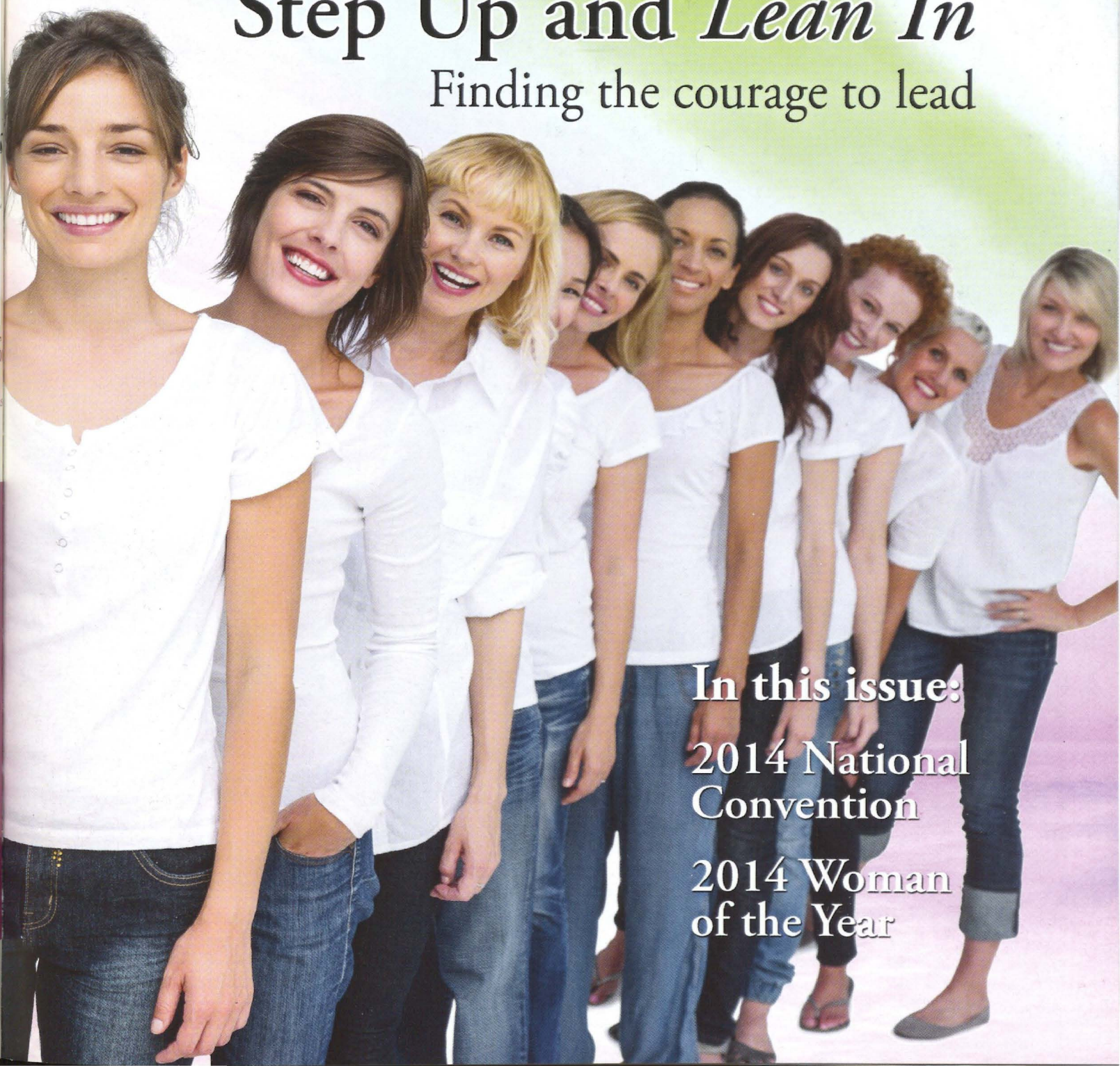


Winter 2014

# The LAMP

o f D E L T A Z E T A

Step Up and *Lean In*  
Finding the courage to lead



In this issue:

2014 National  
Convention

2014 Woman  
of the Year



# Contents



Visit <http://www.deltazeta.org> to read the latest issue. If you would like to read The LAMP online to help the Sorority to go green, please email us at [GreenLAMP@dzshq.com](mailto:GreenLAMP@dzshq.com).

You will receive an email alert when the next issue is online. If you want to continue to receive The LAMP in its hard copy format, mailed to you three times a year, you need not do anything. Thank you!

## Features

- 4 Step Up and Lean In
- 8 2014 Woman of the Year
- 9 Why Do I Give?
- 14 Enriching Communities
- 16 2014 National Convention
- 42 Collegiate Profile
- 44 Alumna Profile

## Departments

- 10 National News
- 22 Distinctive Delta Zetas
- 26 On Campus
- 46 Alumnae News
- 49 Flame Eternal
- 52 Delta Zeta Foundation

Published since December 1910 by Delta Zeta Sorority  
The LAMP of Delta Zeta, Nancy E. Brewer, A, Editor  
(ISSN #0887-2554), official magazine of the Sorority,  
is published three times a year by the Delta Zeta Sorority,  
202 East Church Street, Oxford, OH 45056.

### POSTMASTER

Send address changes to Delta Zeta Sorority,  
202 East Church Street, Oxford, OH 45056.

Send all editorial material to  
Delta Zeta National Headquarters, Attn: Editor,  
202 East Church Street, Oxford, OH 45056  
(513) 523-7597

General email: [dzs@dzshq.com](mailto:dzs@dzshq.com)  
The LAMP email: [LAMP@dzshq.com](mailto:LAMP@dzshq.com)  
Website: <http://www.deltazeta.org>



**Delta Zeta Sorority  
National Council 2014 - 2016**

**Diane M. Stecher**  
Missouri/St. Louis - IE  
National President

**Leslie Evans Williams**  
Indiana - E  
National Vice President of Membership

**Christy Phillips-Brown**  
Western Carolina (NC) - ΘI  
National Vice President of Collegians

**Karen Martin Campbell**  
California State/Long Beach - ΔA  
National Vice President of Alumnae

**Heather Jerden Anderson**  
Texas/Arlington - IY  
National Vice President of  
Administration

**Cathy Irvin Painter**  
Alabama - ΑΓ  
National Vice President of Finance

**Michelle Albrecht Smith**  
California/Los Angeles - AX  
Past National President

**Jeanine Petersen Triplett**  
Louisville (KY) - ΒΓ  
National Panhellenic Conference  
Delegate

**Founded at Miami University**  
Oxford, Ohio  
October 24, 1902

**Founders**

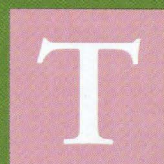
Alfa Lloyd Hayes, 1880-1962  
Mary Collins Galbraith, 1879-1963  
Anna Keen Davis, 1884-1949  
Julia Bishop Coleman, 1881-1959  
Mabelle Minton Hagemann, 1880-1929  
Anne Simmons Friedline, 1879-1932

**The Order of the Laurel**

Irene Caroline Boughton, I  
(University of Iowa)  
Grace Mason Lundy, E  
(Indiana University)  
Elizabeth Coulter Stephenson, A  
(Miami University)  
Myrtle Graeter Hinkly, Δ  
(DePauw University)  
Norma Minch Andrisek, ΓA  
(Baldwin Wallace University)



# From The National President



his is an exciting time to be a Delta Zeta!

We are living in the present to make every moment meaningful. We are looking toward the future with excitement. All Delta Zetas are a part of the team that will make our Sorority a premiere organization. I spoke about teamwork in my acceptance speech at the 2014 National Convention. Teamwork brought our Founders together in 1902 to create a national sorority. Teamwork has guided us every step of the way in Delta Zeta's history. And teamwork will make our Sorority the premiere organization it deserves to be.

As we move into the next biennium and beyond, our strategic planning includes a vision for Delta Zeta to grow the organization, enhance alumnae engagement, improve the member experience and advance organizational effectiveness. Ultimately, this means cultivating Delta Zeta to truly fulfill its purpose as set forth in the *Constitution* – “worthy of the highest aim and purpose of associated effort.”

“Associated effort” – that is the teamwork we must embrace. Teamwork is a principle-based value; if you value teamwork, you have to commit to the principles that grow it. One of the most vital lines of holding high-performance teams together is a common commitment to excellence, a united quest for ongoing improvement. I can't think of a better way to describe Delta Zeta and our members.

Each member of Delta Zeta has her own talents and strengths that she brings to the Sorority. That individuality is crucial to teamwork. Synergy grows out of diversity. We need each member's gifts as we work together to build the future of Delta Zeta.

All of us are on a journey to shape that future – a future that includes expanding our reach, connecting alumnae to use their talents to make us strong, and providing enriching experiences that speak to our members through meaningful development and philanthropy that changes the world. That future is now. Will you join us on the journey?

In Delta Zeta,

*Diane M. Stecher*

Diane M. Stecher,  
National President



FRATERNITY  
COMMUNICATIONS  
ASSOCIATION

Printed in USA.



National Panhellenic Conference



# Step Up <sup>and</sup> *Lean In*

“Since its founding in 1902, Delta Zeta has had the courage to stand up, be brave and to live a life that is full of taking risks.”

Dr. Mari Ann Callais





**“ Our women must learn that they have the right to ‘sit at the table.’ When I say ‘sit at the table,’ I mean literally – to physically be a part of the decision-making, brainstorming, policy development, etc. – to sit at the table with a sense of belonging. ”**

**I**n 2014, how are women approaching leadership? Are they unafraid? Are they taking risks? Are they bringing other women with them?

**The success of Sheryl Sandberg’s (chief operating officer of Facebook) book, “Lean In: Women, Work, and the Will to Lead,” is a testament to the fact that women want to stand up, step up and speak up to become leaders in every aspect of their lives, advancing their careers and their place in the world. But is there a lesson in “Lean In” for sorority women? Aren’t we already leading and mentoring?**

Dr. Mari Ann Callais, speaker, facilitator, consultant and writer in the areas of leadership, fraternity/sorority life and higher education, believes that sorority women, collegiate and alumnae, can become bolder, braver and stronger by leaning in and taking a seat at tables where decisions are made that determine our future.

“What I hear from sorority leaders,” says Dr. Callais, “is they are afraid of not being liked or their chapter not being popular. Sandberg states, ‘Fear is the root of so many of the barriers that women face. Fear of not being liked. Fear of making the wrong choice. Fear of drawing negative attention. Fear of overreaching. Fear of being judged and fear of failure’ (‘Lean In,’ Knopf, 2013, p. 24).

“As women, we are afraid of being judged by others, especially during the developmental years of college when women want to be accepted. So often I see chapters elect officers and those officers try to do the right thing. Then, when their peers think they are trying to take their fun away, they turn on the very women they elected to be their leaders. Women must have more confidence in their abilities to lead and make decisions.”

The sorority experience gives women an opportunity that few others will find in the college setting. “If we can’t help our women to feel confident, where else will they learn?” Dr. Callais asks. “We are positioned to build strong leaders, and not only the officers. Chapters have a small number of officers, but the majority are members who join because we tell them we are interested in helping them to grow and develop. They join because they want to feel accepted by a family of sisters who truly care about them. This is what our chapters and our members need to be not only talking about, but also offering our women.”

With support from within – “when your sisters have your back,” as Dr. Callais says, a sorority woman can do anything to fulfill her dreams and to enrich the world. “The challenge comes when our women act contradictory to our values,” she says. “When chapter members speak down to one another, when they don’t support one another – not just in a campus election or event, but also on a day-to-day basis during the times that really matter, confidence and fearlessness are destroyed.”

It is in a sorority that women find the strength to take advantage of life-changing opportunities – for themselves and others. “No one else is afforded the kind of support



that sorority women offer one another when we do it right,” Dr. Callais says. “We have to start believing that we have the ability to make changes – to have courage to stand up when others are afraid.”

The sorority experience is a subject Dr. Callais is passionate about. “We are learning how to do sorority really well, but we are not *experiencing* sorority,” she emphasizes. “If we were experiencing sorority, we would be unstoppable on college campuses.”

Experiencing sorority is living the ritual and taking the values of Delta Zeta into every aspect of one’s life – especially on the college campus.

“Leaning in and sitting at the table is the only way things are going to change,” says Dr. Callais. “And when you sit at the table, be clear about where Delta Zeta stands.”

But even good leaders can be cautious about being ambitious, a trait that Dr. Callais says women should cultivate. “We are afraid because how does ambition make us seem?” Dr. Callais continues. “How many women do we know in high-power positions who start acting like a man? They don’t realize that they are hired or chosen because we want who they are as women. That is what is important.

“Our women raise tons of money; do hours upon hours of community service, and typically have higher GPAs than the all-women’s average on campus. With this said, what fraternities think of them on most campuses is still one of the most influential factors that determine how they are viewed and how they view themselves. Even though 57 percent of women are earning undergraduate degrees and 60 percent earn master’s degrees, many women still see ambition as a dirty word.”

“ *We have to teach members to see themselves as the amazing women they are and how special it is to be a Delta Zeta, no matter what others might say.* ”

Delta Zeta’s Founders were women who were unafraid to take risks. In 1902, they came to Miami University in Oxford, Ohio as some of the first full-time women students on campus. They met opposition, especially when they wanted to form a national sorority. One such story from Founder Julia Bishop’s diary tells of the would-be theft of the Sorority’s draft of the Constitution by the “Senators,” a group of young men from the various fraternities, who snatched it from the hands of one of the Founders as she crossed campus. Dr. Guy Potter Benton, advisor and friend who would later become the Sorority’s Grand Patron, retrieved the document.

“Delta Zeta’s Founders were great role models for all of us,” says Dr. Callais. “They supported one another and believed in the gifts and talents of each sister. Today, many of our chapters are very large and different than those early years, but the example those women set for us is still applicable today.

“We have to start stepping up because those young women from 1902 are depending on us to do that. They are depending on us to be brave, to be vulnerable, to take risks, to be uncertain and to sometimes not be popular. That is when you know you are a good leader.”

## “BRING OTHER WOMEN ALONG”

“The sorority experience was established for women to mentor other women,” Dr. Callais says. “In my experience, some of our chapter leaders are put in leadership positions too early in their time in the chapter. In the last couple of decades, we have seen a shift from juniors and seniors holding major officer positions to most of the leadership responsibility being placed on the sophomores. It is important to remember that, developmentally, sophomores can do the job asked of them, but what if we gave them the skills and support to develop and take on that role a year or so later? By the time they are juniors and seniors, they are burned out. Then, our seniors feel like they don’t matter to the sorority anymore. We need to help our older members be role models for younger members and stay involved to support their younger sisters.”

Dr. Callais continues, “It is our role to mentor one another, and to help one another be the best version of ourselves that we can be. Our male counterparts are much better at bringing other men along whether in the work place, social scenes or other environments. As women, it is our responsibility to encourage, mentor and nurture one another. There is nothing like the feeling of another woman genuinely offering to help you in a way that builds up your confidence.

“But as younger women, especially, and as older women who are supposed to be mentoring them, if we don’t give them the courage to sit at the table, we will never make the strides that we are capable of making.”



The advantages provided by sorority membership, especially when women lean in, step up and support their sisters, shape them into women who take their fearlessness into the world. And that fearlessness changes the world for the better. "Our sisters challenge us to be better," Dr. Callais says. "Delta Zeta changes the world for people who need speech and hearing services because someone in Delta Zeta stepped up and said, 'That is our responsibility.'"

"If you understand the power of being a Delta Zeta and being in a sorority, you can change our communities in a way that no other organization can," Dr. Callais emphasizes. "But you have to have courage, you have to step up and you have to be willing to take those hits because you know your sisters have your back."

When we became members of Delta Zeta, we pledged to uphold the Sorority's values as established by our Founders more than 100 years ago. These were women who bravely leaned in to create a national sorority and foster a sisterhood that endures. They changed the world for women at Miami University and, later, for Delta Zetas and others around the world.

And leaning in means having the courage to face controversial or difficult issues. "So often as sororities, we don't want to be involved in issues that might seem controversial (such as violence against women), but it is time for our women and, our organizations to stand up for women and gain the respect of others," Dr. Callais says.

**"You can have a seat at the table," Dr. Callais reiterates. "And until you believe you can, the world is not going to change."**



**Dr. Mari Ann Callais** serves as the Sr. Director of Special Initiatives for Delta Delta Delta Fraternity. She is a member of the CAMPUSPEAK Speakers Team and has been a keynote and featured speaker at many regional and national conferences and conventions. She most recently served as an Assistant Professor and Program

Coordinator of the Student Affairs Graduate Program at Mississippi State University. She is the Past National President of her sorority, Theta Phi Alpha, NPC Delegate, and she was a member of the Delta Delta Delta Center Board.

Mary Ann was the recipient of the Fraternity Communications Association's Varner Award in 2013. She has been honored as the Sigma Sigma Sigma Greek Advisor of the Year, with the Theta Chi Fraternity Outstanding Greek Affairs Professional Award, Theta Phi Alpha National Achievement Award and the Guard of Honor, which is the highest award Theta Phi Alpha bestows on a member. She was awarded the AFA 2005 Distinguished Service Award and the National Diversity Council's 2011 Most Influential and Powerful Women in Louisiana.

She served as the Theme Housing Specialist and Vice President for Leasing/Marketing Cottages Division for Capstone Development. Dr. Callais is also a consultant on several fraternity/sorority housing projects.





**Lynn Forney Young, Stephen F. Austin State (TX) - ZΨ, President General of the National Society Daughters of the American Revolution (DAR), is the Delta Zeta 2014 Woman of the Year.**

**L**ynn has been a DAR member for 37 years and has a distinguished service background. She was elected to the position of President General of the Daughters of the American Revolution after serving the Society in a variety of national, state and local roles. The DAR proudly claims 177,000 members and 3,000 chapters in the United States and around the world. Since its founding in 1890, more than 930,000 members have been admitted to its membership ranks.

The nonprofit, non-political women's service organization promotes historic preservation, education and patriotism. The DAR's National Headquarters encompasses an entire city block in downtown Washington, D.C. and houses the organization's offices, a genealogical library, decorative arts museum, historic document collection and a concert hall, all open to the public.

She assumed the Society's highest office after having served for three years as the Recording

Secretary General, a role responsible for overseeing the documentation of the proceedings of the National Society. She took on that Executive Board position following her three-year position as the State Regent of Texas. Her additional leadership includes numerous national chairmanships and vice chairmanships as well as distinguished service at all levels in the Texas State Society.

Lynn quickly acknowledges that without Delta Zeta, she would not be the Chief Executive Officer of the nonprofit organization, serving as a volunteer who also leads a professional staff of 140 at the National Headquarters in the heart of Washington, D.C.

"The first time I ever heard the word 'philanthropy' was when I became a member of Delta Zeta," she says. "I was raised with the feeling that I was very blessed in many ways, and it was my responsibility to give back," Lynn says. "It is because of Delta Zeta that I was led to join the DAR and to explore the opportunity to serve with other

women. I am so amazed at what women can accomplish."

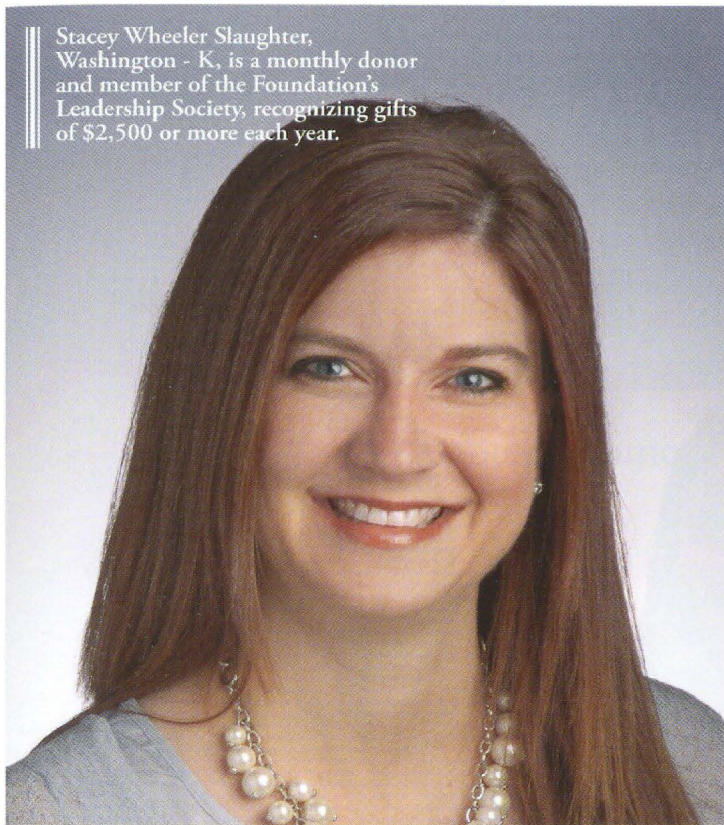
Lynn placed an inspiring call to the members of DAR to give a collective 10 million hours of community service through the Celebrate America! initiative. Since 2013, members have given more than six million hours of service and counting, giving back to their country in many ways that honor the America of today and preserve its history for future generations.

In addition to Lynn's extensive DAR service, she is also very active in her church and community and has been honored for her local leadership efforts. For more than nine years she has served as a Deputy Representative for Veterans Affairs Voluntary Service (VAVS), and was part of the steering committee for the Houston Fisher House Benefit and Homes for Our Troops.

**Read more about Lynn in  
Issue 2 - 2013 of The LAMP at  
[http://www.deltazeta.org/  
aboutus/thelamp](http://www.deltazeta.org/aboutus/thelamp).**



Stacey Wheeler Slaughter, Washington - K, is a monthly donor and member of the Foundation's Leadership Society, recognizing gifts of \$2,500 or more each year.



# WHY DO I GIVE?

**H**aving served the Kappa Chapter (University of Washington) as Treasurer, working as an Educational Leadership Consultant (ELC), volunteering as both a College Chapter Director (CCD) and Regional Collegiate Director (RCD), and now serving as a Membership Specialist, Stacey has seen the impact of Foundation gifts first-hand.

"Our gifts to the Foundation provide options for the Sorority to bring the best, most relevant programs to our members. When I think about the other organizations I connect with here in the Denver area, and where I spend my time and give money, it is with organizations that are empowering women. When you find an organization like Delta Zeta, which is dedicated to being effective in that arena, it is all the more reason to stay involved and to give," said Stacey.

Stacey is quick to point out that she gives for alumnae as well as collegians. "I have grown as much by the collegiate experience as through my alumnae experience and volunteerism," she said. After graduation, Stacey wanted to do something that would help her develop "the other side of her brain."

**Why does Stacey Wheeler Slaughter, Washington - K, give to the Delta Zeta Foundation? "Because I believe in the ways Delta Zeta impacts the lives of women. While we do that through the Sorority programs, it is the money that is donated to the Foundation that allows Delta Zeta to empower tomorrow's leaders through scholarships, leadership opportunities and educational programs."**

"With two degrees in accounting, I knew that the left side of my brain worked, but as an ELC, I developed the right side of my brain – the position allowed me to grow in an interactive, creative role. I met a new chapter every five days, worked with them on issues, applied experiences from others to help them grow, and met with university officials. I spoke in front of groups! I don't think that I would be the financial executive that I am today without that experience. In my professional life, I am told, 'You are not a typical CFO,' and Delta Zeta is a large part of the reason that I am not. I have recently been given the opportunity to become the CEO at Jones NCTI – working with other departments, relating to their needs, and meeting the needs of our clients."

Stacey believes there is always a way to give. "Not all of us have the time to devote to a volunteer position in Delta Zeta. There are, however, many ways to stay connected and

involved – and one of those ways is through the Foundation. I started making a gift annually. It wasn't a lot, but I made sure that I donated. When I could give a little more, I started a monthly gift. It worked in my budget at that point in my life. I've increased my monthly gift twice now because I can see the impact giving has on our Sorority, our chapters and our sisters."

What is it that appeals to Stacey about giving monthly? "I don't have to remember to do it. It isn't about the dollar amount . . . \$10 a month is just as important as \$200! It is just like an automatic payment so I won't forget it."

You can support Delta Zeta with a gift to the Foundation online at <http://www.deltazeta.org> or by mail at Delta Zeta Foundation, 202 East Church Street, Oxford, OH 45056. For questions, please contact Chris Kern, Director of Development, at (513) 523-7597 or [chris@dzshq.com](mailto:chris@dzshq.com).





Delta Zeta

# National News

## “These Hands Don’t Haze”

Delta Zeta Sorority was proud to provide a grant which helped to create HazingPrevention.org’s latest video public service announcement (PSA) entitled “These Hands Don’t Haze,” produced with the use of a certified sign language interpreter.

Aired at Delta Zeta’s 2014 National Convention, the video underscores Delta Zeta’s commitment to eliminate hazing from the college campus, and to make sure all audiences receive the message, including those with speech and hearing challenges.

The video PSA was aired during National Hazing Prevention Week, September 22-26, 2014, and can be viewed at <http://hazingprevention.org>.







## Delta Zeta's collegiate chapters promote i Have a Choice

**D**id you know that the largest health problem on U.S. campuses is high-risk alcohol use?

Delta Zeta's 161 collegiate chapters worked to educate students on their campuses about this and other facts regarding substance abuse among their peers with the Sorority's award-winning i Have a Choice awareness campaign during the annual National Collegiate Alcohol Awareness Week (NCAAW) on October 19-25, 2014.

i Have a Choice is a premier, week-long alcohol prevention and awareness experience designed to help students understand how to make healthy choices around alcohol consumption and social event planning. Delta Zeta is honored to partner with The Coalition of Higher Education Associations for Substance Abuse Prevention (CoHEASAP) during NCAAW and become the leader in the education of college-age students about alcohol consumption. Inspiring students to examine their lifestyle choices and make informed decisions regarding alcohol, Delta Zeta women from across the country and Canada enrich the minds of students by talking about the effects of alcohol on one's body, the warning signs of alcohol abuse, social respect and consent around alcohol consumption, preventative social event planning processes and other topics.



## Watch Operation Change and the work of Starkey Hearing Foundation

**S**tarkey Hearing Foundation's work is featured on Operation Change, an inspiring docu-series which made its debut on OWN: Oprah Winfrey Network this summer.

Since 2006, Delta Zeta has been a proud supporter of Starkey Hearing Foundation, a nonprofit organization that travels the world providing the gift of hearing to those in need, as part of our national philanthropy of speech and hearing. Our support has provided much-needed resources to communities around the world.

This groundbreaking television event highlights the work of Starkey Hearing Foundation alongside some of the world's outstanding philanthropists and leaders. View episodes and exclusive content online at <http://www.operationchange.com/>.

## January is National Mentoring Month

**J**anuary is National Mentoring Month, featuring Thank Your Mentor Day on January 15, 2015. What a great time to remember your Delta Zeta mentor! How will you thank that person?

National Mentoring Month is a campaign held each January to promote youth mentoring in the United States. Inaugurated in 2002, it is spearheaded by the Harvard School of Public Health, MENTOR, and the Corporation for National and Community Service.

A highlight of the campaign is Thank Your Mentor Day, in which Americans thank and honor their mentors. People are encouraged to contact their mentors directly to express appreciation, become a mentor in their own community, make a financial contribution to a local mentoring program, or post a tribute on [WhoMentoredYou.org](http://WhoMentoredYou.org).

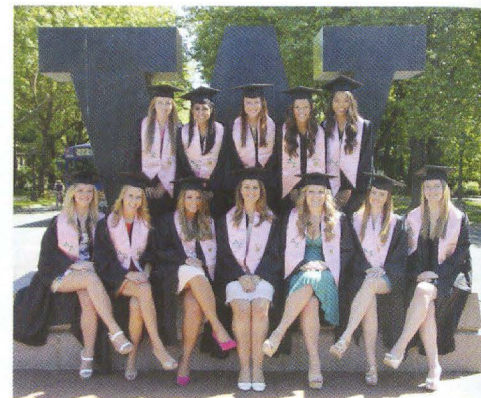
Find more information at <http://www.nationalmentoringmonth.org/>.





# Because of YOU

*Sisters Helping Sisters*



## Fraternity, Sorority Members More Likely to Graduate on Time

**N**ew research finds belonging to a Greek organization can lead to a number of positive outcomes, especially for women. "Greek

membership is found to increase the desire to pursue a graduate degree, and increase the likelihood of graduating on time," report P. Wesley Routon of Middle Tennessee State University and Jay Walker of Niagara University. They find belonging to a sorority has no significant effect on the grade point averages of women, while membership in a fraternity lowers the GPAs of men "only very slightly."

Four-year graduation rates are notably higher for Greek members, with male and female members being 4.8 and 4.7 percentage points more likely to do so, respectively (compared to non-members).

Their study, just published in the Journal of Behavioral and Experimental Economics, is based on a survey of more than 103,000 students at 463 institutions of higher learning in the U.S. More than 19 percent of them reported they had joined a Greek organization.

Source: Fraternity Executives Association (<http://fea-inc.org/>)

### 2012-2014 Biennium

Scholarships given to 104 collegians and alumnae this biennium

**\$366,000**

Emergency Aid to Collegiate Members through the Elizabeth Coulter Stephenson Grants

**\$31,472**

Sponsored 16 Emerging Chapter Leaders to attend UIFI [Undergraduate Interfraternity Institute] this biennium

**\$7,360**

Grant to support 2013 NMALC

**\$10,000**

Grant to Delta Zeta Sorority

**\$300,000**

### 2013-2014

Annual Campaign

**\$487,219**

Alumnae and Friends gave

**\$381,764**

5,544 Collegians gave

**\$105,455**

Chapter Visits by ELCs

**172**

## Additional Biennium giving:

Funded GreekLifeEdu to help every new member successfully




National Historical Museum and Virtual Tour

Over 4,000 Visitors

**ACCLIMATE  
To College Life**

Funded more new programs like Clutch and Being More Pilot Programs





*You are invited*

# THE TABLE -is- SET

## The 2015-2020 Delta Zeta Strategic Plan

The national leadership of Delta Zeta Sorority is dedicated to creating a plan to achieve the vision for our work together. Every member of Delta Zeta has a seat at our table.

We are working in partnership with PLAID, our strategic counseling firm, to improve where needed and expand the impact of our Sorority. We are referring to our immediate priorities and vision in the following terms:

### *Grow*

the organization by expanding to new campuses and improving marketing among our current chapters.

### *Enhance*

Alumnae Engagement by making it easier to connect with one another, improving the member and volunteer experience and developing programming relevant to our alumnae.

### *Improve*

the Member Experience through a richer membership development program and a more impactful philanthropy.

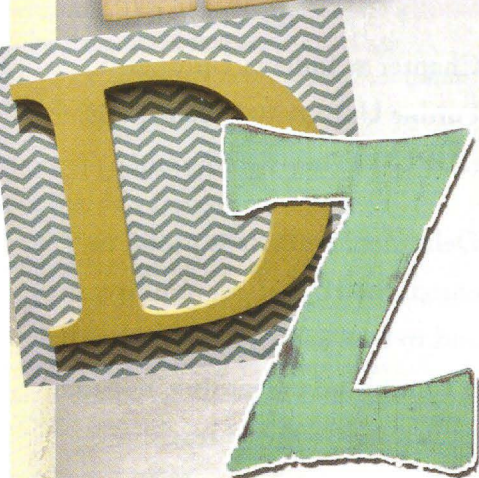
### *Advance*

Organizational Effectiveness through structure and systems that make it easier for you to lead and serve.

These goals, to borrow from our Founders, are worthy of our highest aims and effort.

Visit <http://www.deltazeta.org/thetable> for more information.

DELTAZETA.ORG/THE TABLE

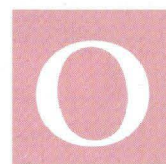






# Enriching Communities

Delta Zeta Sorority Installs Pi Omicron Chapter at Indiana University-Purdue University Indianapolis (IUPUI)

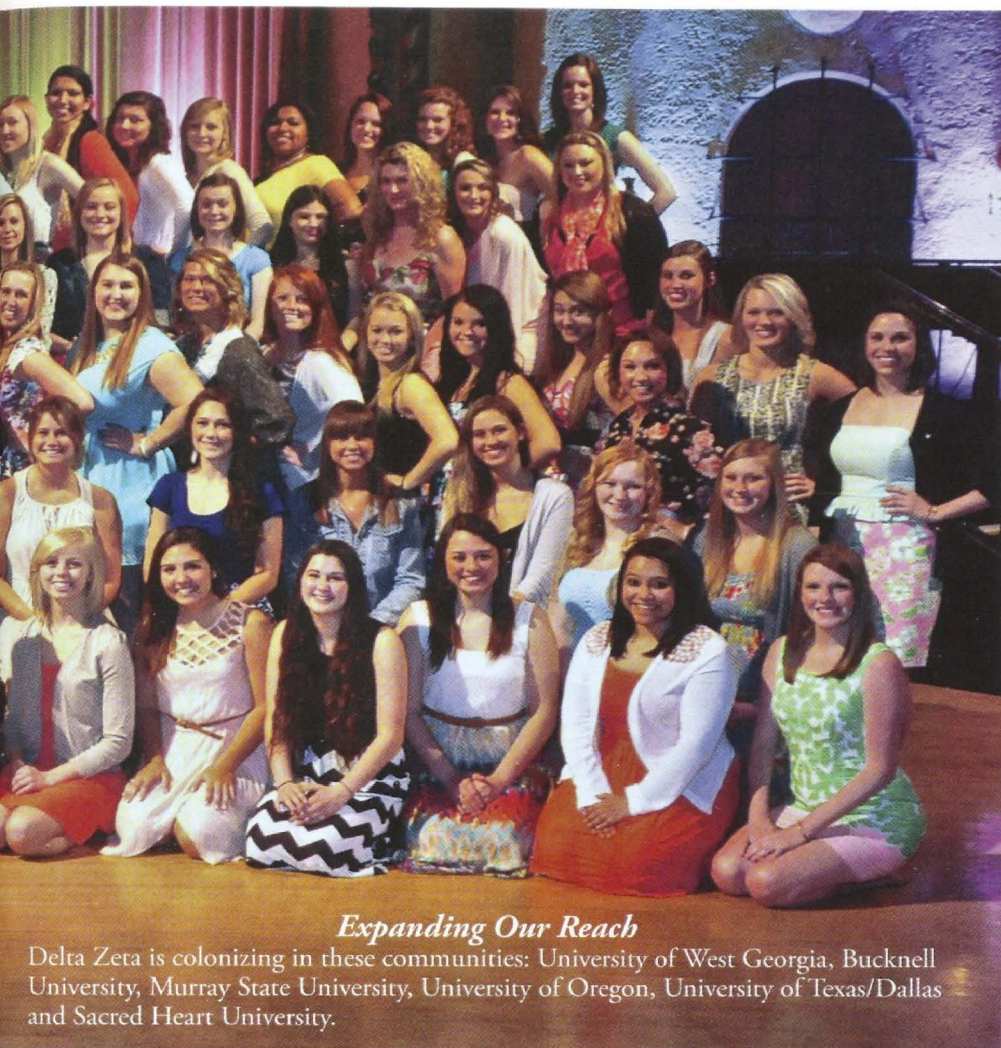


On April 27, 2014, Delta Zeta Sorority was pleased to welcome the Pi Omicron

Chapter at Indiana University-Purdue University Indianapolis (IUPUI) to our sisterhood.

Delta Zeta Sorority is proud to enrich the IUPUI community, and to be a part of a university that is committed to learning, research and creative activity, teaching and civic engagement. IUPUI is Indiana's premier urban public research university.





### *Expanding Our Reach*

Delta Zeta is colonizing in these communities: University of West Georgia, Bucknell University, Murray State University, University of Oregon, University of Texas/Dallas and Sacred Heart University.

One of the most exciting traditions that the Pi Omicron Chapter started during their colonization was an annual trip to National Headquarters the day prior to initiation. This was a special day for the colony members to learn more about Delta Zeta's history and the sisterhood into which they would be welcomed.

The IUPUI Greek Community is very involved and growing quickly. The Panhellenic Community was incredibly supportive during colonization and served as Panhellenic Big Sisters for the members of Pi Omicron Chapter. The Fraternity Community was also very supportive of our colonization process through serving as FODZ (Friends of Delta Zeta).

The installation luncheon, which was attended by more than 250 parents, collegiate and alumnae members, and university officials, was held at the Indiana Roof Ballroom in downtown Indianapolis.

Alex Snowden, Assistant Director for Fraternity and Sorority Life, presented the Pi Omicron Chapter with a Delta Zeta flag that will hang in the campus center along with all of the Greek organizations' flags.

Jeanine Petersen Triplett, Louisville (KY) – Beta Gamma, National President, said, "This installation opens new opportunities for the Sorority, and brings personal and leadership development possibilities to women students at the university. We look forward to being a valuable and contributing organization to the fraternal community. The university's mission to advance the intellectual growth of students to the highest levels nationally and internationally and its commitment to civic engagement are aligned with Delta Zeta's core values."

### Enriching their campus and community

- **Corinne Blackburn**, now a senior member, co-founded Paw's Pantry on IUPUI's campus. Paw's Pantry is a nonprofit food pantry that serves the Indianapolis community and is completely student-funded and student-operated.
- **Hannah Muldoon**, who is now attending Ohio University for her Master's degree in Student Affairs and Higher Education, served as the President of the Student Activities Programming Board last year and also was the student coordinator for Homecoming Week, while serving as the Risk Management Chairman for the chapter and being a founding member of the chapter.
- **Kayla Najera and Maria Harlan**, Panhellenic Delegate, were selected to be on IUPUI's Homecoming Court.
- **Jaskiran Sandhu** attended basic training for the National Guard this summer in Oklahoma.

### IUPUI MISSION

Indiana University-Purdue University Indianapolis (IUPUI), a partnership between Indiana and Purdue universities, is Indiana's urban research and academic health sciences campus.

IUPUI's mission is to advance the state of Indiana and the intellectual growth of its citizens to the highest levels nationally and internationally.

By offering a distinctive range of bachelor's, master's, professional and Ph.D. degrees, IUPUI promotes the educational, cultural and economic development of central Indiana and beyond through innovative collaborations, external partnerships and a strong commitment to diversity (<http://www.iupui.edu/>).





# National Convention 2014

Like the diamond, Delta Zeta's official jewel, the Convention theme was "Our Time to Shine."

**D**elta Zeta members came together to celebrate sisterhood and the amazing experience that is Delta Zeta on July 9-13, 2014 at the JW Marriott Starr Pass Resort & Spa in Tucson, Arizona.

Delta Zetas first convened nationally in 1907. It was at that Convention, led by Grand President Alfa Lloyd, that the Sorority declared itself a "National Assembly," and the work of extending Delta Zeta nationally came to fruition. Alfa's mantra, "Plan your work, then work your plan!" made Delta Zeta a united and strong organization. At this 51st National Convention, the convention body now had the great responsibility of fulfilling Delta Zeta's Purpose as defined in the *Constitution*, following the protocol and standards set by our Founders more than 100 years ago to conduct the national business of the Sorority.

## Stepping Up and Leaning In

Dr. Mari Ann Callais, Carolyn Barnes Gullatt Symposium speaker, brought the Convention body together in sisterhood and song, exploring how today's women can "lean in" to take an active role in the campus community. Often, women need to challenge their male co-leaders when an idea goes against the women's values or policies, or make their voices heard in different areas of student government or academic departments on campus.

Dr. Callais encouraged the audience to "believe that you can. Have the courage to stand up when others are afraid," as women live and lead the college experience.

## Celebrate Service

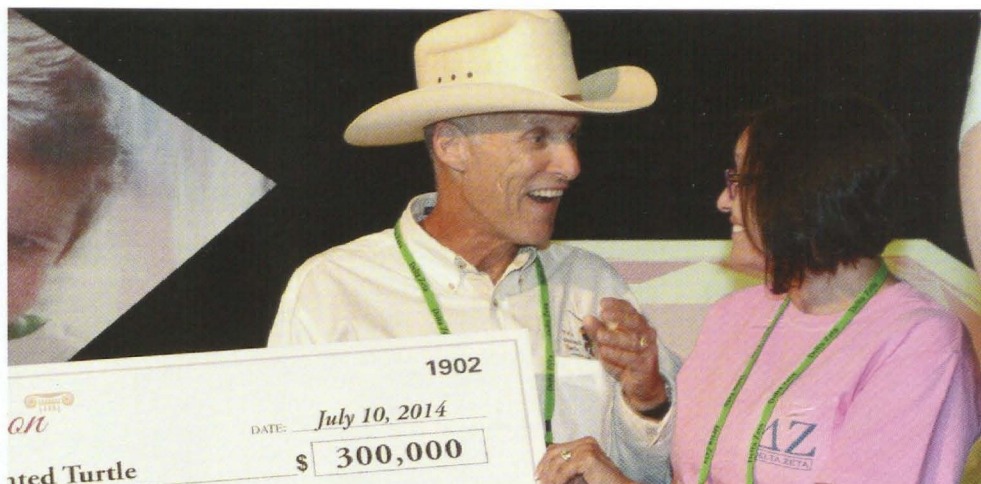
Service has always been an integral part of the Delta Zeta experience. The Founders knew that service to others enriches the world, and they wanted Delta Zeta members to embrace service and make a difference in the world. At the Celebrate Service event, the Convention attendees were

The 2014-2016 National Council:  
Jeanine Petersen Triplett, Louisville (KY) - BG, National Panhellenic Conference Delegate; Heather Jerden Anderson, Texas/Arlington - IY, National Vice President of Administration; Cathy Irvin Painter, Alabama - AG, National Vice President of Finance; Diane M. Stecher, Missouri/St. Louis - IE, National President; Karen Martin Campbell, California State/Long Beach - DA, National Vice President of Alumnae; Leslie Evans Williams, Indiana - E, National Vice President of Membership; Christy Phillips-Brown, Western Carolina (NC) - OI, National Vice President of Collegians; Michelle Albrecht Smith, California/Los Angeles - AX, Past National President

introduced to special guests representing the Sorority's philanthropies of speech and hearing and The Painted Turtle camp.

Sherry and Dennis "Pops" Immel, longtime volunteers and supporters of The Painted Turtle camp, were elated to receive a donation of \$300,000 from the Delta Zeta Foundation and Delta Zeta Sorority, presented by Jeanine Petersen Triplett, Louisville (KY) - BG, National President, and Marvona Easley Tavlin, Southwestern Oklahoma State - EA, Foundation President.





Top left: Oscar-winning actress and social activist Marlee Matlin with the co-founder of the Starkey Hearing Foundation, Tani Austin

Top right: Sherry and Dennis "Pops" Immel accept the donation for The Painted Turtle camp.

Bottom: "What has Delta Zeta given you the courage to do that you otherwise wouldn't have done?" Dr. Callais asked, and members of the audience came to the stage to tell their story.

Oscar-winning actress and social activist Marlee Matlin, and co-founder of Starkey Hearing Foundation, Tani Austin, were thrilled to receive a donation of \$100,000 for the Starkey Hearing Foundation. Marlee Matlin signed to the audience what the service of Delta Zeta meant to those who were deaf or hard-of-hearing like herself. "Courage + Dreams x Delta Zeta = Success," she said in a heartfelt thanks that brought the audience to their feet.

A \$300,000 grant was presented to Delta Zeta Sorority from the Delta Zeta Foundation. This grant exceeded the goal for Foundation support and will provide funding for the Sorority's leadership and educational programs in 2014-2015.

Convention attendees enjoyed participating in the Hike for Hearing and the Great Turtle Race to bring further awareness to speech and hearing and The Painted Turtle camp.

### Achievement through Leadership

Loral Langemeier, Nebraska Wesleyan – BT, 2013 Woman of the Year, is recognized as

one of today's most dynamic and pioneering financial coaches and strategists and a five-time New York Times and Wall Street Journal best-selling author. Live Out Loud is the company Loral founded which coaches women in life and business and teaches them how to be financially independent.

Loral received the Woman of the Year pin and the Gail Patrick Honorary, part of the Delta Zeta Foundation's Woman of Distinction Program. She urged the audience to "Find your passion and what you love to do. Find the women who have already walked the path you want to take." Her Delta Zeta experience taught her that "life is a journey of community. Find that community and stay involved in Delta Zeta Sorority," she said. "Serving the world is your obligation. Your job is to bring your talent to serve the world."

Delta Zeta Sorority welcomed two new initiates at the National Convention. Connie M. Deford has served as a Professional Registered Parliamentarian for the last four Delta Zeta conventions. Her skills ensure that Delta Zeta's convention business meetings are conducted by parliamentary procedure. She is

also the President of the National Association of Parliamentarians and devoted to giving back to her community.

Sherry Immel is an integral part of The Painted Turtle camp through her longtime volunteer service with her devoted husband, Dennis "Pops" Immel. She has been enriching the lives of children who visit the camp since The Painted Turtle's inception, and giving graciously in any way she can to support the camp.

### Enriching Lives

When Alfa Lloyd, Mary Collins, Anna Keen, Julia Bishop, Mabelle Minton and Anne Simmons founded Delta Zeta, they envisioned a sisterhood that transcended boundaries. The 2014 National Convention was a celebration of that sisterhood. Diane Stecher, Missouri/St. Louis - IE, newly-installed National President, reminded the attendees at the Banquet of Celebration, "Let us continue the celebration in our chapters in the next biennium and beyond to always strive for the best that is the tradition of excellence we know as Delta Zeta."



## 2014 National Convention Collegiate Awards

The National Council extends congratulations to these members and chapters for receiving the following awards at the 2014 National Convention in Tucson, Arizona:



### Council Award

This award shall be presented to a chapter or chapters for six years of high consistent achievement.

Epsilon Sigma Chapter, Wayne State University (MI)

### Crest Award

This award shall be presented to outstanding college chapters that have excelled consistently in all areas of college programming.

Beta Delta Chapter, University of South Carolina  
 Beta Gamma Chapter, University of Louisville (KY)  
 Epsilon Sigma Chapter, Wayne State University (MI)  
 Zeta Epsilon Chapter, California University of Pennsylvania  
 Zeta Pi Chapter, University of Georgia  
 Gamma Kappa Chapter, Kent State University (OH)  
 Omicron Zeta Chapter, Randolph-Macon College (VA)  
 Sigma Chapter, Louisiana State University  
 Theta Eta Chapter, Creighton University (NE)

**Caryatides Award** consists of six statues presented to those chapters which have best envisioned and fulfilled a New Member Education Program that has brought enrichment to the new members.

Beta Xi Chapter, Auburn University (AL)  
 Delta Tau Chapter, Temple University (PA)  
 Epsilon Xi Chapter, University of Central Arkansas  
 Kappa Phi Chapter, University of North Carolina/Charlotte  
 Xi Upsilon Chapter, Northeastern University (MA)  
 Pi Alpha Chapter, University of Florida

**Betty Heusch Agler President's Award** shall be an outstanding achievement award to be given at each Convention to a chapter which has shown special achievement or has handled an unusual/critical situation in an exemplary manner, bringing credit to Delta Zeta Sorority in general and its chapter members individually.

Omicron Omicron Chapter, Lindenwood University (MO)

Beta Gamma Chapter (University of Louisville) representatives Trudy Noell Wheeler, Northwestern Oklahoma State - ΔO, Regional Collegiate Director - Region XIII, and Jessica Black, President, on behalf of outgoing National President, Jeanine Petersen Triplett, Louisville (KY) - ΒΓ, passed the Presidents Plaque to Iota Xi Chapter (University of Missouri/St. Louis) representatives Brooke Kwikkel, President, and Marlo L. Dorsey, Missouri/Kansas City - ΞΦ, Regional Collegiate Director - Region IX, on behalf of Diane Stecher, Missouri/St. Louis - ΙΞ, National President, for the 2014-2016 biennium.

### Founders Award

Six candlesticks commemorating our six Founders shall be given to the chapter or chapters with a high record of achievement over the previous two-year period. Eligible chapters shall be judged on membership, financial standing, cooperation, college programs, philanthropies and standing on campus.

Gamma Kappa Chapter, Kent State University (OH)  
 Beta Gamma Chapter, University of Louisville (KY)

**Genevieve Schmitt Memorial Plaque** shall be given to the college chapter with the highest academic rating.

Beta Tau Chapter, Nebraska Wesleyan University

**Gertrude Houk Fariss Award** shall be presented jointly to recognize outstanding alumnae-collegiate chapter programming and activity.

Theta Rho Chapter, California State University/Los Angeles, and Pasadena Foothill (CA) Alumnae Chapter

**Heritage Cup** shall be presented to the college and/or alumnae chapter which has contributed significantly and most effectively to the Delta Zeta National Historical Museum in Oxford, Ohio.

Gamma Kappa Chapter, Kent State University (OH)

**Adelaide See Loving Cup** shall be given to the chapter which has shown unusual improvement since the last National Convention. This improvement may be in any specific area or a combination of areas.

Omicron Zeta Chapter, Randolph-Macon College (VA)



## 2014 National Convention Alumnae Awards

The National Council extends congratulations to members and chapters for receiving the following awards at the 2014 National Convention in Tucson, Arizona:



Jeanine Petersen Triplett, Louisville (KY) - BF, National President; Lorrie Flores Tijerina, St. Mary's (TX) - OA, College Chapter Director for the Omicron Alpha Chapter (St. Mary's University), 2012 winner of the Alice C. Huenefeld Award; Gwen McHugh Shick, Ferris State - ZN, College Chapter Director for the Xi Psi Chapter (Grand Valley State University), 2014 winner of the Alice C. Huenefeld Award; and Ann Gurley Morrow, Southern Indiana - AB, National Vice President of Collegians.

**Margaret Huenefeld Pease Council Award** shall be given to a small alumnae chapter which has excelled in all areas of alumnae work.

Columbus (OH) Alumnae Chapter

**Alice C. Huenefeld Award** shall be presented at Convention to an outstanding College Chapter Director who has given long and dedicated service to her chapter.

Gwen McHugh Shick, Ferris State (MI) - ZN  
College Chapter Director for Xi Psi Chapter, Grand Valley State University (MI)

**Achoth Award** shall be given to specially selected alumnae who have demonstrated, by long and faithful service, their continued loyalty to Delta Zeta particularly in their local communities.

Tera L. Beermann, Nebraska Wesleyan - BT  
Karly K. Burns, East Carolina (NC) - ZA  
Carol Gist Guilliams, Central Oklahoma - EY  
Sandy Shaddix Hall, California State/Fullerton - IY  
Andrea Ridenour Kusta, Ohio State - Θ  
Susan Cassidy McArthur, Washington - K  
Elizabeth (Betty) Barbieri McClellan, Pennsylvania State - ΓΔ  
Karen Woods Miron, Ferris State (MI) - ZN  
Jennifer Bogen Morrison, Ohio State - Θ  
Cyndi Haugeland Munch, Arizona - BI  
Margaret A. Purcell, Alabama - ΑΓ  
Analee Kredel-Speers, California State/Chico - ΔΧ  
Julie Swinhart Weller, Loyola Marymount (CA) - ΞΟ

**Gertrude Houk Fariss Award** shall be presented jointly to recognize outstanding alumnae-collegiate chapter programming and activity.

Pasadena Foothill (CA) Alumnae Chapter, and  
Theta Rho Chapter, California State University/Los Angeles

**Myrtle Graeter Hinkly Council Award** shall be given to a large alumnae chapter which has excelled in all areas of alumnae work.

Greater Seattle Alumnae Chapter (WA)

### Alumnae Chapter Excellence Awards

Greater Seattle Alumnae Chapter (WA), Great Western Area  
Austin Alumnae Chapter (TX), Southwest Area  
Columbus Alumnae Chapter (OH), Great Lakes Area  
Denver Alumnae Chapter (CO), Central Plains Area  
Amarillo Area Alumnae Chapter (TX), Southwest Area  
Chicago Area Alumnae Chapter (IL), Mid-America Area





## 2013-2014 Florence Hood Miner and Grace Mason Lundy Awards

These annual collegiate awards are often the hallmark of Delta Zeta leaders. National Presidents, Women of the Year and other significant Delta Zeta members have received these important awards – women who have demonstrated inspired leadership as volunteers, in their professions and as Delta Zetas.



### 2013-2014 Florence Hood Miner Awards

The Florence Hood Miner Award was first presented at the 1948 Convention in recognition of Mrs. Miner's service as National Vice President, Editor of The LAMP of Delta Zeta, Historian and other national offices. The award shall be given to members of Delta Zeta who in their junior year made the greatest contribution to their college, chapter and Delta Zeta through outstanding leadership on the campus while maintaining a good academic record.



**Jessica Berkowitz**  
Lambda Phi Chapter  
Appalachian State University



**Katherine Farmer**  
Epsilon Delta Chapter  
Concord University



**Katherine Lesiak**  
Beta Tau Chapter  
Nebraska Wesleyan University



**Taylor Melone**  
Delta Phi Chapter  
Northeastern State University



**Shannon Paquette**  
Epsilon Sigma Chapter  
Wayne State University



**Amanda Shreves**  
Delta Sigma Chapter  
Truman State University

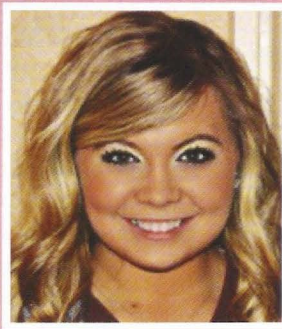


## 2013-2014 Grace Mason Lundy Awards

The Grace Mason Lundy Award was first presented at the 1948 Convention in recognition of Mrs. Lundy's many years of service as a National President, Historian and in other national offices. It shall be presented to senior members of Delta Zeta who throughout their college years have given greatest evidence of loyalty, devotion and service to their chapters and to the Sorority.



**Jacqueline Coty**  
Lambda Omicron Chapter  
Angelo State University



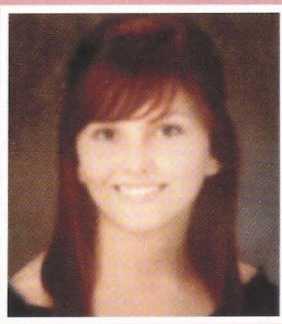
**Briana Harvell**  
Zeta Zeta Chapter  
West Texas A & M University



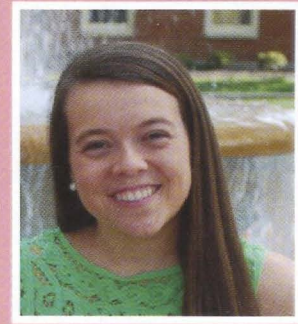
**Angela Marino**  
Lambda Gamma Chapter  
Jacksonville State University



**Aspen Matthews**  
Rho Chapter  
University of Denver



**Maggie Roussell**  
Theta Kappa Chapter  
University of New Orleans



**Laura Young**  
Omicron Zeta Chapter  
Randolph-Macon College



# Distinctive Delta Zetas

Delta Zeta enriches its members' lives and the world community. Delta Zeta collegiate members, fulfilling this philosophy in school and in service through outstanding achievement, are inspirational and exemplify the best of the Sorority.

## Coaching for the love of it



After Theta Kappa Chapter's (University of New Orleans) Academics Chairman, **Alyssa Aleman**, donated more than 200 service hours to coaching young girls playing softball, she was recognized by the local community park where she coaches for her tremendous dedication.

"I coach for the joy of educating the young women I work with," Alyssa said. "I watch them grow more and more every year. My sisters in the chapter inspire me to continue to coach."

## Successful athlete at Creighton University



Photo: Ford Jacobsen

**Madelyn Buckner**, a member of the Theta Eta Chapter at Creighton University, is a junior and defender midfielder in Creighton University's Division I Women's Soccer program. She is the captain of the soccer team and was selected for the Missouri Valley Conference All-Freshmen team during her first season. An Exercise Science and Pre-Physical Therapy major, Madelyn said recently in an online profile that she loved the "uniqueness

and diversity" of Delta Zeta and really wanted to be a member, even if it meant juggling studies and athletics with sorority membership, something that is challenging for most school athletes.

"Balancing everything that I have on my plate (which is a lot) has been hard at times, but it has helped me grow," she says. "Being in a sorority has helped me open another side of myself and given me a support system that sees my potential and wants to help me reach it. It's been amazing and surprising to see the way my sisters have

shown their support and love. They understand the commitment I have for soccer and are cheering me on always. I am proud to be a part of Delta Zeta. We are talented and unique women, doing a lot of great things. I'm happy to call these gifted women my sisters, to support the amazing things they do, and have their support for what I do, too!"

## Greek Woman of the Year

**Tori Heckendorn**, President of the Omicron Beta Chapter at Richard Stockton College of New Jersey, won Stockton's Greek Woman of the Year award. Recognized for her strong academic performance (a 3.96 GPA with a major in Biology and minors in Spanish and Holistic Health), she was also credited with implementing the program that ensured each member and new member of Delta Zeta attended at least one other Greek event each semester.

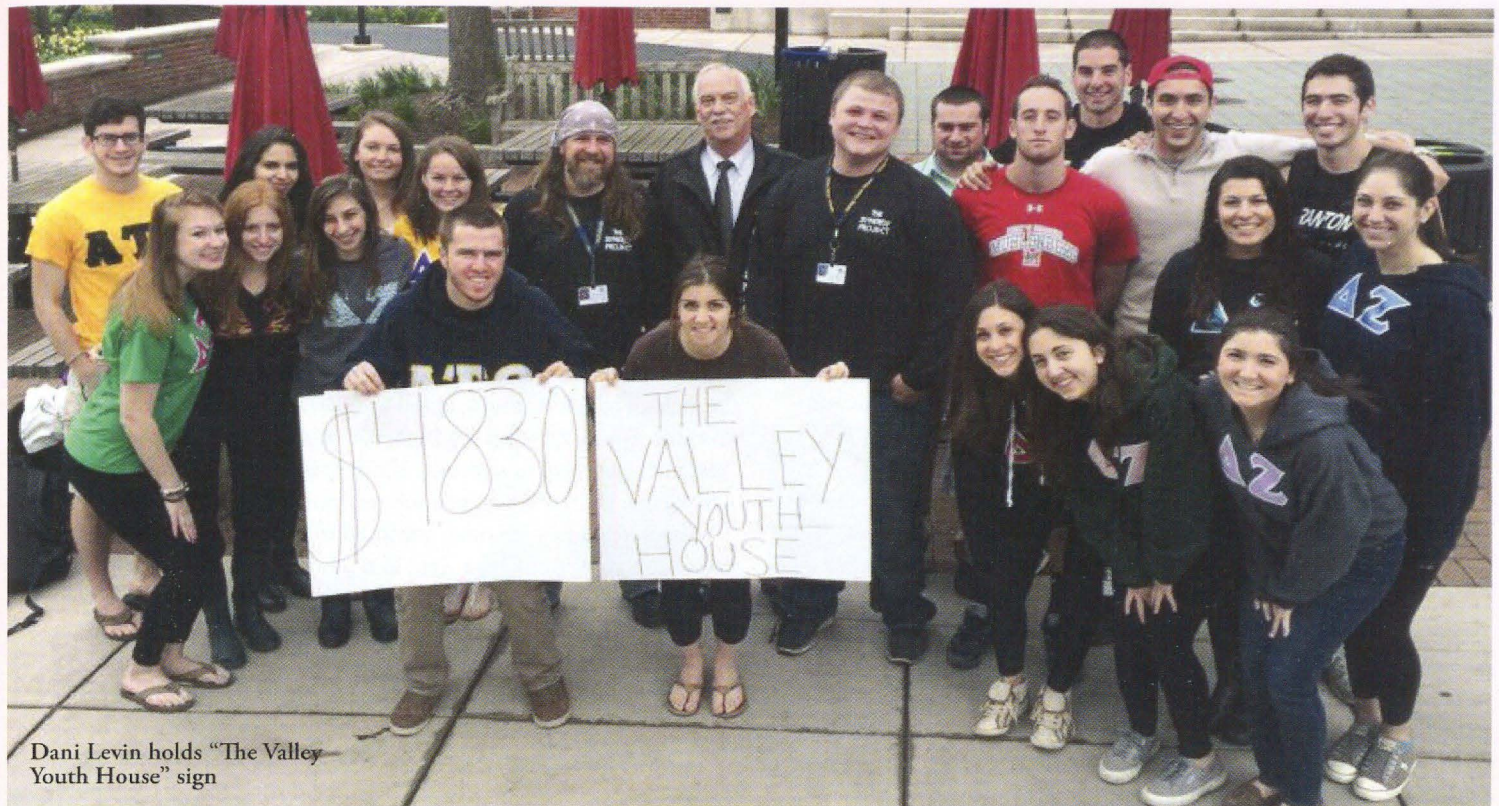
Tori is a member of the Beta Beta Beta Biology Honor Society and has held the positions of Vice President of Membership, Treasurer, Greek Council Representative and Head of the Judiciary Board in her chapter. She is a Florence Hood Miner Award winner and received Delta Zeta's Charline Chilson Scholarship for students studying science.

She was also recognized for her work with the Special Olympics of New Jersey. Tori participates in a Special Olympics Soccer League and Basketball League, resulting in Stockton placing first in the state tournament.

Tori is Event Coordinator for the Physical Therapy Club and has served as the Vice President of the Holistic Health Club. She is CarFit certified, a program that helps the elderly to better utilize their cars to ensure safer driving, and volunteers at St. Gregory's Food Pantry as a Spanish translator for the non-English speakers.

Lastly, Tori was recognized for her Hurricane Sandy relief efforts in 2012-2013, helping with hurricane cleanup and delivering hot meals to those without power for weeks after the storm in conjunction with a local church. She is pursuing a doctorate in physical therapy at Stockton and will graduate in May 2016.





Dani Levin holds "The Valley Youth House" sign

## Helping underprivileged youth in Allentown, Pennsylvania

**Danielle "Dani" Levin**, Philanthropy Chairman of the Xi Iota Chapter (Muhlenberg College), won recognition as an "Outstanding Youth in Philanthropy" from the Association of Fundraising Professionals in eastern Pennsylvania for her leadership in running the chapter's philanthropy event, Chips for Charity. With the help of Alpha Tau Omega Fraternity, Dani and the Xi Iota Chapter raised \$4,830 for abused and homeless Allentown youth.

Dani says, "Philanthropy has always been a big part of my life, but Delta Zeta has provided me with the opportunity to expand my passion to give with the help of my sisters. It is truly inspiring to see how dedicated the sisters of the Xi Iota Chapter are to giving graciously. Their hard work and support for Chips for Charity and everything else that we do makes me so proud to be a part of Delta Zeta and has given me an even deeper understanding of the Delta Zeta values which I will carry the rest of my life."

## Receive Student Government Association Awards at Nicholls State University

Members of the **Kappa Alpha Chapter** were recognized at the Nicholls State University's Student Government Association's Annual Banquet.

Gabby Marcello, Ms. Nicholls 2013, had the honor of crowning the 2014 Ms. Nicholls. Amanda Parham and Cera Boatwright, Panhellenic Delegate, were honored for serving as Student

Government Association (SGA) election commissioners. Lillie Bourgeois received the Senator of the Year Award and the Senator Scholarship, top honors in SGA. She was also honored as the 2014-2015 Director of Public Relations for SGA's executive board. Lindsey Loupe was honored for serving as a Senator for the College of Nursing and Allied Health. Carolanne Moore was elected as the 2014-2015 Director of Student Rights and Grievances for SGA's new executive board.

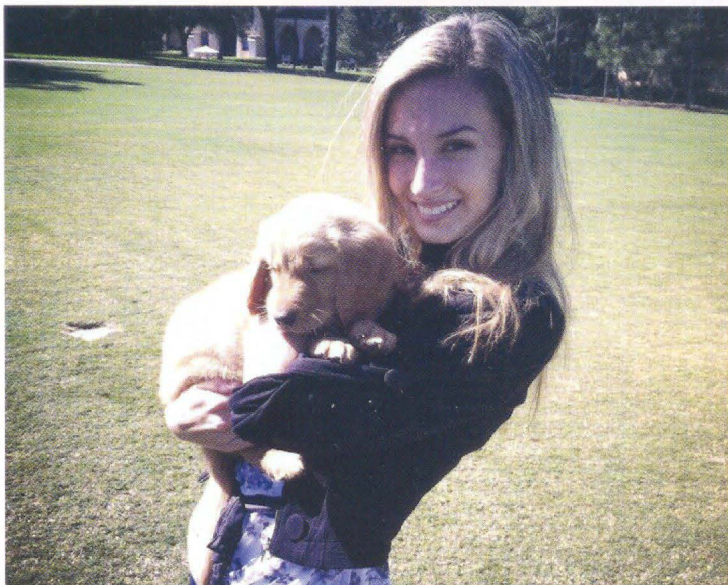
"We are so proud of these women for the recognition that they received, and are additionally proud to see some of our members become campus leaders. They are wonderful representatives of Delta Zeta at Nicholls State University," says member Alexis Foret.



Gabby Marcello, Amanda Parham, Cera Boatwright, Panhellenic Delegate, Lillie Bourgeois, Lindsey Loupe and Carolanne Moore of the Kappa Alpha Chapter (Nicholls State University)



## Founds service dog organization



**Kara Russell**, a member of the Pi Theta Chapter at Rollins College, worked with fellow student Rachel Denton to found Service Independence Training (SIT), a disability awareness and service dog training organization that has been recognized and selected for exhibition at the Clinton Global Initiative University Conference. SIT uses students to train service dogs to decrease the turnaround time from application to independence for people with disabilities who are waiting for a dog.

Kara currently serves as the Organizational Student Coordinator for the school's service learning organization, and as a student researcher for law enforcement's approach to combat human trafficking. She founded and organized a 5k memorial walk for a local Navy SEAL and served as the Vice President of Service for Phi Theta Kappa honor society.

"I am so honored to call the women of Pi Theta my sisters," says Kara. "They have provided me support when I felt that I might not attain my goals, and have been my biggest cheerleaders. SIT was deemed a 'crazy idea' by many people, but my sisters gave me the inspiration and courage to pursue it. Without their support, I would have not been accepted to the Clinton Global Initiative Conference or have been able to increase disability awareness on my campus."

## Recognized with Greek Lifetime Achievement Award

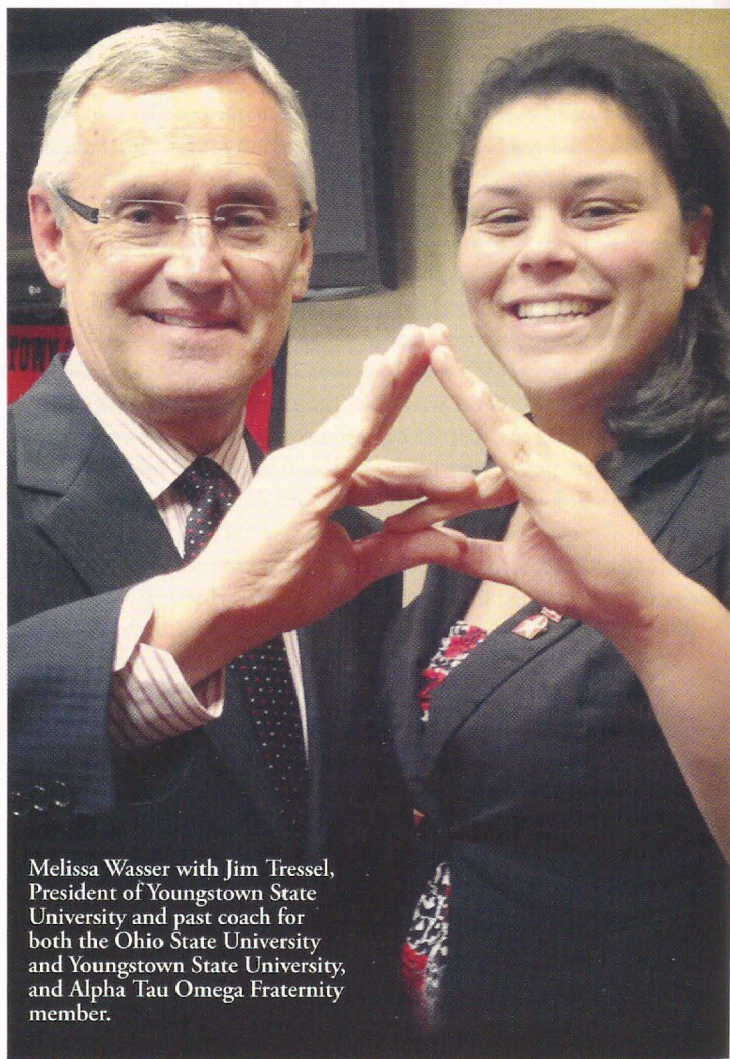
**Melissa Wasser**, a member of the Kappa Chi Chapter at Youngstown State University, was awarded the 2014 Greek Lifetime Achievement Award at the annual Greek Awards.

The Greek Lifetime Achievement Award is given annually to a fraternity or sorority member that has shown leadership throughout his or her Greek life experience. Melissa was recognized for her service to Kappa Chi as a previous Academics and Risk Management Chairman, the immediate past President, and Parliamentarian of the chapter, and for her service on the campus of Youngstown State University within the Student Government Association, Phi Kappa

Phi Honor Society, Order of Omega, Moot Court Association, and as a Student Trustee appointed by the Governor of Ohio in 2012. She volunteered as a bowling coach for children for the past six years and has participated in a local homeless awareness event and Relay for Life.

"Delta Zeta has been a major part of my leadership journey at Youngstown State University," says Melissa. "Being involved in my chapter inspired me to be more involved on campus. I was elected to Kappa Chi's Executive Board as Academics Chairman. This position increased my self-confidence and led me to apply for, and be appointed to, the highest student position on campus, as a Student Trustee on the university's Board of Trustees. Representing my chapter in such an official capacity raised awareness of Delta Zeta across campus, especially when I was chosen to serve on the Presidential Search Committee to select the ninth President of Youngstown State University. Delta Zeta helped me, as President of the Kappa Chi Chapter, network with other campus leaders outside of the Greek community. Having Delta Zeta in my life showed me what it meant to be not only a gracious leader, but to become a better citizen of the university community."

She was the Spring 2014 undergraduate speaker for commencement exercises. Melissa is attending The Ohio State University Moritz College of Law to become an attorney. She hopes to become a legal analyst for CNN, for whom she interned during the 2012 Republican National Convention.



Melissa Wasser with Jim Tressel, President of Youngstown State University and past coach for both the Ohio State University and Youngstown State University, and Alpha Tau Omega Fraternity member.





# Did you know a group of wombats is called a *wisdom*?

Did you know a group of Delta Zeta sisters are called Savers?  
Join your group in saving even more on car insurance with a **special discount**  
from GEICO. Now that's a wise decision.

[geico.com/greek/deltazeta](http://geico.com/greek/deltazeta)  
1-800-368-2734

**GEICO**

*Delta Zeta*



Some discounts, coverages, payment plans and features are not available in all states or all GEICO companies. Discount amount varies in some states. One group discount applicable per policy. Coverage is individual. In New York a premium reduction may be available. GEICO is a registered service mark of Government Employees Insurance Company, Washington, D.C. 20076; a Berkshire Hathaway Inc. subsidiary. © 2014 GEICO

## DATES TO REMEMBER

Visit <http://www.deltazeta.org> or  
watch The LAMP for more information.

**February 1, 2015**

National Panhellenic Conference's  
Month of the Scholar

**March 2, 2015**

International Badge Day

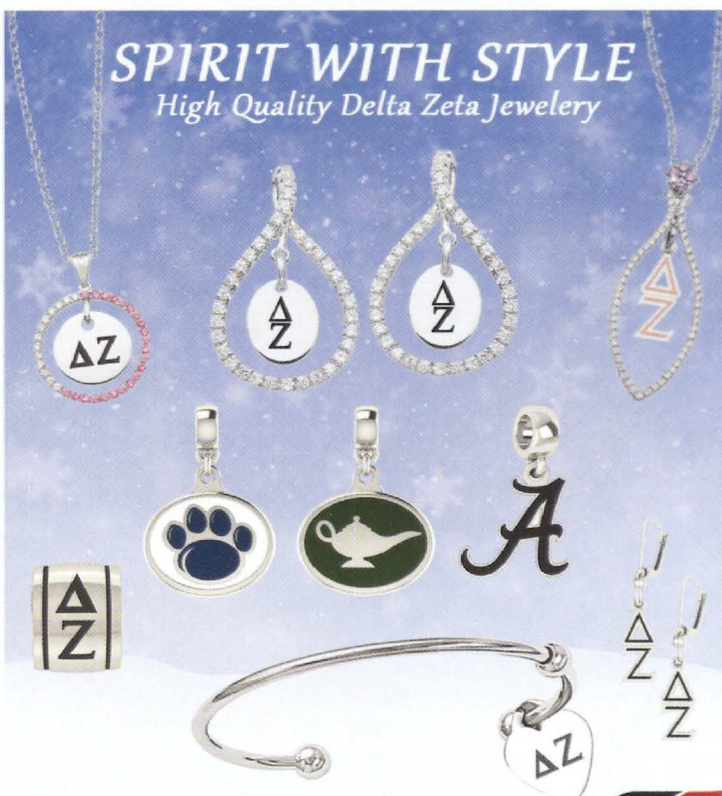
**April 12-18, 2015**

Volunteer Appreciation Week

Watch for the Spring 2015 issue of The LAMP for  
Sharing Sisterhood, featuring alumnae reunions and gatherings

## SPIRIT WITH STYLE

High Quality Delta Zeta Jewelry



Check out the full line at  
[www.collegejewelry.com](http://www.collegejewelry.com)







## BETA DELTA

### University of South Carolina

Hosted 10th Annual Sweet Caroline Bone Marrow (SCBMD) and Blood Drive in memory of member Caroline Terry, raising more than \$1,750 for Be The Match Foundation and added 400 names to the National Bone Marrow Donor Registry

University Greek Awards received included: Chapter Excellence - Gold, Greek Week Winner, Achievement in Scholarship, Achievement in Involvement and Challenge the Process

Hosted annual Turtle Tug competition at which 56 teams raised \$34,000 for speech and hearing and local charities including North Lake Sertoma Club, Camp Wonderhands and Brennen Elementary





# On Campus With Delta Zeta

Just as Delta Zeta's Founders defined leadership more than 100 years ago, our collegiate members continue that legacy by leading in the Sorority on their campuses, in their communities and nationally. These are emerging leaders who are enriching today's world.



## ALPHA

### Miami University

Members volunteered at local senior center and for American Cancer Society®

Participated in Kappa Delta's Paintbrawl benefiting Prevent Child Abuse America, and Delta Upsilon and Phi Mu's competition benefiting Cincinnati Children's Hospital

## THETA

### The Ohio State University

Hosted second annual Turtle Trot 5k to support Columbus Speech and Hearing Center, raising \$5,000

Raised more than \$10,000 for BuckeyeThon, university's largest, student-run philanthropy to fight childhood cancer

Rhyan Passanante, Gaia Altshuler, and Kelsey Heyvaert, members of the Rho Chapter (University of Denver)

## IOTA

### University of Iowa

Raised \$2,500 for Gallaudet University

## KAPPA

### University of Washington

Recognized at the 2014 Greek Awards Ceremony for Outstanding Public Relations

Forty-eight members on Dean's list

Five members belong to Order of Omega Greek honorary society

Ashley Wall raised more than \$3,500 for Fred Hutchinson Cancer Research Center in Delta Tau Delta's Ms. Greek competition

## OMICRON

### University of Pittsburgh

Won category for Most Appeal with blanket fort built to benefit Salvation Army

## RHO

### University of Denver

Volunteered at Project C.U.R.E. to provide medical supplies to underserved regions of the world

Received these 2014 Greek Awards: Chapter Advisor of the Year, Katie Vilders Fredrick, Denver (CO) - P, College Chapter Director; Sunshine Award, Lexi Grafe; Order of Omega Woman of the Year, Shawna Taets; Presidential Pillar of Leadership; Presidential Pillar of External and Alumnae Relations and Chapter Award of Excellence

Fundraised and donated over \$15,000 and performed 6,580 hours of community service this academic year

Hosted annual Big Man on Campus event, raising more than \$5,000 for Starkey Hearing Foundation

Members serve as tutors with Reading Partners to increase literacy levels in underprivileged children

Supported Denver Dumb Friends League at annual fundraiser, the Furry Scurry

Raised \$1,700 at Sigma Chi's Derby Days for Make-A-Wish Foundation





## SIGMA

### Louisiana State University

Raised more than \$5,900 through silent auction and Turtle Tug, which went toward a \$7,000 donation to Baton Rouge Speech and Hearing Foundation

Participated in Greek Week with the largest number of volunteers

Volunteered at St. Lillian's Academy for children with learning disabilities

Participated in Baton Rouge Children's Advocacy Celebrity Waiter Event, sponsoring Deandra de Napoli, Miss LSU-USA 2014, as a celebrity waiter

Placed second with Phi Kappa Psi in 2014 Songfest

## ALPHA ALPHA

### Northwestern University

Raised \$17,493 with Lambda Chi Alpha for university's 41st Dance Marathon for philanthropy

## ALPHA BETA

### University of Illinois

Received Outstanding Risk Management - second place; New Member Programming - third place; and Philanthropy - third place at university's Greek Oscars

Kelsey McCarthy received Panhellenic Living Your Values Award

Ariana Sun awarded Panhellenic Council Scholarship for demonstrating exceptional leadership within the Illinois Greek community

Raised \$9,379 for The Painted Turtle camp through annual Turtle Tugs and Barbecue

## ALPHA GAMMA

### University of Alabama

Raised more than \$21,000 for third annual University of Alabama Dance Marathon (UADM), benefiting Children's of Alabama, the local Children's Miracle Network Hospital

## ALPHA THETA

### University of Kentucky

Received Golden Matrix award for raising \$35,000 for pediatric cancer research at university's annual Dance Blue marathon

Co-hosted event with Delta Tau Delta Fraternity, raising \$3,300 to benefit speech and hearing and Juvenile Diabetes Research Fund

Participated in balloon release to bring awareness of traumatic brain injury and Post-Traumatic Stress Disorder (PTSD)

## ALPHA RHO

### Ohio Wesleyan University

Partnered with Phi Kappa Psi and Phi Gamma Delta to win 2014 Greek Week

Brianna Robinson received Greek Goddess Award

University Greek Awards: Outstanding Sorority Scholar of the Year: Kate Lewis-Lakin; Emerging Leader Award: Rebecca Caserta, President, and Gold Chapter Excellence Award

Twenty one members on Dean's list for the spring semester

Contributed to largest donation received by People In Need, Inc. with 1,165 pounds of food

## BETA GAMMA

### University of Louisville

Becca Sears, Vice President of Programs, elected Vice President of Arts and Sciences Council, and Morgan Cooksey elected Service Vice President of Student Government Association

Savannah Ross won 110% Award as a Fryberger Greek Sing Co-Chair

Won women's intramural basketball tournament and Kappa Sigma Dodge Ball Tournament

Greek Life Awards: Meredith Cooksey - Up and Coming Leader and Peyton Vaughan, Vice President of Membership - Outstanding Greek Athlete

Had the most participants from a student organization in RaiseRED dance marathon, contributing \$8,438 for pediatric cancer research

Hosted Senior Prom for local retirement home and Hamburgers for Hearing benefiting Heuser Hearing Institute

## BETA KAPPA

### Iowa State University

Donated more than \$8,300 to Special Olympics of Iowa

Placed first in 2014 Greek Week Olympics

Received Gold Circle Award for Fraternal Excellence for excellence in academics, recruitment, retention, leadership, risk prevention, administration, diversity and collaboration in the Greek community

## BETA LAMBDA

### University of Tennessee/Knoxville

Sent letters and photos to a U.S. military platoon serving overseas

Turtle Tug raised more than \$6,700 for Knoxville Center for the Deaf



## BETA XI

### Auburn University

Partnered with Alpha Gamma Chapter (University of Alabama) to raise \$4,000 to send a terminally ill child to Disney World®

Highest cumulative GPA out of all 17 sororities on campus for Spring 2014 semester

## BETA TAU

### Nebraska Wesleyan University

Raised \$5,454 for university's annual Relay for Life, contributing to \$45,000 raised in total

Won 2014 Greek Week

Hosted annual Spaghetti Feed, raising more than \$1,300 for The Painted Turtle camp

## GAMMA ALPHA

### Baldwin Wallace University

Received university's Sorority Chapter of the Year award

## GAMMA DELTA

### Pennsylvania State University

Hosted first annual Turtle Tug, raising \$1,100 for The Painted Turtle camp

## GAMMA KAPPA

### Kent State University

Hosted fourth annual Lip Sync, raising more than \$44,000 for speech and hearing and the Delta Zeta Foundation

Donated \$2,000 to Cuyahoga Falls City Schools Speech-Language Pathology Department

Won Music Video of the Year Award at Greek Music Awards

Raised \$1,650 for the American Cancer Society® in Kent State Relay for Life

## GAMMA LAMBDA

### San Jose State University

Ana Ahmad recognized at Honors Convocation Ceremony as among top 10 percent of 30,000 students on campus in academic standing

Turtle Tug event raised \$6,600 for The Painted Turtle camp

## GAMMA NU

### Eastern Illinois University

Several members recognized for outstanding academic excellence at Fraternal Scholars ceremony

Placed third in Greek Week competition

Raised nearly \$1,000 for Gallaudet University

Gamma Delta Chapter (Pennsylvania State University) members participate in the Turtle Tug

## GAMMA XI

### New Mexico State University

Won first place in Spirit Competition and had the largest team participating in university's Relay for Life

Won first place overall in Greek Week, including first place in Greek Sing and Greek Olympics

Amanda Villa awarded All Greek Woman of the Year

## GAMMA OMICRON

### San Diego State University

Volunteers once a week at Urban Angels food donation center

Cleaned up a local beach with Phi Delta Theta

## GAMMA RHO

### Northern Illinois University

Hosted its 19th annual Dream Man and Greek Goddess competition, raising more than \$5,000 for The Painted Turtle camp





## GAMMA SIGMA

### Eastern Michigan University

Hosted Socks of Love event, collecting donations that included 300 pairs of socks and other necessary items donated to local shelter for those in need

Received Greek Awards including: Integration of Purpose Award, Leadership Development, Civic Engagement and Chapter of Excellence Award

Brianna Siler won Delta Tau Delta Miss Greek pageant to support Juvenile Diabetes Research Foundation (JDRE)

Teamed with Delta Tau Delta to raise \$1,023 for university's Relay for Life

## GAMMA TAU

### Bowling Green State University

Partnered with Sigma Phi Epsilon to take second place overall at Greek Sing

Holds highest GPA out of all 12 Panhellenic chapters on campus for third consecutive semester as of Spring 2014

Received Chapter of Excellence Award at Greek Life Awards for displaying leadership, academic excellence and positive relations

Raised nearly \$1,000 for Gallaudet University

## GAMMA PHI

### Indiana University of Pennsylvania

Hosted annual DZ Dodgeball tournament, raising \$1,369 for Starkey Hearing Foundation

Contributed to campus-wide food donation totaling more than \$3,300 for Indiana County Community Action Program's food bank

Took first place in Phi Delta Theta's Greek Sing and in Sigma Chi's Derby Chase

Received Greek Awards including: Academic Excellence, Excellence in Campus Involvement and Excellence in Community Service



Members of the Delta Alpha Chapter  
(California State University/Long Beach)

Performed random acts of kindness to show appreciation for faculty and volunteered at the Humane Society

Donated baskets filled with toys to Pittsburgh Children's Hospital for terminally ill children

## GAMMA CHI

### Ball State University

Received "Exceeds Expectations" recognition in academics by Ball State Greek Life accreditation program

Members volunteered for Multiple Sclerosis (MS) Walk, contributing to more than \$29,000 raised for National MS Society

Participated in university's Riley Children's Hospital Dance Marathon, contributing to total of \$344,800 dollars raised

## GAMMA PSI

### Central Michigan University

Teamed with Pi Kappa Phi to take first place in Greek Week academic games, benefiting Special Olympics Michigan

## GAMMA OMEGA

### Southern Illinois University

Volunteered at local event to fight world hunger

## DELTA ALPHA

### California State University/ Long Beach

Hosted pancake breakfast which raised \$2,874 for Gallaudet University

Chapter's SororiTEA event raised \$7,956 for Delta Zeta Foundation

## DELTA BETA

### University of Tampa

Received Outstanding Sorority of the Year award at university's 2014 Leadership Awards

Raised \$3,152 with fourth annual Green Gala for Starkey Hearing Foundation

Raised \$6,488 for Relay for Life



## DELTA DELTA

### Georgia State University

Hosted third annual Basketball Tournament benefiting the Delta Zeta Foundation

2014 Greek Awards: Panhellenic Chapter of the Year; Excellence in Citizenship; Excellence in Membership Development and Most Improved Chapter

Greek Woman of the Year - Cindy Park, President; Executive Officer of the Year - Audrey Proa; Vice President of Programs and Delegate of the Year - Amanda Brown, Panhellenic Delegate

2014 Georgia State University Royal Flame Awards included Dean's Cup Award, Outstanding Collaboration Program (with Phi Beta Sigma) and Outstanding Leadership Program

## DELTA THETA

### University of Houston

Partnered with Pi Kappa Phi to present "French Quarter" choreographed performance at university's Frontier Fiesta, which fosters school spirit

Won second place in Pi Kappa Phi's "Push America" philanthropy event to raise money for individuals with disabilities

Volunteered at Center for Hearing and Speech in central Houston

## DELTA SIGMA

### Truman State University

Raised \$3,000 during Greek Week for Victims Support Services, which helps those affected by violent crime

Greek Awards received included: Outstanding Academic Program, Outstanding Community Service and Panhellenic Chapter of the Year; Chelsea Reiter named Greek Woman of the Year, Andrea Hoelting was Greek Week Queen, Olivia Louderman recognized as Emerging Greek Leader

Volleyball and basketball Greek intramural champions

## DELTA TAU

### Temple University

Participated in North Philadelphia block clean-up, filling more than 20 trash bags

Made 28 Build-A-Bears for Starkey Hearing Foundation

Held its first "Delta Ziti" pasta dinner event in support of The Painted Turtle camp, raising nearly \$1,000

## DELTA UPSILON

### Marshall University

Raised \$6,351 and placed second in university's Relay for Life event to fight cancer, contributing to total of \$32,983, largest fundraiser in school's history

## DELTA OMEGA

### Fort Hays State University

Mariah Anstaett, Philanthropy Chairman, served as volunteer camp counselor for The Painted Turtle camp

Hosted Big Man on Campus event, raising nearly \$1,000 for The Painted Turtle camp

Participated in university's student-run Tigers in Service trip to clean up local creek

## EPSILON GAMMA

### University of Central Missouri

Won 5-Star Award, given to the most prestigious sorority and fraternity on campus

Won first place in Lambda Chi Alpha's Watermelon Bust house decorating competition and in watermelon pass to benefit North American Food Drive

Participated in Muscular Dystrophy Association (MDA) Walk in Kansas City

## EPSILON DELTA

### Concord University

Held Kay Yow Cancer Fund basketball event to raise money for breast cancer research

Raised more than \$1,500 for member diagnosed with leukemia

Received university's Academic Sorority of the Year award for fifth consecutive year

Ashleigh Price named 2014 Greek Goddess

Donated 74 prom dresses for economically disadvantaged high school students

## EPSILON EPSILON

### Fresno State University

Participated in Sigma Chi Fraternity's Derby Days, raising \$5,000 for Children's Hospital Central California

## EPSILON ZETA

### Drexel University

One-third of the chapter made Dean's list

Won the PHC Athletics Cup for consecutive third year

Earned recognition in all four categories of Dean's Cup: Sisterhood, Scholarship, Leadership and Service to the Community

Won second place for 2014 Greek Week

Volunteered at Phillies baseball game collecting recyclables for Phillies' Red Goes Green program

Hosted fundraising event for Philadelphia Express Track Club, a track league for underserved children

Donated \$1,700 to Global Medical Brigades



The Epsilon Kappa Chapter (University of Wisconsin/Whitewater) received the Chancellor's Achievement Award and Highest Chapter GPA Award.



## EPSILON IOTA

### Fairmont State University

Won 2014 Greek Week

Kalyn Walker, Vice President of Membership, named 2014 Greek Woman of the Year

Hosted Turtle Trot event, raising more than \$2,000 for a local child with speech and hearing challenges

## EPSILON KAPPA

### University of Wisconsin/Whitewater

Raised \$3,195 in university's Relay For Life for American Cancer Society®

## EPSILON NU

### Missouri State University

Participated in street clean-up project during Greek Week

Partnered with Sigma Nu, Pi Kappa Phi and Zeta Phi Beta to take third place overall

Hosted sixth annual Greek Tug with Sigma Phi Epsilon, raising more than \$2,000 for The Painted Turtle camp

## EPSILON TAU

### Longwood University

Hosted dodgeball tournament to raise awareness of hearing loss

Contributed \$5,066 at university's Relay for Life to benefit American Cancer Society®

## EPSILON UPSILON

### University of Central Oklahoma

Received Campus Leadership Awards: Outstanding Community Service and Philanthropic Program awards

## EPSILON OMEGA

### University of Wisconsin/Eau Claire

Won 2014 Greek Week, Spirit Cup competition and Nicole Foyt named 2014 Greek Goddess

Hosted Talent Extravaganza to benefit Starkey Hearing Foundation

Volunteered at YMCA of Eau Claire's Color Run

## ZETA EPSILON

### California University of Pennsylvania

Hosted second annual Turtle Tug to benefit The Painted Turtle camp

Ranked second in academics out of five sororities on campus for the past academic year

Hailey Kelly and Coby Detar inducted into Gamma Sigma Alpha Greek honor society

Seven members were named Presidential Scholars for 3.25 GPA or above



Made hundreds of crafts on campus-wide April Day of Service for multiple local non-profit groups (senior centers, schools, community centers, etc.)

Donated 12 Build-A-Bears to Starkey Hearing Foundation

Volunteered 80 hours of service to The Big Event to beautify parks and homes in the community

## ZETA LAMBDA East Carolina University

Ranked third in academics out of all nine sororities on campus for the Spring 2014 semester

Volunteered for after-school programs for Boys and Girls Club of Greenville

Volunteered 315 service hours for the Greenville Special Olympics

Big Man on Campus event raised \$4,490 for the Delta Zeta Foundation

## ZETA NU Ferris State University

Kristy Kirk, Vice President of Programs, is Panhellenic president

Gave 1,440 service hours during campus-wide Big Event to beautify the community

## ZETA PI University of Georgia

Has 13 Presidential Scholars at the university

## ZETA PHI Slippery Rock University

Contributed 100 hours of service during Build-A-Bear event for Starkey Hearing Foundation

Participated in Adopt-a-Highway, collecting trash and cleaning up highways

Won 2014 Greek Week competition for second consecutive time

Five members belong to Order of Omega

Members of the Zeta Epsilon Chapter (California University of Pennsylvania) participated in the "Walk in Her Shoes" event to stop violence against women.







The Zeta Pi Chapter (University of Georgia) won \$1,000 from Republic Wireless and donated it to The Painted Turtle camp.

Kristen Fouts is Vice President of Recruitment on campus Panhellenic Council

Kristen Japuncha is Vice President of Community Service for Junior Panhellenic Council

Received 2014 Greek Awards: Outstanding Philanthropic Event; Saria Haselrig - Outstanding President; Samantha Caun - Outstanding New Member and Megan Guerrieri named Greek Woman of the Year

### THETA ETA Creighton University

Partnered with Phi Kappa Psi to host second annual charity Jays Jam basketball tournament, raising more than \$4,000 for Completely KIDS non-profit, after-school program

### THETA THETA DePaul University

Hosted its first Tacos and Turtles event, raising nearly \$1,000 for Starkey Hearing Foundation

### THETA IOTA Western Carolina University

Received Sorority of the Year award from the campus Panhellenic Council

"Lord of the Wings" event raised funds for Delta Zeta's national philanthropies

### THETA KAPPA University of New Orleans

Greek Banquet Awards included: Highest Sorority GPA (out of all four sororities on campus), Chapter Progress Award, Excellence



in Programming Award; Alyssa Aleman and Candace Thompson recognized for number of service hours given to community; Rachel Dwyer, Chapter President, named Greek Woman of the Year

Raised \$4,853 with Turtle Tug event which benefited Starkey Hearing Foundation

Volunteered to help ARNO (Animal Rescue of New Orleans) and House for Humanity, which helps families after natural disasters

## THETA MU

### St. Cloud State University

Received 2014 Greek Awards: Chapter of the Year; Most Improved GPA for 2013; Above All-Women's Average for Fall 2013; and ranked number one in academics for Spring 2014 out of all six fraternal organizations on campus

## THETA NU

### Minnesota State University/ Moorhead

Placed first in Sigma Chi's Derby Days with 257 service hours to benefit the American Red Cross

Sarah DeYonge named Most Outstanding New Member at university's Greek Awards

## THETA RHO

### California State University/ Los Angeles

Fraternity and Sorority Life Greek awards received included: Community Relations Award and Outstanding Philanthropic Award

Donated 14 Build-A-Bears to Starkey Hearing Foundation

Partnered with the City of Hope to register more than 100 possible bone marrow donors

Members volunteered for Life Rolls On, helping kids with spinal cord injuries surf and improve their quality of life

## THETA OMEGA

### Barton College

Received 2014 Greek Awards: Highest Sorority GPA; Greek Week Champions; Academic Greek Woman of the Year - Casey Gaston, Treasurer

Sponsored Wilson Walks for Harrison event, and raised \$4,720 for a boy with hearing challenges who needs kidney transplant

## IOTA ALPHA

### Texas State University

Hosted Dad's Day event with 200 members and their fathers in attendance

Sent 60 Build-A-Bears to Starkey Hearing Foundation

Recognized as Organization of the Month for March, 2014 based on exhibiting values of service, excellence, respect, empowerment and collaboration

Hosted campus-wide Turtle Tug which raised \$3,500 for The Painted Turtle camp

## IOTA DELTA

### Edinboro University

First sorority in university's history to win the titles of Homecoming Queen - Megan Corrigan, Greek Goddess - Anna Hepler, President, and Greek Week champions

Supported Zeta Tau Alpha's philanthropic event, Big Man on Campus, and took first place for second consecutive year

Donated 22 Build-A-Bears to Starkey Hearing Foundation

Participated and won Theta Chi's MANJAM event to benefit local veterans' association

Anna Hepler, President, is Treasurer of Order of Omega

## IOTA XI

### University of Missouri/St. Louis

Partnered with Missouri Stream Team to plant 35 trees around Urban Ecology prairie restoration project and cleaned up 1,500 pounds of trash from a stream in St. Vincent Park during Greek Week

Marissa Steimel named Homecoming Queen; second consecutive year that a chapter member has been so named

## IOTA RHO

### West Chester University

Hosted Zumbathon to benefit speech and hearing

Raised \$6,335 during university's Relay for Life, the highest amount out of 55 teams participating

Received university's 2014 Fraternity and Sorority Awards: 4-Star Chapter, Excellence in Service to Campus, New Member Development, Risk Management, Chapter Development, Overall Excellence in Community Service and Lacy Preddie named Outstanding Chapter President of the Year

## IOTA UPSILON

### California State University/ Fullerton

Created 150 Build-A-Bears for Starkey Hearing Foundation

Hosted two events that raised more than \$1,600 for speech and hearing

Raised \$4,000 for Pi Kappa Alpha's Fire Fighter Challenge to support research and awareness for leukemia, lymphoma and melanoma in conjunction with the Fullerton Fire Department

Associated Students, CSUF, Inc. (ASI) awarded ASI Street Team Awards to Sarah Yousuf - Outstanding Volunteer and Jillian Torres, Historian - Most Spirited Girl

Shawna Hudson named Panhellenic Scholar of Month for March, 2014



## IOTA PSI

### University of Texas/Arlington

Received Fraternity Sorority Life Awards: Mardie Sorenson Chapter Programming Award; the Shirley McCracken Outstanding College Panhellenic Council Chapter Award and Arielle Tan named Sorority Woman of the Year

Hosted CAMPUSPEAK speaker Jake Byczkowski, an alumnus of Delta Tau Delta, who spoke about risk prevention

Held campus-wide Turtle Tug, raising more than \$4,000 for The Painted Turtle camp

## KAPPA ALPHA

### Nicholls State University

Members cleaned up Bayou Lafourche in Thibodaux, Louisiana

Volunteered 70 service hours for local hospital's silent auction event

Participated in "Take Back the Night" event in support of anti-violence, empowerment and justice

The Iota Upsilon Chapter (California State University/Fullerton) was named the winner in Pi Kappa Alpha's Fire Fighter Challenge.

Chapter's intramural softball placed second in women's league and first out of the three sororities on campus; Tayla Songe named Most Valuable Player for 2014 season

## KAPPA MU

### Shepherd University

Participated in road cleanup and volunteered at local animal shelter

Raised \$2,227 for Relay for Life on campus with alumnae

## KAPPA PHI

### University of North Carolina/Charlotte

Greek Awards won included: Overall Excellence in Philanthropy, Non-Greek Programming, Chapter Programming, Most Philanthropy in Funds Raised and Sorority of the Year

Recognized as intramural dodge ball champion

Gave 282 service hours during Day of Service, volunteering for Habitat for Humanity, a local domestic violence shelter and Medassist to provide life-saving medication to those in need

Raised \$1,000 for Relay for Life in memory of member Brittany Spaulding who lost her fight against cancer

Volunteered for Campus Clean-up during 2014 Greek Week

## KAPPA CHI

### Youngstown State University

Received the Panhellenic Sports Trophy and the Kessler Award for Philanthropy

Won the 62nd annual Greek Sing

Hosted fourth annual 5k Run/Walk for Noise, raising more than \$3,600 for Youngstown Hearing and Speech and The Painted Turtle camp

## LAMBDA ALPHA

### Arkansas Tech University

Sponsored 59th annual Miss Arkansas Tech pageant, which awarded \$25,000 in gifts and scholarships





## LAMBDA THETA

### Michigan Technological University

Greek Life Awards received included Outstanding Member Development Program and Outstanding Leadership in a Greek Council - Janna Clement

## LAMBDA KAPPA

### University of Alabama/ Huntsville

Gave 155 volunteer hours and won trophy for largest attendance at Student Government Association's Big Event for community service

Won 2014 Greek Week and Greek Olympics

Hosted second annual Rock for Silence concert, raising \$4,516 for Huntsville Hospital Pediatric Audiology Unit

## LAMBDA NU

### Auburn University/Montgomery

Hosted pancake dinner, raising nearly \$1,000 for university's clinic for speech and hearing

Created 20 Build-A-Bears for Starkey Hearing Foundation

## LAMBDA PHI

### Appalachian State University

Won 2014 Greek Week

Donated 1,690 cans to local food bank

Raised \$7,500 through eighth annual Turtle Trot 5k to benefit university's Charles E. and Geneva S. Scott Scottish Rite Communication Disorders Clinic

## XI DELTA

### Radford University

Holds the highest GPA of all seven sororities on campus for Spring 2014

Held annual Turtle Tug event, raising \$1,000 for Gallaudet University

## XI THETA

### University of North Carolina/ Wilmington

Tied for highest sorority GPA of eight organizations on campus for Spring 2014

Fraternity and Sorority Life Awards received: Most Improved Sorority; Philanthropic Program of the Year; Award of Excellence;

Certificates for Service, Philanthropic Efforts, Leadership and Campus Involvement; Panhellenic Scholar of the Year - Sarah Branoff

Hosted first Music for Miracles concert, raising \$1,900 to benefit Miracle League of Wilmington

## XI IOTA

### Muhlenberg College

Fifty-seven percent of the chapter made Dean's list and eight members had a 4.0 GPA for Spring 2014 semester

## XI LAMBDA

### University of San Francisco

Received 2014 Greek Awards: Outstanding Greek Member - Marianne Meyer, Outstanding New Member Program and Outstanding Service and Philanthropy

The Lambda Phi Chapter presents a \$7,500 check to Appalachian State University's Communications Disorders Clinic.







## **XI NU**

### **Tarleton State University**

Top Panhellenic sorority in academics out of four on campus for second semester of 2014

Merlina Cisneros, President, crowned Miss TSU

Greek Awards received included:  
Organization of the Year; John Tarleton Spirit Award - Merlina Cisneros, President; Adviser of the Year - Kim Newton Sulivant, Tarleton - Xi Nu; and Publication Award - Lura Rylant, Philanthropy Chairman

Beautified Stephenville by partnering with Alpha Gamma Rho to Adopt-a-Highway

Hosted Turtle Tug, which raised more than \$2,300 for The Painted Turtle camp

## **XI RHO**

### **Clarkson University**

Holds highest GPA of all three sororities and second highest GPA of all 13 fraternal organizations on campus for Spring 2014

Nicole Mendelson- member of Phi Kappa Phi Honor Society; Gabrielle Pawlowski - member of Tau Beta Pi Engineering Honor Society and Omega Chi Epsilon Chemical Engineering Honor Society; Ashley Brisbin - member of Tri-Beta Honor Society and Emily Canaski - member of Tau Beta Pi Engineering Honor Society

Volunteered to assist local Girl Scouts as they earned their badges

Delivered 150 gift bags and cards to local nursing home residents

## **XI OMICRON**

### **Loyola Marymount University**

Participated in all-sorority event to benefit local women's shelter

Iftin Abshir is Vice President and Kelsey Wilson is Secretary of Order of Omega

Emily Uhland named Philosophy Scholar of the Year

## **XI TAU**

### **Millersville University**

Participated in "Into the Streets" student service program to clean up local park

## **XI UPSILON**

### **Northeastern University**

Chapter's Relay for Life team raised more than \$9,040 for American Cancer Society®

Xi Lambda Chapter (University of San Francisco) raised \$4,500 at chapter's Ali's Way event to benefit Leukemia Lymphoma Society

## **XI CHI**

### **Robert Morris University**

Volunteered 171 hours to Colonial Chaos competition to benefit Cystic Fibrosis Foundation

Volunteered 275 hours at Boston Celtics games to raise money for Celtics Shamrock Foundation, which helps local children in need

## **XI OMEGA**

### **Purdue University**

Co-hosted with Sigma Nu first 5k Turtle Trot/Glow Run, raising \$2,500 for St. Vincent Peyton Manning Children's Hospital in Indianapolis

## **OMICRON ALPHA**

### **St. Mary's University**

Holds highest overall GPA and highest GPA for Fall 2013 and Spring 2014 out of all four sororities on campus

Eleven members named to Dean's list

Four members inducted into Order of Omega and one into Gamma Sigma Alpha Greek honor societies



Emily Artalejo, Stela Khury and Katherine Salazar, LAMP Editor, received President's Award, given to only 14 individuals from the university

Teamed with Chi Phi Fraternity at San Antonio Pets Alive to help control the pet population

## OMICRON BETA

### Richard Stockton College of New Jersey

Won Greek Community Award for partnering with and supporting other Greek philanthropy events on campus



Tori Heckendorn, President of the Omicron Beta Chapter (Richard Stockton College of New Jersey), was named Greek Woman of the Year.

## OMICRON GAMMA

### Ohio University

Received university's Organizational Collaboration Award with Delta Sigma Theta Sorority for campus-wide program on the roles and challenges faced by women in today's society

Donated \$2,500 in clothing to Athens Community Shelter

Raised \$4,290 for university's End Slavery Movement (ESM) to stop human trafficking

## OMICRON DELTA

### Bryant University

Hosted campus-wide Jog for Gizmo in memory of a member who, while jogging, was struck by a driver under the influence

Raised \$2,760 during university's Relay for Life

## OMICRON EPSILON

### Arkansas State University

Raised more than \$7,000 for Camp Aldersgate, serving children with disabilities, youth and senior adults in a camp environment

## OMICRON ZETA

### Randolph-Macon College

Received SERVE (Students Engaged in Responsible Volunteer Experiences) Above and Beyond Award for 253 hours of service logged in one month

Annual Big Man on Campus event and hearing awareness campaign raised \$2,550 for Delta Zeta's national philanthropies

Greek Week winner with partners Sigma Phi Epsilon and Kappa Sigma, and won LipSync competition for second consecutive year

Received 2014 Greek Awards: Excellence in Academic Performance; Excellence in Community Service; Excellence in Risk Management; Excellence in Education; Excellence in Recruitment and Chapter of Excellence

Miriam Smith, Randolph-Macon – OZ, received Field Sorority Chapter Advisor Award and Sequoyah McGee named Outstanding New Member

Raised \$2,667 for college's Relay for Life for cancer research

## OMICRON LAMBDA

### North Carolina State University

Hosted Turtle Trot 5k Run/Walk which raised more than \$5,087 for the Delta Zeta Foundation

## OMICRON MU

### University of South Carolina/Upstate

Sponsored Operation Beautiful, encouraging students to live by their own definition of beauty

## OMICRON NU

### University of Windsor

Won Greek Week and led the Day of Service to help local shelters and clean up campus

Cleaned, organized and donated 3,000 coats for Coats for Kids

Won UWSA (University of Windsor Students Alliance) Club of the Year 2013-2014

Participated in Camp Day for young people sponsored by Tim Horton Children's Foundation

Volunteered at campus Science Rendezvous to inspire the next generation of scientists

Planted trees with Essex Region Conservation Authority

Hosted summer camp at Chatham Kent Children's Safety Village, teaching young girls about leadership and self-respect



## OMICRON PI

### Frostburg State University

Hosted "womanless" pageant to raise awareness about domestic violence and support local women's shelter

## PI ALPHA

### University of Florida

Hosted Turtle Tug which raised \$6,184 for UFHealth - Pediatric Hearing

Donated \$1,872 for Beta Theta Pi's Bring it On event benefiting Alzheimer's Association

Gave 180 hours and \$1,200 to 2014 UF Dance Marathon, which raised \$1,528,330 for Children's Miracle Network

## PI DELTA

### Wake Forest University

Annual philanthropy volleyball tournament, co-hosted with Lambda Chi Alpha, raised \$2,000 for Brian Piccolo Cancer Research Fund

Raised more than \$4,000 for The Painted Turtle camp with annual Turtle Tug event

## PI EPSILON

### Clemson University

Members worked with Pet Spa of Seneca to socialize feral puppies

## PI ZETA

### Arizona State University

Won Tau Kappa Epsilon's coin war fundraiser, competing against 13 other sororities on campus, to benefit St. Jude Children's Hospital

## PI THETA

### Rollins College

Donated \$13,666 to Goodwill

Hosted MR. DZIRABLE to benefit Starkey Hearing Foundation

## PI KAPPA

### University of Idaho

Won Turtle Race portion of Phi Delta Theta's Turtle Derby Philanthropy and second place for overall event to support the ALS (also known as Lou Gehrig's disease) Association

Won third place out of all 10 sororities for 2014 Greek Week

## PI LAMBDA

### University of Tennessee/ Chattanooga

Raised \$4,881 during Greek Philanthropy Week

Made \$1,125 donation to The Speech and Hearing Center

Gave 700 service hours to Sigma Chi Fraternity's Derby Days, contributing to more than \$17,000 raised for T.C. Thompson Children's Hospital

## PI XI

### University of Central Florida

Held third highest GPA for Spring 2014 semester out of all 35 fraternal organizations on campus

Participated in university's Knight-thon to raise money for Greater Orlando Children's Miracle Network Hospitals

Alexandra Porter won Miss Modelo Latino 2014

## PI OMICRON

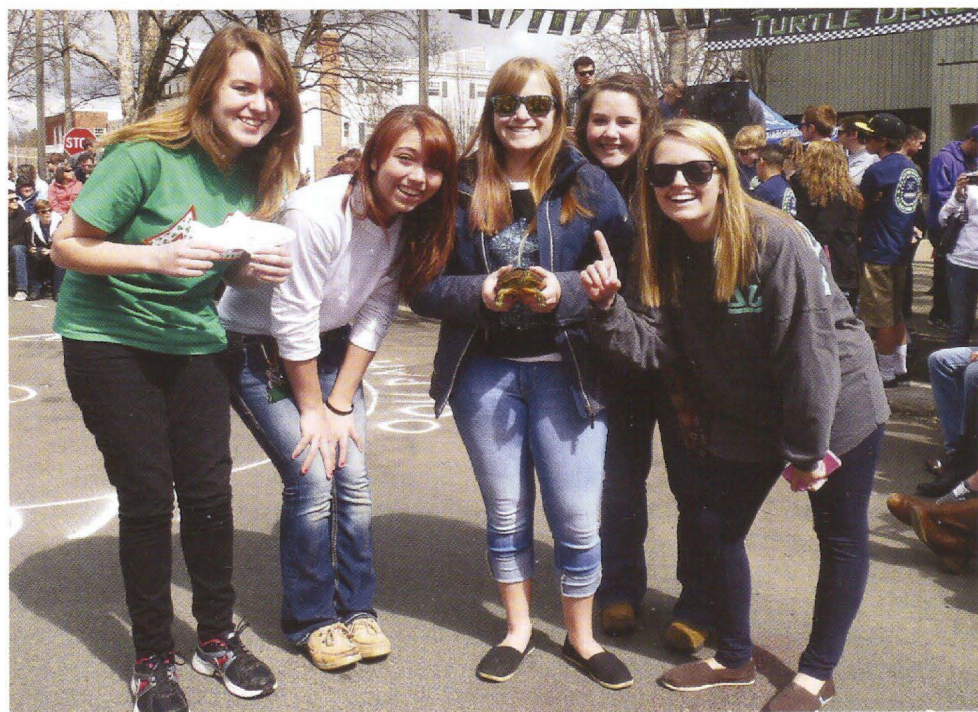
### Indiana University-Purdue University Indianapolis

Held highest sorority GPA of all 11 sororities on campus for Spring 2014

Placed third in Greek Olympics

Raised nearly \$1,000 for university's Relay for Life

Members of the Pi Kappa Chapter (University of Idaho) at Phi Delta Theta's Turtle Derby

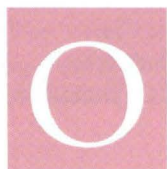




# GREEN Is Beautiful

**“As simple a notion as it may seem, we must realize that all of our environmental efforts added together can have a huge impact on the health of our planet.”**

**Cynthia Loewen, President of the Omicron Nu Chapter at the University of Windsor**

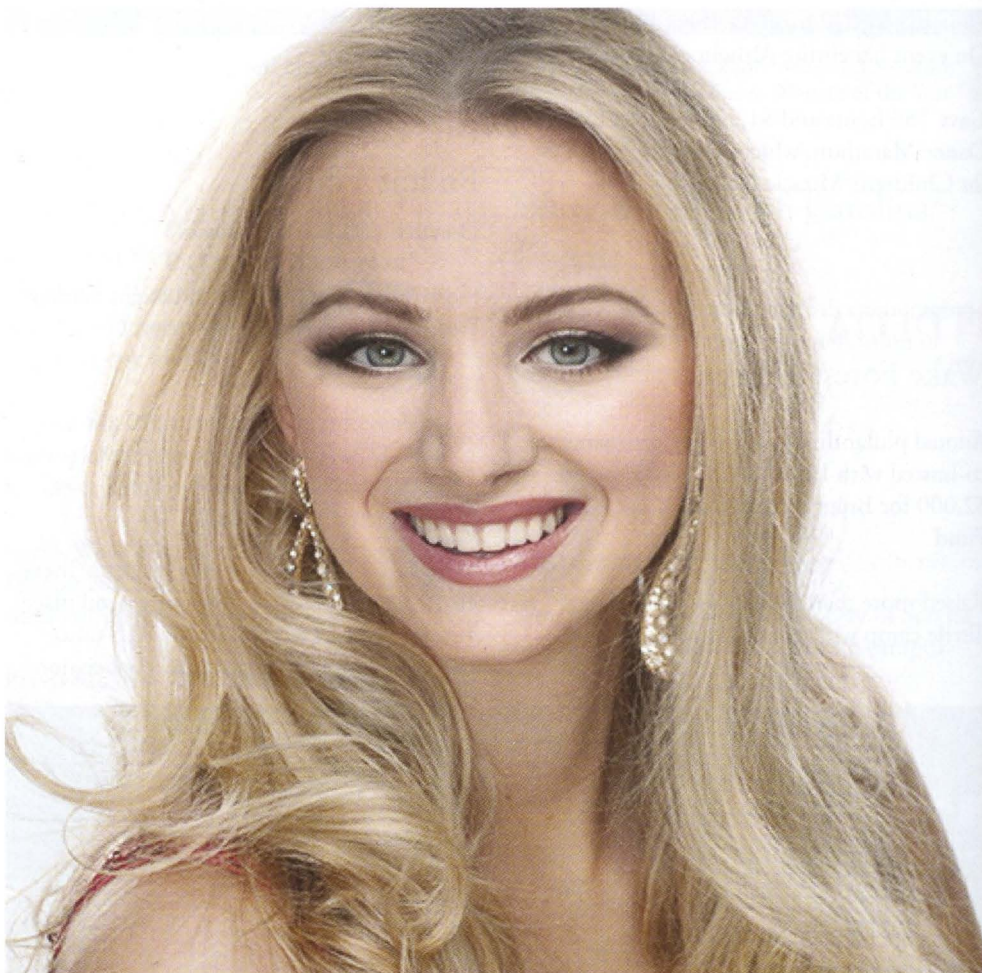


On August 23, 2014, Cynthia Loewen, President of the Omicron Nu Chapter at the University of Windsor, was crowned Miss Earth Canada 2014. Miss Earth

Canada is more than a beauty pageant; the event has “a focal purpose of bringing environmental awareness and concern towards human activity in the preservation of our planet” (<http://rosotro.com/>). It is the official preliminary to the Miss Earth pageant, one of the three largest beauty pageants in the world in terms of the number of national-level competitions to participate in the world finals. Miss Earth is affiliated with the United Nations Environment Program (UNEP), the World Wildlife Fund (WWF) and Greenpeace, and candidates and winners actively promote and get involved in the preservation of the environment and the protection of Mother Earth.

Cynthia’s Omicron Nu sisters, as well as her family, friends and fellow students at the University of Windsor, were not surprised by the news. The statuesque collegian, who majors in Biological Sciences and French Studies at the university, credits her studies with raising her environmental awareness to the passion that it has become.

“The courses I take as a biology major introduced me to the importance of preserving our environment,” Cynthia says. “My passion for environmental activism grew out of learning about the importance of the ecosystem, and how every organism on earth is tied to the other. I was always aware of the fact that making environmentally-friendly decisions was the ‘right’ thing to do. However, I never came to the complete realization of this importance until I began my studies in this program.”



Cynthia lives her passion by making a difference. As Miss Earth Ontario 2012, she worked with organizations such as WaterCan, a leading Canadian charity dedicated to fighting global poverty by helping the world’s poorest people gain access to clean water, basic sanitation and hygiene education, and the World Wildlife Fund (WWF), an international non-governmental organization working on issues regarding the conservation, research and restoration of the environment. She also dedicates her time to local organizations.

Cynthia Loewen, President of the Omicron Nu Chapter at the University of Windsor, was crowned Miss Earth Canada 2014

She is especially proud of the Omicron Nu Chapter, which has long helped to spread environmental awareness and support Delta Zeta’s Pink Goes Green movement with participation in projects such as planting trees with Essex Region Conservation Authority, participating in “Ask a Canadian to Care” with the World Wildlife Fund, and celebrating Earth Day by cleaning local



streets. Cynthia's sisters in the chapter are always ready to support her as well. "Delta Zeta places philanthropy/service as one of its main pillars, and is successful in continuously breaking through barriers to create an outstanding impact for all of the organizations that we support," Cynthia says. "This has influenced me to 'think outside of the box' when it comes to the causes which I hold dear to my heart. I have applied this philosophy to everything that I strive to accomplish."

**"I truly believe that being a Delta Zeta will remain relevant in my life forever. Delta Zeta's values have become my own. Delta Zeta helped me to realize the benefit of maximum effort, which is something that will continue to influence my life in every challenge that I chose to tackle."**

"Being Miss Earth Canada has truly placed me in the public limelight," she says. "As I prepare to compete for the Miss Earth crown, the pressure to remain a competitive candidate on the world stage continues to increase. The friendships that I have made as a result of joining Delta Zeta have truly become an invaluable part of my life. My Delta Zeta sisters have always helped me to remain focused on my goals. They have also served as my main source of encouragement. My sisters continuously remind me to celebrate all that I have achieved so far, and to cherish every memory that I make in this journey."

Cynthia wants to share her knowledge with everyone, especially young people, who are the future stewards of our planet. She started the Green Education/Education Verte program shortly after winning the title of Miss Earth Ontario in 2012. "I wanted to create a fun, educational and interactive program that I could present in both the elementary and high school settings. My belief is that when we are faced with environmental information, issues and, most importantly, solutions, we are increasingly inclined to accomplish something positive for the environment."

Now that she is Miss Earth Canada, Cynthia is excited about the new possibilities for her Green Education program. "I am looking forward to taking my project to the next level as

Miss Earth Canada, since I will now have the opportunity to branch out to school districts in the other provinces of my country other than my own. I dedicated the month of October to visiting as many schools as possible, prior to my departure for the Philippines in November, when I will represent my country alongside approximately 90 other countries at the Miss Earth 2014 pageant in Manila, Philippines."

Cynthia continues to set higher goals for her life. "I served as the president of the Panhellenic Council at the University of Windsor, before becoming chapter President for Omicron Nu," she says. "I have a passion for public speaking, which has led me to host several local and national fashion shows and beauty pageants this past year. In addition, I have had the opportunity to explore the field of professional modeling."

"In the near future I hope to attend medical school. I would like to continue my work as a philanthropist, with hopes of using my medical degree to educate volunteers and professionals planning to work in clinics overseas."

She acknowledges that without Delta Zeta, she doubts that she would be realizing these goals. "I am so honored to have the chance to serve as President of the Omicron Nu Chapter," Cynthia says. "Delta Zeta continues to enhance my life, inspiring me to become a more courageous, open-minded and generous person. I have truly seen the difference that this inspiration has created in all aspects of my life, ranging from my academic endeavors, to my relationships and personal goals. I view my role as President as an excellent opportunity to serve the organization that has already done so much for me. In addition, I find it to be the best opportunity to help inspire women to similarly immerse themselves in the 'Delta Zeta experience.'"



"I conduct a crafting activity with younger children based on the ecosystem," Cynthia says of her Green Education program. "I also offer the option of a French presentation." (Canada's two official languages are Canadian English and Canadian French. - Editor)

**Cynthia Loewen has no shortage of goals. In addition to her medical degree, she plans to create her own skincare line. "Creating an environmentally friendly, organic skincare line has always been a dream of mine," she says. "I am fortunate that my experiences have helped foster this dream and have presented me with the resources to accomplish this. I am planning to make this business idea a reality a few years after I have graduated."**



# GREEN by Design

Annalise Dietzen, Purdue (IN) - ΕΩ,  
embodies Delta Zeta's  
Pink Goes Green philosophy as she  
designs for a sustainable future.



Annalise compiled models and made finish selections for Golden State Foods to achieve LEED certification for the space.



## What is a LEED Green Associate?

LEED stands for Leadership in Energy and Environmental Design, a green building rating system created by the US Green Building Council (USGBC). A LEED Green Associate is the title given to someone who passed the LEED Green Associate examination. "This accreditation," says Annalise, "states that I am knowledgeable about green building practices." A LEED AP (Accredited Professional) specializes in a certain area in the green building industry. Annalise plans to acquire her LEED AP ID+C (Interior Design + Construction) in the near future.



A

nnalise Dietzen, Purdue (IN) - ΕΩ, has always cared for the environment. A high school environmental science course strengthened this interest, and she knew that she needed to make environmental stewardship an important part of her life's work.

"I am a total tree-hugger, and proud of it!" says Annalise, a LEED Green Associate who works for an architecture design firm in Chicago, Illinois. She grew up around architecture and art (her father is a design director at an engineering firm, and her mother loves arts and crafts). "I always say that when their interests were combined, an interior designer was born," laughs Annalise.

**" The Delta Zeta sisterhood, with many different women who value the same things in life, allowed me to create strong friendships that I know will continue in the future. "**

She knew that she must find a way to incorporate her responsibility to the environment into design. "During my time at Purdue," she says, "I took classes in which I learned about environmental science and sustainable design. I also became involved with numerous student groups, including philanthropic ones. I soon realized that I wanted to devote my life to making a difference. I think that combining my love of design, environmental stewardship and philanthropy into one career allows me to do just that."





## Changing the world through design

Why is it important for today's architecture and design to be mindful of the environment it will occupy and affect? "As Americans," says Annalise, "we spend about 90 percent of our time indoors, and we consume about four to six times the earth's resources than are produced. Overall, buildings account for approximately 40 percent of total energy consumption annually. We live in a consumer society that harnesses a 'cradle to grave' [the environmental impact associated with all the stages of a product's life] mentality, which has caused environmental and health-related problems. I think it is not only every person's duty to acknowledge and help find solutions to these problems, but it is especially the responsibility of designers, architects and builders.

"Interior design is about creating a space to be the smartest, most functional and most sustainable space possible," continues Annalise. "Architects and designers have a tremendous opportunity to change the way the world functions through means of design.

I recently met Bill McDonough at the Greenbuild International Conference & Expo. In his books, 'Cradle to Cradle: Remaking the Way We Make Things' and 'The Upcycle,' the authors discuss the idea of eliminating the concept of waste entirely.

"What if everything we create no longer produces any waste? What if we eliminate the very idea of waste, by means of design? To me, this is an absolutely fascinating idea and one that architects and designers can make a reality."

When creating a design, sustainability is Annalise's standard for today – not a long-term goal for tomorrow. "It is not any more difficult to choose locally sourced or organic materials than it is to choose ones that must travel hundreds of thousands of miles to the jobsite," she says. "I understand how natural light works and how LED lights are much more energy efficient than incandescent (traditional) bulbs; these techniques can also be implemented into a design with ease. I love implementing reclaimed or reused products into a space – not only is it an environmentally-conscious decision, but it also creates a unique design."

## The Inspiration to Achieve

Unique also describes the quality that drew Annalise to Delta Zeta Sorority as an Interior Design major at Purdue University. "The two biggest things that Delta Zeta means to me are friendship and the unique ability to be your own person," she says. "During recruitment, the thing that struck me about Delta Zeta was that every member was different. We had women from every major, from around the country, and involved in many different organizations and activities on campus. I was extremely committed to my studies, but I also played volleyball and was involved in other clubs. In Delta Zeta, I found a place that embraced those things in me and the unique qualities in every young woman, and that never wavered during my time as a collegiate member. The ability to bring many different types of women together in one sisterhood is perhaps what I value most about Delta Zeta."

Annalise credits her Delta Zeta experience in helping her realize her goals, which include her current position with an architectural firm in downtown Chicago, and her dreams for the future working with Net Zero Energy buildings (buildings that create as much energy as they consume) and doing pro-bono work in developing countries. "My dream job would be to design extremely sustainable homes and infrastructure in those countries," she says.

The support she received from her Delta Zeta sisters while at Purdue University was inspiring. "They were always the first ones to support whatever I was doing," says Annalise. "They always asked how my interior design projects were going when I was at the studio countless late nights. Some of them were on the chapter's Executive Board with me. My Delta Zeta sisters were genuinely interested in me and gave me reassurance that 'everything would work out.' I'm not sure if I would have achieved what I did without their support. I am sure that it wouldn't have been nearly as fun without them by my side!"

Annalise continues to work for a sustainable future, believing that she can make standard what is regarded today as the exception in interior design and the environment. **Read more about careers in Green Architecture or Design online at <http://www.deltazeta.org>.**



Pamela "Pamm" Mulcahy Ferrand, ||||  
New Orleans (LA) - ΘΚ

Enriching the World

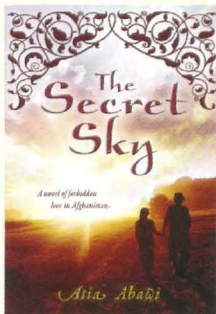
Alumnae

News

Alumnae members make a difference in the world, while inspired by their connection to Delta Zeta and enriched by the Sorority's purpose.



## War correspondent releases first book set in contemporary Afghanistan



**Atia Abawi, Virginia Tech - KΘ**, is a war correspondent who was profiled in a recent issue of *The LAMP*. She has released her first book, a story of

forbidden love set in contemporary Afghanistan entitled "The Secret Sky."

The novel brings to light the day-to-day struggles of young people fighting against ancient cultural divides. Atia, of Afghan descent herself, lived in the country for five years as a news correspondent and brings this

experience to "The Secret Sky," giving readers an insider's look at life and love in rural Afghanistan.

Kirkus Reviews book review magazine raved in their review of "The Secret Sky," saying, "At its heart, this gripping debut by an Afghan-American journalist is a simple love story, but in today's Afghanistan — riven by culture clashes, scarred by decades of war — nothing is simple."

"The Secret Sky" is a thought-provoking look into a world not often depicted for this audience and will spark cross-generational conversations and increase awareness at a time when global issues feel ever closer. Follow Atia on Twitter @AtiaAbawi.



## Dedicated to mission work in Honduras

**P**amela "Pamm" Mulcahy Ferrand, New Orleans (LA) - ΘΚ, began participating in international mission trips in 2008 by going to Honduras with her oldest son. "Since that time," Pamm says, "our family has returned to Honduras each year. For the past four years, I have led the team of 15-24 adults and youth as we work with the LAMB Institute in Tegucigalpa, Honduras. Each year, we spend a week completing various building projects at a children's home in San Buenaventura, which is in the mountains about 45 minutes from the capital city of Teguc."

Pamm credits her Delta Zeta experience as her inspiration for the mission work she does today. "Prior to joining Delta Zeta, I had not done much in the way of service for others or philanthropy. The focus on philanthropy during my college years in Delta Zeta helped inspire me to do more," she says.

## Providing excellent medical care for veterans

**Joan Hietala Caley, Washington - K**, was inducted into the Washington State Nurses Association Hall of Fame, which recognizes the dedication and achievements of Washington state registered nurses who have made significant lifetime accomplishments in the nursing profession. Joan has had an illustrious career in nursing, garnering many awards and accolades as she attains the highest levels of clinical excellence while also advancing the nursing profession.

She has received many awards from the Veterans Administration. Over a 34-year career at the Portland VA Medical Center, Joan has made significant contributions to the care of veterans across the country. She began as a surgical and orthopedics nurse in 1972 and ended her career as the Administrative Director of the Rehabilitation, Community and Long Term Care Division overseeing both institution and non-institutional long-term care services for veterans.

Joan also has served on the Board of Directors and as President for the Oregon Center for Nursing (OCN), a nationally recognized

workforce center for nursing. During her tenure as president, OCN raised nearly \$400,000 from donors to support their work, held five leadership conferences and conducted critical workforce research.

As a member of Washington State Nurses Association (WSNA), Joan has been a key leader in her district association, the Fort Vancouver Nurses Association, while holding numerous WSNA elected and appointed positions over the years. A key achievement during her tenure as District President was supporting the establishment of the Free Clinic of Southwest Washington, now the largest free clinic in the state of Washington. She continues to improve the nursing profession in her role as an instructor in the College of Nursing at Washington State University and the University of Portland School of Nursing.

Throughout her career, Joan has been a loyal supporter of Kappa Chapter and an active member of the Greater Seattle Alumnae Chapter.





||| Jules Juniker makes some new friends in Hattiesburg, Mississippi.

## Serving with AmeriCorps National Civilian Community Corps (NCCC)

**Jules Juniker, Stephen F. Austin State (TX) - ZΨ**, serves with AmeriCorps National Civilian Community Corps (NCCC), a full-time, residential, national service program in which 1,200 young adults serve nationwide each year. During their 10-month term, Corps Members – all 18 to 24 years old – work on projects that address critical needs related to natural and other disasters, infrastructure improvement, environmental stewardship and conservation, energy conservation, and urban and rural development. Members work on a series of different projects to mentor students, construct and rehabilitate low-income housing, respond to natural disasters, clean up streams, help communities develop emergency plans, and address countless other local needs.

“Every Corps member becomes certified in CPR and first aid,” says Jules. “At the end of your year of service, you receive the Segal Education Award, which can be used for future college education or to pay existing student loans.”

Jules worked in Beverly, West Virginia, working on the historic preservation of old Civil War homes, and in Memphis, Tennessee, with the Volintine Evergreen Community Association (VECA) to maintain the community. In Hattiesburg, Mississippi, she worked with Recover Restore Rebuild Southeast Mississippi (R3SM), which focuses on disaster relief for those struck by the F4 tornado in February of 2013. Jules and her team are constructing walls, repairing roofs and laying tile to help the community rebuild after the tornado.

“Delta Zeta helped me in my journey in AmeriCorps,” says Jules. “With my experience in recruitment, not only can I hold a conversation for as long as needed, but I can make it quick and to the point. As a meeting site supervisor in AmeriCorps, I need to establish a relationship with those involved while working on the job site. My conversation skills help me do that. Planning an event and focusing the conversation are skills I learned in Delta Zeta and implement in my AmeriCorps work. And living in the chapter house prepared me to live with my AmeriCorps team.”

Follow Jules and her team on Facebook at [nccriver4](http://nccriver4). For more information about AmeriCorps NCCC, visit the website at <http://www.nationalservice.gov>.

## Chairman of the Dallas CPA Society

**T**erri Moss Hornberger, CPA, North Texas - KZ, was named Chairman of the Dallas CPA Society. The Texas Society of Certified Public Accountants (Dallas Chapter) is a not-for-profit professional association serving approximately 6,200 CPA members in the Dallas and surrounding 13 counties. It is the second largest chapter of the Texas Society, Certified Public Accountants (TSCPA), the statewide professional association with over 27,000 members and 20 chapters around the state.

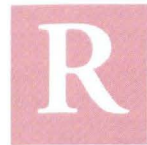
“Delta Zeta always reinforced that I could do anything I set my mind on doing — and that I could have fun along the way!” Terri says.

She is a sole practitioner and consultant in tax and financial matters with a wide client base. Terri is a member of the American Institute of CPAs; serves on the Board of Directors of the Texas Society of CPAs; and served as President of the Zonta Club of Dallas, a worldwide service organization of executives in business and the professions working together to advance the status of women. She has volunteered for the Dallas Police Department, including serving as Chairman of the Crime Watch Executive Board, and as an instructor for Volunteers in Patrol. Terri serves on the Board of Directors of the Doug Woodham Dallas Junior Police Academy. She also served as Treasurer for KidneyTexas, Inc., which provides funding to improve the methods of treatment and search for a cure for kidney disease.





## American College Personnel Association's (ACPA) Outstanding Emerging Professional



**Rebecca "Becca" Fick Obergefell, Ashland (OH)** - ΘΨ, Assistant Director, Center for Student Involvement, Ohio Dominican University, received the American College Personnel Association's (ACPA) Standing Committee for Women Outstanding Emerging Professional Award. ACPA supports and fosters college student learning through the generation and dissemination of knowledge, which informs policies, practices and programs for student affairs professionals and the higher education community.

The Outstanding Emerging Professional Award is based on the recognized potential of a successful Student Affairs professional who has made contributions that have positively impacted her respective departments or institutions.

Becca received national attention after the 2013 bombing of the Boston Marathon when she created a Google doc form, which went viral, for runners, walkers and others who want to show their solidarity and support. Visitors can log their miles, and also have the option of logging miles for a charity of their choice at <http://beccaobergefell.com/runforboston/>.

## Delta Zeta inspires her filmmaking



**Lindsay McClung, Virginia** - ΛΔ, works as a post-production coordinator for the upcoming HBO miniseries "Olive Kitteridge." "Previously," she says, "I worked in the visual effects department on HBO's 'Game of Thrones.' I also worked at a talent agent representing youth talent (theatrically and commercially), as well as heading up the literary division at the Brogan Agency."

Her Delta Zeta experience has influenced her profoundly as she moves forward in her career. "As a filmmaker, it's very important for me to produce content that is not only entertaining but also educational and informative. My focus is primarily on bringing underrepresented social, economic and political issues to the forefront of conversation. As a Delta Zeta, I've always been committed to raising awareness about the violence against women. Our short film, 'Be With Me,' which was on the festival circuit last year, tells a story about human trafficking of women and children through the eyes of an adolescent boy."

Lindsay graduated from UVA in 2007 with a B.A. in American Studies and Politics, then attended the American Film Institute to earn her Master's in Fine Arts (MFA) in Producing, and produced four short films. She also produced two web series for GLAMOUR magazine's YouTube channel.

## Flame Eternal

### Jean Ericsson Schlosstein, Wisconsin - T, Past National Officer

Delta Zeta was saddened to learn about the passing of **Jean Ericsson Schlosstein**, Wisconsin - T, Past National Officer. Jean served on National Council from 1964-1968 as National Secretary-Treasurer.

Jean served on Tau Chapter's Advisory Board, and was a member of the Wisconsin City Panhellenic and its Province President. She assisted in Delta Zeta's extension efforts in cities near her home of Cochrane, Wisconsin.

She shared in her husband's, Wisconsin Judge Gary Schlosstein, social and political responsibilities, was a Girl Scout Leader and Board member, Red Cross co-chairman and served on the Governor of Wisconsin's committees for Children and Youth.

Donations in Jean Ericsson Schlosstein's memory may be made to the Delta Zeta Foundation, 202 East Church Street, Oxford, Ohio 45056 or online at <http://www.deltazeta.org>.



Jean Ericsson Schlosstein, Wisconsin - T, (standing, far left) served on Delta Zeta's 1966-1968 National Council as Secretary-Treasurer with (standing, from left) Gwen Moss McKeeman, Northeastern State (OK) - ΔΦ, Vice President Alumnae; Doris Ellingson Riede, Brenau (GA) - AO, Vice President College Programs; Betsy Bradley Leach, Southern California - AI, National Panhellenic Conference Delegate; Marjorie Doyle Bergman, Michigan State - BP, Vice President Membership; and, seated, Betty Heusch Agler, Cincinnati (OH) - Ξ, National President.





# Flame Eternal

Honor your sisters, friends and loved ones with a memorial gift to the Delta Zeta Foundation

(<http://www.deltazeta.org>).

*Obituaries reported from February 13, 2014 through July 31, 2014. Year of initiation is shown after name.*

## ALPHA

Gwen Lehman Cotabish - 1933  
Jean Edwards Naughtrip - 1940  
Marcia McBride Wells - 1952  
Jean Cestone - 1954  
Sally Pagen Baber - 1957  
Kathryn Bateman Eigher - 1957  
Dorothy Petry Sherron - 1957  
Judith Wharton Dunson - 1962  
Judy Reichenstein Abell - 1963  
Pamela Burns Fagyal - 1968  
Carol Neal Souza - 1969  
Marcia Moeller - 1976  
Nancy Sweet Bachmann

## GAMMA

Elizabeth Buchan Whitley - 1939  
Catherine Wall Dirksmeyer - 1950

## DELTA

Louise Skinner Fitzgerald - 1929  
Julia Dallava Fraser - 1935  
Frances Gramse Dreyer - 1939  
Jerrine Darling Coffman - 1945  
Mary Arnold Cohoon - 1945  
Patricia Stutz Goyer - 1945  
Frances Schlater Simpson - 1946  
Barbara Bratton Randolph - 1948  
Barbara Buntain Donley - 1951  
Kay Brower - 1952  
Sally Gregory Phillips - 1955

## EPSILON

Margaret Evans Carnahan - 1934  
Laura Hochholter Ullmann - 1953  
Betty Molland Prout - 1955

## ZETA

Elizabeth Burnham Davis - 1926

## ETA

Maude McComas Bonar

## THETA

Leona Russell Babyak - 1946  
Patricia Harruff Harris - 1947  
Melinda Ford Meredith - 1962  
Marjorie Young Lee - 1963  
Linda Katherine Ward - 2000

## IOTA

Charlotte Pierson Lamb - 1951

## KAPPA

Lorraine Lyons - 1938  
Betty Racine Stansbery - 1938  
Theodora Burge Cook - 1943  
Laura Elwell Castellow - 1944  
Dorothy Crowley Bledsoe - 1953  
Sara Matthei Beatty - 1961  
Alice Kreide Bingaman - 1962

## LAMBDA

Mary Johnson Garvin - 1970

## MU

Betty Collins Carl - 1941  
Isabel Orton Deering - 1941  
Mary Goepfert Cunha - 1942

Martha Ellis Bosworth - 1946  
Cordelia Jones Bishop - 1947  
Frances Larson Mitchell - 1950

## NU

Carol Nelson Erickson - 1955  
Carole Wilson Smrz - 1955

## XI

Anna Marie Evans - 1931  
Virginia Augspurger Alter - 1935  
Julia Smith Bottemiller - 1948

## OMICRON

Loretta Kirch Proch - 1937  
Ellen Moorhead Ball - 1944

## PI

Helen Cleaver - 1925  
Josephine Carter Booher - 1942  
Jane Marylyn Koppenhoefer - 1962

## SIGMA

Ruth Gladney Featherston - 1920  
Callie Washburn Cool - 1938  
Gloria Smith Beam - 1942  
Betty Sanchez Carpenter - 1950  
L'Mell Moore Smith - 1968

## TAU

Louise Zeratsky Davidson - 1932  
Gloria Liss Johnson - 1950  
Jean Ericsson Schlosstein - 1950

## UPSILON

Ila Mae Lohse Gilbert - 1946  
Paula Hewitt Fairhurst - 1965

## PHI

Frances Silvers Conway - 1937  
Anita Borset Dunham - 1940  
Katherine Graslie Buss - 1950

## CHI

Marlene Bacon Brooks - 1955  
Catherine O'Farrell Barnett - 1958  
Judith Lage Lambert - 1959  
Kristine Jarvis Maneely - 1967

## PSI

Rusty Moore Thompson - 1947  
Barbara Schaefer Doles - 1953  
Marlene Mitchell Jackson - 1954

## OMEGA

Pauline Glenn Fraser - 1963

## ALPHA ALPHA

Nancy Rountree Compall - 1951  
Mary Brown Benoy - 1958

## ALPHA BETA

Mary Stiarwalt Maxfield - 1936  
Dorothy Skiles Weeks - 1941  
Lauretta Schultz Bowes - 1964

## ALPHA GAMMA

Eugenia Henderson Jones - 1941  
Hazel Karter Daniel - 1944  
Laura Biedermann Smith - 1946  
Martha Jackson Brough - 1963

Marjorie Thompson Chesser - 1963

## ALPHA DELTA

Sarah Mc Cann Jaggi - 1937  
Margaret James Calvert - 1943  
Jane Elliott Brittain - 1945  
Delores Hastings Cavallo - 1946  
Ann Courtright Dunnington - 1947  
Dorothy Hastings Wurz - 1948

## ALPHA EPSILON

Flora Mae Carter Deville - 1941  
Ann Horton Berkenbile - 1943  
Betty Greenwood Coats - 1946  
Margaret Gandy Thorpe - 1950  
Pamela Wadley Neville - 1970

## ALPHA THETA

Anna Varney Blackburn - 1947  
Mary Ann Huflage Campbell - 1953  
Jacquelyn Westerfield Edmonds - 1956  
Helen Herndon Adler - 1960  
Deborah Moorhead Frank - 1977  
Rhonda Bagley O'Neil - 1988

## ALPHA IOTA

Eileen Riling Berrill - 1946

## ALPHA KAPPA

Onnolee Diller Mosher - 1927  
Marion Engel Walton - 1942  
Helen Rounds Bedesem - 1943  
Wilma Whisenant Strock - 1943  
Jean Alton Gaffney - 1944  
Irma Lalonde Markert - 1945  
Shirley Norton Pace - 1945  
Sheila Seymour Kelley - 1946  
Carol Groskopf Deemer - 1947  
Barbara Siver Schmidt - 1948  
Mary Mallery Haase - 1949  
Mary Boak Knox - 1953  
Martha M. Riggs - 1957  
Katherine Atwell Bubie  
Harriet Plumley Herbein  
Bessie Thomas Waller  
Irma Loope Zimmermann

## ALPHA NU

Edna Cabalzer Elwood - 1932

## ALPHA XI

Sarah Mendenhall Brown - 1928

## ALPHA OMICRON

Sarah Thompson Brock - 1963  
Wendy Thorn Ford - 1969

## ALPHA PI

Dorothy Harvey Cox - 1948  
Mildred Hay Abel

## ALPHA SIGMA

Sara Hope Holliday Effrain - 1969

## ALPHA TAU

Josephine Fertitta Cassity - 1943  
Joyce Fails Salm-McKelvey - 1945  
Marjorie Bunge Carter - 1952  
Toni Powell Berkes - 1963

## ALPHA UPSILON

Barbara Pillsbury Bradstreet - 1952  
Lois Goldschmidt Cooper - 1962  
Judith Dougherty Black - 1966

## ALPHA CHI

Janet Henze Arnerich - 1927  
Ruth Showalter Douglass - 1934  
Janice Metcalf Clark - 1953

## ALPHA PSI

Marietta Ruby Crabb - 1955  
Paula Dupree Bylsma - 1959  
Kayleen Boyer Behring - 1960  
Mary Edwards Caldwell - 1960  
Frances Robinson Boyer - 1967

## BETA ALPHA

Virginia Holley Scott - 1939  
Betty Martin Lees - 1940  
Elizabeth Whitaker Davis - 1942  
Nancy Hopkins Fox - 1947  
Barb Skooglund Heyman - 1948

## BETA GAMMA

Bernice Hannon Ball - 1953  
Temple Hill Elliott - 1953

## BETA DELTA

Virginia Timmons Derrick - 1935  
Caroline DesPortes Bryant - 1943  
Mary McGregor Clary - 1945  
Catherine Phillips Garety - 1945  
Barbara Hawthorne George - 1946  
Lillian Kellahan Head - 1946  
Sarah Holland Botkins - 1947  
Nancy Ruth McLemore - 1949  
Peggy Page Blankenship - 1951  
Betty Parker Gunter - 1951  
Myrtis Adams Valentino - 1952  
Joan Harter Conyers - 1954  
Frances Fortune Breitenbucher - 1956  
Mary Duckett Walker

## BETA THETA

Anna Malick Kuttruff - 1940

## BETA KAPPA

Elizabeth Engelhardt Booth - 1940  
Patricia Ryan Baldus - 1960  
Jill Marie Christenson - 1982

## BETA LAMBDA

Joan Lilley Betzenhauser - 1945  
Rebecca Crawford Burnette - 1957

## BETA MU

Eloise Whitehurst Driskell - 1937  
Virginia Tyson Trimble - 1944

## BETA NU

Maureen Fitzgerald Campbell - 1964

## BETA XI

Lucile Taylor Magaha - 1949  
Betty Darnell Morrison - 1950  
Elizabeth Tillie Calhoun - 1953  
Patricia Bite Abrasley - 1958



- BETA PI**  
Elizabeth Corinne Leland Barger - 1950  
Myrtle Valentine Baldwin - 1956  
Roberta Kennedy Tower - 1956  
Gwen T. Anderson - 1963
- BETA RHO**  
Veulah Brook Amend - 1947  
Mary Caruana Bakalar - 1956  
Joan Rice Aldrich
- BETA SIGMA**  
Barbara Ferris Devries - 1950  
Marilyn Abrams Fishburn - 1957
- BETA TAU**  
Phyllis Turner Fleming - 1944  
Enola Sponge Martin - 2008
- BETA CHI**  
Eleanor Armstrong Grubbs - 1947  
Gwen Long Hirtzinger - 1953  
Susan Briggs Churchill - 1962
- BETA PSI**  
Betty Brockman Skinner - 1944  
Doris Hane Fair - 1947
- GAMMA ALPHA**  
Virginia Odiorne Finley - 1941  
Natalee Norris Cook - 1947
- GAMMA BETA**  
Isabel Piedade Beckmann - 1945  
Nancy Anderson Antonez - 1947  
Mary Jo Hugret Clark - 1953  
Janet Ball Bartlett - 1959  
Susan Elliott Demers - 1961  
Alma Benoit Arnold - 1962
- GAMMA GAMMA**  
Isabel Schmidle Feltmann - 1945
- GAMMA DELTA**  
Doris Brenner Bany - 1946  
Louise Moreman Priole - 1953
- GAMMA EPSILON**  
Darlene Soiseth Reynolds - 1948  
Norma Percy Bothe - 1958
- GAMMA ZETA**  
Tassie Barton Edwards - 1948  
Barbara Nicholson Andrews - 1949  
Jann Wickersham B. Pullig - 1953
- GAMMA ETA**  
Dorothy Stellar Flint - 1947
- GAMMA THETA**  
Elizabeth Berg Buckardt - 1948
- GAMMA IOTA**  
Mary Cobb Carter - 1951  
Paulette Mitchell Bramuchi - 1968
- GAMMA KAPPA**  
Barbara Toney Hughes - 1955  
Joan Lloyd Hummel - 1964
- GAMMA LAMBDA**  
Gloria Leonard Delaplane - 1948  
Elizabeth Kilgallin Fanucchi - 1948  
Mariana Linden Brown - 1959  
Linda Ralph Dodge - 1959
- GAMMA NU**  
Jane Wilson Robertson - 1951  
Nancy Newberry Beard - 1952  
Phyllis Jett Binder - 1956
- GAMMA XI**  
Terri Mannon West - 1975
- GAMMA OMICRON**  
Jane Owens Morf - 1967
- GAMMA PHI**  
Charlotte Haupt Brosious - 1958  
Clare McGee Freebourn - 1958
- GAMMA PI**  
Joan Fox deMink - 1952
- GAMMA RHO**  
Marion Parker Dresback - 1951  
Georgeanne Krainovich Marquis - 1954  
Kathleen Hanegan Dayton - 1958  
Marilyn Vouch - 1961
- GAMMA SIGMA**  
Mary Jo Searles - 1956  
Mary Paine Fidler - 1957
- GAMMA TAU**  
Martha Ruck Decker - 1954  
Jeanette Ann Damman - 1960
- GAMMA UPSILON**  
Pamela Prentice Parrish - 1938
- GAMMA CHI**  
Joan Beck Picht - 1953  
Nina Lee Bryer - 1956
- GAMMA PSI**  
Judi Mills Bordeaux - 1963
- GAMMA OMEGA**  
Diane Pennington Johnson - 1953  
Helen Collins Wildy - 1953  
June Nightwine Branding - 1958
- DELTA ALPHA**  
Maureen Kramer Bultena
- DELTA BETA**  
Shirley Alvey Adema - 1955
- DELTA GAMMA**  
Mary Wilhoit Evans - 1957
- DELTA DELTA**  
Margaret Spies Dewel - 1961
- DELTA THETA**  
Barbara Wade Carter - 1972  
Vanessa Morales - 2011
- DELTA KAPPA**  
Frances Sabatier Brown - 1959
- DELTA MU**  
Susan Hinkle Wilson - 1964
- DELTA NU**  
Linda Jean Bookin - 1963
- DELTA OMICRON**  
Norma Appleman Trenfield - 1956
- DELTA PI**  
Emily Brooke Bruner - 1957  
Mary Stewart Flannery - 1957
- DELTA SIGMA**  
Patricia Smith Edwards - 1957
- DELTA TAU**  
Joyce Gail Agostini - 1960
- DELTA UPSILON**  
Phyllis Gibson Cook - 1956  
Erica Henderson Fischer - 1964
- DELTA PHI**  
Carol Craig Evans - 1957  
Judith Chandler - 1960  
Gwendolyn Knight Favor - 1961
- DELTA OMEGA**  
Patty Minium Bean - 1956  
Patricia Simmons Agres - 1957  
Marjorie Lebsack Curtis - 1957
- Donna Jean Brown - 1975
- EPSILON ALPHA**  
Joyce Head Chenevert - 1956  
Vera Fritz Reynolds - 1957
- EPSILON BETA**  
Gaye La Velle Clark - 1958  
Martha Lott Chapman - 1972
- EPSILON GAMMA**  
Jacqueline Lewis Adair - 1957  
Marilyn Adams Colster - 1962  
Linda Reuter Frankenfeld - 1962
- EPSILON DELTA**  
Bobbie Smith Bowman - 1956
- EPSILON EPSILON**  
Ferel Broad Berkebile - 1956  
Patricia Heintz Bryant - 1956  
Joan Hedger Steinle - 1956  
Mary Starns Anduri - 1957  
Diana Lubisich Cubre - 1957  
Carol Finley Stein - 1958
- EPSILON ETA**  
Alice White Foster - 1957
- EPSILON THETA**  
Shirley Robb Aber - 1957  
Marybelle Calhoun Corbett - 1957
- EPSILON KAPPA**  
Mary Annis Brieske - 1957  
Ruth Quarna Deegan - 1957  
Kellianne Reeves Beck - 1998
- EPSILON LAMBDA**  
Honor Howard Anderson - 1939  
Betty Hill Kenney - 1943  
Enid Lenaburg Bozarth - 1957
- EPSILON MU**  
Lillie Gatlin Blackwell - 1956  
Barbara Irving McCallum - 1961
- EPSILON NU**  
Peggy Shreve Cooper - 1957  
Earlyne Walker Atherton - 1957
- EPSILON XI**  
Dianna Noble Dodson - 1964
- EPSILON OMICRON**  
Jacqueline Sims Berchtold - 1956
- EPSILON TAU**  
Lisa King Brinkley - 1976
- EPSILON UPSILON**  
Lillian Castro Peterson - 1970
- EPSILON PHI**  
Susanne Stoner Digiulio
- EPSILON PSI**  
Martha Ann Davis - 1961  
Ethel Casey Crisera - 1963  
Norma Jean Frank - 1963
- EPSILON OMEGA**  
Louise Rake Chiodo - 1957  
Sandy Shaurette Miller - 1969
- ZETA ALPHA**  
Maureen Alice Martin - 1965
- ZETA BETA**  
Marguerite Catherine Barra - 1962
- ZETA EPSILON**  
Veronica Duda - 1958  
Clare Gennett Correll - 1959
- ZETA ZETA**  
Imogene Davis Price - 1958
- ZETA THETA**  
Mary Mitchell Collins - 1959  
Linda Martin Cavender - 1964  
Cynthia Ann Carre - 1973
- ZETA KAPPA**  
Linda Rogers Webb - 1959
- ZETA LAMBDA**  
Barbara Hooper Best - 1962
- ZETA TAU**  
Edith Challis Erickson - 1962
- ZETA PSI**  
Ouida Woods Bohac - 1968  
Stephanie Coursey Callaghan - 1969
- ZETA OMEGA**  
Darlene Murphy Arnie - 1963  
Mary Doane Barnaby - 1969
- THETA ALPHA**  
Freda Nine Caviness - 1963
- THETA GAMMA**  
Elizabeth Blake Benway - 1963  
Ruth Davis Corson - 1963
- THETA DELTA**  
Burdeen John Eickmeier - 1963
- THETA EPSILON**  
Frances McInnis Crumpton - 1962  
Lillian Montgomery Baker - 1965
- THETA ZETA**  
Angelina Conti Pritchard - 1962
- THETA IOTA**  
Jenna Burris Greene - 2005
- THETA PI**  
Brenda Lee Burns - 1980
- THETA PSI**  
Mary King Bliss - 1967
- THETA OMEGA**  
Shelia Barbour Bolduc - 1984
- IOTA ALPHA**  
Trudis Solomon Summerford - 1964
- IOTA KAPPA**  
Nancy Bergman Delvillaggio - 1967  
Lisa Conti Devenny - 1980
- IOTA LAMBDA**  
Mary Healey Crosby - 1969
- KAPPA ALPHA**  
Virginia Anne Cook - 1973  
Sarah Braud - 1975
- KAPPA IOTA**  
Shawn Marie Easterday - 1989
- KAPPA TAU**  
Jane Yarbrough Duncan - 1971
- LAMBDA PI**  
Cheryl McNair Perlowin - 1974
- XI NU**  
Laurie Christian Schwendig - 1987
- OMICRON ALPHA**  
Jodi Jaworski Allen - 1990
- PHI BETA**  
Claudia McMurtry Cornwall - 1942  
Carol Freund Cox - 1957  
Barbara Hout Davis - 1957  
Mary Moran Finsterbach - 1957  
Janet Hayes Foley - 1957



Send all notices of address changes and member deaths to:

Delta Zeta National Headquarters  
202 East Church Street  
Oxford, OH 45056  
Phone: (513) 523-7597

PRESORTED  
STANDARD  
U.S. POSTAGE  
**PAID**  
FLORENCE KY  
PERMIT NO. 313



Jessica Blevins, DePauw (IN) - Δ, and President of the Columbus (OH) Alumnae Chapter, started a monthly gift to the Delta Zeta Foundation to empower her Delta Zeta sisters to be more and do more with their lives.

## DELTA ZETA *Foundation* GIVING IS ENRICHING

Start your monthly donation to the Delta Zeta Foundation today. Monthly gifts begin at \$10 per month and can be charged to your credit card or processed through your checking or savings account.

To start your monthly gift of \$10 or more, visit <http://www.deltazeta.org> and go to About Us > Foundation > How You Can Give.

### *Empowering My Delta Zeta Sisters with a Monthly Gift*

By Jessica Blevins, DePauw (IN) - Δ

**I** joined Delta Zeta nearly 15 years ago. Ever since, Delta Zeta has empowered me to be a better person, connected me with outstanding women, and guided my career path. Whether I am visiting my Delta Chapter sisters from DePauw University, volunteering with the Columbus Alumnae Chapter in Ohio, or logging on to the Surfing Sisters website, Delta Zeta is always there for me.

As Delta Zeta sisters, our membership experiences are not that different. Delta Zeta has always been there for us. This past July, while attending our National Convention, I was reminded of all the things Delta Zeta is doing for young women today, and that is when I decided to be a monthly donor.

I hadn't really thought about that as an option before, but simple reasoning led me to make the commitment. How much money do I spend every month without really thinking about it? For

instance, I might go to a coffee shop twice, easily spending five dollars each time. But I realized that rethinking that third cup of pricey coffee each month will lead to long-term results for our collegians, will help Delta Zeta grow as a premier women's organization, and will empower our Delta Zeta sisters to be more and do more with their lives.

Delta Zeta is always there for me. Now I'm glad to be there for Delta Zeta, too.