

In this issue - How Delta Zeta Helps Collegians Stand Up! Stand Out!

The LAMP of Delta Zeta

www.deltazeta.org

Winter 2006

Delta Zeta's Newest Chapter Installed at Arizona State University



Jean Baughman Wessel Templeton $\Gamma\Sigma$
is Delta Zeta's 2005 Woman of the Year



"I think we all have a little voice inside us that will guide us . . . if we shut out all the noise and clutter from our lives and listen to that voice, it will tell us the right thing to do."

Christopher Reeve, actor and advocate for those with disabilities

It begins with the individual. In 1902, six very different young women came together with a common vision—the first sorority on Miami University's campus, where women could bond in friendship and draw strength from the ideals they shared.

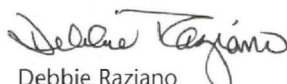
Delta Zeta continues that philosophy today. Made up of individual women—alumnae and collegians, each one unique; composed of different chapters from schools around the country and in Canada, each one distinctive; Delta Zeta is a sorority that continues to recognize that each individual is a building block of the whole organization. But sometimes, as individuals and as women in today's world, we get lost. Bombarded with different messages and endless distractions from all sides of life, we can lose sight of what is important to us. We can succumb to peer influences (alumnae as well as collegians) instead of remembering to look to the core principals that can strengthen us for any challenge that lies ahead.

With challenges that face every Delta Zeta member each day of her life in the 21st century, no matter where her place in life or what her age, each of us needs to take a deep breath, step back, and remember where we can turn to draw upon strength. It might be another sister from your college chapter; a trusted upperclassman; a compassionate teacher; a supportive friend; an understanding parent or sibling. Or, we might be the source of strength for someone else—a college student, our son or daughter, a friend in need. We always remember those who help us, guide us, strengthen us. And those we help will remember us, and be inspired to help someone else in their own lives.

An example of this leadership was shown after the recent hurricanes, Katrina and Rita, which ravaged the Gulf Coast. Delta Zeta members took the lead in communities throughout the United States, giving of their time, talents, and treasures to help not only our members, but anyone whose life was affected by these devastating storms.

Delta Zeta is working every day to provide our members with the strength and inspiration they need, not only to succeed individually, but to be inspired to make a difference for others. Whether it is a collegiate educational program or providing ways for our alumnae to connect with each other, we support our members' efforts to be and do their best. The individual who stands strong does need a support system, and in Delta Zeta, we draw strength from each other. Ultimately, that individual, representing the whole of Delta Zeta, represents more to the outside world: strength, integrity, and a dedication to make a difference where we can.

In Delta Zeta,


Debbie Raziano
National President

FOUNDERS

Alfa Lloyd Hayes, 1880-1962
Mary Collins Galbraith, 1879-1963
Anna Keen Davis, 1884-1949
Julia Bishop Coleman, 1881-1959
Mabelle Minton Hageman, 1880-1929
Anne Simmons Friedline, 1879-1932

THE ORDER OF THE LAUREL

Irene Caroline Boughton, 1904-1988
Grace Mason Lundy, 1893-1993
Elizabeth Coulter Stephenson, 1881-1939
Myrtle Graeter Hinkly, 1893-1987

Published since December 1910 by

DELTA ZETA SORORITY

Founded at Miami University - Oxford, Ohio
October 24, 1902

The LAMP of Delta Zeta

Nancy E. Brewer A, Editor
(ISSN #0887-2554), official magazine
of the sorority, is published quarterly
by the Delta Zeta Sorority,

202 East Church Street, Oxford, OH 45056.

Contributors: Tara N. Raeber AB '96

What is an Alumnae Panhellenic? (page 10)

Karly Klemp Burns ZΛ, Past National President and
NPC Third Alternate Delegate, and
Kathi Bray Heatherly EY, National Director of Extension
and NPC First Alternate Delegate

POSTMASTER:

Send address changes to
Delta Zeta Sorority, 202 East Church
Street, Oxford, OH 45056.

Send all editorial material to
Delta Zeta National Headquarters
Attn: Nancy Brewer, Editor
202 East Church Street
Oxford, OH 45056.

General e-mail: dzs@dzshq.com
LAMP e-mail: LAMP@dzshq.com



National Panhellenic Conference



Printed in USA.

The LAMP of Delta Zeta

About the Cover:

Sara Van Koningsveld, Pi Zeta Treasurer; Tara Gregory, Pi Zeta Vice President of Programs; Kim Dockery, Vice President of New Member Education; Kathi Bray Heatherly EY, National Director of Extension; Debbie Raziano KA, National President; Danielle Steinke, Pi Zeta Chapter President; Lee Ann Martin Witt ZΨ '78, College Chapter Director (CCD) for Pi Zeta; Christy Brownfield, Vice President of Membership; and Margaret Shrader, Pi Zeta Secretary.

4 - 5



The Way West: The Pi Zeta Installation

The Pi Zeta Chapter is installed at Arizona State University. From left, Kathi Bray Heatherly EY, National Director of Extension; Danielle Steinke, Pi Zeta Chapter President; and Lisa Cast ΔΘ '01, Chapter Consultant.

6 - 7

2005 Woman of the Year

Jean Baughman Wessel Templeton ΓΣ '56 (left) is a successful businesswoman and tireless philanthropist and volunteer. She is with Carolyn Barnett Seaman ΔH '67, Huntsville Alumnae Chapter President.



DEPARTMENTS

From the President	2
Stars in Our Service Flag	7
National Panhellenic Conference	10
On Campus	11 - 18
Flame Eternal	19
Directory	20 - 21
Alumnae News	22
2006 Convention and Registration	24 - 25
DZ DeZigns	27
Foundation Donor Profile	28

8 - 9

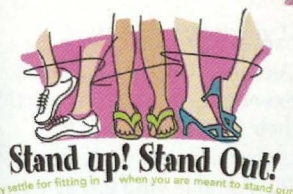
Stand Up! Stand Out!

Delta Zeta collegiate programming strengthens self-esteem and gives members the tools to succeed in today's challenging world.



Alumnae Profiles

Tara Raeber AB '96 assists victims of Hurricane Katrina, and Luci Butler ZΠ '96, musician, goes on a world tour and uses music therapy to help others.



23, 26

Arizona State University (ASU) is the largest university in terms of enrollment in the United States with a main campus student body of 51,612 (Source: Wikipedia.com).

On October 8, 2005, Delta Zeta Sorority installed the Pi Zeta Chapter on this impressive campus, which is set amongst the rugged beauty of the Arizona desert in Tempe. The university has a national reputation as a leading Research I institution.

For over 85 years, Greek organizations have been a part of ASU. Today the university has 21 Interfraternity Council (IFC) members, and 11 organizations and three associate members of its Panhellenic Council.

A Perfect Match

"Delta Zeta's values tie in so well with ASU's mission," says Lara Klinkner, the Greek Life Coordinator at the university who has worked closely with the colony over the past two and a half years. "Delta Zeta has a huge commitment to scholarship. It is one of the things that struck me most about the group, and obviously that's a major goal of our institution," she says.

Lara says that ASU has also been extremely impressed by Pi Zeta's commitment to be involved in many aspects of campus life. "University President Michael Crow has ten design imperatives, or guiding principles, for the university," she continues. "One of them is social embeddedness, which includes public service. Because Delta Zeta stresses that its members be involved in other organizations on campus, Pi Zeta has become socially embedded at ASU. They are not just members of the sorority, but they are also contributing to the university as a whole, which I think is outstanding."

Kathi Bray Heatherly EY, National Director of Extension, led the presentation team which came to ASU in May 2003. Within hours, Delta Zeta was extended the invitation to colonize on the campus. "We had such great support from the campus Panhellenic," Kathi says. "We want to extend our thanks to them, and to Lara Klinkner and Michael Najor, ASU's Greek Life Coordinators. Lara brought a wealth of experience to her role in supporting us." The Delta Zeta presentation team included members of the Iota Phi Chapter from the University of Nevada/Las Vegas; Cynthia Winslow Menges A, Executive Director; and Lynnda Wolf Hoeffler TK, National Panhellenic

Conference Delegate. The Interview Team was Kathi Heatherly; Michelle Albrecht Smith AX, National Vice President of Membership Development; Karen Martin Campbell ΔA '73, Regional Collegiate Coordinator (RCC) – Region X; Lee Ann Martin Witt ZΨ '78 (now College Chapter Director [CCD] for Pi Zeta); and Holly Wainscott IΦ '96, past Chapter Consultant and past National Chapter Advisor.

A Strong Support Network

As a former Chapter Consultant and long-time Delta Zeta volunteer, Lee Ann Witt's experience was invaluable during the colonization process. "I was part of the presentation committee and the extension team," Lee Ann says. "I also worked with the alumnae in the area to raise money to furnish our chapter room on campus and to keep them informed. The colony started out small, but with the outstanding work of our chapter consultants, Lisa Briar EΘ '00 and Kristyn Biebuyck ΞΨ '99 and later, Lisa Cast ΔΘ '01, we hit the ground running," she says.

Pi Zeta met the challenges of recruiting in the spring, challenges which included a shorter period of time for members to get to know each other before summer vacation. Kathi Heatherly, National Director of Extension, says, "We consciously did this to prepare the colony for formal recruitment in the fall. The university administration agreed that it was important that we do spring recruitment, too."

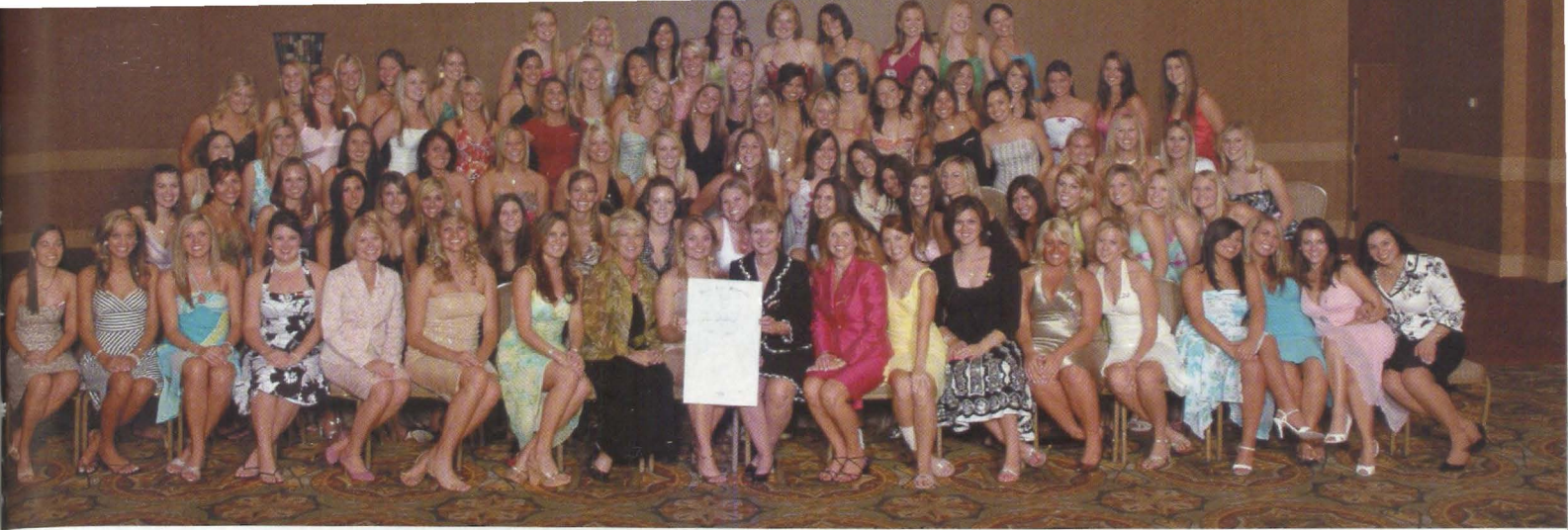
Karen Campbell, Regional Collegiate Coordinator - Region X, says, "We are so proud to welcome Pi Zeta to Delta Zeta. The colony took first place in three of the four fraternity philanthropy events in the spring of 2005—their very first semester!" Some of those events included the five-hour Gulu Walk, which raised awareness for the children of Uganda.

Alumnae were also dedicated to the colony's success. Local alumnae and members of the Phoenix Valley Alumnae Chapter provided meals for the colonization team. Alumnae opened their homes to 23 members of the Delta Alpha Chapter (California State University/Long Beach) who traveled to Tempe to assist with preference events and Bid Day. "The Tucson Alumnae Chapter was also instrumental in providing support to the colony," says Beckey Robinson Romenesko ZO '66, Area Alumnae Director - Great Western Area.

"We were so excited to have a college chapter in Arizona," Mia McMellon Morin ΔY '92, Phoenix Valley Alumnae Chapter President, says. "We have had alumnae support statewide. Contributions weren't just monetary, but many alumnae gave their time and efforts to helping in any way we could. Alumnae support has not wavered since the installation. We have approximately 90 alumnae who are actively involved in helping the chapter."

The Way West:

Delta Zeta Installs the Pi Zeta Chapter at Arizona State University



Building Recognition on Campus

Danielle Steinke, outgoing Chapter President, says, "As a member of the Greek community at ASU, we will present a positive image of Greek life by taking pride in ourselves and in Delta Zeta."

Pi Zeta's Executive Board and members are ready to lead on the ASU campus. In addition to Danielle's leadership, Kim Dockery, the new Chapter President and former Risk Management Chairman and Vice President of New Member Education, fulfilled these roles by providing confident direction for the chapter. Tara Gregory, Vice President of Membership and past Vice President of Programs, oversaw many chapter chairmen while participating in student leadership organizations such as the Student Planning and Activities Board. Many chapter members are on the Dean's List, and others are members of the Spanish National Honor Society, Phi Eta Sigma Honor Society, and Phi Kappa Theta Honor Society.



"This colonization is another building block in what continues to be highly successful extension efforts from the national and local levels of Delta Zeta. We are proud to have a chapter at ASU, which is one of the schools in the Pacific-Ten college athletic conference."

Kathi Bray Heatherly EY, National Director of Extension



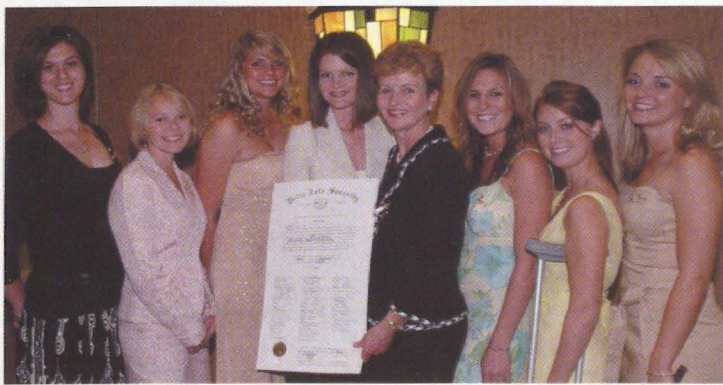
Initiation and the Installation Banquet

Lee Ann Witt began the initiation ceremony on Friday evening, October 7, 2005, by reading the Legend of the Loving Cup and Debbie Raziano, National President, read the history for the Delta Zeta initiation. The installation ceremony on October 8 was the culmination of almost three years of tireless effort on the part of many, including collegiate and alumnae members of Delta Zeta, Lara Klinkner, Greek Life Coordinator, and family and friends. Held at the beautiful Arizona Biltmore Resort in Phoenix, it was a magical evening with over 275 guests in attendance. The ballroom was awash in muted gold and ivory accents, and each table was adorned with centerpieces of hot pink roses.

Debbie Raziano presented the charter to the chapter, which each member signed, and the ceremony closed with the Rose Ceremony as six members of Pi Zeta sang "The Rose" for the assembled guests.

Danielle Steinke expressed the feelings of those involved in the colonization in her speech at the banquet. "We achieved our goal of becoming a chapter. We did this by believing in ourselves, but most importantly, by believing in one another. It is because of each of you that I am proud to call myself a Delta Zeta."

Below left: Members of the Pi Zeta Advisory Team were Yvonne Nunez Manfredo ΓΞ '91 Foundation Scholarship Committee member; Mary Peterson ΔN '65, Financial Advisor; Lee Ann Martin Witt ZΨ '78, Pi Zeta College Chapter Director; Heather Basil BK '99, Academic Advisor; Nicole Barnett ΔB '01, New Member Advisor; and Sue Norman Z '70, House Corporation President. Sue is an interior designer who contributed her services to decorate the chapter room. Not pictured: Janna Kleinecke Vallhonrat ΔΘ '82. **Below right:** Margaret Shrader, Pi Zeta Secretary; Sara Van Koningsveld, Pi Zeta Treasurer; Tara Gregory, Pi Zeta Vice President of Programs; Lara Klinkner, Greek Life Coordinator for Arizona State University; Debbie Raziano KA, National President; Kim Dockery, Pi Zeta Vice President of New Member Education; Christy Brownfield, Pi Zeta Vice President of Membership; and Danielle Steinke, Pi Zeta Chapter President.





Front, from left: Jean's son-in-law Paul Robin, daughter Tristenne Robin, Jean Baughman Wessel Templeton $\Gamma\Sigma$ '56, 2005 Woman of the Year, daughter-in-law Charlotte Wessel, and son John Wessel. Back: Jean's son James Wessel and her husband Steve Templeton.

Jean Baughman Wessel Templeton $\Gamma\Sigma$ '56

"Helping people has given me more satisfaction in life than almost anything else. So many people helped me in so many ways throughout my life—I'm glad I can give back now," says Jean Baughman Wessel Templeton $\Gamma\Sigma$ '56, of Huntsville, Alabama, Delta Zeta's Woman of the Year for 2005.

Jean's philosophy permeates every phase of her life—from mother to Delta Zeta alumna to successful businesswoman. Jean is CEO and Chairman of the Board of Wesfam Restaurants, Inc., a franchisee of Burger King Corporation. A well-known volunteer in her community, she received the Grace Club Award in 1995 for community service and the Pathway to Honor Award in 2001 in recognition of her community leadership. She is also an active member of the Huntsville Alumnae Chapter and has devoted many years to Delta Zeta service.

She was initiated into the Gamma Sigma Chapter at Eastern Michigan University in 1956. Jean served as President of the Miami Alumnae Chapter (Florida) from 1960-61, and developed a volunteer program at the Miami Hearing and Speech Center. She was also College Chapter Director (CCD) for the Beta Nu Chapter at the University of Miami from 1963-65 and served on the Lambda Kappa Chapter (University of Alabama/Huntsville) House Corporation. As Philanthropy Chairman of the Huntsville Alumnae Chapter, Jean developed an Infant Hearing Testing Program at Huntsville Hospital and became President of the alumnae chapter in 1970.

Her national service in Delta Zeta included her appointment as National Social Chairman in 1968. In 1973, the Huntsville Alumnae Chapter recognized her as the "Alumnae Chapter's Ideal Alum."

"Delta Zeta has been a major force in my life," Jean says. Her family moved many times during her childhood and teen years, and Jean explains how important it was to her to connect with Delta Zeta when she became a member of the Gamma Sigma Chapter at Eastern Michigan University. "I learned compassion, understanding, and what leadership was all about. I also began to see the results of possessing those qualities—the means and the purpose. Reaching goals became a personally satisfying experience, and I thrived in that environment."

"It is incredible to think that a young woman can join Delta Zeta as a collegian and have a friendship circle for life. All of this is about the triumph of the human spirit—to be giving, loving, and supportive of each other."

Jean Baughman Wessel Templeton $\Gamma\Sigma$ '56



She serves as a member of the Foundation Board and on the Campus Development and Finance Committees at the University of Alabama/Huntsville. She serves on the Health Care Authority, which oversees the city-owned Huntsville Hospital. She is Chairman of the Community Health Initiative, which seeks to improve the health of the residents of Huntsville and Madison County.

Jean is a board member of the Historic Huntsville Foundation and her major gift helped to restore a donated building in downtown Huntsville. She has served on the board of the Huntsville/Madison County Chamber of Commerce, the Board of Directors of the Business Council of Alabama, and is a member of the Leadership Alabama Association.

Wesfam received Burger King's National Marketing Award for Excellence in 1996, and later, the North Alabama Chapter of the Society of Financial Service Professionals' Ethics in Business Award for its commitment to its 1,300 employees and to its communities. Jean received the Franchisee of the Year award for a five-state region. The company was named Alabama Retailer of the Year in 2000.

Jean and her late husband, Fred Wessel, started Wesfam 39 years ago, opening one of the first 200 Burger King restaurants in the world. Jean has three children: John Wessel, who is Wesfam's vice

president of operations; daughter Tristenne Wessel Robin, vice president of finance; and son James Wessel, who sits on Wesfam's board, but is also a volunteer firefighter and owns Brindlee Mountain Fire Apparatus. Jean passionately supports volunteer firefighters in many capacities because of her son's work. Today Jean is married to Steve Templeton, an attorney and owner of a TCBY franchise, and has three grandchildren.

At the December 3, 2005 luncheon event to honor Jean, Deborah Raziano KA, National President, presented the Woman of the Year pin to her. Guest speakers included Joe Austin, Huntsville Hospital chief executive officer, Dr. Frank Franz, University of Alabama/Huntsville president, and son James.

Callie Nicholson, Chapter President of the Lambda Kappa Chapter (University of Alabama/Huntsville), gave the invocation, and Carolyn Barnett Seaman ΔH '67, Huntsville Alumnae Chapter President, emceed the event.

Among the many people Jean expressed thanks to who had influenced her life were two women who were especially influential: her aunt, Edna McDonald, now deceased, who urged her to go to college, and the late Lois Walker Coates ΔΓ '37 who was instrumental in helping to establish the Lambda Kappa Chapter at the University of Alabama/Huntsville.

"I am so humbled to represent so many Delta Zetas who have accomplished as much or more than I have," Jean said of her Woman of the Year honor. "What I hope to do with this recognition is to create awareness not only for Delta Zeta, but for the concept of sisterhood which the Sorority embodies."



Christie Dale Harmon ΔK '89, Area Alumnae Director – Southeast Area; Tracy Wilson LeSieur ΔE, National Vice President of College Chapter Operations; Jean Baughman Wessel Templeton ΓΣ '56, 2005 Woman of the Year; Debbie Raziano KA, National President; Nikki Dempsey Sprader ΔK '93, Regional Collegiate Coordinator – Region XV; and Melissa Hood Bullard ΔK '90, Alumnae Public Relations Chairman – Southeast Area.

Stars in Our Service Flag

The LAMP is proud to recognize Delta Zeta's "stars" in our Service Flag. If you are or you know a Delta Zeta member in the armed forces or serving as a civilian in foreign service, U.S. Agency for International Development (USAID), USO, or other such organizations, please send name, military branch, rank, where stationed, and other information (including family, hometown, etc.) to Nancy Brewer, Editor, *The LAMP*, Delta Zeta National Headquarters, 202 E. Church Street, Oxford, Ohio 45056 or via e-mail at LAMP@dzshq.com. We welcome stories and photos of members, and look forward to honoring our stars in Delta Zeta's Service Flag.

Lourdes Tiglao KI '00 Staff Sergeant, Cardiopulmonary Specialist (U.S. Air Force)

Lourdes is in Okinawa, Japan with the U.S. Air Force and recently reconnected with the Great Lakes Alumnae. She tells *The LAMP*, "I'm stationed on Kadena AB, Okinawa, Japan and will be here until May 2007. I have deployed all over the world, including Saudi Arabia, Turkey, the Philippines, Diego Garcia (British Indian Ocean Territory), Afghanistan (twice), Kyrgyzstan, and Uzbekistan. I've been flying as part of the CCATT (Critical Care Air Transport Team) for the Air Force. We transport critically ill/injured patients from wherever they are to safer, more definitive treatment facilities. Here in Okinawa, I was one of the three pioneering members of the peacetime version of the CCMAT (Critical Care Medical Attendant Team) covering the Pacific



Lourdes Tiglao KI '00 (bottom row, second from right) has won numerous awards in her field.

region. It's the first of its kind for the Department of Defense. I've worked jointly with other services including the U.S. Army and USAF Special Operations Group while in the Philippines, the State Department while deployed in Kyrgyzstan, and the US Navy while stationed here in Japan. I've done everything from digging ditches to building canals to flying patients through storms when we're seven hours away from any land with limited oxygen capability."

Captain Mary Elizabeth 'Liz' Wilkerson Brinsko ΔA '77 (U.S. Public Health Service)



Liz is stationed at the U.S. Food and Drug Administration in San Diego, California. Her husband, Captain Robert W. Brinsko, MC, USN, is stationed at the Naval Hospital in Camp Pendleton, California. Liz is originally from Morrilton, Arkansas.

"I was recently deployed to Louisiana to provide aid during Hurricanes Katrina and Rita. As a registered Medical Technologist, I was assigned to the Louisiana Joint Field Office/Emergency Support Function - 8 (Medical and Public Health) of the Secretary's Emergency Response Team (SERT). As the Logistics Branch Chief, I was responsible for setting up the supply chain, obtaining and distributing pharmaceuticals and medical supplies, mobile clinics, transportation, and billeting. When not deployed, I work for the U.S. Food and Drug Administration as a biologics and biomedical research investigator."

To Myself, Faith

Many college-age women experience doubts that challenge their self-esteem on today's college campuses. Without a guiding influence, without the support and strength of a value system that reaffirms their self-worth, low self-esteem affects the choices these young women make in their lives. Self-criticism, perfectionism, depression, and loneliness can drive their actions.

New Member Education—Education for a Lifetime

As a new member of Delta Zeta, a young woman is educated, from the moment she pledges, about self-respect, self-care, and the importance of a value system to which she can always turn for answers to today's confusing (and often tempting) issues. *Becoming a Delta Zeta*, the Sorority's new member education program, stresses the importance of the belief in oneself, tempered by the stronger bonds of sisterhood in an organization that supports women and brings out the best in each member, while allowing a new member to stay true to her own unique personality.

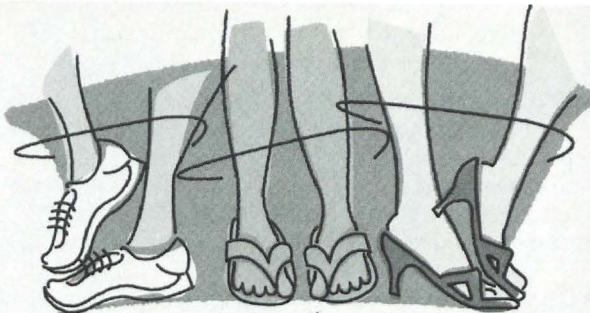
Moreover, the new member is shown how membership in Delta Zeta will carry forward into her life as an alumna—how she can become a successful professional, wife, mother, or mentor, and give of herself to help others with the help of the educational and leadership tools she receives from the Sorority.

Another important aspect of the new member education process is AlcoholEdu, a science-based course that is taken by tens of thousands of college students each year. The course educates students about alcohol and its effects on the mind and body. AlcoholEdu is a requirement for initiation for every new member.

The results from AlcoholEdu's first year of implementation tell us that 62% of our members drank because they are uncomfortable in expressing their feelings in social situations, and 60% say they believed alcohol would enable them to handle the day-to-day stress in their lives. After the AlcoholEdu course, however, these percentages decreased when students learned more about the effects of alcohol on their bodies and minds. For young women, and especially young women who don't have strong family support and/or the right values system, the pressures of "fitting in," coping with academic demands, being a part of the social scene in college may drive them to seek confidence from other influences such as alcohol, drugs, or high-risk behavior.

"The results achieved by Greek organizations implementing Population-Level Prevention with AlcoholEdu for college are truly unprecedented," says Dr. Rick Underhile, Prevention Practice Manager of Outside The Classroom, the organization which developed AlcoholEdu.

Members of the Gamma Beta Chapter (University of Connecticut).



Stand up! Stand Out!

why settle for fitting in when you are meant to stand out

By giving collegians an interactive tool which helps them consider the motivations behind alcohol abuse and the dangerous consequences to their own minds and bodies, Delta Zeta provides an influential educational component to which many collegians probably don't have exposure.

The Challenges of Being Greek Today

All college students, male and female, face enormous challenges today. Kristi Birch, writer and editor at the Bloomberg School of Public Health, says in her article, "College Level Coping" in the *Johns Hopkins University Arts and Sciences* magazine, that today the trend toward more students taking some form of prescribed medication for psychological and emotional issues is referred to as a "collegiate mental health crisis." Higher education carries a higher financial cost than ever before. More students work while going to school. While the expectation to excel and do well academically is greater for them than any other generation, they have less time to study. In addition, more non-traditional and first generation students populate today's campuses.

Many female students may decide that they do not have the time or energy to devote to a sorority, given all of the other demands on their time in college. But Delta Zeta can serve as an anchor, a haven from the stresses and demands of today's college life. Membership prepares a young woman to better handle the challenges she will face on the campus, and ultimately, in the world after graduation.

And once she is a member, there can be other pressures both inside and outside of the chapter. Greek members of any organization must deal with peer pressure and the generally-accepted stereotypes of Greeks (à la *Animal House*) that those outside the Greek world believe. Within the Greek chapter, however, members have a support network—the strength and guidance of other chapter members, the chapter advisor, and alumnae, to help them resist succumbing to high-risk behaviors. New members learn about the honor of being a member of the Sorority, and that their membership should never be jeopardized or compromised by conduct that conflicts with Delta Zeta's core principles.

Although Delta Zeta Sorority is over 100 years old, the tenets established by the Founders in the *Constitution* remain relevant today. The *Constitution* states that one of the key factors in the purpose of the Sorority is "to afford each other every possible assistance and incite all to the attainment of a memorable fame." What does that mean? Our Founders were proud of Delta Zeta as an organization which unites women in a bond deeper than mere friendship. Through the Ritual, this bond strengthens women to support each other, to stand before the world representing the values of Delta Zeta, and as Delta Zetas, to give of themselves to better the world around them. Delta Zeta's reputation, our Sorority's "fame," is carried by each of our members.

Your own success, made possible by the support of your sisters, is the "memorable fame" you will attain as a member of Delta Zeta. And part of that fame is the success of others whom you have helped in some way—through service, philanthropy, or moral support.

I am an Alumna Member—How Can Delta Zeta Contribute to Success in My Life?

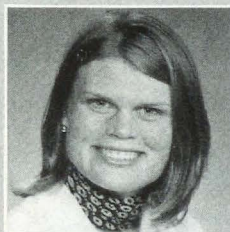
Many Delta Zeta alumnae say their collegiate years in Delta Zeta set the foundation for their lives after graduation. Many of these women use skills and knowledge acquired as collegians in their professions and their personal lives each day. Remember that Delta Zeta is not just something you do during college—it is for a lifetime, and will continue to give back to you just as you give to Delta Zeta long after you have graduated.

As a busy alumna, time is your most precious commodity. You no doubt care for and take care of many people in your life. Yet the time you spend to take care of yourself will give you the strength and energy to take care of those around you, and find fulfillment in helping others. In this way, you are honoring yourself. As a woman who is resolute in her convictions and lives a purposeful life, you represent truth and courage. You have faith in yourself and believe in your power to make a difference.

By making a difference in others' lives, you become successful. Volunteering in many capacities within Delta Zeta can truly influence the lives of young collegiate women. Assisting a chapter with recruitment, mentoring a collegian, speaking at a college chapter meeting, referring potential new members of quality to the Sorority are all ways to make a difference. Beyond Delta Zeta, your participation in community, service, and philanthropic endeavors will allow you to "give graciously" and ensure Delta Zeta's "memorable fame."

As an alumna member, you represent the Sorority to friends, family, and associates. Your reputation is Delta Zeta's reputation.

Collegiate women who have the self-confidence and assurance to become leaders in college go on to become leaders in their communities, and later, to the national and international levels. Delta Zeta works every day to provide the tools, education, friendship, and support that nurtures potential leaders. Leaders can take their place at the forefront or lead quietly by example. No matter what their leadership style, Delta Zeta leaders know the importance of leaving "the world a bit better," and that "this is to have succeeded"—as a Delta Zeta member, and as a human being.



Christine McGill IB '94 Appointed as Delta Zeta National Program Development Chairman

Chris is the Coordinator for Fraternities, Sororities, and Living Groups at Massachusetts Institute of Technology. Prior to this position, she was the Program Coordinator overseeing

fraternities and sororities at the University of Virginia. Chris has co-facilitated sessions at Beta Theta Pi's "Men of Principle" summer programs, and is a member of the Association for Fraternity Advisors (AFA).

She brings her extensive expertise to this national appointment and will utilize the "Stand Up! Stand Out!" program in additional programming for Delta Zeta collegians, working in conjunction with Michelle Albrecht Smith AX, National Vice President of Membership Development. Michelle is responsible for several new and exciting collegiate programming initiatives for Delta Zeta over the last two biennia. Michelle and Chris are excellent examples of Delta Zeta volunteer leadership, which continues to implement outstanding and relevant programming for collegians and alumnae, teaching members to assume leadership roles not only within the Sorority, but as citizens of the world community.

MODEL BEHAVIOR

Randy Haveson, M.A., is a two-time finalist for APCA Speaker of the Year. In 2001, he was named as one of the "Best of the Best" speakers in the 25-year history of the BACCHUS and GAMMA Peer Education Network and in 2002 was named as the Show-case Speaker of the Year by the Georgia chapter of the National Speakers Association. Randy has also been a counselor and university administrator, and is uniquely qualified to understand the challenges that college-age adults face, including self-esteem issues, leadership, and addictive behavior.

Randy was the keynote speaker at the Delta Zeta collegiate programming event, Stand Up! Stand Out!, which was held in Dallas, Texas on February 3-5, 2006.

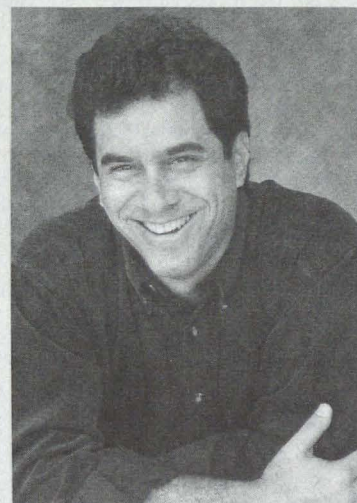
"If you raise self-esteem, you lower all the other problems," Randy says. "Low self-esteem is at the root of problems faced by many young adults today, such as eating disorders, alcohol and drug issues, and relationship issues."

Today's generation of college students face challenges which can assault their sense of self-esteem more than ever before. Randy agrees. "The world is changing so quickly today, more than it ever has in the past. It's very difficult to keep up with everything, and unless you're grounded with who you are, it can be very easy to get lost in everything that is going on."

Randy says that young women today are bombarded with media images that glorify the ego. "It's what I call ego-based rather than self-esteem-based," he continues. "Our society is very big on reinforcing ego—how much money you have, what kind of car you drive, etc. A lot of people who have a strong moral code or value system have those seeds of esteem, but many times they're not allowed to grow. One of the things we need to do is allow these women to see what they can excel at, what their strengths are, and to let those strengths grow."

What is the best thing we can do for young people? "Be honest!" Randy urges. "Young people today see through the disguises. They want what is real and honest. I find that too many times we attempt to shelter them from the truth, and we are doing them a disservice. We need to say, 'The world's a scary place, but it's also a very beautiful place. Here's what I do to be a part of the solution.' Again, it's about being a living example and being honest with them."

"There's one line in the Delta Zeta Creed," Randy continues, "that really stands out to me. 'To seek the truth and defend it always.' Not 90% or 50% of the time, but *always*." As one of Randy's courses advocates, you can be R.I.C.H.—by living a life of Respect, Integrity, Courage, and Honor.



"Women of Vision, Women of Action"

National Panhellenic Conference 59th Biennial Session

by Sue Zorichak, Alpha Sigma Alpha Second Alternate Delegate and NPC Publications Committee Chairman

More than 200 women of vision and action convened at the Woodlands Waterway Marriott Hotel and Convention Center near Houston on October 21-22, 2005 for the 59th biennial session of the National Panhellenic Conference. NPC Chairman Martha Brown, Delta Gamma, illustrated the NPC news-making events each month of the biennium. "These events cannot begin to describe the actual work that has gone into meetings, programs, travel, and preparation done by our NPC volunteers as they have performed their committee assignments in the true spirit of Panhellenic helpfulness and cooperation for the Conference," she noted.

Public Relations Committee Chairman Kris Bridges, Phi Mu, presented the NPC messages and positioning platform, "Helping women grow, give, lead and succeed."

There are five value messages in the platform:

- ❖ NPC helps sororities succeed.
- ❖ NPC is power in numbers.
- ❖ NPC is the unified voice for sororities.
- ❖ NPC sets the bar high for members.
- ❖ Today's sororities enrich society.

Kevin O'Neill, Lambda Chi Alpha, an attorney with D.C.-based law firm Patton Boggs, spoke about Greek government relations.

Karen Holbrook, Ph.D., Gamma Phi Beta, the featured speaker during the Alumnae Awards luncheon, received the 2003-2005 Women in Higher Education Achievement Award. She was named president of The Ohio State University in 2002, where she continues to teach internal medicine, dermatology, cell biology, and physiology.

Refining and voting on the Conference public relations plan and strategic plan took center stage during the session. In addition, seven resolutions were presented and passed.



Delta Zeta representatives at the 2005 NPC Biennial Session included: Phyllis Sundberg Davis AT, National Director of Membership Services, NPC Second Alternate Delegate, College Panhellenics Committee Area Advisor, and Educational Development Committee member; Lynnda Wolf Hoefler TK, National Panhellenic Conference Delegate, Mid-America Area Advisor Coordinator, College Panhellenics Committee Area Advisor, and Recruitment Committee member; Debbie Raziano KA, National President; Cynthia Winslow Menges A, Executive Director and Fraternity Executives Association President; and Kathi Bray Heatherly EY, National Director of Extension, NPC First Alternate Delegate, Alumnae Panhellenics Committee Area Advisor, Extension Task Force Committee member, and College Panhellenics Awards Committee member. Not pictured: Karly Klemp Burns ZA, Past National President, NPC Third Alternate Delegate, Alumnae Panhellenics Committee Area Advisor, NPC Foundation Scholarship Committee member, Housing Committee member, and Long Range Planning Committee member.

WHAT IS AN ALUMNAE PANTHELLENIC?

Have you ever wondered what an Alumnae Panhellenic is? An Alumnae Panhellenic ("APH") is a community-based organization, affiliated with the National Panhellenic Conference. The purpose of an Alumnae Panhellenic is to inform fraternity women of current trends, promote the fraternity system, improve the Panhellenic image, and stimulate a continuing interest in Panhellenic affairs.

There are over 220 Alumnae Panhellenics in the United States, Canada, and the United Kingdom, made up of representatives from the 26 National Panhellenic Conference (NPC) groups.

Alumnae Panhellenics enhance the fraternity system through scholarship awards, annual recruitment information events for prospective college freshman, philanthropic projects, community service participation, and civic leadership. Last year, over \$435,000 was raised and granted in scholarships by Alumnae Panhellenics to over 580 women. The Alumnae Panhellenic can give valuable support to a College Panhellenic. College members can contact a local Alumnae Panhellenic in her hometown and find out if they have scholarships available.

Alumnae Panhellenics can accomplish much in their communities by working together as a large group of sorority women. If there is an Alumnae Panhellenic in your area, our Delta Zeta alumnae chapter *should belong* and a representative attends the meetings to cast our Delta Zeta vote. In large metropolitan areas where there is more than one alumnae chapter, Delta Zeta is allowed only one vote. It is the responsibility of the alumnae chapters to determine which club and delegate is to be the voting representative from year to year. And if there is not a Delta Zeta alumnae chapter in your area, you can still belong to your Alumnae Panhellenic. What a great way to stay in touch with other Greek women!

Delta Zeta congratulates the following alumnae sisters who are currently serving as Alumnae Panhellenic Presidents:

Jackson, Mississippi Alumnae Panhellenic –
Genifer Palmer Freeman ΔE '89, President

Winners of the NPC Outstanding Alumnae Panhellenic/ Citation of Merit for 2003-2005

Omaha, Nebraska Alumnae Panhellenic –
Lois Rippen Westfall BT '65, President

Palm Beach County, Florida Alumnae Panhellenic –
Virginia Olson Hinman TB '44, President

Tallahassee, Florida Alumnae Panhellenic –
Dalisha Herring AT '95, President

Winners of the NPC Programming Excellence for 2003-2005

Arlington, Texas –
Heather Jerden Anderson IW '90,
Delta Zeta Southwest Area Alumnae Director

Dallas, Texas –
Debbie Donathan-Price AT '76

North Orange County, California –
Marilyn Green Payette A '46

Riverside, California –
Lora Barshell Laine M '57



Delta

DePauw University performed a special ceremony in honor of the Founders and the chapter won third place in the annual Ring Sing competition, a philanthropy event that raises money for victims of domestic abuse.

Theta

Ohio State University celebrated Founders Day with the Columbus Alumnae Chapter. Theta hosted their annual Dodgeball Tournament and raised money for the Columbus Speech and Hearing Center.

Rho

University of Denver Chapter members and Delta Xi Chapter members shared Founders Day with the Denver Alumnae Chapter and enjoyed a cake decorated with the Delta Zeta Crest, presented by Jean Haley Harper Y '74, Delta Zeta's 1998 Woman of the Year.

Sigma

Louisiana State University volunteered at the Greater Baton Rouge Awesome Autumn Party, a benefit for children with cancer and their families.

Alpha Alpha

Northwestern University entered a float in the Homecoming Float contest and one member was nominated for the Homecoming Court. After the Homecoming game, the chapter hosted an Alumnae Barbeque at the chapter house.

Alpha Gamma

University of Alabama enjoyed a special Founders Day dinner with several returning alumnae. The chapter had a fabulous Homecoming week, placing in several campus-wide activities.



The Alpha Upsilon Chapter (University of Maine) with alumnae at their Homecoming brunch.

Alpha Theta

University of Kentucky celebrated Founders Day with local alumnae and were honored to be a part of the Golden Rose ceremony celebrating 50 years of membership for nine alumnae members. The chapter teamed with Phi Gamma Delta Fraternity for the annual Four Square philanthropy event.

Alpha Sigma

Florida State University held a formal dinner and a Founders Day ceremony with local alumnae. The chapter participated in Homecoming events such as philanthropy events, building a float for the parade, attending Pow Wow (FSU's Homecoming pep rally), creating a banner, and competing in Skit Night where they won first place.

The Alpha Theta Chapter (University of Kentucky) celebrated Founders Day with area alumnae.



Alpha Rho

Ohio Wesleyan University Chapter members joined the Columbus Alumnae and the Theta Chapter (Ohio State University) to celebrate Founders Day at a brunch. Alumnae were invited to come back to tour the house and reunite with old friends and meet new sisters.

Alpha Upsilon

University of Maine invited alumnae to the Founders Day Ceremony. The chapter also had a "friends and family" lunch. The chapter won first place for Greek Week, and held its annual day of silence to raise money for the Connolly Speech and Hearing Center on campus.

On Campus



The Gamma Kappa Chapter (Kent State University).

Gamma Kappa
Kent State University
members read the Story of the Loving Cup at the Founders Day ceremony, and enjoyed tea and snacks with the alumnae afterwards. Karli Chaboudy, a member of the Student Senate, was nominated as Homecoming Queen.

Gamma Lambda
San Jose State University
held its annual Mocktails (non-alcoholic beverage) Event to promote alcohol awareness on campus and in the local community.

Beta Gamma
University of Louisville
celebrated Founders Day with the Louisville Alumnae Chapter and held a joint auction/fundraiser.

Beta Kappa
Iowa State University
introduced alumnae to the new members and each alumna discussed what Delta Zeta meant to them on Founders Day. The chapter also enjoyed listening to stories about past Homecomings and other activities that Beta Kappa had been involved with on campus over the years. Homecoming was celebrated with the theme "Igniting Cyclone Pride," where the chapter placed first in Community Service.

Beta Lambda
University of Tennessee/Knoxville
Founders Day was celebrated with alumnae at a candlelight ceremony honoring the six Founders. New members' parents were invited to attend a presentation about Delta Zeta and to meet the officers.

Beta Tau
Nebraska Wesleyan University
held a formal dinner and program with collegians and alumnae on Founders Day. All members attended the Homecoming football game and Laura Karthausser was crowned Homecoming Queen.

Gamma Alpha
Baldwin-Wallace College
held a luncheon to celebrate Founders Day, inviting alumnae and family members. The chapter was honored to host Joan Dondrea Lowry ΓA '53, Past Delta Zeta Foundation President and Delta Zeta Woman of the Year for 1995, as the keynote speaker. The chapter won the Breezer's Cup for the spirit competition for the fourth consecutive year.

Gamma Beta
University of Connecticut
participated in a Founders Day celebration and a 25th anniversary of the chapter's recolonization with alumnae. The chapter paired with Sigma Phi Epsilon Fraternity for Homecoming, and placed second overall in Homecoming events, and won softball and basketball tournaments sponsored by other sororities which raised money for philanthropic causes.

Gamma Delta
Pennsylvania State University
held a Founders Day ceremony at which the Executive Board spoke about each of the Founder's lives and what they contributed to Delta Zeta. The chapter received second place overall in Greek Sing 2005.

Gamma Xi
New Mexico State University
combined Parents Weekend with Homecoming. The chapter invited parents to watch the parade at the chapter house and attend the Homecoming game and a brunch. Gamma Xi took first place overall for Homecoming events.

Gamma Pi
Western Michigan University
held a ceremony to honor Founders Day and the chapter's founding. Gamma Pi received numerous awards at the Region Day, including awards for outstanding philanthropy, outstanding programming award, achieving quota, and achieving total.



The Gamma Chi Chapter (Ball State University)

Gamma Tau

Bowling Green State University celebrated Homecoming weekend by hosting a lunch for alumnae. The chapter also hosted a family weekend with lunch and attendance at the football game.

Gamma Chi

Ball State University welcomed many alumnae during Homecoming. A formal dinner was held where new initiates were recognized and seniors spoke. The chapter has been successful in raising money for Riley Hospital's Burn Unit as its philanthropic project.

Gamma Psi

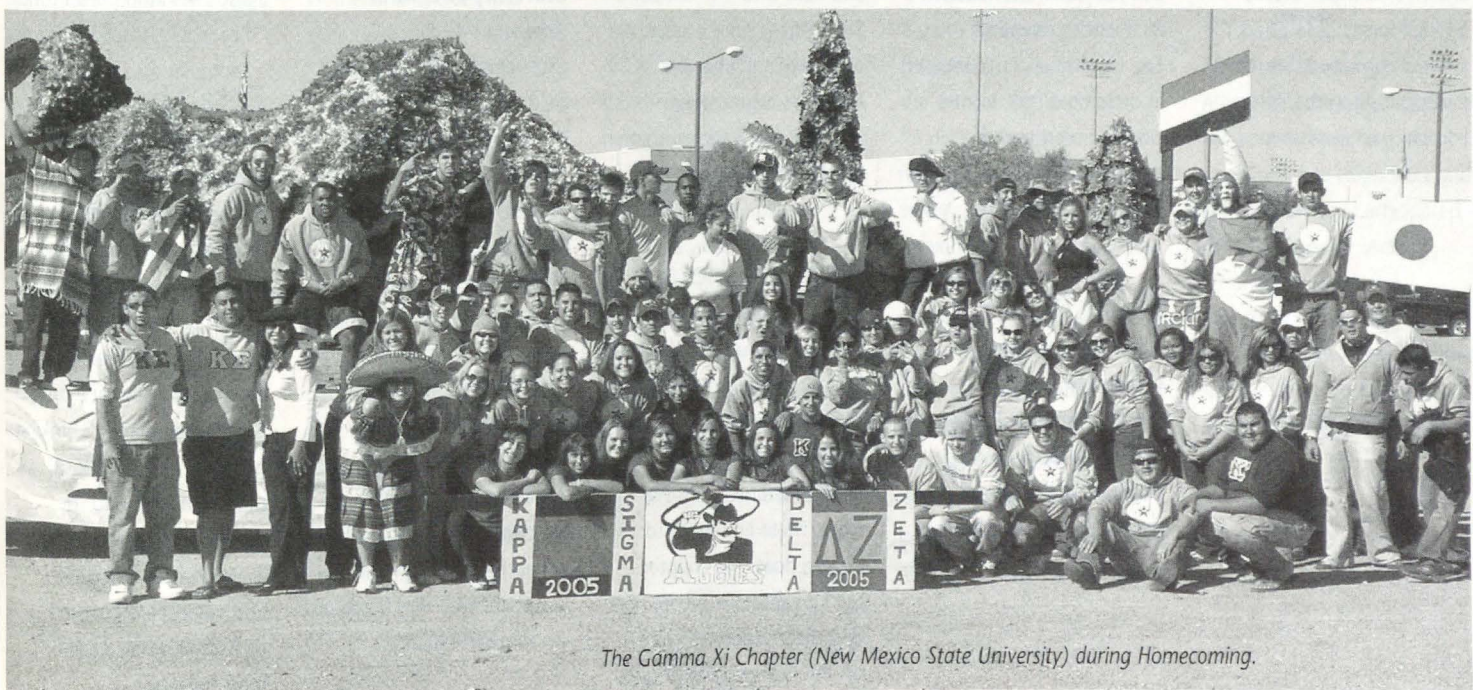
Central Michigan University celebrated Founders Day with a candlelight ceremony. Gamma Psi has been working hard raising money to donate to the Children's Miracle Network and to Central Michigan University's Speech and Hearing Impaired scholarship fund.

Delta Alpha

California State University/Long Beach joined the Long Beach Alumnae Chapter for their Southern California Founders Day celebration. In October, eight chapter members visited Arizona State University to initiate the Pi Zeta Colony.

Delta Beta

University of Tampa participated in a variety of community service events including Sleep Out for the Homeless, the Oxfam Hunger Banquet, Coastal Cleanup, trick or treating to raise money for UNICEF, and a walk to benefit the victims of Hurricane Katrina. They attended Founders Day with the Tampa Bay area alumnae.



The Gamma Xi Chapter (New Mexico State University) during Homecoming.

On Campus

Delta Delta

Georgia State University received pink and green ribbons to wear on Founders Day, donated by one of Delta Delta's founding members, Carolyn Wills.

Delta Theta

University of Houston participated in many Homecoming events on campus. At the largest event, the chapter did a reality TV-themed skit which all of the participants enjoyed. Delta Theta also hosted a talent show to benefit the Center for Hearing and Speech.

Delta Xi

University of Northern Colorado competed in Homecoming events, volunteered at the City of Evan's "Trick or Treat Street," and hosted their "Studio 54" fall formal. Members are looking forward to participating in the Relay For Life next semester.

Delta Sigma

Truman State University participated in many campus-sponsored Homecoming events and the Homecoming parade. The Delta Zeta Dads constructed a float and marched together in the parade.

Delta Tau

Temple University Chapter's Executive Board performed the Founders Day Ceremony. The chapter also took part in the Temple University Greek Association's (TUGA) annual Greek Showcase during Homecoming, where each Greek organization takes the stage to sing, dance, and perform skits.

Delta Upsilon

Marshall University had a Founders Day dinner and formal which included an awards ceremony. The chapter also participated in building a float for the Homecoming parade and hosted a brunch for alumnae and parents.

Delta Phi

Northeastern State University placed third with Phi Lambda Chi in the Homecoming float parade under the non-mechanical float category.

Epsilon Gamma

Central Missouri State University celebrated Homecoming with Lambda Chi Alpha Fraternity. In October, the chapter co-sponsored a blood drive with Theta Chi Fraternity, completed the 5K Spirit Run, and raised money for cystic fibrosis by raking leaves in the community.

Epsilon Delta

Concord University celebrated Founders Day with a ceremony and dinner. The chapter participated in many activities throughout the week of Homecoming, entering billboard, banner, costumes, parade float, and lip sync competitions.

Epsilon Zeta

Drexel University welcomed 16 new members to the chapter and held their 14th annual Step-a-thon on the steps of the Philadelphia Art Museum, raising over \$600 for the National Center for Hearing Assessment.

Epsilon Theta

Clarion University hosted a beautiful Founders Day dinner and ceremony. After the Homecoming parade, for which the chapter teamed with Phi Delta Theta Fraternity to build a float, the chapter held an alumnae picnic, and three members were on the Homecoming Court.

Epsilon Iota

Fairmont State College teamed up with Sigma Tau Gamma Fraternity for Homecoming. The chapter won top honors in the Spirit Stick competition, and hosted a dinner for alumnae the night of the Homecoming Dance.

Epsilon Kappa

University of Wisconsin/Whitewater volunteered for the Take Back the Night program, Trick or Treat for Unique, Adopt-a-Lot clean up, and helped conduct hearing and speech tests for elementary students. The chapter participated in the Homecoming variety show and other activities with the Greek organizations on campus.

Epsilon Xi

University of Central Arkansas Executive Board members held candles representing the Founders and recited the Delta Zeta Creed on Founders Day. The chapter hosted an alumnae tea for Homecoming.

Epsilon Sigma

Wayne State University was instrumental in organizing all sororities on campus to help provide an outfitted dorm room to a student who was displaced by Hurricane Katrina.

Zeta Epsilon

California University of Pennsylvania celebrated Founders Day with their new members at a brunch. Alumnae were invited for pizza after the Homecoming parade. Greek Treats were handed out during Family Day. The chapter participated in "Light Up the Night," a walk for the Leukemia and Lymphoma Society.

Zeta Zeta

West Texas A & M University hosted an alumnae dinner on Founders Day and had a very successful fall recruitment. The chapter volunteered to help the Maverick Club by giving underprivileged children campus tours, collected canned food for the local food bank, and organized a benefit concert in which all proceeds were given to Red Cross to assist the Katrina relief fund.

Zeta Nu

Ferris State University held an alumnae tea during Homecoming. During recruitment, the members learned the Creed in sign language. New members were involved in a community service project where they made "Thinking of You" cards for a local nursing home, and the chapter participated in a walk for rape victims, and volunteered to sing Christmas carols at the local hospital.



The Epsilon Kappa Chapter with University of Wisconsin/Whitewater Greeks at the Greek Games.

Zeta Pi

University of Georgia held a formal chapter meeting on Founders Day. Members took part in the sidewalk chalk painting event, a cookout, and Homecoming float construction. Parents Weekend consisted of a semi-formal dinner and dance and a morning brunch. Members attended the School for the Deaf Fall Festival, sent care packages to victims of Katrina and overseas Marines, and won first place for the "Light the Night" event, with proceeds going to the Red Cross for hurricane relief efforts.

Zeta Phi

Slippery Rock University Founders Day was celebrated as new and active members exchanged gifts. The chapter and alumnae participated in the Juvenile Diabetes Research Foundation walk in memory of their chapter sweetheart. Zeta Phi teamed with Phi Kappa Theta and Alpha Omicron Pi for Homecoming week and their floats, which used an "Around the World" theme.

Theta Mu

St. Cloud State University Chapter's new member class participated in a presentation on Founders Day. Theta Mu also participated in the Safe Ride Home program and sponsored the Trampoline-a-thon with Tau Kappa Epsilon Fraternity, which benefited speech and hearing.

Theta Nu

Minnesota State University/Moorhead alumnae were invited to celebrate Founders Day with the chapter at their annual spaghetti dinner. Alumnae were also invited to a Homecoming brunch in their honor. Proceeds from the fall Teeter-a-Thon helped victims of Hurricane Katrina.

Theta Rho

California State University/Los Angeles enjoyed a Western-themed night with potential new members which featured line dancing, and initiated 18 women into the chapter. Theta Rho made care packages for the Los Angeles Food Bank and participated in the six-mile Los Angeles AIDS walk.

Theta Phi

Old Dominion University Chapter celebrated the university's 75th anniversary with Homecoming festivities. The chapter partnered with Tau Kappa Epsilon and Alpha Phi Alpha Fraternity to create a float for the Homecoming parade.

Theta Omega

Barton College celebrated 40 years on the campus by hosting a fundraiser, lunch, and a formal dance. To increase awareness about hearing impairment, members wore red ribbons and Fact Tags, which had facts about how many hearing-impaired people are in America, famous deaf people, and the leading causes of deafness. The chapter also participated in a program to offer aid to Katrina victims.

Iota Alpha

Texas State University participated in the campus-wide Katrina Challenge, a fundraiser spearheaded by the Greek Affairs staff for those who suffered losses during Hurricane Katrina. Chapter members donated blood and collected canned goods for the cause.

Iota Delta

Edinboro University Alumnae were welcomed at the annual alumnae picnic near Edinboro Lake. New and active members participated in RAKE (Random Acts of Kindness in Edinboro). The chapter Trick-Or-Treated for UNICEF, and new members spent a day with residents at a local retirement home.

On Campus

Iota Iota

Middle Tennessee State University

held a candlelight ceremony honoring the Founders and recited the Creed for Founders Day.

Iota Xi

University of Missouri/ St. Louis

Chapter members celebrated Founders Day with the St. Louis Alumnae Chapter and members of the Omicron Omicron Chapter (Lindenwood University). Parents and alumnae enjoyed the annual Parents/ Alumnae Banquet.

Iota Upsilon

California State University/ Fullerton

combined the Founders Day celebration with their semi-annual Academic Dessert, where awards were given for individual academic performance. Six members, representing the Founders, spoke about the qualities that Delta Zeta values in each member: Sisterhood, Social, Service, Self, Scholarship, and Standards.

Iota Psi

University of Texas/ Arlington

alumnae and collegiate members participated in a ceremony to honor each Founder and to celebrate Delta Zeta on Founders Day. The chapter held its Rose Ball Formal and member Georgette Talley was named campus Panhellenic president.

Kappa Beta

Northern Kentucky University

hosted its annual Pink and Green Auction on Founders Day to raise money for Gallaudet University.

Kappa Iota

Wright State University

Chapter members participated in Founders Day with the Dayton (Ohio) Alumnae Chapter, and teamed with Delta Tau Delta Fraternity on their Homecoming float.

Kappa Xi

Duquesne University

raised funds which were donated to the university's speech and hearing clinic. The donation went to a college student who needed speech therapy services.

Kappa Rho

Kutztown University

recently held its first annual philanthropic event, the Turtle Tug, and participated in the United Greek Council's "Last Comic Standing" event to raise money for Hurricane Katrina relief.

Kappa Tau

Morehead State University

received the Best Participation Award and raised the most money during a fundraiser for the Pi Kappa Phi's No Boundaries Week. The chapter also held its annual kickball tournament, road clean-up, and a haunted trail to raise money for speech and hearing.

Kappa Phi

University of North Carolina/Charlotte

had a great fall recruitment. The chapter won the intra-mural soccer championship, flag-football championship, and held a fundraiser for the Hurricane Katrina relief fund.

Lambda Alpha

Arkansas Tech University

Chapter hosted its annual Alumnae Brunch for Homecoming. The chapter participated in Adopt a Family and hosted the Mr. Tech competition.

Lambda Beta

University of Southern Indiana

held Big Sister revealing on the same day as Founders Day. The chapter volunteered to help the Salvation Army raise money by ringing bells during the holiday season, and also raised money to assist victims of the tornado which struck Evansville, Indiana in the fall of 2005.

Lambda Theta

Michigan Tech University

placed third in the sorority division for Homecoming events, and continued their annual participation in Sigma Pi Haunted Haus, which raises money for the local fire department.

Lambda Kappa

University of Alabama/ Huntsville

hosted a dinner for both active and alumnae members on Founders Day. The chapter joined the Huntsville Alumnae Chapter for their annual Delta Zeta Marketplace, a craft fair which has been done for the past 20 years and the proceeds are donated to the Neonatal Unit of Huntsville Hospital.

Lambda Lambda

The College of New Jersey

celebrated Homecoming by participating in a number of Spirit Week events and came in third place for the spirit competition.

Lambda Nu

Auburn University/ Montgomery

celebrated Founders Day with a dinner. Members donated blood to the American Red Cross blood drive, and Anna Nichols was second runner-up for Homecoming Queen.

Lambda Xi

Texas A&M University

held its annual Run to the Chicken, a 5K race to benefit the Houston Ear Research Foundation and Gallaudet University. A portion of the proceeds also went to the Red Cross to assist with hurricane relief.

Lambda Pi

Georgia College and State University

Chapter held a Founders Day ceremony. Members attended a fundraiser on campus called "Sequins and Smiles." This organization donates dresses and accessories to help underprivileged high school girls attend their schools' proms. The chapter raised money for the ALS Walk.



The Lambda Nu Chapter's (Auburn University/Montgomery) intramural flag football team.

Lambda Rho

Illinois State University invited parents to tour the chapter house on Founders Day. Lambda Rho also hosted its annual philanthropic event, including the fraternity-wide "Delta Zeta Dream Man" competition.

Xi Eta

Northwood University held its International Outdoor Auto Show during Homecoming. The chapter participated in Rake-a-Difference to help local residents with fall yard cleanup, and was recognized by the local press for their efforts.

Xi Kappa

Rowan University collegiate and alumnae members participated in an auction for the victims of Katrina. Xi Kappa received second place in the university's Homecoming competition.

Xi Lambda

University of San Francisco celebrated Founders Day with a ceremony and birthday cake. The chapter participated in the Breast Cancer Walk.

Xi Omicron

Loyola-Marymount University

Founders Day celebration was shared with the Delta Alpha Chapter (California State University/Long Beach). Chapter members' mothers participated in the annual R.O.M.P. (Recruit Our Mothers Practice) event to help the chapter practice recruitment conversation skills.

Xi Rho

Clarkson University participated in Greek Week by making a banner, campus clean up, and a volleyball tournament. Proceeds went to support Head Start. The chapter teamed with Delta Sigma Phi to give gifts to area children and helped to raise \$1,650 for the Children's Miracle Network.

Xi Tau

Millersville University hosted its Alumnae Picnic, then invited alumnae to the football game. Members also participated in the Adopt-a-Highway program. Xi Tau had the highest new member GPA for the fall, and was recognized as Greek Organization of Year at the 2005 Greek Awards Banquet.

Xi Chi

Robert Morris University celebrated Founders Day with parents and alumnae, then held a special farewell ceremony for seniors. The chapter participated in The American Heart Association Heart Walk and the Cystic Fibrosis Foundations Annual Starbucks Sports Challenge.

Xi Omega

Purdue University received the Dean Elsbury Award, which is the highest honor awarded to a sorority at Purdue, for excellence in all aspects of chapter operations and campus and community relations. The chapter hosted a Christmas party for children at a local community center.

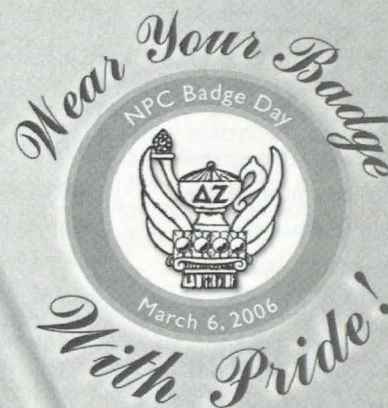
Xi Psi

Grand Valley State University celebrated Homecoming with a week-long tradition of events. The chapter made a sculpture from cans for the can drive and held its annual Dads Day Dinner before the football game.

Omicron Alpha

St. Mary's University shared its Founders Day celebration with many alumnae who told stories of their favorite Delta Zeta moments. The chapter participated in a campus beautification project and the Continuing the Heritage project to benefit the community.

*Wear Your
Badge With Pride!
Celebrate NPC
International Badge Day
on March 6, 2006*



Go to www.deltazeta.org and click on DZ Happenings to download materials to publicize International Badge Day on your campus or in your community.

On Campus



Omicron Lambda's Chapter President, Kim Feldman (center) accepting the Mindy Sopher Award from North Carolina State University's Chancellor, James Oblinger, and Mindy Sopher.

Omicron Gamma

Ohio University

encouraged members of the Greek community and other students to participate in Sound Off Day.

Participants refrained from listening to music for one day to raise awareness of noise-induced hearing loss.

Omicron Delta

Bryant College

celebrated Homecoming with a barbeque for alumnae and Parents Weekend with a dinner.

The chapter participated in several philanthropic events, including raising money for the homeless and Hurricane Katrina victims, the Out of

the Darkness Walk, and was recognized for their participation in the Rhode Island breast cancer walk.

Omicron Epsilon

Arkansas State University

performed in "The Greatest Show on Earth," a step competition, as part of the university's Homecoming activities.

Omicron Lambda

North Carolina State University

celebrated Parents Day and Founders Day together, so parents could learn more about the history of Delta Zeta. Omicron

Lambda was awarded the Mindy Sopher Award as Sorority of the Year.

Omicron Mu

University of South Carolina/Upstate

Founders Day was celebrated with a dinner with family and friends. The chapter participated in a talent show, Upstate Idol, during Homecoming.

Omicron Nu

University of Windsor

held a potluck dinner on Founders Day and welcomed nine new members after recruitment. The chapter has formed a committee to plan for its 15th anniversary in 2007.

Pi Alpha

University of Florida

enjoyed a Founders Day ceremony to honor each of the Founders. Members participated in a week of activities during Homecoming and a fall canned food drive sponsored by the Panhellenic Council for the "Feed the Mighty" food bank in Gainesville, Florida.

Pi Gamma

California State University/Northridge

celebrated Founders Day with recognition to alumnae for their many years of membership.

The chapter held a successful book drive, and donated the books to a children's school for the deaf.

Pi Delta

Wake Forest University

Founders Day was celebrated with the local alumnae. Alumnae and family were also invited to join the chapter for Homecoming, and the chapter is raising funds for member Erika June Harris, who has been hospitalized with viral meningitis, to help with her medical expenses.

Pi Zeta

Arizona State University

enjoyed a special Founders Day as alumnae, dressed in costume as the six Founders, gave a presentation. Pi Zeta was officially installed and it was a memorable weekend. Founding member Jen Bergmark was named to the court of the Fiesta Bowl Queen.



IS YOUR CHAPTER MISSING?

The LAMP provides guidelines and report forms to all chapters which contain deadlines, requirements for material to be submitted, and photograph requirements. We want *your* chapter to be a part of *The LAMP*. If you don't see your chapter listed, it is because that chapter did not file their *LAMP* Report with the Editor or because the information was not received by the deadline specified on the Report.

If you have any questions regarding submissions, please contact Nancy Brewer, Director of Communications and Editor of *The LAMP*, at National Headquarters by mail at 202 E. Church Street, Oxford, OH 45056, by phone at 513/523-7597, or via e-mail at LAMP@dzshq.com.

Flame Eternal

ALPHA

Mary Ellen Biery Cole '34
Alberta Lutz Ittel '39
Hildegard Wolf Fink '63
Beth Harter Burcham '62

GAMMA

Charlotte Miller Eckley '30
Margaret Powers Swenson '41
June Shephardson Barnhill '47

DELTA

Edythe Gilmore Leonard '51

ZETA

Bonita Neese Bondurant '30

ETA

Helen Hartman Haak '32

THETA

Erma Marting Reno '36

IOTA

Ruth Lotspeich Barnes '32

KAPPA

Charlotte Battaglia Shambaugh '45
Helen Allmain Shaughnessy
Gunde A. Ositis '62

MU

Eleanor Atterbury Bartlett '41
Alexandria Fraser Nelson '41
Virginia Coutts Serr '45
Mary Jean Cunningham Jones '46

XI

Marian Conners Postler '44

RHO

Ruth Walker Fraser '29

SIGMA

Ruth Loyd Miller '39

TAU

Carolyn Giessel Gilbert '55

UPSILON

Kathryn "Kay" Tucker Baker '57

PHI

Opal Daniel Wise '37

CHI

Rosemary Corey Johansson '37
Ruth Kreul Goodrich '41
Ardis Eagy Wells '50

PSI

Jeannette Caudle Harding '30
Rebecca White Walker '62

OMEGA

Carola Rowling Haugen '29

ALPHA ALPHA

Amy W. Wattman '47

ALPHA GAMMA

Lois Walker Coates '37

ALPHA KAPPA

Mabel Milligan Greenwood '30

ALPHA NU

Marion Sones Peine '33

ALPHA PI

Ruth Miller Gamber '36
Betty Robinson Worthington '47

ALPHA SIGMA

Josephine Headley Carter '41
Geraldine Elana Traina '85

ALPHA TAU

Jeanine Eminian Lewis '47
Margaret Ringer Rice '49

ALPHA UPSILON

Muriel Covell Wilson '31

ALPHA PHI

Virginia D. Rice '30

ALPHA CHI

Grace Hester McKnight '25
Betty Marriner Vahe '41

ALPHA PSI

Paula Bingaman Kreshtool '62

BETA ALPHA

Alberta Christie Tibbets '40

BETA BETA

Emma Ruth Corban '28

BETA GAMMA

Sarah Mimms Renau '48
Frances Stabile Martin '55

BETA THETA

Carol Johnston Yanno '58

BETA NU

Margaret Wyant Kruse '41

BETA PI

Dorla Olds Whipple '47

BETA RHO

Camilla Maltby Fisher '57

BETA SIGMA

Ima Coates Vance '43

BETA TAU

Iryle Kelly Eveland '43

BETA UPSILON

Marion Jennings Fremont '44
Idamay Hayden Uhl '41

GAMMA ALPHA

Emily Jump Whipple '50

GAMMA BETA

Virginia Carpenter Bissell '45
Jeanne Cobey '48
Mary Penek Kosikowski '52
Eliz Uricchio Hopper '56

GAMMA DELTA

Lindsay Hall Merritt '95

GAMMA NU

Helen Brooks Coontz '52

GAMMA XI

Bonnie Russell Robberson '52

GAMMA PI

Therese Wynn Beehler '53

GAMMA TAU

Janet L. Rickard '63

DELTA ALPHA

Carol Lynn Millard '55

DELTA DELTA

Frances Sullivan Childrey '55

DELTA NU

Sondra Berry Bell '60

DELTA XI

Ruby Francis L'Herisson '56
Orietta Kimball Patterson '57

DELTA RHO

Emily Fawult Van Sickle Thrasher '56

DELTA CHI

Eleanor Craig Friedman '57

EPSILON DELTA

Molly Jackson DeLancey Copes '58

EPSILON THETA

Mary Honeck Downey '57

EPSILON TAU

Susan Rollins Wykle '60

ZETA ALPHA

Brenda Jankins Weinberg '67

ZETA ZETA

Mary Bellah Keeling '60

ZETA LAMBDA

Kay Gibson Gunter '76

ZETA MU

Jean Guild Racine '63

ZETA OMICRON

Diana Jensen Menden '75

LAMBDA BETA

Gina Zehngut-Myers '76

LAMBDA PI

Lynn Adams Sweet '80

IOTA PHI

Chassey Lehua Ako '04

XI SIGMA

Nancy Williams Warren Gregory '88

OMICRON PHI

Lea Rood Powell '94

PHI BETA

Lois Culp Ludlow '57

Ruth Loyd Miller Σ '39

Delta Zeta's Woman of the Year for 1983



Ruth Loyd Miller Σ '39, Delta Zeta's Woman of the Year for 1983, joined the Flame Eternal on September 15, 2005. In 1984, Mrs. Miller was the first woman to serve as the chairman of the Louisiana State University System Board of Supervisors. She was an attorney who tirelessly advocated for issues that supported women's rights. Her professional memberships included Phi Alpha Delta legal fraternity, Shakespeare Oxford Society of the U.S., Shakespeare Authorship Society of

England, and the Louisiana Committee for Identification of Women for Administration in Higher Education.

She was an outstanding writer and researcher on subjects dealing with the authorship of works attributed to William Shakespeare, and was recognized by the *New York Times* and the *Los Angeles Times* for her achievements in this area. Her civic and governmental service included vice-chairman of the Louisiana Constitutional Convention of 1973 and serving as the first woman of the State of Louisiana Mineral Board.

She was named the Outstanding Pledge of the Sigma Chapter in 1939, and continued throughout her life to contribute her time, talents, and treasure to Delta Zeta. "The Sorority cultivates long-lasting friendships," she said. "These are the gems of my life."

Mrs. Miller is survived by her husband, retired Judge Minos D. Miller, Jr., one daughter, two sons, four grandchildren, and one great-grandchild. Donations may be made in Mrs. Miller's memory to the Delta Zeta Foundation, 202 East Church Street, Oxford, Ohio 45056.

Directory

For a complete version of the directory, please call
1-800-6-ALUMNA

To change your name or address, to order
a DZ DeZigns catalog, for information on
the magazine program or other Delta Zeta
programs, contact:

**National Headquarters, 202 East Church St.
Oxford, Ohio 45056**

Phone: (513) 523-7597

Fax: (513) 523-1921

Website: Visit www.deltazeta.org

National Council

NATIONAL PRESIDENT

Debbie Raziano
117 Ashton Road, Luling, LA 70070

NATIONAL VICE PRESIDENT OF MEMBERSHIP DEVELOPMENT

Michelle Albrecht Smith
4319 Canehill Avenue, Lakewood, CA 90713

NATIONAL VICE PRESIDENT OF COLLEGE CHAPTER OPERATIONS

Tracy Wilson LeSieur
2805 Downing Circle, Birmingham, AL 35242

NATIONAL VICE PRESIDENT OF ALUMNAE AFFAIRS

Doretta Pugh Osburn
1016 Wethersfield Crossing, Hurricane, WV 25526

NATIONAL SECRETARY

Sharon Moncrief Slovinski
32787 Waverly Street, LaGrange, MO 63448

NATIONAL TREASURER

Susan Hein Feuerherm
3849 Conroy Trail, Inver Grove Heights, MN 55076

NATIONAL DIRECTOR OF MEMBERSHIP SERVICES

Phyllis Sundberg Davis
124 Beatrice Lane, Brandon, MS 39047

NATIONAL DIRECTOR OF EXTENSION

Kathi Bray Heatherly
528 Alexandria Drive, Naperville, IL 60565

NATIONAL DIRECTOR OF PHILANTHROPY

Chris Kolodgie Kern
109 Woodridge Road, St. Louis, MO 63122

PAST NATIONAL PRESIDENT

Karly Klemp Burns
331 7th Avenue North, Tierra Verde, FL 33715

NATIONAL PANHELLENIC CONFERENCE DELEGATE

Lynnda Wolf Hoefler
2981 Telber Court, Stow, OH 44224

NATIONAL PANHELLENIC CONFERENCE ALTERNATES

1st Alternate - Kathi Bray Heatherly
528 Alexandria Drive, Naperville, IL 60565
2nd Alternate - Phyllis Sundberg Davis
124 Beatrice Lane, Brandon, MS 39047
3rd Alternate - Karly Klemp Burns
331 7th Avenue North, Tierra Verde, FL 33715

Delta Zeta Foundation

PRESIDENT

Ruth Weider Patterson
3623 Devereaux Road, Columbia, SC 29205

VICE PRESIDENT

Sandra Sebrell Bailey
639 N. Portage Path, Akron, OH 44303

VICE PRESIDENT-MUSEUM

Norma Minch Andrisek
319 Janice Drive, Berea, OH 44017

SECRETARY/TREASURER

Marvona Easley Tavlin
6320 Rogers Circle, Lincoln, NE 68506

TRUSTEE

Anne Marie Jones Gavin
3264 Swan Drive, Vineland, NJ 08361

TRUSTEE

Sonja Nay Wise
1813 Mallard Court, West Lafayette, IN 47906

MEMBER

Debbie Raziano
117 Ashton Road, Luling, LA 70070

Committees

FINANCE/INVESTMENTS

Marvona Easley Tavlin
6320 Rogers Circle, Lincoln, NE 68506

GRADUATE SCHOLARSHIPS

Elizabeth Chilton Gryder
714 N. Cambria Street, Anaheim, CA 92801

GALLAUDET UNIVERSITY

Joan Dondrea Lowry
578 Yarmouth Drive, Bay Village, OH 44140

HEGHINIAN SCHOLARSHIPS

Marion Angarola Shapley
109 Via Los Miradores, Redondo Beach, CA 90277

HOUSE EAR INSTITUTE

Marilyn Fey Ghysels
8442 Lindante Drive, Whittier, CA 90603

LEACH SCHOLARSHIPS

Betty Paul DeWitt
23630 Oak Rest Lane, Harbor City, CA 90710

UNDERGRADUATE SCHOLARSHIPS

Vicki Bowman
3050 W. Ball Road #126, Anaheim, CA 92804-3852

WEBSITE/COMMUNICATIONS

Jeanine Petersen Triplett
7203 Limestone Court, Crestwood, KY 40014

National Historical Museum and Headquarters

NATIONAL HEADQUARTERS

202 East Church Street, Oxford, OH 45056
513/523-7597 (FAX) 513/523-1921

EXECUTIVE DIRECTOR

Cynthia Winslow Menges

DIRECTOR OF COMMUNICATIONS -

EDITOR *The LAMP*
Nancy E. Brewer

CHAPTER SERVICES DIRECTOR

Mandi Wise

CHAPTER CONSULTANTS

Meghan Bernhardt Summer Hernandez Elizabeth Stricklin
Lisa Cast Kristin Houghton Cassie Wilkinson

CURATOR/ARCHIVIST

Betty Johnson Gurr-Tomblinson
210 Mt. Pleasant Drive, Apt. 110, Monroe, OH 45050

MAGAZINE PROGRAM, INSURANCE, & NETWORKING

National Headquarters, 202 East Church Street,
Oxford, OH 45056 513/523-7597

National Standing Committees

ACADEMICS

Kara Barker Price
5365 Cottage Circle, Hoover, AL 35226

AWARDS (ALUMNAE AND COLLEGIATE)

Karen Severloh Moffitt
2075 Los Robles Avenue, San Marino, CA 91108

CONSTITUTION

Anne Marie Jones Gavin
3264 Swan Drive, Vineland, NJ 08361

FIELD ACTIVITIES

Karly Klemp Burns
331 7th Avenue North, Tierra Verde, FL 33715

FINANCE

Susan Hein Feuerherm
3849 Conroy Trail, Inver Grove Heights, MN 55076

HISTORY

Florence Hood Miner
1917 Five Iron Drive, Castle Rock, CO 80104

HOUSING ADMINISTRATOR

Norma Minch Andrisek
319 Janice Drive, Berea, OH 44017

JUDICIARY

Cathy Irvin Painter
4108 Mek Drive, Austin, TX 78731

MUSIC

Michele Taylor Benoit
203 East 6th Street, Thibodaux, LA 70301

NEW MEMBER EDUCATION

Jennifer Yeagley Anderson
1014 Park Village Drive, Louisville, OH 44641

PHILANTHROPY - ALUMNAE

Karen Woods Miron
2353 Deer Trail Pvt. NE, Grand Rapids, MI 49505

PHILANTHROPY - COLLEGIATE

Refer to National Director of Philanthropy

PROGRAM DEVELOPMENT

Christine McGill
46 Pilgrim Street, Apt. 201, Cambridge, MA 02139

PUBLICATIONS

Marvona Easley Tavlin
6320 Rogers Circle, Lincoln, NE 68506

RECRUITMENT

Ann Gurley Morrow
7475 Clinton Road, Paducah, KY 42001

RISK MANAGEMENT

Heather Angove
279 Brooklyn Avenue, San Jose, CA 95128

RITUAL

Patricia Menendez Tector
4704 Cypress Ford Drive, Fuquay-Varina, NC 27526

National Special Committees

COLLEGE CHAPTER FINANCE

Diane Stecher
6003 Kensington Way, Imperial, MO 63052-2369

CONVENTION CHAIRMAN

Kimberly Harris Bath
1048 Fawnview Drive, Montgomery, AL 36117

STATUS

Judy Harwood
211 Lathrop Lane, Manchester Center, VT 05255

TECHNOLOGY DEVELOPMENT

Pamela McClure Cronenwett
70 Charter Court, Manistee, MI 49660

TRAINING

JoAnn Arnholt
29 Sterling Road, Princeton, NJ 08540

Area Alumnae Directors

BLUE RIDGE - Virginia, West Virginia, North Carolina, South Carolina, Washington, DC
AAD: Myndi Davidson Carter
1001 Worcaster Place, Charlotte, NC 28211

Membership Chairman

Jill Bishop Brock
2650 Holly Springs Road, Inman, SC 29349

Development Chairman

Pat Clarke Bliedorn
8555 Sunningdale Terrace, Chesterfield, VA 23832

Public Relations Chairman

Refer to AAD

CENTRAL PLAINS - North Dakota, South Dakota, Nebraska, Colorado, Kansas, Missouri, Iowa, Minnesota
AAD: Carolee Lewis Followill
822 Oak Park Boulevard, Cedar Falls, IA 50613

Membership Chairman

Anita Moix Tienken
4917 Whitney Drive, Independence, MO 64055

Development Chairman

Rhonda Reifschneider Roe
7998 Inland Lane N., Maple Grove, MN 55311

Public Relations Chairman

Hope Corizzo
3716 Clayton Drive, Leavenworth, KS 66048

GREAT LAKES - Michigan, Ohio, Canada, United Kingdom
AAD: Mella Cooks Davies
2936 Brighton Road, Shaker Heights, OH 44120

Membership Chairman

Glenna VanderMeer Paukstis
502 N. Lakeshore Drive, Ludington, MI 49431

Development Chairman

Dr. Sandra Harding Alspach
24 E. 14th Street, Holland, MI 49423

Public Relations Chairman

Denise Sabo Brenner
230 East Cooke Road, Columbus, OH 43214

GREAT WESTERN - Washington, Oregon, California, Arizona, Nevada, Utah, Wyoming, Idaho, Montana, Alaska, Hawaii
AAD: Becky Robinson Romenesko
9303 Oakbourne, Santee, CA 92071

Membership Chairman

Desiree Finigan
6347 West 85th Place, Los Angeles, CA 90045

Development Chairman

Refer to AAD

Public Relations Chairman

Donna Sinclair
814 Hacienda Drive, El Cajon, CA 92020

MID-AMERICA - Wisconsin, Illinois, Indiana

AAD: Ann E. Langel
6418 Toribrooke Lane, Madison, WI 53719

Membership Chairman

Jo Ann Hempfling Sparling
2800 Woodbridge Drive, Muncie, IN 47304

Development Chairman

Megan Farrell Skelly
1217 Tower Drive, Ottawa, IL 61350

Public Relations Chairman

Jean Gileno
25 Napanee Drive, Carmel, IN 46032

MID-ATLANTIC - Pennsylvania, Delaware, New Jersey, Maryland
AAD: Melissa Seaman Waldron
601 Ohio River Blvd., 2nd Floor, Pittsburgh, PA 15202

Membership Chairman

Refer to AAD

Development Chairman

Nancy Stewart Reft
3238 Bradbury Drive, Aliquippa, PA 15001

Public Relations Chairman

Linda Cademartori Barba
800 Northwood Avenue, Cherry Hill, NJ 08002

NORTHEAST - Maine, Vermont, New Hampshire, Massachusetts, Connecticut, Rhode Island, New York
AAD: Beth Luton
4961 Surrey Lane, Liverpool, NY 13088

Membership Chairman

Refer to AAD

Development Chairman

Melinda Roy
135 Portland Avenue, #802, Old Orchard Beach, ME 04064

Public Relations Chairman

Katie Isaac Franklin
102 Colebourne Road, Rochester, NY 14609

SOUTH CENTRAL - Kentucky, Tennessee, Louisiana, Mississippi, Arkansas, Oklahoma
AAD: Stacy Orr Bond
4156 Destin Drive, Olive Branch, MS 38654

Membership Chairman

Heather Brown
261 Barfield Crescent Rd., Apt. 1603, Murfreesboro, TN 37128

Development Chairman

Sherry Shadwick Dotts
9741 E. 33rd Street #1005, Tulsa, OK 74146

Public Relations Chairman

Alecia Soyk Manning
P.O. Box 3132, Pikeville, KY 41502

SOUTHEAST - Georgia, Florida, Alabama, Puerto Rico, Virgin Islands
AAD: Christie Dale Harmon
133 Featherstone Lane, Hampton Cove, AL 35763

Membership Chairman

Rebecca Shull Moeller
28 Woodland Trail, Newnan, GA 30263

Development Chairman

Irene Leslie Bush
13370 Old Dixie Highway, Sebastian, FL 32958

Public Relations Chairman

Melissa Hood Bullard
106 Coveetree Circle, Madison, AL 35757

SOUTHWEST - Texas, New Mexico

AAD: Heather Jorden Anderson
548 Edgeview Drive, Grand Prairie, TX 75052

Membership Chairman

Andi Cooper Howard
6212 Kenosha Drive, Lubbock, TX 79413

Development Chairman

Marcie Berry
8702 Chipping Rock, Sugarland, TX 77479

Public Relations Chairman

Heidi Waltenbaugh Parker
6210 Bankston Lane, Beaumont, TX 77706

Regional Collegiate Coordinators

REGION I - Maine, Vermont, New Hampshire, Massachusetts, Connecticut, Rhode Island, New York
RCC: Gay Thor Rose
36 Webster Road, East Lyme, CT 06333

REGION II - New Jersey, Eastern Pennsylvania

RCC: Marlo Dorsey
322 W. 57th Street #16D, New York, NY 10019

REGION III - Maryland, Western Pennsylvania

RCC: Gayle Evans Staub
6542 Baywood Drive, Harrisburg, PA 17111

REGION IV - West Virginia, Virginia, Washington, DC

RCC: Refer to National Vice President of College Chapter Operations

REGION V - Ohio

RCC: Pam Gelhausen Asher
400 Hillbrook Drive, Cuyahoga Falls, OH 44223

REGION VI - Michigan, Canada

RCC: Michelle Buchan Kramer
1730 Somerset Drive, Mt. Pleasant, MI 48858

REGION VII - Indiana

RCC: Refer to National Director of Membership Services

REGION VIII - Iowa, Nebraska, Wisconsin, Minnesota, South Dakota, North Dakota

RCC: Grace Dollahon Bartholet
6445 Olson Memorial Highway, Golden Valley, MN 55427-4947

REGION IX - Missouri, Colorado, Kansas

RCC: Stacey Wheeler Slaughter
9623 West 96th Place, Arvada, CO 80004

REGION X - California, Washington, Oregon, Montana, Idaho, Alaska, Hawaii, Nevada, Arizona, Utah, Wyoming

RCC: Karen Martin Campbell
441-101 Cranston Court, Long Beach, CA 90803

REGION XI - Oklahoma, Louisiana, Mississippi, Arkansas

RCC: Jill Jackson Swift
2107 Greystone Cove, Jonesboro, AR 72401

REGION XII - Texas, New Mexico

RCC: Aileen Salinas
5426 Excelllo Path, San Antonio, TX 78247-5834

REGION XIII - Tennessee, Kentucky

RCC: Julie Stewart Pride
864 Nutwood Street, Bowling Green, KY 42103

REGION XIV - North Carolina

RCC: Christy Phillips
425 Lorna Street, Charlotte, NC 28205

REGION XV - Alabama, Florida

RCC: Nikki Dempsey Sprader
P.O. Box 37, Mooresville, AL 35649

REGION XVI - Illinois

RCC: Sara Groom Boucek
1026 North Wilshire Lane, Arlington Heights, IL 60004

REGION XVII - Georgia, South Carolina

RCC: Margret Georges O'Meara
8040 Ridge Valley, Woodstock, GA 30189



ALUMNAE NEWS

JoAnn Arnholt KP '82, Delta Zeta National Training Committee Chairman and Dean of Fraternity and Sorority Affairs at Rutgers, The State University of New Jersey, received the Spirit of Bowling Green State University Award, which is given to a professional in the field of sorority and fraternity service.

Sloane Arnold IΦ '94 is the Executive Director of the Arthritis Foundation, Southern Nevada Branch. In a recent article in the *Las Vegas Review – Journal and Sun*, Sloane attributes her success to skills learned organizing events for her chapter and to her work as administrative assistant to Rep. Shelley Levine Berkley IΦ '70 (D-Nev). "Shelley is a sorority sister, and was a great benefactor and friend when I needed her," Sloane says in the article.

Information from the Las Vegas Review – Journal and Sun, November 6, 2005.

Mary Jo Krueck Bond AA '60, a retired teacher to hearing-impaired children, has overseen the Wichita Alumnae Chapter's philanthropic project for the past ten years. The chapter raises funds to purchase books for hearing-impaired children in several school programs in the Wichita area. Some of the books help teachers teach sign language to the children. Another project involves providing "literacy baskets" to hearing-impaired infants and toddlers to assist teachers who teach the parents of the children to help them communicate with them.

Mary Jo Krueck Bond AA '60

Meryl Lin McKean EI '77 of the Greater Kansas City Alumnae Chapter was recently honored at "A Toast for the Children," a benefit for the children of Crittenton Behavior Health Center, in recognition of her long-standing support of and dedication to children's mental health. She was also honored at a separate benefit, held for the Missys' Mirror cancer appearance center at Saint Luke's Hospital in Kansas City, Missouri. Missys' Mirror provides products and services to help cancer patients improve their appearance.

Susan Smith Nesbit AA '77 and her therapy dog, Buddy, a 12-year-old Keeshond, were presented with the Ronald McDonald House Family Support Program Volunteer of the Year Award. Buddy and Susan were honored this

year for helping to start the Pet Therapy Program in 2002 and for their hundreds of hours of volunteer service, which have made an extraordinary difference in the lives of the RMH guests. Susan rescued another Keeshond, Pooh Bear, in January, who took the Therapy Dog test in December.

Christy Wprostek Solverson ΓΩ '83 was sworn in as the new associate judge for the Jackson County Court in Illinois. She graduated from Southern Illinois University/Carbondale radio and TV broadcast journalism program, and later became an anchor for ABC affiliate WSIL, Channel 3 News. Christy says it was while working as a reporter that she discovered her real love was law. She earned her juris doctorate in 1990.

"It's a great responsibility and I don't take it lightly," she said. "I do firmly believe that the role of a judge is a service position." She will continue to serve on the board of the not-for-profit organization, Women for Health and Wellness.

Information from The Southern Illinoian, Carbondale, Illinois, November 6, 2005.

Cynthia Winslow Menges A '79, CAE, Delta Zeta Executive Director, was elected to the North American Interfraternal Foundation (NIF) Board at the organization's annual meeting. The NIF is dedicated to promote and support leadership, educational, and research initiatives that advance the North American college fraternal experience. Cindy has served for 23 years as Delta Zeta's Executive Director, and her abilities as a leader and a communicator promote fraternalism both within and outside of Delta Zeta.



Alumnae Profiles

Life's so Sweet*

by Nancy Brewer A

Luci Butler ZPi '96 resisted the idea of becoming a professional musician for most of her life, even though she was playing songs by ear at the age of three, composing by the age of six, and recently wrapped up a worldwide concert tour as the keyboardist and back-ground singer with eclectic musical artist Moby in support of his new album, *Hotel*. Moby has made worldwide gold and platinum-selling albums and has produced for many artists including David Bowie, U2, and Metallica.

"In college, I was going to be a pre-med major and entertained the idea of international business. Music was always just a hobby to me," Luci says. At the University of Georgia, Luci met a professor who taught music therapy, and, "It was somehow magical. I knew that this was someone I wanted to learn from."

Luci went to New York City, and more specifically, to the Bronx, to do her internship at the Institute for Music and Neurologic Function at the Beth Abraham Family of Health Services hospital.

"I used music to help patients who had any kind of brain or spinal cord injury or illness walk or speak again after a stroke, or learn a functional element that would help with competence or memory." Music therapy is becoming quickly accepted by the professional medical community.

Moby sits on the Institute's board of directors and saw Luci perform at the annual fundraiser/concert. He was so impressed that he asked her to join him on his *Hotel* world tour. "It is like a dream, and combines my two favorite things: music and traveling," Luci says. Moby and the band have played for audiences as large as 80,000.

Luci's love for music inspired her to lead the show choir for her college chapter, Zeta Pi, at the University of Georgia. "We had done it at the last minute and everyone pulled together, so when we placed second it was one of those moments where everything was right in the world," she says. "I learned so much by the show choir—it allowed me to practice my leadership and music skills. I made some amazing friends and I still keep in touch with them."

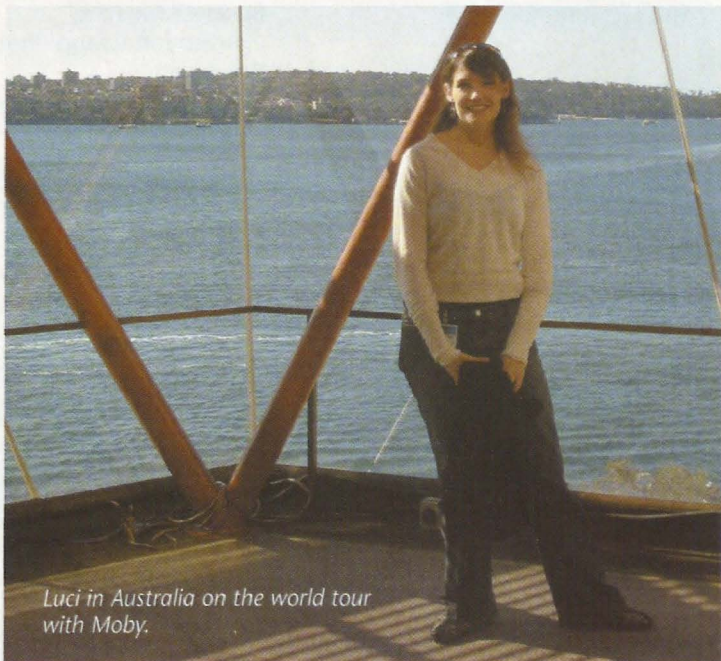
In fact, some of her Delta Zeta sisters followed the Moby tour to three cities when they were in the U.S. "We had 'girls' weekend' when they came, and they spent some time on our tour bus," says Luci of her most enthusiastic supporters.

Luci's mother, Lucinda "Cindy" Hockenberry Butler IN '71 was initiated at Georgia Southern College, and is a teaching specialist in Georgia. Cindy and Luci's father, Jerome, are thrilled with their daughter's recent success. Once the tour ends, however, Luci plans to work on her own music, and will also return to the Institute to work on special projects.

"Music has had a way of sneaking back into my life," Luci says with a laugh. "I want to create music, because now I've seen the world, and have a million stories to tell."

You can read more about Luci's experiences at www.luciontour.blogspot.com, and visit Moby's site at www.moby.com. Visit the Institute for Music and Neurologic Function at www.musicaspower.org.

Luci (second from right) with Zeta Pi alumnae Julie Rahm Shingadia '96 (far left) and Melissa Benton '96 (far right) and musical artist Moby.



Luci in Australia on the world tour with Moby.

*Song title from Moby's album, *Moby 18 B-Sides*.

Alumnae Profiles continue on page 26

Join Delta Zeta at the 47th National Convention Arizona Biltmore Resort and Spa Phoenix, Arizona June 21 – 26, 2006

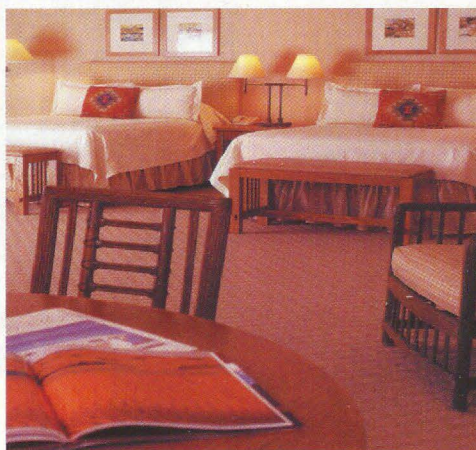
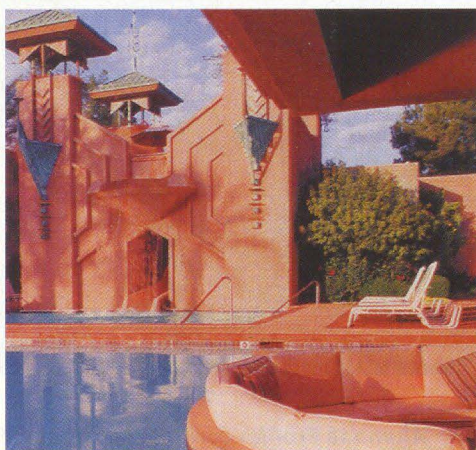
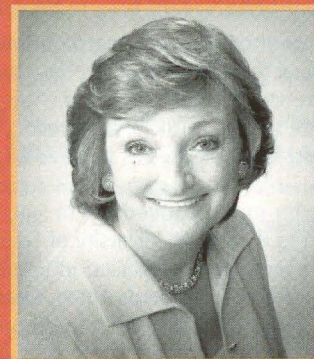
The Arizona Biltmore Resort and Spa is located in the exclusive Biltmore Estates district of Phoenix and just a few minutes from neighboring Scottsdale. It is 15 minutes from Phoenix Sky Harbor International Airport.

2006 TENTATIVE AGENDA

Wednesday, June 21, 2006	Opening Reception
Thursday, June 22, 2006	Business Meeting Foundation Luncheon Speaker – "Mom Nonnie" Owens "Being the Best You Can Be" Financial Seminar Initiation Initiation Banquet
Friday, June 23, 2006	Carolyn Barnes Gullatt Symposium Panhellenic Luncheon Memorial Service Business Meeting Fun Night
Saturday, June 24, 2006	Workshops Rose Luncheon Alumnae Reunions Collegiate Workshops Collegiate Awards Banquet
Sunday, June 25, 2006	Business Meeting Convention Group Photo Box Lunch Workshops Installation Banquet
Monday, June 26, 2006	Departures

Nonnie Cameron Owens, aka "Mom Nonnie," understands how image affects personal and group success. After 32 years as a flight attendant and 12 years as a housemother for fraternities at Southern Methodist and Purdue universities, she knows how ethical decisions, manners, and a good attitude go far in building relationships within the community and throughout one's life.

Hear Nonnie's forthright message and enjoy her sense of humor as she brings a unique perspective to issues ranging from leadership to dating and relationships, from dining etiquette to dinner conversation.



DELTA ZETA SORORITY 47TH NATIONAL CONVENTION — NON-DELEGATE REGISTRATION**Arizona Biltmore Resort & Spa, Phoenix, Arizona — June 21-26, 2006**

Please complete and submit with payment by April 10, 2006. Please print or type (complete one registration form per attendee).

Name _____

☐ Alumnae ☐ Collegian Chapter _____ First _____ Maiden _____ Initiation Year _____

Permanent Address _____

Street _____

City _____

State _____

Zip Code _____

Phone Number _____ E-mail Address _____

Area Code _____

- ☐ Vegetarian ☐ Special Needs (please explain) _____
(special meals and/or needs can only be accommodated at time of advanced registration)
- ☐ Non-smoking room ☐ Smoking room ☐ Roommate request _____
- ☐ I am interested in working on the staff of "The Lampkin," the convention newsletter.
- ☐ I am interested in singing with the Convention Choir. ☐ I can play the following instrument: _____

Delta Zeta Fees:

Registration Fee \$225 (before April 1) \$325 (April 2-10 only) \$

Daily Registration Fee (for single-day visitors) \$50 per day \$

Resort Costs:

Five-day resort room and board package/person (June 21-25 only):

\$700.00 (before April 1) \$800.00 (April 2-10 only) \$

[includes lodging (double occupancy), meals, fees, taxes, and gratuities]

Single Room Fee - add \$300 for five-night stay \$

Daily room cost \$60 per person (June 18-28 only) \$

[double occupancy with no meals]

Daily room cost \$120 per night (June 18-28 only) \$

[single occupancy with no meals]

Please note: 3-day prior and after convention rate is based upon resort availability

[includes lodging, fees, taxes, and gratuities only] - no meals included

Date of check-in _____ Date of check-out _____

Individual Meals Only (for daily registrants & guests - no overnight accommodations):*[registration deadline April 10, 2006]*

Wednesday, June 21 Opening Reception - \$45 \$

Thursday, June 22 Foundation Luncheon - \$30 \$

Initiation Banquet - \$50 \$

Friday, June 23 Panhellenic Luncheon - \$30 \$

Fun Night - \$45 \$

Saturday, June 24 Rose Luncheon - \$30 \$

Collegiate Awards Banquet - \$50 \$

Sunday, June 25 Box Lunch - \$25 \$

Installation Banquet - \$85 \$

Total Amount Enclosed (Delta Zeta Fees + Resort Costs) \$ _____Payment ☐ Check Enclosed ☐ Discover ☐ MasterCard ☐ Visa
(payable to Delta Zeta Sorority)

Account Number _____ Expiration Date _____

Signature _____

Registration and payment must be received no later than April 10, 2006 to guarantee resort space. No refunds after May 1, 2006.

Mail: Delta Zeta Sorority, 202 East Church Street, Oxford, Ohio 45056

FAX: 513/523-1921 (credit cards only)



A Haven from the Storm

by Tara N. Raeber AB '96

Tara Raeber AB '96 is the College Chapter Director for the Gamma Omega Chapter at Southern Illinois University in Carbondale, Illinois. She works as a public relations consultant for Fleishman Hillard International Communications in St. Louis, and provided pro bono PR support

for the American Red Cross during the height of Hurricane Katrina shelter operations at Reliant City in Houston.

On September 20, 2005 the American Red Cross closed its largest shelter in the organization's 125-year history. It was the end of an unprecedented relief effort for the humanitarian group. In early September, thousands of people from Louisiana and surrounding states, who were displaced by Hurricane Katrina, found refuge at the Reliant City shelters in Houston. Literally built in a day, the City housed more than 27,000 people at its peak and offered a myriad of services within its walls.

Most of the residents who made their home in that City came by bus from New Orleans and many with horror stories of their brief time at the Louisiana Superdome. They had known despair, but they remained hopeful. Many felt blessed to even be there. More than one woman I spoke with called Reliant City "heaven" compared with her experience at the Superdome.

It might not have been heaven, but it certainly was a haven for many. The American Red Cross had created a microcosm, the magnitude of which was almost incomprehensible. Reliant City had its own post office and zip code. Within the City, residents could enroll their children in school, apply for a job, find housing, access transportation, get new clothing, or just eat a hot meal. But it was meant as transitional housing, and families quickly moved to more private, comfortable, temporary homes.

When I arrived on September 6 to provide public relations support for the American Red Cross, more than 11,000 people remained in the

shelters. Within minutes, I was on the front line, escorting reporters and assisting shelter residents on the floor of the Astrodome. Most photographs scarcely capture the scene. Cot upon cot by the thousands, families old and young made the small space their home, tucking prized personal items underneath and discretely dressing with strangers nearby. Barely audible in the background, the intercom incessantly announced missing family members and free services.

Reporters converged on the City. And I helped dozens of the 675 plus members of the media, from CNN to *Newsweek* to the *Chicago Tribune*, who came to cover the story. I was also a part of the communications team that helped introduce the American Red Cross Client Assistance Cards, which provided immediate financial assistance to those who needed it right away.

But as an American Red Cross volunteer, my job was just as much about human relations as it was about public relations. I met a woman named Ann who was a single mother with five children and two grandchildren. I held one of her youngest and talked with her while she folded her clothing and packed only a few suitcases for a return trip to Baton Rouge the next day. I helped an old woman with arthritis to the restroom. A tall young man named Tracy was concerned he could not receive a debit card and I talked him through the process. At dinner time, I helped a child find a carton of milk.

I spent nearly a week there and was only one of approximately 60,000 volunteers who passed through Reliant City to lend a day or more to help. Many shelter residents even volunteered their own time to assist others. When a *U.S. News and World Report* reporter complained to me that it looked as if there were so many more volunteers than residents at the shelter, I quickly confirmed her assumption. It certainly was a testament to humanity. There still are many untold stories from Reliant City. But despite the loss and hardship, I found that most are of remarkable hope, generosity, and gratitude—a resilient spirit that is sure to do more for rebuilding than any shelter.

1902
Heritage Ring
"1902 ΔZ 1902" engraved on the outside,
"Delta Zeta" engraved on the inside.

**WINTER
SPECIAL**
SS \$99.00
through 3/31/06

NEW!

NEW!

1636
Horseshoe Necklace
w/Engraved Letters
SS \$38.00

L2647
Traditional Lavalier
SS \$20.00
1117
Curb Link Chain
SS \$10.00
(Sold separately)

636008
Large Pearl Bracelet
w/Sterling Tag
SS \$50.00

NEW!

TIMELESS & TRADITIONAL...

Delta Zeta Jewelry

...CONTEMPORARY FLAIR

0806
Heart Link
Bracelet
w/Engraved Letters
SS \$65.00

1000RS
Swirl Ring w/Rose Sapphires
SS \$99.00

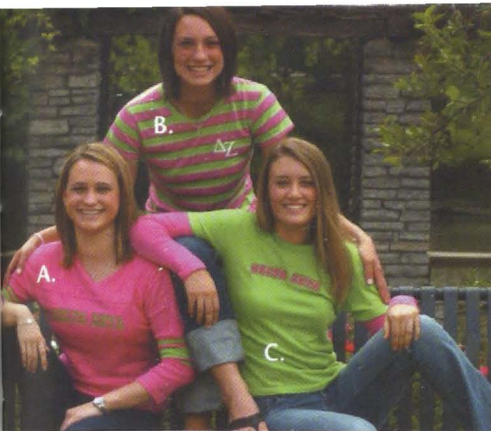
0452
Rose Sapphire
Cushion Stone Ring w/Crest
SS \$95.00

6005
Heart Tag
Toggle Bracelet
SS \$65.00

**Burr
Patterson
& Auld**
The Greek Division of
HERFF JONES
An employee owned company

To Order Call:
1.800.542.3728

www.legacydivision.com



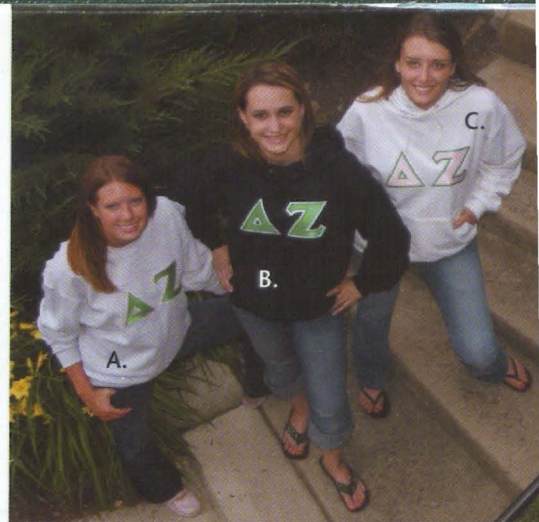
- A. Vintage football tee, #680 \$18.00
 B. "Preppy Stripe" soft tee, #721 \$16.00
 C. Layered tee, #679 \$18.00
 All shirts come in sizes, S(0-2), M(4-6), L(8-10), XL(12-14)



Turtle flip flop,
 custom design for
 Delta Zeta
 #749... \$19.00

At right (from left to right) - All sweatshirts
 come in sizes S,M,L,XL,XXL

- A. Heather crew neck sweatshirt with green/
 pink sewn on letters #137 \$36.00
 B. Black hoodie with green/white sewn on
 letters #173 \$39.00
 C. White hoodie with pink/green sewn on
 letters #331 \$39.00



"Tiffany style" sterling
 silver tag necklace and
 bracelet
 #685 \$45.00
 #543 \$95.00



Silver 10mm bead bracelet
 with engraved charm
 #687 \$54.00



ΔZ charm
 necklace,
 18" chain
 #90 \$19.00



Cigar Band ring (5-9)
 #546 \$19.00

At right

- Polka dot garment bag with embroidered ΔZ and fuschia trim
 (Monogramming of initials an additional \$10.00)
 #640 \$37.00
 Duffel bag lined in pink and white gingham #639 \$39.00
 Fuschia sweatshirt with black, Delta Zeta, est. 1902 print,
 Unisex sizing — S,M,L,XL #713 \$40.00



TO BE SHIPPED TO:

Date _____

Name _____

Address _____

City, State _____ Zip Code _____

Phone No. (____) _____

QUANTITY	ITEM#	SIZE	COLOR	NAME OF ITEM	PRICE

We Honor: ☐ MasterCard ☐ Visa ☐ Discover ☐ American Express

ITEM SUBTOTAL _____

IN OHIO ADD 6.5% SALES TAX _____

SHIPPING AND HANDLING _____

TOTAL AMOUNT OF ORDER \$ _____

Credit Card Signature Required

Exp. Date ____/____/____



Credit Card Number

A check for the total amount of the order (including shipping and handling) should accompany this order. Make checks payable to Delta Zeta DeZigns and send to address below. Please do not send cash. All returned checks are subject to a \$20.00 service charge. Orders are filled promptly as received.

CALL IN YOUR ORDER TOLL FREE

1-800-886-PINK FAX: 1-513-523-1921

www.deltazeta.org

Delta Zeta DeZigns, 202 East Church Street,
 Oxford, Ohio 45056

SHIPPING & HANDLING CHARGE:

If your order totals	Add
\$ 0.00 - 15.00	\$ 5.50
\$15.01 - 25.00	\$ 7.00
\$25.01 - 50.00	\$ 8.00
\$50.01 - 75.00	\$ 9.00
\$75.01 - 100.00	\$10.00
Each additional \$100.00	\$10.00

SPECIAL DELIVERY COSTS:

(In addition to regular rate)	
2-DAY	\$12.00
OVERNIGHT	\$20.00

ADDITIONAL CHARGES:
 Canadian Orders \$ 5.00

All merchandise is
 unconditionally guaranteed.
 All prices in U.S. dollars.
 Prices subject to change
 without notice. Larger sizes
 can be ordered through
 Delta Zeta DeZigns.

Now it's time to give back!



Elaine Hanna Wright ΓΕ '66 (center) with two Delta Zeta sisters,
Jackie Enyeart Clarke ΔΝ '66 (left) and Donna Streck Voss ΓΕ '67.

*"I want to pass on to future generations
what I received and learned from being
a Delta Zeta. Our roots all go
back to Delta Zeta, and to what we
learned as new pledges and active members."*

Elaine Hanna Wright ΓΕ '66



Elaine Hanna Wright was an active collegiate member of the Gamma Epsilon Chapter at Drake University, and since becoming an alumna, has remained active in Delta Zeta. Although her collegiate chapter closed in 1979 (like many Greek chapters on campuses around the country that experienced the campus unrest and changing student attitudes toward fraternal life in the 1970s), Elaine says, "I've stayed connected since graduation. I think Delta Zeta has given me my dearest and most loyal friends, and I love the camaraderie we have. I have continued this with my pledge class sisters and alumnae from Drake and as a founding member of the Chicago Northwest Suburban Alumnae Chapter. I'm also in a Drake/Delta Zeta alumnae group, and we see each other about three times a year."

A former elementary school teacher, today Elaine enjoys needlepoint, golfing, swimming, her three grandchildren (who live nearby), and was president of the local garden club. She and her husband Andrew, CEO of Addus HealthCare and a Drake alumnus, give back to Drake University in many ways. "My husband is on the Board of Trustees at Drake," Elaine explains, "and we're very involved with the campus and fundraising for the university."

Elaine also gives to the Delta Zeta Foundation. "Giving is very necessary to keep Delta Zeta strong as a national organization. I feel it is our duty to give back. Every time I read *The LAMP*, I'm more motivated to stay connected and to give monetarily so that other young women will have the same opportunity that I had," she says.

She also stays involved through the philanthropic work of the Chicago Northwest Suburban Alumnae Chapter. "I can remember one Halloween [in college], we invited disadvantaged children over to the chapter house and carved pumpkins with them. Since I was in education, this went hand-in-hand with helping young children less fortunate than all of us were. That influenced my life after college, too."

For Elaine, sisterhood is not only staying connected to her sisters from college, but getting to know the alumnae, young and old, in her alumnae chapter. And giving means not only making a gift to the Foundation, but giving from the heart in many other ways—the many ways she has learned from every aspect of her membership in Delta Zeta.

Visit the Delta Zeta Foundation at www.deltazeta.org and go to Foundation Focus.