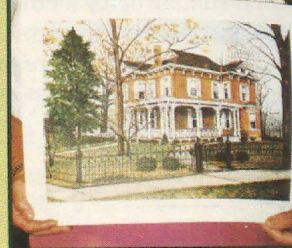


THE LAMP OF DELTA ZETA

WINTER 1992-1993



Anderson
'92



Foundation Report

Foundation Annual Report

This issue contains the 1992 Annual Report of the Delta Zeta Foundation. Charts of income and expense are included, along with the Statement of Activity and Fund Principal. Listed are achievements, scholarship recipients and stories of projects undertaken by the Foundation. Listed also are the more than 2,500 Delta Zeta members who have contributed to make these projects possible. Read . . . and enjoy!



The 1992 Foundation Board: Back row, left to right, Susan Mease, Ann Booth. Middle row, Marjorie Lovewell, Patricia Rosser, Joyce London. Front row, Marvona Tavlin, Joan Lowry. Not pictured: Deanna Pendleton.



Mission Statement

To advance the sorority's educational and philanthropic purposes through the development of financial and human resources in support of the sorority's leadership, scholarship, philanthropic and educational programs.



Rachel Platt, PCD, Province XXV; Lucille Bolstad May, Gallaudet University Committee Chairman, and Joan Dondrea Lowry, Foundation President, meet Clarence Bustamante, 1992 Better Hearing and Speech Month Child of the Year.

Published since December, 1910 by
DELTA ZETA SORORITY
 Founded at Miami University
 Oxford, Ohio
 October 24, 1902



FOUNDERS

Alfa Lloyd Hayes, 1880-1962
 Mary Collins Galbraith, 1879-1963
 Anna Keen Davis, 1884-1949
 Julia Bishop Coleman, 1881-1959
 Mabelle Minton Hageman, 1880-1929
 Anne Simmons Friedline, 1879-1932

THE ORDER OF THE LAUREL

Irene Caroline Boughton, 1904-1988
 Grace Mason Lundy
 Elizabeth Coulter Stephenson, 1881-1939
 Myrtle Graeter Hinkly, 1893-1987

EDITOR

Gwen Moss McKeeman
 5517 S. 74th E. Avenue
 Tulsa, Oklahoma 74145

CHAPTER EDITOR

Diane Jones Skelton

FOUNDATION REPORT

Editor: Susan Mease Long

Contributors: Ann Butler Booth, Joyce Low
 London, Marjorie Klingensmith Lovewell,
 Joan Dondrea Lowry, Deanna Alleman
 Pendleton, Patricia Canady Rosser

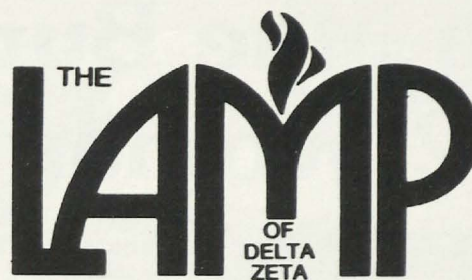
Special thanks to: Shirlyn Chaffin, Betty
 Paul Dewitt

THE LAMP

The *LAMP* of Delta Zeta, official magazine
 of the sorority, is published quarterly by
 the Delta Zeta Sorority, 202 East Church
 St., Oxford, OH 45056.

Send all editorial material to the Editor,
 Gwen Moss McKeeman, 5517 S. 74th E.
 Ave., Tulsa, OK 74145. Send all matters of
 a business nature to Delta Zeta National
 Headquarters, Oxford, OH.

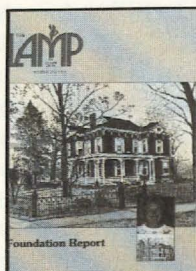
Send all contributions for Gallaudet
 University, House Ear Institute, the
 National Historical Museum, Andrisek
 Education Scholarships and other
 philanthropies through the Delta Zeta
 Foundation, in care of National
 Headquarters, 202 East Church St.,
 Oxford, OH 45056.



Volume 81 Number 4 WINTER 1992-1993

Contents

- 4 1992 Woman of the Year
- 6 Limited Edition Print Available
- 8 AIDS: Chances and Choices
- 13 What Do Delta Zetas Think?
- 16 Scholarship Recipients
- 19 Share in the Election of National Council
- 21 Foundation Grants Help Others
- 21 Public Service Messages
- 22 ΔZ/ΔΓ Join Philanthropic Efforts
- 23 Give a Tug for HEI
- 24 Statement of Activity and Fund Principal
- 27 So, What Happened Then?
- 29 New Scholarships Available
- 30 Dogs for the Deaf
- 31 Still Together
- 33 Why Do I Give to the Foundation?
- 43 1992-1993 Gallaudet Scholars
- 45 Directory
- 47 Flame Eternal



About the Cover

This limited edition print of Delta Zeta National
 Headquarters and Historical Museum is available
 for purchase, with proceeds to benefit the Delta
 Zeta Foundation. Story on page 6.

Edna Mae Burnam Nauman, 1992 Woman of the Year



Edna Mae Burnam Nauman

Edna Mae Will Burnam Nauman, California State University/Chico, Delta Chi chapter, has been named 1992 Delta Zeta Woman of the Year.

Edna Mae was born in Sacramento, California, and has lived there all of her life. After graduating from Sacramento High School, she entered Chico State Teachers College where she was initiated into Delta Sigma Epsilon in 1926. When Delta Zeta and Delta Sigma Epsilon merged in 1956, Edna Mae became a member of Delta Zeta Sorority. She graduated from college in 1929 with a Bachelor of Science degree in Kindergarten, Primary and Elementary Education, with a music minor.

In 1930, she married David Burnam who taught music and harmony at Sacramento City College. Edna Mae accompanied him at harmony concerts around the state. After his death, she was alone with their two daughters until she married Harry A. Nauman in 1965. A devoted family person, Edna Mae is now the matriarch of

a large family which includes her two daughters, seven grandchildren and five great grandchildren, as well as a step-daughter and several step-grandchildren.

Edna Mae, who publishes under her pen name of Edna Mae Burnam, is an internationally published composer. Her songs are not those you hear on the radio or MTV, but you have probably heard her music. Piano students around the world know her name, as Edna Mae is one of the most popular teaching composers of our time.

She began her study of music at the age of seven. Her first piano teacher was her mother, Armilda Mae Will, who taught at the Pease Conservatory in Sacramento.

Edna Mae never intended to write music. She had planned to be a kindergarten teacher when she graduated from college but instead began giving piano lessons at home. She wrote some fun songs and exercises for her students. They worked out so well, that she just went on from there.

Her first publication, "The Clock That Stopped" was released in 1935, and is still being re-published. Since then, she has contributed more than 150 works — piano course books, suites, duets and original sheet music for beginning through mature (about third-year level) piano students. Her best-selling publications include the successful DOZEN A DAY series and the STEP BY STEP course. Edna Smith Sibole, a Sacramento piano teacher, has said that Edna Mae's piano pieces are not only instructional — they are musically good.

One of her latest pieces "Willie the Whale" was honored by *Cla-*

vier (a monthly national music publication) in 1986.

Her works are published by Willis Music Company, Florence, Kentucky; Chappell Music Publishers, London, England; Chappell & Co., Sydney, Australia; and Zen On Music Co. Ltd., Tokyo, Japan. Spanish editions are also published by Willis Music Company.

Edna Mae taught music for many years in the Sacramento City Schools and has given workshops, sponsored by the Willis Music Company, for piano teachers throughout the United States and Canada.

She is very modest about her success and never alludes to her top position in educational publishing. She insists it just comes naturally — no big deal!

Edna Mae belongs to many professional and community organizations which include: Mu Phi Epsilon International Music Honorary Fraternity, National Guild of Piano Teachers, National Professional Music Teachers Association, National League of American Penwomen, P.E.O. Sisterhood, Soroptimist International, Music Teachers' Association of California, California Writers' Club, Music Board of the Crocker Art Museum, Sacramento City College Emeriti Affiliates, Tuesday Club of Sacramento, and First United Methodist Church Circle 8.

Edna Mae has been a member of the Sacramento alumnae chapter for many years, and was honored in 1992 as Province XV-C Alumna of the Year. Her comments upon receipt of this award were, "I love children, I love music, I love Delta Zeta, I love you all."

In addition, Edna Mae was honored in 1989 by the National

League of American Penwomen as the "Ambassador of Music to Children." The Music Teachers Association of California honored her for founding the "Composers Today Program for Student Composers," which she started in 1967. And in 1985, she was honored for 54 years of dedication to the Sacramento Branch of the Music Teachers Association of California.

Delta Zetas nationwide can be proud of our 1992 DELTA ZETA WOMAN OF THE YEAR, Edna Mae Will Burnam Nauman. She is a giving woman who has touched the lives of many through her music and her many activities. She is an outstanding role model reflecting honor to herself and to Delta Zeta Sorority!

Congratulations may be sent to:
Edna Mae Will Burnam Nauman
1249 27th Avenue
Sacramento, California 95822



Mrs. Music herself, Edna Mae Burnam Nauman, CSU/Chico-ΔΧ '29

New Member Joins Foundation



Deanna Alleman Pendleton

The newest member of the Delta Zeta Foundation is Deanna Alleman Pendleton, University of Texas-AT. The "Pendleton" may come as a surprise to those who know her since Deanna and Larry Pendleton were married on November 27.

Deanna joined the Foundation following her "retirement" from

National Council where she served six years, including four as National Vice President of Alumnae Affairs. Deanna has also served as a Province Alumnae Director, NPC Alternate Delegate, Alumnae Relations Chairman, president of the Houston and Oklahoma City alumnae chapters as well as on a multitude of committees.

In her community Deanna has been a volunteer for a variety of fund raising drives and served as the Oklahoma membership chairman for the University of Texas Ex-Students Association.

Deanna lives in Oklahoma City, Oklahoma, where she is the Development Specialist for the Oklahoma Easter Seal Society. She has one son, Mitchell, who was married in August.

Deanna explains her ongoing work with Delta Zeta this way, "Throughout my years of involvement — whether on the local, province or national level — I

have always stressed to alumnae and collegiate chapters the importance of our philanthropic endeavors, not only as a means of helping others, but as a public relations tool. I have been pleased to watch the continued growth and support from our membership and the way they exemplify 'To those whom my life may touch in slight measure, may I give graciously of what is mine,' and for these reasons I am very proud to be able to serve Delta Zeta as a Foundation Trustee!"

**National Council is
pleased
to announce
chartering of the
Central New Jersey
Alumnae Chapter on
October 24, 1992**

Limited Edition Prints

Available for the First Time!



The print of the Delta Zeta Historical Museum and National Headquarters by Violet Anderson.

The Delta Zeta Foundation is excited and proud to offer for sale a limited edition print of the Delta Zeta Historical Museum and National Headquarters painted by Violet Hensen Anderson, University of Tennessee-BA, Province XIX-W Alumnae Director and noted artist.

Vi contacted the Foundation in early 1992 and offered to do a painting as a fundraiser for the Foundation. She has done limited edition prints before as fundraisers for organizations but this time she donated her royalty to the Foundation. Vi said, "I did this out of love for Delta Zeta. It lifted my heart to do this for the Foundation." The Delta Zeta Foundation purchased the original painting and donated it to the National Historical Museum where it will hang.

Vi's training and experience in art are extensive and exemplary.

Her art, which includes oil, watercolor, pastel and pen and ink, has won her awards in juried exhibitions throughout Tennessee. She particularly enjoys painting Tennessee historic scenes, landscapes

and florals. Her original art and her limited edition prints are in over 1000 private and public collections in 34 states and four foreign countries.

Vi is an active member of the Tennessee Watercolor Society; a member of the Tennessee Art League, Cumberland Art Society, Hendersonville Artist Guild, Tennessee Artist Association, and past board member and immediate past president of the Middle Tennessee Committee of the National Museum of Women in the Arts. She is listed in *Who's Who of American Women* for both her painting and her poetry and is represented by fifteen art galleries throughout Tennessee.

The limited edition, signed and numbered 12" x 18" unframed print of Vi's painting is available for \$35 plus \$5 shipping and handling per print. All profits from the sale of the prints will benefit the National Historical Museum Endowment Fund.

This is a wonderful opportunity to own some of Vi's artwork and to help the Museum at the same time. A very few of the artist's



Vi's print of the Historical Museum premiered at the PAD/National Committee Chairmen workshop at DePauw this summer. Pictured are the first purchasers.

proofs are still available; contact Vi directly for those. Many thanks to Vi Anderson for a most generous donation.

In addition to this brand-new picture available, there is a very old picture available.

The Foundation is offering for sale for the first time copies of the Founders portrait donated by Myrtle Graeter Hinkly, DePauw-Δ, and Jean Coleman Lisle, Miami-A, which hangs in the parlor at National Headquarters. This picture has never been available before. Copies of the 12" x 18" poster print of the Founders portrait are \$20 plus \$5 shipping and handling per print. The picture is also available in a 5" x 7" size for \$15 plus \$4 shipping and handling. Proceeds from sales of the Founders Portrait will benefit the Founders Memorial Scholarship Fund.

Here are two unusual opportunities for a special gift to a collegiate chapter, to present as a unique award or give yourself a wonderful gift and help the Delta Zeta Foundation at the same time.

Don't waste time before you send in your order. Quantities of both the Vi Anderson print and the Founders Portrait are very limited.



The Founders Portrait: Copies are available for sale to benefit the Founders Memorial Scholarship.



NVP-Alumnae Dianne Guild and Foundation Trustee Ann Booth are pleased by Vi's generous donation.

ORDER FORM

_____ copy(ies) 12" x 18" print (unframed) of Delta Zeta National Historical Museum and National Headquarters at \$35.00 plus \$5 shipping and handling per print

\$ _____

_____ copy(ies) 12" x 18" poster print (unframed) of the Founders Portrait at \$20.00 plus \$5.00 shipping and handling per print

\$ _____

_____ copy(ies) 5" x 7" (unframed) of the Founders Portrait at \$15.00 plus \$4.00 shipping and handling per print

\$ _____

TOTAL \$ _____

Make checks payable to Delta Zeta Foundation and mail the order to:

Delta Zeta National Headquarters
202 East Church Street
Oxford, OH 45056

AIDS

Chances and Choices of the '90s

This article reflects a health issue which affects each and every individual today. It is an issue which must be addressed because of its profound implications on our social mores. AIDS, whether it be the HIV virus or the disease in its active form, will impact the health care system in this country not only from a cost standpoint but in how patients are treated. This article is the first to address important issues which face the women of the '90s. Coming issues will emphasize health, fitness, the workplace and legal rights of women. This article is made possible by a grant from the Delta Zeta Foundation through private donations.

by Susan Besanceney

Risky Business: Chances and Choices in the '90s

Carolyn R., a 58-year-old widow became intimate with a man during her vacation. When asked by her daughter if she was protecting herself from sexually transmitted diseases, Carolyn bashfully stated, "I can't catch those, I'm too old."

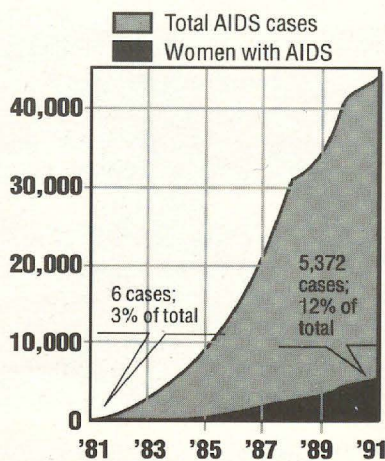
Janet, a 32-year-old secretary contemplating pregnancy has been married five years and monogamous for seven years. For the last two years she has been troubled by recurrent yeast infections that seem to be resistant to conventional therapies. Last Friday Janet tested positive for the HIV virus which causes AIDS.

Scope/Statistics

The number of women diagnosed with AIDS has increased dramatically and by the year 2000 will surpass the rate of men. The World Health Organization estimates that about one million people worldwide have tested positive for HIV (Human Immuno Deficiency Virus), the AIDS virus, so far this year. Almost half of them are women. The rising infection rate among women and children is particularly disturbing. A recent survey by James Chin of the WHO Global Program on AIDS concluded that the HIV pandemic will kill three million women and

AIDS and women

The World Health Organization estimates that about 1 million people worldwide have caught HIV, the AIDS virus, so far this year, almost half of them women. A look at the number of women in the United States with AIDS:



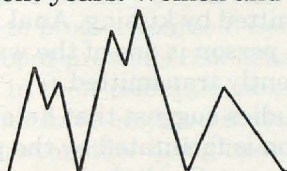
Source: Centers for Disease Control

children in the 1990s. Globally, heterosexual transmissions are outdistancing all other categories and may account for more than 80% of HIV infections by the end of the decade. WHO projects an estimated 30 million HIV-infected adults by the year 2000 with an additional 10 million pediatric cases. While we have made many advances in our understanding of AIDS in the decade since it was first diagnosed, it has also been a decade of frustration and mounting death tolls. We have become accustomed, especially in the industrial world, to high-tech quick-fixes. The reality is that millions of dollars and the brightest scientists in the world are stymied by ever-changing strains of a virus that won't be stopped.

Changing Demographics

The demographics of the disease have changed dramatically in recent years. Women and children

Update



Total number of AIDS cases reported in the United States through November 1991: 202,843

Total number of pediatric AIDS cases reported in the United States: 3,426

Total number of adult/adolescent AIDS cases reported in the United States: 199,417

Total number of adult/adolescent male AIDS cases reported in the United States: 178,678

Total number of adult/adolescent female AIDS cases reported in the United States: 20,739

Breakdown of adult/adolescent AIDS cases by risk factors:

Homosexual/bisexual male: 116,609 — 58%

Intravenous drug abuser: 44,791 — 22%

Homosexual male and IV drug abuser: 12,953 — 6%

Hemophilia/coagulation disorder: 1,680 — 1%

Heterosexual contact with high-risk person: 11,609 — 6%

Transfusion of blood products: 4,306 — 2%

Undetermined: 7,469 — 4%

Known deaths from AIDS in the United States: 130,687

Percentage of reported AIDS cases in the United States that have resulted in death: 59%

Source: Centers for Disease Control. *HIV/AIDS Surveillance*. Atlanta. December, 1991.

are an increasingly visible segment of the population infected with AIDS in the United States. A review of Center for Disease Control (CDC) data reveals that in the United States the number of women with AIDS has risen from 9% of the first 100,000 cases to 12% of the second 100,000 cases. In New York City, AIDS has become the leading cause of death in women aged 20 to 40. In clinics across the United States 30-50% of all new patients are women and half of them become infected through heterosexual contact with high-risk partners. The majority of women say they had no idea their partners had engaged in high-risk behaviors. Many women discover they are infected only after they have passed the virus on to their children. Women of reproductive age are the fastest growing segment of the population to become infected. This fact alone has resulted in the epidemic of pediatric cases.

Heterosexual Transmission

Acquired Immune Deficiency Syndrome first came to world attention a decade ago primarily as a disease of homosexual men and male drug users in the U.S. and Europe. Since then, however, AIDS has spread around the world, and now 80% of new infections are in developing countries, especially Africa, where sex between men and women is the main means of transmission. The heterosexual transmission of the disease did not escalate rapidly in the U.S. until recently. Scientists attribute this to the incredible mutating properties of the virus itself. It is able to quickly and fiendishly adapt to avoid detection, drugs and vaccines. Over time, in the U.S., more strains will develop and the virus will be more easily transmitted heterosexually as it is now in the rest of the world. When that happens heterosexual transmission will expand dramatically.

Although dwarfed in terms of absolute numbers by homosexual and intravenous drug use transmission, heterosexual contact is now the fastest growing category of HIV transmission in the United States. Women acquire HIV/AIDS in several ways, primarily personal IV drug use, blood transfusion and heterosexual contact.

Substance abuse plays a major role in the rising numbers of AIDS cases in women. Fifty-one percent are IV drug users; however, 34% of AIDS cases in adult women in the U.S. have been attributed to heterosexual transmission. Half of these are women who have had sexual contact with IV drug users but the other half are women who have contact with partners who exhibit high-risk behaviors, many times unknown to the women. To complicate the picture even further, women appear to be more vulnerable to this disease both physically and in some ways emotionally. There is evidence that although

HIV is certainly transmitted heterosexually in both directions, women are biologically more likely than men to catch the virus from infected partners. The virus is actually transmitted more efficiently from male to female. Dr. Jonathan Mann of Harvard University and Chairman of this summer's Eighth International Conference on AIDS in Amsterdam said the growing number of women infected with AIDS also reflects the subservient status of women in the world. Men typically initiate sexual encounters, he said, and women often are unable to demand that their partners use condoms. Condoms are currently the primary method of preventing the transmission of AIDS among sexually active men and women.

HIV Exposure Categories of Women With AIDS Reported in the US through February 1992*

Exposure Risk	Number	(%)
Intravenous Drug Use	11,094	(51)
Sex With an Intravenous Drug User	4,671	(21)
Other Heterosexual Contact	2,896	(13)
Blood Transfusion or Tissue Recipient	1,724	(8)
Hemophilia/Coagulation Disorder	42	(0)
Other/Undetermined	1,629	(7)
Total	22,056	(100)

*Adapted from Table 5, HIV/AIDS Surveillance Report, Centers for Disease Control, March 1992.

As the epidemic spreads it is becoming increasingly difficult for women to identify the sexual partner who put them at risk. The impact of this extensive spread to tertiary contacts is only a matter of time. Since many infected people have no apparent symptoms of the condition it's hard to be sure who is or is not infected with HIV. The more partners, the greater the chances of encountering someone with the disease and becoming infected. However, even people in a monogamous relationship can be at risk. Even if you and your partner don't have sex with anyone else, you can still be infected if your partner is already infected from a previous relationship (remember — you can't tell by looking) or if your partner gets the virus through another route, such as IV drug use. Kenneth Mayer, MD, director of the Brown University AIDS Program, found in his study that HIV-infected women in monogamous relationships with HIV-infected partners was a more common risk factor than women with multiple sexual partners.

Transmission: Facts And Myths

How do you get HIV from sexual intercourse? HIV may be in an infected person's blood, semen or vaginal secretions. It is thought that it can enter the bloodstream through cuts or sores — some so small you don't know they're there — on tissue in the vagina, penis, or rectum, and possibly the mouth, according to information provided by the Federal Center for Disease Control. It also may be possible to become infected with HIV through oral intercourse because the act often involves semen and vaginal secretions that contain HIV. During oral intercourse, the virus might be able to enter the bloodstream through tiny cuts in the mouth. HIV can occasionally be found in saliva so scientists are reluctant to rule out the possibility of transmission with prolonged deep kissing. Still, there has never been a single case documented in which HIV was transmitted by kissing. Anal intercourse with an infected person is one of the ways HIV has been most frequently transmitted.

Some studies suggest that heterosexual HIV transmission is facilitated by the presence of genital ulcer disease. Genital ulcers associated with herpes simplex, syphilis or chancroid may contribute to sexual transmission of HIV by increasing either the susceptibility of an uninfected partner or the infectiousness of an infected partner. Certain gynecologic conditions are potentially associated with women infected with HIV/AIDS and many times the physician's first indication in diagnosing HIV. These conditions are:

- chronic vaginal yeast infections that do not respond to conventional therapies;
- genital warts which often lead to cervical abnormalities which can cause abnormal Pap smears and lead to cancer;
- severe pelvic inflammatory disease;
- recurrent sexually transmitted infections including chlamydia, trichomoniasis, syphilis and gonorrhea.

Despite widespread educational efforts, some misconceptions still exist about transmission of the HIV/AIDS virus. The facts are:

- You can't get HIV through everyday contact with people around you in school, the workplace, at parties, stores or by swimming in the same pool.
- You won't get HIV from a mosquito bite. The AIDS virus is not transmitted through a mosquito's salivary glands like other diseases such as malaria or yellow fever. You also can't get it from bed bugs, lice, flies or other insects.
- You won't become infected with HIV from clothes, a telephone, doorknobs, a drinking fountain or a toilet seat.

- You can't get HIV from a drinking glass or eating utensils. You will not get infected from food that has been handled, prepared, or served by someone who is infected with the virus.
- You can't get HIV from coming in contact with sweat, tears, urine or excrement, unless those substances contain blood.
- You can't get HIV from shaking hands, hugging or being in a crowded elevator with an infected person.

Assessing Risk

For many, discussion of sexuality issues and previous sexual behaviors with a potential partner or a healthcare provider may be difficult, embarrassing or frustrating. This lack of communication, however, may prove fatal. Remember, too, that simply asking someone whether they are at risk for HIV is not the safest way to protect yourself. Some people may be in denial about previous risk behaviors and may not be honest in their communication.

If you or a partner have engaged in risky behavior, you may want to consider being tested for HIV. You cannot be sure a partner is not infected with the AIDS virus unless he or she has tested negative for HIV infection.

HIV Testing

Choosing to have the HIV test done is an individual decision. Choosing to be tested may result in difficult consequences and questions to consider: How would I feel if I learn that I am infected? Would my sexual behaviors have to change? How would I tell my partner? My family and friends? What about future childbearing? Who can I talk to about this?

When being tested for the HIV you can choose anonymous or confidential testing. With confidential testing, usually provided by a hospital or physician, your name is used and placed in a medical file. The federal Centers for Disease Control suggest you ask your doctor or counselor who will know the results and how they are stored. The distribution of this information varies from state to state. If you choose anonymous testing your name is never used. You are given a number code to identify your test and no one may be given the results without your authorization.

What is the HIV test? The HIV antibody test determines whether antibodies are present in the blood. If antibodies are present it is an indication that infection with HIV virus has occurred. This test will not tell you if you have AIDS or whether you will get sick with AIDS. HIV infection progresses slowly. It may take ten years or longer before the infection causes symptoms that may be identified as AIDS. Although incurable, HIV infec-

Who should be tested?

- Anyone who has had sex with a person who has not recently been tested for the AIDS virus.
- People who may have had other sexually transmitted diseases, such as gonorrhea, syphilis, chlamydia, and trichomoniasis.
- Men who have had sex with other men.
- Intravenous drug users.
- Men and women who trade sex for drugs and money.
- People who received blood or blood products between 1978 and April 1985, including people with hemophilia.
- People who have had sex with more than one partner.
- Sexual partners of people described above.
- Sexual partners of people with AIDS or HIV infection.
- Women who have been artificially inseminated.
- Babies of mothers who are infected with the AIDS virus.
- People who have been raped or sexually abused.
- Those planning marriage and/or pregnancy.
- People who have hepatitis B or tuberculosis.

Source: Dekalb County (GA) Board of Health.

tion is treatable. Advances in antiretroviral therapy, techniques to prevent or treat opportunistic infections and nutritional therapies now allow for prolonged survival with a reasonable quality of life for many of those infected.

If the HIV test is negative it usually means there is no infection. A negative result can also mean that the antibodies are not yet present in the blood. This can sometimes take up to six months to be detectable. If you feel you are still at risk or if risky behavior is continued, retesting is recommended at six months. During this time you can potentially transmit the virus to others.

If the HIV test is positive the test is automatically repeated on the same sample of blood. If still positive a second type of test is done to confirm the positive findings. A positive result means you have been infected and should consider yourself contagious. You may transmit the virus to others in many ways:

- Heterosexually as previously discussed.
- Sharing IV drug equipment (needles, syringes, etc.)
- Donating blood, sperm, or body organs.
- To an unborn child during pregnancy.

If you test positive you must tell your sexual partner(s) and seek medical care as soon as possible.

Prevention

In considering the rising tide of heterosexual transmission, it is important to remember there is no such thing as "safe sex," only safer sexual practices. Abstaining from sexual intercourse or having sexual contact with a partner who is not infected with HIV are the only ways to ensure you will not become infected with the AIDS virus. Besides sexual abstinence, the only effective mechanical method is the use of condoms and a spermicide containing nonoxynol-9 to prevent transmission of the virus.

As noted earlier, there are psychosocial aspects in prevention that are unique to women. Actual changes in behavior are influenced by factors other than level of knowledge or even desire to change. A woman's willingness to comply with known recommendations to prevent infection and reduce risk is often hindered by the belief that discussion or implementation of these practices may compromise significant personal relationships. All women must be encouraged to exercise appropriate precautions in their personal lives and to assume responsibility for the chances they take and choices they make. To carry this further, women urgently need prevention that is under their control. The need for new methods of prevention on which a woman can depend that are independent of male participation, such as virus-killing creams, are certainly necessary. For

those women whose partners may object or threaten violence, a method of protection is needed that women can use without the partners knowledge.

The best way to prevent transmission is to identify those at risk and educate them to prevent infection and reduce exposure. Public health education can work as evidenced by the success of safe-sex campaigns in reducing the spread of HIV in the white homosexual population. However, the success among blacks and Hispanics and their heterosexual partners has not been as evident. This may suggest a need for more intense efforts and for culturally specific programs for this population.

Ironically, as obvious as the need for education and access to care may seem, many prevention programs have been abandoned or reduced due to cuts in government funding. Public health clinics have been allowed to deteriorate and have had to shorten hours due to budget constraints just as the need for care is reaching critical stages. The World Health Organization's AIDS budget is \$90 million, down from \$110 million two years ago. In the United States, The National Institute of Health AIDS budget has been cut over \$300 million and Congress will probably reduce it further.

Impact

The morbidity and mortality of this disease on our society has had a tragic impact already. It has robbed us of many of our best and brightest in all walks of life. It is a young person's disease — the third leading cause of death in adults ages 25-44. Many women who are HIV positive are experiencing serious gynecological manifestations requiring prolonged medical management and often resulting in chronic disabilities. Most research to date has focused on men and the few studies that have included women have concentrated on their ability to transmit the virus and *not* on the areas that are specific to women with HIV. More gender-specific research is needed on the progress of the disease in women, on the effectiveness of drug therapies and on prevention methods.

Sociologically, we are faced with a rapidly expanding population of chronically ill persons requiring long term care. An increasing number of these are adult women, the traditional caretakers of the young, elderly and ill. The illness and death of these young women is creating a community health crisis, especially in the inner cities of the U.S. The maternal and infant mortality rates in many larger cities have already begun to rise, reversing years of progress. An estimated 1,500-2,000 U.S. newborns are infected each year with thousands more unin-

fectured children being orphaned as their HIV infected mothers die of AIDS.

With these skyrocketing numbers of infected persons come the escalating healthcare costs. WHO estimates that half of the total national health expenditures in the Americas would be spent on AIDS care if the needs of the AIDS patient were fully met. Economically, the AIDS epidemic has painfully highlighted the disparities of those who have healthcare benefits and those who do not. With AIDS treatment costing well into six figures and given the chronic, disabling nature of the disease, many who have no benefits are reduced to public assistance or are on the streets.

Responding

Effectively combating this evolving health crisis requires that major societal public health issues be addressed. Poverty, social inequities, rampant drug and alcohol abuse, and lack of educational opportunities leave young people vulnerable to high-risk behaviors and HIV. Resolution of the issues of access to health care for all people, early prenatal care and availability of drug treatment services will result in

more positive and healthy outcomes for the women and children so vulnerable to this disease.

Susan Besanceney, R.N., B.S.N., is the Manager of the Elizabeth Blackwell Center at Grant Medical Center in Columbus, Ohio. Named after the first woman physician in America, the Elizabeth Blackwell Center provides education, consultation and referral services in the areas of women's health, wellness and parenting. The Center is guided by an approach to life which empowers women and those close to them to achieve individual and collective wellness.

Where to call with questions about AIDS:

The National HIV and AIDS Information Service: (800) 342-2437

AIDS Information Line: (800) 551-2728

National AIDS Hotline: (800) 342-AIDS

— for the hearing impaired: (800) 243-7889

— for Spanish-speaking individuals:
(800) 344-7432

The American Red Cross: (202) 737-8300

What Do Delta Zetas Think?

In 1991 under the direction of National Council Officers Deanna Alleman Pendleton, Patricia Canady Rosser and Foundation Trustee Ann Butler Booth, surveys were sent to Delta Zeta alumnae to find out their interests, what Delta Zeta does for them and what they'd like it to do for them. 1805 surveys were returned, an excellent response rate.

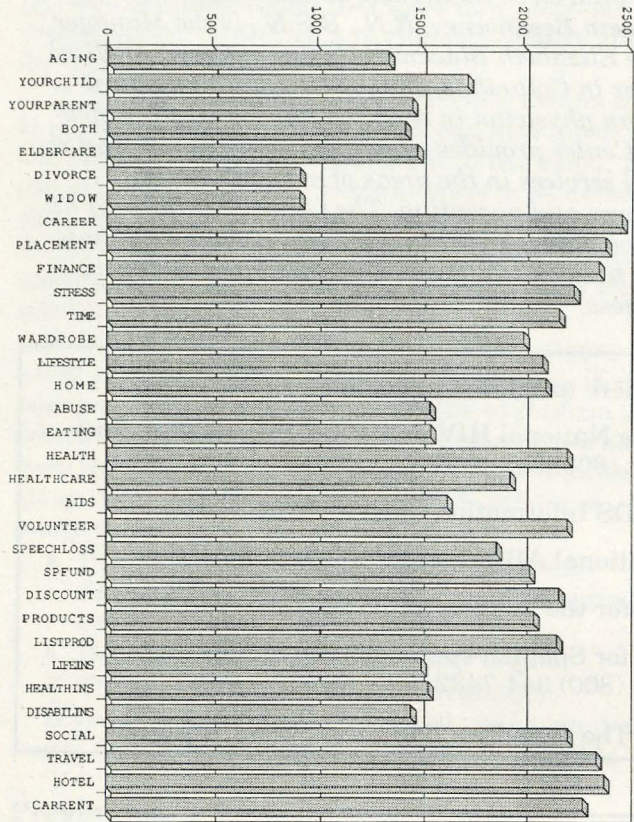
The alumnae were asked their level of interest in a variety of topics under the major headings of Community Issues, Individual Development, Health Care, Philanthropy and Services.

The respondents broke down into the following categories:

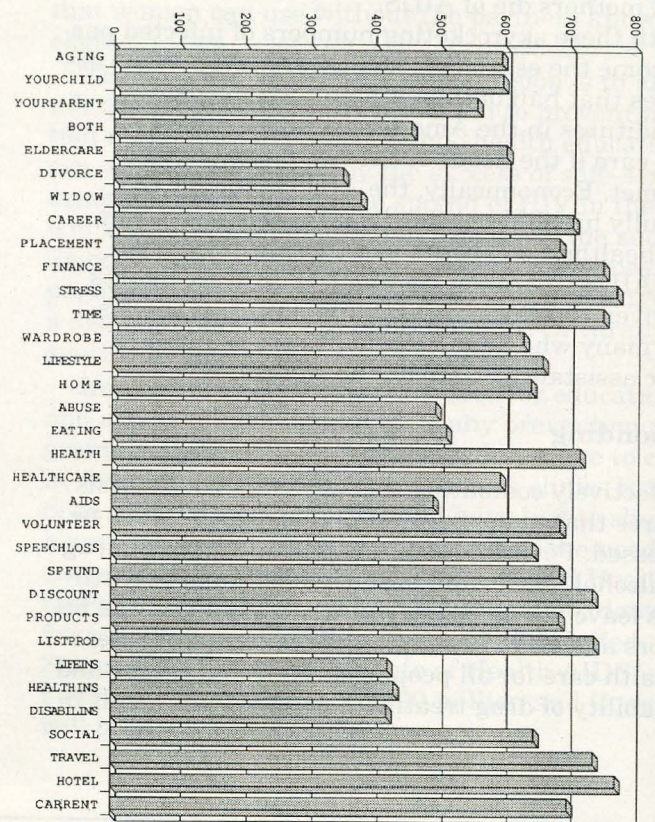
RESIDENTIAL STATUS		# OF WOMEN INVOLVED IN ALUMNAE CHAPTERS BY AGE CATEGORY	
rural	215	under 30	164
small	409	30-45	109
medium	577	46-60	75
large	570	over 60	117
no response	34		

AGE		EMPLOYMENT STATUS	
Under 30	827	full time	963
30-45	334	part time	237
46-60	220	retired	327
60 +	421	none	251
no response	3	no response	27

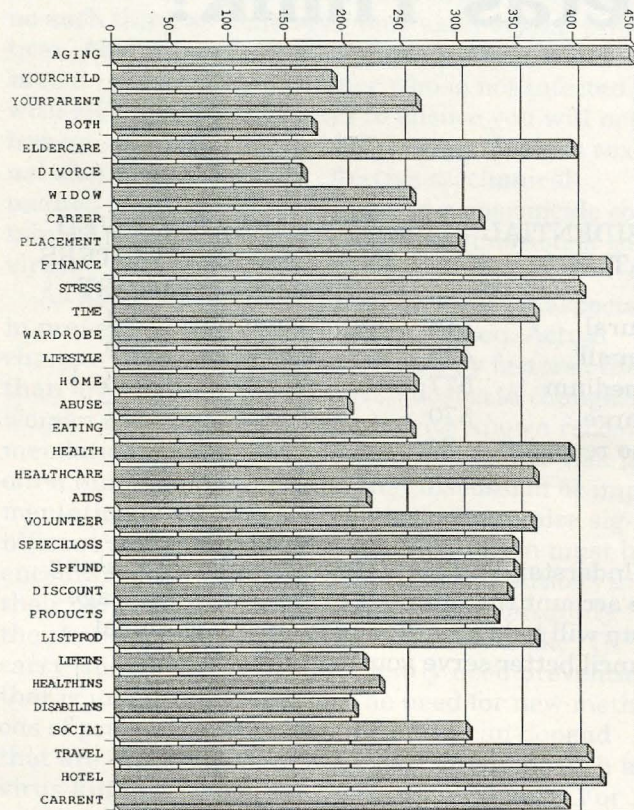
Understanding these demographics and taking into account the interests expressed by each age group will help your Foundation and National Council better serve your needs.



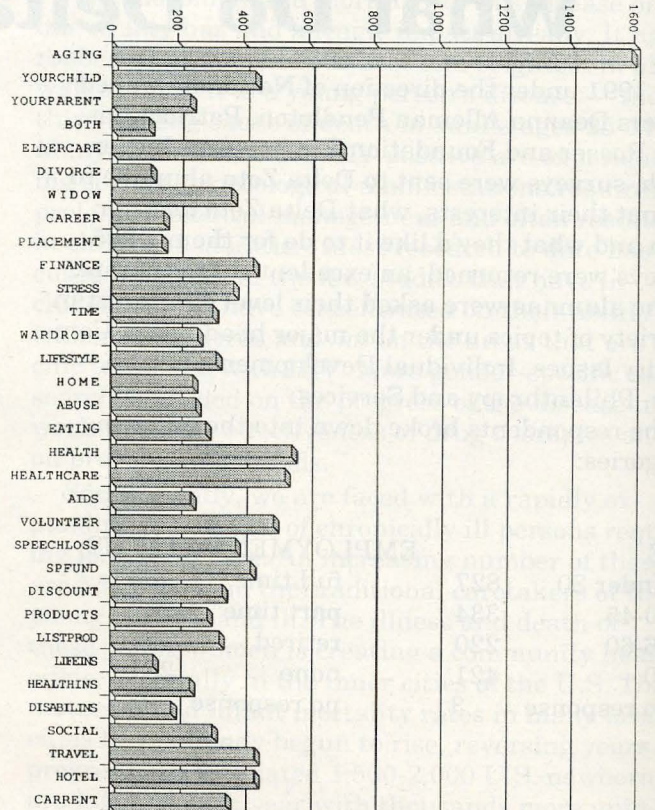
Ages Under 30



Ages 30-45



Ages 46-60



Ages 60+

DELTA ZETA wants to know how to serve you better. . .

Can we hear from you?

Return this survey in the attached envelope to:
DELTA ZETA Foundation, 202 E. Church St. at Campus Ave., Oxford, Ohio 45056.

PERSONAL

Collegiate Chapter _____ Alumnae Chapter _____

Province _____

Age: ☐ Under 30 ☐ 30-45 ☐ 46-60 ☐ 60+

Marital Status: ☐ Single ☐ Married ☐ Widowed ☐ Divorced

Children/Step Children: ☐ At home ☐ In College ☐ Independent ☐ None

Educational Level: ☐ Some College ☐ 4-year Degree

☐ Graduate Work ☐ Graduate Degree

Employment: ☐ Full-time ☐ Part-time ☐ Retired ☐ No

Reside in: ☐ Rural Area ☐ Small City ☐ Medium City ☐ Large City

Do you care for elderly parents: ☐ At Home ☐ Away from Home ☐ No

Have you served or are you currently serving in DELTA ZETA:

☐ National Level ☐ Province Officer ☐ Alumnae President ☐ CCD

Are you involved in alumnae chapter? ☐ Yes ☐ No

If NO, why? _____

Are you, or have you been involved with:

☐ Collegiate Advisory Board ☐ City Panhellenic

Do you support other non-profit organizations? ☐ Yes ☐ No

Do you volunteer in your community? ☐ Yes ☐ No

If YES, in what organizations? _____

YOU AND DELTA ZETA

Have you used the following existing programs?

- Speech & Hearing Work: ☐ Yes ☐ No
- Do you know the opportunities to serve in your area? ☐ Yes ☐ No
- Alumnae career networking, "Directions": ☐ Yes ☐ No
- DELTA ZETA Credit Cards: ☐ Yes ☐ No
- Do you send references to chapters? ☐ Yes ☐ No
- Do you receive the **Lamp** and other communications from the National Organization? ☐ Yes ☐ No
- If YES, how do you use them? _____

- Are these helping you to stay current with what DELTA ZETA is doing about the country? ☐ Yes ☐ No

- Do you use the Delta Zeta Magazine Service for building the scholarships program? ☐ Yes ☐ No
- Have you used alumnae officer training skills learned on the National or Province level? ☐ Yes ☐ No

If YES, which of the following? ☐ Leadership
☐ Programming ☐ Philanthropy

Community Issues —

Please rate from 1-5, with 1 being the *most interested* and 5 being *not interested*, your interests in DELTA ZETA developing the following alumnae programs or services:

Aging	1	2	3	4	5
Parenting	1	2	3	4	5
Your Children	1	2	3	4	5
Your Parents	1	2	3	4	5
Both	1	2	3	4	5
Elderly Care	1	2	3	4	5

Individual Development —

Beginning Again —					
After Divorce	1	2	3	4	5
Becoming a Widow	1	2	3	4	5
Career Advancement	1	2	3	4	5
Career Placement	1	2	3	4	5
Financial Investments/Planning	1	2	3	4	5
Stress Management	1	2	3	4	5
Time Management	1	2	3	4	5
Wardrobe Planning	1	2	3	4	5
Lifestyle Planning	1	2	3	4	5
Home Planning	1	2	3	4	5

Health Care —

Substance/Alcohol Abuse	1	2	3	4	5
Eating Disorders	1	2	3	4	5
Health/Nutrition	1	2	3	4	5
Choosing Proper Health Care	1	2	3	4	5
AIDS	1	2	3	4	5

Philanthropy —

Volunteering	1	2	3	4	5
Speech & Hearing					
Programs/Legislation	1	2	3	4	5
Establishing Special Fund					
for Needy DELTA ZETAs	1	2	3	4	5

Services —

Discount Purchasing Service	1	2	3	4	5
DELTA ZETA Products	1	2	3	4	5
List of Products by DELTA ZETAs	1	2	3	4	5
Insurance Coverage -					
Life	1	2	3	4	5
Health	1	2	3	4	5
Disability	1	2	3	4	5
Social Events	1	2	3	4	5
Travel Packages	1	2	3	4	5
Discount Hotel Costs	1	2	3	4	5
Discount Car Rental Costs	1	2	3	4	5

List any other topics in which you are interested.

List any other programs or services you would like to see DELTA ZETA offer.

What do you feel are the strengths of our alumnae programming?

Other comments (use additional paper if necessary)

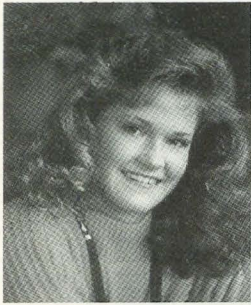
Name (optional)

1992 Foundation Scholarship Recipients

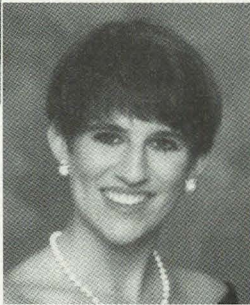
FOUNDERS MEMORIAL SCHOLARSHIP

\$1300

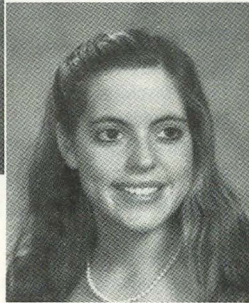
Kelli Kapustaka, Nebraska Wesleyan-BT
Shelly Becker, Stephen F. Austin-ZΨ
Audra Adelstein, Northwestern-AA
Susan Cowart, Samford-AΠ
Cynthia Fontanez, Trenton State-AA
Jody Touchton, Northern Colorado-ΔΞ



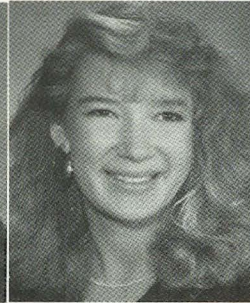
Kelli Kapustaka



Shelly Becker



Audra Adelstein



Susan Cowart



Cynthia Fontanez



Jody Touchton

"What I earn by working two jobs year-round still did not quite make ends meet. This scholarship is *literally* enabling me to attend school this semester. Once again I am reminded how right my decision to 'go Delta Zeta' was."

Cynthia Fontanez
Trenton State-AA

"In addition to being a great honor, this scholarship will be a tremendous help this academic year."

Audra Adelstein
Northwestern-AA

"Thank you so much. I can't say it enough."

Susan Cowart
Samford-AΠ

"I am so thankful. My year will be much less worrisome because of this scholarship."

Kelli Kapustaka
Nebraska Wesleyan-BT

"This scholarship can now be added to the many other non-measurable rewards Delta Zeta has given me. I am grateful for this opportunity extended to me, and I will strive to achieve in a manner of which Delta Zeta can be proud."

Shelley K. Becker
Stephen F. Austin-ZΨ

"I have learned that through my experience as a Delta Zeta, all that I have put into Delta Zeta has rewarded me many times over. I am honored to be part of such a fulfilling sisterhood. Thank you so very much for expressing such confidence in my future by choosing me for such a meaningful award."

Jody Touchton
Northern Colorado-ΔΞ

THORNBERG UNDERGRADUATE SCHOLARSHIPS

\$1000



Sandra Tucker

Shelly Schoen, Northeast Missouri-ΔΣ
Jenny Jackson, Louisville-BΓ
Deborah Keenum, Angelo State-AO
Sandra Tucker, Arkansas Tech-AA



Jenny Jackson

VELDE SCHOLARSHIP \$1000

Karie Hakanson, Northwestern-AA



Karie Hakanson

"As someone who puts herself through school, this scholarship will allow me to pursue my ambitions on campus and in the community, while still allowing me to give the 110% effort Delta Zeta deserves. Somehow I know that no matter how much I give to ΔZ, she will always give back more."

Jenny Lee Jackson
Louisville-BΓ

HAVENS SCHOLARSHIP \$1000

Suzanne Henry, North Georgia-ΞΞ



Suzanne Henry

HEGHINIAN SCHOLARSHIPS

\$1000

Mary Beth Brune, South Carolina-BA
Shawn Ryan, San Diego State-ΓO
Carolyn Waninger, Southern Indiana-AB
Denise Gagnon, Loyola Marymount-EO
Brynn Capella, San Diego State-ΓO



Mary Beth Brune



Shawn Ryan



Carolyn Waninger



Denise Gagnon



Brynn Capella

"It is nice to be involved in an organization like Delta Zeta which provides financial assistance to its members through its generous scholarship program."

Maribeth Brune
South Carolina-BA

"This scholarship will be such a big help to me. It will help me continue my active involvement in Delta Zeta. I feel I have given a lot to Delta Zeta, but she has given me more in return than I ever imagined."

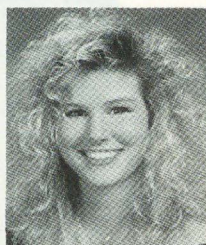
Brynn Capella
CSU/Long Beach-AA

"My family and I greatly appreciate the opportunity this scholarship has given me. In the future, I hope that I can serve Delta Zeta in order to give something back in return."

Carolyn Ann Waninger
Southern Indiana-AB

BECKER MEMORIAL SCHOLARSHIP \$1000

Tracy Johns, Northern Illinois-AP



Tracy Johns

HOUSTON/HOLLIMAN SCHOLARSHIP \$1000

Kimberly Preissler, Tennessee-BA



Kimberly Preissler

HUENEFELD/DENTON \$1000

Brenda Schaefer, Nebraska Wesleyan-BT



Brenda Schaefer

DAVIS SCHOLARSHIP \$1000

Jennifer Bennett, Middle Tennessee-II



Jennifer Bennett

NOLOP SCHOLARSHIP \$1000

Melinda Walker, East Carolina-ZA



Melinda Walker

HEAD SCHOLARSHIP \$1000

Michelle Ross, Eastern Kentucky-EB



GOLDEN CIRCLE SCHOLARSHIP \$1000

Connie Baumgart, CSU/Long Beach-AA



Connie Baumgart

FARISS SCHOLARSHIP \$1000

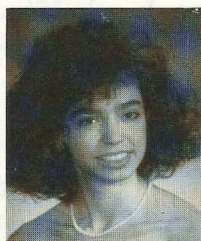
Kristy Berg, Nebraska Wesleyan-BT



Kristy Berg

TONER LOAN \$200

Shana Silas, Arkansas State-OE



Shana Silas

Not pictured:

*Shelly Shoen
Deborah Keenum
Michelle Ross*

"... the financial and mental support the Delta Zeta Foundation, alumnae and collegians have given me continues to be an invaluable source of help during law school."

**Leslie Anne Eagle
UCLA-AX**

LUDEKE SCHOLARSHIPS \$1000

Lisa Draughn, Alabama-AΓ
Kristina Paulson, Ashland-ΘΨ
Leslie Eagle, UCLA-AX



Leslie Eagle



Lisa Draughn



Kristina Paulson

"I am thrilled to have been chosen and my mom was so excited that she cried as she read the award letter."

**Lisa Kay Draughn
Alabama-AΓ**

Every Delta Zeta Can Share in the Election of National Council

The members of National Council are elected from the delegates at the biennial National Convention as provided in the Constitution and Code of Delta Zeta. Every member has the privilege of sharing in this democratic procedure by making recommendations to the Nominating Committee. This may be done by an individual, an alumnae chapter or club, or a collegiate chapter. The Nominating Committee invites your help and will give careful consideration to all recommendations received.

The Nominating Committee is charged with selecting a slate of the best qualified nominees for members of National Council. Thus the welfare and progress of the sorority are directly dependent on the good judgment exercised by the committee. The decisions of the committee will be based on the recommendations received from you or your chapter. However, these recommendations do not assure election as nominations from the floor of qualified candidates may be placed on the ballot.

It is very important in making your recommendations that you keep in mind the qualifications of the person(s) you recommend. An individual under consideration for national office must be an alumna in good standing with the sorority. She must be a member who already has strong leadership experience at the local and province level who has shown a capacity for the effective administration of assigned tasks, and who has the time required for the demanding service, including some freedom to travel.

While we say we will elect a "new" National Council, this term

is not really descriptive as sometimes all the previous officers are returned to their same positions. In some instances, tenure is a factor as no one may serve in the same position more than two terms. As our personal lives change, so do the lives of our officers due to health, family responsibilities, babies which are a joy but do sometimes keep one earth-bound, and jobs that pay real money. In case you need to ask, in Delta Zeta only the Headquarters staff and the traveling chapter consultants are paid.

Remember when making your recommendations that the requirements are that an officer must have a degree from her university or college, with the exception of two of the Directors, who may not have finished the four years required for a degree.

Then, she must have the time, the family support, the charm to make her a leader, as well as the expertise. Most importantly, will she accept this office if it is offered?

If you are not certain who makes up this nominating committee, the chairman is a former national officer who has continued to work in the sorority so that she recognizes the worth of the candidates. The other members, representing various categories of service in Delta Zeta, were elected at the 1991 convention. Thus, we have a Province Alumnae Director, a Province Collegiate Director, a College Chapter Director, a National Committee Chairman and representatives from two collegiate chapters and one alumnae chapter.

The committee meets 90 days before the start of convention, and will then go over your recommen-

dations in order to select the best National Council to function for the next biennium. This is an awesome responsibility, so select your candidates with the experience, ability, charm, time and most of all, family cooperation.

Nominating Committee

Lucile Crowell Cooks, A
Chairman

Ida Marie Carter Nelson, ΘΕ
Province Alumnae Director

Dana McMillan, ΔΣ
Province Collegiate Director

Linda Schaefer Allen, KB
College Chapter Director

Joan Dondrea Lowry, ΓΑ
National Committee Chairman

Long Beach, California
Alumnae Chapter

University of Houston-ΔΘ
University of North Carolina
Charlotte/KΘ
College Chapters



Recommendation for National Council

This form must be postmarked no later than February 10, 1993 and mailed to Mrs. Lucile Crowell Cooks, 7400 Sun Island Dr. S., #404, South Pasadena, FL 33707

I recommend:

Last Name	First Name	Middle Name	Maiden Name
Address: Street			
City		State	Zip

for _____ Has she consented to this recommendation? _____
Council Position

She is member in good standing of

College	College Chapter	Degree/Date	Alumnae Chapter
---------	-----------------	-------------	-----------------

Alumnae chapter(s), office held

Other colleges or universities attended

State, Province, National Offices,
Activities, Services

College chapter offices, honors,
awards, services:

Occupation

Is she presently employed?

Full time _____ Part time _____

Personal Responsibilities:

Number of children & ages:

Civic, community activities, honors,
commitments:

Travel: In your opinion, is she able to travel five or more days at a time?

Reasons for recommending this member:

Recommended by: _____
Your signature (first, maiden, married name) College/Chapter Alumnae Chapter

Address: _____
Street City State Zip

(If more space is needed, please attach additional sheets of paper. If you have more than one recommendation, either xerox form or use additional sheet of paper for each.)

Public Service Messages Get the Word Out

Millions of dollars in equivalent print media space have been donated to public service messages in the Better Hearing Institute's award-winning series. The messages feature prominent people who overcame hearing loss with available help that Delta Zeta and others provide.

BHI's latest message features Donald O'Connor who danced so memorably in "Singing in the Rain" and other classic Hollywood musicals. The message appeared in major consumer magazines as well as specialty and medical publications that generously contributed space to BHI's hearing help messages.

O'Connor's PSA messages encourage others with hearing loss to benefit medically, surgically or — like he did — with hearing aids.



Better Hearing Institute P.O. Box 1840, Washington, D.C. 20013

"I Chose Better Hearing!"

Dancer Donald O'Connor, who uses hearing aids to correct his hearing loss, urges you to protect your hearing.

He strongly promotes hearing conservation for everyone, but says that most people with hearing loss can be helped: medically, surgically, with hearing aids or through rehabilitation.

For more information, call toll-free Hearing HelpLine — 800/EAR WELL.

You should *hear* what you're missing!

Foundation Grants That Help Others

The Delta Zeta Foundation gives grants in different ways to extend needed help. Monies donated to the Foundation are set aside in specially established funds for these purposes. Two such funds are the Hearing Help Fund and the Andrisek Educational Fund.

The Hearing Help Fund provides the monies to be used in the assistance of local hearing and speech organizations. Historically, the Foundation has awarded \$500 grants to assist these organizations with a program, project or for purchasing needed equipment. The organizations are chosen through a grant application made by alumnae chapters through a selection process by the Foundation Trustees.

The grant application is sent to only the alumnae chapters through their regular mailing. Any chapter may apply as long as

they submit the application for a qualifying agency by the deadline date on the application. The grant requests or applications are received at National Headquarters and forwarded to a committee for review. Final selection is made by the Trustees. The alumnae chapters who receive the grants are notified.

So, if you have a local hearing and speech organization that you wish your chapter could further assist, take the time and complete the Hearing Help Grant Application. You never know, your wish just might come true!

The Andrisek Education Fund provides the monies to help bring better programs on the national level to Delta Zeta. These programs can be for either the collegians or alumnae and are only restricted by IRS guidelines.

These funds are also available through a grant process. However,

only the National Council may apply since the monies are to be used on a national scope. The National Council through its Finance Committee must determine the needs of the sorority's educational or philanthropic programs. It then completes a grant application for the use of funds to establish or assist in the development of the program in question.

The application is sent to the Foundation Trustees for approval and if the funds are available and the program meets the IRS guidelines, the Foundation grants the monies for the program.

If you think there is a program that Delta Zeta should be doing, write to the national vice-presidents in charge of collegians or alumnae and let them know your thoughts. Who knows, your idea may be Delta Zeta's next new program!

Delta Zeta/Delta Gamma Join to Promote Philanthropic Efforts

A much talked about plan became a reality this past year when Delta Zeta and Delta Gamma sororities combined their philanthropy efforts at Ohio State University.

Foundation President Joan Lowry and Carol Greenisen, Delta Gamma's Foundation Director, with the assistance of Dr. Marjorie Ward, Associate Professor of Special Education and coordinator of the deaf/blind program at Ohio State University, coordinated the Delta Zeta/Delta Gamma program to benefit deaf/blind individuals and organizations.

Both foundation leaders recognized the tremendous opportunities for networking, coalition building, improving community image and advancing the panhellenic spirit.

Theta chapter of Delta Zeta and Delta Gamma's Epsilon chapter hosted a joint philanthropy/enrichment program. The well-planned awareness program began with an exchange dinner at the Delta Zeta house. Members and pledges of both groups then went to the Delta Gamma house for dessert and speakers and demonstrations.

Included were speakers on hearing and vision loss — diseases and prevention, a hearing impaired speaker on the need for volunteers, vision and hearing tests, braille process, signing, and equipment used by people with hearing and vision loss. Speakers visited with participants during the dessert hour.

Coordinators of the evening were Theta's Philanthropy Chairman Sara Mutzig, Delta Gamma's Philanthropy Chairman Jenni Morril, advisor Wendy Warmolts,



Delta Zetas and Delta Gammas at Ohio State get to know each other and their philanthropies.

and Jenny Morrison, Columbus alumnae chapter representative.

Everyone who attended gained not only a great deal of informa-

tion about their philanthropies but also experienced a renewed enthusiasm about the Greek community.

Foundation Seminar

Delta Zeta has been a participating member of National Panhellenic Conference since 1910 and meetings have been held biennially. But did you know that there has been a NPC Foundation meeting each year for the past decade? For the past three years, the National Interfraternity Conference Foundations have joined with the NPC groups. This meeting is called the Foundations Seminar and for the last two years has been held in Indianapolis, Indiana.

Each year, Delta Zeta has been represented by members of its Board of Trustees. Last year,

Foundation Trustee Patricia Canady Rosser was invited to join the seminar's program committee. This year, Delta Zeta served as hostess for the seminar and will be in a three year rotation of chairmanships in the planning and implementation of the seminar.

While this educational seminar stresses teaching in financial development, topics also include IRS regulations, scholarships, idea swapping and awards. The goal is to keep abreast of the latest information within the Foundation world . . . especially the Greek Foundations.



After a long day of tugging, tired Xi Omicrons trudge homeward.



Delta Zeta's Panhellenic Delegate Holly Paquette gets dunked in the jello pit.

Give a Tug for HEI

What do you get when you put a huge vat of green jello, a rope and twelve teams of the Loyola Marymount University faculty and students together and tell them to "tug it out?" Thanks to Xi Omicron chapter you get an annual event called "Turtle Tug" and the House Ear Institute of Los Angeles gets money and a lot of hope.

Started in 1991, "Turtle Tug" has become a gala Delta Zeta sponsored event for the university community. Taking place in the spring, the event was started to meet the chapter's desire to create a greater awareness of the needs of the hearing impaired. It has since become one of the foremost philanthropic events on campus.

The tug-off has raised more than \$3000 for their philanthropic program. It also allows for total involvement by the university and the surrounding community.

The process begins with the gathering of sponsors and publicity both on and off campus. The chapter members also sell advertisements for the souvenir pro-

gram. Since the food and t-shirts for the participants are donated, the team entry fees are pure profit.

Erin O'Donnell, chairman for the first two events, has been succeeded by Kimberly Caldwell. Kimberly states, "It is our hope the 'Turtle Tug' will eventually go beyond Xi Omicron's wildest

dreams of a successful philanthropy and will truly live up to the slogan — Tugging So All May Hear."

Other chapters interested in adopting this fundraiser for HEI may contact Xi Omicron for specifics of how to run a "Turtle Tug."

You Oughta be in Pictures!

Are you looking for fame but have given up hopes for fortune? We've got an offer for you!

Send the Foundation pictures of your fund-raising activities or your service projects and you could appear in the next Delta Zeta Foundation Annual Report. Be sure to identify *completely* everyone in the picture and tell us what you're doing (rock-a-thon for

Gallaudet, hosting an Easter Egg Hunt for the children of the deaf school near you, etc.)

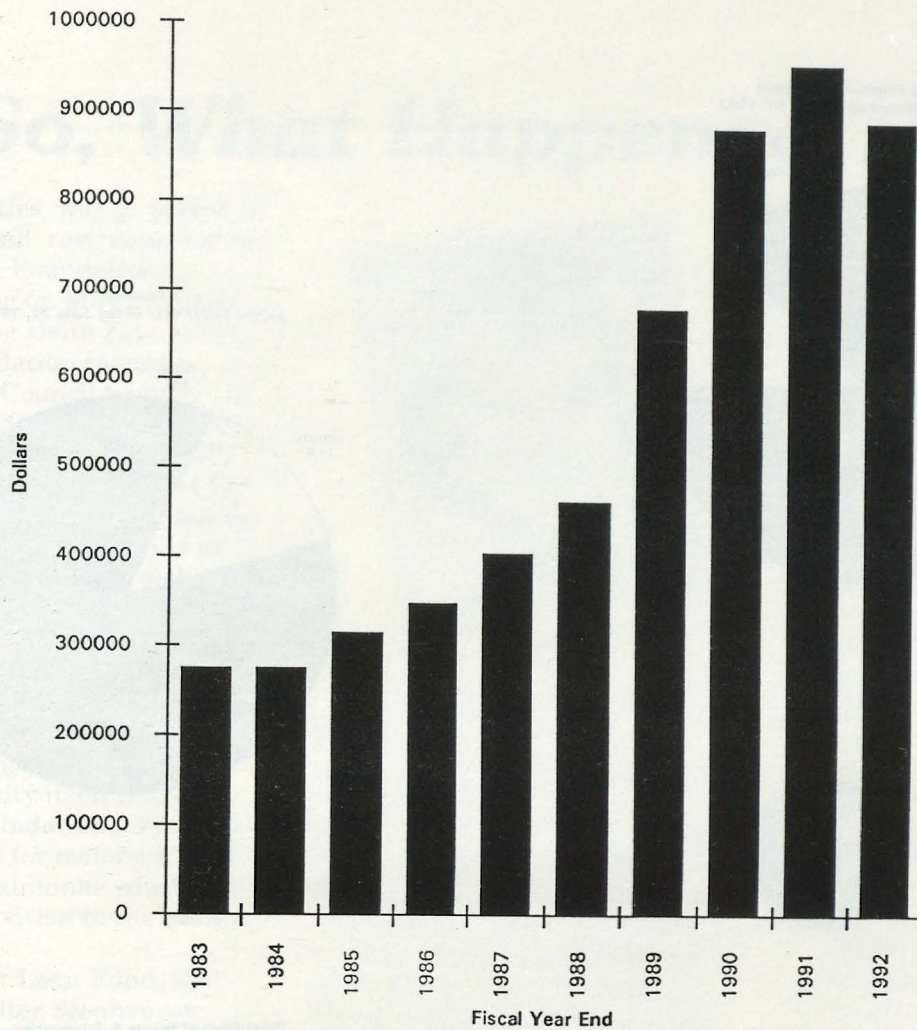
Alumnae and collegians, send your photographs to the Foundation, care of National Headquarters, and look for yourself in the Annual Report. You and your philanthropy activities really "oughta" be in pictures.

Statement of Activity and Fund Principal for the years ended June 30, 1992 and 1991

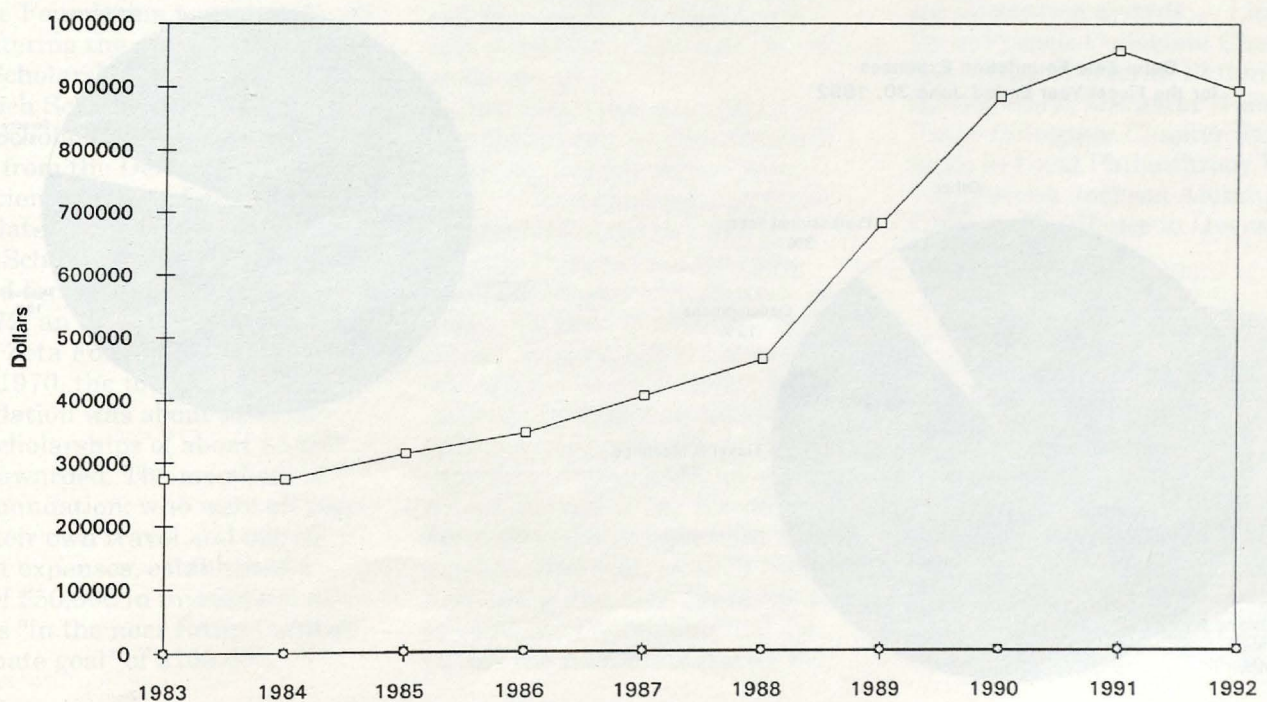
Revenues:	<u>1992</u>	<u>1991</u>
Contributions received	\$324,193	\$344,279
Interest income	57,769	64,845
Other	26,753	11,264
Total revenues	408,715	420,388
 Expenses:		
Grants, gifts, scholarships & awards	249,951	289,603
Donor retention, recognition & acquisition	42,255	46,453
Travel and meetings	10,331	8,162
Professional fees	16,288	22,705
Printing, publications, postage & office supplies	10,206	43,874
Insurance	382	364
Other	4,173	4,107
Total expenses	333,586	415,268
Excess of revenues over expenses	75,129	5,120
 Fund principal, beginning of year	702,604	697,484
 Fund principal, end of year	777,733	702,604

The current financial statements of the Delta Zeta Sorority Foundation have been audited by Coopers & Lybrand, CPAs. Copies are available at National Headquarters, Oxford, Ohio.

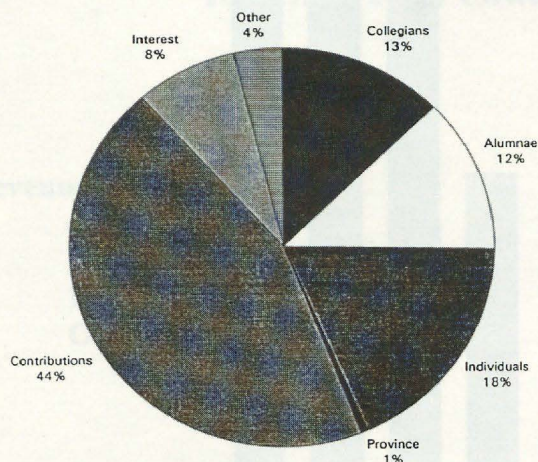
Total Assets & Fund Principal



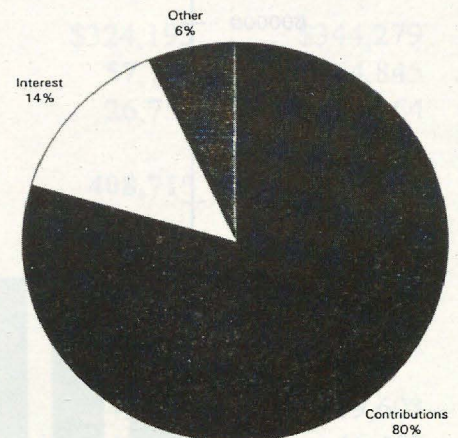
Delta Zeta Foundation Total Assets & Fund Principal



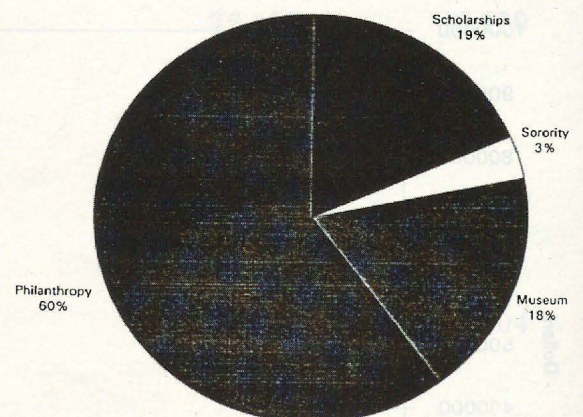
**Delta Zeta Foundation Revenue
for the Fiscal Year Ended June 30, 1992**



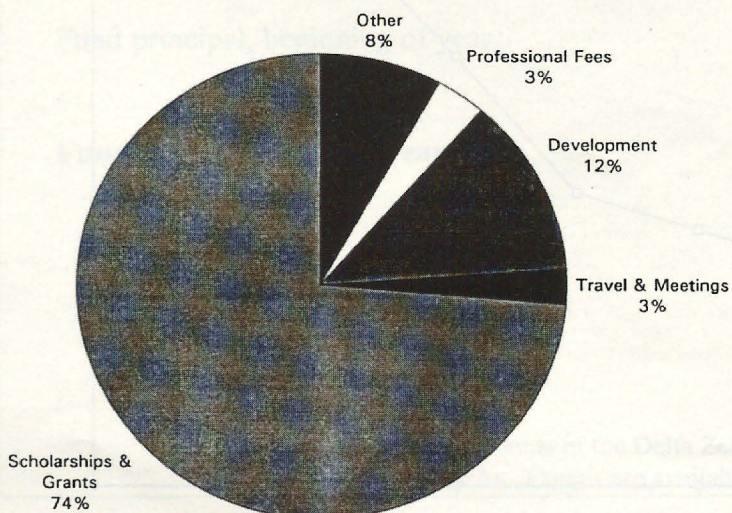
**Revenue
for the Fiscal Year Ended June 30, 1992**



**Breakdown of Grants & Scholarships
for the Fiscal Year Ended June 30, 1992**



**Delta Zeta Foundation Expenses
for the Fiscal Year Ended June 30, 1992**



So, What Happened Then?

The seventies was a period of growth and restructuring for the Delta Zeta Foundation.

At a meeting on May 21, 1970, on advice of the Delta Zeta attorney, the Foundation requested that National Council transfer the philanthropic activities of the Sorority to the Foundation because of changes brought by the Tax Reform Act of 1969. This Tax Reform Act meant that contributions to the Foundation were tax deductible but those to the Sorority were not.

Following the Phoenix National Convention of 1970, the National Council voted to "Transfer of Delta Zeta's charitable activities from the Sorority itself to the Delta Zeta Foundation, to provide tax deductions for members, colleagues(sic), or alumnae when they make a contribution to the Sorority."

The Student Loan Fund, the Elizabeth Coulter Stephenson Fund, the Service Fund and the Elsa Ludeke Memorial Fund were transferred to the Foundation.

The Foundation was already administering the Arlene Davis Aviation Scholarship, Dean Harvey C. Minnich Scholarship, the Founders Scholarship (both of which came from the Delta Sigma Epsilon Friendship Fund and which were later merged), and the Audiology Scholarship which was renamed for Helen Woodruff Nolop in 1972, an Incorporator of the Delta Zeta Foundation.

In 1970, the total income to the Foundation was about \$24,000 and scholarships of about \$5,000 were awarded. The members of the Foundation, who were all paying their own travel and out-of-pocket expenses, established a goal of \$50,000 in investment accounts "in the near future" and an "ultimate goal" of \$100,000.



Katie Blanche Stallworth

Also in 1970, the Foundation Board of Directors decided to move the Foundation from Minnesota where it had been incorporated to Ohio with National Headquarters of Delta Zeta (then in Columbus) as its address.

However, in 1972 National Council asked the Foundation to move all its activities out of National Headquarters because of IRS concerns and Shirlyn Chaffin, Ohio State-Θ, set up a Foundation office in her home in Columbus and became the treasurer. She held this position through the rest of the seventies.

Two philanthropic projects assumed through mergers changed status during this time. Delta Zeta had assumed support of the Hansen's Disease patients at Carville Hospital in Louisiana upon our merger with Delta Sigma Epsilon. In 1972 this became a local project but was reinstated as a national project in 1975 as it was felt we could not abandon these patients as long as they lived. Delta Zeta had also assumed support of the Navajo Fund upon our merger with Theta Upsilon. However, in 1972 Navajo Assistance, Inc. was dissolved and by 1976 the Foundation had disbursed the remaining money in

the Navajo Fund in accordance with the law.

This period of time saw the establishing of many new scholarships and loans. In 1973 the Gertrude Meatheringham Memorial Scholarship (now a local scholarship), Vee Toner Loan Fund, Hearing Help Grants to Alumnae Chapters and Alice B. Huenefeld Scholarships were all established.

In 1975 long-time Foundation President Katie Blanch Masters Stallworth died suddenly and in August of that year a scholarship in her memory was established. In 1976 the Delta Zeta Gallaudet Endowment was established with an initial gift of \$4,000. The first \$200 scholarship from that endowment was awarded the next year. Also in 1976 the Houston/Nancy Holliman Scholarship was established.

By the end of the seventies scholarships and grants awarded through the Foundation totaled about \$30,000.

In the early seventies the Foundation also established several major convention awards — Lisbeth Innis Francis Collegiate Chapter Excellence in Overall Philanthropy Work, Margaret Huenefeld Pease Collegiate Chapter Excellence in Local Philanthropy Work, Gail Patrick Jackson Alumnae Chapter Excellence in Overall Phi-



Shirlyn Chaffin



Vee Toner

Shakarian Toner, Pittsburgh-O; Margaret Huenefeld Pease, Cincinnati-E; Myrtle Graeter Hinkly, DePauw-Δ; Shirlyn Chaffin, Ohio State-O, Patricia Heneghan Pelkofer, Pittsburgh-O, Gail Patrick Jackson Velde, Samford-ΑΠ; Ruth Gump Thomas, Northwestern Louisiana-EB; Ida Ramey Ratliff Miller, Pittsburgh-O, Sue Ricketts Sayre, Ohio No.-ZK, and Sarah Jane Shank Houston, Illinois-AB.

It was an amazing period for the Foundation and, had there not been strong leadership doing everything short of CPR, the Foundation would not have survived. Instead, this era provided the undergirding for the modern Foundation we know today.

lanthropy Work and Myrtle Graeter Hinkly Alumnae Chapter Excellence in Local Philanthropy Work. But in 1978 the alumnae awards program was suspended due to duplication of awards and programs by National Council.

The Foundation bylaws were completely revised in 1973 because of the many IRS regulation changes and by 1975 there was a new emphasis on the need for endowments so that fixed amounts could be given every year for the scholarships and grants.

Some of the people guiding the Foundation through this period of turmoil, and often holding meetings in their homes and housing and feeding the attendees to save money, were Katie Blanche Masters Stallworth, SMU-AΨ; Vee



Sarah Jane Houston

Alumnae Chapters Receive Hearing and Speech Grants

The Delta Zeta Foundation is happy to announce the recipients of the 1992 Hearing and Speech Grants.

Oklahoma City alumnae received a \$125 Hearing Help Grant on behalf of Oklahoma Easter Seal Society for purchase of an otoscope.

The Arlington alumnae chapter was awarded a \$500 grant to be given to Arlington Regional Program for the Deaf for purchase of a video camera and a video camera recorder.

A \$500 grant has been awarded to the Houston alumnae chapter to send deaf children to summer camp. The grant will be given to Houston School for the Deaf.

Also receiving a Foundation Hearing and Speech Grant is Corpus Christi alumnae chapter. Their \$500 grant is to benefit Corpus Christi Area School for the Deaf to send deaf children to summer camp.

The Delta Zeta Foundation applauds the efforts of these four alumnae chapters in working to promote our national philanthropy.



Have You Written a Book?

The National Historical Museum has a collection of books written by Delta Zetas and donated by the authors.

We know there are a lot of talented Delta Zetas and would like to expand this collection so that it is more truly representative of Delta Zeta publishing activities.

Whether you write fiction, children's books, or research books, please autograph a copy and donate it to the Museum. You'll leave a lasting mark in Delta Zeta history and be an inspiration to those who tour the Museum and see the books displayed.

New Scholarships Available



Carol Sharpe Harper



Melanie Alm Robinson, Province IX Collegiate Director surprises Florence Hood Miner with a scholarship established in her name.

There are two new local scholarships available to Delta Zetas due to the generosity of two provinces honoring their own.

Province XX has established a scholarship in honor of Carol Sharpe Harper, University of Louisville-BF, former Province Collegiate Director and Province Alumnae Director of Province XX, twice named Outstanding Alumna of Province XX, Louisville City Panhellenic Outstanding Alumna of 1991 and 1991 Achoth Award winner.

The \$200 scholarship will be given annually to a Delta Zeta alumna living in Province XX who is attending graduate school and has established a record of service to Delta Zeta. The scholarship will be given at Province Day.

Province IX has established a scholarship in honor of Florence Hood Miner, University of Illinois-AB, National Historian and past National Vice President, National Secretary, *LAMP* Editor, and Province Collegiate Director.

This scholarship is open to Delta Zeta undergraduates who are attending schools in Province IX. The award will be based on chapter activities, grade point average and campus activities, in that order.

Provinces, Alumnae Chapters or any other groups wishing to establish scholarships (a lasting way to honor or remember someone) should contact Patricia Rosser, Foundation Treasurer.

Establishment of Local Scholarship

The Delta Zeta Foundation is pleased to offer 20 scholarships on the local level.

To establish a scholarship the Foundation requests a minimum \$10,000 endowment which is immediately invested to receive optimal interest rates. This principal is never awarded or used for anything else; only the interest earned is given as a scholarship.

Scholarships may be given in honor of an individual or a chapter and may be added to at any time. The Foundation administers the funds and sends a check upon

written request from those in charge of awarding the scholarship.

Those endowing a local scholarship also determine:

1. name of scholarship
2. criteria for awarding scholarship
3. establishment of committee to evaluate applications

For more information regarding establishment of a local scholarship please contact the Foundation Office at National Headquarters.

Dogs for the Deaf

Blind people can be identified easily by their white-tipped cane.

Crutches, a wheelchair or brace marks the person with an amputation, paraplegia or other physical disability.

But the profoundly deaf or people with a severe hearing loss, an estimated 22 million, are the invisible handicapped. They live in a lonely, silent world.

Increased deafness has been attributed to the guns of war, loud music, nonpressurized small aircraft and even the noises of our urbanized society. Whatever the reason, deafness has reached record proportions.

One answer: Dogs for the Deaf.

Dogs for the Deaf was founded in 1977 by the late Roy G. Kabot, a longtime Hollywood and circus animal trainer who moved to rural Jacksonville, Oregon, in semi-retirement. Kabot, who passed away in October, 1986, trained animals in hundreds of motion pictures and television shows including "Dr. Doolittle," the cougar in Mercury car commercials, and Elsa, the lion in "Born Free."

Dogs for the Deaf is now directed by Kabot's daughter, Robin Kabot Dickson, who became associate director in 1981.

Mr. Kabot decided to train stray dogs — unwanted mutts doomed to death — dogs that would otherwise be destroyed — for the benefit of mankind.

Dogs are obtained from nearby animal shelters and are trained to identify a sound, make contact with their masters and lead them to the source of the noise. The dogs are taught to react to a knock or doorbell, smoke and fire alarm, baby crying, TTY (telephone), alarm clock or the person's name being called.

The training center has the appearance of a small apartment complete with all the necessary rooms.

The nonprofit organization, based in Central Point, Oregon, trains three types of dogs. *Certified Hearing Dogs* are socialized, obedience trained, and trained to respond to the sounds. They have the legal right to go into any public place with their masters just as Seeing Eye dogs do. *Working Companion Dogs* are obedience trained and trained to respond to the sounds. They work well in the home, alerting people to sounds, but do not have the public access rights. *Social Dogs* are obedience trained and will make good pets and companions for adults who want and need a special canine friend and for deaf children who need to learn how to care for a dog.

The specially trained dogs are placed free of charge with qualified recipients. Cost of training is \$4100 which covers everything from obtaining the dog through the follow-up for as long as the team is together.

Some working dogs would not win any beauty contests, but the beauty that radiates from the special relationship they share with their handicapped partners outshines any other animal/human bond.

SPOTLIGHT ON COMMEMORATIVE GIVING

Long after the flowers have faded, a memorial gift to the Delta Zeta Foundation is still shining brightly as a scholarship, assistance to Gallaudet University or the House Ear Institute, a grant to a local deaf school or in a myriad of other ways. Your gift in memory of a friend or loved one perpetuates that memory.

Or honor someone while she lives. A gift to the Delta Zeta Foundation to commemorate a marriage, new baby, well-deserved award, or appreciation of a good friend in a special way to recognize a special occasion.

Whatever your reason, remember the Delta Zeta Foundation for your commemorative giving. The individual (or the family) will receive notice of your gift and you will have honored your friend and made a contribution to the future.

Delta Zeta Foundation
202 E. Church St.
Oxford, OH 45056



Province Collegiate Directors attended the PCD workshop at Purdue.

Still Together After All These Years

The Indianapolis convention next summer will mark the beginning of the 40th year of Delta Zeta's association with Gallaudet University. These are 40 years filled with exciting growth by both parties. Gallaudet has gone from a college to a university and the Delta Zeta Endowment there has grown to nearly \$200,000. In 1976 we awarded one \$200 grant to a Gallaudet student; this year we gave six women \$2000 each.

Gallaudet has already begun applying the Ruth Thomas bequest for the dance program by installing a new Bio-Cushion III floor in the studio to protect the students from the dangers of repeated impact from their aerobic practices and their dance routines. It will increase the resilience of the floor from its current 5% to 70%. When the studio moves to the new building, the floor will be moved also.

In addition, the university has purchased audio and lighting equipment and permanent costumes and sets. The remainder of Delta Zeta's gift is being invested until it is needed for air conditioning and similar dance-specific enhancements to the studio in the new building. The income being generated is providing additional program support.

Gallaudet recently won a \$12 million matching grant from the Kellogg Foundation to help establish a major conference and training center on campus. The university is now seeking five million dollars in private funds to match the grant. The grant will allow Gallaudet to establish the world's first conference center for deaf people. The center will house a 161,500-square-foot conference and hotel facility with state-of-the-



Members of the Gallaudet University Alumni Association presented their alma mater with the official commissioned portrait of President I. King Jordan during their 34th triennial reunion in July. Pictured with President Jordan is his Delta Zeta wife, Linda.

art technology in every room. The center will provide professional, continuing education, and life skills support for people who are deaf and hard of hearing, and for professionals who work with them.

Forty years bring a lot of changes to every couple but Gallaudet and Delta Zeta plan to stick together for at least another 40 years.

DO YOU HAVE A HEARING PROBLEM?

We'd like to hear from you for future articles in the Foundation Annual Report. How was your problem diagnosed? How was it treated? Were you helped by any of the agencies with which Delta Zeta is affiliated?

Call or write Joan Lowry, Delta Zeta Foundation President, and tell her your story.

Your experience could help someone else get the help she needs!

The Foundation is Looking for You!

Do you have a little time for Delta Zeta? The opportunity is here for you to give of your talents. The Foundation is looking for CPAs, trust officers, certified financial planners, estate attorneys and development officers. Contact Foundation President Joan Lowry (Mrs. Bob-Bill), 578 Yarmouth Lane, Bay Village, Ohio 44140.

Letters



Dear Mrs. Lowry and Trustees of the Delta Zeta Foundation:

On behalf of the Board of Trustees of the Houston Ear Research Foundation, we gratefully acknowledge the \$500.00 contribution toward the program.

Because of altruistic individuals like yourself, our program is able to grow and help more hearing-impaired children come from a world of silence into a world of sound. Last year, the Food and Drug Administration approved the cochlear implant for safe and beneficial use in children. Our years of pledged research has determined advantageous results for implant users. The FDA approval will allow more hearing-impaired children and adults, who are candidates, to have the opportunity to have the cochlear implant.

The Foundation is presently following over 200 hearing-impaired individuals with the cochlear implant. The special recognition that you have given the children of the Houston Ear Research Foundation is priceless.

Again, on behalf of the Board of Trustees of the Houston Ear Research Foundation, we thank you for your generous donation and dedication to our work with the hearing-impaired.

Sincerely,

David Hannah, III
Chairman of the Board
Houston Ear Research Foundation

Dear Madam:

It is through the support of organizations like yours that we have funds to supplement state appropriations for academic programs and activities such as the

College of Education Comprehensive Clinic Fund. State appropriations provide adequate funding, but program enhancements come from commitments by our friends and alumni.

For many years we have been listed as one of the top ten comprehensive institutions in the south by *U.S. News and World Report* magazine. Being selected for this honor reflects on the quality of the institution and its academic programs. With your support you play a major role in moving Appalachian forward. You have helped us reach towards the future and are a part of the vision of this institution.

The gift qualifies the organization for Chancellors Committee membership. This level of giving is indicative of an involvement with and commitment to the university's mission, programs and activities.

I would like to again express my appreciation to you for helping us achieve educational excellence.

Sincerely,

Jehr E. Thomas
Chancellor
Appalachian State University

Dear Ladies:

This is to acknowledge receipt of the donation of \$1,250.00 for use by the Student Center of our school.

On behalf of the students and staff of this school please accept our sincere appreciation for your thoughtfulness.

Sincerely,

John E. Radvany, Ed.D.
Superintendent
Louisiana School for the Deaf

Ms. Joan Lowry
Delta Zeta Foundation
578 Yarmouth
Bay Village, OH 44140

Dear Joan:

Better Hearing Institute owes so much to the appreciated help of Delta Zeta in spreading the hearing help message.

May I please take a moment to again express our gratitude for the special help we continue to receive from Delta Zeta Northern Virginia alumnae chapter members, most of them Washington Metropolitan area career women. It all began when you introduced us several years ago to chapter members Rachel Platt and Maria Startzel, who got the ball rolling.

Since then, the Delta Zeta volunteers have expended much of their meeting time involved in Better Hearing Institute projects, including the generous assembly of comprehensive information packets for Hearing HelpLine callers. Some make speaking presentations to social, civic, and fraternal organizations, using BHI audio-visuals to further public awareness of the help available to one out of every 10 of us with hearing problems.

We are also indebted to Delta Zeta for its sponsorship of many BHI projects, including consumer booklets and the special television PSA featuring actress Florence Henderson, an honorary Delta Zeta sorority sister.

Last, but certainly not least, I want to personally thank you, Joan, for your valuable input as a BHI officer and member of our board of directors — especially for your many hours of work as BHI treasurer. Our cup runneth over!

Regards,

Joseph J. Rizzo
Executive Director
Better Hearing Institute

Why Do I Give To The Foundation?



Elizabeth Barbieri Bragg

by **Elizabeth Barbieri Bragg**
Penn State-ΓΔ

Throughout my years as an active member of my local alumnae chapters, it was the custom to honor contributing officers or remember ill or deceased sisters with a gift in their name to the Delta Zeta Foundation. Having some awareness of the advantages and opportunities which are available to heavily funded Foundations this was, to me, not only a grand way to honor the sister, but also a fine way to build a strong financial future for our Delta Zeta Sorority.

This custom and the thoughts from our own Delta Zeta Creed, "May I give graciously of what is mine," inspired me to remember special friends by donating to the Foundation in their names. Later, as a Province Alumnae Director, member of National Council and a member of the Foundation Board, it seemed quite natural, when it could be worked into our budget, to return to the Foundation the

benefits received from serving in those positions.

During convention when the warmth of our sisterhood is flowing everywhere and there are in attendance so many wonderful Delta Zeta sisters who have given so much of their time and devotion to our sisterhood, it is an especially moving time for me to take advantage of the Foundation's Rose Tree and remember those special ladies.

Further, to me, education of self and others is the best investment one can possibly make for the future and education is one of the basic beneficiaries of the Foundation. The House Ear Institute, Gallaudet University and our own Delta Zeta scholarship program are all dedicated to promoting education.

Finally, there comes such a wonderful "warm and fuzzy" feeling when one shares and gives to others. When I want that feeling I do something thoughtful for a friend, and I give to the Delta Zeta Foundation.



GIVING LEVELS FOR THE DELTA ZETA FOUNDATION

Founders Guild

\$100,000

Rose Society

\$25,000 - \$100,000

(endowed, cumulative)

\$1,000 - \$24,999

(annually)

Heritage Club

Diamond Level

\$500 - \$999

(annually)

Pearl Level

\$100 - \$499

(annually)

Friendship Circle

\$10 - \$99

(annually)

Planned Gifts — Planned gifts can be made through bequests, life insurance, trusts, or gifts of appreciated assets.

Gifts-in-Kind — Gifts of materials and services are highly sought and welcome gifts to Delta Zeta. A special committee will consider all gift-in-kind proposals.

A Challenge to Our Alumnae

With the arrival of the recent *Lamp*, I, like many of you, found a quiet moment to sit down and glance through it with hopes to read it more thoroughly at a later date. You might have noticed that this particular issue listed all donors to the Delta Zeta Foundation during the fiscal year.

Because Delta Zeta is so important to me, I glanced down the list of names to see others I might recognize — knowing that if a name was on the list, then that person cared about our sorority as I do. I was surprised, disappointed and maybe even a little hurt by what I found — or rather, didn't find. There were fewer than a half-dozen Beta Delta alumnae named in that list. There are hundreds of us across the country, but yet less than six of us gave any donation to our sorority.

No, Delta Zeta does not feed the hungry (at least not directly), nor does it cure cancer, but you and I have seen the possibilities our money holds. Have you watched the transformation of a gangly teenager with holes in her jeans to a beautiful woman, self-confident and ready to lead the world? Perhaps it was your own transformation.

Did you see the look of a deaf child who learned to communicate through the help of Delta Zeta aid to the hearing impaired? Did you see the students at Gallaudet University stand up in defiance and proclaim their right to exist in this world as the hearing do, and to be represented as such? Delta Zeta had a part in all of this. It did and does have a great impact on so many young lives.

I challenge each of you to find room in your heart and your purse to give a small gift each year to Delta Zeta. Give \$1 for every year since you've been initiated. Give \$10. Give \$5. Whatever you can. Your money is needed and will go far. Let the next generation know the difference Delta Zeta can make — let them have the opportunity someone else gave us.

Send your contribution today to: Delta Zeta Foundation, 202 E. Church St., Oxford, OH 45056. Your contributions are tax-deductible. I hope that next year as I read this issue of *The Lamp*, I'll notice many Beta Delta alumnae names!

Vicki Jinnette Ringer, Beta Delta '80

Members who are donors to the Delta Zeta Foundation from July 1, 1991 to June 30, 1992 are listed in the five recognized giving levels:
Founders Guild (\$100,000)
Rose Society (\$1,000-\$24,999)
The Heritage Club — Diamond (\$500-\$999)
The Heritage Club — Pearl (\$100-\$499)
Friendship Circle (\$99 or less)

Founders Guild (\$100,000)

Patricia Menendez Tector, EΦ

The Rose Society (Gifts of \$1,000-\$24,000) (Individuals)

Ann Butler Booth, ΘE
Carol Sharpe Harper, BΓ
Marcia Smothers Kinzenbaw, BK
Catherine Clay Lassenes, IΦ
Joyce Low London, AE
Marjorie Klingensmith Lovewell, Γ
Cynthia Winslow Menges, A
Patricia Canady Rosser, IN
Cleora Crosby Snelling, Φ

(Collegiate Chapter Gifts)

Angelo State University-AO
Appalachian State University-AΦ
Arkansas State University-OE
California State University/Los Angeles-ΘP
Central Michigan University-ΓΨ
Florida State University-AΣ
Fort Hays State University-ΔQ
Georgia College-AΓ
Georgia State University-ΔA
Illinois State University-AP
Longwood College-ET
Louisiana State University-Σ
Loyola-Marymount University-EO
Memphis State University-Π
Middle Tennessee State University-II
Nebraska Wesleyan University-BT
North Georgia College-ΞΞ
Ohio Wesleyan University-AP
Old Dominion University-ΘΦ
Pennsylvania State University-ΓA
Purdue University-ΞΩ
Saint Mary's University-OA
San Jose State University-ΓA
Shippensburg University-KΨ
Southwest Texas State University-IA
Tarleton State University-ΞN
University of Massachusetts-EA
University of Pittsburgh/Johnstown-AE
University of Tennessee/Knoxville-BA
University of Texas/Arlington-ΓΨ
University of Alabama-AΓ
University of Houston-AΘ
University of Illinois-AB
University of Kentucky-AΘ
Virginia Tech Institute-KΘ
Wayne State University-ΞΞ
Western Illinois University-EO
Wright State University-KI

(Alumnae Chapter Gifts)

Arlington Alumnae Chapter
Central San Fernando Valley Alumnae Chapter
Chicago-Northwest Suburban Alumnae Chapter
Dallas Alumnae Chapter
Gold Coast Alumnae Chapter
Honolulu Alumnae Chapter
Houston Alumnae Chapter
Huntsville Alumnae Chapter
Lafayette Alumnae Chapter
Long Beach Alumnae Chapter
Los Angeles Alumnae Chapter

North San Diego County Alumnae Chapter
Oklahoma City Alumnae Chapter
Orange County Alumnae Chapter
Pasadena Foothills Alumnae Chapter
Reno Alumnae Chapter
Santa Monica Alumnae Chapter
South Bay Alumnae Chapter
St. Louis Alumnae Chapter
Tuscaloosa Alumnae Chapter
Whittier-West Covina Alumnae Chapter

The Heritage Club Diamond Level (Gifts of \$500-\$999) (Individuals)

Elizabeth Barbieri Bragg, ΓA
Sara Carruthers Procter, A
Leann Danner Eisenreich, EΓ
Carolyn Barnes Gullatt, ΘE

(Collegiate Chapter Gifts)

Arkansas Tech University-AA
Ashland University-ΘΨ
California State University/Long Beach-ΔA
California State University/Fullerton-ΓY
DePauw University-Δ
Drexel University-EZ
Eastern Michigan University-ΓE
Ferris State College-ZN
Jacksonville State University-AΓ
Kent State University-ΓK
Muhlenberg College-ΞI
Northwest Missouri State University-EP
Northwestern University-AA
Northwood Institute-EH
Ohio State University-Θ
Ohio University-OΓ
Rowan College-ΞK
Radford University-ΞA
Samford University-AΠ
Stephen F. Austin State University-ZΨ
Temple University-ΔT
University of Nevada/Las Vegas-IΦ
University of Connecticut-ΓB
University of Rochester-AI
University of South Carolina-BA
University of Washington-K
West Chester State University-IP

(Alumnae Chapter Gifts)

Baton Rouge Alumnae Chapter
Central Philadelphia Alumnae Chapter
Cleveland Eastside Alumnae Chapter
Cypress Creek Alumnae Chapter
Denver Alumnae Chapter
Des Moines Alumnae Chapter
Fairfield County Alumnae Chapter
Findlay Alumnae Chapter
Greater Hartford Alumnae Club
Greater Seattle Alumnae Chapter
Harrisburg Alumnae Chapter
Jacksonville Alumnae Chapter
Louisville Alumnae Chapter
North Central Indianapolis Alumnae Chapter
Omaha Metro Area Alumnae Chapter
Pensacola Alumnae Chapter
Phoenix Alumnae Chapter
Pittsburgh South Hills Alumnae Chapter
San Antonio Alumnae Chapter
San Francisco Bay Cities Alumnae Chapter
Wichita Alumnae Chapter

The Heritage Club Pearl Level (Gifts of \$100-\$499) (Individuals)

Virginia Fowler Abercrombie, BI
Janine Hagan Adams, ΓΦ
Helen Southworth Albrecht, Δ
Anne Denny Allen, E
Janet Lemen Allison, BK
C. Olson Bates, AB
Stephanie Chapman Bell, AΘ
Edna Peterson Bennett, ΓA
Rochelle Levine Berkley, IΦ
Marion Clarke Bliedorn, Γ
Andrea Bloch, A
Vicki Bowman, IY
Deborah Brammer, AI
Myrtle Shireman Bierley, Z

Jeanne Torrey Brown, K
Virginia Duff Calk, AΘ
Jennifer Carpenter, Δ
Nancy Bach Colman, EΩ
Gwynne Richards Cook, BX
Shirley Hamilton Cook, EΓ
V. Workun Covelle, BΩ
Janice Jelks Cox, ΔK
Mary Osborn Criss, BX
Erleen Carrico Culver, ΔX
Claire Koffel Damewood, ΔX
Betty Paul DeWitt, AΓ
Martha Armstrong Denman, Θ
Phyllis Underwood Docherty, BA
Lynn Durgin, BA
Annette Bailey Eberdt, BE
Leora Scharer Eberlein, A
Elizabeth Edmond, BΠ
Mary Bishop Falconer, I
Shirley Sinks Ferson, X
Margaret Edsel Fitch, AE
Anne Marie Jones Gavin, ΔΓ
Oma Bishop Gillis, I
Margaret Kephart Glade, BZ
Grace Pritchard Gorham, AO
Hannah Nicholas Gough, ΔA
Barbara Whittaker Gregor, BP
Barbara Grove, EK
Kathleen McFarland Guidice, ΔE
Jean Delavan Guyot, AΓ
Julie Hauser, EΩ
Nancy Headen, T
Patricie Keating Heidrick, A
Ruth Penzotti Henderson, BΠ
Louise Hendricks, BA
Rannie Pendergrass Hilton, ZA
Charlotte Hollinger, EM
Betty Brant Jamieson, FK
Ellen Kroll Jenkins, E
Frances Latham Jenkins, Z
Lois Bing Johnson, AN
Joan Boesch Knapp, ΔO
Helen Linde, AA
Joan Dondrea Lowry, ΓA
Virginia Frankenberger Lynch, AX
Kam Mabe, ZA
Susan Mease, AΠ
Helen Milar, O
Florence Monroe, BΩ
Beth Kennard Moore, AΠ
Audrey Fahringer Morava, AA
Margot Graney Mudd, A
Olive McLauchlan Neelands, EΩ
Sandra McAlister Nesbitt, BE
Carolynn Ballard Nicholson, M
E. Landrith Odebrecht, AE
Janet Chapman Onishi, Θ
Mary Geibel Osborne, AP
Aurel Fowler Ostendorf, AΠ
Alece Morgan Otto, Δ
Barbara Kerslake Owen, AX
Pam Parker, ΔE
Patsy Parrish, KZ
Candice Kidd Peace, E
Mary Broadbent Platz, E
Linda Remington, AΘ
Edith Allen Richey, EE
Doris Ellingson Riede, AO
Melanie Alm Robinson, AΘ
Majel Mangun Robison, AΠ
Ferdinanda Messmer Roesch, E
Karen Roth, ZN
Adeline Sigwalt, AA
Ellen Silverman, AA
Susan Adrianson Skambis, BM
Leslie O'Halloran Smith, AE
Marc Smith, EZ
Wysonda Depriest Stewart, AT
Jean Nelson Stockham, Π
Linda Dennison Tapp, EZ
Marvona Easley Tavlin, EA
Althea Jones Ulerich, E
Linda O'Day Vilas, AX
Claudia Vollmer, E
Patricia Watson, BN
Esther Vestal Weesner, Δ
Mary Palmer Woods, N
Elaine Hanna Wright, ΓE
Danna Donnelly Wylie, BM

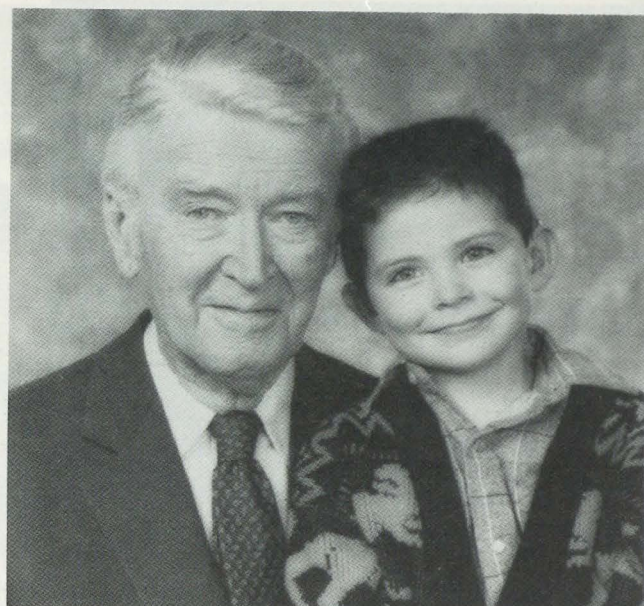
Carroll College-ΓΘ
DePaul University-ΘΘ
Eastern Illinois University-ΓN
Eureka College-Π
Grand Valley State University-ΞY
Mansfield University-ΙΘ
Marshall University-ΔY
Millersville University-ET
Randolph-Macon College-OZ
Robert Morris College-EX
S.U.N.Y./Oswego-ΘΘ
University of South Carolina/Spartanburg-OM
Southern Illinois University-ΓΩ
Trenton State College-AA
University of Alabama/Huntsville-AK
University of Northern Colorado-ΔE
University of Wisconsin/Whitewater-EK
University of Wisconsin/Stout-ZB
University of North Carolina/Chapel Hill-ΞΞ
University of Denver-P
University of Maine-AY
West Virginia Institute of Technology-ΠΠ
Western Carolina University-ΘΓ
Western Michigan University-ΠΠ
William Jewell College-ZP
Winthrop College-ΔE
Wittenberg University-BX
Youngstown State University-KX

(Alumnae Chapter Gifts)

Akron Alumnae Chapter
Austin Alumnae Chapter
Bartlesville Alumnae Chapter
Brevard County Alumnae Chapter
Canton-Massillon Alumnae Chapter
Chicago Far West Alumnae Chapter
Chicago Southwest Suburban Alumnae Chapter
Clay-Platte Alumnae Chapter
Clearwater Alumnae Chapter
Colorado Springs Alumnae Chapter
Columbus Alumnae Chapter
Corpus Christi Alumnae Chapter
Dayton Alumnae Chapter
El Paso Alumnae Chapter
Grand Rapids Alumnae Chapter
Greater Kanawha Valley Avenue
Greater Kansas City Alumnae Chapter
Greater Longview Alumnae Chapter
Greater Shepherdstown Area Alumnae Chapter
Johnson-Wyandotte Alumnae Chapter
Kent Alumnae Chapter
Lawrence Alumnae Chapter
Lexington Alumnae Chapter
Metropolitan Detroit Alumnae Chapter
Montgomery Alumnae Chapter
Muncie Alumnae Chapter
North Philadelphia Alumnae Chapter
Northern Kentucky Alumnae Chapter
Oakland County Alumnae Chapter
Palm Beach County Alumnae Chapter
Pittsburgh-North Hills Alumnae Chapter
Richmond Alumnae Chapter
Shreveport Alumnae Chapter
Southern New Jersey Alumnae Chapter
Springfield Alumnae Chapter
St. Petersburg Alumnae Chapter
Topeka Alumnae Chapter
Tulsa Alumnae Chapter
Twin City Alumnae Chapter

Friendship Circle (Gifts \$10-\$99) (Individuals)

Amy Abdouch, ΔE
Dorothy McKee Abrahamson, M
Lori Winger Ackerman, ΓN
Mary Batchelor Ackerman, EΓ
Merry Westbrook Adamcik, ΔΘ
Donna Smyser Adams, AΦ
Jill Adams, ΘΦ
Joyce Hipps Adams, AO
Lucile Neuman Adams, IA
Marilyn Moore Adams, E
Mary Swager Adams, O
Mary Riddinger Adcox, E
Sharon Decker Affinito, KM
Maureen Ahern, FK
Michelle Albrecht, AX
Melissa Alexander, ΔΠ
Mary Knott Alford, ZA
Bernice Quick Allen, ΓN
Gladys Allen, AΠ



Better Hearing and Speech Month Child of the Year Clarence E. Bustamante, Jr. with Honorary Chairman Actor Jimmy Stewart.

Jana Lindstrom Allen, AB
Dorothy Haubold Almcrautz, AA
Virginia Augspurger Alter, E
Veulah Brook Amend, BP
Michele Ames, K
Aurielia Childs Anderson, Γ
Claudia Owens Anderson, AN
Dorothy Brandes Anderson, AA
Heather Jerden Anderson, IV
Jean Yare Anderson, BA
Joan Pagel Anderson, Φ
Sharon Cook Anderson, A
Jeanette Rickey Andreson, K
Evelynne Molcan Andrew, AK
Carrie Wasson Andrews, ΔA
Edward Craig Andrews, ΔA
Norma Minch Andrisek, ΓA
Laura Ankenbrand, ΓN
Sandra Kaley Anstadt, ΙΘ
Juanita Walker Anthony, BB
Carolyn Schreider Anthropol, ZΘ
Alice Appell, AB
Lesley Apple, EΞ
Wilma Aquila, BN
Mary Leeper Archipley, BT
Carrie Norris Arden, E
Alison Miller Atrial, E
Laura Gausepohl Arlinghaus, KB
Margaret Rawson Arneson, Φ
Kathryn Owoc Arnold, ΘY
Teresa Arrandondo, ΔA
Elise Artelt, ΓA
Rozella Dillard Ashbaucher, BN
Marilyn Ashley, EE
Virginia Smith Attwood, BP
Janet Stryker Aulse, K
Cornelia Jones Babecek, AA
Diane Petherston Babecek, ΔY
Leona Russell Babyak, Θ
Elsa Jane Baer, A
Carol Pettey Baerman, EX
Elsie Kuck Bailey, AO
Coy McCoy Baker, AE
Nancy Conner Baker, EE
Betty Rhoades Baldridge, A
Sharon Sutton Baldwin, ΓX
Ruth Young Ball, BN
Mary Ballengee, AΘ
W. Jane Keister Bals, N
Deloris Meier Bandel, BT
Maryanne Bange Zumda, IZ
Maryella Clark Banks, X
Muriel Curran Bannan, K

Marlowe Zoberski Baranowski, ZB
Terry Kay Bargar, AA
Ruby Pitt Barham, ΔX
Kathryn Daniels Barker, ΔA
Elizabeth Chase Barnes, AK
June Shepherdson Barnhill, Γ
Ann Cline Barr, AT
Olive Barr, BΘ
Evelyn Engbarth Barrett, EM
Sheila Barrett, IT
Waltraut Barsuhn, ΘP
Mary Lou McConaughy Barth, A
Stephanie Bass, AP
Marjorie Hedges Bastin, AΘ
Carolyn House Bateman, ΓZ
Denise Stacha Beakey, ΔE
Betty Harrover Beasley, ΔO
Brenda Beatty, EΦ
Judith Nelson Beaver, AΓ
Gail Schmidt Beck, BΓ
Jane Derieux Beck, AA
Imogene Beckemeyer, ΓΩ
Maxine Scherrer Beckerich, AN
Marion Strong Beckett, ΓE
Virginia Kluth Beggs, T
Lisa Beil, AΘ
Phoebe Welsheimer Bell, A
Hedwig Heinemann Belz, ΔA
Karyn Benchoff, EK
Valorie Lewis Bender, IT
Janis Olson Bennett, ΓP
Gail Smith Benson, Y
Geraldine Wohlfeil Benton, BT
Edith Fidler Bentz, ΓX
Kathryn Weber Berckman, AΘ
Barbara Baxter Beres, AB
Jacqueline Berger, AB
Rose Pearce Bergeron, E
Thelma Crandall Bergquist, EΘ
Jill Bergstrom, I
Doris Oestreich Berkey, ΓA
Barbara Browne Bernard, Y
Lorraine Wolf Berry, M
Sherry Meyers Berry, ZZ
Carol Selway Bertz, Θ
Jan Collins Best, ZΠ
Elsie Yates Bethard, M
Sandra Betz, EΩ
Louise Wadley Bianchi, AY
Dora Geiger Bice, AΦ
Verna Wander Bierschwale, AT
Lois Akerstrom Binkley, A
Patricia Hopp Blackburn, ΓX

Lillian Dougherty Blackwelder, ΔE
Virginia Shepherd Blanton, AY
Helen Calvert Bliss, AA
Lori Block, EO
Doris Voigts Bloom, M
Ginger Bobo, AΓ
Barbara Bodell, BP
Julia Moore Bodenhamer, ZP
Hilda Mahder Boehler, Θ
Pauline Baggett Bogart, AΓ
Jane Ashelman Boger, BX
Norma Boggan, AY
Caroline Ortnan Bohan, I
Bette Jean Boline, ΘM
Francella Seeley Bolte, A
Bonita Neese Bondurant, E
Irma Lorentz Bong, N
Doris Snow Bonn, FK
Karen Joyce Bononici, AA
Loretta Wales Bonsall, ZN
Joan R. Hollingsworth Borders, E
Sandra Heuer Borello, I
Renette S. Yoder Borton, E
Betty Bosse, EH
Sheila Marie Troups Boudreaux, KA
Sara Goodman Bounds, ΔY
Karen Elaine Bowden, AΠ
Phyllis Plog Bowerfind, BN
Gerry Shunkwiler Bowman, A
Sandrena Rooks Boyd, IT
Wilma Goodman Boyd, E
Caroline Karel Boyer, T
Eunice Felter Boyer, Π
Karen Madeline Boykin, AΓ
Cheryl Renee Bradley, ΓA
Alison Marie Brady, ZP
Sharon McKay Brahmmbhatt, IE
Eve Thompson Brake, I
Karen Baurle Brammer, ΓX
Barbara Hosley Brana, BΠ
Mary Rickard Brandman, ΘT
Blanche Price Branscomb, AΓ
Geraldine Gehrke Branstetter, ΔE
Charlotte Rugel Brantley, AT
Martha Norstrum Bray, I
Sherry Ann Brazda, X
Alvina Hefeli Breckel, AK
Kristen Anderson Breedon, KZ
Elsa Moser Brenner, Y
Lucille Tigges Brenner, BK
Laura Brewitt, K
Ann Bridgeman, ΔY
Aletheia Osburn Brill, AΓ

(Collegiate Chapter Gifts)

Auburn University-BE



Austin (Texas) alumnae chapter's Debbie Donathan Price, Texas-AT, and Carrie Gass Armstrong, Texas A&M- EA, present a check from the proceeds of their Charity Shoot-Out to Vaughn House's Marilyn Mofett (center). Vaughn House is a workshop teaching deaf, multihandicapped adults the necessary vocational and independent living skills so they may live and work in the community.

Isabel Brinkman, T
Judy Tuminiella Brochetti, EΘ
Cynthia Rowland Brockmeier, EE
Roberta Ashelman Brokaw, BX
Martha Hood Bromley, AX
Belle Calvert Brooks, AE
Diane Marie Brown, O
Marilyn Leiss Brown, A
Tracy Anne Brown, AE
Viola Husband Brown, ΦB
Vivian N. Brown, AB
Hetty Brownlee, FA
Marion Richardson Broyles, AX
Gemma L. Brueggemann, AE
Melissa Ann Brundjar, AE
Patricia Heintz Bryant, EE
Laura Evans Buck, BK
Jill Hall Buckmaster, BK
Carol McAllister Buerger, E
Carolyn Ann Buesser, IK
Lisa Susan Bufalini, EX
Barbara Davis Buffington, BK
Myra Ball Bugbee, KΘ
Kim Suzanne Buih, AA
Beth McCurdy Bukar, AA
Loretta Davis Bulgerin, IZ
Eleanor Ramlow Bullen, AH
Eileen Carol Bunch, AH
Nancee Smith Burbank, BT
Ruth Anderson Burgess, K
Melissa Kennedy Burke, FB
Sally Rolke Burke, T
Gail Brook Burket, AB
Dolores Street Burkhardt, IΘ
Margo Ann Maier Burkhardt, AP
Janice Smith Burnett, AE
Elizabeth Erwin Burnside, AB
Jean Rump Bursik, ΘH
Beatrice Beck Burton, A
Faye Allred Burton, ZE
Lori Lee Busby, AT
Sara Rosier Bush, Σ
Pamela Jane Butefski, AT
Dorothy Ringenbach Buxton, E
Elizabeth Stone Byers, ET
Laura Michelle Byrne, E
Susan Gibson Calabro, ΔΔ
Edyth Holt Caldwell, AB
Lynn Cross Caldwell, FA
Janelle Repair Callaway, AI

Cecile Hackmeier Calvi, M
Lee Kronk Calvin, IX
Eleanore Adeline Cammack, Δ
Lauren Marie Davis Campbell, IY
Robin Elaine Campbell, AE
Sandra Smith Campbell, AI
Virginia Davis Campbell, EI
Wendy Knight Campbell, AK
Ann Elizabeth Cannaverde, KE
Linda Kesler Canovai, ΘI
Lois Seymour Canzoneri, IO
Callie Len Caraway, EN
Kathleen Louise Carey, ZB
Helen Zomzely Carlberg, BΘ
Kathleen Carmichael, AΩ
Juanita Carnelley, E
Melanie Carr, EE
Ruth Boteler Carr, BM
Anne Jablonski Carrasquillo, BT
Christie Sue Carroll, BI
Nancy Lynn Carroll, EI
Tricia Marie Carroll, FO
Elizabeth Maynard Carson, FA
Judith Saunders Carson, BA
Andra Berger Carter, FA
Carolyn Oakleaf Cartwright, IT
Phyllis Prindle Carvalho, M
Susan Elaine Cashion, AI
Karen Krajci Casten, ΘΘ
Mary Anne Dorland Castro, AI
Karin Jean Catania, AP
Kristen Marie Catto, A
Loto Greenlee Caviness, ΘI
Jennifer Wiggins Cels, BN
Muriel Gray Cerf, A
Adeline Rinas Cervac, FK
Thea Schwartz Chambers, IY
Mary Zelfuff Chandler, Δ
Daisy Ernst Chapman, T
Dorothy Goodman Chapman, EI
Lynn Marie Purdy Chapman, Ω
Donna Bunting Chastain, E
Alice Walton Chayes, AΣ
Iva Cheney, AK
Diane Chernin, AA
Flo Juzeter Cherry, AN
Chia Chia Chien, EZ
Edna Lang Chilton, BI
Judith Dallaric Christian, BP
Ann Doyle Christmann, ZY

Phyllis Dupouy Church, E
Violet Schneider Cianciotto, O
Michelle M. Ciarrochi, IP
Judith Watson Cimaglio, IP
Lisa Shaw Cipolone, EK
Barbara Messer Clark, AΔ
Helga Kohlenberg Clark, M
Kathryn Clark, AN
Kimberly Ann Clark, EB
Peggy Zeringue Chause, Σ
Agnes Lee Clawson, BA
Donna Lynn Clawson, BX
Marilyn Lawson Clayton, IP
Carmin Nannetta Cleavenger, IZ
Alice E. Clegg, AX
Geneva E. Clemans, A
Jeanne Ellen Clifford, IZ
Linda Hall Cline, IHI
Dora Kriechbaum Clouston, FK
Lois Walker Coates, AI
Elizabeth Ann Cochran, AI
Helen Wood Cole, AI
Shelvie Bell Cole, EO
Regina Kathleen Coleman, EE
Carol Lynn Colgin, KT
Joan Gerpeide Colgren, ZΩ
Jan Michelle Collins, A
Joni Louise Collins, ZK
Lucile Dial Collins, AI
Rebecca Hartner Collins, EP
Barbara Bondy Collison, EE
Michele Maire Coneys, ΔB
Jean E. Schneider Connell, Φ
Harriet Lucile Conner, AA
Pamela Dunn Connolly, FA
Marian Conrad, AB
Marjorie Matthews Conrad, AH
Audrey Gates Convery, EΦ
Marjorie Biggart Cook, BB
Patricia Herbert Cook, AT
Renee Scheidel Cook, IY
Virginia Anne Cook, KA
Lucile Crowell Cooks, A
Callie Washburn Cool, Σ
Donna Mae Coolidge, ΘΘ
Dorothy Delavan Coon, AI
Carrie Danielle Cooper, KM
Jane Anne Cooper, IP
Margaret Aldrich Cooper, BT
Debra Moore Cordell, Σ

Lucille Lee Corey, K
Jeanette Ash Cornell, AP
Janet Curry Cornwell, AE
Gwen Lehman Cotabish, A
Lisa Kay Couch, IA
Barbara L. Coughlin, OF
Heidi Elizabeth Cousino, ITI
Betty V. Covill, AΔ
Kathy Lynne Cowart, IN
Harriet Wilson Craig, ΦB
Margaret French Cramer, AI
Marilyn Crandall, BA
Dorothy Harridge Crane, AA
Rhonda Hill Crane, AE
Gladys Shewring Creager, A
Pamela McClure Cronenwett, AA
Esther Pearl Cronkwhite, II
Dorothy Galloway Crooks, IY
Demisha Lynn Cropp, EM
MaryLou Shorten Cabbage, EZ
Sandra Michelle Cugier, EΩ
Jacqueline Sessa Cugliari, AΦ
Mary Cumming, FK
Tracy Shuster Cummings, ΘY
Frances Stone Cummings, E
Marie Anne Cunningham, AT
Alberta Doran Curran, ET
Megan Curran, AB
Dorothy Calder Curry, N
Josephine Rodgers Curtis, BI
Maridee Smock Cutter, IX
Ellen Ruth D'Andrea, IB
Jacqueline Maria D'Aquino, EPI
Janet Kathleen Dagley, KΘ
Gwendolyn Fillman Dahlquist, BT
Joanne Cobb Dailey, K
Christie Dannette Dale, AK
Ruth Haysman Daly, A
Nancy Feller Dambrosio, FA
Mona Campbell Damhorst, Σ
Catherine Anne Dandurand, AE
Susan Kracht Dane, I
Katherine Otto Danforth, ΔK
LouAnn Kemp Daniel, ET
Hope Hodgkin Daniels, M
Alice Erickson Danielson, X
Ruth Elizabeth Datz, IY
Gertrude Kromer Daugherty, O
Helen Cumming Davies, BΘ
Arlene Alexander Davis, BΦ
Deborah Stealey Davis, EI
Donna Levie Davis, AY
Doris Savage Davis, AI
Florence Kreiter Davis, BΘ
Irene Morrison Davis, ΦB
Katherine Clark Davis, FA
Kimberly Ann Davis, IY
Lorraine Smith Davis, A
Naomi Wells Davis, AI
Sammy Ducote Davis, Σ
Susan Woodruff Davis, AΣ
Johanna M. Dawes, AX
Donna Marcis Dawson, IT
Mary Bruce Daily Dawson, AΘ
Dorothy Hauselman Day, A
Fiona McLatchie DeBartolo, EK
Mary Tucker DeCoursey, AB
Kay Waterhouse DeKraay, AA
Teresa Lyn DePew, EE
Meggin L. DeRiemer, ZE
Alice Christopher DeSmet, M
Jill Meyer DeStefano, AI
Jane Johnson Deakynne, Δ
Susanne Deale, AE
Ruth Quaerna Deegan, EK
Lois Read Defenbau, IP
Barbara Padgett Dein, IA
Rita Larson Deines, BE
Renee Marie DellaBadia, AT
Georgann Veeder Delling, BN
Maxine Cates Dellinger, AΘ
Susan Mabree Demichiei, IT
Lisa Ann Demko, AT
Inez Cummins Wood Denesen, I
Anita Elaine Denney-Kays, EB
Gladys Nelson Denton, AA
Sandra Rogers Depompa, EF
Caroline Derbin, IT
Kelly Marie Detwiler, ΔA
April Garcia Devers, IY
Helen Long Devitt, IT
Dawn Louisa DiDonato, OB
Diana G. DiMeo, EZ

Mary Misak Diamond, ΔX
Sheryl Diaz McClanahan, AE
Iris Lapa Dicks, ITN
Vicki Lynn Dickson, ΘY
Lia Sundling Diderer, FA
Shirley Crial Dillon, K
Lynne Ellen Dodson, AI
Helen Clark Doerr, M
Betty Gillespie Dolan, K
Pauline Gumz Dolerhie, E
Mindie Gold Dolinko, IP
Donna Zuliani Dolinski, EE
Loretta Prete Domke, IP
Gertrude Jenkins Donahue, O
Ruth Bohn Doninger, AA
Ruth Kaufman Donk, ΔX
Clarissa Bogart Donnelly, AB
Carmela Joan Donohoe, I
Lisa Ann Dorrough, AE
Marlo Lee Dorsey, EΦ
Dorothy Shekey Dosse, T
Cathy Huckaby Dougherty, IN
Donna Doughty, AA
Ann Hinton Dowdell, AY
Zelma McKewen Dowdley, AII
Jane Weaver Downing, AK
Mary Adams Doring, A
Shirley Houser Downing, IT
Veronica Bauer Doyle, IY
Carol Hutton Dragoo, BΣ
Beverly Joyce Drain, FA
Verna Jensen Draper, K
Margaret Walker Drath, FK
Mary Moran Dreiling, IT
Joann Lynn Drobonick, ZE
Karen Marie Duclos, IΘ
Gladys Justine Dueringer, AA
Julia Evelyn Dueringer, AA
Mary Mills Dumaw, BP
Mae-Mae Wellons Dunagan, BA
Donna Hudson Dunn, IY
Paulene Marguerite Dunn, AY
Ann Courtright Dunnington, AΔ
Dorothy Hartley Durall, AX
Doris Dillon Durham, AE
Phyllis Wehrle Durrieu, IT
Christina Anne Durr, EP
Mary Barbara Dute-Hart, A
Janice Lawton Dwyer, BA
Ruth Schmidt Dyar, IZ
Helen Ludwig Dye, ΦB
Darlene Schwer Dymerski, AB
Martha Jackson Eddy, ZP
Dorothy Curtis Early, AX
Mary Hoover Eastwood, I
Vera Mills Eckert, EΩ
Alaia Ostrum Eckhardt, X
Claire Gaskell Eddins, IY
Amy Elizabeth Edelson, BA
Ann Goodney Edenfield, ZΩ
Helen Jacobsen Edelman, I
Denise Hope Egelston, IΦ
Ardis Homer Ehas, A
Cynthia Shoberg Eidson, ZE
Hazel Kraft Eilers, T
Lesta Bedrosian Elkizian, EE
Margaret Miller Elder, Δ
Carolyn Crispi Ellington, EA
Elizabeth Archer Elliott, AP
Ruth Schustek Elliott, II
Carlyle Ellis, EE
Viola Naibert Elsenbast, I
Ada Morlock Emme, BT
Marjorie Mailand Engels, I
Kelly Suzanne Engelbert, AI
Erika Elizabeth Erfum Erich, I
Marcella Wolfe Erickson, EK
Mary Clearwaters Eriksen, Δ
Kimberly Ann Ess, ZB
Bettye Waites Estes, BE
Alice Hinz Etscorn, BI
Gertrude Jansson Etzler, AH
Maria Verna Evangelista, AA
Anna Marie Evans, E
Gayle Margaret Evans, KY
Jane Crabb Evans, AI
Katherine Walker Evans, AI
Katherine Zehring Evans, BX
Lucia Certoma Evans, AX
Naidene Lybecker Evans, ΔX
Susan Selders Evans, II
Vickie Stotts Evans, EM
Lori Cioletti Ewell, AE

Helen Wood Fackrell, BZ
 Virginia Osborn Fagg, ØB
 Beverly Anne Falkner, A
 Ednamay Fasano, Ψ
 Carol Demos Faulkner, Ø
 Thelma Wall Faux, ΓA
 Myra Brieve Fead, ITI
 Patricia K. Fehl, Δ
 Betty Billingsley Fehrman, Δ
 Jennifer Ann Feldman, KM
 Margaret Moore Felton, O
 Minnie Gibb Fenenga, K
 Betty Schneider Fenton, Σ
 Mary Laganas Fera, AX
 Beverly Acklam Ferguson, EK
 Geraldine Jandos Ferguson, A
 Julia Holbrook Ferguson, ΔY
 Ruth Rothenburger Ferguson, ITI
 Susan Hein Feuerherm, EK
 Marianne Shepherd Fields, Ω
 Beth Susan Fifield, EP
 Marjorie Kanouse Fink, ΔΣ
 Lahna Sue Smith Fischer, AØ
 Rena Cassidy Fisher, ØB
 Vickie Paula Fishman, AI
 Judith Patton Fisk, ΓΣ
 Jeanette Hidy Fitton, A
 Venita Fenton Fitzgerald, ØB
 Bonnie Norman Fitzpatrick, ΔΔ
 Patricia Ann Fitzpatrick, ΔØ
 Mary Kathleen Flanagan, ΔΣ
 Joan Wiedenbein Flannery, Σ
 Anita Barrock Fleisch, ØH
 Lisa Beth Bugg Flint, ΔΣ
 Carolyn Castello Flood, EE
 Margaret Mary Payne Fogg, BΔ
 Roxanne Betker Fons, EK
 Anne Bonham Foote, AΣ
 Matilda Frank Forbes, BΩ
 Laura Kathleen Foreman, Ø
 Chloe Stairs Forrest, BT
 Lillian Gorder Forschner, Y
 Judith Ann Forsythe, ZE
 Juddie Knox Fortson, BΔ
 Brenda Liles Foshee, BE
 Helen Hannon Foster, ΔA
 Lisa Lynne Foster, AΣ
 Mary Helen Larkins Foster, E
 Lucille Radke Fostvedt, Y
 Queta Brenner Fouke, AA
 Jane Margaret Fowler, ΓB
 Janet Railsback Fraembs, ΓN
 Lisbeth Innis Francis, Ψ
 Michelle Renee Franklin, K
 Jacqueline H. Frawley, A
 Dorothy Spence Fray, Σ
 Kathleen G. Frazee, EZ
 Wilma Eddings Frazier, ΓΩ
 Alice Graeber Frederick, M
 Ruth Hammerstrom Fredrich, T
 Joan Free Johnson, EΔ
 Edith Walter Frees, AZ
 Mary Gallatin French, AE
 Dorothy Carol Frese, ΓA
 Sandra Shawver Ficke, ØB
 Dora Marie Fiedel, EH
 Helen Hunter Frisch, T
 Diane Wilkinson Frissell, ITI
 Inez White Fritze, N
 Marion Louise Fry, B
 Phyllis Stewart Frye, E
 Catherine Lentz Fryer, IY
 Margaret Conner Fuhr, Ω
 Virginia Leafstone Fuhrmeister, BK
 Beatrice Card Fulcher, ØB
 Carol Waltzek Gaare, EO
 Debra Ann Gabriele, IK
 Karen Marie Gadaai, ZP
 Audrey Agnes Gaerlan, AX
 Laura McCarthy Gagnon, BA
 Lenora Porter Galbreath, ΓA
 Bernice Barker Gale, ΔØ
 Lisa A. Gale, A
 Christine Sorensen Gallagher, BI
 Ada Dunning Gamble, ΔY
 Donna Roberts Gardinier, ΓK
 Shannon Kay Gardner, ΓK
 Mildred Stetzer Garlock, T
 Barbara Ellen Garman, ØZ
 Leigh Embley Garmon, AF
 Amy Lohrke Garrett, BX
 Sharon Garrett, ΔI
 Jane Buck Garrison, M

Ferne Sparks Gasaway, AB
 Maureen Marsan Gastonguay, ΓB
 Barbara Bankson Gates, AI
 Susan Shane Gates, AI
 Lois Wanous Gaugler, ΓK
 Valerie Jean Geissler, EI
 Erna Fruholz Gellman, AX
 Meredith Scholten Gentry, BT
 Carolyn Camozzi George, M
 Dolly Terzis George, AB
 Kathleen Mary Geosits, Ø
 Amy Eleanor Gerson, AI
 Celeste Constantino Giantsos, ITI
 Camille Branham Gibbs, AB
 Marie Gilbert Gieseke, AA
 Kimberly Donselman Giesting, IX
 Tammy Sue Gilbert, ITI
 Ann Collins Gill, ΓB
 Ellean Fargher Gillam, Ω
 Doris Jansen Gillespie, K
 Deanne Beth Gizoli, ΓA
 Margaret E. Gladden, BΔ
 Cheryl Smith Glasgow, ZE
 Dorothy Ryan Glass, BØ
 Misty McMullen Glass, AN
 Robin Sue Glassman, EK
 Amy Kathleen Glatthaar, EB
 Andrea Hilsman Glenn, ΔΔ
 Barbara Glerum, ΔY
 Virginia Pearce Glick, A
 Pamela Fielhauer Gluski, ZΩ
 Christina Marie Glynn, Δ
 Lillian Kubesch Gohlke, ZØ
 Betty Benefield Goldthwait, BØ
 Alison Lynn Gonder, EI
 Elizabeth Dallman Gonia, EK
 Sherry Lee Gonzalez, KM
 Kathryn A. Good, ΓY
 Kay Harold Goodall, ZΩ
 Anne Stubenrauch Goodell, T
 Katherine Forderhase Goodman, ΔX
 Martha Houghton Goodwin, AY
 Carey Dawn Gorden, Ø
 Inez Burgess Gordon, AI
 Robin Heilbrunn Gordon, AA
 Lois Gutenkunst Gore, ΔΓ
 Koreen Louise Gorton, ITI
 Claire Leader Goss, ΓB
 Paula Distler Gottdiner, AØ
 Dorothy Dietrich Graab, AA
 Gwendolyn Bowman Gracie, Ψ
 Carrie Stickels Grafton, K
 Celinda Young Graham, ΔI
 Helen Johnson Graham, N
 Nancy Foster Gaumlich, AØ
 Verna Pelter Graybill, ΔO
 Shawna Alene Green, AA
 Virginia Claire Green, BØ
 Wendy Anne Greene, AX
 Sarah Steere Greenhalgh, BA
 Linda White Greenwood, II
 Eleanor Bakosh Gregorich, M
 Betty Goad Gregory, ΔΣ
 Marguerite Russell Gregory, I
 Clara Plasil Greike, ΓP
 Cath Casselman Grenhart, BØ
 Edith Olsen Griffin, ITI
 Jacqueline Ward Griffin, AI
 Marjorie Ingram Griffin, ΓN
 Martha Hammerschm Griffin, N
 Dorothy Allen Griffith, I
 Winifred North Grobbel, ΓY
 Georgette Czekarski Grossman, ΓB
 Kathryn Fiscus Groves, ΓΣ
 Elizabeth McCarron Gruber, AB
 Cornelia Anne Gruitza, ZK
 Benia Filipczyk Grygent, IF
 Diane Fellos Guild, Δ
 Irene F. Pollett Gulbran, AK
 Gail Austin Gulino, BA
 Carolyn Hatcher Gundel, BE
 Jean Danner Gurucharri, ΔΔ
 Judith Beaver Guthrie, ITI
 Lara Alice Gutierrez, AF
 S. Candare Guyther, AØ
 Beverly Ann Haas, I
 Dorothy E. L. Haas, AH
 Jennifer Lynn Haas, BA
 V. June Haas, P
 Judith Seeber Habert, Σ
 Barbara Joy Hackett, BA
 Nancy Jones Hackett, ΔX



Members of Iota Iota chapter at Middle Tennessee raise over \$1,100 for Gallaudet University and a local deaf student at a road block.

Shirley Ashton Haertjens, AB
 Marsha Morse Haffey, A
 Susan Schacht Hagaman, Δ
 Elizabeth Peckenpaugh Hagan, AB
 Elaine MacArthur Hagerman, ITI
 Margaret Steninger Haggarty, ITI
 Sue Krueger Hagman, ZΩ
 Edwina Colville Hagstrom, BΩ
 Thelma Davis Hahn, ΓK
 Donald Hamilton Haight, Y
 Beatrice Nix Haines, BØ
 Dorothy Brown Haines, A
 Marjorie Smith Haines, EE
 Helen Newton Haley, AΣ
 Mary Lavin Halfpenny, AB
 Donna Lee Hall, AI
 Frances Sodaro Hall, BΩ
 Gail Hall, EΔ
 Gina Geldbach Hall, IØ
 Julie Ann Bates Hall, AX
 Mabelle Dacotah Hall, Δ
 Naoma Ericson Hall, O
 Jean Margaret Halliday, ØΣ
 Vera Hallinger, BΩ
 Nancy M. Hallman, ΓA
 Janice Kay Halpin, AØ
 Barbara Kirsch Hamilton, Ω
 Phyllis Nordaker Hamilton, BK
 Susan Owens Hamilton, BE
 Jennifer Hammon, EZ
 Margaret Wesley Hammon, Ø
 Judy Ann Hammond, ΔA
 Susan Scott Hamon, AY
 Denise Gage Hampshire, KZ
 Ann Mallory Hancock, ET
 Mary Hilty Handerson, AP
 Manthilde Leonard Hanning, AZ
 Marilyn Ousdahl Hansen, BK
 Mary Nebel Hansen, ZN
 Sharon Garner Hardern, Δ
 Stacy Michael Hardigree, ZI
 Florence Marie Harding, AB
 Shirley Ditzig Hardisty, EO
 Lucille Shafer Haring, AA
 Malory Thomas Haring, BI
 Donna May Harmount, Ø
 Charlotte Hoyne Harper, A
 Jennifer Evans Beasley Harper, AE
 Holly Kirsten Harris, ZP
 Tonya Paige Harris, ΔΔ
 Kathryn Troll Hart, Ø
 Alice Tate Hartman, N
 Ann Gentry Hartman, ΔA
 Joan LaLiberte Hartman, BP
 Cynthia Harvey-Brown, ΓΩ

Gail Schindler Hastings, EØ
 Mary Swanson Hastings, Γ
 Carola Rowling Haugen, Ω
 Linda Southard Hawkins, AB
 Donna Buttrum Hawley, BP
 Eleanor Moser Hays, BQ
 Harriet Marie Hazinski, T
 Mary Kate Heard, BB
 Kathi Bray Heatherly, EY
 Virgene Smith Heckman, Ø
 Carmen Nicolini Heer, ΔA
 Sherri Jeanne Hefty, EΩ
 Geneva Clemens Heifner, A
 Marian Parman Heischman, A
 Liane Ruth Heisohn, IE
 Mary Elizabeth Colla Helmers, EA
 Dana Gail Windsor Helton, ZØ
 Kristina Kay Helzer, IP
 Florence Anderson Hemberger, Z
 Joyce Babeck Hemphill, IE
 Amy Martine Henderson, AI
 Joyce Garon Hendricks, ITI
 Leigh Bittick Hendricks, ØE
 Sue Lovelady Hendricks, IE
 Elizabeth Davies Henkel, BA
 Jean Allen Henkle, ITI
 Brenda Kay Henley, AΣ
 Mary Teresa Hennessy, Y
 Cheryl Boyd Henricksen, ITI
 Melissa Lewis Henricksen, AA
 Patricia Mattie Henry, IP
 Beth Cudd Henson, AΣ
 Helen Ebert Herbert, BΩ
 Carmen Lourdes Hernandez, ZØ
 Janice Cook Herrmann, A
 Patricia Bruns Herzog, A
 Mildred Curran Hickel, ΓA
 Helen McLachlan Hicks, I
 Isabel Brennan Higgins, ΓB
 Kelli Anne Higgins, EP
 Jean Hight, ØB
 Cindy Ann Rice Hileman, ΓA
 Marjorie Durkee Hilton, AX
 Amy Melisa Hinds, AI
 Virginia Olson Hinman, ΓB
 Jean Coon Hinton, ITN
 Dorothy Block Hinxman, AK
 Loretta Cunningham Hipp, AA
 Elizabeth Townsend Hirsch, BA
 Dorothy Lyvere Hitchcock, M
 Tracie Lynn Hitchner, KY
 Harriett Spies Hittinger, Σ
 Almeda Durham Hittle, BΣ
 Dana Anne Hladky, Σ
 Barbara Vanhorne Hoag, ZA

Faith Beckett Hobart, AB
 Kathleen Elizabeth Hodges, Σ
 Lynnda Wolf Hoefler, ΓK
 Mary Poor Hoffer, ØB
 Cheryl Burlingame Hoffman, ΔY
 Irene Olson Hoffman, AB
 Carolyn Zabel Hoffmann, BT
 Vicki McDonald Hogan, Σ
 Mary Nelson Hogg, Ψ
 Ladonna Cox Hoinash, E
 Elizabeth B. Hoklas, Γ
 Nancy Jones Holliman, AT
 Karma Holt Hollingshead, BZ
 Rebecca Knowlton Holloway, IT
 Sharon Sossamon Holloway, ΔØ
 Marion Falkner Holt, AZ
 Tia Linn Craig Holt, EA
 Patricia Ann Holtz, KB
 Cheryl Anne Homich, IA
 Diane Elaine Honecker, ØY
 Lee Wallenstein Hoover, BN
 Ruth Reynolds Hoover, IX
 Carrie Samson Hopkins, ØA
 Ethel Biddlecombe Hopkins, ØB
 Ruth Heller Horton, Δ
 Leslie Victoria House, ΣΣ
 Marjorie Johnson Houser, ΔA
 Elaine Powell Howell, KZ
 Patricia Massie Howell, AØ
 Sarah Badger Howley, A
 Chlo Gragny Hubbard, BE
 Donna Lynn Huch, EM
 Lillian Dean Huffstetler, K
 Marcy Cole Huffstetler, AΣ
 Betty Jo Jackson Hughes, BT
 Sarah Ann Hughes, BK
 Wanda Mansfield Hughes, IX
 Esther Allen Hulst, AK
 Nancy Ann Hatfield Hummers, A
 Marcia Earl Humpal, ΓA
 Diane Schaefer Humphrey, AA
 Therese Anne Humphrey, ØØ
 Tommie Morgan Humphrey, ΔΓ
 Stacie Comeaux Humphreys, Σ
 Joan Safley Humerwadel, BK
 Elizabeth Shingler Hunt, AΣ
 Josephine Roberts Hunt, AK
 Judith Fraley Hunter, IX
 Juanita Wright Hunzinger, AX
 Kathleen Tkach Huot, O
 Rowena Bennett Huribut, ΔM
 Joanne Fisher Hurley, M
 Janet Nauman Hurst, BK
 Emily Husbands, X
 Dorothy Rhine Husted, M

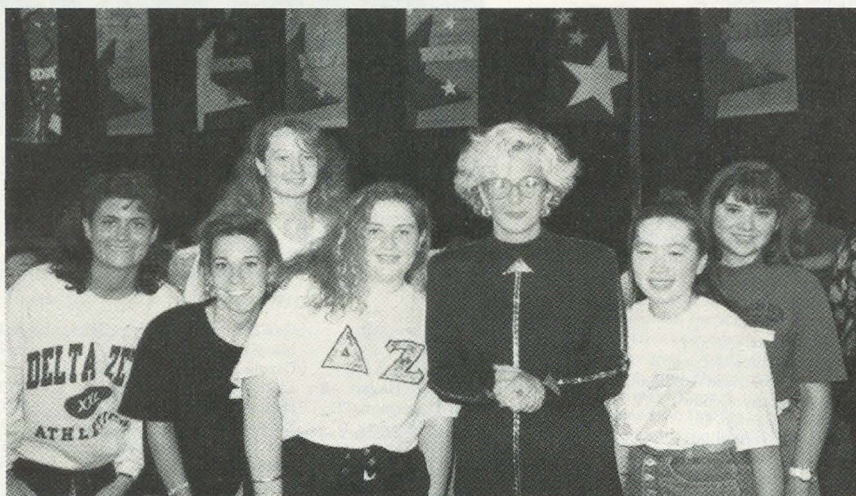
Katherine M. Hyde, BQ
 Mary Phillips Hyde, AO
 Dorothy Mabry Iddins, BA
 Karen Michele Imfeld, OB
 Carol Hannah Imlay, IO
 Karen Incudine, EK
 Vivien Magdalene Ingram, II
 Margaret Brown Irish, GK
 Fredna Tweedt Irvine, AX
 Sachi Ishii, FO
 Anne Ishler, E
 Barbara Cunningham Ivins, FP
 Donna Rose Iwamoto, IT
 Dorothy Niblack Jackson, BM
 Ellen Ackermann Jackson, AP
 Hazel Harmon Jackson, AO
 Helen Purington Jackson, BN
 Marlene Mitchell Jackson, P
 Thelma Logan Jackson, AO
 Arlene Harlow Jacobs, A
 Ruth Smith Jaenecke, AI
 Jean Thomsen Jalufka, AA
 Betty Jankovsky James, A
 Sallie Jane Barber Jameson, N
 Kelly Susan Janousek, ITI
 Helen Runkel Jansen, Z
 Charlotte Weigan Jaouen, BE
 Elaine Susan Lee Jeffers, OP
 Jerilyn Greathouse Jenkins, IE
 Esther Rhodes Jennings, P
 Juanita Lacy Jennings, AA
 Marla Jo Watson Jennings, EN
 Amy Lenmark Johnson, AN
 Ann Barron Johnson, Q
 Catherine Michels Johnson, BK
 Elva Cook Johnson, FA
 Frances Morrow Johnson, AF
 Janet Haines Johnson, P
 Julie Anderson Johnson, T
 Lillian Johnson, FA
 Michele Anne Johnson, AS
 Mildred Garrett Johnson, K
 Mona Maria Johnson, II
 Rose Mary Rommel Johnson, BT
 Ruth Johnson, IB
 Shirley Johnson, AS
 Uree Smith Johnson, AA
 Vivia Gambero Johnson, X
 Elizabeth Keyse Johnston, FA
 Sheena George Johnston, AX
 Barbara Furrer Johnstone, OA
 Jennifer Noel Greer Jolly, API
 Barbara Sue Jones, ON
 Cheryl Stanley Jones, AO
 Irene Bloom Jones, N
 Irene Brislaw Jones, FA
 Monta Stevenson Jones, Z
 Patricia Doran Jones, AX
 Sibyl Griffin Jordan, AE
 Jill Annette Jungertberg, ESQ
 Twila Justa-Papik, BT
 Veronica Jo Bayler Kafer, II
 Lynn Ann Karabochos, FO
 Judith Diane Karner, FP
 Mary Ruggeri Karren, BZ
 Jennifer Dudley Kauffmann, ZK
 Allison B. Kaufman, OK
 Colleen M. Kearns, I
 Geraldine Corbett Keely, ZK
 Hazel Downs Keeton, AA
 Frances Wilson Keith, AB
 Mary Beth Egan Keller, AI
 Carol Wingert Kelley, T
 Emily Vuilleumier Kelley, AZ
 Jane Duplantier Kelley, E
 Patricia Lynn Zorn Kelley, KX
 Nadene Wales Kemp, P
 Deanna Huffaker Kemper, FP
 Kathryn Schmid Kennedy, AP
 Sandra Berry Kennedy, E
 Lesa Michell Kerby, ZP
 Nicki Kappos Kerhulas, ZN
 Colette Bakken Kerlin, F
 Tara Denise Kern, KT
 Laura Jean Fisher Kerns, K
 Charlotte Hieber Keys, Q
 Louise Weishaar Kiefer, FA
 Joan Kathryn Kieffer, OO
 Juliana Phelps Kierstein, Y
 Camilla Dixon Kilgore, AS
 Linda Killan, ET
 Patricia Davis Kimbel, AF
 Elizabeth Lawrence Kimbro, EA

Suzanne Hayward Kimpton, BK
 Glenna Bryant Kinard, BA
 Anita Myers King, BT
 Janet Bush King, BE
 Nancy Thornley King, BA
 Rose Howard King, EF
 Elizabeth Pollard Kinsaul, AF
 Kathy Krueckeberg Kinsel, E
 Dorothy Pace Kinsfather, AS
 Audrey Blockson Kinzer, BB
 Dorothy Lone Kirby, AH
 Lois Thomas Kirk, AA
 Betty Bower Kirkpatrick, BT
 Joy Borden Kirkpatrick, ET
 Pamela Hill Kirthlink, BA
 Janelle Marie Kiszka, ITI
 Lois Rowland Klein, FB
 Lori Ann Klimaitis, FP
 Ruby McClure Kloss, A

Mabel Lackey, AP
 Nancy Greene Lackey, AF
 Karen Price Lacy, FY
 Annette Steel Ladd, AA
 Flossie Marie Lafond, AI
 Beatrice West Lafrenz, X
 Tiffany Lynn Lagalo, ITI
 Barbara Wire Lake, M
 Barbara Larson Lakin, AE
 Marjorie Raja Lamb, FA
 Vera Hecht Lambert, E
 Merry Lamond, IE
 Cynthia Anne Lance, BA
 Amy Landfield, IT
 Henrietta Saltsman Landwer, AB
 Elizabeth Anne Lane, AS
 Ann Elizabeth Langel, EQ
 Elsie Boemker Langenbach, EF
 Beverly Acher Langston, AS

Mary Luett Leone, BK
 Marie Gross Leppine, S
 Wendy Ann Lepper, AB
 Margaret Melka Lester, AE
 Joyce McDonough Lethbridge, BQ
 Mary Egan Lettis, FH
 Michelle Levere, OP
 Mindy Cheryl Levin, EI
 Carla Levy, E
 Frances Pickens Lewis, AF
 Monte Cole Hatcher Lewis, BI
 Sadye Rothholz Lewis, Z
 Dorothy Liebig, F
 Betty Baker Lieder, IS
 Helen Anderson Ligon, AY
 Lisa Michelle Lilley, EP
 Lona Conger Limpo, Z
 Imogene Steele Lindsay, K
 Jean Coleman Lisle, A

Fortuna Lopez Madden, AS
 Susan Sommers Mader, E
 Gertrude Therese Mahall, O
 Mary Cracraft Mains, AO
 Joyce Smith Majonos, BF
 Jeanette Marie Malaf, II
 Camilla Edith Malcolm, BA
 Elsie Milardo Malkin, IB
 Kari Lynne Mallory, AE
 Winifred Isham Malloy, K
 Mary Malone, AO
 Helen Prentiss Maltby, P
 Helen Mamarchev, AP
 Alicia McClean Mantrey, E
 Edith Johnson Mancari, EA
 Margo Moore Mancinelli, ZQ
 Katherine Chan Manlapas, ZE
 Sue Weems Mann, ZI
 Elizabeth Gardiner Manning, BE
 Sharon Hoffman Manning, AI
 Megan Rose Mansour, EB
 Mary Miner Manwaring, IX
 Laura Smith Mapes, AK
 JoAnn Slevin Marcinkoski, FK
 Kendra Lea Marcum, AY
 Hilda Anne Marino, OK
 Dorothy Gerbron Marks, IO
 Kristen Hoover Marone, IX
 Lila Miller Marquis, N
 Billie Jean Allen Marsh, AB
 Darlene Dent Marsh, AI
 Bonita Johnson Marshall, KB
 Janna Beinke Marshall, AB
 Pauline Hoeven Marshall, IE
 Shannon Rae Marshall, P
 Helen Martell, AA
 Bernice Cox Martin, AO
 Christine Mercedes Martin, BT
 Christine Renee Martin, KA
 Diane Paulette Ehn Martin, AX
 Elizabeth Lee Chapman Martin, E
 Sally Jane Martin, IT
 Stephanie Lynn Martin, AN
 Tammy Lucille Martin, EB
 Marianne Laton Martinson, FB
 Catherine Eastep Mason, AF
 Donna Jean Mason, AI
 Jane Weaver Mathes, AK
 Katherine Wetzel Matthews, ZE
 Leslie Muehlhauser Mauger, BX
 Vestia Mawe, Z
 Mary Stiarwalt Maxfield, AB
 Lucille Bolstad May, FB
 Tracey Lynn Mayer, AP
 Sheryl Keeran Mayes, AS
 Cynthia Thorson Maynard, AS
 Margaret Stewart McDonald, BE
 Mildred Hampton McAfee, O
 Marianne Mark McArtor, IT
 Nancy Knapp McCarty, AK
 Sally Mehner McCarty, AP
 Melissa Pate McCaslin, KF
 Marilyn Redden McClellan, F
 Edith McCollister, T
 Isabelle Beers McConnell, BO
 Ann Helmick McCook, AB
 Barbara Anne McCormick, T
 Mariann Walton McCormack, O
 Jorene Christenson McCowen, FO
 Amy Lett McCoy, BE
 Elizabeth Freeman McCoy, O
 Mary Logan McCullough, AS
 Shirley Klutz McDaniel, AA
 Marjorie Crawford McDorman, AF
 Mary Hicks McDougall, AE
 Louisa Wheeler McEachern, AF
 Phylis Baker McEwen, AE
 Janice Villamagna McFadden, ITI
 Mary Reinhold McFarland, E
 Lori Kleist Jean McGeoy, FA
 Ruth McChesney McGrath, GK
 Elizabeth Gilfoil McGuire, S
 Susan Claire McIntyre, ZO
 Carolyn Easley McKee, FN
 Helen Kendall McKee, M
 Eleanor Wycoff McKinn, AE
 Edith Darling McKinney, BK
 Jane Adams McKinney, AF
 Deanna Alleman McKinnon, AT
 Grace Hester McKnight, AX
 Dorothy Izant McLaughlin, FB
 Margaret Alice McLeish, T
 Ruth Wick McMillan, ZK



CSU/Los Angeles-OP members worked the MDA Telethon on Labor Day weekend in Los Angeles. Pictured with talk show hostess Sally Jessy Raphael are Carmen Garcia, Aimee Derderian, Agika Angyal, Cynthia Rodriguez, Chris Ocampo and Cindy Lozano.

Raida Paul Knapp, AX
 Michelle Polachek Knipple, AE
 Haysel Goetting Knisely, O
 Carol Jean Knoblauch, O
 Michelle Anne Koch, IY
 Jodi Lee Heinrich Koelker, AP
 Carolyn Rebecca Koerner, ZI
 J. Moore Koetsch, AO
 Gertrude Ramsay Kohl, A
 Alice Hoyt Konde, BP
 Karis Ambrosier Kopp, BT
 Constance L. Kopplin, AB
 Martha Selbert Kothe, E
 Ellen Reeb Kothman, O
 Carolyn Sue Kovacic, FN
 Mary Wood Krahulec, BF
 Debra Lynn Kralka, IV
 Evelyn Barr Kramer, AO
 Bessie Biddle Krause, AP
 Lois Ossman Krava, FA
 Kim Marie Krawczynszyn, IT
 Eleanore M. Moffett Kring, P
 Drusilla Raber Krockenberger, ET
 Elizabeth Jayne Krueger, ZA
 Julie Lynne Kruse, I
 Nancy Clarson Kruse, AZ
 Virginia Capuzzo Kruse, BQ
 Miriam Powell Kuenzel, O
 Patricia Shirley Kuncie, BX
 Ann Eastman Kunsch, ZK
 Mary Renee Kunz, I
 Laurel Marie Kurtz, AF
 Rose Beck Kutlenios, KE
 Shelly Renie LaBerto, KX
 Jean Taylor LaPointe, BI
 Esther Nordin LaRose, B

Nancy Coulter Langston, FA
 L. Asplund Laper, EK
 Jean Adair Larson, AB
 Susan Spearie Larson, A
 Joanne Dunn Larue, IT
 Treva Deann Davis Latham, EN
 Joan Lathouse, A
 Zerelda Rubush Lawlis, AN
 Marci Leann Lawrence, EE
 Margaret Ann Lawrence, ZA
 Margaret Pyle Laws, M
 Sandra Kaye Lawson, ZT
 Jane Blair Lay, AE
 Julie Kathrine LeFevre, IT
 Tracy Wilson LeSieur, AE
 Betsy Bradley Leach, AI
 Elizabeth Wittich Leach, BA
 Terese Scharton Leal, EE
 Margaret Rose Leap, A
 Marguerite Collier Leavy, A
 Louise Thurber Lee, BA
 Marjorie Young Lee, O
 Linda Angel Leedham, II
 Lori Ann Filby Leek, EP
 Kimberly Sue Leeper, GF
 Anna Lape Leferink, K
 Virginia Krause Lefever, O
 Mildred Pace Leggett, IA
 Jeannine Mullen Lehman, M
 Lucia Ragnone Lehman, ZN
 Helen Leik, K
 Jill Victoria Leis, A
 Kristin Levlis, IZ
 Barbara Lemke, N
 Audrey Bloomgren Leonard, F
 Laura Leonard, BK

Roberta Rabenhorst Litten, FO
 Arlene Schipski Little, IQ
 Susan Wischart Little, A
 Dorothy Davies Littrell, O
 Harriet Virginia Livingston, EP
 Jacqueline Gandy Livingston, AS
 Virginia Carpenter Livingston, AF
 Helen Hamblin Livingstone, AA
 Clare Ann Locascio, ZA
 Cheryl Slusher Lockton, EF
 Karen Kerner Lockyer, AB
 Donna Ralph Loeb, FK
 Lucile Kaufman Logan, AP
 Lynne Mayeux London, EB
 Carmaleta Hebblethwai Long, AK
 Hilda Sheets Long, AY
 Julie Stephens Longo, OK
 Helen Cady Longworth, AP
 Caroline Traulsen Loose, T
 Doris Seibert Loria, FB
 Debra Anne Lovecky, AS
 Elizabeth Mecklem Low, OF
 Cynthia Louise Lowman, ES
 Mabel Flaherty Loy, AO
 Alysa Mary Lucas, AP
 Marianne Mouser Lukan, A
 Louise Davis Lusk, K
 Frances Dorsett Lutz, FB
 Dorothy Lyons, AH
 Maxine Schumann Maas, M
 Kathleen Hayden MacDonald, AO
 Elizabeth Geiger MacIntosh, O
 Mildred Harris MacLean, AS
 Sarah Mancari MacLeod, AY
 Ruth Wagner MacMaster, A
 Celine P. Pitts Mack, BA

Ellen Kessler McNally, EE
 Ruth Trowbridge McNeil, K
 Vicki Sue Laughter McNeil, AT
 Helen Montpetit McRoberts, ZN
 Elsie Wheeler McTee, AT
 Hazel Tillery Meadows, OE
 Lynne Stoeber Megan, AM
 Velma Kay Reed Meinsma, EP
 Susie Stephens Meischen, AT
 Renee Lorraine Mello, FA
 LeeAnn Williford Meltzer, AE
 Monica Sue Mendez, KZ
 Mary Millemont Merrill, AE
 Mary Kay Messina, AE
 Donna Sue Wurzel Metcalfe, E
 Marie Bergman Metcalf, EE
 Christine Meyer, EE
 Marjorie Sipe Meyer, A
 Elizabeth Bergener Meyers, O
 Laurel Garnett Meyers, FN
 Diane Gray Meyenburg, AA
 Teresa Mullen Michalewicz, EX
 Dorothy Jackson Michener, AN
 Karen Eisenhauer Mickus, AE
 Mary Vanetten Mienheardt, A
 Lane Starz Miles, T
 Constance Belding Miller, AP
 Elaine Bowers Miller, BF
 Evelyn Thornber Miller, O
 Janet J. Miller, Y
 Judith R. Roberts Miller, AY
 Mary McGonagle Miller, K
 Rose Harrelson Miller, EM
 Ruth Bailey Miller, M
 Sarah Quincey Miller, AE
 Martha Ann Thomson Milliken, FA
 Sarah Simpson Mills, AY
 Ruth Milner, AA
 Janice Mawhinney Milstead, OE
 Suzanne Thornton Millstead, AO
 Suzanne Elizabeth Minnaugh, ZO
 Kathryn Casto Minnard, ZK
 Carolyn Goss Mitchell, ZP
 Shirley Waggoner Mixson, O
 Vesta J. Moden-Pratt, AO
 Dorothy Wilson Moeller, I
 Elaine Drake Mohr, X
 Ruth Blohm Mohr, GF
 Sharon Lee Moist, A
 Margaret Morris Monson, BE
 Maurine Finley Monteith, BA
 Therese Rose Mullin Montesi, OH
 Katherine Pucharich Montgomery, EI
 Carolyn Jane Moody, AY
 Elizabeth Goodman Moon, IA
 Diane Thompson Mooney, FA
 Carmen Martinez Moore, BY
 Cecilia Ann Moore, EE
 Edna Rinck Moore, E
 Eleanor DeWald Moore, EO
 Florence Henry Moore, K
 Geraldine Monnastes Moore, AX
 Louise May Moore, AD
 Paula Ott Moore, AO
 Stacie L. Ford Moore, AX
 Patricia Moorman, P
 Frances Sercelj Morel, FK
 Marian Morelock, AS
 Charabelle Langdon Morgan, A
 Edith Nichols Morris, ZP
 Jennifer Bogen Morrison, O
 Mavis Kratzke Morrison, O
 Victoria Jo Morrison, AF
 Dee Bove Morson, AX
 Betty Denise Musgrove, AK
 Michelle Rhea Mosher, ON
 Kathryn Winslow Mosier, FE
 Evelyn Nobles Moulton, AS
 Deborah Diane Mousel, EO
 Barbara Fritz Moyer, IP
 Jill Brandyn Muegge, AE
 Lynell Murphy Mueller, EH
 Bertha Louise Muller, M
 Patricia Walker Mulligan, FA
 Christina N. Mullin, AB
 Laron Parker Mullin, ZP
 Margaret Smith Mumma, FO
 Victoria Tacoma Murdock, AN
 Bernice Eckart Murphy, A
 Heather Elizabeth Murray, EP
 Margaret Ann Murray, AS
 Tamara Lee Murray, BA
 Lisa Ann Lovelace Musser, FK

Joy Lentz Mussler, AF
 Bessie Vance Myers, EE
 Sandra Harvey Myrick, FX
 Laurie Sue Nadler, AI
 Annette Fowler Nall, ZZ
 Jean Edwards Naughtrip, A
 Edna Will Nauman, AX
 Nancy Nauman, FX
 Dorothy E. Naumann, AK
 Ruth Sandifur Neely, FA
 Smith Smith Neely, X
 Maxine Dwiggins Neff, O
 Barbara Joyce Nelson, OZ
 Evelyn Ann Nelson, BA
 Ida Carter Nelson, OE
 Louise Nelson, AN
 Sharon Cleveland Nelson, IO
 Sherry Jean Nelson, AO
 Susan Smith Nesbit, AD
 Lois Randolph Nesgoda, F
 Arlene Class Nettekoven, F
 Marilyn Netzel, AA
 Mary Patricia Ward Neville, EE
 Dorothy Brown Newburg, AM
 Helen Daniels Newell, AB
 Terri Lynn Newell, GF
 Jeanne Schuller Newman, BE
 Jane Jones Nichols, FE
 Rosella Nichols, BX
 Maggie Archer Nickelson, ZO
 Sandra Ann Niedballa, EE
 Ruth Marie Nielander, F
 Ednaeyrl Mouden Nielsen, BT
 Jean Kelly Nielsen, AD
 Ruth Scott Noble, FK
 Susan Williams Noland, IN
 Barbara Barnes Norrell, AP
 Sarah Anne Norris, AA
 Margaret Fisher Northridge, F
 Judith Mercer Norton, BX
 Marie Newsom Norton, AF
 Joan Slater Noyes, AA
 Kelly Jo O'Connell, AX
 Terrie M. O'Connell, EO
 Kelly Murray O'Connor, EP
 Linda O'Decapua Connor, EO
 Jane A. Reid O'Halloran, FE
 Catherine Attanasio O'Hara, BA
 Marcy Jane Oberlin, FT
 Suzanne Carpenter Oberly, FT
 Regina Mooers Ockelmann, EE

Catherine Norris Odanovich, IA
 Louise Dillon Ode, AO
 Joann Scruby Oesch, E
 Elizabeth Marie Ohlman, E
 Cherie Phinney Olson, FA
 Jantje Mellema Olson, ZZ
 Deborah Sue Oman, ZZ
 Joyce Carlson Omer, EO
 Rosa Wilson Ondich, BM
 Mary Smith Oneth, AO
 Carol Tempa Opheim, F
 Kathleen Swanger Orchard, AE
 Mary Stone Orr, AF
 Ruth Phillips Orlenmaa, FA
 Lori Michelle Coolier Osborne, AO
 Doretta Kay Pugh Osborn, OE
 Julie Anne Otten, OH
 Margaret Byrne Outhouse, FO
 Carol Birney Owen, ZO
 Christy Hurless Owens, AP
 Nadine Nelson Owens, P
 Joanne Fortuna Pafume, ZA
 Kathleen Wenger Palermo, A
 Christina Louise Palma, AX
 Kathleen E. Peek, EO
 Rebecca Daily Peeples, AF
 Betty Obenour Pekare, FT
 Kathleen Crocker Pelt, AE
 Evelyn Penberthy, AA
 Emily Pendleton, AY
 Martha Kowitz Pendleton, T
 Christine Renee Peraza, ZP
 Barbara Sue Palmer, KO
 Beverly Markle Palmer, N
 Nathalie Marie Palmer, AN
 Shirley Derousse Palmer, K
 Lynn C. Palumbo, EK
 Candace Collins Beaumler Pardee, BI
 Lora Rebecca Parker, O
 Alice Graham Parkinson, M
 Ethel Stromme Parks, IA
 Kimberly Kay Mills Parks, EM
 Melissa Sue Parks, BE
 Sara Rhoads Parks, AT
 Lois Hobbs Parnell, AB
 Julie Elizabeth Parrish, AN
 Karen Hawkins Parsons, ZP
 Kevin Alicia Pascual, FK
 Ruth Lundgren Pasley, X
 Paula Jean Passmore, AF
 Gretchen Schmidt Patterson, X

Ruth Weider Patterson, BX
 Sandra Smith Patterson, AF
 Shirley Orthmann Patterson, FO
 Lucretia Collins Patton, BA
 Glenna Vandermeer Paukstis, BI
 Jeanette Barquist Paul, F
 Loaraine Sherman Pay, AI
 Ardelle May Payne, BQ
 Barbara Croom Pearce, EO
 Cary Dennis Pearall, BO
 Nancy Lynn Pearson, EE
 Christina Pecce, EO
 Mary Womack Percy, S
 Terri Ann Perna-Roth, EE
 Jean McLure Perry, M
 Leslie Elizabeth Perry, III
 Linda Jauch Pearson, BE
 Elizabeth Cunningham Peters, FK
 Julia Minton Peters, A
 Betty Whitlock Peterson, X
 Dorothy White Peterson, BK
 Margaret Monroe Peterson, I
 Martha Dunlop Peterson, M
 Nancy Myers Peterson, A
 Beth C. Petruce, E
 Nancy Marie Pettit, AT
 Harriet Payne Phelan, BA
 Elizabeth Hurd Phelps, AH
 Gladys Elder Phelps, I
 Janet Barker Phillips, AB
 Rebecca Phipps, KO
 Sue Watson Pickerill, FO
 M. Harris Pickersgill, BA
 Harriet Jensen Pickett, X
 Suzanne Christine Piehl, ZI
 Charlotte King Pierce, FO
 Kimberly Jo Pierce, ON
 Mary Taylor Pierce, BM
 Ruby Morrison Pierce, BE
 Florence Berthold Pierstorff, FA
 Evelyn Lebeda Pillsbury, AI
 Janet Hinds Pilvalis, OT
 Heidi Rebecca Pinton, BX
 Melanie Jane Pitre, AF
 Florence Goeders Plato, FY
 Prudence Ditto Platt, H
 Jennifer Ruth Plenge, AO
 Helen Klesath Plumley, FI
 Mary Saidla Plummer, BE
 Donna Davis Plunkett, KO
 Amy Elizabeth Pointer, BE

Dianne Paredes Pollner, BM
 Angela Louise Pope, IN
 Joann Poppy, OA
 Beverly Lambert Porter, AA
 Elizabeth Anne Portwood, AF
 Ann Pothast, BK
 Betty Hupe Potter, E
 Grace McAuley Potter, AB
 Charline Chilson Potts, AX
 Elizabeth E. Potts, BA
 Mary Lynn Powell, KE
 Ruth Miller Powell, X
 Sharon Nichols Powers, OF
 Jacqueline M. Poydence, O
 Laura Koennecke Preston, X
 Paige Alison Priore, EO
 Enid Goble Pritchard, AE
 Edward S. Pruchnic, AE
 Kathleen Schaub Pullen, AO
 Joyce DeViney Qualkinbush, FX
 Stephanie Anne Quinn, BA
 Eileen Dowiat Quinn, OO
 Helen Cook Radke, O
 Antoinette Vivona Radtke, EE
 Patricia McCormick Raffel, ZI
 Kamilla Klekar Rajnus, O
 Ann Taylor Ramey, FI
 Patricia Straka Rankin, FY
 Margaret Frances Rapp, AB
 Dorothy Eggeling Rasmussen, AD
 Esther Rhoades Rasor, BX
 Mildred Meinhardt Rast, AP
 Marian Hintzen Rathbun, O
 Nancy Elizabeth Ravenscraft, AS
 Esther Loyce Rayias, OX
 Debbie Ann Raziano, KA
 Mary Cobane Rea, AH
 Ynez Morey Reagin, BE
 Helen Flake Redick, AT
 Anna Bolland Reddy, BO
 Carlyle Wilson Redfield, N
 Helen Hjul Redfield, M
 Julia Harbert Reed, E
 Jodi Elizabeth Reese, S
 Jeanne Reichelt, ZA
 Donna Krick Reid, E
 Julia Pogue Reid, AO
 Star Whitesell Reimer, EO
 Helen Olene Reimund, OT
 Carol Reinhackel, AT
 Judith L. Replin, FX
 Dana Bluhm Reupert, ZY
 Anita Indoe Reynolds, FA
 Phyllis Anne Reynolds, ZN
 Gracemary Ketcham Rhone, AX
 Mildred Hunt Ribble, AO
 Lucile Northrup Rice, BK
 Virginia D. Rice, AF
 Catherine Richards, A
 Arlene Wiemers Richardson, AY
 Johanna Nolcheff Richardson, FX
 Kathryn May Richardson, FO
 Lynette Spencer Richardson, EA
 Vickie Kirschner Rickabaugh, IM
 Elizabeth Frances Ridgill, BA
 Fern Olds Ridgway, FA
 Connie Frame Riemer, AA
 Mary Geiger Riggs, O
 Wendi Lynne Riley, BA
 Ithira Porter Riner, M
 Vicki Jinnette Ringer, BA
 Ruth Coffin Ringleb, OA
 Heather Star Rinsky, EI
 Bonnie J. Rippere, EP
 Annabelle Risko, AE
 Kerri Ann Rivera, AI
 Patricia Brown Rizzotti, IP
 Alicia Akimoto Robello, ZB
 DeeAnn Rowe Roberts, F
 Jennifer Lowe Roberts, EO
 Joan Prokop Roberts, AB
 Jennifer Lynn Robie, EP
 Carol Cooper Robinson, AI
 Laura Zinsmeister Robinson, FK
 Lorene Robinson, OB
 Christi Diane Roby, FT
 Mary Ashworth Rodda, AA
 Stephanie Delaune Rodrigue, KA
 Kathy Lynette Roewe, ZN
 Mary McDaniel Rogers, FZ
 Terri Lyn Jenkins Rogers, BA
 Elizabeth Ennis Rolfe, FB
 Miriam Stafford Rollins, BO



Real life sisters Allison Berdell, Radford-ED sophomore and Jennifer Berdell, Indiana of Pennsylvania-FO graduating senior are among the many visitors to the Historical Museum and National Headquarters each year.

Frieda Hauser Romanchuk, EZ
Christine Leigh Romano, IT
Carol Steinbach Ronka, BA
Ruth Ward Rosborough, A
Aimee Rosen, AH
Elvira Aberg Rosenberg, BQ
Nancy Ann Rosinski, EK
Alice Mahnke Ross, AH
Phyllis Berens Ross, AQ
Sara Clouse Ross, A
Rita Rossi, GA
Loreen Lee Roth, K
Karen Floyd Roush, AY
Melissa Lue Roush, EI
Louise Salzmann Rowe, GQ
Genevieve Helliwell Roycroft, Q
Ruth Hellyer Rucci, ZA
Rose Gattavara Rucker, K
Diane Louise Ruggie, AA
Miriam Sanderson Rusanowsky, BK
Sherrill Brush Russell, EI
Nellie Jackson Ruth, A
Gertrude Hicks Rutherford, BE
Lisa Revelle Milligan Rutledge, BT
Lois Rees Rutter, IP
Julie Irene Tewes Ruwe, KB
Burdeen John Sadler, QD
Lois Williams Sadler, A
Vera Ahrendt Sadler, BT
Jeanette Melgara Saino, BA
Carol Kreiger Salter, A
Calena Crum Samples, M
Sandra DeMita SanClemente, IT
Bonnie Bronish Sander, IT
Judith Conley Sanders, AQ
Elizabeth Walz Sanderson, AH
Doris Wright Sandoz, IY
Dorothy Deer Sandusky, AE
Wilma Steinhauser Sanford, K
Valerie Moore Sanger, TX
Eleanore Lombardi Santangelo, TH
Patricia Keagle Sargeant, K
Catherine Ruggie Saunders, AA
Kathryn Hagner Saunders, M
Lucretia Ann Saunders, A
Lowell Washburn Sawyer, AY
Diane Kathleen Saxe, ZO
Margaret Shea Saxe, M
Carmel A. Scaglione, AA
Patricia Schaefer, AA
Mary Hoylen Schaeffer, IQ
Tina Bartholomew Schaffer, IQ
Jean E. Schellenberger, I
Suzanne Lynn Schenk, IT
Margaret Shiels Scherer, I
Jacquelyn Sumerford Schexnayder, AK
Patricia Ann Schillings, ZI
Grace Angenstene Schindler, O
Carolyn Louise Schink, Q
Roxanna Schlimm, AT
Stephanie Ann Schloemann, IE
Carolyn Fimmel Schluter, IE
Gloria Stevens Schmidt, IP
DeAnn Lynn Schneider, ZP
Mildred Schuh Schneider, O
Winona Maddox Schnitzer, AO
Mildred McConoughey Schoenbeck, AO
Jean Thomas Schowalter, T
Catherann McDonald Schrader, AX
Helen Christman Schrader, A
Ruth Eichelbarger Schramm, A
Doris Mae Schroeder, EK
Lena Williams Schroeder, AB
Lois D. Danielson Schulenberg, BT
Lorie Jean Schulstad, QN
Donna Chris Campton Schuman, IP
Helen Utter Schuppener, T
Jennifer McElhaney Schuster, IN
Margery Heberer Schuster, AZ
Beryl Covill Schutte, Q
Marjorie Schwegler, A
Valerie Scipione, QP
Sandra Lynn Scoggins, KZ
Marie Tavener Scottlock, BK
Alice Robin Scott, AX
Elizabeth Sue Morrison Scott, FN
Shannon Noel Scott, AB
Masil Ellen Scragg, ZT
Pam E. Scutakes, BA
Carolyn Barnett Seaman, AH
Vivian Hauck Searles, Q
Thea Pellegrini Seese, FA
Anita Thompson Segler, AS



Kappa Phi members at UNC/Charlotte take time to pose while adding cans to the Can Castle during Greek Week. Cans were donated to the Metrolina Food Bank. L to r, Charlissa Reiber, Dee Dee Young and Becca Roach.

Ruth Clark Seiler, N
Amy Stehenson Seitz, QO
Patricia Mathias Seitz, AI
Alice Higgins Sermersheim, QZ
Kimberly S. Sermersheim, AB
Elaine Krause Seubert, IM
Diane Kessler Dugger Severns, AS
Judith Dresselhaus Shaffstall, AQ
Laura Jane McAndrews Shally, IO
Alice Purvis Shambaugh, X
Martha Sharkey, A
Mary Peden Sharp, IT
Dorothy Getter Shattuck, BX
Pauline Brader Shattuck, GA
Emily Sypher Shaw, AY
Janet K. Kittredge Shaw, BI
Mary Hodsdon Shaw, AS
Eileen Smith Shea, QP
Jean M. Sheehan, EI
Mary Flanagan Sheets, IY
Sharon Kelley Shelton, Z
Dixie Leigh Shepherd, EM
Helen Easterling Shoemaker, A
Kathryn Plopper Shore, II
Melissa Claire Shorb, AO
Kathryn Rank Shotwell, AN
Louise Munson Showers, AB
Florentina Leipniker Shupack, AZ
Dyanne Glass Sidner, Q
Kathryn McClurg Siegrist, Q
Joan Marie Sigler, QH
Lisa Ann Sigler, IE
Deirda Elizabeth Sigmon, ZE
Carolyn Deibert Sikes, IO
Sandra Cook Sill, BK
Charlotte Fields Silversteen, AT
Dorris Pike Silverthorn, AA
Andrea Olin Simons, Q
Virginia Statter Simpson, M
Maurine Cille Sinclair, IS
Carla Ann Skinner, QD
Margaret Richardson Skinner, Y
Peggy Gardner Skorpura, TX
Dorothy Robinson Slate, X
Carol A. Slattery, AI
Kathleen Johnson Sledge, AS
Lillian Eckert Sloan, IY
Avis Parvin Slocum, BE
Sharon Moncrief Slovinski, ZP
Eleanor Ferguson Smart, AP
Jeanne Gulliver Smay, GA
Barbara Johnson Smith, M
Barbara Lynn Smith, ZI
Carolann Goldrey Smith, KQ
Catherine Fleri Smith, BQ
Eleanor Dehm Smith, A
Era McGough Smith, BI
Frances Waldo Smith, AB
Hazel Edgerton Smith, BT
Jean Bisbee Smith, Y
Karen Rae Smith, AS
Kim Davis Smith, QI
Leota Blaine Smith, EA
Louise Haupt Smith, AI
Margaret Ross Smith, K

Patricia L. Smith, QO
Sandra Gentle Smith, AI
Stacie Ann Burns Smith, A
Stella Jones Smith, AI
Elizabeth Earley Smithburg, QB
Mary McConnell Smothers, IX
Diane Woodward Snelson, A
Teresa Lynn Snider, AS
Emilie Welsh Snow, IX
Florence Thomasian Snyder, AI
Janice Lynn Snyder, AI
Jennifer Kalhorn Snyder, ZI
Jean E. Sobon, IK
Lori Ann Kreidler Sockel, EI
Angela Cristina Sodano, GA
Lore McManus Solo, EP
Yvonne Sonnemann, BY
Hattie Bridgford Sordean, AN
Michelle Marie Sorrentino, ITI
Yuba Hendrick Sotile, EM
Mary Lou Laqua Sott, IB
Georgia Raft Souris, N
Hazel Griffin Southard, Q
Nancy Lee Spangler, BM
JoAnn Hempling Sparling, IX
Laura Hatfield Speacht, ZA
Linda Lauten Spellman, EE
Mildred Koll Spilman, AA
Mary Spivey, ZI
Ann Litton Spoth, BA
Marion Johnson Sprague, AB
Sharon Louise Sprong, AX
Jane Taft Stafford, AA
Lois Ybarra Stanford, IO
Janet Cecil Stanley, EK
Nancy Brumit Stanton, ZI
Mara Petritis Stark, Q
Dorothy Knapton Stebbins, B
Carin Brown Steckler, K
J. Rodman Steele, IK
Mary Reinhart Stefan, X
Nancy Anne Stefanek, QY
Virginia Hefelfinger Stefanovich, EO
Nicole Denise Stefansen, IO
Cheryl Wassink Steffen, QN
Natalie Stefy, AA
Sandy M. Stencavage, BI
Avis Karpach Sterling, EO
Diane Marie Sterr, EK
Jill Stetz, EI
Kelly Ann Stewart, BA
Marlene Memler Stewart, BP
Dawn Darner Stuele, AO
Mary Norwood Stinger, BI
Janet Bertha Stith, QE
April Craig Stobbe, AE
Jeannie Jarvis Stockton, X
Holly Clause Stoebner, Z
Jeannine Marie Stoessner, Q
Dora Stohl, I
Doris Nickel Stokes, BI
Martha Bullamore Stoltenberg, T
Jana Berno Stone, GA
Sharon Kay Stone, AH
Linda Noffke Stookey, IX

Eliz Lewis Stormer, AK
Helen Topping Stowell, AB
Susan Morrison Stradley, AO
Mary Lou Rector Strain, IN
Carolyn Woods Strancke, ZK
Karen Lee Giles Strange, AS
Barbara Schick Stratton, KP
Janet Thompson Streib, BP
Nancy Strezovski, EQ
Catherine Michelle Strickland, EE
Sherri Lynn Stritter, AI
Stacie Doak Strizek, IA
Gretchen Ann Kihm Strub, KQ
Helen Dewart Studwell, AI
Diane Thompson Sturdivant, AE
Lola Ransom Sugden, AB
Virginia Askew Suhning, A
Susan Marie Sullivan, ZP
Oween Sumner, BM
Barbara Berner Sutton, QI
Norma Edwards Sutton, I
Joan Bunker Swanger, AY
Dorothy Sacks Swartz, AI
Virginia Gummel Sweeney, AD
Michelle Garnette Swetland, A
Ruby Stripling Swezy, BN
Agnes Christie Swift, Q
Sheryl Stace Swingle, IX
Ruth Blanche Sylvester, T
Helen Greb Szatalowicz, AE
Gail Stevens Taber, BA
Alice Edelmaier Taglauer, A
Beth Myra Cline Talbert, ZE
Myrtle Roberts Talbot, AX
Dorothy Pitts Talley, BE
Mildred C. Tallman, P
Florence Tangney, M
Wonda McAlister Tannebaum, ZP
Kathryn Tatko, O
Patricia Tatum, A
Alice Lundgren Taylor, AA
Alison F. Deetz Taylor, AQ
Elena Tribby Taylor, AP
Marilyn Carroll Taylor, IK
Thelma Potter Taylor, AE
Madonna Baker Teaford, Q
Catherine Lynne Tector, KQ
Ada Grace Tedder, AO
Jamie Sue Teichert, AE
Louise Quattlebaum Terlizzi, BA
Samantha Anne Harris Terres, KQ
Helen Thatcher, A
Ethel Theis, AA
Jennifer Lynn Thiemann, AS
Doris Read Thoen, X
Debbie Ann Thomas, IA
Laura Bee Fannin Thomas, KT
Lydia Benninger Thomas, AK
Ruth Aneshansel Thomas, E
Gail A. Thomson, BA
Caroline Dilg Thompson, BN
Jane Gustafson Thompson, BN
Louise Kennedy Thompson, O
Maurine McCulloch Thompson, A
Vivian Shriver Thompson, X

Meredith Thoms, Z
Mary Thomson, T
Ruth Varner Thomson, AB
Elizabeth Von Heill Thorman, AZ
Jean Rupp Thrane, AI
Leone Bovard Threlkeld, Y
Nancy Caperton Thullberry, BM
Barbara Jencen Tiaht, A
Nancy Boyd Tickel, A
E. Anne Koke Tigges, IX
Evelyn Mele Tobey, S
Carolyn Tami Tonin, EO
Caroline Fuhrmeister Touchberry, BK
Betty Shannon Tousey, AS
Jean Moore Trattner, AO
Eileen Molyneux Trawinski, A
Wilna Hall Treichler, BE
Norma Appleman Trenfield, AO
Cameron Lynn Trent, IN
Ruth Mennen Tribby, BX
Gina Devlin Tringola, IM
Ann Brakefield Trotter, AI
Judith Louise Trusz, EI
Mary Holsenback Tucker, BA
Melanie O'Neal Tucker, EQ
Ruth E. Tucker, AB
Tracy Leigh Tucker, AI
Margaret Ellestad Tune, X
Marilyn Lindgren Turchi, I
Michele Karen Turkel, E
Beverly Gaulke Turnbull, AQ
Nancy Holladay Turner, AI
Doris Bullwinkel Tusty, BO
Ann Cole Tweedy, AX
Susan Thompson Tyson, IA
Wanda Preston Tyson, AY
Janette Halcrow Uebner, IM
Ruth Price Ulmen, AK
Sherry Lynn Ulsh, IQ
Florence Hughes Umfrid, AX
Mary Beck Unkefer, IT
Angela Kay Urban, ZE
Lisa Ann Urban, IE
Migg Caulkins Urban, Q
Leslie Margaret Vaccarino, ZQ
Peggy A. Valley, AX
Linda Van Loon, QA
Brenda Ellen Ernst Van Vossen, BK
Catherine Van Watkins, QI
Mary Anne Varga, IH
Daria Trojan Varner, IQ
Stephanie Anne Vaughan, AI
Gail Lutz Verley, KY
Joan Alden Vernotzy, AB
Jenny Lee Vincent, AE
Barbara Bellin Vogel, A
Katharine Bainbridge VonEnde, O
Martha Camp VonKennel, A
Terri Rutkowski Votaneck, EK
Kathleen Wachsmuth, Q
Evelyn Clark Wade, AY
Patricia Thompson Wagler, AE
Dorothy Caldwell Walcher, A
Kristen Moore Waldbillig, P
Ellen Sprawls Walker, BI
Hildegard Halama Walker, IK
Julie Ann Walker, EP
Laura Boedeker Walker, AT
Patricia Roan Walker, I
Ruth Walker, I
Sue Brannon Walker, AI
Nancy Baron Walsh, AI
Genevieve Roccas Walter, EE
Elizabeth Y. Ritchey Walters, AI
Chloa Laretta Walton, QB
Georgia Walton, QB
Jennifer Collins Ward, AA
Joyce Roberts Ward, A
Kimberly Dee Ward, KQ
Arminda Youse Warde, AI
Cheryl David Wardell, EE
Louise Gilbert Warner, AB
Helen Fibiger Warren, AI
Harriet Rohrkaste Wash, A
Bethel Eidson Watney, Q
Joyce Huff Watts, BY
Genevieve Bannerman Wayman, AA
Amelia Wright Webb, FN
Mary Steers Webb, AQ
Melissa Marie Webb, IQ
Patricia Burgess Webb, IK
Lisa Michel Webber, Z
Dorothy Skiles Weeks, AB

Pamela Johnson Weiss, E
 Mariellen Puterbaugh Weist, BX
 Connie Martin Wells, IX
 Kathleen Aldrich Welton, ΔI
 Linda Carpenter Wenger, ΔK
 Victoria Kunst Wenke, EK
 Louise Overturf Wentworth, BM
 Barbara Chapman Wessinger, ΔY
 Inez Oatfield West, X
 Ruth Shoemyer West, ΔS
 Dian Warren Westerberg, ΔE
 Lois Rippen Westfall, BT
 Emma Wetzel, IX
 Colleen Bode Wheeler, IB
 Jean Dougherty Whisler, K
 Veryl Ebbert White, EO
 Violet Sharratt Whitfield, I
 Donna Meyers Whitlock, IP
 Joan Balck Whitlock, ΓA
 Kimberly Susan Whitney, AB
 Grace Nighswonger Whitson, ΔO
 Shirlee Jacobs Whitson, IP
 Melanie Joyce Whitten, ZI
 Alice Feike Wieman, X
 Lydia Osborn Wiekping, A
 Elfreda Mathes Wiggins, BA
 Ruth Slater Wikoff, ΔO
 Harriet Walker Wilborn, BB
 Diane Barghah Wildblood, I
 Lillian Swaney Wildblood, IK
 Carolyn Wildenthal, AT
 Helen Collins Wildy, ΓQ
 Margaret Dickinson Wiles, M
 Donna Loree Wilkie, ZA
 Audrey Joslin Wilkinson, BA
 Bonnie Louise Williams, E
 Julia Bryant Williams, BM
 LaLuce Planck Williams, ΔS
 Llwanda Kneppshield Williams, OA
 Lucille Crosbie Williams, A
 Trudy Wheeler Williams, ΔO
 Norma Buffington Williamson, AI
 Tammy Lynne Williamson, AA
 Marianne Belding Willing, O
 Bobbi Joy Wilson, IP
 Dorothy Eleanor Wilson, AΦ
 Gladys Wilson, N
 Katherine Walsh Wilson, O
 Mary Albertson Wilson, OO
 Michelle Fecteau Wilson, OF
 Ruth Wilson, BZ
 Maxine Mills Wilt, Ω
 Corinne Scherman Winalski, IB
 Nancy Purcell Windbiel, IP
 Donna Holaling Winger, ΔN
 Donna Winkley, AI
 Barbara Schaefer Winslow, A
 Susan Gorman Winstead, EO
 Glennalou Frank Wintersteen, E
 Shirley Brattin Wirt, BI

Marion Smith Wisdom, AX
 Emily Logan Wise, IK
 Rochelle Jean Wisemes, I
 Luvola Huffstutler Wisneski, AF
 Eldene Woellhof, ΦB
 Barbara Vanalstynne Woldt, AK
 Margaret Mueller Wolf, EH
 Linda Woodyard Wolz, IN
 Eudora Begole Wood, AH
 Mary Eva Kociuba Wood, KΘ
 Kristi Lynn Woodall, EN
 Carolyn McCandless Woodling, EI
 Martha Stewart Woodward, AY
 Kathleen Worthington, ITI
 Elizabeth Fulkerson Wright, Δ
 Kelly Lynn Wright, IK
 Leigh Anna Wright, AK
 Jill Ann Wubbenhorst, EK
 Jeanne Hahn Wurmser, A
 Ileana Hutchinson Wyerman, O
 Altise Monroe Wylie, BK
 Hayley Alexis Wyss, OF
 Akari Yamada, AA
 Tracey Kazue Yamamoto, OH
 Olivia Coward Yaron, BA
 Alice Morgan Yates, M
 Gretchen Kay York, IO
 Beulah Young, E
 Gayle Sunday Young, AE
 Gwen Vitteaux Young, IE
 Helen White Young, ΔH
 Isabelle Bouick Young, M
 Gale Hobday Yount, IA
 Christine Nicole Yurchak, EA
 Winifred McMichael Zagariello, EZ
 Pamela Kay Zajko, EH
 Michelle Catherine Zanni, KΦ
 Dawn Susan Zavistoski, AA
 Betty Former Zboray, IK
 Virginia Ward Zehe, AH
 Lisa Anne Zetye, AO
 Kenna Howell Zierer, M
 Cecilia Marie Zindel, KM
 Lylaine Holmberg Zobrist, Φ
 Cori Ann Zube, ITI
 Virginia Shirkey Zwetzig, ΔN

(Collegiate Chapter Gifts)

Bryant College-OA
 Duquesne University-KE
 East Carolina University-ZA
 Fairmont State College-EI
 Indiana University of Pennsylvania-IF
 Indiana University-E
 Kutztown University-KP
 Louisiana Tech University-OE
 Northeastern Oklahoma State University-ΔΦ
 Shepherd College-KM
 University of Central Oklahoma-EY

University of Missouri/St. Louis-IE
 University of North Carolina/Wilmington-EO
 University of Rhode Island-BA
 West Liberty State College-IT

(Alumnae Chapter Gifts)

Berea Alumnae Chapter
 Bucks County Alumnae Chapter
 Flint Alumnae Chapter
 Fort Collins Alumnae Chapter
 Fort Walton Beach Alumnae Chapter
 Greater Orlando Area Alumnae Chapter
 Jackson Area Alumnae Chapter
 Las Cruces Alumnae Chapter
 Lincoln Alumnae Chapter
 Mt. Diablo Alumnae Chapter
 New Haven County Alumnae Chapter
 Portland Alumnae Chapter
 Rochester Alumnae Chapter
 Sacramento Alumnae Chapter
 Salt Lake City Alumnae Chapter
 Spokane Alumnae Chapter
 Stephenville Alumnae Chapter
 Stillwater Alumnae Chapter
 Sun Coast Alumnae Chapter
 Warrensburg Alumnae Chapter
 Wooster Alumnae Chapter
 Youngstown Alumnae Chapter

The National Council
 is pleased to announce
 installations at
University of Windsor
Windsor, Ontario
Omicron Nu
 on
October 3, 1992
 and
Lindenwood College
St. Charles, Missouri
Omicron Omicron
 on
November 22, 1992
 and the pledging
 of colonies at
Frostburg State University
Frostburg, Maryland
Omicron Nu
 and
Mankato State University
Mankato, Minnesota
Omicron Rho



Members of Lambda Xi at Texas A&M entertained children from a local deaf school at the chapter house.



Francie Miller, Aimee Chadwick and Gretchen Decker help local children sort through goodies during the Easter Egg Hunt sponsored by Epsilon Rho at Northwest Missouri.



THE DELTA ZETA FOUNDATION CONTRIBUTION FORM

1. ANDRISEK EDUCATIONAL FUND \$ _____
2. DELTA ZETA HISTORICAL MUSEUM/ENDOWMENT (Circle One) \$ _____
3. DELTA ZETA FOUNDATION ENDOWMENT/ (Circle One)
DELTA ZETA FOUNDATION - GENERAL, NON-RESTRICTIVE \$ _____
4. GALLAUDET UNIVERSITY \$ _____
5. HOUSE EAR INSTITUTE \$ _____
6. HEARING HELP GRANTS \$ _____
7. SCHOLARSHIPS AND LOANS \$ _____

Scholarship name _____

8. COMMEMORATIVE GIFT \$ _____

In honor/memory of:

Send Notification to:

9. LOCAL PHILANTHROPIES \$ _____

Name of charitable organization:

(A check for \$25.00, the minimum contribution, will be returned to the local chapter for proper presentation. Allow 2 weeks turnaround time.)

10. McADAMS HOUSING FUND \$ _____

GRAND TOTAL ENCLOSED \$ _____
*** All Donations Are Tax Deductible ***

Please make checks payable and send to

The Delta Zeta Foundation
202 East Church Street
Oxford, Ohio 45056

(513) 523-7597

From: _____

Chapter _____

Office _____

Address _____

1992-93 Gallaudet Scholars

Kathleen Abenchuchan

Kathleen is from Florida and graduated from the Florida School for the Deaf. Before coming to Gallaudet, she received an Associate of Arts Degree from St. Petersburg Junior College and devoted her time to raising two young children. Kathleen enrolled at Gallaudet in 1989 and is now a senior majoring in Studio Art. She enjoys tennis, drawing, painting, swimming, story-telling and ceramics/pottery. After graduation, she hopes to work either as an art teacher for deaf children or secure employment in advertising or studio art.

Roberta J. Berliner

Roberta is from Brookside, New Jersey, and graduated from Miami University of Ohio with a Bachelor's Degree in Education in 1991. She enrolled in Gallaudet and is now a second year graduate student majoring in Parent-Infant Education. Roberta is a member of the Golden Key honorary and is a Kappa Delta Pi education honorary member. She also was named to *Who's Who Among Students in American Colleges and Universities*. In her spare time, Roberta enjoys volunteer work with high school theater arts and child development centers. She also likes to play racquetball and travel. In the future Roberta hopes to become involved in early intervention programs, especially with families of deaf children.

Jane A. Berger

Jane is from Baltimore, Maryland. She received a Bachelor's Degree from the University of Delaware in 1988 and also attended the Maryland Institute College of Art and LaSalle University. Jane was named to *Who's Who Among Students in American Colleges and Universities* and was a two-time President's Scholar. She also received the William Jappetini Award from Gallaudet's Department of Education. Jane is a member of Delta Epsilon Sorority and Kappa Delta Pi honor society. This year Jane is a third year graduate student majoring in Deaf Education. She plans to become a teacher for the deaf at the elementary school level.

Jody Ann Caseiro

Jody is from East Brunswick, New Jersey, where she graduated from East Brunswick High School. She entered Gallaudet in 1989 and is a senior majoring in Therapeutic Recreation. This summer Jody worked in an Indiana camp for "special" children and adults with a variety of needs. She enjoys working with campers to build their self-esteem. A member of Alpha Sigma Theta Sorority, Jody loves to read and participate in sports activities. After receiving her degree from Gallaudet, she hopes to be a therapeutic recreation specialist in camps, hospitals, group homes or nursing homes. Jody is most interested in helping individuals enjoy a variety of outdoor recreational experiences.

Carol L. Dray

Carol is a resident of Buffalo, New York, and graduated from St. Mary's School of the Deaf. Before entering Gallaudet she attended the National Technical Institute for the Deaf, the University of Buffalo and Villa Maria College of Buffalo. In 1992, Carol enrolled as a transfer student and is now a junior majoring in Sign Communication. She has been active with the Buffalo Civic Association of the Deaf, teaching and training interpreters. Carol enjoys collecting antique photo cameras and pictures. It is her intention to become a Sign Language Specialist and to become involved with research in deaf education.

Noelle L. Behson

Noelle is from Wall Township, New Jersey. After high school, she attended and graduated from the University of Rochester where she was vice president of Lambda Lambda chapter of Delta Zeta. She also was a member of the women's varsity track and field team and participated in Dorm Councils, serving as social chairman, secretary and president. Noelle enrolled at Gallaudet in 1991 and is a second year graduate student majoring in Speech-Language Pathology. After obtaining her Master's Degree, she plans to work as a speech-language pathologist in a clinical or hospital setting or at an institution for the deaf.

Jenny M. Rash

Jenny is from Peoria, Illinois, and graduated from the Illinois School for the Deaf. She came to Gallaudet in 1987 and is now a senior majoring in Elementary Education. Jenny is a member of the Dean's List, National Dean's List, and was a previous Delta Zeta scholarship recipient. She is a member of Phi Kappa Zeta Sorority and enjoys reading and watching movies. After graduation, Jenny plans to become a teacher for deaf children in an elementary school setting.

E. Louise Saathoff

Louise is from Portland, Oregon, but has also maintained residency in Maryland and Utah. She received an Associate of Arts Degree from Ricks College and took classes at Brigham Young University and University of Utah before coming to Gallaudet in 1989. Louise is a senior, majoring in Social Work. She is a member of Phi Kappa Zeta honorary and is a previous recipient of a Delta Zeta scholarship. Louise, who enjoys art and typing, also worked as a volunteer for the Utah Community Center for the Deaf. After graduation, she hopes to be a social worker, art therapist or counselor.

Edna Faye Johnston

Edna is a resident of Maryland and graduated from the Maryland School for the Deaf. She enrolled at Gallaudet in 1988 and is a senior majoring in English Literature and Sign Communication. Edna has been the recipient of a best actress award on two occasions; the Rotary Club "Service Above Self" award; Young Deaf Leader award from the National Association of the Deaf, and an Excellence in English award. She enjoys playing field hockey, basketball, softball, reading and writing stories, spending time with her nieces and nephews and drama. She also served as corresponding secretary for Phi Kappa Zeta Sorority. Edna hopes to pursue a Doctoral Degree in a deafness-related field and teach at a secondary school for the deaf or at Gallaudet. Edna would like to teach for one year in Puerto Rico and to be involved in bridging the gap between the hearing and deaf world.

Emily J. Larkins

Emily is from Harrisonburg, Virginia. She received a Bachelor's Degree from Mary Washington College in 1983 and a Master's Degree from Fairfield University in 1987. She entered Gallaudet in 1991 and is a second year graduate student majoring in Educational Technology. She was inducted into Kappa Delta Pi honorary education society and enjoys photography and writing in her spare time. Emily's goal is to work with deaf children and adults in designing and producing instructional TV/video programs for deaf children.

Directory

NATIONAL COUNCIL

PRESIDENT: Marvona Easley Tavlin (Mrs. Michael J.), 2710 Devonshire Drive, Lincoln, NE 68506

VICE PRESIDENT OF MEMBERSHIP: Sandra McAlister Nesbitt (Mrs. Milton), 3519 Castle Ridge Road, Montgomery, AL 36116

VICE PRESIDENT OF ALUMNAE AFFAIRS: Dianne Fellows Guild (Mrs. Douglas), 22848 Ironwedge Drive, Boca Del Mar, Boca Raton, FL 33433

VICE PRESIDENT OF COLLEGIATE AFFAIRS: Merry Westbrook Adamcik (Mrs. Roy), 614 Rozelle Avenue, Sugar Land, TX 77478

SECRETARY: Charlotte Davis (Dr.), P.O. Box 2, Troy State University, Troy, AL 36082

TREASURER: Lynnnda Wolf Hoefler (Mrs. Robert), 2981 Telber Ct., Stow, OH 44224

DIRECTOR OF CHAPTER FINANCES: Pamela McClure Cronenwett (Mrs. William), 25720 West Hills Drive, Dearborn Heights, MI 48125

NATIONAL DIRECTOR OF MEMBERSHIP SERVICES: Karly Klemp Burns (Mrs. Lawrence), P.O. Box 58050, Tierra Verde, FL 33715

DIRECTOR OF PLEDGE EDUCATION: Phyllis Berens Ross (Mrs. Norman), 1601 Baxter Forest Ridge Ct., Chesterfield, MO 63005

PAST NATIONAL PRESIDENT: Norma Minch Andrisek (Mrs. John R.), 319 Janice Drive, Berea, OH 44017

NATIONAL PANHELLENIC CONFERENCE DELEGATE: Patricia Canady Rosser (Mrs. David), 1609 Indian Rocks Road, Clearwater, FL 34616

NATIONAL PANHELLENIC CONFERENCE ALTERNATES:

Sandra McAlister Nesbitt (Mrs. Milton)

Norma Minch Andrisek (Mrs. John R.)

Marvona Easley Tavlin (Mrs. Michael J.)

NATIONAL HEADQUARTERS

NATIONAL HEADQUARTERS: 202 East Church Street at Campus Avenue, Oxford, OH 45056 (513) 523-7597 FAX (513) 523-1921

EXECUTIVE DIRECTOR: Cynthia Winslow Menges

CHAPTER CONSULTANT COORDINATORS: Sandra Sebrell Bailey (Mrs. Bruce), OH-639 N. Portage Path, Akron, OH 44303, or IN-8574 Old Mill Trace, Indianapolis, IN 46260

Ruth Weider Patterson (Mrs. Robert), 3623 Devereaux Road, Columbia, SC 29205

CHAPTER CONSULTANTS: Jennifer Cochran, Andrea Cooper, Robin DeArmond, Jodi Haire, Pamela Henry, Gail Kemp, Shellie Littrel, Molly McKenzie, Pam Purdy, Donna Winkley, Jennifer Yeagley.

DELTA ZETA SUBSCRIPTIONS

National Headquarters, 202 East Church Street, Oxford, OH 45056

INSURANCE

National Headquarters, 202 East Church Street, Oxford, OH 45056

THE LAMP

Gwen Moss McKeeman (Mrs. Robert), 5517 S. 74th East Avenue, Tulsa, OK 74145

HISTORIAN EMERITUS

Grace Mason Lundy (Mrs. H.M.), 3207 North 25th Street, Phoenix, AZ 85016

NATIONAL PARLIAMENTARIAN

Charlotte Davis (Dr.), P.O. Box 2, Troy State University, Troy, AL 36082

EXTENSION

Sandra Sebrell Bailey (Mrs. Bruce), 639 North Portage Path, Akron, OH 44303

STANDING COMMITTEES

AWARDS (ALUMNAE AND COLLEGIATE): Beth Anderson Hudson (Mrs. Tom), 816 Green Meadows Dr., Knoxville, TN 37920

COLONNADE CLUBS: Kristi Brown Stokes (Mrs. Edward), 11040 Crosswind Drive, Knoxville, TN 37922

CONSTITUTION AND BYLAWS: Anne Marie Jones Gavin (Mrs. William), 3264 Swan Drive, Vineland, NJ 08360

FIELD ACTIVITIES: Sandra McAlister Nesbitt (Mrs. Milton), 3519 Castle Ridge Road, Montgomery, AL 36116

FINANCE: Lynnnda Wolf Hoefler (Mrs. Robert), 2981 Telber Ct., Stow, OH 44224

HISTORY: Florence Hood Miner (Mrs. Arthur), 1040 Avenue H, Nevada, IA 50201

JUDICIARY: Kathy Clark (Ms.), 3837 Cedar Ave., Montgomery, AL 36109

MUSIC: Julie Stewart (Miss), 2017 Lees Court, Clearwater, FL 34624

PHILANTHROPY: See Alumnae and Collegiate committees

PLEDGE EDUCATION: Phyllis Berens Ross (Mrs. Norman), 1601 Baxter Forest Ridge Ct., Chesterfield, MO 63005

RITUAL: Karen Kind Veitch (Mrs. Andrew), 44 Bob Hill Lane, New Canaan, CT 06840

SPECIAL COMMITTEES

ALUMNAE:

ALUMNAE COLLEGIATE RELATIONS: Marianne McKeeman Cravens (Mrs. Scott H.), 2706 Garrett Drive, Fort Collins, CO 80526

MEMBERSHIP: Janice Jelks Cox (Mrs. Stanford), 201 Muir Woods, Cary, NC 27513

PHILANTHROPY: Ann Butler Booth (Mrs. W. Ray), 14735 Oak Bend Drive, Houston, TX 77079

PROGRAMS: Trudy Wheeler, 2935 Bonair Avenue, Louisville, KY 40205

COLLEGIATE:

ACADEMICS: Cheryl Stanley Jones (Mrs. Russell), 3920 University, Houston, TX 77005

ACTIVITIES: Margaret Allegro Sorrells (Mrs. Rick), 6158 Chelsey, Dallas, TX 75214

RISK MANAGEMENT: Kathi Bray Heatherly (Mrs. Don), 5501 Carvell Ave., Indianapolis, IN 46220

PHILANTHROPY: Lori Montgomery McKeating (Mrs. Jim), 12346 Westella, Houston, TX 77077

SOCIAL: Sara Carruthers (Miss), 601 Glenway Drive, Hamilton, OH 45013

SORORITY EDUCATION: Ellen Kroll Jenkins (Mrs. Paul), 390 Smock Drive, Greenwood, IN 46143

STANDARDS: Penny Payne Fioravante, (Mrs. Michael), HC63 Box 91, Tiny Ridge Farm, Sumner, WV 25567

CONVENTION CHAIRMAN: Anne Marie Jones Gavin (Mrs. William), 3264 Swan Drive, Vineland, NJ 08360

HOUSING ADMINISTRATOR: Norma Minch Andrisek (Mrs. John R.)

REGIONAL HOUSING CHAIRMEN:

Mary Beth Hibler Allen (Mrs. Eugene), 8 Summit Cedar Drive, Littleton, CO 80127

Louise Parker Bingham (Mrs. Drake), 4243 Old Tyler Road, Nacogdoches, TX 75961

Dawn Levreau (Miss), 5820 South Walnut Ave. #1C, Downers Grove, IL 60516

Kathleen Johnson Sledge (Mrs. Joe W. Jr.), 1700 Dearing Place, Tuscaloosa, AL 35401

NETWORKING: National Headquarters, 202 E. Church Street, Oxford, OH 45056

NEWSLETTER: Diane Jones Skelton (Mrs. Danny), 759 S.W. Prairie Ct., Topeka, KS 66606

REFERENCES: Alberta Doran Curran (Mrs. Tom), 116 Dublin Woods Drive, Cary, NC 27513

REGIONAL REFERENCE CHAIRMAN:

Maine, Vermont, New Hampshire, Massachusetts, Connecticut, Rhode Island, New York, New Jersey, Delaware: Sharon Nichols Powers, 12 Sunset Drive, Manchester, NH 03104

Pennsylvania: Emma Rossbacher Williams (Mrs. Jack), 121 Terrace Drive, Edinboro, PA 16412

Ohio: Sue Wischart Little (Mrs. Donald), 5151 East Blvd. NW, Canton, OH 44718

Michigan, Wisconsin, Minnesota, North Dakota, South Dakota: Karen Woods Miron, 738 Lake Shore Drive, Escanaba, MI 49829

Indiana, Kentucky: Marla Pittman, 511 Pioneer Drive, Indianapolis, IN 46217

Illinois: Jennifer Hruby Chivers (Mrs. Mark), 41084 North 2nd Street, Antioch, IL 60002

Iowa, Missouri, Kansas, Nebraska: Carole Sorensen, 828 Judge Avenue, Broken Bow, NE 68822

California-North, Oregon, Washington, Idaho, Montana, Alaska: Joyce Rogers Stoffey (Mrs. John), 1240 Nob Hill Avenue, Pine, CA 94564

California-South, Hawaii, Nevada, Wyoming, Utah, Colorado, Arizona: Janet Breitweiser Savage (Mrs. Tom), 5102 Woodwind Lane, Anaheim, CA 92807

Texas, New Mexico: Ann Elkins Hawkins (Mrs. J.M.), 103 Live Oak Lane, Lake Jackson, TX 77566

Oklahoma, Arkansas: Jeania Standridge Evans (Mrs. Jerry), Route 2, Box 530, Russellville, AR 72801

Louisiana, Mississippi, Alabama: Jane Weaver Mathes (Mrs. Jimmy), 12538 Sherbrook Drive, Baton Rouge, LA 70815

Florida, Georgia: Marge Kanouse Fink (Mrs. Edward), 2070 Clematis Street, Sarasota, FL 34239

North Carolina, South Carolina, Tennessee: Debra Wood Pressley, (Mrs. Chuck), 630 Macedonia Road, Asheville, NC 28804

Virginia, Maryland, Washington, D.C., West Virginia: Mala Bumgardner, 26 Lee Drive, St. Albans, WV 25177

REGIONAL PROVINCE COLLEGIATE COORDINATORS:

West and Midwest: Provinces X, XI, XIV XV-S, XV-C, XV-N, XVI Linda Lesniak Szymanski (Mrs. Robert), 931 Notre Dame Ave., Concord, CA 94518

Midwest: V-N, V-S, VII, VIII, XII, XIX, XX Beth Petrucce (Ms.), 5527 N. Haverford Ave., Indianapolis, IN 46220

North and Southeast: IV, VI, IX-N, IX-S, XXI-E, XXI-W Sharon Moncrief Slovinski (Mrs. Harry), 7740 Westminster Dr., Byron Center, MI 49315

Northeast: I-E, I-W, II, III-E, III-C, III-W, XXV Linda Regner Serdahely (Mrs. Steven), 11621 Greenlane Dr., Potomac, MD 20854

South: XVII-N, XVII-S, XVIII, XXII, XXIII, XXIV, XXVI Tracy Harnage Kirkland (Mrs. J. Corey), 10526 Sageyork, Houston, TX 77089

WAYS AND MEANS: Jamie Hammill Pyne, 64 Washington Square South, Hopkinson House, Unit 212, Philadelphia, PA 19106

DELTA ZETA FOUNDATION

PRESIDENT: Joan Dondrea Lowry (Mrs. Bob-Bill), 578 Yarmouth Lane, Bay Village, OH 44140

SECRETARY: Marjorie Klingensmith Lovewell (Mrs.), 96 The Prado NE, Atlanta, GA 30309

TREASURER: Patricia Canady Rosser (Mrs. David), 1609 Indian Rocks Road, Clearwater, FL 34616

MEMBERS:

Ann Butler Booth (Mrs. W. Ray), 14735 Oak Bend Dr., Houston, TX 77079

Joyce Low London (Mrs. John), 6125 Greta Pl., Montgomery, AL 36117

Deanna Alleman Pendleton (Mrs. Larry), 1818 Westminster Pl., Oklahoma City, OK, 73120

Susan Mease (Mrs. Joseph H. Long), 235 East Road, Doylestown, PA 18901

Marvona Easley Tavlin (Mrs. Michael J.), 2710 Devonshire Dr., Lincoln, NE 68506

COMMITTEES:

ELIZABETH COULTER STEPHENSON SCHOLARSHIPS:

Joyce Low London (Mrs. John), 6125 Greta Pl., Montgomery, AL 36117

GRADUATE SCHOLARSHIPS: Priscilla "Pat" Beatty, 3691 NW 95th Terrace #1202, Ft. Lauderdale, FL 33321

GALLAUDET UNIVERSITY: Lucille Bolstad May (Mrs. Leland B.), 5100 Dorset Avenue, #406, Chevy Chase, MD 20815

GOLDEN CIRCLE SCHOLARSHIPS: Kristi Brown Stokes (Mrs. Edward), 11040 Crosswind Dr., Knoxville, TN 37922

HOUSE EAR INSTITUTE: Betty Paul DeWitt (Mrs. Norman), 23630 Oak Rest Lane, Harbor City, CA 90710

UNDERGRADUATE SCHOLARSHIPS: Donna Edwards Happ (Mrs. William), 39968 Pearl Drive, Murietta, CA 92362

NATIONAL HISTORICAL MUSEUM

PRESIDENT EMERITUS: Lucile Crowell Cooks (Mrs.), 7400 Sun Island Drive S., Apt. #404, South Pasadena, FL 33707

CURATOR EMERITUS: Betsy Bradley Leach (Mrs.), 1325 Valley View Road, #304, Glendale, CA 91202

DIRECTOR EMERITUS: Grace Pritchard Gorham (Mrs.), 1510 East 31st Street, Tulsa, OK 74105

PROVINCE COLLEGIATE AND ALUMNAE DIRECTORS

I. Maine, Massachusetts, New York, Vermont, New Hampshire, Connecticut, Rhode Island and New York

PCD I-E: Kari Larson (Ms.), 31 Norwood Farms Rd., York Harbor, ME 03911

PCD I-W: Kimberly Ward (Miss), 2 Wyndover, Apt. #11, White Plains, NY 10603

PAD I-E: Christina Mullin (Miss), 16 Rockmont Road, Arlington, MA 02174

PAD I-W: Teresa J. Sears Scanlon (Mrs.), 30 Brewster Ave., #3, Carmel, NY 10512

II. New Jersey and Delaware

PCD: Linda Dennison Tapp (Mrs.), 21 Cobblestone Road East, Cherry Hill, NJ 08003

PAD: Cynthia Schafer Plucinski (Mrs. Donald), 633 South Edge Park Dr., Haddonfield, NJ 08033

III. Pennsylvania

PCD III-C: Karen Starner Jacobson (Mrs. Charles), RD 1, Box 157, Covington, PA 16917

PCD III-W: Carol Johnson Miskell (Mrs. C.F.), 176 Seminole Ave., Pittsburgh, PA 15237

PAD III-W and -C: Jane Simmons Riccardi (Mrs. Robert), 150 Par Dr., Pittsburgh, PA 15236

PCD III-E: Linda Dennison Tapp (Mrs.), 21 Cobblestone Road East, Cherry Hill, NJ 08003

PAD III-E: Cynthia Schafer Plucinski (Mrs. Donald), 633 So. Edge Park Dr., Haddonfield, NJ 08033

IV. West Virginia

PCD: Lora J. Stuart (Ms.), #2 McMann Ct. South, Charleston, WV 25309

PAD: Doretta Pugh Osburn (Mrs. Thomas), 151 Washington Cir., Hurricane, WV 25526

V. Ohio

PCD-N: Kim Bannerman Hays (Mrs.), 374 E. Bergey, Wadsworth, OH 44281

PCD-S: Susan Steggeman, 3252 Summerhill Ln., Hilliard, OH 43026

PAD-N: Andrea Bloch (Miss), 2586 Warrensville Rd., University Heights, OH 44118

PAD-S: Elizabeth Miller Wood (Mrs. Eugene), 2519 Edgevale Rd., Columbus, OH 43221

VI. Michigan

PCD-W: Sharon Moncrief Slovinski (Mrs. Harry), 7740 Westminster Dr., Byron Center, MI 49315

PCD-E: Cheryl Franks (Miss), 30977 Stone Ridge Rd., #2103, Wixom, MI 48393

PAD: Judith D. Christian (Mrs. Edward), 549 Lakeland, Grosse Pointe, MI 48230

VII. Indiana

PCD: Anne Moser Ikenberry (Mrs.), 5332 Ochs Ave., Indianapolis, IN 46254

PAD: Nancy Ferrone Daughters (Mrs. Michael), 8831 Otter Cove Circle, Indianapolis, IN 46326

VIII. Wisconsin

PCD: Grace Dollohan Bartholet (Mrs. Dave), 6445 Olson Memorial Hwy., Golden Valley, MN 55427-4947

PAD: Julie Hauser (Miss), Route 2, Box 2, Owatonna, MN 55060

IX. Illinois

PCD-N: Melanie Alm Robinson (Mrs. Dave), 2233 S. Highland Ave., #1110, Lombard, IL 60148

PCD-S: Shari Lauer (Miss), RR3, Box 4, Bloomington, IL 61704

PAD-S: Judith Harwood (Ms.), Wood Road Box 204A, Carbondale, IL 62901

PAD-N: Marcia Campbell Harrison (Mrs. Charles), 1 South 761 Ott Avenue, Glen Ellyn, IL 60137

X. Iowa and Nebraska

PCD: Carolyn Zabel Hoffman (Mrs. Jeff), PO Box 910, Guttenburg, IA 52052

PAD: Ann Langel (Miss), 910 Black Hawk Rd. #9, Waterloo, IA 50701

XI. Missouri

PCD: Dana McMillan (Miss), 8183 Monrovia, Lenexa, KS 66215

PAD: Carolyn Hill Nelson (Mrs. Ford), 1201 West 67th St., Kansas City, MO 64113

XII. Minnesota, North Dakota and South Dakota

PCD: Grace Dollohan Bartholet (Mrs. Dave), 6445 Olson Memorial Hwy., Golden Valley, MN 55427-4947

PAD: Julie Hauser (Miss), Route 2, Box 2, Owatonna, MN 55060

XIV. Colorado and Kansas

PCD: Gail Persak Beets (Mrs. Kenneth), 5963 W. Indore Place, Littleton, CO 80123

XIV-E. Kansas Alumnae Chapters

PAD-E: Carolyn McCandless Woodling (Mrs. Charles), 713 Prescott Ct., Lawrence, KS 66049

XIV-W. Arizona, Colorado, New Mexico, Utah, and Wyoming Alumnae Chapters, except Las Cruces, NM

PAD-W: Carol Selway Bertz (Mrs. Michael), 6544 S. Heritage Pl. East, Englewood, CO 80111

XV-S. Southern California, Southern Nevada and Hawaii

PCD: Karen Severloh Moffitt (Mrs. John), 2075 Los Robles Ave., San Marina, CA 91108

PAD: Cindy Johnson Holmes (Mrs. John), 1256 Old Hickory Road, Corona, CA 91720

XV-C. Northern California and Northern Nevada

PCD: Linda Lesniak Szymanski (Mrs. Robert), 931 Notre Dame Avenue, Concord, CA 94518

PAD: Catherine Clay Lassesen (Mrs. B. Rune), 19500 Mt. View Rd., P.O. Box 298, Booneville, CA 95415-0298

XV-N. Oregon, Washington, Montana, Idaho and Alaska

PCD: Carin Brown Steckler (Mrs.), 5208 36th Ave. NE, Seattle, WA 98105

PAD: Helga Kohlenberg Clark (Mrs. William), 4866 123rd Place, S.E., Bellevue, WA 98006

XVI. Oklahoma

PCD: Melissa Smith Massey (Mrs. Wade), 536 Skylark Drive, Oklahoma City, OK 73127

PAD: Pattie Cantrell Hulsey (Mrs. Stephen), 15708 E. 80th St. North, Owasso, OK 74055

XVII-N. Texas, New Mexico Collegiate Chapters, Texas and Las Cruces Alumnae Chapters

PCD-N: Tracy Wilson LeSieur (Mrs. Larry), 1621 Lake Side Lane, Plano, TX 75023
PAD-N: Melody McDonald Wilkinson (Mrs.), 801 Cherry St., 2100 Burnett Plaza, Ft. Worth, TX 76102

XVII-S. Texas

PCD-S: Janna Kleinecke Vallhonrat (Mrs. Paul), 1300 Augusta Dr. #3, Houston, TX 77057-2464
PAD-S: Elsie Wheeler McTee (Mrs. Clifford), 4322 St. George, Corpus Christi, TX 78413

XVIII. Louisiana and Mississippi

PCD: Deborah Raziano (Ms.), P.O. Box 195, Luling, LA 70010
PAD: Ida Marie Carter Nelson (Mrs. John), 126 Fremont Avenue, Shreveport, LA 71105

XIX. Tennessee

PCD: Camilla Malcolm (Miss), 202 Belle Lake Drive, Nashville, TN 37221
PAD-E: Kimberly Preissler (Miss), 1903 Share Hills Blvd., Knoxville, TN 37922
PAD-W: Violet Henson Anderson (Mrs. Charles), 102 Blue Hills Court, Nashville, TN 37214

XX. Kentucky

PCD: Ann Leitsch (Miss), 5412 Coral Way, Louisville, KY 40214
PAD: Debra Dew Behler (Mrs. Jerry), 56 Arlington Place, Ft. Thomas, KY 41075

XXI. South Carolina and North Carolina

PCD-E: Kathy Karbel Phillips (Mrs. Brian), 37 Lansgate Ct., Durham, NC 27713
PCD-W: Debra Wood Pressley (Mrs. Chuck), 630 Macedonia Road, Asheville, NC 28804
PAD: Patricia Menendez Tector (Mrs. John), 907 Winslow Court, Cary, NC 27513

XXII. Georgia

PCD: Kendra Kermeen, 2041 East Lake Park Dr., Smyrna, GA 30080
PAD: Sara Rosier Bush (Mrs. Peter), 3263 L. Flowers Road S., Atlanta, GA 30341

XXIII. Alabama

PCD: Denise Williams McCullars (Mrs.), 1518 Pomotaw Trail, Anniston, AL 36206
PAD: Kimberly Harris Bath (Mrs. Chris), 1071 Rosedale Drive, Montgomery, AL 36107

XXIV. Florida

PCD: Diana Spivey Bishop (Mrs. Harry), 197 E. Burgess Road, Pensacola, FL 32503
PAD S: Donna Snyder Stipek (Mrs.), 14385 Stirrup Ln., West Palm Beach, FL 33414
PAD C: Sue Adriansen Skambis (Mrs. Christopher), 836 S. Lake Adair Blvd., Orlando, FL 32804
PAD N: Robin Griehs Donoho, 1107 Wood Duck Hollow, Jacksonville, FL 32259

XXV. Virginia, Maryland, Washington, D.C.

PCD: Rachel Platt (Miss), One Canterbury Sq., #101, Alexandria, VA 22323
PAD: Jill Adams (Ms.), 2020 Battery Park Rd., Chesapeake, VA 23323

XXVI. Arkansas

PCD: Jacqueline Fabbri Gardner (Mrs. Richard Jr.), P.O. Box 2034, Russellville, AR 72801
PAD: Mary Lorene Williams (Ms.), 206 Club Lane, Conway, AR 72032

Flame Eternal

Zeta
Ruth Schad Pike '26

Kappa
Amelie Nichols Elkinton '24

Lambda
Ruth Louise Davison '26
Margaret Colver Stryker '32
Ruth Larsen Yates '26

Mu
Naida Jovanovich Beckett '33
Ruth Thomas Phillips '26
Patricia Parlier Reed '45

Nu
Helen McGirr Keve '26

Xi
Ruth Johnston Barsdale '34

Alpha Gamma
Jessie Armentrout Kinzer '27

Alpha Theta
Jennifer Baker '84

Alpha Iota
Marjorie Crandall '26

Alpha Nu
Ada Rubush Holland '28

Alpha Phi
Eleanor Ferguson Smart '28

Alpha Chi
Helen Short Bracht '28

Alpha Psi
Louise Bryan Angell '23

Beta Kappa
Marion Hoppe Schlesselman '46

Beta Chi
Carol Atkinson Cook '47

Gamma Kappa
Jennifer Lyn Plymale '92

Gamma Lambda
Joan Becker Hale '55

Epsilon Alpha
Edith Scarlett Bauer '28

Zeta Lambda
Margaret Morris Haney '50
Johanna Gay Petty '94



DIRECTIONS

IN DELTA ZETA CAREER NETWORKING

OCCUPATIONAL CODES

01 Education
02 Finance
03 Medical
04 Law
05 Secretarial/Clerical
06 Media, Communications,
Advertising & Journalism
07 Marketing & Sales
08 Cosmetology
09 Arts i.e. Photography, Musicians,
Artists & Actors
10 Business Administration &
Management
11 Ranching/Farming
12 Travel

13 Community/Social Service
14 Interior, Fashion & Floral Design
15 Military
16 Computer
17 Engineering
18 Insurance & Real Estate
19 Food Service/Hotel/Motel
20 Science & Technology
21 Flight Attendants, Reservations,
Controllers & Pilots
22 Architecture/Construction
23 Religious
24 Librarian/Museums
25 Landscaping/Forestry/
Geology/Geography
26 Athletic/Dance/Recreation
27 Personnel/Guidance & Counseling
28 Retired

29 Politician/Government
30 Animal/Veterinary
31 Public Relations
32 Homemaker/Home Economist

Name/Address Change Form

Please print or type and mail to Delta Zeta Sorority, 202 East Church Street at Campus Avenue, Oxford, OH 45056. Members should use parents' address while in college.

IMPORTANT: You must cut out the mailing label from this issue and paste it here.
We cannot process changes without your label. Thank You.

I am currently a Delta Zeta Officer. Title _____

Name _____ Phone (H) ____ / ____ - ____
Last First Maiden

Address _____ Phone (W) ____ / ____ - ____

This is a new address: ____ yes ____ no

Married name _____ Husband's first name _____ Date of marriage _____

Occupation Code Number _____ Company _____

Title _____ Company Address _____

I agree that my name/address may be released to any Delta Zeta requesting information regarding employment in my field or area.

(signature)

POSTMASTER: Send 3579 immediately to Delta Zeta Sorority, 202 E. Church St., Oxford, OH 45056

Delta Zeta Sorority
Corner of Campus Ave. and Church St.
202 E. Church St.
Oxford, OH 45056

Address Correction requested

Non-Profit Org.
U.S. Postage
PAID
Permit No. 131
Tulsa, OK