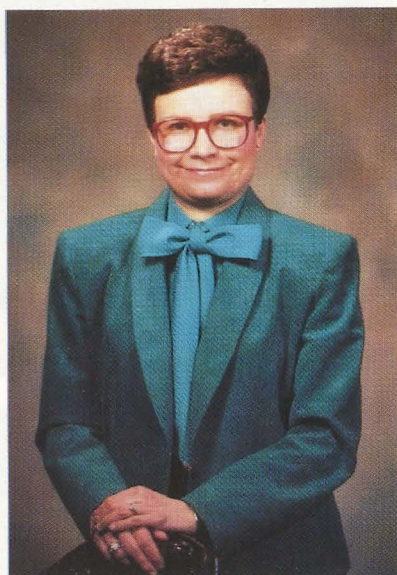


THE
LAMP
OF
DELTA
ZETA
WINTER 1991-1992

Woman of the Year
Shelley Berkley
Foundation Report



Delta Zeta: Building on our heritage



Marvona Tavlin



Foundation Trustees: Back row, Patricia Canady Rosser, Marvona Easley Tavlin. Second row, Joyce Low London, Joan Dondrea Lowry. Front row, Marjorie Klingensmith Lovewell, Ann Butler Booth, Susan Mease Long.

Webster's Ninth New Collegiate Dictionary defines heritage as "something transmitted by or acquired from a predecessor."

Delta Zeta properly regards her heritage as special. Starting with our beloved Founders and transmitted by and from successive generations, the special attributes of our heritage are woven throughout the fabric of our Delta Zeta.

Our heritage serves as a two-way bridge. One side of the bridge takes us to the traditions and good times we enjoyed as undergraduate members of our sisterhood; the other side of the bridge leads to the future and the next generation of Delta Zeta.

The Delta Zeta Foundation is an integral component of our heritage. "Today, for a better tomorrow" could very well be the theme for our Foundation as it aids our national speech and hearing philanthropy, promotes academic excellence through scholarships and educational programs and preserves a tangible portion of our heritage — our National Headquarters and Museum in Oxford, Ohio.

The future of the Delta Zeta Foundation relies heavily on the financial strength and loyal support of Delta Zeta members and friends. To preserve the past and perpetuate new opportunities for the future, I encourage each of you to continue your financial support of the Delta Zeta Foundation. As a contributor, you assume your position in the heritage of Delta Zeta.

In the spirit of our heritage,

Marvona Easley Tavlin

Marvona Easley Tavlin
National President

Published since December, 1910 by
DELTA ZETA SORORITY
 Founded at Miami University
 Oxford, Ohio
 October 24, 1902



FOUNDERS

Alfa Lloyd Hayes, 1880-1962
 Mary Collins Galbraith, 1879-1963
 Anna Keen Davis, 1884-1949
 Julia Bishop Coleman, 1881-1959
 Mabelle Minton Hageman, 1880-1929
 Anne Simmons Friedline, 1879-1932

THE ORDER OF THE LAUREL

Irene Caroline Boughton, 1904-1988
 Grace Mason Lundy
 Elizabeth Coulter Stephenson, 1881-1939
 Myrtle Graeter Hinkly, 1893-1987

EDITOR

Gwen Moss McKeeman
 5517 S. 74th E. Avenue
 Tulsa, Oklahoma 74145

CHAPTER EDITOR

Diane Jones Skelton

FOUNDATION REPORT

Editor: Susan Mease Long

Contributors: Ann Butler Booth, Joyce
 Low London, Marjorie Klingensmith
 Lovewell, Joan Dondrea Lowry, Patricia
 Canady Rosser

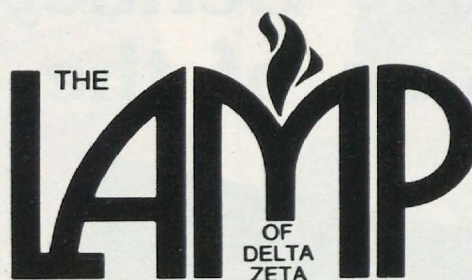
Special thanks to: Shirlyn Chaffin,
 Arlene Newman Marshall, Ellen Kroll
 Jenkins, Kay Morrow Wright

THE LAMP

The *LAMP* of Delta Zeta, official magazine
 of the sorority, is published quarterly by
 the Delta Zeta Sorority, 202 East Church
 St., Oxford, OH 45056.

Send all editorial material to the Editor,
 Gwen Moss McKeeman, 5517 S. 74th E.
 Ave., Tulsa, OK 74145. Send all matters of
 a business nature to Delta Zeta National
 Headquarters, Oxford, OH.

Send all contributions for Gallaudet
 University, House Ear Institute, the
 National Historical Museum, Andrisek
 Education Scholarships, and other
 philanthropies through the Delta Zeta
 Foundation, in care of National
 Headquarters, 202 East Church St.,
 Oxford, OH 45056.



Volume 80 Number 4 WINTER 1991-92

Contents

IFC	Building on our Heritage
4	Woman of the Year Shelley Berkley
6	It All Started 30 Years Ago . . .
7	Just What Can the Foundation Do?
8	Don't Forget the Museum!
9	March is Foundation Focus Month
10	Before the Roses Fade
14	Many Thoughts About Hearing and Speech
16	There She is . . . a Delta Zeta
18	Alum Chapters and Big Bucks
19	Mary Margaret Fore Philanthropy Award
20	ΔZ Goes to Camp with HEI
21	Kentucky Gives in a Big Way
22	"The Breakfast of Champions"
23	Scholarships and Grants
26	Foundation Awards
28	Why Do I Give to Delta Zeta?
39	Gallaudet Scholarship Winners
40	Evelyn Adams Costello
41	Directory
43	Flame Eternal



ABOUT THE COVER

1991 Woman of the Year Shelley Berkley with her family, sons Sam and Max, husband Fred. Story on page 4.

Shelley Berkley is Woman of the Year



Shelley Levine Berkley

In 1976 she was appointed Deputy Director of the Nevada State Department of Commerce which included among many responsibilities serving as Prosecutor for the Real Estate Division, Acting Commissioner of Credit Unions and author of the Residential Landlord and Tenant Act. From May, 1979 until March, 1982, she was employed by Southwest Gas Corporation as their in-house legal counsel.

"Regent Berkley has long been active in the community, in political, social and charitable capacities. Her service dates to her time as a student on this campus when she served as the Student Body President. She richly deserves the honor and I recommend her for it." Robert C. Maxon, President, University of Nevada, Las Vegas.

The National Council is pleased to announce Shelley Levine Berkley, University of Nevada/Las Vegas-IΦ chapter, has been named 1991 Delta Zeta Woman of the Year.

Born in South Fallsburg, New York, Shelley graduated from Valley High School, Las Vegas, where her political career had its beginning. She served as Student Body Secretary and Student Senate Representative and held membership in numerous clubs and organizations. She continued her political career in college by serving as the first female Student Body President of UNLV, earning the special honor of delivering the commencement address at graduation.

Shelley was initiated into Iota Phi chapter in 1970. Other colle-

giate activities included Student Council Representative, Athletic Mascot, Phi Lambda Alpha and Phi Kappa Phi, honor societies. She received her B.A. Degree in Political Science in 1972 and went to Washington, D.C., as a student intern for a United States Senator. She also served as the Nevada Youth Caucus Chairman and as a delegate to the County, State and National Democratic Conventions. To further her education and better prepare for a career in politics, Shelley earned a Juris Doctorate Degree from the University of San Diego School of Law in 1976.

The following year she married Frederic Berkley who is a practicing attorney in Las Vegas. Shelley and Fred are parents of Max, born in 1982, and Sam, born in 1985.

In 1985 Shelley was named legal counsel for the UNLV Student Government where her responsibilities consisted of addressing the legal concerns of students and faculty members, offering advice and representing certain cases in court. Additionally, she was arbitrator for the Nevada Arbitration Association, coordinator for the Clark County Bar Association Pro Bono Project and producer and co-host of the television talk show, "Legislature in Review."

Shelley served a year as director of Government/Legal Affairs for the Sands Hotel Casino and in 1990 was appointed and then elected to the University of Nevada Board of Regents. She continues in this position of helping manage a multi-million dollar budget for the University of Ne-

vada system as well as serving as a consultant for Prudential-Bache Securities.

Shelley has participated in many community and professional activities which include: President, Channel 10 Public Broadcasting Station; UNLV Dean's Advisory Board in the College of Arts and Letters; Past board member and secretary of UNLV Alumni Association; U.S. Bicentennial Constitution Committee; Director and Committee Chairman for the Jewish Federation, National Conference of Christians and Jews; Clark County School District Committees; Founder and First President of Southern Nevada Association of Women Attorneys, and Past President of Clark County Democratic Women's Club. She holds membership in the American Bar Association, Nevada State Bar Association, Clark County Bar Association and Nevada Trial Lawyers Association.

Delta Zetas nationwide can be proud of our 1991 Delta Zeta Woman of the Year, Shelley Levine Berkley, and her many accomplishments. She is an outstanding role model, and is to be commended for the standards of excellence she exemplifies in her profession and to society.

Congratulations may be sent to: Shelley Levine Berkley, 7432 Silver Palm Court, Las Vegas, Nevada 89117.

"Shelley Berkley has demonstrated over the years a true commitment to the Southern Nevada community both as a leader and as an elected official." Richard H. Bryan, United States Senator.

"A look at Shelley's resume is evidence of her hard work and dedication to the community on both a professional and personal level. Leadership positions in several prominent organizations speak volumes about the respect the entire community has for her abilities." Bob Miller, Governor of Nevada.



Regent Berkley at a 1991 Board of Regents meeting.

"In addition to many community activities, Shelley finds the time to serve as a Board of Regent for the University of Nevada System, as well as work full-time and raise two sons. In my opinion, Shelley is a fine role model for future members of Delta Zeta Sorority, and is an excellent candidate for Woman of the Year." James H. Bilbray, Member of Congress.



Shelley meets with Governor Miller and UNLV President Maxson.

It all started 30 years ago . . .



Helen Woodruff Nolop

The Delta Zeta Foundation will observe the 30th anniversary of receiving its tax exempt status on May 23, 1992. Many of us need reminding, or need to hear for the first time, how the whole thing started.

Helen Woodruff Nolop, Minnesota-Γ, National President in 1960, asked Maxine Mason Bergstrom (now Peterson), Minnesota-Γ, to investigate setting up a foundation because of Maxine's extensive experience working in a major law firm in Minneapolis.

In a letter to Helen on January 23, 1960, Maxine laid out the ways a foundation may be established and explained the mechanics of the process. Then she raised questions that the National Council would have to answer about the size of the foundation's Board of Trustees and how they would be chosen, whether the foundation would spend only income or principal as well, how income would be acquired and how the money would be spent.

Clinton Schroeder of the Minneapolis law firm Cant, Taylor,

Haverstock, Beardsley & Gray handled the legal aspects of establishing the foundation. He pointed out, "Because of the favored tax treatment given the foundation, it is essential that the foundation be completely separated from the national sorority and not be run as an adjunct of the national office."

He also explained that Minnesota had a liberal policy toward organization and operation of a charitable corporation. Minnesota directors didn't need to be residents of the state, the meetings didn't need to be held in the state and the only periodic report required by the state was an annual information tax return. These provisions were of great value in a situation where the trustees would be widely separated.

Delta Zeta wanted the new foundation incorporated and granted tax exempt status in time for the June, 1962 National Convention and they were able to meet that schedule.

The signers on the incorporation papers were Mary Collins Galbraith, Alfa Lloyd Hayes and Helen Woodruff Nolop. The first board of directors included Frances Westcott, Northwestern-AA, as president and Gail Patrick Jackson, Samford-API as vice

president. Maxine Bergstrom was appointed secretary/treasurer and members were Myrtle Graeter Van Dusen, DePauw-Δ, and Arlene Palsgraf Davis, Baldwin-Wallace-ΓA.

The assets were \$5,183.12 from Delta Zeta's merger with Delta Sigma Epsilon, \$2,000 from the Social Service Fund and \$1,000 from the Alpha Iota Building Fund in honor of Betsy Bradley Leach, USC-AI.

The Articles of Incorporation for the Delta Zeta Foundation were recorded by the Secretary of State of Minnesota at 9:45 a.m., March 17, 1961. The Foundation was officially in existence.

The first Audiology Scholarship (\$500) from the Foundation went to Beth Louise Dieterly of Stamford, Connecticut.

As of July, 1961, the Foundation had receipts of \$8,708.12 and expenditures of \$1,714.50 (for the scholarship and legal fees for incorporation) for a net worth of \$6,993.62.

From these very modest beginnings, a group of far-sighted, persistent women created an entity which in 1990 gave away over \$300,000 in grants, gifts, scholarships and awards. Big things happened over 30 years and we have all benefitted from Helen Nolop's idea and Maxine Bergstrom's research.

Mission Statement

To advance the sorority's educational and philanthropic purposes through the development of financial and human resources in support of the sorority's leadership, scholarship, philanthropic and educational programs.



Patricia Rosser

by Patricia Canady Rosser
Foundation Treasurer

Often your Foundation Trustees are asked about the work of the Delta Zeta Foundation. "Just what can the Foundation do and what can it fund?" The answers are found in the Foundation's purpose and history.

The Delta Zeta Foundation was chartered in March, 1961, to support the educational and philanthropic activities of Delta Zeta. Although there have been changes through the years, including a merger with the Delta Zeta Founders Memorial Fund in 1979 when the name was changed to Delta Zeta Founders Memorial Foundation, the mission has remained the same.

The Foundation, supported by your tax exempt donations, continued to grow. In addition to scholarships the Foundation broadened its scope of support to include Gallaudet University, the House Ear Institute, the National Historical Museum, sorority educational programs for both collegiate and alumnae members, speech and hearing ac-

tivities and other philanthropic organizations.

In recognition of this growth, in 1988 the National Council and Foundation Trustees unanimously agreed to change the name back to the original — Delta Zeta Foundation. This action offered continuity and en-

compassed all Foundation activities, now and in the future.

Since the change was in the name and not the purpose, a new charter was unnecessary; only a simple filing with the State of Ohio to update the Foundation's Code of Regulations. This was accomplished with the able assistance of the Foundation's attorney, Barbara Bromberg.

The use of Delta Zeta Foundation monies, as with all foundations, is covered by the Internal Revenue Service Regulations and generally accepted accounting principles. Since Ms. Bromberg serves on IRS review boards and specializes in fraternal law, she continues to represent the Foundation. In addition, Coopers & Lybrand, the Foundation's and Sorority's accountants, provide advice and counsel and conduct the annual audit. At National Headquarters, Ken Seelig, a CPA and Delta Zeta's Business Controller, guides the day to day financial affairs of the Foundation. Foundation investments are managed by BancOhio, the same firm that handles the Sorority's trust account. The Foundation Treasurer coordinates the activities of this team of experts to ensure the safety and appropriate use of all donations and Foundation assets.

IRS regulations allow the Foundation to make grants only

to the educational programs of Delta Zeta or other nonprofit 501(c)3 organizations. Just what does that mean?

It means that grants are limited to only those organizations and institutions recognized by the IRS for their charitable purpose, such as Gallaudet University and House Ear Institute. However, the Foundation can not support an individual who attends such a school or is cared for by such an institution, except through an established scholarship or fund.

Within Delta Zeta, the Foundation can grant scholarships and loans as it has done since its inception. The National Historical Museum and the Frances Westcott Archives Program also meet IRS criteria and can be supported by the Foundation.

But what is meant by the Educational Programs? These are selected programs such as Academics, Leadership Training, Financial Management, Philanthropy, Volunteerism, Career, Etiquette, Health Related, and Substance Abuse which are offered through Delta Zeta. In addition, part of the Chapter Consultants' work is in training and can thus be funded by the Foundation. The Foundation cannot fund such sorority programs as rush, pledge education, sorority education, socials, ritual or other unique Delta Zeta membership programs.

To assist the Sorority, the Foundation recently funded the philanthropic focus of the 1991 National Convention. This included materials, workshops, awards and two events promot-

(continued on page 8)

Don't Forget the Museum!

When the 1981 National Convention voted to purchase property in Oxford, Ohio, and incorporate it not only as the National Headquarters but as the Historical Museum as well, Delta Zetas individually, as chapters and as provinces donated the money necessary for the renovation and furnishing of the building.

The building is ten years older, many people have passed through the doors, and the Museum has received more donations than anyone ever expected.

We need help!

It's not glamorous to fix a roof, improve plumbing, freshen the paint and paper, but every homeowner knows that eventually these things have to be done.

The Museum needs a full-time curator and will have to furnish that person with the proper equipment and space.

In other words, there are always things that need to be done at the Museum and, naturally, all of these things cost money.

A Delta Zeta Foundation goal



is to establish a permanent endowment for the Museum. The interest from this endowment would cover all those "unglamorous" upkeep items, a curator and curatorial efforts. An endowment would ensure that the Museum is a *permanent* repository for the history of Delta Zeta.

Helping fund an endowment

may not be as much fun as furnishing a room and then seeing your name or province on a brass plaque but, in the long run, that endowment will be much more lasting than even the most solid bookcase or couch.

When you are deciding how to allocate your charitable donation, don't forget the Delta Zeta Historical Museum.

Just what can the Foundation do? (continued)

ing philanthropy and support of the Sorority's services. In September, the Foundation granted a loan to a collegiate chapter for campus housing. This loan was made possible from a special fund established in 1983 by Norma Clark McAdams.

All transfers of monies within the Foundation or to grant recipients are made within specific guidelines. For instance, any gifts that are designated for a specific purpose must be used for that purpose. Undesignated gifts may be used for the highest and best purpose as defined by the Foundation Trustees.

In addition to the annual audit of the Foundation conducted by Coopers & Lybrand, the IRS may conduct periodic and unscheduled audits. Three years ago, the Foundation passed the IRS audit with flying colors!

For the past two bienniums, the Foundation has been privileged to provide greater assistance to Delta Zetas and others through the scholarship and grant programs. The Foundation plans to continue to provide increased assistance to the Sorority and the other nonprofit organizations with which it has long been associated. It is also hoped

that with the generous support of Delta Zetas all over the country, that the endowment can be increased as well.

Each Delta Zeta can rest assured that all gifts and assets of the Foundation are well managed to achieve the highest rate of philanthropic return. Delta Zeta's philanthropic return will only be limited by the vision and generosity of its members. Your gifts of time, talent, and treasure create the future. After all, the Foundation belongs to Delta Zetas; the Trustees are only the custodians.

MARCH IS FOUNDATION FOCUS MONTH

How much do YOU know about our Delta Zeta Foundation?

How does the Delta Zeta Foundation differ from the Delta Zeta Sorority?

— The Delta Zeta Foundation is a separate, non-profit corporation established to implement the philanthropic and educational objectives of the sorority.

What is the purpose of the Foundation?

— The Foundation's purpose is to raise funds to carry out the sorority's educational and charitable needs, which include scholarships, hearing help grants and assisting the deaf and hard of hearing.

How long has the Foundation been in existence?

— Since March 1961.

The Foundation provides funds for _____.

— Scholarships, hearing help grants, sorority educational programs, special grants to promote hard of hearing education and awareness and the Historical Museum.

What multipurpose educational institution serving deaf people through education, public service and research, established by Act of Congress in 1864, was and is a part of Delta Zeta's philanthropic program?

— Gallaudet University in Washington D.C.,

adopted in 1954 as a channel of service to the deaf and hard of hearing.

How has Delta Zeta's participation in research, current developments and assistance to all ages and all types of hearing impairment been emphasized?

— House Ear Institute in Los Angeles, California, adopted as a part of Delta Zeta's philanthropic program at the 1983 National Convention.

Can you describe the Foundation Logo?

— A lamp encircled with a green background with the words Delta Zeta Foundation.

Does the Foundation offer any emergency type assistance to collegians to enable them to continue their sorority activities?

— Yes, the Elizabeth Coulter Stephenson Scholarships.

Who oversees the work of the Foundation?

— The Board of Trustees appointed by National Council, all of whom are Delta Zetas, have responsibility for the activities of the Foundation.

Are gifts to the Foundation tax deductible?

— Yes, Gifts are tax-deductible under the Internal Revenue Service Code Section 501(c)(3).

Tie one on (your tree)

Christmas tree ornament collectors and people who just like really neat things are in luck! Debuting at the 1991 National Convention was a three-dimensional Reed and Barton brass-plated ornament of the Delta Zeta Headquarters and National Museum. This obviously limited

edition is available from Headquarters for \$17 including shipping and handling. Make your check out to the Delta Zeta Foundation.

Order now for your own tree and for those Delta Zeta sisters you'd like to remember in a special way.

Before the roses fade

Many of us have taken for granted the existence of the scholarships the Foundation offers without thinking about where the money came from to establish the scholarship or wondering a bit about the woman for whom it was named. Before these names recede any further, let's acknowledge once again a very special group.

ELIZABETH COULTER STEPHENSON — small emergency grants for juniors or seniors to be used for sorority expenses.

Bess Coulter and Lillian Minton were the first pledges of the Founders of Delta Zeta. Bess was initiated on February 8, 1903. In the summer of 1907 she directed 19 Delta Zetas to the Algonquin Hotel at Dayton, Ohio, where they declared themselves a convention and established a National Assembly of Delta Zeta.

The school year 1907-08 found Bess a graduate student at Cornell University. Here she gathered a band of choice friends who became charter members of Beta chapter. On her own birthday, March 14, 1908, Bess installed five new Delta Zetas as Beta chapter of the sorority. At the fourth National Convention, held at Winona Lake, Indiana, Elizabeth was elected Grand President, serving from 1912 to 1916.

During her term of office she worked on a real Constitution for the national organization and a model for those needed in the local chapters. Bess considered her most important work for Delta Zeta the reorganization in 1907, founding Beta chapter and later Kappa chapter, and the making of a national constitution. She was also a successful teacher before and after her marriage (married women didn't teach in her time). She moved to Portland, Oregon, in later years

and continued to be active in alumnae work. She passed away in November, 1939.

Collegiate member support fees fund this scholarship.

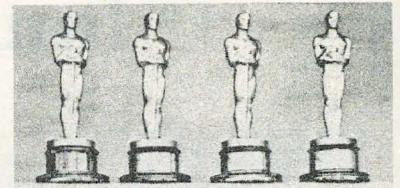


Elizabeth Coulter Stephenson

EDITH HEAD — fashion design

Edith Head Ihnen was an outstanding costume designer for many Hollywood films whose work won several Oscars through the years. She was the convention initiate at the 1960 National Convention held in Pasadena, CA. Edith received her B.A. degree at the University of California and was considered after her initiation to be a member of Mu chapter. She also received an M.A. degree from Stanford University and worked on a Ph.D. at UCLA. In 1961 she was the fashion commentator at the Southern California Flame Fantasy.

Edith Head was Delta Zeta's 1968 Woman of the Year and even the Associated Press carried that news nationwide. In 1976 the collegiate Greek world celebrated its first 200 years and Delta Zetas were proud that Edith Head was chosen to receive one of the Bicentennial



Edith Head

awards to outstanding Greeks.

This fund was established by the Delta Zeta Lamplighters of Southern California.

CATHERINE ANN BENJAMIN BECKER — accounting, finance, banking, or medical technology

Catherine was a member of Beta Rho chapter at Michigan State University. The scholarship was established in her memory by her husband, Alan H. Becker, M.D., and children.



Catherine Benjamin Becker

ALICE B. HUENEFELD/ GLADYS DENTON — child development, primary or secondary education, or library science

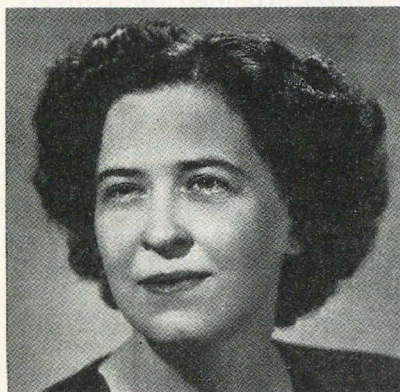
Alice Huenefeld was a mem-

ber of Xi Chapter at the University of Cincinnati. The scholarship was established in her memory by Alice's sister, Margaret Huenefeld Pease, a former National President.

Gladys Nelson Denton expanded this fund in 1990. She is a member of Alpha Alpha Chapter at Northwestern University through the merger with Phi Omega Pi. She was employed by the Chicago Public Libraries system for 28 years.

NANCY JONES HOLLIMAN — hearing and speech, audiology, or an allied field

Nancy is a member of Alpha Tau Chapter at the University of Texas. The scholarship was established by the Houston alumnae in honor of Nancy.



Gertrude Houk Fariss

GERTRUDE HOUK FARISS — journalism, communications, or education (graduate student)

Gertrude was president of the Omega Chapter at the University of Oregon, from which she graduated in 1925. After graduate study Gertrude became (at an early age) the Dean of St. Helen's Hall, a prominent junior college in Portland, OR. However she still had time and energy to serve Delta Zeta as Province Secretary, Province Director and she edited *THE LAMP* from 1936-40.

Gertrude was elected National Secretary in 1940 and then NPC delegate, serving from 1942-48. Elected National President of

Delta Zeta • Winter 1991-1992

the Sorority in 1948, she served until 1952, which included the celebration of Delta Zeta's 50th anniversary and the outstanding Golden Jubilee Convention. Delta Zeta's Standards Program was introduced by Gertrude at the 1936 Convention and has continued (with some name changes) through the years as part of Delta Zeta's programs for members.

This scholarship was established from a bequest in Gertrude's will.

ELSA LUDEKE — graduate students

Elsa Ludeke was one of the six founders of a girls' club called Bide-a-Wee organized to assist the women students at the University of California-Berkeley in 1909. By 1919 the name was changed to Beta Phi Alpha and national expansion followed with the sorority being admitted to NPC in 1923. The last Beta Phi Alpha convention held in 1941 in Lakeside, Ohio, marked the merger of the sorority with Delta Zeta and the initiation of their members into Delta Zeta. The gavel which opens Delta Zeta National Conventions was previously presented to Beta Phi Alpha by Elsa Ludeke. Made from the ivory of a walrus tusk, it now contains the names of both BΦA and ΔZ founders and national presidents.

In 1942 the Beta Phi Alpha scholarship fund was renamed in honor of Elsa Ludeke at the Delta Zeta National Convention.

MARGUERITE WHERRY HAVENS — graduate studies

Marguerite Wherry Havens was a member of Beta Kappa chapter at Iowa State University. She was Delta Zeta's Extension Vice President from 1944-50. In 1950 she was elected National Secretary. In 1952 she took over the newly established position of College Chapter Administrator which included extension, Province Collegiate Directors, training of field secre-

taries, and directing the college programs. She continued in this demanding position until 1968. She also helped organize and teach in the first Regional Leadership School held in 1962. This scholarship was established by the Des Moines area alumnae in memory of Marguerite.



Marguerite Wherry Havens

ARLENE DAVIS — aviation related areas

Arlene Palsgraf Davis was a member of Gamma Alpha chapter at Baldwin-Wallace College in Berea, OH. Internationally known in the field of aviation, she was the unanimous choice for the 1960 Woman of the Year. She was a member of the first Board of Trustees for the Delta Zeta Foundation. In 1954 she established the Arlene Davis Scholarship to be awarded to a Delta



Arlene Palsgraf Davis

Zeta undergraduate whose professional plans lay in aviation or an allied field. Since her death the scholarship is now named the Arlene Davis Memorial Fund.



Gail Patrick Velde

GAIL PATRICK VELDE — financial assistance

Her real name was Margaret Fitzpatrick and she was a member of Alpha Pi chapter at Samford University (formerly Howard College). She won a week in Hollywood in a newspaper contest and was offered a movie contract. Gail attended her first ΔZ convention in 1933 while representing Paramount Pictures at the Chicago World's Fair. She became a movie star, often playing the "other woman" roles, and was for many years the producer of the "Perry Mason" television series.

Gail was named Delta Zeta's Woman of the Year in 1962. In addition to her professional career she was very active in charitable and civic projects in Los Angeles. In 1970 she was named honorary National Chairman of the Christmas Seal campaign. She was a member of the first Board of Trustees for the Delta Zeta Foundation.

This fund was established from a bequest by her estate.

HELEN WOODRUFF NOLOP — audiology and allied fields (graduate student)

Helen was initiated into

Gamma chapter at the University of Minnesota. She was the first National Judiciary Chairman for Delta Zeta. In 1956 she became National Treasurer, was National President from 1958-62, and National Secretary/Treasurer from 1962-64. She was a motivating factor in forming the Delta Zeta Foundation and signed the incorporation papers.

MARY MARGARET CALHOUN FORE — outstanding contribution to college chapter philanthropy

Mary Margaret was president of Alpha Psi chapter at Southern Methodist University. She was PAD for Texas for 11 years and received an Achoth Award. In 1979 she was elected to National Council as Alumnae Vice President and served until 1983. She was National President from 1985-87.

Mary Margaret died in 1988 and this fund was established in her memory by Province XVII.



Mary Margaret Calhoun Fore

GENEVA THORNBURG — financial assistance

Geneva was a member of Iota chapter at the University of Iowa. She worked in the Chicago area for many years as a statistician for the Railroad Retirement Association. When she died in 1985, she left one half of her es-

tate to Delta Zeta and the other half to the American Association of University Women.

LAVONNE HEGHINIAN — financial assistance

Lavonne McClain Heghinian was a member of Alpha Iota chapter at the University of Southern California. The fund was established from a bequest in Lavonne's estate and held in trust for the recolonization of Alpha Iota chapter.

The Foundation is pleased to acknowledge a gift to the general scholarship fund of \$5,000 which was made possible by a donation from Hazel Lenger Rogers of Glendale, California, earlier this year.

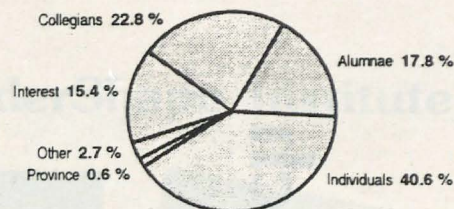
Hazel attended the University of Denver where she was president of Rho chapter. After graduating from the University of Southern California, she taught school privately in Montrose, California and, together with her husband Guy, ran the largest pharmacy in Verdugo City, California, for over 50 years.

Before her death in April, Hazel was well known for her philanthropic endeavors. She believed strongly in education and was interested in helping another Delta Zeta attain her degree.



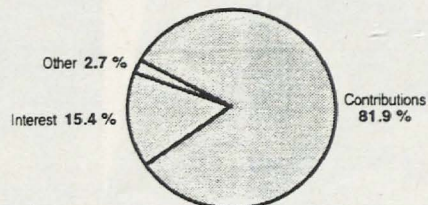
Delta Zeta Foundation Revenue

for the Fiscal Year Ended June 30, 1991



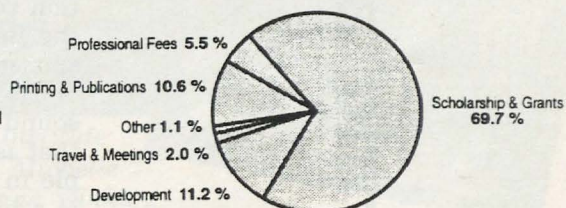
Revenue

for the Fiscal Year Ended June 30, 1991



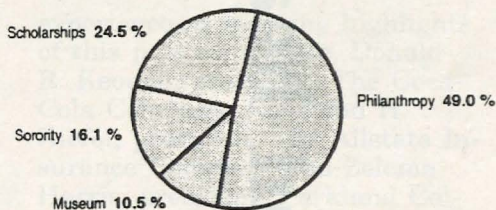
Delta Zeta Foundation Expenses

for the Fiscal Year Ended June 30, 1991

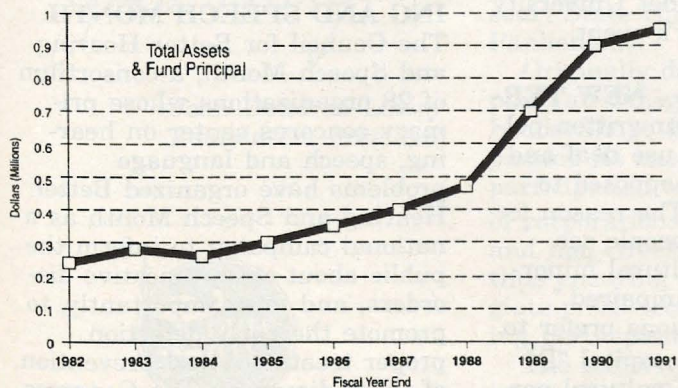
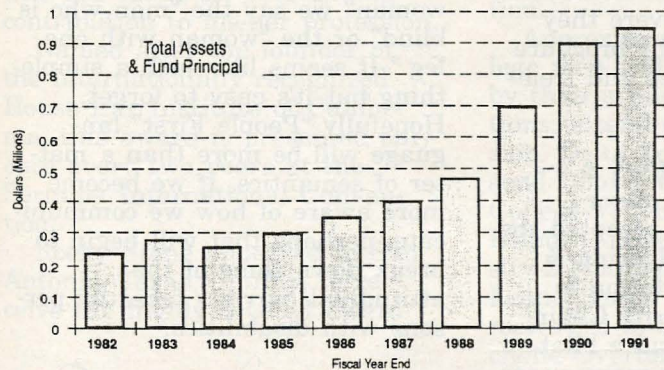


Breakdown of Grants & Scholarships

for the Fiscal Year Ended June 30, 1991



Delta Zeta Foundation



Many thoughts about hearing and speech

MARCH is FOUNDATION FOCUS MONTH. It is the time to plan a special program on the Foundation and our Delta Zeta Philanthropy Program.

MAY is BETTER HEARING & SPEECH MONTH. It is the time to educate the campus and community that there is help available for anyone suffering from a hearing loss!

BETTER HEARING INSTITUTE. The Delta Zeta Foundation recently awarded a grant to the Better Hearing Institute to sponsor a brochure on Tinnitus, or Head Noises. Tinnitus is a sound heard by one or both ears that is described by different people in various ways. To some it is a high-pitched ringing, whining, or hissing sound, like listening to a conch shell. To others it may be a low roaring noise. Tinnitus can be very mild, noticeable only in a quiet room, or it can become so loud and annoying the victim hears nothing else. Some 50-million adults suffer from Tinnitus. For 12-million, the problem is so severe they are incapacitated. The brochure deals with the causes and treatment of Tinnitus.

BETTER HEARING & SPEECH MONTH. Actor Jimmy Stewart has accepted the Council for Better Hearing & Speech Month's invitation to serve as 1992 Celebrity Chairman. Stewart has had a bilateral hearing loss for many years. In addition, Gallaudet University will chair this year's event.

ATTENTION . . . NEW TERMINOLOGY. The unwritten policy is that we now use deaf and hard of hearing as opposed to hearing impaired. The reason for this is many deaf people see themselves as a cultural minority as opposed to "impaired." Some deaf publications prefer to use Deaf — with a capital "D" to acknowledge the cultural perspective. To some people this is



Joan Lowry

an editorial decision. To others, it's a political statement.

ANNIVERSARY OF THE SIGNING OF THE AMERICANS WITH DISABILITIES ACT. There were many events to mark the anniversary and a major public relations campaign was mounted by Jim Brady. At a few of the receptions, people were wearing buttons which said "People First" to remind us that persons with a disability wish to be identified first as a person. So . . . rather than saying "a blind man" or the "one legged woman" we say the "man who is blind" or the "woman with one leg." It seems like such a simple thing but it's easy to forget. Hopefully "People First" language will be more than a matter of semantics. If we become more aware of how we communicate, perhaps that will begin to break down some of the attitudinal barriers faced by persons with disabilities.

MAY IS . . . BETTER HEARING AND SPEECH MONTH. The Council for Better Hearing and Speech Month, a consortium of 28 organizations whose primary concerns center on hearing, speech and language problems have organized Better Hearing and Speech Month as a national campaign to inform the public about communicative disorders, and most importantly, to promote the early detection, proper treatment and prevention of these disorders. The Congress of the United States has offic-

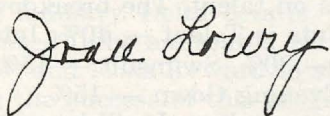
ially declared MAY as Better Hearing and Speech Month. As a sponsoring member of the Council, the Delta Zeta Foundation dedicates itself to bring a message of hope and available help for the children and adults with hearing, speech and language disorders in America. More than 60 magazines, including such diverse publications as *Newsweek*, *Life*, *Ladies Home Journal*, *Sports Illustrated* and *Glamour* will bring the message to America. In addition, look for many radio and television stations to interview the Celebrity Chairman and the 1992 Poster Child.

SHHH . . . SELF HELP FOR HARD OF HEARING.

The founder of SHHH, Rocky Stone, has received the prestigious Howard House Award. The award is sponsored by the Sertoma Foundation, the philanthropic arm of Sertoma International, and was developed in 1985 as a way for Sertoma to recognize an individual in the field of communication disorders who has made an outstanding contribution to his/her profession.

Named after the founder of the internationally recognized House Ear Institute of California, this award is presented only once every two years at the Sertoma International Convention.

Rocky Stone appeared in San Antonio, Texas, in July, to receive the highly coveted award.



Joan Dondrea Lowry
Foundation President



Three attend LeaderShape Institute



Attending the LeaderShape Institute were Marla Hilburn, LSU-Σ, Michelle Overton, CMSU-ΕΓ, and Donna Winkley, Georgia College-ΑΠ.



The LeaderShape Institute is an intensive, energizing and unique six-day educational experience designed to significantly increase a young adult's knowledge of, and ability to apply, leadership skills in an organization.

Approximately fifty-five college men and women, selected by their sponsoring organizations, attend each Institute session. Delta Zeta was proud to send Donna Winkley, Georgia College-ΑΠ chapter and Marla Hilburn, Louisiana State University-Σ chapter to The LeaderShape Institute this summer. Also in attendance was Michelle Overton, CMSU-ΔΣ, representing the Central Missouri State University Panhellenic.

Originally developed by the Alpha Tau Omega Fraternity, The LeaderShape Institute has expanded its base of support and participation to include a variety of corporations and both Greek and non-Greek organizations, thus ensuring a national collegiate cross section of outstanding participants.

The majority of the attendees selected the Team Challenge Course and the Family Cluster

experience as learning highlights of this past conference. Donald R. Keough, president, The Coca-Cola Company; Raymond H. Kiefer, president, The Allstate Insurance Company, and Zelema Harris, president, Parkland College, were among the visiting dignitaries.

Alums go for big bucks

(continued from page 18)

Houston alumnae like this project because it is good for the cause they support and good for the "people involvement" that gives strength to the alumnae chapter.

Even in a city like Houston where fashion luncheons are plentiful, the Delta Zeta "Fashion Fantasy" is successful because of the first class image they project, because of the cause they support, and because of the sisterhood they rekindle while working together.

The 1990 "Fashion Fantasy" raised \$5,700 for the Houston School for Deaf Children.

There she is . . . a Delta Zeta



Renee Autherson, Miss Ohio 1992.

Renee Autherson, Ohio University-OF, represented Delta Zeta well in the recent Miss America Pageant. Foundation President Joan Dondrea Lowry, Baldwin Wallace-FA conducted the following interview shortly before the pageant.

Joan: Tell us a little bit of your Delta Zeta background.

Renee: I am very proud to say that I am a charter member of the Omicron Gamma chapter at Ohio University. We were officially installed on April 27, 1990. I went on to become the vice president of pledge education in the fall of 1990.

Joan: How did you choose Delta Zeta?

Renee: Well, I was a sophomore and had just passed up my second opportunity to go through formal rush. I just didn't think that sorority life was for me. I believe very much in the spirit of individualism, and Greek life to me was just another fine ex-

ample of childish cloning. Delta Zeta started advertising that they were coming to campus in October. Still a little skeptical, I attended the informational meeting. I saw a chance to actually make a difference in the sorority *from the beginning*, rather than fall into stereotypes already established on the campus for the other sororities. I interviewed and was offered a bid, and later realized that Delta Zeta had destroyed all my previous misconceptions concerning Greek life. It was indeed a way to grow, not only individually, but together in very unique ways.

Joan: What's the purpose of the platform issues at the Miss America Pageant?

Renee: The Miss America program stresses the idea that the contestants are not only talented, intellectual, etc., but that they take a special interest in civic or social issues. Each contestant is required to submit two platform issue essays, one of which she would speak about all over the U.S. if she were chosen Miss America. The contestants are asked questions on their issues of concern during their private interview with the judges, and during the final night of competition (for the top five finalists only). My platform issues are 1) Promoting individualism in the educational system and 2) Aid to the hearing and speech impaired.

Joan: Why did you select the deaf as one of your platform issues?

Renee: My initial interest in the deaf was inspired by Delta Zeta. Once I was crowned Miss Ohio, I saw an opportunity to step into a different light, one I could utilize to benefit others. During my preparation for the pageant, my sisters saw very little of me. They were probably

asking, "Renee who?" Now, given an opportunity to speak all over Ohio, I have chosen to give back to Delta Zeta my efforts in promoting our national philanthropy, aid to the hearing and speech impaired.

Throughout my travels I have come to realize just how widespread deafness really is. Even Governor Voinovich wears a hearing aid!

I have recently learned of the phenomenal dance program at Gallaudet University. I have an intensive dance background and plan to travel to Gallaudet in October to see these dancers for myself!

Joan: Describe your speaking schedule.

Renee: Well, this summer I have traveled Ohio attending fairs, festivals, exhibitions, other pageants, etc. Thus far, I've basically made the announcement that I would be promoting hearing and speech. My true speaking schedule begins after the Miss America Pageant. It looks like one of my future engagements will be State Day.

Joan: How is Miss America chosen?

Renee: The one thing that sets the Miss America Pageant apart from other pageants is the emphasis on talent. The breakdown of points is Talent — 40%, Interview — 30%, Swimsuit — 15% and Evening Gown — 15%.

For my talent, I will be performing a song and dance routine to "Fabulous Feet" from the Broadway musical "The Tap Dance Kid." My interview suit is red and white, and I've been training since June for the interview. I recently had a "mock interview" with Melissa Bradley Buchanan, Miss Ohio 1985 and first runner-up to Miss America 1985. My swimsuit is bright neon green (everyone must wear

a neon color this year). My evening gown is a turquoise suede, trimmed in gold and bronze jeweling. The gown was designed by Suzie Lee of Canton.

Let's hope I have the right combination to bring the title home to Ohio!

Joan: We hear that you became a statistic on June 15 when you were crowned Miss Ohio. Tell us about that.

Renee: Well, I am the first brunette Miss Ohio since 1983, the first dancer since 1983 and the third woman since 1975 to win the state title on the first try!

Joan: What is the chain of command in the Miss Ohio Program?

Renee: I have an executive director at the very top who oversees everything. Next is my booking agent/business manager



who sets up appearances for me. Last is my traveling companion who helps take care of me on a day-to-day basis.

Joan: What are your plans for the future?

Renee: I still have one year left at O.U., which I will complete following my year as Miss Ohio. I am studying advertising and right now I am a walking billboard for many businesses, so things are tying together nicely. Ask me this question again in a year!

Joan: We'll let you go now, Renee. Do you have anything else to say to your Delta Zeta sisters?

Renee: Just a couple of things! Dare to be you! No one enjoys a carbon copy! And, the door to success is labeled "PUSH." You figure it out!

Read all about it!

A new beginning for the magazine subscription program was introduced at the recent National Convention.

QSP

QSP (Quality Products, Service and Profits), a subsidiary of the Reader's Digest Association, Inc., is the number one magazine fund raising company in the industry. Delta Zeta is pleased to be associated with QSP and looks forward to sharing the success of this program with each chapter.

"Sharing the success" includes a 10% commission on each order for the chapter and a 20% commission of each order goes to a national scholarship fund. In addition, each chapter is eligible to be in the drawing for a big screen television based on total chapter participation.

A drawing will be held on May 15, 1992 for the big screen television. To be eligible for the

drawing, the chapter must meet or exceed its chapter goal of \$25 per member in orders not later than May 10.

This program can bring substantial dollars to each chapter as well as increase scholarship support for many Delta Zetas.

At the 1991 Convention, Cal State-Fresno-EE "cashed in" their magazine orders and received a VCR. University of Kentucky-AΘ, University of Tampa-ΔB, Moorhead State-ΘT, Shephard-KM, Northeastern Oklahoma-ΔΦ, Northwest Missouri-EP, Appalachian State-ΛΦ, Northwood Institute-ΞH, Nebraska Wesleyan-BT and Indiana of Pennsylvania-ΓΦ all received certificates.

Alumnae chapters don't compete for prizes but they do get the cash commission. St. Louis alumnae placed more magazine orders than any other chapter in the past biennium and received \$1,468.78 as their share of the

commission. They were followed in sales by Metro Detroit and Orange County (California) alumnae.

According to Diane Stecher, St. Louis alumnae president, it is just routine for the alums to send all their magazine renewals through ΔZ subscriptions. In addition they have companies order their magazines through Delta Zeta, focusing on beauty salons and offices of doctors and dentists.

It's easy, it's painless, it's good for your chapter and it's good for the national scholarship program. Order your magazines through QSP today. Call National Headquarters for information and order forms. The magazine hotline is 1-800-678-2683.

Alum chapters know how to go for the big bucks



Katie Blanche Masters Stallworth Award for top dollar chapter benefit in the small chapter category went to Huntsville, Alabama: President Cheryl Hart Smith and PAD Kimberly Harris Bath.

**by Ann Butler Booth,
Louisiana Tech-ΘE**

The two winners of the Katie Blanche Masters Stallworth Award for Top Dollar Chapter Benefit took very different routes to achieve their common goal of raising a significant amount of money for philanthropy.

Huntsville, Alabama, winner in the small chapter category, used to hold the traditional bridge-fashion show but found them to be expensive, time-consuming, and hardly worth the effort in terms of the amount of money raised. About 24 years ago the chapter decided to hold an arts and crafts show and the Annual Delta Zeta Arts and Crafts Show was born. Many years later after trial and error and a few "learning experiences" this show is reputed to be the number one show in North Alabama.

The show is held every year on the weekend before Thanksgiving; the date never varies. Prospective exhibitors receive invitations requesting pictures and descriptions of handmade crafts. Those exhibitors who are accepted pay an entry fee and 10% of their proceeds. There is a waiting list every year.

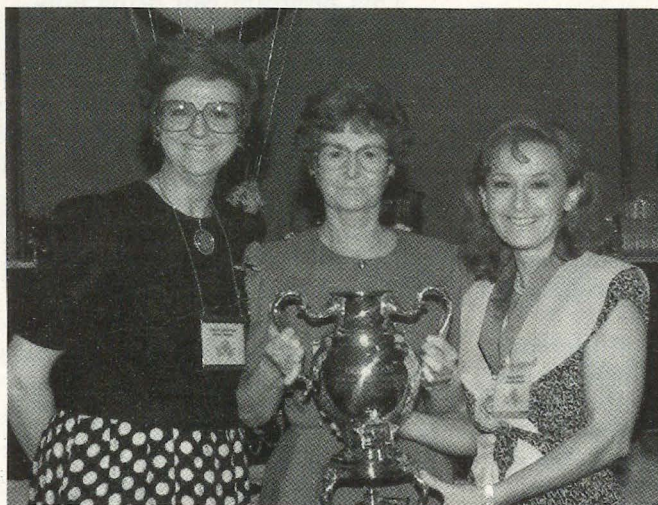
Proceeds from the show go to Huntsville Hospital projects. Each year the Huntsville alumnae, in cooperation with the hospital medical staff, select equipment or projects to sponsor, keeping in mind Delta Zeta's national philanthropy. Each selection deals directly or indirectly with equipment to prevent brain damage resulting in the loss of hearing, speech, sight, other senses, or vital brain functions. The hospital assists the alums with publicity, posters, printing and plaques for purchased equipment.

The 1990 show raised \$20,000 for Huntsville Hospital from the Huntsville alumnae.

In contrast to Huntsville, the Houston, Texas alumnae, winners in the large chapter category, have found great success with a fashion show. For four years their support for the Houston School for Deaf Children has come from the proceeds of ticket sales and raffle tickets for a style show and luncheon.

Houston alumnae solicit corporate sponsors to help underwrite major expenses to enable the group to project the first class image they want for the event. Another committee goes after interesting, desirable raffle items and a prestigious site is chosen for the affair. A major store in the area provides the fashions. An emotional part of the day, the moment that makes everyone glad she participated, is the speaker from HSDC. This is usually a "graduate" of the HSDC who shares her progress, her life, and her ability to communicate in a hearing world she has never heard.

(continued on page 15)



Katie Blanche Masters Stallworth Award for top dollar chapter benefit in the large chapter category was received by Houston, Texas: Nancy Jones Holliman, PAD Elsie Wheeler McTee, President Sheila Howell Partin.



Mary Margaret Fore Alumna Philanthropy Award

by Patricia Canady Rosser

The first Mary Margaret Fore Alumna Philanthropy Award was presented at the 1991 National Convention to Ellen Stavros, University of South Florida-AL.

This award was established in 1989 by Province XVII (Texas and New Mexico) in honor of Past National President Mary Margaret Calhoun Fore in recognition of her work with Delta Zeta Sorority and the Delta Zeta Foundation. The award is given at convention to the alumna who worked the hardest, either through organization and leadership or raised the most money, on an alumnae chapter's philanthropy project during the biennium. The majority of proceeds must have been given to the Delta Zeta Foundation for its work in the areas of speech and hearing, scholarship, the Historical Museum and sorority education programs.

Award nominations were sent in the alumnae chapter mailing last year, as the application must have been made by the local alumnae chapter with the approval of the Province Alumnae Director.

St. Petersburg Alumnae Chapter President Virginia Raysor nominated Ellen Stavros for the pivotal role she played in bringing about a community-wide program designed to benefit the hearing impaired both in Pinellas County (FL) and at Gallaudet University.

In the spring of 1989, Ellen co-chaired a benefit performance of the Gallaudet University dancers and players in Pinellas County. She personally contacted corporations and individuals to help underwrite the expenses of the performance so that ticket prices could be at a low cost of \$10 per seat, held in the theater that

usually charges \$35 - \$75+ per seat.

Working with a committee, she helped arrange all the needs of the 24 guests from Gallaudet for their week's visit, hosted a beach party and arranged for a special trip to Disney World for them.

In addition, she arranged for workshops in four Pinellas County schools and a special dance performance as an introduction to an outdoor Shakespeare play held each spring in St. Petersburg. That night, not only did the dancers perform, but for the first time, deaf interpreters were used so that the hearing impaired audience would be welcome and could enjoy the play.

The next year, the deaf interpreters were again used, having been provided by private donations obtained by Ellen and other Pinellas County alumnae. This is still the only play where deaf interpreters are used in Pinellas County during the year. Yet, the county has one of the highest rates of hearing impair-



Ellen Stavros, South Florida-AL, received the Mary Margaret Fore Alumna Service Award.

ment in the country.

Ellen has been absolutely essential to the success of these and other philanthropic projects for Delta Zeta. As her recommendation stated, "We feel Ellen is the epitome of the dedicated Delta Zeta."

The award was very special for another reason. To Ellen, Mary Margaret Fore was the epitome of a lady and one of her most favorite Delta Zetas.

Become a patron of the arts

Delta Zeta's Senior Program is designed to meet the needs of college seniors as they prepare for new opportunities after graduation.

As a part of the "Projecting Your Image" series of the Senior Program, a video on wardrobing was produced by the Foundation in coordination with Casual Corner Stores, Inc. The video was previewed by 1991 Convention attendees. Funding was also provided in part by University of Kentucky-AΘ chapter and Nebraska Wesleyan-BT chapter.

The video and supplemental materials are available from National Headquarters.

The "Managing Personal Finances" series is in the planning stages and will focus on personal credit, budgeting and saving. Opportunities are available for chapter and individual gifts to support this series and other titles to come. For more information about these opportunities, contact Cindy Menges, Delta Zeta National Headquarters, 202 E. Church St., Oxford, OH 45056.



Collegians from CSU/Long Beach-ΔA and Loyola-Marymount-ΞO served as counselors at the House Ear Institute's "Sharing is Caring Family Camp" in Malibu, California.



ΔZ goes to camp with HEI

Seven Southern California Delta Zeta college women served as counselors this summer at the House Ear Institute's "Sharing is Caring Family Camp" in Malibu. Each year the camp is attended by as many as 45 families from around the United States.

Representing California State University at Long Beach were Delta Alphas Connie Baumgard, Nicole David, Marianne Garcia, Pamela Jesse, Jennifer McKay and Penny Sakellariou. Jackie Newman attended from the Xi Omicron chapter of Loyola-Marymount University.

This is an annual camp specially designed for parents with deaf and hearing-impaired children. While the parents are in workshops and lectures, their children are involved in activities with counselors. Each counselor is with a specific age group of these children and their siblings throughout the day during which they rotate to different activities such as arts and crafts, sports, nature walks and games.

"This task is not an easy one as there are eight to twelve children in each group and two to three counselors per group," stated G. Lynn Odom, who helps

coordinate the program. "They do a splendid job and more importantly, they help the children have a good time," said Miss Odom.

The hearing Delta Zeta counselors take on not only the

challenge of communicating with the children, but also their peer counselors who are hearing impaired. "These young ladies have been invaluable to the camp experience and we welcome them each year," stated Miss Odom.

Double Your Money!

Sounds like an ad you'd immediately toss in the trash, doesn't it? But it's true, you *can* double your donation to the Delta Zeta Foundation if you work for a company with a matching gift policy.

The Foundation meets IRS Code 501(c)(3); the assets are used for educational or charitable purposes so donations to the Foundation are tax deductible. Many companies will match gifts or donations to nonprofit organizations.

Check with your personnel office to see if your company is a matching gift organization and if they will match gifts to fraternal foundations. Fill out the gift form from your company and submit it with your next donation to the Delta Zeta Foundation. We'll handle the rest. Why not inquire too if the gifts of spouses, retirees or directors qualify. Keep in mind that gifts may be other than cash; some companies will match the cash value of securities.

Unlike that ad you'd throw in the trash, there are no strings on this offer. Call your employer's personnel office today and double your money!

Kentucky gives in a big way

Alpha Theta chapter at the University of Kentucky knows the importance of being well-rounded and they can boast the Lisbeth Innis Francis Award as proof. The award goes to the collegiate chapter with the best overall philanthropy program.

Alpha Theta donated over \$8,000 through the Foundation during the 1989-91 biennium — \$6,150 to national philanthropy, \$150 to local speech and hearing and \$1,825 to other local philanthropies. Nationally, their money was directed to the Historical Museum, local speech and hearing projects, Hearing Help, House Ear Institute, Gallaudet University, Delta Zeta Foundation — general and scholarship, the Andrisek Educational Fund, and the fund for videos.

To raise this money, Alpha Thetas participated in 99 projects one year and 80 the other. Their big fund raiser is the Fratman's Classic, a track and field event for fraternity pledges. In addition, they participated in other Greek philanthropy projects and the Panhellenic Walk-a-Thon.



Alpha Theta chapter at the University of Kentucky received the Lisbeth Innis Francis Award: CCD Evelyn Barr Kramer, President Lori Cahill, PCD Patricia Steirer Sorg.

Along with their financial contributions, the chapter has an adopted grandmother, an elderly lady from the local community whom they support all year, and they held clothing drives and col-

lected canned goods for a Community Kitchen.

This is indeed an amazing effort and the many beneficiaries of that effort are grateful.

Grab some control!

Have you had to take care of an aging relative yet; do you expect that you will; are you trying to simplify your affairs to make things easier on your children, or are you someone who simply wants to bring some order and control into her own life?

If you fall into any of these categories, and all of us do, you need a copy of the book **IN TIME OF NEED**. This is a planning workbook for organizing life's business at all ages, married or single. Get all your important papers and information together in one place for the first time! Give a copy to your parents and get a copy for yourself. Make your life easier and, if a tragedy occurs, be assured that *your* wishes are known and carried out.

Through a special arrangement with the pub-

lisher, the Delta Zeta Foundation is making this book available at \$5.00 per copy, including shipping and handling. Quit promising yourself that you'll get organized; do it today.

— — — — ORDER FORM — — — —

Please send me _____ copy(ies) of **IN TIME OF NEED** at \$5.00 each, including shipping and handling. I enclose a check made out to Delta Zeta Foundation for \$ _____. Ship to:

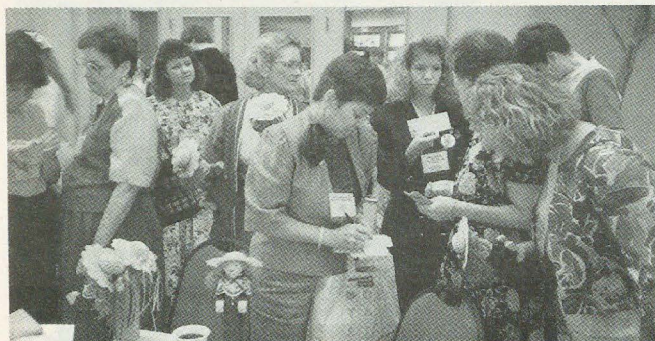
Name _____

Address _____

City _____

State _____ Zip _____

"The Breakfast of Champions"



Money changed hands rapidly as guests vied for centerpieces.



No one lacked elegant food or exciting conversation at the Special Friends Breakfast.

**by Ann Butler Booth,
LA Tech-ΘE
Foundation Trustee**

The rose and green setting of Innisbrook's new Carnelian Center atrium was the perfect setting for the Foundation's Special Friends Breakfast at the 1991 Delta Zeta Convention. An early morning Florida sun shone through the roof as the Trustees literally rolled out the red carpet to a musical background for those individual Delta Zetas or representatives of chapters giving \$100 or more in the last biennium.

Table centerpieces were dolls dressed in Delta Zeta colors and wearing sunhats encircling small versions of the Rose Tree.

Foundation President Joan Lowry, introduced Dr. Howard House and Janet Doak of the House Ear Institute who spent the day at Convention as distinguished guests.

The Trustees then gave an update on Foundation work. Joan is writing a manual for coordinating Better Speech and Hearing Projects and told of the Foundation Manual coming out in the fall. Joyce London, chairman of the Scholarship Program, reported that all scholarships had been increased in value. A goal has been set for a minimum of \$2,000 for each scholarship by the year 2000. Susan Mease confirmed that the annual Report

would indeed continue as such with the next issue describing the history and origins of our scholarships, plus information about those for whom they are named.

Marjorie Lovewell discussed a reunion program for alumnae on which she has been working. Contact should be made with her by those interested in an organized reunion for specified ages of alumnae. Results of the Foundation survey to determine the needs and interests of alumnae will be out by the end of summer, according to Ann Booth. She also described the handbook *In Time of Need* that is being offered as a service for assisting in organizing personal and business records. This section of the program was concluded by Pat Rosser's presentation of a sneak preview

of the new video for the Senior Challenge Program, funded by a grant by the Foundation.

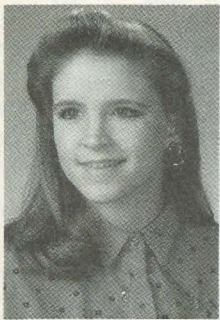
At the end of the Breakfast, two airline tickets donated by USAir through the efforts of Joyce London were given away to Lorraine Maxwell, CCD at Stockton State, and Christine Martin, CCD at Nebraska Wesleyan. Everyone received a bottle of Tiffany perfume donated by Tiffany's through the efforts of Pat Rosser and a Foundation bookmark. At the request of the guests, all the doll centerpieces were put up for sale and were purchased as remembrances.

The Foundation Trustees wish to thank the many people who helped organize this breakfast and, especially, the donors, champions of the work of the Delta Zeta Foundation.



Dr. Howard House and Janet White Doak, UCLA-AX, join Joan Lowry as extra-special guests at the Special Friends Breakfast.

Founders Memorial Scholarships (\$1,300 each)



Andrea Cooper
Tarleton-EN



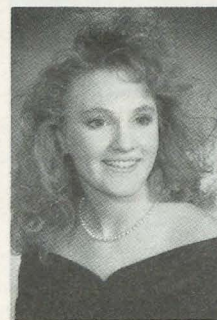
Melissa Gregg
LSU-Σ



Penny Rumley
Middle Tennessee-II



Barbara Snow
So. Mississippi-EM



Bethany Spaulding
Missouri/KC-ΞΦ

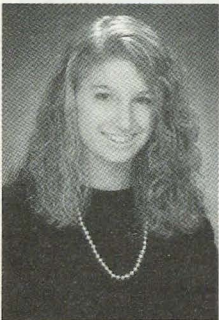


Jill Watson
OSU-AE

Lavonne Heghinian Scholarships (\$1,000 each)



Rachel Sandhorst
NE Wesleyan-BT



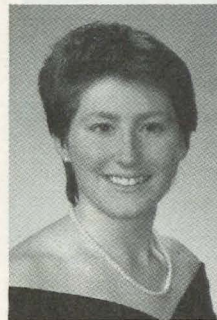
Christy Ziebarth
Washington-K



Sheri Yamauchi
CSU/Fullerton-Ψ



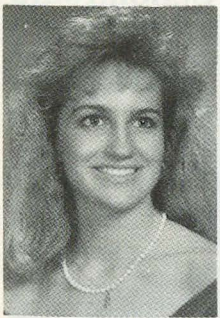
Heather Henderson
Northwestern-AA



Shellie Littrel
Eureka-Π



Carrie Mann
Southern Indiana-AB



Pamela Ronka
Tennessee-BA



Lena Snyder
Morehead State-KT



Holly Stilp
WI/Eau Claire-EΩ

not pictured
Katherine Elder
Memphis State-Π

1991 recipients of scholarships and grants

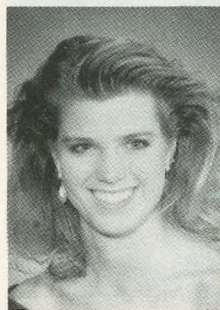
Edith Head Scholarship (\$1,000)

Valerie Knol
W. Michigan-ΠΠ



"I just wanted to thank you so very much for selecting me for the graduate scholarship. You can imagine my excitement and relief." Fonda Satzinger

**Thornberg
Undergraduate
Scholarships (\$800 each)**



Susan Fruits
Louisville-BΓ



Karie Hakanson
Northwestern-AA



Kathy Haller
Tampa-ΔB



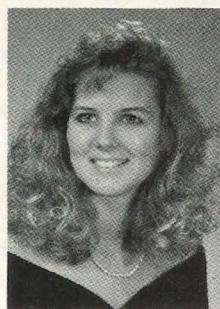
Cheryl Imler
Edinboro-IA



Denise Tamborello
Tampa-ΔB



Julie Westerland
Houston-ΔΘ



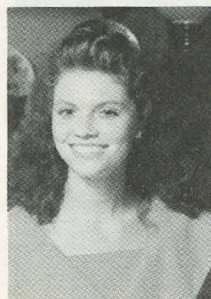
Stacie Yeager
So. Indiana-AB

not pictured

Kelli Kapustka
Nebraska Wesleyan-BT

**Arlene Davis
Scholarship (\$1,000)**

Angela Trulove
Alabama-AΓ



**Gertrude Houk Fariss
Scholarship (\$1,000)**

Sandra Alexander
Alabama-AΓ



**Catherine Benjamin
Becker Scholarship
(\$1,000 each)**



Terri Overby
Louisiana Tech-ΘE



Heather Racki
Lehigh-ΞII

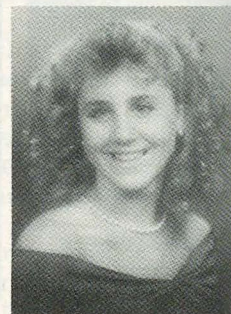
**Gail Patrick Velde
Scholarship (\$800)**

Kelly Starcher
Ohio Northern-ZK



**Mary Margaret Fore
Memorial Scholarship
(\$600)**

Erika Aden
Kentucky-AΘ



**Helen Woodruff Nolop
Scholarship (\$500 each)**



Deborah Stoughton
Northwestern-AA

not pictured

Melinda Walker
East Carolina-ZA

"I am honored to be selected as the Gertrude Houk Fariss Scholarship recipient. I will be attending Owen School of Management at Vanderbilt in the fall and the scholarship money will definitely be of great assistance."
Sandy Alexander

"I just wanted to let you know how excited I am about my scholarship! I feel so privileged that Delta Zeta acknowledges my financial need and displays confidence in my abilities as a graduate student and as an active alumna." Kelly Wright

Elsa Ludecke Graduate Scholarships — Continuing Student (\$1,000 each)



Gina Stoessner
Ohio State-Θ



Fonda Satzinger
Tampa-ΔB

Houston, Texas — Nancy Holliman Scholarship (\$500 each)



Dana Wigginton
Western Michigan-ΠΠ



Jennifer Wright
Ohio-ΟΓ

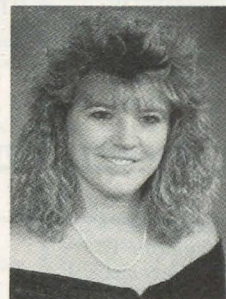
Elsa Ludecke Graduate Scholarships — Returning Student (\$1,000 each)



Melinda Camp
Alabama-ΑΓ



Alison Payne
Middle TN-II



Kelly Wright
Kent State-K

Marguerite Havens Scholarship (\$1,000)

Maria Gelabert
Southwestern-ΓΖ



Huenefeld/Denton Scholarship (\$600 each)



Diana Hutchinson
Kent State-ΓΚ



Jane Klump
Angelo State-ΑΟ

Golden Circle Scholarship (\$500)

Michele Jones
Auburn/Montgomery-ΑΝ



"It feels so good to know that I won't have to sell all of my furniture or jewelry to stay in school! It is also nice to know that I will be able to stay active until I graduate without having to go on emergency alumnae status. My studying has finally paid off and I have the Foundation to thank for that. I owe my senior year to you." Andrea Cooper

Foundation Awards

KATIE BLANCHE MASTERS STALLWORTH AWARD

Large Chapter: Houston, TX
Small Chapter: Huntsville, AL

MYRTLE GREATER HINKLY AWARD

GAIL PATRICK JACKSON VELDE PHILANTHROPY AWARD

St. Petersburg, FL
Clearwater, FL

MARY MARGARET FORE ALUMNA SERVICE AWARD

Ellen Stavros

LISBETH INNIS FRANCIS AWARD

Univ. of Kentucky-AΘ

MARGARET HUENEFELD PEASE AWARD

Nebraska Wesleyan-BT

COLLEGIATE PHILANTHROPY (silver)

Nebraska Wesleyan-BT

Univ. of Kentucky-AΘ

Florida State-AΣ

Appalachian-ΛΦ

Tennessee-BA

Rochester-ΔI

ALUMNAE PHILANTHROPY (silver)

Houston, TX

St. Petersburg, FL

Clearwater, FL

Arlington, TX

San Fernando, CA

Whittier-West Covina, CA

HEARING AND SPEECH GRANTS

(\$500 each)

Palm Beach, FL

Raleigh, NC

Arlington, TX

Baton Rouge, LA

Greater Pensacola, FL

Cypress Creek, TX



Receiving the Gail Patrick Jackson Velde Philanthropy Award were St. Petersburg and Clearwater, Florida, alumnae chapters: PCD Karly Klemp Burns, Clearwater President Eileen Moyneaux Trawinski, St. Petersburg President Kathleen Clark, National Director Patricia Canady Rosser.



The Myrtle Graeter Hinkly Award went to Arlington, Texas, alumnae chapter: President Melody McDonald and PAD Tracy Wilson LeSieur.



The Margaret Huenefeld Pease Award went to Nebraska Wesleyan-BT: CCD Chris Martin and President Kristy Berg.

INCOME TAX DEDUCTION		INCOME TO DONOR OR BENEFICIARY	TAXATION OF INCOME	BENEFITS TO DONOR	BENEFITS TO DELTA ZETA FOUNDATION
OUTRIGHT GIFTS					
Cash	Face value	None	None	Tax deduction	Immediate use for agreed-upon need(s) or purpose(s)
Securities	Market value	None	None	Tax deduction Avoidance of tax on gain	Use of income generated or use of sales proceeds
Personal Property	Appraised value for related use	None	None	Tax deduction Avoidance of tax on gain	Use of the Property or use of sale proceeds
Real Property	Appraised value	None	None	Tax deduction Avoidance of tax on gain	Use for our purpose(s), or benefit from income generated or from sale proceeds
Life Insurance	Replacement value of policy or tax basis or cash surrender value	None	None	Immediate and perhaps subsequent tax deduction in amount of remaining premiums, if any	Ultimate use of the proceeds from the policy
LIFE INSURANCE					
Life Estate Reserved	Charitable remainder interest	None	None	Tax deduction Continued use and enjoyment of property Avoidance of tax on gain Federal estate tax savings	Ultimate use of property or benefit from the sales proceeds
LIFE INCOME GIFTS					
Charitable Gift Annuity	The difference between the fair market value of the gift and the investment in the annuity contract	Income generally based on Committee on Gift Annuities tables and paid annually or more frequently	If funded with cash: 1. ordinary income 2. tax-exempt If funded with appreciated property: part of gain taxed as ordinary income, reportable over donor's life expectancy	Tax deduction Partially tax-exempt income Gains reported over his/her life expectancy	Ultimate use and benefits of gifted asset(s) at the death of beneficiary
Charitable Remainder Annuity Trust	Present value of charitable remainder interest	A FIXED payout based on a percent of the initial fair market value and paid annually or more frequently	Income taxed in same manner as earned in trust; that is, as: 1. ordinary income, including gain taxed as ordinary income 2. tax-exempt 3. tax-free return of principal	Income from trust for term of years or for life Tax deduction Avoidance of tax on gain portion of gift Federal estate tax savings	Ultimate use and benefit of gifted asset(s) at death of beneficiary or end of trust term
Charitable Remainder Unitrust	Present value of charitable remainder interest	A PERCENTAGE of the trust's fair market value, as valued annually and paid annually or more frequently			
Charitable Remainder Lead Trust	Present value of the annuity or unitrust interest assigned to us for the term of the trust	Income assigned to us for the term of the trust	Trust income reported by donor if he/she elects to take tax deduction	Tax deduction if donor elects Possibility of passing substantial wealth to others with reduced gift and estate taxes	Benefit and use of income for term of trust
Pooled Income Fund	Present value of charitable remainder interest	Income received according to donor share in the fund based on total earnings of the fund	Ordinary income	Tax deduction Avoidance of tax on gain Federal estate tax savings Income for life	Ultimate use and benefit of gifted asset(s) at death of beneficiary

BEQUESTS. Gifts of cash, securities, property, etc., may also be contributed outright through your will or used to create a trust or annuity. Such bequests are deductible for estate tax purposes. For more information, contact Pat Rosser, Foundation Treasurer, 813/585-2857.

Why do I give to Delta Zeta?



Patricia Tector

A very simple and direct question. However, it is a question that I never thought about because it seemed such a natural thing to do, just as one gives to a church or to community services. You give to these organizations because of all they give to you and you want to repay them in some way, however large or small it may be.

Why do I give to Delta Zeta?

To really answer this question I must go deeper into my thoughts to find the response about why it is important that I have chosen to give to Delta Zeta. These words are deliberately selected because it is *my choice* to give to Delta Zeta. Nobody is forcing me or challenging me. But I know that money is needed to finance the future growth of Delta Zeta in programs and housing; I know that we have to look beyond this biennium; and, most importantly, I know that the only ones who will give to Delta Zeta are Delta Zetas.

What I give is *both* money and time. The two compliment each other. Money is necessary to finance programs within our sorority. The giving of time is a very visible sign of the commitment and support one gives to Delta Zeta. This gift of time is a way of showing alumnae and collegians that Delta Zeta is lifetime — that being actively involved in our sorority does not

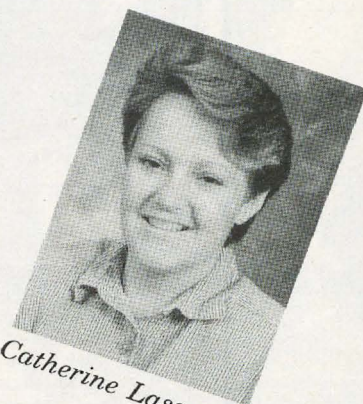
stop with graduation but continues to grow in the new friendships formed in a new community or through working on a philanthropic project or by becoming an advisor to a collegiate chapter.

At first I was not able to give much money and so gave my time wherever possible. Then I realized a fitting way to commemorate my years as a Delta Zeta and still be realistic with our budget was to send \$1.00 for each year since I had been initiated. It was not much in the beginning but, as I have told college seniors whenever I speak to them at our Province Weekend, if everyone of our 130,000 plus membership gave a dollar every year . . . or if everyone gave \$2.00 . . . A dollar or two by itself seems very insignificant but when added to everyone else's dollar or two we would have the means for funding programs that are now not much more than dreams. As the number of years since initiation has increased so has my annual contribution to the Delta Zeta Foundation.

I am proud to be a Delta Zeta. I had a good experience in college and have welcomed the opportunity to do what I can to enable those who are going through college to have the same feelings. I have formed many warm friendships with alumnae all over the country and encourage all I meet to become active in some way. Our sorority started out with six women who set down some basic guidelines which still hold true today. It is these traditions that make us strong in spirit, warm in heart and giving in nature.

And that is why I give to Delta Zeta.

Patricia Menendez Tector,
Detroit-EΦ



Catherine Lassenen

I am not a National Officer, nor am I a Foundation Trustee. I have neither anything to gain nor earn by donating to the Delta Zeta Foundation. So why do I give to Delta Zeta?

An unknown author wrote "People give from the heart, not from economics. When a need is recognized the heart moves the hand."

As a struggling collegian, I recognized that there was a need for more Delta Zeta scholarships and in larger amounts. As an executive board member in my chapter, I recognized that there was a need for leadership training, alumnae advisors and local alumnae support. And as an alumna member, I recognized that we need to maintain the high ideals of our sorority. I also recognized that without each of our individual members supporting the sorority through the giving of their time, talent and treasure, Delta Zeta will not be successful.

I cannot remember the first time I recognized a need. I believe it was when I helped my mother with her philanthropic adventures. I walked year after year for the March of Dimes walk-a-thon, remembering how lucky I was that I could walk when the children in the posters could not. For me, giving is just a way to show thanks for all the things that I am so lucky to

have. Early in life my mother taught me how to give and the importance of giving to those who may not be as lucky.

She taught me this lesson, even up to her final days. My mother Susan was a member of a sorority and throughout her life gave to her sorority's foundation. Her final gift was a few days before her death. We were talking sorority talk, trying to get her mind off of the pain, when she asked me to provide her sorority with a donation.

"Please give this to my sorority, because through the years it taught me much. It gave me confidence when I was lacking it, it gave me lifelasting friends, it was there for me in good times and in bad. The national magazine always kept me informed and in touch. The officers have spent endless hours in educating the members and keeping its high ideals. My sorority has given me much more than I can give back, yet I hope this will be one way I can say thank you."

It has been five years since I heard her say those words, yet I remember them as if it were today. I give because there is a need. A need for larger scholarship amounts, for educating our members, for housing our members in safe houses, for training the leaders of tomorrow, for keeping the ideals of our sorority intact and for our philanthropic projects. I give because I am grateful for what life has given me. I give because I hope that this will be one way I can say thank you.

Catherine Clay Lassesen,
UNLV-10

Members who are donors to the Delta Zeta Foundation from July 1, 1990 to June 30, 1991 are listed in the four recognized giving levels:
Rose Society (\$1,000-\$24,999)
The Heritage Club — Diamond (\$500-\$999)
The Heritage Club — Pearl (\$100-\$499)
Friendship Circle (\$99 or less)

The Rose Society
(Gifts of \$1,000-\$24,000)
(Individuals)

Merry Westbrook Adamcik
Carol Selway Bertz
Ann Butler Booth
Carolyn Barnes Gullatt
Annette Steel Ladd
Catherine Clay Lassesen
Joyce Low London
Joan Dondrea Lowry
Cynthia Winslow Menges
Florence Hood Miner
Hazel Lenger Rogers
Patricia Canady Rosser
Marvona Easley Tavlin
Patricia Menendez Tector

(Alumnae Chapter Gifts)

Arlington Alumnae Chapter
Central San Fernando Valley Alumnae Chapter
Dallas Alumnae Chapter
Gold Coast Alumnae Chapter
Houston Alumnae Chapter
Huntsville Alumnae Chapter
Long Beach Alumnae Chapter
Los Angeles Alumnae Chapter
Louisville Alumnae Chapter
Metropolitan Detroit Alumnae Chapter
North San Diego County Alumnae Chapter
Orange County Alumnae Chapter
Pasadena Foothills Alumnae Chapter
Santa Monica Alumnae Chapter
South Bay Alumnae Chapter
Whittier-West Covina Alumnae Chapter

(Collegiate Chapter Gifts)

Appalachian State University-AΦ
Bryant College-0A
California State University/Fresno-EE
California State University/Los Angeles-0P
Central Michigan University-1Y
Drexel University-EZ
Florida State University-AΣ
Georgia College-A11
Georgia State University-AA
Illinois State University-AP
Longwood College-ET
Muhlenberg College-E1
Nebraska Wesleyan University-BT
Pennsylvania State University-1A
Radford University-EA
Southern Illinois University-1Ω
Stephen F. Austin State University-ZP
Stockton State College-0B
Tarleton State University-EN
Temple University-AT
Texas A & M University-EA
Univ. of Tennessee/Knoxville-BA
University of Alabama-A1
University of Georgia-Z11
University of Houston-A0
University of Illinois-AB
University of Kentucky-A0
University of Louisville-1B
University of New Hampshire-01
University of North Carolina/Chapel Hill-EΣ
University of North Carolina/Charlotte-K0
University of Rochester-A1
University of Tampa-ΔB
University of Virginia-AA
Virginia Tech Institute-K0
Wayne State University-EE
Western Illinois University-EO

The Heritage Club
Diamond Level
(Gifts of \$500-\$999)
(Individuals)

Norma Minch Andrisek
Ellen Stavros
Ellen Kroll Jenkins
L. Howery Moorhouse
Susan Mease

(Alumnae Chapter Gifts)

Clay-Platte Alumnae Chapter
Cleveland Westside Alumnae Chapter
Colorado Springs Alumnae Chapter
Cypress Creek Alumnae Chapter
Denver Alumnae Chapter
Des Moines Alumnae Chapter
Fairfield County Alumnae Chapter

Grand Rapids Alumnae Chapter
Jacksonville Alumnae Chapter
Oklahoma City Alumnae Chapter
Phoenix Alumnae Chapter
Reno Alumnae Chapter
Ruston Alumnae Chapter
Tulsa Alumnae Chapter
Twin City Alumnae Chapter

(Collegiate Chapter Gifts)

Angelo State University-A0
Ashland University-0Y
Auburn University-BE
Bowling Green State University-1T
California State University/Fullerton-1Y
Central Missouri State University-E1
Eastern Kentucky University-EB
Indiana University of PA-1Φ
Iowa State University-BK
Lenoir-Rhyne College-ZE
Louisiana State University-Σ
Michigan Tech University-A0
Morehead State University-KT
Northeast Missouri State University-ΔΣ
Northern Illinois University-1P
Ohio State University-0
Ohio Wesleyan-A0
SUNY/Oswego-00
Saint Mary's University-OA
Shippensburg University-KY
Western Carolina University-01
Western Michigan University-111
Winthrop College-AΣ
Wright State University-K1

The Heritage Club
Pearl Level
(Gifts of \$100-\$499)
(Individuals)

Evelyn Rentfrow Adams
Mary Swoger Adams
Janet Lemen Allison
Virginia Augspurger Alter
Gwendolyn Gove Altstaetter
Jeanette Rickey Andreson
Margaret Rawson Arneson
Sandra Sebrill Bailey
Mary McConaughy Barth
Sandra Kay Baxter
Naida Jovanovich Beckett
Nancy Buck Bibler
Andrea Bloch
Vicki Bowman
Francele Feusier Boyer
Elizabeth Barbieri Bragg
Myrtle Shireman Brierley
Jeanne Torrey Brown
Viola Husband Brown
Katharine Brandon Caccia
Virginia Duff Calk
Frances Robinson Carnes
Sara Procter Carruthers
Vivian Anderson Cave
Violet Schneider Cianciotto
Faye A. Collicott
Lucile Crowell Cooks
Mary Harriette Coughlin
Mary Osburn Criss
Claire Koffel Damedwood
Betty Paul DeWitt
Martha Armstrong Denman
Elizabeth Baker Devereaux
Janet White Doak
Anne Meierhofer Dodds
Leora Scharer Eberlein
Elizabeth Edmond
Leann Danner Eisenreich
Stacey Hader Epstein
Marcella Wolfe Erickson
Karen Hamme Fair
Mary Bishop Falconer
Phyllis Snape Favorite
Betty Schneider Fenton
Anne Dodd Freeman
Mary Gallatin French
Ann Marie Jones Gavin
Helen L. Geri
Ellen Anne Gernon
Christen Ann Gihlstorff
Grace Pritchard Gorcham
Leslie Ponthie Gorman
Hannah Nicholas Gough
Barbara Whittaker Gregor
Ethel-Mae Bishop Gullette

Phyllis Nordaker Hamilton
 Carol Sharpe Harper
 Cameron Ellen Hartson
 Alice Schuchert Hauck
 Julie Ann Hauser
 Ann Elkins Hawkins
 Inez Rogers Hazen
 Haila Hinkley Heard
 Kathi Bray Heatherly
 Kathryn Hornung Heglund
 Patricia Keating Heidrick
 Rannie Pendergrass Hilton
 Lois Swanstrom Hirschmann
 Lynnda Wolf Hoefler
 Charlotte Hollinger
 Dorothy Rhyne Husted
 Frances Latham Jenkins
 Margaret Irene Johnson
 Vivia Gambero Johnson
 Amy Elizabeth Karlstrom
 Jane Dupantie Kelley
 Mary Elizabeth Keown
 Kathryn Vlerebome Kittredge
 Jacqueline Wilson Koehler
 Evelyn Barr Kramer
 Charlotte Duncan LaFevor
 Merry Lamond
 Janet Lynn Larson
 Karyn Doble Laurenzello
 Martha Oliver Leggett
 Helen C. Leik
 Marie Gross Lepine
 Frances Pickens Lewis
 Helen Virginia Linde
 Cheryl Slusher Lockton
 Esther Conroy Loucks
 Marjorie Klingensmith Lovewell
 Kristen Ann Lucas
 Leona Ruoff Lucha
 Dorothy Lyons
 Mary Malone
 Marianne Laton Martinson
 Amy Lett McCoy
 Helene Sooy McCracken
 Viola Shadbolt McElligott
 Eleanor Wycoff McKinley
 Deanna Alleman McKinnon
 Dorothy Izant McLaughlin
 Corinne Hipps McLendon
 Elsie Wheeler McTee
 Mary Vanetten Mienheartt
 Helen Ruth Milar
 Anna Montesi Mitchell
 Dorothea Petrie Moon
 Peggy Burnett Moore
 Linda Lindstrom Morris
 Virginia Murrell
 Olive McLauchlan Neelands
 Sandra McAlister Nesbitt
 E. Ruth Landrith Odebrecht
 Evelyn Christiansen Odell
 Helen Gertrude Oldham
 Janet Chapman Onishi
 Mary Stone Orr
 Mary Geibel Osborne
 Aurel Fowler Ostendorf
 Prudence Ditto Platt
 Mary Broadbent Platz
 Jennifer Ruth Plenge
 Lynda Shepley Reilly
 Helen Olene Reimund
 Lynette Spencer Richardson
 Edith Allen Richey
 Doris Ellingson Riede
 Annabelle Barnes Risko
 Laura Zinsmeister Robinson
 Ferdinanda Messmer Roesch
 Miriam Stafford Rollins
 Phyllis Berens Ross
 Karen Lee Roth
 Lowell Washburn Sawyer
 Lena Williams Schroeder
 Marjorie Schwegler
 Jean Delaney Sharon
 Adeline E. Sigwalt
 Susan Adrianson Skambis
 Georgene Melton Smith
 Louise Haupt Smith
 Elizabeth Earley Smithburg
 Susan Anne Spielmann
 Mildred Koll Spilman
 Miriam Starr
 Jean Nelson Stockham
 Dorothy Sacks Swartz
 Ruth Varner Thomson

Ferol Martin Tomlinson
 Vee Shakarian Toner
 Eileen Molyneux Trawinski
 Alethea Jones Ulerich
 Mary Beck Unkefer
 Charlotte Marie Vasey
 Karen Kind Veitch
 Linda O'Day Vilas
 Barbara Bellin Vogel
 Claudia Frances Vollmer
 Jean Bohne Wagner
 Constance Waller
 Elizabeth Ritchey Walters
 Patricia Marie Watson
 Esther Vestal Weesner
 Edna Laura Wheatley
 Violet Sharratt Whitfield
 Ruth Wilson
 Barbara Schaefer Winslow
 Sonja Nay Wise

(Alumnae Chapter Gifts)

Akron Alumnae Chapter
 Aurora Alumnae Chapter
 Bayou Alumnae Chapter
 Berea Alumnae Chapter
 Boston Metropolitan Area Alumnae Chapter
 Canton-Massillon Alumnae Chapter
 Central Philadelphia Alumnae Chapter
 Champaign-Urbana Alumnae Chapter
 Chicago Far West Alumnae Chapter
 Chicago-Northwest Suburban Alumnae Chapter
 Clearwater Alumnae Chapter
 Cleveland Eastside Alumnae Chapter
 Columbus Alumnae Chapter
 Corpus Christi Alumnae Chapter
 Dayton Alumnae Chapter
 Diablo Alumnae Chapter
 El Paso Alumnae Chapter
 Findlay Alumnae Chapter
 Fort Collins Alumnae Chapter
 Greater Kanawha Valley Alumnae Chapter
 Greater Longview Alumnae Club
 Indianapolis Alumnae Chapter
 Johnson-Wyandotte Alumnae Chapter
 Kansas City Alumnae Chapter
 Kent Alumnae Chapter
 Lawrence Alumnae Chapter
 Lehigh County Alumnae Chapter
 Lexington Alumnae Chapter
 Montgomery Alumnae Chapter
 Muncie Alumnae Chapter
 North Philadelphia Alumnae Chapter
 Omaha Metro Area Alumnae Chapter
 Palm Beach County Alumnae Chapter
 Pensacola Alumnae Chapter
 Pittsburgh South Hills Chapter
 Portland Alumnae Chapter
 Raleigh Alumnae Chapter
 Richmond Alumnae Chapter
 Rochester Alumnae Chapter
 Sacramento Alumnae Chapter
 Saginaw Alumnae Chapter
 San Francisco Bay Cities Alumnae Chapter
 Shreveport Alumnae Chapter
 St. Louis Alumnae Chapter
 St. Petersburg Alumnae Chapter
 Texas Panhandle Alumnae Chapter
 Toledo Alumnae Chapter
 Topeka Alumnae Chapter
 Wichita Alumnae Chapter

(Collegiate Chapter Gifts)

Ball State University-IX
 Carroll College-IG
 Clarion University-EG
 Concord College-EI
 Eureka College-II
 Grand Valley State University-EV
 Lehigh University-EII
 Memphis State University-PI
 Mount Union College-OI
 Nicholls State University-KA
 Northwestern University-AA
 Plymouth State College-KE
 Purdue University-EQ
 Trenton State College-AA
 University of Maine-AY
 University of Massachusetts-EA
 University of Missouri-St. Louis-IE
 University of Northern Colorado-DE
 University of Oregon-OQ
 University of Pittsburgh/Johnstown-AE



Individual Rose Society members in attendance at convention: Patricia Rosser, Patricia Tector, Florence Miner, Joan Lowry, Carol Bertz, Catherine Lassesen, Ann Booth, Joyce London.

University of South Carolina-BA
 University of Texas/Arlington-IV
 University of Wisconsin/Stout-ZB
 University of North Carolina/Wilmington-EQ
 West Virginia Institute of Technology-III
 William Jewell College-ZP

Friendship Circle (Gifts \$50-\$99) (Individuals)

Helen Cosendey Abbate
 Amy Lynne Abdouch
 Ann M. Abdouch
 Virginia Fowler Abercrombie
 Patricia Jean Abram
 Lori Wiegler Ackerman
 Elizabeth A. Ackermann
 Kathleen King Adam
 Barbara Lehman Adams
 Jill Jordan Adams
 Joye Hipps Adams
 Lucile Neumann Adams
 Sheri-lyn Ann Adcock
 Bethany Elaine Akerman
 Helen Southworth Albrecht
 Gertrude Stepan Alcock
 Sandra Gayle Aldredge
 Rebecca Long Aldrich
 Janet Schmidt Alexander
 Kathleen Schweisthal Alexander
 Marion Carey Alexander
 Cheryl Reid Alford
 Bernice Quick Allen
 Mary Susan Allen
 Nancy Melissa Allen
 Sharon Lee Almeida
 Michele Renee Ames
 Patricia Kolb Amlin
 Connie St. Pierre Andersen
 Cynthia Lee Anderson
 Diana Lynn Anderson
 Dorothy Brandes Anderson
 Elizabeth Onsum Anderson
 Iris Suzanne Anderson
 Janice Mueller Anderson
 Marcia Rae Anderson
 Marjorie Durham Anderson
 Reba I. Anderson
 Susan Andersen Anderson
 Violet Henson Anderson
 Virginia McDonald Anderson
 Cynthia Diane Andress
 Evelynne Molcan Andrew
 Amy Phillips Anello
 Carol Jean Annino
 Kimberly Marie Anspach
 Juanita Walker Anthony
 Carolyn Schreider Anthorp
 Jo Holbrook Apple
 Alison Miller Ariail
 Oleis Heineke Arlitt
 Judith Adams Armstrong
 Kathryn Owoc Arnold
 Mercedes Jewett Arnold
 Traci McDonald Arnold
 Andrea E. Arsic
 Elise Wittman Artelt
 Norma Freitag Arvold

Amelia Jo Ash
 Bobette Joy Ash
 Carolle Lucas Ash
 Rozella Dillard Ashbaucher
 Marilyn Ashley
 Joyce Simon Ashpole
 Velora Beck Atkins
 Suzanne Kirkwood Auld
 Sandra Lee Auyer
 Sharon Yarnell Avery
 Virginia Kellogg Avery
 Amy Michelle Aylsworth
 Cornelia Jones Babcock
 Diane Fetherston Babcock
 Leona Russell Babyak
 Lorraine Jacks Bach
 Elizabeth Ann Badeaux
 Lydia Michaliszyn Bader
 Elsa Jane Baer
 Kathryn Lawless Bagnell
 Elke Ursula Bahner
 Elsie Kuck Bailey
 Joan Wilson Bailey
 Nitmarie Moore Bailey
 Carri Lynn Baker
 Janel Eshelman Baker
 Janet Black Baker
 Kathryn Lou Baker
 Penny Davis Baker
 Stella Depasquale Baker
 Virginia VanSant Baker
 Betty Rhoades Baldrige
 Marcia Schlossin Baldwin
 Pauline Farris Baldwin
 Evelyn Katzmann Bale
 Beth Lynne Balinkas
 Charlotte Utsey Balias
 Ruth Young Ball
 Louise McKinley Ballard
 W. Jane Keister Bals
 Vickie Brausch Bamberger
 Virgie Binder Bancroft
 Deloris Meier Bandel
 Barbara Reeder Banks
 Muriel Curran Bannan
 Ann Richardson Barabe
 Carolyn Slutz Baranowskas
 Marlowe Zoberski Baranowski
 Nancy Siebenthaler Barber
 Thelma Pitre Barber
 Ruby Pitt Barham
 Kathryn Daniels Barker
 Kathleen Broderick Barnes
 Ruth Lotspeich Barnes
 Tricia Michelle Barnes
 Margaret Curtis Barnett
 Deborah Neumann Barrett
 Evelyn Engbarth Barrett

Sheila Renee Barrett
 Alice Williams Barron
 Debra Swearingin Barron
 Waltraut Barsuhn
 Erma Robker Bartels
 Ann Marie Bass
 Marjorie Hedges Bastin
 Debora Rocco Batchelor
 C. Hildegard Olson Bates
 Lucy Wheeler Bates
 Dorothy Jones Bauer
 Katherine Deacon Bauer
 Charmion Lackey Baugher
 Jennifer Engels Baumgartner
 Carole Scalone Bayer
 Marjorie Miller Baylis
 Sally Brickner Bayuk
 Maple Cole Beals
 Rita Maldonado Bear
 Lisa Marie Beard
 Pamela Coyle Beasore
 Ann McCoy Beath
 Patricia McCloskey Beattie
 Brenda Ann Beatty
 Priscilla A. Beatty
 Opal Waymire Beaty
 Bridget Kennedy Beck
 Dorothy Elizabeth Beck
 Gail Schmidt Beck
 Judith Lynn Beck
 Imogene C. Beckemeyer
 Maxine Scherrer Beckerich
 Julie Ann Beckjorden
 Tera Lynn Beermann
 Debra Dew Behler
 A. Louise Simpson Behrends
 Kathleen Elizabeth Bell
 Kerith Elizabeth Bell
 Suzanne Mercer Bellows
 Hedwig Heinemann Belz
 Beverly Detling Bender
 Carol Hall Bengfort
 Edna Peterson Bennett
 Edith Fidler Bentz
 Barbara Baxter Beres
 Deborah Anderson Berg
 Vane Bane Berg
 Jeanne Larson Berge
 Vicki Rogers Bergman
 Thelma Crandall Berquist
 Rochelle Levine Berkley
 Barbara Browne Bernard
 Mary Jo Harrison Bernert
 Lorraine Wolf Berry
 Elizabeth Harrison Beszhak
 Elsie Yates Bethard
 Claudia Ann Bettucci
 Sandra Lynn Betz





Foundation Secretary Marjorie Lovewell points to the many directions the Foundation's work can take.

Estelle Collins Beumler
Mary Jo Anderson Bevard
Louise Wadley Bianchi
Dora Geiger Bice
Verna Wander Bierschwale
Flo Whittington Bigby
Carolyn Briggs Bigler
Deborah Lynn Bilkis
Margaret Clark Billings
Stacey Lynn Binder
Louise Parker Bingham
Lois Akerstrom Binkley
Shirley Clucas Binkley
Patricia Jane Birch
Thelma Irene Birt
Diana Spivey Bishop
Charlotte Ann Bissell
Martha Wilson Black
Patricia Hopp Blackburn
Viola Melton Blackford
Shona Nicole Blackmon
Laura Slocum Blair
Marjorie Bell Blair
Eunice Yanke Blanchard
Kellye Wilkes Blanchard
Ethel Jones Blanco
Selena Stanley Blankenship
Christine Spisz Blatt
Debbie Pawlowski Blazek
Betty Bucholz Blazok
Deborah Stadel Blick
Helen Calvert Bliss
Lori A. Block
Catherine Higgins Bloom
Doris Voigts Bloom
Katherine Moss Bloomer
Margaret McNeil Bloomgarden
Elsie Maxson Boatman
Ginger Laine Bobo
Barbara Lois Bodell
Helen Gertrude Boelts
Pauline Baggett Bogart
Natalie June Boger
Norma Lee Boggan
Bridget Mary Bogust
Caroline Ortmann Bohan
Virginia Gifford Bolton
Sandra Badger Bomar
Miriam Albert Bond
Shelley Leigh Bonebrake
Vivian Burkhardt Bonifield
Shirley Harold Bonner
Loretta Wales Bonsall
Patricia Smallwood Bonta

Gail Hummel Boone
Tammy Eby Booth
Joan R. Hollingsworth Borders
Nadyne Butts Bork
Diana Heller Borsari
Betty Bosse
Jennifer Lynn Botenhagen
Sheila Troups Boudreaux
Sara Goodman Bounds
Sandra Lowe Bowdle
Julia Wells Bower
Alice Quarnberg Bowers
Virginia Lovejoy Bowers
Melissa Jenkins Boyd
Nancy Murphy Boyd
Sandrena Rooks Boyd
Tracy Lynn Boyd
Wilma Goodman Boyd
Eunice Felter Boyer
Cynthia Stark Brabec
Shelly Mioduski Bracco
Nancy Rogstad Brackett
Paula Materna Bradford
Deborah Lee Brady
Shannon L. Brady
Kimberly Schaefer Bragg
Denise Hartzell Bramlage
Barbara Hosley Brana
Donna Ann Branson
Geraldine Gehrke Branstetter
Charlotte Rugel Brantley
Ruth Evers Brashear
Sara Braud
Carol Reis Brauner
Martha Norstrum Bray
Sherry Ann Brazda
Alvina Hefeli Breckel
Constance Irene Breckel
Miriam Cole Breese
Jane Henning Bregstein
Jennifer Regina Brennan
Elsa Moser Brenner
Lucille Tygges Brenner
Deanna Lynn Brewer
Laura Brewitt
Marjorie Titchenal Bricker
Marcia Hight Bright
Ruth Brightwell
Isabel Brinkman
Sandra Sutton Bristol
Sandra Hill Brogden
Martha Hood Bromley
Bell Calvert Brooks
Donna Sonaggera Brooks

Irma Brooks
Cindy Ellen Brososky
Chancie Lee Brown
Diane Marie Brown
Emily Brown
Gail Hendry Brown
Kathleen Hamlin Brown
Loretta D. Brown
Margery Miller Brown
Marguerite Updegraff Brown
Marilyn Leiss Brown
Meredith Bogan Brown
Virginia Taylor Brown
Vivian N. Brown
Linda Marsh Browne
Marian Richardson Broyles
Angie M. Brubaker
Andrea Cellucci Brumbach
Lynda Patton Brumby
Melissa An Brundjar
Beth Lynne Brunk
Clare Cooperrider Brunson
Hilliary Delynn Bryan
Virginia Schattner Bryan
Monica Christine Bryce
Sheri Dawn Bryce
Suzanne Marie Buchmann
Karolynn Mathew Buckley
Anne Council Buckingham
Jill Hall Buckmaster
Marie Alverta Budolfson
Lisa Anne Budos
Carolyn Ann Bueesser
Teresa Thelma Buff
LaVerne Cooper Bugna
Margaret Kyne Buis
Beth McCurdy Bukar
Loretta Davis Bulgerin
Dorothy Littig Bulgryn
Eleanor Ramlow Bullen
Mildred Crull Bullock
Lauren Anne Burakoff
Jane Erin Burckle
Ethelyn Kelly Burcky
Janet Bovee Burgess
Ruth Anderson Burgess
Sally Rolke Burke
Tina Ringelsten Burke
Dolores Strong Burkhardt
Ann Schoettler Burnett
Janice Smith Burnett
June B. Burnett
Suzette Gaskin Burns
Tamara Weinhold Burns

Beverly Baldwin Burnsed
Elizabeth Erwin Burnside
Brandy Lynn Burroughs
Beatrice Beck Burton
Mary Strozier Bush
Helen Lyons Butler
Helen Holstein Butler
Dorothy Ringenbach Buxton
Beverly Larsen Byrne
Jeina La'Lene Byrom
Joanne Rudge Cadugan
Lori Cahill
Linda Paules Caillavet
Susan Gibson Calabro
Edyth Holt Caldwell
Carey Call
Devra Dimpfl Callaghan
Janelle Repair Callaway
Cecile Hackmeier Calvi
Tonya Michelle Cambell
Nancy Wackerle Camp
Lucile Irish Campbell
Maurine Prescott Campbell
Virginia Davis Campbell
Wendy Knight Campbell
Laurie Lee Capps
Leslie Jean Capps
Christine Beth Carbone
Ruth Weaver Cardiff
Terri Till Cardone
Helen Zomzely Carlberg
Mildred Pinniger Carley
Janet Schack Carlock
Kathleen Carmichael
Sara Lee Carnahan
Fern Tikalsky Carnes
Margaret Hughes Carney
Alene Morris Carpenter
Mary Hetherington Carpenter
Tayra Sotherland Carpenter
M. Garvin Carrick
Elizabeth Maynard Carson
Lovetta Wood Carson
Sarah Chisholm Carson
Diane Batson Cart
Janet Jeffries Carter
Carolyn Oakleaf Cartwright
Nicole Caruso
Phyllis Prindle Cavalho
Gloria Burns Cashman
Efro Catsis Cassimus
Maureen Castellano
Pearl Herman Castello
Karen Krajci Casten
Claire Palasek Catalano
Sharon Newkirk Cataldi
Karin Jean Catania
Frances Rosa Cavaco
Jane Sarto Caviglia
Barbara Ann Cebula
Andrea Marie Cefaratti
Jennifer Wiggins Cels
Muriel Gray Cerf
Adeline Rinas Cerovac
Delores Freeman Cerro
Daniele Cervino
Joanne Maheris Chaklis
Lucy Barrow Champion
Mary Zeluff Chandler
Daisy Ernst Chapman
Dorothy Goodman Chapman
Beverly Griffin Charles
Cynthia Preston Charles
Iva Cheney
Patricia Ann Cheramie
Diane Chernin
Flo Juzeter Cherry
Chia Chien
Marilyn Franklin Childress
Lillian Morse Chilgren
Kimberly Klika Christian
Helen Halverson Christiansen
Ann Doyle Christmann
Paula Underhill Chronister
Phyllis Dupouy Church
Helen Moman Cillessen
Judith Watson Cimaglio
Kathryn Lynn Cimaskasy
Claudi Hoisington Claggett
Kathryn Grey Clapp
Barbara Messer Clark
Helen Dufton Clark
Helga Kohlenberg Clark
Kathryn Clark
Lillian Birch Clark

Marcy Kline Clark
Nancy Ellen Clark
Shirley Garlock Clark
Katherine Clark-Davis
Janell Costner Clarke
Janet Dunn Clarke
Tracy Jordan Clarke
Holly Jean Clause
Peggy Zeringue Clause
Agnes Lee Clawson
Donna Lynn Clawson
Gail Brunson Clay
Marilyn Larson Clayton
Jolayne Huffer Cleary
Carmin Nannetta Cleavenger
Alice E. Clegg
Jo Ann Clelland
Patricia Lowe Clemens
Linda Hall Cline
Edith King Clinton
Barbara Fowler Cloud
Dora Kriechbaum Clouston
Lois Walker Coates
Elizabeth Ann Cochran
Winona Ormsby Cochran
Allura Easton Cockley
Lynn McCollough Coehoorn
Carol Ann Cole
Helen Wood Cole
Lisa Ann Cole
Patricia Maciolek Cole
Roberta Campbell Cole
Vivian D. Cole
Audrey McColpin Coleman
Ruth Ryus Coleman
Carol Lynn Colgin
Joan Gerpheide Colgren
Jan Michelle Collins
Sarah Sawyer Collins
Mary Schofield Colston
Leila Belle Colwell
Christine Boland Coman
Tammy Lynn Comer
Geraldine Pittel Compton
Gloria Knuckles Compton
Susan Ladell Cone
Michele Maire' Coneyes
Carrie K. Conklin
Anita Hager Conley
Jean Schneider Connell
Harriet Lucile Conner
Thelma McPheeters Conner
Anne Fetzer Connors
Marian E. Conrad
Carol Atkinson Cook
Renee Scheidel Cook
Shirley Hamilton Cook
Winifred Parkhurst Cook
Carol Hubbard Cooke
Callie Washburn Cool
Donna Mae Coolidge
Jane Anne Cooper
Sherry Ann Cooper
Lucille Lee Corey
Lisa Evans Corning
Claudia McMurtry Cornwall
Maria Lourdes Coronado
Janet Jean Correll
Elaine Rita Cosentino
Gwen Lehman Cotabish
Victoria Ann Cotton
Lisa Kay Couch
Jeanne Hutchison Coulter
Karen Kane Courtney
Linda Ulmer Couzens
Betty V. Covell
Billie Happoldt Cox
Catharine Barth Cox
Donita Rae Cox
Janet Lea Cox
Janice Jelks Cox
Carol Schnick Coyle
Louise Clousing Cragan
Deborah Lynn Craig
Evelyn Winegardner Craig
Harriet Wilson Craig
Mary Dulude Crampton
Molly Kay Crampton
Marilyn Crandall
Marjorie F. Crandall
Dorothy Harridge Crane
Genna Cheryl Crane
Harriet Sterrett Crane
Diane Gruber Cranmer
Marianne McKeeman Cravens

Julie Kaye Crawford
Gladys Shewring Creager
Valdina Fink Creasy
Miriam Taylor Crellin
Ruth Younghanse Crenshaw
Nancy Montague Cromer
Pamela McClure Cronenwett
Esther Pearl Cronkhite
Dorothy Galloway Crooks
Elizabeth Porter Crose
Cynthia Brorman Cross
Jane Gillespie Cross
Judith Pantilla Crowell
Cynthia Mann Crush
Mary Shorten Cabbage
Bonnie Kay Culp
Helen Flake Culp
Donna Hall Cumpston
Marie Anne Cunningham
Mimi Wilkinson Cunningham
Nova Terese Cunningham
Terriann Curcio
Willie Goodwin Curlee
Alberta Doran Curran
Dorothy Calder Curry
Kimberly Lauren Curry
Loretta Margaret Cusack
Kathryn Shepherd Cushman
Sharon Potter Cutcliffe
Lori Diane Cutshall
Mary Ann D'Amico
Ninetta Sherwood Dack
Gwendolyn Fillman Dahlquist
Carol Colvin Dale
Nancy Feller Dambrosio
Katherine Otto Danforth
Doreen Hannah Daniels
Hope Hodgkin Danielsen
Mary Mong Danko
Virginia Easterly Danner
Lisa Yerby Darden
Donna Luecht Dase
Ruth Elizabeth Datz
Gertrude Kromer Daugherty
Nancy Ferrone Daughters
Marcia Cramer Davenport
Mella Cooks Davies
Doris Savage Davis
Dr. Charlotte Davis
Jane Branson Davis
Lorraine Smith Davis
Martha Grigsby Davis
Maryellen Dobben Davis
Nancy Larson Davis
Naomi Wells Davis
Naomi Kallmerten Davis
Sammy Ducote Davis
Johanna M. Dawes
Donna Marcis Dawson
Mary Daily Dawson
Helen Penrose Day
Melissa Hester Dayoub
Betty Speaker De Armond
Mary Tucker De Coursey
Robin Jeanette DeArmond
Fiona McLatchie DeBartolo
Susan Greenleaf DeBrincat
Kay Waterhouse DeKraay
Karen Kennedy DeMaria
Nanette DeMuesy
Teresa Lyne DePew
Meggin L. DeRiemer
Diana Marie DeRobertis
Alice Christopher DeSmet
Jane Johnson Deakyne
June Ellen Deal
Suzanne Deale
Mildred Bittner Deanovic
Carol Deaton
Lois C. Decker
Lois Read Defenbau
Cheryl Rockhill Degenhardt
Barbara Padget Dein
Rita Larson Deines
Susan Elizabeth Dekruyff
Jennifer Dianne Delves
Theora Marberger Denaro
Diane Meoli Denney
Anita Elaine Denney-Kays
Gladys Nelson Denton
Kimberly J. Denton
Lisa Ann Detmon
Lynn Kelly Detweiler
Rita Lamoree Detweiler
Marion Burns Deuser

Katharina Eilcen Devanney
Ruth Hendricks Deverter
Helen Long Devitt
Pamela Sue Devlin
Dawn Louisa DiDonato
Diana G. Di Meo
Mary Misak Diamond
Christine Johnson Dicke
Ruth Henderson Dickey
Alice Dickie
Iris Lape Dicks
Judith Cooper Diehl
Shirley Moyer Diepenbrock
Shirley A. Diggs
Lola Lathrop Dill
Elizabeth Schatz Dillion
Shirley Crial Dillon
Joelle Marie Ditzhazy
Cindy Marie Divan
Patricia Janicek Dobbratz
Teneen Davis Dobbs
Ruth Matteson Dodds
Glendine Hathaway Dodge
Lynne Ellen Dodson
Margaret Anderson Dodson
Helen Clark Doerr
Clarie Louise Doiron
Betty Gillespie Dolan
Pauline Gumz Dolerhie
Dana Marie Domas
Mindy Enos Donaldson
Ruth Bohn Doninger
Ruth Kaufman Donk
Robin Griehs Donoho
Carmela Joan Donohoe
Harriet Taylor Dooley
Marion Wescott Dorfler
Dorothy Skeeye Dosse
Amy Gaye Double
Cathy Huckaby Dougherty
Elizabeth Culpepper Dougherty
Kathy Louise Dougherty
Martha Mainous Dougherty
Donna Doughty
Traci Burkhardt Douglas
Pearl Smith Douglass
Rosemary Tankersley Douthit
Virginia Rich Douthwaite
Ann Hinton Dowdell
Zelma McKewen Dowdley
Ruthann Cleer Dowell
Jane Weaver Downing
Mary Adams Downing
Shirley Houser Downing
Jennifer Joan Doyna
Carmen Fenn Drake
Helen Rodin Drake
Monica Rae Drake
Verna Jensen Draper
Elsie Yeager Dressen
Patty Dawn Drewry
Carol Warden Droessler
Georgia Reif Dryfoose
Linda A. Drzewiecki
Karen Marie Duclos
Jennifer Hall Dudley
Lee De Reus Duffy
Marianne Elaine Dugan
Mary Tyson Dugan
Maida Owen Dullam
Mae-Mae Wellons Dunagan
Doris Dagley Duncan
Elizabeth Ann Duncan
Gaye Petre Duncan
Jeanne Steinkamp Dunegan
Ruth Hollinger Dungan
Donna Hudson Dunn
Paulene Marguerite Dunn
Tracy Shaunna Dunn
Ann Courtright Dunnington
Angela Michelle Dunston
Stephanie Denise Dupuy
Mary Rice Duquaine
Dorothy Hartley Durall
Doris Dillon Durham
June Durn
Helen Lautrup Durnell
Phyllis Wehrle Durrieu
Georgia Louise Durshimer
Lisa Anne Dweck
Ruth Schmidt Dyar
Helen Ludwig Dye
Darlene Schwer Dymerski
Carlene Rosboro Eads
Martha Jackson Eagle

Evelyn Downs Easterbrook
Hilda Horny Eastwood
Mary Hoover Eastwood
Annette Bailey Eberdt
Vera Mills Eckert
Alaila Ostrum Eckhardt
Claire Gaskell Eddins
Helen Jacobsen Edleman
Dorothy Cinnamon Edwards
Catherine Dorland Eggleston
Ardis Homer Ehas
Teresa Tapp Eichhorst
Lisa Beth Eidlin
Nancy Culbertson Eilermann
Edna Tracy Eisenbrey
Anita Holt Eisenhauer
Dorothy Maier Eldred
Reba Adkins Edredge
Kathryn Haydon Ellefsen
Helen Campbell Ellerman
Mary Hipke Ellingsen
Betty Shoenberger Elliott
Brenda Elliott
Kelly O'Brien Elliott
Ruth Schustek Elliott
Debi Shank Ellis
Kathryn Young Ellis
Kristen Marie Ellis
Viola Naibert Elsenbast
Cynthia West Ely
Jean Baldwin Ely
Jean St. Louis Ely
Helen McKanna Emerson
Margaret Calahan Emerson
Mildred A. Emery
Ada Morlock Emme
Verona Porter Enander
Louise Bulloch English
Barbra Graham Enlow
Rose Bennett Enterline
Jill Rae Entinger
Melody Ann Eoff
Natalie Sue Eppley
Patricia Ann Erdmann
Erika Erftm Erich
Irene Tarry Erickson
Jo Ann Hejda Erickson
Bimla Elisabeth Erlenkotter
Brenda Ellen Ernst
Mary Galatis Esachenko
Linda Baker Espeir
Michele Suzanne Esquibel
Christine Marie Ess
Kimberly Ann Ess
Dorothy Estep
Kelly Rae Estridge
Rozella Fuguitt Eure
Anna Marie Evans
Jane Crab Evans
Katherine Walker Evans
Katherine Zehring Evans
Marilyn Archey Evans

Nancy Elaine Evans
Vaudeth Campbell Evans
Beverly George Everett
Lori Cioletti Ewell
Alice E. Exley
Gayle Meyer Exley
April Smith Eyeington
Virginia Andrews Ezekiel
Natalie Kathryn Falinski
Vickie Lynn Farmer
Mary Farquhar
Leona Johnson Farrant
Ednamay Fasano
Carol Demos Faulkner
Mary Adaline Fausset
Kathleen Cordry Fears
Cristin Elizabeth Feehrer
Teresa Marie Feeser
Carol Sterne Fehr
Polly Thayer Felici
Alma Felter
Lucille Utecht Felth
Minnie Gibb Fenenga
Shirley Odell Fenimore
Susan Diane Fenzl
Mary Laganas Fera
Sharon Kaye Ferger
Geraldine Jandos Ferguson
Lucille Dillery Ferguson
Deborah Colette Perkany
Shirley Sinks Ferson
Alice Kenney Fetzer
Susan Hein Feuerherm
Lucile Malcolm Field
Bernice King Fields
Mary Schade Fields
Beth Susan Fifield
Suzanne Williams Finch
Winifred Todd Findley
Marjorie Kanouse Fink
Mary Ziegler Finkelstein
Karen Finney
Penny Payne Fioravante
Susan Lori Fisch
Anna Schaller Fischer
Ester-Luc Ham Fish
Vickie Paula Fishman
Judith Patton Fisk
Jeanette Hidy Fitton
Laurine E. Fitzgerald
Cynthia Brenner Fitzpatrick
Joan Wiedenbein Flannery
Elizabeth Ebner Fleming
Sara Elizabeth Flemister
Neita Jones Flenniken
Deanna Taylor Flowers
Kara Patrice Flynn
Melissa Jean Flynn
Karen Hanley Fogarty
Frances Diane Foggin
Cathlyn Louise Foley
Brenda Robinson Follansbee

Carolee Lewis Followill
Martha Streit Foote
Matilda Frank Forbes
Sheri Karch Forhan
Jowilla Crisler Forman
Chloe Stairs Forrest
Susan Oehler Forsling
Judith Ann Forsythe
Marla Carol Fortune
Brenda Liles Foshee
Hattie Davis Foskee
Lucille Caster Foster
Dorothy Ann Fowler
Jane Margaret Fowler
Renec Lee Fowler
Carol Easton Fox
Valerie Lee Fox
Patricia Dolwick Foxworthy
Lisbeth Innis Francis
Polly Thayer Franklin
Cheryl Anne Franks
LaDonna Jean Franks
Helen Harris Frauman
Jacqueline H. Frawley
Alice Graeber Frederick
Ruth Hammerstrom Fredrich
Joan Johnson Free
Elaine McManus Freed
Hester Freeman
Edith Walter Frees
Gretchen Annette Freihofer
Frances Jones Freitas
Ruth Rasmussen French
Alma Frerichs
Dorothy Carol Frese
Mary Walker Fricke
Jackie Rodriguez Friedman
Jane Elizabeth Frierson
Debbie F. Fries
Helen Hunter Frisch
Jacqueline Rozelle Fritz
Paula Deutsch Fritze
Melissa Susan Frizzell
Theresa Katherine Fruin
Yvonne Larime Fruit
Margaret Hudson Frye
Phyllis Stewart Frye
Catherine Lentz Fryer
Gloria MacNeven Frymire
Margaret Conner Fuhr
Virginia Leafstone Fuhrmeister
Beatrice Card Fulcher
Joyce Lyon Fuller
Kimberly Gray Fuller
Tandy Harlan Fuller
Barbara Trinkle Fultz
Martha Atwood Funderburk
Michele Lynn Funderburk
Gina Renee Furia
Maebeth Brown Furrow
Karen Marie Gadai
Laura McCarthy Gagnon



Delta Zetas attended the formal dedication of the new House Ear Institute in Los Angeles. L to r, Betty Willard Peer, Miami-A; Karen Severloh Moffitt, San Diego State-FO; Janet White Doak, UCLA-AX; Lenore Fisch Vasey, St. Louis-EY; Betty Paul DeWitt, USC-AI, and Karen Doble Laurenzello, CSU/Los Angeles-OP.

Denise Chance Galatas
 Lenora Porter Galbreath
 Bernice Barker Gale
 Carolyn Hadskey Gallagher
 Helen Hopp Gallagher
 Alice Caroline Gallup
 Ada Dunning Gamble
 Tracy Barbara Ganem
 Norma Fultz Gangluff
 Rebecca Thorson Gann
 Beth Ann Gannon
 Lillian Arata Garbarini
 Donna Roberts Gardinier
 Jacqueline Fabbri Gardner
 Leigh Embley Garmon
 Lynn Travis Garnett
 Sharon Garrett
 Jane Buck Garrison
 Mitzi Lorraine Garzon
 Ferne Sparks Gasaway
 Susan Shane Gates
 Susan Michele Gattis
 Lois Wanous Gaugler
 Alice Ramil Gault
 Laura A. Gausepohl
 LeeAnn Gauthier
 Ethel Sala Gaviati
 Betty Brown Gebhart
 Cynthia Capalbo Geerders
 Janis Anne Gelinas
 Erna Fruholz Gellman
 Raquel Genel
 Marilyn Hunkins Gentry
 Meredith Scholten Gentry
 Dolly Terzis George
 Kathleen Mary Geosits
 May Bignell Gere
 Laura Anne Gerhan
 Marie Gessert
 Catherine Barth Giangarra
 Rebecca Gibson
 Sharon Rothrock Gieselmann
 Ellen Watson Gigliotti
 Jocelyn Muller Gilbert
 Ann Collins Gill
 Ellean Fargher Gillam
 Jean Clare Gillam
 Judith Chapman Gillem
 Doris Jansen Gillespie
 Velda Hartzell Gillespie
 Oma Bishop Gillis
 Marlene Thompson Gilpin
 Stefanie Thrush Ginger
 Ann Kooser Gintner
 Margaret Kephart Glade
 Amy Reeh Glasgow
 Grace Glasgow
 Dorothy Ryan Glass
 Misty McMullen Glass
 Linda Koppenhafer Glasser
 Amy Kathleen Glatthaar
 Martha Keyser Gleason
 Janet Lowe Gleim
 Andrea Hilsman Glenn
 Heather Stover Glick
 Susan Lynn Gloskowski
 Ruth McKirahan Gmyrek
 Colista Diehl Gnagy
 Phyllis Herman Goebel
 Lisa Kay Goelz
 Lillian Kubesch Gohlke
 Mindie Rachel Gold
 Linda Ann Goldstein
 Linda Rapp Gonnella
 Beth Michelle Gonzales
 Margie Casal Gonzalez
 Marian Barnes Gonzalez
 Kay Harold Goodall
 Anne Stubenrauch Goodell
 Katherine Forderhase Goodman
 Inez Burgess Gordon
 Nancy Anderson Gordon
 Patricia Nuttall Gordon
 Robin Heilbrunn Gordon
 Sandra Lynn Gordon
 Deborah Vandegrift Gore
 Lois Gutekunst Gore
 Koreen Louise Gorton
 Paula Distler Gottdiner
 Catharine Disney Gouldthread
 Betty Burkhardt Gowdy
 Cynthia Marie Goyer
 Dorothy Dietrich Graab
 Lisa Kay Grabmeier
 Gwendolyn Bowman Gracie

Sally Ann Graeff
 Carrie Stickels Grafton
 Lucille Brashers Graham
 Mary Foss Graham
 Oriol Osterman Grand-Girard
 Jo Ellen Vinsel Grant
 Nancy Foster Graumlich
 Verna Pelter Graybill
 Martha Holliday Green
 Mary Phillips Green
 Virginia Claire Green
 Sarah Steere Greenhalgh
 Joann Robinson Gregg
 Betty Goad Gregory
 Marguerite Russell Gregory
 Clara Plasil Greinke
 Cath Casselman Grenhart
 Tracey Ann Gries
 Jacqueline Ward Griffin
 Martha Hammerschmidt Griffin
 Suzanne Griffin
 Dorothy Allen Griffith
 Sophie Prisner Griffith
 Jane Liebig Griffiths
 Molly Christine Grimmer
 Cynthia Brackbill Groff
 Yvonne Bryana Grosjean
 Martha Henderson Gross
 Mary Mackoy Grossenbach
 Elizabeth McCarron Gruber
 Mable Perkins Grunert
 Kathleen Forness Guazzo
 Dianne Fellows Guild
 Wylma Collins Guilfoil
 Irene Follett Gulbran
 Gail Austin Gulinio
 Melissa Jo Gulli
 Carolyn Hatcher Gundie
 Lydie Lemire Gurganus
 Caroline Ingalls Gurland
 Jane Hinton Gurley
 Judith Beaver Guthrie
 Shirley Guthrie
 S. Candare Guyther, DVM
 Patricia Hilgers Haberman
 Judith Seeber Habert
 Barbara Joy Hackett
 Shirley Ashton Haertjens
 Gail Hoefer Haga
 Elizabeth Peckenpaugh Hagan
 Janine Patrice Hagan
 Judy Tuggle Hagen
 Elaine MacArthur Hagerman
 Margaret Steininger Haggarty
 Sue Krueger Hagman
 Edwinna Colville Hagstrom
 Elizabeth Whitehead Hahn
 Thelma Davis Hahn
 Dorothy Brown Haines
 Helen Newton Haley
 Donna Lee Hall
 Edith Green Hall
 Gina Geldbach Hall
 Karen Swaim Hall
 Lee Goff Hall
 Naoma Ericson Hall
 Jeanette Webster Haller
 Janice Kay Halpin
 Susan Halvorson
 Kimberly Dawn Hamill
 Laura Elizabeth Hamilton
 Susan Owens Hamilton
 Carole Pinckard Hamm
 Kay Troyer Hammer
 Margaret Wesley Hammon
 Susan Scott Hamon
 Denise Gage Hampshire
 Mary Suzanne Hance
 Vicky Brown Hance
 Ann Mallory Hancock
 Lori Ann Hand
 Linda Marie Hanie
 Mathilde Leonard Hanning
 Marilyn Ousdahl Hansen
 Sally Strock Harbath
 Sharon Garner Hardern
 Florence Marie Harding
 Lucile Shafer Haring
 Donna May Harmount
 Ruth Jensen Harms
 Helen Elizabeth Harper
 Jennifer Beasley Harper
 Helen Dow Harrington
 Casslyn Quinn Harris
 Diane Gabbert Harris



Joyce London displays the symbols of achieving membership in the Rose Society.

Lesley Paige Harris
 Marilyn McKee Harris
 Marjorie Harris
 Claudia Garvin Harrison
 Marcia Campbell Harrison
 Robbin Michelle Harrison
 Virginia Harrod
 Holly Beth Harshman
 Ellen Colleen Hart
 Kathryn Troll Hart
 Ruth Monahan Hartnett
 Elizabeth Mild Hartnraft
 Daryle Shaffer Harvey
 Judy Harwell
 Judith Ann Harwood
 Laura DeAnne Hatfield
 Carola Rowling Haugen
 Jacqueline Miller Haughton
 Sue Call Hauman
 Tara Osborn Hawk
 Donna Buttrum Hawley
 Leslie Marie Hayes
 Samantha Marie Hayes
 Helen Colby Hayler
 Iva Elaine Heaberlin
 Crill Harden Head
 Nancy Headen
 Mary Kate Heard
 Margery Thomas Heath
 Sandra Lee Hecim
 Sue Heckart
 Virgene Smith Heckman
 Judith Hunter Hedlund
 Jennifer Elizabeth Hedrick
 Mary Cleland Hedrick
 Marilyn Patrice Heflich
 Sherri Jeanne Hefty
 Bonnie Morrison Heinz
 Marian Parman Heischman
 Margaret Heil Heiser
 Liane Ruth Heisohn
 Florence Howenstine Hellwege
 Leslie Hemenway
 Amy Martine Henderson
 Florence Henderson
 Jean Allen Henkle
 Cheryl Boyd Henriksen
 Julia Ann Hensel
 Suzanne Urbanski Henson
 Jennie Paxton Henthorn
 Anne Kirk Hentz
 Helen Ebert Herbert
 Sue Anne Herman
 Jennifer Ann Herr
 Marilyn Horak Herrick
 Janice Cook Herrmann
 Jacqueline Horne Herstrom
 Mary Franklin Hertweck
 Patricia Bruns Herzog

Emma O'Connor Hess
 Marilyn Rubey Hess
 Winifred Scott Hester
 Nancy Johnson Hetzman
 Kerri Anne Heverly
 Charlotte Houston Hibbetts
 Marilyn Johnson Hibbs
 Mildred Curren Hickel
 Dorothea Barcus Hicks
 Wanda Whitaker Hicks
 Dawne Sepanski Hickton
 Deborah Sue Higgins
 Jennifer Louise Higgins
 Jean Hight
 Marla Page Hilburn
 Rhonda Denean Hill
 Rhonda Lynn Hill
 Shelby Simpson Hillman
 Shoshanna Michelle Hinder
 Virginia Olson Hinman
 Heidi Ann Hintz
 Dorothy Block Hinzman
 Loretta Cunningham Hipp
 Elizabeth Townsend Hirsch
 Nancy Knight Hirst
 Dorothy Lyvere Hitchcock
 Julie Henry Hitchens
 Tammy Lynn Hite
 Harriett Spiesz Hittinger
 Dana Anne Hladky
 Barbara Vanhorne Hoag
 Faith Beckett Hobart
 Margaret Almborg Hochberger
 JoAnn Narduzzi Hockenberry
 Kathleen Elizabeth Hodges
 Maria Denend Hodgson
 Jean Davis Hoerr
 Cheryl Burlingame Hoffman
 Irene Olson Hoffman
 Marilyn Keicher Hoffman
 Carolyn Zabel Hoffmann
 Heather Lee Hoffmann
 Vicki McDonald Hogan
 Mary Nelson Hogg
 Ladonna Cox Hoinash
 Elizabeth B. Hoklas
 Ruby Brannon Holland
 Clara Broussard Holliday
 Nancy Jones Holliman
 Sharon Sossamon Holloway
 Cindy Johnson Holmes
 Connie Kellner Holmes
 Marion Falkner Holt
 Tia Craig Holt
 Jane Holt-Duecastier
 Patricia Ann Holtz
 Jane Jonas Homa
 Mildred Sigler Homan
 Cheryl Anne Homich
 Diane Elaine Honecker
 Georgia Delis Hook
 Carrie Samson Hopkins
 Ethel Biddlecombe Hopkins
 Anna Marie Hopta
 Cynthia Lynne Hordusky
 Elizabeth Chase Horton
 Ruth Heller Horton
 Sandra Hart Horton
 Valerie Michelle Hose
 Rosemary Walsh Hossack
 Adrienne Burno Hottinger
 Gaye Leonard Houk
 Leslie Victoria House
 Marjorie Johnson Houser
 Donna Gaye Howard
 Frances Hoelvel Howard
 Karen Carlson Howard
 Evelyn Jones Howe
 Julie Elizabeth Howell
 Eloise Reeves Howerton
 Sarah Badger Howley
 Leona James Howren
 Nannette Lynch Hoyt
 Amy Hope Huber
 Donna Lynn Huch
 Grace Vandrasek Hudek
 Kathleen Hudson
 Nancy Jane Hudson
 Doris Dalin Huffman
 Lisa Anne Huffman
 Lillian Dean Huffstetler
 Karen Diane Hughes
 Pattie Cantrell Hulsey
 Betty Blackwell Hummel
 Marcia Earl Humpal

Tommie Morgan Humphrey
 Helen Leonard Humphries
 Sharon Lee Humphries
 Lisa Carol Hunn
 Jan Brunette Hunyadi
 Paula Jean Hurd
 Michelle Lynn Hurlbert
 Rowena Bennett Hurlbut
 Joanne Fisher Hurley
 Jacqueline McLaughlin Hurst
 Janet Nauman Hurst
 Janice Hayworth Hurst
 Emily Husbands
 Arlyn Pearson Huston
 Kerri Rivera Hutt
 Julie Marie Hyatt
 Johanna Shetter Hyde
 Katherine M. Hyde
 Mary Phillips Hyde
 Rosalind Waters Hyland
 Velva Seyler Idzkowsky
 Dawn Marie Ikner
 Roberta Kindle Imes
 Karen Incudine
 Lina Shone Ingraham
 Sharon McCarthy Intoini
 Kathleen Vollmer Irk
 Catherine Morris Irvine
 Fredna Tweedt Irvine
 Dawn Ellen Irwin
 Mary Wiss Isacson
 Joy Harvey Iturralde
 Donna Rose Iwamoto
 Stephanie Ann Jabbs
 Ann Marie Jablonski
 Helen Purinton Jackson
 Leora Mitchell Jackson
 Margaret Addison Jackson
 Elizabeth Job Jacob
 Janice Allen Jacobelli
 Arlene Harlow Jacobs
 Grace Dickson Jacobson
 Jenifer Lynn Jacobson
 Karen Starnier Jacobson
 Ruth Smith Jaenecke
 Tammy Broderick Jahnke
 Mara O'Brien James
 Sara Barber Jameson
 Betty Brant Jamieson
 Charla Bisno Janecek
 Helen Runkel Jansen
 Charlotte Weigan Jaouen
 Virginia Allsworth Jeffers
 Joan Carter Jeffrey
 Darlene Maria Jelinek
 Florence Thompson Jenkins
 Jennifer Leigh Jenkins
 Jerilyn Greathouse Jenkins
 Lu Ann Jenkins
 Virginia Ashley Jenkins
 Esther Rhodes Jennings
 Virginia Jones Jenny
 Aileen Hayman Jewett
 Vicki Melkus Johansen
 Sherrill Jacotel Johns
 Alison Burnetta Johnson
 Ann Barron Johnson
 Carolyn Beaird Johnson
 Cynthia Ann Johnson
 Diane Pennington Johnson
 Dorothy Eliason Johnson
 Edna Jordan Johnson
 Elva Cook Johnson
 Inez Hergert Johnson
 Julie Anderson Johnson
 Kathryn Prine Johnson
 Lisa Joy Johnson
 Lois Bing Johnson
 Lois Ayers Johnson
 Marion Crist Johnson
 Mildred Garrett Johnson
 Pamela Gwen Johnson
 Rose Rommel Johnson
 Ruth Johnson
 Sandra Carr Johnson
 Sherry Evelyn Johnson
 Shirley Graham Johnson
 Uree Smith Johnson
 Elizabeth Keyse Johnston
 Sheena George Johnston
 Zoe McLean Joiner
 Jennifer Greer Joly
 Cheryl Stanley Jones
 Irene Bloom Jones
 Irene Brislaw Jones

Jennifer Anne Jones
 Jennifer Lynn Jones
 Karen Brennan Jones
 Linda Michelle Jones
 Monta Stevenson Jones
 Nita Posey Jones
 Donna Kitt Juntunen
 Twila Justa-Papik
 Laura Ann Justus
 Susan Hadley Kahler
 Denarie Anne Kane
 Tina Carol Kaplan
 Rhonda Rhea Kappler
 Judith Diane Karner
 Mary Karstaedt
 Lucille Deluca Karvel
 Holly Ryan Kaufman
 Virginia Hansen Kay
 Joan Schweikert Kayer
 Davonna Louise Kearney
 Marcie Manning Kebl
 Shannon Lee Keenan
 Barbara Louise Keim
 Frances Wilson Keith
 Jennifer Mae Keller
 Ludella Malcolm Keller
 Mary Egan Keller
 Rosemary Parker Keller
 Irma Farquhar Kellogg
 Sally Dillon Kelly
 Ruth Kelsey
 Tammy Kay Kelsey
 Nadene Wales Kemp
 Carie Lee Kendall
 Patricia Priest Kendall
 Alice Gentry Kenitz
 Nicki Kappos Kerhulas
 Colette Bakken Kerlin
 Lee-Ellen Angeloff Kerr
 Donna Cowee Kerwin
 Karen Chloe Kerwin
 Winona Francke Kettelhut
 Jennifer Elaine Kettler
 Charlotte Hieber Keys
 Roberta Keene Keyser
 Linda Killan
 Beverly Kassow Kimes
 Cheryl Tyloch Kimpf
 Anita Myers King
 Nancy Thronley King
 Joanne Kapusta Kinsey
 Audrey Blocksom Kinzer
 Dorothy Lone Kirby
 Lois Thomas Kirk
 Tracy Harnage Kirkland
 Marynell Durland Kirkwood
 Kathryn Lynn Kistulenz
 Janelle Marie Kiszka
 Carol Koehler Klasing
 Lois Rowland Klein
 Linda Brose Kleinstreiber
 Margaret Mundi Kleinwort
 Cheryl Marie Klemann
 Sally Pasquali Klemp
 Virginia Riley Klieger
 Judith Sherin Kline
 Debra Rachel Klinek
 E. Lautenschlager Klopfenstein
 Ruby McClure Kloss
 Kathryn Prichard Kluckhohn
 Jennifer Lynn Klukas
 Betty Coomer Klune
 Joan Boesch Knapp
 Margaret Mosehart Knapp
 Raida Paul Knapp
 Muriel Thompson Knight
 Michelle Polachek Knipple
 Carol Jean Knoblauch
 Doris Mae Knopf
 Melaine Irene Knorr
 Elizabeth Smith Knox
 Lucy Mueller Knudsen
 Joyce Rowbotham Koch
 Lisa Marie Koehler
 Janet Brackett Koivunen
 Nancy Rehder Kojder
 Louella Johnson Koken
 Lisa Marie Kolarik
 Beverley Davies Kolb
 Deborah Ann Kolb
 Katherine Louise Kollar
 Alice Hoyt Konde
 Joan Latta Konecky
 Carol Carson Konet
 Marion Tyrrell Koontz

Mary Klingensmith Kopetz
 Constance L. Kopplin
 Ruth Knoernschild Korbel
 Irma Smith Korbitz
 Glenda Zerface Korgel
 Celeste Budd Kostonick
 Martha Selbert Kothe
 Cindy Tinney Kozel
 Janet Paulius Kozlowski
 Ursula Greta Krackow
 Marjorie Mae Kraft
 Mary Wood Krahulec
 Beverly Crane Kraus
 Bessie Biddle Krause
 Lois Ossman Krava
 Kim Marie Krawczynsyzn
 Lori Ann Kreidler
 Sherilyn Kelley Kreinhil
 Patricia Naab Kreinheder
 Michelle Claudia Krieger
 Ruth Hallman Krietz
 Lisa Kennedy Krill
 Eleanor Moffett Kring
 Jane Miessner Krisher
 Kamela Kust Krouskos
 Marilyn Lee Kruse
 Virginia Capuzzo Kruse
 Jennifer Ann Kuchta
 Virginia Waldo Kuck
 Miriam Powell Kuenzel
 Yvonne Doll Kuhn
 Alfreda Gimpert Kujda
 Adelaide Weclaw Kumbura
 Ann Estman Kunsch
 Sandra Henshaw Kurland
 Gigi Andreason Kushla
 Joanne Oltmanns Kuster
 Ruth Ireland Kutz
 Shelly Renie LaBerto
 Wendy Wood LaBounty
 Lauren Monique LaCotts
 Shari Lynn LaMantia
 Catherine Haselton LaPlante
 Esther Nordin LaRose
 Georgia Lenig Lackey
 Mabel Lackey
 Flossie Marie Lafond
 Ann Rogers Lafranchi
 Beatrice West Lafrenz
 June Laverne Lagerquist
 Lisa Kay Lamb
 Marjorie Raja Lamb
 Jodi Lynn Lamke
 Amy Landfield Landfield
 Verna Niebergall Landgren
 Henrietta Saltsman Landwer
 Betty Poehlein Lanford
 Andrea Lorene Lang
 Grace Miller Lang
 Elsie Boemker Langenbach
 Evelyn Quam Langseth
 Leigh McNamara Langston
 Nancy Coulter Langston
 Mary Gruver Lankford
 Darlene Anderson Larson
 Genevieve Adair Larson
 Marcia Larson
 Susan Spearie Larson
 Eleanor Horny Lasca
 Lori Anne Latham
 Nelda Johnson Latham
 Joan Lathhouse
 Jeanette Rae Latimer
 Shari Sullivan Lauer
 Ruth Spurlock Lautaret
 Jennifer Elizabeth Lawn
 Jill Gregory Lawrence
 Patricia Boss Lawrence
 Margaret Pyle Laws
 Doris Kaufman Lawson
 Sandi Ribolzi Lawson
 Patricia Halloran Laychak
 Julie Kathine LeFevre
 Tracy Wilson LeSieur
 Betsy Bradley Leach
 Elizabeth Wittich Leach
 Margaret Rose Leap
 Marguerite Collier Leavy
 Irene Ebeling Ledbetter
 Lucille David Ledoux
 Dana LaNeille Lee
 Marjorie Young Lee
 Sally Castle Lee
 Linda Christine Leech
 Linda Angel Leedham

Lori Filby Leek
 Kimberly Sue Leeper
 Virginia Krause Lefever
 Mildred Pace Leggitt
 Esta Vanderhoef Lehman
 Lucia Ragnone Lehman
 Jill Victoria Leis
 Barbara Lemke
 Amelia Oles Lennon
 Janet Culbertson Lenz
 Laura Leonard
 Sandra Leonard
 Martha Anderson Leonas
 Mary Luett Leone
 Wendy Ann Lepper
 Cathryn Woodard Lester
 Jane O'Neill Letchworth
 Carla Levy
 Leann Mary Lewis
 Mary Kathryn Lewis
 Monte Hatcher Lewis
 Dorothy Liebig
 Betty Baker Lieder
 Jeannette Lusby Lightner
 Helen Anderson Ligon
 Jean Wickstrom Liles
 Lona Conger Limpo
 Imogene Steele Lindsay
 Ruth Upton Lindsay
 Carolyn Frances Lisi
 Jean Coleman Lisle
 Arlene Schipski Little
 Susan Wieshart Little
 Evelyn Ziegelman Littlefield
 Ellen Freeman Litton
 Harriet Virginia Livingston
 Virginia Carpenter Livingston
 Sherry Kent Llewellyn
 Kathryn McGrail Lo
 Donna Ralph Loeb
 Lucile Kaufman Logan
 Sharon Lang Loh
 Trisha Ann Lohr
 Lea Lange London
 Lynne Mayeux London
 Allison Long
 Audrey Cowden Long
 Lori Ann Long
 Caroline Traulsen Loose
 Doris Seebert Loria
 Betty Lane Love
 Melinda Frances Love
 Mildred Casey Love
 Debra Anne Lovecky
 Arnice Shelton Lovell
 Cynthia Louise Lowman
 Ruth Plymate Lowrey
 Katherine Sipe Lowry
 Donna Jean Lualen
 Alysa Mary Lucas

Elizabeth Daley Lucas
 Nancy Noland Lucas
 Stephanie Anne Lucas
 Mary Boffa Luczak
 Miriam Degruchy Luedders
 Lisa Rose Luksic
 Jane Colleen Lumley
 Adelene Austin Lumpkins
 Karen Leslie Lundberg
 Doris Peterson Lundblad
 Grace Mason Lundy
 Frances Dorsett Lutze
 Isis Campbell Lynch
 Jessalyn Johns Lynch
 Margarette Grubbs Lynch
 Mabel Crinkley Lyons
 Dixie Stanley Lysons
 Maxine Schumann Maas
 Susan DeMichiel Mabec
 Geraldine O'Mahony MacAdam
 Dorothy Snidecor MacDonald
 Elizabeth Geiger MacIntosh
 Jill Hildenbrandt MacLaughlin
 Mildred Harris MacLean
 Sarah Mancari MacLeod
 Ruth Wagner MacMaster
 Celine Pitts Mack
 Lisa Avery Mack
 Shaen Hosie Mack
 Fortuna Lopez Madden
 Mary Myster Maddox
 Gertrude Therese Mahall
 Minerva Long Maier
 Andrea Jordan Maki
 Camilla Edith Malcom
 Elsie Milardo Malkin
 Elsie Scott Mallett
 Margary Lilly Mallory
 Winifred Isham Malloy
 Mary Patricia Malone
 Susan Michael Maloney
 Diann Holtsapple Malueg
 Helen Mamarchev
 Edith Johnson Mancari
 Josephine Pendino Mandese
 Michelle Judith Mandrogoc
 Lori McDonough Manfredonia
 Agnes Andersen Mann
 Sharon Hoffman Manning
 Megan Rose Mansour
 Mary Miner Manwaring
 Laura Smith Mapes
 Patricia Horton Maphet
 Bethany Bayert Mara
 Barbara Nelson March
 Joyce Miers Margerum
 Hilda Anne Marino
 Margaret Rendlesham Marker
 Mary Slater Markling
 Patricia Ann Markowski

Theresa M. Markowski
 Dorothy Gerbronn Marks
 Dorothy Marmet
 Lila Miller Marquis
 Margaret Page Marron
 Beth Lichon Marsh
 Darlene Dent Marsh
 Bonita Johnson Marshall
 Carol Finnegan Marshall
 Pauline Hoeven Marshall
 Cheryl Vespoli Martella
 Bernice Cox Martin
 Bobbie Bonham Martin
 Christine Mercedes Martin
 Christine Renee Martin
 Marie M. Martin
 Marilyn Martin
 Tammy Lucille Martin
 Doris Rivers Martinson
 Kathleen Worthington Marzie
 Pat Callaway Maskus
 Catherine Eastep Mason
 Cheryl Ann Massey
 Terri Elder Massie
 Elizabeth Barrett Masterson
 Lorraine Lowe Mathewson
 Wilma Lanning Matkov
 Marjorie Chadwick Matteson
 Katherine Wetzel Matthews
 Monique Frances Matthews
 Wilma Matz-DiRienzo
 Faye Turner Mauldin
 Vesta Mawe
 Mary Stiarwalt Maxfield
 Lorraine A. Maxwell
 Phyllis Mitchell Maxwell
 Lucille Bolstad May
 Sheryl Keeran Mayes
 Cynthia Thorson Maynard
 Heather Lynn Maynez
 Margaret Steward McDonald
 Mildred Hampton McAfee
 Debra Rechsteiner McBroom
 Julia Holly McCall
 Kathryn Wiard McCann
 Mary Ballard McCann
 Sally Mehner McCarty
 Jane Elizabeth McCaslin
 Muriel J. McCaw
 Thelma Newton McClain
 Ruth Stoner McClure
 Dorothy Bogart McCluskie
 Edith McCollister
 Barbara Anne McCormick
 Mariann Walton McCornack
 Jorene Christenson McCowen
 Kathleen Kelly McCoy
 Sandra Jayne McCracken
 Deborah Craig McCory
 Deana Ruth McCrossen



Trustee Susan Mease Long coordinated the Foundation Report.



Sarah Jane Houston Lucille May

Two longtime special friends of the Foundation were recognized at the Foundation luncheon during National Convention.

Lucille Bolstad May, North Dakota and Sarah Jane Shank Houston, Illinois-AB, have both been "in the trenches" for the Delta Zeta Foundation for many years. Lucille brought Gallaudet University to Delta Zeta's attention in the early 1950s and caused the Foundation to set up an endowment fund for scholarships there in 1975. For many years she has been Delta Zeta's liaison to Gallaudet, an unsung but most appreciated position.

Sarah Jane is a former president of the Delta Zeta Foundation, secretary of the Delta Zeta Founders Memorial Foundation, and for many years was the chairman of the Elizabeth Coulter Stephenson scholarships. She continues willingly to help out the Foundation when asked.

Both of these women are the quiet, unassuming, hard workers every successful organization looks for and so rarely finds. Once again, the Foundation says "thank you."

Ellen Kessler McNally
Maureen Ann McNally
Vicki Laughter McNeil
Patricia McPhillips
Helen Montpetit McRoberts
Barbara Pfeifer McVey
Laura Williams Meacham
Hazel Tillery Meadows
Michelle Lapiere Mehl
Kimberly Layne Melvin
Bonnie Cantlay Mercadante
Clair Schmidt Mercer
Maureen Frances Merrigan
Jane Mielke Merriman
Denise Mesple
Maxine Shellhorn Messner
Marie Bergman Metcalf
Christine Meyer
Marjorie Sipe Meyer
Elizabeth Bergener Meyers
Laurel Garnett Meyers
Teresa Mullen Michalewicz
Janet Louise Michals
Shirley McCabe Michener
Caroline Emilie Michiels
Regina Leigh Mickells
Karen Eisenhauer Mickus
Barbara Maser Middelthon
Deborah Smith Milam
Jane Starz Miles
Kathleen Henry Miley
Norma Milkien
Allison L. Miller
Arlene Fabian Miller
Blanche Hellen Miller
Carol Sullivan Miller
Catherine Burdette Miller
Diane Sorensen Miller
Doris Lowery Miller
Elaine Bowers Miller
Janice Eberhardt Miller
Jennifer J. Miller
Judith Roberts Miller
Mary McGonagle Miller
Patricia Miller
Patricia Green Miller
Pauline Prahm Miller
Ruth Bailey Miller
Sandra Menn Miller
Sarah Quincey Miller
Susan Fellows Miller
Susie Bosley Miller
Tonya Jean Miller
Revelle Taylor Milligan
Martha Thomson Milliken
Evelyn Ross Mills
Nancy Gonzalez Mills
Ruth Milner
Suzanne Thronton Milstead
Suzanne Elizabeth Minnaugh
Cornelia Mims
Kathryn Stull Mincks
Hazel Thomas Minogue
Deborah Marie Mischler
Carol Johnson Miskell
Shirley Waggoner Mixson
Teryl Thomas Mlynski
Linda Ley Mock
Eunice Muriel Moe
Dorothy Wilson Moeller
Karen Severloh Moffitt
Debra Dublis Monroe
Florence M. Monroe
Margaret Morris Monson
Theresa Mullin Montesi
Roma Brinkmann Montgomery
Carolyn Jane Moody
Beth Hartke Mooney
Diane Thompson Mooney
Carmen Martinez Moore
Florence Henry Moore
Geraldine Monnastes Moore
Janice Berg Moore
Sherri Daugherty Moore
Yvonne Bardin Moore
Jean Pfau Moorhead
Patricia Moorman
Ann Olivere Morel
Clarabelle Langdon Morgan
Dorothy Bristow Morgan
Leslie Prescott Morgan
Muriel Sutton Morgan
Fatsy Case Morgan
Kerry Jamison Morris
Priscilla Jane Morris

Jennifer Bogen Morrison
Mavis Kratzke Morrison
Rosa Wilcox Morrow
Florence Glasco Morse
Charla Petranovich Morton
Dena Lynn Moschella
Kathryn Winslow Mosier
Mary Gehring Moss
Evelyn Nobles Moulton
Margo Graney Mudd
Lynell Murphy Mueller
Susan E. Mueller
Leanne Theile Mulford
Christina N. Mullin
Margaret Smith Mumma
Kimberly Irene Munch
Susanne Acker Munson
Mary Alice Muraski
Dolores Nash Murphy
Anna Evans Murray
Tamara Lee Murray
Debra Dantin Musso
Miriam James Musso
Bessie Vance Myers
Colleen Marie Myers
Jeanette Duryee Myers
Jodi Kay Myers
Sandra Harvey Myrick
Marion Noster Naberhaus
Sheri Turner Nadig
Laurie Sue Nadler
Delores Ward Napier
Janice Clark Narbett
Tia Maria Narciso
Edna Will Nauman
Dorothy E. Naumann
Pamela May Navarro
Sharon Harden Naylor
Katherine Kuran Neddersen
Ruth Sandifur Neely
Smith Neely
Darsi J. Neff
Helen Tucker Neill
Sarah Smith Neisig
Barbara Joyce Nelson
Carolyn Hill Nelson
Christine Louise Nelson
Evelyn Ann Nelson
Ida Carter Nelson
Kay Pike Nelson
Lisa Michelle Nelson
Louise Nelson
Sharon Cleveland Nelson
Susan Smith Nesbitt
Lois Randolph Nesgoda
Arlene Class Nettekoven
Marilynn Netzel
Mary Ward Neville
Judith Simpson Newcomb
Elizabeth Rodger Newton
Huong Thi Nguyen
Jane Klases Nicholson
Ellen Nichols
Jane Jones Nichols
Rosella Nichols
Virginia Bruce Nichols
Cindy Holder Nicholson
Suzanne Womack Nicks
Sandra Ann Niedballa
Ruth Marie Nielander
Ednaeyrl Mouden Nielsen
Jean Kelly Nielsen
Mary Christensen Nissly
Lauren Jean Nix
Marjorie Lewis Noble
Ruth Scott Noble
Sarah Adele Noble
Mandaine Noel
Barbara Barnes Norrell
Vickie Adcock Norris
Beverly Johnson North
Mary Martin North
Dorothy Corfield Norton
Marie Newsom Norton
Lucille Collins Nutt
Kelly Jo O'Connell
Donna Daley O'Dea
Mary Kemmerling O'Dell
Jane Reid O'Halloran
Leslie Shawn O'Halloran
Catherine Attanasio O'Hara
Cara Ane O'Malley
Denise Anne O'Neill
Martha Haskins Oaks
Susan Fogg Obenauf

Regina Mooers Ockelmann
Catherine Norris Odanovich
Louise Dillon Odee
Joann Scruby Oesch
Flohn Leyboldt Offenbauer
Lori Ann Ohanesian
Elaine Dorothea Oldham
Margaret Horton Olexa
Rebecca Molina Oliver
Velma Katherine Oliver
Charlotte Field Olsen
Muriel Sommermeyer Olson
Suzanne Wentzel Olson
Deborah Sue Oman
Carole Tema Opheim
Hannah Hood Oren
Helen Ayer Ormston
Mary Vielmetti Osborn
Lori Collier Osborne
Doretta Pugh Osburn
Amy Marie Osman
Doris Turner Osten
Sheryl McClanahan Ott
Beth C. Otte
Julie Anne Otten
Aleec Morgan Otto
Cathy Nott Otto
Eleanor Jenks Otwell
Barbara Kerslake Owen
Carol Birney Owen
Mary Landers Owen
Adelaide Ireland Owens
Christy Hurless Owens
Harriet Schlee Oyler
Bryanna Price Padgett
Polly Apt Page
Maria Lehan Paine
Mary Katherine Paine
Patti Clark Paine
Jennifer Ann Palasz
Mary Diel Pallas
Barbara Sue Palmer
Dorothy Ann Palmer
Nathalie Marie Palmer
Mary Jones Panter
Marilyn Mathew Panu
Anmarie Pappas
Sylvia Leigh Pardue
Cynthia Ware Pare
Beryl Plumb Parker
Eleanor Harrison Parker
Stacy Suzanne Parker
Elaine Jones Parkhurst
Alice Graham Parkinson
Ethel Stromme Parks
Sara Rhoads Parks
Marian Pisarek Parmley
Alicia Gail Parrish
Patsy Charlene Parrish
Karen Hawkins Parsons
Sheila Howell Partin
Renee Marie Passalacqua
Alice Campbell Pate
Helen Soule Patterson
Ruth Huehnel Patterson
Ruth Weider Patterson
Shirley Orthmann Patterson
Cynthia Kettler Patton
Maxine Hyland Patton
Glenna Vandermeer Paukstis
Jeanette Barquist Paul
Loaraine Sherman Pay
Ardele May Payne
Helen Barr Payton
Candice Kidd Peace
Lynda Spomer Peacock
Barbara Croom Pearce
Margaret Spencer Pearce
Janet Myers Pearson
Nancy Lynn Pearson
Helen Phillips Peckenpaugh
Kathleen E. Peek
Betty Obenour Pekare
Jacquelyn Ann Pellas
Mary Pangborn Pelton
Wendy Thomas Pember
Nancy Jean Pendergrass
Emily Pendleton
Leigh Ann Penecale
Nancy Edith Pennington
Darcy Stiles Pennoyer
Mary Rose Penrod
Christine Renee Peraza
Joan Arthur Perkins
Patricia Gray Perkins

Mary Logan McCullough
Shirley Klutz McDaniel
Melody Lynn McDonald
Dorothy Johnson McDonough
Louisa Wheeler McEachern
Phyllis Baker McEwen
Nancy McMaster McGinnis
Joan Magliocco McGuinness
Elizabeth Gilfoil McGuire
Doris Phillips McIlveen
Roberta Eads McIntosh
Margaret Price McIntyre
Susan Claire McIntyre
Meryl Lin McKeane
Lori Montgomery McKeating
Euzetta Holeman McKee
Betty Westhaver McKeen

Cheryl Lee McKenney
Louise E. McKenzie
Molly Ann McKenzie
Joan Marie McKernan
Melanie Denise McKinnell
Edith Darling McKinney
Jane Adams McKinney
Grace Hester McKnight
Grace Bagley McLean
Margaret Alice McLeish
Barbar Nash McMahon
Laurie Ann McManaway
Dana Marie McMillan
Ruth Wick McMillan
Tracie Lynn McMillan
Joyce Newell McMurtry
Matilda Saurer McNair

Terri Ann Perna
Rhonda Fredericks Perrett
Jean McLure Perry
Diane Yochem Peters
Cheryl Howerton Petersen
Julie Marie Petersen
Betty Whitlock Peterson
Dorothy White Peterson
Elizabeth W. Peterson
Janna Hamphill Peterson
Lisa Renee Peterson
Lucile Stow Peterson
Margaret Monroe Peterson
Ruth Strate Peterson
Pamela Ione Petrie
Beth Petrucci-Hoepfer
Alice Merritt Peterson
Frances Emma Pettyjohn
Linda Marie Petusky
Kathy Ann Pharr
Harriet Payne Phelan
Dorothy Frink Phelps
Elizabeth Hurd Phelps
Doris Christner Phillips
Dorless Hum Phillips
Janet Barker Phillips
Kathy Karbel Phillips
Margaret Phillips
Rebecca Phipps
Sue Watson Pickerill
Nyra Hagen Pickering
Harriet Jensen Pickett
Valerie Ann Pida
Kimberly Jo Pierce
Mary Taylor Pierce
Anissa Lynn Pike
Evelyn Lebeda Pillsbury
Janet Hinds Pilvalis
Georgia Durham Pinkston
Elinore Wachholz Pipes
Kathy Slover Pirri
Denise Amanda Pitt
Anita Brownlee Platte
Cynthia Schafer Plucinski
Helen Klesath Plumley
Mary Saidla Plummer
Judith Podesta
Lisa Ann Pgaenik
Donna Evans Photo
Maryann Brigida Polefka
Susan Ellen Polewach
Donna Halling Pollock
Bronwyn Cecile Poplin
Joann Poppy
Dwayla Finch Porter
Martha Gene Porter
Rachael Bean Porter
Antoinette Post
Dorothy Rozalie Post
Grace McAuley Potter
Elizabeth E. Potts
Ruth Sargent Potts
Jeanne Wagner Powell
Mary Lynn Powell
Ruth Miller Powell
Jane Strickland Powers
Jane Gale Prall
Mary Beth Prang
Sara J. Prater
Vesta Moden Pratt
Michelle Fackler Preece
Kimberly Anne Preissler
Dawn Marie Pressimone
Laura Koennecke Preston
Kara Barker Price
Sandy Summerville Price
Veronica Marie Price
Virginia Barron Price
Ardath Lodice Priddy
Virginia MacDonald Priebe
Shirley Buack Prigmore
Enid Goble Pritchard
Jeannette Welander Pritchard
Jane Elmer Probst
Barbara Jean Proctor
Edwards S. Pruchnic
Danielle Elaine Publiese
Kathleen Schauble Pullen
Jann Wickersham Pullig
Sarah Moore Purbough
Ruby Gray Purdum
Jennifer Susan Pursley
Denise Neudeck Putman
Cara Sneed Pyle
Sundee Adeline Pyles

Jamie Hammill Pyne
Linda Gruber Quick
Stephanie Anne Quin
Linda Brosius Quinn
Lisa Amaya Quirk
Louise Sivesind Quistorff
Penelope Sittler Radd
Antoinette Vivona Radtke
Lucille Betz Ragan
Angela Marie Raikoglo
Jennifer Elaine Rainey
Mary Susan Rainey
Kamilla Kleka Rajnus
Heidimarie Hayes Rambo
Ann Edwards Ramsay
Dulcie Teeter Randall
Kristi Anne Rapp
Margaret Frances Rapp
Elizabeth Frances Rappe
Marlene Elizabeth Raseta
Dorothy Eggeling Rasmussen
Emily Bickerstaff Raspilair
Mildred Meinhart Rast
Marian Hintzen Rathbun
Jonell Sue Raudenbush
Melissa Kele Raymond
Virginia Rayson
Deborah Ann Raziano
Rayma Marshall Rea
Ynez Morey Reagin
Alice Edington Reck
Alice Hauswirth Rector
Carolyn Furr Rector
Carlyle Wilson Redfield
Alice Priscilla Reed
Julia Harbert Reed
Brenda Frazier Reeve
Kay Hall Reglein
Donna Kirk Reid
Julia Pogue Reid
Pamela Solomon Reid
Beatrice Juliette Reiley
Kathleen Kneale Reimer
Ethel Westbrook Reinert
Carol Reinhackel
Rhonda Barry Reinhardt
Cynthia Trogden Reis
Evelyn Cohen Reis
Pauline Rithmiller Reising
Martha Tilton Reissig
Elaine Leonore Reiter
Dorothy Rutledge Reminger
Linda Kay Remington
Ethel Stewart Remler
Judith L. Replin
Karen Heiberg Reuter
Agnes Romero Reynolds
Anita Indoe Reynolds
Darlene Soiseth Reynolds
Phyllis Anne Reynolds
Vera Fritz Reynolds
Arlene Grimm Rhinehart
Gracemary Ketcham Rhone
Jane Simmons Riccardi
Virginia D. Rice
Helen Smith Richards
Rita Ennen Richards
Jeri Haines Richardson
Johanna Nolcheff Richardson
Marilyn Bachmeyer Richardson
Melissa Leigh Richardson
Sherri L. Richmond
Vickie Kirschner Rickabaugh
Madge Ann Rickards
Carol Davis Riddle
Louise Butler Riddle
Jenni Lynn Riedinger
Dorothy Benner Rieke
Mary Geiger Riggs
Vicki Jinnette Ringer
Alma Gluntz Ripper
Sheran Arnold Rivers
Karlette Pauline Rizzi
Marian McCone Rizzo
Patricia Brown Rizzotti
Deborah Maureen Roach
Debra Robbins
BobbyLou White Roberts
Deborah Edinger Roberts
Jane Frampton Roberts
Katherine Mary Roberts
Leslie Sorrell Roberts
Jennifer Lynn Robie
Harriet Agnes Robinson
Lorene Robinson

Melanie Alm Robinson
Christi Diane Roby
Anne Patterson Roche
Mary Ashworth Rodda
Kay Cochran Roddick
Stephanie Delaune Rodrique
Rhonda Reiffschneider Roe
Nancy Weissberger Roehl
Gladys Tolhurst Roehner
Nellie Brown Roenker
Drude Sparre Roessler
Mary McDaniel Rogers
Terri Jenkins Rogers
Julie Johnson Roknick
Elizabeth Ennis Rolfe
Eleanor Ann Roller
Christine Leigh Romano
Marian McCann Rometty
Hope Carter Rooker
Elizabeth Suzanne Rose
Pauline Sorenson Rose
M. Elvira Aberg Rosenberg
Kristine Ann Rosenberger
Linda Kedzierski Rosenquist
Mary Strench Rosenquist
Julianne Rosenzweig
Nancy Ann Rosinski
Felicia Smith Rosland
Dorothy Flynn Ross
Molly M. Ross
Rita Rossi
Karen Floyd Roush
Louise Salzmann Rowe
Lisa Thompson Rowland
Wilma McCarty Roy
Genevieve Helliwell Roycroft
Shelley Marie Royer
Rose Gattavara Rucker
Diane Louise Ruggie
Mary Goebel Ruplinger
Barbara Williams Rupp
Miriam Sanderson Rusanowsky
Helen Pool Rush
Diane Eslinger Rushing
Gladys Hayes Russell
Tammy Yvonne Russell
Nellie Jackson Ruth
Barbara Askew Rutherford
Alice Richards Rutkoskie
Lois Rees Rutter
Janet Austin Ryan
Muriel Skoog Sadler
Vera Ahrendt Sadler
Denise Marie Shajdack
Mary Graves Saiia
Judith Coontz Sakmar
Christia Detwiler Salyer
Geraldine Ziray Sampson
Laurie Henry Sampson
Sandra DeMita SanClemente
Claudia Marcela Sanchez
Desiree Ruth Sanchez
Bonnie Bronish Sander
Beverly Bailey Sanders
Judith Conley Sanders
Stephanie Cordray Sanders
Elizabeth Walz Sanderson
Greta Franz Sandlin
Dorothy Deer Sandusky
Wilma Steinhauser Sanford

Valerie Moore Sanger
Lynette Alsmann Sarther
Donna Marie Saucier
Kathleen Cline Saunders
Kathryn Hagner Saunders
Lucretia Ann Saunders
Laura Spreitzer Savage
Dorothy Moser Sawin
Ava Maureen Sawyer
Margaret Shea Saxe
Janice Gay Sayre
Carmel A. Scaglione
Joanne Copeland Scarborough
Rowena Ingold Schaber
Joan Stroh Schaefer
Debra Gehman Schaeffer
Stine Jensen Schaffmeyer
Mary Laughlin Schallenger
Helen Hassel Schaller
Aimee Lynn Scharer
Cynthia Kalb Schauer
Ruth Weston Scheer
Jean E. Schellenger
Suzanne Lynn Schenk
Shirley Weichmann Schenning
Charlotte Erpelind Scherer
Linda Mae Schimmel
Grace Angenstene Schindler
Roxanna Schlimm
Stephanie Anne Schloemann
Helen Kahler Schmid
Jean Terry Schmidt
Jill Kathleen Schmidt
Rita Herly Schmidt
Louise Irene Schmitt
Mildred Schuh Schneider
Karen Marie Schnetz
Elaine Blaubach Schoech
Katherine Kotila Scholz
Jean Thomas Schowalter
Catherann McDonald Schrader
Doris Mae Schroeder
Jane Humbach Schulte
Bethany Sue Schumacher
Elizabeth Schumacher
Jennifer McElhaney Schuster
Margaret Vanzanten Schuttenberg
Lucile McClaskey Schwarz
Mary Elaine Schwarz
Martha Durham Schweitz
Fredwyn Creech Schwendeman
Alice Robin Scott
Cynthia Jane Scott
Elizabeth Morrison Scott
Marion Riley Scott
Shannon Noel Scott
Masil Ellen Scragg
Margaret Krogman Scripps
Nancy J. Scsavnicki
Greta Seabholm
Anita Thompson Segler
Diane Zimmerman Sehy
Ruth Clark Seiler
Marth McVey Seithers
Patricia Mathias Seitz
Linda Regner Serdahely
Katherine Lynn Sermersheim
Sylvia Michele Setzer
Diane Dugger Severns
Raeann Shaak

Christi Sisk Shady
Alice Purvis Shambaugh
Nellie Walsh Shanley
Beverly Boswel Shannon
Martha Sharkey
Dorothy Getter Shattuck
Melissa Shaver-Mott
Gertrude McCullough Shaw
Janet Kittredge Shaw
Lisa V. Shaw
Mary Hodsdon Shaw
Patricia Davis Shaw
Theresa Smith Shaw
Linda Ann Shay
Eileen Smith Shea
Paula Denise Shearer
Linda Wood Sheets
Kelly Palmer Sheppard
Carol Curtis Sheridan
Peggy Ann Sheridan
Gwendolyn McHugh Shick
Jennifer Anne Shields
Jean Ralph Shimrock
Christie Leigh Shipton
Cindy Brown Shoaf
Helen Easterling Shoemaker
Janice Stahl Shoemaker
Kathryn Plopper Shorb
Gretchen Marshall Short
Kathryn Rank Shotwell
Lauralyn Vinson Shough
Mary Bond Showalte
Louise Munson Showers
Kimberly Moll Shryock
Randi Jill Shugar
Kimberly Ann Shuler
Jody Lynn Shultz
Florentina Leipniker Shupack
Margaret Craig Shurtz
Jennifer Gensemer Shutt
Dyanne Glass Sidner
Laura Gray Sidwell
Kathryn McClurg Siegrist
Deidra Elizabeth Sigmon
Lynn Weber Sigmund
Loree Ann Silvarman
Charlotte Fields Silversteen
Dorris Pike Silverthorn
Barbara Coletti Simon
Virginia Statler Simpson
Maurine Cilley Sinclair
Donna Burlew Sinnott
Bernice Whitehead Sjostrom
Shelly Lynn Skeen
Diane Jones Skelton
Margaret Richardson Skinner
Marilyn Skinner
Susan Aho Skinner
Lillian Guffey Skora
Peggy Gardner Skorupa
Kathryn Garette Slattery
Kathleen Johnson Sledge
Shelley Kay Sloan
Doris Warner Slosser
Sharon Moncrief Slovinski
Georgene Gentile Slusarski
Diana Lynn Slyfield
Janie Little Smallwood
Barbara Cramer Smith
Candace Hilton Smith

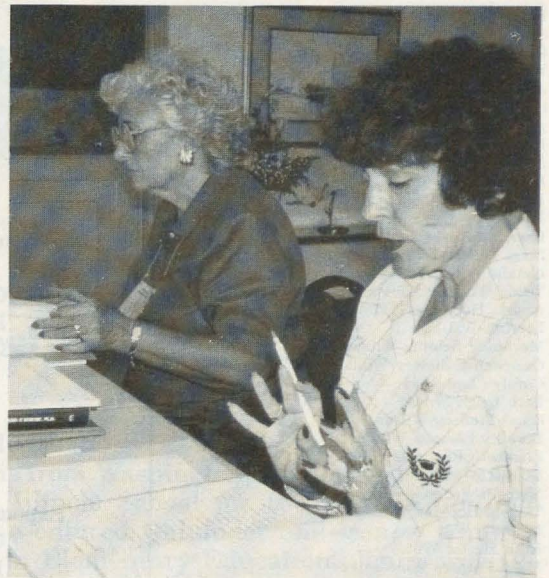


Representatives of the alumnae chapters achieving Rose Society membership during the biennium.

Cheryl Hart Smith
 Clara Schnakenberg Smith
 Claudia Kay Smith
 Cynthia Mary Smith
 Doreen Lynn Smith
 Dorothy Haserot Smith
 Eileen Strout Smith
 Eleanor Dehm Smith
 Elizabeth Harrington Smith
 Emogene Duncan Smith
 Era McGough Smith
 Frances Waldo Smith
 Frances Marsiglia Smith
 Geraldine Ferens Smith
 Hazel Edgerton Smith
 Irene Benson Smith
 Jean Bisbee Smith
 Jeanne Cook Smith
 Judith Nowakowski Smith
 Judy Welch Smith
 Karen Rae Smith
 Kay Canon Smith
 Leota Blaine Smith
 Maribeth Kumsa Smith
 Mary Deanna Smith
 Michele Marie Smith
 Mildred Biklen Smith
 Patricia L. Smith
 Patsiann Nix Smith
 Roxanne Smith
 Stacie Burns Smith
 Stella Jones Smith
 Susan Alyce Smith
 Janet White Smoot
 Dawn Colby Smythe
 Cleora Crosby Snelling
 Diane Woodward Snelson
 Brenda Lynn Snider
 Teresa Lynn Snider
 Vera Wilson Snipes
 Barbara Ann Snow
 Helen Wiese Snuverink
 Carolyn Stickerod Snyder
 Cynthia Marie Snyder
 Flora Scheid Snyder
 Jane Daily Snyder
 Janice Lynn Snyder
 Jennifer Kalhorn Snyder
 Phyllis Hatfield Snyder
 Rosella Hawkins Snyder
 Bernadine Fullerton Solberg
 Many Schlichting Soley
 Jean Marie Solimeno
 Gretchen Ann Soll
 Yvonne Sonnemann
 Patricia Steier Sorg
 Gina Ann Sorrentino
 Georgia Raft Souris
 Hazel Griffin Southard
 Elizabeth Parker Southern
 Carol Neal Souza
 Maria Hardee Spain
 Isabelle Hough Spangler
 Nancy Lee Spangler
 Johnnie Miller Sparber
 Alice Munday Sparks
 Dina Brakefield Sparks
 JoAnn Hempling Sparling
 Ann Rhind Sparrough
 Kimberly Bowen Spatola
 Leona Cordell Spence
 Gertrude Arcega Spencer
 Naula Delaney Sperry
 Betty Trapas Spinks
 Mary Smith Spivey
 Patricia Brandon Spivey
 Ann Litton Spoth
 Deborah Thompson Spratt
 Monica Wills Sprengel
 Sharon Louise Sprong
 Cheryl Lynn Spurgeon
 Jane Elizabeth Spurgeon
 Julie Lynn Sramcik
 Bernice Krout Stacy
 Carolee Stadnicki
 Jane Taft Stafford
 Katherine Boles Stallings
 Georgianna Beames Standafer
 Janet Cecil Stanley
 Toby Cathey Stanley
 Astrid Spencer Staples
 Marie Michell Staska
 Dorothy Knapton Stebbins
 Karen Barkey Stebelski
 Carin Brown Steckler

Paula Lamp Steele
 Cheryl Wassink Steffen
 Kathleen Harro Steffen
 Susan Marie Steggeman
 Donna Watkins Steiling
 Catherine Dee Steiner
 Jeanne Wyckoff Steinkamp
 Sandy M. Stencavage
 Jennifer Lynn Stephens
 Janet Karpach Sterling
 Diane Marie Sterr
 Elizabeth Mueller Stevenson
 Anna Christina Stewart
 Fredna Schroeder Stewart
 Shevon Marie Stieffel
 Donna Cherise Stiles
 Jane Leach Stillman
 Marjorie Mauney Stillwagen
 Phyllis Williams Stine
 Joan Sears Stingely
 Mary Norwood Stinger
 Kelly Ann Stock
 Anne Dunn Stockman
 Marcella Prieto Stoessel
 Dora Stohl
 Doris Nickel Stokes
 Dorinda Lee Stone
 Julie Pamela Stone
 Muriel Baker Stone
 Pauline Rogers Stout
 R. Lynne Stover
 Nashla Showery Stowe
 Helen Topping Stowell
 Helen S. Strain
 Mary Hubbard Strandberg
 Karen Giles Strange
 Barbara Schick Stratton
 Sharon Masuen Stratton
 Ruth Straw
 Kirsten Marie Street
 Patricia Connolly Stringfield
 Sherri Lynn Stritter
 Stacie Doak Strizek
 Marjorie Zimmerman Strom
 Frances Ireland Stromberg
 Carole Green Strong
 Sharon Ann Stryker
 Lora Jean Stuart
 Linda Prinz Stuckey
 Valerie Miller Studer
 Helen Dewart Studwell
 Donna Jean Sturgis
 Ellen Turcan Suarez
 Virginia Askew Subring
 Sheri Lynn Sullins
 Susan Marie Sullivan
 Susan Louise Summers
 Oween Sumner
 Kimberly Ann Superczynski
 Caryle Snow Sutherland
 Barbara Berner Sutton
 Norma Edwards Sutton
 Stacey Ann Sutton
 Ethel Hilliwell Swanger
 Joan Bunker Swanger
 Vickie Lynn Swanson
 Virginia Peoples Swanson
 Kelly A. Sweeney
 Sandra Wilson Sweeney
 Virginia Gummel Sweeney
 Valerie Beth Sweeten
 Rita Reeve Swenson
 Sheryl Kay Swingley
 Nancy Kay Sylvester
 Jennifer McGlade Symes
 Helen Greb Szatalowicz
 Victoria Szatalowicz
 Linda Lesniak Szymanski
 Gail Stevens Taber
 Maida Dawson Tabor
 Christyle Marguarita Tackett
 Lori Ann Tady
 Beth Cline Talbert
 Tevi Ann Taliaferro
 Cheryl Yearty Tallant
 Dorothy Pitts Talley
 Midred C. Tallman
 Margaret Myers Tallon
 Florence Tangney
 Linda Dennison Tapp
 Alice Lundgren Taylor
 Elena Tribby Taylor
 Judy Hoyt Taylor
 Marion Humble Taylor
 Nancy Taylor

Thelma Potter Taylor
 Madonna Baker Teaford
 Catherine Lynne Tector
 Ada Grace Tedder
 Anita Voden Teloh
 Linda Broughman Templeton
 Louise Quattlebaum Terlizzi
 Samantha Harris Terres
 Deborah Anne Terribile
 Angela Young Terry
 Ethel Theis
 Mary Anderson Thigpen
 Lynne Milliones Thomas
 Ruth Aneshansel Thomas
 Gail A. Thomason
 Caroline Dilg Thompson
 Esther Ballard Thompson
 Jane Gustafson Thompson
 Louise Kennedy Thompson
 Margaret Neal Thompson
 Melinda Michelle Thompson
 Rebecca Ayers Thompson
 Rosalie Gray Thompson
 Rena Charnley Thomson
 Elizabeth Von Heill Thorman
 Jackie Santoriello Thorne
 Leone Bovard Threlkeld
 Louri Lynn Throgmorton
 Jeanne M. Tibbles
 Amy Elizabeth Tiernan
 Mattie Corley Tisdell
 Evelyn Mele Tobey
 Michelle Tokarz
 Amy Louise Toman
 Andrea Marissa Tomassoni
 Marguerite Ekdhal Topper
 Yvonne Marie Totin
 Robin Lee Toups
 Betty Shannon Tousey
 Linda Haigh Tozier
 Shannon Anne Trainor
 Jean Moore Trattner
 Katherine Wilson Trawick
 Wilna Hall Treichler
 Annettie Good Tribbett
 Deborah Lynn Trimble
 Mary Marshall Trimble
 Gina Devlin Tringola
 Jeanine Petersen Triplett
 Deborah Huston Tronnes
 Ann Brakefield Trotter
 Rebecca Conlon Trumble
 Tiffani Lynn Tucker
 Tracy Leigh Tucker
 Margaret Ellestad Tune
 Beverly Gaulke Turnbull
 Catherine Ann Turner
 Elizabeth de Gruyter Turner
 Patricia Long Turner
 Wendy Denise Turner
 Joann Semanachek Turpin
 Mona Albright Turpin
 Carmen Johnson Turre
 Doris Bullwinkel Tusty
 Shannon L. Tutt
 Bridget Twickler
 Norma Cox Twyman
 Harriet Warner Tyson
 Susan Thompson Tyson
 Janette Halcrow Uebner
 Ruth Price Ulmen
 Florence Hughes Umfrid
 Barbara Mooney Underwood
 Amy Syrig Unrath
 Joyce Meeks Upchurch
 Angela Denise Uphoff
 Migg Caulkins Urban
 Edna Kraly Ureste
 Pauline Etzler Ursu
 Michelle Lynn Usey
 Pauline Lehman Vaaler
 Josephine Nickora Vaara
 Kaia Lynn Vagas
 Laura Susan Vaglia
 Betty Marriner Vahe
 Nancy Priest Valenzuela
 Margi Ann Valmassoi
 Mary Stallings Van Beber
 Linda Van Loon
 Katherine Meader Vandell
 Mary Anne Varga
 Daria Troyan Varner
 Tracy Ann Varner
 Stephanie Anne Vaughan
 Colleen Patricia Vaughn



Trustees Ann Booth and Joan Lowry present their reports.

Wilmna Fox Vehling
 Dianne Calongne Veith
 Diane Marie Venard
 Dyanne Marie Venezia
 Linda Finder Veraghen
 Barbara Worthy Verminski
 Joan Alden Vernotzy
 Cynthia Angel Verona
 Agna Johnson Vietti
 Michele Roxanne Vinci
 Amy R. Viso
 Theresa Renee Vodola
 Mary Dewein Voigt
 Sue Leaver Volkmer
 Martha Camp VonKennell
 Bette Brand Vonfelt
 Terri Rutkowski Votanek
 Laura Ann Vradelis
 Kathleen Wachsmuth
 Eleanor Wood Wadsworth
 Jennifer Marie Wagner
 Pamela Givens Wagner
 Patricia Hobaugh Wainwright
 Dorothy Caldwell Walcher
 Kristen Moore Waldbillig
 Ruth Hansen Waldron
 Donna Prosser Walker
 Ellen Sprawls Walker
 Judith Baer Walker
 Julie Ann Walker
 Laura Boedeker Walker
 Lori Christine Walker
 Patricia Roan Walker
 Ruth Walker
 Alice Schocke Wall
 Elizabeth McCarter Wall
 Joyce Rodrigues Wallace
 Nancy Eveson Wallace
 Carolyn Nalbach Waller
 Deborah Neely Wallis
 Ann Walls
 Dolores Goncezo Walsh
 Norma McPhee Walsh
 Genevieve Roccas Walter
 Stacey Blanchard Walter
 Mae Agneberg Walton
 Kimberly Dee Ward
 Arminda Youse Warde
 Louise Gilbert Warner
 Dorothy Graf Warren
 Helen Fibiger Warren
 Laura Lisan Warren
 Susan Kelly Warren
 Harriett Rohrkaste Wash
 Jane Erdmann Watkins
 Bethel Eidson Watney
 Evelyn C. Watt
 Linda Wayne

Amelia Wright Webb
 Ann Nolan Webb
 Melissa Marie Webb
 Janell Memleb Weber
 Janet Davey Wehling
 Evelyn Wainscott Weidenbacher
 Jeri Seals Weigand
 Lori Ann Weinrich
 Laurel Michel Weinstein
 Lucille McCrite Weir
 Dorothy Haeger Weis
 Bonnicuse Weiser
 Ida Smith Weisner
 Stephanie Weiss
 Mariellen Puterbaugh Weist
 Dorothy J. Welch
 Connie Martin Wells
 Patricia Knowles Wells
 Susan Elizabeth Wells
 Alysia Beth Welton
 Joan Kappus Wendland
 Louise Overturf Wentworth
 Juliana Rozeboom Wernimont
 Tamara Wertschyn
 Kathy Ann Wessel
 Barbara Chapman Wessinger
 Donna Laminack West
 Inez Oatfield West
 Mary Gribble West
 Margaret Kindschi Westley
 Carol Vansickle Wetherby
 Ruth Elizabeth Wetherly
 Emma Wetzel
 Lynn Whayne
 Colleen Bode Wheeler
 Jean Dougherty Whisler
 Karen S. White
 Mary Pahmeier White
 Patricia Bush White
 Pearl Rosanne White
 Veryl Ebbert White
 Suzanne Stallings Whitehead
 Jo Clements Whitener
 Gladys Nelson Whitesell
 Mildred Wilkinson Whitman
 Doris Kemmerling Whitmore
 Dorothy L. Whittemore
 Janice Word Whitten
 Melanie Joyce Whitten
 Floy Taylor Wickland
 Bethany J. Widelo
 Josephine Spence Wiegand
 Lydia Osborn Wiepking
 Ramona Irene Wigley
 Ruth Slater Wikoff
 Harriet Walker Wilborn
 Katherine Owens Wilburn
 Lillian Swaney Wildblood

Helen Collins Wildy
 Jeanette Marie Wilhelm
 Cheryl Roberts Wilkins
 Theo Clever Wilkins
 Audrey Joslin Wilkinson
 Sandra Daly Wilkinson
 Ann Sturkie Williams
 Bonnie Louise Williams
 Darlene Walter Williams
 Elizabeth Williams
 LaLuce Planck Williams
 Linda Kay Williams
 Llwanda Kneppshield Williams
 Mary Heinzman Williams
 Natalie DeCapite Williams
 Trudy Wheeler Williams
 Angela Henderson Williamson
 LeeAnn Williford
 Marianne Belding Willing
 Gretchen Galloway Willis
 Carolyn Lee Wills
 Beth Leigh Wilson
 Carol Lindsay Wilson
 Dorothy Eleanor Wilson
 Elizabeth Reynolds Wilson
 Gladys Wilson
 Michelle Fecteau Wilson
 Tamela Hopkins Wilson
 M. Mills Wilt
 Ruth Hester Wilt
 Mary Frances Winchester
 Donna Holaling Winger
 Valerie Breuer Winkler
 Susan Gorman Winstead
 Glennalou Frank Wintersteen
 Dorothy VanDanAker Van Dan Wiprud
 Shirley Brattin Wirt
 Luvola Huffstutler Wisneski
 Helen Rose Wissmiller
 Virginia Cribblez Withington
 Gretchen Hall Woeste
 Ruth Classen Wolf
 Linda Woodyard Wolz
 Mary Ellis Womack
 Leanne Leslie Wonders
 Elizabeth Miller Wood
 Kristi Lynn Woodall
 Carolyn McCandless Woodling
 Mary Palmer Woods
 Martha Steward Woodward
 Beatrice Workman
 Elizabeth Fulkerson Wright
 Heather Turner Wright
 Marjorie Wales Wright
 Minnie Myers Wright
 Sara Joanna Wright
 Ileana Hutchinson Wyerman
 Altise Monroe Wylie
 Danna Donnelly Wylie
 Suzanne Valliquette Yager
 Clara Mayo Yarnall
 Judith Martin Yazell
 Jennifer Susan Yeagley
 Joan Harper Yearous
 Kathleen Anne Yoder
 Rebecca Kay York
 Beulah Young
 Cameron Anne Young
 Catherine Daugherty Young
 Dorothy Lock Young
 Gwen Vitteteaux Young
 Helen White Young
 Isabelle Bouick Young
 Jean Kitts Young
 Margaret Anderson Young
 Kay Jandebeur Younger
 Ange Milne Youngs
 Pamela Ayers Youree
 Sandra Kay Yow
 Kim Stubblefield Zaburinov
 Pernilla Anderson Zacher
 Andrea Stephanie Zakheim
 Jennie Cannon Zbierski
 Virginia Ward Zehe
 Lisa Anne Zetye
 Ella Schumacher Zillner
 Cecilia Marie Zindel
 Rhoda Thurm Zobrist
 Louis Kiewit Zollinger
 Karen Corey Zwergel
 Virginia Shhirkay Zwetzig
 CherryLane Broadwell vonSchmittou

Statement of Activity and Fund Principal for the years ended June 30, 1991 and 1990

Revenues:	1991	1990
Contributions received	\$344,279	\$398,256
Interest income	64,845	58,149
Other	11,264	13,066
Total revenues	420,388	469,471
Expenses:		
Grants, gifts, scholarships & awards	289,603	314,863
Donor retention, recognition & acquisition	46,453	34,667
Travel and meetings	8,162	8,833
Professional fees	22,705	18,257
Printing, publications, postage & office supplies	43,874	3,051
Insurance	364	351
Other	4,107	4,344
Total expenses	415,268	384,366
Excess of revenues over expenses	5,120	85,105
 Fund principal, beginning of year	 697,484	 612,379
 Fund principal, end of year	 702,604	 697,484

The current financial statements of the Delta Zeta Sorority Foundation have been audited by Coopers & Lybrand, CPAs. Copies are available at National Headquarters, Oxford, Ohio.

(Alumnae Chapter Gifts)

Bartlesville Alumnae Chapter
 Baton Rouge Alumnae Chapter
 Bloomington Alumnae Chapter
 Cedar Rapids Alumnae Club
 Chico Alumnae Chapter
 East Lansing Alumnae Chapter
 Galesburg Alumnae Club
 Granite State Alumnae Chapter
 Greater Seattle Alumnae Chapter
 Las Cruces Alumnae Chapter
 Lincoln Alumnae Chapter
 New Orleans Alumnae Chapter
 Pittsburgh East Alumnae Club
 Salt Lake City Alumnae Chapter
 San Diego Alumnae Chapter
 Southwest Florida Alumnae Chapter
 Stephenville Alumnae Chapter
 Sun Coast Alumnae Chapter
 Tallahassee Alumnae Chapter
 Tampa Alumnae Chapter
 Tuscaloosa Alumnae Chapter
 Warrensburg Alumnae Chapter
 Youngstown Alumnae Club

(Collegiate Chapter Gifts)

Auburn University/Montgomery-AN
 Baldwin Wallace College-FA
 California State University/Chico-AX
 Duquesne University-KE
 Kent State University-1K
 Kutztown University-KP
 Louisiana Tech University-0E
 Northern Kentucky University-KB
 Ohio Northern University-ZK
 Ohio University-OF
 Old Dominion University-00
 Randolph-Macon College-OZ
 Samford University-AII
 Shepherd College-KM
 Southwestern University-1Z
 University of Connecticut-1B
 University of North Texas-KZ
 University of Southern Mississippi-EM
 West Liberty State College-IT





Theresa



Linda



Rebecca



Jenny



Louise



Sally

Gallaudet 1991-92 scholarship recipients

Theresa Baumgartner

Theresa is from Cleveland, Ohio. She graduated from West Technical High School, and attended both Cuyahoga Community College and Notre Dame College where she received a Certification in Pastoral Ministry. In 1989, Theresa enrolled at Gallaudet, and presently is a junior majoring in Social Work. When not studying, Theresa enjoys camping, hiking, traveling, sports and studying peace and justice issues. It is her hope to obtain both a Bachelor's and Master's Degree in Social Work, and to work in service to deaf individuals. Theresa also would like to use her skills in some facet of missionary work.

Linda S. Hobensack

Linda is from Mentor, Ohio, where she graduated from Mentor High School. After high school, Linda earned an Associate's Degree in Licensed Practical Nursing from Lakeland Community College. In 1989, she enrolled at Gallaudet, and presently is a junior majoring in Psychology. Linda has served as past president of the Lake County Self Help Group for Hard of Hearing, vice president of Licensed Practical Nursing Association #29, and as advisory committee member for the Ohio Board of Nursing. She also is a member of Gallaudet's Deaf Blind Association. In the future, Linda hopes to combine her nursing experience with psychology training to establish support groups for recently deafened persons. She also hopes to help improve communications and services in health care facilities for hearing impaired individuals.

Rebecca S. Phillips

Rebecca is a resident of Newark, Delaware. She graduated from Christiana High School, and earned an Associate of Arts Degree from the National Technical Institute for the Deaf in Rochester, NY. Rebecca was named to the Dean's List for three academic quarters at NTID. In 1989, Rebecca enrolled at Gallaudet, and now is a senior majoring in Accounting. In addition to her studies, Rebecca enjoys playing tennis, traveling, bowling and a variety of craft projects. In the future, she hopes to have her own business or work as an Accountant in a large firm.

Jenny M. Rash

Jenny is from Washington, Illinois and graduated from the Illinois School for the Deaf. After high school, she entered Gallaudet and is now a junior majoring in Elementary Education. Jenny was Co-Valedictorian and a member of the honor roll in high school, and has been named to the Dean's List at Gallaudet. In addition to caring for her three year old daughter, Jenny enjoys reading, collecting comic books, watching movies and bowling. After graduating, Jenny plans on working as a teacher for the fifth or sixth grade students.

Louise E. Saathoff

Louise is from Portland, Oregon, where she attended Washington High School. After high school, Louise attended Ricks College in Idaho where she earned an Associate's Degree. She also attended Brigham Young University and the University of Utah before enrolling at Gallaudet in 1989. Louise is a senior majoring in Social Work. She is a member of Phi Kappa Zeta honor society, and has been the recipient of various scholarships in the past. She has served as a fund-raiser for handicapped services. Louise enjoys art, horseback riding, reading, camping, swimming and traveling. After graduating, she hopes to work as an Art Therapist and/or Counselor.

Sally A. Zwicker

Sally is a resident of Cincinnati, Ohio. She graduated from St. Rita School for the Deaf, and enrolled at Gallaudet in 1986. She earned her Bachelor's Degree in Secondary Education/English from Gallaudet in 1991 and was admitted into the Graduate School of Education this year. Sally was named to the Dean's List, selected as a member of the Phi Alpha Pi Honor Society, and appeared in *Who's Who in American Colleges and Universities*. She received the National Collegiate Foreign Language Award, German Embassy Award, and was a President's Scholar. Sally also was a member of the Registration Committee, Student Exchange Program, and Phi Kappa Zeta Sorority. She enjoys reading, traveling and cooking. After earning her Master's Degree in Education, Sally plans to teach English at the high school level.

Evelyn Adams Costello

1903-1991



Evelyn Adams Costello, National President 1954-1958.

**by Florence Hood Miner
National Historian**

Evelyn Adams Costello had a brilliant mind, a regal beauty, a delightful sense of humor, a way with words and a smile that would melt away your tears. Delta Zeta has lost one of her most distinguished national presidents with her passing on August 21.

Evelyn was initiated in Nu chapter which was then at Lombard College in Galesburg, Illinois. Some years later Lombard became a part of Knox College and the Nu chapter was transferred to that campus.

The daughter of a distinguished Unitarian minister, Evelyn inherited from him her sense of scholarship and ethics. She pursued a career as a psychiatric social worker, first in New England and then in Michigan where she met her husband, Dr. Russell Costello. After his internship at the Mayo Clinic, they moved to the Detroit area where he pursued a career in neurology.

The 1940 convention was held

on Mackinac Island with Michigan alumnae as co-chairmen. Evelyn went as the delegate of the Detroit alumnae chapter and was in charge of the opening banquet. The favors were little metal lamps made by the Costellos.

That summer, my first chore as a Council member was to travel to Michigan to talk Evelyn into becoming the Province Collegiate Director.

And the rest, as they say, is history. Evelyn did such an outstanding job and made so many friends that she was suggested for the National Council and in 1942 was elected National Secretary. In those days the Secretary was also Scholarship Chairman and her own high standards in this field made this a high goal for chapters. She continued in this office until the 1950 convention when she was elected Extension Vice President.

During this time the Detroit alumnae had been pursuing a program of aid to the deaf and when Evelyn presented this to Council as a worthy philanthropy for national recognition, Delta Zeta's program in hearing help was born.

In 1954 she was chosen National President. When asked some years later what she felt had been her most outstanding contributions to Delta Zeta, she named the merger of Delta Sigma Epsilon with Delta Zeta which gave us 40 some thriving new chapters and made us one of the largest NPC groups. The culmination of this merging had far reaching effects.

The 1958 Chicago convention where Evelyn last presided as president was a notable one for her for several reasons. Her husband Dr. Costello gave a terrific workshop and conference on psychiatric problems found in col-

lege women and how to handle them. And, Juanita Kelly Bednar, also a Lombard-N member, had rescued some wood from razed buildings at Lombard and presented what is now known as the President's Plaque to the convention in honor of Evelyn. This plaque names all of Delta Zeta's presidents and hangs at National Headquarters with the names of presidents added as they are elected.

At that convention the Kentucky delegation presented her with the title of Honorary Kentucky Colonel and at the last banquet she received an honorary Florence Hood award.

Evelyn's leadership in National Panhellenic Conference when she served as Delegate from 1960 to 1966 resulted in being named Chairman of the City (Alumnae) Panhellenics Committee for several terms.

When the Historical Museum in Oxford became a reality in 1983, Michigan Delta Zetas contributed funds to dedicate one of the rooms to Evelyn. Her portrait, the gift of the Beta Rho house corporation, hangs over the fireplace and a smiling min-

(continued on page 43)



Attending Michigan Province Day in 1971 were Evelyn Costello, PCD Sue Adams Trevarrow, Michigan State-BP, National Secretary Florence Hood Miner.

Directory

NATIONAL COUNCIL

PRESIDENT: Marvona Easley Tavlin (Mrs. Michael J.), 2710 Devonshire Drive, Lincoln, NE 68506
VICE PRESIDENT OF MEMBERSHIP: Sandra McAlister Nesbitt (Mrs. Milton), 3519 Castle Ridge Road, Montgomery, AL 36116
VICE PRESIDENT OF ALUMNAE AFFAIRS: Dianne Fellows Guild (Mrs. Douglas), 16 Andrews Drive, South Burlington, VT 05401
VICE PRESIDENT OF COLLEGIATE AFFAIRS: Merry Westbrook Adamcik (Mrs. Roy), 614 Rozelle Avenue, Sugar Land, TX 77478
SECRETARY: Jennifer Plenge (Ms.), 904 Dana Marie Drive, Louisville, KY 40223
TREASURER: Lynnda Wolf Hoefler (Mrs. Robert), 1287 Denise Drive, Kent, OH 44240
DIRECTOR OF CHAPTER FINANCES: Pamela McClure Cronenwett (Mrs. William), 25720 West Hills Drive, Dearborn Heights, MI 48125
DIRECTOR OF VOLUNTEER DEVELOPMENT: Charlotte Davis (Dr.), P.O. Box 165, Blacksburg, VA 24063-0165
DIRECTOR OF PLEDGE EDUCATION: Phyllis Berens Ross (Mrs. Norman), P.O. Box 3239, Oakton, VA 22124
PAST NATIONAL PRESIDENT: Norma Minch Andrisek (Mrs. John R.), 319 Janice Drive, Berea, OH 44017
NATIONAL PANHELLENIC CONFERENCE DELEGATE: Patricia Canady Rosser (Mrs. David), 1609 Indian Rocks Road, Clearwater, FL 34616
NATIONAL PANHELLENIC CONFERENCE ALTERNATES: Sandra McAlister Nesbitt (Mrs. Milton)
 Deanna Alleman McKinnon (Mrs. Mike)
 Norma Minch Andrisek (Mrs. J.R.)

NATIONAL HEADQUARTERS

NATIONAL HEADQUARTERS: 202 East Church Street at Campus Avenue, Oxford, OH 45056. 513-523-7597
EXECUTIVE DIRECTOR: Cynthia Winslow Menges
CHAPTER CONSULTANT COORDINATORS: Sandra Sebrell Bailey (Mrs. Bruce), 639 N. Portage Path, Akron, OH 44303
 Ruth Weider Patterson (Mrs. Robert), 3623 Devereaux Road, Columbia, SC 29205
CHAPTER CONSULTANTS: Michele Benshetler, Robin DeArmond, Susan Gattis, Cheryl Halley, Pamela Henry, Stephanie Ann Jobe, Jane E. McCaslin, Christine Meadows, Kathryn Mitchell, Carrie Philbrick, Donna Winkley
GRADUATE COUNSELOR: Jennifer Mann

DELTA ZETA SUBSCRIPTIONS

National Headquarters, 202 East Church Street, Oxford, OH 45056

INSURANCE

National Headquarters, 202 East Church Street, Oxford, OH 45056

THE LAMP

Gwen Moss McKeeman (Mrs. Robert), 5517 S. 74th E. Avenue, Tulsa, OK 74145

HISTORIAN EMERITUS

Grace Mason Lundy (Mrs. H.M.), 3207 N. 25th St., Phoenix, AZ 85016

NATIONAL PARLIAMENTARIAN

Charlotte Davis (Dr.), P.O. Box 165, Blacksburg, VA 24063-0165

EXTENSION

Sandra Sebrell Bailey (Mrs. Bruce), 639 N. Portage Path, Akron, OH 44303

STANDING COMMITTEES

AWARDS (ALUMNAE AND COLLEGIATE): Beth Anderson Hudson (Mrs. Tom), 224 Kasson Road, Knoxville, TN 37920
COLONNADE CLUBS: Kristi Brown Stokes (Mrs. Edward), 1713 Kensington Drive, Knoxville, TN 37922
CONSTITUTION AND BYLAWS: Anne Marie Jones Gavin (Mrs. William), 3264 Swan Drive, Vineland, NJ 08360
FIELD ACTIVITIES: Sandra McAlister Nesbitt (Mrs. Milton), 3519 Castle Ridge Road, Montgomery, AL 36116
FINANCE: Lynnda Wolf Hoefler (Mrs. Robert), 1287 Denise Drive, Kent, OH 44240
HISTORY: Florence Hood Miner (Mrs. Arthur), 1040 Avenue H, Nevada, IA 50201
JUDICIARY: Dianne Fellows Guild (Mrs. Douglas), 16 Andrews Drive, South Burlington, VT 05401
MUSIC: Julie Stewart (Miss), 2017 Lees Court, Clearwater, FL 34624
PHILANTHROPY: See Alumnae and Collegiate Committees
PLEDGE EDUCATION: Phyllis Berens Ross (Mrs. Norman), P.O. Box 3239, Oakton, VA 22124
RITUAL: Karen Kind Veitch (Mrs. Andrew), 36 Rilling Ridge Road, New Canaan, CT 06840

SPECIAL COMMITTEES

ALUMNAE:

ALUMNAE COLLEGIATE RELATIONS: Carol Selway Bertz (Mrs. Michael), 6544 South Heritage Place East, Englewood, CO 80111
MEMBERSHIP: Janice Jelks Cox (Mrs. Stanford) P.O. Box 13883, RTP, NC 27709-3883
PHILANTHROPY: Ann Butler Booth (Mrs. W. Ray), 14735 Oak Bend Drive, Houston, TX 77079
PROGRAMS: Trudy Wheeler Williams (Mrs. Marc), 2935 Bonair Avenue, Louisville, KY 40205
SPECTRUM: Wendy Wood LaBounty (Mrs. William), 2099 Janice Drive, Pleasant Hill, CA 94523

COLLEGIATE:

ACADEMICS: Cheryl Stanley Jones (Mrs. Russell), 220 Church Street, Danville, PA 17821
ACTIVITIES: Margaret Allegro Sorrells (Mrs. Rick), 6158 Chesley, Dallas, TX 75214
CHOICES PROGRAM COORDINATOR: Kathi Bray Heatherly (Mrs. Don), 3 Spooner Street, Floral Park, NY 11001
PHILANTHROPY: Lori Montgomery McKeating (Mrs. Jim), 12346 Westella, Houston, TX 77077
SOCIAL: Sara Carruthers (Miss), 601 Glenway Drive, Hamilton, OH 45013
SORORITY EDUCATION: Ellen Kroll Jenkins (Mrs. Paul), 390 Smock Drive, Greenwood, IN 46143
STANDARDS: Penny Payne Fioravante, (Mrs. Michael), HC63 Box 91, Tiny Ridge Farm, Sumner, WV 25567
CONVENTION CHAIRMAN: Anne Marie Jones Gavin (Mrs. William), 3264 Swan Drive, Vineland, NJ 08360
HOUSING ADMINISTRATOR: Norma Minch Andrisek (Mrs. John R.)
REGIONAL HOUSING CHAIRMAN: Mary Beth Hibler Allen (Mrs. Eugene), 2704 So. Tennyson Way, Denver, CO 80236
 Louise Parker Bingham (Mrs. Drake), 4243 Old Tyler Road, Nacogdoches, TX 75961
 Dawn Leveau (Miss), 541 W. Oakdale Avenue #413, Chicago, IL 60657-5737
 Kathleen Johnson Sledge (Mrs. Joe W. Jr.), 1700 Dearing Place, Tuscaloosa, AL 35401
NETWORKING: National Headquarters, 202 E. Church Street, Oxford, OH 45056
NEWSLETTER: Diane Jones Skelton (Mrs. Danny), P.O. Box 67653, Topeka, KS 66667-0653
PUBLIC RELATIONS: Barbara Poremba (Miss), 49 Benedict Street, Norwalk, CT 06850
REFERENCES: Alberta Doran Curran (Mrs. Tom), 116 Dublin Woods Drive, Cary, NC 27513
REGIONAL REFERENCE CHAIRMAN:
Maine, Vermont, New Hampshire, Massachusetts, Connecticut, Rhode Island, New York, New Jersey, Delaware: Sharon Nichols Powers, 12 Sunset Drive, Manchester, NH 03104
Pennsylvania: Emma Rossbacher Williams (Mrs. Jack), 121 Terrace Drive, Edinboro, PA 16412
Ohio: Sue Wisehart Little (Mrs. Donald), 5151 East Blvd. NW, Canton, OH 44718
Michigan, Wisconsin, Minnesota, North Dakota, South Dakota: Karen Woods Miron, 738 Lake Shore Drive, Escanaba, MI 49829
Indiana, Kentucky: Marla Pittman, 511 Pioneer Drive, Indianapolis, IN 46217
Illinois: Jennifer Hruby Chivers (Mrs. Mark), 41084 North 2nd Street, Antioch, IL 60002
Iowa, Missouri, Kansas, Nebraska: Carole Sorensen, 828 Judge Avenue, Broken Bow, NE 68822
California-North, Oregon, Washington, Idaho, Montana, Alaska: Joyce Rogers Stoffey (Mrs. John), 1240 Nob Hill Avenue, Pinole, CA 94564
California-South, Hawaii, Nevada, Wyoming, Utah, Colorado, Arizona: Janet Breitweiser Savage (Mrs. Tom), 5102 Woodwind Lane, Anaheim, CA 92807
Texas, New Mexico: Ann Elkins Hawkins (Mrs. J.M.), 103 Live Oak Lane, Lake Jackson, TX 77566
Oklahoma, Arkansas: Jeania Standridge Evans (Mrs. Jerry), Route 2, Box 530, Russellville, AR 72801
Louisiana, Mississippi, Alabama: Jane Weaver Mathes (Mrs. Jimmy), 12538 Sherbrook Drive, Baton Rouge, LA 70815
Florida, Georgia: Marge Kanouse Fink (Mrs. Edward), 2070 Clematis Street, Sarasota, FL 34239
North Carolina, South Carolina, Tennessee: Debra Wood Pressley, (Mrs. Chuck), 630 Macedonia Road, Asheville, NC 28804
Virginia, Maryland, Washington, D.C., West Virginia: Mala Bumgardner, 26 Lee Drive, St. Albans, WV 25177
REGIONAL PROVINCE COLLEGIATE COORDINATORS:
West and Midwest: Provinces X, XI, XIV, XV-S, XV-C, XV-N, XVI
 Linda Lesniak Szymanski (Mrs. Robert), 931 Notre Dame Ave., Concord, CA 94518
Midwest: V-N, V-S, VII, VIII, XII, XIX, XX
 Beth Petruce Hoepfer (Ms.), 5527 N. Haverford Ave., Indianapolis, IN 46220
North and Southeast: IV, VI, IX-N, IX-S, XXI-E, XXI-W
 Sharon Moncrief Slovinski (Mrs. Harry), 7740 Westminster Dr., Byron Center, MI 49315
Northeast: I-E, I-W, II, III-E, III-C, III-W, XXV
 Linda Regner Serdahely (Mrs. Steven), 11621 Greenlane Dr., Potomac, MD 20854
South: XVII-N, XVII-S, XVIII, XXII, XXIII, XXIV, XXVI
 Karly Klemp Burns (Mrs. Lawrence), P.O. Box 58050, Tierra Verde, FL 33715
WAYS AND MEANS: Jamie Hammill (Mrs. Philip Pyne), 612 North 21st Street, Philadelphia, PA 19130

DELTA ZETA FOUNDATION

PRESIDENT: Joan Dondrea Lowry (Mrs. Bob-Bill), 578 Yarmouth Lane, Bay Village, OH 44140
SECRETARY: Marjorie Klingensmith Lovewell (Mrs.), 96 The Prado NE, Atlanta, GA 30309
TREASURER: Patricia Canaday Rosser (Mrs. David), 1609 Indian Rocks Road, Clearwater, FL 34616

MEMBERS:

Ann Butler Booth (Mrs. W. Ray), 14735 Oak Bend Dr., Houston, TX 77079
Joyce Low London (Mrs. John), 236 Quartermaster Road, San Pedro, CA 90731
Deanna Alleman McKinnon (Mrs. Mike), 12109 Victoria Place, Oklahoma City, OK 73120
Susan Mease (Mrs. Joseph H. Long), 235 East Road, Doylestown, PA 18901

COMMITTEES:

ELIZABETH COULTER STEPHENSON SCHOLARSHIPS: Joyce Low London (Mrs. John), P.O. Box 2177, San Pedro, CA 90731
GRADUATE SCHOLARSHIPS: Priscilla "Pat" Beatty, 3691 NW 95th Terrace #1202, Ft. Lauderdale, FL 33321
GALLAUDET UNIVERSITY: Lucille Bolstad May (Mrs. Leland B.),

5100 Dorset Avenue, #406, Chevy Chase, MD 20815
GOLDEN CIRCLE SCHOLARSHIPS: Kristi Brown Stokes (Mrs. Edward), 1713 Kensington Dr., Knoxville, TN 37922
HOUSE EAR INSTITUTE: Betty Paul DeWitt (Mrs. Norman), 23630 Oak Rest Lane, Harbor City, CA 90710
UNDERGRADUATE SCHOLARSHIPS: Donna Edwards Happ (Mrs. William), 39968 Pearl Drive, Murietta, CA 92362

NATIONAL HISTORICAL MUSEUM

PRESIDENT EMERITUS: Lucile Crowell Cooks (Mrs.), 7400 Sun Island Drive S., Apt. #404, South Pasadena, FL 33707
CURATOR EMERITUS: Betsy Bradley Leach (Mrs.), 1325 Valley View Road, #304, Glendale, CA 91202
DIRECTOR EMERITUS: Grace Pritchard Gorham (Mrs.), 1510 East 31st Street, Tulsa, OK 74105

PROVINCE COLLEGIATE AND ALUMNAE DIRECTORS

I. Maine, Massachusetts, New York, Vermont, New Hampshire, Connecticut, Rhode Island and New York

PCD I-E: Francis Robinson Carnes (Mrs. Michael), 252 Washington Street, Arlington, MA 02174
PCD I-W: Kimberly Ward (Miss), 5 East Ave., Apt. 4G, Larchmont, NY 10538
PAD I-E: Christina Mullin (Miss), 16 Rockmont Road, Arlington, MA 02174
PAD I-W: Teresa J. Sears Scanlon (Mrs.), 30 Brewster Ave., #3, Carmel, NY 10512

II. New Jersey and Delaware

PCD: Linda Dennison Tapp (Mrs.), 3004 Village of Penbrook, Levittown, PA 19054
PAD: Cynthia Schafer Plucinski (Mrs. Donald), 633 South Edge Park Dr., Haddonfield, NJ 08033

III. Pennsylvania

PCD III-C: Judy Kline, 312 O'Toole Dr., Hagerstown, MD 21740
PCD III-W: Carol Johnson Miskell (Mrs. C.F.), 176 Seminole Ave., Pittsburgh, PA 15237
PAD III-W and -C: Jane Simmons Riccardi (Mrs. Robert), 150 Par Dr., Pittsburgh, PA 15236
PCD III-E: Linda Dennison Tapp (Mrs.), 3004 Village of Penbrook, Levittown, PA 19054
PAD III-E: Cynthia Schafer Plucinski (Mrs. Donald), 633 So. Edge Park Dr., Haddonfield, NJ 08033

IV. West Virginia

PCD: Lora J. Stuart (Ms.), Apt. 731 Kingsrow, Charleston, WV 25314
PAD: Doretta Pugh Osburn (Mrs. Thomas), 151 Washington Cir., Hurricane, WV 25526

V. Ohio

PCD-N: Luann Heyink Dille (Mrs.), 2224 Coventry Drive, Parma, OH 44134
PCD-S: Susan Steggeman, 3252 Summerhill Ln., Hilliard, OH 43026
PAD-N: Andrea Bloch (Miss), 2586 Warrensville Rd., University Heights, OH 44118
PAD-S: Elizabeth Miller Wood (Mrs. Eugene), 2519 Edgevale Rd., Columbus, OH 43221

VI. Michigan

PCD: Sharon Moncrief Slovinski (Mrs. Harry), 7740 Westminster Dr., Byron Center, MI 49315
PAD: Judith D. Christian (Mrs. Edward), 549 Lakeland, Grosse Pointe, MI 48230

VII. Indiana

PCD: Beth Petruccie-Hoeper (Ms.), 5527 N. Haverford Ave., Indianapolis, IN 46220
PAD: Nancy Ferrone Daughters (Mrs. Michael), 8831 Otter Cove Circle, Indianapolis, IN 46326

VIII. Wisconsin

PCD: Jeri Seals Weigand (Mrs. Gregg), 6185 Boyer Path, Inver Grove Heights, MN 55075
PAD: Julie Hauser (Miss), Route 2, Box 2, Owatonna, MN 55060

IX. Illinois

PCD-N: Melanie Alm Robinson (Mrs. Dave), 2233 S. Highland Ave., #1110, Lombard, IL 60148
PCD-S: Eileen Sullivan (Miss), 316 University Union, Eastern Illinois Univ., Charleston, IL 61920
PAD-N: Marcia Campbell Harrison (Mrs. Charles), 1 South 761 Ott Avenue, Glen Ellyn, IL 60137
PAD-S: Robin Furtney Bedwell (Mrs. Kirk), 142 Huntleigh Drive, Belleville, IL 62220

X. Iowa and Nebraska

PCD: Kelli Burgoin (Miss), 20 South 41st, Apt. 27, Council Bluffs, IA 51501

PAD: Ann Langel (Miss), 910 Black Hawk Rd. #9, Waterloo, IA 50701

XI. Missouri

PCD: Dana McMillan (Miss), 8183 Monrovia, Lenexa, KS 66215
PAD: Carolyn Hill Nelson (Mrs. Ford), 1012 West 70th St., Kansas City, MO 64113

XII. Minnesota, North Dakota and South Dakota

PCD: Jeri Seals Weigand (Mrs. Gregg), 6185 Boyer Path, Inver Grove Heights, MN 55075
PAD: Julie Hauser (Miss), Route 2, Box 2, Owatonna, MN 55060

XIV. Colorado and Kansas

PCD: Gail Persak Beets (Mrs. Kenneth), 5963 W. Indore Place, Littleton, CO 80123

XIV-E. Kansas Alumnae Chapters

PAD-E: Carolyn McCandless Woodling (Mrs. Charles), 3112 Creekwood, Lawrence, KS 66044

XIV-W. Arizona, Colorado, New Mexico, Utah, and Wyoming Alumnae Chapters, except Las Cruces, NM

PAD-W: Linda Woodyard Wolz (Mrs. Dean), P.O. Box 5013, Vail, CO 81658

XV-S. Southern California, Southern Nevada and Hawaii

PCD: Karen Severloh Moffitt (Mrs. John), 2075 Los Robles Ave., San Marina, CA 91108
PAD: Karyn Doble Laurenzello (Mrs. Frank), 8939 Gallatin Road, #127, Pico Rivera, CA 90660

XV-C. Northern California and Northern Nevada

PCD: Linda Lesniak Szymanski (Mrs. Robert), 931 Notre Dame Avenue, Concord, CA 94518
PAD: Catherine Clay Lassenes (Mrs. B. Rune), 19500 Mt. View Rd., P.O. Box 298, Booneville, CA 94515

XV-N. Oregon, Washington, Montana, Idaho and Alaska

PCD: Carin Brown Steckler (Mrs.), 5208 36th Ave. NE, Seattle, WA 98105
PAD: Helga Kohlenberg Clark (Mrs. William), 4866 123rd Place, S.E., Bellevue, WA 98006

XVI. Oklahoma

PCD: Melissa Smith Massey (Mrs. Wade), 536 Skylark Drive, Oklahoma City, OK 73127
PAD: Pattie Cantrell Hulsey (Mrs. Stephen), 15708 E. 80th St. North, Owasso, OK 74055

XVII-N. Texas, New Mexico Collegiate Chapters, Texas and Las Cruces Alumnae Chapters

PCD-N: Sonya Kristi Chavez (Miss), 8911 Northeastern, NE M104 Albuquerque, NM 87112
PAD-N: Tracy Wilson LeSieur (Mrs. Larry), 12462 Montego Plaza, Dallas, TX 75230

XVII-S. Texas

PCD-S: Tracy Harnage Kirkland (Mrs. J. Corey), 10526 Sageyork, Houston, TX 77089
PAD-S: Elsie Wheeler McTee (Mrs. Clifford), 4322 St. George, Corpus Christi, TX 78413

XVIII. Louisiana and Mississippi

PCD: Virginia Schattner Bryan (Mrs. Larry), 2404 Brownlee Road, Bossier City, LA 71111
PAD: Ida Marie Carter Nelson (Mrs. John), 126 Fremont Avenue, Shreveport, LA 71105

XIX. Tennessee

PCD: Camilla Malcolm (Miss), 202 Belle Lake Dr., Nashville, TN 37221
PAD-E: Kimberly Preissler (Miss), 1903 Share Hills Blvd., Knoxville, TN 37922
PAD-W: Violet Henson Anderson (Mrs. Charles), 102 Blue Hills Court, Nashville, TN 37214

XX. Kentucky

PCD: Patricia Steirer Sorg (Mrs. John), 3902 Glenoak Dr., Louisville, KY 40218

PAD: Debra Dew Behler (Mrs. Jerry), 56 Arlington Place, Ft. Thomas, KY 41075

XXI. South Carolina and North Carolina

PCD-E: Kathy Karbel Phillips (Mrs. Brian), 37 Lansgate Ct., Durham, NC 27713

PCD-W: Debra Wood Pressley (Mrs. Chuck), 630 Macedonia Road, Ashville, NC 28804

PAD: Patricia Menendez Tector (Mrs. John), 907 Winslow Court, Cary, NC 27513

XXII. Georgia

PCD: Janie Roche (Ms.), 1169 Havenbrook Ct., Atlanta, GA 30319

PAD: Sara Rosier Bush (Mrs. Peter), 3263 L. Flowers Road S., Atlanta, GA 30341

XXIII. Alabama

PCD: Kathy Clark (Ms.), 3837 Cedar Avenue, Montgomery, AL 36109

PAD: Kimberly Harris Bath (Mrs. Chris), 1071 Rosedale Drive, Montgomery, AL 36107

XXIV. Florida

PCD: Karly Klemp Burns (Mrs. Lawrence), P.O. Box 58050, Tierra Verde, FL 33715

PAD S: Ms. LeeAnn Williford (Mrs. Marc Meltzer), 13598 159th Street N. Jupiter, FL 33478

PAD C: Sue Adrianson Skambis (Mrs. Christopher), 836 S. Lake Adair Blvd., Orlando, FL 32804

PAD N: Diana Spivey Bishop (Mrs. Harry), 197 E. Burgess Road, Pensacola, FL 32503

XXV. Virginia, Maryland, Washington, D.C.

PCD: Linda Regner Serdahely (Mrs.), 11621 Greenlane Dr., Potomac, MD 20854

PAD: Rachel Platt (Ms.), One Canterbury Sq. #101, Alexandria, VA 22304

XXVI. Arkansas

PCD: Jacqueline Fabbri Gardner (Mrs. Richard Jr.), P.O. Box 2034, Russellville, AR 72801

PAD: Anne Jablonski, #10 Woodbridge, Conway, AR 72032

Theta

Lorene Terhune Briggs '41

Carol Rhodes Holfinger '68

Dorothy Rayburn Maroney '62

Esther Roberts Riebel '25

Iota

Margaret Lauren Triplett

Mu

June Marie Burnell Solomon '55

Nu

Marion Fulks Baysinger '38

Frances White Parks '24

Alpha Beta

Gladys Brach '41

Gladys Robb Rasmussen '62

Alpha Delta

Ruth Yanovsky Haycock '35

Alpha Epsilon

Louise Trefren McConnell '22

Alpha Eta

Jennifer Lynn Mellen '91

Alpha Kappa

Marian Minnes Bahrenburg '27

Alpha Omicron

Esther Delores Miller '31

Alpha Pi

Nancy Lucille Alford '68

Alpha Tau

Miriam Degruy Luedders '29

Flame Eternal



Alpha Chi

Wilma Foster Garrison '25

Doras Caulkins Lawrence '47

Beta Mu

Susan Reasor Cannon '70

Gamma Sigma

Dorothy Heckendorn Hyne '57

Gamma Chi

Elizabeth Atwood McCallister '56

Delta Phi

Marilyn Randall Wilcox '65

Epsilon Phi

Adrienne Milkie Kysia '56

Iota Tau

Karen Anderson Keller '66

Lisette Reinle Gilmore

Lisette Reinle Gilmore, California-M '21 was National Vice President (Extension) from 1930 to 1934. She had previously served as president of Zeta Province and was marshal of the 1930 Convention. Prior to her marriage to Charles Gilmore she had been a counselor in psychological work in the Oakland, California, schools.

Costello (continued)

ature taken when she was president is on the mantelpiece. The Michigan province also endowed a scholarship in her honor.

To work with Evelyn was a joy. She was fond of quoting her grandmother, and when she would ask you to do a job she would say, "Never send a boy to do a man's job." How could you say no?

She leaves a son, Dr. Thomas

Costello, and a daughter, Doris Gibson.

Oakland County (MI) Alumnae President Barbara Bodell, MSU-BP wrote, "Evelyn was the epitome of what a Delta Zeta should be. Her dedication, inspiring leadership, hard work, loving friendship, pluck and courage endeared her to many. She lived the Delta Zeta Creed word for word. She will

be missed by many."

Just weeks before her passing she sent glowing greetings to the delegates at convention in Florida.

DIRECTIONS

IN DELTA ZETA CAREER NETWORKING

OCCUPATIONAL CODES

01 Education
02 Finance
03 Medical
04 Law
05 Secretarial/Clerical
06 Media, Communications,
Advertising & Journalism
07 Marketing & Sales
08 Cosmetology
09 Arts i.e. Photography, Musicians,
Artists & Actors

10 Business Administration &
Management
11 Ranching/Farming
12 Travel
13 Community/Social Service
14 Interior, Fashion & Floral Design
15 Military
16 Computer
17 Engineering
18 Insurance & Real Estate
19 Food Service/Hotel/Motel
20 Science & Technology
21 Flight Attendants, Reservations,
Controllers & Pilots
22 Architecture/Construction
23 Religious

24 Librarian/Museums
25 Landscaping/Forestry/
Geology/Geography
26 Athletic/Dance/Recreation
27 Personnel/Guidance & Counseling
28 Retired
29 Politician/Government
30 Animal/Veterinary
31 Public Relations
32 Homemaker/Home Economist

Name/Address Change Form

Please print or type and mail to Delta Zeta Sorority, 202 East Church Street at Campus Avenue, Oxford, OH 45056. Members should use parents' address while in college.

IMPORTANT: You must cut out the mailing label from this issue and paste it here.
We cannot process changes without your label. Thank You.

I am currently a Delta Zeta Officer. Title _____

Name _____ Phone (H) _____
Last First Maiden

Address _____ Phone (W) _____

This is a new address: ____ yes ____ no

Married name _____ Husband's first name _____ Date of marriage _____

Occupation Code Number _____ Company _____

Title _____ Company Address _____

I agree that my name/address may be released to any Delta Zeta requesting information regarding employment in my field or area.

(signature)

POSTMASTER: Send 3579 immediately to Delta Zeta Sorority, 202 E. Church St., Oxford, OH 45056

Delta Zeta Sorority
Corner of Campus Ave. and Church St.
202 E. Church St.
Oxford, OH 45056

Address Correction requested

Non-Profit Org.
U.S. Postage
PAID
Permit No. 131
Tulsa, OK