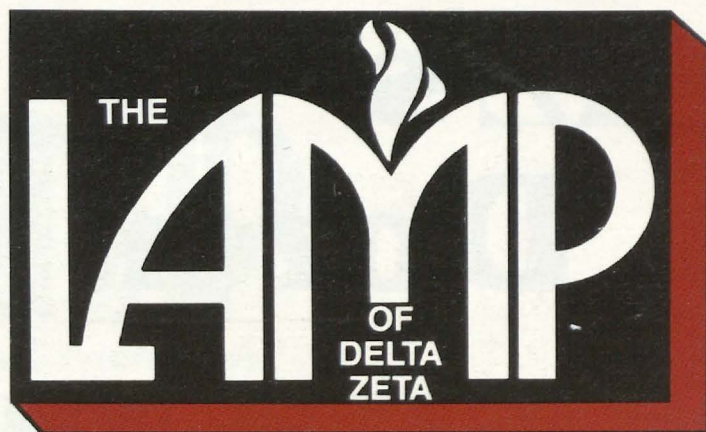


W
O
M
A
N

O
F

T
H
E

Y
E
A
R



WINTER 1990-1991



Dana McMillan

Δ Z's Dozen to travel



Δ Z's Dozen: Back row, l to r, Jane McCaslin, Donna Winkley, Stephanie Jobe and Michelle Beck. Middle row, Susan Gattis, Julie Stewart, Kathryn Mitchell and Pamela Stoenner. Front row, Amy Abdouch, Kathleen Hovde, Lacey Goodwin and Christy Hendricks.

A dozen, exactly 12, smiling young ladies head for their assignments as field representatives and graduate counselor.

Joining second year travelers Amy Abdouch, Susan Gattis, Lacey Goodwin, Kathy Hovde and Pamela Stoenner are six new field representatives and a graduate counselor.

New to the team are Michelle Beck, Northeast Missouri State University- $\Delta\Sigma$; Christy Hendricks, Eastern Kentucky University- $\Xi\beta$; Stephanie Ann Jobe, Southwest Texas State University- IA ; Jane McCaslin, Northeastern (Oklahoma) State University- $\Delta\Phi$, and Julie Ann Stewart, Florida State University- $\text{A}\Sigma$. Serving as a graduate counselor is Donna Winkley, Georgia College- AII . Donna is assigned to Memphis State. Stephanie will be the resident field representative at our new colony at Arkansas State in Jonesboro.

A story on the newcomers to the Δ Z Dozen will be found elsewhere in this issue.

THE LAMP OF DELTA ZETA

Volume 79 Number 4 WINTER 1990-1991

FOUNDERS OF THE SORORITY



Miami University
Oxford, Ohio 1902

Alfa Lloyd Hayes, 1880-1962
Mary Collins Galbraith, 1879-1963
Anna Keen Davis, 1884-1949
Julia Bishop Coleman, 1881-1959
Mabelle Minton Hageman, 1880-1929
Anne Simmons Friedline, 1879-1932

THE ORDER OF THE LAUREL

Irene Caroline Boughton, 1904-1988
Grace Mason Lundy
Elizabeth Coulter Stephenson, 1881-1939
Myrtle Graeter Hinkly, 1893-1987

THE LAMP

The LAMP of Delta Zeta, official magazine of the sorority, is published quarterly by the Delta Zeta Sorority, 202 East Church St., Oxford, OH 45056.

Send all editorial material to the Editor, Mrs. Robert L. McKeeman, 5517 S. 74th E. Avenue, Tulsa, OK 74145. Send all matters of a business nature to Delta Zeta National Headquarters, Oxford, OH.

Send all contributions for Gallaudet University, House Ear Institute and other philanthropies through the Delta Zeta Foundation and all contributions to the National Historical Museum to Delta Zeta National Headquarters, 202 E. Church St., Oxford, OH 45056.

EDITOR

Gwen Moss McKeeman
5517 S. 74th E. Avenue
Tulsa, Oklahoma 74145

CHAPTER EDITOR

Diane Jones Skelton



MEMBER

COLLEGE FRATERNITY EDITORS ASSOCIATION

Contents

- 4 Woman of the Year
- 7 Election of National Council
- 9 PCD-PAD Meeting at Purdue
- 10 Newcomers to the ΔZ Dozen
- 12 From the Lampwriter
- 14 Campaign Against Rape
- 16 What Happened to You After College?
- 18 Alumane Chapters Write . . .
- 20 Campus Sights & Sounds
- 22 Delta Zeta on Campus
- 34 National Leadership Conferences Held
- 37 Directory
- 39 Flame Eternal



ABOUT THE COVER

Dana McMillan, Director of Early Childhood Programs at The Learning Exchange in Kansas City, is 1990 Woman of the Year. Story starts on page 4.

Woman of the Year

*Photos by Connie Campbell,
president of The Learning
Exchange.*

Dana McMillan, Northeast Missouri State University-ΔΣ has been named 1990 Delta Zeta Woman of the Year.



Fayette, Missouri, is the birthplace of Dana who grew up there with her parents, three brothers and a sister. She graduated from Fayette High School in 1967 and entered Northeast Missouri State in Kirksville where she pledged Delta Sigma chapter of Delta Zeta. Following initiation in the spring of 1968 she became assistant to the vice president of pledge education. While serving as vice president of pledge education for two years, she developed an outstanding program which greatly

influenced the pledge education program of her chapter.

Dana graduated in 1972 with a B.A. Degree in Elementary and Early Childhood Education and furthered her education by receiving a M.A. Degree in Reading Education from the University of Missouri/Kansas City this year.

Our Woman of the Year truly exemplifies "once a Delta Zeta, always a Delta Zeta" as she has served in many capacities since her graduation. Zeta Rho chapter at William Jewell College benefited

from her knowledge and expertise as pledge advisor for four years and College Chapter Director for one year before Dana became a member of the Delta Zeta Official Family as Province Collegiate Director for Missouri in 1984.

She remains in that position today and supervises seven collegiate chapters whose membership has increased from 270 members to more than 640 under her guidance and leadership. Since 1987 she has participated in the training of field representatives, teaching them leadership styles, motivation and communication skills. Dana was a member of the extension team for the colonization of Xi Phi chapter at the University of Missouri/Kansas City and the recolonization of Epsilon Nu chapter at Southwest Missouri State University.

In addition to her involvement

with collegiate chapters, Dana has been a member of the Clay-Platte alumnae chapter since 1975, serving as vice president one year and as president for two years. This alumnae chapter began a very successful ways and means project while she served as ways and means chairman for three years. Chapter members work at Royals Stadium and earn from \$1,000 to \$1,500 annually.

Our Woman of the Year has attended every National Convention since 1981 and has an enviable history of continued involvement. She is positive, enthusiastic and energetic in every venture she undertakes and she makes all Delta Zetas feel it is a joy and privilege to work for our sorority.

Dana began her career as a kindergarten teacher in Harrisburg, Missouri in 1972; taught second grade in Columbia, Missouri, in 1974, and from 1975 to 1980 was a traveling kindergarten teacher for two North Kansas City schools. From 1980 to 1988 she served as coordinator and director of the Resource Center at The Learning Exchange which is a one-of-a-kind idea bank and material source for teachers, parents and administrators working in all areas of education. On a monthly basis this program serves over 600 educators and nearly 400 parents, children and community members.

In 1988 Dana became Director of Early Childhood Programs at The Learning Exchange and continues in this capacity. She has established an early childhood network for 16 Kansas City metropolitan school districts and presents workshops and provides consultations for early childhood educators.

Connie Campbell, president of The Learning Exchange stated: "She has invested, through a multitude of creative and scholarly approaches, the past 15 years to empowering teachers to reach their highest capacities of skill and artistry in the classroom." Dr. Campbell also says that "Dana is that rare teacher who paints a canvas of creativity, excitement and depth of knowledge for her learners. She strives to bring order, theory and labels to her art so that other teachers can replicate her talent rather than merely be awed by it."

In 1984 Dana was chosen to develop the Crayola Creativity Program by the CEO of Binney and Smith (the makers of Crayolas). Under her leadership a program was developed for a complete early childhood curriculum that is widely acclaimed for making a difference in the way children are handled in early childhood classrooms, and the impact it has had on the quality of care children are receiving.

Dana's leadership in her chosen profession involves networking, training, teaching and consulting. She has gained national reputation as a writer and has had many books published. One written in 1984 sold over 20,000 copies and brought in \$25,000 in royalties to The Learning Exchange this past year.

She has been the recipient of two grants, one from the Missouri

Department of Education as a regional coordinator for school age child care and one from Hallmark Cards for the planning and development of early childhood instructional and training programs.

Dana has served as a consultant to the Kansas City Chiefs' Crime Tips Program, the Education Division of the Kansas City Police Department and created the Kids' Workshop at the Plaza Art Fair. She has shared her knowledge with the Kansas City newspapers, radio and television stations in order to broaden public awareness about early childhood practices.



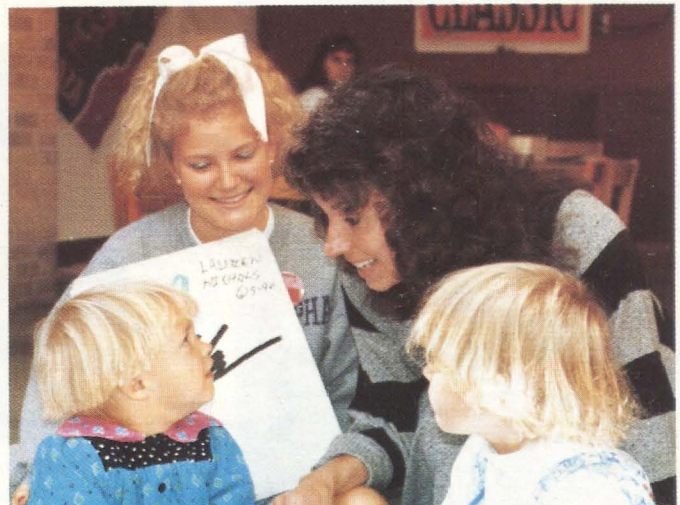
The entrance to the Kids Workshop at the Plaza Art Fair.



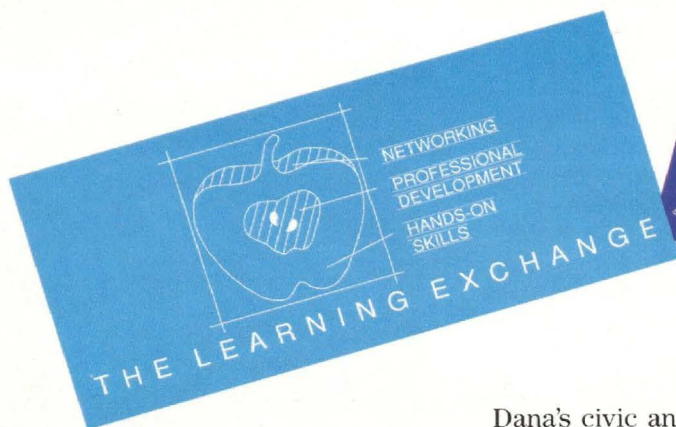
A rare moment in her office!



Dana offers instruction at a workshop for teachers.



The Kids Art Workshop, which Dana organized, attracts children of all ages.



A typical workshop . . . all in a day's work.



Dana consults with an early childhood teacher at the Penn Valley Child Development Center.



Dana's books are displayed at The Learning Exchange.

Dana's civic and professional activities and affiliations include the Governing Board of Greater Kansas City, newsletter co-chairman; Missouri State Department of Education Teacher Training Committee; Penn Valley Preschool Advisory Board; University of Missouri/Kansas City Early Childhood Resource Network; Greater Kansas City Child Care Alliance, and Shawnee Mission Parents as Teachers Advisory Board.

She is widely acclaimed as a gifted presenter and has been instrumental in developing many conferences. She has brought recognition to Delta Zeta by serving as the lead facilitator for the Alpha Tau Omega Fraternity's LeaderShape Institute. The director has stated that because of her total commitment to these young men and women and their personal development, and her interaction with them, she has been

instrumental in motivating them toward a positive change.

Dana has touched many lives with her capacity, dedication, achievements and gifted leadership, but Delta Zetas have benefited from the role model she portrays as a leader in her profession and as a member of the Delta Zeta Official Family. We can all be proud of Dana's many accomplishments as she exudes a value system that sets a standard for our society and sorority. She is the epitome of a Delta Zeta sister and she will reflect honor on Delta Zeta as our 1990 Woman of the Year.

Congratulations may be sent to:

Dana McMillan
8183 Monrovia
Lenexa, Kansas 66215



Student volunteers from William Jewell College assist at the Plaza Art Fair in Kansas City.

Every Delta Zeta can share in the election of National Council

The members of National Council are elected from the delegates at the biennial National Convention as provided in the Constitution and Code of Delta Zeta. Every member has the privilege of sharing in this democratic procedure by making recommendations to the Nominating Committee. This may be done by an individual, an alumnae chapter or club, or a collegiate chapter. The Nominating Committee invites your help and will give careful consideration to all recommendations received.

The Nominating Committee is charged with selecting a slate of the best qualified nominees for members of National Council. Thus the welfare and progress of the sorority are directly dependent on the good judgment exercised by the committee. The decisions of the committee will be based on the recommendations received from you or your chapter. However, these recommendations do not assure election as nominations from the floor of qualified candidates may be placed on the ballot.

It is very important in making your recommendations that you keep in mind the qualifications of the person(s) you recommend. An individual under consideration for national office must be an alumna in good standing with the sorority. She must be a member who already has strong leadership experience at the local and province level who has shown a capacity for the effective administration of assigned tasks, and who has the time required for the demanding service, including freedom to travel.

While we say we will elect a "new" National Council, this term is not really descriptive as sometimes all the previous officers are returned to their same positions. In some instances, tenure is a factor as no one may serve in the same position more than two terms. As our personal lives change, so do the

lives of our officers due to health, family responsibilities, babies which are a joy but do sometimes keep one earthbound, and jobs that pay real money. In case you need to ask, in Delta Zeta only the Headquarters staff and the traveling field representatives are paid.

Remember when making your recommendations that the requirements are strict. An officer must have a degree from her university or college, with the exception of two of the Directors, who may not have finished the four years required for a degree.

Then, she must have the time, the family support, the charm to make her a leader, as well as the expertise. Most importantly, will she accept this office if it is offered?

If you are not certain who makes up this nominating committee, the

chairman is a former national officer who has continued to work in the sorority so that she recognizes the worth of the candidates. The other members, representing various categories of service in Delta Zeta, were elected at the 1989 convention. Thus, we have a Province Alumnae Director, a Province Collegiate Director, a College Chapter Director, a National Committee Chairman and representatives from two collegiate chapters and one alumnae chapter.

The committee meets 90 days before the start of convention, and will then go over your recommendations in order to select the best National Council to function for the next biennium. This is an awesome responsibility, so select your candidates with the experience, ability, charm, time and most of all, family cooperation.

Nominating Committee

Elizabeth Baker Devereaux, Θ
Chairman

Carolyn McCandless Woodling, ΕΓ
Province Alumnae Director

Judith Sherin Kline, ΚΨ
Province Collegiate Director

Patricia Steirer Sorg, ΒΓ
College Chapter Director

Ellen Kroll Jenkins, Ε
National Committee Chairman

Twin Cities, Minnesota
Alumnae Chapter

Pennsylvania State University-ΓΔ
Auburn University-ΒΞ
College Chapters



*Elizabeth Baker
Devereaux*

Recommendation for National Council

This form must be postmarked no later than February 10, 1991 and mailed to Mrs. Elizabeth Baker Devereaux, 304 Wood Lomond Ct., Huntington, WV 25705

I recommend:

Last Name	First Name	Middle Name	Maiden Name
-----------	------------	-------------	-------------

Address: Street	City	State	Zip
-----------------	------	-------	-----

for _____ Has she consented to this recommendation? _____
Council Position

She is a member in good standing of

College	College Chapter	Degree/Date	Alumnae Chapter
---------	-----------------	-------------	-----------------

Alumnae chapter(s), office held

Other colleges or universities attended

State, Province, National Offices,
Activities, Services

College chapter offices, honors,
awards, services:

Occupation _____

Is she presently employed? _____

Full time _____ Part time _____

Personal Responsibilities:

Number of children & ages:

Civic, community activities, honors,
commitments:

Travel: In your opinion, is she able to travel five or more days at a time?

Reasons for recommending this member:

Recommended by: _____	College/Chapter	Alumnae Chapter
Your signature (first, maiden, married name)		

Address: _____	Street	City	State	Zip
----------------	--------	------	-------	-----

(If more space is needed, please attach additional sheets of paper. If you have more than one recommendation, either xerox form or use additional sheet of paper for each.)

PCD-PAD meeting held at Purdue



Province Collegiate Directors and Province Alumnae Directors attend a weekend training session at Purdue. This photo was taken on the steps of the new Delta Zeta house.

Twenty-seven Province Collegiate Directors and 24 Province Alumnae Directors met in the Delta Zeta and Delta Delta Delta houses at Purdue for a weekend of training in July.

Friday evening was devoted to separate "get acquainted" and informational sessions led by PCD Coordinator and National Secretary Merry Westbrook Adamcik and Vice Presi-

dent of Alumnae Affairs Deanna Alleman McKinnon.

Saturday sessions were devoted to discipline problems, communication skills, housing, the Delta Zeta Foundation, province retreats and leadership training for the PCDs. PAD workshops centered on alumnae rush, programming, membership, extension, Panhellenic, PAD/PCD partnerships and much more. An afternoon break celebrated July birthdays with cake and coffee and then it was back to meetings.

Evening presentations were by collegians from Miami-A chapter and Texas A&M-AE concerning anti-hazing policies and the alcohol "choices" program. These programs had been presented earlier to collegians attending the Norma Minch Andrisek Leadership Conference being held on campus at the same time.

Sunday morning was also a combined meeting with presentations on leadership and motivation by Purdue Administrator Carolyn Jones, DePauw-Δ and PCD Dana McMillan, NMSU-ΔΣ.

Little sisters on their way out

The following article was taken from the October issue of the NIC bulletin "Campus Commentary," November 1989

In an effort to decrease claims of sexism, minimize liability, and safeguard the single-sex nature of fraternities as confirmed by the federal government in 1971, many national/international fraternities are calling for the elimination of little sister organizations.

Setting a precedent in 1988, a court in Nebraska ruled that a little sister of a local fraternity was indeed a mem-

ber of the fraternity and was entitled to all membership benefits, i.e. living in the house, attending chapter meetings, voting.

More than half the litigation now facing fraternities has come from little sisters, either through alleged negligence causing unintentional damage or a direct suit filed by a female member. Cases of sexual abuse have demanded multimillion dollar settlements. A court may determine little sisters are members on any of the following grounds:

- pay dues
- maintain a budget/bank account
- elect officers
- hold official membership in a structured club

- appear on chapter composites
- exist on an on-going basis for an indefinite period
- are selected by chapter members
- collectively wear fraternity jewelry or sportswear
- have responsibilities and/or benefits

Campuses, including the University of Oregon and Northern Illinois University, have mandated the elimination of little sister organizations.

Editor's note: Delta Zeta has never recognized little sister organizations on any campus and firmly upholds National Panhellenic Conference resolutions dating back to 1967 discouraging same.

Newcomers to the ΔZ Dozen

First year field representatives and a graduate counselor who have joined the Delta Zeta Dozen include the following:

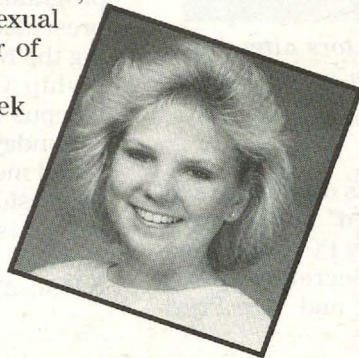
Michelle Marie Beck

Chapter: Northeast Missouri State University-ΔΣ

Major: Marketing

Sorority Service: President, ΔZ Representative for Greek 2000 Proposal, Summer Send-Off Chairman, Treasurer, Colonnade, Press and Publicity Chairman.

Activities and Honors: Student Ambassadors, Student Senate, Co-Chairman, NMSU Sexual Awareness Week, Order of Omega, Greek Week Committee, NMSU Greek Woman finalist.



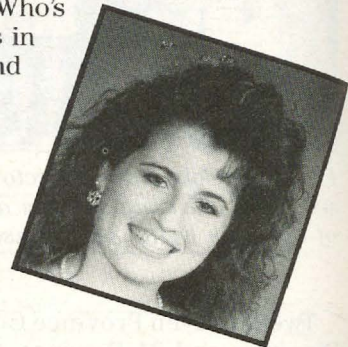
Stephanie Ann Jobe

Chapter: Southwest Texas State University-IA

Major: History

Sorority Service: Vice President Pledge Education, Bylaws Committee Chairman, Senior Panhellenic Delegate, Judicial Chairman, House Manager, Philanthropy Chairman.

Activities and Honors: Student Foundation, Panhellenic Secretary, Treasurer, Who's Who Among Students in American Colleges and Universities.



Jane E. McCaslin

Chapter: Northeastern State University (Oklahoma)-ΔΦ

Major: Business Management

Sorority Service: President, Treasurer, Academics Chairman, Press and Publicity Chairman, Song Leader, Courtesy Chairman.

Activities and Honors: Dean's Honor Role, Phi Beta Lambda (business), Residence Hall Association, Activities Board, Top Ten Greeks, BACCHUS, Grace Mason Lundy award winner.



Christy Lee Hendricks

Chapter: Eastern Kentucky University-EB

Major: English

Sorority Service: Vice President Pledge Education, Vice President Membership, Sorority Education Chairman, Judicial Board Chairman.

Activities and Honors: Sigma Tau Delta (English), Leadership Conference Committee, EKU Dance Theatre, Football Hostess, Gamma Beta Phi (service), Marching Color Guard.

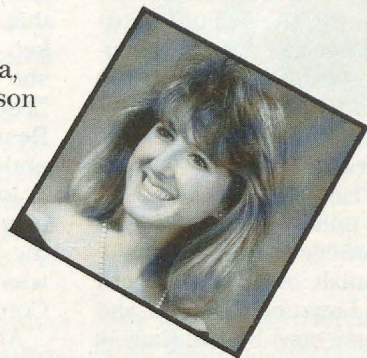


Kathryn Ann Mitchell

Chapter: University of Georgia-ZII
Major: Public Relations

Sorority Service: President, Vice President Membership, Chamber of Commerce Representative, Corresponding Secretary, Leadership Conference Liaison.

Activities and Honors: Student Judiciary, Z-Club, Student Recruitment Team, Mortar Board, Omicron Delta Kappa, Alpha Kappa Psi, Grace Mason Lundy award winner.

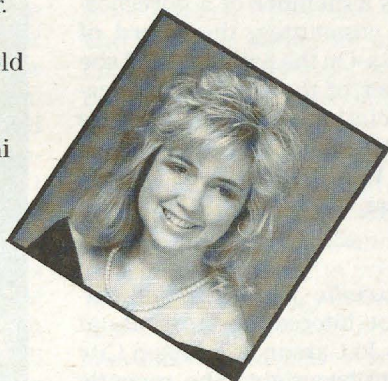
**Julie Ann Stewart**

Chapter: Florida State University-AΣ

Major: Music

Sorority Service: Vice President Membership, Sorority Education Chairman, President's Dinner Chairman, Social Chairman, Assistant Pledge Educator, Song Leader.

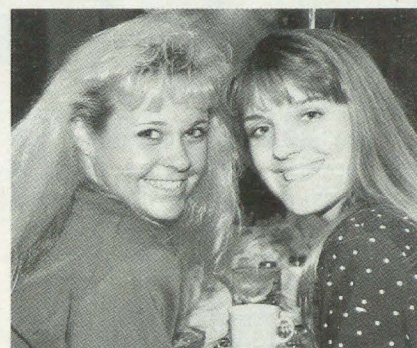
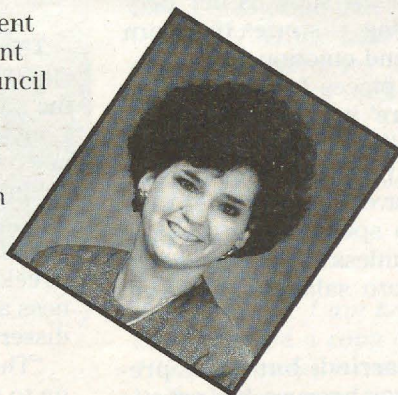
Activities and Honors: Music School Board of Advisors, Gold Key, Student Alumni Foundation, Greek Week and Homecoming Committees, Phi Eta Sigma (honorary).

**Donna Winkley**

Chapter: Georgia College-AII
Major: Special Education

Sorority Service: President (2 years), Vice President Pledge Education, Corresponding Secretary, Philanthropy Chairman.

Activities and Honors: Student Orientation Leader, Student Government, Student Council for Exceptional Children, Dean's List, Who's Who in American Colleges and Universities, Grace Mason Lundy award winner.



Won't you help these collegians and the sisters they represent to stay in school by supporting



SISTERS
in
SCHOLARSHIP

— A Delta Zeta program for scholarship fundraising.

With the costs of a college education increasing every year, more deserving Delta Zetas have a harder time staying in school and completing their education.

The SIS program earns 20¢ of every dollar spent when the *new* or *renewed subscription* is purchased from *our* magazine service.

Selections, rates and dependable service are guaranteed by the READER'S DIGEST Quality School Plan program offering subscribers:

- Over 600 popular magazines
- Special offers at SUPER SAVINGS!
- Customer's receipt with toll-free QSP service number
- FREE PUBLISHER GIFTS

Current selections and rates available from Delta Zeta Subscriptions. For information and SIS packet write:

SISTERS IN SCHOLARSHIP

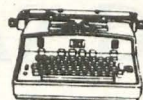
Delta Zeta Subscriptions

P.O. Box 24145

Columbus, Ohio 43224

Nationally Certified Magazine Agency Serving Delta Zeta Educational Fund (Scholarships) and Delta Zeta Chapters.

From the Lampwriter



Hey, College Chapter Editors . . . your response to the September 10 deadline was fantastic considering the timing with some schools just getting back in session. The pictures were particularly good . . . and so many of them! I just wish the budget would permit the use of more. I'm holding some neat rush pictures for next summer's rush issue.

One word of caution — I sometimes have trouble reading identification on the backs of prints and if I am in doubt about names, I usually do not run them. And this is too bad. How about either typing or very clear printing? One of the first things I learned in journalism back in the dark ages was that if you want to insult a person, misspell her name. I don't want to do this knowingly, so . . . help!

— — —

There have been some weddings of "Delta Zeta Official Family" members. Past National Officer and Foundation Trustee Susan Mease was married to Joseph H. Long in May and National Ways and Means Chairman Jamie Hammill became Mrs. Phillip Pyne on August 25. PCD III-E Lynne Cierro married William Joseph McPhillips in July.

National Historian Florence Hood Miner is recovering from a broken hip at her home in Iowa. In a recent phone conversation she reported that her "ΔZ tennies" presented by the LAMPKIN staff a convention or so back brought lots of interesting comments from the personnel in rehab at the hospital.

— — —

Melinda MacNeil, Coordinator for Greek Affairs at Old Dominion University passed on a newspaper clipping about Theta Phi's Jennifer Lewis who had just been crowned Miss Norfolk. She also said that Jennifer had been an outstanding Panhellenic delegate last year.

— — —

The Franklin Reporter's summer

edition carried a story on Grace Angel Marion, Psi '61. Grace was one of two Hispanics at Franklin College when she pledged Delta Zeta. She said the atmosphere, the individual attention, the Greek system, and, most importantly, the friendly students changed her life. As a first generation American she was not used to speaking English for an entire day. So when she went to Franklin she was forced to reverse all habits — speaking mostly in English, eating American foods and understanding middle-class, small college life-styles.

Now a Spanish teacher at South Junior High in Lawrence, Kansas, she was recently selected by the Kansas Advisory Committee on Hispanic Affairs to be profiled in its journal *El Camino Real*. Grace has been president of a 500-member teacher group in Lawrence and is active in the Chamber of Commerce. On the state level she is a member of a governor-appointed committee, the Board of Healing Arts. On the national level she is a member of the National Education Association and the Women's Concerns National Committee, which meets in Washington, D.C., three times a year.

— — —

The *Knoxville News-Sentinel* carried a most interesting story about Delta Eta's Jo Carson, a Johnson City writer/poet/playwright. She recently appeared on the PBS show "Alive from Off Center" in an episode called "Words on Fire." The reporter said that what drew the producer to include Jo on the show is her fiery brand of writing — stories that burn with humor and emotion.

One of the pieces Jo performed in "Words on Fire" was taken from her 1989 book, "Stories I Ain't Told Nobody Yet." She talks about advice her mother gave her before her marriage (not to specialize in making potato salad unless she was prepared to make potato salad till kingdom come.)

Jo isn't married, but once pretended she was because her artistic

career, moving from one grant-funded project to another, made potential "real-world" employers think she couldn't hold a job. So, Jo proceeded to write a new resume that said she'd been married 10 years and that she was just entering the job market. She got interviews and the job she wanted with it but then stated, "The problem was you had to live it. Best acting job I ever had, to live under the confines of that resume."

Jo is primarily a playwright. Her play "Daytrips" premiered last fall at the Los Angeles Theater Center and was produced again this spring in Connecticut.

Another interesting Delta Zeta I would like to meet!



Jo Carson, East Tennessee-ΔH chapter.

— — —

The reprinting of Steven Blair's article "When a date becomes a crime" in the summer issue prompted Virginia Conyers, Morehead State-KT '75 to put pen to paper and comment.

She said in part, "It is time, past due, for Delta Zeta to take the initiative and a leadership role among Greeks. It is time to make rape awareness a top priority. Anything less is a disservice to our Delta Zeta sisters."

"The greatest legacy we can pass on to our young women is that of self

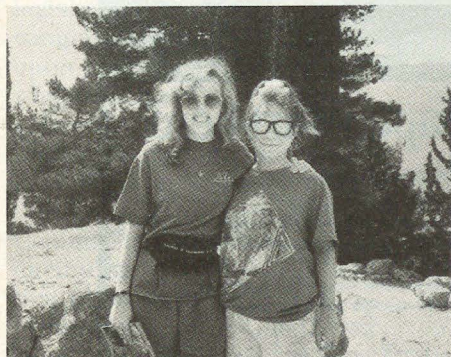
esteem, self assurance and self worth — attributes which are essential to survival in today's world. We must equip all DZs to believe that no matter what, sexual assault is never an acceptable outcome, that saying 'No!' is always a woman's right. And for young women who are victims, we must give them the courage, the confidence, the reassurance that although a rape cannot be reversed, speaking out publicly may prevent another woman from facing a similar fate.

"By reprinting Mr. Blair's article, Delta Zeta is acknowledging the existence of this national crisis. For Delta Zeta to stand by and do nothing more is tacit approval of the college woman's plight. A national initiative is in order."

In this respect you might find the article "Rape Treatment Center launches first national campaign against campus rape" (on page 14) informative and educational.

— — —

When Georgia-ZII's Stephanie Runyan went to Greece this summer she took along a batch of ΔZ letter shirts to wear. This caused a few comments from the Greek people and more comments from American fraternity members abroad. It wasn't until she was in Delphi that she encountered another Delta Zeta. So, of course we have a picture. Here is Stephanie (left) with Monica Stein of UNC/Chapel Hill-ΞΣ chapter. Steph wrote that "meeting Monica in a small village in the middle of Greece truly expresses the belief that ΔZs are everywhere."



PCD for Indiana Beth Petrucce married Bill Hoeper on June 9 in Christ the King Church in Indianapolis. SRC Marla Pittman, Ball State-TX introduced Beth to Bill in February, 1988. Four Delta Zetas were among the attendants and other ΔZs present joined to sing the candlelight song to the newlyweds.

Our first editor writes . . .

Dear Madam Lamp Editor:

"Your 1990 number was read and was especially appreciated. It brought back vivid memories of Alfa and I initiating Martha Railsback into Delta Zeta, representing the petitioning chapter from Indiana University. Before Alfa and I left for home, we initiated the chapter from DePauw. We now considered ourselves on our way to acquiring national status. Alfa said she would be president and I should edit *The Lamp*. The first editions of *The Lamp* were a far cry from your masterful hand.

"I hope you have in your files more than one copy covering the first 50 years of Delta Zeta. My copy was loaned and lost — it told the true story of the modest breakthrough of the magazine. If you can possibly find another edition of that historical number to replace the one that has become lost, I should be most grateful.

"Kindly let me hear from you and again, remember my appreciation of your services for each issue of *The Lamp*.

Yours in the bonds of Delta Zeta,
Ruth Gaddis Jeffries"

Tucson, Arizona
October 2, 1990

*Editor's Note: I am happy to report that I mailed a copy of the May 1952 historical issue of **The LAMP** to Ruth upon receipt of her letter.*

And from Winifred Metzger Forbes, Miami-A came this note.

"I have just received my "Lamp" and have enjoyed the article about Alfa Lloyd Hayes. However, on page 5 there is a picture of Hepburn Hall with the information that it was built by Alfa's father, Thomas C. Lloyd. This I question. I lived in Hepburn Hall my sophomore year at Miami, 1935-36 and I believe the building you picture is a much newer building. The original Hepburn was torn down some years ago."

You are right, of course. Probably the original Hepburn resembled the Kumler Chapel in architecture. If the Miami archives should produce a picture of the building Mr. Lloyd built, we will be happy to run it . . .

— — —

If you are wondering at the absence of scholarship winners and other Foundation related articles the reason is the Delta Zeta Foundation is publishing a special issue which you should receive in the next several months.

— — —

I thought surely someone would inquire about the background of the cover on the fall issue. The stained glass with the beautiful etched roses are on the inside front entry doors at the National Historical Museum in Oxford, Ohio.

Handwritten signature or mark.

RTC launches first national campaign against campus rape

'L.A. Law' Stars Host 'Campus Rape' Film For Students

LOS ANGELES, September 5, 1990 — As 12 million college students start back to classes this week, the Rape Treatment Center at Santa Monica Hospital Medical Center has asked college students and administrators to join them in the fight against the campus rape epidemic by supporting the first comprehensive national campaign against campus sexual assault.

At a press conference yesterday, "L.A. Law" television series stars Susan Dey and Corbin Bernsen joined Rape Treatment Center Director Gail Abarbanel to announce the national program which includes a new 20-minute film about campus sexual assault. The film, titled "Campus Rape," is hosted by Dey and Bernsen and has already been distributed by the Center to more than half the universities in the country. The Center encourages college administrators to adopt the film as part of orientation programs for all incoming students. The film was recently endorsed by the National Interfraternity Conference, which distributed copies to its members.

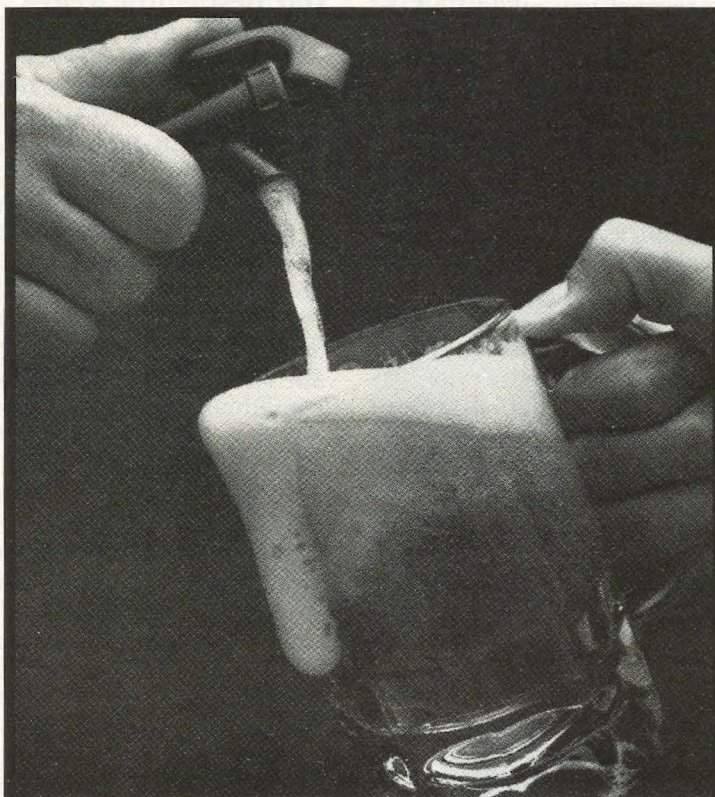
"The goal of the campaign and the film is to reduce the epidemic number of campus sexual assaults," stated Abarbanel. "Recent studies indicate that each year, one in every six college women is a victim of rape or attempted rape and one in every 15 college men admit to committing sexual assault."

In addition to the film, which contains important information about rape and prevention strategies, campaign materials include powerful ads and posters for colleges to adopt, and proposals for state legislation requiring colleges to implement written procedures for handling sexual

assault cases and mandatory rape prevention programs for freshmen.

"Students must understand that rape is not sex; it's an act of violence with devastating consequences," stated actress Dey,

who thinks the film is a valuable resource in educating students by exploring campus rape and its impact through interviews with four college women actually assaulted on college campuses. "I hope our



90% of campus rapes start here.

Whenever there's drinking or drugs, things can get out of hand. So it's no surprise that most campus rapes involve alcohol.

But men should know that under any circumstances, sex without the other person's consent is considered rape. A felony, punishable by prison. And drinking is no excuse.

That's why, when you party, it's good to know what your limits are. You see, a little sobering thought now can save you from a big problem later.

© 1989 Rape Treatment Center, Santa Monica Hospital

film will help reverse the alarming campus rape statistics."

Actor Bernsen cited his support for the campaign, commenting, "Men must take a strong stand against rape. The campaign gives college men an opportunity to become part of the solution, rather than part of the problem."

"College students are more vulnerable to rape than any other age group," said Abarbanel. "To compound the problem, studies have shown that more than 90 percent of campus rapes go unreported. Our campaign provides colleges with effective materials and programs to end rape on campus."

"College administrators and student groups have to work together to solve the problem of campus sexual assaults," said Jonathan Brant, executive vice president of the National Interfraternity Conference. "We strongly endorse the campaign and have distributed the film to our members nationwide to initiate student support of this effort."

To specifically address college administrators, the Rape Treatment Center mailed its booklet, "Sexual Assault on Campus: What Colleges Can Do," to every college president. The booklet urges adoption of a 10-point rape prevention program model which includes mandatory educational programs about rape, increased disciplinary hearings for offenders and comprehensive programs for assisting victims.

The Rape Treatment Center has also been a pioneering force in initiating tougher sexual assault legislation. As part of its national campaign, the Center has called upon governors nationwide to support legislation requiring colleges to have a written procedure for handling sexual assault cases, similar to a new California law supported by the Center. The Center is also encouraging the states to require that colleges provide rape prevention information during freshmen orientation, as New York state recently did.

Abarbanel also commended the many talented members of the

entertainment industry who contributed their time and made the film and ads possible. "Campus Rape" was written by Emmy award winners Allan Burns and Seth Freedman. Compact Video donated film duplication services. The public service ads and posters were contributed by the prestigious advertising agency Dailey and Associates.

Abarbanel said, "The campaign's recommendations are inexpensive, yet effective. They will help reduce the incident of rape on campus and ensure that victims are not revictimized by an insensitive system."

The Rape Treatment Center (RTC) at Santa Monica Hospital Medical

Center was founded in 1974. It is nationally recognized for its model treatment, prevention and education programs. Services include expert, free treatment for sexual assault victims and their families; training for police, prosecutors, medical and mental health personnel; prevention education programs that reach 20,000 teenagers each year; consultation to news media, television and film production companies, and expert testimony in court proceedings and at legislative hearings.

For more information regarding the "Campus Rape" film, contact The Rape Treatment Center at Santa Monica Hospital, 1250 16th Street, Santa Monica, Calif. 90404.

Alpha Beta Reunion



Alumnae attending the summer reunion at University of Illinois-AB include (top row) l to r, Joyce Poggioli Sargent, Jo Ann Bothwell Fitzgerald, Myrna Rea Clark, Nancy Bear Evanson, Colette Holman Sandow, Sandra Eppard Kagy. Middle Row, (all past presidents) Betsy Roe Young, Nancy Swikle Heidkamp, Carolyn Peterson Myers, Phyllis Peterson Hoch. Front row, Fredna Ray Glover, Nan Brown, Kay Jones Horsch. Not pictured, Anna Fruin Miller.

What happened to you after college?

CHERYL GLENN MEYER, Illinois-AB '88 is a journalist working for a distributor of four newspapers. As head writer of one, her stories are occasionally carried in all four publications. Sheryl lives in West Chester, Pennsylvania, with husband Doug.

CANDI COPLIN REYNOLDS, Florida State-AΣ '68 lives in Dallas with husband J. Mikel and children Ashley and Jonathan. She enjoys snow skiing, tennis, travel and cooking.

MICHELE REITH EMMETT, Texas/Arlington-Ψ '89 lives in Palm Desert, California, with husband John. She is a third grade teacher who works with learning disability children before her school day begins. She also directs the school choir. Michele enjoys reading, traveling back to Texas and working in their family-owned Mexican restaurant.

HELENE (BETH) VEAZIE LAMBRIGHT, Bucknell-BΘ and Arizona-BI '73 lives in Corvallis, Oregon, with husband Terry and Melissa and Christopher. She has been a teacher and a women's ministries lecture leader and speaker. Since 1978 she has been a full-time mother, involved with everything imaginable!

SHERI NICHOLS, Ohio Northern-ZK '85 is a registered pharmacist in Lima, Ohio. She enjoys golf, flower arranging, reading and skiing.

ANN B. JOHNSON, Oregon-Ω '87 lives in Alexandria, Virginia, where she is a technical information specialist at the Smithsonian's Museum Support Center Conservation Analytical Laboratory in Suitland, Maryland. CAL performs research in the conservation properties, treatments and technical and analytic studies of museum objects and related materials and advises and assists the museums within the Smithsonian.

KIMBERLY LEEPER, Indiana of Pennsylvania-ΓΦ '87 is currently in the grad school at Miami of Ohio, enrolled in the educational specialist degree program for school psychol-

Don't Keep It to Yourself



Pass the word
to a *Delta Zeta*

ogy. She enjoys photography, aerobics, environmental preservation, music and reading.

ELSIE J. YEAGER DRESSEN, Sam Houston State-ZΘ '61 lives in Lake Jackson, Texas, with husband Glenn and Clark, Ellen and Amy. She is a teacher, Office Education Department, at Brazosport Junior College in Lake Jackson.

CHERYL FEGLEY DOLTZ, Kentucky-AΘ '68 lives in Mine Hill, New Jersey, with husband Raymond and Anne, Ryan and Gregory. A kindergarten teacher for almost 21 years, she also developed a small craft business which is active and home-operated. Busy in various school activities, she enjoys keeping up with her children.

CAROL STANDRIDGE WOOD, Northeastern Oklahoma-ΔΦ '61, lives in Wewoka, Oklahoma, with husband Roy, a retired fire chief. She is Seminole County Extension Home Economist and County Extension Director. Son is Kirk Lee and grandson is Jarrod Kyle. She enjoys needlework, antiques and interior design.

BARBARA LANDERS MILLER, Concord-EA '74 lives in Warrenton, Virginia, and is a math teacher and guidance counselor at William C. Taylor Junior High School. Husband Craig is an assistant principal and son is Stephen, age 12. She enjoys church

choir, cross stitch, reading, tole painting and sewing.

JANE JENSEN HOEGH, Iowa State-BK '88 lives in Afton, Iowa, with husband Scott, a science teacher. Jane teaches home economics at East Union Community School and advises the active Future Homemakers of America chapter, coaches volleyball and is a senior class sponsor. She enjoys camping, golf, crafts and playing the organ.

SUSAN MYHAN CLARK, Samford-Π '83 lives in Lafayette, Georgia, with husband Jay, a science teacher. Susan is a general music teacher and choral director at Lakeview Junior High in Fort Oglethorpe, Georgia. She likes cross stitch, playing the piano, singing, reading, bike riding and hiking.

LISA BURGESS HENDERSON, Eastern Illinois-ΓN '83 lives in Salem, Illinois, with husband J. Bryan and two children. Lisa is a child welfare specialist working with families and children in child abuse and neglect cases. She collects Precious Moments figurines and loves country crafts.

GAYNELLE HASSELMEIER HAYES, Lamar State-ΔΘ '65 is Vice President and Dean of Student Development Services at Galveston College in Texas. Husband Earle Young is with NASA and daughter Anne-Marie Hayes is a student at Texas Christian University. Gaynelle is currently president of the Galveston County Panhellenic Association in addition to active participation in several professional groups.

BRIDGET KENNEDY BECK, Southwest Texas-IA '82, lives with husband Mike in Carrollton, Texas. She met Mike, a corporate controller, at a fraternity party in their freshman year at SWTSU. Bridget is a systems engineer with IBM. She enjoys aerobics, travel, ΔZ alum activities and reading.

MELODY LYNN McDONALD, Angelo State-AO '85 lives in Fort Worth, Texas, where she is associated with Cantey & Hanger, Attorneys at

Law. She received her law degree from Texas Tech in 1988. Melody likes softball, swimming and exercise. She is also president of the Arlington alumnae chapter.

KAREN DIEBLER KOVALL, West Liberty-IT '86, lives in Los Angeles with husband Scott, a full-time law student. They have one son, Sheehan. Karen is a registered dental hygienist working in technical sales. She enjoys going to the beach, reading and spending time with her family.

SARA MILLER JACKSON, Concord-EA '62 lives in Paden City, West Virginia, with husband Raymond. She has two grown children and two step-children. A teacher, Sara enjoys swimming, aerobics, dancing, gardening and her volunteer work.

PATRICIA ROLL SCHMUNK, Miami-A, '52 lives in Idaho Falls, Idaho, with husband Dr. Richard, an engineering professor at Idaho State. She taught elementary education for 22 years and is now employed as a field supervisor of student teachers in the Idaho Falls area. Grown children are Peter, Jennifer, Linda, Rick and Robert. Patricia enjoys square dancing, sewing and golf.

MARTHA HODGESMITH, Kansas State-A '71 is an attorney who coordinates 11 senior citizen law projects located across the state of Kansas. She lives in Topeka with husband Kenneth R. Smith, also an attorney. Martha is interested in ΔZs becoming educated about the legal rights of persons who are hearing impaired. She likes gardening and travel and western America history.

BARBARA THOMPSON TAYLOR, Iowa State-BK '58 lives in Newton, Iowa, with husband John. Their three children are grown. Barbara is a dietitian and food service director in a rural hospital. She enjoys tent camping, sewing and needlework, cooking, church and family. And as one who went back to school for an advanced degree after a length of time, encourages anyone to do so. Says it is a great experience to be an adult student!

GWENDOLYN FILLMAN DAHLQUIST, Nebraska Wesleyan-BT '42 is a senior social worker in Minneapolis, Minnesota. Grown children are Phoebe, Andrea and Leonard. Active in the Twin Cities International Program, she hosts foreign social workers. She is a member of the U.S. Chinese People's Friendship Association and has enjoyed travel to Japan, China, Korea and the U.S.S.R.

LISA ETNYRE BONEHAM, Miami-A, '86 lives in Austell, Georgia, with husband Chris. She is an account executive with Maritz Travel Company in Atlanta, handling outside sales to corporations.

LYNDA COLEMAN NEUROTH, Wayne State-EΣ '64 writes that she has a three part career: Elementary teacher, helping her husband run a cider mill, and growing everlasting which she uses in arrangements and wreaths to sell at markets. Husband Hans is also a learning specialist and children are Heidi and Peter. The Neuroths live in Canton, Michigan.

MARJORIE MARTIN HOLLOWAY, UCLA-AX '52 and husband Bruce live in Colorado Springs, Colorado. Owner of Marway's Cake and Wedding, Marjorie has personally baked and decorated over 3,000 wedding cakes. She enjoys cruise ship travel and plans to conduct seminars there on retirement.

ANDREA ZINNEMAN PERRY, Mansfield-IO '68 and husband David live in Ocean City, New Jersey, with young son Justin. Formerly a teacher in a middle school, Andrea now enjoys being a housewife and caring for their young son. She enjoys reading, walking, biking and the beach.

VICTORIA KAY HOFFMAN COCHRAN, Northwestern Oklahoma-ΔO '83 is a practicing attorney in Springdale, Arkansas. She and her husband live in Prairie Grove but are active members of the First Baptist Church in Fayetteville, teaching first and second grade classes as a missions organization.

LAURA JEWELL EVANS, South Carolina-BA '82 lives in Lexington, Kentucky, with husband David. She is

a senior research analyst with the Department of Physiology at the U of K College of Medicine. Laura is a Girl Scout leader.

CAROLYN ALBO, Winthrop-ΑΣ '89 is a third grade teacher at Edisto Primary School in Cordova, South Carolina. She teaches all subjects in a self-contained classroom. Carolyn also coaches the junior varsity cheerleading team, enjoys cross stitch, crafts, walking, traveling.

MADelyn LUND BLAKEMAN, UCLA-AX '46 was a policewoman in the city of Santa Monica, California, for 32 years, retiring in 1985. Husband is Robert, also retired, and grown children are Charles, Sally and Kathleen. Madelyn enjoys gardening, walking, tennis and travel.

PAULA FRITZE MARIN, Knox-N '58 and husband Dan are managers of the Mesa View Retirement Residence in Grand Junction, Colorado. Grown children are Laura, Katherine, Carol Lynn and Mary Kay, and there are seven grandchildren. Paula enjoys camping, boating, fishing, crocheting, reading, community services. Her mother is Inez White Fritze, also a member of Nu chapter.



National Council
is pleased to announce a
colonization at
Arkansas State University
Jonesboro, Arkansas

Alumnae chapters write . . .



The Fort Collins alumnae chapter presented a \$225 check to Martha Foss of the International Hearing Dog Foundation as part of their 1990 philanthropy program. The Hearing Dog Institute is based in Colorado and trains dogs to be the ears for the hearing impaired. L to r, Martha's daughter, dogs Molly Brown and Denver, Martha and Nancee Stults Codd, UNC-ΔΞ.

CHICAGO NORTHWEST SUBURBAN (Illinois) alumnae raised money at a Tupperware catalog party with proceeds going to Gallaudet, the Illinois Deaf and Blind School and to PAWS with a Cause. PAWS, located in Michigan, trains dogs to "hear" for their deaf owners. The chapter is also collecting used hearing aids to donate to the Chicago Hearing Society.

COLORADO SPRINGS (Colorado) alumnae chapter is celebrating its 30th anniversary this year and will host Province Day in April.

COLUMBIA (South Carolina) alumnae met with husbands and dates for a mid-summer cookout. Still working with the Brennan School's Hearing Impaired Class, the chapter has purchased another book for the parents' lending library. They also collect items for Sistercare, an organization for abused women and children.

COPPER COUNTRY (Michigan) alumnae club is newly organized but off and running with aid to Michigan Tech-ΔΘ chapter in the form of 40 original snack

packs for a retreat and assistance in cleaning the ΔΘ house after a recent fire.

CYPRESS CREEK (Texas) alumnae assisted at the seventh annual Marvin Zindler Golf Tournament which netted funds for the Houston Ear Research Foundation. This small but enthusiastic chapter is committed to Valentine card sales for the Houston Ear Research Foundation, to the Northwest Houston Panhellenic scholarship, plant sales for the NW Houston Cooperative for Speech and Hearing and supporting collegians at Texas A&M-ΔΞ chapter.

DAYTON (Ohio) alumnae chapter recently received a certificate of appreciation from the Hearing & Speech Center of Metropolitan Dayton for their continued support by way of volunteer hours in making favors, saving soup labels and assisting in major fund raising events.

METROPOLITAN DETROIT (Michigan) alumnae supported their own at the Detroit Alumnae Panhellenic Association luncheon. Honored were Harriet Cotton Kamm, Miami-A, DAPA president and Colette Gilewicz, Michigan State-BP, DAPA vice president. Linda Kennedy, Michigan Tech-ΔΘ collegian was among the scholarship recipients.

GOLD COAST (Florida) alumnae celebrated their 25th anniversary with a gala celebration in the home of Golden Rose member Elsie Kluck Bailey, Millsaps-ΔΩ. They enjoyed sharing memories and reminiscing over old scrapbooks.

GREATER HUNTINGTON (West Virginia) alumnae chapter received the "most improved" award at Province Weekend and member Kathleen Cook Turner, Mar-



Metro Detroit Delta Zetas in Panhellenic: L to r, PAD Pamela McClure Cronenwett, Northwestern-AA; DAPA President Harriet Cotton Kamm, Miami-A; Scholarship Winner Linda Kennedy, Michigan Tech-ΔΘ and DAPA Vice President Colette Gilewicz, Michigan State-BP.



Delta Zeta legacies (l to r) Kallie, Kara and Karissa Weigand, along with Twin Cities shoppers were advised to Build a Case for Better Hearing and Speech. The grocery bags were distributed for two weeks in June as public service by eight metro CUB Food Stores. Names of sponsors of the annual poster child contest were listed alphabetically on the grocery bags, and of course included Delta Zeta Sorority and Foundation. PCD Jeri Seals Weigand and husband Gregg are mom and dad to these lovely young women.

shall-ΔY was named outstanding alumna. The chapter sponsored a Rose Petal Tree to raise funds for the Elizabeth Baker Devereaux Province IV Scholarship Fund. They also support the Ruth Heller Horton Scholarship at Marshall which is given to a Delta Upsilon member majoring in speech and hearing.

The **GREATER KANAWHA VALLEY AREA (West Virginia)** alumnae chapter hosted the first meeting of the Charleston Area Alumnae Panhellenic. They are still collecting pennies for Gallaudet and work closely with Iota Pi chapter at West Virginia Tech in fall rush.

Members of the **GREATER KANSAS CITY (Missouri)** alumnae chapter spent an exciting evening at the dog races. They even had a race named after Delta Zeta because of the large attendance. They shared a pot-luck dinner with collegians from Missouri/Kansas City-ΞΦ chapter and bought \$275 worth of babysitting hours, cleaning, car washing and other odd jobs from the Xi Phi members.

Past National President Evelyn Adams Costello received the first Order of the Pearl certificate in Michigan when **OAKLAND COUNTY** alumnae traveled to St. Joseph to make the presentation. The chapter's annual brunch at the home of Sue Adams Trevarrow, MSU-BP was titled "Roses and Old Lace" with flowers gracing each table. Rose water was used as a flavoring in the chicken and cookies and johnny-jump-ups were frozen in the ice ring in the punch bowl. Sugar-coated violets and rose-colored sherbet completed the menu. The hostess then talked about the language of flowers and gave the history of tussie mussels (nosegays). Her botanical exper-

tise shows why she is the current president of the National Herb Society.

PALM BEACH (Florida) alumnae chapter members participated in the Deaf Service Center's annual bowl-a-thon and received an award for the "most pledges obtained by a community service club." They completed turtle crafts for fall pledges at FSU-ΑΣ and Tampa-ΔB.

PHOENIX (Arizona) alumnae chapter presented its first Silver Certificate along with a new Golden Rose recognition at a recent luncheon. They also awarded a \$300 scholarship to a high school senior graduating from the Phoenix Day School for the Deaf. For the past several years the ΔZ cash award has been a part of graduation ceremonies at the school.

GREATER SEATTLE (Washington) alumnae chapter's Helen Neal Radke, Washington-K has received the Women Making the Difference award from Soroptimist International in recognition of her service to education, including 19 years on the Port Angeles School Board and 17 years on the Washington State Board of Education. Helen was Delta Zeta's 1964 Woman of the Year. A Floreen Eastman Scholarship has been established to benefit two Kappa collegians each year. It is named for Floreen Glover Eastman, Nebraska-Z.

GREATER SHEPHERDSTOWN TRI COUNTY (West Virginia) alumnae chapter purchased fine crystal at a summer party and decided to become pen pals with collegians at Shepherd College-KM. They are preparing care packages for sale to parents of students at Shepherd for delivery during finals week.



Phoenix alumnae presented 50 and 25 year certificates to Susan Caldwell Madden, Alabama-ΑΓ and Jean Jasper Oracheff, Ball State-TX. L to r, Chapter President Lorna Enokian Green, Illinois-AB, Susan, Jean and Robin Butler Daviet, New Mexico State-ΓΞ.

Campus Sights & Sounds

ARIZONA STATE'S News Bureau lists campus experts of all kinds who can talk about any number of unusual topics. Some of these are: hot dogs, fly fishing, swimming pool algae, hot rodding and the colonization of the Amazon Forest.

STUDENTS at the University of Illinois' Snyder Residence Hall operate a Dial-a-Carol service to spread holiday cheer. Callers can request any carol and the students will play a record. On each 100th song, the students sing the carol live. The service operates for a week in December.

CHAMPLAIN COLLEGE (Vermont) offers free bus passes and discount bicycles to employees and students who park off campus and ride the bus.

"FIRST TERM'S ON US." Eureka College (Ill.) offers tuition grants to students to resume their education. It is for students who have been away from high school for four or more years, or those who left college at least two years ago.

A CORNELL STUDY says honeybees boost U.S. crop output by about \$10 billion annually. Some call them cleverly disguised pollination machines. Farmers pay \$18 to \$30 for up to three weeks' rental of the colonies.

KUDZU is the weed that can grow a foot a day and covers roadsides, trees, utility poles and anything else in its way. It has spread from East Texas to Florida and north to Southwestern Pennsylvania. Researchers at the University of Georgia now say that four goats can destroy an acre of Kudzu in two years.

HOW TO PAINT a 30-foot flagpole? Fraternity members at Southern Alabama connected three rake handles for the "world's longest paint brush" to renovate their rusty flagpole.

A NEW Pennsylvania law requires colleges and universities to certify to the state that their instructors are fluent in English. Students have complained that they cannot understand some of the instructors.

THERE MAY BE as many as 1,000 U.S. colleges and universities providing student consulting services for small businesses. An outgrowth of a pilot program of the Small Business Administration, seniors and graduate business students provide an inexpensive source of advice and research. The programs give students experience outside the classroom.

MIDDLEBURY (Vermont) trustees voted in January 1990 to force all fraternities to become co-ed and to eliminate those which refused.

CARNEGIE-MELLON will have a music major in bag-

pipes. Only two students will be accepted annually after auditioning. The two students must also study piano and other instruments.

A BRANCH of Ohio University estimates that 25% of entering students need remedial education in reading, writing or math. A teacher at a tech campus says, "For a lot of college students, grammar is a foreign language."

ABOUT 40 colleges have some campus police on bicycles. They can patrol walkways and areas where cars cannot go. In sports clothes, the biking police are not easily recognized.

THE NUMBER of high school graduates has been falling since 1986 and is not expected to rise again until 1993.

WEBER STATE College in Utah will work with scientists from South Korea to develop an experimental research and communications satellite called Korsat.

NORTH DAKOTA was one of 47 institutions of higher education to receive equipment grants from AT&T. The University Equipment Donation Program of AT&T has given more than \$200 million to colleges and universities.



Xi Iotas at Muhlenberg College await their fall pledge class.

Beta Kappa reunion



Beta Kappas from the 1966-1971 classes met at the chapter house at Iowa State for a June reunion.

"Sunshine and shadows
laughter and tears
We share together
all these long years . . ."

The words of this Delta Zeta song rang true June 15 - 17, 1990, as 45 Beta Kappas from 15 states gathered at the chapter house at Iowa State University, Ames, Iowa, for a wonderful weekend reunion! The graduating classes of 1966 - 1971 made a nostalgic return to their college days, reminiscing and renewing the bonds of sisterhood.

Activities included sing-a-longs, a memorabilia display (with family photos, clothing worn in the late '60s and early '70s, scrapbooks, and letters from BKs unable to attend), campus tours, trivia quiz, a slide show, and even an authentic candle passing! A memoriam in the name of Gloria Jenkins Wandrey ('66) and a gift to the chapter house completed this very special event. Another reunion is planned for June 1995!

Science and math teachers receive presidential awards

(Washington, D.C.) . . . The White House has just announced that Marlenn Fairabend Maicki, Wayne State-ES '57 was one of 215 of the nation's finest teachers invited to Washington for a week of ceremonies and events highlighted by the presentation of **PRESIDENTIAL AWARDS FOR EXCELLENCE IN SCIENCE AND MATHEMATICS TEACHING**.

Marlenn teaches elementary science at the Detroit Country Day School in Birmingham, Michigan.

This National Science Foundation (NSF) program is especially important now since President Bush has called on United States students to be "first in the world in math and science achievement by the year 2000."

Since its inception eight years ago, the **PRESIDENTIAL AWARDS** program has become the premier recognition for a middle/junior or senior

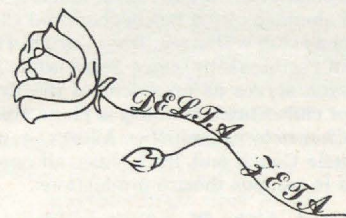
high school science or mathematics teacher because it has consistently identified the highest quality teachers and has presented each of them with a distinguished award, opportunities to interact with public policy makers, a generous classroom grant from the National Science Foundation, and many useful teaching tools as gifts from the private sector. In 1990, for the first time, elementary teachers have been added to the program.

Eligible teachers have spent at least five years teaching science or mathematics halftime or more in a public or private elementary, middle, junior or senior high school in one of the 50 states, the District of Columbia, Puerto Rico, the Department of Defense Dependents Schools or in one of the U.S. Territories. Nominations are made by colleagues, administrators, students, parents and others

who are familiar with a teacher's skills.

The **PRESIDENTIAL AWARD** carries with it a \$7,500 NSF grant for each teacher to spend at his/her school, an expense-paid trip to Washington for the awardee and a guest, and many other gifts and honors.

Delta Zetas are proud to have one of our own honored.



Delta Zeta on Campus



Kerry Colella, Gamma Omega at Southern Illinois University takes her first skydiving jump.

by Diane Jones Skelton

ALABAMA

Alabama-Huntsville, Lambda Kappa — Members put together the final touches for fall formal rush at an August rush retreat. Dawn Ezell, Kim Smith and Wendy Campbell are UAH Panhellenic rush counselors.

Auburn-Montgomery, Lambda Nu — Members visualized the "perfect rushee" when they drew pictures of the ideal rushees at the first summer rush workshop. The second rush workshop focused on conversation techniques. The overnight rush retreat, held at Angela Hammond's lakehouse on Lake Martin, concluded with a heart-warming preference party practice. Members also helped stamp and stuff envelopes for Panhellenic at two summer Panhellenic mailout gatherings. Several members represented the chapter at the Norma Minch Andrisek Leadership Conference at **University of Georgia**. Delta Zeta celebrated with a College Bound Party at Wynlakes Country Club and traveled to Six Flags Over Georgia for Labor Day. Laura Mills is an AUM Cheerleader, and Alaina Pierce won an AUM academic scholarship.

Jacksonville, Lambda Gamma — Delta Zetas organized a campus yellow ribbon campaign for troops in the Middle East. Members honored alumnae of the newly chartered Cheaha alumnae club with a tea. Tracy Loyd is a member of Fastbreakers Dance Team, while Sonia Crosson serves as president of the English honor club. Christi McCarty is photo editor of the *Chanticleer* newspaper. Allison Crawford, Danielle Couch and Traci Miller all captured roles in campus theatre productions.

Samford, Alpha Pi — National Director Pat Rosser and Field Representative Susan Gattis

were on hand for rush activities in the fall. Delta Zetas participated in Welcome Back '90 campus events which included several dances, a dinner, covenant worship, class meetings and the opening football game.

CALIFORNIA

California-Chico, Delta Chi — Members welcomed new pledges following a successful formal rush which featured parties DeeZee-Land, *New York! New York!* and Mardi Gras. Delta Chis celebrated with their new pledges as they all went to Chico Fun World for watersliding. Delta Zeta won honors for their animated float in Rancho Chico Days. Following a theme of Mary Pickford and the Silver Screen, members also participated in the building of a quad, the parade, skit performances, singing and dancing. Patty Murray, Suzanne Hayes and Robyn Pickens all traveled to Los Angeles for the Norma Minch Andrisek Leadership Conference. Julie Lynch is studying in Spain.

California-Fresno, Epsilon Epsilon — A successful fifties theme night featuring authentic root beer floats served by Delta Zetas on roller skates and a *Grease* skit was appropriately called Dee Zee Diner. In fall rush EE added a quota pledge class of 16, making Delta Zeta the largest on campus with 71 members. During rush week, the losing Academic Turtle Race Team treated the entire chapter to a pizza lunch. This semester's newly formed teams are already racing off to earn good test grades and earn points at the study table in hopes of victory. Lori Sorrenti is a fraternity sweetheart.

California-Fullerton, Iota Upsilon — The chapter initiated 100% of the spring pledge

class, prepared for rush with a rush weekend, and held a chapter house cleaning. Members donned their sorority letters for the first week of school, and supported the Delta Zeta cheerleaders by attending the CSUF football games.

California-Long Beach, Delta Alpha — Delta Zetas dazzled rushees with spectacular themes and stunning decorations in formal rush. Day One, they greeted rushees with *Everything's Coming Up Roses*. The *Little Mermaid* joined everyone "Down Under the Sea" on Day Two. Day Three rushees traveled to DZWood to attend Opening Night. Members had prepared for rush with many summer rush schools; one welcomed Delta Zetas from Loyola-Marymount.

Loyola-Marymount, Xi Omicron — At press time, Delta Zetas were looking forward to the largest group of rushees in campus history. Members have great hopes for the new chapter theme party, School DaZe. Summer activities included ten rush workshops and several workdays. Pua Schwab just returned from a year in England, while Dana Narwitz, Jenny Ragan and Sandy Allred studied in Canterbury over the summer.

San Diego State, Gamma Omicron — Members welcomed National President Marvona Tavlin for rush week. The successful week ended with a *quota-plus* pledge class numbering 30! Delta Zeta has purchased a chapter house; the old-fashioned country home design includes a swimming pool. Kelly Reagan is a resident hall adviser.

COLORADO

Denver, Rho — The chapter pledged 26 in fall rush which brings membership to over 70. Junior Jennifer Cortese received the Florence Hood Miner Award for outstanding contributions to Delta Zeta, the campus and community.

CONNECTICUT

Connecticut, Gamma Beta — Members decked out in Delta Zeta attire to help students move into their dorms for Greek Moving Day. At press time, members were attending workshops, putting together costumes, and double checking nametags and decorations for fall rush. The highlight of the summer was a barbecue at Deb Schott's. Members of two other Greek groups attended the event. Faun Riebmman, Joyce Carchman and Cheryl Spiegel spent three weeks in Israel on a special program, while Margo Capen is spending the semester abroad. College Chapter Director Tammy Comer and six members learned new ideas at the leadership conference at **University of Massachusetts**. Kristen Ragusa, Kristy Connor and Lisa Dombrowski assisted with Special Olympics. Faun Riebmman was tapped for Golden Key Honorary; Carrie Philbrick, Tara Moynihan, Kim Tidewell and Sharon Laney are campus tour guides.

FLORIDA

Tampa, Delta Beta — Delta Zeta welcomed the 19 new pledges with a luncheon and trip to the movies. Delta Zeta boasts the top Greek average on campus, a 3.00! The chapter also donated 1200 service hours to the community, the highest among Greek groups. Gail Hant is president of the senior class. Rho Chi Panhellenic rush counselors are Jennifer Breakey, Deanna Brewer and Denise Tamborello.

Georgia State, Delta Delta — Events last spring included hosting the Annual Greek Superlatives, selling Tupperware to raise funds for philanthropy and enjoying the 1990 Diamond and Rose Formal. Rho Chi rush counselors are Krissy Hohnerlein and Kelly Laster.

ILLINOIS

DePaul, Theta Theta — Members gathered at the Shaumburg Marriott for the annual sisterhood weekend. The event provided the opportunity to prepare the rush theme, Delta Zeta — The Ultimate Sorority, and to present officer business capsules. At press time, rush was four days away, and members were putting the final touches on the first party, Delta Zeta Cruise. Other summer activities included a car wash and garage sale; upcoming open rush outings include miniature golf and a trip to a pumpkin patch.

Eastern Illinois, Gamma Nu — Delta Zeta welcomed a pledge class of 41 following a successful formal rush which featured *Grease*, Delta Zeta Country Club and Delta Zeta Premiere parties. Gamma Nu won top honors in Greek Sing, the largest amateur choral competition in the state of Illinois. Delta Zeta also won honorable mention for the Panhellenic-IFC President's Award. Sara Pomakoy, a 1990 graduate, is Sigma Pi International Sweetheart. In her two year reign she will travel to Sigma Pi chapters across the country. Top Ten Greek Women includes Maggie Sullivan, Diane Richardson and Karen O'Reilly. Panhellenic named Maggie Sullivan as outstanding new sorority initiate and outstanding junior Panhellenic delegate.

Eureka, Pi — Members unanimously voted to advocate environmental protection and continue academic success at the chapter's annual retreat. Plans to achieve these goals include providing a solitude hour to encourage studying, levying fines for missing classes or campus and chapter activities and recycling. Members also tied yellow ribbons around trees at the main entrance in honor of the Americans in Saudi Arabia. Dean's List honorees include Lori Marshall, Erika Ketteler, Tori Boccuzzi, Lisa Severtis, Cathy Davis, Stacy Sarrat and Abby Clifton. Shellie Littrel, a Special Olympics volunteer, serves as junior class secretary/treasurer. Tori Boccuzzi is president of both the junior class and Sigma Zeta. Lori Marshall, senior class vice president, was named outstanding business and economics student. Erika Ketteler is a student government association representative, second year scholar, and programmer for Sigma Zeta. Tiffany Wysocki, Lisa Severtis and Abby Clifton traveled with the chorale to England. Lisa also studied for five weeks in Tokyo.

Illinois, Alpha Beta — Delta Zeta welcomed 47 new pledges from formal rush with a backyard barbecue on Sisterhood Night and proudly "showed them off" on Bid Night. The semester schedule includes football block, fraternity exchanges, a pledge retreat, Pledge Mom and Pledge Dad nights and several sisterhood activities. Delta Zeta won second place honors in Panhellenic Most Campus Participation competition. The award considers sorority members active in other areas of campus leadership. Some of the leaders are Christy Balich, Atius, Marching Illini; Angel Bates, *Unsinkable Molly Brown* cast, Marching Illini; Eileen Bunch, Panhellenic treasurer; Jennt Cochran, Torch Honorary secretary; Karen Hammond, Volunteer Illini project vice-president; Holly Hertsgaard, Panhellenic public relations chairman; Joan Kane, Ma-Wan-Da secretary; Kara Lafferty, Golden Key recording secretary, Marching Illini; Gretchen Litkins, fraternity sweetheart; Amy Parise, LAS Council vice-president, Panhellenic Campus Affairs chairman; Tammy Rower, Student Government Executive Board; Ann Tardy, SAA Torch honorary; Bonnie Teitle, Women in Communications president; Kim Slomka, Women's Glee Club.

Illinois State, Lambda Rho — Delta Zeta added 42 (quota!) pledges in fall formal rush. Initiates plan to keep the pledges feeling special with their KROP (Keep on Rushing the Pledges) Board. Activities scheduled include distributing food and clothing to needy families at Neville House in Bloomington; implementing a designated river program; a Halloween exchange; Parents' Day and building a homecoming float. Pledges are organizing a Halloween party for Sunny Side Youth Center underprivileged children. Last spring Lambda Rho won the Best Alcohol Program Award and earned the second highest sorority grade point average. Thirty-two members earned 3.0 or higher: Andrea Alvey, Cara Buffa, Kristen Connolly, Jody Heacock, Amy Hoffer, Sheri Kuhn, Erika Magyar, Stephanie Millar, Michelle Santo, Diane Shaya, Cindy Strubbe, Kathey Wicklas, Tina VanOpdorp, Debbie Cornwell, Michelle Thorpe, Stephanie Murray, Janet Hagen, Karen Trajkovich, Cindy Johnson, Paula Franson, Belinda Mazarello, Gina Miceli, Kristen Benson, Nancy Azukas, Jennt Scrimps, Mindy Cody, Tracy Ambrosio, Joo Son, Anne Gieffers, Lori Shobutte, Susie Brubaker and Shannon Kickler. Adina McCarthy monitors parties as part of the ISU Party Patrol. Debbie Cornwell is a member of Danceline. Last year's second Delta Zeta Dream Man Star Search was a successful philanthropy competition. Members brought home awards for quota, total, standards program and activities from State Day. Shelley Warner reigned as Greek Week Queen and Kirsten Lynch was named Greek Woman of the Year. Housemother Jayne Delforge was named Panhellenic House Mother of the Year.

Northwestern, Alpha Alpha — Members receiving Delta Zeta scholarships are Beverly Deal, Founders Memorial; Sarah Norris, Heghonian, and Kathryn Comba, Elizabeth Coulter Stephenson. Students who studied abroad last year are back and Susann Szotak is studying in Germany. Summer internships include Susan Dolinshek who earned an Illinois Realtor's License; Ashley Jerath and Kathryn Comba



Social Chairman Shannon Stewart and President Laura Borgman lead Lambda Nu in "Delta Zeta all the way" at Auburn/Montgomery.



Epsilon Epsilon members Terin Brown and Lisa Bozzano celebrate bid day at Fresno State.



"See Jane Rush" t-shirts were worn by Denver-P chapter members for the first day of rush. Laurie Scarborough and Missy Wayne pose for the photograph.

who interned in the U.S. Senate, and Ann Charbonneau who is an intern at the Chicago Field Museum. Northwestern rush has gone to deferred in January.

Southern Illinois, Gamma Omega — Delta Zeta is 108 members strong after a successful and almost stress-free rush. The workshops and plans implemented in the spring proved successful when Gamma Omega pledged 42 new members. Pledge Educator Laura Sabatino has planned a full calendar of events for the new pledge class who will be the first to learn the Delta Zeta Creed in sign language. Along with her duties as pledge educator, Laura is anchor, producer and reporter for WSIU TV 8 Night Report and editor of *RT Update*, the radio and television newsletter. Philanthropy events for the fall include working for the Carnival of Crazyness and assisting residents of Roosevelt Home in Murphysboro through a government program. The government program will allow the chapter to earn approximately \$1300 a month to be returned to the residents of the home, which houses mentally and physically handicapped. Credit card application sales should raise \$1000, already earmarked for chapter remodeling costs. Within the last year, Gamma Omegas have been able to remodel both the dining room and basement. Every mother will receive a Mother's Recognition Pin during Parents' Weekend. Individual volunteers include Laura Sabatino, who reads for the blind; Stacy Fischer, who assists Illinois State Advocates for the Department of Children and Family Services; and Heather McNabb, a personal care attendant for the handicapped. Jacqueline (Jeri) Price is Miss Macoupin County and will travel to the Miss Illinois Pageant this winter. Nancy Quane and Chapter President Katy Diedrich have returned from their travels in Europe. While in Europe, Katy traveled with a former Gallaudet student who taught her sign language.

Western Illinois, Epsilon Omicron — At

press time, members were mid-way through rush workshops and looking forward to a successful formal rush. Delta Zeta's neighbors pretended to be rushees to assist new members less experienced in rush conversation. Rho Chi counselors are Jeanne Finkes, DeAnna Chandler and Tina Sullivan. Delta Zeta initiates earned the second highest academic average among sororities. The average was also above the All-Sorority Women's Average. Earning perfect 4.0's were Jane Burckle, Lisa Lakamp, Jennifer Ryan and Julie Shaffer. Earning above a 3.5 were Angie Brown, Annette Gibbs, Danell Joerr, Chris Jerantowski, Kim Mueller, Stephanie Range, Lesley Ross, Molly Ross, Chris Roszyk, Kim Schneider, Tina Sullivan, Carol Vanderploeg, Carrie Clark and Danielle Schellenberger. Campus Greeks returned to campus for the annual Greek Weekend held in late July.

INDIANA

Ball State, Gamma Chi — As a result of a great understanding of the serious environmental problems facing the world today, Gamma Chi is now a recycling chapter. Members recycle aluminum cans and save the aluminum tabs to benefit kidney dialysis. Members also recycle plastic, glass and paper, individually and as a chapter.

DePauw, Delta — Chapter members welcomed alumnae for the Annual Alumnae Weekend in early June. Activities included a brunch, meeting and tours of the house. Members returned to school a few days early for Work Week. Though rush was still more than a month away, Delta Zetas were practicing songs, chants, floating patterns and creating skit decorations.

Purdue, Xi Omega — Delta Zeta initiated 38 pledges from last spring, and they quickly moved into the house. At press time members were planning prerush events and nominating homecoming candidates. Purdue Alumni Asso-

ciation elected Renee Kruger as a Special Boilermaker; Amy Williams placed second in a fraternity beauty contest.

IOWA

Iowa, Iota — Spirits were high throughout rush week and the reward was an "awesome" pledge class. Field Representatives Pam Stoenner and Kathy Hovde were on hand for the events. Rush counselors were Pam Daniel, Alice Mueller and Danita Yoerger. Alice Mueller chaired Bed Races, the all Greek philanthropy. Members also participated in a beach volleyball tournament and olympics for the Big Brother/Big Sister Program. Iotas are hoping for a second consecutive reign as intramural champs.

Iowa State, Beta Kappa — Delta Zetas rushed for the first time in the is brand new renovated house. The successful rush added 30 pledges — *quota plus!* The pledges are already hard at work on Jr. Greek Olympics hoping to win a second consecutive first place for Delta Zeta. Kelly Kellen is student adviser for VEISHEA.

KANSAS

Fort Hays, Delta Omega — Hard work paid off for Delta Zeta! After an intense week of work before formal rush and putting finishing touches to the most minute detail, Delta Zetas presented Grease, and members donned pink and blue poodle skirts dancing to *Summer Nights* and *You're The One That I Want* and rushees were treated to old fashioned ice cream sodas. For the "Time Out For Delta Zeta Party" the front staircase was decorated with sweatshirts, boxer shorts, letter sweaters and pillowcases while the entire ceiling of the formal living room was covered with helium balloons. Following preference, Delta Omega added six new pledges and was the only sorority on campus to fill quota. Seven members traveled to the summer leadership conference in Texas. Campus leaders include Stephanie Kantor, Panhellenic president; Amy Jo Williams, Outstanding Senior Greek Woman, and Misti Hamilton, sophomore honor society president. Kelley Durbin is the school mascot, and Jeanne Costigan captured the lead in the campus production of *Steel Magnolias*. Student ambassadors are Mary Ann Scheetz and Tasha Haas.

KENTUCKY

Eastern Kentucky, Xi Beta — Delta Zeta ranks third in academics on campus and added 20 pledges in fall formal rush. Rush parties included a popular Roaring Twenties skit complete with flapper dresses and a jazz dance number. Members are organizing a flag football team to participate in sorority intramurals.

Kentucky, Alpha Theta — Members arrived in early August to prepare for fall formal rush. This year's rush featured a newly choreographed *New York! New York!* party. Members traveled to King's Island for a sisterhood activity. Rebecca Smith ranked in the Top Ten in the Miss Tennessee Celebration Pageant. Tara Crane is a member of the UK Soccer Team.

Louisville, Beta Gamma — Members gathered at Kavanaugh Life Enrichment Center in Crestwood in early July for two intense days of rush camp. After preparing songs, costumes, skits and "attitudes," Beta Gammas produced



Surgery and two broken arms didn't stop pref night participation for Rho chapter's Kim Schmillen, Nicole Barmen and Kim Barton at Denver University.



Xi Betas at Eastern Kentucky use a Roaring 20s skit for 1990 rush.

another successful formal rush and added a quota pledge class of 21. Pledges and initiates got to know each other better at an overnight chapter retreat at Beulah Presbyterian Church. Activities included Dee Zee charades, name games, learning Delta Zeta songs, and volleyball. Members enjoyed a Sister's Night Out at the house following UL's first home football game. Members had attended the televised kick off pep rally prior to the game. As a Panhellenic project, Natalie Clem and Cindy Lance participated in the summer Mayor's Operation Bright Side, a city clean up. Alumnae were welcomed to the annual picnic in their honor, and Delta Zetas enjoyed a luncheon buffet the first day of school to give members a chance to stop by and eat between classes. Delta Zetas distributed food to bikers in the March of Dimes Bike-a-thon. Last spring members welcomed Susan Fruits' brother Brian as a guest philanthropy speaker. Brian is a student at Galaudet and was more than willing to answer all the Delta Zeta questions about his school and way of life. Tracie Ritchie participated in the Miss Kentucky Scholarship Pageant. Mindy Bell, Paige Hill and Susan Fruits are members of UL's nationally ranked Ladybirds Dance Team. The team took top awards at the **University of Tennessee** National Cheerleader Association dance competition. The group performs at Cardinal football and basketball games. Julie Dunn, Shannon Hill and Jill Prater are members of the Student Orientation staff. Jill was guest solist at the Freshman Convocation in the new Student Activities Center. Natalie Clem, Rebecca Cox, Julie Dunn, Susan Fruits, Staci Hill, Emily Miller, Jill Prater and Cary Utley were also special guests at the event for the work in the One-On-One Student Mentor Program. As mentors, they help orient freshman to the campus.

Morehead, Kappa Tau — Chapter members volunteered their time and hearts to assist in the 1990 Kentucky Area 9 Special Olympics. Girls helped officials keep times, mark distances and keep events on schedule. However,

the duties Delta Zetas most enjoyed were serving as "huggers" and "buddies" to the athletes. Members also made signs welcoming competitors to the campus. Another KT philanthropy include a three-night haunted house which features a spectacular spook show. Parents enjoyed a Parents' Weekend which included a university football game, a picnic and a Delta Zeta special skit, *It's Your Life*. In the skit, members portrayed events in Delta Zeta lives; the events had been submitted by parents and surprised quite a few members! Cathryn Watson was ranked 18th in the nation for college softball RBIs. She was featured in the Sports Calendar and won both an NCAA Softball Scholarship and an academic scholarship. Amy Conley won the MSU President's, the MSU Governor's and the Blanche and Thomas Hope Scholarships. Ann McGlone won a four year Regional Honors II Scholarship. Other scholarship winners were Dawn Bolte, leadership; Ellen Lyons, alumni; Jenny Hubbard, MSU; Michelle Marcum, Presidential Scholarship; Susan Babler, Junior Achievement Scholarship, and Lenore Womack, Ralph Woods Scholarship. Gamma Beta Phi honorary tapped Kristen Moran and Rochelle Eddington. Michelle Marcum won the Governor's Scholars Award, and Lenore Womack won the Residence Hall Award. Amy Conley was named Most Outstanding Pledge of Province XX at State Day. She was also one of 39 Kentucky students selected to participate in the Health Careers Opportunity Program.

Northern Kentucky, Kappa Beta — Delta Zeta broke a chapter record for fall formal rush with the largest pledge class ever — 16! Formal rush featured a new fifties theme party, Rush Around the Clock. Ann Farmer, Kelly Marcum and Meredith Simkonis were all named to the Greek Week Hall of Fame for their involvement on campus and in the sorority.

LOUISIANA

LSU, Sigma — For the thirty-first consecutive

year, Sigma pledged quota. This year's pledge class numbers 48! Delta Zeta's new second party skit, *Willie Wonka and the Chocolate Factory*, was the talk of sorority row during formal rush. Special guests for rush were Past National President Carolyn Barnes Gullatt and Field Representative Julie Stewart. Members and pledges celebrated on Bid Night with a barbeque and space walk party at alumna Maria Hilburn's house. Sigma hosted a Greek Volleyball Tournament, enjoyed a pledge retreat in Covington, and was the first sorority on campus to display blue and yellow ribbons on the front lawn remembering hostages and servicemen in the Middle East. Studying abroad over the summer were Melinda Steele, Katie Paine, Mary Beth Cancienne and Kristin Munson. Michelle McCune is a member of Alpha Lambda Delta, Kappa Tau Alpha and Gamma Beta Phi honoraries. She is a campus reporter for *Reveille* and a *Greek Columns* staff writer. She won a LSU Honor Scholarship and is on the Dean's List. Melissa Gregg is a member of Phi Eta Sigma honor society, Dean's List scholarship, Informative Speech Contest winner, Senior Panhellenic delegate, and Province XVIII Pledge GPA winner. Amy deGeneres is secretary of Sigma Tau Delta. Poppi Johnston holds a seat in Student Government Association and served on the overall homecoming committee. Marci Glasscock, who also holds a seat in Student Government Association, serves on the LSU President's Cabinet, Leisure Sports Management Council, LSU Systems Mass Transit Committee and chairs the Students Rights and Welfare Committee. Gabrielle Gros served as facilitator for the Panhellenic Pledge Retreat and is a Rho Lambda member. Chapter President Margaret Morel is a Dean's List scholar and member of Rho Lambda, Order of Omega, and Alpha Epsilon Delta. Panhellenic President Carla Rowland also serves on the Chancellor Davis Student Advisory Council, Vice Chancellor Moore Student Advisory Council, Overall Charity Marathon Committee and Student Government Association Student Athletic Council. Carla is 1990 Panhellenic Rush Director and vice president of Order of Omega. Ashley Wall, winner of the Baton Rouge Panhellenic Outstanding Sophomore Award, is Student Government Association Assembly secretary, *Greek Columns* editor, Student Athletic Advisory Committee Secretary, Rho Chi member, Panhellenic delegate, and member of Greek Week and Homecoming committees.

Nicholls, Kappa Alpha — Over 200 alumnae and guests were on hand for the chapter's annual Rose Formal which featured the theme *Puttin' On the Ritz*. Guests and members had plenty to celebrate from a successful year which had included second place honors in songfest, highest academic average, province quota, pledge and singing awards, and Greek Week honors. Greek Court members included Jennifer Amedee and Cindy Burns. Pilar Koch reigned as Queen of the Pirogue Court. Jennifer Amedee and Cindy Burns were members of the Greek Court. Pilar Koch and Jennifer Amedee are fraternity sweethearts. Deshae Allen, Tara Campo and Kelly Young are cheerleaders. Order of Omega tapped Jennifer Amedee, Michelle Authement, Kelly and Shelly Badeaux, Claire Doiron, Cindy Burns and Carolyn Hull. Carolyn serves the honorary as treasurer. Kelly Badeaux was named outstanding



Cinderella finds herself surrounded by a rainbow of Iota chapter ΔZs at University of Iowa rush.

junior in the province. Student Government Association includes Kelly Badeaux, president, and Shelly Badeaux, Cindy Burns, Jennifer Kelly and Casey Kern, senators.

New Orleans, Theta Kappa — Members traveled to Baton Rouge for Province Day and enjoyed a spring formal at Vista Shores Country Club. Baked goods proved profitable fund raisers in the spring.

MASSACHUSETTS

Massachusetts, Xi Alpha — After nine years of renting, Xi Alpha now owns its own home. Delta Zeta won Greek Games and first prize for Greek Sing Competition. For the first time in chapter history, Delta Zeta won homecoming, Greek games, and Greek Sing all in one year. The Delta Zeta Sweepstakes raffle, another first, raised \$2000. Delta Zeta co-sponsored the first campus wide Road Race; proceeds went to American Heart Association. Members bid farewell to 23 graduating seniors at the spring formal. Carla Baker and Barrie Zimmerman were two of the 60 winners of the coveted William F. Field Alumni Scholarships. Senior Leadership Awards went to Marissa Melliza, Naomi Linder and Melissa Silverstein. Melissa was also named Greek Woman of the Year, and Naomi won the Gamma Gamma Award. Melissa Starrett is a member of Rho Chi and Lynn Robertson serves Panhellenic as secretary.

MICHIGAN

Central Michigan, Gamma Psi — Delta Zeta enjoyed a summertime sisterhood retreat at Lori Centa's cabin. The retreat provided an opportunity to strengthen sisterhood and set goals for the school year. Rush counselors are Sarah Powel, Sarah Przybylski and Denise Balcerzak.

Eastern Michigan, Gamma Sigma — Delta Zeta placed third overall in Greek Week activities and celebrated their first year anniversary with parents and alumnae. The calendar also included a Kilarney Rose dinner dance. Summer outings included trips to Kristen Von

Bernthal's home on the lake in West Bloomfield, and Laurel Mitchell's home in Addison. Members helped with Orientation 90 by assisting freshmen move in. Academics Chairman Lisa Miller is offering new study incentives — Smarties candies for members earning A's on tests. Melissa Hendrick won a scholarship for her work with the mentally impaired from United Commerical Travelers of America.

Ferris State, Zeta Nu — Ten ZNs traveled to Purdue for the Norma Minch Andrisek Leadership Conference in early July. Prior to fall formal rush, members enjoyed a camping trip "geared" toward rush.

Grand Valley State, Xi Psi — Delta Zeta was named Sorority of the Year by the Greek Council. Members have welcomed friends, relatives, and other Greeks to the new chapter house with two open houses. Fall plans include planning a homecoming float even better than last year's second place winner, a Founders Day celebration with alumnae, and sponsoring a blood drive. Student Senate includes Bethany LeButt, vice president; Lori Pfeffer, secretary, and Shauna Reed, Stephanie Weiss, and Michelle Buchan, senators. Greek leaders include Kristen Gatlin, Greek Council treasurer; Amy O'Kelly, vice president-elect of Panhellenic Council, and Michelle Buchan, vice president of rush, Panhellenic Council. Stacy Weiss serves as vice president of Omicron Delta Kappa.

Michigan Tech, Lambda Theta — Tragedy brought members even closer together when the Delta Zeta sorority house was destroyed by fire on June 13. The chapter gathered to set chapter goals and complete formal rush plans at the annual retreat. This year's event was held at Heidi Mueller's cabin in Pelican Lake, Wisconsin. Robin Scharf won the Philip S. Maki Leadership Award presented by the Dean of Students.

Wayne State, Epsilon Sigma — Summer events included rush workshops, a Hawaiian Luau at Patty Ann Rauser's home in Allen Park

and a chapter camping trip to Dearborn. Emmylou Tiu was honored by the chemistry department for outstanding achievement. Chapter Editor Lisa Giampa sends this riddle. Q: What do you get when you have three birthdays on the same day by three Epsilon Sigma sisters? A: A three-mendous time!

MISSOURI

Central Missouri, Epsilon Gamma — Delta Zeta added a quota pledge class of 27 in fall formal rush. Rho Chi rush counselors were Debra Achiti, Christy Smith, Kimberly Eswine and Michelle Overton.

William Jewell, Zeta Rho — Rush Week was filled with new ideas and beginning traditions. Members tied pink and green ribbons to their car antennas and rear-view mirrors, made new banners, and learned and created new songs. Iced turtle-shaped cookies replaced caramel popcorn as a snack during the second rush party, and a video photo album replaced the projector slide show that had been a part of the preference party. A successful rush brought quota (35) plus (2) for a new pledge class of 37! Parents will enjoy some busy activities with Delta Zeta daughters including a Father's Football Game, a Delta Zeta Mother's Day and a trip to a performance of *Romeo and Juliet*. A Brother and Sister Day will be spent making cookies. Parents' Weekend at WJ will include a Sock Hop Double Bop with parents accompanying daughters and dates. Philanthropies include sponsoring the second Teeter-Totter-a-Thon, assisting a six-year-old deaf boy, a Dimes for Deaf collection, and aiding the homeless. Members plan to raise chapter funds with pizza sales.

NEBRASKA

Creighton, Theta Eta — Executive officers traveled to Purdue for the Norma Minch Andrisek Leadership Conference, while members who lived in Omaha during the summer joined College Chapter Director Marsha Miller Simmons in giving the chapter house a much needed paint job. Officers of Residence Hall Association are Katie Joyce, president, and Kris Otoupal, treasurer. Candice Farrell was named to the National Dean's List. Wendy Slate is a member of the psychology honor society and listed on the dean's List. Diane Theisen serves on the Student Center University Committee.

Nebraska Wesleyan, Beta Tau — Delta Zeta welcomed a quota pledge class of 32 after a successful formal rush which featured *SS Delta Zeta* and *On Broadway* parties. Beta Tau's 117 members earned a 3.43 overall overage for the spring semester. Earning perfect 4.0's were Laura Anderson, Liz Buxton, Tish Gade, Carol Garcia, Christy Hancock, Sorel Haruf, Cheryl Hinze, Becky Hollister, Kelli Kapustka, Jennifer Lamberty, Dawn Miller, Julie Ott, Catherine Wengert, Dee Wilson and Jacqueline Williams. Also included on the Dean's List were Stacy Alexander, Lisa Baratta, Susan Batenhorst, Kelli Burgoin, Daphne Epp, Cindy Grooms, Cari Gilliland, Heidi Herzberg, Joan Korte, Lori Ladehoff, Monica Larson, Tracy Lauritsen, Jennifer Marsh, Jill Mastera, Lori Moser, Amy Orr, Michelle Pariset, Sara Rathjen, Kristen Ross, Brenda Schaefer, Michelle Sindt, Joni Travis, Jennifer Young, and Danielle Zentgraf. Helping steer activities for Union Programs are Tracy

Fiala and Darci Emry, head coordinators. Coordinating other events for the group are Alison Kravetz, Susan Batenhorst and Lisa Wieman. Nicci Tonniges is editor of the Wesleyan yearbook.

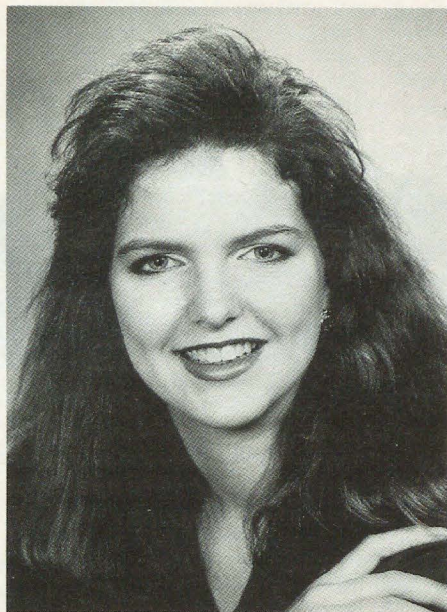
NEW JERSEY

Glassboro, Xi Kappa — Kristin Rienstra spent six weeks of her summer attending ROTC Advanced Camp at Ft. Bragg, North Carolina. The camp is a requirement prior to receiving a commission as a Second Lieutenant in the U.S. Army. On her rare free days she would wander around the post sporting her Delta Zeta attire. She was greeted by other Delta Zetas from all over the East Coast, Maine to Georgia, to exchange sorority stories. While at Ft. Bragg, Kristin was trained by many members of the 82nd Airborne Division before they were mobilized to Saudi Arabia. Kristin holds memberships in Gamma Tau Sigma honorary along with Tracey Kozdemba and Julie Locascio. Kristin received the Business Department's leadership award for outstanding work in the college community. Cathy Coltellaro and Karen Benchoff are resident assistants and have worked with the Peer Referral Orientation Staff. Last spring the former Bureau of Greek Organizations was reorganized and established a new umbrella governing group for Greeks. The new organization is the Inter-Greek Council.

Trenton State, Lambda Lambda — Delta Zeta earned the Presidential Cup and placed second in academic overall grade point average competition. After enjoying a retreat in the Poconos featuring enthusiastic workshops on activities, rush, fund raising, pledge program and public relations, members are looking forward to a great rush. Ten Lambda Lambdas attended the Norma Minch Andrisek Leadership Conference at **Massachusetts**. Several



Bid day at Kentucky-AΘ . . . real life sisters Tonia and Jennifer Hatcher.



Carla Rowland, Sigma, is Panhellenic President at LSU.

members returned to campus early to assist the Inter-Greek Council with freshman orientation events of moving new students into dorms, a carnival and even a rug sale!

NEW MEXICO

New Mexico State, Gamma Xi — After returning to school two weeks early to prepare for formal rush, Gamma Xis were able to see their hard work pay off when they added 13 great new pledges. Prior to the initiation of the spring pledge class, members enjoyed building a badge model out of cookie dough.

NEW YORK

Clarkson, Xi Rho — Delta Zetas joined other Greek organizations at Green Lake for a Greek weekend. They are proud occupants of a new chapter house!

Rochester, Lambda Iota — At press time, members were anxiously preparing for formal rush and the arrival of two new national sororities: Gamma Phi Beta and Alpha Phi. Six Delta Zetas attended the Norma Minch Andrisek Leadership Conference. Shawn Shepard has been tapped for Order of Omega, Greek honorary, and Kaedians, senior honorary. Jenni Czekaj is a member of D'Lion sophomore honorary. Kathy Crane is studying in Madrid fall semester.

NORTH CAROLINA

Appalachian State, Lambda Phi — Named the most outstanding chapter in Province XXI West at province weekend, Lambda Phi chapter went on to pledge quota of 37 in fall rush. Fundraisers for last semester included working in the ASU bookstore which brought in over \$2,000 for the chapter and selling Domino's Pizza certificates with proceeds going to Galaudet. During Speech, Language and Hearing Week, the members wore buttons and sponsored a public service message on the campus

radio station. Jackie Sessa is a member of Order of Omega and Marianne Kearns was named outstanding Panhellenic Delegate. Appointed to the ASU Senior Planning Committee is Lisa Buffone. Bernadette Hanley has been commissioned a 2nd Lieutenant in the U.S. Army. An ASU Ambassador (student guide) is Jill Hooper and Michele Ribiero is a resident assistant. Appol Corps Leaders (freshman orientation) are Susan Hamlett, Wendy Ball and Blenda Price.

Atlantic Christian, Theta Omega — On September 6 at the annual convocation, members witnessed the name change of the college. The new name of **Atlantic Christian** is **Barton College**. The name honors one of the college's founders, Barton Stone. Delta Zetas honored freshmen in the dorm with a welcome party. Members have already started raising chapter monies. The first fund raiser was a car wash.

Lenoir-Rhyne, Zeta Xi — Members will be celebrating the college's 100th homecoming celebration this year with an alumnae tea, a homecoming float and carnation sales. Zeta Xis worked at Carrowinds Theme Park as concession vendors during Labor Day to raise chapter funds. Another profitable fundraiser is working at LR Centennial banquets. Amanda Pierce is national northeast U.S. director for the American International Jr. Charolais Association.

North Carolina-Chapel Hill, Xi Sigma — At press time, members were roughing it in the Omni Europa Hotel waiting for the completion of the 10,000 square foot chapter house by October 1. Brickwork was almost finished and the landscaping was underway. All the furniture had arrived and was in storage. Upon completion, the house will be the largest sorority



A successful rush at Fort Hays State featured a "Time Out with Delta Zeta" theme party. L to r, Lisa Schreiner, Amy Jo Williams and Lori Collier.

house on campus. Ironically, this exciting news event is creating a few problems with rush "silence" rules. It seems everyone on campus is asking about the house! Rush was a few days away and final touches were being placed on party themes: The United Colors of Delta Zeta, Late Night at Delta Zeta, and Delta Zeta in Paradise. On hand for formal rush were National Director Jennifer Plenge and Field Representative Julie Stewart. Plans for the fall include a Parents' Weekend featuring a housewarming party, pre-game brunch, show choir performance and awards banquet. Philanthropy Chairman Beth Steibeck is organizing a trip to Gallaudet University for interested chapter members. Neva Edens, academics chairman, has organized both a quiz file and professor file as study aids for chapter members. Alisa Cargan won the George Cornwell Scholarship from the Pharmacy School. Lori Goins won second runner-up honors in the Miss North Carolina contest.

North Carolina-Charlotte, Kappa Phi — Top scholars earning Chancellor's List honors were Jena Warren, Karen Johnson, Allison Borkowski and Diane Croll. Listed on the Dean's List were Jennifer Bost, Sue Prunetti, Christin Donley, Kris Hoppenseadt, Kim Sommer, Megan Riordan, Carol Andrews and Tracy Tilley. Golden Key national honor society tapped Tracy Tilley, Jennifer Bost and Carol Andrews. Jennifer Mills serves Order of Omega as vice president. Five members represented Kappa Phi at the Norma Minch Andrišek Leadership Conference in Athens, Georgia.

North Carolina-Wilmington, Xi Theta — Members are hoping to find Wilmington alumnae interested in forming an alumnae chapter. Over the summer, Xi Thetas learned that "free" car washes are more profitable than flat fee car washes. The election of an additional social chairman should help ease the load of the current social chairman. Together, they will plan mixers, semi-formals, and the formal. Members are trying out a new rush skit which features a step show. Rho Chi counselors are Mandy Hartman, Lisa Pinckney and Tish Lopes.

Western Carolina, Theta Iota — Chapter President Amy Saltz is executive secretary to the president of Student Government Association, and a member of Mortar Board and Order of Omega. At press time, members were welcoming new pledges at a cookout. Rush included a new skit night party featuring a Broadway theme.

OHIO

Ashland, Theta Psi — Members traveled to Chapter President Brenda Stiving's home in Chillicothe for the annual summer retreat. The day included visiting and planned activities as t-shirt painting and horseback riding. Members are already hard at work planning for formal rush in January.

Bowling Green, Gamma Tau — Forty-one enthusiastic pledges celebrated pledge day with a cookout, volleyball games and movies. Last January the chapter's newly elected president, Mary Beck, was involved in a serious car accident which left her hospitalized. Through several operations, Mary has continued to fulfill her duties as chapter president, fulfill her cam-



Alpha Alpha members do "the ΔZ way" at their Memorial Day picnic at Northwestern.

pus commitments, and display an optimistic and positive attitude which has brought Gamma Taus even closer together. Golden Key national honor society tapped Nancy Carroll, Julie Lange, Debbie McNellie, Shelly Parks and Jamie Pinkerton. The Society of Distinguished Collegiate Americans lists Marsha Mosko. Other members of honoraries are Lisa Esarove, Mary Beck and Julie Herbert, Order of Omega, and Mary Beck, Mortar Board. Rho Chi counselors are Julie Baker and Marsha Mosko. The Dean's List includes Kristy Hagelberger, Nancy Carroll, Chris Bodnar, Suzette Cory, Liz Esarove, Jen Fish, Barb Groth, Tricia Ingram, Beth Marik, Tracie McCluskey, Jamie Pinkerton, Megan Proffitt, Amy Rix, Lisa Schreiber, Christy Spencer and Jackie Whitcomb.

Miami, Alpha — Delta Zeta once again pledged a quota formal rush pledge class. This year's class numbers 50! Elizabeth Ciancio, president of Choraliers, won the Libertyville Panhellenic Scholarship. Jamie Schlueter was tapped for Phi Beta Kappa.

Ohio State, Theta — Chapter members were honored to serve as part of the initiation team for Omicron Gamma at Ohio University. At State Day, Theta received awards as Most Improved Chapter and Best Scrapbook, and earned certificates for quota, academics, standards, pledge training, sorority education and most beautiful song. Past President Cheryl Halley was named Outstanding Chapter President. Winners of Golden Crest Awards were Cheryl Halley, Trisha Grau and Gina Stoessner. Sharon Weldon won a Golden Heart Award. A creative Parents' Day Luncheon included a professional photographer on hand to take family portraits. As a special farewell to the eight graduating seniors, Heidi Hofrichter organized a senior ceremony which featured Sarah Temple's end of the year slide show. Housemother Sarah Pizzino prepared cake, ice cream and punch to celebrate a successful year. Several Delta Zetas helped with registration for free speech and hearing tests at Ohio State's Speech-Language-Hearing Clinic on campus. A Delta Zeta bake sale helped provide funds for the clinic. Sarah Berlin is a fraternity sweetheart; Barbara Badalameti and Heidi Hofrichter are rush counselors. Heidi spent the summer on an internship in England. Natalie Bogar is a senator in the Undergraduate Student Government.

Youngstown, Kappa Chi — At press time, members were in the process of moving into the new chapter house and planning numerous philanthropic activities. Events include participating in the annual putt-a-thon and bike-a-thon to benefit Gallaudet. In addition, members assisted at the Canfield Fair, an open house art show, and the Oktoberfest for Youngstown Hearing and Speech Center. KXs also worked the MDA Telethon. Parents and members enjoyed a picnic at Mill Creek Park.

OKLAHOMA

Northeastern, Delta Phi — At press time, Delta Zeta was midway through formal rush with Field Representative Michelle Beck on hand to assist. Plans are underway for the third annual rock-a-thon, a Halloween carnival with Children's Methodist Home, and Christmas caroling with the Davis Nursing Home. Missy Clark serves as vice president for Panhellenic and vice chairman for both Young Democrats and Oklahoma Intercollegiate Legislature. Lisa Stoner is attorney general for the Student Senate, while Robyn Wilson serves as parliamentarian for Young Democrats.

Oklahoma State, Alpha Epsilon — As collegians created nametags and conversation techniques, parents were on hand to "spiff up the chapter house" prior to formal rush. Minor repairs were made on various parts of the house, while the outside sparkled after landscaping efforts and paint touch-up. Four new swing gliders now grace the side porch, new brass Delta Zeta letters add an elegant touch to the front of the house, and the "old gray front door" received a daring makeover with a coat of mauve paint. A beautiful new chandelier lights up the main entryway. And Chapter Editor Traci Steele reports, "all in all, the much-needed house beautification efforts contributed to the chapter's 1990 rush." Phi Eta Sigma academic honorary includes Kelly Ervin, Amy Sweatt and Jill Watson. Jill serves Panhellenic as secretary. Golden Key tapped Stacey Ballinger and Michelle Ellis; Dulcie Rogers is a member of Phi Upsilon Omicron. Kathleen Gammill serves as president of Society of Women Engineers. Candi Buxton won Miss Sorority Pledge honors and is a member of the OSU Concert Chorale. Traci Steele is special

events officer for Public Relations Student Society of America.

PENNSYLVANIA

Clarion, Epsilon Theta — At the end of spring semester, Delta Zeta's pledges captured top academic honors, while the chapter placed third overall academically. Chapter President Christine Hilterman, who attended the Norma Minch Andrisek Leader Conference at Massachusetts, kept members informed with a chapter newsletter. College Chapter Director Jamie Bero directed a leadership conference at North Texas. At press time, members were excited about this year's rush theme.

Drexel, Epsilon Zeta — At a chapter rush retreat in mid-July members added finishing touches to this year's formal rush theme, Sail Along With Delta Zeta. The series of parties follow events on a cruise: the Welcome Aboard Party, a Caribbean stop, a Mexico stop, and the Captain's Ball (preference). Bonnie Smith is president of IFA TownWatch, and Kim Hoch is a fraternity sweetheart.

Duquesne, Kappa Xi — Delta Zeta performed *I'm a Little Bit Country* and *a Little Bit Rock'n Roll* as their song and dance number in the annual Greek Sing. The event benefitted the homeless. Delta Zetas are looking forward to Greek Carnival Show where they will present an original chapter musical. Delta Zeta placed second in intramural volleyball and collected for MDA. Duquesne swim team member Melissa Bury broke a school swim record.

Kutztown, Kappa Rho — Members gathered for a Delta Zeta Weekend over the summer to provide a chance for relaxation and sisterhood. Lisa Smitreski is Parent Coordinator of KU's Orientation Staff.

Lehigh, Xi Pi — This year marks the beginning of three years in the new Delta Zeta house, formerly the Alpha Chi Rho fraternity house. Forty-one Xi PIs moved into the house and are enjoying meals together in the dining room and fun in the rec room. The house features a chapter room with new carpet and furniture, adding

a special Delta Zeta touch. Delta Zeta opened the year with the number one academic ranking and open rush activities such as brunches, ice cream socials and movie nights. Other activities included ping pong tournaments and barbecues with neighboring fraternities. Omicron Delta Kappa leadership fraternity tapped Erin Cummings, Erin Brown and Marilyn Vricella.

Mansfield, Iota Theta — Members are planning a celebration of the chapter's 25th anniversary on March 9-10, and welcome all alumnae. In preparation for rush, members painted the residence hall floor (pink and green!), repainted windows, and hung composites. Parents joined collegians to celebrate Parents' Weekend with a picnic at Lamb's Creek State Park in New York. Cristin Feehrer and Michelle Burdulis earned Dean's List honors.

Muhlenberg, Xi Iota — Earning Dean's List honors are Veronica Alweiss, Ellen Bloom, Deborah Cohen, Julia Cromer, Jeanine Einfalt, Patricia Fix, Diana Hall, Laura Jamrock, Kelly Hardy, Dana Italiano, Ellen Keiter, Karen Klimek, Elizabeth Kratzer, Lisa Kumar, Beth Kushnik, Tina Nakata, Sonia Schiemann, Linda Schmale, Michelle Simmons, Margo Trott, Nancy Tsibogos, Suzanne Cunningham, Jennifer Goldberg, Judy Kotch, Amyu Kuptsow, Stacie Ludwig, Emily Serpick, Jennifer Staley, Sharon Yencharis, Michele Arilotta, Kristin Beer, Meridith Conrey, Melissa Glaser, Kimberly Halma, Kimberly Kelemen, Francesca Battista, Sheri Glenn, Erika Lawson, Angela Giorgione and Wendy McCann. Seventeen Xi Iotas are studying abroad, while one is touring with Up With People! musical group. Twenty members enjoyed the hospitality of Sheri Bryce and her family for a July Fourth three day celebration in Washington, DC. This included touring the area, a Mexican feast, and viewing fireworks celebrations. Ten members then traveled to the Norma Minch Andrisek Leadership Conference at the *University of Massachusetts*. Anne Roderick and Stacie Ludwig are fraternity sweethearts.

Penn State, Gamma Delta — At press time, members were amidst Rush '90. Weeks of practice and months of preparation came to an end September 4 as 300 girls arrived to learn more about Delta Zeta. Themes for rush include Celebrate Delta Zeta, Picnic in the Park, and A Trip to Hollywood. Members welcomed Field Representative Katie Mitchell for rush.

Robert Morris, Xi Chi — Members added some special touches to this year's formal rush. They recorded the rush songs at a recording studio, and designed and constructed all the skit props.

Shippensburg, Kappa Psi — College Chapter Director Ellen Gigliotti has been named campus Greek adviser. Order of Omega Greek honorary includes Christie Shaffer, Stephanie Baiman and Erin Connors. Kristen Ellis and Denise Berkis are fraternity sweethearts.

Slippery Rock, Zeta Psi — Nine Delta Zetas are now residing in the new chapter house. Members are preparing a Fruity Pebbles float following the homecoming theme, *Snafu*, *Crackle and Pop Into the Nineties*. Past Chapter President Amy Double, who has a graduate



Xi Alpha at Massachusetts co-sponsored a road race. Judy Greenbaum and Tracey Richman ran for the chapter.

assistantship with student activities, is coordinating campus homecoming events. Delta Zetas will host alumnae for a breakfast prior to the parade. Rho Chi counselors are Dawn Hempel and Jeanine Will. Order of Omega includes Jeanine Will and Patricia Banks. Nicole DeJulia is a Student Ambassador.

Temple, Delta Tau — Executive board members traveled to the Norma Minch Andrisek Leadership Conference at University of Massachusetts, while the entire chapter gathered for a summer workshop in mid-August.

SOUTH CAROLINA

Winthrop, Lambda Sigma — A week before school began, the house enjoyed some special decorating touches. Members painted, placed gravel in the driveway, added a downstairs air-conditioner and placed rocking chairs on the front porch. Members are looking forward to Greek Week, now a fall event, and a weekend mountain retreat. Past Chapter President Nancy Linderman was named one of four Panhellenic Women of the Year. She is a former Panhellenic delegate, former president of the Student Alumni Council and homecoming queen finalist. Chapter President Molly McKenzie is also president of the Model UN Club and active in Student Government Association.

TENNESSEE

Memphis State, Gamma Iota — After winning each daily event in Greek Week and boasting a chapter participation rate of 95%, Delta Zeta became the first winner of the traveling Greek Week trophy. Gamma Iota's candidate won Greek Goddess honors. Members orchestrated a new skit, *DZ and the Chocolate Factory*, for formal rush. With the help of a parent, members created suckers, life savers, tootsie rolls, chocolate kisses, oreo cookies, candy trees, and an incredible chocolate "water" fall.

Middle Tennessee, Iota Iota — Delta Zeta added a quota pledge class of 34 in fall formal rush. In a "beautiful" coincidence, Leah Hulan won first runner-up honors for Miss Tennessee and Betsy Drewry won first runner-up honors for Miss Kentucky. Dari Anne Tarbuk reigned as Miss Strawberry Festival.



Southern Illinois-ΓΩ's Jacqueline Price is Miss Macoupin County 1990.



Best hometown friends share ΔΖ: L, Traci Doerr, Indiana of Pennsylvania-ΓΦ and Lisa Barbary, Slippery Rock-ZΦ.

Tennessee, Beta Lambda — For the sixth consecutive year, Delta Zeta pledged quota in formal rush. This year's pledge class numbers 43! Party themes included a cruise ship, a safari and Delta Zetas on Broadway. New pledges and chapter members enjoyed a retreat at a lake cabin to learn more about Delta Zeta. Joanne Fellers, vice president of public relations for Panhellenic, assistant director of Student Services Recycling Center and member of the Dean of Students Advisory Committee on Organizations, is reorganizing the campus Rho Lambda honorary. Four Delta Zetas have been tapped as charter members. Sarah Davis is Panhellenic Programming Director, and Linley Law is assistant director for Student Services Legislative Interest Group.

TEXAS

Angelo State, Lambda Omicron — Rush brought quota of 18 to Lambda Omicron. Chapter members worked at the Jerry Lewis telethon, answering the phones and taking pledges.

St. Mary's, Omicron Alpha — With fall semester just beginning, Delta Zetas are already in full swing. Stars and blinking lights suspended from the ceiling transformed the atmosphere of the University Snack Bar for the Club DZ on-campus dance. Members and dates donned special t-shirts that members had worn earlier to publicize the Delta Zeta booth at Snake Shakes, the all school outdoor dance and party. Delta Zetas answered questions about sorority life and displayed various Delta Zeta memorabilia at the Greek Activities Fair. Dean's List scholars are Shirley Alvarado, Mimi DeLuna, Shawn Dinneen, Lilli Estrada, Jodi Jaworski, Karen Johnson, Rachel Valadez. Norma Chavez earned a 4.0 during her participation in the exchange program in Innsbruck, Austria. Honors Program members are Brenda Biediger, Dannette Glueck, Jodi Jaworski, Karen Johnson, Lisa Murray and Brenda Luna. Academic honoraries include Michaela Ecker, Phi Sigma Iota; Rosella Garcia, Psi Chi; Mari Hernandez, Sigma Tau Delta; Marinela Martinez and Norma Villa, Beta Beta

Beta. The English Guild includes Lori Young, a contributing writer for the campus newspaper; Cathy Perez, Navella Pedraza and Jessica Garcia. Summer orientation assistants included Dina Costanza, Ana DeLeon, Cynthia DeLeon, Shawn Dinneen, Michaela Ecker and Jennifer Martinez. Active in student government are Brenda Biediger, Student Conduct Commission; Shawn Dinneen, vice president internal affairs; Karen Johnson, senator and developmental chairman; Karla George and Yvonne Maldonado, student services chairman. Dina Costanza is executive secretary of Panhellenic, while Mimi DeLuna serves as historian for Women in Business. Cindy Gonzalez is a Student Association Public Justice, while Cara Gloor is a resident assistant. Jody Thesing is president of the national residence hall honorary and a recipient of the campus ministry scholarship. Damaris Ortega is a member of University Programming Council, while Marisol Palacios is a member of the dance team. Navella Pedraza is a member of the concert choir and opera workshop. President's Ambassadors are Jody Thesing, Karen Johnson, Jodi Jaworski, Dannette Glueck, Karla George and Lilli Estrada. Karla George is co-founder of the soccer team; Lisa Murray is an Alumni Scholar.

Southwest Texas State, Iota Alpha — Delta Zeta donned pink and green dresses, performed a short skit, and presented a slide show for the first round of rush parties. For second round, members selected painted Delta Zeta t-shirts and white shorts. Following preference, Delta Zeta welcomed a quota class of 60. The first outing for the initiates and their temporary little sisters was a brunch and tour of the capitol in Austin. Members are already planning entries for the Torchlight Parade and homecoming bonfire. Cheryl Stasney is SWTSU feature twirler and Jennifer Denton is a senator. Holly Hopkins reigned as Greek Goddess, while Sandra Adian reigned as Queen of the Cancer Benefit Bowl. Tara Ryne is a member of the varsity track team.

Southwestern, Gamma Zeta — Officers of campus organizations are Jenifer Covington, president of SU Computer Club; Rachael Sandifer, president, SU Softball Club; Pema Baca, student director, Operation Achievement; Mem Holland, treasurer, Panhellenic Council. Members of honoraries are Erin Allen, Alpha Chi, Psi Chi, Mask and Wig, Delta Omicron, Cardinal Key; Pema Baca, Alpha Psi Omega; Nicole Cowan, Mask and Wig, Delta Omicron; Rachael Sandifer, Alpha Phi Omega; Cindy Smith, Alpha Phi Omega, and Wendy Streza, Alpha Phi Omega and Mask and Wig.

Stephen F. Austin, Zeta Psi — Executive officers attended the NMA Leadership Conference at North Texas State University. With 93 members returning, the chapter is looking forward to rush. The chapter welcomed Gamma Phi Beta to the campus.

Texas A & M, Lambda Xi — Field Representative Katie Mitchell was on hand for this year's formal rush which included the traditional Willie Wonka party, along with *Color Your World Delta Zeta* and *DZ — The Big Thrill*, sixties party. For the Big Thrill (a take-off on *The Big Chill*), members suspended 45's from the ceiling, and decorated the lawn with a Cor-

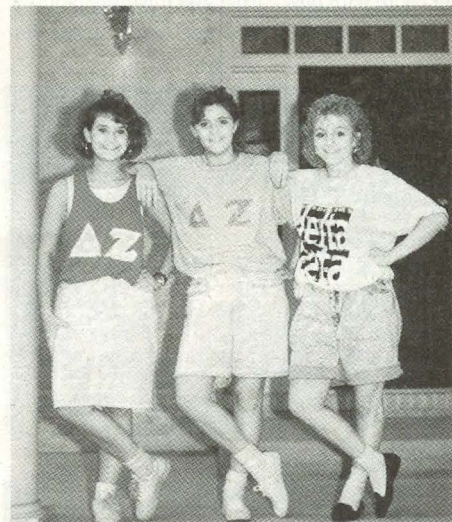
vette and 45's. The 53 pledges were officially welcomed to A & M as Delta Zetas escorted them to All University Night. Ten members attended Norma Minch Andrisek Leadership Conferences; teams visited **North Texas, Purdue, UCLA and Georgia.**

West Texas, Zeta Zeta — Delta Zeta added 11 pledges in fall formal rush, and looks forward to adding ten more in open rush. The chapter earned \$160 for rush with a car wash. Other events included volunteering for the Jerry Lewis Telethon, building a homecoming float, and honoring parents with a Parents' Day Tea. Yuki Flesher and Debbie Thompson are Buff Branding Counselors. Stacy Garrison reigned as Greek Goddess and Angela Duggan is a fraternity sweetheart.

VIRGINIA

Longwood, Epsilon Tau — A summer retreat provided an opportunity to catch up on summer news and prepare new rush songs and a skit for formal rush. Crystal Mitchell received an Honors Scholarship for two years. Christy Meadows received an International Dance Exercise Association certification, and Robin Golden is the Therapeutic Recreational Organization treasurer. Judy Stech is a member of Delta Phi Alpha and Terri Dore is a member of Lancer Dancers.

Virginia Tech, Kappa Theta — Delta Zetas are proud residents of a new sorority house on Greek Row. Kappa Theta was one of ten Greek organizations selected for on-campus housing. The two-level house provides residence facilities for 32, plus a central meeting place for the chapter. Fall activities will include assisting other Greek organizations with their philanthropies and sponsoring the Fourth Annual Delta Zeta Classic. The Classic offers competition for fraternity pledge classes and raises funds for Gallaudet. Recipients of scholarships are Robin Grieshaber, Kristi Hedges, Jennifer Payne, Valerie Rud and Lisa Sneddon. Casey Kepplinger won the \$600 Accounting Faculty



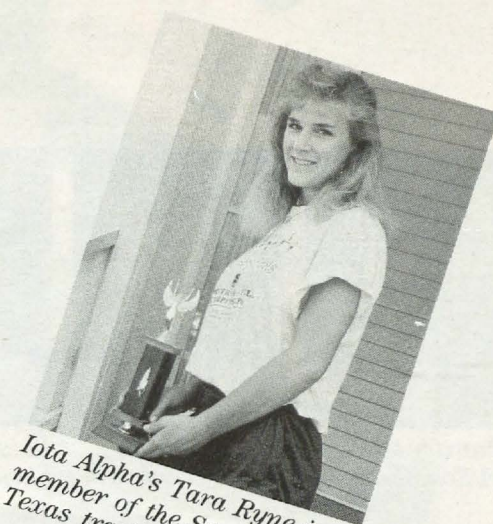
It's bid night at Illinois State-AP. Lori Shobutte and Debbie Inger welcome new pledge Marcy Herman (right).



Cheryl Stasney is a feature twirler at South West Texas State-1A.



Jennifer Denton, SWTSU-1A is an Associated Student Government senator.



Iota Alpha's Tara Ryne is a member of the Southwest Texas track team.

Award. Kristi Kedges is a member of Phi Eta Sigma and Garnet and Gold honoraries. Valerie Jordan serves as special purpose housing chairman for Panhellenic.

WEST VIRGINIA

Fairmont State, Epsilon Iota — At press time members were preparing for the arrival of a field representative for formal rush. This is the first time in several years that Fairmont's Panhellenic has authorized formal rush. Six members were selected as campus freshmen counselors for orientation. Members are delighted that the Delta Zeta alumnae have reorganized in Fairmont. Philanthropy efforts have included the blood drive, United Way drive, raising money for Kidney Dialysis and volunteering hours for the Salvation Army. El also donated to the American Heart Association and World Wildlife Fund. Alicia Morell and Kelly Williamson reigned as princesses on the Queen's Court at the Buckhannon Forest Festival. Gisela Collins, who holds two jobs and carried 18 hours, earned the chapter's only 4.0 last semester. Vicky Morris is a member of the Fairmont Quota Club.

Shepherd College, Kappa Mu — Last spring members traveled to Ripley for Province Day festivities and brought home the Pride of the Province Award. Spring pledges created hand-made turtle baskets as Easter gifts for other sororities. Members enjoyed a picnic and summer retreat at Kelly Orndorf's home. Michelle Scott was first runner-up in the Miss Shepherd Pageant.

WISCONSIN

Carroll College, Gamma Theta — Delta Zetas will be walking to benefit the Juvenile Diabetes Foundation as guests of the Alpha Gamma Delta chapter. The walk at the Milwaukee Zoo is in conjunction with the Alpha Gamma Delta national philanthropy. Members enjoyed a summer retreat at a lake cabin. Pamela Henry is vice president of the Mid-America Panhellenic Council Association.

Wisconsin-Stout, Zeta Beta — For the first time in Panhellenic history, formal rush occurred one week before school. Delta Zeta not only made quota, but is now the largest sorority on campus. New parties included a *Hard Rock Cafe* theme and the Delta Zeta Cruiseline. Sarah Berg and Courtney Bartholomew made all the sailor shirts for the cruiseline party. Another new touch was the escorting of preference rushees in a limousine! The 17 new pledges were welcomed with a cookout.

Wisconsin/White Water, Epsilon Kappa — The chapter has 93 members after pledging quota of 15 in fall rush. Lynn Rice is a member

of Mu Kappa Tau (marketing) and Chris Collins was tapped into Order of Omega. Vicky Poelsterl received a \$1,000 Leadership Fee Remission Scholarship. Jill Piazza, Tiffany Gray and Joanne Stiglich are on the Dean's List. Jodi Jacobson is vice president of the Greek Council and Kristen Wittekind is president of the Panhellenic Council. Christina Garza received a Lawton Undergraduate Minority Retention Grant and Sue Deason has a Fischer Scholarship for geography majors.



Some new pledges at Texas A&M-ΑΞ are proud of their Greek letters.

Sweethearts



Jennifer Galis
WI/Eau Claire-EΩ



Lori Sorrenti
Fresno State-EE



Kristen Ellis
Shippensburg-KΨ



Denise Burkis
Shippensburg-KΨ



Holly Hopkins
SWTSU-IA



Anne Roderick
Muhlenberg-Ξ1



Zeta Phis at Slippery Rock cheer for Greek unity. Photo by Markus Paar.



CCD Kara Barker Price, West Virginia Tech-III attends little sister Marla Barker's initiation into Theta Xi chapter at Glenville State.



Southwestern-ΓΖ's pumpkin carvers: L to r, Ginny Graham, Leigh Shamp, Rachael Sandifer, Erin Allen, Sharon Graham, Kim Baxter, Wendy Streza.



Shippensburg-KΨ's new pledges beam!

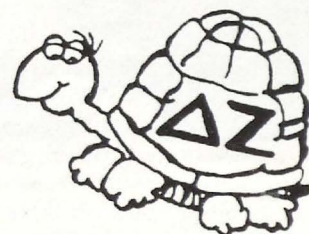


D21	Crest Sweatshirt White or Grey	\$18.00	D26	My Grandma is a 'D Z'	\$7.00
D22	Crest Long Sleeve T White only	\$14.00	D27	My Mom is a 'D Z'	\$7.00
D23	Nylon Windbreaker Jacket Green or Navy	\$22.00	D28	My Aunt is a 'D Z'	\$7.00
D24	D Zee Applique Sweatshirt Navy or White	\$22.00	D29	I Gave My Heart to D Z (Back Reads: My Life. My Time. My Money)	\$12.00
D25	Heavyweight Cross Grain Sweatshirt Ash Grey only	\$38.00	D210	Heavyweight Rugby Navy or Kelly	\$39.00
			D211	Oversize Turtle Tote	\$12.00

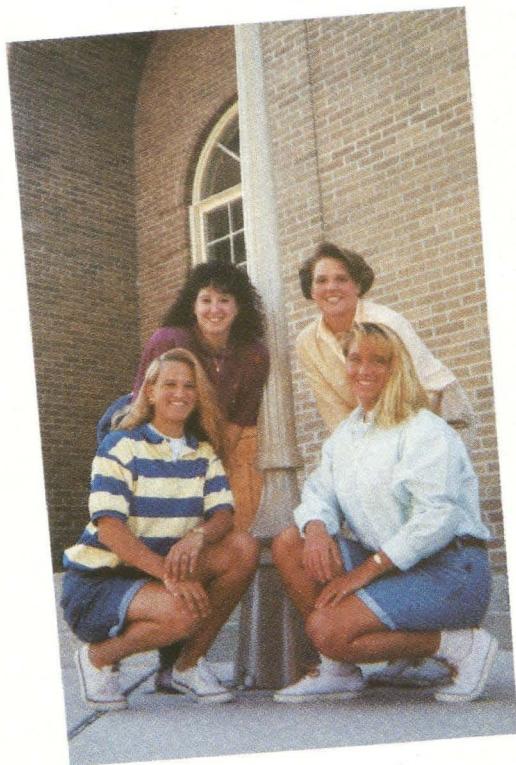
D26, D27, D28 Available only in Kelly and children sizes XS - 2-4, S - 6-8, M - 10-12, L - 14-16

All other sportswear available only in L & XL.

CREATIVE BUSINESS EVENTS, INC.		P.O. Box 1610		Cleveland, Georgia 30528-1610		(404) 536-5028																																									
Name:	ITEM NO.	SIZE	COLOR	Quant.	DESCRIPTION	PRICE																																									
Address:																																															
Phone:																																															
WE HONOR: MasterCard () Visa () <input type="checkbox"/> Check One																																															
EXP. DATE	Credit Card Signature Required																																														
CREDIT CARD NUMBER																																															
<table border="1"> <tr> <th colspan="3">SHIPPING, INSURANCE & HANDLING</th> <th>ITEM TOTAL</th> </tr> <tr> <td>Order Total</td> <td>Via Surface</td> <td>Via Air</td> <td>SHIP. & HANDL. (See Chart)</td> </tr> <tr> <td>\$25.00 & Under</td> <td>\$3.95</td> <td>\$5.25</td> <td>ADD 6 1/2% SALES TAX IF SHIPPED TO CALIFORNIA</td> </tr> <tr> <td>\$25.01-50.00</td> <td>\$4.95</td> <td>\$6.50</td> <td>ADD 6% SALES TAX IF SHIPPED TO GEORGIA</td> </tr> <tr> <td>\$50.01-75.00</td> <td>\$5.95</td> <td>\$7.50</td> <td>GRAND TOTAL</td> </tr> <tr> <td>\$75.01-100.00</td> <td>\$7.95</td> <td>\$10.50</td> <td>PRICES SUBJECT TO CHANGE</td> </tr> <tr> <td>\$100.01-200.00</td> <td>\$9.95</td> <td>\$12.50</td> <td></td> </tr> <tr> <td>\$200.01-300.00</td> <td>\$11.95</td> <td>\$15.50</td> <td></td> </tr> <tr> <td>\$300.01-400.00</td> <td>\$14.95</td> <td>\$18.50</td> <td></td> </tr> <tr> <td colspan="3">ADD \$2.50 for each additional \$50.00 for surface ADD \$5.00 for each additional \$50.00 for air</td> <td></td> </tr> </table>								SHIPPING, INSURANCE & HANDLING			ITEM TOTAL	Order Total	Via Surface	Via Air	SHIP. & HANDL. (See Chart)	\$25.00 & Under	\$3.95	\$5.25	ADD 6 1/2% SALES TAX IF SHIPPED TO CALIFORNIA	\$25.01-50.00	\$4.95	\$6.50	ADD 6% SALES TAX IF SHIPPED TO GEORGIA	\$50.01-75.00	\$5.95	\$7.50	GRAND TOTAL	\$75.01-100.00	\$7.95	\$10.50	PRICES SUBJECT TO CHANGE	\$100.01-200.00	\$9.95	\$12.50		\$200.01-300.00	\$11.95	\$15.50		\$300.01-400.00	\$14.95	\$18.50		ADD \$2.50 for each additional \$50.00 for surface ADD \$5.00 for each additional \$50.00 for air			
SHIPPING, INSURANCE & HANDLING			ITEM TOTAL																																												
Order Total	Via Surface	Via Air	SHIP. & HANDL. (See Chart)																																												
\$25.00 & Under	\$3.95	\$5.25	ADD 6 1/2% SALES TAX IF SHIPPED TO CALIFORNIA																																												
\$25.01-50.00	\$4.95	\$6.50	ADD 6% SALES TAX IF SHIPPED TO GEORGIA																																												
\$50.01-75.00	\$5.95	\$7.50	GRAND TOTAL																																												
\$75.01-100.00	\$7.95	\$10.50	PRICES SUBJECT TO CHANGE																																												
\$100.01-200.00	\$9.95	\$12.50																																													
\$200.01-300.00	\$11.95	\$15.50																																													
\$300.01-400.00	\$14.95	\$18.50																																													
ADD \$2.50 for each additional \$50.00 for surface ADD \$5.00 for each additional \$50.00 for air																																															
<small>PLEASE ALLOW 4-6 WEEKS FOR DELIVERY AS UNPREDICTABLE DEMAND FOR CERTAIN ITEMS COULD CREATE A DELIVERY DELAY. WE WILL MAKE EVERY EFFORT TO SEND YOUR MERCHANDISE PROMPTLY AND YOU WILL BE NOTIFIED OF ANY DELAYS OVER 30 DAYS. ALL CHECKS AND CREDIT CARDS ARE CASHED UPON RECEIPT. PLEASE DO NOT SEND CASH OR MONEY ORDERS. MAKE CHECKS PAYABLE FOR THE TOTAL AMOUNT OF THE ORDER (INC. SHIPPING AND HANDLING) PAYABLE TO CREATIVE BUSINESS EVENTS-DELTA ZETA.</small>																																															
<small>ALL RETURNED CHECKS ARE SUBJECT TO A \$10.00 SERVICE CHARGE. ALL RETURNED CARTONS ARE SUBJECT TO A \$5.00 SERVICE CHARGE.</small>																																															
A PORTION OF EACH SALE WILL GO TO YOUR SORORITY NATIONAL OFFICE.																																															



National leadership conferences held



by **Sandra McAlister Nesbitt**
National Vice President
of Membership

Delta Zetas gathered this summer at five different locations for the 1990 Norma Minch Andrisek Leadership Conferences to exchange ideas, share stories, learn leadership skills and enjoy our special sisterhood. Four of the conferences were held on the weekend of July 6-8 at the University of Massachusetts, Purdue University, University of North Texas and UCLA. The fifth conference was held July 20-22 at the University of Georgia.

These conferences, held on off-convention years, took a different approach this year by highlighting specific areas of chapter concerns. Each conference featured a special presentation geared toward leadership, motivation, stress management, communications and other related topics. There were also special presentations made by collegians from the Alpha chapter, Miami University, on an anti-hazing program and from the Lambda Xi chapter, Texas A & M, on alcohol awareness.

Five of the special presentations were made by professional Delta Zetas who hold leadership seminars and workshops for all types of organizations and groups all over the country. The sixth presenter was Dr. John Hatfield, Assistant Dean of the School of Management at the University of Georgia. He gave a most informative and entertaining workshop on effective ways of communicating.

Past National President Elizabeth Baker Devereaux, Ohio State University-Θ, is Assistant Professor, Department of Psychology and Director of Occupational Therapy at Marshall University. Her seminar topic was on stress management and related concerns that many women of today have to face.

The Purdue conference had Dana McMillian, Northeast Missouri State-ΔΣ, and Dr. Carolyn Jones, Depauw University-Δ, working together to develop their program on motivation and leadership styles.

Ms. McMillian, the 1990 Delta Zeta Woman of the Year, is the



Director of Early Childhood Programs at The Learning Exchange in Kansas City, Missouri. She is the Province Director for Province XI. Her area of expertise presented was on personal and group motivation.

Dr. Jones is the Assistant Executive Vice President for Academic Affairs at Purdue University. She presented her portion of the program on leadership styles and skills.

At UCLA, Christine Malinowski's, Trenton State-AA workshop covered the areas of leadership skills, motivation and organization development.

Jamie Bero, Epsilon Theta, is a Residence Hall Director at Clarion University. She also is the Academic Support Advisor to the Clarion men's basketball team and, as such, presents programs to the team during their study table sessions. She is the College Chapter Director for Epsilon Theta chapter. Her workshop at the North Texas conference consisted of segments - on leadership styles, motivation, campus image, goal setting and team building.

The Alpha women presented their anti-hazing program, Think Twice, which was developed by the chapter after they were involved in a hazing incident. The women added their personal insights as to

how the program has benefited their individual chapter.

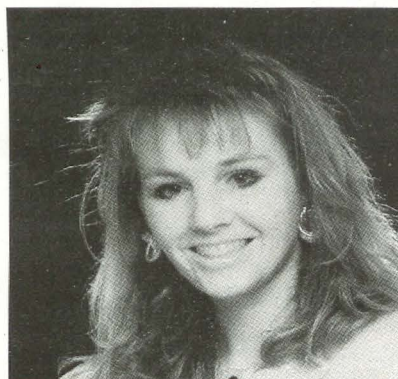
The Lambda Xi chapter has developed an alcohol awareness program to go along with the Delta Zeta Choices program. They have taken a stand on their campus to have non-alcoholic functions, and they shared how they have done this. Even though they were the pioneers on their campus in this endeavor, support now comes from both Panhellenic and IFC at A & M.

Special materials were shared on public relations, ritual, the Delta Zeta Foundation and philanthropy, along with individual officer meetings. Favorite songs of the participating chapters were sung and there was a session on problem solving which proved to be very enlightening for the collegians. Each National Council member was involved in at least one of the conferences, as were each of the Delta Zeta Field Representatives.

Enthusiasm, new ideas, dedication, excitement and renewed faith were feelings expressed in the evaluations. Chapters should plan now to send not only their executive officers but any other member who desires to learn more and be more involved in her chapter to the 1992 Norma Minch Andrisek Leadership Conferences.

ΔZ is international sweetheart

Gamma Nu chapter's Sara Pomakoy, a 1990 graduate of Eastern Illinois University, was named International Sweetheart of Sigma Pi Fraternity at their summer convention in New Orleans. The selection, made from chapter sweetheart entries from the fraternity's 141 chapters and colonies, is a two year reign for Sara. She will help with philanthropic endeavors and attend all formal fraternity functions. Sara is now training with United Airlines.



PAD Diana Spivey Bishop of Florida held a workshop for the alumnae chapters in her area. Standing, l to r, are Seabie Posey Hanson, Auburn-BΞ (president of Pensacola); Marilyn Sheffield Cochran, Auburn-BΞ (President of Fort Walton); Diana Bishop, Auburn-BΞ (PAD, XXIV-North); Robin Griehs Donoho, Jacksonville-IΩ (president of Jacksonville), and Gayle Sunday Young, Oklahoma State-AE (Panhellenic president of Ft. Walton). Kneeling are Beverly Merkle Palmer, Knox-N (vice president of Ft. Walton); Robin Bosso Bellen, FSU-AΣ (1st vice president of Pensacola); Carolyn Kendrick Tate, Samford-AΠ (2nd vice president of Pensacola), and Kim Karnes Brown, New Mexico State-ΓΞ (editor of Ft. Walton).



Theta chapter seniors at their farewell ceremonies at Ohio State University. Back row, l to r, Kyla White, Cheryl Haley, Michele Jackson, Lora Parker. Seated, Trisha Gran, Sarah Temple, Sue Reeser and Shelley Dawson.



A tradition for new pledges at Morehead is "rushing the hill." Here come Kappa Tau's new pledge class.

Directory

NATIONAL COUNCIL

PRESIDENT: Marvona Easley Tavlin (Mrs. Michael J.), 2710 Devonshire Drive, Lincoln, NE 68506
VICE PRESIDENT OF MEMBERSHIP: Sandra McAlister Nesbitt (Mrs. Milton), 3519 Castle Ridge Road, Montgomery, AL 36116
VICE PRESIDENT OF ALUMNAE AFFAIRS: Deanna Alleman McKinnon (Mrs. Mike), 12109 Victoria Place, Oklahoma City, OK 73120
VICE PRESIDENT OF COLLEGIATE AFFAIRS: Phyllis Snape Favorite (Mrs. Robert D.), 522 Melissa Lane, State College, PA 16803
SECRETARY: Merry Westbrook Adamcik (Mrs. Roy), 614 Rozelle Avenue, Sugar Land, TX 77478
TREASURER: Lynnda Wolf Hoefler (Mrs. Robert), 1287 Denise Drive, Kent, OH 44240
DIRECTOR OF FINANCIAL RESOURCES: Patricia Canady Rosser (Mrs. David), 1609 Indian Rocks Road, Clearwater, FL 34616
DIRECTOR OF NEW CHAPTERS: Jennifer Plenge (Ms.), 904 Dana Marie Drive, Louisville, KY 40223
DIRECTOR OF ALUMNAE DEVELOPMENT: Carol Selway Bertz (Mrs. Michael), 6544 South Heritage Place East, Englewood, CO 80111
PAST NATIONAL PRESIDENT: Norma Minch Andrisek (Mrs. John R.), 319 Janice Drive, Berea, OH 44017
NATIONAL PANHELLENIC CONFERENCE DELEGATE: Carolyn Barnes Gullatt (Mrs. John H.), 4008 Hyridge, Austin, TX 78759
NATIONAL PANHELLENIC CONFERENCE ALTERNATES: Sandra McAlister Nesbitt (Mrs. Milton), Deanna Alleman McKinnon (Mrs. Mike), Norma Minch Andrisek (Mrs. John R.)

NATIONAL HEADQUARTERS

NATIONAL HEADQUARTERS: 202 East Church Street at Campus Avenue, Oxford, OH 45056. (513) 523-7597
NATIONAL HEADQUARTERS ADMINISTRATOR: Cindy Winslow Menges
FIELD REPRESENTATIVES: Amy Abdouch, Michelle Beck, Susan Gattis, Lacey Goodwin, Christy Hendricks, Kathleen Hovde, Stephanie Ann Jobe, Jane E. McCaslin, Kathryn A. Mitchell, Julie Anne Stewart, Pamela Stoenner.

THE LAMP

EDITOR: Gwen Moss McKeeman (Mrs. Robert), 5517 S. 74th E. Avenue, Tulsa, OK 74145

EXTENSION

DIRECTOR OF EXTENSION: Carolyn Barnes Gullatt (Mrs. John H.), 4008 Hyridge, Austin, TX 78759

DELTA ZETA SUBSCRIPTIONS

Norma Swepston McIntyre, Box 24145, Columbus, OH 43224

DELTA ZETA FOUNDATION

PRESIDENT: Joan Dondrea Lowry (Mrs. Bob-Bill), 578 Yarmouth Lane, Bay Village, OH 44140
SECRETARY: Marjorie Klingensmith Lovewell (Mrs.), 96 The Prado NE, Atlanta, GA 30309
TREASURER: Patricia Canady Rosser (Mrs. David), 1609 Indian Rocks Road, Clearwater, FL 34616
MEMBERS: Ann Butler Booth (Mrs. W. Ray), 14735 Oak Bend Dr., Houston, TX 77079
 Joyce Low London (Mrs. John), PO Box 2177, San Pedro, CA 90731
 Susan Mease (Mrs. Joseph H. Long), 235 East Road, Doylestown, PA 18901

COMMITTEES:

ELIZABETH COULTER STEPHENSON SCHOLARSHIPS: Joyce Low London (Mrs. John), P.O. Box 2177, San Pedro, CA 90731
GRADUATE SCHOLARSHIPS: Priscilla "Pat" Beatty, 3691 NW 95th Terrace, #1202, Ft. Lauderdale, FL 33321
GALLAUDET UNIVERSITY: Lucille Bolstad May (Mrs. Leland B.), 5100 Dorset Avenue, #406, Chevy Chase, MD 20815
GOLDEN CIRCLE SCHOLARSHIPS: Mary Ann Gallatin French (Mrs. John), 2322 N.W. 58th Circle, Oklahoma City, OK 73112
HOUSE EAR INSTITUTE: Betty Paul DeWitt (Mrs. Norman), 23630 Oak Rest Lane, Harbor City, CA 90710
UNDERGRADUATE SCHOLARSHIPS: Donna Edwards Happ (Mrs. William), 39968 Pearl Drive, Murietta, CA 92362

PRESIDENT EMERITUS OF HISTORICAL MUSEUM

Lucile Crowell Cooks (Mrs.), 7400 Sun Island Drive S., Apt. #404, South Pasadena, FL 33707

DIRECTORS EMERITUS OF HISTORICAL MUSEUM

Grace Pritchard Gorham (Mrs.), 1510 East 31st Street, Tulsa, OK 74105
 Mary Lou Ragel Vineyard (Mrs. Phillip W.), 4998 62nd Ave. S., St. Petersburg, FL 33715

HISTORIAN EMERITUS

Grace Mason Lundy (Mrs. H. M.), 3207 N. 25th St., Phoenix AZ 85016

NATIONAL PARLIAMENTARIAN

Charlotte Davis (Dr.), 215 East Eggleston Hall, Virginia Polytechnic Inst., Blacksburg, VA 24061

STANDING COMMITTEES

AWARDS (ALUMNAE AND COLLEGIATE): Beth Anderson Hudson (Mrs. Tom), 224 Kasson Road, Knoxville, TN 37920
COLONNADE CLUBS: Mary Ann Gallatin French (Mrs. John), 2322 N.W. 58th Circle, Oklahoma City, OK 73112
CONSTITUTION AND BYLAWS: Anne Marie Jones Gavin (Mrs. William), 3264 Swan Drive, Vineland, NJ 08360
FIELD ACTIVITIES: Phyllis Snape Favorite (Mrs. Robert D.), 522 Melissa Lane, State College, PA 16803
FINANCE: Lynnda Wolf Hoefler (Mrs. Robert), 1287 Denise Drive, Kent, OH 44240
HOUSING ADMINISTRATOR: Norma Minch Andrisek (Mrs. John R.)
REGIONAL HOUSING CHAIRMEN:
 Mary Beth Hibler Allen (Mrs. Eugene), 2704 S. Tennyson Way, Denver, CO 80236
 Kathleen Johnson Sledge (Mrs. Joe W. Jr.), 1700 Dearing Place, Tuscaloosa, AL 35401
 Danna Donnelly Wylie (Mrs. William), P.O. Box 1265, Bloomington, IN 47401
INSURANCE: National Headquarters, 202 E. Church Street, Oxford, OH 45056
HISTORY: Florence Hood Miner (Mrs. Arthur), 1040 H Avenue, Nevada, IA 50201
JUDICIARY: Dianne Fellows Guild (Mrs. Douglas), 16 Andrews Drive, South Burlington, VT 05401
MUSIC: Leslie Eagle (Miss), 3939 Moore Street, Apt. 202, Mar Vista, CA 90066
PLEDGE EDUCATION: Merry Westbrook Adamcik (Mrs. Roy), 614 Rozelle Avenue, Sugar Land, TX 77478
PHILANTHROPY: Patricia Canady Rosser (Mrs. David), 1609 Indian Rocks Road, Clearwater, FL 34616
ALUMNAE COORDINATOR: Ann Butler Booth (Mrs. W. Ray), 14735 Oak Bend Dr., Houston, TX 77079
COLLEGIATE COORDINATOR: Lori Montgomery McKeating (Mrs. Jim), 12346 Westella, Houston, TX 77077
RITUAL: Karen Kind Veitch (Mrs. Andrew), 36 Rilling Ridge Road, New Canaan, CT 06840
COMMITTEES
NETWORKING: National Headquarters, 202 E. Church Street, Oxford, OH 45056
NEWSLETTER: Diane Jones Skelton (Mrs. Danny), 1725 Chipco, Tyler, TX 75703
PUBLIC RELATIONS: Barbara Poremba (Miss), 49 Benedict Street, Norwalk, CT 06850
REFERENCES: Alberta Doran Curran (Mrs. Tom), 116 Dublin Woods Drive, Cary, NC 27513
ALUMNAE:
MEMBERSHIP: Janice Jelks Cox (Mrs. Stanford), P.O. Box 13883, RTP, NC 27709-3883
COLLEGIATE:
ACADEMICS: Cheryl Stanley Jones (Mrs. Russell), 220 Church Street, Danville, PA 17821
ACTIVITIES: Margaret Allegro Sorrells (Mrs. Rick), 6158 Chesley, Dallas, TX 75214
CHOICES PROGRAM COORDINATOR: Kathi Bray Heatherly (Mrs. Don), 3 Spooner Street, Floral Park, NY 11001
SOCIAL: Sara Carruthers (Miss), 601 Glenway Drive, Hamilton, OH 45013
SORORITY EDUCATION: Ellen Kroll Jenkins (Mrs. Paul), 1101 Ramblin Court, Greenwood, IN 46142
STANDARDS: Penny Payne Fioravante, (Mrs. Michael), HC63 Box 91, Tiny Ridge Farm, Sumerco, WV 25567
WAYS AND MEANS: Jamie Hammill Pyne (Mrs. Phillip), 6th Street, Locust Walk, 2 Independence Place #906, Philadelphia, PA 19106

PROVINCE COLLEGIATE AND ALUMNAE DIRECTORS

I. Maine, Massachusetts, Vermont, New Hampshire, Connecticut, and Rhode Island

PCD: Francis Robinson Carnes (Mrs. Michael), 252 Washington Street, Arlington, MA 02174
PAD: Christina Mullin (Miss), 16 Rockmont Road, Arlington, MA 02174

II. New York, New Jersey and Delaware

PCD: Linda Dennison, 3004 Village of Penbrook, Levittown, PA 19054
PAD: Cynthia Schafer Plucinski (Mrs. Donald), 633 South Edge Park Dr., Haddonfield, NJ 08033

III. Pennsylvania and Western New York

PCD III-C: Judy Kline, 312 O'Toole Dr., Hagerstown, MD 21740
PCD III-W: Carol Johnson Miskell (Mrs. C. F.), 176 Seminole Ave., Pittsburgh, PA 15237
PAD III-W and -C: Jane Simmons Riccardi (Mrs. Robert), 150 Par Dr., Pittsburgh, PA 15236
PCD III-E: Lynne Ciervo McPhillips (Mrs. William), 46 Heritage Lane, Exton, PA 19341

PAD III-E: Cynthia Schafer Plucinski (Mrs. Donald), 633 So. Edge Park Dr., Haddonfield, NJ 08033

IV. West Virginia

PCD: Lora J. Stuart (Ms.), 7 E. 5th Avenue, Williamson, WV 25661
PAD: Doretta Pugh Osburn (Mrs. Thomas), 314 Roxalana Hills Dr., Dunbar, WV 25064

V. Ohio

PCD-N: Sandy Sebrell Bailey (Mrs. Bruce), 639 N. Portage Path, Akron, OH 44303
PCD-S: Refer to Merry Adamcik, PCD Coordinator
PAD-N: LeeAnn Vogelberger August (Mrs. Donald), 3235 Bloomsbury Circle NW, Canton, OH 44708
PAD-S: Elaine McManus Freed (Mrs. William), 721 Donald Ave., Dayton, OH 45420

VI. Michigan

PCD: Sharon Moncrief Slovinski (Mrs. Harry), 7740 Westminster Dr., Byron Center, MI 49315

PAD: Pamela McClure Cronenwett (Mrs. William), 25720 West Hills Drive, Dearborn Heights, MI 48125

VII. Indiana

PCD: Beth Petruce-Hoeper (Ms.), 5527 N. Haverford Ave., Indianapolis, IN 46220

PAD: Nancy Ferrone Daughters (Mrs. Michael), 9015 Fathom Crest, Indianapolis, IN 46256

VIII. Wisconsin

PCD: Jeri Seals Weigand (Mrs. Gregg), 6185 Boyer Path, Inver Grove Heights, MN 55075

PAD: Julie Hauser (Miss), Route 2, Box 2, Owatonna, MN 55060

IX. Illinois

PCD-N: Melanie Alm Robinson (Mrs. Dave), 2233 S. Highland Ave., #1110, Lombard, IL 60148

PCD-S: Robin Furtney Bedwell (Mrs. Kirk), 142 Huntleigh, Belleville, IL 62220

PAD-N: Marcia Campbell Harrison (Mrs. Charles), 1 South 761 Ott Avenue, Glen Ellyn, IL 60137

PAD-S: Susan Boatman Gruel (Mrs. Larry), 103 S. Orr Drive, Normal, IL 61761

X. Iowa and Nebraska

PCD: Jodi Heinhorst Koelker (Mrs. Glen), 246 Nevada, Dubuque, IA 52001

PAD: Christina Wifvat Gammell (Mrs. Jim), 618 34th Street Place, W. Des Moines, IA 50265

XI. Missouri

PCD: Dana McMillan (Miss), 8183 Monrovia, Lenexa, KS 66215

PAD: Phyllis Berens Koss (Mrs. Norman), 12713 Sherwood, Leawood, KS 66209

XII. Minnesota, North Dakota and South Dakota

PCD: Jeri Seals Weigand (Mrs. Gregg), 6185 Boyer Path, Invergrove Heights, MN 55075

PAD: Julie Hauser (Miss), Route 2, Box 2, Owatonna, MN 55060

XIV. Colorado and Kansas

PCD: Gail Persak Beets (Mrs. Kenneth), 5963 W. Indore Place, Littleton, CO 80123

XIV-E. Kansas Alumnae Chapters

PAD-E: Carolyn McCandless Woodling (Mrs. Charles), 3112 Creekwood, Lawrence, KS 66044

XIV-W. Arizona, Colorado, New Mexico, Utah, and Wyoming Alumnae Chapters, except Las Cruces, NM

PAD-W: Linda Woodyard Wolz (Mrs. Dean), P.O. Box 5013, Vail, CO 81658

XV-S. Southern California, Southern Nevada and Hawaii

PCD: Karen Severloh Moffitt (Mrs. John), 2075 Los Robles Ave., San Marina, CA 91108

PAD: Karyn Doble Laurenzello (Mrs. Frank), 8939 Gallatin Road, #127, Pico Rivera, CA 90660

XV-C. Northern California and Northern Nevada

PCD: Linda Lesniak Szymanski (Mrs. Robert), 931 Notre Dame Avenue, Concord, CA 94518

PAD: Wendy Wood LaBounty (Mrs. William), 2099 Janice Drive, Pleasant Hill, CA 94523

XV-N. Oregon, Washington, Montana, Idaho and Alaska

PCD: Carin Brown Steckler (Mrs.), 5208 36th Ave. NE, Seattle, WA 98105

PAD: Helga Kohlenberg Clark (Mrs. William), 4866 123rd Place, S.E., Bellevue, WA 98006

XVI. Oklahoma

PCD: Melissa Smith Massey (Mrs. Wade), 536 Skylark Drive, Oklahoma City, OK 73127

PAD: Pattie Cantrell Hulsey (Mrs. Stephen), 15708 E. 80th St. North, Owasso, OK 74055

XVII-N. Texas, New Mexico Collegiate Chapters, Texas and Las Cruces Alumnae Chapters

PCD-N: Diane Krause (Miss), 2521 Ruger, #180, Arlington, TX 76006

PAD-N: Kathy Fisher (Miss), 1105 Esters Road, #2303, Irving, TX 75061

XVII-S. Texas

PCD-S: Tracy Harnage Kirkland (Mrs. J. Corey), 10526 Sageyork, Houston, TX 77089

PAD-S: Elsie Wheeler McTee (Mrs. Clifford), 4322 St. George, Corpus Christi, TX 78413

XVIII. Louisiana and Mississippi

PCD: Virginia Schattner Bryan (Mrs. Larry), 2404 Brownlee Road, Bossier City, LA 71111

PAD: Ida Marie Carter Nelson (Mrs. John), 126 Fremont Avenue, Shreveport, LA 71105

XIX. Tennessee

PCD: Clara Smith (Ms.), 502 Belle Pointe Ct., Nashville, TN 37221

PAD-E: Alisha LaPol (Miss), 4000 Pleasant Ridge Road, Apt. F6, Knoxville, TN 37912

PAD-W: Violet Henson Anderson (Mrs. Charles), 102 Blue Hills Court, Nashville, TN 37214

XX. Kentucky

PCD: Jeanine Petersen Triplett (Mrs. Brian), 1920 Roanoke Ave., Louisville, KY 40205

PAD: Nancy Emison (Miss), 1578 Cherokee Road #1, Louisville, KY 40205

XXI. South Carolina and North Carolina

PCD-E: Ruth Weider Patterson (Mrs. Robert), 3623 Devereaux Road, Columbia, SC 29205

PCD-W: Ruth Weider Patterson (Mrs. Robert), 3623 Devereaux Road, Columbia, SC 29205

PAD: Patricia Menendez Tector (Mrs. John), 907 Winslow Court, Cary, NC 27513

XXII. Georgia

PCD: Tracy Wilson LeSieur (Mrs. Larry), 3801 Arc Way, Lawrenceville, GA 30244

PAD: Catharine Kramer Leake (Mrs. Charles), 4458 Glengary Drive, Atlanta, GA 30342

XXIII. Alabama

PCD: Kathy Clark (Miss), 500 Snows Mill Ave., #1020, Tuscaloosa, AL 35406

PAD: Kimberly Harris Bath (Mrs. Chris), 1071 Rosedale Drive, Montgomery, AL 36107

XXIV. Florida

PCD: Karly Klemp Burns (Mrs. Lawrence), P.O. Box 58050, Tierra Verde, FL 33715

PAD XXIV-S: LeeAnn Williford (Miss), 4200 Community Ave., #1015, West Palm Beach, FL 33409

PAD XXIV-C: Lee Kronk Calvin (Mrs. Bill), 922 Eagle Lane, Apollo Beach, FL 33572

PAD XXIV-N: Diana Spivey Bishop (Mrs. Harry), 197 E. Burgess Road, Pensacola, FL 32503

XXV. Virginia, Maryland, Washington, D.C.

PCD: Linda Regner (Miss), 5576 Burnside Drive, #8, Rockville, MD 20853

PAD: Pamela Siders Grizzle (Mrs. John), 1007 Smartts Lane, Leesburg, VA 22075

XXVI. Arkansas

PCD: Jacqueline Fabbri Gardner (Mrs. Richard Jr.), P.O. Box 2034, Russellville, AR 72801

PAD: Kathy Caldwell Mashek (Mrs. Bill), 1106 North 6th, Dardanelle, AR 72834

STATE REFERENCE CHAIRMEN

ALABAMA: Jeanette L. Bell (Miss), 5095 Laurelwood Lane, Huntsville, AL 35816 **ALASKA:** Kathryn Miller Mosley (Mrs. Larry), PO Box 61642, Fairbanks, AK 99706
ARIZONA: Debra Will Welch (Mrs. Wm), Box 9614, Scottsdale, AZ 85252-9614 **ARKANSAS:** Jeania Standridge Evans (Mrs. Jerry), Rt. 2, Box 530, Russellville, AR 72801
CALIFORNIA (North): Joyce Rogers Stoffey (Mrs. John), 1240 Nob Hill Ave., Pinole, CA 94564 **CALIFORNIA (South):** Janet Breitweiser Savage (Mrs. Tom), 5102 Woodwind Lane, Anaheim, CA 92807 **COLORADO:** Diane Vyhnaelek (Miss), 13625-B, E. Yale Ave, Aurora, CO 80014 **CONNECTICUT:** Ann Collins Gill (Mrs. Edward), 53 High Point Road, Westport, CT 06880 **DELAWARE:** Debra Bass (Miss), 357 Shea Drive, New Milford, NJ 07646 **DISTRICT OF COLUMBIA:** Maria Startzel (Miss), 4412 Island Place #204, Annandale, VA 22003 **FLORIDA:** Marjorie Kanouse Fink (Mrs. Edward), 2070 Clematis St., Sarasota, FL 34329 **GEORGIA:** Marjorie Klingensmith Lowewell, 96 The Prado NE, Atlanta, GA 30309 **HAWAII:** Dorothea Bettencourt Ovio (Mrs.), 45-109 Kokokahi Place, Kaneohe, HI 96744 **IDAHO:** Rilla Soderstrom Perala (Mrs. George), 8800 Craydon Drive, Boise, ID 83704 **ILLINOIS:** Jennifer Hruby Chivers (Mrs. Mark), 41084 North 2nd St., Antioch, IL 60002 **INDIANA:** Marla Pittman, 61 W. Waterbury Rd., Apt. C, Indianapolis, IN 46217 **IOWA:** Nancy Northey Pringnitz (Mrs. Douglas), R.R. Box 8158, Spirit Lake, IA 51360 **KANSAS:** Kayla Kerns Eddy (Mrs. Stephen), 2124 S. Lennox, Olathe, KS 66062 **KENTUCKY:** Joy Morton Coleman (Mrs. Kenny), 1728 Hawthorne Lane, Lexington, KY 40505 **LOUISIANA:** Jane Weaver Mathes (Mrs. Jimmy), 12538 Sherbrook Drive, Baton Rouge, LA 70815 **MAINE:** Denise A. Pitt (Miss), 23 Lindale Avenue, Biddeford, ME 04005 **MARYLAND:** Maria Startzel (Miss), 4412 Island Place #204, Annandale, VA 22003 **MASSACHUSETTS:** Abbye Klayman Warren (Mrs. Stephen), 80 Bailey St., Stoughton, MA 02072 **MICHIGAN:** Karen Woods Miron (Mrs. Dale), 738 Lake Shore Drive, Escanaba, MI 49829 **MINNESOTA:** Sandra Brooks Hoffstrom (Mrs. Donald), 3220 Everest Lane North, Plymouth, MN 55447 **MISSISSIPPI:** Mary Halley Huch (Mrs. Donald), 317 Lamar Ave., Hattiesburg, MS 39401 **MISSOURI:** Kayla Kerns Eddy (Mrs. Stephen), 2124 So. Lennox Dr., Olathe, KS 66062 **MONTANA:** Barbara Kirsch Hamilton (Mrs. W.B.), 16400 SE 135th St. #26, Clackamas, OR 97015 **NEBRASKA:** Carole Sorensen (Miss), 828 Judge Ave., Broken Bow, NE 68822 **NEVADA:** Lori Figgins Soren (Mrs.), 1503 Oxbow Court, Henderson, NV 89014 **NEW HAMPSHIRE:** Sharon Nichols Powers (Mrs.), 12 Sunset Drive, Manchester, NH 03104 **NEW JERSEY:** Debra Bass (Miss), 357 Shea Dr., New Milford, NJ 07646 **NEW MEXICO:** Diane Vyhnaelek (Miss), 13625-B East Yale Ave., Aurora, CO 80014 **NEW YORK:** Teresa J. Sears (Miss), 2985 Grant Avenue, Mohegan Lake, NY 10547 **NORTH CAROLINA:** Debra Wood Pressley (Mrs. Chuck), 630 Macedonia Road, Asheville, NC 28804 **NORTH DAKOTA:** Sandra Brooks Hoffstrom (Mrs. Donald), 3220 Everest Lane North, Plymouth, MN 55447 **OHIO:** Susan Wisheart Little (Mrs. Donald), 5151 E Boulevard NW, Canton, OH 44718 **OKLAHOMA:** Ruby Gray Purdum, (Mrs. C.B.), Route 1, Box 147, Dewey, OK 74029 **OREGON:** Barbara Kirsch Hamilton (Mrs. W. B.), 16400 SE 135th St. #26, Clackamas River Village, Clackamas, OR 97015 **PENNSYLVANIA-EAST:** Debbie Fries (Miss), 1060 Oldstone Road, Allentown, PA 18103 **PENNSYLVANIA-CENTRAL & WEST:** Emma Rossbacher Williams (Mrs. Jack), 121 Terrace Dr., Edinboro, PA 16412 **RHODE ISLAND:** Jill Morris Marshall (Mrs. Robert), 109 Pinecrest Dr., Pawtucket, RI 02861 **SOUTH CAROLINA:** Anne Marie VanBesien Cooley, 2306 Lincoln Street, Columbia, SC 29201 **SOUTH DAKOTA:** Sandra Brooks Hoffstrom (Mrs. Donald), 3220 Everest Lane North, Plymouth, MN 55447 **TENNESSEE:** Joyce Lockhart Gary (Mrs. Wallace), 1347 Greendale Ave., Memphis, TN 38127 **TEXAS:** Ann Elkins Hawkins (Mrs. Jerry), 103 Live Oak Lane, Lake Jackson, TX 77566 **UTAH:** Refer to Alberta Curran, National Reference Chairman **VERMONT:** Sharon Nichols Powers (Mrs.), 12 Sunset Drive, Manchester, NH 03104 **VIRGINIA:** Rachel Platt (Miss), 1 Canterbury Square #101, Alexandria, VA 22304 **WASHINGTON:** Karen Fellows Soyk (Mrs. Lon), 31033 38th Ave. South, Auburn, WA 98001 **WEST VIRGINIA:** Mala Lee Bungardner (Mrs.), 26 Lee Drive, St. Albans, WV 25177 **WISCONSIN:** Leila Yancy Wells (Mrs. William), 5302 Namekagon Lane, WI 53704 **WYOMING:** Diane Vyhnaelek (Miss), 13625-B East Yale Ave, Aurora, CO 80014

FLAME ETERNAL

BETA

Marian Cornelia Jones '32

EPSILON

Helen Benton Butler '30

ZETA

Ula Peterson Bach '28

Lois Styer Higgins '31

ETA

Helen Brockaway Wilson '20

THETA

Nancy Brug Hagan '60

Rebecca Yauger Stoltzenbach '30

Sylvia Singrey Turner '37

Grace Williams Worley '23

Charlotte Shirk Zell '61

Nancy Gaffney Zoldak '27

IOTA

May McPherson Herrick '25

KAPPA

Nellie Heron Newstrom '48

LAMBDA

Jean Dobbs Frank '20

Esther Weber Stewart '26

MU

Gloria Lorenzen Bartow '52

Hulda Siess McFadden '20

Mary Tatum Ryan '34

OMICRON

Esther Huebner Kissinger '28

RHO

Mary Santarelli Rollins '37

Emily Radford Wright '35

SIGMA

Mona Dugas Bolles '37

Juliet Sebastian Graves '28

PHI

Evelyn Moses Colvin '27

CHI

Faith Burk Fors '25

Dorothy Parker '41

Carolyn Blakely Shepard '33

OMEGA

Sara Dorothy Abbott Buckner '26

Audrey Forsstrom Snodgrass '32

ALPHA ALPHA

Sandra Schoeneman Barba '57

Gretchen Kroch Kelsch '32

ALPHA GAMMA

Imogene Schuyler Brown '44

Kim Elizabeth Moore '90

ALPHA DELTA

Ena Sikes Hillyard '37

ALPHA ETA

Bernice Endlich Groehn '31

ALPHA THETA

Ethel Barnard Matthews '26

Mary Barnard Cooke '23

ALPHA PI

Ernestine Dyer Thigpen '26

ALPHA RHO

Mary Elisabeth Guthrie '30

ALPHA SIGMA

Cheryl Ann Vineyard Adams '89

ALPHA TAU

Winifred Sicknick Starr '42

ALPHA UPSILON

Edith Deane Spear '33

ALPHA PHI

Foline Eppstein Gartside '31

ALPHA CHI

Boniface Bobb Newman '43

ALPHA PSI

Jo Wilson Collins '50

Mary Buford Miller '40

Laura Mayo Parks '31

BETA EPSILON

Carolyn Lockrey Dale '30

BETA THETA

Mary Murray Pennypacker '34

BETA CHI

Sarah Conwell Bond '35

GAMMA DELTA

Marianne Brozien McDermott '51

GAMMA ETA

Denyse Collette '37

GAMMA NU

Bertha Myers Wright '57

DELTA XI

Gladys Nelson '28

DELTA OMICRON

Annette Parker '36

DELTA SIGMA

Gretchen Flesch Wanek '68

DELTA PSI

Alice Senob '28

EPSILON ALPHA

Mabel Schulte '28

EPSILON PSI

Mariann Steffens Hastings '58

ZETA PI

Dolores E. Artau '26

Sarah Greene Fortune '64

THETA DELTA

Gladys Crowner Dodd '26

THETA ZETA

Henrietta Bartlett '32

IOTA ALPHA

Susan Frost Tiemann '68

PHI BETA

Margaret Lorimer Van Evera '24

Ruth Grubb Vaught '32

Kathryn Vandement Winemiller '27

Mary Lou Ragel Vineyard: 1912-1990

Mary Lou Ragel Vineyard was among the many assets Delta Zeta received when Phi Omega Pi sorority merged with Delta Zeta in 1946. She died on October 14.

A graduate of Northwestern University, Mary Lou had been active in Phi Omega Pi since her college years and continued to be a dedicated and loyal member after her initiation into Delta Zeta in November, 1946.

She served as president of the Chicago alumnae chapter for three years and was convention chairman for five National Conventions. She became a member of National Council in 1962 and served two terms as Director of Public Relations. Elected Director of Extension in 1966, Mary Lou served the following biennium as National Secretary.



Mary Lou Vineyard

In recent years she served as a Trustee for the National Historical Museum and was named a Director Emeritus of the Museum in 1987.

The Vineyards moved from the Chicago area to St. Petersburg, Florida, in 1967 and Mary Lou was widely known

for her civic activities. She was a trustee of the All Childrens Hospital and served as president of the Guild. A member of the advisory board of the Ronald McDonald House, which is affiliated with the hospital, she served as chairman for several Hospital Charity Balls.

Just last year Mary Lou's dream came true when her daughter Cheryl Ann Vineyard Adams was initiated into Alpha Sigma chapter at Florida State University. They shared one happy Founders Day together before Sherry died after a long bout with cancer.

She is survived by her husband Phillip W. Vineyard, one son, five grandchildren and a great granddaughter. Her granddaughter Lynn is a member of Alpha Sigma chapter at FSU.

DIRECTIONS

IN DELTA ZETA CAREER NETWORKING

OCCUPATIONAL CODES

- | | | |
|---|--|---|
| 01 Education | 10 Business Administration & Management | 24 Librarian/Museums |
| 02 Finance | 11 Ranching/Farming | 25 Landscaping/Forestry/Geology/Geography |
| 03 Medical | 12 Travel | 26 Athletic/Dance/Recreation |
| 04 Law | 13 Community/Social Service | 27 Personnel/Guidance & Counseling |
| 05 Secretarial/Clerical | 14 Interior, Fashion & Floral Design | 28 Retired |
| 06 Media, Communications, Advertising & Journalism | 15 Military | 29 Politician/Government |
| 07 Marketing & Sales | 16 Computer | 30 Animal/Veterinary |
| 08 Cosmetology | 17 Engineering | 31 Public Relations |
| 09 Arts i.e. Photography, Musicians, Artists & Actors | 18 Insurance & Real Estate | 32 Homemaker/Home Economist |
| | 19 Food Service/Hotel/Motel | |
| | 20 Science & Technology | |
| | 21 Flight Attendants, Reservations, Controllers & Pilots | |
| | 22 Architecture/Construction | |
| | 23 Religious | |

Name/Address Change Form

Please print or type and mail to Delta Zeta Sorority, 202 East Church Street at Campus Avenue, Oxford, OH 45056. Members should use parents' address while in college.

IMPORTANT: You must cut out the mailing label from this issue and paste it here.
We cannot process changes without your label. Thank You.

I am currently a Delta Zeta Officer. Title _____

Name _____ Phone (H) _____
Last First Maiden

Address _____ Phone (W) _____

This is a new address: ____ yes ____ no

Married name _____ Husband's first name _____ Date of marriage _____

Occupation Code Number _____ Company _____

Title _____ Company Address _____

I agree that my name/address may be released to any Delta Zeta requesting information regarding employment in my field or area.

(signature)

POSTMASTER: Send 3579 immediately to Delta Zeta Sorority, 202 E. Church St., Oxford, OH 45056

Delta Zeta Sorority
Corner of Campus Ave. and Church St.
202 E. Church St.
Oxford, OH 45056

Address Correction requested

Non-Profit Org.
U.S. Postage
PAID
Permit No. 131
Tulsa, OK