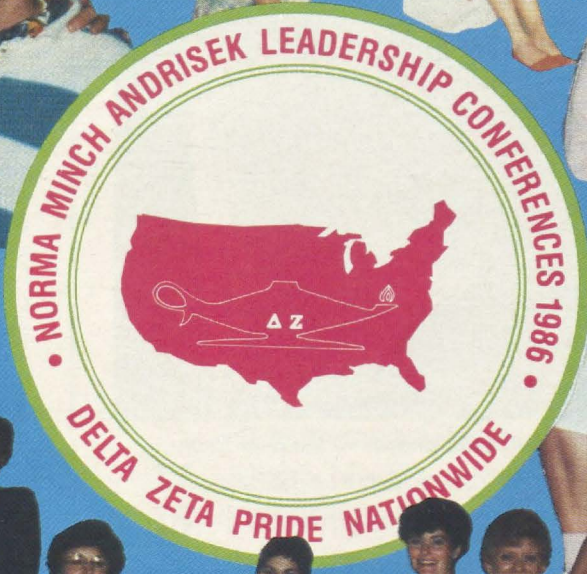


THE LAMP

OF
DELTA
ZETA
WINTER, 1986-87



Costello Portrait Presented to Museum



Evelyn Costello with the portrait presented to the Museum by the Beta Rho House Corporation.



Past National Presidents Norma Andrisek and Evelyn Costello at the portrait presentation.

**by Barbara Bodell
MSU-BP**

On June 18, the National Historical Museum was presented with a portrait of Evelyn Adams Costello, Knox-N, National President 1954-1958. The portrait by internationally acclaimed artist Larry Blovitis was a gift of the Michigan State-BP House Corporation for her work with their chapter and for her years of devoted service to Delta Zeta.

Evelyn served as Oakland County alumnae president, Birmingham Alumnae Panhellenic president and as a member of the Beta Rho House Corporation Board. Nationally, she served as Secretary and NPC Delegate in addition to two terms as National President.

She was largely responsible for Gallaudet becoming one of Delta Zeta's philanthropic projects and was instrumental in the union between Delta Zeta and Delta Sigma Epsilon.

The presentation coincided with the meeting of the Museum Board of Trustees. Following the portrait presentation, local alumnae hosted a reception on the Museum porch.

Beta Rho House Corporation Board members in attendance were Sue Adams Trevarrow, Vicki Knapp Peters and Barbara Bodell. Other Michigan alumnae attending were Pamela McClure Cronenwett, Northwestern-AA, PAD; Catherine Karaffa Williams, Steubenville-ΘΣ, Metropolitan Detroit alumnae president; Olive McLaughlan Neelands, Wayne State-EΣ CCD, and Mary Ann Pigula, Wayne State-EΣ, Metro Detroit alumna.

The Evelyn Adams Costello portrait now hangs in the Michigan Room at the Museum.

THE LAMP OF DELTA ZETA

Volume 75 Number 4 Winter 1986-1987

FOUNDERS OF THE SORORITY



Miami University
Oxford, Ohio 1902

Alfa Lloyd Hayes, 1880-1962
Mary Collins Galbraith, 1879-1963
Anna Keen Davis, 1884-1949
Julia Bishop Coleman, 1881-1959
Mabelle Minton Hageman, 1880-1929
Anne Simmons Friedline, 1879-1932

THE ORDER OF THE LAUREL

Irene Caroline Boughton
Grace Mason Lundy
Elizabeth Coulter Stephenson

THE LAMP

The Lamp of Delta Zeta, official magazine of the sorority, is published quarterly by the Delta Zeta Sorority, 202 East Church St., Oxford, OH 45056.

Send all editorial material to the Editor, Mrs. Robert L. McKeeman, 5517 S. 74th E. Avenue, Tulsa, OK 74145. Send all matters of a business nature to Delta Zeta National Headquarters, Oxford, OH.

Send all contributions for Gallaudet College, House Ear Institute and other Founders Memorial Foundation philanthropies through the Delta Zeta Founders Memorial Foundation, and all contributions to the National Historical Museum to Delta Zeta National Headquarters, 202 E. Church St., Oxford, OH 45056.

EDITOR

Gwen Moss McKeeman
5517 S. 74th E. Avenue
Tulsa, Oklahoma 74145

CHAPTER EDITOR

Diane Jones Skelton



MEMBER
COLLEGE FRATERNITY EDITORS ASSOCIATION

Contents

- IFC Costello Portrait
- 4 Delta Zeta PRIDE Nationwide
- 6 Woman of the Year
- 7 1987 National Convention
- 8 Museum's President Emeritus
- 10 Foundation Focus Month
- 13 Outstanding Juniors
- 14 Joan Lee of Gallaudet
- 15 Recommendations for Council
- 17 Alpha Nu Reunion
- 18 Forming a Bond
- 20 Foundation Scholarships
- 25 FMF Contributions
- 30 Through the Stained Glass Door
- 31 Woman of the Year...Revisited
- 32 Vaughn Grant
- 34 Delta Zeta on Campus
- 40 From the Lampwriter
- 42 Alumnae Chapter Notes...
- 44 Campus Sights & Sounds
- 45 Directory
- 47 Flame Eternal



ABOUT THE COVER

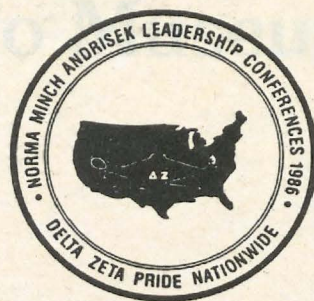
More than 600 collegiate chapter officers and advisors attended the seven Norma Minch Andrisek Leadership Conferences held in chapter houses around the country last summer. The story is on page 4.

Delta Zeta PRIDE Nationwide Shines

At

Leadership

Conferences



Those attending the July 25-27 conference at the University of Alabama posed on the porch of the Alpha Gamma house.

by Marvona Easley Tavlin,
National Vice President
of Collegiate Affairs,
1986 Leadership Conference Chairman

"DELTA ZETA PRIDE NATIONWIDE awaits you with Fun - Friendship - Fellowship in the Summer of '86" was the theme for the Norma Minch Andrisek Leadership Conferences. The conferences were held in chapter houses on the campuses of the University of Iowa, Texas A & M University, University of New Hampshire, UCLA, Indiana University, Rider College and the University of Alabama.

These weekend meetings, held in the alternate years of National Convention, bring collegians, advisors and national officers together to promote leadership development in a casual setting. The skills and ideas gained enable Delta Zeta chapters to continue to excel in meeting the challenges of the future.

The fast-paced agenda featured a variety of topics:

- Reaching Our Potential - Goal Setting

- Rush - A Total Success
- Panhellenic - Pride Through Cooperation
- Pledge Education - Pride of Our Future
- Pride in Academic Achievement
- Keys to Financial Success
- Collegiate Programming - A Winning Combination through Activities, Enrichment, Philanthropy, Sorority Education, Social and Alcohol Awareness
- Fundraising Fun
- Pride in Our Heritage - Delta Zeta Ritual and History
- Looking Toward Tomorrow - Maintaining Effective Collegiate - Alumnae Relations
- Leadership Pride Nationwide focusing on
 - Leadership Styles
 - Officer Elections and Transition
 - Public Relations and Values

Each conference was directed by a team of National Council Officers, National Collegiate Chairmen and Field Representatives. The days were filled with the sharing of multitudes of ideas in large and small group discussions. Officer chats allowed Executive Board members to discuss with their counterparts from other chapters topics relevant to their individual positions. Designing solutions through problem solving activities attacked current issues facing chapters and college campuses in the 1980's. Countless hours of advance preparation by local alumnae were essential to the smooth-running, fun-filled weekends.

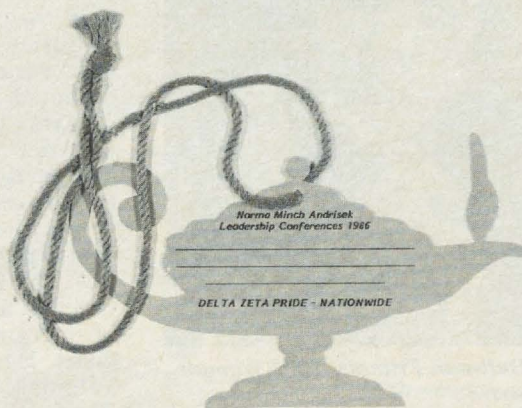
National Leadership Conferences were re-established in 1980 through the persistent, progressive direction of Norma Andrisek, National President, and her Council. In six years the conferences have expanded from three to seven and the attendance has increased from 172 to 600.

The dream has become a successful reality. With pride and loving gratitude, a decision by the 1981-1983

National Council was to name the leadership conferences in honor of Norma for her exceptional leadership and inspiration to all Delta Zetas. The announcement was made at National Convention in 1983.

Evaluations confirmed that each conference was a complete success with new friendships formed and valuable information gained. To the question "should Leadership Conferences be continued?" the answer was a resounding "YES."

As preparations were made to return home, it was obvious that Delta Zetas in attendance had truly caught the spirit of **"DELTA ZETA PRIDE NATIONWIDE."**



The Iota house at the University of Iowa was the setting for those attending this conference on June 13-15.

Muriel Francis Named Woman of the Year



Muriel Bultman Francis, 1986 Woman of the Year.

Muriel Bultman Francis, University of Alabama-AT, has been posthumously named the 1986 Woman of the Year. Nominated by the New Orleans alumnae chapter prior to her death on May 1, Muriel brings pride to her Delta Zeta sisters everywhere with a life of service and contributions to the promotion of the arts.

Muriel, who was president of Alpha Gamma chapter at Alabama, received a bachelor of arts degree from the University — not in art, but in English literature. "I always had a passion for art, even at the University," she told a reporter from the *Alabama/Alumni Magazine* last April. She took some art courses but said that most of her time was necessarily devoted to the English department.

When she completed her studies at Alabama, graduating Phi Beta Kappa, she chose to travel to Paris to study at the Sorbonne. During this period of her life her career as an art collector flourished. It really began on her return to New Orleans when two New York art dealers, E.

and A. Silberman were unable to show their collection at the Delgado Museum. Muriel's father, Frederick Bultman, offered the third story of his home which had been turned into a studio for his son Fritz as an alternative location for the exhibition.

Muriel subsequently purchased two works that the Silbermans had obtained from the Detroit Institute of Arts. The works were two large oils, one a Monet and the other by Odilon Redon, who became one of her favorite artists.

For the next three decades she was a public relations agent for artists in Chicago, St. Louis, New Orleans and New York, specializing in opera singers and classical musicians. Her clients included violinist Yehudi Menuhin and opera stars Lily Pons, Rise Stevens, Ezio Pinza, Leonard Warren and Marguerite Piazza.

When Tennessee Williams was a struggling playwright and needed a place to live, Muriel didn't think twice. She loaned him the Bultman's palatial Garden District "palace" in New Orleans. Williams turned the house's plant-filled conservatory into the setting for "Garden District," a play that was later made into the film, "Suddenly, Last Summer."

Her art collection included paintings, in addition to Monet and Redon, by Jackson Pollock, Robert Motherwell and David Smith, drawings by Pablo Picasso, Pierre Renoir and Edgar Degas, and surrealist paintings by Rene Magritte. Her collection formed the nucleus of the 1983 edition of "Art Seldom Seen," a Gallier Hall exhibit of privately owned art. In November 1985, as a part of the New Orleans art community week-long salute to her, 99 of her pieces were displayed at the New Orleans Museum of Art in "Profile of a Connoisseur: The Collection of Muriel Bultman Francis."

Muriel was the first woman president of the New Orleans Symphony, president of the New Orleans Art Museum, the New Orleans chapter

of the American-Israeli Cultural Foundation, and the community liaison board for the New Orleans Center for Creative Arts. She was treasurer of the New Orleans Spring Fiesta and served on the boards of the New Orleans Ballet, St. Charles General Hospital, the Holman Vocational Center and the New Orleans Opera Association.

Even at age 77, projects kept presenting themselves. She told the *Alumni Magazine*, "There is simply no such thing as a retired art collector."

In a lengthy article on her death in the New Orleans *Times-Picayune*, she was quoted as once saying, "Why not (be so active)? I can find the time and the energy. I've always felt that when you want something done, you ask a busy person, not a do-nothing person. Besides," she added, "it cuts down on the monotony of life a great deal."

A gracious and generous hostess, Muriel Francis opened her home on many occasions to Delta Zetas and to community organizations. She is survived by two nephews, Anthony F. Bultman IV and Ellis Johann Bultman and five great nephews.



Muriel Francis and one of her art treasures.

1987 National Convention



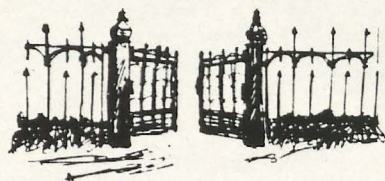
The National Council of Delta Zeta invites you to attend
the 38th National Convention to be held June 25-30, 1987
at INNISBROOK Tarpon Springs, Florida



Innisbrook is one-half mile from the Gulf of Mexico on Florida's West Coast. The entrance is off Highway 19, 35 minutes and 20 miles west of downtown Tampa. The Tampa International Airport services this area. Start making your plans now for Delta Zeta's thirty-eighth National Convention.

Lucile Cooks

Museum's President Emeritus



Lucile Crowell Cooks



Miami University presented a plaque to Delta Zeta to honor Lucile Crowell Cooks in recognition of her service to Miami's board of trustees. Shown at the presentation are, l-r, William Beckett, former chairman of the board; President Paul G. Pearson; Lucile, board member 1952-1977; John D. Millett, Miami president emeritus and Norma Andrisek, past national president. Photo by *Miami Record*, courtesy of Bob White, *Oxford Press*.

In 1973 when Lucile Crowell Cooks of Alpha chapter and Cleveland alumnae was presented the Woman of the Year medallion, *The LAMP* article read:

"Lucile is one of Miami University's most distinguished alumnae and has served the University for many years as a member of the Board of Trustees. She was appointed and reappointed by three different Governors of Ohio and confirmed by the Senate to serve on this Board.

"In June she was elected to be chairman of that Board, the first woman in the history of Miami University to be so honored. Her dedication and work with the University earned for her the Alumni Citation of Merit award in 1955 and the Bishop Medal for national community service."

Our Lucile has been no less dedicated to Delta Zeta and has served as Cleveland alumnae president,



The ribbon cutting: When the Historical Museum and National Headquarters was dedicated in October 1983, the ribbon was cut by Carolyn Gullatt, Lucile Cooks and Norma Andrisek.

Ohio Province Collegiate Director, National Social Service and Constitution Chairmen, National Vice President and Director. A distinguished Parliamentarian, she has guided the business sessions of many Delta Zeta Conventions.

Lucile always felt that since Delta Zeta and Miami University, the place of our founding, were so lovingly entwined, we should make our permanent headquarters there, joining the fraternities which were founded in Oxford. In 1979 she proposed to Convention that the National Headquarters Building Fund set aside some years before be enlarged so that money would be available for a future permanent site.

At the 1981 Convention in New Orleans, during the presidency of Norma Minch Andrisek, her longtime wish came true when the delegates voted to purchase property just off the campus at Miami for a National Headquarters and a permanent Delta Zeta Museum.

Nine trustees were appointed and when they held their first meeting the following June in Oxford, Lucile was elected president. In this capacity she has spent most of her time, organizing, visiting, promoting gifts and funds, or as the saying goes, "eating and sleeping Delta Zeta Museum."

When she informed Council that she felt it time to retire to relax and travel, her wishes were granted but with the provision that she continue to serve the museum as President Emeritus.

Delta Zeta owes a great debt to Lucile for her steadfastness in pursuing her goal to its completion. The Museum was dedicated on Founders Day 1983 during the presidency of Carolyn Gullatt. The Museum in Oxford is indeed an object of great beauty and historical value.

Lucile is most proud of passing on her Delta Zeta heritage to her two daughters, Mella Davies and Constance Roberts, and still further to three granddaughters, Kimberley Davies and Kathy Davies Paetz and Leda Cooks, all Alpha initiates like herself.

With her many honors through the years including an honorary doctorate of community service from Miami in 1979, Lucile has been listed consistently in *Who's Who of American Women*. Now living in Florida, she is active in the Daughters of the American Revolution and serves as president of the Pinellas County parliamentarians.

Province Days and Weekends

Fall Province meetings were October 25 for Province VII at the Atkinson Hotel, Indianapolis, IN; November 8 for Province XXIV at the Crowne Plaza, Orlando, FL and November 15 for Province III in Pittsburgh, PA.

Meetings scheduled for the spring include:

February 7-8

XVIII Louisiana Tech,
Ruston, LA

February 21-22

I Colonial Hilton,
Lynnfield, MA

XX Northern Kentucky
University Center,
Highland Heights, KY

February 21

XXI To be determined.

XXII Still to be determined
in Atlanta, GA

February 28

XXIII Auburn University
Auburn, AL

March 7-8

XVII Wyndham Hotel,
San Antonio, TX

March 14-15

XV-C Concord Inn,
Concord, CA

March 27-28

XVI Park Suite Hotel
Oklahoma City, OK

April 3-5

XXV Virginia Tech,
Blacksburg, VA

April 4

IV Shepherd College,
Shepherdstown, WV

XIV-E Lawrence, KS

XIV To be determined.

April 11

IX Northern Illinois
University, DeKalb, IL

V Findlay College,
Findlay, OH

For further information, contact the PCD or PAD of the Province.

March is ... Foundation Focus Month

How much do YOU know about our Delta Zeta Founders Memorial Foundation?

How does the Delta Zeta Founders Memorial Foundation differ from the Delta Zeta Sorority?

— The Delta Zeta Founders Memorial Foundation is a separate, non-profit corporation established to implement the philanthropic and educational objectives of the sorority.

What is the purpose of the Founders Memorial Foundation? — The Foundation's purpose is to raise funds to carry out the sorority's educational and charitable needs, which include scholarships, hearing help grants, and assisting the hearing impaired.

How long has the Foundation been in existence? — Since March 1961.

The Founders Memorial Foundation provides funds for _____. — Scholarships, hearing help grants, sorority educational programs, special grants to promote hearing impairment education and awareness.

What multipurpose educational institution serving deaf people through education, public service and research, and established by Act of Congress in 1864, is a part of Delta Zeta's philanthropic program? — Gallaudet University in Washington, D.C., adopted in 1954 as a channel of service to the hearing impaired.

How has Delta Zeta's participation in research, current developments and assistance to all ages and all types of hearing impairment been emphasized? — House Ear Institute in Los Angeles, California, adopted as a part of Delta Zeta's philanthropic program at the 1983 National Convention.

Can you describe the Founders Memorial Foundation logo? — A face, hand and lamp silhouetted in a black circle.

Does the Founders Memorial Foundation offer any emergency type assistance to collegians to enable them to continue their sorority activities? — Yes, the Elizabeth Coulter Stephenson Scholarships.

Who oversees the work of the Founders Memorial Foundation? — A five-member Board of Trustees appointed by National Council, all of whom are Delta Zetas, has responsibility for the activities of the Founders Memorial Foundation.

Are gifts to the Founders Memorial Foundation tax deductible? — Yes. Gifts are tax-deductible under the Internal Revenue Service Code Section 501(c)(3).

Gallaudet University

GALLAUDET UNIVERSITY is an integral part of Delta Zeta's philanthropic program and is supported through specially designated gifts from collegiate and alumnae chapters and individual Delta Zetas given through the Delta Zeta Founders Memorial Foundation. The gifts become a part of the permanent Delta Zeta-Gallaudet Endowment Scholarship Fund administered by Gallaudet University. This Fund balance is presently about \$100,000. Six \$1,000 scholarships were given to Gallaudet students for the 1985-86 school year.

Gallaudet has received a \$1 million government matching grant, beginning October 1, 1986, and all contributions received after that date will be matched dollar for dollar.

A Founders Memorial Foundation gift presentation was made to Dr. Jerry Lee, Gallaudet president, during the Better Hearing and Speech Month Kickoff Reception at the president's home by Foundation President Arlene Newman Marshall.



Gallaudet presentation: L to r, Lucille Bolstad May, North Dakota State-ΦΒ; Dr. Jerry Lee, Gallaudet president; Arlene Newman Marshall, Houston-ΔΘ, FMF president and Joan Leo Lee, Virginia-ΛΔ, wife of Dr. Lee.

May I designate how my gift to the Founders Memorial Foundation will be used? — Yes. Funds may be specified for the Scholarship Fund, any named scholarship, Hearing Help Fund, Gallaudet University, House Ear Institute, or Foundation Endowment Fund. In addition, other arrangements can be made as long as the designation is for an educational or philanthropic purpose and is consistent with the purposes of the Founders Memorial Foundation.

May I make a gift as a memorial? — Yes. Gifts to the Book of Remembrance Fund are a loving tribute and deeply appreciated by families and friends of the individual so honored. Each family is notified with a memorial gift card.

May I honor a living person through a gift to the Founders Memorial Foundation? — Yes. Gifts to the Book of Honor recognize special friends as well as new pledges and initiates, birthdays, anniversaries, new arrivals to a family, congratulations, and others. A card is sent to announce each gift.

May I make a provision in my will for a bequest or a gift of other property (securities, insurance policies, real estate)? — You certainly may! Further information may be obtained from the Delta Zeta Founders Memorial Foundation, 202 East Church Street at Campus Avenue, Oxford, Ohio 45056.

May I give something other than cash now? — Yes, Stocks, bonds, other securities, property, insurance policies and other items have also been given as donations to the Foundation.

Does the Founders Memorial Foundation qualify for matching funds from corporations? — Yes. Companies with a "matching gift" program may send a contribution to the Founders Memorial Foundation. Some companies specify for which types of organizations they will match funds. Contributors should obtain the appropriate form from their employer and follow procedures listed.

May collegiate and alumnae chapters contribute to the Founders Memorial Foundation? — Yes. Many collegiate and alumnae chapters make a contribution to the Founders Memorial Foundation part of their annual budget. Additionally, local philanthropic project funds are given through the Founders Memorial Foundation.

Are there certain recognized levels of giving? — While contributions of any size are always welcome, there are seven columns which recognize certain levels of giving. These are:

\$ 100 - \$ 499 ...	Foundation Column
500 - 999 ...	Friendship Column
1,000 - 2,499 ...	Love Column
2,500 - 4,999 ...	Rose Column
5,000 - 9,999 ...	Lamp Column
10,000 - 19,999 ...	Pearl Column
20,000 and above ...	Diamond Column

What are the future plans of the DELTA ZETA FOUNDERS MEMORIAL FOUNDATION? — The Founders Memorial Foundation wants to increase the endowment significantly in the coming years to

- provide more scholarships

- award larger grants
- sponsor educational workshops and seminars
- publish more educational materials
- investigate new areas of endeavor.

Alumnae Aid Deaf



KBA President Jack Euler accepts a telecommunications machine for lawyer referral use from Martha Hodgesmith, Topeka alumnae chapter president.

A telecommunications for the deaf (TTD) machine was presented to the Kansas Legal Services office through the combined efforts of the Johnson-Wyandotte Counties, Lawrence, Topeka and Wichita alumnae chapters.

The machine allows deaf persons who own a corresponding machine to "call" the Kansas Lawyer Referral Service (LRS) for lawyer recommendations and/or minimal legal advice. The message the deaf type into their machine is transmitted over the phone and is printed on a computer printout in the Legal Services Office. Their response is likewise typed into the TTD and is printed out in the caller's home.

The Kansas Lawyer Referral Service's function is to aid Kansans in locating a lawyer in their area who is familiar with the type of case called about. The LRS is sponsored by the Kansas Bar Association and is operated by Kansas Legal Services as a public service. The caller's first 1/2 hour appointment with the referred lawyer is \$15. The cost of further legal advice is determined by the client and lawyer.

Martha J. Hodgesmith, Topeka attorney and president of the Topeka alumnae chapter, presented the machine to Kansas Bar Association President Jack Euler during May Better Hearing and Speech Month.



Delta Zeta *Founders Memorial* Foundation

Applicants and Contributors

"TO MY MIND, GROWTH ..."

One of the ideals of Delta Zeta is to encourage academics which builds a strong and respected sorority. With strength comes power to accomplish many other Delta Zeta goals. The Delta Zeta Founders Memorial Foundation was established to accomplish this with its scholarships. The seed money for the scholarships comes from generous alumnae and collegians who have the foresight to appreciate the need to encourage the highest academic standards. Donations to the scholarship fund or a specifically named scholarship are tax deductible and can be made by individual Delta Zetas or alumnae and collegiate chapters. Don't you want to participate and contribute to the success of our Delta Zeta Scholarship Fund? Simply use the adjoining form.

FOR SCHOLARSHIP APPLICANTS: To apply for a Delta Zeta Founders Memorial Foundation Scholarship, please fill out the applications available in the winter collegiate mailing and return to National Headquarters by March 1, except for the Elizabeth Coulter Stephenson Scholarships which do not have a deadline. Additional applications are available through your chapter CCD, PCD, or the Founders Memorial Foundation in care of National Headquarters. Winners are notified in early July.

"Returning Student" Graduate Scholarship applications are available through the alumnae chapter president. These scholarships are for alumnae who are returning for

graduate work after an extended interim.

For Founders Memorial Foundation locally administered scholarships, application forms are available from the Province Collegiate Director.

REMEMBER your college days, the days of all-nighters, serenades

and socials? Remember the walks across campus, "candlelights" and study breaks? Those days may be over for us, but young Delta Zetas everywhere are experiencing the joys and hardships that college days bring. Delta Zeta can give a girl the best of everything ... but we need you to help Delta Zeta give.

KEEP APPRECIATING DELTA ZETA

Date _____ Enclosed Check for \$ _____

TAX DEDUCTIBLE CONTRIBUTION from:

NAME _____

Married Name

First Name

Maiden Name

ADDRESS _____

COLLEGE/CHAPTER _____

(Where initiated)

(Alumnae Chapter/Club)

DONATION MADE in memory of _____

in honor of _____

occasion _____

Please notify: Name _____

Address _____

PLEASE MAKE ALL CHECKS PAYABLE TO:
DELTA ZETA FOUNDERS MEMORIAL FOUNDATION

Send to: Delta Zeta Founders Memorial Foundation
Delta Zeta National Headquarters
202 East Church Street at Campus Avenue
Oxford, Ohio 45056

Five Receive FHM Awards



Staci Adelman
Northwestern-AA



Chris Alexander
Youngstown-KX



Lauren Bohnet
LSU-Σ



Janna Kleinecke
Houston-ΔΘ



Diane Stecher
MO/St. Louis-IE

and a recipient of their Outstanding Campus Leadership Award.

Christine, president of Kappa Chi and of the Youngstown College Panhellenic, is majoring in chemistry and pre-med. Activities include the dean's list, Health Services Review Board, Homecoming Committee and Court, Horizontal Matrix Management, Philiatric Society and *Who's Who Among American College Students*.

tar Board. She was named by Mortar Board as one of the top ten freshmen at LSU.

Janna is president of the University of Houston Ambassadors and has been employed at the UH Law Center for three years. Activities include Student Program Board, Mam'selles, Young Republicans and Theatre Suburbia. She was named outstanding treasurer of Province XVII and was later pledge educator for Delta Theta. Active in all rush activities, her voice adds to party skit success.

Diane hopes to become a Certified Public Accountant in one of the "big 8" accounting firms. As president of Iota Xi, she is also a cheerleader, has served as a UMSL Ambassador, worked on Peer Counseling and Orientation and was coordinator of UMSL's Alcohol Awareness Week. She is listed in *Who's Who among Students in American Colleges*.

Five outstanding juniors have been selected for the 1986 Florence Hood Miner award. This award, based on campus activities, scholarship and community service, is a diamond shaped pendant with the letters Delta and Zeta and a diamond in the flame connecting the letters. First presented in 1948, it honors National Historian Florence Miner, a Past National Officer with many years of service and devotion to Delta Zeta.

The recipients are Staci Lynn Adelman, Northwestern-AA; Christine Ann Alexander, Youngstown State-KX; Lauren Michele Bohnet, Louisiana State-Σ; Janna Kleinecke, Houston-ΔΘ, and Diane Stecher, Missouri/St. Louis-IE.

Staci is in the Medill School of Journalism at Northwestern University. She is a dean's list student, captain of the marching band flag corps, staff reporter for the *Daily Northwestern* and *Byline Magazine* and president of the Communications Residential College. She was 1984-1985 NROTC Empress Ball Queen, is a member of Alpha Lambda Delta

Lauren is a physical therapy major and plans for a master's degree in occupational therapy. She served as chairman for the Louisiana Panhellenic Conference and later as chairman of the Southeastern Panhellenic Conference which included over 700 delegates from 12 states. She belongs to Omicron Delta Kappa, Rho Lambda and Mor-

A New Delta Zeta ... Joan Lee of Gallaudet



Joan Lee

by Linda Regner, Shepherd-KM
PCD, Province XXV

On a lovely sunny afternoon in April, Province XXV had the pleasure of holding a special alumna initiation for Joan Leo Lee, wife of the president of Gallaudet.

Joan first became interested in Delta Zeta when she observed the many activities involving Gallaudet and the many contributions made to the hearing impaired.

The initiation, conducted by the Lambda Delta chapter, took place on April 27 at the University of Virginia's campus chapel. To share in this special day were FMF President Arlene Newman Marshall; National Philanthropy Chairman Joan Don-drea Lowry; Province XXV's PCD Linda Regner; Province XXV's PAD Shelly Belson Stepp; Washington, D.C. alumnae chapter president Colleen Kinney and other alumnae members and the executive boards

and CCDs of Province XXV chapters - Longwood-ET; Old Dominion-ΘΦ; Radford College-ΞΔ and Virginia Polytechnic Institute-KΘ. After the initiation, a reception was held at the UVA chapter house.

Joan was born in West Chester, Pennsylvania and attended Elon College in North Carolina. She received a graduate degree at Virginia Tech. She taught school in the Alexandria and Fairfax, Virginia areas for 10 years. During this time period she met and married Jerry Lee. They have one son, Zan Lee, who was born in 1985. When Joan is not traveling with President Lee on behalf of Gallaudet and has some free time, she enjoys reading and keeping active with running and aerobics.



Emily Weinstein, president of Virginia-
ΛΔ welcomes new sister Joan Lee.

May is ...

Better Hearing

and Speech Month

The Council for Better Hearing and Speech Month, a consortium of 20 organizations whose primary concerns center on hearing, speech and language impairments have organized Better Hearing and Speech Month as a national campaign to inform the public about communicative disorders, and most importantly, to promote the early detection, proper treatment and prevention of these disorders. The Congress of the United States has officially declared MAY as Better Hearing and Speech Month. As a

sponsoring member of the Council, the Founders Memorial Foundation dedicates itself to bring a message of hope and available help for children and adults with hearing, speech and language disorders to America. More than 60 magazines, including such diverse publications as *Newsweek*, *Life*, *Ladies Home Journal*, *Sports Illustrated*, *Cosmopolitan*, and *Glamour* will bring our message to America — look for DELTA ZETA SORORITY AND FOUNDATION.

Your Privilege ... Recommendations for National Council Offices

by Florence Hood Miner,
Illinois-AB
National Historian

Delta Zeta Sorority is a democracy with the delegates to the National Convention approving the Constitution and Standing Rules which govern our organization. The National Council administers these laws and manages the sorority between Conventions.

From this august body comes the progress and prestige of Delta Zeta. It is therefore up to us as initiated members to choose the best possible officers each biennium. All of us have the privilege of participating in this process by recommending to the Nominating Committee the best possible candidates.

The members of this Nominating Committee were elected at the 1985 Convention in Scottsdale and represent, as you can see, the various categories of delegates. They, along with the Council appointed chairman who must be a former Council member, will meet in March to choose from among the many voluntary recommendations, the candidates for the offices of National Council, which will be voted on at the June Convention in Florida. Remember that this nomination does not assure election as nominations from the floor of qualified candidates may be placed on the ballot.

The process of this early meeting was not always so. This Historian remembers her first Convention as a collegian, when Delta Zeta had but fifty-five chapters, that the Nominating Committee was chosen during Convention and then met until the wee small hours deciding the make-up of the National Council.

The stress on the committee and on the possible candidates was enormous, and since Delta Zeta had tripled her chapter roll, it was felt necessary to have a more efficient method of election. At the 1960 Convention, the Resolutions Committee

presented a plan for choosing the delegates to serve on the next Nominating Committee. At the closing session of this Convention, a delegate and two alternates were chosen in each category by their peers to serve two years later.

However, the committee still did not meet until the Convention, although they did correspond. It was not until 1973 that the committee was empowered to meet and deliberate 90 days before Convention. Thus the present March meeting.

Your recommendations and reasons for nominating worthy experienced alumnae for Council offices are most important to the committee. But in recommending, remember first of all that your candidates must be willing to assume these offices. Serving on a Delta Zeta National Council is an awesome responsibility.

It involves a tremendous amount of time, energy, and dedication to fulfill the many assignments and obligations. Some years back a Vice President who did not wish to continue said that if it weren't for the long meetings and the tons of mail, serving on Council would be fun. Nowadays we add to the list of nerve racking experiences the many waits in airports and snow storms, the delayed mail, constant ringing of the telephone.

All of our Council members are expected to travel and to be shining examples wherever they may be, however difficult the journey or the situations to be faced. To make wise decisions with charm and inspiration is not always easy. To repeat, it is an awesome responsibility, so choose your candidates with the experience, the charm, the time, and most of all family cooperation.

Nominating Committee

Merry Westbrook Adamcik,
Province Collegiate Director
Patricia Mendenez Tector,
Province Alumnae Director
Carol Johnson Miskell,
College Chapter Director
Carol Carson Konet,
National Committee Chairman
Texas A & M University- $\Lambda\Xi$,
College Chapter Delegate
Ohio State University- Θ ,
College Chapter Delegate
Berea (OH) Alumnae Chapter,
Alumnae Chapter Delegate
The Chairman is Dianne Fellows
Guild, Past National Secretary.



Dianne Guild

Recommendation for National Council Nomination

This form must be postmarked no later than February 6, 1987 and mailed to Mrs. Douglas Guild, 16 Andrews Drive, South Burlington, VT 05401.

I recommend:

Last Name	First Name	Middle Name	Maiden Name
-----------	------------	-------------	-------------

Address: Street	City	State	Zip
-----------------	------	-------	-----

for _____ Council Position _____ Has she consented to this recommendation? _____

She is a member in good standing of _____

College	College Chapter	Degree/Date	Alumnae Chapter
---------	-----------------	-------------	-----------------

Alumnae chapter(s), office held _____

Other colleges or universities attended _____

State, Province, National Offices,
Activities, Services: _____

College chapter offices, honors,
awards, services: _____

Occupation _____

Is she presently employed? _____

Full time _____ Part time _____

Personal Responsibilities: _____

Number of children: _____

Ages of children: _____

Travel: In your opinion, is she able to travel 5 or more days at a time?

Yes _____, No _____

2 times a month? Yes _____, No _____

Or how often for how long? _____

Reasons for recommending this member: _____

Recommended by: _____

Your signature
(first, maiden, married name)

College/Chapter

Alumnae Chapter

Address: Street	City	State	Zip
-----------------	------	-------	-----

(If more space is needed, please attach additional sheets of paper.)

Alpha Nu Alumnae Meet for Reunion



Katharine Fillmore Lemons pins a nametag on Mary Elizabeth Johnson at the Alpha Nu Reunion Luncheon in Indianapolis.

**by Ruth Marie Price Griggs
Butler-AN**

Twenty-three members of Alpha Nu Chapter, formerly at Butler University, met for a Reunion Luncheon in Indianapolis, Indiana.

Those present at the Riviera Club on July 10 were Maxine Scherrer Beckerich, '29, Indianapolis; June Wilson Bolyard, '29, Indianapolis; Mary Carriger Buskirk, '27, Zionsville, Indiana; Geraldine Shaw Carrington, '28, Indianapolis; Margaret Davis Carrington, '26, South Bend, Indiana; Ruth Marie Price Griggs, '29, Indianapolis and Bradenton, Florida; Betty Beckman Harker, '33, Indianapolis; Maurine Campbell Hitz, '34, Anderson, Indiana; Ada Rubush Holland, '25, Mystic, Connecticut; Mary Elizabeth Johnson, '34, Muncie, Indiana and Eustis, Florida; Zerelda Rubush Lawlis, '24, Pompano Beach, Florida; Katharine Fillmore Lemons, '24, Indianapolis.

And Virginia Lindsay McLeay, '26, Marion, Indiana; Marion Sones Peine, '33, Zionsville, Indiana; Anita Brownlee Platte, '29, Mooresville,

Indiana; Isabelle Early Schmidt, '28, Indianapolis; Willodean Nease Schofield, '30, Anderson, Indiana; Kathryn Rank Shotwell, '26, Indianapolis; Hattie Bridgford Sordean, '33, Indianapolis; Virginia Springer Springer, '26, Indianapolis; Mary Elizabeth Thumma, '28, Bradenton, Florida; Alene McComb Worth, '31, Indianapolis and Ruth Duffy Weir, '29, South Bend, Indiana.

At the head table were Katharine Fillmore Lemons and Zerelda Rubush Lawlis, charter members of the chapter, and the reunion committee — Mary Carriger Buskirk, Ruth Marie Price Griggs, Katharine, and Anita Brownlee Platte.

If prizes had been given, one would have gone to Kathryn Rank Shotwell for 11 great grandchildren. Mary Carriger Buskirk, Geraldine Shaw Carrington and Maureen Campbell Hitz tied with 9 grandchildren each.

Next to parenting, the most popular profession was teaching. Former teachers included Margaret Davis Carrington, Ruth Marie Griggs, Betty Beckman Harker, Mary Elizabeth Johnson, Willodean Nease Schofield, Hattie Bridgford Sordean, Mary Elizabeth Thumma and Ruth Duffy Weir. The education prize would go to Mary Elizabeth Johnson, Ball State University professor emeritus, who taught for 45 years. Coming in second is Ruth Marie Griggs with 41 years and third is Mary Elizabeth Thumma with 40.

Mary Elizabeth Thumma has continued her teaching in Florida where she has helped Spanish-speaking people learn English under the *Each One Teach One Literacy Program*. She is also a Docent at the Ringling Museums in Sarasota. While in Florida during the winter months, Mary Elizabeth Johnson does tax returns for the elderly as an AARP volunteer. Ruth Marie Griggs keeps in touch with her field by directing the National High School Journalism Contests sponsored by the National Federation of Press Women.

Ada Rubush Holland has been a fashion coordinator for Nieman-Marcus. Not present, but sending greetings was another ΔZ in fashions, Josephine Ready, '29, who owns *The*

Bustle in Wickenburg, Arizona.

Seventeen other Alpha Nus who could not attend the reunion sent letters to be read at the luncheon.

Dorothy Rubin Bell, '35, Encino, California, said she belongs to the San Fernando alumnae chapter which supported the renewal of Alpha Chi chapter.

Betty Wilson Higinbotham, '29, Friday Harbor, Washington, wrote; "Life on this small island (San Juan) is so idyllic that it is very hard to accomplish anything because of frequent pleasures like botanizing, birding, and beach combing. In the past three years I have done some botanical teaching for the University of Washington. This summer I will be teaching the plants of San Juan Island for Skagit Valley Community College."

Florence Condrey North, '31, Lehigh, Florida, "I am living the good life of retirement here after 23 wonderful years teaching. I am affiliated with ΔZ Alumnae in Fort Myers and they had a touching Golden Rose Ceremony for me in 1981 on Founders Day."

Lois Young Shireman, '28, Mesa, Arizona, wrote that in November of '68 her family purchased a travel trailer and moved from Indiana to a drier climate. "We are still trailering and enjoy getting away from Mesa to the cool mountain parks in our beautiful Arizona."

Others who sent greetings were Ellen Lippeatt Alig, '32, Greencastle, Indiana; Pearl Bartley, '25, Connorsville, Indiana; Virginia Gifford Bolton, '29, Noblesville, Indiana; Dorothy Neptune DeCroes, '31, Lebanon, Indiana; Esther Hutsell Duncan, '32, Fort Wayne, Indiana; Florence Tridle Griffin, '34, Orange City, Florida; Frances Brittain Johnson, '30, Naples, Florida; Elizabeth Evans Kugel, '27, Mitchell, South Dakota; Dorothy, Jackson Michener, '31, Ponomo, California; Ruth Emigholz MacLoed, '25, Riverside, California; Maxine Quinn McGoff, '26, Fort Lauderdale, Florida; Irene Wood Warnock, '26, Jacksonville, Florida; and May Langdon Wicker, '30, Moraga, California.

Forming a Bond



Ritual is as old as the history of man, and as new as tomorrow.

Ritual runs from the simplest of gestures to the most elaborate of ceremonies. Everybody has experienced ritual in many different forms.

What is this thing called ritual?

It's as simple as a handshake. We don't think of shaking hands as being a ritual, but it is. The handshake originated as a symbol of peace and friendship, the extending of the hand to show it empty of any weapon.

There are a great many ritualistic acts whose origins are lost to antiquity, but all of them at one time were symbolic of an important fact which could be expressed in such a way as to be understood by anyone without resorting to language.

When we salute the flag, we put our right hands over our hearts. We may not all understand just what this means, but the symbolism of it is clear. When the judge enters the courtroom, all stand. It's not his robes that we are recognizing, but the importance of his office.

When the president of the United States appears on the scene, the band strikes up "Hail To The Chief." This piece of music is not used on any other occasion. It may not be the greatest march ever written, but it is one that carries a single and recognizable message.

All these are examples of ritual - where words are not needed to convey an idea that is expressed in symbolism.

The Roman Catholic ceremony of celebration of the mass, certainly one of the world's rituals of longest standing and, in some of its forms by far the most elaborate, with many rich costumes and props of precious



metals and gems, with large aggregations of music, involving bells and incense and with tremendous pomp and ceremony, has evolved from man's joy at the simple ceremonial breaking of bread and drinking of wine by a group of poor people 2,000 years ago.

People have used rituals to express inner feelings such as that almost since the beginning of time - certainly since long before the first written word.

Our Delta Zeta ritual is a member of that same family. It was born in a room in Oxford, Ohio. It filled a need for a handful of young women

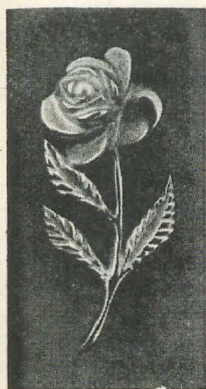
who felt united in a bond of sincere and lasting friendship. Through that ritual they were bonded in a common cause.

The heritage of that group today forms a bond between all Delta Zetas, no matter how old or young we may be, no matter whether we were initiated north, west, east or south. We have all stood together in one room as we heard together over the arch of time those familiar words that have been uttered in our chapter rooms for more than eighty-four years.

As pledges, we might sit in a classroom-style group while the chapter officers talked to us about our Sorority and what it stands for. We could listen while our chapter president explained the meaning of our Delta Zeta badge. We might even sit still for a lecture by an alumna about what the Sorority expects of us.

But certainly such a procedure would have far less impact than our formal initiation, which does much





corner once a year, parceled out to an unwilling initiation team to be mumbled over a group of bewildered pledges and then forgotten. For them it is in constant use as a tool to maintain chapter solidarity, to build chapter strength.

No one is so naive as to think that there are none who scoff at the ritual. No one could believe that every Delta Zeta ever initiated had exactly the same reaction. But it is certain that those Delta Zetas who have succeeded in life are in a large measure those who hold the ritual most clear. They may not remember every word, but even today most of them can probably remember some of the sentences.

What they do recall are most likely to be phrases from the ritual that have played a part in guiding their lives, consciously or subconsciously. For there is much in the teachings of the ritual that is a reminder of the way to live a fuller, richer life. There's guidance there for all of us, not only in groups but also as individuals.

Challenge to Collegians

In your chapter there's one, and probably only one, complete copy of the ritual. But as an initiated member, you are entitled to see it any time you want. Why don't you take a half-hour some day and sit down wherever that book can be made available? That's all the time it will take you to go through all the ceremonies.

If you have never done that, you'll probably find some things there you have either never heard or don't remember. And maybe - just maybe - you will learn why the ritual is the glue that can bind a chapter together more tightly than anything else in the world. Perhaps you will learn, as many other chapters have, the value of our ritual as an aid to building a better, stronger chapter with more dedicated, involved and interested Delta Zetas.

— CFEA Editorial
Services Committee

the same thing but in a stronger and more colorful way. It is one of the most effective ways known to grab our attention and imbed the message in our minds.

No matter that few of us could repeat or even remember the words. No matter that there may have been minor changes or revisions during the intervening years. The symbolism that our ritual portrays stays with us always and creates a bond among us.

The bond is probably at its strongest when we are undergraduates. Then the words and the purposes are freshest and most meaningful. Then the ritualistic procedures are the most powerful. Our best chapters are well aware of this. They are the ones who perform all of our ritual with extreme care, who hold formal meetings, who let the ritual work for them to continually pump more sisterhood into the chapter as a whole.

For them, the ritual is not something that is hauled from its dark



The Delta Zeta badge has changed but little over the years. In the upper left of the picture is Alfa Lloyd's original pin. Note that it has no pearls. Alfa presented this badge to the sorority for its historic value. Next to this is the badge of Gertrude McElfresh, Beta charter member. Note the difference in position of its pearls to the two pins at the right of the picture. The pin in the lower left, by the same jeweler as Gertrude's pin, shows variation in design of column and size of pearls.

Foundation Announces 1986 Scholarships



Carol Boldt
Carroll-ΓΘ



Carolyn Clement
NE Wesleyan-BT

FOUNDERS MEMORIAL SCHOLARSHIPS

In memory of the Founders, six scholarships are awarded annually to junior or senior women outstanding in chapter, campus and scholastic activities. The \$500 award winners for 1986 are:

Carol Boldt Carroll College-ΓΘ

As vice president of membership, Carol organized a program that inspired enthusiasm and participation which resulted in quota being pledged for the first time in several years. A business administration major with a 3.9 GPA, she has been on the Dean's List every term. She has served on the Student Representative Council, been a member of the Business Club and participated in intramural sports.

Carolyn Clement Nebraska Wesleyan-BT

Through academic, extra-curricular and part-time work, Carolyn has demonstrated her abilities as a scholar and leader. A senior psychology/French major, she hopes to continue her education following graduation. Carolyn is Beta Tau's president and has a long list of activities including Cardinal Key, Drill Team captain and Student Affairs Senate Committee.

Laurie Chrisman Robert Morris-EX

Laurie, serving a second term as chapter treasurer, is looked up to by the younger members because of her sincere leadership qualities and constant 4.0 GPA. She graduates in May with a degree in business information systems. She has received numerous honors including a Robert Morris Honors scholarship and a Student Government Honors award. She previously served as vice president of membership and Panhellenic treasurer.

Terri Chrisman Robert Morris-EX

Terri was re-elected vice president of pledge education. A business information systems major graduating in May, she too has consistently maintained a 4.0 GPA. Like her sister, she received many campus honors including the Robert Morris Honors scholarship and Student Government Honors award. She is president of the Alpha Tau Sigma honors fraternity.

Dana Gooden Northeast Missouri-ΔΣ

A speech pathology major, Dana is active in departmental organizations. Her scholastic achievements include membership in Alpha Phi Sigma and Cardinal Key. Several advocates wrote that Dana is involved in those activities which better the life of the community and believe she will continue to give her best endeavors.

Maria Toon Louisville-BT

Maria is considered the chapter's motivator and its "Dear Abby." A nuclear medicine technology major, she is on the Dean's List, participates in intramural sports and was a Louisville Belle nominee. She is vice president of membership.

UNDERGRADUATE SCHOLARSHIPS

Undergraduate scholarships are given annually and are based on chapter and campus activities. Ten \$500 scholarships were awarded to the following:

Lisa Bohlmeier Houston-ΔΘ

Lisa has made an outstanding contribution to the chapter by developing a positive and practical academics program including an awards ceremony at the scholarship dinner.



Laurie Chrisman
Robert Morris-EX



Terri Chrisman
Robert Morris-EX



Dana Gooden
NE Missouri-ΔΣ



Maria Toon
Louisville-BT



Holly Davis
USC-BA



Richelle Ferry
Iowa State-BK

An elementary education major, time limits her campus involvement to committee participation, but she is a behind-the-scenes worker.

Holly Davis
Tampa-ΔB

Holly, a political science major with a 3.8 GPA, hopes eventually to receive a law degree. She has been on the Dean's List three semesters. Now vice president of pledge education, she previously served as Panhellenic representative and Student Government representative.

Richelle Ferry
Iowa State-BK

Richelle is chapter president, having previously served as treasurer. She is a physical education major seeking a teaching certificate. Active in a variety of campus organizations, she is a member of the Campus 4-H and the winner of a National 4-H award.

Kandace Knox
Louisiana Tech-ΘE

Chapter president Kandy was voted outstanding Greek Woman in 1985. As Panhellenic representative she worked to improve relations with other Greek organizations. A Dean's List student, Kandy is a member of several honor societies and works part-time in the School of Professional Accountancy administrator's office.

Kathryn Ohlman
Indiana-E

Katie is chapter president and actively involved in the intramural program, serving as vice president of sorority intramural managers and as an official. A Dean's List student, several advocates note her strong leadership ability.

Benita Petri
Wittenberg-BX

Currently serving as Panhellenic assistant rush chairman, Benita is a member of Mortar Board, secretary-treasurer of Pick and Pen, vice president of Ivy Ring and has been a Wittenberg Scholar for three years. She is Beta Chi's recording secretary and a biology major.

Beatrice Reilley
UCLA-AX

Voted last year as Alpha Chi sister of the year, Bea maintains a 3.2 GPA and is involved in Resident Hall programs and is president of the Northern Suites on campus. Active with the *Bruian*, UCLA student newspa-

per, she is Panhellenic representative and was pledge class president.

Kathleen Spehar
Western Michigan-ΓΠ

Kathy is a musician who served as student conductor with the Kalamazoo Youth Symphonic Band. Active in all the university instrumental ensembles, she also gives private flute lessons at area high schools. She is Gamma Pi's president.

Melanie Tallman
Appalachian State-ΛΦ

Melanie is seeking a degree in management-psychology and was recognized by Panhellenic for her outstanding academic record. She is a member of Gamma Beta Phi honor society and Alpha Chi National Honor Society and has been on the Dean's List continuously.

Cheryl Wallace
Central State-EY

As a new chapter president, Cheryl held down two part-time jobs to finance living in the chapter house. Her CCD says she always finds time to carry out the duties of her office and to help with problems, yet she maintains high academic standards. She is a criminal justice major.

GRADUATE SCHOLARSHIPS

Graduate scholarships are given to women seeking a graduate degree. The \$500 awards were presented to:

Pamela Brugger
Northeast Missouri-ΔΣ

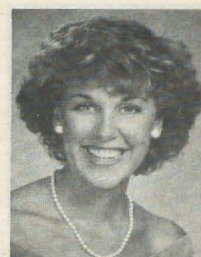
Pam is a first year graduate student seeking a degree in personnel management. Her goal is "to further develop my skills in the area of communication." She used these skills in Delta Sigma by assisting with fund raising projects. A member of *Who's Who*, she was also active in Student Senate and the Japanese Exchange Program.

Veronica Parsley
Middle Tennessee-Π

An accounting major graduating cum laude, Renee is employed as an auditor for the State of Tennessee while working on her MBA at night. As an undergraduate she served as song leader, corresponding secretary and treasurer. After graduation, she stayed involved by becoming rush advisor and is the vice president of the Murfreesboro alumnae chapter.



Kandace Knox
LA Tech-ΘE



Katie Ohlman
Indiana-E



Beatrice Reilley
UCLA-AX



Benita Petri
Wittenberg-BX



Kathleen Spehar
W MI-ΓΠ



Melanie Tallman
Appalachian-ΛΦ



Cheryl Wallace
Central State-EY



Pamela Brugger
NE Missouri-ΔΣ



Veronica Parsley
Middle TN-Π



Betsy Patterson
USC-BA



Marilyn Ramos
New Hampshire-Θ



Jennifer Wysong
NE Wesleyan-BT

Betsy Patterson South Carolina-BA

Betsy is working toward a Ph.D. in environmental health. As a collegian, she chaired Province Day and served two years as Beta Delta's treasurer. She has continued to work with the chapter as financial advisor and has also been acting CCD and rush advisor. A program for hearing impaired children called "Project Scooter" was initiated by Betsy. It won the University Chaplain's Award.

Marilyn Ramos New Hampshire-Θ

Marilyn has long been active in the women's right movement, Stamford Human Rights Commission and with the Hispanic population, all of which gave her a sense of community and purpose and determined her decision to give up teaching and become a lawyer. She has served as coordinator of the *Teaching English to Speakers of Other Languages Program* for the Greenwich (CT) Public Schools since 1979.

Jennifer Wysong Nebraska Wesleyan-BT

While serving as Beta Tau's president and maintaining a 3.9 GPA, Jody also served as Ambassador president, Nebraska Wesleyan Student Senate chairman, Psi Chi psychology honorary vice president and as a member of the President's Student Advisory Board. In addition, she was employed part-time in the Admissions Office. Jody is a first year graduate student working toward a doctorate in psychology.

EDITH HEAD SCHOLARSHIP

This \$500 scholarship is given to a student pursuing a course of study leading to a career in Fashion Design. The 1986 award was given to:

Margaret Blankenship Appalachian State-ΛΦ

As a Clothing and Textiles Merchandising major, Margaret "developed one of the most creative and professional videotaped productions I have ever had an undergraduate student produce," said a professor. Margaret served as Lambda Phi president, was named to *Who's Who* and was on the Dean's List seven consecutive semesters. She is working toward a master in clothing and textiles at the University of North Carolina.



HOUSTON, TEXAS/NANCY HOLLIMAN SCHOLARSHIP

The Houston, Texas/Nancy Holliman Scholarship was established by the Houston alumnae chapter for a collegian pursuing a degree in audiology. The \$200 award went to:

Nancy Buchler Louisiana State-Σ



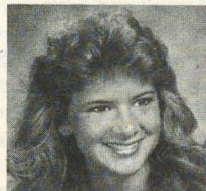
A Dean's List student, Nancy is majoring in speech pathology and audiology. She worked on the Southeastern Panhellenic Conference held at LSU and is currently serving Sigma as *LAMP* editor.

CATHERINE BENJAMIN BECKER SCHOLARSHIP

This annual \$500 scholarship is given to a member pursuing a course of study in the fields of accounting, finance, banking, or medical technology. The award went to:

Cynthia Fritch Indiana-E

As a business honors student, Cynthia is required to take extra MBA courses which will lead to an accelerated MBA degree. She maintains a 3.7 GPA and is active in the Indiana Student Foundation, IU



Swing, Union Board and the Little 500. Her business counselor said, "Cynthia has proven herself not only academically but as an active, caring citizen."

HELEN WOODRUFF NOLOP SCHOLARSHIP

This scholarship is awarded to assist women graduate students in the field of audiology or applied areas of speech and hearing. The \$500 award went to:

Lynne Marie Ludwig North Texas State-KZ

A dedicated student who is sincere about pursuing her professional goals, Lynne is working toward a master's degree in speech pathology. Lynne states, "upon completion of my master's I hope to get experience as a school speech therapist and then possibly do private practice or hospital rehabilitation work." She is a member of the National Student Speech-Language-Hearing Association and as an undergraduate maintained a 3.5 GPA.



GAIL PATRICK VELDE SCHOLARSHIP

This \$500 scholarship is given to a collegian based on chapter and campus activities. The 1986 award went to:

Ramona Tedford Moorhead State-ΘN

A business administration major consistently on the Dean's List, Ramona is Theta Nu president. She has previously served as president of Alpha Lambda Delta honor society and was chapter treasurer and house manager.



VEE SHAKARIAN TONER LOAN FUND

The Foundation has granted \$200 loans to:

Crystal Hull
West Virginia Tech-III

A December 1986 graduate, Crystal was highly praised for her job as treasurer of Iota Pi. She is majoring in computer science.

Pamela Norwood
Louisiana Tech-ΘE

As vice president of pledge education, Pam is an elementary education major looking forward to a career as a teacher. She believes that as pledge educator she will be developing the skills necessary to educate and motivate children in the classroom.

Lincoln, Nebraska
Alumnae/Gladys
Gelwick Memorial
Scholarship

The Founders Memorial Foundation receives with appreciation the Lincoln, Nebraska Alumnae / Gladys Enyeart Gelwick Memorial Scholarship Fund as a locally administered scholarship. This fund shall be used for the scholarship given annually to a Nebraska Wesleyan University-Beta Tau junior or senior. It is awarded by application to a Delta Zeta in good standing who exemplified loyalty and support to the chapter. This fund was established by the Lincoln alumnae chapter with funds willed to the alumnae by Gladys Gelwick.

The first recipient was Lynn Garcia of Omaha. Lynn, a junior majoring in interpersonal relations, is on the dean's list with a 4.0 average last semester. She is very active in both campus and chapter activities and presently serves Beta Tau as pledge educator.

Augusta Piatt Kelleway Scholarship

Those in attendance at the March 1, Province Day of Province XV-C witnessed the first awarding of the Augusta Piatt Kelleway



Scholarship to Kathy Burbank, San Jose State University-ΓΑ. This scholarship was established by the Kelleway family and devoted Delta Zeta sisters through the Delta Zeta Founders Memorial Foundation.

The scholarship is available to members initiated for one year, either attending school in Province XV-C, or from the province and attending school anywhere there is a Delta Zeta chapter. The recipient should be in need of financial assis-

tance, outstanding in campus and chapter activities, while maintaining a 2.8 grade average.

Kathy is currently a junior maintaining a 3.34 grade point average. She has served her chapter as chaplain, scholarship chairman, and is the chapter president. She is active in both Rainbow Girls and Eastern Star and is a member of the Student Occupational Therapy Association. Kathy is one of four Burbank children enrolled in college.

Province XV-C was honored to have in attendance at Province Day, Carolyn Kelleway Hiland, daughter of our beloved Gus. In awarding Kathy as the first scholarship recipient, Carolyn presented her with a bouquet of pink roses and a giant handmade check for \$500, as well as a certificate of remembrance.

Amaryllis Pickett Barnes Scholarship



Amaryllis Barnes

Amaryllis served on National Council from 1975 to 1979 as a Director, was Province Collegiate Director for Province XXII, and College Chapter Director for Georgia State University-ΔΔ, for 23 years. She received the Achoth Award in 1962 and was the first recipient of the Alice Huenefeld Award for Outstanding CCD in 1973. Delta Zeta was saddened to learn of her death on September 19, 1985.

The Amaryllis Pickett Barnes Scholarship has been awarded over the past ten years to Province XXII collegians who have provided extraordinary service and loyalty to their chapter and sorority. This year, the local scholarship fund and a \$1,500 contribution by Delta Delta chapter in memory of Mrs. Barnes have established the Founders Memorial Foundation scholarship. A \$250 scholarship will be awarded annually to a Province XXII collegian selected by an awards committee composed of Atlanta alumnae and province officers. The 1986 recipient was Mary Beth Pavik, former pledge educator for Delta Delta chapter.

by Susan Adrianson Skambis
Province XXII PCD

The Amaryllis Pickett Barnes Scholarship celebrated its tenth anniversary by becoming a locally administered Founders Memorial Foundation scholarship. This fund was begun in 1976 by the Atlanta, Georgia alumnae chapter in honor of Amaryllis Pickett Barnes, Oglethorpe University-BΦ.

Gail Patrick Velde Scholarship



Frances Johnson Hewitt, University of Southern California-AI, chairman of the Gail Patrick Velde Scholarship, presented a check from the Los Angeles alumnae chapter to Betty Paul DeWitt, University of Southern California-AI, secretary of the Founders Memorial Foundation to establish the Gail Patrick Velde Province XV-S Memorial Scholarship Fund as a part of the FMF's locally administered scholarships. The scholarship given annually is by application and awarded to a junior or senior collegian in good standing in a Province XV-S Delta Zeta chapter. Gail, Sanford University-AII, was a beautiful and talented Delta Zeta with numerous accomplishments, including:

Executive Producer of the Perry Mason Shows
Appearance in more than fifty films
Delta Zeta Woman of the Year, 1963
Chairman of Board of Directors, American Lung Association
Chairman, American Diabetic Society
National Association of Accountants' Business Woman of the Year
Listed in Who's Who in America

This memorial scholarship fund was established as an indication of the interest and concern which the Los Angeles alumnae hold for the continuing education of our college members and in loving remembrance of our beautiful sorority sister.

The National Council
is pleased to announce the
installation of
Xi Omicron Chapter
Loyola Marymount University
Los Angeles, California
November 1, 1986

Corporate Matching Gift Information

Many corporations match employee gifts to educational institutions, and consider fraternity/sorority foundations in the category of educational institutions. It depends on whether the foundation meets criteria unique to each corporation. We encourage you to check with your employer and see if the Delta Zeta Founders Memorial Foundation would meet their requirements. Following is a list of corporations known to match employee contributions to fraternity and sorority foundations.

Airco, Inc.	Nabisco Brands, Inc.
Allied Foundation	National Health & Welfare
Amex Foundation, Inc.	New Jersey Bell
The Andersons	J.C. Penney Company, Inc.
Atlantic Richfield Foundation	Penn Central Corporation
ASARCO Foundation	PepsiCo Foundation
Ashland Chemical	Petro Lewis Corporation
Avon Products, Inc.	Pfizer, Inc.
Bankers Trust Company	Pitney Bowes
Beatrice Foods	Proctor and Gamble
Best Products Company	Quaker Chemical Corporation
Chemical Bank of New York	Rainier National Bank
Container Corporation of America	Rockefeller Center, Inc.
Frederic W. Cook & Company, Inc.	SAFECO Insurance Company
Cooper Industries, Inc.	Salomon Brothers, Inc.
Dameron Alloy Foundation	The St. Paul Companies, Inc.
Dart Kraft (Tupperware)	Joseph E. Seagram & Sons, Inc.
Digital Equipment Corporation	Schering-Plough Foundation
Dow Corning	Scott Paper Company
Eaton Corporation	Seagram & Sons, Inc.
Emerson Electric Company	Security Pacific Foundation
Ensign-Bickford Foundation	Slocum
Equitable Life Assurance Society	Sterling Drug, Inc.
Ernst & Whinney Foundation	Sun Company
First Interstate Investment Service	Sunstrand Corp. Foundation
First National Bank of Minneapolis	Tesoro Petroleum Corporation
FMC Foundation	Transamerica Corporation
Gary Energy Corporation	United Banks of Colorado, Inc.
GenRad, Inc.	United States Fidelity & Guaranty
Gilman Paper Company	United Technologies
Gulf & Western Industries	Upjohn Company
Hormel, Inc.	Warren-King Companies
IU International	The Washington Post Company
Illinois Tool Works Foundation	Waste Management, Inc.
International Minerals & Chemical	Winn-Dixie Stores, Inc.
Investors Diversified Services, Inc.	Xerox Foundation
Jefferies & Companies, Inc.	
Jewel Companies, Inc.	
John Hancock Mutual Life Insurance	
Johnson & Johnson	
Josten's, Inc.	
Kansas City Southern Industries, Inc.	
Kemper Group	
Kimberly-Clark Foundation	
Levi-Strauss & Company	
The Mead Corporation	
Merck Company Foundation	
Merit Oil Company	
Middle South Services	
Mobil Oil Foundation, Inc.	
Mutual Life Insurance	
Mutual of New York	

FMF Memorials

The Delta Zeta Founders Memorial Foundation gratefully acknowledges the following memorials received in remembrance of Delta Zetas and relatives and friends of Delta Zetas from July 1, 1985 to June 30, 1986.

ADAMS, ROBERTA PETERSON by Mary Louise McCarty
ADELBERGER, WINIFRED CARTER by Mary Lou McConaughy Barth
ARMSTRONG, RUTH MAE RAILSBACK by Indianapolis IN alumnae
ARNOLD, FLORENCE by Cleveland OH Eastside alumnae
BAILEY, BEATRICE by Phoenix AZ alumnae
BAIRD, LILLIAN by Dallas TX alumnae
BARNES, GERTRUDE by Ann Butler Booth, Donna Hudson Dunn, Phyllis Snape Favorite, Betty Schneider Fenton, Amy Reeh Glasgow, Carol Sharpe Harper, Louisiana State University-Σ, National Council of Delta Zeta, Sandra McAlister Nesbitt, Province XVII, Province XXIII, Karen Fellows Soyk, Texas A & M University-ΛΞ
BARRETT, PHYLLIS by Portland OR alumnae
BECHTEL, JOYCE by Portland OR alumnae
BIGGS, PAUL by Portland OR alumnae
BROWN, REBECCA by Portland OR alumnae
BURGESS, ROBERT by Muncie IN alumnae
BYRNES, ALICE ALVERDES by Portland OR alumnae
COFFEE, MARGARET THOMAS by Ange Milne Youngson
COMNILLO, KATHRYN by Juanita Scholl Johnson
COOPER, MARY FRANCES by Greencastle IN alumnae
CRAVEN, ELMA VAN INYE by Cleveland OH Eastside alumnae
CREMEEN, NATALIE HAWTHORNE by Alpha Iota Reunion Group, Long Beach CA alumnae
DAVIES, ELEANOR C. by Portland OR alumnae
DAVIS, EDNA by Phoenix AZ alumnae
DOWLING, BERNICE by Humboldt CA alumnae
EVERETT, MAXINE GITHENS by Cleveland OH Eastside alumnae
GIFFORD, ELIZABETH CRUSAN by Santa Monica CA alumnae
GRASON, TRUMAN by Orlando FL Area alumnae
GUILD, CHARLES M. by National Council of Delta Zeta
HAMON, DEXTER by Corpus Christi TX alumnae
HARLAN, LEAH by Ann Butler Booth, Amy Reeh Glasgow
HASSEL, HAROLD by Chico CA Area alumnae
HEWITT, ALBERT E. by Los Angeles CA alumnae

HINSHAW, MARGIE by Sacramento CA alumnae
HOUSTON, HAROLD by Amy Reeh Glasgow
JOB, FRANCES MARIAN McMILLIN by Greencastle IN alumnae
JOURDON, BEATRICE by Greater Kansas City MO alumnae
KENNEDY, ISABEL by Cleveland OH Eastside alumnae
KENNEY, DEBORAH by Margaret McDevitt, Northern CA Coordinating Committee
KING, OLIVE by Cleveland OH Westside alumnae, Julie Kishel Foster
LEMON, EDMUND THOMAS by Louisiana State University-Σ
LINHART, CAROL M. by Judith Jacobs
MANRING, MILDRED by Jean Stockham
McCLANAHAN, MR. & MRS. by Northeast Missouri State-ΔΣ
McCROSKY, DORIS by Portland OR alumnae
MELLNIK, THELMA FREAS by El Paso TX alumnae
MYERS, ELEANOR JEAN by Gold Coast FL Area alumnae
NELSON, ELLEN by Portland OR alumnae
NEWMAN, JOHN W. by Merry Westbrook Adamcik, Ann Butler Booth, Corpus Christi TX alumnae, Dallas TX alumnae, Betty Paul DeWitt, Amy Reeh Glasgow, Carol Sharpe Harper, Ann Elkins Hawkins, Lucille Bolstad May, National Council of Delta Zeta, Province XVII, Wayne State University-EΣ
NICKETS, LINAMAE by Betty Paul DeWitt
PENGELLY, WILLIAM E. by Mary M. Winslow
PETERS, DONNA JEAN by Clarion University-EΘ
PETERS, MARJORIE by Sacramento CA alumnae
POSEY, CAROLYN SUNDBERRY by Amy Reeh Glasgow
RATKUS, STANLEY T. by Gold Coast FL Area alumnae
RINEFORT, PENELOPE PRICE by Charleston IL alumnae

RINGO, RUBY E. by Portland OR alumnae
ROBERTSON, DOROTHY by Harrisburg PA Area alumnae
SALAMON, NANCY ANN by Susan Adrianson Skambis
SANDY, RHODA ANN by Founders Memorial Foundation Trustees
SCHWANDT, DEE OSBORNE by Long Beach CA alumnae
SHAMP, SHIRLEY CHASE by Mr. and Mrs. Edward Ancin
STAUFFER, MARY ALICE by Marian E. Conrad
SHERIFF, AL, ΔΤΔ, by National Council of Delta Zeta
SORREL, MADGE JARRAD by Montgomery AL alumnae
STEWART, ROBERT by Gold Coast FL Area alumnae
STOKES, DOROTHEA W. by Springfield OH alumnae
SUTTON, YOLANDE by Salt Lake City UT alumnae
SWENSON, LUCY MAY BITTNEE by Fort Walton Beach FL Area alumnae
TALLEY, DAVID NEAL, IV by Amy Reeh Glasgow
TRAGER, ELIZABETH HAHN by San Francisco Peninsula CA alumnae, Irene and Alvin Thomas
VALLEAU, RUTH WEBB by Northeastern NJ alumnae
VARNER, EVIN C., ΑΣΦ, by National Council of Delta Zeta
WELLS, ALBERT D. by Toledo OH alumnae
WENNERLYN, MARGARET J. by Twin Cities MN alumnae
WEST, MARY ALICE by Phoenix AZ alumnae
WHEELER, HENRIETTA REDDING by Louisville KY alumnae
WOLFE, VELMA GAY by Jo-Dotte County KS alumnae

FMF Receives Special Gift

A \$75,000 life insurance policy on behalf of the Founders Memorial Foundation has been given anonymously. This most gracious and generous gift is from a non-Delta Zeta.

A tenet in our "Delta Zeta Creed" reads, "To those whom my life may touch in slight measure, May I give graciously of what is mine ..." Delta Zetas have been touched in a most beautiful and lasting way. Thank you, anonymous.

1985-1986 Foundation Contributions

The Trustees of the Delta Zeta Founders Memorial Foundation express their appreciation to the loyal members and friends who have contributed to the Founders Memorial Foundation during the 1985-86 fiscal year. Support of the Founders Memorial Foundation programs and the gift programs is gratefully acknowledged. A sincere thank you to the following for support through the Founders Memorial Foundation.

National Council

PROVINCE I

University of Connecticut-ΓB
University of New Hampshire-ΘΓ
Fairfield County alumnae
Dianne Fellows Guild

PROVINCE II

University of Rochester-ΑΙ
Trenton State-ΑΑ
Northeastern New Jersey alumnae
Southern New Jersey alumnae
Mr. and Mrs. Edward Ancin
Juanita Walker Anthony
Anne Marie Jones Gavin
Barbara Ann Stovall

PROVINCE III

Clarion University-EΘ
Drexel-EZ
Shippensburg University-KΨ
Slippery Rock University-ZΦ
Harrisburg alumnae
Lehigh County alumnae
North Philadelphia alumnae
Phyllis Snape Favorite
Charlotte Fields Silversteen

PROVINCE IV

Shepherd College-KM
West Liberty State-ΙΤ
Charleston alumnae

PROVINCE V

Ashland College-ΘΨ
Baldwin-Wallace-ΓΑ
Bowling Green State-ΙΤ
Findlay College-ΘΤ
Miami University-A
Ohio State University-Θ
Wittenberg College-BX
Wright State University-KI
Berea alumnae
Cleveland Eastside alumnae
Cleveland Westside alumnae
Columbus alumnae
Dayton alumnae
Findlay alumnae
Springfield alumnae
Toledo alumnae
Wooster alumnae
Norma Minch Andrisek
Mary Lou McConaughy Barth
Julie Kishel Foster
Joan Dondrea Lowry

PROVINCE VI

Ferris State-ZN
Wayne State University-EΣ

Western Michigan University-ΓΠ
Beta Rho House Corporation
Grand Rapids alumnae
Metropolitan Detroit alumnae
Oakland County alumnae
Province VI
Lisa Marie Housman
Teresa Johnson Severy
Maurine Cilley Sinclair

PROVINCE VII

University of Southern Indiana-AB
Indiana University-E
Bloomington alumnae
Greencastle alumnae
Indianapolis alumnae
Muncie alumnae

PROVINCE VIII

Carroll College-ΓΘ

PROVINCE IX

Eureka College-II
Northern Illinois University-ΓΠ
Charleston alumnae
Marian E. Conrad
Mary McClellan McCarthy

PROVINCE X

Nebraska Wesleyan-BT
Des Moines alumnae
Lincoln alumnae
Omaha Metro Area alumnae
Marvona Easley Tavlin

PROVINCE XI

Central Missouri State-EΓ
University of Missouri/St. Louis-ΙΞ
Northeast Missouri State-ΔΣ
Northwest Missouri State-EP
Clay-Platte alumnae
Greater Kansas City alumnae
St. Louis alumnae
Province XI

PROVINCE XII

Twin Cities alumnae

PROVINCE XIV

University of Denver-P
University of Northern Colorado-ΔΞ

PROVINCE XIV-E

Johnson-Wyandotte alumnae
Lawrence alumnae

PROVINCE XIV-W

Colorado Springs alumnae
Denver alumnae
Fort Collins alumnae
Phoenix alumnae
Salt Lake City alumnae
Juanita Scholl Johnson

PROVINCE XV-N

Greater Seattle alumnae
Portland alumnae
Elizabeth J. Orem
Marilyn Schleining Schultz
Karen Fellows Soyk

PROVINCE XV-C

California State/Chico-ΔX
California State/Fresno-EE
University of San Francisco-ΞΑ
San Jose State-ΓΑ
Northern California Coordinating Committee

Chico alumnae
Humboldt County alumnae
Mt. Diablo alumnae
Reno alumnae
Sacramento alumnae
San Francisco Bay Cities alumnae
San Francisco Peninsula alumnae
Ruth Elizabeth Behnke
Dorothy Delavan Coon
Jane Irwin
Margaret Peterson McDevitt
Irene Thomas
Maryalice Williamson

PROVINCE XV-S

California State/Long Beach-ΔΑ
California State/Los Angeles-ΘΡ
Alpha Iota Reunion Group
Delta Zeta Lamplighters of Southern California
Honolulu alumnae
Long Beach alumnae
Los Angeles alumnae
North San Diego County alumnae
Orange County alumnae
Pasadena Foothills alumnae
San Fernando Valley alumnae
Santa Monica alumnae
South Bay alumnae
Province XV-S
Alan H. Becker, M.D.
Elizabeth Barbieri Bragg
Betty Paul DeWitt
Barbara Bankson Gates
Beatrice Twigg Goodwin
Ardath L. Priddy

PROVINCE XVI

Central State University-EY
Northwestern State-ΔΟ
Alva alumnae
Bartlesville alumnae
Oklahoma City alumnae
Stillwater alumnae
Tulsa alumnae
Province XVI
Jean Nelson Stockham
Lisa Fisackerly Tuttle

PROVINCE XVII-N

North Texas State-KZ
Tarleton State-ΞΝ
University of Texas/Arlington-ΙΨ
Arlington alumnae
Dallas alumnae
El Paso alumnae
Greater Longview Area alumnae
Midland alumnae
Province XVII-N
Donna Hudson Dunn
Monica Mills
Vaughn Foundation
Mary M. Winslow

PROVINCE XVII-S

University of Houston-ΔΘ
Southwestern University-ΙΖ
Stephen F. Austin-ZΨ
Texas A & M University-ΑΞ
Brazos Valley alumnae
Corpus Christi alumnae

Edinburg/McAllen alumnae
Houston alumnae
Province XVII-S
Merry Westbrook Adamcik
Ann Butler Booth
Mary Margaret Calhoun Fore
Amy Reeh Glasgow
Carolyn Barnes Gullatt
Ann Elkins Hawkins
Arlene Newman Marshall

PROVINCE XVIII

Louisiana State University-Σ
Nicholls State University-KA
Shreveport alumnae
Betty Schneider Fenton

PROVINCE XIX

Memphis State University-Π
Memphis alumnae
Nashville alumnae

PROVINCE XX

Eastern Kentucky University-EB
University of Kentucky-AΘ
University of Louisville-BΓ
Lexington alumnae
Louisville alumnae
Carol Sharpe Harper

PROVINCE XXI

Atlantic Christian College-ΘΩ
East Carolina-ZA
Winthrop College-AΣ
Charlotte alumnae
Raleigh alumnae

PROVINCE XXII

Georgia State University-ΔΔ
Atlanta alumnae
Province XXII
Cathy Kramer Leake

PROVINCE XXIII

University of Alabama/Huntsville-AK
Jacksonville State University-ΑΓ
Huntsville alumnae
Montgomery alumnae
Province XXIII
Sandra McAlister Nesbitt
Ange Milne Youngson

PROVINCE XXIV

Florida State University-AΣ
University of Tampa-ΔB
Brevard County alumnae
Fort Walton Beach alumnae
Gold Coast alumnae
Greater Orlando Area alumnae
Miami alumnae
Platinum Coast alumnae
St. Petersburg alumnae
Tampa alumnae
Province XXIV
Lucile Crowell Cooks
Patricia Canady Rosser
Sue Andrianson Skambis

PROVINCE XXV

Old Dominion University-ΘΦ
Radford-ΞΔ
University of Virginia-ΑΔ
Anne Arundel County alumnae
Washington, D.C. alumnae
Mary S. Maxfield
Lucille Bolstad May

PROVINCE XXVI

Arkansas Tech University-AA
Province XXVI

Hearing Help Grants

The Founders Memorial Foundation annually awards grants to alumnae chapters to assist with local "hearing help" philanthropic endeavors. Grants up to \$500 are made possible by tax deductible contributions to the Founders Memorial Foundation Hearing Help Fund. Alumnae chapters must apply by April 1st. The following grants were awarded in 1986:

\$400.00 to **CORPUS CHRISTI AREA COUNCIL FOR THE DEAF** on behalf of **Corpus Christi, Tx. alumnae chapter**. One of the services provided by CCACD is a telephone message relay linking hearing and non-hearing persons via the Telecommunications Device for the Deaf. This grant will be used to purchase an additional tele-typewriter.

\$385.00 to **INFANT HEARING RESOURCE** on behalf of **Portland, Or. alumnae chapter**. Infant Hearing Resource provides a comprehensive program for parents and their hearing impaired children from the time of identification of hearing loss to four years of age. This grant will also be used to purchase a Telecommunications Device to communicate with hearing impaired parents and other professionals.

\$200.00 to **AUTISTIC TREATMENT CENTER, INC.** on behalf of **Dallas, Tx. alumnae chapter**. This grant will be used to purchase several evaluation and remedial instruments which will help the staff in determining the amount of language comprehension a child possesses. Sign language materials are needed because numerous autistic children will not become verbal language users and a manual (sign) language is taught.

Evelyn Adams Costello Scholarship



Pamela McClure Cronenwett, PAD for Province VI (right) presents the check which establishes the Evelyn Adams Costello Scholarship to Glenna VanderMeer Paukstis, chairman of the FMF Graduate Scholarship Committee.

Scholarship Fund as a locally administered scholarship. This scholarship was established by Province VI Delta Zetas in honor of Evelyn Adams Costello, Knox College-N. Evelyn's dedicated service to Delta Zeta speaks for itself, including National President 1954-58 and National Panhellenic Conference Delegate 1958-66. Extension was an area of special interest and she was influential in establishing most of the Michigan chapters. Additionally, during her presidency she was instrumental in the creation and completion of the merger of Delta Sigma Epsilon and Delta Zeta which brought 44 chapters into Delta Zeta. Evelyn's concern for others was evident as she coordinated the implementation of our National Philanthropy — Hearing Helps. It seems appropriate this scholarship be a part of the Founders Memorial Foundation.

It is a privilege for the Delta Zeta Founders Memorial Foundation to receive the Evelyn Adams Costello

Book of Honor ... A Special Gift



Many Delta Zetas continue to designate their contributions to the Founders Memorial Foundation as honor gifts which pay tribute to that special someone deserving a thank you or recognition, i.e., happy birthday or anniversary, new baby, campus or community achievement, outstanding service, etc. Gifts received are acknowledged with a special card sent to the honored person by the Founders Memorial Foundation. These contributions are tax deductible and are used to supplement Scholarships, Hearing Help Funds and the Foundation Endowment Fund. BOOK OF HONOR gifts received from July 1, 1985, to June 30, 1986, honored the following:

Beth Allen
Merry Westbrook Adamcik
Gail Persak Beets
Janet Bailey
Connie Burns Baird
Elizabeth Barbieri Bragg
Dottie Harper Branson
Belle C. Brooks
Lucile Crowell Cooks
Kari Lynn Decker
Betty and Norman DeWitt
Donna Hudson Dunn
Terri Dunson
Betty Schneider Fenton
Mary Margaret Calhoun Fore
Gamma Iota Chapter Founders
Gamma Psi Chapter
Anne Marie Jones Gavin
Sophie Prisner Griffith
Carolyn Barnes Gullatt
Margaret Hackendahl
Ann Elkins Hawkins
Myrtle Graeter Hinkley
Cindy Holder
Sue Jones-Allen
Kappa Zeta Chapter Founders
Yvonne Kauger
Jeanine Koury

Peggy Leupp
Nina Lienon
Joyce Low London
Linda Singer Looper
Joan Dondrea Lowry
Beverly Brademan Malazzo
Deanna Alleman McKinnon
Jo Harris Messlin
Sandra McAlister Nesbitt
Dr. Eunice C. Roberts
Patricia Canady Rosser
Mary A. Schendzelos
Teresa Johnson Severy
Charlotte Fields Silversteen
Margaret Allegro Sorrells
Pat Coleman Spatz
Becky Sumater
Marvona Easley Tavlin
Melinda Mickle Thomas
Janet DeBrecht Tyler
Mr. and Mrs. Robert Vasey
Jane Wilson

Elizabeth Coulter Stephenson Scholarship Recipients

The Elizabeth Coulter Stephenson Scholarship Fund provides scholarships to qualified Delta Zeta collegians in their junior or senior year who are active, participating members of their college chapters. The Founders Memorial Foundation is pleased to award scholarships to the following collegians:

PROVINCE

- III Yvonne Best, Robert Morris-EX
- V Elizabeth Bonfield, Wittenberg-BX
Donna Clawson, Wittenberg-BX
Beth Finnerty, Wittenberg-BX
Colleen Galvin, Findlay College-OT
- VI Susan Every, Western Michigan-IH
Julie Lundahl, Ferris State-ZN
Susan Unwin, Wayne State-EΣ
- VII Janell Bartlett, Ball State-IX
- IX Pamela Mann, Northwestern-AA
- X Patricia Beermann, Nebraska
Wesleyan-BT
Lynn Garcia, Nebraska Wesleyan-BT
Mary Sheka, Iowa State-BK
- XI Dana Dimit, Northeast Missouri State-ΔΣ
Debra McPherson, Northeast
Missouri State-ΔΣ

The National Council
is pleased to announce chartering
of alumnae chapters in
Southeast Wisconsin
October 24, 1986
Columbia, South Carolina
October 26, 1986
Palm Beach County, Florida
November 22, 1986
Arkansas River Valley
October 16, 1986
and
North Central Indianapolis
October 25, 1986

- XV-S Lisa Kennedy, California
State/Fullerton-IY
Kristi Phelps, California State/Long
Beach-ΔA
- XVII Angela Gay Boswell, Southwestern-
I'Z
- XVIII Kateri Harris, Nicholls State-KA
- XIX Lynn Galica, Middle Tennessee-II
Hollie McElroy, Middle Tennessee-II
Amy Minton, Middle Tennessee-II
- XX Andrea Lambert, Eastern Kentucky-
EB
Megan Mansour, Eastern Kentucky-
EB
Traci Taylor, Northern Kentucky-KB
- XXI Mary Kosnosky, South Carolina-BΔ
Gina Mayes, Lenoir Rhyne-ZE
Susan Sorrell, Winthrop College-AΣ
Lindamarie Werntz, South Carolina-
BΔ
- XXIV Deborah Doolittle, Florida State-ΔΣ
- XXV Mary Dennin, Old Dominion-ΘΦ

The Elizabeth Coulter Stephenson Scholarships are awarded throughout the school year. Application forms are included in each collegiate chapter mailing and are available from National Headquarters.

Golden Circle Scholarships

by Mary Ann Gallatin French
Oklahoma State-AE
Colonnade Clubs Chairman

The Golden Circle Scholarships, provided by the Colonnade Clubs, are awarded to worthy juniors or seniors ranking high in academics and leadership. The 1986 recipients are:

Cheryl Francis
Northern Illinois-TP

Cheryl is an accounting major with a political science minor and has a 3.4 accumulative grade point. She is student manager of the NIU Library, has served her chapter as guard and is now house manager.

Christina Hoffman
Ball State-TX

As a pre-med major Christina maintains a 3.8 grade point. She is a member of the Ball State track team and is involved with an organization that helps handicapped students with such things as note taking. A member of Mortar Board, Christina has served her chapter as Panhellenic delegate and is currently Panhellenic president.

Cynthia Scherer
Southwest Texas-IA

As a marketing major, Cynthia is a member of the SWTSU drill team, was in Homecoming Review, all campus review, works for the Registrar's office, is campus tour guide for the Student Development Office and a member of Campus Crusade. She is currently chapter president.



Cheryl Francis
N Illinois-TP



Christina Hoffman
Ball State-TX



Cynthia Scherer
SW Texas-IA

All Gamma Epsilon (Drake University, Des Moines, Iowa) alumnae are invited to an open house during Drake Relays Weekend. The party will be Saturday, April 25 in Des Moines. For details, contact Kay Morrow Wright, 10477 Juan Calle, Des Moines, Iowa 50322. Telephone 515/225-0423.

McAdams Housing Matching Challenge

Delta Zetas are accepting the challenge — but more help is needed! At the 1985 National Convention Norma Clark McAdams, Oregon State-X, gave \$5,000 to be administered through the Delta Zeta Founders Memorial Foundation. The McAdams Housing Matching Challenge was established with the stipulation it is met by \$20,000 in matching contributions from individual members or alumnae and collegiate chapters by the 1987 National Convention. These funds will be used to assist our collegiate chapters with housing needs. As Norma said when making her presentation, "You never get a second chance to make a first impression, and I want to assist Delta Zetas in making a favorable impression on campus."

Won't you help the Founders Memorial Foundation make the McAdams Housing Matching Challenge a reality. All contributions are tax deductible through the Founders Memorial Foundation, should be designated "housing challenge," and sent to:

Delta Zeta Founders Memorial
Foundation
202 East Church Street at Campus
Avenue
Oxford, Ohio 45056

Pass on the Flame

Pass on the flame of Delta Z
Pass it on with love and pride.
When you said I do, to Delta Zeta
you said I do for life.
As a pledge the flame may seem small at first,
but as each day goes on and you understand a little bit more,
that flame will grow bigger and brighter.

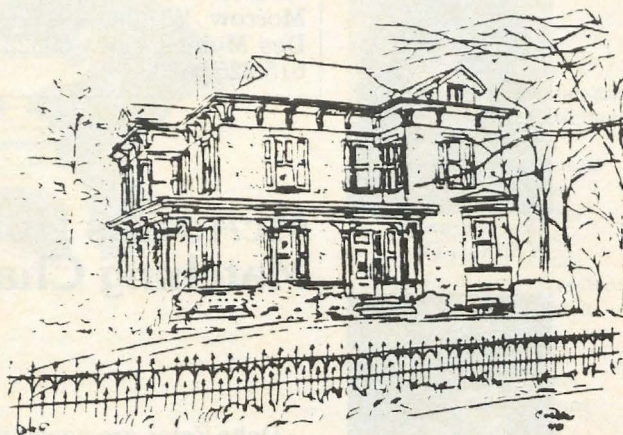
Pass on the flame of Delta Z
Pass it on with love and pride.
As we grow and change through the years, so does Delta Z.
But one thing that will always stay the same,
is the common bond of sisterhood that we share.

So, with this candle
Pass on the flame of Delta Z
Pass it on with love and pride.

Laurie LaLonde Smith
Bowling Green-IT '81



Through the Stained Glass Door



It is always thrilling to turn the pages of the guest book, located in the reception hall of the Museum, and see how many Delta Zetas and friends have visited during the past year. The registry indicates visitors from all over the United States. There is always a smiling staff member to give them a red carpet tour.

In addition, several Oxford area alumnae have volunteered to serve as hostesses to keep the Museum open during special Miami University weekends such as Homecoming and Alumni Weekend.

The Curatorial Committee met again in October for two weeks, which adds up to more than six weeks of concentrated work this year. The latest "Gifts in Kind" to arrive were two large antique trunks from the estate of Gail Patrick Velde. They were filled with albums containing pictures of the many movies in which she played, starred or directed. Gail was one of the first women in Hollywood to direct a movie and was best known for her production of the Perry Mason series.

A pair of lovely brass andirons embedded with the lamp of knowledge on top, arrived at the Museum from an NPC editor colleague of Gwen McKeeman's. Mrs. Charles S. Hyatt's (Chi Omega) gift was in honor of our Gwen.

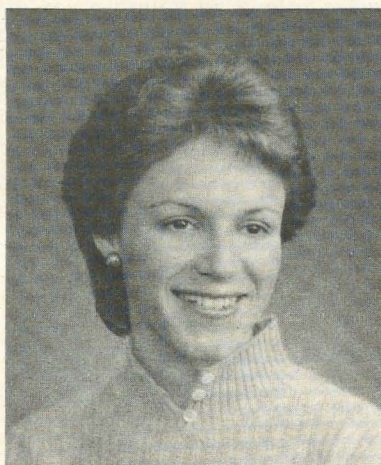
We hope you have placed the Museum on your annual giving list for it is tax deductible. We are

counting on your continued support. Wouldn't you like to be promoted to the next Circle?

Lucile Crowell Cooks, Miami-A
President Emeritus,
National Historical Museum

National Council is pleased
to announce
Delta Zeta's return
to
The University of Georgia
Zeta Pi Colony
pledged
October 19, 1986

Cynthia Winslow



Cynthia Winslow

Cynthia L. Winslow is Administrator of National Headquarters in Oxford.

Cindy has been in the service of Delta Zeta since her graduation from Miami University where she was president of Alpha chapter. She majored in finance and economics and worked one year in National Headquarters in Columbus before assuming the responsibility of the new Headquarters in Oxford.

Active in the National Panhellenic Central Office Executives organization, she is their program chairman for the 1987 meeting. Listed in *Outstanding Young Women of America* in 1984, Cindy holds membership in the Society of Administrators of Management; Pi Sigma Epsilon, a marketing fraternity; KEY (Keep Enriching Yourself), a women's business organization, and the Cincinnati Association of Executives.

Woman of the Year ... Revisited



Mercedes Bates at Repulse Bay, Hong Kong.

**by Mercedes A. Bates
Oregon State-X**

It was a real honor to be chosen by Delta Zeta as "Woman of the Year" in 1970. The award was presented at a Founders Day luncheon ceremony in Minneapolis. Later, I traveled South to be a National Convention speaker, only to find on my arrival that the meeting had been cancelled because of a threatened airline strike!

Because my chapter, Chi, had disappeared from the Oregon State campus, most of my activities have been in my chosen fields of home economics and business. In 1970-71 I served as president of the American Home Economics Association. One of the highlights of my tenure was a trip to France, along with the presidents of seven other women's professional associations as a guest of the French Government. Later, I also served as president of the AHEA Foundation.

My interest in the field of education led me to the University of Wisconsin-Stout where I served the Board of Industry Advisors both as a member and as chairman. I currently serve on two development committees: the College of Home Economics, North Dakota State University and the College of Home Economics, Oregon State University, my alma mater. Last June I was especially pleased to receive the first Outstanding Alumna Award from the Oregon State University Home Economics Alumni Association.

During the height of the consumerism movement, I served on the Consumer Affairs Committee of the U.S. Chamber of Commerce, and later was founding chairman of the Consumer Affairs Committee of the Grocery Manufacturers of America.

In business, I also served as a member of the Board of Directors of Diversified Energies, Incorporated for 10 years, retiring at the annual meeting in May of this year. I was active in the Better Business Bureau of Minnesota, serving as chairman in 1981-82. I retired as vice president, director of the Betty Crocker Food and Nutrition Center at the end of 1982.

Since retirement, I have been busy as a volunteer. I have recently completed two years as chairman of the Sister Kenny Institute and now chair the Long Range Planning Committee. I represented Sister Kenny on the Board of Directors of Abbott-Northwestern Hospital, and also serve as a member of the Board of Health Affiliates.

I will retire this fall as third vice president and board member of the Greater Minneapolis Girl Scout Council. Currently, I am a trustee of the Minnesota 4-H Foundation. I also serve on the boards of Senior Resources and General Mills' Retirement Plus.

My favorite relaxation is world travel and my favorite method of travel is by ship. Last January and February I sailed from Hong Kong to Australia and New Zealand. This winter I hope to sail from Hong Kong to India. My favorite possessions are the "treasures" I bring back to enjoy.

My message, if there is one, is that there is life after retirement and it can be as fascinating as a new career!

National Council is pleased
to announce
installation of
Xi Rho Chapter
Clarkson University
Potsdam, NY
November 15, 1986

Tyler, Texas Alumnae Receive Vaughn Foundation Grant

by Virginia Odle Voelker
University of Houston-ΔΘ

Dr. Jim Vaughn, a well known Eye, Ear, Nose and Throat specialist and philanthropist in East Texas, has given a \$1,500 special grant through the Delta Zeta Founders Memorial Foundation.

This grant was obtained through the efforts of Virginia Odle Voelker, University of Houston-ΔΘ, philanthropy chairman for the newly chartered Tyler alumnae chapter. Virginia's 65% bilateral hearing loss sparked her interest in learning more about the hearing impaired and she joined the East Texas Deaf and Hearing Association in 1980. Through this association she met many hearing persons involved in working with the deaf throughout the state of Texas.

With Delta Zeta's philanthropic endeavors in the field of audiology, Virginia contacted the Texas Commission for the Deaf to inquire if they had any type of project the alumnae chapter could undertake which would benefit the deaf of Texas. Yes, there was one. There are federal and state laws protecting and assisting the deaf that needed to be summarized, published and distributed to the deaf and the hearing persons working with them. Could that alumnae chapter do that? The answer was a quick - yes! All that was needed was the financing for the project. The Texas Association for the Deaf was sponsoring a legislative Symposium in Austin focusing on Volunteerism in the Political Action Network for both deaf and hearing persons. The attendees would later determine legislative issues in Education, Human Service Delivery, Mental Health, and This and That which included a panel on deaf-blind, senior citizens, independent living centers, interpreting services, adult education. Could the alumnae chapter send a delegate to the Symposium? Yes, if funding could be found.

Virginia prepared a grant proposal and met with Dr. Vaughn. He most generously agreed to a \$1,500 grant from the Vaughn Foundation to the Delta Zeta Founders Memorial Foundation to cover the expenses of this overall project. A portion of the grant funds will be a gift to the House Ear Institute and the remainder will be used in Tyler to defray expenses of summarizing the federal and state laws and the trip by Virginia to Austin for the Legislative Symposium.

Dr. Vaughn was very interested in the fact that the finished publication will be distributed to the deaf throughout the state of Texas, and he could foresee how this could assist in many different ways. This publication has been needed for a very long time, but without Dr. Vaughn's Foundation grant Delta Zeta could not have undertaken the project. On a local level, Dr. Vaughn encourages his hearing impaired patients to lead full, productive lives and not feel sorry for themselves. He has done a great deal to give moral encouragement to patients who otherwise would have given up and more or less become recluses. To Dr. Jim Vaughn, Delta Zeta says "many thanks for your wonderful and most gracious gift to the hearing impaired of Texas."

Because of the budgetary federal and state cutbacks, the issues of deaf education, human service delivery, mental health, and the this and that panel, the summary of these issues will be included with the summary of laws when they are distributed to the deaf. In this way the deaf may then contact their local legislators, explaining to them why they need these services continued.

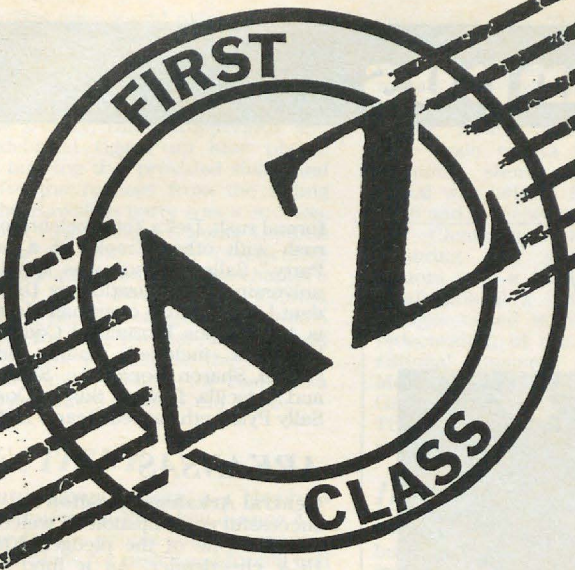
Other Delta Zeta alumnae on the committee for the summary of laws are president Diane Jones Skelton, Southern Mississippi-EM and Katy Marshall Bright, Stephen F. Austin-

ZΨ. When the final draft is finished, the alumnae chapter will do the final proofing.

Gallaudet



A special convocation was held at Gallaudet's Field House on October 24th in recognition of the conferring of University status upon Gallaudet.



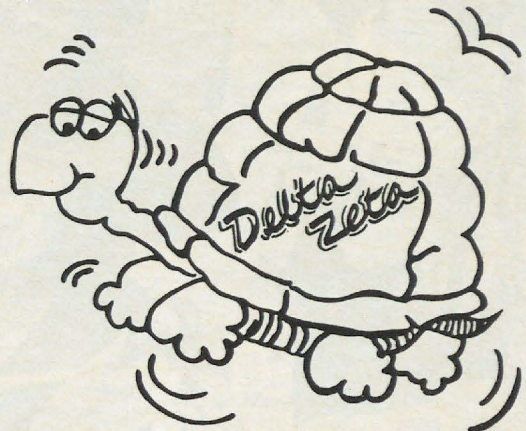
Go **FIRST CLASS**

with

CBE-Delta Zeta Sportswear

971T First Class, short sleeve t-shirt \$7.00
Offered in pink with kelly print. S/M/L/XL

971 First Class, sweatshirt \$15.00
Offered in pink with kelly print. S/M/L/XL



Delta Zeta

Oversized Turtle
Delta Zeta in Script.

976T \$7.00

Short sleeve t-shirt,
in pink with kelly print.
976 \$15.00

Sweatshirt in white
with kelly print.
S/M/L/XL

Crest
905 \$16.00
The Delta Zeta Crest
printed in three
distinct colors.
S/M/L/XL

CREATIVE BUSINESS EVENTS, INC.				Rt. 9-808, Gainesville, Ga. 30506		(404) 983-3778	
Name:	ITEM NO.	SIZE	COLOR	Quant.	DESCRIPTION	PRICE	
Address:							
Phone:							
WE HONOR: Master Card () Visa () ◀ ◀ ◀ Check One							
EXP. DATE	Credit Card Signature Required	CREDIT CARD NUMBER					
PLEASE ALLOW 4-6 WEEKS FOR DELIVERY AS UNPREDICTABLE DEMAND FOR CERTAIN ITEMS COULD CREATE A DELIVERY DELAY. WE WILL MAKE EVERY EFFORT TO SEND YOUR MERCHANDISE PROMPTLY AND YOU WILL BE NOTIFIED OF ANY DELAYS OVER 30 DAYS. ALL CHECKS AND CREDIT CARDS ARE CASHED UPON RECEIPT. PLEASE DO NOT SEND CASH OR MONEY ORDERS. MAKE CHECKS PAYABLE FOR THE TOTAL AMOUNT OF THE ORDER INCLUDING SHIPPING AND HANDLING! PAYABLE TO CREATIVE BUSINESS EVENTS-DELTA ZETA.							
ALL RETURNED CHECKS ARE SUBJECT TO A \$10.00 SERVICE CHARGE. ALL RETURNED CARTONS ARE SUBJECT TO A \$5.00 SERVICE CHARGE.							
SHIPPING, INSURANCE & HANDLING Order Total: _____ Via Surface: _____ Via Air: _____ \$25.00 & Under: \$3.95 \$5.25 \$25.01-\$50.00: \$4.95 \$6.50 \$50.01-\$75.00: \$5.95 \$8.50 \$75.01-\$100.00: \$7.95 \$10.50 \$100.01-\$200.00: \$9.95 \$12.50 \$200.01-\$300.00: \$11.95 \$15.50 \$300.01-\$400.00: \$14.95 \$18.50 ADD \$2.50 for each additional \$50.00 for surface, ADD \$5.00 for each additional \$50.00 for air.						ITEM TOTAL SHIP. & HAND. (See Chart) ADD 6% SALES TAX IF SHIPPED TO CALIFORNIA ADD 4% SALES TAX IF SHIPPED TO GEORGIA GRAND TOTAL ▶▶	
PRICES SUBJECT TO CHANGE						A PORTION OF EACH SALE WILL GO TO YOUR SORORITY NATIONAL OFFICE.	

Delta Zeta on Campus

Beta Delta Gives Party for "Scooter" Kids



The hearing-impaired children of Project Scooter were treated to a special Halloween party by Beta Delta chapter at the University of South Carolina. The chapter had also given the children a party at Easter and indicate future support.

"In addition to having a party for us they donated \$100 for the purchase of a hearing aid for one little girl," said Michele Bigiarelli, the Scooter Program audiologist. The sorority raffled off a semester's free tuition and raised the money for the project at USC's Speech and Hearing Clinic.

Kerri Keurnyck is philanthropy chairman and heads the project for Beta Delta.

by Diane Jones Skelton

ALABAMA

Jacksonville, Lambda Gamma — The chapter sends special thanks to Delta Zeta chapters at **Samford** and **Alabama-Huntsville**, along with Field Representative Sheila Judge and National Vice-President Terri Severy for their help and support during formal rush week. Rushees were welcomed with the chapter's own version of *The Superbowl Shuffle* (renamed the DZ Shuffle). Other skits included the *Delta Zeta Top 40* and *USS Delta*

Zeta. Phi Eta Sigma freshman honorary includes Elise Tillman, Shelley Wall and Marianne Britz. Melanie Patterson is a member of Phi Beta Lambda business club, while Sonya McFerrin is a member of ROTC. Janet Fowler and Casey Caradine are JSU Athletic Hostesses.

Samford, Alpha Pi — Seventeen new pledges joined the chapter after an exciting

formal rush. Delta Zetas celebrated the end of rush with other Greeks at a huge "Squeal Party." Sally Johnson was appointed by the university administration as Director of Student Life. All rush chairman Marsha Pritchett is All Campus Intramural Coordinator. Rush hostesses included Bonita Smith, Poppi O'Neal, Sharon Donaldson, Susan Donaldson and Priscilla Davies. Susan Donaldson and Sally Pyle both earned Dean's List honors.

ARKANSAS

Central Arkansas, Epsilon Xi — In another successful rush, Epsilon Xi welcomed 24 new pledges. One of the pledges, Kim Hull, is a UCA cheerleader. As a fund raiser, Delta Zetas are helping the Office of Public Affairs address 9,000 envelopes. Members and dates dressed in special silk-screened T-shirts and Jams, popular Hawaiian shorts, for the first party of the year, *Life's A Beach*. Members welcomed parents in early October for Parents Day.

CALIFORNIA

California-Los Angeles, Theta Rho — The school year began under the supervision of House Manager Dana Sierra and Rush Chairman Araceli Celis, who directed two major house clean up parties which were followed by well-structured rush schools. Alumnae provided lunch for the chapter during the work sessions. Theta Rhos attended leadership conference at UCLA and joined the Pasadena-Foothill alumnae at a tea. Delta Zeta won the coveted All-Sports trophy for intramural sports by sweeping softball, track and field, basketball and swimming events. Members volunteered time and help at the Jerry Lewis Telethon in Marina Del Rey over Labor Day weekend. Philanthropy Chairman Julie DeVita also involved the chapter in community help for Muscular Dystrophy at Century Plaza. Delta Zeta sold posters as a fundraiser at the First Annual Los Angeles Beach Scene in San Pedro. Initiates and pledges enjoyed a campus and community scavenger hunt which ended at Baby Doe's Restaurant. The chapter welcomes back Rosalina Gonzalez, who spent half a year studying in Mexico.

California-Fresno, Epsilon Epsilon — Delta Zeta added 11 new pledges during September's formal rush. On hand for rushing supervision was Field Representative LeeAnn DeReus. Delta Zetas Shannon Keenan, Stacy Boghosian and Deby Rosendahl treated LeeAnn to a trip to Carmel. But, alas, Mayor Clint Eastwood was out of the office for the day! Julie Taylor, one of the new pledges, is a Fresno cheerleader. Valerie Avila is first runner-up to Miss Kings County.

San Jose, Gamma Lambda — Chapter Editor Jennifer Redmond writes that "working together to prepare for formal rush has been a growing, learning and humorous experience. With a new house come new problems. One of the major concerns at Gamma Lambda (during rush) dealt with a beautiful, old walnut tree located in the backyard. The tree climbs up past three stories of the house, towering over most of the yard. Unfortunately, it began dropping walnuts before rush

even began. The nuts would plummet out of the sky with no warning, smashing against the ground or any available parked car. With members worried about the set-up of the outdoor Hawaiian party, quick-thinking Cindy Rice, Joanne Durray, Diane Koppernick and Kristen Hildebrand rigged up blue plastic tarps into a tent top that provided shade and protection for the rushees from the falling walnuts." The Hawaiian party was a success, as was formal rush, where Gamma Lambda pledged quota for the fourth consecutive year. This year's quota was 23! The chapter's new house on Sixth Street is a Victorian home providing more floor space and much more freedom for rush parties. Alumnae and members were able to complete the remodeling and landscaping in time for rush. Lisa Konnyu was graduated Magna Cum Laude.

CONNECTICUT

Connecticut, Gamma Beta — Members gathered in Stratford at President Joanne Kelleher's home for the annual summer meeting and discussed plans for rush, semi-formal and homecoming. A busy September included a brunch for alumnae and parents and the initiation of 10 pledges. Members also enjoyed a tailgate party with Sigma Phi Epsilon at the Yale-UCONN game.

FLORIDA

Florida State, Alpha Sigma — With updated themes of "Fun in the Sun with Delta Zeta" and "Dreaming Delta Zeta," Alpha Sigma pledged 53 pledges this fall. Pre-rush workshops had included seminars on appearance, image and rush conversation. Serving as formal rush counselors were Jennifer Bromiley, Pam Gillen, Connie Welmer, Robin Davis, Christine Sangas, Jennifer Kraja and Delta Armstrong. Alpha Sigma returned to a newly decorated house this fall. The house now looks like a Southern antebellum home with polished oak floors and southern styled furniture, accentuating the large open rooms and winding staircase. The fall calendar included fund raisers for Gallaudet and fraternity socials. Twenty-three Delta Zetas qualified to receive a pearl for their badges by earning a 3.5 or higher grade point average during

spring semester. The chapter is now ranked within the top three on campus for academics. In the spring, ΔZ placed first in intramurals while excelling in hot shot basketball, tennis, softball and track. Last semester's spring "formal" was a luau where members cast aside taffeta formals and arrived in Hawaiian shorts and dolphin shirts. The social was held at Forest Meadows Country Club and a deejay provided the music. Activities Chairman Jodi Williams led ΔZ in honoring last year's twenty graduating seniors with a slide show of memories and small gifts at a senior farewell. Last year's pledges raised money to contribute to the redecoration of the house. Members of the national business fraternity are Stacey Morgan and Celia Vergamini. Kelli Sisson is a Garnet and Gold Girl and Lynn Bergauer, Gigi Traina and Leslie Narkiewicz are members of Golden Key honorary.

ILLINOIS

Bradley, Zeta Alpha — Delta Zetas are now busy with open rush and parties have included a Sunday cookout, a build your own sundae party, and t-shirt painting get-together. National President Mary Margaret Fore joined the chapter for formal rush this year. One lively party followed a New York theme and featured a Delta Zeta night club, cheesecake, and a *Big Apple* skit. Pre-rush activities included a summer birthday party, a trip to a local waterslide and afternoons at the movies. Liz Leitch and Suzy Thomas toured Europe this summer via a university program. Karen Nekolny was a standard bearer at graduation and Suzy Thomas was named an Outstanding Young Woman.

Eastern Illinois, Gamma Nu — Chapter Editor Cindy Jacobs writes "enthusiasm, sincerity and originality were Gamma Nu's key words during a very successful fall rush." Once again taking quota, Gamma Nu added 41 outstanding pledges. Pledge Educator Kim Robbins and assistant Kathy Rimkus have started a CROP (Continue Rushing Our Pledges) Program. This year's CROP Board consists of initiates who do extra-special things to help the pledges feel Delta Zeta sisterhood at all times during pledgship. Members helped fraternities at their first

completely dry rush. Betsy Watkins took a flashy first place finish and Kerri Robbins captured the third place title in Sigma Chi's Annual Hot Legs Contest. Members participated in Pi Kappa Alpha's Sand Volleyball Tournament. At presstime, members were planning homecoming activities with Phi Sigma Kappa and a "mock prom" with Sigma Pi. Members were also planning strategies for winning Sigma Chi Derby Days.

Southern Illinois, Gamma Omega — The chapter welcomed National Director Anne Marie Gavin for formal rush and celebrated a quota pledge class of 14! Lisa Troyer serves as vice-president of Panhellenic Council, while BiBi Christoff is president of the Forensic Union. BiBi is also captain of the national champion debate team.

INDIANA

Indiana, Epsilon — September first Epsilon welcomed 38 new pledges who were moving into the house, and new Housemother Gretchen Berry, who comes to Delta Zeta from Alpha Chi Omega. At presstime, members were participating in open rush, were paired with $\Delta T A$ for homecoming, and were planning to attend Province Day festivities. Delta Zeta and Alpha Epsilon Pi captured second place honors in the prestigious Little 500 Bike Race. Delta Zeta is currently ranked first in intramural competition. Leading Beta Alpha Psi accounting honorary are Kathy Kruckeberg, president, and Jill Pennock, vice-president. Jody Zima is a cheerleader, and Becky Baranyk is Student Athletic Board director. Molly Zraik is director of the Union Board. Karin Kassabien is an intern with Washington Leadership Intern Program and Pam Johnson won an Eastman Kodak Scholarship.

IOWA

Iowa, Iota — Delta Zetas transformed the chapter house into a castle for a new rush party entitled Walt ΔZ World. Rushees were welcomed by a dozen Delta Zetas dressed as Disney characters, while a quartet entertained with a medley of Disney- ΔZ songs. Theme for the other days included the traditional *ΔZ on the Roof* and *Delta Zeta Follies*. Special guests Past National President Norma Andri-



ΔZ trio meets at camp: Terri Rauschman, Youngstown State-KX (left), Debby Brady, Western Michigan-II recent graduate and Kelly Kilday, Miami-A met at Trip Lake Camp in Poland, Maine. Terri was head lifeguard while Debby and Kelly were counselors.



Becoming acquainted at the Alpha Tau Omega Fraternity's LeaderShape Institute are Nancy Boras, Miami-A and $\Delta T \Omega$ Larry Stempkowski, Rose-Hulman Institute of Technology, Terre Haute, IN. LeaderShape is $\Delta T \Omega$'s trademarked focus on helping youths develop their leadership skills for responsible service to campus, community and country. Photo by $\Delta T \Omega$.



Eileen Moran, Youngstown State-KX is Phi Kappa Tau sweetheart for 1986.

sek, Field Representative Shawn O'Halloran and National Director Deanna McKinnon helped the chapter welcome a quota pledge class of 40! Members and dates enjoyed a riverboat ride down the Mississippi. At presstime, members were participating in Sigma Chi Derby Days, and making homecoming plans with Sigma Nu. Chapter President Kristi Banyas is assistant director for homecoming.

KANSAS

Fort Hays, Delta Omega — Members donned fifties attire for their *Grease* party, then surprised rushees with polo shirts in rainbow shades for the *ΔZ Rainbow Connection* party during formal rush. On Bid Day, Delta Omega welcomed nine new pledges. Tiger Debs Drill Squad includes Darcey Deines, co-captain, and Barb Hines and Cindy Schertz. Kendra Mixer is a cheerleader.

KENTUCKY

Kentucky, Alpha Theta — An exciting rush brought 26 pledges to the chapter. Field Representative Laura Vradelis was on hand for the week. Alpha Thetas welcomed their new pledges with a cookout on bid night. Delta Zeta competed against all sororities and won the tug-of-war event in intramurals. Pledges participated in Sigma Chi Derby Week, which included a banner contest, serenades and intramural sports. Delta Zeta also participated in ATΩ Volleyball Tournament, KΣ Road Rally, and AXA's Watermelon Bust. Earning Dean's List honors were Susan Gloskowski, Jennifer Hager, Jodie Royal, Melissa Shore and Sheri Marshall.

LOUISIANA

LSU, Sigma — For the 27th consecutive year, Delta Zeta pledged quota at LSU. This year's pledge class numbers 73! The days following bid day proved just as exciting as rush. On Bid Day, new pledges were presented with

jerseys and balloons and enjoyed a picnic and swim party at Donna Deblanc's home. The next day was a frozen yogurt party, and then ribbon ceremony the next day. Following that, pledges enjoyed an introductory enrichment program, then a trip out to eat Baton Rouge's favorite college food — cheese fries. During the first four weeks of pledgship, pledges have "buddies" to watch out for them. The weeks vary in title, ranging from purple and gold, rose and green to study and turtle buddies. At presstime, members were preparing for LSU Muscular Dystrophy Marathon. The week kicks off with a parade of sororities, followed by activities including flag football, pole sitting, tennis, bowling, golf, an airband contest, trivia game, and finally an *Anything Goes* Field Day. Serving on LSU's Muscular Dystrophy Committee are Kristie Pospisil, Felecia Gros, Vicki Breckenridge and Carol Steel. Ronnie Causey is a Golden Girl with the marching band, while Wendy Oubre was first runner-up for Miss New Iberia. Nancy Buchler won the Nancy Holliman Scholarship from the Founders Memorial Foundation. Erin Boyd and Felecia Gros are new members of Greek honorary Rho Lambda. Buffy Wright captured a role in the Little Theatre's production of *Chorus Line*. Michelle Todd is the Wellness program representative for Panhellenic.

MICHIGAN

Central Michigan, Gamma Psi — On August 1, Gamma Psi "closed" on its first chapter house. After redecorating and remodeling, members plan to be moved in by fall of 1987. At presstime, members were busy with formal rush and had just added six pledges in open rush. Members were also planning an open house for parents, family and friends. Gamma Psi ranks third in sorority grade point averages. Shelley Abramovitch is organizing a Gamma Psi football team to once again try for the championship trophy.

Wayne State, Epsilon Sigma — Chapter Editor Lisa Runchey writes a story of Carole Wilkins. Carole had charm, courage and a friendly smile for everyone. She only had one problem as a pledge — her grades. After one semester of poor grades, Carole became a hold-over pledge. A semester later, she still couldn't pull her average up. Tired and despaired, she fell out of touch with EΣ. Lisa passed Carole in the hall one day, and asked Carole where she'd been. Carole replied dully, "I'm not a Delta Zeta anymore." But, many tests and hours of studying later, Carole has been initiated and says, "I'll always be a Delta Zeta now. Nobody can ever take that away from me." At presstime, EΣ was in the middle of formal rush. Summer activities included a leadership conference for the executive board, a retreat and used book sale. Twelve new members were initiated over the summer.

Western Michigan, Gamma Pi — Seven members from Gamma Pi attended the Delta Zeta leadership conference in Bloomington, IN during the summer. Attending were Jenny Dubes, Kristen Sagen, Julie Ciminello, Betsy Marshal, Wendy Myers, Tammy Gilbert and Kathy Spehar. Alumnae hosted Sue Jones Allen, National Housing Projects Manager, with a luncheon in July to thank her for her many months spent in designing and purchasing furniture to fill the once-bare ΔZ house at WMU. With 400 girls already preregistered for formal rush, Gamma Pi was looking forward to a terrific rush at presstime. Theme parties will include *Wizard of ΔZ* and *ΔZ Christmas*. Members are also lending a hand to the campus fraternities during their dry rush

week. Gamma Pi welcomed a new house mom, Kelly McMahon, III. Julie Harris served as a summer orientation leader and is a residence advisor. Kathy Spehar traveled with a study delegation to Mexico and Nicaragua during the summer. Jill Waehner won a first place in a national horse show. Laura Miller is a member of the Bronco Buddies Team and Jenny Dubes is co-captain of the color guard for the Bronco Marching Band.

MINNESOTA

Moorhead, Theta Nu — At presstime, members were busily participating in rush. The chapter is helping to organize homecoming and coronation this year, with Stacy Gardner as chairman.

MISSOURI

Missouri-St. Louis, Iota Xi — A week of formal rush parties was highlighted with a *Delta Zeta Goes Broadway* party. Members dressed in black and white, accented with red ties. They concluded rush by welcoming a quota pledge class of 14. After adding one more pledge in open rush, Iota Xi reached total. In late July, Stephanie Schloemann represented Iota Xi at the St. Louis Panhellenic Association Sorority Showcase and Fashion Show.

William Jewell, Zeta Rho — Jill Holston, Sara Landers, Laura Moore and Christine Cook represented the chapter at the Delta Zeta leadership conference in Iowa. The chapter is currently selling college men calendars and Gold C Books. Members enjoyed a chapter retreat. Earning Dean's List honors were Trent Baker, Lisa Bill, Marquita Brown, Rene'e Carnahan, Christine Cook, Malissa Forinash, Staphanie Funston, Lynne Hillen, Jill Holston, Deana McCrossen, Connie Moore, Jill Sillivant and Paula Weaver.

NEBRASKA

Nebraska Wesleyan, Beta Tau — Minnie and Mickey Mouse greeted rushees and escorted them into Disney (ΔZ) Land in the first round of formal rush parties. The house was filled with Disneyland decorations for the lively party. The second party was a *Delta Zeta Chorus Line* featuring a skit patterned after the Broadway hit musical. The five stars



On a summer vacation in England, Barbara McLean, Ohio State-Θ (right) spotted Karen Mann's (West Virginia Tech-III) letters from her tour bus window. They met at Anne Hathaway's cottage.



Members of West Texas State-ZZ's fall pledge class smile for the camera.



Fraternity Sweethearts at Texas/Arlington-Ψ are Dawn Spencer, ΣΦΕ and Audrianne Zachara, ΣΧ.



told rushees why they had pledged Delta Zeta. After a successful preference party, Beta Tau welcomed 35 wonderful pledges. Alpha Mu Gamma language honorary tapped Heather Ernst, Anne Jablonski, Jennifer Davidchik, Jill Reinhart, and Emily England. Andrea Lang had an article published in Sigma Tau Delta's English journal.

NEW HAMPSHIRE

New Hampshire, Theta Gamma — Members will be working hard again this year to retain the chapter's best overall sorority award for the third consecutive year. Currently, Delta Zeta holds the volleyball championship. Other intramural teams will participate in floor hockey and softball. Stacy Center is chairman for the newly formed Safe Ride Program on the UHN campus. Many Delta Zetas are assisting her in this all campus program to reduce the hazards of DWI. A number of members are involved in the campus Greek newsletter and many members are serving as freshman camp counselors for orientation. Chapter members bid farewell to College Chapter Director Angela Shipman, and welcomed new CCD Patricia Cole and new housemother Wendy Carberry Rowins.

NEW YORK

Rochester, Lambda Iota — Over the summer, the executive board attended national leadership conferences at **New Hampshire** and **Rider**. They enjoyed meeting Delta Zeta national officers and talking about future plans for Lambda Iota. Prior to their initiation this fall, the eight spring pledges presented the chapter with a new set of wooden letters for the balcony. On the second day of classes, ΔΖ, ΦΚΤ, ΔΣΦ and ZBT sponsored a *Phase Fest* dorm party on the lawn. The party featured two bands.

NORTH CAROLINA

Atlantic Christian, Theta Omega — At presstime, members were amidst what appeared to be a fantastic rush. Just before rush, the chapter had enjoyed a spirited informal serenade, a pre-rush sundae social and a candlelit formal serenade. All members participated in the Greek Convocation, where sororities promoted Greek unity, explained Greek life, and entertained rushees. Earning

academic honors were Jada Lewis, President's List, and Karen Meyers, Angela Fields and Rhonda Fallin, Dean's List.

North Carolina-Wilmington, Xi Theta — Following a summer initiation, the chapter initiate size rose to 39. Delta Zeta is one of three Greek groups to occupy a floor in one of the newest campus dorms. Delta Zetas are enjoying living together as evidenced by their floor *Traveling Tourist* party. Members dressed in their favorite countries' costumes and even carried "passports." Swayne Sharpe is president of the University Program Board. Donna Wilkenson and Missy Kenyon are rush counselors.

OKLAHOMA

Oklahoma State, Alpha Epsilon — Chapter members met over the summer for a work weekend, which included cleaning the house thoroughly. Chapter President Patricia Ware

even brought her trampoline for the weekend. Fall activities included participating in Sigma Chi Derby Days, which benefits Wallace Children's Home, and pairing with Triangle Fraternity for homecoming festivities. Patricia Ware was named as a Collegiate Academic All-American by OSU. Kris Keegan is secretary of the Speech Pathology Club and Amy Barnett is secretary for College Republicans. Diana Chambers is head writer for the Greek section of *The Redskin* yearbook. Kelly Horton worked in Washington, DC over the summer conducting leadership seminars for Future Farmers of America members from across the nation.

OHIO

Miami, Alpha — In a fantastic rush, 47 coeds chose Delta Zeta. That's the 26th consecutive year for a quota pledge class for Alpha. Members are enjoying the new atmosphere of the suite, which was redecorated over the summer. Pledges participated in Sigma Chi Derby Days, while members teamed with Phi Kappa Tau to compete in Mini Tennis in Greek Week. Delta Zetas and Betas celebrated Miami's win after the first home football game with a cookout at the Beta house. At Parents' Weekend, parents of seniors were honored. For a new fall philanthropy, Delta Zeta sponsored and organized turtle races.

Findlay, Theta Tau — The chapter began working last May preparing for this year's Province Day, which Theta Tau will host. Since then, members have learned that planning, sewing, picture taking and a close knit sisterhood are all essential ingredients for an organized, fulfilled meeting. In August, Delta Zetas joined other Greeks for the seasonal Greek Blacktop Party at which sororities and fraternities welcomed returning upperclassmen and freshmen. Football cheerleaders are Cyndi Wilfong, Cami Rock and Jackie Gaffga. Student Assistants in the speech lab are Jody Buckles and Kelly Sterling. Cynthia Daniels won a band scholarship.

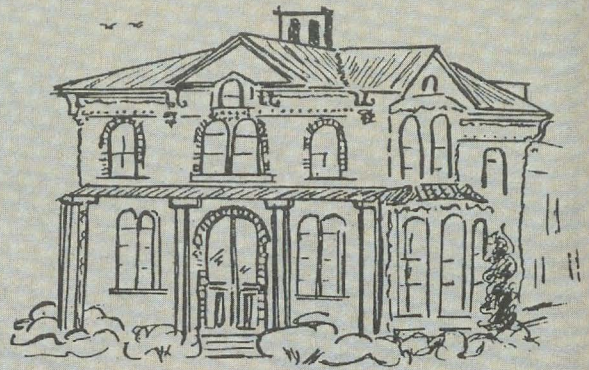
PENNSYLVANIA

Kutztown, Kappa Rho — Members gathered at the New Jersey shore over the summer for a summer rush school. The members are looking forward to putting their great rush school ideas to use when more than 200



Gina Humphrey, UNC/Wilmington-ΞΘ is a Terpsichorean Club debutante.

A Promenade Through Historic Whitewater



DELTA ZETA HOUSE
604 West Main Street

This Italian Vernacular style house of hand made brick with round top windows was built by George Esterly, a farm machine manufacturer, in 1875. Henry Koch, the architect, had also designed the City Hall of Milwaukee. The Esterly house was known as a "square" house because of the room arrangement on either side of a central hallway upstairs and down. Several examples of the original marble mantels can be seen. The fine black walnut staircase in the main hall has recently been restored by students living in the house. This cream brick has had a number of owners since its sale by the Esterlys in 1894 and is presently used as a sorority house.

Delta Zeta on tour: The Epsilon Kappa house in Whitewater, Wisconsin, was a part of the Promenade of Historic Homes sponsored by the local Federation of Women's Clubs, the Historical Society and the Landmarks Commission.

coeds participate in rush. Cindy Hampton and Kim Brands represented the chapter at leadership conference at **Rider**. Joanne Mary Oakston earned her B.S. in nursing with cum laude honors.

Mansfield, Iota Theta — Members celebrated the 20th anniversary of the chapter with a fulfilled day of reminiscing and forming new friendships. Chapter members entertained alumnae with skits, songs, and a slide show. The day reached a climax with an initiation of Joan Kelchner, wife of the president of the university and mother of two Delta Zetas. The day concluded with a banquet, where Susan Fellows Miller, the founding president of IΘ, spoke on the early days of the chapter. Over the summer, Patti Doyle, Susanna Bright, Charlotte Lindvall and Rochelle Snyder traveled to **Rider College** for Delta Zeta's regional leadership conference. Chapter members cleaned the lounge at the end of August, after the chapter made a move from fourth floor to first floor. The new floor hallway now boasts pink and green letters. Members enjoyed a chapter day over the summer to discuss homecoming, fund raising and rush. Five members of Iota Theta earned Dean's List honors, and Elizabeth Bitner was named to the President's List. Elizabeth is a member of Kappa Omicron Phi, home economics honorary. Rochelle Snyder is secretary of Phi Sigma Pi national honor fraternity.

Muhlenberg, Xi Iota — Members "christened" the new house with a series of informal rush parties in early September. The parties included a Bingo game with card

blanks describing qualities of chapter members, a preference party featuring a slide show, and a Mocktail Hour describing Delta Zeta's alcohol awareness program. Parents were honored with a reception in September.

Pittsburgh, Omicron — The chapter reports a busy spring semester which included selling popcorn at the movies and donuts in the dorms; a successful winter rush; sisterhood gathering in the suite; and baking heart-shaped cakes for fraternities. In Greek Week, Omicron won a second place in the Chariot Race and third place in fun and games.

Slippery Rock, Zeta Phi — At presstime, fall formal rush was underway. After a new *Night of the Gods* toga party in rush, Zeta Phi hoped to add ten more pledges. Philanthropy events included a bounce-a-thon and bagel sales. Members again ushered at the Arts Series. Delta Zetas are "getting closer together" — eleven are sharing a home, eight are living on the same dorm hall, and another nine live in the same off-campus dorm. Robin Halbach, vice-president of Panhellenic, is Silk in the Rockets Marching Band. Judy Fox is also a member of the band. Leann Howell is a Rockette dance and drill team member. Lisa Howe is ranked tops on the university's tennis team.

West Chester, Iota Rho — At presstime, members were anticipating an exciting formal rush at which they were to perform their new skit, *Delta Zeta Dream Weaver*. Other fall activities were to include homecoming, Founders Day, Province Day and Greek

Weekend. Amy Darr, Linda Posey and Lauren Manns are rush counselors.

SOUTH CAROLINA

South Carolina, Beta Delta — After a first-ever rush retreat at Lake Murray, Beta Deltas completed a fantastic rush which included a *Delta Zeta-Beach Boys* party and a *Back to the Future* party. Field Representative Barbara Poremba was on hand for the week of rush. Bid Day was celebrated with a taco party honoring the new pledges. Laurie Mitchell, feature twirler with the USC band, spent the summer teaching baton in Switzerland. She is the national baton twirling champion of the US and is Miss Collegiate Majorette of America. Ragan Miller will compete in Florida this winter as Miss Hawaiian Tropic of South Carolina. Ragan is also Miss Pageland. Tracy Wright is vice-president of Golden Key honorary and Cynthia Roof is the director of rush counselors. Vicki Casey is Panhellenic treasurer.

TEXAS

Stephen F. Austin, Zeta Psi — Members started the new school year with 32 members moving into the new Delta Zeta house. Members are constantly showing their house, the first one on campus, to prospective rushees and friends. Fall activities include homecoming and Derby Week, with rush in the spring.

Tarleton, Xi Nu — Former Field Representative Janet Bailey joined the chapter for a rush

workshop in July and Stephenville alumnae treated all to a barbecue.

West Texas, Zeta Zeta — In a successful fall formal rush, ZZ added 14 pledges. Field Representative Shawn O'Halloran was on hand for the rush. Members helped pledges decorate their pledge book, and alumnae treated pledges to dinner in Shirley Hall Loft.

VIRGINIA

Radford, Xi Delta — During the summer, members attending summer school helped raise over \$1000 in a campus fund raiser for a student needing a heart transplant. The chapter participated in Student Appreciation Day sponsored by the downtown merchants. The event offers an opportunity for campus groups to earn money. Delta Zeta won the draw and helped co-sponsor Halloween Dance. More than 3000 students were expected to attend the annual dance. Greeks joined together for a clean-up day, and Delta Zeta enjoyed mixers with TKE, A&P and Pi Kappa Sigma. Delight Caldwell and Alishia McKenna were offered full four year scholarships from the ROTC. Laurie Smith was an honor exchange student over the summer. Sharon Bryand received the Whitehead Nursing Scholarship.

Virginia, Lambda Delta — The chapter was honored to initiate the wife of the president of Gallaudet University in April. Joan Lee was honored with a reception at the house following her initiation. Dela Zeta placed second in Sigma Chi Derby Days, which benefits children's hospital and Multiple Sclerosis. Working on *The Declaration* student newspaper are Kathy Perko, managing editor; Alexis Pinto and Beth Quarles, production editors; and Carol Walder, photography editor. Kathy Perko serves on the Presidential Advisory Committee to Student Health and received a prestigious one year Lawnee residence in the famous Jefferson Lawn Room. The Lawnee honor goes to fourth year students who have contributed significantly to the university. Martha Carlstead serves on the Presidential Advisory Committee to Student Health and Andi Romagnoli is a representative on the Judiciary Council. Susan Friedlander is Intersorority Council rush chairman and Terri Norton is ISC vice-president. Jody Edwards is

a junior varsity cheerleader. Joan Kelliher earned intermediate honors for having a 3.5 or above grade point average. Sondra Walker won a Russian Language Academic Fellowship from Indiana University.

WEST VIRGINIA

Shepherd, Kappa Mu — Members enjoyed their annual summer picnic again at the home of Laura Corbin in Easton, Maryland. The weekend began with a Friday evening feast on crabs, and followed with a Saturday of wet and sandy events at the Ocean City beach — complete with handsome beach patrollers and life guards. Kappa Mu will host State Day this year.

West Virginia Tech, Iota Pi — Delta Zeta serenaded all the campus fraternities and expressed special appreciation to Phi Kappa Taus, who had learned the words of *Dream Girl of Delta Zeta*. Rush will feature a *Gilligan's Island Party*. The chapter programming for the year features a positive points system which will replace fining. At presstime, Iota Pi was planning a joint Homecoming-Founders Day Weekend, a homecoming alumnae brunch, and a mother-daughter banquet. Fraternities will again be serenaded with the

ΔZ Sixth Annual Jack-o-Lantern Serenade. The chapter's annual dance-a-thon will benefit Gallaudet.

WISCONSIN

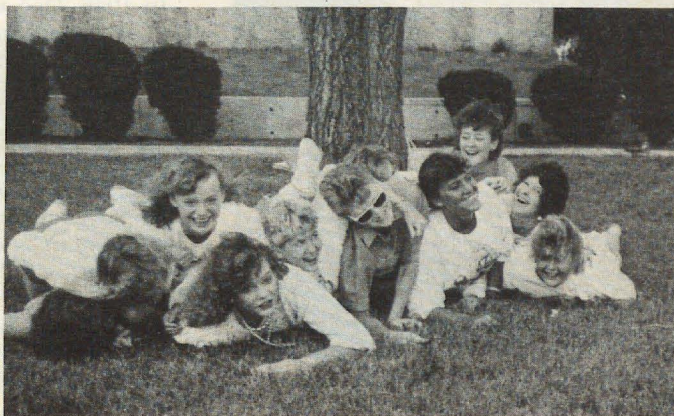
Wisconsin-Whitewater, Epsilon Kappa — Delta Zeta's historic home, designated a landmark since 1983, was among the homes featured with a slide show and walking tour program organized by the Whitewater Public Library. The chapter received a silver plated bowl from the organization. Members are looking forward to the chartering of an alumnae chapter at Founders Day. Members enjoyed a Greek reunion in July and returned to school to help other Greeks with Greek Information Night. Rush party themes for EK include *Fame* and *Paddington*. Members visited Delevan School of the Deaf in early October. Earning Dean's List honors were Kathy Gilbert and Christy Bradley, a peer counselor. Serving on campus committees are Liane Sisko, Parents Day, and Sue Amundson, homecoming. Dana Waldschmidt is Panhellenic president and Roxane Eiesland is treasurer of Tutt Hall. Robin Glassman is a Warhawk Ambassador and Pam Stoenner plays intramural volleyball.



A sampling of LSU-Σ members await the chapter's pledge class - 73 - largest yet!



Pyramid building with Zeta Zeta at West Texas State ... before and after.



From the Lampwriter



Did you know that the coach of the U.S. women's basketball team which defeated the USSR team for the World Basketball Championship in August is Delta Zeta's Kay Yow, East Carolina-ZA? Kay, who is head women's basketball coach at North Carolina State, was assistant Olympic coach of women's basketball at the Los Angeles games. Rumor has it that she is the overwhelming favorite to be named coach of the U.S. Olympic squad in 1988. Delta Zeta cheers, Kay!

The Wyoming Commission for Women of the "Equality State" has named Verda I. James, Iowa-I, as a 1986 Woman of Achievement. The award was presented at a gala banquet in Cheyenne.

The citation stated "Educator and stateswoman, Verda I. James taught school in Natrona County, served as Deputy State Superintendent and on the Community College Board. The Verda James Elementary School in Casper is named in her honor. She served eight terms in the Wyoming House of Representatives and on the

100th anniversary of the Wyoming bill that granted women's suffrage, was elected speaker of the House (the first woman so honored). A tireless worker, Verda belongs to the Wyoming Education Association, Delta Kappa Gamma and the Commission for Women. She is also listed in *Who's Who in America*, *Who's Who in the West* and *Who's Who of American Women*."



The "Three Friends 1946" ... Vici, Nan and Dee.

Three Alpha Alpha sisters from the pledge class of 1944 met last summer in North Canton, OH ... their first reunion in 40 years.

Nanette DeMuesy, who hosted the reunion, met Vici LaSala when she transferred to Northwestern from Sarah Lawrence Junior College and Dee Langren Neill, a University of Iowa transfer, in 1944. Nan was a freshman. They were firm friends and sisters until Vici and Dee graduated two years later.

In 1946, Dee went to Antioch College as secretary to the president and Vici to the Katherine Gibbs School and then to an executive position in the New York corporate offices of General Dynamics. Dee married another staff member at Antioch and they became involved with assignments in Rome, New York, Athens and Africa. Later, living in Hawaii taught Dee much about Oriental antiques and last year she returned to Chicago to manage a showroom in the Merchandise Mart, dealing in Oriental antiques, of course.



The "Golden Girls" Vici LaSala, Nanette DeMuesy and Dee Langren Neill.

Vici left General Dynamics after 25 years and remained in New Jersey where she is an active volunteer for organizations in the Englewood area.

Nan has just completed 25 years as head of her own advertising agency in Canton.

When the Class of '46 at Northwestern planned a reunion last spring, the trio known as the "three friends" decided to get together. They had a wonderful weekend and only agreed to one major change. Rather than the "three friends" they adopted the more apt and current title of the "golden girls."

And, as Nan wrote, "We were indeed and yet are - friends for 40 years ... and that's thanks to Delta Zeta at Northwestern University."

Donna Hartley York, Texas-AT, shared news of the release of an innovative juvenile book written by her mother, Mary Mae McDonald Hartley, also Texas-AT. Critics called it a fitting tribute to Texas' Sesquicentennial celebration.

The 64-page book contains 13 chapters, each of which is a story in itself. All stories feature an elfin boy who travels through Texas history and introduces young readers to various areas/cultures of the Lone Star State.

Mary Mae says she named the "tough Texas fairy" 'Mariposa'.



Wyoming's Woman of Achievement, Verda James.



Mary Mae Hartley (right) with the three grown-up daughters she "tried out" the Mariposa stories on years ago before she got them to book form. L to r, Donna Hartley York (Texas-AT), Harriet Hartley and Julie Mannon, who pledged Iota Alpha chapter at Southwest Texas State.



The Evans family at Chico: L to r, Ann Fain, Toni Evans, Naidene Evans, Shana Fain, Jerrilyn Schenken, Carrie Schenken and Yvonne Skinner.

which means "butterfly" in Spanish because Spain and Mexico play such a vital part in Texas history.

The little butterfly-boy, about as "big as your mother's thumb," says the first tale in the book, has adventures with West Texas prairie fires, cattle drives, dinosaurs in the Big Thicket, and oil workers on offshore drilling rigs. He fights javelinas in South Texas, a badman sought by Texas Rangers and the "Texas Leprecaun" to see who rides the first spaceship to the moon. The last tale in the book pits Mariposa and the state's famous wildflowers against ravaging rabbits — and gives Lady Bird Johnson's "Save the Wildflowers" program a boost.

Mary Mae, who created the Mariposa stories to amuse her three children, says the book was written for parents to read to pre-school children, but students from second through sixth grade will enjoy reading it themselves.

The Evans family has played a major role in the history of Delta Chi chapter at CSU/Chico. It all started with Naidene Lybecker Evans. Naidene was Chico State's Li'l Nell in the 1936 Pioneer Days celebration. In 1983 she returned, with her husband, to share Grand Marshall duties for the parade.

Then, there is Ann Shanley Fain, Naidene's niece. She was CSUC Valentine Queen. Her daughter, Shana Fain, served as general chairman of Pioneer Days.

There is Toni Smith Evans, Naidene's daughter-in-law, a Delta Chi president. Jerrilyn Evans

Schenken is Naidene's elder daughter. Her daughter, Carrie Schenken was in the charter group at UCLA-AX and is now on a university study program in Sweden.

And the seventh member of the family is Yvonne Evans Skinner, Naidene's younger daughter who served briefly as ΔX housemother. But, there is more to come, we hope. Toni Evans' daughter will be entering CSCU next fall!

The promised story about the initiation of Nanette Fabray will be forthcoming in another issue. Nanette was initiated at Gallaudet University, Washington, D.C. where she was presenting the annual MacDougall Awards for creative writing named in memory of her late husband, Randy.

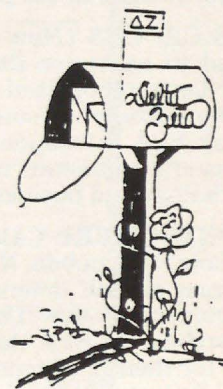
The South Bay (California) bridge group recently celebrated its 20th



The original four at South Bay: L to r, Irene Stam Wallner, Barbara Cunningham Ivins, Betty Paul DeWitt and Betty Craver Sevy.

anniversary of continuous monthly bridge-luncheons. As a result of their efforts, the group has donated some \$1,900 toward local collegiate support. Four of the original members who first met at the home of Carmen Martinez Moore, Sophie Newcomb-BY, who are still playing bridge are Irene Stam Wallner, Fresno State-EE; Barbara Cunningham Ivins, Northern Illinois-IP; Betty Paul DeWitt, USC-AI, and Betty Cramer Sevy, Long Beach State-ΔA. There's a group here in my hometown who can claim more than 30 years of dinner-bridging with spouses. Remind me to tell you THAT story sometime!

JS



Alumnae Chapter Notes ...



Joining Mickey Mouse at the Providence Speech and Hearing Clinic in Orange County are Sue Jones Abel, CSU/Fullerton-IY and Mildren Dean Glenn, UCLA-AX.

Alumnae of **ANNE ARUNDEL COUNTY (Maryland)** held their annual family affair, a crab feast. It was a nice profit making venture, and a lot of fun! The chapter surprised past president Lois Lee Porter, FSU-AΣ with a special thank-you luncheon, complete with gift.

CYPRESS CREEK (Texas) alumnae honored retiring PAD Ann Butler Booth at their annual installation luncheon in June. Ann presided over the installation of officers. A fashion show and silk flower arrangement auction, with funds going to area collegiate chapters, completed the program.

The **LAS CRUCES (New Mexico)** alumnae chapter is proud to announce that member Ann Sullivan Burke has been recognized in the latest edition of *Outstanding Young Women in America*. Ann received her BBA in economics in 1983 and is presently a master's candidate in counseling and educational psychology and business administration.

The **MONTGOMERY (Alabama)** alumnae joined the collegians of Lambda Nu (Auburn/Montgomery) for a program on self defense given by members of the Montgomery Police Department. The chapter assisted Lambda Nu with their rush retreat and provided food for their preference party. They also sent a "Good Luck" plant to Auburn-BΞ chapter for their fall rush and provided popcorn and cokes for one of their all night voting sessions.

OAKLAND COUNTY (Michigan) alumna Glenna VanderMeer Paukstis, Albion-BII received Michigan's outstanding alumna award at Province Day. The chapter received a silver award for superior chapter volunteer hours. For the past ten years Oakland County alumnae have served as support staff for the Oakland County Otology Clinics. This past year they worked a total of 360 hours at 24 clinics.

Sixty three golfers participated in the second annual charity golf tournament sponsored by the **OKLAHOMA CITY (Oklahoma)** alumnae chapter. Proceeds of \$2,600 were donated to the Oklahoma Society for Crippled Children to purchase hearing equipment.

OMAHA METRO (Nebraska) alumnae planned a visit to Clarinda, Iowa for a meeting in the home of Jean Coleman Lisle, daughter of Founder Julia Bishop Coleman. They celebrated Founders Day with the Theta Etas of Creighton University. In the spring they plan a "Planting Day" to landscape the chapter house at Creighton.

ORANGE COUNTY (California) alumnae assist at monthly free closed-captioned feature films for the hearing impaired at the Providence Speech and Hearing Center. The appearance of Mickey Mouse, straight from Disneyland, added to the excitement of the film "100 and 1 Dalmatians."

PALM BEACH COUNTY (Florida) alumnae have recently completed their first year as an organized group. The Deaf Service of Palm Beach County has



Ann Booth, Louisiana Tech-ΘE, former XVII-S PAD, (second left) joined the Cypress Creek alumnae for their installation luncheon. L to r are Peggy Pridgen Townsend, SHSU-ZΘ; Ann; Gabriele Hafner Tryon, Adelphi-AZ; Pamela Walker Turlak, Texas-AT and Sylvia Mentz Foster, SFA-ZΨ.

1986 SECOND ANNUAL Faster Seals CHARITY GOLF TOURNAMENT

Any male or female golfer is eligible
FLORIDA SCRAMBLE FORMAT

Tuesday
August 12, 1986
SUNNY HILLS COURSE
11 A.M. SHOT GOLF

*\$75 per person entry fee (tax deductible) includes cart, green fee, and "After" Party where prizes and trophies will be awarded to top teams.

For more information contact: FRANCES LEE (405) 846-3881 or GARY DUKE (405) 232-2900

SPONSORED BY: DELTA ZETA SORORITY OKLAHOMA HOTEL & MOTEL ASSN. OKLAHOMA CITY EXPRESS TEMPORARY SERVICES



Marylois Moran Dreiling, OCU-FY, shows a poster publicizing the Oklahoma City alumnae chapter's sponsorship of their charity golf tournament.

been identified as the local charity. The chapter also participated in a canned foods drive to benefit needy families.

STILLWATER (Oklahoma) alumnae hosted the Oklahoma State-AE collegians to a "AAA picnic." (AAA means Actives/Alums/Always!) A local restaurant "garden area" was the setting.

If you "winter" on the West Coast of Florida in the Sarasota-Bradenton area, get in touch with the **SUN COAST** alumnae chapter. You will be invited to their monthly meetings. Marjorie Kansuse Fink, 2070 Clematis Street, Sarasota 33579, is president. The Sun Coast chapter includes all communities in Manatee and Sarasota counties — Ellenton, Palmetto, Longboat Key, Osprey, Nokomis and Venice.

TOLEDO (Ohio) alumnae presented a check to the Hearing Impaired Services of Northwest Ohio which funded the weather information for those individuals who use the special print-out telephone equipment giving them up-to-date information on the weather.

The ΔZ "Link"

Yes, I want to participate in the new Delta Zeta networking program!

_____ I agree to have my name sent to a Delta Zeta that I may help in some way.

_____ I agree to contact any Delta Zeta who may need information from me.

NAME _____

STREET ADDRESS _____

CITY, STATE, ZIP _____

INDUSTRY _____

(such as Banking, Health Care, Teaching)

POSITION OR TITLE _____

Mail to Delta Zeta Sorority, 202 East Church Street at Campus Avenue,
Oxford, Ohio 45056

Campus Sights & Sounds

A NON-TRADITIONAL Student Support Group has been formed at West Liberty State College (W. Va.) to help the older, returning student.

A GIFT OF MORE than \$1 million from an alumnus will allow Clemson to establish the nation's first endowed chair in technical communications.

VANDERBILT has been operating a child care center for employees and students. Caring for 60 children and with a waiting list of 136, the center will expand to care for 118 plus a night shift for children of employees who work from 11 pm to 7 am.

THE UNIVERSITY OF TULSA is working with a local company to develop a prototype microwave clothes dryer.

"MENU FRENCH" is a one-credit course at the University of Wisconsin's Stout campus. It teaches the French terminology used in the preparation and presentation of food — and how to pronounce "croissant."

BOSTON UNIVERSITY Alumni Association and the State Street Bank are issuing a BU MasterCard available to 100,000 alumni, faculty, and staff. For \$20 a year, subscribers get a \$3,000 line of credit and an annual interest rate of 16.5%. Every time the card is used, the bank pays a percentage to BU. Texas A&M started a similar program a year ago but proceeds so far have all been used to cover expenses. (*Forbes*)

PHI DELTA THETA and Sigma Chi at Butler University have held an annual chariot race for over 60 years.

APPLICANTS to the University of Pennsylvania are asked to write an essay on the topic, "If you were given the opportunity to spend an evening with any one person, living, deceased, or fictional, whom would you choose and why?" Last year's most popular candidates: God, Jesus, and Lee Iacocca. (*Chronicle of Higher Education*)

A COURSE at San Francisco State is titled "How to Develop, Patent, and Market an Idea." One product of the course is the water bed.

WEST VIRGINIA University has licensed a local distributor to sell "Mountaineer Cola." The bottles bear the university's seal and the university will receive 5% of the wholesale price.

COMPANIES sponsoring summer programs for executives paid \$9,000 for each "student" in a four-week course at Dartmouth. At the University of Virginia, a six-week management course cost \$11,500.

A PACT BETWEEN the University of Alaska at Anchorage and the Siberian branch of the Soviet Academy of Medical Sciences covers joint activities focusing on health issues and medical problems facing inhabitants of polar regions. (*Chronicle*)

JIM CLARK, a Vanderbilt graduate and an employee of the university's office of News and Public Affairs, is founder and president of the Andy Griffith Show Rerun Watchers Club.

The club has more than 10,000 members in 225 chapters in the U.S. and chapters in seven foreign countries.

THE OREGON Educational Coordinating Commission has voted to require foreign-language competence of all baccalaureate-degree candidates, starting with freshmen entering the state's public colleges and universities in 1989. (*Chronicle*)

WOMEN HAVE NOW passed the 50% mark in professional jobs. Such jobs include architects, engineers, computer and natural sciences, physicians, dentists, pharmacists, teachers, librarians, social workers, and lawyers, among others. (*Women & Work*)

MYSTERY CALLERS charged more than \$1,000 worth of long-distance calls to the athletic department of the University of Nevada at Las Vegas while its men's basketball team was on a tour of Australia and New Zealand. (*Chronicle*)

A service of National Panhellenic Editors Conference, Eileen Rudolph, ΔΔΔ, Chairman



Epsilon Omicron alumnae from the late 60's and early 70's at Western Illinois were invited to a reunion in the Chicago area ... and 33 attended. They shared ΔZ memorabilia, family photos and stories. Organized by Linda Wells McNelley and Mary Stoklosa Ferrandino, favors were heart shaped plaques and specially compiled "Memory Books."

Directory

NATIONAL COUNCIL

PRESIDENT: Mary Margaret Calhoun Fore (Mrs. Sam L.), 459 Summit Circle, Fredericksburg, TX 78624
VICE PRESIDENT OF MEMBERSHIP: Teresa Johnson Severy (Mrs. Raymond), 2127 Northampton Way, Lansing, MI 48912
VICE PRESIDENT OF ALUMNAE AFFAIRS: Charlotte Fields Silversteen (Mrs. Allan), 513 Toll Road, Orelan, PA 19075
VICE PRESIDENT OF COLLEGIATE AFFAIRS: Marvona Easley Tavlin (Mrs. Michael), 2710 Devonshire Drive, Lincoln, NE 68506
SECRETARY: Phyllis Snape Favorite (Mrs. Robert), 570 Lancashire Lane, State College, PA 16803
TREASURER: Patricia Canady Rosser (Mrs. David), 1609 Indian Rocks Road, Clearwater, FL 33516
DIRECTOR: Elizabeth Barbieri Bragg (Mrs. Lawrence), 2962 Leopold Avenue, Hacienda Heights, CA 91745
DIRECTOR: Anne Marie Jones Gavin (Mrs. William), 3264 Swan Drive, Vineland, NJ 08360
DIRECTOR: Deanna Alleman McKinnon (Mrs. M.L.), 12109 Victoria Place, Oklahoma City, OK 73120
DIRECTOR: Sandra McAlister Nesbitt (Mrs. Milton), 3344 D Fountain Court, Montgomery, AL 35116
PAST NATIONAL PRESIDENT/NATIONAL PANHELLENIC CONFERENCE DELEGATE: Carolyn Barnes Gullatt (Mrs. John), 4008 Hyridge, Austin, TX 78759

NATIONAL PANHELLENIC CONFERENCE ALTERNATES:

Mary Margaret Calhoun Fore (Mrs. Sam L.)
 Teresa Johnson Severy (Mrs. Raymond)
 Norma Minch Andrisek (Mrs. J.R.)
DIRECTOR OF EXTENSION: Norma Minch Andrisek (Mrs. J.R.), 319 Janice Drive, Berea, OH 44017
PARLIAMENTARIAN: Lucile Crowell Cooks (Mrs.), 7400 Sun Island Drive S., Apt. 404, South Pasadena, FL 33707

NATIONAL HEADQUARTERS

NATIONAL HEADQUARTERS: 202 E. Church Street at Campus Avenue, Oxford, OH 45056, (513) 523-7597
NATIONAL HEADQUARTERS ADMINISTRATOR: Cynthia Winslow
FIELD REPRESENTATIVES: Lynne Cierwo, Lee Ann De Reus, Shaen Hosie, Sheila Judge, Shawn O'Halloran, Barb Poremba, Diane Rolnick, Sharon Rothrock, Kathy Tripp and Laura Vradelis
GRADUATE COUNSELORS: University of Rochester, Diane Rooney; Louisiana Tech, Lauralee Meyer

THE LAMP

Gwen Moss McKeeman (Mrs. Robert), 5517 S. 74th E. Avenue, Tulsa, OK 74145

EXTENSION

Norma Minch Andrisek (Mrs. J.R.), 319 Janice Drive, Berea, OH 44017

DELTA ZETA SUBSCRIPTIONS

Norma Swepston McIntyre, Box 24145, Columbus, OH 43224

FOUNDERS MEMORIAL FOUNDATION

PRESIDENT: Arlene Newman Marshall (Mrs. Norman L.), Rt. 2, Box 78, Port Lavaca, TX 77979
SECRETARY: Betty Paul DeWitt (Mrs. Norman), 23630 Oakrest Lane, Harbor City, CA 90710
TREASURER: Katey Bosworth Sandy (Mrs. Jonathan), 18630 NW Tolovano, Portland, OR 97229
MEMBERS: Joan Dondrea Lowry (Mrs. Bob-Bill), 578 Yarmouth Lane, Bay Village, OH 44140, Elizabeth Barbieri Bragg (Mrs. Lawrence), 2962 Leopold Avenue, Hacienda Heights, CA 91745

COMMITTEES:

ELIZABETH COULTER STEPHENSON SCHOLARSHIPS: Sarah Jane Shank Houston (Mrs. Harold), 3358 Randlewood Place, Sarasota, FL 33577
UNDERGRADUATE SCHOLARSHIPS: Donna Edwards Happ (Mrs. William V.), 15135 Andora Way, San Diego, CA 92129
GRADUATE SCHOLARSHIPS: Glenna VanderMeer Paukstis (Mrs. Charles), 1304 Lake Park, Birmingham, MI 48009
GALLAUDET UNIVERSITY: Lucille Bolstad May (Mrs. Leland B.), 5100 Dorset Avenue, #406, Chevy Chase, MD 20815
HOUSE EAR INSTITUTE: Betty Paul DeWitt (Mrs. Norman), 23630 Oakrest Lane, Harbor City, CA 90710

NATIONAL HISTORICAL MUSEUM BOARD OF TRUSTEES

PRESIDENT: Elizabeth Baker Devereaux (Mrs.), 18 Pembroke Lane, Huntington, WV 25705

TRUSTEES: Norma Minch Andrisek (Mrs. J. R.), secretary, 319 Janice Drive, Berea, OH 44017; Grace Pritchard Gorham (Mrs.), treasurer; 1510 East 31st St., Tulsa, OK 74105; Carolyn Barnes Gullatt (Mrs. John H.), 4008 Hyridge, Austin, TX 78759; Florence Hood Miner (Mrs. Arthur), 1040 H Avenue, Nevada, IA 50201; Mary Lou Ragel Vineyard (Mrs. Phillip W.), vice president, 4998 62nd Avenue, S., St. Petersburg, FL 33715

PRESIDENT EMERITUS: Lucile Crowell Cooks (Mrs.), 7400 Sun Island Drive S., Apt. #404, South Pasadena, FL 33707

CURATOR/ARCHIVIST: Betsy Bradley Leach (Mrs.), 1244 Valley View Road, #116, Glendale, CA 91202

HISTORIAN EMERITUS

Grace Mason Lundy (Mrs. H.M.), 3207 N. 25th St., Phoenix, AZ 85016

STANDING COMMITTEES

AWARDS (ALUMNAE AND COLLEGIATE): Marcia Earl Humpal (Mrs. David), 26798 Mangrove Lane, Olmsted Falls, OH 44138

COLONNADE CLUBS: Mary Ann Gallatin French (Mrs. John), 2322 N.W. 58th Circle, Oklahoma City, OK 73112

CONSTITUTION AND BYLAWS: Elizabeth Baker Devereaux (Mrs.), 18 Pembroke Lane, Huntington, WV 25705

FIELD ACTIVITIES: Teresa Johnson Severy (Mrs. Raymond)

FINANCE: Patricia Canady Rosser (Mrs. David)

HOUSING ADMINISTRATION: Carolyn Barnes Gullatt (Mrs. John)

HOUSING PROJECTS MANAGER: Sue Jones Allen (Mrs. Tom), 2415 Custer Cove, Richardson, TX 75080

REGIONAL HOUSING CHAIRMEN: I: In care of National Headquarters; II: Kathleen Johnson Sledge (Mrs. Joe W.), 17 The Downs, Tuscaloosa, AL 35401; III: Sandy Sebrell Bailey (Mrs. Bruce), 639 N. Portage Patch, Akron, OH 44303; IV: Connie Burns Baird (Mrs. James), 9039 Gunnison Drive, Dallas, TX 75231; V: LaDonna Johnson (Miss), 4850 156th Avenue NE #234, Redmond, WA 98052;

INSURANCE: National Headquarters, 202 E. Church Street, Oxford, OH 45056

WAYS AND MEANS: Sandra McAlister Nesbitt (Mrs. Milton), 3344 D Fountain Court, Montgomery, AL 36116

COLLEGIATE COORDINATOR: Jamie Hamill Mooror (Mrs. C.P.), 1601 Fork Ave., Irmo, SC 29063

HISTORY: Florence Hood Miner (Mrs. Arthur), 1040 H Avenue, Nevada, IA 50201

JUDICIARY: Dianne Fellows Guild (Mrs. Douglas), 16 Andrews Drive, South Burlington, VT 05401

MEMBERSHIP EDUCATION/PLEDGE EDUCATION: Phyllis Snape Favorite (Mrs. Robert), 570 Lancashire Lane, State College, PA 16803

SORORITY EDUCATION: Ellen Kroll Jenkins (Mrs. Paul), 1101 Ramblin Court, Greenwood, IN 46142

MUSIC: Carol Carson Konet (Mrs. Glen), 15568 Cottonwood Oval, Cleveland, OH 44130

PHILANTHROPY: Joan Dondrea Lowry (Mrs. Bob-Bill), 578 Yarmouth Lane, Bay Village, OH 44140

ALUMNAE COORDINATOR: Priscilla (Pat) Beatty (Miss), 3691 NW 95th Terrace, #1202, Ft. Lauderdale, FL 33321

COLLEGIATE COORDINATOR: Rhonda Reifschneider (Miss), 5233 Cameron Creek Court #270, Ft. Worth, TX 76132

RITUAL: Karen Kind Manuel (Mrs.), 36 Rilling Ridge Road, New Canaan, CT 06840

COMMITTEES

NETWORKING: Anne Marie Jones Gavin (Mrs. William C.), 3264 Swan Drive, Vineland, NJ 08360

NEWSLETTER: Susan Mease (Ms), 857 N. Van Dorn Avenue, Alexandria, VA 22304

PUBLIC RELATIONS: Elizabeth Barbieri Bragg (Mrs. Lawrence), 2962 Leopold Avenue, Hacienda Heights, CA 91745

REFERENCES: Alberta Doran Curran (Mrs. Tom), 116 Dublin Woods Drive, Cary, NC 27511

ALUMNAE:

ALUMNAE RELATIONS: Deanna Alleman McKinnon (Mrs. M.L.), 12109 Victoria Place, Oklahoma City, OK 73120

MEMBERSHIP: Carol Selway Bertz (Mrs. Michael), 6544 South Heritage Place East, Englewood, CO 80111

PROGRAMS: Joyce Low London (Mrs. John), P.O. Box 6458, Las Cruces, NM 88006

COLLEGE:

ACADEMICS: Marvona Easley Tavlin (Mrs. Michael J.), 2710 Devonshire Dr., Lincoln, NE 68506

ACTIVITIES: Jeanine Peterson Triplett (Mrs. Brian), 3602 Trial Ridge Road, Lexington, KY 40505

ENRICHMENT: Jane Daily Snyder (Mrs. Eric J.), 13127 Gascogne Court, Creve Couer, MO 63141

SOCIAL: Beth Ballreich Wexler (Mrs. William C.), 6374 Derbyshire Lane, Loveland, OH 45140

PAD: Diane Dershem Kreider (Mrs. Edward), 6204 Elmer Avenue, Harrisburg, PA 17112

IV. West Virginia

PCD: Penny Payne Fiorvante (Mrs.), Box 163, Boomer WV 25031

PAD: Doretta Pugh Osburn (Mrs. Thomas), 1025 Norway Ave., Bldg. 2, Apt. 17, Huntington, WV 25705

V. Ohio

PCD: Lynnda Wolf Hoefler (Mrs. Robert), 1287 Denise Drive, Kent, OH 44240

PAD: Deanna Bolton (Miss), 6000 Nob Hill Drive, Suite 112, Chagrin Falls, OH 44022

VI. Michigan

PCD: Kim Petrella (Miss), 406 Fisher Court, Clawson, MI 48017

PROVINCE COLLEGIATE AND ALUMNAE DIRECTORS

I. Maine, Massachusetts, Vermont, New Hampshire, Connecticut and Rhode Island

PCD: Frances Robinson Carnes (Mrs. Michael), 252 Washington St., Arlington, MA 02174

PAD: Sandra Riddervold (Miss), 77 Powers St., #39, Milford, NH 03055

II. New York and New Jersey

PCD: Refer to Carolyn Gullatt, PCD Coordinator, 4008 Hyridge, Austin, TX 78759

PAD: Cynthia Schafer Plucinski (Mrs.), 34 Tinker Dr., Mount Holly, NJ 08060

III. Pennsylvania and Delaware

PCD: Judith Sherin Kline (Mrs. Patrick E.), 312 O'Toole Dr., Hagerstown, MD 21740

PAD: Pamela McClure Cronenwett (Mrs. William), 25720 West Hills Drive, Dearborn Heights, MI 48125

VII. Indiana

PCD: Elizabeth Petruce (Miss), 4502 Candletree Circle #2, Indianapolis, IN 46254

PAD: Karen Baurle Brammer (Mrs. Phillip), Route 1, Box 177, Gaston, IN 47342

VIII. Wisconsin

PCD: Donna Skotnicki Agnelly (Mrs. Edward), P.O. Box 135, Waterford, WI 53185

PAD: Rochelle Lebahn Andress (Mrs. Brad), Rt. 2, Box 924, Hudson, WI 54016

IX. Illinois

PCD: Valerie Trigg Craig (Mrs. Robert), 344 Indianwood Blvd., Park Forest, IL 60466

PAD: Sara Rosier Bush (Mrs. Peter), 230 Foxdown Road, Holland, MI 49424

X. Iowa and Nebraska

PCD: Barbara Tweed Holland (Mrs. George), 287 Village Dr., Ames, IA 50010

PAD: Carolyn Zabel Hoffman (Mrs. Jeffrey), 520 Ashworth Road, West Des Moines, IA 50265

XI. Missouri

PCD: Dana McMillan (Miss), 541 W. 11th #101, Kansas City, MO 64105

PAD: Eileen Hoffman Doe (Mrs. Larry), 2 Locust Drive, Florissant, MO 63031

XII. Minnesota, North Dakota and South Dakota

PCD: Jeri Seals Weigand (Mrs. Gregg), 6185 Boyer Path, Invergrove Heights, MN 55075

PAD: Sylvia Lee Kafkas (Mrs. John), 3505 Humboldt Ave., South, Minneapolis, MN 55408

XIV. Colorado and Kansas

PCD: Gail Persak Beets, 5476 W. Hinsdale Pl., Littleton, CO 80123

XIV-E. Kansas Alumnae Chapters

PAD-E: Carolyn McCandless Woodling (Mrs. Charles), 3112 Creekwood, Lawrence, KS 66044

XIV-W. Arizona, Colorado, New Mexico, Utah and Wyoming Alumnae Chapters, except Las Cruces, NM.

PAD-W: Margaret Poe (Miss), 4720 W. Rose Lane, Glendale, AZ 85301

XV-S. Southern California, Southern Nevada and Hawaii

PCD: Karen Martin Dessel (Mrs. Tom), 2015 Studebaker Road, Long Beach, CA 90815

PAD: Barbara Phillippi Lancaster (Mrs. Richard), 4923 Libbet Avenue, Van Nuys, CA 91436

XV-C. Northern California and Northern Nevada

PCD: Linda Lesniak Szymanski (Mrs. Robert), 931 Notre Dame Avenue, Concord, CA 94518

PAD: Wendy Wood LaBounty (Mrs. William), 2099 Janice Drive, Pleasant Hill, CA 94523

XV-N. Oregon, Washington, Montana, Idaho and Alaska

PCD: Refer to Norma Minch Andrisek, 319 Janice Drive, Berea, OH 44017

PAD: Helga Kohlenberg Clark (Mrs. William), 4866 123rd Place S.E., Bellevue, WA 98006

XVI. Oklahoma

PCD: Lisa Fisackerly Tuttle (Mrs. R. Colin), 2908 Fairfield, Edmond, OK 73034

STATE REFERENCE CHAIRMEN

ALABAMA: Lottie Ricker Nunnely (Mrs. Mark), 1365 Dearing Down Circle, Helena, AL 35080 **ALASKA:** Kathryn Miller Mosley (Mrs. Larry), P.O. Box 61642, Fairbanks, AK 99706 **ARIZONA:** Judy Hurley Gustafson (Mrs. Terry), 8431 E. Belgian Trail, Scottsdale, AZ 85258 **ARKANSAS:** Jeania Standridge Evans (Mrs. Jerry), Rt. #2, Box 530, Russellville, AR 72801 **CALIFORNIA (North):** Martha Herro Burde (Mrs. Walter), 24685 Camino del Monte, Carmel, CA 93923 **CALIFORNIA (South):** Janet Breitweiser Savage (Mrs. Tom), 5102 Woodwind Lane, Anaheim, CA 92807 **COLORADO:** Diane Vyhalek (Miss), 13625-B E. Yale Ave., Aurora, CO 80014 **CONNECTICUT:** Ann Collins Gill (Mrs. Edward), 53 High Point Rd., Westport, CT 06880 **DELAWARE:** Charlotte Day Fehnel (Mrs. Richard), 212 Sulky Way, Chadds Ford, PA 19317 **DISTRICT OF COLUMBIA:** Pat Dansbury (Miss), 1722 19th St. NW #501, Washington, D.C. 20009 **FLORIDA:** Cindy Brown Helton (Mrs. Charles), 1601 Berkshire Ave., Winter Park, FL 32789 **GEORGIA:** Lynn Williams (Miss), 1209 Shadowood Parkway, Atlanta, GA 30339 **HAWAII:** Dorothea Betten-court Ovio (Mrs.), 45-109 Kokokahi Place, Kaneohe, HI 96744 **IDAHO:** Rilla Soderstrom Perala (Mrs. George), 8800 Craydon Dr., Boise, ID 83704 **ILLINOIS:** Kimberly Klika Christian (Mrs. Michael), 735 South Bruner, Hinsdale, IL 60521 **INDIANA:** Jane Gustafson Thompson (Mrs. Mark), Route 1, Box 162, Pendleton, IN 46064 **IOWA:** Alaire Swedlund Bornholtz (Mrs. Tim), 4534 Perry Way, Sioux City, IA 51104 **KANSAS:** Kay Koger Lauer (Mrs. William), 120 Mulberry, Cottonwood Falls, KS 66845 **KENTUCKY:** Joy Morton Coleman (Mrs. Kenny), 2031 Edgeworth Drive, Lexington, KY 40505 **LOUISIANA:** Jane Weaver Mathes (Mrs. Jimmy), 12538 Sherbrook Dr., Baton Rouge, LA 70815 **MAINE:** Denise A. Pitt (Miss), 23 Lindale Avenue, Biddeford, ME 04005 **MARYLAND:** Pat Dansbury (Miss), 1722 19th St. NW #501, Washington, D.C. 20009 **MASSACHUSETTS:** Teresa Landry, 101 Waite, Malden, MA 02148 **MICHIGAN:** Janelle Kiszka (Miss), 2417 Altoona St., Flint, MI 48504 **MINNESOTA:** Karen Schmieding (Miss), 3121 Hennepin Avenue, Apt. #3, Minneapolis, MN 55408 **OHIO:** Sandra Sebrill Bailey (Mrs. Bruce), 639 N. Portage Path, Akron, OH 44303 **OKLAHOMA:** Patricia Cantrell Hulsey (Mrs. Stephen), 3912 S. Union, Tulsa, OK 74107 **OREGON:** Barbara Kirsch Hamilton (Mrs. W. B.), 12601 S.E. Market, Portland, OR 97233 **PENNSYLVANIA:** Debbie Fries (Miss), 1060 Oldstone Road, Allentown, PA 18103 **RHODE ISLAND:** Jill Morris Marshall (Mrs. Robert), 109 Pinecrest Drive, Pawtucket, RI 02861 **SOUTH CAROLINA:** Susan L. Jones (Miss), Rt. 8, Box 280F, Rock Hill, SC 29730 **SOUTH DAKOTA:** Doris Dalin Huffman (Mrs. Richard, Jr.), 1535 S. State Street, Aberdeen, SD 57401 **TENNESSEE:** Joyce Lockhart Gary (Mrs. Wallace), 1347 Greendale Ave., Memphis, TN 38127 **TEXAS:** Ann Clay Hawkins (Mrs. Jerry), 103 Live Oak Lane, Lake Jackson, TX 77566 **UTAH:** Jean Peters Christensen (Mrs. William), 1669 Yalecrest Ave., Salt Lake City, UT 84105 **VERMONT:** Pat Perreboom Neubauer (Mrs. Robert), 22 Hillwinds, Brattleboro, VT 05301 **VIRGINIA:** Katherine Shepich Newcomer (Mrs. Rick), 11148 Forest Edge Dr., Reston, VA 22090 **WASHINGTON:** Karen Fellows Soyk (Mrs. Lon), 31033 38th Ave., South, Auburn, WA 98002 **WEST VIRGINIA:** Lisa Bergeria Blankenship (Mrs. Glen), 208 N. State Street, Athens, WV 24712 **WISCONSIN:** Lynn Brockmeyer Grosskreutz (Mrs. John), Rt. 1, Box 14AC, Homeberg Lane, Whitewater, WI 53190 **WYOMING:** Donna McElroy Frerichs (Mrs. William), 3301 Alta Vista Drive, Laramie, WY 82070

PAD: Linda Singer Looper (Mrs. Danny), 6508 Dulane Circle, Oklahoma City, OK 73132

XVII-N. Texas, New Mexico Collegiate Chapters, Texas and Las Cruces Alumnae Chapter

PCD: Merry Westbrook Adamcik (Mrs. Roy), 614 Rozelle Avenue, Sugarland, TX 77478

PAD-N: Donna Hudson Dunn (Mrs. Jeffrey), 3207 Quail Lane, Arlington, TX 76016

XVII-S. Texas

PCD-S: Merry Westbrook Adamcik (Mrs. Roy), 614 Rozelle Avenue, Sugarland, TX 77478

PAD-S: Elsie Wheeler McTee (Mrs. Clifford), 4322 St. George, Corpus Christi, TX 78413

XVIII. Louisiana and Mississippi

PCD: Virginia Schattner Bryan (Mrs. Larry), 2404 Brownlee Dr., Bossier City, LA 71111

PAD: Ida Marie Carter Nelson (Mrs. John), 126 Fremont Avenue, Shreveport, LA 71105

XIX. Tennessee

PCD: Vickie Adcock (Miss), Route 1, Box 49, Pegram, TN 37143

PAD: Violet Henson Anderson (Mrs. Charles A.), 102 Blue Hills Ct., Nashville, TN 37214

XX. Kentucky

PCD: Jennifer Plenge (Ms.), 904 Dana Marie Drive, Louisville, KY 40223

PAD: Carol Sharpe Harper (Mrs. Spencer E., Jr.), 3309 Green Hill Lane, Louisville, KY 40207

XXI. South Carolina and North Carolina

PCD: Patricia Blackwell McLain (Mrs. Chip), 7402 Quail Meadow Lane, Charlotte, NC 28210

PAD: Patricia Menendez Tector (Mrs. John), 907 Winslow Court, Cary, NC 27511

XXII. Georgia

PCD: Sue Adrianson Skambis (Mrs. Christopher), 836 Lake Adair Blvd., Orlando, FL 32804

PAD: Marge Klingensmith Lovewell (Mrs.), 96 The Prado NE, Atlanta, GA 30309

XXIII. Alabama

PCD: Barbara Hunt Martin (Mrs. Willis), VA Medical Center, Tuscaloosa, AL 35405

PAD: Elisabeth (Lisa) Williams Terry (Mrs. Rick), 2105 Sparrow Road SW, Decatur, AL 35601

XXIV. Florida

PCD: Sue Adrianson Skambis (Mrs. Christopher), 836 Lake Adair Blvd., Orlando, FL 32804

PAD: Ms. Barbara Boehringer Turner, 6543 Blvd. of Champions, North Lauderdale, FL 33068

XXV. Virginia, Maryland, Washington, D.C.

PCD: Linda Regner (Miss), 5576 Burnside Drive, #8, Rockville, MD 20858

PAD: Shelly Belson Stepp (Mrs. Larry), 2456 Stone Post Terrace, Richmond, VA 23233

XXVI. Arkansas

PCD: Jacqueline Miner Gardner (Mrs. Richard, Jr.), P. O. Box 2034, Russellville, AR 72801

PAD: Dauna Jackson DeBord (Mrs.), 1300 East Russell Road #19, Russellville, AR 72801

Flame Eternal

ALPHA

Mary Niederauer Marsh '58
Dorothy Work '20

EPSILON

Alice Flinn Whitaker '50

THETA

Shirley Fairbanks Butler '47
Carolyn Frost Hurni '61
Marie Smith Murray '19
Martha Lantis Ramsey '46

OMICRON

Roberta Birnie Wellman '41

PI

Frances Welsh Brandon '38
Irene Felter '13
Martha Beshers Johnson '24
Ermine Felter Kesler '17
Virginia Carolyn Snively '22

RHO

Mildred Whitaker Blender '30

SIGMA

Shirley Thomassie Johnson '43

CHI

Alice Alverdes Byrnes '29
Zenda Hendrickson Milloy '25

OMEGA

Ruby Speer Anderson '25

ALPHA ALPHA

Marie Erickson Beu '58
Maybelle Terril Clark '38

ALPHA BETA

Helen Chambers Matanock '32



ALPHA GAMMA

Mildred Steele Eastman '24

ALPHA EPSILON

Zula Felts Anderson '34
Dora Bollinger '22
Gladys Stricklin Murphy '36

ALPHA THETA

Mary McRoberts Fortune '49

ALPHA IOTA

Margaret Allen Duthrie '30

ALPHA NU

Mary Bohnstadt '34

ALPHA TAU

Debbie Blackmon Cox '73

ALPHA PHI

Katherine Morris Cutlip '32
Fanny Seeley Racine '28

ALPHA CHI

Thelma Trafton Stewart '32

GAMMA LAMBDA

Nancy Rooney Seebach '60

GAMMA NU

Winifred H. Bally '33

GAMMA SIGMA

Evelyn Sipe Leck '55

GAMMA CHI

Ethelyn Davidson '29

DELTA ALPHA

Deanna Osborne Schwandt '59

DELTA PHI

Angela Marie Hocker '87

EPSILON DELTA

Virginia Hefner Bivens '36

EPSILON KAPPA

Sally Hahn Gumz '64

THETA GAMMA

Mary Louise Fernald '31

HAVE YOU CHANGED YOUR NAME OR ADDRESS?

Please print or type and mail to Delta Zeta Sorority, 202 East Church Street at Campus Avenue, Oxford, OH 45056. Members should use parents' address while in college.

IMPORTANT. You must cut out the mailing label from this issue and paste it here.
We cannot process changes without your label.
Thank You.

I am currently a Delta Zeta Officer. Title _____

My new address will be _____

street/apt. #

city/state/ZIP

effective date

If mailing label does not show your married name, please include the following information for our membership files.

Married name

Husband's first name

Date of marriage



*Mabelle Dakota Hall was named a recipient of the **Diamond in the Flame** certificate for 75 years of membership and her award was presented to her by Greencastle (IN) alumnae and former PAD Gelaine Smock at a Founders Day observance. Mabelle is the one surviving charter member of Delta chapter at DePauw University.*

POSTMASTER: Send 3579 immediately to Delta Zeta Sorority, 202 E. Church St., Oxford, OH 45056

Delta Zeta Sorority
202 E. Church St. at Campus Avenue
Oxford, OH 45056

Address Correction Requested

Non-Profit Org.
U.S. Postage
PAID
Permit No. 131
Tulsa, OK