

THE LAMP

OF
DELTA
ZETA

WINTER, 1985-1986





Delta Zeta Founders Memorial Foundation

Wanted: Applicants, Contributors

A major goal of the Founders Memorial Foundation is to increase both the number and amount of the scholarships given each year to deserving Delta Zetas. To do this, contributions to the general and individual scholarship funds are needed. Collegians, we encourage you to apply for the scholarships.

Applications are sent in the winter mailing to college chapter presidents and CCDs. If interested, ask them for an application or write to the Founders Memorial Foundation in care of National Headquarters. Completed applications for all scholarships, except the Elizabeth Coulter Stephenson Scholarships, must be received at National Headquarters by March 1. Winners are notified in early July.

Alumnae who have been out of school awhile and are returning to do graduate work should ask their alumnae chapter president for a "Returning Student" Graduate Scholarship Application.

In addition, some provinces have established locally administered scholarships through the Founders Memorial Foundation. Information and application forms are available from the Province Collegiate Director.

Contributions to the scholarship fund or for a specifically named scholarship are tax deductible and can be made by individual members or alumnae and collegiate chapters.

KEEP APPRECIATING DELTA ZETA

Date _____ Enclosed Check for \$ _____

TAX DEDUCTIBLE CONTRIBUTION from:

NAME _____

Married Name

First Name

Maiden Name

ADDRESS _____

CHAPTER NAME _____

(Where initiated)

(Alumnae Chapter Club)

DONATION MADE in memory of _____

in honor of _____

occasion _____

Please notify: Name _____

Address _____

PLEASE MAKE ALL CHECKS PAYABLE TO:
DELTA ZETA FOUNDERS MEMORIAL FOUNDATION

Send to: Delta Zeta Founders Memorial Foundation
Delta Zeta National Headquarters
202 East Church Street at Campus Avenue
Oxford, Ohio 45056

THE LAMP

Volume 74 Number 4 Winter 1985-1986

Contents

Founders of the Sorority



Miami University
Oxford, Ohio 1902

Alfa Lloyd Hayes, 1880-1962
Mary Collins Galbraith, 1879-1963
Anna Keen Davis, 1884-1949
Julia Bishop Coleman, 1881-1959
Mabelle Minton Hageman, 1880-1929
Anne Simmons Friedline, 1879-1932

The Order of the Laurel

Irene Caroline Boughton
Grace Mason Lundy
Elizabeth Coulter Stephenson

THE LAMP

The LAMP of Delta Zeta, official magazine of the sorority, is published quarterly by the Delta Zeta Sorority, 202 East Church St., Oxford, OH 45056. Second Class Postage Pending at Oxford, OH and additional mailing offices.

Send all editorial material to the Editor, Mrs. Robert L. McKeeman, 5517 S. 74th E. Avenue, Tulsa, OK 74145. Send all matters of a business nature to Delta Zeta National Headquarters, Oxford, OH.

Send all contributions for Gallaudet College, House Ear Institute and other Founders Memorial Foundation philanthropies through the Delta Zeta Founders Memorial Foundation, and all contributions to the National Historical Museum to Delta Zeta National Headquarters, 202 E. Church St., Oxford, OH 45056.

EDITOR

Gwen Moss McKeeman
5517 S. 74th E. Avenue
Tulsa, Oklahoma 74145

CHAPTER EDITOR

Diane Jones Skelton



MEMBER

COLLEGE FRATERNITY EDITORS ASSOCIATION

- 2 Beverly Burnsed is Woman of the Year
- 4 Delta Zeta from Coast to Coast
- 7 Honor Gifts
- 8 Standards of Excellence
- 9 Golden Circle Scholarships
- 10 FMF Scholarships
- 14 Foundation Committee Chairmen
- 15 Alpha Pi Reunion
- 16 Delta Zeta On Campus
- 24 FMF Contributors
- 26 Memorials
- 27 McAdams Matching Housing Challenge
- 28 Augusta Kelleway Scholarship
- 28 ECS Scholarships
- 29 Gift to Foundation
- 29 Flame Eternal
- 33 #1 Ranking Academic Chapters
- 34 From the Lampwriter
- 36 Directory



ABOUT THE COVER

Pretty Iota Alphas from South West Texas State are happily awaiting the Christmas festivities. We send this issue with warm greetings for a Happy Holiday Season.

Beverly Baldwin Burnsed is 1985 Woman of the Year



Beverly Baldwin Burnsed, 1985 Woman of the Year

**by Susan Mease
Samford-All**

Beverly Baldwin Burnsed, Florida State University-AΣ of Lakeland, Florida, has been named 1985 Delta Zeta Woman of the Year.

Bev has served in the Florida House of Representatives since 1976 and is currently serving as Chairman of the Commerce Committee, the first woman to chair this committee.

Born in Tampa, Florida, Bev graduated from Florida State University with a Bachelor of Arts in history/

government. She continued her education at Florida Southern College, Pensacola Junior College, University of South Florida and Polk Community College, and received an honorary Doctor of Laws degree from Flagler College.

Bev was president of Alpha Sigma chapter at FSU and served as CCD for Beta Mu chapter at Florida Southern College. She was PCD for Province XXIV (Florida) for two years and was elected to National

Council in 1968. She served for two years as National Director, three years as Vice President of Collegiate Affairs and one year as National Secretary. She was also an alternate delegate to National Panhellenic Conference.

When Bev was elected to the Florida House of Representatives, she was one of 16 women serving in the 120 member body. She was selected by her colleagues as one of the five most promising freshman legislators. As a first term member she was appointed to the powerful Appropriations Committee and has served on that committee continuously. In the Legislature, Bev has served as Higher Education Committee Chairman, Health and Rehabilitative Services Committee Chairman, on the Appropriations Conference Committee and 16 other House committees. She served on the Governor's Community Mental Health Task Force, Vice Chairman of the Governor's Blue Ribbon Commission on Post Secondary Education, Comptroller's Task Force on Securities Regulation (the only member of the House of Representatives of the 17 member panel), and the Speaker's Advisory Committee on the Future (one of six House members on the 44 member panel.)

At the national level, Bev has been actively involved with the National Conference of State Legislatures which represents the 7000+ legislators from the 50 states. She has served NCSL on the Human Resources Committee, Education and Labor Committee, and the Commerce, Labor and Economic Development Committee.

Bev has been involved in so many civic concerns that in 1984 she was named by the Lakeland *Ledger* as one of 50 who made a difference in Polk County during a period of 150+ years. An educator by profession, she has not taught school since her election in 1976 but she stays actively involved. She developed for the Florida House of Representatives a slide presentation and



Mailing 13,000 newsletters from the district office certainly involves Bev Burnsed.



Bev finds time to talk to constituents and friends.

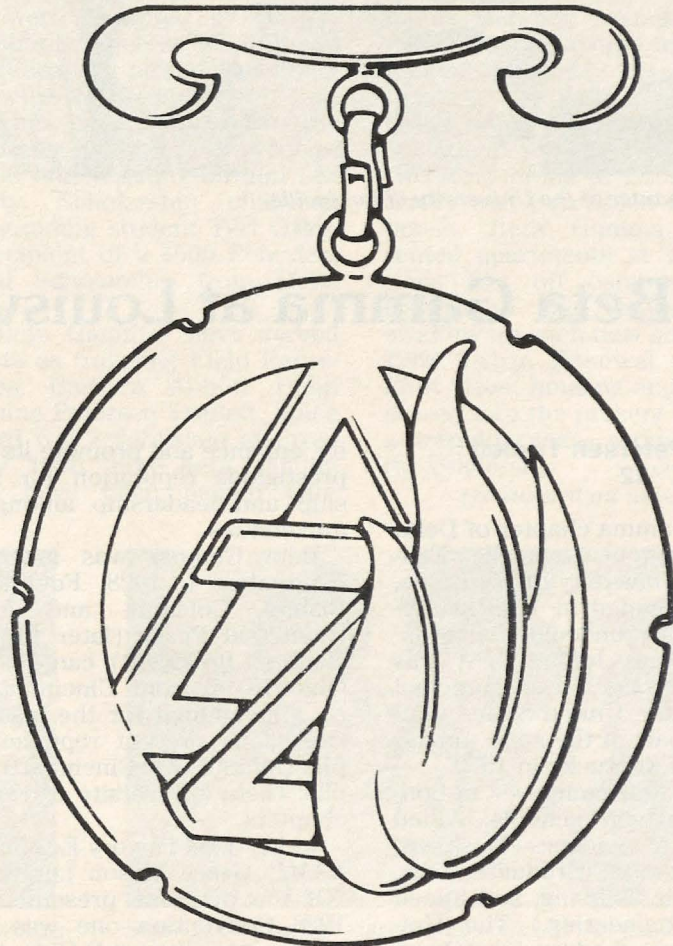
script that was made available to all representatives to use with school or civic groups and she makes about 20 school visits a year working with classes about Florida government.

Bev's mother is Nita Midgley Baldwin, also a Delta Zeta from Alpha Sigma chapter at Florida State University.

Delta Zetas everywhere can look to Beverly Baldwin Burnsed as a role model of a loyal sister and successful career woman who will reflect honor on Delta Zeta as the 1985 Woman of the Year.



A quick check of the day's schedule before the telephone rings!



Delta Zeta from Coast to Coast



Beta Gamma chapter at the University of Louisville.

Meet Beta Gamma at Louisville

**by Jeanine Petersen Triplett
Louisville-BΓ '82**

The Beta Gamma chapter of Delta Zeta is located in Louisville, Kentucky at the University of Louisville, which was founded in 1798 as Jefferson Seminary under a charter issued by Thomas Jefferson. It was noted for being the oldest municipal university in the United States until it became a part of the state university system of Kentucky in 1970.

U of L has four campuses in Louisville and eleven schools: Allied Health, Arts & Sciences, Business, Dental, Education, Graduate, Law, Medical, Music, Nursing, and Speed Scientific (Engineering.) The University has embarked upon a "Quest for Excellence" campaign to solid-

ify, enhance and promote its already prestigious reputation for scholarship and leadership among urban universities.

Beta Gamma was installed on September 1, 1928. Founder Julia Bishop Coleman and Margaret Huenefeld Pease (later to become National President), came down the Ohio River from Cincinnati, Ohio, on a steamboat for the installation. Collegians present represented Alpha (Miami), Xi (Cincinnati) and Alpha Theta (University of Kentucky) chapters.

In her 1934 History Edition of *The LAMP*, Grace Mason Lundy writes, "Of the petitions presented at the 1928 Convention one was greeted by every reader with Oh's and Ah's of admiration. This was the petition

of Phi Sigma Theta for a chapter of Delta Zeta at the University of Louisville. As the delightful art work of the book was well backed with other substantial qualities of recommendations, the petition was accepted ...

"Beta Gamma has shown real stamina in surviving some difficulties of its early history as Delta Zeta, installed as it was just at the beginning of the depression. The caliber of the girls entering this chapter has been gratifying; equal to the demands of unusual days. Beta Gamma promises splendid development for the future."

And indeed, those same girls were still going strong when Beta Gamma celebrated its fiftieth anniversary. On hand to become Golden Roses were four of the original sixteen charter members: Katherine Wendell Lewis, Edna Scott Johnson McKechnie, Jean Allen Strohmenger and Linda Boyd Thomas. Linda was also a founder of the Phi Sigma Theta colony, and "Scottie" McKechnie delighted those present by bringing her Phi Sigma Theta pin to donate to the archives of Delta Zeta.

Beta Gamma has a current membership of 45 (limitation) which includes the fall formal rush quota of seventeen pledges. The chapter has filled quota for the last seven years, consecutively, and in fifteen of the last seventeen.

Formal rush is always a very special time for both collegians and alumnae. The alumnae provide food, funding, kitchen help and servers, as well as moral support, for the four nights of theme parties.

After rush, Beta Gammas move into a hectic schedule. Pledges participate in TKE Skits, an annual contest for the fall sorority pledge classes. In the weeks following are Greek Games, Lambda Chi Alpha Watermelon Bust, Beta Theta Pi Whipped Cream Fight, hayride, Big Little Sister Week, and the annual Thanksgiving dinner.

Each year, Beta Gamma sponsors a tacky party, a philanthropy project in which canned goods for the "Dare-to-Care" project are collected

at the door as admission. Party goers take great pride in their "tacky" attire; a coveted honor is the award given at the end of the evening to the "tackiest" outfit.

Founders Day is celebrated jointly with alumnae, usually with a luncheon or banquet to which mothers are invited. The alumnae also sponsor a Christmas Bazaar where they bring holiday and handcrafted gifts to be auctioned off for the direct and indirect benefit of the chapter.

The Holiday season (and the end of finals) is celebrated with a Christmas date-party. Beta Gamma also remembers those less fortunate by providing food and clothing for a needy family and serving dinner at the Salvation Army on Christmas Day. In addition, the chapter volunteers at the Louisville Jaycees Festival of Christmas Trees, sends letters and presents to an adopted Guatemalan child, and visits an adopted grandmother and her friends at a local nursing home.

During spring semester music is always in the air as the chapter prepares for Fryberger, a competition held every year for Greek and other campus organizations.

Beta Gammas are very active both on and off the campus. Dana Adams and Laura Whitt are Senators in the Student Government Association. Cheryl Triplett, Mary Jo Ratliff and Teri Oskin are Cardinal Belles and Kim Burkhardt is a member of the University Field Hockey Team. Other members are active in intramurals, Student Activities Association, twelve different honoraries, the marching band, Arts & Sciences Student Council, Business School Student Council and many campus committees.

Currently, Bridget Porter is the local Phi Kappa Tau Fraternity Dream Girl and is one of five finalists for their National Dream Girl. Lisa Bronger was the local Rose and was a semi-finalist for the National Rose of Pi Kappa Phi Fraternity. Kelly Rhodes was the runner-up for the 1984-85 Homecoming Queen and Cheryl Triplett was on the 1983-84 Homecoming Court. Named "Miss Cardinal 1985" (outstanding woman graduate of U of L) was Therese Keeling.

Among community activities of particular merit, Bridget Porter is a member of Louisville Ballet, Lisa Bronger served as an intern for Senator Wendell Ford, and both Lori Hebel and Therese Keeling appear in summer musical productions at the Iroquois Amphitheater.

Scholarship is of prime importance to Beta Gamma. The Grade Point Average was second out of nine women's groups, and also second in the "most improved" category, for spring 1985. Three 1985 seniors were accepted by professional schools. Therese Keeling and Kelly Rhodes will attend University of Louisville Medical School. Lisa Bronger has been admitted to the Law Schools of both University of Cincinnati and Washington and Lee University. Scholarship chairman and outstanding student Teri Oskin is the recipient of a \$500 Founders Memorial Scholarship from Delta Zeta.

Two Beta Gammas have served Delta Zeta as traveling Field Representatives: Barbara Abbott Bohn and Jeanine Petersen Triplett. Since the award was established at Province Day, 1982, three Beta Gamma alumnae have been named Out-

standing Alumna of Province XX, Carol Sharpe Harper-1982, Katherine Heine Grauman-1983, and Rose Mary Rommel Johnson-1984. Rose Mary has the unusual distinction of serving in her thirtieth year as treasurer of the Louisville alumnae, has been a National Convention delegate three times, served as secretary of the Beta Gamma House Corporation for several years, and annually opens her home to the Christmas Bazaar.

The Beta Gamma chapter house at 2104 Confederate Place is a very special place, being located in a Historic Preservation District which the University owns and makes available for Greek housing. Built between the Civil War and the Spanish American War, the houses are charming and well-constructed, but do pose frequent problems for life in the twentieth century. From sanding floors to installing ceiling fans, the collegians, Beta Gamma House Corporation, and Louisville alumnae (not to mention the fathers, husbands and boy friends) have contributed time, energy and money to making the house into what is recognized as the most attractive Greek house on campus.

Until 1949, when a large white two-story home at 2028 South First Street was purchased as a chapter house, Beta Gamma maintained rented apartments at various locations just off campus, until the growth of the University would swallow up each new site. Finally, in 1968, Urban Renewal took all the First Street housing and the chapter moved into the present house under a perpetual lease arrangement with the University.

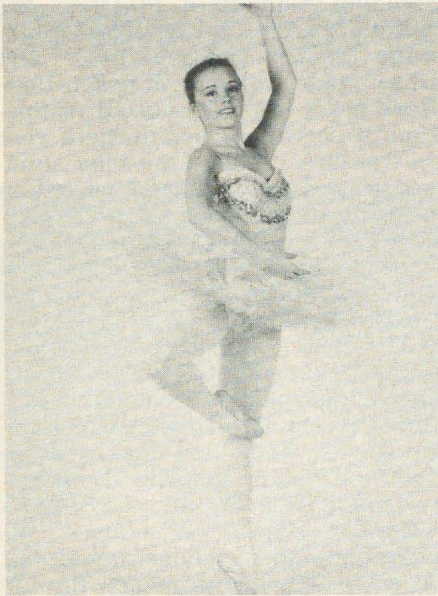
(continued on next page)



During the annual Fryberger Greek Sing the Beta Gammas received two standing ovations and a superior rating for their medley of the Music Man.



Some of the "tacky" sisters take time out during the Annual Tacky Party to pose and show off their tacky outfits.



BF Bridgette Porter is a member of the Louisville Ballet and is a semi-finalist for National Dream Girl of Phi Kappa Tau.

One of the earlier apartment homes was the scene of a most memorable event, the only wedding known to take place in a Beta Gamma house. During World War II, when young men were being suddenly called to service, many marriages were performed just as suddenly. One sister, Louise Anderson, whose home was in West Point, Kentucky, wanted her wedding to take place where her sorority sisters could be present. Her marriage to Rodney Williams was arranged in just a few days time and was attended by Maid of Honor Geneva Hunt (Steier) and Best Man Charles Steier, whose own wedding took place after the war. It is remembered the music was provided by talented sister Mary Edna Mansfield Smith.

It is fortunate for Delta Zeta, for the University, and for the fraternity world that the marriage took place. The child of that union (also Rodney Williams) grew up to become an outstanding U of L student, Chairman of the Student Senate, a Law School graduate, National President of Tau Kappa Epsilon, and currently serves as both Alumni Director of U of L and the President of the National Interfraternity Conference.

An urban location and "street car student body" may have limited the number of women choosing to join

sororities at U of L, but it may also be one reason that sororities have survived and prospered. A large percentage of graduates remain in the immediate vicinity and provide many support services that enable the chapter to perform and behave like a much larger group. College Chapter Directors have been remarkable in their length and quality of service. Katherine Heine Grauman (wife of distinguished jurist, Circuit Judge Lawrence Grauman) was the first to bear the title and served for nine years until she became the Province Alumnae Director. Fannette Lindsay Schmitt served for twelve years, after being an officer and president of both the Louisville alumnae and the Louisville Alumnae Panhellenic. Patricia Steier Sorg is entering her eighth year, having been the collegiate president, 1968 Convention delegate, and president of the Louisville alumnae.

On the night of February 15, 1984 the first Alumnae Careers Night took place at the chapter house. Teri Oskin (who has been Pledge Educator and Scholarship Chairman and was then the Standards Chairman) conceived the idea of making career opportunities known to the chapter through contact with Delta Zeta alumnae in various occupations. Twenty-one alumnae attended a wonderful evening of sharing experiences and getting to know chapter members in their particular fields: Casslyn Harris Atkins (Executive Assistant to Mayor Harvey Sloane's Cabinet Secretary), Karen Scott Bakus (Pediatrician), Barbara Abbott Bohn (Interior Designer), Nancy Mayrose Burkhardt (Fashion Marketer), Brenda Cooke Gardner (Medical Technologist), Carol Sharpe Harper (Registered Pharmacist and Psychologist), Sharon Reinhart Heckmann (Civil Engineer), Betty Greenwell Kassulke (Warden-Kentucky Women's Prison), Martha Breland Lester (Middle School English Teacher), Dorothy Carter Luber (Attorney), Nancy Dolt Langley Fitch (Property Manager and Career Guidance Counselor/Teacher), Sheryl Lynch (Victim Advocate-Commonwealth Attorney's Office), Janice Muntan (Dance Therapist and teacher of the handicapped), Jeanine Petersen (Delta Zeta Field Representative), Jennifer Plenge (Small Business Owner),

Janice Carter Scherm (Registered Nurse and Nursing Instructor), Patricia Steier Sorg (Real Estate Agent), Janice Reinhart Steitz (Music Educator and Performing Artist), Ann Walls (Elementary Teacher and coordinator of inner-city remedial programs), Yvonne Eaton Willenbrink (Journalist - "The Courier-Journal"), and Sherrie Warren Zaino (Dentist.)

The program was such a success it will be repeated during 1985-86 with a different group of alumnae careers represented. Already committed to participate are Sandra Crain Nelson (CPA and Chief Financial Officer for Chi Chi's International), Barbara Effinger Price (Artist, Designer and owner of Barbara's Floral Designs), and Marian Kincaid. Warns (internationally known Labor Arbitrator and the only person to hold four degrees from the University of Louisville, including the Ph.D.)

The Louisville alumnae chapter is almost as old as Beta Gamma, having been chartered in 1931 and operating continuously since then.

Throughout their many activities and busy lives, Beta Gammas do not forget the reason and foundation of sisterhood, which is the friendship and belief in each other and in Delta Zeta.



Kelly Rhodes was runner-up in the 1984-85 Homecoming contest and was a member of the court.



Honor Gifts Show Special Thanks

Many Delta Zetas have designated their contributions to the Founders Memorial Foundation as honor gifts which pay tribute to those in their lives deserving a special thank you or recognition, i.e., happy birthday, happy anniversary, new baby, etc. Gifts received are acknowledged with a special card sent to the honored person by the Founders Memorial Foundation. These contributions are tax deductible and are used to supplement Scholarships, Hearing Help Funds and the Foundation Endowment Fund. Book of Honor gifts received from July 1, 1984, to June 30, 1985, honored the following:

Merry Westbrook Adameik
Lena Anderson
Norma Minch Andrisek
Mary Lou McConnaughey Barth
Ruth Rue Benke
Gail Persak Beets
Debbie Berman
Ann Butler Booth

Belle Calvert Brooks
Elaine Broten
Laura Weimer Clark
Catherine Clay
Ninetta Sherwood Dack
Amy Davis
Denver Alumnae Chapter
Betty and Norman DeWitt
Donna Hudson Dunn
Elizabeth Farrand
Phyllis Snape Favorite
Feike Family
Betty Schneider Fenton
Diane Fenzl
Sylvia Lounsberry Fix
Mary Margaret Calhoun Fore
Mr. and Mrs. Delton Gates
Ann Marie Jones Gavin
Ellie Bakosh Gregorich
Dianne Fellows Guild
Carolyn Barnes Gullatt
Ethel Mae Bishop Gullette
Tracey Harnage
Carol Sharpe Harper
Janet Eisler Havener
Ann Elkins Hawkins
Cindy Holder
Ann Ivy Holloway
Sue Jones-Allen
Judy Sherin Kline
Patricia Knobloch

Carol Carson Konet
Evelyn B. Kramer
Diane Dersham Kreider
Betsy Bradley Leach
Joan Dondrea Lowry
Mabel Flaherty Loy
Grace Mason Lundy
Arlene Newman Marshall
Gwen Moss McKeeman
Jo Harriss Messlin
Florence Hood Miner
Karen Severloh Moffitt
Lois Randolph Nesgoda
Phoenix Alumnae Chapter
Lee Miles Pressley
Province III
Kim Beloate Rainey
Joy Smith Reinhardt
Patricia Canady Rosser
San Antonio Alumnae Chapter
Kathleen Bosworth Sandy
Teresa Johnson Severy
Carmela Sharples
Charlotte Fields Silversteen
Jean Nelson Stockham
Patricia Menendez Tector
Lyn Tyson
Marcia Baird Whipple
Verna Wilhelm
Becky Combs Young

ATTENTION ALL DELTA NU CHAPTER MEMBERS FROM PARSONS COLLEGE ...

The college may be gone but the spirit still exists in hundreds of graduates. This past summer the first annual Parsons College Reunion occurred with over 300 alums attending. Charlotte Pierson Lamb, Iota-I, who was CCD of Delta Nu chapter when Parsons College closed in 1973, writes that she was delighted to see Marilyn Switzer Parker, Zilpha Woods Grooms, Lois Clampitt Adams Presto, Judy Williams Butterbaugh, Ann Blaine Duncan. From the Fairfield area where Charlotte lives, there were Dian Whitney Marker, Sally Reinhart Neff and Jane Vaira Hunt. This group decided to have a Delta Nu Reunion at the same time as the Parsons Reunion in early June, 1986. Contact Charlotte Lamb, 306 S. Main, Fairfield, IA 52556 for details.

Hearing Help Grants

The Founders Memorial Foundation annually awards grants to alumnae chapters to assist with local philanthropic endeavors. These grants are made possible by tax deductible contributions to the Founders Memorial Foundation Hearing Help Fund. The following grants have been awarded:

- \$500.00 to ASSISTIVE DEVICE CENTER AT COLORADO STATE UNIVERSITY on behalf of *Fort Collins, CO Alumnae Chapter*.
- \$425.00 to TUCKER-MAXON ORAL SCHOOL on behalf of *Portland, OR Alumnae Chapter*.

- \$250.00 to DES MOINES HEARING AND SPEECH CENTER on behalf of *Des Moines, IA Alumnae Chapter*.
- \$250.00 to ALL CHILDREN'S HOSPITAL SPEECH AND HEARING CLINIC on behalf of *St. Petersburg, FL Alumnae Chapter*.
- \$100.00 to Program for Speech and Hearing Impaired of WADE COUNTY PUBLIC SCHOOL SYSTEM on behalf of *Raleigh, NC Alumnae Chapter*.

Introducing the Delta Zeta Standards of Excellence



National Housing Projects Chairman Sue Jones-Allen (third left) with the newly appointed Regional Housing Chairmen: Kathleen Johnson Sledge, Sandra Sebrell Bailey, Anne Corson Hathaway, Connie Burns Baird and LaDonna Johnson.

by Sue Jones-Allen
Texas-AT
Housing Projects Chairman

We're very proud of the recent accomplishments of our house corporations and chapters. All signs point to even more and greater achievements in the years ahead. With this in mind, the National Council saw this as an ideal time to establish a comprehensive program to enhance and sustain the momentum being generated by Delta Zetas nationwide.

Called STANDARDS OF EXCELLENCE, this program was formally introduced at the 1985 National Convention in Phoenix. Its principle *raison d'être* is to establish new priorities for our house corporations and the *resources* to help achieve these elevated standards of performance.

Under the sponsorship of National Council five resource centers have been established to provide expertise and services in the following specific areas: *Financial, Legal, Architectural, Design and Insurance*. All of the following key people have been heavily involved with Delta Zeta in the past and are very familiar with our current programs:

DESIGN

Sue Jones-Allen, Dallas, Texas
The National Housing Chairman is available for all Delta Zeta housing projects. She is involved in all facets including design concepts, budgeting, and scheduling. Sue is also capable of securing financing for these programs.

FINANCIAL

David Gaston, Coopers & Lybrand, Columbus, Ohio
Services to be provided by Mr. Gaston and his firm will be concerned specifically with tax returns and other questions pertaining to the IRS. Preparation of House Corporation tax returns and financial statements, quarterly and end of year audits, as well as employee withholding tax statements will be produced in conjunction with the new computer facility at National Headquarters.

LEGAL

Dean Jollay, Squire, Sanders & Dempsey, Columbus, Ohio
Any situation that requires legal advice and services will be handled by this group of attorneys. Mr. Jollay will also provide aid for any specific needs to incorporate.

ARCHITECTURE

Tom Caffal, GROUP 4 Architects, Dallas, Texas
His firm will be available for any problem-solving situations connected with the physical plant.

INSURANCE

Gordon Armstrong, Alexander & Alexander, Chicago, Illinois
This venerable insurance company will see that all necessary coverages are in place for every chapter and house corporation. They will also handle any bonding needs as they arise.

In order for this group or network of people to function efficiently on a nationwide basis for our house corporations, we have established a regional communication system. A total of five regional housing chairmen have been chosen to provide the principal link between National Headquarters, STANDARDS OF EXCELLENCE resource bank and House Corporations.

The Regional Housing Chairmen are:

Provinces 1, 2, 3 and 4: Anne Corson Hathaway, 4 N. Main Street, Orono, Maine 04473

(continued on next page)

Golden Circle Scholarships

by Mary Ann Gallatin French
OSU-AE
Colonnade Clubs Chairman

The Golden Circle Scholarships, provided by the Colonnade Clubs, were awarded once again this year. These scholarships are granted to a worthy junior or senior Delta Zeta ranking high in scholarship and leadership.

Following are the 1985 recipients:



Margaret Daly
Georgia So.-IN

Margaret Ellen Daly Georgia Southern College-IN

As a Sociology and Spanish major, Margaret maintains a 3.4 grade point average, is active in many campus organizations, has served her chapter in many chairmanship capacities and is currently serving as recording secretary.

Besides her campus and chapter involvement she also works part time and during the summer worked as a missionary in the mountains of Mexico.

Margaret's chapter says of her, "Meg has sacrificed other activities to remain in Delta Zeta and to meet the obligations of the sorority. Meg is an asset to our sorority because she works hard for us. She is always willing to help her sisters. Meg strives to maintain the high ideals of Delta Zeta."

Karen Lynn Mann West Virginia Tech-III

"The qualities listed in the spring mailing sound like Karen. She makes recommendation writing easy. Karen works hard at everything she does. She has held several offices in Delta Zeta and is always there when we need hands to get ready for an event or to clean up afterwards. Busy as she is, she still has time to be a good friend to everyone around her and takes time to care," wrote Virginia Gray, her CCD.

Karen works on the college newspaper where she writes articles and is active in the business and administration of the publication. While doing this she is also pursuing a ca-



Karen Mann
W.V. Tech-III

reer in Business Data Processing (Computer Management).

She is active in many campus organizations and has served her chapter as corresponding secretary and is currently serving as recording secretary.



Nancy Soutor
Creighton-ΘH

Nancy Soutor Creighton University-ΘH

Nancy is a chemistry major with an accumulative grade point average of 3.9. She is a resident advisor at Creighton, a tutor in chemistry and calculus and is a presidential scholar.

She has served her chapter as sorority education chairman and is currently serving as vice president of membership.

Her chapter president Christi Albi and CCD Marsha Simmons write, "Nancy is a standout among Delta Zetas in our chapter and at Creighton. Her wide range of activi-

ties and her service to Delta Zeta speak for themselves. She is a born leader and will often take the initiative to get things done. Nancy Soutor exemplifies what every Delta Zeta wishes to possess: service, leadership, loyalty and scholarship."

Standards of Excellence (Continued)

Provinces 5, 6, 7, 8 and 9: Sandy Sebrell Bailey, 639 N. Portage Path, Akron, Ohio 44303

Provinces 16 and 17: Connie Burns Baird, 9039 Gunnison Drive, Dallas, Texas 75321

Provinces 10, 11, 12, 14, 15 and 19: LaDonna Johnson, 9511 N.E. 120th Street, Kirkland, Washington 98034

Provinces 18, 20, 21, 22, 23, 24, 25 and 26: Kathleen Johnson Sledge, 17 The Downs, Tuscaloosa, Alabama 35401

These field people are experienced in many facets of house corporation activities, including trouble shooting assignments. We are convinced that having this line-up of five-star performers on hand to lead us through the eighties is a necessary ingredient in our continued pursuit of excellence.

The National Council
is pleased to announce the
installation of
Alpha Pi Chapter
Samford University
Birmingham, Alabama
October 6, 1985

FMF Scholarships



Valerie Jo Anderson
Findlay-ΘΤ



Holly Clause
LSU-Σ



Catherine Crutchfield
TX/Arlington-ΙΨ



Dana Dimit
Northeast MO-ΔΣ



Melissa Webster
Shepherd-KM



Jennifer Wysong
NE/Wesleyan-BT

by Kathleen Bosworth Sandy
San Diego-ΓΟ

Founders Memorial Scholarships

In memory of the Founders, six Founders Memorial Scholarships are awarded annually to junior or senior women outstanding in chapter, campus and scholastic activities. The 1985 \$500 award winners are:

VALERIE JO ANDERSON Findlay-ΘΤ

While serving as chapter philanthropy chairman last year, Valerie organized nine philanthropy projects, more than double any previous year, and inspired increased participation by her sisters. This year she is serving as Theta Tau rush chairman. A pre-veterinary medicine major, Valerie has made the Dean's list three times. On campus she is said to be "a very effective student leader, personable and business like". She has served as a captain for both volleyball and basketball intramural teams.

HOLLY JEAN CLAUSE Louisiana State-Σ

One day Holly hopes to become a physician. She is majoring in zoology and currently serving as Sigma chapter's president. "I've been extremely involved in Delta Zeta and enjoyed every moment of it," she stated. She has served as recording secretary, Panhellenic delegate, pledge educator and pledge class secretary. On campus her activities

and honors are also numerous. She is a member of Alpha Lambda Delta (freshman honor society) and was nominated for the Mortar Board Outstanding Freshman Award. She was a finalist in the Miss LSU Pageant, has served on the LSU Panhellenic Council as scholarship chairman and was honored as the Outstanding Junior Delegate. A Sigma Nu Sweetheart, she is also a member of Rho Lambda (Outstanding Greek Women Society).

CATHERINE CRUTCHFIELD Texas/Arlington-ΙΨ

Cathy's vivacious personality and her ability to inspire others are the qualities that made her such a successful pledge educator. Serving two years, she won the Province XVII Pledge Educators Award and her chapter won the Best Pledge Education trophy. On campus she has served as an executive officer of the Association of Childhood Education, participated in Sam's Show Girls Drill Team, is a member of Alpha Chi (junior-senior honor society) and a member of Kappa Delta Pi (education honor society). Cathy is an education major with a 3.4 G.P.A.

DANA ELLEN DIMIT Northeast Missouri-ΔΣ

Serving as Panhellenic president her sophomore year, Dana lead in a

"kind, soft-spoken yet firm and decisive manner." "Panhellenic accomplished more under her leadership than it had achieved in a long time," according to her CCD Ruth Towne. She is currently serving Delta Sigma as vice president of pledge education. She is employed several hours a week and is on the Dean's list. Majoring in Business Administration, she has a 3.87 G.P.A.

MELISSA DEE WEBSTER Shepherd-KM

In addition to serving as Kappa Mu president, Melissa is a resident assistant, vice president of Student Government, holds a seat on the Board of Regents and is on the Board of Advisors to the President of the College. Melissa earned her job as a resident assistant at the end of her freshman year, while most don't until the end of the sophomore year. An elementary education major, she is on the Dean's list and a member of Kappa Delta Pi (education honor society).

JENNIFER ANN WYSONG Nebraska Wesleyan-BT

Jody, as she is known on campus, feels "everything she does reflects upon the sorority." This year she is Beta Tau's president, having previously served her chapter as vice president of pledge education and pledge class president. Well known

on campus for her involvement, some of her activities include Student Affairs Committee chair, Student Ambassador president and New Student Orientation Group Leader Trainer. Jody's honors include membership in Psi Chi, Cardinal Key and *Who's Who*. She is a psychology major with a 3.9 G.P.A. Having served as a teaching assistant for two psychology classes, her professor said, "I would always want a teaching assistant like Jody."

Undergraduate Scholarships

ROBIN BLANKENHORN Southern Mississippi-EM

A natural leader, organized and effective, Robin has "contributed greatly to the re-establishment of Epsilon Mu chapter." She served as colony president and is completing her second term as chapter president. She is an advertising-marketing major active in athletics and band. Since entering college she has worked as a sales associate, for the state highway maintenance, as a disc jockey and as a waitress/hostess.

SUSAN CARPENTER Carroll-ΓΘ

Sue's financial experience and knowledge are definitely a benefit to Gamma Theta chapter where she is serving as treasurer. A Business Administration/Finance major with a 3.7 G.P.A., Sue works part-time as a bank teller and trainer. She previously served her chapter as social chairman and assistant treasurer. She's on the Dean's list and a member of Sigma Epsilon Sigma honor society.

LAURIE ANN CHRISMAN Robert Morris-ΞX

Laurie demonstrates the ability to inspire others toward a goal and has been actively involved in the growth of Xi Chi chapter, serving as vice president of membership and now as treasurer. "I enjoy the sisterhood and unity that is shared," she states. Her 4.0 G.P.A. as a Business Information Systems major provides an inspirational model for pledges. She is also currently serving as Panhellenic treasurer.

TERRI LYNN CHRISMAN Robert Morris-ΞX

"Her maturity in making decisions and willingness to stand behind her beliefs," was noted by a professor recommending her. These qualities surely have contributed to her successfully filling both the corresponding and recording secretary positions at Xi Chi chapter ever since her initiation. She is also an inspiration to her sisters scholastically as she, like her sister, maintains a 4.0 G.P.A. as a Business Information Systems major. She has also served as Panhellenic Council junior representative.

WENDY LEIGH CROWSON North Carolina/Wilmington-ΞΘ

Winner of many speech and debate awards, Wendy is known, according to her CCD, as "one of Xi Theta's image makers on campus." She was chosen Delta Zeta Outstanding Collegian for Province XXI and is serving her chapter as corresponding secretary. She personally rushed many of the new pledges and is said to be the reason Xi Theta has improved. She's a member of *Who's Who*, having served on many university committees, in student government and as an officer of the Speech and Debate Team. Wendy is a Speech Communications-Prelaw major.

DEBRA LEE HAINES Shepherd-KM

Employed as a Public Service Director for WRNR radio station in Martinsburg, WV, Debra also serves as a news anchor and program broadcaster. On campus she is a feature writer for the campus newspaper. She is an extremely competent, dependable person who works well with people. A Dean's list student, Debra serves Kappa Mu chapter as LAMP editor.

TERI ANN OSKIN Louisville-BΓ

Planning to attend medical school upon graduation, Teri volunteers at a local hospital in the emergency room. She also tutors local children in math and is on call with the Red Cross for emergencies. Since 1983 she's been a member of Alpha Epsilon Delta, a premedical honor society and she's sponsored a Guatemalan child. Debra has been vice president of pledge education and is currently the Beta Gamma academic chairman. Having worked through her junior year she now babysits and does odd jobs that fit her schedule.

SHANNON LYNN RUYLE William Jewell-ZP

An honor roll student, majoring in Psychology and Communications, Shannon was described by her employer, "as the best secretary in the department." She is active on campus as a Cardinelle (campus hostess), secretary for the Fellowship of Christian Athletes and the Big Sisters Program among others. As Zeta Rho's philanthropy chairman she initiated several new programs.

PAMELA LYNN SIDERS Bradley-ZA

An independent student, Pam is a remarkable girl whose determination to remain in school is an inspiration to others. She pledged Zeta Alpha when it was a colony and the strong feelings of sisterhood she felt continue to encourage and support her. She is active on the rush com-



Robin Blankenhorn
USM-EM



Susan Carpenter
Carroll-ΓΘ



Laurie Chrisman
Robert Morris-ΞX



Terri Chrisman
Robert Morris-ΞX



Wendy Crowson
UNC/Wilmington-ΛΘ



Debra Lee Haines
Shepherd-KM



Teri Ann Oskin
Louisville-BI



Shannon Ruyle
William Jewell-ZP



Pamela Siders
Bradley-ZA



Christina Smith
Franklin-Ψ



Ana Marie Lukehart
Wright State-KI



Lee Ann Brill
WV Tech-III

mittee and serves her chapter as recording secretary. A Dean's List student, Pam has also worked in the Bradley admissions office since her freshman year.

CHRISTINA L. SMITH **Franklin-Ψ**

"She is an enthusiastic, conscientious, hard working person, possessing outstanding leadership ability," according to her volleyball coach. Chrissy serves as co-captain of the volleyball team. A Dean's List student, Chrissy is majoring in biology. At Psi chapter she serves as house manager and vice president of membership.

Alice B. Huenefeld **Memorial Scholarship**

The Alice B. Huenefeld Scholarship is awarded biennially to a sophomore or junior majoring in child development or primary education. The 1985 \$200 award went to:

ANA MARIE LUKEHART **Wright State-KI**

Serving her second year as Kappa Iota treasurer, Ana Marie is considered a dedicated chapter leader. She has maintained a 3.7 G.P.A., is on the Dean's List, and a member of Kappa Delta Pi (education honorary).

Arlene Davis **Memorial Scholarship**

The Arlene Davis Scholarship is given biennially to a Delta Zeta pursuing an aviation related career. The 1985 \$400 award went to:

LEE ANN BRILL **West Virginia Tech-III**

Having served as an officer or chairperson since she pledged, Lee Ann is currently president of Iota Pi ... succeeding her sister Amy. She is an electrical engineering major and a member of Eta Kappa Nu Honorary. As a junior her schedule was more than full, serving as Delta Zeta rush chairman, Panhellenic treasurer and working part time as a bank teller.

Edith Head Scholarship

This annual scholarship (\$500) is given to a collegian pursuing a course of study leading to a career in Fashion Design. The 1985 award went to:

LEAH T. O'KEEFE **South West Texas-IA**

Hoping someday to have a chain of specialty stores with her own label, Leah plans to work for Nieman-Marcus upon graduation and participate in their executive training program. Her desire for success in a retailing fashion career is supported by her active involvement in the Fashion Merchandising Association where she serves as reporter. She is also active in the Home Economics Association and French Club. She was Delta Zeta pledge class secretary, fall 1984 and is a member of Phi Upsilon Omicron (Home Economics Honor Society).

Houston/Nancy Holliman **Scholarship**

The Nancy Holliman annual scholarship was established by the Houston alumnae for a collegian pursuing a degree in hearing. The 1985 \$200 award went to:

SHARON JAN WILLIAMS **Alabama-AI**

Sharon is a Special Education major with emphasis on the hearing impaired. She plans to pursue a graduate degree in audiology. She is a Dean's List student, active in Kappa Delta Epsilon (education honorary) serving as vice president and then president. A conscientious student, Sharon has maintained a 3.4 G.P.A. while participating in many campus activities and working part-time on campus.

Graduate Scholarships

Graduate scholarships are given to Delta Zeta women seeking a graduate degree, in need of financial assistance. The 1985 \$500 awards were presented to:

KATHRYN DUTRO ELSASSER **Virginia-AA**

Desiring to go into student personnel work on the college level, Katie is enrolled in the Masters in Counseling program at the University of North Carolina at Charlotte. She currently is a Graduate Assistant in Learning Assistance Services having previously worked as a Graduate Assistant in Campus Programs at UNC and as Assistant Dean of Admissions at the College of William and Mary in Williamsburg. Recently married, she is described as a "remarkable woman who is a credit to Delta Zeta, having excellent counseling and human relations skills." As an undergraduate, Katie served Lambda Delta chapter as president, was active on campus and received the Province XXV "Pride of the Province Award" in 1983. She also helped in the organization of the Charlottesville alumnae.

JANA JO HOLZMEIER
Northeast Missouri-ΔΣ

Jana was named the outstanding music major for her division of Fine Arts. She has been very busy, singing in choral ensembles, performing in operatic and musical theatre roles and other musical works on campus. She has also been active in many competitive auditions, winning the Liberty, Missouri Symphony competition. Jana is attending Indiana University at Bloomington majoring in Vocal Music Performance. Her goal is to become a professional singer or to teach on the college level. She shared her musical talents with Delta Sigma chapter, assisting with rush plans and performing during rush. "She has a real professional spirit and manner" and this carried over into the standards programs when she served as chairman. She is a member of *Who's Who*.

SUSAN LYNETTE KEISLER
Nebraska Wesleyan-BT

Carrying a double major, mathematics and economics, Susie maintained a 4.0 G.P.A. while an undergraduate. She is now a first year graduate student at the University of Nebraska, Lincoln seeking a masters in Actuarial Science. While an undergraduate she juggled a heavy academic schedule with many extra curricular activities. She was selected for *Who's Who in American Colleges and Universities* and *Who's Who in Fraternities and Sororities*. She served Beta Tau as secretary, rush chairman and social chairman.

MELODY LYNN McDONALD
Angelo State-ΔO

"I hope to become an attorney with an interest in politics," stated Melody at the completion of her senior year. She has worked as an aide in law offices since the age of 14 and during the summer of 1984 was a Congressional intern working in Majority Leader Jim Wright's office. The winner of the 1984 Florence

Hood Miner Award, Melody has a long list of campus activities and honors. She was Panhellenic president her senior year having previously served Lambda Omicron chapter in many ways.

CAROLYN OILL
Northwestern-AA

Currently enrolled in an innovative, intensive two-year law program at Southwestern University, Los Angeles, CA, Carolyn says "the pace is quick but the program is living up to my expectations." Since graduation from Northwestern in 1978, she has been employed doing secretarial work; recently deciding to seek a law degree. A former employer feels "Carolyn would be a credit to the legal profession." An active alumna, Carolyn is now serving as vice president of the Santa Monica alumnae chapter. At Alpha Alpha she served as both recording and corresponding secretary.

Helen Woodruff Nolop
Scholarships



Joy Dean Harvey
 LSU-Σ



Sally Startzman
 Shepherd-KM



Carolyn Oill
 Northwestern-AA

The Helen Woodruff Nolop Scholarship is awarded to assist women graduate students in the field of audiology or applied areas of speech and hearing. The 1985 recipients of \$500 awards are:

JOY DEAN HARVEY
LSU-Σ

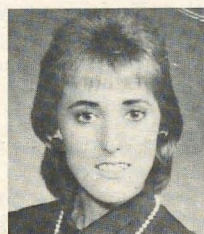
Having just completed her bachelor's degree in Speech, Language Pathology and Audiology, Joy is now working on a master's in Speech Pathology and Audiology. She is interested in researching the many areas of communication disorders. After completion of her master's, she hopes to begin as a school speech therapist. Desiring more extensive knowledge of the field she would later like to work in a clinical setting. Her long range goal is to open her own Speech and Hearing Clinic. Joy has been very active both on campus and in Sigma chapter, serving as Panhellenic delegate and rush vice president. She has done volunteer work for the Special Olympics, the Louisiana State School for the Deaf and other organizations.

SALLY ANN STARTZMAN
Shepherd-KM

Sally is working on a master's degree in the Education of Hearing Impaired at Gallaudet College, Washington D.C. She hopes to begin teaching on the elementary level but eventually would like to obtain a doctorate and teach on the college level. Her undergraduate G.P.A. was a 3.95 and her contributions to the education department earned her great praise from the faculty; one saying her curriculum work was "so unique, so creative, and so well planned that one would think that it was the work of an award winning teacher." As an undergraduate she served Kappa Mu chapter as pledge class president, treasurer, and chapter president in 1984. She was chosen as a Shepherd College McMurren Scholar and selected for *Who's Who*.



Leah O'Keefe
 SW Texas-IA



Sharon Williams
 Alabama-AI



Kathryn Elsasser
 Virginia-AA



Jana Holzmeier
 Northeast MO-ΔΣ



Susan Keisler
 NE Wesleyan-BT



Melody McDonald
 Angelo State-ΔO

Introducing Foundation Committee Chairmen



Donna Edwards Happ



Sarah Jane Shank Houston



Lucille Bolstad May

by Betty Paul DeWitt, USC-AI

Four Delta Zetas assist the Founders Memorial Foundation trustees by serving as committee chairmen.

DONNA EDWARDS HAPP, *CSU/Long Beach-ΔA*, is Undergraduate Scholarship Chairman. She has been president of the San Diego alumnae chapter and the North San Diego County alumnae. Donna also has served as delegate to Southern California Lamplighters and was standards advisor and College Chapter Director for San Diego State-ΓO.

Her community activities include Boy Scouts and Little League groups. She was president of an elementary, a middle school and a high school PTA and served two years as Palomar Council PTA president. She also received the PTA Honorary Service Award and the PTA Continuing Service Award. Her home is in San Diego with her husband Bill and son Scott.

SARAH JANE SHANK HOUSTON, *University of Illinois-AB*, is Elizabeth Coulter Stephenson Scholarships Chairman. Her husband,

Harold, was a pioneer in airline catering and they moved from New York City to Minneapolis, Indiana and then to Sarasota, Florida where she now resides. Sarah Jane was active in Twin Cities alumnae chapter, on the House Corporation Board for Gamma chapter, was College Chapter Director for Gamma Iota and Epsilon chapters, and was Province Alumnae Director for Province VII. Sarah Jane was president of the Delta Zeta Foundation and was instrumental in the merger of the Founders Memorial Fund with the Foundation into the present Delta Zeta Founders Memorial Foundation. She was secretary of the FMF and served two terms as a National Director.

She has been active in the alumnae chapter in every city in which she has lived, including New York, Twin Cities, Denver, Memphis, Columbus, Indianapolis, Terre Haute, Bloomington and the Sun Coast (FL) area. She is a member of the Eastern Star, Daughters of the American Revolution and the Colonial Dames of the Seventeenth Century.

LUCILLE BOLSTAD MAY, *North Dakota State University-ΦB*, is Gallaudet College Chairman. A member of Phi Omega Pi, she became a Delta Zeta upon the merger of the two organizations. She was president of her college chapter, has served as Province Director and has held numerous other alumnae offices. She is a 1985 recipient of the Delta Zeta Achoth Award. Lucille has been active on the local and national level with Gallaudet. She represented Delta Zeta on the steering committee for the 1985 National Better Hearing and Speech Month.

A resident of Chevy Chase, Maryland, she is a hospital volunteer, a YWCA board member, has served on local, state and national levels of the Federated Woman's Club, and was an officer and trustee for the "Over-60 Counseling and Employment Service" in Montgomery County. She has been a member of the Consumer Advisory Board of the Bethesda Chamber of Commerce, and is an active member of the Chevy Chase Presbyterian Church, Washington, D.C.

GLENNA JANE VANDER MEER *PAUKSTIS*, Albion-BII, is Graduate Scholarship Chairman. She has been president and vice president of both the Grand Rapids and Oakland County, Michigan alumnae chapters; membership chairman and past chairman of Group I in Oakland County and treasurer of the chapter; and volunteers at otology clinics in Oakland County (a local philanthropy project). Glenna, her husband Charles and their daughter Sarah Joan live in Birmingham, Michigan.

Service to others is a life style for Glenna. She is presently a board member of the Epilepsy Center of Michigan, chairman of the nominating committee, member of the personnel committee and volunteers one day a week in their office; secretary of the Birmingham Association to Support Students of Exceptional Talent; and through the Metro Detroit United Foundation serves on the Family Service Agencies Allocation Board, ASSISTeam to Catholic Social Services for Macomb County, Liaison to Catholic Social Services for Oakland County, and is Co-chairman Oakland County Individual Campaign for the 1985 Torch Drive.

Alpha Pi Chapter Reunion



Alpha Pi members of the classes of '73 - '75 present (with an assortment of children) were (l-r) Stephanie Judge Garrard, Lynn Taylor Barnard, Pam Sherrill Walker, Monnie Lochlin Anderson, Pam Bean Clanton, Janice Elrod McCulley, Mary Duncan Weary, Nancy NeSmith Dill, Betsy DeVan, Cheri McDonald Watkins, Jill Johnson Foshee, Sandy Smith Patterson and Susan Mease.

by Susan L. Mease
Samford-All

The National Council
is pleased to announce the
installation of
Alpha Upsilon Chapter
University of Maine at Orono
Orono, Maine
November 2-3, 1985

On August 3, 40 alumnae from the classes of '73-'81 of Alpha Pi chapter at Samford University and nearly the same number of husbands and children gathered at Homewood Park in Birmingham, Alabama, for their first-ever reunion.

For many people this was the first time in ten years that they had seen one another and it didn't take long for conversations to hum. Husbands and children were introduced, pictures shared, jobs described, and lives since leaving school summarized. In a very short time people were talking as easily as if they were back in the sorority room hunched over a pizza box. Nancy Ne-Smith Dill and Monnie Lochlin Anderson, whose husbands are serving missions in Germany and New York respectively, were able to arrange their furloughs around this reunion. Others attended from all over the Southeast.

After enjoying a catered box lunch and desserts provided by those alumnae living in Birmingham,

the group broke up to put children down for naps and rest themselves for more talking in the evening. Smaller groups got together by the motel swimming pool or at the homes of a couple of the Birmingham alums to pick right up with the conversations. When the Alpha Pis finally began to go home, it was with promises of doing a better job staying in touch and not waiting so long to get together again. Everyone had such a good time at this reunion that nobody wants to wait another ten years to do it again.

This reunion was organized by Carol Sigler White of Scottsboro, AL, Jamie Griffin Walters of Lawrenceville, GA, and Jane Wright Young of Nashville, TN. They were assisted by Anne McCall Walker of Buford, GA, Judy Smith Hicks of Pell City, AL, Melissa Heard, Kathy Spencer, and Lynn Olive Mayes, all of Birmingham, AL, and Susan Mease of Orlando, FL.

Delta Zeta On Campus



Members of the recently reorganized Gamma Chi chapter at Ball State University.

by DIANE JONES SKELTON

ALABAMA

Alabama, Alpha Gamma — Delta Zetas greeted more than 760 rushees with true Delta Zeta spirit and enthusiasm during the formal rush. Alpha Gammas performed *Gilligan's Island* and *My Fair Lady* and on Squeal Day welcomed 45 new pledges. Frances Pickens Lewis, a founder of Alpha Gamma, was special guest at the 63rd celebration of the founding of the chapter. New Housemother Nell Nichoals was honored

with a Delta Zeta Tea where fraternity and sorority dignitaries officially welcomed her to the campus. Melanie Camp is president of University Ushers and co-chairs the Homecoming Paint the Town Red Committee with sister Melinda. Stephanie Vaughn is a member of Dancers II. Susan Inman, Angie Melton and Amy Kirk are majorettes and Melanie Camp, Melinda Camp and Kim Draughn are Bama Belles athletic hostesses. Alpha Lambda Delta

freshman honorary includes Melinda Camp, Lisa Harding, and Amy Tolleson. OΔK tapped Debbie Hardegree, while KTA honorary chose Traci Bosworth. Triangle Service Honorary includes Kim Draughn, Leah Sides and Melanie and Melinda Camp. Rush counselors are Kristi Sparks, Marianna Cain, Simone Wilkins, Traci Barger, Annette McDermott and Jan Williams. Stephanie Vaughn is SGA's new recreational chairman.

Jacksonville State, Lambda Gamma — A very successful coin-a-thon raised money for Gallaudet and spring pledges held a car wash to raise money for a gift to the chapter...a new ceiling fan for the chapter room. Shelly Bjork is a Distinguished Military Student in Army ROTC and is Military Ball Queen. Malea Horn is academic All-American in the U.S. Achievement Academy. Stephanie Carpenter was named Miss Personality in the Miss Rockingham County Fair beauty competition. Darby Wolf is a finalist in the Arabian Show Horse competition and was named Top 5 Champion for Region 12 English Pleasure, Junior Owner-to-ride show horse competition.

ARKANSAS

Arkansas Tech, Lambda Alpha — The first annual Delta Zeta Night on the Air lip sync contest was a hit on campus. Members also co-sponsored a fashion show for diabetes. During Greek Week, Delta Zeta won the Sisterhood Award. Members and alumnae enjoyed a summer picnic at the lake. Tracey Byler placed as fourth runner-up in the Miss Arkansas Tech Pageant.

Central Arkansas, Epsilon XI — Tamara Morris and Betty Eilbeck both traveled to the Miss Arkansas Pageant over the summer and were among the ten finalists. Theresa McFadden is Sigma Tau Gamma's Miss Body Beautiful and a Calendar Girl. Kimberley Staha was named to *Outstanding Young Women of America*, and Susie Gunther is a ΣΤΓ Calendar Girl. Royal Rooters includes Lisa Kealer, Marty Berkemeyer and Missy Elder. Marilee Crumpler, Leslee Falls and Lynn Littrell are members of Student Orientation Staff. Members helped raise rush funds with an envelope stuffing session, and enjoyed a mid-July rush workshop. Epsilon Xis are excited about the formation of an alumnae club in the area.

Henderson, Epsilon Pi — Freshman Week activities included many events which interested Delta Zetas. They enjoyed courtyard fun and games, a show by a New York comic, the RHA picnic, a movie, street dance and the ever famous Pine Tree Speech. Highlight of spring activities was the formal at the Inn of the Ozarks in Eureka Springs, Arkansas. Sheri Francis is the reigning National Sweetheart of Phi Lambda Chi and is a Red and Gray Line freshman guide. Amy McFarland Bearden is Sigma Tau Gamma White Rose. Brooks Butler

is a cheerleader and member of Red and Gray Line. Melinda Moorman was first runner-up in the HSU pageant.

CALIFORNIA

California-Chico, Delta Chi — After ΔΧ President Lori Brownson earned the chapter's highest spring grade point average with a 3.7, she took a much needed vacation and toured East Asia. Her trip exemplified to the chapter the benefit of being a Delta Zeta, as she was able to correspond with seven Delta Zetas living in Japan prior to her arrival. Sisterhood shined as Lori received warm offers of housing and tidbits of information not found in tour guides or travel books. Delta Chi began the semester with a successful retreat where members discussed plans for fund-raising, philanthropy, social events and fall rush. Province Director Susan Warren stopped by providing encouragement and great ideas. Members perfected rush with a two-day rush school. Plans to adopt a grandparent at a local convalescent hospital, prepare the first edition of the "*Greek Men of Chico State*" calendar, and float down the river innertubing with Phi Kappa Tau are in the works for the semester. Improvements to the house include bunk beds and dressers for the upstairs, new sofas and lamps for the living room, carpeting for the tower stairs, complete remodeling of the downstairs bath and kitchen, wallpaper, new curtains, and full-scale landscaping of the front and side yards.

California State-Fresno, Epsilon Epsilon — A spectacular rush for the second consecutive year brought EE 24 of the most outstanding college women as pledges. Members welcomed National Vice President of Collegiate Affairs Marvona Tavlin as rushing inspiration. A successful past year brought the chapter a total of six trophies at Greek Week. Wins included second and third in Greek Sing, first in volleyball tournament, first in events competition, and the overall Sweepstakes Award. Delta Zeta won second in AXA's Watermelon Bust and won the watermelon decorating contest with their Walter Melondale entry. Delta Zeta then won overall events and a top award for wall painting in Sigma Chi Derby Days. Outstanding philanthropies included a haunted house for children (benefitting Gallaudet) and a clothing drive to support the Pavarello House for the poor. Kim Lotin and Moira Harris earned Dean's List honors. Carey Call is Theta Chi

Dream Girl and Sandra Gavroian is National Raisin Princess.

California State-Fullerton, Iota Upsilon

— Members sponsored their third bi-annual art auction to raise money for the House Ear Institute in June, enjoyed a week long retreat at a beach house at Newport Beach in July, and reunited for a rush weekend in late August.

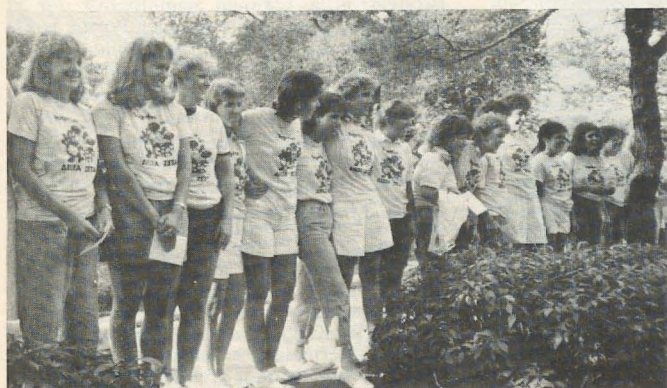
California State-Long Beach, Delta Alpha

— The Delta Zeta tradition continues as Mini Webster, great-great-granddaughter of Founder Alfa Lloyd Hayes is one of the 35 magnificent pledges at Long Beach. Rush parties included a Cruise Day, complete with a gangplank and life preservers with centers filled with photos depicting chapter activities. A *Night in the Theatre* party presented an adaptation of *West Side Story* and Country Club Day included the friendship circle.

San Jose, Gamma Lambda — Delta Zeta was one of two sororities to pledge quota during formal rush and added 23 fantastic pledges! This year the chapter presented a new party, *The Wiz*, complete with a rose and green road, enchanted forest, Dorothy, a scarecrow, tinwoman, lion and Delta Zeta fairy. Rushees also enjoyed a Hawaiian party complete with hula dancers and a waterfall. The Gamma Lambda Rockathon earned \$4,000, which was divided between Gallaudet and the San Jose State Scholarship Fund. Members ended the week of rocking with barbeque at the Kappa Sigma house.

FLORIDA

Florida State, Alpha Sigma — After ten days of pre-rush activities including learning songs, yard routines, and rush conversation, members began five days of rushing with ice water parties, information parties, and a flapper theme day. After donning new preference gowns and presenting a polished ceremony, Alpha Sigma welcomed 45 (quota!) pledges on Squeal Day. Alpha Sigmas are anxiously awaiting the hostessing of Province Day and are busily preparing a schedule of formals, socials, intramurals, fundraising and philanthropy projects. Carrie Dunkle is fourth runner up to Miss Leon County and Amy McLeod is a Seminole Ambassador.



At Bowling Green State, 35 fantastic young women pledge Gamma Tau! Here are a few of them.



Texas/Arlington-IV members entertain their new pledges.

GEORGIA

Georgia Southern, Iota Nu — With an 2.868 average, Delta Zeta again keeps the scholarship trophy ranking above the other seven sororities. At presstime, Delta Zeta was in the middle of formal rush workshop, busily learning lines and creating costumes for rush.

ILLINOIS

Bradley, Zeta Alpha — A busy chapter fall schedule includes a Delta Zeta Hey Dey Formal, two philanthropies, Greek Week, Scholarship Week and intramural competition. Delta Zeta won its first softball game of the intramural season. National Field Representative Lynne Ciervo joined the chapter for fall formal rush. A beach party, old fashioned summer, and birthday party have proved to be successful open rush parties.

DePaul, Theta Theta — Members are planning their popular ΔZ Hayride for late fall and plan to include members, alumnae and guests. Wednesdays are now ΔZ Spirit Days when members don their letters, rose and green attire, or badges. Delta Zeta presented *We Are Family* and *I'm So Excited* at the lip sync competition at Orientation Fair. Members enjoyed a summer softball season playing Sunday games against other sororities. Their winning spirit carried over into rush with the theme "Catch the Delta Zeta Spirit!"

Eastern Illinois, Gamma Nu — Members returned to EIU to discover some pleasant surprises at the house. The downstairs is now carpeted and several rooms have been refurbished. However, the biggest change of all is the new landscaping. Members will no longer have the chore of leaf raking, as the front yard is now landscaped with pebbles accented with small bushes and picket fence. Members are preparing for rush with their parties, *Dee-Zee's the Word* (fifties), *Fly Delta* and the *Hawaiian Tahitian Night*. Angelyn Richardson is assistant to the National Chairman for the Muscular Dystrophy Drive. Both Cathy Gravitt and Jennifer Engels competed in the Miss Illinois Pageant where Jennifer won a Judges Award and Cathy sang her way to the third runner-up title.

Illinois, Alpha Beta — More than 2000 coeds participated in a record breaking rush at Illinois. National Vice President of Membership Terri Severy and Field Representative Paige Hill were on hand to assist the Alpha Betas. New pledges enjoyed a bid night party with Phi Sigma Kappas. Colonnade Club President Marleen Koslowski and the parents cleaned the house above and beyond the call of duty during house clean-up. Members survived the Illinois agony of defeat by USC with a fun football block party with Phi Kappa Theta. Spring activities included exchanges with Farmhouse, ΦKE, ΦKΘ, and IIKΦ. Members also enjoyed a sorority dinner exchange with ΔΠ and a favorite professors and teaching assistant get-together.

Northwestern, Alpha Alpha — The chapter added National Convention awards for membership, quota, scholarship and the See Loving Cup to this year's province award, Pride of the Province. For the fourth consecutive year, AA won Sigma Chi Derby Days. Andrea Shapiro reigned as Derby Darling. At presstime, members were hard at work with Chi Psi Fraternity building a homecoming float.

Hilda Pyun is chairman of the Homecoming Ball, while Margo Daniel was chairman for the Pumpkin Prom Halloween Ball. Andrea Shapiro and Staci Adelman are both rush counselors. Melissa Riley is a resident assistant. Andrea Shapiro is Speaker of the Senate.

Southern Illinois, Gamma Omega — With the earliest Delta Zeta rush in the nation, Gamma Omega hopes to set a precedent nationwide after having pledged quota on August 18! Special guests on hand for rush were National Director Anne Marie Gavin and Field Representative Anne Moser.

Western Illinois, Epsilon Omicron — Twenty-seven new pledges brought EO to campus total of 85. The chapter placed second in GPA and the last pledge class received the highest GPA on campus. Terese Farina is vice president of the Bureau of Cultural Affairs and members of Student Government are Teresa Strayer, Beth Christensen, Mary O'Brien, Monica Thomas and Paula Mehochko. Carmen VanBuskirk is advertising manager of Western *Courier*, the college newspaper. Debbie Kassing is a member of Beta Gamma Sigma and Laura Bondurant is a member of Phi Eta Sigma.

INDIANA

Indiana, Epsilon — Delta Zetas are beaming with pride over the remodeling of the house, which they feel will be a definite plus in rushing. And, the Colonnade Club has added a new sign for the house, a video cassette recorder, and has contracted for landscaping of the front yard. Following a chapter painting day, members had the four hallways recarpeted. Members hosted Province Day last April, and placed second overall in IU Sing and first in Greek division with partner Theta Chi. At presstime, Delta Zeta, paired with Sigma Alpha Mu, was beginning Homecoming activities. Members were also practicing intramural softball and football. Jody Zimma is an IU Cheerleader and Elena Rossi and Kathy Hal-



Zeta Psi's Lisa Albright is Junior Homecoming Duchess at Stephen F. Austin.

linin are Redsteppers. Becky Barranyk is director of the Student Athletic Board.

IOWA

Iowa State, Beta Kappa — Delta Zeta welcomed a pledge class of 34 (quota plus two!) following fall formal rush. The chapter is now preparing a Homecoming lawn display with the men of Theta Xi, and is teamed with Pi Kappa Alpha for Varieties '85. To create a more positive attitude towards activities and house events, Beta Kappa has initiated a Quality Point System to reward members for Delta Zeta participation. The system replaces fining.

KENTUCKY

Kentucky, Alpha Theta — WHAS Channel 11 of Louisville aired a feature on sorority rush with AO President Nancy Emison as the only sorority president interviewed. The segment also included footage of the Delta Zeta house and members. And, Delta Zetas and Field Representative Shawn O'Halloran, who was on hand for the rush, delighted in adding 24 fantastic pledges. Chapter activities included a spaghetti dinner, watermelon eating contest, and chapter version of the Convention favorite Pups 'n Hounds. Members participated in ΣX Derby Week and assisted with *A Sunday in the Country* benefit for the Louisville Orchestra. Members again sponsored their Fratman's Classic philanthropy fund raiser, a parents' day, and enjoyed their fall formal in Cincinnati. Susan Gloskowski spent the summer in Korea and returned with interesting stories and pictures to share with the chapter. Named to the Dean's List last semester were Melissa Shore, Tracey Cooper and Micheller Fackler. Angie Green, Janice Halpin, Donna Herndon, Cindy Kittle and Susan Gloskowski all earned 4.0s.

Louisville, Beta Gamma — Delta Zeta holds a distinctive rushing record on campus. For the seventh consecutive year, longer than any other sorority, Delta Zeta pledged quota! More than 50% of the girls participating in formal rush attended Delta Zeta's preference, and BΓ is the largest chapter on campus at ceiling of 45 with two affiliates. Over the past few months, Delta Zeta redecorated an upstairs sitting room and added a kitchenette in a house refurbishing project. A busy fall semester includes fraternity socials, hayride, Tacky Party and philanthropy projects. Lisa Bronger is a national semi-finalist for Pi Kappa Phi Rose, while Bridget Porter is Pi Kappa Tau Dream Girl at Louisville. Mary Jo Ratliff, Teri Oskin and Cheryl Triplett are among the ten selected for Louisville Belles this year.

Morehead, Kappa Tau — Delta Zeta ended last year on a winning note by taking the Intramural Championship Trophy for the third year in a row and holding the top three spots in individual competition. KT also shared the Distinguished Chapter Award with KB of Northern Kentucky at Province Day. Delta Zeta got off to a running start again this fall by sponsoring a welcome back dance with Pi Kappa Phi. Kappa Tau took second place in AXA's Watermelon Bust and received honorable mention for their great ΔZ spirit! Stephanie Kiser, Miss Grayson and a Miss MSU finalist, and Karen Parks, Miss Ashland and a Miss MSU finalist, both placed in the top ten

at the 1985 Miss Kentucky Pageant. Shelly Web also finished as a finalist in the Miss MSU Pageant. Brenda Hudnell is Panhellenic rush chairman and Debbie Wright recently received the honor of Student Alumni Ambassador. Stephanie Dunaway and Gina Brown are MSU varsity cheerleaders and Jeanetta Hayes and Paula Pope have been selected as photographers for *The Ramcontour* yearbook.

Northern Kentucky, Kappa Beta — KB's pledged quota for the sixth straight year — 14. Prior to rush the NKU Panhellenic and IFC sponsored all All Greek Rush Dance. A scholarship banquet in June honored scholastic achievers.

LOUISIANA

Louisiana Tech, Theta Epsilon — Following fall formal rush, pledges were honored with a barbecue party at a member's house. Members then helped Sigma Alpha Epsilon celebrate its new pledges at a bid day party at the Ruston Civic Center. Members enjoyed a Tahiti Sweetie party at Folley Beach for their spring party. Along with swimming, skiing, boating, and barbecue, members danced to music provided by a deejay. Earning 4.0's last semester were Margaret Vanderlick, Sonja Foresst, Susie Waterhouse, Jill Reber, Tara Owens, Pam Norwood, Jessica Thomas and Kandy Knox. Members of Phi Gamma Beta honorary are Jerlynne Lively, Susie Waterhouse, Sonja Forrest, Cheryl Cowen, Camilla Mitchell and Hilary Cartmill. Regal Blue Dance Line includes Jennifer Flanagan and Shelia Tullos. Tina Veil is a union board printer and Margaret Vanderlick was named outstanding senior in home economics. Siobhan Harty is a member of Alpha Kappa Psi business fraternity and is secretary for American Society for Personnel Administration. Suzanne Hinson is scribe for Alpha Zeta. Angel Allen is a resident assistant and Lori Jackson is a residence hall director. Jill Reber was named to the National Dean's List. Other members of honoraries are Sonja Forrest, Delta Sigma Pi business; and Camilla Mitchell, Beta Alpha Psi accounting. Hilary Cartmill is a member of FEEE electrical engineering club and Carol Sun is a member of the Graphic Arts Club.

New Orleans, Theta Kappa — Delta Zeta reached quota during fall formal rush for the first time in ten years and added ten new pledges — each one a fantastic girl! Included are twins Amy and Adele Huth, who compose the second set of identical twins in the chapter. Eileen and Erin McGuinness, the other set of twins, serve Theta Kappa as president and vice president of membership respectively. Delta Zeta is gearing up for fall with social and activities chairmen working full steam ahead. Plans include a pledge dance, sorority football team, charity fundraisers and campus wide hearing testing to coincide with Delta Zeta's Hearing Help Month.

MICHIGAN

Central Michigan, Gamma Psi — At presstime, Delta Zeta had added five pledges in open rush and was anticipating a successful formal rush. Tricia Straka and Diane Coley are both Panhellenic rush counselors. Michelle Brasseur was first runner-up for National Cherry Queen and Michelle Leonard will be doing her student teaching in England.



Region 12 English Pleasure Junior Owner-to-Ride Top 5 Champion, Shield's Royal, ridden by Jacksonville State-AT's Darby Wolf.

Wayne State, Epsilon Sigma — Summer activities included a retreat weekend at Pinery Campgrounds in Ontario, rush workshops preparing for a *Go Wild With Delta Zeta* wild safari party at formal rush, and a celebration for CCD Olive Neeland's Achoth award honor. Spring activities included the annual Rosebud Dinner Dance and a picnic to celebrate the end of exams. Laurie Munday auditioned for the television program *Saturday Night Music Machine*. Several members drove a total of ten hours to the Delta Zeta Historical Museum in Oxford, and report the highlight of the trip was having their picture made with the new portrait of the Founders.

MINNESOTA

Moorhead, Theta Nu — Members are again sponsoring their Quicky Wedding Chapel Booth at homecoming festivities. The booth, a big hit last year, features all the props for a mock wedding including a marriage certificate. Melanie Sinks was elected Panhellenic rush chairman, and Michelle Mosher was elected secretary-treasurer of the Greek Council. Michelle Magnuson is president of American Marketing Association, while Melanie Sinks and Sue Williamson are members of Pi Sigma Epsilon business fraternity. Sue is also a member of American Marketing Association. Stephi Smith, Sue Ten Eyke, Julie Peterson and Sue Williamson are Student Orientation Counselors and will assist incoming freshmen. Michelle Mosher is sweetheart of Phi Sigma Kappa. Theta Nus welcomed new College Chapter Director Ginger Almer.

St. Cloud, Theta Mu — Chapter editor Cheryl Stolp reports that rush workshop was a major success. Along with plans, preparations and finalizations for formal rush, the chapter is beginning an overall publicity campaign. And, while the collegiate chapter is busy publicizing, the alumnae chapter sent letters of welcome to all incoming freshmen. Penny Schutz is Dream Girl of Theta Chi and Queen of Sons of Norway. Gail Fokken is secretary for Honors Club and Jane Munson is secretary for University Program Board. Me-

lanie Mathiowetz is a resident advisor and Julie Beckjordan is a member of the Speech Communication Club. Cheryl Stolp is a Woman's House volunteer.

MISSISSIPPI

Southern Mississippi, Epsilon Mu — Delta Zeta added a quota pledge class of 30 this fall and welcomed National Director Sandra Nesbitt, Field Representative Pam Summerlin and Province Director Ginger Bryan for rush week. At presstime, members were planning a homecoming display to celebrate the USM's 75th anniversary following the theme *75 Years of Winning*.

MISSOURI

Northeast Missouri, Delta Sigma — Twenty five pledges joined Delta Sigma after rush. The chapter planned a ΔZ-AKA teeter totter in October, tottering for 24 hours straight for a week. The money raised will go to Gallaudet College. Dana Dimit was named Miss Congeniality for all Greek women. Ellen Berry, Barb Brown and Holly Bagby (captains) Jody Lynch and Debbie McPherson are pompon showgirls.

Northwest Missouri, Epsilon Rho — Members have been busy spending long hours of preparation on fall rush. Delta Zetas were proud to have Paige Hill, field representative, join them for rush. Rush counselors included Jennifer Hewitt, Tracy Pederson, Patti Millwood, Laura Kastens and Christ Stobbs. Diana Davies, Diane Watson and Linda Quarti are resident assistants. For their first fund raiser, members sold their *NWMSU Men of the Year Calendars*. Following rush, members began plans for Dads Day, their annual Hayride, Colonnade activities, and homecoming.

William Jewell, Zeta Rho — Delta Zeta again earned the highest grade point average on campus among sororities and received one of the six scholarship trophies at National Convention. Members enjoyed successful summer rush parties in St. Louis and Kansas City. Several sisters "grew" during the summer by working with children, many of them handicapped. Barb Bolick was a youth coordinator for Linn United Methodist Church and a counselor at Kanakuk-Kanakomo Kamp. Tracy Palaska worked in youth leadership for Gashland Presbyterian and Luan Webb was a counselor for elementary children. Sarah Spencer, as a member of WJ's Concert Choir, traveled to England and Scotland on the choir's European Tour. Studying in Grantham, England with the William Jewell over seas program are Linda Baldwin, Stephanie Arner, Lynn Hillen and Connie Moore.

NEBRASKA

Nebraska Wesleyan, Beta Tau — There's always someone behind the scenes doing a thankless task, but this year during formal rush chapter editor Cindy Keisler took note of Ann Krabel's dedication for this report. It seems Ann, dedicated *all* year long, decided the balcony redwood needed repainting. Determined to finish the job before rushees arrived the next morning, Ann hung from the porch balcony and painted by flashlight till af-



Oklahoma State-AE members (l-r) Robyn Clifton, Patti Hill, Patricia Ware, Barbie Johnson and Laurie Russell.



In a scene from the skit "Gone With the Wind" Melanie, played by Joy Knolton, is trying to convince Scarlett, played by Kelly Prince that she should join the "true" sisterhood ... Memphis State-Π chapter.

ter midnight! By the way, the successful rush, featuring both a *Mardi Gras* and a *Pippin* theme, added 39 new girls to the chapter. And, that balcony *was* noticed during rush, for one night the house was decorated like a castle complete with a draw bridge, as strains of medieval music echoed from the balcony! Members are now busy serving as temporary moms for the enthusiastic pledges. Named to the Dean's List of Academic Achievement were Karis Ambrosier, Pam Anderson, Nancy Baruth, Patty Beerman, Janice Berner, Julie Clopper, Emily England, Lynn Garcia, Cindy Keisler, Susie Keisler, Ann Krabel, Nancy Krabel, Andrea Lang, Amy Mielke, Lori Milks, Julie Parker, Courtney Peters, Jill Reinhart, Terri Rhode, Pamela Richardson, Ann Sandstedt, Barb Soukup, Sara Walz, Mary Wright and Annette Nielson.

NEVADA

Nevada-Las Vegas, Iota Phi — Delta Zeta angels depicted life on earth as goal-oriented Delta Zeta collegians in a popular "Heavenly" informal rush party. Thus far, Delta Zeta has added nine pledges in informal rush. Nearly 100% of the members participated in the Labor Day Muscular Dystrophy Telethon which included a carnival at Sunset park for both locals and tourists. Iota Phi Cynthia Bethel directed the Sunset Park event, where Delta Zeta sponsored a frisbee throwing booth. Catherine Clay won a distinguished service award from UNLV. Members of Alpha Kappa Psi business fraternity are Ramy Ernst, Michelle Peveler, Lisa Brown, and Gina Watson. Michelle is also a member of the Student Accounting Association. Karen Hare is head cheerleader, and Gloria Hale, Robin Meeks and Ann Potenza are song leaders.

NEW MEXICO

New Mexico State, Gamma Xi — The chapter welcomed three new affiliates this semester, two on exchange from **Lambda Rho** at **Illinois State**, and one transfer from **Iota Phi** at **Las Vegas**. Members enjoyed an "afternoon off" cookout at the National Park in early September. Rho Chi rush counselors are Tamye Barnum and Cathy Seavey.

NORTH CAROLINA

East Carolina, Zeta Lambda — Zeta

Lambda added 25 new pledges in early September. New CCD is Gena Bourroughs. PCD Sandy Bass and daughter Leanne joined ZA for pref night. Nancy Croft was named ECU Outstanding Senior.

North Carolina-Charlotte, Kappa Phi

At presstime, members were anxiously awaiting the arrival of a record-breaking 400 rushees for fall formal rush. With details worked to a "tee," KΦ anticipates a quota pledge class projected over 40! Members were again planning their productive and interesting fund raiser at Carowinds Amusement Park near the North Carolina-South Carolina border. Members will work on rides, exhibits or in vending at this major fund raising effort. Delta Zeta quarterback Beckie Jarrett is excited about this year's intramural football team as practice began the first day of classes. Her goal is set for capturing the All Campus Championship. Several Kappa Phis traveled to California last year for the installation of Alpha Chi chapter at UCLA and presented the newly installed chapter with an engraved tray. Lucy Doster is president of Alpha Sigma Phi Fraternity and Sheila Chafin is secretary for Alpha Beta Psi accounting fraternity.

North Carolina-Wilmington, Xi Theta

In Greek Week V, Delta Zeta captured second place honors and become the first sorority ever to rank that high. Other awards included first place in tug-of-war, the spirit award, and best team captain award. During the event, Delta Zeta donated a rose bush to the school in honor of Delta Zeta's five years on campus. Service activities included cleaning the windows of the University Union. Delta Zeta also helped at a bloodmobile drive sponsored by the Red Cross.

Western Carolina, Theta Iota

The chapter reached quota in rush for the eleventh year in a row. Delta Zeta participated in the AXA raft race and has second highest grade point out of six on campus. Lynn Brackett and Rena Bellew graduated Magna Cum Laude.

OHIO

Baldwin-Wallace, Gamma Alpha — Gamma Alphas began the school year in mid-September as Kelli Leydon, Shelly Ross and Katie Richardson arrived to welcome freshmen and

other new students as Orientation Leaders. Michele Welsh and Katie Richardson arrived early for varsity football cheerleading practice. And, the rest of the sisters were there, too, to completely redecorate the chapter room. The long hours of summer were spent by many sisters preparing a new skit and party for rush with the theme *Willy Wonka and the Chocolate Factory*. Michele Welsh is a resident assistant.

Bowling Green, Gamma Tau

With the exciting and successful rush themes of *Take Note of Delta Zeta* and *Delta Zeta on Broadway*, Gamma Tau added 35 pledges (exceeding quota by two!). Gamma Tau helped Zeta Beta Taus build the largest banana split in history and have hopes of appearing in the *Guinness Book of World Records*. Delta Zeta placed third in the Phi Kappa Psi-Alfa Chi Omega Tub Race. Orientation leaders include Jennie Anderson, Amy Augsberger, Wendy Gajarsky, Donna Gretz, Denise Hartzell, Marta Haskins, Kathi Mixer and Jennifer Turney. Laura Schnitzer and Kelly McGough are members of the Orientation Board. Colleen Vaughn is awards chairman for Greek Week.

Findlay, Theta Tau

The Delta Zeta house has a new face this semester thanks to alumnae, parents and members. New carpet, donated by Jackie Gaffga's parents, was installed, and living room wallpaper, acquired by alumna Jacquie Rice from her employer First National Bank of Findlay, was hung. Parents of members Theresa Kroner and Kim Heaster provided curtains and paint for bedrooms. The highlight of the summer was a barbecue at Riverside Park, followed by a night at the movies and playing Putt-Putt. Campus fraternities and sororities organized a Welcome Back Party for returning upperclassmen and freshmen to begin fall rush. Members of Aristos Eklektos honorary are Jeanne Stuckey, president, Kerry Crandall and Valerie Anderson. Earning Dean's List honors with 4.0's were Kerry Crandall, Valerie Anderson, Chris Preston and Jeanne Stuckey. Also on the Dean's List were Lisa Nelson, Sharyl Renner, and Jill-Anna Darr. Jill-Anna is also president of the senior class, Sigma Pi Sweetheart, and a speech lab student assistant. Winners of academic scholarships are Valerie Anderson, Kerry Crandall, Renee Schaeffer, Jeanne Stuckey, Jennifer Payne, Denise McGlaughlin, Theresa Kroner, Kim Heaster, Colleen Galvin and Barbara Goshe. Barbara is president of

the Marketing Club and Colleen Galvin is secretary of the student activities group. Jeanne Stuckey won the Williams County Panhellenic Scholarship, is Theta Chi Sweetheart and a student lab assistant for biochemistry, organic chemistry and quantitative analysis.

Kent State, Gamma Kappa — At presstime, Gamma Kappas were excited about rush with more returning members than in years past. The house corporation approved a beautiful new kitchen, complete with microwave, and the house received a major renovation over the summer. Delta Zeta placed fourth in spring Greek Games and has organized a fundraiser to sell and release balloons during the homecoming game. The purchaser of the balloon traveling the longest distance wins \$50. Linda Mushkat is sales manager for the campus television channel.

Wittenberg, Beta Chi — With school not in session at presstime, chapter officers were busily preparing for their fall return. Rush chairman Leslie Muehlhauser was making changes in fall formal rush for a better presentation, while chapter president Mary Slagle had returned from National Convention bubbling with enthusiasm and information to share with the rest of the chapter. Benita Petu, philanthropy chairman, was hard at work on a new philanthropy project — a volleyball tournament. Members welcomed new housemother Mrs. Patricia Bailey.

OKLAHOMA

Oklahoma State, Alpha Epsilon — Alpha Epsilon placed first overall in Sigma Chi Derby Days after winning a first place in participation and third place in Games Day. Money raised from Derby Days goes to the Wallace Village for Children. Members are participating in Project Heart by delivering meals weekly to senior citizens. Delta Zetas will also care for children of the members of the Stillwater Hearing Impaired Club during the club's monthly meetings. Delta Zeta performed a ΔZ song in sign language during



Sheila Judge is Student Government President at New Orleans-OK chapter.

rush, and later donned jams they had created by stenciling rose and green turtles onto the white shorts. Kerry and Sherry Bishop were both selected for the top ranking OSU Wind Ensemble and OSU Jazz Band. Kerry was ranked as a top musician by the OSU Alumni Association's Student Entertainers. Barbie Johnson, while working her summer job as a lifeguard at Tulsa's Zigler Pool, saved the life of an eight year old boy.

PENNSYLVANIA

Drexel, Epsilon Zeta — Rules of etiquette for introductions, party conversation, and Delta Zeta history capsules were just a few of the topics discussed at the summer rush workshop where members prepared for an important fall formal rush. Other summer chapter activities included a pledge sleepover with a Delta Zeta version of *Trivial Pursuit*, an initiation weekend, a barbeque with Delta Sigma Phi's, and a trip to the third annual Canoe Carnival at Medford Lakes, New Jersey. Members were preparing for Greek Week and were excited to learn that the preference party for rush is scheduled on Delta Zeta Founders Day. Allison Bothwell is a resident assistant.

Kutztown, Kappa Rho — The chapter participated in Greek Games, winning the song fest and placing third overall. They are currently working on projects for philanthropy. Merrio Crawford is Inner-Sorority Association president and Joanne Oakstan is president of the Nursing Club. Suzy Ralston is a supervisor in the dorms and received the Ruth Bonner Award for Service.

Mansfield, Iota Theta — At presstime, members were in the midst of planning sorority activities for philanthropy and homecoming and were discussing rush ideas with College Chapter Director Karen Jacobson. This year's Founders Day will mark the 20th anniversary of Delta Zeta on campus.

Pittsburgh, Omicron — Members arrived to see a pleasant surprise. The university had remodeled the bedrooms with new oak furniture! But the members have a lot to live up to be even better than last year, reports chapter editor Sharon Doerfler. With many members in key leadership roles of Greek Week, Delta Zeta earned nearly \$2500 for Eye and Ear Hospital and won second place in philanthropy contributions. Delta Zeta also won third place overall in Greek Week and first place in the chariot races. Past president Wendy Pekich was named Outstanding Greek. Debbie Leff served on the Greek Sing Committee and Sally Rush chaired the Greek Week formal. Spring term ended with a good note with a Crush party, where each member enjoyed a mystery date. Dean's List honors went to Amy Schwartz, Sharon Doerfler, Mel Teeter, Wendy Pekich and Gina Buscaglio. Sally Rush, Debbie Leff and Laura Ferlan were tapped for Rho Lambda honor society.

RHODE ISLAND

Rhode Island, Beta Alpha — Though the chapter will miss its 21 graduating seniors, 27 new sisters moved into the house eager to become a part of Delta Zeta. Two rooms of the house were redecorated over the summer to help start the new year off on a good note. Teamed with partners Theta Delta Chi and



Miss Winthrop 1985 is Diane Hutchinson of Lambda Sigma chapter.

Tau Kappa Epsilon, Delta Zeta placed first in Greek Week. The first social event for the year will be a moonlight harbor cruise in New Port. Susan Andrade earned a 4.0 for the past semester to maintain her 4.0 cumulative! Chris Kane is a new football cheerleader for URI.

SOUTH CAROLINA

South Carolina, Beta Delta — Delta Zeta concluded a successful formal rush week by adding 40 pledges. Parties included a Beach Boys *Fun in the Sun* theme, and a *Be a Star in ΔZ* party. Rush counselors were Meg Brennan, Lisa Cox, Mary Draper, Kelli Mooney and Cynthia Roof. Janet Bailey, field representative, was on hand for rush. Beta Delta has five mother-daughter-sister combinations in the chapter. Identical twins Beth and Bev Bruckman, join sisters Mary Kosnosky, initiate, and Polly Kosnosky, pledge. Kerri Seurnyck, initiate, and sister Kirsten, a new pledge, are daughters of past Beta Delta president Connie Seurnyk. A sister to Julie Rabon Werner and Lynn Rabon Maynard, also pledged. Patricia Rabon has a Delta Zeta mom, too — Patricia Palm Rabon, Beta Delta. And, the final family combination is College Chapter Director Ruth Weider Patterson, whose daughter Betsy, serves as Financial Advisor for the chapter. Rush chairman Kerri Seurnyk is the first recipient of the Bobbi Rossi Nursing Scholarship at USC. Delyn Bradley is newly appointed head student trainer for all sports, male and female, at UCS.

Winthrop, Lambda Sigma — Special events during Greek Week included a dress-up day when Greeks donned badges; a jersey day; an open house; and displays in the Student Center. The final night of Greek Week, Delta Zeta and $\chi\Omega$ were honored as sororities tying for the top grade point average. Social events included a Rose Cotillion at Tega Cay Country Club and a family picnic at the Shack. Members sponsored an Orange Crush Sale and sold chilled cans of Orange Crush to students with "crushes" on fellow classmates. Delta Zeta then delivered the "crushes", attached with special notes from the senders. Profits helped purchase a hearing aid for a needy



Deborah Munson was selected Miss Stephenville, TX in a city pageant. She is a senior fashion merchandizing major at Tarleton State, Xi Nu chapter.

person in the Rock Hill area. Diane Hutchinson is Miss Winthrop 1985.

TENNESSEE

Memphis State, Gamma Iota — Members prepared for rush with weekly summer workshops and an annual rush retreat at Wall Doxey State Park in Holly Springs, Mississippi. Revitalized from a busy summer, Gamma Iota returned to rush and presented a new skit, *Gone With the Wind*, and a revised version of last year's *Love Boat*. And, Delta Zeta proudly added 20 new pledges, just one short of quota. Cindy Virgin is a member of the MSU pep club, The Blue Chippers, is secretary-treasurer for the Resident Hall Association, serves on the Publicity Committee and Hospitality Committee for the Student Activities Council and is the House Chairman for Women's Pannhellenic Council. Cathy Pihl is a member of The Blue Chippers, scholarship chairman for Pannhellenic, a Resident Hall Association representative, serves on the Newman Foundation and is on the Publicity and Hospitality Committee for Student Activities Council. Silvia Ruby serves on the Student Ambassador Board, the Tennessee Intercollegiate State Legislature, President's Standing Committee on Food Services, and is secretary of welfare for the Student Government Association and a member of the concert band. Cheryl Umberger is the recipient of an Early Scholars Scholarship awarded to incoming freshmen for outstanding ACT scores, and a member of the University Singers. Shari Bishop is a member of Gamma Beta Phi honor society, the New Student Orientation Staff, University Honors Program, Honors Student Association and recipient of State Board of Regents Scholarship and S.E. Binswange Scholarship. Susan Woods has

been selected as assistant business manager of *The Daily Helmsman* newspaper and is secretary-treasurer of Advertising Federation.

TEXAS

Houston, Delta Theta — Members enjoyed joining Houston alumnae for a rush school at the Hyatt in West Houston. Members sold soft drinks at an air show at Ellington Air Force Base as a profitable fund raiser. Standards chairman Margarette Barquin presented standards capsules on make-up, wardrobe, and seat belt safety to members over the summer. Members are again collecting canned foods for the needy of Houston at regular meetings. Members are planning to participate with Sigma Chi in a volleyball tournament during Greek Week. Kelly Levy is a member of the Pannhellenic Council.

South West Texas, Iota Alpha — Delta Zeta welcomed a pledge class of 47 beautiful pledges during fall rush. Fifteen of the 47 are Delta Zeta legacies! The chapter spent a memorable weekend at the summer reunion at the house which included a gossip session on Friday night, a river float trip with Kappa Sigma on Saturday, and an evening of dancing at the Kappa Sigma house Saturday night. Sunday was spent in rush workshop and rush preparation. Members are anxiously preparing for campus homecoming events with the theme, Main Event. Strutters Drill Team officers are Tina Ricks and Nugget Gold. Leah O'Keefe is president of the Fashion Merchandising Club and Brenda Harris is TKE Sweetheart.

Tarleton State, Xi Nu — The first formal rush after installation brought quota and total to Xi Nu...19 energetic pledges.

Texas/Arlington, Iota Psi — Rush brought another quota pledge class to Iota Psi — 28. The chapter kicked off September with flag football and looks forward to ΦΔΘ Winter Olympics, ΣΧ Derby Days and is already planning the annual Christmas party. Two goals of the chapter are great scholarship and 100% initiation.

West Texas, Zeta Zeta — Delta Zeta welcomed National Field Representative Vivian Cole this fall and added 17 new pledges. Christy Horn is WTSU Buffalo Mascot.

VIRGINIA

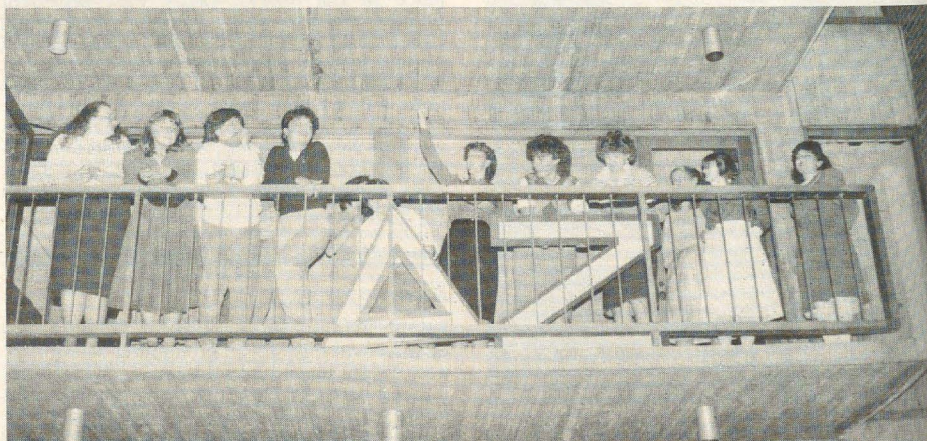
Old Dominion, Theta Phi — Delta Zeta is

hard at work to reach campus limitation following successful rush, with the help of Field Representative Lauralee Meyer, are at 45 — only five from ceiling. Members are participating in a Province XXV cookbook publication, with all profits going towards State Day. All the recipes are personal favorites of Delta Zetas in the province. And, Theta Phi is excited about a social with the Naval Academy that will coincide with Province Day in Annapolis. Members enjoyed their annual Beach Week over the summer. Mary Dennin was honored by Pannhellenic for Best Academic Achievement for a sorority woman.

Virginia, Lambda Delta — The chapter initiated 30 pledges and celebrated the event with a Rose Formal. The chapter is currently participating in open rush to bring the chapter to campus limitation (ceiling) of 100. Delta Zeta placed second in Tug of War during Sigma Chi Derby Days and placed second in softball intramurals. The pledge class treated the chapter's adopted grandmother and her nursing home friends to an Easter party. The pledges also purchased a microwave for the house with the profits from their donut sales. Lambda Delta enjoyed a trip to Myrtle Beach after finals and then returned to see Delta Zeta seniors graduate. Jody Edwards is a cheerleader, and Angie Hackley is a member of Cavalier Kickers. Terri Norton edits the newsletter for Inter-Sorority Council and chairs the Inter-Sorority Council Community Relations Committee. Jennifer Procopio helped Inter-Sorority Council as computer coordinator for rush.

WEST VIRGINIA

Marshall, Delta Upsilon — Following a summer of house renovations, Delta Zeta began the year in style with a Hollywood rush that welcomed ten new pledges. National Director Sandra Nesbitt was on hand to help with rush week. The chapter hosted State Day in mid-April and won awards as most improved chapter and for best song. Lesley Cauffman had the highest pledge average in the province. Suzy Miller was named best rush chairman in the province, and the pledge handbook was named most outstanding. The chapter also boasted 100% initiation. In Greek Week, Delta Zeta took top honors in quiz bowl, tug of war and shuffleboard. Delta Zeta placed second in bowling, third in the 50 yard dash and chariot races, placed third overall and was named most improved sorority on



Rochester-AI members serenade from the balcony of their suite.



Karen Swaim, Shepherd-KM was named 1985 McMurren Scholar, Shepherd's highest academic honor.



Kathy Kussard, Wisconsin/Whitewater-EK, is Wisconsin's Miss Love's Baby Soft, 1985.



Ann Miller, Shepherd-KM is West Virginia's 1985 model pledge.

campus. *Who's Who Among Sororities and Fraternities* lists Lada Gibson and Lee Ann Marcum. Darell Dyer and Angie Scites are serving on the homecoming committee. Amy Smith is a member of the rifle corps and Judy Young is assistant captain in the flags corps. Kelly Kryzak and Cindy Chancey are also members of the flag corps. Sharyn Vickers is president of Student Activities.

Shepherd, Kappa Mu — At presstime, Delta Zeta was in the midst of formal rush and had just participated in the information picnic, a first round party featuring a Fantasy Island skit, and a second round "beach" party featuring beach balls, Hawaiian punch, fresh fruit in a carved watermelon and even swim suits! The chapter's annual summer picnic was held at Laura Corbin's home in Easton, Maryland, where members enjoyed the eastern shore, a crab feast and a Saturday at the beach in Ocean City. Karen Swaim was named a McMurren Scholar, the highest academic honor at Shepherd. Ann Miller was honored as Model Pledge in the province.

West Liberty, Iota Tau — The chapter pledged eight in open rush and is working on Homecoming events. Cathy Miller designed ΔZ bookmarks to welcome freshmen to West Liberty and several members were leaders in freshmen orientation.

West Virginia Tech, Iota Pi — At report time, Iota Pi was in the middle of formal rush preparing a "Tech Spirit" theme party complete with cheerleaders, majorettes, and surprise musical entertainment. At a mid-July summer meeting and retreat, president Lee Brill presented the chapter with its first na-

tional award for membership, along with wonderful stories of Convention happenings.

WISCONSIN

Carroll, Gamma Theta — Members enjoyed swimming, sailing, and basking in the sun along with making plans for rush, lamplight and fundraisers at a summer retreat at the home of Barb Brandeau at Crystal Lake, Illinois. And, members kept in touch with each other with an interesting and informative summer newsletter.

Wisconsin-Whitewater, Epsilon Kappa — Epsilon Kappa is bursting with energy and motivation this semester and have even adopted a chapter motto — *Boy, are we enthusiastic - H-A-P-P-Y!* Members joined other Greeks for a Whitewater summer reunion in mid July. Delta Zetas enjoyed brainstorming and planning for the upcoming semester, then joined other Greeks for barbecue in the park. Over the summer, the exterior of the house was painted and a new porch roof was installed. Members are now anxiously awaiting the arrival of new furniture. Members of the Homecoming Steering Committee are Diane Sterr, president, Christy Bradley, an orientation leader, and Kristy Doner. Kristy Doner is also a member of the golf team. Diane Sterr is captain of the Warhawk Corporation, with Kristi Sonnenleiter as a member. Dean's List included Mary Haferkamp, Ann Hockemeter and Sindy Fricklton. Lori Metz is a resident assistant and Dana Waldschmidt is a Hawkette. Kathy Kussard is Miss Love's Baby Soft 1985 for the Wisconsin Region. Jill Schmidt served as an instructor at the UW-W Tennis Camp and Liane Sisko was a campus conference assistant for UW-W.

WHAT IS A SISTER?

I am your sister sitting up with you the night before your term paper is due, typing each page as you finish writing it.
I am your sister spending my Friday night sewing a formal for you to wear on Saturday.
I am your sister getting up at 2:00 A.M. to let you in when you forgot to bring your key!
I am your sister taking notes for you at your 7:30 A.M. class.
I am your sister conveniently forgetting my own plans and staying home with you on the night your pinnate decides he wants his pin back.
I understand your silence.
I consider your needs before your deservings.
I am true to myself and therefore must be so to you.
I am the same today when prosperity smiles on you, and tomorrow when adversity and sorrows come.
I will cheerfully come in when all the world has gone out; I weep with you when the laughter is away.
I guard your interests as my own; neither flatter nor deceive; I give just praise to your good deeds, and equally condemn your bad acts.
I am the same to you in the society of the wealthy and proud as in the solitude of poverty; a cheerful smile that sheds sunshine in every company.
I am your sister, and my love for you is deep.

anonymous

MARCH IS FOUNDATION FOCUS MONTH

The Foundation will be 25 years old March 17. The Board of Trustees of the Founders Memorial Foundation has established March as Foundation Focus Month. It is our hope that each March alumnae and collegiate chapters will set aside a meeting to focus on the Foundation and its programs.

1985 Contributors

Founders Memorial Foundation

The Founders Memorial Foundation received the following contributions from July 1, 1984 to June 30, 1985.

Province Collegiate Directors attending National Convention

Province Alumnae Directors attending National Convention

PROVINCE I

Rhode Island-BA
New Hampshire-ΘΓ
Fairfield County Alumnae
Ethel Mae Gullette

PROVINCE II

Northeastern New Jersey Alumnae Chapter
Deborah Lee Brady
Sylvia Lounsberry Fix

PROVINCE III

Shippensburg-KΨ
Slippery Rock-ZΦ
Pittsburgh/Johnstown-AE
Chester County Alumnae Chapter
Harrisburg Area Alumnae Chapter
Lehigh Alumnae Chapter
State College Alumnae Chapter
Province III
Phyllis Snape Favorite
Susan Miller
Anonymous

PROVINCE IV

Glenville-ΘΞ

PROVINCE V

Miami-A
Wittenberg-BX
Bowling Green-ΓΤ
Wright State-KI
Findlay-ΘΤ
Ohio Northern-ZK
Berea Alumnae Chapter
Cleveland Eastside Alumnae Chapter
Cleveland Westside Alumnae Chapter
Columbus Alumnae Chapter
Findlay Alumnae Chapter
Ohio Alumnae Delegates to National Convention
Ohio Presidents, CCDs and PCD
Barbara S. Bromberg
Joan Dondrea Lowry

PROVINCE VI

Wayne State-EΞ
Ferris-ZN
Phi Delta Chi (Alpha Xi Chapter)
Grand Rapids Alumnae Chapter
Saginaw Alumnae Chapter
Sigrid H. Valk

PROVINCE VII

Indiana-E
Bloomington IN Alumnae Chapter

PROVINCE VIII

Wisconsin/Whitewater-EK
Alisa Burazin

PROVINCE IX

Northwestern-AA
Southern Illinois-ΓΩ

Illinois State-AP
Chicago Alumnae Chapter
Charleston Alumnae Club
Cathy Nott

PROVINCE X

Nebraska Wesleyan-BT
Iowa-I
Creighton-ΘH
Des Moines Alumnae Chapter
Lincoln Alumnae Chapter
Omaha Alumnae Chapter
Florence Hood Miner
Kay Morrow Wright

PROVINCE XI

Northeast Missouri-ΔΣ
Central Missouri-EI
Northwest Missouri-EP
Missouri/St. Louis-ΙΞ
Clay-Platte Alumnae Chapter
Greater Kansas City Alumnae Chapter

PROVINCE XII

Twin Cities Alumnae Chapter

PROVINCE XIV

Fort Hays State-ΔΩ
Northern Colorado-ΔΞ
Denver-P
Anne Hussar

PROVINCE XIV-E

Johnson-Wyandotte Counties Alumnae Chapter
Lawrence Alumnae Chapter

PROVINCE XIV-W

Colorado Springs Alumnae Chapter
Denver Alumnae Chapter
Phoenix Alumnae Chapter
Estate of Constance E. Milligan
Florence B. Mueller

PROVINCE XV-N

Washington-K
Portland Alumnae Chapter
Seattle Alumnae Chapter
Norma Clark McAdams
Kathleen Bosworth Sandy

PROVINCE XV-C

Northern California Coordinate Committee
Reno Alumnae Chapter
Sacramento Alumnae Chapter
San Francisco Bay Cities Alumnae Chapter
Ruth Elizabeth Behnke
Dorothy D. Coon
Fred Kelleway
Mary Alice Williamson

PROVINCE XV-S

CSU/Fullerton-ΙΥ



Kickoff for BETTER HEARING AND SPEECH MONTH in Washington, D.C. (l to r) Congressman Frank Guarini of New Jersey who sponsored legislation making May "Better Hearing and Speech Month."; Lucille Bolstad May, North Dakota State-ΦΒ, FMF Gallaudet Chairman; Joan Dondrea Lowry, Baldwin-Wallace-ΓΑ, National Philanthropy Chairman and FMF Trustee; Florence Henderson, Celebrity Chairman, Nancy Jones of Cleveland, OH, National Poster Child and Nancy's parents, Mr. and Mrs. Phillip Jones.



Karen Severloh Moffitt of Pasadena Foothill (CA) alumnae chapter accepts the Gail Patrick Jackson Award for chapter excellence in overall philanthropy from FMF Secretary Betty Paul DeWitt.



Lisbeth Innis Francis presents the award given in her name for chapter excellence in overall philanthropy to Texas A&M-ΛΞ chapter president Lisa Rouse.

Alpha Iota Building Corporation
Delta Zeta Lamplighters of Southern
California

Honolulu Alumnae Chapter
Los Angeles Alumnae Chapter
Orange County Alumnae Chapter
Pasadena Foothill Alumnae Chapter
San Fernando Valley Alumnae Chapter
Whittier-West Covina Alumnae Chapter
Province XV-S
Alan H. Becker, M.D.
Elizabeth Barbieri Bragg
Susan Clay
Betty Paul DeWitt
Ardath L. Priddy

PROVINCE XVI

Northwestern State (OK)-ΔO
Central State (OK)-EY
Bartlesville Alumnae Chapter
Oklahoma City Alumnae Chapter
Stillwater Alumnae Chapter
Reta Beth Askew

PROVINCE XVII-N

Texas/Arlington-IΨ
New Mexico State-IΞ
Arlington Alumnae Chapter
Dallas Alumnae Chapter
Greater Longview Area Alumnae Chapter
Midland Alumnae Chapter
Province XVII-N
Delegates and Visitors to National
Convention
Joyce Low London

PROVINCE XVII-S

Houston-ΔΘ
South West Texas-IA
Texas A&M-ΛΞ
Stephen F. Austin-ZΨ
Austin Alumnae Chapter
Beaumont Alumnae Chapter
Corpus Christi Alumnae Chapter
Houston Alumnae Chapter
Province XVII-S
Ann Butler Booth
Mary Margaret Calhoun Fore

Bonnie Morrison Giltner
Arlene Newman Marshall
Elsie Wheeler McTee
Delegates and Visitors to National
Convention

PROVINCE XVIII

Louisiana State-Σ
Shreveport Alumnae Chapter

PROVINCE XIX

Middle Tennessee-II
Katherine Theiss Ray

PROVINCE XX

Kentucky-AΘ
Louisville-BΓ
Nancy A. Emission
Carol Sharpe Harper
Jennifer Plenge

PROVINCE XXI

South Carolina-BΔ
UNC/Charlotte-KΦ
Winthrop-ΛΣ
UNC/Wilmington-ΞΘ
East Carolina-ZΔ
Charlotte Alumnae Chapter
Raleigh Alumnae Chapter

PROVINCE XXII

Georgia State-ΔΔ
Day Group of Atlanta Alumnae Chapter
Province XXII

PROVINCE XXIII

Alabama-AΓ
Auburn-BΞ
Jacksonville State-AΓ
Alabama/Huntsville-AK
Huntsville Alumnae Chapter

PROVINCE XXIV

Tampa-ΔB
Province XXIV
Gold Coast Alumnae Chapter
Greater Orlando Alumnae
St. Petersburg Alumnae Chapter
Tampa Alumnae Chapter

PROVINCE XXV

Virginia-ΛΔ
Radford-ΞΔ
Anne Arundel County Alumnae Chapter
Mary E. Daly
Lucille B. May

PROVINCE XXVI

Arkansas Tech-AA
Jacqueline Miner Gardner

The National Council
is pleased to announce the
chartering of
Greater Pensacola
Alumnae Chapter
July 13, 1985



Memorials

The Founders Memorial Foundation gratefully acknowledges the following memorials received in remembrance of Delta Zetas and relatives and friends of Delta Zetas from July 1, 1984, to June 30, 1985.

ARBOGAST, GRACE M. by Muncie IN Alumnae Chapter
 ARNSBARGER, ISOBELLE by Portland OR Alumnae Chapter
 ASHFORD, ELIZABETH STEARNES by Corpus Christi TX Alumnae Chapter
 BAIRD, ZOE BEHREND by Portland OR Alumnae Chapter
 BEALL, PHYLLIS MAXWELL by Helen Moss Miles
 BEAN, RUTH EYRSE by Luvola H. Wisneski
 BECHMAN, CAROLYN by Phoenix AZ Alumnae Chapter
 BEEMAN, DOROTHY L. by Muncie IN Alumnae Chapter
 BENNETT, LILLIAN by Alpha Iota Reunion Group, Claire Damewood
 BERNHARD, SALLY SISLER by Portland OR Alumnae Chapter
 BEYER, JOYCE DAUBENBIS by Alene K. Hale
 BINGHAM, RUTH by Portland OR Alumnae Chapter
 BJERKE, CONRAD by South Bay CA Alumnae Chapter
 BOTTS, CYRIL by Portland OR Alumnae Chapter
 BOUTERSE, R. A. by Greater Orlando FL Alumnae Chapter
 BRENNAN, JOHN by South Bay CA Alumnae Chapter
 CARLSON, MELANIE by Jo Harriss Messlin
 CHAPMAN, EVELYN WEBER by Portland OR Alumnae Chapter
 COLE, NELVA BOREN by Shreveport LA Alumnae Chapter
 COUCH, JOSEPH by Corpus Christi TX Alumnae Chapter
 DAVIS, MARY GAY CLOWER by Sandra McAlister Nesbitt
 DODSON, SARAH SCHMIDT by Lynne Ellen Dodson
 DONOVAN, ELLEN AGENS by Helen Zomzely Carlberg, Clara Dorothy Clark, Elizabeth F. Gibbons
 DREESE, ERNESTINE HUNTER by Columbus OH Alumnae Daliters
 DRURY, DORINDA D. by Louisville-BI Chapter
 DULANEY, HARRY by Morning Group of Atlanta GA Alumnae
 DUNLAP, WALTER by San Antonio TX Alumnae Chapter
 DYSON, BLANCHE LENORE by Mrs. Donald E. Dyson
 ECKLUND, ELEANOR by Portland OR Alumnae Chapter
 FACER, LEONA HOLT by Salt Lake City UT Alumnae Chapter
 FORE, MARTHA LANE by Betty Paul DeWitt, Alura Miller Mitchell
 GEYER, MARY ANN THOMPSON by East Side MI Alumnae Chapter
 GORDON, EVELYN P. by Columbus OH Alumnae Daliters
 GRAHAM, MAUD by Portland OR Alumnae Chapter

GRAHAM, PAULINE CAIN by Grace Lyon Hulsberg
 HAGEMEISTER, RAUHA by Twin Cities MN Alumnae Chapter
 HAIG, DIANNE OTTERMAN by New Orleans LA Alumnae Chapter
 HARRIS, MRS. JOSEPH D. by Montgomery AL Alumnae Chapter
 HARSH, LORETTA by Irene E. Lyons
 HAYES, LEIGH DABNEY by Tracie L. Daniel
 HINMAN, KATHRYN DOUB by Lisbeth Innis Francis, Betsy Bradley Leach, Oakland County MI Alumnae Chapter, Dorris Silverthorn, Frances E. Westcott
 HOTTINGER, SAM by New Orleans LA Alumnae Chapter
 HOUSTON, HAROLD by Bloomington Alumnae Chapter, Mary Margaret Calhoun Fore, Arlene Newman Marshall
 IDOINE, MOZELLE McELROY by Canton-Massillon OH Alumnae Chapter
 KARR, NOREEN BARTON by Maurine Muller Rallins, South Bay CA Alumnae Chapter
 KELLEYWAY, AUGUSTA PIATT by Sue W. Bebb, Betty Bates DeMars, CSU/Fresno-EE Chapter, Gertrude Houk Fariss, Lisbeth Innis Francis, Elizabeth Eaken Fry, San Jose State-FA Chapter, Helen E. Herbert, Wendy Roe LaBounty, Betsy Bradley Leach, Maxine A. Maas, Carolyn A. McKinney, Florence Hood Miner, Mt. Diablo CA Alumnae Chapter, Dorothy E. Nisbet, LoLo Pickles, Doris E. Riede, Mrs. Edward J. Ruff, Linda M. Szymanski, Engelyn A. Tourtelot, Olive L. Vance
 KELLOGG, DeWITT C. by Indianapolis IN Alumnae Chapter
 KING, BYRON by Cleveland OH Westside Alumnae Chapter, Julie A. Foster
 KLENGENSMITH, BEVERLY COOK by Columbus OH Alumnae Daliters
 KREIDER, JULIA by Ames IA Area Alumnae
 KUKOR, MARY KAY CALLOWAY by Columbus OH Alumnae Daliters
 LEE, KAREN by Beta Delta Chapter
 LINDQUIST, WINIFRED by Chico CA Area Alumnae Chapter
 LINHART, CAROL by Judi Jacobs
 LOYD, GLADYS MEANS by Baton Rouge LA Alumnae Chapter
 LUNDSTROM, JOHN GABRIEL by Portland OR Alumnae Chapter
 MADDOX, MARY ELIZABETH by Bartlesville OK Alumnae Chapter
 MAHISKAS, MIKE by Greater Orlando FL Alumnae Chapter
 McCARTY, ANN FIX by Mary Louise McCarty
 McCoy, GLADYS by Salt Lake City UT Alumnae Chapter
 McELFRESH, VERA GARDNER by Dorothy G. Butler, Mary Louise O'Bryan, Geneva Hunt Steier, Doris Vormbrock Torpley
 McLEEN, MAURICE by Portland OR Alumnae Chapter
 MICKLE, WILLIAM A. by Dallas TX Alumnae Chapter
 MILLER, HELEN KINGHAM by Frances E. Westcott
 MOEN, JOSEPHINE JAMES by Katherine J. Southard
 MONTGOMERY, MARGARET C. by Douglas Montgomery
 MORRIS, JUDITH WILLIAMS by Ames IA Area Alumnae Chapter

NIEMAN, BERTA REINHART by Ruth Ann Rowley Jenkins
 OZMENT, WALTER J. by San Antonio TX Alumnae Chapter
 POTTER, FRED by Greater Orlando FL Alumnae Chapter
 POWELL, RUTH by Greater Kansas City MO Alumnae Chapter
 RAWLINGS, GERRY by St. Petersburg FL Alumnae Chapter
 RHIEL, LILLIAN ANDERSON by Portland OR Alumnae Chapter
 ROLL, HENRY by Toledo OH Alumnae Chapter
 ROSEBOOM, THELMA MATHENY by Columbus OH Alumnae Daliters
 SCHEURER, KATHERINE W. by Lucille E. Ferguson
 SCHULMERICH, ALMA L. by Portland OR Alumnae Chapter
 SLOAT, CAROL FITCHEN by Northeastern NJ Alumnae Chapter
 SOMERS, CATHERINE JONES by Oakland County MI Alumnae Chapter
 STEINMEYER, ALICE B. by Roberta M. Parsons
 STORK, CLARA BILL by Edna G. Ponder, Jean Unruh
 STURM, GLADYCE by Amy M. Glasgow
 TALLE, CHARLES A. by Twin Cities MN Alumnae Chapter
 TARAVICO, MARY by Portland OR Alumnae Chapter
 THOMPSON, MARGARET WALLACE by Shreveport LA Alumnae Chapter
 THOMPSON, PATRICIA GALE by Gladys O'Toole, Mr. and Mrs. Robert Thompson
 RHORNBERG, GENEVA by Des Moines IA Alumnae Chapter
 TISSERAND, RITA M. by Dallas TX Alumnae Chapter
 WALDROP, ETHEL by Mary S. Maxfield
 WALTERS, ELINOR THAYER by Elizabeth Eaken Fry
 WARD, JANE STRUTHERS by Columbus OH Alumnae Daliters
 WELEBER, CAROLYN PARKER by Portland OR Alumnae Chapter
 WHELCHER, LUCILE by Portland OR Alumnae Chapter
 WHIDDEN, RUTH by Alpha Iota Reunion Group
 WILLIAMSON, HAROLD by Betsy Bradley Leach

SCHOLARSHIP FUND GIFT

The Delta Zeta Founders Memorial Foundation has received a \$1,000 bequest from the estate of Constance E. Milligan, Ohio State University-Θ. This gift has been added to the Scholarship Fund principal and interest earned will be applied to the undergraduate scholarships given annually by the Founders Memorial Foundation.

McAdams Housing Matching Challenge



Kathleen Bosworth Sandy, FMF Trustee, accepts a \$5,000 check from Norma Clark McAdams, Oregon State-X for the McAdams Matching Housing Challenge.

A small contribution from you can help make \$25,000 available for helping chapters with housing needs!

Attendees at the 1985 National Convention in Scottsdale were presented with a new fund raising challenge entitled, "McAdams Housing Matching Challenge." At the conclusion of the financial meeting on Tuesday, Norma Clark McAdams, Oregon State-X, presented a check for \$5,000 to be administered through the Founders Memorial Foundation. She told those attending, "In making this matching challenge, I'm reminded of one of my favorite quotations: 'You never get a second chance to make a first impression.' I want to assist Delta Zetas in making a favorable impression on campus, therefore, I am establishing the McAdams Housing Matching Challenge with the stipulation it is met by \$20,000 in matching contributions from individual members or alumnae and collegiate chapters by the 1987 Convention."

Delegates were urged to show their support by making a contribution at Convention and then encouraged to return to their chapters and promote this unique idea. By the close of Convention \$650 had

been donated. These funds will be used to assist collegiate chapters with housing needs.

Norma McAdams has been actively involved in fund raising in Portland, Oregon, with the Republican Party and the Oregon Symphony. A past president of the Portland alumnae, she recently set up a fund raising tour for the chapter. She leads two or three tours a year as fund raisers for various groups. Norma has been selected as one of the ten Women of Accomplishment for Environmental Action by *The Oregon Journal*, and was

Oregon's 1984 Outstanding Delta Zeta Alumna. Her husband, Gary, is a CPA and they have one daughter, Melissa.

Contributions to the McAdams Housing Matching Challenge are tax deductible through the Founders Memorial Foundation, should be designated "housing challenge," and sent to:

Delta Zeta Founders Memorial Foundation
202 East Church Street at Campus Avenue
Oxford, Ohio 45056

Directory Verification Underway

Many alumnae have already received telephone calls from the Harris Publishing Company, publishers of our official Alumnae Directory. The purpose of the telephone contact is to verify the information alumnae provided on the directory questionnaires and the current information held on alumnae records.

At the same time, the telephone representatives of the publishing company are inviting alumnae to purchase personal copies of the di-

rectory.

The directory is tentatively scheduled for release in February or March, 1986. If you are interested in ordering a copy and have not heard from the publisher by November 29, 1985, you may contact the publisher at the following address:

Customer Service Department
Bernard C. Harris Publishing Company Inc.
3 Barker Avenue
White Plains, NY 10601

Foundation Sponsors New Edition of Celebrity Booklet

WASHINGTON, D.C., September 1, 1985—A new edition of Better Hearing Institute's *We Overcame Hearing Loss* booklet—adding new personalities who have joined the Institute's public information program—has been made possible by a grant from the Delta Zeta Founders Memorial Foundation.

"It is a privilege for Delta Zeta to have this opportunity to participate with the Better Hearing Institute in the cause of better hearing," said Arlene Newman Marshall, Founda-

tion president. Delta Zeta has a membership of 121,000 committed to helping the hearing impaired.

The new edition will feature the personal success stories of many of the personalities in BHI's award-winning television PSA series, including Art Carney, Norm Crosby, Phyllis Diller, Nanette Fabray, Lou Ferrigno, Jeff Float, Lorne Greene, Florence Henderson, Bob Hope, Kiel Martin, Frankie Valli, George Wallace, and Keenan Wynn.

Augusta Piatt Kelleway Scholarship Established

An annual scholarship has been established in loving memory of Augusta Piatt Kelleway, Samford- $\Delta\Pi$, by her family and the Delta Zeta Northern California Coordinating Committee. A \$5000 gift from the family was presented to the Founders Memorial Foundation at the XV-C Province Day, by Gus' daughter, Carolyn Kelleway Highland, for a locally administered scholarship.

The annual minimum \$500 award will be by application to an initiated member attending a university in Province XV-C or a Northern California girl attending a university in another province. Financial need will be a priority with service to Delta Zeta, campus activities, and scholastic ability being considered. The first recipient will be announced at Province Day 1986.

When presenting the check, Carolyn said she and her brother Tom "wanted to create a lasting memorial and the logical conclusion was to combine Gus' love for young people with her love for Delta Zeta." At Province Day, Founders Day, Convention and other occasions where alumnae and collegians gathered, Gus could always be found deep within a circle of collegians, talking, laughing, and sharing experiences.

Having graduated from Samford University, Birmingham, Alabama in 1930, Gus served as co-chairman of the 1936 National Convention in Asheville, North Carolina. At this convention she was named one of the two first full-time field secretaries of Delta Zeta. Her travels took her to California where she was introduced to Fred Kelleway. Following a courtship via mail, she ceased traveling to marry Fred and live in California. Together they built and operated the Fred Kelleway Hardware in Walnut Creek, Ca. They became the parents of two children, Carolyn and Tom.

Gus' service to Delta Zeta was on going and her enthusiasm contagious. In 1952 she was elected National Treasurer, serving until 1956 when she was elected Director of Alumnae, serving four years. From 1962 to 1966 she served as Director of House Corporations.

Northern California Delta Zetas



Augusta Piatt Kelleway

loved and respected Gus even though she was not a native and never completely lost her southern drawl. They claimed her as one of California's most prominent members. Many contributions have been made to the scholarship by both individual members and chapters in California. The Kelleway family hopes that through contributions the fund will grow enough that an annual \$1,000 award can be given in the near future. Contributions may be sent to the Founders Memorial Foundation, 202 E. Church St. at Campus Ave., Oxford, Ohio 45056.

ECS Scholarship Recipients

The Elizabeth Coulter Stephenson Scholarship Fund provides scholarships to qualified Delta Zeta collegians in their junior or senior year who are active, participating members of their college chapters to enable them to continue their sorority activities. The Founders Memorial Foundation is pleased to award scholarships to the following collegians:

Province

- I - Michele Cocco — University of New Hampshire- $\Theta\Gamma$
- IV - Stacey Jo Barr — Shepherd College-KM
Ann E. Miller — Shepherd College-KM
- V - Elizabeth Banfield — Wittenberg-BX
Kerensa A. Crandall — Findlay- $\Theta\Gamma$
Carolyn M. Gaines — Wright State-KI
Wendy M. Gajorsky — Bowling Green- $\Gamma\Gamma$
Michele L. Ondrus — Ashland- $\Theta\psi$
Susan M. Turek — Youngstown-KX
- VI - Kathleen L. Spehar — Western Michigan- $\Gamma\Pi$
- VII - Connie J. Krueckeberg — Indiana University-E
- VIII - Carol Boldt — Carroll College- $\Gamma\Theta$
- IX - Sarah E. Holzhauer — University of Illinois-AB
- X - Margaret C. Allender — Iowa State-BK
- XI - Annette M. Carron — Northeast Missouri- $\Delta\Sigma$

- XIV - Margaret J. Wing — Northern Colorado- $\Delta\Xi$
- XV-N - Susan R. Koehler — University of Washington-K
- XV-C - Laura M. Brownson — CSU/Chico- ΔX
- XVII-S - Karen L. Edmondson — S. F. Austin-Z ψ
- XVII-N - Irene Frances Gammon — University of Texas/Arlington-I ψ
Carrie L. Pettit — North Texas State-KZ
- XVIII - Lauren H. Bohnet — LSU- Σ
Kateri A. Harris — Nicholls State-KA
- XXI - Brenda A. Bowen — East Carolina-ZA
Shelly L. Bulluck — UNC/Charlotte-K Φ
Jacquelin L. Dellinger — East Carolina-ZA
Elizabeth A. Richardson — East Carolina-ZA
Kimberly J. Wall — East Carolina-ZA
- XXV - Ruth E. Bittman — University of Virginia-AA
Mary Irene Dennin — Old Dominion- $\Theta\Phi$
Deborah M. Menold — Radford- $\Xi\Delta$
- XXVI - Traci A. Mills — Arkansas Tech-AA
Jonsye K. Whitson — Arkansas Tech-AA

The Elizabeth Coulter Stephenson Scholarships are awarded throughout the school year to qualified Delta Zetas. Application forms are included in each collegiate chapter mailing and are available from National Headquarters.

Foundation Receives Gift



Gail Patrick Jackson Velde

The Delta Zeta Founders Memorial Foundation has received a gift from the estate of Gail Patrick Jackson Velde, and Trustees have elected to establish a scholarship in her memory.

Gail, born Margaret Fitzpatrick, was a beautiful and talented Delta Zeta from Samford University-AL, in Birmingham, Alabama. She earned her Bachelor of Arts with honors while at the same time studying law in extension classes at night. A beauty contest took her to Hollywood where studio bosses insisted that she lose her southern accent and adopt a new name — Gail Patrick. In addition to her acting, her interests covered many fields. A few of her many honors and accomplishments include: Delta Zeta Foundation Trustee; 1963 DELTA ZETA WOMAN OF THE YEAR; appearance in more than 50 films; Executive Producer of the Perry Mason Show, 1957-1966; Treasurer, Los Angeles County Chapter of Freedom's Foundation; 1970 National Honorary Chairman, Christmas Seals Campaign; Chairman, American Lung Association Board of Directors; Co-chairman, Center of Ulcer Research and Education Foundation; Chairman, American Diabetic Society; Los Angeles Times Woman of the Year, 1960-61; Justice

Award, Association of Women Lawyers; 1962 Business Woman of the Year, National Association of Accountants.

The Gail Patrick Jackson Velde Memorial Scholarships will be awarded annually upon application to deserving undergraduate Delta Zeta members exhibiting a financial need. The first recipients will be named in June 1986. Many lives have been and will continue to be enriched because of Gail Patrick Jackson Velde ... a Delta Zeta sister who left a legacy that others may continue to walk in the light of the Flame.

Flame Eternal

ALPHA

Charlotte Wells Kunst '36
Shirley Chase Champ '49

GAMMA

Ruth Freehauf Egermayer
Dorothy McCarthy Fishbaugh '24
Rauha Laulainen Hagemeister '27

DELTA

Hazel McNary Thompson '25

EPSILON

Hazel Sarles Hogan '17

THETA

Adeline Thomas '18

IOTA

Geneva Kuppinger Thornberg '32

LAMBDA

Helen Licht Lovett '31

MU

Estelle Hennigan Lamb '42
Eileen Fourcade McNichol '23

SIGMA

Dorothy Brock Ryland '37

TAU

Sharon Saffell Edwards '66
Elma Morrissey Wake '29

CHI

Alice Gilstrap Whisler '22

PSI

Mary Frances Gilbert '28

ALPHA ALPHA

Georgianna Verville Hilliard '30

ALPHA BETA

Angeline Tarry Mumsen '34

ALPHA PI

Ethel Howle Waldrop '35

ALPHA SIGMA

Mary Frances Wilson '44
Neita Wright Sinclair '37

ALPHA UPSILON

Charlotte Lenentine Melvin '50

ALPHA CHI

Dorothy Howard Wallace '26

BETA GAMMA

Henrietta Redding Wheeler '32

BETA NU

Caroline Dilg Thompson '35

BETA XI

Laura Watt Hanson '17

BETA UPSILON

Diane Bourgeois Campoy

BETA PHI

Amaryllis Pickett Barnes

GAMMA EPSILON

Myrtle E. Nelson '34

GAMMA CHI

Dorothy Anderson Beeman '27

DELTA DELTA

Leigh Dabney Hayes

DELTA SIGMA

Sharon Saffell Edwards '66

DELTA UPSILON

Pauline Dunfee Douthat '24

ZETA KAPPA

Mildred Luna Henning

THETA BETA

Florence Worth Bagley '55

IOTA RHO

Katherine Grace Clapper '71

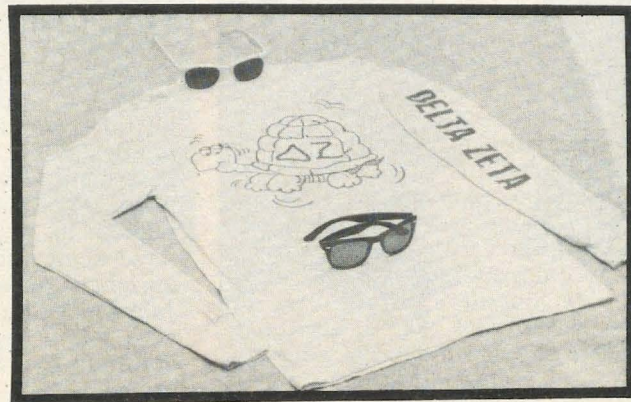
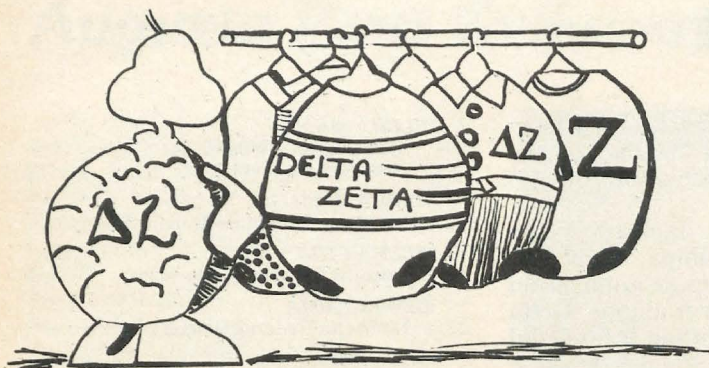


Delta Zeta is saddened to learn of the death of Amaryllis Pickett Barnes, Oglethorpe-BΦ on September 19 in Atlanta. Amaryllis served on National Council from 1975 to 1979 as a Director and was College Chapter Director at Georgia State-ΔΔ chapter for 23 years. She received the Achoth Award at the 1962 Convention.

Amaryllis is survived by her husband Ray, a son and two grandchildren.

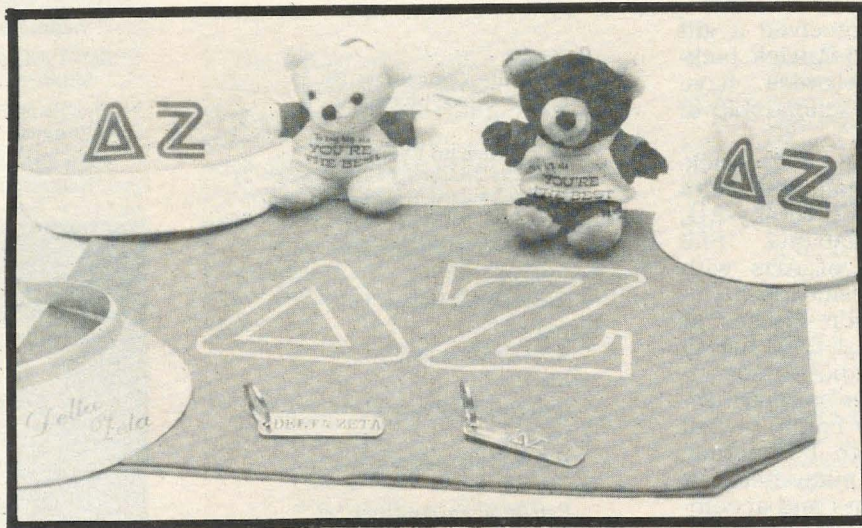
Go In Style! With C.B.E.

sportswear and accessories.



- 1001-5" Plush Polar or Traditional Bear with Lil Sis T-Shirt (Please Specify) \$4.95
- 1002-5" Plush Polar or Traditional Bear with Big Sis T-Shirt (Please Specify) \$4.95
- 981-Oversized Canvas Tote Bag, 12 ounce heavy duty canvas, 18" x 20" with web straps and squared off bottom for extra room \$8.00
- 957-White or Pink Visor with Green Letters on Front (Please Specify) \$3.00
- 957P-Pink Plastic Visor \$2.00
- 956-Pink Painters Cap \$2.00
- 985-Brass Keyrings **ΔZ** or Delta Zeta \$5.50

- 958-Pink Beach Towel with Large Turtle 36" x 66" \$16.00
- 902-100% Pre-Shrunk Cotton Long Sleeve t-Shirt in Pink with Kelly Turtle-S/M/L/XL..... \$9.00
- 959-Wayfairer sunglasses with Delta Zeta on Frames Black \$5.00 / White \$6.00



CREATIVE BUSINESS EVENTS, INC.				Rt. 9-80B, Gainesville, Ga. 30506		(404) 983-3778	
Name:	ITEM NO.	SIZE	COLOR	Quant.	DESCRIPTION	PRICE	
Address:							
Phone:							
WE HONOR: Master Card () Visa () ◀◀◀ Check One							
EXP. DATE	Credit Card Signature Required		SHIPPING, INSURANCE & HANDLING			ITEM TOTAL	
▼ CREDIT CARD NUMBER ▼			Order Total			SHIP. & HAND. (See Chart)	
			Via Surface			ADD 6 1/2% SALES TAX IF SHIPPED TO CALIFORNIA	
			Via Air			ADD 4% SALES TAX IF SHIPPED TO GEORGIA	
			ADD \$2.50 for each additional \$50.00 for surface. ADD \$5.00 for each additional \$50.00 for air.			GRAND TOTAL ▶▶▶	
PRICES SUBJECT TO CHANGE							
ALL RETURNED CHECKS ARE SUBJECT TO A \$10.00 SERVICE CHARGE. ALL RETURNED CASHES ARE SUBJECT TO A \$5.00 SERVICE CHARGE.							
A PORTION OF EACH SALE WILL GO TO YOUR SORORITY NATIONAL OFFICE.							

Province Days/Weekends

Province III Day was at the Embers Convention Center in Carlisle, PA and Province VIII Day was at the University of Wisconsin/Whitewater, both on November 9.

Province XXIV Day was October 26 at the Center for Professional Development in Tallahassee, FL.

Provinces scheduled for the spring include:

February 22, 1986

- XX Eastern Kentucky at Richmond
- XXII Georgia State at Statesboro
- XXIII Tuscaloosa, AL

March 1, 1986

- I New England
- XV-C Berkeley Marina Marriott
200 Marina Blvd.
Berkeley, CA 94710
Chairman: Wendy LaBounty,
PAD
2099 Janice Drive
Pleasant Hill, CA 94523
(415) 798-8128 Evenings
- XVII Marriott Quorum
14901 Dallas Parkway
Dallas, TX 75240
Chairman: Margaret Sorrells
2625 Lanecrest
Dallas, TX 75228
(214) 324-2033

March 8, 1986

- XXVI University of Central Arkansas,
Conway

April 5, 1986

- II New York & New Jersey
- IV West Liberty State at West
Liberty, WV

- VI Ferris State at Big Rapids, MI
- IX Eastern Illinois University
Delta Zeta House
1528 Fourth Street
Charleston, WV 61920
Chairman: Chris Jacobs
1528 Fourth Street
Charleston, WV 61920
(214) 345-7010
- XI Kansas City, MO
- XII Moorhead State at Moorhead,
MN
Chairman: Jeri Weigand, PCD
6185 Boyer Path
Inver Grove Heights, MN 55075
(612) 455-7791
- XVI Embassy Suites
3332 S. 79th E. Ave.
Tulsa, OK 74145
Chairman: Laura Undernehr
2101 W. 48th Pl.
Tulsa, OK 74107
(918) 446-5493
- XVIII University of Southern
Mississippi at Hattiesburg
- XIX MTSU-Campus Building
Murfreesboro, TN
Chairman: Kathy Ray
Route 8, Box 464
Brandywine Dr.
Murfreesboro, TN 37130
(615) 890-2527

April 12, 1986

- VII Indianapolis, IN

April 19, 1986

- V Ohio State University at
Columbus

For further information, contact the PCD or PAD of the Province.

Happy Birthday to ...

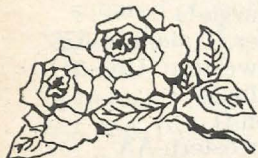
- 75 years Ohio State-Θ
- 70 years Pittsburgh-O •
- Northern Colorado-ΔΞ
- Northwestern (OK)-ΔO
- 65 years Franklin-Ψ
- Oregon-Ω
- Northwestern-AA
- Illinois-AB
- Northeast Missouri-ΔΣ
- 60 years Fort Hays State-ΔΩ
- 55 years Iowa State-BK
- 50 years Wisconsin/Whitewater-EK
- 25 years East Carolina-ZΛ
- Ferris State-ZN
- Lenoir Rhyne-ZΞ
- Wisconsin-LaCrosse-ZO
- William Jewell-ZP

Twin Cities, MN alumnae hosted a reception recently for National Historian Florence Hood Miner. An antique loving cup was presented to Florence to deliver to the National Historical Museum. This cup was awarded to the Gamma chapter at the University of Minnesota in 1931 for "first prize in Homecoming floats." Pictured with Florence are June Shepherdson Barnhill and Myrtle Bloemers Johnson, both of Minnesota-Γ.





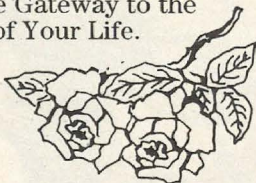
FMF Trustee Joan Dondrea Lowry presents the Margaret Huenefeld Pease Award for college chapter excellence in local philanthropy to Patricia Hanna of Bowling Green-ΓΤ.



Hanging in the Louisville-BF house is a printed scroll that best summarizes sisterhood:

DELTA ZETA

With love in our Hearts
For we have Chosen You as You
Have Chosen Us ...
With Trust in the Strength of Your
Character
Which was already established
Before we met you ...
With Faith in Your Scholarship
For Education Brought us Together
And in Knowledge there is
Everlasting Freedom.
We will Guide You as You will
Inspire Us.
We are your hearth-side at School ...
Your Big Sisters ...
Your Solace ...
Your Cheering Section ...
We Stand at the Gateway to the
Best Times of Your Life.



FOUNDERS MEMORIAL FOUNDATION "ADVENTURES IN FRIENDSHIPS" AWARDS (Presented at National Convention)

COLLEGIATE AWARDS:

LISBETH INNIS FRANCIS AWARD for Chapter Excellence in Overall Philanthropy - Texas A&M University-ΛΞ

MARGARET HUENEFELD PEASE AWARD for Chapter Excellence in Local Philanthropy - Bowling Green State University-ΓΤ

ALUMNAE AWARDS:

KATIE BLANCHE MASTERS STALLWORTH AWARD for Top \$ Chapter Benefit (Large Alumnae Chapter) - Cleveland Eastside, Ohio

KATIE BLANCHE MASTERS STALLWORTH AWARD for Top \$ Chapter Benefit (Small Alumnae Chapter) - Los Angeles, California

GAIL PATRICK JACKSON AWARD for Chapter Excellence in Overall Philanthropy - Pasadena Foothills, California

MYRTLE GRAETER HINKLY AWARD for Chapter Excellence in Local Philanthropy - Northeastern, New Jersey

BETTER HEARING AND SPEECH MONTH

As a sponsoring member of the Council for Better Hearing and Speech Month the Founders Memorial Foundation is a part of the consortium of national organizations that have pooled their resources and expertise to bring a message of hope and available help for children and adults with hearing, speech, and language disorders through the an-

nual observance of Better Hearing and Speech Month each May. Look for Delta Zeta's name in all of the national publicity. More than 60 magazines, including such diverse publications as *Newsweek*, *Life*, *Ladies Home Journal*, *Sports Illustrated*, *Cosmopolitan*, and *Glamour* will bring our message to America.

HAVE YOU CHANGED YOUR NAME OR ADDRESS?

Please print or type and mail to Delta Zeta Sorority, 202 East Church Street at Campus Avenue, Oxford, OH 45056. Members should use parents' address while in college.

IMPORTANT. You must cut out the mailing label from this issue and paste it here.
We cannot process changes without your label. Thank You.

I am currently a Delta Zeta Officer. Title _____

My new address will be _____
street/apt. #

city/state/ZIP _____ effective date _____

If mailing label does not show your married name, please include the following information for our membership files.

Married name _____ Husband's first name _____ Date of marriage _____

CONGRATULATIONS TO THE #1 RANKING
ACADEMIC CHAPTERS BASED ON 1985 REPORTS



PROVINCE II

Glassboro State College-ΞK
University of Rochester-ΛI
Trenton State University-ΛΛ

PROVINCE III

Drexel University-EZ
Kutztown University-KP
Muhlenberg College-ΞI
Robert Morris College-ΞX

PROVINCE IV

University of Charleston-ZT
West Virginia Tech-III

PROVINCE V

Findlay College-ΘT
Wittenberg University-BX
Youngstown State University-KX

PROVINCE VI

Northwood Institute-ΞH

PROVINCE IX

Bradley University-ZA
DePaul University-ΘΘ

PROVINCE X

Nebraska Wesleyan University-BT

PROVINCE XI

University of Missouri/St. Louis-IΞ
Northeast Missouri State University-ΔΣ

PROVINCE XII

Morehead State University-ΘN

PROVINCE XIV

University of Denver-P

PROVINCE XVI

Northeastern (Oklahoma) State University-ΔΦ
Northwestern (Oklahoma) State University-ΔO

PROVINCE XVII

Angelo State University-ΛO
Pan American University-ΘO

PROVINCE XVIII

Nicholls State University-KA

PROVINCE XX

Atlantic Christian College-ΘΩ

PROVINCE XXIII

University of Alabama/Huntsville-AK

PRIDE IS INSTILLED BY ACADEMIC SUCCESS

From the Lampwriter

And more convention...The unsung group called Convention Committee was overlooked in acknowledgements in the last *LAMP*. And who put the whole thing together? Our belated thanks and sincere apology to those behind-the-scenes tireless individuals who made this one of the best Conventions ever! Headed by Norma Minch Andrisek as 1985 Convention Chairman, her coordinators were Betty Barbieri Bragg, Lynnda Wolf Hoefler, Judy Sherin Kline, Jean McClurg Southworth and Cindy Winslow.

In addition, Norma was Credentials Chairman, Lynnda was Chairman of the Guards and Cindy was in charge of Registration. Other committee chairmen included Jan Eisler Havener, Courtesy Resolutions; Elizabeth Baker Devereaux, Election and Tellers; Karen Kind Manuel, Initiation; Merry Westbrook Adamcik, Courtesy; Diane Jones Skelton, *Lampkin*; Susan Mease, Marketplace; Carol Carson Konet, Music; Arlene Newman Marshall, Nominating; Mary Malone Snider, Pages; Gwen Moss McKeeman, Picture Arrangements; Ann Pearson Sunderlin, Publicity; Sondra Golden Bass, Resolutions, Sarah Jane Shank Houston, Rose Shop and Lisbeth Innis Francis, Standing Rules. Susan Norman was Scottsdale Convention Coordinator and of course the Phoenix alumnae manned the Hospitality area.

Members of the Dallas Alumnae Chapter met recently with the staff of the Autistic Treatment Center of Richardson, Texas, to present a check for \$5,000.00, proceeds of the Ninth Annual Charity Silent Auction and Wine Tasting. Chapter members were given a tour of the teaching homes operated by the Center, and provided refreshments for the reception. The Center provides service to autistic children and adults afflicted with autism, a baffling syndrome for

which neither cause nor cure is known.

The Annual Charity Silent Auction and Wine Tasting was held in the spring at the Fairmont Hotel. Members solicited local businesses and services for items for the Silent Auction, while wines and speakers were provided by members of the Texas Grape Growers Association. The 10th annual gala is scheduled for April of 1986, with proceeds to benefit both the Autistic Treatment Center and the House Ear Institute.

The Oklahoma City alumnae chapter co-sponsored their first annual Easter Seals Golf Tournament recently and even though members were nervous about trying a new philanthropy project (those who had never even held a golf club were particularly frightened) the tournament was a huge success. The event surpassed previous fundraisers by netting \$4,300 and proceeds will benefit the Oklahoma Society for Crippled Children for hearing and speech-related equipment projects.



Amelia "Cissy" Oles Lennon, Miami-BN, Cecilia Sharp, Oklahoma State-AE and Deanna Alleman McKinnon, Texas-AT were on hand for the Easter Seals Golf Tournament sponsored by Oklahoma City alumnae chapter.

The Lampwriter has been hearing from Delta Zeta authors here and there.

EVELINE MOUZE KENNEY, California-M, and DOROTHY DELAVAN COON, USC-AI, who have served as alternate and delegate to the San Francisco Alumnae Panhellenic for over 20 years, are pleased to announce publication of a book concerning the history and architecture of San Francisco churches and sacred places. Both Eveline and Dorothy were in on the basic research for this book and have served on various committees as the work progressed.

For more than a decade members of the San Francisco Alumnae Panhellenic have donated their time and talents in the research, development and fundraising activities necessary for the publication of *Sacred Places*. This unique book, conceived as a local history, public service project, benefits Panhellenic scholarship funds and provides a positive image of sorority women in the community. The introductory offer is \$28 a copy, handling and tax included. Checks should be made payable to San Francisco Alumnae Panhellenic and sent to Mrs. Wendell B. Coon, 1886 - 15th Avenue, San Francisco, CA 94122.

VALERIE GRANT SOKOLOSKY, Oklahoma State-AE, heads Valerie and Company in Dallas, a corporate and personal image consulting firm. A many-talented Delta Zeta, she is a speaker for seminars and workshops and has instructed at various charm and fashion schools. She is a member of American Women in Radio and Television, the Fashion Group, Inc. of Dallas and Detroit, Junior League, Sales and Marketing Executives of Dallas, a board member of the Dallas Christian Women's Club and just recently introduced a new book she wrote called *Seasons of Success*. She also writes and produces a regular fash-

ion segment on ABC television in Dallas. These activities, along with writing her regular newspaper column called "Career Corner," keep her hopping.

DR. JANET L. SCHMELZER, Assistant Professor in the Department of Social Sciences at Tarleton State and a fall 1984 alumna initiate of ΞN chapter is the author of *Where the West Begins*. It is a story of Fort Worth's energetic advance from the days of a cattle town through the era of oil and aviation and today's high tech and finance. The book offers a historical account of how the completion of the Texas and Pacific railroad routes turned a struggling frontier town into a thriving "Cowtown." Janet received all three of her degrees from Texas Christian University. She is active in the Stephenville alumnae club.

PATRICIA KILROY WERDEN, Northern Illinois-IP recently retired from the University of Denver after a 16 year tenure as associate professor of physical education and sports sciences. In the early 70's she instigated a three-pronged health education swing course, covering current issues in drug abuse, sexuality and environmental health before sex or drug education classes were offered by other departments. Recently she published a book entitled *Preventive Health for Those Over 50*. Her book, researched primarily in Sun City, AZ stresses preventive health since "Aging actually begins at conception and continues until death...It is important to note that what we do, or fail to do, in our younger years may not show up until our later years." Pat plans to spend more time with her husband, a retired Lear jet pilot, and their five children, ranging in age from 22 to 35.

It would be impossible to quote text from the multitude of letters that cross my desk, but this one I

felt should be shared with you. It is from Don Egermayer of Carlsbad, CA, and he writes:

"I am perhaps taking an unwarranted long letter to advise the fact that you should erase the name of Ruth Freehauf Egermayer from your mailing list. She died June 4 from complications of Osteoporosis, after being bedridden for somewhat over 5 years. And after 51 years, 2 months and 25 days of marriage — all to one husband who misses her terribly.

"However, I thought that you might be slightly interested in some facts regarding her past adult life. This thought was generated by the cover photo of your last issue, - the young Saguaro cactus, and your convention in Arizona.

"For several years just before WWII, Ruth and I lived at the Saguaro National Monument, 17 miles east of Tucson, where I was the then titled "custodian" for the National Park Service. We were the only people living in that Monument area (66,000 acres) except for my fire lookouts during the summer months. She received, and talked to, the Monument visitors when I was not at the Headquarters, there being no one else to do so. She, on one occasion when I was on a forest fire on top the Rincon Mountains, went into town, got on the local radio and broadcast for additional fire fighters, rented a truck, bought extra tools, hired horses and sent the crew up the mountain to help me.

"She spent quite a few nights alone, with her handgun under her pillow, and was a very fine shot with it, although never needed. She had learned to shoot after we moved to Arizona in 1935, and was the Woman's State Rifle Champion (small bore) in 1937, 38, 39 and 40. In 1940 in the rain at Phoenix she fired a possible score of 400 - 400 to win the State Individual Smallbore Championship and the Henry Trophy - beating all of us men. (In fact, she usually outshot me, although we did win with two others, the four-man team championship the same

year).

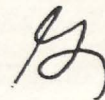
"During WWII she was the second women mechanic hired by Ryan Aeronautics to help maintain the cadet-training aircraft at Ryan Field. Later, she worked for Convair in the Tucson Modification Center, checking hydraulic systems on B-24 aircraft, and finally became head of the Hydraulic Inspection section there.

"After the war (I had been in the Army Air Forces) we returned to Saguaro, but to a much different environment and the Park Service had added staff, built new quarters and Ruth no longer had to talk to visitors, although she often did. And she no longer had to change tires on a truck to come to get her husband, broken down 20 miles from anywhere (it seems we did have radio, although no telephone until after the war.) Then we even had AIR CONDITIONING as well as electricity and running water.

"Of all our life together I think the best years were at Saguaro, so in a few weeks I intend to take her ashes over there to scatter among the giant Saguaro cacti. It is silly, no doubt, and will not benefit her; but it will me. Have been waiting for the cooler weather this fall as I did not think it advisable to take a rather bad heart over there in the usual summer 100+ degree heat.

"Excuse the running-off-at-the-mouth, but I thought perhaps you might be interested in a few highlights of one of your older alumnae. She would have been 76 next month. She loved Delta Zeta, but we never were living where she could have done any degree of contact."

Thank you for writing, Don Egermayer. Delta Zeta is made up of thousands just like your Ruth! Ruth was a member of Minnesota-I chapter.



Directory

NATIONAL COUNCIL

President: Mary Margaret Calhoun Fore (Mrs. Sam L.), 459 Summit Circle, Fredericksburg, TX 78624
Vice President of Membership: Teresa Johnson Severy (Mrs. Raymond), 2127 Northampton Way, Lansing, MI 48912
Vice President of Alumnae Affairs: Charlotte Fields Silversteen (Mrs. Allan), 513 Toll Road, Orelan, PA 19075
Vice President of Collegiate Affairs: Marvona Easley Tavlin (Mrs. Michael), 10518 South Urbana, Tulsa, OK 74137
Secretary: Phyllis Snape Favorite (Mrs. Robert D.), 570 Lancashire Lane, State College, PA 16803
Treasurer: Patricia Canady Rosser (Mrs. David), 1609 Indian Rocks Road, Clearwater, FL 33516
Director: Norma Minch Andrisek (Mrs. J.R.), 319 Janice Drive, Berea, OH 44017
Director: Elizabeth Barbieri Bragg (Mrs. Lawrence), 2962 Leopold Avenue, Hacienda Heights, CA 91745
Director: Anne Marie Jones Gavin (Mrs. William), 3264 Swan Drive, Vineland, NJ 08360
Director: Deanna Alleman McKinnon (Mrs. M.L.), 12109 Victoria Place, Oklahoma City, OK 73102
Director: Sandra McAlister Nesbitt (Mrs. Milton), 241 Landmark Drive, Montgomery, AL 36117
Past National President/National Panhellenic Conference Delegate: Carolyn Barnes Gullatt (Mrs. John.), 4008 Hyridge, Austin, TX 78759
National Panhellenic Conference Alternates:
Mary Margaret Calhoun Fore (Mrs. Sam L.)
Teresa Johnson Severy (Mrs. Raymond)
Norma Minch Andrisek (Mrs. J.R.)
Parliamentarian: Lucile Crowell Cooks (Mrs.), 7400 Sun Island Drive S., Apt. 404, South Pasadena, FL 33707

NATIONAL HEADQUARTERS

Delta Zeta National Headquarters: 202 E. Church Street at Campus Avenue, Oxford, OH 45056. Cindy Winslow (513) 523-7597
Field Representatives: Janet Bailey, Lynn Ciervo, Vivian Cole, Paige Hill, Lauralee Meyer, Anne Moser, Shawn O'Halloran, Pam Summerlin, Laura Vradelis

THE LAMP

Gwen Moss McKeeman (Mrs. Robert), 5517 S. 74th E. Avenue, Tulsa, OK 74145

EXTENSION

Norma Minch Andrisek (Mrs. J. R.), 319 Janice Drive, Berea, OH 44017

DELTA ZETA SUBSCRIPTIONS

Norma Swepston McIntyre, Box 24145, Columbus, OH 43224

FOUNDERS MEMORIAL FOUNDATION

President: Arlene Newman Marshall (Mrs. Norman L.), Rt. 2, Box 78, Port Lavaca, TX 77979
Secretary: Betty Paul DeWitt (Mrs. Norman), 23630 Oakrest Lane, Harbor City, CA 90710
Treasurer: Katey Bosworth Sandy (Mrs. Jonathan), 18630 NW Tolovano, Portland, OR 97229
Members: Joan Dondrea Lowry (Mrs. Bob-Bill), 578 Yarmouth Lane, Bay Village, OH 44140, Elizabeth Barbieri Bragg (Mrs. Lawrence), 2962 Leopold Avenue, Hacienda Heights, CA 91745
Committees:
Elizabeth Coulter Stephenson Scholarships: Sarah Jane Shank Houston (Mrs. Harold), 3358 Ramblewood Place, Sarasota, FL 33577
Undergraduate Scholarships: Donna Edwards Happ (Mrs. William V.), 135 Andora Way, San Diego, CA 92129
Graduate Scholarships: Glenna VanderMeer Paukstis (Mrs. Charles), 1304 Lake Park, Birmingham, MI 48009
Gallaudet College: Lucille Bolstad May (Mrs. Leland B.), 5100 Dorset Avenue, #406, Chevy Chase, MD 20815
House Ear Institute: Betty Paul DeWitt (Mrs. Norman), 23630 Oakrest Lane, Harbor City, CA 90710

NATIONAL HISTORICAL MUSEUM BOARD OF TRUSTEES

President: Lucile Crowell Cooks (Mrs.), 7400 Sun Island Drive S., Apt. #404, South Pasadena, FL 33707

PROVINCE COLLEGIATE AND ALUMNAE DIRECTORS

I. Maine, Massachusetts, Vermont, New Hampshire, Connecticut and Rhode Island

PCD: Refer to Carolyn Gullatt, PCD Coordinator

PAD: Sandra Riddervold (Miss), 77 Powers St., Milford, NH 05055

II. New York and New Jersey

PCD: Sylvia Lounsberry Fix (Mrs. Wayne), 36 Crystal Springs Lane, Fairport, NY 14450

PAD: Cynthia Schafer Plucinski (Mrs.), 34 Tinker Dr., Mount Holly, NJ 08060

III. Pennsylvania and Delaware

PCD: Judith Sherin Kline (Mrs. Patrick E.), 207 Robinwood Dr., Hagerstown, MD 21740

PAD: Diane Dershem Kreider (Mrs. Edward), 6204 Elmer Avenue, Harrisburg, PA 17112

Trustees: Norma Minch Andrisek (Mrs. J. R.), Secretary, 319 Janice Drive, Berea, OH 44017; Elizabeth Baker Devereaux (Mrs.), 18 Pembroke Lane, Huntington, WV 25705; Grace Pritchard Gorham (Mrs.), Treasurer, 1510 East 31st St., Tulsa, OK 74105; Carolyn Barnes Gullatt (Mrs. John H.), Vice President, 4008 Hyridge, Austin, TX 78759; Betsy Bradley Leach (Mrs.), 1244 Valley View Rd., #116, Glendale, CA 91202; Florence Hood Miner (Mrs. Arthur), 1040 H Avenue, Nevada, IA 50201; Doris Ellingson Riede (Mrs. Robert), Box 108, 107 E. Moore St., Caledonia, MI 55921; Mary Lou Ragel Vineyard (Mrs. Phillip W.), 4998 62nd Avenue, S., St. Petersburg, FL 33715

HISTORIAN EMERITUS

Grace Mason Lundy (Mrs. H. M.), 3207 N. 25th St., Phoenix, AZ 85016

STANDING COMMITTEES

Awards (Alumnae and Collegiate): Marcia Earl Humpal (Mrs. David), 26798 Mangrove Lane, Olmsted Falls, OH 44138
Colonnade Clubs: Mary Ann Gallatin French (Mrs. John), 2322 N.W. 58th Circle, Oklahoma City, OK 73112
Constitution and Bylaws: Elizabeth Baker Devereaux (Mrs.), 18 Pembroke Lane, Huntington, WV 25705
Finance: Patricia Canady Rosser (Mrs. David), Chairman, Carolyn Barnes Gullatt, Norma Minch Andrisek, Phyllis Snape Favorite, Anne Marie Jones Gavin
Housing Projects: Sue Jones-Allen (Mrs. Tom), 2415 Custer Cove, Richardson, TX 75080
Regional Housing Chairmen: Sandra Sebrell Bailey (Mrs. Bruce), 639 N. Portage Path, Akron, OH 44303
Connie Burns Baird (Mrs. James), 9039 Gunnison Drive, Dallas, TX 75231
Anne Corson Hathaway (Mrs. W.), 4 N. Main St., #F2, Orono, ME 04473
LaDonna Johnson (Miss), 9511 NE 120th St., Apt. D22, Kirkland, WA 98034
Kathleen Johnson Sledge (Mrs. Joe W.), 17 The Downs, Tuscaloosa, AL 35401
Insurance: Anne Marie Jones Gavin (Mrs. William), 3264 Swan Drive, Vineland, NJ 08360
Ways and Means: Sandra McAlister Nesbitt (Mrs. Milton), 241 Landmark Drive, Montgomery, AL 36117
Bed and Breakfast: Diane Gabbart Harris (Mrs. George), 6316 Marina Pacifica Drive, Long Beach, CA 90803
History: Florence Hood Miner (Mrs. Arthur), 1040 H Avenue, Nevada, IA 50201
Judiciary: Dianne Fellows Guild (Mrs. Douglas), 16 Andrews Drive, South Burlington, VT 05401
Membership Education/Pledge Education: Phyllis Snape Favorite (Mrs. Robert), 570 Lancashire Lane, State College, PA 16803
Sorority Education: Ellen Kroll Jenkins (Mrs. Paul), 1101 Ramblin Court, Greenwood, IN 46142
Music: Carol Carson Konet (Mrs. Glen), 15568 Cottonwood Oval, Cleveland, OH 44130
Philanthropy: Joan Dondrea Lowry (Mrs. Bob-Bill), 578 Yarmouth Lane, Bay Village, OH 44140
Alumnae Coordinator: Priscilla (Pat) Beatty (Miss), 3691 NW 95th Terrace, Apt. 1202, Ft. Lauderdale, FL 33321
Collegiate Coordinator: Linda Regner (Miss), 13702 Dowdais Drive, Rockville, MD 20853
Ritual: Karen Kind Manuel (Mrs.), 36 Rilling Ridge Road, New Canaan, CT 06840

COMMITTEES

Alumnae:
Alumnae Relations: Deanna Alleman McKinnon (Mrs. M. L.), 12109 Victoria Place, Oklahoma City, OK 73102
Programs: Joyce Low London (Mrs. John), P.O. Box 6458, Las Cruces, NM 88006
Networking: Kay Morrow Wright (Mrs. Terry), 10477 Juan Calle, Des Moines, IA 50322
Collegiate:
Academics: Marvona Easley Tavlin (Mrs. Michael J.), 10518 South Urbana, Tulsa, OK 74137
Activities: Tina Vernacchia (Miss), 5452 Bradford Ct., #232, Alexandria, VA 22311
Enrichment: Jane Daily Snyder (Mrs. Eric J.), 13127 Gascogne Court, Creve Coeur, MO 63141
Social: Beth Balreich Wexler (Mrs. William C.), 1205 Greendale Avenue, Bryan, OH 43506
Newsletter: Susan Mease (Ms.), 1413 Cumbie Avenue, Orlando, FL 32804
Public Relations: Elizabeth Barbieri Bragg (Mrs. Lawrence), 2962 Leopold Avenue, Hacienda Heights, CA 91745
References: Alberta Doran Curran (Mrs. Tom), 116 Dublin Woods Drive, Cary, NC 27511

IV. West Virginia

PCD: Lisa Bergeria Blankenship (Mrs. Glen), 208 N. State St., Athens, WV 24712

PAD: Linda Broughman Templeton (Mrs. Robert), 20 Kings Highway, Huntington, WV 25705

V. Ohio

PCD: Lynnda Wolf Hoefler (Mrs. Robert), 1287 Denise Drive, Kent, OH 44240

PAD: Lois Randolph Nesgoda (Mrs. Leonard), 5652 Alberta Dr., Lyndhurst, OH 44124

VI. Michigan

PCD: Kim Petrella (Miss), 406 Fisher Court, Clawson, MI 48017

PAD: Pamela McClure Cronenwett (Mrs. William), 25720 West Hills Drive, Dearborn Heights, MI 48125

VII. Indiana

PCD: Elizabeth Petrucce (Miss), 4502 Candletree Circle #2, Indianapolis, IN 46254

PAD: Gelaine Listenberger Smock (Mrs. Steven), 9561 E. Southport Road, Indianapolis, IN 46259

VIII. Wisconsin

PCD: Donna Skotnicki Agnelly (Mrs. Edward), 420 Racine Ave., Waterford, WI 53185

PAD: Rochelle Lebahn Andress (Mrs. Brad), 1533 Camelot Blvd., Sheboygan, WI 53081

IX. Illinois

PCD: Valerie Trigg Craig (Mrs. Robert), 344 Indianwood Blvd., Park Forest, IL 60466

PAD: Gail Easley McKee (Mrs. Don), 776 10th Street, Charleston, IL 61920

X. Iowa and Nebraska

PCD: Barbara Tweed Holland (Mrs. George), 287 Village Dr., Ames, IA 50010

PAD: Roberta Poppinger Buhl (Mrs. Dale), 1711 NW 99th Court, Clive, IA 50322

XI. Missouri

PCD: Dana McMillan (Miss), 3543 Central #2, Kansas City, MO 64111

PAD: Eileen Hoffman Doe (Mrs. Larry), 2 Locust Drive, Florissant, MO 63031

XII. Minnesota, North Dakota and South Dakota

PCD: Jeri Seals Weigand (Mrs. Gregg), 6185 Boyer Path, Invergrove Heights, MN 55075

PAD: Sylvia Lee Kafkas (Mrs. John), 3505 Humboldt Ave., South, Minneapolis, MN 55408

XIV. Colorado and Kansas

PCD: Janet Eisler Havener (Mrs. Gary), 4343 N. Sheridan Avenue, Loveland, CO 80537

XIV-E. Kansas Alumnae Chapters

PAD-E: Carolyn McCandless Woodling (Mrs. Charles), 3112 Creekwood, Lawrence, KS 66044

XIV-W. Arizona, Colorado, New Mexico, Utah and Wyoming Alumnae Chapters, except Las Cruces, NM.

PAD-W: Mary Jo Harriss Messlin (Mrs. Carl), 2998 S. Akron Court, Denver, CO 80231

XV-S. Southern California, Southern Nevada and Hawaii

PCD: Karen Martin Dessel (Mrs. Tom), 2015 Studebaker Road, Long Beach, CA 90815

PAD: Barbara Phillippi Lancaster (Mrs. Richard), 4923 Libbet Avenue, Van Nuys, CA 91436

XV-C. Northern California and Northern Nevada

PCD: Susan Kelly Warren (Mrs. Robert), 212 Farm Lane, Martinez, CA 94553

PAD: Wendy Wood LaBounty (Mrs. William), 2099 Janice Drive, Pleasant Hill, CA 94523

XV-N. Oregon, Washington, Montana, Idaho and Alaska

PCD: Susan Kelly Warren (Mrs. Robert), 212 Farm Lane, Martinez, CA 94553

PAD: Helga Kohlenberg Clark (Mrs. William), 4866 123rd Place S.E., Bellevue, WA 98006

XVI. Oklahoma

PCD: Mary Malone Snider (Mrs. Charles), 2120 Columbus, Muskogee, OK 74401

STATE REFERENCE CHAIRMEN

ALABAMA: Lottie Ricker Nunnally (Mrs. Mark), 1365 Dearing Down Circle, Helena, AL 35080 **ALASKA:** Deborah Welch Jackson (Mrs. Randy), 435 E. Dyea Avenue, Fort Richardson, AK 99505 **ARIZONA:** Judy Hurley Gustafson (Mrs. Terry), 8431 E. Belgian Trail, Scottsdale, AZ 85258 **ARKANSAS:** Jeania Standridge Evans (Mrs. Jerry), Rt. #2, Box 530, Russellville, AR 72801 **CALIFORNIA (North):** Martha Henry Burde (Mrs. Walter), 24685 Camino del Monte, Carmel, CA 93923 **CALIFORNIA (South):** Janet Breitweiser Savage (Mrs. Tom), 5102 Woodwind Lane, Anaheim, CA 92807 **COLORADO:** Diane Vyhnaek (Miss), 13625-B E. Yale Ave., Aurora, CO 80014 **CONNECTICUT:** Ann Collins Gill (Mrs. Edward), 53 High Point Rd., Westport, CT 06880 **DELAWARE:** Charlotte Day Fehnel (Mrs. Richard), Box 433, Chadds Ford, PA 19317 **DISTRICT OF COLUMBIA:** Pat Dansbury (Miss), 1722 19th St. NW #501, Washington, D.C. 20009 **FLORIDA:** Cindy Brown Helton (Mrs. Charles), 1601 Berkshire Ave., Winter Park, FL 32789 **GEORGIA:** Lynn Williams (Miss), 1209 Shadowood Parkway, Atlanta, GA 30339 **HAWAII:** Dorothea Bettencourt Ovio (Mrs.), 45-109 Kokokahi Place, Kaneohe, HI 96744 **IDAHO:** Rilla Soderstrom Perala (Mrs. George), 8800 Craydon Dr., Boise, ID 83704 **ILLINOIS:** April Giles Giesking (Mrs. William), Box 48, Altomont, IL 62411 **INDIANA:** Karen Manley Davies (Mrs. Roger L.), 869 Ridge Dr., Terre Haute, IN 47803 **IOWA:** Alaire Swedlund Bornholtz (Mrs. Tim), 4534 Perry Way, Sioux City, IA 51104 **KANSAS:** Kay Koger Lauer (Mrs. William), 120 Mulberry, Cottonwood Falls, KS 66845 **KENTUCKY:** Lisa Rullman McAfee (Mrs. Jay E.), 3544 Creekwood Drive, #20, Lexington, KY 40502 **LOUISIANA:** Jane Weaver Mathes (Mrs. Jimmy), 12538 Sherbrook Dr., Baton Rouge, LA 70815 **MAINE:** Denise A. Pitt (Miss), 23 Lindale Avenue, Biddieford, ME 04005 **MARYLAND:** Pat Dansbury (Miss), 1722 19th St. NW #501, Washington, D.C. 20009 **MASSACHUSETTS:** Mary Catherine Davis (Miss), 25 Bayberry Circle, Millis, MA 02054 **MICHIGAN:** Janelle Kiszka (Miss), 2417 Altoona St., Flint, MI 48504 **MINNESOTA:** Mrs. Karen Davis, 207 Maple, #2, St. Paul, MN 55116 **MISSISSIPPI:** Lanelle Long McLeod (Mrs. James), 290 Fanning Landing Circle, Brandon, MS 39042 **MISSOURI:** Michaela K. Kerns (Miss), 10540 Washington #304, Kansas City, MO 64114 **MONTANA:** Jackley Meyers (Miss), 212 N. Ewing, #4, Helena, MT 59601 **NEBRASKA:** Carole Sorensen (Miss), 3027 W. Capital Ave., #26, Grand Island, NE 68801 **NEVADA:** Lori Figgins (Miss), 647 Peppertree Circle, Henderson NV 89015 **NEW HAMPSHIRE:** Sandra Riddervold (Miss), 140 Silver St., Greenfield, MA 01301 **NEW JERSEY:** Debra Bass (Miss), 357 Shea Dr., New Milford, NJ 07646 **NEW MEXICO:** Cheeta Northrip McMurtry (Mrs.), 2507 Baylor Ave., Alamogordo, NM 88310 **NEW YORK:** Mary Frances Sims (Miss), 95B Ball Road, Syracuse, NY 13215 **NORTH CAROLINA:** Beth Cardo Harris (Mrs. Jeff), 3301 Johnnycake Lane, Charlotte, NC 28226 **NORTH DAKOTA:** Karen Clark Davis (Mrs. Leigh), 207 Maple, #2, St. Paul, MN 55116 **OHIO:** Sandra Sebrell Bailey (Mrs. Bruce), 639 N. Portage Path, Akron, OH 44303 **OKLAHOMA:** Pattie Cantrell Hulsey (Mrs. Stephen), 3912 S. Union, Tulsa, OK 74107 **OREGON:** Barbara Kersch Hamilton (Mrs. W. B.), 12601 S.E. Market, Portland, OR 97233 **PENNSYLVANIA:** Debbie Fries (Miss), 1060 Oldstone Road, Allentown, PA 18103 **RHODE ISLAND:** Jill Morris Marshall (Mrs. Robert III), 109 Pinecrest Drive, Pawtucket, RI 02861 **SOUTH CAROLINA:** Susan L. Jones (Miss), Rt. 8, Box 280F, Rock Hill, SC 29730 **SOUTH DAKOTA:** Doris Dalin Huffman (Mrs. Richard, Jr.), 1535 S. State Street, Aberdeen, SD 57401 **TENNESSEE:** Joyce Lockhart Gary (Mrs. Wallace), 1347 Greendale Ave., Memphis, TN 38127 **TEXAS:** Ann Clay Hawkins (Mrs. Jerry), 103 Live Oak Lane, Lake Jackson, TX 77566 **UTAH:** Jean Peters Christensen (Mrs. William), 1669 Yalecrest Ave., Salt Lake City, UT 84105 **VERMONT:** Pat Perreboom Hoefler (Mrs. David), 22 Hillwinds, Brattleboro, VT 05301 **VIRGINIA:** Ann Campbell Pardue (Mrs. Mark), 12 S. VanDorn #V403, Alexandria, VA 22304 **WASHINGTON:** Karen Fellows Soyk (Mrs. Lon), 31033 38th Ave., South, Auburn, WA 98002 **WEST VIRGINIA:** Cheryl Snodgrass (Miss), 1 St. Charles Place, Charleston, WV 25314 **WISCONSIN:** Lynn Brockmeyer Grosskreutz (Mrs. John), Rt. 1, Box 14AC, Homeberg Lane, Whitewater, WI 53190 **WYOMING:** Donna McElroy Frerichs (Mrs. William), 3301 Alta Vista Drive, Laramie, WY 82070

PAD: Melissa Smith Denton (Mrs. Butch), 1200 Windmill Road, Oklahoma City, OK 73132

XVII-N. Texas, New Mexico Collegiate Chapters, Texas and Las Cruces, NM Alumnae Chapter

PCD: Janet DeBrecht Tyler (Mrs. Patrick), 3705 Pimlico, Arlington, TX 76017

PAD-N: Donna Hudson Dunn (Mrs. Jeffrey), 3207 Quail Lane, Arlington, TX 76016

XVII-S. Texas

PCD-S: Merry Westbrook Adamcik (Mrs. Roy), 614 Rozelle Avenue, Sugarland, TX 77578

PAD-S: Ann Butler Booth (Mrs. W. Ray), 14735 Oak Bend, Houston, TX 77079

XVIII. Louisiana and Mississippi

PCD: Virginia Schattner Bryan (Mrs. Larry), 2404 Brownlee Dr., Bossier City, LA 71111

PAD: Ida Marie Carter Nelson (Mrs. John), 126 Fremont Avenue, Shreveport, LA 71105

XIX. Tennessee

PCD: Clara Schnakenberg Smith (Mrs. Dale), 310 Cotton Road, Franklin, TN 37064

PAD: Violet Henson Anderson (Mrs. Charles A.), 102 Blue Hills Ct., Nashville, TN 37214

XX. Kentucky

PCD: Jennifer Plenge (Ms.), 904 Dana Marie Drive, Louisville, KY 40223

PAD: Carol Sharpe Harper (Mrs. Spencer E., Jr.), 3309 Green Hill Lane, Louisville, KY 40207

XXI. South Carolina and North Carolina

PCD: Sondra Golden Bass (Mrs. J. Albert, Jr.), 6425 Chapman Court, Raleigh, NC 27612

PAD: Patricia Menendez Tector (Mrs. John), 907 Winslow Court, Cary, NC 27511

XXII. Georgia

PCD: Sue Adrianson Skambis (Mrs. Christopher), 836 Lake Adair Blvd., Orlando, FL 32804

PAD: Marge Klingensmith Lovewell (Mrs.), 96 The Prado NE, Atlanta, GA 30309

XXIII. Alabama

PCD: Sandra McAlister Nesbitt (Mrs. Milton), 241 Landmark Dr., Montgomery, AL 36117

PAD: Lissie Jo Rounds Simms (Mrs. Jack), 208 Willow Creek Rd., Auburn, AL 36830

XXIV. Florida

PCD: Sue Adrianson Skambis (Mrs. Christopher), 836 Lake Adair Blvd., Orlando, FL 32804

PAD: Barbara Bohrlinger Turner (Mrs. James), 6543 Blvd. of Champions, North Lauderdale, FL 33068

XXV. Virginia, Maryland, Washington, D.C.

PCD: Gail Lutz Verley (Mrs. William), 4727 North Arlington Blvd., Arlington, VA 22203

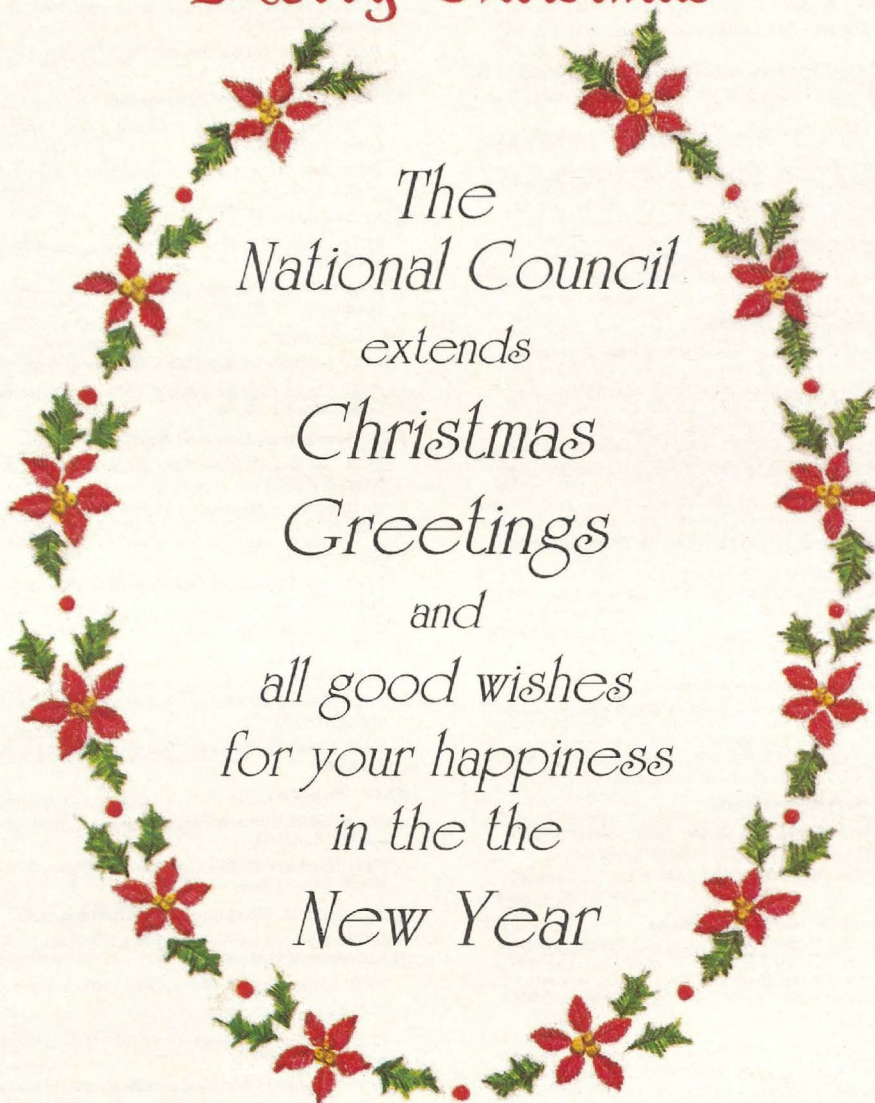
PAD: Linda Wright (Miss), 3012 Park Avenue, Richmond, VA 23221

XXVI. Arkansas

PCD: Jacqueline Miner Gardner (Mrs. Richard, Jr.), P. O. Box 2034, Russellville, AR 72801

PAD: Debbie Jolley Hughes (Mrs.), 21 Wingate, Little Rock, AR 72205

Merry Christmas



*The
National Council
extends
Christmas
Greetings
and
all good wishes
for your happiness
in the the
New Year*

POSTMASTER: Send 3579 immediately to Delta Zeta Sorority, 202 E. Church St., Oxford, OH 45056

Delta Zeta Sorority
202 E. Church St. at Campus Avenue
Oxford, OH 45056

Address Correction Requested

Non-Profit Org.
U.S. Postage
PAID
Permit No. 131
Tulsa, OK