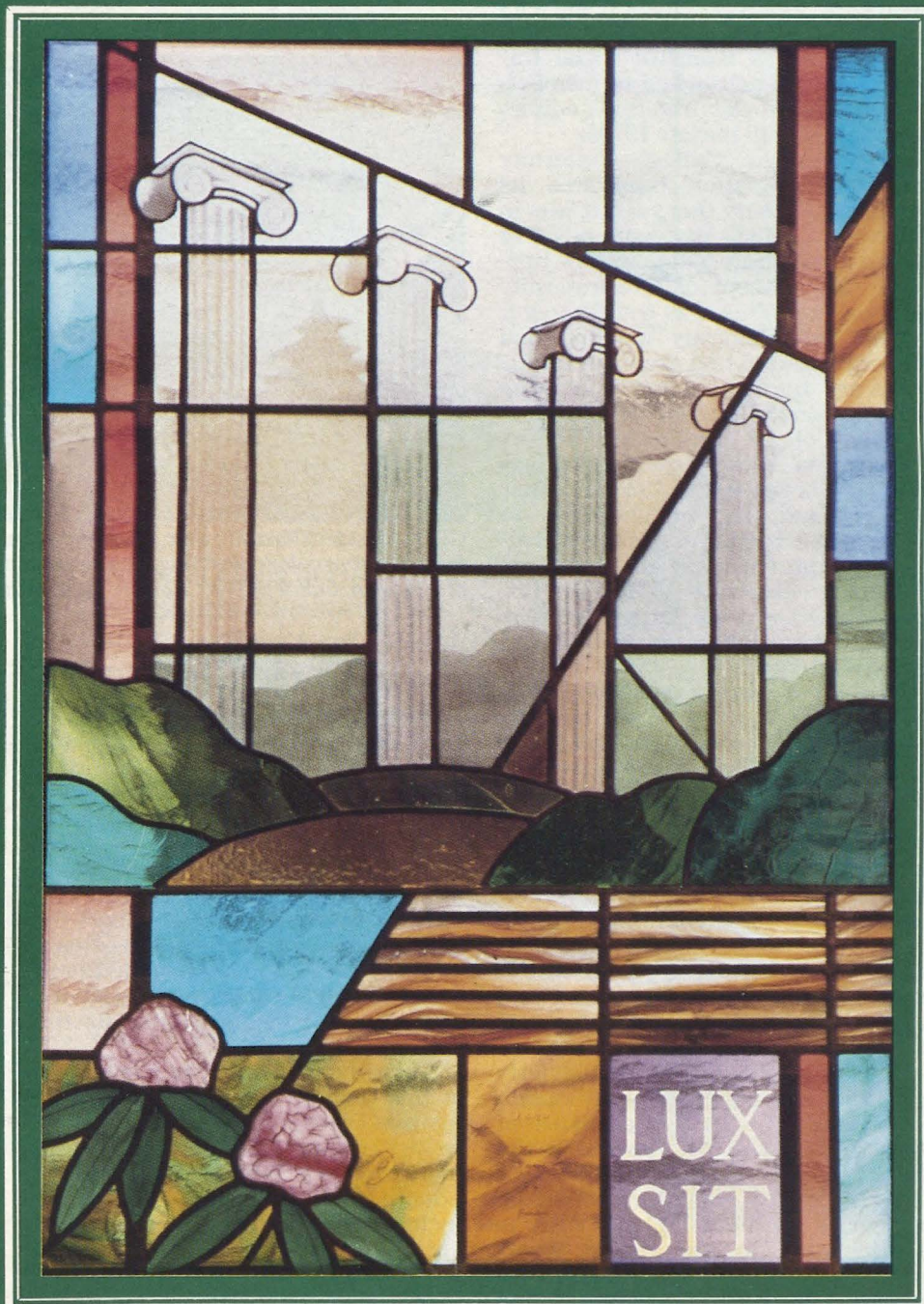


THE
LAMP
OF
DELTA
ZETA
WINTER, 1983-1984



From the Lampwriter

One of the fringe benefits of being editor of The LAMP is the opportunity for membership in the two editors associations of the interfraternity world. One, the National Panhellenic Editors Conference has seen Delta Zeta participation since its inception in 1913. The other has been most recent as women's social fraternities were not invited to membership in the social fraternity editors association until the late 1970s.

Actually, the College Fraternity Editors Association celebrated its 100th anniversary this year. It was in February of 1883 that editors of 14 men's social fraternities met to promote the concept of interfraternity cooperation. This was the first ever formal interfraternity meeting and the organization that grew out of this meeting became known as the Interfraternity Press Association.

The College Fraternity Editors Association as we know it today was officially organized in 1923 and later did expand its membership to include the women's social fraternities and professional and honorary societies, enabling it to add the distinction of being the largest interfraternity organization in addition to being the oldest!

CFEA publishes a quarterly newsletter, bringing news of the association and advances and changes in the publishing industry. It also serves as a forum for the exchange of ideas.

When a particular need arises, CFEA commissions or obtains specific articles and makes them available to members for use in their publications. Member fraternities and sororities exchange subscriptions to their periodicals as we all can benefit from the experience and approach used by our counterparts in other societies.

Member editors are also regularly provided an opportunity to obtain confidential no charge critiques of their publication by experts in the field.

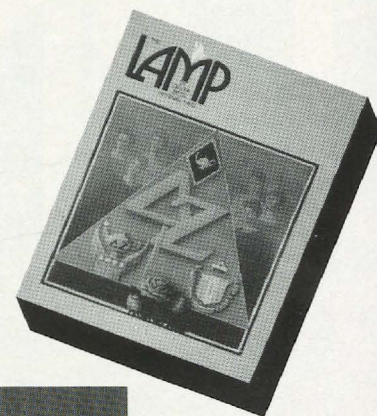
But perhaps the most beneficial aspect of membership in CFEA is participation in the annual workshop. Educational programming with expert speakers discussing all aspects of production and publishing

responsibilities is the highlight of the workshop. These seminars include design, layout, cost control, printing, postal regulations, editorial and management relationships, publication philosophy and application.

One of the most popular sessions is a special orientation for new editors. The program format allows for a great deal of audience feedback and serves as both an introduction to fraternity publishing for the novice as well as a refresher course for the veterans.

The annual awards banquet is held at this time as the organization recognizes outstanding achievement by fellow editors. Outstanding achievement by our member editors is honored in several categories, including cover design, feature article content, feature article layout and routine material.

At the awards banquet at CFEA this past summer, your editor was



CFEA President Mike Moxley, Tau Kappa Epsilon, presents the first place four color cover design award to Gwen Moss McKeeman, Editor of The LAMP of Delta Zeta.

very pleased to receive a plaque and certificate awarding The LAMP first place in four color cover design for the Spring, 1983 issue. This is a first for any women's magazine since the awards were inaugurated.

We are indebted to Lambda Xis at Texas A&M for the insight to establish a chapter, build a new house and pledge Cindy Pitcher. It was Cindy's parents who commissioned the painting which hangs in the Lambda Xi dining room and which provided the very lovely pink cover for our winning LAMP! It may be a long time before we find a cover more beautiful.

Gwen Moss McKeeman
Editor

THE LAMP

Volume 72 Number 4 Winter 1983 - 1984

Founders of the Sorority



Miami University
Oxford, Ohio 1902

Alfa Lloyd Hayes, 1880-1962
Mary Collins Galbraith, 1879-1963
Anna Keen Davis, 1884-1949
Julia Bishop Coleman, 1881-1959
Mabelle Minton Hageman, 1880-1929
Anne Simmons Friedline, 1879-1932

THE LAMP

The Lamp of Delta Zeta, official magazine of the sorority, is published quarterly by the Delta Zeta Sorority, 202 East Church St., Oxford, OH 45056.

Send all editorial material to the Editor, Mrs. Robert L. McKeeman, 5517 S. 74th E. Avenue, Tulsa, OK 74145. Send all matters of a business nature to Delta Zeta National Headquarters, Oxford, OH.

Send all contributions for Gallaudet College, House Ear Institute and other Founders Memorial Foundation philanthropies through the Delta Zeta Founders Memorial Foundation, Delta Zeta National Headquarters, 202 E. Church St., Oxford, OH 45056.

EDITOR

Gwen Moss McKeeman
5517 S. 74th E. Avenue
Tulsa, Oklahoma 74145

STAFF

Diane Jones Skelton
Sheila Hillis Nixon
Meryl Lin McKean Maxwell

CFFA
1883★1983
CENTENNIAL

MEMBER
COLLEGE FRATERNITY EDITORS ASSOCIATION

Contents

- 2 Ruth Loyd Miller is Woman of the Year
- 4 Delta Zeta First at San Francisco
- 6 Founders Memorial Foundation
- 7 "Adventures in Friendship" Awards
- 12 Want to Take Better Pictures?
- 13 Province Days/Weekends
- 14 GML Winners
- 15 ΔZ Family at Nicholls State
- 16 Kappa's Stained Glass Windows
- 18 Delta Zeta from Coast to Coast
- 20 Delta Zeta On Campus
- 28 Busy Alumnae Here and There
- 30 Wanted: ΔZ Volunteers
- 31 Fort Collins Alumnae Give Scholarships
- 32 Alumnae Profiles
- 34 Flame Eternal
- 35 Fundraising with Magazines
- 36 FMF Contributions
- 37 Application for Field Representative
- 39 Order Form for ΔZ Jewelry
- 40 Directory



ABOUT THE COVER

Pictured on this issue's cover is Window #1 of the four stained glass windows commissioned and designed for the Kappa chapter house at the University of Washington. The windows are described by Artist Karin Messmer on page 16.

Ruth Loyd Miller Named Woman of the Year



Ruth Loyd Miller, 1983 Woman of the Year

by Meryl Lin McKean Maxwell

Ruth Loyd Miller, Louisiana State University-Σ, has been named the 1983 Delta Zeta Woman of the Year.

Ruth is the 1983-84 chairman of the Louisiana State University System Board of Supervisors. She is the first woman to serve in this capacity in the 123-year history of the university. The board manages a system which includes five undergraduate campuses and schools of medicine, veterinary medicine, dentistry, law and agriculture. Ruth was appointed to a 14-year term on the board by then Governor Edwin Edwards in 1974, and was elected vice-chairman in 1982.

This year's honoree has maintained a private legal practice since 1957. She is editor and president of the Minos Publishing Company of

Jennings, Louisiana, and is secretary-treasurer of the Jennings Gas Company.

Ruth's professional memberships include the Louisiana State Bar Association, American Bar Association, Phi Alpha Delta legal fraternity, Shakespeare Authorship Society of England, Shakespeare Oxford Society of U.S., Deep South Writers Conference, Honorary Life Member of the Marlowe Society of England, Louisiana Committee for Identification of Women for Administration in Higher Education, Louisiana Council for Music and the Performing Arts and State of Louisiana Division of the Arts-Literature Advisory Committee.

Her civic and governmental service includes participation in the creation of the Governor's Commission on Indian Affairs. In addition, she was the first woman member of the State of Louisiana Mineral Board, vice-chairman of the Louisiana Constitutional Convention of 1973, and proposer and planner of the Louisiana Oil and Gas Park and Museum Commission.

"Ruth is probably Louisiana's most outstanding woman," wrote Betty Schneider Fenton, CCD for Sigma chapter, in nominating Ruth for Delta Zeta Woman of the Year.

Ruth has also become an outstanding researcher and writer on subjects dealing with the authorship of works attributed to William Shakespeare. She edited the third edition of J. Thomas Looney's *Shakespeare Identified in Edward De Vere, Seventeenth Earl of Oxford*, two volumes; the second edition of Bernard M. Ward's *A Hundreth Sundrie Flowers*; the second edition of

Ward's *The Seventeenth Earl of Oxford*; and the third edition of Eva Turner Clark's *Hidden Allusions in Shakespeare's Plays*. All were published by the Kennikat Press, Port Washington, New York.

Married to retired Circuit Court Judge Minos D. Miller, Jr., Ruth is the mother of a daughter and two sons and the grandmother of three.

She is the daughter of Gladys Means Loyd, a charter member of Sigma chapter of Delta Zeta.

"I just grew up thinking I wanted to go to LSU and be a Delta Zeta," says Ruth. "Looking back, I don't know what I would have done if it hadn't worked out that way. I probably would have been crushed."

She was named outstanding pledge of Sigma chapter in March, 1939. Active in the chapter and other organizations while in college, Ruth has contributed her talents to Delta Zeta through the years.

Betty Fenton wrote, "She has been the main speaker at banquets here and at Kappa Alpha Chapter at Thibodaux . . . and never fails to send references to us when she knows of a girl coming to LSU."

Over the years, Ruth has remained in touch with several Delta Zeta sisters from her college days.

"The sorority cultivates long-lasting friendships," she says. "These are the gems of life."

Ruth Loyd Miller is a gem of Delta Zeta, a woman of great intellect, scholarly achievement, dedicated service and national distinction.

The presentation, made on October 30 at LSU, will be reported in the Spring issue!



The Woman of the Year Medallion



Gladys Means Loyd, a charter member of Sigma chapter, is pictured with her Woman of the Year daughter, Ruth Loyd Miller.



Dr. Martin D. Woodin, president of the LSU system; Ruth Loyd Miller, Chairman of the Board of Supervisors 1983-84; John Cade (Executive Council to the Governor of Louisiana, campaign manager for Governor Treen's re-election campaign and member of LSU Board and newly elected vice chairman of the Board) as Ruth assumes chairmanship for 1983-84. Her statement when asked how does it feel to be chairman, was "I feel like young Edward VI, surrounded by his court and nobles, when he said, 'I like being King!'"



Dr. Martin D. Woodin, President of the LSU System; Norris Fitzmorris (vice president Pan American Life Insurance Company and member of the LSU Board), Chairman of the Board's Standing Committee on Property and Facilities; Ruth L. Miller, Chairman of the LSU Board. Discussing property and facility matters — particularly problems of seeping of water from groundwater (Mississippi River) into the \$35,000,000 Veterinary Medicine Building.

Delta Zeta First at San Francisco



Newly initiated members of Delta Zeta's Xi Lambda chapter at the University of San Francisco.

by Janet Kerr, VPI-KΘ



Janet Kerr-Tener, VPI-KΘ is a faculty member at USF and advisor to Xi Lambda. Janet is a former PCD for Northern California.

It all started late one evening during the spring semester of 1982 when a petite blonde knocked on the office door of ΔZ alumna Janet Kerr, who also happened to be a USF professor. The unexpected visitor introduced herself as Carrie Minucciani, a USF sophomore and sister to Terri Lynn Minucciani, a ΔZ at San Jose State University. Carrie came quickly to the point: would Janet be willing to help her start a colony at USF?

Thus began a year-long collaboration which was to lead to the installation of the Xi Lambda chapter of Delta Zeta on April 23, 1983—USF's first National Panhellenic sorority. Within a month of the start of the new school year in September, Carrie and a handful of other coeds sold on the idea of starting a sorority had succeeded in recruiting 30 like-minded women to the ranks of Delta Zeta. On October 9th, the San Jose

State chapter officers, including Terri Lynn, came to USF to pledge them. The San Francisco-Bay Cities alumnae welcomed the new colony the same day with a lavish luncheon and the first of many cash gifts which enabled the colony to continue rushing prospective members.

The USF pledges lost no time making their presence known on campus. The colony held fundraisers, co-sponsored a school dance, and participated in a campus-wide effort to raise money for a new student activities center. Individual members also did their share to bring ΔZ into the campus spotlight.

Stephanie Woodhead was elected freshman class president; Donna Kitt and Dawn Burns were tapped for a special scholars program; Laurie Campbell, Vickie Mackie and Debbie Weisinger own leading roles in two theater productions; Jackie Ober-

mire and Kathi Kelly brought life to the Greek Council; Suzanne Yorn was handily elected student government senator.

Linda Walsh and Teresa Podesta represented ΔZ on the inter-collegiate basketball court; Marilyn McEnhill, Marifel Dispo, Martha Carlstead and Cheryl Baltazar competed successfully for the top spots in organizing freshman orientation; Sheryl Molinaro was elected pledge trainer of the campus business sorority; Wendy Bigham won a much-coveted Residence Hall Council office. The list goes on and on . . . Somehow, between ΔZ work and other commitments, the colony managed to keep a B grade point average, with Stephanie Woodhead and DeeDee Campbell leading the way with straight A's.

The dedication and high caliber of these young women amazed advisors Janet Kerr and Joyce Stoffey. Week by week they witnessed the colony slowly but surely take on the shape of a chapter. Like a butterfly struggling free of its chrysalis, Xi Lambda emerged strong and glowing with vitality.

At the installation banquet and tea, more than 300 friends, parents, alumnae, and campus officials, including USF President Rev. John LoSchiavo and Vice President for Student Affairs Anne Dolan, showered the Xi Lambda members with compliments and congratulations. Theirs was no small feat: from a tentative group of coeds, most of whom were strangers to one another, to a vibrant sisterhood in six short months. Proudest

of all, however, were Janet, Joyce, the San Jose State initiation team, Fielder Jeanine Peterson, National President Carolyn Gullatt and, of course, Extension Director Norma Andrisek, who never ran short of advice and encouragement during the colony months.

Needless to add, enthusiasm was running high when the chapter met again with the opening of the new school year. Though the heady euphoria of having met the installation goal will have passed into a proud confidence, the Xi Lambda sisters will be no less determined to be a credit to their campus and to their collegiate and alumnae collaborators across the country.



The initiation team is from San Jose State-ΓΑ chapter. Left to right, Terri Lynn Minucciani (sister of Carrie), Tracy Temkin, Jeannette Gallant, Paula Sears, Maurine O'Connell, Robin Widger, Melissa O'Brien, Barbara Brodsky, Kim Brown and Nancy Webster.



Among the alumnae in attendance are (l to r) Jeanette Davis and Lauan Boynton Garnjost, California-M, members of San Francisco-Bay Cities alumnae chapter; Eveline Mouse Kenney, California-M, president of SF-Bay Citites; Wanda Lesley Culbertsen, Oregon-Ω, secretary of SF-Bay Citites; Zelta Weiman Adams, Oregon State-X, Chairman of the Northern California coordinating committee and Dorothy Elston Baker, Denver-P, president of San Francisco Peninsula alumnae chapter.



National President Carolyn Gullatt presents the chapter charter to Carrie Minucciani and the chapter was accepted for the university by Dr. Anne Dolan, USF Vice President for Student Development.

The National Council is pleased to announce the organization of the Xi Zeta colony at the University of New York - Brockport.

Founders Memorial Foundation

by Betty Paul DeWitt, USC-AI,
Secretary, Founders
Memorial Foundation

Silver trophies for outstanding philanthropy once again are circulating among Delta Zeta's collegiate and alumnae chapters. Reestablished by the National Council, the former Delta Zeta Foundation silver was presented to the Founders Memorial Foundation to be awarded biennially.

A new award donated to the Founders Memorial Foundation by California alumna, Ruth Gump Thomas, Northwestern Louisiana-EB, in memory of Katie Blanche Masters Stallworth, Delta Zeta Foundation president 1970-75, is a silver coffee urn. Huntsville, Alabama alumnae chapter was the first recipient as large alumnae chapter with top dollar chapter benefit proceeds.

Presented at the 1983 National Convention "Two Foundations Breakfast," other awards, scholarships and grants are listed elsewhere in *The LAMP*.

The Foundation is proud to announce the addition of the House Ear Institute of Los Angeles to its list of philanthropies. Adopted by 1983 National Convention resolution, this nonprofit, tax exempt organization is dedicated to research and training of ear specialists in newer methods of diagnosis and treatment of ear disorders. Through their work, many of the techniques, instruments and procedures used today in ear surgery have been developed. They are able to offer help to all ages and for all types of hearing impairments.

One of House Ear Institute's most important projects is the cochlear implant which brings totally deaf persons from a world of silence to a world of sound. This electronic device is surgically implanted in the cochlea in the inner ear with part of it worn externally. At present the user cannot clearly understand speech through hearing alone, but it does offer the possibility of some form of experiencing sound.

The Founders Memorial Foundation continues to support Gallaudet

College, a national college for the deaf and hearing impaired, and Carville, a hospital treating patients with Hansen's disease.

The Hearing Help Fund provides grants to hearing centers, schools, clinics, etc. for education and projects in speech and hearing. These grants are made to alumnae chapters working with speech and hearing facilities. Application forms for these grants are included in the *Alumnae Chapter Manual*.

Numerous undergraduate and graduate scholarships are available from the Founders Memorial Foundation. Application forms for grants, scholarships and loans will be included in the Founders Memorial Foundation Winter 1983-84 mailing. Individuals, collegiate and alumnae chapters are encouraged to support the philanthropies of the Founders Memorial Foundation with contributions designated for any of the listed projects, the General Fund and/or the Book of Remembrance.

Founders Memorial Foundation Trustees are Arlene M. Newman, University of Houston-ΔΘ, president; Betty Paul DeWitt, University of

Southern California-AI, secretary; Shirlyn Chaffin, Ohio State University-Θ, treasurer; Mary Lou McConaughy Barth, Miami University-A; and Mary Margaret Calhoun Fore, Southern Methodist University-AΨ.



Chapter excellence in local philanthropy work, a silver urn honoring Myrtle Graeter Hinkly, was presented to Portland alumnae president Katey Bosworth Sandy, by newly elected FMF President Arlene Newman, right.

RESOLUTION ADOPTED AT THE 1983 NATIONAL CONVENTION

WHEREAS, the problem of the hearing impaired has been one of the National Philanthropic Projects of Delta Zeta Sorority for many years; and,

WHEREAS, Delta Zeta Sorority has been involved through local projects and through Gallaudet College; and

WHEREAS, research by the Doctors Howard P. and William F. House of the House Ear Institute of Los Angeles, California, has been supported by the Delta Zetas of Province XV-S; and

WHEREAS, the National Council of Delta Zeta Sorority recognizes the need for increasing Delta Zeta's participation in research, current developments and assistance to all ages and all types of hearing impairment;

THEREFORE, be it resolved that the House Ear Institute become one of Delta Zeta Sorority's National Philanthropic Projects as part of the Founders Memorial Foundation.

"Adventures in Friendships" Awards



The Katie Blanche Masters Stallworth silver coffee urn for Top \$ Chapter Benefit was presented by Patricia Heneghan Pelkofer, FMF committee chairman, to the Huntsville, Alabama alumnae chapter. Left to right, Lois Walker Coats, Jean Lisle Coleman, Laura Roach Byrd, Huntsville alumnae chapter president, Mary Lou Barth, president of the FMF and Pat.



The Lisbeth Innis Francis award for collegiate chapter excellence in overall philanthropy is presented to Bowling Green-I.T. Accepting for the chapter are (left) Ann Morrow, CCD and chapter president Kim Pettys.

The National Council of Delta Zeta has reestablished the former Delta Zeta Foundation "Adventures in Friendship" Convention Awards. These traveling silver awards from the former Foundation were presented to the Delta Zeta Founders Memorial Foundation and awarded at the 1983 National Convention.

COLLEGIATE AWARDS:

LISBETH INNIS FRANCIS AWARD
for Chapter Excellence in Overall Philanthropy:

Bowling Green State University - I.T

MARGARET HUENEFELD PEASE AWARD for Chapter Excellence in Local Philanthropy:

Northwestern University - AA

ALUMNAE AWARDS:

KATIE BLANCHE MASTERS STALLWORTH AWARD for Top \$

Chapter Benefit - Large Alumnae Chapter:

Huntsville, Alabama
KATIE BLANCHE MASTERS STALLWORTH AWARD for Top \$ Chapter Benefit - Small Alumnae Chapter:

Findlay, Ohio
GAIL PATRICK JACKSON AWARD for Chapter Excellence in Overall Philanthropy:

Oklahoma City, Oklahoma
MYRTLE GRAETER HINKLY AWARD for Chapter Excellence in Local Philanthropy:

Portland, Oregon
HEARING AND SPEECH PROJECT GRANTS:

\$200.00 to **SPEECH AND HEARING CENTER OF FORT WALTON BEACH, FLORIDA** on behalf of:

Fort Walton Beach Area Alumnae Chapter

\$200.00 to **ATHENS DRIVE SENIOR HIGH SCHOOL HEARING IMPAIRED PROGRAM** on behalf of:

Raleigh Alumnae Chapter

(Continued on page 34)

In a recent AP news release, it was noted that President Ronald Reagan has hearing help, but that his impaired right ear disability is "insignificant." This is according to Dr. John House of the House Ear Institute.

President Reagan has been a patient of the House Ear Institute since 1979. The hearing aid President Reagan wears was developed by Starkey Laboratories in Minneapolis, Dr. House said, although he's the one who recommended it.



The Gail Patrick Jackson award for alumnae chapter excellence in overall philanthropy work was presented to Oklahoma City alumnae by Betty Paul DeWitt, FMF Board member. Left to right, Jean Nelson Stockham; Jean Coleman Lisle; Deanna Alleman McKinnon, PAD; Charlotte Sanders Strain, alumnae president, and Betty.



The Findlay, OH alumnae chapter received the Top \$ Chapter Benefit award for small chapter achievement. Left to right, Cynthia Brenner Fitzpatrick, CCD; Jean Coleman Lisle, Barbara Eakin Shelton, alumnae president, and Mary Lou Barth, the presenter.

Scholarships and Loans

by Mary Lou McConnaughey Barth,
Miami-A

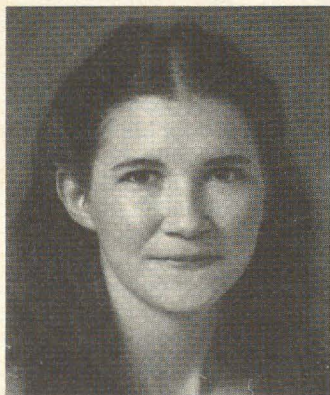
Founders Memorial Foundation Scholars

SUSAN MARIE BAUGHAN - East Tennessee State University-ΔH, 3.8 GPA in major of criminal justice. Member of 3 honorary fraternities. Under Susan's guidance Delta Eta reached #1 scholarship ranking on campus for the first time in many years. Susan was the spark which

this chapter needed to move up from last place in size on campus. Susan is president of Delta Eta.

MARGARET MARY KENNEDY - Baldwin Wallace-ΓA, 4.0 GPA in speech pathology. She is a member

of Omicron Delta Kappa, national leadership society, has served her chapter as corresponding secretary and has been chairman of most all committees. She designs and makes decorations for rush. Margaret is one the chapter members can always depend on.



Susan Marie Baughan,
East Tennessee-ΔH



Margaret Kennedy,
Baldwin-Wallace-ΓA



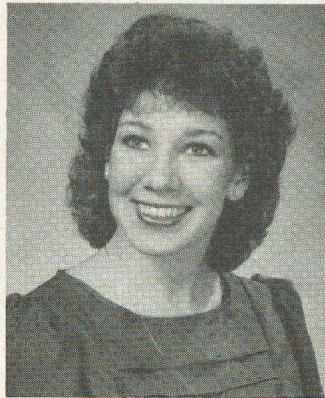
Karen M. Kennedy,
Jacksonville-ΙΩ



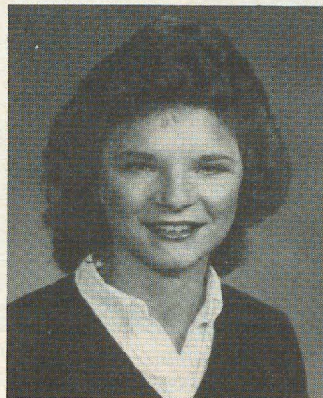
Michele Marie Boor,
Northern Colorado-ΔΞ



Stacie Lynn Comeaux, LSU-Σ



Julia Little Bridges, Auburn-BΞ



Lisa Coley, Georgia State-ΔΔ



Lorie Kramer, Kutztown-KP

MICHELE MARIE BOOR - University of Northern Colorado-ΔΞ, 3.67 GPA in major of management. Michele was a Mortar Board candidate this year. Delta Xi hosted Province XII Weekend with Michele as chairman. Michele is president of Delta Xi.

JULIA LITTLE BRIDGES - Auburn University-BΞ, 3.22 GPA in nursing major. Julia was pledge class president, where she was a strong leader, as she has been ever since initiation. She is now president of Beta Xi and has a sister who is a member of Beta Xi.

STACIE LYNN COMEAUX - Louisiana State University-Σ, 3.1 GPA in advertising major. Stacie is a member of American Advertising Association and is active in intramural athletics. She was a pledge class leader as well as active in all sorority

functions. Stacie's younger sister was initiated into Sigma chapter this year with the highest GPA of 65 pledges. Stacie is president of Sigma.

KAREN MARIE KENNEDY - Jacksonville University-IΩ, 3.46 GPA in major of marine science. Karen is a member of Biological Honor Society and Gold Key and is a distinguished campus leader. She has been selected to participate in the university work study program - teaching general and marine biology. When Iota Omega's image was at low ebb, Karen and one other girl were determined to turn their chapter around. Now Iota Omega is on its way to recovery. Karen is president of Iota Omega.

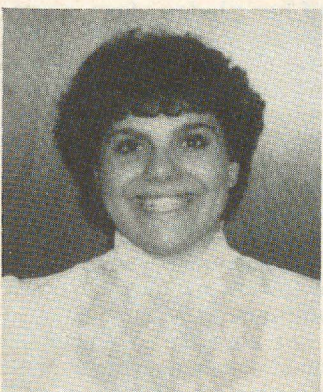
UNDERGRADUATE SCHOLARSHIPS

LORIE ANN KRAMER - Kutztown State College-KΠ, GPA 3.47.

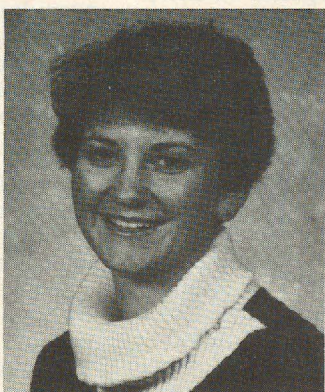
Lorie is a senior working toward a B.A. degree in history with a temporary certificate in library science for research purposes as she expects to go on to graduate school. She is on the Dean's List and a member of Kappa Delta Pi and takes part in intermural sports. She was one of six at the time of chapter re-colonization last spring serving as vice-president of membership.

LEILA MAY YANCEY - University of Wisconsin - Whitewater - EK, GPA 3.4.

Leila is a self-supporting student as she is one of nine children. She works summers as well as during the year. She has still found time to serve Delta Zeta as historian-LAMP editor, Panhellenic delegate and now is corresponding secretary and scholarship chairman. She was named outstanding pledge for Province VIII in 1981-82. She will be a junior this fall in management computer systems working toward a B.S. degree in



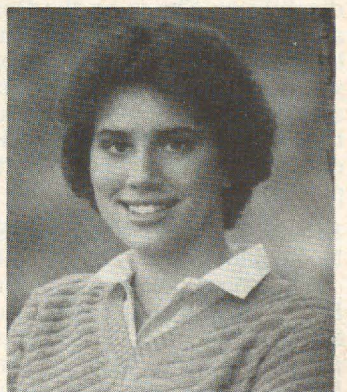
Kimberley Sue Tuttle,
Wright State-KI



Patricia Kelly Allen,
Northeast Missouri-ΔΣ



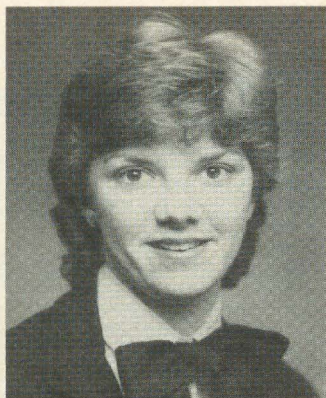
Leila May Yancy,
Wisconsin-Whitewater-EK



Tera Lynn Beermann,
Nebraska Wesleyan-BT



Kelly Weese,
Shepherd College-KM



Susan Kay Griffin,
Georgia College-AII



Susie Keisler,
Nebraska Wesleyan-BT



Rhonda Barry,
William Jewell-ZP

business administration. She is on the Dean's Honor Roll and a member of the Data Processing Management Association.

RHONDA ANN BARRY - William Jewell College-ZP, GPA 3.5.

Rhonda is a senior working toward a B.S. degree in accounting. She is on the Dean's List, a member of Alpha Lambda Delta and the National Honor Society. Rhonda was vice-president of her pledge class and junior Panhellenic representative. She has served as Panhellenic treasurer, scholarship chairman and is now president. She has worked in the Registrar's Office for three years during registration. She also works in the campus book store part-time during the year and full time during the summers.

PAMELA SUE KOTTMAN - Wright State University-KI, GPA 3.528.

Pamela is a senior in the College of Education with a major in elementary education and a minor in special handicapped children and learning disabilities. She is on the Dean's List and has been in high honors and highest honors for the past two years. Pamela has held part-time jobs all during college but has found time to serve her chapter as vice-president of pledge training and now is president.

SUSIE LYNETTE KEISLER - Nebraska Wesleyan-BT, GPA 4.0.

Susie is working toward a double B.S. degree in math and economics. She had the highest freshman grade point average and is on the Dean's List. She has served her chapter as pledge class president, corresponding secretary and now in her junior

year is vice-president of membership. Susie is one of the Student Ambassadors, a member of the Student Senate Legislative Committee and Circle K service organization. She is employed as a computer program grader for the math department.

LISA CAREY SCHUETZ - East Carolina University-ZA, GPA 3.4.

Lisa, a junior in nursing, is an honor roll student and a member of the Student Nurses Association as well as Gamma Beta Phi and Phi Sigma Pi honorary fraternities. She was vice-president of her pledge class and is now serving her second term as corresponding secretary.

KELLY AMBER WEESE - Shepherd College-KM, GPA 3.577.

Kelly expects to receive a B.S. degree in May 1984 with a major in economics and a minor in math. She has been on the Dean's List for four semesters, is the Commuters Senator for the Student Government Association and representative to the Student Advisory Council of the West Virginia Board of Regents of Shepherd College. She has been a tutor in math for the past two years. In her chapter she has served as chaplain, vice-president pledge training and is now president.

JULIE MARIE BROWNING - Arkansas Tech University-AA, GPA 3.03.

Julie is working toward two degrees, a B.A. in history and political science in December 1983 and a B.S. degree in business administration in August 1984. She is a member of the History and Political Science Club and has served this past year as treasurer of the Student Government Association. She was also Delta

Zeta's treasurer at the same time and is now president.

TERA LYNN BEERMANN - Nebraska Wesleyan-BT, GPA 4.0.

Tera is a junior in business administration and accounting. She is on the Dean's List and was selected for Daisy Chain which is for the highest grade point averages for freshmen. Her campus activities include secretary-treasurer of the Administrative Management Society for the past two years, career day planning committee as well as playing on the intermural basketball team. This year she is Delta Zeta's treasurer and is working as a secretary in the business administration department.

LAURA ALISON GAUSEPOHL - Northern Kentucky-KB, GPA 3.2.

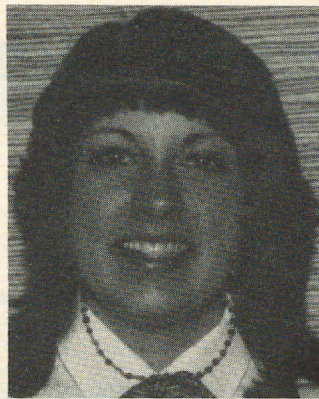
Laura is a junior majoring in marketing and math. She was allowed to take two semesters of calculus while still a senior in high school. She was also awarded six hours of English on her entrance in college. She has been active in all intermural sports. In Delta Zeta she has served as vice president of her pledge class, corresponding secretary, assistant rush chairman and now is president. With all her activities she has maintained her high average to be on the Dean's List.

SUSAN KAY GRIFFIN - Georgia College-AII, GPA 3.1.

Susan is a senior major in home economics and human ecology. She has been a NOVA orientation leader for two summers. She is working to pay all of her sorority expenses. In her chapter she has been president of her pledge class, treasurer, recording secretary and was elected president last spring.



Anne Marie Sferra,
Bowling Green-ΓΤ



Stephanie Chritton,
Texas A&M-ΛΞ



Tamera Giessler, Franklin-Ψ

**NANCY HOLLIMAN/HOUSTON,
TEXAS SCHOLARSHIP**

**KIMBERLY SUE TUTTLE - Wright
State University-KI, GPA 3.0.**

Kimberly is a senior in speech and hearing therapy, graduating in June of 1984. She has been very active in her chapter, serving as Panhellenic delegate, social chairman and assistant rush chairman. At present she is vice-president of membership.

**ALICE B. HUENEFELD
SCHOLARSHIP**

**PATRICIA KELLY ALLEN -
Northeast Missouri State-ΔΣ,
GPA 3.64.**

Kelly is a senior working toward a degree in Pre-K-3 and a minor in 1st-8th. She is on the Dean's List and is a member of the Elementary Education Club, Student Missouri State Teachers Association and the Psychol-

ogy Club. She holds offices in two of the above. She has served as scholarship and money-making chairman for Delta Zeta and is now corresponding secretary.

**GERTRUDE MURPHY
MEATHERINGHAM
SCHOLARSHIP**

**LISA COLEY - Georgia State Uni-
versity-ΔΔ, GPA 3.30.**

Lisa is a senior health and physical education major. She has served her chapter as assistant pledge trainer, song leader and president. She is now vice-president of pledge training. Her campus activities are numerous, including Student Government Association Senator serving on the committee for Academic Affairs, Finance Committee and Director of Student Services.

**HELEN WOODRUFF NOLOP
GRADUATE SCHOLARSHIPS**

MAUREEN E. McGARRY (NON-DELTA ZETA) Graduate of University of Iowa, enrolling in masters program in speech - language pathology at the University of Iowa.

SHARON L. ZILBER (NON-DELTA ZETA) Graduate of University of Maryland, enrolling in masters program in audiology at Towson State University, Maryland.

**VEE SHAKARIAN TONER
STUDENT LOANS**

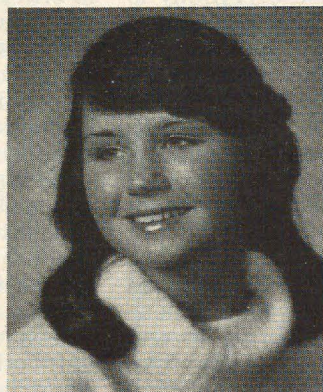
AMY HOPE HUBER - University of Wisconsin, Whitewater-EK

LISA GAYLE RANKIN - Texas A & M University-ΛΞ

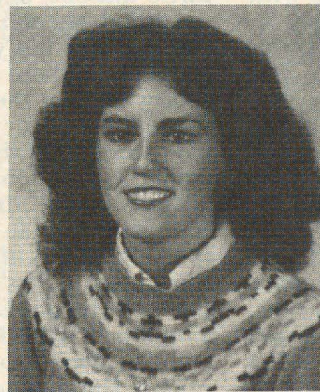
(continued on page 29)



Laura Alison Gausepohl,
Northern Kentucky-KB



Pamela Kottman,
Wright State-KI



Lisa Schuetz, East Carolina-ZΛ



Cathy Crawford, Alabama-AT

Want to Take Better Pictures?

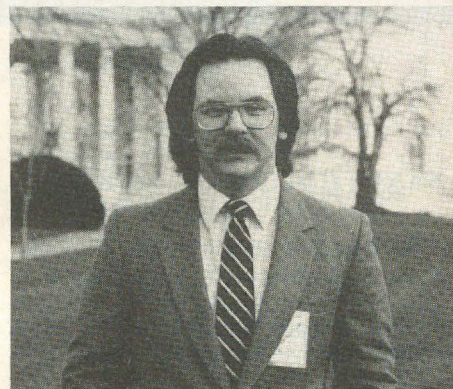
by Pete McKeeman

How to take better pictures! Not an easy subject, but just about all you have to do is to walk into any metropolitan book store, or camera shop, and you can find reams of printed material on how to take the definitive photograph. But digesting all that material, and then sorting out the parts that apply to your particular situation could take forever, that is if you don't get confused enough with all the techno-descripto-lingo.

But there are some simple pointers you can keep in mind when taking a snap shot of the gang, whether it's with someone's hand-me-down Polaroid or the most sophisticated motor-driven 35mm Nikon.

One of the easiest ways to make a photo of a person or group more interesting is to change the setting or background. Where is it carved in stone that all pictures of an individual must look like Sergeant Friday of *Dragnet* snapped down at the stationhouse? If Carol, your president, wins an award and you want to show people what she looks like, why not try and tell them something about her visually, instead of just that she has two eyes, a nose etc.

Take Carol's picture in her surroundings, her environment, some place that she feels comfortable with and says a little bit about who she is. For instance, if Carol is a computer major, frame up the shot so you could see Carol adjacent to a keyboard, or maybe looking up from making notes on some program. Don't try to get the whole desk in, because readers will want to see what she looks like, but with a more interesting setting or background, they won't have to read the part about how Carol blah-blah-blah computers. The same applies to group shots. Use a setting or background to tell who they are. Yeah sure, you're thinking, the best way to do that is to shoot everybody out in front of the



Pictures of Photographer Pete McKeeman illustrate his suggestions on settings for shots. On the left he is set to shoot sideline pics of Dallas Cowboy football. If the picture on the right is familiar, it is because it is the press area on the White House lawn.

house. That brings up another typical photo that is usually as dull as dirt.

I know you have seen the picture of the ol' house and probably four or five rows of people standing in front of it. Chances are the photographer framed it so the whoooooole house was in the shot, and consequently you can't tell Helen from Ellen, or the house mom from somebody's stuffed turtle mascot, because everybody is so little-bitty-shrunk-down-tiny. But you can tell it's your house so you must be in there some where. Let's see, was I on the third row, fourth from the end or was it the fourth row, third from the end? If you must have the group in front of the house, how about shooting it at an angle and have the people gather loosely in more or less a diagonal direction to the camera. That way the house and the people don't look two dimensional and rigid. If you bring several people closer to the camera than others, the three dimensional aspect is heightened even further.

Don't be afraid to experiment, you

have to shoot the whole roll of film anyway, might as well try some new or different ideas. You might just come up with something that is not only interesting, but helps tell a viewer looking at the picture a little more about the subjects.

There is still no rule that says a group of people have to be photographed in front of a sorority house in order to know who they are. There are much more interesting backgrounds sometimes, and just as easy means of identification. Take everyone to the petting zoo, and make sure that at least one or two people on the front row with the baby lions are wearing sorority and/or campus jackets.

Another pet peeve of mine is the indoor photo taken with flash or strobe lighting mounted on top of the camera. Honestly, sometimes it cannot be helped, but it always looks flat and listless. Artificial lighting can be done well and look great, but it usually requires a pretty heavy investment in professional type equipment.

If you can help it, stay outdoors or use available light from large windows if possible. Some shadows under the nose or on the cheek of a subject actually add to a photo. It gives perspective and depth, something you can't get with a simple flash.

Finally, you might think about sending in those ad lib caught on the fly type photos that show people being themselves. You know the ones, where Stacy is caught just after she caught a pie in the face, or Alice's successful steal of home-plate in the championship softball game. Many times a spontaneous snap of the shutter will come out just right, that is in focus and not blurred, and they are almost always more interesting to look at, and that is the bottom line . . . taking pictures that people will notice and enjoy looking at.

So, four easy things to remember the next time the Editor of The LAMP asks you to send her a more interesting picture. BACKGROUND. COMPOSITON. LIGHTING. SPONTANEITY. Go for it, and good shooting.

ABOUT THE AUTHOR: He is related to your Editor and was coerced into this article . . . but has worked as a TV news photographer for nine years. He is currently employed as a photographer/producer for WFAA-TV, the ABC affiliate in Dallas-Fort Worth. WFAA-TV news photos recently won the National Press Photographer Association's award for TV News Station of the Year, which is television news' version of the Pulitzer Prize.

Pete is also a free lance video/film and still photographer who specializes in aerial points of view. (The difference between a TV photographer and a TV cameraman is that a photographer uses his or her journalistic training to make in the field decisions as to the news value of events and circumstances confronting him or her. A cameraman is linked to a headset and is told what and how to shoot.) Pete has also won numerous TV news awards for his photography and producing. He is a 1975 graduate of the University of Oklahoma School of Television/Journalism and is a member of Delta Upsilon fraternity.

Province Days/Weekends

Province III

April 7, 1984
Pennsylvania School for the Deaf
Philadelphia, PA
Margie Cardamone, Chairman
1750 Skippack Pike, TH 1313
Center Square, PA 19422

Province IV

April 14, 1984
West Virginia Tech
Montgomery, WV

Province V

April 7, 1984
Miami University
Oxford, OH
Angie Elliott and
Katie Walsh, Chairmen

Province VII

April 14, 1984
Indiana University Medical Center
1300 W. Michigan
Indianapolis, IN
Mrs. Michael Daughters, Chairman
9015 Fathom Crest
Indianapolis, IN 46256

Province XIII

April 6-8, 1984
Dakota Northwestern University
Minot, ND
Noreen Lund, Chairman
811 Third Street NE
Telephone 701/852-3173

Province XV-S

April 7, 1984
Holiday Inn
2700 Beach Blvd.
Buena Park, CA
Mary Lou Markling, Chairman
2407 Coronado Dr.
Fullerton, CA 92635
714/526-7355

Province XV-C

March 3, 1984
Hs Lordships
199 Seawall Drive
Berkeley, CA 94710

Province XVI

April 13-14, 1984
Ramada Inn
1410 S.E. Washington
Bartlesville, OK
Virginia Price, Chairman
4949 Brookline Dr.
Bartlesville, OK 74003
918/333-1226

Province XVII

March 3-4, 1984
Marriott Hotel, DFW Airport
Hostess Chapters: Arlington Alumnae
and Texas-Arlington-IV
Donna Dunn (Mrs. Jeff), Chairman
5612 Atlantis Terrace
Arlington, TX 76016
817/496-5220

Province XVIII

January 28-29, 1984
New Orleans, LA
Janice Swofford, Chairman
716 Ronson
Kenner, LA 70065
504/466-2608

Province XXI

February 25, 1984
Pinehurst Hotel and Country Club
Pinehurst, NC
Patricia Tector, Reservations Chairman
907 Winslow Ct.
Cary, NC
919/467-8688

Province VIII Day was at Carroll College in Waukesha, WI on November 5. Province XXIV was October 22-23 at the Hilton Inn West in Orlando, FL.

GML Award Winners



Mary Penrod, Northern Kentucky-KB

Two of our 1983 Grace Mason Lundy Award winners were inadvertently overlooked in the announcement of Convention awards. Our very sincere apologies to both for failure to feature them in the Fall issue of the LAMP. Perhaps this special feature will help to make up the error!

The National Council is pleased to announce two additional 1983 GML winners.

Mary Rose Penrod Northern Kentucky-KB

Mary Rose Penrod was elected treasurer of Kappa Beta chapter at Northern Kentucky University shortly after her initiation. She then became vice president of pledge training, president and again vice president of pledge training. The student body of NKU elected her president of that organization. Besides all that, Mary was employed sixteen hours per week during school and full time summers at the *Cincinnati Enquirer*. Talk about busy?

This organized young lady was also named Kappa Beta sister of the

year twice, was recognized as Province XX's most outstanding officer and the list goes on.

Patty Seiter, KB chapter president wrote: "Mary has truly given herself to Delta Zeta and to the Kappa Beta chapter. Her outstanding campus and chapter accomplishments speak for themselves, so I would like to address the 'little' things that make her so special.

"In addition to her duties in her office, Mary is involved in every aspect of the chapter. She plays a role in almost every activity. During Greek Week, she was a major force in our winning the overall competition. She started in volleyball, starred as a forward in basketball and swam in three events. She is also our quarterback in Powderpuff Intramural Football. Mary attends all mixers, and her congeniality has won her popularity.

"Mary is the first to offer her services for any job that needs to be done.

"Mary's spirit and enthusiasm are a spark for our chapter and an example we would be wise to follow."

CCD Linda Allen wrote that "Mary believes with all her heart that she can never give back to Delta Zeta that which has been given to her - her chance of a lifetime. This dedication is the difference between a special Delta Zeta and an extraordinary Delta Zeta. Mary Penrod is an extraordinary Delta Zeta and to me that is what the Grace Mason Lundy Award is all about - to give honor to those who feel they can never return enough to the friend that is Delta Zeta."

Elaine Buchanan East Tennessee-ΔH

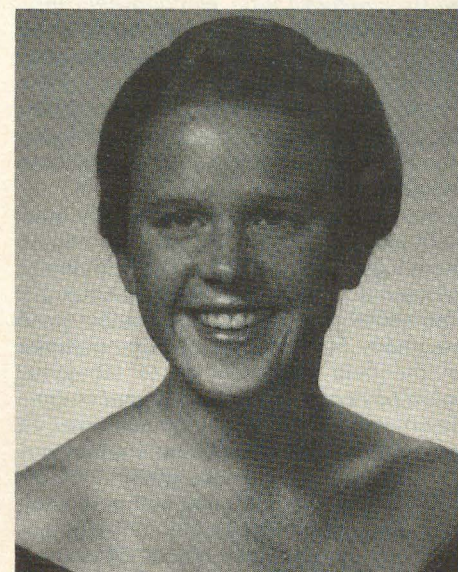
"As my college days come to a close, I look back on them with a realization that, without Delta Zeta, my college experience would have been empty and meaningless. Perhaps I would have found another 'out' to put my heart and energies into, but none could have meant as much to me as Delta Zeta does and always will. Delta Zeta provided me with a change to laugh, lead, live, and

most importantly, to love. The four "L"s of sisterhood stick in my mind, each important, but none possible without the rest." These are words of our GML from East Tennessee-ΔH chapter, Elaine Buchanan.

"Elaine's natural modesty is reflected in her GML application. Even though her list of Delta Zeta activities is long, it does not reveal the magnitude of the contribution this sister has made to Delta Zeta." These words came from Sue Skambis, then Acting PCD for ΔH.

Elaine Buchanan is a music major and her rigorous schedule could have prevented responsibility given to the chapter and campus, but she managed to do it all, also being named to *Rho Lambda*, honor society for Greek women and listing in *Who's Who in American Colleges and Universities*.

And so it is with pride that we add the names of Mary Penrod and Elaine Buchanan to those seven GMLs named earlier . . . two truly GML girls in every way.



Elaine Buchanan, East Tennessee-ΔH

It's a ΔZ Family at Nicholls State



Newly installed president of Nicholls State in Louisiana is Donald J. Ayo, pictured with his wife Betsy Cheramie Ayo, one of the earlier members of Kappa Alpha chapter.

**by Gloria Erwin Lynch,
Memphis State-Π,
Bayou Alumnae Chapter**

When Dr. Donald J. Ayo took over as president of Nicholls State University on July 1, he was not only the first NSU graduate to become the university president—he was also the first “ΔZ Man” to occupy the president’s home.

The new top administrator, popular with both faculty and students, has ties with Delta Zeta that “just seem to keep growing,” he comments good-naturedly.

Vice-president and provost of the

university for the last 12 years, Ayo is married to the former Betsy Cheramie, one of the first initiates of Kappa Alpha chapter, chartered on the campus in the late '60s. Shortly thereafter came her sister, Pat, to wear the Lamp. Through the years, both were active alumnae and the Ayo home was the scene of many Delta Zeta activities.

With the initiation of daughter Allison into Kappa Alpha in '78 things really picked up. Homecoming dis-

plays, song practices, late-night meetings—all things that keep collegians busy—often kept Dad busy in some respect, too. The Kappa Alphas unanimously named him “Delta Zeta Man of the Year” in 1979 after he delivered the keynote address for their annual Honors Banquet. Also on that occasion, Mom was named the Marie Louise Lepine Outstanding Alumna, and Allison was chosen for the President’s Award.

Not to be outdone, son Chris was coming along through all this, dating another Kappa Alpha sister, and it wasn’t long before he was picked as chapter sweetheart. Recently, he and the former Tara Grace, KA, 1981 Grace Mason Lundy award winner, were married and another Delta Zeta tie was added to the new “first family.”

A native of Lafourche Parish, Ayo was graduated from Nicholls in 1954 and earned his Ph.D. in horticulture and plant genetics in 1962 from Louisiana State University. He joined the NSU faculty in 1958 and became head of the department of agriculture in 1964. He was named Alcee Fortier professor of plant science and moved up to academic dean in 1968.

Ayo’s honor as Delta Zeta Man is one among many, including the James Lynn Powell Outstanding Alumnus Award in 1974, and the locally-prestigious Francis M. Durel Outstanding Citizenship Award of the Thibodaux Veterans of Foreign Wars in 1977.

As the university provost, Ayo chaired numerous committees, and he belongs to more than 15 professional organizations. His research has been printed in more than a dozen publications.

Ayo was selected for the president’s post—the third person to serve in that capacity in the school’s 35-year-history—by a unanimous vote of the Louisiana Board of Trustees of Higher Education. Wiley Sharp, Jr., president of the board, said the choice of Ayo “Signified a perfect choice of a highly qualified educator at an excellent institution of higher education.”

Kappa's Stained Glass Windows



Here are the windows as they appear in the Kappa dining room. Under the windows is a magnificent hand carved buffet built many years ago by Dr. Clarke, father of Paula Clarke Bond, Kappa '66.

by Karin Mesmer

New stained glass windows were commissioned for the dining room and front entry of the Kappa chapter house at the University of Washington. The four dining room windows, each measuring about 3' x 4', depict a stylized landscape with figures in various shades of rose, tan, blue, green, lavender and gold. European antique glasses were used with details painted and fired.

Window #1 depicts the Four Columns from the original territorial campus which appear on the University

of Washington seal. The Rhododendron is the state flower and "Lux Sit" is the University motto, "Let there be Light." This window is a gift of Mareta Havens (K'14), a Kappa chapter founder.

Window #2 depicts a young woman with the Open Book. In the background is an Evergreen Tree, Lake Washington and the Cascade foothills. In the foreground is the Delta Zeta scroll. This window is a gift of Kappa Colony '83.

Window #3 depicts her Sister raising the Lamp of

Delta Zeta. She stands upon a Kappa foundation with the Spindle in the foreground. This window is a gift of Louise Maurer Inlow (K'39).

Window #4 depicts the oldest and most beloved building on the University campus, Denny Hall. In the background are Lake Washington and Mt. Rainier. In the foreground are the Delta Zeta Motto and the Delta Zeta Rose. This window is a gift of Dolores Stein Dyson (K'43) in memory of her husband Donald.

Superimposed over the set of four windows are the letters Delta Zeta in a bold graphic design.

The entry window is a three foot diameter "rose window" in opalescent glass of pink, coral, gold and green depicting the Delta Zeta Rose. Designed to be viewed from the exterior above the front entrance, it is backlit for maximum effect.

The windows were designed by Karin Mesmer, daughter of Elizabeth Harrington Smith (K'34). Karin and her husband Richard own Northwest Art Glass, a stained glass studio in Seattle. Karin has studied glass painting extensively and specializes in original commissioned work and restoration.



Two of the three surviving charter members of Kappa chapter. On the left is Frances Ringer Lee and the right is Mareta Havens. The third charter member is Gladys Hitt. Mareta celebrated her 90th birthday at the chapter house.



Mareta Havens, founding member of Kappa chapter in 1914, donated one of the stained glass windows for the dining room. This is her picture from the 1914 Washington yearbook.



Pictured are donors of the windows at Kappa. They are (back row, l to r), Elizabeth Harvey, Kappa chapter president; Dr. E. Burke Inlow, whose suggestion sparked the design and installation of the windows; and front row (l to r) Lousie McKinley Ballard, Katherine Raichle Rue, Lousie Maurer Inlow, Frances Raichle Greenleaf, Elizabeth Harrington Smith (mother of Karin Mesmer who designed and made the windows) and Dolores Stein Dyson. Others who contributed but who are not pictured are Helen Drew Farrell, Dorthea Brockman DeChesne, Carol Ewart Braman, Mary Kasch Nolan.

Delta Zeta from Coast to Coast

Meet ΓA at Baldwin-Wallace



Attired in their black tuxedos with red carnations, Gamma Alphas present a classy picture before Interfraternity Sing at Baldwin-Wallace. They took first place!

by Marge Kennedy,
Baldwin-Wallace- ΓA

Baldwin-Wallace College is located in Berea, Ohio, a suburban community of 26,000 which is approximately 14 miles southwest of the city of Cleveland, providing B-W's students access to a variety of cultural and social activities, and the other advantages of "big city" life.

B-W is proud of its attractive facilities, which cover a 50-acre campus and are a combination of old ivy-covered sandstone buildings and new Georgian-colonial architecture, including some of the newest additions: the Art and Drama Center which houses a proscenium theatre, a studio theatre, art galleries and classrooms, and the George Finnie Stadium, which has been described as one of the finest college facilities in the nation, and serves as the summer practice field for the professional football team, the Cleveland Browns.

B-W is small enough for its over 3700 students to feel at home and

large enough to offer a wide range of academic programs to prepare for a future career. A spirit of community and camaraderie makes the Baldwin-Wallace campus an exciting and rewarding place to study and grow.

It was in this atmosphere of tradition and learning that the AFO-OFA (All for one—one for all) Club was organized in 1935. A year later, the dean of the college, feeling a need for another Greek letter sorority, asked the AFO-OFA to choose Greek letters and incorporate as a sorority. This they did, and in May of 1936, they became Phi Lambda Chi Sorority. After six years of organization, they "went national" on September 24, 1941. The Gamma Alpha chapter of Delta Zeta was officially chartered.

Today, Gamma Alphas continue the tradition of excellence established 42 years ago, and this past year was no exception.

The fall quarter excitement

started when, during B-W's Homecoming festivities, Delta Zetas Paula DeArdo and Laura Lane were honored as members of the Homecoming Court.

The highlight of Gamma Alpha's year came in February with the 51st Annual Interfraternity Sing Competition. Under the direction of Randi Nevins, Delta Zeta sang a medley of New York songs, appropriately attired in black tuxedos. The evening was almost magical and the strong sense of sisterhood and pride felt by each Gamma Alpha was clear to everyone - even the audience. For the first time in eight years, the chapter was awarded *first place*!

The traditional Barn Dance was held, with the members and dates celebrating country-style in a converted barn loft. Wendy Johnston was chosen as this year's "Pledge Princess." Winter quarter also found the sisters recognized as the Greek organization with the highest overall grade point average on campus.



Gamma Alpha's "own section." The only sorority in the building, they are also the only sorority with their own section, all others share floors.



Some Gamma Alpha seniors prepare to read the senior will. (l to r) Kim Rifci, Sandy Pearson, Gretchen Haas, Jane Mowery and Linda Baird.



This is the ΔZ boat team from the May Day Games at B-W. (l to r) Patti Folley, Lisa Latessa, Lorie Frame, Wendy Johnston and Louise Italiano.

In April, Gamma Alphas attended Province V State Day held at Wittenberg University, and began and ended with a bang! Early in the day, members of the chapter performed " ΔZ , ΔZ " (to the tune of "New York"), and won the song competition. Later, during the awards ceremony, the chapter was recognized with several honors. Marge Kennedy received the Golden Heart Award and Randi Nevins, Jane Mowery, and Sandy Pearson received Golden Crests. After a year of hard work, Pledge Trainer Sandy Pearson accepted the outstanding pledge program (Gamma Alpha was the only chapter in Ohio with 100% initiation!), and Jane Mowery was chosen as the outstanding chapter president in the state in Ohio.

The 2nd Annual Greek Week was an exciting time at B-W this year. Gamma Alphas held our third annual bike-a-thon, and the sisters rode through the nearby MetroPark bike trails to raise money for our philanthropy and donated over \$130 to B-W's Speech Clinic.

An All-Greek picnic was another event of the week, and B-W Greeks ate, drank, and were merry at the home of member Ann Holman. Shelley Spencer was first runner up for May Day Queen and the 1982 May Day Queen, our own Jane Mowery, crowned her successor. Gamma Alphas served as the ushers for the coronation ceremonies, and "serenaded" the new queen with our

prize-winning song medley. We also participated enthusiastically in the games with teams in relay, obstacle course, scooter, boat and tug.

Gamma Alphas are looking forward to an exciting fall, and workshops for rush are already underway. Plans have been made for a "New York" party (a theme that seems to bring us a great deal of success!), as well as our tried and true "Land of Oz" party and the traditional beautiful preference party. Gamma Alphas should have plenty of opportunity to meet new girls since Sherri Cox and Marge Kennedy have been selected as resident assistants for the 1983-84 year, and four other sisters, Wendy Johnston, Terri Nass, Randi Nevins, and Debbie Schultz will serve as freshman orientation leaders.

The year will be one of continued service to Baldwin-Wallace with participation as members of the senate, advisory court, varsity cheerleading and a variety of sports that include volleyball, track and tennis (this past year featured *eight* Delta Zetas on the tennis team!). Three of the four senior class officers will be Gamma Alphas - Sheila Khosh has been elected vice-president, Melissa Erzetic is the new secretary and Shelley Spencer will serve as treasurer. Patti Foley has been elected junior class secretary and sophomore Debbie Schultz is the vice president of her class.

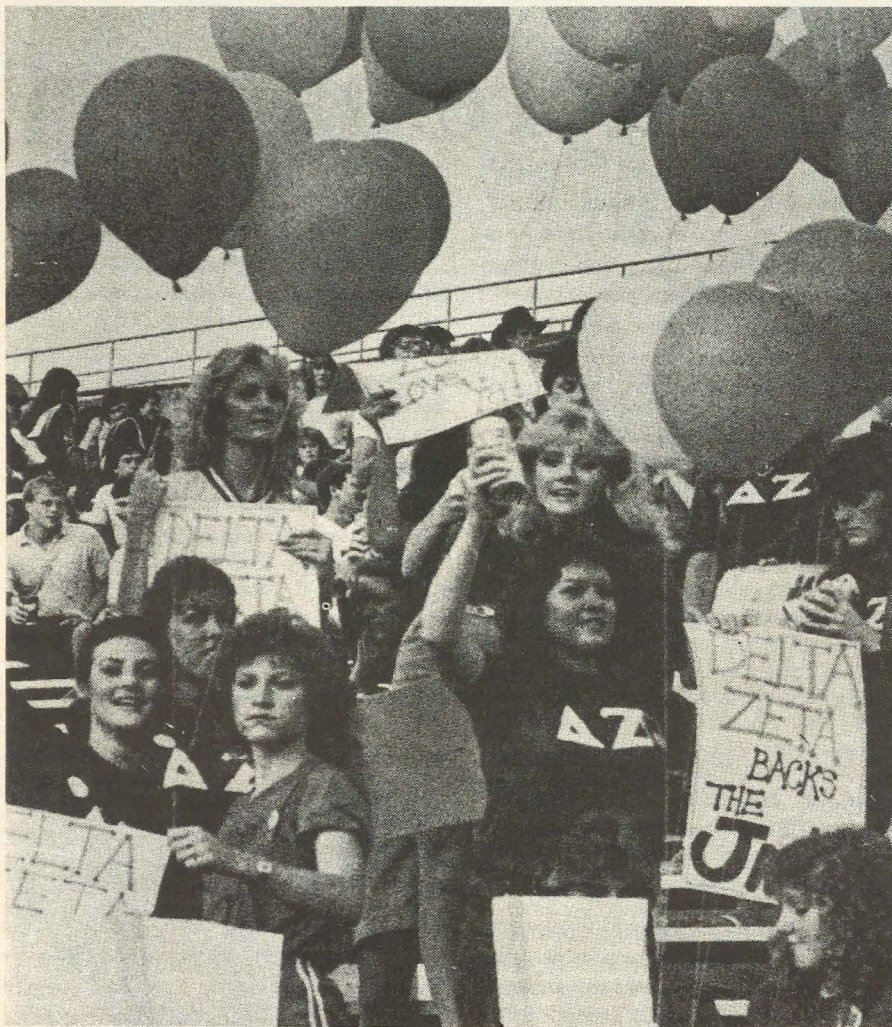
We hope that in the new year Gamma Alphas will create as many

exciting and rewarding memories as this past year has brought to us. Our chapter's own special song, "The Lamp and the Rose", written by President Randi Nevins, was sung this year as a special parting "gift" to our seniors. Through all that we do and achieve together as sisters in our short time at Baldwin-Wallace is an awareness that, as the song says, "even when our college days come to a close; Delta Zeta lives forever in her golden lamp and rose."



Outside the ΔZ section, past president Jane Mowery cooks hamburgers for Lisa Orlando and Shelly Tehlin. Beth McQuaide and Terri Nass wait patiently in the background.

Delta Zeta On Campus



Zeta Psis had a spirited group of women in attendance at Stephen F. Austin's opening football game. They released balloons at different times during the game. (Staff photo by Jim Stotts)

by Diane Jones Skelton

ALABAMA

Alabama, Alpha Gamma — Delta Zetas really *pitched* in to help each other with rush this year. In fact, every member was needed to transfer a truck load of sand to the basement — bucket by bucket with an old-fashioned bucket line. And the *Gilligan's Island* party was among the successful rush parties which helped $\Delta\Gamma$ again pledge quota — this year 49. Rho Chi rush counselors for Panhellenic were

Debbie Carr, Phyllis Sundberg and Beth Kivette. Sheree Martin is president of Panhellenic and Debbie Hardegree is president of Young Democrats. Debbie is also in University Dancers II. Mandaine Noel is a Chi Phi Calendar Girl, and *Corolla* Favorite. University Ushers includes Mandaine Noel and Traci Christian. Members are enjoying new carpet and furnishings in the house.

Jacksonville, Lambda Gamma — New pledges were welcomed at a pool party at the home of Colonel Archie Rider and later enjoyed a retreat at Smith Lake in Cullman. Athletic Department Fuller Girls are Ann Holder, Charmion Lackey and Micheal Hubsky. Micheal is also Panhellenic rush president.

ARKANSAS

Arkansas Tech, Lambda Alpha — Three members, Julie Browning, Cathy Newhouse, and Lisa Yerby all represented $\Delta\Delta$ at Delta Zeta National Convention in Dallas. They were delighted to accept the chapter's award for pledging quota for three consecutive years. Cathy Busken is president of Panhellenic. Cardinal Key tapped Amy Campbell.

Central Arkansa, Epsilon Xi — Shari Coble cheered with the UCA cheerleaders, Delta Zetas marched into the first pep rally wearing their Delta Zeta shirts, carrying large wooden ΔZ Greek letters and a wooden turtle, and shouting their favorite chants. The student orientation staff included many Delta Zetas welcoming new students to UCA. Tamara Morris finished among the Top Ten in the Miss Arkansas Pageant over the summer.

Henderson State, Epsilon Pi — Senators in the Student Government Association are Beth Andrews, Liz Hardman and Jeanne Myers. Jeanne is also treasurer of the Resident Hall Association and vice-president of Student Activities Board. Beth serves as national committee coordinator for the Resident Hall Association. Other Resident Hall Association leaders are Dana Sanders, president, and Sally Shaver, secretary. Dana serves as vice-president of the Student Government Association while Susie McKinney is secretary of Panhellenic Council. Danette Deaton was tapped for Alpha Kappa Psi. Phi Lambda Chis chose Kim Hester as their sweetheart. Delta Zeta, with the other campus sororities, helped freshmen women move into their dorms.

CALIFORNIA

California-Chico, Delta Chi — Delta Zeta placed first among sororities in scholarship and took second in Sigma Nu's sorority softball tournament. Graduated Magna Cum Laude were Melinda Ely, Mary Mills and Marilyn Pitrofsky Weber.

San Jose, Gamma Lambda — Twenty pledges in formal rush brought the chapter to 73. $\Gamma\Lambda$ hopes to repeat last year's championship of flag football. Renee Ushigome is a candidate for Homecoming queen. Barbara Brodsky who carries a 4.0 average is president of Gamma Lambda and Laura Burnell is president of $\tau\Delta\Phi$ honorary. The pledge room is now all pink, complete with rose curtains.

COLORADO

Denver, Rho — At presstime, members were preparing for another successful formal rush. Earning perfect 4.0's were Cindy Bates, Julie Briggs, Marylou Cianciolo, Stephanie Dolan, Susan Fisch, and Kim Verhoerr. Ellen Palmer participated in a 23 day wilderness experience, Outward Bound.

CONNECTICUT

Connecticut, Gamma Beta — In Greek Week members faced fierce competition in sporting events as canoe racing and tug-of-war, but were determined to capture the first place sorority trophy in Greek games and did. The chapter celebrated its 40th anniversary on campus and were busy painting and wall papering the house.

FLORIDA

Tampa, Delta Theta — Delta Zeta was named best sorority on campus last year, won second in Greek Week, won first place overall in intramurals, and captured a close second place trophy in scholarship. Delta Zeta is the largest sorority on campus and was honored as most improved chapter at Province activities. Members sponsored a Go West campuswide party during Oktoberfest Weekend and a pie-throwing booth at charity day. Members of Alpha Chi academic honorary include Karla Ahrens, president, Maureen Merrigan and Donna Berry. Resident advisers are Donna Berry, Marcia Flemming, Maureen Merrigan, Ann-Marie Sepuka, Robin Stephenson, and Heidi Tolvanen. Heidi is also president of Howell Hall. Kathi Drenning is president of Panhellenic, while Maureen Merrigan is president of OAK honorary. *Who's Who in American Colleges and Universities* tapped Holly Fredericks, a member of the political science honorary. Juleigh Hanson is a UT diplomat and Greek editor of the yearbook. Anne Joyce is a member of education honorary, while Monica Rogers serves on the Student Judiciary Board. Panhellenic national honorary tapped Ann-Marie Sepuka. Maureen Merrigan was 1982 Greek Woman of the Year. UT Players includes Leona Peszka and Karen Amarnek is a peer counselor. Ann-Marie Sepuka was first runner-up to Homecoming Queen and Daye Holland reigned over the Valentine Dance.

GEORGIA

Georgia State, Delta Delta — The chapter prepared for formal rush by presenting the theme party skit for a parent/alumnae tea. Philanthropic projects include a sidewalk sale with proceeds going to the Scottish Rite Hospital or the local philanthropy, the Auditory Clinic. Robin Schaffer is Intersorority Council rush chairman and April Morris is a rush counselor. Michelle Houser is a cheerleader for the Atlanta Falcons and Lisa Coley holds two Delta Zeta scholarships. $\Delta\Delta$ was #1 in scholarship this past year and recently received the ATO award for outstanding sisterhood.

ILLINOIS

DePaul, Theta Theta — With so many college women wishing to live off-campus in apartments, its refreshing to read Michelle Miller's footnote to her *LAMP* report . . . "ΘΘ is a unique chapter. Because we do not have a house, and we are all commuter students, and because all of our sisters work part-time and attend school full-time, this report seems a little lacking in interesting or heartwarming incidents. It's not that we do not have them, it's just that it is extremely difficult for all of us to be together at any given time. We are unified and our sisterhood is strong, but we do not live together and I guess we miss a lot." But those full-time students, part-time workers, seem to be busy on campus as Sue Ubis is Phi Kappa Theta Fraternity Queen and Michelle Miller is a member of the Homecoming Court. Blue Key honorary tapped Maria Christiano and Michelle Miller. Maria is on both DePaul's and the National Dean's List. Alana Haley is executive chairman for the Activities Board while Michelle Miller is executive chairman for Greek Council. The chapter's Greek of the Year dance raised \$2500 this year and over 400 guests attended. College Chapter Director Kathleen P. Daly was honored as Outstanding CCD in Province IX.

Eastern Illinois, Gamma Nu — The Delta Zeta Chapter, numbering 114, includes 39 beautiful and enthusiastic new pledges. Fraternity sweethearts are Kelli Ryan, ΦΣΕ, Lisa Michelini, TKE, and Chris Jones, IKA. Pike Calendar Models are Linda Musser and Marci Murphy. Karin Kraai is second vice-president of Panhellenic. Michelle Hove won the Woman of the Month Award and Nancy Slusser won a talented student scholarship award from the Theatre Arts Department. Vikki Lamendola is cheerleader captain. Extensive remodeling to the house included work in the formal living room and kitchen.

Illinois, Alpha Beta — The chapter pledged 20 girls in formal rush and welcomed National Secretary Dianne Guild for rush.

Northwestern, Alpha Alpha — Members prepared for an exciting formal rush in a lovely, redecorated house. And, there's no doubt the rushees will hear about AA's awards from national convention . . . the Margaret Huenfeld Pease Award for philanthropies, a mug for scholarship and certificate for standards.

Southern Illinois, Gamma Omega — Delta Zeta raised cash for Gallaudet by sponsoring a Most Eligible Bachelor Contest. Jill Snow, Kim Wilson and Linda Wilson freeze modeled at a Carbondale clothing store in the mall. July Solarz boasts a 4.0 grade point. And, another mother-daughter team is guiding a college chapter as Kathy Schill is daughter of CCD Elizabeth Mestas Schill. Delta Zeta's new housemother has a good understanding of sororities. Housemother Vicki Hersch just finished traveling as a field representative for Alpha Sigma Alpha Sorority.

INDIANA

DePauw, Delta — An exciting and successful rush included getting the right attitude and the right look. Jessie Reid, Δ , gave professional make-up consultations while Carol Arner of Student Affairs talked to the chapter about

positive mental attitude. Special guidance came from Phyllis Snape Favorite, National Director. Plans for a busy fall include a scholarship banquet, faculty dinner, community project with AXA, sorority tea with AOII, and a housemother's tea. A chapter "smile squad" cheers up sisters who are feeling down by decorating their doors with paper smiles and messages. Campus leaders include Lisa Blyshak, president of the Chemistry Club, and Donna Heckler, secretary of Academic Council. Ronda Hamaker serves on the Sophomore Board. Tanya Seslar is first violin in the Terre Haute Symphony; Linda Johnson played cello in Waldfest in Chicago. Lisa Hidlebrand and Gretchen Stiers are resident assistants. Lisa Blyshak and Cheryl Marvel participated in a peer counseling workshop. Candace Cooper is a representative for Chaplain's Living Unit Council. Monica Girardot and Sharon Heinrich are freshman orientation leaders.

Franklin, Psi — With only 11 members returning for formal rush, Delta Zeta tried a new approach with two new skits. The excellent planning and decoration of Rush Chairman Lynnette Pratt and the enthusiastic rushing of chapter members brought 17 new pledges to Psi. At presstime, members were planning for Homecoming and practicing for intramural flag football (hoping to match last year's win). Gold Quill honorary includes Tammy Giessler and Lynn Grayson. Teresa Abell, member of Lancers and Laurels honoraries, is editing the yearbook. Lisa Stephan is cheerleader captain and president of the Student Congress.

Indiana, Epsilon — Members welcomed an enthusiastic pledge class numbering 18 and are again hoping to win Greek Classic. Debbie



Tamara Morris is Miss UCA and represented the university in the Miss Arkansas pageant. She is a member of Epsilon Xi.



The Delta Chi softball team at Chico State includes (back row, l to r) Larilyn Pitrofsky Weber, Amy Cage, Mary Lang, Stephanie Hogate, Christy Bryant, Anne Markel, Gae Golden. On the front row are Keri Renfro, Katy Venarde, and Pam Sullivan.

Rechsteiner is a member of IU pom pon cheer-leading squad.

Indiana-Evansville, Lambda Beta — Delta Zeta pledged a quota pledge class numbering 17. Student government leaders Mary Beckman, vice president, and Darla Kamman, senator. Lana Barrett traveled to the Miss Indiana State Fair contest wearing the crown of Pike County.

IOWA

Iowa State, Beta Kappa — Though the chapter wasn't 100% in favor of the new quote-total system at Iowa State, BK adjusted and was extremely successful in formal rush. Of the 16 houses on campus, only five reached quota, reported Mary Beth Kissell, rush chairman. And, Beta Kappa pledged quota, 31, in formal rush. ΔZ's total membership is 86. At presstime members were busy planning Homecoming with TKE and preparing teams for ΣX Derby Days.

KENTUCKY

Kentucky, Alpha Theta — "Sing a Rainbow", the first invitational party for Delta Zeta, started rush out right . . . 32 new pledges! Initiates and pledges are getting to know each other with a "build your own sundae" party, a swimming party, and a cook-out. Special thanks to parents and alumnae for the brand new living room furnishings.

Morehead, Kappa Tau — After helping freshmen move into the dorm and hosting an ice cream party for rushees, Delta Zeta became the first sorority to add pledges in fall rush. The second week of school, everyone enjoyed a *Flashdance* party. Members came attired in cut-off sweatshirts, dance clothes and bandanas. KT's are preparing to defend their intramural softball championship. Pledge Melissa Shunk is a MSU majorette. Jenifer Noland is Panhellenic president while Martha Brown is state treasurer of Phi Beta

Lambda. Honors program includes Laura Fannin and Leslie Spradlin. Brenda Bersch is a member of Student Nurses Organization, and Lecia Large is a member of Student Council for Exceptional Children. Tina Simpson co-hosted *MSU Show Case*, and Karen Parks hosted *MSU At Large*. Sheri Wehrum holds the freestyle record for Clermont County.

Northern Kentucky, Kappa Beta — A Panhellenic house is new . . . the three sororities have suites with a common kitchen and living room. KB pledged 11, the largest pledge class on campus. They recently received a first place trophy for intramurals and assisted with a local blood drive. Mary Ann Lawless is president of the Philosophy Club, Kay Powell heads Campus Republicans and Vicki Vanentino is vice president of the Marketing Association.

LOUISIANA

Northwestern, Epsilon Beta — Delta Zetas manned a booth at Inside View Program, summer orientation gathering for incoming freshmen. During the program, EB welcomed other sorority members for a slumber party at the Delta Zeta house. This fall members painted the exterior of the house, attended a Panhellenic pre-rush ceremony and an All-Greek mixer with McNeese. Christine Avant is vice-president of Panhellenic and reporter for SLAE.

LSU, Sigma — The chapter is proud of its many National Convention awards, but especially honored to learn that CCD Betty Schneider Fenton, Σ, received the Outstanding College Chapter Director Award. Sigma, which just won an award for 23 years of pledging quota, pledged quota again . . . the 24th time! Corresponding Secretary Angela Dubroc won a Lafayette Parish Academic Scholarship. Stacie Comeaux, chapter president, received a Delta Zeta Founders Memorial scholarship.

MICHIGAN

Central Michigan, Gamma Psi — Members



Surrounding Miss Ferris State College 1983 Tracey Fitzpatrick, are her sisters from Zeta Nu. L to r are Sheri Culver, Denise Ferguson, Tracey, Berni Osiha and Wendy Alexander.

scooped ice cream, handed out balloons and played volley ball with freshmen to help orient them to school activities.

Michigan Tech, Lambda Theta — Members enjoyed their annual fall retreat at College Chapter Director Julie Kearly's family cabin at Dollar Bay. The chapter celebrated Labor Day with a cook-out. Sandy Brooks was graduated with honors.

Western Michigan, Gamma Pi — Bronco Buddie, nationally recognized college orientation program, includes Delta Zetas Lisa Sherrod, Connie Carlson, Debbie Brady, Mary Lou Hillman, and Sandy Babcock. Tracy Smith is a freshman orientation leader. Gold Company Jazz Group includes Jody Hansen. Bernie Viglione worked as a counselor for Young Life Christian Camp in Buena Vista, Colorado.

MINNESOTA

St. Cloud, Theta Mu — Theta Mu welcomed other Delta Zetas from Minnesota, North and South Dakota at Province XIII Weekend. ΘM won a chapter achievement award, spirit award and several individual honors at the event. Bette Boline won a behind-the-scenes award and Jane Munson was named outstanding pledge. Kelly O'Brien received an honorable mention for top treasurer honors. Theta Mu was also cited for excellence in recording minutes. Chapter philanthropies included a food for friends drive, posting of recycling signs, aiding Salvation Army and parking cars at May Bowl. Delta Zeta joined other Greeks to rake leaves in neighborhood parks.

MISSISSIPPI

Southern Mississippi, Epsilon Mu — The chapter placed third among sororities in scholarship for the spring semester and earned a 3.1 overall for the summer, the highest on campus. Four members earned perfect 4.0's. Alumnae support during formal rush included food preparation, rushing, painting props and even performing in skits! Diane Jones Skelton, EM, is working with the chap-

ter this year as a special assignment, while the chapter continues a concentrated effort to increase membership. Lori Ehlers is one of the 20 original Eaglettes, new twirling line for USM. Amy Hille works at the USM Equestrian Center and Amy Frederick, a resident assistant, served as a summer missionary in Guadeloupe. Donna Huch, chapter president and co-op student with US Navy Oceanographic Services, is in Brazil continuing her oceanographic studies.

MISSOURI

Central Missouri, Epsilon Gamma — Members enjoyed a summer meeting at Wulffe Harbor Lake Resort at Lake of the Ozarks, where they planned Homecoming mum sales and jump-a-thon activities. Gail Spotts directed and produced a segment for *PM Magazine* which aired September in Kansas City.

Missouri-St. Louis, Iota Xi — *M*A*S*H* arrived at UMSL as Delta Zetas dressed in fatigues to perform a delightful and successful formal rush skit. Iota Xi pledged quota, 18, during formal rush. Members enjoyed a summer formal at Flaming Pit Banquet Center at Bridgton. Anita Bryant and Janet Neuner traveled to a UMSL Leadership Training and Development Seminar at Trout Lodge at Potosi. Kim Miller and Janet Neuner represented Delta Zeta at the St. Louis Panhellenic Sorority Show Case and Fashion Show.

Northeast Missouri, Delta Sigma — Lisa Moore is a member of the cheerleading squad which received two excellents and a superior rating at summer camp. The chapter planned a retreat for early October.

Northwest Missouri, Epsilon Rho — Delta Chi Calendar Girls are Tammy Jones and Paula Grant. The Dean's Honor Roll lists Tricia Foley, Jeri Linn, Sally Waller, Callen Bateman, Dawn Stanger, Shelly Steele, Laurie Lehan, Lori Filby, Lisa Volkens, Carleen Ewing and Sally Seipel. EP enjoyed a rush retreat in July.

William Jewell, Zeta Rho — Fall activities included initiation, a turtle ice-cream sundae party, rush practice, rush parties and cheering the Cardinals on to victory. Rhonda Barry, Florence Hood Award winner and chapter president, won a Founders Memorial scholarship and Greater Kansas City Panhellenic Award. Cardinelle hostesses Julie Adams, Melissa Scott, Lori Greenfield and Beth Dreyer were among the hostesses at the Luciano Pavarotti Benefit Reception at Kansas City's Crown Center Hotel. The benefit evening raised over \$50,000 for the William Jewell Fine Arts Program.

NEBRASKA

Creighton, Theta Eta — Omaha Panhellenic honored Kelly McQueen as Creighton Girl of the Year and Sheila Nix as recipient of the Senior Scholarship Award. Kaki O'Brien and Tina Otterstedt are basketball cheerleaders. Pom Pon squad includes Cindy Malone and Liz Malone. Kathleen Dungan won the Outstanding Student Teacher Award. Jamie Hansen is Panhellenic president. Mary Kay Mangus and Therese Mullin are resident advisers. Members are selling 2000 copies of their first Men of Creighton Calendar for \$5

each, worked a welcome week information booth, and are hoping to win a first place in powder puff football.

Nebraska Wesleyan, Beta Tau — Rush not only touched the rushees' hearts, but helped BTs rediscover the special meaning of Delta Zeta. Beta Tau added 17 new pledges, after an ice cream party (complete with clowns, parlor tents and ice cream), a New York City Broadway theme party, and memorable formal party. May was highlighted with the 75th anniversary celebration, while the fall calendar includes plans for a Delta Zeta Barn Party. Beta Tau returned from National Convention with numerous awards including the top scholarship award, a membership award for 17 years of filling quota, a pledge training award and standards, rush and sorority education certificates. They also won the Agler Award for cooperation with national and are extremely proud of their CCD Marvona Tavlin, new National Vice-President of Collegiate Affairs. Tera Beermann and Susie Keisler received scholarships, while Shelly Slaughter won a Grace Mason Lundy award.

NEVADA

Nevada, Las Vega, Iota Phi — Chapter members held a summer retreat in Pine Valley, Utah and held its annual fireworks booth fundraiser. For the fourth year, the chapter worked the Jerry Lewis MDA telethon, the pledge class furnishing ΔZ power during the first half of the telethon and then initiates joined the pledges to finish the shift. Susan Moore, IΦ alumna and MDA executive board member, worked the full 24 hour shift and the late night shifts were taken over by Catherine Clay, Cheri Berndt and Cindy Ward. Catherine Clay is president of the Consolidated Students



Susan Zachritz is co-captain of the pom squad at DePauw-Δ chapter.

of the University of Nevada and Tracy Beaton and Sheri Wolodko are board members. Denise Curcio is a member of the Exceptional Children's Council and Lisa Griffith is publisher/editor of the U.S. Soccer Academy newsletter. Michele Wheeler is a semi-finalist of National Deans Lists and Catherine Clay is an officer of Alpha Kappa Psi business fraternity.

NEW HAMPSHIRE

New Hampshire, Theta Gamma — Karen Johnson is serving as student body president, while Ellen Hume presides over the Greek Senate. Leading Panhellenic Council are Betty Bartlett, president, and Marti Stone, vice-president. Kirsten Kohlmeyer is president of Alpha Epsilon Delta pre-med honor society and is a University Admissions representative. Theta Gammas were ecstatic to return to school and find a newly decorated and renovated dining room and kitchen.

NEW JERSEY

Glassboro, Xi Kappa — Twenty-five of the members traveled to Dee Modrak's summer home in Waretown for a reunion. The day's events included swimming, cook-out and sharing of summer stories. Linda Cademartori began a summer newsletter for the chapter. Plans are already on the drawing board for campus community project, Project Santa, and a Christmas bazaar. Susan Wimann is vice-president of Kappa Omicron Phi home economics honorary. Members of other organizations are Linda Cademartori, Advertising Club and Audrey Otero, Puerto Rican Students in Action.

Trenton, Lambda Lambda — The 14 pledges let the campus know just what they thought of Delta Zeta. They hung a large banner reading "ΔZ Sisters, We Love You!" ΛΛ honored its own at the traditional chapter semi-formal, participated in the college's annual Spring Week with various fund raisers, and entered two teams in "Almost Anything Goes" sports competition. Delta Zeta collected clothing for residents of a run-a-way shelter and entered a team in the wheelchair race at Handicapped Week.

NEW MEXICO

New Mexico, Gamma Xi — Lively renditions of *All That Jazz*, *Ain't He Sweet*, and *Pass It On* earned first place in Greek Sing for Delta Zeta. ΓΞ's won second place in spirit and third place in Greek games.

NORTH CAROLINA

East Carolina, Zeta Lambda — The last phase of chapter house redecoration was completed just in time for rush. The entire downstairs area, excluding the bedroom, is completely remodeled. In fall rush, ZΛ pledged 23 girls.

North Carolina-Charlotte, Kappa Phi — Campus leaders are Robin Overholser, Residence Housing Association president; Tina McWhorter, Schott Hall Activities Representative; Sheryl Lambert, Student Government representative; and Nancy Allen, University



Kelli Ryan, Eastern IL-ΓN, is sweetheart of Phi Sigma Epsilon.

Program Board representative. Members of campus organizations are Jan Mills, business fraternity; Susan Collins, Alpha Kappa Psi; and Kelly Miller, Psychology Club secretary. Susan Cavanaugh handles the treasury for Panhellenic Council. Sweethearts of fraternities are Donna Stroupe, KΣ, and Susan Collins, ΣN. Beth Thompson is a cheerleader. A fun weekend, which proved to be a profitable fund raiser, centered around Delta Zetas manning the rides at the adult and children's sections of Carowinds Amusement Park on the North and South Carolina border. Tina Williams, a Delta Zeta supervisor at the park, arranged the project.

OHIO

Ashland, Theta Psi — *Who's Who Among Greeks* lists Martha Sisk, Doreen Bell, Dolores Henning, Kate Childs and Dawn Shaw. Alpha Omega honorary includes Jessie Brubaker, Diane Goodman, Dawn Shaw and Janet Iley, treasurer. Diane joins Dolores Henning in Kappa Delta Pi. Martha Sisk was named Outstanding Greek Woman of the Year. Chapter pep chairman Lesley Mack has devised a "life-saver" award for the member making the greatest effort to help a sister survive the completion of any difficult task. Teri Kaple, rush chairman, met incoming freshmen immediately as a member of the Ashland orientation staff. Karen Kern joined her on the staff. Randi Parsons and Carolyn Stevenson are on the student Homecoming committee. Members joined Phi Delta Thetas to sponsor an Easter party for underprivileged children, and are extremely proud of their third place national ranking in Delta Zeta scholarship.

Bowling Green, Gamma Tau — ΘΨ again pledged quota, this year 32, with some delightful rushing themes. Parties included "Election Day at Delta Zeta", "Formal Desserts", and "ΔZ is Out of this World!" For the out-of-the-world party, rushees entered through a 16 foot high space ship in front of the house. At presstime, members were preparing for the annual ΣΦΕ Mud Tug and TKE Water Wars. At National Convention, Gamma Tau won silver awards for standards, activities, philanthropy and membership. Anne Marie Sferra received a graduate scholarship from Delta Zeta.

Baldwin-Wallace, Gamma Alpha — The sisters extended a special welcome to all new students through Orientation Leaders Wendy Johnston, Terri Nass, Randi Nevins and Debbie Schultz and Resident Assistants Sherri Cox and Marge Kennedy. Patti Foley and Wendy Johnston arrived on campus early to cheer for the football team as varsity cheerleaders. Marge Kennedy received a scholarship from the Cleveland Alumnae Panhellenic and chapter members are assisting in reforming the B-W chapter of the American Society for Personnel administrators with Sheila Khosh, the new president, leading the way. Other members include Charmae Stamper-Cotton, Sherri Cox and Randi Nevins.

Findlay, Theta Tau — Chapter president Kryss Pituch is secretary of the Student Government Association, manager of college football, speech lab assistant, and member of the WLSC news team. Panhellenic president Lisa Huffman is a senior student government representative, math lab assistant, and Becker CPA campus representative. Lisa earned an academic scholarship from Findlay. Other academic scholarships went to Jeanne Stuckey and Vicky Jones. Denise McGaughlin won a scholarship from the grand Assembly-Rainbow for Girls. Kerry Crandell is pre-vet club treasurer and a library assistant. Doreen Massay, a math lab assistant, won a band scholarship. Vicki Jones, both a math lab and an admissions assistant, won a merit grant from Findlay. Jeanne Stuckey is also a math lab assistant. Sharyl Renner is librarian of the college choir, while Shelly Zimmerman holds memberships in Horse Club and Wilderness Club. Debbie Legg is a peer facilitator, library assistant, and resident assistant. At National Convention in Dallas, Cchapter president Kryss Pituch and College Chapter Director Cindy Fitzpatrick were delighted to hear that Theta Tau ranked eighth in scholarship and ninth in activities nationally.

Miami, Alpha — The year started out perfectly as Alpha again pledged quota—this year 38. At presstime, members were teamed with AXA for a sorority-fraternity exchange dinner and were looking forward to Greek Week competition. Alpha's new philanthropy is a golf tournament at nearby Hueston Woods. The first date party will be a hoe-down.

Wright State, Kappa Iota — Scholarship recipients are Pam Kottman, Kim Tuttle, Founders Memorial Foundation, and Cyndi Walker, Order of Rainbow for Girls. Pam Dugmore is Ohio's Honey Queen for the second time. Members earned over \$200 with a car wash and paper drive. Proceeds went to philanthropies.

Youngstown, Kappa Chi — A busy fall began with several philanthropic projects. Philanthropy chairman Sondra Scott led the sisters in raising over \$500 for speech and hearing with their sixth annual Bike-a-thon on the core of the campus. During the summer, Delta Zeta joined with Phi Kappa Tau for a 12 hour dance-a-thon benefitting Gallaudet and Youngstown Hearing and Speech Center. The chapter also participated in a blood drive. Delta Zeta was named Sorority of the Year at annual Greek Sing, while Leslie Myers was honored as Sorority Woman of the Year. Leslie will be co-chairing Homecoming. Kim Wells is assistant editor of the *Neon* yearbook, while Lisa Hernan is Greek Week chairman.

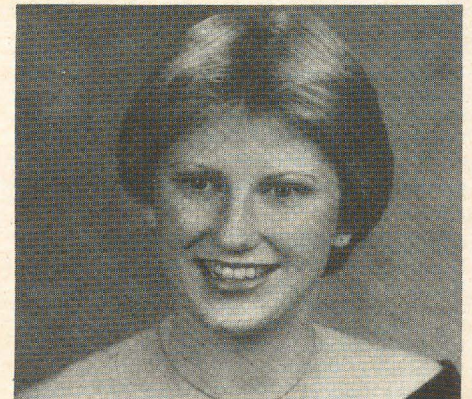
OKLAHOMA

Central State, Epsilon Upsilon — Delta Zetas joined Sigma Tau Gammas for a fun-run benefitting Cerebral Palsy, planned a fund raiser at the Oklahoma City State Fairgrounds, and again worked at the world's largest haunted house. Alumnae got into the swing of things as they costumed as turtles for formal rush. They served as turtle tour guides and escorted rushees to a finance room, scholarship room, and honors room in the house where rushees learned more about Delta Zeta. Later, at "Delta Zeta—the Best Brand", rushees sat on bales of hay and enjoyed a Lone Rushee skit. Epsilon Upsilon pledged quota plus—21—and is the largest sorority on campus. Nina Pitezel is Miss January for Sigma Delta Chi and Kathy Bray is a collegiate national officer for DECA.

Northwestern, Delta Omicron — Rush parties included a ΔZ Safari Party, with real jungle atmosphere, a *Fantasy Island* party, and Rose Preference at the home of an alumna. How many M & M's in a cooler? The person guessing the correct number, after buying a 50¢ chance, will win the M & M's and the gallon cooler in the Delta Zeta fund raiser. Leading Black & Gold Scroll honorary are Kayla Landreth, president, and Kayla Jackson, secretary-treasurer. Lise' Coussens and Diane Herdridge both earned perfect 4.0's in summer school. Lanette Benjamin is president of the Dorm Council.

Northeastern, Delta Phi — The first week of school Delta Phi walked away with most spirited organization honors for its display at the annual school Howdy Dance. Delta Phi celebrated the chapter's 60th birthday in November. Student Senate leaders are Julie Holmberg, vice chairman, and Dianne Dowdy, representative. Susan Vail is flag corps captain with the marching band.

Oklahoma State, Alpha, Epsilon — At a successful summer work-week, members, parents and friends trimmed the ten foot shrubs behind the house, beautified the yard, finished kitchen and dining room painting, hung all the old composites, and built rush props. Joining convention delegates Susan Wahid and Shawn O'Halloran, were Nancy Woods and Susan Cozier. Nancy is chairman of the Student



Leslie Mann is the most outstanding undergraduate German student at Georgia Southern where she is a member of Iota Nu.

Action Council for Health, Physical Education and Recreation. Flag Corps includes Carol Horton and Diana Baldwin. Transfer Student Leadership Council includes Reina Holtman and Cathy Dandurand. Sharolyn Wallace, a member of the President's Honor Roll, holds Miss Appearance and Miss 101 Ranch Rodeo titles. Sheila Bryant won a Sophomore University Scholastic Scholarship. Linda Jones is a member of Parthenon Players and OSU Dance Concert.

PENNSYLVANIA

Drexel, Epsilon Zeta — Donning tropical shirts and leis for the first rush party, members and rushees alike wriggled amongst tropical decor at a hula contest. At another party, rushees jitter-bugged to the sounds of Bill Haley and the Comets, while members dressed in cuffed jeans, bobbie sox and pony tails for the party. The old fashioned Southern Garden Party culminated rush activities. One of the most profitable fund raisers for the chapter was pretzel sales.

Edinboro, Iota Delta — Delta Zetas are celebrating the college's recognition as a university by selling *Go Boro!* buttons. Parents enjoyed the annual Parents Day Luncheon prior to a Fighting Scots football game. Members entertained children with their annual Halloween party at the Sarah Reid Children's Home in Erie. Delta Zeta maintains an annual membership in the Pittsburgh Hearing, Speech and Deaf Services, Inc. Also in the area of philanthropies, members have adopted an 87 year old grandmother in Cambriage Springs. Granny Herrington always looks forward to her Delta Zeta visitors... and delights ΔZ s with her recitations of poetry and songs. $\Delta\Delta$ placed first in Greek Sing competition. Dean's List includes Suzanne Easler, Vaune Pelletier, and Ann Sninsky.

Indiana-PA, Gamma Phi — Chapter President Maria Blair provided an exciting evening for her sisters as she read from her Delta Zeta diary compiled during National Convention in Dallas. At presstime, members were anticipating their most spirited and enthusiastic rush ever. Stacy Tannehill is a member of the varsity cheerleading squad. Nancy Voytosh and her quarterhorse, The Playman, earned numerous championships in Hunter Horse Shows throughout the state last summer.

Kutztown, Kappa Rho — During Greek Week in the Spring, Delta Zeta participated in a faculty tea, beach party and dance, and banquet. Kappa Rho Barbara Patzuk chaired the entire week's festivities for the campus. Winning awards during Greek Week were Jo Anne Arnholt, Colleen McPoyle and Sandy Horst. A little investigative work in the area of fund raising included members discovering their fathers' weights. Dads then donated a penny for every pound. Members of honoraries are Lorie Kramer, $\Phi\Delta\Theta$ history, and Jo Anne Arnholt, New Federation of the Golden Bear residence honorary. Lynn Wallis, a member of the equestrian team, placed eighth in regional competition. The chapter raised \$200 with a summer raffle and chapter President Jo Anne Arnholt was cited as Greek Woman of the Year.

Pittsburgh, Omicron — At a summer rush workshop, the hard-working chapter created

700 nametags. And, to get the campus excited for rush members created a banner depicting two ΔZ turtles holding hands and the caption, "For Friends for Life, Go Greek!" At National Convention Omicron won awards for pledging quota for five years and sorority education. Panhellenic external vice president Andrea Gourney, O, chaired Lantern Night, a ceremony welcoming freshman to Pitt. Patty Maloney co-chaired and organized the event.

Slippery Rock, Zeta Phi — Sixteen Spring pledges have been initiated and there are nine new pledges from Fall rush. $Z\Phi$ had a display table at SRU's organizational fair and joined $\Lambda X\Lambda$ in Homecoming float plans. The chapter has been selected to usher for the Artist series on campus. Kathy Fitske ran in "Run for the Gold" for the upcoming Special Olympics soccer tournament. Wendy Wanswer was named Outstanding Greek Woman at Greek Week and Diane Paul is president of the Public Administration organization.

West Chester, Iota Rho — First in scholarship for the fourth consecutive year pleased Iota Rho who has just completed their most successful rush in years. Chester County alums again furnished all the food for rush. They took first in Greek Games and second in Greek skits. Lynne Ciervo is captain of varsity cheerleaders, assistant vice president of WCU Intercollegiate Governmental Association and head cheerleading coach at a nearby high school. She is also Iota Rho's rush vice president and a nominee for Homecoming queen.

SOUTH CAROLINA

South Carolina, Beta Delta — Delta Zetas put on a fantastic rush and welcomed 41 new pledges. Edi Rose, Sami Mureddu and Carol Monson served as rush counselors. Julianne Neal and Tina McDowell sing with *Carolina Alive*. Toddie Fletcher dances with the USC Dance Company. Delynn Bradley is a trainer for the all women's team and USC football team.



Lisa Huffman, Findlay- ΘT , is Panhellenic president.



Sharolyn Wallace was named Miss Appearance at Miss Pinto of America competition in the International Pinto Show. She is also Miss 101 Ranch Rodeo Queen and a member of Oklahoma State University-AE chapter.

TENNESSEE

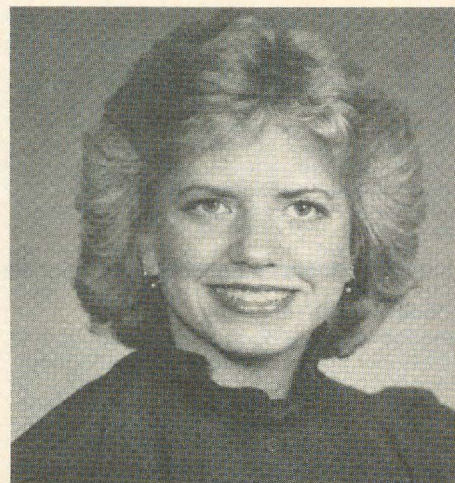
Memphis State, Gamma Iota — For the second consecutive time, Delta Zeta took first place honors in mixed division of All Sing. The highlight of the Phi Gamma Delta-Delta Zeta presentation was a solo of *Maybe* by reigning Miss Memphis Lisa Hatchett, Π . Under the direction of Fielder Diane Sorensen, Π began the excitement of a growing Delta Zeta chapter. Susan McKee is a Resident Hall Association representative. Kathryn Thomas is a member of Honors Student Association and a senator.

Middle Tennessee, Iota Iota — Members have joined together to paint, remove carpet and clean the chapter room in a redecoration project. The pride in the project prompted members to vote "no eating or drinking" in the chapter room in order to maintain its beauty. Members distributed helium filled balloons reading " ΔZ Summer Fling" at fall registration to start off a great year. Members sold donuts in dorms and aided Kappa Alpha Fraternity by selling tickets to their All Star Football Game benefiting Muscular Dystrophy. Molly Donaldson won a \$300 award from the Physical Education Department.

TEXAS

Houston, Delta Theta — $\Delta\Theta$ pledged quota for the 20th consecutive year and participated in the Jerry Lewis MD Telethon. The chapter had an ice skating party at the Houston Galleria the night before initiating spring pledges.

North Texas, Kappa Zeta — Hard-working Kappa Zetas, joined by Lewisville and Dallas alumnae, conducted a successful rush including a Garden Party, *Wiz Skit* and *Fame Skit*, to



Although Upsilon chapter at North Dakota was closed at the end of Spring semester and recolonization is many dollars and years away, chapter members earned honors worthy of note and wanted their alumnae to hear of them. Pictured are Tammy Johannes and Alison Johnson who were named to Order of Omega, Greek honorary, and Judy Ross, named outstanding treasurer in Province XIII.

pledge quota for the second consecutive year. This year's pledge class numbers 37. Members treated campus fraternities with cakes, are collecting aluminum cans for philanthropy, and are teamed with Kappa Sigma for Homecoming. Alison Alves is fourth runner-up in the Olympic division of ice-skating. Wendy Kramme is a member of the Marketing Association. During Kappa Zeta's Goodwill program, members attempted to bake cakes to be decorated by the chapter. Both Karen Keith and Lisa Gallehugh ran into some difficulty. After burning their first cakes to a char, they persisted, baked second attempts — and burned them, too!

Southwest Texas, Iota Alpha — Thirty beautiful pledges now have a home in Delta Zeta! Iota Alphas will perform their top winning Campus Sing song rendition, "Delta Zeta, The Greatest Show on Earth," for Homecoming entertainment. Officers in Strutters Drill Team are Paige Lueking, head captain, Lisa Stone, Kim Pickett and Patsy Haenelt. Order of Omega honorary includes Birdget Kennedy and Charlotte Maxwell. Student Foundation includes Charlotte Jackson, Bridget Kennedy and Lisa Stone. SW Texan Spirit Group members are Mechelle Branch, Kelly Jinks and Marla Evans. Fraternity sweethearts are Julie Rhoades, ΣN, and Jean Rich, TKE.

Stephen F. Austin, Zeta Psi — A successful formal rush brought 21 new pledges into Delta Zeta. Members and pledges alike made a spirited appearance at SFA's first football game carrying helium filled pink and green balloons.

Texas-Arlington, Iota Psi — A successful Fall rush brought 33 new pledges and the new chapter house is finally on the way up! Iota Psi sponsored another Battle of the Sexes on the UTA campus and raised funds by working at the Show-Biz pizza place with campus Greeks coming to show their support. Jan Gibson is Liberal Arts representative to the Student Congress.

VIRGINIA

Radford, Xi Delta — A spirited Delta Zeta

team won two second places in Greek Week while Stephanie Hewitt and Janine Clarke earned top honors in obstacle course. Members helped host an open house for the speech and hearing clinic, volunteered hours at a local juvenile detention home, and organized their first formal rush. Fund raisers included car washes and a candy sale. Allison Merkle serves on the Campus Judicial Board. College Chapter Director Christine Sleight was named Most Outstanding Faculty Member.

WASHINGTON

Washington, Kappa — Members entertained friends, initiates and alumnae with a Hawaiian Luau which also proved a profitable fund raiser. Member Rocky Tsuboi provided authentic Hawaiian dancing. Members are excitedly preparing for their first formal rush. Debbie Wakefield won a \$1000 scholarship from the Bishop Foundation.

WEST VIRGINIA

Concord, Epsilon Delta — Chapter President Cindy Parker brought home a pledge training certificate and silver standards award from National Convention. ED won best song and standards award at Province Day. Carol Fox was named the province's outstanding treasurer. Sarah Pate earned highest senior average awards at the Panhellenic banquet. Teri Poulos serves Panhellenic as vice-president. Thirty-two per cent of Epsilon Delta, the largest percentage of any Greek organization, participated as Orientation Staff members welcoming new students to Concord. A successful Bridal Show, chaired by Laura Hill, included an open house for students, faculty and the public.

Fairmont, Epsilon Iota — At presstime the chapter is preparing for rush and working with Sigma Pi fraternity on Homecoming activities. Christine Phillips is Miss Fairmont State and was a finalist in the Miss West Virginia pageant. Jean Williams is the Mountain State Forest Festival Queen. CCD Marylinn

Kidd and president Kathy Stone, along with Kaye Yost and Pam Pugh, attended Naitonal Convention in Dallas.

Shepherd, Kappa Mu — Members traveled to Cooper Country Farm in Front Royal, Virginia for their annual summer picnic and, at presstime, were participating in Panhellenic formal rush. Robyn Flack is captain of the pom pon team and Sally Startzman is captain



Miss Memphis is Gamma Iota's Lisa Hatchett. She is a broadcast communications major, a member of the MSU Fashion Board and works as an intern at radio stations WREC and WZXR in Memphis. She has just been named to the Homecoming Court at MSU.

to the cheerleading squad. Sally also won the Milton L. Schiffman Scholarship at Shepherd. Kelly Weese won a Founders Memorial Scholarship.

West Liberty, Iota Tau — Delta Zetas got acquainted with freshman girls by delivering pink and green iced cookies to them. Upperclassmen got to know Delta Zetas at a pizza and popcorn open rush party. Members provided an information booth for freshmen on dormitory move-in day. As a fund raiser, Iota Tau sponsored an all campus disc jockey dance in the College Union. Jennifer Ramby won an athletic scholarship for volleyball.

WISCONSIN

Carroll, Gamma Theta — Delta Zeta won the Panhellenic scholarship award and enjoyed a fun-filled weekend retreat in July. Members participated in Al's Run, which benefits Milwaukee Children's Hospital. Sandy Micker won the Social Work Department Award.

Wisconsin-Eau Claire, Epsilon Omega — With the help of National Field Representative Linda Regner, Epsilon Omega had a successful rush in the terms of parties, reports chapter editor Ann Langel. Greek Week was reinstated on campus, but, unfortunately, sororities were unable to participate. It seems participation in Greek Week activities might bring possible rushing infractions since events were scheduled for the same week as rush.

Wisconsin-Whitewater, Epsilon Kappa — Delta Zetas are trying to put a little ZING into the chapter by setting a goal of creating unity among sisters. Within a week, ZING went from a goal on a piece of paper to an anonymous

chapter member leaving ZING notes on chapter memo boards, writing, ZING-ZING-ZING on the sidewalk leading to the house, and leaving mysterious surprises for the chapter on the back steps. Delta Zeta welcomed 14 pledges in formal rush and was excited over National Convention awards for membership, standards, newsletters and activities. Leila Yancy and Amy Huber both won scholarships from Delta Zeta.



New IΦ pledge Karen Hare is a cheerleader at UN-Las Vegas.

THE SRC'S DREAM

Fall rush is a dither,
As we go fro and hither
To show the young girls
A sorority world,
With or without references.

We rush, plan, and giggle
As we try to fi-niggle
Our new freshman misses
To be our ΔZ misses
With or without references.

We rush by the book,
By hook or by crook
We pledge our dears
Without any fears . . .
Did someone mention references?

If directions you elicit
The manual's explicit
"In five days from pledging . . ."
There should be NO hedging
Turn preferences into references.

Ruby Gray Purdum
National Reference Chairman



Southern Illinois Delta Zetas try "freeze modeling" at a local store. On the left are Kim Wilson and Linda Wilson, to the right is Jill Snow.

Busy ΔZ Alumnae Here and There



Rena Pierami Maruna

Rena Pierami Maruna, Drexel-EZ, director of supplier quality assurance at Kentucky Fried Chicken in Louisville was one of 27 women in the United States selected to receive a *Tribute to Women in International Industry* award from the National Board of the YWCA.

The YWCA organized the TWIN awards in 1978 for three purposes: to honor outstanding women in executive, managerial or professional roles in business and industry; to recognize corporations for establishing progressive personnel policies that provide opportunities for the advancement of women in industry; and to identify successful management women as role models.

Rena began her career at Kentucky Fried Chicken in 1974 as a microbiologist. She has progressed steadily to management positions, serving as manager of technical services and manager of poultry quality assurance before being promoted to her present position in 1981. She is responsible for monitoring the quality of all major ingredients used for Kentucky Fried Chicken products.

A native of Philadelphia, Rena received her bachelor of science degree from Drexel University and a master of science in food science from Michigan State. We are indebted to her sister Delta Zetas at Kentucky Fried Chicken, **Clara Lamkin, Kentucky-AΘ '68** and **Diane Beck Ogle, Kentucky-AΘ '67** for the information and picture!

Sandra Jongsma Madden, Newcomb-BY, sent an article from her Tulane alumni magazine relating achievements of **ΔZ Gayle John Howell**, a Newcomb grad who is manager of production engineering at the National Aeronautics and Space Administration (NASA) Michoud facility of Martin-Marietta in New Orleans East.

Martin-Marietta has the contract to build the external fuel tanks for the NASA space shuttle which went into space for its seventh run in June. Gayle - the only female manager at the facility - supervises the 471 employees who are the step between the design and construction phases.

Gayle emphasized that as a woman in a male-dominated field, women who expect to be treated equally have to do equal work! She said she remembered her first class at Tulane when she entered the engineering school in 1956: "I remember my first class - Math 175. It was for engineering students. So I showed up and everybody tried to convince me that I was in the wrong class. They kept saying, 'You want to be down the hall, not in this class.' I just kept saying, 'No, this is exactly where I'm supposed to be.'"

Gayle John Howell, another Delta Zeta Lady of Achievement!

And then there is **Kathryn Linkhart Jones, NSU-ΔΦ** chapter, who is serving her fifth year as executive director of the Greater Southwest Music Festival in Amarillo, Texas.

The annual festival attracts around 10,000 high school and junior high school musicians, plus another 135

directors and studio teachers — constituting Amarillo's single largest annual event. Altogether more than 205 organizations participated in the 1983 festival.

The festival has a 45-member Board of Directors who are doctors, lawyers, businessmen, educators, musicians and housewives - all interested in young people and music. The festival operates under a charter from the State of Texas as a nonprofit organization.

Kathryn, who attended Northeastern State in Tahlequah, Oklahoma, with your editor as a classmate, has also taught school and worked with husband Pat in his music store. She's an avid golfer who has won her share of tournaments. The Jones' are living on a small farm (by Texas standards) with 8 horses (6 registered paints, one Palomino and one fine riding horse), two dogs, three mama cats and ten kittens.



Gayle John Howell

Beverly George Everett, Iowa State-BK '49 was recently named to the Iowa Women's Hall of Fame. Beverly is pictured on page 67 of the new *History of Delta Zeta* when she attended a commission meeting for International Women's Year.

Beverly, who farms with her husband near New Sharon, Iowa, "has spent a lifetime involved in programs advocating equality for women here and abroad, and dealing with agriculture and food problems, rural and international development, cross-cultural understanding and continuing education."

Because much of her life has been spent on farms, Beverly is a vocal advocate of soil conservation, a subject she has frequently written about. She was appointed by then-Secretary of State Cyrus Vance to the U.S. National Commission for UNESCO, a United Nations group where she was vice chairman and has served on boards that range from local agencies to world-wide organizations.

The *Chattanooga News-Free Press* carried an article about **Dee Kindelberger** (Diane Santmyer Kindelberger, Baldwin-Wallace-FA) and her rewarding hours of volunteerism. The newspaper reported that in 45 minutes she taught a young girl at a children's home who had never played an instrument before to play the piano.

While the child did not become an immediate virtuoso, the mere fact that she learned so quickly must attest to a certain talent which Dee shares with those in trouble and distress.

Dee admits she is a doer. She does volunteer work five out of seven days a week. In addition to working as a CONTACT telephone counselor once a week and teaching Sunday School at the Brainerd United Methodist Church, she teaches singing and piano at the Chambliss Home Delinquent Unit, teaches piano to female prisoners at Silverdale and teaches singing to youngsters at the Children's Home.



Kathryn Linkhart Jones

Married to Lou Kindelberger, her degree is in Music Education and she just loves to pass on her knowledge to others. Their children are daughter Kelly, 14 (who is "very good" at the piano and also plays the flute) and son Scott, 12. Dee also jogs five miles at a time.

Dee sums it all up: "I find that there's great joy giving to the community through my music to people who have never been exposed to music as such . . . I really feel like the small things in life are the things that are the most rewarding, even if it's just a smile from a happy child from a new song that you've taught him."

The *New York Times* recently pictured **Kathy Klinkenfuss Manatt, Iowa State-BK '58** and her husband Charles T. Manatt, Chairman of the Democratic Committee as they entertained former Cabinet Members from the past three Democratic Administrations in their home. The information, sent by Kathy's classmate **Betsy Aldershof, BK '59**, mentioned that Chuck is also an Iowa State graduate and was well

known around the Delta Zeta house, loaning his car for their philanthropic projects and of course, being Kathy's date at all their parties. She mused further, "I'll bet Kathy never dreamed as she was busy learning how to cook and entertain at Iowa State that she would have such distinguished dinner guests in her home!"

SCHOLARSHIPS-1983

GRADUATE SCHOLARSHIP RECIPIENTS

CATHERINE ANN CRAWFORD - University of Alabama-AI, GPA 3.75 with BS degree in mathematics and computer science. During her senior year, Catherine taught algebra and pre-calculus at the university. She has been a very active member of Alpha Gamma chapter, participating in all areas. Catherine is a member of many honorary fraternities, is a member of Dean's list and President's list. She was Alpha Gamma's TOP scholar. She will attend University of Alabama's Graduate School, seeking a masters degree in computer science.

STEPHANIE LYNNE CHRITTON - Texas A&M University-AE, GPA 3.5 with BS degree in animal science. Stephanie is a member of several honorary fraternities and is on the Dean's list. She has held various offices of Lambda Xi chapter and works at Richardson Veterinary Clinic during vacations. She will attend Texas A&M University Graduate School seeking a degree as Doctor of Veterinary Medicine.

TAMERA SUE GIESSLER - Franklin College-Ψ, GPA 3.2 with BA degree in biology. Tamera has served as library and biology lab assistant in addition to holding many Psi chapter offices, including that of president. She will attend Indiana University Graduate School seeking a masters of science degree.

WANTED:

DELTA ZETA

VOLUNTEERS

Delta Zeta is growing every year. Continued involvement of alumnae as support and resource personnel is always necessary. We need to identify Delta Zetas who are willing to contribute time and effort to assure quality growth in every area of our Delta Zeta Sisterhood.

If you want to be an active Delta Zeta alumna - on a local, province or national level; if you want to enjoy the experience and rewards of this unique service; if you have a special talent or area of interest which can be used to strengthen our sorority, please complete and return the form below.

Mail to: DELTA ZETA SORORITY
202 East Church Street
Oxford, OH 45056

Name _____ School/Chapter _____
First, Maiden, Married (Husband's)

Address _____

Telephone _____ Alumnae Chapter/Club _____
Area Code/

Province _____

College _____

Chapter offices held _____

Alumnae chapter offices held _____

Other Delta Zeta service _____

Major _____ Degree(s) _____ Years _____

Business experience _____

Have you worked with college students? _____ Capacity _____

AREAS OF COLLEGIATE DELTA ZETA WORK WHICH INTEREST YOU:

Alumnae Advisory board _____ Scholarship _____ Social Activities _____

House Corporation _____ Rush _____ Financial _____

Pledge/Chapter Education _____ Publications _____ Extension _____

Collegiate Chapter Director _____ Province Collegiate Director _____

AREAS OF ALUMNAE DELTA ZETA WORK WHICH INTEREST YOU:

Alumnae Chapter/Club _____ Philanthropy _____ Panhellenic _____

Publications (writing) _____ Photography/Art Work _____ Fund Raising _____

Alumnae Chapter organization _____ House Mother _____

Province Alumnae Director _____ National Committee Chairman _____

Ft. Collins Alumnae Give Scholarships

by Gail A. Harmon,
South Carolina-BA

Many hearing-impaired children miss out on things the rest of us take for granted, but for ten years the Fort Collins, Colorado alumnae chapter has enriched the lives of twenty one children with hearing loss. Their success story, while not over, reached a high point in May. At that time, the chapter awarded scholarships to two students who had been in the program since childhood, and who were now graduating from high school.

The Fort Collins alums began planning their enrichment program for hearing-impaired students about ten years ago. At that time, they decided to help Beattie Elementary School teachers who had twenty one such students, ages three to twelve, in their classes. Two members instrumental in starting the program and seeing it through were Martha Whitehead Larsen, Northwest Missouri-EP '62, and Elva Brackett Alden, Maine-AY '57, both still active in the chapter.

At first, "help" meant providing field trip transportation, but within a few months, the alumnae organized a card party to raise funds for camp. The previous year, only three of the Beattie kids had been able to afford camp in Aspen, Colorado; however, the winter of 1974-75, seventeen went, thanks to ΔZ donations and the children's bake sales. Alums also sent popcorn, cookies, and rolls of film along.

From then on, the local alumnae chapter worked to provide an "enlarged environment," so that hearing loss didn't handicap the children's experience any more than necessary. Each year, the Beattie teachers planned five learning units which would lend themselves to hands-on experience and field trips, provided by the chapter. These included:

- Spinning/textiles: demonstrations of dirty fleece and how to clean it and spin it. Children were encouraged to pull and twist fleece into yarn on a spinning wheel, and had the story of "Rapunzel" signed to them. In

addition, they brought cat and dog hair from pets at home and made thread from it. Later, a weaving demonstration was held as a follow-up.

- History; a visual program—with signing—based on the Constitution, Declaration of Independence, Betsy Ross House, flag, etc. Also visits to the local museum and to Centennial Village, where the movie *Centennial* was filmed.
 - Plants: visit to local greenhouse, where children chose a small potted plant to take with them; the alumnae paid for the plants. Discussions on plant care and feeding.
 - Animals: to teach responsibility for pets, a visit to the Humane Society, followed up later by a visit from a vet with his Mobile Pet Hospital.
- Trip to the Fish Hatchery, and picnic outdoors under the colorful changing aspen trees.
- Food and health: McDonald's tour followed by free meal that they had supervised. Also a tour of a doughnut shop — with snacks — and lecture about health regulations.

- Other countries: Fort Collins is a university town, and there was easy access to foreign shops—trip to East-West Imports, with demonstration of kimono wearing, tea ceremony, doll exhibit.

In addition, there were parties, scavenger hunts, attendance at a dress rehearsal of *Cinderella* (signed for them) at Children's Theater, and other excursions that truly met the criteria of enlarging the children's environment and perceptions of the world around them.

In 1976, the chapter decided to look to the future, and established a scholarship fund for any child deciding to go past high school. To that end, collections were taken at larger social events, such as the progressive dinner to which husbands were invited.

By 1978, seven of the original Beattie bunch were in junior high. After one semester, they presented a program at a chapter meeting about how they were coping with a larger school and hundreds of strangers. Most were happy with lecture situations, either because teachers used the microphone which fed into the students' phonic ear devices, or their

(continued on page 34)



Yann Hofmann and Kevin Sheldon are graduating from high school after 12 years in hearing help programs. Presenting scholarships to further their education are Elva Brackett Alden and Martha Whitehead Larsen of our Fort Collins alumnae chapter.

Alumnae Profiles



Several members of the Phoenix alumnae chapter attended the high school graduation ceremony at the Phoenix Day School for the Deaf. This was the school's first commencement since becoming fully accredited by the State of Arizona. The Phoenix alumnae presented a scholarship to class member Tina Champion to help defray costs of attending Gallaudet College in the fall. Pictured (l to r) are alumnae president Susan Norman, Appalachian-ΔΦ, secretary Pat Knowles Wells, San Jose-ΓΔ, graduate Tina Champion, philanthropy chairman Claudia Edwards Hosking, Cal Long Beach-ΔΔ, and Panhellenic delegate Marge Poe, Ashland-ΘΨ.

VIRGINIA ODLE VOELKER, Houston-ΔΘ, currently resides in Tyler, Texas. After 26 years in Houston and her husband Wendell's death, Virginia moved to the piney woods of East Texas "where life is more leisurely." When a moderately severe hearing impairment curtailed her secretarial work to the Director of Physical Therapy at the University of Texas Health Center at Tyler, she took training as a certified sitter and is now employed at First Baptist Church with their nursery division. Because of her continued interest in hearing impaired and totally deaf children and adults, she is secretary and board member of the East Texas Hearing Association. Seventeen years service to the Texas Business and Professional Women's Clubs, including five years on the state board, earned her the *1983 Woman of the Year* award of the Tyler BPW Club. Past Delta Zeta service includes National Endowment Chairman from 1960 to 1963.

DENISE LYNN FIELDS, FSU-ΑΣ, is manager of marketing services for a 60 million dollar worldwide telecommunications organization. Responsibilities include market planning and research; design and implementation of marketing management information systems which includes entry, sales and inventory control; marketing communications which includes advertising,

sales promotion, brochures, exhibits, public relations, distributor co-op, in-house production, proposal production and translation, Denise likes racquetball, sailing, training parrots, water skiing, dancing and sewing.

LEONA TRAIN RIENOW, Minnesota-Γ, and her husband Rob began their writing career just after Rob returned from four years in WWII. They have written more than 35 books for public consumption and much of their work has appeared in *Harper's*, *The Rotarian*, *This Week*, *Saturday Review*, *New York Times Magazine*, *Defenders of Wildlife*, *The Nation*, *Audubon Magazine* and others. Their *MOMENT IN THE SUN* (Dial Press 1967) has been said to have "sparked the advent of the environmental age." Lee has also done fiction — two or three satires. The Rienows live near Selkirk, NY in a 1746 farmhouse surrounded by 135 acres which now encompass a beautiful wild park with uncountable numbers of birds and animals. Rob is just retired as Distinguished Service Professor at the State University of New York at Albany.

VICKI LYNN JINETTE, South Carolina-ΒΔ, graduated in May 1983 and went to work as news editor of the Dispatch News, a weekly newspaper in Lexington, SC. Her duties include a little of everything except selling advertising . . . and she's even done that. She assigns stories, edits copy, takes pictures, writes stories, lays out the paper, even glueing down copy and takes abuse from the readers. But, she added, just one "the paper looks good" makes it all worthwhile! She'd like to start a ΔZ alumnae chapter in her area, and likes reading, cross stitch, water skiing and writing.

DANA LEIGH FOX, Central Arkansas-EΞ, taught English for three years and then was awarded a Rotary Foundation Scholarship to do graduate studies in English at University College, Cork, in Cork, Ireland. She plans to return to Central Arkansas and obtain her M.A. in English. Dana likes golf, tennis, teaching swimming, reading and writing.

KATHERINE RAICHLE RUE, Washington-K, taught home economics in Olympia, Washington during the time the state capitol was being built. She has participated in all the usual groups - PTA, Campfire, AAUW and after teaching ended, became involved in Delta Zeta - her greatest interest. She received the Achoth Award in 1977 and wrote that she has just recommended a wonderful prospect!

JEANNE HIRSCH BLAYLOCK, William Jewell-ZP, is news reporter/anchor for KTAB-TV, the CBS Affiliate in Abilene, TX. Duties include regular journalism features and news coverage. Special assignments include "All God's Children," a weekly series featuring a child who needs a Big Brother or adoptive parents or sponsor families, etc. Husband Mark is a public accountant.

CHANGE OF ADDRESS CARD. Please advise Delta Zeta promptly if there is a change or correction in your name or address as shown on the back cover. It is not necessary to return this card if the mailing label is correct. Members should use parents' home address while in college.

IMPORTANT. You must cut out the mailing label from this issue and paste it here. We cannot process changes without your label. Thank You.

I am currently a Delta Zeta Officer. Title _____

My new address will be _____
street/apt. # _____

city/state/ZIP _____ effective date _____

If mailing label does not show your married name, please include the following information for our membership files.

Married name _____ Husband's first name _____ Date of marriage _____

ing rides used in carnivals and county fairs to ensure their safety. Now residing in Toledo, she is serving her second term as president of the Toledo alumnae chapter but still finds time for practicing her culinary arts and pursuing her hobbies of sewing, gardening and singing.

MILDRED BRINKER McCLELLAN, Syracuse-AK, married while playing in Richmond, Virginia in a 500 person capacity tea room. She is a violinist with a bachelor of music degree from Syracuse. She married a Birmingham electrical contractor and moved there, playing 23 years with the Alabama Symphony Orchestra, teaching violin and playing jobs all over the state. She is now a widow with three sons and five grandchildren. She belongs to many church and political groups and enjoys her large vegetable garden and pretty flowers.

BRENDA MARIE BRENNAN, Lt. USAF, Franklin-Ψ, is a navigator in the U.S. air force. She is stationed at Kadena Air Base, Okinawa, Japan. She is assigned to a KC 135 stratotanker (modified Boeing 707). The mission of the aircraft is to perform in-air refueling for almost all other aircraft in the air force (fighters, bombers, AWALS, etc.) Recently she began work on her master of science in systems management with University of California, Kadena Branch. She likes all exercise, aerobics, dancing, water skiing, reading and writing lots of letters (so she gets lots of letters back!)

MICHELE HARRINGTON, Creighton-ΘH, is a Captain, Judge Advocate General's Corps. She is chief of military justice for Camp Humphreys, Korea. Her duties involve the prosecution of criminal cases for the 19th Support Command at Camp Humphreys. She is also the Legal Assistance Officer and her duties include consumer complaints, divorce matters and financial counseling. She likes travel and calligraphy.

MAUREEN KRAMER BULTENA, Cal Long Beach-ΔA, was a deputy probation officer for Orange County from 1963 to 1972, dealing mainly with placement of

She was in charge of institutional cases and worked with locating missing persons. She is now deputy probation officer for Orange County, doing mainly intake and court investigation. She is in charge of "Operation-Stay-in-School" in the local area, contacting parents of truant students, visiting schools and working with the courts. Her interest has centered on development of a new history in the local 100 year old Court House. She was president of the Merced County Alumnae Chapter, Merced County Lawyers Wives and Daughters Club. Interests include history, genealogy, and crafts and reading. Husband David and children are Diana and John.

It is with Regret . . .

It is with deep regret that the National Council announces the withdrawal of the charter of Upsilon chapter of Delta Zeta, University of North Dakota.



Carol Sherman Mathis (Western Illinois-EO '72), left, is the newly elected president of the St. Petersburg, FL Alumnae Panhellenic Association.

She was installed by Gay McNaughton Shirley (Westminster-ΘΔ '64), who was Delta Zeta's last Panhellenic president 10 years ago.

Carol was elected by the nearly 300 women from 22 national sororities who comprise the membership. The presidency is an elected office, not one filled by a rotation system.

Carol held a number of offices in both Panhellenic and St. Petersburg alumnae chapter, which she served as president in 1977-78. She planned to miss only one Panhellenic meeting this year, in September, when she and her husband, Ray Mathis, expected their second child. (Daughter Alison is 3.)

Alumnae P



Several members of the Phoenix alumnae chapter attended the high school graduation ceremony at the Phoenix Day School for the Deaf. This was the school's first commencement since becoming fully accredited by the State of Arizona. The Phoenix alumnae presented a scholarship to class member Tina Champion to help defray costs of attending Gallaudet College in the fall. Pictured (l to r) are alumnae president Susan Norman, Appalachian-ΔΦ, secretary Pat Knowles Wells, San Jose-ΓΑ, graduate Tina Champion, philanthropy chairman Claudia Edwards Hosking, Cal Long Beach-ΔΑ, and Panhellenic delegate Marge Poe, Ashland-ΘΨ.

VIRGINIA ODLE VOELKER, Houston-ΔΘ, currently resides in Tyler, Texas. After 26 years in Houston and her husband Wendell's death, Virginia moved to the piney woods of East Texas "where life is more leisurely." When a moderately severe hearing impairment curtailed her secretarial work to the Director of Physical Therapy at the University of Texas Health Center at Tyler, she took training as a certified sitter and is now employed at First Baptist Church with their nursery division. Because of her continued interest in hearing impaired and totally deaf children and adults, she is secretary and board member of the East Texas Hearing Association. Seventeen years service to the Texas Business and Professional Women's Clubs, including five years on the state board, earned her the 1983 *Woman of the Year* award of the Tyler BPW Club. Past Delta Zeta service includes National Endowment Chairman from 1960 to 1963.

DENISE LYNN FIELDS, FSU-AΣ, is manager of marketing services for a 60 million dollar worldwide telecommunications organization. Responsibilities include market planning and research; design and implementation of marketing management information systems which includes entry, sales and inventory control; marketing communications which includes advertising,

DELTA ZETA SORORITY
Corner of Campus Ave. and Church St.
202 East Church Street
Oxford, OH 45056

Selkirk, NY in a 1746 farmhouse surrounded by 135 acres which now encompass a beautiful wild park with uncountable numbers of birds and animals. Rob is just retired as Distinguished Service Professor at the State University of New York at Albany.

VICKI LYNN JINETTE, South Carolina-BA, graduated in May 1983 and went to work as news editor of the Dispatch News, a weekly newspaper in Lexington, SC. Her duties include a little of everything except selling advertising . . . and she's even done that. She assigns stories, edits copy, takes pictures, writes stories, lays out the paper, even glueing down copy and takes abuse from the readers. But, she added, just one "the paper looks good" makes it all worthwhile! She'd like to start a ΔZ alumnae chapter in her area, and likes reading, cross stitch, water skiing and writing.

DANA LEIGH FOX, Central Arkansas-EΞ, taught English for three years and then was awarded a Rotary Foundation Scholarship to do graduate studies in English at University College, Cork, in Cork, Ireland. She plans to return to Central Arkansas and obtain her M.A. in English. Dana likes golf, tennis, teaching swimming, reading and writing.

KATHERINE RAICHLE RUE, Washington-K, taught home economics in Olympia, Washington during the time the state capitol was being built. She has participated in all the usual groups - PTA, Campfire, AAUW and after teaching ended, became involved in Delta Zeta - her greatest interest. She received the Achoth Award in 1977 and wrote that she has just recommended a wonderful prospect!

JEANNE HIRSCH BLAYLOCK, William Jewell-ZP, is news reporter/anchor for KTAB-TV, the CBS Affiliate in Abilene, TX. Duties include regular journalism features and news coverage. Special assignments include "All God's Children," a weekly series featuring a child who needs a Big Brother or adoptive parents or sponsor families, etc. Husband Mark is a public accountant.

Alumnae Profiles

SISTER MARJORIE SHELVEY, California-M, is vice president-finance for St. Vincent Medical Center in Los Angeles. She is the chief financial officer at St. Vincent's, a 386 bed general acute care hospital with significant specialties in cardiac surgery, otology, oncology and kidney transplantation and budgets revenues in excess of 90 million per year. She is responsible for the functions of accounting, reimbursement and budget, internal audit and overall financial planning. Interests lie in community service, music and sports.

ELIZABETH DETRICK, Virginia Poly-KΘ, majored in food science and technology which led to her position as a food and drug inspector for the State of Ohio. One of the unusual aspects of her job is that of inspecting rides used in carnivals and county fairs to ensure their safety. Now residing in Toledo, she is serving her second term as president of the Toledo alumnae chapter but still finds time for practicing her culinary arts and pursuing her hobbies of sewing, gardening and singing.

MILDRED BRINKER McCLELLAN, Syracuse-AK, married while playing in Richmond, Virginia in a 500 person capacity tea room. She is a violinist with a bachelor of music degree from Syracuse. She married a Birmingham electrical contractor and moved there, playing 23 years with the Alabama Symphony Orchestra, teaching violin and playing jobs all over the state. She is now a widow with three sons and five grandchildren. She belongs to many church and political groups and enjoys her large vegetable garden and pretty flowers.

BRENDA MARIE BRENNAN, Lt. USAF, Franklin-Ψ, is a navigator in the U.S. air force. She is stationed at Kadena Air Base, Okinawa, Japan. She is assigned to a KC 135 stratotanker (modified Boeing 707). The mission of the aircraft is to perform in-air refueling for almost all other aircraft in the air force (fighters, bombers, AWALS, etc.) Recently she began work on her master of science in systems management with University of California, Kadena Branch. She likes all exercise, aerobics, dancing, water skiing, reading and writing *lots* of letters (so she gets lots of letters back!)

MICHELE HARRINGTON, Creighton-ΘH, is a Captain, Judge Advocate General's Corps. She is chief of military justice for Camp Humphreys, Korea. Her duties involve the prosecution of criminal cases for the 19th Support Command at Camp Humphreys. She is also the Legal Assistance Officer and her duties include consumer complaints, divorce matters and financial counseling. She likes travel and calligraphy.

MAUREEN KRAMER BULTENA, Cal Long Beach-ΔA, was a deputy probation officer for Orange County from 1963 to 1972, dealing mainly with placement of

foster children. She was in charge of institutional placement for girls and worked with locating missing juveniles. She is now deputy probation officer for Merced County doing mainly intake and court investigations. She ran "Operation-Stay-in-School" in the local community for two years, contacting parents of truant students, notifying schools and working with the police. Her main interest has centered on development of a museum of history in the local 100 year old Courthouse. She's served as president of the Merced County Historical Society, Merced County Lawyers Wives and Merced Symphony Group. Interests include history, calligraphy, arts and crafts and reading. Husband David is an attorney. Children are Diana and John.

It is with Regret . . .

It is with deep regret that the National Council announces the withdrawal of the charter of Upsilon chapter of Delta Zeta, University of North Dakota.



Carol Sherman Mathis (Western Illinois-EO '72), left, is the newly elected president of the St. Petersburg, FL Alumnae Panhellenic Association.

She was installed by Gay McNaughton Shirley (Westminster-ΘΔ '64), who was Delta Zeta's last Panhellenic president 10 years ago.

Carol was elected by the nearly 300 women from 22 national sororities who comprise the membership. The presidency is an elected office, not one filled by a rotation system.

Carol held a number of offices in both Panhellenic and St. Petersburg alumnae chapter, which she served as president in 1977-78. She planned to miss only one Panhellenic meeting this year, in September, when she and her husband, Ray Mathis, expected their second child. (Daughter Alison is 3.)

Flame Eternal

ALPHA

Edith Sims Huff '22
Charlotte Sample Oldham '49
Patricia Smith '40

GAMMA

Mary Keenan '26

DELTA

Hope Graeter Knies '21

EPSILON

Mary Brooks Hanrahan '26
Christina Hornibrook Jackson '75

ZETA

Alice Balderson Steinmeyer '12

ETA

Ruth Borgman Batterton '28
Dorothy R. Canham '34

THETA

Emily Roe Fynes '27
Gladys Laughlin Lang '15
Mae Johnson Reed '26

KAPPA

Charity Baker Austin '22
Marion Manley Buchanan '27
Hertha O'Neill Cartmell '16

MU

Elizabeth Genoway Chadwick '22
Anne Kidd Fox '37
Florence Anderson Gregoriev '51
Doris Gladding Haas '26
Marjorie Tuft Longley '18

NU

Esther Ballard '18
L. Grace Egan Holmes '31

OMICRON

Louise Dunn Wright '24

UPSILON

Karen Marie Erickson '60
Mildred Nelson Lippincott '28

CHI

Arline Barnum Eslinger '20

ALPHA BETA

Mary Sparks Cerling '23

ALPHA THETA

Sarah Thorn Mitchell '25

ALPHA KAPPA

Ina Elizabeth Taylor '35

ALPHA LAMBDA

Elizabeth Brown Van Kirk '29
Beth Buirgy White '29

ALPHA MU

Gladys Mount Herklotz '25

ALPHA SIGMA

Isabelle Richardson Pearce '27

ALPHA TAU

Virginia Maxwell Hickfang '48

BETA GAMMA

Virginia Kelley Becht '34

BETA KAPPA

Julia Bell Edwards '33

BETA SIGMA

Josephine Flittie Donaldson '46

DELTA PI

Mary Ann Simpson '58

EPSILON GAMMA

Doris Goodrich Barber '43

EPSILON IOTA

Juanita Harpold Satterfield '40

ZETA ZETA

Lenna Foster Parker '36

ZETA RHO

Eleanor Damer Baker '57

ZETA UPSILON

Jill Miller Kranz '65

THETA GAMMA

Sara Jean Gum '82

THETA THETA

Magdalena Naunheimer Schnatterbeck '70

IOTA ALPHA

LaRoss Sheppard '67

IOTA ZETA

Christine Marie Terzo '73

KAPPA PSI

Pamela Ann Burgess '83

PHI BETA

Gertrude Myers Chappell '28
Elizabeth Seitz Miller '22

THETA UPSILON FOUNDER

Marie Goethals Leibert, California-M, one of the founding members of Theta Upsilon (then Mekatina Club at the University of California). Theta Upsilon became a part of Delta Zeta in 1962.

Fort Collins

(continued)

mentor/teacher from Beattie was able to attend classes and sign for them.

By this time, there were only twelve children in the hearing-impaired unit at Beattie Elementary, and while the local alumnae chapter still helped, the main focus was the scholarship fund. The fund, although quite small, was growing at a regular rate with donations throughout the years. At the Installation Luncheon in May, 1983, the alumnae chapter presented scholarships, for the first time, to Kevin Sheldon and Yann Hofmann. We were proud to see two young men—whom we'd watched from childhood and come to know well—go on for more education, and proud to know that we had helped!

FMF Grants

(continued)

\$200.00 to INSTITUTE FOR AUDITORY VERBAL COMMUNICATION AND RESEARCH, INC. on behalf of:
Orlando-Winter Park, Florida Alumnae Chapter

\$200.00 to OKLAHOMA SOCIETY FOR CRIPPLED CHILDREN on behalf of:

Oklahoma City Alumnae Chapter

\$100.00 to THE OHIO SCHOOL FOR THE DEAF on behalf of:

Columbus, Ohio Alumnae Chapter

\$50.00 to PENNSYLVANIA SCHOOL FOR THE DEAF on behalf of:

North Philadelphia Suburban Alumnae Chapter

\$25.00 to FAIRMOUNT THEATRE OF THE DEAF on behalf of:

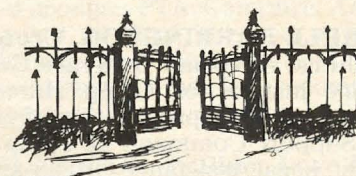
Cleveland Eastside Alumnae Chapter

\$25.00 to FAIRVIEW GENERAL HOSPITAL DEPARTMENT OF SPEECH PATHOLOGY AND AUDIOLOGY on behalf of:

Berea, Ohio Alumnae Chapter

DELTA ZETA COMES HOME

The complete story of the dedication of our National Headquarters and Historical Museum in Oxford, Ohio, will appear in the Spring issue of The LAMP.



"A heritage for our yesterdays.
A home for our todays.
A hope for our tomorrows."

FUNDRAISING WITH MAGAZINES

IT'S AS EASY AS
1 . . . 2 . . . 3

1

CHAPTERS circulate order packets three times a year, set a \$ goal, promote program.

2

SUBSCRIBER mails order (for new or renewed subscriptions) to DELTA ZETA SUBSCRIPTIONS.

3

DELTA ZETA SUBSCRIPTIONS places order for magazine in 3-5 days.

Each time a magazine subscription is ordered through

DELTA ZETA SUBSCRIPTIONS —

10% COMMISSION is earned by a Delta Zeta chapter
AND

10% COMMISSION is paid to the Educational Fund to
provide scholarships to Delta Zetas.

“Mags”
says . . .



Give your Delta Zeta chapter a 10% commission on your next magazine renewal by sending it to DELTA ZETA SUBSCRIPTIONS rather than directly to the publisher. Delta Zeta will place the order with the magazine for you within 3-5 days.

HOW TO ORDER

RENEWALS: Send completed order form and publisher's renewal notice with payment indicated on the notice.

NEW SUBSCRIPTIONS: Send completed order form with payment indicated in magazine. Allow 30-90 days for first copy.

Full payment must accompany each order. Please make checks or money order payable to: DELTA ZETA SUBSCRIPTIONS, P.O. Box 24145, Columbus, OH 43224.

Magazine _____

Subscriber _____

(person to receive magazine)

Address _____

City-State-Zip _____

STUDENT-EDUCATOR RATE. Complete this section to pay lower rate if offered by publisher *For subscriber only.*

x _____

School in which subscriber (person to receive magazine) teaches or attends as a student.

____ Educator

____ Graduate. Year studies end _____

____ Undergraduate. Studies end _____

____ Renewal ____ New Sub. ____ Yrs. \$ _____

Gift card to arrive by _____ Amt. Enclosed _____

Signed _____

Purchaser _____

Address _____

City-State-Zip _____

PAY 10% COMMISSION TO:
() Delta Zeta college chapter

Name _____

() Delta Zeta alumnae chapter or club

Name _____

() Delta Zeta House Corporation
Chapter _____

() Delta Zeta Educational Fund (scholarships for Delta Zeta members)

Founders Memorial Foundation Contributions

The following have made contributions to the Founders Memorial Foundation from September 1982 through June 1983.

PROVINCE I

New Hampshire-ΘΓ
Maine, Orono-AY

PROVINCE II

Northern New Jersey Alumnae Club (*in memory of Doris Lou Odell, AK*)
Northeastern New Jersey Alumnae Chapter
Rochester-ΑΙ

PROVINCE III

Marianne Belding Willing (*in memory of Jean Jolley McDaniels*)
Omicron Alumnae Association (*in memory of Mae Dickinson*)
Patricia Pelkofer (*in memory of Mae Dickinson*)
Vee Shakarian Toner (*in memory of Mae Dickinson*)
Province III (*in memory of Mae Dickinson*)
Harrisburg Area Alumnae Chapter
State College Alumnae Chapter (*in honor of Golden Rose, Helen Oldham*)
North Philadelphia Alumnae Chapter
Estate of Madeline C. Cassell

PROVINCE IV

West Liberty-IT
Glenville State College-ΘΞ
Fairmont Alumnae Chapter
Charleston Alumnae Chapter

PROVINCE V

Miami University-A
Baldwin Wallace-ΓΑ
Bowling Green-ΓΤ
Findlay-ΘΤ
Mildred D. Ellis - for the Dayton Alumnae Chapter
Berea Alumnae Chapter
Canton-Massillon Alumnae Chapter
Cleveland Eastside Alumnae Chapter (*in memory of Ethel Boros, Θ and Helen Jenney Brown, Ohio Wesleyan and Gretchen Day*)
Cleveland Westside Alumnae Chapter
Columbus Alumnae Chapter - for Ohio School for the Deaf
Findlay Alumnae Chapter
Toldeo Alumnae Chapter (*in memory of Dorothy Matheny and Fern Wilson*)

PROVINCE VI

Oakland Alumnae Chapter
Saginaw Alumnae Chapter

PROVINCE VII

DePauw-Δ
Indianapolis Alumnae Chapter (*in memory of Pauline Mason*)

PROVINCE VIII

Wisconsin-Whitewater-EK
Carroll-ΓΘ

PROVINCE IX

Northwestern-AA
Northern Illinois-ΓΡ
Helen V. Linde

PROVINCE X

Iowa City Alumnae Chapter

PROVINCE XI

Northeast Missouri-ΔΣ
Clay-Platte Alumnae Chapter
Greater Kansas City Alumnae Chapter
Kirksville Alumnae Chapter

PROVINCE XII

Nebraska Wesleyan-BT
Johnson-Wyandotte Alumnae Chapter
Lawrence Alumnae Chapter
Lincoln Alumnae Chapter
Omaha Alumnae Chapter
Omaha Alumnae Chapter (*in memory of Eda Elizabeth Kelley Harper, Hester Wyman Zacek, and Dagmar Anderson Hosman, Z*)
Patricia A. Keating Heidrick

PROVINCE XIII

Twin Cities Alumnae Chapter (*in memory of Ruth Ruckle Welbaum, Γ*)
Doris Riede (*in memory of Ruth E. Simering and Fern Riley Wilson, E*)

PROVINCE XIV

Denver Alumnae Chapter

PROVINCE XV-South, Central & North

ΔΖ Lamplighters of Southern California
Long Beach Alumnae Chapter (*in memory of Ida Deppner, K and George Harris, husband of Diane Harris*)
Los Angeles Alumnae Chapter (*in memory of Helen Denney Bowman, AX*)
Sacramento Alumnae Chapter (*in memory of Lucy Grimmeasey*)
San Francisco-Bay Cities Alumnae Chapter
Whittier-West Covina Alumnae Chapter (*in memory of David Sprong, husband of Betha Sprong*)
Hazel L. Glesenkamp (*in memory of Esther Wallace McGill*)
Hazel and Girard Keeton (*in memory of Eula Kiser Weiterhausen, ΘA*)
Leota M. Smith (*in memory of Alaska Davis*)
Portland Alumnae Chapter for Tucker Maxon Oral School and Portland Center for Hearing and Speech
Portland Alumnae Chapter (*in memory of Porter M. Larson, husband of Gene M. Larson, Iota, Georgina Battaglia, mother of Charlotte Shambaugh, K, Charles Edward Wheelock, father of Mrs. Clifford Sander, X*)
Portland Alumnae Chapter (*in memory of Arline Barnom Eslinger, X, Eugene Deluca, father of Maryanne Deluca Foy, Raymond M. Gunesch, Darlene Loret Luengen, Rose M. Schink, mother of a ΔΖ, Lloyd F. Eckhardt*)
Spokane Alumnae Chapter (*in memory of Dr. Irene Grieve*)

PROVINCE XVI

Alva Alumnae Chapter
Oklahoma City Alumnae Chapter for

Oklahoma Society for Crippled Children

Tulsa Alumnae Chapter
Gwen McKeeman (*in memory of Dr. Rudolf Cooks*)

PROVINCE XVII

Arlington Alumnae Chapter
Austin Alumnae Chapter
Beaumont Alumnae Chapter (*in memory of Audie Evelyn Perkins and Mr. Sakichi Kondo*)
Corpus Christi Alumnae Chapter (*in honor of Marcia Whipple*)
Houston Alumnae Chapter
San Antonio Alumnae Chapter
San Antonio Alumnae Chapter by Mary Margaret Fore (*in honor of Foundation Officers & Trustees*)
Texas Panhandle Alumnae Chapter

PROVINCE XVIII

Northwestern State-EB
Shreveport Alumnae Chapter
Shreveport Alumnae Chapter (*in memory of Ann Whittington Graham, Σ*)

PROVINCE XIX

Middle Tennessee-II

PROVINCE XX

Eastern Kentucky-ΞB

PROVINCE XXI

Charlotte Alumnae Chapter
Raleigh Alumnae Chapter

PROVINCE XXIII

Jacksonville-ΑΓ
Alabama, Huntsville-AK
Auburn - Montgomery-AN
Huntsville Alumnae Chapter
Muscle Shoals Area Alumnae Chapter
Mr. Robert M. Cheney

PROVINCE XXIV

Clearwater Alumnae Chapter (*in memory of Sadye Lou Peters Calhoun, Σ*)
Florida Gold Coast Alumnae Chapter (*in memory of Ernestine Wartena and William R. Beatty, father of Pat Beatty*)
Florida Gold Coast Alumnae Chapter
Miami Alumnae Chapter
Tampa Alumnae Chapter (*in memory of Christina Guitierrez and Walter Gergmann*)
Violet Whitfield (*in memory of Dr. Rudolf Cooks*)

PROVINCE XXV

Virginia Polytechnic-KΘ
Virginia-ΔΔ

Send all contributions for the FOUNDERS MEMORIAL FOUNDATION to
Delta Zeta National Headquarters
202 E. Church St.
Oxford, Ohio 45056

Application for Field Representative

A Field Representative has many diversified assignments. Her duties entail assisting with the growth and strengthening of chapters by encouraging the development of sound sorority programs, helping with routine chapter business and problems, training officers and assisting chapters with rush.

Each young woman selected as a Field Representative will receive specialized and intensive training before she is assigned to chapter work. The

training session will be conducted by sorority leaders who will further her knowledge of sorority background, rushing methods and techniques.

The employment contract for a Field Representative usually extends from August 15th to late in May, and Delta Zeta encourages its Field Representatives to work more than one year in the position. In addition to monthly salary, board, room and all travel expenses are provided while on assignment. Most travel will be by

plane. Field Representatives are given one free weekend a month and extra time at Thanksgiving, Christmas and Easter.

If you are interested in applying for a position as Field Representative, will you complete the application form and return it as soon as possible? Your application and recommendations should be sent to National Headquarters, 202 East Church Street, Oxford, Ohio 45056.

APPLICATION FOR EMPLOYMENT
FIELD REPRESENTATIVE

Please Attach
Recent Picture

MUST BE POSTMARKED BY MARCH 1

Name _____

School _____ Chapter _____

Grad. Date _____ Date available _____

Home Address _____

_____ Home Phone _____

School Address _____

_____ School Phone _____

Your Social Security # _____ Date of Birth _____ Place of Birth _____

Your Height _____ Your Weight _____

What serious illnesses, operations or injuries have you had?

Do you have any allergies (if yes, describe briefly)?

List any physical handicaps or limitations:

EDUCATION:

Name and Location	Dates attended from-to	Standing in class (quartile)	Academic Major
-------------------	---------------------------	---------------------------------	-------------------

High School

College/Univ.

Graduate

Scholastic Honors, Honor Societies, Fellowships, Scholarships:

College Subjects of Greatest Interest:

ACTIVITIES:

Name of Organization	Length of Membership	Offices and Chairmanships held
High School		
College/Univ.		

SORORITY: Chapter _____ Pledging Date _____ Initiation Date _____

Offices and Chairmanships held (include year):

Pledge: _____ Initiate: _____

EMPLOYMENT: (List most recent first)

Name of Employer	Type of Business	Description of work
------------------	------------------	---------------------

REFERENCES: (not a relative) - Give name, complete mailing address and occupation.

- 1.
- 2.
- 3.

Please give your chief reason(s) for being interested in this position.

Do you plan to be married within the next year or so, or do you have a definite choice of profession or business toward which you will eventually be working? If so, what?

Does this affect the length of time in which you might continue as a Field Representative?

Please add any other information you think would assist in the decision on your taking this position.

In order for your application to be complete, National Headquarters must receive under separate cover two letters of recommendation, one from your CCD and one from your PCD.

"Authorization is given by me to have investigated any and all statements contained in this application form. I understand that misrepresentation, omission of facts, or receipt of unsatisfactory references shall be cause for non-consideration of this application and if employed, cause for discharge from the position held."

Date _____

Signature of applicant _____

DO NOT WRITE IN THIS SPACE—FOR OFFICE USE ONLY

Comments:

Date Interviewed: _____

DELTA ZETA SORORITY

PRICE LIST FOR OFFICIAL JEWELRY

Effective September 1, 1983

ALL DELTA ZETA JEWELRY MUST BE ORDERED FROM: Delta Zeta National Headquarters, Cor. Campus Ave. & Church St., 202 E. Church St., Oxford, OH 45056

PRICES INCLUDE SALES TAX. A PROCESSING CHARGE OF \$2.00 MUST BE ADDED TO ALL ORDERS FOR POSTAGE, INSURANCE AND HANDLING.

BADGES and GUARDS

When ordering badges and guards, use an official badge order form available from the chapter pledge trainer or Delta Zeta National Headquarters.

BADGES

Be sure to specify "flush" or "tiffany" setting for the zircon set in the flame. Tiffany setting only for the diamond set in the flame.

Pearls and one zircon, set flush	39.50
Pearls and one zircon, set tiffany	39.50
Pearls and one .015 diamond, set tiffany, 10K	119.50
Pearls and one .03 diamond, set tiffany, 10K	154.50
Pearls and one .04 diamond, set tiffany, 10K	174.50
Pearls and one .05 diamond, set tiffany, 10K	194.50
Pearls and one .10 diamond, set tiffany, 10K	259.50
Pearls and one zircon, set flush, 10K	74.50
Pearls and one zircon, set tiffany, 10K	74.50

GUARDS**

	10K	Gold Finish
Plain, single letter	16.00	9.50
Plain, double letter	22.75	10.50
Engraved, single letter	17.50	11.50
Engraved, double letter	22.50	12.50
Close set pearl, single letter	34.50	24.50
Close set pearl, double letter	47.50	35.50
Crown set pearl, single letter	42.75	26.50
Crown set pearl, double letter	59.75	39.50
Crown set opal, single letter	45.75	35.00
Crown set opal, double letter	74.00	56.50

**alternating pearl and other stones - by quote only

GOLDEN ROSE PIN (for 50 year members), yellow gold finish 28.00

DAUGHTER-GRANDDAUGHTER PENDANT,

yellow gold finish with gold filled chain	22.50
10K yellow gold with gold filled chain	47.50

PLEDGE PIN 3.00

RECOGNITION PINS:

Crest, yellow gold finish	7.75
Crest, enameled	12.50
Lamp, yellow gold finish	8.00
Lamp, 10K gold finish	25.00
Staggered Greek letter monogram, yellow gold finish	5.00
Staggered Greek letter monogram, 10K yellow gold	25.00
Staggered Greek letter, crown pearl monogram, yellow gold finish	55.00
Staggered Greek letter, crown pearl monogram, 10K yellow gold	75.00
MOTHERS PIN, yellow gold finish	12.50
yellow gold finish with four pearls	23.50
10K yellow gold	29.50
10K yellow gold with four pearls	40.00

TIE TAC (for father or husbands), yellow gold finish	14.50
10K yellow gold	28.50

LAPEL BUTTON (for fathers or husbands), yellow gold finish	14.50
10K yellow gold	28.50

STICK PINS:

Crest, yellow gold finish	6.50
Staggered Greek letter monogram, yellow gold finish	5.50

DANGLES:

College chapter officer, yellow gold finish*	6.50
College chapter officer, 10K yellow gold*	12.00

*specify: President, Rush Chrm VP, Pledge Trainer, Recording Secy, Corresponding Secy, Treasurer, Chaplain, Guard, Historian, Editor, House Manager, Publicity Chrm, Panhellenic Rep, Social Chrm, Standards Chrm, Scholarship Chrm, Activities Chrm, Philanthropy Chrm, Song Chrm, Intramural Chrm, Member at Large, Parliamentarian

Pearl (for scholarship)	6.50
Big Sister, yellow gold finish	6.50
Big Sister, 10K yellow gold	12.00
CCD, 10K yellow gold	25.00
PCD, 10K yellow gold	26.50
PAD, 10K yellow gold	26.50
National Committee Chairman, 10K yellow gold	26.50
Alumnae Chapter President, one pearl, yellow gold finish	10.00
Golden Rose, 50 year, yellow gold finish with pearl	11.00
Golden Rose, 50 year, 10K yellow gold with pearl	21.00

GREEK LETTER MONOGRAM PENDANT:

(order 24 or more, chapter receives 10% discount)	
Staggered letter, yellow gold finish with gold filled chain	16.00
Vertical letters, yellow gold finish with gold filled chain	16.00
Staggered letters, 10K yellow gold with gold filled chain	27.00
Vertical letters, 10K yellow gold with gold filled chain	27.00
Staggered letters, sterling with silver chain	16.00
Vertical letters, sterling with silver chain	16.00
Vertical letters, 10K engraved, with gold filled chain	32.00
Wood vertical letters with gold filled chain	6.50
10K Choker, oval with cutout letters, 15" gold filled chain	30.00
Crown set pearl, 10K yellow gold with gold filled chain	75.00

LAMP PENDANT, yellow gold finish with gold filled chain	16.00
10K yellow gold with gold filled chain	26.50
sterling with silver chain	16.00

TURTLE PENDANT, yellow gold finish with gold filled chain	16.00
10K yellow gold with gold filled chain	25.50

LAMP BRACELET, yellow gold finish	15.00
silver finish	15.00

SPECIAL CHARMS:

CCD, 10K	59.50	PCD, 10K	75.00	PAD, 10K	75.00
CCD, 14K	68.50	PCD, 14K	95.00	PAD, 14K	95.00
CCD, sterling	24.50	PCD, sterling	35.00	PAD, sterling	35.00

National Committee Chairman, 10K	75.00
National Committee Chairman, 14K	95.00
National Committee Chairman, sterling	35.00

Delta Zeta Directory

NATIONAL COUNCIL

President: Carolyn Barnes Gullatt (Mrs. John), 4008 Hyridge, Austin, TX 78759
Vice President of Membership: Teresa Johnson Severy (Mrs. Raymond), 2127 Northampton Way, Lansing, MI 48912
Vice President Alumnae Affairs: Charlotte Fields Silversteen (Mrs. Allan), 513 Toll Road, Oreland, PA 19075
Vice President Collegiate Affairs: Marvona Easley Tavlin (Mrs. Michael), 7411 Briarhurst Circle, Lincoln, NE 68506
Secretary: Dianne Fellows Guild (Mrs. Douglas), 16 Andrews Drive, South Burlington, VT 05401
Treasurer: Anne Marie Jones Gavin (Mrs. William), 3264 Swan Drive, Vineland, NJ 08360
Director: Elizabeth Barbieri Bragg (Mrs. Lawrence), 2972 Leopold Avenue, Hacienda Heights, CA 91745
Director: Lucile Crowell Cooks (Mrs. Rudolf), The Ambassador #404, 7400 Sun Island Drive South, South Pasadena, FL 33707
Director: Phyllis Snape Favorite (Mrs. Robert), 570 Lancashire Lane, State College, PA 16801
Director: Mary Margaret Calhoun Fore (Mrs. Sam), 459 Summit Circle, Fredericksburg, TX 78624
Director: Patricia Canady Rosser (Mrs. David), 1609 Indian Rks. Road, Clearwater, FL 33516
Past National President: Norma Minch Andrisek (Mrs. J. R.), 319 Janice Drive, Berea, OH 44017
National Panhellenic Conference Delegate: Mary Margaret Calhoun Fore (Mrs. Sam), 459 Summit Circle, Fredericksburg, TX 78624
Alternates: Carolyn Barnes Gullatt (Mrs. John)
Norma Minch Andrisek (Mrs. J. R.)
Teresa Johnson Severy (Mrs. Raymond)

NATIONAL HEADQUARTERS

Delta Zeta National Headquarters: Corner of Campus Avenue & Church Street, 202 E. Church Street, Oxford, OH 45056
Delta Zeta Subscriptions (Collegiate & Alumnae): Box 24145, Columbus, OH 43224
National Field Representatives: Karen Giles, Judy Markel, Jeanine Petersen, Linda Regner, Vickie Adcock, Diane Sorensen, Suzanne Jewhurst, Lisa Straub, Debra Nesbitt

THE LAMP

Gwen Moss McKeeman (Mrs. Robert L.), 5517 S. 74th E. Avenue, Tulsa, OK 74145

EXTENSION

Norma Minch Andrisek (Mrs. J. R.), 319 Janice Drive, Berea, OH 44017

FOUNDERS MEMORIAL FOUNDATION

President: Arlene Newman Marshall (Mrs. Norman), Rt. 2, Box 78, Port Lavaca, TX 77979
Secretary: Betty Paul DeWitt (Mrs. Norman), 23630 Oakrest Lane, Harbor City, CA 90710
Treasurer: Shirlyn Chaffin (Miss), 6561 Santa Cruz Place, Reynoldsburg, OH 43068
Members: Mary Lou McConaughy Barth (Mrs. William), 1662 Villa South Drive, West Carrollton, OH 45449
Mary Margaret Calhoun Fore (Mrs. Sam), 459 Summit Circle, Fredericksburg, TX 78624

NATIONAL HISTORICAL MUSEUM BOARD OF TRUSTEES

President: Lucile Crowell Cooks (Mrs. Rudolf), The Ambassador #404, 7400 Sun Island Drive South, South Pasadena, FL 33707

Trustees: Norma Minch Andrisek, 319 Janice Drive, Berea, OH 44017; Carolyn Barnes Gullatt, 4008 Hyridge, Austin, TX 78759; Florence Hood Miner, 1040 H. Avenue, Nevada, IA 50201; Aurel Fowler Ostendorf, Rt. 1, Box 262 A1, Kapwaa Kauai, HI 96746; Mary Lou Ragel Vineyard, 4998 62 Ave. South, St. Petersburg, FL 33715; Doris Ellingson Riede, 4661 Lake Avenue, White Bear Lake, MN 55110; Dr. Elizabeth Rogers, 302 W. Vine St., Oxford, OH 45056; Betsy Bradley Leach, 1244 Valley View Rd., Glendale, CA 91202

HISTORIAN EMERITUS

Grace Mason Lundy (Mrs. H. M.), 3207 N. 25th St., Phoenix, AZ 85016

STANDING COMMITTEES

Colonnade Club: Mary Ann Gallatin French (Mrs. John), 2322 N.W. 58th Circle, Oklahoma City, OK 73112
Constitution and Procedure: Lisbeth Innis Francis (Mrs. Robert), 2508 Belle Terre Drive, Birmingham, AL 35226
Finance: Anne Marie Jones Gavin, chairman, Lucile Crowell Cooks, Mary Margaret Calhoun Fore, Norma Minch Andrisek, Patricia Canady Rosser and Carolyn Barnes Gullatt, ex officio.
History: Florence Hood Miner (Mrs. Arthur), 1040 H Avenue, Nevada, IA 50201
Judiciary: Dianne Fellows Guild (Mrs. Douglas), 16 Andrews Drive, South Burlington, VT 05401
Ritual: Karen Kind Manuel (Mrs.), 36 Rilling Ridge Road, New Canaan, CT 06840

COMMITTEES

Activities/Social (Collegiate): Margaret Stone Grosse (Mrs. Robert), 21 Terrace Walk, Berkeley CA 94707
Alumnae Relations: Scott Thompson Douget (Mrs. Michael), 6715 E. 78th Ct., Tulsa, OK 74133
Awards (Collegiate & Alumnae): Marcia Earl Humpal (Mrs. David), 26798 Mangrove Lane, Olmsted Falls, OH 44138
Bylaws and Standing Rules: Lisbeth Innis Francis (Mrs. Robert), 2508 Belle Terre Drive, Birmingham, AL 35226
Housing: Ruth Heller Horton (Mrs. Frank C.), 2742 Washington Blvd., Huntington, WV 25705
Housing Projects: Sue Jones Allen (Mrs. Tom), 2415 Custer Cave, Richardson, TX 75080
Newsletter (Collegiate & Alumnae): Patricia Heneghan Pelkofer, (Mrs. C. G.), 252 South Winebiddle St., Pittsburgh, PA 15224
Philanthropy (Collegiate): Joan Dondrea Lowry (Mrs. Bob-Bill), 578 Yarmouth Lane, Bay Village, OH 44140
Philanthropy (Alumnae): Priscilla (Pat) Beatty (Miss), 3691 Northwest 95th Terrace, Apt. 1202, Sunrise, FL 33321
Pledge Programs: Phyllis Snape Favorite (Mrs. Robert), 570 Lancashire Lane, State College, PA 16801
Programs (Alumnae): Sherrie Campbell Loader (Mrs. Charles), 565 Church, Portland, MI 48875
Programs (Collegiate): Marvona Easley Tavlin (Mrs. Michael), 7411 Briarhurst Circle, Lincoln, NE 68506
References: Ruby Gray Purdum (Mrs. C. B.), Rt. #1, Box 147, Dewey, OK 74029
Scholarship (Collegiate): Sharon Strassler Kryger (Mrs. Steve), Box 2, Neligh, NE 68756
Elizabeth Coulter Stephenson Scholarships (Collegiate): Sarah Jane Shank Houston (Mrs. Harold), 3358 Ramblewood Place, Sarasota, FL 33577
Sorority Education: Ellen Kroll Jenkins (Mrs. Paul L.), 1101 Ramblin Court, Greenwood, IN 46142
Standards: Lee McFalls Rodekohr (Mrs. Larry), 901 Platte Avenue, Cheyenne, WY 82001
Ways & Means Projects: Patricia Canady Rosser (Mrs. David), 1609 Indian Rks. Road, Clearwater, FL 33516

PAD: Lois Randolph Nesgoda (Mrs. Leonard), 5652 Alberta Dr., Lyndhurst, OH 44124

VI. Michigan

PCD: Janelle Kiszka (Miss), 550 Chamberlain St., Apt. 1008, Flushing, MI 48433

PAD: Pamela McClure Cronenwett (Mrs. William), 25720 West Hills Drive, Dearborn Heights, MI 48125

VII. Indiana

PCD: Elizabeth Petrucce (Miss), 4508 Candletree Circle #11, Indianapolis, IN 46254

PAD: Gelaine Listenberger Smock (Mrs. Steven), 9561 E. Southport Road, Indianapolis, IN 46259

VIII. Wisconsin

PCD: Danice Whalen (Miss), 913 1/2 S. Roosevelt, Green Bay, WI 54301

PAD: Lynn Marie Shebesta (Miss), 422 Hudson Avenue, West, Mankato, MN 56001

IX. Illinois

PCD: Linda Harbaugh Sundlof (Mrs. Robert), 2511 W. Downer Place, Aurora, IL 60506

PAD: Gail Easley McKee (Mrs. Don), 776 10th Street, Charleston, IL 61920

PROVINCE COLLEGIATE AND ALUMNAE DIRECTORS

I. Maine, Massachusetts, Vermont, New Hampshire, Connecticut and Rhode Island

PCD: Angela Piper Shipman (Mrs. John), 8 Bayberry Lane, Exeter, NH 03833

PAD: Gay Thorro Rose (Mrs. Jack), 124 Roxbury Road, Niantic, CT 06357

II. New York and New Jersey

PCD: Sylvia Lounsberry Fix (Mrs. Wayne), 36 Crystal Springs Lane, Fairport, NY 14450

PAD: Amy Furesz Curry (Mrs. James), 338 Marvin Ave., Hackensack, NJ 07601

III. Pennsylvania and Delaware

PCD: Judith Sherin Kline (Mrs. Patrick E.), 207 Robinwood Dr., Hagerstown, MD 21740

PAD: Diane Dershem Kreider (Mrs. Edward), 6204 Elmer Avenue, Harrisburg, PA 17112

IV. West Virginia

PCD: Lisa Bergeria Blankenship (Mrs. Glen), P.O. Box 779, Athens, WV 24712

PAD: Mary Barnette Semder (Mrs. Robert), 140 Meadow Drive, Scott Depot, WV 25560

V. Ohio

PCD: Lynnda Wolf Hoefler (Mrs. Robert), 1287 Denise Drive, Kent, OH 44240

X. Iowa

PCD: Janet Eisler Havener (Mrs. Gary), 4343 N. Sheridan Ave., Loveland, CO 80537

PAD: Kay Morrow Wright (Mrs. Terry), 10477 Juan Calle, Des Moines, IA 50322

XI. Missouri

PCD: Mary Tripodi (Miss), 2123 Lilly Avenue, St. Louis, MO 63110

PAD: Eileen Hoffman Doe (Mrs. Larry), 2 Locust Drive, Florissant, MO 63031

XII. Kansas, Nebraska and collegiate chapters of Colorado

PCD: Janet Eisler Havener (Mrs. Gary), 4343 N. Sheridan Ave., Loveland, CO 80537

PAD: Carolyn McCandless Woodling (Mrs. Charles), 3112 Creekwood, Lawrence, KS 66044

XIII. Minnesota, North Dakota and South Dakota

PCD: Jeri Seals Weigand (Mrs. Gregg), 549 19th Avenue, North, South St. Paul, MN 55075

PAD: Sylvia Lee Kafkas (Mrs. John), 3505 Humboldt Ave., South, Minneapolis, MN 55408

XIV. Colorado, Wyoming, Utah, Arizona and New Mexico (See Province XVII)

PAD: Mary Jo Harriss Messlin (Mrs. Carl), 2998 S. Akron Court, Denver, CO 80231

XV SOUTH. Southern California, Southern Nevada and Hawaii

PCD: Karen Martin Dessel (Mrs. Tom), 2015 Studebaker Road, Long Beach, CA 90815

PAD: Barbara Phillippi Lancaster (Mrs. Richard), 4923 Libbit Ave., Van Nuys, CA 91436

XV CENTRAL. Northern California and Northern Nevada

PCD: Susan Kelly Warren (Mrs. Robert), 212 Farm Lane, Martinez, CA 94553

PAD: Ruth Rue Behnke (Mrs. Albert), 2241 Sacramento St., San Francisco, CA 94115

XV NORTH. Oregon, Washington, Montana, Idaho and Alaska

PCD: Susan Kelly Warren (Mrs. Robert), 212 Farm Lane, Martinez, CA 94553

PAD: Helga Kohlenberg Clark (Mrs. William), 4866 123rd Place S.E., Bellevue, WA 98006

XVI. Oklahoma

PCD: Mary Malone Snider (Mrs. Charles), 2120 Columbus, Muskogee, OK 74401

PAD: Deanna Alleman McKinnon (Mrs. M.L.), 12109 Victoria Place, Oklahoma City, OK 73120

XVII. Texas, New Mexico Collegiate Chapters and Las Cruces Alumnae Chapter

PCD: Merry Westbrook Adamcik (Mrs. Roy), 614 Rozelle Avenue, Sugarland, TX 77478

PAD-N: Annette Fowler Nall (Mrs. Garry), Box 136, WT Station, Canyon, TX 79015

PAD-S: Ann Butler Booth (Mrs. W. Ray), 14735 Oak Bend, Houston, TX 77079

XVIII. Louisiana and Mississippi

PCD: Jean Funck Person (Mrs. John D.), 4808 Craig Ave., Kenner, LA 70062

PAD: Lizetta M. Frederick (Ms.), 1721 Victor II Blvd., Morgan City, LA 70380

XIX. Tennessee

PCD: Clara Schnakenberg Smith (Mrs. Dale), 310 Cotton Road, Franklin, TN 37064

PAD: Violet Henson Anderson (Mrs. Charles A.), 102 Blue Hills Ct., Nashville, TN 37214

XX. Kentucky

PCD: Jennifer Plenge (Ms.), 904 Dana Marie Drive, Louisville, KY 40223

PAD: Carol Sharpe Harper (Mrs. Spencer E., Jr.), 3309 Green Hill Lane, Louisville, KY 40207

XXI. South Carolina and North Carolina

PCD: Sondra Golden Bass (Mrs. J. Albert, Jr.), 6425 Chapman Court, Raleigh, NC 27612

PAD: Patricia Menendez Tector (Mrs. John), 907 Winslow Court, Cary, NC 27511

XXII. Georgia

PCD: Sue Adrianson Skambis (Mrs. Christopher), 230 West Lake Sue Ave., Winter Park, FL 32789

PAD: Marge Klingensmith Lovewell (Mrs.), 96 The Prado NE, Atlanta, GA 30309

XXIII. Alabama

PCD: Sandra McAlister Nesbitt (Mrs. Milton), 241 Landmark Dr., Montgomery, AL 36117

PAD: Lassie Jo Rounds Simms (Mrs. Jack), 208 Willow Creek Rd., Auburn, AL 36830

XXIV. Florida

PCD: Sue Adrianson Skambis (Mrs. Christopher), 230 West Lake Sue Ave., Winter Park, FL 32789

PAD: Susan Mease (Miss), 2095 Sunset Point Road, #2405, Clearwater, FL 33575

XXV. Virginia, Maryland and Washington, D.C.

PCD: Sharon Lamb (Miss), 4600 John Hancock Ct., #301, Annandale, VA 22003

PAD: Gail Lutz Verley (Mrs. William), 1735 North Troy, Apt. 413, Arlington, VA 22206

XXVI. Arkansas

PCD: Jacqueline Miner Gardner (Mrs. Richard, Jr.), P. O. Box 2034, Russellville, AR 72801

PAD: c/o National Vice President Alumnae Affairs

State Reference Chairmen

ALABAMA: Madge Vinton Sorrell (Miss), Route 1, Pike Road, AL 36064 **ALASKA:** Caroline Dunbar Valentine (Mrs. Craig), 3838 Westminster Way, Anchorage, AK 99504 **ARIZONA:** Margaret Ann Poe (Miss), 4720 West Rose Lane, Glendale, AZ 85301 **ARKANSAS:** Jeania Standridge Evans (Mrs. Jerry), Rt. #2, Box 370, Russellville, AR 72801 **CALIFORNIA (North):** Martha Henry Burde (Mrs. Walter), 24685 Camino del Monte, Carmel, CA 93923 **CALIFORNIA (South):** Janet Breitweiser Savage (Mrs. Tom), 5102 Woodwind Lane, Anaheim, CA 92807 **COLORADO:** Tressa Moor Brasse (Mrs. Lawrence), Box 146, Calhan, CO 80808 **CONNECTICUT:** Ann Collins Gill (Mrs. Edward), 53 High Point Rd., Westport, CT 06880 **DELAWARE:** Cindy Andrew (Miss), 5068 W. Brigantine Ct. Mermaid Run, Wilmington, DE 19808 **DISTRICT OF COLUMBIA:** Pat Dansbury (Miss), 1722 19th St. NW #501, Washington, D.C. 20009 **FLORIDA:** Cindy Brown Helton (Mrs. Charles), 1601 Berkshire Ave., Winter Park, FL 32789 **GEORGIA:** Nancy Winslow Carroll (Mrs. William), 1518 1/2 Heath Street, Augusta, GA 30904 **HAWAII:** June Burnell Solomon (Mrs. Albert K.), 208 Seaside Towers, 435 Seaside Ave., Honolulu, HI 96815 **IDAHO:** Rilla Soderstrom Perola (Mrs. George), 8800 Craydon Dr., Boise, ID 83704 **ILLINOIS:** Terryl Mellen (Miss), RR #1, Coal City, IL 60416 **INDIANA:** Karen Manley Davies (Mrs. Roger L.), 812 S. 5th St., Terre Haute, IN 47807 **IOWA:** Alaire Swedlund Bornholtz (Mrs. Tim), 3601 Lafayette, Sioux City, IA 51104 **KANSAS:** Kay Koger (Miss), 120 Mulberry, Cottonwood Falls, KS 66845 **KENTUCKY:** Mary Penrod (Miss), 67 Gaddis Dr., Ft. Thomas, KY 41075 **LOUISIANA:** Jane Weaver Mathes (Mrs. Jimmy), 12538 Sherbrook Dr., Baton Rouge, LA 70815 **MAINE:** Candace Hilton Smith (Mrs. Nelson L.), R.R. 2, Box 505A, Yarmouth, ME 04096 **MARYLAND:** Pat Dansbury (Miss), 1722 19th St. NW #501, Washington, D.C. 20009 **MASSACHUSETTS:** Mary Catherine Davis (Miss), 25 Bayberry Circle, Millis, MA 02054 **MICHIGAN:** Terri Anderson Miller (Mrs. Bruce), 2476 Sharma Lane, Howell, MI 48843 **MINNESOTA:** Grace Dollohan (Miss), 4040 15th Ave. South Apt. 1, Minneapolis, MN 55407 **MISSISSIPPI:** Lanell Long McLeod (Mrs. James), Rt. 3, Box 433, Brandon, MS 39042 **MISSOURI:** Michaela K. Kerns (Miss), 10540 Washington #304, Kansas City, MO 64114 **MONTANA:** Jackley Meyers (Miss), 343 W. Lawrence, #4, Helena, MT 59601 **NEBRASKA:** Carole Sorensen (Miss), 3027 W. Capital Ave., #26, Grand Island, NE 68801 **NEVADA:** Lori Figgins (Miss), 647 Peppertree Circle, Henderson, NV 89015 **NEW HAMPSHIRE:** Karen Macrigeanis (Miss), Box 296, Laconia, NH 03246 **NEW JERSEY:** Debra Bass (Miss), 357 Shea Dr., New Milford, NJ 07646 **NEW MEXICO:** Louise Seitzinger Longenecker (Mrs. Donald), 1417 W. 8th Street, Silver City, NM 88061 **NEW YORK:** Mary Frances Sims (Miss), 95 Ball Road, High Acres, Syracuse, NY 13215 **NORTH CAROLINA:** Linda Angel Leedham (Mrs. Gary), 4414 Woods End Lane, Matthews, NC 28105 **NORTH DAKOTA:** Kathie Ryckman Anderson (Mrs. Owen), 816 N. 39th St., Grand Forks, ND 58201 **OHIO:** Sandra Sebrill Bailey (Mrs. Bruce), 541 Willard Rd., Aurora, OH 44202 **OKLAHOMA:** Pattie Cantrell Hulsey (Mrs. Stephen), 3912 S. Union, Tulsa, OK 74107 **OREGON:** Barbara Kersch Hamilton (Mrs. W. B.), 12601 S.E. Market, Portland, OR 97233 **PENNSYLVANIA:** Debbie Fries (Miss), 1060 Oldstone Road, Allentown, PA 18103 **RHODE ISLAND:** Patricia Webster Boynton (Mrs. William), 63 Benefit Street, Warwick, RI 02886 **SOUTH CAROLINA:** Sharon Youngblood Parsell (Mrs. David), 2 Kingsbury Rd, Rt. 9, Greenville, SC 29609 **SOUTH DAKOTA:** Doris Dalin Huffman (Mrs. Richard, Jr.), 1535 S. State St., Aberdeen, SD 57401 **TENNESSEE:** Joyce Lockhart Gary (Mrs. Wallace), 1347 Greendale Ave., Memphis, TN 38127 **TEXAS:** Ann Clay Elkins Hawkins (Mrs. Jerry), 324 Pine St., Lake Jackson, TX 77566 **UTAH:** Jean Peters Christensen (Mrs. William), 1669 Yalecrest Ave., Salt Lake City, UT 84105 **VERMONT:** Pat Perreboom Hoefler (Mrs. David), 22 Hillwinds, Brattleboro, VT 05301 **VIRGINIA:** Sue Kuether Sippel (Mrs. Leonard), 1109 Five Points Rd., Virginia Beach, VA 23454 **WASHINGTON:** Karen Fellows Soyk (Mrs. Lon), 31033 38th Avenue South, Auburn, WA 98002 **WEST VIRGINIA:** Sherry Hornsby Miller (Mrs. William), 2609 Jefferson, Point Pleasant, WV 25550 **WISCONSIN:** Mary Ann Myhrvold Janssen (Mrs. Paul), 312 Andrew St., Waukonga, WI 53149 **WYOMING:** Donna McElroy Ferichs (Mrs. William), 3301 Alta Vista Drive, Laramie, WY 82070



POSTMASTER: Send 3579 immediately to Delta Zeta Sorority, 202 E. Church St., Oxford, OH 45056

Delta Zeta Sorority
Corner of Campus Ave. and Church St.
202 E. Church St.
Oxford, OH 45056

Address Correction Requested

Non-Profit Org.
U.S. Postage

PAID

Permit No. 131
Tulsa, OK