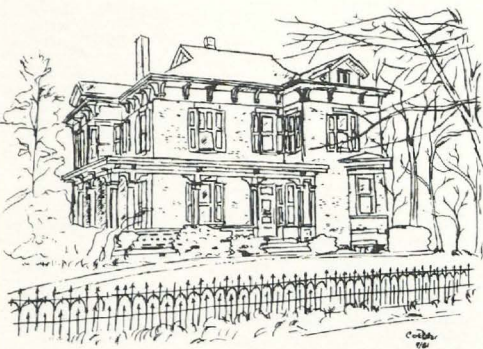


LAMP

OF
DELTA
ZETA

WINTER 1982-1983





Open Our Friendship Gate;
Join the Charter Circle.

National Historical Museum, Inc.

At the corner of Church and Campus streets in Oxford, Ohio, the gate will swing open to Delta Zeta's new home in 1983. This stately red brick mansion is on a tree lined street of lovely residences, and just a block away from the campus of Miami University. It has been designated by the Oxford City Council as an Historic Site.

The building will house not only Delta Zeta's busy headquarters office, but will contain Delta Zeta's memories and history from her founding at the turn of the century.

Last summer the trustees met and were delighted with the beauty of the building as seen through the eyes of the capable architect, Hal Barcus. He had a planned use for every foot, including the lower level and windowed third floor for storage and a dormitory.

Each of the rooms has the original woodwork and a working fireplace. Even the original stair rails were found tucked away in a corner of the ample basement.

The side entrance will be used for the offices, and the front entrance will bring you to the parlors which will be restored to their authentic period, which will be a museum of things Delta Zeta, past and present. Even the office walls will reflect our origins and scope.

Julia Bishop Coleman's daughter Jean, also an Alpha chapter member, has offered lovely pieces belonging to her mother. One of our former National Presidents is working on appropriate needlepoint designs.

Every Delta Zeta member, young and old, will feel a part of this museum and headquarters. Since it will take time and money to restore the house and yard to its former glory, we are sure all of you will want to participate. The purchase price of the property was \$150,000 and even if it takes again as much to redo and decorate, one architect husband said it would be a steal at that cost. It will be a magnificent structure in a choice location.

The trustees agreed that before any decorating could be attempted, the inside structural changes needed to be made. The outside brick and stone have been cleaned and repaired. The original woodwork, the windows, and even the iron fence around the yard are intact, just needing refurbishing. When these changes are made, and in many cases it means restoring walls and stairways to their original design, we can then think of appropriate furnishings. Luckily, the basic foundations and walls are sound. And with the removal of old fixtures one would never know that countless Miami students had lived there and toasted marshmallows in the fireplaces. It was said the little apartments were in great demand because of these cozy fireplaces, all of them different in design, and all the original materials.

The second floor will be used for bedrooms and meeting rooms, and sleeping quarters will be available for

those attending conferences. One province has offered to do an entire bedroom, and the others will be furnished as funds and gifts are made available.

After the enthusiastic meeting in Oxford, the trustees, all but two of whom have served on National Council, were assigned various categories with which to work. You will be hearing from them as the work progresses.

And this is where YOU come in. Delta Zeta needs your gifts and your money. These contributions will pay for the house and its restoration, and it will then be self-sustaining as the amount used previously for rent of our Columbus headquarters will cover the maintenance adequately.

Since the building has been incorporated as the Delta Zeta National Historical Museum, your contributions will be tax deductible, and make you a member of the Charter Circle, prior to dedication in 1983. We want it to be a showplace of memorabilia and charm as well as a working office.

Officers elected at the annual meeting were Lucile Cooks, president, Carolyn Gullatt, vice president, Norma Andrisek, secretary and Betty Rogers (a professor at Miami University), treasurer. They will serve until the next annual meeting, which will be held in conjunction with National Convention in Dallas next June. Other trustees who will serve for staggered terms are Florence Miner, Betsy Leach, Mary Lou Vineyard, Doris Riede and Aurel Ostendorf.

Open our Friendship Gate, and join us in the Charter Circle.



Members of the Board of Trustees of the Delta Zeta National Historical Museum are (back row, l to r) Norma Andrisek, Carolyn Gullatt, Florence Miner, Betsy Leach and Betty Rogers. The first row includes Mary Lou Vineyard, Lucile Cooks and Doris Riede. Not pictured is Aurel Ostendorf.

LAMP

Volume 71 Number 4 Winter 1982-1983

Founders of the Sorority



Miami University
Oxford, Ohio 1902

Alfa Lloyd Hayes, 1880-1962
Mary Collins Galbraith, 1879-1963
Anna Keen Davis, 1884-1949
Julia Bishop Coleman, 1881-1959
Mabelle Minton Hageman, 1880-1929
Anne Simmons Friedline, 1879-1932

THE LAMP

(USPS 585-640)

The Lamp of Delta Zeta, official magazine of the sorority, is published quarterly by the Delta Zeta Sorority, 21 East State Street, Columbus, Ohio 43215.

Send all editorial material to the Editor, Mrs. Robert L. McKeeman, 5517 S. 74th E. Avenue, Tulsa, OK 74145. Send all matters of a business nature to Delta Zeta National Headquarters, Columbus, OH.

Send all contributions for Delta Zeta Founders Memorial Foundation and Gallaudet College to Mrs. William Barth, 1662 Villa South Drive, West Carrollton, OH 45449.

EDITOR

Gwen Moss McKeeman
5517 S. 74th E. Avenue
Tulsa, Oklahoma 74145

STAFF

Diane Jones Skelton
Virginia Gilbert
Sheila Hillis Nixon
Meryl Lin McKean



Contents

- 2 Woman of the Year
- 4 Woman of the Year, Posthumously
- 5 Penny Caldwell, AXA's Sweetheart
- 6 Eastern Kentucky Welcomes Delta Zeta
- 8 FHM Award Winner
- 10 Delta Zeta from Coast to Coast
- 16 Convention Registration Form
- 17 National Council Nominations
- 19 Gallaudet Dance Company
- 20 Province Alumnae Directors
- 22 Gail Spotts of Missouri
- 23 Nancy Walker, Glamour Winner
- 24 Founders Memorial Foundation
- 27 Dianne Collier, KΘ
- 28 Initiation
- 29 Application for Graduate Counselor
- 31 NU-AA '47 Reunion
- 32 Delta Zeta on Campus
- 40 Class of '71
- 42 Application for Field Representative
- 43 PCD-PAD Workshop
- 44 Province Weekends/State Days
- 47 Flame Eternal
- 48 Directory

ABOUT THE COVER

Marilu Penland Caldwell, Western Carolina University-ΘI, is Lambda Chi Alpha's 1982 International Sweetheart. Our "Penny" is featured on page 5.

Ethel Mae Gullette

Woman of the Year Noted Pianist



Ethel Mae Gullette, Woman of the Year

*by Karen Kind Manuel
Baldwin-Wallace-ΓA*

The National Council of Delta Zeta proudly announces Ethel Mae Bishop Gullette as one of two Delta Zetas named as 1982 Woman of the Year.

Today at 74, Ethel Mae, who is a native of St. Paul, MN, is well-known as a pianist, accompanist and duopianist, having given concerts in the East, South and Middle West. Besides being a gifted musician, she continues to be very active in many community

activities, having now lived in New Canaan, CT for 31 years.

As one writer put it, "She has been active in or headed just about every organization in town except the YMCA wrestling team. To name a few: American Cancer Society, Red Cross, March of Dimes, Girl Scouts, New Canaan Community Concerts Association, Darien Community Association and New Canaan Town Players." She

is a charter member of the American Association of University Women, New Canaan Branch. Her interests are many, but photography and snorkeling head the list.

She is a graduate (BM) of MacPhail School of Music, Minneapolis; University of Minnesota (BA), and the Juilliard School of Music, New York City. At the latter she was an accompanist for 14 years. Ethel Mae doesn't hesi-

tate to give full credit to the dedicated piano teachers who guided and inspired her through her student days; namely, Janet Davidson, Carrie Zumbach Bliss, Donald N. Ferguson and James Friskin.

Besides being a 55-year member of the international professional music fraternity, Mu Phi Epsilon, where their quarterly *Triangle* featured her in an article in 1981, she is listed in *Who's Who of American Women* (Marquis), *Who's Who in the East* (Marquis), *Dictionary of International Biography* (England) and *Who's Who in Mu Phi Epsilon* (1981).

In 1962, Ethel Mae lost the sight of her right eye. A detached retina halved her vision three days before she performed in a benefit Twelve Piano Concert for the American Red Cross in Bridgeport, CT. Afterwards, she underwent two major eye operations which failed to restore the sight in that eye. "At first I didn't want to accept it," she said. "I was miserable." But it was another challenge which she met and continues to conquer.

A highlight of her career was the duo-piano concert in 1979 in Silvermine, CT (and repeated by popular demand in 1980 in New Canaan) to celebrate a 25 year collaboration with her partner, Dorothy Forrest. Over the past 28 years they, with their Duo Piano Groups performing in concerts, have raised over \$30,000 for charities.

As late as May this year the duo entertained the Norwalk Symphony Women's Association at their annual meeting, performing compositions by Bach, Debussy, Deluis and Granger in honor of the latter's 100th anniversary of birth.

Ethel Mae and her husband, William B. Gullette have just this year retired (after nearly 50 years) as owners of Preview Theatre, Inc., 1600 Broadway, New York City. They have been married 46 years and have two daughters, Ethel and Charlene, both of whom are teachers. For recreation the Gullettes enjoy ballroom dancing and swimming.

A member of the Order of Golden Rose, Ethel Mae was initiated into

Beta Phi Alpha at the University of Minnesota before Delta Zeta's merger with that sorority. Subsequently, she was initiated into Gamma chapter. She is a founder and charter member of the Fairfield County alumnae chapter in Connecticut, now in its 23rd year, and has served as chapter president. She is currently the chapter treasurer. She was named 1980 *Outstanding Alumna of Province One* (New England), and has been actively involved over the years in State Day arrangements.

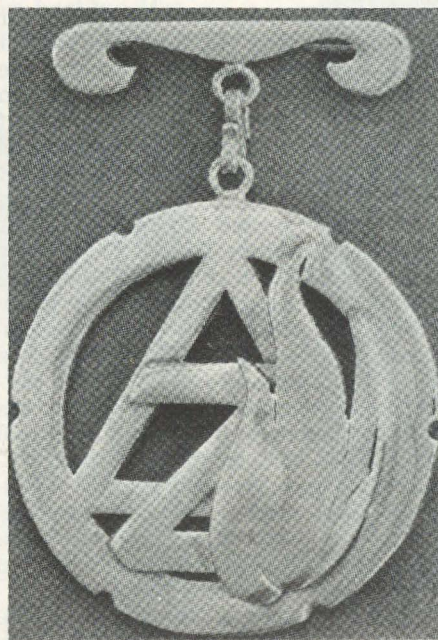
In May of this year, Ethel Mae was elected chairman of the Darien Community Association Duo Piano Groups which makes her a member of the DCA Board for two years. The DCA has a membership of 1,300 women.

This Delta Zeta is full of enthusiasm in everything she does and has a special way of passing her friendship and wisdom to those who meet her. Ethel



Mae is a great asset to Delta Zeta in Connecticut and throughout the nation.

Editor's Note: The presentation will be in New Canaan in early November and the event will be covered in the Spring LAMP.



The Woman of the Year medallion.

The National Council
is pleased to announce
the recolonization
of

Kappa Chapter
University of Washington
Seattle, WA

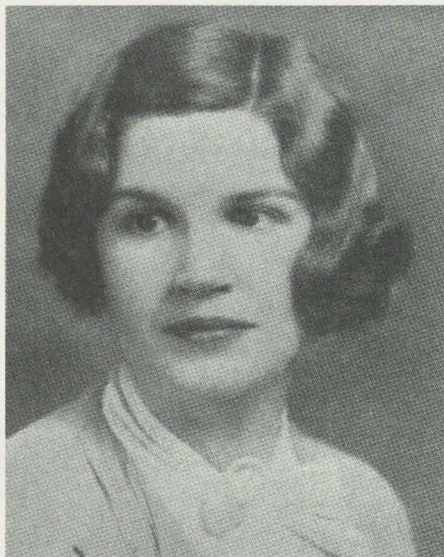
and new colonies at

Radford University
Radford, VA
Xi Delta

and

University of San Francisco
San Francisco, CA
Xi Zeta

Woman of the Year Posthumously Awarded to Dorothy M. Williams



Dorothy Mumford Williams, author of the The Delta Zeta Creed, is a Woman of the Year, granted posthumously.

*by Mary Margaret Calhoun Fore
National Vice President of
Alumnae Affairs*

"Out of the dusk a lamp was lit,
Out of the dusk a heart of flame,
Fire out of darkness infinite,
And out of the fire a white jewel came.
Cherish the flame!"

These words of a Delta Zeta sister exemplify the stirring appeal of her talent with words and her love of Delta Zeta. The National Council of Delta Zeta Sorority takes pride in announcing the posthumous proclamation of Dorothy Mumford Williams as one recipient of the 1982 Delta Zeta Woman of the Year Award.

Initiated into Alpha Zeta chapter of Delta Zeta, Dorothy was graduated from Adelphi College in 1929. After earning her M.A. degree from the University of North Carolina, she was a member of the English faculty at Adelphi prior to her marriage.

From her early teen years until 1976 when she became a member of the Flame Eternal, Dorothy's deep

sense of beauty and poetry was expressed in lyrics, sonnets and other poetic vehicles. Many of these received national acclaim. Dorothy and her family were life-long members of the Friends Society of America. The Journals of the Friends Society published many of her works and a dramatic masque was written by her for the National Biennial Convention of the Women's Organization of Friends of America in 1947. (The Invocation for this presentation is on page 34 of Volume 39, No. 1 of the September, 1949 LAMP of Delta Zeta.) A pageant presented at the 1936 Delta Zeta National Convention in Asheville, North Carolina was Dorothy's composition.

In college, Dorothy was literary editor of the yearbook, a member of Mortar Board and Phi Beta Kappa and was awarded the Barlow medal for the highest four years scholarship at Adelphi. During graduate study at the University of North Carolina on scholarship she was literary editor of the university magazine and received a silver cup for the best sonnet published.

Dorothy served Delta Zeta four years as Province Director for Province I which in 1936-1940 included Maine, Vermont, Connecticut, New Hampshire, Massachusetts, Rhode Island and New York. The Delta Zeta Creed known and held as a life pattern for every Delta Zeta today was written and presented to the National Council in 1939 by then National Ritual Chairman, Dorothy Mumford Williams. Accepted unanimously and becoming a part of everything Delta Zeta, the Delta Zeta Creed has proved a living memorial to its author.

A collection of her poems, *The Badge of Honor*, was published by Poetry House in Brooklyn in 1941.

Her artistic gifts found added expression through her talent for painting. Many pieces of critical distinction in this media are also her legacy.

In addition to her many contributions in the fields of art and letters, Dorothy was active in community affairs as a member of her local Historical Society and a docent of the Hyde Art Collection of Glens Falls, New York.

Dorothy and her husband, Waldo, were the parents of five children, Kay Felt, Carol Hartman, Jesse, Christopher and Jon.

The National Council of Delta Zeta and the many thousands of Delta Zeta sisters whose lives her words continue to inspire express loving gratitude for Dorothy's life and gifts in naming her posthumously one recipient of the 1982 Delta Zeta Woman of the Year Award.

Delta Zeta Creed

To the world,

I promise temperance and insight and courage,
To crusade for justice,
To seek the truth and defend it always;

To those whom my life may touch in slight measure,

May I give graciously
Of what is mine;

To my friends,

Understanding and appreciation;

To those closer ones,

Love that is ever steadfast;

To my mind,

Growth;

To myself,

Faith
That I may walk truly
In the light of the Flame.

Copyright © Williams

Penny Caldwell is Λ XA's International Sweetheart

Marilu Penland Caldwell of Theta Iota chapter at Western Carolina University is Lambda Chi Alpha Fraternity's International Sweetheart for 1982.

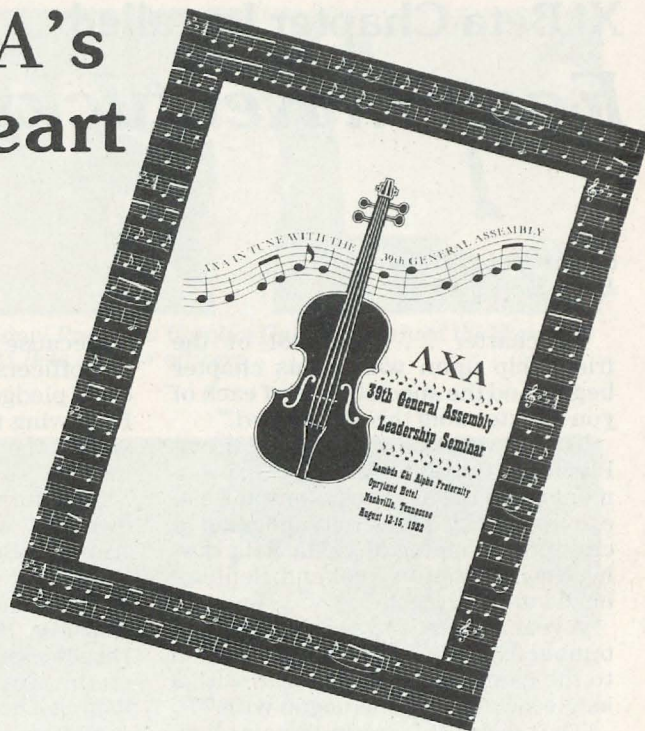
"Penny," as she is known to her sisters and friends, was the guest of the fraternity's 39th General Assembly and Leadership Seminar held at the Opryland Hotel in Nashville, TN in mid-August. She was formally presented to the assembly at their Friday evening Convention Banquet.

Penny is a May 1982 magna cum laude graduate of Western Carolina with a 3.71 QPR in English Education and is now in graduate school in Guidance and Counseling. She was listed in *Who's Who Among Students in American Universities and Colleges* and has numerous campus honors and awards ranging from Outstanding Female Student of the Year, Outstanding Greek Woman and Outstanding Junior to serving as Marshal at her graduation.

She is a past president of Theta Iota chapter, having also served as historian, scholarship chairman, guard and alumnae newsletter editor. She was named outstanding collegian for the Province and belongs to Phi Kappa Phi, Cap and Gown, Kappa Delta Pi and Alpha Lambda Delta.

Penny was nominated by the Beta Zeta chapter of Lambda Chi Alpha at WSU and was selected from among the 218 chapter and colony nominations submitted.

If all goes as planned, Penny will have become Mrs. Mark Ethridge by the time this LAMP is published. He's a Lambda Chi Alpha, of course!



Our Penny enroute to her formal introduction to the Lambda Chi Alpha convention in Nashville, TN.



Penny's bright smile is for all of the Lambda Chi Alphas!

Xi Beta Chapter Installed

Eastern Kentucky Welcomes Delta Zeta

by Maryleigh Hayden
EKU-EB

"A charter ... a symbol of the friendship upon which this chapter begins and the special work of each of you in extending this sisterhood."

Those were the words of National President Carolyn Gullatt at that moment when the Xi Beta colony at Eastern Kentucky University became a chartered chapter of Delta Zeta during the installation weekend, September 11 and 12, 1982.

A year and two days earlier, on September 9, 1981, Xi Beta was presented to the campus. Day one began with a single sister; year one began with 77.

The process of starting a new chapter actually began in the Spring of 1981 when then National Vice President Carolyn Gullatt made a presentation to the college Panhellenic. An invitation to colonize was extended to Delta Zeta and in the fall an extension team of Norma Andrisek, Past National President and Extension Director, Lee Ann Martin and Sherry Helton, Field Representatives, arrived. The new colony grew quickly and soon took its place among the seven other National Panhellenic sororities on the campus, joining Alpha Delta Pi, Alpha Gamma Delta, Chi Omega, Kappa Alpha Theta, Kappa Delta, Phi Mu and Pi Beta Phi.

National officers and representatives began arriving for installation on Friday evening and a reception, complete with skits from Xi Beta's first formal rush, was held for them on the Delta Zeta floor of the dorm.

A campus rule requires all groups to be organized for one full year before official recognition is granted by the university. Therefore, Xi Beta's installation could not take place until that time has passed. The first charter members were initiated, however, last Spring by an initiation team from Alpha Theta chapter at the University of Kentucky and some of those Delta Zetas returned to take part in the installation weekend.

Because of these circumstances the officers of Xi Beta initiated their own pledges on Saturday morning. Following the initiation all members signed the charter in a special ceremony.

The formal banquet on Saturday evening was held in the Keen-Johnson Building on the campus of Eastern Kentucky University with Norma Andrisek serving as toastmistress. Dr. Hayward M. Daugherty, Jr., Director of Student Activities, spoke on the process of selecting and establishing a new chapter.

Xi Beta was welcomed to the Province by Province Collegiate Director Jennifer Plenge and Province Alumnae Director Carol Harper. Terry McNeer, National Field Representative, who had worked closely with the colony extended her special welcome. National Director Terri Severy brought greetings and shared many of

the notes of congratulations sent to the new chapter from Delta Zetas all over the country.

Pati Beil, Xi Beta's first pledge and president responded, expressing her thanks to all those who had made the installation possible. Lee Ann Martin who had worked so closely with the colony during their first year also responded with her own insights into the chapter's beginning.

National President Carolyn Gullatt presided at the installation service and presented the gavel to Pati Beil and the charter to the chapter officers. Nancy Holt, Greek Advisor, accepted the chapter on behalf of the University.

Xi Beta received many gifts including a lovely silver punch bowl from the National Council on behalf of the entire sorority, and a loving cup from the chapters and officers of Province XX. Xi Beta remembered both Lee



Members of newly installed Xi Beta chapter of Delta Zeta at Eastern Kentucky University.



Those appearing on the banquet program included (standing 1 to r) Ann Leine, Field Representative; Jennifer Plenge, PCD; Katherine Day, Graduate Counselor at the University of Kentucky; Pati Beil, Xi Beta president; Carol Harper, PAD, and Terry McNeer, Field Representative. Seated are Lee Ann Martin, former Field Representative; Terri Severy, National Director; Carolyn Gullatt, National President; Norma Andrisek, Past National President, and Dr. Nancy Lee-Riffe, Faculty Advisor from the Staff at Eastern Kentucky.

Ann and Terry with special gifts in appreciation for all they had done to support and help them.

The installation banquet closed with the Rose Ceremony conducted by Lee Ann and Terry and members of Kappa Beta chapter from Northern Kentucky University. The evening's program concluded with all those present joining in the friendship circle.

The weekend came to a close on Sunday afternoon with a reception for the newly installed chapter. Campus sororities and fraternities sent gifts and congratulations with members of the Greek community, parents, friends and visiting officers attending the reception.

"A charter," said Carolyn Gullatt, "is a visible sign of confidence and responsibility." A chapter loved by its sisters and built with that sisterhood is a confidence that will make each responsible for keeping Xi Beta a chapter of sisterhood.

Xi Beta charter members are: Mary Bach, Lori Balogh, Pati Beil, Amy Berberich, Michele Berger, Lisa Blank, Jane Blevins, Kim Botkins, Sherri Breeze, Jeri Carter, Lisa Catlett, Beverly Caylor, Kristi Claybrooks, Lisa Cuccaro, Kim Davis, Theresa Di-

mond, Nancy Dreier, Alisa Floyd, Kim Gilbert, Kim Goins, Mary Leigh Hayden, Kelly Headen, Becky Hurtz, Melisa Jacobsen, Sherry Kelly, Linda Kern, Melissa Kidd, Peggy Kramer, Brenda Lewis, Nancy McConnell, Melinda Miller, Deana Moore, Paula Mullins, Anna Osborne, Carolyn Osborne, Mary Osborne, Leslie Palmer, Lora

Perkins, Bonni Peterson, Lynette Reiser, Becky Robinson, Sharon Ruehrwein, Lisa Rullman, Denise Sheets, Mary Shemelya, Melissa Sizemore, Stacia Starkweather, Karen Steele, Reva Stewart, Rhonda Stickly, Susan Webb, Sharon Wells, Beverly Wheeler, Cynthia Wise, Lisa Wolnitzek.



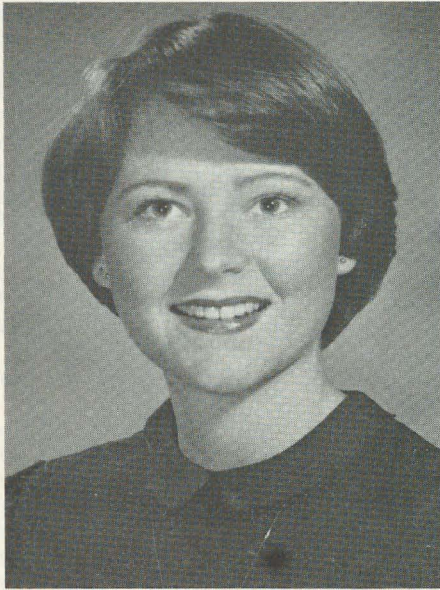
National President Carolyn Gullatt presented the charter to the Xi Beta chapter officers.



Pictured at the reception greeting guests are chapter president Pati Beil, National President Carolyn Gullatt and Past National President and Extension Officer, Norma Andrisek.



Florence Hood Miner Award Winner and Honor Court



Lauren Jorgenson, Alabama-AI

The winner of the Florence Hood Miner award, which is presented annually to Delta Zeta's most outstanding junior collegian, is Lauren Jorgenson of the University of Alabama-AI chapter ... a young woman of charm, leadership and scholastic ability. The presentation was made by Past National President Lisbeth Innis Francis just before formal rush at Alabama.

As Lauren's college chapter director wrote, "She belongs to all of the most selective organizations on campus." This includes being tapped into the Anderson Society, the most selective women's honorary on campus. She also was named to Mortar Board and ODK, received academic honors and was named outstanding sorority woman of the year at Alabama's 1982 Honors Day.

Lauren is a respected and effective leader on campus and her accomplishments include election as the

first woman president of the School of Commerce and Business Administration. Community activities include an internship with the Honorable Claude Pepper of the United States House of Representatives and she was named University of Alabama delegate to the National Collegiate Assembly, serving as chairman of the committee on inflation and unemployment.

She plans to attend law school after graduation, hoping to specialize in anti-trust law and work for the Department of Justice. Lauren plans to stay involved with public service and hopes one day to run for Congress. She added that she also plans to remain active as a Delta Zeta alumna through work with collegiate and alumnae chapters.

Named to the FHM Honor Court are Gretchen Freihofer, Northern Kentucky-KB; Joanne Barone, Florida State-AΣ, and Cheryl Ann Hart, University of Alabama at Huntsville-AK.

Gretchen is a mass communications/PR major at NKU involved with Student Affairs programming, especially in the area of special events. She has done major PR work for events such as Homecoming and Music Fest, and has worked with student blood drives on campus and with telethons for Easter Seals and Muscular Dystrophy.

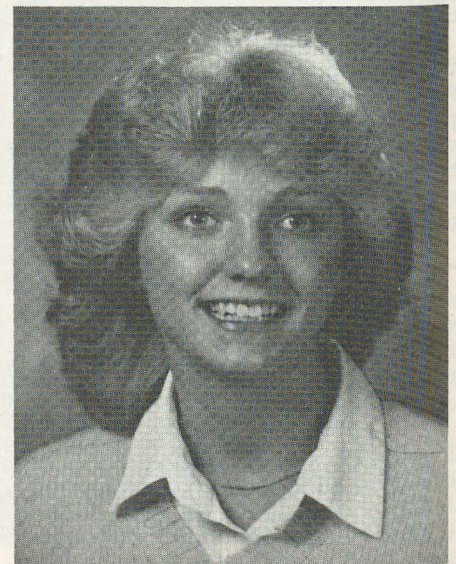
She was chosen Greek Goddess during 1981-82 Greek Week and was named to *Who's Who Among Students in American Universities and Colleges*. She is president-in-training of Panhellenic and did an extensive slide show presentation dealing with sorority life at NKU.

Joanne Barone of FSU has served as the Panhellenic rush chairman, is an officer of the Greek Council and has been named to Rho Lambda, national Panhellenic honorary. She served AΣ chapter as recording secretary, assistant rush chairman and a member of the standards, judicial and

house corporation boards. A Garnet and Gold Girl, she served on the selection committee for *Who's Who*. She served an internship at the Florida capitol under the direction of State Representative Larry H. Plummer. Joanne also plans to attend law school and become involved in government work and politics.

Cheryl Ann Hart of our Alabama at Huntsville-AK chapter is a Finance/Procurement major planning to attend paralegal school following graduation, concentrating in either trial law or corporate finance.

She served in the 1982 Homecoming court and was named to *Who's Who Among Students in American Universities and Colleges*. She belongs to ODK and Alpha Lambda Delta freshman honorary and has served in various student government offices.



Gretchen Freihofer, NKU-KB



Joanne Barone, FSU-AΣ

An honor scholar on the Dean's List, Cheryl Ann has been involved with several band and music ensemble groups, instructing in baton and clarinet, and worked as a Cerebral Palsy and Heart Association volunteer, along with church youth groups and a political campaign. Cheryl Ann was named the outstanding pledge of her pledge class and more recently shared honors as the chapter's outstanding junior.

Our winner and her honor court are four young ladies deserving of the title, "Outstanding Delta Zeta."



Cheryl Ann Hart, Alabama at Huntsville-AK

Reflections *ΔΖ*

Did you enjoy our first "Reflections" in the last issue? Then I am sure you will continue to do so as our guest writer this issue is Evelyn Adams Costello, Knox-N, who has served Delta Zeta in many capacities through the years and who was our National President from 1954 to 1958.

Many of our English words have opposite meanings. A reflection can be an image returned as you look in a mirror or mirror-like substance, it can be speculation, meditation or contemplation. Conversely a reflection can be an unfavorable remark, an aspersion. Being an eternal optimist I prefer to accept the first definition. I learned many years ago to ignore unfavorable remarks or aspersions.

I reflect or meditate on the years since Delta Zeta was founded in 1902. It has been my privilege to watch Delta Zeta grow from a small but always respected organization to one of the largest and most prestigious. It

has become such because its members have reflected the ideals and principles in their lives which were those of the Founders. These six women reflected these principles in their lives.

As I reflect, I realize that Delta Zeta has given me much more than I can chronicle in a small space. I was given the opportunity to know many Delta Zetas not only locally but all over the country. Wherever I went there I found a welcome from Delta Zetas, both alumnae and collegians. Just recently I attended a Province Day and as I was leaving a collegian slipped a note in my hand asking me to read it when I was alone. When I got home I read it. It was so heartwarming that I would like to share it. It said, "I really enjoyed having the opportunity to meet you. You are one fantastic Delta Zeta—sixty years and going strong. That is absolutely awesome. I hope I'll see you at next year's province meeting." This little evidence of Delta Zeta

love has given me one more reflection to cherish.

One of my most wonderful reflections concerns the mergers with which I had some part. Into Delta Zeta wonderful women, reflecting in their lives the same goals and principles on which Delta Zeta is founded were initiated. They have added strength and beauty and loyalty to Delta Zeta. I recall several instances when an alumna would say, "I became a Delta Zeta through a merger and although I was happy in my original choice, I have learned to love Delta Zeta more."

Most of all I reflect that Delta Zeta gave me the opportunity and privilege of serving in many capacities, first as an alumnae chapter president, a province director, as a member of National Council and finally as National President.

*Evelyn Adams Costello
Knox-N*

Delta Zeta from Coast to Coast

Meet Zeta Omicron, Wisconsin-LaCrosse



These Delta Zetas are members of Zeta Omicron chapter at the University of Wisconsin-La Crosse.

by Linda Moore, UW-LC—ZO

The Zeta Omicron chapter of Delta Zeta is located on the University of Wisconsin-La Crosse campus. La Crosse is located in the scenic Mississippi River Valley of West Central Wisconsin. Traditionally, Wisconsin universities have had a low percentage of Greeks on their campuses, but La Crosse can boast of the highest percentage of Greeks of any university in Wisconsin.

In 1935 under the sponsorship of Rena Augell, a group of girls united on the University of Wisconsin-La Crosse campus under the name of Lambda Sigma Chi. Twenty-six years later, in the Spring of 1961, Lambda Sigma Chis recognized Delta Zeta as a common force in their lives by becoming the Zeta Omicron chapter of Delta Zeta.

Eileen Hammerburg, advisor to Zeta Omicron, said in her speech at

the Installation banquet in the Spring of 1961 that "by our love for one another we shall insure that through Delta Zeta we too shall have our lives enriched in serving her and each other."

"Sailing into Sorority Life" was the Panhellenic theme throughout last Fall's formal rush, and we made quota, receiving ten pledges. On Founders Day, the pledges planned a party to celebrate the founding of Delta Zeta.

This year, State Day was hosted by the Epsilon Kappa chapter at the University of Wisconsin-Whitewater. Our chapter received \$30.00 for winning the Family Feud game in which all Province VIII chapters participated. It was great to meet other Delta Zetas, and our Province Collegiate Director, Sandi Betz, did a super job in giving us all a sense of unity and sisterhood. To

top off the day, Tracy Quinn, a member of our chapter, was voted Miss Province VIII.

Throughout the sports season, Barb Roach led the La Crosse cheerleaders as captain of the varsity squad. Barb has been a cheerleader for the past three years.

Julie Kummer was recognized by the University's Panhellenic Council for having a 4.0 grade point average. She received a \$100.00 scholarship. Members like this have led the Zeta Omicron chapter to receive the traveling Panhellenic trophy for scholarship 18 out of 27 semesters for the highest overall grade point average.

At the end of the fall semester, we held an election for new officers. Our new executive board includes Julie House as president, Joan Williams as vice president-pledge training, Nancy Everding as vice president-rush, Carol Henry as corresponding secretary, Linda Wallis as recording secretary, and Barb Roach as treasurer.

Our new president, Julie House, is a blue belt in Tae Kwon Do. She has competed in many tournaments, most recently bringing home an overall woman's first place trophy. Julie will be competing in the Winnipeg, Canada tournament and will also be giving a Standards program on self defense to the chapter.

Our new work projects chairman, Sue Secondi, has been doing an excellent job with her office. A few of the fund raisers she has initiated are singing Valentines, bake sales, car washes, and squirt-o-grams for April Fool's Day. Cindy Hoehne, our new song leader, has been busy teaching us all new Delta Zeta songs at our weekly meetings.

Parents' Weekend, planned by Colonnade chairman Barb Roach, was an excellent chance for all of us to meet each other's families. We raised \$90 in donations by "planting tulips" with our fathers and mothers. Each Delta Zeta gave her parent a kiss in exchange for a donation. I'm sure that



A rush skit at Zeta Omicron was a take-off on Gilligan's Island, complete with grass hut. Pictured are Barb Roach, Cheryl Wagner, Joan Williams, Karen Olson, Carol Henry, Beth Schoepke and Linda Wallas.



Zeta Omicrons posed just before Fall rush. They've now added 10 new pledges to their chapter roll.

there are fond memories of the weekend that will be remembered for a long time.

Some of the social events planned by social chairman Cheryl Wagner have been tobogganing, horseback riding and volleyball parties with various fraternities. Cheryl also planned our annual Spring dinner dance, which was held on April 17th in the grand ballroom of the La Crosse Radisson Hotel.

As one of our philanthropies, Zeta Omicron once again participated in the Annual Muscular Dystrophy Dance Marathon. Carol Henry and Rob Westphal danced for 31 hours, and placed second in the sorority competition for collecting the greatest amount of money. We also planned an Easter egg coloring party with the elderly residents of Bethany Lutheran Home.

Some of the members of the Zeta Omicron chapter have been actively participating in area talent competitions. Karen Olson was recently crowned Shamrock Queen in her hometown, Gays Mills, while Kris Boehm passed on her Applefest Queen crown in October, after a hectic but exciting year. In the Annual Calendar Queen Contest sponsored by the Sigma Tau Gamma Fraternity, Nancy Everding and Barb Roach were honored as Calendar Girls. They received the titles of Miss May and Miss September, respectively. It was

an exciting moment for past Queen Wendy Wocelka to see two of her sisters on stage receiving their awards.

We feel that as a chapter, we have not only remained active in the community and on campus, but also among ourselves. We also believe that through our members, the true meaning of sisterhood in Delta Zeta shines through.



President Julie House took first place in a Tae Kwon Do (karate) tournament.

ΔZ Admitted to Hall of Fame

Vee Shakarian Toner (Mrs. Arthur C., Jr.), Pittsburgh-O, and Delta Zeta's 1969 Woman of the Year, has been elected to the Pennsylvania Sports Hall of Fame. Vee has been a prominent sports figure for many years in Olympic and Pan-American games as well as with international swimming competition and as a Stadium Umpire of the United States Tennis Association and Wimbledon, England. She was inducted at the association's annual dinner in October.

Vee is the first woman from Western Pennsylvania to be elected to the State Sports Hall of Fame and joins such prominent people as Stan Musial, Arnold Palmer, Jim Thorpe, "Pop" Warner, Ralph Kiner and a host of others.

She is also the only woman to have been elected president of the Allegheny Mountain Association of the Amateur Athletic Union and has also been presented a Life Membership in the Amateur Athletic Union of the United States.

Delta Zeta from Coast to Coast



Pictured are members of the Delta Sigma chapter at Northeast Missouri State University. Brewer Hall is the Panhellenic dormitory.



Delta Sigmas hung their banner from their dorm floor to welcome freshman students.

Meet Delta Sigma at Northeast Missouri

*by Allison Fuhrig
NMSU-ΔΣ*

Missouri's landscape, its people, its economy, and its recreations are highly varied, almost mirroring the nation as a whole. The landscape varies from the fertile river bottom of the "boot-hill" in the Southeast, to the rugged tree-covered Ozarks in the South, to the prairies of the Northwest and the rolling hills of the Northeast.

Missouri's people range from nuclear scientists to hill folk. One out of every five workers is engaged in manufacturing anything from corncob pipes to aerospace equipment. Missouri has everything from small towns to big cities, town squares with quaint shops to downtown areas with national monuments. In short, Missouri has it all, including Kirksville, the hub of Northeast Missouri, a town of 17,000 and home of Northeast Missouri State University and the Delta Sigma chapter of Delta Zeta.

Northeast Missouri State University began in 1867 as a private normal school. In 1870 it was taken over by the state as the first state-supported teacher training institution west of the Mississippi.

In 1919 when the school's name was changed to Northeast Missouri State Teachers College, there were two sororities on campus. Efforts soon began to establish a third. On January 31, 1921 a national organizer of

Delta Sigma Epsilon, a member of the Association of Education Sororities, installed the Iota chapter on the Kirksville Campus.

AES was taken into NPC in 1947 which intensified competition as old AES groups tried to colonize on liberal arts campuses and NPC sororities moved into teacher's colleges. In a few years NPC suggested that some former education sororities think in terms of combination with an old NPC order. The first to take this momentous step was Delta Sigma Epsilon which chose Delta Zeta for union. The similarities of their backgrounds and ideals made such a merger a natural one. The decision was announced in August 1956, and Delta Sigma Epsilon collegians and alumnae were initiated in early September. The new Delta Zeta chapter at Northeast received the designation of Delta Sigma chapter to the great pleasure of old Delta Sigmas.

During our sixty-two year history, the chapter has only seen three faculty advisors. The first was Dr. Lucy Simmons, the second was Dr. Pauline D. Knobbs, and in 1953 Dr. Ruth W. Towne was appointed. All three were members of the Division of Social Science and two, Dr. Simmons and Dr. Towne were U.S. historians. Dr.

Towne saw the chapter through the merger in 1956. In 1963 she started the *DeltaScope*, which is an annual newsletter recording the year's events for the collegiate chapter and the activities of many alumnae all over the country. Delta Sigmas look forward to receiving a copy each Spring and regularly send their news to Dr. Towne who acts as editor.

Sororities at Northeast do not have houses but in 1969 Brewer Hall was designated as the Panhellenic Residence hall. Each sorority has a wing and a chapter room. Delta Zeta is located on the third floor. Last year saw a redecoration of the chapter room with beautiful new furniture and shelves for our numerous trophies. This year upon returning to school we repainted the hallway, decorating it with our letters and colorful turtles.

Ever since an annual homecoming was instituted in 1939, the sorority has participated. Each year the Delta Sigma chapter is asked to build a float with one of the fraternities on campus. After the annual parade and football game, the chapter has a "coketail" party for visiting alumnae. Delta Zeta also selects a candidate to run for Homecoming queen. For the past five years a Delta Zeta has been a finalist on the Homecoming court.

In the 1960's the Panhellenic Council and the Interfraternity Council began to hold an annual Greek Week. All five sororities and eleven fraternities compete for trophies in a basketball game, Variety night, and Greek Olympics, and then end the week together with a Greek Bash. ΔΖs have always done well capturing the first place trophy for Variety night for five years, and both the first place trophy for Olympics and Overall the past two.

Panhellenic has an awards banquet for the sororities in February. The women of Delta Zeta usually bring home most of the awards. We have won the Pledge Scholarship Plaque six times over the last seven years. We won the President's Scholarship Cup last year with a 3.01 and senior Peggy Schoen was named *Outstanding Greek Woman* which made her the fourth Delta Zeta in the last five years to win this prestigious award.

We are not only well recognized during Greek Week and the Panhellenic Banquet, but everyday by our activities on campus. Members of the sorority hold seats on Student Senate, serve as cheerleaders for varsity sports and act as student ambassadors. We have members in Cardinal Key, an honorary service sorority, the NEMO singers, a select choral group, and all the major clubs on campus. Delta Zetas are also instrumental in the campus Greek activities such as the Greek Alcoholic Information Network and the Greek Development committee. Although we are not the most sports-minded group on campus we participate in intramurals, and have a good time doing it. We enter teams in volleyball, basketball, bowling, softball and tug-of-war, besides individual participation in swimming, racquetball and others.

Each chapter has special traditions and Delta Sigma is no exception. Since 1963 we have been selecting a Delta Zeta Dad of the year from the administration and faculty. Among our Dads are the President of the University, the Dean of Students, and most recently the Director of Housing. These men send us flowers on our return to school, boxes of candy at Christmas or Valentine cakes. In return we try to do special favors for them such as raking their yards and carolling them at Christmas.

Not only chapters but also schools have unique traditions. NMSU has one concerning sorority rush. The climax to the end of rush week is Yell-In. Each rushee who has accepted a bid yells the name of the sorority of her choice and runs down the steps of the Kirk Memorial Building into the arms of her laughing, crying, screaming, singing new sisters. Each Yell-In brings a new group of novices to be instructed in the ways of Delta Zeta and the Delta Sigma chapter.



Delta Sigmas at Northeast Missouri State posed for this picture following victory in the Greek Olympics.



Janet Asbrook runs to her new screaming, laughing, crying sisters after she "Yelled In."



*Dr. Ruth Warner Towne is only the third CCD for Delta Sigma's 60 years as a chapter. She edits the *DeltaScope*, chapter newsletter and is a recipient of Delta Zeta's Achoth Award.*

Delta Zeta from Coast to Coast

Meet the Sigmas from LSU



Here they are . . . count them. All 65 of Sigma chapter's newest pledge class. This quota class makes the 23rd consecutive year the chapter has made quota at LSU.

by Denise Collier
Louisiana State University-Σ

Louisiana State University, originally known as the Louisiana State Seminary of Learning was founded on January 2, 1860, in Pineville, Louisiana. There were 19 students and five faculty members. William T. Sherman, the famous Civil War general, was superintendent. During the Civil War, the university closed, but reopened in 1865 with four students under former Confederate Colonel

David Boyd. The school was demolished by fire in October of 1869. On November 1st of the same year, Louisiana State Seminary of Learning reopened in Baton Rouge and in 1870, it was officially named Louisiana State University.

In 1906, the first coeds were admitted to LSU. Eleven years later on November 30, 1917, a local sorority, Alpha Alpha Zeta, received its charter as

Sigma chapter of Delta Zeta.

In 1925 LSU moved from downtown Baton Rouge to its present campus and became a land grant college.

Sigma chapter was the first Delta Zeta chapter in the South and was the third sorority on LSU's campus. The Delta Zetas at LSU have a beautiful house which overlooks one of the university lakes. Fifty-one girls along



It's a candlelight on the front lawn at Sigma. Denise Collier, who wrote our feature story had just received a $\Delta\Gamma\Delta$ pin. L to r, peeking at the camera are Peggy Mahoney, Barbara Standing and Cristal Curry.



The week following Bid House, the new pledges were entertained at a variety of functions. Here are some of them enjoying a skating party.

with the housemother, Mrs. Nancy "Mom" Moon, live in the house that was built in 1965 and opened January 1, 1966.

Mrs. Betty Schneider Fenton, Sigma '46, has been Sigma College Chapter Director since 1979 and has devoted much of her time to the success of Sigma chapter. Mrs. Fenton has been treasurer of the House Corporation since 1964 and from 1970 to 1975 she was Province Collegiate Director of Province XVIII. She also served on National Council for four years. The members of Sigma are very proud of Mrs. Fenton and her many accomplishments.

This year, Sigma chapter started off with a strong feeling of sisterhood. Sigma received an outstanding pledge class and reached quota for the 23rd year in a row. To welcome the new pledges, the chapter planned many

different activities for the first week to get everyone acquainted such as a bid day picnic at an alumna's house, an ice cream party, a slumber party, a skating party and a pizza party.

Sigma has had many exciting activities in the past. Last year the pledges threw a "big band" party for the chapter in which everyone dressed up in the style of the 1940's. The party was held at the Royal Rouge Hotel in Baton Rouge and music was provided by a 13-piece orchestra. This party was such a smashing success, we hope it will become an annual event. In addition to this major event, Sigma has an exchange or TGIF (Thank Goodness It's Friday) Party with a fraternity almost every week. The first exchange this year was with Sigma Nu and their pledges presented each of our 65 pledges with a rose to welcome them to LSU.

Homecoming is also a major event on campus. All of the fraternity and sorority houses are decorated with extravagant displays. There are different competitions all week before Homecoming, including the LSU Run-around, an 8-hour scavenger hunt which is always fun and exciting. On Thursday before Homecoming, Sigma has a big decorating party so everyone can help decorate the house and have a good time too.

Muscular Dystrophy week in October is a campus-wide fund-raiser for this worthy cause. All week, Delta Zetas get sponsors to donate money to MD, or get businesses to sponsor Delta Zeta teams in football games that are scheduled 24 hours a day for the entire week. For every game Sigma plays, the sponsor's donation goes to MD. The initiates usually challenge the pledges to a game and when

(continued on page 44)



Sigma's alumnae advisory board: Top, l to r, Laurie Ledet Landry, Betty Schneider Fenton and Kay Fenton. Seated in front of them are Phyllis Beshel Granmoucher and Marie Loyacano.



The Sigma chapter house is on Lakeshore Drive in Baton Rouge, LA and overlooks one of LSU's three large lakes. The house was built in 1966.

Convention Visitor's Registration Form

Fairmont Hotel
Dallas, Texas June 17-21, 1983

Please type this form and return it to Delta Zeta Sorority, ATTN: Convention, Suite 600, 21 East State Street, Columbus, OH 43215. THIS FORM IS FOR VISITORS ONLY. Delegates will receive their registration forms in the mail. Full-time visitors (attending entire convention) must include registration fee of \$65 with this form. Part-time visitors (not attending entire convention) must include a registration fee of \$20 for each 24-hour period they plan to attend. Visitors desiring meals *only* do not pay a registration fee but must make advance reservations. Visitors wishing to attend only business meetings and workshops must pay registration fee and fill in Workshop Section below. Make checks payable to Delta Zeta Sorority.

Name _____
(Last) (first) (maiden name, if married) (husband's first)

Home Address _____ Phone: _____
(street) (city) (state) (zip) (area)

School Address _____ Phone: _____
(collegians) (street) (city) (state) (zip) (area)

School/Chapter _____ Initiation Yr. _____ Check One: Alumna _____ Collegian _____

Age group (Please check one): Under 21 _____ 21-30 _____ 31-40 _____ 41-50 _____ Over 50 _____

If you have roommate choice list name and chapter _____

Are you a Past National Officer? _____ Title and Year of Office _____

Are you a Golden Rose? _____ Do you have your Golden Rose certificate? _____

PLEASE INDICATE BELOW YOUR PLANS FOR ATTENDING CONVENTION:

_____ I WISH TO ATTEND THE ENTIRE CONVENTION AT A COST OF \$325, plus \$65.00 registration fee. (Add \$100 for single room) _____ \$ _____
Includes hotel 4 nights, 8 meals, tax, gratuities, and all convention activities.

Check one: Smoker _____ Non-smoker _____

_____ I wish to arrive before June 17. Date of arrival desired _____

_____ I wish to depart after June 21. Date of departure desired _____
Reservations will be made for you by Delta Zeta Sorority. Cost of room will be \$35 per person double occupancy, \$55 per person single occupancy, per night, exclusive of meals. Payment to be made at the Fairmont desk upon departure.

_____ I wish to reserve the DAILY HOTEL PACKAGE FOR _____ DAYS AT A COST OF \$85 PER DAY plus \$20 per day registration fee. (Add \$25 per day for single room) _____ TOTAL COST \$ _____

THE DATES I WISH TO ATTEND ARE: _____

Includes hotel, meals, tax gratuities, and all convention activities for the days I am attending.

RESERVATIONS CANNOT BE ACCEPTED AFTER MAY 1, 1983. Your reservations for the above will not be considered unless registration fee is included with this form. NO REFUNDS for cancellations postmarked May 15 or later. FULL PAYMENT OF BALANCE DUE WILL BE REQUIRED PRIOR TO MAY 1.

WORKSHOPS & BUSINESS MEETINGS ONLY

_____ I WISH TO ATTEND BUSINESS MEETINGS & WORKSHOPS ONLY
I am enclosing \$65.00 registration fee for entire convention _____ \$ _____

OR
I am enclosing \$20.00 per day for _____ \$ _____
(Please list days attending _____)

PAYMENT OF REGISTRATION FEE ONLY, DOES NOT INCLUDE MEALS OR HOTEL ACCOMMODATIONS.

FOR INDIVIDUAL MEAL RESERVATIONS, CIRCLE YOUR CHOICES BELOW. You may not attend meetings or workshops if you pay for meals only. All meal reservations must be made at least 24 hours in advance. If you find you cannot attend, you will be responsible for full payment of the meal reserved UNLESS you have cancelled 48 hours prior to the event. Meal costs shown include tax and gratuities.

	June 17 Formal Opening Banquet	June 18 Awards Banquet	June 19 Initiation Banquet	June 20 Formal Installation Banquet	
Breakfast			\$ 9.00	\$ 9.00	Total \$ _____
Lunch		\$18.00	\$18.00		Total \$ _____
Dinner	\$30.00	\$30.00	\$30.00	\$35.00	Total \$ _____

TOTAL AMOUNT DUE _____ \$ _____

FULL PAYMENT ON ANY BALANCES DUE
MUST BE POSTMARKED NOT LATER THAN
MAY 1, 1983.

AMOUNT ENCLOSED _____ \$ _____
BALANCE DUE _____ \$ _____

Convention Visitor's Registr

Fairmont Hotel
Dallas, Texas June 17-21, 1983

Please type this form and return it to Delta Zeta Sorority, ATTN: Convention, Suite 600, 21 East State Street, Columbus, OH 43215. Delegates will receive their registration forms in the mail. Full-time visitors (attending entire convention) must include a registration fee of \$65 with this form. Part-time visitors (not attending entire convention) must include a registration fee of \$25. Visitors desiring meals *only* do not pay a registration fee but must make a reservation for meals. Only business meetings and workshops must pay registration fee and fill in Workshop Section below.

Name _____
(Last) (first) (maiden name, if married)

Home Address _____
(street) (city) (state) (zip)

School Address _____
(collegians) (street) (city) (state) (zip)

School/Chapter _____ Initiation Yr. _____

Age group (Please check one): Under 21 _____ 21-30 _____ 31-40 _____ 41-50 _____

If you have roommate choice list name and chapter _____

Are you a Past National Officer? _____ Title and Year of Office _____

Are you a Golden Rose? _____ Do you have your Golden Rose certificate? _____

PLEASE INDICATE BELOW YOUR PLANS FOR ATTENDING CONVENTION:

_____ I WISH TO ATTEND THE ENTIRE CONVENTION AT A COST OF \$325, plus \$65.00 registration fee (single room)
Includes hotel 4 nights, 8 meals, tax, gratuities, and all convention activities.

Check one: Smoker _____ Non-smoker _____

_____ I wish to arrive before June 17. Date of arrival desired _____

_____ I wish to depart after June 21. Date of departure desired _____
Reservations will be made for you by Delta Zeta Sorority. Cost of room will be \$35 per person per night, exclusive of meals. Payment to be made at the time of departure.

_____ I wish to reserve the DAILY HOTEL PACKAGE FOR _____ DAYS AT A COST OF \$85 per day registration fee. (Add \$25 per day for single room)

THE DATES I WISH TO ATTEND ARE: _____

Includes hotel, meals, tax gratuities, and all convention activities for the days I am attending.

RESERVATIONS CANNOT BE ACCEPTED AFTER MAY 1, 1983. Your reservations for the above will be included with this form. NO REFUNDS for cancellations postmarked May 15 or later. FULL PAYMENT REQUIRED BY MAY 1.

WORKSHOPS & BUSINESS MEETINGS ONLY

_____ I WISH TO ATTEND BUSINESS MEETINGS & WORKSHOPS ONLY

I am enclosing \$65.00 registration fee for entire convention \$ _____

OR

I am enclosing \$20.00 per day for _____ \$ _____
(Please list days attending _____)

PAYMENT OF REGISTRATION FEE ONLY, DOES NOT INCLUDE MEALS OR HOTEL ACCOMMODATIONS.

FOR INDIVIDUAL MEAL RESERVATIONS, CIRCLE YOUR CHOICES BELOW. You may not attend meetings or workshops if you pay for meals only. All meal reservations must be made at least 24 hours in advance. If you find you cannot attend, you will be responsible for full payment of the meal reserved UNLESS you have cancelled 48 hours prior to the event. Meal costs shown include tax and gratuities.

	June 17 Formal Opening Banquet	June 18 Awards Banquet	June 19 Initiation Banquet	June 20 Formal Installation Banquet	Total
Breakfast			\$ 9.00	\$ 9.00	\$ _____
Lunch		\$18.00	\$18.00		\$ _____
Dinner	\$30.00	\$30.00	\$30.00	\$35.00	\$ _____

TOTAL AMOUNT DUE \$ _____

FULL PAYMENT ON ANY BALANCES DUE MUST BE POSTMARKED NOT LATER THAN MAY 1, 1983.

AMOUNT ENCLOSED \$ _____
BALANCE DUE \$ _____

Moving?

A change of address card is inserted in this magazine for your convenience. If you are prompt to send Delta Zeta your new address, it can be entered in the LAMP magazine file before the next issue is mailed.

Delta Zeta

History in permanent, hard-back form, can be yours for a special pre-publication price of \$15, postage and handling included.

Complete the information requested on the other portion of this card and mail with your check or money order to Delta Zeta National Headquarters, 21 East State Street, Suite 600, Columbus, OH 43215.

Magazines . . .

a practical gift
for all occasions

Delta Zeta Subscriptions
P. O. Box 24145
Columbus, Ohio 44017



NOW IT CAN BE TOLD . . .

Delta Zeta Can Share Action of National Council

Phyllis Snape Favorite
Province Collegiate Director
Annette Fowler Nall
Province Alumnae Director
Betty Schneider Fenton
College Chapter Director
Priscilla (Pat) Beatty
National Committee Chairman
Shippensburg State College-KΨ
Iowa State University-BK
College Chapters
Denver, Colorado
Alumnae Chapter

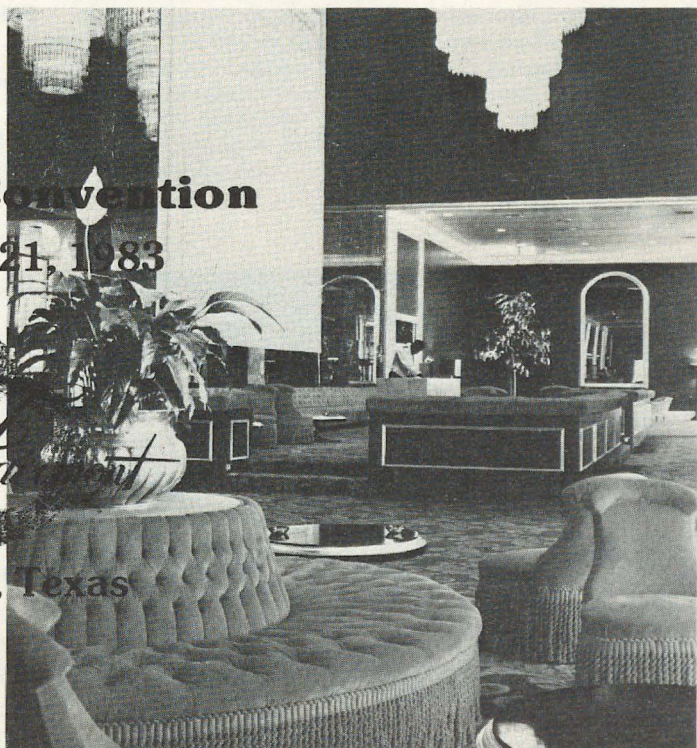
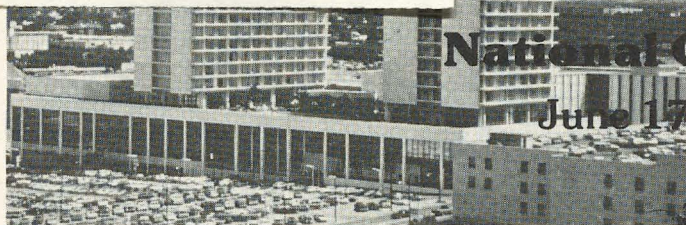
The committee will appreciate
your assistance and will carefully
consider all recommendations sub-
mitted.



*Lisbeth Innis Francis, Chairman
Nominating Committee*

National Convention

June 17-21, 1983



Every Delta Zeta Can Share in the Election of National Council

In this issue of The LAMP you will find a form for the recommendation of members you believe qualified for consideration as candidates for election to National Council at the 1983 Convention. This form is in compliance with the Constitution of Delta Zeta Sorority, Article VI, Section 3 which defines the process for nomination for National Council.

You are urged to submit a recommendation for any number of members; however, please include all the information requested on the form plus any additional material you consider significant to decisions made by the Nominating Committee.

The Nominating Committee, as designated in the Constitution, Article VI, Section 4 is composed of:

Chairman, Lisbeth Innis Francis
Past National President

Phyllis Snape Favorite
Province Collegiate Director

Annette Fowler Nall
Province Alumnae Director

Betty Schneider Fenton
College Chapter Director

Priscilla (Pat) Beatty
National Committee Chairman

Shippensburg State College-KΨ
Iowa State University-BK
College Chapters

Denver, Colorado
Alumnae Chapter

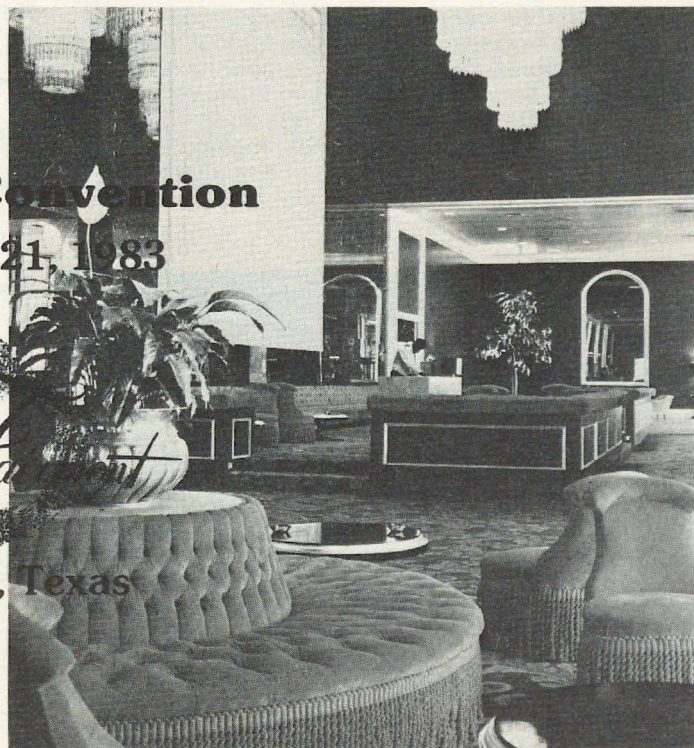
The committee will appreciate your assistance and will carefully consider all recommendations submitted.



*Lisbeth Innis Francis, Chairman
Nominating Committee*



National Convention
June 17-21, 1983



Recommendation for National Council

This form must be postmarked no later than February 12, 1983 and mailed to Mrs. Robert D. Francis, 2508 Belle Terre Drive, Birmingham, Alabama 35226.

I recommend:

Last Name	First Name	Middle Name	Maiden Name
-----------	------------	-------------	-------------

Address: Street	City	State	Zip
-----------------	------	-------	-----

for _____ Council Position _____ Has she consented to this recommendation? _____

She is a member in good standing of _____

College Chapter	College	Degree/Date	Alumnae Chapter
-----------------	---------	-------------	-----------------

Alumnae chapter(s), office held _____

Other colleges or universities attended _____

State, Province, National Offices,
Activities, Services: _____

College chapter offices, honors,
awards, services: _____

Occupation _____

Is she presently employed? _____

Full time _____ Part time _____

Personal Responsibilities: _____

Number of children: _____

Ages of children: _____

Civic, community activities, honors,
commitments: _____

Travel: In your opinion, is she able to travel 5 or more days at a time?

Yes _____, No _____,

2 times a month? Yes _____, No _____,

or how often for how long? _____

Reasons for recommending this member: _____

Recommended by: _____ Your signature (first, maiden, married name)	College/Chapter	Alumnae Chapter
--	-----------------	-----------------

Address: _____ Street	City	State	Zip
--------------------------	------	-------	-----

(If more space is needed, please attach additional sheets of paper.)

26th Annual Performance

Gallaudet Dance Company Performs

by Myra Hall Ralston, CU-AA
Washington DC Alumnae Chapter

On April 25th the Washington, D.C. alumnae chapter of Delta Zeta sponsored its 26th annual performance of the Gallaudet College Dance Company. "Time, Space, and Energy" was the theme of this year's production under the direction of Dr. Diane Hottendorf. She replaced Dr. Peter Wisher who retired a year ago.

This performance was dedicated to Dr. Wisher for his tremendous accomplishments in dance at Gallaudet.

The story of dance at Gallaudet College for the Deaf should be retold. It began in 1955 when Dr. Wisher, who was Professor of Physical Education and basketball coach, first observed a student signing "The Lord's Prayer" in American Sign Language during a ceremony in Chapel Hall.

Dr. Wisher was so impressed with the beauty, grace, and movement of the signs that he wondered why deaf people were not dancing and using signs as a foundation for dance movements. Thus the first idea of having a dance group was born.

At that time Lucille Pendell, a Delta Zeta from Oklahoma State University-AE chapter, was librarian at the college. She invited the members of the alumnae chapter for a meeting on the college campus. Entertainment was furnished by a small group of students Dr. Wisher had interested in dancing and who performed to the beat of music produced by a well-worn portable phonograph.

We were amazed at the ability of these young people to interpret the music although they heard very little, if any, of it. Incidentally, many people have the misconception that the deaf can "hear" by feeling vibrations through the floor. How is this possible, especially if a person is moving and jumping so much, while making little contact with the floor? What if the floor is made of solid concrete? A deaf person needs many hours of practice to help develop an inner sense of timing for a specific dance.

To continue with the history of the Gallaudet Dance Group and the local Delta Zeta alumnae, as a result of that first informal meeting it was decided that our next project would be to buy a new record player for the group.

The following Spring Dr. Wisher planned a dance recital so that parents and friends might observe the progress and pleasure these college students were deriving from such an activity.

Immediately the alumnae chapter grasped the opportunity to sponsor one performance and to return the receipts to the dance class. Two of the most outstanding students were sent to the Connecticut School of Dancing for a summer course as a result of our contribution of \$1,000.

Since then the dance concert has become an annual affair and many more men and women have participated, each production demonstrating the exciting possibilities open to all interested students. Today the Gallaudet Dancers are performing various dance forms such as modern dance, tap, ballet, jazz, disco, and of course sign language dance.

The dancers have given performances throughout the United States as well as in foreign countries such as France, Israel, Canada, and Denmark. The 1982 summer schedule included a performance and workshop in Barbados, as well as an invitation to perform in Lima, Peru, for the Second International Special Arts Symposium.

In later years as proceeds from the ΔZ -sponsored performances have increased, half has been given to the dance group and half to the Delta Zeta Scholarship Fund at Gallaudet. This year a check in the amount of \$1,200 was presented, \$600 being allocated to the Gallaudet Dancers and \$600 to the Scholarship Fund.

After many of the concerts the ΔZ alumnae have entertained at a tea in the beautiful and historic home of President and Mrs. Edward C. Merrill, Jr., for the dancers and audience.

The Gallaudet Dancers, Delta Zetas, and friends thank the creator of the group for his 27 years of service.

We hope to continue aiding the Gallaudet students in this way for years to come. Our earnest desire is that every Delta Zeta may sometime have the privilege of seeing the interpretation in dance and sign language of "The Lord's Prayer."



A scene from Gallaudet Dance Company's 26th annual performance.

Province Alumnae Directors

It is the LAMP's pleasure to introduce to you in this issue some of our Province Alumnae Directors, or in ΔZ terminology, PADs. Long ago when this Editor was a Province Alumnae Director she requested a name change for the job as she insisted, one doesn't "DIRECT" alumnae to do anything! We hope you know she was being facetious! At any rate, these are more of our delightful volunteers who give of their time and talent to Delta Zeta!

Pamela Cronenwett **Province VI-Michigan**

Pamela McClure Cronenwett pledged Delta Zeta at Northwestern-AA but transferred to Eastern Michigan- $\Gamma\Sigma$, where she served as corresponding secretary, Panhellenic delegate and Panhellenic secretary and rush advisor. She was president of the Town Council, on the Homecoming Court, vice chairman and queen's coordinator of Homecoming and on the dorm advisory board.

She served as financial advisor for both Wayne State-E Σ and Detroit-E Φ chapters and has been active in the Metro Detroit alumnae chapter, serving as president for three years and in other areas of responsibility.

Pam is an Area Director for the YWCA and says her job includes "planning, coordinating and implementing outreach programs." In other words, a "jack of all trades." Her hus-

band Jim is a programmer/analyst for Ford Motor Company and their children are Tom, in the 8th grade, and Melissa who is in the sixth grade.

Jo Messlin **Province XIV-Colorado,** **Wyoming, Utah,** **Arizona and New Mexico**

Mary Jo Harris Messlin is a native of Colorado, but has traveled in 42 of our 50 states and lived in several of them. Now calling Denver home, she worked as an executive secretary for 21 years, ending as Director of the Colorado Health Careers Council. As director of CHCC, she served on the Advisory Committee of the National Health Council and American Hospital Association and still serves them as a member of their Board.

Jo attended Colorado State University where she was initiated into our Beta Sigma chapter. She's held almost every office in the Denver alumnae chapter, including president, and last year headed the chapter's 60th anniversary committee.

Jo's husband is Carl who is Manager of Payroll and Accounts Payable at Samsonite. There are no children, but the Messlins are owners of their fourth Weimaraner. They have built a mountain cabin from the ground up and just recently celebrated their 25th wedding anniversary. Jo and Carl are avid Bronco fans and belong to a charter travel club which takes them

to the Caribbean and Mexico among other places.

Violet Anderson **Province XIX-Tennessee**

Violet Henson Anderson of Nashville was president of University of Tennessee-BA chapter and later served as CCD. She's been active in Nashville alumnae affairs for 25 years, including serving as president.

Her husband Charles is a retired civil engineer and a retired Colonel, having served in the Army Reserve for 30 years. Their three children are grown and her oldest daughter is a Delta Zeta.

Violet is a professional artist, taking part in at least two shows a year. She is currently chairman of the Central-South Art Show that covers eight states and is sponsored by the Tennessee Art League.

Lois Nesgoda **Province V-Ohio**

Lois Randolph Nesgoda served as president of her Beta Phi Alpha chapter at the University of Minnesota. Coming to Delta Zeta with the merger, she was active in the Pittsburgh alumnae chapter and later the Cleveland East alumnae chapter, where she served as program chairman, vice president and president.

Husband Leonard is a mechanical engineer working with material han-



Pamela Cronenwett



Jo Messlin



Lois Nesgoda



Amy Curry



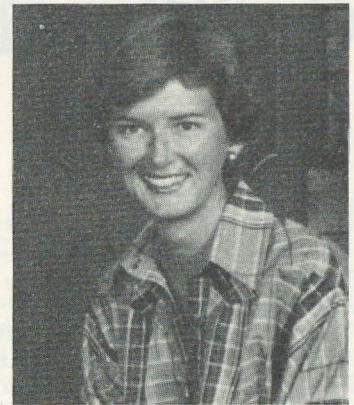
Violet Anderson



Eileen Doe



Gay Rose



Susan Mease

dlings equipment, but is in the process of retiring, perhaps to continue in a consulting capacity. Their children are Kathleen Cackowsky, who works as a family counselor in a private facility; Susan McDonald, who is primarily a mother to Lois' two grandsons, Matthew and Brian; Michael who is in the process of finishing work at the University of Utah and Stephen, who is in business for himself.

Lois has been actively involved in church work for over 20 years, as an Elder and Deacon in the Presbyterian Church and in all women's work from lowly kitchen drudgery to the presidency and everything in between.

Eileen Doe Province XI-Missouri

Eileen Hoffman Doe is actively involved with the St. Louis alumnae chapter, working on the program committees and serving as newsletter editor for four years. She was initiated into the University of Missouri-St. Louis IΞ chapter where she was vice president of membership and song leader.

Her husband is Larry who is with McDonnell Douglas Corporation and Eileen teaches educable mentally retarded children, ages 8-14, for the special school district of St. Louis County. She enjoys TV, bowling, horseback riding and traveling.

Gay Rose Province I Maine, Vermont, New Hampshire, Massachusetts, Connecticut and Rhode Island

Gay Thorro Rose (Edinboro-IA) lives in Niantic, CT where she is a ju-

nior high school Spanish teacher. She has also been soccer and basketball cheerleading advisor for ten years. Husband Jack is a math teacher in the same school. "We have an adorable beagle named Heidi," Gay said.

She was the organizing president of our newly organized Niantic alumnae club.

Interests include music, dancing (ballet), photography and reading. For several years she has played in the Connecticut College orchestra. Recently she became interested in needlepoint and cross-stitch.

Amy Curry Province II New York and New Jersey

Amy Furesz Curry is no stranger to Delta Zeta activities. Initiated as a charter member of Lambda Omega chapter at William Paterson College, Amy became involved in all phases of sorority life. She continued that involvement by constant committee participation in her Northeastern (NJ) alumnae chapter.

Amy roller skate danced her way to a bronze medal in high school, graduated cum laude from college and now works for a major medical laboratory as a marketing administrator. She and her husband James are the parents of Jennifer, age 2. Amy is also an enthusiastic baker and quilter and has shared her talents in these areas with her alumnae chapter.

Susan L. Mease Province XXIV-Florida

Susan Mease is a graduate of Samford University-AII where she served as chapter president. She received best pledge and best initiate awards

and was listed in *Who's Who Among Students in American Universities and Colleges*. She served two years as president of the Clearwater alumnae chapter.

By profession, Susan, is a sales representative for Prentice-Hall Publishing Company and was featured in a "Careers" series in the Spring, 1981 LAMP.

She serves on the Clearwater YWCA Board of Directors and for hobbies lists "voracious reader of nearly anything; enjoys needlepoint, crewel, embroidery and antiques, and is a devoted 'beach bum.'"

ELIZABETH COULTER STEPHENSON SCHOLARSHIP AWARDS 1982-1983

Virginia Almer, Moorhead State—ΘN
Linda Ann Aumer, Edinboro-IA
Susan Kay Birbrey, East Tennessee-ΔH
Bette Jean Boline, St. Cloud-ΘM
Carla Clements, Georgia College-AII
Pamela Ann Day, North Texas State-KZ
Eva Marie Di Napoli, Georgia State-ΔΔ
Lisa Downey, Louisiana Tech-ΞΞ
Sharon L. Duda, Youngstown-KX
Regina Garrett, Auburn at
Montgomery-AN
Lisa Genova, Virginia-ΛΔ
Christi Griffin, Alabama in Huntsville-AK
Cynthia Harless, Marshall-ΔY
Priscilla Heavner, Lenoir Rhyne-ZΞ
Linda McKee, Virginia-ΛΔ
Karen L. McManus, Northeastern
(Oklahoma)-ΔΦ
Terry Mellen, Eastern IL-ΓN
Deneise G. Powell, Lenoir Rhyne-ZΞ
Ellen M. Riley, Oklahoma State-AE
Tracy Shanahan, Virginia Polytech-KΘ
Pamela A. Thrash, West Texas State-ZZ
Alice M. Wegley, Louisiana Tech-ΞΞ
Anita M. Zgibor, Slippery Rock-ZΦ

Gail Spotts, a Sister We'd Like to Meet

by Meryl Lin McKean

Gail Spotts (Central Missouri State University-ET) has told the story many times.

It was the night of December 23, 1978. The car that was carrying Gail and her boyfriend to a Christmas party reached the crest of an icy hill in Kansas City, Missouri.

"There was an accident at the bottom, so we had to stop," Gail recalls. "A guy came over the crest of the hill—he was driving under the influence of alcohol—and slammed into us from behind."

The force of the collision broke Gail's back in two places and damaged her spinal cord. The accident left her paralyzed from the chest down.

Her boyfriend's back was also broken. He recovered fully.

"I never asked myself 'why me?'," says Gail. "I'm just like anybody else, and it could have happened to anybody."

She was 16, a junior at Kansas City's Winnetonka High School, when the accident happened. Since then, despite her confinement to a wheelchair, Gail has done many things that some able-bodied young women only dream of doing.

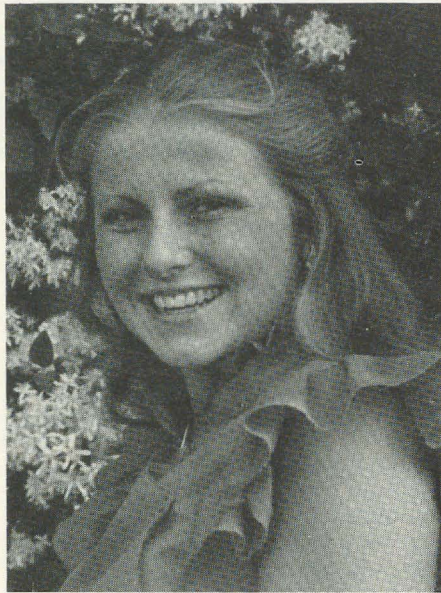
During her senior year in high school, Gail was a cheerleader. She performed all the same routines as her cohorts, using her voice and her arms to help boost school spirit.

Gail was also Homecoming Queen and second runner-up and Miss Congeniality in the Miss Missouri Teen Pageant.

Following graduation, she chose to attend Central Missouri State University in Warrensburg. She did not sign up for formal rush.

"I'd heard of sororities, but I really didn't know if I'd be able to participate in one," she says.

Several weeks later, Gail met a Delta Zeta, Karen Bench, who invited her to an informal rush party. Gail says she was touched by the thoughtfulness and sincerity of the sorority's members.



Gail Spotts, NMSU-ET

"It didn't seem like it was any trouble for them to carry me up the stairs (the ΔZs live on the second floor of CMSU's Panhellenic Hall) or for them to come to my dorm and take me to a football game," Gail explains.

She pledged Delta Zeta a month later. Her new sisters immediately began helping her try to convince CMSU administrators that a wheelchair lift should be installed in the Panhellenic Hall so Gail could live there.

"The administration didn't want to put out the money to do it," Gail says. "But they get money from the government to do that sort of thing, so I finally filed a complaint with the state civil rights court."

Soon after that complaint was filed, the university purchased and installed a lift.

It has helped Gail play an active role in her chapter. Now a 20-year-old junior, she has been Colonnade Club chairman, chaplain and sorority education chairman. She recently organized Epsilon Gamma chapter's Homecoming festivities.

On campus, Gail has been a Student Government Association senator, a student ambassador and a member of the Special Student Services Committee.

"She's not what you expect," says Sandra Singer, a Delta Zeta and one of Gail's closest friends. "There are very few things that Gail can't do, and when she can't do something, she makes up for it in other ways."

For example, while other ΔZs put up wall decorations for formal rush parties last fall, Gail patiently ironed all the tablecloths for the parties.

Later, when the rushees arrived, she was busy explaining why Delta Zeta is special to her.

"I tell the rushees that the girls have been able to overlook my handicap and look at the person inside of me. And if they're good enough to do that, I think it says a lot for the sorority."

Gail is working toward a degree in public relations at CMSU. Following graduation in the spring of 1984, she plans to work for a major corporation or a professional sports franchise in Kansas City.

She hopes to someday marry and have children, but not before she spends a year or two "on her own."

Life after graduation will, no doubt, present new challenges for Gail. But in the four years since that awful Winter night, she has grown accustomed to facing challenges.

"I've never let my wheelchair stand in my way," says Gail.

No one can argue with that.

Scholarship Offered

The Rochester (NY) Alumnae Panhellenic is offering a scholarship to any sorority member whose permanent residence is the Rochester area. Applications are available upon request from Jan Mead, 41 Marble Drive, Rochester, NY 14615. Deadline for requests is January 15, 1983.

Nancy Walker in Glamour's Top Ten



Nancy Walker, Iowa State-BK

by Virginia Gilbert

It's no secret to collegiate Delta Zetas that Nancy Walker, Iowa State-BK, is a sister to be proud of.

As a National Field Representative, she has traveled to dozens of chapters during the past year and a half, spreading the good word about ΔΖ programs, activities and opportunities to Delta Zetas across the country. But now, with the help of *Glamour* magazine, Delta Zetas everywhere can help spread the good word about Nancy.

Nancy was selected from some 900 entries as one of *Glamour's* Top Ten College Women for the 1982 and was featured with the other honorees in the August issue of the fashion magazine. Winners are chosen annually on the basis of their "hard-driving, goal-oriented spirit of the eighties," according to *Glamour's* Editor-in-Chief

Ruth Whitney. "Capable, self-confident and ambitious, they have no hesitation about making it clear that they intend to get ahead." The award is \$1,000 from *Glamour*.

The daughter of Dr. and Mrs. O.C. Walker of Zearing, IA, Nancy majored in Business Administration and Speech at Iowa State where she was vice president of her senior class, publicity director of the Student Alumni Association, events co-chairman of the Parents Weekend Committee, Homecoming chairman, a member of the yearbook staff and senator-at-large of the Student Government.

She received the Outstanding Leadership and Service award for her work in student government, was the legislative director for the Iowa Regents Universities Student Coalition,

was the recipient of the Campus Chest Charity award for her philanthropic work and was named Most Outstanding Member of the Student Union Board of Directors for her work as Fine Arts Director.

Active in the University's theater group, she is a member of Theta Alpha Phi, national theater arts honorary, and represented Iowa State at the National Entertainment and Campus Activities Association's convention. Hoping to pursue a career in public relations or international relations, Nancy externed with Representative Tom Harkin in Washington and Donnelly Corporation in Nevada, and interned with State Representative Phillip Davitt in Des Moines and the Iowa Arts Council in Des Moines.

With that list of accomplishments, it's no wonder that Nancy was chosen as her chapter's Dream Girl of Delta Zeta and received the Florence Hood Miner award in 1980 as Delta Zeta's most outstanding junior. She served Beta Kappa as vice president of rush and Panhellenic representative.

IF THERE SHOULD NOT BE LOVE

If there should not be love or charity
To live in simple ways;
If there should be no giving of the soul
To mark the sober days;

If there should be no quiet laughter shared
When mind meets kindred mind;
Nor hope, nor trust, nor understanding
bared
Nor faith to seek and find;

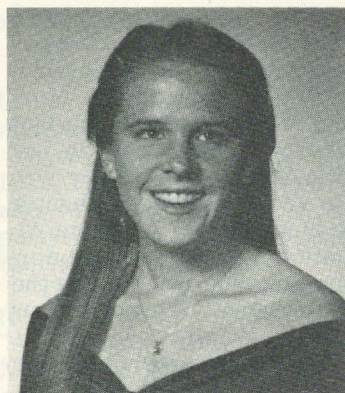
If there should never be a table set
Where lonely people meet;
If vows were consecrated to forget
And dreams to know defeat,

Then you and I would not white visions
see,
Holding our flame against eternity.

Dorothy M. Williams

Founders Memorial Foundation

Scholarships and Grants



*Donna Elaine Buchanan,
East Tennessee-ΔH*



*Kimberly Ann Donselman,
Ball State-ΓX*



*Ronna Kay Hickman,
Auburn-BΞ*



*Randi Jill Nevins,
Baldwin-Wallace-ΓA*

FOUNDERS MEMORIAL SCHOLARSHIP RECIPIENTS

DONNA ELAINE BUCHANAN, East Tennessee State University- ΔH. GPA 3.5

Donna is a senior, majoring in Music Education. She has served Delta Eta chapter as scholarship chairman, corresponding and recording secretaries, social chairman, song leader and all-sing chairman. She was president of Delta Eta the past year.

KIMBERLY ANN DONSELMAN, Ball State University-ΓX. GPA 3.6

Kimberly is a senior, majoring in High School Science Education. She

has served Gamma Chi chapter as song leader, scholarship chairman and membership vice president. She is a member of freshman honorary, science honorary and education honorary.

RONNA KAY HICKMAN, Auburn University-BΞ. GPA 3.9

Ronna is a senior, majoring in Finance. She has served Beta Xi as treasurer and as chairman of favor and banquet committees for Province Day. She is a member of several honoraries as well as Mortar Board.

RANDI JILL NEVINS, Baldwin Wallace College-ΓA. GPA 3.6

Randi is a junior, majoring in Speech Education and Musical The-

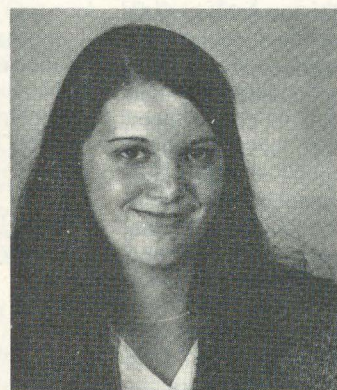
atre. As song director, she directed Interfraternity Sing competition and wrote original words to songs performed at Ohio State Day, winning first prize.

MARTHA IRENE SISK, Ashland College-ΘΨ. GPA 3.5

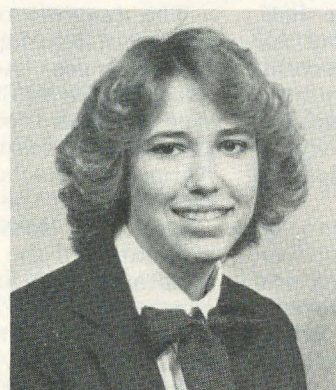
Martha is a senior, majoring in Marketing/Management Economics. She has served Theta Psi chapter as public relations chairman, LAMP editor, house manager, vice president of membership. Currently she is president of Theta Psi. She has been on the Dean's List constantly and served on the Board of the *Collegian* (school paper).



*Martha Irene Sisk,
Ashland-ΘΨ*



*Kimberly Ann Schmidt,
NSU-ΔΦ*



Lisa Heath, NMSU-ΔΣ



*Kelly Miller,
UNC-Charlotte-KΦ*



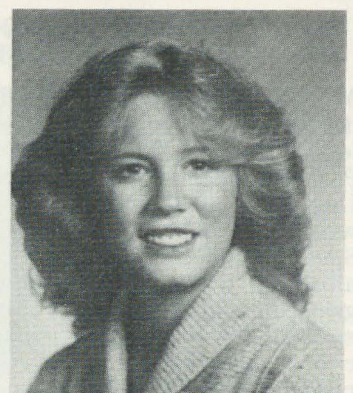
*Michelle O'Connell,
Westchester-IP*



Cynthia Stout, NMSU-ΓΞ



*Linda Lee Scott, Bowling
Green-ΓΤ*



Deborah Gish, NMSU-ΕΓ

KIMBERLY ANN SCHMIDT, Northeastern (Oklahoma) State University-ΔΦ. GPA 3.4

Kimberly is a senior, majoring in Elementary Education and Psychology. She has served Delta Phi as historian, treasurer and assistant rush chairman. She designed the Delta Phi of Delta Zeta banner and 1981 Homecoming Banner.

EDITH HEAD SCHOLARSHIP FOR FASHION DESIGN

The first Edith Head Scholarship is being awarded to:

JANET LYNN WAYMAN, DePauw University-Δ. GPA 3.5.

Janet, pictured in the Fall LAMP, is a senior, majoring in Art and French. She will continue her education in Design. She has been on the Dean's list for 5 semesters and has served Delta chapter as social chairman and guard. She is a member of Art Students Committee and Alpha Lambda Delta Freshman Honorary. Janet has taken liberal arts courses as well as art in order "to acquire a broad background and to have a second major in French." She has studied art in central Mexico and spent a semester studying in Europe. Janet has been accepted as a student by The School of the Art Institute of Chicago, where she will study Fashion Design.

GENERAL UNDERGRADUATE SCHOLARSHIPS

LISA MARIE HEATH, Northeast Missouri State University-ΔΣ. GPA

3.14.

Lisa is a junior working toward a BS degree in Nursing with a minor in Psychology. She is a member of Alpha Phi Sigma scholastic fraternity, Student Nurses Association and Greek Development committee. Lisa was president of her pledge class, assistant pledge trainer and served on activities, skit, moneymaking and homecoming committees of her chapter.

KELLY ANNE MILLER, University of North Carolina, Charlotte-KΦ. GPA 3.

Kelly is a junior working toward a double degree in Education with a major in both Psychology and Human Development. For the past year she has worked as teaching assistant for the Chairman of the Psychology Department. She has served Kappa Phi chapter as parliamentarian and activities chairman. She has been coordinator for intramural sports and served on committees for Homecoming, fundraisers for United Way, Muscular Dystrophy and Charlotte Rehabilitation Center.

MICHELLE O'CONNELL, West Chester State College-IP. GPA 3.69.

Michelle is a senior. She is a member of Alpha Lambda Delta honorary and on the Dean's List. She plans to do graduate work in Psychology. Michelle has served Iota Rho chapter as philanthropy chairman, treasurer, and is currently president of the chapter.

CYNTHIA ELIZABETH STOUT, New Mexico State University-ΓΞ. GPA 3.2.

Cynthia is a senior majoring in Elementary Education with a minor in Special Education. She has served

Gamma Xi chapter as social chairman and press and public relations chairman. Presently she is vice president of membership. Cynthia is on the Student Council for Exceptional Children and was selected by her chapter as their candidate for Homecoming Queen.

LINDA LEE SCOTT, Bowling Green State University-ΓΤ. GPA 3.9.

Linda is a senior, majoring in Fashion Merchandising. She is a member of Phi Eta Sigma, Alpha Lambda Delta honoraries, on the Dean's List and a member of Fashion Merchandising Association. She is a member of the Greek Unity Committee and served on the reception committee for Greek Week. She has been on a college-work study plan, working with the Burser's office during her entire college career. Linda has served her chapter as assistant pledge trainer.

HOUSTON ALUMNAE/NANCY HOLLIMAN SCHOLARSHIP

DEBORAH DENISE GISH, Central Missouri State-ΕΓ. GPA 3.60.

Deborah is a senior, working toward a B.S. in Education with a major in Speech Pathology. She plans to continue her education with a masters degree in Speech Pathology and Audiology. She has served Epsilon Gamma chapter as vice president of membership and vice president of pledge training, as well as sorority education chairman and philanthropy chairman. Deborah is a member of Phi Eta Sigma and Alpha Phi Delta honoraries as well as the Honors Program.

HELEN WOODRUFF NOLOP GRADUATE SCHOLARSHIPS

MARY McLELLAN DADDIO, graduated from William Patterson College- $\Lambda\Omega$ with a B.A. degree in Speech Pathology. She is now enrolled at the University of Colorado where she is working on a masters degree in Speech and Language Pathology. Her aim is to obtain a well-rounded background in this field before choosing a specialty. She is looking forward to a career as a clinician in a hospital or clinic setting. As a long range goal, Mary plans to return to school for a doctoral degree after having gained several years of professional experience.

NANCY MOLZON, graduated from University of Connecticut- ΓB with a B.A. degree in Psychology. She is now enrolled at University of Colorado where she is working on a master's degree in Communication Disorders and Speech Science. Nancy has not yet chosen a specific field but is interested in working with the disorders of children or working in a hospital clinic, with the opportunity to participate in research concerning the central processes of speech and hearing.

GRADUATE SCHOLARSHIPS

ANN ELIZABETH ASKEY, Nebraska Wesleyan University-BT. GPA 3.9.

Ann graduated with a B.S. degree in Business Administration and Communications. She plans her master's degree in Business Administration. She was admitted to Phi Kappa Phi national honorary in her junior year, being in the top 5% of her class. She is

also a member of Omicron Delta Epsilon, national economics honorary, has continuously been on Dean's List and is listed in *Who's Who in American Colleges and Universities*. Ann was senior class president and a member of Nebraska Wesleyan Board of Governors & Trustees. She served Beta Tau chapter as corresponding secretary and as vice president of pledge training for two years where she developed an outstanding pledge program.

DANIELLE ROWE, Auburn University at Montgomery-AN. GPA 4.0

Danielle graduated in August, 1982 with a B.S. degree in Criminal Justice and a minor in Speech. She plans a masters degree in Business Administration and will continue on for a law degree. She has been on the Dean's List and is on the National Dean's List. She received a Phi Eta Sigma Special Book Award, given by West Publishing Company for highest GPA in Civil Litigation. Danielle served Lambda Nu chapter as pledge class president, social chairman, entertainment chairman and played intramural basketball, football and softball for Delta Zeta.

ANNE MARIE SFERRA, Bowling Green State University- ΓT . GPA 3.8.

Anne graduated with a major in International Business and a minor in Business Pre-Law. Her graduate work will be toward a Juris Doctorate and M.B.A. degree. She was a member of numerous honoraries and she served Gamma Tau chapter in many capacities, serving as chairman for Ohio State Day in 1981, when she was chapter president. Anne worked as Student Assistant in Bowling Green Of-

fice of Admissions where she coordinated all student tours. She was a student exchange participant to New Mexico State University, a member of Law Society, Orientation Board, International Business Association and Human Relations Alliance.

ALUMNAE CHAPTER HEARING HELP GRANTS

\$100 has been awarded to each of the following alumnae chapters to assist in their philanthropies of working with the Hearing Help program.

Findlay, OH — Findlay Program for the Hearing Impaired

Oklahoma City, OK — Hildale Multi-Handicapped School

St. Louis, MO — St. Joseph's Institute for the Deaf

Portland, OR — Delta Zeta Professional Library Tucker-Maxon Oral School

Denver, CO — The Listen Foundation.



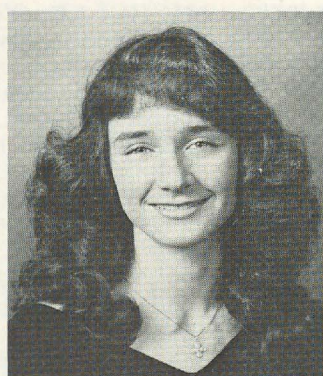
Anne Marie Sferra, Bowling Green- ΓT



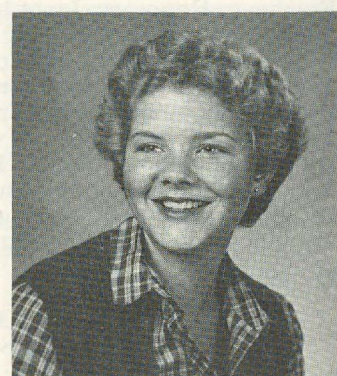
Mary McLellan Daddio, Connecticut- ΓB



Nancy Malzon, William Paterson- $\Lambda\Omega$



Danielle Rowe, Auburn at Montgomery-AN



Ann Elizabeth Askey, Nebraska-Wesleyan-BT

Dianne Collier of KΘ, Someone Special

Dianne Collier of Kappa Theta chapter at the University of New Orleans is a very special Delta Zeta ... and there isn't a sister in her chapter who would tell one otherwise. They have written her story, each in her own way.

Dianne has Crohn's Disease, a chronic inflammatory disease affecting the digestive track for which doctors do not know the cause or the cure. The latest treatment involves "shutting down" the digestive system and letting it rest for at least six weeks. To supply nutritional needs during this time, Dianne was put on total parenteral nutrition. A solution which met her complete nutritional needs was developed. A catheter was inserted in her body at mid-chest and let the liquid food flow directly into her heart. After two weeks in the hospital with this treatment, Dianne went home - the first patient ever who was to totally manage her own parenteral nutrition. She had gained 14 pounds from the 80 she weighed when she entered the hospital.

Dianne's life revolves around her college life at UNO and her Delta Zeta activities. She does not let the fact that until she reaches 105 pounds she will have to be constantly attached to her feeding pump, which has been named 'Rover.' She's confident she will gain the necessary weight, so confident that she enrolled for 12 hours this semester and was thrilled to be chosen pledge trainer of the chapter.

But to give you a little more of her remarkable story. Dianne first pledged Delta Zeta in the Spring of 1980, struggling not only with her illness but her classwork. Illness prevented her from making grades, so she was forced to depledge. This did not stop her love of and for Delta Zeta and while not in school one semester she continued her contacts and became, in fact, a rather unofficial helper with the pledge class and joined other chapter functions whenever possible.

Another attempt at college brought the necessary grade point requirement and the chapter begged that she be permitted to repledge and be initiated. This was in the summer of

1981 and Dianne was repledged and initiated.

From then on, said chapter president Susan England, "Everything has been WONDERFUL! Dianne has been assistant pledge trainer, participated in initiation, wrote the chapter newsletter and now has achieved a goal she set her sights on - pledge trainer of the chapter."

Dianne knew early last Spring that she needed to be in the hospital for treatment but she managed to postpone it until she had finished the semester. Susan continued:

"Growing with Delta Zeta in my college years has been the most memorable experience. I'll never forget these years and I'll never forget Dianne. Her struggles in and out of the hospital for the last two years. Her desire to continue college and to become a Delta Zeta. I've often wished to be able to take some of the pain from her life. She's fought to get through the simple act of walking or standing up. She's fought it all and keeps a smile on her face. What makes me happy is that through all her suffering, Dianne has room in her heart for her sisters."

"I expect Dianne and I will always be friends as she is a special person to me. She's made me feel good about myself. I hope that I can help make her life easier. She's given me all I could ever ask from a sorority. She's an inspiration to the whole chapter. Some things may take her longer when she's in a bout with her illness, but Dianne will never let you down. I can't think of anything she has taken on that she hasn't completed. Dianne, as party chairman for our theme party, worked out of her hospital bed to complete preparations."

"Dianne may not be a scholar or the next UNO Homecoming Queen, but she's that special friend, that special someone who makes you proud to be a Delta Zeta."

Field Representative Nancy Walker was with the chapter for rush. "She is being fed intravenously so she brought 'Rover' with her for rush setup and unhooked herself so she could participate in the parties. I was worried about her because she was there at all times and just wouldn't



Dianne Collier, UNO-KΘ

quit. I am thankful for the blessings of her friendship and that we are Delta Zeta sisters."

Sherri Saucer remarked, "Many times I have watched Dianne continue to persevere in completing a needed task despite the pain. Through all her illness and discomfort, I have never, ever heard her complain. Dianne is devoted. Dianne is caring. Dianne is considerate, kind and willing to work for her sisters."

And Kathryn Kroetzer added it all up. "When I think of her, a montage of memories come to mind ... Dianne dancing at the Pledge Welcome dance ... Dianne in pain ... Dianne in a hospital bed, talking to one sister on the phone as well as to another at her bedside ... Dianne during her initiation ... face upturned, glowing ... Dianne hooked up to a machine, applying red velvet to the door before theme party ... Dianne laughing. Whenever I become apathetic about the time Delta Zeta demands, I think of her. Dianne lights up at the mention of sisterhood and makes me glad there is such an organization that can fulfill a person's life so ... if she chooses to let it."

These are a few of the many notes and letters reflecting Kappa Theta's pride in their very special sister. And to complete the story. Our latest information is that she now weighs 99½ pounds and may be able to start eating again. At this writing it had been six weeks without food ... only her constant companion, "Rover."



Initiation at Jacksonville State-ΔΓ

JUST FOR TODAY ... I will think of the deep significance of my initiation and the challenge that awaits me. One of the most wonderful and truly beautiful days of my life is here. Soon I will have full knowledge of the things we cherish, the deepest meaning of Delta Zeta. Today, I will join, as you have joined, with thousands of others in wearing the Lamp of Delta Zeta. I will wear it with pride—always treasuring the flame of friendship. This flame is kept burning by each of the over 100,000 sisters in our sorority. It is through their individual efforts and personalities that Delta Zeta remains a living and growing thing.



Application for Graduate Counselor

Delta Zeta is pleased to announce the beginning of a new Delta Zeta Graduate Counselor Program. Many other national sororities have similar assignments and we are extremely happy to be able to implement this new program.

A graduate counselor is best viewed as a College Chapter Director "in residence." She works closely with the chapter CCD in implementing and overseeing chapter operations. She has the same rights and re-

sponsibilities as are described in the Constitution and Code for a CCD. She will supervise the rush program with the CCD, rush chairman and National officer assigned. She will help to implement the open rush program and work with other chapter officers in developing a program for pledge retention. She will be a guide in all areas of chapter operation.

The applicant(s) chosen will be a Delta Zeta seeking a graduate scholarship. She will have some training or

experience in counseling and student programs. Her college experience should include campus and community activities and above all she must bring to her assignment love for Delta Zeta and enthusiasm for working with a particular chapter to increase membership and strengthen the chapter in an overall program of improvement.

More application forms may be requested from National Headquarters.

APPLICATION FOR EMPLOYMENT GRADUATE COUNSELOR SCHOLARSHIP

Please Attach
Recent Picture

Send to: Field Activities Committee
c/o Delta Zeta National Hdqts.
21 E. State St., Suite 600
Columbus, OH 43215

- MUST BE POSTMARKED BY MARCH 1 -

Name _____

School _____ Chapter _____

Grad. Date _____ Date available _____

Home Address _____

_____ Home Phone _____

School Address _____

_____ School Phone _____

Your Social Security # _____ Date of Birth _____ Place of Birth _____

Your Height _____ Your Weight _____

What serious illnesses, operations or injuries have you had?

Do you have any allergies (if yes, describe briefly)?

List any physical handicaps or limitations:

EDUCATION:

	Name and Location	Dates attended from-to	Standing in class (quartile)	Academic Major
High School				
College/Univ.				
Graduate				

Scholastic Honors, Honor Societies, Fellowships, Scholarships:

College Subjects of Greatest Interest: _____

ACTIVITIES:

	Name of Organization	Length of Membership	Offices and Chairmanships held
High School			
College/Univ.			

SORORITY: Chapter _____ Pledging Date _____ Initiation Date _____
Offices and Chairmanships held (include year): _____
Pledge: _____ Initiate: _____

EMPLOYMENT: (List most recent first)

Name of Employer	Type of Business	Description of work
------------------	------------------	---------------------

REFERENCES: (not a relative) - Give name, complete mailing address and occupation.

1. _____
2. _____
3. _____

What is your field of interest for graduate study courses? _____

List schools where you are most interested in taking your graduate study. (Only schools that have Delta Zeta chapters are considered for this scholarship.)

1. _____
2. _____
3. _____

Do you plan to be married within the next year or so, or do you have a definite choice of profession or business toward which you will eventually be working? If so, what?

Do this affect the length of time in which you might continue as a Graduate Counselor?

Please add any other information you think would assist in our decision on your taking this position.

In order for your application to be complete, Field Activities Committee must receive under separate cover one letter of recommendation from your CCD and one from your PCD.

"Authorization is given by me to have investigated any and all statements contained in this application form. I understand that misrepresentation, omission of facts, or receipt of unsatisfactory references shall be cause for non-consideration of this application."

Date _____ Signature of applicant _____

DO NOT WRITE IN THIS SPACE—FOR OFFICE USE ONLY

Comments: _____ Date Interviewed: _____

Northwestern Class of '47 Holds Reunion



Members of Northwestern-AA's Class of '47 met in Maryland at the home of Helen Docekal Morris for a week of fun and remembering. Pictured are (back row, l to r) Betty "Polly" Pollard Morris, Laverne Wulf Keyser, Bunny Schneider Van Heule, Barbara Megowen Spring, Helen Docekal Morris, Betty Albach Weamer, Jane Stultz Lewis, Dotti Geng Smith and Lois "Nipp" Bronder O'Neill. On the front row are Jeanne Fretz Barthold, Sue Eckley, Jackie Connelly Seay, Lorraine Kucera Aichinger and Joan Higham Young.

by Betty Albach Weamer
NU-AA

Members of the Alpha Alpha chapter at Northwestern University, primarily from the class of '47, had a 35th reunion at the home of Helen Docekal Morris in Potomac, Maryland from August 8 to August 15. Of some 44

people contacted, 14 were able to attend for all or part of the week.

Special events arranged for the group began with a picnic supper and evening performance at Wolf Trap by Tex Beneke and orchestra with Helen

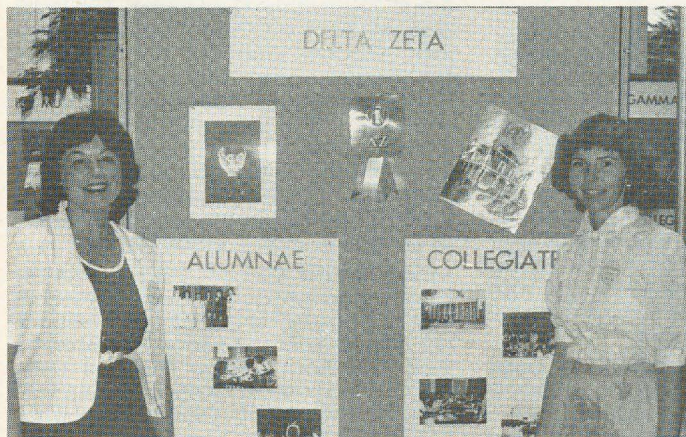
Forrest, Johnny Desmond and the Modernaires playing big band sounds of '42. Ah, nostalgia!

A White House tour was made available through the courtesy of Senator Alan Dixon of Illinois and when the mid-week Torchlight Tattoo at the Thomas Jefferson Memorial was rained out, drivers Helen Docekal Morris and Polly Pollard Morris substituted a drive about the mall showing Washington's monuments lit for evening—an impressive sight indeed!

Another day included seeing the U.S. Capitol with a visit to both House and Senate Chambers (in session), the newest movie on flight at the Air and Space Museum, the First Ladies' inaugural gowns in the Museum of History and Technology and the public rooms at the Kennedy Center for Performing Arts.

During the week there was time to peruse the scrapbook of letters and pictures from all those on the mailing list. Friday, the day all fourteen ΔZ sisters were present, saw much picture-taking and visiting, concluding with a true ceremonial dinner.

A presentation of two decorative clay poolside figures by the group to Helen D. Morris can't begin to express our appreciation to her for providing us with the hospitality of her home, the fruits of her gardening and cooking, and most of all, the opportunity for being together as sisters.



St. Louis alumnae Jane Daily Snyder (NU-AA) and Eileen Hoffman Doe (UMSL-ΙΞ) are seen at the ΔZ display at Sorority Showcase. College bound girls and their parents were invited to visit each sorority's exhibit.



Delta Zetas at Memphis State hosted their annual ΔZ Follies at the famous Orpheum Theater in Memphis.

Delta Zeta on Campus



Beta Kappas at Iowa State were Greek Week Sing finalists again this year.

by Diane Jones Skelton

ALABAMA

Alabama, Alpha Gamma — Forty-nine new pledges, Fall quota, joined Alpha Gamma chapter. The chapter celebrated its birthday on September 9th with a special house dinner and with Frances Pickens Lewis, one of the charter members, as guest speaker. Lauren Jorgenson scored in the 94% on the LSAT this past summer and plans to attend law school. She received this year's Florence Hood Miner award. Cathy Crawford is the first undergraduate to teach a math class at the university.

Auburn, Beta Xi — All the hard work on rush paid off when 47 new pledges arrived on Squeal Day. They continued to make the chapter proud as they marched in the Wreck Tech and Burn the Bulldogs parades. Members and pledges got together at a swimming party, a skating party, ice cream party and even at an early morning breakfast. Under the direction of Kathy Saal, BΞs held a successful fund raiser with ΑΓΔ, ΦΓΔ and ΒΘΠ. Teri Smith was named outstanding UPC Director (University Programs Council) and Ronna Hickman was tapped for Mortar Board. Joanna Haffner is president of the Order of Omega, Greek honorary.

Auburn-Montgomery, Lambda Nu — Danielle Rowe was graduated with a 3.0 average last Spring. Over the summer,

members enjoyed a rush retreat filled with practice, singing, swimming and even a candle lighting.

Jacksonville, Lambda Gamma — The chapter grew from 22 to 80 when members welcomed a quota pledge class for the first time in the five year history of the chapter. Pam Champion is JSU ROTC Cadet Captain and Lynn Lowe is ROTC Ranger Sponsor.

ARKANSAS

Arkansas Tech, Lambda Alpha — Busy chapter members include Vicky Robertson, Miss Arkansas Valley, and first runner-up to Miss Tech; Mary Bane, a flag line member, and Cathy Busken, administrative assistant in Student Government. Christie Montgomery is trainer for the Tech football team, while Kathy Miller is Phi Lambda Chi's sweetheart. Charlotte Warhurst won the Sadie Hawkins look-alike contest. Lambda Alpha returned with the largest number of members among the sororities this Fall.

Central Arkansas, Epsilon Xi — Delta Zetas are boosting school spirit on and off the field. Shari Coble and Angela Lilley are among the new cheerleaders, and June Moreland is returning for her second year as feature twirler. Off the field, members were cheering in full force wearing their green and white shirts at the first pep

rally. A chapter convention prior to rush boosted confidence and removed "fears" of rushing.

Henderson, Epsilon Pi — Campus leaders include Dana Sanders, president of both Student Activities Board and Resident Hall Association, and vice president of Student Government Association. Liz Harmand serves as vice president of Student Activities Board, National Communications Coordinator for Resident Hall Association, treasurer of Panhellenic and a senator. Leesa Smith is cheerleader captain, while Sally Sharer is vice president of Resident Hall Association. Beth Andrews is secretary for Student Activities Board, a senator, and treasurer for Resident Hall Association.

CALIFORNIA

CSULA, Theta Rho — Three Delta Zetas were elected to the Greek Council at CSULA — Laurie Capps is president, Lisa Vega is women's representative and Barb Maloney is treasurer. Several ΘPs attended the Leadership Conference held at the EE chapter house in Fresno. Members enjoyed the annual Rose formal in late May aboard the H.M.S. Princess Louise anchored in San Pedro harbor. A trip to Six Flag's Magic Mountain in Valencia was full of fun and friendship.

California State-Fresno, Epsilon Epsilon — Members won the prestigious Panhellenic Spirit Banner for the sorority showing the most Greek spirit and support. The award is calculated from spirit points earned throughout the school year. In the summer, EE hosted the first National Leadership Conference for Delta Zeta on the West Coast. National President Carolyn Gullatt, Vice President Dwayla Porter, and two province directors and several college chapter directors attended. With love and appreciation, pledges presented their pledge trainer, Patricia DeNardi, with a quilt following their initiation. The rose and green quilt is composed of squares designed by pledges and assembled by Mrs. Dorothy Mardy.

Chico, Delta Chi — During Pioneer Days, organizations on campus research an era of history and depict an outstanding person from the period to feature in their quad lawn display. This year Delta Chi chose Louise McCurry, a woman who took over the family camera shop when her husband went to war. The shop began a successful chain of camera stores. Pamela Sullivan portrayed Mrs. McCurry, and reached the finals in the Little Nell competition. The Delta Chi quad repre-

Delta Zeta

DELTA ZETA SORORITY
21 East State Street
Suite 600
Columbus, OH 43215

Attn: Addressograph

— clip and mail —

Please reserve _____ copies of the new History of Delta Zeta at special pre-publication price of \$15.00 each, postage and handling included.

Print your name _____

Address _____

City _____

State _____

Zip _____

Make your check payable to Delta Zeta Sorority and mail to Delta Zeta National Headquarters, 21 East State Street, #600, Columbus, OH 43215. Cost of the History after March 1 will be \$20.00.



Beta Kappas at Iowa State were Greek We

by Diane Jones Skelton

ALABAMA

Alabama, Alpha Gamma — Forty-nine new pledges, Fall quota, joined Alpha Gamma chapter. The chapter celebrated its birthday on September 9th with a special house dinner and with Frances Pickens Lewis, one of the charter members, as guest speaker. Lauren Jorgenson scored in the 94% on the LSAT this past summer and plans to attend law school. She received this year's Florence Hood Miner award. Cathy Crawford is the first undergraduate to teach a math class at the university.

Auburn, Beta Xi — All the hard work on rush paid off when 47 new pledges arrived on Squeal Day. They continued to make the chapter proud as they marched in the Wreck Tech and Burn the Bulldogs parades. Members and pledges got together at a swimming party, a skating party, ice cream party and even at an early morning breakfast. Under the direction of Kathy Saal, BΞs held a successful fund raiser with ΑΓΔ, ΦΓΔ and ΒΘΠ. Teri Smith was named outstanding UPC Director (University Programs Council) and Ronna Hickman was tapped for Mortar Board. Joanna Haffner is president of the Order of Omega, Greek honorary.

Auburn-Montgomery, Lambda Nu — Danielle Rowe was graduated with a 3.0 average last Spring. Over the summer,

Chapter Fall Champion is 1982 ROTC Cadet Captain and Lynn Lowe is ROTC Ranger Sponsor.

ARKANSAS

Arkansas Tech, Lambda Alpha — Busy chapter members include Vicky Robertson, Miss Arkansas Valley, and first runner-up to Miss Tech; Mary Bane, a flag line member, and Cathy Busken, administrative assistant in Student Government. Christie Montgomery is trainer for the Tech football team, while Kathy Miller is Phi Lambda Chi's sweetheart. Charlotte Warhurst won the Sadie Hawkins look-alike contest. Lambda Alpha returned with the largest number of members among the sororities this Fall.

Central Arkansas, Epsilon Xi — Delta Zetas are boosting school spirit on and off the field. Shari Coble and Angela Lilley are among the new cheerleaders, and June Moreland is returning for her second year as feature twirler. Off the field, members were cheering in full force wearing their green and white shirts at the first pep

port. The award is calculated from spirit points earned throughout the school year. In the summer, EE hosted the first National Leadership Conference for Delta Zeta on the West Coast. National President Carolyn Gullatt, Vice President Dwayla Porter, and two province directors and several college chapter directors attended. With love and appreciation, pledges presented their pledge trainer, Patricia DeNardi, with a quilt following their initiation. The rose and green quilt is composed of squares designed by pledges and assembled by Mrs. Dorothy Marty.

Chico, Delta Chi — During Pioneer Days, organizations on campus research an era of history and depict an outstanding person from the period to feature in their quad lawn display. This year Delta Chi chose Louise McCurry, a woman who took over the family camera shop when her husband went to war. The shop began a successful chain of camera stores. Pamela Sullivan portrayed Mrs. McCurry, and reached the finals in the Little Nell competition. The Delta Chi quad repre-

CHANGE OF ADDRESS CARD. Please advise Delta Zeta promptly if there is a change or correction in your name or address as shown on the back cover. It is not necessary to return this card if the mailing label is correct. Members should use parents' home address while in college.

IMPORTANT. You must cut out the mailing label from this issue and paste it here. We cannot process changes without your label. Thank You.

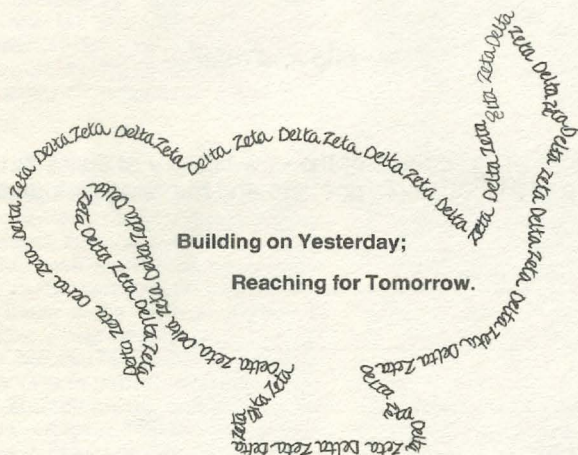
I am currently a Delta Zeta Officer. Title _____

My new address will be _____
street/apt. #

city/state/ZIP _____ effective date _____

If mailing label does not show your married name, please include the following information for our membership files.

Married name _____ Husband's first name _____ Date of marriage _____



Yes, a beautiful, permanently bound copy of Delta Zeta's last thirty years, updating the 1952 Golden Anniversary History, can be yours by reserving your copy now.

For Lambda Pi, members were especially proud of the chapter's sportsmanship. At Spring Formal, honors went to Laura Stephens, sister of the year; Kim McDonald, Dream Girl and Rose Award; Amy Piper, best pledge; Lisa Reynolds, best scrapbook; Dixie Collins, most athletic; and Dawn Evans, most spirited. Members enjoyed socials with PIKA, KΣ and KA Order.

Georgia State, Delta Delta — The chapter won the coveted Alpha Tau Omega Dean Nell Trotter Award for outstanding sisterhood among the eight sororities on campus. ΔΔ also captured championships in volleyball and swimming and seconds and third in tennis doubles, badminton, basketball and flag football. A second also came in the new sorority competition — soccer. Dara Coulter is president of Phi Chi Theta honorary, with Andrea Hilsman, secretary. Lisa Coley is a senator, while Genie Lupo won the Best Supporting Actress title from the Players Drama Club. Indy Bradley reigned as Miss Sigma Chi Derby Day.



Vicky Robertson, Arkansas Tech-AA was Miss Arkansas Valley in the state pageant.

gether a softball team good enough to win the 12-inch softball championship in intramurals. Kathy Carlis is a member of Alpha Lambda Delta and Zeta Phi Eta honoraries, the Wildcat Council, and is director of University relations for Panhellenic. She served on the Dance Marathon Committee, the Homecoming Committee, and is this year's parade chairman. She is also a reporter for the *Summer Northwestern*, and active in Maids of Athena Auxiliary for the Hellenic Associated Student Union.

Western Illinois, Epsilon Omicron — Delta Zeta earned the highest grade point among sororities, and the second highest campus overall with a 2.7. Included on the Dean's List were Danna Aliano, Jessica Bilinski, Kay Christiansen, Shirley Evans, Lisa Guiling, Rita Kester, Karen Meisinger, Jill Yentes and Peggy Kuli-jovskis. Danna Aliano serves as vice-president of Student Government. Improvements to the house include an interior paint job, landscaping, exterior paint job, new television, fire doors, dishwashers, and deck.

INDIANA

Ball State, Gamma Chi — The chapter suite, remodeled during the summer, now features a color scheme of rose, accented with champagne and green. Gamma Chis have been busy supporting Panhellenic and Interfraternity Councils by participating in a blood drive for the local hospital. Several members are in training for the upcoming Sigma Switch where women ride bikes and men ride trikes. Lynn Henderson was selected for the National Residential Hall honorary.

Franklin, Psi — Roxanne Addis, a 1982 graduate, was voted Outstanding Greek Woman by her fellow Greeks. Teresa Puchley is Delta Zeta's representative on the field hockey team, while Lee Ann Hadley is the tennis star. Chris Chastain and Lori Cummings play volleyball. Terri Johnson and Lisa Stephan are cheerleaders for the Franklin Grizzlies. With eyes on the championship, the Powder Puff football team is trying to better last year's second place win. Janet Muston reigned as May Sing Queen and Tammy Geisley and Chris Chastain were tapped for Daisy Chain.

IOWA

Iowa State, Beta Kappa — "Grounded" best describes the Delta Zeta-Alpha Tau Omega small division float entry in Veishea 1982. A top contender for parade honors, the float, titled A Flight Through Time, broke down only one block into the parade. Hard working members watched the great flying machine nesting in a flurry of clouds towed home. Chapter editor Terri Reese reports maybe the hard work

sented the first camera shop, complete with dark room, antique cameras and pictures from the past. The chapter float, featuring a huge old-fashioned camera, earned a superior, and the Delta Zeta t-shirt designed by Michelle Shibata won hands down over 25 other entries. The shirt sported the motto "Flash with Delta Zeta." Delta Chi also won the sports round-up competition and blood drive during Pioneer Week.

San Jose, Gamma Lambda — In rush Delta Zeta pledged 14 girls. Quota was 15. Lisa Bickford, Fair Princess to Santa Clara County Fair, placed seventh in Miss Santa Clara County competition. She also received an Outstanding Community Service Award from the Board of Directors of Santa Clara for service as Youth Ambassador to Japan and her involvement with Big Sisters Volunteer Group and the Humane Society.

FLORIDA

Florida State, Alpha Sigma — The chapter proudly welcomed a quota pledge class of 37. Delta Zetas aiding the success of Panhellenic rush were Joanne Barone, Panhellenic rush chairman; Kathy Moon, rush statistician; Sally Graeff, assistant rush computer programmer; and Tracey Beckley and Marilyn McIntyre, rush counselors. Delta Zeta is paired with Phi Delta Theta for Homecoming, with Sharon Knieberg as chapter chairman. Alpha Sigmas hosted Province Day in October for XXII and XXIV.

GEORGIA

Georgia College, Lambda Pi — In Panhellenic's Greek Week, Delta Zeta placed second. Though it was the first loss for Lambda Pi, members were especially proud of the chapter's sportsmanship. At Spring Formal, honors went to Laura Stephens, sister of the year; Kim McDonald, Dream Girl and Rose Award; Amy Piper, best pledge; Lisa Reynolds, best scrapbook; Dixie Collins, most athletic; and Dawn Evans, most spirited. Members enjoyed socials with IKA, KΣ and KA Order.

Georgia State, Delta Delta — The chapter won the coveted Alpha Tau Omega Dean Nell Trotter Award for outstanding sisterhood among the eight sororities on campus. ΔΔ also captured championships in volleyball and swimming and seconds and third in tennis doubles, badminton, basketball and flag football. A second also came in the new sorority competition — soccer. Dara Coulter is president of Phi Chi Theta honorary, with Andrea Hilsman, secretary. Lisa Coley is a senator, while Genie Lupo won the Best Supporting Actress title from the Players Drama Club. Indy Bradley reigned as Miss Sigma Chi Derby Day.

ILLINOIS

Eastern Illinois, Gamma Nu — Thirty-five girls compose the quota pledge class. Rushees enjoyed Gamma Nu parties as South Pacific, Annie and Tahitian Holiday. Members are compiling an alumnae directory for ΓN, and planning an alumnae luncheon, and Parent's Weekend. Panhellenic named Cathy Mathis as outstanding rush counselor, and Pam Geskey won an American Business Women's Association scholarship.

Illinois, Alpha Beta — More than 1700 rushees participated in formal sorority rush, which proved to be one of the most successful in years for AB. Dianne Guild, national secretary, and 15 members from ΓN at Eastern Illinois joined the Alpha Betas for the week. Tanya Tussing is trumpeteer with the Top Jazz Band and Gillian Menees is a member of Atius sophomore honorary.

Northwestern, Alpha Alpha — With 11 sororities competing in Sigma Chi Derby Days, Delta Zeta placed first in banner contest, and Derby Chase and second in cash raised for the March of Dimes to capture the Derby Days championship. Kathy Carlis was named Derby Darling and Sigma Nu White Rose Sweetheart. Mary Lu Merkelis and Claire Roth pulled to-

gether a softball team good enough to win the 12-inch softball championship in intramurals. Kathy Carlis is a member of Alpha Lambda Delta and Zeta Phi Eta honoraries, the Wildcat Council, and is director of University relations for Panhellenic. She served on the Dance Marathon Committee, the Homecoming Committee, and is this year's parade chairman. She is also a reporter for the *Summer Northwestern*, and active in Maids of Athena Auxiliary for the Hellenic Associated Student Union.

Western Illinois, Epsilon Omicron — Delta Zeta earned the highest grade point among sororities, and the second highest campus overall with a 2.7. Included on the Dean's List were Danna Aliano, Jessica Bilinski, Kay Christiansen, Shirley Evans, Lisa Guilinger, Rita Kester, Karen Meisinger, Jill Yentes and Peggy Kuli-jovskis. Danna Aliano serves as vice-president of Student Government. Improvements to the house include an interior paint job, landscaping, exterior paint job, new television, fire doors, dishwashers, and deck.

INDIANA

Ball State, Gamma Chi — The chapter suite, remodeled during the summer, now features a color scheme of rose, accented with champagne and green. Gamma Chis have been busy supporting Panhellenic and Interfraternity Councils by participating in a blood drive for the local hospital. Several members are in training for the upcoming Sigma Switch where women ride bikes and men ride trikes. Lynn Henderson was selected for the National Residential Hall honorary.

Franklin, Psi — Roxanne Addis, a 1982 graduate, was voted Outstanding Greek Woman by her fellow Greeks. Teresa Puchley is Delta Zeta's representative on the field hockey team, while Lee Ann Hadley is the tennis star. Chris Chastain and Lori Cummings play volleyball. Terri Johnson and Lisa Stephan are cheerleaders for the Franklin Grizzlies. With eyes on the championship, the Powder Puff football team is trying to better last year's second place win. Janet Muston reigned as May Sing Queen and Tammy Geisley and Chris Chastain were tapped for Daisy Chain.

IOWA

Iowa State, Beta Kappa — "Grounded" best describes the Delta Zeta-Alfa Tau Omega small division float entry in Veishea 1982. A top contender for parade honors, the float, titled A Flight Through Time, broke down only one block into the parade. Hard working members watched the great flying machine nesting in a flurry of clouds towed home. Chapter editor Terri Reese reports maybe the hard work



Vicky Robertson, Arkansas Tech-ΔΔ was Miss Arkansas Valley in the state pageant.



The Western summer leadership conference was held in the Epsilon Epsilon chapter house at Fresno State.



Delta Zetas attending the summer leadership conference in Oklahoma are pictured in front of the Epsilon Upsilon chapter house at Central State University, Edmond.

and memories will prove more valuable than any trophy. Weather grounded the Greek Week olympics as an unseasonal snow storm forced the activities indoors. But, the weather didn't dampen Delta Zeta singers as they captured a second place trophy for Greek Week Sing. Sue Nielson is a pom pon girl and Barb Dawson is ISU twirler. Delta Zeta teamed with ΣAE for Homecoming and a social service project, casino night. Julie Sorenson traveled to the Miss Iowa Pageant and Holly Smith was voted Miss Congeniality in the Miss Muscatine contest. Winners of scholarships are Joyce Johannson, Teri Reese, journalism, and Janeen Chamberlain was outstanding entering freshman. Nancy Walker was named to *Glamour's* Top Ten College Women for 1982.

KANSAS

Emporia, Delta Pi — Donna Rae White is recipient of the Marie Berg Scholarship. Members enjoyed a reunion during the summer and a buffet with alumnae the first week of school.

Fort Hays, Delta Omega — This year formal rush took place a week before school commenced. Delta Zeta added nine pledges in rush and four summer pledges. The new theme for the Union Party was *Fame*, including lively song and dance numbers. Varsity cheerleaders are Deidre Mendicina and Christi Hockersmith. Shelley Deines plays varsity tennis.

KENTUCKY

Kentucky, Alpha Theta — The House Corporation, Parents Club and chapter redecorated the house during the summer by adding a lovely concrete patio and flower garden. The addition was used for a summer get-together, a New York street cafe during formal rush, and a cook-out welcoming the 30 new pledges. Rush was somewhat chaotic, but AOs coped well and especially enjoyed a particular living room chat following a long day of rushing.

One by one, the oldest alumna to the youngest initiate revealed why she had pledged Delta Zeta and why Delta Zeta is so special. The session ended in tears and warmth of sisterhood. Pledges discovered the identities of their big sisses during a retreat to Louisville. After a week of secret clues and gifts, the chapter traveled to Lynn Wyatt's home, where pledges followed a maze of string leading to helium filled balloons. When the balloons popped, they revealed scraps of paper naming the big sisses.

Louisville, Beta Gamma — The chapter worked hard preparing for rush and it paid off with the addition of 17 quota pledges. On bid day the new pledges were met by an enthusiastic crowd of Delta Zetas and they posed for pictures and sang all the way to the chapter house.

Morehead, Kappa Tau — Delta Zeta placed third in Lambda Chi Alpha Watermelon Bust, and participated in the Panhellenic-Interfraternity Council Campus Madness Sale. Kappa Taus also sold chances on turtles for guessing the number of jelly beans in a jar.

LOUISIANA

Northwestern, Epsilon Beta — A well received new chapter rush party is Delta Zeta Hoe Down. Members sit on bales of hay and sing *Country Roads* as rushees are escorted in by alumnae. The chapter president welcomes the girls and members sing a chapter version of *Delta Dawn* and *Let Us Be There*. After the final chorus, members do various dance steps culminating in the Pinwheel and Cotton-Eyed-Joe. Rushees then view elaborate displays carrying out the western theme. Delta Zeta placed second in Greek Week Sing and captured the Spirit Trophy. Members are again planning their Ten Mile Walkathon to benefit Gallaudet. Christine Avant is a member of Alpha Lambda Delta, National Dean's List, *Who's Who*, and is publicity editor for *Argus* magazine and historian for Student Louisiana Asso-

ciation of Educators. Janie Byrge is a member of the State Fair Court and Telenia Hines is Northwestern Rodeo Queen. Darlene Hay is a member of the Homecoming Court and a senator, while Leigh La Rose is Panhellenic treasurer.

MAINE

Maine-Orono, Alpha Upsilon — Greek Week, with the theme of Greek Mythology, included a Delta Zeta car entry, the head of Medussa, which placed third. Members placed second in sorority tug-of-war. Donna McFadden, Chris Probert, and Deb Wintle teamed to win a second in sorority pony keg throw. Fraternity sweethearts are Liz Sylvester, ZΦE, Chris Probert, ΑΤΩ, and Holly Anderson, ΘΧ. Holly Anderson and Margaret Hazzard won recognition awards from the ROTC, and Lisa Grimaldi won the Susie Scholarship for class attendance.

MICHIGAN

Michigan Tech, Lambda Theta — Named to the Dean's List were Marie Popa, Jennifer Kuchta, Sandy Brooks, Kathy Taylor and Mary Carver. Sandy Brooks was tapped for OΔK honorary and won a Kodak Scholarship.

Wayne State, Epsilon Sigma — Two summer rush schools helped prepare members for the busy rush schedule. This year's theme, Look to Your Future With Delta Zeta, has a science fiction flair. Members raised cash with a successful garage sale at CCD Olive Neeland's home in Grosse Pointe.

Western Michigan, Gamma Pi — Members are planning rush around Panhellenic's theme, Greeks on the Rise, while the activities chairman is readying the chapter for Homecoming and Sigma Chi Derby Week. Gail Barrie was appointed second vice-president of Panhellenic and Renee Slavin is Sigma Pi's Sweetheart. At Province Day, Gamma Pis captured the PCD Award and Display Award. Panhellenic Awards went to Delta

Zeta for campus involvement, community involvement and most improved scholarship.

MINNESOTA

St. Cloud, Theta Mu — Fall is an exciting time for ΘM — they're moving into a new house! The house is located near two fraternities and another sorority and boasts a beautiful trophy room to display ΘM's many accomplishments.

MISSOURI

CMSU, Epsilon Gamma — Epsilon Gamma's annual summer meeting was held at the Lake of the Ozarks. Shortly thereafter, the chapter moved back to Panhellenic Hall and rush began. Enthusiastic pledges participated in Yell-Out at the candlelight ceremony for all pledges of all sororities.

Missouri-St. Louis, Iota Xi — Fall rush featured a recruiting skit patterned after the television series *M*A*S*H*. Members dressed as Mash characters, and served popcorn, pretzels, hotdogs wrapped in dough and NeHi Grape. And, the most rushees chose Delta Zeta. IΞ pledged 20. Members enjoyed a summer formal on the river front and ended the evening with a champagne breakfast. Four members earned \$250 for the chapter treasury by working at Six Flags Over Mid-America.

Northwest, Epsilon Rho — Delta Zeta's first annual calendar is complete and Chairman Mary Jo Anderson says the profit will go to philanthropy. Lisa Neal is overall Homecoming chairman for NWMSU, and Mary Sanchez is university editor of *NM Missourian*, campus paper. Kelly Hamilton is photo editor for *Tower* yearbook, while Nancy Martin is a stepper with the marching band.

William Jewell, Zeta Rho — Chapter member Becky Martin brightened up the study room by painting a beautiful rainbow on one wall. Members enjoyed a summer rush party, Hawaii ΔZ Style, at Julie Calderella's poolside.

NEBRASKA

Creighton, Theta Eta — The chapter held a car wash called the Delta Zeta "topless" car wash . . . washing the bottom of the car for \$1.50 and the rest for an additional 50¢. Five new pledges were added in September. Meanwhile, the chapter is playing intermural softball. The first game turned out badly in the heat of a hot afternoon. It proves, however, that ΔZs are great at everything . . . even losing.

Nebraska Wesleyan, Beta Tau — Province Day awards for Beta Tau included outstanding chapter, rush, quota and total, chapter scholarship and pledge scholarship. Donna Frerichs was named Miss Province XII and Tammie Reichwaldt was honored as outstanding pledge trainer in the Province. Ann Askey won the Edna Zamzow Service Award and Senior Scholarship Award. Beta Tau pledged a quota plus pledge class as rushees enjoyed three formal rush parties. The first featured a circus theme, complete with clowns, tents, animals, balloons and popcorn. At the *Fame* party, numbers by some high stepping singers and dancers wooed rushees. The Preference Party filled an afternoon with picture taking, good conversation and scoops of pink and green ice cream.

NEW JERSEY

Glassboro State, Xi Kappa — One of the members of ΞK, Lanie Kuznick entertained with a chapter reunion which in-

cluded swimming, eating and a "lot of hugging." Diane Modrak belongs to Alpha Kappa Delta (sociology honorary), Leigh Ann Thunhorst is a member of Gamma Chi (law, justice honor roll), Helen Kallargerellis is reports chairman of the International History Honor Society and Maryann McNamara is social chairman of Gamma Chi.

NEW MEXICO

New Mexico, Gamma Xi — Rush is the key, and grease was the word as formal rush featured a *Fifties Grease* party, followed by a *Fantasy Island* party. Formal rush ended with a successful preference party, and now Delta Zeta has pledged even more girls in informal rush. Kamala Singh is first runner-up to Miss New Mexico, and Evelyn Rodriguez and Nancy Jackson are cheerleaders. Patsy Sanchez is a student ambassador, and Cynthia Stout is an Aggie Angel. Jackie Kirby is a member of the National Girls Softball Team.

NEW YORK

Rochester, Lambda Iota — Big and little sisters traced their lineage as Lambda Iotas compiled a family tree tracing the big-little sister links back to charter members. Alumnae replies to a letter helped fill in the missing limbs. Delta Zeta sponsored a Dating Game as a part of a weekend campus activity, and enjoyed speakers on choosing a career and managing debt. Marybeth Egan and Kellie O'Keefe danced in the annual campus marathon. Laura Scanlan, Teresa Landry, Maryanne Collieran and Terri Goulard are basketball cheerleaders. With the help from province and chapter directors, Delta Zeta has helped organize a Panhellenic for the University.



Beta Gamma (Louisville) member Cheryl Marshall (seated center) talked to rushee Diana Miller (floor, left) while Dorinda Drury talked to rushee Debbie Fusting. It must have worked - they're new Beta Gamma pledges.



Some of the ΛΘ's at Michigan Tech. Back row, Edie Given, Ruth Nowak, Debbie Kunzelman, Jayne Hoppe and Cathy Learmont. On the front row are Kelly Obeginski, Cindy Richardson and Shannon Dean.

NORTH CAROLINA

Appalachian, Lambda Phi — Forty members finished name tags and practiced rush techniques at a summer rush retreat in Boone. The totals are in and Delta Zeta Laps for Apps Jog-a-thon last Spring raised \$1400 — half goes to the university athletic program and a fourth to Gallaudet. Members are earning chapter funds for a candlelight formal by gathering and distributing rental textbooks in the university bookstore.

East Carolina, Zeta Lambda — The entire chapter pitched in and scoured the house inside and out during Fall clean-up just in time to meet House Mother Marie Dennis with a welcome back party. Members participated in a Morale Corral to promote Delta Zeta spirit for fall semester and rush. Rush chairman Helen Floyd directed night workshops for upcoming rush. At presstime, members were behind pledge Lori Patton 100% as they planned to attend cheerleader tryouts where 40 girls (Lori included) will vie for 8 cheerleading spots.

Lenoir Rhyne, Zeta Xi — Drill Team Co-Captains Rebecca Whitner and Barbi Sentman welcomed Elisa Jones to this year's squad. Myra Jenkins and Jill Freeman are cheerleaders, while Erin Wells is a ball girl. Honeybears officers include Sandy Letson, secretary, and Mary Jane Lawson, treasurer. Christie Andrews and Sarah Vogelberg participated in a student exchange program in France and are entertaining members with tales of their adventures in Europe. Zeta Xis planned a Halloween party for children at a school for the deaf in Morganton.

North Carolina-Charlotte, Lambda Phi — Delta Zeta enlarged their contribution to Charlotte Rehabilitation Hospital to \$1500 after earning another \$500 by managing a local night spot for one night with a Delta Zeta Dixie Electric Nite. The hospital, in turn, honored Delta Zeta with a party. Following a rush workshop, Lee Naccarato and Kim Small surprised chapter members with a banner filled with encouraging messages for all the sisters. Sydney Winter participated in the International Student Exchange Program in Delaware.

Winthrop, Lambda Sigma — Delta Zeta won the overall sorority competition in Greek Day last Spring, later enjoyed a family picnic and a mid-summer cook-out, rush workshops, car wash and a ten mile walk-a-thon for Gallaudet. On *The John-sonion* campus newspaper are Terri Dietrich, news editor; Bunny Duke, typist, and Linda Wilson, copy editor. Omicron Delta Kappa leadership honorary tapped Mary Katherine Phillip, vice-president; Robin Shealy, treasurer; Karen Giles, and Sallie Warren. Joy Freeman won the Miss Clover Pageant, a Miss South Carolina preliminary. Rho Kappa Phi honorary



Pamela Sullivan portrayed Louise McCurry, a local historical personage, at Chico's Pioneer Days. Pam is a member of Delta Chi at Chico State.



Pictured at the Western summer leadership conference in Fresno are (l to r, standing) EE rush chairman Brenda Snyder, EE president Patricia DeNardi and National Vice President Dwayla Porter. Seated are National President Carolyn Gullatt, 50-year member Ella Odorfer and Field Representative Nancy Walker.

tapped Mary Katherine Phillip and Sallie Warren. Cathy Helms is president of Kappa Delta Pi and Mary Katherine Phillip is a member of BΓΣ business honorary.

OHIO

Ashland, Theta Psi — Delta Zetas have moved out of the house and into a suite in a campus dorm. The suite, redecorated by college and chapter funds, includes a chapter room and kitchen. Executive officers live on the same floor as the suite. The suite is dedicated to CCD Alice Fetzer for her long and hard hours of chapter support. Ohio's largest banana split came to Ashland and ΘΨ entered the contest to see who could eat the most, the fastest and the sloppiest. Participating were Betty Ann Stevenson, Eli Cunningham, Jessie Brubaker, Barb Slusser, Jani Boyd, Kathy McGuff, Shelley Fetcher and Terri Kaple. Marcy Miller is Panhellenic rush chairman and Diane Goodman and Tracy Johnston served as rush counselors.

Baldwin-Wallace, Gamma Alpha — Members raised \$125 by selling donuts to defray rush expenses. Sisters then raised \$400 for the speech and hearing clinic with their All Greek bike-a-thon. Pledge trainer Sandy Pearson and spring pledges organized the successful event.

Bowling Green, Gamma Tau — The hard work of rush chairman Judy Markel, her assistant, Kim Pettys, and the entire chapter brought 34 new pledges to Gamma Tau. Party themes were Election Day at Delta Zeta and Delta Zeta Dreamland.

Kent State, Gamma Kappa — Delta Zetas placed first in Greek Week after winning five of six events, captured the highest initiate grade point honors among sororities and hosted Province V Day. Rho Lambda honorary tapped Theresa Dolan, secretary, and Ann Martin. Dawn Levin serves as rush chairman for Panhellenic.

Miami, Alpha — Medley of Musicals added a new dimension to A's rush this year. Under the supervision of rush chairman Lori Eyler, the fourth period party changed from *Camelot* to *The Grand Finale*. Members donned elegant pastel formals and white gloves. In the remodeled chapter room, the wine draperies, flocked wallpaper, silver tea services and sparkling chandelier added a touch of spender to the formal setting. Under the direction of Nancy Prittie, Alpha's quintet sang a Delta Zeta variation to *The Rose* to entertain rushees. Once again Alpha pledged quota, 39, to bring chapter membership to 130. A fall schedule includes the third annual ΔΖ-ΦΚΤ keg toss and Homecoming. Panhellenic president Patty Schaeffer is Delta Zeta's candidate for the first annual Greek God and Goddess contest.

Wright State, Kappa Iota — Alumnae joined collegians for a celebration of the



Katherine C. Carlis, Northwestern-AA, with one of her trophies. She was Sigma Nu's White Rose Sweetheart (1982) and Sigma Chi's 1982 Derby Darling.

chapter's tenth birthday and surprised members by bringing early chapter scrapbooks and reminiscing over the tales of the early days of Delta Zeta, the first sorority at Wright. This year's rush theme will be *Alice in ΔZ Land* and KI is the largest chapter on campus. Pam Dugmore is a semi-finalist for the Ohio State Fair Queen and is reigning Honey Queen. She'll travel to Hawaii in January for the National Honey Queen competition.

Youngstown, Kappa Chi — A busy summer included a dance-a-thon with ΦKT, manning phones at the Jerry Lewis Telethon, washing cars, rush parties and a senior farewell cook-out. Delta Zetas ushered for summer commencement.

OKLAHOMA

Central State, Epsilon Upsilon — Members transformed the house into a tropical island for the *Fantasy Island* theme party and luau to culminate a successful formal rush which added 16 pledges. Dads, moms and daughters worked together repairing and painting the Delta Zeta house at Parents Day. EY hosted a Delta Zeta Leadership Conference in June and welcomed chapters from as far away as Missouri and Texas. The conference answered many questions and offered fresh ideas on rush, standards, activities, philanthropies, scholarship, Panhellenic, alumnae relations, finances, pledging, references and initiation. Leadership skills were shared by national officers. Student Senate includes

Sherry Andrews and Rhonda Cherry. Dean's Honor Roll named Rhonda Cherry, Tracy Knutson, Sheryl Kudy, Polly Pitezel and Kathy Swallows.

Northeastern, Delta Phi — Miss Greek 1982 and NSU twirler is Rhonda Rider. Linda Ballew, Brenda Ballew and Kathleen Cannaughton are members of Redman Review. Geri Carr is a cheerleader and Susan Vail is flag captain. Dianne Dowdy is yearbook editor. Members participated in Greek Week and raised funds by washing cars, working at Expo Square, and sponsoring a turtle toss at a campus carnival.

Northwestern, Delta Omicron — Susan Perkins, a company member of Oklahoma's Cameron Summer Stock, has reached the Western Oklahoma, Oklahoma Kid Diamond Jubilee Talent Search Finals. With her talent, *Bonita Banghart and the Story of Superman*, she travels to the state finals to vie for membership in Oklahoma Kid, a traveling group representing the state. Vicki Hoffman, a pre-law student, is a drum major for the third year and Governor George Nigh's campus chairman for re-election.

Oklahoma City, Gamma Upsilon — At presstime, Delta Zetas were busy entertaining rushees with their theme party, Delta Zeta Choo Choo, and skit party, *Annie*.

Oklahoma State, Alpha Epsilon — Delta Zetas returned to school to discover many cosmetic changes to the house, thanks to a busy house corporation and those members living in the house during the summer. The new look includes interior painting, repainting the famous pink bath, new ceilings with fans, and a plush lawn. It is hoped major construction on older sections of the house will begin in Spring. The Delta Zeta-Pi Kappa Phi team entry in Varsity Revue will long be remembered, as will championships in Sigma Chi Derby Day and All Greek volleyball. Members placed second in Lambda Chi's canned food drive for the Salvation Army and raised funds for Stillwater Speech and Hearing Clinic. Campus leaders include Shawn O'Halloran, Panhellenic vice-president; Christy Chism, Eta Kappa Nu secretary; Carol Hicks, Theatre Guild president. Dawn Wiegand is a staff writer for the *Daily O'Collegian*. Nancy Woods is a Student Council delegate and member of freshmen woman's honorary.

PENNSYLVANIA

Pittsburgh, Omicron — Pitt Delta Zetas stretched across the country and the world this summer as Jane Hartline and Kathy Miskin studied in the Dominican Republic. Laura Vaglia met three other Delta Zetas at summer boot camp in Fort Bragg during her Army ROTC training. Linda Huebner is a cheerleader.

Pittsburgh-Johnstown, Lambda Epsilon — Dressed in bright clown costumes, clown make-up, and creating animals from balloons, Delta Zetas were the hit of a campus activities fair. Members enjoyed a mixer with Lambda Sigma Phi and a summer break reunion. Two sisters are involved in campus Playfair, a campus organization which travels to other schools to perform ice-breaking, get-to-know each other games for new students.

Shippensburg, Kappa Psi — Delta Zeta is proud to announce its fourth consecutive year's win of the President's Cup for the sorority with the highest overall cumulative grade point average. The chapter also earned Pride of Province III honors at State Day. Other province awards included membership, philanthropies and standards. Judy Breski is Sigma Tau Gamma Sweetheart and her ΔZ little sis Susie Zink is Kappa Sigma Sweetheart.

TENNESSEE

Memphis State, Gamma Iota — The 1982 Delta Zeta Follies, at the Orpheum Theatre with approximately 1,300 in attendance, netted \$2,000 for the MSU Panhellenic-IFC Scholarship Fund. The Follies, in its 32nd year, offers Greeks an opportunity to present seven-minute skits in competition for first and second place trophies for both fraternities and sororities. The Follies hold a position of equal rank with Panhellenic-IFC All Sing and Homecoming weekend festivities. All the stage management, including lighting, scenery moving and clean up, is arranged by the chapter. Ushers are also Delta Zetas. This year Follies chairmen were Lou Ann Kummerer, Kathryn Thompson and Nicki Crowell. A poster contest is held in conjunction with Follies. Alumnae hosted an open house to celebrate Delta Zeta's



Iota Xis at Missouri-St. Louis used a M*A*S*H theme for rush. Here are Carol Hoffmann, Marilyn Brand and Pam Young offering a ΔZ version of "Boogie Woogie Bugle Boy."



Carol Hicks, Oklahoma State-AE, starred as Amanda Wingfield in the university production of Tennessee Williams' classic, "The Glass Menagerie." President of the Theatre Guild, Carol has been involved in numerous productions.

34th year on campus, and chapter members participated in philanthropy projects for special olympics, cancer fund, kidney foundation, and speech and hearing. Order of Omega, Panhellenic honorary, includes Lisa Hise, Lou Ann Kummerer and Sharon Kennedy. Sally Rose is a member of 4.0 Club, Dean's List and Presidential List. Ellen Bailey is also a member of 4.0 Club. Sharon Kennedy and Shery Ihrig are members of 3.0 Club.

TEXAS

Angelo State, Lambda Omicron — Following a summer rush workshop at Angelo State Lakehouse, members returned to fall rush filled with enthusiasm and welcomed 18 new pledges to Delta Zeta. An October retreat at Buffalo Gap filled a weekend with hiking, camping and sisterhood.

Houston, Delta Theta — At Province XVII Weekend, Delta Thetas receiving recognition were Brenda Tobias, outstanding senior; Lori Montgomery, Houston alumnae scholarship; Brenda Tobias, Rebecca Brauer, Tricia Knoblauch, province scholars; Lori Montgomery, outstanding treasurer; Carol Simmons, outstanding scholarship chairman; Bari Drescher, outstanding guard. Special recognition for members assisting with rush at Lamar University went to Elaine Kunnecke, Belinda Bennett, Janet Mosely, Carol Simmons and Lulu Parra. Delta Theta won best chapter display, top activity chapter, and the formal rush award for 19 consecutive years of top membership. Delta Theta was named outstanding sorority in the Sigma Nu Bike Race, where Cherie Collins

reigned as queen. Another first place win came in Σ AE's Sing Song. Members joined AXA to collect \$1,000 for Muscular Dystrophy and helped man telephones at telethon headquarters.

Southwest Texas, Iota Alpha — After five days of rush, Delta Zeta pledged another quota class, this year numbering 48. IA won \$100 for having the most members present at a San Marcos event. Paige Lueking is captain of Strutters and Dana Taylor is president of Fashion Merchandising Association. Bridget Kennedy is Panhellenic treasurer.

Southwestern, Gamma Zeta — Delta Zeta won the Panhellenic plaque for top sorority scholarship and also maintains the highest grade point average among Greek organizations on campus. Cardinal Key tapped Jeanne Clifford, Mary Ballou, and Chatty Chapman. Members of Delta Omicron are Christie Burtner and Martha Isbell, vice-president. Donna Taylor and Chatty Chapman are resident advisors, while Patti Ross and Kim Dykes are sophomore advisers. Robyn Hall is co-captain for Lady Bucs varsity volleyball team.

Texas A & M, Lambda Xi — Members, eagerly awaiting the opening of the new chapter house, rushed successfully to add 45 new pledges. Pledge Trainer Janet Bailey represented Anthony in the Miss Texas Pageant, and Carri Baker was featured in *Southwest Football* magazine.

West Texas, Zeta Zeta — Thirty-three members returned for an impressive fall rush where 11 girls pledged Delta Zeta. The new preference party, The Night Before Pref, featured a Christmas theme and



Patty Schaeffer, Miami-A is president of the Miami Panhellenic Council and is pictured at the front door of the Panhellenic Office.



Susan Perkins, NSU- Δ O appeared in Oklahoma Cameron's Summer Stock theater.

lots of candlelight. BeLinda Simmons is a cheerleader, while Julie Worthington is a senator and treasurer of Phi Gamma Nu business honorary.

VIRGINIA

Virginia, Lambda Delta — Representatives from 19 Delta Zeta chapters and several national officers attended the Regional Leadership Workshop hosted by Lambda Delta this summer. It's a small Delta Zeta world, says past president Linda McKee who, while traveling a canal in Venice, passed alumna Lisa Beht in a gondola going the other way! Lois Mate and Rebecca Fant studied architecture in Italy over the summer, and Sara Collins is studying in Cambridge, England.

WEST VIRGINIA

Concord, Epsilon Delta — Rush chairman Brenda Natale is leading the chapter in rush preparation for Concord's first attempt at Fall formal rush. Delta Zeta's theme is *Annie*. Rebecca Robinette is a member of Collegiate Singers and Laura Hill is copy editor for *Pine Tree* annual. Cindy Parker earned a perfect 4.0 and Patricia Rife was graduated magna cum laude.

Glenville, Theta Xi — Members readied for Fall rush with a July retreat at the house. At the first open rush party, members b-bopped in bobbie sox and treated rushees to ice cream sodas and music from Fonzie's Juke Box. Theta Xi arranged a lawn display for the campus picnic in August. Spring activities included a softball tourney, spaghetti dinner, blood drive and State Date attendance. Chapter awards at State Day were for attendance

and scholarship. Dena Dunlap received outstanding senior and Jamie Copenhaver won outstanding pledge trainer honors. Sheila Martin, member of *Who's Who in American Colleges and Universities*, serves Panhellenic as president. Lori Park is Panhellenic vice-president. Members of Panhellenic are Susie Ballengee and Mary Grose. Susie is also in Student Congress. Mary is a cheerleader and secretary of Physical Education Majors Club. Doretta Pugh is member of GSC Marching Band's Silk Line and ΦΒΑ honorary.

Shepherd, Kappa Mu — At presstime, members were developing a rush party, *The Wizard of ΔΖ*, and planning a Homecoming float following the theme of Mardi Gras. Members enjoyed a three day summer get-together near Ocean City, Maryland. Gina Fiuk is second runner-up to Miss Eastern Shore.

WISCONSIN

Carroll College, Gamma Theta — Named to Dean's List for 3.5 or higher were Sue Barwick, Lynn Inkmann, Beth Lewis, Lori Mantz, Sandy Mickler, Barb Musil and Meg Peterson. Sue is secretary of Psychology Club and Meg is secretary-treasurer of ΣΕΣ, freshman woman's honorary.

Wisconsin-Eau Claire, Epsilon Omega — Passersby wondered exactly what *was* going on at the Delta Zeta House. Was it a bombing by a fraternity that left holes in the stucco? No, the landlord simply added insulation every two feet. The holes, patched two weeks after filling, are still a bit whiter than the stucco — and, until Spring's paint job, the house will remain slightly polka dotted. Korinne Kaszynski is designing a new wooden yard sign featuring a rose and the name Delta Zeta. And, this time, the chapter is mounting the

yard sign to discourage those who've taken other signs over the years. At presstime, the most girls in six years were signed up for rush and ΕΩ was readying palm trees and fountains for the *Fantasy Island* party.

Wisconsin-LaCrosse, Zeta Omicron — Cheryl Wagner is a finalist for Miss LaCrosse Oktoberfest. Julie House is coordinator for the newly formed Student Ambassadors, an organization which will help minority students to adapt. Joan Williams is a student senator and Kristin Boehm is a member of LaCrosse Singers. Julie Kummer received Panhellenic's Scholarship Award for highest grade point for the second consecutive semester. Members enjoyed a summer reunion at Great America.

Wisconsin-Stout, Zeta Beta — All members are involved in fun rush skits, songs and displays proving successful team work. ΖΒ's are planning an adopt a grandparent program and raising funds for Gallaudet with a poster sale and pancake breakfast.

Wisconsin-Whitewater, Epsilon Kappa — The new look to the house includes living room, hallway and stairway carpeting, and a more functional kitchen. Summer residents began the tedious job of stripping the paint from the staircase spindles. To aid in the project, ΑΧΑ's joined the members and later enjoyed a ΕΚ thank-you spaghetti dinner. At presstime, rush was in progress with members excited about the new preference dinner theme, a Polynesian one. Cindy Divan is a chairman of Homecoming house decorations and float committee for the campus. Four other ΕΚ's join her on the committee.

WEST VIRGINIA

West Liberty, Iota Tau — Chapter President Lisa Tennant was tapped for National Business Honor Society, an honorary for business administration majors with a 3.25 grade point or better average.



Texas A&M's Carri Baker was pictured in an *Athlon's Southwest Football* magazine special article. ΔΖ's at A&M-ΛΞ are proud to claim her.



All that work and the float was towed home due to mechanical difficulties. A joint venture for the Veisea Parade at ISU by Alpha Tau Omega and Delta Zeta's Beta Kappas.



Participating in the Ashland College "Largest Banana Split Contest" are Theta Psi members Betty Ann Stevenson and Shelly Fletcher.

This is One Class of '71 in Review

by Jessica Brown Cummins
Bradley-ZA

When I graduated from Bradley University in 1971, one of my sorority sisters attended graduation wearing a bikini under her graduation gown. Another sister had a bruise on her forehead from a champagne cork hitting her and several of us were a few pounds heavier due to 2:00 A.M. peanut butter toast feasts. We said goodbye, some of us wondering what we were going to do because we hadn't been able to find jobs.

Even a devotee of Peter Pan would have to concede we've grown up. My bikini-clad sister is a successful lawyer, the cork recipient is a teacher and mother of three children and, while we may have lost the lithe bodies we entered college with, we aren't ready for facelifts and eye tucks!

I like to think we've acquired some character with time, individually and as a class. Collectively, we have in eleven years produced 12 children (6 boys, 6 girls), 8 marriages for a total of 69 years, three Master's degrees, and one J.D. degree. When we left school, five of us were going into teaching, two into business and three into graduate school.

I suspect that we weren't quite as "directed" as today's graduate. As one of my graduating sisters says, "I didn't anticipate that I would enjoy working on a career so much." Another wrote me that "we really came to college because it was expected of us—it was the next thing to do after high school." But with time, came that direction; within five years, we had moved up and were variously and in combination, moms, a teacher, students, a computer supervisor, an advertising account executive, a social worker, a rent-a-car executive, a college librarian, and a high school department chairman.

In eleven years we have changed, and yet there's a sameness to our relationships that's almost a comfort. We still get together for lunch or when one of us is in from out-of-town. Almost all of us got together to celebrate, collectively, our 30th birthday year. We even had a cake with pink

roses. It's always good to know that we can still laugh as hard as we laughed that day.

I've come to understand that my class is something of a rarity. To quote a member of my class, "Friends, friends were the important thing, then and now ... the youthful exuberance, those minds working together to create, to support one another. When it clicked, and it did quite often, it was quite special." We are a wonder to ourselves, I think; for all our disagreements, we're still here and we still appreciate each other.

We obviously aren't close in the way we once were since we don't live together anymore, but we are close in a different way. We all know where we're living, where we work, who's

married, who has kids. We have a kind of "good ole' girl network" of our own and we care about and are interested in what we're each doing. It's an adult sisterhood now.

Not too long ago, a few of us got together for lunch. Near us were several tables of ladies, all of them in their 60's and 70's, lunching and talking together. My friends could envision us just that way. Laura Johnson (ZA, '71) says it best: "I'm confident we'll be 50 and 70 someday, and sincerely admire one another's grandchildren, and understand about bifocals and retirement plans. We're not all 'best friends'. We don't see one another that often. But it's one heck of a mutual admiration society!" Indeed, it is.

Julie Foster Heads Cleveland Panhellenic



Julie Kishel Foster, Baldwin-Wallace-ΓA

Julie Kishel Foster, Baldwin-Wallace College-ΓA, was installed as the 67th president of Cleveland

Panhellenic Association after serving in the capacity of treasurer and secretary. Cleveland Panhellenic is made up of delegates representing over 2,000 dues paying members of 20 of the 26 NPC sororities. Each member sorority holds the offices in rotation. \$500 scholarships are awarded each year to 10 Cleveland area women who are initiated members of NPC sororities.

Julie has been on the Cleveland Panhellenic board for 13 years and has held 6 chairmanships. She has held all offices and chairmanships in her Cleveland Westside alumnae chapter of Delta Zeta, and was PAD for Province V for 6 years.

At present she is a member of the Women's Council and volunteer guide for Cleveland's PBSTV Channel 25. She has a Delta Zeta daughter Janine Foster Woody, Northwestern University-AA, and a Delta Zeta sister Mary Lou Kishel McDade, Baldwin-Wallace-ΓA.

Application for Field Representative

A Field Representative has many diversified assignments. Her duties entail assisting with the growth and strengthening of chapters by encouraging the development of sound sorority programs, helping with routine chapter business and problems, training officers and assisting chapters with rush.

Each young woman selected as a Field Representative will receive specialized and intensive training before she is assigned to chapter work. The

training session will be conducted by sorority leaders who will further her knowledge of sorority background, rushing methods and techniques.

The employment contract for a Field Representative usually extends from August 15th to late in May, and Delta Zeta encourages its Field Representatives to work more than one year in the position. In addition to monthly salary, board, room and all travel expenses are provided while on assignment. Most travel will be by

plane. Field Representatives are given one free weekend a month and extra time at Thanksgiving, Christmas and Easter.

If you are interested in applying for a position as Field Representative, will you complete the application form and return it as soon as possible? Your application and recommendations should be sent to National Headquarters, Suite Six Hundred, Twenty-one East State Street, Columbus, Ohio 43215.

APPLICATION FOR EMPLOYMENT
FIELD REPRESENTATIVE
Please Attach
Recent Picture

MUST BE POSTMARKED BY MARCH 1

Name _____

School _____ Chapter _____

Grad. Date _____ Date available _____

Home Address _____

_____ Home Phone _____

School Address _____

_____ School Phone _____

Your Social Security # _____ Date of Birth _____ Place of Birth _____

Your Height _____ Your Weight _____

What serious illnesses, operations or injuries have you had?

Do you have any allergies (if yes, describe briefly)?

List any physical handicaps or limitations:

EDUCATION:

Name and Location	Dates attended from-to	Standing in class (quartile)	Academic Major
High School			
College/Univ.			
Graduate			

Scholastic Honors, Honor Societies, Fellowships, Scholarships:

College Subjects of Greatest Interest:

ACTIVITIES:

Name of Organization	Length of Membership	Offices and Chairmanships held
----------------------	----------------------	--------------------------------

High School

College/Univ.

SORORITY: Chapter _____ Pledging Date _____ Initiation Date _____

Offices and Chairmanships held (include year):

Pledge: _____ Initiate: _____

EMPLOYMENT: (List most recent first)

Name of Employer	Type of Business	Description of work
------------------	------------------	---------------------

REFERENCES: (not a relative) - Give name, complete mailing address and occupation.

- 1.
- 2.
- 3.

Please give your chief reason(s) for being interested in this position.

Do you plan to be married within the next year or so, or do you have a definite choice of profession or business toward which you will eventually be working? If so, what?

Does this affect the length of time in which you might continue as a Field Representative?

Please add any other information you think would assist in the decision on your taking this position.

In order for your application to be complete, National Headquarters must receive under separate cover two letters of recommendation, one from your CCD and one from your PCD.

"Authorization is given by me to have investigated any and all statements contained in this application form. I understand that misrepresentation, omission of facts, or receipt of unsatisfactory references shall be cause for non-consideration of this application and if employed, cause for discharge from the position held."

Date _____ Signature of applicant _____

DO NOT WRITE IN THIS SPACE—FOR OFFICE USE ONLY

Comments: _____ Date Interviewed: _____

PCD-PAD Workshop in Illinois

Province Collegiate Directors, Province Alumnae Directors, National Committee Chairmen and members of National Council convened at the Northern Illinois Conference Center in DeKalb, Illinois for a weekend conference in June, 1982.

Sharing ideas and information, asking questions, discussing problems and solutions and developing plans for action in a relaxed atmosphere, the participants named the time together beneficial in their understanding of the national scope of Delta Zeta. Improvement and interpretation of Delta Zeta policies and procedures and strengthening province leader-

ship unity were purposes accomplished.

National Treasurer Anne Marie Gavin coordinated the travel and facility arrangements. National Vice President of Alumnae Affairs Mary Margaret Fore and National Director and PCD Coordinator Terri Severy, with the assistance of National Council and National Headquarters, prepared the agenda and provided leadership materials. National President Carolyn Gullatt, National Vice President of Membership Debbie Bruce, National Vice President of Collegiate Affairs Dee Porter, National Director and PAD Coordinator Charlotte

Silversteen with Anne Marie, Mary Margaret and Terri led specific program items and shared in the overall presentations and discussions.

Offering an opportunity for training and inter-relation between the province officers working directly with the collegians and those whose responsibilities are primarily in alumnae activities, the session was a rewarding experience in learning about Delta Zeta and in continuing to build and strengthen the bonds of sisterhood in a growing national organization.

Carol Harper Receives ΠKΦ Certificate of Appreciation

Carol Sharpe Harper, Louisville-BΓ and Province XX Alumnae Director (Kentucky) recently received a Certificate of Appreciation from Pi Kappa Phi fraternity for "loyalty and service" over a period of years.

Making this presentation was C. Barret Birnsteel, senior vice president of Liberty National Bank and Trust Company of Louisville and advisor to the newly recolonized chapter of Pi Kappa Phi at the University of Louisville.

Back in the early 1960's Carol and her husband Spencer, ΠKΦ worked with a revitalization effort for his fraternity which proved very successful and Barret Birnsteel was one of that group.

Later (in the mid-60's) the chapter was closed because of adverse campus conditions and the general anti-fraternity feeling which prevailed on many campuses. However, within this last year Pi Kappa Phi again became a part of the Louisville scene and both Carol and Spencer worked on this major effort. In the interim periods between, they worked to keep chapter members in touch with one an-

other.

Interesting too is the fact that both chapters at the University of Louis-

ville are the Beta Gamma chapter, Carol's Delta Zeta, and Spencer's Pi Kappa Phi.



Carol Sharpe Harper with a "certificate of appreciation" presented by Pi Kappa Phi's C. Barrett Birnsteel.

Spring Province Weekends and State Days

Province V-Ohio
April 16, 1983
Wittenberg University
Springfield, OH 45504
Contact: Lois R. Nesgoda, PAD

Province VI-Michigan
April 9, 1983

Province VII-Indiana
February 12, 1983
Valle Vista Country Club
Indianapolis, IN

Contact: Mrs. Betty Dukes
4125 Alberta Street
Indianapolis, IN 46222

Province XIII-Minnesota,
North Dakota, South Dakota
April 8-10, 1983
St. Cloud State University

St. Cloud, MN
Contact: Miss Penny Johnson
427 7th Avenue S.
St. Cloud, MN 56301

Province XV-C-Northern California
and Northern Nevada
March 5-6, 1983
San Jose State University
Contact: Ruth Behnke, PAD

Province XVI-Oklahoma
April 15-16, 1983
Lincoln Plaza Inn
Oklahoma City, OK
Hostesses: Edmond Alumnae and
CSU-EY chapters

Contact: Doris Sandoz, PAD

Province XVII-Texas
"Deep in the Heart of Texas"

February 26-27, 1983
Marriott Hotel
Austin, TX
Contact: Annette Nall, PAD

Province XIX-Tennessee
April 16, 1983
Holiday Inn, Briley Parkway
2400 Elm Hill Pk.
Nashville, TN 37214

Contact: Violet Anderson, PAD
or Clara Smith, PCD

Province XXIII-Alabama
April 16, 1983
Samford University
Birmingham, AL

Contact: Mrs. Jane DeStefano,
3748 Mountain View Lane
Birmingham, AL 35223

Meet LSU-Σ (continued)

the week is over, Delta Zeta has played football with many sororities, fraternities and even Baton Rouge businesses.

There is also "Dollar Day" when Delta Zetas go out on campus in force in an attempt to get every LSU student to donate a dollar to MD. Last year, Sigma even sponsored a dating game, featuring such celebrity bachelors as LSU quarterback Alan Risher and one of the LSU cheerleaders, among others. A few Delta Zetas and girls from other sororities were chosen to be bachelorettes. The celebrity bachelors chose their dream dates from these girls. Last fall, Sigma received second place for raising money for MD on campus and is shooting for first this year.

Spring is filled with many activities also. A major event is Songfest, sorority and fraternity group competition of song and dance. This year, Sigma chapter and Kappa Alpha Theta are pairing off in the first duo sorority team in Songfest history. Many hours of hard work are involved in putting

on this spectacular show.

Jam Jam, short for Jambalaya Jamboree, is a week-long Cajun Festival which includes campus-wide competition in Cajun dancing and games. On the final day, groups get together and perform skits with Cajun themes and sell Cajun food like crawfish etouffee, boudin, and jambalaya. Last spring, Delta Zeta and Delta Tau Delta Fraternity teamed up to win third place in the Cajun Dance competition, second in Entertainment and Concession, and third overall on campus.

Other highlights of the spring semester include formal presentation of the new initiates, Rose Formal, Tahiti Sweetie (a Hawaiian theme party), and the grub party, a casual dance.

The school year comes to a close with the senior banquet where graduating Sigmas are presented with farewell gifts. Here, the chapter can say goodbye to those graduates and wish them well. The returning girls can look forward to another year of fun and togetherness with their sisters.



Buses deliver new pledges to various sorority houses following Bid House at LSU. Here Rush chairman Missy Haydel and Peggy Chafin greet new pledge Carla Ledet, right.

Memorial Scholarship

A nursing scholarship is being established at Northern Michigan University in memory of Susan R. Fradette (NMU-ZΩ) who was killed in a car accident in September, 1982. Zeta Omega alumnae who wish to contribute toward the scholarship can send their donations to Developmental Fund, c/o Mr. Joe Shehen, Cohodas Building, NMU, Marquette, MI 49855. Checks should be made out to NMU Developmental Fund, memorial for Susan Fradette.

Fairfield County Alumnae Panhellenic Scholarship



Pictured receiving the Fairfield County Panhellenic scholarship is Ellen Greenwood, Rhode Island-BA, third from the left. With her are Karen K. Manuel, alumnae president; Pamela Bartholutti Libertiny (Kentucky-AΘ), ΔΖ Panhellenic delegate and Mrs. Ethel Mae Bishop Gullette, treasurer of the alumnae chapter and our newly named Woman of the Year.

The Fairfield County Panhellenic Association has awarded its 1982 \$500 scholarship this year to Miss Ellen Greenwood, daughter of Mr. & Mrs. Richard F. Greenwood of Trumbull, CT. Ellen will be a senior at the University of Rhode Island majoring in Journalism. She is a member of the Beta Alpha chapter of Delta Zeta and currently is the president of the University of Rhode Island Panhellenic Association. Past and present activities include: Panhellenic representative and member of Beta Alpha's executive board, member of Beta Alpha's standards committee, reporter for the school newspaper, newscaster for the school radio, story writer for the yearbook and member of URI's Alternatives for Hazing Committee.

The scholarship, established for Fairfield County, Connecticut, residents and offered for the first time in 1979, will make available another \$500 grant in 1983. The scholarship is being offered by the Fairfield County Panhellenic Association which each year sets aside part of its fund raising money for this purpose. Applicants must now be in their sophomore or junior year and be active members of a National Panhellenic Conference sorority.



Mary Broadbent Platz (Indiana-E), president and Carol Sherman Mathis (Western IL-EO) proudly display the "Apple from the Teacher Award" to the St. Petersburg alumnae chapter at their summer luncheon. The award, presented in May by the Pinellas Classroom Teachers Association, was in appreciation for over one hundred volunteer hours by members of the chapter at the Deaf Education Center at Cross Bayou Elementary School in St. Pete.

Honolulu Alumnae Help Gallaudet Student

*by Hildegard Hiller Owen, UCLA-AX
LAMP Editor, Honolulu Alumnae
Chapter*

Over the past decade, Honolulu Delta Zeta alumnae have raised funds yearly for philanthropy. The major fund raiser is the annual Christmas auction, where donated baked goods and other handicrafts are sold to members and friends.

This year the group awarded a \$400 scholarship to Ronald M. Lake, a hearing-handicapped student from Hawaii attending Gallaudet College this fall.

Ron graduated with honors from Castle High School in the upper fifteen percent of his class. He went on to Kapiolani Community College, where he maintained a B average with little special training. His classmates took notes for him, and he developed good oral skills.

Ron is active within the deaf community. He participated in the Big-Little Brother program, worked at a California summer camp for the deaf and initiated a chapter of the Junior

National Association of the Deaf in Hawaii. He is a Certified Occupational Therapy Assistant, taught signing in the community college system and also a recreational course for the adolescent deaf.

Ron will major in psychology at Gallaudet, and hopes to go on for his master's degree. Upon completing his education he will return to Hawaii to work with the deaf population. He would like to assist the hearing-handicapped attain greater self-sufficiency and thus contribute more toward themselves and their community.

In awarding this scholarship to this determined and hardworking young man, the Honolulu alumnae chapter felt they were helping not only Ronald M. Lake, but, through him, perhaps many generations of hearing-handicapped in Hawaii.

Founders Memorial Foundation

Listed are those who have made contributions to the Founders Memorial Foundation from March, 1982 through August, 1982.

PROVINCE I

University of Connecticut - ΓΒ
University of New Hampshire - ΘΓ
Fairfield County Alumnae Chapter

PROVINCE III

University of Pittsburgh-O
House Corporation
Martha Grigsby Davis
Edith McCollister

PROVINCE IV

Glenville State College - ΘΞ
Shepherd College - ΚΜ
Fairmont Alumnae Chapter

PROVINCE V

Miami University - Α
Baldwin Wallace College - ΓΑ (*in memory of Sally Stahl Beach, ΓΑ*)
Bowling Green State University - ΓΤ
Ohio Northern University - ΖΚ
Canton-Massillon Alumnae Chapter
Daylighters of Columbus Alumnae Chapter (*in memory of Mary Zaring, Θ*)
Dayton Alumnae Chapter (*in memory of Julia Butts Newcomb*)
Findlay Alumnae Chapter
Norma M. Andrisek (*in memory of Sally Stahl Beach, ΓΑ*)
Mary Lou Barth, Brace Miller, Mary Louise Nelson, Thelma Noe, Cele Oberer, Helen Powell, Margaret Rummel, Marjorie Williamson (*in memory of Mary Lou Holycross*)

PROVINCE VI

Central Michigan University - ΓΦ
Saginaw Alumnae Chapter (*in memory of Kay Ritter Fassezke - ΓΨ*)

PROVINCE VII

Columbus Alumnae Chapter (*in memory of Ernestine Adams Fisher*)
Indianapolis Alumnae Chapter
David and Linda Guipe (*in memory of Pauline M. Masson, ΑΝ*)
Catherine V. Winchester (*in memory of Pauline M. Masson, ΑΝ*)

PROVINCE IX

University of Illinois - ΑΒ
Eastern Illinois University - ΓΝ
DePaul University - ΘΘ
Bloomington - Normal Alumnae Chapter

PROVINCE X

Iowa City Alumnae Chapter

PROVINCE XI

Northwest Missouri State University-EP
Greater Kansas City Alumnae Chapter

PROVINCE XII

Ft. Hays State University - ΔΩ
Lawrence Alumnae Chapter
Manhattan Alumnae Chapter (*in memory of Margurite Haege*)
Helen Kingham Miller (*in memory of Pauline Masson, ΑΝ*)
Lincoln Alumnae Chapter
Omaha Alumnae Chapter
Omaha Alumnae Chapter (*in memory of Elsie Haberg Adams, Ζ*)

PROVINCE XIV

Denver Alumnae Chapter
Phoenix Alumnae Chapter (*in memory of Gladys Marie Webb, ΒΚ*)

PROVINCE XV

University of Nevada, Las Vegas - ΙΦ
Delta Zeta Lamplighters of Southern California
Long Beach Alumnae Chapter (*in memory of George Harris, husband of chapter president, Diane Harris*)
Pasadena-Foothills Alumnae Chapter (*in memory of Dorothy Painter Truesdale*)
Whittier-West Covina Alumnae Chapter
San Fernando Valley Alumnae Chapter
Mr. and Mrs. Thomas Matter (*in memory of Pauline Howard Masson, ΑΝ*)
Portland Alumnae Chapter (*in memory of Margaret V. Hintzen*)
Portland Alumnae Chapter (*in memory of Frances Hicks*)
Portland Alumnae Chapter
Portland Alumnae Chapter (*in memory of Grace L. Russell*)
Portland Alumnae Chapter (*in memory of Gertrude B. Matheson, Ω*)
Portland Alumnae Chapter (*in memory of Helen Currie Alm, X and husband Frank Alm*)
Portland Alumnae Chapter (*in memory of Winifred Sigurdson*)
Portland Alumnae Chapter (*in memory of Dorothy Billington Leland, Ω*)

PROVINCE XVII

Texas A & M University - ΑΞ
Austin Alumnae Chapter (*in memory of the Rev. Edwin C. Calhoun*)
Houston Alumnae Chapter (*in memory of the Rev. Edwin C. Calhoun*)
Houston Alumnae Chapter (*in*

memory of Alma Wood Rust, ΑΤ)
Houston Mothers Club (*in memory of Carole Jones Sharpe, ΑΤ*)
San Antonio Alumnae Chapter (*in memory of the Rev. Edwin C. Calhoun given by Marian Parmley, Ann Holloway, Mickey Holland*)
Amy Glasgow (*in honor of Vera Strum Wolford, Α*)
Mary Margaret Fore (*in memory of Stella Cash Bell, University of Oklahoma*)
Edna Ponder (*in memory of Stella Cash Bell, University of Oklahoma*)

PROVINCE XVIII

Nicholls State University - ΚΑ
Mrs. J. Wilson Lepine (*in memory of Mrs. Irving Lengendre and Mrs. Vermelle H. Marks*)

PROVINCE XIX

Middle Tennessee State University - ΙΙ

PROVINCE XXII

Mrs. Faye Hutson Martin (*in memory of Mrs. Jo Hammond*)

PROVINCE XXIII

Auburn University at Montgomery - ΑΝ
Huntsville Alumnae Chapter
Frances Pickman Lewis (*in memory of Frances McDaniel Tillotson, ΓΙ*)

PROVINCE XXIV

Florida Gold Coast Alumnae Chapter (*in memory of Mrs. Clark, Pat Beatty's Grandmother*)
St. Petersburg Alumnae Chapter (*in memory of Edith Kendrick, ΑΚ*)
Tampa Alumnae Chapter (*in memory of Charles E. Appleton, husband of Mary Louise Leimgurber Appleton*)
Margaret M. LeFebvre (*in memory of Joan Tea Weaver, Γ*)
Maxine McGoff (*in memory of Pauline Howard Masson, ΑΝ*)



Fort Walton Beach, FL area alumnae honored Mrs. Sarah Hoover Davis, Samford-ΑΠ and Mrs. Lona Cathey Almond, Alabama-ΑΓ for 50-year membership in Delta Zeta.

Flame Eternal

ALPHA

Barbara Bland Williams '51

BETA

Cecilia Hardy Schliepper '15

DELTA

Edith Fox Smith '14
Edith Howard Young '22

EPSILON

Margaret Rowand Ludwig '26

ZETA

Elsie Hoberg Adams '18
Ruth Bobst Clifford '31

ETA

Chelsea Funnell Slingsby '22

THETA

Evelyn King Harris '39
Margery Steiner Headington '29
Barbara Caldwell Telford '69

IOTA

Gertrude Owen Solberg '21
Kathleen King Toms '30

KAPPA

Vieno Salo Hupp '31

LAMBDA

Louise Logan Eagle '20

MU

Helen Irvine Carlson '29
Jenesse Van Dyke Farry '25
Billie Brown Pape '31

OMICRON

Elizabeth Austen Nichols '22
Harriet Nemon Tomaska '29
Aneitha Hughes Wahl '29

PI

Margaret DeVol Florea '27
Edith May Scott '23

SIGMA

Gertie Arbour McNeely '37
Helen Brock Purser '34
Dorothy Brock Ryland '37

UPSILON

Eleanore Gustava Fladeland '31

PHI

Martha Fries Anderson '33
Irene Larsen Henderson '25

CHI

Georgia English '27
Rena LaTourette Sater '20

PSI

Ernestinne Unversaw Fisher '21

OMEGA

Belle Chatburn Liddell '24
Gertrude Smith Matheson '24

ALPHA BETA

Florence Lackey Buckmaster '29
Ruth Elizabeth Burley '26
Julia Kappus McCabe '25
Laura Moss Reistrup '27
Gervaise Kappus Steffen '29

ALPHA ZETA

Frances Firman Whitaker '35

ALPHA IOTA

Louise C. Koffel '35
Betty Spear Moffitt '26

ALPHA KAPPA

Edith Morton Kendrick '27

ALPHA NU

Pauline Howard Masson '30

ALPHA PI

Bernice Bellsnyder Goodwin '37
Nellie Freeman Risley '28

ALPHA SIGMA

Margery Jones Fouraker '38

ALPHA TAU

Helen Buckley Peters '32
Carol Jones Sharpe '62

ALPHA PHI

Alpha Marsh Cady '29

ALPHA CHI

Annis Flintzer Vogel '41

ALPHA OMEGA

Oneita Winstead Dalsheimer '33

BETA GAMMA

Agnes Jungermann Desmond '39

BETA DELTA

Karen Marie Lee '79

BETA ZETA

Priscilla Nore Barber

BETA ETA

Lucile Montgomery Churchill '34

BETA RHO

Anne Hess Bolls '48

BETA TAU

Lois Connor Ault '38

GAMMA BETA

Barbara Linton Dorval '62

GAMMA DELTA

Ursula Martha Leunis '57

GAMMA KAPPA

Mary Bootman Fodor '58

GAMMA PI

Myrtle Marie Powers '25

GAMMA SIGMA

Joanne Carole Corwin '71

GAMMA CHI

Callie Pressnall Folger '29
Margaret Mills Reynard '25
Osa Woodring Smith '26

DELTA ETA

Mary Ellen Stallard '58

DELTA KAPPA

Nancy Bernard Weiler '66

DELTA PI

Marilyn Ross Van Hooser '58

DELTA UPSILON

Louise Lewis Brubeck '38

DELTA OMEGA

Dixie Badgwell Roberson '55

EPSILON EPSILON

Anna Adkinson Huggins '40

EPSILON LAMBDA

Barbara Allen Roush '51

ZETA OMEGA

Susan Renee Fradette '79

THETA CHI

Adrienne Monica Randik '66

Bessie Brown Akin - University of
Oklahoma

Stella Cash Bell - University of Oklahoma
'25

Ruth Tinkham Schwenn - Ripon '26

CALLIE FOLGER, Former Office Manager November 25, 1906 - August 7, 1982

Callie Presnall Folger became Delta Zeta's Acting Executive Secretary following Irene Boughton's retirement in 1966. For many years, as bookkeeper and assistant to Irene, she gave devoted and loyal service to Delta Zeta. Her many years of experience and knowledge of our sorority qualified her for this position.

She will be remembered by her many friends in Delta Zeta and by the officers and chapters with whom she worked.

Because of her many friends in Delta Zeta and her awareness of our ideals and goals, she was initiated by Gamma Chi (Ball State University) chapter in April of 1967. Callie resigned in 1969 to assist her husband with his retirement plans. She is survived by her husband, Walter Folger, 222 Alsace Avenue, Venice, FL 33595.

The pride of Delta Zeta membership lasted Callie the rest of her life. We who knew and worked with her will always appreciate her sincerity and loyalty.

by Violet Sharratt Whitfield
Past National President

Delta Zeta Directory

NATIONAL COUNCIL

President: Carolyn B. Gullatt (Mrs. John), 4008 Hyridge, Austin, TX 78759
Vice President of Membership: Debbie M. Bruce (Mrs. Bill), 5008 NW 62nd Street, Oklahoma City, OK 73122
Vice President Alumnae Affairs: Mary Margaret C. Fore (Mrs. Sam), 459 Summit Circle, Fredericksburg, TX 78624
Vice President Collegiate Affairs: Dwayla F. Porter (Mrs. Arthur), 1121 Osage Drive, Stillwater, OK 74074
Secretary: Dianne F. Guild (Mrs. Douglas), 16 Andrews Drive South, Burlington, VT 05401
Treasurer: Anne Marie J. Gavin (Mrs. William), 3264 Swan Drive, Vineland, NJ 08360
Director: Isabel (Terri) J. Severy (Mrs. Raymond), 2127 Northampton Way, Lansing, MI 48912
Director: Lucile C. Cooks (Mrs. Rudolf), 1936 Dolphin Blvd., South, St. Petersburg, FL 33707
Director: Charlotte F. Silversteen (Mrs. Allan), 513 Toll Road, Orelan, PA 19075
Director: Sarah Jane S. Houston (Mrs. Harold), 3358 Ramblewood Place, Sarasota, FL 33577
Past National President: Norma M. Andrisek (Mrs. J. R.), 319 Janice Drive, Berea, OH 44017
National Panhellenic Conference Delegate: Dwayla F. Porter (Mrs. Arthur). **Alternates:** Carolyn B. Gullatt (Mrs. John), Norma M. Andrisek (Mrs. J. R.)

NATIONAL HEADQUARTERS

Delta Zeta National Headquarters: Suite 600, 21 E. State Street, Columbus, OH 43215
Delta Zeta Subscriptions (Collegiate & Alumnae): Box 24145, Columbus, OH 43224
National Field Representatives: Ann Leine, Terry McNeer, Nancy Walker, Jill Banks, Diane Krause, Linda Regner, Jeanine Petersen

THE LAMP

Gwen M. McKeeman (Mrs. Robert L.), 5517 S. 74th E. Avenue, Tulsa, OK 74145

EXTENSION

Norma M. Andrisek (Mrs. J. R.), 319 Janice Drive, Berea, OH 44017

FOUNDERS MEMORIAL FOUNDATION

President: Mary Lou M. Barth (Mrs. William), 1662 Villa South Drive, West Carrollton, OH 45449
Secretary: Sarah Jane S. Houston (Mrs. Harold), 3358 Ramblewood Place, Sarasota, FL 33577
Treasurer: Shirlyn Chaffin (Miss), 6561 Santa Cruz Place, Reynoldsburg, OH 43068
At large: Arlene Newman (Miss), 40 Crestwood, Houston, TX 77007
Betty Paul Dewitt (Mrs. Norman), 23630 Oakrest Lane, Harbor City, CA 90710

PROVINCE COLLEGIATE AND ALUMNAE DIRECTORS

I. Maine, Vermont, New Hampshire, Massachusetts, Connecticut and Rhode Island

PCD: Angela P. Shipman (Mrs. John), 8 Bayberry Lane, Exeter, NH 03833
PAD: Gay T. Rose (Mrs. Jack), 124 Roxbury Road, Niantic, CT 06357

II. New York and New Jersey

PCD: Donna S. Stipek (Mrs. John), 752 Forest Edge Drive, East Amherst, NY 14051
PAD: Amy F. Curry (Mrs. James), 338 Marvin Ave., Hackensack, NJ 07601

III. Pennsylvania and Delaware

PCD: Phyllis S. Favorite (Mrs. Robert), 570 Lancashire Lane, State College, PA 16801
Acting PAD: Charlotte F. Silversteen (Mrs. Allan), 513 Toll Rd., Orelan, PA 19075

IV. West Virginia

PCD: Sherry H. Miller (Mrs. William), 2609 Jefferson, Pt. Pleasant, WV 25550
Acting PAD: Charlotte F. Silversteen (Mrs. Allan), 513 Toll Road, Orelan, PA 19075

V. Ohio

PCD: Lynnda W. Hoefler (Mrs. Robert), 1287 Denise Drive, Kent, OH 44240
PAD: Lois R. Nesgoda (Mrs. Leonard), 5652 Alberta Dr., Lyndhurst, OH 44124

VI. Michigan

PCD: Isabel (Terri) Severy (Mrs. Raymond), 2127 Northampton Way, Lansing, MI 48912
PAD: Pamela M. Cronenwett (Mrs. William), 25720 W. Hills Dr., Dearborn Heights, MI 48125

NATIONAL HISTORICAL MUSEUM BOARD OF TRUSTEES

President: Lucile C. Cooks (Mrs. Rudolf), 1936 Dolphin Blvd. South, St. Petersburg, FL 33707
Trustees: Norma M. Andrisek, Carolyn B. Gullatt, Florence Hood Miner, Aurel F. Ostendorf, Doris E. Riede, Dr. Elizabeth Rogers, Mary Lou R. Vineyard, Betsy B. Leach

STANDING COMMITTEES

Colonnade Club: Florence H. Miner (Mrs. Arthur), 1040 H. Avenue, Nevada, IA 50201
Constitution and Procedure: Lisbeth I. Francis (Mrs. Robert), 2508 Belle Terre Drive, Birmingham, AL 35226
Finance: Anne Marie J. Gavin, chairman, Lucile C. Cooks, Mary Margaret C. Fore, Norma M. Andrisek and Carolyn B. Gullatt, ex officio.
History: Grace M. Lundy (Mrs. H. M.), 3207 N. 25th St., Phoenix, AZ 85016
Ritual: Karen Kind Manuel (Mrs.), 36 Rilling Ridge Road, New Canaan, CT 06840

COMMITTEES

Activities/Social (Collegiate): Malissa W. Hawkins (Mrs. William), 409 Camperdown Way, Greenville, SC 29601
Alumnae Relations: Christa Chaussee (Ms.), 211 S. Pleasant Ave., Ridgewood, NJ 07450
Awards (Collegiate & Alumnae): Marcia E. Humpal (Mrs. David), 26798 Mangrove Lane, Olmsted Falls, OH 44138
Housing: Ruth H. Horton (Mrs. Frank C.), 2742 Washington Blvd., Huntington, WV 25705
Newsletter (Collegiate & Alumnae): Patricia H. Pelkofer (Mrs. C.G.), 252 South Winebidle St., Pittsburgh, PA 15224
Philanthropy (Collegiate): Joan D. Lowry (Mrs. Bob-Bill), 578 Yarmouth Lane, Bay Village, OH 44140
Philanthropy (Alumnae): Priscilla (Pat) Beatty (Miss), 3691 NW 95th Terrace, Apt. 1202, Sunrise, FL 33321
Programs (Alumnae): Sherrie C. Loader (Mrs. Charles), 565 Church, Portland, MI 48875
References: Marianne M. Cravens (Mrs. Scott), 4455 Hollyhock Street, Ft. Collins, CO 80526
Rose Shop Chairman: Karen F. Soyk (Mrs. Lon), 31033 38th Ave., South, Auburn, WA 98002
Scholarship (Collegiate): Margaret S. Grosse (Mrs. Robert), 21 Terrace-Walk, Berkeley, CA 94707
Elizabeth Coulter Stephenson Scholarships (Collegiate): Sarah Jane S. Houston (Mrs. Harold), 3358 Ramblewood Place, Sarasota, FL 33577
Sorority Education Chairman: Ellen K. Jenkins (Mrs. Paul L.), 1101 Ramblin Ct., Greenwood, IN 46142
Standards: Lee M. Rodekohr (Mrs. Larry), 901 Platte Avenue, Cheyenne, WY 82001
National Rush Committee Members: Marvona E. Tavlin (Mrs. Michael), 7411 Briarhurst Circle, Lincoln, NE 68506
Susan A. Skambis (Mrs. Christopher), 230 W. Lake Sue Avenue, Winter Park, FL 32789

VII. Indiana

PCD: Beth Melton (Miss), 966 Varsity Drive, Evansville, IN 47712
PAD: Gelaine L. Smock (Mrs. Steven), 9561 E. Southport Road, Indianapolis, IN 46259

VIII. Wisconsin

PCD: Sandi Betz (Miss), 3011 Agnes St., Eau Claire, WI 54701
PAD: Kay M. Wright (Mrs. Terry), 10477 Juan Calle, Des Moines, IA 50322

IX. Illinois

PCD: Gail E. McKee (Mrs. Don), 776 10th Street, Charleston, IL 61920
Acting PAD: Charlotte F. Silversteen (Mrs. Allan), 513 Toll Road, Orelan, PA 19075

X. Iowa

PCD: Janet E. Havener (Mrs. Gary), 4343 N. Sheridan Ave., Loveland, CO 80537
PAD: Kay M. Wright (Mrs. Terry), 10477 Juan Calle, Des Moines, IA 50322

XI. Missouri

PCD: Cherine Heckman (Miss), 214 West 1st, Apt. 11, Maryville, MO 64468
PAD: Eileen H. Doe (Mrs. Larry), 2 Locust, St. Louis, MO 63031

XII. Kansas, Nebraska and the collegiate chapters of Colorado

PCD: Janet E. Havener (Mrs. Gary), 4343 N. Sheridan Ave., Loveland, CO 80537
PAD: Carolyn M. Woodling (Mrs. Charles), 3112 Creekwood, Lawrence, KS 66044

XIII. Minnesota, North Dakota and South Dakota

PCD: Jeri S. Weigand (Mrs. Gregg), 549 19th Avenue, North, South St. Paul, MN 55075

PAD: Sylvia L. Kafkas (Mrs. John), 3505 Humboldt Ave., South, Minneapolis, MN 55408

XIV. Colorado, Wyoming, Utah, Arizona, New Mexico (ALUMNAE CHAPTERS ONLY)

PAD: Mary Jo H. Messlin (Mrs. Carl), 2998 S. Akron Court, Denver, CO 80231

XV. SOUTH Southern California, Southern Nevada and Hawaii

PCD: Karen M. Dessel (Mrs. Tom), 2015 Studebaker Road, Long Beach, CA 90815

PAD: Elizabeth B. Bragg (Mrs. Lawrence), 2972 Leopold Ave., Hacienda Heights, CA 91745

XV. CENTRAL Northern California and Northern Nevada

PCD: Janet K. Tener (Mrs. Ralph), 30 A Heather, San Francisco, CA 94114

PAD: Ruth R. Behnke (Mrs. Albert), 2241 Sacramento St., San Francisco, CA 94115

XV. NORTH Oregon, Washington, Montana, Idaho and Alaska

PAD: Helga K. Clark (Mrs. William), 4866 123rd Place S.E., Bellevue, WA 98006

XVI. Oklahoma

PCD: Donna S. Brooks (Mrs. Mike), 241 West Durham Street, Broken Arrow, OK 74012

PAD: Doris W. Sandoz (Mrs. N. O.), 624 SW 51st St., Oklahoma City, OK 73109

XVII. Texas and the collegiate chapters of New Mexico

PCD: Merry W. Adamcik (Mrs. Roy), 6222 Ariel, Houston, TX 77074

PAD: Annette F. Nall (Mrs. Garry), Box 136, WT Station, Canyon, TX 79015

XVIII. Louisiana and Mississippi

PCD: Jean F. Person (Mrs. John D.), 4808 Craig Ave., Kenner, LA 70062

PAD: Lizetta M. Frederick (Ms.), 3208 E. Lafouche Ct., Kenner, LA 70062

XIX. Tennessee

PCD: Clara S. Smith (Mrs. Dale), 605 Netherland Dr., Hermitage, TN 37076

PAD: Violet H. Anderson (Mrs. Charles A.), 102 Blue Hills Ct., Nashville, TN 37214

XX. Kentucky

PCD: Jennifer Plenge (Ms.), 904 Dana Marie Drive, Louisville, KY 40223

PAD: Carol S. Harper (Mrs. Spencer E., Jr.), 3309 Green Hill Lane, Louisville, KY 40207

XXI. North Carolina and South Carolina

PCD: Sondra G. Bass (Mrs. J. Albert, Jr.), 6425 Chapman Court, Raleigh, NC 27612

PAD: Patricia M. Tector (Mrs. John), 907 Winslow Court, Cary, NC 27511

XXII. Georgia

PCD: Patricia C. Rosser (Mrs. David), 1609 Indian Rks. Road, Clearwater, FL 33516

PAD: In care of National Vice President Alumnae Affairs

XXIII. Alabama

PCD: Sandra M. Nesbitt (Mrs. Milton), 241 Landmark Dr., Montgomery, AL 36117

PAD: Lassie Jo R. Simms (Mrs. Jack), 208 Willow Creek Rd., Auburn, AL 36830

XXIV. Florida

PCD: Patricia C. Rosser (Mrs. David), 1609 Indian Rks. Rd., Clearwater, FL 33515

PAD: Susan Mease (Miss), 2095 Sunset Point Road, #2405, Clearwater, FL 33515

XXV. Virginia, Maryland, Washington, D.C.

PCD: Mary E. McAuliffe (Miss), 11462 Orchard Lane, Reston, VA 22090

PAD: Gail L. Verley (Mrs. William), 3079 South Buchanan St., Apt. 2C, Arlington, VA 22206

XXVI. Arkansas

PCD: Jacqueline M. Gardner (Mrs. Richard, Jr.), P. O. Box 2034, Russellville, AR 72801

PAD: In care of National Vice President Alumnae Affairs

State Reference Chairmen

ALABAMA: Miss Madge Sorrell, Route 1, Pike Road, AL 36064 **ALASKA:** Mrs. Craig Valentine, 3838 W. Minster Way, Anchorage, AK 99504 **ARIZONA:** Miss Margaret Poe, 4720 West Rose Lane, Glendale, AZ 85301 **ARKANSAS:** Mrs. Jerry Evans, Rt. #2, Box 370, Russellville, AR 72801 **CALIFORNIA (N):** Mrs. Walter Burde, 24685 Camino del Monte, Carmel, CA 93923 **CALIFORNIA (S):** Mrs. Tom Savage, 5102 Woodwind Lane, Anaheim, CA 92807 **COLORADO:** Mrs. Lawrence Brase, Box 146, Calhan, CO 80808 **CONNECTICUT:** Mrs. Edward Gill, 53 High Point Rd., Westport, CT 06880 **DELAWARE:** In care of Mrs. Scott Cravens, 4455 Hollyhock Street, Ft. Collins, CO 80520 **DISTRICT OF COLUMBIA:** Miss Pat Dansbury, 1722 19th St. NW #501, Washington, D.C. 20009 **FLORIDA:** Mrs. Charles E. Helton, 1601 Berkshire Ave., Winter Park, FL 32789 **GEORGIA:** Mrs. William Carroll, 1518 1/2 Heath Street, Augusta, GA 30904 **HAWAII:** Mrs. Albert Solomon, Jr., 208 Seaside Towers, 485 Seaside Ave., Honolulu, HI 96815 **IDAHO:** Mrs. W. L. Lundquist, 1004 S. Logan, Moscow, ID 83843 **ILLINOIS:** Miss Terry Mellen, RR 1, Coal City, IL 60416 **INDIANA:** Mrs. Roger L. Davies, 812 S. 5th St., Terre Haute, IN 47807 **IOWA:** Mrs. Tim Bornholtz, 3601 Lafayette, Sioux City, IA 51104 **KANSAS:** Mrs. Richard Furman, 4017 W. 68th Terrace, Prairie Village, KS 66208 **KENTUCKY:** Mrs. Stephen Plenge, Rt. 5, Cedar Grove Rd., Shepherdsville, KY 40165 **LOUISIANA:** Mrs. Jimmy Mathes, 12538 Sherbrook Dr., Baton Rouge, LA 70815 **MAINE:** Mrs. Nelson L. Smith, R.R. 2, Box 505A, Yarmouth, ME 04096 **MARYLAND:** Miss Pat Dansbury, 1722 19th St. NW #501, Washington, D.C. 20009 **MASSACHUSETTS:** Miss Mary Davis, 25 Bayberry Circle, Millis, MA 02054 **MICHIGAN:** Mrs. Bruce Miller, 2476 Sharma Lane, Howell, MI 48843 **MINNESOTA:** Miss Grace Dollohan, 4040 15th Ave. S. Apt. 1, Minneapolis, MN 55407 **MISSISSIPPI:** Mrs. James McLeod, Rt. 3, Box 433, Brandon, MS 39042 **MISSOURI:** Miss Mechaela Kerns, 10540 Washington #304, Kansas City, MO 64114 **MONTANA:** Miss Jackley Meyers, 343 W. Lawrence, #4, Helena, MT 59601 **NEBRASKA:** Miss Carole Sorensen, 3027 W. Capital Ave., #26, Grand Island, NE 68801 **NEVADA:** Miss Lori Figgins, 647 Peppertree Circle, Henderson, NV 89015 **NEW HAMPSHIRE:** Miss Karen Macriganis, Box 296, Laconia, NH 03246 **NEW JERSEY:** Miss Debra Bass, 357 Shea Dr., New Milford, NJ 07646 **NEW MEXICO:** Mrs. Donald Longenecker, 1417 W. 8th Street, Silver City, NM 88061 **NEW YORK:** Miss Mary Sims, 95 Ball Road-High Acres, Syracuse, NY 13215 **NORTH CAROLINA:** Mrs. Gary Leedham, 4414 Woods End Lane, Matthews, NC 28105 **NORTH DAKOTA:** Mrs. Owen Anderson, 816 N. 39th St., Grand Forks, ND 58201 **OHIO:** Mrs. Bruce Bailey, 541 Willard Rd., Aurora, OH 44202 **OKLAHOMA:** Mrs. C. B. Purdum, Rt. #1, Box 147, Dewey, OK 74029 **OREGON:** Mrs. W. B. Hamilton, 12601 S.E. Market, Portland, OR 97233 **PENNSYLVANIA:** Miss Debbie Fries, 904 N. 20th St., Apt. C, Allentown, PA 18104 **RHODE ISLAND:** Mrs. William Boynton, 63 Benefit Street, Warwick, RI 02886 **SOUTH CAROLINA:** Mrs. David Parsell, 2 Kingsbury Rd, Rt. 9, Greenville, SC 29609 **SOUTH DAKOTA:** Mrs. Richard Huffman, Jr., 1535 S. State St., Aberdeen, SD 57401 **TENNESSEE:** Mrs. Wallace Gary, 1347 Greendale Ave., Memphis, TN 38127 **TEXAS:** Mrs. Jerry Hawkins, 324 Pine St., Lake Jackson, TX 77566 **UTAH:** Mrs. William Christensen, 1669 Yalecrest Ave., Salt Lake City, UT 84105 **VERMONT:** Mrs. David Hoefer, 22 Hillwinds, Brattleboro, VT 05301 **VIRGINIA:** Mrs. Leonard Sippel, 1109 Five Points Rd., Virginia Beach, VA 23454 **WASHINGTON:** Mrs. Lon Soyk, 31033 38th Avenue, South, Auburn, WA 98002 **WEST VIRGINIA:** Mrs. Robert Semder, 140 Meadow Dr., Scott Depot, WV 25560 **WISCONSIN:** Mrs. Paul Janssen, 3416 N. 86th St., Milwaukee, WI 53222 **WYOMING:** Mrs. William Frerichs, 3301 Alta Vista Drive, Laramie, WY 82070



*From
The
Lampwriter*

Diane Jones Skilton

Meryl Lin McKean

Virginia Gilbert

Shirley Hillis Nylor

LS

POSTMASTER: Send 3579 immediately to Delta Zeta Sorority, Suite 600, 21 E. State St., Columbus, OH 43215

Delta Zeta Sorority
21 E. State St. Suite 600
Columbus, OH 43215

Address Correction Requested

Non-Profit Org
U. S. Postage
PAID
Permit No. 13
Tulsa, OK