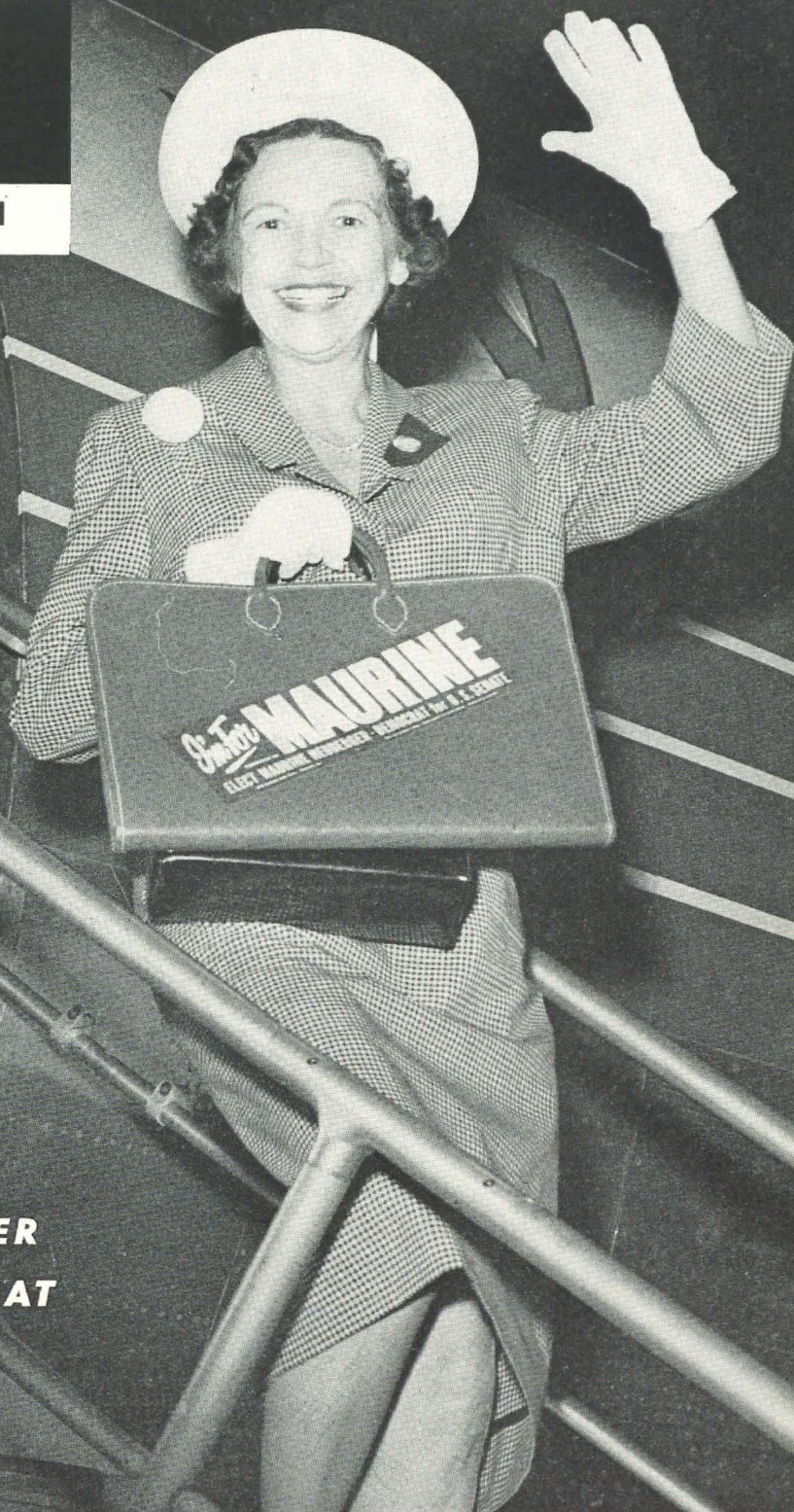


the LAMP

OF DELTA ZETA



WINTER 1960-61



**MAURINE NEUBERGER
WINS U.S. SENATE SEAT**

Inside . . .

How They Help Hard-of-Hearing in Detroit

page 4

More New Houses for Delta Zetas

page 10

Aviatrix Arlene Davis Breaks Sound Barrier

page 14

THE LAMP of Delta Zeta

JANET SMITH OTWELL, *Editor*

Staff: SUSAN BURGER, A A
College and Alumnae Editor
TONI MCGLONE, Δ Δ
Staff Artist

Writers: JOAN FLECK FINKLEA, Δ T; ANN FORKEL, A A; JUDITH GROVES, A A; JACKIE LAWSON, A A; JANE ANN MAXWELL, A T

- 1 Maurine Neuberger Elected to U.S. Senate
- 4 How They Help the Hard-of-Hearing in Detroit
by Helen E. R. Ditzhazy
- 7 Don't Say I Said Anything
by Wholly S. Wholly
- 8 Founders' Day Highlights
- 10 And Still More New Houses for Delta Zetas
- 14 In The Editorial Mailbox
- 15 Our Charming Flying Lady
by Olive Jenkins King
- 17 A Challenge to the Fraternity System
by Walter and Janet Weir
- 20 Gamma Alpha—One of Our Winningest Chapters
by Joy Springer
- 24 DZs in the Lamplight
- 26 Carville—Where Hope is High
- 29 News of Our Collegiate Chapters
- 38 Directory of Mothers' Clubs
- 39 Golden Flame Eternal
- 40 Directory

THE LAMP OF DELTA ZETA, official magazine of the sorority, is published four times a year in Autumn, Winter, Spring and Summer by George Banta Company, Inc., official printers to the sorority. \$2.00 per year. Life subscription \$25.00. Printed in U.S.A. Second class postage paid at Menasha, Wisconsin. Acceptance for mailing at special rate of postage provided for in section 1103, Act of October 3, 1917, authorized September 26, 1918.

Send all material for publication to Mrs. Ralph M. Otwell, 1234 Isabella St., Wilmette, Ill.; all changes of address and advertising information to Miss Irene C. Boughton, 3561 N. Pennsylvania St., Indianapolis 5, Indiana.

Summer issue will appear in August (copy deadline June 1), autumn issue will appear in November (copy deadline Sept. 1), winter issue will appear in February (copy deadline Dec. 1) and the spring issue will appear in May (copy deadline Mar. 1).

Copyright 1961 by Delta Zeta Sorority

POSTMASTER: Please send copies returned under labels form 3579 to Delta Zeta Sorority, 3561 N. Pennsylvania St., Indianapolis 5, Indiana. Return Postage Guaranteed.

On the Cover . . .
and Beyond

• • •

Delta Zetas can be very proud of their new Senator, Maurine Brown Neuberger of Omega chapter at the University of Oregon. Sen. Neuberger is pictured on the cover of this LAMP as she makes one of her numerous trips to Washington. Her story begins on the next page.

And not only have we had a Senator elected since the last LAMP came out, but another of our famous members has broken the sound barrier—not many an aviatrix can claim such a thing. The 1960 Woman of the Year, Arlene Davis, accomplished this feat just this past fall. For the story, see page 14.

DZ keeps building and building, and this LAMP has three new houses to show you—one at the University of Texas which is a pace setter among sorority houses all over the nation. The other two glamor houses are at the University of Wisconsin at White-water and the University of California at Santa Barbara. See page 10.

Help for others is a DZ trademark, and this issue brings you the story of a Detroit alumnae and collegiate combined "Adventure in Friendship" with the hard-of-hearing—on page 4—and a story about one of our National philanthropic projects, Carville, on page 26.

Wholly S. Wholly again makes his delightful appearance with laughs tucked in every line, so don't miss page 7.

Then for serious consideration, read the article reprinted from *The Fraternity Month*, beginning on page 17, entitled "A Challenge to the Fraternity System."

Gamma Alpha chapter, one of our "winningest" ones, tells its story beginning on page 20. They trundled home loaded with silver awards and certificates from the 1960 convention.

SENATOR MAURINE NEUBERGER spends the morning after the Nov. 8 election—in which she won a seat in the United States Senate—quietly cleaning house in her Portland, Oregon, home.



Maurine Neuberger Elected to U.S. Senate

The third woman ever to be elected to the United States Senate in the history of this country is Delta Zeta Maurine Brown Neuberger, now serving as Democratic Senator from Oregon.

She is one of two women Senators currently in the group of 100. The other is Sen. Margaret Chase Smith, Republican of Maine. Another woman, Hattie Carraway of Arkansas, was previously elected to the Senate.

Sen. Neuberger won the election easily from Elmo Smith, a former



MRS. NEUBERGER laughs happily over her Senate victory at a luncheon where she is seated with Senator Hubert Humphrey of Minnesota.

On the night of the election, as returns indicated her victory, Mrs. Neuberger flashes a winning smile as she spends the evening with friends.



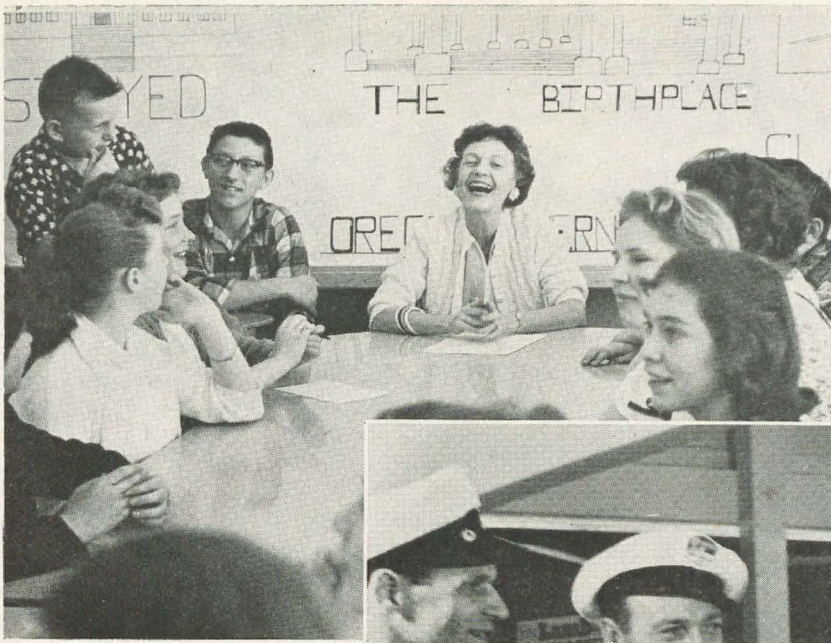
Oregon Governor, even though Richard Nixon carried Oregon's six electoral votes for the Republicans.

A member of Omega chapter at the University of Oregon, Sen. Neuberger has been an Oregonian all her life. She was educated in Oregon schools, then taught in them for some years before she married the late Sen. Richard L. Neuberger, who died last March of a cerebral hemorrhage. The Senate seat which Mrs. Neuberger now holds had been held by her husband for nearly six years.

However, she is very familiar with the Washington scene. During the nearly six years that her husband was Senator, Mrs. Neuberger was very close to the work that he did, even having a desk in his office and working there. "And she wasn't on the payroll, either," says a friend.

The Neuberger had both served in the Oregon State legislature, so vote-getting and campaigning were not exactly new to Mrs. Neuberger.

Shortly after her election, Mrs. Neuberger was given the appointment to represent the United States at the meeting in Paris of the Inter-Parliamentary Union. She stopped briefly in Washington to visit her new Senate office.



Above, Mrs. Neuberger, a former school teacher in Oregon before her marriage to the late Sen. Richard Neuberger, discusses with students how a bill becomes a law. At right, Mrs. Neuberger appears with delivery men at one of Oregon's grocery stores during the campaign.



In their special election supplemental issue, *Time* magazine had this to say about Mrs. Neuberger:

... "A phenomenal vote getter in her own right, trim, athletic Maurine spent two terms in the state legislature, is remembered with particular affection by Oregon housewives for overturning a state ban on colored margarine. Outspoken, she once advocated a woman President because 'women are nicer than men, mostly.'"

The *Saturday Evening Post* for Jan. 7 featured an article on Mrs. Neuberger.

It is likely that Mrs. Neuberger will work for or support legislation to improve teachers' salaries; end discrimination in public places, employment and in schools; strengthen the United Nations; establish a new teaching hospital and medical center at the University of Oregon; pro-

tect Oregon's fish, wildlife and recreational resources.

When committee appointments were made shortly after the Senate began its session last month, Mrs. Neuberger won posts on the highly-sought-after Agriculture Committee and Banking and Currency Committee.

Mrs. Neuberger has several times spoken to Portland Delta Zetas, and was the guest of honor at the DZ Christmas luncheon in 1959 in Portland. She is an associate member of Theta Sigma Phi, journalism honorary for women, and has been named a Woman of Achievement by that group. She lives in the large house in Portland Heights which she shared with her husband even before they went to Washington, and has a colorful flower garden in which she loves to work when she has the opportunity.



Two youngsters at the Wayne State University Hearing Clinic are shown how to use the "pictionary" made by DZs by (l. to r.) Joan Coleman of Epsilon Sigma at Wayne State, Joy Wheeler, collegiate province director, and Epsilon Sigmas Lynn Wesson and Sue Cheskie.

How Delta Zetas Help the Hard-

by HELEN E. R. DITZHAZY
Detroit Alumnæ LAMP
 Editor

Epsilon Sigma (Wayne State) collegiates and Metropolitan Detroit Alumnæ have a fascinating "Adventure in Friendship" going for them at Wayne State University Hearing Clinic.

It began when the college chapter produced an "Auction Antics" last spring and gave the \$160 they earned to help provide tuition money for students planning to teach the deaf. The Epsilon Sigma girls raised this money by "selling" the talents of every fraternity and sorority at a campus-wide auction.

At about the same time, the Detroit alumnæ presented to Dr. John Gaeth, director of the Hearing Clinic, a "pictionary" (picture dictionary) made from a vocabulary list the clinic had furnished.

That beginning has grown to a full-scale project of the two groups. At Founders' Day last October, the alumnæ presented a much-needed oscillator (for producing tones of various pitches) to Dr. Gaeth.

The collegiate chapter, under its philanthropic chairman, Lynn Wesson, began to furnish volunteers to the hearing clinic. All summer Lynn served as a teacher's aide. One member of the chapter switched to the teaching of the deaf and now Carol Degan has the adult testing program as her teaching "contact." With Carol in charge of the night testing program, the chapter has taken over the hostess job. They will help conduct the people to their testing stations, serve

coffee and, in general, help where they can.

This semester the alumnae and collegiates are again joining Dr. Gaeth in a new program. The "young adults" of the college chapter are joining the "mature adults" of the alumnae to be tested at prescribed intervals over the semester to set the limits of normal hearing according to age groups.

Before the beginning of this program, the alumnae chapter had given money and the collegiate chapter had given volunteer service and scholarships. Now the two are joining the money and service of both alumnae and collegiates in Dr. Gaeth's new "Adventure in Friendship."

All Delta Zetas in the Detroit area had an opportunity to meet Dr. Gaeth personally last fall when he was the featured speaker at the Founders' Day celebration held on the campus of Wayne State.

Dr. Gaeth, in addition to being director of the Hearing Clinic, is also a Professor of Audiology at Wayne State. Born and raised in Nebraska, he is a graduate of Northwestern University where he began to train teachers of the deaf in 1951-52. It was at Northwestern that Dr. Gaeth first became acquainted with Delta Zetas who, through their alumnae group there, presented him with a check for \$160, enough to send a girl to a deaf training school.

After Dr. Gaeth came to Wayne, he expanded the Hearing Clinic which functions as an auton-

by hearing that children learn?

The results of this study showed that kindergarten children learn verbally, from auditory intake, but that by the time they are in sixth grade they are learning better by reading.

Another study was set up to determine a) whether bi-modal (both vision and hearing) methods of learning were better and b) whether the switch from learning verbally to learning through vision is made sometime between kindergarten and sixth grade.

Results indicated that there seems to be a "flip-flop" sometime in the third year of school, during which children switch from auditory to visual learning.

Hearing loss therefore results in extensive use of visual perception during the child's early years. Unfortunately, hearing loss is compounded and confounded by many factors.

Present research is aimed at formulating new procedures for teaching hard-of-hearing children. Other current research is concerned with a study of pitch or "frequency discrimination." Several hundred hard-of-hearing persons will be tested at the Hearing Clinic and funds will be made available for this through the National Institute of Health.

of-Hearing in Detroit

omous part of the College of Education and which is committed to training people as undergraduate teachers of the deaf and as candidates for masters and doctors degrees in audiology.

Before World War II, there were no audiologists as such. During the latter years of the war, four "aural" rehabilitation centers were set up in the United States. Dr. Gaeth feels that the general public, as well as servicemen and veterans, should have access to a similar set-up.

At present, the Wayne Hearing Clinic and the Ford Hospital have good audiology clinics. The Veterans Administration continues to have its own clinic centers, but in Michigan veterans are served at the Wayne center.

In 1948 Dr. Gaeth received his Ph.D. in Audiology, which he termed a "new, dynamically moving field." At Wayne State he began a three-year study in 1957 to observe verbal learning in children and to try to answer two questions: How do the normal children learn? Is it by vision or

MRS. FORBES HASCALL, President of the Oakland County Delta Zeta Alumnae; Mrs. Frank Oakes, President of the Metropolitan Detroit Alumnae; and Mrs. Leo Blazok of the downriver hostess group, in authentic 1902 costumes, with a 1900 vintage "pay phone" from the Michigan Bell collection, called all Delta Zetas, for their 57th Founders' Day celebration.





DR. JOHN H. GAETH, director of the Wayne State Hearing Clinic, accepts oscillator given by Metropolitan Detroit Alumnae from the group's president, Ruth Ann Oakes.

In the Hearing Clinic at Wayne, anyone who deserves to be seen is tested for hearing difficulties. The regular staff and doctoral candidates perform these examinations. These men and women have specialized in the process of measurement. Young children are a particularly challenging group. They may not hear, or they may behave as though they do not hear because they are emotionally disturbed, mentally retarded or brain-damaged. The galvanic skin response test is often used in testing for a hearing loss in this type of case.

In the elderly there may be two kinds of hearing loss. One kind is degeneration of sensory organs, and this can and should be helped by a hearing aid if at all possible. The other kind is a loss of neural connections in the aural path to the brain. This cannot be helped by amplification with a hearing aid.

Dr. Gaeth explained all this at the Delta Zeta's

October 24 Founders' Day dinner which was held in the Wayne State Alumni House of the MacGregor Center. MacGregor Center is the interpretation, by architect Minoru Yamasaki, of strength, unity and grace in concrete. It is characteristic of a building situated on a college campus in a downtown metropolitan area.

All Delta Zetas in Wayne and Oakland counties were called via a vintage 1900 "pay phone" before the celebration. Pictures appeared in the Detroit and suburban newspapers.

The traditional candlelighting ceremony was presented by Mrs. Larry Frymire, national director of alumnae; Mrs. Russell Costello, national NPC delegate and immediate past national president; Mrs. Winfield Hinman, province alumnae director; Mrs. William Wheeler, province collegiate director; Mrs. George Betker Jr., province collegiate secretary, and Mrs. Donald Pfeffer, state recommendations chairman.

Hostesses for the evening were Mrs. Howard Nowka, chairman of the Dearborn group of the Metropolitan Detroit Alumnae, and Mrs. Forbes Hascall, president of the Oakland County Alumnae chapter. Mrs. Frank W. Oakes is president of the Metropolitan Detroit Alumnae chapter which consists of four groups.

The plate on the top of the oscillator control box.



To Publicity and Newsletter Chairmen:

Your province coordinators are listed under "Committees" in the Directory on page 40 for your convenience. For the first time in Delta Zeta, provinces have a public relations officer to work with college and alumnae chapters on all phases of public relations and news. If there is not a coordinator in your province, please write to me with your suggestions.

It would be very "public-relationsy" for your chapter to write your coordinator a note of welcome and to let her know that you'll be delighted with suggestions she may have to help your program.

Velma McKee
National Director of Public Relations

"Don't Say I Said Anything . . ."

by WHOLLY SMOKE WHOLLY

WE WERE just sitting here quietly in our Wholly of Whollies drinking the last of the breakfast coffee and admiring the leisurely winter morning when here came this letter from Editor Otwell . . . oh well, there wasn't much coffee left anyway. Editor Otwell was just home from Arkansas.

"Just home" also because the Otwells had just got into their new home on Isabella Street in Wilmette. They got there just in time to clean autumn leaves out of the gutters (with radio playing romantically "When Autumn leaves fall"), and pick the last unfrosted chrysanthemums, scrub floors, bed down the cattle and hogs and curry the horses, and do all the things people do when moving into a new house. Such as ignoring the house and getting out the next issue of THE LAMP.

What was going to be in *The Lamp* anyway, wondered Editor Otwell.

She picked up their black cat, Amahl, and began buttering his paws. It is an old farm superstition that when you take your cat with you to a new house, you must butter his paws to keep him from running away, back to the old house. Outraged, Amahl licked off the butter as fast as Editor Otwell spread it on (you cannot use oleomargarine as a substitute, by the way).

It occurred to Otwell to butter up her typewriter and THE LAMP files too. From our smoke-filled Wholly, we advise Amahl to make the most of his little hour of being buttered up. A young Otwell is expected at the Editor's house in February, a German shepherd puppy is expected sometime in spring, and a LAMP number featuring housing sometime. Amahl will do well in those unhouse-broken days to get his daily bread, even unbuttered, let alone getting his paws buttered.

* * *

Except people, nothing is as interesting as their houses. Note, therefore the houses of Delta Zeta in Austin, Texas, Santa Barbara, California, and White-water, Wisconsin, as illuminated by this *Lamp*.

Incidentally, if you happen to be asked on a quiz program "How many Delta Zeta chapters are there now?", it was 130 at last count, which makes a great many housing and pin-up bulletins thereunto appertaining.

We saw the pin-up bulletins at Epsilon's house at Founders' Day when the Michigan alumna's gift of a silver tea service in memory of Hester Fredenburg Miller, was accepted. We secretly decided Epsilon (Indiana University) is composed at least 100% of pin-up girls.

Alumnae who haven't been back to the House any more often or recently than Wholly has been back to Epsilon's house, ought to be ashamed of themselves, but not of the active chapter. Epsilon seems at least 100% pin-up worthy.

* * *

Hamburgers, cheeseburgers, even chiliburgers have been popular a long time. In fact, can you imagine the American way of life without the different burgers? No. (Thank you, whoever said that.) Now Delta Zeta offers a new and delicious kind of burger, even spelled differently, burger. Maurine Neuberger, from Omega chapter at the University of Oregon. Note that Maurine is the third woman to get to the U.S. Senate the hard way . . . being elected instead of just being appointed to fill out somebody else's unexpired term. Neuberger, Wholly salutes you with mustard, catsup, onion and pickle!

* * *

Finally, Delta Zetas, if a black cat crosses your path henceforth, don't consider it bad luck. Just give it a Delta Zeta handclasp and a ticket back to Wilmette. It might be Amahl, running away because his paws became unbuttered while Editor Otwell Meantwell got out this number of THE LAMP. If you enjoy this LAMP, drop Amahl a line and say so, but "don't say I said anything!"

Wholly Smoke

Founders' Day Highlights

Reno: A New Charter

The newly-chartered alumnae group at Reno, Nevada, celebrated Founders' Day by receiving their charter from Mrs. Charlotte Holt, alumnae province director. Charters had been issued to the Reno group and to a sister alumnae group to the south at Las Vegas at the 1960 convention.

Reno charter members are Sharon Musgrove Becker, Δ Ψ-Santa Barbara; Elaine Bowman Broten, X-Oregon State; Andra Berger Carter, Γ Δ-San Jose; Grace Kohl Cate, A Z-Adelphi; Ethel Kudrna Johannes, Z-Nebraska; Janice Kendrick Kenney, Z Z-West Texas; Dorothy Cappell Lauderdale, X-Oregon State, and Doris Little Vitale, K-U. of Washington.

Kansas City: Two Golden Roses

Miss Beulah Kelly and Mrs. Paul H. Merry were initiated into the Order of the Golden Rose (for 50-year members) at the Greater Kansas City Alumnae's Founders' Day celebration.

Both Miss Kelly and Mrs. Merry were initiated in 1910 into Eta chapter at Baker University in Lawrence, Kansas, and were roommates while they were in school. Miss Kelly served as first

MISS KELLY (left) and MRS. MERRY



MRS. JAMES CREAGER, Dayton Alumnae president, pours tea for guest speaker Mrs. Russell Costello and Mrs. William Barth, alumnae province director, looks on.

president of the Kansas City Alumnae chapter back in 1920.

Dayton: 35th Anniversary

To commemorate Founders' Day, Dayton Alumnae celebrated the 35th anniversary of their founding, with charter members as honored guests.

Evelyn Adams Costello, immediate past national president and NPC delegate, addressed the group and their guests, the Dayton area Panhellenic Alumnae, on "Panhellenic Relations Today."

The Dayton group, which has grown from 11 charter members to a membership today of 175, has a long list of accomplishments:

They held the first Ohio State Day in 1939. In 1951-52, they raised \$165 for the Kennedy school for the oral deaf. For nine years one cottage at the Montgomery County Children's Home has been the recipient of gifts and parties. Dayton was hostess chapter to the 1951 State Day which had the largest registration to date at that time.

In 1953, Mildred Wade Lenning, A Δ-University of Colorado, was voted the Delta Zeta Woman of the Year. During 1954, Margaret Plander Sherer, A-Miami, won the Outstanding Club-woman Award, sponsored by a local radio station. A style show in 1958 netted \$510 for the YWCA Building Fund.

In recent years, Gallaudet College has received gifts from the chapter, and college aid has been given to Ohio chapters.—*Doris Bender Byers, T-Bowling Green.*

Detroit: Gives Silver Service

As part of Epsilon (Indiana) chapter's Founders' Day observance, a dedication of a silver service presented to the chapter by the Detroit Alumnae in memory of alumna Hester F. Miller was held.

Mrs. Miller, a member of the class of 1921 at Indiana, passed away in February, 1960, in Detroit. While living in Indianapolis she had been president of the Indianapolis Alumnae Chapter and, after moving to Detroit, had been a very active member of the Detroit Alumnae chapter.

Hence the Detroit group felt that a fitting memorial to her memory would be a silver tea service to the college chapter to which she belonged. Grace Mason Lundy, past national president and herself a member of Epsilon chapter, spoke at the dedication service and said that "it is our hope that every Epsilon member will receive a measure of inspiration from the knowledge of the influence one quiet, dedicated Delta Zeta left behind."

In a note sent with the silver service to Epsilon chapter, the Detroit alumnae said: "This coffee and tea service is sent to the college chapter of the Delta Zeta sorority at Indiana University in loving memory of Hester Mary Fredenburg Miller, X'21, a member of the board of directors of our alumnae chapter and our member at College Women's Volunteer Service. She gave of herself for others and so endeared herself to the alumnae chapter of Metropolitan Detroit that we give to you this service to perpetuate at Epsilon the memory of her joyous service to Delta Zeta."

Silver Service sent to Epsilon Chapter House in Memory of Hester F. Miller, by the Detroit Alumnae groups.



MRS. FREDERICK D. SMITH

Dallas: Another Golden Rose

Fannie Putcamp Smith (Mrs. Frederick D.) of Dallas, a former national secretary, a national vice president, and province director, was presented with the Golden Rose of Delta Zeta at the Dallas Alumnae Founder's Day banquet.

Initiated into Zeta chapter at the University of Nebraska in 1910, Mrs. Smith has lived most of her life on college campuses. She is wife of Dean Emeritus Smith of Southern Methodist University. She was doubly honored at the banquet as founder of SMU's Alpha Psi chapter, because it was she who had organized a local chapter, Kappa Phi, in 1924, which was installed into Delta Zeta in 1926.

Mrs. Smith is a graduate of Stanford University, and holds graduate degrees from the University of Wisconsin and the University of Southern Illinois. She is a former president of both the Stanford Alumni Club and the Faculty Women's Club of Southern Methodist University. She is a member of the American Association of University Women, Dallas Women's Club, Marianne Scruggs Garden Club and Mary K. Craig Class.

Special guests at the banquet were Mrs. Jacob F. Schultz of Houston, collegiate province director; Mrs. Claude A. Bell, state recommendation chairman, and Mrs. Joan Smith, director of women's housing at SMU.

And Still More New Houses for Delta Zetas

In Texas . . .

by MARY MAE HARTLEY
Austin Alumnæ chapter

First view of the new Delta Zeta "glamor house" for University of Texas' Alpha Tau chapter is from the exterior, of course. . . .

. . . And that impression is of a modern pink brick building, two-story, neat, with attractive shutters opening onto a serenade balcony, a double door outstanding in purple and gold, and a lawn just getting started.

But open that door and step in. . . .

. . . And you'll feel like one of the chosen few who have been given the keys to a fairy kingdom, all white, pink and purple, and decidedly feminine and definitely breathtaking. THE LAMP carried an exterior shot of the house in the last issue, but the interior was not sufficiently completed at that time to tell you all about it.

This, among the newest of sorority houses, is causing quite a furor in many circles throughout the nation.

It is thought to be the only Greek house in the nation with a swimming pool and a fallout shelter. As a result, it has received national publicity from the Civil Defense organization and nods of approval from such groups as the American Red Cross.

Already the collegiate members and pledges of Alpha Tau, which, with 150 members, is the largest Delta Zeta chapter in the nation, have launched a study of civil defense. Their standards chairman, Amy Bruyere of Dallas, has scheduled talks from Civil Defense experts in order that the girls may realize how they can make use of their shelter should it become necessary. They are realizing that upon such young people as themselves rests the problem of survival in a nuclear-gear world.

It is believed that the Alpha Tau chapter is the first university group of any kind which has taken a definite step forward as part of the Civil Defense effort of the United States.

It's another "first" for the pace-setting Delta Zetas.

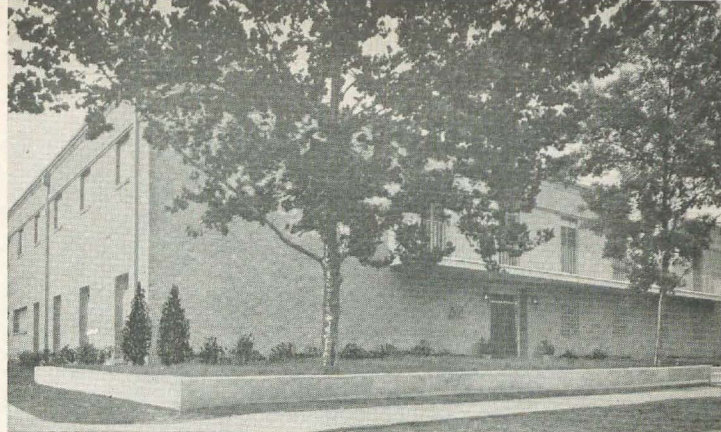
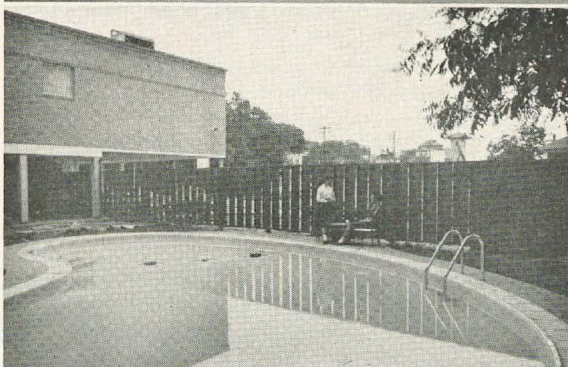
Through the glass walls of the large recreation room and the adjoining formal living room can be seen the patio in which the focal point is a pretty, kidney-shaped swimming pool, surrounded by foliage like banana trees and other greenery.

Here again the Alpha Taus are busy pace-setting. They have plans for Red Cross-type water safety courses this year, with a goal of a safety badge for every girl in the chapter.

The patio is small, but sufficient, made somewhat larger by a veranda (attached to the house) for outdoor serving, studying or lounging. The patio is made private by head-high walls on the street side.

One of the things of which the chapter is most proud is the chapter room on the second floor. It is large, light and quiet, with desks which open out from the walls to permit studying after meetings are concluded and during the day.

The rooms for the 50 girls on the second floor are decorated in pinks, greens, buffs and blues. The first floor, with all white terrazzo or tile floors and walls of either white or pale, pale pink gives an air of luxury and glamor. But underneath it all it is practical, having been



Top, left: Formal living room. Center, left: Recreation room. Bottom, left: Patio with swimming pool. Top right: New DZ house at University of Texas. Bottom, right: Katie Blanche (Mrs. H. G.) Stallworth of Austin, A Ψ-SMU, was chairman of the House Corporation Board. A tireless civic worker, she also is alumnae province director. In recognition of her outstanding service as house board chairman, the Alpha Taus presented her with a surprise plaque, beautifully engraved, on Founders' Day, naming her their own "woman of the year." The plaque will hang in the new house.

planned with such thoughts as minimum upkeep and protection from fire hazards.

Furniture lends the color, which sometimes is beautifully startling, ranging from soft pinks to brilliant purples. Wall accessories and many of the light fixtures add the touch of dramatic gold.

Also on the first floor are guest rooms and the housemother's suite. These rooms and the living room are carpeted.

The hotel-planned, very modern kitchen can serve 100; the dining room seats 75. Perhaps most beautiful in the dining room are the gold chandeliers.

Total cost of the house, furnishings, two lots is around \$287,000.

Most of the credit for the planning, building

and financing of the much-talked about Alpha Tau house goes to Mrs. H. G. (Katie Blanche Masters) Stallworth of Austin. Those who have watched Katie Blanche in action the past two years have decided she built the glamor house, practically brick by brick, working on a 24-hour-a-day Delta Zeta schedule.

Of course she's been on this kind of schedule for years for her sorority. In addition, she manages to sandwich in all kinds of civic and charitable work in Austin.

Currently she serves as Alumnae Province Director of Province XVII, comprising all of Texas.

In recognition of her outstanding contribution to Alpha Tau's new home, the chapter named her their "woman of the year" on Founders' Day at

a special banquet. They presented her with an engraved plaque which will hang in the house so that all may see how proud—and grateful—all DZs are of her outstanding and untiring work.

Katie Blanche, chairman of the AT House Corporation Board, had assisting her the following: Mrs. W. B. Leach, co-chairman; Mrs. Carrielyn Garretson, treasurer; Mrs. Gerald VanEck, secretary; Mrs. Wilbur White, member-at-large from Austin; Mrs. Jacob Schultz, member from Houston and Collegiate Province Director of Province XVII; Mrs. Lionel Bloomquist of Dallas; Miss Diana Vollentine of Fort Worth, collegiate chapter president, and Miss Carol Sanders of Houston, collegiate chapter treasurer.

Mrs. A. J. Caldwell, who has been housemother for the ATs for the past 11 years and who had a big part in seeing the new home succeed said: "I thought the house would be beautiful, but it far exceeds my expectations." And that's about what everyone says.

And all the Alpha Taus say: "You'll just have to see our new house to believe it!"

In Wisconsin . . .

by BARB LUND, E K

Collegiate Chapter Press Chairman

The Rosecrest Subdivision of Whitewater, Wisconsin, is the location of Epsilon Kappa's new house at 155 Fraternity Lane.

When the four Greek houses were built on the Lane near the campus of the University of Wisconsin at Whitewater, Rosecrest Subdivision was chosen as the name since most Greek organizations have the rose as their flower and the majority have a crest.

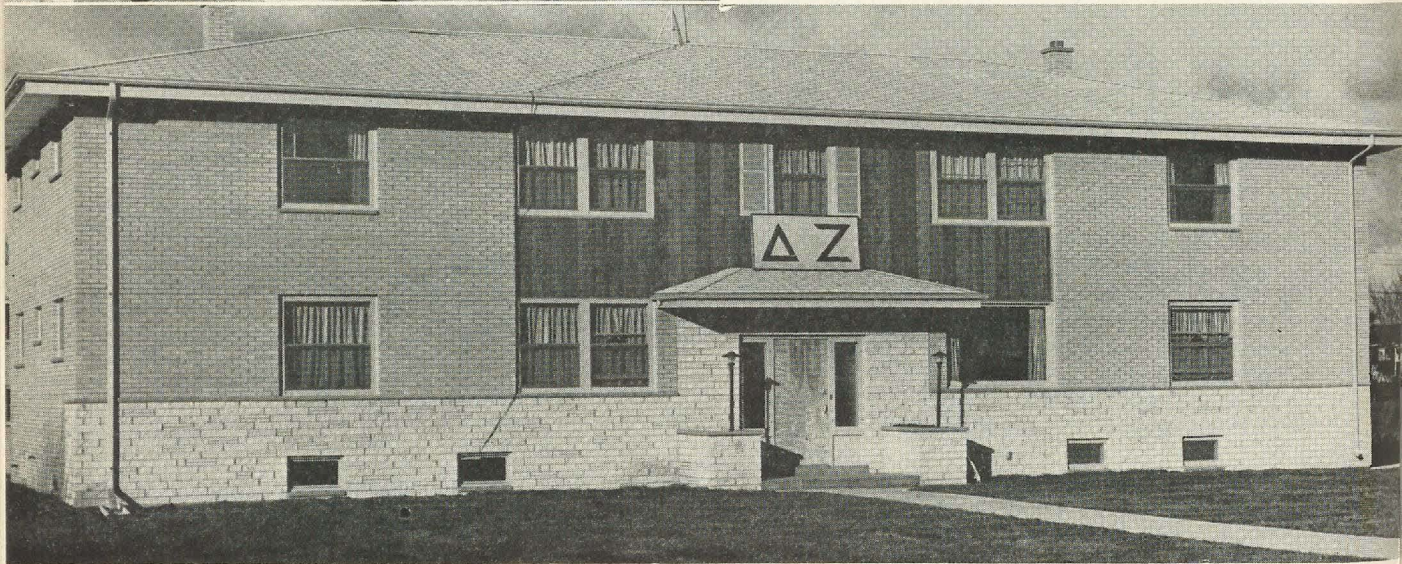
Since a sorority is basically a fraternity, in that "fraternity" means friendship and brotherhood, the street is quite appropriately called Fraternity Lane. Each of the four houses of brick construction is designed to accommodate 27 occupants plus a housemother.

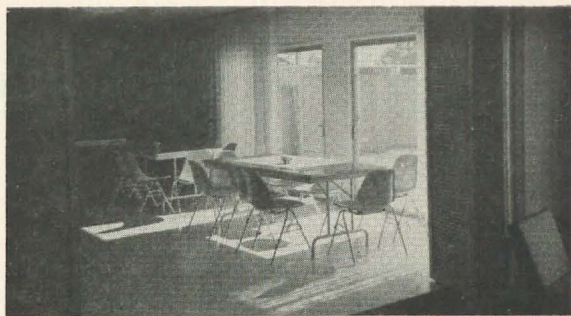
Each house contains a fully equipped kitchen with adjoining dining room and recreation lounge. The kitchen has a 40-cubic foot refrigerator, deep freeze, a six-burner stove and a large work area. Laundry facilities are in the basement.

There are 12 bedrooms, three triple and nine double. The housemother's apartment is made up



New DZ house at the University of Wisconsin at Whitewater (below) houses 27 girls and is decorated in a light cool green. At left are (l. to r.) Carol De Back, Pauline Kedrowicz and Mary Ann Jorgenson in their triple bedroom.





New home (above) at the University of California at Santa Barbara was completed this fall but landscaping had not been done when the photograph was taken. Above right is a view of the dining room and adjoining patio. Below right is the living room.

of a living room, small kitchenette, bedroom and bath.

The color scheme of the whole house is a light, cool green. The living room and housemother's apartment are fully carpeted and are furnished in early American maple. Bedrooms combine the green with cinnamon-colored bedspreads.

Buff-colored brick and redwood panelling are used for the exterior of the house.

Officers of the house for the year are Marilyn Pautsch, house president and chapter historian; Kathy Maly, house secretary and chapter philanthropy chairman; Jeanette Cates, food treasurer and Janet Runkle, rent treasurer. All officers of the sorority live in the house.

Previously Epsilon Kappa lived at 404 North Street in a two-story house. Only 14 girls, all of whom were officers, lived there.

... And In California

by MARINELL ASH, Δ Ψ
Chapter Historian

Our charming California contemporary-styled house, with its exterior of western red cedar and brick accents with glass, glass, glass, is adjacent to the campus of the University of California at Santa Barbara.

The house accommodates 39 girls, is designed so that it may be enlarged, has more than 1200

square feet of terrace and parking for 20 cars.

On the main floor are the living room, library, dining room, housemother's suite, office and guest room, date room, kitchen, cook's room, laundry and storage, etc. An ornamental screen and painted brick planter divides the entry from the living room, and the brick is also used in the fireplace. Just off the entry hall is the open terrazzo stairway.

The dining room seats 60 and an eating area is provided in the kitchen for breakfast and snacks. A reception alcove in the hall has mail boxes, bulletin board and telephone exchange with an intercommunications system to the upstairs.

On the second floor are 15 bedrooms which accommodate two girls each, two bedrooms that accommodate four girls each, and the president's room. A large bath is located at each end of the building. A spacious lounge for study and recreation is also included. Here a small kitchen unit will be installed for refreshments. Ironing boards and a large closet for formals are yet to be installed.

Mrs. John R. Sencerbox, an alumna of Delta Psi chapter and president of the house corporation for 1959, was the original force in getting our new house started. Present house corporation board members are Mrs. Richard Reverdy, president; Mrs. Gran Meisenbach, vice president; Mrs. Henry Levy, secretary; Mrs. Robert Blois, treasurer; Mrs. Bruce Buhl, corresponding secretary, and collegiate members Lynn Hammock and Cheri DeLand.

In the Editorial Mailbox



Sometimes the story-behind-the-story is as interesting as the story itself. Now take the Maurine Neuberger our Delta Zeta Senator story. After all, how many national social sororities can claim a member elected to the U.S. Senate? (Only us DZs and the Sigma Kappas, with Sen. Margaret Chase Smith, Republican of Maine.)

Mrs. Neuberger has been kindness itself in supplying THE LAMP with information. As soon as her committee appointments were made last month, she wrote the following letter January 16:

I have been appointed to the Senate Agriculture Committee, which is of great interest to me because the Northwest has never been represented in recent years on this important committee. The membership is mainly from the states having the large farm subsidy crops, and I think it is time that the perishable products which are grown in the Far West be represented. Probably the main interest I will have on this committee is the Forest Service, which comes under the jurisdiction of the Secretary of Agriculture and is directly affected by our committee work. In fact it was my first duty as a member of this committee to participate in the hearings which gave clearance to the newly-appointed Secretary of Agriculture, Orville Freeman.

My next committee is Banking and Currency. This might seem a strange assignment for an ex-school teacher and one thousands of miles from Wall Street, but its interest to me is that it deals with housing legislation, and I look forward to learning a lot in my service on this committee.

In addition to these assignments I am working closely with President Kennedy's Committee on Natural Resources and Conservation. The new Secretary of the Interior, Mr. Udall, is also a personal friend and equally interested in this important legislation.

Development of hydro-electric power and water resources will be an important part of my program, along with these other conservation measures connected with forests and seashore parks.

Carrying over from my legislative program of past years, I will follow closely all consumer legislation, and so indicated when I queried the Secretary of Agriculture as to the consumer interest in the farm program.

In addition to Mrs. Neuberger's kind help, Kay Butterfield Larson, a former LAMP editor who lives in Portland, Oregon, Mrs. Neuberger's home town, nobly volunteered to gather material for the current LAMP story. This letter from professional journalist Kay gives some idea how she gathered her information:

"This morning I awakened around 6 and was up and at the typewriter soon after, constructing a memo for you . . . instead of doing a couple of news items due today . . . (I did do those later and got them under the wire).

"To insure clear communicating and hoped-for brevity, I started enumerating segments of my memo. Then the following things happened . . . making for confusion, I fear. . . .

"I found a second envelope of clippings. Tore out the page from *The Oregon Nurse* to indicate Maurine's continuation of Dick's interest in promotion of medical research, etc. . . . Added 'aside comments.' Added penned interpolations . . . etc.

"Now, later in the day, I've just called Sen. Maurine Neuberger's office and learned the following: Mr. Denbeste is no longer with Sen. Neuberger. The girl who answered the phone has some glossies in response to my telephoned request.

"So, I'm trotting up to the U.S. Courthouse where Maurine's office is located and I will enclose the glossies in this envelope and will mail it at the post office in that building Certified Mail, Air Mail (if not too much) and you'll have it later this week!"

* * *

Then there was a letter from Sally Beach of the Cleveland Westside Alumnae who wrote the story in the Fall LAMP on our Woman of the Year, Arlene Davis. She gave us some additional information about our "Charming Flying Lady":

"Congratulations on the Golden Anniversary edition of THE LAMP. I have just finished talking with Arlene and she is completely thrilled with the pictures and article on the Delta Zeta Woman of the Year. Arlene and I have been very close for many years and it has been a great honor to have such a friend and to have been able to contribute in honoring her.

"Now to bring you up to date on Arlene. Early in November, Brig. Gen. Joseph H. Moore, Commander of the 4th Tactical Fighter Wing at Seymour Johnson Air Force Base in North Carolina, called Arlene to say that he had cleared with the Air Force to have her fly a F-100F Super Sabre Jet. She went down to the base and, flying 1,061 miles per hour at 37,000 feet, she broke the sound barrier.

"Arlene was presented with a book, made up by General Moore, and containing a certificate showing that she had broken the sound barrier."

And Mrs. Davis herself, who took time out from her busy life to write THE LAMP a charming letter, said in part:

"Need I tell you how excited I am and highly honored indeed with the pictures and article on the Delta Zeta Woman of the Year. . . .

"Breaking the sound barrier was an experience I had long dreamed of and I count my blessings for the privilege of accomplishing it."

* * *

THE LAMP likes a full mailbox and would be most grateful for criticisms, comments, story ideas, or just chit-chat at any time.

THE EDITOR



ARLENE DAVIS receives *Woman of the Year* silver medalion from longtime friend Sally Beach (right) former regional alumnae director. Julie Foster, president of Cleveland Westside Alumnae, looks on.

Our Charming Flying Lady

by OLIVE JENKINS KING
Cleveland Westside Alumnae

The accompanying poem well describes Arlene Palsgraf Davis, Delta Zeta's 1960 Woman of the Year, who, with deep religious feeling senses that when freed from the bonds of earth she can almost "touch the face of God" and her prayers will bring her back safely.

While the thoughts of Delta Zetas across the country turned toward Ohio, Mrs. Davis, an alumna of our Gamma Alpha chapter at Baldwin-Wallace College, spoke to an assembled group of 81 DZs on Founders' Day. The group, made up of alumnae from Cleveland Westside, Cleveland Eastside and Berea and from the Gamma Alpha chapter at Baldwin-Wallace, joined for dinner in Cleveland.

Mrs. Davis had agreed to speak on "The Flying Lady Gets Around" last July before she knew she had been awarded her sorority's highest alumnae award. She recalled for the Founders' Day audience her trip over the North Atlantic and back over the South Atlantic, and also shared some experiences of her college days at Baldwin-Wallace.

Sally Beach, former regional alumnae director, was listed in the program with "I've Got a Secret." After much dinner-hour conjecture, the secret was revealed when Sally said: "I could not be happier nor more proud to call forward the Delta Zeta Woman of the Year, our own lovely Arlene Davis."

"To you, Arlene," Mrs. Beach continued, "inspiring leader in your chosen field of aviation and in service to others, Delta Zeta proudly presents in the presence of those assembled here and on behalf of its 40,500 members around the world, the highest honor your sorority can bestow upon an alumnae member. At this time, every Delta Zeta joins us in honoring you as Woman of the Year for best exemplifying in your daily living the high and noble principles of Delta Zeta. . . . In wearing this pin you will honor Delta Zeta and you will be surrounded by the love and esteem which go to you with it."

Mrs. Beach explained the symbolism of the traditional silver medallion given annually by

*Oh, I have slipped the surly bonds of earth
And danced the skies on laughter-silvered
wings;
Sunward I've climbed, and joined the tumbling
mirth*

*Of sun-split clouds—and done a hundred things
You have not dreamed of—wheeled and soared
and swung*

*High in the sunlit silence. Hov'ring there,
I've chased the shouting wind along, and flung
My eager craft through footless halls of air,
Up, up the long, delirious, burning blue
I've topped the windswept heights with easy
grace*

*Where never lark, or even eagle flew.
And, while with silvent, lifting mind I've trod
The high untrespassed sanctity of space,
Put out my hand, and touched the face of God.*

High Flight by J. G. MACEE JR.

Delta Zeta to the Woman of the Year before pinning it next to Mrs. Davis' corsage of dainty pink roses. The pin from which the medallion hangs is the top of the Ionic column, symbol of strength. The outer indentations of the medallion signify the great circle of friendship in Delta Zeta and the flame symbolizes the outer flame which has as its source that inner flame which glows in the heart of every Delta Zeta. The medallion was designed by Alumnae Province Director Eleanor Hanson Nichols.

There were tears in Mrs. Davis' eyes when the Gamma Alpha girls sang "Dream Girl of Delta Zeta" just for her. The Baldwin-Wallace Alumni Association sent Mrs. Davis two dozen pink roses.

Julie Kishel Foster, Gamma Alpha, president of Cleveland Westside Alumnae, presented Mrs. Davis with the Westside special gift—a charm in the shape of the DZ Lamp and engraved "Delta Zeta Woman of the Year" to add to the bracelet which Mrs. Davis always wears. The charms on the bracelet represent things most dear to Mrs. Davis.

Two other charms on the platinum bracelet are replicas of airplanes which she has flown. One is engraved "I love you" and is set with emeralds,

rubies and sapphires. The second is "Hook in my Heart" set with a heart of diamonds. Both of these represent the love and devotion in her marriage.

The third charm is an owl insignia set with diamonds and resting on a book of rubies representing her membership in the National League of American Pen Women. And now she had added the Delta Zeta Lamp, making her indeed our charming flying lady.

Gamma Alpha's presentation of the traditional candlelight service closed the Founders' Day dinner. Hazelle Bechberger of Gamma Alpha, president of the Cleveland Eastside Alumnae, was toastmistress for the dinner, and at the head table were Lucille Cooks, A-Miami, a member of Cleveland Eastside who paid tribute to Olive McCune, A-Miami, new Ohio state recommendations chairman; Gamma Alpha's college chapter director, Norma Andrisek; Gamma Alpha chapter president Jane Jennell, and Berea Alumnae president Emily Whipple of Gamma Alpha.

(See page 14 for story of how our own Arlene Davis broke the sound barrier this past fall.)

. . .

THE NATIONAL COUNCIL OF DELTA ZETA
is especially pleased to announce the installation of
ZETA MU CHAPTER
Portland State College
Portland, Oregon
February 4th and 5th, 1961

A Challenge To the Fraternity System

by WALTER and JANET WEIR

Some of our warmest memories of collegiate life during and just following the war center on a phenomenon which seems to have been characteristic of our college generation: those long after-study hours sessions where ideas jostled perilously with other ideas far into the night.

Typical of those meetings, perhaps, were ones at the Alpha Omicron Pi house in Lincoln where the Lady Philosophers' Chowder and Marching Society merged nightly with the Coffee Drinkers Amalgamated in the dark recesses of the third floor; there in a smoky haze, over unbearably pungent brew furnished by the chairman of the Coffee Drinkers (who owed her office to possession of an electric percolator), eight or ten sisters regularly grappled with the problems of the world. Ethics, religion, the war, art, political systems, and poetry came under their scrutiny. Occasionally, of course, men were discussed, but quite as likely the group mourned the condition of the modern novel and debated why there had been no American Tolstoi. The fines they paid one night at 2:00 A.M. for arguing too loudly in the hall were perhaps worth every cent, for without benefit of philosophy courses they had stumbled on to what philosophers call the epistemological question and were starkly facing "How can we know?"

In night-time sessions of this kind students of our era took themselves many steps beyond the usually barren issues of campus politics and the exhausting treadmill of "activities" (which were guaranteed to furnish us with some vague attribute called "well-roundedness"); we transcended the banalities of fraternity or dorm conversation and the pedantry of many of our professors as well. Prodded by the ablest minds among us, we grasped the ideal of a university and sought to learn for ourselves; in those night-time searches we ceased to be giddy girls or callow boys and took our first hesitant steps toward intellectual maturity.

The unashamed concern with things of the intellect that infected significant numbers of students of war vintage seems rather rare on state university campuses today. Where the fraternities and sororities of 15 years ago often took on a richer texture and wider dimension through the intellectual commitments of many of their members, organized houses today are sometimes pockets of stubborn intellectual apathy. Alumni of the days when homecoming decorations were constructed at the cost of six hilarious man-hours plus \$10 worth of cardboard and lath the day before the game—and who expected to win the prize anyway?—are often shocked at the energy, intensity, and highly organized efficiency with which their houses now pursue extracurricular prizes and trophies. The tendency of fraternities to over-organize the lives of their members has increased, alumni will find, as have those endless house and inter-house committees devoted to trivia unrelated to the purposes of a university. The pressures toward "herd behavior," always present in Greek houses, are no longer subtle, and the frantic concern of many houses to be "known on campus" has resulted in an unhealthy stress on "activities" *per se*. The extraordinary devotion of some Greek houses to the social aspects of life has become a byword.

All of these kinds of activity combine, by sheer weight of the time they consume, to vitiate the intellectual development of the fraternity member and thereby to subvert the fundamental aims of a university. The development of the student's mind and judgment, the opportunity for him to penetrate his cultural heritage, and all of the preparations he must make, in areas both humane and technical, to live intelligently in a complex and dangerous world, are relegated to a few fugitive hours each week. Greek students, by their own testimony, often come to feel lucky if they can throw together *any* kind of written work before the class deadline; to present a paper thoroughly researched, carefully argued, and rewritten for style and precision of language would require more hours than the student has available—unless he bypasses a skit rehearsal, Friday and Saturday night parties, two committees and a meeting of the Greek combine. Many serious organized students do try to by-pass much of this peripheral activity, but pres-

This thought-provoking article is reprinted in its entirety from The Fraternity Month of April 1960. We are grateful to the authors and Fraternity Month staff for allowing THE LAMP to bring this to the attention of Delta Zetas.

asures from their houses often make it so difficult that they feel they must give up their fraternity or sorority as well. Each year professors here and on other campuses counsel dozens of upperclassmen who come with the same problem: they cannot accomplish honest academic work at the fraternity or sorority house, no exchange of real ideas is possible there, the adolescent inanities of life in the house are intolerable. "Shall I turn in my pin or just move out; or, shall I stay and try to fight it?" are the invariable questions they ask.

Greekletter organizations are not intentionally anti-intellectual; they were founded to strengthen bonds with the *alma mater*, and those 19th century founders understood and respected the aims of their universities. Yet through the years fraternities have drifted away from their primary ideals and become so entangled with secondary aims that today they sometimes seem almost completely divorced from the vital spirit of the universities to which they profess allegiance. This divorce perhaps reflects the divided mind of our society concerning the value of intellectual experiences. Certainly parents and secondary schools fail to send us many students who have firm standards for intellectual achievement; our freshmen are charming young people, already adhering to well-defined criteria of dress and manners, but often innocent of any desire for serious encounters with ideas. This fact does not absolve fraternity leadership from responsibility for some of the current estrangement of the fraternity system from the central purpose of our universities. Too often fraternity leaders have supposed that their major obligation to the universities is discharged by the appointment of scholarship chairmen, locally and nationally, who in turn feel they function properly if they make occasional exhortations concerning higher grade point averages. Such a limited approach does not penetrate to the core of the problem; even the narrow demand for respectable chapter averages will be pointless until whole attitudes and atmospheres are changed so that serious academic work may flourish. Our work with Greek students indicates to us that fraternity leaders who are willing to try broader, more creative approaches to solving the problem of the relationship of the fraternity system to the university will meet with heartwarming response from many Greek students, particularly from the upperclassmen among sorority women.

At the University of Colorado there are some tentative signs that a renaissance among Greek students may be in the offing. Three sororities and one fraternity have taken significant steps to bridge the gap between life in their houses and their intellectual and scholarly pursuits. The girls of Chi Delta Chapter of Alpha Omicron Pi have accepted

and are attempting to initiate a broad and comprehensive scholarship program worked out by their alumnae advisory board in consultation with the president and scholarship chairman. Central to the program is the building of a library and study center in the old recreation room of the house; the open shelf library will include basic reference material and classic works in every major field, with further emphasis on literature and the humanities. Set in comfortable, quiet surroundings the library will provide the girls with easily accessible books for browsing, exploring, and studying. Alpha Omicron Pi alumnae groups have given enthusiastic support to the library and are raising money for the project; the advisory board estimates that it may take four years to build a four or five hundred volume library and complete remodeling of the study center, but a modest and useful collection of books will be on hand for the fall term.

The A O II program begins with a search for girls who are capable of intelligent and critical response to their university experience, girls who can contribute to each other on many levels. The girl whose recommendations and high school record indicate high academic potentiality receives primary consideration during rushing. For its fall pledges A O II has set up a 6-seminar orientation course in college study techniques conducted by advisers and upperclassmen. At these sessions the idea of a university and the purpose of the A O II scholarship program will be discussed as well as specific study methods most useful in major introductory courses. The pledges will meet at study tables 15 hours each week until mid-term examinations; girls delinquent at that time, including actives, will continue to meet a strict study table.

In order to find more evening study time, the A O IIs voted to abolish participation in the fraternity-sorority "functions" traditionally held Wednesday nights and to urge week-end partying instead. So far, theirs has been a lonely stand, although fraternities have cooperated with them in setting week-end party dates.

Other positive steps have been taken to improve the intellectual atmosphere of the house: every four weeks a professor comes for dinner and discussion, or a member of the music faculty for supper and a sonata; with the help of chapter art majors the girls plan to set up changing displays of some of the exciting work being done by the University's artists in residence; from the book fund will come house subscriptions to the *Sunday Times* and other national and international news sources; and the A O IIs are negotiating with the Dean's office in an effort to secure faculty advisers attached specifically to their chapter. Each May the sorority will give public testimony to its belief in academic excellence

Behind the Byline: Jan Douthit Weir attended the University of Nebraska where she was a member of Alpha Omicron Pi. She formerly worked in the advertising and promotion fields; now is serving as Alumnae Adviser to Chi Delta Chapter of A O II at Boulder. . . . Dr. Walter Weir, graduate of Boston University, holds M.A. and Ph.D. degrees from Harvard; he is Associate Professor of philosophy and acting Director of Honors at the University of Colorado. As a member of the executive board of the Interuniversity Committee on the Superior Student he has had occasion to visit many campuses across the country during the past two years.

at an Awards Dinner where the outstanding pledge scholars will be honored, and the Sophomore Scholar and the Junior Scholar of the Year named. The names of these girls will be commemorated on plaques in the study center. The chapter has also worked out plans enthusiastically for two seminar groups to meet in the house each week, following an experiment successfully tried by the Chi Omegas.

The Colorado Chi Omegas, sparked by an impressive number of upperclass honor students, initiated at the beginning of the spring term a unique experimental program, an honors course in modern literature in their house. Each Tuesday night 22 girls at the chapter meet in the Chi Omega lounge with Dr. Walter Weir, Director of Colorado's Honors program, for lively explorations of the works of such authors as Dostoevski or T. S. Eliot. Honor students receive one hour credit for the course, but many girls are taking it simply for the love of learning. Participants report the course has given an exciting new flavor to sorority life; the issues emanating from the readings give rise to many stimulating house discussions long before Tuesday night rolls around, and girls not in the course are borrowing the assigned books to discover what all the excitement is about.

Kappa Kappa Gamma began a similar experimental house honors group in modern social philosophy with the start of the spring term. About 10 girls meet weekly for two hours to discuss a not easy reading list, which includes such works as Toynbee's *Study of History*, Nietzsche's *Genealogy of Morals*, and Hannah Arendt's *The Origins of Totalitarianism*.

Delta Upsilon has set a pace for other Colorado fraternities in completing plans for an honors discussion group to be held in their house next fall. Architect's drawings for the new Delta Upsilon house indicate that ΔY members take seriously their rôle as students: the plans provide for a 2,000-volume library and large individual study cubicles.

Six other fraternities and sororities have expressed interest in beginning house discussion groups if faculty members willing to devote the time can be secured. Three other sororities are starting to collect books for reference libraries. Although the fraternities, as a group, have not been notable for their contribution to the intellectual life of the University of Colorado, at least two of them have asked the Alpha Omicron Pi scholarship committee for help in setting up strong scholarship programs, two others have set up study tables, and a fifth fraternity has quietly inched its grade average requirement up from C to C+, the current requirement of Colorado Panhellenic.

These are small and tender shoots reaching in the direction which fraternities and sororities must turn. Whether these chapters succeed in their aspirators will depend on more than the coöperation of chapter members and the encouragement of University of Colorado officials; it will depend also on strong and concerted national fraternity leadership to encourage seriousness of purpose by banishing some of the plethora of stunts, contests, parades, skits, parties, derbies, and endless hullabalooing for which the Greeks are largely responsible and in



GIRLS OF BETA TAU AT NEBRASKA WESLEYAN hold informal discussion of their courses and current reading.

which Greek houses feel they are obliged to take part or suffer campus oblivion.

A more real kind of oblivion will remain a threat unless these kinds of changes are made. University officials are well aware that gracious living and good comradeship are possible in dormitories, too. (One official commented to us recently that the frenetic pace maintained in the Greek houses was hardly his idea of the gracious living fraternities claim to foster.) If many sorority members continue to indicate that they consider being a beauty queen finalist somehow equivalent to the difficult task of achieving insights into the history of western civilization, or if fraternity members seem to feel that letter club membership is on a par with, if not distinctly superior to, membership in Phi Beta Kappa, or that float-building is a group activity as meaningful and time-worthy as creative campus political leadership, then nothing can rescue the Greek system from the disrepute into which it has fallen with many university officials and faculty members all over the country.

On the other hand, if the Greeks were to abandon the somewhat parochial campus politics which they practice at some schools, if they were to sever the few remaining ties that bind them to the bigotry of another age, and to cease much of the energy-wasting competition with each other while channeling the time saved into activities honestly connected with a university education, then the fraternity system might justify its claim to be a part of the university.

If fraternity and sorority leaders genuinely wish to contribute to the whole development of their members, they could do nothing more important than to provide the kind of houses where serious work may be accomplished, where broad intellectual experiences as well as the necessary and relaxing social experiences are possible. They could give no greater gift to their members than the gift of time . . . time to breathe, time to read, time to think and talk; fraternity leadership must act to remove the present burden of excessive required togetherness and allow their members to grow and develop in individual ways. These things done, the Greek system may survive to exist as a new and higher form of fraternity.



Biggest trophy of 1960 fall quarter went to DZs—the Siglympics Trophy on Homecoming weekend presented by Alpha Sigma Phi fraternity. Here DZs collect their trophy from Alpha Sigma Phi Howie Shay.



Editor-in-chief Nancy Boden (seated) confers with other DZ members of the Exponent staff: (l. to r.) Bonnie Mohler, Carol Davidson, Joy Boor, Sue McArthur, Sally Horton and Judy Ducharme.



DZs in Laurels, leadership group, are (l. to r.) President Judy Hancher, Jane Jennell, Joyce Bender and Nancy Boden (top). These four, plus Donna Keir and Sally Stout, are also in Who's Who.

1960 Lambda Chi Alpha Homecoming Queen was Dorothy Opalich (center). Two of her court were DZs Sue McArthur (left) and Judy Hinde.



THE LAMP VISITS BALDWIN-WALLACE

Gamma Alpha-

Two-time winners of DZ's highest award for excellence, the B-W chapter also claimed the 1960 DZ Woman of the Year.

by JOY SPRINGER, Γ A

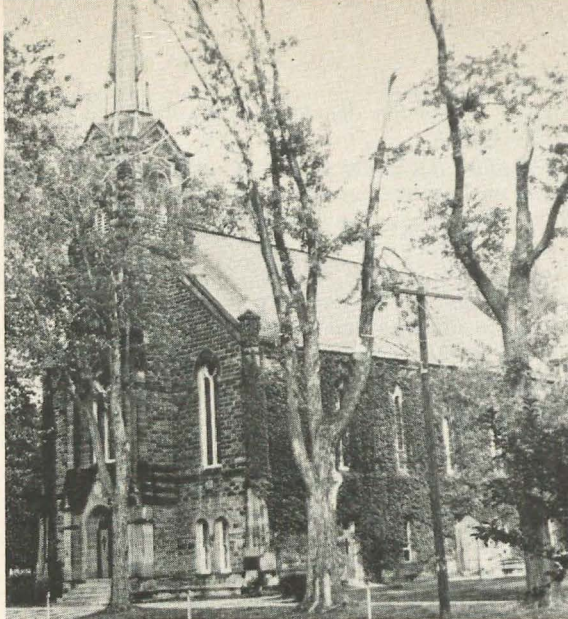
DZs on B-W Student Council are (l. to r.) Barb McElfresh, chairman of the Campus Relations Board; Sally Horton, chairman of election board; Joyce Bender, 1960 student council vice president (highest office for a woman on campus); Judy Hinde, 1961 vice president who succeeded Joyce and Joy Boor, sophomore representative.



THREE CHEERS for Gamma Alpha" was President Jane Jennell's exclamation on her way home from the Delta Zeta Convention at Pasadena this summer. Loaded with trophies and certificates which the Baldwin-Wallace College chapter had won, Jane had ample reason to be proud.

The Council Award, DZ's highest award to a collegiate chapter given for continued excellence in all fields, was won by Gamma Alpha at the 1958 Convention. Lo and behold, there was Gamma Alpha to take the award again in 1960—a feat never accomplished successively before by any chapter—so National Council created the Merit Council Award, a certificate indicating B-W's continued excellence for the entire four-year period.

The chapter also won awards in scholarship, membership, publicity and activities, and honors in the competition for the Genevieve Schmitt Memorial Plaque (for scholarship) and the Arlene Davis Scholarship (for a girl interested in a



BALDWIN-WALLACE COLLEGE CHAPEL

One of Our Winningest Chapters

career in aviation).

The chapter was especially proud to have one of its favorite alumnae, Arlene Davis, widely known aviatrix and donor of the sorority's Arlene Davis award, named Delta Zeta Woman of the Year on Founders' Day. Many of the GA girls attended the banquet at which she received her medallion on October 24 in Cleveland.

Then on December 1, Mrs. Davis entertained the Gamma Alpha chapter at a Christmas dinner at the Lakeshore Hotel in Cleveland with a party following in her penthouse. The chapter presented her with a large rose bowl engraved "Gamma Alpha, Woman of the Year, 1960." And then they sang and sang to her. Her sincerity, generous hospitality and stories will long be remembered by all the girls in the chapter.

Baldwin-Wallace College is located in Berea, Ohio, only 15 miles southwest of Cleveland. The college was chartered on December 20, 1845, and became Baldwin-Wallace College in 1913 when Baldwin University and German Wallace College were united.

A coeducational college of liberal arts, Baldwin-Wallace is a small institution by choice, with a student body of 1500. It is rich in tradition fostered over more than a century of Christian educational service.

Under the administration of President A. B. Bonds, B-W has grown extensively in the last

five years. Two new women's residence halls were opened in 1958. The three-story Ritter Library was dedicated in 1959. Wilker Hall opened last year for science study. A colonial-styled men's residence hall is now nearing completion.

Delta Zeta had its beginning at B-W in 1935 when 15 girls organized Phi Lambda Chi sorority. The local occupied a position of prominence on campus. It was outstanding in scholastic achievements. Also, the first girl to become editor of the *Exponent*, the college paper, and the first girl to be elected Student Council president were members of this group. After six years as a local, Phi Lambda Chi became Gamma Alpha chapter of Delta Zeta on September 24, 1941, and was guided by Lucille Cooks, an Alpha chapter alumna now on the Board of Trustees of Miami University.

Current chapter size is 50 members, which is the limitation set by the college for all six sororities. Other sororities are Alpha Gamma Delta, Alpha Xi Delta, Beta Sigma Omicron, Phi Mu and Zeta Tau Alpha. There are also six fraternities in B-W's family: Alpha Sigma Phi, Alpha Tau Omega, Lambda Chi Alpha, Phi Kappa Tau, Pi Lambda Phi and Sigma Phi Epsilon.

All sororities have their sorority rooms on the third floor of Marting Hall, the main classroom and activity building which has housed sororities since their establishments. All six so-

rorities share the dream of a Panhellenic house in the future.

Gamma Alpha began this year with all the spirit and enthusiasm for which they are known. Returning to campus were many DZs who copped honors at the end of last year. Nancy Boden, Jane Jennell, Joyce Bender and Judy Hancher were tapped to Laurels, the women's leadership honorary, in the traditional ceremony at Honors Convocation. Judy Hancher is this year serving as the Laurels president.

Also at Honors Convocation, Joy Boor, Betsy King and Joy Springer were named Outstanding Freshman Women. Gamma Alpha now has six members of *Who's Who*: Nancy Boden, Jane Jennell, Sally Stout, Donna Keir, Judy Hancher and Joyce Bender.

Under the leadership of President Jane Jennell, Rush Chairman Judy Ducharme and Pledge Trainer Von Ewing, Gamma Alpha had a very successful fall rush, resulting in the pledging of two wonderful sophomores which again filled quota.

The DZs won the prize trophy of fall quarter—the Siglympics Trophy. Siglympics is sponsored by Alpha Sigma Phi Fraternity on Homecoming weekend and the DZs exhibited their talents in the egg-throwing contests, leap frog and rolling pin throwing contest.

For the sixth year in a row, Delta Zeta won first place among the sororities in the Campus Chest Carnival. This year, under the chairmanship of Judy Boor, the winning booth was entitled "Smash the Martians." As pies hit the DZs, money was made for the fund-raising campaign. The DZs were also auctioned off to serve dinner at a fraternity house, and this brought in the highest amount of money for Campus Chest at the auction.

The sorority spent a very enjoyable evening at the annual Thanksgiving dinner the night before vacation. This is given for the DZs by their brother fraternity, Alpha Sigma Phi, in the fraternity house.



DONNA KEIR



JONI DAVIS

Donna Keir was selected as the 1960-61 May Queen at Baldwin-Wallace and Joni Davis was the Alpha Tau Omega's White Tea Rose Queen.

Gamma Alpha and Gamma Kappa (the DZ chapter at nearby Kent State in Kent, Ohio) again held their annual Kent-B-W Winter Formal, this time on February 4.

Beauty is certainly prevalent in Gamma Alpha. Lovely Donna Keir is the reigning 1960-61 May Queen. Five girls from Delta Zeta were on Donna's May Queen Court this past spring. Joni Davis, a senior, was the A T Ω White Tea Rose Spring Formal Queen last year, and two other DZs were on her court. Sue McArthur was the Alpha Sigma Phi Queen at their annual pledge dance. Dorothy Opalich is the Lambda Chi Alpha Homecoming Queen, with two other DZs on her court.

Delta Zetas are very active in student government on the B-W campus. Joyce Bender has been serving as Student Council vice president, and in early December, Judy Hinde was elected to this post to succeed Joyce. Judy is the eighth Delta Zeta in a row to be elected to this post, highest a woman can hold on campus. Four other DZs hold chairmanships of committees and boards on Student Council.

The DZs had the annual pep rally the evening



Behind the Byline

Joy Springer, who is vice president of the sophomore class at Baldwin-Wallace College, is the chapter *Lamp* editor and author, compiler and picture editor of this story. *The Lamp's* many thanks go to her for her prompt and thorough work.

Joy is majoring in home economics, is publicity chairman of the Home Economics Club, secretary-treasurer of the Modern Dance Club and on the Campus Relations Board. She was chosen as Ohio's North-western Regional Candidate for a national office in the Home Economics Club.

before the December student council elections.

Lucy Coons is B-W's District YWCA representative. In class elections held in October, Sally Horton was elected junior class vice president and Joy Springer was elected sophomore class vice president.

Gamma Alpha is very proud of Nancy Boden who is the editor of the *Exponent*, college newspaper. Also on the executive staff are Judy Ducharme and Sally Horton.

Scholarship is very important to Gamma Alpha. In 1958-59, Delta Zeta won the Campus Scholarship Trophy and in 1959-60 again won honors in scholarship. Gamma Alpha has received the Scholastic trophy for the past several years among the Ohio Delta Zeta chapters.

Many DZs are in campus honoraries. Judy Hancher and Sally Stout are in Dayton C. Miller, local academic honor fraternity. Bonnie Mohler is in Science Seminar. Judy Hancher is vice president of Kappa Mu Epsilon, mathematics honorary.

Joyce Bender is in Pi Kappa Delta, speech and debate honorary, and the three girls in Mu Phi Epsilon, women's music honorary, are Sue Chad-dock, Jane Jennell and Sally Stout who is president. Judy Ducharme is in Sigma Lambda Alpha, French honorary.

Several philanthropy projects have been completed. DZs collected in the United Appeal Drive. Several girls took children from the Methodist Children's Home to Campus Chest Activities. Judy Hancher is campus chairman and Jan Pontius is co-chairman of the Blood Mobile.

But no chapter can attain any measure of success without loyal alumnae. Mrs. A. B. Bonds, wife of the college president; Mrs. Harris, wife of the dean of the college, and Mrs. Hazelle Bechberger, wife of the chairman of the board of trustees, have always been willing and ready to help.

Credit is certainly due to the present advisory

A Word from the Dean

It is a privilege to commend Gamma Alpha for the honor bestowed on it by Delta Zeta.

We find the chapter on Baldwin-Wallace College campus a positive influence in bringing merit to the fraternity world.

Their first concern is for the academic program. Social activities and other areas of extracurricular life find our Delta Zetas well represented and holding many positions of leadership. Work and play together help them to further friendships and develop the character of individual members.

They are a strong link in the fraternity system.

Sincerely yours,

Wilma L. Shultz

Dean of Women

board which is composed of College Chapter Director Norma Andrisek, Mrs. William Taylor, a former president of Gamma Alpha, and Mrs. Carl Harrison.

The Cleveland Eastside, Cleveland Westside and the Berea Alumnae chapters have always offered much service to Gamma Alpha.

Special thanks goes to Gamma Alpha's wonderful friend and alumna, Mrs. Sally Beach, past Regional Alumnae Director. And sincere congratulations to the outstanding alumna of Gamma Alpha, Arlene Davis, the 1960 Delta Zeta Woman of the Year. Gamma Alpha will long remember the inspiration and sincerity of Arlene and the honor of singing "Dream Girl of Delta Zeta" to her on their Founders' Day last October.

As Baldwin-Wallace is proud of Delta Zeta sorority, Gamma Alpha is indeed proud to claim B-W as its home. Delta Zeta has always offered spirit and enthusiasm to the activities and campus-life of Baldwin-Wallace.



Alumnae Mrs. Sally Beach, past regional alumnae director, and Mrs. Hazelle Bechberger, wife of the B-W Board of Trustees chairman, and College Chapter Director Norma Andrisek look at the picture of Gamma Alpha's installation in a 1942 issue of THE LAMP.



MARION DITTMAN, foreground, walks through ruins at Olympia. ▶

DZs in the Lamp -

In Dallas: They Make Hospital Puppets

The Children's Medical Center of Dallas is a much brighter place these days thanks to local Delta Zetas. A variety of "sock puppets" and "story rugs" help to keep the children busy during their hospital stay. The babies aren't forgotten either: they are dressed in diaper sets made by DZs.

The children's project was initiated largely through the effort of Mrs. Clarence (Barbara) Troup who originated the idea and has contributed many sewing hours to it, and Mrs. John (Beverly) Baker, philanthropic chairman.

Barbara also compiles the Do-It-Yourself Smile Kits, which contain material for two infant

diaper sets and socks to make sock puppets. These kits, as well as empty kits for non-sewers to fill with old sheets or pillow cases for lining diaper sets, rick rack or buttons for trim, diaper pins and plastic toys for story rugs, are distributed and collected at alumnae meetings.

The story rugs are squares of material with Mother Goose rhymes or a children's story depicted by pictures cut out from scraps of material and appliqued on rug squares. Plastic toys are either donated or purchased to carry out the theme of the stories on the rugs. This really allows the imagination to run wild. One of the little boy favorites is an Indian village with plastic Indians to ride horses and hunt the buffalo. Bed-

GAYLE JOHN HOWELL, B T-Sophie Newcomb, at work in Tulane University Laboratory. ▶



In Baltimore: A Beautiful Brain

The pretty brunette on this page is Gayle John Howell, one of the few women electrical engineers in the United States. Gayle was formerly Delta Zeta's outstanding member, treasurer, and president of the Beta Upsilon chapter at Sophie Newcomb in New Orleans.

Her husband, Bill, is a field engineer with an electronics firm in Riverdale, Maryland, and so Gayle is completing her graduate work toward a Master's degree in electrical engineering at nearby Johns Hopkins in Baltimore.

Gayle was a straight-A student at St. Mary's Dominican High school, and was named salutatorian of her graduating class. At Tulane she was named outstanding senior student in the

In Chicago: Librarian Awarded Greek Trip

A Chicago library group editor and graduate of Northwestern University (A A) was one of 20 scholars accepted for a study group in Greece last summer.

Miss Marion Dittman attended the 1960 summer session of the American School of Classical Studies in Athens, Greece. She is editor of publications at the American Library Association in Chicago.

The six-week session included three weeks

study in the school and in Athens museums followed by three weeks of travel to historical sites in Greece and on the island of Crete. Miss Dittman wrote papers on the theater at Delphi and the temple of Zeus at Olympia.

A highlight of the summer trip for her was seeing a play of Euripides in the original Greek on the Acropolis in Athens.

On her return trip in mid-August she stopped in Italy to view various excavations there.

Miss Dittman received her master's degree in Greek and Latin from Northwestern University.
—by JUDY GROVES, A A.

Light

ridden children can sit up in bed with the rugs spread over their sheets, or the rug can be spread on a table and enjoyed by several youngsters.

When each kit and rug is completed, or material or trim turned in, the person responsible becomes a "Smiler." "Smilers for the Month" are listed in the Dallas Alumnae newsletter. Names of "Smilers" are also posted on the alumnae news bulletin board at each meeting.

The project has been very enthusiastically accepted and supported by the alumnae as well as by the Alpha Psi collegiates (at Southern Methodist University) who participated by decorating the sock puppets with felt and buttons, so the list of smilers is a large and ever-growing one.



◀ BARBARA TROUP, Dallas alumna, cheers young hospital patients.

college of electrical engineering, was elected to membership in the American Institute of Electrical Engineers and is one of the two women in Louisiana who has the right to wear the honorary woman's badge of Tau Beta Pi fraternity, the engineering equivalent of Phi Beta Kappa.

Bill Howell is proud of the fact that his wife is an engineer, and enjoys being able to discuss even the technical aspects of his work with Gayle. And she is delighted to be able to discuss her courses, problems, and laboratory experiments with him.

Gayle herself has this to say about her engineering career: "I feel that there is definitely a place for women in the engineering field. Many, if not most, aspects of engineering require creativity and ingenuity, and I feel that women have

much to offer in this line. By far the biggest obstacle to women in engineering is tradition, and this is certainly not an insurmountable one."

Gayle's story, along with numerous pictures of herself, was featured recently in the Sunday magazine section of the New Orleans *Times-Picayune*. It described her early life in New Orleans, her home town, when she developed into an avid learner, foreshadowing her future success as a student in high school and college. Her grandmother, Mrs. Florence Hingle, taught Gayle to read and write and do simple arithmetic before she was five years old. She also studied the piano and became so accomplished at it that she taught piano on the side. Her real love, however, was for mathematics and this is what she developed into such a successful career.—by ANN FORKEL, A A.



ENTRANCE TO CARVILLE

Carville . . . Where Hope Is High

From
Delta Sigma Epsilon,
Delta Zeta inherited
the worthwhile
and rewarding project
of aiding
handicapped patients
at Carville, hospital
for treatment of
Hansen's disease.
So we are especially
grateful to know of
scientific advancement
which gives hope
for its eradication.

On the banks of the Mississippi 75 miles north of New Orleans stands Carville, a city unto itself which holds hope of eradicating Hansen's disease, formerly known as leprosy, from the United States.

When we say "Carville," we mean the United States Public Health Service Hospital at Carville, La., 337 acres of buildings and grounds for patients who have Hansen's disease.

Hansen's disease has been a dread disease for centuries, with fragmentary records in India, China and Egypt dating back 1000 years before Christ. But a hopeful note is issued by the U. S. Public Health Service Hospital bulletin which says:

"Hansen's disease is today managed rather successfully, it is far from the worst evil that could befall, and public support is strengthening the expectation that H.D. will disappear from the U.S.A. as it has already done in several European countries. Research and education already in progress may hasten the victory!"

One small sign of victory is felt by many Delta Zetas. DZ chapters which have requested a Carville patient to "sponsor" have, of



RECREATION BUILDING FOR PATIENTS



AERIAL VIEW OF ENTIRE HOSPITAL PLANT

TELEVISION LOUNGE FOR PATIENTS



necessity, had to be turned down simply because there are not enough patients to go around. Chapters which may be disappointed at not being assigned a patient to sponsor will surely be gratified to know that the reason is that the number of patients is diminishing each year.

As of June 1960, 80 college and alumnae chapters of Delta Zeta were sponsoring 40 Carville patients. Shirlyn Chaffin, chairman of the national committee on Carville, has a waiting list of 20 more chapters which wish to sponsor a patient.

The patients sponsored by Delta Zeta are either blind and/or handicapped by an amputation, have bad feet or hands, or are confined to a wheelchair. They all belong to the Jolly Social Club, a group which they themselves formed at Carville.

These 40 specially handicapped persons are a relatively small percentage of the approximately 275 patients now at Carville. Few new patients are received due to outstanding advancement in medical research and drugs.

"Sponsoring" a patient means that the chapter corresponds with him or her, sends a monthly allowance of one dollar and sends birthday and Christmas cards and gifts.

Delta Zeta gives the Jolly Social Club a Christmas party each year. National provides each patient with a pound box of candy and miscellaneous gifts are sent for patients who might be forgotten by their sponsor. Entertainment is provided not by DZs but by local people of Baton Rouge. Our Sigma chapter at Louisiana State University, Baton Rouge, goes out to visit our patients throughout the year and also attends the Christmas party. Mrs. Norman Agler, former national director of philanthropies, made a visit to Carville last year and visited with members of the Jolly Social Club.

Delta Zeta nationally has purchased several large gifts for Carville. One is an inter-communication system, another is sewing machines and bolts of material for the sewing room, and another is talking records for the blind patients. Gifts were made possible through donations from both active and alumnae chapters throughout the year.

Another major purchase which Delta Zeta is now working on is a dictating machine and transcriber for use in the school program and in "The Star," Carville magazine which is quite widely circulated throughout the country. With such a machine, young people in the school could become familiar with some of the equipment they would find if they someday seek employment in the outside world following their discharge from Carville.

A new motion picture about Carville called "Management of the Leprosy Patient" will be available shortly for showing to both active and

alumnae chapters. For information about obtaining the film, write to Shirlyn Chaffin, 1140 E. 21st Ave., Columbus 11, Ohio.

Carville was the national project of the Delta Sigma Epsilon sorority, and when the DSE and DZ union took place in 1956, Delta Zeta was happy to add Carville to its national projects, along with hearing.

The hospital is almost a self-sufficient community, consisting of a large quadrangle containing an infirmary with 67 beds, 16 two-story dormitories with single rooms for patients, a dining room seating 400, Protestant and Roman Catholic chapels, a recreation hall containing a theater for 400, TV lounges, library, ballroom, canteen, post office and space for various patient enterprises. Additional facilities are a 20-acre lake, a nine-hole golf course, a lighted tennis court, a softball diamond and picnic grounds. The hospital has its own water purification plant, power plant, laundry and maintenance shops. Quarters are provided for 23 staff families.

Patients have a variety of cultural and occupational interests and come from all levels of educational achievement. They are encouraged to develop social clubs and publications and to participate in a diverse program of recreational activities. As a rehabilitation measure, the hospital employs approximately 100 patients on a part time basis.

Certified instructors teach grade and high

school subjects in a school with the present enrollment of about 50. Students who complete their work receive high school diplomas.

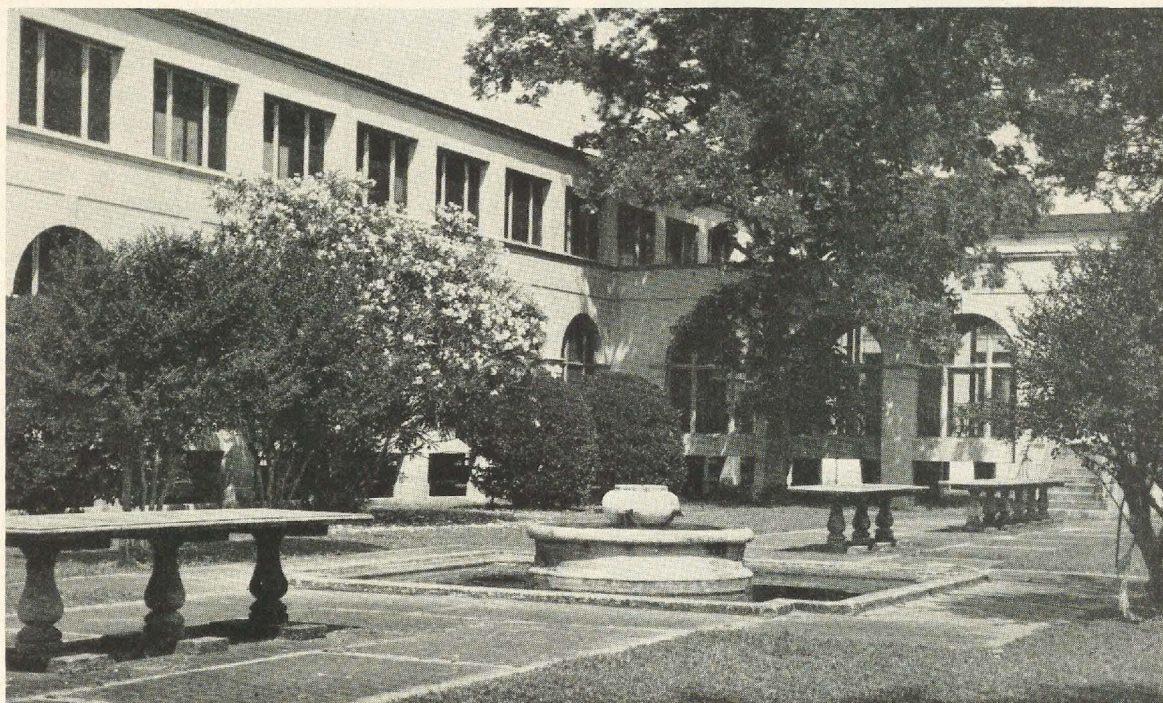
Patients range in age from 12 to 85 years.

Vocational exploration is available through general aptitude tests and planning for discharge of the patients. On the job training is part of the patient-employee program. Social service agencies and state employment agencies often arrange for job placement with patients who wish to work after discharge from Carville.

DZ CHRISTMAS PARTY FOR PATIENTS



ONE OF CARVILLE'S PATIOS



News of Our Collegiate Chapters



A DRAMATIC WAY TO SELL TICKETS! *Gamma Rho girls of Northern Illinois University joined in the fun with the Vets Club to promote tickets for the school's annual Dad's Day dance held this fall.*



One DZ crowns another as the 1960 Homecoming Queen Beverly DeLoach is crowned by 1959's queen, Joyce Pickett. Both are members of Delta Delta chapter at Georgia State. (See page 32 for another picture of Beverly and three DZs in her court.)

Fall and Winter Busy for Collegiates

Fall semester brought a rush of activities to Alpha Sigma (**Florida State**). Holding important positions in the student government are Dorrie Chazel and Rosemary Plunckett, secretary and undersecretary of Finance. Mary Packard is chairman of the Off-Campus court.

Because these girls entertained the prospective football team at a party this fall, they have been chosen by the coaching staff to give two more parties this semester. Quite a compliment to DZ's "hostessing abilities."

Gamma Mu (**Illinois Institute of Technology**) pledges distributed baskets of food to needy families for Thanksgiving. The food and money were donated by faculty and staff. Gamma Mu's standard programs have had a rather hypnotic effect. Col. Eichler, well-known authority on hypnosis, gave a recent talk on "Psychological Helps In Study." Other Panhellenic girls, as

well as un-affiliated women, were entertained at the lively and informative discussion. Perhaps this helped, for Gamma Mu was tops in scholarship last semester, breaking the all-school record.

Zeta Iota (**Humboldt State, California**) was able to send a contribution to Gallaudet College through funds raised at a fashion show. Zeta Iota also placed top on campus scholastically.

Here's a tip from Zeta Iota for other chapters. Each week the girl elected by the chapter as most outstanding in activities for that week receives the "traveling bracelet."

Although the year is only half under way, Gamma Pi (**Western Michigan**) has already had a pledge-active party, a costume party with Delta Sigma Pi, a hayride and Dad's Day luncheon. This summer saw the beginning of Mother's clubs groups in Detroit, Kalamazoo and Grand

Rapids.

Psi (**Franklin College**) has "adopted" a family in Franklin as their main philanthropic project. This family received a basket of food at Thanksgiving and Christmas. Standards proved interesting at "Know your Sisters" night. A quiz was held on the girls' hometowns, majors and other bits of information.

The Bloomfield Convalescent Home received Thanksgiving and Christmas favors from Gamma Psi (**Central Michigan**) girls. These girls are also winners when it comes to football. DZ captured first place in the Annual Power Puff Derby. Score: DZ 12—ZTA 7.

Although Mu (**U. Calif., Berkeley**) hasn't quite hit the top yet, they've gone from 21st to 6th scholastically in three semesters. That's real progress.

Fruit baskets and boxes of groceries were given to the needy at Thanksgiving by pledges of Epsilon Lambda (**Southwestern State, Okla.**). Along with T K E, these girls walked off with top Homecoming honors.

At the close of last year, Gamma Beta (**U. of Connecticut**) was presented with the Phi Sigma Kappa trophy for outstanding sorority of the year. Scholarship, activities, social grace, and service to the University form the basis of the award. This is the third year these girls have won, and now retain the trophy.

Gamma Theta (**Carroll, Wis.**) girls' new philanthropic project is participating in the occupational therapy program at the local mental health clinic.

Epsilon Zeta (**Drexel Inst.**) along with Delta Sigma Phi and Tau Kappa Epsilon won first place in Homecoming skit competition.

It is the practice of Gamma Gamma (**Mis-**

souri Valley) to send a group of girls to the Blosser Crippled Children's Home each Sunday evening. The girls lead the children in devotion and singing.

Epsilon Omicron (**Western Illinois**) again took the first place in the Red Cross Blood Drive. This entitles them to keep the trophy. Pledges are doing volunteer work at the local hospital, writing letters, fixing flowers, visiting and reading.

For the second consecutive semester, Delta Upsilon (**Marshall**) received top scholastic honors. These girls also received a blood donation trophy. Once a month these girls supervise a party for underprivileged children in Huntington.

Alpha Epsilon (**Oklahoma State**) had a very successful Family Day this year with more than 60 guests at the chapter house. Dean Jackson, Associate Dean of Industrial and Electronic Engineering, spoke on scholarship.

Epsilon Sigma (**Wayne State**) and Epsilon Phi (**University of Detroit**) enjoyed a combined standards meeting, presented by a representative of the Warner foundation garment corporation.

Henderson State Teachers College faculty members were entertained by Epsilon Pi girls at a come-as-you-are breakfast. All were surprised, but had a good time.

Many a crisp night this fall Iota (**U. of Iowa**) girls worked on 1960 Homecoming plans with PIKA. All this hard work was not in vain for the combined group won first place.

Philanthropic projects in line for Delta Sigma (**NE Missouri State**) are reading to and talking with patients in the community nursing home. Also, girls have volunteered their services

ALPHA EPSILON'S SWEEPSTAKES-winning fair booth at the Student Union Activities Board Fair held in October.



Homecoming Queens 1960



SANDY ABLES, *Delta Sigma*
N.E. Missouri State
Kirkville, Mo.



SALLY ADKINS, *Gamma Nu*
Eastern Illinois University
Charleston, Ill.

For list of other Homecoming Queens and court members, see list of Honors beginning on page 34.



HOMECOMING QUEEN D. ANN MOORE is surrounded by 13 other DZs who represented Epsilon Xi (Arkansas State) on Homecoming Day. Four cheerleaders in front are Judy Green, Dottie Richardson, Monterey Talley and Patsy Hendriks. Two majorettes are Linda Fitzhugh and Cissie Hazzard. Seven T-steppers (dressed in white, l. to r.) are Jenna Hairston, Martha Jane Hix, Cissy Gillespie, Fran Phillips, Katsy Dobbs, Diane Meacham and Pat Lachowsky.



NANCY MCELROY, *Gamma Phi*
Indiana State College
Indiana, Pa.



FIVE OF THESE EIGHT ARE DELTA ZETAS of Delta Delta chapter at Georgia State. Queen Beverly DeLoach is attended by (at left, l. to r.) Mimi Tatum, Sharon Hubbard and Joyce Dick. Joyce Pickett, a DZ and 1959 Homecoming Queen, stands to Beverly's left.

to a local Girl Scout troop.

Beta Sigma (**Colorado State**) has the honor of acquiring the largest pledge class in the history of the chapter—38 pledges.

Miss Beth Peterson, home economist of Du Pont Co. Extension Div., was a recent guest at Epsilon (**Indiana University**), after speaking to the student body on "The New American Look in Living." A member of Δ Z, Miss Peterson is also a member of the American Home Economics association and Home Economics Business Section.

Delta Psi (**U. of Calif., Santa Barbara**) has adopted St. Vincent's School as their philanthropy. The girls spend at least an hour a week entertaining the retarded children in the school.

Beta Xi (**Auburn**) donated baskets of food to needy families of Auburn at Thanksgiving.

Zeta Zeta (**West Texas State**) sponsored a car wash. Proceeds went to the Fine Arts building for a new tape recorder.

The good voices of Sigma (**Louisiana State**) pledges brought happiness to the old folks home in Baton Rouge.

Gamma Epsilon (**Drake**) girls entertained children at the Des Moines Crippled Children's Home at a Hallowe'en party.

Zeta Beta (**Stout State, Wis.**) pledges became "helping hands" during their pledgship. The girls worked at Menomonie Memorial Hospital every Saturday afternoon.

Gamma Delta (**Penn State**) has been adding to their suite furnishings by saving S&H green stamps and redeeming them for such items as a coffee percolator. All the girls began saving during the summer and the supply has been increased since. During the past elections, these girls provided baby sitting service and helped drive people to and from the polls.

Beta Lambda (**University of Tennessee**) boarded busses for Gatlinburg where the girls spent a weekend in the Smokies. The hours were spent singing, hiking and enjoying the companionship of brightened sisterhood.

Candy selling was again selected by Alpha Upsilon (**University of Maine**) girls as their money making project. Some containers were brandy snifters, others were apothecary jars. The order was doubled this year, as last year's candy sale was so successful.

At Hallowe'en, the Sigma Nu fraternity chapter at **Fresno State** sponsored an all school dance. Epsilon Epsilon girls took sweepstakes at the dance for the pledge skit.

Staten Island Community Chest is the philanthropic project of Zeta Delta (**Wagner College**) pledges this year.

For an aid in scholarship, Beta Nu (**University of Miami**) has set up study halls. They

have reserved a classroom for two hours every afternoon of the week.

Beta Rho (**Michigan State**) and the Tau Chi's held their annual Christmas party for needy children. Toys and small, useful articles of clothing were given to the children.

Recently, members of Omega (**U. of Oregon**) assisted alumnae in making Christmas decorations out of tin cans. The proceeds from the sale of decorations was used for philanthropy.

The afternoon really hopped in front of the Gamma Kappa (**Kent State, Ohio**) chapter house when the girls and the A T O's sponsored a Dixieland session on their front porch after a football game.

\$150 for philanthropies was netted by Zeta Epsilon (**California, Pa.**) in a style show held jointly with a local store.

Gamma Phi (**Indiana, Pa.**) mothers club found an idea to help boost the treasury. An apron was sent to each girl's mother. When they received the apron, each mother sewed a patch to it, under which they placed dollar bills. After doing this, each mother sent the apron to another mother. Finally, the apron was returned to the girls. Total income was \$43.

To further faculty relationship, Theta (**Ohio State**) holds a faculty night each week. Several faculty members and their wives are invited to dinner and a social hour.

Soon after school had started, Gamma Omicron (**San Diego**) enjoyed a weekend retreat to the mountains.

Delta Xi (**Colorado State**) and Sigma Phi Epsilon held a joint Christmas party for underprivileged children. Approximately 40 children were entertained and given presents.

Gamma Rho (**Northern Illinois**) and the Vets Club held a Dad's day dance.

SIGMA GIRLS AT LOUISIANA STATE UNIVERSITY held a Plantation Party as part of their successful, quota-filling rush. Here, (l. to r.) are Rose Pearce, Sandra Forbes and Carolyn Randolph.

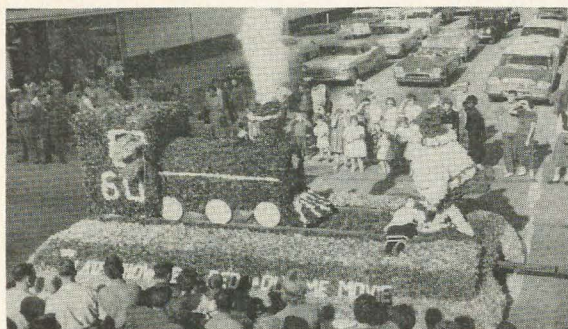




First place float: DELTA BETA, Tampa University



First place float: GAMMA RHO, Northern Illinois U.



First place float: DELTA LAMBDA, Lamar Tech (Beaumont, Tex.)

Second place float: GAMMA LAMBDA, San Jose State



HONORS . . . In Our Chapters

Some of the recent top honors reported from our Collegiate Chapters are listed below.

HOMEcoming—1st Place

- Γ P—Northern Illinois
- Γ N—Eastern Illinois
- B N—University of Miami
- E E—Fresno State College
- I—State University of Iowa
- Δ Δ—Lamar Technological College
- E Z—Drexel Institute
- E K—Whitewater, Wisconsin
- E A—Southwestern State, Oklahoma

HOMEcoming QUEENS

- Nancy McElroy, Γ Φ—Indiana State
- Sally Adkins, Γ N—Eastern Illinois
- Beverly Deloach, Δ Δ—Georgia State
- Sandy Ables, Δ Σ—North Eastern Missouri State
- Marilyn Saddler, Γ Γ—Missouri Valley
- Isi Stedham, E K—Whitewater, Wisconsin

HOMEcoming COURT

- Toni Wesley, Γ P
- Julia Witt, B A
- Nancy Fruit, Z B
- Mimi Tatum, Δ Δ
- Joyce Dick, Δ Δ
- Sharon Hubbard, Δ Δ
- Jenne Emeric, B Π
- Carol Meyer, Γ T

MORTAR BOARD

- Julia Witt, B A—University of Tennessee
- Marjorie Ransick, O—University of Pittsburgh—Vice President
- Joan Coleman, E Σ—Wayne State—President

PHI BETA KAPPA

- Nancy Fehnesfeld, B Π—Albion

CLASS OFFICERS

- Ohio State
- Marianne Green, Vice President—Sophomore Class
- SIU
- Linda Brooks, Vice President—Junior Class
- Sandy Terry, Secretary-Treasurer—Sophomore Class
- Georgia State
- Mary Ann Heron, Secretary-Treasurer—Senior Class
- Marie Jones, Secretary-Treasurer—Junior Class

WHO'S WHO

- Eastern Illinois
- Sally Adkins
- Carolyn Fresenberg
- Betty Loy
- Judy McCoy
- Fresno State
- Peggy Levora
- Georgia State
- Kitty Stretch
- Myra Phillips
- Mary Smith
- Linda Beeler

Southwestern State, Oklahoma
 Meridith Cunningham, Joan Gentry, Jeanette Nippert,
 Janice Whelgal
 Henderson State (Ark.)
 Lynn Weber, Nancy Boaz, Betty Hall
 Marshall
 Sandra Strohmeier, Mary Hanna
 Missouri Valley
 Sandra Moore
 Wisconsin State (Whitewater)
 Carol Thiers Niendorf, Ann De Coster, Phyllis
 De Biase, Karen Knaak, Jule Schwertfeger Sherwood

PI LAMBDA THETA—Education

Colorado State
 Peggy Gerlach
 Luella Aden
 Jan White
 Jeane Haye

KAPPA DELTA PI—Education

Fresno State	Ball State
Beverly Broughton	Sue Teagle
Marshall	Carolyn John
Nancy Shomaker	Doris Ogle
Joann Horne	Eleanor Hartman
Constance Bradley	RuthAnne Smelser
Jean Anne Stone	Emporia State
Franklin	Karen Erbes
Ann Allen	Darlene Shoemaker
Ruth Boyer	Whitewater, Wis.
Sally Mabel	Kathy Maly
Sally Thiesing	Shirley Williams

OMICRON NU—Home Economics

Joan Lang, A T—University of Maine

KAPPA OMICRON PHI

Betty Loy, Γ N

SIGMA ALPHA ETA—Speech Correction

Pat Mooney, Γ N
 Chris Ried, Γ N
 Lois Miller, Γ X—honor graduate
 Glynda Walker, Γ Ω

ALPHA EPSILON RHO

Gaty Wood, Γ N

YEARBOOK

Judy Beach, Greek Editor—Kent State
 Pat Alisau, Activities Editor—Kent State
 Edith Little, Editor—Iowa State

PANHELLENIC

Cindy Grossma, Program Chairman—Kent State
 Rosemary Loffredo, Treasurer—Wagner

AWS

Barbara Boyles, Judiciary Board—MSU
 Karen Knaak, President—Whitewater, Wis.

ALPHA LAMBDA DELTA

Patricia Dumas—Michigan State
 Margir Naibert, Iowa State—Vice President

KAPPA TAU ALPHA

Marilyn Tipton Moske—State University of Iowa



MARILYN JOHNSON
 Δ Σ-N.E. Missouri State
 Cardinal Key



JOAN COLEMAN
 E Σ-Wayne State
 Mortar Board President



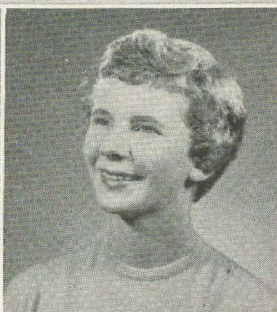
MARILYN MOSKE
 Γ Ω-Southern Illinois
 Cap and Tassel President



JUDY SCHANDER
 Γ Π-Central Michigan
 Outstanding campus senior



LINDA COSTELLO
 Ψ-Franklin, Indiana
 Gold Quill



MARILEE OLSON
 I-Iowa State
 Mortar Board



BARBARA WILKINSON
 Δ Λ-Lamar Tech
 Cap and Gown charter
 member



JOAN BIEDLER
 Γ Δ-Penn State
 Mortar Board selections
 chairman

Busy DZs with Top Jobs



CHAROLLETTE McELROY
Z Z-West Texas
Secretary of Student Senate



MARTHA AUSTIN
E II-Henderson (Ark.)
Yearbook editor



THELMA SCHWARTZ
Γ I-Memphis State
Desoto (Yearbook) Beauty



KAY DAUGHERTY
Δ Σ-N.E. Mo. State
Senior Class Secretary



ANNE WEIGAND
E II-Henderson (Ark.)
Newspaper editor



ELIZABETH MALIN
Z Z-West Texas
Junior Class Secretary



GLEND A COX
Δ A-Lamar Tech. (Tex.)
Senior class treasurer



STEVIE MUELLER
Δ E-Colorado State
President of AWS



NANCY JANE VERZUH
E A-Western State (Colo.)
President of AWS

DZs with Special Awards



KATHLEEN BOSWORTH of Gamma Omicron at San Diego State won Miss State Day award presented at 1960 National Convention.



MARJORIE RANSICK of Omicron chapter at the University of Pittsburgh is recipient of the Nationality Rooms Council Award.



CORNELIA KORNEY of Theta chapter at Ohio State won the American Guild of Musical Artists Award this year.



PHYLLIS SCOFIELD of Gamma Beta chapter at the University of Connecticut has been selected a University Scholar.



JACQUE HIGGINS of A E chapter at Oklahoma State won a \$600 American Business Club Scholarship for Speech Therapists.



PAT MCCARRON of Beta Mu at Florida Southern is varsity cheerleader and Women's Student Government dorm president.

Inside . . .

**How They Help Hard-of-Hearing in Detroit
More New Houses for Delta Zetas
Aviatrix Arlene Davis Breaks Sound Barrier**

**page 4
page 10
page 14**



BARBARA HARMES, Delta Xi; BARBARA MAITLAND, Gamma Gamma; JANET DAVIDSON, Delta Sigma, met at the national Uniting Assembly at Stephens College, Columbia, Missouri, last August.

DZs Meet at National Uniting Assembly

In hot August weather four denominations took a calculated risk and voted the merger of their student movements. At Stephens College, Columbia, Missouri the Disciples of Christ, Evangelical United Brethren, the United Church of Christ and the United Presbyterian Church, U.S.A. declared themselves one movement.

This national merger was also the meeting of three Delta Zetas: Barbara Harms, Delta Xi, Colorado State; Barbara Maitland, Gamma Gamma, Missouri Valley College and Janet Davidson, Delta Sigma, Northeast Missouri State Teachers College. The recognition of another Delta Zeta badge was a thrilling experience. It is a good feeling to know that sorority sisters you have never seen before are working with you toward a like purpose.

While at the Uniting Assembly we journeyed to Kansas City, Missouri to attend a nautical party given by a Gamma Gamma alumna. There we met more Delta Zetas. It is really a fact that Delta Zeta is tops across the nation.—JANET DAVIDSON, Delta Sigma

1960-61 Directory of Delta Zeta Mothers' Clubs

<i>Chapter or City</i>	<i>President</i>	<i>Address</i>
Gamma	Mrs. Leon Godley ...	5118 W. 28th St., St. Louis Park, Minn.
Delta	Mrs. E. F. Horak	3687 Ingleside Rd., Shaker Hts., Ohio
Epsilon	Mrs. Chase C. Mooney ..	910 So. Highland, Bloomington, Ind.
Theta	Mrs. Joseph Kelly	3755 Olentangy Blvd., Columbus, Ohio
Iota	Mrs. Henry A. Ferguson	146½ Martin Rd., Waterloo, Iowa
Kappa Parents'	Mrs. P. R. Banks	8211-8th Ave. N.E., Seattle, Wash.
Mu	Mrs. Charles R. Lohmeyer	16 Cowper Ave., Berkeley 7, Calif.
Nu	Mrs. Parrish	486 Lombard, Galesburg, Ill.
Xi	Mrs. Carl Koeppe	2736 McKinley Ave., Cincinnati 11, Ohio
Omicron	Mrs. A. C. Raynor	7813 Lloyd Ave., Pittsburgh 18, Pa.
Pi	Mrs. R. H. Hancock ..	404 E. Eureka, Eureka, Ill.
Sigma	Mrs. Wm. J. Henry ...	2140 So. Ramsey Dr., Baton Rouge, La.
Tau	Mrs. D. F. Schaefer ..	4426 Sommerset Lane, Madison, Wis.
Upsilon	Mrs. T. H. Harwood ..	2704 Belmont Rd., Grand Forks, N.Dak.
Chi	Mrs. J. B. O'Farrell, ..	Rt. 4, Box 132, Sherwood, Oregon
Psi	Mrs. L. F. Heminger ..	668 So. Home, Franklin, Ind.
Omega	Mrs. D. R. Husband ..	1944 Charnelton St., Eugene, Oregon
Alpha Alpha	Mrs. A. M. Dobrick ..	1751 W. 104th Place, Chicago 43, Ill.
Alpha Beta	Mrs. C. C. Brown	805 N. Orchard, Urbana, Ill.
Alpha Delta	Mrs. Mable Holmes ..	3931 W St. N.W., Washington, D.C.
Alpha Epsilon (Okla. City) ...	Mrs. C. L. Gandy	4125 N.W. 22, Oklahoma City 7, Okla.
Alpha Epsilon	Mrs. R. J. Tayer	2625 S. Oswego Pl., Tulsa, Okla.
Alpha Theta	Mrs. Robt. L. Klaren ..	565 Longview Drive, Lexington, Ky.
Alpha Tau	Mrs. Glynn Drake	1704 Mohle Drive, Austin, Texas
Alpha Chi	Mrs. Hugh L. Walkington	1761 Cherry Ave., Long Beach 13, Calif.
Alpha Psi (Alpha)	Mrs. W. S. Raef	5437 Richmond, Dallas, Texas
Alpha Psi (Beta)	Mrs. C. N. Rea	2941 Fondren Drive, Dallas, Texas
Beta Alpha	Mrs. Norma Jocelyn ..	3478 Pawtucket Ave., Riverside, R.I.
Beta Gamma	Mrs. Howard Turner ..	1514 Woodluck, Louisville, Ky.
Beta Theta	Mrs. Harry E. Best ..	103 McDonald Ave., Pittsburgh 23, Pa.
Beta Kappa	Mrs. Clifford E. Mack ..	1411 Curtiss, Ames, Iowa
Beta Lambda	Mrs. W. C. Bell	817 Whitehall Road, Knoxville 9, Tenn.
Beta Pi	Mrs. Grace B. James ..	9650 1St. Mary's, Detroit 27, Michigan
Beta Rho	Mrs. John Toben	845 Touraine, E. Lansing, Michigan
Beta Sigma	Mrs. Irving Roberts ..	749 W. 11th St., Loveland, Colo.
Beta Tau	Mrs. Preston L. Wright ..	713 Hazel, Louisville, Nebr.
Beta Upsilon	Mrs. Arthur M. Ritif ..	5530 St. Claude Ave., New Orleans, La.
Beta Chi	Mrs. Robt. Kalbfus ..	1701 Crestview Drive, Springfield Drive, Springfield, Ohio
Gamma Alpha (Co-Pres.)	Mrs. T. Newton	223 Mainwood Dr. S.E., Warren, Ohio
Gamma Epsilon	Mrs. Myron Zornow ..	444 Fair St., Berea, Ohio
Gamma Iota	Mrs. C. E. Glancy	612 Grand Ave., W. Des Moines, Iowa
Gamma Kappa	Mrs. E. F. Harder	3135 Choctaw, Memphis, Tenn.
Gamma Lambda	Mrs. R. J. Vacha	6210 Woburn, Cleveland 9, Ohio
Gamma Mu	Mrs. Gertrude Richardson	1380 No. Lemon, Menlo Park, Calif.
Gamma Omicron Parents'	Mrs. J. McNamara ...	7221 So. May St., Chicago, Ill.
Gamma Pi	Mr. & Mrs. L. B. Ison ..	P.O. Box 36, Campo, Calif.
Gamma Rho	Mrs. Morris	1918 Cedar Hill, Royal Oak, Mich.
Gamma Tau	Mrs. Earl Curtiss	108 Walkup Ave., Crystal Lake, Ill.
Gamma Upsilon	Mrs. Wm. Marcell ...	4330 W. 193 St., Fairview Pk. 26, Ohio
Gamma Phi	Mrs. Troy Sponholtz ..	2200 N.W. 58, Oklahoma City, Okla.
Gamma Omega	Mrs. Vernon McElroy ..	756 Sugar Hollow Rd., Sharon, Pa.
Delta Alpha	Mrs. David Levy	2227 Clay St., Murphysboro, Ill.
Delta Beta	Mrs. Lois Nance	127 Gordon St., Long Beach 5, Calif.
Delta Delta	Mrs. J. H. Ray	4627 El Prado Blvd., Tampa, Fla.
Delta Lambda	Mrs. Richard H. Wiggins	2652 LaVista Rd., Decatur, Ga.
Delta Mu	Mrs. D. C. Cascio	1109 East Drive, Beaumont, Texas
Delta Omicron	Mrs. Glenn Bushyager ..	1016 So. St. Mary's, Sioux City 6, Iowa
	Mrs. Cecil Kirkland ..	1102 Barnes, Alva, Okla.

Delta Upsilon	Mrs. E. C. Buckner ..	1622 Crestmont Dr., Huntington, W.Va.
Delta Phi	Mrs. John Dissly	126 N. Victor, Tulsa, Okla.
Delta Psi Parents'	Mrs. Gerald F. Percell	921 So. 1st St., Alhambra, Calif.
Delta Chi	Mrs. A. W. Aaberg ..	580 Bryden Way, Marysville, Calif.
Epsilon Delta	Mrs. L. T. Funk	Athens, W.Va.
Epsilon Epsilon	Mrs. John Dugan	1828 Adoline St., Fresno, Calif.
Epsilon Zeta	Mrs. John John	10 Glenwood Ave., Norristown, Pa.
Epsilon Sigma	Mrs. M. E. Talick	20227 Woodburn Ave., Southfield, Mich.
Epsilon Upsilon	Mrs. Gentry	4605 N.W. 11th, Oklahoma City, Okla.
Epsilon Phi	Mrs. F. K. Ward	1838 Rosemont Rd., Berkeley, Mich.
Epsilon Chi	Mrs. Roger Roberts ..	1711 E. Beverly Rd., Milwaukee, Wis.
Zeta Alpha	Mrs. John Dodds	2327 N. Delaware, Peoria, Ill.
Zeta Epsilon	Mrs. Frances J. Brown	201 Meadow St., Charleroi, Penna.
Dayton, Ohio	Mrs. Chester A. Penn ..	28 Erie Ave., Dayton 10, Ohio
Denver, Colo.	Mrs. Marion Karger ..	650 Cody Court, Denver, Colo.
Houston, Texas	Mrs. Robt. Smith	714 Arion Lane, Pasadena, Texas
Indianapolis, Ind.	Mrs. Wayne Eubank ..	9600 E. Raymond, Indianapolis, Ind.

(Any changes or names not listed here should be sent to National Chairman of Mothers' Clubs,
Mrs. Peter Tema, 627-38th Ave. N.E., Columbia Heights, Minnesota)

★ ★ ★ Golden Flame Eternal ★ ★ ★

GAROLD ALFRED LEACH

The fraternal world mourns the passing of Garold Alfred Leach, at 59 years of age, in Los Angeles, California. He attended UCLA where he was an undergraduate Phi Gamma Delta. Later he obtained an LL.B. degree from the Pacific Coast Law School and served for 31 years in the Los Angeles Municipal Court. For the past several years he served as the Clerk to the Presiding Judge.

Although busy with this exacting work, he took time for activity in the Eagle Rock Presbyterian Church, to serve as director of the Los Angeles County Employees Association and to work with Phi Gamma Delta and Delta Zeta Sorority. His college advisory duties to the UCLA Phi Gamma Deltas were his first love, but Delta Zeta came in a close second since he worked personally for the organization and supplied encouragement and assistance to his wife, long a national officer of Delta Zeta (presently Director of College Activities) and a worker in Panhellenic circles on the west coast.

*Submitted by HELEN NOLOP, National President
and MARGUERITE W. HAVENS, CCA
Delta Zeta Sorority*

BETA	UPSILON
Sabina Theresa Murray '14	Mary Johanna Finnegan '29, 5-16-60
GAMMA	CHI
Ruth Emily Plummer '23	Dawn Gay Foster '60, 11-6-60
DELTA	Psi
Beatrice Wyman Drewes (Mrs. John H.) '38, 11-17-60	Gladys Carter List (Mrs. Earl B.) '13, 11-3-59
EPSILON	ALPHA BETA
Julia Marie Ballinger '20, 8-1-60	Betty J. Coleman '46, 12-1-60
Mabel Helen Fry Holmes (Mrs. Morris J.) '27x	ALPHA CHI
Kathryn Joan Kemmerling Trumbo (Mrs. Andrew) '54x, April '60	Martha Moneta Wirick '19x, 1-21-60
THETA	ALPHA Psi
Angeline McTigue Young (Mrs. Ray) '26, 11-11-60	Ruby Mae Harbin Walley (Mrs. Charles L.) '27
KAPPA	BETA LAMBDA
Harriett Hopkins Kettenring (Mrs. Robert) '31x, Nov. '59	Ruth Walsh Hyde (Mrs. Victor A.) '30x, 10-8-60
MU	BETA Xi
Vera Hively Lewis (Mrs. L. Glenn) '17, 12-19-56	Helen Cynthia Pace '48
Pi	BETA CHI
Lucy Palmer Frane (Mrs. Ivan A.) '23, May '60	Miriam Cahill Butler (Mrs. Gordon B.) '28
SIGMA	Ruth Edna Morey Holschue (Mrs. Henry F.)
Doris Lassalle '34, Jan. '59	Marian Eleanor Schell Rose (Mrs. Everett O.)
	GAMMA KAPPA
	Evelyn Gertrude Weston '38

• Delta Zeta Sorority •

Founded at Miami University, October 24, 1902

GUY POTTER BENTON, D.D., LL.D., Grand Patron (Deceased)

FOUNDERS

JULIA BISHOP COLEMAN (Mrs. J. M.)	Deceased
MARY COLLINS GALBRAITH (Mrs. George)	3371 Tremont Rd., Columbus 21, Ohio
ALFA LLOYD HAYES (Mrs. O. H.)	3761 N. Meridian, Indianapolis, Ind.
ANNA KEEN DAVIS (Mrs. G. H.)	Deceased
MABELLE MINTON HAGEMANN (Mrs. Henry)	Deceased
ANNE SIMMONS FRIEDLINE (Mrs. Justus R.)	Deceased

NATIONAL COUNCIL

National President	HELEN WOODRUFF NOLOP (Mrs. R. J.), 2520 No. 48th Pl., Phoenix 8, Ariz.
National Secretary (Extension)	VIOLET SHARRATT WHITFIELD (Mrs. R. H.), 3230 Park Pl., Evanston, Ill.
National Treasurer	GLADYS LUTZE VARTY (Mrs. Jonathan), 149 Brixton Rd., Garden City, L.I., N.Y.
Director of Alumnae	GLORIA MACNEVEN FRYMIRE (Mrs. Larry), 2403 Devonshire St., Lansing, Mich.
Director of College Programs	BETSY BRADLEY LEACH (Mrs. Garold A.), 1865 Hill Dr., Eagle Rock, Los Angeles 41, Calif.
Director of Membership	BETTY HEUSCH AGLER (Mrs. Norman), 3546 Sunbury Rd., Columbus, Ohio.
Director of House Corporations	EDITH ALLEN BROWN (Mrs. C. W.), 10 Abbott Ct., Orinda, Calif.
Director of Philanthropies	MARJORIE DOYLE BERGMAN (Mrs. Edward), 1 North 616 Western, Glen Ellyn, Ill.
Director of Public Relations	VELMA LOCKRIDGE MCKEE (Mrs. M. J.), 7318 Edgerton Dr., Dallas 31, Tex.
National Panhellenic Conference Delegate	EVELYN ADAMS COSTELLO (Mrs. Russell T.), 2850 Pine Lake Rd., R.F.D. 2, Orchard Lake, Mich.

NATIONAL HEADQUARTERS

National Headquarters Address	3561 N. Pennsylvania St., Indianapolis 5, Ind.
Executive Secretary	MISS IRENE C. BOUGHTON

COLLEGE CHAPTER ADMINISTRATOR'S OFFICE

College Chapter Administrator	MARGUERITE WHERRY HAVENS (Mrs. George C.), 5518 Grand Ave., Des Moines 12, Iowa.
Field Secretaries	OLIVIA COLVIN, CAROLYN LEE, JEANETTE MITCHELL, DEE ANN STEPHENS

THE LAMP

Editor of THE LAMP	JANET SMITH OTWELL (Mrs. Ralph M.), 1234 Isabella St., Wilmette, Ill.
Board of Trustees of THE LAMP Fund:	Gladys Lutze Varty (1962); Edith Allen Brown (1966); Helen Woodruff Nolo (1962); Evelyn Adams Costello (1964); Irene Boughton (1962), chairman, 3561 N. Pennsylvania St., Indianapolis, Ind.

STANDING COMMITTEES

Constitution & Procedure Chairman—Frances Benallack Benowicz (Mrs. C. A.), 6569 N. Tahoma Ave., Chicago 46, Ill.	Judiciary Committee—Eleanor Atterbury Corten (Mrs. Amos), 951 Larkspur Rd., Oakland, Calif.
History & Archives Chairman—Grace Mason Lundy (Mrs. H. M.), R.R. 1, Bloomington, Ind.	Mothers' Club Chairman—Mrs. Peter Tema (Caroline), 627 38th Ave., N.E., Columbia Heights, Minn.

COMMITTEES

Activities Chairman—Patti Volbrecht Phillips (Mrs. Jay), 300 E. Alster, Arcadia, Calif.	VI. Mrs. Richard A. Bicknell (Gaile), 2329 Holiday Dr., Grand Rapids 9, Mich.
Audiology and Allied Fields Scholarship—Miss Evelyn Morris, University of Rhode Island, Kingston, R.I.	VII. Mrs. Joe Kalivoda (Marie), 2715 Glenn Ave., Evansville, Ind.
Awards Committee—Opal Wells (Mrs. Cord), 336 N. Prairie St., White-water, Wis.	IX. Miss Madeline Fridrich, 5729 S. Francisco Ave., Chicago, Ill.
Carville—Miss Shirley Chaffin, 1140 E. 21st Ave., Columbus, Ohio.	X. Mrs. George Ahern, 338 31st St., S.E., Cedar Rapids, Iowa.
Chapter Newsletters—Cleo Cardwell Arterburn (Mrs. Sam B.), 2528 East Second, Tulsa 4, Okla.	XI. Mrs. Fred Biele (Esther), 7324 Tracy, Kansas City 31, Mo.
Course of Study Chairman—Miss Judy Noble, 309 Leaway Dr., Apt. 2, Baton Rouge, La.	XII. Mrs. Curtis Johnson (Juanita), 2045 S. Cook, Denver 10, Colo.
Endowment Fund—Miss Charlyn Murray, 6101 N. Haverford, Indianapolis, Ind.	XIII. Mrs. Donald Husband, 1944 Charnelton St., Eugene, Ore.
Foundation—Mrs. Maxine Bergstrom (Mrs. Marlow), Box 808, Route 2, Tucson, Ariz.	Miss Florine Majers, 75200 Ravenna Ave., Seattle 15, Wash.
Gallaudet College—Lucille Bolstad May (Leland B.), 1570 Mount Eagle Pl., Alexandria, Va.	XIV. Mrs. Al Grimmercy, 2500 St. Francis Dr., Sacramento, Calif.
Installation Coordinator—Mrs. Charles Alseth (Joanna), 3520 Lake Shore Dr., Chicago 13, Ill.	XV. Mrs. David Williams, 448 E. Michell, West Covina, Calif.
Legislative Chairman—Gertrude Houk Fariss (Mrs. C. A.), 2997 S.W., Fairview Blvd., Portland 1, Ore.	XVI. Mrs. Robert McKee, 5705 E. 26th St., Tulsa 14, Okla.
Magazine Chairman—Engelyn Brown Tourtelot (Mrs. Charles H.), P.O. Box 725, Concord, Calif.	XVII. Miss Jane Ann Maxwell, 4126 Kenneth, Beaumont, Tex.
Memory Book Chairman—Ruth Clausen Reasor (Mrs. M. L.), 7980 Windcombe Blvd., Indianapolis, Ind.	XVIII. Mrs. Frank W. Quin, Jr. (Haanah-Nell), 3875 Greenway Pl., Shreveport, La.
Personal Loans and Scholarships—Bernice Hutchison Gale (Mrs. Guy H.), 130 Van Winkle Dr., San Anselmo, Calif.	XIX. Mrs. Henry McClellan, 425 Shades Crest Rd., Birmingham 9, Ala.
Pledge Training Chairman—Clara Plasil Greinke (Mrs. E. D.), 4902 Erie St., Cedar Crest, Annandale, Va.	XX. Miss Evonne Eaton, Courier Journal, Louisville, Ky.
Province Convention Coordinator—Eleanor Strickler Fariss (Mrs. James), 17721 Bethel Way, Seattle, Wash.	XXI. Mrs. R. B. Baldwin, 727 Woodward Drive, Lakeland, Fla.

PROVINCE PUBLIC RELATIONS COORDINATORS

Province	III. Mrs. Joan F. Finkles, 134 S. Gilmore St., Baltimore 23, Md.
	IV. Mrs. O. E. Maxfield (Mary), 2301 40th St., N.W., Washington 7, D.C.
	V. Mrs. Wm. J. Davis, 24622 Theresa Lane, North Olmsted, Ohio.

SPECIAL STUDY COMMITTEE

National Council Study Committee—Hazel Buffmire (Mrs. Wallace), 2400 Lawndale, Evanston, Ill.
Report Study Committee—Frances Benallack Benowicz (Mrs. C. A.), 6569 Tahoma Ave., Chicago 46, Ill.

PROVINCE I—Maine, Vermont, New Hampshire, Massachusetts, Connecticut, Rhode Island

Collegiate Province Director:

COLLEGE CHAPTERS

Chapter	School	President and Chapter Address	College Chapter Director and Address
Alpha Upsilon	Univ. of Maine	Madonna Fogg, 412 Valentine Hall, Univ. of Maine, Orono, Me.	Claire S. Sanders, 123½ Main St., Orono, Me.
Beta Alpha	Univ. of Rhode Island	Roberta Maxey, Delta Zeta House, 70 Lower College Rd., Univ. of R.I., Kingston, R.I.	Mrs. William Stauffer Gates (Mitzi), 15 Normandy Dr., Wakefield, R.I.
Gamma Beta	Univ. of Connecticut	Judith Roncalli, Delta Zeta House, Univ. of Connecticut, Storrs, Conn.	Mrs. Russell DeCoursey (Betty), Storrs Heights, Storrs, Conn.
Delta Iota	Tufts University	Barbara Stutsman, 980 Central, Needham 92, Mass.	Mrs. F. W. Pote (Marguerite), 15 Chester Ave., Medford, Mass.

Alumnæ Province Director: MRS. WILLIAM C. DUNN (BARBARA), 1203 Silver Lane, East Hartford, Conn.

ALUMNÆ CHAPTERS (* not chartered)

Chapter	President and Address	Chapter	President and Address
*Bangor, Me.	Mrs. Eugene Tracy, R.R. 5, Brewer, Me.	*Kingston, R.I.	Miss Marion Wible, Box 143, Kingston, R.I.
Boston, Mass.	Mrs. Frank Howard, 81 Hillsdale Rd., Medford 55, Mass.	New Haven, Conn.	Mrs. John Sindlein, 32 Fuco Dr., East Haven, Conn.
Fairfield Co., Conn.	Mrs. Edward Gill, 53 Highpoint Rd., Westport, Conn.	Providence, R.I.	Mrs. William Guise, 7 Cullen Ave., Lincoln, R.I.
Hartford, Conn.	Mrs. Frederick Schneider, 50 Camp Ave., Newington, Conn.	*Storrs, Conn.	Mrs. Robert Jones, Pine Ridge Dr., Andover, Conn.

PROVINCE II—New York and New Jersey

Collegiate Province Director: MARJORIE W. SCHLEHER, 57 Adams St., Garden City, N.Y.

COLLEGE CHAPTERS

Chapter	School	President and Chapter Address	College Chapter Director and Address
Alpha Zeta	Adelphi College	Irene Ahlmeyer, East Hall, Adelphi Coll., Garden City, L.I., N.Y.	Dr. Louise Heim, 49 Campbell, New Hyde Park, L.I., N.Y.
Beta Omega	New York Univ.	Aristia Petkoglou, 209 34th St., Brooklyn, N.Y.	Mrs. Edward Homer (Tara), 2171 Center St., Fort Lee, N.J.
Gamma Eta	Hunter College	Ethel Wikberg, 68 W. 162nd St., Bronx, N.Y.	Dr. Emily Philpott, 43-21 242nd St., Douglaston, L.I., N.Y.
Delta Epsilon	Queens College	Ann McRae, 37-31 149th St., Flushing, L.I., N.Y.	Mrs. Florence Grouzales, 1126 Forest Ave., Staten Island, N.Y.
Zeta Delta	Wagner College	Elaine Corklo, 322 Guild Hall, Wagner College, Staten Island 1, N.Y.	

Alumnæ Province Director:

ALUMNÆ CHAPTERS (* not chartered)

Chapter	President and Address	Chapter	President and Address
Buffalo, N.Y.	Mrs. Robert S. Kinkel, 138 Rosemont, Buffalo 26, N.Y.	Staten Island	Mrs. A. G. Stem, 128 Hart Blvd., Staten Island 1, N.Y.
Long Island, N.Y.	Mrs. Jack Magennis, 145 Kensington Rd., Garden City, N.Y.	Northeastern New Jersey	Mrs. William Taber, 159 Cottage Rd., Wyckoff, N.J.
New York City	Miss Birgit Dahlstrom, 2069 E. 72nd St., Brooklyn 72, N.Y.	Northern New Jersey	Mrs. John W. Waldron, 225 Liberty St., Apt. 407, Bloomfield, N.J.
Bronx	Miss Lillian Ahle, 2123 Hermany Ave., Bronx 72, N.Y.	Rochester, N.Y.	Mrs. Glen Atkins, 62 Belleclaire Dr., Rochester 17, N.Y.
Manhattan	Miss Eleanor M. Murphy, 37-26 87th St., Jackson Heights, N.Y.	Syracuse, N.Y.	Miss Winifred Farley, 104 Haffender Rd., Syracuse, N.Y.
Queens	Miss Charlotte Schmidt, 41-23 68th St., Woodside 77, N.Y.	*Westchester, N.Y.	Mrs. Frank H. Dunsmore, Jamestown House, Scarsdale, N.Y.

PROVINCE III—Pennsylvania

Collegiate Province Director: MRS. BRUCE DUTTON (MARY ELLEN), 532 Bryn Mawr, Swarthmore, Pa.

COLLEGE CHAPTERS

Chapter	School	President and Chapter Address	College Chapter Director and Address
Omicron	Univ. of Pittsburgh	Nancy Raynor, DZ Suite, Apt. 601, 4004 Fifth Ave., Pittsburgh 18.	Mrs. Robert L. Wyerman, 673 Hantrauf, Pittsburgh 26.
Beta Theta	Bucknell Univ.	Judith Maier, W-513 Bucknell U., Lewisburg.	Mrs. E. Harwood Lyons, 119 S. 3rd St., Lewisburg.
Gamma Delta	Penn State Univ.	Joan Biedler, 2217 Pollock Dining Hall, Penn State U., Box 37, University Park.	Mrs. Leslie R. Mayer, Jr., 1176 S. Albertson St., State College.
Gamma Phi	Indiana State Teachers	Nancy McElroy, 301A John Sutton Hall, Indiana.	Miss Ruth Podbielski, Box 157, S.T.C., Indiana.
Delta Tau	Temple Univ.	Patricia Warning, 1721 Park, Philadelphia.	Mrs. Robert Matheson (Nancy), 507 Glen Arbor, Wynwood, Pa.
Epsilon Zeta	Drexel	Linda Lowell Oeth, 819 S. 48th St., Philadelphia.	Mrs. Franklin Bennett, 621 DeKalb Pike, Norristown, Pa.
Epsilon Theta	Clarion State Teachers	Sally Ann Shaner, M.R. 10, E. Brady Rd., Kittanning.	Miss Dolores Johnson, Clarion State College, Clarion.
Zeta Epsilon	California State Teachers	Mary Ann Marek, 322 College Ave., California, Pa.	Mrs. Michael Duda, California State Teachers College, California, Pa.

Alumnæ Province Director: MRS. C. F. FISHER (PEG), R.D. 1, Harding Boro, Pittston, Pa.

ALUMNÆ CHAPTERS

Chapter	President and Address	Chapter	President and Address
*California	Miss Janet Bristol, 1251 Park, Washington, Pa.	Philadelphia (West Sub)	Mrs. Louis P. Morris, 655 Ninth Ave., Prospect Park.
Erie	Mrs. E. J. Tempas, 853 E. Gore Rd., Erie.	Pittsburgh	Mrs. James D. Concelman, 432 Woodruff Lane, Pittsburgh 36.
*Harrisburg	Mrs. Don R. Grafton, R.R. 2, Box 50, Harrisburg.	State College	Mrs. Henry Knerr, 219 Adams Ave., State College.
*Lehigh Valley	Mrs. George Fugere, 1548 Kadel, Bethlehem, Pa.		

PROVINCE IV—West Virginia, Virginia, North Carolina, South Carolina, District of Columbia, Delaware, Maryland

Collegiate Province Director:

COLLEGE CHAPTERS

<i>Chapter</i>	<i>School</i>	<i>President and Chapter Address</i>	<i>College Chapter Director and Address</i>
Alpha Delta	George Washington Univ.	Martha Mitchell, 620 21st St., N.W., Washington, D.C.	Mrs. Bertram M. Spencer (Lois), 2408 N. Washington Blvd., Arlington 1, Va.
Beta Delta	Univ. of S. Carolina	Constance Getsinger, Box 1552, U.S.C., Columbia, S.C.	Mrs. John Herin, 3127 Chinaberry, Columbia, S.C.
Delta Upsilon	Marshall College	Sandra Strohmeier, 1616 5th Ave., Huntington, W.Va.	Mrs. Lyle Douthatt (Pauline) 1110 11th Ave., Huntington, W.Va.
Epsilon Delta	Concord College	Marianna Hayes, Concord College, Athens, W.Va.	Miss Ruby Holland, 108 Birch St., Athens, W.Va.
Epsilon Iota	Fairmont State College	Elaine Negie, R. 2, Box 320, Fairmont, W.Va.	Mrs. Lee A. Woodburn, 1249 Bellaire St., Fairmont, W.Va.
Epsilon Tau	Longwood College	Barbara Chaffin, Box 322, Longwood College, Farmville, Va.	Mrs. Jean Cunningham Wilson, Jackson Heights, Farmville, Va.
Zeta Lambda	East Carolina College	Sylvia Sampedro, Box 1106, East Carolina College, Greenville, N.C.	Mrs. Helen Snyder, Garrett Hall, E.C.C., Greenville, N.C.

Alumnae Province Director: MRS. J. BURTON NICHOLS (ELEANOR), 1505 River Rd., Wilmington 3, Del.

ALUMNAE CHAPTERS (* not chartered)

<i>Chapter</i>	<i>President and Address</i>	<i>Chapter</i>	<i>President and Address</i>
Athens-Princeton, W.Va.	Miss Virginia Hatcher, 907 Reynolds, Princeton, W.Va.	Huntington, W.Va.	Miss Jane Roberts, 45 S. Queens Ct., Huntington, W.Va.
Baltimore, Md.	Mrs. John Stentz, 4656 Parkston St., Baltimore, Md.	Richmond, Va.	Mrs. Robert Taylor, 204 Menole Ave., Apt. 3, Richmond, Va.
Charleston, S.C.	Miss Hazel Moore, 68 Elizabeth Lane, Charleston, S.C.	Roanoke, Va.	Mrs. Albert W. Wilson, 3921 Bohon St., N.E., Roanoke, Va.
Charleston, W.Va.	Mrs. Richard Bokenkamp, 827 Carroll Rd., Charleston, W.Va.	Shenandoah Valley, Va.	Mrs. Esther LaRose, Box 952, Staunton, Va.
*Charlotte, N.C.	Mrs. Philip Beebe, 5017 Wedgewood Dr., Charlotte, N.C.	Washington, D.C.	Miss Betty J. Covell, 3342 Erie St., S.E., Washington 20, D.C.
Columbia, S.C.	Mrs. Celestin Putz, 3022 Girardeau, Columbia, S.C.	Wilmington, Del.	Mrs. Richard Fehnel, 309 Waverly Rd., Fairfax, Wilmington, Del.
Greenville, N.C.	Mrs. W. Stuart Bost, 310 Harding St., Greenville, N.C.		

PROVINCE V—Ohio

Collegiate Province Director: MRS. ERROL W. JONES (MARY ANNA), 2687 Wexford Rd., Columbus, Ohio

COLLEGE CHAPTERS

<i>Chapter</i>	<i>School</i>	<i>President and Chapter Address</i>	<i>College Chapter Director and Address</i>
Alpha	Miami University	Patricia Higgins, 245 Hamilton Hall, Oxford.	Mrs. Robert G. Berry (Patricia), 5349 Hillcrest Dr., Oxford.
Theta	Ohio State Univ.	Margaret Pees, Delta Zeta House, 212 E. 15th Ave., Columbus.	Mrs. William Reidenback (Joann), 876 Poling Dr., Columbus 24.
Xi	Univ. of Cincinnati	Marsha Schomberg, Delta Zeta House, 2811 Swiss Chalet Ct., Cincinnati, 20.	Mrs. Donald Bell, 2409 Ingleside Place, Cincinnati.
Beta Chi	Wittenberg Univ.	Melody Light, Delta Zeta House, 923 N. Fountain Ave., Springfield.	Mrs. Willard (Barbara) Stiles, 8 W. Madison, Springfield.
Gamma Alpha	Baldwin-Wallace	Jane Jennell, 226 Findley Hall, Berea.	Mrs. J. R. Andrisek (Norma), 209 Fair St., Berea.
Gamma Kappa	Kent State Univ.	Cindy Grossman, Delta Zeta House, 244 E. Main St., Kent.	Mrs. Erich Griebing (Helen), 7421 Diagonal Rd., Kent.
Gamma Tau	Bowling Green State	Patricia Beatty, Delta Zeta House, Bowling Green.	Mrs. Eleanor C. Leonard, The Hillcrest Hotel, Toledo.
Zeta Kappa	Ohio Northern Univ.	Ann Melkerson, 200 W. Lehr, Ada.	Mrs. Karl Roider (Kay), Rt. 2, Ada.

Alumnae Province Director: MRS. WILLIAM T. BARTH (MARY LOU), 1720 Tennyson Ave., Dayton 6, Ohio

ALUMNAE CHAPTERS (* not chartered)

<i>Chapter</i>	<i>President and Address</i>	<i>Chapter</i>	<i>President and Address</i>
Ada	Mrs. Alice Webb, 316 S. Johnson St., Ada.	Hamilton	Mrs. Luther A. Peters, 401 Ross Ave., Hamilton.
Akron	Mrs. William Riddle, 2746 Elmwood St., Cuyahoga Falls	Kent	Mrs. John Michaels, 332 Summit St., Kent 6.
Berea	Mrs. John Whipple, 187 N. Bottom Rd., Berea.	*Middletown	Mrs. Paul Long, 2908 Central Ave., Middletown.
Canton Area	Miss Peggy Paul, 313 Third St., N.E., Massillon.	*Oxford	Mrs. Robert Fryman, Morningsun Rd., Oxford.
Cincinnati	Mrs. Donald E. Miller, 2423 Jefferson, Cincinnati 12.	*Portsmouth	Mrs. James D. Grimm, 4620 Scioto Trail, Portsmouth.
Cleveland, Eastside	Mrs. Carl Bechberger, 2681 Ashley Rd., Cleveland 22, Ohio.	Springfield	Mrs. Robert E. Carr, 117 E. Second, Springfield.
Cleveland, Westside	Mrs. Paul Foster, 24116 Russell Rd., Bay Village 40.	Toledo	Miss Nancy Lee Moon, 4852 Naomi Ave., Toledo 13.
Columbus	Mrs. Richard E. Johnson, 393 E. Clearview Ave., Worthington, Ohio.	Wooster	Mrs. James Michener, 1901 Christmas Run, Wooster.
Dayton	Mrs. J. H. Creager, 1028 Swango Dr., Dayton 29.	Youngstown	Mrs. William G. McCollum, 132 Como Ave., Struthers.
*Dover-New Philadelphia	Mrs. E. G. Weaver, Jr., R.R. 3, Dover.		

PROVINCE VI—Michigan

Collegiate Province Director: MRS. WILLIAM B. WHEELER (JOY), 1732 Winchester, Lincoln Park, Mich.

Province Secretary: MRS. GEORGE BETKER (BETTY), 3633 Dukeshire, Royal Oak, Mich.

COLLEGE CHAPTERS

Chapter	School	President and Chapter Address	College Chapter Director and Address
Beta Pi	Albion College	Linda Titus, Susanna Wesley Hall, Albion.	Mrs. Sadie Williams, 1405 Jackson Rd., Albion.
Beta Rho	Michigan State Univ.	Barbara Burda, Delta Zeta House, 110 Oak-hill, East Lansing.	Mrs. Harland Richie (Lou), 1315 University Village, East Lansing.
Gamma Pi	Western Michigan Univ.	Carole Pardee, Davis Hall, WMU., Kalamazoo.	Mrs. Marty Meinzinger (Martha), 610 Campbell, Kalamazoo.
Gamma Sigma	Eastern Michigan Univ.	Betty Harrison, Downing Hall, Ypsilanti.	Miss Roberta Kennedy, 915 E. Huron, Ann Arbor.
Gamma Psi	Central Michigan Univ.	Barbara Becker, 216 Tate Hall, Mount Pleasant.	Miss Barbra King, 1001 S. College, Mt. Pleasant.
Epsilon Sigma	Wayne Univ.	Susan Cheskie, 138 Colorado, Highland Park 3, Detroit.	Mrs. William B. Wheeler (Joy), 1732 Winchester, Lincoln Park.
Epsilon Phi	Univ. of Detroit	Jeanne Duckett, 114 W. Longwood, Detroit.	Maureen Kennedy, 15641 Minock, Detroit 23.

Alumnae Province Director: MRS. WINFIELD C. HINMAN (KATHRYN), 27310 Wellington Dr., Franklin, Mich.

ALUMNAE CHAPTERS

Chapter	President and Address	Chapter	President and Address
Albion	Mrs. Parker Smith, 510 Linden Ave., Albion.	Kalamazoo	Mrs. Larry Martin, 10411 Dewberry, Kalamazoo 13.
Battle Creek	Miss Ruth Tower, 127 Boyes Dr., Battle Creek.	Lansing-East Lansing	Mrs. Frank Throop, Rt. 1, Okemos, Mich.
Detroit	Mrs. F. W. Oakes, 533 N. York, Dearborn.	Oakland County	Mrs. Forbes S. Hascall, 668 Oaklawn, Birmingham.
Flint	Mrs. George Fetzter, 1909 Marlowe, Flint.	Ypsilanti-Ann Arbor	Mrs. Robert Galbreath, 1706 Hanover Rd., Ann Arbor.
Grand Rapids	Mrs. Robert Brandt, 1608 Hall St., S.E., Grand Rapids.		

PROVINCE VII—Indiana

Collegiate Province Director: MRS. JOHN C. VEENSTRA (JOYCE), 209 Northwestern Ave., West Lafayette, Ind.

COLLEGE CHAPTERS

Chapter	School	President and Chapter Address	College Chapter Director and Address
Delta	DePauw University	Sylvia Kearns, Delta Zeta House, 411 Anderson St., Greencastle.	Mrs. Arthur Shumaker (Julia), 602 Anderson St., Greencastle.
Epsilon	Indiana University	Arleen Goodman, Delta Zeta House, 809 E. 7th St., Bloomington.	Mrs. Arnie Duemling (Karen), 558 S. Lincoln, Bloomington.
Psi	Franklin College	Ruth Boyer, Elsey Hall, Franklin.	Mrs. Morris Davis (Sue), R.R. 3, Franklin, Ind.
Gamma Chi	Ball State Teachers	Judy Replin, Wood Hall, Ball State Teachers, Muncie.	Mrs. Frank Silverthorn (Dorris), 2710 Kilgore Ave., Muncie.

Alumnae Province Director:

ALUMNAE CHAPTERS (* not chartered)

Chapter	President and Address	Chapter	President and Address
Bloomington	Mrs. James Dixon, 405 N. Indiana Ave., Bloomington.	Indianapolis	Mrs. Paul L. Jenkins, 5926 E. 43 St., Indianapolis.
*Columbus	Mrs. Roy VanWye, 925 Franklin St., Columbus.	*Indianapolis, Southside	Mrs. Lowell Krebs, 4556 Blackstone Dr., Indianapolis 27.
Fort Wayne	Miss Elsie F. St. John, 2335 Opechee Way, Fort Wayne.	Lafayette	Mrs. Karl T. Kettlehut, 1313 Hedge-wood Dr., Lafayette.
Franklin	Mrs. Charles J. Patterson, R.R. 4, Franklin.	Muncie	Mrs. Clair Bullock, 508 E. Adams, Muncie.
Greencastle	Mrs. John C. Wright, 1009 Hillcrest Dr., Greencastle.	South Bend	Mrs. John Heisler, Jr., 725 N. Ironwood, South Bend.

PROVINCE VIII—Wisconsin

Collegiate Province Director: MRS. WILLIAM MOLLER (MIMI), Box 100D, Rt. 1, Belgium, Wis.

COLLEGE CHAPTERS

Chapter	School	President and Chapter Address	College Chapter Director and Address
Tau	Univ. of Wisconsin	Jill Mokrejs, Delta Zeta House, 142 Langdon S., Madison 3.	Mrs. Robert Cnare (Delta), 5117 Spannem Ave., Madison.
Gamma Theta	Carroll College	Carol Meyer, Voorhees Hall, Room 213, Waukesha.	Shirley Moore Harris, 228 South Charles St., Waukesha.
Epsilon Kappa	Wisconsin State College	Diana Olson, Delta Zeta House, 155 N. Fraternity Lane, Whitewater.	Mrs. Neil Ferguson (Beverly), 1434 Tamarack Lane, Janesville.
Epsilon Chi	Univ. of Wisconsin, Milwaukee	Janis Roberts, 1711 E. Beverly Rd., Milwaukee.	Mrs. Frank Zillmer (Ella), 5310 W. Roosevelt Dr., Milwaukee.
Epsilon Omega	Wisconsin State College	Kathleen Shattuck, 317 Summit Ave., Eau Claire.	Mrs. Myron Rossow (Dorothy), 2715 Rudolph Rd., Eau Claire.
Zeta Beta	Stout State College	Pat Boettcher, Eichelberger Hall, Stout State College, Menomonie.	Miss Dorothy Knutson, 614 Wilson Ave., Menomonie.

Alumnae Province Director: MRS. W. J. BEYER (KAY), 2771 S. Root River Pkwy., West Allis 19, Wis.

ALUMNAE CHAPTERS

Chapter	President and Address	Chapter	President and Address
Fox River Valley	Mrs. Edward Moon, 349 Lopas St., Menasha.	Milwaukee	Mrs. James C. Hunt, 12580 W. Manitoba Ave., New Berlin, Wis.
Madison	Mrs. Werner E. Wilking, 5905 Mayhill Dr.	Waukesha	Mrs. John O. Coleman, 333 N. Hartwell, Waukesha.

PROVINCE IX—Illinois—North and South

*Collegiate Province Directors: Mrs. WALLACE BUFFMIRE (HAZEL), North—2400 Lawndale, Evanston, Ill.
Mrs. PAUL SPEAR (FLORENCE), South—627 S. Lincoln, Hinsdale, Ill.*

COLLEGE CHAPTERS			
<i>Chapter</i>	<i>School</i>	<i>President and Chapter Address</i>	<i>College Chapter Director and Address</i>
NORTH			
Pi	Eureka College	Joyce McCoy, 807 S. Burgess St., Eureka.	Mrs. Carl Hirsch (Beverly), 605 W. Cruger St., Eureka.
Alpha Alpha	Northwestern Univ.	Drude Sparre, Delta Zeta House, 717 University Place, Evanston.	Mrs. Wendell Schmidtke (June), 1624 Thelin Ct., Evanston.
Gamma Mu	Illinois Institute of Technology	Corrie-Lou Livingston, 8045 So. Luella, Chicago.	Mrs. Robert B. Shogren (Loretta), 2951 South Parkway, Chicago 16, Ill.
Gamma Rho	Northern Illinois Univ.	Marilyn Hagman, 329 N. 3rd St., De Kalb.	Mrs. Ralph McKinzie (Betty), 325 Normal Rd., De Kalb.
Nu	Knox College	Janet Kornman, Williston Hall, Knox College, Galesburg.	Ann Weinmann, 51 E. Grove St., Galesburg.
SOUTH			
Zeta Alpha	Bradley University	Judy Le Grande, Delta Zeta House, 1318 W. Bradley Ave., Peoria.	Mrs. Richard Bliss (Helen), 1025 N. Elmwood, Peoria.
Alpha Beta	Univ. of Illinois	Phyllis Peterson, Delta Zeta House, 710 W. Ohio St., Urbana.	Joyce May, 624 E. Green St., Champaign.
Gamma Nu	Eastern Illinois Univ.	Ann Marie Brown, Delta Zeta House, 848 6th St., Charleston.	Mrs. Ben F. Anderson (Lena), 845 6th St., Charleston.
Gamma Omega	Southern Illinois Univ.	Sharon Long, Small Group Housing Bldg. #103, Southern Ill. Univ., Carbondale.	Miss Imogene Beckemeyer, 607 S. University, Carbondale.
Epsilon Omicron	Western Illinois Univ.	June Gerdes, Delta Zeta House, 420 W. Adams, Macomb.	Mrs. William Burton (Ruth), 504 W. Calhoun, Macomb.

Alumnæ Province Director: Mrs. RUSSELL CARLSON (MAURINE), 1520 W. Lincoln Blvd., Freeport, Ill.

ALUMNÆ CHAPTERS (* not chartered)			
<i>Chapter</i>	<i>President and Address</i>	<i>Chapter</i>	<i>President and Address</i>
Aurora	Miss Gloria Bender, Wildwood Dr., R.R. 3, Aurora.	Galesburg	Miss Karen Parrish, 950 Lawrence, Galesburg.
Carbondale	Mrs. Harold Bechman, 104 Brook Lane, Carbondale.	LaGrange	Mrs. Paul Fetzek, 531 S. Catherine Ave., LaGrange.
Chicago	Mrs. George R. Hornkohl, 2834 Addison St., Chicago 18.	Peoria	Miss Estella Burns, 504 W. High, Peoria.
Chicago, North Suburban	Mrs. Henry C. Korff, 1179 N. Beverly Lane, Arlington Heights.	Quint City (Davenport, Bettendorf, Rock Island, Moline, East Moline,	Mrs. Roland Kirkwood, 906 39th St. Court, Moline, Ill.
*Decatur	Mrs. Lowell F. Boatz, 782 W. Sawyer, Decatur.	*Rockford	Mrs. Harold Livingston, 2404 Barton, Rockford.
*DeKalb	Mrs. Robert Benson, 917 N. 7th St., DeKalb.	*South Suburban	Mrs. R. W. Vann, 114 Berry St., Park Forest, Ill.
Elgin	Mrs. Victor Centanni, 432 Addison St., Elgin.	Urbana-Champaign	Mrs. Morris K. Coad, 306 E. White, Champaign.
Eureka	Mrs. Howard Wuethrick, 507 W. Burton, Eureka.	West Suburban	Mrs. Peter Duve, 1029 S. Tenth, Maywood.

PROVINCE X—Minnesota, Iowa, North Dakota, South Dakota

Collegiate Province Director: Mrs. J. R. RIEDE (DORIS), 103 Lake Ave., White Bear Lake 10, Minn.

COLLEGE CHAPTERS			
<i>Chapter</i>	<i>School</i>	<i>President and Chapter Address</i>	<i>College Chapter Director and Address</i>
Gamma	Univ. of Minnesota	Gretchen Ulrich, Delta Zeta House, 519 10th Ave. S.E., Minneapolis, Minn.	Miss Jean Bohne, 3421 Emerson Ave. S., Minneapolis 8, Minn.
Iota	University of Iowa	Kathy Erwin, Delta Zeta House, 322 N. Clinton St., Iowa City, Iowa.	Miss Peggie Stiles, 1416 E. College, Iowa City, Iowa.
Upsilon	Univ. of North Dakota	Suzanne Wentsel, Delta Zeta House, 2724 University Ave., Grand Forks, N.D.	Miss Valborg Oslund, 414 Second Ave. S., Grand Forks, N.D.
Beta Kappa	Iowa State University	Gwynn Jones, Delta Zeta House, 2138 Sunset Dr., Ames, Iowa.	Mrs. Marilyn Heusinkveld (Ruth Ann) 1650 Carroll, Ames, Iowa.
Gamma Epsilon	Drake University	Dorothy Triplett, Delta Zeta House, 3118 Cottage Grove Ave., Des Moines 11, Iowa.	Mrs. Robert Butts (Dottie), 6419 Elmcrest Dr., Des Moines, Iowa.
Delta Mu	Morningside College	Diane Bushyager, 1016 S. St. Marys, Sioux City, Iowa.	Miss Beatrice Tift, 3817 Vine Ave., Sioux City, Iowa.
Delta Nu	Parsons College	Kay Sobaski, 1000 N. 4th St., Fairfield, Iowa.	Mrs. Harold V. Lamb (Charlotte), 205 E. Burlington St., Fairfield, Iowa.

Alumnæ Province Director: Mrs. L. D. OLSON (IVA), 1605 Fairway Lane, Minneapolis 26, Minn.

ALUMNÆ CHAPTERS (* not chartered)			
<i>Chapter</i>	<i>President and Address</i>	<i>Chapter</i>	<i>President and Address</i>
Ames-Boone, Iowa	Mrs. George Holland, 287 Village Dr., Ames, Iowa.	Iowa City, Iowa	Mrs. Robert Dautremont, 815 N. Dodge, Iowa City, Iowa.
Cedar Rapids, Iowa	Mrs. Ed. Helgert, 646 Grant Woods Dr. S.E., Cedar Rapids, Iowa.	Sioux City, Iowa	Miss Marilyn Menter, 1301 S. Newton, Sioux City, Iowa.
Des Moines, Iowa	Mrs. William McKain, 3709 40th St., Des Moines, Iowa.	Twin Cities (Minneapolis-St. Paul, Minn.)	Mrs. James Polzak, 3530 N.E. Spain Place, Minneapolis 18, Minn.
*Fairfield, Iowa	Mrs. Harold Lamb, 205 E. Burlington, Fairfield, Iowa.	*Waterloo, Iowa	Mrs. Raymond J. Barta, 305 Blowers Ave., Waterloo, Iowa.
Grand Forks, N.D.	Mrs. Donald Anderson, 410 23rd St., Grand Forks, N.D.		

PROVINCE XI—Missouri

Collegiate Province Director: Mrs. F. R. OLMSTEAD (EVELYN), 4217 N. Grand Ave., Kansas City, Mo.

COLLEGE CHAPTERS

<i>Chapter</i>	<i>School</i>	<i>President and Chapter Address</i>	<i>College Chapter Director and Address</i>
Gamma Gamma	Missouri Valley College	Mary Bulley, MacDonald Hall, MVC, Marshall.	Mrs. Josephine Reed, c/o Blosser Home, E. Eastwood, Marshall.
Delta Sigma	Northeast Missouri State Teachers College	Donna Dawkins, 113 Blanton Hall, Kirksville.	Dr. Ruth Towne, 709 N. Davis, Kirksville.
Epsilon Gamma	Central Missouri State College	Linda Blackwell, Todd Hall, C.M.S.C., Warrensburg.	Miss Edith Brooks, Music Dept., C.M.S.C., Warrensburg.
Epsilon Eta	Harris Teachers College	Cynthia Bruce, 2740 Narragansett, Florissant.	Miss Fanita Terry, 5540 Murdock St., St. Louis.
Epsilon Nu	Southwestern Missouri State	Jeannette Lucas, Delta Zeta House, 925 Kings St., Springfield.	Mrs. Lawson A. Weaver (Billie), 1344 E. Portland, Springfield.
Epsilon Rho	Northwest Missouri State	Mary Kay Beason, Residence Hall, Maryville.	Miss Margaret Prince, 429 College Dr., Maryville.
Epsilon Psi	St. Louis University	Mary Shipley, 1247 McLaran, St. Louis.	Mrs. Edwin Lawler Jr. (Pauline), 1646 S. 39th St., St. Louis 10.

Alumnæ Director:

ALUMNÆ CHAPTERS (* not chartered)

<i>Chapter</i>	<i>President and Address</i>	<i>Chapter</i>	<i>President and Address</i>
Kansas City	Mrs. Robert W. Frye, 5301 Clark Dr., Shawnee Mission, Kan.	*Springfield	Mrs. L. E. Lurney, 720 E. Walnut, Springfield.
Kirksville	Mrs. Al Holzmeier, 608 S. High, Kirksville.	St. Louis	Mrs. Wesley Barr, 6219 Pernod, St. Louis 9, Mo.
Marshall	Mrs. Philip Humphreys, R.R. 4, Marshall.	Warrensburg	Mrs. Lester E. Volentine, 409 E. Market
*Maryville	Mrs. Donald Evans, Box 136, Maryville.		

PROVINCE XII—Nebraska, Kansas, Colorado, Wyoming, and Utah

Collegiate Province Director: Mrs. FOREST FISCH (PHYLLIS), 18 Levis Rd., Greeley, Colo.

COLLEGE CHAPTERS

<i>Chapter</i>	<i>School</i>	<i>President and Chapter Address</i>	<i>College Chapter Director and Address</i>
Beta Sigma	Colorado State Univ.	Judy Raven, Delta Zeta House, 801 S. Shields, Ft. Collins, Colo.	Mrs. William Davy (Arlene), 1508 S. Whitcombe, Ft. Collins, Colo.
Beta Tau	Nebraska Wesleyan	Mary Kluver, Delta Zeta House, 4942 Madison, Lincoln, Neb.	Mrs. Richard Levander (Joyce), 333 S. 53rd St., Lincoln, Neb.
Delta Xi	Greeley Colorado State	Marsha Lanari, 1717 Tenth Ave., Greeley, Colo.	Mrs. D. B. Hardman (Barbara), 1831 14th St. Rd., Greeley, Colo.
Delta Pi	Kansas State Teachers	Nancy DeKeyser, Delta Zeta House, 1005 Merchant, Emporia, Kan.	Miss Ruth Otterstrom, 224 E. 6th Ave., Emporia, Kan.
Delta Omega	Ft. Hays State College	Elizabeth Ann Estes, Delta Zeta House, 506 Pine St., Hays, Kan.	Mrs. Elizabeth Mosier, 521 W. 16th St., Hays, Kan.
Epsilon Alpha	Western State College	Beverly Bunker, 309 Shavano Hall, W.S.C., Gunnison, Colo.	Mrs. Edward Blackstock (Page), Iola, Colo.

Alumnæ Province Director: Mrs. D. E. CADWELL (MARCELLA), 858 S. Josephine St., Denver, Colo.

ALUMNÆ CHAPTERS (* not chartered)

<i>Chapter</i>	<i>President and Address</i>	<i>Chapter</i>	<i>President and Address</i>
*Cheyenne, Wyo.	Mrs. Faith Waldman, 1746 Newton Dr., Cheyenne, Wyo.	Johnson-Wyandotte County, Kan.	Mrs. J. M. Crabb, 818 N. Washington, Kansas City, Kan.
Colorado Springs, Colo.	Miss Faye Heitsmith, 717 N. Tejon, Colorado Springs, Colo.	Lincoln, Neb.	Mrs. L. E. Chapman, 3227 E. Pershing Rd., Lincoln, Neb.
Denver, Colo.	Mrs. James E. Isenhart, 121 S. Easton, Denver, Colo.	Manhattan, Kan.	Mrs. Randall Hill, 1902 Anderson, Manhattan, Kan.
Emporia, Kan.	Mrs. Joseph Eisenbach, 1213 Neosho, Emporia, Kan.	Omaha, Neb.	Mrs. D. Fay Hosman, 821 S. 96th St., Omaha, Neb.
Ft. Collins, Colo.	Mrs. Donald Roscoe, 1144 LaPorte Ave., Ft. Collins, Colo.	Salt Lake City, Utah	Mrs. Thomas Davis, 1604 E. Olive Dr., Salt Lake City, Utah
Greeley, Colo.	Miss Barbara Herdman, 1831 14th St. Rd., Greeley, Colo.	Topeka, Kan.	Mrs. Arthur Martin, 1192 Oakley, Topeka, Kan.
Gunnison, Colo.	Mrs. Eloise Nowles, Gunnison, Colo.	Wichita, Kan.	Mrs. Wm. D. Wise, 1647 N.E. Parkway, Wichita, Kan.
Hays, Kan.	Mrs. Don Kerns, Hackberry Ct., Hays, Kan.		

PROVINCE XIII—Washington, Oregon, Montana, and Idaho

Collegiate Province Director: Mrs. NELLA HULET, 910 N.E. 44th St., Portland, Ore.

COLLEGE CHAPTERS

<i>Chapter</i>	<i>School</i>	<i>President and Chapter Address</i>	<i>College Chapter Director and Address</i>
Kappa	Univ. of Washington	Sharon Cramer, Delta Zeta House, 4535 18th N.E., Seattle 5, Wash.	Mrs. Alexander Crisp (Verna), 5103 W. Hudson, Seattle 16, Wash.
Chi	Oregon State College	Kathy O'Farrell, Delta Zeta House, 2311 Van Buren, Corvallis, Ore.	Mrs. Elizabeth Cramer, 513 N. 30th St., Corvallis, Ore.
Omega	Univ. of Oregon	Karen Damrose, Delta Zeta House, 1883 University, Eugene, Ore.	Mrs. Kenneth S. Wood (Peggy), 1941 Potter St., Eugene, Ore.

Alumnæ Province Director: Mrs. HARRY S. HOLT (CHARLOTTE), 1097 Clarendon Crescent, Oakland 10, Calif.

ALUMNÆ CHAPTERS

<i>Chapter</i>	<i>President and Address</i>	<i>Chapter</i>	<i>President and Address</i>
Corvallis, Ore.	Mrs. Milton Sheeley, 3558 Polk Ave., Corvallis, Ore.	Salem, Ore.	Mrs. Albert Faragher, Station A, Salem, Ore.
Eugene, Ore.	Miss Virginia Vogel, 372 W. 12th St., Eugene, Ore.	Seattle, Wash.	Mrs. Harry Nollan, 2021 36 W, Seattle 99, Wash.
Portland, Ore.	Mrs. John J. Elliott, 1427 N.E. 16th St., Portland, Ore.	Spokane, Wash.	Mrs. Frank G. Congdon, N. 3526 Lindeke, Spokane, Wash.
Pullman, Wash.	Mrs. Perry C. Combs, 507 State St., Pullman, Wash.	Tacoma, Wash.	Mrs. D. D. Stewart, 1224 Third, N.E., Puyallup, Wash.

PROVINCE XIV—Northern California, Nevada, Hawaii

Collegiate Province Director: MRS. WILLIAM L. BLAIR (LU), 597 Cascade Dr., Fairfax, Calif.

COLLEGE CHAPTERS			
Chapter	School	President and Chapter Address	College Chapter Director and Address
Mu	Univ. of California	Sandra Hunt, Delta Zeta House, 2728 Durant Ave., Berkeley 4, Calif.	Mrs. James Lemmon (Jean), 6857 Ridge-wood Dr., Oakland, Calif.
Gamma Lambda	San Jose State College	Nancy Buttram, Delta Zeta House, 201 S. 11th St., San Jose, Calif.	Mrs. Larry Quick 2513 Johnson Pl., Santa Clara, Calif.
Delta Chi	Chico State College	Shirley Aaberg, 131 Oak St., Chico, Calif.	Mrs. Verne L. Swartz (Vernita), 1673 Park Vista Dr., Chico, Calif.
Epsilon Epsilon	Fresno State College	Julia Johnson, 430 North Van Ness, Fresno, Calif.	Miss Janice Kulgren, 858 E. Carmen, Fresno, Calif.
Zeta Iota	Humboldt State College	Nancy Foster, Sunset Hall, Humboldt State College, Arcata, Calif.	Miss Kathryn Goetz, Rt. 1, Box 99, Eureka, Calif.

Alumnae Province Director: MRS. HARRY S. HOLT (CHARLOTTE), 1097 Clarendon Crescent, Oakland 10, Calif.

ALUMNAE CHAPTERS (* not chartered)			
Chapter	President and Address	Chapter	President and Address
Chico, Calif.	Mrs. Allen Willock, 9 Mione Way, Chico, Calif.	*Reno, Nev.	Mrs. G. A. Broten, 203 College Dr., Reno, Nev.
Fresno, Calif.	Mrs. Forrest Steinle, 2206 E. Hampton Way, Fresno, Calif.	Sacramento, Calif.	Mrs. Frank Taggart, 6580 Longridge Way, Sacramento 22, Calif.
Honolulu, Hawaii	Mrs. M. K. Shipley, 91-523 Pohakupuna Rd., Ewa Beach, Oahu, Hawaii	San Francisco-Bay Cities, Calif.	Mrs. L. Lewis King, 810 Keeler, Berkeley 8, Calif.
*Las Vegas, Nev.	Mrs. Arlene Southard, Box 575, Las Vegas, Nev.	San Francisco Peninsula, Calif.	Mrs. Ervin Henson, 3729 Skycourt, San Mateo, Calif.
Marin County, Calif.	Mrs. Robert M. Tanem, 842 Rincon Way, San Rafael, Calif.	San Joaquin Valley, Calif.	Mrs. Clyde Belew, 3315 Orange Ave., Stockton, Calif.
Monterey Peninsula, Calif.	Mrs. Walter Burde, R. 3, Box 986, Carmel, Calif.	San Jose, Calif.	Mrs. Richard MacQuiddy, 38 Decorah, Campbell, Calif.
Mt. Diablo, Calif. Area	Mrs. William Crepps, 3150 Ebano Dr., Walnut Creek, Calif.	Southern Alameda County, Calif.	Mrs. Ray Hassek, 41632 Chiltern Dr., Irvington, Calif.
Palo Alto, Calif.	Mrs. R. Fred Pfoat, 1660 Lee Dr., Mountain View, Calif.		

PROVINCE XV—Southern California, Arizona, New Mexico

Collegiate Province Director: MRS. ROBERT KOEHLER (MARY), 917 Corsica Dr., Pacific Palisades, Calif.

COLLEGE CHAPTERS			
Chapter	School	President and Chapter Address	College Chapter Director and Address
Alpha Chi	Univ. of California	Robin Rush, Delta Zeta House, 824 Hilgard Ave., Los Angeles, Calif.	Mrs. R. N. Gifford (Elizabeth), 2033 Euclid #10, Santa Monica 10, Calif.
Gamma Xi	New Mexico A&M	Barbara Witte, Box 973, University Park, N.M.	Mrs. Thomas Wick (Beth), Box 1656, University Park, N.M.
Gamma Omicron	San Diego State College	Marion Stille, 5074 College Ave., San Diego, Calif.	Miss Donna Isaak, 2126 San Clemente, Ocean Beach, San Diego, Calif.
Delta Alpha	Long Beach State College	Diana Miettunen, 12411 Ninth St., Garden Grove, Calif.	Mrs. S. M. Gregory (Frances), 3850 Olive St., Long Beach, Calif.
Delta Rho	New Mexico Highlands Univ.		Mrs. Emily Van Sickle, 521 Douglas Ave., Las Vegas, N.M.
Delta Psi	Santa Barbara	Norma Mae Johnson, 6525 Picasso Rd., Coleta, Calif.	Mrs. Maebel Colton, 6525 Picasso Rd., Coleta, Calif.

Alumnae Province Director: MRS. W. J. MAHAN (VIRGINIA), 11622 Norma Lane, Garden Grove, Calif.

ALUMNAE CHAPTERS (* not chartered)			
Chapter	President and Address	Chapter	President and Address
*Albuquerque, N.M.	Mrs. Thomas Beard, 2614 Gretta, N.E., Albuquerque, N.M.	*Pomona Valley	Mrs. Russell W. Ohne, 224 College Way, LaVerne, Calif.
Bakersfield, Calif.	Mrs. Keith Berry, 2612 Renegade, Bakersfield, Calif.	San Diego, Calif.	Mrs. Michael F. Hallahan, 4653 Biona Dr., San Diego 15, Calif.
El Paso	Mrs. Donald Longenecker, 479 St. Matthews Dr., El Paso.	San Fernando Valley, Calif.	Mrs. George Eggleston, 18016 Boris Dr., Encino, Calif.
Glendale-Burbank, Calif.	Miss Alice Chapman, 3612A Stancrest, Glendale 8, Calif.	Santa Barbara-Ventura, Calif.	Mrs. James B. Keith, 3115 Calle Roselas, Santa Barbara, Calif.
*Las Cruces, N.M.	Mrs. George Gardner, Box 973, Las Cruces, N.M.	Santa Monica, Calif.	Mrs. Michael Verange, 815 Brooktree Rd., Pacific Palisades, Calif.
Long Beach, Calif.	Mrs. B. T. Thompson, 5471 El Jardin, Long Beach 15, Calif.	South Bay, Calif.	Mrs. Norman A. DeWitt, 22736 Date Ave., Torrance, Calif.
Los Angeles, Calif.	Mrs. Emil Speidel, 1331½ Fifth Ave., Los Angeles, Calif.	Tucson, Ariz.	Mrs. Marlow Bergstrom, R. 2, Box 808, Tucson, Ariz.
Orange County, Calif.	Mrs. Raymond Johnson, 1506 W. Baker, Fullerton, Calif.	West Covina-Covina, Calif.	Mrs. Dale Howe, 1838 Puente Ave., West Covina, Calif.
Pasadena Foothills, Calif.	Mrs. Hugh Jones, 750 Old Mill Rd., San Marino, Calif.	Whittier, Calif.	Mrs. J. F. Davis, 14022 Oval Dr., Whittier, Calif.
Phoenix, Ariz.	Mrs. A. W. Miller, 3009 E. Shangri-La Rd., Phoenix, Ariz.		

PROVINCE XVI—Oklahoma

Collegiate Province Director: MRS. H. MEAD NORTON (HAZEL ROSE), 225 W. Eubanks, Oklahoma City, Okla.

COLLEGE CHAPTERS			
Chapter	School	President and Chapter Address	College Chapter Director and Address
Alpha Epsilon	Oklahoma State Univ.	Carole Candy, Delta Zeta House, 224 S. Jefferson, Stillwater.	Mrs. Joseph A. Adair (Jackie), 1617 W. 9th Ave., Stillwater.
Gamma Upsilon	Oklahoma City Univ.	Jan Sponhaltz, 2200 N.W. 58th, Oklahoma City.	Mrs. Ralph Dreiling (Marylois), 615 N.W. Hill St., Oklahoma City 18, Okla.

Delta Omicron	Northwestern State College	Barbara Bobbitt, Shockley Hall, N.S.C., Alva.	Miss Annette Parker, 515 College Ste., Alva.
Delta Phi	Northeastern State College	Faynelle Mays Lee, 221 Wilson Hall, Tahlequah.	Miss Irene Morgan, Publicity Director, NESC, Tahlequah.
Epsilon Lambda	Southwestern State College	Joan Gentry, Stewart Hall, SWSC, Weatherford.	Miss Mable Owen, 123 W. Franklin, Weatherford.
Epsilon Upsilon	Central State College	Freda Shope, Delta Zeta House, 310 East First St., Edmond.	Mrs. Kenneth Ruhl (Mary Jane), 5325 N.W. 44, Oklahoma City.
Zeta Eta	Southeastern State College	Mary Elizabeth Boone, Box 169, Station A, Durant.	Mrs. Lawrence E. Hafner, 517 N. 8th, Durant, Okla.

Alumnæ Province Director: MRS. ROBERT L. McKEEMAN (GWEN), 5705 E. 26th St., Tulsa, Okla.

ALUMNÆ CHAPTERS (* not chartered)

Chapter	President and Address	Chapter	President and Address
Alva	Mrs. Larry Heaton, 1129 Eighth, Alva.	*Ponca City	Mrs. L. W. Vickery, 142 Whitworth, Ponca City.
Bartlesville	Mrs. Herbert Loy, 4744 E. Frank Phillips Blvd., Bartlesville.	Stillwater	Mrs. Guy M. Pritchard, 824 W. Bennett Dr., Stillwater.
Oklahoma City	Mrs. Wendell Burke, 2212 Ann Arbor, Oklahoma City.	Tulsa	Mrs. James O. Anderson, 3710 E. 54th St., Tulsa.
		*Weatherford	Mrs. Dean Wright, R. 2, Weatherford.

PROVINCE XVII—Texas

Collegiate Province Director: MRS. JACOB F. SCHULTZ (RHEA), 5610 Tupper Lake Dr., Houston, Texas

COLLEGE CHAPTERS

Chapter	School	President and Chapter Address	College Chapter Director and Address
Alpha Tau	University of Texas	Carla Cooper, Delta Zeta House, 2315 Nueces, Austin.	Mrs. John Wildenthal, Jr., (Carolyn), 1710 Enfield Rd., Apt. D., Austin.
Alpha Psi	Southern Methodist Univ.	Margaret Randel, Delta Zeta House, 3034 Daniels, Dallas.	Mrs. M. B. Bowers (Virginia), 3549 Greenbrier, Dallas 25.
Gamma Zeta	Southwestern Univ.	Sarah Shepherd, Box 153, S. U. Station, Georgetown, Tex.	Mrs. Louis L. Huie (Bea), 1002 E. 15th, Georgetown.
Delta Theta	University of Houston	Kathleen Pollack, 3611 Rosedale, Houston.	Mrs. Jack F. Gale (Bernice), 929 Chimney Rock, Houston.
Delta Lambda	Lamar State College of Technology	Brenda Cascio, 1109 East Dr., Beaumont.	Mrs. Don Kaye (Lory), 520 Riverside Dr., Beaumont.
Zeta Zeta	West Texas State College	Charlotte McElroy, Box 695, W.T.Sta., Canyon.	Mrs. Larry W. Cook, 1407 9th Ave., Canyon.
Zeta Theta	Sam Houston State College	Phyllis Sweatman, Delta Zeta House, Sam Houston State College, Huntsville.	Mrs. Floyd Taylor (Mable), 2321 Robinson Way, Huntsville.

Alumnæ Province Director: MRS. HARRY C. STALLWORTH (KATIE BLANCHE), 2601 Westover Rd., Austin 3, Tex.

ALUMNÆ CHAPTERS

Chapter	President and Address	Chapter	President and Address
Amarillo	Mrs. Danny A. Ritter, 3631 Doris Ave., Amarillo.	Fort Worth	Mrs. Joe H. Frye, Jr., 5725 Wedgmont Circle, Fort Worth, Tex.
Austin	Mrs. Wilbur White, 2303 Towbridge Circle, Austin 5.	Houston	Mrs. Robert W. Smith, 5319 Stillbrooke, Houston 27.
Beaumont	Mrs. E. J. Tennyson, 3955 Ironton, Beaumont.	Huntsville	Mrs. Clyde Hall, 1807 Avenue P, Huntsville.
Corpus Christi	Mrs. Allen Salge, 917 Dodderidge, Corpus Christi.	Lubbock	Mrs. Merle D. Routzon, Jr., 4307 60th St., Lubbock
Dallas	Mrs. Carl Klein, 6415 Axton Lane, Dallas.	San Antonio	Mrs. Jerry C. Parker, 330 Denton Dr., San Antonio 10.

PROVINCE XVIII—Louisiana and Mississippi

Collegiate Province Director: MRS. JOHN MAKAR (RUTH), Box 775, Natchitoches, La.

COLLEGE CHAPTERS

Chapter	School	President and Chapter Address	College Chapter Director and Address
Sigma	Louisiana State Univ.	Susan Heck, L.S.U. Box 12662, Baton Rouge, La.	Mrs. John Cox (Frances), 2025 Steels Blvd., Baton Rouge, La.
Beta Upsilon	Sophie Newcomb	Patricia Drake, 716 Broadway, New Orleans 18, La.	
Delta Kappa	University of Southwestern Louisiana	Judy Aylsworth, Box 281, S.L.I., Lafayette, La.	Mrs. J. Frank Smith (Becky), 101 Beverly Dr., Lafayette, La.
Epsilon Beta	Northwestern State College	Jo Ann Robinson, Box 555, N.S.C., Natchitoches, La.	Miss Catherine Winters, 434 Williams Ave., Natchitoches, La.
Epsilon Mu	Mississippi Southern	Jane Lyn Pierce, Sta. A, Box 1853, M.S.C. Hattiesburg, Miss.	Mrs. Wiley Lewis, 217½ N. 25th Ave., Hattiesburg, Miss.
Zeta Gamma	McNeese College	Colleen Wayne, 2908 Gen. Patton, Lake Charles, La.	Mrs. Horace Austin, Jr. (Sandy), 1535 Foster St., Lake Charles, La.

Alumnæ Province Director: MRS. FRANK W. QUIN, JR. (HANNAH-NELL), 3875 Greenway Pl., Shreveport, La.

ALUMNÆ CHAPTERS (*not chartered)

Chapter	President and Address	Chapter	President and Address
*Baton Rouge, La.	Mrs. James M. Lain, 8950 Alma Dr., Baton Rouge, La.	New Orleans, La.	Mrs. Samuel Hottinger, Jr., 70 Hawks St., New Orleans, La.
Hattiesburg, Miss.	Mrs. Roland Loper, Rawls Spring, Miss.	Shreveport, La.	Mrs. Albert L. Dietz, Jr., 465 Gloria St., Shreveport, La.
Lake Charles, La.	Mrs. Fred F. Johnson, 2120 Second Ave., Lake Charles, La.		

PROVINCE XIX—Western Tennessee, Arkansas, and Alabama

Collegiate Province Director: MRS. GILBERT P. STRODE, JR. (MARY LEE), 4812 Marcel Rd., Memphis, Tenn.

COLLEGE CHAPTERS

<i>Chapter</i>	<i>School</i>	<i>President and Chapter Address</i>	<i>College Chapter Director and Address</i>
Alpha Gamma	Univ. of Alabama	Marion Jarrell, Delta Zeta House, Box 4736, University, Ala.	Miss Eunice Jenkins, P.O. Box 1681, University, Ala.
Alpha Pi	Howard College	Kaye Kennamer, Howard College, 800 Lakeshore, Birmingham, Ala.	Mrs. Robert Francis (Lisabeth), 3327-D Montgomery Hwy., Birmingham, Ala.
Beta Xi	Auburn University	Ann Joiner, Dorm 1, Auburn, Ala.	Mrs. Margaret K. Zaring, P.O. Box 67, Auburn, Ala.
Gamma Iota	Memphis State Univ.	Jackie Jones, Box 108, M.S.U., Memphis, Tenn.	Mrs. Robert S. Goforth (Bobbie), 170 N. Hollywood, J 3, Memphis, Tenn.
Epsilon Xi	Arkansas State Coll. of Education	Jo Ann Caldwell, A.S.T.C., Box 260, Conway, Ark.	Miss Carlyle Ellis, A.S.T.C., Box 944, Conway, Ark.
Epsilon Pi	Henderson State Teachers College	Nancy Boaz, Box 554, H.S.T.C., Arkadelphia, Ark.	Miss Ruth Guthrie, H.S.T.C., Arkadelphia, Ark.

Alumnæ Province Director: MRS. CLYDE C. OWEN (POLLY), 1864 S. Hull St., Montgomery, Ala.

ALUMNÆ CHAPTERS

<i>Chapter</i>	<i>President and Address</i>	<i>Chapter</i>	<i>President and Address</i>
Auburn, Ala.	Mrs. Henry Hanson, 255 Thach, Auburn, Ala.	Mobile, Ala.	Mrs. K. H. Moore, 156½ S. Monterey, Mobile, Ala.
Birmingham, Ala.	Mrs. John R. Orr, Jr., 1028 45th St. W., Birmingham 8, Ala.	Montgomery, Ala.	Mrs. F. E. Stillwagon, 801 Byrne Dr., Montgomery, Ala.
*Chattanooga	Mrs. W. L. Chapman, Jr., 3971 Manor Rd., Chattanooga 11, Tenn.	Nashville, Tenn.	Mrs. Charles Anderson, 229 Amherst Dr., Donelson, Tenn.
Little Rock, Ark.	Mrs. Fred Walker, 105 Winnwood Dr., Little Rock, Ark.	Tuscaloosa, Ala.	Mrs. Haynes Smith, 2 Hillcrest, Tuscaloosa, Ala.
Memphis, Tenn.	Mrs. Kirby Bishop, 792 West Dr., Memphis, Tenn.		

PROVINCE XX—Kentucky, Eastern Tennessee, Georgia

Collegiate Province Director: MRS. SPENCER HARPER, JR. (CAROL), 4297 Chandler Ave., Apt. B, Columbus, Ohio

COLLEGE CHAPTERS

<i>Chapter</i>	<i>School</i>	<i>President and Chapter Address</i>	<i>College Chapter Director and Address</i>
Alpha Theta	Univ. of Kentucky	Betty Greene, Delta Zeta House, 319 Columbia Ter., Lexington, Ky.	Mrs. H. A. Garber (Dorothy), 324 Sycamore Rd., Lexington, Ky.
Beta Gamma	Univ. of Louisville	Jean Slucher, 4145 Reservoir Ave., Louisville, Ky.	Mrs. Lawrence Grauman (Kit), 3945 Napanee Rd., Louisville, Ky.
Beta Lambda	Univ. of Tennessee	Doris Rivers, Box 256, 1618 W. Cumberland, Knoxville, Tenn.	Mrs. Pryor Wagner (Mary Nell), 2724 Magnolia Ave., Knoxville, Tenn.
Delta Gamma	Transylvania College	Patricia May, Ferrer Hall, Transylvania College, Lexington, Ky.	
Delta Delta	Georgia State College	Joan Wiggins, 2652 Lavista Road, Decatur, Ga.	Mrs. H. Cecil Moon (Jeanette), 3975 N. Stratford Rd. N.E., Atlanta 5, Ga.
Delta Eta	Eastern Tennessee State	Christine Hawkins, Box 3386, E.T.S.C., Johnson City, Tenn.	Patricia Henry, 1302 Iris, Oakland Gardens, Johnson City, Tenn.

Alumnæ Province Director: MRS. LAWRENCE GRAUMAN (KIT), 3945 Napanee Rd., Louisville, Ky.

ALUMNÆ CHAPTERS

<i>Chapter</i>	<i>President and Address</i>	<i>Chapter</i>	<i>President and Address</i>
Atlanta, Ga.	Mrs. Robert Dean, 3075 Piedmont Rd. N.E., Atlanta, Ga.	Lexington, Ky.	Mrs. Wm. Jackson, Penmoken Park, Lexington, Ky.
*Chattanooga	Mrs. W. L. Chapman, Jr., 3971 Manor Rd., Chattanooga.	Louisville, Ky.	Mrs. Donald Smith, 4415 Rudy Lane, Louisville, Ky.
Knoxville, Tenn.	Mary Neal Goodson, 1311 W. Clinch Ave., Knoxville 16, Tenn.	Tri-Cities, Tenn.	Mrs. Wendell Shurtz, Lakeview Dr., Johnson City, Tenn.

PROVINCE XXI—Florida

Collegiate Province Director: MRS. JOHN M. TAYLOR (DOTTY), 2427 Meadow Lane, Lakeland, Fla.

COLLEGE CHAPTERS

<i>Chapter</i>	<i>School</i>	<i>President and Chapter Address</i>	<i>College Chapter Director and Address</i>
Alpha Sigma	Florida State University	Cree Ann Kearns, 749 Jefferson St., Delta Zeta House, Tallahassee.	Mrs. Richard Marland (Ann), 2113 Croyden, Tallahassee.
Beta Mu	Florida Southern College	Leah Kirkpatrick, Delta Zeta House, Florida Southern College, Lakeland.	Mrs. Carolyn Hayes, 2035 Conrad St., Lakeland.
Beta Nu	University of Miami	Suzanne Schaub, 707 New Holt, Coral Gables.	Miss Jane Everitt, Dean of Women's Office, University of Miami, Coral Gables.
Delta Beta	University of Tampa	Yolanda Martino, 2303 West Virginia, Tampa.	Mrs. D. H. Williams (Iris), 1709 Eldred Dr., Tampa 4.

Alumnæ Province Director: MRS. JOHN T. BRINSON (INZZ), 1726 Clemson Rd., Jacksonville, Fla.

ALUMNÆ CHAPTERS (*not chartered)

<i>Chapter</i>	<i>President and Address</i>	<i>Chapter</i>	<i>President and Address</i>
*Clearwater	Mrs. Benton Snyder, R. 2, Box 958, Clearwater.	Ocala-Leesburg	Mrs. T. L. Mack, Anthony Farms, Lowell, Fla.
Cocoa	Karen Addington, 1301 Dixie Blvd., Cocoa.	Orlando	Mrs. T. R. Minter, 702 Hampstead, Orlando.
Dayton-Volusia County	Mrs. Robert Motley, 421 Lakeshore Dr., Daytona Beach.	Pensacola	Mrs. Wm. T. McElfresh, R. 1, Box 728, Pensacola.
Fort Lauderdale	Mrs. Fritz Richter, 432 W. 24th St., Ft. Lauderdale.	Plant City	Mrs. Hammond Turner, W. Mahoney St., Plant City.
Gainesville	Mrs. Hoy Williams, 725 N.E. Sixth St., Gainesville.	St. Petersburg	Mrs. Darley E. Templeton, 750 Lake Maggio Blvd., St. Petersburg.
Jacksonville	Mrs. T. Crawford Clark, 1441 Northwood Rd., Jacksonville.	*Sarasota-Bradenton	Mrs. Leroy Horton, 8260 W. Moreland Dr., Sarasota.
Lakeland	Miss Oween Sumner, 717 S. Success Ave., Lakeland.	Tallahassee	Mrs. J. W. Ashton, FSU, Box 2813, Tallahassee.
Miami	Mrs. Cyrus Thompson, 6000 S. W. 33rd St., Miami 55.	Tampa	Mrs. Angus Williams, 5034 Dickens, Tampa 9.

State Recommendation Chairmen

Alabama—Mrs. Stuart Barrett, 2301 48th St., Fairview Sta., Birmingham, Ala.
Alaska—Mrs. Dale Miller, Valdez, Alaska
Arizona—Mrs. Loren Curtis, Box 1957, Casa Grande, Ariz.
Arkansas—Mrs. Roy L. Hinson, 35 Harrow Dr., Little Rock, Ark.
California—(Northern) Mrs. Walter Burde, Rt. 3, Box 986, Carmel, Calif.; (Southern) Mrs. Frank X. Bale, 1953 Cheremoya Ave., Los Angeles 28, Calif.
Colorado—Mrs. Wilma Reiva La Sasso, 625 York St., Denver 6, Colo.
Connecticut—Mrs. John Hill, Jr., 29 Montrose St., Hartford, Conn.
Delaware—Mrs. R. C. Schreyer, 2522 Deepwood Dr., Wilmington 3, Del.
District of Columbia—Miss Helen Van Gilder, 3130 Wisconsin Ave. N.W., Apt. 409, Washington 16, D.C.
Florida—Mrs. Jerome J. dePaula, R. 2, Box 225, Round Lake, Lutz, Fla.
Georgia—Miss Margaret Vardaman, 4221 Club Dr., N.E., Atlanta, Ga.
Hawaii—Mrs. Leon McCluskey, 1029 Makaiwa St., Honolulu, Hawaii
Idaho—Mrs. W. L. Lundquist, Rt. 3, Box 104, Moscow, Idaho
Illinois—Mrs. Francis J. Houline, 540 Pennsylvania Ave., Aurora, Ill.
Indiana—Mrs. Vera Grace French, Apt. 3B, 415 S. 25th St., South Bend, Ind.
Iowa—Mrs. F. Darrell Goar, 5411 30th Ave., Moline, Ill.
Kansas—Mrs. Thomas M. Evans, 830 Harris St., Manhattan, Kan.
Kentucky—Miss Ainslee Pearce, 142 Hamilton Park, Lexington, Ky.
Louisiana—Mrs. Joe White, Box 591, Houma, La.
Maine—Miss Velma Oliver, 3 Allen Rd., Orono, Me.
Maryland—Mrs. Blaine O'Dell, 2007 Lydonlea Way, Baltimore 12, Md.
Massachusetts—Mrs. John Higgins, 99 Greenacre Rd., Westwood, Mass.
Michigan—Mrs. Steven Garfield, Cobles, Mich.
Minnesota—Mrs. Paul Velz, 801 Boone Ave., N., Minneapolis 27, Minn.
Mississippi—Mrs. W. M. Rayburn, 808 Johnson Ave., Hattiesburg, Miss.
Missouri—Mrs. Frank L. Stockham, 7252 Zephyr Pl., Maplewood, St. Louis 17, Mo.
Montana—Mrs. R. H. Walkup, 4406 Charrett Ave., Missoula, Mont.
Nebraska—Mrs. Ben Akert, 1800 S. 51st, Lincoln Neb.
Nevada—Mrs. Arlene Southard, Box 575, Las Vegas, Nev.
New Hampshire—Mrs. Gordon Thorburn, Bell Lane, Hollis, N.H.
New Jersey—Mrs. H. A. Bates, 10 Roosevelt Ave., East Orange, N.Y.
New Mexico—Mrs. John Carlisle, Box 1737, Alamogordo, N.M.
New York—(Upper N.Y.) Mary Frances Sims, 1217 Bellevue, Syracuse, N.Y.; (Lower N.Y.) Mrs. William G. Baker, 5 Lafayette Ave., Hempstead, L.I., N.Y.
North Carolina—Mrs. Phillip Beebe, 5017 Wedgewood Ave., Charlotte, N.C.
North Dakota—Mrs. Frances Erickson, Halstad, Minn.
Ohio—Miss Olive McCune, 2673 N. Park Blvd., Cleveland 6, Ohio
Oklahoma—Mrs. N. K. Scott, 1260 E. 30th St., Tulsa Okla.
Oregon—Mrs. Monte L. Thoen, 13124 N.W. Sue St., Portland 10, Ore.
Pennsylvania—Mrs. Edward Monaghan, 305 Narberth, Narberth, Pa.
Rhode Island—Mrs. James H. Crossley, 40 Farmland Rd., Warwick, R.I.
South Carolina—
South Dakota—Mrs. Richard E. Huffman, Jr., 1535 S. State St., Aberdeen, S.D.
Tennessee—Mrs. Thomas Scales, 4309 Bates Dr., Nashville, Tenn.
Texas—Mrs. Claude A. Bell, 3813 Bryn Mawr, Dallas 25, Texas
Utah—(Co-Chm.) Mrs. Franklin Shafer, Box 552A RFD, Tooele. Utah; Yolande Sutton, 1606 Yale Ave., Salt Lake City, Utah
Vermont—Mrs. John Rider, 10 Marshall Dr., Burlington, Vt.
Virginia—Mrs. Arthur L. Blakeslee, 2916 Noble Ave., Richmond, Va.
Washington—Mrs. D. Dean Stewart, 1224 Third Ave. N.W., Puyallup, Wash.
West Virginia—Mrs. W. Ray Manning, 4310 Staunton, Charleston, W. Va.
Wisconsin—Mrs. John Streib, 408 Western Ave., Neenah
Wyoming—Mrs. Glenn K. Rogers, 312 E. Pershing Blvd., Cheyenne, Wyo.



ALUMNAE GROUPS

You'll want the distinctive Robert Rollins Delta Zeta Blazer, too— it's fashioned for the lives you lead!

PLEDGED!

Chosen As The Official

Delta Zeta Blazer

ROBERT ROLLINS

Now, Delta Zetas everywhere have their own official Blazer—a beautiful bond of pride—with the elegant DZ coat-of-arms woven right into the pocket.

This indispensable addition to a college wardrobe, available only through Robert Rollins, fits sorority life as well as it fits your figure—perfectly! It speaks volumes about how proud you are of your chapter, gives you a wonderful sense of belonging to DZ. Your Robert Rollins Blazer is so handsomely tailored it can go anywhere, do anything—campus or town, sorority meeting or weekend date, classroom or stadium, rushing, pledging—it varies its outlook to suit the occasion. Best of all, it only looks expensive. You'll want your whole chapter to have the distinction and prestige of a Delta Zeta Blazer by Robert Rollins.

Fashioned of the finest fabrics in officially approved colors to suit your favorite color strategy: White wool tweed, White flannel, White "doeskin" flannel; Menswear flannel in Mint Green, Forest Green, Coral Pink. PIPINGS: White, Bright Green, Dark Green or Plain Edge.

Send for exact prices, and order blank.

ROBERT ROLLINS BLAZERS, INC.

Dept. TL, 832 Broadway
 New York 3, N.Y.

Second class postage paid at Menasha, Wisconsin

If undeliverable return copies and Form 3579 to Delta Zeta
Sorority, 3561 N. Pennsylvania St., Indianapolis 5, Indiana.

RETURN POSTAGE GUARANTEED

Your Official Jeweler

**BURR, PATTERSON & AULD
COMPANY**

2301 Sixteenth Street
Detroit 16, Michigan

*Catalogues and badge order books free
upon request*

When ordering badges, please use the official badge order form and forward same to the Executive Secretary for her approval. Your sorority requires this.

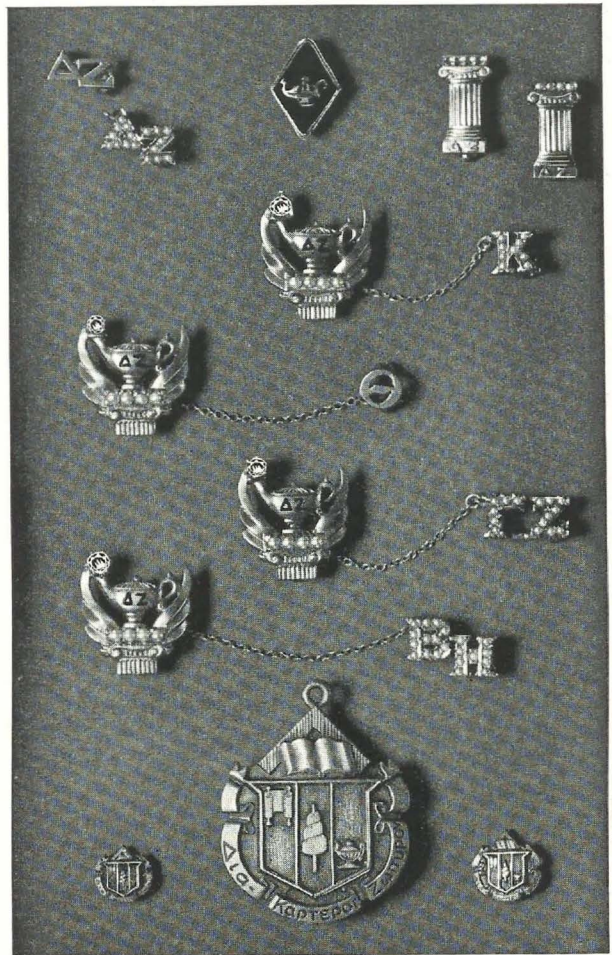
GUARD PIN PRICES

	Single Letter	Double Letter
Plain	\$2.75	\$ 4.25
Engraved	3.25	5.00
Crown set pearl	7.75	14.00
Close set pearl	5.50	9.25

(Be sure to mention the name of your chapter when ordering a guard to your pin.)

Large Coat-of-arms Charm:

Sterling Silver	\$ 3.00
Yellow Gold-filled	5.25
10K Yellow Gold	23.25



STANDARD BADGES

Zircon, set flush or tiffany	\$13.50
Brilliant cut diamond, flush or tiffany	22.50
Medium size diamond, flush or tiffany	27.50
Extra size diamond, flush or tiffany	30.00
.05 Diamond, set tiffany	35.00
.10 Diamond, set tiffany	62.50
(Be sure to specify your choice of setting for the diamond, flush or tiffany.)	
Recognition pin, staggered letters, crown set pearl	10.00
Recognition pin, staggered letters, gold-filled	1.50
10K gold	2.50
Mother's pin, plain	3.00
with pearls	4.25
Pledge pin, with safety catch	1.25

**10% FEDERAL EXCISE TAX MUST BE ADDED TO ABOVE PRICES; ALSO STATE SALES AND
USE TAX WHERE THEY ARE IN EFFECT.**