

The Lamp of Delta Zeta



3rd Quarter 1967

What Delta Zeta Means To Me!

I am a Delta Zeta because I have found here embodied those qualities of scholarship, morality, and social living which serve to enrich my selfhood within our encompassing society—such qualities as are needed in our nation—such qualities are needed to be engendered in those who live on after us.

Sorority is the paradox of me and we. The me in Delta Zeta is the recognition that I am an individual having potentials, interests, and abilities which assert I am unique.

But we do not develop in vacuums of isolation. It is working for and with our sisters—escaping the shell of self, enriching the core of self, that gives us our greatest joys and enhances our zest for living.

In our varying temperaments, personalities, and philosophies, we are bound by a transcendent common interest—loyalty—to each other—to the ideals of a Delta Zeta Sorority.

“There is a time to be happy, a time to be sad; a time to sing and a time to sigh; a time to strive, a time to acquiesce; a time to fulfill, a time to be fulfilled. And always, always, there is a time to share these times.”

Delta Zeta has touched my mind, my heart, my soul, my entire being. See tonight the candlelight that glows in the eyes of a Delta Zeta. See tonight what Delta Zeta means to me. And then see yourself as a part of this sisterhood of love—you, as a Delta Zeta.

Written by JOANNE SELLERS, Delta Mu, Morningside College

THE LAMP of Delta Zeta

Office of Publication, George Banta Co., Inc., Curtis Reed Plaza, Menasha, Wis. 54952

IRENE C. BOUGHTON, *Acting Editor*

-
- 3 Delta Zeta Comes to New Jersey
 - 5 Another Chapter for New York
 - 7 Delta Zeta Comes to New University in Florida
 - 10 A Seventh for West Virginia
 - 12 Second New Jersey Chapter Installed
 - 14 A Fifteenth Chapter for Pennsylvania
 - 16 Special Initiation for Delta Iota
 - 19 Presenting Province XI
 - 33 Δ Z Photo Album
 - 42 Were You a Spar?
 - 43 Delta Zetas Go Caribbean Español
 - 44 Eighth Flame Fantasy for Sacramento
 - 45 Indiana's Second Flame Fantasy
 - 46 Magazine Winners
 - 47 Golden Flame Eternal
 - 48 Directory



Golden Rose Pin
For 50 Year Members—\$17.50
Order from National Headquarters



Daughter-Granddaughter Pendant gold-filled\$4.50
Daughter-Granddaughter Pendant 10K gold\$7.25
(Order from Executive Secretary)

THE LAMP OF DELTA ZETA, official magazine of the sorority, is published Quarterly by George Banta Company, Inc., official printers to the sorority. \$2.00 per year. Life subscription \$25.00. Printed in U.S.A. Second class postage paid at Menasha, Wisconsin. Acceptance for mailing at special rate of postage provided for in section 1103, Act of October 3, 1917, authorized September 26, 1918.

Copyright 1967 by Delta Zeta Sorority

RETURN REQUESTED

Delta Zeta Sorority, 3561 N. Pennsylvania St., Indianapolis, Indiana 46205

Attention All Chapter Lamp Editors:

Send all material for publication to Delta Zeta National Headquarters, 3561 N. Pennsylvania St., Indianapolis, Ind. 46205. All changes of address and advertising information to Mrs. Walter Folger, Delta Zeta National Headquarters, 3561 N. Pennsylvania St., Indianapolis, Indiana 46205. Deadline for Third Quarter issue is June 1, issue will appear in late August. Deadline for Fourth Quarter issue is Sept. 1, issue will appear in late November. Deadline for First Quarter issue is Dec. 1, issue will appear in late March. Deadline for Second Quarter issue is March 1, issue will appear in May.



Carla Maurine Barwick, Zeta Psi Chapter at Stephen F. Austin in Nacogdoches, Texas, was presented as a debutante in December of 1967 to Greenville, Mississippi society.

Carla Barwick, on her maternal side, is a descendant of the Bailey family of England who settled in Louisiana in the 17th century. She traced her ancestry to Mary Stuart, Queen of Scots.

On her paternal side, her descendants include John Henry and Patrick Henry of Virginia, Alexander Henry of Aberdeen, Scotland, the Norman conquerors, and the Earl of Warwick.

Her campus activities include the Entertainment Committee of the college center, Sociology Club, and a finalist in the Miss Stone Fort Pageant.

Delta Zeta Comes to New Jersey

by KATHLEEN I. EDWARDS, A O

Delta Zeta has the distinction of having some Firsts this year in New Jersey. **FIRST**—Delta Zeta Chapter in New Jersey. **FIRST**—National Sorority at Monmouth College. **FIRST**—of Original 23 National Panhellenic Conference of Sororities in New Jersey.

It all began last spring when the Monmouth College local sorority known as Tau Lambda Chi asked Delta Zeta Jane Cornish to become their advisor. Miss Cornish, of A Ξ , is Assistant Professor in the Department of Teacher Education at Monmouth; and became interested in the girls whose aims were Truth—Leadership—Charity. The local, Tau Lambda Chi, founded in 1956, was active in community projects and in 1965 had received the Dean's Trophy for the best overall sorority. In the fall of 1965 Tau Lambda Chi petitioned Delta Zeta.

Mrs. Charles Alseth, Province II President, Mrs. Ado Bolles, New Jersey, State Membership Chairman and Miss Cornish met unofficially with Miss Barbara M. Krantz, Dean of Women, and the girls of the local chapter. Just before Thanksgiving 1966 the Tau Lambda Chi girls were ribboned by Delta Zeta. Monmouth College greatly favored this step and from then on the road was clear and leading to the momentous week of Initiation and Installation.

January 8th the Hunter College Initiating



RELAXING AFTER the Installation Banquet. Left to right: Mary E. Snyder, Installation Chairman; Jane E. Cornish, CCD Iota Mu Chapter; Barbara Link, Traveling Secretary; Betty Heusch Agler, National President; Joanna Alseth, Province II President; Judith LeMassena, Province II Vice-President; Theresa I. Bolles, New Jersey State Membership Chairman.

Team led by their College Chapter Director, Miss Italia Terrone, formally pledged fifteen girls and thirteen alumnae. February 18th the following were initiated: Eve Nelson, President; Gail Silverstein, vice-president, membership; Carol A. Bobertz, vice-president, pledging; Linda E. Panizzi, recording secretary; Alice J. Semon, corresponding secretary; Sandra O. Sullivan, treasurer; Mary L. Wunderlich, publicity and service chairman. Also, Patricia J. Daly, Betty Deeny, Karen A. Neary, and Nina E. Vuyosevich.

The alumnae are: Suzan DeBonis, Barbara Garbley, Joanna Maimone, Theresa Nonnenberg, Karen Palmer, Phyllis Hamilan, Annette Sagalia, Gina Tringola, Joyce Phillips, Elaine McGarry, Jeanne Silverstein, June Todd.

Linda Panizzi was Campus Queen at Homecoming Week-end in the fall of 1966.

Mrs. Earl Snyder, the Chairman of Initiation and Installation, Miss Mildred Giesecke, Mrs. Bolles and Miss Cornish, representatives of the Northeastern New Jersey Alumnae Chapter of New Jersey, which sponsored Iota Mu Chapter, along with Mrs. Betty Heusch Agler, National President of Delta Zeta, and Mrs. Alseth performed the Initiation Ceremonies on the morning of February 18.



Left to right: Dr. William Van Note, President of Monmouth College; Betty Heusch Agler, National President of Delta Zeta; Jane E. Cornish, CCD for Iota Mu Chapter; Barbara M. Krantz, Dean of Women Monmouth College; Gail Silverstein, Vice-President of Iota Mu.

The evening of February eighteenth was the social culmination of an exciting, exhilarating and wonderful day. The Installation Banquet, held at the Crystal Brook Inn with Mrs. Alseth serving as Toastmistress. Jane Cornish, College Chapter Director of Iota Mu, gave a welcome from all Delta Zetas. Mrs. Earl Snyder presented the gift of silver candlesticks from the Northeastern New Jersey Alumnæ Chapter. Mrs. Agler formally presented the Charter for Iota Mu Chapter to the chapter president. Dr. William Van Note, President of Monmouth College, gave an inspiring talk on "Janus's Wife," bringing out the past traditions of Delta Zeta and looking forward to future aspirations. Dean Krantz accepted the chapter on behalf of the university. Mrs. Robert F. LeMassena of Flanders, New Jersey, Vice-President of Province II sang "Roses I Give To Thee" as Mrs. Burton M. Levin of Hackensack, president of the Northeastern New Jersey Alumnæ Chapter, presented each new Delta Zeta with a rose.

Sunday afternoon, February 19, Woodrow Wilson Hall at Monmouth College was the setting for the tea presenting Iota Mu of Delta Zeta to the officials of the college and the community. Graciously given by the Northern New Jersey Alumnæ Chapter and making use of the exquisite silver tea service, a gift to the new chapter, it was an auspicious introduction of the new chapter to the Faculty of Monmouth College, and dignitaries of the town, as well as friends, students and relatives.

A glorious, wonderful week-end came to a happy close, and the Delta Zetas in New Jersey are proud and happy to welcome Iota Mu members as our sisters, and we are deeply grateful to all who labored with love to make this new chapter a dream come true. We are especially indebted to Jane Cornish, without whose tireless energy, enthusiasm, and hard work Delta Zeta today would not be able to boast of her THREE FIRSTS.

The National Council
of Delta Zeta
announces the
1968 National Convention
to be held in
St. Louis, Missouri
Chase Park Plaza Hotel
June 16-21

Another New Chapter for New York

by MARION E. HERRMANN, *Alpha Zeta*

It was a weekend to remember. Solemn rites mixed with frolicsome gaiety. Dreamy-eyed girls filled with curiosity, excitement and happiness; practical girls filled with anticipation, exuberance and dreams. Such was the world of St. John's University, Jamaica, New York on October 29 and 30, 1966, when the 37 charter pledges of this colony that was one of the largest local sororities, Sigma Alpha Sigma, on this campus became Iota Zeta Chapter of Delta Zeta. It became the sixth chapter of Delta Zeta in our fast growing Province II.

The weekend was the culmination of many weeks of loving labor by Joanna M. Alseth, our efficient and loyal Province II President—aided by many local Delta Zetas in preparations and rehearsals, and by the coming and going of many people especially Violet Sharratt Whitfield, immediate past national president of Delta Zeta.

The solemnities were started on the spacious and quiet campus of St. John's University—grassy, rolling slopes lead up the hill to the many grey field-stone buildings standing majestically against the sky—on this 12,000 student body campus. All seemed a world away from the turmoil of New York City, awaiting just outside the gates.

The formalities began Saturday morning with the initiation of the Associate Dean of Students, Miss Patricia Ann Mulvey. How proud Delta Zetas were to initiate as one of its members a woman of such vision, integrity and energy. We know that Iota Zeta will be an outstanding chapter having the surveillance and interest of Dean Mulvey. The girls were initiated with the traditional ritual. These services were performed most capably and with great dignity by the initiating team of Alpha Zeta chapter of Adelphi University, under the guidance of Dorothy Karsch, chapter president. Directing and assisting this team were the Collegiate Chapter Director, Suel-len Filipek; Province II President, Joanna M. Alseth; and the immediate Past National President of Delta Zeta, Violet S. Whitfield. At noon, the initiating team and the thirty-seven new Iota Zeta initiates were served lunch by the thirty new pledges of Iota Zeta chapter.

By mid afternoon the new initiates had received "their diamond and four pearls."

Our banquet was held in the warm and beautiful Garden Room of Patricia Murphy's Candlelight Restaurant in Manhasset, Long Island located on New York's famous Miracle Mile. The room which had looked large and cold when it



New Initiates of Iota Zeta Chapter. 1st row, left to right: Kathe Nelson, Ingrid Seiffert, Linda Jablonsky, Geraldine Otremba, Sue Gaeta, Allison Kraemer, Dee Fastiggi, Jane Conway, Mary Fadel, Joan Fredericks. 2nd row, left to right: Lynne Levy, Ellen Tumminelli, Terri Willig, Judi Callison, Kathi Larkin, Joanne Monaco, Barbara Abbate, Pat Pellegrino, Ginny Wallace, Kathy McMahon. 3rd row, left to right: Toni Bresha, Jan Gleason, Judi Wallin, Paula Le Laidier, Mary Lou Macho, Monica Schiebel, Terri McGill, Kathy Ingrassia, Pat Gartner, Jeanette Fanning, Diane Greenwich, Margaret Opulente. 4th row, left to right: Jackie Nigro, Marianne Bange, Angel Sousa, Lorraine Beebe, Kathie Tunney, Karen DeVora, Cathy DelGaudio, Judi Loonam, Denise Sullivan, Terri Kriska, Paula Schwefel, Sue Fitzpatrick, Eddie Pauzer. Absent: Leslie Amrhein, Mimi Anderson, Francine Benes, Maureen Broda, Pat Collins, Marie Colicchio, Julie Crocetto, Barbara Edwards, Barbara Faccio, Dorf Linehan, Millie Lohrand, Bernadette Lupo, Pat Nieman, Liz Zullo.

was first engaged, now seemed to have a friendly enchantment about it. The many long tables were covered with pink linen tablecloths and napkins. Each table was decorated with a large Delta Zeta Gold Lamp standing on its Ionic column. These were loaned to Iota Zeta by the Delta Zetas from Adelphi University. At the speakers' table there was a decorative bouquet of large pink, green and white chrysanthemums. Off to the left was a small staircase that led to a room directly above and opening onto the dais, a room that was to play an important part in the evening.

One by one and two by two, the girls with their guests arrived. In resplendent formal gowns, their youth and beauty added to the glittering evening. The delicious food was rather forgotten as our hearts went into thinking of the importance of the evening.

The Toastmistress of the affair was Joanna M. Alseth, Province II President, under whose capable direction the evening proceeded smoothly. She welcomed the 181 guests to our formal Installation Banquet. The invocation was delivered by Francine Benes of Iota Zeta chapter. Theresa I. Bolles, New Jersey State Membership Chairman, offered the welcome from Delta Zetas everywhere by reading several of the many congratulatory telegrams and letters received by Iota Zeta chapter. Judith L. LeMassena, Province II, Vice-President, brought greetings from the alumnæ in Province II. Each of the Province II Collegiate Presidents were in attendance—Dorothy Karsch, A Z; Linda Comer, B Ω; Joan Balke, Γ H; Carol Pucilowski, Δ E; and Sandra Henshaw, Z Δ. All of these chapter presidents warmly welcomed Iota Zeta into our Province and into our circle of friendship. The response was given by Geraldine Otremba, President of Iota Zeta chapter. Then came the presentation of the many gifts. They were in a room, above and behind the speaker's table. A room which now was opened and acted as a display case so that the gifts could be seen by all. Each was presented individually of course; with the gleaming silver tea service presented by Marion E. Herrmann, New York (lower) State Membership Chairman. With its presentation she brought greetings and best wishes from all Delta Zetas everywhere, and from our National Council. It was beautiful and impressive and will stand for the interest and affection that Delta Zetas have for the Iota Zeta girls. The musical program was given by our accomplished pianist, Karen Edwards, Alpha Zeta chapter.

The chapter was honored to have Mr. Thomas Shea, Dean of Students, at St. John's University talk to us on "The Challenge of Sorority Membership." Since Dean Shea is a fraternity man himself, he gave us an inspiring speech based on



Receiving line, Installation Tea, St. John's University. Left to right: Very Reverend Joseph Cahill, CM—President of St. John's University; Geraldine Otremba, Iota Zeta Chapter President; Violet S. Whitfield, Immediate Past National President, Delta Zeta; Patricia A. Mulvey, Associate Dean of Students, St. John's University; Joanna M. Alseth, Province II President and a Δ Z.

the value of sorority membership both to the individual and to the university. This chapter is indeed fortunate to have a Dean with such understanding of the fraternity system. The installation service was graciously conducted by Mrs. Whitfield, the Immediate Past National President of Delta Zeta, who made us feel that Delta Zeta will become an inspiration to the girls to lead better lives. Then, the popular Dean Patricia A. Mulvey accepted the charter on behalf of the university, and as a Delta Zeta herself. The evening came to a conclusion with the traditional Rose Ceremony, "Roses, I Give To Thee," sung and presented by Janet Pampinella, President of this local sorority when it petitioned Delta Zeta.

Sunday morning was a beautiful day, which began with the chapter worshipping together in the chapel on campus. That afternoon a formal tea was held in the huge Library Exhibition Hall on the campus. By coincidence, the room was beautifully decorated with rare Oriental objets d'art, which were on loan from the Japanese government. The gold tapestries and Oriental paintings made a perfect foil to the tangerine colored sofas which lined the room. The tea table was beautiful with its pink, green and white floral centerpiece; its two silver tea services; tall massive silver candelabra; and its many silver trays filled with petit fours. There were many congratulations from the 350 guests composed of parents, alumnæ, faculty and other Delta Zetas and friends of the chapter. They were received by Gerry Otremba, Mrs. Whitfield, Dean Mulvey and Mrs. Alseth.

Delta Zeta Comes to New University in Florida

by CHLO HUBBARD

Iota Lambda Chapter of Delta Zeta has added one more new and exciting aspect to the new and exciting University of South Florida, Tampa, Florida. In order to go "where the action is," the state of Florida opened a new University in the metropolitan Tampa Bay Area in the fall of 1960. The University of South Florida is located on 1,734 acres of sand piles eight miles northeast of Tampa. However, since its beginning, the sand has been leveled, many modern buildings have been built, many flowers have been planted and it has now become a show place for the area. The fall of 1960 saw 2000 students enroll in the new university; that number has increased to almost 10,000 for the fall of 1966. The student enrollment has by no means leveled off for the undergraduate program continues to develop, many graduate programs have just begun, many more are in the planning stages, and a medical school is being planned. University of South Florida has all the potential for becoming one of the best universities in the South.

Since many students have always been commuters, this added to the usual needs for sororities. So it wasn't long—just until December of 1960 that a group of coeds founded the Paideia Local Sorority, which is now our Iota Lambda Chapter. Paideia was founded on self-discipline, self-realization, self-enhancement. In the first quarter of 1961, three other local sororities were added.

In the beginning of 1966 all of the local sororities were given permission to affiliate with national sororities. After the usual rounds of interviews and visitations of many NPC sororities, Mrs. B. H. Agler, then National Vice-President for Membership and Alice Patton, Field Secre-

tary, conveyed so effectively the true meaning of friendship in Delta Zeta that Paideia chose to become Delta Zeta. At the same time two of the other locals chose Delta Delta Delta and Kappa Delta.

Then the fun and work began. The Tampa Alumnae Chapter immediately went to work with the local chapter. An excellent choice, Mrs. Charles E. Appleton, was appointed College Chapter Director, and she chose seven alumnae to serve on her advisory board. Under the direction of Mrs. C. V. Delaney, president of the Tampa Alumnae Chapter, a beautiful pledging ceremony was held in September, 1966 at the home of Mrs. James Douglas Thullbery, a member of the Tampa alumnae chapter. Mrs. Allen Burnsed, Province President of Province XXII, conducted the ceremony. Soon after pledging, a very successful rush was held and 31 new pledges wore the Delta Zeta pledge pin. Mrs. Burnsed, collegiates from Alpha Sigma (Florida State University) and from Beta Mu (Florida Southern College), many Tampa Alumnae and several alumnae of the local Paideia Sorority gave invaluable assistance during this important rush. Linda Lenox, Field Secretary, was sent to help with rushing and officer training. Thus, an excellent beginning to an excellent new colony, which made our Founder's Day Celebration on October 24, 1966, hold a very special meaning for all Florida Delta Zetas.

The remainder of the Fall of 1966 was spent readying the colony for January 14, 1967. This was the date that the local Panhellenic had set aside for all three N.P.C. colonies to be installed.

January 13, 1967, found many important people arriving in Tampa and descending upon the



Collegiate Group of Initiates, January 17, 1967, Iota Lambda Chapter.

Holiday Inn North. Deltas Zetas were everywhere. From Lakeland, the Beta Mu initiating team arrived, along with the former Province President, Mrs. R. B. Baldwin, and the present Province President and daughter of Mrs. Baldwin, Mrs. Allen Burnsed. Soon, Mrs. Philip W. Vineyard, National Director of Extension, arrived from Winter Haven, Florida, while Linda Lenox, who arrived earlier from Troy, Ohio, was at the airport greeting Mrs. Robert Francis, National Director, from Birmingham, Alabama.

Mrs. Angus Williams, Tampa Installation chairman, got everyone off to an early start on Saturday, January 14, with breakfast at the Temple Terrace Methodist Church, Temple Terrace, Florida. Following breakfast, the initiation services began. By mid-afternoon, forty-two collegiates: Adams, Edna Kay; Baker, Judy McKenzie; Benton, Olga Elaine; Burdette, Mary Louise; Cali, Rose Marie; Carrier, Nancy Vanderslice; Cody, Mary Catherine; Conrad, Cynthia Louise; Cooper, Jo Lee; Cusmano, Mary Ann; DeLara, Yvonne; Demmo, Donna Carraway; Doetsch, Kathleen Ann; Donohoe, Patricia Ann; Emerman, Felice Ellen; Fuller, Harriet Rosalie; Goins, Sandra Ann; Hall, Rosalind Jane; Hawkins, Karen Sue; Hilburn, Patricia Gwynett; Hurley, Karen Ann; Irmiter, Michele M.; Kastner, Sharon Ann; Kurek, Diane Marie; Lala, Frances Ann; Latham, Joan Marie; Lawson, Carolyn Jean; McClure, Susan Jane; Miller, Doris Elizabeth; Osborne, Eleanora Diana; Piniella, Vivian Sandra; Purcell, Cheryl Ann; Sallet, Diane Lynn; Spence, Rhea Carolyn; Sroka, Sandra Gail; Sullivan, Jane Anne; Sullivan, Linda Sue; Talty, Patricia Bernadette;

Traina, Maria Jolie; Vigo, Cynthia Marie; Villareal, Susan Joyce; Wimmert, Jo Anne; eighteen Paideia Alumnæ: Bowen, Colleen Claire; Burlington, Margaret Ellen; Cagnina, Mary Antoinette; Cauvel, Ara Louise; Clark, Sarah Ann; Harper, Karen O'Grady; Hickinbotham, Sharon Younglove; Hutto, Andrea Michele; Kelly, Roger Diane; Lang, Janice Marie; Money, Sidney Gill; Palmer, Janet Rae; Pantling, Sue Stelzer; Pearce, Betty Ann; Smith, Eileen Strout; Steadman, Frances Rose; Vail, Jo Ann; Wolfe, Carolyn Kaiser, and four alumnæ initiates were wearing the Golden Lamp of Delta Zeta. There was an especially emotional moment during the initiation of the four alumnæ initiates when Mrs. Antoinette Leimgruber received her badge from her daughter, Mrs. Charles E. Appleton, College Chapter Director of Iota Lambda. The three other alumnæ initiates, Mrs. Barth Engert, Mrs. Raymond King, and Mrs. Mark Orr, are all wives of University Faculty and Staff. Iota Lambda is proud of these alumnæ initiates.

The installation banquet in charge of Mrs. Angus Williams was held at the Sheraton Tampa Motor Hotel.

The grace was given by Dr. Grant Noble, chaplain of the Episcopal University Chapel. Mrs. Robert Francis, toastmistress, introduced Dr. Herbert Wunderlich, Dean of Student Affairs at University of South Florida, and Dr. Margaret Fisher, Dean of Women at University of South Florida, who warmly welcomed Iota Lambda Chapter to the University. Mrs. Allen Burnsed and Mrs. Lowell Johnston, President and Vice-President of Province XXII respectively, also welcomed the chapter. Mrs. Charles E. Appleton, CCD, and Rose Marie Cali, President of Iota Lambda Chapter, responded to the welcomes. The speaker for the evening was Mrs. Philip W. Vineyard, who gave an inspiring talk on the meaning of sorority membership. Mrs. Francis conducted the Installation Service, with Dr. Harris W. Dean, Dean of Academic Affairs at the University of South Florida, accepting the chapter on behalf of the University. Delta Zetas from Beta Mu presented long stemmed pink roses to all their new sisters while a group from the same chapter sang, "The Heart of a Delta Zeta Rose."

On Sunday, January 15, Delta Zeta, Delta Delta Delta, and Kappa Delta Alumnæ Chapters joined together in a tea presenting their respective new chapters to the campus. The Student Center Ballroom was the location for the tea, with the receiving line and the guest books in an adjoining room. The rainy afternoon did not affect the attendance as friends, families, alumnæ, faculty and staff, and other members of the student body made their way down the long receiv-



Mrs. Lisbeth Francis presenting Loving Cup to Kay Adams, 2nd Vice-President of Iota Lambda Chapter.

ing line. Guests were greeted by Dean and Mrs. Herbert Wunderlich, a national officer, the alumnae advisers, and the local chapter president from each sorority. Mrs. Vineyard, Mrs. Appleton, and Rose Marie Cali represented Delta Zeta in the receiving line. After signing the guest book, which was attended by Mrs. Robert Young and Miss Virginia Brown, Tampa Alumnae Members, Delta Zeta pledges ushered the guests into the ballroom for coffee, tea, or punch. Each sorority decorated its respective table with ribbons of the sorority colors, sorority flowers, long white tapers, and silver trays of finger sandwiches, petit fours, and mints. Punch and coffee were poured at the Delta Zeta table by Mrs. Braulio Alonso,

Mrs. Paul Gloger, Mrs. Donald McIntosh, and Mrs. J. C. MacDonald, members of the Tampa Alumnae Chapter. Punch was served from the exquisite silver punch bowl given to Iota Lambda by other chapters and our National Council. The advisory board, Mrs. Warren L. Baker, Mrs. Conrad E. Hubbard, Mrs. Florence Kennedy, Mrs. C. L. Lancaster and Mrs. Charles Wildy assisted at the tea.

Today, Iota Lambda is working hard to live up to all that is expected of them. Through all of the good training, each of the sixty-four present members have received from the National, Province, and Local level, this new challenge should be easy for them.

A Family Tenth



Left to right: Alice Feike Wieman, Brenda Sue Farrell, Zelta Fieke Rodenwold.

Among the new initiates at Chi Chapter, Oregon State University, last January was Brenda Sue Farrell, the tenth in her family to be initiated into Delta Zeta Sorority. Zelta Fieke Rodenwold, Miss Farrell's great Aunt was Chi's first

president. Her sisters, Alice Feike Wieman and Vivian Feike Copple were members of the first pledge class. Other members of the family include two sisters-in-law and four nieces. All are members of Chi chapter.

A Seventh for West Virginia

Iota Pi became the seventh Delta Zeta chapter in the state of West Virginia and the first national sorority on West Virginia Institute of Technology's campus in Montgomery.

The initiation ceremony took place on February 4, in the Presbyterian church. Delta Upsilon chapter at Marshall University installed thirty-four collegiates and six alumnae and the College Chapter Director, in a very impressive manner.

Those present for the installation ceremonies were: Mrs. Betty H. Agler, National President; Mrs. Charles Devereaux, National Director; Mrs. Charles Kurner, Province Vice-President; Mrs. Judy Johnston, Province Treasurer; Mrs. Frank Mancari, State Recommendations chairman; Mrs. Verne Duda, Installation chairman; Linda Heft, Traveling Secretary. Marshall University, Concord College, and Morris Harvey College Delta Zeta collegiate chapters were present.

The installation banquet was held Saturday evening, at the Rose City Banquet Room in Charleston. Mrs. Joan Armbruster, faculty advisor for Iota Pi chapter was Toastmistress. Mrs. Charles Devereaux, National Director read various greetings from our Delta Zeta chapters.

Dr. Leonard C. Nelson, President of West Virginia Institute of Technology gave the main address: "The Place of Greek Organizations in W.V.I.T.'s Future."

Mrs. Betty Agler, National President, formally installed the chapter by presenting the charter and this moment will long be remembered by the Iota Pi charter members.

Miss Eva Kessinger, Dean of Women, of West Virginia Institute of Technology formally accepted Iota Pi Chapter of Delta Zeta to the campus as the first National Penhellenic Conference Sorority.

After a delightful series of gift presentations, the evening was closed with the traditional Rose Ceremony and the singing of "Remember." As the new Delta Zetas left, one could feel the warmth of true sisterhood in these newest Iota Pi members.

Sunday morning services at the Montgomery Methodist Church saw the front pews filled with Delta Zeta's. A warm welcome was extended both in the day's bulletin and in the sermon.

On Sunday afternoon a formal tea was given in the Tech Center Ball Room presenting Iota Pi to the community. Family, friends, representatives from campus organizations and officers of the local sorority; and fraternities were received by: Mrs. Betty Agler, National President; Mrs. Charles Devereaux, National Director; Mrs.



Mrs. Betty Agler, National President giving the Iota Pi Charter to Ruby Curry, Recording Secretary and Donna Blevins, Corresponding Secretary.

Verne Duda; Mrs. Barbara Clark, College Chapter Director; Mrs. Linda Akers, past President of Iota Pi; Miss Sharon Miller, President of Iota Pi. On display were the many silver gifts and greetings received by the Iota Pi chapter.

Presiding at the tea table were Mrs. Charles Kurner, Province Vice-president; Mrs. Frank Mancari, State Recommendations Chairman; Mrs. Joan Armbruster, faculty adviser; and Miss Linda Jones, representing the alumnae.

The week-end ended with anticipation on the part of Iota Pi girls, thinking of the years ahead in love and service to Delta Zeta.

West Virginia Institute of Technology is an expanding school with approximately 2,000 students. It is located mid-state in the beautiful hills of West Virginia. It was founded in 1895 as the Preparatory Branch of West Virginia University. It was a junior college; and in 1941 the name of West Virginia Institute of Technology was bestowed on the campus and continues to date as a four year institution.

Iota Pi started on the campus as a local, Delta Theta Pi in 1926. Their aim was to "obtain high scholastic standings, to take active interest in



New Initiates of Iota Pi Chapter of Delta Zeta, Montgomery, W.Va.

college life and in any enterprise the college may undertake; and to promote good fellowship in the school."

The alumnæ initiates were: Mrs. Darwin Ligon, Mrs. Roy Windon, Sharon Whitman, Linda Jones, Phyllis Barker, Mrs. Hugh McCaughan, Mrs. James Clark, C.C.D.

The new collegiate members are: Linda Akers, Patricia Barker, Donna Blevins, Patricia Bovetsky, Elizabeth Bryant, Susan Campbell,

Donna Caudill, Ruby Curry, Linda Dame, Ann Darling, Tamara Deahl, Drema Estep, Novella Estep, Kelen Fulmer, Carol Grant, Kay Hanna, Donna Johnson, Judy Kincaid, Carole Kinder, Linda Martin, Sharon Miller, Carla Morgan, Karleen Purcell, Judith Rodgers, Alfreda Schuller, April Shamblen, Cora Spaulding, Sylvia Stancick, Dolly Stover, Joan Stroh, Janice Sturgell, Edna Rae Wells, Frances Delperto, Betty Nicholas.

Suzanne Maynard, a onetime Natchitoches (Louisiana) Parish Hospital candy-striper, has sprouted wings and is vaulting over the North Pole to Europe as a Pan American World Airways stewardess.

Suzanne is a recent graduate of the airline's International Stewardess College in Miami, Florida. She is serving aboard Jet Clipper flights from Chicago over the polar route to London and Paris.

Foreign travel is no novelty to the new stewardess, who in 1965 attended the University of Vienna, Austria, where she learned German and visited most of Western Europe. She is a graduate of Louisiana Northwestern State, and is a member of Delta Kappa Chapter.



Suzanne Maynard, Δ K

Second New Jersey Chapter Installed

Iota Kappa chapter of Delta Zeta was installed at Rider College the weekend of March 11 and 12, 1967.

The members of Zeta Mu Epsilon, a member of the Junior National Panhellenic, petitioned in October and were accepted last fall. This was the first Rider College sorority to be accepted by National Panhellenic Conference sorority.

Founded as the Trenton Business College in 1865, the college grew and developed in the city of Trenton until 1964 when it closed its Trenton facilities and moved to a suburban campus. Although this college is over 100 years old all of its buildings are new and the campus too.

Rider College is a coeducational, private, non-sectarian college operating under the control of a

Board of Trustees. The college is now located on its new 233 acre suburban campus which is located on Route 206, three miles north of Trenton and seven miles south of Princeton. The college is organized into four schools: Liberal Arts, and Science, Education which includes a Division for Graduate study, Business Administration and the Evening School. It is accredited by the Middle States Association of Colleges and Secondary Schools and the Department of Education of the State of New Jersey. The majority of Rider students are from New Jersey, New York, and Pennsylvania; although in a typical year students are enrolled from about 25 states and ten foreign countries. Normal enrollment is 3000 with a ratio of 2 to 1 between men and women.



New initiates of Iota Kappa Chapter and guests.



Left to right, admiring the chapter's gifts: Noreen Grella, Charter President; Genevieve James, Associate Dean of Students; Jennie Daubert, CCD; Betty H. Agler, National President.

There are three resident students to every commuter. Rider College is growing and turns down more applications each fall than it can at present accept.

A weekend of activities was planned for the national representatives, new members and forty-one pledges.

Iota Zeta chapter at St. John's University initiated the pledges at Rider on Saturday morning, March 11, at the Delta Zeta house.

In the evening, a formal banquet was held at the Holiday Inn in Princeton.

Mrs. Betty H. Agler, president of Delta Zeta National, presented the formal charter to the chapter president Noreen Grella. Miss Genevieve James, associate dean of students accepted the chapter for the College. Toastmistress was Mrs. Joanna Alseth, president of Province II.

James M. McRoberts, dean of students, delivered the invocation. Mrs. Charles Devereaux, National Director, read greetings from Delta Zeta Chapters. Dr. Carl Hatch, associate professor of history, spoke on "What Is in the Wind?"

For the closing ceremony, Miss Lois Dolt and Miss Patricia Murday sang "Flowers I Give To Thee."

Other national officers and guests included: Mrs. Judith LeMassena, vice-president of Province II; Miss Barbara Link, traveling secretary, and Miss Patricia Mulvey, dean of women at St. John's University.

A tea was served Sunday afternoon at the Delta Zeta house in honor of the new chapter. Faculty, administration members and representatives of Delta Zeta chapters in New Jersey attended.



New pledges of Iota Kappa Chapter.



A Fifteenth Chapter for Pennsylvania

On May 13, 1967, a local sorority at the Philadelphia College of Textiles and Science, which had been in existence for more than twenty-five years, was formally installed as Iota Sigma, and became the fifteenth Delta Zeta chapter in the state of Pennsylvania.

The exciting weekend began with the initiation ceremony held Saturday morning in the Bergman Lounge on campus with the members of the Epsilon Zeta chapter from Drexel Institute of Technology performing the ritual. The initiating team from Drexel included Margaret Zeiger, President, Judy Dynakowski, Cheryl Graff, Cindy Pinati, Rena Pirami, Ina Safra, Karen Andes, Mary Ann Lolly, and Barbara Borejko. Twenty-seven collegians and College Chapter Director, Mrs. Richard Davy were initiated during the service which was conducted under the direction of National Director at large, Mrs. Charles Devereaux, Assistant to the Extension Director, Mrs. Verne Duda, and Delta Zeta Field Secretary, Miss Barbara Link. After the morning ceremony the members, including the initiating team from Drexel and Delta Zeta alumna Mrs. Herbert W. Barron who witnessed the initiation of daughter Linda Barron, lunched together in the school cafeteria. Following luncheon, the girls returned to receive their pins signifying their membership in Delta Zeta. Becoming Delta Zetas were Linda Barron, Emily Bauhof, Carol Beck, Anna Bogacki, Jeanne Drew, Diane Edwards, Ellyne Glaser, Nan Greenhouse, Mally Jo Kutlow, Carlyn LaRue, Patricia Leonard, Ronny Levine, Frances Madden, Patricia Marshall, Gay Mason, Cheryl McIntyre, Jayne Morovich, Joan Munsee, Terry Neeld, Abra Nelson, Mary Ann Novack, Gail Nurney, Margaret Pesce, Susan



Left to right: Mrs. Richard Davy, CCD, Dr. Bertrand Hayward, President of the College, Mrs. Charles Devereaux, National Director at large and Mrs. Verne Duda, Asst. to the Extension look on as Mrs. Betty H. Agler presents charter for Iota Sigma to Patricia Marshall, President of chapter.



New Initiates of Iota Sigma

Preiksats, Janice Rosenfeld, Edna Schmidt, Ann Tamura, and Mrs. Davy.

Saturday evening witnessed the formal installation banquet held at the Greenbriar Country Club in suburban Philadelphia. Prior to the dinner, the initiates sang the Delta Zeta Grace accompanied by Susan Preiksats, a new sister. College Chapter Director of Iota Sigma Chapter, Mrs. Richard Davy, acted as Toastmistress to welcome college officials and representatives, Philadelphia alumnae, and guests and relatives of the new initiates.

Following introductions, Mrs. Charles Devereaux, National Director at large began the program by welcoming the newly installed chapter to Delta Zeta and presenting the chapter with a silver tea service from Delta Zeta Sorority. Miss Ellen Hynson, President of the North Philadelphia Suburban Alumnae Chapter followed with a welcome from her chapter and presented the newly installed chapter with a crystal punch bowl set. Mrs. Richard Myers, President of the West Suburban Alumnae Chapter also welcomed the new chapter and presented

the Iota Sigmas with a guest book, which was used at the Presentation Tea the following day, and a lovely vase. President Rose Alice Hoerst of Delta Tau Chapter, Temple University and Cheryl Graff of Epsilon Zeta Chapter, Drexel Institute of Technology each presented the chapter with engraved silver serving trays.

After the gift presentations, Patricia Marshall, chapter president, expressed her thanks for the lovely gifts, and the program continued with greetings given by Dr. Robert Rhoads, Dean of Faculty at Philadelphia College of Textiles and Science; Mr. Bruce DeBruhl, Dean of Students at the College; and finally by Mrs. Verne Duda, Assistant to the Extension Director, who read a few selected greetings from other Delta Zeta chapters in the United States.

Mally Jo Kutlow, Cheryl McIntyre, and Joan Munsee of Iota Sigma chapter gave some musical selections.

The address was delivered by Dr. Bertrand W. Hayward, President of the Philadelphia College of Textiles and Science, who stressed the challenge to each Greek member in our present day system of higher education. Dr. Hayward also emphasized social service projects and complimented the national organization on their fine philanthropic projects, as well as the local chapter for their outstanding contributions to campus and community. Mrs. Betty H. Agler, National President of Delta Zeta Sorority, formally installed the chapter by presenting President, Patricia Marshall with the gavel; Vice-President in charge of Rush, Carol Beck, and Vice-President in charge of Membership, Joan Munsee with the loving cup; and Recording Secretary, Tish Leonard, and Corresponding Secretary, Ann Tamura with the chapter charter. Present to formally accept the chapter for the college was Mr. H. Lawrence Laupheimer, Director of Placement and Inter-Fraternity Council Advisor at the Philadelphia College of Textiles and Science.

In appreciation for all the help contributed by the College Chapter Director, Mrs. Richard Davy, and I.F.C. Advisor, Mr. H. L. Laupheimer, Mally Jo Kutlow and Joan Munsee presented the two with an engraved plaque in gratitude from the Iota Sigmas.

The banquet ended with the traditional rose ceremony. Mary Ann Lolly of the Epsilon Zeta Chapter at Drexel sang "Roses, I Give To Thee" while Joan Munsee passed out a rose to each initiate. Following the ceremony, everyone formed a friendship circle and sang "Remember" . . . and remember we shall!!

On the agenda for Sunday's activities was a formal presentation tea held in the Student Lounge of Althouse Hall on campus. Members of the faculty and student body as well as relatives and guests of the initiates were invited to the affair. Hostesses for the tea were Mrs. Betty H. Agler, National President of Delta Zeta; Mrs. Charles Devereaux, National Director; Mrs. Verne Duda, Assistant to Extension Director; Miss Barbara Link, Delta Zeta Field Secretary; Miss Patricia Marshall, Chapter President; and Mrs. Richard Davy, College Chapter Director.

The Philadelphia College of Textiles and Science is located in historic Germantown, a suburban section of Philadelphia. It is a small, dynamic college (for men and women) with a traditional specialty in textile education. The excellence of its programs is internationally recognized. Students studying here at various times have represented a total of forty-three different foreign countries from six continents.

Founded by the Philadelphia Manufacturers Association in 1884, it was originally incorporated as the Philadelphia Textile School of the Pennsylvania Museum of Art. In 1941, the name was changed to the Philadelphia Textile Institute of the Philadelphia Museum of Art, a degree program was approved shortly thereafter, and in 1949 the college separated from the parent institution and became an independent non-profit corporation. Accreditation by the Middle States Association of Colleges was achieved in 1955.

The name was changed to Philadelphia College of Textiles and Science in 1960, to indicate more accurately the full collegiate status now attained.

Though the great development of this College has occurred in the past decade, the College has given instruction in textiles longer than any similar institution in the United States, and is also the only privately owned and operated college of its type in our country.

A bell is no bell till you ring it;
A song is no song till you sing it.
Love in your heart wasn't put there to stay,
Love is not love till you give it away.
(Oscar Hammerstein to Mary Martin)

Special Initiation for Delta Iota

Delta Zeta is one of three NPC sororities at Jackson College, Medford, Massachusetts.

The busy initiation weekend began Friday evening, April 28 when Anne Marie Jones, advisor and member of the former Delta Iota chapter, conducted a lamp lighting ceremony to prepare the pledges for their initiation. On Saturday, April 29, fourteen collegians and two alumnae were initiated at Curtis Hall in services conducted by Anne Marie Jones and Theta Gamma chapter members from the University of New Hampshire. Those attending the initiation besides members of Theta Gamma chapter were: Mrs. Betty H. Agler, National President; Mrs. Charles Devereaux, National Director; Miss Alice Patton, Traveling Secretary; Miss Sandra Szymczack, College Chapter Director; and several visiting alumnae. On May 11, two more pledges of Delta Iota were initiated at the University of New Hampshire along with the pledges of Theta Gamma chapter.

Saturday evening, April 29th, Delta Zeta held its Initiation Banquet at Jackson Gymnasium on the Tufts campus. Toastmistress Mrs. Charles



Mrs. Betty H. Agler, National President, presents gavel to Delta Iota president, Suzanne D. Gray.

Devereaux, National Director, welcomed sorority officers, alumnae from throughout New England, and the new initiates with their parents and guests. Anne Marie Jones, Delta Iota advisor read a selected few congratulatory notes and telegrams sent



Delta Iota Initiates. Left to right: Susan Palmer, Sandra Staub, Georgina Leimert, Mary Lou Boardman, Gail Durant, Edith Selina, Suzanne Gray, Nancy Slauffer, Patricia Cronin, Janice Fitzgerald, Carol Fletcher, Anne Marie Jones, Jennifer Robins, Marcia Rodgers. ABSENT: Marilyn Prasinos, Donna Scali, Linda Aslanian.

to the chapter. In her address Mrs. Agler stressed the responsibilities of being a sorority member. Mrs. Devereaux formally installed the chapter. On behalf of Miss Betty Bone, Dean of Women, Miss Linda Towle formally accepted Delta Iota chapter of Delta Zeta.

During the evening, music was furnished by soloist Sandy Witcome of Theta Gamma chapter. Miss Anne Marie Jones presided over the presentation of gifts which were accepted by Suzanne Gray, President of Delta Iota. Highlighting the gifts was a silver tea service from the national organization. Others included gifts from Mrs. Agler, Mrs. Devereaux, and Theta Gamma chapter of University of New Hampshire, Chi Omega and Alpha Omicron Pi sororities of Jackson College, Phi Sigma Kappa fraternity of Tufts University, Miss Sandra Szymczack, Miss Sheila McDermott, financial advisor of Delta Iota, Miss Alice Patton, and Miss Anne Marie Jones. The banquet ended with the traditional rose ceremony.

Sunday afternoon a tea was given by the Boston Area Alumnæ Council in honor of the new initiates in the Delta Iota chapter room. Guests included national sorority officers, University officials, members of campus sororities, and families of members of Delta Iota.

Very special thanks are due to Anne Marie Jones, former president of Delta Iota who served

as advisor; Miss Sandra Szymczack, College Chapter Director and Miss Sheila McDermott, financial advisor, both active members of the Delta Zeta Boston Area Alumnæ Council; and Miss Alice Patton, traveling secretary who trained officers and helped the colony through its rush in February.

Jackson College is the liberal arts college for women within the group of associated undergraduate colleges in Tufts University. Granted an independent charter by the Commonwealth of Massachusetts in 1910, Jackson is now coordinated with Tufts College. The land upon which the University is situated was given by Charles Tufts. When asked by a friend what he intended to do with the hill, he replied, "I will set a light on it." At present the total full-time enrollment in all departments is 5000 students.

One of the goals of Delta Zeta as it joins with the other two Jackson sororities is to help form a stronger, more effective Panhellenic Association on the campus. A warm welcome is extended to the new alumnæ initiates—Mrs. Elaine Casperian, Mrs. Ruth Jones and to the Collegiate initiates: Linda Aslanian, Mary Lou Boardman, Patricia Cronin, Gail Durant, Suzanne Gray, Janice Fitzgerald, Carol Fletcher, Georgina Leimert, Susan Palmer, Marilyn Prasinos, Jennifer Robbins, Marcia Rodgers, Donna Scali, Edith Selina, Sandra Staub, Nancy Stauffer.



Dallas Edith Bindley, Δ N

Dallas Edith Bindley, has sprouted wings and is flying the Diplomacy Route across the Atlantic as a Pan American World Airways stewardess.

She is a recent graduate of the airline's International Stewardess College in Miami, Florida. Wearing her new gold wings on the horizon blue, high fashion uniform, she is serving aboard Jet Clipper flights from Washington, D.C., to London and Paris.

Dallas Bindley graduated from Parsons College, Fairfield, Iowa, where she was a member of Delta Nu chapter of Delta Zeta sorority. Except for vacation trips to Canada and the Caribbean resort islands, she is having her first fling at foreign travel.

Province XI Officers



Mae Collins

Province XI President, Mae Peterson Collins, Beta Tau, and her husband Clarence, live in Grandview, Missouri. Clarence, retired, is an artist who paints portraits and scenes and has sold several. He also writes and has two books in the hands of publishers.

Mae was first of all a business woman, then a high school librarian for several years. She has a Master of Education degree from The University of Missouri.

She is a member of the Christian church, Past President of the Greater Kansas City Alumnae of Delta Zeta; Past Matron of the Order of Eastern Star; Past Noble Grand of the Rebekahs; Past President of the Ladies Auxiliary of the Midwestern Beekeepers Association. She and her husband will move to Golden Gate (near Naples) in Southern Florida this summer.

Mae is a dedicated, loyal and tireless worker for Delta Zeta.

Karen Mast Wake is a member of Epsilon Rho chapter and holds a B.S. in Elementary Education from Northwest Missouri State College in Maryville, Mo.

Karen lives on that campus where her husband Bruce is Director of Mens Housing.

They have two children: Ryan—3 years; Laura—1½ years.

She has been President of Maryville Alumnae past 2 years.

Her pastimes are sewing and bridge.

Her husband is sponsor of Alpha Phi Omega service fraternity. So they share their fraternal interests since Karen is Vice-President of Province XI.

Karen is vivacious and energetic and thoroughly enjoys her Delta Zeta work.



Karen Wake

Presenting Province XI



Gamma Gamma Chapter Missouri Valley College Marshall, Missouri

Gamma Gamma chapter of Delta Zeta Sorority is located on the campus of Missouri Valley College in Marshall, Missouri. The college is a small one, of about eight hundred students, but is well-known in the area because of its fine reputation in athletics. Taking up forty acres, the school is a mixture of ivy-covered buildings, and glass and brick structures, blended together by spacious lawns and ancient trees. There are two sororities at Missouri Valley College, Delta Zeta, and Alpha Xi Delta. The campus also has three fraternities, Alpha Sigma Phi, Sigma Nu, and Tau Kappa Epsilon. The sororities live in the women's dormitories, and have chapter rooms on the lower level of the larger residence hall.

Gamma Gamma was originally a local sorority, Sigma Phi. When, in 1945, Sigma Phi began to function as a social sorority encouraging scholarship and leadership on the campus, a petition for a charter was sent to Delta Zeta. On October 21, 1945, Sigma Phi became Gamma Gamma chapter of Delta Zeta.

Since the beginning of Gamma Gamma's time on the campus, the importance of philanthropy projects has been emphasized. Today members maintain three local projects. Parties, visits at holiday seasons, and the making of favors are all ways that the ΔZ 's help brighten the lives of patients at the Crippled Children's home, the Saline County Rest Home, and the Marshall State School for the Mentally Retarded.

The past year has been a good one for Gamma Gamma, which has taken many honors, and whose members have, themselves, been awarded many honors.

The year started well, with a full quota of new pledges. These pledges went to work within a

week after receiving their "shiny black buttons" and won first place with their Homecoming gate decoration. A large telephone decorated the gate with the cord passing over the heads of people entering the stadium, and supported a sign saying, Hold That Line. At this time Delta Zeta Kathleen Fisher, Homecoming Queen of 1965, passed her crown to her successor and sister, Barbara Martin.

Gamma Gamma has had other queens in the past year. Catherine Schultz is Sweetheart of Alpha Sigma Phi, and Tau Kappa Epsilon chose Peggy Grant as their Favorite Girl, with Karen Rissler as an attendant.

Missouri Valley, with its reputation for athletics, also has a fine women's intramural program, which is led by Kathleen Fisher, president of WAA, Women's Athletic Association. Delta Zeta has won several trophies in the last few semesters. Also supporting the school's athletic program are three members of Gamma Gamma who cheer Valley on to victory; Jane Kehoe, cheer-leading captain, Linda Boyce, and Shirleen Ulery.

In addition to their athletic achievements, the members of Gamma Gamma are also interested in the more feminine world, as is evidenced by the choosing of Judy Sibley as Missouri Valley's candidate to Glamour magazine's contest for the "Ten Best-Dressed College Girls." Catherine Schultz, another member was chosen first runner-up in the contest. Two pledges, Anita Hen-



Gamma Gamma's fall pledge class, smiling proudly after they received their pledge pins.

drickson, and Jane Thomas also participated in the competition, representing their housing units.

Student government is in the form of a student senate. As a body, this group has widespread influence, and sponsors many projects. Recently, after a large snow storm, the senate sponsored a snow sculpture contest. The Δ Z's weren't snowed under by the task, and managed to win first prize with their 6×7 model of a well-known instructor.

The student senate, led by Cathy Schultz, senator at large, and senators Janet Randall and Susan French, also sponsored nine students to a meeting of the local Council for Higher Education's leadership training session—four of whom were Δ Z's. Attending the meeting were: Kathy Fisher, president of AWS, Paula Rudigier, president of both Panhellenic Council and MacDonalld Hall dormitory, Jane Kehoe, treasurer of AWS, and Anne Tyner, feature editor for the school paper. Each attended sessions relating to her particular area of interest, and brought back many ideas to be used on the campus.

Annually, in March, a Greek Week is held. Last year, Gamma Gamma's Jane Fey was elected by a panel of faculty and students as Greek Queen, and reigned over such events as chariot races, pseudo Olympics, and saw her sisters take second place in the Greek Sing, and third in the Quiz Bowl.

At the present time, the girls of Gamma Gamma are looking forward to their formal, Coronation Ball. At the dance, the chapter's choice of officers for 1967-68 will be disclosed for the first time.

Soon after Coronation Ball, plans must begin for the annual chapel program for which the Delta Zetas are responsible. This program usually consists of songs, passages from the scriptures, and slides of the Passion Play at Oberammergau. As a church-related college, Missouri Valley requires chapel attendance once a week at programs which feature either speakers or which are planned by various groups on the campus.

Many students at Missouri Valley, and a majority of Δ Z's are education majors. Consequently, with such a large number of students in this area, SNEA, Student National Education Association, is an important organization on the campus. Delta Zeta's stand as leaders in this area, also. Jane Fey is serving as president, and Karen Rissler is treasurer. These same two girls have also been honored by being elected to "Who's Who Among American Students in Universities and Colleges." The girls were elected on the basis of scholarship, participation, citizenship, service to the school, and promise of future usefulness. Karen has served, during the past year, as president of Gamma Gamma chapter,

and Jane as pledge trainer.

One of the major events of the year at Valley is the carnival held annually by Alpha Phi Omega service fraternity. This carnival is held to raise money for a boys' home, Butterfield Boys Ranch, which is operated by a Missouri Valley alumnus. Booths and events are planned, built and operated by various groups on campus, who compete to see which organization can raise the greatest amount of money with a single project. For the past two years, the Δ Z's have won this award with their Toll Road.

Delta Sigma—Northwest Missouri State Teachers College Kirksville, Missouri

On September 2, 1967, Northeast Missouri State Teachers College, Kirksville, Missouri; home of Delta Sigma Chapter of Delta Zeta, will be one hundred years old. On that date in 1867 Joseph Baldwin, pioneer educator, opened the North Missouri Normal and Commercial College in Kirksville. In December, 1870, the school was adopted by the state of Missouri and christened the First District Normal School, the first state supported teacher training institution in Missouri. On May 20, 1919, the General Assembly renamed the school the Northeast Missouri State Teachers College. During 1967 the college is celebrating its Centennial with a number of activities. We are proud of our school which has grown in one hundred years from an obscure normal school to one of the leading teacher colleges in the nation.

The Iota Chapter of Delta Sigma Epsilon sorority was founded at the Teachers College on January 31, 1921. Miss Lucy Simmons, professor of history, was the sponsor and Alma Reed, the first president. In September of 1956 Delta Sigma Epsilon merged with Delta Zeta sorority, with Dr. Ruth Towne, professor of history, as sponsor and Mrs. Rebecca (Becky) Crumpacker Osborn as President.

Delta Sigma chapter started off very well this year with its two rush parties, SS Delta Zeta and Delta Zeta Rose Garden. Fifteen wonderful pledges were added to the roll of Delta Zeta.

Soon came Homecoming with our candidate Mary Jane Millemon and our float winning second place in the Beauty division. After the afternoon game we had a caketail party, an annual joint activity with the Kirksville Alumnae Chapter, to entertain Delta Sigma alumnae returning to the campus for Homecoming.

Our fall schedule included the Founder's Day Banquet, Greek Olympics for all Greek organizations in which we won first place in the car proj-



Left to right, First row: Assistant Pledge Trainer Gayle Olsen, Mary Sue Denny, Star Reed, Pat Loveland, Kathy Costello, Cindy Walter, Jackie Jones, Jan Amosson, Pledge Trainer Judy Ward. Second row: Nancy Bulick, Karen Hier, Derry Jones, Donna Nardin.

ect, piling twenty-three girls in one car, and Campus Town Races in which we won the Powder Puff Division. One of the big events of the fall season was our annual Dads' Day at which time the honorary Delta Zeta Dad of the Year was named. This event was instituted in 1963 with Dr. Walter H. Ryle, President of the Teachers College, as first recipient of the honor. Since then the Dads of the Year have been Dr. Gilbert C. Kohlenberg, head of the Division of Social Science, in 1964; Dean of Students, Henry Boucher, in 1965; and Robert L. McKinney, head of Division of Public Relations and Information Service who was chosen in 1966. These honorary dads are selected for their services to Delta Zeta. The girls invite their dads or faculty men here at the college to a luncheon and football game following the luncheon.

Winter is usually calm and quiet with the usual caroling and Christmas parties and fraternity mixers. In open rush we were able to pledge four more girls.

In the Spring comes Student Council Elections, Mother's Day Tea and a retreat to the Ozarks. This is our chance for really being together for a whole weekend which is an unusual treat since we do not have a sorority house. Also, in the Spring we work on our philanthropy project. The alumnae chapter and college chapter work together annually to raise funds for the Missouri Society for Crippled Children and Adults. A Kirksville alumna, Mrs. Gerald Jones, is chairman of the Adair County branch of the society and Mrs. James Edwards, president of the alumnae chapter, is chairman of the 1967 Easter Seals campaign for benefit of the society. Chapter members and alumnae address and mail letters containing Easter seals to all persons in Adair County. Delta Sigma members sell Easter lilies in the business district of Kirksville during Lent. At the College Awards assembly held each spring Delta Zeta announces the winner of the scholarship which we give in honor of the founder of our sorority on campus—the Dr. Lucy

Simmons Scholarship. This award goes to the woman student majoring in social science who has the highest scholarship average and displays the greatest promise in her field. In 1966 our own Donna Vignovitch was chosen for the honor.

Even with our activities we still manage to have time to participate in campus organizations. Delta Sigma Chapter is well represented in Kadettes, SNEA, Historical Society, Student Council, class officers, Social Committee, Nemo Singers, the Marching 100, orchestra, College ushers, Echo staff, Colhecon Club—home economics majors, Ryle Hall President, Beta Tau Delta, twirling organization, Young Democrats and Young Republicans and Panhellenic.

Delta Sigma girls are also found in many honorary scholastic organizations including *Who's Who*; Cardinal Key, honorary service organization; Sigma Zeta, science; Kappa Delta Pi; Alpha Phi Sigma; Pi Omega Pi, business fraternity; and the honor roll. Jeanne Staggs and Donna Lawson returned this fall after studying for a year in Costa Rica as recipients of exchange scholarships maintained by the staff of the Teachers College and Christine Carskadan is studying in Germany on another exchange scholarship. Judy Hoover Peters (Mrs. Lester) Kirksville, Mo. an alumna of our chapter is Public Relations Coordinator for Province XI.

We are also proud of our queens. We held Homecoming Queen for two years with first honor attendant the year before that. In 1963 Joyce Flowers was first honor attendant, 1964 Mitzi Hilsabeck was Homecoming Queen and Marcy Kaiser succeeded her in 1965. Shirley Hayes was Echo (yearbook) queen in 1965. Janet Flesch was selected to be Alpha Kappa Lambda Sweetheart in 1963 and Marian Teruya in 1965. Kay Cone was sweetheart of the 1965 Sigma Tau Gamma White Rose Ball and Cherie Baugh was an attendant in 1966. Gretchen Flesch was awarded a scholarship to John Roberts Finishing School in the summer of 1966. Gretchen completed a similar course with the Jean Davies Modeling School, a subsidiary of Pearl and Dean of London, while living in Bangkok, Thailand with her parents, Colonel and Mrs. J. M. Flesch. Her past experiences also include modeling for hair stylists and fashion designers in Bangkok.

Our big event this year was our Fashion show in connection with Centennial Year—"Through the Pages of History." With the cooperation of every girl it turned out to be very successful.

Epsilon Gamma—Central Missouri State College, Warrensburg, Missouri

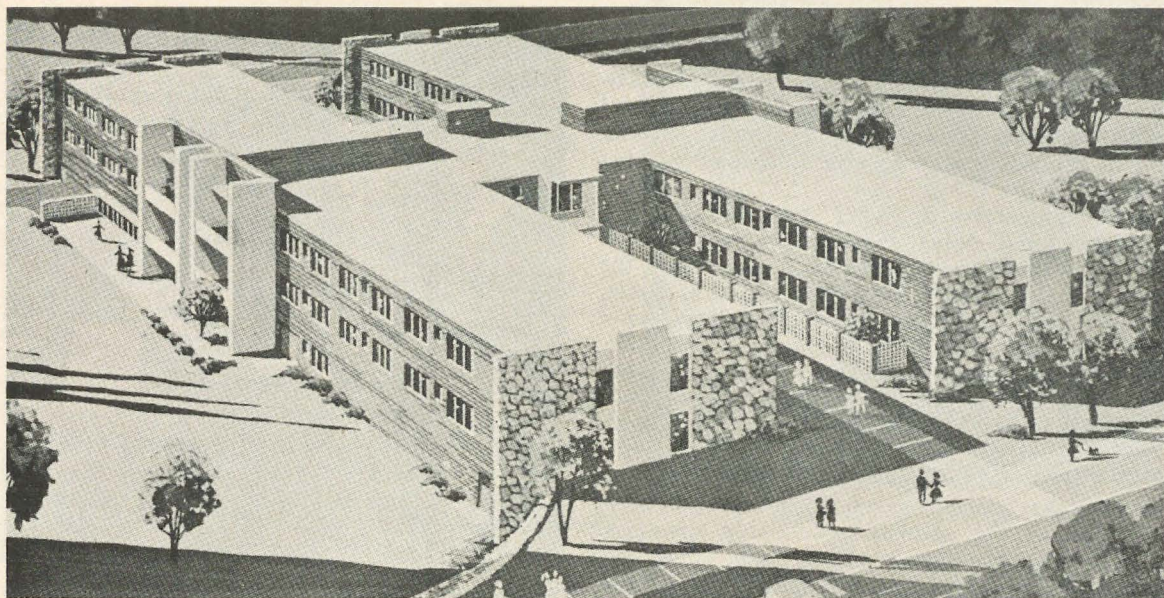
The "Best-Dressed" Girl in 1965 was Sandy Cloninger; this year, Maureen Moore, who was chosen from 24 semi-finalists to represent CMS in Glamour Magazine's national best-dressed coed contest. Cathie Coxon, Kim Davis, Sheryl York, and Susan Rude were among the semi-finalists. Among the Top Ten "Best-Dressed" Girls in 1963 was Kathy Pollalis; in 1964, Marilyn Guinty and Helena Markese (representing Sigma Pi); in 1966, Jenni Bender, who serves on the College Fashion Board for Stix, Baur & Fuller, St. Louis, and who won in 1965 a \$3,000 Bobbie Brooks Scholarship for fashion careers. (Jenni plans to attend the Tobe-Coburn School for Fashion Careers in New York City next year. Sandy and Jenni were on this year's Fashion Board at CMS to select the semi-finalists for the "Best-Dressed" Girl Contest.

Queen contests at CMS include Homecoming Queen, Rhetor Queen, Beauty Queen, and Miss CEMO. During the past two years sororities at CMS have found the competition increasingly difficult as the large 200-600 women's and men's dormitories as well as the M Club and other large organizations enter candidates. Rhetor Queen in 1965 was Heidi Fritz. Beauty Queen in 1966 Sandra Glass (chapter president this past year); First Princess to Beauty Queen in 1967 was Jenni Bender. (Princesses to Beauty Queen announced only past two years.) Miss CEMO in 1966 was Dena Van Slyke; Third Runner-Up in 1967 was Carol Vansandt. In the Miss Warrensburg Contest, members of Epsilon Gamma have been among the semi-finalists and Runner-Ups every year since 1962; in 1966, Sandy Cloninger was Second Runner-Up and Marilyn Guinty Third Runner-Up. Marilyn was First Runner-Up in the Dogwood Festival at the Lake-of-the-Ozarks. Some members have represented fraternities in queen contests: Stephanie Gillum, Sigma Pi, 1966 Rhetor Queen; and Dena Van Slyke, Sigma Phi Epsilon, 1967 Beauty Queen.

Fraternity Sweethearts have been Donna Kelly, Tau Kappa Epsilon Sweetheart in 1964 (later chosen as one of the twelve T K E National Calendar Girls); Kiran Metzger in 1964, Vivian Heyer in 1965, and Sue Clevenger in 1966, White Rose Queens of Sigma Tau Gamma; Barbara Hinds in 1963, Shirley Schlapper in 1964, and Linda Roberts in 1966 were Sigma Pi Sweethearts. The members of Epsilon Gamma honor their Man of the Year each spring at their formal dance for his loyalty and service to the chapter.

Campus leadership honors for the present membership have indeed been numerous, in-





The Panhellenic Hall in which seven Greek letter social organizations are housed. Thirty-six women of each sorority occupy a floor of each wing of the air-conditioned, H-shaped building. Central offices, public lounge area, recreation room and dining room are shared by all groups. The individual lounge areas also serve as chapter rooms. A small kitchen in each sorority wing is equipped with a sink, apartment refrigerator and stove.

cluding: Lynn Lyon and Charlotte Bemboom among 36 senior students at CMS chosen for 1967 membership in *Who's Who Among Students in American Universities and Colleges*; College Union Upper Board, Sandy Cloninger, and Lower Board, Kathy Witte and Jenni Bender (Sandy led a session at a recent Leadership Conference for a four-state area); Dena Van Slyke has a prized position in Student Government Association—the only coed office—appointment as secretary to SGA Senate, a position she has held for two years; Sandra Glass served as Panhellenic Rush Chairman in 1965-66, Dena Van Slyke was Panhellenic Treasurer this year, and Cathie Coxon is Panhellenic Recording Secretary for next year; Lynn Lyon was the first treasurer of Panhellenic Hall in 1965-66; on AWS Judiciary Board in 1964-65, Dena Van Slyke (and also Barbara Cumper, a recent graduate, who, like Dena, was active in SGA and received an SGA Honor Key Award); dormitory officer or council positions have been held by Susan Dover, Linda Esser, Patricia Handel, Linda Medley, Evie Harris, Dena Van Slyke, Linda Roberts, Susan Rude, Charlotte Bemboom, Lynn Lyon, and Marilyn Patton; Cathy Keener was a member of AWS in 1965-66; cheerleader for the Mules, Sandy Cloninger (a recent graduate, Gail Carr, served as Cheerleader for four years); debate team in 1965-66, Charlotte Bemboom, and novice debate team this year, Linda Esser; majorette in 1966-67, Connie White, who will be

head majorette next year (she is a member of the Concert Band, Marching Band, and College Chorus); staff of *The Student* (campus newspaper), Linda Esser; staff of *The Rhetor* (annual) last year were Lynn Lyon, Carol Jackson, Linda Esser and this year Linda serves again; Grappell-ettes this year are Gail Jackson and Pat Woolworth; on the Board of Directors for the Way Out House (campus student coffee house) is Stephanie Gillum; a Religious Emphasis Week position was held by Linda Esser this year; Dolphins (precision swimming) member, Maureen Moore; last spring Carol Vansandt placed third in women's singles and fifth in women's overall competition in bowling at the Region XI Tournament of the Association of College Unions; Kathy Schanauer has had major roles in several plays and productions on campus; Kathy Witte was director of the College Union's *Variety Revue* recently. The Delta Zetas have the most members on College Union committees of all Greek groups at CMS; likewise, they have the most members in Greek Choir and have been asked by Lambda Chi Alpha to select 8 of their members at their formal banquet.

Working as a group, Delta Zetas at CMS took Convocation skit honors of second place for CEMO in 1965 and again in 1966 and also for Homecoming in 1965. They have won Christmas decoration honors at Panhellenic Hall—first in 1966 and second in 1965. For their UMOG Carnival Booth this year they received a certificate

for third place. In Homecoming window decorations they won first prize last fall, the first time in recent years that they have entered that category. They also participate in the intramural volleyball and basketball tournaments, placing third in each last year and in volleyball this year.

Although active in social and campus activities, Epsilon Gamma members do not overlook the scholastic aspect of their college life. In the past two years, Donna Barry, LaNita Cable, Lynn Lyon, Sue Young, Stephanie Gillum, Janet Sturgis, Sue Clevenger, Ellie Perry, Mary Love, Barbara Cumper, Diane Perry, Carol Jackson, and Maureen Moore have been on the Dean's List and most of them have had quarters with 4.0 averages. Chapter has not won the Panhellenic Scholarship Trophy; but in very stiff competition they placed second, third, or fourth most quarters in the sorority scholarship averages. Sue Young graduated magna cum laude last spring. Membership in the honorary fraternities include the following members: 3, Alpha Lambda Delta; 2, Sigma Alpha Eta; 3, Kappa Delta Pi; 2, Pi Kappa Delta (Charlotte Bemboom, Pres.); 3, Alpha Phi Delta (Linda Blacksmith, President this year, and Lynn Lyon, President last year); 1, Beta Alpha; 1, Pi Omega Pi (LaNita Cable, Historian); 2, Colechon; 1, Lambda Alpha Epsilon; and 5 CWENS. Membership in other clubs include the following members: 13, Student NEA; 4, French Club (Stephanie Gillum, Treasurer); 4, Prexy Club and Young Democrats; 3, WRA, Public Relations Club, and PEM Club; 2, Association for Childhood Education, Crescendo, English Club, Tri-Kaps Nursing Club, Phi Beta Lambda, Society for Advancement of Management, Wesley Foundation, and Newman Club; 1, Psychology Club, Social Science Club, People-to-People, Sociology Club, Council for Exceptional Children, Music Educators National Club, Speech and Hearing Club, United Campus Christian Foundation.

Lynn Lyon and Stephanie Gillum made Epsilon Gamma international last summer. Both members, as French majors, lived in Paris and studied at the Sorbonne. They were graduated from the Sorbonne's Cours de l'Et'e in August. After their graduation, they spent the remainder of the summer traveling in Europe, visiting nine countries. Lynn is presently practice teaching and after graduation from CMS will begin graduate work in library science at Denver University on a scholarship. Stephanie has been invited to train for the Peace Corps with an assignment in Brazil.

Epsilon Gamma members enjoy Delta Zeta, are proud of Delta Zeta, and therefore shine in the



Miss Maureen Moore, Best Dressed Girl on Campus, stands beside the trophy case in the entrance way of the Chapter room.

light of her flame. State Day honors last spring included First Place in the Song Contest and John Roberts Powers Scholarships for Dena Van Slyke and Sharon Perkins. Grand Bahama Convention awards were recieved for Activities, for Service, for Sorority Education (fourth-year award), and Flame Fantasy Award for Benefit Project.

Within the chapter the members keep the Delta Zeta spirit high with chapter awards. At the Parents' Banquet each spring the following awards are presented: plaque for Epsilon Gamma's Woman of the Year, charm for the initiate with the Best Scholarship for past year; charms for Big-Little Sisters Best Scholarship for past year; charm for Best Pledge of past year; charm for Best Pledge Scrapbook of past year. Month by month an "Initiate of the Month" is elected and, in turn, wears a special bracelet.

Busy and happy members of Epsilon Gamma Chapter, assisted by Miss Kathryn Baker as their College Chapter Director, have been building the sisterhood and the image of Delta Zeta at Central Missouri State. They strive for the highest ideals of life, realizing that at all times sorority life enhances a young woman's opportunities to achieve those ideals.



Epsilon Eta Chapter Harris Teachers College St. Louis, Missouri

Harris Teachers College, established in 1857 to train teachers for the St. Louis elementary schools, was the first normal school to be founded west of the Mississippi River. In 1924, the college, previously a two-year institution, expanded its curriculum to four years of college work leading to a B.A. Degree in Education and a life-time teaching certificate.

Epsilon Eta Chapter of Delta Zeta was installed at Harris Teachers College 1956, after the merger of Delta Sigma Epsilon with Delta Zeta, whose chapter began in 1930, and it has continued to grow with the college.

Delta Zetas are involved in many campus activities. The office of Vice-President of Student Congress was held the last two semesters by one of our members, Pat Smith. Mary Morris and Marian Wilson are now serving on the Congress also, while Barbara Craft is Vice-President of her Senior II class and Joan Tochtrop is Secretary of the Sophomore II class. Our chapter president, Karen Bernstein, is Treasurer of the Panhellenic Association. Among our collegiates we have four cheerleaders: Karen Bernstein (Captain), Beverly Kreh, Earlette Moeller, and Judy Mulkey. Campus publications are the interest of Barbara Craft, who is cartoonist for the Harris "Collegian" (newspaper), and Donna Cowee, who is on the *Torch* staff (yearbook).

Harris Teachers College Homecoming was celebrated this year at a basketball game with Southeast Missouri State College. As usual, our chapter participated in the float parade. We were honored by winning the second place trophy for largest percentage of members attending.

During the past year, several of our girls have been honored at various functions. Gail Doerner Harper was Queen of Pi Kappa Sigma Fraternity's "Swing Into Spring," Julie Griffith reigned over Lambda Beta Lambda Fraternity's Formal Dance, Sharon Carpenter was chosen first special maid at Sigma Tau Gamma's "White Rose," and Ellyn Richardson was first maid for Alpha Sigma Tau Sorority's "Emerald Evening." In an all-school election, two of our members, Pat Rosa and Pat Sellers, were crowned Queen and First Maid of the Harris "May Fete" Dance.

Our chapter has always fostered harmonious relationships among the Greek organizations at Harris. We do this by supporting their activities as well as our own. Last spring, the Delta Zetas won first place in Jabberwock (Skit Night) sponsored by the Delta Sigma Theta Sorority, and this past Christmas, we also took first place



Some members of Epsilon Eta.

in the Christmas Room Decorating Contest sponsored by Lambda Beta Lambda Fraternity.

Chapter activities are highlighted by our rush parties. The theme for this year's informal party was rather angelic, "Δ Z Heaven," while our formal party was "New Friends are Silver, Old Friends are Gold." Every year at Christmas time, our College Chapter Director, Miss Fanita B. Terry, entertains the entire chapter at a dinner, with the dessert always being cherry pie; hence, the name for the occasion: "Cherry Pie." Each May we hold a Mothers' Tea to better acquaint our mothers with all of our girls. In February of each year, we sponsor our formal dance, the "Sweetheart Prom." Various casual dances are also held throughout the year. Bake sales, candy sales, car washes, and rummage sales help to finance our activities. The annual Founders' Day Banquet is, of course, celebrated on October 24 with the Epsilon Psi Chapter and the St. Louis Alumnae Chapter.

With these two groups, we also help sponsor a fashion show called "Flame Fantasy" for the benefit of Gallaudet College. As another aspect of our philanthropies program, we give two parties a year for the children of Special School District Number One, who are taught by our College Chapter Director, Miss Terry. This spring we will be visiting the St. Louis Zoo with the children and will serve picnic lunch prepared by our members.

Epsilon Eta Chapter doesn't neglect scholarship either. At last year's Scholarship Tea, Delta Zeta placed fourth with a 2.880 average, missing third place by a sorority having a 2.883 average. As a scholarship incentive within our chapter, we have a dinner called "Beans, Burger, and Steak" at the end of every semester, at which

every girl eats according to her grades. If she has 3.0 average or above, she eats steak; 2.6-2.9, hamburger; and anything lower, she eats beans. The price of the dinner is split evenly between all our collegiates.

Epsilon Eta is proud of her many members honored for scholastic achievement. Joyce Drechsel, Shirley Folkers, and Ellyn Richardson are members of Gamma Theta Upsilon, the honorary geography fraternity; Barb Craft was selected for Kappa Delta Pi, honorary education fraternity; Judy Mulkey is a member of Sigma Tau Delta, the English fraternity; and Donna Cowee and Mary Morris are provisional members of Beta Beta Beta, honorary biology fraternity. Every term, the Δ Z's are numbered among those on the Dean's List. Those most recently honored are Gail Doerner Harper, Beverly Kreh, Barbara Craft, Pat Smith, Joan Tochtrop, and Marian Wilson. Another of our members, Donna Cowee, is attending Harris on a four-year scholarship.

Our most recent activities were a pledge-active "Fiesta," with various "awards" being presented to the collegiates by the pledges; and the initiation of six new collegiates: Linda Burgdorf, Nancy Dieckmann, Lilli Domke, Linda Harris, Earlette Moeller, and Mary Morris.

Our chapter owes much to the help and thoughtfulness of our College Chapter Director, Miss Fanity B. Terry, and the cooperation of Dr. Lillian Nagel, a Delta Zeta and the Dean of Women at Harris Teachers College.

Epsilon Nu—Southwest Missouri State College Springfield, Missouri

Epsilon Nu is located on the rapidly expanding campus of Southwest Missouri State College in Springfield, Missouri. The college founded in 1906, has a history of planned growth in curricular variety and academic excellence. In fact, the college is now completing plans to erect a brand new science building in the same block where the girls of Epsilon Nu reside at 925 S. Kings. Thus, the girls will have to vacate the only Delta Zeta chapter house now in Missouri.

The beginning of the fall semester this year found President Barbara Fitzgerald, Beverly Ball, Sidney Tomb, and our college chapter director, Mrs. Lawson Weaver, proudly displaying the two awards given to Epsilon Nu at the National Convention—the Standards Bowl and the Pressbook Award. As September progressed, the girls began anxiously preparing for the first round of rush parties with an "Under the Sea"

party, a "Roaring Twenties" party, and a Preferential Tea—all resulting in twenty-two new pledges for Epsilon Nu.

In all of our activities we are aided by our college chapter director, Mrs. Weaver and our two faculty advisors, Miss Robin Rudolf, an instructor of English, and Dr. Grace Gardner, an instructor at Greenwood Laboratory School. The latter was also a Fulbright Scholar in India and



Epsilon Nu's prizewinning float.

her experience has provided some interesting standards meetings. More important in our day-to-day supervision is our housemother, Mrs. Elsie Quisenberry, fondly called "Mom Quizzy."

October brought the first sorority project—Homecoming. That includes making a prize-winning float for the morning parade, attending an afternoon football game, hostessing an after-the-game tea for parents and alumnae at the chapter house, and finishing up the busy day with the annual Homecoming dance at the college's Student Union. On the twenty-fourth of October we hold our annual Founders' Day ceremony and banquet.

Epsilon Nu had a week's visit from our Province Director, Mrs. Mae Collins, in November. It was also this time of year that we received the very special honor of being adopted by Grace Mason Lundy, founder of the Grace Mason Lundy Award and one of the two initiates into the order of the Laurel.

Then the chapter settled down to studies until Christmas time. Christmas is marked by a party complete with a visit from Santa Claus. The ini-

tiates also prepare the Sisterhood Tree—a small Christmas tree decorated with ornaments made by big sisters for their little sisters. The tree is taken along with our Christmas basket to a needy family in Springfield.

Following the close of the fall term, we hold our annual Scholarship Banquet. Here we announce the newly elected officers and make the presentation of awards. These awards include our Delta Zeta “Smartee” award given to each initiate who has made substantial improvement in her grade point average. We also hold our annual Winter Carnival, an informal house party for the girls and their dates.

The year of 1967 will mark the first year Southwest Missouri State College will have a formally organized Spring Rush. Held late in February, the quota was considerably less than it was in our Fall Rush.

Spring brings many activities also, beginning with Greek Week. This is jointly organized by the Panhellenic Council and the Interfraternity Council. The week starts with all of the Greek organizations attending a church service together



Epsilon Nu rush party.



Epsilon Nu House.

that is usually held in an outdoor chapel. Monday begins a series of nightly convocations, the first of which is the presentation of college awards by SMS's President Dr. Arthur Mallory.

Also in the Spring is the annual Sigma Tau Gamma Variety Show. We have entered every year and have never failed to have a good time as well as learning something new about some of our own sorority sisters.

The last main event of the year is Epsilon Nu's annual Rose Ball, a formal dinner dance. Following this event, the girls again settle down to study for finals. The alumnae chapter holds a brunch in honor of the graduating seniors.

To these annual events add the numerous activities—exchange parties, entries in Carol Sings, Organizational Nights and Variety Shows, standards meetings, philanthropy projects and money-making projects such as bake sales or rummage sales, which are part of every Delta Zeta chapter, and you have a brief picture of life “as usual” with Epsilon Nu.

Success is focusing the full power of all you are on what you have a burning desire to achieve.

WILFERD A. PETERSON

Epsilon Rho—Northwest Missouri State College, Maryville, Missouri

In 1905 a school, which is now Northwest Missouri State College, was founded at Maryville, Missouri. At the time the name was Northwest Normal and the college consisted of one building. This building is presently the Administration Building and serves as a traditional landmark of the college. The campus soon grew with the addition of Roberta Hall, a residence hall, which is still standing today and houses all the sororities on campus. The college continued to grow and within the last five years the college has added a new fine arts building, two new residence halls, another cafeteria, new addition to the library, and a new science and mathematics building is being constructed at the present. N.W.M.S.C. has 4,000 students enrolled and still continues to grow.

We have many traditions on campus such as: the foot bridge, which carries the tradition that a girl must be kissed on the bridge before the snow falls before she is considered a co-ed; Walk-out Day, which means just what it says, all the students walk out of their classes when the college bell is rung on that day. No one (but a choice few) know when walk-out day is until the bell is rung, and many events and activities are planned by the college for the students on this day. The Hanging of the Greens, which is strictly a tradition of Roberta Hall in which the greenery is hung at Christmas time by the bearers of the green who are chosen by the girls of the Hall. The Spirit of Christmas is announced at this time which is a senior girl typifying that



A K A Sweetheart—Sherry Means, Jeanne McCormick, Sandy, Eckhoff.

spirit whom the girls feel has done the most for the Hall and the girls.

Epsilon Rho was established on this campus in Sept. of 1956 after Delta Sigma Epsilon and Delta Zeta merged. Eight members from Gamma Epsilon chapter at Drake and their faculty sponsor, Miss Florence M. Meyer installed our chapter. Miss Mabel Cook now head of the Home Economics Department at N.W.M.S.C., was the new chapter's sponsor. We have continued to grow until now we have a total of fifty members.

Epsilon Rho is a very busy chapter for during this past year we have participated in the following activities as a chapter: Founders' Day Tea, Homecoming Alumnæ Tea, Goodwill Ambassadors Program, Progressive Dinner at Christmas given by our alumnæ chapter, Religious Emphasis Week, Ugly Man Carnival, Spring Formal; State Day, Retreat, all Homecoming events, United Fund Drive, various money making projects throughout the year, Greek Week, Annual Navajo Philanthropy Party, and various minor activities.

Epsilon Rho has an old tradition which is called "retreat." This retreat carries two purposes: (1) a fun filled weekend at some lake or lodge, (2) and a planning meeting for the next year. Retreat is held during the last month of school. We take off for the weekend and stay over night in cabins. We cook-out, go swimming,



Homecoming '65 Δ Z house decoration, 2nd place, "Let's Ring Up A Victory—1910."



Delta Zeta "Friendship 7" tied for 1st in Women's division.

water skiing (if the weather is nice), play softball, and just relax Friday afternoon and Saturday morning. Lunch at noon on Saturday is usually provided by our alumnae chapter and then the afternoon is spent planning rush and homecoming for the next fall. This method of planning has worked out very well for us and we can look back on this past year and see that through our rush planning we filled quota fall semester with our "Anchors Away" theme for our informal party of rush week. Homecoming also proved to be great! We won the over-all parade supremacy trophy, placed 3rd with our house decoration, and 2nd with our float. The over-all theme for homecoming at N.W.M.S.C. was "That Wonderful World of Song." The theme for our float was "Tip Toe Through the Tulips" depicting a Dutch windmill and, of course, the tulips. Our house decoration was "Puff, the Magic Dragon." So all in all, retreat serves many purposes and is always looked to with excitement and fun.

Epsilon Rho chapter is very proud of their philanthropy program and have been working hard to enlarge it more and more every year. One of our main projects is Mr. Andrew Ory, our patient at Carville who is blind. We send Mr. Ory money every month along with our letters. This Christmas we sent him a tape re-

cording of the chapter singing carols to him. In return Andrew sent us a recording telling us that he was in the process of writing a book and wants all of us to help him. We enjoy sending him presents on his birthday and at Christmas as well as cards during the year.

As a community project for our program we make favors for the hospital trays once a month. The staff at the hospital have expressed their gratitude many times for this bit of thoughtfulness both for themselves and the patients.

We have a traditional Navajo Indian party every year with our alumnae chapter. This is a very enjoyable project as it gives our chapter a chance to get together with our alumnae. Everyone brings a present to be sent to the Navajo Indians and the whole party is in honor of them. We also have a guest speaker at the party who tells about the Navajo Indians and their needs. We do something similar during the Christmas season for the mentally retarded students at Horace Mann Laboratory school here on campus, when we send them Christmas presents.

Our Individual Honors

Kappa Delta Pi: Mary Pettigrew, Linda Chappell.

Kappa Omicron Phi: Sheila Schieber, Linda Chappell, Pat Shradel.

Alpha Mu Gamma: Linda Sams.

Phi Omicron Phi: Kathy Griffin.

Dean's Honor Roll: Kathy Griffin, Linda Sams, Linda Chappell, Chris Beal, Nancy Watson.

Delta Psi Kappa: Sandy Eckhoff.

Sweethearts:

Alpha Kappa Lambda—Jeannie McCormick; 1st runner, Sherry Means; 2nd runner, Sandy Eckhoff.

Delta Zeta—Sue Wagers.

Snowball Queen—Judy Miller Holtz.

Delta Sigma Phi—Mary Frances Schulenberg '65; Marilyn Hanna '66.

Bearer of the Greens: Mary Pettegrew.

Daughters of Diana: Sheila Schieber.

"The master secret of happiness is to meet the challenge of each new day with the serene faith that: 'all things work together for good to them that love God.'"

WILFERD A. PETERSON

Epsilon Psi Chapter St. Louis University St. Louis, Missouri

St. Louis University traces its history back to the foundation of the St. Louis Academy in 1818, three years before Missouri became a state of the union. It was also given the first university charter granted west of the Mississippi River. St. Louis University is a private university owned and operated by the Society of Jesus. It has recently become the first major Catholic institution to give laymen and clergy combined legal responsibility for institutional policy and operations. Presently there are 15,000 students enrolled in the fourteen schools of St. Louis University. Many new classroom and science buildings have been completed recently or are under construction at the present, to accommodate the expansion of the university and its schools. We are anxiously awaiting our new Student Union, Busch Memorial, which will provide meeting and recreational facilities for the students of St. Louis University as well as the Greek organizations on campus.

Epsilon Psi chapter of Delta Zeta was installed in 1956, and is one of six social fraternities and four social sororities on campus. Epsilon Psi has thirty-seven members, plus pledges in the chapter at present and is very active in all phases of campus life. Last Spring Greek life came to a peak with the initiation of the first annual Greek Week. Delta Zeta took top honors when Libby Fueglein was crowned Greek Week Queen.

The school year began with each of the Greek organizations sponsoring an activity during Freshman Week. Delta Zeta sponsored a Hawaiian Luau dinner-dance. The setting was a Pacific island scene with volcanoes and palm trees, complete with a Hawaiian menu and our girls serving as the hostesses.

On Founders' Day, Epsilon Eta and Epsilon Psi were guests at a dinner given by the St. Louis alumnae chapter. Dr. Morris, a prominent St. Louis obstetrician, was the guest speaker and told of her musical tour of Europe.

November brought the Delta Zeta Family Affair and tea, attended by parents, alumnae, and members. Miss Ring, the Dean of Women, was presented with a Mother's pin. Miss Ring received this honor on the basis of her service to the university, especially the women on campus,

spiritually, academically, and socially. During the ceremony the Delta Zeta Creed and the Ten Commandments of Delta Zeta were recited and with each commandment Miss Ring was presented a pink rose.

Next on the agenda was our annual Delta Zeta Pancake dinner-dance. This is an all university event and a charity project from which all of the proceeds go to our philanthropies. This is an all university event and this year even Aunt Jemima and Uncle Ned were present for this event and provided "all of the pancakes you can eat."

January brings the election of new officers in Epsilon Psi. Following the installation, all of the officers are honored at a breakfast given by the other members of the sorority.

Several other activities of Epsilon Psi included the truck wash, pledge projects, and a pledge walk-out.

Homecoming also marked a highlight for St. Louis University as well as Delta Zeta. The first annual homecoming was sponsored by Tau Kappa Epsilon. The weekend activities included floats displayed by all of the organizations on campus, a semi-formal dance, and a basketball game. Delta Zeta's float represented a large stork carrying the theme "We're Expecting A Victory."

Scholarship has played an important role in Epsilon Psi. The Province XI scholarship trophy was awarded to our chapter last year at State Day and since 1960 Delta Zeta has received many campus awards for merit in scholarship. Julie Holloran, Pat James, Suzanne Norton, and Barbara Waschek are members of Gamma Pi Epsilon, the National Jesuit Honor Society for Women. This is the highest honor awarded to women of St. Louis University.

In May, Ann Brennan will be installed as Panhellenic president for the forthcoming year. Awards within the sorority during pledging were awarded at our final highlight of the year, the Spring Formal. The Outstanding Pledge award was received by Cecelia Garcia, and the Outstanding Senior award was received by Lynn Wakefield, who is now studying at the St. Louis University Medical School.

Epsilon Psi is very proud of their members and their rapid growth of sisterhood and accomplishments in the past years. By living, working, and playing together we have formed close and lasting friendships which will always be a part of each of us. We have high ideals in all phases of college life, but they are especially high for the respected sisterhood of Delta Zeta.



William Jewell College Zeta Rho Chapter Liberty, Missouri



Semple Hall—home of Zeta Rho.

William Jewell College, located in Liberty, Missouri, was founded in 1859 by Southern Baptists of Missouri and has remained closely affiliated with this denomination throughout its history. Co-educational since 1902, William Jewell is a four-year liberal arts institution with an average enrollment of 1,100.

Under its tenth president, Dr. H. Guy Moore, William Jewell has launched a building program, to be completed by September, 1967, including a \$2 million dollar Memorial library, having 500,000 volumes, a third men's dormitory, an addition to Yates College Union and an addition to Semple Hall for Women.

Located in a village setting, William Jewell also enjoys the cultural and entertainment advantages of nearby Kansas City. The college has recently initiated a fine arts program which has brought such well-known classical entertainers as Edward Villella, Sir John Gielgud and Jose Molina to the campus. Under the auspices of the Concert-Lecture Series, such well known entertainers as the Christy Minstrels, Brothers Four, and Dick Ellington have appeared.

Installed in October, 1961, Zeta Rho Chapter of Delta Zeta was the fourth NPC Sorority on the William Jewell College campus. Mrs. Larry Frymire, Miss Irene Boughton and Mrs. Evelyn Olmsted were present for the installation. Zeta Rho has attractive living and meeting facilities in Semple Hall, a Panhellenic dormitory.

Since its beginning, Zeta Rho has grown and developed rapidly and many important events have occurred and several significant projects have been recently started. In April, 1966, Zeta Rho was hostess for Province XI State Day for the first time. Mrs. Violet Whitfield, National

President, was the featured speaker. Last fall the chapter adopted a 3-year-old deaf child, Randy Dock, and in addition to providing clothing and Christmas gifts for him and his younger brother, money was raised from several projects to purchase a hearing aid. Each girl in the chapter has worked hard and followed with great interest Randy's corrective therapy.

At homecoming last fall, Zeta Rho teamed with Kappa Alpha on the first-prize winning float: "W.J.C.—Hottest Brand Going." Delta Zeta's candidate for Cutie Pan, Linda Henny, came in second.

Delta Zeta placed first in the Fatler Revue. This year, under the direction of Julie Greenwood and Frank Hester the Delta Zetas and Phi Gamma Deltas won the trophy for best skit.

In November, Delta Zeta sponsored a bloodmobile to obtain thirty-four pints of blood for the sister of one of our members who had open heart surgery.

At Christmas time, in addition to having our own party complete with a visit from Santa Claus and providing entertainment for the all-school Christmas party, we continued our tradition of inviting another sorority to the chapter room for games and refreshments.

Spring activities were climaxed by our annual Parents Weekend, the "Golden Flame Ball," the annual spring dinner dance; and assisting the Clay-Platte Alumnæ with their annual hat boutique which raises money for philanthropies.

Delta Zetas are well known on the William Jewell campus and Liberty area for their musical abilities, partially due to appearances by our sextet the "Lamplighters." They sing frequently



1st place float, "W.J.C.—Hottest Brand Going."

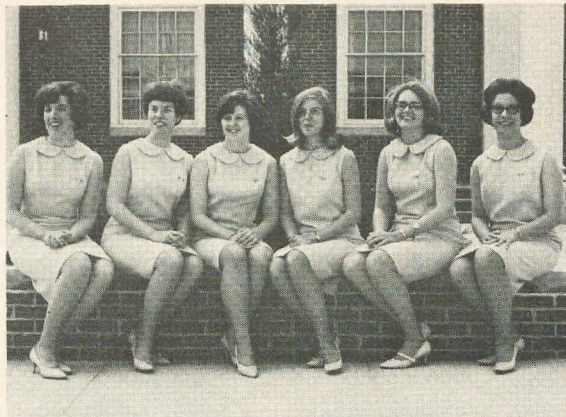
at campus events and have appeared before community groups and such meetings as the Missouri Language Arts Workshop.

Individual members of the chapter have attained honors on the "Campus of Achievement" in the past year. Barbara Story was one of four women tapped for Panaeges, the Senior Women's Honorary. Delta Zetas are well represented in other honoraries as well; Marilyn Burt is President and Sharon Moncrief, treasurer of Sigma Alpha Iota. Patty Warren is president of Kappa Mu Epsilon to which Barbara Story also belongs. Linda Lawson is secretary of Sigma Tau Delta and treasurer of Phi Alpha Theta, of which Carol Werner is also a member. Carol is also active in Pi Gamma Mu.

"People to People" is headed by Jeanne Chandler, who is also publicity chairman of the Women's Recreation Association. Jane Murry was president of this organization last year. Ann Pacey is vice-president of the Student National Education Association. Linda Lawson served as co-editor of the campus newspaper, *the Student* this year.

Delta Zeta has five representatives in the Concert Choir, more than any other group—Sharon Moncrief, Barb Story, Marilyn Burt, Pat Smith, and Linda Lawson. The choir visited Mexico on its annual spring tour.

Selected for inclusion in the 1967 edition of



Delta Zeta Sextet

"Who's Who Among Students In American Colleges and Universities" were Barbara Story and Linda Lawson.

Zeta Rho Chapter, while proud of the progress made thus far in six years, is ever mindful that much more is to be done in meeting the high standards of Delta Zeta. With an enthusiastic spirit, the cherished ideals of our sorority and the backing of a strong and ever-expanding national organization, we look to the future with high hopes.

The National Council of Delta Zeta
announces the reactivation of the
Enid (Oklahoma) Alumnæ Chapter
and the chartering of the
Anderson (Indiana) Alumnæ Chapter
and the
Southern New Jersey Alumnæ Chapter

Δ Z Photo Album



Pat Marshall, President of Iota Sigma, Philadelphia College of Textiles and Sciences holds the award for Scholarship and the award for outstanding social service which were presented to the chapter.



Blaine Hughes, Delta Delta, Georgia State College President, Delta Delta, Who's Who, Crimson Key, Sorority Editor of Yearbook, Panhellenic Scholarship Chairman, Senior Week.



Carol Piecelowski, Delta Epsilon, Queens College, Panhellenic President, Who's Who, Interfraternity Queen and Student Service Award.



Patricia Anderson, Gamma Xi, New Mexico State, Miss University Park 1967, Miss America Beauty Pageant.



Patricia Prewitt, Epsilon Epsilon, Fresno State College, Senior Class President, Pi Kappa Delta Service Award.



Margie Miller, Beta Gamma, University of Louisville, Miss Thoroughbred for 1967 by John Robert Powers Agency, Vice President of Angel Flight, Freshman Advisory Council.

ACTIVITIES



Lynn Wright, Delta Chapter,
DePauw University, Phi Beta
Kappa.



Lorna Cameron, Beta Gamma,
University of Louisville, Phi
Beta Kappa.



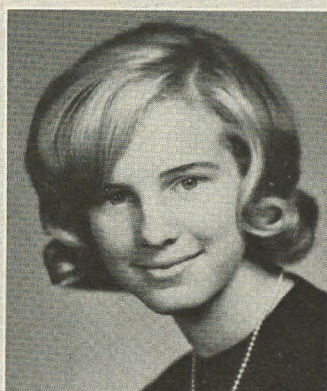
Mary Ellen Bullerman, Gamma
Nu Chapter, Eastern Illinois Uni-
versity, awarded the "Kappa
Delta Scholarship Award."

SCHOLASTIC

HONORS



Dorothea Woolsey, Beta Alpha,
Rhode Island University, Phi
Kappa Award and Panhellenic
Award for highest freshman
average.



Mary Ann Mitchell, Theta Chi
Chapter, Lock Haven State, Re-
cipient of Max Fromm Scholar-
ship for outstanding scholarship
and professional promise.



Jean Fisher, Beta Rho, Michigan State University, Alpha Lambda Delta, Kappa Delta Pi. One of the fifty outstanding Senior Women of 1966-67. AWS President 1966-1967.



Two smiling Beauties, Carol Hutcheson of Delta Delta Chapter (left) has been named best dressed. Heather Fields, "Miss Georgia State College" is competing nationally for the title through *Glamour* magazine.



Jacque Shaefer, Delta Chapter, DePauw University, First runner-up, Miss DePauw, Lead role in *Barber of Seville*.



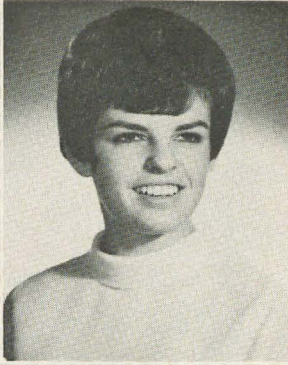
Jan Ullin, Kappa Chapter, University of Washington, National Rowing Champion.



Three Delta Zetas, Judy Adomitas, Mary Lynn Brown and Ann Wagenseller of Gamma Nu, were elected Junior Aides to assist with commencement exercises.



Carol Cooper, Delta Chi, Chico State College, TKE, Order of Diana, AWS, outstanding woman president of Delta Chi Chapter.



Jessie Yaw, Delta Chapter,
De Pauw University, Mu Phi
Epsilon, Alpha Lambda
Delta, Angel Flight.

HONORARIES



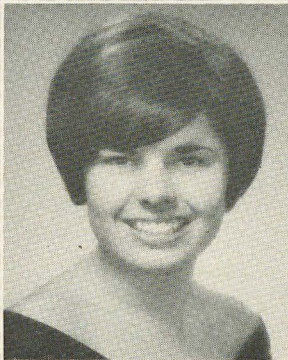
Mary Ann Caswick, Gamma
Rho, Northern Illinois Uni-
versity, Phi Sigma.



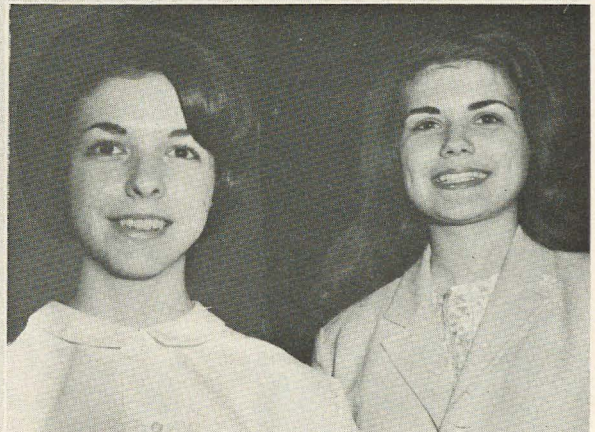
Jan Cameron, Beta
Pi Chapter, Albion
College, Alpha Lamb-
da, Kappa Mu Ep-
silon.



Jan Jamison, Beta Chi,
Wittenberg University, Phi
Sigma Iota.



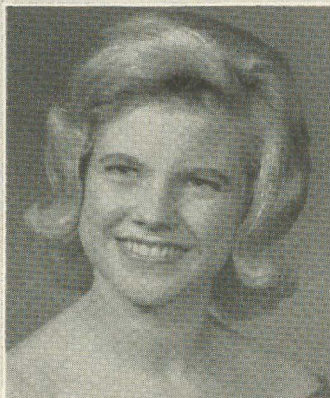
Nancy Hurlbut, Delta Chi,
Chico State College, Sopho-
more Women's Honorary
Society, Vice President Delta
Delta Chi.



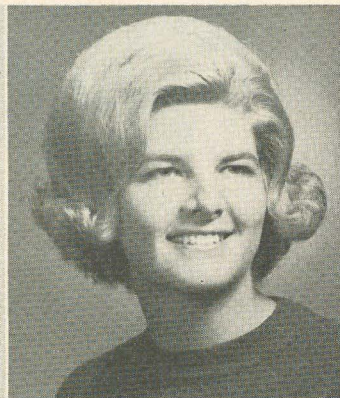
Karen Barton (left), Sharon Granholm (right), Delta Delta,
Georgia State College.



Barbara McGann, Delta Lambda Chapter, Lamar State College.



Donna Schildt, Epsilon Omega.



Charlotte Bemboom, Epsilon Gamma, Central Missouri State.

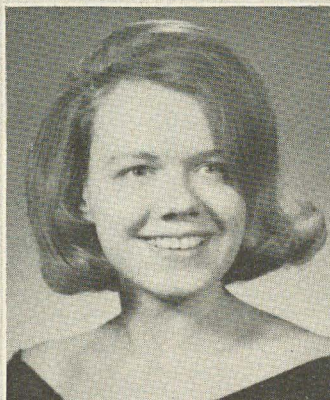
WHO'S



Donna Below, Beta Delta, University of South Carolina.

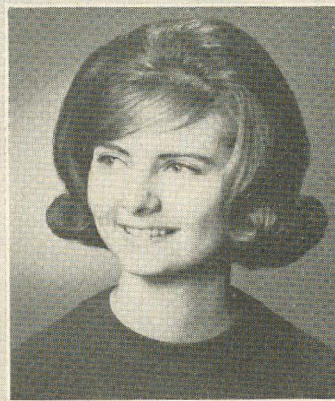
WHO

Dee Lieberman, Gamma Omicron, San Diego State College.



Peg Wiesenberger, Beta Pi Chapter.

Lynn Lyon, Epsilon Gamma, Central Missouri State.



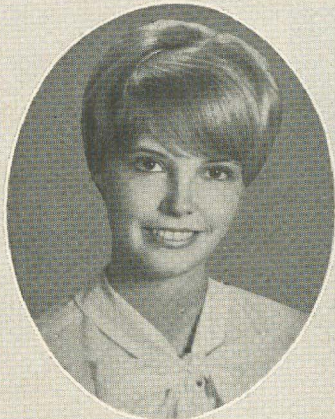


Kim Taliaferro, Delta Delta, Georgia State College, Kappa Sigma Sweetheart.



Linda Brown, Zeta Zeta Chapter, West Texas State University, Lambda Chi Alpha Sweetheart.

SWEETHEARTS



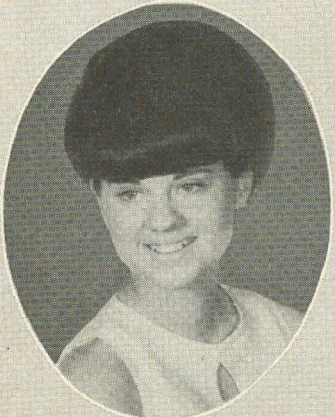
Mary Lynn Mattson, Sigma, Louisiana State University, Sweetheart of Phi Kappa Theta Fraternity.



Charlynn Ballew, Gamma Iota, Memphis State University; Miss Liberty Bowl 1966; Air Force R.O.T.C. Queen 1965; Desoto Beauty Queen 1965; "Little Coloney" 1966; Greek Goddess (Sweetheart of all the Fraternities on Campus) 1966; Angel Flight, officer; *Who's Who*.



Kathy Fiscus, Gamma Xi, New Mexico State University, Sweetheart Dance Princess.



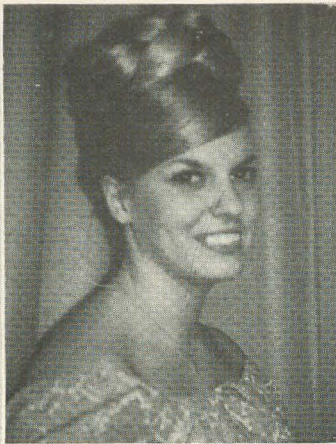
Suzan Richardson, Kappa Alpha Sweetheart (Fall Quarter), Theta Iota Chapter, Western Carolina State.



April Plumb, Beta Tau, Nebraska Wesleyan University, Sweetheart for the year (Tau Kappa Epsilon).



Ann Adair, Zeta Zeta Chapter, West Texas, Personality Queen of West Texas State University.



Sandy Woehrmyer, Gamma Tau, Bowling Green State University, Alpha Tau Omega Queen.



Cathy Thornton, Gamma Epsilon, Drake University, '66 Drake Homecoming Queen.



Sue Unruh being crowned Governor's Lady of 1966-67 by Toni Wade, Governor's Lady 1965-66. Both are Epsilon Sigma Chapter, Wayne State University.

QUEENS



Sheri Anderson, Beta Tau Chapter, Nebraska Wesleyan, May Queen, Former President of Beta Tau, pictured with Larry Tiedje, member of Phi Kappa Tau.



Frances Madden, Iota Sigma, Philadelphia College of Textiles and Science, Spring Weekend Queen.



Libby Fueglein, Epsilon Psi, St. Louis University, Greek Week Queen.



Trisha Williams, Delta Delta, Georgia State College, *Who's Who*, Crimson Key, President of Senior Class, Honor Graduate, Phi Chi Theta, Chairman Mardi Gras.



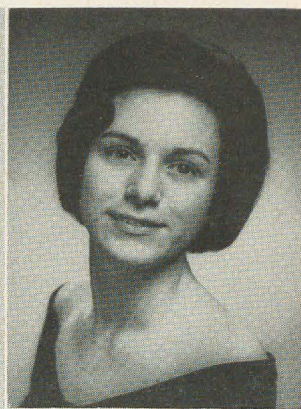
Gina Perry, Curli-Q, Homecoming Skit, East State Players, Lead Role in "The Boyfriend," "The King and I," "Once Upon a Mattress." USO Entertainment in the Orient for Soldiers.



Mary Morrow, Gamma Rho, Miss Northern Illinois. Chosen from 75 candidates and then from 10 finalists.



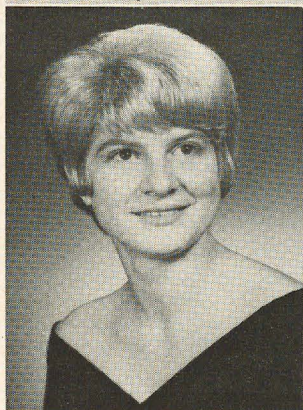
Andi Loveall, Delta Chi, Chico State College, Order of Diana, Secretary, Deans List, Honors Program in English, Authoress—"Pool of Dreams."



Sandy Crain, Beta Gamma Chapter, University of Louisville, Vice-President of the Business School Student Council; Outstanding Junior Business Student. She also received the Yeager, Ford, and Warren Outstanding Accountancy Award; Dean's List, Gamma Beta Phi and Phi Kappa Phi national honor societies, Mortar Board, *Who's Who in American Colleges and Universities*.

CAMPUS

Juanita Hartford, Dean's Honor Roll, People to People Vice President, Xi Phi Honorary Leadership Fraternity, Kappa Delta Pi, Pi Delta Phi, Rotary Club Fellowship to the National University of Mexico in Mexico City in 1968.



Miss Kathy Ganey, President, Gamma Omega Chapter, Sphinx Club, Angel Flight, Sigma Alpha Eta, Theta Sigma Phi.

ACTIVITIES

Left to right: Theta Theta, De Paul University Cheerleaders, Betty Martinez; Emily Mannarelle, Pres. of Theta Theta, Secy. of Liberal Arts Council; Pat Meyer.





Jane L. Hayes

Were You a Spar?

Lt. Comdr. Jane L. Hayes, U. S. Coast Guard Reserve, Alpha Alpha Chapter, Northwestern University, has been appointed Florida State Chairman for the 25th anniversary reunion of the Coast Guard Women's Reserve, the SPARS. The anniversary meeting will be held November 23-25 at the site of the organization's World War II training station, the beautiful Palm Beach Biltmore Hotel, Palm Beach, Florida. Over 1,000 former SPARS are expected to attend and they will represent all 50 states, including Alaska. All former Spars, and there were several Delta Zeta's, are asked to contact the SPAR REUNION CHAIRMAN, U. S. Coast Guard, STA 2-3, Washington, D.C., 20591, for details.

MOVED? MARRIED? . . .

Don't Be a "Lost" Delta Zeta

Mail to: Delta Zeta
3561 N. Pennsylvania St., Indianapolis, Indiana 46205

PLEASE PRINT

Husband's Legal Name

Is this a new marriage? Date of Marriage.....

Legal Maiden Name

Check if: Widowed Divorced Separated Remarried

If so give name to be used

Chapter Year of Initiation

Last Previous Address
(number) (street)

.....
(city) (state) (Zip)

New Address
(number) (street)

.....
(city) (state) (Zip)

Check if you are: alumnæ officer house corporation officer chapter adviser



Delta Zetas by the Sea were in the mood for the Southern California Flame Fantasy.
Left to right: Mrs. Lloyd McCallum, Mrs. Hugh Gadwin and Mrs. Robert Mallory.

"Delta Zetas Go Caribbean Español" for Southern California Flame Fantasy

The annual "Flame Fantasy" benefit Luncheon-Fashion Show was given by the Southern California Council of Delta Zeta sorority. The Los Angeles-Santa Monica Room of the Century Plaza, Beverly Hills, to the music of the Lyn Willis Marachis, was transformed into a beautiful living garden, accented with an ornate gazebo with large hanging bird cages each with white doves. In the center of each of the 100 tables was a salmon-peach azalea plant.

Miss Edith Head, a Delta Zeta was the fashion show commentator. During the showing of fashions from leading California designers, Miss Head included hints to the ladies from her new book "How to Dress for Success," published by Random House.

Mrs. Gail Patrick Jackson, a Delta Zeta and ardent supporter of this Flame Fantasy annual benefit show awarded the grand prize, a trip for

two via Delta Airlines to Puerto Rico and Jamaica plus accommodations for 4 days. A "Miss Flame Fantasy" from each of Delta Zeta collegiate chapters in Southern California took part.

Prominent guest-patrons were the Mmes. James Mason, James McNulty, Art Linkletter, Ozzie Nelson and Edwin Pauley and many others. Over 1200 alumnae and friends from Santa Barbara to San Diego attended.

Last year a check of over \$5600 was presented to the Uni-Betic Camps for boys and girls with diabetes, sponsored by the non-profit Los Angeles Metabolic Clinic, Inc. Established in 1941 in the Barton Flats area of the San Bernardino Mountains, the camps are set up for a two-week period each summer. Resident physicians from Children's Hospital supervise the exacting demands of a diabetic schedule for campers while emphasizing normal camping activities.



Making decorations, from left: Mrs. Donald Paulsen (Ann), Publicity Chairman; Mrs. Leonard Frizzi (Nellis), Reservation Chairman; Mrs. Kenneth Ainsworth (Coralie), Sacramento Alumnæ President.

An Eighth Flame Fantasy for Sacramento

by CLYDENE LESLIE

Fiesta Del Fuego was the theme of the eighth annual Flame Fantasy Luncheon and Fashion Show presented by the Sacramento Alumnæ last March. Colorful parrots on perches graced the tables and other areas in the dining room.

One of the outstanding events of the luncheon was the drawing of eighty-three door prizes given by local and out of town merchants. These included dinners and lodging in San Francisco and Lake Tahoe.

Mrs. Gary Balow was the chairman of a very successful day with 450 guests attending.

Proceeds from the luncheon benefited speech and hearing philanthropies throughout Sacramento. Each year Sacramento State College receives \$200 for a scholarship. Money is also donated to the Sacramento Hearing Society for

testing equipment. The chapter continues to furnish hearing aid batteries for children at Starr King and David Lubin schools in the Sacramento area.

President Coralie Ainsworth presented Outstanding Flame Fantasy Awards she received at years 1965 and 1966 to the chairman of each the convention in the Grand Bahamas for the year, Beverly Bender and Beverly Balow.

Other projects of the alumnæ group during the year include contributing food and clothing for a needy family at Christmas and making favors for the children at the Sacramento Children's Receiving Home on Valentine's Day. Many members of the chapter donated their time and helped with the children at the new pre-school for the hard of hearing.

Indiana's Second "Flame Fantasy"

The "flame" of Delta Zeta glowed brightly in Indiana as over 300 Delta Zetas and their friends attended the second annual Flame Fantasy luncheon and fashion show in November. Proceeds from the event went to the Indiana School for the Deaf and the National Association of Hearing and Speech Agencies.

The festivities began with a social hour at the Columbia Club on the Circle in the center of downtown Indianapolis. Luncheon was followed by a fashion show, presented by the Wm. H. Block Co., which featured fashions for every occasion and every budget. A Delta Zeta alumna, Mrs. Marshall Evilsizer from Fort Wayne was one of the models. Mrs. Evilsizer is a graduate of Bell State and a member of Gamma Chi Chapter.

A Mardi Gras theme was carried out in the decorations and the entertainment. Dolls, dressed in purple, green, and gold costumes and covered with streamers and confetti, adorned every table, and a large gold mask decorated the stage. A dixieland band, the Dixie Royales, set the mood for the afternoon with several special numbers.

Mrs. Thomas E. Breeden (Nancy Poteet, Epsilon), Indianapolis, was the winner of a trip to New Orleans. Over sixty door prizes, with a five-piece silver tea service heading the list, were given to holders of the lucky numbers at the luncheon.

Mistress of ceremonies for the afternoon was Mrs. William B. Medlicott, an Upsilon alumna who is well known in the area as "Barbara Kay," a local television personality.

Special guests included: Mrs. Rollie A. Bayless, Indianapolis, a Delta Zeta alumna who is a theater and TV star; Mrs. Harold W. Houston, Province VII Vice-President; Miss Irene C. Boughton, former National Executive Secretary; Miss Frances E. Westcott, president of the Delta Zeta Foundation; Mrs. Walter C. Folger, manager of Delta Zeta National Headquarters; Miss

Becky Damron, television personality; Mrs. Howard Adkins, Executive Secretary of the Indiana School for the Deaf; Mrs. Charles Fiebleman, member of the Advisory Committee of the Deaf School; Mrs. David E. Brown, whose husband is a member of the Deaf School Advisory Committee; and Mrs. Alfred J. Lamb, whose husband is assistant superintendent of the Indiana School for the Deaf. These persons are all from Indianapolis.

Other honored guests were: Mrs. Frank Silverthorn, Delta Zeta National Director of Philanthropies, from Muncie; Mrs. Miriam Mason Swain, Batesville, 1966 Delta Zeta Woman of the Year, author; and Mrs. Roma Thiry, Muncie, member of the Deaf School Advisory Committee.

Girls from the four collegiate chapters of Delta Zeta in Indiana were hostesses. Representing Delta Chapter at DePauw were Vicki Lind, Brooklyn, Indiana, and Suzanne Frisselle, Lowell, Massachusetts. Epsilon Chapter at Indiana University sent Pat Coplen, Logansport, Indiana, and Jackie Pallatin, Indianapolis, Indiana, while Cathy Carpenter, Fulton, New York, and Sue Cole, Rarwich, Rhode Island, came from Psi Chapter at Franklin. Gamma Chi Chapter at Ball State was represented by Marilyn Cuthriell, Warren, Ohio, and Beth Hohman, Indianapolis, Indiana.

The committee responsible for the 1966 Flame Fantasy was headed by Mrs. Max Fitzpatrick, of the Franklin Alumnae Chapter. She received assistance from the following committee chairmen: Mrs. James Boles, Indianapolis, Reservations; Mrs. Frank Silverthorn, Muncie, Invitations; Mrs. Albert Jay Lucas, Indianapolis, Grand Prize; Mrs. Arnold Harlan, Lafayette, Door Prizes; Miss Gretchen Erickson, Indianapolis, Publicity; Mrs. Phillip Bucher, Anderson, Printing; and Mrs. James R. Templeton, Greenwood, Style Show Coordinator.



ANNOUNCING MAGAZINE WINNERS !!!

(For period May 1, 1966 through April 30, 1967)

Congratulations to a new College Chapter First-Place Winner!

And a welcome back to last year's First-Place Alumnae Winner!

FIRST PLACE

SEATTLE ALUMNÆ, Washington

BETA IOTA, University of Arizona

SECOND PLACE

AUBURN ALUMNÆ, Alabama

DELTA UPSILON, Marshall Univ., Huntington, W.Va.

THIRD PLACE

METROPOLITAN DETROIT ALUMNÆ, Michigan

DELTA CHI, Chico State, California

CONGRATULATIONS and THANKS to these wonderful chapters for their **excellent** work on the National Magazine Program and for their support of the Endowment Fund!!!

YOU can start your Chapter on its way to being a winner at the end of **this** year's accounting period (which began May 1) by using the magazine order form printed below.

DONT FORGET YOUR ZIP CODE!

DELTA ZETA SUBSCRIPTIONS

P.O. BOX 725

Concord, California 94522

Order Form

Date 19

Chapter to be credited

Address

Amount Enclosed \$.....

Please make checks payable to
DELTA ZETA SUBSCRIPTIONS

Magazine to be sent to:

Name of subscriber

Street

City & State Zip Code

NAME OF MAGAZINE

No. of Years ☐ New ☐ Renewal

Is this a gift? If so, write in name of giver here.

Street

City & State Zip Code

No Card Sent Unless Requested

Birthday Christmas Anniversary General No Card

Gift Card ☐ ☐ ☐ ☐ ☐

Card to arrive 19..... Card to be Signed

Province Public Relations Coordinators

Province

- I. Mrs. Albert DeCosta, 54 Algonquin Rd., Rumford, R.I. 02916.
- II. Mrs. P. Thomas Cox, 2 Sunny Hill Rd., Vallanora, Pa. 19085.
- III. Mrs. C. G. Pelkhofer (Pat), 252 S. Winebiddle St., Pittsburgh, Pa. 15224.
- IV. Miss Gail Rector, R.R. 1, Box 153, Princeton, W.Va. 24740.
- V. Mrs. William Trout, 11109 Lake Ave., Cleveland, Ohio 44102.
- VI. Mrs. Michael S. Richardson (Jeri-Lynne), 409 1st Ave., Box 614, Tawas City, Mich. 48763.
- VII. Mrs. Richard Lankford (Ruth), 702 North Turtle Creek Dr. #10, Indianapolis, Ind. 46227.
- VIII. Mrs. Lyle Sampson (Joanne), 255 S. Spring St., Columbus, Wis. 53925.
- IX. Mrs. Wayne Hutchinson (Louise), 402 E. DeYoung, Marion, Ill. 62959.
- X. Mrs. Geo. Ahern (Elinor), 338 31st St., S.E., Cedar Rapids, Iowa. 52403.
- XI. Mrs. Lester Peters, 20 Catapla Tr. Ct., Kirksville, Mo. 63501.

- XII. Mrs. Edward Fulton (Betty), 4103 Lupine St., Colorado Springs, Colo. 80907.
- XIII. Mrs. Monte Thoen (Doris), 13124 NW Sue St., Portland, Ore. 97229.
- XIV. Mrs. Frank Taggart (Tina Fisk), 6580 Longridge Way, Sacramento, Calif. 95831.
- XV. Mrs. Stewart Finke (Anna), 5909 Courtland, Riverside, Calif. 92501.
- XVI. Mrs. N. O. Iandoz (Doris), P.O. Box 64, Medicine Park, Okla. 73557.
- XVII. Miss Jane Ann Maxwell, 4162 Kenneth, Beaumont, Tex. 77705.
- XVIII. Mrs. Sammie D. Reidenbach, Route 1, Box 26, Keithville, La. 71047.
- XIX. Miss Virginia Combs, 1107 Tolston Ave., Bristol, Tenn. 37622.
- XX.
- XXI. West—Mrs. John R. Orr, Jr., 1028 45th St. W., Birmingham, Ala. 35212.
- XXI. East—Mrs. Charles Wills, 620 Peachtree, N.E., Atlanta, Ga. 30309
- XXII. Mrs. Jack B. Tower, c/o Province President.

★ ★ ★ Golden Flame Eternal ★ ★ ★

ALPHA

- Elinor Hawk Cox (Mrs. Clyde) '59, 5-22-67
Charlotte Stark Leahy (Mrs. Edward), '67

BETA

- Eleanor Edwards Cole (Mrs. Alfred) '11, 6-5-67
Marguerite Douglass Luckett (Mrs. George) '13x, 6-18-67

GAMMA

- Eleanor Small Feeney (Mrs. Wayne) '24, '66
Ruth Eller Ross (Mrs. Lindsley), 4-8-67

ZETA

- Crete Briggs Franzen (Mrs. Frederick) '11, 3-67
Loy Ream Rohwer (Mrs. George) '19, '66

IOTA

- Jacquelyn Temple Elder (Mrs. Donald) '28, 5-20-64

KAPPA

- Annicc Mars Barnhart (Mrs. Thomas) '26, 10-18-66
Edith Sisler '30, 12-65

MU

- Marjorie Hicok Sutton (Mrs. Park) '39x, 10-24-66

NU

- Alice McCreary Malcolm (Mrs. Russell) '27x, '67
Alvira Lingroth Stephenson (Mrs. Clarence) '22x, 6-9-67

OMICRON

- Virginia Eaton Billingsley (Mrs. A. L.) '24
Catherine Moore Young (Mrs. John) '21, 2-5-67

CHI

- Marian Ott Wagner (Mrs. Richard) '47, 4-17-67

ALPHA BETA

- Olive Paul Goodrich (Mrs. Owen) '25, '64
Bette Staats Hood (Mrs. Paul) '40, 5-67

ALPHA GAMMA

- Marion Bishop Moxley (Mrs. Stephen) '24, 2-18-67

ALPHA DELTA

- Marjorie Mothershead Clark (Mrs. Robert) '27, 5-67

ALPHA EPSILON

- Cleora Helbing, 11-20-66
Mary Margaret Thomson '68, 7-5-67

ALPHA IOTA

- Margaret Fisk Strubler (Mrs. Harvey) '31, 6-5-66

ALPHA KAPPA

- Carol Murphy Gussin (Mrs. Alfred) '50, '60

ALPHA LAMBDA

- Rachel Trout Hunsinger (Mrs. Carlos) '30, 3-4-66
Florence Riede Wieselmann (Mrs. E.) '29, 4-24-67

ALPHA MU

- Grace Woodcock Rich (Mrs. J. Wesley) '24, 5-66

ALPHA SIGMA

- Margaret Murphy May (Mrs. Eugene) '32, 5-16-67
Arey Kaufmann White (Mrs. Robert) '30x, 5-2-67

ALPHA UPSILON

- Rita Morancy Gordon (Mrs. Owen) '52, 6-10-67

BETA EPSILON

- Florence DeBring Rose (Mrs. S. Brandt) '30, 2-7-67

BETA MU

- Anne Bridger McLean (Mrs. Kenneth) '47, 3-12-66

BETA NU

- Francesca White Cantrell (Mrs. C. E.) '45, '67

BETA SIGMA

- Mary Baber Benson (Mrs. Herbert) '27, 3-22-66

BETA TAU

- Violet Johnson Swanson (Mrs. Winston) '31, 2-16-67

BETA CHI

- Edith Marie Lang '39, 4-6-67

BETA OMEGA

- Mollie Jane Humphreys '28, 3-10-66

GAMMA DELTA

- Katherine Davis Locke (Mrs. Edwin) '60, 4-67

GAMMA UPSILON

- Feriba Pate Henley (Mrs. Russell) '50x, 3-24-67
Kathleen Ryan Hutsell (Mrs. Sam) '26, 3-8-67

GAMMA CHI

- Vivian Burnworth Anderson (Mrs. Carl) '25, '67

EPSILON GAMMA

- Doris Witt Hofstaedter (Mrs. Gerald) '49, 5-6-67

EPSILON UPSILON

- Linda Bell Ogle (Mrs. Paul) '68x, 5-67

ZETA PSI

- Althea Edens Etheridge (Mrs. James) '39, 9-23-65

THETA DELTA

- Janet White Eigo (Mrs. James) '34, 2-22-67

THETA ETA

- Glenda Jean Gibson '69, '67

IOTA ALPHA

- Ruby Henderson '04

BUFFALO STATE

- Ruth Stilson Ball (Mrs. Nelson) '24, 3-24-67
Pearl Bridenbaker Case (Mrs. Homer) '13x, 3-66

Delta Zeta Sorority

Founded at Miami University October 24, 1902
GUY POTTER BENTON, D.O., LL.D.
Grand Patron*

FOUNDERS

JULIA BISHOP COLEMAN (Mrs. J. M.)*
MARY COLLINS GALBRAITH (Mrs. George)*
ALFA LLOYD HAYS (Mrs. O. H.)*

ANNA KEEN DAVIS (Mrs. G. H.)*
MABELLE MINTON HAGEMAN (Mrs. Henry)*
ANNE SIMMONS FRIEDLINE (Mrs. Justus R.)*
* Deceased.

THE ORDER OF THE LAUREL

Grace Mason Lundy

Irene Caroline Boughton

NATIONAL COUNCIL OF DELTA ZETA SORORITY

President Betty Heusch Agler (Mrs. B. H.), 20 East 14th Ave., Apt. 7, Columbus, Ohio 43201
Vice-President (Alumnæ) .. Gwen Moss McKeeman (Mrs. Robert L.), 5517 South 74th East Ave., Tulsa, Okla. 74145
Vice-President (College Programs)
..... Doris Ellingson Riede (Mrs. J. R.), 103 Lake Ave., White Bear Lake, Minn. 55110
Vice-President (Membership)
..... Marjorie Doyle Bergman (Mrs. Edward), 5217 Riverview Lane, Lisle, Ill. 60532
Secretary-Treasurer Jean Ericsson Schlosstein (Mrs. Gary B.), Michaels St., Cochrane, Wis. 54622
National Panhellenic Conference Delegate
..... Betsy Bradley Leach (Mrs. Garold A.), 1865 Hill Dr., Eagle Rock, Los Angeles, Calif. 90041
Director (Area East) Elizabeth Baker Devereaux (Mrs. Charles), 3514 Cadillac Dr., Parkersburg, W.Va. 26101
Director (Area South) Lisbeth Innis Francis (Mrs. Robert), 2508 Belle Terre Dr., Birmingham, Ala. 35226
Director (Area West) Gloria MacNeven Frymire (Mrs. Larry), 16 Olympus Dr., Naperville, Ill. 60540
Director (Area Midwest)
..... Kathryn Doub Hinman (Mrs. Winfield C.), 27310 Wellington Dr., Franklin Village, Mich. 48025
Director (Extension) Mary Lou Ragel Vineyard (Mrs. Philip), 754 N. Waukegan, Lake Forest, Ill. 60045
Director (House Corporations) Dorothy Varley Breitweiser (Mrs. Roy), 2717 Firethorne Ave., Fullerton, Calif. 92631
Director (Philanthropies) Dorris Pike Silverthorn (Mrs. Frank W.), 2710 Kilgore Ave., Muncie, Ind. 47304
Director (Public Relations)
..... Dee Ann Stephens Connor (Mrs. Larry), 3861 New Salem Ave., Okemas, Mich. 48864
Immediate Past President Violet Sharratt Whitfield (Mrs. R. H.), 3230 Park Pl., Evanston, Ill. 60201

NATIONAL FIELD CONSULTANT

Gertrude Murphy Meatheringham (Mrs. V. H.), Route 1, Kennesaw, Ga. 30144

NATIONAL HEADQUARTERS

National Headquarters Mrs. Callie Folger (Office Manager), 3561 N. Pennsylvania St., Indianapolis, Ind. 46205

SIMPLIFIED AUDITS

Helen Woodruff Nolop (Mrs. Ray), 2520 N. 48th Pl., Phoenix, Ariz. 85008

COLLEGE CHAPTER ADMINISTRATOR

Marguerite Wherry Havens (Mrs. George C.), 5518 Grand Ave., Des Moines, Iowa 50312

FIELD SECRETARIES

Marian DeLay, Linda Lenox, Shelia Pilger, Sheri Anderson

THE LAMP

Acting Editor of THE LAMP Miss Irene C. Boughton
Board of Trustees of THE LAMP Fund: Betty Heusch Agler (1968); Dorothy Varley Breitweiser (1972); Jean Ericsson Schlosstein (1968); Violet Sharratt Whitfield (1970); Irene Boughton (1968), 3801 N. Meridian St., Apt. 306, Indianapolis, Ind. 46208

DELTA ZETA FOUNDATION

President—Miss Frances E. Westcott, 549 E. 84th St., Indianapolis, Ind. 46240

Treasurer—Mrs. Maxine Peterson, Rt. 2, Box 808, Tucson, Ariz. 85715

Directors—Gail Patrick Jackson, Margaret Huenefeld Pease, Marjorie Doyle Bergman

Chairman Audiology Scholarship—Dr. Eunice Roberts, Kirkwood Hall, 101, Indiana University, Bloomington, Ind. 47406

STANDING COMMITTEES

Constitution & Procedure Chairman—Evelyn Adams Costello (Mrs. Russell T.), 3790 Lakecrest Dr., Bloomfield Hills, Mich. 48013.

Alumnæ—Mrs. Iva Olson, 10648 Balboa Dr., Sun City, Ariz. 85351.
Corporation—Mrs. Roy Breitweiser, 2717 Firethorne Ave., Fullerton, Calif. 92631.

House Corporation By-Law and Constitution Chairman—Mrs. Archie MacMillan (Genevieve), 1050 Ladera Dr., Long Beach, Calif. 90807.

History: Ritual Chairman—Grace Mason Lundy (Mrs. H. M.), R.R. 1, Bloomington, Ind. 47403.

Judiciary Committee—Florence Honbaugh Maier (Mrs. Ralph H.), 1587 Lamberts Mill Rd., Westfield, N.J. 07091.

Colonnade Club Chairman—Mrs. A. Parks Howard, 4401 Perry Way, Sioux City, Iowa 51104.

COMMITTEES

Activities Chairman—JoAnn Hoover Franke (Mrs. Roger), 1900 Elm, Hays, Kan. 67601.

Awards Committee—Florence Hood Miner (Mrs. Arthur J.), 1040 Avenue H, Nevada, Iowa 50201.

Carville—Miss Shirlyn Chaffin, 4431 Danforth Rd., Columbus, Ohio 43224.

Chapter Newsletters—Dorothy Rich (Mrs. Earl), 773 Michigan St., Eaton Rapids, Mich. 48827.

Endowment Fund—Florence Hood Miner.

Flame Fantasy Chairman—Patti Volbrecht Phillips (Mrs. J.), 300 E. Alster, Arcadia, Calif. 90066.

Gallaudet College—Mrs. Margaret F. Dodderidge, The Apolline, #313, 1330 New Hampshire Ave., N.W., Washington, D.C. 20036.

Magazine Chairman—Engelyn Brown Tourtelot (Mrs. Charles H.), P.O. Box 725, Concord, Calif. 94522.

Memory Book Chairman—Ruth Clausen Reasor (Mrs. M. L.), 4918 Whitton Pl., Apt. B, Indianapolis, Ind. 46220.

National Membership Chairman—Mary Lou Barth (Mrs. William T.), 1720 Tennyson Ave., Dayton, Ohio 45406.

Navajo Project—Write to Director of Philanthropies.

Order of Golden Rose—Irene C. Boughton, 3801 Meridian, Apt. 306, Indianapolis, Ind. 46208.

Personal Loans and Scholarships—Marguerite Wherry Havens (Mrs. George), 5518 Grand Ave., Des Moines, Iowa 50312.

Pledge Training Chairman—Mrs. James W. Benjamin (Peggy), 1876 South 116th St., Omaha, Neb. 68144.

Province Conference and State Day Coordinator—Lois Westerman Schrank (Mrs. Benjamin M.), 5184 Meadow Wood Blvd., Cleveland, Ohio 44124.

Scholarship Chairman—Ellie Bakosh Gregorich (Mrs. Edw.), 2821 Palmerton, Troy, Mich. 48024.

Sorority Education Chairman—Kay Morrow Wright (Mrs. Terry), 1913 Beaver Ave., Des Moines, Iowa 50310.

Standards Chairman—Evelyn Simmons (Mrs. Russell), 341 Dorchester Rd., Akron, Ohio 44320.

This Directory is correct as of June 15.

* (Alumnae chapters not chartered)

PROVINCE I—Maine, Vermont, New Hampshire, Massachusetts, Connecticut, Rhode Island

Acting Province President:

Chapter/School
 AT—Univ. of Maine
 BA—Univ. of Rhode Island
 FB—Univ. of Connecticut
 AI—Jackson College
 OT—Univ. of New Hampshire

President
 Diane Hadley
 Mary Lou Dravinville
 Lynn Thompson
 Sue Gray
 Sandra Whitcomb

Chapter Address
 206 Penobscot Hall, Univ. of Maine, Orono, Maine 04473
 DZ House, 70 Lower College Rd., Kingston, R.I. 02881
 DZ House, U. of Conn. Storrs, Conn. 06268
 Haskell Hall, Jackson College, Medford, Mass. 02155
 DZ House, 25 Madbury Rd., Durham, New Hampshire 03824

College Chapter Director
 Miss Claire S. Sanders
 Mrs. Richard Moore (Marion)
 Mrs. Russell De Coursey (Mary)
 Miss Sondra Szymczak
 Miss Myra Davis

Address
 123½ Maine St., Orono, Maine 04473
 Middle Drive, East Greenwich R.I. 02818
 24 Storrs Heights Road, Storrs, Conn. 06268
 37 Elliott St., Danvers, Mass. 01923
 20 Main St., Durham, N.H. 03824

Province Vice-President:

Chapter
 *Bangor, Maine—Mrs. Gene Carter, 12 N. Folk St., Bangor, Maine 04401
 Boston, Mass.—Mrs. Doris Sickler, 61 Norwich Circle, W. Medford, Mass. 02155
 Fairfield Co., Conn.—Mrs. Roy Billings, 22 Lakeview Dr., Stamford, Conn. 06905
 Hartford, Conn.—Mrs. Paul E. Milott, Jr., 580 E. Silver Lane, East Hartford, Conn. 06118

President and Address

State Membership Chairmen: Maine—Miss Velma K. Oliver, 3 Allen Rd., Orono, Maine 04473
 Vermont—Mrs. John Rider, 10 Marshall Dr., Burlington, Vt. 05401
 New Hampshire—Mrs. Raymond N. Gradual, 105 Lawrence Rd., Derry, N.H., 03038
 Massachusetts—Mrs. Paul Chiavacci (Mary Jane) 851 Coventry Lane, Norwood, Mass. 02062
 Connecticut—Mrs. Edward B. Gill, 53 High Point Rd., Westport, Conn. 06880
 Rhode Island—Mrs. James H. Crossley, 40 Farmland Rd., Warwick, R.I. 02886

Chapter
 *Kingston, R.I.—
 Providence, R.I.—Miss Doris Dyson, 165 Missouri Drive, Warwick, R.I. 02886
 *Springfield, Mass.—Mrs. Richard Dorshimer, 131 Wenonah Rd., Longmeadow, Mass. 01100
 Storrs, Conn.—Mrs. Russell Wheeler, Jr. Columbia Lake, Columbia, Conn. 06237

President and Address

PROVINCE II—New York and New Jersey

Province President: MRS. CHARLES ALSETH (JOANNA), 15 Garden Place, Hempstead, N.Y. 11550

Chapter/School
 AZ—Adelphi Univ.
 BQ—New York Univ.
 FH—Hunter College
 AE—Queens College
 IZ—St. John's Univ.
 IK—Rider College
 IM—Monmouth College

President
 Gabriele Hafner
 Linda Comer
 Betty Ann Dragovich
 Lucretia Scharf
 Joanne Monaco
 Noreen Grella
 Bette Deeney

Chapter Address
 2547 Grand Ave., Bellmore, N.Y.
 90-39 144th Pl., Jamaica, N.Y. 11435
 80 Simonson Ave., Staten Island, N.Y. 10303
 69-25 62 Ave., Middle Village, N.Y. 11379
 12 Fern Drive, West, Jericho, N.Y. 11753
 DZ House, Rider College, Trenton, N.J. 08602
 41 Park Pl., Red Bank, N.J. 07701

College Chapter Director
 Miss Suellen Filipek
 Mrs. David W. Schropfer (Gloria)
 Miss Italia Terrone

Address
 16 Brower Ave., Woodmere, New York 11598
 91 Strawberry Hill, Stamford, Conn. 06902
 147-16 33 Ave., Flushing, N.Y. 11354

Miss Janet Pampinella 102 Leahy St., Jericho, N.Y. 11753
 Miss Jane Cornish 66 N. Irving Street, Ridgewood, N.J. 07450

Province Vice-President: MRS. ROBERT F. LEMASSENA (JUDITH), R. D. 1, Box 395B, Hopewell, N. J. 08525

Chapter
 Buffalo, New York—Mrs. Earl Fischer, 495 Carmen Rd., Amherst, N. Y. 14226
 Central New Jersey—Mrs. Robert G. Kuzy, 50 Middleton, Willingboro, N. J.
 *Long Island, N.Y.—Mrs. Ludwig Herrman, 8 Lindens, Roslyn, New York 11576
 Staten Island—Mrs. John Drury, 997 Rensselaer Ave., 8 The Lindens, Staten Island, N. Y. 10309
 Northeastern New Jersey—Mrs. Ado Bolles, 90 E. Crescent Ave., Allendale, N.J. 07401
 Northern New Jersey—Mrs. Robert F. LeMassena, RR#1, Box 395B, Hopewell, N. J. 08525

President and Address

State Membership Chairmen: New York (Lower)—Miss Mary Frances Sims, 1612 W. Onondaga St., Syracuse, N.Y. 13204
 (Upper)—Miss Mary Frances Sims, 1612 W. Onondaga St., Syracuse, N.Y. 13204
 New Jersey—Mrs. Ado F. Bolles, 90 E. Crescent Ave., Allendale, N. J. 07401

Chapter
 Rochester, N.Y.—Mrs. Stanley Blow, 52 Astor Dr., Rochester, N.Y. 14610
 *Jersey Shore—Miss Barbara J. Garberly, 96 Neptune Ave., Apt. #7, Deal, N.J. 07723
 Southern New Jersey—Mrs. Thomas S. Cooper, Jr., 17 Old Towne Road, Cherry Hill, New Jersey 08034
 Syracuse, N.Y.—Mrs. Lawrence McCarty, 1625 Stolp Ave., Syracuse, N.Y. 13207
 *Westchester County, N.Y.—Mrs. Richard Brown, 1 Garrett Place, Bronxville, N.Y. 10708

President and Address

PROVINCE III—Pennsylvania and Delaware

Province President: MRS. C. A. DICKINSON (MAE), R.D. #3, Slippery Rock, Pa. 16057

Province President Philadelphia Area: MRS. EDWARD MONAGHAN (PIXIE), 142 Barcladen Rd., Rosemont, Pa. 19010

Chapter/School
 BQ—Bucknell Univ.
 FA—Penn State Univ.
 QX—Lock Haven State College
 IO—Mansfield State
 O—Univ. of Pittsburgh
 FO—Indiana Univ. of Penn.
 EO—Clarion State College

President
 Barbara Dangman
 Barbara Neuhoff
 Becky Dill
 Linda Mase
 Patricia Wagner
 Linda Neely
 Linda Oleksa

Chapter Address
 Box W-506, Bucknell Univ., Lewisburg, Pa. 17837
 206 Hiester Hall, University Park, Pa. 16802
 Woolridge Hall LHSC, Lock Haven, Pa. 17745
 Laurel Manor Apts. B., Mansfield, Pa. 16933
 701 Amos Hall, Univ. of Pitts, Pittsburgh, Pa. 15213
 219 Levy Hall, Ind. U. of Pa. Indiana, Pa. 15701
 182 Jefferson Hall, CSC—4th Floor, Clarion State Col., Clarion, Pa. 16214

College Chapter Director
 Mrs. Donald B. Young (Elsie)
 Mrs. Taniazine C. Miller (Tammy)
 Mrs. George Hayfield (Joan)
 Mrs. Kenneth W. Brace (Mary)
 Mrs. Gordon Pike (Gwen)
 Miss Paula Jerito
 Mrs. Edward Grejda (Gail)

Address
 226 S. 4th, Lewisburg, Pa. 17837
 1366 Old Boalsbury Rd., State College, Pa. 16801
 504 Woodward Ave., Lock Haven, Pa. 17745
 50 Mann St., Mansfield, Pa. 16933
 142 N. Sprague Ave., Pittsburgh, Pa. 15202
 1024 Washington St., Indiana, Pa. 15701
 40 Campbell Dr., Clarion, Pa. 16214

ZE—California State
 ZB—Slippery Rock State
 OA—Westminster College
 IT—Alliance College
 IA—Edinboro State College
 AT—Temple Univ.
 EZ—Drexel Inst. Tech.
 IS—Philadelphia College of Textile and Science

Ann Johnston
 Judy Mooney
 Melanie K. Smith
 Patricia Koziol
 Nancy Dunbar
 Rose Alice Heerst
 Margaret Zeiger
 Patricia Marshall

Box 329, Longanecker Hall, 631 Second St., California, Pa. 15419
 334 Harner Hall, Slippery Rock State Col., Slippery Rock, Pa. 16057
 304 Galbreath Hall, New Wilmington, Pa. 16142
 Bartlett Hall, Alliance Col., Cambridge Springs, Pa. 16403
 Earp Hall, Box 214, E.S.C., Edinboro, Pa. 16412
 2640 Cedar St., Philadelphia, Pa. 19125
 3320 Powelton Ave., Philadelphia Pa. 19104
 306 Stow Rd. Elkins Park, Pa. 19117

Mrs. Henry Price (Carol)
 Mrs. William A. Storer (Emme)
 Mrs. Richard V. Stevens II (Connie)
 Mrs. Wm. C. Wenner (Jeannette)
 Mrs. Jack Williams (Emma)
 Mrs. Kenneth Stebner (Maureen)
 Mrs. Mario Ivacolla (Arlene)
 Mrs. Richard Davy (Linda)

301 3rd St., California, Pa. 15419
 221 Elm St., Slippery Rock, Pa. 16057
 36 Orchard Ave., Hubbard, Ohio 44425
 337 Main St., Cambridge Springs, Pa. 16403
 Box 177, Edinboro, Pa. 16412
 3769 Pennypack St., Philadelphia, Pa. 19136
 231 C. Garfield St., Collingswood, New Jersey 08108
 170 Clubhouse Rd., King of Prussia, Pa. 19406

Province Vice-President:

Chapter
***California**—Miss Janet Bristor, 1251 Park, Washington, Pa. 15301
 Erie—Mrs. Walter J. Wicker, 629 Cherry St., Erie, Pa. 16502
 Harrisburg—Mrs. Robert Rowland, 3 Cornell Dr., Camp Hill, Pa. 17011
 Indiana—Mrs. John D. Varner 414 Oak St., Indiana, Pa. 15701
 *Lancaster—Mrs. William Lumbeck, 407 Glen Ridge Dr., Lancaster, Pa. 17601
 Philadelphia (North Sub.)—Mrs. Walter Hall, 1317 Bradford Rd., Oreland, Pa. 19075
 Philadelphia (West Sub.)—Mrs. Richard Myers, 536 Grand Ave., Havertown, Pa. 19083

State Membership Chairmen: Pennsylvania—Mrs. George G. West, Hemlock Acres, R.D. 2 Punxsutawney, Pa. 15767
 Delaware—Mrs. Edwin G. Willing, 110 Canterbury Dr., Windsor Hills, Wilmington, Dela. 19803

PROVINCE IV—West Virginia

Chapter/School
 ΔT—Marshall Univ.
 ΔE—Concord College
 EI—Fairmont State
 ZT—Morris Harvey College
 ΘE—Glenville State College
 IΠ—W. Va. Inst. Tech.
 IT—West Liberty State College

President
 Peggy Miller
 Eyvonne Mayhew
 Peggy Lohse
 Sandra McCoy
 Marilyn Sue Strickling
 Sharon Miller
 Kay Birney

Chapter Address
 1616 5th Ave., Huntington, W.Va. 25703
 Box C-404, Athens, W.Va. 24712
 317 North Hall, Fairmont, W.Va. 26554
 362 Witcher Rd., Belle, W.Va. 25015
 305 E. Main St., Glenville, W.Va. 26351
 Box 115, Lavada Ratcliff Hall, W.V.I.T. Montgomery, W.Va. 25136
 310 Rogers Hall, W.L.S.C., West Liberty, W.Va. 26074

Province Vice-President: MRS. CHARLES KURNER (MARIAN), 103 Brentwood St., Marietta, Ohio 45750

Chapter
 Athens-Princeton, W.Va.—Mrs. Otto Fredeking, 212 Center St., Princeton, W.Va. 24740

Charleston, W.Va.—Mrs. John M. Jones, 1927 Seventh Ave., St. Albans, W.Va. 25177
 Fairmont, W.Va.—Mrs. Elaine Negie Butcher, 1114 Gaston Ave., Fairmont, W.Va. 26553

State Membership Chairman: West Virginia—Mrs. Frank Mancari, Kayford, W.Va. 25116

PROVINCE IV—South—Kentucky

Chapter/School
 AΘ—Univ. of Kentucky
 BT—Univ. of Louisville

President
 Joyce Heck
 M. Candis Healy

Chapter Address
 DZ House, 319 Columbia Terr., Lexington, Ky. 40506
 2028 S. 1st St., Louisville, Ky. 40208

Province Vice-President: MRS. WM. F. JACKSON, (Selma) 109 Penmoken Park, Lexington, Ky. 40503

Chapter
 Lexington, Ky.—Mrs. Paul E. Bastin, 105 Goodrich Ave., Lexington, Ky. 40503

State Membership Chairman: Mrs. Charles W. Cheatham, 6804 Moorhaven Dr., Louisville, Ky. 40218

PROVINCE V—Ohio

Chapter/School
 A—Miami Univ.
 Θ—Ohio State Univ.
 E—Univ. of Cincinnati
 BX—Wittenberg Univ.
 ΓA—Baldwin Wallace
 ΓK—Kent State Univ.
 IΤ—Bowling Green State
 ZK—Ohio Northern Univ.
 ΘZ—Univ. of Akron
 ΘΣ—College of Steubenville
 ΘT—Findlay College
 ΘΨ—Ashland College

President
 Linda Jackson
 Jacqueline Nahodil
 Wanda Wilbrich
 Dorothy Pedrick
 Phyllis Williams
 Sandra Berkebile
 Marcia Littell
 Jean Gordon
 Linda Barbuto
 Mary Virginia Gualtieri
 Mary Anzalone
 Janis Thompson

Chapter Address
 Hamilton Hall, Miami U., Oxford, Ohio 45056
 212 E. 15th Columbus, Ohio 43201
 2811 Swiss Chalet Crt., Cincinnati, Ohio 45220
 DZ House, 923 N. Fountain Ave., Springfield, Ohio 45504
 Findley Hall, Baldwin Wallace, Berea, Ohio 44017
 244 E. Main, Kent, Ohio 44240
 Delta Zeta House, BGSU, Bowling Green, Ohio 43402
 213B Lima Hall, Ada, Ohio 45810
 845 E. Waterloo Rd., Akron, Ohio 44304
 Box 494, Coll. of Steubenville, Steubenville, Ohio 43952
 AZ House, 323 Frazer St., Findlay Col., Findlay, Ohio 45840
 508 Samaritan, Ashland, Ohio 44805

Province President: MRS. J. R. ANDRISEK (NORMA), 119 Meadow Dr., Berea, Ohio 44017

Chapter
 Pittsburgh (East)—Mrs. Robert Nielsen, 2019 Holiday Park Dr., Pittsburgh, Pa. 15239
 Pittsburgh (North)—Mrs. Jos. Barr, 319 Frederick Ave., Sewickly, Pa. 15143
 Pittsburgh (South Hills)—Mrs. Charles Sullivan, 2418 Southvue, Bridgville, Pa. 15017
 State College—Mrs. John Zimmerman, 726 Glenn Rd., State College, Pa. 16801
 Wilmington, Del.—Mrs. Richard Fehnel, 3209 Kammerer Dr., Delwynn; Wilmington, Del. 19803

President and Address

College Chapter Director
 Mrs. Wm. H. Richardson (Nina)
 Mrs. Don Williams (Clara)
 Mrs. James Synder (Carol)
 Mrs. Virgil Fairchild (Mary)
 Miss Ann Kellerman

Address
 2208 Inwood Dr., Huntingdon, W.Va. 25701
 Weaver St., Athens, W.Va. 24712
 1232 Woodland Crescent, Fairmont, W.Va. 26554
 5200 Kanawha Ave. S.E., Charleston, W.Va. 25304
 7 College St., Glenville W.Va. 26351

Mrs. John A. Weeks (Ginny) Box 182 West Liberty, W.Va. 26074

Chapter
 Huntington, W.Va.

President and Address
 Mrs. Paul Browne, E. 3038 3rd Ave., Huntington, W.Va. 25702

College Chapter Director
 Mrs. H. A. Garber (Dot)
 Mrs. Edward Schmitt (Fannette)

Address
 324 Sycamore Rd., Lexington, Ky. 40502
 2414 Brighton Dr., Louisville, Ky. 40205

Chapter
 Louisville Ky.—Mrs. Lewis G. Chilton, 4327 Wingate Rd., Lexington, Ky. 40207

College Chapter Director
 Miss Mary Melvin
 Mrs. Thomas Kirkpatrick (Joy)
 Mrs. Richard Krisher (Jane)
 Mrs. Milton Ogden (Marty)
 Mrs. J. R. Andrišek (Norma)

Address
 516 S. Main St., Oxford, Ohio 45056
 5145 Holbrook Dr., Columbus, Ohio 43227
 8586 Hallridge Ct., Cincinnati, Ohio 45231
 537 Candace Dr., Springfield, Ohio 45504
 119 Meadow Dr., Berea, Ohio 44017
 2012 Westwood, Toledo, Ohio 43607
 R.R. 2, Ada, Ohio 45810
 2746 Elmwood Ave., Cuyahoga Falls, Ohio 44221
 Crestland, Mt. Pleasant, Ohio 43939
 1521 Tiffen Rd., Findlay, Ohio 45840
 1564 Wagner Ave., Lakewood, Ohio 44107

Province Vice-President:

Chapter
 Ada—Miss Evelyn Jenkins, 714 S. Johnson, Ada, Ohio 45810
 Akron—Mrs. James S. Murch, 1641 Moreview Dr., Copley, Ohio 44321
 Berea—Mrs. David E. Jones, 26259 Crange Rd., Olmsted Falls, O. 44138
 Canton Area—Mrs. William Hudson, 3741 Ashwood Dr. N.W., Canton, Ohio 44714
 Cincinnati—Mrs. Merlyn Heusinkveld, 8484 Fernwell Dr., Cincinnati, Ohio 45231
 Cleveland, Eastside—Mrs. Robert McCloud, 1071 Selwyn Rd., Cleveland, Ohio 44121
 Cleveland, Westside—Mrs. Loughner Davis, 17506 Franklin Blvd., Lakewood, Ohio 44107
 Columbus, Ohio—Mrs. Raymond Klingensmith, 2247 Woodstock Rd., Columbus, Ohio 43221
 Dayton, Ohio—Mrs. Bruce Oberlin, 859 Butternut Dr., Dayton, Ohio 45419
 Hamilton—Mrs. Walter M. Jackson, 116 Westbrook Dr., Hamilton 45013

State Membership Chairman: Ohio—Mrs. William B. Wilt, 2950 Langfield Dr., Columbus, Ohio 43209

Chapter
 Kent—Mrs. Harris Dante, 502 Dansel, Kent, Ohio 44240
 Marietta-Parkersburg—Mrs. John F. Swan, 113 Lincoln Rd., Marietta, Ohio 45750
 *Marietta—Mrs. Reiner Balzer, 2113 Linda Ave., Middletown, Ohio 45052
 *Oxford—Mrs. Robert Fryman, Morningsun Rd., Oxford, Ohio 45056
 *Portsmouth—Mrs. James P. Grimm, 4620 Scioto Trail, Portsmouth, Ohio 45662
 Springfield—Mrs. Irving D. Stahl, 2110 Park Rd., Springfield, Ohio 45504
 Toledo—Mrs. John Hogan, 4608 Wickford Drive, Sylvania, Ohio 43560
 Wooster—Mrs. Don L. Reynolds, 2910 Graustark Path, Wooster, Ohio 44619
 Youngstown—Mrs. Charles Miller, 5960 Stillson Pl., Youngstown, Ohio 44512

PROVINCE VI—Michigan

Chapter/School
 BP—Mich. State Univ.
 E2—Eastern Mich. Univ.
 E2—Wayne State Univ.
 EF—Univ. of Detroit
 B1—Albion College
 H1—Western Mich. Univ.
 I1—Central Mich. Univ.
 ZN—Ferris State College
 ZN—Northern Mich. Univ.

President
 Mary Roe
 Laurie Hilde
 Aileen Cronin
 Cara Knopes
 Christine Humphrey
 Barbara McKeand
 Cindy Charlebois
 Carolyn Thiele
 Cheryl Anderson

Chapter Address
 DZ House, 110 Oakhill, M.S.U., East Lansing, Mich. 48823
 823 Lowell St., Ypsilanti, Mich. 48197
 665 W. Warren, 28-B, Detroit, Mich. 48201
 17597 Stoepele, Detroit, Mich. 48221
 East Hall, Albion Col., Albion, Mich. 49224
 520 Harrison Hall, W.M.U., Kalamazoo, Mich. 49001
 233 Sloan, C.M.U., Mt. Pleasant, Mich. 48858
 106 Taggart Hall, Ferris St., Big Rapids, Mich. 49307
 308 Spooner Hall, N.M.U., Marquette, Mich. 49855

Province President: MRS. KENNETH BOLOGH (SUE), 13323 Averhill, Detroit, Mich. 48215

College Chapter Director

Address

Miss Diane Gabbine
 Miss Nan Shuttleworth
 Miss Margaret Weisenberger
 Mrs. David Koth (Sandra)
 Miss Barbara King
 Miss Helen Wild

2390 Jeanne St., Ann Arbor, Mich. 48104
 1211 Rademasher, Detroit, Mich. 48215
 W. Hall, Albion College, Albion, Mich.
 434 W. Bridge Ave., Plainwell, Mich. 49080
 1001 S. College, Mt. Pleasant, Mich. 48858
 611 Lilac, Big Rapids, Mich. 49307

Province Vice-President: MRS. LORETTA M. GILEWICZ, 473 Allard Rd., Grosse Pointe Farms, Mich.

Assistant Province Vice-President: MRS. HOWARD J. NOWKA (RUTH), 22700 Alexandria, Dearborn, Mich. 48124

Chapter
 Albion—Mrs. Edward Henderson, Route 1, Albion, Mich. 49224
 Battle Creek—Mrs. Dale Dittmer, 149 Homecrest, Battle Creek, Mich. 49017
 *Big Rapids Alumnae—Mrs. Robert Everin, 11 Colonial Arms Apt., Big Rapids, Mich. 49307
 Detroit—Mrs. Howard G. Nowka, 22700 Alexandrine, Dearborn, Mich. 48124
 Flint—Mrs. Earl Senninger, 802 Blanchard Ave., Flint, Mich. 48503
 Grand Rapids—Mrs. Roger Meyer 2231 Sylvan S.E., Grand Rapids, Mich. 49506

State Membership Chairman: Michigan—Mrs. Edward C. Wirth, 730 W. Wattle Rd., Bloomfield Hills Mich. 48013
 Asst. Michigan—Mrs. Frederick L. Lutze, 15520 Amherst, Birmingham, Mich. 48010

PROVINCE VII—Indiana

Chapter/School
 A—DePauw Univ.
 E—Ind. Univ.
 V—Franklin College
 FX—Ball State Univ.

President
 Verna Baughman
 Anita Junken
 Naomi Jane Singer
 Pamela Whitestone

Chapter Address
 DZ House, 411 Anderson, Greencastle Indiana 46135
 DZ House, 809 East Seventh, Bloomington, Ind. 47403
 Elsey Hall, Box 66, Franklin Col., Franklin, Ind. 46131
 Klipple Hall-Ball State Univ., Muncie, Ind. 47301

Province President: MRS. BERNARD WALDMAN (GLENNALOU), 54728 Merrifield Dr., Mishawaka, Ind. 46544

College Chapter Director
 Mrs. Ray H. French (Martha)
 Mrs. N. A. Fattu (Jeannette)
 Mrs. Max Fitzpatrick (Carol)
 Mrs. Allen Winters (Rita)

Address
 106 E. Seminary St., Greencastle, Ind. 46135
 921 Sheridan Rd., Bloomington, Ind. 47403
 RR 1, Whiteland, Ind. 46184
 515 No. Tillotson Ave., Muncie, Ind. 47304

Chapter
 Anderson—Mrs. Donald Simmons, 3213 Sherman Court, Anderson, Ind. 46014
 *Bloomington—Mrs. Wm. Chappell, 7039 Gourbey Dr., No. 8, Bloomington, Ind. 47401
 Columbus—Mrs. Robert Luckhardt, 1118 Pennsylvania St., Columbus, Ind. 47201
 Fort Wayne—Mrs. F. R. Reese, 8736 Maraville, Ft. Wayne, Ind. 46805
 Franklin—Mrs. Rolland Neese, 1131 Hillview Dr., Franklin, Ind. 46131
 Greencastle—Mrs. Robert Breese, 712 Dogwood Lane, Greencastle, Ind. 46135
 Indianapolis—Mrs. K. P. Potter, 7336 Lowe Dr., Indianapolis, Ind. 46226

State Membership Chairmen: Indiana—Mrs. John Thomas, 321 N. Irvington, Indianapolis, Ind. 46219

PROVINCE VIII—Wisconsin

Chapter/School
 T—Univ. of Wisconsin
 TQ—Carroll College
 EK—Wisconsin State, Whitewater
 EX—Univ. Wisconsin, Milwaukee

President
 Rita Fish
 Sue Howard
 Judi Rogge
 Vicki Hughes

Chapter Address
 DZ House, 142 Langdon, Madison, Wis. 53703
 135 S. East Ave., Waukesha, Wis. 53186
 604 W. Main St., Whitewater, Wis. 53190
 439 N. 49th St., Milwaukee, Wis. 53208

Co-Province President: MRS. TOM WEGNER (DOROTHY), 740 Carol St., Eau Claire, Wis. 54701

EQ—Wisconsin State, Eau Claire
 ZB—Stout State Univ.
 ZO—W.S.U., La Crosse
 ZX—Wis. State Univ., Stevens Point
 QA—St. Norbert College
 IE—Wisconsin State Univ., Oshkosh

Connie Winter
 Virginia Scholl
 Sharon Chitwood
 Maureen O'Connor
 Elaine Micheline
 Ann Morrison

2636 Keith St., Eau Claire, Wis. 54701
 608 N. 9th St., Menomonie, Wis. 54751
 Angell Hall, Rm. 427a, La Crosse, Wis. 54601
 104 Delzell Hall, W.S.U., Stevens Point, Wis. 54481
 301 M.M. McCormick Hall S.N.C. West DePere, Wis. 54178
 1226 Titan Court, W.S.U., Oshkosh, Wis. 54901

College Chapter Director
 Mrs. Nancy Periman
 Mrs. David O. Jones (Ora)
 Miss Mary Jo Rice

Address
 921 Lynn Dr., Waukesha Wis. 53186
 335 Graham St., Whitewater, Wis. 53190
 317 E. Plainfield Ave., Milwaukee, Wis. 53207

Mrs. Rita Mahan
 221 W. 3rd St., Menomonie, Wis. 54751

Mrs. Robert Lewis (Ruth)
 Mrs. Michael Wisneski
 Mrs. Kenneth J. Hammond (Dorothy)

112 Greenbriar Ave., Park Ridge, Stevens Point, Wis.
 1155 Cherry St., Green Bay, Wis. 54301
 4330 Winneconne Rd., Oshkosh, Wis. 54901

Chapter
 *Eau Claire—
 *Fox River Valley—Mrs. Gene Hockemeyer, 1712 E. Frances St., Appleton Wis. 54911
 *La Crosse, Wis.
 Madison—Mrs. Robert Korbitz, 6307 Eastgate Rd., Madison, Wis. 53716
 *Beloit-Janesville—Mrs. Lester Harlow, 805 Elmwood, Beloit, Wis. 53511

State Membership Chairman: Mrs. John Kellog, 8 Brokaw Place, Appleton, Wis. 54911

Province Vice-President:

Chapter
 *Menomonee Falls—Mrs. Robert J. Allen, 3500 Studio Ct., Brookfield, Wis. 53005
 Milwaukee—Mrs. Robert Haupt, 829 N. 58th St., Milwaukee, Wis. 53213
 Waukesha—Mrs. Arnold Harrits, 228 S. Charles St., Waukesha, Wis. 53186
 *Whitewater—Mrs. Jo Sager, 10942 Wildwood Lane, West Allis, Wis. 53214

President and Address

PROVINCE IX—Illinois

Chapter/School

AA—Northwestern Univ.
AB—Univ. of Illinois
FN—Eastern Illinois Univ.
FP—Northern Illinois Univ.

IG—Southern Illinois Univ.
EO—Western Illinois Univ.
ZA—Bradley Univ.
ΘΘ—De Paul Univ.

President

Natalie Krewitzky
Diane Moore
Mary Lynn Braun
Marti Kamschulte

Marcia Rodriguez
Carlene Krutmeier
Susan Conlan
Diane Rojas

Province President: Mrs. Dale Sargent (Sue), 2505 Hilltop Ct., Peoria, Illinois 61604

Chapter Address

DZ House, 717 University Pl., Evanston, Illinois 60201
DZ House, 710 W. Ohio, Urbana, Ill. 61801
DZ House, 848 Sixth, Charleston, Ill. 61920
DZ House, 1010 Blackhawk, De Kalb, Ill. 60115

103 Small Group Housing, Carbondale, Ill. 62901
410 W. Adams, Macomb, Ill. 61455
DZ House, 1514 W. Fredonia, Peoria, Ill. 61606
6221 W. Grand, Chicago, Ill. 60639

College Chapter Director

Mrs. Raymond F. Johnson (June)

Mrs. Don McKee (Carolyn)
Mrs. Robert Williams (Georgia)

Mrs. Thomas Schill (Elizabeth)

Mrs. James P. Lawrence (Louise)

Address

816 Madison St., Evanston, Ill. 60202

776 10th Ave., Charleston, Ill. 61920
RFD, Annie Glidden Rd., De Kalb Apts., De Kalb
Ill. 60115

1805 W. Freeman, Carbondale, Ill. 62901

2107 West 7th, Peoria, Ill. 61604

Province Vice-President:

Chapter

Alton-Wood River—Mrs. Ted Porter, 23 N. Circle Drive, East Alton, Ill.
Arlington Heights—Mrs. Warren Karlsen, 5135 S. School, Mt. Prospect, Ill. 60056
Aurora—Mrs. Roger Eichmeier, 425 Cobblestone, Aurora, Ill. 60506
Carbondale—Miss Kathryn Kimmel, 309 E. Main, Carbondale, Illinois, 62901
Chicago—Miss Dorothy Pergande, 5757 Sheridan Rd., Chicago, Ill. 60626
*Charleston—Mrs. Glenn Williams, 410 Cedar Dr., Charleston, Ill. 61920
*Decatur—Sue Curry Paston, 2288 E. North St., Decatur, Ill. 62521
North Suburban—Mrs. Theo. E. Briggs, 730 Clifton, Park Ridge, Ill. 60068
West Suburban—Mrs. James Wagner, 613 Lakeside Drive, Hinsdale, Ill. 60521
South Suburban—Miss Sandra Lee Hecim, 16768 Bulger Ave., Hazel Crest, Ill. 60429
*DeKalb-Sycamore—Mrs. S. L. Toppen, 1706 Margaret Lane, DeKalb, Ill. 60115

President and Address

State Membership Chairman: Illinois—Mrs. Wendell Swanson, 115 Kurlene Drive, Macomb, Ill. 61455

PROVINCE X—North—Minnesota, North Dakota and South Dakota

Province President: MRS. RANDALL JONES (PAT), 5015 Wentworth Ave., South, Minneapolis, Minn. 55419

Chapter/School

T—Univ. of North Dakota
ZT—Winona State College
ΘM—St. Cloud State College
ΘN—Moorhead State College
ΘH—Minot State College
IB—Dickinson State College

President

Irene Van Eeckhout
Patricia Fischbach
Mary Harris
Karen Koenning
Judy Bradley
Rita Blood

Chapter Address

DZ House, 2724 University Ave., Grand Forks, N.D. 58201
411 Lucas Hall, Winona, Minn. 55987
525 3rd Ave. So., St. Cloud, Minn. 56301
412 No. Eleventh, Moorhead, Minn. 56560
DZ House—725-9th Ave., Minot, N.Dakota, 58701
Woods Hall, Box 159, DSC, Dickinson, N. Dakota 58601

College Chapter Director

Mrs. Willis Peterson (Marlene)
Miss Kay Dunlay
Miss Louise Johnson

Mrs. David Morstad (Marilyn)
Mrs. Doris Reinke

Address

207 Division St., Grand Forks, N.Dak, 58201
351 W. Broadway, Winona, Minn. 55987
707 3rd Ave. So., St. Cloud, Minn. 56301

904 20th St., N.W., Minot, No. Dak. 58701
207 12th St., East, Dickinson, No.Dak. 58601

Province Vice-President: MRS. CHARLES A. TALLE (HELEN), R.R. 4, St. Croix Beach, Stillwater, Minn. 55082

Chapter

*Moorhead-Fargo—Miss Patricia Hillestad, 1115 N. 10th St., Fargo, N.D.
Grand Forks, N.D.—Miss Mary Ellen Reetz, 1117-25th Ave., S. Grand Forks, N.D. 58201
*Minot, N.D.—Mrs. David Morstad, 906 20th St., N.W., Minot, N. Dakota 58701

President and Address

State Membership Chairmen: Minnesota—Miss Dorothy Jones, 1001 E. 77th St., Minneapolis, Minn. 55423
North Dakota—Mrs. A. W. Cupler, 1728 9th St., South Fargo, N.D. 58101
South Dakota—Mrs. Richard E. Huffman, Jr., 1535 South State St., Aberdeen, S.D. 57401

PROVINCE X—South—Iowa

Chapter/School

I—State Univ. of Iowa
BK—Iowa State Univ.
rE—Drake Univ.
ΔM—Morningside College
ΔN—Parsons College
ΘA—Simpson College

President

Judith Mitchell
Diane Bowen
Karen Perkins
Fay Nelson
Mary Peterson
Vicki Poindexter

Chapter Address

DZ House, 322 N. Clinton, Iowa City, Iowa 52240
DZ House, 2138 Sunset Drive, Ames, Iowa 50012
DZ House, 3118 Cottage Grove, Des Moines, Iowa 50311
1500 Morningside, Sioux City, Iowa 51106
ΔZ Dorm #106 Parsons, Fairfield, Iowa 52556
DZ House, 710 N. Buxton, Indianola, Iowa 50125

College Chapter Director

Mrs. Steven P. Richardson (Kaye)
Mrs. Richard E. Horton (Sandy)
Mrs. Paul Nurczyk (Nancy)
Miss Beatrice Tift
Mrs. Harold V. Lamb (Charlotte)
Miss Clarice Orcutt

Address

729 Manor Dr., Iowa City, Iowa 52240
2119 Country Club Blvd., Ames, Iowa 50010
104 S.W. 52nd, Street, Des Moines, Iowa 50312
4001 Orleans, Sioux City, Iowa 51106
205 E. Burlington, Fairfield, Iowa 52556
1206 North "B" St., Indianola, Ia. 50125

Province Vice-President: MRS. MYRON E. JENSEN (JEAN), 4118 Maryland Pike, Des Moines, Iowa 50312

Chapter

Ames—Mrs. Carol Seikmeier, 723 9th St., Ames, Iowa 50010
Cedar Rapids, Iowa—Mrs. Robert Nechanicky, 4450 Midway Dr., N.W. Cedar Rapids 52405
Des Moines—Mrs. William Wheatcraft, 2206-70th St., Des Moines, Iowa 50322
Fairfield, Iowa—Mrs. David Marker, 305 W. Hempstad, Fairfield, Iowa 52556

President and Address

State Membership Chairmen: Mrs. Thomas Andritsch, 549 32nd St., West Des Moines, Iowa 50265

President and Address

Indianola—Mrs. Orrie Koehlmoos, 1211 Ann Parkway Indianola, Iowa 50125
Iowa City, Iowa—Mrs. Howard Nash, 1 Melrose Place, Iowa City, Iowa 52240
Sioux City, Iowa—Mrs. James E. Stachour, 3236 Lindenwood, Sioux City, Ia. 51104
Waterloo, Cedar Falls, Iowa—Mrs. Burdette Jones, 170 Berkshire Rd., Waterloo, Iowa 50701
Davenport, Bettendorf Iowa—See Quint Cities, Province IX

PROVINCE XI—Missouri

Chapter/School
 IT—Missouri Valley College
 ΔΣ—Northeast Missouri State
 ET—Central Mo. State
 EH—Harris Teach.
 EN—Southwest Missouri State
 EP—Northwest Missouri State
 EV—St. Louis Univ.
 ZP—William Jewell College

President
 Susan French
 Janet White
 La Nita Cable
 Donna Cowee
 Angie Pyle
 Christie Beal
 Suzanne Norton
 Marva Rapp

Province President: MRS. ROBERT H. JENKINS (Jo) 523 Grand Ave, Kansas City, Mo. 64106

Chapter Address
 122 Mac Donald Hall M.V.C., Marshall, Mo. 65340
 205 Ryle Hall, N.E. MSTC Kirksville, Mo. 63501
 ΔZ Wing D200 Panhellenic Hall, C.M.S.C., Warrensburg, Mo. 64093
 3967 Juniata Ave., St. Louis, Mo. 63123
 317 N. Burton, Springfield, Mo. 65802
 253 Roberta Hall, NWMSC, Maryville, Mo. 64468
 3601 Lindell Blvd., St. Louis, Mo. 63108
 Semple Hall, Wm. Jewell, Liberty, Mo. 64068

College Chapter Director
 Mrs. W. E. Morton (Christine)
 Dr. Ruth Towne
 Miss Fanita Terry
 Mrs. Lawson A. Weaver (Billie)
 Dr. Wanda Walker
 Mrs. Eugene Kaltenbronn (Verna)
 Mrs. J. Robt. Thomas (Connie)

Address
 417 East Rae, Marshall, Mo. 65340
 709 North Davis, Kirksville, Mo. 63501
 5540 Murdock, St. Louis, Mo. 63109
 1976 Cedarbrook, Springfield, Mo. 65802
 NWMSC, Maryville, Mo. 64468
 408 Sunnyslope, Dr., Ballwin, Mo. 63011
 1303 E. 66th St., No. Kansas City, Mo. 64118

Chapter
 Clay-Platte—Mrs. David L. Kelley, Rt. 27, Kansas City, Mo. 64152
 Kansas City—Mrs. Edward L. Landers, 9414 Craig Dr., Overland Park, Kan. 66212
 Kirksville—Mrs. Francis Walter, 1320 E. Highland, Kirksville, Mo. 63501
 Marshall—Mrs. G. C. Redford, Jr., RR 4, Marshall, Mo. 65340

State Membership Chairman: Missouri—Mrs. Robert S. Bagnell, Jr., Blackburn, Mo. 65321

PROVINCE XII—East—Kansas and Nebraska

Chapter/School
 Z—U. Nebraska
 Δ—Kansas State Univ.
 BT—Nebraska Wesleyan
 ΔΠ—Kansas State, Emporia
 ΔΩ—Fort Hays State
 ZΣ—Kearney State Univ.
 ΘH—Creighton Univ.

President
 Nancy Fritzler
 Bonnie Badger
 Lynne Robertson
 Terri Booker
 Cindi Holiday
 Patricia J. Morin
 Susan Tracy

Province President: MRS. RICHARD GREEN (DORIS), 1332 S. 51st St., Omaha, Nebraska 68106

Chapter Address
 600 No. 15th St., Lincoln, Nebr. 68508
 DZ House, 1803 Laramie, Manhattan, Kan. 66504
 DZ House, 2401 No. 51st, Lincoln, Nebr. 68504
 DZ House, 1005 Merchant, Emporia, Kans. 66802
 DZ House, 210 West Sixth, Hays, Kans. 67601
 Hi-Rise, K.S.U., Kearney, Nebr. 68847
 2615 California #629, Omaha, Nebr. 68131

College Chapter Director
 Mrs. Lionel Brown (Barbara)
 Mrs. Robert Dunn (Delores)
 Mrs. Glenn Gimple (Barbara)
 Mrs. Joel Moss (Nelle)
 Mrs. D. A. Richards (Sue)

Address
 3607 "B" St., Lincoln, Nebr. 68510
 2539 Rathbone Rd., Lincoln, Neb. 68502
 2060 Canterbury Rd., Emporia, Kan. 66801
 408 W. 4th, Hays, Kansas 67601
 4124 S. 13th, Omaha, Neb. 68107

Chapter
 Emporia Kansas—Mrs. Arnold Lister, 2020 E. 6th, Emporia, Kansas 66801
 Hays, Kan.—Mrs. Richard Malmberg, 118 Drum, Hays, Kan. 67601
 Johnson-Wyandotte—Mrs. Richard Furman 4017 W. 68th Terrace, Prairie Village, Kansas 66208
 County, Kan.—
 Kearney—Mrs. Rosemary (James) Slaughter, 202 E. 22nd, Kearney, Nebraska. 68874
 Lincoln, Neb.—Mrs. James D. Johnson, 6601 Sumner, Lincoln, Neb. 68506

State Membership Chairmen: Kansas—Mrs. William Wise, 1647 N.E. Parkway, Wichita, Kan. 67208
 Nebraska—Mrs. Oswald C. Mickelmann, 5411 Decatur St., Omaha, Neb. 68104

PROVINCE XII—West—Colorado, Wyoming and Utah

Chapter/School
 BΣ—Colo. State Univ.
 ΔΣ—Colo. St., Greeley
 EA—Western State

President
 Janis Yost
 Barbara DeCamp
 Carol Rook

Chapter Address
 DZ House, 801 S. Shields, Ft. Collins, Colo. 80521
 DZ House, 1717 10th Ave., Greeley, Colo. 80631
 105 Hermosa Hall, W.S.C., Gunnison, Colo. 81230

Province President:

College Chapter Director

Address

Chapter
 *Cheyenne, Wyo.—Mrs. Jack Varra, 1218 Foyer Ave., Cheyenne, Wyo. 82002
 Colorado Springs, Colo.—Mrs. Edward V. Fulton, 4103 Leipine, Colorado Springs, Colo. 80907
 Denver, Colo.—Mrs. V. Gene Spatz, 5460 E. Jewell, Denver, Colo. 80222
 Ft. Collins, Colo.—Mrs. Eugene Treichler, 5845 Mercury Dr., Ft. Collins, Colo. 80521

State Membership Chairmen: Colorado—Mrs. Leonard Snyder, 628 W. Prospect, Ft. Collins, Colo. 80521
 Wyoming—Miss Alice Halsted 446 1st West Parkway Sheridan, Wyoming
 Utah—Mrs. Franklin Shafer, R.F.D. 1, Box 3, Tooele, Utah 84074

PROVINCE XII—Southwest—Arizona, New Mexico

Chapter/School
 BI—Univ. of Arizona
 IΣ—New Mex. State Univ.
 ΔP—Highlands Univ.

President
 Carol Face
 Jeannie Blackmon
 Claire Holdenreid

Chapter Address
 SUPO 9920, Tucson, Ariz. 85704
 Box 973, University Park, New Mex. 88070
 203 Kennedy Hall South, Highlands Univ., Las Vegas, N. Mex. 87701

College Chapter Director
 Mrs. Betty Sutherland
 Mrs. Larry C. Abney

Address
 9341 E. 10th, Tucson, Arizona 85719
 616 Columbia Ave., Las Vegas, New Mex. 87701

Chapter
 Albuquerque, N.M.—Mrs. Larry Paradee, 301 Tennessee, S. E. Albuquerque, N.M. 87108
 El Paso, Texas—Mrs. Wm. Jones, 157 Riverside Dr., El Paso, Texas 79924
 Las Cruces, N.M.—Mrs. James F. Melton, Box 1451, University Park, N.M. 88070
 Phoenix, Ariz.—Mrs. Marion Smoker, 4011 E. Hazelwood, Phoenix, Ariz. 85018

State Membership Chairmen: Arizona—Mrs. Joseph Andriano, 1149 E. McMurray Blvd., Casa Grande, Arizona 85222
 New Mexico—Mrs. R. B. Jansen, 1204 W. Eleventh St., Roswell, N.M. 88201

Province Vice-President: MRS. A. W. McCARTY (CYNTHIA), 3102 E. Earl Dr., Phoenix, Arizona 85016

Chapter
 *Roswell, N.M.—Mrs. Van Wayne Witt, 1512 South Kentucky, Roswell, N.M. 8820
 Tucson, Arizona—Mrs. G. E. Wright, 5636 East 8th Tucson, Arizona 85711

PROVINCE XIII—Washington, Oregon, Montana, Idaho and Alaska**National Director:** MRS. LARRY FRYMIRE (GLORIA), 104 Moonlit Circle, Sacramento, Calif. 95831**Chapter/School**

K—Univ. Washington
X—Oregon State Univ.
Ω—Univ. of Oregon

President

Sandy Newman
Barbara Chapman

Chapter Address

DZ House, 4535 18th, N.E., Seattle, Wash. 98105
DZ House, 2311 Van Buren, Corvallis, Oregon 97330
DZ House, 1883 University, Eugene, Ore. 97403

College Chapter Director

Mrs. Orville Davis (Pat)
Mrs. Gordon Seese (Thea)
Mrs. Kenneth S. Wood (Peggy)

Address

7707 31st. N.E., Seattle, Washington 98115
R.R. #2, Box 14, Albany, Ore. 97321
1941 Potter St., Eugene, Ore., 97405

Nevada—Mrs. Morris Vitale, 1355 Granite Dr., Reno, Nev. 87502

South Nevada—Asst. Mrs. W. W. Southard, 311 Parkway East, Las Vegas, Nevada

Province Vice-President: MRS. PRESTON OREM (BETH), 7738 S. W. 51st Ave., Portland, Ore. 97219**Chapter**

Corvallis, Ore.—Mrs. Jerome Lemaster, 10 Edgewood Way, Corvallis, Oregon 97330
Eugene, Ore.—Mrs. S. Spence, 248 Sterling Drive, Eugene, Ore. 97402
*Klamath Falls, Ore.—Mrs. Fred Goeller, 234 S. Riverside, Klamath Falls, Ore. 97601
*Rogue Valley, Ore.—Mrs. James Johansson, 2133 Dellwood, Medford, Oregon 97502
*Olympia, Wash.—Mrs. Michael A. Wellander, 1610 S. Water, Olympia, Wash. 98502
Portland, Ore.—Mrs. John Wainright, 3535 Burnside, Portland, Ore. 97214
Salem, Ore.—Mrs. A. A. Friesen, 421 Taybin Rd. N.W., Salem, Oregon 97304
Oregon Council of ΔZ—Mrs. E. M. Litweller, 529 No. 21st, Corvallis, Oregon

President and Address

State Membership Chairmen: Washington—Mrs. James A. Cloore, 10412 Crestwood Dr. S., Seattle, Wash. 98178
Oregon—Mrs. Elyde C. Carlson, 3128 N.E. Bryce, Portland, Ore. 97212
Montana—Mrs. B. S. Everingham, Route 4, Rattlesnake, Missoula, Montana 59801
Idaho—Mrs. W. L. Lundquist, 1004 S. Logan, Moscow, Idaho 83843
Alaska—Mrs. Gerard Belanger, 1110 Sixth, Apt. 104, Anchorage, Alaska 99501

PROVINCE XIV—Northern California, Nevada and Hawaii**Province President:** MRS. PAUL O. TRY (BARBARA) 3339 Sueno Dr., San Jose, Calif. 95122**Chapter/School**

M—Univ. California—Berkeley
ΓΔ—San Jose State
ΔX—Chico State College
EE—Fresno State College
ZI—Humboldt State College

President

Carol Bergfeld
Linda Margaret Taylor
Carol Cooper
Bonnie Benck
Janeene Krueger

Chapter Address

DZ House, 2728 Durant, Berkeley, Calif. 94704
DZ House, 201 So. 11th, San Jose, Calif. 95114
746 Rancheria #4, Chico, Calif. 95926
DZ House, 5337 N. Millbrook, Fresno, Calif. 93726
1162 "C" St., Arcata, Calif. 95521

College Chapter Director

Mrs. Hollis Walker (Nellie)
Mrs. Jos. S. Crosby (Nancy)
Mrs. Roxanne Canfield
Mrs. Dick Palmquist (Cathy)
Mrs. George Hartford (Linda)

Address

1342 Carlotta Ave., Berkeley, Calif. 94703
705 Coyote St., Milpitas, Calif. 95035
1142 Wendy Way, Chico, Calif.
6039 N. Moroa Ave., Fresno, Calif. 93704
965 Union St., Arcata, Calif. 95521

Province Vice-President: MRS. BRYANT KING (DARLYNE), 840 Crossbrook Ct., Moraga, Calif.**Chapter**

Chico, Calif.—Co. Pres. Mrs. James Canfield, 1142 Wendy Way, Chico, Calif. 95926
Fresno, Calif.—Mrs. Sam Reid, 3124 E. Santa Ana, Fresno, Calif. 93726
Hayward Area, Calif.—Mrs. Malcolm Campbell, 14883 Western Ave., San Leandro, Calif. 94578
Honolulu, Hawaii—Mrs. Nicholas Ovio, 45-015 Ma'ulani St., Kaneohe, Hawaii 96944
Humboldt, Calif.—Mrs. Dayton Griffith, 1131 Austin Way, Arcata, Calif.
Marin County, Calif.—Mrs. Charles Hamilton, 75 Kensington Rd., San Anselmo, Calif. 94960
Monterey Peninsula, Calif.—Mrs. C. D. Starnes, Rt. #1, Box 360, Carmel, Calif. 43921
Mt. Diablo, Calif. Area—Mrs. Robert Ottesen, 10 Hetfield Place, Moraga, Calif. 94556

President and Address

State Membership Chairmen: Northern California—Mrs. Walter Burde, Route 3, Box 986 Carmel, Calif. 93921
Hawaii—Mrs. Albert K. Solomon, Jr., Apt. 208 Seaside Towers, 435 Seaside Ave., Honolulu, Hawaii 96815
Nevada—Mrs. Morris Vitale, 1355 Granite Dr., Reno, Nev. 87502 South Nevada—Asst. Mrs. W. W. Southard, 311 Parkway East, Las Vegas, Nevada

PROVINCE XV—Southern California**Province President:** MRS. WILLIAM ROUSE (DIANA) 3062 Salmon Dr., Los Alamitos, Calif. 90720**Chapter/School**

AX—Univ. of California at Los Angeles Karen Olson
FO—San Diego State College Pamela Jane Holloway
ΔA—Calif. State College at Long Beach Barbara Hetzel
ΘP—Cal. St., Los Angeles Janice Cull

President**Chapter Address**

DZ House, 824 Hilgard, Los Angeles, Calif., 90024
DZ House, 5074 College Ave., San Diego, Calif. 92115
148 Moline, Long Beach, Calif. 90804
510 S. Mound, So. Pasadena, Calif. 91030

College Chapter Director

Mrs. Richard Owen
Mrs. Wm. V. Happ (Donna)
Mrs. Richard Powell (Kathy)

Address

320 21st St., Manhattan Beach, Calif. 90266
8721 Hartzell Dr., Spring Valley, Calif. 92077
7829 Coolgrove, Downey, Calif. 90240

Province Vice-President: MRS. ROBERT L. DECKER (BARBARA), 615 Jambolaya, Anaheim, Calif. 92805**Chapter**

Bakersfield, Calif.—Mrs. Jon Crawford, 4000 Hindsdale, Bakersfield, Calif. 93306
Central San Fernando Valley, Calif.—Mrs. Lewis List, 18921 Dukas St., Northridge, Calif. 91324
Dz's by-the-sea—Mrs. Diane Richards, 960 Coronada Dr., Costa Mesa, Calif. 92626
Downey Area, Calif.—Mrs. Charles L. Youde, 10344 Triston Dr., Downey, Calif. 90241
Glendale-Burbank, Calif.—Mrs. R. H. Parsons, 4415 Alta Canyon, La Canada, Calif. 91011
Long Beach, Calif.—Mrs. Charles Paige, 2660 Marber, Long Beach, Calif. 90815
Los Angeles, Calif.—Miss Dallas Shenk, 147 S. New Hampshire, Los Angeles, Calif. 90004
Orange County, Calif.—Mrs. Ernest Templin, 706 Pueblo Pl., Fullerton, Calif. 92632

President and Address

State Membership Chairman: Southern California—Mrs. Raymond C. Plyley, 1270 Cordova Apt. #3, Pasadena, Calif. 91106

PROVINCE XVI—Oklahoma**Province President:** MRS. N. K. SCOTT (ELAINE), 1260 E. 30th St., Tulsa, Oklahoma 74114**Chapter/School**

AE—Okla. State Univ.
IT—Okla. City Univ.
ΔO—Northwestern State College
ΔP—Northeastern State College
EA—Southwestern State College
ET—Central State College
ZH—Southeastern State College

President

Pamela Sue Cheatham
Gwen Jones
Peggy Feist
Vicki Marshall
Jackie Dudgeon
Frances Brewer
Phyllis Rand

Chapter Address

DZ House, 224 S. Jefferson, Stillwater, Okla. 74074
2000 N.W. 28th, Okla. City, Okla. 73106
Women's Res. Hall, NSC, Alva, Okla. 73717
204 Northwest Hall, N.S. Tahlequah, Okla. 74464
224 West College (DZ House), Weatherford, Okla. 73096
DZ House, 1000 N. Chowning, Edmond, Okla. 73034
Sta. A Box 165, Durant, Okla. 74701

College Chapter Director

Miss Janice Spooner
Mrs. J. I. French (Mary Anne)
Miss Annette Parker
Mrs. Martha Markham
Miss Joanna Hibler
Mrs. Jim West (Linda)
Mrs. Ernest Sturch (Kathy)

Address

239 S. Hester, Stillwater, Okla. 74074
2322 N.W. 58th Circle, Oklahoma City, Okla. 73112
515 College St., Alva, Okla. 73717
226 N. Mission, Tahlequah, Okla. 74464
Southwestern State College, Weatherford, Okla. 73096
629 Reynolds Rd., Edmond, Okla. 73034
1222 N. 5th St., Durant, Okla. 74701

PROVINCE XVII—Texas Mrs. H. Lee Smith (Earlene), 5 Harbor Court, Seminole, Okla. 74868

Chapter
Alva—Mrs. Gladys Dotter, 807 1st St., Alva, Okla. 73717
Bartlesville—Mrs. Melvin Albright, 400 Lahoma, Bartlesville, Oklahoma 74003
Edmond—Mrs. Raymond Shaffer, 3132 N.W. 44th, Oklahoma City, Okla. 73112
Enid—Mrs. Pat Haines, 1921 E. Maple, Enid, Okla. 73701
*Norman—Mrs. Robert Dudley, 2322 Dakota, Norman, Oklahoma 73069

State Membership Chairman: Oklahoma—Mrs. Wendell Burke, 2212 Ann Arbor Ave., N., Oklahoma City, Okla. 73127

PROVINCE XVII—Texas

Chapter/School
AT—Univ. Texas
AW—Southern Methodist
TZ—Southwestern Univ.
AO—Univ. of Houston
AA—Lamar State
ZZ—West Texas State Univ.
ZO—Sam Houston State
ZY—Stephen F. Austin State
OO—Pan American State
IA—Southwest Texas State

President and Address
Janis Ratzlow
Milijon Smyth
Linda Cooper
Carol Guinn
Meredith Montagnet
Susie Hughes
Denice Pope
Margaret Miller
Karen Hatfield
Ellen Edom

Chapter Address
DZ House, 2315 Nueces, Austin, Tex. 78705
DZ House, 3034 Daniels, Dallas, Tex. 75205
Box 153, S.U. Sta., Georgetown, Tex. 78626
1731 Peer, Houston, Tex. 77004
DZ House, 4135 University, Beaumont, Tex. 77705
Box 1317, W.T.S., Canyon, Tex. 79015
DZ House, Ave. J, Huntsville, Tex. 77340
Box 498, SFA, Nacogdoches, Tex. 75962
Box 568, Pharr, Tex. 78577
Falls Hall, Box 272, San Marcos, Tex. 78666

Province President: MRS. WILLIAM B. CARR (BARBARA), 4716 Blaney Ave., Ft. Worth, Texas 76118

Province Vice-President: MRS. HARRY C. STALLWORTH (KATIE BLANCHE), 2601 Westover Rd., Austin, Texas 78703

Chapter
Amarillo—Mrs. S. S. Stephens, 3622 Royal Rd., Amarillo, Tex. 79107
Arlington—Mrs. Richard Moody, 105 W. Lavender Lane, Arlington, Tex. 76010
Austin—Mrs. John Gullatt, 4008 Highridge, Austin, Tex. 78731
Beaumont—Mrs. Pat Parker, 1897 Corley, Beaumont, Texas 77701
Canyon—Mrs. Jerry Puckett, 505 11th Ave., Canyon, Tex. 79015
Corpus Christi—Mrs. James I. Hailey, 4214 Dody, Corpus Christi, Tex. 78411
Dallas—Mrs. Bob L. Dickey, 13666 Pyramid, Dallas, Tex. 75234
Edinburg—McAllen—Mrs. Sam Fore, 1209 Whitewing, McAllen, Tex. 78501
El Paso—Mrs. William H. Jones, 157 Riverside Dr., El Paso, Texas 79907
Fort Worth—Mrs. D. P. Shore, 2200 Glenco Terrace, Fort Worth, Tex. 76110
Houston—Mrs. Harvey Holliman, 2202 Brooktree, Houston, Tex. 77008
San Antonio—Mrs. Gaylord Tauchstone, Jr. 8266 Campobello, San Antonio, Texas 78218

State Membership Chairman: Texas—Mrs. T. J. Bianchi, 5727 Ellsworth, Dallas, Texas 75206

PROVINCE XVIII—Louisiana

Chapter/School
Z—Louisiana State Univ.
AK—Univ. of Southwestern Louisiana
EB—Northwestern State
OE—La. Polytechnic Inst.
OK—L.S.U.-New Orleans

President and Address
Laura McQuaig
Sharon Lee
Cheryl Terry
Nelda Sisemore
Catherine Van Geffen

Chapter Address
AZ House, Box 17674, L.S.U., Baton Rouge, La. 70809
Box 241, U.S.L., Lafayette, La. 70501
Box 799, N.S.C., Natchitoches, La. 71457
Box 136, T.S., Ruston, La. 71271
1329 Sylvia, Metairie, La. 70005

Province President: MRS. FRANK W. QUIN, JR. (HANNAH-NELL), 6017 River Rd., Shreveport, La. 71105

Province Vice-President: MRS. FRED ELSING, JR., (LINDA), 1216 Wilshire Dr., Alexandria, La. 71303

Chapter
*Alexandria—Mrs. Fred Elsing, Jr., 1216 Wilshire Dr., Alexandria, La. 71303
Baton Rouge, La.—Mrs. Paul T. Barber, 2257 Cloverdale Ave., Baton Rouge, La. 70808
Lafayette, La.—Mrs. Richard Meaux, 318 Beverly Dr., Lafayette, La. 70501

State Membership Chairman: Louisiana—Mrs. Thomas Fenton, 2037 Steele Blvd., Baton Rouge, La. 70808
Asst. Louisiana—Mrs. W. M. Eberhart, 1513 Steele Blvd., Baton Rouge, La. 70808

PROVINCE XIX—Tennessee and Arkansas

Chapter
BA—Univ. of Tennessee
FI—Memphis State Univ.
AH—E. Tenn. State Univ.
EZ—State College of Ark.
EI—Henderson State

President and Address
Rosemary Hunter
Linda Payne
Pat Murden
Cathy Reed
Jackie Wilkins

Chapter Address
1531 Cumberland Ave. W., Knoxville, Tenn. 37916
2990 Mansdale Dr., Memphis, Tenn. 38127
Box 028, E.T.S.U., Johnson City, Tenn. 37602
Box 336, S.C.A., Conway, Ark. 72032
H.S.C., Box 1680, Arkadelphia, Ark. 71923

Province Vice-President: MRS. BOB L. WHITE (DE ANNA), 17 Cliftstone Apts., Kingsport, Tenn.

Chapter
Tri-Cities, Tenn.—Mrs. Jack Bright, 12129 Waverly Rd., Kingsport, 38128
Little Rock, Ark.—Mrs. Joe Mahan, 403 Nebling Rd., Little Rock, Ark.
Memphis, Tenn.—Mrs. Charles Bramlett, 3808 Cape Henry, Apt #8, Memphis, Tenn. 38100

State Membership Chairmen: Tennessee—Mrs. Bob L. White, 17 Cliftstone Apts., Kingsport, Tenn. 37664
Arkansas—Mrs. Robert M. Elliott 323 N. Jackson St., Little Rock, Ark. 72205

Chapter
Oklahoma City—Mrs. Harriett Murphy, 2513 N.W. 58th, Oklahoma City, Okla. 73112
Stillwater—Mrs. Maurice Roney, 417 Orchard Lane, Stillwater, Oklahoma 74074
Tulsa—Mrs. W. J. Crichton, 5518 E. 65th Place, Tulsa, Okla. 74135
Weatherford—Mrs. Carl Steiner, 1010 Indiana, Weatherford, Okla. 73096

College Chapter Director
Mrs. Forrest R. Mitchell (Paulette)
Mrs. Wm. Knight (Eleanor)
Mrs. Angus Springer (Frances)
Miss Scherrie Watson
Mrs. Ed Pearson (Kathleen)
Mrs. J. O. Parker (Lena)
Mrs. Earl G. Evans (Eunice)
Mrs. Blanche Phillips
Mrs. John Hook (Judy)

Address
2709 Pecos St., Austin, Tex. 78703
6935 Dahlart Lane, Dallas, Texas 75214
Box 249, S.U. Station, Georgetown, Texas 78626
P.O. Box 2446, Houston, Texas 77001
9245 Shepherd, Beaumont, Texas 77707
1601 8th Ave., Canyon, Texas 79015
1804 Ave. P, Huntsville, Texas 77340
301 E. Starr, Nacogdoches, Texas 75961
Rt. 2, Box 351 Edinburg, Texas 78539

Chapter
Huntsville—Mrs. Bennie Simons, 2516 Robinson Way, Huntsville, Texas 77340
Lubbock—Mrs. C. W. Barton, 3306 56th St., Lubbock, Texas 79413
*Midland—Mrs. Clinton H. Adams, 4608 Mercedes, Midland, Texas 79702
*Odessa—Mrs. Rose Kinser, 2515 Roper, Odessa, Texas 79762
Port Arthur—Miss Sarah Sims, 3716 Fifth St., Port Arthur, Texas 77640
*Rio Grande Valley—Mrs. E. B. Hinkly, Box 173, Port Isabel, Texas 78578
San Antonio—Mrs. Walter C. Dunlap, 8416 Laurelcreech Place, San Antonio, Tex. 78209
San Marcos—Miss Laura Whittenberg, Commons Hall SWTC, San Marcos, Tex. 78666
*Waco—Mrs. D. R. Zaggle, 5420 Lake Charles St., Waco, Texas 78212

College Chapter Director
Mrs. Van M. Woodward (Mattie)
Miss Dorothy Hines
Mrs. Ross M. Smith (Kay)

Address
311 Whitfield Dr., Natchitoches, La. 71457
615 S. Trenton, Ruston, La. 71270
2423 Pace Blvd., New Orleans, La. 70114

Chapter
Lake Charles, La.—Mrs. Leon R. Ford, MRH-BN241, Sulphur, La.
New Orleans, La.—Mrs. Gerald Clause, 4926 Sierra Madre, New Orleans, La. 70127
Shreveport, La.—Mrs. R. V. Taylor, 313 Wayne Dr., Shreveport, La. 71105
*Ruston, La.—Mrs. W. E. Baugh, Riser Rd., Ruston, La. 71270

College Chapter Director
Mrs. Hale Hamilton (Bonnie)
Mrs. J. E. Andrews (Jackie)
Dr. Constance Mynatt
Mrs. Jeff Farris (Patsy)
Mrs. Lucy Finley

Address
1512 Forrest Ave., Apt. 54, Knoxville, Tenn. 37916 BA
1207 Yorkshire Dr., Memphis, Tenn. 38128 FI
E.T.S.U., Box 2562, Johnson City, Tenn. 37602 AH
518 Donaghey, Conway, Ark. 72032 EE
Box 674, Arkadelphia, Ark. 71923 EI

Chapter
Knoxville, Tenn.—Miss Carol McSpadden, 2106 Fairmont Blvd., Knoxville, Tenn. 37917
Nashville, Tenn.—Miss Lloydia May, 47 Green Hills, Terrace Apts., Nashville, Tenn. 37215

PROVINCE XX—Virginia, North Carolina, Maryland and Washington, D.C.

Chapter/School
 AA—George Washington Univ.
 ET—Longwood College
 ZA—East Car. College
 ZE—Lenoir Rhyne College
 61—Western Car. College
 6P—Old Dominion
 6Q—Atlantic Christian

President
 Eleanor Dibala
 Judy Reese
 Carol Julian
 Katie Harris
 Becky Young
 Jacqueline L. Thomas
 Frances Gladson

Province President: MRS. LELAND TATE (MILDRED), 111 Cohee Rd., Blacksburg, Va. 24060

Chapter Address
 Washington, D.C. 20006
 Stubbs 226, Longwood Col., Farmville, Va. 23901
 AZ House, 801 E. 5th St., Greenville, N.C. 27835
 Box 645, L.R. Sta., Hickory, N.C. 28601
 Box 1881, W.C.C., Cullowhee, N.C. 28723
 1002 Rockbridge Ave. Apt. 147C, Norfolk, Va. 23508
 Box 5102 Atlantic Christian College, Wilson N.C. 27893

College Chapter Director
 Mrs. Jos. L. Ralston (Myra)
 Mrs. John C. Wilson (Jean)
 Mrs. K. E. Schmude (Helen)
 Mrs. R. T. Parkinson (Joan)
 Mrs. Carl Smith, Jr. (Dottie)

Address
 2909 Holly St., Alexandria, Va. 22305
 Box 367, Farmville, Va. 23901
 1219 Airlee Ave., Kinston, No. Car. 28501
 521 10th St., N.W., Hickory, No. Car. 28001
 Box 276, Cullowhee, N. Car. 28723

Mrs. Wm. Smith (Barbara)

503 W. Vance St., Apt. 4, Wilson, N.C. 27895

Chapter
 Baltimore, Md.—

President and Address

Province Vice-President: MRS. J. ALBERT BASS, JR., 5105 Liles Rd., Raleigh, No. Car. 27606

Chapter
 Richmond, Va.—Miss Carol Combs, Box 5, Grundy, Va. 24614
 Tidewater Area—Mrs. Thomas Robinson, 1134 Cambridge Crescent, Norfolk, Va. 23508
 Triangle Area—Mrs. J. Oldham, 219 Cheryl Ave., Durham, N. C. 27704
 Washington, D.C.—Miss Anne E. McGinnis, 5120 Bradley Blvd., Chevy Chase, Md. 20015

State Membership Chairmen: North Carolina—Mrs. Betsy Owens, 1824 Rivershore Rd., Elizabeth City, N. Carolina 27909

Virginia—Mrs. Barbara Wilson, 3921 Bolton St. NE, Roanoke, Va. 24012

Maryland—Mrs. Richard F. Free, 2512 Hillford Dr., Baltimore, Md. 21234

Washington, D.C.—Mrs. Margaret F. Dodderidge, The Appolline #313, 1330 New Hampshire Ave. N.W., Washington, D.C. 20036

PROVINCE XXI—West—Alabama and Mississippi

Province President:

Chapter/School
 AI—Univ. Alabama
 AII—Samford Univ.
 BE—Auburn Univ.
 EM—Univ. So. Miss.
 6B—Birmingham So.

President
 Lane Chambers
 Gail Daniel
 Becky Windham
 Beverly Gay Johnson
 Marilyn McGough

Chapter Address
 Box 2652, University, Ala. 35486
 WB-259-B Samford Univ., Birmingham, Ala. 35209
 207 Dobbs Hall, Auburn University, Auburn, Ala. 36830
 Southern Box 343, Hattiesburg, Miss. 39401
 Box 352, Birm. So. Col., Birmingham, Ala. 35204

College Chapter Director
 Mrs. Cecil M. Youngson (Angie)

Address
 Box 6174, University, Ala. 35486

Mrs. Thomas McMurtry

265 Chewalea Dr. Auburn Ala. 36830

Province Vice-President: MRS. HAYWOOD DEDMAN, 6806 Criner Rd., Huntsville, Ala. 35802

Chapter
 Auburn, Ala.—Mrs. Robert Williams, 546 Moore's Mill Rd., Auburn, Ala. 36830
 Birmingham, Ala.—Mrs. Robert Clelland, 519 Greensprings Ave., Birmingham, Ala. 35205
 Hattiesburg, Miss.—
 Huntsville, Ala.—Mrs. John T. Wheeler, 7404 Martha Drive, Huntsville, Ala. 35802

State Membership Chairmen: Alabama—Mrs. Douglas Guild, 11402 Maplecrest Dr., Huntsville, Ala. 35803
 Mississippi—Mrs. Douglas Guild, 11402 Maplecrest Dr., Huntsville, Ala. 35803

PROVINCE XXI—East—Georgia and South Carolina

Province President: MRS. V. H. MEATHERINGHAM (GERTRUDE), Route 1, Kennesaw, Ga. 30144

Chapter/School
 AO—Brenau College
 BA—Univ. South Carolina
 6A—Georgia State
 ZII—Univ. of Ga.

President
 Suzanne Granbery
 Brenda Smith
 Linda West
 Jo Anne Bruner

Chapter Address
 AZ House, Brenau Col., Gainesville, Ga. 30501
 Box 1252, U.S.C. Columbia, So. Car. 29205
 33 Gilmer St., S.E., Atlanta, Ga. 30303
 AZ House, 397 S. Milledge, Athens, Ga. 30601

College Chapter Director
 Mrs. Frank Hatcher (Martha)
 Mrs. Virginia Eagles DeTurk
 Mrs. Ray Barnes (Amaryllis)
 Miss Gail Henley

Address
 840 Memorial Dr., Gainesville, Ga. 30501
 Cornell Arms, Apt. 8D, Columbia, N. C. 29201
 2424 Glenwood Dr., N.E., Atlanta, Ga. 30305
 175 Baxter Dr., Athens, Ga. 30601

Province Vice-President: MRS. R. F. MARTIN (LOUISE), 451 Carriage Dr. N.E., Atlanta, Ga. 30328

Chapter
 *Athens, Ga.—Mrs. Rodney Baine, 690 Duncan Spring Rd., Athens, Ga. 30601
 Atlanta, Ga.—Mrs. R. F. Martin, 451 Carriage Dr., N.E. Atlanta, Ga. 30328
 Atlanta Council of AZ—Mrs. D. Carl Duval, 2880 Knellwood Trail, E. Point, Ga. 30044
 *Cobb County, Ga.—Mrs. Charles W. Miller, 656 Huntington Place S.E., Marietta, Ga. 30060
 *Lamplighters—Mrs. Harold Childrey, 3103 Woodrow Place, Lithonia, Ga. 30058
 Mrs. R. F. Martin, 451 Carriage Dr. NE, Atlanta, Ga. 30328

State Membership Chairmen: Georgia—Mrs. Charles W. Miller, 656 Huntington Pl. S.E., Marietta, Ga. 30060
 South Carolina—Mrs. Edward M. Boland, 371 Carolina Ave., N.W., Orangeburg, S.C. 29115

PROVINCE XXII—Florida

Province President: MRS. A. D. BURNS (BEVERLY), 511 Woodward Dr., Lakeland, Fla. 33803

Chapter/School
 AE—Florida State Univ.
 BM—Fla. Southern College
 BN—Univ. of Miami
 IA—Univ. of South Fla.

President
 Dian Warren
 Victoria Anne Bayly
 Mrs. Jane Jones
 Rose Marie Cali

Chapter Address
 AZ House, 749 W. Jefferson, Tallahassee, Fla. 32304
 Box 214, Fla. So. Col., Lakeland, Fla. 33802
 1245 Dickinson Dr., Apt. 15F, Coral Gables, Fla. 33146
 402 N. Howard Ave., Tampa, Fla. 33606

College Chapter Director
 Mrs. Harold R. Bazzell (Peggy)
 Mrs. R. B. Baldwin (Nita)
 Mrs. Thos. Sandridge (June)
 IA—Mrs. Charles Appleton

Address
 3212 Jim Lee Rd., Tallahassee, Fla. 32306
 727 Woodward Dr., Lakeland, Fla. 33803
 8040 S. W. 138th St., Miami, Fla. 33156
 4905 San Nicholas, Tampa, Fla. 33609

Province Vice-President: MISS ADA GRACE TEDDER, 828 E. Cumberland, Lakeland, Fla.

Chapter
 Boca Raton—Mrs. Ruth Jewell, 2143 Bethel Blvd., Boca Raton, Fla. 33432
 Clearwater—Mrs. Janet Munnis, 1607 Tuscola Rd., Clearwater, Fla. 33516
 Fort Lauderdale—Mrs. Fritz Richter, Jr., 4740 N.E. 28th Ave., Fort Lauderdale, Fla. 33308
 Gainesville—Mrs. Donald Oglesby, 1400 N.W. 39th St., Gainesville, Fla. 32601
 Jacksonville—Mrs. F. S. Frankland, 918 Overlook Dr., Jacksonville, Fla. 32211
 Miami—Miss Jane Everitt, 1481 Galiano St., Apt. #5, Coral Gables 33134
 Orlando-Winter Park—Miss Susan Kazaros, 722 S. Lake Adair Blvd., Orlando, Fla. 32804

President and Address

Chapter
 *Palm Beaches—Mrs. Woodrow A. Schad, 1628 Boardman Ave., West Palm Beach, Fla. 33407
 Pensacola—Miss Myrtle—Lois Bailey, 1201 E. Gadsden St., Ap. 202, Pensacola, Fla.
 St. Petersburg—Mrs. Frederic Tuttle, 657-1st St. N.E., St. Petersburg, Fla. 33701
 Sarasota-Bradenton—Mrs. J. E. Coleman, 2630 Colony Terrace, Sarasota, Fla. 33579
 Tallahassee—Mrs. Jack D. Ingram, 1211 Walton Dr., Tallahassee, 32303
 Tampa—Mrs. C. Delaney (Elizabeth), Rt. 2, Box 1600, Pepper Tree Lane, Lutz, Fla. 33549

Your Official Jeweler

BURR, PATTERSON & AULD COMPANY

2301 Sixteenth Street

Detroit, Michigan 48216

Gift Parade Catalogue free on request.

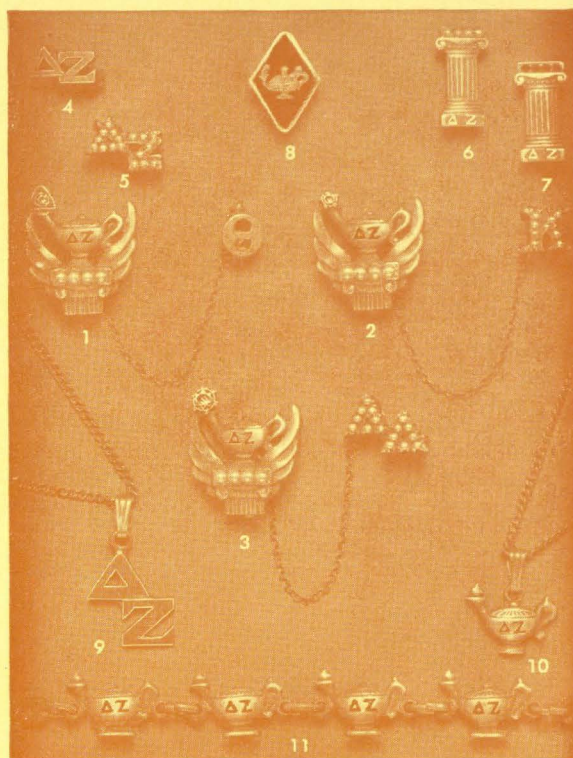
STANDARD BADGES

When ordering, please use the official order form and forward same to the Executive Secretary for her approval. Your sorority requires this.

1. Pearl and One Zircon, Set Flush\$14.50
2. Pearls and One Zircon, Set Tiffany 14.50
3. Pearls and One .10 Diamond, Set Tiffany 70.00
- Pearls and One .05 Diamond, Set Tiffany 40.00
- Pearls and One .04 Diamond, Set Tiffany 35.00
- Pearls and One .03 Diamond, Set Tiffany 32.00
- Pearls and One .015 Diamond, Set Tiffany ... 26.00
4. Recognition pin, gold-filled 1.50
- 10K gold 2.50
5. Recognition pin, crown set pearl 11.50
6. Mother's pin, with pearls 4.50
7. Mother's pin, plain 3.25
8. Pledge pin 1.25

GUARD PINS

	Single Letter	Double Letter
Plain	\$3.00	\$ 4.75
Crown set pearl	8.50	15.50
Close set pearl	6.00	10.25
Be sure to mention the name of your chapter when ordering a guard.		
9. Monogram Necklace, 10K drop on an 18" gold-filled neck chain		5.00
10. Lamp Necklace, 18" neck chain, gold-filled ..		4.00
11. Lamp Bracelet, gold-filled		7.25



State, County, and Municipal sales or use taxes must be added to prices, wherever such taxes are in effect.

Official DELTA ZETA BLAZERS FEATURING

The Delta Zeta Coat-of-Arms Woven Directly into the Blazer Pocket
Start Your Chapter Blazer Tradition To-Day!

Write for full information including official color swatches, prices
and order blanks.

ROBERT ROLLINS BLAZERS, INC.

Department DZ, 242 Park Avenue South

New York, New York 10003

RETURN REQUESTED

Second class postage paid
at Menasha, Wisconsin

“One of the most beautiful of all things is a beautiful lamp. Nothing in the world, save it be music, can so soothe and set a-dreaming the mood of man. The past and all the present and some of the future are encompassed in its soft persuasive glow. It is the symbol of love, of home, of wasteful vagrant fancy, of all the hopes and despairs of man’s life on earth. God made the sun, the moon and stars, but man, His child, out of necessity made for himself the lamplight as a beacon and haven for the innermost secrets of his heart of hearts.”

—‘Autobiography of Attitude’

George Jean Nathan

NATIONAL
LIBRARY BINDERY
COMPANY
OF INDIANA, INC.
246 SOUTH
MERIDIAN STREET
INDIANAPOLIS