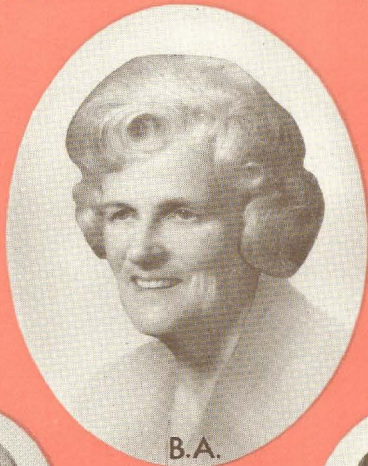


# *THE LAMP*

of DELTA ZETA



THIRD  
QUARTER  
1966

To the Editor:

At a time when fraternities and sororities are menaced by those who feel "everyone deserves to be included in everything," we should all do a bit of honest soul-searching to be sure we, by our actions, are behaving in the best possible way to help preserve our sorority and its aims.

During rushing, it is necessary to find and pledge girls who are interested, active and giving. Girls who are strictly ornamental, who have no compunction to do their share and to help their group to prosper and grow, have no place in Delta Zeta. And chapters concerned only with the social aspects of college will soon find their appeal to truly worthwhile prospective members greatly diminished. In the current preoccupation of college students to protest, sit-in, and picket, such a shallow reason for its existence can only weaken a group. Giving, and service, and actions, not just words, thus are extremely important for us in this day.

This is not to undervalue the learning of grace, poise, and social adeptness, for these hold us in special repute all our lives. To be useful and gracious women we must learn and practice these skills as we grow. Being a lady is surely one of the finest things one can be. And the social life of a sorority can indeed develop this in us all.

Nor should our awareness and interest in our sorority end with graduation. Without active and caring alumnae backing up the college chapters, they would either have an extremely difficult task (i.e. to exist and grow) or else would quietly fold. Too few of us during college recognized or appreciated the varied things our alums did for us.

It is therefore, most essential for Delta Zetas to be responsible and to continue as active members of the sorority as alumnae. Almost every alumnae chapter carries many names on its rolls of girls who have resigned their responsibility and "never darken the door" of the meetings or pay their dues. "Let George Do It" is too often prevalent feeling of alumnae or else the non-participants complain about the "clique" running the group. If each did his share, there would be no clique.

And we all are guilty of this, either by not speaking up and voicing our feelings, or by agreeing vocally when we don't really agree, or by standing aside and allowing others to do things to the group or to individuals within the group which we don't approve. There is no place in a sorority for back-biting, personal animosity, jealousy, or procrastination and the sooner we all face up to our responsibility the stronger Delta Zeta and the fraternity system will be.

We have only ourselves to blame if we do nothing to enrich the sorority and our communities in which we live. The statement is very true that "A chain is only as strong as its weakest link." What kind of a link are you?

Joan Boesch Knapp, Tau '54

*The Editor felt that this letter should be shared with her sisters.  
Is there a message here for you?*



# THE LAMP of Delta Zeta

Office of Publication, George Banta Co., Inc., Curtis Reed Plaza, Menasha, Wis. 54952

MARY KAY G. MOON, *Editor*, Marq. '57

*Photo Editor:* ALICE HOCKEMEYER, Z B

- 3 Our New President
- 5 Convention Moments
- 20 Getting to Know You
- 24 Convention Awards
- 30 Triple Tribute
- 32 Grace Mason Lundy Winners
- 33 Florence Hood Miner Winners
- 36 Library Dedication
- 38 New Chapters
- 50 Delta Zeta Leadership
- 52 State Days
- 54 "Romance of Riverboat Days"
- 56 Directory

THE LAMP OF DELTA ZETA, official magazine of the sorority, is published Quarterly by George Banta Company, Inc., official printers to the sorority. \$2.00 per year. Life subscription \$25.00. Printed in U.S.A. Second class postage paid at Menasha, Wisconsin. Acceptance for mailing at special rate of postage provided for in section 1103, Act of October 3, 1917, authorized September 26, 1918.

Copyright 1966 by Delta Zeta Sorority

RETURN REQUESTED

Delta Zeta Sorority, 3561 N. Pennsylvania St., Indianapolis, Indiana 46205

**Attention All Chapter Lamp Editors:**

Send all material for publication to Mrs. Edward Moon, 349 Lopas St., Menasha, Wis. 54952; all changes of address and advertising information to Miss Irene C. Boughton, 3561 N. Pennsylvania St., Indianapolis 5, Indiana. Deadline for Third Quarter issue is June 1, issue will appear in late August. Deadline for Fourth Quarter issue is Sept. 1, issue will appear in late November. Deadline for First Quarter issue is Dec. 1, issue will appear in late March. Deadline for Second Quarter issue is March 1, issue will appear in May.

... *On the Cover*

Delta Zeta's picture of leadership.

Front cover portrays our Executive Council:

- B. A.—Betty Heusch Agler—National President  
G. M.—Gwen Moss McKeeman—Vice-President Alumnae  
D. R.—Doris Ellingson Riede—Vice-President College Program  
M. B.—Marjorie Doyle Bergman—Vice-President Membership  
J. S.—Jean Ericsson Schlosstein—Secretary-Treasurer  
B. L.—Betsy Bradley Leach—National Panhellenic Conference Delegate

The Directors are featured on the back cover:

- D. B.—Dorothy Varley Breit-  
weiser  
D. S.—Doris Pike Silverthorn  
D. C.—Dee Ann Stephens Connor  
E. D.—Elizabeth Baker Deveraux  
L. F.—Lisbeth Innis Francis  
G. F.—Gloria MacNeven Frymire  
K. H.—Kathryn Doub Hinman  
M. R.—Mary Lou Ragel Vine-  
yard  
V. W.—Violet Sharratt Whitfield

It will be a pleasure to more formally introduce the council in future issues of THE LAMP.



## *Founders' Day Proclamation*

OCTOBER 24, Founders' Day, is a time when the hearts of all Delta Zetas respond to two themes: gratitude for what the Founders and earlier members have done, and gratitude for an opportunity to make our own contribution to an even greater Delta Zeta.

No better words could be chosen to express our pattern for the future than those of Dr. F. Brengle McIntosh as he challenged the 1966 Delta Zeta Convention:

**"EXCELLENCE IS THE ORDER OF THE DAY:  
MEDIOCRITY IS NOT GOOD ENOUGH."**

The words may be different, but these are exactly the principles of our Founders in planning Delta Zeta.

Delta Zeta will need all your devotion, your prayers and your service, right where you are, to reach this excellence. Simple as it may seem, I believe the surest means for assuring our future, for justifying our existence, and for strengthening us, is Friendship . . . with all that the word implies.

Keep this thought in your heart, and on your lips . . . Delta Zeta is Friendship, for Always, and Forever.

Given under my hand and seal this twenty-sixth day of July, in the Year of our Lord, nineteen hundred and sixty-six, and of our sorority the sixty-fourth.

## Introducing Our President: Betty Agler

The American tradition is that if the President of a Big Business has arrived at the helm from an office-boy start, the organization is satisfied and anticipates real understanding from its management: "he knows what it's all about."

In Betty Agler, Delta Zeta has chosen just such an experienced, mindful leader. Growing up in Columbus, Ohio in a sorority environment, she made the University of Cincinnati, rather than hometown Ohio State, her Alma Mater; Delta Zeta, rather than her mother's K K, her sorority, and from then on, Delta Zeta has been a major interest among the many which have made hers a life of varied services and associations.

At Xi Chapter, Betty was president in both Junior and Senior years, working under the able direction of CCD Margaret Huenefeld Pease, another outstanding Xi member (she was later both LAMP Editor and National President). As a senior, Betty added presidency of Mortarboard to her responsibilities.

A year's residence in the chapterhouse at Alpha Beta, pursuing advanced study, gave her a new understanding of what "a big-house campus" is like.

Interestingly enough, her first professional work was not in her majoring field of Commercial Art, but in a service organization, the National Red Cross, and this spirit of service and of great interest in "people activities" has been a leading motif in all her progressive work.

In the Columbus Alumnae Chapter there was association with Founder Mary Collins Galbraith, with Amanda Thomas and Atema O'Brien Kirven, stalwarts of Delta Zeta in her growing years. From presidency of the alumnae chapter Betty advanced, through State Membership Chairman, to Province President, and under her guidance the Province-State of Ohio increased both in number and achievements of its chapters. During these years Betty had married, acquired a son, Clell, a daughter, Linda, and served her stint in PTA's, Boards of Education, Girl Scouts, and all the circle of duties a modern mother knows.

Election to National Council as Director of Philanthropies, in 1958, brought also a Directorship in Ohio Hearing and Speech Center, while the accustomed role of financial adviser to Theta chapter was part of her schedule through a major remodelling job on the chapter house.

In 1960, Convention utilized Betty's special gift for working with collegiate groups by making her Director of Membership, where she served with distinction for two terms. In this position she developed a special talent, a unique skill as a chapter colonizer. Through her ability to establish fine understandings with alumnae, with college administrators and with college girls, we have been fortunate to acquire some of our excellent new chapters: at Lock Haven State College, Edinboro State College, The College of Steubenville, Glenville State College, Findlay College, Ashland College, St. Cloud State College (with Doris Riede), Pan American State College, and Atlantic Christian College.

A warmth of personality, a zest for enjoying the things people do in groups, an honest respect for the hopes and plans of her associates, an unerring appreciation for the fineness of talent and ideals wherever met, a willingness to give unstinting cooperation, time and thought, to whatever receives her allegiance . . . these will be the trademarks of our new president, to the great joy of all the friendships in which she shares. This will include, since 1964, the many many mothers of Delta Zetas in or out of organized clubs, for Betty's daughter Linda is a member of Theta Chapter and busy trying to keep up with her accomplished mother.

When Xi Chapter proudly hangs the beautiful and symbolic President's Plaque on its walls this fall, for "our" Betty, it will know too that every other chapter, every member, is proudly claiming her; happy to share the privilege of sharing the exciting quest ahead . . . for new goals to achieve, new records to excel, under the leadership of every Delta Zeta's Betty Agler.

GRACE M. LUNDY



## *The Light of a Flame*

HOW CAN ONE MEASURE THE LIGHT OF A FLAME?

BY WARMTH, INTENSITY, OR THE LENGTH OF THE FLAME ITSELF?

HOW CAN ONE MEASURE THAT DEPTH OF FEELING, THAT TREASURE FOR LIFE  
THAT IS BROUGHT TO A GIRL AS THE GOLDEN PIN OF DELTA ZETA IS FIRST  
PLACED ABOVE HER HEART?

THE LOVELIEST PIN IN THE WORLD SHINES ONLY BECAUSE THE HEART BELOW  
HAS CAUGHT THAT MAGIC.

ALL THE OUTSIDE PROMPTINGS CAN DO LITTLE FOR A LACK-LUSTER CHAPTER,  
BUT one GIRL, WITH THAT SPECIAL FLAME ALIGHT,  
CAN MAKE THE DIFFERENCE.



# CONVENTION MOMENTS

a Delta Zeta  
Convention is a  
series of moments  
bound together in  
Sorority ideals,  
individual thought,  
ceremony, and  
a certain amount  
of excitement. It  
is a conglomeration  
of like purposes,  
similar problems,  
unified aims,  
difficult decisions,  
and enlightening discussions.  
Convention is not  
so much a certain  
place or specific  
year as it is  
a timeless experience.  
It is moments of beauty,  
of joy, of satisfaction;  
and each moment is,  
in itself, part of the  
meaning of Convention. . . .





Traveling on the water . . .

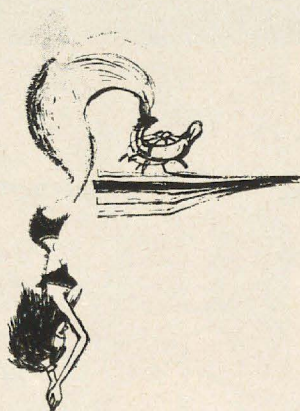


It is the excitement of checking in . . .





Getting new ideas for programs.



Convention is the warmth of poolside meetings.



The declaration  
of purpose  
in ever  
memorable words . . .  
“Excellence  
is the order  
of the day  
mediocrity  
is not good enough”



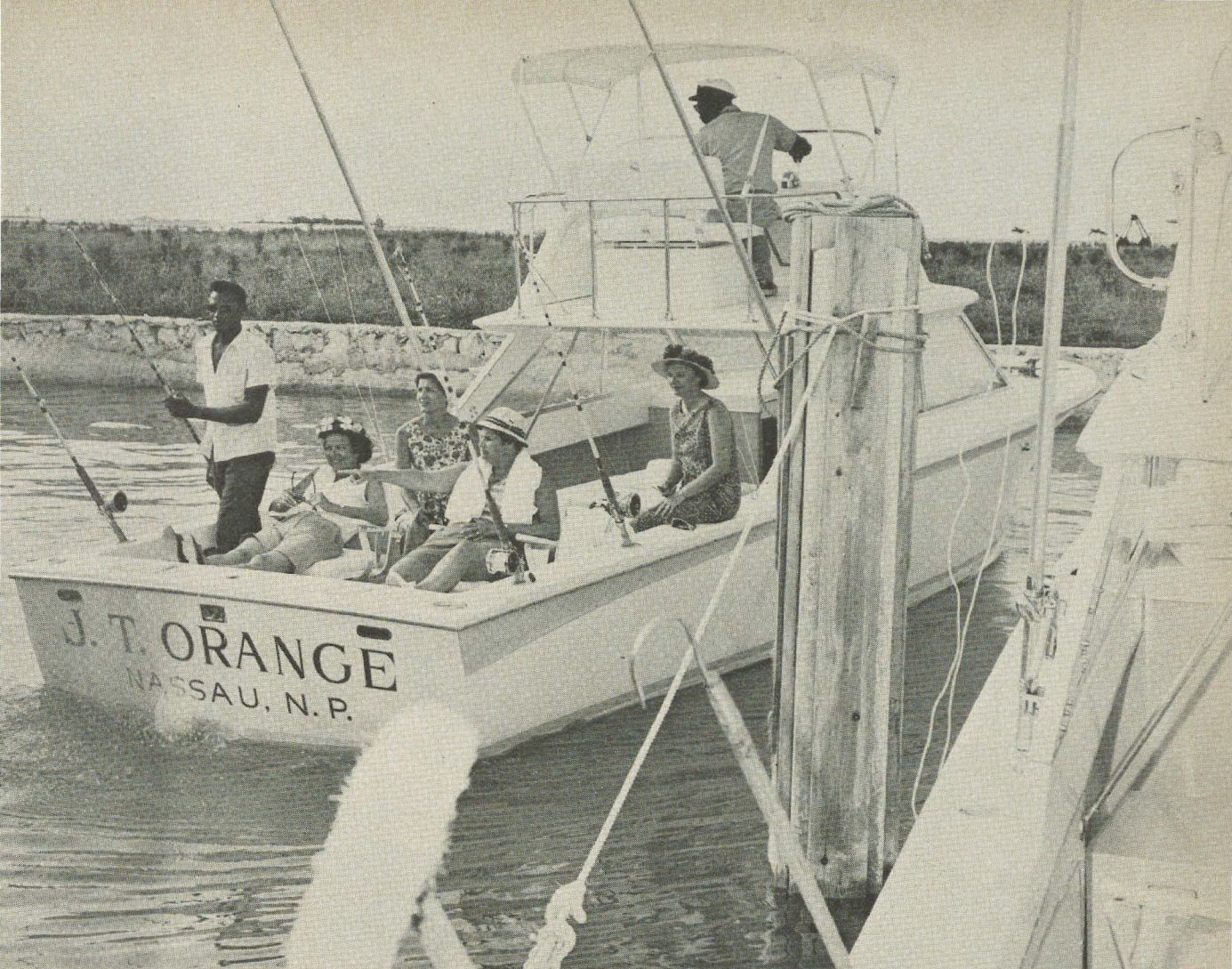
It is four Delta Zetas enjoying the Grand Bahamas



and six hundred women unanimous in song at Stunt night.



Convention is our new Executive Council



a change of scenery . . .

seeing how others do it . . .





starting a new tradition . . .

styles of  
convention . . .



being a part of our convention traditions . . .

Convention is  
the  
Fountain of Youth



A sudden  
burst of  
delight

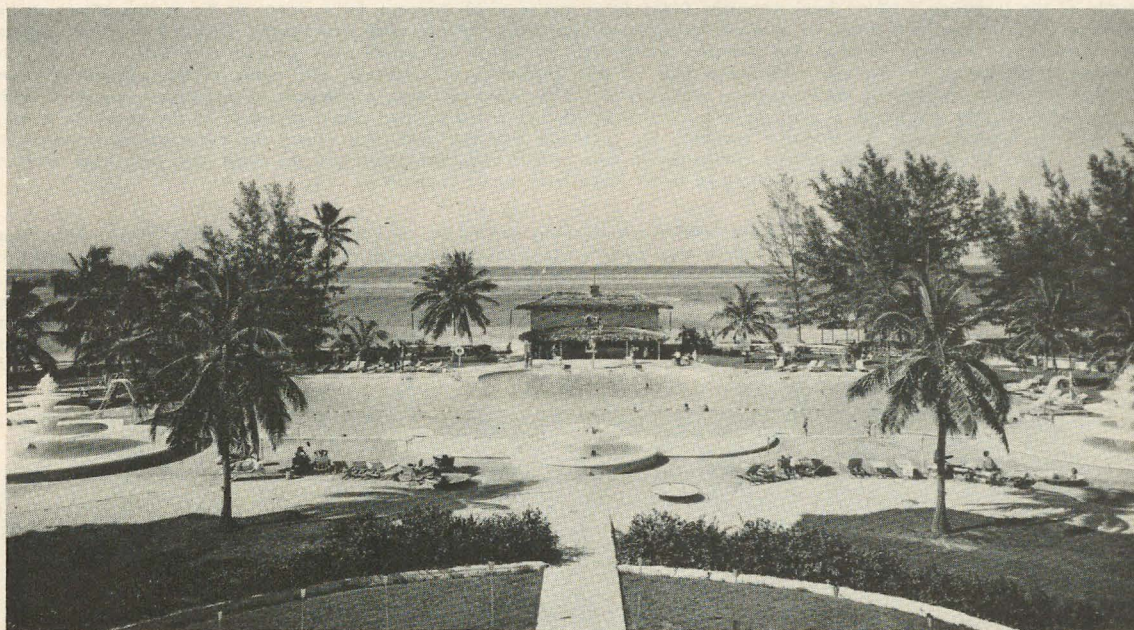


A proud smile . . .





rewards for service . . .



All too soon Convention is a last glimpse  
of a new found friend. It is moments shared in  
mutual understanding, common goals, and oneness of purpose.  
They are enriching moments; some are small,  
some have the qualities of greatness.  
They are moments that live in achievement,  
in the furthering of aims; and they live  
in the quiet corners of memory  
as the meaning of Convention.



### Getting To Know You Is a Convention in the Bahamas

*Getting To Know You is arriving at Convention!* This 29th Biennial may go down in the annals of our sorority as the "Battle of the Baggage." Never have so many Delta Zetas lost so much luggage for so long. At the airline office, at the concourse gate, at the boat dock, we queued for seats, waited for flight calls that never came, boarded anyway, landed hot, harried and hungry. Through the customs—answering questions but nicely—we poured onto this tiny isle, this paradise small scale. We brought with us a few intrepid husbands and fathers, and some pretty, patient children prepared to amuse themselves while mommy went about the business of being a delegate. If our luggage arrived with us, we changed into our finest. If not, we wore travelling clothes and (laughed about it) (most of the time), to humor our National Council. After the opening banquet, the receiving line stretched long across the patio as we lingered to speak to, touch the hand of the officers, suddenly become real, living breathing (and we must say, beautiful) women with warm smiles, endearing gestures. *Getting To Know You is arriving at Convention.*

*Getting To Know You is getting a job done.* And we had a big one to do. First the Roll Call, reports, resolutions. Then we attacked the constitution, grappled with it line by line, considered, corrected, completed and—where!—adopted it unanimously. We swarmed about this great resort, commandeering every room—dining room for displays, auditorium for convention meetings, night club for workshop, sessions in every nook and cranny. We talked about everything from the Powers' capsule beauty course to establishing house corporations. We explored for ideas on scholarship rush, pledge training, standards, public relations. We hurried from meeting to meal to workshop to fireside to bed (late) protected always from instant deluge by frequent tropical rains, surrounded always by the lush foliage studded with hibiscus and plumbria blossoms. We worked hard, but *happiness is getting the job done!*





Province Presidents—Front row, left to right: Dorothy Wegner, Liz Devereaux, Hannah Nell Quin, Jo Alseth, Elaine Scott, Katey Sandy, Francis Nicol, Jean Williams, Mae Collins. Back row: Joy Wheeler, Sylvia Dailey, Vera Roy, Juanita Johnson, Glenna Lou Waldman, Gertrude Meatheringham, Norma Andrisek, Pat Jones, Betsy Spoelstra.

## Getting to Know You is hearing what you say.

"Ladies, this period of trying times is hard. If the time comes when we have our victory, we can then rejoice and get back to those things which made us strong fraternal organizations and for which we were founded. But if the time comes, God forbid, when the rights of Delta Zeta to operate as a voluntary organization under the constitution of the United States are denied, then the whole United States will have forgotten those laws and principles for which our forefathers fought so valiantly. I, for one, do not believe . . . that this can happen."

Evelyn Costello

"The international Olympic motto is written in Greek. We of the modern age realize that the Greeks are not the only people in the world. We recognize two groups—the Greeks and the Independents. We are desirous of having everybody understand our Delta Zeta motto. We spell ours out in English—HIGHER, STRONGER, GREATER."

Augusta Kelleway



Province Vice-Presidents: Karen Wake, Sandy Bass, Beth Orem, Lois Concilman, Louise Martin, Sarah Jane Houston, Clarice Gardner, Carlene Smith, Helen Talle, Janet Smebok, Cynthia McCarty, Katie Blanche Stallworth, Doris Silverthorn, Sheena Johnston, Katye Hinman, Darlyne King, Judith Le Massena, Marion Kurner.



Top row, left to right: Norma Andrieseck, P.P. Ohio; Marion Criest, President Beta Chi; Linda Agler, Theta chapter; Ellen Martin, President Theta chapter; Fran Reed, President Theta Zeta. Front row, left to right: Ruth Bitner, President Theta Tau; Marilyn Petering, President Xi Chapter; Suzanne Brown, President Gamma Alpha; Lynn Rogers, President Alpha Chapter; Andrea Getzloff, President Gamma Kappa. The initiating team.

### Getting to Know You is praying with your sisters.

"O God, Lord of all power and might, Preserver of all thy creatures; keep us this day in health of body and soundness of mind, in purity of heart and cheerfulness of spirit, in contentment with our lot and charity with our neighbor; and further all our lawful undertakings with thy blessing. In our labor, strengthen us; in our pleasure purify us; in our difficulties direct us; in our perils defend us; in our troubles comfort us; and supply all our needs, according to the riches of thy grace in Christ Jesus our Lord. Amen"



Initiates at Bahamas Convention, left to right: Jane Durbin, Kay Birney, West Liberty State; Linda Gregg, Kathlyn Johnson, U. of Arizona; Geraldine Otremba, Janet Pampinella, St. John's University.

*Getting to know You is singing and stunts. Singing and dancing and a hootennany band and the joy of raising our laughter to the roof. What talent we have—Original lyrics, original songs, new words for old tunes—"Get Me To The Moon on Time", a winner and "The Song of Evelyn Costello" And "all these wonderful things in Delta Zeta that we live to love—Sure and we "Saw the Light" with guitar strumming Synda Taylor from Texas and her gang to lead us—out by the pool, along the walkway, and this final triumphant smash hit at Stunt Night after the Luau. (The Luau had been rained into the dining room but nothing dampened the enthusiasm.) Do you know how to dance the *Limbo*? Some of us learned!) *Happiness is singing and stunts.**



*Getting to know You is seeing the light* of Delta Zeta rekindled with the election and installation of new officers who will carry on our work for the biennium to come. Every convention has its peculiar problems—always too many things to do and too little time—and programs that run late and photographers that pop lights. But always there is the fun of discovering new friends, the persistent joy of meeting you and the thrill of finding it all the same though each time it is also different. Here on this foreign soil, we brought Delta Zeta and transplanted her temporarily in this tropic clime and she flourished. The biggest convention yet, the largest logistics problems ever—but still the best convention! And why not? We are Delta Zetas and nothing daunts us—not even mountains of lost baggage. *Getting to Know You and Like You Is Seeing the Light!*

by ELEANOR CORTEN





## Award



The Arlene Davis Award goes to the outstanding girl intending to make a career in aviation. This year's recipient is Sammaye Jo May—Delta Omega—Fort Hays.

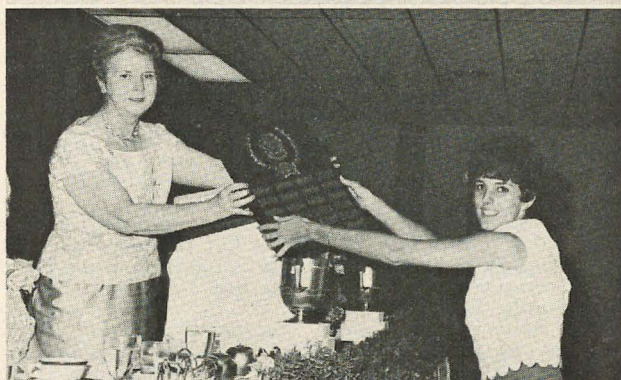
Founders Awards were presented by our new President Mrs. Betty Agler to representatives of Alpha, Miami Univ.; Epsilon Sigma, Wayne State Univ.; Zeta Zeta, West Texas; and Epsilon Kappa, Whitewater.



One of the Achoth Award winners, Gloria Hecker, Sigma, receives her award from Mrs. Gwen McKee-man. Other winners are: Valborg Oslund, Upsilon; Engelyn Brown Tourtelot, Mu; Ruth Heineman Walsh, Alpha Chi; Edna Zamzow, Beta Tau; Margaret Glenz Weichel, Alpha Alpha.

## Winners

Gamma Iota—Memphis State is the proud recipient of the Gertrude Houk Fariss Award.



The Genevieve Schmitt Memorial Plaque was presented by Mrs. Dorothy Breitweiser to Gamma Zeta, Southwestern U—Texas.

Gamma Omicron and Theta Zeta tied as winners for the See Loving cup.



# Olympic Awards Banquet

The Olympic flame was lighted to signify the opening of the DZ Olympic Awards Banquet. DZ had received official permission from the Japanese International Olympic Chairman to adopt the official Olympic symbols and program to fit our needs. Gus Piatt Kelleway presided in her inimitable and delightful way.

**SCHOLARSHIP—Silver Awards** presented to: Delta, DePauw Univ.; Theta, Ohio State U.; Beta Kappa, Iowa State U.; Gamma Beta, U. Conn.; Gamma Zeta, Southwestern U.; Gamma Sigma, East. Mich. U.; Gamma Chi, Ball State; Gamma Psi, Cent. Mich. U.; Delta Delta, Ga. St.; Delta Iota, Tufts; Delta Omicron, Northwestern St. (Okla.); Delta Phi, Northeastern St. (Okla.); Epsilon Kappa, Wis. St. U. (Whitewater); Epsilon Sigma, Wayne State U.; Epsilon Psi, St. Louis U.; Zeta Zeta, West Tex. St.; Zeta Epsilon, Calif. St. (Pa.); Zeta Omicron, LaCrosse St.; Zeta Upsilon, Winona State; Zeta Phi, Slippery Rock; Zeta Omega, No. Mich. U.; Theta Kappa, LSU. (New Orleans); Theta Nu, Moorhead State.

**ACTIVITIES—Rose Bowl Awards** to: Theta, Ohio St. U.; Sigma, La. St. U.; Alpha Gamma, U. Ala.; Beta Delta, U. So. Cal.; Beta Kappa, Iowa St. U.; Beta Tau, Nebr. Wesleyan; Gamma Theta, Carroll; Gamma Iota, Memphis St. U.; Gamma Sigma, East. Mich.; Gamma Psi, Cent. Mich.; Delta Delta, Ga. St.; Delta Lambda, Lamar St.; Delta Xi, Greeley; Delta Upsilon, Marshall; Delta Phi, Northeastern St. (Okla.); Gamma Alpha, Baldwin-Wallace; Epsilon Gamma, Cent. Mo.; Epsilon Eta, Harris; Epsilon Kappa, Wis. St. (Whitewater); Epsilon Omicron, West. Ill.; Epsilon Pi, Henderson; Epsilon Rho, N.W. Mo.; Zeta Epsilon, Calif. St. (Pa.); Zeta Zeta, West Tex. St.; Zeta Kappa, Ohio No. U.; Zeta Lambda, East Carolina; Theta Delta, Westminster; Theta Theta, DePaul U.; Theta Kappa, LSU, New Orleans.

Theta Omega, Atlantic Christian honored for outstanding performance (94 out of 100 points), new chapter. Thirteen chapters awarded honorable mention—Alpha, Miami (Ohio); Alpha Alpha, Northwestern; Beta Alpha, U. Rhode Is.; Gamma Zeta, Southwestern U.; Gamma Epsilon, Drake; Gamma Chi, Ball St.; Delta Omicron, Northwestern St.; Delta Sigma, N.E. Mo.; Delta Omega, Ft. Hays St.; Epsilon Delta, Concord; Epsilon Omega, Wis. St., Eau Claire; Zeta Phi, Slippery Rock; Iota Alpha, S.W. Texas; and Certificates for outstanding progress to—Psi, Franklin; Alpha Delta, George Washington U.; Beta Gamma, U. Louisville; Beta Mu, Florida So.; Delta Epsilon, Queens; Epsilon Alpha, Western St.; Epsilon Chi, U. Wis. (Milwaukee); Zeta Upsilon, Winona; Theta Gamma, U. New Hamp.

**Alumnæ Awards**—Honorable mention, 1st Step (2 yrs.) Auburn, Ala.; Boca Raton, Fla.; Canton, O.; Carbondale, Ill.; Champaign-Urbana, Ill.; Clay-Platte, Mo.; Columbus, Ohio; Edmond, Okla.; El Paso, Tex.; Fairfield, Conn.; Fort Worth, Tex.; Glendale-Burbank, Calif.; Harrisburg, Pa.; Houston, Tex.; Huntsville, Ala.; Kent, Ohio; Mobile, Ala.; No. Sub., Ill.; Orlando-Winter Park, Fla.; Phila. W. Sub.; Pittsburgh East; So. Hills of Pittsburgh; Port Arthur, Tex.; Riverside, Calif.; Salem, Ore.; Salt Lake City, Utah; San Diego, Calif.; Santa Monica, Calif.; Springfield, Ohio; St. Petersburg, Fla.; Tacoma, Wash.; Toledo, Ohio; West Covina-Covina, Calif.; Wooster, Ohio; Ypsilanti-Ann Arbor, Mich.

**Gavels**—2nd Step (4 yrs.) to: Canyon, Tex.; Emporia, Kan.; Honolulu, Hawaii; Huntington, W.Va.; Marietta-

Parkersburg, Ohio-W.Va.; Louisville, Ky.; Memphis, Tenn.; Palo Alto, Calif.; Stillwater, Okla.; Wilmington, Del.; Whittier, Calif.

**Notebooks**—3rd Step (6 yrs.) to: Bartlesville, Okla.; Cincinnati, Ohio; Colorado Springs, Colo.; Fresno, Calif.; Hays, Kan.; Indianapolis, Ind.; Lincoln, Neb.; Miami, Fla.; Muncie, Ind.; Northeastern, N.J.; Oakland Co., Mich.; Omaha, Neb.; Orange Co., Calif.; South Bay, Calif.; Cent. San Fernando Valley, Calif.; St. Louis, Mo.

**Certificates**—4th Step—Albion, Mich.; Aurora, Ill.; Austin, Tex.; Berea, Ohio; Cedar Rapids, Iowa; Cleveland Eastside, Cleveland Westside, Ohio; Dallas, Tex.; Dayton, Ohio; Denver, Colo.; Detroit, Mich.; Grand Rapids, Mich.; Johnson-Wyandotte, Kan.; Kansas City, Mo.; Long Beach, Calif.; Manhattan, Kan.; Mt. Diablo, Calif.; Montgomery, Ala.; Northern, N.J.; Pasadena Foothills, Calif.; Phoenix, Ariz.; Portland, Ore.; Sacramento, Calif.; San Antonio, Tex.; San Francisco-Bay Cities, Calif.; Seattle, Wash.; Tulsa, Okla.; Washington, D.C.; Wichita, Kan.

Special award to a topnotch chapter since 1950 San Francisco-Bay Cities a cash award to be given to their philanthropy. Also special commendations to Dayton, Ohio and Pasadena Foothills, Calif.

**Magazine Awards**—1st place award for \$1,000 in sales to Delta Pi, Kansas St. (Emporia), a repeat winner. 2nd place Delta, DePauw; and tie for 3rd, Alpha Gamma, U. Ala. and Zeta Theta, Sam Houston State.

Alumnæ winners, 1st Seattle, Wash.; 2nd Auburn, Ala.; 3rd Pasadena-Foothills, Calif.

**Philanthropy Awards**—Collegiate—1st place Delta Delta, Ga. State; 2nd place Theta Theta, De Paul U.; 3rd place Beta Xi, Auburn U. Flame Fantasy or outstanding chapter benefit award to So. Calif. Province Action Committee, Alpha Chi, UCLA; Gamma Omicron, San Diego St.; Delta Alpha, Long Beach St.; Delta Psi, Santa Barbara; and Theta Rho, Los Angeles State. Delta Kappa, U. SW La.; Epsilon Gamma, Cent. Mo.; Epsilon Xi, ASTC; and Zeta Omega, No. Mich. U.

**Superior Achievement Alumnæ Awards** to Akron, Ohio; Detroit, Mich.; Chicago, Ill.; Indianapolis, Ind.; Houston, Tex.; Pasadena-Foothills, Calif.; St. Louis, Mo.; Sacramento, Calif.; San Francisco Bay Cities, Calif.; Seattle, Wash.; Washington, D.C.

Alumnæ Flame Fantasy or outstanding benefit award to—So. Calif. Council, Ill. Council, Ind. Council, St. Louis, Houston, Tex., Seattle, Wash.; Washington, D.C., Sacramento, Calif.

The Seattle Hearing Society, in cooperation with the Seattle Alumnæ received the 1965-66 American Hearing Society grant in the amount of \$2,500.

**Standards Awards**—Silver awards to—Chi, Ore. St. U.; Alpha Tau, U. Tex.; Delta Alpha, Long Beach; Beta Rho, Mich. St. U.; Epsilon Phi, U. Detroit; Theta Nu, Moorhead; Epsilon Nu, S.W. Mo.; Kappa, U. Wash.; Zeta Upsilon, Winona; Theta Iota, West Carolina; Epsilon Xi, ASTC; Zeta Alpha, Bradley; Gamma Epsilon, Drake; Epsilon Kappa, Wis. St. (Whitewater), Gamma Nu, East. Ill.; Alpha Zeta, Adelphi, Delta Omicron, Northwest St.; Pi, Eureka; Zeta Zeta, W. Texas St.; Zeta Xi, Lenoir Rhyne.

**Membership Silver Awards**—Theta Gamma, U. New Hamp.; Theta Chi, Lock Haven St.; Zeta Epsilon, Calif. (Pa.); Gamma Phi, Ind. (Pa.); Theta Delta, Westminster; Alpha Theta, U. Ky.; Delta Upsilon, Marshall;

Theta Xi, Glenville; Epsilon Iota, Fairmont; Alpha, Miami U.; Theta, Ohio St. U.; Zeta Kappa, Ohio No.; Gamma Sigma, East. Mich.; Epsilon Phi, U. Detroit; Epsilon Sigma, Wayne St. U.; Gamma Psi, Cent. Mich. U.; Gamma Theta, Carroll Col.; Epsilon Kappa, Wis. St. (Whitewater); Zeta Beta, Stout St. U.; Pi, Eureka Col.; Gamma Rho, No. Ill. U.; Theta Theta, De Paul U.; Zeta Upsilon, Winona; Beta Kappa, Iowa St. U.; Delta Nu, Parsons; Delta Omega, Ft. Hays St.; Theta Eta, Creighton; Zeta Iota, Humboldt; Delta Alpha, Long Beach St.; Epsilon Upsilon, Cent. St. (Okla.); Alpha Tau, U. Tex.; Gamma Zeta, W. Texas St.; Iota Alpha, S.W. Texas St.; Sigma, L.S.U.; Epsilon Beta, N.W. St. (La.); Theta Kappa, LSU-NO; Gamma Iota, Memphis St.; Zeta Xi, Lenoir Rhyne; Theta Iota, W. Carolina Col.; Delta Delta, Ga. St. Col.; Alpha Sigma, Fla. St. U.

*Sorority Education—Silver Awards*—Delta, DePauw U.; Sigma, La. St. U.; Psi, Franklin; Gamma Chi, Ball St.; Epsilon Kappa, Whitewater. Notebooks to: Pi, Eureka Col.; Epsilon Gamma, Cent. Mo.; Epsilon Xi, ASTC; Zeta Kappa, Ohio No.

*Parents' Club (Colonnade Club)* to Kappa Parents' Club,

Lambda Mothers' Club, Mu Mothers' Club, Tau Mothers' Club, ADelta Parents' Club; ATheta Mothers' Club, APsi Mothers' Club, Beta Theta Mothers' Club, BKappa Mothers' Club, Beta Tau Mothers' Club, Glota Mothers' Club, DAlpha Mothers' Club, DDelta Mothers' Club, EKappa Mothers' Club, DPsi Mothers' Club, EOmega Mothers' Club, Theta Zeta Mothers' Club, Indianapolis Mothers' Club, Houston, Tex. Mothers' Club and Zeta Mothers' Club.

*Public Relations Awards*, collegiate Delta Lambda, Lamar St.; Zeta Theta, Sam Houston; Gamma Chi, Ball State; Iota, U. of Iowa for best posters.

Alumnæ-Denver, Colo.; Colorado Springs, Colo.; Arlington, Tex.; and Tulsa, Okla.

*Press Book Awards*—Collegiate—Superior—Eta Upsilon, Central St.; Gamma Beta, U. Conn.; Sigma, L.S.U.; Beta Sigma, Colo. St. U.; Delta Xi, Colo. St. (Greeley); Delta Omega, Ft. Hays; Epsilon Nu, S.W. Mo.; Delta Delta, Ga. St.; Gamma Zeta, Southwestern U.; Delta Lambda, Lamar; Zeta Zeta, West Texas St.; Gamma Upsilon, Okla. City U.; Epsilon Lambda, Southwestern St. (Okla.); Epsilon Xi, Ark. St. Teach. Col.

## ★ ★ ★ Golden Flame Eternal ★ ★ ★

### ALPHA

Helen Gaskill, '08x, 6-66  
Donna Sue Dotson Parker (Mrs. Keith) '60, 1965

### BETA

Gertrude Elizabeth Ewing McElfresh (Mrs. Fred Morgan) '09, 5-30-66

### GAMMA

Nancy Nadine Norton Storberg, Jr. (Mrs. V. H.) '48, 12-21-65

### ZETA

Britannia Daughters Bednar (Mrs. James Edmund) '10, 12-26-65

### ETA

Florence Mildred Kerr Landis (Mrs. Bernard J.) '22, 6-66

### THETA

Emma Frechtling Bock (Mrs. Theodore) '18, 1966  
Josephine Dunn Cisler (Mrs. Charles Frederick) '25x, 1-22-66

### IOTA

Nellie Ruth Knowles Waite (Mrs. Frank Marion) '27, 4-14-66

### MU

Minette Kathryn Shanahan, '45, 1956  
Emelie C. Hagemer Tod (Mrs. Andrew Gray) '02, 12-1-65

### XI

Catherine Elizabeth Leyman Cowan (Mrs. Gerald Arthur) '26, 6-66  
Geraldine Farrar Schwartz Gross (Mrs. Martin D.) '44, 5-5-66

### SIGMA

Patricia Ann Bundrick, '68, 4-2-66  
Joyce Jones Hoffman (Mrs. H. J.) '29, 5-66  
Velma Lyons Hynes (Mrs. Cyril Augustus) '27x, 6-66

### TAU

Idell Christine Urquhart Tibbs (Mrs. Brooke) '29, 6-66

### UPSILON

Audrey Ellen Larson Gant (Mrs. Jon Alfred) '50, 11-65

### PSI

Elizabeth Marie Smith, '19, 4-29-66

### ALPHA ALPHA

Nancy Jane Cochrane Shabino (Mrs. Clark L.) '28, 4-66

### ALPHA BETA

Dorothy Elizabeth Smith Ware (Mrs. Claude R.) '25, 1964

### ALPHA EPSILON

Lavina Drake Patterson (Mrs. D.) '29, 6-66

### ALPHA LAMBDA

Anne Elizabeth Dumler Trimble (Mrs. Kermith Walker) '25, 10-22-65

### ALPHA XI

Lillian A. Whittle Clark (Mrs. S. Harvey) '29, 1966

### ALPHA CHI

Barbara Saunders Hovermale (Mrs. Allen Jeff) '28, 3-10-66

### ALPHA OMEGA

Sidney Stevens Brame Elliott (Mrs. James Wallis) '30, 6-66  
Blanche Stubbs Keen (Mrs. C. C.) '35, 6-66

### BETA UPSILON

May Eleanor Hafkesbring Hidden (Mrs. Theodore William) '30, 7-65

### GAMMA EPSILON

Nellie Irene Morris, '28x, 6-2-65

### GAMMA RHO

Dorothy Ann Hills Blanchard (Mrs. John) '57, 6-66  
Cynthia Anne Benton Rasmussen (Mrs. Ronald) '60x, 6-66  
Susan Kay Tracey Wehman (Mrs.) '63x, 5-6-66

### DELTA PHI

Betty K. Sollock Wamack (Mrs. William Scott) '51, 8-65

### IOTA ALPHA

Tina Sue Jones, '69, 5-14-66

### BUFFALO STATE

Helene M. Doherty Kervel (Mrs. Vincent) '30, 6-66

### PITTSBURG STATE

Gladys Elizabeth Jenkins Haselmire (Mrs. William Bernard) '22, 4-9-66

In the second quarter of THE LAMP, Clara Gilbert Taylor (Mrs. W. D.), was reported as deceased. We are happy to report that Mrs. Taylor resides at 11734 Second St., Yucaipa, Calif. and is a charter member of Alpha Iota Chapter.





# To Irene C. Boughton

## A Delta Zeta—and a Friend

How does one write an article about a person like Irene Boughton and keep it within the word limits set by an editor? One can begin with dates but with only a few of the most significant ones. Irene C. Boughton (her middle name is Caroline, I wondered about this for years) is an example of a true and devoted Delta Zeta. She graduated from Iota chapter in 1925 where she had served as president. Following her graduation she did not take a vacation from sorority activity but soon became a Province Director in which position her work was so excellent that she was asked to be the Delta Zeta Executive Secretary. She assumed this post in 1928, and has been "the head" of the National Headquarters ever since. In this capacity she has done work far beyond the call of duty. Those who have attended conventions know how much extra work she has always done to make the mechanics run smoothly. General reports, statistics, membership lists, financial reports, all have come from her office. She has been the reliable source of information for all Delta Zeta officers and members and even for all outsiders too.

Of course in the early days of her stewardship Delta Zeta did not have as many chapters, nor as many members as now so National Headquarters moved to the home city of the National President. Can you imagine this now? National Headquarters moved from Indianapolis to San Antonio, Texas with the president, Myrtle Malott, and of course Irene went with it. Then it moved to Cincinnati and finally back to Indianapolis. In the lovely old home which Delta Zeta bought and renovated for an office, Irene has had an apartment in which she was always a most competent and gracious hostess.

In 1936 the National Convention asked Irene to accept the office of National President. No, the Convention did not wish her to give up her position as Executive Secretary but merely to add the responsibility of being president to the full time job she already held. Irene, being the loyal and devoted Delta Zeta she is, accepted and served as president until 1938.

For many years, Irene has had a vital part in the publication of *The Lamp*, one time as editor but in more recent years as business manager.



Miss Boughton

She has been on the Board of Trustees of the Life Lamp Fund and is presently its president. In conjunction with the National Panhellenic Conference the editors and the executive secretaries of the various N.P.C. member groups hold conferences. Irene has been active in both of these organizations serving as vice president and president of the Executive Secretaries Conference.

Because Irene has been in National Headquarters all these years does not mean she has not traveled for Delta Zeta. She has made many trips on various kinds of assignments, many of them on financial and housing problems. She loved working with both college and alumnae chapters and when she could leave the office she visited many of these chapters and helped to inspire others to work for and with Delta Zeta.

You might think that with all of the Delta Zeta

activity that Irene would not have time or interest in community affairs. This is far from the truth since she has been most active in Altrusa International, and in Camp Fire Girls having been on their national board.

One could not write about Irene without mentioning her phenomenal memory. All one needs to do is ask Irene for any date, to recall any amount of money, to quote any rules or regulations, or even to remember the name of any person and her chapter designation and she can come up with the answer. When she leaves the headquarters with all of its many files, with all of its carefully tabulated information she will carry in her head and in her heart much more than will ever be evident in the material there.

The National Presidents who have worked with Irene will never forget her loyalty and willingness to work endless hours to accomplish something which they wished to have done. I speak from experience, for during my four years as National President, never did I ask Irene for anything which she did not make every effort to do for me. Often she would even anticipate my needs. Even more important, in spite of trying experiences, she maintained her sweetness of disposition consistently.

Irene has been given all the honors any individual Delta Zeta can receive, the final one coming to her at the 1966 Convention in the Bahamas when her retirement was announced. Irene and Grace Mason Lundy were made charter members of the Order of the Laurel, the highest recognition in Delta Zeta. These two names will find their place of honor just under those of the six Founders.

The association of Irene and Delta Zeta has been a long and a happy one. Irene has helped to make Delta Zeta what it is today. To her we all owe a debt of gratitude. Irene, though she will no longer be in the National Headquarters will keep herself in readiness to answer questions, to serve Delta Zeta where and when she can. This is the kind of wonderful person she is. So to Irene as Executive Secretary we say "farewell"; but to Irene as a continuing Delta Zeta worker and loyal friend to all members of Delta Zeta we simply say "greetings" and welcome her with arms outstretched in gratitude and love.

EVELYN ADAMS COSTELLO  
*Past National President*



## To Evelyn Costello

### A Dedicated Delta Zeta

From the Council meeting I watched her quietly leave her room and walk down the canopied walk toward the Grand Bahama lobby. She had requested "no good-byes." But when she was a short distance away, the Council broke forth with the popular Evelyn Costello (Rum by Dum) song so frequently heard at the convention. Council will miss her. We all love and respect her.

In retiring from the Council (but not from Delta Zeta activities) she must have been flooded with memories; faithful work, happy relationships, projects of great consequence to Delta Zeta, workshop leadership and the latest accomplishment, the passage of the revised Constitution.

Evelyn Costello has given devoted service to Delta Zeta. After a year as Province Director,

*(Continued on page 34)*



Mrs. Costello



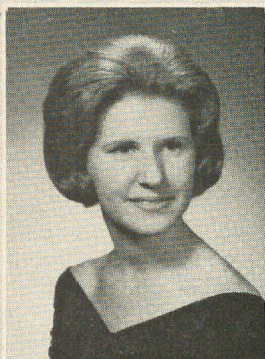
Linda Allison  
Zeta Zeta—  
Alpha Chi  
Kappa Delta Pi  
Who's Who  
Pres.—Zeta Zeta



Charlene Venator  
Gamma Gamma—  
Mo. Valley  
Who's Who  
SNED. Ass. Pres.  
WSGA—Pres.



Janice Michalek  
Epsilon Sigma—  
Wayne State  
Mortar Board—Vice Pres.  
Alpha Kappa Delta  
Psi Chi



Susan Arnold  
Delta Eta  
Sigma Alpha Eta  
Who's Who  
Pres.—Delta Eta

## Grace Mason Lundy AWARD WINNERS

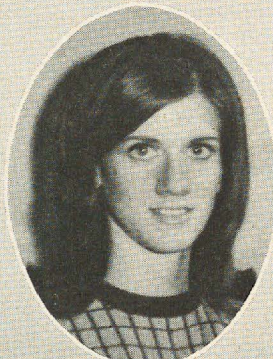


Joan Mosbo  
Delta Xi—Greely  
Pi Kappa Delta  
Chandelle  
Gold Key  
Who's Who

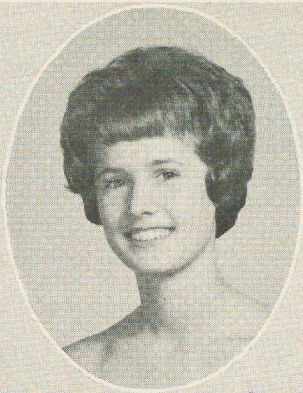
Annually honoring the most outstanding  
Delta Zeta senior collegians



Susan DuMond, Theta Delta—West-  
minster College, Cwens, Kappa Delta Pi, —Carroll, Pres.—Gamma Theta,  
Pi Sigma Pi, Pi Delta Phi, Mortar Board, Panhellenic—Pres., Scroll, Who's  
Who's Who, Sigma Nu White Rose Who, Beta Beta Beta, Kappa Delta Pi.  
Queen, Pres.—Theta Delta.



Sallye Johnson, Epsilon Pi—Hen-  
derson STC, Student Senate—Pres.,  
Who's Who, Pi Kappa Delta, Theta  
Alpha Phi, Honor Court—Florence  
Hood Award.



# Florence Hood Award

... Winner

Annually honoring the  
most outstanding Delta  
Zeta junior collegian

Jane Janes  
Beta Nu—  
U of Miami, Fla.  
Mortar Board  
Pi Delta Phi  
AWS officer  
Sigma Phi Epsilon Court  
Sigma Chi Court

## —AND—HER—COURT—



Charlene Keebler  
Epsilon Sigma—  
Wayne State U  
AWS—President  
Homecoming Queen  
Mortar Board



Jane McCafferty  
Gamma Chi—  
Ball State  
Panhellenic Vice Pres.  
Clavia  
Kappa Delta Pi



Ann Connors  
Theta Gamma—  
U of New Hampshire  
Mortar Board  
Panhellenic—Pres.  
Phi Kappa Phi  
Phi Sigma



Carolyn Wasaba  
Xi—U of Cincinnati  
Mortar Board  
Kappa Delta Pi  
Panhellenic—Treas.



Deborah McWhirter  
Epsilon Upsilon—  
Central State Okla.  
Pres. EU-2 yrs.  
Who's Who  
Pi Kappa Delta



Sandra Reeves  
Alpha Gamma—  
U of Ala.  
Pres. of Alpha Gamma  
Mortar Board  
AWS—Director



Verna Nelson  
Upsilon—U of ND  
Pres.—Upsilon  
Panhellenic—Pres.  
Grey Gowns

(Continued from page 31)

she was elected to the Council at the French Lick Convention in 1942. During the past twenty-four years she has been Secretary, Vice-President-Extension, President, NPC delegate on two appointments and Past President. She has been a vital part of the Delta Zeta growth, especially when, as President, she showed exceptional leadership in working with the fine Delta Sigma Epsilon Council and our Council committee to accomplish the largest merger in the history of fraternities.

Throughout her years of service to Delta Zeta her leadership encompassed a willingness to listen, the ability to act with courage, the example of cooperation and follow through on assignments. Always evident was her good sportsmanship and a delightful sense of humor frequently expressed, very appropriately, through quotations "from my grandmother." Those alumnae and college members who have been fortunate in working with her were aware of a depth relationship because of her objectivity in viewing problems and in mutually working out solutions. Her understanding and sensitivity found its source in a clarity of insight.

Delta Zeta can also be proud of Evelyn's excellent representation in the National Panhellenic Conference. During her first appointment, she worked faithfully on the College Panhellenics Committee. This involved the supplying of material to Deans of Women and College Panhellenics. Many consultations and college workshop conferences transpired during this period. A long friendship with many Deans of Women has resulted from her many contacts. A later appointment found her chairman of the National Panhellenic Alumnae Panhellenic Committee. During this period she wrote and dispersed the first Alumnae Panhellenic Manual now in use. Since her term coincided with the many attacks upon the fraternity system, she was frequently called upon to make speeches in many areas, Research for those lectures must have filled her "spare moments." At the last National Panhellenic meeting in Williamsburg she participated in several important programs covering different fields of interest. We were truly proud she was "our Delta Zeta."

Her most recent contribution has been a long and detailed research on our Constitution. Condensing, clarifying and eliminating material which had accumulated over many, many years was no easy task. In order to present it for passage in as correct a form as possible, many consultations with all departments were held with adjustments being made before the final draft was presented. It is to her diligence and credit that the reading and the passage of the Constitu-

tion proceeded with a minimum of amendments at the convention. We are truly grateful for her efforts and success. Mrs. Gano Senter, our Parliamentarian, was especially complimentary of Evelyn's ability and success in this work.

The Council will miss Evelyn but she has promised to continue to work as our Constitution Chairman. During the coming year this will involve checking all alumnae and college by-laws to see that they conform with the revised Constitution.

We join Evelyn in her warm appreciation of the cooperation and interest of her family. Both her husband, Dr. Russell, and her son, Dr. Tom, have been patient, resourceful in managing when alone, always ready to encourage or console as needed and helpful when advice was sought. The family togetherness, not only with Russell and Tom but also with her father, the late Reverend Adams and her mother, her sisters and grandchildren has made a life rich in thoughtfulness and service to all. Not only has Delta Zeta been the recipient of their time and interest but also organizations in the community the church where she was organist, and the medical profession have shared in their efforts.

This same warm and thoughtful togetherness permeated all their relationships with Delta Zeta. We thank you, Evelyn, and all those whose love and loyalty made it possible for you to extend your abilities and friendship to Delta Zeta.

VIOLET WHITFIELD  
Immediate Past President

## *To Vi Whitfield*

### *Immediate Past President*

As with the money-lenders of ancient Biblical times, it is often my duty as your National Secretary-Treasurer to exact tribute. Thus, it is a special pleasure as well as honor to be provided with this opportunity to pay tribute.

Thinking back to the days of my childhood, I recall the attractive, gracious lady who always had time for a pleasant chat while her father and my parents were engaged in business transactions. Later, as a collegiate member of Tau Chapter, also her chapter, at the University of Wisconsin, I recall the pleasure with which we looked forward to a visit from our Province President. I next recall renewing our friendship when attending the installation of ZB Chapter at Menomonie, Wisconsin.



Mrs. Whitfield

By that time, Violet Sharratt Whitfield, Past National President, had given many years of loyal service to Delta Zeta in Wisconsin, Illinois and on the National Council. Her tireless work as Director of Extension, then done solely by the National Secretary, may be credited as the source of much of the growth of Delta Zeta as we know it today.

After many years as advisor to AA Chapter at Northwestern, then as Province President, Vi was elected to Council at our 1952 Golden Jubilee Convention in the capacity of Extension Vice-President. Her work in the field of extension continued after the structural change of the Council when she also assumed the responsibilities of National Secretary. Delta Zeta began its second fifty years as Vi began over a decade of service on the Council. At that time there were 74 chapters. Today we have 165 chapters and 5 colonies. In 1962 Vi was elected to the post of National President and was returned to this position at the 1964 Convention. These four years have been rigorous. Although Delta Zeta has continued its growth to maintain its position as the largest national sorority, it has been a period of unrest and change in the Panhellenic world.

Thus, as our Chapter Roll has grown from Gamma Chi to Iota Epsilon, we have welcomed many new sisters who now join me in warm and affectionate appreciation to Vi Whitfield for all that she has given to Delta Zeta. We thank her family for sharing her with us for the many hours of time and sometimes exhausting energy which she has devoted. We, hopefully, look forward to her solving problems with her creative, imaginative approach in yet another capacity.

As we look forward to another biennium which promises even more change, we may recall the comment of George Austin Whitcomb who said: "In a world of change, there is still one thing that stands firm: Friendship."

It is in this spirit of friendship that we wish you a well-deserved rest, Vi, continued success and great happiness.

JEAN ERICSSON SCHLOSSTEIN,  
National Secretary Treasurer



#### A SONG OF SERVICE

If all my pain and all my tears,  
And all that I have learned throughout the years  
Could make one perfect song  
To lift some fallen head  
To light some darkened mind,  
I should feel that not in vain  
I have served mankind.

MARGUERITE FEW

# Memorial Library Dedicated at Alpha Beta Chapter



by BOBBY KRAUZ, Alpha Beta

Alpha Beta chapter at the University of Illinois dedicated their library on Sunday afternoon, March 27, to the memory of Mabel A. Piety, '28. At the time of her death in 1954 she was president of the Alpha Beta corporation and had worked long and lovingly for the sorority after receiving her master's degree in geography in 1929.

Three years ago on the death of her mother, the corporation was notified that they would receive a portion of the family estate. A committee

consisting of longtime friends was appointed to suggest ways for using this money for the altruistic chapter good as Mabel would have planned herself. These suggestions were presented to the alumnae in a news letter, and then voted on at the annual corporation meeting.

The upstairs lounge was made into a library, using antique elm panelling and shelves, with decorations of green and turquoise. This Memorial library was dedicated to Mabel Piety, and a collection of reference books started. The Father's Club presented them with a complete set of Encyclopedia Britannica.

Invitations were sent to the dedication ceremonies for a Sunday brunch and open house on March 27. Many alumnae, faculty, local friends of Delta Zeta were present.

Susan Prawl, president of Alpha Beta Chapter, welcomed all those present.

Florence Hood Miner, President of Alpha Beta Corporation, former National Vice-President of Delta Zeta and presently National Chairman of the Awards and Endowment Committees, acted as toastmistress for the occasion.

Miss Miriam Shelden, Dean of Women, was presented \$100 for her Dean's Emergency Fund, which came as a complete surprise to her. Her fund is used for unexpected emergencies arising among undergraduate women during the year which can not be taken care of by the students themselves.



Mary Ruth Kelley, Chairman for the Scholarship Fund, presented an annual \$300 scholarship to the U. of I. Mr. Fred Turner, Dean of Students accepted the scholarship in behalf of President David Henry. The scholarship will be given to a University undergraduate woman, selected each year by the University Committee on Undergraduate Scholarships. Grades and financial need will be considered in giving this scholarship, but preference will be given to a woman of outstanding campus leadership ability.

Following this, Mrs. Miner introduced Elizabeth Corsa Beggs and her daughter, Sarah Beggs Coad. Mother and daughter presented the Florence Hood award to the chapter. The award was in the form of a hand wrought silver bracelet and will henceforth be worn each year by an outstanding junior chosen by the chapter.

Six alumnae were honored for contribution of outstanding services, talent and loyalty to Delta Zeta by vote of the A B alumnae. Betty Vinje Day, '35, Past President of Province IX, presented the jeweled Alpha Beta guard to each alumna: Alice Appel, '35, Long Beach, California; Rovenia Miller Fitz-Gerald, '28, Urbana; Florence Harding, '24, Champaign; Ferol Marin Tomlinson, '54, McHenry, Illinois; Mrs. Miner, '29, Nevada, Iowa, and Dean Eunice Carmichael Roberts, '23, Bloomington, Indiana.

For each of these persons, a book was given to the Mabel Piety Memorial Library in her name. Miss Harding, Memorial Library Chairman, selected books to be representative of each person's field of interest. For Miss Appel, who majored in romance languages and who received her Master's Degree in Spanish, Velasquez' "Spanish

Dictionary" was presented. Mrs. Fitz-Gerald, who has traveled widely and particularly loved Ireland, a Studio book—"British Isles in Color," Introduction by Walter Allen, was given; for Miss Harding, whose life's work has been library science and who gave of her talent to establish the beginning collection for the Memorial Library, a book of her selection will be purchased and presented; Bartlett's "Familiar Quotations" is a favorite book of Mrs. Tomlinson and thereby added to the library in her name; Henry Hansen's "Costumes and Styles" was selected most appropriately for Mrs. Miner, as she is a dress designer; and for Dean Roberts, Cassell's "French Dictionary" was selected as French was her major in school.

Goode's "World Atlas" was presented in Miss Piety's name as she obtained her Master's in Geography. Miss Margaret Osborne, Champaign, gave "American Heritages of Natural Wonders" in the name of Miss Piety, who was a very dear and close friend of Miss Osborne.

Roget's "Thesaurus of English Words and Phrases" was given in the name of Laura Smith Eberhardt, '21, who served for four years as Treasurer of the Delta Zeta Corporation before her death. "Art Through the Ages" by Helen Gardner was given in the name of Shirley Oyen Kaad, '37, who served as Editor of the Delta Zeta Corporation prior to her death.

(Continued on page 40)

Standing: left to right, Mrs. C. Russell Carlson, Province V.-P. Aurora, Ill., Gail Brook Burket, Dean Eunice Carmichael Roberts, Dean Miriam Shelden, Mary Ruth Kelley, Dean Fred Turner, Betty Vinje Day. Seated: Florence Hood Miner, Susan Prawl.





## The Initiation and Installation of Iota Theta Chapter of Delta Zeta at Mansfield State College

The initiation and installation ceremonies held March 12 and 13, linked Mansfield State College's Iota Theta chapter of Delta Zeta to the largest sorority in the Panhellenic Council. This event, culminating many weeks and months of preparation, has been lauded as the most successful social event held on the campus of Mansfield State College.

Formal initiation of the new chapter was conducted by the Beta Theta chapter of Delta Zeta of Bucknell University, Lewisburg, Pennsylvania and their College Chapter Director, Mrs. Catherine Trutt, under the direction of Mrs. Mae Dickinson, Province President of Western Pennsylvania, and Mrs. Verne Duda, National Deputy, on Saturday at the Mansfield Methodist Church. Initiated were 54 Mansfield State College coeds, eight members of an Alumnae Advisory Board, and the Chapter Director, Mrs. Mary M. Brace, associate Professor of Home Economics at Mansfield.

Saturday evening Delta Zeta held a Hospitality hour in the conference dining room and lobby of North Hall. Iota Theta's first Rush Class at Mansfield displayed their project . . . a large panel of a rose with the names of the sorority

sisters and important dates of the sorority placed around the flower made of individual satin roses and the leaves.

Following the Hospitality Hour, the sorority sisters and their guests attended the Installation Banquet held in the dining room of Mansfield State College. Toastmistress was Mrs. C. A. Dickinson, Province President, Pennsylvania West. Mrs. Brace formally welcomed the 152 guests in attendance. The Panhellenic Advisor for Mansfield's Greek sororities, Mrs. Laurence H. Snively, welcomed Delta Zeta to the campus. Mrs. Michael Duda read a selected few of the approximately 100 congratulatory notes sent to the Iota Theta chapter.

Dr. Fred E. Bryan, president of Mansfield State College, in his short speech to the group, pointed out the responsibility of chapter members to Delta Zeta traditions as well as the life long reward of friendship. Miss Eleanor L. Mayoock, Dean of Women and Mr. Thomas Costello, Assistant Dean of Academic Affairs reiterated the comments of Dr. Bryan along with their congratulations to Iota Theta chapter.

Mrs. Norman Agler, National Vice-President of Membership, formally installed the local

chapter into the national organization. Acting as the representative of Mansfield State College, Dr. Laurence H. Snively, Dean of Student Affairs, accepted Iota Theta chapter of Delta Zeta.

Highlighting the gifts was a silver tea service from the national organization and eleven other college chapters including Iota Theta of Alliance College, Beta Theta of Bucknell University, Zeta Epsilon of California State College, Epsilon Theta of Clarion State College, Epsilon Zeta of Drexell Institute of Technology, Delta Phi of Indiana University, Theta Ghi of Lock Haven State College, Gamma Delta of The Pennsylvania University, Zeta Phi of Slippery Rock State College, Delta Tau of Temple University, Theta Delta of Westminster College and Miss Alice Patton, Traveling Secretary of Delta Zeta.

The banquet closed with the traditional Rose Ceremony.

On Sunday afternoon 240 guests attended the formal presentation tea at the home of President and Mrs. Bryan. Delta Zeta assisted by the Theta Chi chapter from Lock Haven served as hostess in presenting Iota Theta to Mansfield. Invited were parents of the sorority, representatives of the clubs, fraternities, faculty, the Board of Trustees, and citizens from the surrounding area. Among the distinguished guests present were State Assemblyman and Mrs. Warren Spencer of Wellsboro and Harrisburg, Tioga County Judge and Mrs. Charles G. Webb of Wellsboro, President of the Board of Trustees, Mr. Fred A. Jupenz and his wife, Mr. Abe Snyder of the Board of Trustees and his wife and Mrs. George Hayfield, College Chapter Director of Lock Haven.



In the home of President and Mrs. Bryan, looking at the Silver gifts at the Presentation Tea: Mrs. C. A. Dickenson, Province President, Pa. West; Mrs. Norman Agler, Vice-President of Membership; Miss Susan Fellows, Iota Theta President; Mrs. Kenneth Brace, College Chapter Director.



The Pledge Class and their Project.

Iota Theta chapter began with a small group of girls who were interested in forming a sorority at Mansfield State College. Prior to this time only one sorority was formed and active on the campus, Alpha Sigma Tau. While getting off to a slow start and abiding by administrative decision to move slowly, this group contacted in writing a number of nationally organized sororities. However, early in November of 1965, Mrs. George C. Havens, College Chapter Administrator, came to Mansfield State College at Mansfield, Pennsylvania. She contacted the administration and met with the girls along with their advisor. On November 2, 1965 Delta Zeta became a reality for the girls at Mansfield. With the help of Mr. Thomas Costello, then Dean of Student Affairs, who handled the problems of administration and Mrs. Havens the colony was formed. The officers were elected and they with their advisor, Mrs. Mary Brace began in earnest to become true Delta Zeta. The Traveling Secretary, Miss Alice Patton, arrived to help all of us. Indeed, her help was invaluable for not only did she help the girls learn their roles in Delta Zeta responsibilities but she also helped recruit membership as well as being the consultant and guide in the development of the Panhellenic Council. While there was only one sorority on campus there was no reason for Panhellenic but with the advent of Delta Zeta as a second sorority the need for Panhellenic was apparent. Thus, through her cooperative help this group was organized. Her second visit was devoted to Rush, the very first Panhellenic Rush held at Mansfield State College. Though we are ingenues, the whole of the campus enjoyed Rush and the resultant first pledge class of Delta Zeta. These fifteen girls have worked diligently as have the original charter members. The Pledges' Project was a delight to see, involving time and effort on their part. This is a framed, glass covered design of a large rose, made up of individual satin roses, one for each member of the chapter along with names and dates that are important to the development of the chapter. The initiation and installation of Iota Theta was a fine and exciting

event. Through cooperative effort it was well planned, organized and highly successful. We are given to understand that in numbers we have had either the largest or one of the largest initiations-installations held nationally. There is no doubt that this affair was certainly the nicest social affair held on this campus. Iota Theta recognizes that this is really only the beginning of the challenges, the effort and the rewards that are achieved through sorority life. At the banquet a highlight announcement was that of the Dean of Women, Miss Mayock, "Iota Theta will have its own suite or floor beginning next September in one of the dormitories." Not only will Delta Zeta have a home but the opportunity and challenge of self-government within the framework of the policies of the college, privilege with responsibility. The sorority undergraduate sisters are indeed appreciative of those who have helped them—in particular, the national organization, Mrs. Havens, Alice Patton, Mrs. Agler, Mrs. Dickinson and Mrs. Duda as well as the Beta Theta chapter of Bucknell University and the Theta Chi chapter of Lock Haven State College. They are also appreciative of the help they are receiving from alumnae members, recently initiated. There are adult women who have particular talents and a sincere interest in the intellectual and social growth of young women.

Mansfield State College is located in the northern tier of Pennsylvania, within a few miles of the New York State border. The region is noted for vast stretches of forest and for unexcelled hunting and fishing. The whole area is rapidly becoming a winter sports area and current plans include the development of areas for year round recreation. While the community is small, it has an interesting history and for more than one

hundred years has been dedicated to "education." In 1857, the Mansfield Classical Seminary opened. However in 1862, the Commonwealth of Pennsylvania established this same school as a Normal School. In 1926 this school was designated a State Teachers College. Indicating a broadened concept of professional preparation, the Pennsylvania Legislature in 1960 authorized the general title of Mansfield State College. It offers a B.S. Degree in Elementary and Secondary Education, Music, Home Economics and Library Science Education and a Liberal Arts Curriculum. Recently it has been approved to offer a graduate program in Music Education and Elementary Education. Like colleges in most of the United States it is in the process of expansion and growth. While the enrollment currently is about twenty one hundred students, its projected enrollment within a short period of time is three thousand students. As a college it has always enjoyed a fine reputation for excellence in the preparation of teachers and is known as the friendly campus. The composition of the student body is evenly divided in men and women students, who come from city, suburban and rural areas. The quality of student entering Mansfield becomes increasingly better, competition is keen and emphasis is placed on the well rounded student. While there are numerous clubs and honorary fraternities the social fraternities and sororities are new to the State College Campus. On this campus is: Alpha Sigma Tau, the first sorority to be formed became a national sorority in 1964. Phi Sigma Epsilon was established in 1962 and Sigma Tau Gamma about 1960 represent the social fraternities. However with the growth of the campus there is reason to believe that other fraternities and sororities will be organized.

*(Continued from page 37)*

To round out the collection of books given to the library, Mrs. Gail Brook Burket, '27, Evanston, Illinois, outstanding author of poetry, presented a number of volumes of her work to the Memorial Library. Mrs. Burket is a former National Vice-President of American Penwomen and served as President of the Illinois organization when she was chosen  $\Delta Z$  Woman of the Year.

Natalia Belting, Alpha Beta, class of '36 and Assistant Professor of History at the U. of I., has written many children's books and donated one of her latest and most delightful books, "The Calendar Moon."

Climaxing the presentation and awards, Dean Roberts, Assistant Dean for Undergraduate Development for Women's Educational Programs at Indiana University, Bloomington, Indiana, spoke of "Delta Zeta Goals and Legacy." Dean

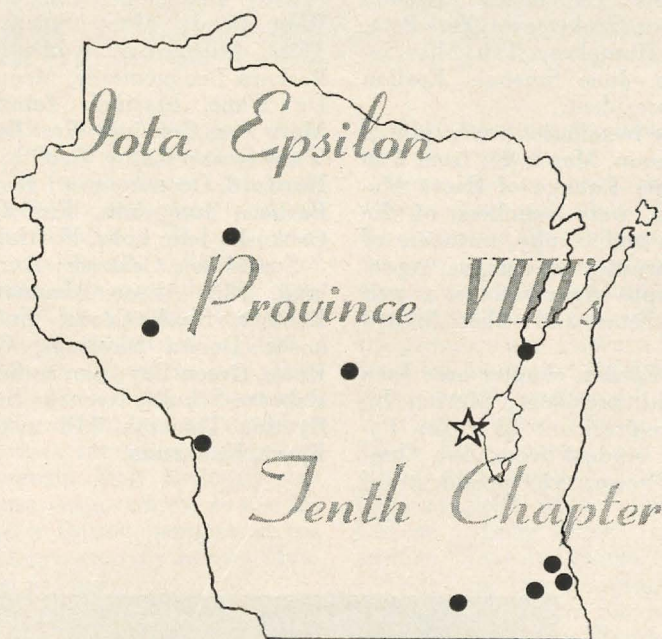
Roberts pointed out that the emancipation of women has been one of the greatest things which has happened in this world and emphasized that the developed minds are the greatest contributions which can be made to our society of today.

In the afternoon following the Brunch, an Open House took place from 3:00 P.M. to 5:00 P.M. Serving at the tea table were Dinah Niemeyer and Eleanor Schreiner.

The Dedication Ceremonies Committee was chairmaned by Mrs. Fitz-Gerald, and assisting her were Nancy Wood Deedrick, Chairman for Invitations, Miss Harding as Memorial Library Chairman, Miss Kelley as Chairman for the Scholarship Fund; Mrs. Norman Krausz as Public Relations Chairman, and Mrs. Miner, Chairman for the Program. Judy Martin, and Eleanor Schreiner, a Junior, were the collegiates who assisted the alumnae committee.



Members of the Colonized chapter Iota Epsilon, Oshkosh State University, Oshkosh, Wisconsin.



by SUE PFLEGER, *Iota Epsilon*

The Iota Epsilon chapter of Delta Zeta sorority at Wisconsin State University Oshkosh was formally installed into the national sorority in ceremonies held March 25-28 in Oshkosh.

The installation of the chapter culminated the colonization procedures that began last semester when a colony of 40 and new pledges totaling 52 WSU-O co-eds were accepted by Delta Zeta.

Activation of members began on Friday evening, March 25, when newly-elected officers of the local chapter were initiated. It was completed

the next day, March 26, when the remainder of the chapter became active. The ceremonies were held at the Congregational church, with members of Theta Lambda chapter at St. Norbert College, De Pere, present to aid in the activation of their WSU-O sisters.

A formal dinner was held Saturday evening, at the Pioneer Marina Resort, in honor of the newly initiated members of Delta Zeta.

Guests at the banquet included WSU-O President and Mrs. Roger Guiles; Mrs. Ruth Nelson,

associate dean of students; Dr. Evert Wallenfildt, dean of students, and Mrs. Wallenfildt; Dr. Earnest Thedinga, dean of student affairs, and Mrs. Thedinga; Dr. Sherman Gunderson, dean of the School of Letters and Science, and Mrs. Gunderson; Dr. and Mrs. Ralph Steinhaus; and, Mr. and Mrs. George Schowengerdt. Mrs. Steinhaus is Panhellenic advisor and Mrs. Schowengerdt is advisor to Delta Zeta at WSU-O.

Also guests were Dr. and Mrs. Nels Nordstrom, Oshkosh. Dr. Nordstrom, pastor of the Congregational church, said the grace at the banquet.

Violet Sharratt Whitfield, national president of Delta Zeta, was present at the banquet, as were others affiliated with the sorority, including: Mrs. Edward L. Moon, national editor of *THE LAMP*, Menasha, who served as toastmistress; Mrs. Louis Moegenburg, Tau, state secretary, Menasha; Mrs. James Hallenbeck, Epsilon Omega, and Mrs. Eugene Hockemeyer, Zeta Beta, Appleton; Miss Nancy Humphrey, Tau, Miss Sophia Haase, and Mrs. Jane Smebak, Epsilon Kappa, province vice president.

The final event of the installation weekend was a tea on Sunday afternoon, March 27, from 2 to 4 p.m. in the University Lounge of Reeve Memorial Union. Present were members of the WSU-O administration and faculty, members of all sororities and fraternities on campus, representatives of other campus organizations, as well as parents of Delta Zetas and other invited guests.

Officers of the Iota Epsilon chapter are: Jean Hirschboech, West Bend, president; Marian Pisarek, Milwaukee, vice-president of rush; Patricia Zick, a transfer student from Zeta Omicron chapter in LaCrosse, vice-president of

pledge training; Carol Popp, Okauchee, recording secretary; Pamela Rosenberger, Sheboygan, corresponding secretary; Dale Honey, Oconomowoc, Rita Endrizzi, Milwaukee, and Kathy Burow, West Allis, co-treasurers; Carol Nelson, Cudahy, historian; Sue Pfleger, Green Bay, publicity chairman; Judy Sanstadt, Madison, social chairman; Yvonne Babich, West Allis, scholarship chairman; and Trula Jensen, Neenah, Suzanne Sargent, New Berlin, and Helen Hathaway, Wauwatosa, Panhellenic delegates.

Other members of the Iota Epsilon chapter are: Barbara Boelter, Marinette; Mary Gunderson, Madison; Linda Hartman, Milwaukee; Linda Hiller, Racine; Janet Jensen; Pound; Pamela Jochims, Neenah; Sharon Johannes, Cudahy; Connie Leighton, Sheboygan Falls; Nancy Licht, Oconomowoc; Patti Look, Mequon; Sandra Neely, Madison; Cathie Pague, De Pere.

Judy Pinterics, West Allis; Karen Schucht, West Bend; Mary Strom, Marinette; Grace Taibl, Milwaukee; Kathy Zarling, Milwaukee; Barbara Bruggemeyer, Menomonee Falls; Sheila De Wane, Maribel; Janet Doeml, Oshkosh; Mary Ann Gonring, West Bend; Janice Graham, Wauwatosa; Kathy Griffith, Milwaukee; Cheryl Hartford, Oconomowoc; Jeanne Holub, Algoma; Barbara Jungwirth, Elm Grove; Mary Lang, Oshkosh; Jean Lohr, Hartford.

Sue Miller, Oshkosh; Ann Morrison, Rock Island, Ill.; Alison Meuman, Appleton; Lynn Raether, Black Creek; Enid Rasmussen, Oshkosh; Donna Rawlings, Chicago, Ill.; Linda Rowe, Green Bay; Janice Scholl, Belgium, Wis.; Rebecca Schultz, Neenah; Sue Stahl, West Bend; Cynthia Tomczak, Milwaukee, and Karen Van Epern, Kaukauna.

OFFICERS OF IOTA EPSILON CHAPTER WITH THE CHAPTER: (left to right) Carol Popp, corresponding secretary; Kathy Burow, treasurer; Jean Hirschboech, president; Dale Honey, treasurer and chairman of the installation weekend events; and Judy Sanstadt, social chairman.



# Theta Rho Is 1st



Theta Rho became the Tenth Delta Zeta chapter in California and the *first* national sorority for girls attending California State College at Los Angeles when twenty-six collegiates and one honor initiate (Meta McBride Haupt, state president of the California division of AAUW) received Delta Zeta pins during ceremonies at the Alpha Chi Chapter House at UCLA on Saturday morning, April 30, 1966.

A moving moment in the life of the new chapter occurred that evening when the excited new initiates, all dressed in white gowns, watched Theta Rho officers receive the gavel, loving cup and charter from Augusta Piatt Kelleway, national director of house corporations, as she installed the chapter at a formal banquet in the Wentworth Room of the nationally known Huntington-Sheraton Hotel in Pasadena.

Lovely, large oblong-shaped floral arrangements of pink roses, carnations and white gladioli flanked the head table. An illuminated replica of the Roman lamp was placed in front of the podium. The new initiates, actives from other Province Fifteen chapters, alumnae and guests were seated at circular tables covered with pale green cloths and centered with pink net topiary trees studded with tiny roses.

Toastmistress for the program was Dorothy Varley Breitweiser, national director-at-large and installation chairman. Mrs. Breitweiser, along with Jacqueline Robinson Stevens and other local and national advisors, has guided the group toward installation since it was first organized last fall as Theta Rho colony. The grace was given by Louise Haupt Plyley, Pasadena-

Foothill Alumnae president, who served as banquet chairman.

Betsy Bradley Leach, national vice-president—college programs, chose "The Road Ahead" as the theme for the main address, and she inspired the new Delta Zetas to have "the wisdom to recognize the right road and the courage to take it." The presidents of the other collegiate chapters in the province and Barbara Bozeman Decker, president of Southern California Council of Delta Zeta, warmly welcomed the new chapter into Province Fifteen. Evon Dimon, president of Theta Rho Chapter and Joeline Olivo, CCD, gratefully responded. Esther Ballard Thompson, CCD at Delta Alpha chapter (California State College at Long Beach), sang a meaningful solo entitled "Take Joy Home."

Following the acceptance of the chapter by Kathleen Bosworth Sandy, province president, Jacqueline Togdon Youde, province vice-president, presented gifts to the chapter president, including the beautiful silver tea service from Delta Zetas throughout the country and accompanying tray from National Council. One of the highlights of the presentations came when Mrs. Youde announced that Mrs. Leach had given the chapter two sterling silver charm bracelets for use as traveling awards. One is for the girl who makes the most improvement in scholarship. The other, for the girl who best exemplifies qualities of friendship, was presented to Janice Cull, former rush chairman and new pledge mistress, who was earlier introduced as the founding member of the group.

The impressive Rose Ceremony concluded the

program when a trio from Delta Alpha sang and members of the Province Action Committee, who also served as the initiating team, presented roses to (each girl) Evon, Joanne Clay (Baldwin Park), Janice, Kathy Coleman, Susan Hules, Linda McDonald, Karen Schade, Shirley Walrod (South Pasadena), Linda Brueggemann, Jane Morgan (San Marino), and Mary Cox (Lake-wood). Also to Mary Davison (Monterey Park), Kathy Fox (Covina), Margaret Gomez, Mary Martin, Lynne Rittenhouse (Los Angeles), Janet Howard, Jacqueline Pruett (El Monte), Beverley Jones, Margaret Porter (San Gabriel), Agnes Hollos, Kathy Muhleman (Pasadena), Suzanne Lunde, Karen Pure (Alhambra), Melinda Rogers (Temple City), and Dale Rush (Glendale).

Initiating team: Cathy Cunningham, A X; Karen Olson, A X; Sue Nelson, Δ Ψ; Nancy Nesmith, Δ X; Leslie Krieger, Δ Ψ; Pat Rolan, Γ O; Dee Lieberman, Γ O; Anna Mason, Δ A; Carolyn Freeman, Δ A. These girls represent the Province Action Committee.

The Province Action Committee (P.A.C.) is made up of representatives from each chapter in the province—Delta Alpha, Alpha Chi, Delta Psi (University of California at Santa Barbara) and Gamma Omicron (California State College at San Diego). They meet once a month to discuss problems and ideas.

The next morning the tired but happy Theta Rhos attended 8 o'clock Mass at the historic Mission San Gabriel and 11 o'clock services at Oneonta Congregational Church in South Pasadena. That afternoon, attired in their pretty white formals, long white gloves and fresh pink carnation wrist corsages, they were presented to the



Left to right: Betsy Bradley Leach (National Vice-President—college programs) and featured speaker at banquet, Evon Dimon, Theta Rho chapter president, Dorothy Varley Breitweiser (National Director at-large) and toastmistress and installation chairman.

community at a May day tea at the San Marino residence of Mr. and Mrs. Harold Alwes (Barbara Griffith Alwes). Family, friends, representatives from other campus organizations and national officers of sororities and fraternities who reside in the Pasadena area, were received by Miss Dimon, Mrs. Kelleway, Mrs. Leach, Mrs. Breitweiser and Miss Olivo.

Over 200 guests enjoyed punch, petits fours and tea sandwiches on the sunny patio bordering the pool as well as inside, where the many gifts and greetings received by the chapter were attractively displayed. Presiding at the tea table were Charlotte Strong Adams, West Covina Alumnae president, Beverly Ebbert Mueller, Whittier Alumnae president, Ruth Hester Wilt, Los Angeles Alumnae president, and Mrs. Plyley.

Guests were also greeted by Frances Igo Gregory, national scholarship chairman, Patti Volbrecht Phillips, national activities chairman, Betty Harler Van Steenwyk, province public relations coordinator, and Arabelle Hurlbut Green, who has opened her Arcadia home to the new chapter for meetings and rush parties. Katherine Mueller Simpson, state recommendations chairman—southern California, was in charge of the tea.

California State College at Los Angeles is a rapidly expanding school of over 21,000 students located on the eastern boundary of the city near the area known locally as the San Gabriel Valley. Among its many fine departments, especially in the field of education, is one offering advanced degrees in audiology where this year's \$1,000 Delta Zeta Foundation scholarship winner, Victoria Cangelosi, is studying.



Left to right: Augusta Piatt Kelleway (National Director of House Corporations and Installing Officer) presents charter to Evon Dimon, Theta Rho chapter president.

# Zeta Reactivation

The Zeta Chapter of Delta Zeta was formally initiated on May 23. The Beta Tau Chapter of Nebraska Wesleyan University performed the initiation ceremony. Thirty-four members were activated. Annette Roch was initiated as an alumna. Nebraska held its State Day Luncheon that noon with the Lincoln Alumnae as hostesses.

The initiation banquet was held at the Nebraska Center for Continuing Education that evening. Dorothy Cathers, Zeta from Omaha, presided as toastmistress. Doris Post Green, B K, assistant province president, led the collegiate and alumnae chapters present in welcoming the new group. Ellen Hladky, president of Zeta chapter, and Barbara Carter Brown, Omega, college chapter director, responded.

After reading greetings from Delta Zetas everywhere, Florence Hood Miner, former national vice-president, spoke of the many memories they as sisters would store up through the years.

A most thought provoking talk was given by Miss Helen Snyder, dean of women at the University, who challenged the group to prove themselves.

Augusta Piatt Kelleway, national director of house corporations, formally installed the chapter. Miss Madeline Girard, panhellenic administrator accepted for the university.

After a delightful series of gift presentations, the evening was closed with the traditional Rose ceremony. Sue Ware, B T, sang, while Kay Riser, president of Epsilon Sigma, and Mary Beth

Reeves, Theta Eta president, presented the roses to the new initiates.

Many former Zeta alumnae traveled to Lincoln for the event, with the Omaha and Lincoln alumnae chapters presenting gifts. Mrs. Vera Roy, Des Moines, and Mrs. Sandra Horton, Ames attended with members of the Iowa chapters.

In the picture below the girls who were initiated into Zeta chapter are, back row, left to right: Carol Maas, Patricia Penterman, Judy Smith, Nancy Foster, Linda Hammer, Nancy Fritzler, Gaynelle Podoll, Donna Novotny, Judy Songer, Joan Tarbutton, Juliel Morris, Susan Houghton. Second row: Laura Oppegard, Cathy Loudon, Joan Wilson, Connie Driewer, Joanne Wilkins, Cheryl Duey, Terri Fisk, Linda Nelson, Judy Heller, Mary Stroh, Judi Brecka, Nancy Kelly. First row: Judy Stoner, Stella Rochrord, L. Carolyn Rieken, Mary Kehr, Ellen Hladky, JoAnn Larsen, Mary Ann Chamberlain, Pam Harris, Mary Jean Jaixen, Jill Ott.

On Sunday afternoon Zeta chapter was formally presented to the University of Nebraska campus at a Formal Tea held at the Nebraska Student Union. The Housemothers and Presidents of all the Fraternities and Sororities on campus, as well as Zeta chapter alumnae, parents of the initiates, members and alumnae of Beta Tau chapter were among the guests attending.

Greeting the nearly 300 guests were: Mrs. Fred Kelleway, National Director of House Corporation, Walnut Creek, California; Florence Hood





Miner, Nevada, Iowa; Mrs. Doris Post Green, Omaha, Nebraska; Miss Carolyn Ubben, Long Beach, California, (National Traveling Secretary); Barbara Carter Brown, Lincoln, Nebraska, College Chapter Director, and Ellen Hladky, President of Zeta chapter.

Zeta chapter of Delta Zeta will be the 18th National Sorority on the University of Nebraska campus.

Founded in 1871, the University of Nebraska, in the state's capital city Lincoln, is one of the prominent midwest universities. It has an approximate enrollment of twelve thousand.

Initiates Connie Driewer, Nancy Fritzler, Judy Heller, and Donna Novotny, holding their roses from the Rose Ceremony after the Initiation Banquet.



Newest item in the Delta Zeta Rose Shop!

Remember the cover on the 2nd Quarter issue of THE LAMP? This two-color map locating our chapters has been made into place mats. Wonderful for rush parties, favors, banquets, alumnae luncheons, and a package of 100, only \$3.00.

The DZ Rose Shop is managed by Florence Hood Miner with all proceeds adding to the Endowment Fund.

The Delta Zeta Rose Shop has all sorts of things:

for the bridge table,

score pads .....	each	.25
tallies .....	dozen	.50
playing cards .....	double deck	3.00

for rush parties, state days, banquets,

miniature DZ flags .....	each	.10
place cards		
napkins		
book marks .....	each	.10
quill pens .....	each	.25
matches		
coasters		
place mats DZ map .....	pkg. of 100	3.00

for writing,

Crested stationery .....	box	1.35
Crested informals 4 x 5 .....	box	3.25
gold pens .....	each	.50
DZ seals (green, gold) .....	pkg. of 90	1.00

for reading,

magazines  
more magazines

for wearing,

blouses  
shells  
sweaters

Best of all the Endowment Fund grows!



Send orders and checks to DZ National Headquarters,  
3561 North Pennsylvania Street, Indianapolis, Ind. 46205

# Epsilon Mu Is a Reality at Southern Mississippi

An unusual hum of activity was noted around this dormitory the weekend of April 16, as a number of groups were holding Parents' Weekend or other springtime festivities. Special excitement centered around the 7th floor, for here the Delta Zeta suite was to be the scene of a happy event, the re-installation of Epsilon Mu Chapter of Delta Zeta.

When the National Council reluctantly pronounced a period of dormancy for this chapter in 1964, it was with the expressed intent of restoring activity at the earliest feasible time. Thanks to the friendship and the watchful care of Dean Ivah Wilber, this time seemed to have arrived in the college year 1965-66, and it was with great satisfaction that Marguerite Havens with Linda Lenox and Alice Patton, Traveling Secretaries, accepted an invitation to recolonize the chapter in November 1965. With the fortunate discovery of Sandra Miller Moore, an alumna of Gamma Epsilon, available as CCD, and with the encouragement and guidance of Hattiesburg alumnae, it was felt that the new generation of Epsilon Mu was ready for installation at the close of the year, and an April weekend, when this campus is a bower of roses, azaleas and other lovely southern bloom, was selected.

First to arrive was Linda Lenox, by now practically Godmother to the new colony. Friday morning brought Grace Lundy; Friday evening began with Jean Williams Wickstrom, Province President of XXI West, to be followed by two car-

loads of Alpha Gamma sisters excited at the prospect of being the initiation team, and last of all a group from Gamma Iota at Memphis State, sandwiching this visit of welcome in between the important preparations for their famous all-campus event, the Delta Zeta Follies. Friday evening after having dinner as a group, there was a time for singing, for revealing Secret Sisters, a "line-up" in reverse, when the initiates-to-be were put through their paces by the pledges-in-waiting; and after freshmen had gone back to their own dorms, Linda and her corps of willing workers adjourned to the Panhellenic kitchen to perform various culinary rites and routines in preparation for the post-initiation luncheon on Saturday.

In addition to the collegiates, lovely and starry-eyed in their white dresses and glowing hopes, a former Theta U alumna, Mrs. Letha Sinclair drove up from Pensacola to be initiated as a member of Alpha Sigma chapter at Tallahassee, and enjoyed the luncheon along with other alumnae from the Hattiesburg chapter.

For the installation banquet held at the popular Sea Lodge, Polly Stout was the toastmistress, the perfect choice because of her long acquaintance with Delta Zeta, her close association with the college administration, and in particular, with Dean Wilber, her beloved friend. The banquet program held some surprises, such as gifts presented by the chapter to its installing guests, and an award to the Outstanding Pledge, which went, appropriately enough, to Becky Allums



Sorority groups at the University of Southern Mississippi are housed in one of the most attractive Panhellenic dormitories to be found on any campus. Each sorority has its own floor, with enough bedrooms for the number of upperclassmen an average chapter will have (freshmen girls are housed in freshman dormitories), with a chapter suite that includes a complete kitchenette, storage closets, air conditioning, an unusually large room for chapter functions and entertaining, and an attractive balcony opening from this room with a tremendous door and picture window. On the first floor a similar arrangement provides a Panhellenic suite, ideal for events in which the groups unite for their various activities. A large and handsome reception foyer close to the registration desk completes its entertainment area.

who will become Pledge Mistress to Epsilon Mu's new pledges. The presentation of silver gifts to Epsilon Mu, from the Alpha Gamma girls, the installing officers and the handsome silver tea service from the sorority, brought expressions of surprised delight, too.

A presentation of special significance was the gift, from Delta Zeta Sorority, of one hundred dollars to be used by the University Endowment in its proposed scholarship honoring Dean Wilber. The acceptance of this gift, in a short but deeply sincere speech, was made by Col. Johnson, vice-president of the University.

In presenting the gavel of president's office to Marcia Broadus, Mrs. Lundy explained that this was a really special gavel, in that it was the gift to Epsilon Mu of the local chapter of Kappa Sigma Fraternity. Chosen to represent its use by a feminine hand, this was a white gavel, with a silver band, inscribed to commemorate the occasion, and with the additional message, "May Success Attend Your Efforts" a quotation, as explained by the letter of transmission, from Kappa Sigma's own pledge service. A happier choice of gift could scarcely have been imagined.

With the gracious welcoming acceptance voiced by Dean Ernestine Lawhon, and the traditional Rose Ceremony, a happy installation became a prized memory, sending all the Delta Zetas away re-committed to the awareness of the opportunity and the challenge which Delta Zeta offers today.

As suggested earlier, this was a busy weekend on campus; and various functions were graced by shining new or freshly-proud Delta Zeta pins.

Sunday morning services at Westminster Presbyterian Church saw the front pews filled with Delta Zetas. A warm welcome was extended both in the day's bulletin and in the sermon, which to one alumnae seemed beautifully appropriate for



Sandra Moore, Marcia Broadus, Grace Lundy, Linda Lenox, Jean Williams.

Delta Zeta. Commenting on this to one of the initiates, she received the honest but just-slightly-embarrassed answer: "I can't remember a thing he said, I was just so happy we could all be there together" . . . perhaps as worthwhile a remembrance as any.

Open house for her friends in the chapter suite that afternoon gave the new chapter further evidence of the welcome felt by the USM campus people. Among the happiest of guests were the many parents and families who had come to rejoice in this happy and honored experience for cherished daughters. Faculty members and President and Mrs. William McCain took pleasure in extending their good wishes; members of other groups, some of whom had also been entertaining, came with good wishes. Two members of the Mobile alumnae chapter, as well as representatives of the city Panhellenic, attested to the interest in the new chapter. Hattiesburg Alumnae were gracious and happy hostesses, and in the talk-it-over session, told of plans for a Parents' Club, for some



Initiates and Pledges of Epsilon Mu Chapter.

needed gifts to the chapter room, for additional alumnae activity in Jackson, and for statewide activity.

The busy Sunday was concluded with a model business meeting, and the distribution of chapter and individual Delta Zeta supplies, guides for the growing responsibility now becomingly assumed.

Finally all the visitors were homeward bound except Linda, who stayed through Greek Week, taking care of the help with details for closing the year. Looking over her list of personal mentions prepared by Gayle Leech, chapter historian, the National Historian was pleased to add up data to show that Epsilon Mu had set no mediocre goals for the chapter. Epsilon Mu has representatives on the Dormitory Officers, The Dean's List (scholastic), the President's List; Vickie Hendershot is a leader in SCOPE (Student Conference on Paramount Events) also a delegate to Student Government Convention, Mississippi Intercollegiate Council, and a Senator. Shirley Hazzlerigg, another Senator also belongs to Druids, and to Alpha Lambda Delta as does Lynn Baldwin. Marcia Broadus and Pam Keller are also members of SCOPE, while Judy Beckner shows versatility by being on the best-dressed coed list and a member of senior honorary. Becky Allums is Miss Hospitality and a candidate for Miss Southern, Mary Beth Nelson is one of the Dixie Darlings, Jima Schoen is a member of Sigma Alpha Eta (honorary Speech and Hearing Society). Linda Ayers is candidate for Greek Goddess as well as being recognized in

the Dean's List; and Becky Allums is President of the State Methodist Youth and a member of the Committee of 100 (Religious Council). Beverly Johnson is a member of Kappa Omicron Phi (home economics honorary), and the chapter's baseball team, coached by Kappa Sig friends, entered the spring intra-murals with high hopes!

The new members of Epsilon Mu are: Rebecca Jane Allums, Ellisville, Mass.; Linda Jean Ayers, Pensacola, Fla.; Owen Lynn Baldwin, Jackson, Miss.; Patricia Ann Carson, St. Louis, Mo.; Marilell Davis, Prentiss, Miss.; Sharon Kay Ellis, Hazlehurst, Miss.; Shirley Ann Hazzlerigg, Vicksburg, Miss.; Billie Jean Herrod, Vicksburg, Miss.; Mary Katherine Holman, Benoit, Miss.; Linda Dayle Hulse, Biloxi; Susan Diane Jones, Vicksburg; Martha Gayle Leech, Memphis, Tenn.; Mary Elizabeth Nelson, Jackson; Beverly Johnson, Nicholson, Miss.; Pamela S. Keller, Metairie, La.; Lee Marion Ratcliff, Ft. Walton Beach, Fla.; Vickie Hendershot, Jackson; Jima Carter Schoen, Pontotoc, Miss.; Paula Dianne Shelton, Biloxi; Sandra Nora Stewart, Biloxi; Marcia Kirk White, Brookhaven, Miss.; Marcia Jean Broadus, Saucier, Miss. Their pledges include: Pamela Poole, Ellisville, Miss.; Bessie Marguerite Watson, Jackson; Karen Lee Stokes, Jackson; Beryl Ann Marx, Bogalusa, La.; Vicki Kay Owens, Tylertown, Miss.; Judith Evelyn Beckner, Tylertown; Patricia Elizabeth Murphy, Pascagoula, Miss.; with two new additions, Lydia Dillman and Paulette Page pledged during Greek Week.

## The National Council of Delta Zeta

announces with pleasure the following colonies:

Beta Iota, University of Arizona  
Iota Zeta, St. John's University  
Iota Tau, West Liberty State College

Installation dates will be announced in a future LAMP.

# PRESENTING OUR NEW COUNCIL



With Betty Agler's enthusiasm and experience this Council will share in Delta Zeta Leadership during this biennium.

## Purposeful and diligent

*Doris Ellingson Riede*, Alpha Omicron Vice-President—College Programs, attended Brenau College and Winona State receiving a B.S. in Education. Her teaching experiences make her well qualified for her new responsibilities when planning and educational techniques are so essential.

A world traveler with her husband, and a participant in community affairs has given her a broad experience.

As former CCD of Gamma Chapter, Province President and National Director, she has an appreciation of college age interests. You'll find her a charming, well organized person with whom to work.

## Ideas and persevering

*Marjorie Doyle Bergman*, Beta Rho Vice-President—Membership, was Rush Vice-President of her chapter at Michigan State University when as a charter member Beta Rho was installed. Her service to Delta Zeta has been consistent and continuous since the chartering days.

Versatility describes her best for she is a professional decorator and has frequently assisted Delta Zeta in this capacity. As the Director of Philanthropy, a completely new field to her, she developed the present hearing program. Both Delta Zeta and the National Hearing Society of which she is secretary of the National Board appreciate her enthusiasm in this field.

Work in extension field has also claimed her interest. In spite of other Delta Zeta responsibilities, she has always assisted chapters with rushing. She comes to the Director of Membership with experience and past successes. A patient and generous husband, Ed, has made it possible for her to serve Delta Zeta.

## Devoted to alumnae

*Gwen Moss McKeeman*, Delta Phi—Vice-President—Alumnae, attended Northeastern College, Oklahoma. Her educational background makes her well qualified to plan and to work diligently with our alumnae.

From her experiences in Panhellenic (President of City Panhellenic); Province Officer, State Recommendation Chairman and Coordinator of State Days, she has given devoted service to alumnae. Oklahoma college chapters have also benefited from her assistance. Along with these activities, she has guided and helped with a complicated housing project at Edmond, Oklahoma bringing

the plans to a successful and happy grand opening this spring.

## A legal mind

*Jean Ericsson Schlosstein*, Tau, with a B.S. from the University of Wisconsin and a Teachers Certificate from Wisconsin State, is a truly busy person. Her analytical mind and attention to details is of great benefit in the work as treasurer.

Having served on Tau's Advisory Board, Wisconsin City Panhellenic and Province President, she has knowledge and experience in chapter work. She has also assisted with extension at Winona State, Wisconsin State LaCrosse and the installation of the chapter at Dickenson, North Dakota.

Boundless energy helps her not only to serve Delta Zeta but also sharing in the many social and political responsibilities of husband, Judge Gary. Even more the two little daughters also involve her in other community work. Her other interests are the Political Executive Committee, the Governor's Conference on Children and Youth, Girl Scouts and Red Cross Cochairman. Their relaxation is found on a beautiful Mississippi houseboat.

*Betsy Bradley Leach*, Alpha Iota, University of Southern California, is continuing on Council as our N.P.C. Delegate on the City Panhellenic Committee. This position requires a wide experience in sorority work. Betsy is admirably suited for this work, for she has worked in many areas, National Vice-President College Programs, recently and earlier as Vice-President—Alumnae. She has also been a leader on many national committees.

Perhaps not as widely known has been her most detailed study and writing of many of our Delta Zeta manuals which have been so helpful to chapters. Her leadership and counsel in working with the College Programs Committees have brought knowledge and procedures which have helped chapters to be more effective and to bring wider experiences.

Betsy is a busy person as head of a credit office in Los Angeles. However, she has always been devoted to her Delta Zeta work for which we are most grateful.

## Sincere and dependable

*Dorothy Varley Breitweiser*, Alpha Chi, also has a record leadership in her quiet, efficient way. She has been President of Pasadena Area City Panhellenic, President of Southern California alumnae, Vice-President of AAUW and on the Council of Job's Daughters.

Especially important to Delta Zeta is her fine record as Secretary of the Pasadena Conference which includes both sororities and fraternities all of whom have great respect for her.

Her part time work in real estate will be very beneficial to her as the new Director of Housing.

During the past few months she has been extra busy with her daughter's involvement in Job's Daughters and her recent graduation from high school. Now she is getting ready for California State at San Diego.

## Southern warmth

*Dee Ann Stephens Connor*, Alpha Gamma, joined Delta Zeta at the University of Alabama. She is well-known to hundreds of Delta Zetas through her five year service as our traveling secretary.

Experience as a traveling secretary is considered by deans of women to be very desirable for college counselor positions. So we lost Dee Ann to Oklahoma State University where she both counseled and completed her M.A.

Recently married, she and her husband will be living in Lansing, Michigan, where her husband will be doing research at Michigan State University.

Dee Ann is an ideal choice of Director of Public Relations, for most southerners early have a social awareness and are noted for their warm hospitality.

With her recent college personnel work and the experience as advisor to the OSU College Panhellenic, Dee Ann returns to Delta Zeta work with new ideas and assurance.

### Resourceful and calm

*Elizabeth Baker Devereaux*, Theta, is another new member of Council. Petite and energetic she has given valuable service to her area. One can realize why she was once the Outstanding Pledge at Theta Chapter. In later years she was State Recommendation Chairman, Panhellenic delegate, Province Vice-President and President.

These past few years as Province President, Liz Devereaux has been working in a newer Delta Zeta area. Such an area was a challenge to her resourcefulness and ability to search out and find positive factors on which to build groups. She is objective and purposeful in her work at all times.

Her community work has been varied with the usual P.T.A. and scouting, Board of Directors of Crippled Children Society, the Governor's Commission, West Virginia OT and AOTA. She also is a consultant in occupational therapy.

Her area of supervision now will be the New England area. No doubt she will also be involved in extension work as two colonies will be installed and other opportunities are being checked.

### Northern but southern now

*Lisbeth Innis Frances*, Psi, attended Franklin College in Indiana. Lis is continuing on the Council and will supervise and counsel the southeast area of the country.

Previous to her Council position, she was treasurer of her chapter, treasurer and later president of the Birmingham Alumnae Chapter, CCD, Province President and Vice-President and National Deputy.

While coming from Ohio, Lis has now adopted the south and they, her. Through her college and alumnae work she has developed a fondness for those who live there.

In addition to Delta Zeta work she was Secretary of the League of Women Voters in Alabama; and a member of the League in Birmingham. She has also been President of the faculty wives at the University of Alabama Medical Center where Dr. Bob does research, a past Director of the Y.W.C.A. and a member of PEO.

*Gloria MacNeven Frymire*, Beta Rho, though now in California, is from Michigan State University. In returning to a Council position as Area National Director (West Coast) she will devote her time to collegiate work. Formerly she was National Vice-President Alumnae.

Having served eight years as CCD and three years as Province President, she has a real appreciation of our college girls. Her sense of humor and cheerful attitude are wonderful assets too.

The Frymire family is a busy one. Larry Frymire is now with the California Education Department and travels frequently. He also broadcasts many programs.

Gloria is President of Women's Fellowship, den mother, KVIE Women's Auxiliary and on the Board of Directors of the Sacramento Hearing Society, an interest especially suited to her training in speech therapy.

*Kathryn Doub Hinman*, Psi, National Area Director attended Franklin College and Wayne State University. Recently retired from teaching Kathryn can now enter into more extensive Delta Zeta activity. Her years of teaching and working with young people will be assets in programming and supervising chapters.

In spite of being a busy teacher, Kathryn has been serving Delta Zeta as Province Vice-President, assisted in installing three chapters, worked on revision of the pledge service and on the National Scholarship Committee.

Community activities have also claimed her interest. She has been active in PTA, President of W.S.C.S., Board of Directors of Wesley Foundation, President of the Library Board and on the Village Election Board.

We are pleased to welcome Kathryn to the National Council.

### Faithful and capable

*Dorris Pike Silverthorne*, Alpha Alpha, graduated from Evanston's Northwestern University. Upon graduation she served Delta Zeta in special assignments. Subsequent service was given as Province President and Province Vice-President, CCD to Gamma Chi, President of Muncie alumnae and National Deputy. Her dignity and graciousness has brought her many friends both in Delta Zeta and in her community work.

At home she is involved with Y.W.C.A., Political Club, The Hospital Auxiliary and the Aeroplane Club. All have served to gain her interest in philanthropic work.

Dorris, Frank and son are busy, happy people. You just might be surprised by an aeroplane landing near you for they have their own plane.

*Mary Lou Vineyard*, Alpha Alpha, is from Northwestern University. Elected as a Director on Council, she will devote her time to the assignment of Extension.

Conventioners know Mary Lou well for her ability to make "announcements" fun and exciting. Those who work with her know her excellent organizational ability. She has been convention chairman since 1954—missing only the Pasadena Convention.

Since coming into Delta Zeta Mary Lou has entered into many activities. She was President of Chicago Alumnae Chapter for three years, served on Chicago City Panhellenic, edited the *Chatterbox* and served on the National Qualifications Committee. The office of National Director of Public Relations has been her recent interest.

The Vineyard family, and especially Mary Lou and Phil are extensive travelers and involved with business responsibilities. They have fun too at golf and more recently on their new fifty-three foot cruiser.

*Violet S. Whitfield*, Tau, continues on Council as the Immediate Past President. Presently she is the N.P.C. alternate and is Housing Chairman of N.P.C.

An interesting coincidence with regard to chapter membership. There are two Council members from each of the following chapters, Theta, Psi, Tau and Alpha Alpha.



# State

WELCOMING Dean Robert H. Shaffer to their State Day luncheon Saturday in the Frangipani Room are Delta Zeta officers. Left to right, are Miss Irene C. Boughton, Delta Zeta National Executive Secretary, Indianapolis; Miss Frances E. Westcott, president of the Delta Zeta Foundation and a past National President of the group, Indianapolis; Mr. Fred Shaffer, dean of students at Indiana University and speaker of the day; and Mrs. Eunice C. Roberts, assistant dean at I.U. and presiding officer at the State Day meeting.

(H-T Photo)

**STATE DAY IN DALLAS—A T IS PROUD OF DIANA!**  
Diana Haskinson (A T) is recipient of the Rhea Schultz Award. Mrs. Schultz (on right) is presenting the award named in her honor, and Mrs. Wm. B. Carr, (another A T) is presiding over the Awards Breakfast as Province President. The annual award goes to the best all-round Senior of the Province. Diana, Past Pres. of A T also received the Grace Mason Lundy Award and has many campus honors to boast at the University of Texas, including Bluebonnet Belle, Orange Jackets, Angel Flight, Mortar Board, A & S Assemblywoman, & Outstanding Student.



Mrs. Curtis Johnson, Province president, shown with  $\Delta \Xi$  chapter at State Day, April 30. To her right is Bonnie Sandoz, Delta Xi president.



# Days

*Ida-Ramey Miller* (Mrs. Robert N.) left designed and hand lettered the Pennsylvania State Day Awards presented. Recipients—holding awards—left to right *Beta Theta-Bucknell-Pres. Mary Kay Daniels—Scholarship*, *Theta Delta-Westminster-Pres. Susan DuMond—Public Relations and Song Contest*, *Pittsburgh Alumnae Chapter-East Area-Pres. Gloria Anderson (Mrs. John) for Public Relation excellence*, *Mae Dickinson, Province III President*, far right, presented the awards.



Beta Tau of Nebraska Wesleyan University hosted State Day, this year combined with the initiation of Zeta Chapter of the University of Nebraska and Iowa State Day. Beta Tau initiated the Zeta girls. Pictured are: Doris Green, acting province President for XII East; Augusta Kelleway, National Director of House Corporations; Ellen Hladky, President of Zeta; and Florence Hood Miner.

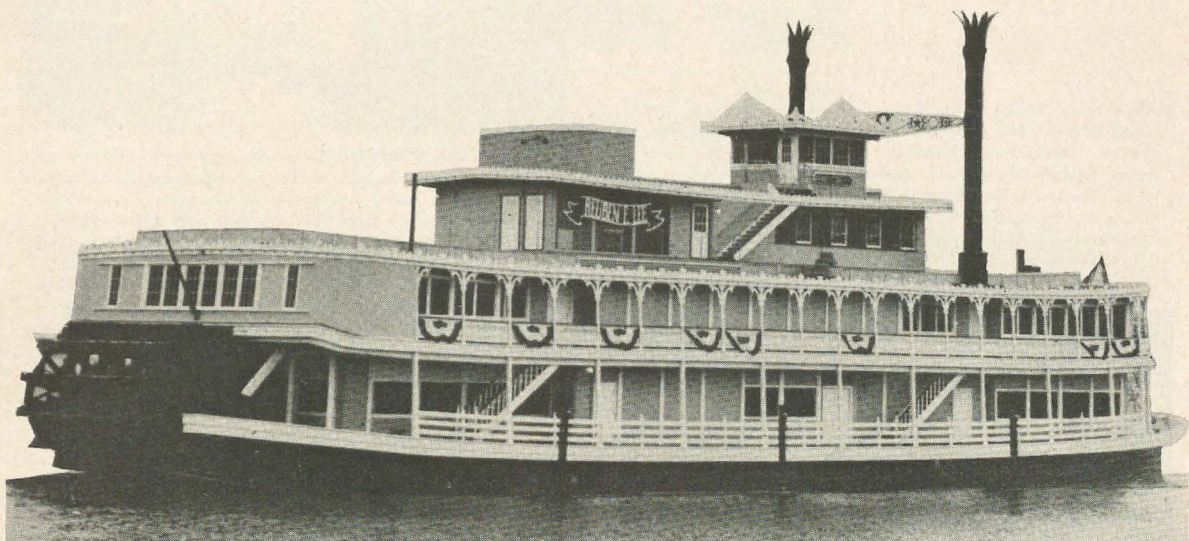


**DELTA ZETA CONVENTION**—At the annual Delta Zeta State Day held in Wisconsin, Saturday, April 23, several awards were presented to chapters and to individuals. Shown from left to right are: Ellen Heagle, chairman, presenting the Outstanding Chapter award to Jan Lenherr of Stout State University; and Dorothy Wegner, province president, presenting the Delta Zeta Alumna of the Year award to Jean Schlosstein, of Cochrane, Wisconsin, Delta Zeta national secretary-treasurer.

Four nominees for Pride of the Province Award at Michigan State Day—left to right, Judy Thompson-E Φ-U of Detroit, Ruth Neher-Z Ω-Northern Michigan University, Winner Janice Michalek-E Σ-Wayne State U., Betty Hiltz-I Ψ-Central Michigan University.



## "Romance of Riverboat Days"



All the glamour and charm of the Old South was spot lighted when Southern California Council of Delta Zeta sponsored its annual "Flame Fantasy" fashion luncheon in the International Ballroom of the Beverly Hilton Hotel.

The 1,200 Delta Zeta alumnae and friends gathered for a picturesque tour of "New Orleans—Romance of the Riverboat Days."

Lending a note of authenticity to the New Orleans theme was the SS. Delta Zeta, a white riverboat set amidst a background of old southern trees hung with Spanish moss. The riverboat replica served as focal point for the high fashion models who stepped down its gangway to show the latest in spring and summer styles from top California designers.

The chic couturier creations, coordinated by June Van Dyke, were described by actress Mary Tyler Moore, pert TV wife of Dick Van Dyke. Appropriate background music was provided by Ivan Scott and his orchestra.

Furthering the festive afternoon note was the awarding of a four-day trip for two to New Orleans, via Delta Airlines, where lucky recipients

will stay at the famed Sheraton Charles Hotel. A portable television set also was awarded as second prize during the benefit drawing.

Mrs. Roy B. Medlin of Canoga Park is chairman of the philanthropic venture, assisted by Mrs. Robert Decker of Anaheim, president of the Southern California Council of Delta Zeta. Others completing arrangements for the fun-filled affair are Mmes. Everett Walsh, Ruth Wilt, Fred Hart and Norman DeWitt.

The annual benefit event, copied for its fund-raising success by Delta Zeta groups throughout the nation, last year garnered \$5,600 for the Uni-Betic Camps for boys and girls with diabetes.

Below, Mrs. David Sprong, wife of La Puente's mayor, expresses delight in grand prize to be awarded—a four-day trip for two to New Orleans via Delta Airlines.



Sponsored by the non-profit Los Angeles Metabolic Clinic, Inc., the Uni-Betic Camps, established in 1941, are held for two week periods each summer in the Barton Flats area of the San Bernardino Mountains.



Southern Style—Romance of the Old South will be depicted in styles such as those worn by Kathie Fox of Covina, left, and Evon Dimon, Baldwin Park, both Delta Zeta pledges at L.A. State College.



Golden Rose Pin  
For 50 Year Members—\$15  
Order from National Headquarters



Daughter-Granddaughter Pendant gold-filled .....\$4.50  
Daughter-Granddaughter Pendant 10K gold .....\$7.25  
(Order from Executive Secretary)

# Delta Zeta Sorority

Founded at Miami University October 24, 1902

GUY POTTER BENTON, D.O., LL.D.

Grand Patron\*

## FOUNDERS

JULIA BISHOP COLEMAN (Mrs. J. M.)\*  
MARY COLLINS GALBRAITH (Mrs. George)\*  
ALFA LLOYD HAYS (Mrs. O. H.)\*

ANNA KEEN DAVIS (Mrs. G. H.)\*  
MABELLE MINTON HAGEMAN (Mrs. Henry)\*  
ANNE SIMMONS FRIEDLINE (Mrs. Justus R.)\*  
\* Deceased.

## THE ORDER OF THE LAUREL

Grace Mason Lundy

Irene Caroline Boughton

## NATIONAL COUNCIL OF DELTA ZETA SORORITY

*President* ..... Betty Heusch Agler (Mrs. B. H.), 20 East 14th Ave., Apt. 7, Columbus, Ohio 43201  
*Vice-President (Alumnae)* .. Gwen Moss McKeeman (Mrs. Robert L.), 5517 South 74th East Ave., Tulsa, Okla. 74145  
*Vice-President (College Programs)* .....  
..... Doris Ellingson Riede (Mrs. J. R.), 104 Lake Ave., White Bear Lake, Minn. 55110  
*Vice-President (Membership)* .....  
..... Marjorie Doyle Bergman (Mrs. Edward), 5217 Riverview Lane, Lisle, Ill. 60532  
*Secretary-Treasurer* ..... Jean Ericsson Schlosstein (Mrs. Gary B.), Michaels St., Cochrane, Wis. 54622  
*National Panhellenic Conference Delegate* .....  
..... Betsy Bradley Leach (Mrs. Garold A.), 1865 Hill Dr., Eagle Rock, Los Angeles, Calif. 90041  
*Director (Area East)* ..... Elizabeth Baker Devereaux (Mrs. Charles), 3514 Cadillac Dr., Parkersburg, W. Va. 26101  
*Director (Area South)* ..... Lisbeth Innis Francis (Mrs. Robert), 2508 Belle Terre Dr., Birmingham, Ala. 35225  
*Director (Area West)* ..... Gloria MacNeven Frymire (Mrs. Larry), 104 Moonlit Circle, Sacramento, Calif.  
*Director (Area Midwest)* .....  
..... Kathryn Doub Hinman (Mrs. Winfield C.), 27310 Wellington Dr., Franklin Village, Mich. 48025  
*Director (Extension)* ..... Mary Lou Ragel Vineyard (Mrs. Philip), 754 N. Waukegan, Lake Forest, Ill. 60045  
*Director (House Corporations)* .... Dorothy Varley Breitweiser (Mrs. Roy), 2717 Firethorn Ave., Fullerton, Calif. 92631  
*Director (Philanthropies)* ..... Dorris Pike Silverthorn (Mrs. Frank W.), 2710 Kilgore Ave., Muncie, Ind. 47304  
*Director (Public Relations)* .....  
..... Dee Ann Stephens Connor (Mrs. Larry), 801-205 Cherry Lane, M.S.U., E. Lansing, Mich.  
*Immediate Past President* ..... Violet Sharratt Whitfield (Mrs. R. H.), 3230 Park Pl., Evanston, Ill. 60201

## NATIONAL REPRESENTATIVE—SPECIAL ASSIGNMENTS

Gertrude Murphy Meatheringham (Mrs. V. H.), Route 1, Kennesaw, Ga. 30144

## NATIONAL HEADQUARTERS

*National Headquarters* ..... 3561 N. Pennsylvania St., Indianapolis, Ind. 46205  
*Executive Secretary* ..... Miss Irene C. Boughton

## COLLEGE CHAPTER ADMINISTRATOR

Marguerite Wherry Havens (Mrs. George C.), 5518 Grand Ave., Des Moines, Iowa 50312

## FIELD SECRETARIES

Linda Lenox, Alice Patton, Carolyn Ubben, Linda Heft, Barbara Link, Connie Kennard, Sue Ricketts

## THE LAMP

*Editor of THE LAMP* ..... MRS. EDWARD MOON (Mary Kay), 349 Lopas St., Menasha, Wis. 54952  
*Board of Trustees of THE LAMP Fund:* Betty Heusch Agler (1968); Dorothy Varley Breitweiser (1968); Jean Ericsson Schlosstein (1968); Violet Sharratt Whitfield (1970); Irene Boughton (1968).

## DELTA ZETA FOUNDATION

*President*—Miss Frances E. Westcott, 549 E. 84th St., Indianapolis, Ind. 46240  
*Treasurer*—Mrs. Maxine Peterson, Rt. 2, Box 808, Tucson, Ariz. 85715  
*Directors*—Gail Patrick Jackson, Margaret Huenefeld Pease, Marjorie Doyle Bergman  
*Chairman Audiology Scholarship*—Dr. Eunice Roberts, Kirkwood Hall, 101, Indiana University, Bloomington, Ind. 47406

## STANDING COMMITTEES

*Constitution & Procedure Chairman*—Evelyn Adams Costello, 3190 Lakecrest Dr., Bloomfield Hills, Mich. 48013.  
*Awards Committee*—Florence Hood Miner (Mrs. Arthur J.), 1040 Avenue H, Nevada, Iowa 50201.  
*History: Ritual Chairman*—Grace Mason Lundy (Mrs. H. M.), R.R. 1, Bloomington, Ind. 47403.

*Judiciary Committee*—Eleanor Atterbury Corten (Mrs. Amos), 951 Larkspur Rd., Oakland, Calif. 94610.  
*Colonnade Club Chairman*—Vice President (College Programs)

## COMMITTEES

*Activities Chairman*—Patti Volbrecht Phillips (Mrs. Jay), 300 E. Alster, Arcadia, Calif. 91006.  
*Awards Committee*—Florence Hood Miner (Mrs. Arthur J.), 1040 Avenue H, Nevada, Iowa 50201.  
*Carville*—Miss Shirlyn Chaffin, 4431 Danforth Rd., Columbus, Ohio 43224.  
*Chapter Newsletters*—Write to Director (Public Relations)  
*Endowment Fund*—Florence Hood Miner.  
*Gallaudet College*—Write to Director of Philanthropies.  
*Magazine Chairman*—Engelyn Brown Tourtelot (Mrs. Charles H.), P.O. Box 725, Concord, Calif. 94522.  
*Memory Book Chairman*—Ruth Clausen Reasor (Mrs. M. L.), 4918 Whitton Pl., Apt. B, Indianapolis, Ind. 46220.  
*National Membership Chairman*—Mary Lou Barth (Mrs. William T.), 1720 Tennyson Ave., Dayton, Ohio 45406.  
*Navajo Project*—Write to Director of Philanthropies.

*Order of Golden Rose*—Irene C. Boughton, 3561 N. Pennsylvania St., Indianapolis, Ind. 46205.  
*Personal Loans and Scholarships*—Mrs. George C. Havens, 5518 Grand Ave., Des Moines, Iowa 50312.  
*Pledge Training Chairman*—Write to Vice-President (College Programs).  
*Powers Program Chairman*—Mrs. Carlyle W. Rees (Zo), 2927 Crooks Rd., Royal Oak, Mich. 48073.  
*Province Conference and State Day Coordinator*—Lois Westerman Schrank (Mrs. Benjamin M.), 5184 Meadow Wood Blvd., Cleveland, Ohio 44124.  
*Scholarship Chairman*—Write to Vice-President (College Programs).  
*Sorority Education Chairman*—Kay Morrow Wright (Mrs. Terry), 1913 Beanes Ave., Des Moines, Iowa 50310.  
*Standards Chairman*—Frances Igo Gregory (Mrs. S. M.), 3850 Olive Ave., Long Beach, Calif.

This Directory is correct as of August 1.

\* (Alumnae chapters not chartered)

# **PROVINCE I—Maine, Vermont, New Hampshire, Massachusetts, Connecticut, Rhode Island**

**Chapter/School**  
 AT—U. of Maine  
 BA—U. of R. I.  
 IB—U. of Conn.  
 AI—Jackson Col., Tufts Univ.  
 OT—U. of New Hampshire

**President**  
 Andrea J. Pulkkinen  
 Carol Sposito  
 Elizabeth Traceski  
 Anne Marie Jones  
 Karen Acheson

**Chapter Address**  
 342 York Hall Orono, Maine 04473  
 ΔZ House, 70 Lower College Rd., Kingston, R. I. 02881  
 ΔZ House, U. of Conn., Storrs, Conn. 06268  
 Hodgdon Hall, Jackson Col., Medford, Mass. 02155  
 ΔZ House, 25 Madbury Rd., Durham, N.H. 03824

**National Director:** MRS. CHARLES DEVEREAUX (ELIZABETH) 3514 Cadillac Dr., Parkersburg, W.Va. 26101

**College Chapter Director**  
 Miss Claire S. Sanders

**Address**  
 123½ Maine St., Orono, Maine 04473

Mrs. Russell De Coursey (Ma-y)  
 Miss Sondra Szymczak  
 Miss Myra Davis  
 24 Storrs Heights Road, Storrs, Conn. 06268  
 37 Elliott St., Danvers, Mass. 01923  
 20 Main St., Durham, N.H. 03824

**Province Vice-President:** MRS. JAMES CONCELMAN (LOIS), 23 Sniffen Rd., Westport, Conn. 06880

**Chapter**  
 \*Bangor, Maine—Mrs. Gene Carter, 12 N. Folk St., Bangor, Maine 04401  
 Boston, Mass.—Mrs. Doris Sickler, 61 Norwich Circle, W. Medford, Mass. 02155  
 Fairfield Co., Conn.—Mrs. Roy Billings, 22 Lakeview Dr., Stanford, Conn.  
 Hartford, Conn.—Mrs. John G. Hill, Jr., 272 Fern St., West Hartford, Conn. 06167

**President and Address**

**State Membership Chairmen:** Maine—Miss Velma K. Oliver, 3 Allen Rd., Orono, Maine 04473  
 Vermont—Mrs. John Rider, 10 Marshall Dr., Burlington, Vt. 05401  
 New Hampshire—  
 Massachusetts—  
 Connecticut—Mrs. Edward B. Gill, 53 High Point Rd., Westport, Conn. 06880  
 Rhode Island—Mrs. James H. Crossley, 40 Farmland Rd., Warwick, R.I. 02886

**Chapter**

Kingston, R.I.—  
 Providence, R.I.—Miss Elaine Tallmadge, 14 Lodi Ct., Warwick, R.I. 02886  
 \*Springfield, Mass.—Mrs. Richard Dorshimer, 131 Wenonah Rd., Longmeadow, Mass. 01100  
 Storrs, Conn.—Mrs. Russell Wheeler, Jr. Columbia Lake, Columbia, Conn. 06237

**President and Address**

# **PROVINCE II—New York and New Jersey**

**Chapter/School**  
 AZ—Adelphi University  
 BQ—New York U.  
 FH—Hunter Col.  
 ΔE—Queens Col.  
 ZΔ—Wagner Col.

**President**

Dorothy Karsch  
 Susan Trentacoste  
 Joan Balke  
 Carol Pucilowski  
 Sandra Henshaw

**Province President:** MRS. CHARLES ALSETH (JOANNA), 95 Jefferson St., Garden City, L.I., N.Y. 11530

**Chapter Address**

78 Dover Parkway, Stewart Manor, N.Y.  
 1429 2nd Ave, N.Y. N.Y.  
 95-04 Woodhaven Ct. Ozone Park, N.Y. 11416  
 667 Manhattan Ave., Brooklyn, N.Y. 11222  
 138 Targee St., Staten Island, N.Y.

**College Chapter Director**

Mrs. David W. Schropfer (Gloria)  
 Miss Italia Terrone  
 91 Strawberry Hill, Stamford, Conn. 06902  
 147-16 33 Avenue, Flushing, New York 11354

Dr. Edith A. Schmitt  
 151 Livermore Ave., Staten Island, N.Y. 10314

**Chapter**  
 Buffalo, New York—Mrs. Earl Fischer, 495 Carmen Rd., Amhurst, N. Y. 14226  
 Staten Island—Mrs. Madeline Buono, 118 Penn Ave., Staten Island, N.Y. 10306  
 Northeastern New Jersey—Mrs. B. M. Levin, 415 Passaic St., Hackensack, N.J. 07601

**President and Address**

**State Membership Chairmen:** New York: (Lower)—Mrs. Ludwig H. Herrmann, 8 The Lindens, Roslyn, L. I., New York 11576  
 (Upper)—Miss Mary Frances Sims, 1612 W. Onondaga St., Syracuse, N.Y. 13204  
 New Jersey—Mrs. Ado F. Bolles, 90 E. Crescent Ave., Allendale, N. J. 07401

**Chapter**

Northern New Jersey—Mrs. Robert F. LeMassena, Box 37, Flanders, N.J. 07836  
 Rochester, N.Y.—Mrs. Robert Henderson, 38 Pasadena Dr., Rochester, N.Y. 14606  
 Syracuse, N.Y.—Mrs. Lawrence McCarty, 1625 Stolz Ave., Syracuse, N.Y. 13207  
 \*Westchester County, N.Y.—Mrs. Richard Brown, 1 Garrett Place, Bronxville, N.Y. 10708

**President and Address**

# **PROVINCE III—East Pennsylvania and Delaware**

**Chapter/School**  
 BQ—Bucknell U.  
 ΔA—Penn. St. U.  
 ΔT—Temple Univ.  
 EZ—Drexel Institute of Technology  
 QX—Lock Haven St. Col.  
 IO—Mansfield St.

**President**

Priscilla Morrell  
 Nancy Arburu  
 Lynn Powell  
 Virginia M. Maffei  
 Suzanne Lehman  
 Susan Fellows

**National Director:** MRS. CHARLES DEVERAUX, 3514 Cadillac Dr., Parkersburg, W.Va. 26101

**Chapter Address**

Box W-179, Bucknell Univ., Lewisburg, Pa. 17837  
 409 Hiester Hall, University Park, Pa. 16802  
 Panhellenic House, 1953 N. Broad St. Philadelphia, Pa. 19122  
 214 N. 34th St., Philadelphia, Pa. 19104  
 102 Russell Hall, Lock Haven St. Col., Lock Haven, Pa. 17745  
 Box 135, Pinecrest Manor, Mansfield St. Col., Mansfield, Pa. 16933

**College Chapter Director**

Mrs. Ralph Trutt (Catherine)  
 Mrs. Carroll Champlin (Dorothy)  
 477 Water Street, Northumberland, Pa. 17857  
 627 W. Fairmont, State College, Pa. 16802

Miss Diana Di Meo  
 Mrs. George Hayfield (Joan)  
 Mrs. Kenneth W. Brace (Mary)  
 33 Rodmor Rd., Havertown, Pa., 19184  
 504 Woodward Ave., Lock Haven, Pa. 17745  
 50 Mann St., Mansfield, Pa. 16933

**Province Vice-President:**

**Chapter**  
 Harrisburg—Mrs. Donald Douglass, 315 Manchester Rd., Camp Hill, Pa.  
 \*Lancaster—Mrs. William Lumbeck, 407 Glen Ridge Dr., Lancaster, Pa. 17601  
 Philadelphia (West Sub.)—Mrs. Edward Monaghan, 142 Barcladen Rd., Rosemont, Pa. 19010  
 Philadelphia (North Sub.)—Ellen Hynson, 11708 Beech Ave., Philadelphia, Pa. 19126  
**State Membership Chairmen:** Pennsylvania—  
 Delaware—Mrs. Edwin G. Willing, 110 Canterbury Dr., Windsor Hills, Wilmington, Dela. 19083

**President and Address**

**Chapter**

State College—Mrs. Leslie Moyer, 1173 S. Atherton, State College, Pa  
 Wilmington, Del.—Mrs. Bruce I. Dittmar, 302 Plymouth Rd. Fairfax, Wilmington, Del.  
 19803

**President and Address**

### PROVINCE III—West Pennsylvania

Chapter/School	President
O—U. of Pitt.	Donna Diego
ΓΦ—Indiana St. College	Judy DeGarmo
Θ—Clarion St. Col.	Jackie Sabol
ZE—California St. Col.	Lorraine Bonito
ZΦ—Slippery Rock St. Col.	Karen McVitty
ΘΔ—Westminster Col.	Kathleen Schauble
IT—Alliance College	Carolyn Rusiecki
IA—Edinboro St. Coll.	Jean MacArthur

**Province President:** MRS. C. A. DICKINSON (MAE), R.D. 3, Slippery Rock, Pa. 16057

Chapter Address
1616 Termon Ave., Pittsburgh, Pa. 15213
340 Stewart Hall, Indiana, Pennsylvania 15701
Box 272, Given Hall, Clarion, Pa. 16214
Stanton Hall, California, Pa. 15419
327 Harner Hall, State Col., Slippery Rock, Pa. 16057
306 Galbreath Hall, Westminster, New Wilmington, Pa. 16142
Women's Dorm, Alliance Col., Cambridge Springs, Pa. 16403
C.U. Box B-99, ESC, Edinboro, Pa. 16412

College Chapter Director
Mrs. Gordon Pike (Gwen)
Miss Ruth Podbielski
Mrs. Ernest W. Johnston (Margery)
Miss Nellie Baliker
Mrs. George G. West (Marion)
Mrs. Richard V. Stevens II (Connie)
Mrs. Wm. C. Wenner (Jeannette)
Mrs. Jack Williams (Emma)

Address
142 N. Sprague Ave., Pittsburgh, Pa. 15202
Box 157 S.T.C., Indiana, Pa.
198 Third Ave., Clarion, Pa. 16214
542 2nd St., California, Pa. 15419
624 S. Main St., Slippery Rock, Pa. 16057
36 Orchard Ave., Hubbard, Ohio 44425
337 Main St., Cambridge Springs, Pa. 16403
Box 177, Edinboro, Pa. 16412

Chapter	President and Address
Erie—Mrs. E. J. Tenpas, 853 E. Gore Rd., Erie, Pa. 16509	
*California—Miss Janet Bristor, 1251 Park, Washington, Pa. 15301	
Indiana—Mrs. John D. Varner 414 Oak St., Indiana, Pa. 15701	
Pittsburgh (North)—Mrs. Jos. Barr, 319 Frederick Ave., Sewickly, Pa. 15143	

**State Membership Chairman:** Pennsylvania

### PROVINCE IV—West Virginia and South Kentucky

Chapter/School	President
AΘ—U. of Kentucky	Cheryl Mathias
ΔT—Marshall U.	Mary Lind Hagan
EA—Concord Col.	Anita Skeens
EI—Fairmont St. Col.	Karen Doll
ZT—Morris Harvey College	Dianna Kinser
ΘΞ—Glenville St. Col.	Cynthia Bennon

**National Director:** MRS. CHARLES DEVEREAUX (ELIZABETH), 3514 Cadillac Dr., Parkersburg, W.Va. 26101

Chapter Address
ΔZ House, 319 Columbia Terr., Lexington, Ky. 40506
1814 16th St., Huntington, W. Va. 25701
Box C27, Concord Col., Athens, W. Va. 24712
284 View Ave., Fairmont, W. Va. 26554
119 Dickinson Hall, M.H., Charleston, W. Va. 25321
Women's Hall, Glenville St., Glenville, W. Va.

**Province Vice-President:** MRS. CHARLES KURNER (MARIAN), 103 Brentwood St., Marietta, Ohio 45750

Chapter	President and Address
Athens-Princeton, W.Va.—Miss Gail Rector, R.R. 1, Box 153, Princeton, W. Va. 24740	
Charleston, W.Va.—Mrs. John M. Jones, 1927 Seventh Ave., St. Albans, W.Va.	
*Fairmont, W.Va.—Mrs. Elaine Negie Butcher, 1114 Gaston Ave., Fairmont, W.Va. 26553	

**State Membership Chairmen:** West Virginia—Mrs. Frank Mancari, Kayford, W. Va. 25116  
Kentucky

### PROVINCE V—Ohio

Chapter/School	President
A—Miami U.	Lynn Rogers
Θ—Ohio St. U.	Ellen Martin
Ξ—U. of Cincinnati	Marilyn Petering
BX—Wittenberg U.	Marion Crist
ΓA—Baldwin-Wallace Col.	Suzanne Brown
ΓK—Kent St. U.	Andrea Getzlaff
ΓT—Bowling Green St. U.	Leslie Neidhart
ZK—Ohio No. U.	Barbara Turner
ΘZ—U. of Akron	Frances Reed
ΘΣ—College of Steubenville	Janice Jedrzejewski
ΘT—Findlay College	Ruth Bittner
ΘΨ—Ashland College	Sally Worcester

**Province President:** MRS. J. R. ANDRISEK (NORMA), 119 Meadow Dr., Berea, Ohio 44017

Chapter Address
Box 99, Dorsey Hall, Miami U., Oxford, Ohio 45056
ΔZ House, 212 East 15th, Columbus, Ohio 43201
ΔZ House, 2811 Clifton, Cincinnati, Ohio 45220
ΔZ House, 923 N. Fountain, Springfield, Ohio 45504
Findley Hall, Berea, Ohio 44017
244 E. Main, Kent, Ohio 44240
ΔZ House, B.G.S.U., Bowling Green, Ohio 43402
200 W. Lehr, Ada, Ohio 45810
1490 Bellows St., Akron, Ohio 44301
Steubenville Col., Box 484, Steubenville, Ohio 43952
1011 N. Main, Findlay, Ohio 45840
329 Jacobs Hall, Ashland College, Ashland, Ohio 44805

**Province Vice-President:** MRS. John O'Neil (Emily), 1098 Conestoga Ct., Cincinnati, Ohio 45241

Chapter	President and Address
Ada—Miss Evelyn Jenkins, 714 S. Johnson, Ada, Ohio 45810	
Akron—Mrs. Roy Browne, 590 Scholalog Rd., Akron, Ohio 44320	
Berea—Mrs. David E. Jones, 26259 Orange Rd., Olmsted Falls, O. 44138	
Canton Area—Mrs. James Kandel, 808 W. Nassau, East Canton, Ohio	
Cincinnati—Mrs. Robert L. Mullins, 6613 Apache Circle, Cincinnati, Ohio 45243	
Cleveland, Eastside—Miss Lillian Swaney, 2383 Noble Rd., Cleveland, Ohio 44121	
Cleveland, Westside—Mrs. Loughner Davis, 17506 Franklin Ave., Cleveland, Ohio 44107	
Columbus, Ohio—Mrs. Willard Heckman, 2766 York Rd., Columbus, Ohio 43221	
Dayton, Ohio—Mrs. Bruce Oberlin, 859 Butternut Dr., Dayton, Ohio 45419	
Hamilton—Mrs. Walter M. Jackson, 116 Westbrook Dr., Hamilton 45013	

**State Membership Chairman:** Ohio—Mrs. William B. Wilt, 2950 Langsfield Dr., Columbus, Ohio 43209

Chapter	President and Address
Pittsburgh (South Hills)—Mrs. Clifford Perry, 155 Par Dr., Pittsburgh, Pa. 15236	
Pittsburgh (East)—Mrs. Robert Nielsen, 2019 Holiday Park Dr., Pittsburgh, Pa. 15239	

College Chapter Director	Address
Mrs. H. A. Garber (Dot)	324 Sycamore Rd., Lexington, Ky. 40502
Mrs. Don Williams (Clara)	Weaver St., Athens, W. Va. 24712
Mrs. Virgil Fairchild (Mary)	5200 Kanawha Ave., S.E., Charleston, W. Va.
Mrs. J. Wm. Douglas (Margaret)	917 Mineral Rd., Glenville, W. Va. 26351
Chapter	President and Address
Huntington, W.Va.—Mrs. John Whitfield 1122 11th Ave., Apt. D., Huntington, W. Va. 25701	
Lexington, Ky.—Mrs. B. G. Crawford, 1850 Pershing Ave., Lexington, Ky. 40504	

College Chapter Director	Address
Mrs. Wm. Reidenback (Joann)	876 Poling Dr., Columbus, Ohio 43224
Mrs. Richard Krisher (Jan)	8586 Hallridge Ct., Cincinnati, Ohio 45231
Mrs. Milton Ogden (Marty)	537 Cadance Dr., Springfield, Ohio 45504
Mrs. J. R. Andrišek (Norma)	119 Meadow Dr., Berea, Ohio 44017
Mrs. James McGrath (Ruth)	347 Miller Ave., Kent, Ohio 44240
Mrs. Jerold Morrow (Ann)	2012 Westwood, Toledo, Ohio 43607
Mrs. Karl Roeder (Kay)	R.R. 2, Ada, Ohio 45810
Mrs. Wm. Riddle (Aldabell)	2746 Elmwood, Cuyahoga Falls, Ohio 44221
Mrs. Kenneth Peterson (Nancy)	461 Scenic Dr., Steubenville, Ohio 43953
Miss Helen Reimund	1521 Tiffin Rd., Findlay, Ohio 45840
Mrs. Carl Reichard (Vivienne)	1564 Wagner Ave., Lakewood, Ohio 44107
Chapter	President and Address
Kent—Mrs. Charles Chandler, 455 Dansel St., Kent, Ohio 44240	
Marietta-Parkersburg—Mrs. Richard J. Newell, Box 242K, Route 1, Parkersburg, W. Va. 26105	
*Middletown—Mrs. M. L. Hackney, 4610 Stratford Drive, Middletown, Ohio 45052	
*Oxford—Mrs. Robert Fryman, Moringsum Rd., Oxford, Ohio 45056	
*Portsmouth—Mrs. James P. Grimm, 4620 Scioto Trail, Portsmouth, Ohio 45662	
Springfield—Mrs. Herbert Fyffe, 2553 Derr Rd., Springfield, Ohio 45503	
Toledo—Mrs. Donald Small, 3141 Wendover, Toledo, Ohio	
Wooster—Mrs. W. R. Fritze, 833 S. Vine St., Orrville, Ohio 44667	
Youngstown—Mrs. Stephen Zboray, 3605 Kiowa Dr., Youngstown, Ohio 44511	

# PROVINCE V—Michigan East

**Chapter/School**  
BP—Michigan State U.  
E—East. Mich. U.  
E—Wayne State U.  
E—Univ. of Detroit

**President**  
Sandra Schnetzky  
Barbara Piercecchi  
Kathleen Hatcher  
Judith Thompson

**Province President:** MRS. WILLIAM B. WHEELER (JOY), 630 S. Lafayette, Dearborn, Michigan 48124

**Chapter Address**  
ΔZ House, 110 Oakhill, East Lansing, Mich. 48823  
215 Downing Hall, E.M.U., Ypsilanti, Mich. 48197  
19156 Annchester, Detroit, Mich. 48219  
26940 Hass, Dearborn Heights, Mich. 48127

**College Chapter Director**  
Mrs. Geo. Pinches (Carole)  
Mrs. Michael Richardson (Jeri-Lynn)  
Miss Cathy Dritsas  
Mrs. Kenneth Balogh (Sue)

**Address**  
1114 Chester Rd., Lansing, Mich. 48912  
3027 Williamsburg, Ann Arbor, Mich. 48103  
14542 Woodmont, Detroit, Mich. 48227  
16166 McClain, Allen Park, Mich. 48101

**Province Vice-President:** MRS. LORETTA M. GILEWICZ, 473 Allard Rd., Grosse Point Farms, Michigan

**Assistant Province Vice-President:** MRS. HOWARD G. NOWKA (RUTH), 22700 Alexandria, Dearborn, Mich. 48124

**Chapter**  
Detroit—Mrs. Howard G. Nowka, 23700 Alexandrine, Dearborn, Mich. 48124  
Flint—Mrs. Earl Senninger, 802 Blanchard Ave., Flint, Mich. 48503  
Lansing-East Lansing—Mrs. Robt. Fitzpatrick, 4400 Dell Rd., Holt, Mich. 48842

## President and Address

**State Membership Chairman:** Michigan—Mrs. Edward C. Wirth, 730 W. Wattle Rd., Bloomfield Hills, Mich. 48013  
Asst. Michigan—Mrs. Frederick L. Lutze, 15520 Amherst, Birmingham, Mich. 48010

# PROVINCE VI—Michigan West

**Chapter/School**  
BIT—Albion College  
FIT—West. Mich. U.  
F—Cent. Mich. U.  
ZN—Ferris State College  
Z—No. Mich. Univ.

**President**  
Sue Galbraith  
Elaine Eisner  
Carole Brockman  
Trudy Proctor  
Carole Camilli

**Province President:** MRS. DAN NAGELVOORT, 3615 Crooks Rd., Royal Oak, Mich. 48073

**Chapter Address**  
S.W.H., Albion, Mich. 49224  
221 Draper, WMU, Kalamazoo, Mich. 49001  
201 Sloan Hall, CMU, Mt. Pleasant, Mich. 48858  
221 Clark Hall, Ferris St., Big Rapids, Mich. 49307  
323 E. Magnetic, Marquette, Mich. 49855

**College Chapter Director**  
Mrs. John F. Karmalski (Virginia)  
Mrs. David Koth (Sandra)  
Miss Barbra King  
Miss Helen Wild  
Mrs. Mary E. Anderson

**Address**  
R.R. 2, Parma, Mich. 49269  
434 W. Bridge Ave., Plainwell, Mich. 49080  
1001 S. College, Mt. Pleasant, Mich. 48858  
611 Lilac, Big Rapids, Mich. 49307  
1808 Tracy Ave., Marquette, Mich. 49855

**Province Vice-President:** MRS. LORETTA M. GILEWICZ, 473 Allard Rd., Grosse Point Farms, Mich.

**Assistant Province Vice-President:** MRS. HOWARD J. NOWKA (RUTH), 22700 Alexandria, Dearborn, Mich. 48124

**Chapter**  
Albion—Mrs. J. L. Glathart, 418 Darrow St., Albion, Mich. 49224  
Battle Creek—Mrs. Dale Dittmer, 149 Homestead, Battle Creek, Mich.

## President and Address

**State Membership Chairman:** Michigan—Mrs. Edward C. Wirth, 730 W. Wattle Rd., Bloomfield Hills Mich. 48013  
Asst. Michigan—Mrs. Frederick L. Lutze, 15520 Amherst, Birmingham, Mich. 48010

# PROVINCE VII—Indiana and North Kentucky

**Chapter/School**  
Δ—DePauw Univ.  
E—Indiana Univ.  
F—Franklin Col.  
BT—U. of Louisville  
IX—Ball St. Univ.

**President**  
Pat Schrage  
Janet Ann Coplen  
Susan Wolmuth  
Michael Morford  
Carol Paoletto

**Province President:** MRS. BERNARD WALDMAN (GLENNALOU), 54728 Merrifield Dr., Mishawaka, Ind. 46544

**Chapter Address**  
ΔZ House, 411 Anderson, Greencastle, Ind. 46135  
ΔZ House, 809 East 7th St., Bloomington, Ind. 47403  
Elsey Hall, Franklin Col., Franklin, Ind. 46131  
Threlkeld Hall, 120 E. Barbee, Louisville, Ky. 40208  
600 Calvert St., Muncie, Indiana 47301

**College Chapter Director**  
Mrs. Ray H. French (Martha)  
Mrs. N. A. Fattu (Jeannette)  
Mrs. Max Fitzpatrick (Carol)  
Mrs. Edward Schmitt (Fannette)  
Mrs. Alan Winters (Rita)

**Address**  
106 E. Seminary St., Greencastle, Ind. 46135  
921 Sheridan Rd., Bloomington, Ind. 47403  
RR 1, Whiteland, Ind.  
241 Brighton Dr., Louisville, Ky. 40205  
515 No. Tillison, Muncie, Ind. 47304

**Province Vice-President:** MRS. HAROLD HOUSTON (SARAH JANE), 6322 Hoover Rd., Indianapolis, Indiana

**Chapter**  
\*Anderson—Mrs. Thomas T. Thomas, P.O. Box 174, Alexandria, Ind. 46001  
\*Bloomington—  
Columbus—Mrs. Roy Van Wye, 918 Lafayette Ave., Columbus, Indiana 47201  
Fort Wayne—Mrs. F. R. Reese, 8736 Maraville, Ft. Wayne, Ind. 46805  
Franklin—Mrs. Charles Patterson, R.R. 5, Franklin, Ind. 46131  
Greencastle—Miss Mary Frances Cooper, 304 E. Hanna, Greencastle, Ind. 46135  
Indianapolis—Mrs. Ted Wyman, 1932 Fairhaven Dr., Indianapolis, Ind. 46219

## President and Address

**State Membership Chairmen:** Indiana—Mrs. John Thomas, 321 N. Irvington, Indianapolis, Ind. 46219  
Kentucky

# PROVINCE VIII—Wisconsin

**Chapter/School**  
T—Univ. of Wis.  
IO—Carroll Col.  
EK—Wis. State, Univ. Whitewater  
EX—U. of Wis., Milwaukee

**President**  
Dorothy Chadbourne  
Patricia Lynn  
Marge Trachte  
Nancy Pukay

**National Director:** MRS. WINIFELD HINMAN (KATHRYN) 27310 Wellington Dr., Franklin Village, Mich. 48025

**Chapter Address**  
ΔZ House, 142 Langdon, Madison, Wis. 53703  
151 S. East Ave., Waukesha, Wis. 53186  
Fricker Hall, Wis. St., Whitewater, Wis. 53190  
1926 So. 58th St., Milwaukee, Wis. 53219

**College Chapter Director**

**Address**

Mrs. David O. Jones (Ora)  
Miss Mary Jo Rice  
Mrs. Laurence Reck (Alice)  
Miss Rita Todd

335 Graham St., Whitewater, Wis. 53190  
317 E. Plainfield Ave., Milwaukee, Wis. 53221  
1005 Vine Street, Eau Claire, Wis. 54701  
221 W. Third St., Menomonie, Wis. 54751

**Co-Province President:** MRS. TOM WEGNER (DOROTHY), 740 Carol St., Eau Claire, Wis. 54701

EO—Wis. St. U., Eau Claire  
ZB—Stout State University  
ZO—Wis. St. Univ., LaCrosse  
ZX—Wis. St., Univ., Stevens Point  
OA—St. Norbert Col.  
IE—Oshkosh State Col.

Connie Winter  
Janet Lehnerr  
Nancy Weissenberger  
Virginia Clay  
Carol Dodge  
Jean Hirschboech

2636 Keith St., Eau Claire, Wis.  
721 Wilson Ave. Menomonie, Wis. 54751  
Wentz Hall, 328B, Wis. St., LaCrosse, Wis. 54601  
1309 Michigan Ave., Stevens Point, Wis. 54481  
304 M.M.M. Hall, West DePere, Wis. 54178  
235 Taylor Hall, WSU, Oshkosh, Wis.

Mrs. Robert Lewis (Ruth)  
Mrs. Wm. D. Campbell (Rosemary)

112 Greenbriar Ave., Park Ridge, Stevens Point, Wis.  
314 Bader St., West DePere, Wis. 54115 54481

**Province Vice-President:** MRS. VERNON SMEBAK (JANE), 314 Arcade Ave., Watertown, Wis. 53094

**Chapter**  
\*Eau Claire—Mrs. Michael L. Bell, 840 Chippewa St., Eau Claire, Wis. 54701  
\*Fox River Valley—Mrs. Gene Hackmeyer, 1712 E. Frances St., Appleton, Wis.  
\*La Crosse, Wisc.  
Madison—Mrs. Robert Korbitz, 6307 Eastgate Rd., Madison, Wis. 53716  
Beloit-Janesville—Mrs. Lester Harlow, 805 Elmwood, Beloit, Wis. 53511

## President and Address

**Chapter**  
\*Menomonee Falls—Mrs. Robert J. Allen, 3500 Studio Ct., Brookfield, Wis. 53005  
Milwaukee—Mrs. Robert Haupt, 829 N. 58th St., Milwaukee, Wis. 53213  
Waukesha—Mrs. Arnold Harriets, 228 S. Charles St., Waukesha, Wis. 53186  
\*Whitewater—Miss Judy Hendricks, 17 Water Street, Prairie du Sac Wis.

## President and Address

**State Membership Chairmen:** Wisconsin—Mrs. Louis Moegenburg, 346 Winnebago Ave., Menasha, Wisc. 54952

**PROVINCE IX—Illinois North**

**Chapter/School**  
 II—Eureka College  
 AA—Northwestern U.  
 IP—No. Ill Univ.  
 OO—De Paul Univ.

**President**  
 Sharon Matterer  
 Nancy Joeckel  
 Katy Rieger  
 Emily Mannarelli

**Chapter Address**  
 807 S. Burgess St., Eureka, Ill. 61530  
 ΔZ House, 717 University Pl., Evanston, Ill. 60201  
 1010 Blackhawk Dr., DeKalb, Ill. 60115  
 11027 S. Ewing Ave., Chicago, Ill. 60617

**College Chapter Director**  
 Mrs. Dale Sargent (Sue)  
 Mrs. Raymond P. Johnson (June)

**Address**  
 2505 Hilltop Ct., Peoria, Ill. 61611  
 816 Madison Ave., Evanston, Ill. 60202

Miss Regina Bachta  
 5744 W. Gunnison, Chicago, Ill.

**Chapter**  
 Arlington Heights—Mrs. Frank Blake, 2210 Central Rd., Rolling Meadows, Ill. 61757  
 Aurora—Mrs. Galen Horsch, 209 A. Linn Ct., N. Aurora, Ill. 60542  
 Chicago—Miss Katharine Schweizer, 2616 Walnut, Evanston, Ill. 60201  
 North Suburban—Mrs. H. W. Chronquist, 3247 Park Place, Evanston, Ill. 60201  
 South Suburban—Mrs. Glenn Holtz, 17639 Rockwell Ave., Homewood, Ill. 60403  
 \*DeKalb-Sycamore—Mrs. Owen W. Nelson, R. R. 2, DeKalb, Ill. 60115

**President and Address**

**Province Vice-President:** MRS. RUSSELL CARLSON (MAUREEN), 819 Oak Ave., Aurora, Ill. 60506

**Chapter**  
 DuPage Valley—Mrs. Frank Stamm, 468 Arlington, Glen Ellyn, Ill. 60137  
 Elgin—Mrs. Jack Dahl, 492 Linn, Crystal Lake, Ill. 60014  
 Eureka—Mrs. Elene Brandon, 105 E. College, Eureka, Ill. 61350  
 Rockford—Mrs. Roy Wilder, 1622 Harlem Blvd., Rockford, Ill. 61103  
 Salt Creek—Mrs. George Elliott, 642 Hillside, Elmhurst, Illinois 60126  
 \*Springfield—Mrs. Richard Jeffers, 2200 Whitefield Road, Springfield, Ill. 62704

**President and Address**

*State Membership Chairman:* Illinois—

**PROVINCE IX—Illinois South**

**Chapter/School**  
 AB—U. of Illinois  
 FN—Eastern Ill. U.  
 FN—Southern Ill. U.  
 EO—Western Ill. U.  
 ZA—Bradley Univ.

**President**  
 Sue Prawl  
 Sharyn Hill  
 Kathy Ganey  
 Faye Armstrong  
 Beverly Helling

**Chapter Address**  
 ΔZ House, 710 W. Ohio, Urbana, Ill. 61801  
 ΔZ House, 848 Sixth St., Charleston, Ill. 61920  
 103 Small Group Housing, Carbondale, Ill. 62901  
 417 Olson, Macomb, Ill. 61455  
 ΔZ House, 1514 W. Fredonia, Peoria, Ill. 61606

**College Chapter Director**  
 Mrs. John C. Stubbs (June)  
 Mrs. Ben F. Anderson (Lena)  
 Mrs. J. E. Burnside (Betty)  
 Mrs. Gary L. Cowman (Farrell)

**Address**  
 1709 Ridge Road, Champaign Ill. 61820  
 845 Sixth St., Charleston, Ill. 61920  
 R. R. 4, Carbondale, Ill. 62901  
 R. R. 1, Macomb, Ill. 61455

**Chapter**  
 Alton-Wood River—Mrs. Harold L. Carr, 315 Tower Drive, E. Alton, Ill. 62003  
 Carbondale—Miss Kathyryn Kimmel, 309 E. Main, Carbondale 62901  
 \*Charleston—Mrs. James Scribner, 1067 9th St., Charleston, Ill. 61920

**President and Address**

**Province Vice-President:** MRS. RUSSELL CARLSON (MAUREEN), 819 Oak Ave., Aurora, Ill. 60506

\*Decatur—Mrs. Sophia Strubinger, 1665 W. Forest, Decatur, Ill. 62522

*State Membership Chairmen:* Illinois—

**PROVINCE X—North—Minnesota, North Dakota and South Dakota**

**Chapter/School**  
 T—U. of No. Dakota  
 ZT—Winona State Coll.  
 OM—St. Cloud St. Coll.  
 ON—Moorhead State Coll.  
 IB—Dickinson State Coll.

**President**  
 Verna Nelson  
 Cheryl Fick  
 Kathy Erickson  
 Jane Bergford  
 Tony Pokorny

**Chapter Address**  
 ΔZ House, 2724 University Ave., Grand Forks, N. Dak. 58202  
 Lucas Hall—302, Winona, Minn.  
 428 5th Ave So., St. Cloud, Minn. 55987  
 1312 6th Ave. So., Moorhead, Minn. 56561  
 Box 210, Woods Hall DSC, Dickinson, N.D. 58601

**College Chapter Director**  
 Mrs. Willis Peterson (Marlene)  
 Mrs. Nicholas Kranz (Jill)  
 Miss Louise Johnson  
 Miss Marvel Froemming  
 Mrs. Doris Reinke

**Address**  
 207 Division, Grand Forks, N.D. 58201  
 311 Washington, Winona, Minn. 55987  
 707 Third, Ave. So., St. Cloud, Minn. 56301  
 2314 14th St. So., Moorhead, Minn. 56560  
 207 12th St. East, Dickinson, No. Dak. 58601

**Chapter**  
 \*Moorhead-Fargo—Mrs. Harold L. Hayer, 2821-11th St. South Fargo, N.D. 58102  
 Grand Forks, N.D.—Mrs. Robert Peabody, 910 7th Ave. S.E., East Grand Forks, Minn. 56721  
 \*Minot, N.D.—Mrs. David Morstad, 904 20th St., N.W., Minot, N. Dakota 58701

**President and Address**

**Province Vice-President:** MRS. CHARLES A. TALLE (HELEN), R.R. 4, St. Croix Beach, Stillwater, Minn. 55082

**Chapter**  
 Twin Cities (Minneapolis-St. Paul)—Mrs. Gilbert Barnhill, 110 Malcolm Ave., S.E., St. Paul Minn. 55414  
 \*Winona, Minn.—Mrs. Nick Kranz, 411 Sanborn Winona, Minn.

*State Membership Chairmen:* Minnesota—Mrs. Roger Franke, 3520 Beard Curve, Minneapolis, Minn. 55431  
 North Dakota—Mrs. A. W. Cupler, 1728 9th St., Fargo, N.D.  
 South Dakota—Mrs. Richard E. Huffman, Jr., 1535 South State St., Aberdeen, S.D. 57401

**PROVINCE X—South—Iowa**

**Chapter/School**  
 I—State U. of Iowa  
 BK—Iowa St. U.  
 TE—Drake Univ.  
 AM—Morningside Col.  
 AN—Parsons Col.  
 OA—Simpson Col.

**President**  
 Jane Gormley  
 Kay Hall  
 Lonnie Terpstra  
 Karen Hanson  
 Jennifer Conforto  
 Laura Deardorff

**Province President:** MRS. JAY ROY (VERA), 2800 44th St., Des Moines, Iowa 50310

**Chapter Address**  
 ΔZ House, 322 N. Clinton, Iowa City, Iowa 52240  
 ΔZ House, 2138 Sunset Dr., Ames, Iowa 50012  
 ΔZ House, 3118 Cottage Grove, Des Moines, Iowa 50311  
 ΔZ House, 1500 Morningside, Sioux City, Iowa 51106  
 ΔZ Dorm 10, Parsons Col., Fairfield, Iowa 52556  
 ΔZ House, 710 No. Buxton, Indianola, Iowa 50125

**College Chapter Director**  
 Mrs. Steven P. Richardson (Kaye)  
 Mrs. Richard E. Horton (Sandy)  
 Mrs. Paul Nurczyk (Nancy)  
 Miss Beatrice Tift  
 Mrs. Harold V. Lamb (Charlotte)  
 Miss Clarice Orcutt

**Address**  
 729 Manor Dr., Iowa City, Iowa 52240  
 242 Village Dr., Ames, Iowa 50012  
 104 S.W. 52nd, Street, Des Moines, Iowa 50312  
 4001 Orleans, Sioux City, Iowa 51106  
 205 E. Burlington, Fairfield, Iowa 52556  
 1206 North "B" St., Indianola, Ia. 50125

**Province Vice-President:**

**Chapter**  
 Ames—Mrs. Margaret Livingston, 212 Hayward, Ames, Iowa  
 Cedar Rapids, Iowa—Mrs. Ralph Huffman, 770 S. 12th, Marion, Iowa 52302  
 Des Moines—Mrs. William Wheatcraft, 2206-70th St., Des Moines, Iowa 50322  
 Fairfield, Iowa—Mrs. David Marker, 305 W. Hempstad, Fairfield, Iowa 52556

**President and Address**

**Chapter**  
 Indianola—Mrs. Orrie Koehlmee, 1211 Ann Parkway, Indianola, Iowa 50125  
 Cedar Rapids, Iowa—Mrs. Paul Penninghatch, 1631 Muscaltine, Iowa City, Iowa 52240  
 Sioux City, Iowa—Mrs. Barbara McCutcheon Dodge, 3200 Garretson, Sioux City, Iowa  
 Waterloo, Cedar Falls, Iowa—Mrs. Carole Humont, 1560 Independence, Waterloo, Iowa

*State Membership Chairmen:* Iowa—Mrs. Bruce F. Stoll, 1826 Madison, Cedar Falls, Iowa 50613

**PROVINCE XI—Missouri****Chapter/School**

IT—Missouri Valley Col.  
 ΔΣ—N.E. Mo. State Col.  
 ET—Cent. Mo. State Col.  
 EH—Harris Teach. Col.  
 EN—S.W. Mo. State Col.  
 EP—N.W. Mo. State Col.  
 EY—St. Louis Univ.  
 ZP—Wm. Jewell Col.

**President**

Karen Rissler  
 Helen Owen  
 Sandra Glass  
 Karen Bernstein  
 Barbara Fitzgerald  
 Mary Mast  
 Judy Kuehne  
 Linda Lawson

**Province President:** MRS. CLARENCE B. COLLINS, 5603 E. 141st St., Grandview, Mo. 64030

**Chapter Address**

307 MacDonald Hall, MVC, Marshall, Missouri 65340  
 4573 Ryle Hall, MSTC, Kirksville, Mo. 63501  
 D210 Panhellenic Hall, Warrensburg, Missouri 64093  
 8112 Parkridge Dr., St. Louis, Mo. 63123  
 657 South Grant, Springfield, Missouri 65802  
 154 Roberta Hall, NWMSC, Maryville, Mo. 64468  
 5933 Kingsbury, Apt. 2 West, St. Louis, Mo. 63112  
 Semple Hall, Wm. Jewell, Liberty, Mo. 64068

**College Chapter Director**

Mrs. W. E. Morton (Christine)  
 Dr. Ruth Towne  
 Miss Kathryn Baker  
 Miss Fanita Terry  
 Mrs. Lawson A. Weaver (Billie)  
 Dr. Wanda Walker

**Address**

417 East Rae, Marshall, Mo. 65340  
 709 North Davis, Kirksville, Mo. 63501  
 709 S. College, Warrensburg, Mo. 64093  
 5540 Murdock, St. Louis, Mo. 63109  
 1976 Cedarbrook, Springfield, Mo. 65802  
 NWMSC, Maryville, Mo. 64468

645 Crestview Lane, Kansas City, Mo. 64116

**Chapter**

Clay-Platte—Mrs. David Kelley, Rt. 27, Kansas City, Mo. 64152  
 Kansas City—Mrs. George L. Maggio, 10201 Linden, Overland Park, Kan. 66204  
 Kirksville—Mrs. James Edwards, 616 W. Hamilton, Kirksville, Mo. 63501  
 Marshall—Mrs. G. C. Redford, Jr., RR 4, Marshall, Mo.

**President**

Mrs. David Kelley

**Province Vice-President:** MRS. BRUCE WAKE (KAREN), Hake Hall, Maryville, Mo. 64468

**Chapter**

Maryville—Mrs. Bruce Wake, Hake Hall, Maryville, Mo. 64468  
 Springfield—Mrs. L. E. Lurvey, 2132 N. Glenstone, Springfield, Mo. 65804  
 St. Louis—Miss Betty Bosse, 5838 Lansdowne, St. Louis, 63105  
 Warrensburg—Mrs. James Krockenberger, 1601 S. Lexington, Holden, Mo. 64040

**President and Address**

Maryville—Mrs. Bruce Wake, Hake Hall, Maryville, Mo. 64468  
 Springfield—Mrs. L. E. Lurvey, 2132 N. Glenstone, Springfield, Mo. 65804  
 St. Louis—Miss Betty Bosse, 5838 Lansdowne, St. Louis, 63105  
 Warrensburg—Mrs. James Krockenberger, 1601 S. Lexington, Holden, Mo. 64040

**State Membership Chairman:** Missouri—Mrs. Robert S. Bagnell, Jr., Blackburn, Mo. 65321

**PROVINCE XII—East—Kansas and Nebraska****Chapter/School**

Z—U. of Nebr.

**President**

Ellen Hladky

A—Kansas State U.  
 BT—Nebraska Wesleyan U.  
 ΔΠ—Kansas St. College (Emporia)  
 ΔΩ—Fort Hays State Col.  
 ZΣ—Nebr. St. Teachers Col.  
 ΘH—Cerrington U.

Nancy Fair

Sheri Anderson

Jane Trenkamp

Mimi Delay

Kay Rizer

Mary Beth Reeves

**Chapter Address**

Panell. Office, Rm. 335C, Stud. Union Bldg., U. of Nebr., Lincoln, Nebr.

ΔZ House, 1803 Laramie, Manhattan, Kansas 66504

ΔZ House, 2401 No. 51st, Lincoln, Nebr. 68504

ΔZ House, 1005 Merchant, Emporia, Kansas 66802

210 West Sixth St., Hays, Kansas 67601

2525 Ave. I, Kearney, Nebr.

8321 No. Ridge Dr. E. Omaha, Nebr.

**Province Vice-President:** Mrs. Thomas A. Gardner (Clarice), 6902 Montview Blvd., Denver Colorado 80207

**President and Address**

Emporia, Kansas—Mrs. Glen Gimple, 707 Congress, Emporia, 66801  
 Hays, Kan.—Mrs. David Mosier, 521 W. 16th St., Hays, Kan. 67601  
 Johnson-Wyandotte—Miss Charlotte K. Richardson, 1054 Forest Court, Apt. 18, Kansas City, Mo. 66103  
 County, Kan.—  
 Kearney—Mrs. Arthur Roach, 712 W. 30th St., Kearney, Neb. 68874  
 Lincoln, Neb.—Mrs. Leonard Qualthamer, 5410 Wilshire Blvd., Lincoln, Neb. 68504

**State Membership Chairmen:** Kansas—Mrs. William Wise, 1647 N.E. Parkway, Wichita, Kan. 67208  
 Nebraska—Mrs. Oswald Mickelmann, 5411 Decatur St., Omaha, Neb. 68104

**PROVINCE XII—West—Colorado, Wyoming and Utah****Chapter/School**

BΣ—Colorado State U.  
 ΔΣ—Colorado St. U.  
 EA—Western State Col.

**President**

Diane Bean

Bonnie Sandoz

Gwen Jaynes

**Province President:** MRS. CURTIS JOHNSON (JUANITA) 2045 S. Cook St., Denver Colo. 80210

**Chapter Address**

ΔZ House, 801 S. Shields, Ft. Collins, Colo. 80521

ΔZ House, 1717 10th Ave., Greeley, Colo. 80631

#103 Ophir Hall, WSC, Gunnison, Colo. 81230

**Province Vice-President:** Mrs. Thomas A. Gardner (Clarice), 6902 Montview Blvd., Denver, Colorado 80207

**President and Address**

\*Cheyenne, Wyo.—Mrs. Jack Varra, 1218 Foyer Ave., Cheyenne, Wyo. 82002  
 Colorado Springs, Colo.—Mrs. Edward Fulton, 4103 Lupine St., Colorado Springs, Colo. 80907  
 Denver, Colo.—Mrs. Cyril J. Chucovich, 9130 W. 73rd Place, Arvada, Colo. 80002  
 Ft. Collins, Colo.—Mrs. Wm. A. Davy, 1508 S. Whitcomb, Fort Collins, Colo. 80521

**State Membership Chairmen:** Colorado—Mrs. James L. Twombly, 720 Melany Lane, Apt. 21, Colorado Springs, Colo. 80907  
 Wyoming—Miss Alice Halsted 446 1st West Parkway Sheridan, Wyoming  
 Utah—Mrs. Franklin Shafer, R.F.D. 1, Box 3, Tooele, Utah 84074

**PROVINCE XII—Southwest—Arizona, New Mexico and Nevada**

**National Director:** MRS. LARRY FRYMIRE (GLORIA), 104 Moonlit Circle, Sacramento, Calif. 95831

**Chapter/School**

ΓΣ—New Mexico St. U.  
 ΔP—New Mexico Highlands U.

**President**

Mary Faith Cooper

Shirley Ann Bullich

**Chapter Address**

Box 973, University Park, N. Mex. 88070

P.O. Box 205, Las Vegas, New Mexico

**Province Vice-President:** MRS. A. W. McCARTY (CYNTHIA), 3102 E. Earle Dr., Phoenix, Arizona 85016

**President and Address**

Albuquerque, N.M.—Mrs. Larry Paradee, 301 Tennessee, S. E. Albuquerque, N.M. 87108  
 El Paso, Texas—Mrs. Joseph Pollock, 5404 Vancouver, El Paso, Texas 79924  
 Phoenix, Ariz.—Mrs. Richard Poage, 4416 S. Grandview, Tempe, Arizona, 83281

**College Chapter Director**

Mrs. James W. Cole (Loudell)

**Address**

1728 Calle Feliz, Las Cruces, New Mexico

**State Membership Chairmen:** Arizona—Mrs. A. W. McCarty, 3102 E. Earle Dr., Phoenix, Arizona 85016  
 New Mexico—Mrs. R. B. Jansen, 1204 W. Eleventh St., Roswell, N.M. 88201  
 Nevada—Mrs. Morris Vitale, 1355 Granite Dr., Reno, Nev. 87502  
 South Nevada—Asst. Arlene Southard, 311 Parkway East, Las Vegas, Nevada

**Chapter**

Reno, Nev.—Mrs. W. C. Shonk, Jr., 960 Munley Dr., Reno, Nev. 89502  
 \*Roswell, N.M.—Mrs. Harry Dale, 313 E. Church St., Roswell, N.M. 88201  
 Tucson, Arizona—Mrs. G. E. Wright, 5636 East 8th, Tucson, Arizona 85711

**President and Address**

Reno, Nev.—Mrs. W. C. Shonk, Jr., 960 Munley Dr., Reno, Nev. 89502  
 \*Roswell, N.M.—Mrs. Harry Dale, 313 E. Church St., Roswell, N.M. 88201  
 Tucson, Arizona—Mrs. G. E. Wright, 5636 East 8th, Tucson, Arizona 85711

**PROVINCE XIII—Washington, Oregon, Montana and Idaho****Chapter/School**

K—Ore. St. Univ.  
X—U. of Wash.  
Q—U. of Ore.

**President**

Sandra Newman  
Aubyn Ann Pullen  
Linda Wilkes

**Chapter Address**

ΔZ House, 4535 18th, N.E., Seattle, Wash. 98105  
2311 Van Buren, ΔZ House, Corvallis, Oregon 97330  
ΔZ House, 1883 University, Eugene, Oregon 97403

National Director: MRS. LARRY FRYMIRE (GLORIA), 104 Moonlit Circle, Sacramento, Calif. 95831

**College Chapter Director**

Mrs. Orville Davis (Pat)  
Mrs. Gordon Seese (Thea)  
Mrs. Kenneth S. Wood (Peggy)

**Address**

7707 31st, N.E., Seattle, Washington 98115  
R.R. 4, Box 345E, Albany, Ore. 97321  
941 Potter St., Eugene, Ore., 97403

**Chapter**

Corvallis, Ore.—Mrs. Charles Oltham, 3224 Wes-Linn Drive, Corvallis, Ore. 97330  
Eugene, Ore.—Miss Charlene Echterkamp, 262 Roundup, Eugene, Ore.  
\*Klamath Falls, Oregon  
\*Rogue Valley, Ore.—Mrs. James Johansson, 2133 Dellwood, Medford, Oregon 97502  
\*Olympia, Wash.—Mrs. Michael A. Wellander, 1610 S. Water, Olympia, Wash. 98502  
Portland, Ore.—Mrs. Gary McAdams, 3256 N.E. Couch, Portland, Ore. 97232  
Salem, Ore.—Mrs. R. D. Johnson, P.O. Box 2134, Salem, Ore. 97308  
Oregon Council of ΔZ—Mrs. E. M. Litweller, 529 No. 21st, Corvallis, Oregon

**President and Address**

Province Vice-President: MRS. PRESTON OREM (BETHE), 7738 S. W. 51st Ave., Portland, Ore. 97219

State Membership Chairmen: Washington—Mrs. James A. Cloore, 10412 Crestwood Dr. S., Seattle, Wash. 98178  
Oregon—Mrs. Eldon D. Slate, 3131 S.W. Sunset Blvd., Portland, Ore. 97201  
Montana—Mrs. B. S. Everingham, Route 4, Rattlesnake, Missoula, Montana 59801  
Idaho—Mrs. W. L. Lundquist, Route 3, Box 104, Moscow, Idaho 83843  
Alaska—Mrs. Gerald Belanger, 1110 Sixth, Apt. 104, Anchorage, Alaska 99501

**PROVINCE XIV—Northern California and Hawaii****Chapter/School**

M—U. of Calif.  
ΓA—San Jose St. Col.  
ΔX—Chico St. Col.  
EE—Fresno St. Col.  
ZI—Humboldt St. Col.

**President**

Christine Sullenger  
Linda Taylor  
Sandra Hull  
Sue Goth  
Heddie Morris

**Chapter Address**

ΔZ House, 2728 Durant Ave., Berkeley, Calif. 94704  
ΔZ House, 201 South 11th, San Jose, Calif. 95114  
Rt. 1, Box 914, Durham, Calif.  
ΔZ House, 5337 No. Millbrook, Fresno, Calif. 95337  
1162 "C" Street, Arcata, Calif. 95521

Province Vice-President: MRS. BRYANT KING (DARLYNE), 669 Jennie Ct., Lafayette, Calif. 94549

**President and Address**

Chico, Calif.—Mrs. Roy Schaller, 326 W. Legion Ave., Chico, Calif. 95926  
Fresno, Calif.—Mrs. Ronald Roush, 3517 E. Holland, Fresno, Calif. 93726  
Hayward Area, Calif.—Mrs. Malcolm Campbell, 14883 Western Ave., San Leandro, Calif. 94578  
Honolulu, Hawaii—Mrs. Marshall Rosier, 244 Portlock Rd., Honolulu 96821  
Humboldt, Calif.—Mrs. Evelyn G. Ballard, 2332 Yale Circle, Eureka, Calif. 95501  
Marin County, Calif.—Mrs. Charles Hamilton, 75 Kensington Rd., San Anselmo, Calif. 94960  
Monterey Peninsula, Calif.—Mrs. F. W. Speltstoesser, 812 Sunset Dr., Apt. 2, Pacific Grove, Calif. 93950  
Mt. Diablo, Calif. Area—Mrs. Raymond Gasperi, 588 Duar Dr., Concord, Calif. 94520

State Membership Chairmen: Northern California—Mrs. Walter Burde, Route 3, Box 986 Carmel, Calif. 93921  
Hawaii—Mrs. Donna M. Katz, 619 Kaiemi St., Kailua, Hawaii 96734

**PROVINCE XV—Southern California****Chapter/School**

ΔX—U. of Calif. at L.A.  
ΓO—San Diego St. Col.  
ΔA—Calif. St. Col. at Long Beach  
ΔV—U. C., Santa Barbara  
ΘP—Los Angeles State

**President**

Paula Contratto  
Dee Lieberman  
Kathy Kasarda  
Nancy Nesmith  
Evan Dimon

**Chapter Address**

ΔZ House, 824 Hilgard, Los Angeles, Calif. 90024  
ΔZ House, 5074 College Ave., San Diego, Calif. 92115  
ΔZ House, 148 Molino, Long Beach, Calif. 90804  
ΔZ House, 6525 Picasso Rd., Goleta, Calif. 93107  
3571 N. Maine Ave., Baldwin Park, Calif. 91706

Province Vice-President: MRS. ROBERT L. DECKER (BARBARA), 615 Jambolaya, Anaheim, Calif.

**President and Address**

Bakersfield, Calif.—Mrs. Peter Miller, 2410 Kaibob, Bakersfield, Calif. 93305  
Central San Fernando Valley, Calif.—Mrs. Robert Pierce, 10455 Mason Ave., Chattrivoule, Calif. 91311  
Dz's by-the-sea—Mrs. Lawrence T. Platt, 3276 Iowa St., Costa Mesa, Calif. 92626  
Downey Area, Calif.—Mrs. Charles L. Youde, 10344 Triston Dr., Downey, Calif. 90241  
Glendale-Burbank, Calif.—Mrs. John Jaenecke, 6264 Church St., Los Angeles, Calif. 90042  
Humboldt, Calif.—Mrs. Evelyn Ballard, 2332 Yale Circle, Eureka, Calif. 95501  
Long Beach, Calif.—Mrs. Charles Paige, 2660 Marber, Long Beach, Calif. 90815  
Los Angeles, Calif.—Mrs. John Boychuk, 828 So., Luserne Blvd., Los Angeles, Calif. 90005  
Orange County, Calif.—Mrs. Fred Hart, 2659 Jackson Ave., Anaheim, Calif. 98205

State Membership Chairman: Southern California—Mrs. Harold Simpson, 421 Vaquero Road, Arcadia, Calif. 91007

**PROVINCE XVI—Oklahoma****Chapter/School**

AE—Okla. St. U.  
ΓT—Okla. City U.  
ΔO—Northwestern St. Coll.  
ΔΦ—Northeastern St. Coll.  
EA—Southwestern St. Coll.  
ET—Central St. Coll.  
ZH—Southeastern St. Coll.

**President**

Mary Jane Baker  
Joan Frederick  
Linda Nichols  
Marsha Thompson  
Joan Reimers  
Debbie McWhirter  
Patty Haynie

**Chapter Address**

ΔZ House, 224 S. Jefferson, Stillwater, Okla. 74075  
Banning Hall, OCU, Oklahoma City, Okla. 73106  
Girls' Dorm, NSC, Alva, Okla. 73717  
210 N.W.H., Tahlequah, Okla. 74464  
ΔZ House 224 West College, Weatherford, Okla. 73096  
ΔZ House 1012 North Chowning, Edmond, Oklahoma 73034  
818 N. Washington, Durant, Okla. 74701

Province President: MRS. N. K. SCOTT (ELAINE), 1260 E. 30th St., Tulsa, Oklahoma 74114

**College Chapter Director**

Mrs. Hildegarde Owen  
Mrs. Wm. V. Happ (Donna)  
Mrs. B. T. Thompson (Esther)  
Mrs. Robert Ramsdell (Winifred)  
Jolene Olivo

**Address**

2808 Alma Ave., Manhattan Beach, Calif.  
8721 Hartzell Dr., Spring Valley, Calif.  
5471 El Jardin, Long Beach, Calif. 90815  
585 Las Palmas, Santa Barbara, Calif. 93105  
330 Gerona, San Gabriel, Calif.

**Chapter**

Pasadena Foothills, Calif.—Mrs. Raymond Pyley, 1270 Cordova, Apt. 3, Pasadena, Calif. 91106  
\*Pomona Valley, Calif.—Mrs. Phillip Heathman, 2018 N. Garey, Pomona, Calif. 91767  
Riverside, Calif.—Mrs. Festus McCann, 4694 Sunnyside, Riverside, Calif.  
San Diego, Calif.—Mrs. Laurence Barbieri, 6402 Mt. Agroler, San Diego, Calif. 92111  
Santa Barbara, Calif.—Mrs. Theodore Harder, 441 Stanley Dr., Santa Barbara, Calif. 93101  
Santa Monica, Calif.—Miss Grace Maxwell, 227 D Ocean Ave., Santa Monica 90402  
South Bay, Calif.—Mrs. Jess Sevy, 29004 Maplepark Dr., Palos Verdes Estates, Calif. 90274

West Covina, Calif.—Mrs. Phillip N. Adams, 2524 Alaska St., West Covina, Calif. 91791  
Whittier, Calif.—Mrs. Kenneth Mueller, 10839 Colimard, Whittier, Calif. 90604

**President and Address****College Chapter Director**

Mrs. Jos. A. Adair (Jacquie)  
Mrs. J. I. French (Mary Anne)  
Miss Annette Parker  
Miss Martha Markham  
Mrs. Chas. Braucher (Sara Lou)  
Mrs. Jim West (Linda)  
Mrs. Ernest Sturch (Kathy)

**Address**

1617 W. 9th Ave., Stillwater, Okla. 74074  
2322 N.W. 58th Circle, Oklahoma City, Okla. 73112  
515 College St., Alva, Okla. 73717  
226 N. Mission, Tahlequah, Okla. 74464  
902 Krest Dr., Weatherford, Okla. 73096  
216 E. 5th, Edmond, Okla. 73034  
621 Montgomery Dr., Durant, Okla. 74701

**Province Vice-President:** MRS. H. LEE SMITH (EARLENE), 8 Harber Court, Seminole, Okla. 74868

**Chapter President and Address**  
 Alva—Mrs. W. E. Simon, 1201 Maple, Alva, Okla. 73717  
 Bartlesville—Mrs. C. B. Pardum, Rt. 1, Box 81, Dewey, Okla. 74029  
 Edmond—Mrs. Donna Lee Paddyaker, 201 N.W. 85th, Oklahoma City, Okla. 73114  
 \*Enid—Mrs. Pat Haines, 1424 S. Madison, Enid, Okla.

**State Membership Chairman:** Oklahoma—Mrs. Wendell Burke, 2212 Ann Arbor Ave., N., Oklahoma City, Okla. 73112

## PROVINCE XVII—Texas

**Chapter/School President**  
 AT—Univ. of Texas Karen S. Smith  
 AV—So. Meth. U. Mary Lou Johnson  
 IZ—Southwestern U. Pat McGuire  
 ΔΘ—Univ. of Houston Diane Farman  
 ΔA—Lamar St. Col. of Tech. Lynne Hughes  
 ZZ—W. Tex. St. U. Carol Ayers  
 ZΘ—Sam Houston St. Col. Theresa Stowe  
 ZΨ—Stephen F. Austin St. Col. Diana Morton  
 ΘO—Pan American St. Col. Elaine Hamlin  
 IA—SW Texas St. Col. Sally Jackson

**Province President:** MRS. WILLIAM B. CARR (BARBARA), 4716 Blaney Ave., Ft. Worth, Texas 76118

**Chapter Address**  
 ΔZ House, 2315 Nueces, Austin, Texas 78705  
 ΔZ House, 3034 Daniels, Dallas, Texas 75205  
 ΔZ Box 153, S.U. Station, Georgetown, Texas 78626  
 7610 Oak Vista, Houston, Texas 77017  
 Gentry Hall, 205A, Lamar Tech., Beaumont, Texas 77705  
 Box 886, W. T. Sta., Canyon, Texas 79016  
 ΔZ House, Sam Houston St., Huntsville, Texas 77340  
 SFA Station, Box 7501, Nacogdoches, Texas 75962  
 Rt. 1, Pharr, Texas  
 Lantana Hall, SWTSC, San Marcos, Texas 78666

**College Chapter Director Address**  
 Mrs. Gerald Van Eck (Hermina) 2603 Westover, Austin, Texas 78703  
 Mrs. Roland Hallmark (Joan) 7212 Alpha Road, Dallas, Texas 75230  
 Mrs. Angus Springer (Frances) Box 249, S.U. Station, Georgetown, Texas 78626  
 Miss Scherrie Watson P.O. Box 2446, Houston, Texas 77  
 Mrs. Ed Pearson (Kathleen) 9245 Shepherd, Beaumont, Texas 77707  
 Mrs. J. O. Parker (Lena) 1601 8th Ave., Canyon, Texas 79015  
 Mrs. Floyd Taylor (Mable) 2321 Robinson Way, Huntsville, Texas 77340  
 Mrs. Blanche Phillips 301 E. Starr, Nacogdoches, Texas 75961  
 Miss Judith Hook Rt. 2, Box 351 Edinburg, Texas 78539  
 Miss Laura Whittenburg Southwest Texas State College, Box 130 Commons Hall, San Marcos, Texas 78666

**Province Vice-President:** MRS. HARRY C. STALLWORTH (KATIE BLANCHE), 2601 Westover Rd., Austin, Texas 78703

**Chapter President and Address**  
 Amarillo—Mrs. S. S. Stephens, 3622 Royal Rd., Amarillo, Texas 79107  
 Arlington—Mrs. Galen Steeg, 1113 Forest Dr., Arlington, Texas 76010  
 Austin—Mrs. Forrest R. Mitchell, 2709 Pecos St., Austin, Texas 78703  
 Beaumont—Mrs. J. B. McCann, 340 Giles, Beaumont, Texas 77703  
 Canyon—Mrs. Jack Priddy, 2607 Ninth Ave., Canyon, Texas 79015  
 Corpus Christi—Mrs. James L. Hailey, 3722 Lincoln, Corpus Christi, Texas 78415  
 Dallas—Mrs. Don Page, 11228 Fernald, Dallas, Texas 75218  
 Edinburg—McAllen—Mrs. Sam Fore, 1209 Whitewing, McAllen, Texas 78501  
 Fort Worth—Mrs. D. P. Shore, 2200 Glenco Terrace, Fort Worth, Tex 76110  
 Houston—Mrs. Harvey Holliman, 2202 Brooktree, Houston, Texas 77018

**State Membership Chairman:** Texas—Mrs. T. J. Bianchi, 5727 Ellsworth, Dallas, Texas 75206

## PROVINCE XVIII—Louisiana

**Chapter/School President**  
 Σ—Louisiana St. U. Betsy Boy  
 ΔK—U. of Southwest La. Jean Barnett  
 EB—Northwestern St. Col. (La.) Judy Terry  
 ΘE—La. Polytechnic Inst. Jane Pickering  
 ΘK—L.S.U., New Orleans Raven Coleman

**Province President:** MRS. FRANK W. QUIN, JR. (HANNAH-NELL), 6017 River Rd., Shreveport La. 71105

**Chapter Address**  
 Box 17817, LSU, Baton Rouge, La. 70809  
 Box 241, U S L, Lafayette, La. 70501  
 Box 266, N. S. C., Natchitoches, La. 71457  
 P.O. Box 136, T.S., Ruston, La. 71271  
 901 Jefferson Heights, New Orleans, La. 70121

**College Chapter Director Address**  
 Mrs. Joseph Hecker (Gloria) 462 Maxine Dr., Baton Rouge, La. 70808  
 Mrs. Van M. Woodward (Mattie) 311 Whitfield Dr., Natchitoches, La. 71457  
 Miss Dorothy Hines 615 S. Trenton, Ruston, La. 71270  
 Mrs. Ross M. Smith (Kay) 2542 Prancer, New Orleans, La. 70114

**Province Vice-President:** MRS. FRED ELSING, JR., (LINDA), 1216 Wilshire Dr., Alexandria, La. 71303

**Chapter President and Address**  
 \*Alexandria—Mrs. Fred Elsing, Jr., 1216 Wilshire Dr., Alexandria, La. 71303  
 Baton Rouge, La.—Mrs. H. M. Chenebert, Jr., 1436 Heathston Dr., Baton Rouge, La. 70808  
 \*Houma, La.—Mrs. Luther Kelly, Jr., 18 El Paso, Houma, La. 70360  
 Lafayette, La.—Mrs. Lawrence Carr, 157 Fallbrook, Lafayette, La. 70501

**State Membership Chairman:** Louisiana—Mrs. Thomas Fenton, 2037 Steele Blvd., Baton Rouge, La. 70808  
 Asst. Louisiana—Mrs. W. M. Eberhart, 1513 Steele Blvd., Baton Rouge, La. 70808

## PROVINCE XIX—Tennessee and Arkansas

**Chapter/School President**  
 BA—U of Tenn. Mary E. Hendrickson  
 ΠI—Memphis St. U. Martha Harris  
 ΔH—E. Tenn. St. U. Sharon Brumley  
 EZ—Ark. STC Becky Joyner  
 EII—Henderson STC Connie Welch

**National Director:** MRS. ROBERT D. FRANCIS (LISBETH)

**Chapter Address**  
 1531 Cumberland Ave., W., Knoxville, Tenn. 37916  
 P.O. Box 81645, MSU, Memphis, Tenn. 38111  
 Box 028, E. Tenn. St. U., Johnson City, Tenn. 37602  
 ASTC, Box 567, Conway, Arkansas 72032  
 Box 3066, H.S.T.C., Arkadelphia, Ark. 71923

**College Chapter Director Address**  
 Mrs. Hale Hamilton (Bonnie) 1512 Forrest Ave., Apt. 54, Knoxville, Tenn.  
 Mrs. J. E. Andrews (Jackie) 1207 Yorkshire Dr., Memphis, Tenn. 38128  
 Dr. Constance Mynatt E.T.S.U., Box 2562, Johnson City, Tenn. 37602  
 Mrs. Jeff Farris (Patsy) 518 Donaghey, Conway, Ark. 72032  
 Mrs. Lucy Finley Box 674, Arkadelphia, Ark. 71923

**Province Vice-President:**

**Chapter President and Address**  
 Tri-Cities, Tenn.—Miss DeAnna McCrary, Fall Branch, Tenn.  
 Little Rock, Ark.—Mrs. Joe Mahan, 403 Nebling Rd., Little Rock, Ark.  
 Memphis, Tenn.—Mrs. Ralph Smith, 4283 Hilldale, Memphis, Tenn. 38118

**State Membership Chairman:** Tennessee—De Anna McCrary, Fall Branch, Tenn.  
 Arkansas—

**Chapter President and Address**  
 Chattanooga, Tenn.—  
 Knoxville, Tenn.—Mrs. Jeff Hunter, 303 Shasta Dr., Knoxville, Tenn. 37912  
 Nashville Tenn.—Miss Lloydia May, 47 Green Hills, Terrace Apts., Nashville, Tenn. 37215

**PROVINCE XX—Virginia, North Carolina, Maryland and Washington, D.C.**

**Chapter/School**  
 AA—Geo. Wash. U.  
 ET—Longwood Col.  
 ZA—E. Car. Col.  
 ZZ—Lenoir Rhyne Col.  
 OI—W. Car. Col.  
 OF—Old Dominion College  
 OQ—Atlantic Christian

**President**  
 Patricia Sherrard  
 Katherine Bagley  
 Jane Stephenson  
 Beth Petrich  
 Rosemary Parker  
 Jacqueline Thomas  
 Betsy Nash

**Province President:** MRS. LELAND TATE (MILDRED), 111 Cokee Rd., Blacksburg, Va.

**Chapter Address**  
 3002 Rodman St., N.W., Washington, D.C. 20008  
 Cox 304, Longwood Col., Farmville, Va.  
 ΔZ House, 801 E. 5th St., Greenville, N. Car. 27835  
 Box 953, L. R. Sta., Hickory, No. Car. 28601  
 Box 2577, Cullowhee, No. Car.  
 408 Winchester Dr., Hampton, Virginia  
 Box 521, A. C. C., Wilson, No. Car. 27893

**College Chapter Director**  
 Mrs. Jos. L. Ralston (Myra)  
 Mrs. John C. Wilson (Jean)  
 Mrs. K. E. Schmude (Helen)  
 Mrs. R. T. Parkinson (Joan)  
 Miss Janice H. Spooner  
 Mrs. Frank C. Holton, Jr. (Jean)  
 Mrs. Wm. Smith (Barbara)

**Address**  
 2909 Holly St., Alexandria, Va. 22305  
 R.R. 3, Farmville, Va. 23901  
 1219 Airlee Ave., Kinston, No. Car.  
 521 10th St., N.W., Hickory, No. Car.  
 Box 2645, Cullowhee, No. Car.  
 516 Warren Crescent, Norfolk, Va. 23507  
 503 W. Vance St., Apt. 4, Wilson, N.C. 27895

**Chapter**  
 Baltimore, Md.—Mrs. Richard F. Free, 2512 Hillford Dr., Baltimore, Md. 21234  
 \*Charlotte, N.C.—Mrs. J. L. Boyd, 5510 Farmbrook Dr., Charlotte, N.C. 28210  
 \*Greenville, N.C.—Mrs. W. Stuart Bost, 310 Harding St., Greenville, N.C. 27834

**President and Address**

**Province Vice-President:** MRS. J. ALBERT BASS, JR., 5105 Liles Rd., Raleigh, No. Car. 27606

**Chapter**  
 Richmond, Va.—Miss Carol Combs, 2530 Marina Drive, Richmond, Va. 23235  
 Tidewater Area—Mrs. Thomas M. Robinson, 1134 Cambridge Crescent, Norfolk, Va.  
 Washington, D.C.—Mrs. B. M. Spencer, 2408 N. Washington Blvd., Arlington, Va. 22012

**State Membership Chairmen:** North Carolina—Mrs. Craig Kellogg, 742 Cavalier Circle, Knuston, N.C.  
 Virginia—Mrs. Barbara Wilson, 3921 Bolton St. NE, Roanoke, Va. 24012  
 Maryland—  
 Washington, D.C.—Mrs. Margaret F. Dodderidge, The Appolline #313 1330 New Hampshire Ave. N.W.  
 Washington, D.C. 20036

**PROVINCE XXI—West—Alabama and Mississippi**

**Chapter/School**  
 AI—U. of Ala.  
 AII—Samford Univ.  
 BE—Auburn Univ.  
 EM—U. of So. Miss.  
 OB—Birm. So. Col.

**President**  
 Sandy Reeves  
 Judy Swindall  
 June Cassidy  
 Marcia Jean Broadus  
 Carol Lynn Slaughter

**Chapter Address**  
 Box 737, University, Ala. 35486  
 Samford Univ., Vail Hall 467, Birmingham, Ala. 35209  
 Dorm D, Room 215, Auburn U., Auburn, Ala.  
 Box 2069, So. Sta., Hattiesburg, Miss.  
 Box 455, B. S. C., Birmingham, Ala. 35204

**College Chapter Director**  
 Mrs. Cecil M. Youngson (Angie)  
 Mrs. Jimmy Carnes (Jerolyn)  
 Mrs. John H. Hanson (Laura)  
 Mrs. Donald Moore (Sandra)  
 Miss Sarah Rogers

**Address**  
 Box 6174, University, Ala. 35486  
 320 Shenandoah Dr., Birmingham, Ala. 35226  
 255 E. Thack Ave., Auburn, Ala. 36830  
 1379 Southern Dr., Hattiesburg, Miss.  
 1016 Cotton Ave., S.W., Birmingham Ala.

**Chapter**  
 Auburn, Ala.—Mrs. Max F. Aycock, 324 Payne St., Auburn, Ala. 36830  
 Birmingham, Ala.—Mrs. Charles A. Kelley, Rt. 4, Box 8, Old Leeds Road, Birmingham, Ala. 35213  
 Hattiesburg, Miss.—Mrs. Richard Spencer, 503 Melba, Hattiesburg, Miss. 39491  
 Huntsville, Ala.—Mrs. D. Guild, 11402, Maplecrest Dr., Huntsville, Ala. 35801

**President and Address**

**Province Vice-President:** MRS. HAYWOOD DEDMAN, 6806 Criner Rd., Huntsville, Ala. 35802

**Chapter**  
 Mobile, Ala.—Mrs. K. H. Moore, 4303 Coalesway Dr., Mobile, Ala. 36609  
 Montgomery, Ala.—Mrs. Shaffer W. Johnson, 244 E. Haven Rd., Montgomery, Ala.  
 Tuscaloosa, Ala.—Mrs. Hubert Mate, 2713 Claymont Circle, Tuscaloosa, Ala. 35404

**State Membership Chairmen:** Alabama—Mrs. Douglas Guild, 11402 Maplecrest Dr., Huntsville, Ala. 35803  
 Mississippi—

**PROVINCE XXI—East—Georgia and South Carolina**

**Chapter/School**  
 AO—Brenau College  
 BA—U. of So. Car.  
 ΔA—Ga. St. Col.  
 ZII—U. of Ga.

**President**  
 Sarah Ponder  
 Carol Lucas  
 Blaine Hughes  
 Steph Martin

**Chapter Address**  
 Brenau College, ΔZ House, Gainesville, Ga. 30501  
 ΔZ Box 4722, U.S.C., Columbia, So. Car. 29205  
 33 Gilmer St., S.E., Atlanta, Ga. 30303  
 ΔZ House, 397 S. Milledge, Athens, Ga. 30601

**College Chapter Director**  
 Mrs. Frank Hatcher (Martha)  
 Mrs. Virginia Eagles DeTurk  
 Mrs. Ray Barnes (Amaryllis)  
 Mrs. H. Randolph Holder (Kim)

**Address**  
 840 Memorial Dr., Gainesville, Ga. 30501  
 Cornell Arms, Apt. 8D, Columbia, N. C. 29201  
 2424 Glenwood Dr., N.E., Atlanta, Ga. 30305  
 383 West View Dr., Athens, Ga. 30601

**Chapter**  
 \*Athens, Ga.—Mrs. Rodney Baine, 690 Duncan Spring Rd., Athens, Ga. 30601  
 Atlanta Council of ΔZ—Mrs. D. C. Duvall, 2462 Plantation Dr., East Point, Ga.  
 Atlanta, Ga.—Mrs. R. F. Martin, 451 Carriage Dr., N.E., Atlanta, Ga. 30328  
 \*Cobb County, Ga.—Mrs. Edgar R. Clauser, 103 Rockwood Dr., Marietta, Ga. 30062

**President and Address**

**Province Vice-President:** MRS. R. F. MARTIN, 451 Carriage Dr. N.E., Atlanta, Ga. 30328

**Chapter**  
 \*Columbia, S.C.—Mrs. William Addison, 6150 Crabtree, Columbia, S.C. 29206  
 \*Macon, Ga.—Mrs. Larry L. Johnson, 104A Stadium Drive, Macon, Ga. 31201

**President and Address**

**State Membership Chairmen:** Georgia—Mrs. Charles W. Miller, 656 Huntington Pl., S.E., Marietta, Ga. 30060  
 South Carolina—Mrs. Edward M. Boland, 371 Carolina Ave., N.W., Orangeburg, S.C. 29115

**PROVINCE XXII—Florida**

**Chapter/School**  
 AΣ—Fla. St. U.  
 BM—Fla. So. Col.  
 BN—U. of Miami

**President**  
 Joanne Kozel  
 Ruth Anne Tallamy  
 Priscilla Ann Nackley

**Chapter Address**  
 ΔZ House, 749 W. Jefferson, Tallahassee, Fla. 32304  
 Box 421x, F.S.C., Lakeland, Fla. 33801  
 2004 S.W. 7th Ave., Miami, Florida

**College Chapter Director**  
 Mrs. Harold R. Bazzell (Peggy)  
 Mrs. R. B. Baldwin (Nita)  
 Mrs. Thos. Sandridge

**Address**  
 3212 Jim Lee Rd., Tallahassee, Fla. 32301  
 727 Woodward Dr., Lakeland, Fla. 33803  
 8040 S. W. 138th St., Miami, Fla. 33156

**Chapter**  
 Boca Raton—Miss Mary Jo Kurk, 1071 N.E. 24th Ave., Apt. 5, Pompano Beach, Fla. 33062  
 Clearwater—Mrs. Janet Munnis, 1607 Tuscola Rd., Clearwater, Fla. 33516  
 Fort Lauderdale—Mrs. Fritz Richter, Jr., 4740 N.E. 28th Ave., Fort Lauderdale Fla. 33308,  
 Gainesville—Mrs. Paul Satz, 3916 N.W. 21st Terrace, Gainesville, Fla. 32601  
 Jacksonville—Mrs. G. F. Ginder, 240 Broward Rd., Jacksonville, Fla. 32218  
 Miami—Mrs. Betty Ellis, 619 Altira Ave., Coral Gables, 33146  
 Orlando-Winter Park—Mrs. Belle C. Brooks, 510 Woodland Ave., Orlando, Fla. 32810

**President and Address**

**Province Vice-President:** MRS. LOWELL JOHNSTON (SHEENA), 2440 East Bay Dr. S.E., St. Petersburg Fla. 33705

**Chapter**  
 Palm Beaches—Mrs. Woodrow A. Schad, 1628 Boardman Ave., West Palm Beach, Fla. 33407  
 Pensacola—Miss Myrtle—Lois Bailey, 1201 E. Gadsden St., Ap. 202, Pensacola, Fla.  
 St. Petersburg—Mrs. Robert S. Webb, 6783 55th Ave., No., St. Petersburg, Fla. 33709  
 Sarasota-Bradenton—Mrs. John L. DeWitt, Jr., 2432 Whipperwill Circle, Sarasota, Fla. 33581  
 Tallahassee—Mrs. Jack D. Ingram 1211 Walton Drive, Tallahassee, Fla. 32303  
 Tampa—Mrs. Charles Appleton, 4905 San Nicholas, Tampa, Fla. 33609

**State Membership Chairman:** Mrs. C. S. Keve 1481 Hillview Drive, Sarasota, Fla.

Your Official Jeweler

**BURR, PATTERSON & AULD COMPANY**

2301 Sixteenth Street

Detroit, Michigan 48216

Gift Parade Catalogue free on request.

#### STANDARD BADGES

When ordering, please use the official order form and forward same to the Executive Secretary for her approval. Your sorority requires this.

1. Pearl and One Zircon, Set Flush .....\$14.50
2. Pearls and One Zircon, Set Tiffany ..... 14.50
3. Pearls and One .10 Diamond, Set Tiffany .... 70.00
- Pearls and One .05 Diamond, Set Tiffany .... 40.00
- Pearls and One .04 Diamond, Set Tiffany .... 35.00
- Pearls and One .03 Diamond, Set Tiffany .... 32.00
- Pearls and One .015 Diamond, Set Tiffany ... 26.00
4. Recognition pin, gold-filled ..... 1.50
- 10K gold ..... 2.50
5. Recognition pin, crown set pearl ..... 11.50
6. Mother's pin, with pearls ..... 4.50
7. Mother's pin, plain ..... 3.25
8. Pledge pin ..... 1.25

#### GUARD PINS

	Single Letter	Double letter
Plain .....	\$3.00	\$ 4.75
Crown set pearl .....	8.50	15.50
Close set pearl .....	6.00	10.25
Be sure to mention the name of your chapter when ordering a guard.		
9. Monogram Necklace. 10K drop on an 18" gold-filled neck chain .....		5.00
10. Lamp Necklace, 18" neck chain. Gold-filled ..		4.00
11. Lamp Bracelet, gold-filled .....		7.25



State, County, and Municipal sales or use taxes must be added to prices, wherever such taxes are in effect.

# Official DELTA ZETA BLAZERS FEATURING

The Delta Zeta Coat-of-Arms Woven Directly into the Blazer Pocket  
Start Your Chapter Blazer Tradition To-Day!

Write for full information including official color swatches, prices  
and order blanks.

**ROBERT ROLLINS BLAZERS, INC.**

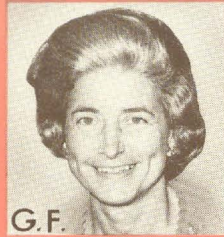
Department DZ, 242 Park Avenue South

New York, New York 10003

109  
Delta Zeta Sorority,  
3561 North Pennsylvania St.,  
Indianapolis, Indiana 46205

RETURN REQUESTED

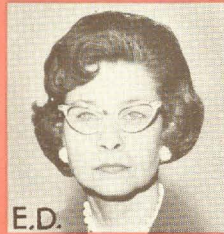
Second class postage paid  
at Menasha, Wisconsin



G.F.



D.B.



E.D.



D.S.



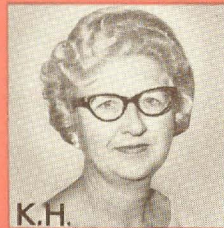
V.W.



L.F.



M.V.



K.H.



D.C.



NATIONAL  
LIBRARY BINDERY  
COMPANY  
OF INDIANA, INC.  
546 SOUTH  
MERIDIAN STREET  
INDIANAPOLIS