

In this issue - Delta Zeta's Commitment to Leadership

The LAMP

of Delta Zeta

www.deltazeta.org

Summer 2005



Two New Chapters Join the Delta Zeta Sisterhood at
Wake Forest and Clemson Universities



Returning from the 2005 Norma Minch Andrisek Leadership Conference in July, I was struck by the same thought I have had on several other occasions when coming back from National Conventions, Region Days, and the Standards of Excellence Conference: I am always so impressed with the quality of young women in our collegiate ranks, and I can picture these collegians in leadership roles as alumnae and in the other roles of post-graduate life.

The Norma Minch Andrisek Leadership Conferences (see more about the 25th anniversary of these conferences on pages 32-33) underscore Delta Zeta Sorority's commitment to leadership. From our Founders to today, Delta Zeta is blessed to have wonderful leaders—women of foresight who have guided this organization, meeting the challenges and opportunities of each of their generations with success and growth for the Sorority.

When we cover the NMA Leadership Conference in the next issue of *The LAMP*, you will see that Delta Zeta understands the importance of nurturing tomorrow's leaders today. The Leadership Conference is not about officer training, which is done at the regional and local levels, but about inspiring and guiding collegians to become vibrant leaders in their chapters and on their campuses, then taking that knowledge into the world when they become alumnae, where they can lead and mentor.

Each of us teaches by example, and we have many young women looking up to us—whether we are a College Chapter Director at a university where Delta Zeta has a chapter, or an alumna in the community who is recommending a young woman as a potential new member.

Beginning with your new member education, and with your participation in Sorority activities, you strengthen your character, build self-esteem, and come to know yourself. And self-confidence is the hallmark of a successful leader.

When each member accepts responsibility for herself, her chapter, and ultimately Delta Zeta as a whole, the result is a stronger organization. Today's contemporary leadership model focuses on giving everyone involved responsibility for the success of an organization. That responsibility is something that Delta Zeta has advocated since its founding in 1902.

I know that same sense of responsible leadership is evident in our newest chapters, Pi Delta at Wake Forest University and Pi Epsilon at Clemson University. We have proven and promising leaders in these chapters who are ready to move forward and blaze new trails in the history of Delta Zeta—just as our alumnae do both within and outside of the Sorority (and you'll read about some of them in this issue).

With each member's commitment to provide "steadfast love" and "give graciously of ourselves" as leaders, whether within or outside Delta Zeta, we will certainly exemplify the qualities of "temperance, insight, and courage" for those who follow.

In Delta Zeta,

Debbie Raziano
National President

FOUNDERS

Alfa Lloyd Hayes, 1880-1962
Mary Collins Galbraith, 1879-1963
Anna Keen Davis, 1884-1949
Julia Bishop Coleman, 1881-1959
Mabelle Minton Hageman, 1880-1929
Anne Simmons Friedline, 1879-1932

THE ORDER OF THE LAUREL

Irene Caroline Boughton, 1904-1988
Grace Mason Lundy, 1893-1993
Elizabeth Coulter Stephenson, 1881-1939
Myrtle Graeter Hinkly, 1893-1987

Published since December 1910 by

DELTA ZETA SORORITY

Founded at Miami University - Oxford, Ohio
October 24, 1902

The LAMP of Delta Zeta

Nancy E. Brewer A, Editor

(ISSN #0887-2554), official magazine
of the sorority, is published quarterly
by the Delta Zeta Sorority,

202 East Church Street, Oxford, OH 45056.

Contributors: Lindsey Aspinall Ξ '01

Megan Erb $\Lambda\Sigma$ '95

POSTMASTER:

Send address changes to
Delta Zeta Sorority, 202 East Church
Street, Oxford, OH 45056.

Send all editorial material to
Delta Zeta National Headquarters
Attn: Nancy Brewer, Editor
202 East Church Street
Oxford, OH 45056.

General e-mail: dzs@dzshq.com

LAMP e-mail: LAMP@dzshq.com



National Panhellenic Conference



Printed in USA.

The LAMP

of Delta Zeta

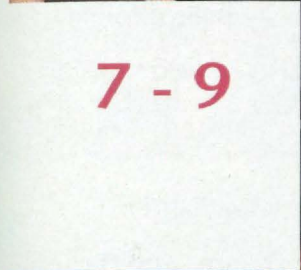
About the Cover:

Delta Zeta welcomed two new chapters in the spring of 2005 to our sisterhood: Pi Delta at Wake Forest University (photo, left) and Pi Epsilon at Clemson University (photo, right).



4 - 6 A New Tradition is Born

The story of the Pi Delta Chapter's colonization and installation at Wake Forest University in Winston-Salem, North Carolina.



7 - 9

The Pi Epsilon Chapter is Installed at Clemson University

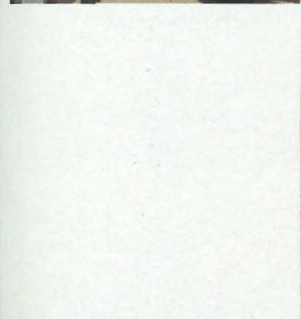
The Pi Epsilon Chapter became a part of Clemson University in April 2005.



25 Off to Washington, D.C.

11 We Promise

Delta Zeta and AlcoholEdu—the New Standard in Alcohol Education



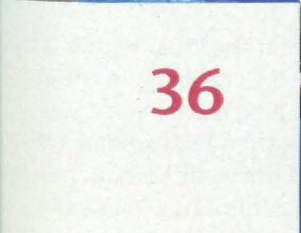
DEPARTMENTS

From the President	2
Stars in Our Service Flag	10
Directory	12 - 13
On Campus	14 - 22
Flame Eternal	23
Delta Zeta News	24
Alumnae News	26 - 27
Foundation Focus	32 - 33
DZ DeZigns	34
Legacy Jewelry	35



28 - 31 Alumnae Profiles

Meet cartoonist and volunteer Lois Laughlin Semple I '51; actor and world traveler Julia Ann Dean AO '65; marine conservation volunteer Dawn Fieser Simonsen ΔΘ '92; and trailblazer Nadine Block Robinson ΦΒ.



36

The Unlimited Potential of Giving

Photo Credits: Cover (photo, left), pp. 4-6: Jim Kernodle, JPK Photography, Elon, North Carolina; cover (photo, right), pp. 7-9: Ashley Billingsley, Classic Photography, Inc., Clemson, South Carolina; p. 24, Chapter Consultant Photo: Convention Photography, Pisgah Forest, North Carolina; pp. 32-3: Russ McLaughlin, McLaughlin Studio, Inc., West Chester, Ohio.



From left, Colleen Dunn, Pi Delta Chapter President, Debbie Raziano KA, National President, and Tess Fath, Colony President.

On March 19, 2005, Delta Zeta Sorority added a tenth collegiate chapter to its roster of chapters in the state of North Carolina as the Pi Delta Chapter was installed at Wake Forest University.

"We conquered the intangible goal of creating a Delta Zeta chapter at Wake Forest," Colleen Dunn, Chapter President, said in her speech at the installation banquet. "We did this by believing in ourselves—but more importantly, by believing in one another."

That faith in both Delta Zeta as a whole and in the individuals who make up the chapter and those who were involved in the colonization process was no doubt the reason that Pi Delta was named "Chapter of the Year" at the Order of Omega awards banquet, in addition to receiving numerous awards at the Region XIV Day.

The Pi Delta Chapter at Wake Forest University

A New Tradition is Born

The Pi Delta Colony began at a university steeped in tradition. Wake Forest College was founded in 1834, and became a university in 1967. In 1942, women were admitted to the school, and at the same time, "societies" were formed on campus which later became part of national sororities in the 1990s. Today, 90% of the student population at Wake Forest is involved in a Greek organization.

Tricia Richerson, Director of Conference and Guest Services at Wake Forest, who was then Associate Director for Greek Affairs, talks about the strong Greek ties at the university. "It is a traditional campus. Delta Zeta was a breath of fresh air for us. The members of Pi Delta wanted to truly embrace what it means to be in a sorority. They brought new ideas to Wake Forest and are very energetic."

The Extension Team consisted of Kathi Bray Heatherly EY, National Director of Extension; Sara Groom TN '95, Regional Collegiate Coordinator [RCC] for Region XVI; Lisa Ziemiecki Burnham TB '95; Shelly Brown Dobek TΩ '94, and Holly Wainscott IΦ '96.

Cheryl Byers Calogerakis ZA '93, CCD for the chapter, discusses how the strong Greek system presented a challenge in the early days of colonization for Pi Delta. "The biggest challenge was integrating into a deep-rooted Greek system with so much history and tradition," she says. "Formal recruitment was a big challenge as we were the smallest organization on campus at the time, and competition was tough."

But the Pi Delta Colony was up for the challenge. "We were one of the four groups on campus who achieved quota because of the amazing efforts of our Executive Board and Invitation



Front, from left: Susan Loeffler Bayer ZY '64; Margie Calhoun McKinzie AS '71; Sheena Davis; Christy Phillips ΘΙ '93, RCC – Region XIV; Tracey Andrews Gardner ΚΦ '87, Triad Alumnae Chapter President; Missy D'Agostino Safrit ZΞ '88, Pi Delta Advisory Board; Debbie Raziano KA, National President; Kathi Bray Heatherly EY, National Director of Extension; Louise Denny Britt ΚΦ '72, Pi Delta Advisory Board; Joann Drobonick Hearn ZΞ '89, Pi Delta Advisory Board; Dixie Myers Scott ΒΩ '45; Alisa Agosto Bentley ΛΣ '98, Pi Delta Advisory Board; Kimberly Chandler Cruz ΟΛ '92; and Anita Poston Hooker ΘΙ '79. Back: Kelli Hester Stoup ΞΣ '93; Laura Misiunas ΚΦ '01, Kappa Phi CCD; Tracy Kingsbury Bank ΟΙΙ '93, Past Blue Ridge Area Alumnae Director; Stephanie Ledet KA '99, Chapter Consultant; Ashley Patton ΙΑ '98, Chapter Consultant; Cheryl Byers Calogerakis ZΛ '93, Pi Delta CCD; and Amanda Ingram ΒΔ '00, Chapter Consultant.



Inset: Tracey Andrews Gardner ΚΦ '87, Triad Alumnae Chapter President (left) with Colleen Dunn, Pi Delta Chapter President.

Committee," Cheryl continues. "I cannot say enough about the resolve of the collegiate women. Each one of them has so much to be proud of."

Kathi Bray Heatherly EY, National Director of Extension, believes that Delta Zeta's history of tradition and strength helped the colony succeed at Wake Forest as well. "We did so well during formal recruitment—that confirms what a strong chapter Pi Delta is. Although we hold fast to our Delta Zeta values, we do have to adapt to the campus where we colonize. We strive to become a part of that campus's Greek community and partner with them."

Amanda Ingram ΒΔ '00, Chapter Consultant, says, "It was exciting to experience Pi Delta's first formal recruitment this past winter firsthand. The women of this chapter are proven leaders. The whole experience was about forming a stronger sisterhood."

Stephanie Ledet KA '99, Chapter Consultant, who worked with Ashley Patton ΙΑ '98, another Chapter Consultant, at the beginning of the colonization, emphasizes the quality of women who came to Pi Delta. "From the beginning, it was amazing to see their love of Delta Zeta grow," she says. "We recruited an outstanding group of women. They recruited, established their place on campus, got to know each other, and focused on their studies—all at the same time."

Tess Fath, who received the Outstanding Collegian Award at Region XIV Day, was the Colony President and talks about the excitement she felt in those early days of organization. "Delta Zeta was the only sorority that I wanted to be a part of. As the group came together for the first time on Bid Day, we realized that we were about to embark on a special adventure that would change us forever," she recalls.

Christy Phillips ΘΙ '93, the Regional Collegiate Coordinator for Region XIV, adds, "We wanted to include Pi Delta in Region Day to recognize their hard work. This chapter's accomplishments are remarkable. The members are very motivated."

Christy also talks about the dedication of the area alumnae who assisted during colonization. "The Triad Alumnae Chapter was thrilled to have the opportunity to help. The alumnae are very important to the chapter's success. Chapters need a strong network of support, and that's what the alumnae provide."

Tracey Andrews Gardner ΚΦ '87, President of the Triad Alumnae Chapter (which covers the Winston-Salem/Greensboro/High Point areas of North Carolina), says, "The alumnae response was quick and enthusiastic when we learned that Delta Zeta would be presenting at Wake Forest. Alumnae fit recruitment around their already-busy family and work schedules. Those who couldn't come to campus cooked meals for the Extension Team."

Alumnae also served in the vital role of advisors during the colonization process. Tracey says that events such as joint Founders Day celebrations will definitely become traditions for both Pi Delta and the Triad Alumnae Chapter.

The installation banquet took place in the Adams Mark Hotel's West Tower ballroom on March 19, 2005. The Delta Zeta Creed and Invocation was led by Pi Delta's Chaplain, Katie Simpler. Guests at the banquet included Debbie Raziano KA, National President; Kathi Bray Heatherly EY, National Director of Extension; Tracy Kingsbury Bank OII '93, Past Blue Ridge Area Alumnae Director; Dr. Mary T. Gerardy, Associate Vice President for Student Life, and Kevin Cox, Assistant Vice President and Director of Media Relations, represented the university; Stephanie Ledet KA '99 and Amanda Ingram BA '00, Chapter Consultants; Christy Phillips OI '93, RCC for Region XIV; Cheryl Byers Calogerakis ZA '93, CCD; the Initiation Team from the Kappa Phi Chapter (University of North Carolina/Charlotte), which were Susan Veit, Chapter President, Christi-Ann Ferland, Sayre Froelich, Kristen Swift, Karmen Ogden, Maya Crews, Amanda Wells, Laura Misiunas KΦ '01, CCD, and Charlotte Etier; and the Pi Delta Advisory Board, which included Alisa Agosto Bentley ΔΣ '98, Kelli Hester Stoup ΞΣ '93, Joann Drobonick Hearn ΖΞ '89, Missy D'Agostino Safrit ΖΞ '88, and Louise Denny Britt KΦ '72.

The Triad Alumnae Chapter, with Tracey Gardner, President, were also in attendance. Wake Forest's Panhellenic president Rebecca Potts and the fraternity presidents of Sigma Nu, Sigma Chi, and Chi Psi were also present.

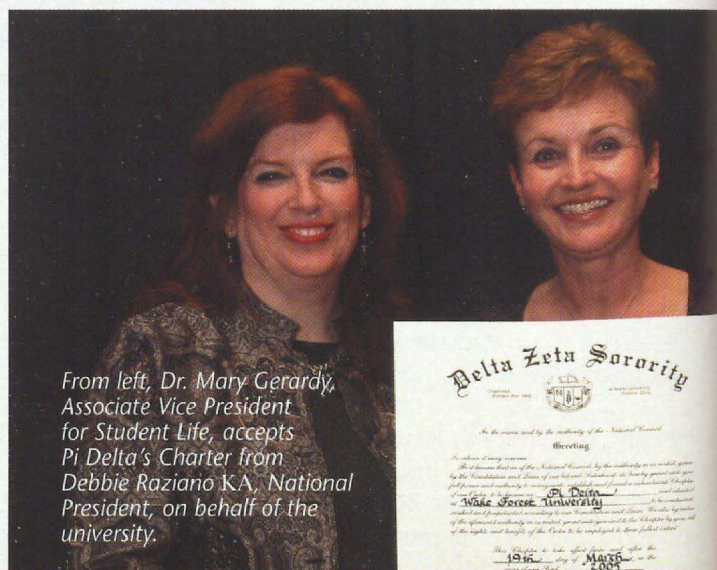
Pi Delta members sang "The Rose" as roses were given to all of the charter members. Colleen Dunn told everyone assembled, "It is because of each of you that I am proud to call myself a Delta Zeta." And Delta Zeta is certainly proud to call Pi Delta one of its outstanding chapters.

PI DELTA'S RECENT ACHIEVEMENTS

- During Pi Delta's first year on campus, they established two successful philanthropy projects. Their Turtle Tug raised \$1,900 for the Brian Piccolo Foundation for cancer research, and another project raised \$1,000 for the Delta Zeta Foundation.
- At Region XIV Day, Pi Delta received chapter awards for Financial Excellence, Philanthropy, Membership Quota, Above All Women's Average GPA, and Foundation Giving.

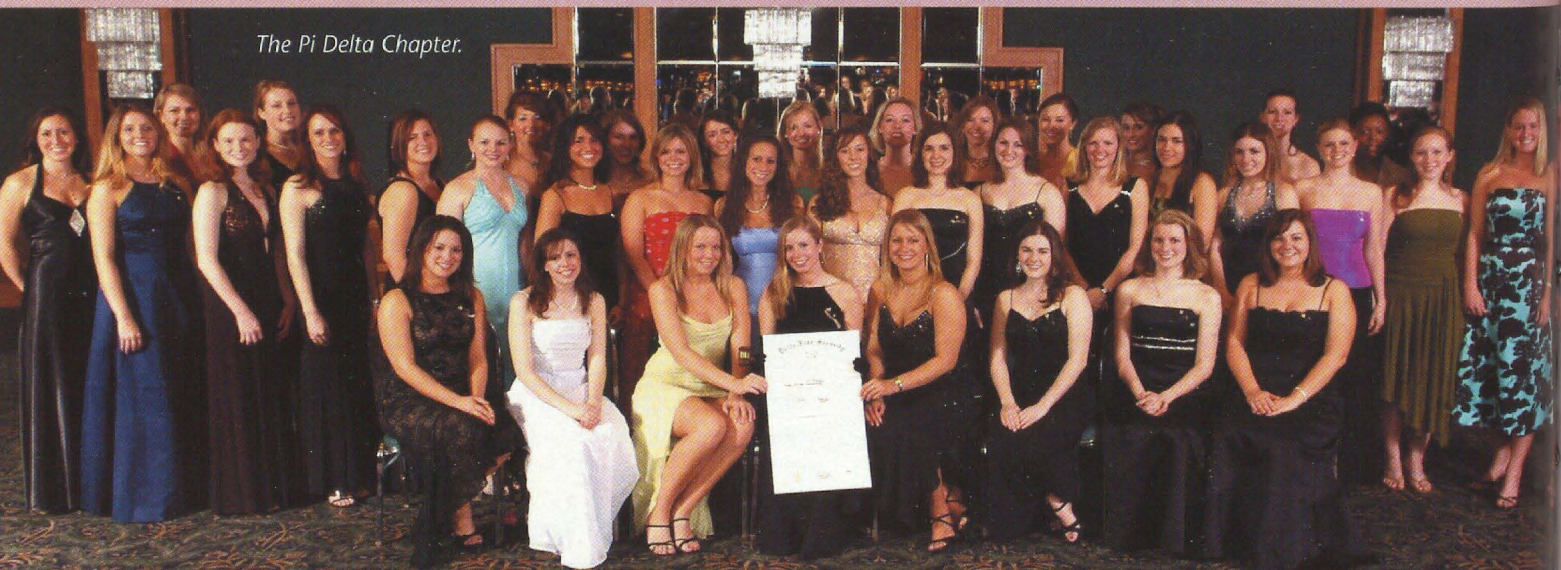
"In order for a colony to meet with success, it takes many individuals working together. Everyone involved in this colonization gave graciously of themselves."

Debbie Raziano KA, Delta Zeta National President



From left, Dr. Mary Gerardy, Associate Vice President for Student Life, accepts Pi Delta's Charter from Debbie Raziano KA, National President, on behalf of the university.

The Pi Delta Chapter.



One of the largest sororities in the National Panhellenic Conference (NPC) became a part of "one of the top public schools in the country,"* as Delta Zeta's Pi Epsilon Chapter was installed at Clemson University in Clemson, South Carolina on April 9, 2005.

* According to *The Princeton Review* and *U.S. News and World Report*.

The Pi Epsilon Chapter is Installed

at Clemson University

Kathi Bray Heatherly EY, National Director of Extension, and the Delta Zeta Extension Team (consisting of Sara Groom GN '95, Regional Collegiate Coordinator [RCC] for Region XVI, and Monica Carney OA '99 and Amy Vanderdonck IT '01, Chapter Consultants, came to Clemson in August 2002 to present to 700 potential members after receiving an invitation from the university to colonize. Kathi Heatherly says, "At Clemson, there are a lot of strong Greek groups, which made the charter members very competitive, and in the end, a strong and solid chapter."

Amy Vanderdonck says, "The charter members bring so much to Delta Zeta, and I am confident that they will continue to make Pi Delta a successful chapter."

Monica says, "The three of us on the consultant team (Monica, Amy, and Kristyn Biebuyck ΞΨ '99, Chapter Consultant, who



From left, Nicole Harris, Assistant Director of Greek Life for Clemson, Christine Beck, Pi Epsilon Chapter President, and Debbie Raziano KA, National President.

joined them later) knew we needed to make our presence known in the campus community. There were also many large Greek chapters on campus with great reputations who were willing to assist us with anything that we needed."

Julie Hyatt Allen BA '85, College Chapter Director (CCD), adds, "It was exciting to see so many energetic young women participating in recruitment." Julie, who at first agreed to serve as an advisor for the colony, was later asked to become the CCD. "Delta Zeta was a very important part of my life as a collegian; it gave me leadership opportunities that boosted my self confidence in so many ways, and I felt it was important to give back to an organization that has given so much to me," she says.

Alumnae from the Blue Ridge Area played a crucial role in the recruitment process as well, talking to potential new members

and explaining Delta Zeta's principles and the value of membership. Julie continues, "Collegians from the nearby campuses of the University of Georgia (Zeta Pi Chapter) and the University of Tennessee/Knoxville (Beta Lambda Chapter) also came to some of the events to meet potential new members."

After numerous information sessions for women interested in Delta Zeta and the Pi Epsilon Colony, an open house was held which had 400 potential new members in attendance. Out of those women, the 158 founding members of the colony were pledged.

Margret Georges O'Meara $\Lambda\Xi$ '82, RCC – Region XVII, discusses the enthusiasm of the Delta Zeta collegians who did assist in the colonization. "What impressed me was that everyone who was asked to help said 'yes' without hesitation," she says. "The collegians were delighted to help. We had three initiation teams. They were very organized and practiced weeks in advance, at a time when they had a lot going on in their own chapters. It was a challenge, but they were very excited to do it."

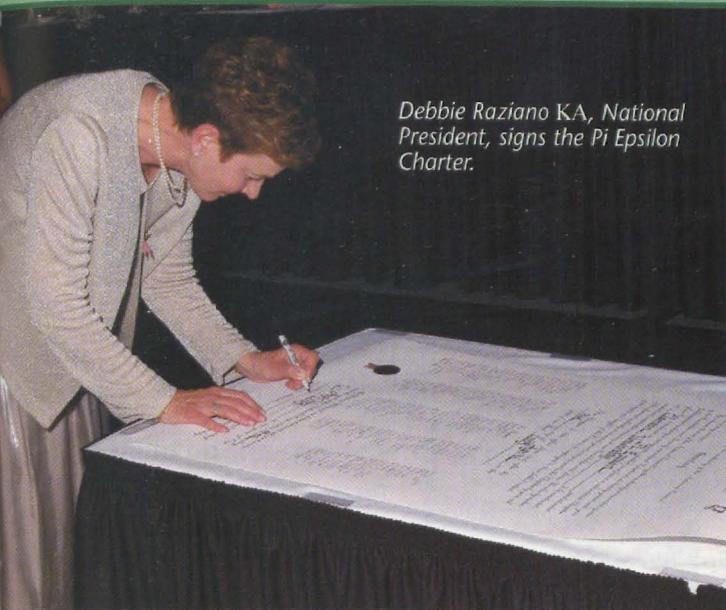
The Pi Epsilon Chapter has many outstanding members who are leaders on campus and in the surrounding community. Six women have a cumulative 4.0 GPA, 14 women are on the President's List, 31 women are on the Dean's list, three members were inducted into the Order of Omega this year, and two members were named Resident Advisor of the Month.

Christine Beck, Chapter President, is enthusiastic about the coming school year with the potential the new chapter offers. "Each member in the chapter wants to be involved. All of us are involved on campus and in community service. At Clemson, the emphasis is on academics. We, likewise, emphasize academic achievement for our members, providing them study hours and the tools they need to succeed."

A beautiful initiation ceremony on the evening of April 8 began with Patricia Menendez Tector $E\Phi$ '61, National Ritual Chairman, reading the Legend of the Loving Cup. Debbie Raziano KA, National President, recited Delta Zeta's initiation history. The Zeta Pi Chapter, Beta Lambda Chapter, and the Delta Delta Chapter (Georgia State University) provided the initiation teams. Rebecca Howard, who lived in the area and wanted to become involved with the chapter, was initiated as an alumna initiate.

Back, from left: Leslie Capps Milligan $\Xi\Theta$ '85; Terry Smith $E\Theta$; Kerry Jamison Morris $E\Theta$ '80, Recruitment Advisor; Denise Lobodinski ΓE '71, Zeta Pi CCD; Julie Hyatt Allen $B\Delta$ '85, Pi Epsilon CCD; Patricia Menendez Tector $E\Phi$ '61, National Ritual Chairman; Ruth Weider Patterson BX, Delta Zeta Foundation President; Debbie Raziano KA, National President; Kathi Bray Heatherly, National Director of Extension EY ; Jill Bishop Brock OM '92, Blue Ridge Area Alumnae Public Relations Chairman; Tracy Kingsbury Bank $O\Gamma$ '93, Past Blue Ridge Area Alumnae Director; and Margret Georges O'Meara $\Lambda\Xi$ '82, RCC – Region XVII. Front: Vicki Jinnette Ringer $B\Delta$ '80, Past National Public Relations Chairman; Gina Smith McCarty $B\Delta$ '84, Financial Advisor; Amy Vanderdonck ΓT '01 and Monica Carney OA '99, Chapter Consultants; and Rebecca Howard ΠE '05, Pi Epsilon alumna initiate.





Debbie Raziano KA, National President, signs the Pi Epsilon Charter.



Inset above, Members of the Pi Epsilon Executive Board with National Officers. Back: Kathi Bray Heatherly EY, National Director of Extension; Lauren Johnson, Vice President of Programs; Lauren Caratura, Treasurer; Nicole Harris, Assistant Director of Greek Life for Clemson; Debbie Raziano KA, National President; Christine Beck, President; and Emily Gowdy, Secretary. Front: Brittany Knick, Academics Chair; Whitney Shipman, Vice President of New Member Education; Rebekah Ritchie, Panhellenic Delegate; and Hillary DeWitt, Vice President of Membership.

With 471 guests attending the installation banquet, Pi Epsilon held the event at the Palmetto Expo Center in Greenville, South Carolina. Special guests included Deborah Raziano KA, National President; Kathi Bray Heatherly EY, National Director of Extension; Vicki Jinnette Ringer BA '80, Past National Public Relations Chairman; Margret Georges O'Meara AE '82, RCC – Region XVII; Tracy Kingsbury Bank OPI '93, Past Blue Ridge Area Alumnae Director; Patricia Menendez Tector EΦ '61, National Ritual Chairman; Ruth Weider Patterson BX, Delta Zeta Foundation President; Nicole Harris, Assistant Director of Greek Life; Erin Jennings, Graduate Assistant for Panhellenic; Tricia Hanson, Panhellenic secretary; Laura Nicholson, Panhellenic treasurer; English Morgan, Panhellenic scholarship chair; Elise Timanus, Alpha Delta Pi Sorority President; Elizabeth Miller, Kappa Delta Sorority President; Ali Bedard, Kappa Kappa Gamma Sorority President; Justin Evans, Alpha Tau Omega Fraternity President; Hank Johnson, Sigma Alpha Epsilon Fraternity President; and Steve Silcock, Associate Director of Expansion for Alpha Tau Omega Fraternity. Julie Hyatt Allen BA '85, CCD for Pi Epsilon; Kerry Jamison Morris EO '80, Recruitment Advisor; and Gina Smith McCarty BA '84, Financial Advisor, who are part of the chapter's advisory board, were in attendance.

"To our newly initiated and new members of the Pi Epsilon Chapter, I challenge you to live by our Creed and the standards that make Delta Zeta the sisterhood that she has been for over 100 years."

Debbie Raziano KA, Delta Zeta National President

Denise Marie Lobodinski IE '75, CCD for the Zeta Pi Chapter, and Susannah Martin and Blakely Sasser, collegiate members of Zeta Pi, who were part of the Initiation Team, remained to attend the banquet.

Nicole Harris, Assistant Director of Greek Life at Clemson, spoke about the significance of the Pi Epsilon Chapter coming to the university. "Clemson University strives to attract a diverse and dedicated student body and the Pi Epsilon Chapter attracted dedicated, capable, and diverse young women. Pi Epsilon has been a wonderful addition to student life and Panhellenic life at Clemson. They have strengthened our Panhellenic by giving young women a new and different option in sorority life and our Greek community by increasing its size and participation in campus and community events."

And Pi Epsilon is ready to continue the legacy begun on the historic night in April as the chapter looks forward to the 2005-2006 school year and the potential for its future.

CLEMSON AND GREEK LIFE

Clemson University was founded in 1889, and Greek life was officially established in 1970 when national organizations began colonizing on campus. Currently one out of every five Clemson students belongs to a fraternity or sorority, 15% of undergraduate males at Clemson are Greek, and 23% of undergraduate females at Clemson are Greek. There are nine other Panhellenic organizations at Clemson University and 21 fraternities that are part of the North-American Interfraternal Conference (NIC). Clemson is also home to nine National Pan-Hellenic Council (NPHC) organizations.

Be a Part of the Excitement

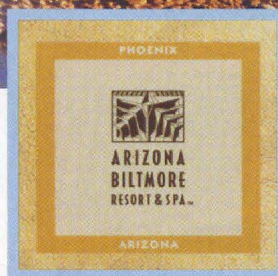
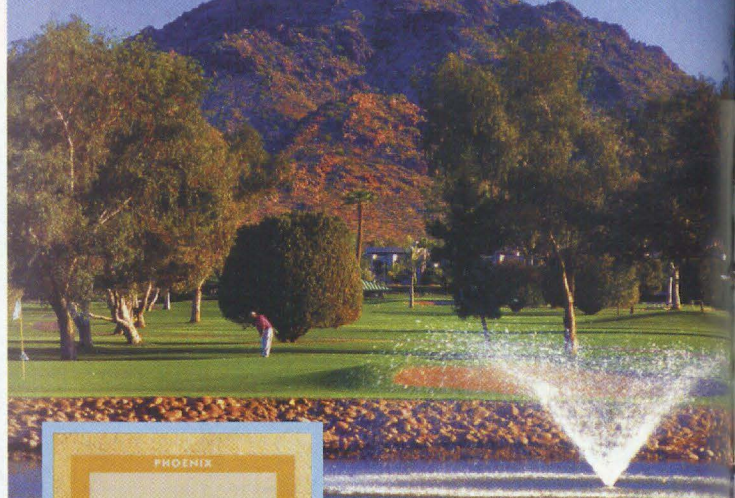
at the Arizona Biltmore Resort and Spa
in Phoenix, Arizona

June 21 – 26, 2006

Since its grand opening gala in 1929, the Arizona Biltmore has played host to celebrities, U.S. Presidents, and sports figures. In 2006, the Resort will host other prominent guests—members of Delta Zeta Sorority—as they attend the 47th National Convention from June 21 – 26, 2006.

An architectural masterpiece, inspired by Frank Lloyd Wright's designs, the Arizona Biltmore Resort and Spa is set amid the splendor of the Arizona desert. The luxurious rooms, eight heated swimming pools and six outdoor whirlpool spas, two 18-hole championship golf course, biking, hiking, and jogging trails, and seven tennis courts are just some of the features awaiting you.

You won't want to miss a minute of the 47th National Convention in Phoenix, Arizona. Watch for further information and registration materials in future issues of *The LAMP*.

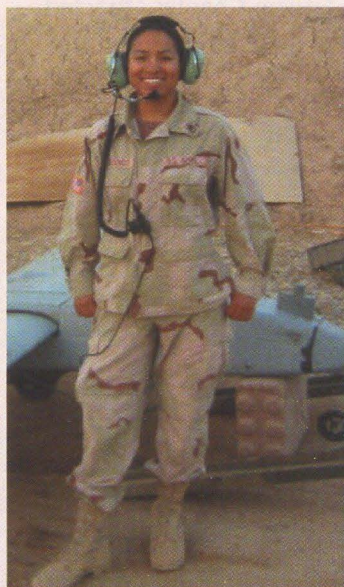


LOCATION:

The Arizona Biltmore Resort and Spa is located in the exclusive Biltmore Estates district of Phoenix and just a few minutes from neighboring Scottsdale. It is situated 15 minutes from Phoenix Sky Harbor International Airport.

Stars in Our Service Flag

Staff Sergeant (SSG) Norma A. Arredondo Θ P '99,
(U. S. National Guard)



At left: Staff Sergeant (SSG) Norma A. Arredondo Θ P '99.

Above: Norma (far right) with fellow soldiers in Iraq.

"I am a member of the California National Guard and was deployed in May 2004. I am now serving in FOB Warhorse which is located in Baqubah, Iraq. I have been in Iraq since October 2004 serving as the Maintenance NCOIC (Non-commissioned Officer in Charge) of a Tactical Unmanned Aerial Vehicle (TUAV) Platoon."

You can see more of Norma's photos at:
<http://www.mydeployment.mypicgallery.com/> and a deployment video at <http://www.jusspress.com/Norma07>.

The LAMP is proud to recognize Delta Zeta's "stars" in our Service Flag. If you are or you know a Delta Zeta member in the armed forces or serving as a civilian in foreign service, U.S. Agency for International Development (USAID), USO, or other such organizations, please send name, military branch, rank, where stationed, and other information (including family, hometown, etc.) to Nancy Brewer, Editor, *The LAMP*, Delta Zeta National Headquarters, 202 E. Church Street, Oxford, Ohio 45056 or via e-mail at LAMP@dzshq.com. We welcome stories and photos of members, and look forward to honoring our stars in Delta Zeta's Service Flag.

Captain Alexis Rominger McCabe Δ E '94, F/A
18A+USMC Hornet Pilot (Marine Corps)



At left: Captain Alexis Rominger McCabe Δ E '94.



Currently deployed to Iraq for the second time, Captain McCabe is serving at Al Asad Air Base in Anbar Province, Iraq. She is assigned there until September, then will return to her home station of Beaufort, South Carolina. She is shown flying an F/A-18A Hornet over Al Asad Air Base.

AlcoholEdu™

■ ■ ■ The New Standard in Alcohol Education

By Cynthia Winslow Menges A, Executive Director

WE PROMISE

"To build up the character and cultivate the truest and deepest friendship among its members.

To stimulate one another in the pursuit of knowledge and the attainment of a high standard of morality; to inculcate elevated sentiments and noble principles and to afford each other every possible assistance and to incite all the attainment of a memorable fame."

Articles of Incorporation, Delta Zeta Sorority

What we promise in the Delta Zeta Sorority is that membership will motivate and encourage a young woman to become the best possible person she can be to her family, to her friends, to her community and to herself. And she can count on support from her sisters in Delta Zeta to help her attain this worthy goal.

What we promise in the Delta Zeta Sorority is that membership is life changing and lifelong, and that promise has not changed since our founding in 1902. What has changed is the de-standardized social environment and accepted drinking culture on college and university communities that has greater influence on our members' behavior and character building.

Membership in any Greek organization involves many privileges and obligations. We continually work to provide balanced programming and encouragement in the areas of academic achievement, community service, campus involvement, spiritual growth, leadership development, and social success, but unfortunately alcohol abuse can thwart our efforts and sidetrack our collegiate members.

Although alcohol abuse is not exclusively a Greek problem, or a Delta Zeta problem, we are taking a leadership role to combat it, both for the safety of our own members and for the betterment of the community at large.

Enter AlcoholEdu for College: *The New Standard in Alcohol Education.*

Effective Fall 2004, membership in Delta Zeta Sorority requires each new member to take the online, confidential course. The results are in:

■ ■ ■ **Fact:** 96% of our new members passed the course.

■ ■ ■ **Fact:** Their self-assessed knowledge about the effects of alcohol nearly doubled after taking the course; and those who were enthusiastic about AlcoholEdu more than tripled after taking the course.

■ ■ ■ **Fact:** Our members told us, through this course, that AlcoholEdu is "very effective in getting students who use alcohol to try practicing in healthier and safer ways".

■ ■ ■ **Fact:** AlcoholEdu is life changing.

At the end of this 2004-05 academic year, over 4,200 new members in Delta Zeta Sorority will have taken the online course. From a national standpoint, what did we learn? Where do we go from here? How will we get there?

AlcoholEdu asks students to respond to statements reflecting several commonly held expectations about the personal and social effects of alcohol. We learned that 70% of our members experienced moderate to high drinking behaviors in high school. And while this statistic may sound alarming from a recruitment standpoint, what is more important is that we learned why drinking is so prominent in high school. It is not because they want to party; it is because they are uncomfortable in expressing their feelings in social situations (62% of responses) and they believed alcohol would enable them to feel less stressed in their daily lives (60%).

We are recruiting women who are high achievers, leaders, and good citizens. But they are coming to us over-programmed and stressed out with poor time management and conflict resolution skills. Consequently, our national programming goals for the 2005-06 academic year are quickly turning to focus on Stress Management and Self-Esteem. As a national organization we must be responsive to our members' needs, while remaining true to the standards of Delta Zeta, which are as pertinent today as they were in 1902. It is our partnership with Outside The Classroom that is helping Delta Zeta maintain a relevant status in each member's life.

In addition, we look as well to our host institutions to partner with us in providing this valuable program to their students, our members. In bringing our resources and mutual interests together through providing programs such as AlcoholEdu, we can make a difference and change the culture of college drinking.

Delta Zeta is life changing. We promise.

Directory

For a complete version of the directory, please call

1-800-6-ALUMNA

To change your name or address, to order a DZ DeZigns catalog, for information on the magazine program or other Delta Zeta programs, contact:

**National Headquarters, 202 East Church St.
Oxford, Ohio 45056**

Phone: (513) 523-7597

Fax: (513) 523-1921

Website: Visit www.deltazeta.org

National Council

NATIONAL PRESIDENT

Debbie Raziano
117 Ashton Road, Luling, LA 70070

NATIONAL VICE PRESIDENT OF MEMBERSHIP DEVELOPMENT

Michelle Albrecht Smith
4319 Canehill Avenue, Lakewood, CA 90713

NATIONAL VICE PRESIDENT OF COLLEGE CHAPTER OPERATIONS

Tracy Wilson LeSieur
2805 Downing Circle, Birmingham, AL 35242

NATIONAL VICE PRESIDENT OF ALUMNAE AFFAIRS

Doretta Pugh Osburn
1016 Wethersfield Crossing, Hurricane, WV 25526

NATIONAL SECRETARY

Sharon Moncrief Slovinski
32787 Waverly Street, LaGrange, MO 63448

NATIONAL TREASURER

Susan Hein Feuerherm
3849 Conroy Trail, Inver Grove Heights, MN 55076

NATIONAL DIRECTOR OF MEMBERSHIP SERVICES

Phyllis Sundberg Davis
124 Beatrice Lane, Brandon, MS 39047

NATIONAL DIRECTOR OF EXTENSION

Kathi Bray Heatherly
528 Alexandria Drive, Naperville, IL 60565

NATIONAL DIRECTOR OF PHILANTHROPY

Chris Kolodgie Kern
109 Woodridge Road, St. Louis, MO 63122

PAST NATIONAL PRESIDENT

Karly Klemp Burns
331 7th Avenue North, Tierra Verde, FL 33715

NATIONAL PANHELLENIC CONFERENCE DELEGATE

Lynnda Wolf Hoefler
2981 Telber Court, Stow, OH 44224

NATIONAL PANHELLENIC CONFERENCE ALTERNATES

1st Alternate - Kathi Bray Heatherly
528 Alexandria Drive, Naperville, IL 60565

2nd Alternate - Phyllis Sundberg Davis
124 Beatrice Lane, Brandon, MS 39047

3rd Alternate - Karly Klemp Burns
331 7th Avenue North, Tierra Verde, FL 33715

Delta Zeta Foundation

PRESIDENT

Ruth Weider Patterson
3623 Devereaux Road, Columbia, SC 29205

VICE PRESIDENT

Sandra Sebrell Bailey
639 N. Portage Path, Akron, OH 44303

VICE PRESIDENT-MUSEUM

Norma Minch Andrisek
319 Janice Drive, Berea, OH 44017

SECRETARY/TREASURER

Sonja Nay Wise
1813 Mallard Court, West Lafayette, IN 47906

TRUSTEE

Anne Marie Jones Gavin
3264 Swan Drive, Vineland, NJ 08361

TRUSTEE

Marvona Easley Tavlin
6320 Rogers Circle, Lincoln, NE 68506

MEMBER

Debbie Raziano
117 Ashton Road, Luling, LA 70070

Committees

FINANCE/INVESTMENTS

Sonja Nay Wise
1813 Mallard Court, West Lafayette, IN 47906

GRADUATE SCHOLARSHIPS

Elizabeth Chilton Gryder
714 N. Cambria Street, Anaheim, CA 92801

GALLAUDET UNIVERSITY

Joan Dondrea Lowry
578 Yarmouth Drive, Bay Village, OH 44140

HEGHINIAN SCHOLARSHIPS

Marion Angarola Shapley
109 Via Los Miradores, Redondo Beach, CA 90277

HOUSE EAR INSTITUTE

Marilyn Fey Ghysels
8442 Lindante Drive, Whittier, CA 90603

LEACH SCHOLARSHIPS

Betty Paul DeWitt
23630 Oak Rest Lane, Harbor City, CA 90710

UNDERGRADUATE SCHOLARSHIPS

Vicki Bowman
3050 W. Ball Road #126, Anaheim, CA 92804-3852

WEBSITE/COMMUNICATIONS

Jeanine Petersen Triplett
7203 Limestone Court, Crestwood, KY 40014

National Historical Museum and Headquarters

NATIONAL HEADQUARTERS

202 East Church Street, Oxford, OH 45056
513/523-7597 (FAX) 513/523-1921

EXECUTIVE DIRECTOR

Cynthia Winslow Menges

DIRECTOR OF COMMUNICATIONS -

EDITOR *The LAMP*

Nancy E. Brewer

CHAPTER SERVICES DIRECTOR

Mandi Wise

CHAPTER CONSULTANTS

Meghan Bernhardt Kristin Houghton Elizabeth Stricklin
Lisa Cast Cassie Wilkinson Summer Hernandez

CURATOR/ARCHIVIST

Betty Johnson Gurr-Tomblinson
210 Mt. Pleasant Drive, Apt. 110, Monroe, OH 45050

MAGAZINE PROGRAM, INSURANCE, & NETWORKING

National Headquarters, 202 East Church Street,
Oxford, OH 45056 513/523-7597

National Standing Committees

ACADEMICS

Kara Barker Price
3433 Meadow Sound Drive, De Pere, WI 54115

AWARDS (ALUMNAE AND COLLEGIATE)

Karen Severloh Moffitt
2075 Los Robles Avenue, San Marino, CA 91108

CONSTITUTION

Anne Marie Jones Gavin
3264 Swan Drive, Vineland, NJ 08361

FIELD ACTIVITIES

Karly Klemp Burns
331 7th Avenue North, Tierra Verde, FL 33715

FINANCE

Susan Hein Feuerherm
3849 Conroy Trail, Inver Grove Heights, MN 55076

HISTORY

Florence Hood Miner
1917 Five Iron Drive, Castle Rock, CO 80104

HOUSING ADMINISTRATOR

Norma Minch Andrisek
319 Janice Drive, Berea, OH 44017

JUDICIARY

Cathy Irvin Painter
4108 Mek Drive, Austin, TX 78731

MUSIC

Michele Taylor Benoit
203 East 6th Street, Thibodaux, LA 70301

NEW MEMBER EDUCATION

Jennifer Yeagley Anderson
1014 Park Village Drive, Louisville, OH 44641

PHILANTHROPY - ALUMNAE

Karen Woods Miron
2353 Deer Trail Pk. NE, Grand Rapids, MI 49505

PHILANTHROPY - COLLEGIATE

Grace Dollahon Bartholet
6445 Olson Memorial Highway,
Golden Valley, MN 55427-4947

PROGRAM DEVELOPMENT

Refer to National Vice President of Membership Development

PUBLICATIONS

Marvona Easley Tavlin
6320 Rogers Circle, Lincoln, NE 68506

RECRUITMENT

Ann Gurley Morrow
7475 Clinton Road, Paducah, KY 42001

RISK MANAGEMENT

Heather Angove
279 Brooklyn Avenue, San Jose, CA 95128

RITUAL

Patricia Menendez Tector
4704 Cypress Ford Drive, Fuquay-Varina, NC 27526

National Special Committees

CONVENTION CHAIRMAN

Kimberly Harris Bath
1048 Fawnview Drive, Montgomery, AL 36117

STATUS

Judy Harwood
211 Lathrop Lane, Manchester Center, VT 05255

TECHNOLOGY DEVELOPMENT

Pamela McClure Cronenwert
70 Charter Court, Manistee, MI 49660

TRAINING

JoAnn Arnholt
29 Sterling Road, Princeton, NJ 08540

Area Alumnae Directors

BLUE RIDGE - Virginia, West Virginia, North Carolina,
South Carolina, Washington, DC
AAD: Refer to National Vice President of Alumnae Affairs

Membership Chairman

Pat Clarke Bliedorn
8555 Sunningdale Terrace, Chesterfield, VA 23832

Development Chairman

Jill Bishop Brock
2650 Holly Springs Road, Inman, SC 29349

Public Relations Chairman

Katherine Fehervari
1237 N. Utah Street, Arlington, VA 22202

CENTRAL PLAINS - North Dakota, South Dakota,
Nebraska, Colorado, Kansas, Missouri, Iowa, Minnesota
AAD: Carolee Lewis Followill

822 Oak Park Boulevard, Cedar Falls, IA 50613

Membership Chairman

Anita Moix Tienken
4917 Whitney Drive, Independence, MO 64055

Development Chairman

Rhonda Reifschneider Roe
7998 Inland Lane N., Maple Grove, MN 55311

Public Relations Chairman

Angela Drennan Johnston
246 Laramie Court, Castle Rock, CO 80104

GREAT LAKES - Michigan, Ohio, Canada, United Kingdom

AAD: Mella Cooks Davies
2936 Brighton Road, Shaker Heights, OH 44120

Membership Chairman

Glenna VanderMeer Paukstis
502 N. Lakeshore Drive, Ludington, MI 49431

Development Chairman

Dr. Sandra Harding Alspach
24 E. 14th Street, Holland, MI 49423

Public Relations Chairman

Denise Sabo Brenner
230 East Cooke Road, Columbus, OH 43214

GREAT WESTERN - Washington, Oregon, California, Arizona,
Nevada, Utah, Wyoming, Idaho, Montana, Alaska, Hawaii

AAD: Becky Robinson Romenesko,
9303 Oakbourne, Santee, CA 92071

Membership Chairman

Desiree Finigan
6547 West 85th Place, Los Angeles, CA 90045

Development Chairman

Refer to AAD

Public Relations Chairman

Donna Sinclair
814 Hacienda Drive, El Cajon, CA 92020

MID-AMERICA - Wisconsin, Illinois, Indiana

AAD: Ann E. Langel
6418 Toribrooke Lane, Madison, WI 53719

Membership Chairman

Jo Ann Hempfling Sparling
2800 Woodbridge Drive, Muncie, IN 47304

Development Chairman

Megan Farrell
601 West Rand Road #A408, Arlington Heights, IL 60004

Public Relations Chairman

Jean Gileno
25 Napanee Drive, Carmel, IN 46032

MID-ATLANTIC - Pennsylvania, Delaware,
New Jersey, Maryland

AAD: Melissa Seaman Waldron
601 Ohio River Blvd., 2nd Floor, Pittsburgh, PA 15202

Membership Chairman

Inez Wiatrowski Apgar
10 Tumble Falls Road, Stockton, NJ 08559

Development Chairman

Nancy Stewart Reft
3238 Bradbury Drive, Aliquippa, PA 15001

Public Relations Chairman

Linda Cademartori Barba
800 Northwood Avenue, Cherry Hill, NJ 08002

NORTHEAST - Maine, Vermont, New Hampshire,
Massachusetts, Connecticut, Rhode Island, New York

AAD: Beth Luton
4961 Surrey Lane, Liverpool, NY 13088

Membership Chairman

Refer to AAD

Development Chairman

Melinda Roy
135 Portland Avenue, #802, Old Orchard Beach, ME 04064

Public Relations Chairman

Katie Isaac Franklin
102 Colebourne Road, Rochester, NY 14609

SOUTH CENTRAL - Kentucky, Tennessee, Louisiana,
Mississippi, Arkansas, Oklahoma

AAD: Stancy Orr Bond
4156 Destin Drive, Olive Branch, MS 38654

Membership Chairman

Samantha Hellums Blue
8098 E. Country Roads Drive, Claremore, OK 74019

Development Chairman

Sherry Shadwick Dotts
9741 E. 33rd Street #1005, Tulsa, OK 74146

Public Relations Chairman

Alecia Soyk Manning
140 Map Drive, Apt. 13, Pikeville, KY 41501

SOUTHEAST - Georgia, Florida, Alabama,
Puerto Rico, Virgin Islands

AAD: Christie Dale Harmon
133 Featherstone Lane, Hampton Cove, AL 35763

Membership Chairman

Rebecca Shull Moeller
28 Woodland Trail, Newnan, GA 30263

Development Chairman

Irene Leslie Bush
13370 Old Dixie Highway, Sebastian, FL 32958

Public Relations Chairman

Melissa Hood Bullard
106 Covetree Circle, Madison, AL 35757

SOUTHWEST - Texas, New Mexico

AAD: Heather Jerden Anderson
548 Edgeview Drive, Grand Prairie, TX 75052

Membership Chairman

Andi Cooper Howard
6212 Kenosha Drive, Lubbock, TX 79413

Development Chairman

Marcie Berry
8702 Chipping Rock, Sugarland, TX 77479

Public Relations Chairman

Heidi Waltenbaugh Parker
6210 Bankston Lane, Beaumont, TX 77706

Regional Collegiate Coordinators

REGION I - Maine, Vermont, New Hampshire,
Massachusetts, Connecticut, Rhode Island, New York
RCC: Gay Thorri Rose
36 Webster Road, East Lyme, CT 06333

REGION II - New Jersey, Eastern Pennsylvania

RCC: Marlo Dorsey
322 W. 57th Street #16D, New York, NY 10019

REGION III - Maryland, Western Pennsylvania

RCC: Gayle Evans Staub
6542 Baywood Drive, Harrisburg, PA 17111

REGION IV - West Virginia, Virginia, Washington, DC

RCC: Refer to National Vice President of College
Chapter Operations

REGION V - Ohio

RCC: Pam Gelhausen Asher
400 Hillbrook Drive, Cuyahoga Falls, OH 44223

REGION VI - Michigan, Canada

RCC: Michelle Buchan Kramer
1730 Somerset Drive, Mt. Pleasant, MI 48858

REGION VII - Indiana

RCC: Shelly Bastin Kleiman
11133 W. State Road #68, Elberfeld, IN 47613

REGION VIII - Iowa, Nebraska, Wisconsin, Minnesota,
South Dakota, North Dakota

RCC: Pat Bladow
W5190 Jason Road, Elkhorn, WI 53121-2466

REGION IX - Missouri, Colorado, Kansas

RCC: Diane Stecher
6003 Kensington Way, Imperial, MO 63052

REGION X - California, Washington, Oregon, Montana,
Idaho, Alaska, Hawaii, Nevada, Arizona, Utah, Wyoming

RCC: Karen Martin Campbell
441-101 Cranston Court, Long Beach, CA 90803

REGION XI - Oklahoma, Louisiana, Mississippi, Arkansas

RCC: Jill Jackson Swift
2107 Greystone Cove, Jonesboro, AR 72401

REGION XII - Texas, New Mexico

RCC: Aileen Salinas
11711 Wall Street #13102, San Antonio, TX 78230

REGION XIII - Tennessee, Kentucky

RCC: Julie Stewart Pride
864 Nutwood Street, Bowling Green, KY 42103

REGION XIV - North Carolina

RCC: Christy Phillips
425 Lorna Street, Charlotte, NC 28205

REGION XV - Alabama, Florida

RCC: Nikki Dempsey Sprader
153 County Road 658, Hanceville, AL 35077

REGION XVI - Illinois

RCC: Sara Groom
1026 North Wilshire Lane, Arlington Heights, IL 60004

REGION XVII - Georgia, South Carolina

RCC: Margaret Georges O'Meara
8040 Ridge Valley, Woodstock, GA 30189



Alpha Alpha

Northwestern University hosted a barbeque in honor of our seniors, and enjoyed a senior event with the North Chicago Area Alumnae Chapter. Our new member class won May Sing, an annual skit competition in which the new members of every Greek house on campus participates.

Alpha Gamma

University of Alabama wrapped up the semester with senior week, highlighting many of our accomplishments and service to Delta Zeta. Several members in each new member class were inducted into honor societies, including Lambda Sigma, Cardinal Key, Blue Key Honor Society, Omicron Delta Kappa, Anderson Society, and XXXI Women's Honor Society.

Alpha Rho

Ohio Wesleyan University held a Rose Banquet in honor of our graduating seniors and had an alumnae ceremony. At OWU's Greek Awards, we were honored as the Best Overall Chapter on campus, and also received awards for the Best New Member, Best Athlete, Highest Sorority Community Service Hours, and the Chapter House Advisor Award.

Alpha Sigma

Florida State University graduating seniors enjoyed a luncheon hosted by the Tallahassee Alumnae Chapter. On campus, we received four Greek Awards including Citizenship, Chapter Management, Recruitment and Retention, and Leadership.

Alpha Theta

University of Kentucky seniors were given recognition throughout the year with "Senior Spotlights." Michelle Rose Stancel, Chapter President,

was honored with the Most Outstanding Executive Member award at the university's Greek Awards Banquet. The Annual Mr. UK Pageant raised almost \$10,000 to be divided between the Delta Zeta Foundation and the Lexington Speech and Hearing Center.

Alpha Upsilon

University of Maine received the campus Chapter of the Year award.

Beta Delta

University of South Carolina won first place in "War of the Wings," a fundraising event supporting another sorority's philanthropy. We are also thrilled to receive the Chapter of Excellence Award at the Order of Omega awards, which honors the university's Greek community.

Beta Gamma

University of Louisville placed first overall in the sorority division of the university's 68th annual Fryberger Sing with the theme "Let Freedom Sing."

Beta Kappa

Iowa State University participated in Operation Playground with nine other Greek organizations to renovate playgrounds and city parks in the city of Ames.

Beta Xi

Auburn University members are looking forward to a great recruitment in fall 2005. We have held three recruitment workshops in which members practiced recruiting techniques.

Delta

DePauw University was recognized at the university's Academic Award Convocation. Twelve of our members were honored for their academic achievements.

Delta Alpha

California State University/Long Beach won second place in this year's Greek Week. Paired with Delta Gamma Fraternity and Sigma Pi Fraternity, we competed with other Greeks in the events. We tied for second place in the Greek Sing Competition.

Delta Beta

University of Tampa Sarah McAdams, Chapter President, won the Greek Woman of the Year Award at our university's annual

Leadership Awards. Our chapter also received the Sorority of the Year Award for the seventh consecutive year! At Greek Awards night, we received the Highest GPA Award and an award for excellence in academic programming.

Delta Delta

Georgia State University was awarded the Dean's Cup for: Excellence in Academics, Excellence in Citizenship, and Excellence in Member Education at the university's Greek Awards ceremony. In addition, we received Five Star Chapter Recognition.

Delta Omega

Fort Hays State University held a senior ceremony for our graduating members. Kylee Colson received the Phyllis Berens Ross Award at our Formal Dinner, in recognition for her dedication to Delta Zeta, and Lawna Staven received the Rose Arnold Award for her academic achievement and community service.

Delta Omicron

Northwestern Oklahoma State University had eight members who were selected for the Greek honor society, Order of Omega. We hosted a picnic for the Delta Phi Chapter from Northeastern State University.

Delta Sigma
Truman State University
 recognized senior Carrie Grass as our Rose Queen at our spring formal, an award given to a senior for her dedication to Delta Zeta.

Delta Tau
Temple University
 won Greek Sing during Greek Week and placed second overall for the week.

Delta Upsilon
Marshall University
 won the Chapter of the Month for February, Most Outstanding Webpage, Excellence in Scholarship, Most Improved in Scholarship, and Most Community Service Awards at the PHC/IFC (Panhellenic/Interfraternity Conference) awards on campus. We ranked third overall in Greek Week competition.

Delta Xi
University of Northern Colorado
 raised money to participate in the Relay for Life, a fundraiser for the American Cancer Society.

Epsilon
Indiana University
 held our second annual Turtle Tug to benefit the Delta Zeta Foundation. We designed a banner for Faculty Appreciation Week that said, "DZ Thanks Our Professors!", and attended a Faculty Appreciation

Dessert Banquet. Liz Brune, Vice President of Membership and campus Panhellenic vice president, was named Greek Woman of the Year. We won first place for our banner which displayed Greek spirit.

Epsilon Delta
Concord University
 was awarded the Academic Sorority of the year and Heather Flanagan was awarded the honor of Academic Greek for the fourth year in a row.

Epsilon Kappa
University of Wisconsin/Whitewater
 held a seminar to raise awareness about drunk driving, and were recognized in the *Royal Purple* student newspaper for our presentation.

Epsilon Omega
University of Wisconsin/Eau Claire
 received the Chapter of Excellence Award and the Blugold Outstanding Chapter Award because of our 100% involvement on our campus. Katie Anderson, Chapter President, received the Greek Woman of the Year Award. We also received an Award at Region VIII Day for our Risk Management Capsule on breast cancer prevention.



The Alpha Alpha Chapter's new Executive Board on Bid Night.



The Alpha Rho Chapter shows off their Region V State Day awards.



Beta Gamma Chapter members sold Kentucky Derby Festival Pegasus Pins at Thunder Over Louisville.



Delta Beta Chapter members at the university of Tampa's Leadership Awards.

On Campus

Epsilon Rho Northwest Missouri State University

was named the Most Outstanding Greek Sorority during Greek Week. We were also given the Alpha Chi Integrity Award. Three of our members were initiated into Order of Omega. We volunteered to organize and raise money for a benefit concert for Camp Quality, which provides support to children with cancer and their families.

Epsilon Sigma Wayne State University

won Greek Week. Our best recruitment events were the ones we merged with our sisterhood events.

Epsilon Theta Clarion University

hosted Region Day on our campus and we were honored to receive the Pride of Region III Award. We also placed third for our informal song in this year's Greek Week.

Epsilon Upsilon University of Central Oklahoma

received second place in the Spring Sing Competition during Greek Week 2005.

Epsilon Zeta Drexel University

received the 2005 Greek Week Champion Trophy at the Greek Awards Banquet.

Gamma Alpha Baldwin-Wallace College

received an award for having the fourth highest GPA on campus.

Gamma Beta University of Connecticut

has the highest overall GPA, and received the award for the Most Involved Sorority on campus in extra-curricular activities.

Gamma Chi Ball State University

held our successful Turtle Tugs event, the proceeds of which will benefit Gallaudet University and the *Sound Beginnings* program. At our Senior Ceremony, our seniors spoke about what their Delta Zeta college experience has meant to them.

Gamma Kappa Kent State University

took third place at Greek Week 2005. We also received the Certificate of Recognition for work done during Community Awareness Week, Most Improved Chapter GPA, and Pam Gelhausen Asher '91 (then CCD, now RCC for Region V) received the Sorority Advisor of the Year Award. We were recognized with the Most Creative Service Project of 2004-2005 and the Best Philanthropy of the Year for our annual LipSync, as well as the Most Improved Sorority of the Year.



The Epsilon Sigma Chapter builds a pyramid during Greek Week.

Gamma Lambda San Jose State University

honored our twelve seniors during the Recognition Banquet. We're enthusiastic about fall 2005 recruitment. Our seniors offered advice on successful recruitment, and our newest initiates learned about the best ways to recruit potential new members.

Gamma Nu Eastern Illinois University

won this year's Greek Sing, a university tradition for 54 years.

Gamma Omega Southern Illinois University

won second place when they teamed with Iota Phi Theta for the Ebony and Ivory step show, sponsored by campus Panhellenic Association, the National Pan-Hellenic Council, and the Interfraternity Council.

Gamma Phi Indiana University of Pennsylvania

hosted Delta Days Carnival with Delta Sigma Theta to benefit Lifesteps of Indiana County, which helps individuals and families with life-changing needs.

Gamma Psi Central Michigan University

won the Greek-sponsored "Say What!" karaoke competition during Greek Week. The proceeds supported Los Ninos De Oaxaca, a service learning class in Oaxaca, Mexico. We kicked off the "Mock Rock" event which ended Greek Week and raised money for the Women's Aid Shelter.

Gamma Rho Northern Illinois University

raised \$5,300 for Gallaudet University and the National Center for Hearing Assessment Management at our Dream Man and Greek Goddess 2005 event. The winners represent the ideal Greek leaders on campus.

Gamma Tau Bowling Green State University

honored our twelve seniors during the Recognition Banquet. We're extremely enthusiastic about recruitment in Fall 2005, and have planned a weekend for our sisters to sample what recruitment school will include at the end of summer. Our newest initiates learned a great deal of information and the best ways to recruit potential new members.

Gamma Xi New Mexico State University

held our "Mr. Greek" event, which raised \$1,500 for the

Delta Zeta Foundation and local charities. During Greek Week, we won first place overall in the Pool Day events. We also won the overall sorority bracket and placed second overall out of all of the 35 teams participating in College Knowledge Bowl.

Iota
University of Iowa
seniors had a week devoted just to them. Seniors' families gave gifts and a junior/senior dinner was held. We started off Greek Week with Greek God and Goddess and had the best attendance ever with 21 Greek organizations attending.

Iota Delta
Edinboro University
sponsored a successful domestic violence and sexual assault awareness program entitled, "Speak Out with Voices, Not Fists." We collected cell phones to donate to local women services. The presentation included the facts and myths of violence and assault and an Edinboro police officer discussed his experiences.

Iota Iota
Middle Tennessee State University
presented our graduating seniors with scrapbooks and held a picnic in their honor. We received third place in intramural softball and won first place at the step show presented by Alpha Kappa Alpha.

Iota Psi
University of Texas/ Arlington
received the Most Outstanding PHC President Award for Jennifer Walsh, as well as awards for Achievement of Excellence in Chapter Administration, Recruitment and Retention, and Member Education from the UTA Greek community. At Region XII weekend, Jennifer Walsh received Outstanding President, Ashley Holzman was honored with Outstanding Secretary, and Stacey McKendry received Best Academic Improvement.

Iota Theta
Mansfield University
held our first annual Turtle Tug in support of speech and hearing. We will be celebrating our fortieth anniversary in the spring of 2006.

Iota Upsilon
California State University/Fullerton
presented \$700 from the proceeds of our Turtle Tug to the university's Center for Children Who Stutter. We participated in Greek Week events, which raised money for Camp Titan for underprivileged children.



The Epsilon Omega Chapter Executive Board.



The Epsilon Zeta Chapter are the Greek Week champions!



Iota Psi Chapter members at the Greek Awards.



The Iota Upsilon Chapter partnered with Lambda Chi Alpha during Greek Week.

On Campus

Kappa Beta Northern Kentucky University

held a formal dinner and presentation of senior gifts. Each member provided a piece to a photo puzzle so that our seniors could take a 'piece' of each of us with them. We received a Merit Award from the university.

Kappa Chi Youngstown State University

received the award for Most Improved Chapter, 100% Campus Involvement, Reaching Quota, and the Panhellenic Service Award at Region V Day. Our chapter was also recognized for serving 1,230 philanthropy hours, and Rachel Bice was named Panhellenic Woman of the Year.

Kappa Epsilon Plymouth State University

held a Senior Week, which included a Fun Night, square dancing, and concluded with a Senior Ceremony. Many of our members belong to honor societies.

Kappa Iota Wright State University

hosted the Mr. WSU competition on campus, which benefits the Delta Zeta Foundation.

Kappa Phi University of North Carolina/Charlotte

was recognized for Excellence in Community Service and won first place in the canned food drive during Greek Week. We are excelling at intramural sports and have been recognized for our participation in campus activities. We hosted the "Most Eligible Bachelor" competition to raise money for speech and hearing. We are also looking forward to calling the "Greek Village" our home by fall 2006.

Kappa Psi Shippensburg University

elected our upcoming Executive Board members for the fall 2005 semester. We wish them success with their positions.

Kappa Tau Morehead State University

held a senior banquet and watched a slide show about our graduating sisters.

Lambda Gamma Jacksonville State University

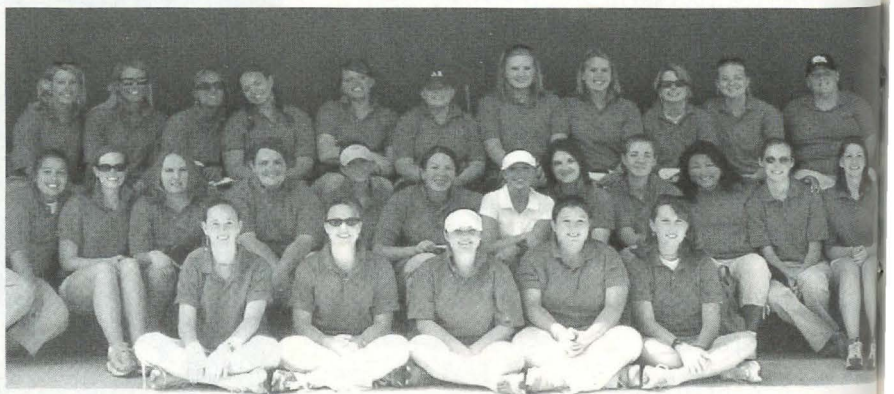
welcomed Nikki Dempsey Sprader ΔK '93, RCC - Region XV, to the final chapter meeting and senior farewell. Nikki presented Molly Sosebee with the Grace Mason Lundy Award. Our chapter also won Greek Week 2005.



The Kappa Beta Chapter's seniors.



The Kappa Iota Chapter with Mark King, Mr. WSU and a member of Phi Sigma Phi.



The Lambda Psi Chapter's Golf Tournament.

Lambda Kappa University of Alabama/Huntsville sponsored a golf tournament at the Huntsville Municipal golf course to raise money for the House Ear Institute and the Alabama Institute for the Deaf.

Lambda Lambda The College of New Jersey held a senior ceremony in May. Graduating seniors said farewell to the chapter and promised to return for events in the near future.

Lambda Nu Auburn University/Montgomery held a dinner at the end of the spring semester, to honor our new members' achievements and acknowledge their devoted support to the chapter.

Lambda Omicron Angelo State University had two members inducted into the National Honor Society. Kali Daniels, a member of the university's track team, won the Conference Meet in April.

Lambda Psi Columbus State University received the 100% Participation in 1902 Loyalty Circle Awards at Region Weekend. For Homecoming, we placed second overall. In April, we hosted a golf tournament for our philanthropy at

Callaway Gardens in Pine Mountain, Georgia. The event was a success and a lot of fun!

Lambda Rho Illinois State University received first place in Chi Omega's "March Madness" this year. Seven members were named to the Dean's List and five were named to the National Society of Collegiate Scholars. Our chapter hosted Parents Day, where we recognized our seniors. We also participated in Relay For Life, raising \$1,000 for the charity.

Lambda Xi Texas A&M University held two chapter retreats with our recruitment advisor. At the Senior Farewell, the seniors gave us advice for future goals of our chapter.

Omicron Alpha St. Mary's University was named the "Most Involved Sorority" on campus, and had the second highest GPA. During the spring, we did new community service projects, recruited new members, and held creative social events.

Omicron Beta Richard Stockton College of New Jersey earned second place during Greek Week and first place for Greek Sing. We raised money for several speech



Members of the Omicron Alpha Chapter.



The Omicron Lambda Chapter after washing fire trucks at Bethesda Fire Station in Durham, North Carolina.

and hearing organizations; including the university's Speech and Hearing Club and K-9s for the Hearing Impaired.

Omicron Lambda North Carolina State University won the sorority competition for the food drive for the Raleigh-Wake Food Bank during Greek Week by donating 2,905 pounds of canned goods.

Omicron Mu University of South Carolina/Upstate won the Spartan Award for the most money raised for community service/philanthropy for the second year in a row. Elicia Bryant won the Greek Woman of the Year Award.

Omicron Sigma Gallaudet University had a ceremony for our graduating seniors on the day of our last chapter meeting. We have a great group of very motivated new members, and continue to increase our membership through our creative recruitment programs.

Omicron Xi Mars Hill College held Senior Week for our graduating members. Sophomore Whitney Stroud was awarded Most Valuable Player for the Mars Hill College women's tennis team for their spring 2005 season.

Pi Eureka College taught elementary school students at St. Patrick's School how to say "Happy Birthday" in sign language as a surprise to Sister Guistina, who is on staff at the school and is deaf. Sister Guistina celebrated her eightieth birthday. She uses sign language and written words to communicate with her students.

Pi Alpha University of Florida sponsored our second-annual Turtlepalooza, which featured performances from 16 of the university's fraternities, to benefit Gallaudet University.

On Campus



Members of the Pi Delta Chapter promoting the second annual Turtle Tug.



The Pi Zeta Colony during Bid Day.



Theta Kappa Chapter members participate in a philanthropic project during Region XI Weekend.

Pi Delta

Wake Forest University held our Turtle Tug fundraiser for speech and hearing impaired children and the Brian Piccolo Cancer Fund, the university's philanthropy.

Pi Epsilon

Clemson University won Greek Week this spring. Several chapter members were on the Dean's and President's Lists, and others received scholarships for attaining the highest GPA for their area of study.

Pi Zeta (Colony)

Arizona State University participated in four philanthropic events and took home two first place finishes. We came in third at Greek Week. We are excited to be a part of the Delta Zeta Sorority!

Rho

University of Denver held our Senior Formal at the end of Senior Week. We received many awards at Region IX Weekend, including reaching Total, Quota, and the Most Improved Chapter.

Sigma

Louisiana State University held our annual Miss LSU-USA Pageant and crowned member Katherine Ellard the winner. Proceeds from the event benefit the Delta Zeta Foundation, the Baton Rouge Speech and Hearing Foundation, and the Alzheimer's Services of the Capital Area.

Theta

Ohio State University held our annual Rose Ball and awarded Becca Kleinberg, Past Chapter President, with the Judi Jacobs Dream Girl Award (named after Judi Jacobs KΨ '76, our Advisor). Judi was also honored with a gift for her long-time service to the chapter.

Theta Iota

Western Carolina University

placed second overall in Greek Week and won the annual variety show. We also won the Order of Omega Award for the most improved chapter GPA. We held a Jump-a-thon with Kappa Sigma and sold green rubber bracelets stamped with "Speech and Hearing" to raise money for the House Ear Institute.

Theta Kappa University of New Orleans

teamed with members of Alpha Kappa Alpha Sorority and Kappa Alpha Psi and Alpha Phi Alpha Fraternities to win first place in the Greek Week step show for the third year in a row. Three chapter members were recognized for outstanding leadership at the University's Leadership Awards Banquet in April. We have the highest sorority GPA on campus and received several awards at Region XI Weekend.

Theta Mu

St. Cloud State University received an award for Academic Excellence from the campus Panhellenic.

Theta Nu

Minnesota State University/Moorhead received the Student Organization School Spirit and Campus Involvement Award at the university's Student Organization Awards Ceremony.

Theta Omicron

University of Texas/ Pan American placed second during Greek Week.

Theta Phi

Old Dominion University received the campus Panhellenic's Outstanding Chapter of the Year 2004 – 2005, the Most Community Service Hours Per Member Award, and the Most Community Service Hours Per Chapter Award. We ranked fourth in the Relay for Life fundraising event, and received the Diamond Team Award.

Theta Theta

DePaul University sponsored a breast cancer benefit, featuring a raffle and a performance of *The Gift*, an inspirational play by Organic Theater



Theta Nu Chapter members at Region VIII Day.



The Xi Lambda Chapter received several awards at Region X Day, including awards for meeting quota and total, risk management reporting, a GPA exceeding the all-women's average on campus, and a national award for GPA.

to promote hope and awareness about breast cancer. Breast cancer organizations around the country and local businesses donated prizes for the raffle. All proceeds were donated to a local breast cancer organization called, "Look Good, Feel Better," based out of University of Chicago hospitals.

Greek Sing event, which raised money for St. Jude Children's Research Hospital.

Xi Eta

Northwood University held our traditional senior sendoff, at which each senior told us about her Delta Zeta memories and had a chance to say goodbye.

program at Region II Weekend. We also received the national award for maintaining quota and total for two consecutive years.

Xi Lambda University of San Francisco

received recognition from our university's Greek Council for the Greek Games Spirit Competition, Homecoming, and appreciation for participation in Greek Council. We are sadly saying goodbye to Andrea Marsala ΓΑ '90, our CCD for almost twelve years.

Xi Omega

Purdue University participated in Phi Delta Theta and Kappa Alpha Theta's whiffle ball philanthropy. We took second place overall and won the Spirit Award. We also took part in the Colleges Against Cancer Relay for Life Walk. Stephanie Rhoads was named Greek Woman of the Year.

Xi Psi

Grand Valley State University

received the Coat of Arms Award which is given for excellence in leadership, and elected our new Executive Board who will be working over the summer to finalize plans for next school year.

Xi Rho

Clarkson University won the annual Sigma Chi Derby Day's event to raise money for the Children's Miracle Network, and co-hosted our annual spring barbeque with Tau Epsilon Phi.

Xi Upsilon

Northeastern University held our annual spring philanthropy event, a volleyball tournament called "Spikes for Tykes" with the brothers of Kappa Sigma. It was our most successful "Spikes for Tykes" ever.

Xi Beta

Eastern Kentucky University participated in the Greek Week events including the pyramids competition, the canoe races, and the

Xi Iota

Muhlenberg College won the Silver Award for Outstanding Membership and the New Member Education Award for our new member education

On Campus

Zeta Beta

University of Wisconsin/ Stout

held our annual Alcohol Awareness Week on campus, and won the biggest event of Greek Week, which was football. We participated in the Relay for Life, and our philanthropic event, Turtle Tug, which has become a Zeta Beta tradition, was a great fundraiser.

Zeta Lambda

East Carolina University

Our spring recruitment was a huge success, as was our chapter's annual fundraiser, Jump-a-thon. We also hosted our annual Kasey's Prom with Sigma Alpha Epsilon at a nearby retirement home.

Zeta Phi

Slippery Rock University

took top honors for formal and informal song at the Greek Sing event to raise money for the Make-A-Wish Foundation. This was the fifth year in a row that we have won the sorority competition.



The Zeta Psi Chapter's 2005 New Member Class.

Zeta Pi

University of Georgia

"adopted" a group of Marines stationed in Iraq this April. We received a letter and photos from the troop through the Marines on campus at UGA and responded with a care package to boost their morale.

Zeta Psi

Stephen F. Austin State University

received the Outstanding New Member Program; the Pioneer Award, which recognizes the chapter with the most original philanthropy project (an Easter party for a speech and hearing impaired class at Carpenter Elementary); and we were also recognized as the chapter with the highest overall GPA at the campus Panhellenic awards ceremony.

Zeta Rho

William Jewell College

seniors told about how Delta Zeta has been important to them in the past four years at our Senior Banquet.

CORRECTION

In the Spring 2005 issue of *The LAMP*, on page 19 of the On Campus section, it was reported that the Beta Xi Chapter participated in a fundraiser for the Johnny Spann Scholarship fund, and that Johnny Spann, an Auburn University graduate, was one of the first Americans killed in Iraq. Mr. Spann was actually the first U.S. combat fatality in the war on terrorism, and was killed in Afghanistan on November 28, 2001.



IS YOUR CHAPTER MISSING?

The LAMP provides guidelines and report forms to all chapters which contain deadlines, requirements for material to be submitted, and photograph requirements. We want your chapter to be a part of *The LAMP*. If you don't see your chapter listed, it is because that chapter did not file their *LAMP* Report with the Editor or because the information was not received by the deadline specified on the Report.

If you have any questions regarding submissions, please contact Nancy Brewer, Director of Communications and Editor of *The LAMP*, at National Headquarters by mail at 202 E. Church Street, Oxford, OH 45056, by phone at 513/523-7597, or via e-mail at LAMP@dzshq.com.

Flame Eternal

ALPHA

Leah Rose Fox '21
Mary Alice Kimmel Robertson '21
Elma Baber Griffin '23
Helen Duckham Heitkamp '25
Martha Craver Murray '26
Dorothy Martin Grimm '29
Marion Decker Nissen '29
Ruth Plymate Lowrey '32
Lucille Crosbie Williams '57
Betty Kingseed '41
Margaret Isabel Kennedy
Bricker '42
Verna Schwier Scheidker '43
Ann Anderson Brown '53
Lavina Carr Wheeler '57
Helen Conroy Sarkozy '62
Margaret Dean '63
Ann Bernadette Friedl '81
Lori Robin Ernst '86
Maxine Elliott Finkbine

GAMMA

Florence Ziska Rathmanner '41
Betty Crawford Strong '44
Patricia Peterson Page '47

DELTA

Marihelen Paddock McClaskey '27
Juanita Gahimer Arnold '40

ZETA

Marie Lessenhop Hearson '47

THETA

Bertha Ricker Turner '41

KAPPA

Lorraine Donoghue Koranda '41
Joan Mendenhall Lewis '47
Ruth Anna Allison Cairns '62
Shirley Rose Anne Meyer Qually '62

MU

Dolores Freeman Cerro '45

PI

Joan McNett Netzt '55

XI

Elaine Woods Erion '37

OMICRON

Mary Garber Shirer '30

RHO

Marjorie Hancock Weise '35

SIGMA

Fabul Powell Durham '37

PSI

Jean Halliday Rueff '35
Jean Baldus Beck '46

ALPHA DELTA

Marion Cox Idleman '29

ALPHA EPSILON

Betty Degraffenreid Blackman '44

ALPHA THETA

Frances Britton Hood '38
Lucille Hurt Roebuck '48

ALPHA KAPPA

Blanche Collins Perry '25
Gladys Hawie Walker '46

ALPHA NU

Virginia Gifford Bolton '29

ALPHA OMICRON

Edna Anderson Hoblin '26
Virginia Porterfield Williams '39

ALPHA PI

Martha Hardin Haynes '43

ALPHA CHI

Gwendolyn Stock Webster '62

BETA XI

Marion Bailey Richardson '44
Ruth Upton Lindsay '45

BETA TAU

Elyn Bentz Maxwell '71

BETA CHI

Muriel Peter Vore '42

GAMMA ALPHA

Ruth Daehler Zeller '47

GAMMA EPSILON

Annette Darke Orlow '51

GAMMA XI

Lavania "Bonnie" Russell
Robberson '52

GAMMA RHO

Jean MacFarland Ansley '53

GAMMA TAU

Paula Marie Weber '66

GAMMA UPSILON

Isabelle Hough Spangler '25

GAMMA PHI

Linda Hossman Cross '59

GAMMA CHI

Joyce De Vinney Qualkinbush '56
Julia Ann Hinshaw Sumner '56

Barbara Shafer Bratton '65

DELTA ALPHA

Nancy Baldwin Treloar '58

DELTA BETA

Adelfa Diaz Alonso '54

DELTA LAMBDA

Karen Kay Cathey '67

DELTA RHO

Laureen Wilson Clauser '56

EPSILON GAMMA

Barbara Swaithes Huffman '57

EPSILON PHI

Anne Brennan '65

EPSILON ZETA

Judith Piper Stocker '57

ZETA KAPPA

Beverly Elliott Kerr '59

ZETA NU

Anita Armstead Sample '61
Cynthia Czerniak Murdie '91

KAPPA ZETA

Kathy Deanne Kelley '79

LAMBDA GAMMA

Janet Gentry Hallman '82

PHI BETA

Ruth Hansen Waldron '46

Introducing Delta Zeta's Chapter Consultants For the 2005 – 2006 School Year

Delta Zeta Sorority is pleased to announce the women who have been selected to serve as Chapter Consultants for the 2005 - 2006 school year. Mandi Wise IX, Chapter Services Director, oversees the Chapter Consultant Program. Chapter Consultants visit Delta Zeta's collegiate chapters around the country to advise chapter executive board(s) and chairmen, assist in the planning and implementation of membership recruitment activities, and deliver leadership development and educational programs throughout the academic year.



The following women will serve as Chapter Consultants for the coming school year (listed as shown in photo):

Back from left:

Summer Hernandez, Omicron Alpha Chapter (*St. Mary's University*)
Cassie Wilkinson, Omicron Chapter (*University of Pittsburgh*)
Kristin Houghton, Delta Upsilon Chapter (*Marshall University*)
Elizabeth Stricklin, Lambda Pi Chapter (*Georgia College and State University*)

Front, from left:

Meghan Bernhardt, Alpha Sigma Chapter (*Florida State University*)
Lisa Cast, Delta Theta Chapter (*University of Houston*)

Cynthia Winslow Menges A, CAE, Delta Zeta Executive Director, Installed as President of the Fraternity Executives Association

Cynthia Winslow Menges A, CAE, Delta Zeta Executive Director, is the new president of the Fraternity Executives Association (FEA). She was installed at the Diamond Jubilee celebrating the Association's 75th anniversary. She is the third woman in the history of FEA to hold the position.

The Fraternity Executives Association exists to provide educational and other support services for the professional development of its members as well as to promote the values and success of the fraternal movement. FEA was founded in 1930 and has representatives from 86 Greek organizations in its total membership.

Debbie Raziano KA, Delta Zeta National President, and past National Presidents, Norma Minch Andrisek GA and Sandra McAlister Nesbitt BE were on hand to congratulate Cindy, and National Council hosted a reception in her honor.

Cindy has served 23 years as Delta Zeta's Executive Director. In this position, she works with National Council, the Delta Zeta Foundation Trustees, and the National Housing Corporation to ensure the business of the Sorority, and manages the National Headquarters staff, maximizing production and efficiency.



From left, Cynthia Winslow Menges A, CAE, Delta Zeta Executive Director and Fraternity Executives Association (FEA) President, with Martha Brown, Delta Gamma, NPC Chairman, and Deb Ensor, Zeta Tau Alpha Executive Director and Immediate Past President of FEA.

Cindy exemplifies the spirit of interfraternal fellowship in working with many colleagues in the Greek world. Her abilities as a leader and communicator continue to promote fraternalism both within and outside of Delta Zeta, and the Sorority is truly proud to have Cindy in this prestigious position in FEA. Congratulations, Cindy, from all of your Delta Zeta sisters!

Delta Zeta Sorority and The Delta Zeta Foundation Receive Four Public Relations Awards

This spring, Delta Zeta Sorority and the Delta Zeta Foundation received four public relations awards.

- The Public Relations Society of America (PRSA) Award of Merit in the Websites/Electronic Media Category for the Sorority's national website, www.deltazeta.org. This award recognizes the research, planning and ingenuity that go into implementing an exceptional public relations initiative.
- The College Fraternity Editors Association (CFEA) and the North American Interfraternal Foundation (NIF) Communication Award of Excellence for outstanding efforts in presenting material on a website. The redesign for the Delta Zeta website was launched in 2004.
- The CFEA and NIF Writing Award of Excellence for "Generation Veneration," by Julie Slaymaker, which was published in *The LAMP* of Delta Zeta. The article profiled Tina Prather McIntosh, a Delta Zeta alumna of the Gamma Chi Chapter at Ball State University (Muncie, Indiana) and founder and CEO of Joy's House, a unique adult care facility in Indianapolis, Indiana.
- The International Association of Business Communicators (IABC) Bronze Quill Award for the Delta Zeta Foundation Annual Report 2004. The award recognizes excellence in business communications which demonstrate strategic thinking, creativity and successful execution.

Off to Washington, D.C.



The Delta Zeta delegation visited Washington, D.C. on April 17 – 20, 2005 in support of the Collegiate Housing and Infrastructure Act (H.R. 1523/S.1246). This bill seeks to preserve the future of Not-for-Profit Student Housing by allowing tax-deductible contributions to fraternity and sorority foundations to be used for the same purposes that a college or university would use such contributions. In addition, the delegates also lobbied for the The College Fire Prevention Act (H.R. 128).

Ruth Weider Patterson BX, Delta Zeta Foundation President, and Lynnda Wolf Hoefler TK, Delta Zeta National Panhellenic Delegate, joined 46 teams representing national fraternities and sororities. Following a legislative briefing, Ruth and Lynnda were assigned to the Michigan State Spartans team which included Dave Westol, Executive Director, and Dr. Don Gehring, both from Theta Chi.

The Michigan State Spartans team was honored to visit the offices of Senator Debbie Stabenow (D-Michigan); Congresswoman Gwen Moore (D-Wisconsin); Congresswoman Shelley Levine Berkley '70 (D-Nevada), who is an alumna from the Iota Phi Chapter; Theta Chi Congressman Dennis Cardoza, (R-California); Congressmen Henry Brown, Jr. (R-South Carolina); Omega Psi Phi Congressman James Clyburn (D-South Carolina); Congressman Mark Foley (R-Florida); and Congressman Steven LaTourette (R-Ohio).

Collectively, the teams picked up 22 new sponsors for the Collegiate Housing and Infrastructure Act in the House and two in the Senate. Additionally, 18 new sponsors will support the Fire Prevention Act in the House.

The Delta Zeta delegation was proud to be among the Greek men and women lobbying Congress about these important causes. "It is our hope that this year we will get the bills through the House and Senate and be able to begin the task of upgrading some of our chapter houses and including fire suppression equipment with contributions from our alumnae," Lynnda says.



At the Congressional Reception, Ruth (second from right) and Lynnda (second from left) met Delta Zetas Clytie Roberts EN '99 (far right), who is the College Chapter Director at Randolph Macon College, and Julia Tsoi AB '02 (far left). Clytie and Julia are staffers on Capital Hill. Clytie will be participating in the Capital Fraternal Caucus.



ALUMNAE NEWS

Elle Alexander (née Ellen Itkoff Hamilton) ΔA '87 was featured in the February issue of *Police Times Magazine* in an ad for the Outdoor Channel and its new HDTV season. She has also recently completed a new music video with the band, The Bravery. Elle is an actress, stuntwoman, and stunt coordinator who has appeared in movies such as *Confidence* with Dustin Hoffman, and *Bringing Down the House* with Queen Latifah (for which she was nominated for an MTV Movie Award in 2004), and was the stunt coordinator for the Goo Goo Dolls' music video "Black Balloon." Visit Elle's website at <http://www.ellealexander.com>.

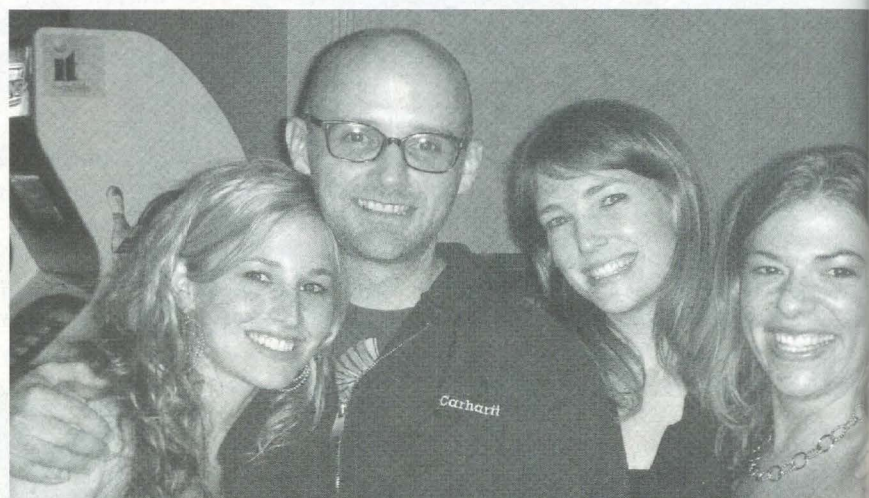
Linda Cademartori Barba ΕΚ '83, Central Philadelphia Alumnae Chapter member, witnessed the signing of the Safe Return Bill by New Jersey's Acting Governor Richard J. Codey. The Safe Return Bill requires the Department of Law and Public Safety to establish a

policy for state police and local law enforcement in working with the Safe Return Program to recover lost individuals with Alzheimer's disease and related disorders. Linda provided testimony before the New Jersey Senate Law and Public Safety and Veterans' Committee in an effort to facilitate the passage of the bill. She is a dedicated advocate and volunteer for the Alzheimer's Association and is a recipient of the Delaware Valley Chapter of the Alzheimer's Association's 2005 "Caring Hearts-Helping Hands" Volunteer of the Year Award.

Debra Swearingin Bass EP '85 received *Ingram Magazine's* 40 Under 40 Award, which honors 40 leaders under the age of 40 in the Kansas City area. Debbie is the Director of Major Gifts for the Truman Medical Center Charitable Foundation. She received the 1998 Ark of Friends Professional of the Year Award for advocacy of



Linda Cademartori Barba ΕΚ '83 at the New Jersey State Capital in Trenton with Acting Governor Richard J. Codey.



Luci Butler ΖΠ '96 (second from right) with Zeta Pi members Julie Rahm Shingadia '96 (far left) and Melissa Benton '96 (far right) and musical artist Moby.

people with mental illnesses, and is a three-time Public Relations Award recipient from the Ark of Friends. She helped negotiate a \$250,000 grant from Royals Charities for TMC's Women's Partner Council, formed to increase awareness of women's health issues and to raise funds for women's health services provided by Truman Medical Center. She has served on the boards of the National Alliance of the Mentally Ill of Kansas City, Community

Health Charities, and the Missouri Association for Social Welfare (president).

Information from: http://www.ingramsonline.com/april.2005/40_under_forty1.php

Jean Williamson Blois M '46 was honored by the Goleta Valley Chamber of Commerce as Public Servant of the Year. She served on the local elementary school

board from 1970 – 1983, then came back to public life when she served on the Council for the city of Goleta, California. Last fall, Jean was elected mayor of Goleta in a landslide victory.

Luci Butler ΖΠ '96 is the keyboardist and background singer on a worldwide concert tour with Moby in support of his new album, "Hotel." Moby is an eclectic musical artist with worldwide gold and



Avanelle Oberlin BE '51



Mittie Garretson McDonald ZΘ '69 (left) is the 2004-05 Austin Alumnae Panhellenic Association (AAPA) Woman of the Year. Joining her are Tandy Harlan Fuller IA '68 (center), the 2002-03 AAPA Woman of the Year, and Phyllis Berens Ross ΔΩ '64 (right), Past National Officer, the 2001-02 AAPA Woman of the Year.

platinum-selling albums, and has produced for such artists as David Bowie and Metallica. After graduating from the University of Georgia, Luci moved to New York to pursue a career in music therapy. She met Moby at a New York hospital when he became a charitable contributor to the hospital's music therapy program. You can read more about Luci's experience and get the latest tour dates at www.luciontour.blogspot.com.

Thanks to Katie Freeman AΠ '80 for sending this story.

Marcia Earl Humpal

ΓA '67, music therapist at the Early Childhood Division of the Cuyahoga County Board of Mental Retardation and Developmental Disabilities, received the 2004 American Music Therapy Award of Merit by the American Music Therapy Association. She was recognized as a leader in the development of best practices for early childhood music therapy.

Thanks to Mella Cooks Davies A '56 for sending this story. From the *The Plain Dealer*, Cleveland, Ohio, April 9, 2005.

Marjorie Klingensmith Lovewell Γ '57, Past

Delta Zeta Foundation President, was named the 2005 Atlanta Alumnae Panhellenic Association

Woman of the Year. Marge also received the Southeast Region Outstanding Alumnae Award for 2004-05.

Mittie Garretson

McDonald ZΘ '69 was named the 2004-05 Austin Alumnae Panhellenic Association's (AAPA) Woman of the Year for her long and exemplary service to the Greek community. Mittie has served the Panhellenic for 14 years, including the position of treasurer-elect, and she had a major role in the development of the AAPA website.

Avanelle Bruce Oberlin

ΒΧ '51 was inducted into the 30th Annual Central Ohio Senior Citizens Hall of Fame in Columbus, Ohio. Inductees are selected who have enriched the quality of life for others in their communities. Avanelle taught in the Marysville Exempted Village School System for 25 years, then later helped to organize a senior group, the Community and Seasoned Citizens (CASC), for the promotion of activities of interest to seniors. As Director of CASC, she is working to structure a solid foundation for future growth. As an Advisory Council member for the Central Ohio Area Agency on Aging, she is an amazing advocate for the concerns of older adults.

In 2002, Governor Taft appointed her to the Cemetery Dispute Conflict Resolution Board for the State of Ohio. She is currently president of the local chapter of the Ohio Child Conservation League and of the P.E.O. Sisterhood, as well as past director of District VI of the Ohio Retired Teachers Association. New in 2005 are appointments to the Charter Review Committee for the City of Marysville and the Legislative Committee for the Union County Chamber of Commerce.

Jean Scheuering Rice

Σ '58 received the Great Lady Award, sponsored by the East Jefferson General Hospital Auxiliary, for her outstanding volunteer services in the greater New Orleans area. Jean has also been recognized by the University of Notre Dame with the Volunteerism Award of the Year and was named the Archbishop Rummel High Volunteer of the Year. She is a New Orleans Tourism volunteer and has served many times as a volunteer for the Armed Services Fashion Shows. Her other affiliations include St. Clement of Rome Women's Guild, the Ladies Leukemia League, the New Orleans Opera Guild, Louisiana State University, and Jefferson Beautification.

The Adventures of Little Arfin' Annie . . . and Other Tales from Dober'Toons

By Lindsey Aspinall EI '01

Lois Laughlin Semple I '51 began her career as a cartoonist in college, drawing cartoons for *Frivol*, the campus humor magazine at the University of Iowa. Today, she is still busy publishing cartoons on her popular website Dober'Toons (www.dobertoons.net), and spending her free time with Mr. Cha Cho, K-T Did, and Starpuppy, her Doberman Pinschers, in their Michigan home.

An ardent pet lover, Lois became involved with the Doberman Pinscher Club of America, an organization which supports Doberman rescue groups across the country. She stumbled upon the local chapter of this organization when she personally rescued a Doberman. "I rescued a Doberman in below 30 degree weather during a blizzard on my way to the post office," she recalls. Lois began inquiring if anyone would be interested in a Doberman, and ended up finding the rescue group. Yet, by the time she found it, she had already put a lot of money toward veterinary bills and had developed a strong fondness for the dog she called "Chiquita", meaning "little one." In the end, Lois officially adopted Chiquita. "She was my buddy for eleven years," Lois says.

"After finding this group, I started going to the Doberman Rescue Group functions as a member," Lois recalls. "The idea for Dober'Toons came from the work I did on the group's newsletter." Lois began working for the newsletter as a freelance writer under the pen name "Auntie Dobe R. Mann," and wrote a column called *The Indulged Dobe*. Soon, she was also doing her cartoons for the group. Dober'Toons is the story and adventures of Little Arfin' Annie, the main character, and her friends, including: Dobie, Oliver, and Izzy.

"A portion of the money I make on those cartoons goes to the rescue group. My cartoon books have been auctioned off for the rescue as well. The books are handmade and one even sold for \$500," Lois says.

Lois is specifically involved in the Dobe Rescue of Michigan, her local chapter. It is a non-profit, charitable organization which helps find homes for Doberman Pinschers in need of a second chance. The Dobe's are first placed in a foster home, where they are kept while the rescue group works to obtain all available information on the dog. The

temporary parents provide obedience training. Eventually, the dogs go up for adoption and get a second chance at a better life. The maintenance and growth of this rescue group relies completely on the loving donations of time and money by volunteers such as Lois.

"One rewarding experience I've had through the site is receiving the e-mails from all over the world, and being listed on worldwide Doberman sites," she says. The Dober'Toons have also been featured in magazines and Doberman publications all over the world. The *Doberman Dossier Carattere*, an Italian Doberman book, did a five-page spread of her 'toons. Just this year, Lois was recognized at the National Doberman Pinscher Club of America convention. She designed the convention's tee-shirts and gave them an original painted cartoon to auction for the fundraiser.

Besides countless hours spent volunteering, Lois has also turned her passion for dogs into a career. She is a dog trainer at PetsMart and has been involved in showing in obedience competitions for years. Her Doberman Starpuppy has earned six titles of which she is very proud.

And as if all her work with Doberman Pinschers isn't enough, Lois is also

Little Arfin' Annie helps Lois
with the 'toons.



extremely involved in music. As a collegian, she was the song leader for the Iota Chapter and did the song arrangements for any concerts the chapter did. She has been a percussionist all her life and has played with various groups. For many years she even made a living as a drummer/vibist. She has appeared in numerous festivals and clubs both as a soloist and with other groups. Lois even spent some time in Mexico studying marimba music. She has brought her gift to local schools, and spent some time as an "artist in residence," teaching Latin percussion to children. As a result, she has been given several Hispanic awards and was issued a Congressional Award of Merit for her work.

Lois has fond memories of her college days, and says, "It was natural that I gravitated toward Delta Zeta. I have so many wonderful friends in the Sorority."

Of all her hobbies and jobs, Lois considers her website to be the most special. Her love of dogs and her dedication to the site are evident. "Dober'Toons is one of the major Doberman sites on the Inter net and I'm very proud of that," Lois said. Be sure to check out her 'Toons at www.dobertoons.net.

Lois with Starpuppy, Miss K-T Did
and Mr. Cha Cho.



From Here to Antarctica *by Megan Erb ΔΣ '95*



Julie with the penguins in Antarctica.

When **Julia "Julie" Ann Dean** AO '65 saw an ad for the Women's Army Corps in *Glamour* magazine nearly 30 years ago, this restless young woman in search of something more for her life could never have expected the journey she was about to embark on. But she was ready for it. The Kentucky-born Delta Zeta would dance with Cary Grant, mingle with Spanish royalty, and travel to the ends of the world—quite literally.

After graduating from Brenau College in Gainesville, Georgia, where she pledged the Alpha Omicron Chapter in 1965, Julie was ready for a new path in life. She signed on with Uncle Sam in 1974 as a Second Lieutenant in the Army. "I was committed to a two year commission which turned into 20 years," said Julie in a phone interview from her Alexandria, Virginia condo. "I wanted to see a little of the world."

While her role was one of support, she never saw any combat. Stationed on bases from Hawaii to New York to Korea, it was her work in Washington, D.C. that gave her the most memorable experiences. "I was a White House Social Aide from 1975 to 1977 [during Presidents Gerald Ford and Jimmy Carter's terms]. It was collateral duty for my job at the White House Personnel Center," she says. "The White House would have military social aides at all functions, such as bill signings, and swearing-in ceremonies. Most people, when invited to the White House, are nervous. We were there to put them at ease." says Julie.

But there were times when Julie herself needed someone to put her at ease. "I was so star-struck with most of the celebrities and heads of State whom I met there." Like the time she danced with screen legend Cary Grant. "He was very handsome and suave—after all, it was Cary Grant!" she laughed. "I was there during the Bicentennial Celebration so there were all kinds of events going on. One highlight for me was meeting Elizabeth Taylor."

Of course, all visitors to the nation's capitol weren't Hollywood celebrities. "I've met Presidents Ford and Carter. We were often with the First Families and, of course, members of Congress, the Supreme Court, and the regular Washington crowd."

After 20 years of service to the United States, Julie retired, eager for the next phase of her life. So she tapped into her days on the stage in college. "When I was at Brenau, I was active in the theater and was in all the plays." She took some classes, made her resume, and got some headshots. "I signed up with different casting agencies in the D.C. area, and when a project comes up, they call me." Her credit list is growing to include some of the most popular movies and television shows: *Contact* with Jodie Foster, *The Wire* on HBO, and *The District* on CBS. She also appeared in *Something the Lord Made*, an HBO original movie nominated for 11 Emmy awards. "It took place in the 1940s so we were decked out in '40s style. But commercials are my favorite. They are a lot of fun, take a short amount of time, and pay the best money." But sometimes it takes a while for Hollywood to come calling. "I'm probably more retired than not, but I do it for fun."

But don't expect Julie to be sitting around waiting for her big break. She spends her free time indulging in another passion—travel. "I enjoy seeing other cultures," she says. While she hits the main tourist destinations such as England, France, and Italy, there are a few less popular places stamped in her passport: Estonia, Malta, and Antarctica. "Antarctica was fascinating. It was like being on another planet. It is so beautiful." She is hoping to add India and Nepal to her passport for her next trip.

Even though she'll trek halfway around the globe to see a penguin up close, there is one journey, while a little less spectacular in

scenery, which leaves a big impression on her heart. "I wouldn't miss it. It's the first week in June." She and about half a dozen of her Delta Zeta sisters reunite each summer on the Carolina coast. "No husbands, no children—it's like being back in the house except we're middle-aged and have more bathrooms," she laughs. Some of the sisters come almost every year. Others come when they get the chance. The trip isn't just about getting away from normal life; it's about reconnecting with their sisters, taking a break, and recharging their batteries. "It's great once a year to catch up again and of course we relive our memories in the old DZ house," Julie says.

"I'm doing the things I enjoy doing and being fortunate enough to do them," Julie adds. She is eager to share her photos and memories from this past year with her Delta Zeta sisters, who are no doubt looking forward to hearing about her next adventure.



Top, Julie with her Alpha Omicron sisters at the beach. Front: Ramah Blackwelder Mackey, Peyton Osborn Cherry, Julie, and Mary Ann Barnes Freeman. Back: Linda Mathis, Debo Morrison Bryant, and Cindy Robinson Yonkers.

Bottom, Julie (right) meets King Juan Carlos of Spain (left) while President Gerald Ford (center) looks on.

Swimming with the Dolphins

By Megan Erb ΔΣ '95

As a busy mother of two young children, **Dawn Fieser Simonsen** ΔΘ '92, has her hands full. Yet despite her hectic schedule, she makes time to give some love and care to some of the most vulnerable animals that need her most: stranded dolphins and whales.

Dawn began volunteering for the Texas Marine Mammal Stranding Network (TMMSN) in late 2003. "I always wanted to work with dolphins but I didn't take that path in college," she said from her Missouri City, Texas home, "This is the perfect opportunity to be able to do that now."

TMMSN is a non-profit volunteer based agency committed to the understanding and conservation of marine animals. "A lot of them are stranded because they are already dead or near death. Some become stranded because they are sick or injured," Dawn explained.

After completing the training course, Dawn signed up for four-hour shifts to watch Cupid, a bottle nose dolphin rescued along the Texas coastline on Valentine's Day 2003. "We sit on a platform above the pool and watch. Every hour we take the water temperature reading, pump pressure, and respiratory pressure," she said.

"The goal is to re-release them. If they can be re-released, we don't touch them, because there isn't a natural partnership between dolphins and humans," Dawn continued. Because Cupid has seizures that would make him an easy target for predators, he was deemed unreleasable.

Once Cupid began gaining weight, he became more active. It was the playful spirit that the dolphin exhibited which kept volunteers entertained during shifts. "On my first night, he jumped onto the side of pool. That was his thing," she laughed. His entertaining stunt landed Cupid on the pavement a few times. "Because these are soft pools, he did fall out at least three times and someone would have to get the stretcher and put him back in. The pool was only four feet deep so he didn't have far to fall." Biologists helping Cupid never knew why he jumped on the sides of the pool. Like

any parent with an unruly child, they just encouraged others to ignore him. "We tried not to encourage it so we were supposed to ignore him, except when he fell out."

When Cupid wasn't trying to escape from his rehab pool, he was trying to knock volunteers off their feet when they entered his territory. "He was used to people and he'd try to knock you off balance by swimming between your legs," said Dawn of her ventures into Cupid's pool. "He'd swim by and touch your leg and let you pet him on the head. He was a very friendly dolphin. People pay \$200-\$300 to swim with dolphins, and I get to do this for free!"

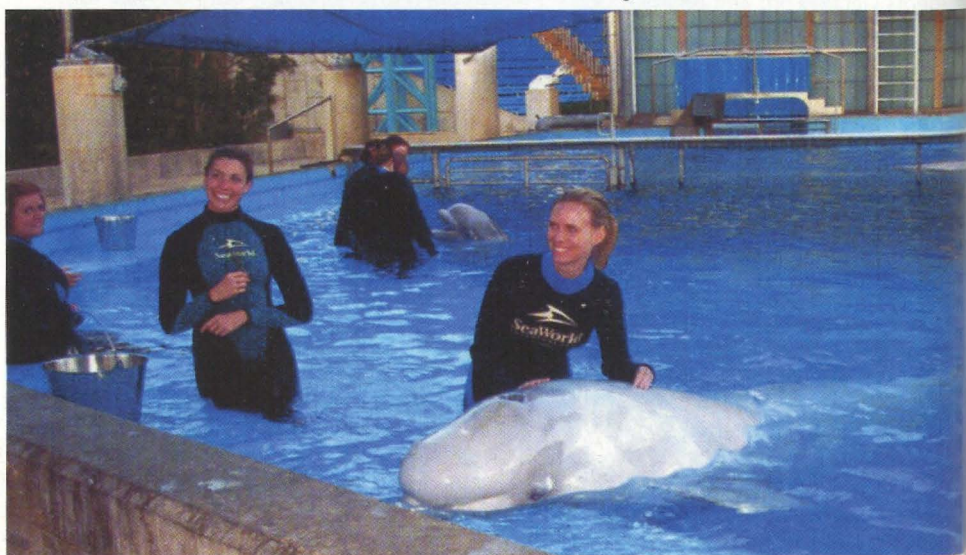
Once TMMSN nurses their patients back to health, the animals are either released back into the wild, or in Cupid's case, moved to a permanent home. After a year in Texas, Cupid was sent to a park in California. It didn't take long for the playful dolphin to find his spot in front of the cameras. National Geographic was with him on his journey out west, filming parts of his rehab and his move to California. The program aired in the 2004.

The non-profit organization relies on donations to help keep their program up and running. Another group with the same passion for marine life, Sea World, helps

supply the TMMSN with fish and other supplies. Sea World also gave a big thanks to volunteers like Dawn. "We went behind the scenes [at Sea World] for some interaction. It was on my list of things I wanted to do," she says. She was allowed to get into the pool with a Beluga whale at Sea World. "Beluga whales are huge and I never realized how big they are. They are gentle and squishy," she said. While they didn't have as much freedom to play with the Beluga whales as they did with Cupid, Dawn and the others were able to get an up-close view. "We were giving them hand signals so they could do their tricks. We were telling them to turn in circles, jump out of the water and to splash us. It's so fun—I would just do it every day if I could."

The TMMSN relies on beach goers to notify them of stranded dolphins and whales. As for donations, Dawn said, "Anything from trucks to computers—there's a whole range of things we need. The organization is always fundraising. It's such an awesome program. People work so hard because they love dolphins." The facility currently has two temporary residents, Harley, a rescued spinner dolphin, and Memory, a melon-headed whale. To check on their progress, or to learn more about the program log on to www.tmmsn.org.

Dawn (center) with one of the Texas Marine Mammal Stranding Network's whales.



Nadine Robinson: Trailblazer and World Traveler

By Nancy Brewer A

Nadine Block Robinson ΦΒ recently returned from a 20-day trip to Chile, Peru, and the Panama Canal, only a few of the 110 countries she has visited and lived in during her lifetime—a lifetime of 91 years that includes the distinction of being the first American woman to work in Saudi Arabia for the United States government in 1973.

Nadine attended Purdue University in 1931 and initiated into the Beta Phi Alpha Sorority. When the Depression came, Nadine and her family moved to Arizona, where her father worked for the White Spar Mines. Nadine worked for the Yavapai County Immigration Commissioner's office for five years, until her father transferred to work the gold mines in Venezuela. "I went to Venezuela, too, 30 miles inland over dirt roads from Boliver," she recalls.

A cousin of the superintendent of the mines was the head of the Engineering Division of the U.S. Army Corps of Engineers (USACOE) and was assigned to the new organization in Trinidad. Enterprising Nadine asked if they would be interested in hiring an American woman to work for them, and they accepted her offer.

After her stint in Trinidad, Nadine worked for the South Atlantic Division of the Army Corps of Engineers, which took her to Brazil during World War II. She also met her husband, Jack P.R. Robinson, a U.S. Army auditor, during this time. Jack was transferred to a different place every year, so Nadine ended up working in most of the islands that dot the Pacific and Atlantic oceans for over 30 years. Her son was born in an Army hospital in Guam in the Marianna Islands and has dual citizenship.

During her travels, Nadine has met several dignitaries. At dinner one night at Tall Trees in Africa (which is built on stilts because it is surrounded by water), "I was sitting next to a very nice English woman who was called to the phone and told to return to England immediately. We discovered that she was Princess Elizabeth (now Queen of England) and her grandfather, King George V, had just died." On a tour with her husband, Nadine invited a young couple to join them for dinner, and the Robinsons were invited by the couple to watch a movie at their resort. "It turned out to be Asfa Woosen, the crown prince of Ethiopia (Emperor Haile Sillassie's son)," she says.



Nadine with her grandson, who recently finished a six-year stint in the Navy, on board his ship.

When the Corps was running three years behind on government contracts, the inspector general's office opened a regular office in Saudi Arabia. "The USACOE district office in Italy knew my husband would not go if I didn't," Nadine says, "so they got special permission for me.

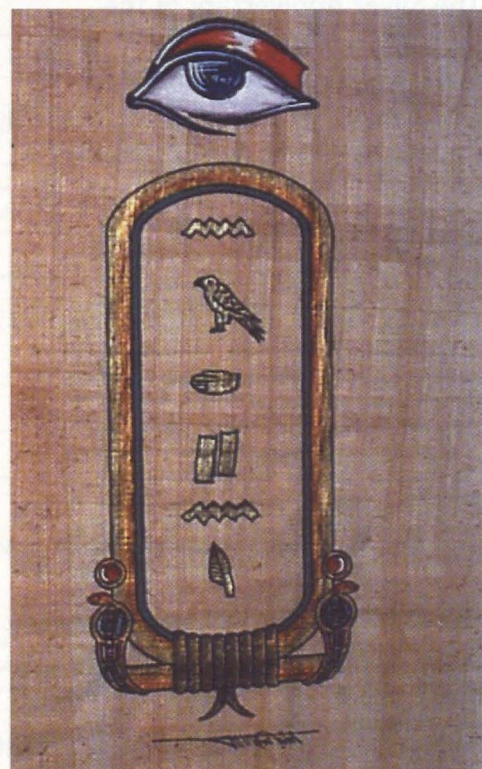
"When I got off the plane in Riyadh in 1973, Sheik Faisal bin Abdelaziz Al Saud [who was King of Saudi Arabia in 1964 and would rule until his assassination in 1975] put a black veil on my head (not covering my face) and said that I was the first woman to come there to work, and that I'd better wear the veil until the people there got used to me. Soon, he was calling me 'Nadine', not Mrs. Robinson. I wore the veil and never had any problems."

Nadine eventually was in charge of all the clerical files of the USACOE office in Saudi Arabia. She went to every base in that country, setting up the files and training others on how to handle government correspondence. She also did some consulting work for USACOE after retirement.

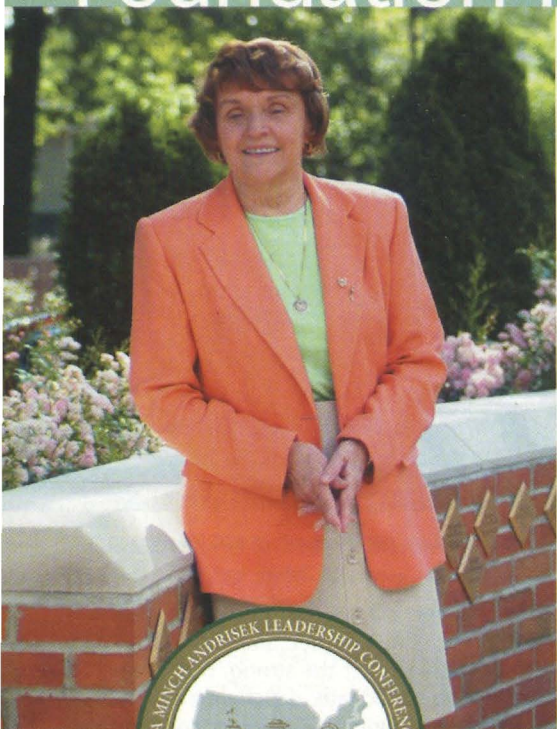
After 30 years of service, Nadine was ready for retirement, but her world travels did not stop. Her husband passed away in 1990, and she moved to California to be near her family. In 2003, she sailed on the Lindblad Expedition, a voyage she has made many times. The 38 crew members held a surprise birthday party for "Momma Nadine," and she fished with the deck crew during the trip.

"I became of member of Delta Zeta when they merged with Beta Phi Alpha while I was getting ready to go to Brazil during World War II. In the end, I did work in every military branch except the Marines. Uncle Sam sent me to all the places he thought I could serve best," she says.

Today Nadine is a member of the Pasadena Foothill Alumnae Chapter. She says that Delta Zeta made her the strong, outgoing person who would later experience a world of adventures during her lifetime, and gave her the confidence to be a high achiever while working in a traditional male environment. In 1982, Nadine received the Order of the Golden Rose to honor her 50 years of membership in the Sorority, and today she is always ready to take on the next challenge in her life with her characteristic fearless optimism.



"This picture was done in Egypt. Under the eye, the hieroglyphics spell 'NADINE,'" says Mrs. Robinson.



Delta Zeta Pride Nationwide

The 25th Anniversary of the Norma Minch Andrisek Leadership Conference



Attendees at the 2005 Leadership Conference were the beneficiaries of Delta Zeta's long-standing awareness of and sensitivity to the importance of leadership training.

Prior to this year's Conference, Bill Jenkins, the Director of Development for the Delta Zeta Foundation, sat down with Mrs. Andrisek to discuss the evolution of the Conferences and her perspective on the past 25 years of bringing this leadership education to Delta Zeta's collegians.

When the Sorority's inaugural regional "workshops" began in 1980 (held on three campuses and with 140 collegians in attendance), the objective was to provide a cornerstone of lifetime learning which students could carry into their post-graduate lives as alumnae, professionals, mothers, and women of the world community. At the time, these were truly innovative initiatives for any sorority to undertake.

"I remember returning from our National Convention at that time and thinking, 'Wouldn't it be great to have the opportunity to get the collegians together in a less formal setting where they could interact one-on-one with National Officers and National Chairmen?' From the beginning, we thought of these as 'Leadership Conferences', not officer training conferences," Mrs. Andrisek says.

At the 1983 National Convention, National Council announced that the conferences would be named after Mrs. Andrisek. The John R. Andrisek Educational Fund, an endowment created by National Council in 1988 (named for Dr. John R. Andrisek, Mrs. Andrisek's late husband, who was a superintendent of schools in Berea, Ohio), provided for educational programs and materials to benefit collegians and alumnae, continuing the vision of leadership education.

The 1990s saw a change in the demographics of the college campus as more non-traditional students enrolled. Risk management issues, such as alcohol and substance abuse, were very real issues for collegians. School administrators instituted shorter pledge periods for Greek organizations. Delta Zeta developed its New Member Education Program in 1993 and introduced it at the

1994 Leadership Conference. "That's when it was decided to have one central conference in one location," Mrs. Andrisek says. "That way, we could address these issues in one voice.

"The training committee identified the topics that needed to be addressed, and had access to a recognized faculty, people who spoke to issues the students could respond to, and to this day, the training committee does the same thing," Mrs. Andrisek continues. "The facilitators we brought in were impressed with what we were doing. They wanted to be a part of it, and because of that, we attracted other facilitators who were experts in their fields."

Today, the Leadership Conferences continue to be relevant to students' concerns. "I think that the Greek system is basically strong," Mrs. Andrisek adds, "but the actions of some of our members are of great concern. All of the sororities and fraternities have tried very hard to educate their members on these issues and it's discouraging when the members continue inappropriate or high risk behaviors. Our existence depends on one another in the Greek world. Delta Zeta has some wonderful leadership—that's reinforced for me every time I meet women from the collegiate chapters. There's so much good out there, and so many alumnae supporting those women."

We know that, from the beginning, the Founders knew they were going to expand the Sorority nationally. They were truly visionaries.

Mrs. Andrisek agrees. "The Founders were so involved in establishing ten of the first 13 chapters, and this has been a part of Delta Zeta from the beginning. We've always been extension-minded, while always holding to our same ideals. We have to remember always that we are a collegiate-based organization and that our actions have to be directed towards that. We're also a volunteer-based organization. The volunteer does her job because she wants to. We need to continue to develop our volunteer base,

The Silver Anniversary of the Norma Minch Andrisek Leadership Conferences was celebrated this summer at Purdue University. This event brought nearly 500 collegians and their advisors from Delta Zeta chapters everywhere for leadership-based training of the highest quality.



Mrs. Andrisek discusses the 25th anniversary of the NMA Leadership Conferences with Bill Jenkins, Delta Zeta Foundation Director of Development.

support those volunteers, and continue to promote the values that are important to DZ. When you talk about values, they're not old—they're the basis of Delta Zeta."

Delta Zeta's commitment to leadership has not wavered, and gains additional strength each year. Mrs. Andrisek affirms this. "The Sorority is in good hands, and I believe there are people coming along who will see to it that it remains strong—people who embrace the values that all Delta Zetas think are important. There are so many people who have contributed in so many ways and so many people who care and who are determined to address the difficult issues. For all Delta Zetas, I don't think there is anything that can enrich and enhance the college experience like being a member of Delta Zeta. The basis is friendship, and that will never change."

In 2003 the Delta Zeta Foundation introduced a new "sponsorship" program, permitting alumnae and friends the opportunity to sponsor collegiate attendance at the Leadership Conferences. That sponsorship initiative continues to grow as increasing numbers of alumnae are participating in the program by making tax-deductible gifts to cover the on-site expenses of collegians who attend the biennial Conferences. Sponsor a collegian today by visiting https://www.deltazeta.org/pages/content/online_conference_contribution_form.html.

About Norma Minch Andrisek IΛ

Norma Minch Andrisek IΛ has served numerous positions in Delta Zeta, including Director of Pledge and Collegiate Education, Vice President of Collegiate Affairs, Vice President of Membership, Alternate Panhellenic Delegate, Director of Extension, and Past National President. She has been elected to the position of National President three times, and was the Centennial Steering Committee Chairman for Delta Zeta's Centennial in 2002.

She is currently the National Director of Housing, Foundation Vice President of the Delta Zeta National Museum, and serves as special advisor to National Council.

DZ DEZIGNS ORDER CONFIRMATION

TO BE SHIPPED TO:

Date _____

Name _____

Address _____

City, State _____ Zip Code _____

Phone No. (____) _____

Qty	ITEM#	SIZE	COLOR	NAME OF ITEM	PRICE

We Honor: ☐ MasterCard ☐ Visa ☐ Discover Exp. Date ____/____/____

Credit Card Signature Required



Credit Card Number

DEZIGNS

ITEM SUB TOTAL _____
IN OHIO ADD 6.5% SALES TAX _____
SHIPPING AND HANDLING _____
TOTAL AMOUNT OF ORDER \$ _____

A check for the total amount of the order (including shipping and handling) should accompany this order. Make checks payable to Delta Zeta DeZigns and send to above address. Please do not send cash. All returned checks are subject to a \$20.00 service charge. PLEASE ALLOW THREE (3) WEEKS FOR DELIVERY.

CALL IN YOUR ORDER TOLL FREE
1-800-886-PINK FAX - 1-513-523-1921

Delta Zeta DeZigns, 202 East Church St.,
Oxford, Ohio 45056

www.deltazeta.org Summer 2005 **33**

SHIPPING & HANDLING CHARGE:

If your order totals	Add
\$.00 - 5.00	\$ 4.00
\$ 5.01 - 25.00	\$ 7.00
\$25.01 - 50.00	\$ 8.00
\$50.01 - 75.00	\$ 9.00
\$75.01 - 00.00	\$10.00
Each additional \$100.00	\$10.00

SPECIAL DELIVERY COSTS:

2-DAY	\$16.00
OVERNIGHT	\$19.00

DZ DeZigns



Above
Alumnae Polo with Embroidered Crest,
Ladies cut (Pink, Pistachio Green), 547 \$36.00



At right
Sweatshirt - Vintage
screen print, ladies cut
Lime Green, Pink,
Yellow, 595 \$20.00



Above, left
Note Pad Pack
Includes 3 notepads:
Large check pad, dot
pad, and curl pad,
634 \$11.00



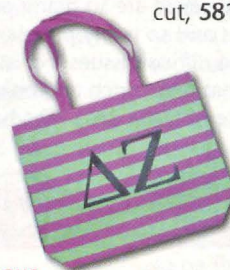
Above, top right
8 Striped note cards and envelopes,
535 \$10.00

Above, bottom right
8 Purse note cards and envelopes,
534 \$10.00

Below
Polka dot "Hobo" small purse with pewter DZ
dazzler - Pink with green, Green with pink,
Black with hot pink, 636 \$25.00



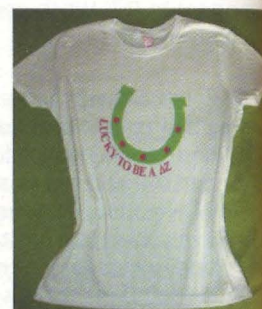
Above
Garment Bag with pink embroidered DZ at
top. Black and white polka dot w/pink trim
garment, 640 \$37.00
duffel, 639 \$39.00
Embroidered initials additional \$10.00



Above
Pink & green striped
canvas tote w/black
screened letters,
550 \$12.00



Above
Polo tee with embroidered turtle with gingham
detail. Junior cut; great for recruitment.
Quantity prices available, 534 \$38.00



At right
Lucky to be a
DZ tee - Great
recruitment tee
or new member's
gift! 100% soft
cotton, ladies
cut, 581 ... \$15.00



Above - Football style, Junior sizing; great
for recruitment. Quantity prices available,
603 \$15.00

DZ DeZigns,

202 East Church Street, Oxford, Ohio 45056

1-800-886-PINK
FAX 513-523-1921

www.deltazeta.org



At left - Silver "Tiffany style" necklace. (This
has a matching bracelet for \$49.00), 543 \$95.00



Above left - Silver bracelet with heart closing
and engraved disk, 549 \$29.00

Above right - Silver rectangle signature ring
Introductory Offer, 531 \$19.00

All merchandise is unconditionally
guaranteed. All prices in U.S. dollars.
Prices are subject to change without
notice.

RETURNS

To return an item, send your invoice
with the package. Please send informa-
tion about the merchandise to be
exchanged. Shipping and handling
fees are not refundable.

Larger sizes can be ordered through
DZ DeZigns.

Summer Sparklers!



2003
Pink Sapphire
Sunburst Pendant
SS \$179.00
(Snake chain sold separately)



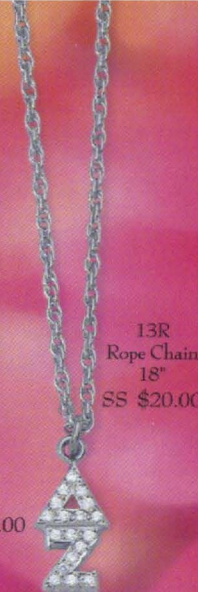
0452
Rose Sapphire
Cushion Stone
Pendant w/Crest
SS \$95.00
(Chain sold separately)



R0452
Rose Sapphire
Cushion Stone Ring
w/Crest
SS \$95.00



4939
Rope Border
Charm
SS \$35.00
(Snake chain sold separately)



13R
Rope Chain
18"
SS \$20.00

L2630
Diamond
Lavalier
10KW \$460.00
(Chain sold separately)

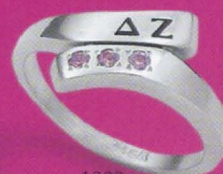
1000
Swirl Ring
w/Rose Sapphires
10KY \$125.00



1331C
Figaro
Chain
24"
SS \$20.00



1000E
Swirl Ring
w/Emeralds
SS \$90.00



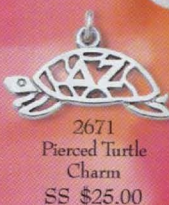
1000
Swirl Ring
w/Rose Sapphires
SS \$90.00



1563
Slide on Snake Chain
w/Pink Sapphires
SS \$100.00

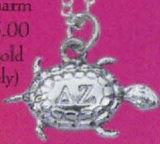


1565
Slide on Snake Chain
w/Diamonds
SS \$195.00



2671
Pierced Turtle
Charm
SS \$25.00

2760
Turtle Charm
SS \$25.00
(Chain sold separately)



1370
Sterling Beads
w/Engraved Disc
SS \$40.00



1700
Alternating
Geometric Emerald
Crystal Bracelet
w/Engraved Disc
SS \$95.00



6005A
Heart Tag
Toggle Bracelet
SS \$65.00



1680
Bangle Bracelet w/Engraved ΔZ
SS \$35.00



Division of Harff Jones

226 Public St. P.O. Box 6500
Providence, RI 02940-6500

NEW OFFICIAL JEWELER TO DELTA ZETA

To Order Call: 1.800.542.3728
Or Click: www.legacydivision.com

Most items are available in 10K/14K gold as well. Traditional Lavalieres and Officer Dangles available on line!

The Unlimited Potential of Giving



Marcella Doxsee K '95 with her three closest friends from her pledge class at a Husky football game at the University of Washington. From left, Kelly Blake '95, Lisa Vose '95, Marcella, and Darcy Jacobson '95.

Marcella Doxsee K '95 played basketball at the University of Washington and made the team in her sophomore year. But there was another team which would become very important to Marcella in college—the Kappa Chapter of Delta Zeta.

"I had incredible support from the chapter throughout my college basketball career," Marcella says today from her office as the human resources manager for Food Services of America. "The members were great—they always came out for my basketball games and supported me in every way possible."

Marcella's membership in Delta Zeta helped her to understand the importance of giving. "Membership means quite a bit to me: great friendships, opportunities to be involved in something bigger than me, giving back to the community through philanthropy, and unconditional love," she says.

"Delta Zeta gave me a lot of opportunities and opened a lot of doors that I wouldn't have had otherwise. I want to be able to give something back to the future members of Delta Zeta—to give others the opportunities that I had through Delta Zeta."

Marcella Doxsee K '95

That's why it's so important for her to give to the Delta Zeta Foundation. "Since I wouldn't be able to devote the time I would want to give to my collegiate chapter as a volunteer, I started giving to the Foundation. It's something I can do consistently."

The lesson of giving is something Marcella has never forgotten. "I still play basketball and softball and coach girls' basketball—third, fourth, and fifth graders. I enjoy teaching them about the game when they are starting out and know nothing about it."

Helping young women to find their potential and giving them the opportunities she had are foremost for Marcella. "It's very worthwhile to see people's lives impacted in such a positive way through membership in Delta Zeta. I think it's so important to stay connected to Delta Zeta and to give back."