

SUMMER 1964

# *THE LAMP*

of DELTA ZETA



*See Inside for . . . .*

**28th Biennial Convention  
Honors, Honors, Honors  
Spotlight on Province XIX**





# From the Editor's Desk

## New Idea

DEAR EDITOR:

As a Delta Zeta alumna (B A '55) who has been quite busy since graduation with profession, marriage, children, various community activities, etc., and all the joys and problems attendant to them, I have often thought of Delta Zeta sisters with whom I have lost contact.

Many times, as I have read my issues of THE LAMP, I have wished that it had some small section devoted to "Keeping in Touch"; to which alumnae could send brief items of personal data such as marriages, new jobs, new addresses, children, etc., subject, of course, to editing. Has this been suggested or tried before? I'm very curious to know how other Delta Zetas feel about this type of feature. I know that I have been quite impressed with such a section in my husband's Cal Tech alumnae magazine. It has helped him retain and re-establish contact with many of his old school friends. It was also the inspiration for the writing of this letter.

THE LAMP does a marvelous job of presenting college chapter news and the feature articles about the outstanding accomplishments of Delta Zeta alumnae. Surely every Delta Zeta is proud of these women and the example they set for us and the world.

Unfortunately, all of us are not so talented; or have not had time or opportunity to achieve such honors. Yet we also feel a bond with Delta Zeta and would like to hear news of others like us; we would perhaps like to meet other Delta Zetas in our new location; or renew contacts with members from our own chapter.

I sincerely believe that such a section would benefit the sorority nationally, inspiring more interest, new alumnae chapters and increased growth of those already formed.

Thank you for your consideration.

Sincerely,

PAULA JEAN YOUNG

(Mrs. Franklin E. Gillespie)

(ED. NOTE.—THE LAMP is interested in knowing how the rest of you feel about such a "keeping in touch" type of column. Let us hear your comments on this. And thank you, Paula, for your nice letter.)

## Small But Mighty

This group in Beloit might be very small in numbers but that does not discourage anyone from doing just as many things as if we were a larger group. In the past year we have:

Helped with the Beloit City Panhellenic Bazaar and cleared one thousand dollars. This was the first project for the Panhellenic. The money went for the student aid fund which covers emergency aid, initiation fees, dues for the sororities on the campus and Delta Zetas at Epsilon Kappa chapter and the Alpha Gammas at White-water State.

We have made tray favors for the hospital which were very much appreciated.

Rockford, Ill., group invited us to their Founders' Day dinner and we had a wonderful time meeting different Delta Zetas.

We are all keeping in contact with a disabled person and trying to cheer him up by writing to him, etc.

There are only about four of us who are active and yet we are proud to say that we keep the spirit of Delta Zeta growing. We are small but mighty. Thank you.

Your's in Delta Zeta,

MRS. ELIZABETH KERWIN  
Beloit, Wis.

(ED. NOTE.—It's our firm opinion that it only takes one DZ to start an alumnae chapter. We were particularly interested in an article titled 'One Lonesome Theta' which ran in the Kappa Alpha Theta magazine a few issues ago. Seems that one lonesome Theta found herself in a strange town with no Theta chapter but that didn't last long. She spotted a Theta sticker on a car window at a laundromat, hunted up her sister inside, and before too many months they had an alumnae chapter going. It can be done, and size is no problem, when sisters want to. We'd like to know where our smallest

and largest alumnae chapters are located. Anyone have any nominations for the honor? If you do, we're all ears. We especially approve of Mrs. Kerwin's choice of words . . . "we keep the spirit of Delta Zeta growing. We are small but mighty." How true they are. Look what David did with his slingshot.)

## Laurels to The Lamp

DEAR EDITOR:

The members of Cleveland Eastside Alumnae chapter are delighted that so many of our news items and pictures have been included in recent LAMP issues. We are proud of our alumnae and their enthusiastic support of Delta Zeta projects and philanthropies . . . and to have our projects mentioned in THE LAMP gives us an added stimulus to continue to serve Delta Zeta.

Yours in Delta Zeta,

MRS. M. C. DAVIES, LAMP EDITOR  
Cleveland Eastside Alumnae

(Thank you, thank you, thank you. It warms the cockles of our hearts to hear that.)

## DZs Go Hawaiian

The Honolulu Alumnae Chapter has received numerous requests during the past few years from the active chapters on the mainland for information, flowers, props, etc. to be used for rush parties, floats, and spring formals.

We love being able to assist our girls in their rush activities! This service has made us feel just a little closer to the initiates and the contact helps us realize that we are actually a part of a national organization. However, the burden of carrying on personal correspondence with all the college (and alumnae) chapters requesting aid becomes greater each year. (One East coast chapter even wired "Please ship enough orchids to cover float. Understand you furnish free.")

Therefore, we have undertaken to assemble the best sources of information on Hawaiian food (recipes), entertainment, decorations, flowers, costumes, music, etc. that we could find in the islands. We have organized it and packed it into mailing tubes (including 2 large Hawaiian travel posters) which we are making available to college or alumnae chapters at cost plus postage charge. We have gotten some of the material at a discount for bulk quantities, some at cost, and the remainder has been donated so that the actual value of the Hawaiian Party Kit is about triple our cost. We decided to offer 2 prices: \$1.00 for surface mail, and \$1.50 for airmail (since there is likely to be a premium on quick replies).

Our members have put quite a bit of effort, time and love into producing their Hawaiian Party Kit and anxiously anticipate the service it will provide for our "Mainland" sisters.

Yours in Delta Zeta,

ALICE SHELLY, President

Honolulu Alumnae Chapter of Delta Zeta

## Lost Sister

DEAR EDITOR:

I was informed by one of my sisters of an article that appeared in a past magazine of Delta Zeta offering a house in New York to any sister who might be visiting the World's Fair. If at all possible I would like your help in securing her name and address. Thank you.

Sincerely,

IRENE RICKSON, Epsilon Gamma  
4504 Claremont, Kansas City 33, Mo.

THE LAMP is always on the lookout for interesting letters for the Editor's Desk. If you have suggestions, information you think we'd enjoy passing along to your sisters or even complaints (perish the thought), we'd appreciate hearing from you.



# THE LAMP of Delta Zeta

Office of Publication, George Banta Co., Inc., Curtis Reed Plaza, Menasha, Wis. 54952

EDDI PARKER, *Editor*, ©

Staff: SUSAN BURGER ERION, A A  
College and Alumnae Editor

Writers: JANE ANN MAXWELL, A T; MARILYN MOSS, E;  
JOANNE GROVE HAVENHILL, O; LEAH MCGRAW STEWART, F;  
CAROLE SHARPE HARPER, B T

- 
- 2 Convention, 1964
  - 7 Award Lists
  - 18 Adventure in Friendship
  - 19 Another DZ Lamp Lighted
  - 23 Delta Zeta Careerist
  - 24 Magazine Sales Winners
  - 26 Honors
  - 32 Delta Zeta Profiles
  - 33 Spotlight on Province XIX
  - 40 More Honors
  - 43 Around the College Campuses
  - 56 In Memoriam to Arlene Davis
  - 57 Golden Flame Eternal
  - 58 Directory

THE LAMP OF DELTA ZETA, official magazine of the sorority, is published Quarterly by George Banta Company, Inc., official printers to the sorority. \$2.00 per year. Life subscription \$25.00. Printed in U.S.A. Second class postage paid at Menasha, Wisconsin. Acceptance for mailing at special rate of postage provided for in section 1103, Act of October 3, 1917, authorized September 26, 1918.

Copyright 1964 by Delta Zeta Sorority

## RETURN REQUESTED

Delta Zeta Sorority, 3561 N. Pennsylvania St., Indianapolis 5, Indiana. Return Postage Guaranteed.

## On The Cover . . .

They were definitely tired (after a fast-paced convention) but you'll note that the Delta Zeta ladies on the cover were still smiling when this portrait of them was made. These fourteen ladies are the members of National Council, some old and familiar names and faces to you because they were reelected, some brand new. They will guide us for the next two years and in return, ask from us our whole hearted support. Let's meet them. They are (from left, on floor) Doris Ellingson Riede, Augusta Piatt Kelleway, Jean Ericsson Schlosstein and (from left, seated) Gwen Moss McKeeman, Evelyn Adams Costello, Violet Sharratt Whitfield, Betsy Bradley Leach, Lisbeth Francis, and (standing, from left) Marjorie Doyle Bergman, Dorothy Varley Breitweiser, Grace Mason Lundy, Betty Heusch Agler, Gertrude Houk Fariss and Mary Lou Ragel Vineyard. For the offices they hold, see the convention story.

## Attention All Chapter Lamp Editors:

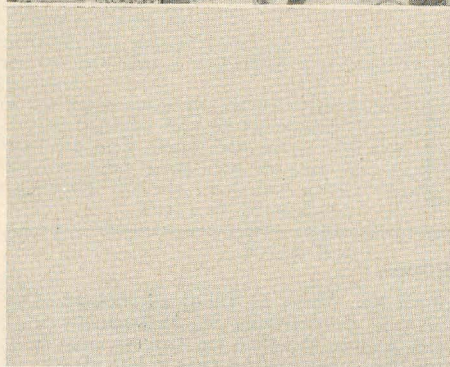
Send all material for publication to Miss Eddi Parker, 74 Maplewood Rd., Akron 13, Ohio; all changes of address and advertising information to Miss Irene C. Boughton, 3561 N. Pennsylvania St., Indianapolis 5, Indiana. Deadline for Summer issue is June 1, issue will appear in late August. Deadline for Autumn issue is Sept. 1, issue will appear in late November. Deadline for Winter issue is Dec. 1, issue will appear in late March. Deadline for Spring issue is March 1, issue will appear in May.



# DZ PLAYED A LITTLE TOO



Playtime at convention caught Delta Zetas in a variety of poses. Grace Mason Lundy and Irene Boughton (at left) did a little howling at the Pups and Hounds dinner; taking a joy ride at the Coney Island outing with a friend were (from left) Evelyn Costello, Frances Westcott and Betty Agler; Delta Zetas enjoy the sun topside on the way to Coney Island (below); roller coaster gives this group of collegiates a thrill.







Smiles were plentiful when silver awards were handed out Tuesday evening of convention. We hope your delegate is here with an armload of silver for your chapter. If she is, congratulations.

AT CONVENTION

# Violet Sharratt Whitfield Re-elected

THE FLAME from the Delta Zeta Lamp burned bright and vigorously for six days in Cincinnati, O., at the 28th biennial national convention.

Over 500 delegates and visitors saw Violet Sharratt Whitfield reelected to a two-year term as national president. Serving with Mrs. Whitfield will be these newly-elected National Council officers: vice president (alumnae) Gwen Moss McKeeman, former province vice president for province XVI, Oklahoma; vice president (college), Betsy Bradley Leach (reelected); vice president (membership), Betty Heusch Agler (reelected); secretary-treasurer, Jean Ericsson Schlosstein, former province president of Province VIII, Wisconsin; director, house corporations, Augusta Piatt Kelleway (reelected); director, philanthropies, Marjorie Doyle Bergman (reelected); director, public relations, Mary Lou Ragel Vineyard (reelected); directors-at-large,

Dorothy Varley Brietweiser, former national deputy; Lisbeth Francis (reelected), Grace Mason Lundy (reelected), and Doris Ellingson Riede, former Province president X North. The position of Panhellenic delegate held by Evelyn Adams Costello was not up for election.

There was so much hard work accomplished and so much good fun had at convention that we can only hit the highlights for those of you who couldn't attend. But come along now through convention week with us and let's see what those highlights were.

SUNDAY . . . Registration began early on Sunday morning at the Netherland-Hilton Hotel in downtown Cincinnati. By 2 p.m. most of the delegates had arrived and were assembled in the Hall of Mirrors (where many of our luncheons and all our business sessions were held) for the opening ceremonies and initiation service.



The convention was opened by Mrs. Whitfield and the initiation was conducted by an illustrious group of Delta Zetas which included Gertrude Fariss, Evelyn Costello, Helen Nolop, Irene Boughton, Frances Westcott, Grace Lundy and Margaret Pease, all past presidents, Augusta Kelleway and Eleanor Fariss acted as guards and Louise Bianchi as pianist.

The two honor initiates for this service were Mary Gail Hobbs, namesake and god child of Gail Patrick Jackson, and Martha Lewis Barker who was a Theta Upsilon at Westminster College and whose mother, Mrs. Thelma Henderson Lewis, is a Delta Zeta from Alpha Eta at University of Michigan.

Sunday evening the initiation banquet was held in the Pavillon Caprice in the hotel with national vice president Gloria MacNeven Frymire in charge. Lending her assistance were Ohio Delta Zetas. Arrangements chairman was director of pledge training, Evelyn White Olmsted.

The program was packed with entertainment and surprises. Claire Palasek of Cincinnati's Xi chapter won the "What Delta Zeta Means to Me" contest and read her essay, an essay which we hope you'll watch for in the Fall issue of THE LAMP. Speaking on the same subject from the alumnae point of view was Olive McCune of Columbus (Alpha chapter) who asked those in the audience to rededicate themselves in a mutual love and sisterhood.

As a complete surprise to Olive, she was awarded the Order of the Golden Rose certificate honoring her 50 years in Delta Zeta and as an additional surprise, she received the golden

rose pin from Cleveland alumnae friends.

It was thrilling to note, as the speakers' table was introduced, that seven past national presidents were present, an all time high for convention. It was these same women who conducted the initiation service.

Achoth Awards for outstanding alumnae service went to: LaVonne McClain Heghinian of Alpha Iota chapter, Los Angeles alumnae; Hazel Buffmire of Alpha Alpha chapter, Evanston, Illinois; Ruth Dary of Lambda chapter, Manhattan, Kan.; Betty DeCoursey, Gamma Beta, Storrs, Conn.; Marguerite Pote of Theta, Boston, Mass.; Iva Olson of Gamma, Minneapolis, Minn.; Bertha Berg Sprong of Alpha Iota chapter, La Puente, Calif.

Receiving Caratydes Awards based on their pledge training programs were: Zeta Epsilon, California State, Pa.; Beta Sigma, Colorado State University; Gamma Beta, University of Connecticut; Alpha Theta, University of Kentucky; Gamma Rho, Northern Illinois University; Theta Theta, De Paul University.

The reception and province meetings followed the banquet.

MONDAY . . . Taken up with a morning business session at which the resolution was made and passed to abolish the titles of directors of scholarship and pledge training and return these duties to chairmanships under the direction of vice president of college programs. The title of director of recommendations was also deleted and its duties given over to a committee chairmanship.

The latter part of the afternoon was taken up with alumnae and college workshops which would



The largest group of Past National Presidents of Delta Zeta ever in attendance at a national convention gathered in Cincinnati. They are (from left) Margaret Huenefeld Pease, Irene Caroline Boughton, Grace Mason Lundy, Frances Elizabeth Westcott, Gertrude Houk Fariss, Evelyn Adams Costello and Helen Woodruff Nolop. The eighth smiling DZ is our present National President Violet Sharratt Whitfield.





Listening intently is a group attending an alumnae workshop.

continue the rest of the week and would cover a variety of subjects such as rush, standards, social patterns, DZ traditions, fund raising, philanthropies, state days, Panhellenics and any other subject a delegate might be interested in.

Firesides closed out the late evening hours and covered many subjects. Both workshops and firesides were repeated on several days and nights so that delegates would have a chance to cover as many as physical endurance allowed.

All serious thoughts were put away Monday evening when the traditional Pups and Hounds dinner, under the director of Florence Hood Miner, was held. Iowa DZs helped her hostess it.

You never heard so much barking and howling as that which went up as all hounds vied for the honor of receiving a pair of hounds ears. Every DZ must be a pup for two years and at her second convention she automatically becomes a hound. Lots of ribbons were handed out at this dog show but top prizes of all went to Grace Mason Lundy and Irene Boughton who had 19 conventions each to their credit.

The evening closed out with prizes going to collegiate chapters for original songs. Taking top prizes for songs were: 1st, provinces XXI and XXII, Alabama, Georgia and Florida; 2nd, provinces XVIII and XIX, Louisiana, Mississippi, Tennessee and Arkansas, and 3rd, provinces XIII, XIV and XV, Washington, Oregon, Montana, Idaho, Northern California, Hawaii and Southern California.

**TUESDAY . . .** An American Citizenship program at which the Hon. Judge Charles T. Smith

of the Long Beach, Calif., Municipal Court, spoke, was the highlight of the morning session. The judge, who is a Phi Delta Theta, discussed the future of Greek organizations and spoke of tightening administration controls which result in a loss of freedom for such organizations.

Such control, he said, undermines the hard won freedoms of not only fraternity affairs but entire society. Judge Smith feels confident that fraternities will survive the challenge being put forth today but to do so may have to make drastic changes in their structure. They are, he said, self perpetuating friendship organizations and membership in them is a privilege, not a right. The Judge and his remarks were warmly received by the delegates.

We had a chance to meet the new Mothers Club Chairman, Mrs. Alice Feike Wieman, at a Mother-Daughter luncheon and if you want to know about the charming Mrs. Wieman, just turn to page 17 where we have a brief biography on her.

The formal awards banquet was held Tuesday evening and was presided over by Evelyn Adams Costello. Hostessing for her were the Oakland County (Mich.) alumnae.

**WEDNESDAY . . .** General business sessions on Wednesday covered everything from Panhellenic, recommendations and rush techniques to house corporations and Delta Zeta Foundation. But business went by the wayside in the afternoon when DZs boarded "The Chaperone", a paddlewheeler, for a trip upriver to Coney Island, Cincinnati's amusement park where alumnae and collegiates alike screamed on the roller coaster



and laughed on the Tilt-a-whirl. Then everyone sat down in the waterfront park and ate a chicken supper under the trees.

In the early evening we all tramped back aboard the boat and took the hour trip back to Cincinnati to get back to the business of convention. Playday was over. Its memories will live on. Who can forget the Fariss girls, Eleanor (province XIII president) and Gertrude (past national president) together in a car on the Wild Mouse or Evelyn Costello on the thriller called the Calypso . . . or the ride our hardworking convention chairman Lois Westerman Schrank took with the entertaining clown who dogged our footsteps in his little automobile.

The evening hours were filled with fireside chats on a number of subjects, some of which we will run down for you in this issue.

**THURSDAY . . .** The morning session was given over to a report by Marjorie Doyle Bergman who presented a most inspiring program on philanthropies, one which included talks by several representatives of the Cincinnati Hearing Center and a demonstration of teaching the hard of hearing by a young girl, Kathy, and her teacher.

Voting on National Council followed luncheon. In the afternoon business session the membership statement which Delta Zeta has carried but which had never been voted on was taken under advisement, later voted on and unanimously passed in its original form.

The biggest night of them all finally rolled around . . . the formal awards banquet. A night when all the sisters look sparkling in their gowns and excited as they anticipated awards they would receive. Betsy Bradley Leach and Augusta Piatt Kelleway were in charge of the banquet assisted by members from West Virginia.

Taking awards were:

Gertrude Houk Fariss Award is a citizenship award (silver punch bowl and ladle) presented to the chapter making the most outstanding record in community service for the past two years. Winner was Delta Eta at Eastern Tennessee State University.

The Arlene Davis Award going to an outstanding girl intending to make a career in aviation went to Kathryn Anne Hack, Gamma Alpha at Baldwin-Wallace, Ohio.

Founders Awards for most improvement went to Zeta Kappa at Ohio Northern and Gamma Chi at Ball State Teachers College, Ind.

Council Awards for continued excellence in all fields went to Theta at Ohio State University; Delta Delta at Georgia State College and Gamma Psi at Central Michigan University.

The Genevieve Schmitt Memorial Plaque, former Delta Sigma Epsilon award for scholarship, went to Westminster College, Pa.

The See Loving Cup, named for a former Delta Sigma Epsilon president, was shared by Alpha Tau, University of Texas, and Gamma Rho at Northern Illinois University. It goes to a chapter for most co-operation.

The Florence Hood Award going to the outstanding junior girl went to Jeanne Hahn, Alpha, Miami University, Ohio, who is president of her chapter.

Grace Mason Lundy award which goes to the most outstanding senior girl went to a quartet. They were Carolyn Galbraith, Theta, Ohio State; Karen Hamme, Gamma Zeta, Southwestern Texas University; Linda Hootman, Zeta Epsilon, California State College, Pa., and Judith Thomas, Epsilon Epsilon, Fresno State College, Calif.

Florence Hood Court includes: Kristi Bown, Alpha Epsilon, Okla.; Carole Doll, Beta Kappa, Iowa State; Nancy Flaiz, Theta Theta, De Paul; Diana Haskinson, Alpha Tau, U. of Texas; Gaynelle Hasselmeier, Delta Lambda, Lamar Tech; Barbara Kleinschmidt, Delta Mu, Fla. Southern; Sherrill Williams, Beta Xi, Auburn.

Grace Mason Lundy Court includes: Jean Wickstrom, Alpha Gamma, Alabama; Sue Johnson, Epsilon, Indiana U.; Nancy Hodges, Delta Upsilon, Marshall; Claire Palasek, Xi, Cincinnati; Priscilla Elder, Beta Delta, U. of S. Carolina; Mary Fowler, Theta Epsilon, La. Tech.; Kay Morrow, Alpha Tau, U. of Texas.

The evening was capped by rush skits directed by Betty Heusch Agler and providing just the right note for a perfect and inspiring evening.

**FRIDAY . . .** The final day of convention began to roll in the morning with the report of elections and introductions of new council by chairman of the nominating committee, Frances Westcott. Following this Mary Lou Ragel Vineyard, national director of public relations, presented her program on public relations and LAMP editor Eddi Parker presented hers on THE LAMP.

Council was formally installed at a luncheon which brought convention to a close. Violet Sharratt Whitfield was toastmistress for the affair at which Helen Woodruff Nolop did the installing. Dorris Silverthorne, national deputy, and the Indiana alumnae were responsible for the luncheon decorations.

This was the formal close of convention but many delegates and visitors remained in Cincinnati for that which so many of us had looked forward to all week—the pilgrimage to Miami University at Oxford to see our birth place.

Traveling in two buses the group toured the campuses, seeing many of the fraternity houses (sororities are housed in suites) and making stops first at the DZ suite and later at the Chapel where local alumnae had prepared punch and cookies for us.

This chapel houses the chimes donated by Delta Zeta as a lasting memorial to our founders. It was a memorable trip for all those of us who made it . . . one we shall always remember. Time will come when we must part and say farewell, But our hearts with thee will ever dwell; Sing, Oh, Sing to Delta Zeta, good and true Delta Zeta for me and you. Delta Zeta dear, Our Delta Zeta dear, To thee may we be loyal and to thee sincere. May we pledge ourselves, that we may never shame. But honor, bless and keep thy good and noble name.



# Are You Among Them?

**Commended for all-round excellence** were: Commended for all-round excellence: Gamma Epsilon, Drake U., Des Moines, Iowa; Zeta Zeta, W. Texas U., Canyon; Epsilon Kappa, Wisconsin State at Whitewater; Gamma Sigma, Eastern Michigan at Ypsilanti; Zeta Epsilon, California State, Pa.; Gamma Delta, Pennsylvania State, Pa.; Beta Kappa, Iowa State, Ames; Gamma Zeta, Southwestern U., Georgetown, Tex.; Gamma Phi, Indiana State College, Pa.; Delta Omega, Ft. Hayes State, Hayes, Calif.; Alpha Tau, U. of Texas, Austin.

**Taking silver awards for scholarship** (ranking first or second for two years on a campus or no less than third on campus having eight or more sororities) were: Omicron, U of Pittsburgh; Theta, Ohio State; Zeta Kappa, Ohio Northern; Epsilon Sigma, Wayne; Gamma Chi, Ball State; Epsilon Kappa, Wisconsin State, Whitewater; Zeta Omicron, Wisconsin State, LaCrosse; Pi, Eureka; Gamma Mu, Illinois Institute of Technology; Epsilon Omicron, Western Illinois; Gamma Epsilon, Drake; Gamma Xi, New Mexico A & M; Zeta Zeta, West Texas State; Gamma Iota, Memphis State; Epsilon Pi, Henderson State; Theta Iota, Western Carolina; Delta Delta, Georgia State; Delta Phi, Northeastern State, Tahlequah; Epsilon Psi, St. Louis University; Theta Delta, Westminster; Zeta Upsilon, Winona State.

**Commended for improvement** were: Kappa, U of Washington; Alpha Beta, U of Illinois; Gamma Psi, Central Michigan; and Delta Alpha, Long Beach State.

**Silver awards for outstanding activities** were given by national chairman Patti Volbrecht Phillips to Pi, Eureka; Sigma, L.S.U.; Alpha Gamma, Alabama; Alpha Sigma, Florida State; Beta Alpha, Rhode Island; Beta Kappa, Iowa State; Gamma Alpha, Baldwin-Wallace; Gamma Iota, Memphis State; Gamma Sigma, Eastern Michigan; Gamma Upsilon, Oklahoma City; Gamma Chi, Ball State; Gamma Psi, Central Michigan; Delta Delta, Georgia State; Delta Theta, Houston; Delta Iota, Tufts; Delta Lambda, Lamar State; Epsilon Kappa, Wisconsin State, Whitewater; Epsilon Xi, Conway State; Epsilon Omicron, Western Illinois; Epsilon Pi, Henderson State; Epsilon Phi, Detroit; Epsilon Omega, Wisconsin State, Eau Claire; Zeta Alpha, Bradley; Zeta Epsilon, California State, Pennsylvania; Zeta Zeta, West Texas State; Zeta Kappa, Ohio Northern; Zeta Xi, Lenoir Rhyne; Theta Theta, DePaul.

**Certificates of merit** were awarded for **Honorable Mention** to Alpha Alpha, Northwestern; Alpha Tau, Texas; Alpha Chi, UCLA; Alpha Psi, Southern Methodist; Beta Lambda, Tennessee; Beta Rho, Michigan State; Beta Tau, Nebraska Wesleyan; Gamma Epsilon, Drake; Gamma Lambda, San Jose; Gamma Nu, Eastern Illinois; Gamma Xi, New Mexico; Gamma Tau, Bowling Green; Delta Alpha, Long Beach; Delta Kappa, Southwestern Louisiana; Delta Mu, Morningside; Delta Nu, Parsons; and Theta Delta, Westminster.

**Awards for Course of Study programs** (presented by Chairman Judy Noble) were based on the number of years of excellence.

**Certificates of Merit for two years:** Pi, Eureka; Upsilon, North Dakota; Alpha Alpha, Northwestern; Alpha Tau, Texas; Beta Xi, Auburn; Gamma Iota, Memphis State; Gamma Kappa, Kent State; Epsilon Gamma, Central Missouri; Epsilon Xi, Conway State; Zeta Lambda, Eastern Carolina.

**Notebooks for four years:** Sigma, LSU; and Zeta Kappa, Ohio Northern.

**Silver for six years:** Delta, DePauw; Psi, Franklin; Gamma Chi, Ball State; and Epsilon Kappa, Wisconsin State, Whitewater.

**Honorable mention for High Average:** Iota, State U of Iowa; Mu, Berkeley; Alpha Sigma, Florida State; Alpha Psi, Southern Methodist; Gamma Epsilon, Drake; Gamma Pi, Western Michigan; Epsilon Beta, Northwest Louisiana.

**Honorable mention for Progress:** Beta Nu, U of Miami; Gamma Sigma, Eastern Michigan; Delta Iota, Tufts; Zeta Pi, U of Georgia.

**Support of national magazine programs** was recognized by Darlyne Simon King, representing **Chairman Engelyn Brown Tourtelot.**

College chapters: First place, Delta Pi, Kansas STC; Second, Delta, DePauw; and Third, Gamma Lambda, San Jose.

Alumnae chapters: First place, Pasadena Foothills; Second, Seattle; and Third, Metropolitan Detroit.

**Silver awards for excellence in Standards** were given by Chairman Frances Igo Gregory to:

Gamma Chi, Ball State; Epsilon Xi, Conway State; Alpha Gamma, U of Alabama; Gamma Epsilon, Drake; Epsilon Phi, U of Detroit; Beta Tau, Nebraska Wesleyan; Alpha Theta, U of Kentucky; Zeta Zeta, West Texas State; Theta Delta, Westminster; Epsilon Omega, Wisconsin State, Eau Claire; Omega, U of Oregon; Gamma Phi, Indiana State, Pennsylvania; Delta Xi, Colorado State College; Epsilon Epsilon, Fresno; Alpha Chi, UCLA; Alpha Beta, U of Illinois; Alpha Omicron, Brenau; Beta Chi, Wittenberg; Delta Alpha, Long Beach.

**Certificates of Honor in Standards** went to: Zeta Alpha, Bradley; Zeta Xi, Lenoir Rhyne; Kappa, U of Washington; Gamma Zeta, Southwestern Texas; Chi, Oregon State; Epsilon Kappa, Wisconsin State, Whitewater; Beta Kappa, Iowa State; Gamma Omicron, San Diego State; Delta Eta, East Tennessee; Delta Lambda, Lamar Tech; Zeta Psi, Stephen Austin; Beta Pi, Albion; Gamma Psi, Central Michigan; Delta Omicron, Northwestern State, Alva, Oklahoma; Tau, U of Wisconsin; Alpha Pi, Howard; Gamma Xi, New Mexico State U; Delta Pi, Kansas STC; Theta Lambda, St. Norbert.

**Mrs. Gregory gave special commendation to two new chapters, Zeta Phi, Slippery Rock, Pa., and Zeta Chi, Wisconsin State, Stevens Point, for excellence in 1963-64.**

**Betty Agler presented silver membership awards for reaching top quota or limitation during rush for two years to:** Beta Alpha, U. of Rhode Island; Zeta Epsilon, California State College, Pennsylvania; Alpha Theta, U of Kentucky; Theta Xi, Glenville State; Alpha, Miami University; Theta, Ohio State U; Gamma Alpha, Baldwin-Wallace; Gamma Tau, Bowling Green; Zeta Kappa; Ohio Northern; Gamma Sigma, Eastern Michigan; Epsilon Phi, Detroit; Epsilon Sigma, Wayne; Epsilon Kappa, Wisconsin State, Whitewater; Epsilon Omega, Wisconsin State, Eau Claire; Gamma Nu, Eastern Illinois; Gamma Epsilon; Drake; Theta Eta, Creighton; Delta Xi, Colorado State, Greeley; Delta Alpha, Long

(Continued on page 8)



Beach; Gamma Zeta, Southwestern U, Texas; Delta Lambda, Lamar; Sigma, LSU; Epsilon Beta, Northwestern State, Louisiana; Zeta Xi, Lenoir Rhyne; Delta Delta, Georgia State; Alpha Sigma, Florida State U.

**Certificates for reaching top quota or limitation during the year for two years went to** Gamma Beta, U of Connecticut; Gamma Delta, Pennsylvania State U; Theta Chi, Lock Haven; Gamma Phi, Indiana State, Pennsylvania; Epsilon Theta, Clarion; Zeta Phi, Slippery Rock; Delta Upsilon, Marshall; Gamma Pi, Western Michigan; Gamma Psi, Central Michigan; Gamma Chi, Ball State; Zeta Beta, Stout; Zeta Chi, Wisconsin State, Stevens Point; Theta Lambda, St. Norbert; Gamma Rho, Northern Illinois; Theta Nu, Moorhead; Beta Kappa, Iowa State U; Delta Nu, Parsons; Delta Omega, Fort Hays; Epsilon Alpha, Western Colorado, Gunnison; Zeta Psi, Stephen Austin; Iota Alpha, South West Texas State; Delta Kappa, U of Southwestern Louisiana; Theta Kappa, LSU at New Orleans.

**Alumnæ awards are given on a "step-plan." The first award is honorable mention; second, a gavel; third, a notebook; and fourth, a certificate of merit. Chapters which continue to excel, continue to receive certificates of merit. Gloria MacNeven Frymire, Vice president (Alumnæ), presented the awards.**

**Honorable Mention:** Wilmington, Del.; Stillwater, Okla.; Huntington, West Va.; Louisville, Ky.; Palo Alto, Cal.; Honolulu, Hawaii; Emporia, Kans.; Fort Collins, Colo.; Greeley, Colo.; Lincoln, Neb.; Topeka, Kans.; Marietta-Parkersburg, Ohio and West Va.; Downey, Cal.; Whittier, Cal.; Nashville, Tenn.; Memphis, Tenn.; Canyon, Texas; and Bakersfield, Cal.

**Gavels:** Alva, Okla.; Bartlesville, Okla.; Cincinnati, Ohio; Fresno, Cal.; Hays, Kans.; Indianapolis, Ind.; Lincoln, Neb.; Lubbock, Texas; Miami, Fla.; Milwaukee, Wis.; Muncie, Ind.; Northeastern New Jersey; Oakland, Cal.; Omaha, Neb.; Orange County, Cal.; South Bay Cal.; San Fernando, Cal.; Shreveport, La.; and St. Louis, Mo.

**Notebooks:** Ames-Boone, Iowa; Berea, Ohio; Cleveland Eastside, Ohio; Grand Rapids, Mich.; Greeley, Colo.; Johnson-Wyandotte Counties, Kan.; Wichita Kan.; Mount Diablo, Cal.; Phoenix, Ariz.; and Aurora, Ill.

**Certificates of Merit:** San Francisco Bay Cities, Cal.; Tulsa, Okla.; Long Beach, Cal.; Kansas City, Mo.; Dayton, Ohio; Northern New Jersey; Akron, Ohio; Albion, Michigan; Cedar Rapids, Iowa; Cleveland Westside, Ohio; Denver, Colo.; Manhattan, Kans.; Portland, Ore.; Sacramento, Cal.; San Antonio, Texas; Seattle, Wash.; and Washington, D.C.

#### College Service Awards in Philanthropies

Alpha Alpha, Northwestern University—a 2nd place winner last convention  
Alpha Sigma, Florida State University  
Beta Xi, Auburn University, Alabama  
Gamma Kappa, Kent—1st place last convention  
Gamma Omicron, San Diego State, California  
Delta Eta, Eastern Tennessee State University  
Epsilon Gamma, Central Missouri State College  
**3rd place:** Beta Theta, Bucknell University, Pennsylvania  
**2nd place:** Gamma Iota, Memphis State, Tennessee  
**1st place:** Beta Sigma, Colorado State University

#### Special Commendation

Beta Nu, Miami  
Delta Alpha, Long Beach State, tremendous improvement  
Delta Delta, Georgia State College, improvement

Zeta Lambda, E. Carolina College, improvement  
Theta Theta, De Paul University, excellent campus participation

#### Christmas Card Winners in Philanthropies

**3rd place:** Card #13—Canton Area Alumnæ, Ohio.  
**2nd place:** Card #5—Margaret Beverly Bunn, Huntsville Alumnæ, Alabama.  
**1st place:** Card #26—Judy Hanlon, CCD, Bradley University, Peoria, Illinois. (Elected to the Fine Arts League Board of Directors, the youngest member.)

#### Alumnæ Excellent Participation

Akron, Ohio	Northeastern, N.J.
Chicago, Ill.	Oakland County, Mich.
Clay Platte, Mo.	Des Moines, Iowa
Indianapolis, Ind.	Sacramento, Calif.
Marin County, Calif	Washington, D.C.

#### Commendation

Miami Alumnæ Chapter	South California Council
----------------------	--------------------------

#### Alumnæ—Superior Achievement

Central San Fernando Valley	Dallas, Tex.
Glendale—Burbank	Washington, D.C.
Long Beach	California "Flame Fantasy"
Los Angeles	DZ's by the Sea, Calif.
Orange County	Downey, Calif.
Pasadena Foothills	Chairmen:
Pomona Valley	Juanita Powell
Riverside	Jane Troutman
San Diego	Jolene de a Faent
Santa Barbara	Mary Koehler
Santa Monica	Ruth Walsh
South Bay	Charla Janecek
West Covina	Betty De Witt
Whittier	Patti Phillips
San Francisco	Grace Handy
Sacramento	

#### Press Book Awards

##### COLLEGIATE

##### Superior (11)

Lambda—Kansas State at Manhattan  
Sigma—Louisiana State University at Baton Rouge  
Alpha Pi—Howard College, Ala.  
Alpha Tau—University of Texas, Austin, Tex.  
Delta Lambda—Lamar State College of Technology, Beaumont, Tex.  
Delta Upsilon—Marshall University, West Va.  
Epsilon Rho—Northwest State College, Mo.  
Epsilon Psi—St. Louis University, St. Louis, Mo.  
Zeta Epsilon—State College, California, Pa.  
Zeta Psi—Stephen F. Austin State College, Nacogdoches, Tex.  
Theta Lambda—St. Norbert College, DePere, Wis.

##### ALUMNÆ

##### Superior (19)

Chicago, Ill.	Marietta-Parkersburg
Cincinnati, Ohio	Mt. Diablo, Calif.
Cleveland West Side	Oakland County, Mich.
Colorado Spring, Colo.	Pasadena-Foothill, Calif.
Denver, Colo.	Portland, Ore.
Indianapolis, Ind.	Sacramento, Calif.
Lincoln, Neb.	San Francisco-Bay Cities, Calif.
Long Beach, Calif.	Seattle, Wash.
Los Angeles, Calif.	Stillwater, Okla.
Manhattan, Kan.	

Total number of collegiate and alumnæ press books: 102.  
Total number of collegiate press books: 55.  
Total number of alumnæ press books: 47.



**Newsletter Contest**  
**ALUMNÆ FOR LOCAL USE**  
*Superior*

Washington, D.C.—“Alumnæ Chatterbox”  
 Wilmington, Delaware—“Delaware DZ Doings”  
 Akron, Ohio—“Akron Accents”  
 Dayton, Ohio—“DZ Dayton Doings”  
 Indianapolis, Ind.—“DZ Dateline”  
 Du Page Valley, Ill.—“DZ Guide”  
 St. Louis, Mo.—“The Candle”  
 Mt. Diablo, Calif.—no name  
 Long Beach, Calif.—“The Aluminator”

**COLLEGE CHAPTER TO ALUMNÆ**

Gamma Omega—“Gamma Omegaphone”—(Southern Illinois U.)

**ALUMNÆ ASSOCIATIONS**

Beta Gamma—“Delta Zeta Doings”—University of Louisville)  
 Epsilon—“Epsilon Etchings”—(Indiana U.)  
 Alpha Alpha—“Alfalfa News”—(Northwestern U.)  
 Gamma—“Gammaphone”—(Univ. of Minnesota)  
 Alpha Epsilon—“The Lamplighter”—(Oklahoma State Univ.)

**STATE**

Wisconsin State—“The Wick of Wis.”

*Excellent*

Harrisburg, Pa.	Colorado Springs, Colo.
South Hills Pittsburgh, Pa.	Denver, Colo.
Berea, Ohio	Johnson-Wyandotte Counties, Kan.
Cincinnati, Ohio	Salt Lake City, Utah
Cleveland Eastside, Ohio	Seattle, Wash.
Cleveland Westside, Ohio	Sacramento, Calif.
Lansing, Mich.	Santa Barbara, Calif.
Chicago, Ill.	Tulsa, Okla.
North Suburban Chicago, Ill.	San Antonio, Tex.
Kansas City, Mo.	Birmingham, Ala.

*Excellent*

Gamma Psi—Central Michigan Univ.  
 Delta—DePauw University  
 Alpha—Miami University  
 Nu—Knox  
 Beta Kappa—Iowa State U.  
 Lambda—Kansas State U.  
 Connecticut  
 Ohio  
 Kansas

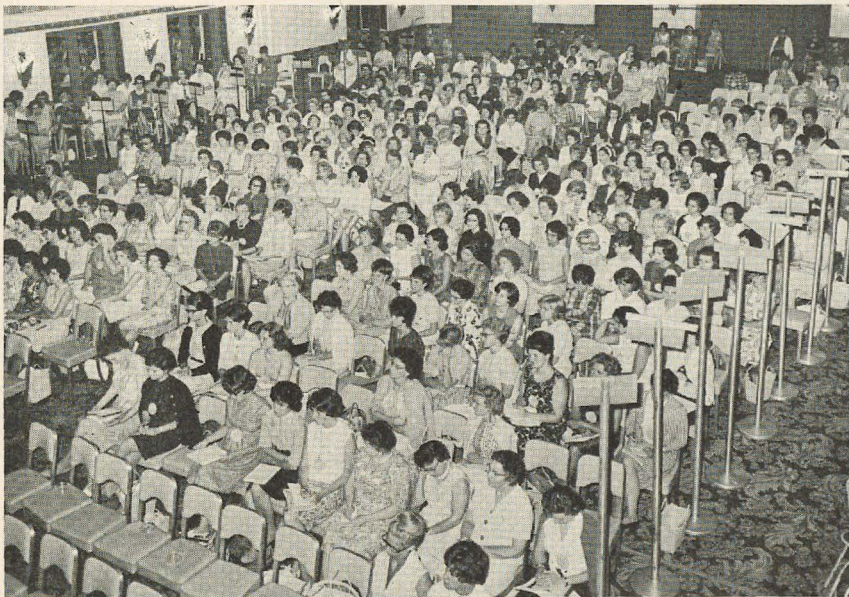
**Public Relations Photo Contest**

*Collegiate Division*

*Winner:* Delta Lambda—Lamar Tech  
 2: Delta Omega—Fort Hays State College  
 3: Gamma Psi—Central Michigan University  
 4: Zeta Phi—Slippery Rock State College  
 5: Alpha Epsilon—Oklahoma State University  
 6: Upsilon—University of North Dakota

*Alumnæ Division*

*Winner:* Oakland County, Mich.  
 2: Cleveland Eastside, Ohio  
 3: Denver, Colo.  
 4: Colorado Springs, Colo.  
 5: Indianapolis, Ind.  
 6: Mount Diablo, Calif.  
 7: San Francisco-Bay Cities, Calif.  
 8: Chicago, Ill.  
 9: Muncie, Ind.



**Our delegates hard at work in general sessions in the Hall of Mirrors.**





The Arlene Davis Award going to outstanding girl intending to make a career in aviation went to Kathryn Anne Hack of Gamma Alpha at Baldwin-Wallace and was presented by Sally Beach.



## Award



Jeanne Hahn of Alpha Chapter outstanding junior girl receives her Florence Hood Miner from Florence Hood Miner.

The See Loving Cup was shared by Alpha Tau, University of Texas, and Gamma Rho, Northern Illinois University. Presenting it is Marguerite Havens.



Marjorie Doyle Bergman, Philanthropy director, presents the silver candelabra, top prize with Christmas Card Contest, to Judy Hanlon of Peoria, Illinois.



Accepting the Founders Award for their chapters from Margaret Huenefeld Pease are (from left) Jane Dunn, Gamma Chi, Ball State Teachers College and Loretta Forney, Zeta Kappa, Ohio Northern University.



## Winners

Gertrude Houk Fariss presents her citizenship award to the delegate from A H at East Tennessee State, for the chapter making the most outstanding record in community service for the past two years.















## Skits, Songs Good Fun!

Convention wasn't all business by any means. Original songs were presented one evening and delegates were entertained by such as the Beatles (above), and Texas cowgirls (below) and Province XIX gals (opposite, bottom). They also laughed and learned when rush skits were presented on another evening. One skit took the guise of a puppet show (opposite, center) and another was Disneyland (opposite, top). See yourself or anyone you know?









# Some Sidelights to Convention

Delta Zeta was honored to have Mrs. Gano Senter of Denver, Colo., as official parliamentarian for the convention. Mrs. Senter is parliamentarian for National Panhellenic Conference. In addition to her regular duties at the business sessions, Mrs. Senter held special sessions on parliamentary law each morning for those interested in learning more about the intricacies of the law.

Δ Z      Δ Z      Δ Z

Agatha Activities was introduced to delegates by Patti Phillips, national activities chairman. Activities, leadership training, responsibility, spirit, prestige and public relations are all characteristic of Agatha. Agatha says active Delta Zetas should be recognized. A sign of appreciation offers more encouragement than any other thing.

Δ Z      Δ Z      Δ Z

Alumnæ delegates were reminded of their importance in strengthening college chapters and assisting them. Adequate provision of recommendations is one of the most important aspects of an alumnæ program.

Δ Z      Δ Z      Δ Z

One of the main objectives of a sorority is to teach its women to live without friction—teaching them to live with small annoyances as well as to avoid making annoyances is important, also. One can be intemperate about nothing whether it is alcohol, promiscuity or idle chatter. These thoughts were conveyed by Evelyn Costello in her workshops.

Δ Z      Δ Z      Δ Z

Jean Schlosstein tells us that there are lots of ways to raise funds. For dormitory campuses where food service is limited to certain hours, you can sell coffee and doughnuts on weekends in the dorms, have chili or spaghetti suppers on Sunday nights, sell sandwiches to the night owls or how about providing a birthday service for girls away from home. Parents ask DZ to provide a party or cake for the girl.

Some chapter may wish to sell services such as ironing shirts or shining shoes. And then there's always lots of things such as candy, flowers, etc. you can sell.

Δ Z      Δ Z      Δ Z

If you want to shop the DZ way, says Endowment Fund Chairman Virginia Voelker, buy

(and sell) stationery, records, and seals from Delta Zeta. They make wonderful gifts for friends and family and give you a chance to display Delta Zeta.

Δ Z      Δ Z      Δ Z

Education begins when we're born and continues throughout our lives. Judy Noble, national course of study chairman, who is also an instructor at Iowa State, tells us that sorority education encompasses every phase of Delta Zeta. And only by continual education can we keep our place of leadership in the world of fraternities. "The strength of Delta Zeta lies in the heart of each Delta Zeta. Each one of us is responsible for growth, for bonds of friendship and for courage."

Δ Z      Δ Z      Δ Z

Public relations are only as good as a chapter's standards programs and the standards programs are only as good as the standards chairman makes them. Standards, our ethics, ideas and values held in actions and expressions each day, show us as we really are. How are your standards? In what way can they be improved. These questions were brought forth at convention by Frances Gregory, national standards chairman.

Δ Z      Δ Z      Δ Z

Tradition is important to every Delta Zeta and Grace Mason Lundy explained some of ours. Traditions give us a feeling of individual importance, making us more secure in our convictions, giving us something rich, glowing and dear. You are a Delta Zeta and will be for the rest of your life so it is fitting that you talk about Delta Zeta. Know the background of events like Lamplighter Week, the wearing of rose and green on Founders' Day, mother-daughter relationships. Our traditions will add to your appreciation and understanding of Delta Zeta.

Δ Z      Δ Z      Δ Z

Velma McKee built a Delta Zeta dream house for those at convention. A house that projects a favorable DZ image, important during rush. The foundation is scholarship. The first floor, leading to the street is our showcase. Activities fill this floor. Service floods this floor with light and love. Community and philanthropic service turns girls into women. Topping the dream house is a penthouse and garden, the glamorous area of social activity. We are not ready for this floor unless we have the other three. How's your DZ dream house?



# She's DZ All the Way

by MARILYN MOSS, *Epsilon*

Mrs. Alice Feike Wieman, new National Mothers' Club Chairman, is well versed in sorority history and fraternal good works; indeed Delta Zetas are as common in her family as trees in Oregon.

While an undergraduate at Oregon State University, Mrs. Wieman was a charter member of Chi Chapter during its first years on campus. True to family tradition, her two daughters—Mrs. Zelta May Adams and Mrs. Betty Jane Morrison—attended OSU and pledged Chi.

Mrs. Wieman also has two sisters, two nieces and two sisters-in-law in the fold.

Her active interest in Delta Zeta, and civic affairs as well, earned her a nomination for DZ Woman of the Year honors in 1950.

In addition to her duties as National Mothers' Club Chairman, Mrs. Wieman serves on the state board of the Oregon State University Mothers' Club. She is secretary of the OSU Federation and public relations chairman of the Oregon Home Economics Association. (She was graduated from OSU in 1922 with a BS in Home Economics.)

Mrs. Wieman was a partner and secretary-treasurer of John Wieman Holly, Inc., Portland,



until 1962. She previously had been head of the home economics department at Lewis and Clark College from 1944 to 1951.

Now a grandmother to two legacies and three grandsons, Mrs. Wieman's leisure time is reserved for home, friends, bowling, and travel.

• • •



Representatives of Theta at Ohio State University, Delta Delta at Georgia State College and Gamma Psi at Central Michigan University accept the Council Awards for continued excellence in all fields.



## *An Adventure In Friendship*

"MEALS ON WHEELS" bring food and cheer every day to elderly and handicapped persons of Hartford and West Hartford, Conn. In the last year 139 people have received a total of 24,942 meals.

Among the nearly 400 volunteers who deliver the meals on five routes, five days a week are the Delta Zeta Alumnae of Greater Hartford.

Among those who have so faithfully devoted their time and effort to delivering the "Meals on Wheels" are Barbara Hill (President of the Greater Hartford Delta Zeta Alumnae), Gamma Beta; Grace Warren, Beta Tau; Marian Glidden, Xi; Ruth Killoran, Gamma Beta; Isabel Bowsza, Gamma Beta; Liz Payne, Delta; Lois Young, Gamma Beta; Joy Bacci, Beta Omega; Ruth Rosmarin, Gamma Beta; and Bert Davidson, Delta Omega.

The first Tuesday of each month, without fail, Delta Zeta Alumnae arrive at the YMCA in Hartford where the "Meals on Wheels" are prepared. They load their car with the thermal containers of hot food for dinner, a thermos bottle of hot coffee and the paper bags containing sandwiches, salads, puddings, and milk for the suppers.

A route has been carefully mapped out ahead (with as many as 10 to 12 stops) by Anna Fiori,

the director of "Meals on Wheels." The meals are then delivered to the clients of this project who are physically or psychologically handicapped, preventing preparation of well-balanced meals.

It is neither a charity nor a commercial project. Each client pays a small amount (\$1.25 a day) if he is able. The project is sponsored by a sub-committee of the Health Service Committee and is recipient of some federal funds allocated by the State of Connecticut. About 50 persons are served daily with quite a number on the waiting list.

The Delta Zeta Alumnae become acquainted with the people on their routes and often stop a few moments to visit with each lonely person. Also they baby-sit for each other to allow more of the membership to take part in this service.

A sample menu for dinner is baked chicken, gravy, cranberry sauce, oven-browned potato, cauliflower, tossed green salad, bread and butter, apricot upsidedown cake, and coffee. A sample menu for supper is sliced ham, bread and butter, purple plums, and milk.

For three and a half years the Delta Zeta alums of Hartford have found this service most rewarding.



Loading up for their "Meals on Wheels" deliveries were DZ alumnae (from left) Ruth Killoran, Gamma Beta; Marian Glidden, Xi, and Barbara Hill, Gamma Beta. The front seat passenger is Steven Killoran.



## Another DZ Lamp Lighted

SIXTY-FIVE new diamonds lighted Delta Zeta Lamps on the campus of Southwest Texas College in San Marcos in April when Iota Alpha became the ninth chapter in Province XVII and the one hundred fifty-eighth on the National roll.

More than two hundred fifty college members and alumnae of Delta Zeta from Texas and Louisiana attended the installation. The chapter was formerly Alpha Delta Chi, local sorority which had begun as the Allie Evans Literary Society in 1927. In 1957 the clubs were allowed to choose Greek letter names and began looking forward to the time when they could become affiliated with National Panhellenic sororities.

Thirty-three girls were pledged into Delta Zeta by a like number of Alpha Tau members from Austin. The group decided to rush as Delta Zetas and in the formal rush week with all groups competing Delta Zeta received their choice of thirty-two girls to meet the chapter quota of sixty-five. Another large pledge service was held with the help of the Alpha Tau girls and rose and green ribbons were all over the campus, especially prominent in the spring elections, where, with the backing of the *College Star* (editor Mary Hale, Delta Zeta) Kathy Alford was elected vice-president of the student body and Ann Marie Kessler, Patricia Kessler, and Millie Cobb were elected Senators.

On installation weekend Mrs. Marguerite Havens, CCA; Mrs. Larry Frymire, national vice-president (alumnae); Mrs. Katy Blanche Stallworth, Province vice-president; Mrs. William B. Carr, province president; Mrs. M. J. McKee, former national director of public relations; Mrs. T. J. Bianchi, state recommendation chairman, and Jane Ann Maxwell, state public relations coordinator, arrived to help with the installation of the chapter.

Assisting with the preparations were the San Marcos alumnae, seven of whom were initiated in Austin on March 15. Ruby Henderson, retired head of the Education Department of SWTC, and first sponsor of the Allie Evans Literary Society; Laura Whittenberg, co-sponsor of ADX and faculty member in the school of business; Mrs. Fred Richan and Mrs. H. G. Jackson, teachers in the elementary school, Mrs. Roland Manske, honorary sponsor; Mrs. Sam Leggitt, mother of a



Old Main at Southwest Texas College in San Marcos.

pledge, and Mrs. Frank Edwards of Martindale. Long time faculty member of the school of music, former AT, Mrs. James Buchanan (Mary) was invaluable in her help to Delta Zeta through the four years of contact with this campus.

Additional alumnae initiates were: Mrs. Ralph Erickson, French teacher in the high school; Mrs. Douglas Harris, wife of SWTC history department professor; Phyllis L. Brown, Librarian of Texas A&M University; Mrs. Thurmond Glasgow, Miss Sally Jo West, Mrs. Donald Swisher, Miss Ina Miller, Mrs. George Taylor, Mrs. Kenneth Chance, Catherine Compton, Mrs. Robert Cromwell, Mrs. G. W. Touchstone Jr., Claudine Nelson, Doneta Darnell, Sharon Richey, Peggy Jo Stapp, Mrs. Nick Carr and Mrs. Al Mustin.

Initiation services were conducted by a team from University of Texas led by Kay Morrow in the Fellowship Hall of the First Methodist Church. Officers of Iota Alpha initiated were: Karen Jo Kneupper, president; Judy Browning, pledge trainer; Sarah Sherman, rush chairman; Judy Seidel, recording secretary; Ann Keeler, corresponding secretary; Glenda Griffith, treasurer; Pat Garrett, philanthropy; Pamela McKinley, press chairman; Millie Cobb, social chairman; Stephanie Catalani, historian; Dede Armentrout, activities chairman; Deann Hilton, standards chairman; Cindy Alviset, scholarship chairman; Cookie Matthews, courtesy chairman; Mimi Miller, public relations; and Barbara Canion, parliamentarian.

Other initiates were: Christine Andrae, Mary



Jane Alexander, Kathy Alford, Patricia Arnold, Carolyn Bond, Sandra Cahill, Elizabeth Carter, Cynthia Jo Charlton, Joane Czichos, Bobbie Delaney, Peggy DeMarais, Betsy Fisher, Julie Forsythe, Frances Kay Foster, Barbara Jane Gafford, Ann Gordon, Barbara Guerrero, Mary Hale, JoAn Henry, Jon Ann Hilburn, Cecilia Houk, Carol James, Sally Jackson, Ann Keeler (Houston), Ann Keeler (Ozona), Kitty Kelly, Carol Jean Kreneck, Mary Kay Larson, Kathy Lindsey, Karen Little, Faye Love, Kathy Lykins, Sharon McCauley, Roxanne McCown, Yesa Miranda, Carol Northington, Glenda Perser, B. J. Redell, Sandy Rasbarry, Nancy Rogers, Barbara Jane Ryon, Nedra Schott, Linda Shoemaker, Betty Ann Smith, Carol Sulik, Helen Sommer, Patricia Talbert, Becky Walling, Elizabeth Webb and Jane Woodress.

Immediately following initiation, the patroness ceremony was held in the church sanctuary for Dr. Azelete Little (Mrs. Byron) Head of the Home Economics Department, and mother of Karen Little. Dr. Little had served as co-sponsor of  $\Delta \Delta X$  for a number of years and will continue as an advisor.

The installation banquet was held at Hill Restaurant with Mrs. Frymire serving as the national installing officer and Dr. Little as chairman. Mrs. McKee, toastmistress, introduced Dr. J. G. Flowers, president of Southwest Texas College, who welcomed Delta Zeta to the campus and reminded the members of their responsibility to the College as sorority women.

Greetings were read from Delta Zetas all over

the states by Mrs. Bianchi and a welcome from national and state officers was given by Mrs. Havens, Mrs. Carr and Mrs. Stallworth. Iota Alpha chapter of Delta Zeta was accepted for SWTC by Marjorie Stewart, Dean of Women, with wishes for happiness and success in the years to come.

Guests included Dr. and Mrs. J. G. Flowers; Rev. and Mrs. Raymond Wilson, Pastor First Methodist Church; Dr. and Mrs. Leland Derrick, Dean of Graduate School; Mr. and Mrs. Robert Hoganson, Music Department; Mrs. Eleanor Johnson, Music Department and soloist for the banquet and Mr. and Mrs. Joe Zimmerman, society editor of San Marcos Record.

Several husbands and parents of initiates were among the 218 admiring guests who witnessed the presentation of a beautiful silver service to Betty Smith, president of the chapter by Mrs. Frymire on behalf of Delta Zeta National and college and alumnae chapters. There were many other silver gifts.

Sunday morning Mrs. Carr held a model chapter meeting in the Student Union and later all members and guests attended church services together at the First Methodist Church with the Rev. Wilson, father of Delta Zeta, Evangeline Wilson, Alpha Psi, conducting the morning worship.

Many faculty, parents and friends came to the presentation tea held Sunday afternoon in the ball room of the Union. Mrs. William Leach, Mrs. Joseph Bosch, and Mrs. Howard Payton, representing the Austin Alumnae, were hostesses



Mrs. George C. Havens (left), Dean Marjorie Stewart (center) and Mrs. Larry Frymire make a stop at the tea table during installation ceremonies at Southwest Texas.





Iota Alpha Chapter of Delta Zeta following installation.

for the tea.

San Marcos is situated on the clear, cool San Marcos river. Its streets are shaded by giant oak, pecan, elm and sycamore trees draped with Spanish moss. Established first as a mission by the Spanish priests in the early 1700's, the town was destroyed twice, once by flood waters and once by an Indian raid. When Stephen F. Austin brought the early settlers to Central Texas, the settlement which grew into present-day San Marcos was established.

Atop the hill on the Southwest Texas campus stands "Old Main"—a red brick building which originally was San Marcos Normal School, es-

tablished in 1899. In 1923 the name of the college was changed to Southwest Texas State Teachers college. The State Legislature again changed the name of the college by deleting the word "teachers" in 1959. "Old Main," because of its charm and quaintness is unforgettable both to visitors and students.

SWTC, alma mater of President, Lyndon Baines Johnson, has an enrollment of between 3,000 and 4,000 students with an increase every semester. New buildings are going up at the rate of three or four at a time and the future of the College shines as brightly as do the diamonds in the Lamp of Delta Zeta.

## Flame Fantasy on the Move

The Illinois Council of Delta Zeta is planning a Flame Fantasy. It will be held at the fabulous Sheraton O'Hare Motor Hotel in Des Plaines, Ill., on November 14, 1964. The Sheraton O'Hare is just two minutes from Northwest Expressway and Illinois Tollway exits.

This will benefit the hearing philanthropy of Delta Zeta. A fashion show will be given by Bonwit Teller and many prizes will be awarded. Tickets will cost \$5. An information flyer and ticket blank will be sent to all Delta Zetas in the area. So you gals in Illinois and surrounding territory keep your eyes on the newspapers and your mailbox. You'll want to attend this gala affair, which of course is patterned after Southern California's famous Flame Fantasy.



## KAPPA GOLDEN GLOW

May 30th had that golden glow for members of Kappa Alumnæ Chapter in Seattle. It was 50th anniversary time and the chapter marked it with a reception at the Kappa college chapter house at University of Washington.

Honored guests were those who had been initiated into Delta Zeta in 1914 and Golden Rose certificates were presented by alumnæ president, Leah McGraw Stewart, to Mareta Havens, Hilda Knausenberger Baldwin, Frances Ringer Lee, Clara Knausenberger Holmes, Fanny Berglund Forsman and Olga Liska Springsteen. Also honored was Emily Neighbor Dullahant who joined at Theta Chapter, Ohio State University, 50 years ago.

Honored in absentia were Gladys Hitt Durrant of St. Helens, Ore.; Eugenia Bassett Dana, Phoenix, Ariz.; Hertha O'Neill Cartmell, San Jose, Calif.; Christine Pollard Quattlebaum, Columbia, S.C., and Elsie Morse Stuart of Seattle.

Doris Gillespie was general chairman for the reception assisted by Zoa Straw and Eleanor Fariss. Marcia Hooper Lewis handled the decorations and Dorothy Wolf Carpenter and Verna Jensen Crisp officiated at the tea table.

Lovely Kappa collegians served as hostesses



Six of the charter members and pledges who attended the Kappa golden anniversary party included (from left) Mareta Havens, Clara Knausenberger Holmes, Hilda Knausenberger Baldwin, Fanny Berglund Forsman, Olga Liska Springsteen and Frances Ringer Lee.

for this occasion which reunited many sisters and renewed old friendships.

## Library Honors Late Cleo Rogers

A library to be built in Columbus, Ind., this Fall will be named the Cleo Rogers Memorial Library in memory of the longtime librarian there.

Miss Rogers, who joined Delta Zeta at Franklin College's Ψ chapter served the Bartholomew County Library since 1936. She died this year. The library will be designed by I. M. Pei of New York City.

Miss Rogers was active in many organizations in the Columbus area and is fondly remembered by all whose lives she touched in however slight the manner. All Delta Zetas are honored that the library board and citizenry of Columbus would see fit to name their library after Miss Rogers so that it may serve as a memorial to her.

• • •

You cannot climb uphill by thinking downhill thoughts. If your world is gloomy and hopeless, it is because you are gloomy and hopeless. You must change your mind to change your world.



# Delta Zeta Careerist

POLLY WALDRON is director of Women's Activities for radio station KWKH in Shreveport, La. A woman of unbounded energy and enthusiasm she is also active in innumerable civic activities. But then Polly has always been active in whatever she's undertaken.

Back in Paris, Tex., she was president of her high school class of 1942; president of her speech club, president of her Latin Club and named best all-around senior girl and friendliest senior girl. She was in "Who's Who in American High Schools and Colleges," also.

When she moved up to Paris Jr. College she was just as active. She was a cheerleader, vice president of Phi Theta Kappa honorary society, president of Curtain Club and president of the sophomore class, among other things.

It was at the University of Texas that Polly joined Delta Zeta's Alpha Tau chapter. Her interest in speech that eventually brought her into the radio field was evident here where she was active in the Forensic Society.

As an ambassador of good will for station KWKH, she has done an extraordinary job. She has traveled throughout the station's 71 county coverage area; been featured on convention programs; appeared at fairs and festivals; addressed club meetings and met thousands of her fans in person.

Her services as a speaker and book reviewer are eagerly sought by women's organizations.

Just one of her jobs is "Open House," the housewife's program of which Polly is hostess. She offers her listeners 90 minutes of entertainment and wanted information daily. Each broadcast includes a recipe of the day, a feature on menu planning and problems and solutions, a telephone participation feature and other features on a variety of subjects of interest to women.

The program also offers interviews with visiting celebrities and discussions by guest professionals on music, art, home decorating, nutrition, fashions, gardening, etc.



Polly Waldron

Outside the radio station Polly is married to an independent consulting geologist and has two children, a boy and a girl. Homemaking is her hobby and she enjoys cooking. Polly is active in American Women in Radio and Television, and is a member of East Texas Tourism Committee as well as chairman of the subcommittee for the Shreveport Chamber of Commerce.

Her husband is a deacon in the Shreve City Baptist Church and she is superintendent of the married young peoples' department in Sunday School and is a counselor to young single people.

She's a real Southern lady with a vibrant personality and we're happy she's a Delta Zeta.

. . .

Said the Emperor Marcus Aurelius: "Live as on a mountain."

Mountain heights cause spirits to soar. How can one be mentally small who associates with the magnificent bigness of mountains?



# ANNOUNCING!!!!

## Magazine Sales Winners

(May 1, 1963 through April 30, 1964)

### THE WINNERS—DELTA PI

PASADENA-FOOTHILL ALUMNÆ

#### ALUMNÆ CHAPTERS

First Place—PASADENA-FOOTHILL (California)

Second Place—SEATTLE ALUMNÆ (Washington)

Third Place—METROPOLITAN DETROIT ALUMNÆ (Michigan)

#### COLLEGE CHAPTERS

First Place—DELTA PI (Emporia, Kansas)

Second Place—DELTA (Greencastle, Indiana)

Third Place—GAMMA LAMBDA (San Jose, California)

For the first time in the history of our National Magazine Program, a Chapter has gone over the \$1000.00 mark in magazine sales. Congratulations, DELTA PI for your record of \$1100.00!!!!

Our thanks to these outstanding chapters and to *all* of you who have worked so hard to make our National Magazine Program a success.

Why don't you start YOUR chapter on the way to the \$1000.00 mark by using the handy order form printed below?

---

### ORDER FORM FOR DELTA ZETA SUBSCRIPTIONS

P.O. BOX 725, CONCORD, CALIFORNIA

Date ..... 19 .....

Chapter to be credited .....

Address .....

Amount enclosed \$ .....

#### PLEASE PRINT

Name of Subscriber .....

Street, City & State .....

Name of Magazine .....

No. of Years ..... ☐ New ..... Renewal ☐ .....

Donor (If a Gift) .....

Street, City & State .....

---

#### No Card Sent Unless Requested

Gift Card	Birthday <input type="checkbox"/>	Christmas <input type="checkbox"/>	Anniversary <input type="checkbox"/>	General <input type="checkbox"/>	No Card <input type="checkbox"/>
-----------	-----------------------------------	------------------------------------	--------------------------------------	----------------------------------	----------------------------------

Card to Arrive ..... 19 .... Card to be Signed .....



# The Week That Was



Posed with the seven trophies Zeta Alpha received in as many days, were (from left) Mary Hildeman, Betty Kolves, Arlie Gaut, Lynne Mahlig and Marsha Rensch.

Saturday, April 11, began the "week that was" and quite a week it turned out to be. Zeta Alpha Chapter of Delta Zeta at Bradley University took seven trophies home.

It all began with the chapter winning first place for the sixth year in the booth competition at Campus Carnival. DZ's "Baby Haven" took in 1,422 tickets during the two-day carnival which is a charity fund raising event. Lynne Mahlig was chairman.

Next came the carnival dance at which Marsha Rensch, copped a trophy for being named "Lady Fair." The following week Marsha was chosen "Darling of Delta Upsilon" by Bradley DUs.

A few days later, at the Panhellenic Scholarship banquet, Delta Zeta was presented the trophy for the highest sorority grade point average

(for the second year). In individual awards, Betty Kolves was honored (with a trophy, what else?) for senior girl with highest grade point average.

The fifth trophy was won by Mary Hildeman who received the Arnold Air Society Angel for 1964. The "Angel" goes to the co-ed who has shown outstanding service to Angel Flight, honorary auxiliary to Air Force Reserve Officers Training Corps. Mary has been commander of the Angel Flight.

But moving on . . . Arlie Gaut was crowned "Dream Girl of Theta Chi" at the local chapter's Spring formal and received two trophies to mark the occasion, making seven trophies in all for the Zeta Alphas.

The gals are still walking on cloud nine.

## *Coming in the Fall Issue*

MORE CONVENTION HI LITES

. . . What Delta Zeta Means to Me

Δ Z Development Plan

Florence Hood & Grace Mason Lundy Award Winners and Court

New Traveling Secretaries





Donna Lemon  
Phi Kappa Phi  
Alpha Epsilon  
Okla. State Univ.



Nancy Treesh  
Varsity Cheerleader  
Gamma Chi  
Ball State Teachers College



DZ members of the St. Norbert College Chamber Singers; (from left) Rosemary Corrigan, Sue Steckhart, and Katie Farrell. Theta Lambda, St. Norbert College.

## Honors



Judy Perle  
Who's Who  
Gamma Psi  
Central Michigan Univ.



Betty Drummond  
Who's Who  
Alpha Sigma  
Florida State University



Barbara Barr  
Beatrice Benson Award  
Zeta Alpha  
Bradley



Sharon Kowalski  
Who's Who  
Gamma Psi  
Central Michigan Univ.



Kay Mekemson  
Who's Who  
Delta Sigma  
N.E. Missouri State College



Dolly Persinger  
Secretary of A.W.S.  
Epsilon Alpha  
Western State College



Jean Dallas  
Phi Alpha Mu  
Lambda  
Kansas State University



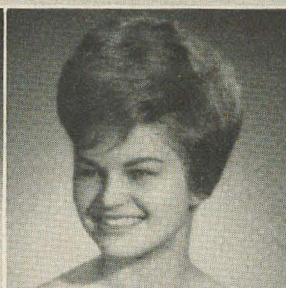
Jayne Combs  
Kappa Delta Pi  
Beta Tau  
Nebraska Wesleyan University



# Scholastic Honors



Laurilyn Harris  
Epsilon  
Pleiades  
U. of Indiana



Susan Greenleaf  
Phi Kappa Phi  
Beta Rho  
Michigan State University



Ann Eskridge Cleek  
Fagus (Mortar Board  
equivalent)  
Delta Upsilon, Marshall



Jane True  
Fagus (Mortar Board  
equivalent)  
Delta Upsilon, Marshall



Caryn Shelar  
Xi Phi (Mortar Board  
equivalent) Delta Pi  
Kansas State Teachers



Sue Wallace  
Kappa Pi  
Gamma Omicron  
San Diego State College



Sandy Peterson  
Sigma Delta Pi  
Tau  
University of Wisconsin



Janet Vespa  
Shorter Board, Junior Aca-  
demic Honorary, Alpha  
Beta, Univ. of Illinois



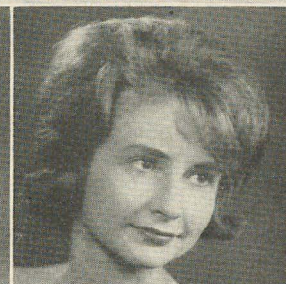
Gay Colson  
Kappa Delta Pi  
Beta Tau  
Nebraska Wesleyan



Sharron Palmeter  
Phi Kappa Phi  
Alpha Epsilon  
Oklahoma State



Fran Tieman  
Cardinal Key  
Delta Sigma  
N.E. Missouri State Teachers



Jean Traxler  
Cardinal Key  
Delta Sigma  
N.E. Missouri State Teachers



New members of Delta Epsilon Sigma include from l. to r.: Pat Van Hout, Katie Farrell, and Mary Heezen. Theta Lambda, St. Norbert.



Doreen Matara  
Who's Who, Epsilon Kappa,  
Wisconsin State  
(Whitewater)

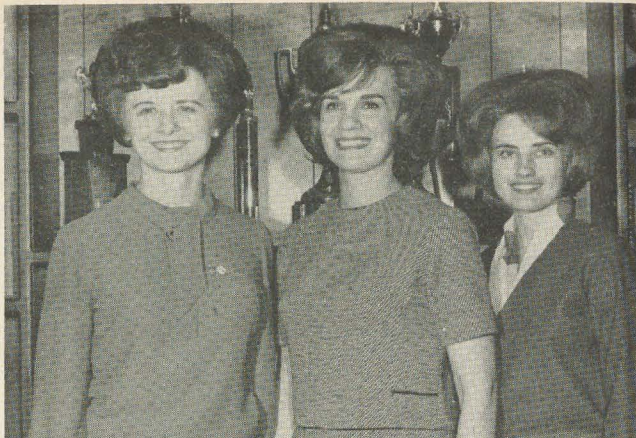


Karolyn Victor  
Who's Who, Epsilon Kappa,  
Wisconsin State  
(Whitewater)





Marilyn Rosenblatt  
Sweetheart of Zeta Beta Tau  
Delta Alpha  
California State College, Long Beach



Delta Zeta Beauty and Brains from Alpha Epsilon at Oklahoma State University. (l. to r.) Dee Dee Finch, 1963 Theta Chi Sweetheart; Jerry Cotten, Fire Protection Queen; Gaye Petre, Mortar Board, Who's Who, 2nd runner-up Miss OSU Contest.

## Sweethearts



Sara Tuley  
Sigma Tau Gamma,  
White Rose Queen  
Delta Pi  
Kansas State Teachers  
College



Carolyn Bailey  
Homecoming Court  
Beta Theta  
Bucknell



Joyce Tutty  
Tau Kappa Epsilon  
Sweetheart  
Gamma Phi  
Indiana State College



Marsha Paulus  
Theta  
Ohio State U.  
Sigma Nu White Rose Queen



Emily Ann Gentry  
Alpha Gamma Rho  
Sweetheart  
Zeta Pi  
University of Georgia



Margaret Dye  
Golf Team Sponsor  
Delta Theta  
University of Houston



Donna Weaver  
Delta Chi Sweetheart  
Delta Theta  
University of Houston

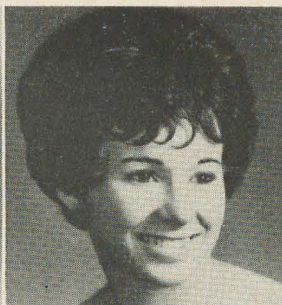


M'Liz Hancock  
Sweetheart of Theta Chi  
Delta Alpha  
Calif. State College,  
Long Beach





**Marjorie Rupert**  
Maid of Honor to the  
Laurel Queen  
Gamma Phi  
Indiana State College



**Chris Steward**  
Alpha Gamma Rho  
Sweetheart  
Beta Kappa  
Iowa State



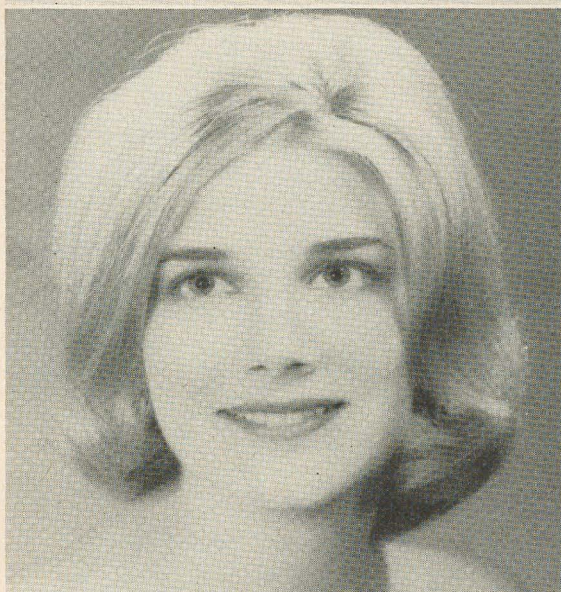
**Cathy Runnels**  
Delta Phi Delta, President  
Gamma Omega  
Southern Illinois University



**Marna Paulovicks**  
Greek Week Queen  
'Who's Who  
Delta Upsilon  
Marshall



**Donna Jean Kelly**  
First runner-up Miss Warrensburg Contest  
Sigma Gamma  
Cent. Missouri State



**Marilyn Blasini**  
Sweetheart Court of Tulane Engineering School  
Finalist in LSUNO Sweetheart Contest  
Theta Kappa  
Louisiana State



**Heidimarie Fritz**  
Second runner-up Miss Warrensburg Contest  
Sigma Gamma  
Cent. Missouri State





Janet Flesch  
Alpha Kappa Lambda Sweetheart  
Delta Sigma  
Northeast Missouri State College



Kappa Pi, national honorary art fraternity, members from Delta Lambda, Lamar State College of Technology. L. to R.: Barbara McGann, Leona Fasullo, Margaret Scott.



Sally Kroger  
R.O.T.C. Sponsor  
Delta Upsilon  
Marshall



Kay Kidder  
Campus Leader  
Epsilon Omicron  
Western Illinois University



Margie Day  
First attendant to the queen of  
Alpha Kappa Lambda  
Zeta Epsilon  
California State College



Candidates for sweetheart contest of LSUNO include: 1st row l. to r: Shirley Pettingill, Muriel Fortier, Andrea Nicolaides  
2nd row l. to r.: Sherron Stein, Rosemary Allardyce, Sandra Puccio. Theta Kappa, Louisiana State.





Marly Fraley  
Homecoming Duchess  
Zeta Psi  
Stephen F. Austin State  
College



Carol Heitman  
Queen TKE Post Mardi Gras  
Zeta Omicron  
Wisconsin St. Coll., La Crosse



Kathy Butler  
Pershing Rifle Sponsor  
Beta Kappa  
Iowa State



Karen Mueller  
Gamma Kappa  
Kent State  
May Day Court

DZ's displaying a year's winnings, from Delta Upsilon, Marshall University. 1st row (l. to r.) State Day individual scholastic trophy, volley ball intramurals trophy, and Blood Drive trophy. 2nd row (l. to r.) Greek Week Olympics trophy, State Day press book trophy, and Outstanding Greek Woman trophy. 3rd row (l. to r.) Karen Jones holding Pikes Peak Queen trophy, which she won; Sally Kroger with Pikes Peak trophy, and Adrianna Upp holding Mothers' Day Sing trophy.

## More Honors



Roseann Worthington  
I.S.U. Dairy Princess  
Beta Kappa  
Iowa State University

Marilyn Walthers-Greek  
Goddess with Tau Kappa  
Epsilon God at annual  
Greek Toga Party.  
Epsilon Omicron  
Western Illinois University





# Delta Zeta Profiles

## JOYCE MORTON



Joyce Morton, Gamma Gamma chapter at Missouri Valley College, was graduated in June from Missouri Valley College after a very busy four years on campus. In her own chapter she served as first vice president and by-laws chairman. In addition she was (taking her activities by years) in her freshman year: class secretary-treasurer, a member of student senate and class Queen. Understandably, we can only hit the high spots since this DZ has been so active in everything. In her sophomore year she was again in student senate, was cheerleader and again class Queen. Along came the junior year and she was still in the senate along with disciplinary board, WAA, Liaison Council, head cheerleader, Sigma Tau Delta and an attendant to May Queen. Then she was a senior and was Sabidura Queen (yearbook), the outstanding senior woman, a member of Who's Who, on the dean's list and still a member of senate. Joyce plans to work towards a master's degree in physical education. One additional interesting note. Joyce is a charter member of Gamma Gamma chapter and is now CCD for it.

## KATHLEEN DUGGAN

Kathleen Duggan is a hardworking assistant yearbook editor, one of the offices that won her the New Mexico Highlands University Woman of the Year Award. (This award is presented to one woman student each year on the basis of her scholarship, leadership qualities, and campus activities.) "Dug" will study in Germany on a Fulbright fellowship next year. She is an active member of Alpha Psi Omega, national dramatic honorary fraternity, and the French Club.



## BRENDA MENGES



Brenda Menges, Alpha Upsilon, University of Maine, was graduated in June with a degree in education. She is also a student of languages—French and Russian. During her senior year Brenda was called upon to become a three-day a week French teacher at nearby Orrington, Me., junior high school, while carrying a full load of six courses. To prepare the 8th graders for high school language courses, she was asked to teach beginning oral French to 120 students. She did. The experience thrilled this Dean's list student. Brenda is an active DZ who loves music, gymnastics, all sports and the domestic sciences. The experience gave her a chance to find out if teaching was really for her. "And you know what?" she says, "It is."

## MRS. JASON SMITH

Mrs. Jason (Idella) Smith, Alpha Epsilon, 18 years-ago launched an intensive, two-year study of the Bible. She never went on to another line until she understood the line she had read. She agreed to share her new-found interest in the Bible with a few friends in her hometown of Tampa, Fla. Word got around. As a result, she's still teaching a class at First Presbyterian Church. And, as a result, The Tampa Times "Churchwoman Award of 1963" was bestowed upon her. Tampans cited her for the award because, "She's one of the truly fine women of Tampa," they said. Idella Smith, Kentucky born, was reared a Methodist and married an Episcopalian. She's a Florida State College for Women graduate, a prominent Tampa civic leader, an enthusiastic traveler with a sense of humor—and she's a Delta Zeta.





*Come with us this issue for a look inside Province XIX, Tennessee and Arkansas. Here we find five college chapters and seven alumnae chapters. You'll also find lots of southern hospitality here and pretty southern belles. Mrs. Gilbert Strobe Jr. of Memphis is Province President and Mrs. Frank Quin Jr. of Shreveport, La., is vice president.*

## East Tennessee's DZs

DELTA ETA Chapter was installed on the East Tennessee State University campus on January 29, 1956. There were 10 charter members, including sponsors, who prior to this date, had been members of Delta Pi Delta, a local sorority.

Co-CCD's are Mrs. Pat Henry Barnes and Dr. Constance Mynatt. Dr. Mynatt is head of the Women's Physical Education Department on campus. The collegians are an active group. Two are in the ETSU Sponsor Corps, the president, DeAnna McCrary, and Honorary Lt. Col. Pauline Stanin, who is commander of the Corps. This year, Linda Crawford is President of Panhellenic Council. The chapter also has a senator and two members of the House of Representatives in the student government. Cheryl Williams and Judy Groves are majorettes in the Band.

Four Delta Zetas, Phyllis Moore, Pauline Stanin, sisters Ann Crawford and Linda Crawford, are listed in *Who's Who in American Colleges and Universities* for 1964. Ann, Linda, Sue Bernard and Jilda Creed were also on the Dean's List with straight A averages. Two members serve on the ETSU *Collegian* school newspaper and there are Delta Eta members in most of the campus honor societies.

The chapter's philanthropy work on campus consists of supporting the Speech and Hearing Clinic. A Christmas party is held each year for the children of this clinic and a check presented to the Clinic to be used in connection with their work. Members are also responsible for maintaining the nursery at the First Methodist Church on Sunday mornings.

Other activities include participation in Pi Kappa Alpha Pike's Peak, Lambda Chi Alpha All-Sing, Homecoming Display, DZ Dinner Dance, houseparties, and various school-sponsored activities, all of which gives the DZs a well-rounded program during the year.



Cheryl Williams twirls for East Tennessee.





East Tennessee DZs and Clinic Children

## EPSILON PI

# Henderson State

Henderson State Teachers College is located at Arkadelphia, seventy miles southwest of Little Rock, Ark., and thirty-five miles south of Hot Springs, America's oldest national park.

The college was established by an act of the General Assembly in 1929 as a college for the education and training of teachers for the public schools of Arkansas. It occupies a campus donated to the state, along with some buildings and equipment, by the city of Arkadelphia. The property had reverted to the city from the Methodist Conferences of Arkansas' Henderson Brown College, an institution which the church had maintained since 1890.

Part of today's active campus is Epsilon Pi chapter of Delta Zeta, which, as a former Delta Sigma Epsilon chapter, was installed in September, 1956, by the then national president, Evelyn Adams Costello. She initiated two girls and one alumni member, Ruth Guthrie, who received an Achoth Award at the 1958 convention in Chicago for her outstanding service as an alumna to the growth of Epsilon Pi. Mrs. Lucy Finley, who has served as faculty adviser of Epsilon Pi for many years, was initiated into our sisterhood last year, and is presently CCD.

From a membership of two on that day of in-

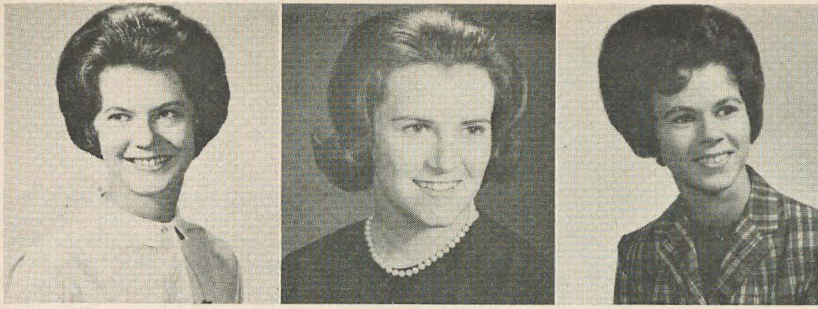
stallation, Epsilon Pi has grown steadily with many members displaying outstanding leadership and honors. At the 1962 convention Suzy Glover was the recipient of the Grace Mason Lundy Award.

The chapter is active throughout the year with holiday parties, rummage sales, school activities, and many other events, including an annual mother-daughter banquet and DZ-Phi Lambda Chi Luau. The highlight of the year comes in May when the Epsilon Pis travel to Hot Springs, Arkansas, for a fun-filled weekend, including annual rush school.

Among our members many double honors have come to Epsilon Pi as campus groups hold spring elections and contests. The retiring Miss Henderson State gave her crown to the 1964-65 winner, Brenda Richey; Anna Beth Silliman handed the Associated Women Student president's gavel to Dana Countz; Homecoming Queen Edie Perry also passed the title of Phi Lambda Chi Sweetheart to Dana. The title of Outstanding Senior Woman, not to be revealed until the yearbook is released, is certain to be a Delta Zeta, for the run-off is between Anna Beth and Edie.

The high caliber of Delta Zeta leadership on





This pretty trio claims membership to Alpha Chi honorary for the top 10 per cent of the junior and senior classes at Henderson State. The DZs are (from left) Jean Garner, Guylene Cameron and Dana Countz.

the Henderson State campus is also indicated by the inclusion of six girls this year in *Who's Who in American Colleges and Universities*. Joyce Gaddy, Nancy Wallis, Edie Perry, Dana Countz, Anna Beth Silliman and Sue Spann. Nancy, Jean, Anna Beth, Dana, Linda Sowards, Jean Edler, Lanell Hillman and Guylene Cameron are in Alpha Chi, campus honorary for the top ten percent of the Junior and Senior classes, and eight of the thirty members of the campus service honorary for men and women, Heart and Key,

are Delta Zetas. With members such as these, it is not surprising that the chapter won first place in scholarship and a first place award of \$50 for the homecoming float decorated in cooperation with Phi Lambda Chi fraternity.

Like Province XIX as a whole, Epsilon Pi is a well-rounded chapter, with each member contributing to its success and being rewarded with personal growth and the bonds of sisterhood in proportion to the service and love she gives.

## Gamma Iota: Memphis State University

Nestled in the heart of the world's cotton capital on the banks of the Mississippi River is Memphis State University, home of Gamma Iota of Delta Zeta.

Contrast is characteristic of the school, with its old campus, such as the 52-year-old Administration Building along with the 10 modern classrooms and resident structures which have been completed within the last five years. This theme also underlies enrollment, which has skyrocketed to an expected 10,000 for this fall.

One of the new facilities is the Panhellenic Building, which is the chapter's "home." From 1948, when DZ came to MSU, to 1960 the Gamma Iotas had rooms first in Mynders Hall and then in the Student Center. Decorated in modern tones with an Eastern flavor, the suite in the new building has a spacious living and meeting room, and office, a kitchenette and two large closets.

A friendly atmosphere pervades the campus, and the DZ's are especially known for promoting this attitude, with the annual tea at Christmas for foreign students, open houses for the athletic teams, pledge swaps and popcorn parties with the fraternities, and various other social and philanthropic projects during the year.



The famous "Peter, Paul and Mary" (they're really Memphis State DZs) perform for the Delta Zeta Follies number "DZ Swings in Stereo." They are (from left) Charlynn Ballew, Gail Mitchell and Julie Taylor.





Learning their parts for the annual campus-wide all-sing are officers of Gamma Iota chapter at Memphis State. They are (from left) Merrill Ann Leslie, recording secretary; Nancy Bailey, treasurer; Wanza Gooch, historian; Gail Bishop, corresponding secretary; Marsha Wilkinson, second vice president; Donna Jean Newman, first vice president, and Judy Austin, president.

Competition is keen, however, among the 11 sororities and nine fraternities, and DZ has taken her share of honors. In the spring the chapter took first place in scholarship for the year. In Sigma Chi Derby Day last Fall the pledges took third place, as well as the Sigma Chi Derby Doll trophy, won by freshman Gail Mitchell. A stereo provides music for the chapter's suite as the result of its winning first prize in the Marlboro contest.

Individuals have brought home trophies also. Beauty contest winners include Bette Dillon, "Miss Frayser" (a "Miss America" preliminary), and "Miss Fire Prevention" first alternate, as well as "Miss Congeniality" in three contests; Merrill Ann Leslie "Miss City Beautiful" one year, and Sydney Campbell first alternate to the title the next year. "Miss Dance of Memphis" was won by Stephanie Smithey and "Miss Fire Safety" is Kaye Ferguson, who is also sweetheart of Lambda Chi Alpha. Bette Dillon and Dee Dotson have been sweethearts of  $\Sigma P E$  and  $\Sigma A E$  respectively, and Dee was elected May Queen by the student body last spring. Ginger Toombs was selected as  $\Sigma P E$ 's Diamond Princess and Glo Ervin was "Miss August" on their 1964 calendar. The 1964 Sweetheart of Sigma Chi at Memphis State is Carolyn O'Briant.

On the campus, DZ has many leaders. Marilyn Winn served as President of Panhellenic in 1963-64, Jane O'Neil was president of Tassell, Glo Ervin was Associate Editor of *The Tiger Rag*, campus newspaper and Gail Bishop was elected president of the Student Education Association.

Majorettes for three years have been Bette Dillon and Ann Taylor. Members of the Angel Flight are Martha Jackson, Anita Accardi and

Kaye Ferguson.

Co-Captain of the cheerleaders, Patti Gail Oliver has been elected Secretary of the Student Government Association. New SGA representatives from the school of Arts and Sciences are Gail Bishop and Carolyn O'Briant. Marsha Wilkinson and Valerie Oehm are on dormitory councils.

One distinction of the group is its "DZ Man of the Year" trophy, given each year at the spring formal to a student who is elected by secret ballot for being outstanding in his contribution to Delta Zeta.

"DZ Follies" is Gamma Iota's unique claim to fame on the campus. An event comparable in size to All-Sing and Homecoming, the Follies is a project started in 1952 involving 8-to-10 minute skit productions from sororities and fraternities competing for first and second places.

In 1960 the Gertrude Houk Fariss citizenship award was given to Gamma Iota for its outstanding work through the Follies. Biggest honor to come to an individual of the chapter was DZ's own Florence Hood award, given to Jane O'Neil in 1963.

The chain of sisterhood is strong in Gamma Iota, with the big-little sister program serving as a vital link, along with the merit system, slumber parties, kidnap breakfasts, pledge parties for the actives, "hot dog" dinners after standards meetings or at especially long meetings, songfests, study halls, "Lamplighting Week" before initiation and many other activities which constantly provide new experiences for the girls to share. All this, the girls will tell you, is the real glow in the life of those who walk "in the light of the flame."



## U. of Tennessee

by BRENDA CLIFT

The University of Tennessee is actually older than the state of Tennessee itself. In 1794, two years before Tennessee became a state, a charter was granted to Blount College, named for William Blount, Governor of the territory. After changing the name to East Tennessee College and then to East Tennessee University, the school became the University of Tennessee in 1879. With this change in name, the school became the state university as well as the state's Federal Land Grant Institution.

"The Hill," as it is known to its 12,000 students, is indeed situated on a hill high above the city of Knoxville. Today the university is rapidly expanding down the side of this age old monument, "The Hill." Recently completed have been the warmly welcomed Panhellenic Building, the new and modern Physics, Engineering, and Biology buildings and women's dormitories. Plans are presently under way to relocate the Music and Fine Arts departments.

In addition to the Main Campus here in Knoxville, the University also has campuses in Nashville and Martin, a Medical College in Memphis and a Space Center in Tullahoma. The total enrollment on all these campuses and the extension branches in Oak Ridge and Kingsport is about 20,000, making the University of Tennessee one of the South's largest universities.

As the song, written by our sisters, goes, "Up on a Hill at U. of T, a Sorority was meant to be . . ." Alpha Theta in 1933 became the Beta Lambda Chapter of Delta Zeta at Tennessee.

The sisters at Tennessee have a unique project which they host each winter quarter. In the interest of welcoming the several hundred foreign students on campus, Beta Lambda presents an International Tea. It is attended by all the sororities and fraternities on campus as well as the deans of the university and their wives. The foreign students look forward to this tea each year and it is always a great success.

In 1963, Beta Lambda was declared the Pippiest Sorority on campus and we were presented Adawayhi's "Spirit of the Hill" trophy. In 1964, however, we had to settle for an extremely close second place.

The talents of our sisters Susan Follett, Laurie Potter, Nancy Troxell and Cathy Anderson, sing-

ing "I've Got Rhythm," brought us second place in small group competition in the 1964 All Sing. Combining the efforts of a tall pledge class and our rather short initiated chapter, Beta Lambda also brought home the 1964 Women's Intramural Basketball Championship. Francis Gill, Ginny Keen, Sally Prentiss and Liz Hendrickson, all freshmen and all over 5'6", were backed by 4'11" Carol Carr, and 5'5" Martha Carson, initiates. The pledges also brought in the first trophy of the year by winning the campus paper's subscription contest.

Beta Lambda's Lanna Vineyard has been elected to Angel Flight, Air Force Auxiliary, and is also a candidate for treasurer of the senior class. April Gardner, a 1964 Vol Beauty, is the outgoing President of Panhellenic and Carol Carr and Chris Harrison are the sorority's representatives to Adawayhi, the Student Pep Club. Sandy Cronin and Lynda Waldrop were selected by a faculty committee to serve in the Vol Corps, a campus public relations group.

Blonde Sophomore, Brenda Clift, has been elected president of Beta Lambda for the coming year. Serving with her are Pledge Mother, Brenda McClard, Rush Chairman, Lanna Vineyard, Corresponding Secretary, Jane Tigert, Recording Secretary, Sandy Cronin, Treasurer, Martha Carson, and Historian, Lynda Waldrop. Excitement is mounting as Beta Lambda prepares for its first year in the new Panhellenic building. On the fourth floor, our suite affords a beautiful view of "The Hill" and the city of Knoxville.





# Epsilon Xi : Arkansas

IN MAY 1907, with 107 students and ten faculty members, the Arkansas State Normal School was established in Conway, thirty miles from Little Rock. In 1925, the name of the institution was changed to Arkansas State Teachers College. The school has since expanded to include a 200-acre campus.

Delta Phi Delta, a local sorority and the grandmother of the present Epsilon Xi chapter of Delta Zeta, was organized on the Arkansas State Teachers College campus in 1929. Colors were green and gold; the flower was the rose. Pledges were required to carry green and gold paddles, which was the local custom.

In 1944, Delta Phi Delta merged with Delta Sigma Epsilon, becoming an educational sorority. As Delta Sigma Epsilon, the customs and symbols remained the same. It may be thought of as the mother of the DZ chapter.

Then September 21, 1956, a "new generation" was born when Delta Sigma Epsilon merged with Delta Zeta. The Greek letter Delta and the rose are very symbolic to the chapter because they have remained constant throughout its history.

For many years faculty sponsors Mrs. Nolen Irby and Dorothy Long have watched the chapter change and grow while they provided guidance, support and encouragement. Mrs. Jeff Farris, Jr. is the CCD. Dr. Silas Snow, President of ASTC, is a "DZ Man," as his daughter Sue is an alumna of Epsilon Xi.

Epsilon Xi has an active philanthropy program. This year's projects consist of aiding in a recreational program at a Children's Colony. Also, the chapter sponsors a patient at Carville, Louisiana, a colony for victims of Hansen's disease.

Epsilon Xi chapter is proud of the many world, national, state and city titles which are held by its members. Brenda Peacock is the former World Champion Duck Caller; Dianna Arey was chosen as the National Phi Lambda Chi Sweetheart; Edye Addington is a former Miss Arkansas; Sue Ann Wright is the State Fair Queen; Kay Mauldin is Miss Speedbowl of Arkansas, and Dianna Arey is the former Miss Hospitality of Arkansas. Charla Ray represents her hometown as Miss Booneville and Linda Davis is Miss Stuttgart. Charla was also second runner-up in this year's Miss ASTC pageant.

The chapter's participation in campus activities is made apparent by the following. Sue Cummins, Judy Janes, Linda McKnight, Carolyn Edison, and Betty Rose Burns are members of Alpha Chi, a national honor society. Sue is secretary of the organization. Dianna Arey, Marsha

Pratt, Margaret Mitchell, and Kay Mauldin are members of the national honorary dramatic fraternity, Alpha Psi Omega. Pat Cantrell and Kay Mauldin are cheerleaders. Deltas on the T-Steppers, the school's drill team, are Rockie Rauert, Judy Janes, Carolyn Hazel, Janie Mazanti, Linda Stanfield and Dianna Arey. Pam Bohart, Linda Davis, and Terri Robnett serve as majorettes with the college band.

Three Delta Zetas were in this year's homecoming royalty. They are Dianna Arey, June Terry, and Pat Cantrell. Constance Gilbert was chosen as second runnerup in the Best Dressed Coed Contest. Dian Jennings is Vice President of the Women's Recreation Association. Marsha

(Continued on page 39)



Dianna Arey  
Epsilon Xi  
Arkansas State Teachers  
1963 Arkansas Miss Hospitality  
National Phi Lambda Chi  
Sweetheart



Charla Ray  
Epsilon Xi  
Arkansas State Teachers  
Miss Stuttgart, Ark.



Linda Davis  
Epsilon Xi  
Arkansas State Teachers  
Miss Booneville, Ark.



Sue Wright  
Epsilon Xi  
Arkansas State Teachers  
Arkansas State Fair Queen



# Province XIX Alumnae

**LITTLE ROCK, ARK.**—This chapter, very active in City Panhellenic, helps to operate the Children's Library and sponsors a Christmas party each year for the Girls' Industrial School. The members are annual hostesses to Arkansas State Day, which is attended by DZ's from Arkansas' two college chapters, Epsilon Xi and Epsilon Pi, as well as the Arkansas alumnae. Little Rock alumnae have also been active in extension work for Delta Zeta.

**TRI-CITIES ALUMNAE**—Delta Zetas from three east-Tennessee cities, Johnson City, Bristol and Kingsport, gather to make up the membership of this chapter and to give support to Delta Eta college chapter.

**MEMPHIS, TENN.**—Down in the opposite corner of the state, over 500 miles from the Tri-Cities group, is the Memphis alumnae chapter, which gives an annual party in the fall for Gamma Iota's pledges and in the spring for this college chapter's graduating seniors. Interesting programs keep the meeting attendance high, and members particularly enjoy the Christmas party to which they bring toys for a children's hospital. Another philanthropic project is the adoption of a Carville patient, Mr. Schnell, an elderly jazz fan who this year sent a message to the group by way of a tape recording. An additional highlight of the past year was a coffee for Delta Zeta's recording artist and concert pianist, Til Dieterlie, when she was in Memphis. The coffee's hostess, Jackie Andrews, Alpha Gamma, is serving as president of the Memphis City Panhellenic this year.

**OAK RIDGE, TENN.**—Although there is no organized Delta Zeta alumnae chapter at this famous atomic energy center, Lee Collins Porter, Beta Lambda, is serving Delta Zeta's term as president of the Oak Ridge City Panhellenic.

**NASHVILLE, TENN.**—Continuing the roll

call of Panhellenic presidents in Tennessee, we come to Gertrude Daugherty, Delta, who served as president of the Nashville City Panhellenic this year, and who was also a charter member of the Nashville DZ alumna chapter when it officially organized in 1951. Nashville alumnae were hostesses for Tennessee State Day this year, including a congenial coffee hour, lively workshop, and inspiring luncheon. Other special events, interspersed with meetings which drew many times on the very talented local alumnae, were the Founders' Day dinner, Christmas party to which they brought gifts to be distributed to stranded families during the holidays by the Travelers' Aid, and a family picnic in May.

**CHATTANOOGA, TENN.**—The Chattanooga alumnae chapter, like the Nashville organization, is not located near a college chapter, but provides an opportunity for Delta Zetas who have moved into the area to meet. Some of their members are drawn from such famous points as Lookout and Signal Mountains, Tennessee. Proceeds from their annual benefit contribute to a hearing aid for a local child.

**KNOXVILLE, TENN.**—This chapter, whose past president, Carol McSpadden, Beta Lambda, applied her industry and sense of humor to the job of Knoxville City Panhellenic president this year, lends its support to Beta Lambda college chapter. This activity has included a beautiful Legacy Tea, and a Founders' Day surprise kitchen shower for the girls, who plan to move into their suite in the new Panhellenic Building at the University of Tennessee this fall. Another college-alumnae get-together was a fashion show last fall with the children of alumnae, both boys and girls, as the little models. Collegiates, dressed as clowns, went through the store advertising the children's fashion show. The event was so successful, and the models so precious, that the store asked several little DZ men and legacies back for other shows.

---

*(Continued from page 38)*

Pratt is treasurer of Royal Rooters, and Constance Gilbert and Judy Janes are on the Council of the Student Christian Association. Ginny Enderlin is the State Secretary of Colechon, an organization for Home Economics majors and the list goes on and on.

Eighteen DZs served as orientation leaders

in this year's orientation program for freshmen. In the annual Greek Song Contest, Delta Zeta has won first place five out of the past six years. This year the chapter had the second highest grade point average of all the sororities on campus.





Linda Taylor  
Gamma Omicron  
San Diego State  
Kappa Pi honorary



Bev Bolanowski  
Epsilon Phi  
U. of Detroit  
Secretary of Year award  
Student Council secretary



Kristi Brown  
Alpha Epsilon  
Oklahoma  
Honorary Cadet Colonel



Rose Ann Brendle  
Zeta Omicron  
Wisconsin State (LaCrosse)  
President, Panhellenic



Jeanie Bagley  
Gamma Zeta  
Southwestern U.  
Miss Lake Belton  
Miss Texas 2nd  
runner-up



Judy Lee  
Alpha Chi  
UCLA  
President, Angel Flight

## Honors



New members of CWENS, national sophomore women's honorary are (from left) Nancy Schlafer, Karen Crawford, Sharon Cox and Susan DuMond, all from Theta Delta, Westminster College.





Sherryl Waits  
Zeta Iota  
Humboldt  
Senior Women of Year



Sharon Kowalski  
Gamma Psi  
Central Michigan U.  
AWS Woman of Year



Charlotte McCalla  
Epsilon Beta  
Northwestern State, La.  
Miss Potpourri '64 (annual)



Donna Kelly  
Epsilon Gamma  
Central Missouri State  
TKE Sweetheart

## Honors

In memory of their daughter, Arzelle, Mr. and Mrs. D. Q. Mitchell of Charlotte, N.C., presented a silver punch bowl, tray and ladle with crystal cups to Zeta Pi chapter o. Delta Zeta at the University of Georgia. In their message to the girls, the Mitchells had said, "You girls are the bright lights of our lives, you are very dear to us and our love goes deep. Love is a special feeling that stays inside your heart for the rest of your lives. This is our feeling for each of you." Miss Mitchell and her sorority little sister, Linda Blalock, a pledge, also of Charlotte, were killed in an automobile accident last Fall, along with two other university students. Shown with the service are (from left) Karen Fowler, Carolyn Jackson, Gail Hendry, Sue Weems and Susan Farran.







This prize winning "Carny Sundae" held by creator Carolyn Roman, was just one of the events that helped Epsilon Phi win a trophy for "Most Active Sorority on Campus" during Carny Week at University of Detroit.



Sue Delano of Epsilon Omicron at Western Illinois University accepts the first place trophy for Greek Olympics with Theta Xi's.



Cardinal Theatre, college theatrical group, of Lamar State College of Technology voted Delta Lambdas (from left) Karen Buvinghousen "best actress" and Durr Wilson "best supporting actress." Karen and Lynda played the twins, "Viola" and "Sebastian" in Shakespeare's "Twelfth Night." (Karen was "Viola.") Lynda also had the title role in "Monique."



Each year since its beginning three years ago, the Delta Zetas have won the "Miss Cutie Pan" Contest which is sponsored by the national service fraternity, Alpha Phi Omega at William Jewell College, thus retiring the trophy to Zeta Rho's chapter room. The winners of Miss Cutie Pan are (from left) Sharon Vulgamott, 1962; Janet Webster, 1963; and Shirley Williams, 1961.



# *Around the College Campuses*

by SUSAN ERION BURGER



Sigma Chapter at Louisiana State University is bubbling over with excitement at the news that both the "Darling of LSU" and the "First Maid" are Delta Zetas. The "Darling" (that's Ruth Lynn Rummery with the flowers) is traditionally presented at the Gumbo Ball held this year in the new student union building. The "First Maid" with the lovely smile is Bonny Bridges. Both are from New Orleans. As we said before, Sigma Chapter is so happy about the state of affairs they just want to share that happiness with their DZ sisters.



## STATE DAY AND FOUNDERS' DAY NEWS

Gamma Omicron, San Diego State, attended State Day at Sherman Oaks, Cal., and received the Most Improved Chapter award.

The entertainment portion of Nebraska State Day was carried out by Beta Tau, Neb. Wesleyan. It consisted of skits showing different types of rushees, songs for rush, and a demonstration of a floating circle.

Epsilon Alpha, W. State of Colo., hosted the State Day for 1964. The program included an hour workshop for everyone, then three additional workshops, covering housing, standards and rush. These were followed by a banquet, at which Epsilon Alpha won the scrapbook award.

Founders' Day activities were held at the Seattle Tennis Club by Kappa, U. of Wash. Speaker was Mrs. L. Collins, Panhellenic Executive Secretary.

A banquet at Menomonie, Wis., was the scene of the Epsilon Omega, Wis. State-Eau Claire, Founders Day, held with Zeta Beta.

After State Day, Gamma Psi, Central Mich., returned to the campus with the Province award. This is the third year in a row that  $\Gamma \Psi$  has received this honor.

The Delta Alpha, Calif. State-Long Beach, State Day was centered around the theme, "Bonds of Sisterhood." Mrs. Howard Wittenburg, president of Gamma Phi Beta was the speaker.

Delta Zeta State Day in Georgia was held at the Georgia Center for Continuing Education, in Athens. The program began with a coffee and registration, followed by workshops, and panel discussions. Next a luncheon was held, at which Mrs. Verle Meatheringham, national  $\Delta Z$  deputy officer, spoke. The festivities ended with a tea and open house at the Zeta Pi, U. of Ga., chapter house in Athens.

Many Delta Thetas, U. of Houston, attended State Day in San Marcos, Tex. The convention consisted of displays, workshops, a luncheon, banquet and the installation of the new Iota Alpha chapter at South West Texas State College in San Marcos.

Founders' Day celebration at Mu, U. of Cal.-Berkeley, included a brunch at the Kaiser Center in Oakland, where Gail Patrick Jackson spoke about the philanthropic work of Delta Zeta.

Beta Rho, Mich. State., as well as other Michigan chapters were the guests of the Kalamazoo alumnae and Gamma Pi, W. Mich. U., for State Day. The day began with workshops for initiates and pledges, designed for the purpose of better understanding of the various activities, public relations and scholarship.

State Day in Charleston, brought honors to

Delta Upsilon, Marshall U. A trophy was presented for the individual highest scholastic average in the state to this chapter. In addition they received the silver bowl for the best scrapbook.

Ohio's State Day was held at Beta Chi, Wittenberg. Gamma Tau, Bowling Green, won the Membership Trophy.

An important event at Gamma Omega, S. Ill. U., was State Day in Carbondale. Mrs. Whitfield helped conduct informal discussions covering rush, standards and philanthropic projects.

West Virginia State Day was held on the campus of Morris Harvey College. Chapters present were: Delta Upsilon, Marshall; Epsilon Delta, Concord; Epsilon Iota, Fairmont State; Theta Xi, Glenville; and Zeta Tau, Morris Harvey.

## AWARDS FOR GRADES AND ACTIVITIES

A trophy for spirit and originality of costume was presented to Gamma Tau, Bowling Green, on Sigma Chi Derby Day. The girls came dressed as midgets, wearing cut-offs around their knees, white shirts around their waists and pillow cases with faces drawn on them over their heads.

Beta Theta, Bucknell, attained the highest scholastic average of all sororities and fraternities first semester, with an average of 3.034 on a 4.0 system. Beta Theta was the only chapter to have higher than a 3.0 average.

During Greek Week, Zeta Phi, Slippery Rock, won first place in the sing contest, May Queen and two in May court.

Second place in volleyball, Ice-O-Rama, basketball and third place in soft ball went to Epsilon Kappa, Wis. State-Whitewater.

Theta Nu, Moorhead State, won first place in the annual Songfest.

Long Beach College Panhellenic awarded Delta Alpha with the scholarship prize . . . for the second year in a row.

First place over all in U. of Houston's Sigma Chi Derby Day activities went to Delta Theta. This group also won first place in Intramurals.

Delta Pi, Emporia, was especially victorious in that school's Intramurals, winning the all-sports trophy and the Sportsmanship trophy.

Five members of Beta Rho, M.S.U., rolled up another trophy in the bowling finals.

For the first time in 21 years, a sorority won the annual Beta Variety show at Wis. State-La Crosse, and it was Zeta Omicron who took home the honors. The last time the \$25 first place was won was in 1943 when Lambda Sigma Chi, which became  $\Delta Z$  in 1961, presented the first place skit. This year's winning skit was "Screamers Through The Ages," a scientific re-



port on feminine reactions to popular singing idols. Idols included were Rudy Vallee, who "hitches" back to the roaring twenties, Frank Sinatra who provoked heartfelt sighs in intimate scenes with the microphone and induced one young lady to carry him from the stage in her arms, and Elvis Presley who brought the screaming crowd to its feet with "Heartbreak Hotel." Bringing the skit to a climax were the Beatles. (What—no Russ Colombo?)

Greek Week at Western Ill., was an active and rewarding week for Epsilon Omicron. They won first place in the Sing, watched a member be crowned Greek Goddess, and brought home the trophy for the relays. In addition, this chapter has won that school's scholarship trophy for the sixth time out of nine.

Homecoming brought awards to Theta Theta, De Paul. They presented the winning skit, which was a take-off on Bonanza, with "Ma Cartwheel" and her three unmarried daughters. A member was crowned Homecoming Queen, and they won first place in the float contest.

First place in ice carving and second place in women's division sports were won by Epsilon Kappa-Wis. State-Whitewater, at that school's Ice-O-Rama.

As a group, Gamma Omega, S. Ill., has earned a number of honors, receiving first place in the Greek Track meet, bowling championship, and Grand Champions of the Midway at the Spring Festival.

Gamma Beta, U. Conn., won first place in the Homecoming Display.

An average of 2.88 brought home scholarship honors for Theta, Ohio State.

For the second year in a row, Theta Epsilon, La. Poly. Tech., won the province Scholarship trophy.

Zeta Phi, Slippery Rock, are proud of their chapter this year. They achieved three awards, which were the Homecoming Float Award, Greek Sing Award, and May Queen.

Delta Iota, Jackson College, is well-represented in athletic events, winning the inter-sorority basketball and volleyball trophies this year.

Delta girls, De Pauw, won an extra hour by taking first place in the Mortar Board Late Hours Contest, to raise money for women's scholarships. They have won first for the past three years. This year they added the hour to their Spring House Dance and served a midnight chicken dinner to all.

Epsilon Omicron, W. Ill. U., has been awarded the traveling scholarship trophy.

The Scholastic Improvement Award at Oklahoma State was awarded to Alpha Epsilon, for having a .21 grade improvement.

Third place in the Colorado State University sing went to Beta Sigma. They also won a tro-

phy for submitting the winning theme for College Days.

## INTERESTING AND VARIED STANDARDS PROGRAMS

One of Georgia's leading hair stylists visited Alpha Omicron, Brenau, at a recent standards meeting.

Courtship and Marriage was the topic selected by Dr. Charles White of the Ga. State Sociology Department in a standards meeting speech at Delta Delta.

How to Study Effectively. The Importance of Scholarship, Manners at a Wedding, Fashion and Fads, and New Hairstyles were all included at various standards meetings held by Theta Kappa, L.S.U.-New Orleans.

A discussion by Dean of Women at St. Norbert, on etiquette, and The Role of Women in the World, by Rev. Brendan J. McKeough, were presented at meetings held by Theta Lambda. In addition, this chapter opened one standards meeting to the whole campus, when an attorney came to speak on Civil Rights.

One of the most exciting standards programs held by Delta Iota, Jackson, was a cosmetic demonstration, using one of the girls as a subject.

A sophomore member of Delta, DePauw, presented a standards meeting when she demonstrated the harp.

Something new in standards meetings has been used by Beta Sigma, Colo. State U. A five-minute capsule is given every Monday evening which includes reminders on study, etiquette, and other areas.



Elizabeth Fleming of Delta Theta at University of Houston receives Mayor Louie Welch's Proclamation for National Transportation Week to be observed in Houston, May 10-16. Elizabeth served as Chairman of the Women's Traffic Club of Houston and as Secretary for National Traffic Week.



The most successful standards program held at Zeta Phi, Slippery Rock, was a demonstration of hairdressing. It was open to all girls, for a slight admission, and more than \$30.00 was added to the Z Φ treasury.

Manners, properly used, make people feel comfortable with one another, so a standards program speaker pointed out to Gamma Psi, Central Mich.

Standards programs at Cal. State College Pa., included a study of the new Panhellenic Constitution, attending an honors program, and a session on how to improve study habits. Zeta Epsilon enjoyed them all.

Etiquette was also the topic of standards programs at Theta Xi, Glenville.

A question and answer period on social graces was conducted at Zeta Phi, Slippery Rock.

Cal. State College—Long Beach, girls, the Delta Alphas, heard discussions of grooming and commonism in standards programs this year.

Folklore of America was selected by an Anthropology Professor of U. of Cal.-Berkeley, when he presented a standards program to Mu girls.

Since many Beta Rho, M.S.U., girls are approaching voting age, a representative of the League of Women Voters was invited to present a standards program. She gave instructions on registration and told about the League and its work.

An outing to the theatre was part of a standards program when Gamma Phi, Indiana State-Pa., attended "Oedipus Rex."

Zeta Chi, Wis. State-Stevens Point, heard a pastor discuss morals in romance. Other standards programs were based around Δ Z Reflections, and a make-up demonstration.

A beauty consultant from J. L. Hudson's in Detroit spoke to Epsilon Phi, U. of Detroit, on grooming, fashions and etiquette.

A professor of Political Science at Northern Michigan U., presented a Zeta Omega standards program on what women can do to combat communism.

A panel discussion on the meaning of Delta Zeta, a review on President Kennedy, and a demonstration of china, were included in the standards programs of Epsilon Theta, Clarion State.

### PARTIES AND MISCELLANY

A Halloween party was enjoyed by Theta Delta, Westminster College, and their dates.

The quadrangle on the campus of St. Louis U. was the site of a Hootenanny attended by some 2,500 students. This affair was given by Epsilon Phi, with the help of Alpha Delta Gamma. It was originally intended for incoming freshmen, but was enjoyed by the whole campus community. This group also hosted a reception for the St. Louis Soccer team.

Each year Beta Rho, M.S.U., holds an informal



A scene from Beta Rho, Michigan State University's Alice-in-DZ-land rush party. Alice (Nancy Todd) watches the Mad-hatter (Sharon Ensfield), pour tea for the March-hare (Sue Atwatter), and tweedle-dee and tweedle dum (from left; Gail Warner and Donna George).



dance, called the Triad, with two fraternities—this year, Phi Gamma Delta and Delta Chi. The pledges from each house worked on decorations and entertainment.

Recently at the annual faculty auction, Alpha Sigma, Fla. State U., bought a Professor of Geology for \$64. As a result, he was the scholastic advisor for the year. Proceeds from the event go to the Campus Chest.

The latest change at Kappa, U. of Wash., has been the formation of a Dad's group—the Do Dads. Their purpose is to help the girls and the house in whatever ways they can.

The Gamma Phi chapter, Indiana State-Pa., needed a rug for their sorority room. Since they did not wish to buy one, they did something new and different. Each girl brought as many rug samples as possible back to school. Each initiate was asked to help sew these rug samples together. In a very short time, they had a beautiful rug which was the envy of the other sororities. In time, the initiates hope to enlarge their rug and make it wall to wall.

Gamma Tau, Bowling Green, held their Rose Ball in Toledo, at which time these selected a  $\Delta Z$  man of the year and a Rose Couple.

Another honor came to this chapter when the GE College Bowl asked the college to participate in that television program. One of the members was selected to be on the four man team.

Efforts are being made at Moorhead State College to formulate a dress code. Theta Nu has set up a code for the sorority, and hopes that the whole school will adopt one. This group also enjoyed a weekend at a lake nearby.

The annual  $\Delta Z$  Steak Fry was held by Theta Eta, Creighton, for their dates. This event also included a hootenanny.

Spring Social events at Tau, U. of Wis., included Mother's Weekend and Father's Weekend at the house. Both started with lunch at the house and festivities during the afternoon. Dinner was held at a local restaurant, followed by an evening on the town.

Theta Epsilon, La. Poly. Tech., has begun what it hopes to make a tradition . . . a pink rose ball. The Rose of the Ball was elected by secret ballot as was the man of the year.

Activities at Beta Sigma, Colo. State U., have included a spring formal, a fashion show, and other money-making projects.

Zeta Chi, Wis. State-Stevens Point, climaxed their annual Snowswirl with a dance of the dolls. The dolls were displayed in a toy shop and were brought to life for a child.

The faculty and scholars were honored by Epsilon Phi, U. of Detroit, at a tea and special dinner, respectively.

Goblets with  $\Delta Z$  etched on them were the favors at the first dinner dance held by Zeta



These sailors re-enact one of the dances used during their "South Pacific" rush skit. They are (from left) Gwynne Gatewood, and Kathy DaMay of the Delta Omega chapter, Fort Hays, Kansas State College, Hays, Kansas.

Omega, N. Mich. U. This group also held a Mothers Day-First Anniversary tea.

Delta Zeta Sorority and Sigma Nu fraternity took all the honors in the 1964 Tatler Revue at William Jewell College, Liberty, Mo. The team took first place in the skit competition, "In the Bee-ginning" depicting the life and problems in a bee colony, with its best actor and best actress (Miss Janet Webster,  $\Delta Z$ ).

Tatler Revue is a show of student written produced skits sponsored by the college annual.

Best actress during the evening was Janet Webster of St. Joseph, Mo., and the best actor was Tom Trotter of Centerville, Iowa.

## DZS SHARE WITH OTHERS

Zeta Phi, Slippery Rock, held a party for the children of the faculty. This party is given each year by this group and is a huge success.

Theta Lambda, St. Norberts, joined with the other sororities to produce a very successful tour show. The troupe traveled by bus to put on half hour shows at six institutions including the orphanage, the Odd Fellows Home, sanitarium, etc. It was a rewarding experience.

The most successful philanthropic project of the year for Delta Iota, Jackson College, was the annual Christmas party for children of the Boston area. Toys were given to each of the children and the turn-out was successful.

Members of Gamma Psi, Central Mich., have had some rewarding experiences at the State Home and Training School in Mt. Pleasant. Before Easter vacation, girls worked on the



Cancer Drive by stuffing envelopes. They also made favors for the Broomfield Memorial Convalescent Hospital.

As part of their philanthropic program, Gamma Theta, Carroll College, helped the Easter Seal Society by stuffing envelopes.

Pledges of Delta Omega, Ft. Hays Kansas State, are helping with the Heart Fund Drive.

Delta Zeta sisters of Gamma Lambda, San Jose, held a Christmas party for patients of the Rehabilitation Ward of the county hospital. During the party, the girls assisted the patients in trimming a tree, and singing Christmas carols.

Theta Delta, Westminster, has recently donated \$70 to the Youngstown Hearing Center to be used toward the construction of a glass wall. This will act as a two-way mirror, where the parents—unseen—will be able to watch the progress of their children. These girls also visited the old people's home to chat with the patients there.

Christmas time found Delta Deltas, Ga. State College, at the home of Our Lady of Perpetual Help to visit the patients there.

Theta Kappa, Louisiana State U.-New Orleans, gave a charity dance with the proceeds going to an orphanage.

Several deaf students were invited to the Beta Rho, Mich. State, Christmas tree trimming party. These students were from the Better Hearing Association. In preparation for them, the girls learned hand signals which helped with communications. The party was especially appreciated because most of the deaf students live by themselves.

Pledges of Theta Lambda, St. Norbert, visited the Brown County Mental Hospital in Green Bay. The people at the hospital were very glad they came.

Pledges of Chi, Oregon State, carved and delivered pumpkins to all 33 fraternities and 17 sororities on that campus.

A traditional Christmas party was held by Kappa, U. of Wash., with each girl bringing a gift for distribution for needy children.

New initiates of Epsilon Omega, Wis. State-Eau Claire, donated two hours of time to reading or writing letters for elder patients in the Eau Claire hospitals. The chapter received a certificate in appreciation for work done in collecting money at the Eau Claire bowling alleys for the Wisconsin Council for Retarded Children.

Zeta Epsilon, Cal. State College—Pa., were invited to usher for the campus Graduation ceremony and also for the Pittsburgh Symphony and Opera production of "Madame Butterfly." This group also campaigned for the Kennedy Memorial Library Drive.

Epsilon Gamma, Central Mo. State, honored

their retiring College Chapter Director at their annual Spring banquet. She was presented with a plaque appropriately inscribed.

Mothers of Zeta Chi, Wis. State-Stevens Point, were honored at a tea, program and taped tour of the campus on Mother's Day. The film was a class project showing the buildings, classrooms and students.

Delta Lambda, Lamar Tech., and Pi Kappa Alpha jointly honored Miss Celeste Kitchen, Registrar at that school for her 25 years of service. As a Delta Zeta and honorary Pi Kappa Alpha dream girl, she has especially been helpful in every way possible to these two organizations. This group also gave \$100 to Gallaudet College.

The annual Parent's Day was held by Gamma Tau, Bowling Green, in Findlay, Ohio in May.

Minerva Sebastian, of the Philippines, is being sponsored by Beta Theta, Bucknell, through the Foster Parent's Plan. This chapter also received the Panhellenic cup for having the most members participate in the Bloodmobile.

A Christmas party for children was held by Gamma Beta, U. Conn., at the Mansfield State Training School.

Theta Eta, Creighton, has added a new philanthropic project to the annual clothing drive. This year they served at the annual fund-raising spaghetti dinner put on by a nearby parish. The parish is a poor one, and this is their single source of income during the year. The girls acted as waitresses and liked it so much, they're planning to participate again next year.

Members of Zeta Tau, Morris Harvey, gave a banquet in honor of Mrs. Virginia P. Gray, who has been their college chapter director since the chapter was founded in 1962.

The pledges of Gamma Chi, Ball State, made Easter baskets for the children in the hospital in Muncie. They also traveled to Yorktown with the rest of the chapter to visit an orphanage there.

Deaf teen-age girls were the guests at a spring picnic held by Mu, U. of Cal.-Berkeley, girls. It proved to be a very educational, stimulating, fun-filled day.

Spring quarter pledges of Theta Nu, Moorhead State, had a very successful ice-cream sale as their money-raising project. It was held in the center of the campus on a beautiful day—a great day for an ice cream cone.

Epsilon Phi, U. of Detroit, sponsored its annual Easter Basket Drive. All campus organizations were asked to contribute baskets of food or candy which was distributed among needy children in Holy Trinity parish. The baskets were judged on originality and content. Trophies were awarded accordingly.

Stuffed animals were sent to pre-schoolers by



Tau, U. of Wis., girls. They also sent letters and gifts to a patient at Carville. In addition, clothes were sent to a Navajo family.

Zeta Omega, Northern Mich., participated in Bay Cliff Health Camp clean-up campaign, to get it ready for the summer session.

A trick or treat drive was held by Epsilon Theta, Clarion State. More than 125 pounds of candy were collected. For Easter, they collected money for the heart fund.

At Christmas time, Theta, Ohio State, held a Christmas party for children. The sisters and their dates seemed to have as much fun as the children. Santa made his appearance and gifts were distributed to the children.

Hospital visitations by collegiate members is a weekly thing with Zeta Theta, Sam Houston State. Representatives of the group visit with and perform little tasks for the patients of Huntsville Memorial Hospital. At Christmas, the entire chapter went caroling to the hospital.

This group also gave a dinner party honoring their house mother, Mrs. Bess Emley, who is retiring. Many campus members were in attendance.

Children of Charleston, Ill., were special guests at an Easter party hosted by Gamma Nu, E. Ill. U. The children were delighted by an afternoon of egg hunting and story telling.

### PLEDGES ENTERTAIN AND ARE ENTERTAINED

Hopping themselves to victory were the pledges of Gamma Chi, Ball State, at the High School Harry Hop, sponsored by Σ Σ Σ. The



Military honors for big-little sisters go to (from left) Judy Mattox a member of the Army Drill Team "Blades" whose girls are selected on basis of poise, appearance and interest and sponsored by Army ROTC and Kristi Brown, Honorary Cadet Colonel Army ROTC. Both girls are members of Alpha Epsilon at Oklahoma State University.

object of the record hop was to award a trophy to the best dressed high school Harriets.

Every semester, pledges of Gamma Omicron, San Diego State, hold a car wash. They've washed everything from the K A fire engine to



Enjoying refreshments at the Governor's Tea at Winona State College are (from left) Inge Hofer, Patty Pottratz, Jill Miller (Pres. of Zeta Upsilon chapter), Gov. Rolvaag, Mrs. Minne (wife of the college president) and Anne Fishbaugher. These girls also served as ushers for the tea.



friendly police cars . . . including the submarine USS Trepang!

Pledge parties at Tau, U. of Wis., included a session at the sorority house to stuff animals for distribution to children, and a scavenger hunt in the spring.

Pledges of Zeta Omega, N. Mich. U., entertained their "Big Sisters" at a party held "Beside the Sea." Each initiate was presented with a beach robe made as a pledge project.

Epsilon Theta, Clarion State, women were also honored at a party given by their pledges.

The song written by pledges of Beta Tau, Neb. Wesleyan, placed second in the annual May Fete celebration.

One of the special pledge projects of Zeta Phi, Slippery Rock, was the selling of donuts and orange juice in the dorms on Saturday mornings.

Theta Eta, Creighton, initiated a new custom. They present new-initiates with  $\Delta Z$  crested stationery as a welcome-in present.

Pledge parties at Tau, U. of Wis., included a session at the sorority house to stuff animals for distribution to children, and a scavenger hunt in the spring.

Pledges of Zeta Omega, N. Mich. U., entertained their "Big Sisters" at a party held "Beside the Sea." Each initiate was presented with a beach robe made as a pledge project.

Telephone directories, skating parties, slumber parties, bonfire and Christmas party have been but a few of the things keeping the pledges of Theta Kappa, L.S.U.-New Orleans, busy.

Some of the pledge projects of new Delta Zeta chapter, Theta Lambda, St. Norberts, included studying one hour a week with big sis-

ters, money making projects, service projects and making a  $\Delta Z$  pillow for the big sisters. For Valentine's Day, pledges made a spiritual bouquet for the Dean of Women and the C.C.D.

Sophomores at Chi, Oregon State, gave the fall Term house dance in honor of the pledges. The latter returned the favor in December with a walk-in and breakfast for the big sisters.

Alpha Sigma, Florida State, has devised a "pledge point" system to encourage pledges to excel in extra-curricular activities as well as in scholarship. In this system, they give a certain amount of points for such things as attending dorm teas, for performing a worthwhile duty for the sorority, going to pep rallies, participating in contests, for making As and Bs each week and for many other such activities. As a reward for participating in these activities each week, a silver charm bracelet is presented to "The Pledge of The Week."

In addition, this group held a retreat honoring the new girls at the FSU Reservation.

All of the initiates of Beta Sigma, Colo. State U., started a secret pal idea to form closer relationships with the pledges.

A very successful pledge reception was held to introduce the new members of Epsilon Omega, Wis. State-Eau Claire, to the faculty, the administration and various organizations on campus.

A "winter picnic" was held by the pledges of Gamma Phi, Indiana State College, for the sisters and their dates.  $\Delta Z$  man of the year was selected at this event.

This summer, Gamma Psi, Central Mich., will devote its time to revamping the rush and pledging program. Pledge manuals and National



The trophy for first place, shown here with members of the Delta Theta Chapter of University of Houston, represents a full year's work on the part of all the girls—participation in archery, tennis, volleyball, basketball, badminton, softball and swimming. First place in Women's Intramurals for the year 1963-1964.



Proudly modeling their DZ uniforms for us are members of Theta Lambda chapter at St. Norbert College (from left) Carol Felix, Joann Poppy, Mary Jo Lee, Nancy Copens, Kathy Hannon, Paula May and Jean Pirlott. The straight-line skirts and matching wool blend sweaters of forest green, azure blue, cherry red, peach or orchid manifests a unique combination of conformity and individuality.



reports will be reread so that they can compose a stronger program for their chapter.

Zeta Epsilon, Cal. State-Pa., was entertained at a Lua party given by the pledges. Big sisters and sponsors gave the pledges  $\Delta Z$  pillows and pajamas. The party was held at the sorority house, complete with Hawaiian food, costumes and decorations.

Spring pledges of Epsilon Kappa, Wis. State-Whitewater, made a special effort to salute the Big Sisters, by singing a special song and presenting them with favors at their pledge dance.

A party, " $\Delta Z$  After Dark," was presented for the initiates by the Spring pledges of Gamma Phi, Indiana State-Pa. After dancing and refreshments, the Outstanding Initiate was chosen.

Zeta Chi, Wis. State-Stevens Point, was invited to a hootenanny by their pledges. Besides being assigned false names, the initiates were asked to entertain the pledges with songs and skits.

Pledges of Theta Xi, Glenville State, have been most active. They've placed a welcome sign at the city limits, held slumber parties, made wooden plaques for their Big Sisters, and attended Pledge School.

Pledges of Beta Theta, Bucknell, held a car-wash in front of the engineering building as a money making project. As a gift to the suite, the pledges presented a ceramic tile pledge pin for the wall.



Pledges of Gamma Omicron at San Diego State College "hard at work" during a pledge car wash.

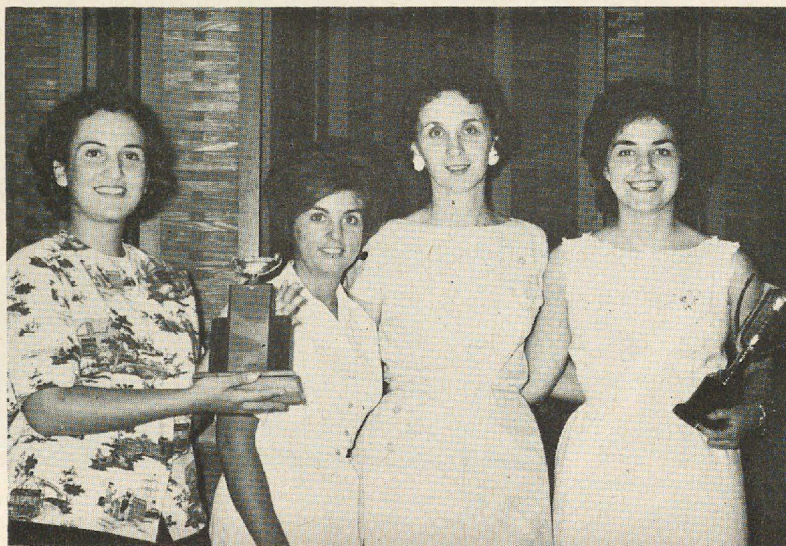




Delta Zeta Sorority and Sigma Nu fraternity took all the honors in the 1964 Tatler Revue at William Jewell College, Liberty, Mo. The team took first place in the skit competition with its entry, "In the Bee-ginning," depicting the life and problems in a bee colony. Janet Webster of Zeta Rho chapter was named best actress of the show.



Theta Theta of De Paul University took first place in the Homecoming Variety Show with their entry, "Adult Western."



Occasions are rare indeed when a sorority chapter receives not one but two scholarship trophies in a school year. But Beta Nu Chapter at University of Miami did it. The chapter placed first on campus in scholarship for Fall and Spring semesters of 1962-63 and as a result received a trophy presented by the Dean of Women on behalf of City Panhellenic for the highest Panhellenic average and another from Alpha Chi Omega sorority in recognition of highest improvement among sororities. Proudly displaying the trophies are (from left) Aleda Pintavalle, scholarship chairman; Judy Young, president; Jane Everitt, former CCD and now representative to City Panhellenic, and Yvonne White, past scholarship chairman.



# HONORS

## Phi Beta Kappa

Judith Marcovitz, **Delta Iota**, Jackson, Tufts  
 Elizabeth Mood, **Delta Iota**, Jackson, Tufts  
 Linda Waugh, **Delta Iota**, Jackson, Tufts  
 Karen Kish, **Delta**, DePauw  
 Carol Meister, **Omicron**, University of Pittsburgh  
 Irene Bullinger, **Beta Theta**, Bucknell  
 Jeanne Hahn, **Alpha**, Miami University  
 Pru Smith, **Alpha**, Miami University  
 Sarah Green, **Zeta Psi**, University of Georgia  
 Melba Davenport Little, **Zeta Psi**, University of Georgia  
 Susan Hill, **Zeta Psi**, University of Georgia  
 Linda Zufall, **Theta**, Ohio State University  
 Carolyn Galbraith, **Theta**, Ohio State University

## Cardinal Key

Sherry Speer, **Epsilon Rho**, North West Missouri State College  
 Pat Phillips, **Epsilon Rho**, North West Missouri State College

## Mortar Board

Pat Creel, **Epsilon Phi**, University of Detroit  
 Karen Sue Fowler, **Zeta Psi**, University of Georgia  
 Sheila Molloy, **Gamma Beta**, University of Connecticut  
 Jeanne Hahn, **Alpha**, Miami University  
 Linda Morgan, **Delta**, DePauw  
 Wilma Cranshaw, **Theta Delta**, Westminster College  
 Janet Codey, **Theta Delta**, Westminster College  
 Gayle Phillips, **Theta Delta**, Westminster College  
 Susan Rockwood, **Epsilon**, Indiana University  
 Margie McDonad, **Alpha Chi**, University of California, Los Angeles  
 Diane Sederoff, **Omicron**, University of Pittsburgh

## Who's Who

**Theta Nu**—Moorhead  
 Virginia Shimota, Pat King

**Delta Omega**—Ft. Hays State Teacher's College  
 Judy Ubert

**Sigma**—Louisiana State University  
 Kathleen Dolesa, Kathleen Charpentier

**Delta Mu**—Morningside  
 Karen Braunschweig

**Theta Kappa**—L.S.U.-New Orleans  
 Amanda Beck, Marilyn Blasini, Shirley Pettingil

**Theta Lambda**—St. Norbert College  
 Nancy Coppens, Kathleen Farrell, Patricia Van Hout

**Alpha Sigma**—Florida State University  
 Beverly Acher, Betty Drummond

**Delta Lambda**—Lamar Technological Institute  
 Gaynelle Hasselmeier

**Gamma Tau**—Bowling Green University  
 Sue Hartline

**Theta Xi**—Glennville State  
 Yvonne Row, Patricia Burch, Sherry Sherwood

**Theta Theta**—De Paul University  
 Marilyn McKenna, Mary Cook, Kathy Ficaro

**Alpha Epsilon**—Oklahoma State University  
 Sharron Palmeter

**Epsilon Kappa**—Wisconsin State College—Whitewater  
 Catherine Christenson, Anita Gilliland, JoAnn Kapoun,  
 Eleanor Klymek, Carolyn Victor

**Gamma Beta**—University of Connecticut  
 Helen Sharp, Donna Shambron

**Delta Pi**—Emporia State  
 Donna Fitzpatrick

**Theta Epsilon**—Lamar Technological Institute  
 Marty Fowler

**Kappa Delta Pi**—Education  
**Zeta Phi**—Slippery Rock State Teachers  
 Judy Anderson, Jean Davidson, Barb Bonesteil

**Epsilon Omicron**—Western Illinois University  
 Sue Barnes, Peggy Gulick, Jean Slater

**Beta Rho**—Michigan State University  
 Jon Jay Baker, Maureen Vivadelli

**Epsilon Kappa**—Wisconsin State College—Whitewater  
 Jean Knickmeier, Doreen Matara, Michelle Mundt, Carolyn Victor

**Zeta Omicron**—Wisconsin State College—La Crosse  
 Brenda Dambach

**Delta Pi**—Emporia Teachers  
 Annabeth Dall, Donna Fitzpatrick, Sharon Garrett

**Zeta Omega**—Northern Michigan University  
 Pat Guiliani, Ann Miron, Gail Vanni

**Beta Tau**—Nebraska Wesleyan  
 Gey Colson, Jayne Combs, Betty Maple Nelson

**Alpha Lambda Delta**—Freshman Scholarship  
 Wendy Marck, **Gamma Lambda**, San Jose State College  
 Martha Rockwood, **Epsilon**, Indiana University  
 Florence Peterson, **Epsilon**, Indiana University  
 Priscilla Morrell, **Beta Theta**, Bucknell  
 Lora Thomas, **Gamma Kappa**, Kent State  
 Carol Bartels, **Gamma Omega**, Southern Illinois University

**Sigma Tau Delta**—English  
 Jan Voakes, **Epsilon Omicron**, Western Illinois University  
 Demaris Carbone, **Beta Sigma**, Colorado State University  
 Claudia Homann, **Beta Sigma**, Colorado State University  
 Dorothy Wegner, **Epsilon Omega**, Wisconsin State College—Eau Claire  
 Pat Burzinski, **Epsilon Omega**, Wisconsin State College—Eau Claire  
 Elaine Nyktas, **Gamma Tau**, Bowling Green University



## Phi Delta Epsilon—Journalism

Anita Hart, **Theta Eta**, Creighton University  
Jean Voakes, **Epsilon Omicron**, Western Illinois University

## Pi Kappa Lambda—Music

Susan Armbrust, **Delta**, DePauw University  
Sara Wooden, **Delta**, DePauw University

## Psi Chi—Psychology

Gayle Phillips, **Theta Delta**, Westminster College  
Judy Thornhill, **Theta Delta**, Westminster College  
Barbara Wimer, **Theta Delta**, Westminster College

## Delta Phi—German

Maren Kiehl, **Theta Delta**, Westminster College

## Editorial

Betty Williams, Editor, **Alchemist Newspaper**, Brenau College  
Mara Gabriel, Editor, **Lumberjack Newspaper**, Humboldt State College  
Bonnie King, Editor, **Sunflower Yearbook**, Kansas State Teacher's College  
Diane Brandt, Co-Editor, **La Vie Yearbook**, State U. of Pennsylvania  
Carol Bauer, Co-Editor, **La Vie Yearbook**, State U. of Pennsylvania

## Campus Officers

Beverly Lisiecki, **Gamma Psi**, Central Missouri State—Secretary, Student Body  
Pat Padden, **Theta Epsilon**, Creighton—Secretary, Senior Class  
Kay Kidder, **Epsilon Omicron**, Western Illinois—Vice-President, Senior Class  
Beverly Harding, **Delta Mu**, Morningside—Secretary, Senior Class  
Susan Steckart, **Theta Lambda**, St. Norbert—Vice-President, Freshman Class

## Panhellenic Offices

Liz Bryant, **Theta Eta**, Creighton—President  
Jan McKinnon, **Chi**, Oregon State—Treasurer  
Sally Surtzer, **Epsilon Rho**, N. W. Mo. State—Vice-President  
Joan Adamski, **Gamma Psi**, Central Mich.—Vice-President  
Rose Ann Brendle, **Zeta Omicron**, Wis. State-LaCrosse—President  
Linda Richards, **Gamma Tau**, Bowling Green—Treasurer  
Pam Worley, **Gamma Omega**, S. Ill. U.—Secretary  
Pam Read, **Epsilon Phi**, U. of Detroit—Secretary  
Shann Squire, **Epsilon Alpha**, West St. Coll. of Colo.—Vice-President

## Queens and Sweethearts

Mikie Roof, **Zeta Phi**, Slippery Rock—Sigma Pi  
Karla Bentzen, **Zeta Phi**, Slippery Rock—Kappa Sigma  
Rogene Peters, **Delta Omega**, Ft. Hays—Yearbook  
Ruthlynn Rumery, **Sigma**, L.S.U.—LSU Darling  
Beverly Roach, **Delta Delta**, Georgia State—Sigma Phi Epsilon  
Nancy Brown, **Delta Delta**, Georgia State—Yearbook  
Sandy Summerville, **Delta Delta**, Georgia State—Perishing Rifles

Diana Grace, **Zeta Xi**, Lenoir Rhyne—Sigma Phi Epsilon  
Sharron Stein, **Theta Kappa**, L.S.U.-New Orleans—Lambda Chi Alpha  
Jerlene Mancuso, **Theta Kappa**, L.S.U.-New Orleans—Delta Sigma Pi  
Sharon Smith, **Beta Rho**, M.S.U.—Phi Kappa Sigma  
Suki Bruns, **Zeta Alpha**, Bradley—Slide Rule  
Jo Macaluso, **Beta Nu**, U. of Miami—Sigma Phi Epsilon  
Beverly Acher, **Alpha Sigma**, Fla. St. U.—Delta Tau Delta  
Bonnie Bell, **Alpha Sigma**, Fla. St. U.—Alpha Tau Omega  
Ester Daddingan, **Gamma Phi**, Indiana State-Pa.—Homecoming  
Kathy Mahaffey, **Gamma Phi**, Indiana State-Pa.—Kappa Delta Pi  
Sue Brown, **Gamma Phi**, Indiana State-Pa.—Sigma Tau Gamma  
Donna Jones, **Gamma Phi**, Indiana State-Pa.—Sigma Theta Epsilon  
Ginny Harrigan, **Gamma Phi**, Indiana State-Pa.—Tau Kappa Epsilon  
Paula Romanski, **Gamma Phi**, Indiana State-Pa.—ROTC  
Yvonne Westbrook, **Epsilon Upsilon**, Cent. St. Coll.-Okla.—Yearbook Acacia  
Vickilyn Johnson, **Epsilon Upsilon**, Cent. St. Coll.-Okla.—Acacia  
Pat Ellynsen, **Epsilon Upsilon**, Cent. St. Coll.-Okla.—Tau Kappa Epsilon  
Sondra London, **Epsilon Upsilon**, Cent. St. Coll.-Okla.—Tau Kappa Epsilon Pledge  
Marlene Solda, **Epsilon Upsilon**, Cent. St. Coll.-Okla.—Sigma Tau Gamma  
Bonnie Harper, **Zeta Epsilon**, Cal. State-Pa.—Sigma Tau Gamma  
Ginny Mebs, **Zeta Epsilon**, Cal. State-Pa.—Alpha Kappa Lambda  
Sherryl Waits, **Zeta Iota**, Humboldt—Tau Kappa Epsilon  
Sandra Reidenbach, **Zeta Chi**, Wis. State-Stevens Pt.—Jr. Prom  
Marilyn Becker, **Zeta Chi**, Wis. State-Stevens Pt.—Phi Epsilon  
Judy Rasch, **Zeta Chi**, Wis. State-Stevens Pt.—Tau Kappa Epsilon  
Marna Paulovicks, **Delta Upsilon**, Marshall—Greek Week  
Karen Jones, **Delta Upsilon**, Marshall—Pike's Peak  
Jean Shafer, **Gamma Tau**, Bowling Green—Yearbook  
Joyce Obropta, **Gamma Tau**, Bowling Green—Sigma Phi Epsilon  
Roseann Worthington, **Beta Kappa**, Ia. State—Dairy Princess  
Chris Steward, **Beta Kappa**, Ia. State—Alpha Lambda Rho  
Donna Holt, **Gamma Omega**, S. Ill. U.—Miss Woddy Hall  
Mary Jo Burch, **Gamma Omega**, S. Ill. U.—Miss November  
Geri Verge, **Gamma Beta**, U. Conn.—Winter Weekend  
Caren Ciolli, **Delta Theta**, U. of Houston—Cougar Capers  
Donna Weaver, **Delta Theta**, U. of Houston—Delta Chi  
Sherry Beckerstaff, **Zeta Pi**, U. of Ga.—Alpha Kappa Psi  
Emily Ann Gentry, **Zeta Pi**, U. of Ga.—Alpha Lambda Rho  
Sue Weems, **Zeta Pi**, U. of Ga.—Alpha Tau Omega

## Tau Sigma Pi—Journalism

Sue Schacht, **Delta**, De Pauw  
Marlene Depper, **Mu**, University of California



### Angel Flight—ROTC

Sharon Andrus, **Beta Sigma**, Colorado State University  
Sandra Wilmoth, **Gamma Tau**, Bowling Green University  
Donna Wither, **Gamma Tau**, Bowling Green University

### Kappa Pi—Art

Dawn Deady, **Alpha Omicron**, Brenau College  
Sandra Braswell, **Alpha Omicron**, Brenau College  
Ellen Jump, **Delta**, DePauw University  
Carol Engleman, **Delta**, DePauw University  
Marian Fiala, **Epsilon Omicron**, Western Illinois University

Georgia Moffet, **Gamma Omicron**, San Diego State College  
Linda Taylor, **Gamma Omicron**, San Diego State College  
Sue Wallace, **Gamma Omicron**, San Diego State College

### Mu Phi Epsilon—Music

Mary Ann Griner, **Alpha Omicron**, Brenau College  
Ann Reed, **Alpha Omicron**, Brenau College  
Barbara Creel, **Delta**, DePauw University  
Linda Mudd, **Delta**, DePauw University  
Conne Warner, **Epsilon**, Indiana University

### Phi Alpha Theta—History

Kathy Downing, **Theta Eta**, Creighton University



For the fifth consecutive year the Gamma Theta volleyball team placed first in the volley ball tournament sponsored by the Women's Athletic Association at Carroll College, Waukesha, Wis. Participating were all the women's social groups on campus.

Marilyn Rosenblatt, **Delta Alpha**, Cal. Coll.-Long Beach—Zeta Beta Tau  
Kathy Jewell, **Delta Alpha**, Cal. Coll.-Long Beach—Phi Kappa Tau  
M'Liz Hancock, **Delta Alpha**, Cal. Coll.-Long Beach—Delta Chi  
Sue Jansen, **Theta Nu**, Moorhead—Tau Kappa Epsilon  
Betty Newson, **Theta Nu**, Moorhead—Miss Moorhead  
Sandy Tillet, **Gamma Kappa**, Kent State—Tau Kappa Epsilon  
Camille Serocki, **Epsilon Phi**, U. of Detroit—Spring Carnival

Patricia Boyce, **Epsilon Phi**, U. of Detroit—Delta Sigma Pi  
Linda Taylor, **Gamma Omicron**, San Diego State—Tau Lambda Chi  
Marsha Paulua, **Theta**, Ohio State—Sigma Nu  
Gloria Saragosa, **Zeta Theta**, Sam Houston—Sigma Chi  
Linda Montgomery, **Epsilon Alpha**, W. St. Coll. of Colo.—Tau Kappa Epsilon  
Sandi Bateman, **Gamma Nu**, E. Ill. U.—Alpha Kappa Lambda  
Elise Artelt, **Gamma Delta**, Penn State—Queen of Hearts

Mary Browning Scanlon, Omicron, passed away in Pittsburgh in January. She was a nationally known musicologist and has been written about in several biographical dictionaries because of her contributions in research on Early American music and her authoritative writings on Lowell Mason and Thomas Hastings, among others. Her sister, Pauline Scanlon Gardescu, also from Omicron, writes that Mary's music and papers have been given by Mary and accepted by the Music department at Carnegie Library in Pittsburgh as a memorial collection to the memory of their father, Dr. Charles Scanlon who studied at the New England Conservatory in Boston some 80 years ago. The memorial is also in honor of their mother. We deeply regret Mary's passing.





Arlene Davis is shown in an early picture in a typical pose. She was close to that which she loved best, an airplane and was using her hands to illustrate a flying maneuver.

On July 3, in Cleveland, Ohio, Arlene Palsgraf Davis (Mrs. Max) lost her battle with cancer. With her passing Delta Zeta lost one of her most sincere and inspiring members.

Of all the many honors she received, the Delta Zeta Woman of the Year Award she received in 1960 was the one she treasured most. She wore her Woman of the Year medallion proudly. Arlene, who was initiated at Gamma Alpha, Baldwin-Wallace, Ohio, was always sincere in her devotion to Delta Zeta. Being a Delta Zeta meant so very much to her. Even the letters on her license tag for her car were  $\Delta$  Z. She was very pleased when the West Side Alumnae chapter of Cleveland made her an honorary life member of their chapter.

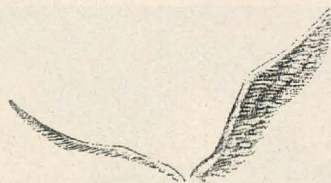
She was a deeply religious person and had great humility. At her memorial service, the minister revealed that when their church needed a new steeple, Arlene donated the money for it, but asked that the donation be anonymous. The more we read or learn about her many and varied interests and activities, the better we can appreciate her national prominence and the esteem in which she was held.

She had great enthusiasm for everything she did. Many in their lifetimes would settle for lesser goals, but achievement in everything she undertook was one of Arlene's outstanding characteristics. She was an accomplished golfer, horsewoman, ballet dancer, artist, and swimmer.

Her national prominence, though, was earned

## In Memoriam To Arlene Davis

By JULIE KISHEL FOSTER



in the field of aviation, and was marked by spectacular achievements from the time she received her private pilot's license in 1931. Her aviation trophies, now permanently displayed in the Air Force Museum in Washington, D.C., tell highlights of some of the achievements which made her one of our nation's leading aviatrixes.

The Women's National Aeronautic Association honored her as Woman of the Year in Aviation in 1953. Her achievements to that date were written into the Congressional Record of the 83rd Congress. In 1954 she was one of the first members of the Air Force Jet Clan. She was one of few women represented in "Who's Who in Aviation." She was the first woman to receive the National Aeronautics Association's "Certificate of Elder Statesman of Aviation" in 1961.

Arlene was also affiliated with The Woman's City Club, Zonta, National Intercollegiate Flying Association, the Society of Women's Engineer, and the Soaring Club of America.

The Arlene Davis Aviation Scholarship, the only aviation scholarship in the country, is awarded to a Delta Zeta at each National Convention. Arlene was also a charter member of the Delta Zeta Foundation.

We shall miss our vivacious flying lady with her charming smile and flashing eyes.

ED. NOTE: Julie Foster has told you the facts concerning Arlene but sometimes how we feel about a person is best described in our afterthoughts . . . in the note we scribble at the bottom of a sheet to an editor. In her note Julie said, "Arlene meant a great deal to me, but it's hard for me to put in writing. She would always end her letters to me with 'stay as sweet as you are.' She was the one who was sweet." We think that tells how a lot of DZs felt about their sister, Arlene.



#### ALPHA

Mary Sparling Leet (Mrs. R. A.) '22, Reported 5-64  
Marcia Wolff Vaughn (Mrs. Willard) '33, 5-24-64

#### GAMMA

Harriet Simons '42, 1963

#### DELTA

Ann Sirmyer Ballard '63x, 2-5-64  
Donna Lima Bassett (Mrs. D. R.) '51, 5-30-64  
Ruth Shufflebarger Fields (Mrs. H. E.) '23, 5-21-64  
Kathleen Crowder McIntosh (Mrs. Frank B.) '19, 6-8-64

#### ZETA

Elizabeth Seymour Radtke (Mrs. Albert A.) '16, 4-15-64

#### ETA

Estelle Martin Moukman (Mrs. W. C.) '26, 10-62  
Mildred Kennedy Wertman (Mrs. E. V.) '24x, 4-30-64

#### THETA

Mildred Geiger Ballantyne (Mrs. Alan) '25, 6-63  
Edith Anderson Jones (Mrs. Charles L.) '21x, 6-10-63

#### KAPPA

Mary Henry Beacraft (Mrs. Louis) '39x, 3-64  
Almyra Kelshaw Bonham (Mrs. Clyde L.) '01, Reported 4-64  
Evelyn Clifton '24, Reported 4-64  
Sara Lewis Lansar (Mrs. Martin) '24x, 3-27-64  
Annah Shelton Soule (Mrs. John A.) '13, 4-3-64

#### XI

Esther Aneshansel Knaggs (Mrs. Nelson S.) '28, 5-64  
Virginia Dale Peters (Mrs. Charles T.) '26, 10-63

#### OMICRON

Mary B. Scanlon '19, 1-16-64

#### TAU

Joan Fischer Hinnenthal (Mrs. Thomas M.) '60, 1-25-64  
M. Gladys Lowry '39, Reported 1964

#### UPSILON

Eunice Iverson (Mrs. Jack L.) '31, 3-58

#### PSI

Gladys Alys King '24, 5-64

#### OMEGA

Mildred McAllister Folts (Mrs. Merton B.) '28, 9-29-63  
Barbara Deane McClanahan '59x, 5-64

#### ALPHA ALPHA

June Kraft Moser (Mrs. John), '36, 4-7-64

#### ALPHA THETA

Mary Hopper Laytham '34, 7-13-62

#### ALPHA KAPPA

Jane Greenland Krieger (Mrs. Wm.) '33x, 1963  
Nancy Lee Moon (Mrs. Wilson M.) '42, 2-64

#### ALPHA XI

Sarah Jackson Megabee (Mrs. Lloyd) '29, 4-22-63

#### ALPHA CHI

Lois Hillhouse Gallwas (Mrs. Ernst W.), '28, 3-64  
Winifred Clark Horner (Mrs. John W.) '27, 1-1-63

#### GAMMA ALPHA

Arlene Palsgraff Davis (Mrs. Max T.) '55, 7-3-64

#### GAMMA EPSILON

Dorothy Marie Gaffney '53, 3-8-64

#### GAMMA KAPPA

Ruth Reesh Densmore (Mrs. Alton C.), '39x, 4-64

#### DELTA ALPHA

Linda S. Phister '61, 3-64

#### DELTA RHO

Nettie Gieheart Koll (Mrs. Neal C.) '37, 1963

#### DELTA UPSILON

Adeline Koontz Riddleberger (Mrs. Alton) '27, 5-4-64

#### ZETA THETA

Merry Leidy Marti (Mrs. Allen) '62x, 3-64

## State Recommendation Chairmen

*Alabama*—Mrs. Robert L. Gunn, Meadowview, Jasper, Ala.  
*Alaska*—Mrs. Gerard Belanger, 1110 Sixth, Apt. 404, Anchorage, Alaska

*Arizona*—Mrs. A. W. McCarty, 3102 E. Earl Dr., Phoenix, Ariz.

*Arkansas*—

*California* (North)—Mrs. Walter Burde, Route 3, Box 986, Carmel, Calif.; (South)—Mrs. Roy Breitweiser, 955 Huntington Dr., San Marino, Calif.

*Colorado*—Mrs. M. C. Averill, 4464 Brentwood, Wheat Ridge, Colo.  
*Connecticut*—Mrs. William Dunn, 1203 Silver Lane, E. Hartford, Conn.

*Delaware*—Mrs. Edwin G. Willing, 110 Canterbury Dr., Windsor Hills, Wilmington, Del.

*District of Columbia*—Mrs. William R. Schafer, 8208 Nolte Ave. 3, Silver Spring, Md.

*Florida*—

*Georgia*—Mrs. J. W. Odom, 1902 Canmount Dr., N. E., Atlanta 19, Ga.

*Hawaii*—Mrs. Nicholar Ovio, 45-232 Mamolu, Kaneohe Island, Oahu, Hawaii

*Illinois*—Ruth Ann Dahl, 89 Seminole, Apt. 36, Elgin, Ill.

*Indiana*—Mrs. Marnard Meyer, 1410 Hickory Pl., Goshen, Ind.

*Iowa*—Mrs. Bruce F. Stoll, 1242 55th St.

*Kansas*—Mrs. William Wise, 1647 N. E. Parkway, Wichita 8, Kan.

*Kentucky*—Mrs. Harold J. Short, 107 Greenbriar Rd., Lexington, Ky.

*Louisiana*—Miss Carolyn Reber, Courthouse, Winnfield, La.

*Maine*—Miss Velma K. Oliver, 5 Allen Rd., Orono, Me.

*Maryland*—Mrs. Richard F. Free, 2512 Hillford Dr., Baltimore 34, Md.

*Massachusetts*—Miss Sandra Ann Szymczak, 37 Elliott St., Danvers, Mass.

*Michigan*—Miss Glenna J. VanderMeer, 1915 Argentina Dr. S. E., Grand Rapids, Mich.

*Minnesota*—Mrs. Roger Franke, 3520 Beard Curve, Minneapolis 31, Minn.

*Mississippi*—Mrs. W. M. Rayburn, 808 Johnson Ave., Hattiesburg, Miss.

*Missouri*—Mrs. Robert S. Bagnell, Jr., Blackburn, Mo.

*Montana*—Mrs. B. S. Everingham, Rout 4, Rattlesnake, Missoula, Mont.

*Nebraska*—Mrs. Ben Akert, 1800 S. 51 St., Lincoln, Neb.

*Nevada*—Mrs. Morris Vitale, 1355 Granite Dr., Reno, Nev.

*New Hampshire*—Mrs. Gordon Thorburn, Bell Lane, Hollis, N.H.

*New Jersey*—Mrs. Wm. Tabor, 159 Cottage Rd., Wycoff, N.J.

*New Mexico*—Mrs. R. B. Jansen, 1204 W. Eleventh St., Roswell, N.M.

*New York* (Lower)—Mrs. Wm. G. Baker, 36 Summit Dr., Smithtown, L.I., N.Y.; (Upper)—Miss Mary Frances Sims, 1217 Bellevue Ave., Syracuse 4, N.Y.

*North Carolina*—

*North Dakota*—

*Ohio*—Miss Olive M. McCune, 245 Winthrop Rd., Columbus, Ohio

*Oklahoma*—Mrs. Wendell Burke, 2212 Ann Arbor, Oklahoma City, Okla.

*Oregon*—Mrs. Zelta Rodenwald, 1717 S. W. Park Ave., Portland, Ore.

*Pennsylvania*—Mrs. Lawrence Plantholt, 423 Olympic Ave., Haverstown, Pa.

*Rhode Island*—Mrs. James H. Crossley, 40 Farmland Rd., Warwick, R.I.

*South Carolina*—Mrs. Edward M. Boland, 371 Carolina Ave., N.W., Orangeburg, S.C.

*Tennessee*—Mrs. Gilbert P. Strode, Jr., 4812 Marcel Rd., Memphis 17, Tex.

*Texas*—Mrs. T. J. Bianchi, 5727 Ellsworth, Dallas 6, Tex.

*Utah*—Mrs. Franklin Shafer, Box 552 A, R.F.D., Tooele, Utah

*Vermont*—Mrs. John Rider, 10 Marshall Dr., Burlington, Vt.

*Virginia*—Mrs. William Lawson, 1201 South Scott St., Apt. 122, Arlington, Va.

*Washington*—Mrs. James A. Cloore, 2012 Thorndyke, W. Seattle 99, Wash.

*West Virginia*—Mrs. Frank Mancari, Kayford, W.Va.

*Wisconsin*—Mrs. Edward Moon, 349 Lopas St., Menasha, Wis.

*Wyoming*—Miss Verda James, Ass't. Supt. Natrona County High School, Casper, Wyo.

*Foreign Countries*—Mrs. Wm. T. Barth, 1720 Tennyson Ave., Dayton 6, Ohio



# Delta Zeta Sorority

Founded at Miami University, October 24, 1902  
GUY POTTER BENTON, D.O., LL.D.,  
Grand Patron (Deceased)

## FOUNDERS

JULIA BISHOP COLEMAN (Mrs. J. M.) .....Deceased  
MARY COLLINS GALBRAITH (Mrs. George) ....Deceased  
ALFA LLOYD HAYS (Mrs. O. H.) .....Deceased  
ANNA KEEN DAVIS (Mrs. G. H.) .....Deceased  
MABELLE MINTON HAGEMANN (Mrs. Henry) ..Deceased  
ANNE SIMMONS FRIEDLINE (Mrs. Justus R.) ...Deceased

## NATIONAL COUNCIL OF DELTA ZETA SORORITY

President ..... Violet Sharratt Whitfield (Mrs. R. H.), 3230 Park Pl., Evanston, Ill. 60201  
Vice-President (Alumnæ) ..Gwen Moss McKeeman (Mrs. Robert L.), 5517 South 74th East Avenue, Tulsa, Okla.  
Vice-President (College Programs) .....  
.....Betsy Bradley Leach (Mrs. Garold A.), 1865 Hill Dr., Eagle Rock, Los Angeles 14, Calif.  
Vice-President (Membership) .....Betty Heusch Agler (Mrs. Norman), 3546 Sunbury Rd., Columbus 19, Ohio  
Secretary-Treasurer ..... Jean Ericsson Schlosstein (Mrs. Gary B.), Michaels, St. Cochrane, Wis. 54622  
National Panhellenic Conference Delegate .....  
.....Evelyn Adams Costello (Mrs. Russell T.), 2850 Pine Lake Rd., R.F.D. 2, Orchard Lake, Mich.  
National Director of House Corporation .....  
.....Augusta Piatt Kelleway (Mrs. Fred), 425 Lakewood Circle, Walnut Creek, Calif.  
National Director of Philanthropies .....Marjorie Doyle Bergman (Mrs. Edward), 5217 Riverview Lane, Lisle, Ill.  
National Director of Public Relations .....  
.....Mary Lou Ragel Vineyard (Mrs. Philip), 754 N. Waukegan, Lake Forest, Ill.  
National Director-at-Large ....Dorothy Varley Breitweiser (Mrs. Roy), 955 Huntington Dr., San Marino, Calif.  
National Director-at-Large ..Lisbeth Innis Francis (Mrs. Robert), 3327 D. Montgomery Hwy., Birmingham 9, Ala.  
National Director-at-Large .....Grace Mason Lundy (Mrs. H. M.), R.R. 1, Bloomington, Ind.  
National Director-at-Large .....Doris Ellingson Riede (Mrs. J. R.), 103 Lake Ave., White Bear Lake 10, Minn.  
Past National President .....Gertrude Houk Fariss (Mrs. C. A.), 2997 S.W. Fairview Blvd., Portland 1, Ore.

## NATIONAL DEPUTIES

Verne Fimeck Duda (Mrs. Michael), California State Teachers Coll., California, Pa.  
Gertrude Murphy Meatheringham (Mrs. V. H.), Route 1, Kennesaw, Ga.  
Dorris Pike Silverthorn (Mrs. Frank W.), 2710 Kilgore Ave., Muncie, Ind. 47302  
Jackie Froyden Youde (Mrs. Charles L.), 10344 Tristan Dr., Downey, Calif.

## NATIONAL HEADQUARTERS

National Headquarters Address .....3561 N. Pennsylvania St., Indianapolis, Ind. 46205  
Executive Secretary .....Miss Irene C. Boughton

## COLLEGE CHAPTER ADMINISTRATOR'S OFFICE

College Chapter Administrator .....  
.....Marguerite Wherry Havens (Mrs. George C.), 5518 Grand Ave., Des Moines 12, Iowa  
Field Secretaries Marjorie Higgs, Sue Ellen Johnson, Sharon Kowalski, Jan Mitchell, Marian Stille, Jean Wickstrom

## THE LAMP

Editor of THE LAMP .....Miss EDDI PARKER, 74 Maplewood Rd., Akron 13, Ohio  
Board of Trustees of THE LAMP Fund: Violet Sharratt Whitfield (1964); Augusta Piatt Kelleway (1966); Jean Ericsson Schlosstein (1964); Evelyn Adams Costello (1970); Irene Boughton (1968); 3561 N. Pennsylvania St., Indianapolis, Ind.

## DELTA ZETA FOUNDATION

President—Miss Frances E. Westcott, 549 E. 84th St., Indianapolis 40, Ind.  
Treasurer—Mrs. Maxine Peterson, 5637 Woodlawn Blvd., Minneapolis 17, Minn.  
Directors—Gail Patrick Jackson, Margaret H. Pease.  
Chairman Audiology Scholarship—Dr. Eunice Roberts, Kirkwood Hall, 101, Indiana University, Bloomington, Ind.

## STANDING COMMITTEES

Constitution & Procedure Chairman—  
History & Archives Chairman—Grace Mason Lundy (Mrs. H. M.),  
R.R. 1, Bloomington, Ind.  
Judiciary Committee—Eleanor Atterbury Corten (Mrs. Amos), 951  
Larkspur Rd., Oakland, Calif.  
Mothers' Club Chairman—Alice Feike Wieman (Mrs. John S.),  
10819 S.W. Capitol Highway, Portland, Ore.

## COMMITTEES

Activities Chairman—Patti Volbrecht Phillips (Mrs. Jay), 300 E.  
Alster, Arcadia, Calif.  
American Citizenship Chairman—Gertrude Houk Fariss (Mrs. C. A.),  
2997 S.W. Fairview Blvd., Portland 1, Ore.  
Awards Committee—Mrs. Richard Kukowski (Beverly), 805 29th St.,  
West Des Moines, Iowa  
Carville—Miss Shirilyn Chaffin, 4431 Danforth Rd., Columbus 24, Ohio.  
Chapter Newsletter—Queta Fouke (Mrs. Raymond J.), 505 Green  
Bay Rd., Lake Bluff, Ill.  
National Pledge Training Chairman—Ellen Kroll Jenkins (Mrs. Paul  
L.), 5926 E. 43rd St., Indianapolis 26, Ind.  
Endowment Fund—Virginia Odle Voelker (Mrs. Wendell), #40 Oak-  
dale, Apt. 1-D, Houston 6, Tex.  
Gallaudet College—Lucille Bolstad May (Leland B.), 5100 Dorset,  
Chevy Chase 15, Md.  
Magazine Chairman—Engelyn Brown Tourtelot (Mrs. Charles H.),  
P.O. Box 725, Concord, Calif.  
Memory Book Chairman—Ruth Clausen Reasor (Mrs. M. L.), 7980  
Windcombe Blvd., Indianapolis, Ind.  
National Recommendations Chairman—Mary Lou Barth (Mrs. William  
T.), 1720 Tennyson Ave., Dayton, Ohio.  
Navajo Project—Dee Sims (William D.), 10 Elizabeth Pl Mobile,  
Ala.  
Order of Golden Rose—Irene C. Boughton, 3561 N. Pennsylvania, In-  
dianapolis, Ind.  
Personal Loans and Scholarships—Mrs. George C. Havens, 5518 Grand  
Ave., Des Moines, Iowa.  
Province Conference and State Day Coordinator—  
Province  
I.  
II. Mrs. William Logan, 212 DuBois Rd., Glassboro, N.J.  
III. Mrs. Nelson Charles, Quarters F, NAS, Willow Grove, Pa.  
19090.  
IV.  
V. Mrs. Gary Thornton (Sharon), 6750 Bramble Ave., Cincin-  
nati 27, Ohio  
VI. Mrs. Willard Pearson (Garry), 1742 Cambridge S.E., Grand  
Rapids, Mich.  
VII.  
VIII. Mrs. Lyle Sampson (Joanne), 255 S. Spring St., Columbus,  
Wis.  
IX. Miss Gloria Bender, Wildwood Dr., Rt. 3, Aurora, Ill.  
X. Mrs. Geo. Ahern (Elinor), 338 31st St., S.E., Cedar Rapids,  
Iowa.  
XI.  
XII. Mrs. Curtis Johnson (Juanita), 2045 S. Cook, Denver 10, Colo.  
XIII. Mrs. Monte Thoen (Doris), 13124 NW Sue St., Portland, Ore.  
XIV. Mrs. A. L. Grimesey (Lucy), 2500 St. Francis Dr., Sacra-  
mento, Calif.  
XV. Mrs. Betty DeWitt, 22736 Date Ave., Torrance, Calif.  
XVI. Mrs. N. O. Sandoz (Doris), P.O. Box 64, Medicine Park, Okla.  
XVII. Miss Jane Ann Maxwell, 4162 Kenneth, Beaumont, Tex.  
XVIII.  
XIX. Miss Virginia Combs, 1107 Holston Ave., Bristol, Tenn.  
XX. Mrs. O. E. Maxfield (Mary), 2301 40th St., N.W., Washing-  
ton 7, D.C.  
XXI. Mrs. J. Edward Tare, III, 3027-B Cloverdale Rd., Montgomery  
6, Ala.  
XXII. Miss Susan Kazgros, 722 S. Lake Adair, Orlando, Fla.  
Ritual Chairman—Jeannette Harding (Mrs. Harold K.), 48 E. 56th  
St., Indianapolis, Ind.  
Robe Chairman—Florence Hood Miner (Mrs. Arthur J.), 1040 Avenue  
H, Nevada, Iowa.  
Sorority Education Chairman—Miss Judy Noble, 2728 Lincoln Way,  
Ames, Iowa.  
Standard Chairman—Frances Gregory (Mrs. S. M.), 3850 Olive Ave.,  
Long Beach 7, Calif.  
Theta Upsilon Chairman—Miss Marjorie Schwegler, 4550 W. 223rd  
St., Fairview Park 26, Ohio.

## PROVINCE PUBLIC RELATIONS COORDINATORS



PROVINCE I—Maine, Vermont, New Hampshire, Massachusetts, Connecticut, Rhode Island, New York

Province President: MRS. JOHN C. EDWARDS (RUTH), 12 Valentine Hill Rd., Durham, N.H.

Chapter/School President  
 A T—U. of Maine Donna Weaver  
 B A—U. of Rhode Island Susan Durfee  
 I B—U. of Conn. Sheila Malloy  
 Δ I—Jackson Col., Tufts Univ. Maria Bizzo  
 Θ I—U. of New Hampshire Judith Breed  
**PROVINCE II—New York and New Jersey**

A Z—Adelphi University Audrey Becher  
 B Ω—New York U. Martha Newton  
 Γ H—Hunter Col. Nurla Delaney  
 Δ E—Queens Col. Lydia LaRuffa  
 Z Δ—Wagner Col. Jean Heulton

**PROVINCE III—East Pennsylvania**

B Θ—Bucknell U. Barbara Stell  
 Δ A—Penn St. U. Lynda E. Oberholtzer  
 Δ T—Temple U. Maureen Halloway  
 E Z—Drexel Institute of Technology Sheila S. Dugan  
 Θ X—Lock Haven St. Col. Angela Rienzo  
**PROVINCE III—West Pennsylvania**

O—U. of Pitt. Judith D. Ruebush  
 Γ Φ—Indiana St. Col. Mary Lou Leisher  
 E Θ—Clarion St. Col. Connie Woolslayer  
 Z E—California St. Col. Virginia Mebs  
 Z Φ—Slippery Rock St. Col. Linda Girdwood  
 Θ Δ—Westminster Col. Michele Robinson  
**PROVINCE IV—West Virginia and South Kentucky**

A Θ—U. of Kentucky Penelope Price  
 Δ T—Marshall U. Donna Lambert  
 E Δ—Concord Col. Kay White  
 E I—Fairmont St. Col. Loretta Culiz  
 Z T—Morris Harvey College Wanda Burdiss  
 Θ Z—Glenville St. Col. Sandra Riggs  
**PROVINCE V—Ohio**

A—Miami U. Jeanne Hahn  
 Θ—Ohio St. U. Diana Grossman  
 Z—U. of Cincinnati Linda Lee Doepeke  
 B X—Wittenberg U. Mary Ann Jackson  
 Γ A—Baldwin-Wallace Col. Sandra Ward  
 Γ K—Kent St. U. Linda Lenox  
 Γ T—Bowling Green St. U. Linda Richards  
 Z K—Ohio No. U. Loretta Forney (Pres.)  
 Θ Z—U. of Akron Carol Aldridge  
**PROVINCE VI—Michigan East**

B P—Mich. State U. Maureen Vivadelli (Pres.)  
 Γ E—East. Mich. U. Gloria Verdon  
 E Σ—Wayne State U. Caryl Skibbe  
 E Φ—Univ. of Detroit Carolyn Roman  
**PROVINCE VI—Michigan West**

B II—Albion College Shirley Tucker  
 Γ II—West. Mich. U. Joanne Wilson  
 Γ V—Cent. Mich. U. Ann Ransford  
 Z N—Ferris State College Jeanne Mike  
 Z Ω—No. Mich. Univ. Darlene Murphy

Chapter Address  
 319 Hart Hall, Orono, Me.  
 Δ Z House, 70 Lower College Rd., Kingston, R.I.  
 Δ Z House, U. of Conn., Storrs, Conn.  
 Hogdon Hall, Merford 55, Mass.  
 Δ Z House, U.N.H., Durham, N.H.

Province President: MISS MARJORIE W. SCHLEHER, 57 Adams St., Garden City, N.Y.

105 Irish La. East Islip, L.I., N.Y.  
 640 Pelham Rd., New Rochelle, N.Y.  
 30-23-83 St., Jackson Hts., N.Y.  
 139-16 73 Terrace, Flushing, N.Y.  
 #35 Tyser Hall, S.I. Hospital, Staten Island, N.Y.

Province President:

W-421 Box, Bucknell Univ., Lewisburg, Pa.  
 315 Pollock 2, University Park, Pa.  
 3330 Tudor St., Philadelphia, Pa.  
 528 Windemere Rd., Philadelphia, Pa.  
 Box 267 Woolridge Hall, LHSC Lock Haven, Pa.

Province President: MRS. MICHAEL DUDA (VERNA), California State Teachers College, California, Pa.

701 Amos Hall, 3955, Forbes Ave., Pittsburgh 13, Pa.  
 307A John Sutton, Indian, Pa.  
 484 Jefferson Hall, Clarion, Pa.  
 8811 Fifth St., California, Pa.  
 321 North Hall, Slippery Rock St. Col., Slippery Rock, Pa.  
 Box 6, Calbreath Hall, New Wilmington, Pa.

Province President: MRS. CHARLES DEVEREAUX (ELIZABETH), 2317 Morningside Ave., Parkersburg, W.Va.

319 Columbia Terr., Lexington, Ky.  
 1616 5th Ave., Huntington, W.Va.  
 Box C-27, Concord Co., Athens, W.Va.  
 Morrow Hall, FSC, Fairmont, W.Va.  
 Box 12, North Dickenson Hall, Morris Harvey, Charleston, W.Va.  
 Women's Hall, Box 249, Glenville St. Col., Glenville, W.Va.

Province President: MRS. ERROL JONES (MARIANNA), 2687 Wexford Rd., Columbus 21, Ohio

Richard Hall, Miami U., Oxford, Ohio  
 Δ Z House, 212 East 15th St., Columbus, Ohio  
 2811 Clifton Ave., Cincinnati 20, Ohio  
 Δ Z House, 923 N. Fountain, Springfield, Ohio  
 Findley Hall, Baldwin Wallace College, Berea, Ohio  
 224 E. Main, Kent, Ohio  
 Δ Z House, BBSU, Bowling Green, Ohio  
 Girls' Dormitory, 200 W. Lehr, Ada, Ohio  
 401 Grand Ave., Akron, Ohio

Province President: MRS. WILLIAM B. WHEELER (JOY), 639 S. Lafayette, Dearborn, Mich.

110 Oakhill, East Lansing, Mich.  
 344 Goddard Hall, Ypsilanti, Mich.  
 10329 Lakepointe, Detroit, Mich.  
 25531 Avondale, Dearborn Heights, Mich.

Province President: MISS MARIE STEVENS, 1122 Weaver Ave., Kalamazoo, Mich.

Susanna Wesley Hall, Albion, Mich.  
 330 Davis Hall, WMU, Kalamazoo, Mich.  
 261 Sloan Hall, CMU, Mount Pleasant, Mich.  
 PO Box 425, Helen Ferris Dorm., Big Rapids, Mich.  
 414 East Hewitt, Marquette, Mich.

College Chapter Director  
 Miss Claire S. Sanders

Mrs. Russell DeCoursey (Betty)  
 Mrs. F. W. Pote (Marguerite)  
 Miss Myra Davis

Miss Elaine Pasquali

Miss Emily Nixon  
 Mrs. Geo. Blauvelt (Doris)  
 Dr. Emily Philpott

Mrs. Morris Pickell (Mary Lou)  
 Mrs. Carroll Champlin (Dorothy)  
 Miss Wilma Nork  
 Miss Mary Ann Young

Mrs. George Hayfield (Joan)

Mrs. Arthur Parker (Sally)  
 Miss Ruth Podbielski  
 Mrs. Ernest W. Johnson (Margery)

Mrs. C. A. Dickinson (Mac)  
 Mrs. Richard V. Stevens II (Connie)

Mrs. H. A. Garber (Dot)  
 Mrs. Don Titus (Martha)  
 Mrs. Don Williams (Clara)

Miss Cynthia Crawford

Mrs. J. Wm. Douglas (Margaret)

Miss Jane Baer  
 Mrs. Wm. Reidenback (Joanna)  
 Mrs. E. W. Altstaetter (Gwen)  
 Mrs. Martha Ogden  
 Mrs. J. R. Andrisek (Norma)  
 Mrs. James McGrath (Ruth)  
 Mrs. Ann Morrow  
 Mrs. Karl Roeder  
 Mrs. Aldabell Riddle

Mrs. David Rice (Dianna)  
 Mrs. Robert Calbreath (Lenora)  
 Miss Kathy Dritsas  
 Mrs. Kenneth Balogh (Sue)

Mrs. David Paulson (Jean)  
 Miss Barbara King  
 Miss Helen Wild  
 Miss Frances Tuffley

Address  
 123½ Main St., Orono, Me. 04473

Storrs Heights, Storrs, Conn.  
 15 Chester Ave., Medford, Mass.  
 20 Main St., Durham, N.H.

108-25 217th Pl., Queen's Village, L.I., N.Y.

440 W. 34th. New York 1, N.Y.  
 96 Colonial Rd., Bellerose, L.I., N.Y.  
 140-23 Rose Ave., Flushing 55, N.Y.

68 S. 6th St., Lewisburg, Pa.  
 627 W. Fairmont, State College, Pa.  
 628 Cheswick Rd., Philadelphia 28, Pa.  
 3991 Lankenou, Philadelphia 31, Pa.

504 Woodward Ave., Lock Haven, Pa.

1504 Beech St., McKeesport, Pa.  
 Box 157, STC, Indiana, Pa.  
 198 Third Ave., Clarion, Pa.

R.D. 3, Slippery Rock, Pa.  
 36 Orchard Ave., Hubbard, Ohio.

324 Sycamore Rd., Lexington, Ky.  
 204 Chestnut St., Huntington, W.Va.  
 Athens, W.Va.

4003 Pennsylvania Ave., So. Charleston, W.Va.  
 917 Mineral Rd., Glenville, W.Va.

131 E. Spring St., Oxford, Ohio  
 876 Poling Dr., Columbus, Ohio  
 805 Endor Court, Cincinnati, Ohio  
 537 Cadence Dr., Springfield, Ohio  
 119 Meadow Dr., Berea, Ohio  
 347 Miller Ave., Kent, Ohio  
 2012 Westwood, Toledo, Ohio.  
 R.R. 2, Ada, Ohio.  
 2746 Elmwood, Cuyahoga Falls, Ohio.

1433 Franklin St., Haslett, Mich.  
 1706 Hanover Rd., Ann Arbor, Mich.  
 14542 Woodmont, Detroit, Mich.  
 16166 McClain, Allen Park, Mich.

1713 Paddington Rd., Kalamazoo, Mich.  
 1001 S. College, Mt. Pleasant, Mich.  
 215 Linden, Big Rapids, Mich.  
 Northern Michigan University Library,  
 Marquette, Mich.



# PROVINCE VII—Indiana and North Kentucky

## Chapter/School

Δ—DePauw Univ.  
E—Indiana Univ.  
Ψ—Franklin Col.  
B Γ—U. of Louisville  
Γ X—Ball St. Teach.

## President

Linda Morgan  
Carol Peden  
Marsha Stubbs  
Sue Runner  
Jane Dunn

Province President: MRS. A. W. SHUMAKER (JULIA), 602 Anderson St., Greencastle, Ind.

## Chapter Address

Δ Z House, 411 Anderson, Greencastle, Ind.  
Δ Z House, 809 East 7th St., Bloomington, Ind.  
Elsey Hall, Franklin College, Franklin, Ind.  
1116 Hilliard, Louisville, Ky.  
Rogers Hall, Ball St., Muncie, Ind.

## College Chapter Director

Mrs. John C. Wright (Betty)  
Mrs. William Mills (Sylvia)  
Mrs. Morris Davis (Sue)  
Mrs. Frank W. Silverthorn (Dorris)

## Address

1009 Hillcrest, Greencastle, Ind.  
319 H Dunn St., Bloomington, Ind.  
R.R. 3, Franklin, Ind.  
2710 Kilgore Ave., Muncie, Ind. 47302

# PROVINCE VIII—Wisconsin

T—Univ. of Wis.  
Γ Θ—Carroll Col.  
E K—Wis. State Univ.,  
Whitewater  
E X—U. Wis., Milwaukee  
E Q—Wis. St. U., Eau  
Claire

Patti Forbes  
Sandy Harwood  
Sally Hahn

Mary Ann Pagel  
Mardell Mathews

Z B—Stout State University  
Z O—Wis. St. Univ. at La-  
Crosse  
Z X—Wis. St. Univ. at  
Stevens Point  
Θ A—St. Norbert Col.

Joyce Ziegler  
Carol Kubiak  
Marilyn Sherman  
Chris Libal

# PROVINCE IX—Illinois North

II—Eureka College  
A A—Northwestern U.  
Γ M—Ill. Inst. of Tech.  
Γ P—No. Ill. Univ.  
Θ Θ—De Paul Univ.

Helen Brown  
Barbara Bogott  
Mary C. Epstein  
Sharon Wheelock  
Nancy Flaiz

Province President: MRS. WENDELL SCHMIDTKE (JUNE), 1267 Blackhawk Drive, Elgin, Ill. 60120

# PROVINCE IX—Illinois South

A B—U. of Illinois  
Γ N—Eastern Ill. U.  
Γ Q—So. Ill. Univ.  
E O—Western Ill. U.  
Z A—Bradley Univ.

Hilda Weeks  
Judy Woodruff  
Marsha Purdum  
Karen Olsen  
Brenda Powell

Province President: MRS. H. SUMMERFIELD DAY (BETTY), 801 S. Westlawn, Champaign, Ill.

# PROVINCE X—North—Minnesota, North Dakota, and South Dakota

T—U. of No. Dak.  
Z T—Winona State Col.  
Θ N—Moorhead State Col.

Nicholetta Fiergola  
Jill Miller  
Dorothy Donley

Province President: MRS. RANDALL JONES (PAT), 7721 Pickfair, Bloomington, Minneapolis, Minn.

# PROVINCE X—South—Iowa

I—State U. of Iowa  
B K—Iowa St. U.  
Γ E—Drake Univ.

Linda Johnston  
Janet Hammans  
Judy Vachata

Δ M—Morningside Col.  
Δ N—Parsons Col.  
Θ A—Simpson Col.

Susan Buckingham  
Kathy Kensingser  
Beverly Warner

Δ Z House, 322 N. Clinton, Iowa City, Iowa

Δ Z House, 2138 Sunset, Ames, Iowa  
Δ Z House, 3118 Cottage Gr., Des Moines 11, Iowa

Δ Z House, 1500 Morningside Ave., Sioux City, Iowa  
Δ Z Quad, Parsons Col., Fairfield, Iowa  
Δ Z House, 710 N. Buxton, Indianola, Iowa

## Province President:

Mrs. Steven P. Richardson (Kaye)  
Mrs. George Holland (Barbara)  
Mrs. Robert Helmick (Kay)

Miss Beatrice Tift  
Mrs. Harold V. Lamb (Charlotte)  
Mrs. C. E. Reber (Linda)

Town & Campus Apts., Apt. C2, Iowa  
City, Iowa  
287 Village Dr., Ames, Iowa  
528 Waterbury Cir., Des Moines, Iowa  
50312  
3817 Vine Ave., Sioux City, Iowa  
205 E. Burlington, Fairfield, Iowa  
1103 Caulder Ave., Des Moines, Iowa 50315

# PROVINCE XI—Missouri

Γ Γ—Missouri Valley Col.  
Δ E—N.E. Mo. State Col.  
E Γ—Cent. Mo. State Col.  
E H—Harris Teach. Col.  
E N—S.W. Mo. State Col.  
E P—N.W. Mo. State Col.  
E Ψ—St. Louis Univ.

Linda Fulghum  
Fran Tieman  
Carol Mengel  
Carol Dreesel  
Judith Ann Kiefer  
Rosie Guyer  
Sharon Ann Nicholson

Province President: MRS. CLARENCE B. COLLINS, 5603 E. 141st St., Grandview, Mo.

MacDonald Hall, Marshall, Mo.  
263 Ryle Hall, Kirksville, Mo.  
225C Nickerson Hall, CMSC, Warrensburg, Mo.  
7015 Staska Dr., St. Louis, Mo.  
2529 W. Monroe, Springfield, Mo.  
Roberta Hall, NWMSC, Maryville, Mo.  
7526 Comfort, St. Louis 17, Mo.

Mrs. W. E. Morton (Christine)  
Dr. Ruth Towne  
Miss Kathryn Baker  
Miss Fanita Terry  
Mrs. Lawson A. Weaver (Billie)  
Dr. Wanda Walker  
Mrs. Robt. L. Jackson (Janie)

417 East Rac, Marshall, Mo.  
709 North Davis, Kirksville, Mo.  
709 S. College, Warrensburg, Mo.  
5540 Murdock, St. Louis, Mo.  
1976 Cedarbrook, Springfield, Mo.  
NWMSC, Maryville, Mo.  
1113 Ralph Terr., Richmond Heights, Mo.  
63117  
438 E. Mississippi, Liberty, Mo.

Z P—Wm. Jewell Col.

Patricia Mays

Semple Hall, Wm. Jewell, Liberty, Mo.

# PROVINCE XII—East—Kansas and Nebraska

A—Kansas State U.  
B T—Nebraska Wesleyan U.  
Δ II—Kansas St. College  
(Emporia)  
Δ Q—Fort Hays State Col.  
Z E—Nebr. St. Teachers Col.  
Δ E—Nebraska Wesleyan U.  
Δ E—Colorado State Col.

Carol Reed  
Barbara L. Thompson  
Ircia Sitts  
Vae Jene Bowhan  
Dee Carlson  
Lynne Eggleston  
C. J. Hill

Δ Z House, 1803 Laramie, Manhattan, Kan.  
2401 N. 51st St., Lincoln, Neb.  
Δ Z House, 1005 Merchant, Emporia, Kan.  
210 W. 6th St., Fort Hays, Kan.  
610 W. 26th, Kearney, Neb.  
Box 47, Escalante Terr., Gunnison, Colo.

Mrs. Thos. M. Evans (Leota)  
Mrs. Orville Davis (Pat)  
Mrs. Joel Moss (Nelle)  
Mrs. Wayne P. Marshall (Doris)  
Mrs. Jeffrey Johnson (Roberta)

830 Harris St., Manhattan, Kan.  
400 N. 70th St., Lincoln, Neb.  
466 West 4th St., Hays, Kan.  
704 East 40th St., Kearney, Neb.  
212 Alpine Hall, WSC, Gunnison, Colo.



Nebr. St. Teachers Col.  
Colorado State Col.  
A—Western State Col.

Carlson  
Lynne Eggleston  
Pam McAnall

610 W. 26th, Kearney, Neb.  
610 W. 26th, Kearney, Neb.  
Box 47, Escalante Terr., Gunnison, Colo.

Mrs. Joel Moss (Nelle)  
Mrs. Wayne P. Marshall (Doris)  
Mrs. Jeffrey Johnson (Roberta)

408 West 4th St., Hays, Kan.  
704 East 4th St., Kearney, Neb.  
212 Alpine Hall, WSC, Gunnison, Colo.

## PROVINCE XII—Southwest—Arizona, New Mexico, and Nevada

Γ E—New Mexico St. U.  
Δ P—New Mexico Highlands U.

Sandra Jentgen  
Barbara Barnes

**Province President:** MRS. GERALD T. PORCH (MARIAN) 5050 N. 59th Dr., Glendale, Ariz.  
Box 644, N. Mex. St. U., University Park, N.M.  
207 S. Kennedy Hall, Las Vegas, N.M.

Mrs. F. P. Stevenson (Betty)  
Miss Lillian Rogers

335 Hwy. 282, Las Cruces, N.M.  
Bus. Dept. Highland U., Las Vegas, N.M.

## PROVINCE XIII—Washington, Oregon, Montana, and Idaho

K—U. of Wash.  
X—Ore. St. Univ.  
Q—U. of Ore.

Sally Gardner  
Blanche M. Litwiller  
Nancy Ruckert

**Province President:** MRS. JAMES F. FARISS (ELEANOR), 17721 Bothell Way, N.E., Seattle 55, Wash.  
Δ Z House, 4535 18th Ave., N.E., Seattle 5, Wash.  
529 N. 21st, Corvallis, Ore.  
Δ Z House, 482 Cottage Ave., Eugene, Ore.

Mrs. Kenneth Callahan (Judy)  
Mrs. Kenneth S. Wood (Peggy)

6523 28th Ave., N.E., Seattle 15, Wash.  
1941 Potter St., Eugene, Ore.

## PROVINCE XIV—Northern California and Hawaii

M—U. of Calif.  
Γ A—San Jose St. Col.  
Δ X—Chico St. Col.  
E E—Fresno St. Col.  
Z I—Humboldt St. Col.

Mary Packard  
Charlotte Brecker  
Kathy Newman  
Lorrie Roach  
Marilyn Woody

## Province President: MRS. T. R. NICOL (FRANCES), 767 Euclid Ave., Berkeley, Calif.

Δ Z House, 2728 Durant Ave., Berkeley 4, Calif.  
Δ Z House, 201 S. 11th St., San Jose 12, Calif.  
420 W. 6th St., Chico, Calif.  
5337 Millbrook, Fresno, Calif.  
416 Ninth St., Arcata, Calif.

Mrs. James Lemmon (Jean)  
Miss Florence Ross  
Mrs. Marialyce Hawke  
Miss Joanne Bernardi  
Mrs. Clayton VanDeventer (Mary Lou)

6857 Ridgewood Dr., Oakland, Calif.  
1325 Santa Paula, San Jose, Calif.  
25 Oak Dr., Chico, Calif.  
402 S. Chestnut, Fresno 22, Calif.  
3463 Cottage St., Eureka, Calif.

## PROVINCE XV—Southern California

Δ X—U. of Calif. at L.A.  
Γ O—San Diego St. Col.  
Δ A—Calif. St. Col. at Long Beach  
Δ Ψ—U.C., Santa Barbara

Sharon Dalrymple  
Sylvia Palmer  
Carolyn Smith  
Susan Peterson

## Province President: MRS. JONATHAN SANDY (KATIE), 3522 Madison Ave., Apt. 5, San Diego 16, Calif.

Δ Z House, 824 Hilgard, West Los Angeles, Calif.  
Δ Z House, 5074 College Ave., San Diego 15, Calif.  
151 LaVerne, Long Beach, Calif.  
Δ Z House, 6525 Picasso Rd., Goleta, Calif.

Mrs. Arthur F. Eskelin (Katherine)  
Mrs. Dan J. Leonard (Dorothy)  
Mrs. B. T. Thompson  
Mrs. James B. Keith (Dorothy)

2233 Washington Ave., Santa Monica, Calif.  
6168 Mohler, San Diego, Calif.  
5471 Jardin, Long Beach, Calif.  
3115 Calle Rosclas, Santa Barbara, Calif.

## PROVINCE XVI—Oklahoma

Δ E—Okla. St. U.  
Γ T—Okla. City U.  
Δ O—Northwestern St. Col.  
Δ Φ—Northeastern St. Col.  
E A—Southwestern St. Col.  
E T—Central St. Col.  
Z H—Southeastern St. Col.

Alice VerNooy  
Jon Smith  
Claudine Barnes  
Patricia Lowery  
Nancy Totten  
Beverly Ann Wilkinson  
Linda Dawson

## Province President: MRS. N. K. SCOTT (ELAINE), 1260 E. 30th St., Tulsa, Okla.

Δ Z House, 224 South Jefferson, Stillwater, Okla.  
Pennington Hall, OCU, Oklahoma City, Okla.  
Girls' Dorm, NSC, Alva, Okla.  
107 Northwest Hall, Tahlequah, Okla.  
Stewart Hall, SWSC, Weatherford, Okla.  
310 East First, Edmond, Okla.  
Box 182 Sta. A., Durant, Okla.

Mrs. Jos. A. Adair (Jacquie)  
Mrs. Dick Workman (Jan)  
Miss Annette Parker  
Miss Martha Markham  
Mrs. Mable Owen  
Mrs. Jim West (Linda)  
Mrs. Kenneth Ruhl (Mary Jane)

1617 W. 9th Ave., Stillwater, Okla.  
1838 Westminster Pl., Okla. City, Okla.  
515 College St., Alva, Okla.  
NSC, Tahlequah, Okla.  
Southwestern St. Col., Weatherford, Okla.  
114 So. Lake, Edmond, Okla.  
1304 West Main, Durant, Okla. 74701

## PROVINCE XVII—Texas

Δ T—Univ. of Texas  
Δ Ψ—So. Meth. U.  
Γ Z—Southwestern U.  
Δ O—Univ. of Houston  
Δ A—Lamar St. Col. of Tech.

Nancy Jo Campbell  
Karen Kessler  
Mona Lowman  
Pat Hargrove  
Shirley Anderle

## Province President: MRS. WILLIAM B. CARR (BARBARA), 4716 Blaney Ave., Ft. Worth 18, Tex.

Δ Z House, 2315 Nueces, Austin, Tex.  
Δ Z House, 3034 Daniels, Dallas, Tex.  
Δ Z Box, S.U., Georgetown, Tex.  
4361 Wheeler, Box 434, Houston, Tex.  
A206 Gentry Hall, 4135 University Dr., Beaumont, Tex.

Mrs. A. E. Massengale (Dorothy)  
Mrs. Carl Klein (Joan)  
Mrs. Denes Monostory (Katherine)  
Mrs. Jack F. Gale (Bernice)  
Mrs. Den Kaye (Lory)

3004 Bryker Dr., Austin, Tex.  
12320 Wood Manor Circle, Dallas 34, Tex.  
380 Church St., Georgetown, Tex.  
928 Chimney Rock, Houston, Tex.  
8765 Greenridge Lane, Beaumont, Tex.

Z Z—W. Tex. St. U.  
Z Z—Sam Houston St. Col.  
Z Ψ—Stephen F. Austin St. Col.

Gaynelle Hasselmeir  
Barbara Gae Eldridge  
Linda Cook

Box 122, W.T. Station, Canyon, Tex.  
Δ Z House, Sam Houston St., Huntsville, Tex.  
Box 489 S. F. A. Station, Nacogdoches, Tex.

Mrs. Borden Price (Gene)  
Mrs. Floyd Taylor (Mable)  
Mrs. Blanche Phillips

2513 13th Ave., Canyon, Tex.  
2321 Robinson Way, Huntsville, Tex.  
301 E. Starr, Nacogdoches, Tex.

I A—SW Texas St. Col.

Karen Jo Kneupper

Brogden Hall, SW Texas St. Coll., San Marcos, Tex.

Miss Laura Wittenberger

Southwest Texas State College, San Marcos

## PROVINCE XVIII—Louisiana

Σ—Louisiana St. U.  
Δ K—U. of Southwest  
E B—Northwestern St. Col. (La.)

Roni Bergeron  
Cynthia Rhea  
Mary Ann Jones

## Province President:

11320 Archery, Baton Rouge, La.  
Bx. 241, U.S.L., Lafayette, La.  
Box 3743, N.S.C., Natchitoches, La.

Mrs. Joseph Hecker (Gloria)  
Mrs. W. L. Flannery (Elaine)  
Mrs. Van M. Woodward (Mattie)

462 Maxine Dr., Baton Rouge, La.  
148 River Rd., Lafayette, La.  
311 Whitfield Dr., Natchitoches, La.

Z Γ—McNeese St. Col.  
Θ E—La. Polytechnical Inst.  
Θ K—L.S.U., New Orleans

Anetha June Snider  
Martv Fowler  
Shirley Pettingill

Box 160 M.S.C., Lake Charles, La.  
Box 136, T.S., Ruston, La.  
1033 Jena St., New Orleans, La.

Mrs. E. L. Guidry (Eliz.)  
Mrs. John M. Goudeau (Loretta)

4406 Ashland, Lake Charles, La.  
4858 Knight Dr., New Orleans 27, La.

## PROVINCE XIX—Tennessee and Arkansas

B A—U. of Tenn.  
Γ I—Memphis St. U.  
Δ H—E. Tenn. St. U.

Brenda Clift  
Judy Austin  
De Anna McCrary

## Province President: MRS. GILBERT P. STRODE, JR. (MARY LEE), 4812 Marcel Rd., Memphis 22, Tenn.

821 Temple Box 104, Knoxville, Tenn.  
4323 Fredericks Ave., Memphis, Tenn.  
Box 1028, EASU, Johnson City, Tenn.

Miss Marifloyd Hamil  
Miss Joy Bailey  
Mrs. Fred Barnes (Patricia)  
Dr. Constance Mynatt  
Mrs. Jeff Farris (Patsy)  
Mrs. Lucy Finley

1628 N. Hills Blvd., Knoxville, Tenn.  
3947 Graceland Dr., Memphis, Tenn.  
820 W. Maple, Johnson City, Tenn.  
E.T.S.U. Box 2562  
518 Donaghey, Conway, Ark.  
Box 690, Arkadelphia, Ark.

E E—Ark. STC  
E H—Henderson STC

Patsy Jean Cantrell  
Dana County

ASTC, Conway, Ark.  
Box 318, HSTC, Arkadelphia, Ark.

## PROVINCE XX—Virginia, North Carolina, Maryland and Washington, D.C.

Δ Δ—Geo. Wash. U.  
E T—Longwood Col.  
Z A—E. Car. Col.  
Z E—Lenoir Rhyne Col.  
Θ I—W. Car. Col.

Roxie Huff  
Dale Cannon  
Maxine Brown  
Faye Allred  
Sandra McCracken

726 22nd St.  
Longwood College, Farmville, Va.  
Δ Z House, 801 E. Fifth St., Greenville, N.C.  
Box 114, L.R.C., Hickory, N.C.  
W.C.C., Cullowhee, N.C.

## Province President:

Mrs. B. F. McFarland (Barbara)  
Mrs. Jean C. Wilson  
Mrs. Helen A. Snyder  
Mrs. Geo. J. Spence (Betty)  
Dr. Muriel Hegwood

804 Hellewood Ave., Falls Church, Va.  
Rt. 3, Farmville, Va.  
Box 38, E.C.C., Greenville, N.C.  
1166 11th St. Pl., N.W., Hickory, N.C.  
Box 904, Cullowhee, N.C.



# PROVINCE XXI—West—Alabama and Mississippi

Chapter/School	President
A I—U. of Ala.	LaDonna Lanier
A II—Howard College	Angi Grooms
B Z—Auburn Univ.	Helen Likis
E M—U. of S. Miss.	Mary Ann Johnson

## 62 PROVINCE XXI—East—Georgia and South Carolina

B A—U. of S. Car.	Lynn Proctor
A O—Brenau College	Betty Williams
Δ Δ—Ga. St. Col.	Elaine Ogletree
Z II—U. of Ga.	Sue Weems

## PROVINCE XXII—Florida

A E—Fla. St. U.	Jan Warren
B M—Fla. So. U.	Barbara Kleinschmidt
B N—U. of Miami	Yvonne White

Province President: MISS SARAH ROGERS, 1016 Cotton Ave., Birmingham 11, Ala.

Chapter Address
Box 5488, University, Ala.
WB 358, Howard College, Birmingham 9, Ala.
Rm. 206 Dorm I, Auburn University, Auburn, Ala.
Station A, Box Hattiesburg, Miss.
Box 371, Birm. So. Col., Birmingham 4, Ala.

College Chapter Director
Mrs. Cecil M. Youngson (Angie)
Miss Ann Varnon
Mrs. Margaret K. Zaring (Peg)
Mrs. Michael James McElhaney (Virginia)
Mrs. Richard O'Connell (Mary Ann)

Address
Box 6174, University, Ala.
1013 Tower Dr., Birmingham, Ala.
Box 67, Auburn, Ala.
5075 Laurel Ave., Hattiesburg, Miss.
311 Hagood St., Birmingham 13, Ala.

## Province President:

Box 3333 University of South Carolina, Columbia, S.C.
Δ Z House, Brenau College, Gainesville, Ga.
33 Gilmer St., S.E. Atlanta, Ga.
397 S. Milledge Ave., Athens, Ga.

Mrs. Robert Thompson (Kaye)
Mrs. Frank Hatcher (Martha)
Mrs. Ray Barnes (Amaryllis)
Mrs. Rex Fredricks (Rachel)

530 Santee Ave., Columbia, S.C.
840 Memorial Dr., Gainesville, Ga.
2424 Glenwood Dr., N.E. Atlanta 5, Ga.
150 Green Crest Dr., Athens, Ga.

Province President: MRS. R. B. BALDWIN (NITA), 727 Woodward Dr., Lakeland, Fla.

749 W. Jefferson St., Tallahassee, Fla.
Box 371, Fla. So. Col., Lakeland, Fla.
730 East, Rm. 1123, Coral Gables 46, Fla.

Mrs. Allen Burnsed (Beverly)
Mrs. Jean Wessel

511 Woodward Dr., Lakeland, Fla.
5960 S.W. 16th St., Miami, Fla.

## ALUMNÆ CHAPTERS (\*not chartered)

## PROVINCE I—Maine, Vermont, New Hampshire, Massachusetts, Connecticut, Rhode Island

Province Vice-President: MRS. JAMES CONCELMAN (LOIS), 23 Sniffen Rd., Westport, Conn.

Chapter	President and Address
*Bangor, Me.	Mrs. Eugene Tracy, R.R. 5, Brewer, Me.
Boston, Mass.	Mrs. Donald James Creeley, 53 Colonial Rd., Hingham, Mass.
Fairfield Co., Conn.	Mrs. G. Thomas Ludwig, 8 McCrea Lane, Darien, Conn.
Hartford, Conn.	Mrs. John C. Hill, 272 Fern St., West Hartford, Conn.
*Kingston, R.I.	Miss Marion Wible, Box 143, Kingston, R.I.

## PROVINCE II—New York, New Jersey

Buffalo, N.Y.	Mrs. Leland Moody, 172 Walter, Tonawanda, N.Y.
New York City	Mrs. George Wolf, 955-04 Pembroke Ave., Great Neck, L.I., N.Y.
Staten Island	Mrs. Madeline Buono, 118 Penn Ave., Staten Island, N.Y.
Northeastern New Jersey	Mrs. Frank Bina, 111 Elm Ave., Hackensack, N.J.

## Province Vice-President:

Northern New Jersey
Rochester, N.Y.
Syracuse, N.Y.
*Westchester, N.Y.

Miss Sarah R. Norred 421 West 21st St., New York 11, N.Y.
Mrs. Donald Henry, 723 Eaton Rd., Rochester 17, N.Y.
Mrs. Laurence McCarty, 110 Clayton Ave., Syracuse, N.Y.
Mrs. Richard Clute, 737 N. Broadway, River Pine Apts., Hastings-on-the-Hudson, N.Y.

## PROVINCE III—East Pennsylvania, Delaware

Baltimore, Md.	Mrs. Richard F. Free, 2512 Hillford Dr., Baltimore 34, Md.
Erie	Mrs. E. J. Tenpas, 853 E. Gore Rd., Erie, Pa.
Harrisburg	Mrs. Wayne Stevenson, 4611 Surrey Rd., Harrisburg
Indiana	Mrs. Walter Callot, 104 Shady Dr., Indiana, Pa.
*Lancaster	Mrs. William Lumbeck, 407 Glen Ridge Dr., Lancaster, Pa.
Philadelphia (West Sub.)	Mrs. Robert Wagner, 611 Newlin Rd., Springfield, Pa.

## Province Vice-President:

Philadelphia (North)
Pittsburgh (North)
Pittsburgh (South Hills)
Pittsburgh
State College
Washington, D.C.
Wilmington, Del.

Mrs. William J. Warning, 123 Pueblo Rd., New Britain, Pa.
Mrs. Richard M. Krotzer, 174 Cass Rd., Pittsburgh 29, Pa.
Mrs. John Baker, 1187 Driftwood Dr., Pittsburgh, Pa.
Mrs. C. H. Petkofer, 252 South Winchiddle
Mrs. R. L. Harman, 1450 Curtin St., State College
Miss Marion Worthing, 3703 Leland St., Chevy Chase 15, Md.
Mrs. W. H. Vinton, Horseshoe Hill, Hockessin, Del.

## PROVINCE IV—West Virginia, South Kentucky

Athens-Princeton, W.Va.	Mrs. Verne L. Rhodes, 1482 Pennsylvania Ave., St. Albans
Charleston, W.Va.	Mrs. Cail McKee, 1204 Garfield, Charleston
Huntington, W.Va.	Mrs. Fred Keyser, 1032 12th Ave., Huntington

Province Vice-President: MRS. DON TITUS (MARTHA), 204 Chestnut St., Huntington, W.Va.

Lexington, Ky.
Mrs. Glen Conatser, 34A Greentree Rd., Lexington

## PROVINCE V—Ohio

Ada	Mrs. John Seitz, 245 W. Buckeye Ave., Ada.
Akron	Mrs. Gene Strassner, 134 Donovan Way, Akron
Berea	Mrs. Wm. M. Taylor, 8112 Lynway, Olmsted Falls
Canton Area	Mrs. Robert Drath, 354 Whipple Rd., N.W., Canton 8, Ohio
Cincinnati	Mrs. Alan C. Alexander, 1181 Alnetta Dr., Cincinnati 30, Ohio
Cleveland, Eastside	Mrs. Robert T. Howell, 20141 Concordia Dr., Euclid 17, Ohio
Cleveland, Westside	Mrs. Ronald Weber, 8555 Royce Ridge, Parma 29
Columbus, Ohio	Mrs. Thomas F. Head, 1724 Foxchase Dr., Reynoldsburg, Ohio
Dayton, Ohio	Mrs. Richard Booher, 3206 Wonderview Dr., Dayton, Ohio
Hamilton	Mrs. Walter M. Jackson, 116 Westbrook Dr., Hamilton

## PROVINCE VI—Michigan

Albion	Mrs. Otis Myers, 414 Darrow, Albion
Battle Creek	Mrs. Peter Christ, 264 Alzonquin, Battle Creek
Detroit	Mrs. Loretta Gilewicz, 473 Allard Rd., Grosse Pointe Farms 36, Mich.
Flint	Phyllis C. Chana, 1305 Westwood Dr., Flint
Grand Rapids	Mrs. William F. Ehinger, 9094 Natchez Ct., N.E., Rockford, Mich.

Province Vice-President: MRS. WINFIELD C. HINMAN (KATHRYN), 27310 Wellington Dr., Franklin, Mich.

Kalamazoo
Lansing-East Lansing
Oakland County
Ypsilanti-Ann Arbor

Mrs. Dan Nagelvoort, 1119 Greenwood, Kalamazoo
Mrs. Frank Smith, Jr., 3115 Forest Rd., Lansing 10
Mrs. Laurence Trevaror, 2739 Kingston, Huntington Woods, Mich.
Mrs. Jack B. Tower, 9045 McGregor Rd., Pinckney, Mich.

Province Vice-President: MRS. WINFIELD C. HINMAN (KATHRYN), 27310 Wellington Dr., Franklin, Mich.

## Chapter

## President and Address



**Chapter**

\*Bloomington  
Columbus  
Fort Wayne  
Franklin  
Greencastle  
Indianapolis

**PROVINCE VIII—Wisconsin**

\*Fox River Valley  
Madison  
Beloit-Janesville

**PROVINCE IX—Illinois**

Alton-Wood River  
Arlington Heights  
Aurora  
Carbondale  
\*Charleston  
Chicago  
Chicago North Suburban  
Chicago South Suburban  
\*Decatur  
\*DeKalb-Sycamore  
DuPage Valley

**PROVINCE X—Minnesota, Iowa, North Dakota, South Dakota**

Ames-Boone, Iowa  
Cedar Rapids, Iowa  
Des Moines  
\*Fairfield, Iowa  
\*Fargo-Moorhead  
Grand Forks, N.D.

**PROVINCE XI—Missouri**

Clay-Platte  
Kansas City  
Kirksville  
Marshall

**PROVINCE XII—Nebraska, Kansas, Colorado, Wyoming, Utah, Arizona, New Mexico, and Nevada**

Albuquerque  
\*Cheyenne, Wyo.  
Colorado Springs, Colo.

Denver, Colo.  
Emporia, Kan.  
Ft. Collins, Colo.  
Greeley, Colo.  
Gunnison, Colo.  
Hays, Kan.

**PROVINCE XIII—Washington, Oregon, Montana, Idaho**

Corvallis, Ore.  
Eugene, Ore.  
Portland, Ore.  
Salem, Ore.

**PROVINCE XIV—Northern California, Hawaii**

Chico, Calif.  
Fresno, Calif.  
Honolulu, Hawaii  
Las Vegas, Nev.  
Marin County, Calif.  
Monterey Peninsula, Calif.  
Mt. Diablo, Calif. Area  
Palo Alto, Calif.  
Reno, Nev.

**President and Address**

Mrs. James Dexon 405 N. Indiana, Bloomington, Ind.  
Mrs. John Newbright, 1025 Pearl St., Columbus, Ind.  
Mrs. John Young, 305 McKinnie Ave., Fort Wayne, Ind.  
Mrs. Dan Mitchell, 206 E. Adams St., Apt. 6, Franklin, Ind.  
Mrs. Robert Breese, 324 Redland Lane, Greencastle  
Mrs. James Boles, 8810 Pendleton Pike, Box 304, Indianapolis

Mrs. R. Milton Lynnes, 1620 N. Douglas St., Appleton, Wis.  
Mrs. Nyles Spoelstra, 612 Howard Place, Madison, Wis.  
Mrs. Lester Harlow, 805 Elmwood, Beloit, Wis.

**Province Vice-President: MRS. RUSSELL CARLSON (MAURINE), 819 Oak Ave., Aurora, Ill.**

Mrs. Harold L. Carr, 315 Tower Drive, E. Alton, Ill.  
Mrs. Walter Rogers, 2210 N. Cedar, Rolling Meadows, Ill.  
Mrs. James Harrington, 1410 Russell, Aurora, Ill.  
Mrs. Wayne Hutchison, 402 E. DeYoung, Marion, Ill.  
Gail McKee, 1609 S. 10th, Charleston, Ill.  
Mrs. Robert Kuznicki, 327 Oxford Rd., DesPlaines, Ill.  
Mrs. H. W. Chronquest, 3247 Park Place, Evanston, Ill.  
Mrs. Henry Alekno, 437 Navajo, Part Forest, Ill.  
Mrs. J. B. Upchurch, 1569 W. Sunset, Decatur, Ill.  
Mrs. Owen W. Nelson, R.R. 2, DeKalb, Ill.  
Mrs. Charles Porath, 108 North Erie, Wheaton, Illinois

Mrs. Richard Horton, 242 Village Ave., Ames, Iowa  
Mrs. Roy McMichael, 1434 Golfview Dr., N.E., Cedar Rapids, Iowa  
Mrs. Foster Turnbull, 3907 Kingman Blvd., Des Moines, Iowa  
Sandra Jane Wilson, 307½ W. Kirkwood, Fairfield, Iowa  
Mrs. Harold Bergford, 1312 Sixth Ave., Moorhead, Minn.  
Mrs. T. H. Harwood, 2704 Belmont Rd., Grand Forks, N.D.

**Province Vice-President: MRS. JOSEPHINE REED, 836 Eastwood St., Marshall, Mo.**

Mrs. James H. Truesdale, 4823 N. College, Kansas City 19, Mo.  
Mrs. Clarence B. Collins, 5603 E. 141st St., Grandview, Mo.  
Mrs. Ed Grim, 42 Kellwood Dr., Kirksville, Mo.  
Mrs. Josephine Reed, 836 E. Eastwood, Marshall, Mo.

**Province Vice-President: MRS. THOMAS M. EVANS (LEOTA), 830 Harris St., Manhattan, Kan.**

Mrs. John P. Jones, 1300 Glorietta N.E., Albuquerque, N.M.  
Mrs. James Newman, Quarters 110 B, Warren AFB, Cheyenne, Wyo.  
Mrs. W. L. Dorsey, 1650 Mesa Ave., Broadmoor, Colorado Springs, Colo.  
Mrs. C. D. Maier, 2875 Glencoe, Denver 7, Colo.  
Mrs. Arnold Lister, 2020 E. 6th, Emporia, Kan.  
Mrs. Robert Johnson, 834 Juniper Lane, Fort Collins, Colo.  
Mrs. John S. Girault, 2648 13th Ave., Greeley, Colo.  
Mrs. Richard A. Pigg, 322½ No. Wisconsin, Gunnison, Colo.  
Mrs. Dean G. King, 1903 Lincoln Dr., Hays, Kan.

**Province Vice-President: MRS. PRESTON OREM (BETH), 7738 S.W. 51st Ave., Portland, Ore.**

Mrs. J. Alfred Cox, 1630 Dixon St., Corvallis, Ore.  
Mrs. R. K. Woodward, Rt. 5, Box 375, Eugene, Ore.  
Mrs. George J. Eicher, 60 N.W. 87th Ave., Portland 10, Ore.  
Mrs. Elizabeth Stevely, Rt. 4, Box 157, Salem, Ore.

**Province Vice-President: MRS. PRESTON OREM (BETH), 7738 S.W. 51st Ave., Portland, Ore.**

Mrs. Rodger Evans, 6157 Pentz Rd., Paradise, Calif.  
Mrs. Alfred Siacqua, 4389 N. Belmont, Fresno, Calif.  
Miss Nancy E. Wilcox, 2243 Mohala Way, Hawaii  
Mrs. George R. Mallory, 178 Devan Dr., San Rafael, Calif.  
Mrs. James E. Gilman, Box 1096 Carmel, Calif.  
Mrs. Bryant King, 669 Jennie Ct., Lafayette, Calif.  
Mrs. James S. Arnold, 700 Alester Ave., Palo Alto, Calif.  
Mrs. William V. Neely, 4601 Aster Ave., Reno, Nev.

**Chapter**

\*Indianapolis Southside  
Lafayette  
Louisville, Ky.  
Muncie  
South Bend-Mishawaka

Milwaukee  
Waukesha

Elgin  
Eureka  
Galesburg  
Peoria  
Quint City (Davenport,  
Bettendorf, Rock Island,  
Moline, East Moline)  
Rockford  
Salt Creek  
Urbana-Champaign  
West Suburban

**Province Vice-President:**

Iowa City, Iowa  
Sioux City, Iowa  
Twin Cities (Minneapolis-  
St. Paul)

\*Waterloo, Iowa

**President and Address**

Mrs. Robert J. Lebrock, 722 Memorial Dr., Beech Grove, Ind.  
Mrs. Jack Disler, R.R. #2, Lafayette, Ind.  
Mrs. Edward Schmitt, 2414 Brighton Ave., Louisville  
Mrs. Bart James, 698 Weber Dr., Muncie, Ind.  
Mrs. John Hoffman, 1329 Belmont, South Bend

Miss Audrey A. Benning, 3045 N. Newbali St., Milwaukee, Wis.  
Mrs. Milo Milanovich, 237 Tenny, Waukesha, Wis.

Mrs. Harry Wenger, 957 Scott Dr., Elgin, Ill.  
Mrs. Lyle Barker, 606 S. Main, Eureka, Ill.  
Mrs. Steve McConnell, 1689 W. North St., Galesburg, Ill.  
Mrs. Ralph Claasen, 2715 W. Moss, Peoria, Ill.  
Mrs. Eddie Sperry, 2118 6th St. Ct., East Moline, Ill.

Mrs. John Young, Box 362, Winnebago, Ill.  
Mrs. Richard Spangler, 421 S. Catherine, La Grange Park, Ill.  
Mrs. L. L. Patterson, 720 S. Elm, Champaign, Ill.  
Mrs. William Dean, 316 N. Mayfield, Chicago 44, Ill.

Mrs. Richard Houston, 1421 Ash, Iowa City, Iowa  
Mrs. Duane Schroeder, 3716 Orleans  
Mrs. G. C. Putnam, 1492 Portland Ave., St. Paul, Minn.

Mrs. Robert Hyke, 202 Parkview Blvd., Waterloo, Iowa

Mrs. Darell Quinn, 405 W. 12th, Maryville, Mo.  
Mrs. L. E. Survey, 1900 N. Burton, Springfield, Mo.  
Mrs. Geneva Schatz, 7460 Arlington, St. Louis 17  
Mrs. Lester E. Volentine, 409 E. Market, Warrensburg

Miss Hazel Ferguson, 7115 Paseo, Kansas City, Mo.

Mrs. Robert Dunn, 2539 Rathbone Rd., Lincoln, Neb.  
Mrs. C. V. Williams, 1407 Laramie, Manhattan, Kan.  
Mrs. Joseph W. Elliott, 12152 Lamont St., Omaha 44, Neb.  
Mrs. Louis Dovilla, 1345 E. Rose Lane, Phoenix, Ariz.  
Mrs. Harry Dale, 313 E. Church St., Rosewell, N.M.  
Mrs. Gary Stroud, 508 Nickell Rd., Topeka, Kan.  
Mrs. John R. DeMonte, 1426 S. Rosemont Blvd., Tucson, Ariz.  
Mrs. William Wise, 1647 N.E. Pkwy.  
Mrs. P. P. Falvo, 8689 Edith, Wichita, Kan.

Mrs. D. Dean Stewart, 11668 18th Ave., S.W., Seattle 66, Wash.  
Miss Helen Kading, W. 2028 4th St., Spokane, Wash.  
Mrs. Larry Wetterhus, 314 14th St. S.W.

Mrs. Gary L. Balow, 5324 Silver Strand Way, Sacramento 21, Calif.  
Mrs. Robert Redfield, 95 Ross Circle, Oakland, Calif. 94618

Mrs. Donald Foster, 320 Loyola Dr., Millbrae, Calif.  
Mrs. Howard Morris, 1901 Holly Dr., Lodi, Calif.  
Mrs. Ted Chamberlain, 1588 Willowbrook Dr., San Jose, Calif.  
Mrs. Ernest Soza, 2158 Florida St., Hayward, Calif.



# PROVINCE XV—Southern California

*Province Vice-President:* MRS. WALTER A. VOSS (RUTH), 11107 East Coolhurst Dr., Whittier, Calif.

## Chapter

Bakersfield, Calif.  
Central San Fernando Valley, Calif.  
DZ's by-the-sea  
Downey Area, Calif.  
El Paso, Tex.  
Glendale-Burbank, Calif.  
Long Beach, Calif.  
Los Angeles, Calif.  
Orange County, Calif.

## President and Address

Mrs. Richard Hayes, 2305 Lynnwood Dr., Bakersfield, Calif.  
Mrs. Roland Coldwell, 9504 Sylvia, Northridge, Calif.  
Mrs. Hugh Godwin, 20291 S.W. Acacia, Santa Ana Heights  
Mrs. Charles L. Youde, 10344 Trestan Dr., Downey, Calif.  
Mrs. Lowell H. Christensen, 5813 Tarpon Dr., El Paso, Tex.  
Mrs. Richard W. Newcom, 1629 Virginia Ave., Glendale 2, Calif.  
Mrs. Herman M. Turk, 219 Belmont Ave., Long Beach, Calif.  
Mrs. Rudy Yarak, 4804 Southridge Ave., Los Angeles 43, Calif.  
Mrs. Richard L. Decker, 615 Jambolaya St., Anaheim, Calif.

## Chapter

Pasadena Foothills, Calif.  
\*Pomona Valley, Calif.  
Riverside, Calif.  
San Diego, Calif.  
Santa Barbara, Calif.  
Santa Monica, Calif.  
South Bay, Calif.  
West Covina, Calif.  
Whittier, Calif.

## President and Address

Mrs. Martin Thompson, 399 Wallis, Pasadena, Calif.  
Mrs. Phillip Heathman, 2018 N. Carey, Pomona, Calif.  
Mrs. Arnold Butki, 8975 Delano Dr., Riverside, Calif.  
Mrs. Roy Womack, 3155 Kemper, Apt. 3, San Diego 3, Calif.  
Mrs. Bruce Buchl, 628 W. Mission, Santa Barbara, Calif.  
Mrs. Harry Corrigan, 258 S. Amalfi Dr., Santa Monica, Calif.  
Mrs. W. R. Wallner, 3833 Paseo de Campo, Palos Verdes Estates, Calif.  
Mrs. Delton M. Gates, 2416 Inola St., San Dimas, Calif.  
Mrs. Donald W. Rowen, 9081 Canfield Dr., Whittier, Calif.

# PROVINCE XVI—Oklahoma

Alva  
Bartlesville  
\*Edmond, Okla.  
Oklahoma City

Mrs. Frank Marcom, 1122 Church Ave., Alva, Okla.  
Mrs. Karl B. Ness, Jr., 1409 May Lane, Bartlesville, Okla.  
Mrs. Donna Lee Paddyaker, 201 N.W. 85th, Oklahoma City, Okla.  
Miss Rita Sue Privett, 106 N.W. 27th, Oklahoma City

# PROVINCE XVII—Texas

Amarillo  
Austin  
Beaumont  
Canyon  
Corpus Christi  
Dallas  
Fort Worth  
Houston

Mrs. Jack T. Campbell, 606 Broadway, Amarillo  
Mrs. Joseph Beach, 5804 Timber Trail, Austin  
Mrs. Wm. D. Campbell, 5355 Bettles Lane, Beaumont  
Mrs. Bruce Winn, Rt. 1, Box 22A, Canyon  
Mrs. James L. Hailey, 3722 Lincoln, Corpus Christi  
Mrs. Donald E. Buckroyd, 1417 San Rafael Dr., Dallas  
Mrs. Weldon Aston, 5704 Wessex  
Mrs. Harold A. Smith, 1503 Del Norte, Houston

# PROVINCE XVII—Louisiana

\*Baton Rouge, La.  
Hattiesburg, Miss.  
\*Houma, La.  
Lafayette, La.

Mrs. H. M. Chenebert, Jr., 1436 Hearstson Dr., Baton Rouge, La.  
Mrs. Richard Spencer, 503 Melba, Hattiesburg, Miss.  
Mrs. Seymour Dalsheimer, 28 Dallas Dr., Houma, La.  
Mrs. W. P. Bishop, Jr., 222 Sunny Lane, Lafayette, La.

# PROVINCE XIX—Tennessee and Arkansas

Tri-Cities, Tenn.  
Little Rock, Ark.  
Memphis, Tenn.

Mrs. John Mark Young, 6089 Unaka Ave., Johnson City, Tenn.  
Mrs. John M. Harbour, 3816 Lee, Apt. 101, Little Rock, Ark.  
Mrs. Henry R. Wenzler III, 5300 Edenshire Ave., Memphis, Tenn.

# PROVINCE XX—Virginia, North Carolina, Maryland and Washington, D.C.

Baltimore, Md.  
\*Charlotte, N.C.  
\*Greenville, N.C.

Mrs. Richard F. Free, 2512 Helford Dr., Baltimore, Md.  
Mrs. J. L. Boyd, 5510 Farmbrook Dr., Charlotte 10, N.C.  
Mrs. W. Stuart Bost, 310 Harding St., Greenville, N.C.

# PROVINCE XXI—East—Georgia and South Carolina

Atlanta, Ga.  
Auburn, Ala.  
Birmingham, Ala.

Mrs. R. F. Martin, 451 Carriage Dr., N.E. Atlanta  
Mrs. Lyman Pittman, Rt. 3 Box 261 Opeleka, Ala.  
Mrs. Frank T. Joyce, 5064 Scenic View Dr., Birmingham 10, Ala.

# PROVINCE XXI—West—Alabama and Mississippi

Birmingham, Ala.  
Hattiesburg, Miss.  
Huntsville, Ala.

Mrs. Frank T. Joyce, 5064 Scenic Dr., Birmingham 10, Ala.  
Mrs. Richard Spencer, 503 Melba, Hattiesburg, Miss.  
Mrs. F. T. Saam, 605 Glasgow, N.W., Huntsville, Ala.

# PROVINCE XXII—Florida

Boca Raton Alumnae Chapter  
Clearwater  
Daytona Beach-Volusia Co.  
Fort Lauderdale  
Gainesville  
Jacksonville  
Miami

Mrs. Donald Miller, 132 N.W. 10th Ct., Boca Raton, Fla.  
Mrs. Edgar Haun, 1533 Sea Breeze, Clearwater  
Mrs. Clifford H. Coffin, Jr., 1235 Flagstone Dr., Daytona Beach  
Mrs. Fritz Richter, Jr., 4740 N.E., 28th Ave., Fort Lauderdale  
Mrs. Ralph Kinney, 1238 N.W. 35 Terr., Gainesville  
Miss Joanne Overman, 516 Matterhorn, Jacksonville, Fla.  
Mrs. Edgar P. Elles, 619 Altora Ave., Coral Gables, Fla.

## *Province Vice-President:*

Stillwater  
Tulsa

Mrs. R. D. Cocanougher, 818 Blakeley, Stillwater, Okla.  
Mrs. Herbert J. Danne, 5823 E. 57 St., Tulsa

## *Province Vice-President:* MRS. HARRY C. STALLWORTH (KATIE BLANCHE), 2601 Westover Rd., Austin 3, Tex.

Huntsville  
Lubbock  
\*Midland  
\*Odessa  
Port Arthur  
San Antonio  
San Marcos  
\*Waco

Mrs. Lee Olm, 321 Roundabout Rd., Huntsville  
Mrs. W. H. Harrison, 3210 38th St., Lubbock  
Mrs. George Dolmas, 4810 W. Illinois, Midland  
Mrs. Rose Kinser, 2515 Roper, Odessa, Tex.  
Mrs. W. E. McDaniel, 3900 Charles Ave., Groves, Tex.  
Mrs. Fritz Bauer, 222 Funston Pl., San Antonio 9, Tex.  
Mrs. Fred J. Richan, 115 Buena Vista, Buena Vista, Tex.  
Mrs. D. R. Zaggie, 5420 Lake Charles St., Waco

## *Province Vice-President:* MRS. FRANK W. QUIN, JR. (HANNAH-NELL), 3875 Greenway Pl., Shreveport, La.

Lake Charles, La.  
New Orleans, La.  
Shreveport, La.

Mrs. Albert D. Sterckx, Rt. 3, Box 207C, Lake Charles, La.  
Mrs. John C. Wright, 4911 Pauline Dr., New Orleans 26, La.  
Mrs. Charles Ray Jones, 2727 Balch, Shreveport, La.

## *Province Vice-President:* MRS. FRANK W. QUIN, JR. (HANNAH-NELL), 3875 Greenway Pl., Shreveport, La.

Nashville, Tenn.  
Chattanooga, Tenn.  
Knoxville, Tenn.

Mrs. R. L. Iddins, 3012 Delaney, Nashville, Tenn.  
Mrs. Lee Collins, Jr., 6224 Stockton Dr., Chattanooga 6, Tenn.  
Mrs. Everitt Scroggie

## *Province Vice-President:* MISS MARY WORKUN, 303 Mansion Dr., Alexandria, Va.

Richmond, Va.  
Washington, D.C.

Mrs. Hunter R. Pettus, 8107 Kingston Rd., Richmond, Va.  
Miss Marion Worthing, 3703 Ledwood St., Chevy Chase, Md.

## *Province Vice-President:* MRS. HENRY McCLELLAN (MILDRED), 425 Shades Crest Road, Birmingham, Ala.

Huntsville, Ala.  
Mobile, Ala.  
Montgomery, Ala.  
Tuscaloosa, Ala.

Mrs. F. T. Saam, 605 Glasgow, N.W., Huntsville, Ala.  
Mrs. W. T. Brown, 5054 Woodmere, Mobile, Ala.  
Mrs. William O'Rear, 3515 Norman Bridge Rd., Montgomery, Ala.  
Mrs. Eugene R. Tillotson, 53 Idlewood, Tuscaloosa, Ala.

Mobile, Ala.  
Montgomery, Ala.  
Tuscaloosa, Ala.

Mrs. W. T. Brown, 5054 Woodmere, Mobile, Ala.  
Mrs. William O'Rear, 3515 Norman Bridge Rd., Montgomery, Ala.  
Mrs. Eugene R. Tillotson, 53 Idlewood, Tuscaloosa, Ala.

## *Province Vice-President:*

Ocala-Leesburg  
Orlando-Winter Park  
Pensacola  
St. Petersburg  
Sarasota-Bradenton  
Tallahassee  
Tampa

Mrs. William Price, 2704 Washington Dr., Ocala, Fla.  
Mrs. Truman Crason, 1705 Virginia Dr., Orlando  
Mrs. Wm. T. McElfresh, R. 1, Box 728, Pensacola  
Mrs. Kenneth Carpenter, 10515 52 Ave. North, St. Petersburg, Fla.  
Mrs. C. S. Keve, 1481 Hillview Dr., Sarasota, Fla.  
Mrs. J. D. Williamson, 231 East 5th St., Tallahassee  
Mrs. M. C. Magidson, 4702 San Jose, Tampa 9, Fla.



Attending the Founders Day celebration of Chicago Alumnae Chapter held in the Lake Shore Club in Chicago were (from left) Kay Schweizer, vice-president; Marilyn Kuznicki, president; Marjorie Bergman, national director of philanthropies, who spoke, and Colleen Burns, treasurer.



#### ALUMNAE GROUPS

You'll want the distinctive Robert Rollins Delta Zeta Blazer too—it's fashioned for the lives you lead!

## PLEDGED!

### Chosen As The Official Delta Zeta Blazer

ROBERT ROLLINS

Now, Delta Zetas everywhere have their own official Blazer—a beautiful bond of pride—with the elegant DZ coat-of-arms woven right into the pocket.

This indispensable addition to a college wardrobe, available only through Robert Rollins, fits sorority life as well as it fits your figure—perfectly! It speaks volumes about how proud you are of your chapter, gives you a wonderful sense of belonging to DZ. Your Robert Rollins Blazer is so handsomely tailored it can go anywhere, do anything—campus or town, sorority meeting or weekend date, classroom or stadium, rushing, pledging—it varies its outlook to suit the occasion. Best of all, it only looks expensive. You'll want your whole chapter to have the distinction and prestige of a Delta Zeta Blazer by Robert Rollins.

Fashioned of the finest fabrics in officially approved colors to suit your favorite color strategy: White wool tweed, White flannel, White "doeskin" flannel; Menswear flannel in Mint Green, Forest Green, Coral Pink. PIPINGS: White, Bright Green, Dark Green or Plain Edge.

Send for exact prices, and order blank.

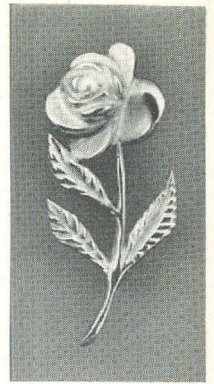
**ROBERT ROLLINS BLAZERS, INC.**

Dept. TL, 832 Broadway  
New York 3, N.Y.

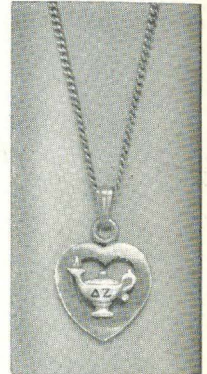


Second class postage paid at Menasha, Wisconsin

Return requested. Send Form 3579 to Delta Zeta Sorority.  
3561 North Pennsylvania St., Indianapolis, Indiana 46205



Golden Rose Pin—\$16.50  
Order from National Headquarters



Daughter-Granddaughter Pendant

Your Official Jeweler

**BURR, PATTERSON & AULD COMPANY**  
2301 Sixteenth Street  
Detroit 16, Michigan

Gift Parade Catalogue free on request.

Daughter-Granddaughter Pendant gold-filled .....	4.00
Daughter-Granddaughter Pendant 10K gold .....	6.75
(Order from Executive Secretary)	

#### STANDARD BADGES

When ordering, please use the official order form and forward same to the Executive Secretary for her approval. Your sorority requires this.

1. Zircon, set flush .....	\$13.50
2. Zircon, set tiffany .....	13.50
3. .10 Diamond, set tiffany .....	62.50
4. Recognition pin, gold-filled .....	1.50
10K gold .....	2.50
5. Recognition pin, crown set pearl .....	10.00
6. Mother's pin, with pearls .....	4.25
7. Mother's pin, plain .....	3.00
8. Pledge pin .....	1.25

#### GUARD PINS

	Single Letter	Double Letter
Plain .....	\$2.75	\$ 4.25
Crown set pearl .....	7.75	14.00
Close set pearl .....	5.50	9.25

Be sure to mention the name of your chapter when ordering a guard.

9. Monogram Necklace, 10K drop on an 18" gold-filled neck chain .....	4.00
10. Lamp Necklace, 18" neck chain. Gold-filled ..	4.00
11. Lamp Bracelet, gold-filled .....	6.75



10% Federal Excise Tax must be added to prices; also State Sales or Use Tax and Municipal Tax where they are in effect.









NATIONAL  
LIBRARY BINDERY  
COMPANY  
OF INDIANA, INC.

546 SOUTH  
MERIDIAN STREET  
INDIANAPOLIS