

TRULY LIVING OUR POTENTIAL

Delta Zetas fulfill their
promise to be amazing

TRULY CONNECTED

The power of the Delta Zeta
professional network

TRANSFORMING THE CAMPUS

New chapters deliver
values-based leadership

The LAMP OF DELTA ZETA

*“Believing
in myself
started
here.”*



SPRING/SUMMER 2016



- 04** **Truly Living Our Potential**
Fulfilling our promises with authenticity



- 12** **Delta Zeta Donates \$500,000 to Starkey**
First Hike for Hearing milestone



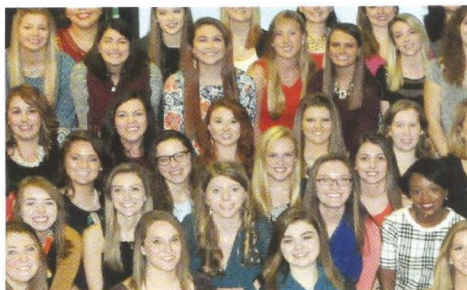
- 16** **2015 Florence Hood Miner and Grace Mason Lundy Awards**



- 40** **Truly Imagined**
Truly realized in art



- 10** **Truly Connected**
Professional networking event



- 14** **Transforming the Campus**
Latest chapter installations



- 22** **Hike for Hearing**
Stories to inspire



- 48** **The Painted Turtle camp**
Delta Zeta's national service project

DEPARTMENTS

- 18** **TRULY DISTINCTIVE**
Collegiate leaders transform the world

- 24** **ON CAMPUS**
Delta Zeta chapters are leading for positive change.

- 42** **TRULY PURPOSEFUL**
Alumnae achievers inspired by Delta Zeta's purpose

- 50** **FLAME ETERNAL**

- 52** **FOUNDATION**

Visit deltazeta.org to read the latest issue. If you would like to read The LAMP online to help the Sorority to go green, please email us at GreenLAMP@dzshq.com, and include your full name, chapter of initiation and mailing address.

You will receive an email alert when the next issue is online. If you want to continue to receive The LAMP in its hard copy format, mailed to you three times a year, you need not do anything. Thank you!

Published since December 1910 by Delta Zeta Sorority. The LAMP of Delta Zeta, Nancy E. Brewer, A, Editor (ISSN #0887-2554), official magazine of the Sorority, is published three times a year by the Delta Zeta Sorority, 202 East Church Street, Oxford, OH 45056.

POSTMASTER

Send address changes to Delta Zeta Sorority, 202 East Church Street, Oxford, OH 45056.

Send all editorial material to Delta Zeta National Headquarters, Attn: Editor, 202 East Church Street, Oxford, OH 45056 (513) 523-7597

General email: dzs@dzshq.com
The LAMP email: LAMP@dzshq.com
Website: deltazeta.org

**DELTA ZETA SORORITY
NATIONAL COUNCIL 2014 - 2016**

Diane M. Stecher
Missouri/St. Louis - **IE**
National President

Leslie Evans Williams
Indiana - **E**
National Vice President of Membership

Christy Phillips-Brown
Western Carolina (NC) - **ΘI**
National Vice President of Collegians

Karen Martin Campbell
California State/Long Beach - **ΔA**
National Vice President of Alumnae

Heather Jerden Anderson
Texas/Arlington - **Ψ**
National Vice President of
Administration

Cathy Irvin Painter
Alabama - **ΑΓ**
National Vice President of Finance

Michelle Albrecht Smith
California/Los Angeles - **AX**
Past National President

Jeanine Petersen Triplett
Louisville (KY) - **ΒΓ**
National Panhellenic Conference
Delegate

Founded at Miami University
Oxford, Ohio • October 24, 1902

FOUNDERS

Alfa Lloyd Hayes, 1880-1962
Mary Collins Galbraith, 1879-1963
Anna Keen Davis, 1884-1949
Julia Bishop Coleman, 1881-1959
Mabelle Minton Hagemann, 1880-1929
Anne Simmons Friedline, 1879-1932

THE ORDER OF THE LAUREL

Irene Caroline Boughton, **I**
(University of Iowa)
Grace Mason Lundy, **E**
(Indiana University)
Elizabeth Coulter Stephenson, **A**
(Miami University)
Myrtle Graeter Hinkly, **Δ**
(DePauw University)
Norma Minch Andrisek, **ΓA**
(Baldwin Wallace University)



Printed in USA.



National Panhellenic Conference

FROM THE PRESIDENT

PROMISE



We all have a true purpose in life—something you are meant to do that will not only utilize your skills and talents, but will make you happy and fulfill you at the end of every day.

There is no one like you.

No one has your experiences or education.

No one has your relationships.

No one has your hopes, joys and fears.

Which means ...

There is no one else who can do what you do, the way that you do it.

There is no one else who sees the world the way that you see it or who thinks the way that you do.

There is no one else who is perfectly suited to impact the lives around you the way that only you can.

But if you aren't willing to do everything that you were created to do, the promise that is you is not realized.

When you touch people with your life, you leave a legacy. Delta Zeta empowers 261,000 uniquely gifted women to realize their potential and truly make the world better. How can your experience in Delta Zeta inspire you to fulfill the promise to the world that is you? What will your legacy be?

I challenge you to make a promise to yourself to discover your potential, live a life of purpose and happiness, and create a better world. Delta Zeta will be with you every step of the way.

In Delta Zeta,

Diane M. Stecher
Diane M. Stecher
National President

“Believing
in myself
started
here”

TRULY LIVING
OUR POTENTIAL



Potential: existing in possibility; capable of development into actuality

**“Make these ideals more truly our own
than they have ever yet been.”**

— ELIZABETH COULTER STEPHENSON, NATIONAL PRESIDENT, 1912 – 1915

Each of us is born with potential — the possibility of doing or learning to do — something that is truly our own in a way that only we can do it.

Potential needs to be nurtured. It needs to be encouraged. In many lives, it goes unfulfilled, and so the light that each person can bring to the world is never realized. Something important is not done. The future begins early in a young woman's life. And college is a crucial juncture where she discovers her passion, claims her place in the world and acquires the knowledge to move toward her ideal.

As a young woman discovers her passion, her life's work, she lives a life that makes a meaningful impact on the world, and personally fulfills her. That is the gift of the Delta Zeta experience. Each Delta Zeta carries within her the promise of Truly — the promise she makes to live a life fulfilled; the promise she makes to her sisters — and to the world — through our Creed.

Truly reveals her authentic life — who she truly is and what she is meant to do. In Delta Zeta, each member's experience is unique to reflect her individual talents, yet at the same time unifies her bond to the Sorority. The satisfaction and happiness she has in finding herself empowers her to make a difference and to reach her potential.

Women who come to the Sorority discover themselves in Delta Zeta, find their true passion and begin to live their dreams. Living authentically helps them learn how to make the journey, how to recover from disappointments and how to build a life that is meaningful for them. Ultimately, their life reaches out to other lives and causes — their life makes a difference.

Our members come to us with dreams. The experiences they find in Delta Zeta help them take a hope and make it a reality. The women they meet encourage and mentor them, leaving no room for doubt that they are on the right path, and help lead them to achievement.

“It was the role models that I had in Delta Zeta that really gave me some sense of confidence,” says Jeanne Bokina Christie, Wisconsin/Stout – ZB, who served in the Vietnam War as a American Red Cross Supplemental Recreational Activities Overseas (SRAO), and is an adjunct professor at Manhattanville College in Purchase, New York and at Western Connecticut State University in



*"Believing in myself started **here**."*



"Being 'Truly DZ' means to me that you are putting your full self into Delta Zeta. Through being in Delta Zeta, I have learned more about myself and gained more confidence in my being. My sisters have given me the strength and love I need to stay positive through the hard times and they encourage me through the good times."

— MARISSA O'BRIEN, SOCIAL CHAIRMAN, ZETA EPSILON CHAPTER (CALIFORNIA UNIVERSITY OF PENNSYLVANIA)

Danbury, Connecticut. "Their leadership offered certain strengths and qualities that lasted a lifetime. It was one of the first times I was exposed to young women who cared a lot about the world out there. The chapter accepted a diverse range of people, of learning styles, of seeing the world from different places. That diversity gives you a sense of 'I can do this,' when you see members succeed. They were very good role models and they had a sense of integrity for the individual. That diversity of membership attests to the strength of Delta Zeta as an organization."

In Delta Zeta, individuality is celebrated as a strength. A young woman discovers how her talents can do good — for her, for others, for a cause, or simply by giving someone the opportunity to see something differently. She is surrounded by women who believe in the same values she does. They believe in her and she in them. Her potential is nurtured and encouraged. She sees that she can become what she wants to be.

A woman's potential — the promise she holds within herself to do something significant and of value — grows in self-confidence, a fragile element of the self that needs special care. Within Delta Zeta, members like Marissa O'Brien find the support and encouragement that they need to help self-confidence grow. That support is born from the strength of sisterhood. In the safety of the chapter, a member tries something new that moves her to a different place in her life. She knows that her sisters rejoice when she thrives. They will catch her if she falls. She has the courage to make her dream a reality, to explore new experiences and to continue to grow.

"One of the most important things I learned from Delta Zeta is that you truly can do anything you set your mind to," says Kristen Martin, Arizona State - ΠΖ, who recently published

BELOW: Jeanne Bokina Christie, Wisconsin/ Stout - ZB, served in the Vietnam War as a American Red Cross Supplemental Recreational Activities Overseas (SRAO). Currently she is an adjunct professor at Manhattanville College in Purchase, New York and at Western Connecticut State University in Danbury, Connecticut.



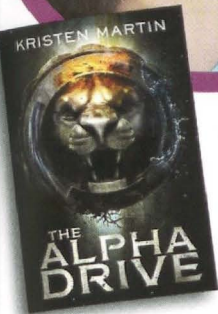
"Delta Zeta taught me to be true to myself. She taught me how to make connections which helped me get my career at Camp Aldersgate. I'm very thankful for her wisdom and to be able to walk in her light with my sisters. I am very thankful to be a Delta Zeta."

— MICHAELA KABERLINE, ARKANSAS STATE - OE

LEFT: Michaela (on left) with Presley Adamson, Philanthropy Chairman of the Omicron Epsilon Chapter, who works at Camp Aldersgate in the summer as a counselor.



MARTIN



ABOVE: Kristen Martin, Arizona State — ΠΖ, recently published her first novel. "Delta Zeta ... provided me with an incredible support system and a network of amazing women who inspire."

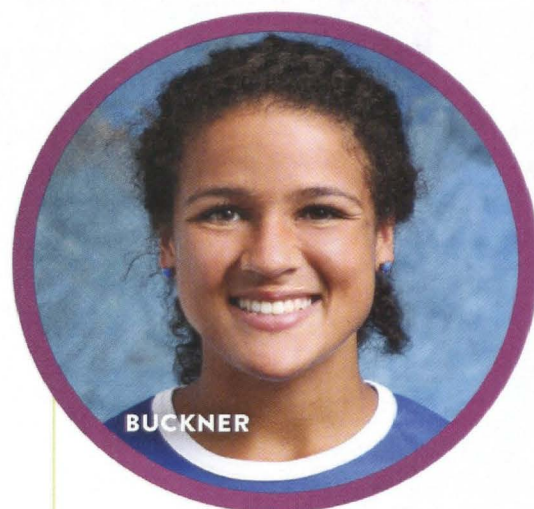
her first novel. "I wrote 'The Alpha Drive' while working a full-time job in the oil and gas industry and earning my master's degree in Industrial Distribution at Texas A&M University. Delta Zeta taught me essential time management and prioritization skills, but more importantly, provided me with an incredible support system and a network of amazing women who inspire and lift each other up and motivate each member to be the best versions of themselves. A tremendous thank you to Delta Zeta for inspiring me to live my dream!"

When we don't follow our passion or nurture our soul to discover our reason for being, we fail not only ourselves, but a little part of the world. That little part of the world is the one we were meant to touch with our life. If we don't, what will the impact be?

Our Founders understood this. They knew the power of women to change their own lives and effect good in the world. They came to realize this as they banded together to create an organization for women. They felt the power of Delta Zeta as the Sorority grew and touched other women's lives. They saw the potential as the good that came from Delta Zeta helped to fill a need and transformed communities.

"Delta Zeta has helped me reach my highest potential not only within my sorority but also outside of it," affirms Kaylie Klavoon, Ritual Chairman of the Xi Rho Chapter at Clarkson University. "I've used skills such as time management organization and good study habits to gain leadership positions in organizations such as Engineers Without Border [a non-profit humanitarian organization established to partner with developing communities worldwide in order to improve their quality of life], where I am an executive board member for fundraising. Delta Zeta has helped me become a better person by teaching me the importance of helping others, whether it is through philanthropy work or simply by helping a sister with a class in which she's struggling. I am extremely grateful to Delta Zeta for assisting me in finding my best self and helping me achieve what I never thought was possible. I am truly grateful to be a Delta Zeta."

We are proud to be global citizens who care enough to make a difference. We know that our contribution to the world, no matter how small, is important because it is a part of us. Through our sorority experience, made possible by the women within Delta Zeta, we take that leap forward in living up to our potential and use our unique talents to effect positive change in the world. We are proud to be Delta Zetas.



BUCKNER

"Being in a sorority has helped me open another side of myself and given me a support system that sees my potential and wants to help me reach it."

— MADELYN BUCKNER, CREIGHTON — ΘΗ

As an exceptional student athlete at Creighton University, Theta Eta Chapter member Madelyn Buckner said her Delta Zeta sisters supported her commitment for soccer, even when she couldn't commit a lot of time to the chapter. This made her collegiate experience life-changing as she became a champion on the soccer field.



KLAVOON

ABOVE: Kaylie Klavoon, Ritual Chairman of the Xi Rho Chapter at Clarkson University, says, "I've used skills such as time management organization and good study habits to gain leadership positions in organizations such as Engineers Without Border, where I am an executive board member for fundraising."

Believing in myself started here.



There are a lot of ways to look at our sorority experience. For many it's friendship, and that is where it starts. Then we begin to notice how the values we share inform decisions we're making. We see our role in the chapter as a chance to find our leadership voice. We learn about ourselves and learn from one another. Before long we're doing meaningful things for people we may never even meet.

It's clear that somebody believes in us. We see the path they made and light for us. They knew that we had potential, and soon we believe it, too. To myself, faith – in me, in others, and in our potential.



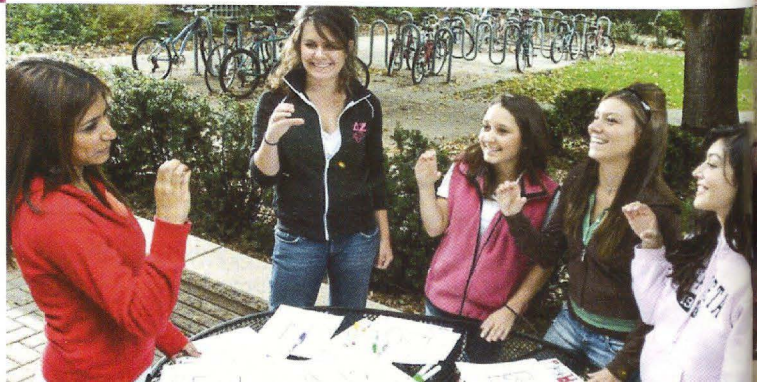
We're global citizens.

She said, *"nobody need wait a single moment before beginning to improve the world."*

There are things we can do right now to make life better for those around us, and those around the world.

We're lifelong learners.

The academic standards set for us serve as a way to measure our progress. Reaching them affirms that we belong, and that we have the potential to do more.





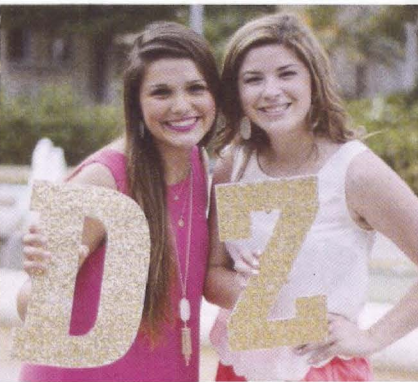
We're empowered to lead and serve.

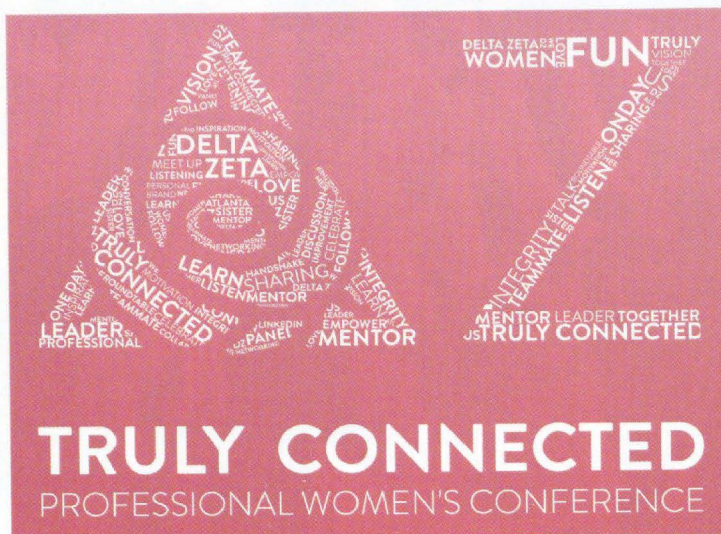
A thing needs doing and we're the ones to get that thing done. The Sorority is ours. What we do to serve our chapter helps us see that we can lead and serve others wherever we go.



We give graciously.

Some people are just a moment away from realizing their potential. The time we spend in service aligns with their moment. Donations we make afford the opportunity to realize it. We pay it forward because we believe in another's potential, and we believe in our own.





If you have wanted to tap into the professional network connections in Delta Zeta, now is the time! Truly Connected, Delta Zeta's professional women's conference, gives you that opportunity.

“Truly Connected is an opportunity for each of us to initiate new connections and expand our network.”

Leslie Evans Williams
National Vice President of Membership

Launched in Atlanta, Georgia, on February 20, 2016, the first Truly Connected professional conference demonstrated how our Delta Zeta network generates career connections. Truly Connected is a key part of fulfilling the strategic plan of National Council to enhance alumnae engagement by making it easier to connect with one another, improve the member experience and develop programming relevant to our members. The Atlanta event was streamed live, giving more women the opportunity to participate. More Truly Connected events are planned for the future.



Held at the Coca-Cola World Headquarters, Truly Connected offered networking on a global scale as collegians and alumnae came together for professional workshops, roundtables and discussion panels.

“This is a wonderful day of positivity that will enlighten us and give us the opportunity to meet many new sisters.”

Truly Connected participant

Empowering women to lead and serve is about creating opportunities for them to do so, but it is also an investment in a woman's knowledge through leadership training and conferences provided by the Sorority.

Delta Zeta women dedicated to lifelong learning discovered that the inspiration and soft skills shared at an event such as Truly

"You can be whatever you want to be. You have to support yourself. Delta Zeta wants this for all of us."

Susan Pearson Gambardella, 2015 Woman of the Year

TRULY CO
PROFESSIONAL WO



Connected is about investing in herself, knowing that those she has entrusted with her personal and professional development share her values inherent in the Sorority.

Susan Pearson Gambardella, University of Connecticut – ΓΒ, 2015 Woman of the Year and Chief of Staff to the Chief Executive Officer and Chairman of The Coca-Cola Company, gave the keynote. "There is a sisterhood to support, advise and inspire in Delta Zeta. Anything is possible," she said. "Lifetime learning and connections are so important. Keep your network rich and vibrant. Own your own career strategy."

"I want to hear the testimonies of these women who are so successful in their careers and their lives. I want to apply that to my life as well."

Truly Connected participant

Susan received the Woman of the Year medallion from Diane M. Stecher, National President, and the Woman of Distinction \$5,000 Honorarium from Virginia Gilbert Loftin, Delta Zeta Foundation President.

The Truly Connected discussion panel provided real-life advice for women in all stages of their lives. Terri Badour Duckett, Western Michigan – ΓΠΙ, Chief Executive Officer, American Red Cross of Georgia; Alison Terry, Alabama – ΑΓ, Production Manager, BBDO Atlanta; and Holly Pendley Monaghan, Georgia State – ΔΔ, President and CEO, The Waters Organization, joined Susan Gambardella to discuss the challenges and rewards women face in today's professional world.

"The power of Truly Connected is what happens now," said Diane Stecher. "When we take what we've learned here today to our homes, workplaces and communities, we're demonstrating the power of women connected by shared values committed to building up one another and creating opportunity for each of those whom our lives may touch in some slight measure."

Visit deltazeta.org for Truly Connected resources and upcoming events.



DELTA ZETA SORORITY DONATES \$500,000 TO STARKEY HEARING FOUNDATION THROUGH HIKE FOR HEARING

“So the world may hear is not about hearing aids – it’s about understanding each other.”

– Bill Austin, Co-founder,
Starkey Hearing Foundation

In March, 2015, the Sorority pledged to raise \$5 million over the next five years for speech and hearing, and to donate that amount to the Starkey Hearing Foundation. It was with great joy that Delta Zeta presented a check for \$500,000 to Starkey on December 23, 2015, marking a milestone in Delta Zeta’s Hike for Hearing global effort to meet this goal.

Tani Austin, Co-founder of the Starkey Hearing Foundation, said, “Thank you, Delta Zeta, for Truly Giving to Starkey Hearing Foundation! Together we will change the world!”

Delta Zeta Sorority’s Hike for Hearing (dzhikeforhearing.org) provides a way for the Sorority’s chapters and members to raise money for speech and hearing to meet the \$5 million goal we pledged to the Starkey Hearing Foundation.

Our members believe, as does the Starkey Hearing Foundation, that in giving the gift of hearing, lives are changed for the better. Communication is possible. And through that communication, building peace in the world is possible. Delta Zeta has partnered with Starkey Hearing Foundation since 2006 to advance our national philanthropy of speech and hearing to a global level.

**How are you inspired by Delta Zeta as we take the global stage to change the world?
Tell us at deltazeta.org by clicking on the Submit News link.**

New Season.
SAME GREAT
Delta Zeta
STYLE



WANT TO SEE SOMETHING
CUSTOM FOR YOUR CHAPTER?

EMAIL CUSTOM@DZSHQ.COM TO GET STARTED!



WHITE TURTLE
POCKET T-SHIRT
GMS2115 | \$19.50



TRULY AMAZING
GOLD BRACELET
GMS1565 | \$29.50



ARUBA ESTABLISHED
1902 POCKET T-SHIRT
GMS2082 | \$24.50



Transforming The

Pi Phi Chapter at Cleveland State University

DELTA ZETA WELCOMED TWO NEW CHAPTERS TO THE SORORITY NEAR THE END OF 2015: THE PI PHI CHAPTER AT CLEVELAND STATE UNIVERSITY AND THE PI CHI CHAPTER AT WESTERN KENTUCKY UNIVERSITY.

“Delta Zeta Sorority will provide the students of Cleveland State with inspirational opportunities for personal and leadership development,” said Diane

M. Stecher, National President, at the installation of the Pi Phi Chapter at Cleveland State University on November 8, 2015.

“Our partnership with the university allows the Sorority to bring a values-based experience to Cleveland State’s students,”

she continued. “Delta Zeta’s values are congruent with the university’s commitment to engaged learning as its students ‘engage ... inside the classroom, throughout the community and around the globe.’ We welcome the opportunity to enrich the lives of the students in this urban, broadly diverse campus community.”

As a colony, Pi Phi welcomed the members of Chi Delta Epsilon, a local sorority at the university, to its membership. Chi Delta Epsilon ideals included success, strength and love, and enrichment through the pursuit of knowledge and giving back to the community. “Chi Delta Epsilon’s purpose to enrich its members is attuned to Delta Zeta Sorority’s core values,” said Diane Stecher. “We are honored to have the members of Chi Delta

Epsilon become charter members of Delta Zeta Sorority at Cleveland State University.”

Cleveland State University is a commuter campus located in the heart of Cleveland, Ohio. This urban community is full of diverse and passionate students who are ready to make a difference. The fraternal community is a growing one on this campus, and Delta Zeta is honored to be a part of it.

Jill Mahar, Assistant Dean of Student Engagement for the university, spoke of the positive impact the Pi Phi Chapter has made on the campus. “The chapter is innovative, and will continue to make a difference at Cleveland State,” she said.

Read more about the Pi Phi Chapter’s innovative leaders at deltazeta.org.



mpus

THE PI CHI CHAPTER AT WESTERN KENTUCKY UNIVERSITY WAS INSTALLED ON DECEMBER 6, 2015.

Pi Chi Chapter at Western Kentucky University

“Delta Zeta Sorority is excited to join the Western Kentucky University community,” said Diane

M. Stecher, National President. “Delta Zeta’s values-based experience is congruent with the university’s mission to prepare ‘students of all backgrounds to be productive, engaged, and socially responsible citizen-leaders of a global society.’ Like Delta Zeta, Western Kentucky University ‘enriches the quality of life for those within its reach.’”

After its inaugural semester at the university, the Pi Chi Chapter was ranked among the top five Greek organizations for academics, based on cumulative GPA scores. To date, the chapter has walked 5.2 million steps in the philanthropic event, Hike for Hearing. Members are encouraged to pursue greater roles and responsibilities to become inspiring leaders and trailblazers in their future professions and in the world community.

Founded in 1906, today Western Kentucky University has more than 21,000 students pursuing 33 undergraduate and 28 graduate certificate programs. The university “is home to many highly ranked and nationally-recognized academic programs such as Journalism and Broadcasting, Education, Engineering, Business and an award winning speech and debate team.” (<http://www.wku.edu>). The school has an active fraternity/sorority community of 30 fraternal organizations with approximately 1,500 members per year.

Howard Bailey, Vice President of Student Affairs for Western Kentucky University, told the assembled audience that the university was excited to further the partnership of WKU and Delta Zeta. A founding member of his own fraternity’s chapter, Mr. Bailey compared his story to the Pi Chi Chapter.

UPCOMING COLONIZATIONS

Bucknell University
Lewisburg, Pennsylvania

Murray State University
Murray, Kentucky

University of Texas/Arlington

University of Oregon
Eugene, Oregon

University of Connecticut
Storrs, Connecticut

University of Akron
Akron, Ohio

2015 FLORENCE HOOD MINER



GRACE MASON LUNDY AWARDS

THESE ANNUAL COLLEGIATE AWARDS ARE OFTEN THE HALLMARK OF DELTA ZETA LEADERS – WOMEN WHO HAVE DEMONSTRATED INSPIRED LEADERSHIP AS VOLUNTEERS, IN THEIR PROFESSIONS AND AS DELTA ZETAS.

FLORENCE HOOD MINER AWARDS

First presented at the 1948 Convention in recognition of Mrs. Miner's service as National Vice President, Editor of The LAMP of Delta Zeta, Historian and other national offices, the award shall be given to members of Delta Zeta who in their junior year made the greatest contribution to their college, chapter and Delta Zeta through outstanding leadership on the campus while maintaining a good academic record.



KIERA BOHAN
Epsilon Zeta Chapter
Drexel University



MEGAN BROCKETT
Zeta Nu Chapter
Ferris State University



NICOLE CIRILLO
Omicron Beta Chapter
Stockton University



LEAH DICKINSON
Gamma Tau Chapter
Bowling Green State University



OLIVIA LANSER
Delta Sigma Chapter
Truman State University



CAROLANNE MOORE
Kappa Alpha Chapter
Nicholls State University



MADISON NORWICH
Pi Beta Chapter
University of Hartford



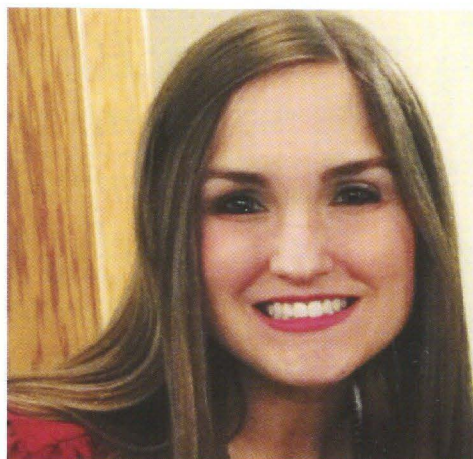
REBECCA SEARS
Beta Gamma Chapter
University of Louisville

GRACE MASON LUNDY AWARDS

First presented at the 1948 Convention in recognition of Mrs. Lundy's many years of service as a National President, Historian and in other national offices, it shall be presented to senior members of Delta Zeta who throughout their college years have given greatest evidence of loyalty, devotion and service to their chapters and to the Sorority.



CHLOE COX
Lambda Alpha Chapter
Arkansas Tech University



ALEXIS FORET
Kappa Alpha Chapter
Nicholls State University



NICOLE HENSCH
Iota Upsilon Chapter
California State University/Fullerton



CATHERINE LOFASO
Xi Upsilon Chapter
Northeastern University



ALLIE QUINTYNE
Delta Beta Chapter
University of Tampa



EMILY SHELTON
Lambda Kappa Chapter
University of Alabama/Huntsville



“

Delta Zeta prepared me tremendously for engaging with my peers and the judges at Harvard, and I know it will continue to help me have faith in myself. I have 141 amazing, intelligent and inspiring sisters who have my back and believe in me.”

Kailyn Gaines, Xi Upsilon Chapter, Northeastern University

Kailyn, a third-year political science and communication studies major, was invited to participate in the National Collegiate Research Conference hosted by Harvard College.

She met with other undergraduate researchers, distinguished faculty and professionals and presented her honors interdisciplinary thesis studying race mainstream culture and police brutality in the poster competition.

Truly
DISTINCTIVE

As collegiate leaders, we continue the Founders' vision as we truly transform our campuses and communities. Read more at deltazeta.org.

“

I believe that I am making a difference in this world by being a courageous and kindhearted leader.”

Victoria Pedri, Omicron Nu Chapter, University of Windsor

Victoria is 2016 Miss Canada United Nations. The United Nations Pageant brings together representatives of a wide range of communities and cultures from all over the globe, whose delegates aim to share common values and foster international friendship and understanding. Social justice and equity are Victoria's priorities, and she is especially passionate about women's rights, anti-bullying, student financial equity and mental health awareness. She is the past Philanthropy Chairman for the Omicron Nu Chapter. "Delta Zeta gave me a sense of motivation and resolution and sparked my passion and deep love for community service. My sisters encourage me to succeed and push for my best on a daily basis, and I will continue to try to push for the best for others."

She is founder and president of Get Real UWindsor, an organization that speaks out against LGBT discrimination and bullying. She is a tireless volunteer for many organizations and causes such as SASS (Society of Arts and Social Sciences), the Golden Key Society, Relay for Life, Shinerama (which raises money for Cystic Fibrosis Research), Jack.org, a national network of young leaders transforming the way we think about mental health, and the Psychology Students Association.



“

Delta Zeta is proud to have a very strong sisterhood, and I experience it every day.”

Brooke Liston, Pi Alpha Chapter, University of Florida

Brooke, Past President of the Pi Alpha Chapter at the University of Florida, is living Truly on her campus. A nursing major who has served as Pi Alpha's Chapter President and Panhellenic Delegate, she was inducted into the University of Florida Hall of Fame. Since 1921, the University of Florida Hall of Fame has recognized seniors and graduate students who have consistently demonstrated an outstanding commitment to improving UF through campus and community involvement, participation in organized campus activities and scholastic achievement.

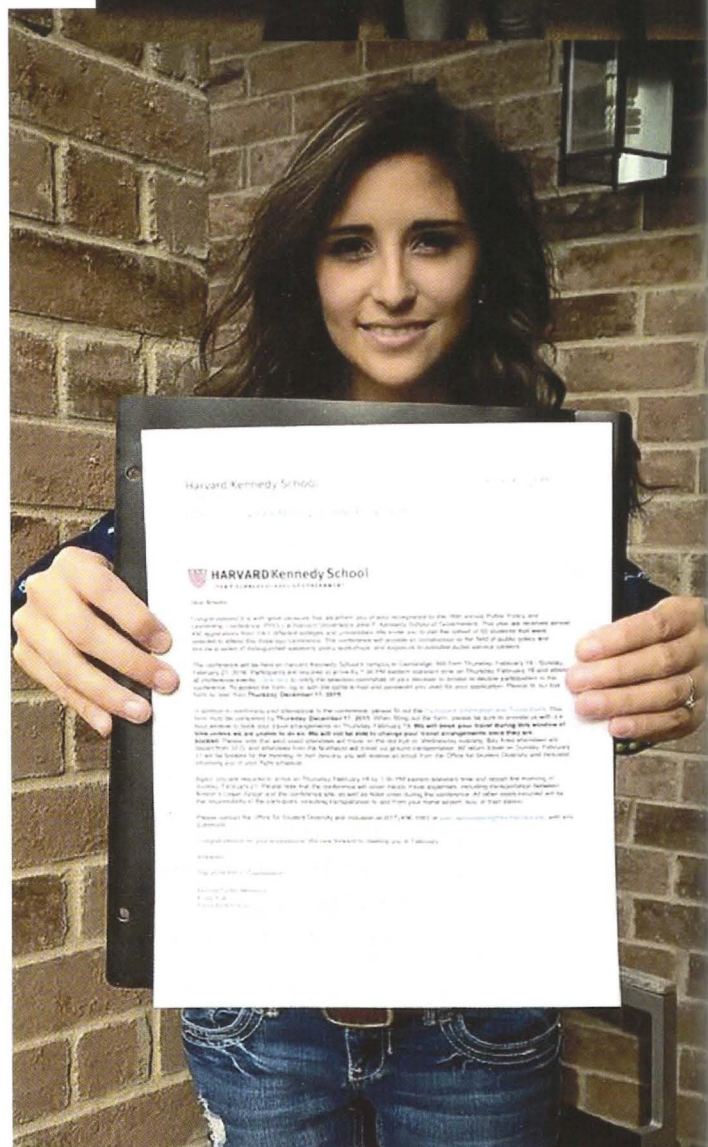


“

Delta Zeta taught me how to give myself fully to something that I am passionate about and gave me a safe place to chase my dreams. I have learned how to lead, how to care and how to grow.”

*Madison Norwich, Pi Beta Chapter
University of Hartford*

Madison (left), President of the Pi Beta Chapter, is among 10 college student leaders from around the country who serve on the American Association of University Women's (AAUW) National Student Advisory Council (SAC) based on their leadership potential and commitment to gender equity. She advises the AAUW on the needs of college students and is also a peer leader at the National Conference for College Women Student Leaders. Madison teaches women's leadership classes on campus and volunteers as a sexual violence crisis counselor.



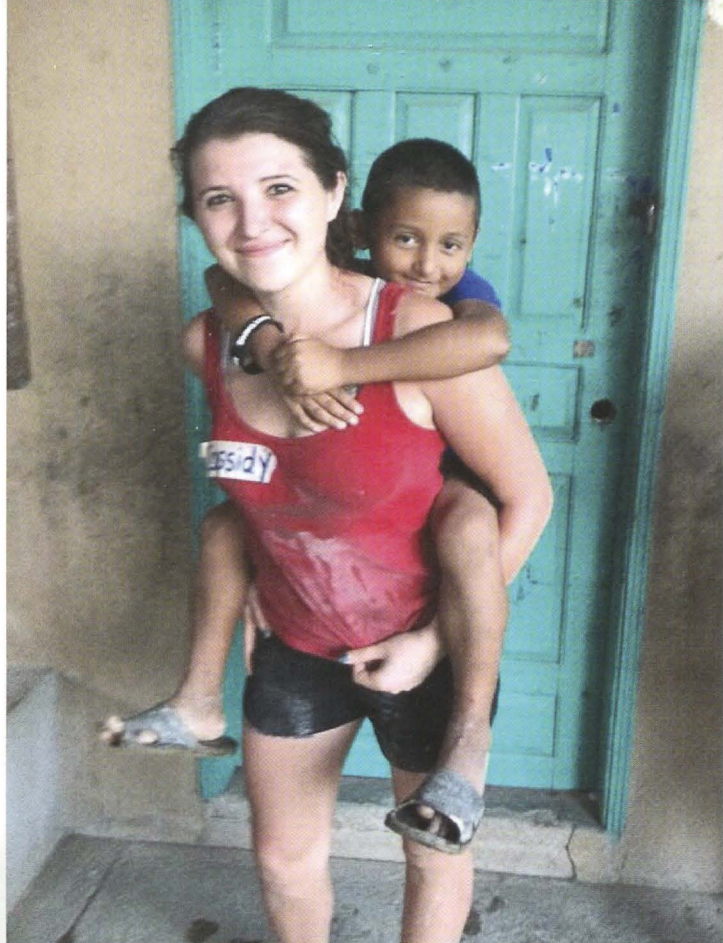
“

I had never felt so supported and loved until I joined Delta Zeta, where I believe I have truly gained my confidence as a professional and a community leader.”

*Brooke Lopez, Pi Sigma Chapter
University of Texas/Dallas*

Brooke, Pi Sigma Philanthropy Chairman, was the first student at the University of Texas at Dallas to attend the 16th annual Public Policy and Leadership Conference (PPLC) at Harvard University.

The conference is held at Harvard Kennedy School to inspire talented, driven and diverse first- and second-year undergraduate students to pursue careers in public service. The PPLC application process is competitive. Selected participants have strong academic records and demonstrate a commitment to public service through activism and student leadership positions.



“

The trip to Honduras inspired me to start a chapter of Students Helping Honduras at Edinboro University and return to Honduras in the future.”

*Cassidy Chambers, Iota Delta Chapter
Edinboro University*

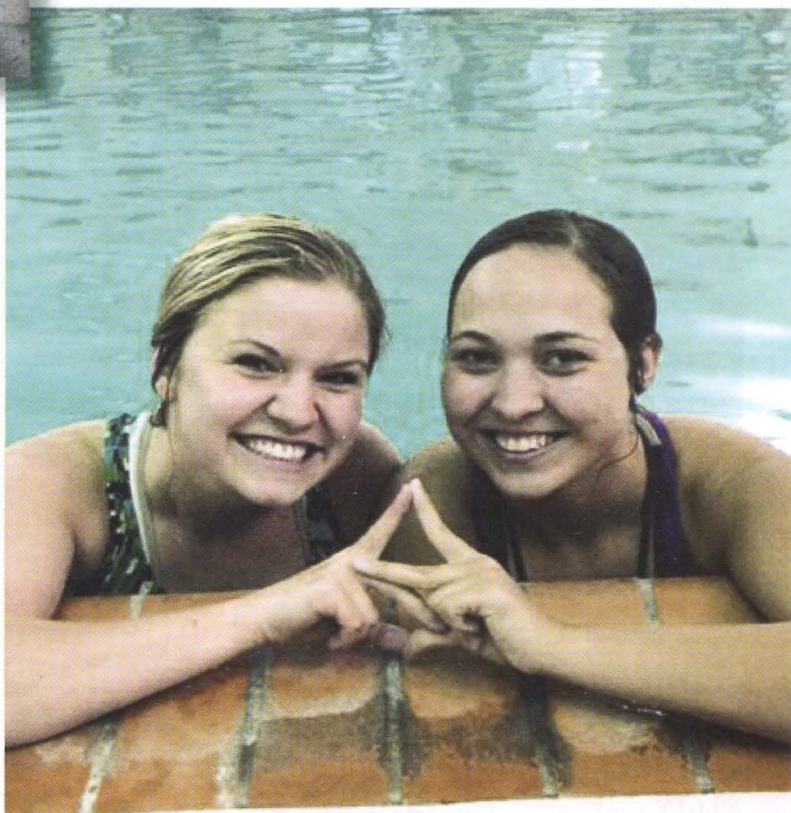
Cassidy traveled to Honduras with the Students Helping Honduras organization. On her service trip, she helped Honduran workers build a school for the Los Castaños village. She learned about the culture as well as the poverty and danger of children joining gangs. She plans to teach in Honduras at a bilingual school built by Students Helping Honduras. Learn more at SHHkids.org.

“

We swim strong for children with special needs.”

*Kaylee Cole and Abby Allbritton, Kappa Alpha Chapter
Nicholls State University*

Kaylee Cole, President of the Kappa Alpha Chapter, and Abby Allbritton gave graciously by volunteering at a summer camp, Swim Strong, in Baton Rouge, Louisiana. They provided water therapy to children with special needs. The camp's goal is to improve the children's independence, strength, coordination, endurance and breath support.

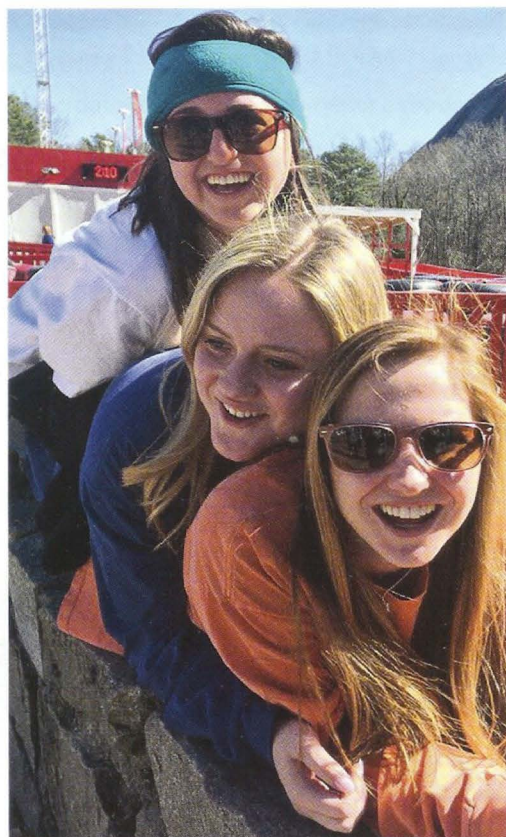


HIKE FOR HEARING

Delta Zeta

Delta Zeta Sorority's Hike for Hearing (dzhikeforhearing.org) provides a way for the Sorority's chapters and members to raise money for speech and hearing to meet the \$5 million goal we pledged to the Starkey Hearing Foundation.

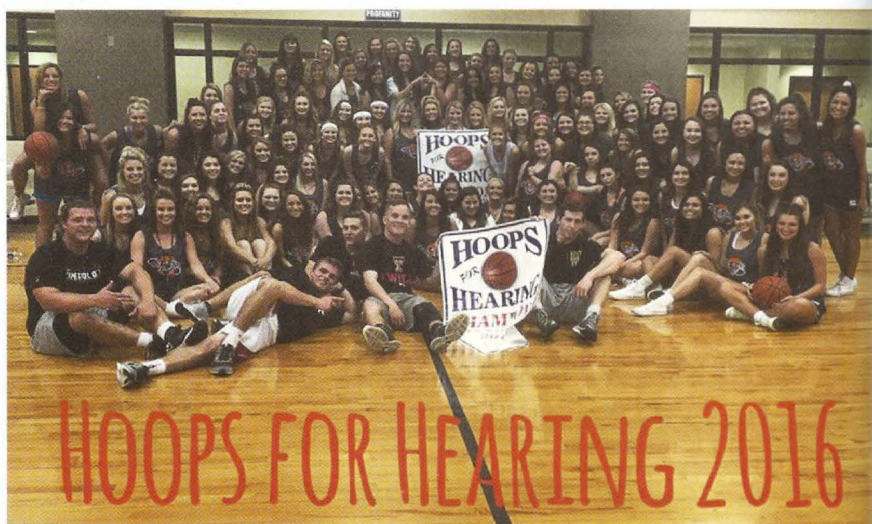
Here are the top 10 chapters that raised the most Hike for Hearing donations from January to the beginning of March, 2016. Visit dzhikeforhearing.org for more updates.



BETA XI CHAPTER
Auburn University
\$9,614



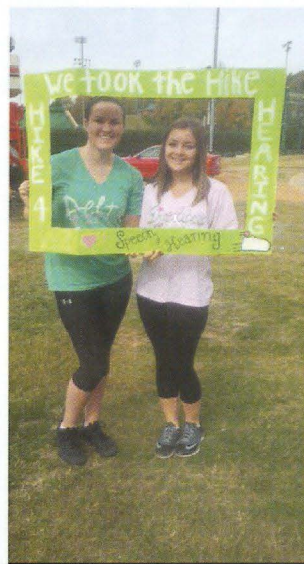
OMICRON EPSILON CHAPTER
Arkansas State University
\$7,967



XI NU CHAPTER
Tarleton State University
\$6,923

XI LAMBDA CHAPTER
University of San Francisco
\$6,594





Left:
PI ALPHA CHAPTER
 University of Florida
 \$6,326

KAPPA PHI CHAPTER
 University of North
 Carolina/Charlotte
 \$6,030

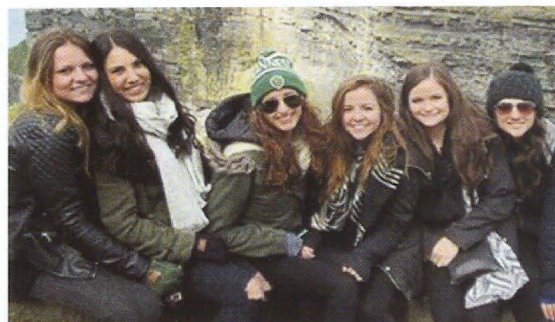


EPSILON CHAPTER
 Indiana University
 \$5,896

ZETA LAMBDA CHAPTER
 East Carolina University
 \$5,680



BETA ALPHA CHAPTER
 University of Rhode Island
 \$5,430



**OMICRON OMICRON
 CHAPTER**
 Lindenwood University
 \$4,998

ON CAMPUS



JUST AS DELTA ZETA'S FOUNDERS
DEFINED LEADERSHIP MORE
THAN 100 YEARS AGO,

our collegiate members continue that legacy by living Truly — leading
in the Sorority, on their campuses, in their communities and nationally.
These are emerging leaders who are inspiring today's world.

Philanthropy - Total Dollars Donated to all Philanthropic and Charitable Causes


July 1, 2015 – March 10, 2016

ABOUT ON CAMPUS

To continue Delta Zeta's focus on truly significant chapter news that has national implications and global potential, the On Campus section contains the Top 10 Chapters in Philanthropy, Grade Point Average (GPA) and Service Hours.

This approach focuses on the difference we are making on a national level and the progress our chapters are making toward our national goals.

All of our collegiate chapters are important, and we gratefully acknowledge the efforts of the LAMP Editor in each chapter. To recognize the important work those editors do, we direct our readers to read more chapter stories on our website and in the digital LAMP at deltazeta.org.



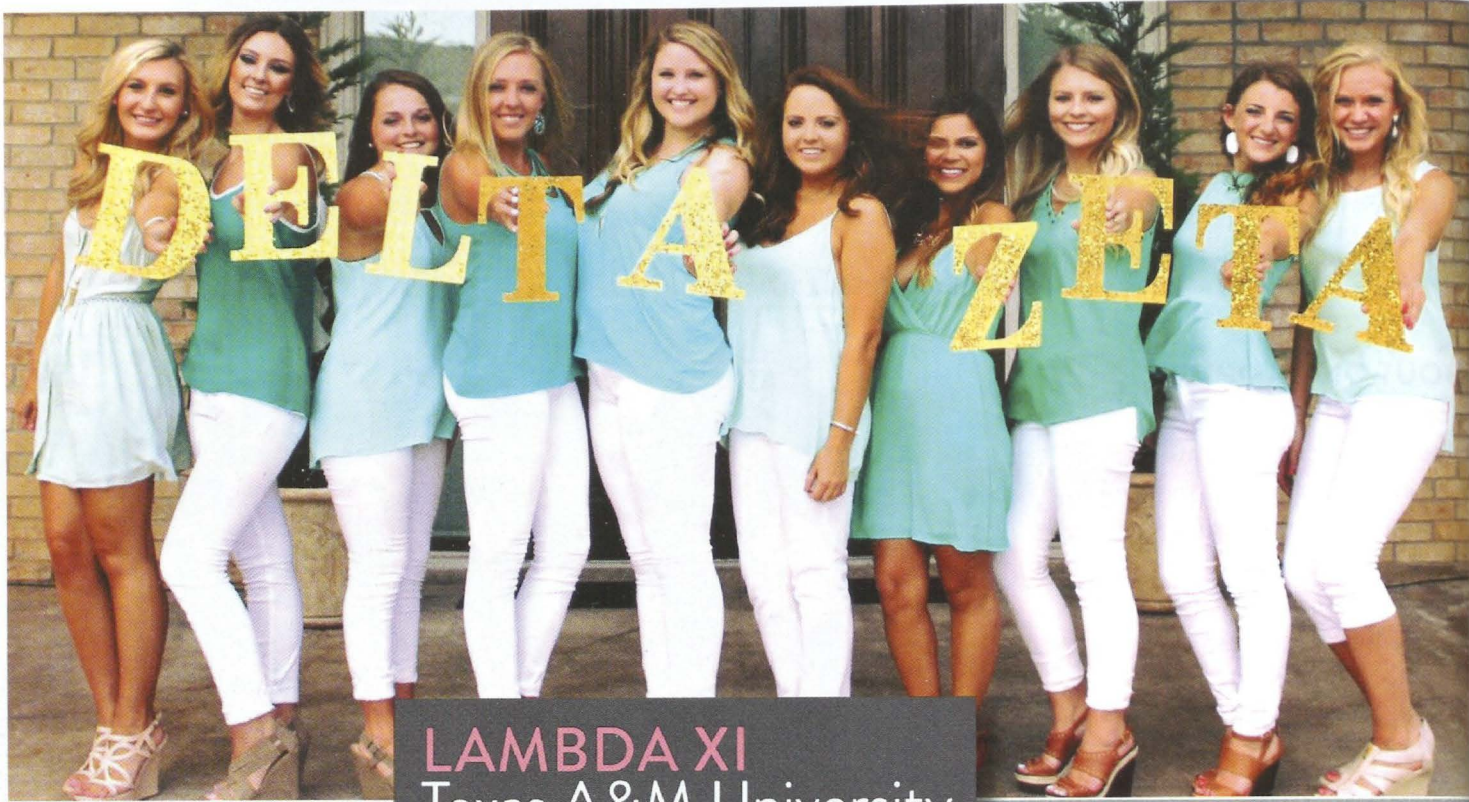
IOTA
University of Iowa

donated: \$40,127



BETA XI
Auburn University

donated: \$39,772



LAMBDA XI
Texas A&M University

donated:
\$32,293



PI ALPHA
University of Florida

donated:
\$39,185



EPSILON
Indiana University

donated:
\$27,462

“Raising money for pediatric cancer research and Riley Children’s Hospital made our sisterhood stronger than ever. We could not have accomplished it without the support and help from our sisters.”

Hannah Inabnit, Historian

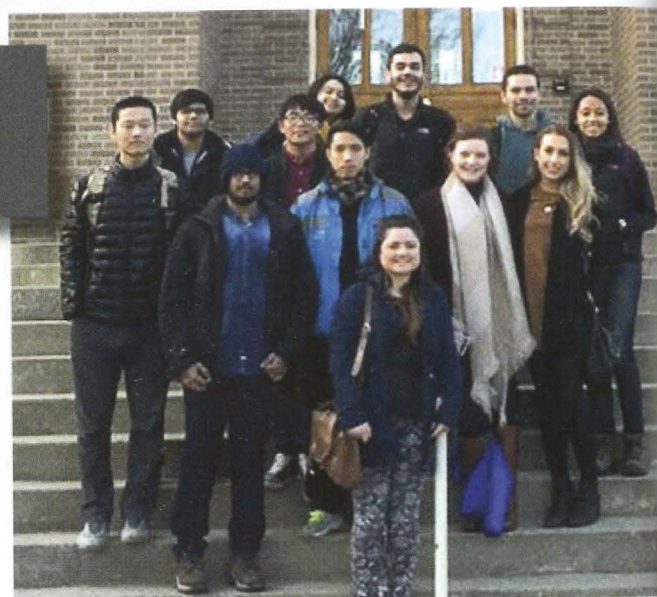


ALPHA ALPHA
Northwestern University

donated: \$24,859

XI OMEGA
Purdue University

donated: \$23,996



"Before I joined Delta Zeta, I had no idea how prominent hearing issues were. Delta Zeta encouraged me to understand this. I thank Delta Zeta for not only advocating, but for taking action on this challenge that so many face."

Gabby Thro

THETA ETA
Creighton University

donated: \$23,794





GAMMA DELTA
 Pennsylvania State
 University

donated:
\$20,766

DELTA THETA
 University of Houston

donated: **\$20,279**



Top Grade Point Average (GPA)

July 1, 2015 – March 10, 2016

“Delta Zeta is group of unique and talented women who are united by the same values. We are leaders on campus and in the Greek community, who give graciously whenever possible; women who are motivated by their sisters and by themselves. We are Delta Zetas.”

*Lindsey Poyar, LAMP Editor
Gamma Alpha Chapter
Baldwin Wallace University*

ALPHA ALPHA
Northwestern University

3.71





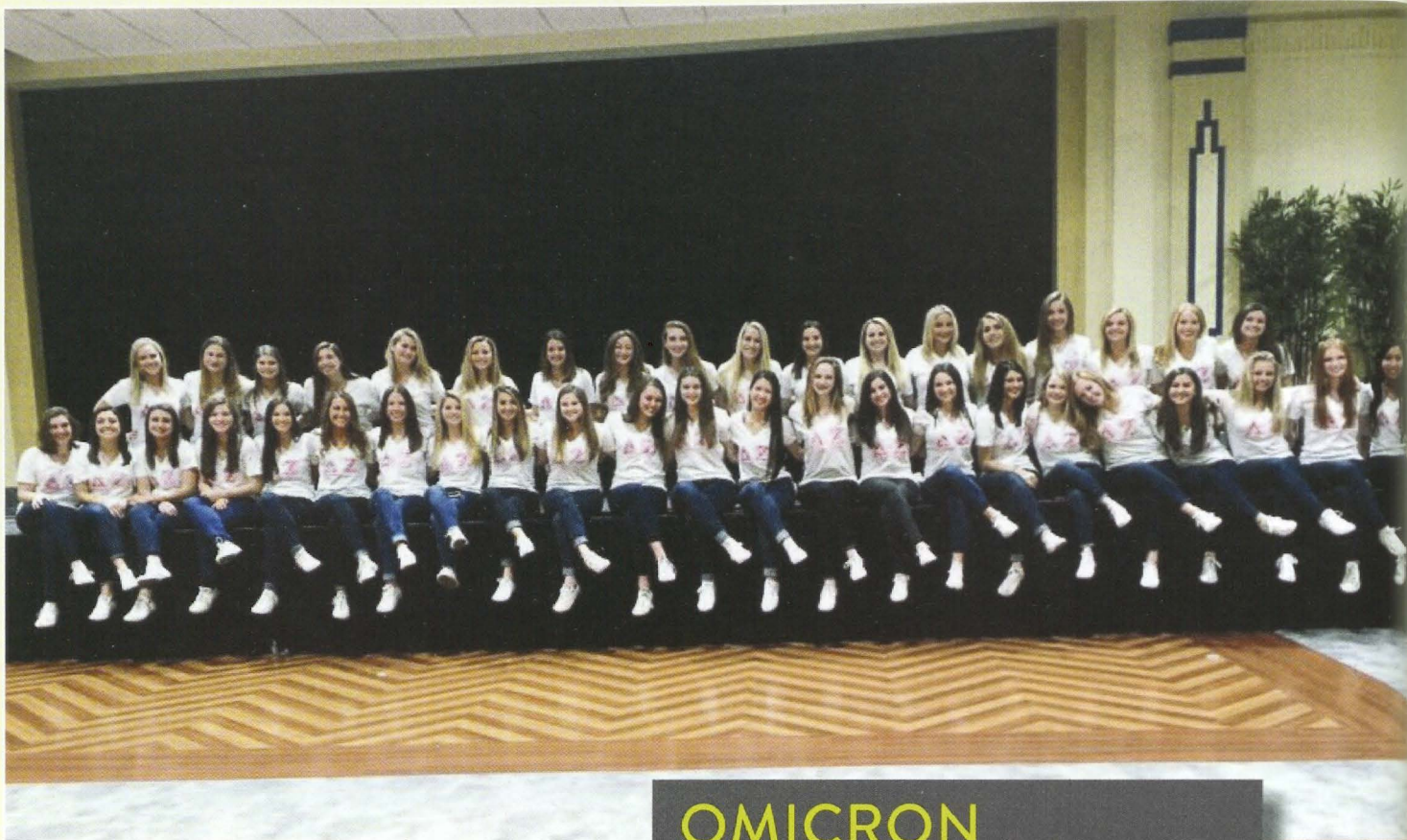
LAMBDA SIGMA
Winthrop University

3.52

OMICRON BETA
Stockton University

3.5





OMICRON
University of Pittsburgh

3.5



XI IOTA
Muhlenberg College

3.49

“*Delta Zeta has taught me how to be empowered, follow my passions and exemplify leadership in everything I do.*”

*Romy Richman, Vice President of Programs
Pi Beta Chapter
University of Hartford*

BETA TAU
Nebraska
Wesleyan University

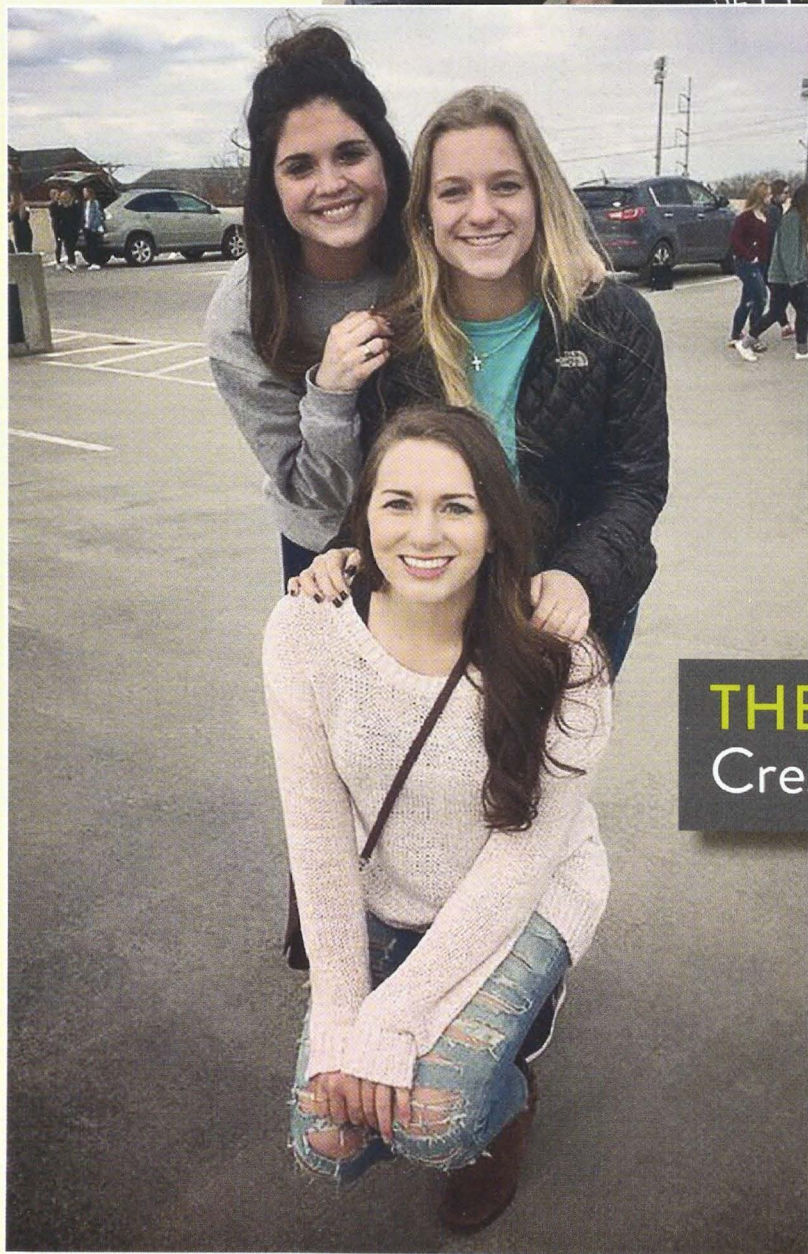
3.48



XI LAMBDA

University of San Francisco

3.48



THETA ETA

Creighton University

3.47



LAMBDA DELTA
University of Virginia

3.46



BETA DELTA
University of
South Carolina

3.46

Top Number of Service Hours Given

July 1, 2015 – March 10, 2016

“Our chapter has worked tirelessly to help the members of not only our sisterhood but also the community around us. Our shared commitment as a Sorority to speech and hearing connected us to our local philanthropy, Appalachian Communication Disorders Clinic, in hopes of truly bettering our community.”

*Rachel Peterson, LAMP Editor
Lambda Phi Chapter
Appalachian State University*

BETA XI
Auburn University

11,832





LAMBDA XI
Texas A&M University

7,738

PI ALPHA
University of Florida

7,627



ZETA PI
University of Georgia

6,552



When it comes to jewelry,
Don't sacrifice quality.
Check out our full ΔZ line.

WWW.COLLEGEJEWELRY.COM





ALPHA GAMMA
University of Alabama

6,406

BETA KAPPA
Iowa State University

6,110



EPSILON DELTA
Concord University

5,908





THETA ETA
Creighton University

5,657



KAPPA ALPHA
Nicholls State University

5,627



XI NU
Tarleton State University

5,299

Truly IMAGINED

Our brand tagline is something uniquely Delta Zeta, but that doesn't mean others don't have their sense of Truly.



For us, Truly is to be found keeping the promises we've made to ourselves, to our friends and family, and to the world. It speaks to authenticity in the way that we live our values, and is validated against the test of time and the ideals of our Founders. But what does it mean to an artist? And how can her Truly help us learn more about communicating ours?

Delta Zeta's Chief Marketing Officer, Tim C. Nicholson, wanted to know. "Delta Zeta's vision of its future self is to be a premier women's organization. Getting there requires strategy, but it also involves imagining. Achieving such an audacious goal takes time, and it's important to fill the space or time between where we are now and the realization of that goal with images of what a premier women's organization looks like. So, I'm always seeking to find those images."

His workspace is shared with a modern art gallery, Camiba Art, in Austin, Texas. The gallery owner curates contemporary art from predominantly Texas artisans and features a new artist and his or her work in his gallery each month. Troy Campa, the gallery owner, offered an idea. "I simply suggested that we curate a show around the idea of Truly, share the definition with my artists, and invite them to submit or create new works that represented the idea," Troy said. "Several artists responded. I chose nine — coincidentally all women — and we named the show, 'Truly Imagined.'"

In some instances, Truly was whether or not the art was what it seemed to be. In others, it was about the process or materials, and how the work was created. In a few instances, it was the art's subject matter (e.g., portrait of a woman) itself.

Cathy Irvin Painter, Alabama - $\Delta\Gamma$, Delta Zeta National Vice President of Finance, lives in Austin. Tim told her about the idea. Soon they were making plans for a night of artist talks and presentation of Truly Imagined.



"We invited the local alumnae chapter and members from nearby cities to the show with special guests that included Diane Stecher, Missouri/St. Louis - IE, National President, Cindy Winslow Menges, Miami (OH) - A, Executive Director and Virginia Gilbert Loftin, Alabama - AG, Delta Zeta Foundation President," Cathy Painter told us, "and we had a wonderful night of sisterhood and personal growth. We found the work of Katy David to be especially relevant."

Katy David's work is created using a centuries-old technique called Pysanky. This is a batik process using beeswax, a small heated funnel, and aniline dyes on eggshells that results in intricately layered patterns of color, geometry and two-dimensional line on a three-dimensional surface.

She combines elements of traditional Pysanky design, Japanese textile patterns, Aboriginal forms, Middle Eastern decorative motifs, and modern forms and sensibilities. "The challenge," Katy tells us "is to loosen or even set free the pattern from the traditionally rigid framework without losing the rhythm that gives it life and grace of form."

She adds, "All this must happen within the enclosed frame of the eggshell without feeling cramped or limited in scope. Using traditional symbols and techniques combined with my own more contemporary ideas, I hope to combine past and present in a heterogeneous and lively form."

"And so there is the lesson of Truly Imagined," says Tim. "Combine tradition and contemporary ideas, work through the process of change (or creation, if you will) and become that premier women's organization. A Delta Zeta Sorority whose message is relevant for



View the spectacular art at
camibaart.com

ALUMNAE NEWS

Truly PURPOSEFUL

We are the alumnae of Delta Zeta, truly connected to the Sorority and inspired by Delta Zeta's purpose. Read more at deltazeta.org.

DR. STEFANIE BUMPUS, LOUISVILLE (KY) - BI

Stefanie is special assistant to the director at the U.S. Centers for Disease Control and Prevention (CDC) in Atlanta, Georgia, supporting the CDC director in the areas of global health, infectious diseases, the Global Health Security Agenda and international emergency responses. Her leadership and scientific technical expertise in U.S. international cooperation programs help to strengthen global health security. She travels to Africa, Asia and Europe to ensure global health security, working with U.S. policy makers and host countries.

"I have the opportunity to support many public health experts as they implement programs to improve and protect the health of Americans and people around the world," she said. "These programs save lives every day. It is a privilege to work with so many people who have dedicated their lives to improving public health."



"THE SORORITY TAUGHT ME HOW TO BE AN AUTHENTIC LEADER."

MARY FRANCES DRAKE PATE, ALABAMA - AI, R.N., PH.D., CNS

Mary Frances serves as chair on the American Association of Critical-Care Nurses (AACN) board. She is an assistant professor at East Carolina University College of Nursing, Greenville, North Carolina. She is a member of numerous AACN volunteer committees, and her published work includes many nursing articles.

"Nurses see patients and families during the best and worst times of their lives," she said. "It is an honor to be there during these times to provide supportive, competent care. Nurses truly have the opportunity to make a positive impact on the lives of everyone for which we care."



"DELTA ZETA INSTILLED A SENSE OF SERVICE TO OTHERS, WHICH CERTAINLY HAD A ROLE TO PLAY IN CHOOSING A CAREER IN PUBLIC SERVICE."

“ALL OF US ARE BORN WITH LEADERSHIP POTENTIAL. I AM FORTUNATE THAT, AS A COLLEGIAN, DELTA ZETA ALUMNAE ADVISORS GAVE ME THE CONFIDENCE TO GROW AND LEAD.”

DEBBIE “RAZ” RAZIANO, NICHOLLS STATE (LA) - KA, PAST NATIONAL PRESIDENT

Raz received the James Lynn Powell Award, the highest award given to a graduate of Nicholls State University, at the NSU Alumni Federation Awards for Excellence. It is presented to an individual who is outstanding in his or her chosen field and supports both Nicholls State and the Alumni Federation.

She has served on numerous committees and boards over the years, and in organizations such as the Council for Advancement and Support of Higher Education (CASE) and the Association for Louisiana Alumni Executives (ALAE). Raz has been dedicated to Delta Zeta since pledging the Sorority, from serving as an Educational Leadership Consultant after college to National President from 2004 to 2007. She continues to volunteer for Delta Zeta and for the Nicholls Art Department since her retirement.

JOAN METCALF SCHAEFER, MIAMI (OH) - A

Joan Metcalf Schaefer, Miami (OH) – Alpha, was presented with the Order of the Diamond to recognize 75 years of membership in Delta Zeta. Joan served as Dean of Women at the University of Southern California from 1955 to her official retirement in 1992, then spent the next 20 years volunteering at the university in her role as Dean of Women Emerita. She was named Honorary Alumna in 1999 by USC, and encouraged young women to pursue careers in medicine and law and other professions. The university created an endowed scholarship in her name and awards over \$75,000 each year in scholarships and travel awards to outstanding USC students.



“THERE ARE A LARGE NUMBER OF MEN AND WOMEN WHO OWE THEIR SUCCESS TO HER.”

Gerald S. Papazian, friend and attorney



JULIA GRIFFITHS JUNG, TEXAS A&M - ΔΕ, AND GLENNASKEY DEVONPORT, TEXAS STATE - ΙΑ

Julia and her daughter, Glenna, lead in innovative medical care in Texas. Glenna is Practice Administrator and Vice President of Operations for House Call Doctors, a multi-million dollar company that aligns the interest of the patient, physician and payor. Julia is President and Owner. The company has received the award of Medicare's Independence at Home Demonstration, an invitation to participate in the University of California San Francisco/ John Hopkins Grant for development of House Call quality measures and a national registry and recipient of the AAHCM 2013 Innovation Award.

"We provide doctors, nurse practitioners and physician assistants to patients in their homes who cannot get to a doctor's office," said Julia. "It is extremely beneficial for a large population of people in the U.S. Glenna, Natalia Krasutsky Thomas, Texas State - ΙΑ, and I make a formidable team. We've had spirited conversations around the conference table resulting in great decisions and maintain unconditional support for each other."

"OWNERS DON'T BUILD SUCCESSFUL ORGANIZATIONS WITHOUT SURROUNDING THEMSELVES WITH SMART PEOPLE WHO POSSESS COMPLEMENTARY SKILL SETS."

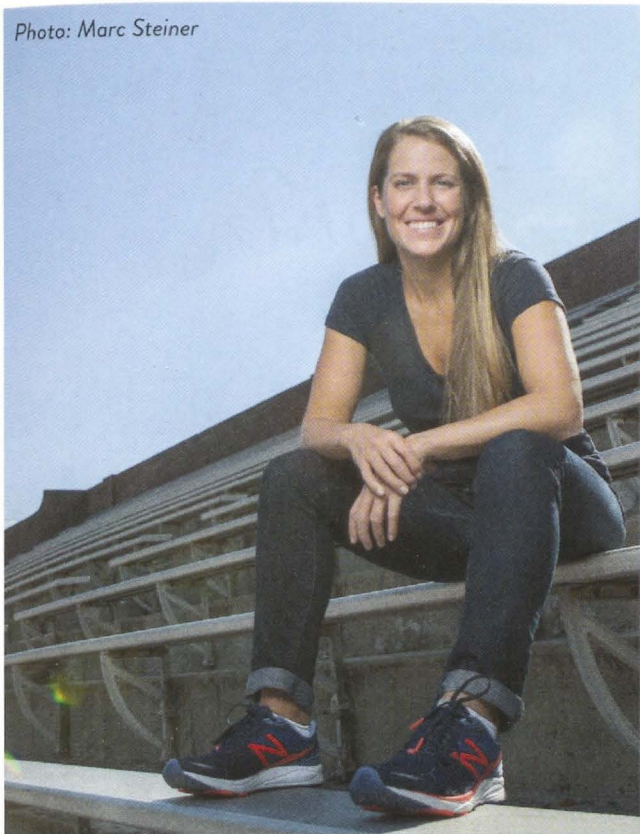
STEPHANIE VAUGHAN, ALABAMA - ΑΓ

Stephanie, Stetson University College of Law professor, has been promoted to Associate Dean for Student Engagement at the College of Law, guiding students through their development into significant advocates, practitioners and individuals, blending their academic experience with co-curricular and extracurricular experiences to prepare the whole graduate. She has served for nearly two decades with the legal research and writing faculty at Stetson. She previously served as associate director for the Center for Excellence in Advocacy, and has mentored numerous students on Stetson's award-winning moot court teams. The Stephanie A. Vaughan Award for Excellence in Advocacy is given to an outstanding graduate of the law school each year.



"DELTA ZETA TAUGHT ME HOW TO CHERISH AND EMBRACE LIFE, AND HOW TO REALIZE THAT THERE IS AN UNSPOKEN BOND THAT IS ATTAINABLE IN THIS WORLD."

Photo: Marc Steiner



“SHARING THESE KINDS OF TOUGH EXPERIENCES LETS PEOPLE SEE SOMEONE ELSE WHO HAS BEEN THERE AND COME OUT ON THE OTHER SIDE.”

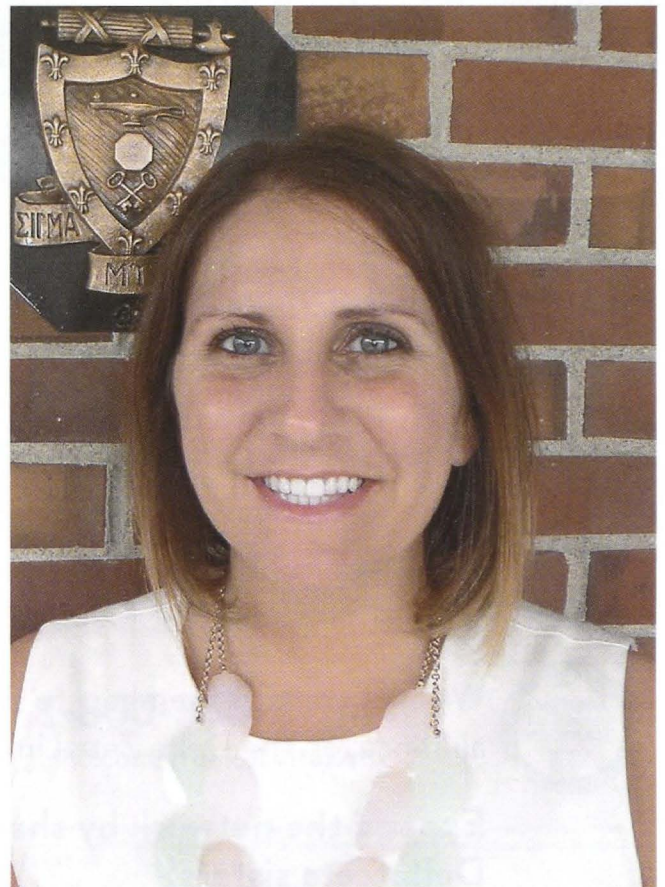
JEN A. MILLER, TAMPA (FL) - ΔB

Jen is nationally-published journalist and has written her third book, “Running: A Love Story.” She has been a contributor to The New York Times, Washington Post and Runner’s World, and writes a running column for the Philadelphia Inquirer. In “Running: A Love Story,” Jen tells the story of her lifelong relationship with running with wit, thoughtfulness and brutal honesty. “This wasn’t an easy book to write, but I think it gives people a way into talking about some really uncomfortable things.”

MICHELE N. PETERSON, WESTERN ILLINOIS - EO

Michele recently became Director of Chapter Services for Sigma Alpha Mu Fraternity. She will manage the fraternity’s educational leadership consultants, chapter services, expansion, risk management and educational programs. She brings significant experience in working with fraternity chapters, volunteers and programs through her previous roles on college campuses overseeing fraternity/sorority communities. Michele previously worked in Greek Life at Winthrop University, Western Carolina University and Indiana University of Pennsylvania where she supported more than 40 chapters. She has been an active member of the Association of Fraternity/Sorority Advisors and is a graduate of the Interfraternity Institute. Her previous work has been recognized with two Presidential Citations for Service to the Winthrop University and Western Carolina University’s Student Affairs New Employee Award 2009-2010.

“I AM VERY PASSIONATE ABOUT THE FRATERNAL MOVEMENT AND THE POSITIVE IMPACT IT HAS ON OUR MEMBERS.”



Truly CONNECTED on LinkedIn®

ZETA
Truly.

DELTA



Connect with Delta Zeta Sorority professionals on LinkedIn today!

One of the best ways to connect any time with Delta Zeta women is via the Sorority's LinkedIn group. Visit deltazeta.org and click on the LinkedIn logo.

Networking and information-sharing are available to collegians planning their careers and to alumnae professionals in any stage of theirs.

We encourage all members to share their professional news, collegiate or alumnae, on the Delta Zeta LinkedIn page, too.

Expand the network by sharing the LinkedIn group with your Delta Zeta sisters!

Savings are in season for **Delta Zeta!**



Delta Zetas could save even more on **GEICO** insurance with a special discount!
Get your *free* quote to see how much more you could save today!

GEICO
#MemberDiscount

DELTA ZETA
Truly.

1-800-368-2734
geico.com/greek/DeltaZeta

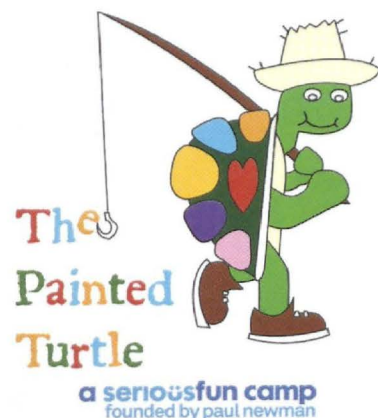


Some discounts, coverages, payment plans and features are not available in all states or all GEICO companies. GEICO contracts with various membership entities and other organizations, but these entities do not underwrite the offered insurance products. Discount amount varies in some states. One group discount applicable per policy. Coverage is individual. In New York a premium reduction may be available. GEICO may not be involved in a formal relationship with each organization; however, you still may qualify for a special discount based on your membership, employment or affiliation with those organizations. GEICO is a registered service mark of Government Employees Insurance Company, Washington, D.C. 20076, a Berkshire Hathaway Inc. subsidiary. GEICO Gecko image © 1999-2016. © 2016 GEICO.

Truly SERVING

The Painted Turtle camp

Are you a Delta Zeta collegian or alumna who has volunteered at The Painted Turtle camp? Tell us on Twitter @DeltaZetaNatl with the hashtag #TrulyServing or submit your story to LAMP@dzshq.com.



SERVICE PROVIDES AN OPPORTUNITY TO ENGAGE IN A COMMUNITY ACTIVITY FOR THE BENEFIT OF THAT COMMUNITY.

The Painted Turtle camp is a community that gives back to the children in that community. As a national organization, Delta Zeta collectively joins to support and nurture The Painted Turtle and the children the camp serves as a national service project. The Painted Turtle (TPT) is associated with SeriousFun Children's Network founded by actor and philanthropist Paul Newman. Delta Zeta's members are committed to enriching the lives of children with chronic and life-threatening illnesses through their service to The Painted Turtle. Here are some of their stories.



"My parents taught me it was important to volunteer. Each day at the camp was a different adventure for the chronically-ill children. I saw the campers grow throughout the week and enjoy being children. The experience touched not only the campers' lives, but mine as well."

Amanda Furrer, Past Philanthropy Chairman, Epsilon Gamma Chapter (University of Central Missouri)

Megan met Barbara Jones Brotherton, Minnesota State/Moorhead - ΘN, Delta Zeta's National Philanthropy Chairman, Diane M. Stecher, Missouri/St. Louis - ΙΞ, National President, and Cindy Winslow Menges, Miami (OH) - Α, Executive Director, at The Painted Turtle.

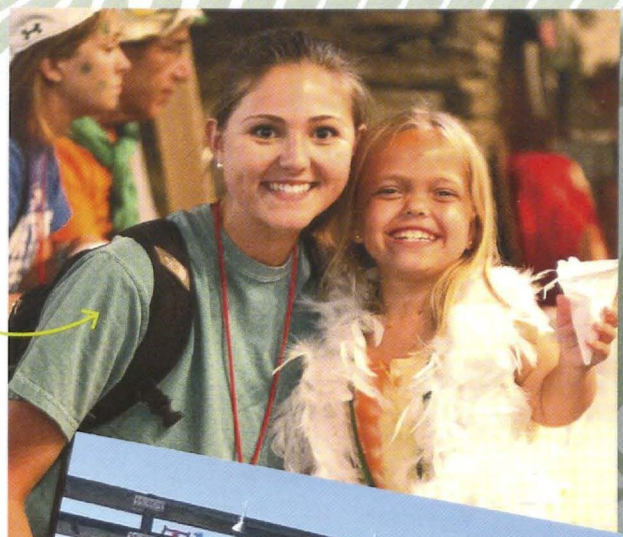
"Words can't express how amazing this experience has been volunteering here. These kids have not only taught me, but inspired me in more ways than one. Keep on fighting, little ones!"

Megan Jay, Epsilon Kappa Chapter (University of Wisconsin/Whitewater)



"I couldn't wait to see how our chapter's philanthropy event is impacting this camp!"

Ashley Stigler, Past LAMP Editor, Zeta Pi Chapter
(University of Georgia)



"It was the best experience I have had during my time as an undergraduate! The children at the camp are so great, and it feels good to know that Delta Zeta is making such a big difference."

Ashly Dickman, Gamma Alpha Chapter
(Baldwin Wallace University)



"After a successful philanthropy event in the fall which raised funds for the camp, it was an incredible experience to see firsthand the wonderful work that is accomplished at The Painted Turtle. We are fortunate to be located close to the camp, and our sisters hope to return as volunteers in the near future."

Alanna Quinn, LAMP Editor, and members of the Xi Omicron Chapter
(Loyola Marymount University)



"We helped create lanyards and friendship bracelets for children to have at their bedside while in the hospital. We could not have been more proud to be invited to visit our national service project and help make a difference."

Marisol Davila, LAMP Editor and Historian, Iota Upsilon Chapter
(California State University/Fullerton)



FLAME ETERNAL

Honor your sisters, friends and loved ones with a memorial gift to the Delta Zeta Foundation (deltazeta.org). Obituaries reported from August 14, 2015 through February 8, 2016. Year of initiation is shown after name.

ALPHA

Emily Robinson Kinkley - 1942
Carol Michelsen Way - 1962
Janet Lind Griffith - 1967

GAMMA

Joyce Hanson Madson - 1946
Elizabeth B. Hoklas - 1947
Janice Peterson Gustafson - 1953
Mary Gorton Loudin - 1954
Gretchen Ulrich Brayley - 1959

DELTA

Mary Dunn Brown Hamingson - 1942
June Thomas Nixon - 1946
Beverly Pierce Walker - 1948
Donna Lee Edwards - 1950
Marian Jean Morrison - 1950

EPSILON

Nancy Purvis Sando - 1951
Julia Harbert Reed - 1952
Diane Kester Brown - 1956

THETA

Florence Hall Leslie - 1945
E. Kathleen Krieg Zuniga - 1947
Shirley McCabe Michener - 1948
Carolyn Myers Heskett - 1952
Kathleen M. Wachsmuth - 1962

IOTA

Rebecca Reed Anderson - 1968

KAPPA

Alice Bean Cech - 1947
Janet Stryker Ause - 1948
Merilyn Baisch Parkinson - 1954
Jean Andrews LeMay-Roberts - 1956

MU

Muriel Tuft Reynolds - 1941
Kathryn Crawford Young - 1954
Barbara O'Connor Peterson - 1963

NU

Helen Regan McClelland - 1929
Elizabeth Jorgensen Stackhouse - 1962

OMICRON

Edith Worcester McElfish - 1946
Elizabeth Hanna Blank - 1948

SIGMA

Mary Johns Duggan - 1934
Marjorie Harrington Hansen - 1936
Gloria Pohlmann Hecker - 1939
Betty Sue Ferguson - 1948
Mertie Barnes Miller - 1956

TAU

K. Louise Henning - 1940
Caroline Traulsen Loose - 1946
Joyce Valerie Miller - 1960
Jane Happle Drake - 1962
Susan Haupt Wynhoff - 1965

UPSILON

Darlyne Simon King - 1947
Rita McDonald Noeske - 1957

PHI

Katherine Crosby King - 1938
Mary Foss Graham - 1944
Margaret Nelson Lavinder - 1950
Sandra Susan Parker - 1954

CHI

Eugenia Fischer Clinton - 1928
Rova Kerley Gowdy - 1930
Alys Belle Feike Farrell - 1937
Evelyn Haworth Jones - 1938
Helen Miller Hammond - 1940
Dorothy Bailey Knapp - 1941
Ruth Swift Kuhl - 1942
Adell Anderson Johnson - 1944
Marjorie Olson Albright - 1946
Vera Bishop Alexander - 1946
Elizabeth Peake King - 1946
Leta Mae Brant Adams - 1947
Betty Westlin Klahn - 1948
Janet Sturges Boardman - 1950
Mary Anne Norton Greenlund - 1951
Rosalie Mumford Lanham - 1954
Linda Walker Arenchild - 1958
Gay Tuescher Jones - 1958
Paula Wright Guffey - 1964
Susan Kay Gill - 1969

PSI

Martha Smith Miller - 1946
Ruth Doub Callon - 1949
Laura Halls Merritt - 1960
Charlotte McCreary Broyles - 1961

ALPHA ALPHA

Virginia Samuel Wilson - 1935

Marie Novy Rybacki - 1943
Bette Michels Sherrill - 1943
Frances Rosa Cavaco - 1944
Meredith Schlatter Bjorklund - 1959
Catharine Bushnell - 1969

ALPHA BETA

Ellen Reimann Marks - 1962

ALPHA GAMMA

Gwenith Moxley MacKay - 1934
Katherine Everidge Oliver - 1947
Pearl Graham Thrash - 1948
Janet Krickbaum Gravatt - 1949
Sharon Butler Wyatt - 1967
Carolyn Jones Chambliss

ALPHA EPSILON

Frances Roach Albright - 1944
Margaret Logston Durrett - 1951
Jane Ann Scroggs - 1966

ALPHA ZETA

Marie Gessert - 1941
Patricia Bertini - 1971

ALPHA THETA

Barbara Wayman Schaefer - 1949
Negia Gilpin Hampton - 1951
Martha Mary Keffer - 1958

ALPHA IOTA

Beata Giddings Mead - 1924
Rowena Ingold Schaber - 1933

ALPHA KAPPA

Mary Noxon Holmes - 1941
Ruth Hayden Hannah - 1947

ALPHA XI

Marie Hardee Spain

ALPHA RHO

Louise Redfern Pells - 1929

ALPHA SIGMA

Roberta Love Kendall - 1944
Bettye Jean Phillips Sanders - 1946
Martha Bunker Cianfrone - 1956

ALPHA TAU

Vera Foster Irby - 1941
Jane Brown Long - 1947
Edith Fletcher Williams - 1955

Kathryn Giddens Bennett - 1958
Pauline Barham Drewett

ALPHA UPSILON

Rosanne Labree Coursen - 1967

ALPHA PSI

Laurel Knorpp Chucovich - 1950
Margaret McWilliam Graham - 1961

BETA ALPHA

Elizabeth Rodger Newton - 1930
Beverly Grout Beaven - 1940
Lois Ibbotson Hartnett - 1949
Dorothy Haslam Hetherington - 1950
Camille Paglia Angeli - 1955

BETA BETA

Doris Harned Kretschmer - 1948

BETA GAMMA

Mary Louise Gaupin O'Bryan - 1941
Mary Lee Miller Bach - 1947
Robin Lane Massey - 1970
Robin DeArmond Shartzter - 1987

BETA DELTA

Donna Perry Dineen - 1983

BETA THETA

Margaret Maupin Bent - 1939
Kathryn Lauer Holgate - 1941
Emily Soos Robison - 1945

BETA KAPPA

Alice Hauswirth Rector - 1941
Jean Grosser Smith - 1944
Bonnie Brenholdt Wharton - 1953

BETA MU

Barbara Mock Maier - 1954

BETA NU

Charlene Heritage Geers - 1954
Gail Marie Marshall - 1958

BETA XI

Emma Maddox Peacock - 1944
Dorothy Wainwright Oliver - 1950
Patsy Hall Cobb - 1956
Sara Price Wiggins - 1959

BETA PI

Wilta Reiser Lambrecht - 1963

BETA RHO

Garadina Cameron Whittaker - 1941
Joan Bourdo Bevelacqua - 1960
Martha Coon Hitchcock - 1968

BETA SIGMA

Barbara Coffey Johnson - 1955

BETA CHI

Rachel Bair Redinger - 1942
Nancy Cressman - 1967

GAMMA ALPHA

Doris Oestreich Berkey - 1941
Beverly Jane Hoehn - 1945
Saralu Covert Diller - 1949
Tanya MacMorris Wenger - 1950
Ruth Geib Heater - 1955
Judith Van Schaack Mayes - 1965

GAMMA BETA

Maureen McGuire McDermott - 1959

GAMMA GAMMA

Sherry Kent Llewellyn - 1947

GAMMA DELTA

Judith Ann Hastings - 1955

GAMMA EPSILON

Mary Lou Taylor Jose - 1949

GAMMA ZETA

Martha Phillips Schier - 1949

GAMMA THETA

Helen Papadakis Rouman - 1951
Florence Perkins Blattner - 1955

GAMMA IOTA

Sharon Graig Menish - 1964

GAMMA KAPPA

Elizabeth Raup McClelland - 1948

GAMMA LAMBDA

Patricia Kiddie Patterson - 1949

GAMMA NU

Nina Swearingen Braxton Dudgeon - 1957
Cheryl Holderness Wise - 1971

GAMMA XI

Patsy Jean Patton Meerscheidt - 1953

GAMMA PI

Rita Beaudoin Poux - 1950
Patricia Jane McLean - 1951
Sally Cushman Moss - 1954
Alice Mary Roggenkamp

GAMMA RHO

Joan Grafer Lurie - 1950

GAMMA SIGMA

Pamela Pascoe Pollzzie - 1968

GAMMA TAU

Patricia Leonard Storer - 1952
Rhea Jane Myers Hoyt - 1956
Suzanne Schrier Price - 1963

GAMMA UPSILON

Sherlene Taylor Carruth - 1955

GAMMA CHI

Martha Williams Abert - 1955
Rebecca Felton Schott - 1975
Robertta Hammontree Porter

GAMMA PSI

Moreen McLaughlin Terwilliger - 1955

DELTA ALPHA

Cheryl Myers Shoults - 1963
Linda Wunderley Reitz - 1968

DELTA GAMMA

Nancy Joan Wykes - 1954

DELTA EPSILON

Anne Marrinan - 1962

DELTA KAPPA

Alice Savoie Lazaro - 1959

DELTA LAMBDA

Lee Austin Silverburg - 1956
Elizabeth Barbay Himel - 1957
Ada McKee Billings - 1966

DELTA MU

Pamela Rasmussen Held - 1967

DELTA XI

Faith Gustafson Waldmann - 1946

DELTA PI

Margie James Larkin - 1956
Mary Rawie Calkins - 1957
Joan Bourgain Miller - 1957

DELTA SIGMA

Rosemary Rippel Leath - 1959
Melva Wolf Trager - 1961

DELTA TAU

Elizabeth Lesh Riker - 1956

DELTA UPSILON

Betty Mead Dix - 1957

DELTA CHI

Anne Ballard Krause - 1956
Beverly Greene Selland - 1957

DELTA OMEGA

Marjorie Butler Simons - 1956

EPSILON EPSILON

Doris Prunty Miller - 1956
Donadeane Wilson Clancy - 1957

EPSILON ZETA

Elizabeth Baker - 1956
Flora Stabler Conger - 1957

EPSILON ETA

Helen Underwood Hills - 1956
Eileen Rue Uljee - 1956
Shirley Thieret Matheus - 1958
Kathleen Friend Swiderski - 1958

EPSILON KAPPA

Rita Jorstad Gundlach - 1962
Cynthia Nell Clark - 1975

EPSILON XI

Sandra Shumad Ledbetter - 1967
Michelle Pogue Whalls - 1978

EPSILON OMICRON

Brenda Rademaker Moehring - 1948

EPSILON RHO

Mary McComb McDonald - 1959

EPSILON SIGMA

Nancy Zimmerman Jones - 1957
Marisa Jo Krueger - 2008

EPSILON TAU

Dorothy Caldwe Lafoon - 1956
Joy Borden Kirkpatrick - 1958
Marlene Armour Mathers - 1963

EPSILON UPSILON

Nelda Johnson Latham - 1989

EPSILON PHI

Sarah Ross Lezotte - 1956

ZETA BETA

Julia Williams Anson - 1970
Ann Davis Golubeff - 1972

ZETA EPSILON

Mary Katherine Meyers Wilsher - 1964

ZETA THETA

Victoria Duran - 1959
Dorothy Saltsman Haskins - 1959
Doretta Dever Holloway - 1959
Linda Bachemin Hough - 1962
Betty Crawford Brown - 1966
Laurene Schmitt Horton-Evans - 1966
Rosalind Williams Anderson - 1970
Karen Beauchamp Roudon - 1973
Terri Lynne Wilson - 1982

ZETA LAMBDA

Izora Jean Bell - 1963

ZETA NU

Jane Patricia MacFarlane - 1990

ZETA TAU

Pamela Hunt Schultz - 1974

ZETA PHI

Debby Ann Welch - 1970
Belinda Shook Terzich - 1990

THETA ALPHA

Beverly Warner Koehlmoos - 1963

THETA BETA

Sharon Sue Hobbs - 1956

THETA EPSILON

Esther Mays Kendall - 1964

THETA THETA

Janet Freedman Wood - 1964

THETA XI

Judith Devers Jaffre - 1980

THETA PI

Sandra Koolmo Dilland - 1968

THETA PSI

Alicia Luckey Bradley - 1990

IOTA DELTA

Emma Rossbacher Williams - 1965

IOTA LAMBDA

Kathryn Hawkins Garrison - 1972

IOTA PI

Helen Fitzwater Lodge - 1967

IOTA RHO

Erin Christian - 2010

IOTA TAU

Jane Bender Ripley - 1973

IOTA PSI

Karen Coley Domke - 1968

KAPPA RHO

Lisa Buitekant Davies - 1991

XI LAMBDA

Rebecca Shanfield - 2008

OMICRON NU

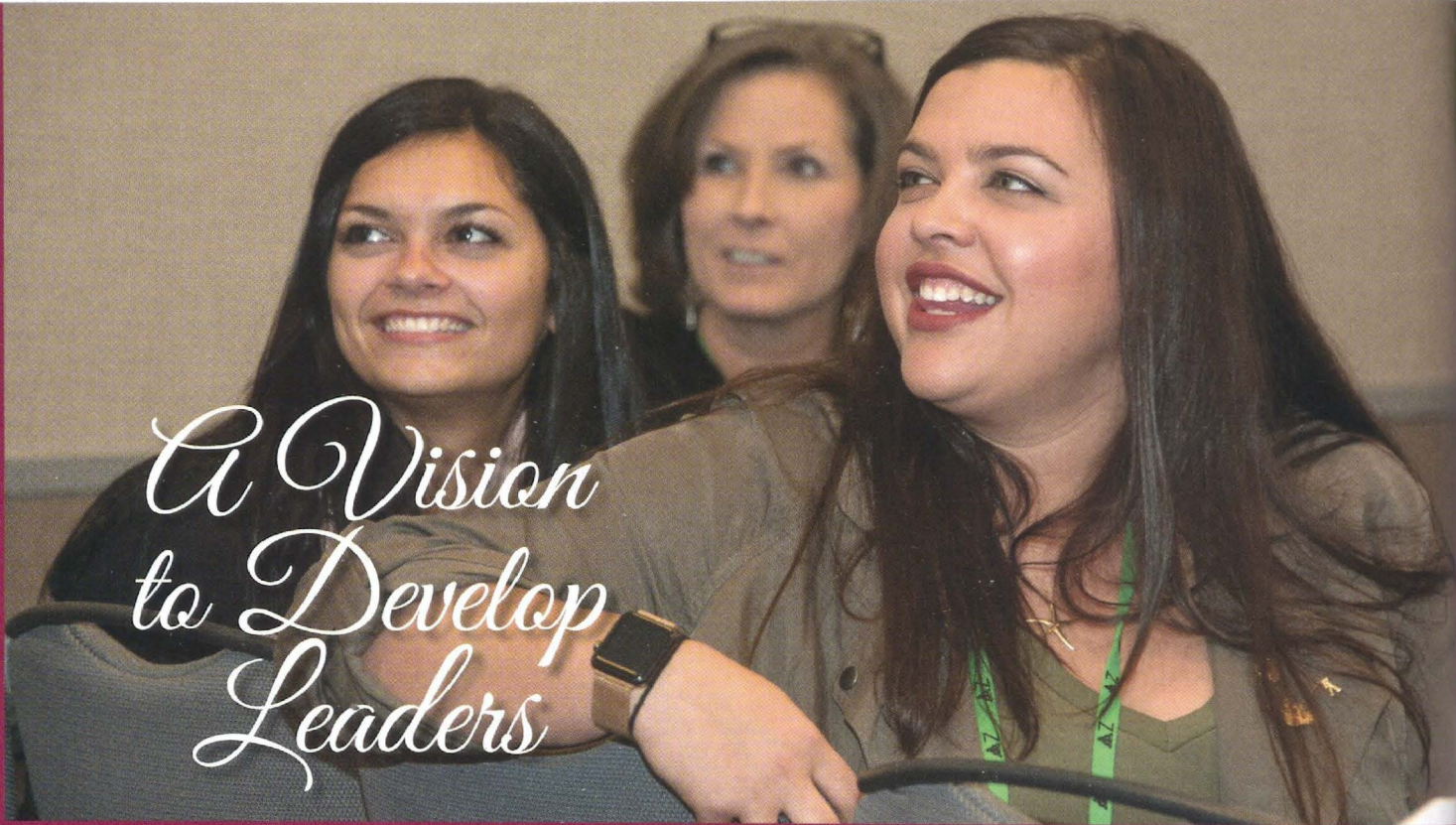
Julie Holmes Desbien - 2006

PHI BETA

Dolores Kreft Krebs

Send all notices of address changes and
member deaths to:
Delta Zeta National Headquarters
202 East Church Street
Oxford, OH 45056
Phone: (513) 523-7597

NON-PROFIT
ORG.
U.S. POSTAGE
PAID
FLORENCE KY
PERMIT NO. 313



A Vision to Develop Leaders

Through leadership programs for our
alumnae and collegiate members,
**Delta Zeta embodies our Founders' vision
of a national sorority that produces
leaders who enrich today's world.**

Delta Zeta programs provide the opportunity
to learn, in a real-life setting, leadership skills
which can help change the world.



**DELTA ZETA
FOUNDATION**

The Delta Zeta Foundation is proud to
support these programs and others that
prepare sorority women to lead – now
and in the future. Your gift keeps our
Founders' vision thriving, empowering
our leaders to impact their campuses,
communities and the world for the better.