

The LAMP

Spring/Summer 2015

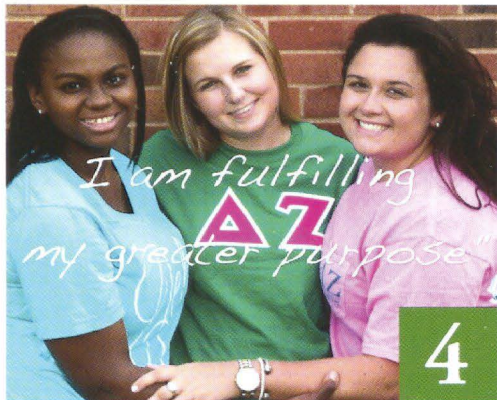
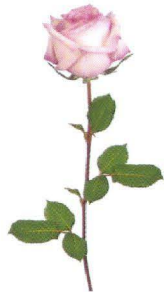
o f D E L T A Z E T A

*I am fulfilling
my greater purpose*

In this issue:

Delta Zeta
Welcomes Two
New Chapters:
Pi Rho
and Pi Sigma

Contents



Visit <http://www.deltazeta.org> to read the latest issue. If you would like to read The LAMP online to help the Sorority to go green, please email us at GreenLAMP@dzshq.com.

You will receive an email alert when the next issue is online. If you want to continue to receive The LAMP in its hard copy format, mailed to you three times a year, you need not do anything. Thank you!

Features

- 4 Spirit of Giving
- 12 Enriching New Campuses
- 38 Collegiate Profile
- 40 Alumna Profile

Departments

- 8 National News
- 16 On Campus
- 33 Distinctive Delta Zetas
- 35 Sharing Our Sisterhood
- 43 Flame Eternal
- 46 Alumnae News
- 52 Delta Zeta Foundation

Published since December 1910 by Delta Zeta Sorority
The LAMP of Delta Zeta, Nancy E. Brewer, A, Editor
(ISSN #0887-2554), official magazine of the Sorority,
is published three times a year by the Delta Zeta Sorority,
202 East Church Street, Oxford, OH 45056.

POSTMASTER

Send address changes to Delta Zeta Sorority,
202 East Church Street, Oxford, OH 45056.

Send all editorial material to
Delta Zeta National Headquarters, Attn: Editor,
202 East Church Street, Oxford, OH 45056
(513) 523-7597

General email: dzs@dzshq.com
The LAMP email: LAMP@dzshq.com
Website: <http://www.deltazeta.org>

**Delta Zeta Sorority
National Council 2014 - 2016**

Diane M. Stecher
Missouri/St. Louis - IE
National President

Leslie Evans Williams
Indiana - E
National Vice President of Membership

Christy Phillips-Brown
Western Carolina (NC) - ΘI
National Vice President of Collegians

Karen Martin Campbell
California State/Long Beach - ΔA
National Vice President of Alumnae

Heather Jerden Anderson
Texas/Arlington - IΨ
National Vice President of
Administration

Cathy Irvin Painter
Alabama - ΑΓ
National Vice President of Finance

Michelle Albrecht Smith
California/Los Angeles - ΑΧ
Past National President

Jeanine Petersen Triplett
Louisville (KY) - ΒΓ
National Panhellenic Conference
Delegate

Founded at Miami University
Oxford, Ohio
October 24, 1902

Founders

Alfa Lloyd Hayes, 1880-1962
Mary Collins Galbraith, 1879-1963
Anna Keen Davis, 1884-1949
Julia Bishop Coleman, 1881-1959
Mabelle Minton Hagemann, 1880-1929
Anne Simmons Friedline, 1879-1932

The Order of the Laurel

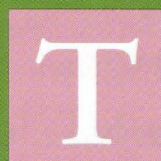
Irene Caroline Boughton, I
(University of Iowa)
Grace Mason Lundy, E
(Indiana University)
Elizabeth Coulter Stephenson, A
(Miami University)
Myrtle Graeter Hinkly, Δ
(DePauw University)
Norma Minch Andrisek, ΓA
(Baldwin Wallace University)



From The National President

*"To those whom my life may touch in slight measure,
May I give graciously of what is mine."*

The Delta Zeta Creed



Those words from the Delta Zeta Creed have never rung more true for our members than they do today. Delta Zeta is fulfilling our purpose as set forth by our Founders in 1902: "to build up the character and cultivate the truest and deepest friendship among its members. To stimulate one another in the pursuit of knowledge and the attainment of a high standard of morality; to inculcate elevated sentiments and noble principles ..."

We have a work worthy of our efforts. Philanthropy not only changes the lives of others, but leaves us the better for having undertaken it. In this issue of The LAMP, you will learn more about our global efforts to make a *lasting* difference in the world through speech and hearing – a difference that enriches lives and makes communication possible. And that communication opens new doors of possibility for those we help as well as for ourselves.

Serving others makes that possibility a reality – one I experienced firsthand at a Starkey Hearing Foundation hearing mission in the Dominican Republic. But you don't need to travel to other places to make a difference. You can change lives wherever you are – on your own campus or in your own community. You might be a collegian who needs hearing assistance in order to understand the subject you are studying. You might be an alumna who knows a senior citizen in your community who feels shut out because he can't hear clearly. You have the power to help.

The important thing to remember is that you are doing the work that Delta Zetas are meant to do. Your membership has a deeper meaning. Your commitment fulfills a global purpose to touch lives which are forever changed. And those lives, transformed, change the world.

In Delta Zeta,

Diane M. Stecher

Diane M. Stecher,
National President



FRATERNITY
COMMUNICATIONS
ASSOCIATION

Printed in USA.



National Panhellenic Conference



SPIRIT OF GIVING

“Let us grasp the greater opportunities that are ours and push forward steadily and unitedly.”

Julia Bishop Coleman, Founder


W

ith Delta Zeta's founding in 1902, our Founders envisioned that the Sorority would bring to its members the opportunity “to grow in strength and character,” as Alfa Lloyd

Hayes said in 1927. The pledge to give graciously to “a work worthy of our effort, perhaps something different than has ever been done before,” as Elizabeth Coulter Stephenson, National President 1912-1916, said, brings that opportunity to realization and allows Delta Zeta to transform

lives through the power of giving.

Each of us has a higher purpose. Delta Zeta's commitment to service enables women to do more, be more and care more – to change the world and change our own lives at the same time.



Why Speech and Hearing?

“Blindness cuts us off from things,
but deafness cuts us off from people.”

Helen Keller

More people have a hearing loss than any other physical or mental challenge. This fact, from The National Center for Health Statistics (<http://www.cdc.gov/nchs/>), makes Delta Zeta Sorority's commitment to speech and hearing one that is all the more urgent today.

In 2015, Delta Zeta is renewing our promise to give graciously by giving more to the national philanthropy of speech and hearing. Because the ability to hear affects everyone around the world, our commitment to a global effort is needed. Because lives are changed forever through the gift of hearing, Delta Zeta is acting now.

The National Council of Delta Zeta Sorority announced at the 2015 Presidents Academy that the Sorority has pledged to raise \$5 million over the next five years for speech and hearing, and to donate that amount to Starkey Hearing Foundation, the Sorority's philanthropic partner since 2006. This commitment is part of Delta Zeta's strategic plan to grow, enhance, improve and advance the organization, while enriching our membership and changing the world.

“Speech and hearing has been important to Delta Zeta since our earliest philanthropic efforts, when the Sorority built a school in the Appalachian Mountains of Kentucky in the 1920s,” says Diane M. Stecher, Missouri/St. Louis - IE, National President. “In the 1940s, we provided hearing aids to children and adults, and in the 1950s, funded furnishings for the library at Gallaudet University, the world's leading university with undergraduate programs accessible to deaf, hard of hearing, and hearing students, and in 1995, the Delta Zeta Dance Studio was dedicated. This important partnership with Starkey Hearing Foundation takes our national philanthropy of speech and hearing to a global level.”

Barbara Jones Brotherton, Minnesota State/Moorhead - ON, National Philanthropy Chairman, says, “This global commitment not only makes a difference in so many lives around the world, but our philanthropy enriches the member experience. Many college women today are choosing a sorority based upon their wish to change lives through philanthropy and service – not only in their community, but around the world, and this is where Starkey becomes a great partner for us as we want to make a difference globally.” Learning, growing, leading and serving in meaningful philanthropy make the Delta Zeta experience one that women want as they define their life journey.

Did you know?



I

n the last four years, Delta Zeta chapters and members have given over 2,900,000 hours in service and over \$6.5 million in financial contributions to provide awareness and support for speech and hearing.

Starkey Hearing Foundation's mission is to change the social consciousness of hearing and hearing matters through education and research, while providing the gift of hearing to those in need around the world. Starkey provides more than 175,000 hearing aids annually in countries all over the world. Delta Zeta alumnae and collegiate members volunteer at many of these Starkey mission events. Learn more at <http://www.starkeyhearingfoundation.org>.

“We have hearing lives to save. We can save more hearing lives together. Delta Zeta joins us as citizens of the world. Your partnership is so important to us. I want to thank you so much.”

**Tani Austin, Co-Founder
Starkey Hearing Foundation**

HIKE FOR HEARING



Delta Zeta

D

elta Zeta Sorority has also launched Hike for Hearing (<https://dzhikeforhearing.org/>), which provides a way for the Sorority's chapters and members to raise money for speech and hearing to meet the \$5 million goal. Chapters and members have been supplied with tools and resources to host actual and virtual Hike for Hearing events on their campuses and in their communities to increase awareness of speech and hearing issues while raising money for the cause. The money will help Starkey Hearing Foundation with their life-transforming work, including building speech clinics for those who have benefited from their hearing missions.



Diane Stecher, National President, Barb Brotherton, National Philanthropy Chairman, and Seattle Seahawks' Derrick Coleman

Cindy Winslow Menges, Miami (OH) - A, Executive Director, gives the gift of hearing on a mission to Matamoros, Mexico.

Photos: Starkey Hearing Foundation



Service in Action

E

arlier this year, Diane M. Stecher, National President, and Barbara Jones Brotherton, National Philanthropy Chairman, traveled to the Dominican

Republic with Starkey representatives such as Derrick Coleman, fullback for the Seattle Seahawks and the first legally deaf offensive player in the NFL, and Oscar-winning actress and social activist Marlee Matlin for one of Starkey's hearing missions. Derrick had given an inspiring speech at Delta Zeta's Presidents Academy a few days after the mission, and Marlee had moved the National Convention with a heartfelt testimonial in 2014.

"Diane and I had the pleasure of representing Delta Zeta in an opportunity that changed lives, including our own," says Barb Brotherton. "And what we learned is that hearing is a vehicle to changing lives. You are not only changing the lives of that patient who is sitting in front of you, but you are also changing the lives of their families, their neighbors, their workplace — their whole community, because now they can communicate so much easier with the people they touch in their lives. That was truly amazing."

Diane and Barb have many gratifying stories to tell, such as the little boy, Daniel, who was able to say, and hear, his name for the first time, and the grandmother, Alejandrina, who heard her grandchild's voice for the first time. "Our team fit approximately 4,000 people with hearing aids," says Diane. "We are so fortunate to have this partnership and expand our level of engagement to make a global impact."

Barb points out that many of the people they helped on this mission had a lesser degree of hearing loss that was improved immensely with just a little help from a hearing device. "Starkey's mission is 'so the world may hear,' and that brings understanding between people through caring and sharing."

While the Delta Zeta-sponsored missions are a big part of speech and hearing, Barb says that every member can have an impact, no matter where they are. "You don't have to travel around the world to show your support. You can begin right where you are. Get involved by raising money and awareness. Use our Hike for Hearing tools to support your efforts. You can raise your funds on your own or as part of your alumnae or collegiate chapter. Every dollar raised makes an impact on this journey of changing lives through the gift of hearing."

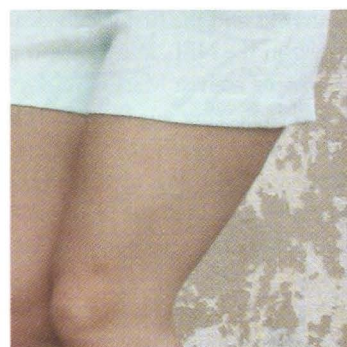
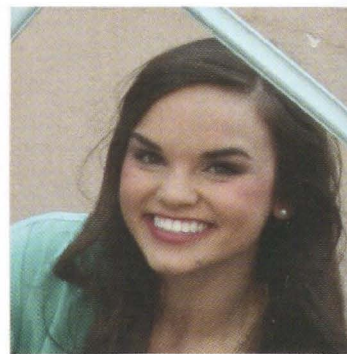
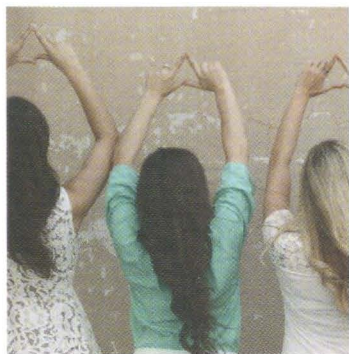
LISTEN CAREFULLY

Delta Zeta and Starkey are equally committed to saving healthy hearing. Currently, one in six American teens has noise-induced hearing loss from loud sounds (<http://www.listencarefully.org/>). Noise-induced hearing loss is irreversible, but it is also preventable.

Each year, for one week in April, Delta Zeta's Learn 2 Listen Week seeks to educate others about protecting their hearing. Starkey's Listen Carefully awareness campaign is dedicated to educating the public about noise-induced hearing loss and how it can be prevented.

As noise-induced hearing loss is on the rise in the collegiate age group, Delta Zeta is compelled to make a difference in hearing loss prevention by educating our campus communities on how to protect their hearing.

BEING MORE! MEMBER DEVELOPMENT PROGRAM



Being More! Launching in Fall 2015

The most exciting educational initiative in Delta Zeta's history, the Being More! Member Development Program, will be officially launched to all Delta Zeta collegiate chapters in the Fall of 2015. The Being More! program offers a four-year experience for collegiate members tailored specifically for Delta Zeta based on a competency model for successful women leaders. Future opportunities for alumnae member development are in progress.

The competency model, which identifies and defines the top traits for women to be successful leaders, has been validated by top business and community leaders, and allows all women the opportunity to grow and develop as they reach their potential. The competencies identified for Delta Zeta's program are: Confidence, Values and Maintains Relationships, Communicates Effectively, Personal Life Balance, Possesses Expertise and Critical Thinking, and Resolving Conflict.

These competencies mirror the tenets in Delta Zeta's Creed: Faith, Growth, Steadfast Love, Giving Graciously, Temperance, Insight, Courage and Truth. The program will better prepare members to meet the challenges and opportunities they face within their chapters, in leadership roles, and as they transition out of the collegiate experience into alumnae and professional life.

We are proud to bring this life-changing education, funded by the Delta Zeta Foundation, to our members. If you are interested in supporting Being More! and programs like it, please indicate this when making a gift to the Foundation, or contact DZFoundation@dzshq.com.

Risk Prevention and Education – Essential for Every Member

Delta Zeta believes in positive prevention planning and works with our chapters to have safe and controlled events that are fun and keep the social aspect of the sorority experience. The Sorority provides the essentials that every member needs for a safe and enjoyable event in Clutch, Delta Zeta's online social event planning tool.

The Clutch logo is displayed in a white, stylized serif font inside a pink envelope-shaped graphic.

Clutch is a quick and easy way to make sure that when a chapter plans a social event, it is compliant with all Delta Zeta National Policies and Procedures, including the *Code of Regulations*, *Constitution*, FIPG, Inc. policies and Standing Rules and Policies to help prevent risky situations from occurring.

Clutch (not unlike a woman's handbag, from which the name derives) provides the essentials every Delta Zeta needs for a great time, and some other tips on how your fun can be increased safely, as well as some ways the night could be ruined. Clutch was not required in the 2014-2015 academic year, but 75 percent of Delta Zeta's 163 chapters used the system with 61 percent of those chapters using it more than once. Clutch was recently approved for the 2015-2016 school year as the required method of social event registration for events with or without alcohol because of the usage rates, success of the program and feedback from users.

Other fraternal organizations are taking notice, too, and are interested in using Clutch within their organizations.

Will Frankenberger, Director of Risk Prevention and Education, says, "Delta Zeta is proactive in

creating easy-to-use resources that our chapters can utilize for their event planning to ensure safety and compliance with all policies and procedures. Clutch begins those peer-led critical conversations that are essential to understanding and eliminating risk for today's college students during social events."



Extending Our Reach

The National Council of Delta Zeta is excited to announce our colonization on the following campuses:

Sacred Heart University

Installed May 3, 2015

(full coverage in the next issue of The LAMP)

Cleveland State University

Spring 2015

Long Island University Post

Spring 2015

California State University/San Marcos

Fall 2015

Johnson & Wales University

Fall 2015

Western Kentucky University

Fall 2015



High Quality Jewelry

COLLEGE JEWELRY

www.collegejewelry.com
248.548.4855

OFFICIAL LICENSED PRODUCT

The advertisement displays various Delta Zeta jewelry items: a pearl necklace with a Delta Zeta pendant, a bracelet with a Delta Zeta charm, a ring with a Delta Zeta charm, and a pair of earrings with Delta Zeta charms. The background is pink with a large Delta Zeta logo and the text 'High Quality Jewelry'.

Do you know a potential Delta Zeta?

Since our founding in 1902 at Miami University in Oxford, Ohio, more than 254,700 women have been initiated into our sisterhood.

Members find that Delta Zeta not only enriches their lives, but it allows them to enrich the lives of those around them.

If you know someone whom you would like to recommend, please use the forms (online and Word document) at <http://www.deltazeta.org/>. Go to the Recruitment and Legacy Form link at the bottom of the page. If you download the Word document form, please send completed forms directly to the chapter by logging onto the Member's page and finding the addresses you need on the Chapter Directory. The online form will automatically notify the chapter that an introduction has been received.

If you need a hard copy of the form and the address to mail it to, please contact Delta Zeta National Headquarters at (513) 523-7597, 202 East Church Street, Oxford, OH 45056, or dzs@dzshq.com.



**Take your place in
Delta Zeta history with
an engraved brick in
the Founders Walk and
Centennial Garden at
Delta Zeta's National
Historical Museum
and Headquarters in
Oxford, Ohio.**

The red brick Founders Walk and Centennial Circle showcases members and chapters from all over the United States and the world!

Each engraved brick paver allows for up to three lines of text (14 characters per line). Each brick is a \$250 donation (tax-deductible) to the Delta Zeta Foundation, helping fund the preservation of our rich 113-year history.

Visit <http://www.deltazeta.org> and go to About Us > Foundation > How You Can Give.





Enriching New Campuses

The Pi Rho Chapter is installed on the University of
West Georgia campus.



elta Zeta Sorority welcomed the Pi Rho Chapter at the University of West Georgia to our sisterhood on November 15, 2014. Delta Zeta is

proud to become a part of this university which provides "opportunities for intellectual and personal development . . . provided through quality teaching, scholarly inquiry, creative endeavor, and service for the public good." (<http://www.westga.edu/>)



The University of West Georgia, founded in 1906, has more than 12,000 students currently enrolled.

The major colleges of the university are the College of Arts and Humanities, the College of Social Sciences, the College of Science and Mathematics, the Richards College of Business, the College of Education and the School of Nursing. The Honors College boasts high academic achievements; the Pi Rho Chapter currently has several members in this college.

University of West Georgia Mission

The University of West Georgia seeks to achieve preeminence in providing educational excellence in a personal environment through an intellectually stimulating and supportive community for its students, faculty and staff.

Delta Zeta joined seven other sororities on the University of West Georgia's campus. The women of the Pi Rho Chapter have participated in campus-wide philanthropy events, outreach groups, student programming and more. They are involved in other organizations on campus including, but not limited to, Order of Omega, Honors College, and Delta Epsilon Iota.

Friends of Delta Zeta (FODZ) allowed for students and faculty/staff members to share information about the colony through social media. FODZ includes members of Interfraternity Council (IFC) and College Panhellenic Council (CPC) chapters.

The Pi Rho members have committed their leadership skills to several organizations on campus including Marketing Association, Public Relations Student Society of America (PRSSA), Student Activities and Programming, Blue Coat Society and others. The colony held several events on campus such as an all-inclusive study night during National Hazing Prevention Week as well as participating in other organizations' events. The colony's i Have a Choice event during National Collegiate Alcohol Awareness Week encouraged students to participate in a campaign to raise awareness about risky alcohol practices. And when the colony participated in its first Greek dance competition, Pi Rho won first place.

Special Delta Zeta guests at the installation luncheon included Diane M. Stecher, Missouri/St. Louis (MO) - IE, National President; Michelle Albrecht Smith, California/Los Angeles - AX, Past National President and National Extension Chairman; Mandi Wise Evans, Ball State (IN) - GX, Director of Membership

Services; Barbara Poremba, Connecticut - IB, Delta Zeta Foundation Trustee; Diana Porter Joyner, South Carolina - BD, Regional Collegiate Director - Region XVII; Lisa Severtis Higgins, Eureka (IL) - II, Southeast Area Alumnae Director; and Denise Lobodinski, Drake (IA) - GE, Atlanta Alumnae Chapter President.

Diane M. Stecher said, "The university's mission to transform the lives of its students is one that Delta Zeta welcomes. The University of West Georgia's purpose is aligned with the Sorority's core values. We are proud to be a valuable and contributing part of the fraternal community, the university and the surrounding community of Carrollton, Georgia."

Representatives from the university included Chris Geiger, Director of Center for Student Involvement; Helen Diamond Steele, Winthrop (SC) - AS, Director of First-Year Programs; April Thomas Saunders (Pi Rho alumna initiate), Director of Creative Services; Emily Teitelbaum (Pi Rho alumna initiate), Assistant Director for Special Events and Programs; Michael Steele, Assistant Director for Fraternity and Sorority Life; Aubrey Duman, Graduate Assistant for Fraternity and Sorority Life; Victoria Chan, Graduate Assistant for Fraternity and Sorority Life; Deb Padgett, Manager of Housing for Greek Village; and Christine O'Dea, Residence Life Coordinator.

The banquet concluded with a video made by Lexi Benitez, the chapter Historian and LAMP Editor, documenting the chapter's various events and programs throughout the colonization period. Delta Zeta is proud to welcome the Pi Rho Chapter!



The Pi Sigma Chapter (University of Texas/Dallas) is Delta Zeta's newest chapter.



Delta Zeta Sorority installed the Pi Sigma Chapter at the University of Texas/Dallas on December 7, 2014.

The University of Texas/Dallas' "vision is to be one of the nation's best public research universities ..." and is "ideally positioned to accomplish this goal as a global leader in innovative, high-quality science, business, and engineering education and research" (<http://www.utdallas.edu/>). The University of Texas/Dallas is on the path to achieving Tier 1 status nationally, and was ranked 15th among the world's most outstanding young universities that have been in existence for less than half a century by Times Higher Education's 2014 ranking.

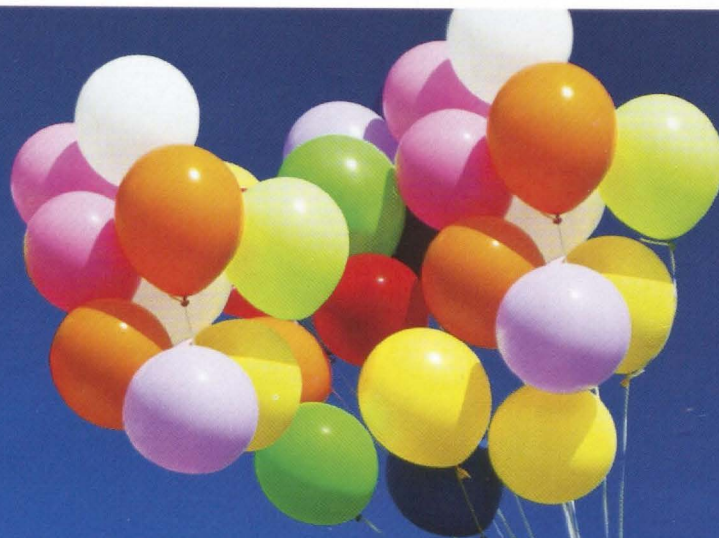
Greek life began on the UTD campus in 1992 and has expanded to 21 fraternities and sororities and is still growing. Delta Zeta is the fourth Panhellenic Sorority to join the University of Texas/Dallas Greek community.

Pi Sigma Chapter includes many outstanding students from the UTD community, including two graduate students, one Ph.D. student and two McDermott Scholars, one of the most prestigious scholarships in the nation.

The installation included special guests Diane M. Stecher, Delta Zeta National President; Michelle Albrecht Smith, Past National President and National Extension Chairman; Mandi Wise Evans, Director of Membership Services; Sarah McCracken, Northwestern (IL) – AA, Director of Program Development; Erin Kallus Hasbrouk, Houston (TX) – ΔΘ, Regional Collegiate Director – Region XII, as well as local alumnae and collegiate members. Representatives from the university included Gene Fitch, Dean of Students; Kecia Baker, Assistant Dean of Students; Daniel Hernandez and Julie Murphy, Assistant Directors of Fraternity and Sorority Life; Laura Pearson, Fraternity and Sorority Life Student Worker as well as various Fraternity and Sorority Life student leaders. Many members' parents and close friends were also in attendance.

Daniel Hernandez and Julie Murphy played an integral part in assisting the Educational Leadership Consultants, Lisa McCoy, Rollins (FL) – ΠΘ, and Cindy Park, Georgia State – ΔΔ, during their time colonizing at the University of Texas/Dallas. Daniel and Julie both spoke about the journey of extension and how proud they are of the women of Pi Sigma.

Diane Stecher said, "Delta Zeta Sorority is proud to bring personal and leadership development possibilities, as well as the opportunity to make a global impact through philanthropy, to women students at the university. The university's mission to 'produce graduates prepared for life, work and leadership; to advance educational and research programs; and to transform ideas into actions that benefit the citizens of Texas' is aligned with the Sorority's core values. We anticipate being a valuable and contributing organization to the fraternal community, the university and the surrounding community of Richardson, Texas."



Delta Zeta Sisters could get a special discount on GEICO car insurance.

Your completed quote also helps benefit
Delta Zeta!

Don't forget to check out GEICO's great rates
on insurance for home, renters, and condo.

GEICO®

geico.com/greek/DeltaZeta




Delta Zeta



Some discounts, coverages, payment plans and features are not available in all states or all GEICO companies. Discount amount varies in some states. One group discount applicable per policy. Coverage is individual. In New York a premium reduction may be available. Homeowners, renters and condo coverages are written through non-affiliated insurance companies and are secured through the GEICO Insurance Agency, Inc. GEICO is a registered service mark of Government Employees Insurance Company, Washington, D.C. 20076; a Berkshire Hathaway Inc. subsidiary. GEICO Gecko image © 1999-2015. © 2015 GEICO

JUST AS DELTA ZETA'S FOUNDERS
DEFINED LEADERSHIP MORE
THAN 100 YEARS AGO,
OUR COLLEGIATE MEMBERS
CONTINUE THAT LEGACY BY LEADING
IN THE SORORITY ON THEIR CAMPUSES,
IN THEIR COMMUNITIES AND
NATIONALLY. THESE ARE EMERGING
LEADERS WHO ARE ENRICHING
TODAY'S WORLD.

ZETA LAMBDA

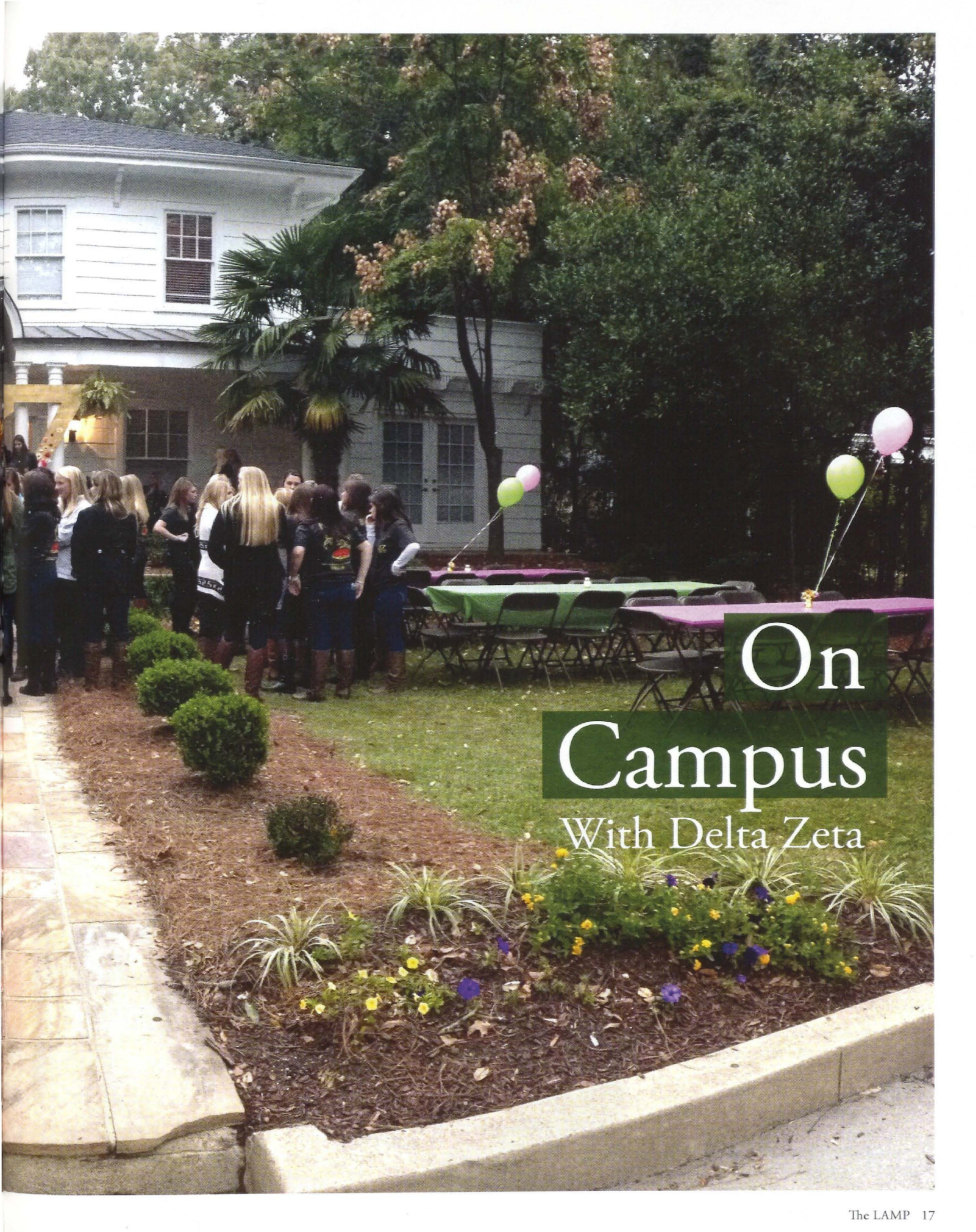
East Carolina University

Raised \$5,000 for member Carolyn Pittman
and Jamisen Alston, a local child with cerebral palsy,
at chapter's annual spaghetti dinner.
Both Carolyn and Jamisen have hearing loss.

Donated \$3,793 to Starkey Hearing Foundation
through Hot Dogs for Hearing event

Received Panhellenic Award for Outstanding
Academic Development Program of the Year





On Campus With Delta Zeta

ALPHA

Miami University

Puttin' on the Hits event raised \$13,181 benefiting St. Rita's School for the Deaf in Cincinnati

Received academic recognition including Dean's list and President's list for outstanding academic achievement

Partnered with Sigma Pi Fraternity to collect 255 canned goods and winter apparel for those in need

EPSILON

Indiana University

Ranked fifth highest GPA among the 22 sorority chapters on campus

New member class raised more than \$35,000 at Indiana University Dance Marathon to benefit Ryan White Infectious Disease Center and Riley Hospital for Children

KAPPA

University of Washington

60 members on Dean's list

Placed first in the Pi Kappa Phi Roses volleyball tournament benefiting Push America

Eight members in Order of Omega honor society

Partnered with Pi Kappa Alpha, raising \$1,000 to support Seattle Children's Hospital

PI

Eureka College

Five members received Sandifer Fellow Scholarship for commitment to leadership and service

Seventeen members on Dean's list

Hosted Spaghetti for Starkey event for Starkey Hearing Foundation

RHO

University of Denver

Received six awards at university's Greek Awards

14 members on Dean's list, and nine achieved 4.0 GPA

Raised nearly \$2,500 for Beta Theta Pi's annual fundraiser for Gabby Krause Foundation

Participated in DU B.O.S.S. training to help students learn about importance of campus leadership and speaking up to prevent violence on and off campus

SIGMA

Louisiana State University

Hosted Miss LSU-USA pageant, raising \$50,000 to benefit local philanthropies

Donated \$1,650 to The Emerge Center, which optimizes independent

communication and social interaction skills for those in need

Volunteered at St. Lillian's Academy to help children with learning challenges

ALPHA BETA

University of Illinois

Co-sponsored University of Illinois McKinley Heath Center Alcohol Awareness Fair

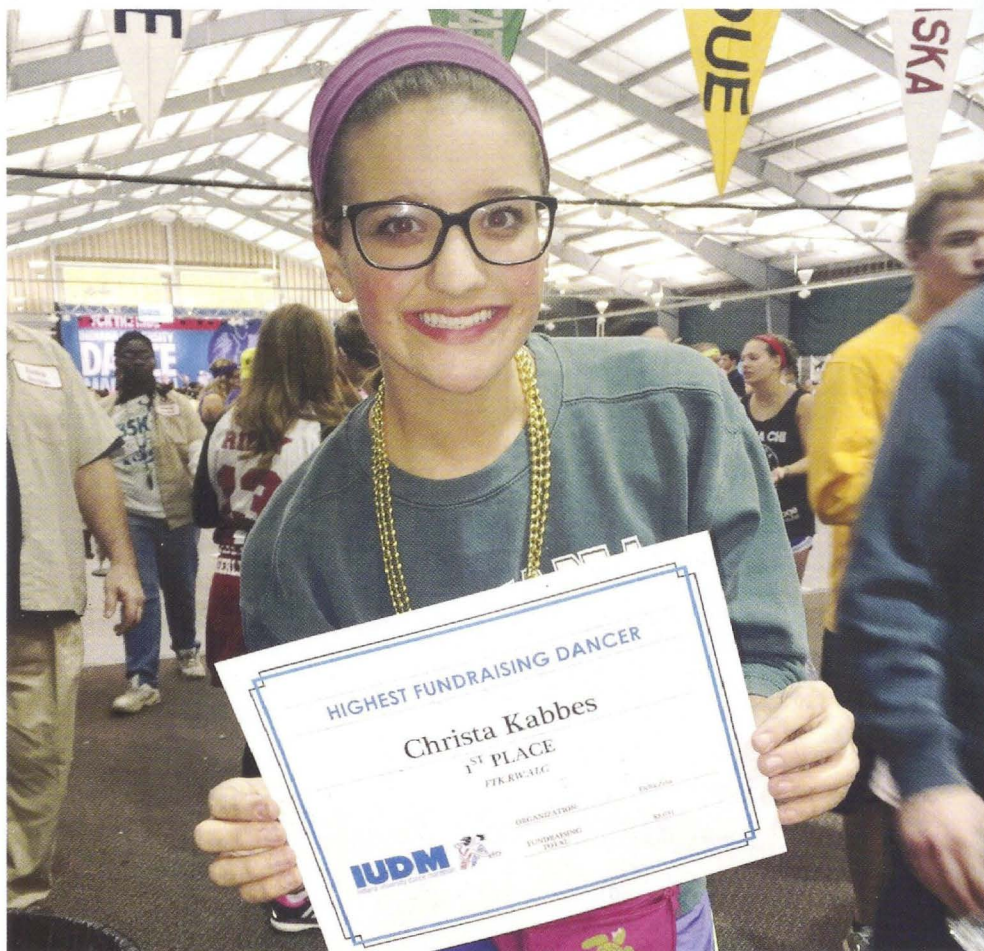
Received academics, risk management and philanthropy awards at Greek Oscars

Placed first in Phi Sigma philanthropy event

Co-led a Theta Xi service project for Habitat for Humanity

Turtle Trot raised more than \$1,700 for Starkey Hearing Foundation

Christa Kabbes, Risk Management Chairman of the Epsilon Chapter, was the highest fundraising dancer at Indiana University's Dance Marathon.





ALPHA GAMMA

University of Alabama

Received Outstanding Service & Philanthropy Award at Panhellenic Greek Excellence Banquet

Raised more than \$21,000 for Children's of Alabama, the local Children's Miracle Network hospital

Hamburgers for Hearing event raised more than \$8,600 for Starkey Hearing Foundation

ALPHA THETA

University of Kentucky

Awarded the Golden Matrix award at university's annual DanceBlue marathon, raising \$40,000 for pediatric cancer research

Mr. UK event raised \$32,000 benefiting Starkey Hearing Foundation and Lexington Speech & Hearing Center

ALPHA RHO

Ohio Wesleyan University

Hosted Delta Zeta Dance-Off to benefit The Painted Turtle camp

Elizabeth Fisher, Vice President of Membership, is Senior Class President

Eleven members made Dean's list

ALPHA SIGMA

Florida State University

Presented \$14,844 to School of Communication Science and Disorders raised through Hamburgers for Hearing event

ALPHA UPSILON

University of Maine

14 members on Dean's list

Raised more than \$1,000 at BearFest for Children's Miracle Network benefiting

local medical center's Neonatal Intensive Care Unit and Pediatrics department

Intramural soccer champions

Holds third highest GPA out of six sororities and 17 fraternities on campus for Fall 2014

Won first place in Greek Week Talent Show

Participated in Clean Up Acadia Day in the National Park in Acadia

BETA GAMMA

University of Louisville

Annual auction raised \$26,000 benefiting speech and hearing and The Painted Turtle camp

Placed first in tennis, kickball and swimming intramural sports

Members volunteered at Ronald McDonald House "Cheers to 30 Years" event

Holds second highest GPA out of six sororities on campus



Beta Gamma Chapter (University of Louisville)

56 members on Dean's list and 14 on President's list

Donated more than 300 blankets to Salvation Army in Sigma Chi's Wrap Up Louisville event

BETA DELTA

University of South Carolina

New Member Silent Auction raised \$1,945 benefiting The Painted Turtle camp

Received Be The Match Leadership Award for recruiting over 3,000 students as bone marrow donors

Kathryn Malone recognized as Volunteer of the Year for March of Dimes/Gamecock for Babies philanthropy; Maria Molinaro won Top Individual Fundraiser

Painted Turtle Trot raised more than \$4,000 with 960 service hours from chapter

BETA KAPPA

Iowa State University

Donated more than \$2,000 to Lutheran Services of Iowa

44 members on Dean's list

Amelia Medici is Collegiate Panhellenic Council Vice President of Judicial Affairs and Ally Tack is Vice President of Recruitment

Raised more than \$1,300 to buy 225 pounds of items sent in care packages to U.S. troops

BETA LAMBDA

University of Tennessee/
Knoxville

Received second place in LipSync competition

BETA XI

Auburn University

Hosted Hamburgers for Hearing event, raising over \$7,000 for Starkey Hearing Foundation

Holds highest overall GPA out of 17 sororities on campus

Intramural flag football team undefeated for fourth year in a row

Placed first in Black Student Union's Tiger Stomp competition

BETA TAU

Nebraska Wesleyan University

Volunteered at Lincoln's annual Junior Achievement auction

Participated in Walk to End Alzheimer's to support alumna diagnosed with disease and raised more than \$10,000

Won Greek Week

Relay for Life team raised \$5,454 for cancer research

Partnered with Alpha Gamma Delta to raise more than \$1,500 for Starkey Hearing Foundation

GAMMA ALPHA

Baldwin Wallace University

Gave pink and green "confidence balloons" to women on campus to increase self-esteem

GAMMA DELTA

Pennsylvania State University

Raised \$1,100 for The Painted Turtle camp

GAMMA KAPPA

Kent State University

Holds highest overall GPA out of seven sororities on campus

71 members on Dean's list and 14 on President's list

Won first place overall in Alpha Xi Delta's Xi Man event to benefit Autism Speaks

Hosted first Hike for Hearing, raising more than \$3,400 for speech and hearing

The Gamma Alpha Chapter (Baldwin Wallace University) with alumna Norma Minch Andrisek, Past National President (center)

GAMMA LAMBDA

San Jose State University

Five members received Golden Key Award, given to those students whose GPA is in the top 10 percent of their class

Received annual Greek Week award

Raised nearly \$1,000 in university's annual Light the Night Walk for Leukemia and Lymphoma Society

GAMMA NU

Eastern Illinois University

Participated in Girls on the Run 5k, which enables young girls to fulfill their potential

Made top three in women's intramural bowling tournament

19 members are Fraternal Scholars for Spring and Fall 2014 with 3.50 cumulative or semester GPA

In top three out of 19 Greek organizations on campus in supplying the most paper goods to families in need

GAMMA XI

New Mexico State University

Second annual Hot Dogs for Hearing raised more than \$1,200 to benefit Delta Zeta's national philanthropies

Recognized for contributing the most community service hours overall on campus

Placed first at Lambda Chi Alpha's Watermelon Bust for the third year in a row

GAMMA PI

Western Michigan University

Silent auction event raised \$47,000 for Jericho Foundation, which helps children in Bosnia and Herzegovina



Raised \$6,000 for MiCops Foot Chase Community Service, which aids local indigenous immigrant communities

Second in academics for Fall 2014 out of eight sororities on campus

GAMMA RHO

Northern Illinois University

Won eighth consecutive championship to benefit Northern Illinois University's Dance Marathon

Pancake Breakfast raised \$1,609 to benefit The Painted Turtle camp

GAMMA SIGMA

Eastern Michigan University

21 members on Dean's list for Fall 2014

Annual Mister Greek event raised over \$5,000 to send children to The Painted Turtle camp

GAMMA TAU

Bowling Green State University

Holds top sorority GPA for third consecutive semester out of 12 sororities on campus

Raised nearly \$1,000 for Gallaudet University in Washington D.C.

GAMMA PHI

Indiana University of Pennsylvania

Holds top sorority GPA out of 11 on campus

Received Academic Excellence Award for the highest GPA on campus

Received Greek awards for Excellence in Campus Involvement and Excellence in Community Service

GAMMA PSI

Central Michigan University

Ranked fourth academically out of 11 sororities on campus

DELTA ALPHA

California State University/ Long Beach

Silent auction event raised \$14,000 donated to the Delta Zeta Foundation

Teamed with Pi Kappa Phi to host school-wide spelling bee, raising money for both organizations' philanthropies

Won President's Cup for highest GPA out of seven sororities on campus for 11th consecutive semester

Received eight awards at university's Greek Ceremony

Volunteered at The Painted Turtle camp

DELTA BETA

University of Tampa

Volunteered to help Humane Society of Tampa Bay

Annual Rose Bowl benefited The Painted Turtle camp

Won Outstanding Sorority of the Year 2014 award

Raised more than \$3,000 at fourth annual Green Gala for Starkey Hearing Foundation

Raised nearly \$6,500 for Relay for Life

Holds top GPA out of five sororities and eight fraternities on Campus

Sold environmentally-friendly water bottles on DZ Beach Clean-up Day

Team DZ Green raised most money out of all organizations on campus in Pre-Relay for Life Fundraiser



The Gamma Rho Chapter
(Northern Illinois University)

DELTA DELTA

Georgia State University

Won first place and raised \$1,360 in Zeta Tau Alpha's Think Pink volleyball tournament benefiting breast cancer awareness and research

Won first place in Outdoor Soccer Intramurals

Received the Dean's Cup for Outstanding Chapter of the Year at university's Royal Flame Awards

Ranked number one among the five sororities on campus for cumulative GPA and is fourth highest out of 29 Greek organizations

Teamed with Foster Care Support to provide prom dresses to local high school students

Volunteered with Special Olympics of Georgia



Kristen Cary, Vice President of New Member Education for the Delta Alpha Chapter (California State University/Long Beach), and Julia Vasquez, Assistant Vice President of Membership, learn self-defense at a kickboxing gym.

DELTA XI

University of Northern Colorado

Hosted DZ Hop, raising over \$2,000 for Delta Zeta philanthropies

DELTA OMICRON

Northwestern Oklahoma State University

Received Greek awards for Outstanding Academic Program, Outstanding Community Service and Panhellenic Chapter of the Year

Volleyball and basketball Greek Intramural champions

DELTA SIGMA

Truman State University

Raised \$3,600 for Victims Support Services

Raised more than \$3,000 for The Painted Turtle camp and speech and hearing

Tied for highest new-member cumulative GPA for Fall 2014 semester among five sororities on campus

DELTA TAU

Temple University

Hosted All-You-Can-Eat Delta Ziti benefiting The Painted Turtle camp

Held highest GPA among four sororities on campus

Named City Six Champions in intramural flag football

DELTA UPSILON

Marshall University

Volunteered at local animal shelter, resulting in seven adoptions for homeless animals

Raised \$6,251 and placed second at Relay for Life event

Donated 167 cans of food to Facing Hunger Foodbank

DELTA PHI

Northeastern State University

Participated in Kappa Sigma Fraternity's event to support domestic violence prevention agency

DELTA OMEGA

Fort Hays State University

Hosted event to support university's The Herndon Clinic for speech and hearing

EPSILON GAMMA

University of Central Missouri

Received honor for top GPA for 18 consecutive semesters

Received university's Five Star Award, highest award given to a Greek chapter

Raised more than \$2,800 for The Painted Turtle camp

Participated in Vets 5k run, Muscular Dystrophy Association Walk, MLK Day of Service, Make a Wish Foundation event and Project Community Connect

EPSILON DELTA

Concord University

Katherine Farmer crowned winner of Miss Sorority competition, with half of proceeds going to Delta Zeta's national philanthropy

Epsilon Iota Chapter members
(Fairmont State University)



EPSILON ZETA

Drexel University

Ranked second out of 16 Greek organizations on campus for Fall 2014 GPA

Raised more than \$10,000 for The Painted Turtle camp

EPSILON IOTA

Fairmont State University

Placed first in Greek Week

Highest GPA among all six Greek organizations on campus

Polar Plunge raised \$1,500 to aid physically and emotionally wounded military veterans

EPSILON KAPPA

University of Wisconsin/ Whitewater

Received Greek Chapter Excellence Award and Highest Chapter GPA Award

EPSILON NU

Missouri State University

Teamed with Sigma Phi Epsilon to raise more than \$2,000 for The Painted Turtle camp

Megan Gaglio and Meagan Tarrant are Directors on Panhellenic Council

Raised more than \$3,200 for Starkey Hearing Foundation

Won sixth consecutive award for the most donations at local Ozarks blood drive

EPSILON OMICRON

Western Illinois University

Attended first annual 5k and donated over \$1,000 to AAIM (Alliance Against Intoxicated Motorists)

EPSILON SIGMA

Wayne State University

Maintains highest GPA out of four sororities on campus

Raised more than \$4,000 for The Painted Turtle camp

EPSILON TAU

Longwood University

Raised nearly \$1,000 benefiting The Painted Turtle camp

Cassandra LaFont, Vice President of Programs, received Ed Cunningham Panhellenic Award for promoting unity within Greek community

Greek Awards included: Outstanding Academic Program, Outstanding Community Service and Panhellenic Chapter of the Year

Hosted joint corn hole tournament with Phi Kappa Tau with proceeds going to The Painted Turtle camp and other SeriousFun Children's Network camps

Volleyball and basketball Greek intramural champions

EPSILON UPSILON

University of Central Oklahoma

Members participated in university's Little Event, volunteering for Oklahoma CASA Association to help children in community

Undefeated in intramural basketball

Raised more than \$6,000 at the 5k for Kids benefiting The Painted Turtle camp

EPSILON OMEGA

University of Wisconsin/Eau Claire

Hosted Befriending Bugolds event benefiting the Starkey Hearing Foundation

ZETA EPSILON

California University of Pennsylvania

Members cleaned up litter on campus and in the surrounding community

Volunteered to clean streets before the borough's "Light up Night" event

Won scholarship award for highest chapter GPA out of five sororities, and placed second for President's Award

Volunteered at a Habitat for Humanity build

Donated backpacks and school supplies to support Phi Sigma Sigma women's fraternity's philanthropy project

Donated 50 cans of food to California Food Pantry

ZETA ZETA

West Texas A&M University

Seven members are Presidential Scholars

Raised nearly \$1,000 for The Painted Turtle camp

Six members inducted into Order of Omega

ZETA NU

Ferris State University

Hosted Glow Run event benefiting Gallaudet University

Decorated and donated lunch bags to Kids' Food Basket in Western Michigan

Held highest GPA of five sororities on campus for Fall 2014; new member class had highest GPA as well

Recognized with Prince Hall Greek Award as best sorority on campus

Partnered with American Red Cross for blood drive, resulting in 45 donations

ZETA XI

Lenoir-Rhyne University

Partnered with Zeta Tau Alpha to donate 100 packages to children in need

ZETA PI

University of Georgia

Won \$1,000 prize, which was donated to The Painted Turtle camp

Ninth annual Wing Bash event raised more than \$8,000 benefiting Gallaudet University and Starkey Hearing Foundation

Funded scholarship for Camp D.O.V.E. (Deaf Outreach through Visual Effects), which provides hearing-challenged youth a unique camping experience

ZETA RHO

William Jewell College

Holds top GPA on campus

Three members inducted into Order of Omega

Participated in Serve and Celebrate, the school's campus-wide service day

ZETA PHI

Slippery Rock University

Contributed 100 hours of service for Starkey Hearing Foundation

Volunteered at Special Olympics

Partnered with Pi Kappa Alpha Fraternity for bike-a-thon benefiting breast cancer research

Holds highest GPA and highest new member GPA out of 25 Greek organizations on campus

Helped young women with chronic illness or physical challenges prepare for fashion show, promoting self-confidence, inner beauty and diversity

Members prepare meals for patients at Victim Outreach Intervention Center (VOICE)

THETA ETA

Creighton University

Donated approximately \$7,000 to Gallaudet University

Participated in annual Out of the Darkness Walk to promote suicide prevention and awareness

Partnered with Phi Kappa Psi for community event, raising \$1,200 to Completely Kid and \$1,400 to Starkey Hearing Foundation and Delta Zeta Foundation

Paired with Sigma Phi Epsilon for kickball tournament in which 22 teams participated, raising more than \$1,000 for pediatric cancer research

THETA THETA

DePaul University

Received New Member of the Year and President of the Year awards at university's Fraternity Sorority Life banquet

Raised more than \$2,770 for The Painted Turtle camp

Holds second highest GPA out of seven sororities on campus

52 members are on Dean's list

THETA IOTA

Western Carolina University

Softball tournament raised nearly \$1,000 for Gallaudet University

THETA KAPPA

University of New Orleans

Holds highest GPA out of 16 Greek organizations for second consecutive year

Received university's Chapter Progress Award, Excellence in Programming Award, and Rachel Dwyer, President, named Greek Woman of the Year

Volunteered with Habitat for Humanity to repair and build homes for families in need

Volunteered for Park(ing) Day, where metered parking spots are transformed into temporary public parks, implementing Pink Goes Green program and sharing information about caring for the planet

Raised more than \$4,000 for Starkey Hearing Foundation and The Painted Turtle camp

THETA MU

St. Cloud State University

Donated 29 pounds of canned goods to the Salvation Army

Raised \$2,900 at Freeze-A-Thon event for SeriousFun Children's Network, of which The Painted Turtle camp is a part

Held top Greek chapter sorority GPA out of 10 organizations on campus

Named Organization of the Year by university

THETA NU

Minnesota State University/ Moorhead

DZ Dogs event raised money for 4 Luv of Dog Rescue organization

Held highest cumulative GPA out of all three Greek organizations on campus for Fall 2014

Helped MSUM Panhellenic Council raise money and awareness for Hope Inc., helping children with physical challenges play sports

THETA RHO

California State University/ Los Angeles

Took part in AIDS Walk Los Angeles

Members volunteered at Oaks Mesa Elementary School with Pasadena Foothill Alumnae Chapter

Volunteered at Pasadena Convalescent Home and St. Francis Center breakfast program to feed the homeless

THETA PHI

Old Dominion University

Raised more than \$800 benefiting Donate Life donor registry

THETA PSI

Ashland University

Don't Forget the Lyrics event raised nearly \$1,000 benefiting The Painted Turtle camp, Gallaudet University and local speech and hearing philanthropies

Donated 60 school supply items to Gallaudet University

Intramural volleyball team has won five out of six matches

Donated more than \$8,300 from silent/raffle auction benefiting Sertoma Club, which helps children with speech and hearing challenges, and Delta Zeta Foundation

Received Outstanding Public Relations award at university's Greek Honors event

23 members on Dean's list

Members picked up litter and did routine lawn care at a children's home

Raised more than \$2,500 at St. Jude's Up 'til Dawn event to fight pediatric cancer

IOTA ALPHA

Texas State University

Hosted families at Delta Zeta Parent's Weekend

Sponsored second Annual Delta Zeta Classic volleyball tournament

Raised \$16,000 at Mr. Bobcat philanthropy event for The Painted Turtle camp

IOTA DELTA

Edinboro University

Placed first in Greek Week

Katie Close, President, member of Order of Omega and National Society of Leadership and Success, on Dean's list and is Vice President and advisor of PRSSA (Public Relations Student Society of America) and Graduate Assistant for Department of Journalism

Sent more than 100 cards to U.S. troops stationed overseas

Participated with other Greek organizations in a program about campus safety

IOTA XI

University of Missouri/St. Louis

Planted trees and cleaned a stream for Greek Week community service project

IOTA RHO

West Chester University

Donated 665 pounds of canned food to the West Chester Food Cupboard

IOTA UPSILON

California State University/ Fullerton

Raised \$1,600 for speech and hearing

Sarah Yousuf received Outstanding Volunteer and Jillian Torres Most Spirited Girl student government awards

KAPPA ALPHA

Nicholls State University

Hosted second annual Pink and Greentober, a month dedicated to supporting Delta Zeta's national philanthropies

Volunteered at university's annual Culinary Career Panel, A+ Scholarship Dinner and Career Day

Raised \$7,900 for Starkey Hearing Foundation and Relay for Life

Hosted a Raising Cane's Give Back Night donating proceeds to The Painted Turtle camp

Volunteered to clean up the local bayou

KAPPA MU

Shepherd University

Holds highest GPA out of eight Greek organizations on campus

Raised nearly \$1,000 for The Painted Turtle camp

KAPPA RHO

Kutztown University

Ranked second in overall Greek life out of 10 organizations on campus for Fall 2014

Hosted fundraiser for a collegiate member with a rare form cancer

Donated \$1,600 to Starkey Hearing Foundation

KAPPA TAU

Morehead State University

Holds highest GPA out of six sororities on campus

Hosted kickball event benefiting Delta Zeta's national philanthropies and gave most community service hours per member during the event

Taylor Gasser received university's Outstanding Veterinary Science Award and Emily Hale received Outstanding Dentistry Award

KAPPA PHI

University of North Carolina/Charlotte

Hosted Turtle Trot 5k event benefiting The Painted Turtle camp, donating 900 service hours to event

Co-hosted blood drive for the American Red Cross Association with Delta Sigma Theta

Holds highest GPA among all six sororities on campus for Fall 2014

Hosted "Hear and Now with Kyle Kiser" campus-wide event, featuring American Sign Language (ASL) Instructor

Sarah Winget elected Panhellenic President

KAPPA CHI

Youngstown State University

Received two Greek awards from the university

Hosted first annual Turtle Olympics, raising more than \$1,400 for Youngstown Hearing and Speech and national philanthropy of speech and hearing

KAPPA PSI

Shippensburg University

Helped Pi Lambda Phi raise money for the No More Foundation to protect against domestic violence and sexual assault

Raked leaves at a local group home

Kappa Phi Chapter (University of North Carolina/Charlotte)





Lambda Kappa Chapter (University of Alabama/Huntsville)

LAMBDA GAMMA

Jacksonville State University

Hamburgers for Hearing event raised \$1,200 for Starkey Hearing Foundation

Donated 22 teddy bears to Alabama School for the Deaf and Blind

LAMBDA THETA

Michigan Technological University

Holds third highest GPA for Fall 2014 semester out of 19 Greek organizations on campus

First place winner of university's 2015 Winter Carnival in women's overall category

Laura Jewett crowned 2015 Winter Carnival Queen

LAMBDA KAPPA

University of Alabama/Huntsville

Won the Most Attendance Award for the university's Big Event

Hosted Rock for Silence event raising \$4,516 benefiting the Huntsville Hospital Pediatric Audiology Unit

LAMBDA NU

Auburn University/ Montgomery

Hamburgers for Hearing event supported university's Speech and Hearing Clinic

LAMBDA XI

Texas A&M University

Received Panhellenic Chapter of the Year Award

Hosted annual 5k, Run to the Chicken, donating \$15,000 to local philanthropy Isaiah's Place and more than \$4,700 to the Delta Zeta Foundation

LAMBDA PHI

Appalachian State University

Hamburgers for Hearing event raised \$1,000 for Starkey Hearing Foundation

LAMBDA PSI

Columbus State University

Won Kappa Sigma's event for breast cancer research for fourth consecutive year, raising nearly \$1,000

Named runner-up out of nine teams in the NPHC's "Strolling for a Cure" event to benefit Sickle Cell Awareness

Participated in Pi Kappa Alpha's event, 48 Hours Homeless and collected non-perishable food items to donate

Donated nearly \$1,000 to The Painted Turtle camp

XI BETA

Eastern Kentucky University

Won first place in Greek Sing event

Danielle Wade elected Panhellenic President

Hosted a competitive event that raised \$1,902 for Starkey Hearing Foundation

Donated 50 cans of food to campus food pantry through Panhellenic food drive



XI DELTA

Radford University

Raised more than \$1,500 for The Painted Turtle camp

Participated in university's Up 'til Dawn event benefiting St. Jude Children's Research Hospital

XI THETA

University of North Carolina/ Wilmington

Tied for highest GPA out of eight sororities on campus

Raised more than \$1,300 for The Painted Turtle camp

XI IOTA

Muhlenberg College

Anna Poirier, Philanthropy Chairman, recognized by Association of Fundraising Professionals

Raised \$4,830 for disadvantaged Allentown youth

39 members on Dean's list

XI LAMBDA

University of San Francisco

Raised more than \$7,000 for The Painted Turtle camp at annual Turtle Tournament

XI NU

Tarleton State University

Received The Foster Home - Myrtie Service Award for volunteer work at Foster's Home for Children

Hosted Change for Change concert, raising more than \$1,800 for Starkey Hearing Foundation.

Held Pink Week and raised \$3,000 for Susan G. Komen Foundation

Visited local nursing homes to "Adopt a Grandparent"

XI OMICRON

Loyola Marymount University

Placed third in the university's annual Lip Sync and Stroll Off competition, donating proceeds to national philanthropy

Partnered with Delta Sigma Phi from University of Southern California for the College Within Reach service event

XI RHO

Clarkson University

Holds second highest GPA out of four sororities on campus and third highest out of 15 Greek organizations on campus

Five members on Dean's list; three members in Honors Program

Raised more than \$2,841 with Sigma Chi Fraternity at Derby Days benefiting Children's Miracle Network

Made 100 candy-grams and donated 150 gift bags to local nursing home

Raised nearly \$1,000 for speech and hearing

XI TAU

Millersville University

Participated in university's Relay for Life; Ashley Rossi, Vice President of Membership, and Larissa Deleo, Vice President of Programs, helped organize event

XI UPSILON

Northeastern University

New member class had third highest overall GPA out of 13 Greek organizations on campus

Volunteered for Boston Celtics Shamrock Foundation, which benefits children through programs that provide education and support

XI PSI

Grand Valley State University

Placed first in LipSync competition

Raised more than \$2,500 during Delta Zeta Duke Out Week to benefit The Painted Turtle camp

OMICRON ALPHA

St. Mary's University

Ranked top in academics out of 11 Greek organizations on campus

Participated in service event benefiting Habitat for Humanity

Donated more than \$2,000 to St. Francis of Assisi Fall Festival

Participated in St. Mary's annual Continuing the Heritage, giving 184 hours in one day to benefit the community

OMICRON BETA

Richard Stockton College of New Jersey

Glow Walk 5k raised \$2,000 benefiting New Jersey Hearing Aid Project and American Cancer Society

OMICRON DELTA

Bryant University

Krysten Zuffelato, Chapter President, is Vice President of Scholarship on the campus Panhellenic board; Ashley Polak, Risk Management Chairman, is Community Coordinator; Grace-Ann Onishea, LAMP Editor, is Vice President

of Communications and Emily Farber is Vice President of Finance

Up 'til Dawn raised \$3,600 benefiting St. Jude Children's Research Hospital

Participated in Hashtag Lunchbag, making over 200 lunch bags for the homeless

Hosted campus-wide self-defense class

OMICRON EPSILON

Arkansas State University

28 members selected to university's Student Activities Board committees

Raised more than \$1,500 for The Painted Turtle camp

OMICRON ZETA

Randolph-Macon College

Raised more than \$1,000 for The Painted Turtle camp

OMICRON LAMBDA

North Carolina State University

Received the Most Sustainable Chapter Award at university's Greek Life Awards

Xi Omicron Chapter performs at Loyola Marymount University's lip sync competition



OMICRON MU

University of South Carolina/ Upstate

Made door tags for students and built stables for horses at South Carolina School for the Deaf and Blind

Created trophies for campers at The Painted Turtle camp

Won intramural football partnering with Pi Kappa Phi

OMICRON NU

University of Windsor

Pink lemonade stand and car wash event raised \$1,850 benefiting Canadian Breast Cancer Foundation

OMICRON PI

Frostburg State University

Participated in the university's "Big Event" by cleaning up their adopted street

PI ALPHA

University of Florida

Sponsored first UF Health Pediatric Hearing Loss Conference and hosted two philanthropy events, raising more than \$29,300 for The Painted Turtle camp

Ranked third out of 16 sororities on campus for highest GPA

Named co-ed champions in the Dance Marathon Kickball tournament

Won first place in New Member Lip Sync

Three members are in prestigious Campus Ambassador Programs

Chandler Smith is Communications Vice President of Panhellenic Council

Hosted Clay Classic which raised almost \$30,000 for the UF Health Pediatric Hearing Loss Institute



PI BETA

University of Hartford

Holds highest GPA on campus out of six sororities

Raised nearly \$1,000 benefiting Gallaudet University

PI GAMMA

California State University/ Northridge

Raised more than \$6,000 for The Painted Turtle camp

Received "Women's All University" award and placed first in softball and basketball intramural sports competition

Holds second highest cumulative GPA out of seven sororities on campus for Spring 2015 semester

Participated in Heal the Bay clean up with Alpha Epsilon Pi Fraternity

PI DELTA

Wake Forest University

Hosted Color Run 5k, raising \$5,000 for Starkey Hearing Foundation

The Executive Board of Pi Alpha Chapter
(University of Florida)

Packed 600 meals at event hosted with Forsyth Backpack Program and the WFU Resident Student Association during Forsyth County's Hunger and Homelessness Week

Ranked second academically out of nine sororities on campus

82 members on Dean's list

PI EPSILON

Clemson University

Holds third highest GPA out of 12 sororities on campus

Participated in Sigma Chi "Derby Days" benefiting childhood cancer research, contributing to the \$25,000 raised for the cause

PI ZETA

Arizona State University

Intramural Soccer Team placed first out of 12 sororities in Greek Intramural Soccer Championship League



Pi Lambda Chapter performs at the University of Tennessee/Chattanooga lip sync event

PI KAPPA

University of Idaho

Partnered with Pi Kappa Phi Fraternity to babysit children for Parent Shopping Day event

Received Greek Awards for Risk Management, Outstanding COB and Outstanding New Member Education

Participated in G.I. Thera Chi's philanthropy to recognize U.S. soldiers' service in Iraq

PI LAMBDA

University of Tennessee/Chattanooga

Raised more than \$1,700 for The Austin Hatcher Foundation to fight pediatric cancer

Heather Delbridge, Vice President of Programs, received school's first Panhellenic Woman of the Month award

PI XI

University of Central Florida

Held second highest GPA out of 12 Panhellenic organizations for Fall 2014 and ranked with third highest GPA out of 30 Greek organizations on campus

Raised \$1,000 to benefit Mothers Against Drunk Driving (MADD) and Starkey Hearing Foundation

Tied with Alpha Xi Delta to raise the most money overall benefiting St. Jude Children's Research Hospital, totaling more than \$2,000

PI OMICRON

Indiana University-Purdue University Indianapolis

Holds highest cumulative GPA out of 10 sororities on campus

PI RHO

University of West Georgia

Raised \$2,000 for Starkey Hearing Foundation and The Painted Turtle camp

Won first place in Greek dance competition

PI SIGMA

University of Texas/Dallas

Ranked first in overall GPA out of four sororities and third out of all Greek organizations

In the Winter 2014 issue, the photo on page 31 was incorrectly identified as the Delta Alpha Chapter (California State University/Long Beach). The photo was of members of the Theta Rho Chapter at California State University/Los Angeles. We sincerely apologize for the error.

Distinctive Delta Zetas

Delta Zeta enriches its members' lives and the world community. Delta Zeta collegiate members, fulfilling this philosophy in school and in service through outstanding achievement, are inspirational and exemplify the best of the Sorority.

Volunteering in Haiti

Junior **Haley Binnette** of the **Pi Zeta Chapter (Arizona State University)** volunteered in Haiti, helping a little boy who changed her life for the better.

Two years ago, Haley's sister volunteered in Haiti and fell in love with a little boy named Moise, who lives in the New Life Orphanage in Port Au Prince, Haiti. Moise had such a positive impact on Haley's sister that the Binnette family decided to travel to Haiti to meet Moise and volunteer their time to help the Haitian community.

When Haley came home, she started a fund called Money for Moise, and to date has raised hundreds of dollars for him. All donations will help diagnose Moise's mental disability. The funds raised through Money for Moise will help to fund his education.

Haley said, "Saying goodbye to Moise was by far the hardest thing I have ever done, and right now all I want is to give something back to the boy who changed my life forever."

Pennsylvania's Miss Military Star 2014

Melia Brocious, Academics Chairman of the **Iota Delta Chapter at Edinboro University**, was crowned Pennsylvania's Miss Military Star 2014. She won the state title and was named Donation Queen by raising more than \$700 for Pennsylvania Wounded Warriors and writing more than 100 letters and cards for Operation Recovering Hero. The Miss Military Star Program was developed to benefit different organizations that help the United States' wounded military men and women.

Melia is a senior biology pre-med major with a chemistry minor and is contracted in Army ROTC, currently holding the position of Executive Officer in Edinboro's Fighting Scots Battalion. Upon graduation, she will be commissioned as an Army officer.

Melia was a unique contestant in this pageant because most contestants are civilians. "I found out about the pageant through one of my pledge sisters," she said. "I wanted to participate simply to raise money for the Wounded Warrior project because it is a program near to my heart. I never thought I would win the title. I had fun just being myself and met some amazing young women."



When crowned, Miss Military Star is given red, white and blue flowers with a yellow ribbon which the title holder is asked to give to a veteran or service member as a symbol of gratitude for their service and the positive impact they have made on her life. Melia Brocious awarded her flowers to Sergeant First Class Todd Tagami to thank him for his service, mentorship and inspiration to her.

It was truly an amazing experience."

She credits her sisters in the Iota Delta Chapter with helping her prepare for the pageant. "I wouldn't have been able to do this without the help of one of my close friends and sorority sister Andrea. I am so blessed to have received so much support from my friends, family, sisters and community."

The 2014 Miss Military Star pageant raised more than \$3,700 in support of Pennsylvania Wounded Warriors. As Miss Military Star, Melia will promote and raise funds for the veterans and wounded warriors throughout her reign, supporting our country's military organizations.



Delta Zeta Down Under

Lili Fikter, Academics Chairman of the **Alpha Rho Chapter at Ohio Wesleyan University**, studied in Australia and New Zealand as part of her program through the university's School for Field Studies.

Lili, who is doing a triple major: zoology, geology and environmental studies, went to New Zealand to study the environmental concerns of the rainforests, then ventured on to Queensland, Australia to study plant and animal life.

Lili was pleasantly surprised to meet another member of Delta Zeta on her trek to Down Under – Taylor Melone of the Delta Phi Chapter from Northeastern State University in Oklahoma. “It was fun because I got to talk to her and see what her chapter is like,” said Lili in an interview with “Connect2OWU,” Ohio Wesleyan’s e-magazine. “We talked about similarities we have and differences. It was an instant connection.”

She plans to work after graduation as a naturalist, hoping to work for a park district doing education and public outreach, and says the trek confirmed for her that she is majoring in the field that she loves.

Lili affirms that her Delta Zeta experience has been key in helping her to pursue her dream. “My membership in Delta Zeta has influenced my goals in several ways and encouraged me to help the environment,” she says. “One of the biggest is through the opportunities for personal development and leadership that the Sorority has offered. As a member of Delta Zeta, I am able to put my best self forward. I have also been given leadership opportunities that I would not have had. My membership in Delta Zeta has made me more confident and a stronger leader, helping me follow my goals to save the environment.”

“I appreciate that Delta Zeta has the Pink Goes Green movement and think that it is an important program for raising awareness about environmental issues and taking the steps to help the environment.”

Serves on medical mission trip in Jamaica

Kappa Alpha Chapter (Nicholls State University) collegiate member **Brooke Pregeant** traveled to Jamaica with International Service Learning (ISL) for a volunteer medical mission trip.

International Service Learning, a non-profit organization, provides educational opportunities for students by partnering student and professional teams with service opportunities in developing countries. ISL provides health care that would otherwise be unavailable, to tens of thousands of the underserved each year. Brooke, who is majoring in nursing, provided health services and medications to those in need.

Brooke said, “We went door-to-door making appointments for people who needed medical attention, and worked in a clinic. Some team members worked in our make-shift pharmacy while others took vitals and got the patients ready for the doctor. It’s been an amazing experience, working in such a different environment!”

Discovering potential and achieving the state of becoming Truly Absolute

Rebecca Tjahja, Philanthropy Chairman for the **Pi Sigma Chapter (University of Texas/Dallas)**, a finance and information technology management freshman, started her own nonprofit organization while still in high school. Rebecca had been serving breakfast to low-income families through her church, and as she got to know them, she felt something more needed to be done to help these families succeed.

She began Truly Absolute in 2012, at the age of 15, to provide underprivileged children the opportunities to discover their true potential through educational enrichment. Today Truly Absolute reaches out to not only the underserved in the United States, but in Cambodia, Mexico and Indonesia as well with mission trips, academic enrichment programs and fundraising. Learn more at <http://www.trulyabsolute.org/>.

A total of 300 children have reaped the benefits of Truly Absolute through trained volunteers who help with schoolwork, character building and social skills.

Sharing Our Sisterhood

Delta Zeta values connect members through shared sisterhood at events such as reunions, chapter anniversaries and alumnae events around the country. Delta Zeta sisterhood remains relevant in our members' lives, no matter how many years have passed since graduation from college.

CENTRAL PLAINS AREA - Colorado, Iowa, Kansas, Minnesota, Missouri, Nebraska, North Dakota, South Dakota

Delta Omega Chapter (Fort Hays State University - KS) recognizes Order of the Golden Rose recipients



Celebrating 50 years of sisterhood in the Delta Omega Chapter (Fort Hays State University) are Judy Dresselhaus Shaffstall, Gwynne Gatewood Van Scoyk, Barbara Pfeifer McVey, Judy Ubert Carney and Judy Grimm Elsen.

Theta Nu Chapter (Minnesota State University/Moorhead) celebrates 50th anniversary



The Theta Nu Chapter (Minnesota State University/Moorhead) enjoyed a 50th anniversary celebration that included collegiate and alumnae members.

GREAT LAKES AREA - Canada, Michigan, Ohio

Alpha Rho Chapter (Ohio Wesleyan University) celebrates 25th/90th anniversary



Collegiate and alumnae members of the Alpha Rho Chapter (Ohio Wesleyan University)

The Alpha Rho Chapter celebrated 90 years since its original founding and 25 years since its return to Ohio Wesleyan University with a reunion during OWU Homecoming Weekend 2014. Nearly 150 sisters were treated to brunch and a Founders Day sisterhood ceremony, followed by a tour of the chapter house and a formal dinner.

GREAT WESTERN AREA - Alaska, Arizona, California, Hawaii, Idaho, Montana, Nevada, Oregon, Utah, Washington, Wyoming

Celebrating 100 Years of Sisterhood



The Kappa Chapter (University of Washington) celebrated its 100th anniversary with four days of memorable events, including the presentation of a special gift to the university, a sisterhood social, and a party attended by friends, family and Delta Zeta members.

Omega Chapter (University of Oregon) alumnae reunite in Portland, Oregon



Alumnae from the Omega Chapter (University of Oregon) gathering in Portland, Oregon for a reunion included Regina Micheline-Eldien, Sara Yeats Hale, Liane Rogers, Leanne Bullard Klein (coordinator for the event), Chris Kirsch Mahaffey, Sheila Beggs Hoover, Kris Gustafson, Kim Soeteber Jarvis, Michele Rogers Andrade, Ann Johnson N'Gadi, Rebecca Rockom and Judith Morrison Lanz.

Delta Alpha Chapter (California State University/Long Beach) celebrates 60th anniversary



The Delta Alpha Chapter (California State University/Long Beach) celebrated its 60th anniversary on March 23, 2014. Alumnae enjoyed reuniting and meeting collegiate members at the chapter house. Scrapbooks and other memorabilia were on display.

MID-AMERICA AREA - Illinois, Indiana, Wisconsin

Gamma Rho Chapter (Northern Illinois University) reunites for Founders Day

Alumnae of the Gamma Rho Chapter, Mary Ellen Zelko Regan, Karen Pellman Pietroski, Rhonda Aves Veit and Pat Mastores, visited the chapter at Northern Illinois University and celebrated with a luncheon for 2014 Founders Day.

MID-ATLANTIC AREA - Delaware, Maryland, New Jersey, Pennsylvania

Gamma Delta Chapter (Pennsylvania State University) reunites for 25th anniversary



Members of the Gamma Delta Chapter at Pennsylvania State University gathered in State College for a reunion in celebration of the chapter's 25th year of re-establishment, and in honor of all classes.

Zeta Phi Chapter (Slippery Rock University - PA) celebrates 50th anniversary



Janet Cromie Klauss was among the charter members honored at Zeta Phi Chapter (Slippery Rock University) 50th Jubilee. A total of 115 alumnae attended an exciting evening of shared sisterhood.

Iota Theta Chapter alumnae (Mansfield University - PA) share sisterhood

Alumnae from the Iota Theta Chapter (Mansfield University - PA) have been reuniting since 1991. "We have taken many trips together over the years," says Samantha Johnson Leonberger. "We have daughters who have also become the best of friends. We invited our founding sisters to join us for a Jersey Shore beach weekend."



Founding members of the Iota Theta Chapter (Mansfield University - PA)

SOUTH CENTRAL AREA - Arkansas, Kentucky, Louisiana, Mississippi, Oklahoma, Tennessee

Charter members of the Xi Beta Chapter reunite at Eastern Kentucky University

Founding members of the Xi Beta Chapter at Eastern Kentucky University enjoyed a reunion that marked the first time many of the women had been reunited in more than 25 years. The alumnae toured the collegiate chapter's dorm floor, enjoyed scrapbooks and shared stories with collegiate members. "This was a special day for everyone!" says Hunter Barker Rogers, Eastern Kentucky - Ξ B, College Chapter Director of the Xi Beta Chapter.



Charter members of the Xi Beta Chapter (Eastern Kentucky University)

SOUTHEAST AREA - Alabama, Florida, Georgia

Delta Delta Chapter (Georgia State University) marks 60th anniversary

Delta Delta Chapter celebrated its 60th anniversary with approximately 90 guests in attendance. Charter member Carolyn Wills, 1976 Woman of the Year, described the founding of Delta Delta Chapter, the first Panhellenic organization on Georgia State University's campus. Joan Limehouse Milsap, also a charter member, joined Carolyn to speak about the chapter's progress, memories created over the years, and the future of the chapter. Barbara Poremba, Connecticut - Γ B, Delta Zeta Foundation Board of Trustee Member, gave an insightful speech about Delta Zeta as a national organization in today's world, and the importance of collegiate members making connections with alumnae to better sisterhood as well as an advancement of Delta Zeta women in the workplace through networking.



I Can Be Who I Am*

Alexya Garcia, a collegiate member of the Xi Omicron Chapter at Loyola Marymount University, says she knew that Delta Zeta Sorority was where she was meant to be when she came to the school in Los Angeles, California.

It's honestly one of those things where it just feels like home. You feel like that's your place and the women like you for who you are. I just knew Delta Zeta was the one because it was the only sorority where I had real conversations about life. The members didn't judge me. That is what sisterhood is. I'm so happy I picked Delta Zeta. I just love it!"

Just as she knew Delta Zeta was where she belonged, Alexya knew from an early age what she was meant to do with her life — perform. "I knew from the beginning. I put in the hard work. I started out as a dancer. My mom would take notes during my class and we'd practice at home. Whenever I performed, I just loved it. When I was three or four years old, I loved being on stage. All I've ever wanted to do is perform."

Today Alexya is living her passion as a singer, dancer and actress. She has been a member of the soul and R&B pop girl group, The Fabulous Girls, since a young teen, a dancer for as long as she can remember, and most recently is extending her talent to the acting craft.

The Fabulous Girls (the other members are Cymphonique Miller and Kiley Fitzgerald) are Disney artists and have appeared on the Nickelodeon Channel. They have gone on concert tours with Raven-Symoné and other Disney artists, and their single "Butterflies" was launched on Radio Disney. Today their newest song, "You Do," is getting international airplay.

*Lyric to The Fabulous Girls' song, "Butterflies"



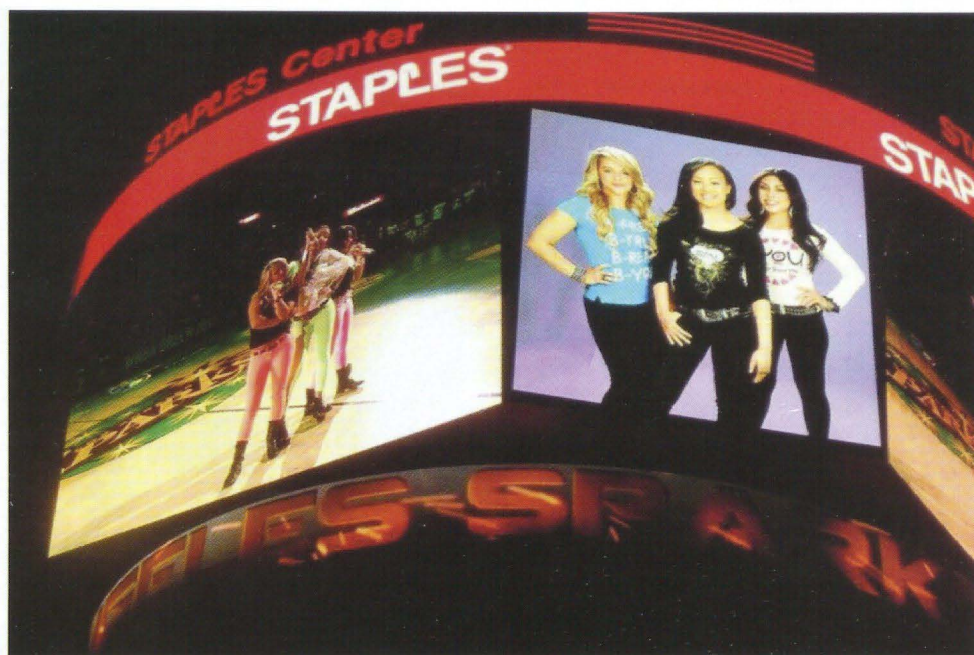
The three voices of the Fabulous Girls harmonize beautifully on their YouTube and SoundCloud channels. “I have dabbled with guitar and piano,” says Alexya, “but the vocals are the most natural instrument, so I am really working to get those down before I feel comfortable selecting another instrument.”

Alexya says the fulfillment of her dream began with her mother. “She knew it was my passion, and she knew that the work ethic was there. My father wasn’t as enthusiastic, but when I was in high school, he saw that I still wanted to pursue this career and that I was serious about it. Now he is my number one fan!”

She knows that when the group appeared as Disney artists, young girls were looking up to The Fabulous Girls and no doubt emulating them. “Our group was really focused on the music and the performing aspect, but we never realized how far our songs have reached out to people,” Alexya says. “I was raised to lead by example, even among my peers, which I think transcends into being a role model for younger people. It was really cool having our song on the Disney Channel and Radio Disney. The pre- and early teen years are an important age for girls. I think it’s important to not focus so much on being a role model, but being the best you that you can be.”

The group has also been influenced by their producer, Master P (a.k.a. Percy Miller), who is Cymphonique’s father and someone with whom The Fabulous Girls feel fortunate to work. “He gives us the recording space and has provided us the opportunities to perform on stage at places like the House of Blues,” explains Alexya. “He’s a very family-oriented man, and it’s a great honor to know his family. He is a businessman who gives back to the community. He’s always flying from Los Angeles to New Orleans, where he is from, to serve the community there. A couple of years ago, we performed at schools in disadvantaged areas of L.A. He also founded Let the Kids Grow Foundation, which lets kids focus on their education and their creative side.”

Alexya loves the creative aspect of crafting a song with the members of the group, all of whom bring different aspects of music and their personalities to the craft. “When you see the audience giving feedback or when



“ My sisters’ support allows me to do it all. They support my creative side. It’s a privilege for me to have sisters like that. ”

they know your words, there is really no other feeling like it. Those memories keep me pushing for what I want to do because you have an amazing relationship with the audience. It’s my favorite thing in the whole world.”

And beyond the group, Alexya is reaching further as she prepares to act in two sitcoms later this year.

“There is a part of me that is open,” she says. “I’m learning to be open about opportunities that I may get. One of my goals is to sell out Madison Square Garden. My other goal is to be in a major motion picture, working with other great actors. So I want to do both. I look up to Jennifer Lopez. She’s an actress and she’s out doing her concerts and she is a good bridge between the Latin/Spanish industry, which is a big market, and our market here in the U.S. I want to do that, too. That’s really the goal — just do it all.”

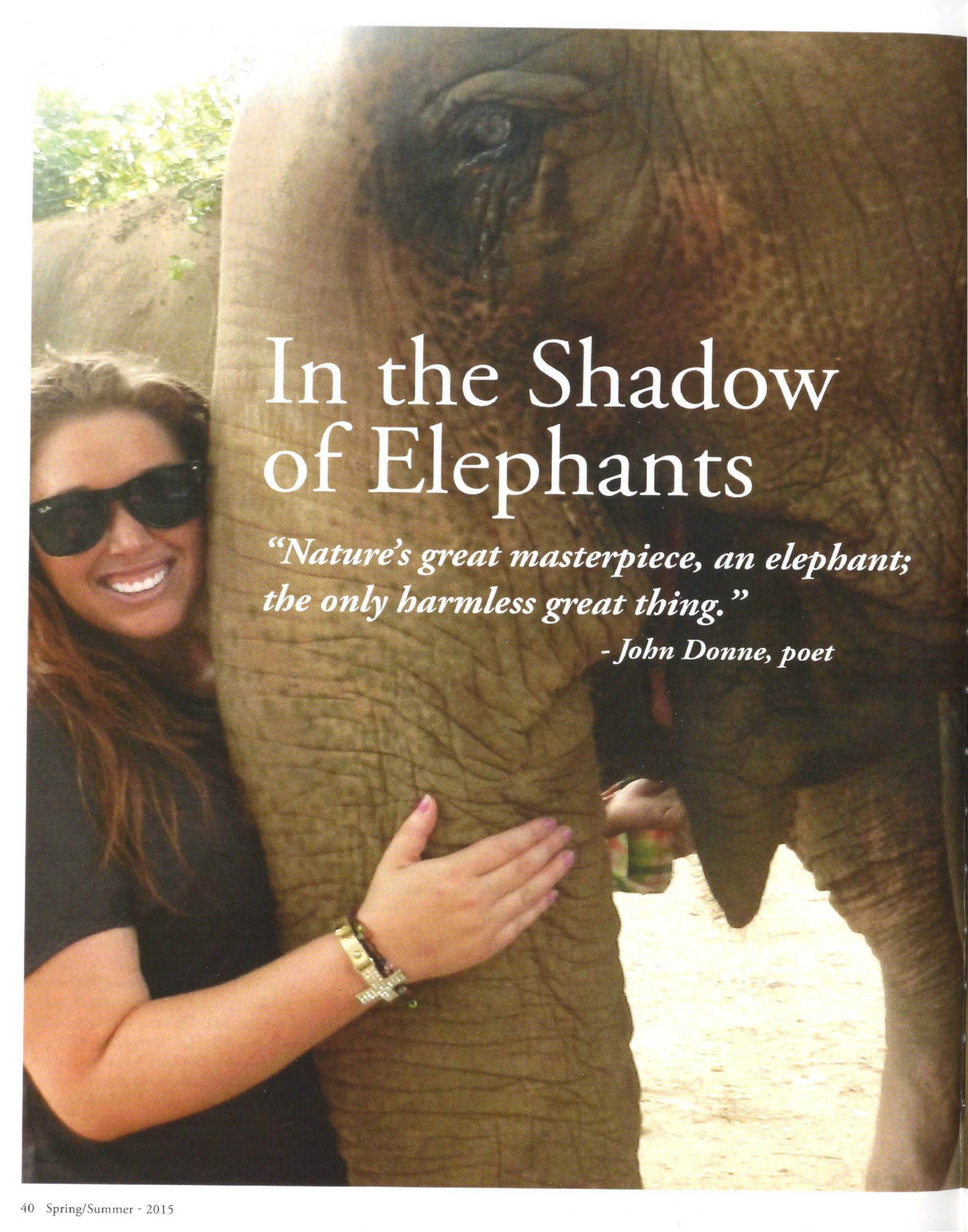
Alexya readily acknowledges that her Delta Zeta sisters have been integral to fulfilling her dream. “Their support allows me to do it all,” she says. “They really keep me grounded, because there have been times

when I couldn’t participate as much as I wanted to in the Sorority. My Delta Zeta family has always been there. I’ve never had that relationship before with other women.”

And part of that Delta Zeta experience is giving back. “I think the role that I have right now — aside from me being an artist — is to be a student and a healthy person in the community. By healthy, I mean constantly reflecting and making sure that I am able to contribute to my sisters — to always be of help to others. Selfishness is a bad reputation that a lot of people in the industry have, and sometimes people assume that about me before they get to know me, so I’m particularly sensitive.

“When it comes to the community, I try to be the best student and citizen that I can possibly be, and that means doing service. I make sure I do that. By starting with morality and values, that’s really the best and most simple way you can give back to a community and be there for others — not just yourself.”

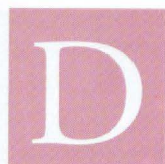
Alexya Garcia is a rising star to watch — one that Delta Zeta is proud to call our own.

A photograph of a woman with long brown hair, wearing sunglasses and a black shirt, smiling and touching the trunk of a large elephant. The elephant's trunk is thick and wrinkled, and its eye is visible in the upper left. The background is a bright, sunny outdoor setting with some greenery.

In the Shadow of Elephants

*"Nature's great masterpiece, an elephant;
the only harmless great thing."*

- John Donne, poet



Danielle “Nell” Medoro, Creighton (NE) – ΘH, remembers rescuing stray cats, dogs and birds as a little girl. “‘Dr. Dolittle’ was my favorite movie,” she says with a laugh. “I used to come home with mice that I would hide in my shirt pocket!”

A graduate of Creighton University in Omaha, Nebraska, where she became a member of Delta Zeta’s Theta Eta Chapter, Nell attends Tuskegee University’s School of Veterinary Medicine, fulfilling her dream of becoming a veterinarian. “For as long as I can remember, I’ve had a passionate love for animals,” she says. And now Nell is using that passion to help the endangered Asian elephant in Thailand.

Working for a veterinarian during her freshman year in college, Nell saw that “he became the animals’ voice and their advocate. That’s when I knew I needed to go to vet school,” she says.

She was supported in her decision by her sisters in the Theta Eta Chapter. (Nell’s grandmother, Diane, is also a member of Delta Zeta.) “Most of my best friends are my sorority sisters and I don’t know if I would be here without them, because they have always been at my side through it all. That is the truth.”

While attending Tuskegee, Nell met a colleague who had volunteered at the Elephant Nature Park, an elephant rescue and rehabilitation center in Northern Thailand. “Rehabilitation has always been a strong focus of mine, and the school encourages pre-vet students to try something new over the summer,” Nell says. “I knew this was exactly the type of rehabilitation focus that I was looking for. After learning how mistreated the elephants were in Thailand, I knew that in volunteering for a good cause, I could make a difference with my time for the sanctuary, but also have the knowledge and experience to heighten my awareness to make a change and help the vets.”

Thailand has the most extensive protected area system in the region, encompassing 60 percent of its remnant wildernesses and 15 percent of the total land area. Unfortunately, many of these habitats are

fragmented, which jeopardizes the wildlife populations that reside there. Wildlife within protected areas is still threatened by poaching for commercial sale. Conflicts between humans and wildlife — particularly with elephants — is another challenge to conservation (Wildlife Conservation Society – <http://www.wcs.org>).

Elephant Facts

1. Elephants are the largest of all land animals in the world.
2. The trunk of an elephant has more than 40,000 muscles in it.
3. Elephants are herbivores, or plant eaters.
4. Elephants consume large amounts of water - up to 15 quarts of it at once.
5. Elephants love to swim.
6. Elephants have an excellent sense of smell and hearing but poor eyesight.

Source: <http://www.elephant-world.com/>

Nell explains, “Many people see the elephants and the wildlife as a way to work or earn a living. There is no respect or protection for animals. There used to be a lot more focus on the ways to support themselves and their families without destroying the magnificence and the contribution that wildlife provides. There needs to be a limit. A lot of these elephants are being abused, neglected and go through an ancient ritual called the phajaan. It translates to ‘breaking the spirit.’ Baby elephants are taken from their mothers too early, confined and tortured in small cells. They are so fearful that they become submissive and are trained to do logging, trekking or are used for other entertainment,” (including allowing people to ride on their backs, which actually causes spinal injuries).

Nell Medoro, Creighton (NE) – ΘH, has walked with the elephants in Thailand as she worked to rescue them.



The plight of the Thai elephant is particularly heart-rending. Nell describes two elephants she cared for at the nature park who were cruelly mistreated: one, a mother elephant who gave birth to her baby while logging. When she tried to stop and take care of the baby (the bond between a baby elephant and its mother can be correctly described as the closest of any animal on Earth), she was abused and blinded by her owner in an attempt to make her keep working and be totally submissive. Another elephant was co-owned by two people who worked the animal day and night for logging. When the elephant came to the sanctuary, she could not lay down because her legs had stiffened from standing so long, and her feet were ulcerated.

"Most of the elephants, except for a few of the babies that were born at the sanctuary, all came with some type of history of abuse and neglect," Nell says, "but they have a permanent home at the sanctuary. They are fed well and have had a few births at the sanctuary – those are some of the only baby elephants in Thailand who don't have to experience going through that trauma of abuse."

Nell believes that educating the Thai people about the animals and fostering respect for them is essential to ending the tragic way of life known by most elephants in the region.

She admits her trepidation on her first trip to Thailand to treat the elephants after hearing the stories of abuse. "We were surprised how open and how gentle they were with us," she says. "They knew we were there to help them. If I were an elephant and I went through what they experience, I wouldn't be very trusting of humans. I never once felt like I was in danger or that any of them would hurt me. They are all very gentle."

The sanctuary encourages visitors to stay and help care for the elephants. "They had numerous volunteers every day," says Nell, "who, instead of going to Thailand to experience riding an elephant, pay to stay at the sanctuary to take care of them. It's really amazing."

The haven is also home to numerous dogs and cats (Thailand is plagued with stray animals) who are sterilized and can live out their years peacefully. "They have an open door policy for animals," Nell explains, "They also have had rabbits, monkeys, cows — any animal that needs to be rescued."

With an estimated 30,000 elephants left in Asia, the sanctuary is a necessity in Thailand.

Nell says her experience in Delta Zeta has been an essential part of her life as she pursues her dream to care for animals.

"One of the reasons why I chose Delta Zeta while I was at Creighton was because the chapter is all about philanthropy and community service. I just knew that was where I would fit in. I participated in many charitable and philanthropy events with my chapter. Theta Eta Chapter was really focused on giving back, and they're very dedicated. We won Chapter of the Year Award because of it, and we always encourage members to be involved."

Nell raised \$3,500 to purchase supplies to send back to the veterinarians at the Elephant Nature Park sanctuary. "They don't have the same supplies that we do in the U.S.," she explains, "and I hope that after graduation, I can not only work and focus on small animal emergency medicine, but put my efforts into raising awareness and money towards giving back. My passion will always remain with wildlife rehabilitation centers, so I plan on volunteering to help facilities and try to expand global awareness about what is going on. We need to tell the story. We need more people who want to be educated and want to advocate for the animals."

Learn more about the Elephant Nature Park at <http://www.elephantnaturepark.org/>. Read more about Nell in The LAMP online at <http://www.deltazeta.org>.



Flame Eternal

Honor your sisters, friends and loved ones with a memorial gift to the Delta Zeta Foundation
(<http://www.deltazeta.org>).

Obituaries reported from August 1, 2014 through February 2, 2015. Year of initiation is shown after name.

ALPHA

Jane McKinney White - 1934
Marthina McCoy Harper - 1935
Marjorie Saxbe Leinberger - 1936
Jane Meldrum Reid - 1943
Caryl Anderson Gerber-Alexander - 1949
Frances Fitzgerald Horak - 1950
Lynda Catchpole Schopfer - 1955
Denese Martell Brown - 1957
Mary Conti Sfera - 1957
Maureen Healy Tomalin - 1960
Dolores Watkins Gardner - 1962
Jane Lindhorst Schultz - 1962
Jane Negus-de Wys - 1964
Ruth Ostholtthoff Kuhlman - 1965
Virginia Dolan Fuzzard

GAMMA

Gloria Johlfis Korn - 1953

DELTA

Alice Edelmaier Taglauer - 1935
Mary Jean Kemmerling O'Dell - 1944
Joan Augustine Hatton - 1945
Jacqueline Arnold Lang - 1946
Helen Stovall Coulter - 1949
Jane Lambertson Riegle - 1952
Elizabeth Allen Johnson - 1954
Ruth McCracken Cheatham - 1959
Lisa Richardson Catron - 1989

EPSILON

Eloise Hamilton Ferling - 1934
Ferdinand Messmer Roesch - 1935
Cheryle Curtis Smith - 1944
Phyllis Wear Thomas - 1945
Donna Slinkard Green - 1947
Peggy Adams Thompson - 1947
Linda Farnham Fredrick - 1950
Frances Broderick Koressel - 1956
Janet Fuller - 1961
Mary Franklin Hertweck - 1961
Diana Turpen Pool - 1962
Patricia Ann Thielen - 1964

ZETA

Hilma Anderson Welsh - 1928

ETA

Lelia Huckleberry Lawson - 1918
Ivy Kretzmier Oppy - 1920
Anna Geil Seeber - 1920
Martha Ann McCormick - 1921
Florence Boone Groves - 1923
Ruth Burns Morrison - 1923
Prudence Ditto Platt - 1923
Laura Parker Allen - 1924
Mary Elizabeth Brown - 1925
Hazel Gifford Fisher - 1926
Betty Wheeler Springer - 1927
Gertrude Braun - 1929
Eleanor Hollinger Torrence - 1929
Margaret Thorp Weisser - 1929

THETA

Elizabeth E. Jones - 1934
Marietta Alkire Goode - 1943
Sara Rector Cotterman - 1946
Barbara Houghn Hain - 1946
Fanne Kehoe Smith - 1950
Judith Morris Whitehead - 1950
Ann Neely Jackson - 1961
Helen Westenberger Orcutt - 1963
Tamara Freisner Michetti - 1979

IOTA

Hazel Kline Williamson - 1927

KAPPA

Aileen Foster Howard - 1945
Lucia MacNichols Ulvang - 1946
Joyce Craig Richardson - 1954
Anna Kolloen Park - 1962
Suzanne Meyer Mull - 1963
Carol Neavins Condon

LAMBDA

Georgie Voshell Hederhorst - 1941

MU

Jessie McInnis Rademacher - 1941
Lorna Mullen Swain - 1941
Joanne Fisher Hurley - 1946
Elizabeth Stoops King - 1946
Eva Cannon Stiles - 1946
Mary Ketelsen McGreal - 1956
Carol Duke Reinke - 1958
Mary-Alice Frost Morr - 1961
Eleanor Wildhagen Hoehn - 1962
Freda Liskey Camozzi - 1963
Joanna Morgan Metzner

NU

Martha Lingwall LaDuke - 1938
H. Christelle Harshbarger Briggs - 1945
Shirley Chap MacDaniel - 1946

XI

Marilyn Retz Gardt - 1945
Joan Ricking Mooney - 1950
Donalda Gates Neumann - 1950
Cora Freytag Stephens - 1950
Mary Gardner Snyder - 1953
Arlene Jaspers Geldreich - 1958
Marsha Schomburg - 1959
Kathleen Mary Long - 1963

OMICRON

Mary Lou Klingensmith Kopetz - 1937
Merilee Colbert Zawadzki - 1955

RHO

Mathilde Mut Smith - 1925
Nadene Wales Kemp - 1938

SIGMA

Corinne Davidson McKenzie - 1928
Louise Dugas Wiggins - 1930
Margaret Landry Moore - 1940
Joyce Smith Conway - 1941
Dorothy Poche Coco - 1945
Betty Butler Strother - 1948
Barbara Blumer Rutledge - 1953
Betty Wilson Sims - 1954
Jo Joffrion Martin - 1955
Barbara Ham Schwab - 1956
Ann Hawkins Schulz - 1957
Amy Jean Waters - 1975

TAU

Jean Wilson Ross - 1946
Lois Cook Wegener - 1949
Lu Anne Napp Gruber - 1954
Patricia Morrissey Kropp - 1958
Charlene Sigger Jebens - 1962
Linda Cossmann Sundene - 1962

UPSILON

Evelyn Husband Thornton - 1936
Ann Hansen Vaaler - 1942
Jean Harris Vickers - 1943

Isis Campbell Lynch - 1944
Sally Moore Triske Gorman - 1956
Mildred Hedman Granger - 1961
Sandra Carr Mehall - 1962
Deeann Smith Klapp - 1971

PHI

Gladys Clark Laird - 1919
Lelah Burgess Lange - 1919
Celia Burgess McConnell - 1919
Agatha Lewis Bell - 1921
Blanche Keatts Chambers - 1929
Wilma Fulton Koenig - 1929
Evalyn Tonsfeldt Keating - 1933
Marjorie Bell Blair - 1935
Amy Calkins Brandon - 1937
Janet Duncan Lahey - 1937
Jeanette Campbell Wegner - 1941
Jean Smith Deglow - 1944
Helen Richman Prenguber - 1944
Mary Lee Machin Adams - 1945
Marys Kropf Farr - 1945
Eleanor Swanson King - 1948
Eleanor Freese Yockey - 1949
Jocelyn Schneider Konigsmark - 1951
Marilyn Mulroney Hammer - 1954
Marilyn Fraser McIntosh - 1955
Mildred Shields - 1958
Clelah Cooper Miller

CHI

Doris Read Thoen - 1944
Patricia McKenna Coyner - 1946
Joan Holzmeyer Russell - 1954
Annette McDonald Rossback - 1961

PSI

Betty Coolidge Hill - 1939
Mary Ruth McConnell Kent - 1939
Barbara Browne Bernard - 1944
Aloha Yarian Freeland - 1945
Norma Myers Shirk - 1950
Shirley Dine Mendenhall - 1954

OMEGA

Alene Hinton Peterman - 1945
Carol Anderton Debrick - 1949
Anastasia Martin Jasper - 1955
Sondra Langsler Grubbs - 1959
Linda Rapp Gonnella - 1960

ALPHA ALPHA

Callie Harcourt Hemb - 1926
Louise E. McKenzie - 1931
Joanna Maheras Alseth - 1937
Marie Gilbert Gieseke - 1943
Rosemond Meriwether - 1945
Mary Pierson Tanke - 1945
Marilyn Giallombardo Jones - 1959
Maureen Connolly Turk - 1961
Mary Tylena Geupel - 1963
Charlene Pisatowski Redling - 1985

ALPHA BETA

Nancy Embree Hewitt - 1930
Dorothy Hillman Thomas - 1940
Phyllis Mrazek Orland - 1942
Marianna Minnich Schifferdecker - 1945
Patricia Sutsman Bonvaller - 1946
Erma Hill Farley - 1949
Norma Farbes Jacobson - 1952
Christine Hansen Hamby - 1954
Carol Ganz Stull - 1955
Joan Harmon Pientka - 1963
Rosemary Cerny Vachta - 1963
Ruth Grant - 1964
Donna Luallen Emrick - 1983

Jean Stewart McWhood

ALPHA GAMMA

Margaret Page Marron - 1939
Flora Godard Simmons - 1939
Fay Baxley Kizzire - 1942
Betty Hardy Judice - 1953
Zella Jane Williams Mabry - 1954
Sandra Zirtzman Maiden - 1960

ALPHA DELTA

Katherine Wheeler Jones - 1940
Gisela Sterling O'Keefe - 1946
Sarah Jackson Harvey - 1955
Patricia Jean Bell - 1962
Kathleen Thompson - 1967

ALPHA EPSILON

Bobby Webb Allred - 1945
Mary Harber Harris - 1953
Patricia Neel Walker - 1954
Charlene Duff Watson - 1962
Sharon Jacobs Thurman - 1963
Gemma Brueggemann Wallis - 1973
Bernice Pattison Going

ALPHA ZETA

Althea Dean Hoyt - 1927
Virginia Wollny Wohland - 1964
Linda Ann Damico O'Neill - 1966
Linda Lynch Kice - 1968

ALPHA ETA

Ruth Parsons Edge - 1948

ALPHA THETA

Margaret Smoot Breeze - 1931
Marilee McDonald - 1955
Virginia Roberson Workman - 1968
Kimberly Baugh Rideout - 1982

ALPHA IOTA

Sherry Ardell Jay - 1940

ALPHA KAPPA

Margaret Abdo Hoffmann - 1948
Mari Longwell Walker - 1949
Barbara Shockley Broadbent - 1952

ALPHA NU

Elizabeth Beckman Harker - 1933

ALPHA OMICRON

Emily Johnson Matthews - 1927
Gilda Kerns Pettit - 1946

ALPHA PI

Mildred Downs Noojin - 1937
Helen Harrell Dedman - 1946
Frances Weston Townsend - 1949
Sarah Ruth Norred - 1952
Nanci Cutcliff Pate - 1961

ALPHA RHO

Courtney Fulton Snyder - 1933

ALPHA SIGMA

LaLuce Planck Williams - 1933
Sarah Quincey Miller - 1939
Lucille McLeod Hancock - 1940
Genevieve Crowley Donohue - 1941
Leola Beland Pope - 1948
Dorothy Frierson Thornberry - 1950
Marcia Hamm Grim - 1958
Gloria Hodges McCormick - 1961
Ana Hartzman Thompson - 1973

ALPHA TAU

Lillian Augspurger Sheldon - 1924
 Adeline Harvey Huff - 1927
 Emily Adams Lyne - 1940
 Winifred Amy Smith Kutac - 1943
 Virginia Barron Price - 1945
 Shirley Winter Whiteside - 1949
 Frida Struve Milone - 1952
 Dorothy Ann Stroup - 1957
 Peggy Lanius Davis - 1965
 Linda Ratzlow Schneider - 1966
 Jewell Cowan Murrell

ALPHA UPSILON

Eliz Furrow McGraw - 1959
 Linda Milvany Nuesse - 1966

ALPHA CHI

Carol Amunds Gowan - 1944
 Lois Walker Loughran - 1945
 Delfina Fatjo Hoffmann - 1947
 Mary Dixon Spinelli - 1949
 Peggy Armstrong Hess - 1962
 Frances Rodden Hagen - 1963

ALPHA PSI

Hellen Spong Sanders - 1927
 Betty Blanton Sumner - 1937
 Frances Prater Gaskill - 1946
 Joyce Harris Boynton - 1953
 Joan McLain Newcomb - 1955
 Linda Stover Walters - 1960
 Mary McEachern Wells - 1960
 Diane Thompson - 1965

BETA ALPHA

Elizabeth Allard Kress - 1943
 Ellen Odland McBride - 1947
 Barbara Roussin Nagel - 1947
 Carol Heald Ahlberg - 1948
 Claire Buchanan Voorhees - 1951
 Joan Mason Plouffe - 1953
 Jane M. Hopkins - 1956
 Bridget Silvia Hawthorne - 1970
 Barbara Plante - 1972
 Sharon McCarthy Introini - 1973

BETA GAMMA

Nancy Mayrose Burkhardt - 1958

BETA DELTA

Barbara Wright - 1956

BETA THETA

Mary Jenkins Sirianni - 1942
 Barbara Booth Ruscher - 1950
 Patricia Lunn Smith - 1962

BETA KAPPA

Miriam Johnson Newland - 1937
 Marilyn Lugsch Graham - 1938
 Alice Nelson Hanselman - 1938
 Marilyn Ousdahl Hansen - 1941
 Marjorie Bencke Jensen - 1941
 Jean Kimberly Lengeling - 1942
 Jean Page Crocker - 1943
 Martha Simons French - 1944
 Joan Weber Lorange - 1947
 Patricia Wright Shafer - 1947
 Marilyn Schweitzer Thatcher - 1954
 Mary Elizabeth Platt - 1959
 Terry Peterson Denny - 1969
 Susan Andersen Walden - 1969

BETA LAMBDA

Elizabeth Campbell Painter - 1942
 Elizabeth Tobin Hathaway - 1956

BETA MU

Martha Tarbett Lyons - 1947
 Anna Combs Moore - 1953
 Kathleen Kosar Harlin - 1954
 Elizabeth Baum Hanbury

BETA NU

Josephine Wilburn Sullivan - 1947
 Helen Hilson Miller - 1952
 Margaret Frances Peek - 1967
 Janice Kay Monaldi - 1970

BETA XI

Joy Thigpen McGowen - 1948
 Letitia Oden Smith - 1959
 Sylvia Littlelaylor Sims - 1965

BETA PI

Janet Kittredge Shaw - 1940
 Janet Wheatley Gildermaster - 1941
 Joyce Mulleavy Bennion - 1947
 Susan Aldona Zekas - 1965

BETA RHO

Marian Roselle Mitchell - 1942
 Betty Fenwick Williams - 1944
 Eleanor Jackson Plum - 1958

BETA SIGMA

Margaret Murphy Vining - 1944
 Eleanor Jane Hansen - 1950
 Phyllis Fishburn McGeorge - 1950
 Elwood Faye Fox Aylward - 1954

BETA TAU

Betty Jo Jackson Hughes - 1941
 Mary Weirauch Warts - 1945
 Roma Gene Johnson Greathouse - 1946
 Isabel Smith Melvin - 1949
 Marlea Sims Spreeman - 1949
 Esther Ruth Godbey - 1950
 Margaret Dickerson O'Neill - 1950
 Colette Dissmore Marushak - 1951
 Susan McClelland Heath - 1952
 Florence Hansen Bridge - 1953
 Jacolyn McLeland Sheehan - 1959
 Becky Roscoe - 1965

BETA CHI

Helen Basler Rankine - 1941
 Sharon Kerentoff Hochstetler - 1957
 Jo Blackburn Karasek - 1961
 Sandra Stevenson - 1963

BETA PSI

Mary Stack Bolen - 1941
 Virginia Smith Kuhne - 1941
 Annette Barbot McGovern - 1941
 Elizabeth Siemers Moorner - 1941

BETA OMEGA

Janet M. Kennedy - 1942
 Dorothy Beck Pohl - 1944

GAMMA ALPHA

Mary Ruth McLean Wittenauer - 1944
 Jean Shafer Hall - 1948
 Joan Davis Gradwell - 1958

GAMMA BETA

Marilyn Marsh Vigeant - 1950
 Marie Spino Luciano - 1951
 Marguerite Salomon McDonnell - 1958
 Judith Atwater Godfrey - 1961

GAMMA GAMMA

Rosalie Alquist Parsons - 1956
 Ann Neuenschwander Martens - 1960

GAMMA DELTA

Joan Beidler Zimmerman - 1958
 Nancy Headley McConnell - 1959

GAMMA EPSILON

Beverly Nord Simpson - 1946
 Ruth Purinton Talley - 1948
 Donita Stone Case - 1950
 Marilyn Hirschman Baker - 1954
 Francile Rector Juhl - 1956
 Mary Waltemate Cawiezell - 1964
 Sandra Weaver Ullman - 1964
 Andrea Mann Carponelli - 1965
 Deetta Brownfield Mehl - 1972
 Claudia Wicker Brisentine - 1978
 Loie Ehlert McElwain

GAMMA ZETA

Marcia Neuburger Garrett - 1952
 Aleida Lambert Haney - 1954
 Peggy Pryor Itzen - 1954
 Beverly Medford Mason - 1960
 Carolyn Ellis Winters - 1976

GAMMA ETA

Nina Faluotico Uzzo - 1955

GAMMA THETA

Ethel Ziebell Ziegler - 1948
 Gwyneth Jones Nurkala - 1958

GAMMA IOTA

Shirley Hartman Romine - 1949

GAMMA KAPPA

Beverly Maybee Goodman - 1949
 Judy Harmon Hertz - 1951
 Iris Zmeskal Simpkins - 1951
 Rhea Johnson Merrell - 1957
 Cherie Wyle Uncapher - 1957
 Mary Schrafel Glavic - 1960

GAMMA LAMBDA

Betty Brisbin Quick - 1948
 Suellen Downey Schaumburg - 1962
 Brenda Ann Montgomery - 1987

GAMMA NU

Mary Anna Campbell Kohler - 1950
 Janice Gail Jump - 1951
 Darlene Marian Jelinek - 1952
 Joyce Goegge Phipps - 1955
 Delores Ticknor Snapp - 1955
 Eileen Schutte - 1957
 Janice Curry Miglin - 1958
 Barbara Weerts Winkler - 1958
 Marjorie Lois Dent Winkler - 1958
 Teri Huddleston Reynolds - 1981

GAMMA XI

Allana McCoy Lowman - 1949
 Evelyn Sellars Brannan - 1951
 Elaine Black Houston - 1951
 Eleanor Rollins Roederer - 1952
 Cynthia Leigh Gerber - 1968

GAMMA OMICRON

Patricia Sherman Malloy - 1949
 Marjorie Enlund Scudder - 1950

GAMMA PI

Patricia Wilson Needel - 1951
 Norma Vershure Kilgore - 1956
 Carol Axford Crumbaker - 1957
 Carol Schmitt Buege - 1958
 Eleanor Gilbert Holiday - 1958

GAMMA RHO

Dorothy Tamlyn Jeske - 1952
 Joan Shapley Frichtl - 1956
 Maxine Robertson Haney - 1957
 Eve Hyniuk Hodous - 1957
 Jeanne Sperry Lekovich - 1957
 Jeanette Veale Williams - 1957

GAMMA SIGMA

Jane Vandermeer Chartier - 1955
 Doris F. Rosenbusch - 1955
 Morjorie Hadley Vaniadis - 1955
 Donna Ausum French - 1956
 Donna Poet Greaves - 1956
 Norma Green Hall - 1956
 Helen Fast Keller - 1956
 Paula Benge McCullough - 1956
 Carole Steele Dehart - 1957
 Dorothy Green Kay - 1957
 Agatha Fouts Longyear - 1957
 Dorothy Snidecor MacDonald - 1957
 Donna Chakich Northridge - 1957
 Irvana Goldsmith Rogn - 1957
 Joanne Walin Stapleton - 1957
 Eleanor Purman Townsend - 1957
 Mary Smith Weimeister - 1957
 Helen Reid Wendling - 1957
 Mildred Paine Wenzel - 1957
 Joan Poe Yerkes - 1957
 Jacqueline Dennison Zuschlag - 1957
 Betty Strieter Colvin - 1959
 Lillian Klein Standen - 1959
 Ginger Hunter Parker - 1962
 Terrie McEnroe Ozolis - 1965
 Nancy Seremjian Danna - 1967

GAMMA TAU

Helen Wetzel Waldron - 1950
 Jean McCandlish Hoffman - 1955
 Priscilla (Pat) A. Beatty - 1959
 Sharon Karun Griffiths - 1961
 Jean Prentiss Rhodes - 1965
 Karen Wilcoxon Izso - 1966
 Cynthia Schmidt Martin - 1970
 Alice J. Lavery - 1981

GAMMA UPSILON

Patsy Deason Bryan - 1953
 Vivian Burkhardt Bonifield - 1954
 Eleanor Scott Liles - 1959
 Paulette Lowe - 1970

GAMMA PHI

Carol Papalia Waronsky - 1961

GAMMA CHI

M. Joan Frazier Williams - 1954
 Rosella Martin Lamb - 1956
 Sandra Harvey Myrick - 1956
 Willa Dungan Williamson - 1957
 Shirley Stroup Yeoman - 1957
 Doris Ogle Irons - 1958
 Judith L. Replin - 1959
 Diane Mattingly Henry - 1966

GAMMA PSI

Melva Krogman Coyne - 1957
 Ann Averill Sweeney - 1962
 Carol Ryan Wolverton

GAMMA OMEGA

Phyllis Hortin Kukla - 1956
 Jeanine Dusek Nelson - 1965

DELTA ALPHA

Dorcas Wilson Richards - 1954
 Lynn Holan Knox - 1956
 Betsey Dudley Doult - 1958
 Pamela Stockman Maples - 1962

DELTA GAMMA

Willette Rasch Saunders

DELTA DELTA

Donna Gayle Walker - 1968

DELTA THETA

Beatrice Lytle - 1956
 Sharon Lothringer Hinnant - 1968

DELTA LAMBDA

Audrey Talbert - 1956
 Arlene Hildabridge Hanlon - 1969

DELTA MU

Merilyn Knowles Foss - 1970

DELTA NU

Mary Anderson Lawson - 1957
 Lucille Shirley Nedrebo - 1958

DELTA XI

Louise Hicks Gaer - 1957
 Jeanie McCormick Wehrman - 1957
 Shirley Patton Hanson - 1971

DELTA OMICRON

Billy Ann Eller Brown - 1957
 Frances Nelson Henderson - 1957
 Jonila Graves McGinley - 1957
 Ruth Hadwiger Weigand - 1957

DELTA PI

Dolores Goad Lindberg - 1956
 Carrie Johnson Salmick - 1956
 D. Jeanne Waldvogel Snyder - 1956
 Wanda Bacon Stallard - 1956
 Ethel Ekstrom Kaiser - 1957

DELTA SIGMA

Helen Thompson Miller - 1957

DELTA TAU

Mary McBride Stout - 1962

DELTA UPSILON

Charlene Frazier Sizemore - 1956
Jean Iseley George - 1957
Jessie Mann Melton - 1960
Martha Landers - 1974
Joanne Hossley Wilson

DELTA PHI

Pat Hinds Holmes - 1956
Margaret McCutchan Johnson - 1964
Brenda Ann King - 1971

DELTA CHI

Marie Williamson Davis - 1957
Lennis Colwell Giugni - 1957
Evelyn Dixon Smith - 1957
Suzanne Soreck Vertiz - 1966
Leigh Yonkondy Hatcher - 1972

DELTA PSI

Elizabeth Bartlett Wallace - 1957
Robert Elderkin Johnson - 1958
Lynn Hammock Burtness

DELTA OMEGA

Joann Hoover Franke - 1957

EPSILON ALPHA

Ellen Hansen Smith - 1957

EPSILON BETA

Lois Gandy Gregory - 1961
Melinda Martin McClung - 1976

EPSILON GAMMA

Margaret Handly Harmon - 1956
Carleen Hendrickson Nolte - 1956
Evelyn Bailey Preuitt - 1956
Margaret Bell Southall - 1956
Duveen Kaser Mitchell - 1957
Carolyn Koester Rosencrans - 1957
Martha Goodman Cohick - 1958
Barbara Randel King - 1968
Rita Baker Venable - 1968

EPSILON DELTA

Margaret Fitchett Frost - 1957
Nancy Hellems Taylor - 1957
Udessa Johnston Hunold - 1958
Connie Miliam Six - 1960

EPSILON EPSILON

Morva Brautigam Taylor - 1956
Marian Evans McCabe - 1957
Sandra Lee Harvey - 1966

EPSILON ZETA

Paula Holmes Watts - 1956
Margaret Zeiger Horn - 1965

EPSILON ETA

Nadine Merk Rippe - 1956

EPSILON THETA

Deloris Danziger McElroy - 1956
Phyllis Hale Jordan - 1957

EPSILON IOTA

Gina Siddi Pinto - 1957
Barbara Tetrick Bowling - 1964
Paula Oberle Howard - 1966
Renee Hook Vangilder - 1968

EPSILON KAPPA

Emily Wentzel Springer - 1957
Alice Christiansen Teigen - 1957
Stacey Anne Gray - 1977
Katherine Wheeler Hensel - 1977

EPSILON LAMBDA

Margaret A. Howard - 1941
Kay Weast Sparks - 1961

EPSILON NU

Bettie Graham Johnstone - 1957

EPSILON OMICRON

Marjorie Ratekin Johns - 1957
Joann Eckhardt Schock - 1957

Karolyn Beatty Sheppard - 1957
Cynthia Harbaugh Gries - 1959
Karen Gustafson Horschke - 1964
Patricia Lee Humphrey - 1979
Shirley Simeral Snowden

EPSILON RHO

Evelyn Finter Severson - 1956
Patricia Logan Cornett - 1959
Kay Strader Jensen - 1963
Mary Suzanne Potts Wakeman - 1965
Janet Modlin White - 1970

EPSILON SIGMA

Carol Cornish Bruening - 1956
Anne Miller MacPherson - 1956
Joy Thompson Stevenson - 1956
Joan Tomboni Wojack - 1956
Marietta Kemp Peters - 1957
Joyce Cromie Elliston - 1960
Lorraine Pronyk Ryan - 1962
Carol Klarich Arnold - 1963
Margaret Kakaley Chmielewski - 1965
Antoinette Vivona Radtke - 1978

EPSILON TAU

Nancy Hughes Goodman - 1956
Blanche Ingram Middlebrooks - 1957
Ann Nichols Wesler - 1957
Patricia Stout Guthrie - 1958

EPSILON UPSILON

Virginia Day Scates - 1956
Frances Ille Littell - 1960
Linda Christensen West - 1961

EPSILON PHI

Lorry Goncz Walsh - 1956
Mary Frabotta Kolis - 1969

EPSILON CHI

Ruth Horton Schwartz - 1950

EPSILON PSI

Barbara Foerster Puder - 1957
Nina Marie Klarich - 1958
Justine Klaus Toman - 1958
Charlene Steltenpohl Jackson - 1966
Patricia Lyons Wankum - 1966

EPSILON OMEGA

Mary Mattson Holtan - 1956
Robert Vorpahl Shaw - 1961
Bonnie Draxler Larose - 1966

ZETA ALPHA

Shelley Haas Spicer - 1970
Lee Ann Kozak - 1971

ZETA EPSILON

Marguerite Caruso Pankiewicz - 1963

ZETA ZETA

Edith Morrow Reynolds - 1959
Jerry Woodard Frey - 1960
Launita Ann Warwick - 1963
Nadine Callicoate Lewis - 1969
Dina Marie Peltier - 1971
Cathy A. Bridley - 1991

ZETA THETA

June Harrison Guess - 1959
Barbara Metzger Petty - 1959
Una White McGown - 1960
Ann Cordes Ward - 1960

ZETA KAPPA

Rowena Harris Winsley - 1959
Betty Place Pigozzi - 1960
Lois Miller Merrill - 1970
Joan Meisner Loughren - 1975
Elizabeth Jean Macswords - 1978

ZETA LAMBDA

Dorning Jenkins Metzler - 1960
Freddie Skinner Weaver - 1962
Rannie Pendergrass Hilton - 1964
Jane Stephenson Montgomery - 1964

ZETA XI

Victoria Feimster Ratchford - 1964

ZETA OMICRON

Allegra Jordie Standing - 1964
Betty Emery Delapp - 1965
Mary Jane Bartlett Friedl - 1967
Jena McNamer Cina - 1971

ZETA PI

Nancy Klemann Sproul - 1966
Anne Strickland Wheeler - 1969

ZETA PHI

Marilyn Franko Graham - 1964
Martha Cook Eichenlaub - 1967
Susan Branham Thiebaud - 1973
Kami Lee Poole - 1997

ZETA PSI

Rebecca Chandler Walters - 1964

ZETA OMEGA

Patricia Pompo Komula - 1963
Georgeanne Laitaa Taylor - 1963
Dorian Larsen Mantei - 1964
Julie Magnuson Robinson - 1967
Colleen M. Madigan - 1974
Karen Elizabeth Tollefson - 1975

THETA ALPHA

Shirley Duckett Ruppert - 1962
Helen Casady Runciman - 1971
Laurie Jo Jolliffe - 1976

THETA BETA

Joyce Joiner Giles - 1962
Karyl Kesmodel Rice - 1969

THETA GAMMA

Carolyn Young Worthington - 1962
Anne Kirk Lamothe - 1963
Kathleen Ann Nauss - 1976

THETA DELTA

Margaret Gladys Johnson - 1963
Janet Saylor Wexman - 1964

THETA EPSILON

Evelyn Davidson Tannehill - 1965
Candice Pemberton Martin - 1968

THETA ZETA

Linda Hipple Randall - 1967

THETA ETA

Annabel Smith LaPlante - 1962
Carol Shepherd Taute - 1963

THETA IOTA

Lynn Smith Cunningham - 1964

THETA KAPPA

Mary Ann Rantz Mangipano - 1967
Candace Pembo Jacobi - 1997

THETA NU

Carole Strand Melby - 1964
Marguerite Bjerken Holecek - 1965

THETA XI

Debra LeNar Stalnaker - 1971
Teresa Scott Goodman - 1989

THETA OMICRON

Elizabeth Beardmore Jones - 1966

THETA RHO

Nancy Louise Bailey - 1981

THETA SIGMA

Betty Jo Smith - 1971

THETA PSI

Janet Stutz Clayton - 1973

THETA OMEGA

Catherine Alice Nash - 1967

IOTA ALPHA

Marion Barnhart Horton - 1967

Janet Zipperer Phares - 1970
Karen Jeanne Hunt - 1972
Joan Carol Sander - 1973
Ellarene Herrmann - 1975

IOTA ZETA

Bernadette Lupo Vaccaro - 1966

IOTA THETA

Brenda Bolles Warner - 1969

IOTA IOTA

Mary Leathers Quirk - 1969

IOTA KAPPA

Janet Marie Yanchuk - 1978
Joan Beatty Gould

IOTA XI

Teri Lynn Reiter - 1984

IOTA PHI

Victoria Lynn Krist - 1971

IOTA PSI

Peggy Miller Gilbert - 1967
Cindy Clark Pittman - 1970

KAPPA ALPHA

Adeline Legendre Bernard - 1984

KAPPA EPSILON

Brenda Giudici Plungis - 1972
Karen Rachel Krukonis - 1975
Maria Johanne Giotas - 1983

KAPPA ZETA

Elaine Powell Howell - 1976

KAPPA TAU

Nancy Workman Eck - 1971
Ann Sandifer Mayhew - 1971

KAPPA PHI

Susan Clements Hardy - 1980

LAMBDA LAMBDA

Shari Reinstein Widmayer - 1980

LAMBDA NU

Katrine Ocobock Ferreiras - 1996

LAMBDA XI

Paula Ann Jourde - 1987

LAMBDA OMICRON

Sherrie Stevens Smith - 1975
Chelsea Maddux Laney - 1997

LAMBDA PI

Susan Taylor Rouse - 1988

LAMBDA SIGMA

Julie Pettus Smith - 1986

LAMBDA PHI

Katharine Harper Kent - 1984

XI IOTA

Landa Graziano Martina - 1992

XI KAPPA

Anne Marie Smith - 2005

XI SIGMA

Kathryn Clapp Dickerson - 1988

OMICRON GAMMA

Ashley Nicole Szewczyk - 1994

OMICRON SIGMA

Rebecca Sloan Layton - 2012

PI ALPHA

Lynn Holston - 2003

PHI BETA

Bernice Walters West - 1956
Helen Holstein Butler - 1957
Patricia Krieg Trinkner - 1957

Enriching the World

Alumnae News

Alumnae members make a difference in the world, while inspired by their connection to Delta Zeta and enriched by the Sorority's purpose.

Texas Woman's University's Vice President for Student Life

Dr. Monica Mendez-Grant, North Texas - KZ, was named Vice President for Student Life at Texas Woman's University. She has served as the university's Interim Vice President for Student Life since May.

"I have found Dr. Mendez-Grant to be a strong advocate for our students and a champion of the university and its mission," said TWU Chancellor Dr. Carine M. Feyten. "I speak for the entire university Cabinet when I say we have been impressed with her judgment, leadership and vision. We look forward to continuing our work together for the ongoing success of the university."

Dr. Mendez-Grant has more than 20 years of student affairs leadership experience, including serving as TWU's Associate Vice President for Student Life for 13 years and Director of the Center for Student Development and Student Orientation for seven years.

Receives university's Entrepreneurial Spirit Award



Takes you to "Sunnyland" on her new music tour



Danna Aliano, Western Illinois - EO, is forging a successful career in music. Her success includes touring the world, opening for 25 national acts including The Stray Cats, Robben Ford, Foghat, Kansas, Marshall Tucker, Cinderella, Clarence "The Big Man" Clemmons, Tower of Power, Gregg Allman, John Lee Hooker and more. Danna's original band, Chain of Blues, was signed by Warner Brothers, and she made it in the European music scene with a number one hit. Her latest rock 'n roll music is featured on her album, "Sunnyland."

Danna is touring in 2015, so visit her website, <http://www.dannamusic.com/>,

for her tour schedule. "I am a Delta Zeta and I love it!" says Danna. "We are the funny, smart, pretty, devout, questioning, caring, truth tellers and knowledge seekers of our world. I have never met a Delta Zeta that wouldn't tell you the truth or help you reach a realistic goal."

"How can you live in a sorority house with 100-plus women and not come up with a few songs . . . life, love, heartbreak, success, facing any adversity and coming out the other side better for it with the help and support of my sisters. From Western Illinois to Loyola Marymount, rock on, my sisters, and remember there is no deadline on dreams."

Sheila Johnson Burkett, Missouri/St. Louis - IE, (center) received the University of Missouri's Entrepreneurial Spirit Award during College of Business Administration's Salute to Business Achievement Awards.

At the University of Missouri/St. Louis, the Salute to Business Achievement Awards recognize alumni of the College of Business Administration who have demonstrated exceptional personal and professional accomplishments to the university, their profession and/or their community.

Sheila is a Founder and Managing Partner of Spry Digital and Founder and President of Tuxedo Park Leasing. She launched businesses that built race cars, sold race fuel and finished a historic redevelopment of a commercial building before launching Spry Digital.

As an alumna, she has served in various positions in the St. Louis Alumnae Chapter including President and is currently the Panhellenic Delegate, where she served on the executive board and as President of the St. Louis Alumnae Panhellenic. Sheila has also served as a panelist at the Norma Minch Andrisek Leadership Conference.

Lifelong advocate for children with special developmental and educational needs



Donna Schmidt Burn, Oklahoma State - AE, served as the President, Vice-President and Secretary of the Greater Oklahoma City Alumnae Panhellenic Association. Donna also served as Historian and Events Coordinator of the Oklahoma City Alumnae Chapter, where she received the Mary Lois Dreiling Service Award. She received her Master's degree in reading followed by a second Master's degree in counseling. After the birth of her daughter, Laurie, her life changed forever. Donna was now the mother of a child with cerebral palsy. Laurie inspired Donna to develop a nonprofit organization to help build a chapel for those with physical and mental challenges. It also led Donna to serve on the Governor's Commission for the Mentally Challenged and Disabled.

Donna ran 50 wheelchair races in the Special Olympics and represented the state of Oklahoma at a National Convention for the Disabled. Along with the help of other parents, Donna started the first Early Intervention Pre-K class for special needs children in Putnam City Schools. Donna served as the President of the Parents of the Developmental Learning Center, establishing a thrift store to fund the Center. With grants, Donna purchased a van to pick up items for the thrift store and to provide musical instruments for the special needs choir. In 2010, Donna retired as Continuing Education Coordinator at Francis Tuttle Technology Center.

Volunteers as camp nurse at The Painted Turtle camp

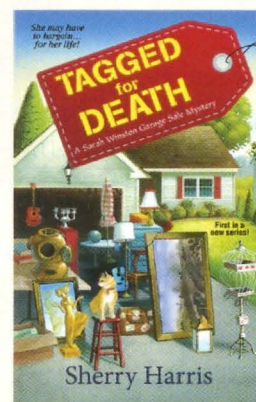


Amanda Fulk, Old Dominion (VA) - ΘΦ, volunteered as a camp nurse at The Painted Turtle camp for Skeletal Dysplasia

Week. "When I got there," Amanda says, "I was so happy to find that there were

many Delta Zetas there — a total of 11 there for that week, including me as a medical staff member and seven volunteer counselors for the week, plus three camp counselors for the whole summer. This was such an incredible experience, and I would recommend more chapters and members to get involved," she says.

Pens mystery series with encouragement from Delta Zeta sisters



Sherry Novinger Harris, Truman State (MO) - ΔΣ, has written "Tagged for Death," the first of the Sarah Winston Garage Sale mystery series. The book was recently nominated for an Agatha Award for Best First Novel. She developed her writing inspiration through a lifelong enjoyment of bargain hunting, a love of garage sales, and her life living in Massachusetts with her military husband.

Sherry says her Delta Zeta sisters have encouraged her throughout her life and in her writing career. "There hasn't been a time since I pledged Delta Zeta," she says, "that my sisters haven't been in my life supporting me and cheering me on. Our continuing bond was evident when over 40 of us met in St. Charles, Missouri last September. The joy and good wishes that my sisters expressed that weekend and continue to express humble me." You can buy Sherry's book at <http://sherryharrisauthor.com/>.

Bringing women college graduates together to work on global issues



Janet Hart Heinicke, Wittenberg (OH) - BX, is a program convener bringing women college graduates together who are concerned about global issues through the organization Women Graduates USA, which is part of the International Federation of University Women. "Skills learned and sharpened 65 years ago in Delta Zeta are still at work!" Janet says.

She served as Beta Chi Chapter's President for two years at Wittenberg University. Following college, she began a 30-year path in a teaching career at a school district in northeastern Indiana. During her first year teaching, she began graduate school at Arizona State University and later transferred to the University of Wisconsin where she received her Master's degree in art education. Janet then taught and motivated adult learners in evening classes at college. She served for 10 years in various national offices for the American Association of University Women.

Changing choices for gluten-free eating

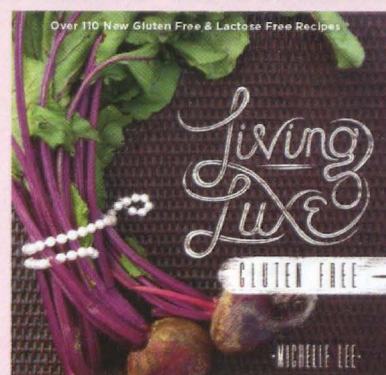


Photo: Michelle Lee
Cover design: Kat Tushim

Michelle Rakiec Lee, Miami (OH) - A, was discouraged by the foods that are available for those living with the challenge of a gluten-free diet when her husband developed a sensitivity to gluten and lactose. Her answer was to publish a new gluten-free cookbook which is winning rave reviews.

"Living Luxe Gluten Free" provides tempting and nutritious gluten-free, lactose-free recipes developed by Michelle.

The idea of "Living Luxe Gluten Free," Michelle says, "is no hassle and no compromise — just great food without fuss." Michelle says she and her husband now eat better than ever before. "It wasn't an easy road to this point, but I'm so glad we traveled it. This book is about sharing what we've learned along the way. My philosophy is that when you eat well, you feel great. That's when life is really good ... really luxurious."

In addition to her book, Michelle profiles products, restaurants, and chefs dedicated to gluten-free and lactose-free dining on her website, <http://www.livingluxeglutenfree.com>. Living Luxe Gluten Free can be ordered at <http://www.livingluxeglutenfree.com> and on Amazon.

Direct Marketing News' "40 Under 40"

Kim Buckner Land, South Carolina - BΔ, Marketing Director at the Herald-Journal, was named to Direct Marketing News' "40 Under 40." Kim was selected as a "young, standout marketer whose work has already left an indelible mark on her organization, clients, and the industry as a whole." This award is not industry-specific, but recognizes marketers across disciplines.

"Delta Zeta was my first opportunity to serve in a true leadership role with adult peers," says Kim. "I learned many things

about leadership as President of the Beta Delta Chapter — the importance of leading by example, the necessity of sometimes making the hard (but right) decision, how to relate to different types of people and the pride found in striving to always do your best. I also learned how wonderful it is if you can find a good mentor and learn as much as you can from them. I took all of those attributes with me into the professional realm. My Delta Zeta experience and leadership opportunities definitely helped shape me into the woman I am today."

First woman appointed Chairman of Senate Finance Committee in Texas legislative history



Photo: Gittings

"This is a tremendous honor and responsibility. I am absolutely up for the challenge and eager to get to work on a budget that will make Texas proud," said Senator Nelson.

Senator Nelson is the Senate's highest ranking Republican; served on the Senate Finance Committee during seven legislative sessions (1997, 2003-current); and twice served on the conference committee to resolve differences between the House and Senate budgets. As the longest serving chair of the Senate Health and Human Services Committee, Senator Nelson plays a key role in the health and human services budget.

As chair of Finance, Senator Nelson will assume a seat on Legislative Budget Board, a body of five Senate and five House representatives that will set the constitutional spending limit and develop the draft appropriations bill. The budget process is already in progress as state agencies are preparing their Legislative Appropriations Requests, which will be released in the fall.

Senator Nelson was recently named a "Courageous Conservative" by the Texas Conservative Coalition and Research Institute, holds the number two ranking on the Young Conservatives of Texas' historic honor roll, and logged a perfect 100 percent pro-business voting record last session, according to Texas Association of Business. She received the Women's Health Hero Award from the Texas Women's Health Coalition; the Texas Champion for Children Award from Texas CASA; the Patient Protection Award from the Texas Medical Association; Senate Legislator of the Year Award from Texas Nurse Practitioners; and the Courageous Defender of Life Award from Texas Alliance for Life.

She attributed her Delta Zeta membership experience as one of the influences in her success in the political arena. "The leadership skills I learned as President of my chapter, as a Chapter Consultant (now known as Educational Leadership Consultants), and as a Province Director, have been helpful to me as a public servant," she said.

Texas State Senator **Jane Gray Nelson, Texas/Arlington - IΨ**, was named Chairman of the Senate Finance Committee, becoming the first woman in Texas legislative history to chair a standing budget-writing committee.

Recipient of University of Central Missouri's 2014 Distinguished Alumni Award



Photo: University of Central Missouri Photo Services

Meryl Lin McKean, **Central Missouri - ΕΓ**, was recognized with the University of Central Missouri Alumni

Association's Distinguished Alumni award. Meryl Lin is a renowned health care reporter at Kansas City's Fox 4 News. A journalist for more than 30 years, she is also dedicated to service and philanthropy. She volunteers for causes such as cancer research and awareness, heart disease and arthritis.

For Delta Zeta, she serves as the Philanthropy Chairman for the Kansas City Alumnae Chapter, and in 2010, she received the Achoth Award, given to specially selected alumnae who have demonstrated, by long and faithful service, their continued loyalty to Delta Zeta particularly in their local communities.

Holocaust history education program

Tracy Solow Sockalosky, **Michigan - AH**, was selected as one of 25 teachers from around the world to participate in the education program to support the official observance of the 70th anniversary of the liberation of Auschwitz on January 27, 2015.

Tracy's participation in the program gave her the tools to provide engaging, primary-source resources to her students to strengthen the understanding and importance of remembering the Holocaust.

Tracy is quoted in the Jewish Journal as saying, "This program will help the way I teach this very, very difficult subject. Ignorance breeds hatred. It worries me that this will be forgotten. There are very few Holocaust survivors left to share their stories, so it is up to the rest of us to do so and to ensure that ignorance does not prevail."

Recognized nationally for work in study of human trafficking

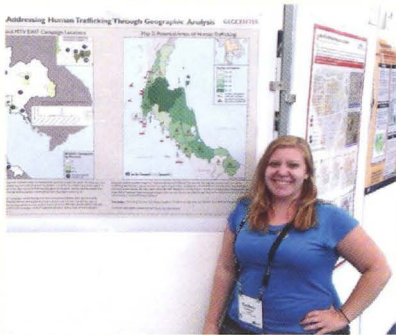


Photo: Ben Swartley

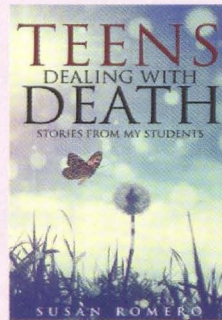
Colleen Pulsford, Concord (WV) - EA, College Chapter Director of the Omicron Sigma Chapter (Gallaudet University), is working with the US Agency for International Development (USAID) and supports MTV EXIT, a campaign harnessing the power of the MTV brand which fights human trafficking and exploitation by raising awareness, promoting positive behavior change and driving social action.

Colleen worked with the USAID GeoCenter to conduct an analysis of MTV EXIT's anti-trafficking program in Thailand. Colleen analyzed indicators of human trafficking through mapping locations of MTV EXIT events and analyzing Twitter data during the events in efforts to better geographically target future investments.

"Delta Zeta has given me the leadership skills I've needed to be successful in my career," she says. "I've gained not only great leadership skills, but great friends along the way. My time in Delta Zeta has not only been a benefit to my family relationships and relationships I've made with friends both in and out of the Sorority, but also my teamwork skills that I apply to my everyday work."

Helping teens cope with the loss of a loved one

Susan Romero, San Diego State (CA) - IO, an educator at the middle school level, has written "Teens Dealing with Death" to help teens cope with the loss of a loved one.



The book was inspired by her current students who have experienced the death of someone close to them. "The idea came to me that my students should tell their story in a book to help other

teens deal with death and grieving," Susan says. "Being a Delta Zeta has played a pivotal part in my life and in my writing." (Susan was the chapter President of Gamma Omicron Chapter at San Diego State University).

In addition to the lifelong sisterhood that I absolutely cherish, being a Delta Zeta introduced me to the world of philanthropy and doing for others in need. This desire to help others is the motivation behind my first two books."

Her second book, "What I Couldn't Teach You in the Classroom: Stories of Undying Love," written to help others understand the power of love from beyond, is slated for publication in the summer of 2015.

Committed to patient care and innovative cancer research



Photo: Memorial Sloan Kettering Cancer Center

Carol A. Slattery, Rochester (NY) - AI, was promoted to Vice President of Research and Project Administration at Memorial Sloan Kettering in New York.

Carol provides oversight for the pre-award administration of research grants and contracts, post-award grant administration, the fiscal budget for the Sloan-Kettering Institute (currently \$500 million), and ongoing financial planning for the Memorial Sloan Kettering research enterprise.

She received an undergraduate degree in political science and a master's degree in public policy analysis, both from the

University of Rochester, where she became a member of the Lambda Iota Chapter of Delta Zeta. She joined Memorial Sloan Kettering in 1991. Prior to joining the Research and Project Administration Department, Carol served as the inaugural Administrator of Memorial Sloan Kettering's first translational research program and the Program Administrator of the Geoffrey Beene Cancer Research Center. From 1998 through 2006, she was the Administrator of the Department of Surgery at Memorial Hospital (<http://www.mskcc.org/>).

Carol says, "Delta Zeta enriched my college experience and gave me a deep appreciation of the importance of helping others – both personally and professionally. I continue to be involved as an alumna where the strong bond of Delta Zeta sisterhood is consistently highlighted. As Treasurer of my college chapter, Delta Zeta also provided me with real-world business experience that was invaluable as I started my career at Memorial Sloan Kettering Cancer Center."

Send all notices of address changes and member deaths to:
Delta Zeta National Headquarters
202 East Church Street
Oxford, OH 45056
Phone: (513) 523-7597

PRESORTED
STANDARD
U.S. POSTAGE
PAID
FLORENCE KY
PERMIT NO. 313



How Will You Honor Your Life?

Paula Harfst, Washington - K

L

ife has a way of grabbing our attention. I had delayed preparing a will for some time. But when I was preparing to leave for an international vacation,

I realized I couldn't put it off any longer – I needed to get my house in order. If something happened to me, I didn't want to leave important decisions to the state of Washington!

I started to think about what is important to me: my family, of course, but beyond taking care of my loved ones, I wanted to ensure my life would have meaning and purpose. So I thought, "How could I honor my life?" The Delta Zeta Foundation came to mind.

As a first-generation sorority woman, I didn't start out with an understanding of the permanent benefits of Sorority membership. But when I reflected on the impact of all I learned as a collegian, and have continued to learn through my volunteer experiences, I realized that the skills I learned through Delta Zeta helped me become a successful businesswoman. I learned how to speak in public, how to motivate peers and subordinates, how to lead and coach, and how to conduct an effective meeting, to

name a few. These are all intangible benefits of being a Delta Zeta – growth that is unique to being Greek at most colleges and universities.

As a volunteer, I have enjoyed the opportunity to work with women of all ages. Professionally, as the Global Solutions Training Program Manager for Lexmark International, Inc., there are four generations currently represented on my team. I credit my experience within Delta Zeta for developing the skills to successfully communicate and motivate a generationally diverse team.

I feel very strongly about providing opportunities for others to hone the foundational skills they need to be successful. By giving to the Delta Zeta Foundation, I know that I am giving to an organization that shares my values in developing strong, confident women who are prepared to lead in whatever role they choose.

Getting started was so much easier than I thought. I simply found a Power of Attorney and Last Will and Testament (for my state) online. I plugged in my information and my wishes, and took it to a notary. I now have

copies at home, in a safety deposit box and one with my parents.

The Delta Zeta Foundation was very helpful in answering questions for me, too. The online resources gave me the information I needed to know, and the staff was very open to discussing how I wanted my gift to be used. You may wish to consult an attorney to discuss the options best for you – I was happy to keep mine simple and straightforward with a direct gift to the Foundation.

I encourage all of my Delta Zeta sisters to ask themselves this: *What mark do I want to leave on the world?* Make sure the people and organizations that represent your legacy know your intentions, and put those intentions in writing. *I am confident that the gift I am making through my estate plan will empower Delta Zetas to pursue their dreams for generations to come.*

Professional resources are available online at <http://www.deltazeta.planmylegacy.org>. Should you have any questions, please feel free to contact the Delta Zeta Foundation at (513) 523-7597 or DZFoundation@dzshq.com.