

In this issue - Delta Zeta's Centennial Gift to Miami University Unveiled

The LAMP

of Delta Zeta

www.deltazeta.org
SPRING 2006



Recruitment:

The Roots of Delta Zeta's Growth



In our rapidly changing world, our personal, professional, social, and spiritual lives are controlled by how we perceive and handle change. Each day brings a new set of challenges that must be met with a careful balance of vision, leadership, and wisdom.

Nowhere is change more apparent than within Delta Zeta, especially on today's college campus and in our undergraduate chapters. They are experiencing change faster than any generation before them. And at no time in Delta Zeta's history has the need for volunteers been greater.

National data from the Bureau of Labor and Statistics based on a survey of about 60,000 households show that 64.5 million people volunteered in some capacity in 2004—up from 63.8 million for the similar period ended in September 2003. This may be an indication that it takes more people each doing a little less work (due to family responsibilities, job commitments, and other interests) in order to achieve the same results as in the past. Volunteer organizational structures are being reviewed and changed to accommodate the volunteers of this new century. But perhaps one thing hasn't changed: studies by the National Volunteer Center (www.pointsoflight.org) show that over 90% of volunteers who give their time continue to be motivated by the desire to help and fill a need. And many of us are familiar with the studies done on the Millennial Generation show that volunteerism is on the rise among teens and college-age young adults.

During the 1830s, Alexis De Tocqueville, a young French aristocrat, spent several months touring the United States and subsequently published *Democracy in America*. In it he said, "Americans of all ages, all conditions, and all dispositions constantly form associations . . . if it be proposed to advance some truth, or foster feeling by the encouragement of a great example, they form a society . . ."

Delta Zeta is an excellent example of De Tocqueville's observation. The Sorority's success and growth to date is due to the tireless efforts of volunteers through our 104-year history. We are fortunate to have committed members (alumnae and collegiate) as volunteers. We salute and thank these dedicated women. Yet that percentage of volunteers remains small in comparison to our overall membership. We need more. Alumnae volunteers are often the foundation of consistency and continuity so essential to helping chapters meet the challenges of change.

In serving, a simple but powerful truth is recognized: We need each other. And we must care for one another. Today, we do more than celebrate Delta Zeta; we rededicate ourselves to the very ideals of Delta Zeta—ideals which will carry us through this century and beyond.

In Delta Zeta,

Debbie Raziano

FOUNDERS

Alfa Lloyd Hayes, 1880-1962
Mary Collins Galbraith, 1879-1963
Anna Keen Davis, 1884-1949
Julia Bishop Coleman, 1881-1959
Mabelle Minton Hageman, 1880-1929
Anne Simmons Friedline, 1879-1932

THE ORDER OF THE LAUREL

Irene Caroline Boughton, 1904-1988
Grace Mason Lundy, 1893-1993
Elizabeth Coulter Stephenson, 1881-1939
Myrtle Graeter Hinkly, 1893-1987

Published since December 1910 by

DELTA ZETA SORORITY

Founded at Miami University - Oxford, Ohio
October 24, 1902

The LAMP of Delta Zeta

Nancy E. Brewer A, Editor
(ISSN #0887-2554), official magazine
of the sorority, is published quarterly
by the Delta Zeta Sorority,
202 East Church Street, Oxford, OH 45056.

Contributors:

Ann Gurley Morrow AB '91, National Recruitment Chairman
Leslie Evans Williams E '96, National Recruitment Committee member
Brooke Reynolds IX, Vice President of New Member Education
for Gamma Chi Chapter and LAMP National Committee Member

POSTMASTER:

Send address changes to
Delta Zeta Sorority, 202 East Church
Street, Oxford, OH 45056.

Send all editorial material to
Delta Zeta National Headquarters
Attn: Nancy Brewer, Editor
202 East Church Street
Oxford, OH 45056.

General e-mail: dzs@dzshq.com
LAMP e-mail: LAMP@dzshq.com



National Panhellenic Conference



Printed in USA.


Photo Credits: Page 26, Iowa State University Alumni Association; p. 27, photo of Marti Dodson courtesy of Toucan Cove Entertainment; photo of Julie Senn, courtesy of the Spartanburg Herald-Journal, Spartanburg, SC; p. 28, photo of Sally Haydon Van Wert, courtesy of the Iowa State University Alumni Association; p. 29, Exposures Unlimited, Oxford, OH, Ron Kolb, photographer; back cover, Alissa Hollimon.

The LAMP

of Delta Zeta

About the Cover:
Recruitment is the root of Delta Zeta's growth, requiring nurturing to ensure the Sorority's future, much like a plant needs cultivation to grow. And like that plant, Delta Zeta's blooms or leaves include sisterhood, service and philanthropy, education and leadership, and the legacy of the organization. One of those leaves, philanthropic projects undertaken during recruitment, is explored in the lead article of this issue.

4



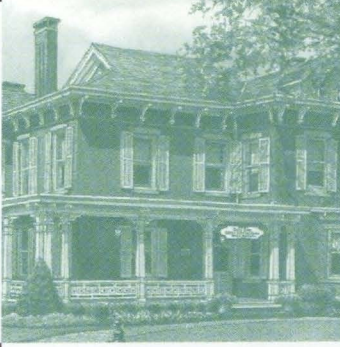
Giving Graciously as Part of the Recruitment Experience

Delta Zeta's commitment to philanthropy and service is strengthened during the recruitment process as new members learn firsthand why it is important to "give graciously" of what is theirs.



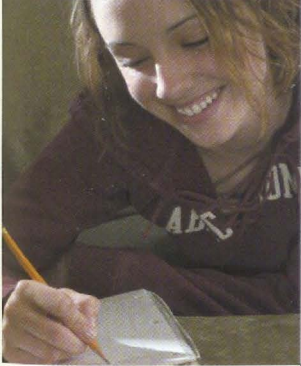
6 - 7 Alumnae Profiles

Triston Wright AN '94, Miss Wheelchair America/Alabama 2005, advocates for those with disabilities, and Melissa Klopfer BD '78, is named National Distinguished Elementary School Principal of the Year by the U.S. Department of Defense, and is a leader in the educational field abroad.



DEPARTMENTS

From the President.....	2
Stars in Our Service Flag	5
On Campus	8 - 17
Directory	20 - 23
Flame Eternal	24
Foundation Focus	25
Alumnae News.....	26 - 28
DZ Designs	30
A Tribute to Our Chapter Consultants.....	31
Foundation Donor Profile.....	32



18 - 19 Participate in Quality Recruitment

You can recommend a potential new member who possesses the committed values that are inherent in Delta Zeta.

29



Delta Zeta's Centennial Gift to Miami University Completed

Delta Zeta Sorority provides a gift to Miami University that commemorates the first sorority and the fraternities of the Miami Triad founded at Miami University.

Giving Graciously as Part of the Recruitment Experience

"Unless a fraternity helps you to be of service in life, it is not worthwhile. One should be of more service in home, university, state, and sorority. Our watchword should be SERVICE. It must be kept in the foreground of our lives as a very real thing."

Ruby Long K, Delta Zeta Grand Vice President (1920-1922)

Greek organizations face different challenges on today's campus when recruiting new members. The campus environment is very different than it was 20, 10, and even five years ago. Fraternities and sororities are under scrutiny by college administrators and the community surrounding them. More schools have non-traditional age, commuter student populations who are also holding jobs while going to school. Today's student may not have the time or financial resources to be part of a Greek organization, so recruitment programs must be relevant and meaningful to that student.

Delta Zeta recognizes these many challenges our chapters face on campuses around the country. While the Sorority insists on the recruitment of quality members, we also want those potential new members to understand the Sorority's values and the total Delta Zeta experience. And part of that experience includes giving back—to Delta Zeta, to the campus, and the surrounding community.

To emphasize Delta Zeta's commitment to philanthropy, and to help members understand why giving their time, talent, and treasure to any worthy organization or cause is a crucial way to help others and make the world a better place, chapters undertake philanthropic projects as part of their recruitment and Continuous Open Bidding (COB) processes.

Each year, our collegiate chapters report on their philanthropic projects undertaken during recruitment. In addition, new member classes are also required to complete one service project prior to initiation, which provides an excellent educational experience for them while helping worthy causes.

Rachel Olson, Vice President of Membership for the Xi Psi Chapter at Grand Valley State University, says, "Our philanthropy project during formal recruitment consisted of potential and initiated members creating a special quilt. They drew pictures on squares of fabric with puffy paint. We asked each round of potential new members to make a square if they wished to do so. Once the fabric squares dried, I took them to my grandmother and together we made a children's quilt from them. We donated the quilt to a children's hospital in Grand Rapids to the Neonatal Intensive Care Unit (NICU)

"This project was fun for everyone. The quilt turned out beautifully and I am sure the family who received it truly enjoyed it!"

Sarah Morrison, Vice President of Membership, Kappa Rho Chapter at Kutztown University reports, "We made bar soaps in the shape of fish for the women's shelter in Reading, Pennsylvania during formal recruitment. To make the 'fish,' we used an oval bar of soap and wrapped a wash cloth around it, closing the end with a rubber band, which makes the extra wash cloth material look like a tail. We drew faces on the fish with washable markers. The women housed at the shelter had their own washcloths and soap to bathe with."

Meghan Anderson, Vice President of Membership for the Omicron Pi Chapter at Frostburg State University in Maryland, says, "Some recent projects that we have done in the past year are: decorating flower pots for a local nursing home, creating a banner/quilt for American soldiers in Iraq, decorating Christmas tree ornaments for a hospital, and creating cards for breast cancer patients."

When seeking, then participating, in a project that is beneficial to others, members learn not only the importance of giving, but come to experience a true sense of belonging to and involvement with not only their chapter, but with Delta Zeta as a national organization. At the same time, they are learning and experiencing the values upon which the Sorority was built, and understanding the significance of commitment. And perhaps most importantly, they experience the personal growth and satisfaction that comes from giving unselfishly, while at the same time demonstrating to the campus and community Delta Zeta's commitment to "give graciously of what is mine" (Delta Zeta Creed).

If you want more ideas on philanthropy projects for recruitment, please contact Ann Gurley Morrow AB '91, National Recruitment Chairman, at anngmorrow@aol.com.

Thank you to Ann Gurley Morrow AB '91, National Recruitment Chairman, and Leslie Evans Williams E '96, member of the National Recruitment Committee, for their work in gathering information for this article.



In Loving Remembrance - Gay Thorr Rose ID '66



Gay Thorr Rose ID '66, Regional Collegiate Coordinator for Region I (Maine, Vermont, New Hampshire, Massachusetts, Connecticut, Rhode Island, and New York) passed away on March 19, 2006. "Working with the collegians in Delta Zeta is a very special part of my life," she had recently said.

She loved spending time with her family: her husband, Jack, and her son, Matthew, a college freshman, at their home in East Lyme, Connecticut.

Gay had recently retired as a middle school Spanish teacher in a career that spanned 36 years. As Gay did in so many areas of her life, she served as much more than a teacher to her students. She was also a yearbook advisor, cheerleader coach, and mentor.

As a collegian, she was initiated into the Iota Delta Chapter of Delta Zeta while attending Edinboro University. She later attended Central Connecticut State University, receiving a B.S. in Secondary Education - Spanish, and an M.S. in Secondary Education - Psychology.

In college, she was Recording Secretary for the chapter, a member of the Association of Women Students, the Pennsylvania State Education Association, Mu Kappa Gamma (honorary music fraternity), the String Ensemble (Gay played the viola), and the Spanish Club. Gay was also dorm President and served on the Student-Faculty Council.

Gay's Delta Zeta sisters attest to her devotion to the Sorority. As an alumna, Gay was Province Area Director for Province I prior to becoming a Regional Collegiate Coordinator (a position which she would hold for nearly ten years). "I remember Bid Night, when my big sister came to my dorm room," she said of her most memorable Delta Zeta experiences, "and attending my first Convention."

In addition to her dedicated work for Delta Zeta, Gay volunteered for the P.E.O. and Red Cross blood drives, and was a member of the Bell Choir, the Safe Church Committee, and did Bible study at her church.

She enjoyed reading, music, and counted cross stitch, and her favorite vacation place was Disney World.

Delta Zeta will miss Gay's gentle smile and her desire to help in any way she could. "Gay truly loved Delta Zeta," said Debbie Raziano KA, National President. "As a devoted sister, she exemplified the ideals and values of our Sorority. We will cherish her memory and keep her in our hearts forever."

Stars in Our Service Flag

The LAMP is proud to recognize Delta Zeta's "stars" in our Service Flag. If you are or you know a Delta Zeta member in the armed forces or serving as a civilian in foreign service, U.S. Agency for International Development (USAID), USO, or other such organizations, please send name, military branch, rank, where stationed, and other information (including family, hometown, etc.) to Nancy Brewer, Editor, *The LAMP*, Delta Zeta National Headquarters, 202 E. Church Street, Oxford, Ohio 45056 or via e-mail at LAMP@dzshq.com. We welcome stories and photos of members, and look forward to honoring our stars in Delta Zeta's Service Flag.

Crystal A. Geier AB '01, 2nd Lieutenant, (U.S. Air Force)



Crissi has been stationed at Ramstein Air Force Base in Germany since September of 2004. She is currently in Finance Field. She is enjoying her deployment overseas and is taking advantage of traveling throughout Europe. Crissi, originally from Pensacola, Florida, will be stationed in Germany through September of 2006.

Lieutenant Tatana Olson, Ph.D., KO '98 Medical Service Corps (U.S. Navy)



Tatana is an Aerospace Experimental Psychologist stationed at the Naval Aerospace Medical Institute, Naval Air Station, Pensacola, Florida. She serves as the Biostatistics Division Officer in the Operational Psychology Department. Tatana is charged with all research and development, administration, and management of the Aviation Selection Test Battery, the primary tool used by the Navy, Marine Corps, and Coast Guard to select naval aviators and flight officers for training.

Tatana's husband, LTJG Frank Moglia, is currently serving a six-month tour of duty at the Pentagon as a Cryptology Officer in the Navy Reserve. "It is a great pleasure to serve our country alongside the many Delta Zeta alumnae who have made the ultimate commitment," she says. "I am proud of each and every one of them."

Alumnae Profiles

Trisston Wright: An Extra-Ordinary Delta Zeta

by Brooke Reynolds ΓΧ,

Vice President of New Member Education for Gamma Chi Chapter
and LAMP National Committee Member

Trisston Wright's ΔΝ '94 dream came true the night she was crowned Ms. Wheelchair America/Alabama 2005. She was given the opportunity to make a difference, or as what she likes to call it, "let her internal light shine," by representing others with disabilities throughout the United States.

Her commitment to the disabled community allowed her to speak up for the 54 million disabled Americans in this country. "Throughout my travels, personal appearances, presentations, and interactions with local and state government entities, I remain focused on bringing to all an awareness of the unique and extraordinary abilities of people with disabilities," Trisston says. She brought this focus into her Ms. Wheelchair America/Alabama 2005 platform, centering on the "extra-ordinary abilities of people with disabilities," as she encourages Americans with disabilities to go beyond the ordinary, do the extra, and exceed all expectations.

Trisston also encourages those with disabilities, as well as others, to live by the words of Henry David Thoreau: "If one advances confidently in the direction of his dreams and endeavors to live the life which he has imagined, he will meet with a success unexpected in common hours." It is Trisston's strong belief in these words, her faith, her family, and her commitment to succeeding that serve as her foundations while she lives with cerebral palsy (also known as CP). This condition is not hereditary or genetic; it is not a disease nor is it degenerative. In Trisston's case, it is a condition that affects her fine-motor skills and ability to balance in order to walk.

"I have never allowed [cerebral palsy] to slow me down or serve as a barrier to enjoying life and living it to its fullest," Trisston says. "This is a condition that I'll have for the rest of my life, and it has allowed me to get out and touch people in a way that I may not have been able to do in any other way."

Despite Trisston's condition, she was raised to be as independent as possible. "From the day I was born, the word 'can't' has never been in my vocabulary," Trisston says. Throughout her life she has participated in all types of activities, from being a member of the Prattville High School marching band, to being a member of numerous clubs and Delta Zeta during her college years, to serving on boards and volunteering in her adulthood. "I even have my own van that is equipped with a ramp, and I am out and about more than I am at home," Trisston says.

Her positive attitude and outlook on life allowed her to pursue her goals to become a painter and a writer after she graduated from Auburn University at Montgomery. "One of my dreams throughout life has been to devote my time and energy to the arts," Trisston says. Today, she has paintings in public galleries and private collections throughout Alabama, including work in the Very Special Arts of Alabama Traveling Exhibit, and in the Alabama State Capitol Building. She also writes her own column called "Trisston's Tidbits" for *The Montgomery Gazette* and *The Prattville Gazette*.



Trisston with Alabama's Governor Bob Riley.



Trisston (left) with Jean Baughman Wessel Templeton ΓΣ, Delta Zeta 2005 Woman of the Year.



Missy with some of the school children.



Learning for a Lifetime

*by Brooke Reynolds TX,
Vice President of New Member Education for Gamma Chi Chapter
and LAMP National Committee Member*

The War on Terrorism brings many challenges to the principal of Aviano Elementary School in Aviano, Italy. Principal **Melissa "Missy" L. Klopfer BA '78** works at this school created by the Department of Defense Dependents Schools (DoDDS), an organization which serves the children of military service members around the world.

"A lot of our kids are really going through difficult times with their parents being deployed, and we're doing a lot more social work than we've ever done before," Missy says. "We share a lot more in the parenting than teachers might do in America."

Despite these challenges, Missy has been named National Distinguished Elementary School Principal of the Year. She believes it is her hands-on approach to education that has enabled her to win this recognition.

"I spend a lot of time in the classroom and spend a lot of time working with parents, and with a few kids mentoring them individually," Missy says.

Missy attributes some of her success as a principal to her involvement with Delta Zeta. She says that she took many lessons from her chapter presidency during her senior year. "While serving as President, I was student teaching. I was so busy and I think the overload really caused me to get organized," Missy says.

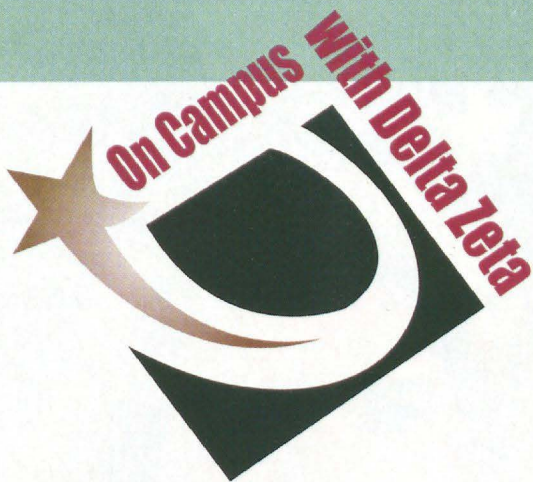
The National Distinguished Principals (NDP) program is designed to recognize excellence among elementary and middle school principals. According to the Department of Defense Education Activity (DoDEA), "one principal is chosen annually from each of the 50 states and the District of Columbia. Principals representing K-8 schools, DoDDS, and the U.S. Department of State Overseas Schools are also recognized." Candidates selected for recognition must be principals for at least five years and demonstrate strong educational leadership.

Missy was recently selected out of all the National Distinguished Principals for 2005 to receive a full Doctoral scholarship from the National Association of Elementary School Principals (NAESP). She will begin coursework leading to a Ph.D. in Organizational Leadership in 2007.

Missy was a teacher for 14 years for DoDEA schools in Japan, Italy and Turkey before becoming an assistant principal at a secondary school for nine years in Turkey. She was also a teacher and assistant principal at Aviano Elementary School, where she is now the principal. Aviano Elementary School has 780 children enrolled, all of whom are children of U.S. Air Force personnel stationed overseas.

Although she has moved around the globe many times for various job opportunities, she does not have to learn the language of the country she is in. This is because the DoDEA schools follow a typical American curriculum so that the students are able to easily transfer schools back and forth to the states.

Learning for a Lifetime continued on page 28



Alpha

Miami University

held their annual philanthropy event, "Putting on the Hits," which raised over \$13,000 for St. Rita's School for the Deaf in Cincinnati, Ohio. New member classes of each fraternity and sorority on campus compete in a dance and lip-sync competition. The chapter also collected donations and thank you cards for the troops overseas.

Delta

DePauw University

had a successful Turbo Turtle Trek last semester, the proceeds of which went to the Greencastle Fire Department to purchase special smoke detectors for the hearing impaired. Delta is ranked fourth among sororities on the DePauw campus.

The Pi Chapter's Karisa Fluegel, Chapter President was crowned Homecoming Queen at Eureka College.



The Alpha Rho Chapter (Ohio Wesleyan University)

Epsilon

Indiana University

was named Panhellenic Chapter of the Week, and performed at the IU Sing event.

Theta

Ohio State University

raised money for Columbus Speech Hearing in a dodgeball tournament. The chapter enjoyed a sisterhood bowling event and hosted the campus Panhellenic Association's road show with two other fraternities.

Kappa

University of Washington

participated in the university's Jump Start program providing literacy kits for underprivileged children.

Pi

Eureka College

is serving the Heart House and the Food Pantry in Eureka to help entertain, feed, and care for those less fortunate.

Sigma

Louisiana State University

helped fundraise at the Mardi Gras Ball benefiting Kappa Sigma's philanthropy and the Children's Miracle Network. The chapter also participated in the Zeta Tau Alpha Breast Cancer Walk, Alzheimer's Walk, and played bingo with older adults at a retirement center, and took a trip to the Baton Rouge Zoo for their spring chapter retreat.

Alpha Beta

University of Illinois

participated in philanthropic events for Alpha Delta Pi and Sigma Kappa Sorority. The chapter held its Krazee Bowl bowling tournament to benefit speech and hearing.

Alpha Gamma

University of Alabama

was ranked in the top five for highest overall GPA among Greek sororities. The chapter hosted their annual Hoops for Hearing philanthropy event to raise money for the Speech and Hearing Center.

Alpha Theta

University of Kentucky

held a four-square tournament in which all of the sororities and fraternities on campus participated, and proceeds were donated to the Red Cross. Thirteen members made the Dean's List.

Alpha Rho

Ohio Wesleyan University

currently holds the second-highest GPA among sororities on campus.

Alpha Upsilon

University of Maine

members helped a local thrift store and food pantry, assisting in organizing inventory, general cleaning, and maintenance. The chapter is the overall champion among sororities for Greek Week.

Beta Delta

University of South Carolina

held their second annual bone marrow drive in memory of the late Caroline Boles Terry BA '03. The new

new member classes of Beta Delta (University of South Carolina) and the Pi Epsilon Chapters (Clemson University) competed to raise money for hurricane victims. Beta Delta raised the most money, and a total of over \$9,000 was jointly donated to American Red Cross.

Beta Gamma

University of Louisville sponsored their first charity fashion show which raised money for the Louisville Deaf Oral School. The chapter placed second in the annual step show sponsored by Phi Kappa Tau for their philanthropy day.

Beta Gamma

Iowa State University participated in a 1980s-themed "Dance with the Disabled" at Camp Sunnyside in Boone, Iowa.

Beta Lambda

University of Tennessee/Knoxville held its first annual Clay Shoot to support their local philanthropy, Tennessee School for the Deaf.

Beta Xi

Auburn University hosted a Skeet Shoot, with all proceeds going to the Delta Zeta Foundation and the Alabama Institute for the Deaf and Blind. Beta Xi's GPA is above the all undergraduate women's average.

Beta Tau

Nebraska Wesleyan University held the Build-Your-Own-Burger Bash, with proceeds going to speech and hearing causes, and to four children the chapter sponsors in Zimbabwe. Members participated in Nebraska Wesleyan's annual Relay for Life to help raise money to fight cancer. Beta Tau is tied for the highest GPA among sororities on campus.

Gamma Beta

University of Connecticut held their HUSKYthon, a twelve-hour dance marathon that raises money for Connecticut Children's Medical Center, part of the Children's Miracle Network. Gamma Beta holds the highest overall grade point average among all sororities on campus.

Gamma Delta

Pennsylvania State University participated in THON, a 48-hour dance marathon, to raise money for children with cancer at the Hershey Medical Center, and their families at the Four Diamonds Foundation. The chapter placed second in the Greek Sing competition.

Gamma Theta

Carroll College donated items to the Waukesha Woman's Shelter and helped in renovation projects there. Gamma Theta ranked second in academics out of all sororities on campus.



The Alpha Theta Chapter (University of Kentucky)



The Alpha Upsilon Chapter (University of Maine)



The Beta Delta Chapter (University of South Carolina)



The Beta Gamma Chapter (University of Louisville) won the Greek Sing competition.

On Campus

Gamma Kappa

Kent State University held its annual fundraiser for speech and hearing, Lip-Sync, the largest Greek philanthropy event on the Kent State campus. The highly successful event featured 12 performances from fraternities and sororities, and had more than 1,200 people in attendance.

Gamma Xi

New Mexico State University participated in Lambda Chi Alpha's Watermelon Bust, coming in first place for the third year in a row. The chapter held its annual philanthropic event, Mr. Greek, which raises money for the Delta Zeta Foundation. Gamma Xi ranked third overall for GPA among the sororities on campus. The chapter received first place overall in the Homecoming parade.

Gamma Pi

Western Michigan University donated money to benefit the Little Children's Network, purchased Papa John's cards from the Order of Omega to help victims of Hurricane Katrina, and donated school supplies to the children of Mobile, Alabama. The chapter won first place in Sigma Chi's Derby days, and took second place in Alpha Xi Delta's XI Cup competition.

Gamma Rho

Northern Illinois University participated in Pi Kappa Alpha's philanthropy, Tugs, to raise money for the American Red Cross.

Gamma Tau

Bowling Green State University raised money for the university's Dance Marathon, which benefits the Children's Miracle Network in partnership with Mercy Children's Hospital in Toledo. Some members are pen pals with residents at the Luther Home of Mercy. The chapter's GPA was above the All-Greek average.

Gamma Phi

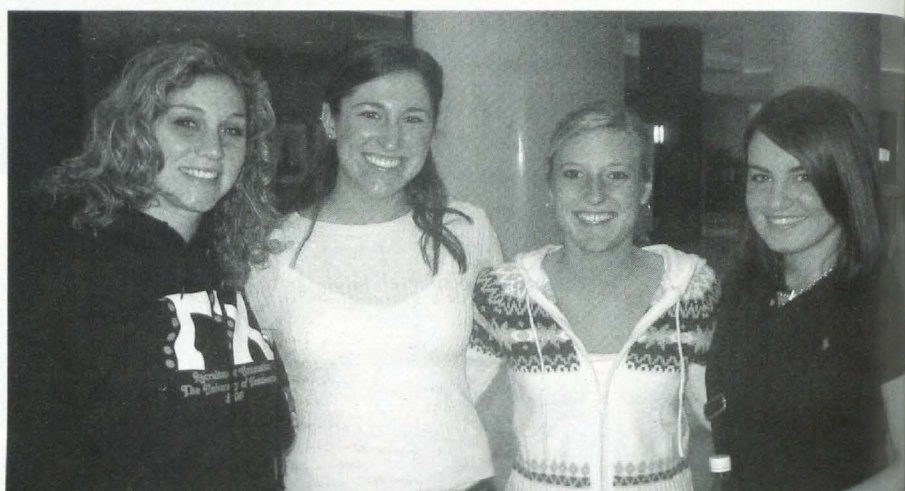
Indiana University of Pennsylvania organized "Kick Out Cancer Week," raising over \$800 for the American Cancer Society.

Gamma Chi

Ball State University did yard work for residents in the community and participated in Phi Mu and Sigma Alpha Epsilon's annual dance marathon.

Gamma Psi

Central Michigan University hosted its annual pancake breakfast to raise money for speech and hearing.



Delta Sigma Chapter (Truman State University) officers at the Collegiate Programming Conference.



Epsilon Epsilon (Fresno State University) members assisted victims of Hurricane Katrina.

Delta Beta

University of Tampa held its annual "Paint the Town" and "Delta Zeta Man of the Year" philanthropic events to benefit speech and hearing.

Delta Delta

Georgia State University had the second highest GPA on campus. The chapter participated in a blood drive with the American Student Medical Association, and was recognized for the highest attendance at the university's basketball games.

Delta Theta

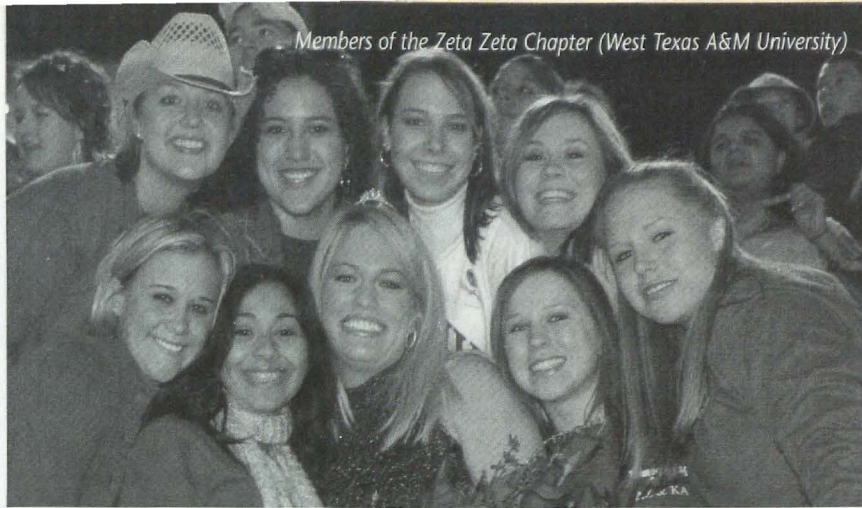
University of Houston had the highest GPA among sororities on campus for the second semester in a row. The chapter hosted a Thanksgiving party for the children at the Center for Hearing and Speech.

Delta Sigma

Truman State University received the President's Academic Cup for the eleventh consecutive year.

Delta Tau

Temple University sponsored the "Heart for Hearing" philanthropic event to benefit the Pennsylvania School for the Deaf (PSD), raising \$1,000 for the school and over \$100 for the Delta Zeta Foundation. Delta Tau was the only chapter in Region II with a chapter GPA above the All-Women's and All-Sorority average, and was ranked number one on their campus in academics.



Epsilon Gamma

Central Missouri State University

teamed with Sigma Epsilon Gamma for the Spirit Run. Members raked leaves with Alpha Kappa Lambda to raise money for Cystic Fibrosis. Epsilon Gamma placed first in intramural football and for their Homecoming float, and received second place in overall intramural sports.

Epsilon Epsilon

Fresno State University

members joined other Greeks in Louisiana during Christmas break to help the victims of Hurricane Katrina rebuild their homes. The chapter's Dee Zee Bowl Football Tournament was voted the best philanthropic event by all sororities and fraternities on campus.

Epsilon Zeta

Drexel University

held its major philanthropic fundraiser, Hearts for Hearing, with proceeds going to the Delta Zeta Foundation. The chapter is one of the highest-ranked sororities on campus in academics. Epsilon Zeta also won ABC's "Campus Invasion" program for hosting the best viewing party for the soap opera, *All My Children*, and met some of the cast members of the show.

Epsilon Theta

Clarion University

made cards for servicemen and women stationed overseas. The chapter had one of the highest GPAs on campus, with 26 of their members on the Dean's List and 11 members achieving a 4.0 GPA.

Epsilon Iota

Fairmont State College

held the Turtle Trot to help a speech and hearing-impaired person. The chapter also organized a campus wide clothing drive to benefit three local organizations, including a shelter for victims of domestic violence.

Epsilon Kappa

University of Wisconsin/Whitewater

made Valentine cards for the children of the Delevan School for the Deaf. The chapter held a philanthropy/sisterhood event with a local retirement home, making turtle cookies and Valentine cards. Epsilon Kappa had the highest Greek GPA on campus, and received the Chancellors Achievement Award, the highest honor for a student organization on campus.

Epsilon Rho

Northwest Missouri State University

held its annual philanthropic event, the Turtle Tug, and had many members who received university academic awards

for high GPAs. The chapter also received five Homecoming awards, including Homecoming supremacy.

Epsilon Sigma

Wayne State University

hosted a kissing booth with Hershey's kisses to raise donations for two causes: speech and hearing and the Detroit Rescue Mission to help the homeless.

Epsilon Tau

Longwood University

received the award for the most completed service hours for the first half of the school year, participating in Dimes for the Deaf, Relay for Life, and Daffodil Days.

Epsilon Upsilon

University of Central Oklahoma

sold Valentines for the Children's Hospital and held a raffle at a university basketball game, donating the proceeds to the speech and hearing impaired.

Epsilon Omega

University of Wisconsin/Eau Claire

volunteered to help with abandoned pets at a local animal shelter, and tutored children at a local elementary school.

Zeta Beta

University of Wisconsin/Stout

collected pop tabs for the Ronald McDonald House, and ranks number one on campus in academics.

Zeta Zeta

West Texas A&M University

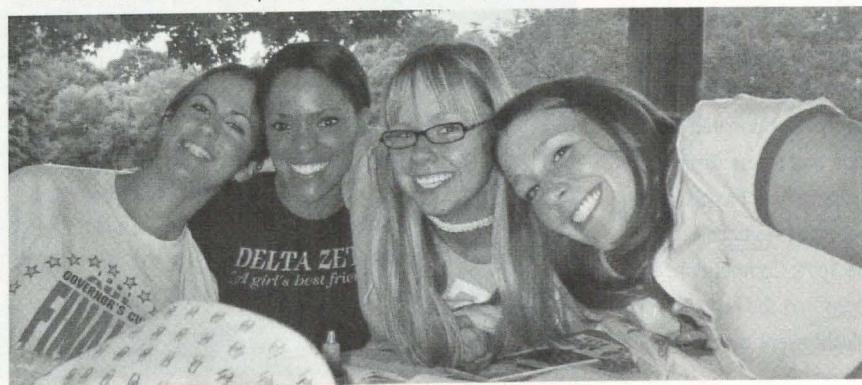
introduced the first annual Hear Me Out Concert, which showcased local performers and raised money for speech and hearing. The chapter's overall GPA was the highest in the campus Panhellenic and beat the overall women's average for the fall of 2005.

Zeta Nu

Ferris State University

participated in the Big Brothers/Big Sisters of America bowling fundraiser, and other events such as the Bethany Shumaker volleyball tournament and donating blood to the Red Cross. The chapter had the highest GPA of all sororities on campus.

Members of the Zeta Nu Chapter (Ferris State University)



On Campus

Zeta Xi

Lenoir-Rhyne College participated in the annual March of Dimes walk. The chapter received the Centennial Award, the Award for Vice President Membership Excellence, Golden Crest, Junior of the Year (Sarah Dougherty), and Highest Chapter Scholarship and Recruitment Excellence at Region XIV.

Zeta Pi

University of Georgia established the Turtle Grant, which uses a portion of money raised by philanthropy events to benefit those in the Athens-area deaf community. The chapter had 20 members on the Dean's List and nine women named as Presidential Scholars.

Zeta Rho

William Jewell College worked with Hillcrest Ministries to help families in need of shelter, and Synergy, a service offering free babysitting for mothers taking parenting classes. The chapter is ranked fourth among sororities on campus and has 19 members on the Dean's List and 15 Scholar Athletes.

Zeta Phi

Slippery Rock University visited a local nursing home, and donated to the Make a Wish Foundation and the Juvenile Diabetes Research Foundation. The new members had the highest grades for the fall 2005 semester out of all new members in the Greek community.

Zeta Psi

Stephen F. Austin State University had a victorious intramural volleyball team. Three members served as counselors at the university's summer freshman camp, and Rebekah Stefanski was on the Homecoming Court.

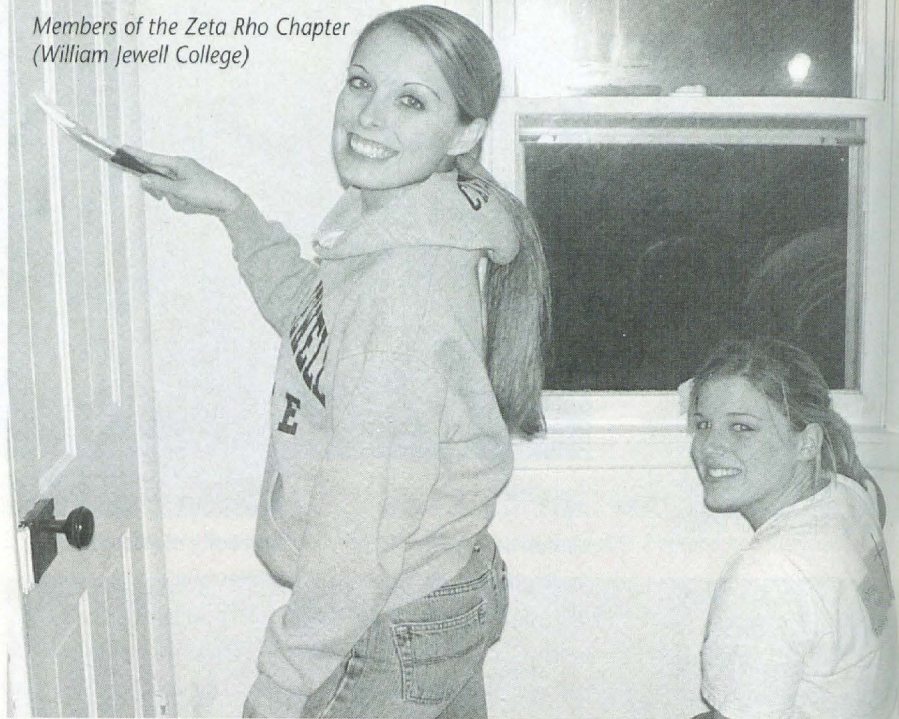
Theta Mu

St. Cloud State University volunteered for Adopt-A-Highway/Adopt-A-Block and Relay For Life, which benefits cancer research.

Theta Nu

Minnesota State University/Moorhead volunteered to make phone calls to encourage donations to a local women's shelter. The chapter made quilts which were donated to the Rape and Abuse Crisis Center. Theta Nu placed second at Homecoming in the Spirit Competition, and sponsored the first Mr. MSUM event on campus.

*Members of the Zeta Rho Chapter
(William Jewell College)*



The Zeta Phi Chapter (Slippery Rock University)



Theta Omicron

University of Texas/Pan American participated in the American Cancer Society's Relay for Life and Highway 107 clean up. The chapter volunteered at the Special Olympics.

Theta Rho

California State University/Los Angeles hosted the Community Association Meeting for the neighborhood at the newly renovated chapter house. The chapter participated in intramural sports and held the Turtle Tug, their largest event.

Theta Phi

Old Dominion University delivered Valentines to students at Mary Calcutt Elementary, a school for hearing-impaired children. The chapter also volunteered at the Virginia Aquarium, and participated in the Relay for Life.

Theta Psi

Ashland University volunteered at a children's festival and held a clothing/money drive to obtain goods for hurricane victims.

Theta Omega

Barton College participated in a program to promote spring break safety. Several members waitressed at a roast for a well-known campus staff member. The event raised proceeds for book scholarships for students. The chapter also participated in an Adopt-A-Street clean-up event.

Iota Alpha

Texas State University gathered donations in an effort spearheaded by Nan Stovall Patton IA '92, College Chapter Director, to help a

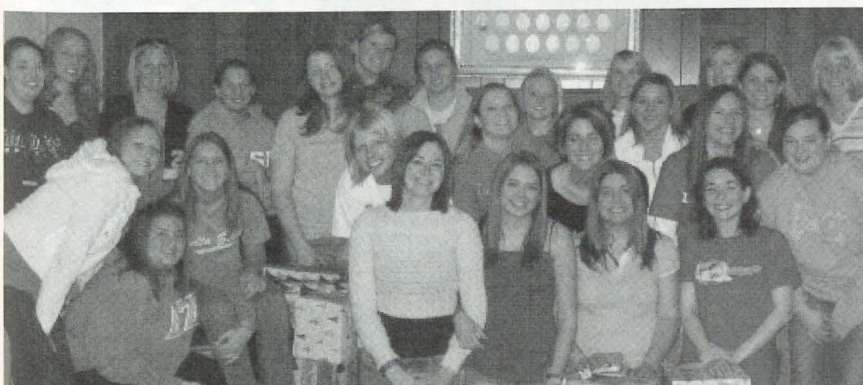
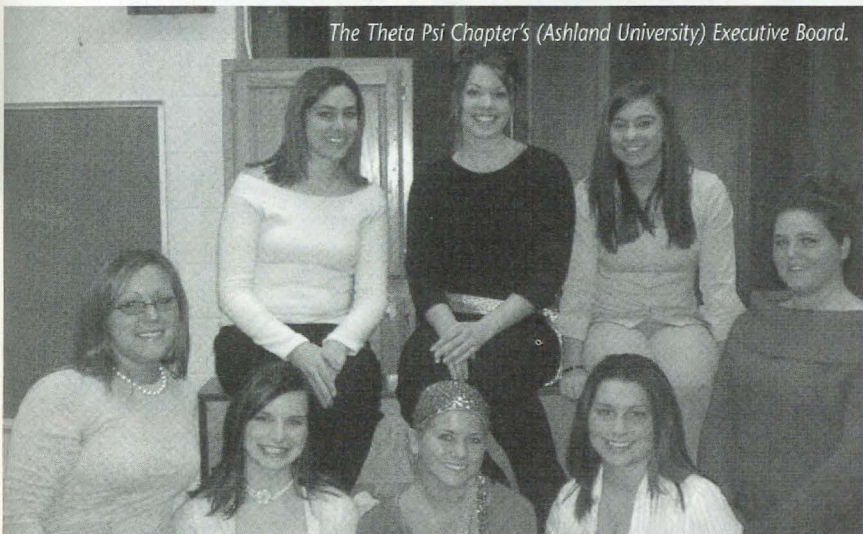
Members of the Iota Delta Chapter (Edinboro University)



The Theta Phi Chapter (Old Dominion University)



The Theta Psi Chapter's (Ashland University) Executive Board.



The Iota Xi Chapter (University of Missouri/St. Louis)

single mother and her two sons, who lost everything in Hurricane Wilma. The chapter won an award for their support of the Texas State Bobcats football team.

Iota Delta

Edinboro University

sponsored a blood drive with the Central Blood Bank of Pittsburgh. The chapter had the highest GPA average of any Greek organization on campus.

Iota Theta

Mansfield University

celebrated their 40th anniversary and Karen Starner Jacobson's IO '67 35th anniversary as College Chapter Director. The audience enjoyed a slide show presentation of the chapter's history from 1966 to 2006. Iota Theta has the highest average GPA of all Greek organizations on campus.

Iota Iota

Middle Tennessee State University

volunteered at the Boys and Girls Club in Murfreesboro during their pancake breakfast, at the Bowl for Kid's Sake, and MTSU's Up 'til Dawn, which benefited St. Jude's Children Research Hospital.

Iota Xi

University of Missouri/St. Louis

participated in a coat drive for Operation Food Search, and adopted a family in need during the holidays, giving them a Christmas tree. The chapter has been ranked first academically on campus for nine consecutive semesters.

Iota Rho

West Chester University

hosted a Ping-Pong-a-thon and a "Say What? Karaoke" for philanthropy. Other donations collected were given to Camp Dreamcatcher to help children with HIV/AIDS. The chapter also placed first in Homecoming.

Iota Psi

University of Texas/Arlington

has the highest cumulative GPA on campus. The chapter partnered with a fraternity on campus to hold a clothing drive which benefited hurricane victims.

Kappa Beta

Northern Kentucky University

participated in Service on Saturday, an annual day of community service. Chapter members played board games and were named the flag football champions. The chapter had the highest All-Greek GPA in 2005, and placed second in the accumulative GPA for the Greek organizations.

On Campus

Kappa Epsilon

Plymouth State University participated in community service projects such as the cancer walk and an ice cream social, which raised money for speech and hearing.

Kappa Iota

Wright State University hosted a philanthropy and social event, making Valentine cards for the Children's Hospital and Hospice.

Kappa Mu

Shepherd University participated in Adopt-A-Highway, an Alzheimer's walk, the American Cancer Society's Relay for Life, and the Multiple Sclerosis walk.

Kappa Rho

Kutztown University participated in Operation Snow Flake, shoveling snow for elderly citizens. Toiletries were donated to women and children at a local shelter. The chapter had the second highest GPA among sororities on campus last semester.

Kappa Tau

Morehead State University sponsored "Spring Break: Spring Back" relief trip to Gulfport, Mississippi, working to help those displaced by Hurricane Katrina.

Kappa Phi

University of North Carolina/Charlotte placed second in Greek Week events on campus and won Region XIV Day awards which included Recruitment-Total, 100% Initiation, and the President's Society distinction from the Delta Zeta Foundation.

Kappa Chi

Youngstown State University hosted one of their largest philanthropic projects, Battle of the Bands, where area artists performed and all proceeds benefited Youngstown Hearing and Speech Center.

Kappa Psi

Shippensburg University held their Legacy Luncheon this spring and hosted a street cleaning event.

Lambda Beta

University of Southern Indiana sent hand-designed Valentines and goody bags to troops stationed in Iraq. The chapter also co-sponsored a blood drive with the American Red Cross.

Lambda Gamma

Jacksonville State University made goody bags and posters for the Alabama Institute for the Deaf and



The Kappa Psi Chapter (Shippensburg University) as the Pink Ladies at a Grease-themed recruitment event.



The Lambda Nu Chapter's (Auburn University/Montgomery) Executive Board.

the Blind, wrote letters to soldiers in Iraq, and celebrated Valentine's Day with local nursing home residents. The chapter was named Greek Week champion on campus.

Lambda Delta

University of Virginia held their largest philanthropic event, "Wingfest," to raise money for Gallaudet University. Members made cards and baskets for local hospital patients, volunteered for academic tutoring in Charlottesville schools and read to school children in the "Book Buddy Program," and supported one member's work in organizing the Make A Wish Charity Dinner.

Lambda Kappa

University of Alabama/Huntsville participated in restoring a Ramada Inn which provided temporary shelter to Hurricane Katrina victims. The chapter tutored children at Chaffee Elementary School.

Lambda Lambda

The College of New Jersey auctioned picnic baskets to raise funds for Hurricane Katrina victims. The chapter held its first annual Dating Game event to raise money for the Gallaudet Dance Company and the Mary H. Katzenbach School for the Deaf.

Lambda Nu

Auburn University/Montgomery held a prom fashion show for high school girls. All proceeds went to the Janis Capilutto Center for the Deaf.

Lambda Xi

Texas A&M University held their biannual jean sale at which the company, Charity Denim, sells designer jeans and donates a portion of the sales to the chapter's charity of choice. Lambda Xi also participated in the Big Event, the largest, student-run, service project in the nation.

Lambda Pi

Georgia College and State University

served dinner for the community members, students, and teachers. The money raised was donated to Gallaudet University.

Lambda Sigma

Winthrop University

joined Kappa Sigma and Sigma Gamma Rho during Greek Week, receiving second place overall for the week's events. The chapter sold candy on Valentine's Day to raise money for speech and hearing.

Lambda Phi

Appalachian State University

prepared packages for Operation Christmas Child. Members adopted soldiers in Iraq and sent cards to them.

Lambda Psi

Columbus State University received the highest GPA in the campus Panhellenic for the fourth semester in a row.

Xi Beta

Eastern Kentucky University hosted "DZ Mocktail" in support of National Alcohol Awareness Week, and collaborated with ECU's

Health Education Action Team to educate the campus community about alcohol awareness. The chapter ranked third on campus in academics.

Xi Delta

Radford University

held its annual Turkey Trot to gather donations for the local Women's Resource Center. Xi Delta also hosted their first annual Academics Night, inviting faculty as well as chapter and Greek community advisors. The chapter received second place in the Homecoming Parade for their float.

Xi Theta

University of North Carolina/Wilmington

participated in the AIDS Quilt Memorial at UNCW, the Wilmington Children's Museum Charity Event, and the Winter Park Festival. The chapter exceeded the All-Women's and All Students GPA for the 2005 fall semester.

Xi Iota

Muhlenberg College

sponsored Fraternal Information and Programming Group Director Dave Westol's presentation, "Hazing on Trial," and participated in a Christmas party for underprivileged children, the Walk for Hope, and a breast cancer event. The chapter ranked second academically out of all sororities on campus.

Xi Lambda

University of San Francisco

participated in the American Cancer Society's Breast Cancer Walk. The new member class participated in coloring binder dividers for children at the San

Francisco Bay Hearing and Speech Impaired Center. The chapter ranks highest in academic standing of all sororities on campus.

Xi Nu

Tarleton State University

participated in the Angel League with the Stephenville Optimist and Lions Clubs, helping mentally and physically challenged children play t-ball.

Xi Xi

North Georgia College and State University

contributed to the Hurricane Katrina Relief drive, sent care packages to the troops in Iraq, and sewed "Bosom Buddy" pillows which were donated to a local hospital for Breast Cancer Awareness Month. The chapter also works with NOA (No One Alone) to provide help to battered women and children in the community.

Xi Omicron

Loyola-Marymount University

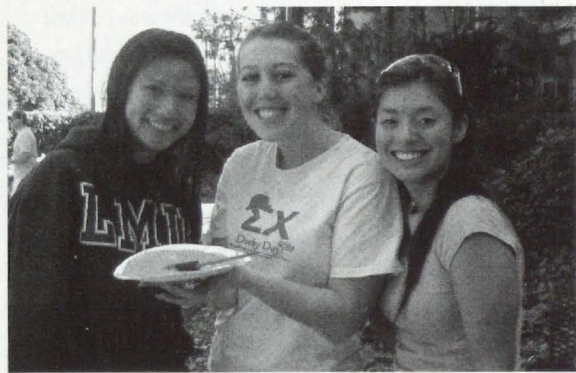
participated in a beach clean up and Special Games, which is a student-run, non-

The Lambda Pi Chapter (Georgia College and State University) raised \$700 for ALS.



The Xi Xi Chapter (North Georgia College and State University)

The Xi Omicron Chapter (Loyola-Marymount University)



On Campus

profit organization serving individuals with physical and special needs. The chapter has the second highest GPA of all sororities on campus.

Xi Rho

Clarkson University organized an annual joint philanthropy event with Sigma Phi Epsilon Fraternity by serving coffee and muffins to the residents of a local nursing home. The chapter also participated in Relay for Life. The chapter had the highest cumulative and semester GPA of all Greek organizations on campus.

Xi Tau

Millersville University completed their Adopt-A-Highway community service project. The chapter ranked second on campus in academics.

Xi Upsilon

Northeastern University hosted a community event at which Heather Whitestone McCallum, Miss America 1995, gave a presentation, discussing the challenges she has faced as a hearing-impaired person.

Xi Phi

University of Missouri/Kansas City held their annual "Big Man on Campus" event, with proceeds going to Children's Mercy Hospital. Members also made Valentines for the hospital's patients. Xi Phi held the Turtle Ball.

Xi Chi

Robert Morris University organized a benefit to raise funds for the Cystic Fibrosis Foundation.

Xi Psi

Grand Valley State University sponsored a local family during the holidays, with help from other students on campus. Their total chapter GPA is above the All-Women's average, and they are ranked second academically out of all sororities on campus.

Omicron Beta

Richard Stockton College of New Jersey held Hoops for Hearing, a popular basketball tournament which raised funds to help a little boy who was born deaf and blind.



The Xi Upsilon Chapter (Northeastern University) with Heather Whitestone McCallum, Miss America 1995



The Omicron Gamma Chapter's (Ohio University) new members.

Omicron Gamma

Ohio University donated to the victims of Hurricane Katrina. The chapter supported Habitat for Humanity, and held their basketball tournament, Hoops for Hearing, in which the Greek community participated. Omicron Gamma is above the All-Women's and All-Sorority GPA on campus.

Omicron Epsilon

Arkansas State University The new member class helped the Jonesboro Fire Department install and test fire detectors in homes around the neighborhood.

Omicron Mu

University of South Carolina/Upstate participated in the March of Dimes Spartanburg Area Walk America kickoff. The chapter visited children at the South Carolina School for the Deaf and Blind to work on craft projects with them.

Omicron Nu

University of Windsor
volunteered for a city-wide youth basketball skills competition. The chapter also worked with the local Optimist Club on the "Communication Contest for the Deaf and Hard of Hearing," which gave hearing-impaired youths the chance to win a scholarship.

Omicron Sigma

Gallaudet University
ushered for the university's Theatre Department for their performance of *Much Ado About Nothing*, and also assisted the National Deaf Dance Academy with their spring performance.

Pi Alpha

University of Florida
coordinated the first annual Skeet Shoot Philanthropy. The chapter also participated in the Dance Marathon 5K Run/Walk, with all proceeds going to the Children's Miracle Network.

Pi Beta

University of Hartford
sponsored the second annual Turtle Tumble which raised money for the Alexander Graham Bell Association for the Deaf and Hard of Hearing. The chapter also participated in a breast cancer walk and collected canned goods for the homeless. Pi Beta has the highest cumulative GPA of all sororities on campus.

Pi Gamma

California State University/Northridge
held a book drive for a deaf and hard of hearing school. The chapter held a campus-wide event hosted by television personality, producer, and comedian, Steve Hofstetter, which raised money for speech and hearing and the Delta Zeta Foundation.

Pi Epsilon

Clemson University
collected donations for the victims of Hurricanes Katrina and Rita. At Region XVII Day, nine new members and two initiated members received awards for the highest GPAs.

Pi Zeta

Arizona State University
sponsored, with the campus Panhellenic, a speaker who made a presentation on risk management. Members volunteered for the FDR Golf Tournament. Pi Zeta was awarded a Full Occupancy brick from Adelphi Commons at the university's Greek Awards.

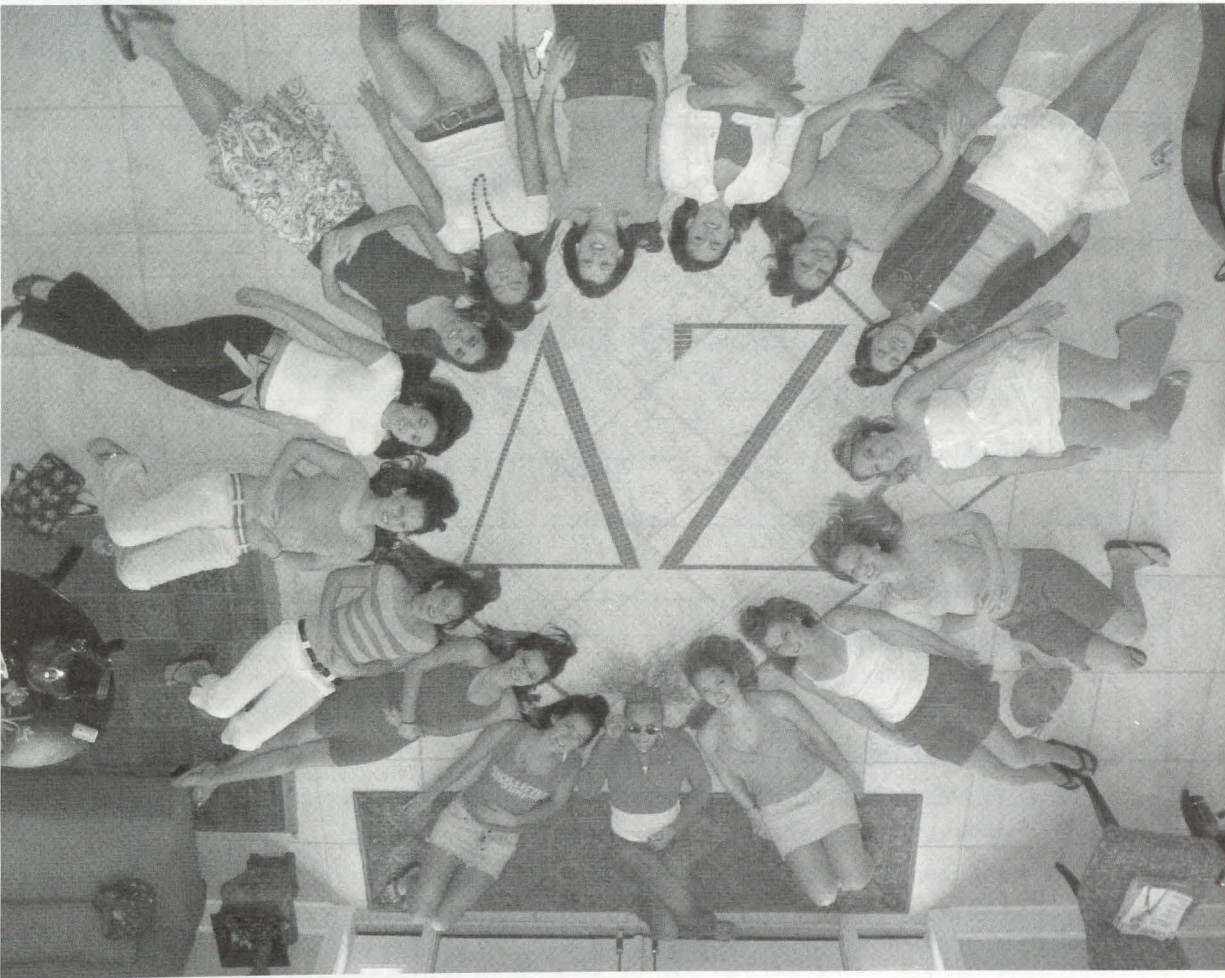
*The Pi Alpha Chapter
(University of Florida)*



IS YOUR CHAPTER MISSING?

The LAMP provides guidelines and report forms to all chapters which contain deadlines, requirements for material to be submitted, and photograph requirements. We want *your* chapter to be a part of *The LAMP*. If you don't see your chapter listed, it is because that chapter did not file their *LAMP* Report with the Editor or because the information was not received by the deadline specified on the Report.

If you have any questions regarding submissions, please contact Nancy Brewer, Director of Communications and Editor of *The LAMP*, at National Headquarters by mail at 202 E. Church Street, Oxford, OH 45056, by phone at 513/523-7597, or via e-mail at LAMP@dzshq.com.



DELTA ZETA RECRUITMENT INTRODUCTION FORM

This form is designed to introduce a young woman to Delta Zeta Sorority for consideration of membership.

Legacy: ☐ Yes ☐ No

Name _____ College/University _____

Home address _____

City

State

Zip

Campus address _____

City

State

Zip

High school attended _____ GPA _____

Year in College: ☐ Freshman ☐ Sophomore ☐ Junior ☐ Senior

Is this woman a transfer student? ☐ Yes ☐ No

If yes, college previously attended _____

Please describe any organization with participation and leadership in each, interest and special talents, job and volunteer work experience. _____

Please attach additional sheets if necessary

Parents' names _____

Legacy Information

Delta Zeta relatives (check all that apply): ☐ Mother/Stepmother ☐ Grandmother/StepGrandmother ☐ Sister/Step Sister

Have they discussed Delta Zeta with her? ☐ Yes ☐ No

Name of Delta Zeta _____ Initiation chapter _____

First

Maiden

Married

Phone _____ Address _____

Area code

City

State

Zip

Other Greek affiliated relatives _____

Check all that applies to you:

- ☐ I know this potential member personally.
- ☐ I know the potential member's family.
- ☐ I have discussed Delta Zeta with the potential member.
- ☐ This reference was voluntarily sent because I believe this potential member would make an exceptional Delta Zeta.
- ☐ This reference was requested by an alumnae or collegiate chapter.
- ☐ I do not know this potential member personally. The information has been obtained from reliable sources.

Please complete and submit the form on page 19 with this form.
Form is also available online at www.deltazeta.org. Go to DZ Life/Download Forms.



In this issue, you will find the Delta Zeta Recruitment Introduction Form. By participating in this process, you are fulfilling your personal responsibility to the future of Delta Zeta Sorority, and ensuring our continuing success. Many chapters will start formal recruitment at the beginning of their fall school terms. Your participation in the recruitment process will ensure that our college chapters are aware of quality women who have a personal association with one or more of our alumnae, and who will be participating in those recruitment periods.

We all know outstanding young women through our other associations. Perhaps we also think that many of these women would be wonderful Delta Zetas—collegians who are assets to their campuses and communities, and active and contributing alumnae after graduation. Our alumnae are our number one resource in recruiting these women by letting them know about Delta Zeta before they leave for college. You are often the first contact potential members have with Delta Zeta Sorority, and the impression you make is crucial before they meet the women of the college chapters.

How can you play an integral role in the recruitment process? Simply by taking a few moments to complete a Recruitment Introduction Form for each of the women you want to recommend and sending it to the College Chapter Director listed in the Directory of this issue of *The LAMP*. At the same time, please send a copy to National Headquarters. We will then forward it to the summer address of the chapter and/or Vice President of Membership (or, make sure it gets into the hands of the appropriate person).

The Recruitment Introduction Form allows you to make your recommendations before recruitment. Thank you for your participation in our recruitment process. We appreciate your effort to aid Delta Zeta Sorority in continuing to recruit quality members. Your reference letters on potential members are important!

DELTA ZETA REFERENCE AND LEGACY POLICY

1. A Delta Zeta legacy is defined as the biological or adopted daughter, granddaughter, great-granddaughter, or sister of an initiated member (alive or deceased) of any Delta Zeta chapter. This may include half-sisters or step relations if the relationship to the Delta Zeta member has been a close one. A Delta Zeta legacy shall be invited to at least one invitational formal membership recruitment party if the chapter received a written voluntary reference and/or a legacy introduction form prior to the formal membership recruitment period.
2. A legacy receiving an invitation to the preference event shall be placed on the chapter's first bid list.
3. A prospective member receiving a written voluntary reference from a Delta Zeta alumna shall be invited to at least one invitational formal membership recruitment event.

From Delta Zeta Standing Rules and Policies.

Recommendation Information

(Include with form on previous page.)

Information submitted by _____ ☐ Alumna ☐ or Collegian

Address _____

City _____ State _____ Zip _____

Initiating chapter _____ College or University _____

Year of initiation _____ Phone _____

I recommend this woman? ☐ Yes ☐ No I have known her for _____ years.

Comments: _____

Signature _____ Date _____

- Please attach additional information you may have and wish to share regarding this potential member.
- Please send one copy to Delta Zeta National Headquarters and one copy to the College Chapter Director
- Addresses may be found in the Spring issue of *The LAMP* or visit www.deltazeta.org/For Sisters Only/Connections.
- Please attach photo if possible.
- This form may be copied for additional use.

Chapter use only

Rec'd _____ Ack _____

Directory

For a complete version of the directory, please call
1-800-6-ALUMNA

To change your name or address, to order
a DZ DeZigns catalog, for information on
the magazine program or other Delta Zeta
programs, contact:

**National Headquarters, 202 East Church St.
Oxford, Ohio 45056**

Phone: (513) 523-7597

Fax: (513) 523-1921

Website: Visit www.deltazeta.org

National Council

NATIONAL PRESIDENT

Debbie Raziano
117 Ashton Road, Luling, LA 70070

NATIONAL VICE PRESIDENT OF MEMBERSHIP DEVELOPMENT

Michelle Albrecht Smith
4319 Canehill Avenue, Lakewood, CA 90713

NATIONAL VICE PRESIDENT OF COLLEGE CHAPTER OPERATIONS

Tracy Wilson LeSieur
2805 Downing Circle, Birmingham, AL 35242

NATIONAL VICE PRESIDENT OF ALUMNAE AFFAIRS

Doretta Pugh Osburn
1016 Wethersfield Crossing, Hurricane, WV 25526

NATIONAL SECRETARY

Sharon Moncrief Slovinski
32787 Waverly Street, LaGrange, MO 63448

NATIONAL TREASURER

Susan Hein Feuerherm
3849 Conroy Trail, Inver Grove Heights, MN 55076

NATIONAL DIRECTOR OF MEMBERSHIP SERVICES

Phyllis Sundberg Davis
124 Beatrice Lane, Brandon, MS 39047

NATIONAL DIRECTOR OF EXTENSION

Kathi Bray Heatherly
528 Alexandria Drive, Naperville, IL 60565

NATIONAL DIRECTOR OF PHILANTHROPY

Chris Kolodgie Kern
109 Woodridge Road, St. Louis, MO 63122

PAST NATIONAL PRESIDENT

Karly Klemp Burns
331 7th Avenue North, Tierra Verde, FL 33715

NATIONAL PANHELLENIC CONFERENCE DELEGATE

Lynnda Wolf Hoefler
2981 Telber Court, Stow, OH 44224

NATIONAL PANHELLENIC CONFERENCE ALTERNATES

1st Alternate - Kathi Bray Heatherly
528 Alexandria Drive, Naperville, IL 60565
2nd Alternate - Phyllis Sundberg Davis
124 Beatrice Lane, Brandon, MS 39047
3rd Alternate - Karly Klemp Burns
331 7th Avenue North, Tierra Verde, FL 33715

Delta Zeta Foundation

PRESIDENT

Ruth Weider Patterson
3623 Devereaux Road, Columbia, SC 29205

VICE PRESIDENT

Sandra Sebrell Bailey
639 N. Portage Path, Akron, OH 44303

VICE PRESIDENT-MUSEUM

Norma Minch Andrisek
319 Janice Drive, Berea, OH 44017

SECRETARY/TREASURER

Marvona Easley Tavlin
6320 Rogers Circle, Lincoln, NE 68506

TRUSTEE

Anne Marie Jones Gavin
3264 Swan Drive, Vineland, NJ 08361

TRUSTEE

Sonja Nay Wise
1813 Mallard Court, West Lafayette, IN 47906

MEMBER

Debbie Raziano
117 Ashton Road, Luling, LA 70070

Committees

FINANCE/INVESTMENTS

Marvona Easley Tavlin
6320 Rogers Circle, Lincoln, NE 68506

GRADUATE SCHOLARSHIPS

Elizabeth Chilton Gryder
714 N. Cambria Street, Anaheim, CA 92801

GALLAUDET UNIVERSITY

Joan Dondrea Lowry
578 Yarmouth Drive, Bay Village, OH 44140

HOUSE EAR INSTITUTE

Marilyn Fey Ghysels
8442 Lindante Drive, Whittier, CA 90603

LEACH SCHOLARSHIPS

Betty Paul DeWitt
23630 Oak Rest Lane, Harbor City, CA 90710

UNDERGRADUATE SCHOLARSHIPS

Vicki Bowman
3050 W. Ball Road #126, Anaheim, CA 92804-3852

WEBSITE/COMMUNICATIONS

Jeanine Petersen Triplett
7203 Limestone Court, Crestwood, KY 40014

National Historical Museum and Headquarters

NATIONAL HEADQUARTERS

202 East Church Street, Oxford, OH 45056
513/523-7597 (FAX) 513/523-1921

EXECUTIVE DIRECTOR

Cynthia Winslow Menges

DIRECTOR OF COMMUNICATIONS -

EDITOR *The LAMP*
Nancy E. Brewer

CHAPTER SERVICES DIRECTOR

Mandi Wise

CHAPTER CONSULTANTS

Mandy Blackhurst	Summer Hernandez	Elizabeth Urso
Megan Cosner	Kristin Houghton	Cassie Wilkinson
Kristen Field	Meghan Person	

CURATOR/ARCHIVIST

Betty Johnson Gurr-Tomblinson
210 Mt. Pleasant Drive, Apt. 110, Monroe, OH 45050

MAGAZINE PROGRAM, INSURANCE, & NETWORKING

National Headquarters, 202 East Church Street,
Oxford, OH 45056 513/523-7597

National Standing Committees

ACADEMICS

Kara Barker Price
5504 Brocks Pass, Hoover, AL 35244

AWARDS (ALUMNAE AND COLLEGIATE)

Karen Severloh Moffitt
2075 Los Robles Avenue, San Marino, CA 91108

CONSTITUTION

Anne Marie Jones Gavin
3264 Swan Drive, Vineland, NJ 08361

FIELD ACTIVITIES

Karly Klemp Burns
331 7th Avenue North, Tierra Verde, FL 33715

FINANCE

Susan Hein Feuerherm
3849 Conroy Trail, Inver Grove Heights, MN 55076

HISTORY

Florence Hood Miner
1917 Five Iron Drive, Castle Rock, CO 80104

HOUSING ADMINISTRATOR

Norma Minch Andrisek
319 Janice Drive, Berea, OH 44017

JUDICIARY

Cathy Irvin Painter
4108 Mek Drive, Austin, TX 78731

MUSIC

Michele Taylor Benoit
203 East 6th Street, Thibodaux, LA 70301

NEW MEMBER EDUCATION

Jennifer Yeagley Anderson
1014 Park Village Drive, Louisville, OH 44641

PHILANTHROPY - ALUMNAE

Karen Woods Miron
2353 Deer Trail NE, Grand Rapids, MI 49505

PHILANTHROPY - COLLEGIATE

Refer to National Director of Philanthropy

PROGRAM DEVELOPMENT

Christine McGill
46 Pilgrim Street, Apt. 201, Cambridge, MA 02139

PUBLICATIONS

Marvona Easley Tavlin
6320 Rogers Circle, Lincoln, NE 68506

RECRUITMENT

Ann Gurley Morrow
7475 Clinton Road, Paducah, KY 42001

RISK MANAGEMENT

Heather Angove
279 Brooklyn Avenue, San Jose, CA 95128

RITUAL

Patricia Menendez Tector
4704 Cypress Ford Drive, Fuquay-Varina, NC 27526

National Special Committees

COLLEGE CHAPTER FINANCE

Diane Stecher
6003 Kensington Way, Imperial, MO 63052-2369

CONVENTION CHAIRMAN

Kimberly Harris Bath
1048 Fawnview Drive, Montgomery, AL 36117

STATUS

Judy Harwood
211 Lathrop Lane, Manchester Center, VT 05255

TECHNOLOGY DEVELOPMENT

Pamela McClure Cronenwett
70 Charter Court, Manistee, MI 49660

TRAINING

JoAnn Arnholt
29 Sterling Road, Princeton, NJ 08540

Area Alumnae Directors

BLUE RIDGE - Virginia, West Virginia, North Carolina,
South Carolina, Washington, DC
AAD: Myndi Davidson Carter
1001 Worcaster Place, Charlotte, NC 28211

Membership Chairman

Amanda Ingram
1074 Otis Blvd., Spartanburg, SC 29302

Development Chairman

Pat Clarke Bliedorn
8555 Sunningdale Terrace, Chesterfield, VA 23832

Public Relations Chairman

Deanna Hall Parker
1003 Moss Creek Drive, Hurricane, WV 25526

CENTRAL PLAINS - North Dakota, South Dakota,
Nebraska, Colorado, Kansas, Missouri, Iowa, Minnesota
AAD: Carolee Lewis Followill
822 Oak Park Boulevard, Cedar Falls, IA 50613

Membership Chairman

Anita Moix Tienken
4917 Whitney Drive, Independence, MO 64055

Development Chairman

Rhonda Reifschneider Roe
7998 Inland Lane N., Maple Grove, MN 55311

Public Relations Chairman

Hope Jones Corizzo
3716 Clayton Drive, Leavenworth, KS 66048

GREAT LAKES - Michigan, Ohio, Canada, United Kingdom
AAD: Mella Cooks Davies
2936 Brighton Road, Shaker Heights, OH 44120

Membership Chairman

Glenna VanderMeer Paukstis
502 N. Lakeshore Drive, Ludington, MI 49431

Development Chairman

Dr. Sandra Harding Alspach
24 E. 14th Street, Holland, MI 49423

Public Relations Chairman

Denise Sabo Brenner
230 East Cooke Road, Columbus, OH 43214

GREAT WESTERN - Washington, Oregon, California, Arizona,
Nevada, Utah, Wyoming, Idaho, Montana, Alaska, Hawaii
AAD: Beckey Robinson Romenesko,
9303 Oakbourne, Santee, CA 92071

Membership Chairman

Desiree Finigan
6547 West 85th Place, Los Angeles, CA 90045

Development Chairman

Betty Suttle Loftus
11491 Forty Niner Circle, Gold River, CA 95670

Public Relations Chairman

Donna Sinclair
814 Hacienda Drive, El Cajon, CA 92020

MID-AMERICA - Wisconsin, Illinois, Indiana
AAD: Ann E. Langel
6418 Toribrooke Lane, Madison, WI 53719

Membership Chairman

Jo Ann Hempfling Sparling
2800 Woodbridge Drive, Muncie, IN 47304

Development Chairman

Megan Farrell Skelly
1217 Tower Drive, Ottawa, IL 61350

Public Relations Chairman

Jean Gileno
25 Napanee Drive, Carmel, IN 46032

MID-ATLANTIC - Pennsylvania, Delaware,
New Jersey, Maryland
AAD: Melissa Seaman Waldron
601 Ohio River Blvd., 2nd Floor, Pittsburgh, PA 15202

Membership Chairman

Michele Driscoll
8202 Featherhill Road, Apt. 204, Perry Hill, MD 21128

Development Chairman

Melissa Rennie
159 Chapel Towne Circle, Nottingham, MD 21236

Public Relations Chairman

Linda Cademartori Barba
800 Northwood Avenue, Cherry Hill, NJ 08002

NORTHEAST - Maine, Vermont, New Hampshire,
Massachusetts, Connecticut, Rhode Island, New York
AAD: Beth Luton
4961 Surrey Lane, Liverpool, NY 13088

Membership Chairman

Meghan K. Flynn Olynciw
19 Rogers Hill Road, Waterford, CT 06385

Development Chairman

Melinda Roy
18 Gary Maietta Parkway, Unit 3, South Portland, ME 04106

Public Relations Chairman

Katie Isaac Franklin
102 Colebourne Road, Rochester, NY 14609

SOUTH CENTRAL - Kentucky, Tennessee, Louisiana,
Mississippi, Arkansas, Oklahoma
AAD: Stancy Orr Bond
4156 Destin Drive, Olive Branch, MS 38654

Membership Chairman

Heather Brown
261 Barfield Crescent Rd., Apt. 1603, Murfreesboro, TN 37128

Development Chairman

Sherry Shadwick Dotts
9741 E. 33rd Street #1005, Tulsa, OK 74146

Public Relations Chairman

Alecia Soyk Manning
P.O. Box 3132, Pikeville, KY 41502

SOUTHEAST - Georgia, Florida, Alabama,
Puerto Rico, Virgin Islands
AAD: Christie Dale Harmon
133 Featherstone Lane, Hampton Cove, AL 35763

Membership Chairman

Rebecca Shull Moeller
28 Woodland Trail, Newnan, GA 30263

Development Chairman

Josi Mandese
1625 Pelican Drive, Merritt Island, FL 32952

Public Relations Chairman

Melissa Hood Bullard
106 Covetree Circle, Madison, AL 35757

SOUTHWEST - Texas, New Mexico
AAD: Heather Jerden Anderson
548 Edgeview Drive, Grand Prairie, TX 75052

Membership Chairman

Andi Cooper Howard
6212 Kenosha Drive, Lubbock, TX 79413

Development Chairman

Marcie Berry
8702 Chipping Rock, Sugarland, TX 77479

Public Relations Chairman

Heidi Waltenbaugh Parker
6210 Bankston Lane, Beaumont, TX 77706

Regional Collegiate Coordinators

REGION I - Maine, Vermont, New Hampshire,
Massachusetts, Connecticut, Rhode Island, New York
RCC: Laura Baxter Hedenberg
4 Wotton Lane, Burlington, CT 06013-2302

REGION II - New Jersey, Eastern Pennsylvania

RCC: Marlo Dorsey
322 W. 57th Street #16D, New York, NY 10019

REGION III - Maryland, Western Pennsylvania

RCC: Gayle Evans Staub
6542 Baywood Drive, Harrisburg, PA 17111

REGION IV - West Virginia, Virginia, Washington, DC

RCC: Refer to National Vice President of College
Chapter Operations

REGION V - Ohio

RCC: Pam Gelhausen Asher
400 Hillbrook Drive, Cuyahoga Falls, OH 44223

REGION VI - Michigan, Canada

RCC: Andrea Kovacs Henderson
7995 Thornhill Drive, Ypsilanti, MI 48197-6159

REGION VII - Indiana

RCC: Tina Thien Hayes
4617 South Bluff Road, Indianapolis, IN 46217

REGION VIII - Iowa, Nebraska, Wisconsin, Minnesota, South Dakota, North Dakota

RCC: Chris Martin
2135 S. 14th, Lincoln, NE 68502

REGION IX - Missouri, Colorado, Kansas

RCC: Stacey Wheeler Slaughter
9623 West 96th Place, Arvada, CO 80004

REGION X - California, Washington, Oregon, Montana, Idaho, Alaska, Hawaii, Nevada, Arizona, Utah, Wyoming

RCC: Karen Martin Campbell
441-101 Cranston Court, Long Beach, CA 90803

REGION XI - Oklahoma, Louisiana, Mississippi, Arkansas

RCC: Jill Jackson Swift
2107 Greystone Cove, Jonesboro, AR 72401

REGION XII - Texas, New Mexico

RCC: Aileen Salinas Roel
5426 Excelllo Path, San Antonio, TX 78247-5834

REGION XIII - Tennessee, Kentucky

RCC: Julie Stewart Pride
864 Nutwood Street, Bowling Green, KY 42103

REGION XIV - North Carolina

RCC: Christy Phillips
425 Lorna Street, Charlotte, NC 28205

REGION XV - Alabama, Florida

RCC: Kathleen R. Hudson
1426 Deirdre Drive, Ruskin, FL 33570-4101

REGION XVI - Illinois

RCC: Sara Groom Boucek
1026 North Wilshire Lane, Arlington Heights, IL 60004

REGION XVII - Georgia, South Carolina

RCC: Heather Busby Hanner
359 Patrick Circle, Jenkinsburg, GA 30234

CCD Directory Listing

College Chapter Director Listing

Alabama

UNIVERSITY OF ALABAMA
Shay Victoria Lawson
1510 Plantation Lane
Tuscaloosa, AL 35405

UNIVERSITY OF ALABAMA/HUNTSVILLE
April Freeman Gero
7308 Oldstone Drive
Owens Cross Roads, AL 35763

AUBURN UNIVERSITY
Elizabeth H. Mueller
1551 N. College Street
Auburn, AL 36830

AUBURN UNIVERSITY/MONTGOMERY
Elizabeth Marie Hitch
2055 Hyundai Blvd.
Montgomery, AL 36105

JACKSONVILLE STATE UNIVERSITY
Gina Moses Mabrey
501 South 5th Street
Gadsden, AL 35901

Arizona

ARIZONA STATE UNIVERSITY
Lee Ann Martin Witt
12240 N. 86th Street
Scottsdale, AZ 85260

Arkansas

ARKANSAS STATE UNIVERSITY
Samantha Davis Glover
310 Elm Avenue
Jonesboro, AR 72401

ARKANSAS TECH UNIVERSITY
Brittany Alayne Brough
1813 E. 12th Street
Russellville, AR 72802

UNIVERSITY OF CENTRAL ARKANSAS
Carrie Bayer Short
2460 Remington Road
Conway, AR 72032

California

CALIFORNIA STATE UNIVERSITY/FRESNO
Cam Maloy
2439 E. Soquel Circle
Fresno, CA 93720-4640

CALIFORNIA STATE UNIVERSITY/FULLERTON
Sandy Shaddix Hall
1610 East 20th Street
Santa Ana, CA 92705

CALIFORNIA STATE UNIVERSITY/LONG BEACH
Kelly Janousek
18527 Edgebrook Lane
Huntington Beach, CA 92648

CALIFORNIA STATE UNIVERSITY/LOS ANGELES
Shoshana Yudin
12109 Sylvan River #123
Fountain Valley, CA 92708

CALIFORNIA STATE UNIVERSITY/NORTHRIDGE
Lorrie Preuss Samalot
19726 Satcoy Street
Winnetka, CA 91306

LOYOLA-MARYMOUNT UNIVERSITY
Susan Wheeler
3214 S. Barrington Avenue, Apt. C
Los Angeles, CA 90066-1143

UNIVERSITY OF SAN FRANCISCO
Rebecca Gligo
1671 Grove Road
El Cajon, CA 92020

SAN JOSE STATE UNIVERSITY
Theresa Higgins
131 Belridge Drive
Los Gatos, CA 95032

Canada

UNIVERSITY OF WINDSOR
Danielle Brown
1460 Henry Ford Centre Drive
Windsor, Ontario, CANADA N8Y 2V1

Colorado

UNIVERSITY OF DENVER
Kate Bleakley
8147 S. Wabash Court
Centennial, CO 80112

UNIVERSITY OF NORTHERN COLORADO
Jenny Dybala Hartfelder
7367 S Newport Way
Centennial, CO 80112

Connecticut

UNIVERSITY OF CONNECTICUT
Julie Shea Moore
5 New Light Drive
Danbury, CT 06810

UNIVERSITY OF HARTFORD
Rachel Bagby
283 S. Elm Street
Windsor Locks, CT 06096-2619

District of Columbia

GALLAUDET UNIVERSITY
Refer to National Vice President of College
Chapter Operations

Florida

FLORIDA STATE UNIVERSITY
Amy Anderson Riley
3590 Ocleon Drive
Tallahassee, FL 32312

UNIVERSITY OF TAMPA
Tycene Parrott
6718 Mirror Lake Avenue
Tampa, FL 33634

UNIVERSITY OF FLORIDA
Kimberly Kibler Vaughn
13729 SW 4th Lane
Newberry, FL 32669

Georgia

COLUMBUS STATE UNIVERSITY
Leslie Clack
5425 Ray Drive
Columbus, GA 31904

GEORGIA COLLEGE AND STATE UNIVERSITY
Refer to RCC - Region XVII

GEORGIA STATE UNIVERSITY
Carlyn Rieser Kappy
1740 Fireside Place
Alpharetta, GA 30004

UNIVERSITY OF GEORGIA
Denise Marie Lobodinski
2014 Stratford Place
Marietta, GA 30067

NORTH GEORGIA COLLEGE AND STATE
UNIVERSITY
Rebecca McClellan Pedersen
8055 Brookstone Lane
Gainesville, GA 30506

Illinois

DEPAUL UNIVERSITY
Julie McDermott
3409 N. Elaine Place #3
Chicago, IL 60657

EASTERN ILLINOIS UNIVERSITY
Beth Daily Wiley
16302 NCR 100E
Arthur, IL 61911

EUREKA COLLEGE
Joan Paxson
1022 Miller Street, Apt. C
Washington, IL 61571

ILLINOIS STATE UNIVERSITY
Heidi Elizabeth Oettel
100 Northfield Drive 10-D
Normal, IL 61761

UNIVERSITY OF ILLINOIS
Brenda Lindsey
1003 N. Lake Pointe Lane
Mahomet, IL 61853

NORTHERN ILLINOIS UNIVERSITY
Gretchen Waltenbaugh
612 W. Harrison #15
Oak Park, IL 60304

NORTHWESTERN UNIVERSITY
Stacey Patricia Smith
517 W. Oakdale #211
Chicago, IL 60657

SOUTHERN ILLINOIS UNIVERSITY
Tara Raeber
1930 Yankeetown Lane
Prairie du Rocher, IL 62277

WESTERN ILLINOIS UNIVERSITY
Barbara Brumett Baily
14 Elmo
Macomb, IL 61455

Indiana

BALL STATE UNIVERSITY
Laura Rasche
3090 Armory Drive
Indianapolis, IN 46208

DEPAUL UNIVERSITY
Refer to RCC - Region VII

INDIANA UNIVERSITY
Jennifer Carpenter Hanley
528 W. 43rd Street
Indianapolis, IN 46208

PURDUE UNIVERSITY
Missy Lewis
9318 Eden Woods Court
Indianapolis, IN 46260

UNIVERSITY OF SOUTHERN INDIANA
Shelly Bastin Kleiman
18081 Highway 57
Evansville, IN 47725

Iowa

UNIVERSITY OF IOWA
Refer to RCC - Region VIII

IOWA STATE UNIVERSITY
Julie Kiefer
1718 Coolidge Drive
Ames, IA 50010

Kansas

FORT HAYS STATE UNIVERSITY
Vicki Melkus Johansen
2803 Barclay Drive
Hays, KS 67601

Kentucky

EASTERN KENTUCKY UNIVERSITY
Kara Tatum
2020 Merrick Drive #9
Richmond, KY 40475

UNIVERSITY OF KENTUCKY
Abigail Elizabeth Scott
420 Winfield Place
Lexington, KY 40517

UNIVERSITY OF LOUISVILLE
Jeanine Petersen Triplett
7203 Limestone Court
Crestwood, KY 40014

MOREHEAD STATE UNIVERSITY
Vivian Cyrus
406 Jewell Lane
Morehead, KY 40351

NORTHERN KENTUCKY UNIVERSITY
Jill Voet
924 Lost Valley Court
Villa Hills, KY 41017

Louisiana

LOUISIANA STATE UNIVERSITY
Doraine Bonnez Wilson
19052 W. Pinnacle Circle
Baton Rouge, LA 70810

UNIVERSITY OF NEW ORLEANS
Jessica Duet
2401 Division Apt. G-47
Metairie, LA 70001

NICHOLLS STATE UNIVERSITY
Kelly Rodrigue Soignet
127 Esplanade Blvd.
Thibodaux, LA 70301

Maine

UNIVERSITY OF MAINE
Billie Jordan Roach
5748 Memorial Union
Orono, ME 04469

Maryland

FROSTBURG STATE UNIVERSITY
Jamie Metz Winters
301 Laurelwood Drive, Box B6
Lonaconing, MD 21539

Massachusetts

NORTHEASTERN UNIVERSITY
Christine Danielson
157 Eastern Avenue, Apt. 203
Manchester, NH 03104

Michigan

CENTRAL MICHIGAN UNIVERSITY
Refer to RCC - Region VI

EASTERN MICHIGAN UNIVERSITY
Refer to RCC - Region VI

FERRIS STATE UNIVERSITY
Leah Nixon
423 Finley
Big Rapids, MI 49307

GRAND VALLEY STATE UNIVERSITY
Gwendolyn McHugh Shick
14684 8th Avenue
Marne, MI 49435

MICHIGAN TECHNOLOGICAL UNIVERSITY
Tommy Gilpin
112 W. Douglass
Houghton, MI 49931

NORTHWOOD UNIVERSITY
Jaime Prevost Kurowski
1003 Airfield Lane
Midland, MI 48642

WAYNE STATE UNIVERSITY
Kristen Shymanovitz Trudeau
3412 Smith Street
Dearborn, MI 48124

WESTERN MICHIGAN UNIVERSITY
Lauren Davis Campbell
61270 South VanKai
Mattawan, MI 49071-8511

Minnesota

MINNESOTA STATE UNIVERSITY/MOORHEAD
Tricia Huson Anton
6605 Broadway St NW
Moorhead, MN 56560

ST. CLOUD STATE UNIVERSITY
Lesley Schreiber Farnham
7239 James Avenue South
Richfield, MN 55423

Missouri

CENTRAL MISSOURI STATE
Jennifer O'Reilly
1520 Lynette
Liberty, MO 64068

LINDENWOOD UNIVERSITY
Kathy Thompson
#3 Amber Jack Court
Ballwin, MO 63021

MISSOURI STATE UNIVERSITY
Margo Westphal Griffith
5610 South Roanoke
Springfield, MO 65810

UNIVERSITY OF MISSOURI/KANSAS CITY
Niki Rittenhouse
6920 NE 55th Street
Kansas City, MO 64119

UNIVERSITY OF MISSOURI/ST. LOUIS
Molly Bommarito
337 W. Argonne Drive
Kirkwood, MO 63122

NORTHWEST MISSOURI STATE
Deb Johnson Toomey
1648 North College Drive
Maryville, MO 64468

TRUMAN STATE UNIVERSITY
Bridget Stepnoski Morton
902 E. Northtown Road, P.O. Box 265
Kirksville, MO 63501

WILLIAM JEWELL COLLEGE
Michelle Marie Moseman
311 NW 110 Terrace
Kansas City, MO 64155

Nebraska

CREIGHTON UNIVERSITY
Refer to RCC - Region VIII

NEBRASKA WESLEYAN
Refer to RCC - Region VIII

Nevada

UNIVERSITY OF NEVADA/LAS VEGAS
Jennifer Parnell
10175 Spring Mountain Road #2147
Las Vegas, NV 89117

New Hampshire

PLYMOUTH STATE UNIVERSITY
Jhana Rondos

15 Judith Drive
Concord, NH 03301-5934

New Jersey
RICHARD STOCKTON COLLEGE OF NEW JERSEY
Barbara Horner
307 N. Union Avenue
Margate, NJ 08402

ROWAN UNIVERSITY
Coleen Barricelli
513 Lantern Way
Franklinville, NJ 08322

THE COLLEGE OF NEW JERSEY
Bethany McLaughlin
720 North 5th Street, Apt. 202
Philadelphia, PA 19123

New Mexico
NEW MEXICO STATE UNIVERSITY
Jennifer West
PO Box 2782
Mesilla Park, NM 88047

New York
CLARKSON UNIVERSITY
Pam Blevins
6711 State Highway 56
Potsdam, NY 13676-3507

North Carolina
APPALACHIAN STATE UNIVERSITY
Elena Tribby Taylor
135 Dell Coffey Road
Boone, NC 28607

BARTON COLLEGE
Amanda Denise Humphrey
4700 Hudson Road NW
Wilson, NC 27896

EAST CAROLINA UNIVERSITY
Victoria McIntosh
1944-202 Tara Court
Greenville, NC 27858

LENOIR-RHYNE COLLEGE
Krystal Ramsey Phillips
P.O. Box 7228
Hickory, NC 28603

MARS HILL COLLEGE
Robin Cole
P.O. Box 6712
Mars Hill, NC 28754

UNIVERSITY OF NORTH CAROLINA/CHARLOTTE
Laura Misiunas
17039 Turning Stick Court
Charlotte, NC 28213

UNIVERSITY OF NORTH CAROLINA/
WILMINGTON
Jennifer Jernigan Slusser
703 E. Morris Circle
Dunn, NC 28332-8334

NORTH CAROLINA STATE UNIVERSITY
Melissa Funke
2800 Trailwood Pines Lane #204
Raleigh, NC 27603

WAKE FOREST UNIVERSITY
M.L. Gough
Office of Student Life
221 Elliott University Center
Greensboro, NC 27402

WESTERN CAROLINA UNIVERSITY
Jennifer Haynes Collins
927 South Country Club Drive
Cullowhee, NC 28723

Ohio
ASHLAND UNIVERSITY
Refer to RCC - Region V

BALDWIN-WALLACE COLLEGE
Lauri Campbell Walburn
959 Bayberry Drive
Medina, OH 44256

BOWLING GREEN STATE UNIVERSITY
Celeste Constantino Giansos
5019 Larkhaven
Toledo, OH 43623-2055

KENT STATE UNIVERSITY
Kelly Wright-Gonos
5640 Caranor Drive
Kent, OH 44240

MIAMI UNIVERSITY
Susan Vaughn
628 Sanders Drive
Hamilton, OH 45013

OHIO NORTHERN UNIVERSITY
Jackie Lapp-Lee
194 Overtrick Drive
Delaware, OH 43015

OHIO STATE UNIVERSITY
Refer to RCC - Region V

OHIO UNIVERSITY
Andrea Kusta
68 Aldrich Road
Columbus, OH 43214

OHIO WESLEYAN UNIVERSITY
Sharla Klich Buxton
4956 Wallington Drive
Hilliard, OH 43026

WRIGHT STATE UNIVERSITY
Rebecca Holmes
108 Mallard Glen Drive #2
Centerville, OH 45458

YOUNGSTOWN STATE UNIVERSITY
Madonna Barwick
1014 E. Shawnee Trail
Youngstown, OH 44511-1344

Oklahoma
UNIVERSITY OF CENTRAL OKLAHOMA
Amber Park Tytenicz
20575 N. Triple XXX Road
Luther, OK 73054

NORTHEASTERN STATE UNIVERSITY
Connie Parnell
314 Dogwood Drive
Tahlequah, OK 74464-5108

NORTHWESTERN OKLAHOMA STATE
UNIVERSITY
Refer to RCC-Region XI

Pennsylvania
CALIFORNIA UNIVERSITY/PENNSYLVANIA
Robin Rudic
1405 Gill Hall Road
Jefferson Hills, PA 15025

CLARION UNIVERSITY
Jamie Bero
840 Wood Street, 265 Gemmell Student Ctr.
Clarion, PA 16214-1232

DREXEL UNIVERSITY
Kate Bay
2031 South Street, Apt. 118
Philadelphia, PA 19146

DUQUESNE UNIVERSITY
Rita DiLucia Warfield
1802 Orchid Street
Pittsburgh, PA 15207-247

EDINBORO UNIVERSITY
Diane DiOrio Raffle
12884 Forrest Drive
Edinboro, PA 16412

INDIANA UNIVERSITY/PENNSYLVANIA
Rebecca Guillouma O'Brien
1161 Winterset Road
Ebensburg, PA 15931

KUTZTOWN UNIVERSITY
Nicole Burkhardt
424 Bentley Ridge Blvd.
Lancaster, PA 17602

MANSFIELD UNIVERSITY
Karen Starnier Jacobson
3119 Cherry Flats Road
Covington, PA 16917

MILLERSVILLE UNIVERSITY
Refer to RCC - Region II

MUHLBERG COLLEGE
Meredith Horishny
415 Eagle Drive
Emmaus, PA 18049

PENNSYLVANIA STATE UNIVERSITY
Megan Thomas Gilpin
386 Plum Street
Bellefonte, PA 16823

UNIVERSITY OF PITTSBURGH
Kelly Waitkus Wetzel
22 Riverview Drive
Leetsdale, PA 15056

ROBERT MORRIS UNIVERSITY
Michelle Talik
247 Idlewood Road
Pittsburgh, PA 15235

SHIPPENSBURG UNIVERSITY
Megan Capuano
PO Box 688
New Kingstown, PA 17072

SLIPPERY ROCK UNIVERSITY
Jennifer Raabe Walters
122 Beechwood Blvd.
Butler, PA 16001-1603

TEMPLE UNIVERSITY
Jenny McKenna-Daily
563 Sunset Avenue
Maple Shade, NJ 08052

WEST CHESTER UNIVERSITY
Christine Patterson Mullery
1207 Braeburn Terrace
Lansdale, PA 19446

Rhode Island
BRYANT UNIVERSITY
Jen Ptaschnik
121 N. Main Street, Apt. 14
Mansfield, MA 02048

UNIVERSITY OF RHODE ISLAND
Erin West
32 Buoy Street
Jamestown, RI 02835

South Carolina
CLEMSON UNIVERSITY
Julie Hyatt Allen
16 Steadman Way
Greer, SC 29650

UNIVERSITY OF SOUTH CAROLINA/UPSTATE
Jill Bishop Brock
2650 Holly Springs Road
Inman, SC 29349

UNIVERSITY OF SOUTH CAROLINA
Diana Porter
407 South Bonham Drive
Columbia, SC 29205

WINTHROP UNIVERSITY
Catherine Kelly Lengers
14349 San Paolo Lane
Charlotte, NC 28277

Tennessee
MIDDLE TENNESSEE STATE UNIVERSITY
Cindy Stockdale White
515 Council Bluff
Murfreesboro, TN 37127

UNIVERSITY OF TENNESSEE/KNOXVILLE
Allison Jones
12699 Amberset Drive
Knoxville, TN 37922

Texas
ANGELO STATE UNIVERSITY
Pamela Ramirez
5320 Shani Lane
Odessa, TX 79766

UNIVERSITY OF HOUSTON
Sheryl Lynn Guiney
1415 Eldridge Parkway #1014
Houston, TX 77077

ST. MARY'S UNIVERSITY
Lori Ovalle
2423 W. Huisache Avenue
San Antonio, TX 78228-5110

STEPHEN F. AUSTIN STATE UNIVERSITY
Carrie Ross Hyland
4704 N. University Drive #228
Nacogdoches, TX 75965

TARLETON STATE UNIVERSITY
Julie Tennyson
1715 North Graham
Stephenville, TX 76401

TEXAS A & M UNIVERSITY
Kara Hay Comte
4505 Sapphire Court
College Station, TX 77845

TEXAS STATE UNIVERSITY
Nanette Stovall Patton
P.O. Box 1628
San Marcos, TX 78667-1628

UNIVERSITY OF TEXAS/ARLINGTON
Emily Brown Brown
5805 Briarcliff
Haltom City, TX 76117

UNIVERSITY TEXAS/PAN AMERICAN
Liza Estella Gonzalez
1317 Ridgewood Circle
Pharr, TX 78577

WEST TEXAS A & M UNIVERSITY
Farrah Hashmi Shah
4407 Van Winkle Drive
Amarillo, TX 79121-1901

Virginia
LONGWOOD UNIVERSITY
Tami Park
PO Box 6215
Newport News, VA 23606

OLD DOMINION UNIVERSITY
Kirsty Sanford
1613 Rich Avenue
Norfolk, VA 23518

RADFORD UNIVERSITY
Helen Diamond Steele
221 College Lane, Box 2305
Salem, VA 24153

RANDOLPH MACON COLLEGE
Clytie Roberts
302 Maryland Avenue NE
Washington, DC 20002

VIRGINIA TECH INSTITUTE
Vicki Shannan
5397 McVitty Road
Roanoke, VA 24018

UNIVERSITY OF VIRGINIA
Felicia Benaman Wilson
1462 Ashland Drive
Charlottesville, VA 22911

Washington
UNIVERSITY OF WASHINGTON
Dawn Leland Wasukewicz
18115 72nd Avenue W.
Edmonds, WA 98026

West Virginia
CONCORD UNIVERSITY
Lisa Bergeria Blankenship
P.O. Box 779
Athens, WV 24712

FAIRMONT STATE COLLEGE
Refer to National Vice President of College
Chapter Operations

MARSHALL UNIVERSITY
Robin Taylor
6200 Rosalind Road
Huntington, WV 25705

SHEPHERD UNIVERSITY
Refer to National Vice President of College
Chapter Operations

WEST VIRGINIA UNIVERSITY INSTITUTE OF
TECHNOLOGY
Emily Myers
76 Parkview
Poca, WV 25159

Wisconsin
CARROLL COLLEGE
Melissa Furrer
1108 River Park Circle E #205
Mukwonago, WI 53149

UNIVERSITY OF WISCONSIN/EAU CLAIRE
Refer to RCC- Region VIII

UNIVERSITY OF WISCONSIN/STOUT
Cheryl Matheny Norder
2511 Crestwood Drive
Menomonie, WI 54751

UNIVERSITY OF WISCONSIN/WHITEWATER
Amanda M. Koss
2518 North 82nd Street
Wauwatosa, WI 53213-1021

Flame Eternal

ALPHA

Ursula Kershner Spohn '35
Audrey Keiser Wald '38
Jane Gildersleeve Lowman '36
Ivabel Burnside Beidler '57
Karen Marbaugh Kohn

DELTA

Ella McDonald Read '49
Teresa Lain Douglas '81

EPSILON

Lolita Schoenewey Taylor '45
Doris Ann Watson Gish '46
Dorothy Lowe Stewart '50

THETA

Gwyneth Jenkin Deutschle '43
Lucille Ann Lambillotte Weir '83

KAPPA

Jeannette Cram Williams '76
Catherine Parker More

MU

Marie Schmidt '31
Ada Jane Dykes Ekholm

NU

Mary Juergens Baker '40

XI

Harriet Evans Statzer '34
Eileen O'Neill '41

PI

June Rollins Petty '40

UPSILON

Lesley Patricia Graham '66

PHI

Mirian Hintzen Rathbun '39

OMEGA

Sylvana Edmonds Stark '41

ALPHA ALPHA

Doris Leeberg Wertz '39
Margaret Mc Bryde '46

ALPHA BETA

Bernyce Tannler Fogarty '63

ALPHA EPSILON

Sharron Palmeter Baucom '62

ALPHA ZETA

Dorothy M. Torpey '39

ALPHA ETA

Patricia Elaine Thayer McMillan '51

ALPHA THETA

Yvonne Eaton Willenbrink '53

ALPHA OMICRON

Margaret Adams McCranie '29
Mary Garner Fitts '34

ALPHA PI

Lucy Frank Barrow Champion '60

ALPHA TAU

Katherine Lyne Griswold '41
Alice Crawford Francis '46

ALPHA UPSILON

Margaret Hall Hook '33

ALPHA CHI

Thalia Wilson Larson '62

BETA ALPHA

Claire Emerson Grysting Stoecker '50

BETA LAMBDA

Margaret Dyke McKissick '36

BETA XI

Martha Price '47
Mary Mackie Cassidy '48

BETA RHO

Jean McDonald Christian '48

BETA SIGMA

Mary Beth Latson Lyttle '42

BETA TAU

Dixie Winchell Ackman '46

BETA PHI

Virginia Turner Avery '41

BETA CHI

Dorothy Snyder Widner '41

BETA OMEGA

Ethel Slicklen deVyver '41
Audrey Place Widin '46

GAMMA BETA

Barbara Warnes Schreter '61

GAMMA DELTA

Lois Krug Nichols '61

GAMMA IOTA

Virginia Diehl Galyon '49

GAMMA KAPPA

Donna Russell Mooney '54

GAMMA LAMBDA

Ann Tibbetts Paulsen '54

GAMMA NU

Genevra Duzan Dvorak '49
Nancy Clapp Eckert '57

GAMMA OMICRON

Marjie Lorraine Frank Thompson '58

GAMMA PSI

Jane Baker Harrigan '57

DELTA OMICRON

Louise Wentworth Lambert '29

DELTA CHI

Naomi Manley Moore '57

DELTA OMEGA

P. Joy Smith Reinhardt '57

EPSILON GAMMA

Amanda Christine Rohlman '02

EPSILON THETA

Adrienne Di Pasquale Eckert '93

EPSILON OMICRON

Nancy Abbott Politovich '57

ZETA ALPHA

Mary Weiss Kibler '64

ZETA IOTA

Cathy Diane Briggs '64

ZETA KAPPA

Jean Faller Barrett '59

ZETA OMICRON

Mary Patricia Neenah Mahoney '61

ZETA PI

Leigh Wimberly Taylor '00

THETA DELTA

Louise Atkinson Reider '62

IOTA DELTA

Gay Thorro Rose '66

IOTA IOTA

Jacalyn Boyce Vickery '71

IOTA XI

Debra Ann O'Donnell '74

IOTA UPSILON

Kathy Gillam Paap '76

KAPPA XI

Gina Donatelli Angelich '92

KAPPA PSI

Victoria Ann Ubriaco '87

PHI BETA

Inez Millholland '41
Nadine Block Robinson '43
Winnogene Darling Lanham '57
Arlene Storm Ziegelhofer '57
Ellen Ann Usher Durkin

Foundation Focus



The Guy Potter Benton Society

Dr. Guy Potter Benton, a member of Phi Delta Theta Fraternity and president of Miami University at the time of Delta Zeta's founding in 1902, was immensely influential in helping the Sorority establish itself—so much so he was named Grand Patron. Delta Zeta's Guy Potter Benton Society, announced in 2004, appropriately honors his name.

This special giving Society recognizes the generosity of alumnae and friends who choose to make an annual unrestricted gift to the Delta Zeta Foundation of \$1,000 or more, supporting the mission of Delta Zeta at the highest level.

Charter memberships in the Society are being accepted through our 2006 National Convention. Charter members will receive special Convention recognition, in addition to a distinctive remembrance for their generosity.

Trisston Wright: An Extra-Ordinary Delta Zeta continued from page 6

Trisston was a marketing major while at Auburn University at Montgomery. She graduated summa cum laude at the top of the School of Business, winning the Chancellor's Scholars Award. She was the first marketing major in the history of the School of Business to win that award. "All my DZ sisters were cheering me on, of course," Trisston says. "They were a great support system while I was in school."

Trisston's Delta Zeta sisters also supported her during her time as Ms. Wheelchair America/Alabama 2005. She represented Alabama in the national Ms. Wheelchair America 2006 pageant in Albany, New York. Just before Trisston left to go to the national pageant, the Montgomery Alumnae Chapter and the Lambda Nu Chapter at Auburn University at Montgomery threw a "Bon Voyage/Good Luck Party" for her. In addition, while preparing for the national pageant, she received an e-mail from a Delta Zeta sister named Dr. L. Anne Hudson Browne E '63 who graduated from Indiana University. Dr. Browne had read about Trisston in *The LAMP of Delta Zeta*. She lived outside of Albany, New York and attended several events at the national pageant. She sat with Trisston's family and cheered her on. "Now that's sisterhood!" Trisston says.

Trisston says that much of what she gained from being a member of Delta Zeta prepared her for being crowned Ms. Wheelchair America/Alabama 2005. "Being a part of this wonderful group has reinforced my understanding of teamwork, friendship and sisterhood, as well as the importance of time management, organizational skills, and determination," Trisston says. She has made wonderful lifelong friendships through Delta Zeta. She participates in her local alumnae chapter, and stays in touch with sisters via e-mail and phone.

She says that she will continue to make personal appearances and presentations in an ongoing effort to educate others about the "extra-ordinary abilities" of people with disabilities. She also plans to work tirelessly in expanding the horizons for people with disabilities. One can find out more about Trisston and her work on her website: www.trisstonwright.com.

Trisston may use a wheelchair for mobility, but this does not affect the difference she has made as Ms. Wheelchair America/Alabama 2005. "I can crawl, I can walk on my knees, but I haven't gained the ability yet to walk on my feet. I say 'yet' because you never know what will happen tomorrow. Miracles happen every day," she says. "Being crowned Ms. Wheelchair America/Alabama 2005 was not only a great honor, it is a tremendous chance to make a difference in people's lives and illuminate opportunities for others."

"After all, we all have one thing in common: we are human and we have to focus on the abilities of each other, because none of us can do everything perfectly," Trisston says. She will continuously serve as an example of what the word "ability" truly means.

The Oxford Society

Everyone leaves footprints. Ours are usually made by the impression of our lives on the sands of time. What will you leave behind? One way each member of Delta Zeta has to make a more permanent print in the sand, not to be washed away with the tide, is through thoughtful estate planning.

Created in 1995, the Oxford Society recognizes and honors those alumnae and friends who make provisions for future generations of student members through planned gifts. It's a wonderful way to celebrate one's life through the lives of others, sharing our values with those we may never meet.

Bequests also enable substantial gifts to be made to the Delta Zeta Foundation without drawing from assets during one's lifetime. Permanent footprints. Yours. For Delta Zeta's future!

For more information about becoming an Oxford Society member, or any other information about the Delta Zeta Foundation, contact Delta Zeta Foundation, 202 East Church Street, Oxford, Ohio 45056, 513/523-7597 or go to www.deltazeta.org and click on Foundation Focus.



ALUMNAE NEWS

Three Delta Zeta alumnae were honored by Iowa State University at the 75th Honors Awards ceremony.

Susan Chadima BK '73 received the Stange Award for Meritorious Service to honor alumni for outstanding professional achievements in veterinary medicine. Susan was the first female to be elected to the Board of Veterinary Medicine of Maine. She serves as the alternate delegate from Maine to the American Veterinary Medical Association House of Delegates. She is a founding member of the Program for the Assessment for Veterinary

Educational Equivalence. She volunteers at a local elementary school and church, and serves as the Maine liaison for an El Salvadoran rural health care organization.

Trudy Huskamp Peterson

BK '64 received the Citation of Merit. She served as the deputy archivist and acting archivist during the Clinton administration. She was Commissioner on the U.S.-Russia Joint Commission on POW/MIAs that attempted to resolve the fate of people missing from wars since

World War II. She worked for the United Nations High Committee for Refugees, and was the founding executive director for the Open Society archives, providing training and support for Eastern European archivists after the fall of Communism. She advised South Africa's Truth and Reconciliation Commission in 1998 on the preservation of their apartheid-era records and wrote a book, *Final Acts: A Guide to Preserving the Records of Truth Commissions*, for future generations.

Eva Donelson Wilson BK '49 received the Alumni Merit Award. A home economics professor who is 100 years young, Eva received her doctorate in 1934 and has held faculty positions at the University

of Minnesota and Pennsylvania State University, and authored celebrated nutrition books at Ohio State University. In the 1960s, she went to the University of Sao Paulo, Brazil to start a home economics program. After her retirement, she served as a consultant to the nutritional program at the University of Brasilia. Today she enjoys mentoring young people and is an English language tutor.

Mary Iovenelli Buescher

AB '94 received two awards at the national Pillsbury Bake-Off event and \$20,000 in prizes. She donated a large portion of the winnings to the American Red Cross for the organization's work during Hurricane Katrina, the National Kidney Foundation, and

the Foundation at St. Francis Regional Medical Center. She was also featured on the Food Network in a special about the contest. Mary is a member of the Twin Cities Alumnae Chapter. View Mary's award-winning recipes at <http://www.pillsbury.com/bakeoff/currentbo/index.aspx>.

Helene Johnson

Cushenan BQ '47, of the Cleveland Westside-Berea Alumnae Chapter received the Ohio Outstanding Alumna Award at Ohio State Day 2005. Helene served as Chapter President of her collegiate chapter at New York University, and has held many offices in the alumnae chapter, including Co-President. She is an adjunct faculty member at Lorain County Community College, serves as an officer in the American Association of University Women (AAUW), the League of Women Voters, Genesis House, St. Thomas



Susan Chadima

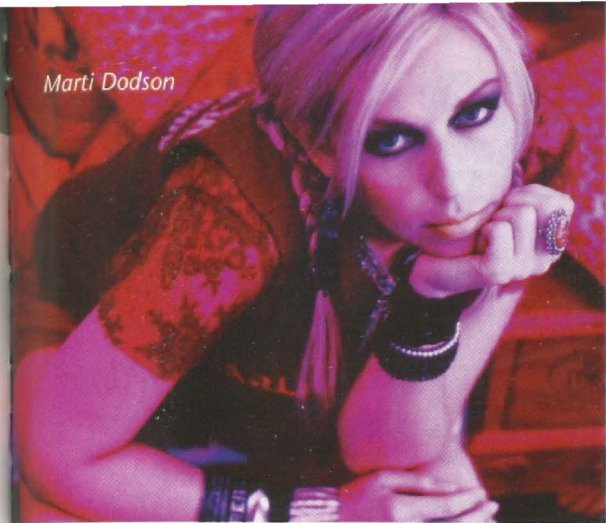


Trudy Huskamp Peterson



Eva Donelson Wilson

Marti Dodson



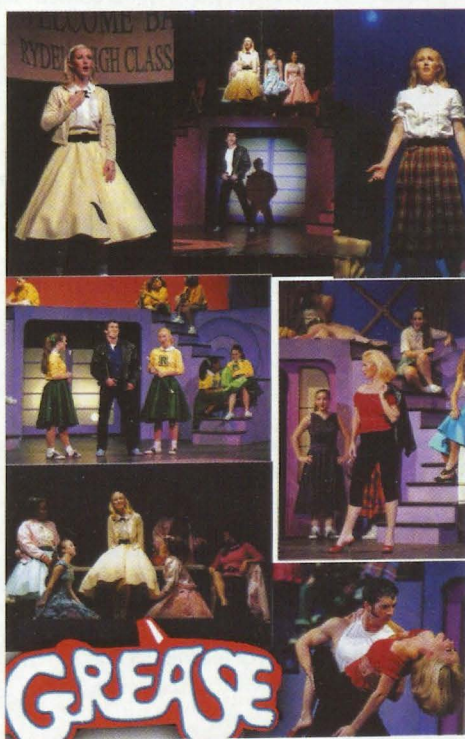
Church, and the Lorain County Chapter of the Cleveland Speech and Hearing Center. She also organizes events for the Gamma Alpha Chapter at Baldwin-Wallace College, and attends annual reunions at New York University with her Delta Zeta sisters.

Marti Dodson Θ '99 and her band, Saving Jane, are climbing the Billboard pop charts with the first single from their new album, "Girl Next Door." Saving Jane is now touring across the country, and has performed in a number of capacities, including a Hurricane Katrina Benefit concert on the high school field where Marti once played clarinet in the marching band. The band recently signed with major label Universal Records. Marti says, "Delta Zeta afforded me a great opportunity to meet some wonderful women and develop friendships that I still cultivate today."

Photo of Marti Dodson courtesy Toucan Cove Entertainment.

Erica Drew Lewis II '99 has had starring roles in *Grease* as Sandy, *Footloose* as Ariel Moore, and *The Most Happy Fella* as Rosabella in theatre in Sarasota and Tampa, Florida. Erica recently traveled to China to perform in a tour of *The Legends of Yin and Yang* with The Players Troupe. She is a member of the Iota Iota Chapter Association.

Erica Drew Lewis



Chris Martin BT '74, Regional Collegiate Coordinator - Region VIII, was one of six teachers honored on Nebraska Teacher Recognition Day. She has taught English Language Learners at Everett Elementary School in Lincoln, Nebraska since 1996. "Ms. Martin taught me that it was necessary to succeed but also to help others do well," said one of her former students.

Holly Pendley Monaghan ΔΔ '98 received honors for her work at Accountants One, an accounting and financial recruiting firm, during the 2006 Georgia Association of Personnel Services (GAPS) Annual Awards Banquet. The

awards recognized outstanding achievers among GAPS members. The Georgia Association of Personnel Services is a non-profit trade association consisting of personnel staffing services firms in the state of Georgia.



Holly Pendley Monaghan

Mary Rose Vescio Reno ΕΘ '57 was recognized by the Pittsburgh-South Hills Alumnae Chapter for her many years of dedication and service. Mary Rose organizes the yearly schedule and monthly programs for the chapter and acts as a liaison between the chapter and the community. When she held the position of Chapter President, she initiated the Santa Letter Project, which continues today and enables the chapter to make donations to various women's and children's causes in the Pittsburgh area.

Helen Rotnem Θ '01, Grace Mason Lundy Award winner and a past Delta Zeta Chapter Consultant, was the committee chair for "Rockin' for Relief." Held at the University of Akron, the event featured a day of arts and entertainment to benefit the victims of Hurricane Katrina. Event proceeds went to the American Red Cross for their continued relief efforts in the Gulf coast.

Julie Senn OM '98 is a volunteer doing mission work in Biloxi, Mississippi to aid those hardest hit by Hurricane Katrina. She works on homes that have been gutted, moves debris, and counsels hurricane survivors. Julie gave up her job, family, and friends to answer her "personal calling," she says. "When you are actually down there and see people with their children living in tents on the side of the road . . . it makes things very realistic."



Julie Senn

Linda Dennison Tapp EZ '85 was honored by the Girl Scouts of Camden County, New Jersey as one of seven women who, in the words of Girl Scout CEO Mary Connell, "have made an extraordinary contribution to the lives of everyone around them and are stellar examples to the girls we serve each day, every day." Linda is currently President of Crown Safety in Cherry Hill, New Jersey, and was recently elected director to the Council on Certification of Health, Environmental and Safety Technologists (CCHST), which operates certification programs for safety and health practitioners at the technologist/technician level. She is also a past Regional Collegiate Coordinator for Regions II and III and is a founder of the Central Philadelphia Alumnae Chapter.

Carla Arnold Woodcock GK '58 was named the Cleveland Alumnae Panhellenic Association Woman of the Year. For many years Carla has played a leadership role in alumnae activities and has served as President of the Cleveland Alumnae Panhellenic Association, as well as Past President of the Cleveland Eastside Alumnae Chapter.

Sally Haydon Van Wert BK '59 received the College of Family and Consumer Sciences Career Award from Iowa State University for her 30-year teaching career and worked as a family and consumer scientist, which included serving on the State Citizens' Advisory Council and in many other capacities. Sally is a community leader, involved in P.E.O., Order of the Eastern Star, Thrivent, and the Republic Political Party.



Linda Dennison Tapp

Sally Haydon Van Wert



Learning for a Lifetime continued from page 7

DoDEA operates over 200 public schools in 15 districts located in 13 foreign countries, seven states, Guam, and Puerto Rico. DoDEA schools are different from traditional schools in the United States in that the military service members and their families live in an American military-based community, most often within another country. Everyone is contained to a common area where all residents shop at the same place and see the same doctors. Good housing is provided for the families, and the residents receive free medical and dental programs. Parents of the school children are on duty 24 hours a day.

These differences do not seem to impact the educational focus of the DoDEA schools. "Our schools come out at the top—we are certainly rated at the top in terms of our kids; academic achievement," Missy says. According to the Department of Defense Education Activity, "the DoDEA instructional program provides a comprehensive pre-kindergarten through 12th grade curriculum that is competitive with that of any school system in the United States. DoDEA maintains a high school graduation rate of approximately 97 percent. The 3,102 graduating seniors in DoDEA's class of 2002 earned more than \$35 million in scholarships and grants."

Despite the similarities that DoDEA schools such as Aviano Elementary School have with traditional American schools, Principal Klopfer and the other educators at Aviano Elementary School make an effort to integrate the children and families into the culture of the Italian community. According to Aviano Elementary School's Web site, the host nation teacher informs children and families about Italian traditions. The host nation teacher also plans special Italian events, such as festivals and concerts, that are held to assimilate them into the country.

Missy and the other educators also put together a simulated deployment at the flight line at Aviano Air Base. They work with the base commander on this event to help students learn about what their parents experience during deployment. This allows students to understand the jobs that their parents do, as well as see how the skills they learn in school will be valuable after graduation.

Although she is far from America, Missy stays in touch with her Delta Zeta sisters via e-mail and message boards, and comes back to the states for reunions with her Beta Delta sisters. "Those reunions are great, because even though we're far away, we can just pick up like we never left each other at all."

Principal Klopfer's efforts through Delta Zeta and education have shown her the importance in making time to acquire knowledge as well as validate and celebrate the work of teachers and others. "My job is to find the genius in every teacher, just like I expect every teacher to find genius in every child," Missy says.

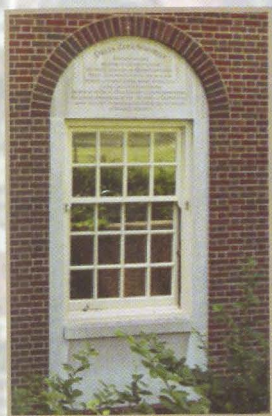
Delta Zeta's Centennial Gift to Miami University Completed

On October 24, 2002, Delta Zeta Sorority unveiled its Centennial gift to Miami University. On the north wall of King Library, bordering Miami University's famous Slant Walk, where thousands of students traverse every day to classes, Delta Zeta donated a memorial to commemorate the founding of the four fraternities and one sorority at Miami. Inscribed on the four arches that are part of the architecture of this side of the library are tributes to Beta Theta Pi Fraternity, Phi Delta Theta Fraternity, Sigma Chi Fraternity, and Phi Kappa Tau Fraternity. Between these columns, under a graceful arch, a tribute to the first sorority at Miami, Delta Zeta, is etched. Benches are positioned across from the building so others can stop and reflect upon the memorial.

"We thank you so much, Delta Zeta. We are humbled. We will forever celebrate your founding here."

Dr. Dennis Roberts, Assistant Vice President of Student Affairs at Miami University

Dr. Dennis Roberts, Assistant Vice President of Student Affairs, graciously accepted the gift. "Think of the symbolism of the pillars and the arch—four strong pillars and the arch in the center," he said. "In ancient architecture, the arch was one the most important architectural features ever to be created. It allowed for buildings to be built larger, stronger, and higher. I think it's symbolic that we have the four pillars representing strong organizations which have been bound together through the arch of the women of Delta Zeta. It's a beautiful symmetry, and it is the first time that we will be able to honor the founding organizations—all five of our Alphas at Miami University."



*"The engraving has been completed, and
now the founding of four fraternities
and one sorority are commemorated at Miami University,
the 'Mother of Fraternities.'"*

DELTA ZETA SORORITY

FOUNDED IN 1902

BY SOME OF THE FIRST WOMEN
STUDENTS ADMITTED TO MIAMI UNIVERSITY,
DELTA ZETA HOLDS FAST TO THE IDEALS OF
INSIGHT, COURAGE, FAITH, APPRECIATION, AND
GIVING GRACIOUSLY TO OTHERS.

IN HONOR OF DELTA ZETA SORORITY'S 100TH ANNIVERSARY,
WE HEREBY COMMEMORATE THE "MOTHER OF FRATERNITIES"
WITH THIS GIFT AND HONOR THESE GREEK ORGANIZATIONS
AT MIAMI UNIVERSITY.

BETA THETA PI FRATERNITY

THE FIRST FRATERNITY
FOUNDED AT
MIAMI IN 1839,
TODAY BETA'S MEMBERS
LIVE THE IDEALS
OF THE FRATERNITY:
FRIENDSHIP,
MUTUAL ASSISTANCE,
SCHOLARSHIP, AND
TRUST.

PHI DELTA THETA FRATERNITY

FRIENDSHIP,
SOUND LEARNING,
AND RECTITUDE
CHARACTERIZE
THE VALUES
OF THIS FRATERNITY,
FOUNDED IN 1848
BY SIX MEN
WHO MET IN
ELLIOTT HALL.

SIGMA CHI FRATERNITY

COMPLETING THE
MIAMI TRIAD,
SIGMA CHI
WAS FOUNDED IN 1855
WITH THE
"FUNDAMENTAL
PURPOSE TO CULTIVATE
THE APPRECIATION
AND COMMITMENT TO
THE IDEALS OF
FRIENDSHIP, JUSTICE
AND LEARNING."

PHI KAPPA TAU FRATERNITY

FOUNDED AT MIAMI
IN 1906,
PHI KAPPA TAU'S
CREED IS,
"TO CHAMPION A
LIFELONG COMMITMENT
TO BROTHERHOOD,
LEARNING,
ETHICAL LEADERSHIP
AND
EXEMPLARY
CHARACTER."



Pink dress shirt with embroidered ΔZ crest, also available in white S,M,L,XL #703...\$39.00



Above
Niagara football tee with Lamp print Flamingo Pink or Clover S(0-2), M(4-6), L(8-10), XL(12-14) #603...\$15.00

At right
Canvas polka dot tote with canvas handles, hot pink and black, white ΔZ #734...\$12.00

Below
Wood block frame #382...\$14.00



Silver 10mm bead bracelet with engraved charm #687 \$54.00

At right
A. Silver 10mm bead bracelet with engraved charm #687 \$54.00



A.

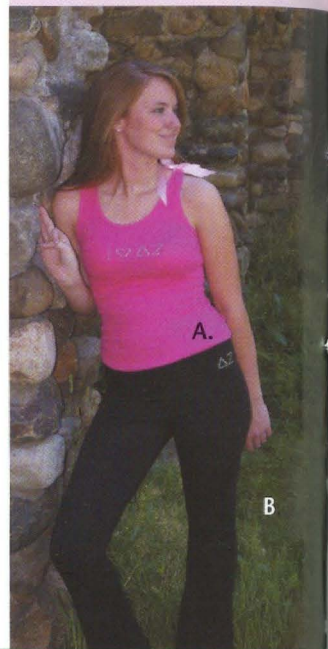


B.

At far right
B. ΔZ Charm bracelet #210 \$35.00

At right
A. Fuschia tank w/rhinestone I ♥ ΔZ and ribbon detail S(0-2), M(4-6), L(10-12) #591...\$25.00

B. Black Yoga pant with fold over waist, rhinestone ΔZ letters S(0-2), M(4-6), L(10-12) #705...\$26.00



A.

B.

TO BE SHIPPED TO:

Date _____

Name _____

Address _____

City, State _____ Zip Code _____

Phone No. (____) _____

QUANTITY	ITEM#	SIZE	COLOR	NAME OF ITEM	PRICE

We Honor: ☐ MasterCard ☐ Visa ☐ Discover ☐ American Express

Credit Card Signature Required

Exp. Date ____/____/____



Credit Card Number

SHIPPING & HANDLING CHARGE:
If your order totals Add
\$.00 - 15.00 \$ 5.50
\$ 15.01 - 25.00 \$ 7.00
\$ 25.01 - 50.00 \$ 8.00
\$ 50.01 - 75.00 \$ 9.00
\$ 75.01 - 100.00 \$ 10.00
Each additional \$100.00 \$ 10.00

SPECIAL DELIVERY COSTS:
(In addition to regular rate)
2-DAY \$ 12.00
OVERNIGHT \$ 20.00

ADDITIONAL CHARGES:
Canadian Orders \$ 5.00

All merchandise is unconditionally guaranteed. All prices in U.S. dollars. Prices subject to change without notice. Larger sizes can be ordered through Delta Zeta DeZigns.

ITEM SUBTOTAL _____
IN OHIO ADD 6.5% SALES TAX _____
SHIPPING AND HANDLING _____
TOTAL AMOUNT OF ORDER \$ _____

A check for the total amount of the order (including shipping and handling) should accompany this order. Make checks payable to Delta Zeta DeZigns and send to address below. Please do not send cash. All returned checks are subject to a \$20.00 service charge. Orders are filled promptly as received.

CALL IN YOUR ORDER TOLL FREE
1-800-886-PINK FAX: 1-513-523-1921
www.deltazeta.org

Delta Zeta DeZigns, 202 East Church Street,
Oxford, Ohio 45056

A Tribute to Our Chapter Consultants

Delta Zeta Chapter Consultants convey the Sorority's mission and fundamental principles through on-site visits to our college chapters around the country. Consultants often keep a busy travel schedule as they become acquainted with campuses and collegiate and alumnae members.

We'd like to thank the Chapter Consultants who have served Delta Zeta during the past school year. Some of them worked with colonies in conjunction with Delta Zeta's extension plans as others traveled to visit college chapters throughout the United States. Their efforts are greatly appreciated, and they have valuable experiences to take with them in future endeavors.



Meghan Bernhardt AΣ

Meghan is applying for teaching positions in middle and high school English departments. She says she learned the value of being close to loved ones during her work as Chapter Consultant. "I really value the time I get to spend with my family and friends. I have always taken for granted living near to all of my best friends and family, and now I know the importance of e-mail and phone communication as ways to stay in touch." Megan will

reside in Las Vegas, where she will pursue a teaching position.



Lisa Cast ΔΘ

Lisa returns to Houston to begin her teaching career this fall. She also looks forward to connecting with the Delta Theta Chapter Association and Houston Alumnae Chapter, and to teaching aerobics.

"The most valuable thing I have learned as a Chapter Consultant," Lisa says, "is to think on my feet, stay positive and flexible, and I want to thank everyone who made my visits great."

Lisa enjoyed working with the Pi Zeta Colony at Arizona State University, eating at different restaurants around the country, connecting with the other consultants online, and meeting Delta Zeta members throughout the United States.



Summer Hernandez OA

Summer will be returning in the 2006-2007 school year to work as a Chapter Consultant again.

"The most valuable thing I have learned as a Chapter Consultant is the importance of patience and flexibility," she says. "I have learned that I can be patient in almost any situation and that I can work with many different people."

Her favorite memory is her first visit to the University of Kentucky. "It was a new experience and I had to put my training to use as soon as I entered those doors. Working with those women was amazing. I learned a lot about myself within those first few days and I knew after the first day that I was capable of doing my job."

Summer continues, "The best part of being a Chapter Consultant is that I know that I came to do a job and I am leaving with friends,

especially the other Consultants. Those women are some of the most amazing women I have ever met and I know they are lifelong friends."



Kristin Houghton ΔΥ

Kristin will be returning for the 2006-2007 school year as a Chapter Consultant, and later plans to work in public relations. "I have learned to be flexible and make the best of every situation," she says. "You can't please everyone, but you can make decisions in the best interest of members, chapters, and our organization."

Her favorite memory as a Chapter Consultant is consultant training, in addition to, "getting to know Delta Zetas across the country and seeing the inner similarities rather than the outer differences that everyone has," Kristin says.



Elizabeth Stricklin AΠ

Elizabeth will be returning to Georgia College and State University this summer to receive a Master's of Education in Instructional Technology. She is recently engaged and is planning a summer wedding in 2007.

"I have learned so much about who I am," Elizabeth says of her year as a Chapter Consultant. "I have learned what it is like to step out of your comfort zone and I knew that there was nothing else I would do! This has been one of the most amazing experiences of my life.

"The friendships that I have made and women that I have met are all valuable to me," she continues. I have learned to love and grow more as a Delta Zeta through these friendships, memories, and experiences."

Elizabeth has some amusing (and painful) memories of her experience. "I fell down the stairs on a recruitment visit and after visiting the emergency room, learned that I had broken my elbow! It is a memory I can laugh about now and be thankful for, because this chapter made me feel like I had 80 moms taking care of me."



Cassie Wilkinson O

Cassie will be returning for a second year as a Chapter Consultant. "The most valuable thing I have learned as a Chapter Consultant is being open to new experiences. I've learned so much about myself and working with others," she says.

Cassie says it is hard to pick just one favorite memory from her year as a Chapter Consultant. "I take away something from every chapter I visit. Training and spending time with the other consultants is always fun and interesting. Whenever we see each other, it's like reuniting with long-lost friends."

"People support what they create."



Karen Lee Johnson Zachry OA '90 has lived many different chapters in her life. As a collegian, she became a member of the Omicron Alpha Chapter at St. Mary's University and served as Rush Chairman. After graduation, she traveled as a Chapter Consultant for Delta Zeta ("which I remember as one of the happiest times of my life," she recalls), then went to law school. After practicing successfully as an attorney for seven years, Karen Lee opened a new chapter in her life when she chose to remain at home to raise her young children (Sam, Olivia, and Henry) after her marriage to David, an engineer and president of Zachry Construction.

"I attended an all-girls' high school," Karen Lee says. "Many of the experiences I had in Delta Zeta as a collegian were similar to my high school experience of being in an all-women's environment. Women are nurturers and supporters and a lot of our self esteem as women not only comes from within, but comes from the support we get from those around us."

Karen Lee also credits her Delta Zeta experience with helping her to succeed in her professional life as a lawyer. "I think that being in that cooperative environment encourages you to succeed in a more competitive environment," as she refers to the atmosphere she encountered at law school. And succeed she did—Karen Lee graduated second in her class. "I am comfortable with what I have accomplished and can be proud of it," she continues, "because the Sorority helped me to have the confidence I needed."

Another valuable lesson Karen Lee learned as a Delta Zeta member is that of giving back. "I do a lot of volunteer work now," she says, "and a lot of those commitments to volunteering come from when I was in my college chapter. You are encouraged to be a part of Delta Zeta, but at the same time, your involvement in co-curricular activities is also encouraged. You aren't only giving to Delta Zeta, but you're using the leadership skills you are developing to help others, better your campus, or give back to your school. It is a good training ground for women leaders as you go out into the world and realize that there are a lot of organizations and people that need your help."

Karen Lee knows that giving to the Delta Zeta Foundation helps to support the educational and leadership programs that the Sorority provides for its members. "It doesn't matter how small your gift is, because any gift to the Foundation matters," she says. "The act of giving is more important than the amount you give. Your gift supports the work of the Sorority for the collegiate and alumnae members."

While she has fulfilled many roles in her life—college student, Delta Zeta member, attorney, and mother, philanthropic and service work are some of the most important roles Karen Lee believes she can have.

*"Someone once told me a saying that has stayed with me throughout my life:
'People support what they create.'
Even if you give a little bit to Delta Zeta, it keeps you connected and you invest in making membership a great experience for someone else along the way—just as all of the women who volunteered and gave made it possible for me to have my collegiate experience."*

Karen Lee Johnson Zachry OA '90

