

In this issue - Meet Marcia Wallace ΔN, actor and comedian

The LAMP

www.deltazeta.org
Spring 2005

of Delta Zeta



The New Generation of College Women



In February 2005, Delta Zeta collegiate advisors came together at the Standards of Excellence Conference to work with National Chairmen and National Council to implement the Standards of Excellence. These standards, of course, are the ones our Founders built the Sorority upon—integrity, trust, responsibility, respect, and a dedication to excellence. In today's ever-changing world, it is more important than ever that we hold true to those standards—standards which are as relevant today as they were over 100 years ago.

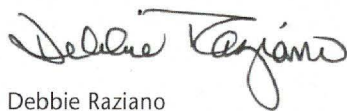
The Standards of Excellence Conference marks another innovative chapter in the story of Delta Zeta. College Chapter Directors have specific criteria by which to guide our chapters. Everyone in Delta Zeta benefits from these Standards, for they represent the embodiment of the values our Founders held dear, and the commitment of today's members to attain excellence, both within themselves and for Delta Zeta.

When we aspire to the Sorority's ideals, those ideals touch and enrich our lives. In turn, everything our lives touch is enriched as well. Each day of your life, you are still connected to Delta Zeta by these values. Every action, every interaction with everyone in your sphere demonstrates to them that you are a woman of "moral, social, and intellectual worth." These values are goals we can all strive to attain each day of our lives as Delta Zetas and as citizens of the world community.

Whether we are a collegian in a college chapter or an alumna who may live far from the nearest Delta Zeta alumnae chapter, we symbolize Delta Zeta. Each member, no matter where she is in her life, personifies the Sorority. Each of us has the power to "promote the welfare of the whole by every means consistent with a high sense of honor" (Delta Zeta Constitution, Article III, Section 3). The Standards of Excellence gives us the tools to utilize that power to the fullest.

As you'll see in this issue of *The LAMP*, Delta Zeta is important to our members in every aspect of their membership, no matter what their age. Our *Code of Regulations* says that "Membership is a privilege, not a right," and as such, we have a responsibility to Delta Zeta—to live her values, to nurture her as we keep all members connected to the Sorority, and to provide for her growth as we reach out to new members. Always remember that our Ritual defines us, our Creed reminds us, and our actions speak for us, and those actions should reflect our commitment to Delta Zeta.

In Delta Zeta,


Debbie Raziano

FOUNDERS

Alfa Lloyd Hayes, 1880-1962
Mary Collins Galbraith, 1879-1963
Anna Keen Davis, 1884-1949
Julia Bishop Coleman, 1881-1959
Mabelle Minton Hageman, 1880-1929
Anne Simmons Friedline, 1879-1932

THE ORDER OF THE LAUREL

Irene Caroline Boughton, 1904-1988
Grace Mason Lundy, 1893-1993
Elizabeth Coulter Stephenson, 1881-1939
Myrtle Graeter Hinkly, 1893-1987

Published since December 1910 by

DELTA ZETA SORORITY

Founded at Miami University - Oxford, Ohio
October 24, 1902

The LAMP of Delta Zeta

Nancy E. Brewer A, Editor
(ISSN #0887-2554), official magazine
of the sorority, is published quarterly
by the Delta Zeta Sorority,
202 East Church Street, Oxford, OH 45056.
Contributors: Lindsey Aspinall EI '01
Megan Erb ΔΣ '95

POSTMASTER:

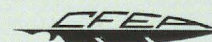
Send address changes to
Delta Zeta Sorority, 202 East Church
Street, Oxford, OH 45056.

Send all editorial material to
Delta Zeta National Headquarters
Attn: Nancy Brewer, Editor
202 East Church Street
Oxford, OH 45056.

General e-mail: dzs@dzshq.com
LAMP e-mail: LAMP@dzshq.com



National Panhellenic Conference



Printed in USA.

The LAMP

of Delta Zeta

About the Cover:

Since Delta Zeta's founding in 1902, collegiate women, and Greek women in particular, have faced many challenges. Learn more about what challenges today's collegians have on campuses around the country, and what these challenges mean to the future of Greek organizations.



4 - 6

The New Generation of College Women

The Millennials are the newest generation on today's college campus. How can sororities effectively respond to today's college women?

7



Standards of Excellence

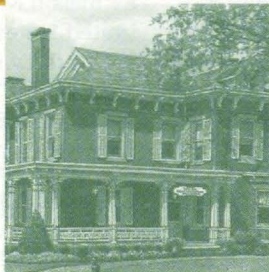
Delta Zeta's Standards of Excellence give today's college chapters the opportunity to excel, and gives collegians opportunities to grow, lead, and succeed.



8 - 10, 34 - 35

Alumnae Profiles

Meet actor and comedian Marcia Wallace ΔN '61, entrepreneur Emily Heintz ZΠ '96, disabilities advocate Jane MacFarlane Welker ZN '90, and singer-songwriter Stacy Donahue BT '97.



DEPARTMENTS

From the President	2
Flame Eternal	11
Directory	14 - 17
On Campus	18 - 29
Stars in Our Service Flag	29
Foundation Focus	32
Alumnae News	33



31 - 32

A Tribute to Our Chapter Consultants

As the school year ends, we thank our Chapter Consultants, who have worked tirelessly and enthusiastically with Delta Zeta's college chapters during 2004-2005.

Participate in Quality Recruitment

You can recommend a potential new member who possesses the strong values that Delta Zeta expects from its members.

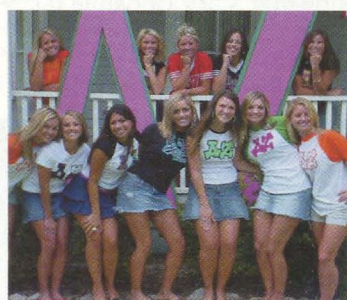
Page 30 -
Update on the
2006 National
Convention!

Photo Credits:

Cover, pp. 3, 4: Color photos of the Iota Alpha Chapter (Southwest Texas State University) by Christopher Caillavet, San Marcos, Texas; pp. 3, 8 - 9: Photos courtesy of Marcia Wallace; p. 30: Arizona Biltmore; pp. 3, 31 - 32: Convention Photography, Pisgah Forest, NC; p. 34: Len Katz Photography, Inc. Royal Oak, MI.

The New Generation of College Women: Challenges Facing Sororities

by Mari Ann Callais, Ph.D.
Theta Phi Alpha Fraternity National President



The Changing College Landscapes

Colleges and universities have experienced drastic changes in the past ten years. Within the past five years alone, tragedies such as Columbine, September 11, 2001, and most recently, the war against Iraq, have all had a dramatic impact on college students and campuses across the country.

Worldwide events are only one of many factors influencing college life. Campus administrators and faculty are challenged to increase services for students with decreasing funds. The student population is growing increasingly diverse, including more Latino/Hispanic students and first generation college students. The non-traditional (over age 25) and part-time student populations are growing exponentially. Colleges must deal with a higher incidence of mental health disorders and increasing concerns related to mental health of students. Parental involvement is on the rise. Students' and parents' expectations demand a customer-service atmosphere, sometimes at the expense of a student-centered approach.

As university administrators and faculty tackle these issues and the ever-changing campus landscape, it is imperative that we, as women's fraternities and sororities, do the same. We must ask ourselves: How can we effectively adapt to the changing campus environment? How can we best meet the needs of today's college women? Most importantly, how can we enhance the college and sorority experience for today's generation of college women and beyond?

Today's College Students

As we ask these questions, we first need to understand the new generation, the "Millennials," that is populating America's campuses. "These students are part of the largest population group since the baby boom of the 1950s and '60s. More than 81 million Millennials were born in the United States from 1982 through 2002, compared with 87.2 million baby boomers born before 1961. And more are coming. The Census Bureau predicts that the biggest segment of the new generation will reach its peak between 2005 and 2011" (O'Brien, 2003).



*We must ask ourselves:
How can we effectively adapt
to the changing campus
environment? How can we
best meet the needs of today's
college women?*

The Millennials, born in or after 1982, are "the most numerous, affluent, and ethnically diverse generation in American history" (Howe and Strauss 2000). The oldest of the Millennials graduated from high school in 2000, and many are now in college. The Millennials are planners and goal setters who have highly detailed five and ten year plans for their futures; they feel they are special; and they believe they are the corrective generation that can reverse the trends of prior generations. Neil Howe and William Strauss, authors of the books *Millennials Rising* (2000) and *Millennials Go to College* (2003), characterize the Millennials as:

- Close with their parents, often sharing the same values
- Focused on grades and performance
- Busy with extracurricular activities
- Eager to take part in community activities
- Savvy in technology
- Interested in mathematics and science and less interested in humanities
- Demanding of a secure, regulated environment
- Respectful of social conventions and institutions

Millennials are often compared to the generation prior to them, known as "Generation X." Millennials are more ethnically diverse and discard race as a criterion for judging people and behavior. As a collective whole, they focus on community and civic renewal. Presumably, the ideals that organizations such as sororities and fraternities foster will be more attractive to the joiner Millennials than the individualistic Gen Xers.

How Can Sororities Effectively Respond to Today's College Women?

As colleges and universities prepare for the new wave of Millennials, so too must the sorority community. The question remains: What are some of the ways that we can effectively respond to the needs of today's college women and enhance their college and sorority experience? Millennials will heavily consider the cost-benefit analysis of lifetime membership in an organization. It is imperative that our organizations are thoughtful, not only in recruitment, but in the overall collegiate experience and

beyond, to ensure that we provide a meaningful experience for our incoming membership.

Recruitment. Millennials expect that what they are told is what they will experience. Therefore, it is vital that sororities deliver on whatever we "sell" to potential new members during recruitment. If we tell them that we do community service, will help with their academics, have movie nights, and provide a safe environment, then we must do our absolute best to provide that type of experience. And we must be mindful that we are not only selling this experience to the student, but to her parents as well.

New Member and Membership Education. New Member and Membership Education programs need to be much more interactive, including use of teams, technology, and more involvement by chapter members and advisors. It is not enough to just "talk at" today's students. As faculty members know from their teaching, we must present information in various ways, to address various learning styles, and we must present multiple opportunities for students to be involved.

The Importance of Big Sisters as Mentors. The role of Big Sisters as Mentors is paramount. Research on student development (such as studies by Chickering, Pascarella and Terenzini Astin — all theorists who have researched student development and student involvement) have indicated that mentoring, whether it is by faculty, administrators, staff, or upperclass students, positively impacts a student's satisfaction with her college experience and her ability to be successful both academically and socially. Big sisters were not established to buy a plethora of gifts. The value of the Big Sister role and relationship should be one centered around spending time with the new member, who, in some cases, may be older in her academic career but new to the sorority experience. No bought gift can replace the time spent with a sister to help her understand and develop a sense of self.

High Standards and Expectations. The Millennials have high expectations of themselves and their organizations. In the fraternal world, we too often focus on setting and meeting "minimum standards." This new generation sets high standards for themselves and those all around them.

They will not be motivated by minimum standards. We need to create programs and incentives to challenge and support them, while remembering that they are most likely involved in many different activities across campus and in the community.

Scholarship and Career Goals. This generation is focused on scholarship and career goals, and we need to help them meet those goals. In addition to supporting our younger members, we must also focus on the needs of our upper-class members, many of whom we are not retaining. Once a student outgrows the "party mode" in college and focuses on her future, we must offer the types of activities, programs and support to meet her academic and career goals, and her changing needs and development.

The Challenges on the Horizon

Can we meet the expectations of the women coming to college today? As sororities, we have all of the elements to contribute to and enhance a young woman's life. We can provide love and support, but we can also challenge each woman to meet her full potential and provide opportunities for purposeful involvement throughout her college career. Sororities are intended to provide experiences that allow a young woman to develop as a leader and a person. If we are not doing this; the new college woman is going to find something else to be involved in that does.

We must respond to these challenges. It is our duty and responsibility to ensure that we continue to provide the support that our collegiate women need to have healthy, positive sorority and college experiences.

This new generation will embrace diversity, create positive environments, and live our rituals through their actions. They may be just the generation we have been waiting for. They may be the generation that will help bring the respectability to the fraternity/sorority community that has been tainted by the actions of some of our individuals and groups.

The "Millennials," together with dedicated sisters of all ages, will help us live our belief that Theta Phi Alpha is "Ever Loyal, Ever Lasting."

ADDITIONAL QUESTIONS TO CONSIDER IN WORKING WITH THE MILLENNIALS

The questions below are provided for your own thought, or for discussion within your chapter or alumnae association.

- Why are we losing our seniors? What can we do to keep them involved?
- Why have we seen an increase in sophomores (typically 19-year-old members) serving as chapter presidents, some only a semester or two after having been initiated? Why are they the only ones "eligible"? Where are our third or fourth year members?
- What is our process of assigning a "big sister" to a younger member? Is that role one of being a mentor and helping her little sister through the college years? If so, why are we allowing second semester freshman (many of whom are still 18 years old) or first semester sophomores to serve in big sister roles? Is it because they are the only ones who can afford to be or want to spend the time that it takes to be a big sister? What happened to juniors and seniors truly mentoring younger members and teaching them what they need to know to have a positive sorority and college experience? Is it that our older members do not feel valued or needed? Is it because we have not inculcated a life long commitment to our organizations?
- Will our advisors know how to work with the Millennials? All of our advisors are volunteers, and many have very different generational expectations. How can we help and support our advisors in working with this new generation?
- As sororities, are we seen as partners and collaborators to administrations and faculty? All national sororities and fraternities are being asked this question. Each sorority must do our part to be seen as a valuable partner on our college campuses and within our communities.
- Are we demonstrating to external audiences that sororities positively impact college women? We need to communicate with campus administrators about the ways that we contribute positively to college women's learning and development, and not just wait to do so when something goes wrong and we have to prove our value.
- A few additional questions to consider: Since the Millennial women are planned and focused, how will some of our unorganized chapters attract and retain these students? Will the new generation of students continue to rely so much on their parents for guidance to the point that they will mature less rapidly? Will their respect for authority cause challenges as it relates to hazing and other behaviors?

The questions are many, and the answers are complex. Considerations such as these will cause all of us who work with students to evaluate and revise our practices. We must plan for the future of our sororities, and an important part of that future is the Millennials. If we listen to and learn from the new generation of college women, live our mission and creed, and set our goals high, I believe we can provide a true living-learning experience for this new generation, and consequently, they will take our organizations to new heights!



Mari Ann Callais is National President of Theta Phi Alpha Fraternity. She holds a Ph.D. in Educational Leadership and Research from Louisiana State University. Her dissertation topic was sorority ritual. Her professional career has been in Student Affairs, including working as Assistant Professor on the graduate faculty of Counselor Education and the Student Affairs Program Coordinator at Mississippi State University and Director of Student Organizations/Greek Life at Southeastern Louisiana University. Currently, she is speaking nationally for CAMPUSPEAK and working as The Theme Housing Specialist for Capstone Development Corporation. Visit www.MariAnnCallais.com for more information.

References

- Howe, Neil and William Strauss (2000), *Millennials Rising: The Next Great Generation*, New York, N.Y.: Random House Inc.
- Howe, Neil and William Strauss (2000), www.millennialsrising.com.
- Strauss, William and Neil Howe (2003), *Millennials Go to College: Understanding the New Generation on Campus*, Ithaca, N.Y.: Paramount Market Publishing, Inc.
- O'Brien, Don (2003), "Millennials: The Next Generation," *Atlanta Journal-Constitution*, available online at www.ajc.com, originally published 8/11/03.

DELTA ZETA

In 1902, the highest standards of character, conduct, and scholastic achievement were established for Delta Zeta by the Sorority's Founders—six young women, still in their teens or barely out of them, who envisioned these values enduring for Delta Zeta members, whether it is 1902 or 2005.

In February 2005, Delta Zeta unveiled the Standards of Excellence (SOE) at the conference of the same name in Dallas, Texas. The Standards of Excellence outline benchmarks by which chapters can measure their progress toward fulfilling the charge of the *Constitution*.

The Standards of Excellence embody the standards of Delta Zeta which have been the Sorority's foundation since its beginning, giving chapters the opportunity to renew their own vows of excellence as they strive to be the best. Its guidelines promote friendship, academic excellence, a deeper knowledge of the Ritual, and provide ways for members to work together toward common goals that benefit their chapters, and ultimately Delta Zeta as a whole.

One of the core principles of the Standards of Excellence is that it strengthens the individual as a member, providing leadership, service, philanthropic, and educational opportunities both within and outside of Delta Zeta. A member who is self-assured and successful in her collegiate life will in turn contribute to the overall strength of the chapter.

The Standards of Excellence establish standards for the areas of:

- | | |
|--------------|---------------------|
| ■ Membership | ■ Philanthropy |
| ■ Academics | ■ Panhellenic |
| ■ Finance | ■ Alumnae Relations |
| ■ Ritual | ■ Risk Management |
| ■ Compliance | |

With these specific criteria, collegiate chapters and those who guide them know exactly what is expected of them, and now have a tool to measure their own progress in meeting these expectations. Delta Zeta's Standards of Excellence go hand in hand with the National Panhellenic Conference's own standards, which fosters cooperative inter-fraternity relationships among its member organizations, their collegiate and alumnae associations, and partners with colleges and universities to maintain the highest performance standards in all areas of collegiate life. The Sorority will also work to educate its host institutions about SOE and its positive results—not only for Delta Zeta, but for Greek life in general.

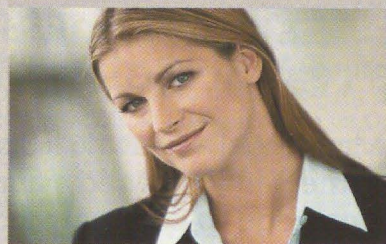
The Standards of Excellence also epitomize the precepts set forth in REACH (Raising Expectations and Creating Horizons), which was adopted at the 1996 National Convention. This initiative provided a structure designed to serve Delta Zeta's needs in a rapidly changing environment, using as its base Delta Zeta's *Constitution* and *Code of Regulations*. REACH reached to all areas of the Sorority: collegiate, alumnae, and National.

By recognizing and addressing the challenges faced by all of these segments in today's world, Delta Zeta provides the support and tools chapters need to become cohesive, while nurturing members who become productive and contributing citizens of the world community.

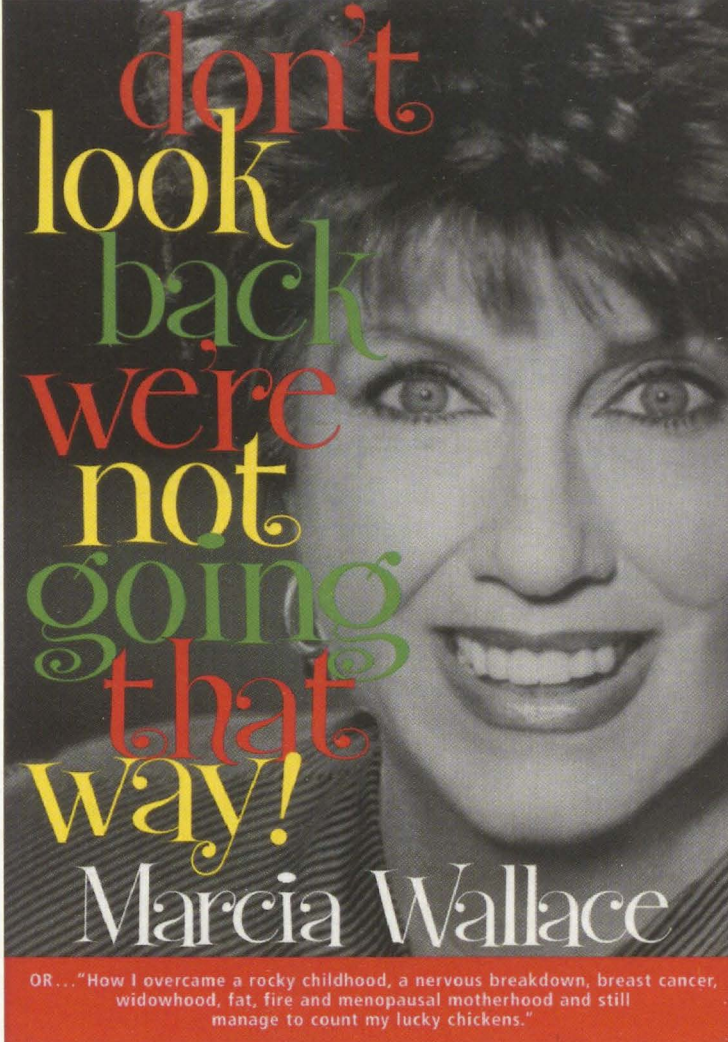
Delta Zeta's collegiate chapters have enthusiastically embraced the Standards of Excellence to reach chapter excellence. *The LAMP* will continue to update readers on its implementation and progress, with real life examples of how the SOE is profoundly influencing our chapters and members.

"To build up the character and cultivate the truest and deepest friendship among its members. To stimulate one another in the pursuit of knowledge and the attainment of a high standard of morality; to inculcate elevated sentiments and noble principles and to afford each other every possible assistance and to incite all to the attainment of a memorable fame."

**The Original Articles
of Incorporation,
The Constitution of the
Delta Zeta Sorority**



Alumnae Profiles



**don't
look
back
we're
not
going
that
way!**

Marcia Wallace

OR... "How I overcame a rocky childhood, a nervous breakdown, breast cancer, widowhood, fat, fire and menopausal motherhood and still manage to count my lucky chickens."

"Don't Look Back, We're Not Going That Way"

Marcia Wallace ΔN '61 discusses her life, fame, family, tragedy, and why she can "still manage to count my lucky chickens."

By Nancy Brewer A

Marcia Wallace ΔN '61 is truly an actor for all generations. In 1972, she played the quick-witted receptionist on the Emmy-nominated *The Bob Newhart Show*. In the 1980s, she made guest appearances on TV shows such as *Taxi*, *Magnum P.I.*, *Alf*, and later, as Murphy Brown's efficient secretary in the television series of that same name. A new generation of television viewers came to know her in the 1990s as Edna Krabappel on *The Simpsons*, Bart Simpson's middle-aged, divorced fourth-grade teacher who never gives Bart a grade above a 'D', a part for which Marcia won an Emmy. "It's job security, because Bart has been in the fourth grade for 16 years!" she laughs.

On March 16th, Marcia joined the cast of *The Bob Newhart Show* for the 2005 TV Land Awards. That night, the show was honored with the Icon Award, and television viewers both young and old were treated to a *Bob Newhart* reunion.

Behind the colorful characters she has created on the TV screen, Marcia is also a mother, an advocate for breast cancer awareness, and now an author with the release of her autobiography, *Don't Look Back, We're Not Going That Way!*, which is the perfect motto for her life journey to fame, self-discovery, love, and heartbreak.

After a "rocky" childhood in Creston, Iowa (Marcia's father was an alcoholic, but someone she later reconciled with and the person she credits with giving her the wacky sense of humor everyone has come to know), Marcia ventured to Parsons College in Fairfield, Iowa, a small school with an excellent drama program. Her high school journalism teacher guided her to this major after she told Marcia that she had "no nose for news."

While at college, Marcia became a member of the Delta Nu Chapter of Delta Zeta Sorority, and later served as Chapter President. "I went through rush [recruitment] and was turned down by everybody. Then I was rooming with a lot of sorority girls in the dorms, and over a period of time everybody got to know me. Then everybody wanted me. One friend tells the story of how somebody went through rush and my friend said, 'We need to be careful—she might turn out to be another Marcia Wallace!'

"I am extremely close with my sorority advisor, Charlotte Lamb I '61, and she and her family ended up being my surrogate family," Marcia continues. "I met her when I was 19—in fact, I talked to her just the other day. She's warm and loving and hilarious and just made everybody feel great [in college]. And all my sorority sisters from school remember her."

Marcia values her sorority experience. "I learned about that kind of deep friendship that I didn't want to do without once I got out into the world. I didn't want to have just superficial friends because I had developed so many strong friendships. I loved college and my sorority experience, and I value and treasure the friends that I made there. My life is better for it—no question about it."

Through Parson's excellent drama program, Marcia learned from some of the best, then, "I took off for New York City the day I graduated from college. I weighed 230 pounds and I had \$150 in the bank. When people ask me, 'How do you break into show business?', I say, 'Well, first of all, your ready cash should at least equal your weight,'" she laughs.

After studying with actor and sought-after acting coach Bill Hickey, Marcia was working with his improv group at a small club in New York. "So there I am, and we're working for like a dollar and a half and a Chicklet®, and one night it's raining and one of the drama critics for the *New York Times* literally came in out of the rain and sat down to watch us—not that we were that good, but we had potential and he mentioned me. Somebody from *The Merv Griffin Show* read that article and came down and saw us and then put me on *The Merv Griffin Show* which eventually led to *The Bob Newhart Show*."

Marcia's brief appearance on *The Merv Griffin Show* was enough to convince CBS founder Bill Paley that he had found Carol Kester, the funny, loyal receptionist for Bob Newhart's Dr. Bob Hartley, a psychologist practicing in Chicago. She got the job without an audition.



Above left: "I got married at the Buddhist temple in Cucamonga, California. It was an hour from Los Angeles and the reception was an hour away in Long Beach. Somebody said, 'I hope the marriage lasts longer than the drive.' Bob Newhart said, 'I love a traditional Cucamonga/Long Beach wedding.'" **Second from left:** "I'm very lucky to have been paid for what I love to do. I want more than anything for my son, Mikey, to find his passion—what he feels strongly about and go for it. A lot of people never do that, and that is too bad." **Second from right:** Marcia (center) with the cast of The Bob Newhart Show. Clockwise: Suzanne Pleshette, Bob Newhart, Bill Daily, and Peter Bonerz. "It was fabulous," Marcia says. "That was a wonderful time. That whole Saturday night line up—All in the Family, M*A*S*H*, The Mary Tyler Moore Show, Bob Newhart, and Carol Burnett—we'll never see the likes of that again. People had one TV and there were three channels, so people watched as a family. I still get all generations who remember the show with a great deal of affection and fondness because those shows were so darn good." **Above right:** Today Marcia is the voice of Edna Krabappel on The Simpsons.

Marcia stays in touch with the cast today, including Bob Newhart. "He's a very unusual comic. I always say he's like the Fred Astaire of comedy because he makes it look so easy. I had a dog named Maggie who was so old when I got her, all she did was sleep and yawn. So whenever there was a joke that Bob didn't particularly like, he'd get down and tell the joke to Maggie, and say, 'See? Maggie doesn't think it's funny.' He is an absolutely nice person."

The highly successful comedy ran from 1972 to 1978, and at the height of its success, Marcia found herself checking into a mental hospital (which she affectionately refers to as "the Bin") after suffering a nervous breakdown. "I ended up at a time, when I should have been the happiest, feeling so isolated and I kind of went to pieces. Of course now, if you have a nervous breakdown, you'll be on *The View* on Tuesday. In those days, you didn't talk about that."

But the experience taught Marcia an important lesson. "When I knew the show was a success, I found out that you can't look outside yourself for real happiness," she says.

With the support of her *Newhart* family and her friends, Marcia started the road to recovery. This leg of her journey took her through therapy and a spiritual journey which led her to the discovery of Buddhism, her adopted faith. "Basically," she explains, "it's about tapping into the best part of yourself and looking for enlightenment in your own self. Buddhism really helps you tap into that life force."

In her early forties, Marcia had a chance meeting with hotel owner Dennis Hawley in Long Beach, California. After years of dating the wrong men, her love affair with Dennis was magical. "He said, 'I'm crazy about you, but I've been married and I didn't like it and I don't want to get married,'" Marcia remembers. "I thought to myself, 'For once in your life, shut up. He's here. He's with you. Appreciate all the wonderful things he will do and don't concentrate on what he won't.' So six months later he said, 'I can't go one more minute without being married.' Then I almost broke his neck jumping on him!"

On the eve of her wedding, she was diagnosed with breast cancer. "I've been a breast cancer survivor for 19 years this October," Marcia says. "I caught it early, I never got sick, and it never came back. That's about a 10-minute movie of the week. Then one day somebody called and said, 'Would you come and share your story at the luncheon?' and eventually, after about 10 years, I had a speech and people were asking me if I could travel around the country. I talked about breast cancer survival as a volunteer for years."

A year after their wedding, Marcia and Dennis adopted Mikey, their son. "Five years later, this huge wrecking ball came crashing into my heart and I thought, 'I'll never survive this.'" Marcia had learned that her husband had cancer. "Denny died at 47 of pancreatic cancer—it was just so horrible. Two weeks before he died, he said, 'This is hard, and I hate it, but I'm so glad we used our good china,' because we did. We traveled, we hugged, and we used our good china, and most of it is broken, but so what? And that was a metaphor for our life together—there were no regrets."

Her experience with breast cancer also saved her financially after her husband's death. "When Denny died, I had medical bills and owed the IRS the penalty for dissolving my retirement fund early. My house was in foreclosure, and then somebody said, 'We'll pay you to go on the road and talk about breast cancer,' and I said, 'I don't think I'm good enough,' but I got over that! After months and months on the road, I paid back all the money I borrowed and paid back all of our debts, which was tens of thousands of dollars. It's given me great pleasure, especially to pay back people who are struggling now."

Today she is busy raising her teenage son, Mike. "I'm losing hormones and he's getting them!" she laughs ruefully. "I do *The Simpsons*, I do the speaking engagements, I raise my boy, and I'm promoting the book right now. I want to take the book to talk shows—my dream is *Oprah*—it could happen! The whole world wants to be on *Oprah*, but why not me? That's why I'm still here, I think, because I presume, 'Why not?' Now many, many times it turns out not to be me, but that's okay, too. I'll keep going."

Visit Marcia's website at www.marciawallace.com. The Bob Newhart Show (first season) is now available on DVD.

Meet Marcia Wallace at the Delta Nu Reunion!

Alumnae of the Delta Nu Chapter (Parsons College, Fairfield, Iowa) are holding a reunion the weekend of June 3, 2005. Meet alumna Marcia Wallace '61, actor and comedian, for a book signing and memories!

Please contact Kaye Sobaski Richardson '59 at stevenr114@comcast.net or 520/690-1361 for further information.

Alumnae Profiles



labellosangeles.com

Label Los Angeles: L.A. Fashion Brought to Your Living Room

By Megan Erb ΔΣ '95

Believing in yourself and finding your niche. That's the motto of Delta Zeta alumna **Emily Heintz** ZΠ '96. It's more than just a phrase she repeats to herself in times of challenges—it's her motto that helped launch her successful business, and now she wants to share it.

Emily didn't always have that motto. With a degree in public relations from the University of Georgia, she left the south for the glitz and glamour of Los Angeles. But after nine months, she found herself with a pink slip and the uneasy feeling of what to do with her life. "I decided to go another direction, so I took an hourly job as a buyer and worked at the bottom of the fashion industry." Fast forward a few years and Emily had graduated from the Fashion Institute of Design and Merchandising, found a business partner, and a niche.

www.labellosangeles.com was born out of the idea to bring the trends of L.A. to the rest of the world. "Bricks and mortar businesses are so competitive. With 'clicks only' stores, the sky's the limit. You can sell 24-seven and you're not limited to geography, so we decided that's the way to go," said Emily from her L.A. office. Emily met her business partner, Katie Bogue, in an entrepreneurial class. Reluctantly she accepted a partner for the project. "I didn't want a partner at first, but then decided we'd be better together." The two began researching business ideas and decided to see where they could go with their plan.

After graduation this past June, they took their plan to the real world. "It was a nine month process. But we were really excited—we felt like we had jumped off a cliff. It was all about selling ourselves," said Emily. "The key to your identity is having a niche and focusing. It's helped us with our marketing plan and getting certain designers." By focusing on Los Angeles-based designers, Emily and Katie felt they were filling a void in the online market. "Independent retailers didn't have this," said Emily. "We said, 'Let's do it better, let's specialize.'" Their website is more than an online store, "it's more of an

informational resource for trends happening in L.A." The Flash-integrated website makes it more interactive, "to give it the boutique experience," she adds. Specializing is what Emily believes set them apart from the rest.

www.labellosangeles.com launched on October 2, 2004. "The first week was just family and friends, then people we didn't know started ordering—now we don't know any of our customers personally," laughs Emily. She and her partner saw sales surge, thanks to the holidays and a big marketing push. Their site is linked to other shopping sites, Yahoo, Google, "and we're working with stylists to get clothes on celebrities," she adds.

Emily isn't just committed to launching the fashion design careers of L.A.'s style elite, she also wants to encourage young women to branch into the business world. "A lot of girls are taught to go to college, but beyond that it's get married and have kids. I'd love to be involved with high school and college girls and offer advice. It's possible [to start your own business]—you just have to have desire."

Aside from desire, Emily says it's also important to gain experience in lots of different industries. "I've had five jobs since college and every one of them has been valuable, from the smallest class to serving as the managing director of a \$2 million retail store." Reading books on starting a business was also key to her education, "I read lots of books just to get a feel for what I'd have to do." Education and books are only part of the process, "Believe in yourself and you can go anywhere," Emily says. "When I have a challenge, I believe in myself and I know I can make it work."

"They say [in business] if you break even in your first year, you're doing good," says Emily. Label Los Angeles is on track to break even. "We are finally realizing this is happening, we're building momentum, have a positive attitude and it's because of our niche." Thanks to their niche, the rest of us will know what's hot in Los Angeles besides the weather.



Emily Heintz ZΠ '96 (right) with her partner Katie Bogue.

Flame Eternal

ALPHA

Jean Elizabeth Pfau Moorhead '42
Joyce Ann Fuller Wiland '49
Marie Finkbeiner Becker '57
Lynn Rogers Hall '65

GAMMA

Norma Edward Sutton '29

DELTA

Dorothy Larkin Robitaille '38
Clarabelle Langdon Morgan '41

EPSILON

Marion Holmes Caudell '50
Wilma Ruth Olson Ruwe '53
Aurela Pasko Conway '62

ETA

Mary Crawford Teasley '29

KAPPA

Constance Bailey Davis '31
Minnie Gibb Fenenga '46
Helen Creesy Edwards '54

LAMBDA

Lucile McClaskey Schwarz '42

MU

Virginia Vail Keating '22
Sara Lee Adams '46
Sally Laforge '46
Ruth Holmes McNulty '46
Nancy Spencer Spaniol '57
Juanita Eitel Alving '63

NU

Marion Anderson Crandell '39

RHO

Carmelita Bissitt Gilbert '50
Joan Kyle Dietrich '52

SIGMA

Marie Major Wagley '36

TAU

Mildred Bemis Bryan '47
Frances Cavanagh Gale '47

UPSILON

Delores Zimmerman Stroh '54

PHI

Wanda Piper Majnarich '43

CHI

Elizabeth Sedgwick Kleinke Steele '41
Antonette Svendsen Davies '46

OMEGA

Carolyn Hoskins Adkison '51

ALPHA ALPHA

Carlene Rosboro Eads '30

ALPHA BETA

Grace McAuley Potter '32

ALPHA GAMMA

Priscilla Agnes Givens '72
Elizabeth Penruddocke Dobson

ALPHA DELTA

Ethel Theis '41

ALPHA EPSILON

Eleanore Wycoff McKinley '22
Iola McVey Holcomb '30
Nancy Lambert Zellers

ALPHA ZETA

Margery Heberer Schuster '41

ALPHA THETA

Mary Ann Helm Luce '55

ALPHA KAPPA

Gwili "Jill" Barrho Kowalski '52

ALPHA LAMBDA

Myra Hall Mitchell '27

ALPHA SIGMA

Avaline Lancaster Cannon '34
Alice Datson Herndon '46

ALPHA CHI

Virginia Shoenberger Curley '41

BETA GAMMA

Juanita Wood Stephenson '45

BETA KAPPA

Esther Treptow Clark '35

BETA LAMBDA

Martha Newman Dillman '35

BETA MU

Lois Reynolds Wiggins '37

BETA NU

Yvonne Caproni Watts '53

BETA PI

Carol Conway Moore '45

BETA TAU

Eleanor Ware Park '42

BETA PHI

Pinky Gates Bondurant '41

BETA CHI

Ruth Campbell Mowell '41
Ruth Ellen Shumaker Miller '46

GAMMA ALPHA

Mary Lou Kishel McDade '42

GAMMA BETA

Bernice Fanning Burnes '54

GAMMA GAMMA

Betty Harrison Chandler '53

GAMMA CHI

Evelyn Groscoast Howell '56

GAMMA PSI

Jalaine Andersen Jeffries '56
Danielle Christine Morrison '95

GAMMA OMEGA

Susan L. Frommel
Marsha Purdum Besant '63

DELTA OMICRON

Doris Anne Selman '42

DELTA TAU

Helen Flake Rearick '62

DELTA CHI

Donna Due Cleek '56

DELTA OMEGA

Joyce Brungardt Davison '60

EPSILON BETA

Hazel Barnes Sampite '57

EPSILON EPSILON

Marjorie Lewis Downey '57

EPSILON KAPPA

Phyllis Hamley Newman '57
Donna Shemick Diamond '57

EPSILON SIGMA

Maybell Flaherty Hoggatt '56

ZETA ALPHA

Leslie Burlison Dobbins '61

THETA ZETA

Marilyn Adams Meredith '62
Dorothy Musch McQuain '62
Rosanne Coher Hirschfeld '75

THETA ETA

Nancy Heggemeier Degand '62
Janelle Marie Hornickel '03

THETA TAU

Mary Anzalone Meyer '66
Mary Harris Brandman '83

KAPPA PHI

Heather Leigh Hawkins '00

LAMBDA RHO

Cathleen Volk Colbert '81

PHI BETA

Kathryn Stacy Dedman '63

CORRECTION

In the Winter 2005 issue of *The LAMP*, it was published that Glenna Rose Mervosh EØ '57 was deceased in the Flame Eternal on p. 39. We are happy to report that Mrs. Mervosh is alive and well, and we apologize for the error.

Also, in the Winter 2005 issue of *The LAMP*, in the Flame Eternal section, it was reported, under Florence Hohnbaum Harvey's BØ '38 obituary, that Bucknell University is in New York. This was incorrect. Bucknell is located in Lewisburg, Pennsylvania.

DELTA ZETA RECRUITMENT INTRODUCTION FORM

This form is designed to introduce a young woman to Delta Zeta Sorority for consideration of membership.

Legacy: ☐ Yes ☐ No

Name _____ College/University _____

Home address _____

City

State

Zip

Campus address _____

City

State

Zip

High school attended _____ GPA _____

Year in College: ☐ Freshman ☐ Sophomore ☐ Junior ☐ Senior

Is this woman a transfer student? ☐ Yes ☐ No

If yes, college previously attended _____

Please describe any organization with participation and leadership in each, interest and special talents, job and volunteer work experience. _____

Please attach additional sheets if necessary

Parents' names _____

Legacy Information

Delta Zeta relatives (check all that apply): ☐ Mother/Stepmother ☐ Grandmother/StepGrandmother ☐ Sister/Step Sister

Have they discussed Delta Zeta with her? ☐ Yes ☐ No

Name of Delta Zeta _____ Initiation chapter _____
First Maiden Married

Phone _____ Address _____
Area code City State Zip

Other Greek affiliated relatives _____

Check all that applies to you:

- ☐ I know this potential member personally.
- ☐ I know the potential member's family.
- ☐ I have discussed Delta Zeta with the potential member.
- ☐ This reference was voluntarily sent because I believe this potential member would make an exceptional Delta Zeta.
- ☐ This reference was requested by an alumnae or collegiate chapter.
- ☐ I do not know this potential member personally. The information has been obtained from reliable sources.

Please complete and submit the form on page 13 with this form.
Form is also available online at www.deltazeta.org. Go to DZ Life/Download Forms.



In this issue, you will find the Delta Zeta Recruitment Introduction Form. By participating in this process, you are fulfilling your personal responsibility to the future of Delta Zeta Sorority, and ensuring our continuing success. Many chapters will start formal recruitment at the beginning of their fall school terms. Your participation in the recruitment process will ensure that our college chapters are aware of quality women who have a personal association with one or more of our alumnae, and who will be participating in those recruitment periods.

We all know outstanding young women through our other associations. Perhaps we also think that many of these women would be wonderful Delta Zetas—collegians who are assets to their campuses and communities, and active and contributing alumnae after graduation. Our alumnae are our number one resource in recruiting these women by letting them know about Delta Zeta before they leave for college. You are often the first contact potential members have with Delta Zeta Sorority, and the impression you make is crucial before they meet the women of the college chapters.

How can you play an integral role in the recruitment process? Simply by taking a few moments to complete a Recruitment Introduction Form for each of the women you want to recommend and sending it to the College Chapter Director listed in the Directory of this issue of *The LAMP*. At the same time, please send a copy to National Headquarters. We will then forward it to the summer address of the chapter and/or Vice President of Membership (or, make sure it gets into the hands of the appropriate person).

The Recruitment Introduction Form allows you to make your recommendations before recruitment. Thank you for your participation in our recruitment process. We appreciate your effort to aid Delta Zeta Sorority in continuing to recruit quality members. Your reference letters on potential members are important!

DELTA ZETA REFERENCE AND LEGACY POLICY

1. A Delta Zeta legacy is defined as the biological or adopted daughter, granddaughter, great-granddaughter, or sister of an initiated member (alive or deceased) of any Delta Zeta chapter. This may include half-sisters or step relations if the relationship to the Delta Zeta member has been a close one. A Delta Zeta legacy shall be invited to at least one invitational formal membership recruitment party if the chapter received a written voluntary reference and/or a legacy introduction form prior to the formal membership recruitment period.
2. A legacy receiving an invitation to the preference event shall be placed on the chapter's first bid list.
3. A prospective member receiving a written voluntary reference from a Delta Zeta alumna shall be invited to at least one invitational formal membership recruitment event.

From Delta Zeta Standing Rules and Policies.

Recommendation Information

(Include with form on previous page.)

Information submitted by _____ ☐ Alumna ☐ or Collegian

Address _____

City _____ State _____ Zip _____

Initiating chapter _____ College or University _____

Year of initiation _____ Phone _____

I recommend this woman? ☐ Yes ☐ No I have known her for _____ years.

Comments: _____

Signature _____ Date _____

- Please attach additional information you may have and wish to share regarding this potential member.
- Please send one copy to Delta Zeta National Headquarters and one copy to the College Chapter Director
- Addresses may be found in the Spring issue of *The LAMP* or visit [www.deltazeta.org/For Sisters Only/Connections](http://www.deltazeta.org/ForSistersOnly/Connections).
- Please attach photo if possible.
- This form may be copied for additional use.

Chapter use only

Rec'd _____ Ack _____

Directory

For a complete version of the directory, please call

1-800-6-ALUMNA

To change your name or address, to order a DZ DeZigns catalog, for information on the magazine program or other Delta Zeta programs, contact:

**National Headquarters, 202 East Church St.
Oxford, Ohio 45056**

Phone: (513) 523-7597

Fax: (513) 523-1921

Website: Visit www.deltazeta.org

National Council

NATIONAL PRESIDENT

Debbie Raziano
117 Ashton Road, Luling, LA 70070

NATIONAL VICE PRESIDENT OF MEMBERSHIP DEVELOPMENT

Michelle Albrecht Smith
4319 Canehill Avenue, Lakewood, CA 90713

NATIONAL VICE PRESIDENT OF COLLEGE CHAPTER OPERATIONS

Tracy Wilson LeSieur
2805 Downing Circle, Birmingham, AL 35242

NATIONAL VICE PRESIDENT OF ALUMNAE AFFAIRS

Doretta Pugh Osburn
1016 Wethersfield Crossing, Hurricane, WV 25526

NATIONAL SECRETARY

Sharon Moncrief Slovinski
32787 Waverly Street, LaGrange, MO 63448

NATIONAL TREASURER

Susan Hein Feuerherm
3849 Conroy Trail, Inver Grove Heights, MN 55076

NATIONAL DIRECTOR OF MEMBERSHIP SERVICES

Phyllis Sundberg Davis
124 Beatrice Lane, Brandon, MS 39047

NATIONAL DIRECTOR OF EXTENSION

Kathi Bray Heatherly
528 Alexandria Drive, Naperville, IL 60565

NATIONAL DIRECTOR OF PHILANTHROPY

Christine Kolodgie Kern
109 Woodridge Road, St. Louis, MO 63122

PAST NATIONAL PRESIDENT

Karly Klemp Burns
331 7th Avenue North, Tierra Verde, FL 33715

NATIONAL PANHELLENIC CONFERENCE DELEGATE

Lynnda Wolf Hoefler
2981 Telber Court, Stow, OH 44224

NATIONAL PANHELLENIC CONFERENCE ALTERNATES

1st Alternate - Kathi Bray Heatherly
528 Alexandria Drive, Naperville, IL 60565
2nd Alternate - Phyllis Sundberg Davis
124 Beatrice Lane, Brandon, MS 39047
3rd Alternate - Karly Klemp Burns
331 7th Avenue North, Tierra Verde, FL 33715

Delta Zeta Foundation

PRESIDENT

Ruth Weider Patterson
3623 Devereaux Road, Columbia, SC 29205

VICE PRESIDENT

Sandra Sebrell Bailey
639 N. Portage Path, Akron, OH 44303

VICE PRESIDENT-MUSEUM

Norma Minch Andrisek
319 Janice Drive, Berea, OH 44017

SECRETARY/TREASURER

Sonja Nay Wise
1813 Mallard Court, West Lafayette, IN 47906

TRUSTEE

Anne Marie Jones Gavin
3264 Swan Drive, Vineland, NJ 08361

TRUSTEE

Marvona Easley Tavlin
6320 Rogers Circle, Lincoln, NE 68506

MEMBER

Debbie Raziano
117 Ashton Road, Luling, LA 70070

Committees

FINANCE/INVESTMENTS

Sonja Nay Wise
1813 Mallard Court, West Lafayette, IN 47906

GRADUATE SCHOLARSHIPS

Elizabeth Chilton Gryder
714 N. Cambria Street, Anaheim, CA 92801

GALLAUDET UNIVERSITY

Joan Dondrea Lowry
578 Yarmouth Drive, Bay Village, OH 44140

HEGHINIAN SCHOLARSHIPS

Marion Angarola Shapley
109 Via Los Miradores, Redondo Beach, CA 90277

HOUSE EAR INSTITUTE

Marilyn Fey Ghysels
8442 Lindante Drive, Whittier, CA 90603

LEACH SCHOLARSHIPS

Betty Paul DeWitt
23630 Oak Rest Lane, Harbor City, CA 90710

UNDERGRADUATE SCHOLARSHIPS

Vicki Bowman
3050 W. Ball Road #126, Anaheim, CA 92804-3852

WEBSITE/COMMUNICATIONS

Jeanine Petersen Triplett
7203 Limestone Court, Crestwood, KY 40014

National Historical Museum and Headquarters

NATIONAL HEADQUARTERS

202 East Church Street, Oxford, OH 45056
513/523-7597 (FAX) 513/523-1921

EXECUTIVE DIRECTOR

Cynthia Winslow Menges

DIRECTOR OF COMMUNICATIONS -

EDITOR *The LAMP*
Nancy E. Brewer

CHAPTER SERVICES DIRECTOR

Mandi Wise

CHAPTER CONSULTANTS

Kristyn Biebuyck	Amanda Ingram	Helen Rotnem
Lisa Bria	Andrea Johnson	Amy Vanderdonck
Monica Carney	Angela Lyon	

CURATOR/ARCHIVIST

Betty Johnson Gurr-Tomblinson
210 Mt. Pleasant Drive, Apt. 110, Monroe, OH 45050

MAGAZINE PROGRAM, INSURANCE, & NETWORKING

National Headquarters, 202 East Church Street,
Oxford, OH 45056 513/523-7597

National Standing Committees

ACADEMICS

Kara Barker Price
3433 Meadow Sound Drive, De Pere, WI 54115

AWARDS (ALUMNAE AND COLLEGIATE)

Karen Severloh Moffitt
2075 Los Robles Avenue, San Marino, CA 91108

CONSTITUTION

Anne Marie Jones Gavin
3264 Swan Drive, Vineland, NJ 08361

FIELD ACTIVITIES

Karly Klemp Burns
331 7th Avenue North, Tierra Verde, FL 33715

FINANCE

Susan Hein Feuerherm
3849 Conroy Trail, Inver Grove Heights, MN 55076

HISTORY

Florence Hood Miner
1917 Five Iron Drive, Castle Rock, CO 80104

HOUSING ADMINISTRATOR

Norma Minch Andrisek
319 Janice Drive, Berea, OH 44017

JUDICIARY

Cathy Irvin Painter
4108 Mek Drive, Austin, TX 78731

MUSIC

Michele Taylor Benoit
203 East 6th Street, Thibodaux, LA 70301

NEW MEMBER EDUCATION

Jennifer Yeagley Anderson
1014 Park Village Drive, Louisville, OH 44641

PHILANTHROPY - ALUMNAE

Karen Woods Miron
2353 Deer Trail Pk. NE, Grand Rapids, MI 49505

PHILANTHROPY - COLLEGIATE

Grace Dollahon Bartholet
6445 Olson Memorial Highway,
Golden Valley, MN 55427-4947

PROGRAM DEVELOPMENT

Ann Grant Wadsworth
192 Wind Brook, Alexander City, AL 35010

PUBLICATIONS

Marvona Easley Tavlin
6320 Rogers Circle, Lincoln, NE 68506

RECRUITMENT

Ann Gurley Morrow
7475 Clinton Road, Paducah, KY 42001

RISK MANAGEMENT

Heather Angove
1409A McDaniel Avenue, San Jose, CA 95126

RITUAL

Patricia Menendez Tector
4704 Cypress Ford Drive, Fuquay-Varina, NC 27526

National Special Committees

CONVENTION CHAIRMAN

Kimberly Harris Bath
1048 Fawnview Drive, Montgomery, AL 36117

STATUS

Judy Harwood
211 Lathrop Lane, Manchester Center, VT 05255

TECHNOLOGY DEVELOPMENT

Pamela McClure Cronenwett
70 Charter Court, Manistee, MI 49660

TRAINING

JoAnn Arnholt
29 Sterling Road, Princeton, NJ 08540

Area Alumnae Directors

BLUE RIDGE - Virginia, West Virginia, North Carolina,
South Carolina, Washington, DC
AAD: Tracy Kingsbury Bank
7211 Danford Lane, Springfield, VA 22152

Membership Chairman

Pat Clarke Bliedorn
8555 Sunningdale Terrace, Chesterfield, VA 23832

Development Chairman

Jill Bishop Brock
2650 Holly Springs Road, Inman, SC 29349

Public Relations Chairman

Katherine Fehervari
1237 N. Utah Street, Arlington, VA 22202

CENTRAL PLAINS - North Dakota, South Dakota,
Nebraska, Colorado, Kansas, Missouri, Iowa, Minnesota
AAD: Carolee Lewis Followill
822 Oak Park Boulevard, Cedar Falls, IA 50613

Membership Chairman

Anita Moix Tienken
4917 Whitney Drive, Independence, MO 64055

Development Chairman

Rhonda Reifschneider Roe
7998 Inland Lane N., Maple Grove, MN 55311

Public Relations Chairman

Angela Drennan Johnston
246 Laramie Court, Castle Rock, CO 80104

GREAT LAKES - Michigan, Ohio, Canada, United Kingdom
AAD: Mella Cooks Davies
2936 Brighton Road, Shaker Heights, OH 44120

Membership Chairman

Glenna VanderMeer Paukstis
502 N. Lakeshore Drive, Ludington, MI 49431

Development Chairman

Dr. Sandra Harding Alspach
24 E. 14th Street, Holland, MI 49423

Public Relations Chairman

Denise Sabo Brenner
230 East Cooke Road, Columbus, OH 43214

GREAT WESTERN - Washington, Oregon, California, Arizona,
Nevada, Utah, Wyoming, Idaho, Montana, Alaska, Hawaii
AAD: Beckey Robinson Romanesko,
9303 Oakbourne, Santee, CA 92071

Membership Chairman

Desiree Finigan
6547 West 85th Place, Los Angeles, CA 90045

Development Chairman

Refer to AAD

Public Relations Chairman

Donna Sinclair
814 Hacienda Drive, El Cajon, CA 92020

MID-AMERICA - Wisconsin, Illinois, Indiana

AAD: Ann E. Langel
6418 Toribrooke Lane, Madison, WI 53719

Membership Chairman

Jo Ann Hemphling Sparling
2800 Woodbridge Drive, Muncie, IN 47304

Development Chairman

Megan Farrell
600 West Rand Road #A408, Arlington Heights, IL 60004

Public Relations Chairman

Jean Gileno
25 Napanee Drive, Carmel, IN 46032

MID-ATLANTIC - Pennsylvania, Delaware,

New Jersey, Maryland
AAD: Melissa Seaman Waldron
607 1/2 East Drive, Sewickley, PA 15143

Membership Chairman

Inez Wiatrowski Apgar
10 Tumble Falls Road, Stockton, NJ 08559

Development Chairman

Nancy Stewart Reft
3238 Bradbury Drive, Aliquippa, PA 15001

Public Relations Chairman

Linda Cademartori Barba
800 Northwood Avenue, Cherry Hill, NJ 08002

NORTHEAST - Maine, Vermont, New Hampshire,
Massachusetts, Connecticut, Rhode Island, New York
AAD: Beth Luton
4961 Surrey Lane, Liverpool, NY 13088

Membership Chairman

Refer to AAD

Development Chairman

Melinda Roy
135 Portland Avenue, #802, Old Orchard Beach, ME 04064

Public Relations Chairman

Katie Isaac Franklin
102 Colebourne Road, Rochester, NY 14609

SOUTH CENTRAL - Kentucky, Tennessee, Louisiana,
Mississippi, Arkansas, Oklahoma
AAD: Stacey Orr Bond
4156 Destin Drive, Olive Branch, MS 38654

Membership Chairman

Samantha Hellums Blue
8098 E. Country Roads Drive, Claremore, OK 74019

Development Chairman

Sherry Shadwick Dotts
9741 E. 33rd Street #1005, Tulsa, OK 74146

Public Relations Chairman

Alecia Soyk Manning
140 Map Drive, Apt. 13, Pikeville, KY 41501

SOUTHEAST - Georgia, Florida, Alabama,
Puerto Rico, Virgin Islands

AAD: Christie Dale Harmon
133 Featherstone Lane, Hampton Cove, AL 35763

Membership Chairman

Rebecca Shull Moeller
28 Woodland Trail, Newnan, GA 30263

Development Chairman

Irene Leslie Bush
13370 Old Dixie Highway, Sebastian, FL 32958

Public Relations Chairman

Melissa Hood Bullard
106 Covetree Circle, Madison, AL 35757

SOUTHWEST - Texas, New Mexico

AAD: Heather Jerden Anderson
548 Edgeview Drive, Grand Prairie, TX 75052

Membership Chairman

Andrea Cooper Howard
2105 96th Street, Lubbock, TX 79423

Development Chairman

Marcie Berry
8702 Chipping Rock, Sugarland, TX 77479

Public Relations Chairman

Heidi Waltenbaugh Parker
6210 Bankston Lane, Beaumont, TX 77706

Regional Collegiate Coordinators

REGION I - Maine, Vermont, New Hampshire,
Massachusetts, Connecticut, Rhode Island, New York
RCC: Gay Thor Rose
36 Webster Road, East Lyme, CT 06333

REGION II - New Jersey, Eastern Pennsylvania

RCC: Marlo Dorsey
322 W. 57th Street #16D, New York, NY 10019

REGION III - Maryland, Western Pennsylvania

RCC: Gayle Evans Staub
6542 Baywood Drive, Harrisburg, PA 17111

REGION IV - West Virginia, Virginia, Washington, DC

RCC: Gretchen Cosgrove
3207 Stephens Way, Midlothian, VA 23113

REGION V - Ohio

RCC: Pam Gelhausen Asher
400 Hillbrook Drive, Cuyahoga Falls, OH 44223

REGION VI - Michigan, Canada

RCC: Michelle Buchan Kramer
5119 Jonathon Lane, Mt. Pleasant, MI 48858

REGION VII - Indiana

RCC: Shelly Bastin Kleiman
11133 W. State Road #68, Elberfeld, IN 47613

REGION VIII - Iowa, Nebraska, Wisconsin, Minnesota,
South Dakota, North Dakota

RCC: Pat Bladow
W5190 Jason Road, Elkhorn, WI 53121-2466

REGION IX - Missouri, Colorado, Kansas

RCC: Diane Stecher
6003 Kensington Way, Imperial, MO 63052

REGION X - California, Washington, Oregon, Montana,
Idaho, Alaska, Hawaii, Nevada, Arizona, Utah, Wyoming

RCC: Karen Martin Campbell
441-101 Cranston Court, Long Beach, CA 90803

REGION XI - Oklahoma, Louisiana, Mississippi, Arkansas

RCC: Jill Jackson Swift
2107 Greystone Cove, Jonesboro, AR 72401

REGION XII - Texas, New Mexico

RCC: Aileen Salinas
11711 Wall Street #13102, San Antonio, TX 78230

REGION XIII - Tennessee, Kentucky

RCC: Julie Stewart Pride
864 Nutwood Street, Bowling Green, KY 42103

REGION XIV - North Carolina

RCC: Christy Phillips
425 Lorna Street, Charlotte, NC 28205

REGION XV - Alabama, Florida

RCC: Nikki Dempsey Sprader
153 County Road 658, Hanceville, AL 35077

REGION XVI - Illinois

RCC: Sara Groom
226 Ashbury Lane East, Roselle, IL 60172

REGION XVII - Georgia, South Carolina

RCC: Margret Georges O'Meara
8040 Ridge Valley, Woodstock, GA 30189

CCD Directory Listing

Alabama

UNIVERSITY OF ALABAMA
Shay Victoria Lawson
1510 Plantation Lane, Tuscaloosa, AL 35405

UNIVERSITY OF ALABAMA/HUNTSVILLE
April Freeman Gero
204 Red Oak Place, Madison, AL 35758

AUBURN UNIVERSITY
Elizabeth H. Mueller
1551 N. College Street, Auburn, AL 36830

AUBURN UNIVERSITY/MONTGOMERY
Elizabeth Marie Hitch
2055 Hyundai Blvd., Montgomery, AL 36105

JACKSONVILLE STATE UNIVERSITY
Gina Moses Mabrey
501 South 5th Street, Gadsden, AL 35901

Arizona

ARIZONA STATE UNIVERSITY
Kristyn Biebuyck, Chapter Consultant
739 East Apache Blvd., Tempe, AZ 85281

Arkansas

ARKANSAS STATE UNIVERSITY
Samantha Davis Glover
310 Elm Avenue, Jonesboro, AR 72401

ARKANSAS TECH UNIVERSITY
Laura Young Gottsponer
66 Lonoke Road, Morrilton, AR 72110

UNIVERSITY OF CENTRAL ARKANSAS
Carrie Bayer Short
2460 Remington Road, Conway, AR 72032

California

CALIFORNIA STATE UNIVERSITY/FRESNO
Cam Maloy
2439 E. Soquel Circle, Fresno, CA 93720-4640

CALIFORNIA STATE UNIVERSITY/FULLERTON
Sandy Shaddix Hall
33866 Copper Lantern, Dana Point, CA 92629

CALIFORNIA STATE UNIVERSITY/LONG BEACH
Kelly Janousek
18527 Edgebrook Lane, Huntington Beach, CA 92648

CALIFORNIA STATE UNIVERSITY/LOS ANGELES
Shoshana Yudin
227 Pomona, Apt #5, Long Beach, CA 90803

CALIFORNIA STATE UNIVERSITY/NORTHRIDGE
Lorrie Preuss Samalot
19726 Saticoy Street, Winnetka, CA 91306

LOYOLA-MARYMOUNT UNIVERSITY
Carol Chung Lingrosso
7876 Airplane Avenue, Los Angeles, CA 90045

UNIVERSITY OF SAN FRANCISCO
Andrea Marsala
215 St. Denis Court, San Ramon, CA 94583

SAN JOSE STATE UNIVERSITY
Kristi Melani
493 Tower Hill Avenue, San Jose, CA 95136

Canada

UNIVERSITY OF WINDSOR
Danielle Brown
1460 Henry Ford Centre Drive, Windsor, Ontario, CANADA N8Y 2V1

Colorado

UNIVERSITY OF DENVER
Stacey Wheeler Slaughter
9623 W. 69th Place, Arvada, CO 80004

UNIVERSITY OF NORTHERN COLORADO
Jenny Dybala Hartfelder
7367 S Newport Way, Centennial, CO 80112

Connecticut

UNIVERSITY OF CONNECTICUT
Laura Baxter Hedenberg
4 Wotton Lane, Burlington, CT 06013

UNIVERSITY OF HARTFORD
Anna Mann
136 Loomis Drive, Apt. A1, West Hartford, CT 06107

District of Columbia (Washington, D.C.)

GALLAUDET UNIVERSITY
Elyssa Bockman Brecher
3908 9th Road South, Arlington, VA 22204-4170

Florida

FLORIDA STATE UNIVERSITY
Amy Anderson Riley
3590 Ocleon Drive, Tallahassee, FL 32312

UNIVERSITY OF TAMPA
Tycene Parrott
6718 Mirror Lake Avenue, Tampa, FL 33634

UNIVERSITY OF FLORIDA
Kimberly Kibler Vaughn
13729 SW 4th Lane, Newberry, FL 32669

Georgia

COLUMBUS STATE UNIVERSITY
Leslie Clack
5425 Ray Drive, Columbus, GA 31904

GEORGIA COLLEGE AND STATE UNIVERSITY
Heather Busby Hanner
359 Patrick Circle, Jenkinsburg, GA 30234

GEORGIA STATE UNIVERSITY
Lisa Severtis Higgins
5536 Trace Views Drive, Norcross, GA 30071

UNIVERSITY OF GEORGIA
Denise Marie Lobodinski
2014 Stratford Place, Marietta, GA 30067

NORTH GEORGIA COLLEGE AND STATE UNIVERSITY
Rebecca McClellan Pedersen
8055 Brookstone Lane, Gainesville, GA 30506

Illinois

DEPAUL UNIVERSITY
Julie McDermott
3409 N. Elaine Place #3, Chicago, IL 60657

EASTERN ILLINOIS UNIVERSITY
Beth Daily Wiley
16302 NCR 100E, Arthur, IL 61911

EUREKA COLLEGE
Joan Paxson
1022 Miller Street, Apt. C, Washington, IL 61571

ILLINOIS STATE UNIVERSITY
Heidi Elizabeth Oettel
101 Fox Hill Circle, Apt H, Bloomington, IL 61701

UNIVERSITY OF ILLINOIS
Brenda Lindsey
507 North Shore Drive, Mahomet, IL 61853

NORTHERN ILLINOIS UNIVERSITY
Gretchen Waltenbaugh
612 W. Harrison, #15, Oak Park, IL 60304

NORTHWESTERN UNIVERSITY
Kara Baskett
3721 N. Kenmore Avenue, Apt. 3, Chicago, IL 60613

SOUTHERN ILLINOIS UNIVERSITY
Tara Raebler
1930 Yankeetown Lane, Prairie du Rocher, IL 62277

WESTERN ILLINOIS UNIVERSITY
Barbara Brumett Baily (Dr.)
14 Elmo, Macomb, IL 61455

Indiana

BALL STATE UNIVERSITY
Laura Rasche
3090 Armory Drive, Indianapolis, IN 46208

DEPAUW UNIVERSITY
Jennifer Carpenter Hanley
528 W. 43rd Street, Indianapolis, IN 46208

INDIANA UNIVERSITY
Amanda C. Wiley
612 E. Atwater Avenue, Bloomington, IN 47401

PURDUE UNIVERSITY
Missy Lewis
8156 Hoover Lane, Indianapolis, IN 46260

UNIVERSITY OF SOUTHERN INDIANA
Elizabeth Bucko Melton
11125 P.K. Drive, Evansville, IN 47712

Iowa

UNIVERSITY OF IOWA
Melanie Reichenberger
2325 Mulberry Street #6, Coralville, IA 52241

IOWA STATE UNIVERSITY
Refer to RCC - Region VIII

Kansas

FORT HAYS STATE UNIVERSITY
Vicki Melkus Johansen
2803 Barclay Drive, Hays, KS 67601

Kentucky

EASTERN KENTUCKY UNIVERSITY
Kara Tatum
2020 Merrick Drive, #9, Richmond, KY 40475

UNIVERSITY OF KENTUCKY
Gayla Long Donnelly
369 W. Vine Street, #2004, Lexington, KY 40507

UNIVERSITY OF LOUISVILLE
Katy DeFerrari Zeitz
12513 Valley Pine Drive, Louisville, KY 40299

MOREHEAD STATE UNIVERSITY
Vivian Cyrus
406 Jewell Lane, Morehead, KY 40351

NORTHERN KENTUCKY UNIVERSITY
Jill Voet
924 Lost Valley Court, Villa Hills, KY 41017

Louisiana

LOUISIANA STATE UNIVERSITY
Doraine Bonnacaze Wilson
19052 W. Pinnacle Circle, Baton Rouge, LA 70810

UNIVERSITY OF NEW ORLEANS
Rosalia D'Amico Wright
5518 Vermillion Blvd., New Orleans, LA 70122

NICHOLLS STATE UNIVERSITY
Kelly Rodrigue Soignet
1249 Highway 20, Thibodaux, LA 70301-6242

Maine

UNIVERSITY OF MAINE
Miranda Nelson
128 Mayo Road, Unit N, Hampden, ME 04444

Maryland

FROSTBURG STATE UNIVERSITY
Jacqueline A. Brenneman
838 Shriver Avenue, Cumberland, MD 21502

Massachusetts

NORTHEASTERN UNIVERSITY
Christine Danielson
211 Summer Street, Portsmouth, NH 03801

Michigan

CENTRAL MICHIGAN UNIVERSITY
Vu Chhan Stefanich
824 N. Francis Shores, Sanford, MI 48657

EASTERN MICHIGAN UNIVERSITY
Christyle Tackett Broadworth
7211 Spyglass Lane, Ypsilanti, MI 48657

FERRIS STATE UNIVERSITY
Dawn Stanek
578 Abbey Mill Drive SE, Ada, MI 49301

GRAND VALLEY STATE UNIVERSITY
Gwendolyn McHugh Shick
14684 8th Avenue, Marne, MI 49435

MICHIGAN TECH
Marlene Thompson Gilpin
112 W. Douglass, Houghton, MI 49931

NORTHWOOD UNIVERSITY
Heather Weaver Marinik
800 Balfour Street, Midland, MI 48640

WAYNE STATE UNIVERSITY
Kristen Shymanovitz Trudeau
3412 Smith Street, Dearborn, MI 48124

WESTERN MICHIGAN UNIVERSITY
Lauren Davis Campbell
61270 South VanKal, Mattawan, MI 49071-851

Minnesota

MN STATE UNIVERSITY/MOORHEAD
Tricia Huson Anton
6605 Broadway St NW, Moorhead, MN 56560

ST. CLOUD STATE UNIVERSITY
Lesley Schreiber Farnham
7239 James Avenue South Richfield, MN 55421

Missouri

CENTRAL MISSOURI STATE
Jennifer O'Reilly
1520 Lynette, Liberty, MO 64068

LINDENWOOD UNIVERSITY
Kathy Thompson
#3 Amber Jack Court, Ballwin, MO 63021

MISSOURI/KANSAS CITY
Marcy Krumm Pelecky
7717 Ward Parkway, Kansas City, MO 64114

MISSOURI/ST. LOUIS
Laurie Tretter
8818 Gravois Road, Apt. 11, St. Louis, MO 63110

NORTHWEST MISSOURI STATE
Terri Teetor Christensen
1018 Victory Lane, Maryville, MO 64468

SOUTHWEST MISSOURI STATE
Margo Westphal
634 S. Barnes, Springfield, MO 65802

TRUMAN STATE UNIVERSITY
Bridget Stepnoski Morton
902 E. Northtown Road, P.O. Box 265, Kirksville, MO 63501

WILLIAM JEWELL COLLEGE
Michelle Marie Moseman
311 NW 110 Terrace, Kansas City, MO 64155

Nebraska

CREIGHTON UNIVERSITY
Haleigh Christensen Tebben
7947 South 171st Street, Omaha, NE 68136

NEBRASKA WESLEYAN
Christine Martin
2135 S. 14th, Lincoln, NE 68502

Nevada

UNIVERSITY OF NEVADA/LAS VEGAS
Jamie Hemington
10729 Windrose Point Avenue, Las Vegas,
NV 89144

New Hampshire

PLYMOUTH STATE UNIVERSITY
Jessica Moore
121 Herrick Street, Merrimack, NH 03054

New Jersey

ROWAN UNIVERSITY
Coleen Barricelli
513 Lantern Way, Franklinville, NJ 08322

RICHARD STOCKTON COLLEGE of NEW JERSEY

Barbara Horner
307 N. Union Avenue, Margate, NJ 08402

THE COLLEGE OF NEW JERSEY

Amanda Kelly Park
7019 Campbell Avenue, Pennsauken, NJ 08109

New Mexico

NEW MEXICO STATE UNIVERSITY
Jennifer West
PO Box 2782, Mesilla Park, NM 88047

New York

CLARKSON UNIVERSITY
Pam Blevins
6711 State Highway 56, Potsdam, NY 13676-3507

North Carolina

APPALACHIAN STATE UNIVERSITY
Elena Tribby Taylor
135 Dell Coffey Road, Boone, NC 28607

BARTON COLLEGE

Lydie Lemire Silverthorne
3828 Starship Lane NW, Apt B, Wilson, NC 27896

EAST CAROLINA UNIVERSITY

Victoria McIntosh
1944-202 Tara Court, Greenville, NC 27858

LENOIR-RHYNE COLLEGE

Krystal Ramsey Phillips
P.O. Box 7228, Hickory, NC 28603

MARS HILL COLLEGE

Robin Cole
P.O. Box 771, Mars Hill, NC 28754

UNIVERSITY OF NORTH CAROLINA/CHARLOTTE

Laura Misiunas
17039 Turning Stick Court, Charlotte, NC 28213

UNIVERSITY OF NORTH CAROLINA/ WILMINGTON

Jennifer Jernigan Slusser
703 E. Morris Circle, Dunn, NC 28332-8334

NORTH CAROLINA STATE UNIVERSITY

Heather Brown Vaughn
105 Old Bellows Court, Raleigh, NC 27607

WAKE FOREST UNIVERSITY

Cheryl Byers Calogerakis
7541 Riverside Court, Clemmons, NC 27012

WESTERN CAROLINA UNIVERSITY

Jennifer Haynes Collins
927 South Country Club Drive, Cullowhee, NC 28723

Ohio

ASHLAND UNIVERSITY

Jody Shultz Thomae
1738 E. Woodhill Drive, Ashland, OH 44805

BALDWIN-WALLACE COLLEGE

Lauri Campbell Walburn
959 Bayberry Drive, Medina, OH 44256

BOWLING GREEN STATE UNIVERSITY

Lindsay Suckow
4233 Todd Drive, Sylvania, OH 43560

KENT STATE UNIVERSITY

Kelly Wright-Gonos
5640 Caranor Drive, Kent, OH 44240

MIAMI UNIVERSITY

Susan Vaughn
628 Sanders Drive, Hamilton, OH 45013

OHIO NORTHERN UNIVERSITY

Jackie Lapp-Lee
194 Overtrick Drive, Delaware, OH 43015

OHIO STATE UNIVERSITY

Refer to RCC – Region V

OHIO UNIVERSITY

Andrea Kusta
68 Aldrich Road, Columbus, OH 43214

OHIO WESLEYAN UNIVERSITY

Sharla Klich Buxton
4956 Wallington Drive, Hilliard, OH 43026

WRIGHT STATE UNIVERSITY

Rebecca Holmes
108 Mallard Glen Drive #2, Centerville, OH 45458

YOUNGSTOWN STATE UNIVERSITY

Julie A. Miller
6296 Youngstown Hubbard Road, Hubbard,
OH 44425

Oklahoma

UNIVERSITY OF CENTRAL OKLAHOMA
Sarah Lucas
12600 N. MacArthur, #1421, Oklahoma City,
OK 73142

NORTHEASTERN STATE UNIVERSITY

Connie Parnell
314 Dogwood Drive, Tahlequah, OK 74464-5108

NORTHWESTERN OKLAHOMA STATE UNIVERSITY

Jennifer Reihm Bays
Rt. 1, Box 17, Dacoma, OK 73731-9705

Pennsylvania

CALIFORNIA UNIVERSITY/PA
Robin Rudic
1405 Gill Hall Road, Jefferson Hills, PA 15025

CLARION UNIVERSITY

Jamie Bero
840 Wood Street, 265 Gemmell Student Ctr.,
Clarion, PA 16214-1232

DREXEL UNIVERSITY

Jacqueline McClure
436 Euclid Avenue, Maple Shade, NJ 08052

DUQUESNE UNIVERSITY

Rita DiLucia Warfield
1802 Orchid Street, Pittsburgh, PA 15207-2471

EDINBORO UNIVERSITY

Diane Diorio Raffe
12884 Forrest Drive, Edinboro, PA 16412

INDIANA UNIVERSITY/PA

Rebecca Guilliouma O'Brien
1161 Winterset Road, Ebensburg, PA 15931

KUTZTOWN UNIVERSITY

Nicole Burkhart
325A Birch Avenue, Horsham, PA 19044

MANSFIELD UNIVERSITY

Karen Starner Jacobson
3119 Cherry Flats Road, Covington, PA 16917

MILLERSVILLE UNIVERSITY

Terri Andary Cooke
P.O. Box 9002, Lancaster, PA 17604

MUHLENBERG COLLEGE

Tracy Kleppinger Bozik
3016 Eisenhower Drive, Northampton, PA 18067

PENNSYLVANIA STATE UNIVERSITY

Refer to RCC – Region II

UNIVERSITY OF PITTSBURGH

Kelly Waitkus Wetzel
22 Riverview Drive, Leetsdale, PA 15056

ROBERT MORRIS UNIVERSITY

Michelle Talik
112 Emerson Avenue, Pittsburgh, PA 15215

SHIPPENSBURG UNIVERSITY

Jessica Sprajcar
420 Amherst Drive, Apt. B, Harrisburg, PA 17109

SLIPPERY ROCK UNIVERSITY

Jennifer Raabe Walters
122 Beechwood Blvd., Butler, PA 16001-1603

TEMPLE UNIVERSITY

Jenny McKenna
563 Sunset Avenue, Maple Shade, NJ 08052

WEST CHESTER UNIVERSITY

Christine Patterson
35 S. Linden Avenue, Upper Darby, PA 19082

Rhode Island

BRYANT COLLEGE
Stacy Marie Burinskas
6 Leo Road, Sharon, MA 02067

UNIVERSITY OF RHODE ISLAND

Jackie Ahnert Meislitzer
52 Pheasant Run, Oakdale, CT 06370

South Carolina

CLEMSON UNIVERSITY
Amy Vanderdonck, Chapter Consultant
2127 University Station, Clemson, SC 29632

UNIVERSITY SC/UPSTATE

Lisa Davenport Green
9 Shamrock Lane, Greenville, SC 29609

UNIVERSITY OF SOUTH CAROLINA

Jaylene Phelps Braxton
203 E. Hampton Way, Columbia, SC 29229

WINTHROP UNIVERSITY

Mandy Smith Rawls
510 Saddlebrook Drive, Rock Hill, SC 29730

Tennessee

MIDDLE TENNESSEE STATE UNIVERSITY
Cindy Stockdale White
515 Council Bluff, Murfreesboro, TN 37127

UNIVERSITY OF TENNESSEE/KNOXVILLE

Allison Jones
1215 Lake Heritage Way, #208, Knoxville, TN 37922

Texas

ANGELO STATE UNIVERSITY
Joan Lohstreter Paulsen
1909 A and M Avenue, San Angelo, TX 76904

UNIVERSITY OF HOUSTON

Ashley Vaughan
4239 Greeley Street, Houston, TX 77006

ST. MARY'S UNIVERSITY

Pamela Ramirez
16650 Huebner Road, #527, San Antonio,
TX 78248

STEPHEN F. AUSTIN STATE UNIVERSITY

Carrie Ross Hyland
1324 Pruitt Hill Drive, #207, Nacogdoches,
TX 75961

TARLETON STATE UNIVERSITY

Julie Tennyson
1715 North Graham, Stephenville, TX 76401

TEXAS A & M UNIVERSITY

Kara Hay Comte
1310 Danville Court, College Station, TX 77845

TEXAS STATE UNIVERSITY

Jessica Lane Henderson
753 Bent Wood Place, Round Rock, TX 78664

UNIVERSITY OF TEXAS/ARLINGTON

Emily Brown Brown
5805 Briarcliff, Haltom City, TX 76117

UNIVERSITY TEXAS/PAN AMERICAN

Liza Estella Gonzalez (Ms.)
1317 Ridgewood Circle, Pharr, TX 78577

WEST TEXAS A & M UNIVERSITY

Lexie Bowling Brewton
3015 Laguna Drive, Amarillo, TX 79110

Virginia

LONGWOOD UNIVERSITY
Tami Park
PO Box 6215, Newport News, VA 23606

OLD DOMINION UNIVERSITY

Kristy Sanford
918 Brigantine Court, Chesapeake, VA 23320

RADFORD UNIVERSITY

Denise Shimp Powder
534 Spruce Street, Vinton, VA 24179

RANDOLPH MACON COLLEGE

Clytie Roberts
302 Maryland Avenue NE, Washington, DC 20002

VIRGINIA TECH INST.

Vicki Shannan
5397 McVitty Road, Roanoke, VA 24018

UNIVERSITY OF VIRGINIA

Felicia Benaman Wilson
1462 Ashland Drive, Charlottesville, VA 22911

Washington

UNIVERSITY OF WASHINGTON
Dawn Leland Wasukewicz
18115 72nd Avenue W., Edmonds, WA 98026

West Virginia

CONCORD UNIVERSITY
Lisa Bergeria Blankenship
P.O. Box 779, Athens, WV 24712

FAIRMONT STATE COLLEGE

Marcella S. Johnson
401 Lee Street, Fairmont, WV 26554

MARSHALL UNIVERSITY

Robin Taylor
6200 Rosalind Road, Huntington, WV 25705

SHEPHERD UNIVERSITY

Bella Gonzalez Barron
P.O. Box 191, Damascus, MD 20872-0191

WEST VIRGINIA UNIVERSITY INST. OF TECH.

Emily Myers
76 Parkview, Poca, WV 25159

Wisconsin

CARROLL COLLEGE
Melissa Furrer
1108 River Park Circle E, #205, Mukwonago, WI 53149

UNIVERSITY OF WISCONSIN/EAU CLAIRE

Refer to RCC- Region VIII

UNIVERSITY OF WISCONSIN/STOUT

Cheryl Matheny Norder
2511 Crestwood Drive, Menomonie, WI 54751

UNIVERSITY OF WISCONSIN/WHITEWATER

Amanda M. Koss
2518 North 82nd Street, Wauwatosa, WI 53213-1021

On Campus

Alpha Alpha Chapter's (Northwestern University) Academics Chairman, Stefanie Brody, has instituted a mentoring program that encourages more interaction with the chapter's faculty advisor, and presents awards for achievement. Alpha Alpha hosted its Big Man on Campus philanthropic event to benefit the Delta Zeta Foundation. Jessica Hurst, Philanthropy Chairman, encouraged the chapter to participate in other fraternity and sorority philanthropies, and members were involved in Northwestern's Dance Marathon.

The **Alpha Beta Chapter** (University of Illinois) consistently ranks above the All-Women's Average grade point average for all chapters on the campus. Philanthropy Chairman Stephanie Gioiosa is currently preparing for Alpha Beta's annual "Krazee Bowl." Sasha Young is the Public Affairs Officer of the Naval Reserve Officer Training Corps at the university, and as correspondent for her R.O.T.C. unit, assisted in helping a military wife send over 500 care packages to her husband's Marine expeditionary unit. She is also organizing the collection of old cell phones to send to Marines overseas so they can use calling cards to phone friends and family.

The **Alpha Gamma Chapter's** (University of Alabama) Anna Walley, a Florence Hood Miner recipient, won the university's title of Miss Corolla. This is the third consecutive year a Delta Zeta has taken home the crown. The chapter participated in a S.P.I.R.I.T campaign to raise money for a new scholarship on campus, which will assist a first-generation college student to attend the university. Members sent care packages and cards to troops in Iraq. The Alpha Gamma Chapter also planned its philanthropy event, "Hoops and Hearing."

The **Alpha Rho Chapter** (Ohio Wesleyan University) has the highest sorority GPA on campus. The chapter held its annual Tug-of-War event to raise over \$900 for the Delaware County Speech and Hearing Center, and a Valentine's Day raffle raised money for breast cancer. The university's Panhellenic Council donated all of the profits from spring 2005 Recruitment t-shirts to the Red Cross for tsunami relief. The new member class wrote letters to individual troops stationed in Iraq.

The **Alpha Sigma Chapter** (Florida State University) was spotlighted on NBC Nightly News on December 23, 2004 for their role in Operation Iraqi Children, a national grassroots campaign to donate school supplies to children in Iraq. "It will give them some hope. It will give them the drive to learn," member Melissa Wilson said on the newscast. Daphne Brusso said, "We just wanted to make sure that they each have the opportunity to learn just like we did growing up."

The **Alpha Theta Chapter's** (University of Kentucky) Vice President of Membership, Liz Lewis, held a new member workshop to emphasize the chapter's goals. Following initiation, many newly initiated members were appointed to chapter offices. Julia Bichlmeir, Vice President of Programs, said, "By holding an officer position, newly initiated members are committed to the present and future Alpha Theta." Alpha Theta members hold leadership in Student Government, Student Activities Board, as well as several additional leadership groups on campus.

Eighteen members of the **Alpha Upsilon Chapter** (University of Maine) made the Dean's List with a GPA of 3.3 or better, giving the chapter the second highest GPA of all sororities on campus. The chapter held an Easter party for under privileged kids and hosted its Turtle Tug to raise money for the Multiple Sclerosis (MS) Foundation. Alpha Upsilon also donated \$100 to UNICEF for tsunami relief. At the university's winter carnival, the chapter placed third in the snow sculpting contest and fourth in the talent show.

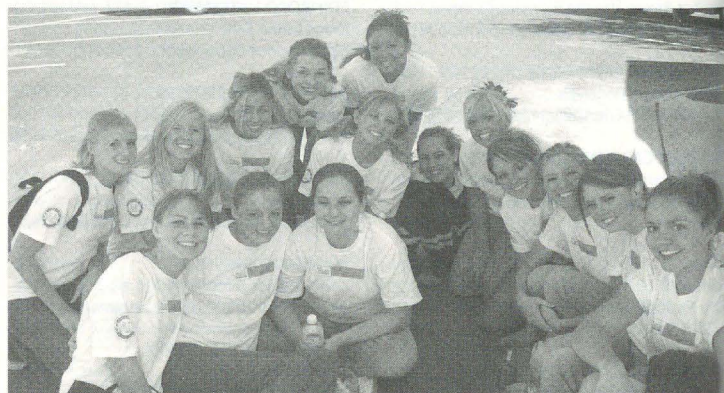


The Alpha Upsilon Chapter chose a luau theme for Homecoming.

The **Beta Delta Chapter** (University of South Carolina) assisted the Pi Delta Colony at Wake Forest University (Winston-Salem, North Carolina) with their recruitment. The chapter visited a hearing impaired class at Brennen Elementary School in Columbia, South Carolina. Members organized a bone marrow drive at the University to help a sister who was recently diagnosed with leukemia. Beta Delta held the Turtle Tug in April. Christi Woodham organized "Operation Delta Zeta Cares," which provided necessities and handwritten cards to the troops, who were delighted to receive the goodies and continue to correspond with the chapter members.

The **Beta Gamma Chapter** (University of Louisville) has seven members who maintained a 4.0 GPA throughout the semester. Stefanie Bumpus, a 2004 Florence Hood Miner Award winner, is Miss Cardinal and one of the Kentucky Derby Festival Princesses. Marian Cochiasue recently became the winner of a university racquetball tournament. Beta Gamma volunteered at the Young Women's Charity Ball and donated funds for various local charities. Members who have close friends from the fraternities at the university who are fighting overseas are corresponding with them and praying for their safe return.

The **Beta Kappa Chapter** (Iowa State University) partnered with Delta Tau Delta, Sigma Kappa, and students from Elm-Miller residence hall for Operation Playground. This program will raise over \$15,000 and build a playground in the Ames area during a 24-hour period.



The Beta Kappa Chapter in front of the chapter house.

Beta Lambda Chapter (University of Tennessee/Knoxville) members who achieved a 4.0 last year were recognized at Parents Day. After the fall semester, the chapter's GPA went up to a 3.0 to tie the All-Women's Average. Beta Lambda hosted a Halloween party for the children at the Tennessee School for the Deaf, worked with the Boys and Girls Club of Knoxville, and raised \$3,000 for the Dance Marathon, which went to a local children's hospital. Members "adopted" Marines and sent cards, supplies, and gifts.

Many members of the **Beta Xi Chapter** (Auburn University) made the Dean's List, and several achieved a 4.0 GPA. The chapter participated in Zeta Tau Alpha's "Big Man on Campus," with all proceeds going towards Breast Cancer Research. Beta Xi hosted its annual Skeet Shoot to raise \$10,000 for the Delta Zeta Foundation and the Alabama Institute for the Deaf and Blind. Members purchased wristbands, with proceeds going to tsunami victims. Beta Xi also participated in a fundraiser for the Johnny Spann Scholarship fund. Johnny Spann was an Auburn graduate who was one of the first Americans killed in Iraq.

The **Delta Chapter** (DePauw University) had the fourth highest GPA of all sororities on campus. The chapter participated in a successful fundraiser for the American Diabetes Association, which senior Megan Luecke organized. With senior Beth Sugrue's help, the Delta Chapter raised a total of \$535. Altogether the event raised over \$1,000. After recruitment the chapter welcomed 20 new members to Delta Zeta.

Delta Alpha Chapter (California State University/Long Beach) members Frances Caron and Lorena Salzedo were on the President's List, and 15 women were recognized on the Dean's List. The chapter received several Standard of Excellence awards from the Panhellenic Council on Greek Awards Night last fall, including the Communitive Involvement Award, Member Development Award, Chapter Management Award, and the highly coveted President's Cup, and was the only sorority on campus to receive the university's five-star honor. During its annual Turtle Bowl and a Red Cross blood drive, Delta Alpha raised over \$3,000 dollars for the House Ear Institute. The chapter donated canned good for the Food Bank, tutored a fourth grade class at a local elementary school, and helped at the Rape Crisis Center. The chapter is organizing a fundraiser for victims of the tsunami and supporting U.S. Troops overseas, especially alumna Lisa Katimbang '99, who is currently stationed in Kuwait. Along with sending care packages to Kuwait, Delta Alpha writes letters to local veterans at the V.A. Hospital in Long Beach.



Members of the Delta Alpha Chapter.

The **Delta Beta Chapter's** (University of Tampa) average sorority GPA was higher than any other Panhellenic sorority on campus and higher than the general campus average. Several members participated in the annual Martin Luther King, Jr. Day of Service, and volunteered at Metropolitan Ministries and Kid City. The chapter hosted its annual "Paint the Town" theme week titled, "Yo ho, yo ho, a DZ Life for Me," featuring the turtle tug-o-war contest won by Theta Chi. Overall, the event raised approximately \$500.

The **Delta Delta Chapter** (Georgia State University) has the highest academic GPA for all Greek organizations at the university, and has had the highest GPA for four continuous semesters. Delta Delta celebrated the chapter's 50th anniversary by hosting a banquet to honor and recognize alumnae.



Jamie Zaj and a little girl at the Atlanta Area School for the Deaf's annual fall festival, organized by the chapter, which raised approximately \$2,500 for the school.

Many **Delta Omega Chapter** (Fort Hays State University) members were on the Dean's Honor Roll and Molly Brown and Lawna Staven were on the President's Honor Roll. Members inducted into the Order of Omega included: Molly Brown, Kellie Benash, Melissa Wiseman, and Erica Woods. The chapter hosted its annual Big Man on Campus event, and many members are doing community service outside of Delta Zeta.

The **Delta Omicron Chapter** (Northwestern Oklahoma State University) has the highest GPA among all Greek organizations on campus and has several members on the President's and Vice President's Honor Roll. The chapter adopted two children from the local Head Start and a local retirement home resident during the Christmas season. Delta Omicron also donated food and toys to a local FFA-sponsored drive. Senior Kellie Bradford has led the campaign to bring Order of Omega Greek Honor Society to the NWOSU campus, which will be installed this spring. Savannah White was crowned the new Miss Northwestern and Kary Zweifel was named the first runner up in the competition. The chapter has a winning record in the Intramural Basketball season.



The Delta Omicron 2005 Executive Board is: Erika Bonham, Vice President of Programs; Brandi Schlarb, Secretary; Lacy Nelson, President; Marti Jones, Vice President of New Member Education; Shelby Evans, Vice President of Membership; Jodi Ackerman, Treasurer; and Jennifer Reihm Bays '02, College Chapter Director.

Delta Phi Chapter (Northeastern Oklahoma State University) members who are currently in NSU's Honors Program are: Tori Woods, Stefanie Vahdatipour, and Lauren Woods. Amanda Caseboldt, Kendra Kennedy, and Jill Webster were accepted into the President's Leadership Class. Delta Phi also has a number of sisters who are on the President's and Dean's Honor Rolls. The chapter's cumulative GPA ranked Delta Phi second of four sororities on campus. Jill Webster and Heather Winkleman have been named two of four Rookie Bridge Camp Directors for the upcoming year. Delta Phi has participated in an annual highway clean up and can food drives, and sold Valentine's Day roses to help support a women's crisis shelter.

On Campus

The **Delta Sigma Chapter** (Truman State University) had 35 members in the fall who were named to the President's or Vice President's Lists. Delta Sigma was recognized as number one academically out of the six sororities on campus.



Delta Sigma's new member class.

Delta Tau Chapter (Temple University) members Megan Price, Christine Parsons, and Alyson Lipsky were inducted into the Order of Omega in the spring. The chapter had the highest overall fall semester GPA and the top GPA for the overall cumulative GPA. Delta Tau raised money for the American Cancer Society through the "Relay for Life" walk, and supported the Epsilon Zeta Chapter's (Drexel University) "Hearts for Hearing." Members made Christmas cards for U.S. troops. Claudia Gomez received the Charlotte Fields Silversteen Award, and seven members were initiated into Rho Lambda, the Panhellenic Honors Fraternity.

Delta Theta Chapter (University of Houston) member Lisa Cast made the Dean's List, and Lisa and Laila Eliassi were inducted into the Golden Key Honor Society. Laila was also inducted into Eta Sigma Delta Honor Society and Catherine Hoyle became a member of Phi Sigma Pi. Robin Mitchell was elected to the Student Government Association and was inducted into Omicron Delta Kappa. Delta Theta had the second highest GPA of the six sororities on campus. The chapter's annual Gong Show contributed about three hundred service hours and \$300 to the Houston AIDS Foundation. The chapter participated in Jingle Bell Express 2004 by helping unload trucks with toys and clothes to be donated to needy families. The chapter also received the Most Congenial Award for Fall Recruitment.

The **Epsilon Iota Chapter** (Fairmont State College) was the champion in intramurals for the first semester. The new member class collected over \$300 in three days for the local animal shelter. During the week of Homecoming, Epsilon Iota sponsored a drive to collect items to send to the troops stationed overseas.

The **Epsilon Kappa Chapter's** (University of Wisconsin/Whitewater) Renee Piquette, Vice President of Membership, won Homecoming queen, and the chapter won first place for the trivia challenge during Homecoming, as well as placing third in overall championship and Spirit Cup. Lindsey Kalland was a contestant in the Miss Wisconsin USA competition.

The **Epsilon Nu Chapter** (Southwest Missouri State University) has 28 members on the Dean's List. Dawn Schuenemeyer and Lindy Meyer are in the Order of Omega, and Dawn joined three other chapter members in Kappa Delta Pi, an education honor fraternity. The honors business fraternity inducted Kassy Filbeck, Megan Brady, Keshia Clubb, Lindy Meyer, Brittany Ems, and Cassie Schurman.

Christina Beeman was named to Rho Lambda, and Mindy Musselman was named to the National Society of Collegiate Scholars. The chapter won the campus Panhellenic's fall academic challenge for the second consecutive semester. Dawn Schuenemeyer and Lindy Meyer were elected to the campus Panhellenic's executive board, and senior Tracy Behlmann was elected to be Greek Week chairman for March 2005. The chapter's Big Man on Campus event raised \$2,000 for the Communications Sciences Disorders Department on campus, and Epsilon Nu is collecting money for the tsunami victims.

Epsilon Omega Chapter (University of Wisconsin/Eau Claire) members recognized for Academic Distinction are: Katherine Christians, Deborah Ernie, Sara Kiekhoefer, Michelle Pickett, Brook Tweedale, and Amber Weeks. Deborah Ernie was named to the Dean's List. The chapter ranked second in academics and placed second in intramural softball. Members volunteered to assist with Robin's Elementary School's hearing-impaired program, where they held an Easter party. The chapter is also involved in Special Olympics, Big Brothers/Big Sisters, and raising funds for the tsunami tragedy.

The **Epsilon Omicron Chapter** (Western Illinois University) gained 12 new members during spring recruitment.

Epsilon Rho Chapter (Northwest Missouri State University) members Danielle Clouse and Courtney Snodgrass hold a 4.0 GPA, and the chapter has the highest GPA for all sororities at the university for the fall semester, the second semester that the chapter has held this honor. Members volunteer at the Humane Society to play with the animals and made IV bag covers for the children's hospital. Members also serve as pen pals for American soldiers in Iraq, and sent them Valentines in February.

Epsilon Sigma Chapter (Wayne State University) members Jessica Jiles, Kathy Porembiak, and Melanie Gerling were named to the Dean's List. The chapter distributed food to the indigent in the community, and volunteered to help with the community/campus-wide annual American Red Cross blood drive.

The **Epsilon Tau Chapter** (Longwood University) had the highest GPA of all the sororities on campus for the fall semester, and received the Greek award for the highest number of community service hours out of all sororities. The chapter co-sponsored the Relay for Life, and sold luminaries and flowers to remember those loved ones lost to cancer and to raise money for cancer research.

The **Epsilon Theta Chapter** (Clarion University) has 21 members who have made the Dean's List for the fall semester, and the chapter placed first with the highest combined GPA out of all sororities on campus. Epsilon Theta cleaned a one mile strip of highway for Adopt-a-Highway. This semester members are enjoying the weekly "Turtle Workout" at the recreation center and attending the men and women's basketball games.

The **Epsilon Upsilon Chapter** (University of Central Oklahoma) ranked third academically in the campus Panhellenic, and the chapter would like to thank to Courtney Pille, Academics Chairman, for her hard work. Twenty-three members are on the Dean's Honor Roll. Freshmen Randee Lucas, Stephanie Moren, and Stephanie Barr made the President's Honor Roll. The chapter's "Hearts for Hearing" week in February got the community and campus involved with speech and hearing education. McDonald's and the Ronald McDonald Foundation teamed with the chapter for a dinner as part of the

fundraising effort. Members worked with Tinker Air Force Base to send Valentines to soldiers in Iraq.



The Epsilon Upsilon Chapter during spring recruitment.

The **Epsilon Xi Chapter** (University of Central Arkansas) volunteer events included a canned food drive for a shelter for battered women; participation in Race for the Cure, an ongoing campaign sponsored by the Susan G. Komen Foundation to help find a cure for breast cancer; Bikers for Babies, an event to help raise money for the March of Dimes; and Highway Cleanup. The chapter contributed to a fundraising drive and silent auction, which helped to raise over \$60,000 to fund new technology for the Arkansas School for the Deaf. Epsilon Xi also participated in Tsunami Relief Week sponsored by the university. Members also purchased phone cards for soldiers so the troops can contact their families here at home.

The **Epsilon Zeta Chapter** (Drexel University) completed its fourth annual "Hearts for Hearing" philanthropy in which paper hearts are sold to the Drexel community the week before Valentine's Day, with all proceeds benefiting the Delta Zeta Foundation. Other volunteering opportunities included working at a bingo tournament for the AIDS fund and visiting the local soup kitchen.

The **Gamma Alpha Chapter** (Baldwin-Wallace College) placed fourth on campus for both fall and cumulative GPA. Twenty-three members made the Dean's List. Gamma Alpha won the Breezers Cup, a spirit award, for the third consecutive year at Homecoming, and placed second in the Greek Sing competition. The chapter made Valentine's Day cards for the children at the Children's Home and assisted with the annual Dance Marathon sponsored by the college.



Gamma Alpha Chapter members at the Homecoming game.

Gamma Beta Chapter (University of Connecticut) members Jessica Stram, Aerin Messner, Andrea Crespo, and Lindsay Rice were inducted into the Order of Omega. The chapter received the "Most Involved" award for on campus activities outside of the chapter. Gamma Alpha participated in Delta Gamma's Anchorslam for the Blind; Kappa Kappa Gamma's walk-a-thon for breast cancer, Pi Beta Phi's Arrowspike for inner city education, and the chapter's own philanthropy event, which

was a soccer tournament. Gamma Alpha donated to tsunami relief through campus Panhellenic and the student government fundraising programs.



The Gamma Beta Chapter's new Executive Board.

The **Gamma Chi Chapter** (Ball State University) had seven members on the Dean's List: Michele Baumgardt, Aimee Deveau, Jessica Fisk, Melissa Funkey, Jacquelyn Rich, Erin Rietz, and Laura Ruckel. Turtle Tug was held in April, and Gamma Chi paired the event with philanthropy events sponsored by the fraternities on campus.

The **Gamma Delta Chapter** (Pennsylvania State University) raised money for Penn State's IFC/Panhellenic Dance Marathon. All proceeds benefited the Four Diamonds Fund for pediatric cancer. Gamma Delta, with other organizations in the Penn State community, hopes to surpass last year's donations of more than \$3.5 million to this worthy cause.

The **Gamma Kappa Chapter** (Kent State University) joined other sororities on campus, to make Valentine's Day cards for the children in Akron's Children's Hospital. The chapter also sponsored the Delta Zeta Lip Sync competition, the proceeds benefiting Gallaudet University and the *Sound Beginnings* program. Over 800 people attended the event, and 14 fraternities and sororities performed.

Information about the Lip Sync competition from The Kent Stater, Feb. 14, 2005.



The Gamma Kappa Chapter's new member class, from top to bottom: Christa Whitehair, Valarie Covert, Megan Miller, Nikki Adante, Eileen McConville, and Casey Wiland, outside of Macc Center before a basketball game.

The **Gamma Lambda Chapter** (San Jose State University) received the "Most Improved New Member GPA" award and the "Chapter of Excellence" award during the university's Annual Greek Oscars. The latter celebrated the chapter's success in recruitment, academics, sisterhood, and overall house participation and house morale. Gamma Lambda also made plans for its annual fundraiser, the Turtle Bowl, a flag football tournament between the fraternities on campus.

On Campus

Gamma Nu Chapter (Eastern Illinois University) members Lindsey Carstens, Kristen Field, Stephanie Gwillim, Lindsay Hassall, Tricia Klaus, Denise Sabo, Erin Shattuck, Sara Butkus, Jill David, Kristina Domek, Ashley Kell, and Lenzi Murray are on the Dean's list. Kristen Field and Sara Kaywood were inducted into the Order of Omega; Stephanie Koenig into Rho Lambda; Kristen Field and Stephanie Koenig into Sigma Alpha Lambda; and Kylee Flider into Gamma Sigma Alpha. Each of these members also received Greek Academic Achievement Awards. The chapter is collecting money to be given to the American Red Cross for tsunami aid.

The **Gamma Phi Chapter** (Indiana University of Pennsylvania) placed first in Phi Kappa Tau's football tournament, and placed in the top three for Zeta Tau Alpha's Kick-out for Cancer soccer tournament. The chapter is hosting a Delta Carnival with Delta Gamma to raise money for various charities, and is working with the College Democrats to raise money for tsunami relief.

The **Gamma Pi Chapter** (Western Michigan University) volunteered for events such as the Martin Luther King Jr. Day Celebration and the Spring Leadership Adventure Conference. On campus, the chapter won first place in Pi Beta Phi's Hoops for Halos and took third in the Lambda Chi Alpha's Snowbowl.

Gamma Psi Chapter (Central Michigan University) officers Katherine Gritter received Most Outstanding Chapter President award, Nicole Braddock received the Most Outstanding Social Chairman award, and Megan Miller was selected to the Order of Omega at the fall Greek Academic Awards. Gamma Psi organized care packages to send over to the troops in Iraq and made plans for its semi-annual pancake breakfast to support speech and hearing.

Sixteen **Gamma Tau Chapter** (Bowling Green State University) members made the Dean's List with a 4.0. Cheryl Smith was inducted into Omicron Delta Epsilon (National Economic Honor Society) and Andrea Ramirez, past Chapter President, was initiated into the Order of Omega and was nominated for Who's Who Among College Students. Stacy Looser organized volunteer activities for the chapter, including walking dogs for the Humane Society.

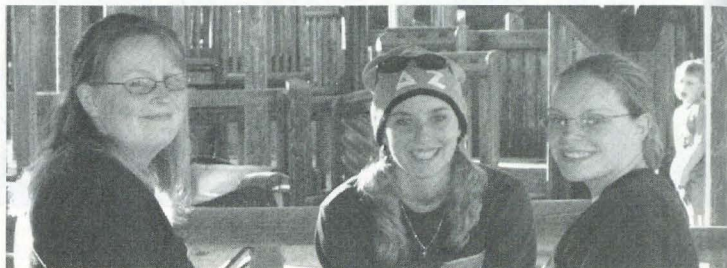
The **Gamma Theta Chapter** (Carroll College) had the second highest GPA out of all sororities on campus. The chapter collected food to donate to a local church for a food pantry, and collected money for the tsunami relief fund.

The **Gamma Xi Chapter** (New Mexico State University) was honored in January for the chapter's retention efforts at the university's Spring Convocation with the Outstanding Student Retention and Graduation Award. Gamma Xi was also the overall winner in the sorority bracket of the university's College Bowl for the second year in a row. Points earned from this win contribute to total points earned during Greek Week. Sherry Kamali, Chapter President, was appointed to a two-year term as student regent, and will represent the students of NMSU at seven meetings with the university's Board of Regents.

The **Iota Chapter** (University of Iowa) congratulates Mindy Anderson with the top GPA from the freshman class, and Virginia Witherspoon held the highest GPA in the sophomore class. Caitlin Volker is the academic leader for the juniors, and the senior with the top GPA is Ashley Nemitz.

Iota Delta Chapter (Edinboro University) member Amanda Slattery received a 4.0 last semester, Michelle Munksgard, Chapter President, received the Greek of the Week award, and Erica Penepacker was the

Honor Student of the Month in January. The new member class sponsored a university-wide blood drive. The chapter also participated in R.A.K.E. (Random Acts of Kindness), raking neighborhood yards; the Wheel-a-thon, to raise money for the Office of Students with Disabilities on campus; and Adopt-a-Highway. The chapter also donated to the university's Tsunami Relief Service with other members of the Greek community.



Iota Delta Chapter members Kristy Sheldon, Kelly Wagner, and Caroline Chludzinski welcome alumnae to a picnic at Homecoming.

The **Iota Iota Chapter** (Middle Tennessee State University) mentored to children at the Boys and Girls' Club of Murfreesboro. Other philanthropic projects included "adopting" a nursing home resident and enjoying a Valentine's Day party with senior citizens.

The **Iota Phi Chapter** (University of Nevada/Las Vegas) held an auction to raise money for one member who lost her leg to cancer and needs a prosthesis. The chapter is also sponsoring competition among university staff members to raise money for the tsunami relief fund. Iota Phi also collected items that were shipped to troops over the holiday break.

Iota Psi Chapter (University of Texas/Arlington) member Danielle Carleton, was named as one of the university's Scholars of the Month. The chapter won the "Best Dressed" award at an annual school competition in which student and Greek organizations participate. Iota Psi helped Sigma Chi with their coat drive for the local organization "Mission Arlington" by donating the most coats out of all of the sororities. The chapter also helped in Delta Upsilon's toy drive, participated in Phi Gam Slam, a charitable volleyball tournament, and raised money for Pi Kappa's Push Week, which helps people with disabilities.

The **Iota Rho Chapter** (West Chester University) ranked number one academically among all NPC sororities on campus and 13 members were on the Dean's List. The chapter made crafts for senior residents of Brandywine Hall in West Chester and DuPont Children's Hospital in Delaware. Iota Rho also planned a ping pong tournament benefiting the hearing impaired, and donated items for a campus Panhellenic yard sale benefiting victims of the tsunami tragedy.



Iota Rho Chapter members Amy Corson, Megan McCarthy, and Christin Hanna.

The **Iota Theta Chapter** (Mansfield University) had the highest overall GPA on the Mansfield campus. Lauren West was voted as the "Best Overall Female Greek." The chapter was also the highest ranked in the Star System on campus for academic achievement, community service, and inter-Greek relations. Members visited local nursing homes and played Bingo with the residents, and sold "I love you" sign language lollipops for speech and hearing. Iota Theta sent letters and cards to soldiers overseas.

Iota Upsilon Chapter (California State University/Fullerton) members who earned a 4.0 GPA were Charley Martinez and Jill Seevers. Angelique Russo, Jade Chiarini, past Chapter President, Trang Tran, Chapter Treasurer, Mandy Mineah, and Bernice Vega-Govea were on the Dean's List. The chapter received an honorary campus Panhellenic award as the sorority with the most A and B grades for the semester. In intramural competition on campus, the chapter won the Spirit Award for the semester. Stephanie Cooke received the Most Valuable Player award and Bernadette Ramos and Laurie Protacio received the Most Improved at the Intramurals Banquet.



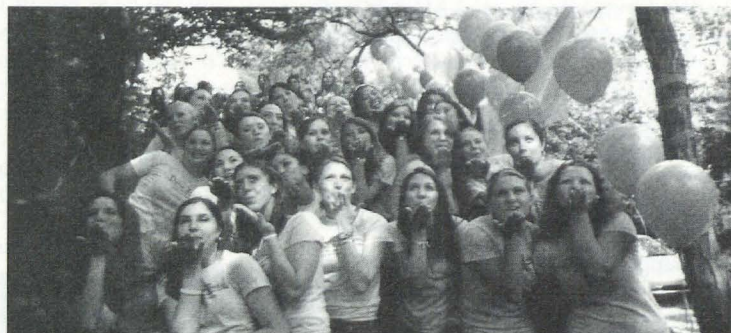
Kathy Budar and Katherine Dreikorn at the Iota Upsilon Chapter's successful annual Turtle Tug event.

The **Iota Xi Chapter** (University of Missouri/St. Louis) had the highest GPA among the sororities and fraternities for the seventh consecutive semester. Lisa Blume, Erica Leigh Brown, Erica Lynn Brown, Rachel Clark, Mandy Deidrick, Christine Eccleston, Martha Gamble, Alison Griffith, Kristin Howard, Kristin Kreidler, Miranda Ruegge, Rachel Smith, and Christina Stephan made the Dean's List. Martha Gamble was nominated to *Who's Who Among American Colleges and Universities*. Kristin Howard, Kristin Kreidler, Rachel Smith, Lisa Blume, and Alison Griffith are members of the Golden Key Honor Society. Rachel Smith was inducted into the American Communications Honor Society. Kristin Howard and Kristin Kreidler are members of Phi Kappa Phi and Sigma Tau Theta, the national nursing honor society. The chapter participated in many events throughout the university's Month of Service, and visited Shriner's Hospital to assist during Bingo night. Iota Xi donated money to World Vision for the tsunami victims, and participated in the Big Man on Campus event, with all proceeds going to the Red Cross to benefit tsunami survivors.



Iota Xi members Kristen Kuehn, Brandee Georgevitch, Erica Leigh Brown, Lindsay Jakul, and Mandy Deidrick deliver a check for \$481 to St. Joseph Institute for the Deaf after raising funds through its second annual Hear Me Out Concert.

The **Kappa Chapter's** (University of Washington) Risk Management Chairman, Michelle Foster, represented the chapter in Delta Tau Delta's annual Miss Greek competition, which raises money for a charitable cause. The chapter also participated in the annual Relay for Life, and won Sigma Alpha Epsilon's Feed the Lion philanthropic competition to benefit a junior fraternity member who is battling brain cancer.



Kappa Chapter freshman on Bid Day.

The **Kappa Alpha Chapter** (Nicholls State University) ranked first in cumulative GPA out of all sororities on campus. The chapter also volunteered with other Greek organizations for "A Day of Care," assisting local social-service agencies in the Thibodaux area, including Habitat for Humanity and local retirement homes.

The **Kappa Beta Chapter's** (Northern Kentucky University) Abby Bentley, Chapter President, was named Greek Goddess during the Greek Formal event. Members volunteered for the Big Brother/Big Sister program, helped with fundraising for the children at St. Jude's Hospital, and donated money to the Tsunami Relief Fund. The new members organized a fundraising event for St. Rita's School for the Deaf in Cincinnati.



Kappa Beta Chapter members wore DZ letters at the Homecoming basketball pep rally.

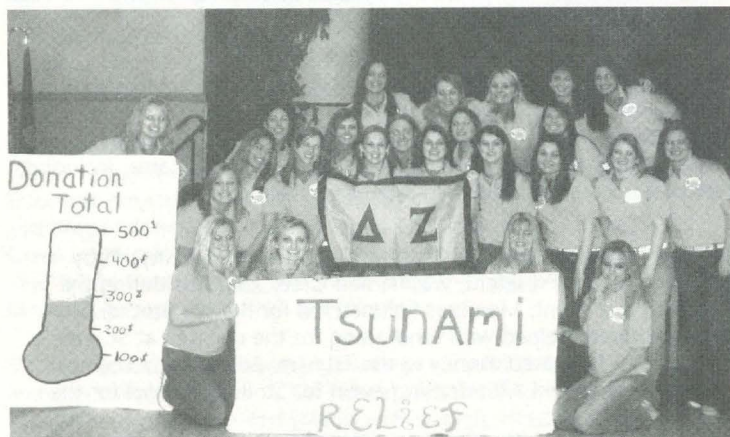
The **Kappa Chi Chapter** (Youngstown State University) held its annual Turtle Tug event which raised over \$1,000 for speech and hearing. The chapter also presented \$400 to Youngstown Hearing and Speech Center with money raised from the chapter Bowl-a-thon held earlier in the year. Both of these events were made possible through the hard work of Nicole Carr, Chapter President.

On Campus

Kappa Epsilon Chapter (Plymouth State University) members inducted into honor societies included: Emily Dowd, Chapter President, and Ann Flight - Kappa Delta Pi (education); Ann Flight and Rebecca Michno - Pi Gamma Mu (history); Shannon McCluskey and Rebecca Welch - Psi Chi (psychology); and Michaela Topp is a founding member and secretary of Phi Epsilon Kappa (physical education). Emily Dowd invited faculty and staff to a recognition ceremony of academic success for the chapter members. The chapter was recognized with the highest GPA of all Greek organizations on campus.

Members of the **Kappa Psi Chapter** (Shippensburg University) on the Dean's List were: Michelle Bisko, Jennifer Clemens, Amy Egan, Amy Eichelberger, Ashley Gensel, Nicole Gudleski, Kaehla Hershey, Rebecca Pincofski, Stephanie Russell, Marianne Senft, and Elaine Toto. Kappa Psi was ranked third on campus academically out of seven sororities.

The **Kappa Rho Chapter** (Kutztown University) participates in Operation Snowflake, a campus program where students shovel walks and driveways for senior citizens.



The Kappa Rho Chapter was the first organization on campus to collect donations for tsunami aid, raising over \$500 for UNICEF.

Kappa Tau Chapter (Morehead State University) member Christine Pendleton achieved a 4.0 GPA, and 15 members made the Dean's List. Seven members received pearls for academic excellence: Kendra Kiskaden, Sara Messer, Jessie Nolen, Desirae Prater, Ali Ruckstuhl, Jessica Salisbury, and Allison Williams. The chapter won the intramural softball tournament, Lambda Chi Alpha's Watermelon Bust, and won overall at the Chi Omega Follies. Kappa Tau partnered with Sigma Phi Epsilon in a 5K race to raise money for the *Sound Beginnings* Program, collected items for the troops in Iraq, and worked with Lambda Chi Alpha to raise over \$800 for speech and hearing.

Kappa Theta Chapter (Virginia Tech Institute and State University) members with high overall GPAs include: Whitney Feussner, Sarah Wilson, Allison Tausek, Whitney Lanham, Erin Finnegan, and Dawn Holbrook, who was also included in the 27th annual edition of *The National Dean's List*. The chapter was awarded the Order of Omega for the second consecutive year at the 2005 Greek Awards for the most successful community service project with the most impact, and received a prestigious award for the ARK Project, developed by the chapter as a daily awareness campaign that stresses the importance of safety belts. All money raised through donations goes to the Ashley Ryan Krueger Scholarship, established after chapter member Ashley Krueger lost her life in a car accident.



The Kappa Theta Chapter holds its annual DZ Classic event to raise money for Gallaudet University.

The **Lambda Beta Chapter** (University of Southern Indiana) had the highest GPA of all the sororities on campus. Katie Wannemuehler was on the Homecoming court, and the chapter assisted the Delta Chapter (DePauw University) with recruitment.

Lambda Delta Chapter (University of Virginia) Past President, Jacqueline Sandberg, was inducted into the Order of Omega honor society. Senior Suzanne Hahl was admitted to the U.S. Air Force School of Intelligence. Taylor Wood, Shannon Foley, and Kara Frederick helped the university's women's soccer team capture second place in the national ranking, as well as its first ACC championship title. The chapter is working to raise over \$5,000 for Relay for Life to benefit the American Cancer Society. Lambda Delta supported the U.S. troops overseas by sending care packages and exchanging letters to help boost soldiers' morale. The chapter holds the highest GPA out of all sororities on campus.

The **Lambda Gamma Chapter** (Jacksonville State University) placed first in intramural bowling. The chapter's Turtle Tug event to support speech and hearing was very successful, with almost all Greek organizations on campus participating.

The **Lambda Kappa Chapter** (University of Alabama/Huntsville) partnered with the Huntsville Alumnae Chapter to work the Kid's Corner at the annual Delta Zeta Marketplace, a craft fair. Proceeds were donated to the neonatal unit of Huntsville Hospital. Several chapter members worked in the concession stands at the university hockey games, and donated their earnings to a local cerebral palsy foundation. Lambda Kappa has also adopted an area on campus which they clean every month.

Several members of the **Lambda Lambda Chapter** (The College of New Jersey) were inducted into the Golden Key National Honor Society. Laura Rosenberger and Katie Cushing were recognized as the Big/Little Sister pair with the highest GPA.

Lambda Omicron Chapter (Angelo State University) members on the Dean's List were: Mary Hudson, Kristin Zerr, Marisa Alvey, Erica Bruner, Nicole Giesen, and Stephanie Gotcher. The chapter received second place for Homecoming Week. Lambda Omicron visited residents of the Heritage House Nursing Home, and assisted with valet parking for a benefit for West Texas Rehab. The new member class baked cookies and painted picture frames which they donated to the Concho Valley Home for Girls.

The **Lambda Phi Chapter** (Appalachian State University) hosted a risk management program for all Greeks on campus. The chapter also visited a local nursing home.



The Lambda Phi Chapter's new member class.

Lambda Pi Chapter (Georgia College and State University) members who made the President's List are: Kelly Anderson, Elizabeth Stricklin, and Carla McNeely, and 30 members were named to the Dean's List. The chapter received the "Sorority of the Semester" award at the biannual award ceremony, "Cheers to Volunteers," hosted by the Give Center on campus. Amy Hall was named "Greek Individual of the Semester" at this same event. Lambda Pi worked on a fundraiser for Big Brothers/Big Sisters called "Turbo Turtle Race."

The **Lambda Psi Chapter** (Columbus State University) received the "Best Theme" award in "Mocktails," an event on campus to raise awareness about the effects of alcohol. Academically, 12 women were on the Dean's List and an additional eight members achieved above a 3.0 GPA. The chapter has the highest sorority GPA on campus.

The **Lambda Theta Chapter** (Michigan Technological University) received second place for its Winter Carnival statue and placed first overall in the university's Winter Carnival event.



The Lambda Theta Chapter's snow sculpture for the university's Winter Carnival was entitled, "School of Fish."

The **Lambda Xi Chapter** (Texas A&M University) is planning its big fall philanthropy event, "Run to the Chicken." The new Executive Board members are: Lindsey Fostinis, Chapter President; Meredith Roberts, Vice President of Membership; Jennifer Luhnnow, Vice President of New Member Education; Amanda Price, Vice President of Programs; Lauren Carter, Treasurer; Jessica Brick, Secretary; and Sara Runnels, Academics Chairman.

The **Omicron Chapter** (University of Pittsburgh) had the second highest GPA among all campus sororities. The Vee Shakarian Toner Award (Vee Toner O '24, Olympic swimming coach, was the Woman of the Year in 1969) for the highest chapter GPA was awarded to Stephanie Golubic. Omicron won the attendance award at a showing of an AIDS awareness video for Greek Week. The chapter was also

recognized for highest participation in the spring Greek Week Blood Drive for the Central Blood Bank of Pittsburgh. Delta Zeta Dunk, the chapter's annual basketball contest, raised over \$500 for a local school for the deaf. Lauren Cavallaro is the campus Panhellenic Council president.

The **Omicron Alpha Chapter** (St. Mary's University) had the highest GPA out of all sororities on campus. Twenty-seven members received certificates from the campus Panhellenic Council for academic achievement. Sixteen members made the Dean's List. Omicron Alpha placed first in the talent show, the volleyball tournament, and the academic bowl, giving the chapter second place overall during Greek Week. Andrea Carranco, Philanthropy Chairman, arranged several philanthropic projects, including "Continuing the Heritage," a university service project; and the university's annual Blood Drive. The chapter mentored at Sunshine Cottage, a school for the hearing impaired.



Omicron Alpha Chapter members making Valentine's Day cards for the hearing-impaired children of Sunshine Cottage are: Robi Andrews, Jacqueline Martinez, and Jessica Sholty.

The **Omicron Beta Chapter** (Richard Stockton College of New Jersey) members on the Dean's List are: Jessica Conner, Colleen Cullen, De'Anna Curci, Cristina DeFuria, Sarah Keidel, Julie Kellner, Jessica Mattiace, Beth-Ann McCarthy, Genna Saler, Lauren Shapiro, and Nicole Tessier. The chapter thanks Jennifer Pino, past Vice President of Membership, for her hard work as Omicron Beta welcomed nine new members to the chapter.

The **Omicron Delta Chapter** (Bryant College) had the highest overall sorority GPA, and highest new member GPA out of all sororities on campus. Yvonne Sousa was recognized as the Greek Member of the month for November. Omicron Delta welcomes its new Executive Board and new Chapter President, Cara Guarneri.

The **Omicron Gamma Chapter** (Ohio University) served lunches at a local elementary school, and held its third annual Hoops for Hearing "March Madness" basketball tournament to benefit Gallaudet University.

The **Omicron Lambda Chapter** (North Carolina State University) has many members in service and honorary fraternities. The chapter placed first place in the campus sororities' flag football. Omicron Lambda was part of Take Back the Night, a walk to bring attention to domestic violence, and Toys for Tots. The chapter's biggest project was cosponsoring a women's health fair with Alpha Kappa Alpha Sorority, Inc. Members also participated in "Wave of Relief" with the university student government to donate money for tsunami relief, and wrote letters to Marines stationed overseas.

The **Omicron Mu Chapter** (University of South Carolina/Upstate) held its annual Turtle Tug, which was a great success. Members also volunteered at a local park's grand opening where they enjoyed playing with the children and face painting. The chapter also made cards for the troops in Iraq, thanking them for their service.

On Campus

The **Omicron Nu Chapter** (University of Windsor) organizes an ongoing penny drive to benefit a local shelter for abused women, Hiatus House. The chapter also held its "Warm Up Windsor" event, handing out free hot chocolate to university students as the chapter accepted donations for Hiatus House. Omicron Nu made sign language alphabet flip-books that were donated to local hearing-impaired children during new member information sessions. The chapter also volunteered at basketball tournaments for grade school children where they awarded medals to the winners.

The **Omicron Pi Chapter** (Frostburg State University) has the highest GPA among all Greek organizations on campus. The chapter held a mock baby shower and donated all of the gifts to less-fortunate women in the community, and made goody bags with pencils, stickers, and other fun items for children at the local elementary school.

Omicron Sigma Chapter (Gallaudet University) members Jessica Swecker and Jennifer Lash were honored at the university's annual scholars dinner, where they were recognized for academic achievement.

Omicron Xi Chapter's (Mars Hill College) Caty Carpenter, Chapter President, and Danielle Buice, Vice President of Membership, were inducted into Alpha Chi National Honor Society and were selected as *Who's Who Among American Colleges and Universities*. They have also been selected as college marshals for the 2005-2006 school year. Omicron Xi participated in a breast cancer awareness project with other Greeks on campus, and in the Adopt-a-Highway roadside clean-up. Members put together tsunami-relief kits, which included toiletries and other necessities, and were sent to the victims of the tragedy.

The **Omicron Zeta Chapter** (Randolph Macon College) spent time at a local retirement home with the residents, playing bingo and enjoying other activities with them.

The **Pi Alpha Chapter** (University of Florida) ranks seventh academically among all Greek chapters on campus, and sixth among all Panhellenic sororities (out of 16). Founding member Christy Caruso was recognized as a 2004 J. Wayne Reitz Scholar. Twenty scholars were recognized for leadership and service on campus out of 1,000 applicants. Amber Collins, Chapter President, was awarded "Most Outstanding Greek Scholar," and Jacqui Resop was recognized as the Athlete of the Month by the campus Panhellenic.

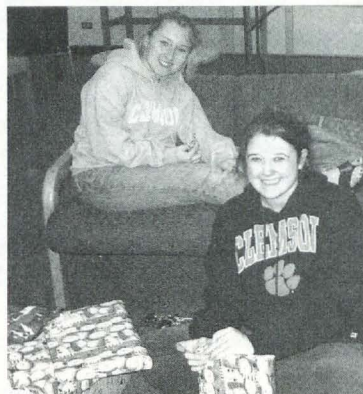
The **Pi Delta** and **Pi Epsilon Colonies** were installed as chapters in March and April of 2005. Watch for coverage of these installations in the Summer 2005 issue of *The LAMP*.

The **Pi Delta Chapter** (Wake Forest University) has been recruiting successfully, with 42 members in the new member class. Pi Delta hosted a spectacular philanthropy event to aid the Brian Piccolo Cancer Research Foundation, which is the university's philanthropy. Erika Harris, Vice President of Membership, went to the Miss Illinois Pageant to compete for a spot in the Miss USA pageant this past November. Erika was one of the 100 women selected from 1,000 applicants.



The Pi Delta Chapter was on the university newspaper's front page in a story about Bid Day at Wake Forest.

The **Pi Epsilon Chapter** (Clemson University) has an overall GPA of 3.16, and has 14 women with a 4.0 semester GPA.



Pi Epsilon Chapter members Alyson Willis and Kate McDermott wrap presents during the holidays for the local family that the chapter adopted.

Pi Gamma Chapter (California State University/Northridge) member Anna Mesick is a member of the Golden Key Honor Society. The chapter worked with the Greek community on campus to help those devastated by the tsunami by collecting donations. Spring recruitment was a success as Pi Gamma welcomed 15 new members. Pi Gamma was grateful that one member's boyfriend in the military returned home from Iraq safely.

The **Pi Zeta Colony** (Arizona State University) recruited 90 women on Bid Day. The colony GPA is a 3.3, and Pi Zeta has several student leaders who are members. Delta Zeta is the 12th Panhellenic sorority on this campus and looks forward to a great history and tradition at Arizona State!



Pi Zeta Colony members on Bid Day.

Seven members of the **Rho Chapter** (University of Denver) were inducted into the Rho Lambda Honor Society: Kaitlin Erickson, Lindsay Fryer, Jessica Grabau, Erika Ituassu, Lesley Kolb, Chapter President Kristin Safi, and Alissa Veuthey, past Chapter President. Jessica Grabau was nominated as Outstanding Senior and Leslie Kolb as Model Initiate at the Greek Awards.

The **Sigma Chapter** at Louisiana State University hosted a formal dinner honoring Debbie Raziano KA, National President. The university's vice chancellor, dean of students and Greek advisor were also in attendance, and Sigma was honored as an outstanding chapter on the LSU campus. Sigma hosted Alpha Kappa Alpha Sorority for dinner, and prepared for Sigma's Miss LSU pageant, which has over 30 contestants participating. The chapter received the Angel Award by the Alzheimer Services of the Capital Area. Sigma donated \$10,000 and hosted a barbecue honoring caregivers for Alzheimer patients.

The **Theta Iota Chapter** (Western Carolina University) welcomed 28 new members and their new CCD, Jennifer Haynes Collins ØI '93. The chapter also elected a new executive board, headed up by Kristina McAdams as President. Kelsey Reynolds was elected as the vice president of programming for the campus Panhellenic. The chapter holds the highest initiated women's GPA on campus out of all sororities.

The **Theta Mu Chapter** (St. Cloud State University) congratulates Andrea Olthoff, Cameo Rainaldo, and Michelle Blair, who made the Dean's List. The new member class raised \$168 to send lip balm to the troops in Iraq. The donation, made through the Red Cross, is one of the most requested items on soldiers' list of needs. The chapter co-hosted a major fundraising event with Acacia Fraternity that was aired on local television.

The **Theta Nu Chapter's** (Minnesota State University/Moorhead) teamed with Gamma Phi Beta for their annual semi-formal dance, Term Ball. Collegiate members and alumnae from both organizations were invited, and a Phi Sigma Kappa Fraternity member provided the music as the DJ.

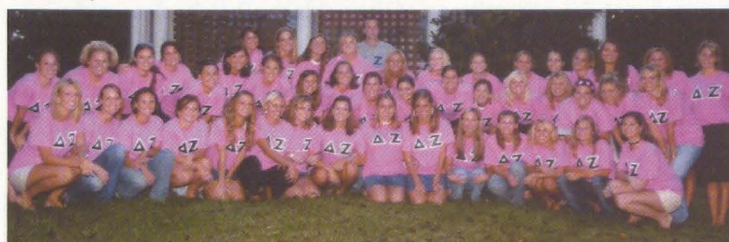
Theta Omicron Chapter (University of Texas/Pan American) members Annylu Pena, Lorena Medina, Lisette Blanco, and Kelly Gaskin were named to the Dean's List. The chapter aided the city by participating in a highway clean-up. The chapter sponsored a canned food drive with Delta Upsilon Fraternity. The members also volunteered at a local school carnival during their annual fall festival. Theta Omicron donated money for toiletries to tsunami victims.

Theta Phi Chapter (Old Dominion University) member Rebecca Voskeritchian was inducted into the Psychology Honor Society. Rachel Clark, Laura Copley, Kristin Gay, Candice Goodson, Stacey Lenassi, and Karen Morgan were named to the Dean's List. Chapter awards included: Jackie Asman - DZ Sister of the Year, and Jamie Stump - DZ New Member of the Year. Jamie Stump was also named the university's Student Leader of the Month, Homecoming princess, and the university's Representative for 52nd Annual International Azalea Festival. The chapter volunteered at the Virginia Aquarium for many events, donated to St. Jude's Children's Research Hospital, and donated member contributions and money raised from the university flea market to the United Way for tsunami relief efforts. Theta Phi also sent care packages to soldiers stationed in Iraq prior to the Christmas holiday.

The **Theta Psi Chapter** (Ashland University) ranked third academically out of all Greek organizations on campus. The chapter participated in a fundraiser at Geauga Lake in Cleveland for speech and hearing. Theta Psi co-sponsored a dance with Tau Kappa Epsilon to eventually raise \$700 in donations for a young boy in need of a heart transplant.

The **Theta Theta Chapter** (DePaul University) participated in Kohl's Step Up for Kids, the ultimate stair climbing challenge to the top of Chicago's second tallest building, the Aon Center. The event benefited K.I.D.S.S., an affiliated organization of Children's Memorial Hospital, which provides playroom programs, art therapy, garden play, and encounters with Rainbow Therapy Dogs.

The **Xi Beta Chapter** (Eastern Kentucky University) welcomed 15 new members during recruitment. The chapter partnered with Phi Delta Theta Fraternity for Greek Week events, and hosted Region Day at the university.



The Xi Beta Chapter.

The **Xi Delta Chapter** (Radford University) had 22 members who were named to the Dean's List. Xi Delta won the Sigma Chi Derby Days, a week long philanthropy event benefiting the Children's Miracle Network. The chapter joined with the Greek community on campus for a fundraiser for tsunami relief.

The **Xi Eta Chapter** (Northwood University) had eight members named to the Dean's List, and Sarah Balcueva, Chapter President, and Michelle Sbrinovich, Chapter Vice President of Programs, made the President's List. Members visited a nursing home and delivered Valentine's Day cards. Xi Eta participated in the Salvation Army's Christmas Party, spending time with underprivileged children. With spring on the horizon, the chapter planned its second annual Hoops for Hearing event.

The **Xi Iota Chapter** (Muhlenberg College) had 12 seniors and 12 juniors named to the Dean's List. Xi Iota was ranked second out of all the sororities on campus. The chapter participated in a walk to raise money for diabetes, delivered Christmas gifts to underprivileged children and treated them to food and crafts during the holiday season. Xi Iota members sold bracelets with the words, "Relive, Recover, and Rebuild" to raise money for tsunami relief efforts.

Xi Lambda Chapter (University of San Francisco) member Amber Justice was named to the President's List, and Jennifer Cherry, Chapter President, Megan Colliss, Heidi Hoops, Nicolette Kirk, Sophia Sheyman, Veronica Soria, Candice Stancil, Sara Westin, and Selica Winston made the Dean's list. The chapter participated in "Making Strides," and raised \$1,885 to benefit breast cancer research. Members donated money to the tsunami relief fund, and participated in the "Adopting A Troop" program where members send letters to troops overseas.

The **Xi Omega Chapter** (Purdue University) had 38 members named to the Dean's List and/or recognized with Semester Honors. The chapter's GPA was above the All-Sorority Average, the All-Women's Average, and the All-Campus Average. Meghan Fay is the vice president of administration for the campus Panhellenic, and the chapter softball team finished first in the Sorority Intramural League. The chapter's Bowl-A-Rama had 17 fraternities competing, and raised \$1,053 for the Delta Zeta Foundation. Members collected donations for Purdue University Tsunami Relief Fund. Xi Omega received the 2004 Dean Elsbury Award for overall excellence on campus and within the chapter.

On Campus

The **Xi Omicron Chapter** (Loyola-Marymount University) had the highest GPA of all sororities on campus. The chapter supported Beta Theta Pi's first recruitment at the university, and with the most members in attendance, Xi Omicron won \$250 courtesy of the fraternity for the philanthropy of their choice. The chapter welcomed 60 new members during recruitment.

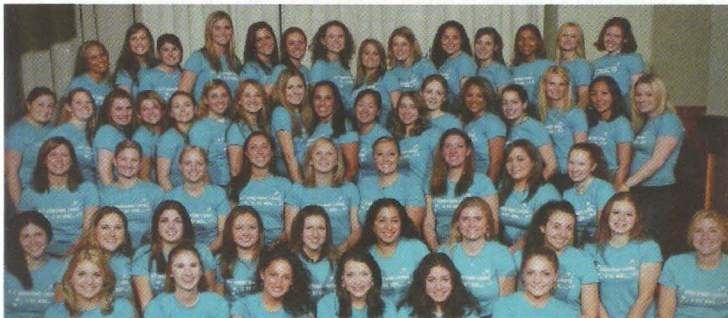
The **Xi Phi Chapter** (University of Missouri/Kansas City) had the highest GPA out of all sororities on campus. Members with the top ten GPAs are: Angie Clement, Katie Dalzell, Heather Hildebrand, Jessica Teeter, Rebecca Mueller, Danielle Jensen, Melissa Taylor, Katie Twenter, Lauren Hays, and Jessica Newill. The chapter hosted its Turtle Ball Tournament to benefit a local women's shelter. Jessica Newill has been nominated as Courtwarming queen, and the chapter won second place in the cheer/dance competition at a recent pep rally.

The **Xi Psi Chapter** (Grand Valley State University) had nine members on the Dean's List. Freshman Ashley Morris is in the Honors College and held a 4.0 GPA last semester. Ashley Schulte and Briana Loney were nominated in the "I am Grand Valley" competition, which recognizes leaders who exemplify the spirit of the campus community, excelling in academic excellence, ethical leadership, and civic responsibility. The chapter raised money for tsunami relief efforts by volunteering at the campus Spotlight Organization Casino Night.

The **Xi Rho Chapter** (Clarkson University) had the highest overall GPA and the highest new member GPA out of all sororities. The chapter's fundraiser, a midnight pancake breakfast organized by Jennifer Fraczek, was so successful that the chapter plans to hold the event annually.

The **Xi Theta Chapter's** (University of North Carolina/Wilmington) GPA exceeded the All-Women's Average on campus. Samantha Roth was elected vice-president of recruitment on the campus Panhellenic. Allison McKiernan was inducted into Order of Omega and Alison Jones made the Chancellor's List. Members volunteered for Habitat for Humanity and assisted in siding an entire house in one day. The chapter also hosted an open house and social for the Wilmington Resource Center for the Deaf and Hard of Hearing, collected money for tsunami relief, and sent comfort supplies for the troops overseas.

Xi Upsilon Chapter (Northeastern University) member Hillary Rosse was recognized by the campus Panhellenic with the highest GPA in the chapter. During Homecoming, Xi Upsilon teamed with Kappa Sigma and won first place in the float building competition. The new member class won first place at the Greek sing and dance competition, with performances choreographed by Alyssa Gugliotti. The chapter's Turtle Tug event raised money for Gallaudet University. Xi Upsilon gave money to Comic Relief, an organization that provides comic books for our troops overseas.



The Xi Upsilon Chapter on Bid Day.

The **Xi Xi Chapter** (North Georgia College and State University) hosted its first annual Turtle Tug, a philanthropic fundraiser which was very successful and had great attendance not only from the students in general, but from many other organizations on campus.



The Xi Xi Chapter welcomed 25 new members on Bid Day.

The **Zeta Beta Chapter** (University of Wisconsin/Stout) congratulates Kelly Greer with a 4.0 GPA and Tara O'Keefe with a 3.9. The chapter volunteered at a women's shelter and planned its annual Turtle Tug in the spring.

The **Zeta Kappa Chapter** (Ohio Northern University) was top ranked in academics on campus among all sororities for two years in a row. Barbie Tate presented at the national Public Relations Student Society of America (PRSSA) conference in New York City, senior, Emily Edgerton starred as the lead in the play "Children of Eden," and sophomore Laura Lucas was in the play, "Miss Julie." The chapter volunteered at the blood mobile and made cards which were sent to a chapter member's friend's platoon.

The **Zeta Lambda Chapter** (East Carolina University) held its third annual Senior Prom event at a local retirement home, Cypress Glenn, and sponsored its Boys and Girls Club Easter Egg Hunt. Zeta Lambda took part in the Greenville Annual Community Clean Up event. Meredith Anderson was named Recruitment Director of the Year, and Meredith and Jen Hill, Chapter President, were named to the Greek Hall of Fame.



The Zeta Lambda Chapter had a successful recruitment.

The **Zeta Nu Chapter** (Ferris State University) had the highest overall GPA of any organization on campus. The chapter was recognized at Homecoming as the sorority with the "Most Greek Spirit." Zeta Nu participated in Safe Ride, to get people home safely in the late hours of the night.

Danielle Worthington, Chapter Secretary, of the **Zeta Phi Chapter** (Slippery Rock University) was inducted into Gamma Sigma Alpha, a national Greek academic honor society. The chapter participated in Adopt-a-Highway and collected donations for the Make-A-Wish Foundation.

Stars in Our Service Flag

The **Zeta Psi Chapter** (Stephen F. Austin State University) was recognized as the sorority with the highest GPA on campus. Samantha Bendix and Kasie Scritchfield were on the President's List, and the chapter had 18 members on the Dean's List. Lauren Drinkard was awarded a \$200 scholarship as the new member with the highest GPA.



Members of the Zeta Psi Chapter intramural basketball team include: Melanie Biehl, Tiera Blackburn, Laura Lutz, and Jennifer Winkler.

The **Zeta Rho Chapter** (William Jewell College) had 14 Scholar Athletes and 19 members on the Dean's List. The chapter made Valentine's Day Cards for Children's Mercy Hospital and sent care packages to the soldiers in Afghanistan through a program called, "Take a Wounded Soldier to the Movie." The packages included DVDs, popcorn, and candy.

The **Zeta Xi Chapter** (Lenoir-Rhyne College) made Valentine cards and treat bags for the children at the North Carolina School for the Deaf.

IS YOUR CHAPTER MISSING?

The LAMP provides guidelines and report forms to all chapters which contain deadlines, requirements for material to be submitted, and photograph requirements. We want your chapter to be a part of *The LAMP*. If you don't see your chapter listed, it is because that chapter did not file their LAMP Report with the Editor or because the information was not received by the deadline specified on the Report.

If you have any questions regarding submissions, please contact Nancy Brewer, Director of Communications and Editor of *The LAMP*, at National Headquarters by mail at 202 E. Church Street, Oxford, OH 45056, by phone at 513/523-7597, or via e-mail at LAMP@dzshq.com.

CORRECTION

In the Winter 2005 issue of *The LAMP* in the On Campus section, p. 30, Ann Grant Wadsworth BE, National Chairman of Program Development, was incorrectly referred to as the National Philanthropy Chairman. We apologize for this error.

The LAMP is proud to recognize Delta Zeta's "stars" in our Service Flag. If you are or you know a Delta Zeta member in the armed forces or serving as a civilian in foreign service, U.S. Agency for International Development (USAID), USO, or other such organizations, please send name, military branch, rank, where stationed, and other information (including family, hometown, etc.) to Nancy Brewer, Editor, *The LAMP*, Delta Zeta National Headquarters, 202 E. Church Street, Oxford, Ohio 45056 or via e-mail at LAMP@dzshq.com. We welcome stories and photos of members, and look forward to honoring our stars in Delta Zeta's Service Flag.

Second Lieutenant Sarah Brook Timmons Dauer AΘ '00, (U. S. Air Force)

"I am from the Alpha Theta Chapter, University of Kentucky in Lexington KY. I graduated in 2003. Upon graduation, I commissioned as a 2nd Lieutenant in the United States Air Force. I am currently stationed at Vance Air Force Base - Oklahoma where training Air Force pilots is our mission.



"I have been on active duty for nearly two years, and will be promoted to the rank of First Lieutenant (1Lt) in May 2005. I supervise nine airmen, two non-commissioned officers, and one civilian. I was announced as the Company Grade Officer of the Quarter January 2005 for the 71st Mission Support Squadron. I plan to begin classes for my MBA through Penn State University's MBA program this fall.

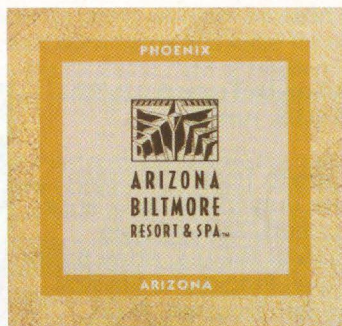
"My hobbies are running, reading, planning/coordinating events, and pampering my puppy. I am honored to serve my country and feel gratified each day by my work in the United States Air Force."

Major Deydre Smyth Teyhen AP '90, PT, PhD., OCS (U.S. Army)

Major Deydre Smyth Teyhen has been serving on active duty in the Army since 1993. She is currently serving as an assistant professor at the U.S. Army-Baylor University Doctoral Program in Physical Therapy at Fort Sam Houston, Texas. She is also serving as a research consultant at the Spine Research Center, Walter Reed Army Medical Center and at the Military Performance Laboratory, Brooke Army Medical Center. As a physical therapist and a biomechanist, she has been performing research to help prevent and treat musculoskeletal injuries with the goal of optimizing the return of soldiers to duty. She is married to LTC John V. Teyhen III, an environmental science officer for the U.S. Army. They were married after meeting on a deployment to Bosnia in 1996, where they were on the same medical task force.



The 2006 National Convention



THE 2006 NATIONAL CONVENTION

June 21 – 26, 2006

Arizona Biltmore Resort and Spa
Phoenix, Arizona

You won't want to miss a minute of Delta Zeta's 47th National Convention in 2006. Make yourself at home at the luxurious Arizona Biltmore. You'll enjoy the excitement of Convention on this 39-acre oasis of lush gardens, glistening pools, and one-of-a-kind architecture inspired by Frank Lloyd Wright.

Be a part of leadership and educational workshops, sisterhood, exciting awards presentations, and the thrill of the installation of Delta Zeta's National Council at one of the most beautiful resorts in the country. It has a celebrated guest history from world leaders to movie and music superstars to U.S. Presidents. Set in the wild beauty of the Arizona desert, this spectacular resort beckons like the inviting and palatial oasis that it is.

Mark your calendar now and look for more 2006 Convention information in future issues of *The LAMP*.

A Tribute to our Chapter Consultants

Chapter Consultants convey the Sorority's mission and fundamental principles through on-site visits to our college chapters around the country. Consultants often keep a busy travel schedule as they become acquainted with campuses and collegiate and alumnae members.

We'd like to thank the Chapter Consultants who have served Delta Zeta during the past school year. Some of them worked with colonies in conjunction with Delta Zeta's extension plans as others traveled to visit college chapters throughout the United States. Their efforts are greatly appreciated, and they have valuable experiences to take with them in future endeavors.



Kristyn Biebuyck ΞΨ '99

Kristyn is applying for positions in higher education, specifically entry-level Greek affairs and housing. "I plan to do some traveling in May, going to Ocean Isle, North Carolina and Charleston, South Carolina," Kristyn says.

As for her experience as a consultant, Kristyn says, "The most valuable thing I have learned is to have confidence in myself and a renewed love and respect for Delta Zeta. The experience has taught me invaluable lessons about myself and my capabilities. There are so many women who are so passionate about our organization—they make me feel proud to be a Greek and a Delta Zeta. I feel that I can do any type of job now, and the traveling that I have done inspires me to make that a priority in my life."



Lisa Bria ΕΘ '00

Lisa is planning to obtain a Master's degree in counseling, as she loves working with children and adolescents. She also plans to volunteer for the Sorority in some capacity. The most valuable thing she has learned is, "How important it is not to procrastinate. Also, details and the little things count more than you imagine. Taking the time to make a phone call to someone or sending an e-mail or thank you card really can make a difference in the outcome of a situation."

One of Lisa's favorite moments was the outing the Chapter Consultants made to King's Island theme park during consultant training. Another was getting a flight home after being on the road for two months. "I was supposed to fly out of Enid, Oklahoma. All of the flights were cancelled and I was stranded at the airport at 5:00 a.m. Marge, a 76-year-old woman who runs a cab service out of her home, drove me to the Oklahoma City airport, where I was thoroughly searched. I ended up making it home in time for dinner, though!"



Monica Carney ΟΑ '99

"I plan to attend graduate school at Pratt Institute in New York City, majoring in Urban Planning and Historic Preservation. I'll be working as a sailing guide at Camp Seafarer this summer leading trips around the Outer Banks of North Carolina on a sail boat," Monica says. "I'm also going on a cross country trip with my best friend."

Monica says the most valuable thing she learned as a consultant is to "be flexible—to know when to let someone else have the floor, and how to empower other women to do things for themselves."

Her favorite memory is working with Amy Vanderdonck, Chapter Consultant, during the Pi Epsilon colonization at Clemson University in South Carolina.



Amanda Ingram ΒΔ '00

"I plan to work in the public relations field, and am currently looking for a job in South Carolina," Amanda says. "The most valuable thing I have learned as a consultant is to pay attention to the details. Those who can focus on those special touches, whether it is in recruitment or during a philanthropy event, enable a chapter to set itself apart from the rest. I'm extending this philosophy to 'set myself apart from the crowd' into my life as I plan my next career move."

Amanda's favorite memory is recruitment at one chapter where "the members faced great odds to make quota during formal recruitment. When I arrived, the women had mentally resigned themselves to believe that they would not make quota. We focused on them and ways to improve their attitude and self image so this confidence would shine through during recruitment. It worked! They stood tall as the days passed, and worked harder than I've ever seen to be competitive on campus. They were able to snap bid to quota. This chapter exhibited the strongest bond of sisterhood that I have ever seen, knowing they had to pull together."



Andrea Johnson ΠΒ '03

"I will be moving back to Connecticut for the summer and working as a summer school teacher and as a waitress at a country club. This fall I hope to have a full time teaching position in Hartford," Andrea says.

She says her favorite memory is not just one memory, but many. "They're a collection of experiences that have made the whole year memorable. The best memories are the women who e-mail me months after I have visited their chapters and I remember exactly who they are. I will never forget this year, nor will I forget the women that I have met and the schools I have visited."

Andrea has learned "the power of actions" during her year as a consultant. "I've seen the influence that my actions and those of others have not only on us, but on everyone around us. I learned how to tell and retell my life story and how to make even the minutest details seem interesting, and that 20-degree weather is not fun, but women in the Midwest are!"



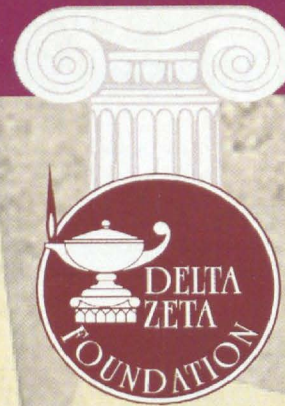
Angela Lyon ΚΨ '01

Angela is seeking an entry-level position in general business and event marketing/planning. "I would really love to work within a college setting," she says. "I would like to enroll for a Master's degree in Higher Education and Student Affairs to further my career in helping on a college campus."

Although Angela only traveled for three months, she says, "I had countless experiences that will broaden my future and career goals. The most valuable thing that I have learned is to look at the big picture. What is the main goal we are trying to achieve? I also know that Delta Zeta is a part of my life that I want to maintain forever. Our strong, wonderful organization has such amazing women with the utmost potential who continue to strive for excellence each year."

Continued on next page

Foundation Focus



The Oxford Society
celebrate your life through the lives of others! This special giving Society honors and recognizes those alumnae and friends of Delta Zeta who have made provisions for future generations of student members through thoughtful estate planning. Bequests help us fulfill our mission and underwrite future educational initiatives by sharing your values with those you may never have the opportunity to meet, but who will always be grateful for your generosity. Contact the Delta Zeta Foundation at DZFoundation@dzshq.com, 513/523-7597, or at 202 East Church Street, Oxford, Ohio 45056.

2004-05 Annual Fund

You can still make a tax-deductible gift to our Annual Fund before the 2004-05 campaign concludes on June 30. Alumnae gifts are true gifts of leadership, and student members benefit through scholarships and a variety of educational initiatives. Gifts large and small are welcomed, and because gifts are "pooled" with others, they form a wonderful fabric of support which does unbelievable good. That's why annual giving does make a difference. You do count!

"In the Light of the Flame"

Delta Zeta's inaugural e-newsletter debuted on April 8, 2005. Did you receive one? If Delta Zeta does not have your e-mail address on file, please share it now to be sure you get the next issue! Send your name, chapter, and e-mail address to dzs@dzshq.com. "In the Light of the Flame" will keep you updated on the latest Foundation news and contains interesting stories about alumnae and collegians who are giving of their time, talents, and treasures.

Leadership Conference Sponsorships

Purdue University is the place. The dates are July 8-10, 2005. And the event is the Norma M. Andrisek Leadership Conference. The audience? Hundreds of Delta Zeta collegians who will gain insights into leadership experience and personal values. Alumnae can invest in their future by sponsoring a student. Sponsorships are \$250 and cover all expenses except travel. Call 513/523-7597, e-mail DZFoundation@dzshq.com or go to www.deltazeta.org/foundation to give a collegian an experience she will always remember.

Chapter Consultants continued

Angela Lyon continued

"My first favorite memory was leaving Ohio for the first time. When I was flying I saw the beauty of the land in a way that I had never seen before. Another favorite memory was visiting Texas. The chapter that I stayed with was so excited and thrilled to show me Texas. Those 'bigger and better' Texas traditions are ones I will never forget."



Helen Rotnem Θ '01

Before graduating from Ohio State University, Helen received the university's Conway-Chase Sorority Woman of the Year Award for 2004. Other awards included Living the Ritual, the Ohio State Greek Award; the award for Outstanding Chapter President for Region V; the Outstanding New Member Award for Region V; and the Grace Mason Lundy Award.

Helen is heading for graduate school after her work as a consultant.

"The most valuable thing I have learned," she says, "is to truly rely on yourself, and remain flexible and adaptable in challenging situations."

The Standards of Excellence Conference held in Dallas in February 2005 is one of Helen's favorite memories. "I had a great time with the other consultants at the conference. After being on the road all year, it was so great to see them all again. We were like long lost friends reunited!"



Amy Vanderdonck IT '01

Amy will work as a registered nurse in a Toledo hospital. "I would like to work in a cardiac unit. I plan to attend graduate school for nursing in the fall of 2006 and specialize in cardiology."

No doubt Amy's experience as a chapter consultant will serve her well in the nursing profession. "The most valuable thing I have learned as a consultant is to be flexible," she says.

"My favorite memory is calling women to extend bids to join the Pi Epsilon (Clemson University) and the Pi Zeta (Arizona State University) colonies. It has been great to be able to share Delta Zeta with so many women who otherwise wouldn't have had the opportunity to know each other and the Sorority. Another moment was the last chapter meeting of the fall semester at Clemson. It was our first meeting after elections and our colony officers were installed. I was so proud to see the officers, especially the Colony President, run their own meeting.

"I also treasure the opportunity to work with the other consultants. When I first started the job, I thought that I would be traveling alone, but I became great friends with these women. I have learned so much from working with each of them and am so grateful to be able to share this experience with them."



Stephanie Ledet KA '99 served as Chapter Consultant from January-December of 2004. Stephanie is currently preparing for a career as a physician's assistant. To see Stephanie's profile, please refer to the Spring 2004 issue of *The LAMP*, page 27.

A Life Made Complete

By Lindsey Aspinall EI '01

Living in Michigan, Jane MacFarlane Welker ZN '90 found out about Paws with a Cause many years ago. And so, when her hearing loss became much worse, she knew where to turn for help.

Paws with a Cause is a national organization which trains service dogs for people in need. After a lengthy application process including a home assessment and proof of need (providing various medical documents), Jane finally got to bring her new hearing dog home.

Ukon, a golden retriever, was trained to provide various services for Jane. He was born in Ann Arbor, Michigan, and raised through a foster puppy raiser in the Grand Rapids area of Michigan.

"My life prior to getting Ukon has been very challenging and difficult in the last two years," Jane says. "Now that I have Ukon I am able to walk around malls, go out and meet my friends and family, and feel safe because he will let me know if someone is at the door." As a "Combo Dog" (a dog who was trained as both a hearing dog and a service dog) Ukon performs many tasks which have become difficult for Jane. He is trained to alert Jane of an intruder or a smoke alarm. He will also pick up items she has dropped, take clothes out of the dryer so she won't have to bend down and lose her balance, bring her items such as her keys, and help her walk and balance. "People take things for granted like going up stairs or taking clothes out of the dryer," she said. "Just today I took Ukon to the mall and climbed the stairs with him. I haven't been able to do that because I was afraid of falling. I felt it was such an accomplishment."

Because Paws with a Cause is a non-profit organization, Jane didn't have to pay for Ukon's extensive training. "I got Ukon through donations from Canton Civitains and Plymouth Lions as well as other donations," Jane explains. "Paws with a Cause works with the community to get donations so that the cost of training the dog is free for the client."

Jane first attended Ferris State University where she studied allied health. She later transferred to Madonna University where she studied gerontology, case management, and sign language. At Madonna, Jane learned to speak and communicate very well. "My mother, who is a person that worked with deaf and hard of hearing children, always advocated for me to be in the mainstream school system. If it wasn't for my mother, I would be signing and not speaking as I do today."

When she's not out and about with Ukon, Jane is working diligently for the Michigan Commission on Disability Concerns. Recently re-appointed by Governor Jennifer Granholm (D), Jane sits on the Commission doing advocacy and public policy for the disabled population in Michigan. The state has approximately 1.9 million disabled residents and the Commission works to aid these people through disability rights training, information and technical assistance, and coordinating disability awareness. The

Commission also works with the Michigan Business Leaders Network on employment concerns for people with disabilities.

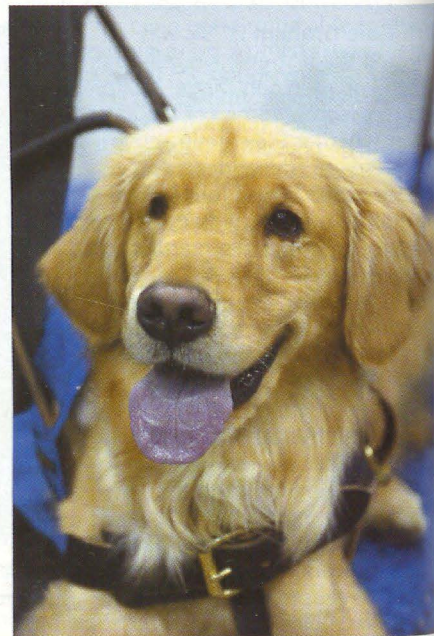
In addition to her work for the Commission, Jane is also very involved in Canton Township and has been appointed to several other advisory committees. As a member of the Advisory Board for the Area Agency on Aging, Jane helps to advocate for older adults and persons with disabilities. She also worked at the state and local levels for the Help America Vote Act, which aids people with disabilities in participating in the voting process.

Jane says that Ukon has been a true blessing in her life. He travels everywhere she goes and even stays under the table at restaurants. "He loves to be out in public and he just loves to help me," Jane says. With so many great things to say about Paws with a Cause and hearing dogs, Jane is anxious to share her story. She has already done several presentations on how Ukon has changed her life and even recently brought him to be introduced to the Ann Arbor Alumnae Chapter of Delta Zeta. "It is my hope that my Delta Zeta sisters understand what a gift a service dog like Ukon can be to someone who is profoundly hard of hearing. Most of all, I feel very safe again and will be able to live my life with confidence. Paws with a Cause has made my life complete."



Above, Jane and Ukon recently performed at the Detroit Kennel Club Dog Show to educate the audience about service dogs.

At right, "Ukon takes me to the door when someone rings the doorbell," Jane says. "His presence provides the stability I need to be active in my life."



"Music Straight from the Soul"

By Lindsey Aspinall ΞI '01



In college, **Stacy Donahue** BT '97 was leading fellow Beta Tau Chapter members through choruses of "Flickering Light" as the Delta Zeta song leader. Now, three years later, Stacy is pursuing a country music career.

Born and raised in Nebraska, Stacy attended Nebraska Wesleyan University and graduated in 2001 with a degree in music. After spending a few years teaching music, she made the bold decision to move to Chicago to pursue a singing career. "I think I could sing before I could talk," Stacy says. "It's just something I've always done. I sang my very first solo at church." Today, Stacy is living in Nashville, and sings for quite a bigger crowd. She currently performs her music every Monday night at Second Fiddle, located next door to the world famous "Tootsie's." She also recently released a CD, *Windows of the Soul*, with 11 original songs on it.

"One of the neatest singing experiences I've had was when I was chosen to participate in Chicago's Colgate Country Showdown," Stacy says. "There were thousands of people there." Stacy was selected as a finalist with a song she wrote herself, and went on to take third place in the competition.

Stacy looks back upon her years in Delta Zeta very fondly, and attributes a lot of her success to her chapter's support. "Delta Zeta gave me so many opportunities in college," she said. "I was Song Chairman for a few years, Assistant Recruitment Chairman, and of course during recruitment, I was always involved with our skit/musical." Stacy's strong support from her sisters provided her the love and encouragement to pursue her dream. "All of my Delta Zeta sisters were so supportive of my singing. If I had a concert, they were there. Support is so important in trying to pursue this type of career." Living in the chapter house for two years, Stacy was an extremely active member of her chapter. "Our chapter was very involved with Special Olympics, so I got to sing the National Anthem at a lot of events!" Stacy also met some of her best friends in Delta Zeta. Besides support, Stacy says Delta Zeta has also

provided her with self-confidence. "Delta Zeta taught me to never give up! It taught me to believe in myself and in others . . . and that we can achieve anything we put our minds to."

When Stacy's not singing she enjoys hanging out with friends, writing music, and watching movies. She also enjoys listening to live music in her area. "If I'm not singing downtown, I'm always out listening to other musicians. It's fun to listen to and it's good to learn from other people." And, she's even considering getting a dog this summer. "I've been able to keep my plants alive now for a few years so I think it's time to say I could handle a living creature," she jokes. Stacy is the oldest of three siblings, and has a younger brother and sister back home.

Pursuing a music career can be tough in such a competitive market, but Stacy is doing all the right things. She spends much of her free time trying to memorize as many songs as she can, and searching for new musicians to form her own band. She knows the importance of getting her name out there and even understands the way the industry works. "The big labels aren't downtown listening to people sing," she explains. "They want facts and numbers. Every one of my CDs has a bar code which keeps track of how many are sold and the record labels will look at that."

Stacy hopes that her music can touch other people in the way that it has helped her in life. "I have gone through so many things in my life and music has always been my outlet," she said. "I want to sing songs about life and love that can help people get through their day."



Stacy with Tom Sparks, who co-wrote and produced her CD.

*Taken from the chorus of Stacy's song, "You Don't Have To Be Country (To Love a Good Old Country Song)."

You can purchase Stacy's CD at www.stacydonahue.com or www.cdbaby.com/sdonahue

Send all notices of address changes
and member deaths to:
Delta Zeta National Headquarters
202 East Church Street
Oxford, OH 45056
Phone: 513/523-7597
CHANGE SERVICE REQUESTED

Non-Profit ORG.
U.S. POSTAGE
PAID
Cincinnati, OH
Permit #2881

The Many Ways to Give



*"As a collegian, I looked to my
incredible Delta Zeta sisters for
confidence and guidance.*

*They helped me develop leadership and team
building skills so I was able to march
into a man's world and succeed."*



Susan Patterson Perry-Lindle EQ '68 has led a distinguished life. Commissioned as a second lieutenant in the U.S. Army, she completed basic training in the Women's Army Corps, and later became the first female officer assigned to a combat brigade of an infantry division in Europe. Her career included a term at NATO's Headquarters in Izmir, Turkey and assignments with the Army staff at the Pentagon. She was promoted to the rank of colonel in 1994 when there were only 25 female colonels in the Military Intelligence Corps. Susan received numerous military awards and decorations during her years of service.

After retirement from a 26-year military career, she eagerly embraced new chapters of her life. Her alma mater, the University of Wisconsin/Eau Claire, honored her with the Alumni Distinguished Achievement Award. "I've done hospice volunteer work and am pursuing a doctorate in divinity," Susan says. She married her husband, Terry, in 2000, and inherited two grown children and three grandchildren.

And Susan happily became a member of the advisory team for the Kappa Beta Chapter at Northern Kentucky University near her home in Edgewood, Kentucky. She was honored by the chapter as an outstanding alumna for two years in a row. "As an alumna, Delta Zeta means mentoring and giving back. Each one of us tries to do small things with love. The Delta Zeta Foundation puts the Delta Zeta Creed into action on a national scale. Donating to the Foundation is so easy, and you can do it anytime."

Susan enumerates some of the many ways to give. "In the 1902 Loyalty Circle, collegians not only receive recognition, but they are benefiting the Foundation—it's a win/win situation. Instead of buying a birthday present for your sister, donate to the 1902 Loyalty Circle in her name.

"I became a member of the Guy Potter Benton Society as soon as I heard about it. This will allow me to see the benefits of my gift now. Donations help a collegian go to a leadership conference or receive a scholarship.

"Donations through commemorative and honorary gifts are another way to honor your sisters. I also want to be sure that Delta Zeta receives something from my estate through the Oxford Society. This is such an easy thing to do."

In a life of notable accomplishments, Susan Perry-Lindle believes one of the most important things she can do is support the mission of the Delta Zeta Foundation. "I would encourage any alumna or collegian to think about how the Sorority has touched their lives, and give back to Delta Zeta."