

the Lamp

O F D E L T A Z E T A

SPRING 2000

Windows of Our Homes

Delta Zeta

Meet Delta Zeta's 1999
Woman Of The Year

Page 4

The Windows of Delta Zeta

Small squares of colored glass provide the frame for the entryway windows in the century house Delta Zeta purchased in 1981 to establish its permanent home in Oxford, Ohio. These stained glass pieces suggested that other renderings in glass would be significant in the



chronicles of the Sorority and should be included in the building's restoration. And so were placed in appropriate spaces, the stained glass windows that have become an integral part of the beauty and character of Delta Zeta's home.

Two entryway windows were created with special symbols, the Delta Zeta crest in one and an etched lamp in the other. The seal of Miami University was placed above a third entry. A single rose was etched in each of the two panels framed by the original glass pieces in the entryway foyer. Bouquets of pink roses were detailed for the transoms over the doors to the second floor rooms.

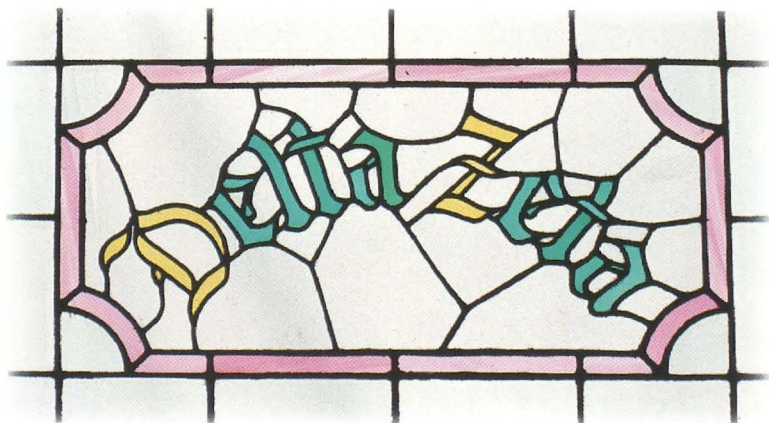
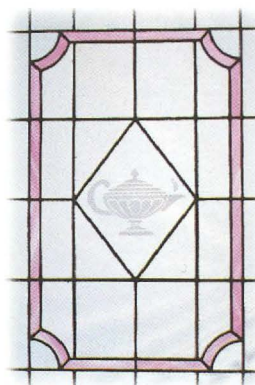
When the addition to the building was considered and changes became necessary because of design, one of the transom windows was moved to the end of the new second floor hall, where the sunlight adds an extra dimension to its appeal. At the same time, the seal of Miami University was placed where the old and new were joined, forever confirming Delta Zeta's past and future ties to the place of her founding.

The stained glass windows in our home are more than pieces of colored glass.

As the bricks and mortar may represent Delta Zeta's foundation, the windows are her signature, an affirmation of our heritage and the ideals we embrace.

The lamp, the crest, the rose, the seal of the University that nurtured us, provide us with a clear vision of pride and purpose as we look to Delta Zeta's bright future—*through the windows of our homes.*

Norma Minch Andrisek *ΓΑ*
Past National President



the
Lamp
OF DELTA ZETA

Volume 89, Number 1 • Spring 2000

FOUNDERS

Alfa Lloyd Hayes, 1880-1962
Mary Collins Galbraith, 1879-1963
Anna Keen Davis, 1884-1949
Julia Bishop Coleman, 1881-1959
Mabelle Minton Hageman, 1880-1929
Anne Simmons Friedline, 1879-1932

THE ORDER OF THE LAUREL

Irene Caroline Boughton, 1904-1988
Grace Mason Lundy, 1893-1993
Elizabeth Coulter Stephenson, 1881-1939
Myrtle Graeter Hinkly, 1893-1987

Published since December 1910 by

DELTA ZETA SORORITY

Founded at Miami University - Oxford, Ohio
October 24, 1902

The LAMP of Delta Zeta

Nancy E. Brewer, Editor
(ISSN #0887-2554),

official magazine of the sorority,
is published quarterly by the
Delta Zeta Sorority,

202 East Church Street, Oxford, OH 45056
Periodicals postage paid at
Oxford, OH, and additional mailing offices.

CONTRIBUTING WRITERS:

Florence Hood Miner AB
Kimberly Preissler KI

POSTMASTER:

Send address changes to
Delta Zeta Sorority,
202 East Church Street, Oxford,
OH 45056.

Send all editorial material to
Delta Zeta National Headquarters,
202 East Church Street
Attn: Nancy Brewer, Editor
Oxford, OH 45056.

E-mail: dzs@dzshq.com



National Panhellenic Conference

www.kappasigma.org/cfea

Printed in USA.

Features



4

1999 Woman of the Year

Sheila Howell Partin ΔΘ, successful entrepreneur whose first commitment is to her family.

6

Windows of Our Homes

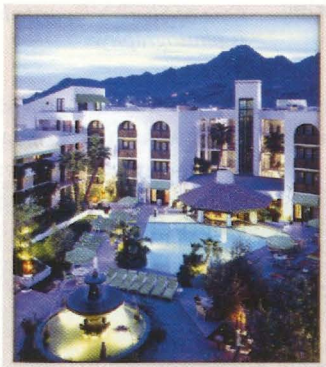
Looking to Delta Zeta's future through the windows of our homes.



20

Delta Zeta Convention 2000

You'll find the forms you need to register as well as an updated agenda to help you plan.



31

Better Speech & Hearing Month

Delta Zeta's philanthropic efforts support this endeavor.



In Every Issue

Alumnae News 10-19

Delta Zetas reunite and reminisce.

On Campus 33-43

Chapter traditions, old and new, philanthropic and community service events.

Foundation Focus 30

Giving Others The Opportunity To Learn:

Speech and Hearing Philanthropy

Memorial & Honorary Gifts 22-23

Delta Zeta celebrates the generosity of its members.

Flame Eternal 23-24

Directory 25-27

DZ DeZigns 44

About the Cover: One of the stained glass windows at Delta Zeta National Museum and Headquarters. Photo Credits: Cover, inside cover and pages 3, 6, 7, 8 — Igor Osatuke, Vision Studio.

1999 Woman of the Year



Sweet Success

While Delta Zeta's 1999 Woman of the Year, Sheila Howell Partin ΔΘ, is a successful entrepreneur with many outside interests and commitments, her first commitment is to her family. Sheila says proudly, "My husband, Robert, works hard, but he is always with his family. He has always been involved in my business. He is loyal and committed to whatever or whomever he's involved with. I'm lucky!" Her three children, Paige, 13, Bowe, 11, and Samuel, 7 assist Sheila in her business. "I have always made sure my children were involved with the business," she says. "I want them to have a strong work ethic."

Owner of Sheila Partin's Sweet Sourdough, Inc. and Sheila Partin's Grille in Houston, Texas, she has built a million-dollar business from a sweet sourdough bread recipe. As she celebrated her tenth anniversary in the business this past April, she emphasized that her enterprise could be even more profitable if she devoted more time to it—instead, she chooses to spend more time with her family. "I know if I was totally involved," she says, "this business would be HUGE. I feel that God has blessed my family and me because I have my priorities in the right place. I can always have a business; I cannot always have and raise my children. I have really worked diligently these ten years to be a mother first."

*"This award is so special,
and I will wear this medallion
with such pride . . .
being surrounded by love was the
most memorable aspect of all."*

She was honored at the Woman of the Year ceremony held on January 29, 2000 in Houston, Texas. Michele Cardoza Klump ΔΘ organized the luncheon. National President Karly Burns presented Sheila with the Woman of the Year medallion to honor her achievements and her work, not only for Delta Zeta, but also for many other worthy causes. Sheila recalled her feelings during the ceremony.



One of Sheila's favorite hobbies is photography.

Sheila's business began out of necessity. Her husband, owner and President of Lamar Construction Inc. was building a large apartment complex ten years ago. When the apartment owner failed to pay her husband for the project, Sheila went to work. She says, "That's when I decided to sell breads—it was an alternative source of income, and I could be home with my babies. Hence, the birth of a business."

Sheila had made her bread for her family and friends, and would send cinnamon rolls to her children's school. When Ann Butler Booth ΘE tasted Sheila's bread at an alumnae chapter meeting and insisted on buying it, Sheila's business was born. Mothers in the carpool line at school would ask Sheila if they could buy her bread, and soon, she never left home without a car full of her sourdough bread.

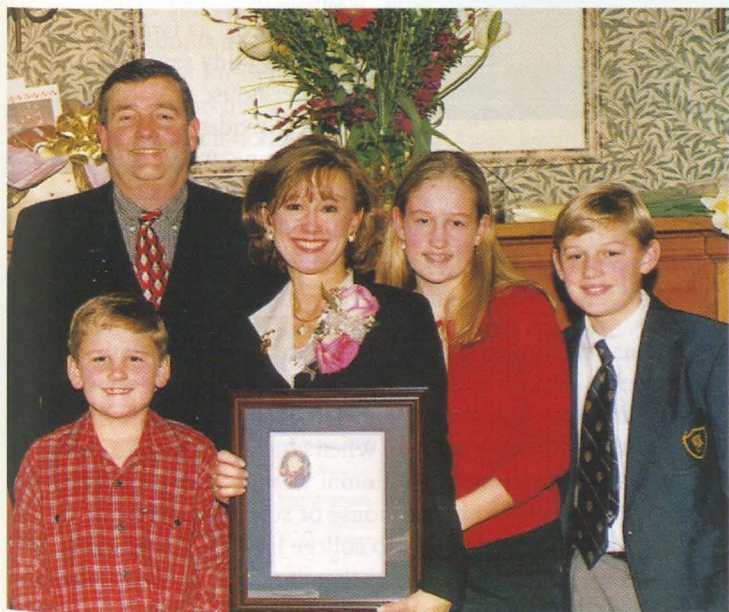
Initially, Sheila made the bread at night, sleeping on her kitchen floor while the bread baked, and personally making deliveries each day. In 1991, she moved the enterprise to a small bakery facility, which allowed her to begin selling the bread commercially. She has expanded her business to include food service sales and distribution. The sweet sourdough bread is served in hundreds of restaurants, schools, hospitals, country clubs, and on Continental Airlines. Her grille is a 3,600 square foot facility serving sandwiches made from her special dough.

Even though her business has grown tremendously in ten years, the bread is still made by hand. Each loaf of bread takes two days to make because of the natural rising process. Sheila says, "It's truly a labor of love."

Second only to her commitment to family is Sheila's devotion to her community and to helping others. "I have volunteered anywhere I've been asked. And even where I'm not asked. My husband says that he is confident that when we are down to our last dollar, I will give it away to someone. I am not motivated by money or the bottom line. I'm motivated by love and smiles and giving to people in need. When others ask 'Why?' I say 'Why not?'"

Sheila gives tirelessly of her time and efforts to The Brookwood Community in Houston, which provides a place for adults with physical and mental disabilities to live and work. She takes truckloads of bread to the Community's more than 100 residents, and promotes the facility at her restaurant, giving tours to those who are interested in supporting Brookwood.

One of the best things about Sheila's business, she says, is that "it gave me something to *give* to people. I always have a gift, a present, a way to contribute." Her heart goes out to the homeless and hungry in her city. "I never want to feel that I have more than someone else," Sheila says with conviction. "My heart hurts to think that people and children here in Houston are hungry and I have bread. So many friends help me distribute breads. I always encourage everyone I know to help."



Sheila's family shared her special day. Husband Robert and son Samuel, left, with Sheila, daughter Paige, and son Bowe.

Sheila credits Delta Zeta as the key to her success—professionally and personally. "Delta Zeta has made me who I am," she says. "I was the first to go to college in my family. I followed my boyfriend, with the intent of going to college for the 'experience,' then we would marry. In my third year, I got serious about graduating! I told the boyfriend good-bye, and knew I had to study and graduate. I truly think Delta Zeta kept me in school and meant enough to me to keep me going to school."

After graduation, Sheila continued her involvement in Delta Zeta with the Houston Alumnae Chapter. In 1992, she was named Province XVII Outstanding Alumnae President, and in 1994, she won the distinction of Province XVII Distinguished Delta Zeta Alumna. "The encouragement and support for me from Delta Zeta sisters has made my business successful and well-received. What would I have done without Delta Zeta?"

While women entrepreneurs are one of the fastest-rising segments of today's business world, Sheila believes true success comes from loving, rewarding relationships with family, friends, and dedication to your community and the causes in which you believe. "My advice to a young woman today is that you appreciate the qualities God has given us as women. We are innately good listeners, good teachers, sensitive, and compassionate. Be convinced that whatever you want to do is important, valuable, significant, a service, and something you will be proud of. Then, use those gifts and commit to your goals and dreams."



Top: left to right, are: Katie Lehnert BA, President of the Houston Alumnae Chapter; Michele Cardoza Klump ΔΘ, who arranged the luncheon; Sheila Partin; National President Karly Burns; Arlene Newman Marshall ΔΘ, Past Foundation President; and Ann Butler Booth ΘE, Past Foundation Trustee.

Bottom: Sheila's parents, Woodie and Lela Howell, came to Houston from Abilene, Texas, for the ceremony.



Windows

of Our Homes

When six young women came together in 1902 to form a social sorority, they had a vision of lifetime sisterhood fostered by ideals that they cherished. These friends bonded quickly as they faced the challenges of starting a sorority on a male-dominated campus (women had just been given full status as students at Miami University in 1902). At Miami, the Greek system had gotten off to a rocky start, first banned by the University Board of Trustees, then gaining strength as secret societies which were a backlash to the popular literary societies of the time.

Although fraternities were well established by the time Alfa Lloyd, Mary Collins, Anna Keen, Julia Bishop, Mabelle Minton, and Anne Simmons met with Dr. Guy Potter Benton to make their idea a reality, they faced derision from the male students of the university. This adversity served to bond them even closer, and the need to find a place to meet, strategize, and grow in friendship became paramount.

While the college dormitory was meant to offer a home-like atmosphere for young people away from home for the first time in their lives, dormitories were also considered something akin to a prison in the 19th century. Students felt confined to the "dreariness of the collegiate regiment" within them (Harding, "The Shelter," 1858, March 2000). When Greek organizations began colonizing, their intent was to provide not only a private meeting place, but a home which could give the stability of a family

life the students lacked on the campus setting while at the same time uniting members in the spirit of friendship.

"Of course the growth of the chapter house life was gradual; but the later increase in college enrollment, and the consequent inability of colleges to, provide anything like enough dormitory accommodations for the student body, was a very concrete faction in stimulating the fraternities to meet their housing needs for themselves," Grace Mason Lundy E tells us in the *History*, 1934.

Delta Zeta's chapter houses and meeting places have come to symbolize "the feeling of intimacy and of seclusion . . . a cherished feature of . . . sorority experience," as Grace Mason Lundy says. The chapter house or gathering place provides a home away from home, where members

feel comfortable; a private meeting place to conduct chapter business and social events; and more importantly, a place where friendships and memories are made for a lifetime.

Alumnae recall their collegiate sorority experience with fondness. Tied up in those memories are the days they spent in their chapter house or designated dorm space, enjoying fellowship with their sisters. When alumnae return to their schools for homecoming or alumni weekend events, they always seek out the chapter house or suite—a haven for them when they acclimated to college life as a young adult, and now a haven which brings them together in sisterhood as they meet new members and reunite with old friends.

*"Being mindful to carry with
us the ideals etched in the
rose windows,
we can look through these clear ones
to a bright Delta Zeta tomorrow—
one of vision and responsibility, of
challenge and faith, of courage
and determination."*

Norma Minch Andrisek, Past National President

Strengthening the tie of the chapter house for women in Delta Zeta is the bond of sisterhood. The chapter house or gathering place is the first place that the bond is strongly forged. After graduation, personal and professional commitments separate sisters, but they can always reconnect by remembering the life they shared in Delta Zeta during those college days.

Leaving our home, whether it is a college chapter house after graduation or a move to a new city, state, or country as an alumna, means taking a chance on the unknown. But the strength and ideals Delta Zetas acquire while living with their chapter stays with them throughout their lives. Just like the foundation of the chapter house, which is the base for a shelter that holds values and unwavering friendship, members build their own foundation of faith and friendship in school. This is a foundation upon which they will build the rest of their lives.

The windows are symbolic of the places where Delta Zetas gather. Through these windows, whether in a chapter house, a dorm, or in our official home, the National Historical Museum and Headquarters in Oxford, Ohio, Delta Zeta sees a changing world.

Collegians face new challenges, such as recruitment and risk management issues, that our Founders could not have foreseen. Through leadership training programs, member education, and by referring to the *Constitution* and *Creed*, collegiate members have the tools they need to meet these challenges successfully.

Alumnae, too, face the challenges of a rapidly changing, diverse world. Increasing personal and professional responsibilities may distance them from Delta Zeta, but the Sorority, through the REACH initiative, has provided new and flexible ways for alumnae members to connect and contribute to Delta Zeta.

Looking out of the windows of Delta Zeta's homes, we see the changes in the collegiate and alumnae realms. Looking into our homes through those same windows, we see Delta Zeta Sorority—a dynamic organization that retains the traditions and heritage of our Founders while working to accommodate the changing needs of our members. Delta Zeta will always be our home. Her windows will be our eyes through which we remember the past and welcome the future.

The Delta Zeta Foundation — Preserving Our Past

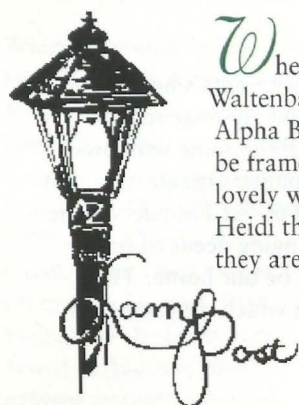
The National Historical Museum and Headquarters in Oxford, Ohio, is the repository of those precious momentos and records which validate Delta Zeta's history. The Museum is a reminder of our past—the legacy we use to build upon for our future. The Museum brings together the artifacts, archives, and important documents that are Delta Zeta's rich heritage.

With your gift to the Delta Zeta Foundation, you can designate part or all of your donation to the preservation of our archives and assist in maintaining our Museum. When you give to the Delta Zeta Foundation, you become part of our history, too. *Won't you consider making a gift today to keep our heritage strong?*



The Lamp Post

"The Lamp Post," a column by Florence Hood Miner AB, was a staple of *The LAMP* during Mrs. Miner's tenure as Editor from 1969-1979. Initiated into the Alpha Beta Chapter at the University of Illinois in 1929, her many years of alumnae and national service include Alumnae Vice President, Director-at-large, Director of Public Relations, and Secretary. Today, she is Delta Zeta's National Historian, dedicated to preserving the legacy of the Sorority's sisterhood. The original rendering of the lamp post, which designated Mrs. Miner's column was done by Beth Kennard Fletcher API '63, who was on *The LAMP* staff at the time. Readers looked forward to the tidbits of personal information and history that Mrs. Miner shared with them in her column. We're honored to feature Mrs. Miner as a guest columnist in this issue of *The LAMP*.



When Consultant Gretchen Waltenbaugh's twin sister, Heidi, took Alpha Beta's picture of the Founders to be framed, the man asked her if the lovely women were her ancestors. Heidi thought and said, "In a way, they are."



The book *Dutch* spends pages on Ronald Reagan's Eureka College days where he waited tables at Lida's Wood dormitory, then home of the Pi Chapter. The author mentioned several Delta Zetas and even has a picture of Margaret Cleaver, very pretty. You have to read it to know all about the relationships. Incidentally, Margaret lives in Raleigh, and is, as he says, "still very pretty."



Jean Haley Harper Y, 1998 Woman of Year, alerted us to an article in the *International Society of Women Airline Pilots*. In "West to the Sunrise," by Grace Harris, she introduces us to such aviation notables as Jimmy Doolittle, Jacqueline Cochran, and Arlene Davis. And that rang a bell. Arlene Palsgraf Davis ΓA was our 1960 Woman of the Year, and later contributed an aviation scholarship in her name. Jean was a recipient while in college.

"West to the Sunrise" is out of print, but Castle Rock's local librarian found a copy for us at the University of Wyoming's library. And I quote from the book: "Arlene Davis was one of the true gentlewomen of aviation. Blonde and blue-eyed, with about five feet and four inches of the right curves in the right places, she had unusual charm and talent. Her small petite figure was filled with tremendous vivacity and talent. Her flying career dated back to the 1920s and was quite impressive."

The closing sentence gave us a chuckle. "When I told him that he'd live to see the day he'd ride a jet liner flown by a woman captain, he grunted derisively as he replied, 'That'll be the day!'"

All we can say is, "Have you ever flown United Airlines and the pilot was Jean Haley Harper?"

Did you know that not only men but women are buried at Arlington National Cemetery? One of our Past National Presidents, Bernice Hutchinson Gale M, is buried beside her military husband, Guy. Affectionately called "Bunny" by everyone, she had three Delta Zeta daughters, all at different chapters. Twins Jane and Nancy recently visited the Arlington site and alerted us. And close to home, our own brother's wife, Florence Morgan Hood AB, who was CCD at Alpha Pi and President of the Birmingham, Alabama Alumnae Chapter, is next to our brother. It used to be confusing with two Florence Hoods and fun for the two of us.

florencehoodminer



Florence Hood Miner
with her Delta Zeta
daughter, Juliet Miner, I

A Delta Zeta Chapter House Finds a New Home

Delta Zeta Sorority's Theta Epsilon chapter house on the Louisiana Tech University campus was no longer being used by the Sorority after the chapter closed in 1992. The Theta Epsilon Chapter had originally been part of the Theta Upsilon Sorority, which merged with Delta Zeta in 1962. But Delta Zeta wanted to find a way to make the house useful for the University. In the spring of 1999, the Sorority donated the house to the University to be used as the new University Women's Center. The Women's Center's mission is "to promote a supportive environment to enhance the educational attainment level and subsequently the quality of life for the women students of Tech."

The Center contributes to the overall mission of the University by:

- Helping to create an active, aware, affirming community for the University women.
- Providing a physical environment where issues of particular interest and benefits to women can be heard and examined.
- Offering services and programs that empower women to pursue and achieve self-developed goals.
- Creating a physical hub of communications and activities that fosters and enriches networking opportunities among all women.
- Serving as a resource center for University-recognized women's groups by accommodating meeting and program space.

Sandra Nesbitt, Past National President, and Debbie Raziano, National Vice President of College Chapter Operations, traveled to Ruston, Louisiana to represent Delta Zeta at the dedication ceremony on December 8, 1999. The house had been renovated, and other sororities had posted signs saying, "Thank you, Delta Zeta" around campus.

Also present at the ceremony were Corre Stegall, Past National President of Kappa Delta and Executive Director for University Development at Louisiana Tech, and a number of University officials. Delta Zeta alumnae in the area were also invited to attend. Ms. Stegall presented the sorority with a framed resolution proclaiming the donation of the building. "This is a monumental gift, and all of Delta Zeta alumnae should be proud," said Corre Stegall.

Debbie Raziano thanked the University President, Dr. Daniel Reneau, for the generosity afforded Delta Zeta in the past. "We hope that the new Women's Center will be Delta Zeta's legacy on the Louisiana Tech campus. This donation provides a way for Delta Zeta to remain connected to the school, as our alumnae will also have access to the facility for various events."

"Women do have unique needs, and this will provide an opportunity to focus on those needs," said Maribel McKinney, Dean of Student Services. In addition to housing the Association for Women Students and providing facilities for women's programming for other campus groups, the Center will be the permanent location for the Panhellenic Council at Louisiana Tech.

The University has arranged that Delta Zeta alumnae will have the opportunity to use the building for meetings, reunions, and receptions. A plaque will be displayed in the building to mark Delta Zeta's generous donation. Delta Zeta is proud to be able to provide a facility that will nurture and strengthen women on Louisiana Tech's campus.



From left to right: Corre Stegall, Executive Director for University Advancement; Dr. Jean Hall, Vice President-University Advancement; Dr. Dan Reneau, University President; Sandra Nesbitt, Past National President of Delta Zeta; and Debbie Raziano, Vice President of College Chapter Operations for Delta Zeta.



The former Theta Epsilon Chapter house, now the University Women's Center at Louisiana Tech University.



REACH

Alumnae News

In this issue's "Alumnae News," alumnae reminisce about college days in their chapters, and send more stories about inspiring reunions, in addition to new dates for upcoming reunion events. Alumnae are also recognized for their philanthropic, volunteer and professional accomplishments.

Blue Ridge (DC, NC, SC, VA, WV)

Loretta Crain Carter EØ '88 (Clarion University), of Virginia, says, "The home of my chapter was a mint-green house on Wood Street in Clarion, Pennsylvania. The house was small, a converted ranch style. We shared one kitchen, but no one ever seemed to mind. Perhaps the best thing about the house is that it was where I got to know the women who are, today, my closest friends. Within the first few weeks of living in the house, I had made friends for life."

Diane Salade Neralic IT '69 (West Liberty State College) is looking forward to the first-ever reunion of her sisters this summer. The chapter has rented a lodge on a nearby lake where they will reconnect.

The **Northern Virginia Alumnae Chapter** prepared meals at a nearby Ronald McDonald House, and gathered in December for their holiday party.



The Northern Virginia Alumnae Chapter members gather for their annual Christmas party and cookie exchange.

Omicron Mu Chapter alumnae remember the office they used in the Campus Life building at the University of South Carolina-Spartanburg. "It was a great place to go after classes," says Sallye Hampton Gresham OM '94. "Not only did it keep our chapter close, but it kept us involved with other campus activities."

At New Member Retreat, new members received a white pillowcase with a green turtle painted in the middle and their name on the border. Each sister added a message in permanent marker on the pillowcase.

Melba Lou Fitzwater White III '67 (West Virginia Institute of Technology) is running for mayor of the city of Montgomery, West Virginia. She received a Distinguished West Virginian Award in 1991 from the governor and was named Citizen of the Year in 1999. She is the immediate past president of the Upper Kanawha Valley Chamber of Commerce, an elder in the Montgomery Presbyterian Church, and secretary-treasurer of the Presbyterian Women. She is also the chairperson of the Christian Education Committee. She and her husband William have four children and three grandchildren.

Information for this story from The Charleston Gazette.

Sandra Kay Yow ZA '62 (East Carolina University) celebrated her 25th anniversary as coach for the Wolfpack Women, North Carolina State University's women's basketball team at a ceremony given in her honor. Those who have played for Kay talk about her love of the game and her team, her generosity and faith. Kay was a star basketball player in high school and at East Carolina University, where she was initiated into the Zeta Lambda chapter. She led a fledgling team at NCSU to victory as they won 500 games and went to the Final Four, and coached the U.S. Women's Olympic team in 1988 to a gold medal win. Kay also faced the challenge of breast cancer. In remission today, she says, "I think you just learn how to enjoy each and every moment. I'm grateful for that. It makes life richer and fuller." Kay was honored as Delta Zeta's Woman of the Year in 1987.

Information for this story from the Raleigh, North Carolina News and Observer by Ned Barnett.

Central Plains (CO, IA, KS, MN, MO, ND, NE, SD)

Elva Brackett Alden AY (University of Maine) was given the Cum Laude Award from the Rocky Mountain Chapter of the Arthritis Foundation as an outstanding volunteer in Colorado. Elva established the Rocky Mountain Chapter and the Arthritis Aquatic Program in Fort Collins 15 years ago, where she continues her work as an instructor-trainer.

friendships

Alumnae members of the **Epsilon Alpha Chapter** reminisced about a sisterhood retreat held at Western State College of Colorado. Past traditions included writing notes to sisters to thank them for helping members or boosting their spirits. The notes, read aloud at chapter meetings, were called "Roses," as a way of giving a rose to a sister who did something special for another sister.

The **Fort Collins Alumnae Chapter** recalls scholarship dinners held at the end of each quarter during college days, and singing in the Hesperia Song Fest, competing against other Greek houses.

Connie Surprise Kramer EP '70 (Northwest Missouri State University) says, "This fall at a 30th high school reunion, we also had a Delta Zeta reunion! Twelve sisters from the Epsilon Rho Chapter got together at the same time. One of our sisters borrowed her parents' home for a huge slumber party. Several of us hadn't seen each other since 1973, when we graduated from college. It was so much fun that we are planning another reunion this summer in Wisconsin."

Becky Mathis EA '94 (Western State College) writes, "I met Kim Brown Harclerode '94 and Jennifer Chadwick '94 during the Christmas holidays. We had not been together for about five years, and had a wonderful time catching up on old times."

Marilyn Schwab Rose Rossow Σ '57 (Louisiana State University) raises purebred Arabian show horses with her husband, Reverend Francis Rossow, at Fairview Arabian Farms in Hayward, California, but the couple also makes their home in St. Louis, Missouri. Their horses have won numerous championships, including national level awards. Marilyn has written a children's book, *My First Horse*, which is available by contacting the Arabian Horse Trust, 12000 Zuni Street, Westminster, CO 80234.



Marilyn Schwab Rose Rossow Σ with her show horse, Famous Fyre.

Twin Cities Alumnae Chapter members remembered their college days. Roxanne Betker Fons EK '70, Chapter Editor, says, "One sister remembers dressing nicely for dinner. The Executive Board sat at the same table with the housemother. Everyone waited until the housemother was served to begin eating." The alumnae chapter recently adopted Mary's Shelter, which provides emergency and transitional housing for women and children.

Wichita Alumnae Chapter members remember "Turtle Passing" in the Delta Omega Chapter at Fort Hays State University, where sisters sat in a circle to talk about upcoming finals or other events. The alumnae chapter made a donation to a deaf and hearing-impaired camp for children near Wichita.

Great Lakes (MI, OH, Canada)

Muriel Gray Cerf A '62 (Miami University) writes, "I recently celebrated my 60th anniversary at Miami University in Oxford, Ohio, this past June. I roomed with Lucy Calvert, my roommate in our junior year. We hadn't seen each other in 60 years. We enjoyed our weekend, and Miami honored our class at the Alumni Weekend festivities."

Editor's Note: Muriel is the mother of Dr. Vinton Cerf, who is credited as the "Father of the Internet." Dr. Cerf mapped the architecture that eventually became the Internet, and works actively with the deaf and hearing-impaired community.

The **Cleveland Eastside Alumnae Chapter** presented seven TTY machines to area schools. Chapter Editor Dorothy Gill Lawyer ΓΔ '53 says, "The hard work is all worthwhile when we see the happiness on the faces of these children."



At South High School in Cleveland, the Cleveland Eastside Chapter presents a TTY machine to grateful hearing-impaired students. Alumnae members are left to right, Pat Garver Boris ΓK '49 and Dorothy Gill Lawyer ΓΔ '53.

chapter associations

Nanette DeMuesy AA received recognition for her outstanding work as an editorial journalist for the *Canton Repository* newspaper, and for her commitment to bettering her community in Canton, Ohio. She has also had a distinguished career heading up her own advertising firm. Nan began her career as a staff writer while attending Northwestern University, where she was initiated into the Alpha Alpha Chapter in 1947. In addition, she has volunteered on service projects for the North Canton Community Church, the North Canton Library, the North Canton Park Board, and the Cultural Center for the Arts. She recently commissioned a statue for the entrance of the North Canton Library. "I think of Nan as a good friend and as a person who exemplifies the best of Delta Zeta in her personal and professional life," says her long-time friend, **Ruth Milner** AA '47.



Nan DeMuesy AA beside the statue she donated to her local library.

Flint Alumnae Chapter (Michigan) members participated in the "Homes Sweet Homes" gingerbread display, sale, and auction to benefit the Shelter of Flint for homeless women and children at Christmas.



Flint Alumnae Chapter members Sally Cooper Burek $\Gamma\Psi$ '59 and Gail Bennett Rachor $\Gamma\Psi$ '56 put the finishing touches on the gingerbread house which was auctioned to raise funds for a local homeless shelter.

Alumnae from the **Gamma Alpha Chapter** recall winning the Greek Sing at Baldwin-Wallace College. Traditions included putting on plays to raise money for the orphaned children in the area, and the White Rose Banquet held for graduating seniors.

Gamma Kappa Pledge Class 1960 (Kent State University) will have a reunion July 21-23, 2000. On Saturday, July 22, 2000, an open house will be held from 1:00-5:00 p.m. at the chapter house for all Delta Zetas and friends. For more information contact Joyce Burrell Thompson '55 at 501/922-0960 or jthomps0@cswnet.com.

The Gamma Kappa Chapter invites all alumnae to Homecoming Weekend, October 14, 2000 at Kent State University.

Members of the **Grand Rapids Alumnae Chapter** (Michigan) are creating a Delta Zeta scrapbook, and preserving memories as sisters bring pictures from college days to add to the book. The chapter holds potluck dinners and game nights, among other events, to encourage members to stay connected to Delta Zeta.

The **Lambda Theta Chapter** (Michigan Tech University) will be celebrating their 25th anniversary on August 4-6, 2000. Please contact Julie Varichak '99 at 111 College Ave., Houghton, MI 49931 for further details.

Members of the **Oakland County Alumnae Chapter** (Michigan) enjoyed each other's company at a Christmas potluck dinner and a Mother-Daughter Tea and Silent Auction, the latter of which raised money for philanthropy. The alumnae chapter will assist the Gamma Sigma Chapter at Eastern Michigan University with their spring recruitment.

Nancy Nebel Palmer BII '49 (Albion College) wrote to the Northern Virginia Alumnae Chapter, "Thank you very much for inviting me to the Ritz-Carlton . . . I enjoyed the tea, conversation, and most of all, being honored as a 50-year member of Delta Zeta. Looking back, many things have changed. We wore wool skirts, bobby socks, and penny loafers, and lived on the second floor of Susannah Wesley Hall and used our chapter house for meetings, rushing, and other social events. We had no co-ed living and a ten o'clock curfew during the week. The symbolism of the pink roses and the lighting of the candles brought back memories of 50 years ago. It is refreshing that young women of today are carrying on the sisterhood of Delta Zeta."

ALUMNAE ACHIEVERS

Great Western (AK, AZ, CA, HI, ID, MT, NV, OR, UT, WA, WY)

The **Greater Seattle Alumnae Chapter** made a donation to the local Goodwill's employment and training program and their community learning center. The chapter also supports the Deaf Youth Drama Program at the Seattle Children's Theater.

The **Las Vegas Alumnae Chapter** collected books for children at the Ruby Thomas Elementary School. The school has a deaf education program for the Clark County school district in Nevada. The chapter donated over 90 books to the school's library.

Helen Neal Radke K will be honored on June 19, 2000 at Peninsula College with the Distinguished Service Award, the institution's highest award for meritorious service. She was initiated into the Kappa Chapter at the University of Washington in 1929. Helen, who lives near Olympic National Park in Washington, has always volunteered her time and talents to education and youth-related activities. She served on her local school board for 19 years, and was a member of the Washington State Board of Education and the State Board for Community College Education for many years. For the past decade, the *Peninsula Daily News* has sponsored a Helen Radke Youth Achievement Award for three different age categories. Helen says, "Past winners have been a very impressive bunch of kids. I've always felt the reward for community service was in the doing, and it is, but I must admit I'm looking forward to June 19!"

The **Sacramento Alumnae Chapter** celebrates Valentine's Day by presenting homemade treats to the children of the Sacramento Children's Home.



Members of the Sacramento Alumnae Chapter include: Chapter President Merle Whitworth Jaekel K '45, Chapter Vice President of Membership Maurine Muller Rollins M '37, and Philanthropy Chairman Marge Belch Brownell X '47.

Carol Hannah Imlay FO '51, Chapter Editor for the **San Fernando Valley Alumnae Chapter**, describes the chapter's work with the Northridge National Center on Deafness. "For over ten years, we have assisted the Center, located at California State University. Each year, we meet with the NCOD and participate in a hands-on project. In addition, proceeds from our annual Nut Sales are donated to the Center. The Center is a national leader in providing quality education to deaf and hard-of-hearing students in a mainstream university environment, and has helped more than 2,500 such students to graduate."



The San Fernando Valley Alumnae Chapter presenting their donation to the National Center on Deafness at California State University in Northridge, California. Pictured left to right: Marynell Durland Kirkwood N '41, Barbara Bankson Gates AI '47, Lorene Elliott Miller AX '62, Barbara Phillippi Lancaster AX '62, Philanthropy Chair Fern Ebbert Gipe EO '57, Terri Goldstein (representing NCOD), Bernadine Johnson Poulsen AX '62, Chapter President Peggy Steninger Haggarty II '49, Barbara Lemke N '41, and Dorothy Rubin Bell AN '56.

If you need contact information for a Delta Zeta sister for whom you are searching, please contact National Headquarters at 202 East Church Street, Oxford, OH 45056, by phone at 513/523-7597, or via e-mail at dzs@dzhq.com.

CORRECTION: In the Winter 2000 issue of *The LAMP*, four members of the North Philadelphia Alumnae Chapter were incorrectly listed as members of the Central Jersey Alumnae Chapter. The Central Jersey Alumnae Chapter hosted the luncheon which was held for these Order of the Pearl recipients: Frances Sodaro Hall BQ, Marion DePater AT, Roxanna Schlimm AT, and Marjorie Desmond AT.

In April, the **San Francisco Peninsula Alumnae Chapter** celebrated their 50th anniversary with the Gala Spring Luncheon. The chapter was chartered in 1950, and Gertrude Houk Fariss, then National President, signed the charter. The chapter invited seniors from three collegiate chapters to join them: the Gamma Lambda Chapter (San Jose State University), the Omicron Chi Chapter (Santa Clara University) and the Xi Lambda Chapter (University of San Francisco).



The planning committee for the 50th anniversary of the San Francisco Peninsula Alumnae Chapter are: Martha Ann Thomson Milliken ΓΛ '81, Constance Wyant Mills ΓΛ '61, Gwen Brenner Waddell ΔX '80, and, in the above picture, left to right, Dorothy Elston Baker P '35 and Zelta Wieman Adams X '47. Dorothy is a charter member of the chapter.

The **Seattle Alumnae Chapter** reminisced about college memories such as study trips to the library, sleeping porches, road trips, and sisterhoods and remembered a continuing tradition of the Kappa Chapter—planning a week of events for new members before initiation. The chapter also made a donation to a deaf students' theater production at a local high school.

Mid-America (IL, IN, WI)

The **Bloomington (Indiana) Alumnae Chapter** recalled chapter house memories such as singing Delta Zeta songs and being serenaded on the balcony of their chapter house by fraternities on campus. Special traditions included the "Sigma Rho Club," which was formed by Epsilon seniors. The alumnae chapter provides teaching aids to the speech and hearing therapist who assists women and children at a local shelter.



Linda Cater Heath EB '60, center, was selected as the "most outstanding chapter advisor on the campus of Indiana University." She is shown with Danna Donnelly Wylie BM '66, left, and Cathie Wedge Lynch E '49 of the Bloomington Alumnae Chapter.

Gamma Rho (Northern Illinois University) Classes 1958 – 1965.

Mark your calendar! October 20-22, 2000 for lunch at the Drake Oak Brook Hotel. Contact Marilyn Hagman Cushing '58, 5614 Woodland Drive, Western Springs, IL 60558 for details.

Susan Schacht Hagaman Δ '61 (De Pauw University) says, "During a visit to Colorado, I saw Susan Wright Carlisle '62, who lives in Boulder. We spent the day sightseeing and talking about the years since college. My next adventure was in September to help my daughter plan her wedding in Louisville, Kentucky. I called Sherri Seabolt Kraus '60 who gave me a tour of Louisville, her hometown. Over Labor Day weekend, Carolyn Stevenson Offill '60 was in the New Jersey area and stayed overnight with me. Again, this was an unexpected, pleasant visit."

celebrations

Cherie Kesler Π '96 (Eureka College) married Brian Parrott in Champaign, Illinois. Her attendants included alumnae and active sorority sisters. Cherie is a second-year law student at the University of Illinois School of Law.



Attendants at Cherie Kesler's wedding included sisters from the Pi Chapter, from left to right: Rachel Garey, Jill Zielinski '96, Tara Harris '97, Stephanie Giddings '98, and Karyn Szardowski. Barb Bell '98 (pictured in white) and Terra Fountain '97 (not pictured) were greeters.

Sisters in the **North Central Indianapolis Alumnae Chapter** reminisce about college days filled with late night talks, double dates, socials, and sharing clothes. Members celebrated the holidays together, and welcome new members to their meetings, held on the second Wednesday of every month. For more information, contact: Shelly Merrick Moore ΓΩ '90 at 317/733-8825 or e-mail her at: ss.moore@gateway.net.



The North Central Indianapolis Alumnae Chapter celebrated Christmas 1999 together.

Janet Adams Rowland E '50 (Indiana University) reports, "The Epsilon pledge class of 1983 had a reunion at the Epsilon Chapter house which included a sleep-over. Twenty Delta Zetas came for the reunion—some as far away as Germany, California, and Arizona. They plan to get together every four years."

Heart Whiteselle Shapr  E '56 (Indiana University) says, "It has been 42 years since we lived under the same roof in Epsilon at Indiana University. I left in 1958 to begin a career with American Airlines, and my sorority mother, Nancy Breedan, stayed on to finish her degree as a specialist working with children. Happily we have never lost touch with one another. She now lives in Arizona. I still call her 'Mom.'"

Mid-Atlantic (DE, MD, NJ, PA)

A step-a-thon raised money for philanthropy when the **Central Philadelphia Alumnae Chapter** walked up and down the Art Museum steps in Philadelphia.



The Central Philadelphia Alumnae Chapter imitated "Rocky" as they participated in a step-a-thon at the Art Museum in Philadelphia.

The **Omicron Chapter Association** (University of Pittsburgh) produces a regular newsletter for its members. If you have news, or would like to receive the newsletter, please contact Editor Gail Minneci Champlin '73, 2032 Lincoln Court, Wyomissing, PA 19610.

Northeast (CT, MA, ME, NH, NY, RI, VT)

Helene Johnson Cushenan BΩ '47 says, "An outstanding reunion was held at New York University, New York City, when Delta Zetas came from all over the country to celebrate sisterhood. The University invited Delta Zeta to join in GRAD Alley, where the streets of Greenwich Village are closed to the public for a street fair for NYUers only. The surprise event of lunch at the Harvard Club was the arrival of Professor Marion Primot, now 89, and teacher to at least seven of the 22 Delta Zetas who attended."

friendships

R I N G S

Sisters from the **Fairfield County Alumnae Chapter** created gift baskets for local philanthropies including STAR (Society To Advance the Retarded and Handicapped), Battered Women of Greater Bridgeport, CT, and the Operation Hope Homeless Shelter. Florentina Leipniker Shupack AZ celebrated her 90th birthday and was awarded the Order of the Pearl.



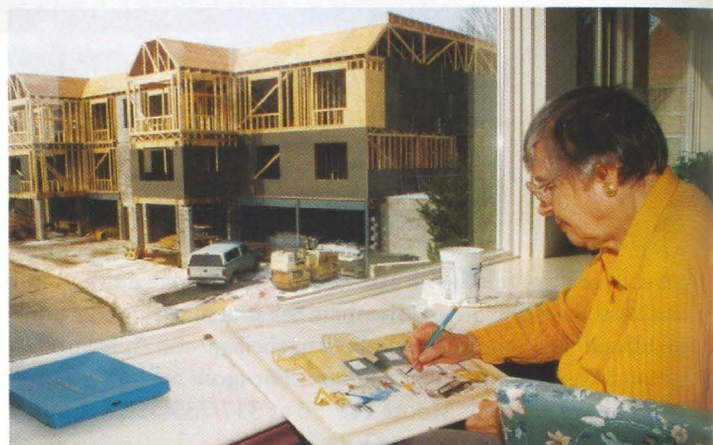
Fairfield County Alumnae gather around the baskets they made for various philanthropies. From left to right: Joyce Lyon Fuller AY '54, Judi Fuller Scofield GB '80, Lois Madducks Lunardini O '62, Florentina Leipniker Shupack AZ '41, Cathie Fuller Ford GB '80, Jenny Gilmore Puccinelli KΘ '91, Darcy Pennoyer Smith AP '89, Audra Dunefsky Good ZA '90, Kristin Montgomery Dayton ΛΔ '93, Brooke Zelesnick GB '95, and Dolores Cueto Mason IQ '76.

Gamma Beta Chapter (University of Connecticut) collegians and alumnae are invited to an end-of-the-school-year picnic on June 15, 2000, hosted by the Fairfield (Connecticut) County Alumnae Chapter. Contact Fairfield County Chapter President Darcy Pennoyer Smith AR '89 at 203/966-7343 or via e-mail at darcystilesfloraldesign@worldnet.att.net for more details.

Jane Sullivan Gibbons IP '69 (West Chester University) was recently inducted into the University of Rochester's Sports and Recreation Hall of Fame. Jane is the Department Chairperson of the Health and Physical Education in Neshaminy School District and coaches field hockey and track. She coached the University of Rochester's diving team from 1973-78, was Coordinator of Women's Intercollegiate Athletics, and then became Coordinator of Women's Recruiting. She also served as the Vice Chairperson of the Western New York Board of Officials for Swimming and Diving and as the American Red Cross Chairperson for Water Safety Training. Jane was the first female Commodore of the Brigantine Yacht Club in 1996, and was the Women's Sailing champion in 1997 and 1998.

Marianne Belding Willing Θ '37 (Ohio State University) has been recognized for her distinctive artwork in her community of Wilmington, Delaware. Her degree in education and fine arts led to a teaching position in Maumee, Ohio. During World War II, she stopped teaching to volunteer for the Red Cross as a caseworker in Toledo. Marianne married her college sweetheart Edwin and moved to Delaware, raising five children. After her husband passed away in 1997, Marianne moved to the Methodist Country House in Greenville, and finally found time to pursue her love of art. She was honored with a reception for her work, which now totals almost 500 paintings. Despite health problems, Marianne continues to paint, and donates all proceeds for her work to the Benevolence Fund, which provides funds for retirees who may not be able to otherwise afford to live at Methodist Country House.

Story by Jennifer Miller courtesy of *Greenville Community News*.



Marianne Belding Willing Θ paints a construction scene from her window.

Photo credit: Lynn Scheetz Maniscalco ΓΔ '58.

South Central (AR, KY, LA, MS, TN)

Denise M. Collins II '97 writes, "I just graduated from Middle Tennessee State University, and have been just as involved in Delta Zeta as I was before I graduated. It was so hard for me to even think of leaving my chapter after graduation. But my sisters have been sure to invite me to everything. I love Delta Zeta and have already made a donation and plan to continue to do this and stay involved in my chapter. I feel like this is the least I can do for an organization I care about so much, and I hope others in my chapter will feel the same way as they graduate and move on in their lives."

chapter associations

Phyllis Sundberg Davis $\Delta\Gamma$ '81 (University of Alabama) won the 1999 Athena Award from the Jackson Mississippi Alumnae Panhellenic Association for outstanding service to her sorority and the Panhellenic.

Marcia Simson Ball $\Delta\Pi$ '60 (Samford University) was nominated for outstanding community service. Each year the Panhellenic Association recognizes two sorority women from the Jackson metropolitan area who have exemplified outstanding work in these two areas of service.



Marcia Simson Ball $\Delta\Pi$, left, and Phyllis Sundberg Davis $\Delta\Gamma$, right, at the Panhellenic Association Award event.

The **Knoxville Alumnae Chapter** hosts a traditional Mother/Daughter Tea after recruitment to introduce mothers of new members to Delta Zeta. Other chapter members recall having a chapter floor in a sorority dormitory in college to use for gatherings and late-night TV watching.

The **Louisville Alumnae Chapter** sponsored an Aldabra tortoise (one of the oldest living animals on record and found near the Indian Ocean) at the Louisville Zoo, and received VIP zoo passes and other items which were raffled off in a fundraising effort.



The Louisville Alumnae hosts a Christmas Auction/Brunch to support the Delta Zeta Foundation and the University of Louisville's School of Education.

Southeast (AL, GA, FL, PR, VI)

The **Atlanta-Northside Alumnae Chapter** celebrated Founders Day at Georgia State University with the Delta Delta Chapter, where they were treated to a slide show. The chapter received three awards on State Day, and provided a barbecue for the Xi Xi collegiate sisters who had been working hard on their recruitment program.

Robin Griehs Donoho $\Delta\Omega$ '75 (Jacksonville University) is organizing a chapter association for **Iota Omega** members. Robin has mailed newsletters to initiated members, but if you did not receive one, please contact her at 1107 Wood Duck Hollow, Jacksonville, FL 32259.

The **Gold Coast Alumnae Chapter** (Florida) has adopted an English tearoom in Coral Springs for gatherings and other events. Recently, the chapter met there to celebrate Silver and Golden Rose achievements for Andrea Lunsford Schroeder $\Delta\Gamma$ '74 and Irene Leslie Bush $\Delta\Sigma$ '49, respectively. President Debbie Shane $\Delta\Gamma$ '69 performed the ceremonies.



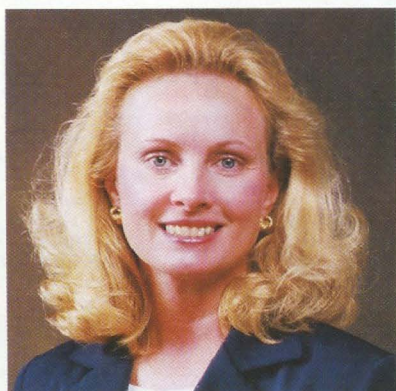
Gold Coast Alumnae Chapter President Debbie Shane $\Delta\Gamma$ (center) gives Andrea Lunsford Schroeder $\Delta\Gamma$ (left) her 25-year Silver Rose certificate, and Irene Leslie Bush $\Delta\Sigma$ (right) her 50-year Golden Rose certificate.

Beverly Hammel-Lemlich $\Delta\Delta$ '48 received recognition from Florida Governor Jeb Bush and his mother Barbara Bush for a tutoring program that she founded at Palm Lake Elementary School in Hialeah, Florida. Beverly was concerned about children who were "about to fall through the cracks," as she terms it—children who feel that no one cares about them. Beverly and her friends, including Delta Zeta sister **Dorothy Frink Phelps** $\Delta\Sigma$ '62, spend time teaching children to read and helping children of other nationalities learn to converse in English. Most of the children had shown behavioral problems before coming to Beverly's program. Teachers note that the children are now increasingly animated and are responding very well to the program.

alumni^{G A T H E R I N G} achievers

The **Huntsville Alumnae Chapter** received recognition for their philanthropic efforts with the Humanitarian Award given by the Huntsville Area Committee on Employment of People with Disabilities.

Reneé Gravitt Leake BA '76 joined Wesleyan College in Macon, Georgia as Vice President for Student Affairs. Reneé holds doctoral, education specialist, master's, and bachelor's degrees from the University of South Carolina, and will oversee all aspects of student life at Wesleyan. She is active in the National Association of Student Personnel Administrators, the Association of College and University Housing Officers International, and the Southeastern Association of Housing Officers.



Reneé Gravitt Leake BA

Members of the **Tallahassee Alumnae Chapter** have created their own chapter traditions, such as exchanging ornaments at a Christmas brunch and hosting a summer luncheon with the collegiate executive board to find out how they can assist with recruitment. The chapter has worked with collegiate members to help the Dick Howser Center, a facility for children with speech and hearing disabilities.

Jean Baughman Wessel Templeton ΓΣ '56 owns and manages Wesfam Restaurants, Inc., in Huntsville, Alabama, a business she and her late husband, Fred Wessel, began in 1966. When Fred passed away in 1995, Jean stepped in as president and to date owns 26 Burger King franchises. In 1998, she was named Franchisee of the Year for a five-state region and currently is a member of the Calhoun Community College Foundation Board in Alabama. Jean has always made her family and community service priorities, and was recognized with the Grace Award in 1995, which is given to an individual who has made a significant difference in the community. "I've been blessed," Jean said, "and I wanted to give some of that back to my community."

Information for this story from Connection magazine of Eastern Michigan University in Ypsilanti, Michigan.

Dr. Louise Turner ΔK '56 was profiled in the *Opelika-Auburn News* of Alabama as a citizen committed to preserving the environment. Dr. Turner, an associate professor emeritus at Auburn University, retired in 1976, and donated 110 acres of natural woods containing wildflowers and wildlife to the Department of Forestry at the University. She has since worked tirelessly to create programs which would make the Forest Ecology Preserve valuable to both science students doing research and to community residents for educational purposes. Volunteers assist her in creating walking paths with displays of information about the flora and fauna in the area, and free ecology programs are open to the public. Joe Robison of the Society of American Foresters says, "As more people learn about Mrs. Turner's vision, the more they will use the preserve. She's doing a great service to the community."

Information for this story from Opelika-Auburn News of East Alabama, Dec. 21, 1999.

Southwest (NM, OK, TX)

The **El Paso Alumnae Chapter** donates money to the University of Texas (El Paso) Speech and Hearing Center. This year, they will visit the facility during Better Speech and Hearing Month in May.

Members of the **Houston Alumnae Chapter** raise funds from their Spring Fashion Show each year to donate to the Houston Center for Speech and Hearing and Camp Hope. The chapter also has a traditional dinner with the Delta Theta Chapter (University of Houston).



The Houston Alumnae Chapter participated in a Christmas Tea and collected candy to donate to the local soup kitchen to brighten up their Christmas meals. Pictured left to right, first row: Katie Lehnert BA '94, Neisa Vitanza Janner ΔΘ '91, Melanie Beu ΔΘ '99, Crystal Hold, Noelle Blue ΔΞ '92. Second row: Melinda Pinnell Kinley ΔΞ '76, Shirley Burrige Asel ΑΨ '54. Third row, standing: Coralie Somers M '55, Leslie Prescott Morgan Σ '90, Julie Westerland Goolsby ΔΘ '88, Kimberly Beu Pressler ΔΘ '87, Dawn Fieser Simonsen ΔΘ '92, Amber Martin Gailey ΔΘ '91, Patti Walsh Gillies ΖΨ '67, Sally Cashman ΖΨ '66, and Ann Walker ΔΘ '61.

celebrations

G A T H E R I N G S

Alumnae from the **Lambda Xi Chapter** (Texas A&M University) get together once a year in College Station, Texas. They go to a football game and visit their favorite restaurants, and a stop by the Delta Zeta Sorority house is a must to relive their college days.

Cindy Daniel Palmer EY '66 (University of Central Oklahoma) recalls her college days in Delta Zeta. "I remember the special DZ Corridor in the dormitory. Since it was an old dorm and the halls were very wide, it allowed room for sofas and easy chairs along the sides of the corridor. It was not only a neat place to visit or study, but it was a great privilege to have a room on The Corridor."

Melody McDonald Wilkinson AO '82 has been elected to serve as president of the Texas Young Lawyers Association. She is a litigator for Cantey & Hanger law offices in Fort Worth, Texas, where she has been a partner since 1993. With membership numbering more than 20,000, the TYLA is composed of Texas lawyers who are younger than 37 or who have been licensed less than three years. Melody has a long history of service with legal organizations, including the Young Lawyers Division of the American Bar Association. As chair of the TYLA board last year, Melody accepted the President's Service Award, presented by the Points of Light Foundation, which recognized the TYLA for its volunteer work with youth. After receiving her bachelor's degree from Angelo State University in San Angelo, Texas, she obtained her law degree from the Texas Tech University School of Law. She is married to Chip Wilkinson, the assistant chief of the Tarrant County District Attorney's Office, and they have three children.

Information for this story from The Cantey and Hanger Counselor newsletter, Fall 1999.



Melody McDonald Wilkinson AO.

"Alumnae from the **Zeta Psi Chapter** (Stephen F. Austin State University) have been meeting for dinner once a month for the past 18 years on the third Thursday of every month. We are planning a fantastic trip or cruise to celebrate all of our 50th birthdays," says **Pattie Walsh Gillies** ZΨ '67.



Zeta Psi Chapter alumnae include, seated left to right: Nancy Davis Pinkerton '66, Rita Rougagnac Fisher '67, Vona Tittle Morefield '70. Back row, left to right: Suzanne Davis Hanks, Pattie Walsh Gillies '67, Lynn Seaborg Barnes '69, Yvonne Gagner Sparks '68, Melinda Edmiston Redd '69.

CHAPTER ASSOCIATIONS

An easy way to connect with your sisters in Delta Zeta is through Chapter Associations. Alumnae who belong to the same college chapter can form a chapter association. It affords a chance to meet whenever you want to—chapter associations don't have the formal structure of an alumnae chapter, but give alumnae the opportunity to connect with sisters from their college chapter at their convenience.

If you'd like more information about forming a chapter association in your area, you can contact:

Meggan Jordan George AE
National Contact for Chapter Associations
4210 Tompkins Court SE
Grand Rapids, MI 49546
616/977-7668
e-mail: mkgeorge@iserv.net

**Participate in Quality Recruitment
Submit Your Reference and/or Legacy Form Today!**

In this issue, you'll find the Voluntary Reference and Legacy Introduction Forms. By participating in this process, you are fulfilling your personal responsibility to the future of Delta Zeta Sorority, and ensuring our continuing success. Many chapters will begin formal recruitment (rush) at the beginning of their fall school terms. Your participation in the recruitment process will ensure that our college chapters are aware of quality women who have a personal association with one or more of our alumnae, and who will be participating in those recruitment periods.

We all know outstanding young women through our other associations. Perhaps we also think that many of these women would be wonderful Delta Zetas— collegians who are assets to their campuses and communities, and active and contributing alumnae after graduation. Our alumnae are our number one resource in recruiting these women by letting them know about Delta Zeta before they leave for college. You are often the first contact potential members have with Delta Zeta Sorority, and the impression you make is crucial before they meet the women of the college chapters.

How can you play an integral role in the recruitment process? Simply by taking a few moments to complete a Voluntary Reference Form or Legacy Form for each of the women you want to recommend and sending it to the College Chapter Director (CCD) listed in the Directory of this issue of *The LAMP*. At the same time, please send a copy to National Headquarters. We will then forward it to the summer address of the chapter and/or College Chapter Director (or, make sure it gets into the hands of the appropriate person).

We are including these forms to allow you to make your recommendations before fall recruitment begins. Please do not forget that many of our chapters also have deferred rush.

Thank you for your participation in our recruitment process. We appreciate your effort to aid Delta Zeta Sorority in continuing to recruit quality members. Please complete this form and send it directly to the CCD for the appropriate school listed in the Directory of this magazine, and send a copy of the form to National Headquarters.

LEGACY INTRODUCTION

To _____ Chapter of Delta Zeta Sorority at _____
Greek _____ University or College _____

This is to introduce you to my: ☐ Daughter ☐ Granddaughter ☐ Sister ☐ Other (please explain)

School address _____
(if known)

City
State
Zip

Home address _____

City	State	Zip
------	-------	-----

High School _____

Will be attending _____
University or College
as a _____ beginning _____
Year in school

Please extend her every courtesy afforded a legacy in Delta Zeta Sorority.

Submitted by: _____

Name _____

First	Maiden	Last Name
Address	City	State Zip

Phone _____ Chapter _____
Area code Chapter name and school

Signature _____ Date _____

Please note this form does not replace a standard reference form.

Personal Reference Form

To _____ Chapter of Delta Zeta Sorority at _____ University or College
 _____ Greek

Potential member's name _____ Classification _____
 _____ Year in School

School address _____
 (if known) _____ City _____ State _____ Zip _____

Home address _____
 _____ City _____ State _____ Zip _____

Parents' names _____ Occupation _____
 _____ Occupation _____

High School _____
 _____ Name _____ City _____ State _____

Academic information: GPA _____ ACT/SAT Score: _____
 Academic honors _____

University or College previously attended _____ Classification _____
 _____ Year in School

College GPA: _____ Major _____
 College academic honors _____

Activities: Please list names of organizations (explain if high school, college, church, community) with the participation and leadership in each.
 (Attach a separate sheet of paper if needed.)

Interests and special talents (attach a separate sheet of paper if needed):

Job and volunteer work experience (attach a separate sheet of paper if needed):

Additional comments, which might include personality traits, leadership potential, etc.

Legacy information:

☐ Has she a relative in Delta Zeta? ☐ Mother ☐ Sister ☐ Grandmother

Other (Please explain) _____

Name _____ Chapter _____
 Address _____
 _____ City _____ State _____ Zip _____

Has she connections with other NPC groups? _____

I hereby endorse this potential member for membership into _____ Chapter of Delta Zeta Sorority.

I have personally known this potential member for _____ years.

Although I do not know this potential member personally, the information has been obtained from school, friends or other reliable sources: _____

I have discussed Delta Zeta with her _____. I plan to discuss Delta Zeta with her _____.

Name _____
 Chapter _____ University or College _____
 Address _____
 _____ City _____ State _____ Zip _____
 Phone number _____
 _____ Area code _____

Signature _____ Date _____

Please complete these forms and send them directly to the CCD for the appropriate school listed in the Directory of this magazine, and send a copy of the form to National Headquarters. Legacy and reference forms are also available online at www.deltazeta.org.

MEMORIAL AND HONORARY GIFTS

August 1, 1999 through December 31, 1999



IN HONOR OF:

Linda Schaefer Allen, KB
Denise Williams McCullars

Alpha Theta Chapter
Denise Williams McCullars
Debra Brown Finneran

Alpha Theta House Corporation
Denise Williams McCullars

Norma Minch Andrisek, ΓA
Denise Williams McCullars
Sandra McAlister Nesbitt

Nancy Poteet Breeden Arbuckle, E
Heart Whitesell Shapre

Vicki Bowman, IY
Delta Zeta Foundation Trustees

Karla Ash, AI
Tuscaloosa Alumnae Chapter

Bayou Alumnae Chapter
Diane Lowery Young

Gail Persak Beets, BM
Denise Williams McCullars

Pat Clarke Bliedorn, Γ
Shenandoah/Central Virginia
Alumnae Chapter

Nancy Brewer
Anne Marie Jones Gavin

Sara Rosier Bush, Σ
Catherine Clay Lassesen

Leigh Ann Clemons, ΓZ
Kristin E. Lelvis

Nancy Bach Colman, EΩ
Susan Yaeko Reed

Margaret Cowin, EB
Delta Zeta Foundation Trustees

Alberta Doran Curran, ET
Delta Zeta Foundation Trustees

Delta Chapter
Florence Hood Miner

Delta Xi Chapter
Florence Hood Miner

Delta Zeta Foundation Trustees
Diane Lowery Young

Delta Zeta National Council
Diane Lowery Young

Marlo Lee Dorsey, ΞΦ
Epsilon Gamma Chapter

Lynn Ehrenberg, BP
Delta Zeta Foundation Trustees

Epsilon Delta Chapter
Ouida Kahle Harman

Mona Hite Forrester, N
Delta Zeta Foundation Trustees

Shannon Frazier Cordray, ΔΘ
Delta Theta Chapter

Suzanne Freshwater, AI
Tuscaloosa Alumnae Chapter

Gamma Zeta Chapter
Ann Elkins Hawkins

Anne Marie Jones Gavin, ΔI
Denise Williams McCullars

Angela Felice Goodson, ZK
Lee Goodson

Carolyn Barnes Gullatt, ΘE
Annette Fowler Nall

Tandy Harlan-Fuller, IA
Iota Alpha Chapter

Carol Sharpe Harper, BI
Denise Williams McCullars

Diane Gabbert Harris, Ω
Delta Zeta Foundation Trustees

Julie Hauser, EΩ
Delta Zeta Foundation Trustees

Amy Hayes, AI
Tuscaloosa Alumnae Chapter

Kathi Bray Heatherly, EY
Denise Williams McCullars

Carolyn and Shaffer Johnson
Mary Landers Owens

Karen Ditzler Johnson, OA
Omicron Alpha Chapter

Anne Moser Ikenberry, IT
Denise Williams McCullars

Kappa Alpha Chapter
Diane Lowery Young

Kappa Zeta Chapter
Denise Williams McCullars

Karlota M. Koester, ΔA
Dorothy Rhyne Husted

Lillian Krawczynsyn
Kim Marie Krawczynsyn

Jessica Lane, IA
Denise Williams McCullars

Tracy Wilson LeSieur, AΞ
Denise Williams McCullars

Susan Wischart Little, A
Carrie Ann Martin

Marjorie Klingensmith Lovewell, Γ
Jeanne Hornsten Wagoner

Courtney Markel, AI
Tuscaloosa Alumnae Chapter

Brianne McCleary, AI
Tuscaloosa Alumnae Chapter

Denise Williams McCullars, BE
Anne Marie Jones Gavin

Cynthia Winslow Menges, A
Denise Williams McCullars
Sandra McAlister Nesbitt

Florence Hood Miner, AB
Jean Haley Harper
Carol Sharpe Harper

Karen Severloh Moffitt, FO
Susan Yaeko Reed

Alma Jo Moore, ZZ
Annette Fowler Nall

Laura Fowler Motoyoshi, EE
Delta Zeta Foundation Trustees

Nanette Stovall Patton, IA
Iota Alpha Chapter

Leigh-Ann Penecale Reitze, IO
Cristin E. Feehrer

Vicki Jinnette Ringer, BA
Denise Williams McCullars

Nancy A. Russell, IY
Delta Zeta Foundation Trustees

Marian Angarola Shapley, AI
Delta Zeta Foundation Trustees

Michelle Albrecht Smith, AX
Denise Williams McCullars

Marvona Easley Tavlin, EA
Angela Goodson
Allison Holmes
Annika Limberg
Denise Williams McCullars
Gretchen Waltenbaugh

Patricia Menendez Tector, EΦ
Delta Zeta Foundation Trustees

Ann Grant Wadsworth, BE
Denise Williams McCullars

Ann Walls, BI
Denise Williams McCullars

Dawn Wells, AI
Tuscaloosa Alumnae Chapter

Cindy Fulcher Wilson, ΘI
Delta Zeta Foundation Trustees

Rhonda Allen Wistner, AK
Suzanne Nicole Dempsey
Denise Williams McCullars

Wooster Alumnae Chapter
Ruth Abbott Remy

IN MEMORY OF:

John R. Andrisek
Cynthia Winslow Menges

Alice Appell, AB
Hannah Nicholas Gough
Diane Gabbert Harris
Barbara Lemke
Long Beach Alumnae Chapter

Margaret Monnett Barrett, AP
Marsha Benko Marquardt
Louise Gilbert Warner

R. J. BeMent
Cheryl Bennett BeMent

Bette Boline, ΘM
Susan Hein Feuerherm
Twin Cities Alumnae Chapter

Ruth Harvey Carter, AX
Jean G. Johnston

Grace Meinhardt Coffman, AP
Mildred Meinhardt Rast

Nelva Boren Cole, AΨ
Margaret Boren Lashley

Julia Bishop Coleman, A
Jean Coleman Lisle

Lucile Crowell Cooks, A
Ellen Stavros

Una Fournet Daigre, Σ
Betty Schneider Fenton

Inez Wood Crimmins Denesen, Γ
Louise Clousing Cragun
Susan Hein Feuerherm
DeeAnn Rowe Roberts

Grace Davis Daly, AI
T. Daly, III

Darla Daniel Ellingsworth, EY
Robert Ellingsworth

Ruth Rowe Flansburg, ΓP
Maria Hyniuk Ryan

Elizabeth Weigand Francoeur, ΔII
Wichita Alumnae Chapter

Nada Merrick Gadbury, ΓX
Muncie Alumnae Chapter

Hope Golden, KM
Region IV

Carolina Gonzalez, AΞ
Delta Zeta National Council
Lambda Xi Chapter

MEMORIAL AND HONORARY GIFTS

August 1, 1999 through December 31, 1999

Lida Haynes
Karly Klemp Burns
Marjorie Klingensmith Lovewell
Cynthia Winslow Menges
Sandra McAlister Nesbitt
Marvona Easley Tavlin

Harriott "Sue" Anderson
Hendricks
Douglas C. Manley

Devon Higgins, ZII
Mr. and Mrs. Patrick Higgins
Zeta Pi Chapter

Ray Hudson
Karly Klemp Burns
Region XV

Wanda Mansfield Hughes, IX
Mr. and Mrs. Joseph Gardner
Dorothy Krieger
Muncie Alumnae Chapter

Evelyn Antles Jones, Φ
Pernilla Zacher

Florence L. Klemp
Pamela McClure Cronenwett
Lois Rowland Klein
Marjorie Klingensmith Lovewell
Cynthia Winslow Menges
Sandra McAlister Nesbitt
Jamie Hammill Pyne
Region VII

Region XIV
Sharon Moncrief Slovinski
Karen Kind Veitch
Joan Alden Vernotzyl

Margaret Klingensmith
Jeane Hornsten Wagoner

Garnet Nagel Kelly, Θ
Columbus Alumnae Chapter

Emma Koester
Dorothy Rhyne Husted

Elizabeth MacDonald
Jennifer Fawley

Ruth Wagner MacMaster, A
Joseph B. MacMaster

Jessie McAlister
Norma Minch Andrisek
Arlington Alumnae Chapter
Sandra Sebrell Bailey
Bayou Alumnae Chapter
Karly Klemp Burns
Sara Rosier Bush
Pamela McClure Cronenwett
Charlotte Davis
Delta Zeta Foundation Trustees
Anne Marie Jones Gavin
Caren Metcalf Hansel
Tracy Wilson LeSieur
Marjorie Klingensmith Lovewell
Denise Williams McCullars
Cynthia Winslow Menges

Deanna Alleman Pendleton
Deborah Ann Raziano
Gay Thorro Rose
Sharon Moncrief Slovinski

Region II
Region IV
Region XI
Region XV
Marvona Easley Tavlin
Ann Grant Wadsworth

Jim Montgomery
Priscilla Beatty

Sarah Stoneham Muller, AI
Jocelyn Muller Gilbert

Olive McLauchlan Neelands, EE
James A. Neelands
Barbara Osiecki-Csircsu
Christina Chase Peruski

Gladdes Burrell Neff, I
Diane Gabbert Harris
Long Beach Alumnae Chapter
Jeanne Elges Paige

Carrie Nesbitt
Sandra Sebrell Bailey
Pamela McClure Cronenwett
Cynthia Winslow Menges
Deborah Ann Raziano

Milton Nesbitt
Bayou Alumnae Chapter
Birmingham Alumnae Chapter

Charlotte Davis
Joyce Merritt Dawkins
Delta Zeta Foundation Trustees
Betty Paul DeWitt
Epsilon Pi Chapter
Anne Marie Jones Gavin
Indianapolis North Central
Alumnae Chapter
Tracy Wilson LeSieur
Diane Sorensen Miller
Melinda H. Oates
Melinda Love Oldfield
Jane McCaslin York

Kathleene Crocker Pelt, AZ
Palm Beach Alumnae Chapter

Julia Smethers Raymond, ΔΠ
Wichita Alumnae Chapter

LeRoy Reynolds
El Paso Alumnae Chapter

Betty Williams Ruppe, OM
Spartanburg Alumnae Chapter

Mary Frances Andrews Scherf, AI
Fort Walton Beach
Alumnae Chapter

Rose Kohout Tetik, GM
Robert A. Tetik

Ernestine Dyer Thigpen, AΠ
Maxine Gray Thigpen

Sylvia Thorro
Denise Williams McCullars
Deborah Ann Raziano

Nancy Caperton Thullbery, BM
Virginia Riley Klieger

Dr. Ruth Warner Towne, ΔΣ
Karen Barkey Stebelski

Rosalie Poe Wagenblatt, ΦB
Tulsa Alumnae Chapter

Virginia Humphries Weaver, ΘB
Grant H. Weaver

Jennifer Whitlatch, OT
Carrye Jenkins

Harriet Walker Wilborn, BB
Jerry Brooks Forrest

Julia Teague Wielkens, ZΘ
Elsie Yeager Dressen

Lillian Swaney Wildblood, ΓK
Diane Barghahn Wildblood

Ethel Smith Wylder, ΦB
Alma Turechek

Amy Rebecca York, ET
Wendy Arendall
Michelle M. Maier

Flame eternal

Helen Woodruff Nolog Γ



Helen Woodruff Nolog served as Delta Zeta's National President from 1958-62. She passed away on January 17, 2000 at the age of 96. She was instrumental in building the Gamma Chapter at the University of Minnesota, where she was initiated in 1924. After graduation, she served Delta Zeta in many capacities as an alumna, including the House Corporation Board of Gamma Chapter and as Province Director.

Elected to National Council in 1946 as Treasurer, Helen brought a wealth of accounting experience to the role, having taught accounting for 25 years at the Minneapolis Business College. She would serve as Treasurer until she became President in 1958. Helen also established the Delta Zeta Foundation in 1961.

Helen wed Raymond J. Nolog in 1951, and together they worked to standardize accounting and auditing procedures for Delta Zeta college chapters. Helen's service to Delta Zeta will always be remembered. She was an exemplary member and a dedicated leader as she implemented innovations that greatly benefited our Sorority.

Hazel DuVal Buffmire AA

Hazel DuVal Buffmire served Delta Zeta Sorority as National Treasurer for the biennium 1960-62. She passed away on December 14, 1999 at 98 years of age. She attended Northwestern University, where she was initiated into the Alpha Alpha Chapter when her sorority, Phi Omega Pi, merged with Delta Zeta. Living in Evanston, Illinois, she and her husband, Wallace, were both high school teachers.

Serving Delta Zeta was an important part of Hazel's life. She was a Province Director and was given the Order of the Golden Rose in 1972. Her sisters remember her with great fondness, and the Sorority appreciates the many contributions she made to Delta Zeta.

Donations may be sent in memory of these two devoted sisters to:

The Delta Zeta Foundation
202 E. Church Street
Oxford, OH 45056



Flame eternal

ALPHA

Marian McHenry Luedeke '24
Margaret Carpenter Crooks '28
Mary Hoel Edmiston '41
Grace Glasgow '41
Jane Gentzel Graveen '59
Marcia Cramer Davenport '62
Ruth Wagner MacMaster '62

BETA

Frances Young Wilson '26

GAMMA

Helen Woodruff Nolo '23
Inez Wood Crimmins Denesen '28
Pauline Wendt '28
Ruth Marie Nielander '30
Elizabeth Bullock Naas '44

DELTA

Esther Vestal Weesner '19
Aileen Browning West '21
Ruth Shortz Blomgren '23

EPSILON

E. Jeanne Lautenschlager Klopfenstein '50

ZETA

Sadye Rothholz Lewis '17
Marcia Marlene Kruse

ETA

Frances Long Ruckel '32

THETA

Charlotte Hays Boyd '23
Garnet Nagel Kelly '32
Rachael Bean Porter '62

IOTA

Lola Moeller Zook '28
Selma Fraas Wood '29
Oma Bishop Gillis '46
Mary Belle Derderian Murphy '66

KAPPA

Charlotte Rigg Williams '27
Eugenia Hopkins Plant
Mary Ellen McGonagle Miller '31
Helen Cecelia Leik '41
Louise Nicholson '41
Virginia Ewing Ellis
Sheryl Thompson '87

LAMBDA

LaVerne Huse Martin

MU

Alma Pope Herbert '59

NU

Martha Hammerschmidt Griffin '50

XI

Elizabeth Swing Robertson '24

OMICRON

Jane Cronin Birch '28
Elizabeth Geiger MacIntosh '29
Cynthia Ruhe Clark '35
Lois St. Clair Davis '35
Jane Hastings '42
Dolores Jean Schaub '51
Sarah Moore Purbrough

PI

Margaret Coleman Dorward '19

RHO

Marie Louise Catherine Johnson Cain '43

SIGMA

Mary Caffery Wilbourn '36

TAU

Dorothy Koelsck Kickhafer '20
Alice Nelson Shillig '28
Mary Thompson Brumm '30
Isabel Graves Wiggins '47

UPSILON

Eileen Skogland Mattson '63

CHI

Helen Funk Awbrey '30
Bernice Elle Waters '38
Anne Granville Long '54

PSI

Marcia Marie Vandivier Theobald '28
Floda Shanks Dustin '29
Lucile Clarke Mills '35
Mary Platt Oxford '43
Cheryl L. Lively '80

OMEGA

Maurine Brown Neuberger '28

ALPHA ALPHA

Elizabeth Hoon Cawley '25
Evelyn C. Watt '29
Hazel DuVal Buffmire '46
Nancy Singleton York '49
Leta Bowyer '62

ALPHA BETA

Wilma Snider Swisher '28
Louise Clow Welles '31
Alice Appell '34
Patricia Jaye Dieter '52

ALPHA GAMMA

Grace Davis Daly '28
Mary Worthington Harley '39

ALPHA EPSILON

Annie Sue Hester Miller '41
Linda Fern Cacy Scott '64

ALPHA THETA

Mary Bruce Daily Dawson '28

ALPHA IOTA

Helen Peterson Johnson '34
Shirley Goss Neilson '41

ALPHA KAPPA

Thelma Wood Carroll

ALPHA LAMBDA

Margaret Kohler Floegel '29
F. Elizabeth Johnson Miller '31

ALPHA OMICRON

Laura Ozier Gerber '72
Mary Peck Botti

ALPHA PI

Anna Hendon Hollingsworth
Margaret Moore Grindle '66
Hattie Parrish Guffin '69
Staci Elise Carnley '90

ALPHA RHO

Gertrude Dedrich Sweeney '28
Hazel Moore Minnich '33
Margaret Monnett Barrett '62

ALPHA SIGMA

Margaret Hess Crawford
Eunice M. Moe '62

ALPHA TAU

Dorothea Rugh Chipman '46

ALPHA PHI

Mary Filkin Spencer '25
Donna Smyser Adams '27

ALPHA CHI

Bernice Jacobs MacLeod '41
Doris Tracy Storm '46
Marion Riley Scott '63

ALPHA OMEGA

Kathleen Carmichael '26

BETA ALPHA

Dorothy Kenyon Powell '28
Helen McKechnie Kelleher '32

BETA THETA

Jean Virginia Swartz Cheslok '46
Barbara Anne Josenhans Ancona '53

BETA IOTA

Virginia Fowler Abercrombie '34

BETA KAPPA

Lucile Northrup Nesbitt-Rice '38
Frances Riggins Van Allen '38

BETA MU

Peggy Saunders Latour '40
Nancy Caperton Thullbery '50

BETA PI

Mary Childs Young '44

BETA SIGMA

Lorraine Conant Smith '41

BETA TAU

Vera Harvey Rubottom '41

BETA CHI

Pauline Metzger '41

GAMMA ALPHA

Marion Schmidt Berkowitz '42

GAMMA GAMMA

Anita Hendrickson Maggard Skelton '67

GAMMA ZETA

Bertie Ann Gardner Aynesworth '60

GAMMA KAPPA

Ann Harbourt Raup '54
Frances Kearney Wiley '67

GAMMA LAMBDA

Marjorie McClelland Johnson '51
Dorothy Moore Gosslee '52
Lauri Jo Mathot '89

GAMMA OMICRON

Lois Lorenzen Danks '49
Donna Isaak '54

GAMMA PI

Marilyn Bomers Armstrong '52

GAMMA RHO

Barbara Cunningham Ivins '51

GAMMA SIGMA

Joyce Blashill Kelly '55
Laura Wells Willey '57

GAMMA TAU

Rose Kohout Tetik '48
Marilyn Weaver Riegler '50
Joan Degriff Grendahl '52
Beryl M. Parrish

GAMMA CHI

Marjorie Brown Marshall '55
Wanda Mansfield Hughes '58

DELTA DELTA

Barbara Ann Baughman '69

DELTA EPSILON

Rosanne Cardone Morris '55

DELTA NU

Louise Nelson '57

DELTA XI

Grace Reutter '56

DELTA OMICRON

Gwendolyn Frye Schumacher '32

DELTA PI

Gail Bradford Adamson '59

DELTA RHO

Rowena Gordon Swain '57

DELTA UPSILON

Marcia Campbell Harrison '61

DELTA PHI

Elizabeth Gill Gouge '32
Janice Sue Frey Lewis '69

EPSILON ALPHA

Onalee Brown Tomsick '57

EPSILON GAMMA

Mildred Tuttle Burk '57
Freda Turner Parker '57

EPSILON DELTA

Virginia Perry Davis '56

EPSILON EPSILON

Edith Cvietusa Richey '56

EPSILON IOTA

Veatrice Sue Talbert '73

ZETA LAMBDA

Rebecca Engleman Messer '70

THETA ALPHA

Lenore Turner Senholz '63

THETA OMICRON

Marla Garcia Bell '91

IOTA XI

Jerilyn Ann Greathouse Jenkins

IOTA OMEGA

M. Elaine Sherman '74

OMICRON GAMMA

Jennifer Rebecca Whitlatch '94

PHI BETA

Pauline Brockmeier '47
Lorene Campbell Burge '57
Stella Shurgot Guyett '57
Elizabeth Root Rogerson '57

CORRECTION

In the Winter 2000 issue of *The LAMP*, collegiate member Jamie Lynn Grounds of the Lambda Xi Chapter was listed as deceased in the Flame Eternal and in the On Campus sections of the magazine. We are happy to report that Jamie is alive and well, but sadly, the sister the chapter lost was Carolina Gonzalez. We extend our apologies and condolences to the Lambda Xi Chapter.

DELTA ZETA Directory

For a complete version of the directory, please call
1-800-6-ALUMNA

To change your name or address, to order a DZ
DeZigns catalog, for information on the magazine
program or other Delta Zeta programs, contact:

National Headquarters, 202 East Church Street
Oxford, Ohio 45056 - Phone 513/523-7597
Fax 513/523-1921

NATIONAL COUNCIL

NATIONAL PRESIDENT

Karly Klemp Burns
P.O. Box 58050, Tierra Verde, FL 33715

NATIONAL VICE PRESIDENT OF MEMBERSHIP DEVELOPMENT

Denise Williams McCullars
3 Poplar Point, Silver Lakes, Glencoe, AL 35905

NATIONAL VICE PRESIDENT OF ALUMNAE AFFAIRS

Pamela McClure Cronenwett
25720 West Hills Dr., Dearborn Heights, MI 48125

NATIONAL VICE PRESIDENT OF COLLEGE CHAPTER OPERATIONS

Debbie Raziano
117 Ashton Road, Luling, LA 70070

NATIONAL SECRETARY

Katherine L. Sermersheim
1220 W. Chautauqua, Carbondale, IL 62901

NATIONAL TREASURER

Ruth Weider Patterson
3623 Devereaux Road, Columbia, SC 29205

NATIONAL DIRECTOR OF ALUMNAE DEVELOPMENT

Jamie Hammill Pyne
202 Campden Way, Greenville, NC 27858

NATIONAL DIRECTOR OF MEMBERSHIP SERVICES

Sonja Nay Wise
1813 Mallard Court, West Lafayette, IN 47906

PAST NATIONAL PRESIDENT

Sandra McAlister Nesbitt
44 Tecumseh Drive, Montgomery, AL 36117

NATIONAL PANHELLENIC CONFERENCE DELEGATE

Jamie Hammill Pyne
202 Campden Way, Greenville, NC 27858

NATIONAL PANHELLENIC CONFERENCE ALTERNATES

1st Alternate - Sandra McAlister Nesbitt
44 Tecumseh Drive, Montgomery, AL 36117
2nd Alternate - Lynnda Wolf Hoefler
2981 Telber Court, Stow, OH 44224
3rd Alternate - Denise Williams McCullars
3 Poplar Point, Silver Lakes, Glencoe, AL 35905

DELTA ZETA FOUNDATION

PRESIDENT

Marjorie Klingensmith Lovewell
96 The Prado NE, Atlanta, GA 30309

VICE PRESIDENT-MUSEUM

Norma Minch Andrisek
319 Janice Drive, Berea, OH 44017

VICE PRESIDENT-DEVELOPMENT

Sandra Sebrell Bailey
639 N. Portage Path, Akron, OH 44303

SECRETARY/TREASURER

Anne Marie Jones Gavin
3264 Swan Drive, Vineland, NJ 08361

MEMBER

Karly Klemp Burns
P.O. Box 58050, Tierra Verde, FL 33715

NATIONAL HEADQUARTERS

NATIONAL HEADQUARTERS

202 East Church Street, Oxford, OH 45056
513/523-7597 (FAX) 513/523-1921

EXECUTIVE DIRECTOR

Cynthia Winslow Menges

DIRECTOR OF COMMUNICATIONS - EDITOR *The LAMP*

Nancy Brewer

CHAPTER CONSULTANT COORDINATOR

Marvona Easley Tavlin
4581 Woodhaven Drive, Zionsville, IN 46077

CHAPTER CONSULTANTS

Laura Cripple	Jamie Doolin	Angela Goodson
Sara Groom	Jessica Haynes	Allison Holmes
Jessica Lane	Annikka Limberg	Gretchen Waltenbaugh

MAGAZINE PROGRAM, INSURANCE & NETWORKING

National Headquarters, 202 East Church Street,
Oxford, OH 45056 513/523-7597

NATIONAL PARLIAMENTARIAN

Virginia Raysor
6920 5th Avenue North, St. Petersburg, FL 33710

NATIONAL STANDING COMMITTEES

ACADEMICS

Susan Adrianson Skambis
1028 Shady Lane Dr., Orlando, FL 32804

AWARDS (ALUMNAE AND COLLEGIATE)

Karen Severloh Moffitt
2075 Los Robles Ave., San Marino, CA 91108

CONSTITUTION, CODE OF REGULATIONS AND BYLAWS

Anne Marie Jones Gavin
3264 Swan Drive, Vineland, NJ 08361

EXTENSION

Karen Kind Veitch
44 Bob Hill Lane, New Canaan, CT 06840

FIELD ACTIVITIES

Co-Chairmen: Debbie Raziano
117 Ashton Road, Luling, LA 70070 and
Denise Williams McCullars
3 Poplar Point, Silver Lakes, Glencoe, AL 35905

FINANCE

Ruth Weider Patterson
3623 Devereaux Road, Columbia, SC 29205

HISTORY

Florence Hood Miner
1917 Five Iron Drive, Castle Rock, CO 80104

HOUSING ADMINISTRATOR

Norma Minch Andrisek
319 Janice Drive, Berea, OH 44017
Regional Housing Chairmen
Mary Beth Hibler Allen
8 Summit Cedar Drive, Littleton, CO 80127
Louise Parker Bingham
4243 Old Tyler Road, Nacogdoches, TX 75961
Kathleen Johnson Sledge
1700 Dearing Place, Tuscaloosa, AL 35401

JUDICIARY

Tracy Wilson LeSieur
2805 Downing Circle, Birmingham, AL 35242

MUSIC

Julie Stewart Pride
864 Nutwood Street., Bowling Green, KY 42103

NEW MEMBER EDUCATION

Rhonda Allen Wistner
616 Wellingburg Road, Huntsville, AL 35803

PHILANTHROPY - ALUMNAE

Linda Brueggemann Seymour
725 S. Londerry Lane, Anaheim, CA 92807

PHILANTHROPY - COLLEGIATE

Gail Persak Beets
5963 W. Indore Place, Littleton, CO 80128

PROGRAM DEVELOPMENT

Sharon Moncrief Slovinski
RR1, Box 241-49, LaGrange, MO 63448

RISK MANAGEMENT

Pamela Siders Grizzle
1209 Barksdale Drive Leesburg, VA 20176

Risk Management Coordinators - Regions I, II, III, IV, and XIV

JoAnn Arnholt
11 Bristol Drive, North Brunswick, NJ 08902

Regions V, VI, VII, XIII, and XV

Barbara Snow
PO Box 892, Bloomington, IL 61702-0892

Regions VIII, IX, X, XI, and XII

Heather Angove
600 Front St. #442, San Diego, CA 92101

RITUAL

Patricia Menendez Tector
4704 Cypress Ford Dr., Fuquay-Varina, NC 27526

RUSH

Michelle Albrecht Smith
4319 Canehill Avenue, Lakewood, CA 90713

NATIONAL HISTORICAL MUSEUM

DIRECTOR EMERITA

Grace Pritchard Gorham
P.O. Box 88, Spavinaw, OK 74366

CURATOR/ARCHIVIST

Betty Johnson Gurr-Tomblinson
210 Mt. Pleasant Drive, Apt. 110, Monroe, OH 45050

AREA ALUMNAE DIRECTORS

BLUE RIDGE - Virginia, West Virginia, North Carolina,
South Carolina, Washington, DC

AAD: Doretta Pugh Osburn
1 Valley View Estates, Hurricane, WV 25526

CENTRAL PLAINS - North Dakota, South Dakota, Nebraska,
Colorado, Kansas, Missouri, Iowa, Minnesota

AAD: Susan Hein Feuerherm
3849 Conroy Trail, Inver Grove Heights, MN 55076

GREAT LAKES - Michigan, Ohio, Canada, United Kingdom

AAD: Mella Cooks Davies
2936 Brighton Road, Shaker Heights, OH 44120

GREAT WESTERN - Washington, Oregon, California, Arizona,
Nevada, Utah, Wyoming, Idaho, Montana, Alaska, Hawaii

AAD: Beckey Robinson Romensko,
9303 Oakbourne, Santee, CA 92071

MID-AMERICA - Wisconsin, Illinois, Indiana

AAD: Ann E. Langel
3825 Daystar, Apt. D, Madison, WI 53704

MID-ATLANTIC - Pennsylvania, Delaware, New Jersey, Maryland

AAD: Ellen Watson Gigliotti
165 Pugh Drive, Shippensburg, PA 17257

NORTHEAST - Maine, Vermont, New Hampshire,
Massachusetts, Connecticut, Rhode Island, New York

AAD: Nicole Pollack
65-61 Saunders Street, Apt. 1-K,
Reno Park, NY 11374

SOUTHEAST - Georgia, Florida, Alabama,
Puerto Rico, Virgin Islands

AAD: Refer to National Vice President of Alumnae Affairs

SOUTHWEST - Oklahoma, Texas, New Mexico

AAD: Diane Larson Leaverton
2310 Buckholt Road, Pearlman, TX 77581

SOUTH CENTRAL - Kentucky, Tennessee, Louisiana,

Mississippi, Arkansas
AAD: Ann Walls
1035 Sarah Drive, Louisville, KY 40219

REGIONAL COLLEGIATE COORDINATORS

REGION I - Maine, Vermont,
New Hampshire, Massachusetts, Connecticut,

Rhode Island, New York
RCC: Gay Thor Rose
36 Webster Rd., East Lyme, CT 06333

REGION II - New Jersey, Eastern Pennsylvania

RCC: Tracy Kleppinger
1144 Tilghman Street, Allentown, PA 18102

REGION III - Maryland, Western Pennsylvania

RCC: Deb Fries
1060 Old Stone Road, Allentown, PA 18103

REGION IV - West Virginia, Virginia, Washington DC

RCC: Kara Barker Price
5753 Cypress Trace, Hoover, AL 35244

REGION V - Ohio

RCC: Jennifer Yeagley
3913 Logan Avenue NW, Canton, OH 44709

REGION VI - Michigan, University of Windsor (Canada)

RCC: Tammy Comer Stafford
2050 Cahas Mountain Road, Boones Mill, VA 24065

REGION VII - Indiana, Illinois

RCC: Ann Gurley Morrow
211 Plainfield Way, Bowling Green, KY 42104

REGION VIII - Iowa, Nebraska, Wisconsin, Minnesota, South Dakota, North Dakota
RCC: Grace Dollahon Bartholet
6445 Olson Memorial Hwy.,
Golden Valley, MN 55427-4947

REGION IX - Missouri, Colorado, Kansas
RCC: Diane Stecher
6003 Kensington Way, Imperial, MO 63052

REGION X - California, Washington, Oregon, Montana, Idaho, Alaska, Hawaii, Nevada, Arizona, Utah, Wyoming
RCC: Renee Mello-Robinett
606 Portsmouth Lane, Foster City, CA 94404

REGION XI - Oklahoma, Louisiana, Mississippi, Arkansas
RCC: Phyllis Sundberg Davis
431 Fox Bay Drive, Brandon, MS 39047

REGION XII - Texas, New Mexico
RCC: Cathy Irvin Painter
10204 Pantera Ridge, Austin, TX 78759

REGION XIII - Tennessee, Kentucky
RCC: Linda Schaefer Allen
777 Abbotsbury Place, Edgewood, KY 41017

REGION XIV - North Carolina, South Carolina
RCC: Debra Wood Pressley
39 Fox Lair Lane, Hendersonville, NC 28791

REGION XV - Georgia, Alabama, Florida
RCC: Ann Grant Wadsworth
136 N. Fairwinds, Alexander City, AL 35010

COLLEGE CHAPTER DIRECTORS

UNIVERSITY OF ALABAMA - Sherri Smith Martin, CCD
5624 Redbud Lane, Tuscaloosa, AL 35405

UNIVERSITY OF ALABAMA/HUNTSVILLE - Leigh Wright Wiersig, CCD
1715 Beirne Avenue, Huntsville, AL 35801

ALFRED UNIVERSITY - Carolyn Stuby Fugate, CCD
5745 Oak Ridge Lane, Alfred Station, NY 14803

ANGELO STATE UNIVERSITY - Esmeralda Gonzalez, CCD
1427 S. Madison, San Angelo, TX 76901

APPALACHIAN STATE UNIVERSITY - Elena Tribby Taylor, CCD
P.O. Box 1358, Boone, NC 28607

ARKANSAS STATE UNIVERSITY - Jill Jackson Swift, CCD
2107 Greystone Cove, Jonesboro, AR 72401

ARKANSAS TECH UNIVERSITY - Lori J. Walker, CCD
414 Austin Circle, Russellville, AR 72801

ASHLAND UNIVERSITY - Jody Thomas, CCD
110 Vernon Avenue, Ashland, OH 44805

AUBURN UNIVERSITY - Joy Yeager, CCD
6595 Lee Road 166, Opelika, AL 36804

AUBURN UNIVERSITY/MONTGOMERY - Elizabeth Marie Hitch, CCD
4105 Tandy Drive, Montgomery, AL 36106

BALDWIN-WALLACE COLLEGE - Christine Lenz Begeman, CCD
23131 Grist Mill Court, Olmsted Falls, OH 44138

BALL STATE UNIVERSITY - Ann Gurley Morrow, RCC
211 Plainfield Way, Bowling Green, KY 42104

BARTON COLLEGE - Lydie Lemire Silverthorne, CCD
1723 Anderson Street, Wilson, NC 27893

BOWLING GREEN STATE UNIVERSITY - Jennifer Yeagley, RCC
3913 Logan Avenue NW, Canton, OH 44709

BRYANT COLLEGE - Rebecca Huard, CCD
19 Davis Road #C6, Acton, MA 01720

CALIFORNIA STATE UNIV/FULLERTON - Janet Gillis Gibson, CCD
413 N. Sara Jane Lane, Placentia, CA 92870

CALIFORNIA STATE UNIV/LONG BEACH - Jennifer Stripe, CCD
3423 Legato Court, Phillips Ranch, CA 91766

CALIFORNIA STATE UNIV/L.A. - Christina Crabtree, CCD
511 Loma Vista, El Segundo, CA 90245

CALIFORNIA UNIVERSITY OF PENNSYLVANIA - Robin Rudic, CCD
1405 Gill Hall Road, Clairton, PA 15025

CARROLL COLLEGE - Amy Birschbach Dethloff, CCD
N30W23490 Greenfield Cr., Unit B, Pewaukee, WI 53072

UNIVERSITY OF CENTRAL ARKANSAS - Angela Lyons, CCD
13706 Ivy Point Dr., Little Rock, AR 72211

CENTRAL MICHIGAN UNIVERSITY - Michelle Kramer, CCD
5119 Jonathon Lane, Mt. Pleasant, MI 48858-4728

CENTRAL MISSOURI STATE - Marlo Dorsey, CCD
2133 S. 37th Street, Kansas City, KS 66106

UNIVERSITY OF CENTRAL OKLAHOMA - Cindy Palmer, CCD
1209 Glenbrook Terrace, Oklahoma City, OK 73116

CLARION UNIVERSITY - Jamie Bero, CCD
275 Gemmell Student Center, Clarion, PA 16214

CLARKSON UNIVERSITY - Par Thompson, CCD
2054 River Road, P.O. Box 142, Hannawa Falls, NY 13647

COLUMBUS STATE UNIVERSITY - Destiny Lyn Parkman, CCD
1275 Whisperwood Drive, Columbus, GA 31907

CONCORD COLLEGE - Lisa Bergeria Blankenship, CCD
P.O. Box 779, Athens, WV 24712

UNIVERSITY OF CONNECTICUT - Lisa A. Ziemiacki, CCD
210 Pine Street, Unit 114, Manchester, CT 06040

CREIGHTON UNIVERSITY - Christine Winship Nikunen, CCD
2407 N 147th Street, Omaha, NE 68116

UNIVERSITY OF DENVER - Stacey Wheeler Slaughter, CCD
9623 W. 69th Place, Arvada, CO 80004

DEPAUL UNIVERSITY - Leslie Evans, CCD
1218 West Rosco #3, Chicago, IL 60657

DEPAUW UNIVERSITY - Jennifer Hatchett, CCD o/o Baker & Daniels
300 N. Meridian St., Ste. 2700, Indianapolis, IN 46204

DREXEL UNIVERSITY - Kimberley Slater, CCD
The Village of Stoney Run, 36-E, Rt. 73, Maple Shade, NJ 08052

DUQUESNE UNIVERSITY - Mary Calabro, CCD
206 Bonnie Brae Drive, Moon Twp., PA 15108

EAST CAROLINA UNIVERSITY - Jennifer Urbaniak, CCD
2118 Hyde Drive, Greenville, NC 27858

EASTERN ILLINOIS UNIVERSITY - Joni Jester Baldwin, CCD
825 W. Lincoln Avenue, Charleston, IL 61920

EASTERN KENTUCKY UNIVERSITY - Virginia Fairchild, CCD
1144 Andover Forest Drive, Lexington, KY 40509

EASTERN MICHIGAN UNIV. - Christyle Tackett Broadworth, CCD
46121 Village Green Dr., Apt. A-334, Belleville, MI 48111

EDINBORO UNIVERSITY - Diane Diorio Raffle, CCD
12884 Forrest Drive, Edinboro, PA 16412

EUREKA COLLEGE - Shona Schmitz, CCD
934 W. Ridgmont Rd., Peoria, IL 61614

FAIRMONT STATE COLLEGE - Michele Scouvant, CCD
10 Clear Spring Drive, Morgantown, WV 26508

FERRIS STATE UNIVERSITY - Sandy Alspach, CCD
24 E. 14th Street, Holland, MI 49423

FLORIDA STATE UNIVERSITY - Amy Colleen Anderson, CCD
3723 Fermanagh Circle, Tallahassee, FL 32308

FORT HAYS STATE UNIVERSITY - Vicki Melkus Johansen, CCD
2803 Barclay Drive, Hays, KS 67601

FRESNO STATE UNIVERSITY - Cam Maloy, CCD
1684 East Utah Avenue, Fresno, CA 93720

FROSTBURG STATE UNIVERSITY - Jamie Winters, CCD
301 Laurewood Drive, Lonaconing, MD 21539

GALLAUDET UNIVERSITY - Katherine Fehervari, CCD
2400 N. Clarendon #113, Arlington, VA 22201

UNIVERSITY OF GEORGIA - Pamela Cantrell Rushton, CCD
8020 Brookstone Lane, Gainesville, GA 30506

GEORGIA COLLEGE - Dana Camp Rogers, CCD
1696 Valley Road, Milledgeville, GA 31061

GEORGIA STATE UNIVERSITY - Cathy Herbert Furbish, CCD
2681 Cove Circle, Atlanta, GA 30319

GRAND VALLEY STATE UNIV. - Gwendolyn McHugh Shick, CCD
14684 8th Avenue, Marne, MI 49435

HENDERSON STATE UNIVERSITY - Beth Wyatt, CCD
1008 S. 21st, Arkadelphia, AR 71923

UNIVERSITY OF HOUSTON - Julie Westerland Goolsby, CCD
4526 Jamaica Drive, Sugar Land, TX 7747

UNIVERSITY OF ILLINOIS - Stephanie Rosene Famey, CCD
1014 East Kerr Avenue, #101, Urbana, IL 61801

ILLINOIS STATE UNIVERSITY - Lindsay Timm, CCD
3016 Lakeshire, Springfield, IL 62707

INDIANA UNIVERSITY - Linda Heath, CCD
3802 Callery Court, Bloomington, IN 47408

INDIANA UNIVERSITY OF PENNSYLVANIA - Deb Fries, RCC
1060 Old Stone Road, Allentown, PA 18103

UNIVERSITY OF IOWA - Grace Bartholet, RCC
6445 Olson Memorial Hwy., Golden Valley, MN 55427-4947

IOWA STATE UNIVERSITY - Kari Ditsworth Hensen, CCD
2414 NW Heritage Avenue, Ankeny, IA 50021

JACKSONVILLE STATE UNIVERSITY - Kimberly Bynum Dalesandro, CCD
2118 Ewing Avenue, Gadsden, AL 35901

KENT STATE UNIVERSITY - Pam Gehlhausen Asher, CCD
2626 Owaisa Drive, Cuyahoga Falls, OH 44221

UNIVERSITY OF KENTUCKY - Linda Schaefer Allen, RCC
777 Abbotsbury Place, Edgewood, KY 41017

KUTZTOWN UNIVERSITY - Tracie L. Law, CCD
2806 Sturbridge Court, Sinking Spring, PA 19608

LENOIR-RHYNE COLLEGE - JoEllen Frantz Johnson, CCD
4340 N. Center St. #502, Hickory, NC 28601

LINDENWOOD COLLEGE - Cathy Thomasson Will, CCD
5425 Columbia, St. Louis, MO 63139

LONGWOOD COLLEGE - Gretchen Cosgrove, CCD
3207 St. Stephens Way, Midlothian, VA 23113

LOUISIANA STATE UNIVERSITY - Doraine Bonneau Wilson, CCD
19052 W. Pinnacle Circle, Baton Rouge, LA 70810

UNIVERSITY OF LOUISVILLE - Catherine Barth Giangarra, CCD
1918 Myddleton Drive, Louisville, KY 40243-1430

LOYOLA-MARYMOUNT UNIVERSITY - Carol Chung, CCD
PO Box 3753, Playa del Rey, CA 90296

UNIVERSITY OF MAINE - Holly Sands, CCD
284 S. Main St. Apt. 1, Old Town, ME 04468

MANSFIELD UNIVERSITY - Karen Stamer Jacobson, CCD
RD #1, Box 157, Covington, PA 16917

MARS HILL COLLEGE - DeAnn DeBrand Lyda, CCD
49 Lawterdale Circle, Asheville, NC 28804

MARSHALL UNIVERSITY - Robin Taylor, CCD
6200 Rosalind Road, Huntington, WV 25705

UNIVERSITY OF MASSACHUSETTS - Christine Danielson, CCD
921 Beacon Street, Boston, MA 02215

MIAMI UNIVERSITY - Susan Vaughn, CCD
628 Sanders Drive, Hamilton, OH 45013

MICHIGAN TECH - Marlene Thompson Gilpin, CCD
112 W. Douglass, Houghton, MI 49931

MIDDLE TENNESSEE STATE - Darla Sampson, CCD
3732 Nicklaus, Murfreesboro, TN 37129

MILLERSVILLE UNIVERSITY - Deborah Friez Bodnar, CCD
2131 Millcreek Road, Lancaster, PA 17602

MISSOURI/KANSAS CITY - Jennifer May Bosshardt, CCD
5287 Foxridge Dr. Apt. 204, Mission, KS 66202

MISSOURI/ST. LOUIS - Cheri Fortney, CCD
620 Barbara Jean Court, Webster Groves, MO 63119

MOORHEAD STATE UNIVERSITY - Melisa Davison Kirtleson, CCD
PO Box 6534, Fargo, ND 58109

MOREHEAD STATE UNIVERSITY - Vivian Cyrus, CCD
406 Jewell Lane, Morehead, KY 40351

MUHLENBERG COLLEGE - Tracy Kleppinger, CCD
1144 Tilghman Street, Allentown, PA 18102

NEBRASKA WESLEYAN - Christine Martin, CCD
2135 S. 14th, Lincoln, NE 68502

UNIVERSITY OF NEVADA/LAS VEGAS - Amy Payer, CCD
2521 Kilmarnock Circle, Henderson, NV 89014

THE COLLEGE OF NEW JERSEY - Tracy Kleppinger, RCC
1144 Tilghman Street, Allentown, PA 18102

NEW MEXICO STATE UNIVERSITY - Kelly Schryer Mahres, CCD
1277 N. Willow, Las Cruces, NM 88001

UNIVERSITY OF NEW ORLEANS - Rosalia D'Amico, CCD
5544 Vermillion Blvd., New Orleans, LA 70122

NICHOLLS STATE UNIVERSITY - Amanda Enclave Fremin, CCD
116 St. Michael Street, Thibodaux, LA 70301

NORTH CAROLINA STATE UNIVERSITY - Kristin Burke, CCD
231 Windborne Drive, Cary, NC 27513

UNIVERSITY OF NC/CHAPEL HILL - Siobhan Neely, CCD
6321-304 Lynn Crest Lane, Raleigh, NC 27609

UNIVERSITY OF NC/CHARLOTTE - Kris Hoppensteadt Spokas, CCD
7412 Feathers Place, Charlotte, NC 28213

UNIVERSITY OF NC/WILMINGTON - Jennifer Jemigan Slusser, CCD
1018 Cherrywood Court, Leland, NC 28451

NORTH GEORGIA COLLEGE - Margret Georges O'Meara, CCD
8040 Ridge Valley, Woodstock, GA 30189

UNIVERSITY OF NORTH TEXAS - Cheryl Wassink Steffen, CCD
7608 Worthing, Dallas, TX 75252

NORTHEASTERN UNIVERSITY - Jennifer Ann Taglia, CCD
15 Maplewood Street, Watertown, MA 02472

NORTHEASTERN STATE UNIVERSITY/OK - Marti Keller Renz, CCD
3535 N. Old Oak Lane, Coweta, OK 74429

UNIV. OF NORTHERN COLORADO - Jenny Dybala Hartfelder, CCD
7367 S. Newport Way, Englewood, CO 80112

NORTHERN ILLINOIS UNIVERSITY - Ann Gurley Morrow, RCC
211 Plainfield Way, Bowling Green, KY 42104

NORTHERN KENTUCKY UNIVERSITY - Billie Lane Clark, CCD
3165 Royal Windsor Drive, Edgewood, KY 41017

NORTHWEST MISSOURI STATE - Terri Teetor Christensen, CCD
1018 Victory Lane, Maryville, MO 64468

NORTHWESTERN UNIVERSITY - Shellie Littell, CCD
5461 N. East River Rd. #1011, Chicago, IL 60656

NORTHWOOD UNIVERSITY - Tammy Stafford, RCC
2050 Cahas Mountain Road, Boones Mill, VA 24065

OHIO NORTHERN UNIVERSITY - Kacy Halker Duling, CCD
Controller's Office - 525 S. Main Street, Ada, OH 45810

OHIO STATE UNIVERSITY - Jennifer Yeagley, RCC
3913 Logan Avenue NW, Canton, OH 44709

OHIO UNIVERSITY - Andrea Kusta, CCD
68 Aldrich Road, Columbus, OH 43214

OHIO WESLEYAN UNIVERSITY - Heather Bledsoe, CCD
1448 Runaway Bay Drive, #1B, Columbus, OH 43204-3864

OLD DOMINION UNIVERSITY - Kara Price, RCC
5753 Cypress Trace, Hoover, AL 35244

PENNSYLVANIA STATE UNIVERSITY - Tracy Kleppinger, RCC
1144 Tilghman Street, Allentown, PA 18102

UNIVERSITY OF PITTSBURGH - Deb Fries, RCC
1060 Old Stone Road, Allentown, PA 18103

PITTSBURGH/JOHNSTOWN - Jacqueline Lee Widmar, CCD
P.O. Box 23, Dilltown, PA 15929

PLYMOUTH STATE COLLEGE - Linda Bonislowski, CCD
322 Coolidge Avenue, Manchester, NH 03102

PURDUE UNIVERSITY - Ann Gurley Morrow, RCC
211 Plainfield Way, Bowling Green, KY 42104

RADFORD UNIVERSITY - Denise Shimp Sowder, CCD
534 Spruce Street, Vinton, VA 24179

RANDOLPH MACON COLLEGE - Barbra Tauriello, CCD
6300 Stevenson Ave. #607, Alexandria, VA 22304

UNIVERSITY OF RHODE ISLAND - Jacqueline Ahnert Meislitzer, CCD
343 Monticello Drive, Branford, CT 06405

ROBERT MORRIS COLLEGE - Melissa Seaman, CCD
607 1/2 East Drive, Sewickley, PA 15143

ROWAN UNIVERSITY - Kristina Sovich, CCD
4706B Fradswell Court, Mount Laurel, NJ 08054

ST. CLOUD STATE UNIVERSITY - Holly Disell Benson, CCD
2511 Clearwater Road #302, St. Cloud, MN 56301

ST. MARY'S UNIVERSITY - Aileen Salinas, CCD
11711 Wall Street #13102, San Antonio, TX 78230

SAMFORD UNIVERSITY - Susan Knox, CCD
501 Oxford Circle, Birmingham, AL 35209

UNIVERSITY OF SAN FRANCISCO - Andrea Marsala, CCD
18 Escanero Drive, San Francisco, CA 94080

SAN JOSE STATE UNIVERSITY - Kristi Melani Kaspar, CCD
1104 Delina Manor Lane #4, San Jose, CA 95128

SANTA CLARA UNIVERSITY - Rebekah Atkinson Frye, CCD
949 Resina Way, Pacifica, CA 94044

SHEPHERD COLLEGE - Bella Gonzalez, CCD
9402 Berkley Lane, Frederick, MD 21701

SHIPPENSBURG UNIVERSITY - Gayle Evans Staub, CCD
5601 Fordham Avenue, Harrisburg, PA 17111

SLIPPERY ROCK UNIVERSITY - Kelly Dietrich, CCD
127 E. Market Street, Apt. 1, Mercer, PA 16137

UNIVERSITY OF SOUTH CAROLINA - Jaylene Phelps Braxton, CCD
203 E. Hampton Way, Columbia, SC 29229

UNIV. SOUTH CAROLINA/SPARTANBURG - Lisa Davenport Green, CCD
9 Shamrock Lane, Greenville, SC 29609

SOUTHERN ILLINOIS UNIVERSITY - Connie Brown Morgan, CCD
1937 Pine Street, Murphysboro, IL 62966

UNIVERSITY OF SOUTHERN INDIANA - Tisha Holcomb Cullison, CCD
1518 Madison Avenue, Evansville, IN 47714

SOUTHWEST MISSOURI STATE - Kimberly Goedeke Helm, CCD
1535 South Oakmont, Springfield, MO 65809

SOUTHWEST TEXAS STATE UNIVERSITY - Nanette Patton, CCD
316 A Edward Gary, San Marcos, TX 78666

STEPHEN F. AUSTIN STATE UNIV. - Dr. Louise Parker Bingham, CCD
4243 Old Tyler Road, Nacogdoches, TX 75961

STOCKTON STATE COLLEGE - Barbara Homer, CCD
307 N. Union Avenue, Margate, NJ 08402

SUNY/ALBANY - Judy Harwood, CCD
211 Lathrop Lane, Arlington, VT 05250

UNIVERSITY OF TAMPA - Kathleen Hudson, CCD
1426 Deirdre Drive, Ruskin, FL 33570-4101

TARLETON STATE UNIVERSITY - Elizabeth Fortune, CCD
P.O. Box 982, Stephenville, TX 76401

TEMPLE UNIVERSITY - Tracy Kleppinger, RCC
1144 Tilghman Street, Allentown, PA 18102

UNIVERSITY OF TENN/KNOXVILLE - Niki Norton, CCD
5800 Central Avenue Pike, Apt. 5406, Knoxville, TN 37912

TEXAS A & M UNIVERSITY - Pam Walker Turlak, CCD
3317 Big Bend Drive, Austin, TX 78731

UNIVERSITY OF TEXAS/ARLINGTON - Stefani Miller, CCD
1310 Harwell #4711, Arlington, TX 76011

UNIVERSITY OF TEXAS/PAN AMERICAN - Liza Estella Gonzalez, CCD
1228 S. Cage, Pharr, TX 78577

TRUMAN STATE UNIVERSITY - Bridget Stepnoski Motton, CCD
902 E. Northtown Road, P.O. Box 265, Kirksville, MO 63501

UNIVERSITY OF VIRGINIA - Allie Blalock Griffin, CCD
603 Stagecoach Road, Charlottesville, VA 22902

VIRGINIA TECH INSTITUTE - Vicki Shannan, CCD
5397 McVitty Road, Roanoke, VA 24018

UNIVERSITY OF WASHINGTON - Tiffany Irvine, CCD
400 NE 65th #106, Seattle, WA 98115

WAYNE STATE UNIVERSITY - Andrea Kovacs Henderson, CCD
7995 Thornhill Drive, Ypsilanti, MI 48197

WEST CHESTER UNIVERSITY - Kathryn Buckley, CCD
1070 Antler Drive, Glen Mills, PA 19145

WEST TEXAS A & M UNIVERSITY - Mandy Barron Gray, CCD
2052 Bowie, Amarillo, TX 79110

WEST VIRGINIA TECH. - Katrina Fleming, CCD
PO Box 394, Mt. Carbon, WV 25139

WESTERN CAROLINA UNIVERSITY - Janice Smith Harris, CCD
P.O. Box 154, Cullowhee, NC 28723

WESTERN ILLINOIS UNIVERSITY - Barbara Brunett Bailly, CCD
14 Elmo, Macomb, IL 61455

WESTERN MICHIGAN UNIVERSITY - Lauren Davis Campbell, CCD
61270 South VanKail, Mattawan, MI 49071-8511

WILLIAM JEWELL COLLEGE - Michelle Marie Moseman, CCD
311 NW 110 Terrace, Kansas City, MO 64155

UNIVERSITY OF WINDSOR - Glendalynn Dixon, CCD
737 Oullette Towers, #501, Windsor, Ontario
CANADA N9A 6T2

WINTHROP UNIVERSITY - Christy Phillips, CCD
425 Lorna Street, Charlotte, NC 28205

UNIVERSITY OF WISCONSINEAU CLAIRE - Lillian Karstensen, CCD
1041 Brookline Avenue, Eau Claire, WI 54703

UNIVERSITY OF WISCONSIN/STOUT - Vanessa Petersen, CCD
2736 Blackberry Trail, Menomonie, WI 54751

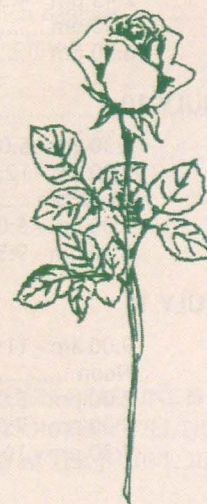
UNIV. OF WISCONSIN/WHITEWATER - Pat Bladow Christian, CCD
W 5190 Jason Lane, Elkhorn, WI 53121-2466

WRIGHT STATE UNIVERSITY - Michelle Duncan, CCD
5116 Scarsdale Drive, Kettering, OH 45440

YOUNGSTOWN STATE UNIVERSITY - Megan Thomas, CCD
1819 Stillwagon Road, Warren, OH 44484

YOUR DELTA ZETA BADGE: A SYMBOL FOR LIFE

It is extremely important that the
Delta Zeta badge be protected,
since it is our sign of membership.
At your death, your badge is
buried with you or returned to the
National Headquarters.



DELTA ZETA'S 44TH NATIONAL CONVENTION TENTATIVE SCHEDULE

THE POINTE HILTON AT SQUAW PEAK RESORT, PHOENIX, ARIZONA

JULY 7 - 12, 2000

FRIDAY, JULY 7 - Pre Convention Trip to Sedona, Arizona

10:00 am - 6:30 pm Registration open; DZ DeZigns, Foundation
7:00 pm - Opening Banquet



Heather Whitestone McCallum, the 1995 Miss America from Alabama, will be the keynote speaker at the Opening Banquet this evening.

Heather is the first woman with a physical challenge to be crowned Miss America. She lost her hearing at the age of eighteen months. She currently serves as an executive board member on the President's Committee on Employment of People with Disabilities. She also spearheaded the nation's largest multimedia public service campaign to identify early hearing loss, which was created by the Miss America Organization and the Alexander Graham Bell Association for the Deaf.

She developed the S.T.A.R.S. program (Success Through Action and Realization of your dreamS), which uses a five-point approach to personal empowerment to motivate all people, no matter what their age or what obstacles they may face. Heather believed that everyone has different talents, personalities, and abilities, and truly loves to see people "reach for the stars." Don't miss this highly motivational, inspiring speaker.

SATURDAY, JULY 8

8:00 am - 5:00 pm Registration, DZ DeZigns, Foundation
8:30 am - 11:30 am Business Meeting
12:00 pm Box Lunch
1:30 pm - 2:30 pm Carolyn Barnes Gullatt Symposium
2:45 pm - 3:30 pm Regional and Area Meetings
4:00 pm - 5:00 pm Financial Seminar
5:00 pm - 6:00 pm Free time
6:30 pm Initiation & Banquet

SUNDAY, JULY 9

8:00 am - 5:00 pm Registration, DZ DeZigns, Foundation
9:00 am - Memorial Service
..... Business Meeting
12:00 pm - 2:30 pm Rose Luncheon
2:45 pm - 4:30 pm DZ Fair
5:30 pm Kennel Club
6:30 pm Fun Night

MONDAY, JULY 10

8:30 am - 5:00 pm Registration, DZ DeZigns, Foundation
9:00 am - 12:00 pm Training/Workshops Sessions
12:00 pm Box Lunch
1:00 pm - 5:00 pm Training/Workshop Sessions Continue
7:30 pm - 9:30 pm Awards Banquet

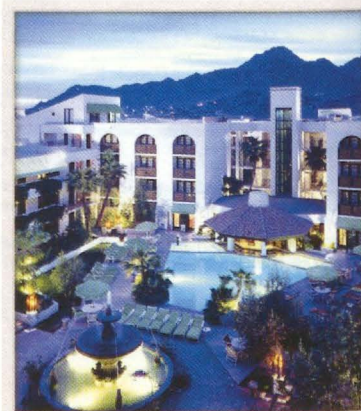
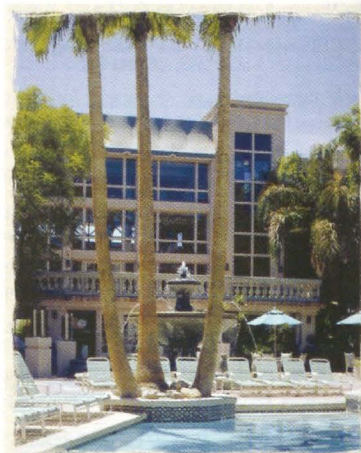
TUESDAY, JULY 11

9:00 am - 11:30 am Business Meeting
Noon Buffet Luncheon
2:00 pm - 5:00 pm Workshops
5:00 pm - 7:00 pm Free Time
7:30 pm - 10:00 pm Installation Banquet

WEDNESDAY, JULY 12

..... Departures


Pointe Hilton
Squaw Peak Resort



DELTA ZETA SORORITY 44TH NATIONAL CONVENTION
The Pointe Hilton Resort at Squaw Peak – July 7-12, 2000

OFFICIAL REGISTRATION

Please type or print this form. A form must be completed for each person attending. Be sure the information you provide is legible. PLEASE MAKE CHECKS PAYABLE TO: Delta Zeta Sorority. Return this form and the total payment fee by May 15, 2000 to: Delta Zeta Sorority, 202 East Church Street, Oxford, Ohio 45056.

Name _____
Last Maiden First Preferred first name for name tag

Home Address _____
Street City State Zip

Home Phone () Work Phone ()

Please check applicable: ☐ Past National Officer ☐ Alumnae Chapter Delegate for ☐ Visitor ☐ Other ☐ Non Smoking ☐ Smoking ☐ Vegetarian ☐ Special Needs (please explain)

FIVE DAY RESORT PACKAGE

Convention resort package (room, meals, tax, gratuities, double occupancy) ... \$825
Early bird convention package if postmarked by May 1 \$750
Single room fee \$300

REGISTRATION FEES:

Registration fee submitted on or before May 1, 2000 postmark ... \$150
Registration fee submitted after May 1, 2000 postmark \$225
TOTAL AMOUNT ENCLOSED \$

EARLY ARRIVALS AND LATE DEPARTURES ONLY

☐ I wish to arrive at the resort before Fri., July 7. Arrival date _____
☐ I wish to depart from the resort after Wed., July 12. Departure date _____

Reservations will be made for you by Delta Zeta Sorority. Cost of room will be \$60.00 per person double occupancy per night (exclusive of meals) or \$120.00 per person single occupancy per night (exclusive of meals). Payment to be made to Pointe Hilton Resort at Squaw Peak at the time of departure.

WILL YOU PARTICIPATE? Convention Chorus: ☐ Yes ☐ No Musician: ☐ Piano ☐ Flute ☐ Other ☐ Sign Language: Would you be willing to sign during the Initiation Service? ☐ Yes ☐ No Lampkin Staff: ☐ Yes ☐ No

Single Day Resort Packages:

FRIDAY, JULY 7

☐ Opening Banquet..... \$50.00

SATURDAY, JULY 8

☐ Registration daily fee.....\$45.00
☐ Luncheon.....\$25.00
☐ Lamplighting Banquet.....\$50.00
☐ Lodging:
Single.....\$120.00
Double.....\$60.00

SUNDAY, JULY 9

☐ Registration daily fee\$45.00
☐ Rose Luncheon.....\$35.00
☐ Fun Night Dinner\$40.00
☐ Lodging:
Single\$120.00
Double.....\$60.00

MONDAY, JULY 10

☐ Registration daily fee.....\$45.00
☐ Box Lunch\$25.00
☐ Awards Banquet.....\$50.00
☐ Lodging:
Single.....\$120.00
Double.....\$60.00

TUESDAY, JULY 11

☐ Registration daily fee.....\$45.00
☐ Buffet Luncheon
"Centennial Extravaganza"\$35.00
☐ Installation Banquet.....\$65.00
(favor included)
☐ Lodging:
Single.....\$120.00
Double.....\$60.00

TOTAL AMOUNT \$

☐ Discover ☐ MasterCard ☐ VISA ☐ Check

--	--	--	--	--	--	--	--	--	--	--	--	--	--	--	--	--	--	--	--

Signature _____

Exp. Date ____/____/____

REGISTRATION DEADLINE IS MAY 15, 2000
REGISTRATION FEES WILL NOT BE
REFUNDED AFTER JUNE 1, 2000

You can also register online at
www.deltazeta.org.

Foundation focus



HOUSE **EAR** INSTITUTE

Giving Others The Opportunity To Learn: *Speech and Hearing Philanthropy*

When you give to Delta Zeta Sorority's philanthropy for the speech and hearing impaired, your gift assists with hearing research programs and provides needed equipment to the hearing impaired. Funds also support a variety of programs that stress the importance of hearing loss prevention. Delta Zeta collegiate and alumnae chapters work to raise money for local speech and hearing clinics, and volunteer time to tutor speech-and-hearing-impaired children. We realize how vital it is that everyone have an opportunity to realize their own goals and become productive citizens, no matter what their life situation. Our philanthropic efforts ensure this opportunity.



Hearing-impaired children enjoy social interaction at Institute's 'Sharing is Caring' Family Camp.

Since 1954, Delta Zeta Sorority has shared a partnership with Gallaudet University in Washington, D.C., the world's only university with undergraduate programs accessible to hearing-impaired students.

Through the Foundation, we provide scholarship support for students, and support the library and performing arts programs endowment funds.

Visit Gallaudet University on the web at www.gallaudet.edu.



Early detection of hearing loss and timely intervention and rehabilitation make a difference in language development at House Ear Institute.

In 1983, the House Ear Institute in Los Angeles, California also became part of Delta Zeta's national philanthropy. The Institute is one of the premiere research sites for hearing disorders and the prevention of hearing loss, and the adjacent clinic treats a variety of hearing disorders. You can visit the House Ear Institute on the Internet at www.hei.org. Delta Zeta Sorority is proud to partner with these distinguished institutions. Together, we can improve the lives of those living with speech and hearing disorders. Please consider giving today to the Delta Zeta Foundation.

Better Speech & Hearing Month

Since 1927, May has been designated as Better Hearing and Speech Month, a time to raise public awareness of hearing, speech, and language disorders. Delta Zeta Sorority, through our work with the House Ear Institute in Los Angeles, California, and Gallaudet University in Washington D.C., has raised money, implemented and supported programs, and publicized the importance of this cause. Locally, our alumnae and collegiate chapters raise money and volunteer countless hours to help speech and hearing organizations and schools in their areas throughout the year. Giving those who are speech and hearing impaired the chance to learn and succeed is a heartfelt priority for Delta Zeta. While we have accomplished much, there is always much more to do. We thank all our members and those associated with our philanthropic work as we continue to improve the lives of people who live with this challenge every day.

Early Detection of Hearing Loss is the Key to Successful Treatment

By Kimberly Preissler KI

Hearing loss is the most common congenital problem in the newborn, occurring in approximately 1/1000 births. Most of these are permanent sensorineural hearing losses and will not improve with age. Often, the early identification of this hearing loss in children is delayed.

More than 90% of children who are born with or who develop hearing loss have no family history of hearing loss. In approximately 25% of cases, the hearing loss is of genetic origin. Some babies develop medical conditions, such as meningitis, cytomegalovirus (CMV), or rubella (German measles), which can increase the chance of developing hearing loss. Some medications used to treat severe infections are also known to be toxic to the hearing system. For this reason, ongoing testing for hearing problems in young children is critical.

Hearing is essential for normal speech, language, cognitive, and educational development. Recent studies supported by the National Institutes of Health have concluded that children whose hearing loss is identified *and* who receive appropriate intervention prior to six months of age develop significantly better language ability than do children who are later identified. Unfortunately, in the United States, the average age of identification of childhood hearing loss is two years.



Kimberly Preissler with Jojo.

prior to discharge or they may not be tested until signs of hearing loss are observed by parents. Technology now exists to provide safe, cost-effective, and reliable methods to assess hearing in newborns, making universal screening both possible and practical.

In 1994, a Joint Committee on Infant Hearing Screening issued a position statement recommending universal detection of hearing loss in infants. They also recommended that intervention and rehabilitation should occur before six months of age. Infants should be tested in the hospital

Infant hearing screening has been increasing in the United States over the last several years.

Automated equipment has been developed that is easier to operate. An audiological evaluation is painless, quick, and accurate, even in the youngest infants, and can be done regardless of a child's age or developmental level. To test the hearing of a newborn using otoacoustic emissions, or OAEs, sound is introduced to the ear and a normal inner ear sends an echo that is picked up by the microphone.



Holly uses special equipment to learn.



Ailis is tested for hearing loss.

If you have concerns about your baby's hearing, remember that no child is too young to be tested. Early identification of hearing loss is imperative. It's true that surgery and medicine can clear up some hearing problems. However, for other types of hearing loss, hearing aids and early education programs are critical. For children with permanent

hearing loss, early identification, early amplification and early education are essential.

If you have questions, or would like more information about your baby's hearing, call an audiologist at Boys Town National Research Hospital at 402-498-6675, or the American Academy of Audiology at 703-524-1923

Kimberly Preissler is an alumna of the Kappa Iota Chapter at Wright State University in Dayton, Ohio. She graduated from the University of Tennessee, Knoxville with a BA in Speech Pathology and an MA in Audiology. She is currently a clinical audiologist at Boys Town National Research Hospital in Omaha, NE working primarily with hearing impaired infants and children. She manages nearly 100 hearing impaired children on her caseload as their primary audiologist. She also executes a universal newborn hearing-screening program at another local hospital where over 1,500 normal newborns were tested last year. Kim is actively involved in several multidisciplinary teams including a cleft palate team. She lives with her two cats, Max and Trixie and is planning an October wedding. She can be contacted at preisslerk@boystown.org.

Campus Leaders

Many of our collegiate members are distinguishing themselves in academics, athletics, community service, philanthropy, and in other areas. Here we profile just a few of these Delta Zetas who are now campus leaders, and will carry their leadership into their alumnae years.

Molly Bircher ΔΩ advanced to the state finals in the Rhodes Scholarship trust last December as a representative of Fort Hays State University. Although she was not selected as one of the two finalists, Molly met the criteria required for a Rhodes Scholar: excellence in scholastic attainment; success in sports; truth; courage; duty and protecting those in need; kindness, unselfishness and fellowship; and moral force of character. She competed against students from other Kansas schools as well as Harvard University and the Massachusetts Institute of Technology. Molly was a Truman Scholarship finalist in 1998, the legislative director for the Student Government Association, and interned in Congressman Jerry Moran's (R-Kansas) office.

Information for this story from Russell Daily News, Russell, Kansas.

Melissa Dickinson ΞΞ has been working to raise money for the Rainbow Children's home since the fall of 1999. The Rainbow Children's Home is a temporary emergency shelter for children who must be removed from their homes because of neglect, abuse, or abandonment. Melissa, with the help of Delta Zeta sister Katie Thalacker and her chapter, mobilized the Greek organizations on the North Georgia College and State University campus to assist in the fundraising effort. "The fact that there is such a definite need, and the picture in my mind of a family being split up, just made me want to do something to help," says Melissa.

Information for this story from Dahlonega Nugget, Dahlonega, Georgia.

Karen Gibbs, President of the Omicron Zeta Chapter at Randolph-Macon College, has been recognized for her outstanding athletic achievements as the center-forward for the school's No. 15th-ranked Division III field hockey team. Karen scored 18 goals and assisted on two others in the Yellow Jackets' first seven games in 1999,

which were all wins. She continues to score at a pace that will almost certainly shatter the program's single-season record for goals (19) and points (46). Karen says her leadership role on the hockey team is not unlike her role as President of her sorority chapter. "The Sorority is a team. We have to be able to function as a unit to accomplish what we want to do," she says.

Information for this story from Richmond Times-Dispatch, Richmond, Virginia.

Vanessa Martinez OA is a collegiate who is also an up-and-coming actress. Vanessa, who is attending St. Mary's University in San Antonio, had a major role in John Sayles' film, "Limbo," and looks forward to working on other film projects. The film is a psychological drama about three people fighting for survival in the Alaskan wilderness. Sayles wrote the part of an outspoken teen just for Vanessa after she appeared in his film "Lone Star." At 15, Vanessa won a role in the ABC miniseries "The Streets of Laredo." An English and communications major, Vanessa works hard as a student, which, in spite of her acting career, is her first priority. "The acting part has always been my passion, but I feel that if it's meant for me to do it, it will be there after college," Vanessa says.

Information for this story from the San Antonio Express News, San Antonio, Texas.

Jillianne Muller ΘH was inducted in to Sigma Theta Tau International, a national honor society in nursing. The society recognizes superior achievements in nursing, encourages leadership development, fosters high nursing standards, and strengthens commitment to the ideals of the profession. Jill has also received the Dean's Achievement Award at Creighton University, is a member of the Order of Omega, sits on the executive board of the Theta Eta Chapter, and serves as a delegate on the Panhellenic Council on campus.

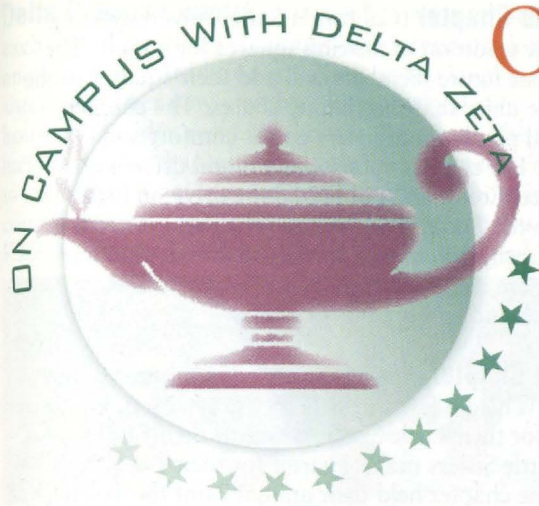
Susan Murphy ΞΞ has been chosen as a member of the Student Government Association during the elections held at North Georgia College and State University. Majoring in psychology and French, Susan is a member of the Psychology Club, Omicron Delta Kappa, and Pi Gamma Mu.

Emily Schoenfeld A, Past Chapter President, was recognized by Miami University in Oxford, Ohio, as an Outstanding Greek Senior. She was commended by Lupita Temiquel, Acting Director of Greek Affairs at Miami, for her continued involvement in her chapter and other projects with Greek organizations on her campus. "You are to be commended for your continued service to the chapter since seniors have traditionally drifted away from their chapter responsibilities," Ms. Temiquel said to Emily. "Your knowledge and expertise aids your organization in chapter operations/programs, and your role as a mentor to the younger members can never be replaced."

Heather Weaver ΓΠ was named to the local College Panhellenic Council Executive Board at Western Michigan University. Heather is a dedicated member of Delta Zeta and serves on the CPC Executive Board as Vice President of Recruitment. Tracy Filak, President of the CPC at Western Michigan, said of Heather, "She is not only a leader to the Panhellenic community, but also to Panhellenic potential new members. It is truly an honor to work along side her."

CORRECTION:

Daniele Distel, a recipient of the Founders Memorial Scholarship, was listed incorrectly in the Winter 2000 issue of *The LAMP* as a member of the Xi Beta Chapter. She is a member of the Gamma Sigma Chapter at Eastern Michigan University.



On Campus with Delta Zeta

Our Homes and Traditions

This edition of On Campus with Delta Zeta looks at chapter traditions, old and new, and the memorable features of chapter houses and chapter gathering places, as well as philanthropic and community service events.

The **Alpha Chapter** at Miami University of Ohio participated in Greek Week with the theme "DZ—All You Can Be." Greek Week Chair Patti Welhouse and the impressive athletic abilities of the entire chapter helped them finish near the top in the competition. The chapter is working hand-in-hand with the Miami Panhellenic Association's *Something of Value Program*, designed to educate Greek organizations in identifying risky behaviors and empowering them to take action.

The **Alpha Alpha Chapter's** (Northwestern University) traditions center around the New Member period. New members are paired with other members of the class as "Twin Turtles," and have lunch or plan a meeting to get to know each other. The chapter recently started a new tradition with an e-mail newsletter called "There and Then" which contains funny quotes and stories from the members' experiences. Their chapter house was built in 1924, where members gather in the solarium to watch movies, or in the kitchen to study. The chapter held its annual "Cues n' Blues" pool tournament and raffle event to raise money for Gallaudet University.



The Alpha Chapter enjoy their sorority house.

Alpha Rho members at Ohio Wesleyan University carry on traditions such as painting "The Rock" outside Smith Dormitory, taking group trips to Graeter's Ice Cream Shop, and participating in Delaware's All Horse Parade. A new tradition is the Sisterhood Fun Night/Halloween Party, one of the chapter's most highly attended events. Members enjoy gathering at the front porch swing of their chapter house. The chapter has excelled in academics for many years, and holds

the highest GPA among Greek and non-Greek groups on campus. Recent philanthropy events have included the Red Cross Blood Drive, building houses for community residents through the Habitat for Humanity program, and making Valentines for Meals-on-Wheels.



Alpha Rho members make green Jell-O for the "Jell-O Tug-of-War" to raise money for the speech and hearing impaired.

The **Beta Delta Chapter** (University of South Carolina) follow traditions such as the Big/Li'l Sis Ornament Exchange at Christmas and Pass the Gavel, where members are given an opportunity to speak about ways to improve their chapter. A new tradition is "Senior Spotlight," which honors one senior in the chapter each week for her accomplishments and contributions to the chapter. Members live in the South Tower at USC, and gather in the living room which holds awards the chapter has won.



Beta Delta Chapter members Jessica Lentini, left, with her Little Sister, Angel Alexander.

Beta Gamma Chapter (University of Louisville) members hand down traditions such as reuniting Big Sisters with Little Sisters after Big/Little Sisters Week. The chapter is especially proud of their house. "We receive the most compliments about our house than any other sorority on Greek Row," reports Chapter Editor Grace Lynch. Rachel Shee has been named as one of five Kentucky Derby Festival Princesses. Rachel, a Golden Key National Honor Society member, Order of Omega member, and the Vice President of Recruitment for her chapter, is a role model to her sisters and peers.

Members of the **Beta Lambda Chapter** (University of Tennessee/Knoxville) promote sisterhood with the Turtle Trivia tradition. Members write upbeat messages which are put into a box and later read. A new tradition is Blue Ribbons, in which members are given blue ribbons in recognition of achievements and those who overcame some obstacle. The chapter donated 560 pounds of clothing to Goodwill from their clothing drive. "Goodwill is able to distribute the clothing to the places that need it the most," says Chapter President Katie Shamblin. "We wanted to be able to give something back to the Knoxville community."

At the **Beta Tau Chapter**, former chapter president Karla Kucera led the Nebraska Wesleyan University Greek system in the "Greeks into Volunteering" project which raised money for a community program that serves low-income families. The chapter also sponsors an annual Spaghetti Feed to benefit the speech and hearing impaired, and volunteers to assist in the Special Olympics held at a local high school.

At Auburn University, **Beta Xi Chapter** members host a special senior event for graduating seniors as part of their tradition. The chapter invites alumnae to visit them or attend their upcoming events. For more information, visit the chapter website at www.auburn.edu/dz/ or contact Alumnae Relations officer Kate Tarleton at 334/844-7183.



The Beta Xi Chapter gears up for its annual Hoops for Hearing contest on Auburn's concourse to raise money for the hearing impaired.

The **Delta Alpha Chapter** (California State University/Long Beach) has a new tradition of making squares for a quilt. The chapter hopes that future members will add their squares to the quilt to show the unity that the chapter shares. The chapter house is a special place where sisters go for comfort and companionship. The chapter sponsored a blood drive with the American Red Cross, and publicized the drive on local television and in the *Los Angeles Times*. The event exceeded its goal. This March, the chapter participated with alumnae and other collegiate chapters in the Flame Fantasy 2000 to benefit the speech and hearing impaired.

The **Delta Beta Chapter** (University of Tampa) began a new tradition which is held a few weeks before graduation. Big Sisters make rag dolls for their Little Sister to give to their future children, and Little Sisters make a garter for their Big Sister's wedding day. The chapter held their annual Paint the Town theme to raise money for speech and hearing.



Perri Weisman and her little sister Jennifer Perla, members of the Delta Beta Chapter.

The **Delta Delta Chapter** (Georgia State University) proudly displays the first lamp of the chapter with other trophies and chapter accomplishments at their sorority hall on campus, which also serves as a meeting place and "our home away from home," says Chapter Editor Celeste Finney. "We always feel welcome here." The chapter made Christmas stockings for the Archer House, a women and children's shelter in their area.

IS YOUR CHAPTER MISSING?

The LAMP provides guidelines and report forms to all chapters which contain deadlines and requirements for material and photographs to be submitted. We want *your* chapter to be a part of *The LAMP*. If you don't see your chapter listed, it is because that chapter did not file their LAMP Report with the Editor by the deadline.

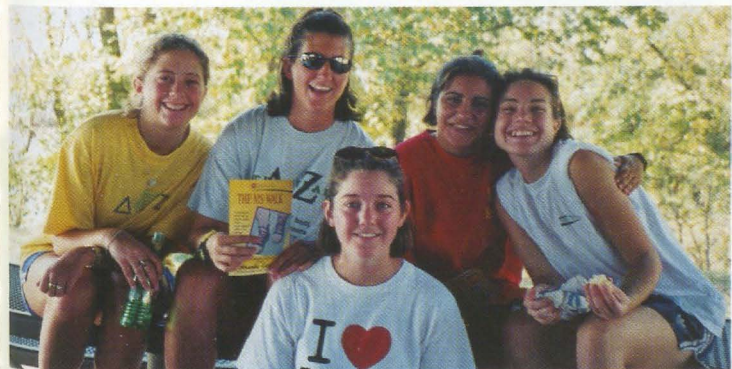
If you have any questions regarding submissions, please contact Nancy Brewer, Director of Communications and Editor of *The LAMP*, at National Headquarters by mail at 202 E. Church St., Oxford, OH 45056, by phone at 513/523-7597, or via e-mail at neb@dzshq.com.

Delta Omega Chapter sisters at Fort Hays State University exchange Rose Notes to express their appreciation of one another. A new tradition is to sing on the lawn in a circle of sisterhood after new members have pledged. The chapter house is an older, residential home, so it feels like home to the members. The chapter joined other Greek members on campus to collect personal hygiene items to give to those in need in their community, hosted the Region IX Conference this spring in Kansas City, and held their Rose Formal on April 28.



Delta Omega members on the steps of their chapter house after their theme party for recruitment.

One tradition of the **Delta Sigma Chapter** (Truman State University) is "Brewer Hall Takeover." New members get to know each other in the chapter room located in Brewer Hall, while active members move to another site for their retreat. The chapter members choose Rose Buddies and Turtle Buddies, so younger members have a chance to connect with their older sisters. The chapter donated gifts to area children at Christmas instead of buying gifts for themselves, and made Valentine cards for nursing home residents. They also hosted the Big Man on Campus competition to raise money for Gallaudet University, and held their annual Golf for Gallaudet Tournament in March.



Delta Sigma members participate in the MS Walk at Truman State. Front: Crystal Schooler. Back, left to right: Shannon Curran, Amanda Cox, Yasmine Mogharreban, and Allison Rhomberg.

Delta Upsilon Chapter (Marshall University) members continue the tradition of passing the gavel at the end of each business meeting to allow other members to speak about themselves or other issues. "This gives us a chance to find out what is going on in our sisters' lives," says Chapter Editor Erin Jellots. "Because we're a big chapter, it's hard to keep up with everything." Their favorite meeting place is the dining room, and a recently established corner of the upstairs hall serves as a game area where members can take a study break. One of the chapter's favorite community service projects was teaming with fraternity brothers to take children from low-income families shopping for a day. They bought clothes, shoes, and toys, then enjoyed pizza and an afternoon playing at a local park. "It was hard for us to say goodbye to them at the end of the day," Erin says.



Delta Upsilon member Kim Cella at Wal-Mart with some of the children the chapter "adopted" for a day.

The **Epsilon Chapter** enjoys the courtyard feature of their house, formed by three floors which are connected by balconies. The chapter has organized a miniature golf tournament to benefit speech and hearing, and participated in a trick-or-treat event with local children.

The **Epsilon Epsilon Chapter** (Fresno State University) participated in a local fundraiser for Breast Cancer Awareness month. Out of all the sororities and fraternities who participated, the chapter raised the most money, and received a sign to use for future functions. The chapter plans to use the sign for Dee Zee Bowl, recruitment, and on-campus activities.



Epsilon Epsilon members display the sign they won as the top fundraiser for Breast Cancer Awareness month.

At Central Missouri State University, the **Epsilon Gamma Chapter's** traditions include Senior Send-offs, New Member Appreciation, and Active Appreciation events. This year the chapter began a Senior Wills program where seniors give a Delta Zeta item that is special to them to an active member. A lounge area of the house provides an area for meetings and ceremonies, and a special study room is also available. Members participate in a weekly program at the Speech and Hearing Clinic on campus and baby-sit children there.



Epsilon Gamma members visit a local nursing home on Valentine's Day. From left to right: Audrey Blonien, Tonya Kricensky, Krista Freeman, Ali Sousley, and Sarah Lewark.

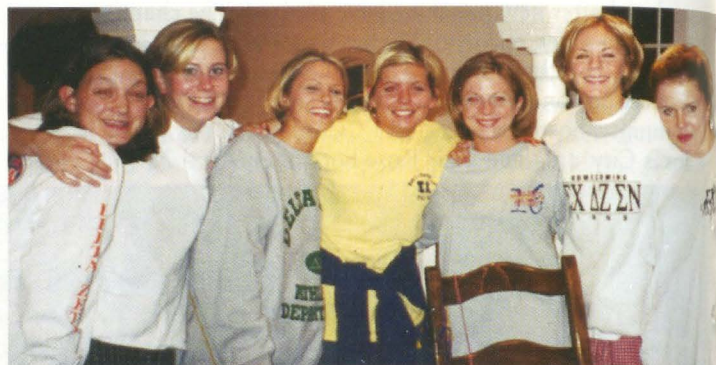
The **Epsilon Iota Chapter** at Fairmont State College uses the Sunshine Jar filled with candy to show their appreciation for a special sister at their meetings. Their chapter room on campus allows them to hold meetings, ceremonies, and participate in workshops. Alumnae visit them at the chapter room, too. The chapter has been researching their history and share information they have learned each week with members.



The Epsilon Iota Chapter celebrates with their new members at their fall formal recruitment event.

The **Epsilon Nu Chapter** (Southwest Missouri State University) is creating new traditions for their members. The Diamond Spring Formal to honor graduating seniors and Parents Weekend Auction, their biggest fundraiser, are two of them. The candle passing and bi-annual sisterhood retreat are traditions they want to pass on to future members. Gathering places at their chapter house include the library for study and a basement which is being carpeted and furnished for meetings. Hill Hall, on campus, is a memorable place for ceremonies. The Big Man on Campus philanthropic event, which the chapter participated in, raised the largest amount of money for the Communication Sciences and

Disorders Department on campus last fall, and will help fund programs and buy supplies to enhance children's learning experiences.



The Epsilon Nu members enjoy the library in their chapter house. Left to right are: Jen Wilferth, Chrissy Bellah, Carrie Sparks, Robyn Muenster, Katelyn Swezy, Sarah Diggs, and Stephanie Rau.

The **Epsilon Pi Chapter** (Henderson State University) sponsors the Reddie Blanket ceremony for senior football players and hosts an Alumnae Tea during homecoming as part of their traditions. New traditions include Kid Stuff, a program established by member Shannon Simmons in 1997, which promotes literacy for children. The chapter also cleans up a local park, visits the elderly, delivers stuffed animals to hospitalized children, and co-hosts a Halloween dance for individuals who are physically and mentally disabled. A chapter room allows members to connect and enjoy each other's company.

The **Epsilon Rho Chapter** (Northwest Missouri State University) enjoys traditions such as "Della and Zella," who are two seniors designated to leave treats and notes welcoming new members at meetings. The Alumnae Christmas party offers a chance to spend time with alumnae. A new tradition is a mission statement conceived by the chapter: "As proud women of Epsilon Rho, we continuously strive for a strong sisterhood through academic excellence, philanthropic endeavors, and individual development. By exemplifying these founding ideals, we shall remain united as successful women of Delta Zeta." The chapter room and the Delta Zeta hallway, where members' rooms are located, provide special gathering places. The chapter always hosts a Christmas party for Head Start children, and participates in walks for multiple sclerosis.

Epsilon Sigma (Wayne State University) members have a Rose Buddy formal, and provide Rose Buddies to new members to guide them in their first few weeks as a Delta Zeta. This chapter gathers in the Student Center for lunch and to meet with other members of Greek organizations. The chapter has embraced learning more about Epsilon Sigma's history, and believes this will unite their chapter within Delta Zeta on their campus and in their community. Members also host an activity night at Barat House, a local facility providing a haven for teenage women who need a nurturing family environment.

"It is good for the girls to interact with healthy role models," says Barat House's Director of Volunteer Programs.



Epsilon Sigma members at their New Member Retreat.

Epsilon Tau Chapter members at Longwood College worked with other students on campus to collect school supplies for Appalachian schools. Teachers had previously tried to collect supplies on their own, with little success, but the combined efforts of Greek organizations and others on campus, using fliers and door-to-door collections, resulted in a successful contribution of many needed items to the schools.

The **Epsilon Theta Chapter** (Clarion University) find that support from their families for the chapter is a welcome tradition. The members cite the friendly atmosphere of their house as the feature that makes all sisters, whether they live there or not, feel welcome. The chapter recently made picture frames for the children in the speech and hearing clinic on campus, and plan a seesaw marathon to raise more money for speech and hearing.

Epsilon Upsilon Chapter (University of Central Oklahoma) members have a Big Sis/Li'l Sis event that has always been traditional for them, and recently enjoyed a sisterhood retreat at a lodge near the school. The chapter excitedly prepares for Greek Week on campus, having won first place last year in the Spring Sing and Greek Week events.



Epsilon Upsilon members gather at their sisterhood retreat. Front row, left to right: Janna Jones, Lacy Walker, Sarah Davis, and Amber Butler. On the stairs, left to right: Andrea Clinger, Whitney Smith, Katie Lee, Rebecca Miller, Jill Devereaux, Melissa Mann, Amber Hefley, and Lacy Lodes.

Gamma Alpha Chapter members at Baldwin Wallace College were commended by the school's Panhellenic and Greek Council for their active participation in recent Panhellenic-sponsored philanthropic events. "Baldwin Wallace is happy to announce that, with the help of your organization, we are able to give back to the community," said Amy Garbacz, Panhellenic and Greek Council Advisor.

The **Gamma Beta Chapter** (University of Connecticut) honors older traditions like Candle Passing, to mark engagements or pinnings. A new tradition is the High Tea Alumnae Event in which alumnae are invited to the chapter house. The chapter house on campus holds many treasures of the past. Founded in 1943, the chapter moved off campus during World War II. The living room, known as the Pink Room, is special to the members because the ritual is held there. Candace Jones, Chapter President, feels the house provides a safe haven of emotional support for sisters. Members join volunteers to participate in Community Service Day, and recently held their Turtle Tug to benefit the speech and hearing impaired.



Gamma Beta Chapter members host alumnae at the High Tea Event.

Gamma Kappa Chapter (Kent State University) members enjoy painting a Greek rock in front of campus and celebrating Big/Little Sister Week. New traditions include "Lip Sync," in which Greeks perform songs and skits and raise money for philanthropy, and ROMP (Rush Our Moms Party), where mothers are invited to the house before formal rush. "Our house is the newest one on campus," reports Chapter Editor Amy Liolios. "It is very pretty and sits on a hill." The chapter participated with other Greek organizations to build a playground and fence at a local elementary school, where they plan to do other volunteer events.

New members of **Gamma Lambda** (San Jose State University) participate in "get to know your sisters" activities and receive pink and green ribbons to signify their commitment to Delta Zeta as part of the chapter's tradition. They also sing songs which have been passed down to the chapter from previous classes. The chapter hosts a recognition banquet as a new tradition to acknowledge the achievements of chapter members, with family and friends in attendance. Gamma Lambda's annual flag football competition, the "Turtle Bowl," raises money for speech and hearing. Members also help at a local convalescent home and a battered women and children's shelter.

At Central Michigan University, the **Gamma Psi Chapter** recently redecorated their chapter house. "It has a welcoming feeling as soon as you walk in the door," says Chapter Editor Amy Siegmund. The chapter meeting room now has a sitting area to provide a homier atmosphere. At Christmas, the chapter bought and collected toys, clothes, and furniture for a family in need, and is working to raise money to give a child the opportunity to go to summer camp.



Gamma Psi members tend the snack bar at their Fall Fundraiser 1999.

Iota Alpha Chapter members (Southwest Texas State University) continued the tradition of their new member retreat by going to a lake house this school year. Big Sisters give their Little Sisters a shirt that every member of their "family" wears. The chapter house is a Victorian style with pillars, a wrap-around porch, and a swing. Members continue to build on the Delta Zeta legacy by providing the right environment for sisterhood in their house.



The Iota Alpha Chapter with alumnae on Alumnae Weekend 1999.

The **Iota Delta Chapter's** (Edinboro University) Senior Sister Send-off is a semi-formal party where members say good-bye to their senior sisters. Rose and Turtle Buddies encourage involvement among the members. The chapter enjoys preserving its original traditions and in teaching members about Delta Zeta's history. Meetings are held in the University Center conference room, and more informal gatherings are hosted at a nearby parent's house. The chapter works on highway clean-up projects and fundraising events for the Delta Zeta Foundation. Alumnae enjoy reuniting and meeting new members at their homecoming events in the fall.

The **Iota Psi Chapter** (University of Texas/Arlington) continues a long tradition of displaying their motto, "Faith, Hope, and Love," on little wooden hearts around their chapter house. New traditions include gathering every Sunday to attend a local, student-centered church. The largest chapter house on campus, the Iota Psi house is colonial style and was recently remodeled inside. The parlor is an elegantly decorated room that is popular for visiting, studying, or enjoying some quiet time. Their Strike Night bowling tournament raises funds for speech and hearing. Enough money was raised through this event recently to contribute to both the Foundation and local philanthropy.

Iota Rho Chapter (West Chester University) members have Turtle Pals, new members who exchange gifts with each other. The Rose Box contains messages and poems which are shared at chapter meetings. The chapter also raised money for speech and hearing with a recent 24-hour Ping-Pong-a-thon.

New traditions in the **Kappa Chapter** at the University of Washington include awarding an outstanding chapter executive or officer who receives the "Officer Superstar" award each week. The third floor of the chapter house has a lounge where many members relax and socialize. The chapter participates in the annual Miss Greek competition to raise money for the Fred Hutchison Cancer Research Center in Seattle.

Kappa Alpha Chapter (Nicholls State University) members dress up for chapter meetings and invite the football team to ride their float in the homecoming parade as part of their traditions. Members usually gather in front of the Student Union between classes. The chapter volunteers for Bingo at a local retirement home, and runs in the LaFourche Parish Relay for Life to benefit cancer research.



Kappa Alpha's new members: First row: Kristi Geist, Lee Gravois, Erin Terracina, and Jeanne Lafont. Second row: Kelsie Angelle, Dayna Roux, Tara Creel, Kellie Fletcher, and Amy Fuqua. Third row: Jamie Boudreaux, Stephanie Ledet, Nicole Sagastume, Laura Vedros, Erin Dearman, and Carly Spaulding.

The **Kappa Xi Chapter** (Duquesne University) hosts a mother-daughter tea and a father-daughter day as a tradition to get parents involved with Delta Zeta. The chapter has added new traditions such as Barn Bash, a sisterhood event that takes place in a barn decorated with barrels of hay. To make the event authentic, members wear overalls, flannel shirts, and cowboy hats. The chapter has a wing of their residence hall which is special to them. The main lobby boasts comfortable green sofas and is a favorite gathering place. Kappa Xi works with the Animal Rescue League to help find loving homes for abandoned animals. They also assist the agency with fundraising and administrative efforts.

The **Lambda Kappa Chapter** (University of Alabama/Huntsville) alumnae and collegians have a strong bond. Alumnae support and assistance is always given during recruitment. The chapter hosts an alumnae picnic every summer to reconnect and let new members meet their alumnae sisters. "Rose Petals" is a favorite tradition where notes of appreciation are read at the end of meetings. A floor in the university housing facility serves as home for the chapter with a chapter room, open living area, kitchen, and office area. Members visited a nursing home on Valentine's Day to entertain the residents with songs, and hosted a skating party for the Boys and Girls Clubs of Huntsville.

Lambda Lambda (The College of New Jersey) members are working on a philanthropic project for AIDS awareness. They also do highway clean up in their county, have participated in a walk-a-thon for Breast Cancer Awareness, contributed time to the Special Olympics, and hosted a Halloween party for underprivileged children.

The **Lambda Pi Chapter** (Georgia College and State University) asks new members to donate something to their chapter house. This has resulted in years of wonderful memories in a house that always feels like home. The basement of the house is a "time capsule" of sorts, where sisters sign the brick walls and add quotes and special Delta Zeta memories. The chapter also participated in AIDS Awareness Week and the Relay for Life tournament.

The **Lambda Theta Chapter** (Michigan Tech University) enjoys traditions such as the Color Tour, a day spent outdoors in the fall, and Senior Gifts, a potluck dinner. The chapter took first place in snow events at the Winter Carnival held at the school. The chapter house has two stained glass windows as its focal point, and members meet at the Lily Pad, an outdoor area used when the weather is warm. Their successful bake sale held this winter raised money for Gallaudet University.



Lambda Theta members play broomball at the Winter Carnival. Back row, left to right: Brianne Graham, Shauna Ross, and Cassie Zelesnikar. Middle: Abbey Harbert, Julie Varichak, Kirsten Rollay, and Allyson Morehouse. Front: Jamie Wagner.

The **Lambda Xi Chapter** (Texas A&M University) celebrates recruitment success with a trip to a nearby ranch to enjoy food and each other's company. The Senior Honor Dinner is another tradition when members share how graduating seniors have inspired them. The chapter has Chapter Dinners once a month in their house. The chapter house has a fenced courtyard which is a favorite gathering spot. The chapter's philanthropy project, a 5K run, was their most successful to date, with proceeds going to the Delta Zeta Foundation and the Houston Ear Research Foundation.



Lambda Xi members enjoy many traditions together.

The **Omicron Chapter** at the University of Pittsburgh recently redecorated their suite with the help of the chapter house corp and dedicated alumnae. Carol Johnson Miskell ΓK and Jane Simmons Riccardi ΓΦ were instrumental in helping create a comfortable atmosphere to welcome potential new members and make active members feel at home. On Founders Day, the chapter held their official ribbon cutting ceremony to christen the newly decorated suite. The chapter's first annual basketball tournament benefited Gallaudet University this school year.



Alumnae and collegians of the Omicron Chapter attend the ribbon cutting ceremony to celebrate the redecorated Delta Zeta suite.

The **Omicron Alpha Chapter** (St. Mary's University) has Mother/Daughter and Father/Daughter days as part of their tradition to share their love of Delta Zeta with their parents. This year's Rose Ball Formal was especially meaningful as the chapter celebrates its tenth year on campus. A Christmas party with food and a gift exchange was the highlight of the holiday season for the chapter. Afterwards, a chapter picture was taken and made into Christmas cards which were sent to prospective members. The Quad, a courtyard on campus, serves as a gathering place. A philanthropy project held during recruitment resulted in hand-made craft items donated to Sunshine Cottage, a local haven for speech and hearing impaired children.



Omicron Alpha members enjoy Rudy's BBQ, a traditional place to gather for good food.

Omicron Delta (Bryant College) new member classes present a gift (decorated lamps, mirrors, etc.) to the chapter house. A tree on campus holds a plaque dedicated to sister Kristen Hatch, who was the victim of a drunk driver. The chapter plants flowers around the tree and holds a memorial service on Kristen's birthday. A new tradition is the chapter's web site, located at www.bryant.edu/~dz/. The chapter is very active in the Special Olympics and recently participated in the Jump-Rope-a-thon to raise funds for Sojourner House, a haven for people in abusive relationships.

During sisterhood retreats, the **Omicron Epsilon Chapter** (Arkansas State University) discusses events in member lives during the Turtle Pass. The sorority suite on campus provides a place to watch movies, hold meetings, study, and enjoy each other's company. These members build on the Delta Zeta legacy by sharing with each other. At Christmas, the chapter bought presents for children at Day Clinic and raised money to benefit Gallaudet University.

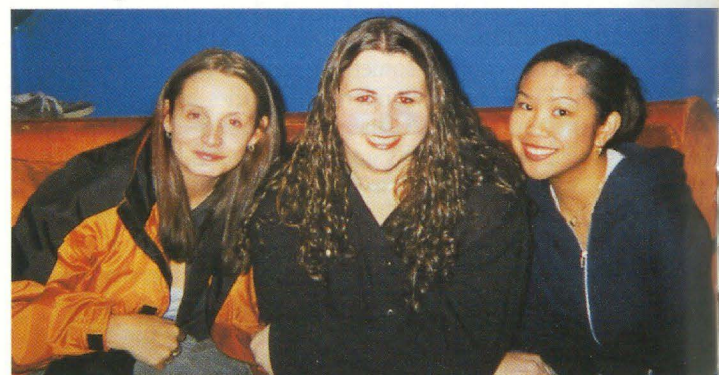
The **Omicron Kappa Chapter's** most coveted tradition is the Senior Send-off, a party given for graduating members of the chapter each spring to show them how much they have meant to their sisters. A new tradition, "Sister of the Week," is awarded to a member who has done something special for the chapter. The chapter also participated in the Food for the Hungry program for families in need of assistance.

Omicron Lambda (North Carolina State University) members pass special glasses or vases down to their Little Sisters. The chapter loves the chapter house they recently took residence in, and believes the closeness it provides has strengthened their chapter as a whole. The chapter makes gift bags for children at the North Carolina School for the Deaf, and the new member class had a successful fundraiser for Gallaudet University.



Omicron Lambda Chapter members Jessica Dupree (Vice President-Programs), Kelly Wozniak, Katy Lehman (Treasurer), and Cara Wells (President), at the Panhellenic basketball game to support women's basketball and Coach Kay Yow ZA at NCSU.

The **Omicron Nu Chapter** at the University of Windsor (Canada) participated in an AIDS walk to raise funds for research. The chapter also has its annual formal at the beginning of each April.



Omicron Nu members walk to help find a cure for AIDS. Left to right are Rebecca Stuart (Vice President-Programs), Stephanie Labbate, and Anne Marie Penaflor.

Omicron Omicron Chapter members at Lindenwood College are planning a new tradition called An Evening of Diamonds and Pearls, a mother-daughter dinner which will combine stories and songs. The chapter is looking forward to their new chapter room which will be part of two new dorms that the school is constructing. Members also learn about Delta Zeta history with "Fun Fact Quizzes." A Christmas party at St. Joseph's Institute for the Speech and Hearing Impaired provided the chapter an opportunity to bring Christmas cookies and holiday spirit to children at the facility.

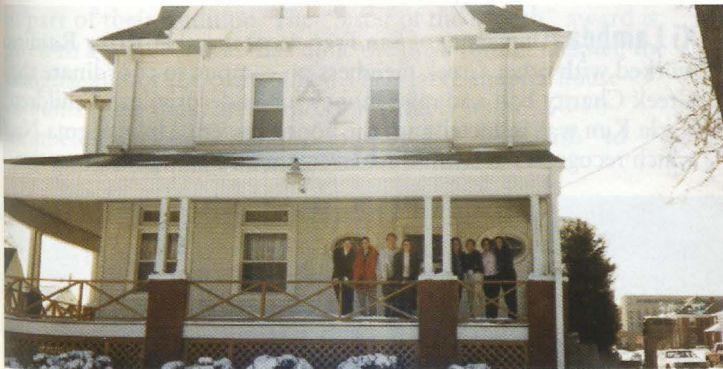
At Eureka College, the **Pi Chapter** has two traditions that keep growing. They do activities with the Girl Scout Brownie Troop, and participate in the annual Memory Walk to support Alzheimer's research. Their chapter house is small, but provides the privacy needed for study. A new area is the Girl Scout Lounge in the basement of the house, which provides a place for the troop to meet. The chapter is ranked first in combined GPA among all six of the Greek organizations on campus.

The **Sigma Chapter** at Louisiana State University honors the memory of past members by remembering the chapter's traditions. The chapter's new traditions include the "Sunshine Award," given to a member who has gone out of her way to help her sisters, and adopting a family at Christmas time to help buy presents for their children. The Sigma house has a balcony that is used for many activities. The house features an original piano which has been there since the house was built in 1965, and a spiral staircase. A newly constructed multi-purpose chapter room was unveiled on April 16, 2000. The chapter received the Samaritan's Award from a local church for their philanthropic efforts to help underprivileged children.



Balcony of Sigma House

The **Theta Eta Chapter** at Creighton University enjoys TV night on Thursdays at their house, and activities such as DZ Days to introduce new members to initiated members. The house, near campus and other Greek houses, recently had new windows and siding installed. The chapter co-sponsored the "Run for the Heart" race with Sigma Phi Epsilon, and enjoyed visiting a local art museum with alumnae from their area.



Theta Eta Chapter members on the porch of their house.

The **Theta Nu Chapter** (Moorhead State University) enjoy an annual trip to a nearby lake as one of their traditions. The chapter has occupied their house for 30 years, which is located across the street from the academic buildings on campus. Members volunteered at the Special Olympics Bowl, and celebrate spring with their annual Killarney Ball.

One of the **Theta Omega Chapter's** (Barton College) traditions is the gift of a charm from Big Sisters for Little Sisters' lavalieres. The chapter uses a suite in Wenger Dorm as a gathering place. Philanthropic work has included raising money and collecting clothing for flood victims in North Carolina. Members enjoy the Rose Ball, which celebrated the chapter's 35th anniversary this year and is held in the spring.



Theta Omega Chapter members gather with the Easter Bunny before the egg hunt at Eastern North Carolina School for the Deaf.

The **Theta Phi Chapter** at Old Dominion University faces the challenge of recruiting new members at the largely commuter campus. One tradition members have instituted is to drive to the house of a person to whom they are extending a bid, where they sing while holding pink roses. Another tradition is to eat lunch twice a week with the other Greek organizations on campus. This chapter rallied to collect books to donate to a historic library in Franklin, Virginia, which suffered hurricane damage. The chapter connects with alumnae through their Progressive Dinner event, which moves to different houses throughout the evening to sample different courses.

Theta Psi members at Ashland University designate Rose Buddies and Heart Sisters as part of their tradition. Each week, members of the chapter plan an activity with new members to get to know them better. The chapter has a suite for informal gatherings. In philanthropic efforts, they raise money for Gallaudet and volunteer weekly in local soup kitchens. The chapter celebrated their 35th anniversary at the university with a formal in April, to which alumnae were cordially invited.



Theta Psi new members after the new member pinning ceremony.

The **Theta Theta Chapter** at DePaul University treasures all the traditions which have been passed down to them. Little Sisters who receive T-shirts with their Big Sisters' names, and the Friends of the Family BBQ, where sisters bring non-Greek friends, are two new traditions. The chapter joined other Greek organizations for Greeks and Ghouls for Schools at Halloween, to provide a safe trick-or-treat alternative for children. A large banquet dinner for all Delta Zeta alumnae in their area was held at the end of April.



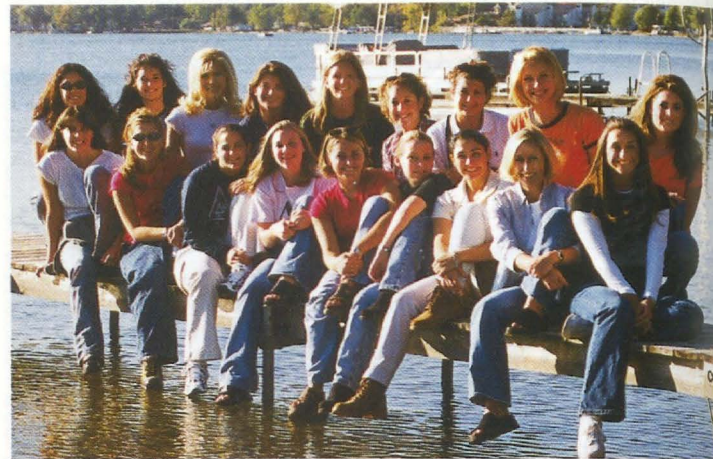
Theta Theta Chapter members learn sign language during a sisterhood retreat.

At Radford University, **Xi Delta** members send notes of appreciation to each other via the "Roses Box," and other traditions include Delta Zeta Spirit Week, Family Appreciation Day, and Pink and Green Day. Members raised money for Toys for Tots during the Marine Mud Run.



Xi Delta members pictured are: Brooke Cunningham, Brigid Darling, Melissa Westmoreland, Becky Eubank, Danielle Mendalka, Susan Shifflett, Laura Lemon, Leah Mills, Alison Steele, Michelle Pagelsen, Eryne Mirizio, Maryse McNally, Danielle Young, Alyson Barnette, Leigh Anne Lyle, Jen Aljoe, Whitney Rea, Sarah Vogler.

The **Xi Eta Chapter's** (Northwood University) traditions include the Senior Picnic and Rose Buddy Hunt. Recently the chapter hosted the Delta Zeta auction and raised money for Gallaudet University. They also won first place during Winter Week at their school.



The Xi Eta Chapter's sisterhood retreat. Bottom row, left to right: Lori Lindensmith, Jamie Reif, Angela Santa Lucia, Danielle Walls, Laura Kamp, Breanna Pettinga, Cecilia Burgoa, Randi O'Mara, and Melissa Albrecht. Top row: Ann Maria Garrido, Kim Coventry, Stefanie Bronner, Carmen Stroia, Brooke Olney, Courtney Donaldson, Heather Whiting, Aubry Stack, and Alexis Logan.

Xi Iota Chapter (Muhlenberg College) members have "Secret Buddies," to whom they send treats and anonymous notes until their identities are revealed with a small gift. A new tradition is a small mural that members are painting in their chapter house, and they hope that future members will continue to add to it in the coming years. The Xi Iota house is a three-story structure with a finished basement, and is close to campus. Members enjoy the homey atmosphere it provides. The chapter hosted a holiday party for children from low-income families, and helps in a literary program for a local elementary school.

Xi Lambda (University of San Francisco) member Roxy Ramirez worked with other Greek members on campus to coordinate the Greek Charity Ball and raise money for underprivileged children. Karla Kim was inducted into the honor society Alpha Sigma Nu, which recognizes academic achievement and community service.

The **Xi Nu Chapter** (Tarleton State University) gathers at other sisters' houses to strengthen their sisterhood. At Halloween, the chapter made goodie bags for children at a local orphanage, and donated canned goods to a local charity.

The **Xi Omicron Chapter** stands out on the Loyola Marymount University campus with representatives in Student Government, Resident Advisors, and Freshman Orientation Leaders. The chapter participates in fundraising activities with other Greek groups, and competed in "La Fiesta Grande" to raise money for the House Ear Institute. They participated in the Adopt-a-Family program at Christmas to bring gifts and food to a family in the Los Angeles community, and hosted a course in self-defense for women.

The **Xi Theta Chapter** is involved in holiday celebrations with the other Greek organizations on their campus at the University of North Carolina/Wilmington. Members also revived the chapter's Golf Event Tradition to benefit Hearing Sounds of Success, a local hearing aid bank for those who are unable to afford hearing aids. Xi Theta has also begun an environmental program to clean up their community.

The **Xi Upsilon Chapter** (Northeastern University) has been educating members on the challenges faced by the hearing-impaired population, and members are working with the Northwestern University Deaf Awareness Week Committee to plan a philanthropic event.

Zeta Epsilon Chapter (California University of Pennsylvania) traditions include house dinners and decorating parties to deck the house for Christmas. The meeting room holds the Delta Zeta crest and all of the awards that the chapter has won. At meetings, both chapter and national history are discussed. Sisters are also planning a workshop to teach sign language to other members.

The **Zeta Kappa Chapter** at Ohio Northern University co-sponsored a 1940s-style dance at a local retirement home, and had a great time meeting the residents. Members also had a blood drive in conjunction with the American Red Cross. "The projects were a great way for sisters to come together and help those in need," says Chapter Editor Dwan Preston.

Zeta Phi Chapter (Slippery Rock University) members present a poem, song, or gift to the Sorority upon initiation as one of their traditions. In 1996, members established their chapter house at Fairview Hall. It has a kitchen, chapter room, and rooms for all of the members. Sisters enjoy the comfortable sofa and entertainment system for relaxation. The chapter room is especially meaningful, often the site of senior send-off and recognition dinners.

The **Zeta Pi Chapter** (University of Georgia) writes personal notes to welcome new members to the chapter after initiation as part of their tradition. The "Sister of the Month" award is given to a member who has done the most for her chapter, the campus, and/or the community. Their large chapter house contains three main areas and comfortably houses 60-70 members each year. They also sponsored a "Wingbash" to raise money for philanthropy.



Members of the Zeta Pi Chapter at their fundraising event. Left to right: Christy Serio, Becca Wessellink, Hartley Price, Sarah Hagenbush, and Lauren Trainer.

Each family within the **Zeta Psi Chapter** (Stephen F. Austin State University) passes down patterns and colors to their Little Sisters as part of their tradition. New member classes receive shirts and tote bags designed just for their class. The sunroom of the chapter house has sofas, a TV, and an open, airy feel. Members visit the elderly at a retirement home regularly, and this spring hosted an open house for high school students touring the campus.

The **Zeta Rho Chapter** at William Jewell College has many traditions such as "Pass the Candle" for significant events in member's lives, and an annual barn dance called the "Shindig." Upperclassmen plan a night to serenade fraternities on campus. New traditions include a sisterhood-broomball night, and awards for excellence in academics. The chapter shares quarters with three other sororities on campus in a dorm, and enjoy the interfraternal spirit the setting affords. The chapter room is the setting for slumber parties, Turtle talks, and other social events. Zeta Rho proudly holds the highest GPA for any Greek organization on campus, and raises funds for Hillcrest Ministries, which provides shelter for families who need assistance.



Zeta Rho members at their annual "Shindig" dance.

At Lenoir-Rhyne College, **Zeta Xi Chapter** Big Sisters treat new members to breakfast before lamplighting ceremonies. The chapter lives in a residence hall, which they recently redecorated with the help of a sister's mother who is an interior designer. Members recently raised money for the March of Dimes at a charity dinner.



Members of the Zeta Xi Chapter await the arrival of guests at the March of Dimes charity dinner.

Send all notices of address changes and member deaths to:
Delta Zeta National Headquarters
202 East Church Street
Oxford, OH 45056
Phone: 513/523-7597



STERLING SILVER JEWELRY

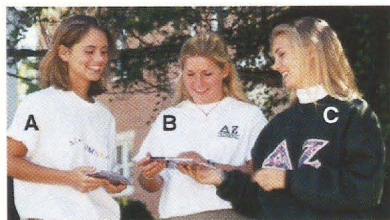
- | | | |
|----|---|---------|
| A. | Engraved DZ Necklace, DVC7 | \$29.00 |
| B. | 18" Chain w/Letters, DVC2 | \$18.00 |
| C. | 18" Chain w/Toggle, Turtle and Letters, DVC4 | \$27.00 |
| D. | Cube Necklace, DVCN | \$25.00 |
| E. | Square Illusion Necklace, HSIS | \$16.00 |
| F. | Chain w/DZ Floaters, DVC8 | \$18.00 |
| G. | Round Illusion Necklace, HSIR | \$16.00 |
| H. | Turtle Charm on 18" Chain, DVC1 | \$16.00 |
| I. | Square DZ Pendant w/Chain, HS9 | \$35.00 |
| J. | Filigree Necklace w/Crest on 18" Chain, DVC5 | \$37.00 |
| | <i>Also available in Gold, DVC6</i> | \$38.00 |
| K. | 18" Chain w/Toggle, Turtle and Rose, DVC3 | \$27.00 |
| L. | DZ Pin, DVP1 | \$10.00 |
| M. | Turtle Bracelet, DVLB | \$34.00 |



SPORTSWEAR

(M, L, XL)

- A. "Performance" T-Shirt,
A3 \$12.00
- B. "Tommy" T-Shirt,
A2 \$12.00
- C. DZ Tear Away Pant Lined,
BTWL \$49.00
- D. Navy Cotton Shorts,
TRC \$22.00

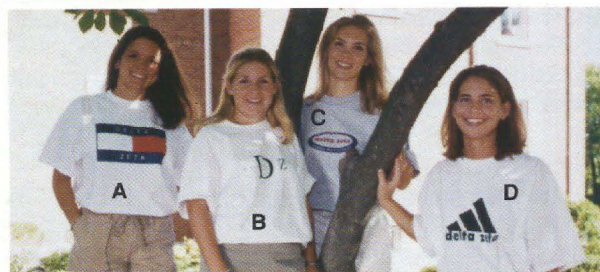


ALUMNAE SHIRTS (L,XL)

- | | |
|--|---------|
| A. Alumna "Wave" T-Shirt w/Embroidered Letters,
TRC26 | \$22.00 |
| B. White T-Shirt w/Small Embroidered Alumna,
CSH9 | \$21.00 |
| C. Green Sweatshirt w/Rose and Green Letters,
CSW10 | \$4.00 |

SHIPPING & HANDLING CHARGE:

If your order totals	Add
\$.00 - 5.00	\$3.00
\$ 5.01 - 25.00	\$6.00
\$25.01 - 50.00	\$7.00
\$50.01 - 75.00	\$8.00
\$75.01 - 100.00	\$9.00
Each additional \$100.00	\$9.00



HATS

- Khaki Bucket Cap, **TRCH** \$20.00
Light Khaki Baseball Cap, **EBC** ... \$13.00

All merchandise is
unconditionally
guaranteed. All prices
in U.S. dollars.
Prices subject to change
without notice.



Delta Zeta DeZigns, 202 East Church Street,
Oxford, Ohio 45056

CALL IN YOUR ORDER TOLL FREE
1-800-886-PINK
OR FAX - 1-513-523-1921
www.deltazeta.org

TO BE SHIPPED TO:

Name _____

Address

City, State

Phone No. ()

Date _____

[illegible]

ITEM SUB TOTAL

IN OHIO ADD 6 1/2% SALES TAX

SHIPPING AND HANDLING

TOTAL AMOUNT OF ORDER \$

A check for the total amount of the order (including shipping and handling charges) should accompany this order. Make checks payable to Delta Zeta Delta and send to above address. Please do not send cash. All returned checks are subject to an \$20.00 service charge. PLEASE ALLOW THREE (3) WEEKS FOR DELIVERY.

We Honor: ☐ MasterCard ☐ Visa ☐ Discover Exp. Date ____/____/____

Credit Card Signature Required

[illegible]

Credit Card Number