

# THE LAMP

OF  
DELTA  
ZETA

SPRING 1995





# I Am A Delta Zeta!



In a recent communique from Patricia Tector, SPECTRUM Alumnae Chairman, she related the following story: "While at an office supply place making copies of some materials which included items with some bold letters saying 'Delta Zeta' a woman approached me and said that she had been a Delta Zeta at such and such university. In the course of the conversation I told her that I am a Delta Zeta and wondered why she spoke of sorority life in the past tense. Her main reason was that she had not done anything with or for Delta Zeta since leaving school. I talked about some of the things that were happening locally with Delta Zeta in the alumnae chapter and also in the collegiate chapter which the alumnae supported. We talked about some changes in Delta Zeta policies and I also gave her specific information about upcoming alumnae and collegiate activities. It was with great delight that I saw her at the next alumnae meeting and an even greater delight that she has continued to be involved."

Shortly after that, I also received the Twin Cities Alumnae Chapter Newsletter, Province XI's PAD newsletter and the Alumnae Panhellenic Newsletter, all of which heartily encouraged recognition of and pride in the fact that your sorority membership indeed

continues for life. We all took those same vows, but how can we manage to keep them? How can one member make a difference for Delta Zeta?

YOU can make a difference because we offer many opportunities for continued involvement in our sisterhood. Upon initiation each member automatically becomes a member of the chapter association of her own particular chapter, and is, regardless of where she lives. Perhaps your chapter association has had a reunion of the members of your chapter, distributes a newsletter about your chapter, or some of you have served on the chapter's House Corporation Board. Additionally, our many alumnae chapters and clubs, located throughout the country, offer opportunities for educational, interesting and fun programs, help local collegiate chapters share sisterhood and community service. Why not attend the next meeting in your area, and bring a sister; you'll be very glad you did.

Our collegiate chapters are always in need of advisors in the areas of rush, new member education, finances, etc., as well as a College Chapter Director, a more direct, but especially rewarding responsibility. Offer to help them and feel young again!

Qualified individuals to serve Delta Zeta as province or international officers, committee chairs or members are constantly being sought among our active alumnae. Submit your own name for service, or recommend a sister.

Yearly at rush the demand continues for voluntary references for women who are planning to attend a college where Delta Zeta is located. Why not recommend a special young woman we'd love as a sister?

The Delta Zeta Foundation requires your financial support, too. Donations fund scholarships, help maintain our Historical Museum in Oxford, Ohio, and aid in our leadership training and many philanthropic efforts, including Gallaudet University. Support of our magazine program directly benefits the scholarship program, and information and forms for ordering are available from any alumnae chapter or Province Alumnae Director. Also, using a Delta Zeta Visa card and/or ordering Delta Zeta items from DZ Designs returns monies

to our sorority to fund projects across the country. Every purchase makes a difference.

By sharing your business or career expertise with another Delta Zeta, you help open doors for your sister in her own job, make a move to a new area more comfortable for her and provide her help on resume writing and tips for successful career dressing. This networking is crucial for our graduating senior members.

Our New Member Education program offers multiple ways in which an alumna can involve herself (and her DZ friends) with Delta Zeta collegians, including membership in a Triad. This one-to-one contact can truly bring home the idea of lifetime membership.

Have you attended a Founders Day event, Province Weekend or Convention lately? You'll see many of your great sisters there and have a wonderful time sharing and learning. Convention in Rancho Mirage this summer is a great place to have your own special reunion, so we hope to see you there.

Early this year we instituted a toll free alumnae services phone line at our Headquarters. Just call 1-800-6-ALUMNA to get a variety of questions answered about alumnae chapter activities and locations, receive information on starting an alumnae club or chapter, furnish a name or address change, offer help to collegiate chapters, or learn of current DZ projects and MORE. It's just another way in which we hope to help you stay "active."

We all have daily opportunities to show our Greek pride and especially our lifetime membership in Delta Zeta by wearing that DZ t-shirt, by drinking coffee from a DZ mug, by announcing proudly to all that "I AM A DELTA ZETA." I hope that you will enjoy this special issue of The LAMP in which we share developments in alumnae programming and highlight some alumnae achievers, history and special features. See you soon at a DZ event.

In the flame,

*Phyllis B. Ross*

Phyllis Berens Ross  
Vice President - Alumnae



Published since December, 1910 by  
**Delta Zeta Sorority**  
 Founded at Miami University,  
 Oxford, Ohio  
 October 24, 1902



#### Members

Ma Lloyd Hayes, 1880-1962  
 Mary Collins Galbraith, 1879-1963  
 Anna Keen Davis, 1884-1949  
 Anna Bishop Coleman, 1881-1959  
 Isabelle Minton Hageman, 1880-1929  
 Irene Simmons Friedline, 1879-1932

#### The Order of the Laurel

Irene Caroline Boughton, 1904-1988  
 Grace Mason Lundy, 1893-1993  
 Elizabeth Coulter Stephenson, 1881-1939  
 Myrtle Graeter Hinkley, 1893-1987

#### Editor

Steven Moss McKeeman  
 17 South 74th East Avenue  
 Tulsa, Oklahoma 74145

#### Chapter Editor

Shane Jones Skelton

#### THE LAMP

The Lamp of Delta Zeta, (ISSN #0887-2554)  
 Official magazine of the sorority, is published  
 quarterly by the Delta Zeta Sorority, 202 East  
 Church Street, Oxford, OH 45056. Second  
 class postage paid at Oxford, OH and addi-  
 tional mailing offices. POSTMASTER: Send  
 address changes to Delta Zeta Sorority, 202  
 East Church Street, Oxford, Oh 45056.  
 Subscriptions: \$15.00 for three years; single  
 copy \$1.00. Address correction requested.  
 Printed in USA.

Send all editorial material to the Editor,  
 Steven Moss McKeeman, 5517 S. 74th E.  
 Ave., Tulsa, OK 74145. Send all matters of  
 business nature to Delta Zeta International  
 Headquarters, Oxford, OH.

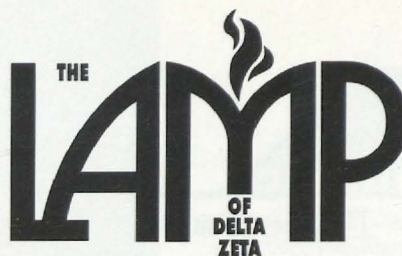
Send all contributions for Gallaudet University,  
 House Ear Institute, the National Historical  
 Museum, Andriese Education Scholarships,  
 and other philanthropies through the Delta  
 Foundation, in care of International  
 Headquarters, 202 East Church St., Oxford,  
 OH 45056.

#### Member

National Panhellenic Conference



College Fraternity Editors Association



Volume 84, Number 1

Spring 1995

## Contents

*A Lifetime of Sisterhood ... Our Mergings*

10

*Alumnae Chapter History*

12

*Alumnae Initiation in Delta Zeta*

13

*Among Alumnae Achievers*

14

*Delta Zeta's Career Connection*

21

*Visions — An Eye on The Future*

22

*Relationship Violence*

24

*Convention*

40

## Departments

<i>ALUMNAE NEWS</i> .....	2
<i>ALUMNAE CHAPTERS WRITE</i> .....	6
<i>FOCUS ON HEALTH AND FITNESS</i> .....	23
<i>THE DELTA ZETA DIRECTORY</i> .....	26
<i>DELTA ZETA ON CAMPUS</i> .....	28
<i>FOUNDATION</i> .....	39
<i>FLAME ETERNAL</i> .....	43

#### About the Cover

*LeAnn Danner Eisenreich, Central Missouri - EF, finished second in  
 classic women's figures at the United States Roller Skating Championships.  
 Her story and that of other alumnae achievers starts on page 14*



## Developments from Your Alumnae Committees

**A**lumnae Committee Coordinator *Elsie Wheeler McTee, University of Texas - AT* oversees seven alumnae committees and acts as a liaison between the International Vice President of Alumnae and the chairmen. She assists the chairmen in setting goals, meeting deadlines, and establishing priorities for committee work, then monitors progress and provides guidance to help achieve those goals. She keeps the IVPA informed about committee activities and provides her with written updates before Council meetings.

By encouraging cooperation between committees and keeping all chairmen informed of other committee projects, she prevents duplication of effort. She encourages the chairmen to share ideas which will help the Province Alumnae Directors and alumnae by contributing to the quarterly *Delta Zeta Alumnae "Notepad"* which is published by the IVPA. The coordinator also assists with PAD leadership conferences and alumnae education and activities at convention.

### Alumnae-Collegiate Relations

Chairman Linda Bruggemann Seymour, California State University/Los Angeles - QR, sent a questionnaire to each alumnae and collegiate chapter and is using the information gained from these forms to help with any problems which may exist and to offer encouragement.

This is the first time that forms from alumnae and collegians have been compared, and it was discovered that sometimes the alumnae and collegians "speak a different language." The committee's goal

is to bridge this gap in communication and encourage more contact between alumnae and collegians. A list of activities which could be shared by both groups and ways in which the alumnae could interact with the collegians was compiled for PADs and alumnae presidents.

### Alumnae Recruitment

A tri-fold brochure to educate seniors and new graduates about alumnae life was developed by Chairman Sara Rosier Bush, Louisiana State University - Σ, and her committee members. This is included in a much larger packet of alumnae information which is distributed to graduating seniors by the CCD, chapter president, PCD or PAD. During the development of this project the 1-800-6-ALUMNA number was born. Any alumna can use this toll-free number to learn about alumnae chapters, LAMP subscriptions, or general alumnae information.

The possibility of establishing a young group within alumnae chapters for socializing and networking was studied, presented and implemented. See pages 4 & 5 of this issue to learn about Killarney Klubs, another facet of Delta Zeta alumnae membership.

A membership card was designed and has been printed and distributed so that dues-paying alumnae will have tangible evidence of their membership.

Detailed instructions on how to conduct a phon-a-thon and a listing of ideas, "How To Attract New Members," were written and distributed to chapters and clubs for use as alumnae recruitment tools. An "Alumnae Recruitment Workshop" was also developed to give additional ways in which to

encourage the recruitment of prospective members. Committee members are currently working on an alumnae recruitment guidebook to assist alums.

### Alumnae Membership

Chairman Janice Jelks Cox, University of Southwestern Louisiana - ΔK, and committee members have developed educational capsules to help Delta Zetas be "good citizens" by doing their share to preserve our environment. It is hoped these capsules will be used in conjunction with Delta Zeta's program focus on health and fitness. The capsules, "Doing Our Part for Recycling ... Delta Zetas Can Make a Difference" and "Delta Zeta Greens: What We Should Know About Household Products" were distributed in the fall mailout.

Another charge to this committee was the review of Delta Zeta's alumnae initiative policy. To see how Delta Zeta's procedure compared to other NPC groups, the committee reviewed the results of a survey conducted by another sorority and learned that Delta Zeta's practice is similar to the policies of many other NPC groups.

(See a related article on alumnae initiatives in this issue on page 13.)

At the request of Council, the committee is currently writing guidelines for an alumnae membership tracking system. Having designated alumna from a particular college chapter keep up with that chapter alumnae and their addresses is a concept in its evolutionary stages. The committee hopes to have such a permanent alumnae secretary program developed for presentation to Council later this year.





Alumnae committee members are pictured with Vice President of Alumnae Phyllis Ross at last summer's leadership conference. Back row: Philanthropy Chairman Ann Booth, Phyllis Ross. Second row: Julie Hauser, Elsie McTee, Patricia Tector, Sara Bush. Front row: Meryl Lin McKean, Janice Cox. Not pictured: Linda Seymour and Diane Skelton.

## Newsletter

"An effective newsletter is the key to keeping alumnae informed and active... whether it's published by a collegiate chapter, house corporation or alumnae chapter," says Newsletter Chairman Diane Jones Skelton, Southern Mississippi - EM, who is chairman for both collegians and alumnae.

This biennium the focus has been on assisting newsletter editors to move into the information-age while adhering to limited chapter budgets. The fall mailing included a new guide for editors (the first revision since 1981). The guide provides general tips for editors with specific advice on computer desktop publishing, budgets, subscription rates, cost-effective postage rates and mailing lists. The chairman and her assistant have created computer discs cataloging Delta Zeta clip-art as well as cleaner, updated paste-up art and custom sorority designs.

## Programs

This committee, chaired by Meryl Lin McKean, Central Missouri State University - EF, is devoted to helping alumnae chapters present both informative and entertaining programs for their members. The focus is on health and fitness in this biennium. A program idea list and an accompanying list of health and fitness-related organizations that can provide resource materials and speakers were prepared and distributed. A regular feature on the focus subject has been added to each issue of *The LAMP*.

Materials which will assist chapters in exploring arts and literature in the next biennium are currently being prepared. If you know a Delta Zeta alumna who is an achiever in the area of art or literature, write to Meryl Lin McKean, 8301 Sagamore Road, Leawood, KS 66206.

## SPECTRUM

This committee, under the leadership of Patricia Menendez Tector, University of Detroit - EΦ, is responsible for the development and implementation of an educational program which emphasizes the lifetime involvement by alumnae in the programs of Delta Zeta. Also, this educational program would enhance, as well as continue, the programs developed through SPECTRUM for new members and initiates.

Three workshops were developed by this committee: SPECTRUM, Triads and "Delta Zeta is Lifetime." A notebook "Lifetime of Sisterhood," is being prepared to provide a continuing resource for information.

SPECTRUM, as our total membership education program is titled, seeks to offer programming to improve the quality of membership throughout each facet of the Delta Zeta experience. A very important part of SPECTRUM is to promote the interaction of new members, initiates and alumnae.

Triads are comprised of three Delta Zeta Sisters: a new member, initiate and alumna (or senior member if enough alumnae are not available) for continual interaction and participation in academics, activities, philanthropy, etc., during each term. By meeting, socializing and working with an

alumna, each new member will have the opportunity to see firsthand that Delta Zeta does not stop when she leaves school and to understand the true meaning of "Delta Zeta is Lifetime."

The "Delta Zeta is Lifetime" workshop is based on a loyalty theme and presents a variety of levels of opportunity for involvement in Delta Zeta.

## Ways and Means

Ways and Means Chairman Julie Hauser, University of Wisconsin/Eau Claire - EΩ, used reports filed by both alumnae and collegiate chapters to identify successful ways and means projects. These ideas for fundraising projects were compiled and passed on to PADs and alumnae presidents. Another project of this committee, which should be completed this year, is the revision of the Ways and Means Manual.

Ways and Means activities can have a large impact on the overall success of alumnae chapters. The committee would like to hear about fundraising projects which were successful in your community and could be used by Delta Zeta. If you have ideas for successful projects or have an idea for a Ways and Means project for all Delta Zetas, contact Julie Hauser, 14124 Heywood Path, Apple Valley, Minnesota 55124.



# Northeast Missouri State Honors Ruth Towne



President Jack Magruder of Northeast Missouri State University presents the Alumna of the Year award to Delta Zeta's Ruth Towne.

**D**r. Ruth Warner Towne, CCD, Delta Sigma chapter, Northeast Missouri State University, 1953-1987, faculty advisor, 1953 to present, was announced as the 1994 Alumna of the Year at the Homecoming All-Alumni Banquet on October 28, 1994. In presenting the award, University President Jack Magruder cited Dr. Towne's years of service to the University as a member of the history faculty from 1952 to the present, as Dean of Graduate Studies, 1983-1988, her excellence in teaching, her work as advisor and mentor to the women of Delta Zeta, and her monetary contributions which make her a life fellow of both the Baldwin Society and Kirk Society. In 1992 she gave the University the Westminster Chimes and bell carillon in memory of her parents, Mr. and Mrs. Frank Warner Towne.

Ruth Towne received the baccalaureate degree from Northeast Missouri State Teachers College, now Northeast Missouri State University, in 1939 ranking as the first honor graduate, the graduate with the highest grade point average. She attended the University of Missouri on a curators' scholarship and a graduate assistantship

and received the master of arts in history in 1940. After teaching in the Kirksville Senior High School, she was appointed to the faculty of the Teachers College with the understanding that she would be immediately given a leave of absence to study for the doctorate. She completed all course work and the qualifying exams in 1951-1952 and began teaching at the college while writing her dissertation. She was awarded a Ph.D. degree in history by the University of Missouri on July 31, 1953.

Dr. Towne is the author of two major biographies, numerous articles, and a history of First United Methodist Church, Kirksville of which she is a life-long member. She is currently engaged in a number of writing projects. Although alone in the world with no relatives, but many friends, she claims three wonderful "families" — the faculty, administrators, and students of NMSU; the women of Delta Zeta; and the people of her church. Her joys in life are teaching, writing, and Delta Zeta.

## Alumni

Call 1-800-6-ALUMNA

**D**o you miss Delta Zeta in your life? It doesn't matter if you have been "away from our sisterhood" for one year or for forty-one years. We want you back.

Think for a moment about that special time you spent with Delta Zeta sisters or friends — the fun you had, the memories shared and the heartfelt feelings you gave. Do you want to rekindle that flame? It's so easy to organize an alumnae chapter for your area.

An excellent starting place is to contact your Province Alumnae Director (ig. Don't know who she is? Check the directory in issues of The LAMP or call 1-800-6-ALUMNA (our toll free alumnae hotline at Headquarters). They will provide that information for you. With the assistance of the PAD, you will pre-plan an organizational meeting of Delta Zeta in your area, and follow up with meetings, election of officers, the adoption of bylaws and standing rules and of sharing and learning from one another as you work toward chartering.

Call 1-800-6-ALUMNA

**T**he Killarney Klub concept has been formed so Delta Zeta alumnae in the age of thirty can have the opportunity to get together on an informal basis to socialize and network. The Killarney Klub is a special interest group within an organized alumnae chapter or club, as is or luncheon group would also be.

A Killarney Klub member pays dues to her alumnae chapter and enjoys all the rights and privileges of membership in that chapter. She is eligible to hold office in the alumnae chapter and is encouraged to participate in any chapter activity.



# Chapter Organization —

## *It's as easy as 1, 2, 3...DZ*

BY DORETTA PUGH OSBURN, GLENNVILLE STATE - ΘΞ, PROVINCE ALUMNAE DIRECTOR, IV

Delta Zeta Headquarters can provide you with a computerized list of all the alumnae in your neighborhood standing in a defined area. (You will need to identify the zip codes of all those neighborhoods within a 30 minute drive in all directions from your location.) A letter of intent to organize and/or a questionnaire can then be mailed to all those names on that list. The Province AD has sample letters to assist you in that effort. Once you have responses to the initial survey, you can realistically set a day, time and place for your first organizational meeting. (A restaurant, apartment club house or someone's home all work well for this initial meeting. (Remember, a Delta Zeta alumnae chapter must have a minimum of 10 members and meet at least six times before being chartered.)

Something very helpful in starting up is the Delta Alumnae Club Packet which can be provided by the PAD or obtained from Headquarters. Also, it is beneficial to order a Province President's Manual to assist in your efforts. Prepare a simple agenda for the meeting, serve some easy refreshments and spend

most of your time getting acquainted with each other and with Delta Zeta again. Agree on the next meeting time and place, get phone numbers (because nothing works like that personal contact), and get volunteers from those in attendance to help in various ways. Positive attitude does wonders, too!

At the next meeting you can discuss chapter offices, possible program ideas, whether or not you will assist a collegiate chapter (if there's one in your area), the purposes and duties of an alumnae chapter, what dues you should charge, etc. Discuss some mechanics of getting fully operational, but don't get overburdened with this; keep it simple at first. The meetings should be both fun and interesting, a time to renew that feeling of college days and to reinterest the alumnae in actively participating again.

Perhaps you need to consider a newsletter, a valuable form of communication with any alumnae organization. Seek a volunteer to produce and distribute this. (The dues you collect will help defray the costs of such

communication.) Elect a few key officers, like president, secretary, treasurer. More can be added later, or positions changed as needed.

The foundation of the chapter has now been laid, the tone set, and afterwards it will all come together quite naturally; you will find the friendships developing and that you enjoy your time together — at programs, at college activities, socializing, doing community service projects, etc. After all, isn't that what this is all about? Continue to meet and share your sisterhood, rush for more members, prepare the necessary bylaws and standing rules for your group and petition to charter as a chapter. The time will fly by! You will feel a real sense of self-satisfaction once you've an alumnae club or chapter going, and all the members will thank you for helping to rekindle the bonds of sisterhood. Good luck to you and your alumnae sisters in all their efforts!

## **Killarney Klubs: Another Facet of Delta Zeta Membership**

BY ELSIE WHEELER MCTEE, UNIVERSITY OF TEXAS - A T

as the chapter's activities. Forming a Killarney Klub is an option of each alumnae chapter, and membership in the Killarney Klub is an option for all of those alumnae under thirty.

If no organized group of alumnae exists in an area, then a Killarney Klub can be organized for a group of five or more alumnae under the age of 30. Hopefully, these Killarney Klub members will later form the nucleus for a chartered Delta Zeta alumnae chapter.

Each Killarney Klub needs a chairman. Either the chairman or another Klub

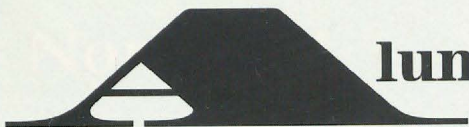
member will act as liaison to the alumnae chapter. The liaison will take news of the Killarney Klub to the chapter and keep Klub members informed of chapter activities. If a purely social, networking organization does not meet the needs of the Klub members, programs of interest to this group can be a part of their activities.

In the past, several Delta Zeta alumnae chapters formed special interest groups of younger alumnae as a way of encouraging more young alumnae to join. These alumnae groups realized that a young alumna feels more comfortable joining a

chapter if she knows that she can participate with a young group of her peers who offer networking and support. In all instances, these "young group" members paid dues to and were a part of the alumnae chapter and functioned much as the Killarney Klub is set up. To learn more about the Killarney Klub contact your alumnae chapter president or Province Alumnae Director.

Killarney Klub membership is another way to continue the Delta Zeta Experience!





# Alumnae Chapters Write . . .

Proceeds from **ARLINGTON (Texas)** alumnae chapter's Golf Classic went to the Arlington ISD Hearing Impaired Program and to the House Ear Institute. Members also held a canned food drive for the Arlington Food Bank. Proceeds from a pizza party for members and their guests were given to Iota Psi at University of Texas/Arlington to assist with house expenses.

**ATLANTA-COBB COUNTY (Georgia)** alumnae volunteered for Atlanta's biggest arts festival, the Piedmont Park Arts Festival. Chapter members walked or ran in the Susan G. Komen "Race for the Cure" and participated in the Olympic Signature Event sponsored by Hands On Atlanta. Secret sisters were revealed at their Christmas party when members tried to guess their secret sisters by way of baby pictures.

**ATLANTA-NORTHSIDE (Georgia)** alumnae members donated to the Georgia Red Cross for flood victims, filled bags with toiletries for a local battered women's shelter and made a wreath for Egleston Children's Hospital's Festival of Trees. They shared initiation and a retreat with Xi Xi members at North Georgia College.

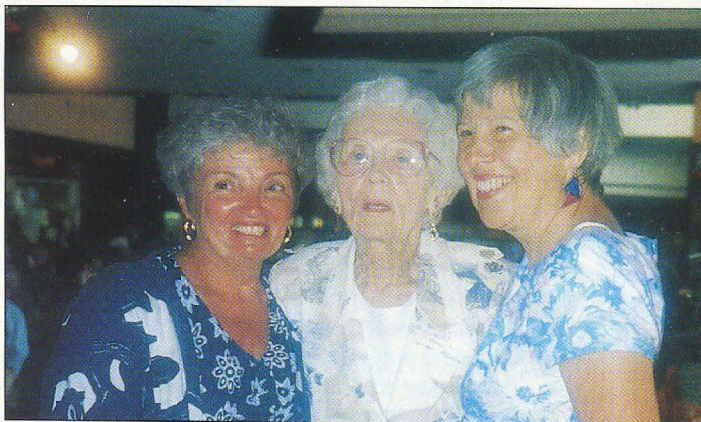
**AUSTIN (Texas)** alumnae chapter "adopted" Iota Alpha at Southwest Texas University and formed a House Corporation Board. Plans are underway for Province XVII Weekend in Austin on March 3-5. Some alumnae shared Founders Day with **SAN ANTONIO** alumnae.

**BARTLESVILLE (Oklahoma)** alumnae enjoyed summer

restaurant luncheons. One hostess, Virginia Barron Price, Texas-A T, greeted guests at the door with the Ukrainian greeting of freshly baked bread with an indentation of salt in the center. This was on an embroidered towel. The program was a slide show of the five weeks Virginia and her husband spent in Russia and the Ukraine.



The Quad Cities (Iowa-Illinois) alumnae are reorganizing their chapter and hoping to charter. At Founders Day they presented Order of the Pearl certificates to Anna Mae Hulett Roberts, Eureka-II and Ada Patten Horn, Drake-IE.



Hannah Nicholas Gough, CSU/Long Beach-ΔA, and Jeanne Elges Paige, Harris Teachers-EH, congratulate Esther Campbell who was given the Life Award at Long Beach Children's benefit League Annual Luncheon. Esther, who is an Order of the Pearl Delta Zeta, states her age as past 90 and has volunteered 40 years of service to the league which raises money for Memorial Hospital, John Tracy Clinic and Special Olympics.

**BLOOMINGTON (Indiana)** area alumnae chapter with 13 active members represent eight different Delta Zeta chapters. They carved jack-o-lanterns for dining room decorations for members of Epsilon chapter at Indiana University.

**CHICAGO NORTHWEST (Illinois)** alumnae donated \$750 to be distributed to House Ear Institute, Center for Deafness, Paws with a Cause (hearing aid for dogs), Gallaudet and Alpha Beta chapter at Illinois. Funds were raised with entertainment book sales.

**CLEVELAND EASTSIDE (Ohio)** alumnae chapter celebrated its 70th anniversary at Founders Day. Hours of hard work culminated in their second Art Auction to benefit the Bellflower Center for Prevention of Child Abuse, with more than \$1000 raised for the center.

**COLORADO SPRINGS (Colorado)** alumnae toured the Starsmore Discovery Center, a historic house moved from downtown to the foot of Cheyenne Canyon for a visitors center. Member Patricia Burget Webb, Kent State - ΓΚ is vice president of the Colorado Springs Alumnae Panhellenic.

**COLUMBIA (South Carolina)** alumnae helped the Salvation Army with "Giving/Sharing Tree" at a Columbia shopping mall. Alumnae now worked shifts helping shoppers choose children's names and suggest gift ideas. Their participation in the Columbia Autumnfest raised money for their local philanthropy, the USC Speech and Hearing Center. A fall recipe exchange resulted in a cookbook soon to be in print. The chapter



continuing its scholarship to the Speech and Hearing Center's summer camp.

Founders Day at **EL PASO (Texas)** included guests — Foundation Trustee Ann Butler Booth and Province Alumnae Director Pat Brown Rizotti and alumnae and collegians from nearby New Mexico State University in Las Cruces.

**FAIRFIELD COUNTY (Connecticut)** members sent Halloween candy to Gamma Betas at UConn and donated frozen turkeys to a local food bank. A holiday decorating workshop produced country mailbox decorations and door swags. They also swapped healthy holiday recipes.

**FORT COLLINS (Colorado)** alumnae shared Founders Day with collegians from University of Northern Colorado - ΔΕ, and presented their annual outstanding senior award to Alyson Hoberecht. They also gave the chapter a large silver serving tray. The alumnae continue to support local projects such as hearing aid batteries for the hearing impaired, a scholarship to a graduating hearing impaired senior, purchase of a TV with closed caption for a local high school and they are working now on buying a TDD for a junior high school. Shut-in members are remembered with "shower-of-love" cards and visits in November when the alumnae "take their show on the road."

**GREENCASTLE (Indiana)** alumnae members invite Delta chapter members from DePauw



Fort Collins alumna Jan Eisler Havener, Central Missouri-ET, presents the outstanding senior award to Delta Xi's Alyson Hoberecht at Founders Day in Colorado.



Bartlesville alumnae sample a Ukranian guest greeting at a restaurant meeting. From the left, Mary Ann Trosclair Whatley, Southwest Louisiana-ΔK; hostess Virginia Barron Price, Texas-AT; Doris Dillon Durham, OSU-AE, Maebeth Brown Furrow, Iowa-I, and Ruby Gray Purdum, NSU-ΔΦ.



Cleveland Eastside alumnae chapter honored Golden Rose and Order of the Pearl members at Founders Day. Order of the Pearl recipients are Gertrude Corey Hoeger, Ohio State-Θ; Alice Wells Lamiell, Ohio State-Θ and Lucile Crowell Cooks, Miami-A.

to an annual Sunday evening sloppy Joe supper just before finals. Fund-raisers have included a yard sale, a book sale during Parents Weekend at DePauw, selling and baking birthday cakes for the women of Delta chapter and selling DZ cookbooks. Founders Day was shared with Delta chapter. They also visit older members in nursing homes and take them to lunch.

**GREATER HARTFORD COUNTY (Connecticut)** alumnae members held a tag sale fund-raiser and celebrated Founders Day during Homecoming at UConn. They also sent snacks to both UConn and UMass chapters for finals week.

**HOUSTON (Texas)** alumnae members in different fields talked to collegiate Delta Zetas about career choices at the annual Career Fair held at the University of Houston. Two garage sales provided funds for the annual fashion show, "A Carousel of Fashion" planned for February 25.

**NORTH CENTRAL INDIANAPOLIS (Indiana)** again volunteered their services to the Conner Prairie Headless Horseman Fall Festival and were able to donate 20 tickets to the event to the Indiana School for the Deaf. They also helped wrap Christmas gifts at a local mall. The event is sponsored by the Indianapolis Alumnae Panhellenic and Delta Zeta's share of the proceeds went to speech and hearing. Members also participated in the Alzheimers Walk and the "See Spot Run" walk to benefit the Humane Society.

The **GREATER KANSAS CITY (Missouri)** alumnae chapter held its second Flame Fantasy luncheon and fashion show with proceeds of \$600 benefiting the chapter's various philanthropic projects. Alumna and former

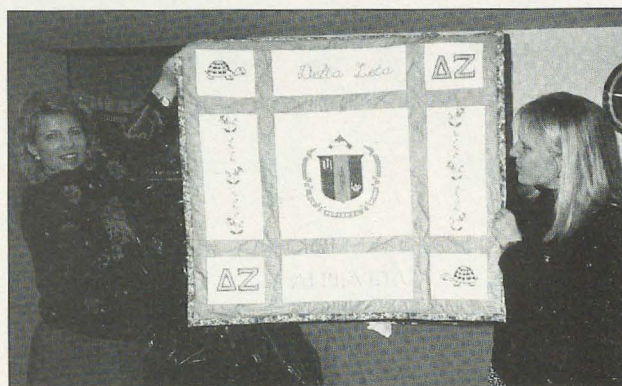


projects. Alumna and former Woman of the Year Jan McBurney Armstrong, Oregon State-X chapter, was featured in a recent issue of *The Kansas City Star* magazine. Jan, who manages charitable gift programs for Kansas City Southern Industries, has been active in the Missouri chapter of the Nature Conservancy where she is a board member.



Orange County alumnae display some of the Christmas crafts sold at their Holiday Boutique, "Parade of Holidays." From CSU/Fullerton-IY are members Sharon Kern, Sarah Whittenberg, Martha Nunn and Janet Fox.

**KENT (Ohio)** alumnae chapter held successful Tupperware parties and sold Entertainment Books for easy fund-raisers. They celebrated Founders Day with the collegians of Gamma Kappa. Their November meeting was held over breakfast at Bob Evans Restaurant prior to a full day of holiday shopping at the Aurora Farms Factory Outlet Stores. They filled goodie bags for the collegians and shared their annual holiday party.



Cheryl Franks-Denman, PCD for VI-E (Michigan) and Jeannie Taylor, president of Alpha Eta at the University of Michigan, display the counted cross stitch project made by Flint alumnae chapter members for the Alpha Eta chapter.

**NORTHERN KENTUCKY** alumnae chapter continued their emphasis upon fitness and health by completing their third consecutive year of playing volleyball together. They are participating in the Triad Sister Program with Kappa Betas of Northern Kentucky University.



Members of the National Theatre of the Deaf performed recently in a comedy "An Italian Straw Hat" in Rancho Palos Verdes, California. Among those attending from the South Bay alumnae chapter were (from left): Betty Paul DeWitt, USC-AI; Betty Craver Sevy, CSU/Long Beach-ΔA; Elizabeth Bartlett Wallace, USC/Santa Barbara-ΔΨ; Audrey Hoffpauir Heaton, Louisiana Tech-ΘE; Mary Rodda Curtin, USC/Long Beach-ΔA, and Betty Willard Peer, Miami-A. Photo courtesy of the Palos Verdes Peninsula News.

**LAFAYETTE (Indiana)** alumnae honored all 25-year members at Founders Day. They toured a local Art Museum, supported activities for the collegians at Purdue -  $\Xi\Omega$  and are promoting a fund-raiser for courses related to organization of scrapbooks and photo albums which should benefit all historians of sororities, fraternities and other organizations.

**LONG BEACH (California)** honored 65-year member Leota Blaine Smith, Western Colorado - EA at Founders Day and enjoyed entertainment by Delta Alpha collegians from Long Beach State. A fundraising auction, "Make It, Bake It, Sew It, Grow It" shared their talents.

**MEMPHIS (Tennessee)** alumnae chapter is expanding activities to include "DZ Fun Nights" in which they go bowling, to the movies, or shopping. At Founders Day they welcomed 16 new members from Gamma Iota at Memphis State.

The recently chartered **MOREHEAD AREA (Kentucky)** alumnae chapter held a pink turtle (while elephant?) auction to raise funds for the Mabel



Cindy Shoberg Eidson, Lenoir Rhyne- $\Sigma\Xi$  and Laureen Lloyd, West Chester-IP, wear their  $\Delta Z$  letters with pride while working at the Columbia (SC) Salvation Army Giving/Sharing Tree this past Christmas.





## Alumnae Chapters Write ...

Barber scholarship at Morehead State. They shared a Homecoming brunch with members of Kappa Tau chapter at Morehead.

**MURFREESBORO (Tennessee)** alumnae chapter celebrated Founders Day with collegians from Iota Iota at Middle Tennessee and later helped the chapter celebrate its 25th anniversary on campus. The alumnae group celebrated its 10th anniversary.

The alumnae chapter of **SOUTHERN NEW JERSEY** helped with rush at Rowan and met all local collegiate chapters and alumnae from Central New Jersey, CPAC, Northern Philadelphia and Long Island for Founders Day. At the luncheon they raffled a handmade pink and green quilt for the Province's Collegiate Emergency Fund.

Alumnae of **ORANGE COUNTY** presented their annual Boutique Fashion Luncheon and raised approximately \$4,000 for the Iota Upsilon chapter at CSU/Fullerton and speech and hearing. Silver, Golden Rose and Order of the Pearl certificates were presented at Founders Day. Their 65-year member is Margaret Duckering Douglas, University of Washington-K.

**CENTRAL PHILADELPHIA (Pennsylvania)** alumnae chapter's second Harvest Ball and

Silent Auction benefited speech and hearing causes. CPAC members assembled plates of cookies, candy and hot chocolate packets for their "Cookies for Finals" fundraiser.

**PORTLAND (Oregon)** alumnae raised over \$1,000 with their absentee tea. The invitation included a tea bag and suggested that the recipient did not have to go out to a meeting but could contribute to philanthropy while enjoying a cup of tea at home.

**ST. LOUIS (Missouri)** alumnae learned how to make "Tussie Musses" in November, with each alum going home with her own Victorian nosegay. On cookie night, the alumnae made and packed cookies for the children at St. Joseph Institute for the Deaf.

**ST. PETERSBURG (Florida)** alumnae invited alumnae from **CLEARWATER** and **SARASOTA** for Founders Day where National Director Karly Klemp Burns was guest speaker. Golden Rose members were also honored.

**SAN FERNANDO VALLEY (California)** held their Annual Nut Rally, bagging 650 pounds of various kinds of nuts. Proceeds go to the CSUN National Center for the Deaf and related philanthropies. Valley alumnae

supported the Panhellenic fashion show at a department store, newly reopened after Earthquake '94 repairs. Alumnae, spouses and friends "Go to the Races" on February 26 for Southern California Lamplighters' Flame Fantasy event.

**GREATER SEATTLE (Washington)** alumnae chapter observed Founders Day with members of Kappa at the University of Washington and presented the chapter with three study tables. Their annual Flame Fantasy is planned for April 1 at Marchiero's at Shilshole Bay. Members are active in two Alumnae Panhellenics, Seattle and Overlake. Alumna Carin Brown Steckler, Washington-K, is president of the Seattle Alumnae Panhellenic.

**SPARTANSBURG (South Carolina)** alumnae celebrated Founders Day with the collegians of Omicron Mu and got to meet new members at "girls night out" where they watched movies with the collegians.

**SUNCOAST (Florida)** alumnae chapter's silent auction raised money for philanthropy at their September coffee. The Suncoast chapter invites all visiting snowbirds to join their monthly meetings. For information, call Charlyn Murray Pittman, DePauw-D, at 813/756-8358.



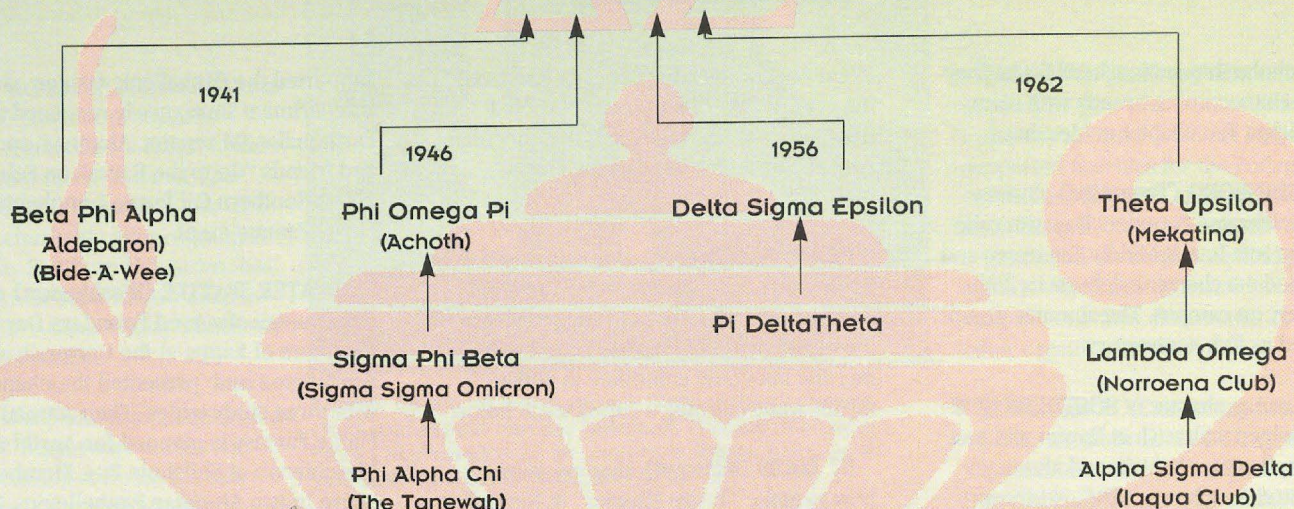
Mount Diablo (California) alumnae spent a mid-summer day touring the Napa Valley. L to r, Sharon Stover Duesterhaus, Marshall-Y; Helen Ebert Herbert, NYU-BQ; Beverley Brown Soza, California-M; Linda Lesniak Szymanski, Northwestern-AA; Wendy Wood LaBounty, Indiana of Pennsylvania-IG; Maxine Schumann Maas, California-M; Joyce Rogers Stoffey, CSU/LA-OP, and Ruth Phillips English, Washington-K.



Bay Area, Cypress Creek and Houston alumnae chapters in Texas celebrated 1994 Founders Day together. Guest speaker was Cheryl Stanley Jones, International Academics Chairman. From the left, Bay Area Alumnae President Mary Ortiz Piwetz; Cypress Creek Philanthropy Alumnae/Coordinator Peggy Prigden Townsend; PAD Diane Larson Leaverson; International Vice President - Collegians Merry Westbrook Adamcik; Houston Alumnae President Toni Post, and Ann Butler Booth, Alumnae Philanthropy Coordinator and Foundation Trustee.



# Delta Zeta



## A Lifetime of Sisterhood...Our Mergings

**B**eta Phi Alpha was founded on the University of California, Berkeley campus in May 1909, and was the first college fraternity for women on the Pacific Coast. Called "Bide-a-Wee," the girl's club was sponsored by the university to meet a very difficult housing problem. Little did their founders dream that one day their little club was to become the mother chapter of a national organization.

In 1912, the name Bide-A-Wee was changed to "Aldebaran" after the star and in 1919, Aldebaran was officially changed to Beta Phi Alpha. Following expansion, Beta Phi Alpha was admitted to NPC in 1923 as the nineteenth member and held the chairmanship of NPC from 1935 to 1937.

The merger of Beta Phi Alpha with Delta Zeta in 1941 brought two National Convention traditions: the gavel which opens and closes every convention and the song "Convention Lights." The gavel had been given to Beta Phi Alpha by one of its Founders, Elsa Ludeke and, made from the tusk of a walrus, contains the names of both Delta Zeta and Beta Phi Alpha Founders and National Presidents. At the 1941 Beta Phi Alpha National Convention, those present were initiated into Delta Zeta. It was a tearful conclusion when, at the final banquet, they sang "Convention Lights" for what they thought would be the last time. But it was

only a beginning, for the song has been sung, still tearfully, at the final banquet of every Delta Zeta Convention since.

**Phi Omega Pi**, founded as the Achoth Sorority on March 5, 1910, at the University of Nebraska, began as an organization for girls who were affiliated with chapters of the Order of the Eastern Star. The name Achoth was taken from the Hebrew signifying "sisters" and it is interesting to note that one of the girls invited to the founding meetings was Pearl Barton, a friend of the sponsors but a member of Delta Zeta and thus ineligible for membership.

In 1922, they decided to join the Greeks and the name was changed to Phi Omega Pi. In 1933, in order to be accepted into full membership in NPC, the Masonic affiliation requirement was dropped.

Also in 1933, **Sigma Phi Beta**, founded at the University of New York on November 1, 1920, and originally named Sigma Sigma Omicron, merged with Phi Omega Pi. A second group, **Phi Alpha Chi**, founded at the University of California/Berkeley in 1919 and originally known as "The Tanewah," had already merged with Sigma Phi Beta. Thus, after 1933, Achoth, Tanewah, Phi Alpha Chi and Sigma Phi Beta members were all sisters in Phi Omega Pi.

On August 10, 1946, Phi Omega Pi was accepted into membership in Delta Zeta. This merger brought the Achoth Award to Delta Zeta honoring alumnae serving long and well on the local level.

**Delta Sigma Epsilon** was organized on September 23, 1914, at Miami University, Oxford, Ohio. Because its Founders represented high scholarship and splendid ideals, they were selected by Dean Minnig of the College of Education to organize a new sorority.

In 1917, the sorority's fifth chapter was installed and Delta Sigma Epsilon was admitted into the National Panhellenic Education Sororities, then called the Association of Pedagogical Sororities. From that date, Delta Sigma Epsilon played a leading role in determining and perfecting the policies of that national association which was later renamed the Association of Education Sororities.

In the fall of 1940, **Pi Delta Theta** petitioned Delta Sigma Epsilon for membership. The merger of these two sororities was the first and only such merger in the history of the Association of Education Sororities.

Delta Sigma Epsilon became a member of NPC in 1947 and on August 22, 1956, merged with Delta Zeta. With this union, two awards were added to those already



given at Convention: the Genevieve Schmitt Memorial Plaque which is awarded to the collegiate chapter with the highest scholastic rating between Conventions; and the See Loving cup, originally the Loving Cup honoring Adelaide See who served as Delta Sigma Epsilon National President from 1918-1920, which was given to the chapter having the highest "efficiency" between conclaves. Since Delta Zeta already had both the Council and Founders Awards which were given to achieving chapters, new criteria were established. The See Loving Cup is now given to the chapter which has shown unusual improvement in any or all areas since the last Convention.

**Theta Upsilon** traces its beginning back to 1909 when their Founders joined forces at the University of California, making scholarship and friendship their aim. In 1913-14, the group decided to organize under the university and chose the Indian name, Mekatina, meaning "Among the Hills," and January 1, 1914, was the formal date of their founding. With the growth in numbers and campus standing, came the desire to become a national Greek letter fraternity. On February 7, 1921, Mekatina girls were pledged to Theta Upsilon, a planned national fraternity for women whose organization was outlined and whose ritual had been perfected by Ida Shaw Martin of the Sorority Service Bureau. On April 24, 1921, Mekatina became the Alpha Chapter of Theta Upsilon and birth was given at a university whose motto is the same as the open motto of Theta Upsilon: "Let There Be Light."

In 1932, **Alpha Sigma Delta**, founded as the Iaquia Club in 1919 at the University of California, merged with Lambda Omega, an associate member of NPC. Lambda Omega had been founded at the University of California in 1923, and its origin went back to the Norroena Club founded at Berkeley in 1915. Norroena, meaning "Breath of the North," developed its ritual around an Indian legend and had a Norse motif emphasizing the hardihood, hospitality, economy and friendship of the Norse people. In September, 1933, Lambda Omega merged with Theta Upsilon.

On May 6, 1962, Theta Upsilon was accepted into membership in Delta Zeta Sorority.

Condensed from *Delta Zeta Sorority*, 1902-1982

## *An invitation*

*Familiar faces  
of friends you haven't seen in years ...  
faces you once knew  
of friends  
with whom you shared your hopes and fears.*

*Familiar signs ...  
the lamp, the pearl, the distaff and the tears ...  
come sit a while and chat;  
we'll laugh and share the years.*

Carla Arnold Woodcock - TK  
Cleveland Eastside Alumnae Chapter

*The International Council  
is proud to announce installation of*

*Epsilon Alpha  
Western State College  
Gunnison, Colorado  
October 29, 1994  
and  
Omicron Tau  
Brock University  
St. Catharine's, Ontario  
on  
November 26, 1994*

*Installation stories will appear in the  
summer issue of The LAMP.*





# Alumnae Chapter History

From the early days of Alpha and Beta chapters each had what amounted to an informal alumnae organization of the type we now continue as our chapter associations. They kept in close touch with each other by reunions at commencement, by personal letters and especially by Round Robins. Beta chapter's first seventeen members inaugurated a Round Robin which has never ceased its flight to this day. (1934) No formal organization was at that time considered or indeed needed by these chapters. Building or buying a house was not possible for either of them, and an alumnae club or chapter would have been impossible because the homes of the members were so widely scattered.

However, the installation of Delta and Epsilon chapters produced a group of members whose homes, centering about Indianapolis, gave a ready-made nucleus for an alumnae group in a short time after the chapters were installed. Looking about them with awakened interest, these new alumnae were spurred on to organize in order to participate in the activities of the city Panhellenic as much as through a desire to keep their own group interest.

It is very likely that the thought of an alumnae organization was in the minds of those members whose homes or activities were in Indianapolis, for the definite proposal to form alumnae organizations in all localities where they were possible was presented to the 1912 Convention, approved and at once followed by action. Something tangible in the way of a cause to bring the Indianapolis alumnae together was readily found when Epsilon chapter called upon them for assistance in planning the 1914 Convention which was to be held in Indianapolis. And inasmuch as the birthdays of the two Indiana chapters

were so close together, it was quite fitting that in May 1913, there should be a gathering in Indianapolis of the resident alumnae and all other members who could attend; and that this gathering not only discussed convention plans, but also constituted the first of the annual state luncheons of Delta Zeta as well as formally established the Indianapolis alumnae group as a definite organization.

Ohio was not far behind Indiana in obeying the will of the 1912 Convention. The summer of 1913 saw the assembling of a number of Delta Zetas in and near Cincinnati who laid the foundations of an alumnae chapter and worked under the tentative name of the Southern Ohio alumnae chapter. Their fundamental reason for association was the personal advantage each felt she would gain in continuing sorority friendships, but they too had a distinct cause: to serve in the field of extension. This interest was presented to them by Founder Mabelle Minton's membership in their group and her position as extension officer of the sorority. They received their formal recognition from the Grand Council in September and began an active program which has shown no slacking with the passing years.

The first alumnae group to be formed in the same city with a college chapter was in Columbus, Ohio. The natural growth of Theta chapter's membership, the fact that many of the alumnae lived in Columbus, and the additional difficulty found in making possible a continuing active interest and participation in chapter affairs for those girls who had completed their college work, naturally led to the banding together of the alumnae to keep in close touch with each other; and, by representation and assistance, with their undergraduate group. This alumnae body was already actively

under way when Bess Coulter Stephenson, enroute to 1913 Convention, came to Columbus to inspect Theta chapter.

Lincoln, Nebraska, offered a situation similar to that of Columbus and followed an identical course of action. Zeta chapter was at that time formed almost entirely of Lincoln girls, and these, under the leadership of Nettie Wills Shugart, had completed an organization of alumnae by May 1914.

Thus it was that the 1914 Convention had the satisfaction of welcoming four strong and thriving alumnae groups; and wisely enough, the new constitution, which was presented to this convention for acceptance, carried with it a section providing for the formation, chartering, and operation of official alumnae chapters. These four groups were duly chartered, and at once able to take part in the business of the convention. Following the custom at that time set up, they were named for the letters of the Greek alphabet just as the college chapters. Thus Indianapolis became the Alpha alumnae chapter; Cincinnati was Beta; Columbus Gamma; and Lincoln, Delta.

This custom of naming was followed until 1923. By that time the roll of alumnae chapters had extended to Sigma, which was Chicago. It was becoming clear that there was a certain amount of confusion continually arising from this use of Greek letter names for alumnae chapters while no actual advantage was gained, and the council meeting of 1923 abolished the alphabetical names, substituting instead those of the cities where the chapters were located, which remains the procedure today.

(From *The LAMP* of Delta Zeta, Historical Issue, October 1934)



# Alumnae Initiation in Delta Zeta

BY JANICE JELKS COX, SOUTHWEST LOUISIANA - ΔK,  
ALUMNAE MEMBERSHIP CHAIRMAN

**M**ost of us went through rush as collegians and then were initiated shortly after a period of pledgship. Perhaps you don't know that there is an additional way in which a woman can join Delta Zeta, and that is by becoming an alumna initiate. Women who did not have either the opportunity or resources to join our sorority during their college years still can experience the joys of sisterhood through this special membership procedure.

A chapter or individual can sponsor a candidate for alumna initiation. The membership criteria are specified in *The Delta Zeta Standing Rules and Policies*, or can be determined by consulting the Province Alumnae Director in your area. She can also provide the appropriate petition form. The candidate completes one side and signs the form acknowledging her request. The "sponsor" indicates reasons for wanting this woman to be initiated, and permission for the initiation is given in writing by both the collegiate chapter (who will actually perform the initiation service for this woman at their next regularly scheduled initiation) and by the alumnae chapter president in the area, if there is one. Additionally, the Province Alumnae Director signs the petition and then forwards it to the Vice President of Alumnae. She, in turn, sends it to the Alumnae Initiate Committee of the International Council which carefully and thoroughly reviews each application. Approval is given to applicants found worthy of the honor and those who indicate a sincere desire to become an active and contributing member of the sorority. This whole application process takes approximately 4-6 weeks.

Once approval has been given, the candidate is notified by letter and is requested to order a badge and pay the regular initiation

fee. The collegiate chapter then sets the time for initiation and makes all the other necessary arrangements. In return, this alumna initiate has all the rights and privileges of a Delta Zeta member.

Who can be a candidate? Mothers, aunts or sisters of Delta Zetas (who have graduated from college), a woman chosen to serve as a College Chapter Director or Faculty Advisor for a colony or local chapter, the Dean of Women or a university president's wife, former members of a sorority with which Delta Zeta has merged or friends of alumnae are all eligible, good candidates for alumnae initiation.

Perhaps you know someone that you would like to recommend for membership? Contact your local Province Alumnae Director and get the process going; we continue to be interested in adding valued members to our rosters.

Women who have been initiated into Delta Zeta as alumnae have often become some of our most involved members and have contributed their time and talents to the sorority. Lienne Federico Medford is such a woman. She is a DZ legacy, the daughter of Amy Hardouin Federico, a Gamma Eta alumna who served as president of her chapter at Hunter College in New York City. Amy taught French and Latin for twenty years in New York schools and currently resides in Wilmington, North Carolina, where she is a member of the Wilmington alumnae club.

Lienne received her B.A. from Hamilton College in New York State and her M.A. from the University of North Carolina at Chapel Hill. Lienne is pursuing a Ph.D. in Education at East Carolina University where she hopes to receive her degree in December of 1995. Lienne's involvement in Delta Zeta began at the University of North Carolina in Wilmington. While teaching an English class at UNC-Wilmington, Lienne



Lienne Medford

noticed some of her students wearing Delta Zeta letters. Upon learning that she was a Delta Zeta legacy, the students approached Ruth Weider Patterson, then serving as PCD of Province XXI-E, about initiating her as an alumna. Lienne was initiated into Delta Zeta and was appointed CCD of UNC-Wilmington shortly after.

Lienne continues to be actively involved in Delta Zeta locally and at the province level. During the fall 1994 semester, Lienne represented the Greek community as Acting Greek Advisor for the university. Locally, she is active in the Wilmington alumnae club and presently serves as the club's secretary. She is currently serving as PCD of Province XXI-E for North and South Carolina.

For Lienne, being an alumna initiate holds special meaning. It's special because as a legacy she grew up talking with her mom about Delta Zeta. Being chosen by the UNC-Wilmington chapter to serve as their CCD, she felt a part of the Delta Zeta sisterhood. Through her years of service as CCD, she gained a sense of satisfaction from working with the chapter. Lienne stressed, "Being an alumna initiate in Delta Zeta has meant more to me than I had ever imagined. To be asked to be a part of an organization that prides itself in its philanthropic work and its high ideals for its members — what more could a member ask?"



# Among Alumnae Achievers

*This "Focus on Alumnae" issue of The LAMP brings to Delta Zeta readers a number of interesting profiles from among our alumnae achievers. We think you'll find it enjoyable reading!*

## Susan Feuerherm

Susan is a buyer for the Joint Purchasing Office for the City of Saint Paul and the County of Ramsey in Minnesota, and is primarily responsible for city construction projects. After working in purchasing for a mail order house in college, and then teaching for several years she went back to the business world after the job market for teachers became tight.

She has worked for the City of Saint Paul for seven years and has bid projects ranging from a seven million dollar parking ramp to construction of new parks, zoo buildings, and a formal Japanese Garden. The real satisfaction, according to Susan, is watching a project go from conception on paper, through the bidding process to enjoyment by the public, and knowing you played a part in its development.

The most fun part of her job is another commodity responsibility...zoo animals. Several years ago she purchased Betty and GiGi, two female reticulated giraffes for Como Zoo, one of the few remaining free urban zoos in the country. Last year, after 15 months of pregnancy, Betty gave birth to a bouncing six foot, 100 lb. baby giraffe named Shawnee, making Sue a "grandmother!" Along with purchasing animals, (which is rare as most zoos trade or loan them,) she also is responsible for their food and recently placed contracts for such delicacies as chicken necks, horse meat, and flamingo fare.

Susan Hein Feuerherm, University of Wisconsin - EK, enjoys gardening, reading and slipping away in the summer to a cabin in Northern Wisconsin where there are "wild" animals and no telephones! She has been very active in the Twin Cities alumnae chapter and recently resigned as president in order to become Province Alumnae Director.



## Dorothy Teater

Dorothy Seath Teater, University of Kentucky - AΘ, has chosen a life of community involvement. The community has obviously welcomed that choice.

Dorothy Teater is currently serving her third term as a Franklin (OH) County Commissioner. Her interest and leadership in county government convinced her peers statewide to elect Dorothy Teater president of the County Commissioners Association of Ohio in 1994. Prior to serving as a county commissioner, she served five years on the Columbus City Council.

Dorothy's commitment to the community includes a special focus on young people. She initiated the Juvenile Delinquency Task Force which concentrates community and government resources on delinquent and unruly youth. The Task Force has already developed two programs designed to strengthen the family and keep children in school and out of trouble with the law.

Dorothy is not the only Teater playing an active role in the community. Her husband, Robert W. Teater, is president of the Columbus School Board and his own consulting firm. Dot and Bob live in a historic brick home in the Beechwold neighborhood of Columbus where they raised their four boys. The Teaters have eight grandchildren.

Dot and Bob are both 1951 graduates of the University of Kentucky where she joined Delta Zeta in 1949. She earned her Master's Degree in Family Resource Management from The Ohio State University. Dorothy has taught at the high school and college levels. She has also worked in consumer affairs in the private and public sectors.

When she does take time for herself, Dorothy likes to spend it gardening or sewing.



*"Whenever one certain alumna attends, it just 'makes' our event."*



## Carol Vipperman

Carol Vipperman graduated from the University of Washington - K in 1970 with a B.A. in Far Eastern and Slavic Studies, An Area Study of Russia. She began her career in Seattle, Washington, as a policyholder service representative for Liberty Mutual Insurance. For five and one-half

years following, Carol worked in the hospitality industry for the John A. Tetley Company (hotel representatives) and the Harrison Hotel, Harrison Hot Springs, British Columbia, Canada.

In 1978, Carol formed her own business specializing in marketing, sales and customer service consulting and training. For over 12 years Carol trained professionals and business leaders throughout the United States, Canada, Europe and in the former Soviet Union. She has co-authored and written three books: *Solutions to Sales Problems*, published by Prentice-Hall in 1980; *Marketing Your Service*, published by Self-Counsel Press in 1985; and *Professional Selling, A Woman's Guide*, published by Self-Counsel Press in 1990.

As a result of a trip to the Soviet Union in 1989 where she was a consultant to the emerging cooperatives and state enterprise associations, Carol established the Foundation for Russian/American Economic Cooperation. This nonprofit organization, for which she serves as president, promotes and fosters trade and economic connections between Russia and the Pacific Northwest. The Foundation has grown from 10 members in 1990 to currently over 145 member organizations. In addition, under Carol's guidance, the Foundation has received several significant U.S. government grants to assist in facilitating business relationships between the Pacific Northwest and the Russian Far East. Carol, through the Foundation, was instrumental in developing the location for the Russian Consulate in Seattle which opened in December, 1992. In recognition for the increasing importance that the Pacific Northwest has to the future of Russian trade, the Foundation was the lead organization in hosting President Boris Yeltsin on his first visit to Seattle in September 1994.

In addition to her career activities, Carol has been very involved in the community. She has received the following awards: recipient of the 1991 Woman of Achievement award from the International Women's Forum; recipient of the 1990 Small Business Administration's Washington State Women in Business, Advocate of the Year Award; recipient of the 1989 Seattle Mayor's Small Business Award for Outstanding Achievement; recipient of the 1988 Minority Enterprise Development Week Achievement Award for Outstanding Business Development; delegate, 1986 White House Conference on Small Business, appointed by the Governor of Washington State. Recently Carol was listed in the *Who's Who in International Trade* by the Puget Sound Business Journal.



## Earlene Smith

Earlene Heaton Smith graduated from Northwestern State College in Alva, Oklahoma (Now Northwestern Oklahoma State University) in 1953 with a B.S. Degree in physical education. She had served as Delta Omicron chapter president, Little Theatre president, Alpha Psi Omega president and was freshman queen, homecoming queen and football queen. Is it any wonder she was named Outstanding Graduating Senior that year?

After marriage and three children, Earlene found herself in the Oklahoma City area where she became involved in the alumnae chapter. Graduate work took her to Norman and the University of Oklahoma where she served as Assistant Dean of Women and General Counselor for several years. Later, she taught in the Norman public schools. Counselor/Instructor for the College of Nursing at the University of Oklahoma Health Sciences Center, Coordinator Health Professions Counseling Center, Coordinator Educational Services at Tinker Air Force Base for Rose State College, Adjunct Professor of Psychology at Langston University Center in Oklahoma City, Assistant Director Resource Development and Professor of Psychology at Rose State are all positions held until she "retired" to Alva, Oklahoma, in 1992.

Advanced degrees include M.Ed. in counseling from the University of Oklahoma and Ed.D. in higher education administration, also from the University of Oklahoma.

Honors are numerous but include the national presidencies of Zeta Phi Eta (communication arts and sciences professional fraternity) and Women's Auxiliary to the Student American Medical Association. Long active in the Methodist Church, Earlene has written and directed numerous dramas, skits and musical revues. The Republican Party benefited from her expertise for many years. This past fall she served as Area Coordinator for the Frank Keating campaign which assisted in his election to Oklahoma's highest office.

When Earlene "retired" to Alva, she became involved with the alumnae chapter and soon was appointed to the Board of Directors for Alva Hospital Authority, Northwest Family Services and Woods County Senior Citizens Center. And...she was an adjunct professor at Northwestern, teaching Theories of Personality and Introduction to Research.

Last, but not least, Earlene served a term as Province Alumnae Director for Oklahoma back in the late '60s when your editor was serving as National Vice President of Alumnae. She was primarily responsible for assisting me in coordinating the Indian-themed Awards Banquet at the 1968 convention which older alumnae still talk about and Historian Florence Miner says is the "most outstanding banquet ever seen in Delta Zeta."





## Diane Skelton

Diane Jones Skelton, Epsilon Mu, was named outstanding alumna for Province XIV-E in April 1994. Diane, newsletter chairman for both alumnae and collegians, received her bachelor of science degree from the University of Southern Mississippi in 1969, majoring in journalism and English with a minor in education.

A wife and mother of three boys, Diane has held many offices both as a collegiate and as an alumna. She is the Assistant to the Director of Student Activities, Panhellenic Advisor, and Publications Advisor at Washburn University in Topeka. Diane enjoys being involved in her sons' activities and is a high school booster club member. Other special awards and honors that Diane has received include being the recipient of a College Fraternity Editors Association award for a feature article, *Who's Who in American Education* honoree for two consecutive years, and *Who's Who Among America's Teachers* honoree for one year.

Diane has had many selected achievements. To name a few, she was a conference presenter at state, local, and regional conventions for teachers of gifted and talented students. She was a campus writing specialist for two years, training 250 teachers yearly and preparing classroom materials for their use. Diane has been the daily convention newspaper editor for five National Conventions where she supervised daily writing, editing, deadlines, publishing, and printing for a volunteer staff varying from five to 25 women.

In education, she has been a lead freshman English teacher, coordinating 12 English teachers and compiling instructional and testing materials. Diane is also very good working with children and young adults as is exemplified by her being the Director of a Cub Scout Day Camp for three years. This volunteer position included recruiting staff members and organizing and developing a program of activities along with supervising more than 75 adult volunteers and 250 scouts.



## Rose Mary Johnson

Rose Mary Rommel Johnson, University of Louisville - BT '48, has been treasurer for the Louisville alumnae chapter for 40 years. For many years she served on the Beta Gamma House Corporation and has been Louisville's alumnae delegate to convention. Every year she ascertains that her home is decorated early so it can be the site of the Louisville alumnae chapter's holiday brunch and craft auction. She was named outstanding alumna of Province XX in 1984.

Rose Mary is retired from a successful career as secretary at Seagram's Distillery in Louisville. She and her husband are avid travelers and there are few areas of the world which they have not visited. Rose Mary is a talented decorator and their home features many objects from their travels. She also designs many of her clothes.

Recently she has become interested in an organization which seeks homes for "retired" greyhound racing dogs and has now adopted one. Rose Mary is also very active in a number of organizations concerned with historic preservation and environmental issues. She is a member of the Audubon Society and an avid bird watcher.

Rose Mary has been a member of the board of directors of the Goodwill Industries Volunteer Services (GIVS) for the last eighteen years and just completed a term as president of this group.

For ten years, Rose Mary has been chair of the International Relations interest/issue group of the Louisville Branch of the American Association of University Women (AAUW). In May 1994 she was honored by the branch which contributed \$500.00 to the AAUW Educational Foundation in her name.

Rose Mary Rommel Johnson exemplifies the tenets of our creed, concerned about the quality of community life, giving generously of her time and talent, supporting and encouraging emerging leaders, and engaging in lifelong learning.



*"Fall rush is a fun and exciting time for the collegians. W  
hectic time if not for the alumnae. They keep us organized.  
They organize teams which help with house decorations,  
party cleanup, skit preparation, rushing techniques."*



## Donna Peacock

Donna Wilkie Peacock's job has taken her around the world and she is regularly associated with some of the most influential people. Donna is a Special Agent with the United States Secret Service. She is a member of Zeta Lambda chapter '78, graduating with a B.A. in political science from East Carolina University and attending law school for one semester.

It was at this time she was recruited by the Naval Investigative Service and in their service she assisted in the protection of Prince Andrew and met Prince Edward.

In 1983 she decided to work for the United States Secret Service and began her work in Jacksonville, Florida. After two years, she was transferred to Former President Carter's detail and spent the next two years traveling around the world on his detail. It was also during this time she met her husband, Jim, also a Special Agent.

Since becoming a Special Agent, Donna's responsibilities have included protecting six presidents (Nixon, Ford, Carter, Reagan, Bush and Clinton); Pope John Paul during his trip to Denver; Prime Minister Margaret Thatcher; President Korizan Aquino and President Gorbachev. Her travels have taken her to Africa, the Middle East, Central America and Europe. When she is not on Protective Assignment, she resides in Pensacola, Florida, with her husband and two daughters (ages 2 and 6) and investigates criminal cases at the USSS Field Office in Mobile, Alabama.



## Carolyn Wills

Carolyn Lee Wills, Georgia State - ΔΔ, '55, served as a chapter president and Panhellenic president as a collegian. After graduation, Carolyn was a field representative and as an alumna, Carolyn was president of the Atlanta alumnae chapter, president of the Atlanta Panhellenic, and Delta Zeta's 1976 Woman of the Year.

Professionally, Carolyn was Regional Manager, Public Relations, of Eastern Airlines for 17 of the 22 years until the department was closed because of bankruptcy proceedings. Eastern became the first client of Carolyn Lee Wills and Associates, Inc. Wills International Travel was founded because of her love of travel and the travel business after the demise of Eastern. The company specializes in travel to China and also represents Ixtapan de la Sol, a health spa/hotel in the mountains of Mexico.

Carolyn has held numerous offices including president of Media Women and has had many awards bestowed upon her. She is a consummate volunteer fund-raiser at black tie events. In the fall of 1994, Carolyn was on the committees for five large fund-raiser, black-tie balls. When Carolyn was president of the Atlanta alumnae chapter in 1976, the group of young career women organized a benefit to save what is now called Atlanta's favorite landmark, the Fox Theater. The opulent Moorish palace was scheduled for the wrecking ball but the benefit DZ orchestrated caught the public's awareness and is now called the turning point in saving the theater. Carolyn was invited to serve on the Board of Trustees of Atlanta Landmarks, Inc., the group that owns and operates the theater. "The Phantom Paints the Fox" benefit on October 1, 1994, was created and chaired by Carolyn with a goal of \$150,000 to paint the auditorium of the theater. The extravaganza not only met its goal, but earned more than the previous opening, a \$177,000 profit! The extra funds will go toward additional lighting in the auditorium.

Carolyn was also part of the turnaround of Atlanta's Zoo that had been named one of the worst in the US. She chaired the "Beastly Feast" in 1987, a black tie dinner dance in a tent at the zoo which was its largest fund-raiser, taking it from a profit of \$28,000 the previous year to \$112,000.

Carolyn chaired the Georgia Chapter of the Arthritis Foundation major fund-raiser in 1991, "The Crystal Ball." Carolyn's ball, "An Evening in China" at the Ritz Carlton Buckhead, is still called one of Atlanta's most memorable and extravagant galas. That 10th anniversary of the ball earned \$225,000, still a record for that event. Carolyn is the current chairman of the Arthritis Foundation, Atlanta Branch.

Carolyn has been the Vice President of Education for several years for the premier theater in the area, the Alliance Theater Guild.

Carolyn Lee Wills and Associates created and chaired the Peach Bowl's major event, other than the game itself. The Contract Signing Dinner was the favorite of coaches and sponsors in Atlanta for five years.



*would be a crazy and  
motivated and on time.  
kitchen duty, between-  
and rush etiquette."*



## Jane Nelson

Texas State Senator Jane Gray Nelson has held a variety of leadership positions in Delta Zeta, both as a collegian and as an alumna. She was pledge class president and Iota Psi chapter president '70 at University of Texas/Arlington and served as Province Collegiate Director for five years. She also helped found the Lewisville/-Lake Cities alumnae chapter.

"The leadership skills I acquired as a Delta Zeta prepared me well for my position as a Texas State Senator," Jane said. "My experiences as a former school teacher, business woman and proud mother of five provide me with unique qualifications for the role of state senator. I bring real world understanding of just how individuals are affected by government rules and regulations. That is one of the main reasons I ran for the Senate — to provide a voice for the average person who must live under the laws passed by their government."

Jane began her second term in January and looks forward to the challenges and opportunities presented to her. She represents a constituency of over 550,000 Texans in the Dallas/Fort Worth metropolitan area. Previously an elected member of the Texas Board of Education, she loves campaigning and tells us she sees every roomful of people as a giant rush party.



## Linda Backelant

For Linda Myers Backelant, Zeta Nu '68 at Ferris State, LULA BELLE "emerged" sometime after she turned 40. Clowning was something Linda had always wanted to try, but never took the time to initiate, putting family, career and other commitments first. After doing much personal research, Linda developed her clown alter ego and makeup mainly for philanthropic purposes. Lula Belle has appeared at several hospitals, entertaining children and delighting the staff. One Halloween she and hospital staff members even took the children patients trick or treating throughout the hospital. Wheel chairs and beds went to every nurses' station for treats, and the weak and fragile smiles on those children's happy faces were payment enough for Lula Belle.

Lula Belle has also appeared in local parades, at block parties, and at some children's parties in the Atlanta area. Her latest appearance was with the Atlanta-Gwinnett alumnae chapter's face painting booth at Duluth Days in Duluth, Georgia.

When Linda is not busy with her family, job, or "clowning around," she serves Delta Zeta as the Province Alumnae Director of Georgia.



## Patricia Rizzotti

"It seems difficult to believe, but it's been over a decade since I worked in the 'glamorous' world of modeling," remembers Patricia Brown Rizzotti, PAD-XVII-N. It all began in the late '70s. After doing some runway modeling for local groups, including Panhellenic, she was spotted by the owner of a chain of boutiques who wanted her to do "tea room" modeling during business lunches at prominent restaurants. Most of the outfits were cocktail or formal attire and many times featured fur coats. From these beginnings, she progressed to modeling for bridal stores and doing shows. Although it may seem that this is easy work and money, the time put in "behind the scenes" is often long and tiring. One time during a show, she came down with a high fever and only later discovered she had mono. But always a trooper, the show went on without a hitch, and no one was the wiser.

Another interesting job she has worked was as hostess at The Greenhouse, which is a famous health spa. Celebrities such as Liz Taylor, Debbie Reynolds, Lady Bird Johnson, etc. were frequent guests. Pat rubbed elbows with the rich and famous!

Pat now "works" for Delta Zeta. She is married and has two children (one of whom is a legacy). She spends much time doing volunteer work at a local museum and at her children's schools.

Pat is an alumna of Iota Psi at the University of Texas/Arlington, '79.



## Patricia Hurd

Patricia Hurd, Northwestern University-AA, joined the "Phantom of the Opera" company in the role of Carolotta Giudicelli when it opened in Chicago in 1990. She has remained in this role during tours to Boston, Washington, D.C., Denver, Detroit and Atlanta. Prior to her success in "Phantom", Patricia made her European debut at the Aldeburgh Festival in 1989 where her performance as Donna Anna in Mozart's "Don Giovanni" received rave reviews.

Patricia's repertoire includes Cio-Cio San in Puccini's "Madam Butterfly," Constanze in "The Abduction from the Seraglio" and Marguerite in Gounod's "Faust" in which she made her American debut.

On the concert stage, Patricia has been a soloist with the Chicago Symphony Orchestra at the Ravinia Festival and has been a member of the Lyric Opera chorus and the Chicago Symphony Orchestra.

Patricia's warm lyric soprano was generously shared with the Delta Zetas at Northwestern before she graduated cum laude in the school of music.





## ***Meryl Lin McKean***

Thousands of people in Mid-America know Meryl Lin McKean as someone they can turn to for reliable health information. Meryl Lin is the health and medical reporter for WDAF-TV in Kansas City, a position she's held since 1985. She prepares and presents more than a dozen feature stories each week.

"My reporting has to be accurate and balanced while still being interesting to viewers," said Meryl Lin. "I have to listen very carefully to my sources in health care and then convey that information in a way that viewers can understand."

Meryl Lin believes no other type of reporting could be as rewarding. "When I hear from a viewer who says she took a cancer screening test because of a story I did, and that it helped to save her life, that's a wonderful feeling."

Meryl Lin, a member of Epsilon Gamma, '77, graduated magna cum laude from Central Missouri State University in Warrensburg, Missouri, with a bachelor of science degree in broadcasting and film.

During her career, Meryl Lin has received numerous public education awards from organizations such as the Missouri Division of the American Cancer Society, the Dairy Council of Greater Kansas City and the Tulsa chapter of the American Heart Association. She is also a recipient of the Russell L. Cecil Award for journalism from the Arthritis Foundation, and won second place at the American Academy of Family Physicians' television journalism awards.

Meryl Lin is actively involved in community service. She is a member of the boards of directors for both the Missouri and Kansas City Region Easter Seal Society. She is International Chairman of Alumnae Programs for Delta Zeta.



## ***Tammy Stafford***

When Tammy Comer Stafford started college at West Virginia Tech she was unsure of a major for herself. She took math and science classes, as well as some in business. Soon she found she really enjoyed the challenge of the technical courses and decided to enter the school of engineering there. Her future career became clear to her when she began interviewing with several power companies and found that she was very interested in the kind of work they offered her.

She began with Northeast Utilities in 1987, dealing mostly with long range power supply planning. Most of her work centered around working on computer simulations of future power needs for the area. After two years, she was offered a job as a field engineer. This was not a job typically held by a woman, but it held great appeal for Tammy! Since then, she has continued on this career path, working now for another utility—Appalachian Power Company.

Her main duties include the design of new power lines as well as the maintenance of existing lines. She also performs safety audits on the substation department, surveys for new overhead power lines, works to upgrade power lines in downtown areas, as well as assisting developers on the design and construction of new residential subdivisions. She works in all kinds of weather and with many different people, and would not trade her job for anything.

Outside the job, Tammy also teaches a Project Business class for Junior Achievement and serves Delta Zeta as Province Alumnae Director for Virginia.



## ***Carla Woodcock***

Carla Arnold Woodcock was recently named Businessperson of the Year by the Wickliffe (OH) Chamber of Commerce. Carla, the "W" as she says, in M & W Printing and Graphic Design, is the owner of the company located in Wickliffe.

In the advertising business for 30 years, she was an account executive with the former Cleveland Press for 15 years before the start of M & W Printing.

Carla, a member of Gamma Kappa '58, graduated from Kent State University with a communications major. She is a past president of the Women's Advertising Club of Cleveland, and is currently vice presi-



dent of the Cleveland Eastside alumnae chapter where she has taken over the strip list for a membership drive. She has served many times as newsletter editor and ways and means chair. From her business she donates or does at cost most of the chapter's printing.

In community work she has served as public relations chair for the Cleveland YWCA, and chair of the Richmond Heights School Levy Committee.

In Wickliffe, Carla is a member of the Civic Center, the Historical Society, the Provo House Guild, Friends of Christmas in April, and an honorary member of the Wickliffe City Club. Wickliffe Clean City Commission recognized M & W Printing in 1993 for their valued contributions in graphic design to the commission.



## LeAnn Eisenreich

LeAnn Danner Eisenreich, Central Missouri - EG '85, became accustomed to living out of a suitcase during her year as a traveling chapter consultant for Delta Zeta. Little did she realize it would prepare her for life as the wife of a major league baseball player.

"An unpredictable life was meant to be," said LeAnn.

She met Jim Eisenreich, now an outfielder for the Philadelphia Phillies, on a blind date in Kansas City in 1989. Jim then played for the Royals. Since their marriage in 1990, LeAnn has gone on many road trips with her husband. She's also organized two households. During the season, the Eisenreichs and their children, Lauren and Tyler, live in a rental house in the Philadelphia area. During the off-season, it's back to the home they own in a Kansas City suburb.

LeAnn plays the role of single parent much of the time from March to October. "Even when Jim is home, he has to get his rest and get back to the ballpark. It can be hard on the kids when he's not around."

The 1994 baseball strike meant Jim was home while LeAnn, College Chapter Director for Zeta Rho chapter at William Jewell College, was busy with rush. "It was so nice. This was the first rush that I could leave the kids at home."

Many baseball fans know Jim as the player who's overcome Tourette's Syndrome, a neurochemical disorder that can cause involuntary twitching. LeAnn encouraged Jim to become involved with the Tourette's Syndrome Association. He speaks to school and church groups and also visits individually with many young people who have the disorder. "Jim just believes it's important if he can help someone and prevent them from going through what he went through," said LeAnn.

Jim isn't the only accomplished athlete in the family. LeAnn is a world class roller skater. In 1994, she finished second in classic women's figures at the United States Roller Skating Championships. She practices two hours a day, five days a week, often taking her children to the rink with her. "It's something to keep me normal, something to do on my own schedule away from baseball." LeAnn says she'll continue competing at least another year.

Her friendships in Delta Zeta and her work as a CCD also help balance her life. "Watching the chapter set goals and helping them reach those goals means a lot to me. Being able to help in some way is important."



## Sheila Partin

When one of Sheila Howell Partin's Delta Zeta sisters asked to purchase several loaves of her sweet sourdough bread, little did she dream that this was the beginning of a million-dollar business. In a few short years this fledgling baking business which began in her kitchen in Houston with personal delivery of each loaf has spread to more than 80 retail outlets in Texas, many restaurants and an international airline.

Sheila began baking a sweet sourdough bread for her family and friends in late 1989; by the spring of 1990 she had filled her first purchase order for some of this unusually flavorful bread. In the beginning she distributed many samples to friends and family and used hair salons as places to introduce her bread to potential customers. A mere taste of the product always brought orders, so she already had a well-established clientele when the first retail store began carrying Well-Bread (the name she used in the beginning). At this time she was working from her home kitchen; Sheila and husband Robert would share the responsibility of the long baking day. She started baking at 3:00 a.m. and Robert would come home after work and bake cinnamon rolls.

In October 1991, Well-Bread moved from Sheila's kitchen to its first retail bakery. She has moved twice to larger quarters, now operating in a 8,500-square foot facility designed and built through Robert's construction company. Robert also handles the administration and assists in product development.

Sheila's product has expanded to include dinner rolls, cinnamon rolls, sausage and fruit kolaches, bread pudding, hamburger buns, crackers, croutons and jalapeno cheese products. In 1994, Sheila Partin's Sweet Sourdough (the new name) continued to expand, adding more restaurants and moving into the Dallas, Fort Worth and Austin markets. She said it was exciting to fly on TWA Airlines last summer and see the food cart with "our" buns used for the sandwiches. Sheila's current focus is on adding restaurants and introducing a line of frozen bakery products. Using her considerable marketing expertise she says, "You just have to taste it" has become the truth in marketing and the basis for success for Sheila Partin's Sweet Sourdough.

While building her business, Sheila served as president of the Houston alumnae chapter for two years, did volunteer work at her children's school, and had her third child. In 1994 she was nominated for "Houston Sorority Woman of the Year" by her Delta Zeta alumnae chapter.

Sheila Howell Partin is a Delta Theta, University of Houston, '73.





# Delta Zeta's Career Connection

BY SHAEN HOSIE MACK, PHR

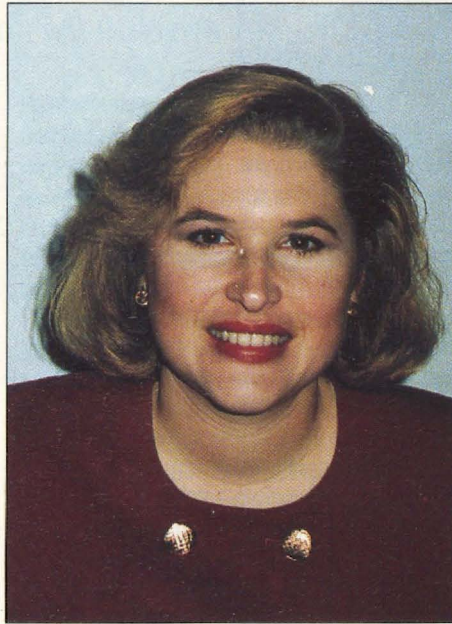
EMPLOYEE RELATIONS SPECIALIST, NETWORK EQUIPMENT TECHNOLOGIES, INC.

**W**hether you are about to embark on your first job search or looking for your next career opportunity, job hunting is the hardest job of all. Today's employment market is more competitive than ever. Because of this, knowing how to write that perfect résumé and prepare for your interview is critical.

As Delta Zeta members, we have experiences and skills which enhance our qualifications in a professional environment. But how do we best present and sell those qualifications? The answer is how you market your Delta Zeta experience. Here are some suggested ways to incorporate Delta Zeta in your résumé and during your interview.

**Résumé:** Try to keep your résumé to one page. If you graduated from college more than 10 years ago you may consider adding a second page. Focus on your qualifications and accomplishments. It is important to think of your résumé as a piece of advertising. A well-formatted and written résumé will help market your skills and land that all-important interview.

If you are a graduating senior without a lot of work experience, you may want to list your Delta Zeta experience under the Work History section of your résumé, especially if you held leadership positions. If you do this, do not use Greek terminology when explaining your accomplishments. Relate your accomplishments to only the business environment. Using only professional language is also recommended. Remember, not all employers are members of Greek organizations. Here is an example:



Shaen Mack

If you were a rush chairman you may state it this way:

**Title** - Director of Membership Development.

**Description** - Developed and managed the membership program for the chapter of 75 members. Responsibilities included planning and coordinating a new membership campaign, implementing policies and practices as they related to membership development.

**Accomplishment:** Increased total membership by 50% in 3 weeks.

If it has been several years since your college graduation, I recommend including Delta Zeta in the **Professional Affiliation**

section of your résumé. In addition to this, analyze the personal development skills you have acquired through Delta Zeta and consider including them in a **Skill Summary** or **Qualifications** section.

**Interviewing:** I strongly encourage you to practice interviewing. This can be done with a friend or respected professional. Establish a set of questions that you are likely to be asked during an interview. I also suggest preparing two sets of answers for each question. One answer would be in response when interviewing with a small company, the other a large company. As you prepare for your interview, don't forget to conduct some research on the company you will visit.

Having a familiarity with the organization will confirm your interest to the employer. When there is an opportunity to cite an example or experience about Delta Zeta be prepared to apply your Greek experience and leadership to the business environment and the job for which you are interviewing. The key is appropriately describing your experience in Delta Zeta in a way that gives you a competitive edge. Finally, be able to explain how your accomplishments in Delta Zeta will help you become successful in the position.

Best of luck!

*Shaen, a former chapter consultant, is Province Alumnae Director for XV-C. She is a member of Xi Lambda at University of San Francisco.*

## 1-800-6-ALUMNA



# Visions — An Eye on the Future

Delegates from all 26 member groups met together in Indianapolis, October 21-23, 1994, for the National Panhellenic Conference annual meeting. Representing Delta Zeta were Sandra Sebrill Bailey, delegate; Sandra McAlister Nesbitt, first alternate delegate; Lynnda Wolf Hoeffler, second alternate delegate; and Karley Klemp Burns, third alternate delegate. Harriet B. Rodenberg, Sigma Delta Tau, National Panhellenic Conference Chairman, presided.

The theme, "Visions-An Eye on the Future," provided focus for discussion, understanding, mutual trust and cooperation among the delegations. Highlighted were the accomplishments of the committees within NPC.

The Alumnae Panhellenics Committee announced that 289 chapters offered over \$300,000 in collegiate scholarships in the past year. Committed to providing the most

up-to-date resources, the committee worked to promote Adopt-A-School, development of an Alumnae Panhellenic Award and established guidelines for using the Rush Information Form. A sub-committee has been formed to assist in the recruitment of volunteer Panhellenic Advisors on campuses where there is no advisory leadership.

In an effort to keep our College Panhellenics with an eye to the future, the College Panhellenics Committee assigned 44 NPC delegation members as Area Advisors for the over 600 campuses where College Panhellenics are organized. NPC Area Advisors offer support, advice and educational programming to their designated College Panhellenics. During the past year, NPC has provided seven consulting team visits to assist in strengthening College Panhellenics and offering recommendations and solutions to problems. The Rush 2000 Committee has been charged with investigating

rush programming in all parts of the country, and in particular, examining rush formats that differ from the traditional.

Resolutions passed by the Conference addressed issues of gridlock when computer bid matching is used, consulting with Area Advisors prior to the re-evaluation of Total, clarification of the status of off-campus students by replacing the word "term" with "an entire academic year" and the development of an educational programming series, "NPC Link," to be offered as a resource for Alumnae and College Panhellenics.

The Conference also approved the expansion of the Executive Committee to include the chairmen of the College and Alumnae Panhellenics Committees. An NPC foundation will be established to provide funds for educational programming.

The members present kept their eyes to the future with the educational component "In the Company of Women - A Legal Perspective," presented by Tim Burke, attorney with Manley, Burke, Fischer and Lipton, publishers of *Fraternal Law*; Holly McKiernan, Executive Liaison and Counsel, Alpha Chi Omega; Greg Hauser, attorney with Walter, Conston, Alexander and Green, Chairman, NIC Legal Committee; and Dave Westol, Executive Director, Theta Chi Fraternity.

Issues addressed and of concern to all women's fraternities were university required relationship agreements, risk management, community living, sexual orientation, HIV/AIDS, illegal activities in chapter houses, eating disorders, single sex status and managing liability.

The National Panhellenic Conference draws upon the expertise and experience of its members throughout the women's fraternity world. These dedicated women are committed to assisting collegiate and alumnae women achieve the highest ideals of fraternity membership.

By Kathleen Massie,  
NPC Delegate, Delta Delta Delta

*The International Council  
is proud to announce chartering of  
Inland Empire (Southern California)  
Alumnae Chapter  
on  
February 4, 1995  
Wilson (North Carolina)  
Alumnae Chapter  
on  
February 5, 1995  
and  
Morehead Kentucky Area  
Alumnae Chapter  
on  
February 25, 1995*



# Women and

BY MARGARET WATT, UNIVERSITY OF WASHINGTON - K



Life, stress, women. At times it seems as if these words are synonymous, with no let up in sight. The truth is that all men, women and children experience stress. The only questions are how much stress can we endure before it becomes destructive, and what can be done to help alleviate some of the stresses in our lives?

Renee is a typical example of collegiate women and the kinds of stress they face today. While attending a university, she is an active Delta Zeta, she is the chapter House Manager, and works at two different part-time jobs. Class-work, finals and financial pressures complete the picture of a life-style geared for stress. Renee balances her responsibilities and pressures by taking an hour a day to just relax, plus, she states emphatically, she needs ten hours of sleep a night. Whenever she crosses the line and experiences too much stress, Renee will get depressed and feel negative about herself; little things which normally don't bother her will make her feel worried and irritated. She tends to get sick, her resistance is run down. This too is typical; people with stressful lives often suffer depression, colds, headaches, stomach aches, colitis, stiff necks and abnormal eating habits.

Melody is an active alumna of Delta Zeta; she is divorced, the mother of a son and a professional career woman whose job is extremely stressful, not only emotionally, but physically. She explains that she feels symptoms of stress when she is being pulled in different directions at the same time; she feels out of control and fragmented. When this happens, Melody suffers exhaustion, headaches, and is unable to unwind and just relax; she finds that it takes a longer time for her to react to everything, that she can't think quickly, and is "teary-eyed." Sometimes it takes all her strength to stay focused; and after a stressful day at work, she feels that there is nothing left in her to give — at home or elsewhere.

Both Renee and Melody typify the effects that stress can have upon us and the feel-

ings of helplessness that can render us impotent in our lives. Dr. Joan Martin, who works at the Clinic of Psychiatry at the University of Washington Hospital, believes that women are culturally and socially trained to react differently than men to stress. Women are trained not to show anger nor to act out their feelings, and as a result women turn their stress inside themselves. They feel that it is their fault, that they have to cope. They tell themselves that they are "bad." The result is that they become their own worst enemy.

While experiencing stress, men tend to drink, women less so. However, in the number of new smokers, women outnumber men in taking up the habit. Sometimes stress shows itself in eating disorders. The major result is depression. Bulimics are mostly women who feel that they can't please; bulimia is a way of taking back control of their lives, and dealing with the stress.

Dr. Martin notes that women are twice as likely to be depressed as men. (If we exclude women from the ages of 20 to 45, then the equation of depressed men and women are the same.) Some of the mental impacts of stress on women can be summed up in the idea of the "Type E" woman — the E woman is everything to everybody. She works, tends to her family, her husband, is active in organizations, etc. She buys into the idea that everything is her responsibility; all problems are her problems.

According to Dr. Martin, the real issue is dependency. Women need to get out of the trap of trying to do it all: children, husband, home and job, etc. Stress is having too much to do. Women must reject the idea of having to do it all, and instead start making choices.

So what are some solutions to combating stress? Renee, as noted above, gives some time to herself to rest. She also finds it helpful to talk to a friend and get plenty of sleep and exercise. Melody rewards her-

self by swimming, or when weather is inclement, she treats herself to a massage. She enjoys her house, and has done some remodeling. Her motto is "don't worry about what you can't control," and she tries not to bring work problems home with her. (She also believes that the unconditional love of her pet dog is a great comfort and combatant to stress!)

Dr. Martin emphasizes that people who make choices are happy people. They feel they have more control over their lives. They must be honest in their relationships and deal with fear. The doctor notes that there may be a price to pay: the family may not like it when the mother/wife stops assuming the responsibility and blame for everything. The husband could become angry and the children feel neglected. The typical response is to accuse the woman of being selfish. Many women, to keep peace, go back to the usual routine, many because they believe the accusations, and then everything in the family is "right" again.

The fact is that the old patterns of our grandmothers and mothers just don't work for us anymore. Sometimes professional therapy is needed to help break the cycle of stress in our lives. Also, joining and talking with a group of women is a good idea; women learn that they are not alone, that they are not selfish.

Some recommended books to read on the subject are: *Women Who Run With The Wolves* by Clarissa Estes, *Dance of Anger* by Harriet Lerner, and *Type E Woman* by Harriet Braiker.

Margaret Watt, a professional writer, is a member of the Alumnae Programs Committee. This article is presented as part of the focus on health and fitness in this biennium.



# Relationship Violence

BY ANNE LEITSCH, UNIVERSITY OF LOUISVILLE - BT



**H**ow many times have you said or heard the comment

"Domestic violence is overblown?"

However, on average each year, women experienced 572,032 violent<sup>2</sup> victimizations at the hands of an intimate.<sup>3</sup> With figures this staggering, domestic violence, unfortunately, is one of the leading problems in our society. The only positive that has come from the O.J. Simpson case is maybe people will realize that it *is* a problem.

Many women's organizations, law enforcement agencies and various other community groups offer seminars on what to do if you are attacked or how to protect against an attacker. Many collegiate and alumnae chapters also have such seminars as standards programs. These are outstanding programs and should be offered to women; however, women need to learn to protect themselves, not only from people they know, but from strangers. Women are significantly less likely to become victims of violent crime than men when the perpetrator is a stranger. However, if the perpetrator is an intimate, women are 10 times more likely to be a victim of violence than men.

Women are just as likely to experience a violent victimization by an intimate or relative (33 percent) as they are to be victimized by an acquaintance (35 percent) or a stranger (31 percent). Relationship-related violence, however, accounted for only five percent of all violent victimizations against men. Men are far more likely to be victimized by an acquaintance (50 percent) or a stranger (44 percent) than by an intimate or family member. Women have traditionally been unwilling to accept and deal with this problem, but they must in order to achieve complete freedom.

The self-protection type of seminars do help women and should be continued. At least they provide a means to teach women

how to fight back. That is a needed skill to protect oneself from an intimate. Women suffering violent victimizations were almost twice as likely to be injured if the offender was an intimate (59 percent) compared to offenders who were strangers (27 percent). But, it is the philosophy of these seminars that needs to change.

The focus of seminars should change from physical self-protection into an array of personality development techniques to prevent a woman from becoming an abused person. They need to address a profile of the "typical" abused woman to build those inner traits to prevent a woman from entering an abusive relationship or to help a woman remove herself from such a relationship.

The "typical" profile of a battered woman depicts someone with low self-esteem, a lack of self-confidence, and a tendency to withdraw. The woman may display an aloof quality, a critical or uncompromising attitude, and a sense of discomfort when interacting with others. The combination of shyness and reserve generally reflects traits developed in childhood as a result of poor early life relationships.<sup>4</sup>

If seminars addressed the building of one's inner self, then maybe a woman will not become a victim at the hands of an abusive mate. Although these traits were not developed in the woman's childhood, they can be addressed in adulthood. The core behind the ability of a woman to leave or not become a victim is a sufficient support network that she can depend upon. Women must come together to aid each other for the betterment of the gender.

The problem of relationship violence will simply not go away on its own. Society needs to include in its current philosophy the realization that violence toward women by an intimate is not a private family matter. It is a societal problem. The following is a list of myths and facts about abused

women. Taking a grassroots approach, if we all dispel these myths, then we can start treating the problem.

**Myth:** Some people still believe the old common law that a wife is the property of her husband, and it is his prerogative to punish her.

**Fact:** The hitting, threatening/ or harassment of any person by another person, including husbands, is against the law.

**Myth:** She could just leave.

**Fact:** It is not her fault. The psychological reasons a victim cannot leave are very complex.

**Myth:** Maybe she asked for it.

**Fact:** The courts do not consider nagging as justification for abuse.

**Myth:** If a police officer intervenes, he/she can resolve the situation.

**Fact:** Many states have an exception (in a domestic situation) to the requirement that some degrees of assault must occur in the officer's presence to make an arrest. Police are more willing and able to arrest in domestic violence situations than any other.

**Myth:** Police cannot arrest the abuser without a warrant.

**Fact:** Most states allow police to make a warrantless arrest in domestic violence situations.

**Myth:** Physical violence is normal in marriage.

**Fact:** Most couples have arguments but can control their emotions. Physical violence in any form is abnormal.

**Myth:** Most abusers were drunk at the time of the assault.



*"The struggle to be free of violence from men is a prerequisite for women's freedom."<sup>1</sup>*



Anne Leitsch

**Fact:** Excessive use of alcohol is often a factor, but many abusers use alcohol as an excuse for their behavior.

**Myth:** A woman cannot receive alimony or child support if she leaves her husband.

**Fact:** If a woman leaves her home after being threatened or beaten she may obtain an order for child support and possibly alimony. If the husband violates this court order, he may be held in contempt of court.

**Myth:** If a woman leaves her home, she will lose it in a divorce.

**Fact:** This is not automatically true, especially if she leaves because of abuse.

### ***Violence in Dating Relationships***

Several studies have shown a parallel between dating experiences of college students and those of women abused in their marriages, suggesting that behaviors which occur in dating relationships may establish expectations and patterns of behavior which continue in later marriages.

The primary causes of violence (i.e., jealousy, alcohol and money) and the effects of violence on their relationships were additional similarities found between college students and abused women in marriages. Furthermore, studies have shown that the degree of intimacy in the relationship correlated with violence. Violence was more apt to occur if the relationship had achieved a state of seriousness or intimacy than if the individuals were still at a casual dating stage.<sup>5</sup> Simply put, life does not change once the individuals are married. It usually becomes worse. However, if a woman is helped in the early stages of a relationship, then violence is usually prevented.

### ***Children are the Forgotten Victims***

The forgotten victims of relationship violence are the children who have huddled in their private world of hell and unfortunately have never come to the attention of a social service agency. The dysfunctional pattern of an abusive relationship impaired the ability of a parent to meet the developmental and emotional needs of the children.

Relationship violence is cyclical. Violent people tend to have great expectations of themselves; therefore, they have great or unrealistic expectations of their children too. The emotional and psychological damage is shared between mother and child in a situation where father/husband is the abuser. If the abuser verbally or physically lashes out at the child, the mother is placed in a position to ignore the abuse or to intervene. If she intervenes, she is accused by the abuser of siding with the child or undermining his authority. The result is that the child will accept responsibility for the abuser's anger toward the mother.

In addition to assuming the responsibility for the violence, the child will often blame himself for the breakup of the family. Therefore, the child becomes a source of pressure the mother feels to stay in the abusive relationship. Many times a mother will return to an abusive relationship because the child tells her to do so. In actuality, the mother is doing what she perceives from the child to be the right thing and vice versa. In actuality, no one really wants to go back but due to the complete break down in psychological structure, no one is able to articulate true feelings.

Moreover, the child becomes a pawn in the relationship. Threats to obtain custody or to kidnap the child may be sufficient to intimidate a mother into returning or keep from ever leaving, especially if she does not

have adequate legal and social support systems available to her.<sup>6</sup>

In conclusion, the purpose of this article is simply to give an overview of some of the problems associated with relationship violence. An understanding of relationship violence is the first step to any solution. As an international organization for women, Delta Zeta has the ability to begin the attitudinal change that is so desperately needed. Delta Zeta has the ability to address the characteristic traits that enable women to be abused. The sorority can help free women!

*Anne, an attorney, is assigned to the Quick Response Unit for Inter-Family Violence, a part of the Jefferson County (Kentucky) Prosecutor's office. She deals in cases of child and spousal abuse and with families in crisis. She is Province Collegiate Director for Province XX, Kentucky.*

*All statistics for this article were obtained from the U.S. Department of Justice, Bureau of Justice Statistics, A National Crime Victimization Survey Report (January 1994).*

<sup>1</sup> Lefcourt, C. *Women and the Law*, (Clark Boardman Co., 1984), p. 1-8.

<sup>2</sup> *Violent* is defined as rape, robbery and assault.

<sup>3</sup> *Intimate* is defined as boyfriend, girlfriend, spouse and ex-spouse.

<sup>4</sup> Star, B., Clark, C., Goetz, K., and O'Malia, L., "Psychosocial Aspects of Wife Battering", *The Journal of Contemporary Social Work*, 1979, p. 483.

<sup>5</sup> Roscoe, B. and Benaske, N. "Courtship Violence Experienced by Abused Wives: similarities in patterns of abuse", *Family Relations* (1985) p.423.

<sup>6</sup> Elbow, M. "Children of Violent Marriages: The Forgotten Victims", *The Journal of Contemporary Social Work* (1982).



# Directory →

## INTERNATIONAL COUNCIL

**PRESIDENT:** Sandra McAlister Nesbitt (Mrs. Milton), 44 Tecumseh Drive, Montgomery, AL 36117

**VICE PRESIDENT OF MEMBERSHIP:** Lynnda Wolf Hoefler (Mrs. Robert), 2981 Telber Court, Stow, OH 44224

**VICE PRESIDENT OF ALUMNAE:** Phyllis Berens Ross (Mrs. Norman), 25 Scottsdale, Wichita, KS 67230

**VICE PRESIDENT OF COLLEGIANS:** Merry Westbrook Adamcik (Mrs. Roy), 614 Rozelle Avenue, Sugar Land, TX 77478

**SECRETARY:** Charlotte Davis (Dr.), P.O. Box 2, Troy State University, Troy, AL 36082

**TREASURER:** Pamela McClure Cronenwett (Mrs. William), 25720 West Hills Drive, Dearborn Heights, MI 48125

**DIRECTOR OF CHAPTER FINANCES:** Ruth Weider Patterson (Mrs. Robert), 3623 Devereaux Road, Columbia, SC 29205

**DIRECTOR OF MEMBERSHIP SERVICES:** Karly Klemp Burns (Mrs. Lawrence), P.O. Box 58050, Tierra Verde, FL 33715

**DIRECTOR OF NEW MEMBER EDUCATION:** Jeanine Petersen Triplett (Mrs. Brian), 4014 Deer Creek Drive, Louisville, KY 40241

**PAST PRESIDENT:** Marvona Easley Tavlin (Mrs. Michael J.), 6320 Rogers Circle, Lincoln, NE 68506

**NATIONAL PANHELLENIC CONFERENCE DELEGATE:** Sandra Sebrell Bailey (Mrs. Bruce), 639 N. Portage Path, Akron, OH 44303 and 110 Laurel Crossing, Huntington, WV 25701

**NATIONAL PANHELLENIC CONFERENCE ALTERNATES:** Sandra McAlister Nesbitt (Mrs. Milton) Lynnda Wolf Hoefler (Mrs. Robert), Karly Klemp Burns (Mrs. Lawrence)

## INTERNATIONAL HEADQUARTERS

**INTERNATIONAL HEADQUARTERS:** 202 East Church Street, Oxford, OH 45056, 513/523-7597 FAX: 513/523-1921

**EXECUTIVE DIRECTOR:** Cynthia Winslow Menges

**CHAPTER CONSULTANT COORDINATORS:** Sandra Sebrell Bailey (Mrs. Bruce), 639 N. Portage Path, Akron, OH 44303 and 110 Laurel Crossing, Huntington, WV 25701

Ruth Weider Patterson (Mrs. Robert), 3623 Devereaux Road, Columbia, SC 29205

**CHAPTER CONSULTANTS:** Heather Angove, Aimee Chadwick, Jennifer Dunlap, Spring Kreeger, Yvonne Nunez, Christi Ostendorf, Stacey Wheeler, Dana Wulff

**GRADUATE COUNSELOR:** Cynthia Cruz

**MAGAZINE PROGRAM:** International Headquarters, 202 East Church Street, Oxford, OH 45056

**INSURANCE:** International Headquarters, 202 East Church Street, Oxford, OH 45056

**THE LAMP:** Gwen Moss McKeeman (Mrs. Robert), 5517 S. 74th E. Avenue, Tulsa, OK 74145

**PARLIAMENTARIAN:** Charlotte Davis (Dr.), P.O. Box 2, Troy State University, Troy, AL 36082

## STANDING COMMITTEES

**AWARDS (ALUMNAE AND COLLEGIATE):** Mary Malone (Ms.), 2120 Columbus, Muskogee, OK 74401

**COLONADE CLUBS:** Kristi Brown Stokes (Mrs. Edward), 1504 Pine Springs Rd., Knoxville, TN 37922-5943

**CONSTITUTION, CODE OF REGULATIONS AND BYLAWS:** Anne Marie Jones Gavin (Mrs. William), 3264 Swan Drive, Vineland, NJ 08360

**EXTENSION:** Jamie Hammill Pyne (Mrs.), 10185 Collins Avenue, The Plaza of Bal Harbour, Unit 1415, Bal Harbour, FL 33154

**FIELD ACTIVITIES:** Lynnda Wolf Hoefler (Mrs. Robert), 2981 Telber Court, Stow, OH 44224

**FINANCE:** Pamela McClure Cronenwett (Mrs. William), 25720 West Hills Drive, Dearborn Heights, MI 48125

**HISTORY:** Florence Hood Miner (Mrs. Arthur), 1917 Five Iron Dr., Castle Rock, CO 80104

**JUDICIARY:** Kathryn Clark Mitchell (Mrs.), 3837 Cedar Avenue, Montgomery, AL 36109

**MUSIC:** Julie Stewart Pride (Mrs. Charles), 2122 B Stonebrook Court, Bowling Green, KY 42101

**RITUAL:** Karen Kind Veitch (Mrs. Andrew), 44 Bob Hill Lane, New Canaan, CT 06840

## SPECIAL COMMITTEES

### ALUMNAE:

**ALUMNAE-COLLEGIATE RELATIONS:** Linda Bruggemann Seymour (Mrs.), 695 So. Pathfinder Trail, Anaheim, CA 92807

**ALUMNAE COMMITTEE COORDINATOR:** Elsie Wheeler McTee (Mrs. Clifford), 4322 St. George, Corpus Christi, TX 78413

**ALUMNAE RECRUITMENT:** Sara Rosier Bush (Mrs. Peter), 3523 Ashwood Lane, Atlanta, GA 30341

**MEMBERSHIP:** Janice Jelks Cox (Mrs. Stanford), 201 Muir Woods, Cary, NC 27513

**PROGRAMS:** Meryl Lin McKean (Ms.), 8301 Sagamore Road, Leawood, KS 66206

**SPECTRUM:** Patricia Menendez Tector (Mrs. John), 907 Winslow Court, Cary, NC 27513

### COLLEGIATE:

**ACADEMICS:** Cheryl Stanley Jones (Mrs. Russell), 4012 El Capitan Drive, Temple, TX 76502

**ACTIVITIES:** Margaret Allegro Sorrells (Mrs. Rick), 6158 Chesley, Dallas, TX 75214

**RISK MANAGEMENT:** Pamela Siders Grizzle (Mrs. John), 1007 Smartts Lane, Leesburg, VA 22075

**SOCIAL:** Sara Carruthers (Ms.), 601 Glenway Drive, Hamilton, OH 45013

**SORORITY EDUCATION:** Ellen Kroll Jenkins (Mrs. Paul), 390 Smock Drive, Greenwood, IN 46143

**STANDARDS:** Penny Payne Fioravante (Mrs. Michael), HC63 Box 91, Tiny Ridge Farm, Sumner, WV 25567

**CONVENTION CHAIRMAN:** Anne Marie Jones Gavin (Mrs. William), 3264 Swan Drive, Vineland, NJ 08360

**HOUSING ADMINISTRATIVE:** Norma Minch Andrisek (Mrs. John R.), 319 Janice Drive, Berea, OH 44017

### REGIONAL HOUSING CHAIRMEN:

Mary Beth Hibler Allen (Mrs. Eugene), 8 Summit Cedar Drive, Littleton, CO 80127

Louise Parker Bingham (Mrs. Drake), 4243 Old Tyler Road, Nacogdoches, TX 75961

Kathleen Johnson Sledge (Mrs. Joe W. Jr.), 1700 Dearing Place, Tuscaloosa, AL 35401

**PHILANTHROPY CHAIRMAN:** Joan Dondrea Lowry (Mrs. Bob-Bill), 578 Yarmouth Lane, Bay Village, OH 44140

**ALUMNAE:** Ann Butler Booth (Mrs. W. Ray), 14735 Oak Bend Dr., Houston, TX 77079

**COLLEGIATE:** Louise Gilbert Warner (Mrs.), 34720 Sherbrook Park Drive, Solon, OH 44139

**NETWORKING:** International Headquarters, 202 E. Church Street, Oxford, OH 45056

**NEWSLETTER:** Diane Jones Skelton (Mrs. Danny), 100 SW Meadow Lane, Topeka, KS 66606

**REFERENCES:** Alberta Doran Curran (Mrs. Tom), 116 Dublin Woods Drive, Cary, NC 27513

## REGIONAL COLLEGIATE COORDINATORS:

**Northeast and Midwest:** Provinces I-E, I-W, II, III-E, III-C, III-W, IV, VII, XX Linda Regner (Ms.), 514 Beacon Hill Terrace, Gaithersburg, MD 20878

**West and Midwest:** V-N, V-S, VI-E, VI-W, IX-N, IX-S, XV, S, XV-C, XV-N Beth Petrucce (Ms.), 7006 N. Tuxedo, Indianapolis, IN 46220

**South and Southeast:** XVIII, XIX, XXI-E, XXI-W, XXII, XXIII, XXIV, XXV, XXVI Sharon Moncrief Slovinski (Mrs. Harry), 7740 Westminster Dr., Byron Center, MI 49315

**Midwest and Southwest:** VIII, X, XI, XII, XIV, XVI, XVII-N, XVII-S Linda Lesniak Szymanski (Mrs. Robert), 931 Notre Dame Ave., Concord, CA 94518

**WAYS AND MEANS:** Julie Hauser (Ms.), 14124 Heywood Path, Apple Valley, MN 55124

## DELTA ZETA FOUNDATION

**PRESIDENT:** Joan Dondrea Lowry (Mrs. Bob-Bill), 578 Yarmouth Lane, Bay Village, OH 44140

**VICE PRESIDENT:** Joyce Low London (Mrs. John), 13326 Glen Taylor Lane, Herndon, VA 22071

**VICE PRESIDENT-MUSEUM:** Norma Minch Andrisek (Mrs. John R.), 319 Janice Drive, Berea, OH 44017

**SECRETARY:** Carol Selway Bertz (Mrs. Michael), 36 Glenmoor Drive, Englewood, CO 80110

**TREASURER:** Marjorie Klingensmith Lovewell (Mrs.), 96 The Prado NE, Atlanta, GA 30309

**MEMBERS:** Ann Butler Booth (Mrs. W. Ray), 14735 Oak Bend Dr., Houston, TX 77079

Sandra McAlister Nesbitt (Mrs. Milton), 44 Tecumseh Drive, Montgomery, AL 36117

## COMMITTEES:

**COUNCIL FOR BETTER HEARING:** Joan Dondrea Lowry (Mrs. Bob-Bill), 578 Yarmouth Lane, Bay Village, OH 44140

**ELIZABETH COULTER STEPHENSON SCHOLARSHIPS:** Joyce Low London (Mrs. John), 13326 Glen Taylor Lane, Herndon, VA 22071

**FINANCE/INVESTMENTS:** Marjorie Klingensmith Lovewell (Mrs.), 96 The Prado NE, Atlanta, GA 30309

**GRADUATE SCHOLARSHIPS:** Priscilla "Pat" Beatty, 3691 NW 95th Terrace, #1202, Ft. Lauderdale, FL 33321

**GALLAUDET UNIVERSITY:** Lucille Bolstad May (Mrs. Leland B.), 5100 Dorset Avenue, #406, Chevy Chase, MD 20815

**GOLDEN CIRCLE SCHOLARSHIPS:** Lacey Goodwin (Miss), 155 Sylvest Drive, #605, Montgomery, AL 36117

**HEGHINIAN SCHOLARSHIPS:** Marion Angarola Shapley (Mrs.), 109 Via Los Miradores, Redondo Beach, CA 90277

**HOUSE EAR INSTITUTE:** Betty Paul DeWitt (Mrs. Norman), 23630 Oak Rest Lane, Harbor City, CA 90711

**PUBLIC RELATIONS/BETTER HEARING INSTITUTE:** Joan Dondrea Lowry (Mrs. Bob-Bill), 578 Yarmouth Lane, Bay Village, OH 44140

**PUBLICATIONS:** Diane Jones Skelton (Mrs. Danny), 100 SW Meadow Lane, Topeka, KS 66606

**SCHOLARSHIP COORDINATOR:** Joyce Low London (Mrs. John), 13326 Glen Taylor Lane, Herndon, VA 22071



**UNDERGRADUATE SCHOLARSHIPS:** Donna Edwards Happ (Mrs. William), 39968 Pearl Drive, Murieta, CA 92563

## NATIONAL HISTORICAL MUSEUM

**PRESIDENT EMERITA:** Lucile Crowell Cooks (Mrs.), 7400 Sun Island Drive S., Apt. #404, South Pasadena, FL 33707  
**SUMMER:** 1890 E. 107th Street, Judson Manor, Apt. #511, Cleveland, OH 44106

**CURATOR EMERITA:** Betsy Bradley Leach (Mrs.), 1325 Valley View Road, #304, Glendale, CA 91202

**DIRECTOR EMERITA:** Grace Pritchard Gorham (Mrs.), 1510 East 31st Street, Tulsa, OK 74105

**CURATOR/ARCHIVIST:** Betty G. Johnson Tomblinson, National Historical Museum, 6080 Oxford-Milford Rd., RR #1, Oxford, OH 45056

## PROVINCE COLLEGIATE AND ALUMNAE DIRECTORS

### I. Maine, Massachusetts, New York, Vermont, New Hampshire, Connecticut, Rhode Island and New York

PCD I-E: Cindy Tinney Kozil, 6 Autumn Road, Medway, MA 02053-2154

PCD I-W: Diana Hutchinson, 1001 Woodhill, Newark, NY 14513-2040

PAD I-E: Acting PAD Sara Bush (Mrs. Peter), 3523 Ashwood Lane, Atlanta, GA 30341

PAD I-W: Christie Putnam, 3272 Seneca St. West, Seneca, NY 14224

### II. New Jersey and Delaware

PCD: Anita Mangano-Reece (Ms.), 118 Kevin Road, Delran, NJ 08075

PAD: Acting PAD Sara Bush (Mrs. Peter), 3523 Ashwood Lane, Atlanta, GA 30341

### III. Pennsylvania

PCD III-C: Karen Starnier Jacobson (Mrs. Charles), RD 1, Box 157, Covington, PA 16917

PCD III-W: Jamie Lynn Bero-Johnson, 228 Egbert Hall, Clarion, PA 16214

PAD III-E, W and C: Acting PAD Sara Bush (Mrs. Peter), 3523 Ashwood Lane, Atlanta, GA 30341

PCD III-E: Deb Fries, 2060 Old Stone Rd., Allentown, PA 18103

### IV. West Virginia

PCD: Kara Barker Price (Mrs.), 124 Ruthlawn Drive, South Charleston, WV 25309

PAD: Doretta Pugh Osburn (Mrs. Thomas), 1 Valley View Estates, Hurricane, WV 25526

### V. Ohio

PCD-N: Kim Bannerman Hays (Mrs.), 374 East Bergey, Wadsworth, OH 44281

PCD-S: Michelle Lamance, 3118 E. 4th St., Dayton, OH 45403

PAD-N: JoAnn Arnholt (Mrs. Edward Carmien), 425 Student Services, Bowling Green University, Bowling Green, OH 43403

PAD-S: Connie Teaford Wilt (Mrs.), 5437 Rockwood Road, Columbus, OH 43229

### VI. Michigan

PCD-W: Marlene Thompson Gilpin (Mrs. Michael), 112 W. Douglas, Houghton, MI 49931

PCD-E: Cheryl Franks Denman (Mrs. Scott), 1038 Nottingham, Grosse Pointe Park, MI 48230

PAD: Judith D. Christian (Mrs. Edward), 21 Newberry Place, Grosse Pointe Farms, MI 48236

### VII. Indiana

PCD: Anne Moser Ikenberry (Mrs.), 5332 Ochs Avenue, Indianapolis, IN 46254

PAD: Acting PAD Meryl Lin McKean 8301 Sagamore Road, Leawood, KS 66206

### VIII. Wisconsin

PCD: Grace Dollohan Bartholet (Mrs. Dave), 6445

Olson Memorial Hwy., Golden Valley, MN 55427-4947

PAD: Susan Hein Feuerherm (Mrs.), 3849 Conroy Trail, Inver Grove Heights, MN 55076

### IX. Illinois

PCD-S: Shari Lauer, RR #3, Box 4, Bloomington, IL 61704

PCD-N: Anita Lopez Powers (Mrs.), 2055 Medinah Circle, Elgin, IL 60123

PAD-S: Terri Sullivan Choules (Mrs.), 203 East Fawn, Mahomet, IL 61853

PAD-N: Marcia Campbell Harrison (Mrs. Charles), 1 South 761 Ott Avenue, Glen Ellyn, IL 60137

### X. Iowa and Nebraska

PCD: Carolyn Zabel Hoffmann (Mrs.), P.O. Box 910, Guttenberg, IA 52052

PAD: Ann Langel (Miss), 910 Black Hawk Rd., #9, Waterloo, IA 50701

### XI. Missouri

PCD: Dana McMillan (Miss), 8183 Monrovia, Lenexa, KS 66215

PAD: Sidney Tomb Kendall (Mrs.), 12662 Broadridge, Florissant, MO 63033

### XII. Minnesota, North Dakota and South Dakota

PCD: Grace Dollohan Bartholet (Mrs. Dave), 6445 Olson Memorial Hwy., Golden Valley, MN 55427-4947

PAD: Susan Hein Feuerherm (Mrs.), 3849 Conroy Trail, Inver Grove Heights, MN 55076

### XIV. Colorado and Kansas

PCD: Heather Brennan Dillon (Mrs.), 3414 S. Locust Street, Unit D, Denver, CO 80222

### XIV-E. Kansas Alumnae Chapters

PAD-E: Carolyn McCandless Woodling (Mrs. Charles), 713 Prescott Court, Lawrence, KS 66049

### XIV-W. Arizona, Colorado, New Mexico, Utah, and Wyoming Alumnae Chapters, except Las Cruces, NM

PAD-W: Nancy Kishiyama Yokomizo (Mrs. Gene), 9747 W. 76th Place, Arvada, CO 80005

### XV-S. Southern California, Southern Nevada and Hawaii

PCD: Karen Severloh Moffitt (Mrs. John), 2075 Los Robles Ave, San Marina, CA 91108

PAD XV-SE: Hannah Nicholas Gough, 262 Argonne Avenue, Long Beach, CA 90803

PAD XV-SW: Terri Knapp DeSales, 4537 Clark Avenue, Burbank, CA 91905

### XV-C. Northern California and Northern Nevada

PCD: Jennifer Edwards, 1065 Lincoln Court, San Jose, CA 95125

PAD: Acting PAD Elsie McTee (Mr. Clifford), 4322 St. George, Corpus Christi, TX 78413

### XV-N. Oregon, Washington, Montana, Idaho and Alaska

PCD: Jennifer Edwards, 1065 Lincoln Court, San Jose, CA 95125

PAD: Carin Brown Steckler, 5208 36th Avenue NE, Seattle, WA 98105

### XVI. Oklahoma

PCD: Jane McCaslin (Ms.), 10932 E. 61st St., #627, Tulsa, OK 74133

PAD: Pattie Cantrell Hulsey (Mrs. Stephen), 15708 E. 80th St. North, Owasso, OK 74055

### XVII-N. Texas, New Mexico Collegiate Chapters, Texas, Las Cruces Alumnae Chapters

PCD-N: Tracy Wilson LeSieur (Mrs. Larry), 1621 Lake Side Lane, Plano, TX 75023

# Directory

PAD-N: Pat Brown Rizzotti, 6103 Millwood Drive, Arlington, TX 76016

### XVII-S. Texas

PCD-S: Cathy Irvin Painter (Mrs. Tom), 10204 Pantera Ridge, Austin, TX 78759

PAD-S: Diane Larson Leaverton, 2310 Buckholt Road, Pearland, TX 77581

### XVIII. Louisiana and Mississippi

PCD: Debbie Raziano (Miss), 117 Ashton Street, Luling, LA 70070

PAD: Phyllis Sundberg Davis, 137 Redbud Trail, Brandon, MS 39042

### XIX. Tennessee

PCD: Beth Hudson, 318 Hamilton Road, Knoxville, TN 37920

PAD: Patty Drewry, 209 Turtle Rock Court, Murfreesboro, TN 37129

### XX. Kentucky

PCD: Anne Leitsch (Ms.), 5412 Carol Way, Louisville, KY 40214

PAD: Ann Walls, 1035 Sarah Drive, Louisville, KY 40219

### XXI. South Carolina and North Carolina

PCD-E: Lienne Federico Medford, 5631 Woodridge Road, Wilmington, NC 28409

PCD-W: Debra Wood Pressley (Mrs. Chuck), 630 Macedonia Road, Asheville, NC 28804

PAD: Acting PAD Elsie McTee (Mr. Clifford), 4322 St. George, Corpus Christi, TX 78413

### XXII. Georgia

PCD: Elizabeth Ann Grant Wadsworth, 2105 Liberty Bell Place, Lawrenceville, GA 30243

PAD: Linda Myers Backelant (Mrs. Gustave), 1281 Howard Way, Lawrenceville, GA 30243

### XXIII. Alabama

PCD: Denise Williams McCullars (Mrs. Michael), 3 Poplar Point, Silver Lakes, Glencoe, AL 35905

PAD: Acting PAD Elsie McTee (Mr. Clifford), 4322 St. George, Corpus Christi, TX 78413

### XXIV. Florida

PCD: Diana Spivey Bishop (Mrs. Harry), 40 Ridgeview Court, Pensacola, FL 32514

PAD S: Linda Ratkus Packham (Mrs.), 201 NW 52 Court, Fort Lauderdale, FL 33309

PAD N & C: Robin Griehs Donoho (Mrs.), 1107 Wood Duck Hollow, Jacksonville, FL 32259

### XXV. Virginia, Maryland, Washington, D.C.

PCD: Rachel Platt (Ms.), One Canterbury Square #101, Alexandria, VA 22304

PAD: Tammy Comer Stafford (Mrs.), 1 C Cedar Haven Court, Forest, VA 24551

### XXVI. Arkansas

PCD: Jane Tiefel (Ms.), 11800 Pleasant Ridge Road #324, Little Rock, AR 72212

PAD: Acting PAD Meryl Lin McKean 8301 Sagamore Road, Leawood, KS 66206



BY DIANE JONES SKELTON

When reading college chapter reports, it might seem that alumnae service to collegians is a one-way street...serve refreshments, clean, polish, cook, fold chairs, make decorations, plan Christmas parties, bake more cookies, send flowers, donate plants, go to a homecoming tea. However, as Xi Nu Chapter Editor Eileen Coker of Tarleton State points out, "We wanted to do something for them (alumnae) also, but they wouldn't let us." So, collegians, if those determined alumnae refuse to let you do something nice for them...try these techniques.

### 1. Treat the children of alumnae...

When Iota Psis at Texas/Arlington planned an alumnae picnic, they rented a Moon Walk for the children of the guests.

### 2. Help alumnae at work...

Omicron Lambdas at North Carolina State help Martha Schweitz with her kindergarten class. Each member volunteers on a different day to assist. Collegians love working with the children and find great rewards in their smiling faces. No doubt their assistance brings a great smile to Martha's face, too.

### 3. Nominate them for community or campus awards...

Xi Omegas at Purdue honored College Chapter Director Sonia Wise by nominating her for Chi Omega's Mary Owen Advisory Excellence Award. Alpha Gammas at the University of Alabama honored alumna Kathleen Sledge by renaming the house corporation scholarship in her honor.

### 4. Replace something irreplaceable...

Lambda Nus at Auburn/Montgomery surprised former College Chapter Director Ann Cheney with a special gift. They presented her with a new Delta Zeta badge to replace her original one, which had been stolen when her home was burglarized.

### 5. Make a memory special...

When almost every alumna returned for the chapter formal, each received an engraved glass listing the names of the founders and charter members of Omicron Phi at Alfred in New York. Their first "alumnae!"

### 6. Make homecoming more special...

Epsilon Omegas at Whitewater/Eau Claire made extra efforts to make alumnae returning for homecoming feel more welcome. Since many of the returning alumnae stayed together in hotels, goodie bags and special poems were prepared and left for them at local hotels prior to the traditional reception.

### 7. If you have an alumnae chapter, help with their philanthropy program...

Epsilon Zetas at Drexel helped Central Philadelphia alumnae chapter with their annual fundraiser for the deaf and hearing-impaired. The event was a step-a-thon where participants ran up the 100 steps of the Philadelphia Art Museum. Collegians contributed time, manpower, donations, and some even ran the steps! Delta Chis at California State/Chico assisted alumnae with their annual yard sale. Grand Valley Xi Psis volunteered to help alumnae with their community work at Shawnee Elementary; they all assisted teachers in catching up on work.

### 8. Say goodbye in fashion...

Even though Iota Iotas at Middle Tennessee will miss their alumnae when they move, they still provided manpower to help two alumnae move. And, alumnae, if you think collegians forget to show how much they appreciate you, remember this quote passed on a collage that Kerrie Kitchen of Northeastern, Xi Upsilon, included with her report: "Youth would be an ideal state if it came much later in life."



New Delta Chis at Chico State joined local alumnae at a tea last fall in the home of Helen Hassel Schaller (back row, fourth left.)

"Make a memoe



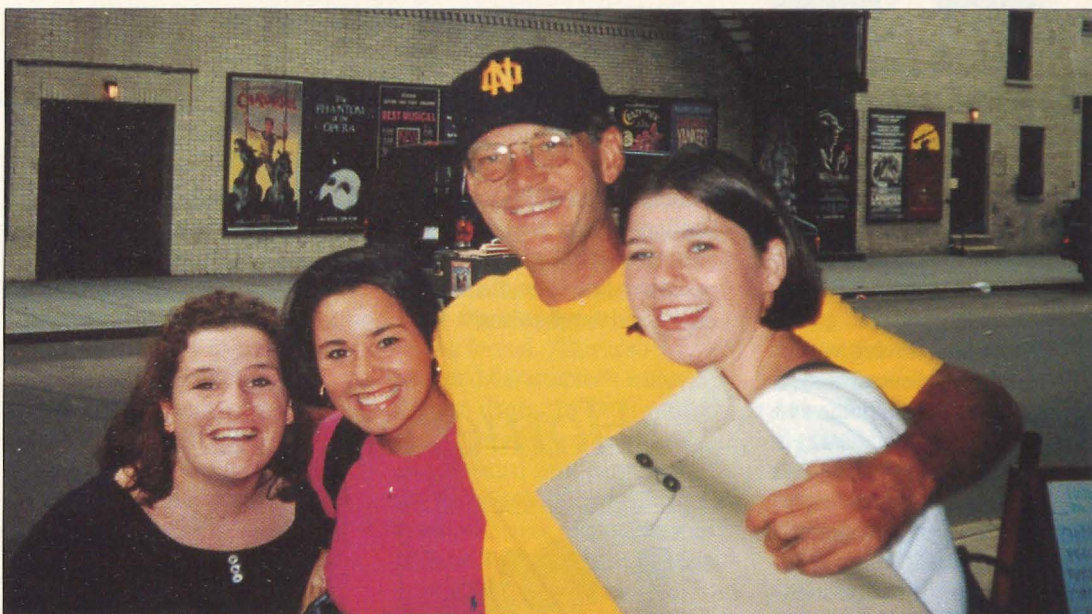
## ALABAMA

### Alabama, Alpha Gamma—

When Alpha Gammas celebrated Founders Day, they invited the Tuscaloosa alumnae chapter to join them for dinner at the house. During the festivities, collegians honored alumna Kathleen Sledge by renaming the house corporation scholarship in her honor. Former College Chapter Director Mary Ann Thigpen presented the chapter with a scrapbook of collegiate activities that she had compiled. New members were honored at a New Member Alumnae Tea hosted by the alumnae chapter; Frances Pickens Lewis, an Alpha Gamma founder, spoke at the event. Alumnae honored Alpha Gamma by making a cash donation in the chapter's name to the University Speech and Hearing-Impaired Clinic.

### Alabama/Huntsville, Lambda

**Kappa**—In spring and fall, collegians organized Sisterhood Sunday with alumnae. First, collegians attended church together; then they joined alumnae for lunch at a local restaurant. Members are also excited about the Triad program which plays a



Epsilon Omegas Sheila McQuellon and Beth Matarelli met David Letterman on a fun visit to New York City.



Epsilon Xi members at the University of Central Arkansas enjoyed a fall retreat.

big part in chapter programming. Triad groups (composed of a new member, initiate and alumna) compete for points and prizes. Each month an event (such as a lunch or movie) was planned and all Triads could participate. If two or all members of the group attended, the group won points. The groups could also earn additional points for activities outside the planned events. Members agree that competition made the Triads even more fun. For rush, several alumnae helped with planning, decorations, and skit practices during summer. The last day of rush was the most exciting day as alumnae

helped fill Bid Day baskets with goodies for the quota pledge class. Collegians and alumnae joined together for a Founders Day luncheon. Several alumnae attended the chapter initiation and even more were on hand for the initiation luncheon. Collegians assisted alumnae with their annual Delta Zeta Craft Show.

### Auburn/Montgomery, Lambda

**Nu**—When the chapter celebrated its "Sweet Sixteen" birthday on April 24, both alumnae and parents attended the festivities at the South Trust Bank Center. During the festivities, collegians honored former College Chapter

Director Ann Cheney with a special presentation. They surprised her with a new Delta Zeta badge to replace her original one which was stolen when her home was burglarized.

**Samford, Alpha Pi**—Collegians welcomed several alumnae who assisted with rush. They supplied food, attended activities, and Cheri Stites sang for preference. Several alumnae also attended the annual country hayride and bonfire in Columbiana.

## ARKANSAS

**Central Arkansas, Epsilon Xi**—Chapter Editor Misty Spires reports, "Our alumnae have been so awesome this past year. For rush they remodeled our chapter room all by themselves. They also took charge of all our decorations for rush and they even helped clean up after parties." Alumnae were also on hand to welcome the 26 new members at the chapter's weekend retreat, where Triads were formed. Alumnae were honored with a tea prior to the homecoming game.

pecial..."



**Arkansas State, Omicron Epsilon**—In mid-June the chapter was worried about not having alumnae advisors, but by mid-October Becky Hutchinson was serving as college chapter director and was busily recruiting other advisors. Shana Silas, a 1993 graduate and *Who's Who Among College Students* honoree, is among the new chapter advisors.

**Arkansas Tech, Lambda Alpha**—After the pledging of 13 new members, alumnae assisted with Big Sis, Little Sis Week and Big Sis revelation. Alumnae also assisted with initiation week and homecoming activities. Alumnae were honored with a dinner following the homecoming game. Alumnae also helped with the Love Tree and with food preparation and singing during rush.

## CALIFORNIA

**California State/Chico, Delta Chi**—Many of the 22 new members from fall rush attended the annual new member and alumnae tea. The tea, hosted by Delta Chi alumna Helen Schaller, has become a chapter tradition providing an opportunity for new members and alumnae to meet. Collegians listened to inspirational stories of the chapter's beginning and found it heartwarming when the newest members joined in singing *Delta Zeta Lamps are Burning*. Alumnae were welcomed to a Founders Day celebration at the chapter house. Collegians assisted alumnae with the group's annual yard sale.

**California State/Fullerton, Iota Upsilon**—Delta Zeta was one of three groups on campus to reach quota and total, and discovered that the Triad

favorite Delta Zeta college memories. Alumnae and parents joined collegians for the fall formal at Tustin Ranch Golf Club. Members celebrated Founders

**California State/Los Angeles, Theta Rho**—Collegians welcomed alumnae to the chapter's first-ever alumnae barbecue at Almanzor Park in Alhambra in late August. In early November, alumnae joined collegians for a chapter retreat.

**Loyola-Marymount, Xi Omicron**—Chapter Editor Elaine DeSantos writes that during rush "alumnae revisit and help us prepare for rush through their insight on their past experience with rush. They help teach us techniques . . . and remind us of what it means to be a Delta Zeta. Listening to how much [pride] they continue to have . . . is a highly motivating thing. They also help us . . . decorate and get costumes and props ready."

## Homecomings...



**Kappa Xi President Mandy Zientarski (right) congratulates Activity Chairman Shelley Previte who was crowned Homecoming Queen at Duquesne University.**



**Homecoming royalty at California of Pennsylvania are Zeta Epsilons Michelle Sauro, Heidi Schmidt and Holly Schmidt, queen.**



**Omicron Phi's Jodi Csaszar reigned as Homecoming Queen at Alfred.**



**Homecoming Queen at the University of Connecticut is Beta Gamma's President Jennifer Taglia.**

program was a great way for the 14 new members to get to know alumnae. Events at the house for Triads included a "turtle talk" where alumnae shared their

Day at a mother-daughter luncheon and fashion show hosted by the Orange County alumnae chapter.

## COLORADO

**Northern Colorado, Delta Xi**—The chapter enjoyed its best alumnae turnout ever at this year's homecoming festivities where alumnae helped collegians celebrate their first place parade float victory! Homecoming events also included an open house and a backyard barbecue. At Founders Day festivities in Fort Collins, Alyson Hobercht was honored as outstanding Delta Xi senior.

## CONNECTICUT

**Connecticut, Gamma Beta**—When Founders Day coincided with homecoming it was a perfect time for collegians and alumnae alike to celebrate. Events included a homecoming brunch, a Founders Day ceremony and an open house for the newly



remodeled house. In early September Karen Kind Veitch, international ritual chairman, presented a ritual workshop for the chapter. Fairfield County alumnae treated members to Halloween candy, and the Greater Hartford alumnae provided snacks for finals week. In January, Greater Hartford alumnae were invited to the house for dinner.

## FLORIDA

**Tampa, Delta Beta**—Local alumnae assisted the chapter during formal rush which

with food. Collegians later honored alumnae with a dinner.

### Georgia College, Lambda Pi—

Alumnae flew in from as far away as California to help collegians celebrate the chapter's 20th anniversary with an alumnae weekend in mid-November. The weekend included a formal dinner where collegians were treated to a video prepared by an alumna and her husband (who works for Warner Bros.). Everyone watched the screen in amazement when Burt Reynolds wished Lambda Pis a happy



International President Sandra McAlister Nesbitt was a special guest at Lambda Kappa's Founders Day in Huntsville, Alabama. From the left, Kim Hall, Sandra Nesbitt, Tammy Wells and Amanda Johnson.

resulted in 11 new members (quota)! Alumnae also joined collegians for the Founders Day ceremony and dinner.

## GEORGIA

### Columbus College, Lambda Psi—

Chapter Editor Alyssa Farmer writes, "This past rush would have been impossible if it were not for our alumnae." Sabryna Wooten hosted the preference party at her home, while other alumnae assisted

20th anniversary and apologized for not being able to attend in person and celebrate by "jumping out of a cake."

### North Georgia, Xi Xi—

Collegians honored alumnae on a November evening with Rose Remembrance, an annual event including refreshments and music. Alumnae also spent the day with collegians at the chapter's retreat.

## ILLINOIS

**DePaul, Theta Theta**—More than 30 alumnae and their dates attended the annual spring formal. Many also attended the chapter's annual Calypso dance. To assist with rush, alumnae prepared food and attended rush parties to answer questions and talk about the three stages of membership in Delta Zeta. Thirteen alumnae participated in the Triad program. Collegians also enjoyed a Christmas party with alumnae.

### Eastern Illinois, Gamma Nu—

The chapter is communicating with alumnae by writing letters in conjunction with the Triad program. The entire chapter participated and a night was designated for letter writing. Guidelines were offered for what to write about, and initiates assisted new members with their letter writing. The homecoming open house provided a perfect opportunity for new members to meet some of the alumnae to whom they had written. According to Editor Jennifer Cromwell, letter-writing provides "a great way to keep Gamma Nu alumnae updated on future events."

**Eureka College, Pi**—Alumnae were invited to a jewelry party in mid-November. The event preceded the Greek Week party.

**Illinois, Alpha Beta**—The chapter has welcomed increased alumnae involvement this semester and a new college chapter director, Rebecca Priest, AB. Several alumnae returned for homecoming. Collegians hosted a meeting for Champaign-Urbana alumnae, who are working hard to establish an alumnae chapter.

### Illinois State, Lambda

**Rho**—Collegians prepared for rush with the help of alumnae. By giving helpful tips and taking part in the endless hours of decorating, alumnae helped Lambda Rho add 31 new members. Not only did alumnae help prepare collegians for rush, they helped welcome the new members on Bid Day and celebrated with a pizza party. Other activities with alumnae included a homecoming open house, Founders Day dinner, and Christmas party with Bloomington-Normal area alumnae. At the Christmas party, alumnae and collegians decorated a Christmas tree (provided by College Chapter Director Sarah Jacobs) and sang Christmas carols.

### Northwestern, Alpha Alpha—

Alumnae were welcomed back to the house with a reception following the homecoming game, and helped the chapter celebrate its runner-up honors in homecoming float competition.

### Western Illinois, Epsilon

**Omicron**—Alumnae helped cheer collegians to a second place overall in the homecoming Spirit Stick competition.

## INDIANA

### Ball State, Gamma Chi—

The chapter's new members attended an alumnae meeting to get to know alumnae better. The Executive Board was invited to a "suite shower" where alumnae "showered" them with gifts for the house. Gamma Chis and alumnae teamed for an auction to raise money for the chapter, and decorated a Christmas tree to donate to the speech and



hearing clinic. Collegians and alumnae observed Founders Day together.

**DePauw, Delta**—Several alumnae attended the Founders Day ceremony and reception, as well as Old Gold game festivities.

**Indiana, Epsilon**—North Central alumnae chapter members serve as "alum chums" with collegians. Alum Chum support includes monthly gifts like cookies and fruit plates. In addition alumnae met with collegians to carve pumpkins and decorate the house for Halloween. Alumnae attended a chapter Founders Day dinner. Alumnae rush support includes attending rush functions, providing monetary assistance, and helping out with decorations and last minute preparations.

### KANSAS

**Fort Hays, Delta Omega**—Founders Day was extra special this year as collegians celebrated with the newly reactivated Hays alumnae chapter.

### KENTUCKY

**Eastern Kentucky, Xi Beta**—Collegians welcomed new College Chapter Director Virginia Rowlett Fairchild. Homecoming activities for alumnae included a homecoming reception at Irving McDowell Park and placing a tent in the coliseum parking lot as a gathering spot. Alumnae have provided collegiate assistance for events as Fratman's Classic, intramural football, philanthropy events and dances. Alumnae receive a newsletter to inform them of upcoming events.

### Morehead, Kappa Tau

Collegians are excited about the chartering of the local alumnae chapter. Alumnae invited collegians to lunch at Mr. Gatti's and shared the alumnae plans for the upcoming year. Alumnae also organized a retreat at the home of an alumna. One highlight of the retreat was a raffle of old Delta Zeta items as well as handmade items; the sale earned funds for the Mabel Barber Scholarship, a \$150 scholarship offered to a senior initiate in good standing. Alumnae are establishing another scholarship for Glenna Campbell. One of the chapter's founders was even at the retreat, and she shared the beginning of KT over 25 years ago. Collegians invited alumnae for a homecoming tea, and alumnae invited collegians to a Christmas party.

### LOUISIANA

#### Nicholls, Kappa Alpha

Alumnae are there, every step of the way, for Kappa Alpha collegians — from rush through pledgeship to graduation. This year for rush, alumnae judged tryouts for singing, reading, dancing and acting parts, coached them during tryouts, and then moderated rehearsals. An alumna served as pianist for all three parties. Alumnae, who attended all rush parties, loaned memorabilia for displays, personalized cake, served punch, cleaned tables and silverware, made sandwiches, baked goods, donated other goods, and even served. For preference, alumnae were there to pin corsages and tie sashes. They greeted rushees and encouraged rushers. After preference they folded chairs and stored the props. The morning

of Bid Day, alumnae letters of support motivated the collegians. And, it was alumnae love and care that enabled the chapter to overcome a difficult time after not pledging quota. For Bid Day celebration, an alumna hosted a chapter barbecue at her home. For Kappa Alpha's Day Away in early September, alumnae again provided food and shared memories of Delta Zeta. That evening, alumnae joined collegians for the NSU football game. Triad groups are writing notes, telephoning and enjoying lunches together. Alumnae met parents during a joint Founders Day celebration. And seniors are remembered as alumnae donate a silver fork to the chapter silver service in each graduate's name.

### MAINE

#### Maine/Orono, Alpha Upsilon

Members honored alumnae with a breakfast party at homecoming. The chapter room was decorated with a nostalgic motif, including old composites. Collegians provided pastries, donuts, muffins, coffee and juice, and welcomed back several alumnae, including a 50-year member. In May, members hope to meet more alumnae when collegians host their first alumnae and family graduation banquet.

### MARYLAND

#### Frostburg, Omicron Pi

Since the collegiate chapter is relatively new, the alumnae are



Having a ball on their Homecoming float are sisters of Xi Upsilon chapter at Northeastern University: Lesly Reicheimer, Julie Miller, Alison Hynes, Lefy Karriannis, Tracy Goulet, Elissa Fallo, Kasey Kiser.



Fort Hays University President Edward Hammond and Delta Omega members shared a day's activities at FHSU.



relatively few. However, those women who are alumnae are very active, writes Chapter Editor Heather Matthews. Many alumnae returned for homecoming weekend, participated in Bobcat Growl pep rally, and were on hand to celebrate when the chapter won the spirit award. Alumnae helped with the homecoming float and enjoyed a breakfast in their honor. Alumnae were also invited to the chapter's fall formal, which will be a memorable event for alumna Jodie Gerwitz: her boyfriend proposed to her at the dance.

## MASSACHUSETTS

### Northeastern, Xi Upsilon—

Boston Metro alumnae assist collegians with rush workshops, rush, and bid day activities. Two alumnae assisted with the ritual for the Founders Day weekly sisterhood meeting, and five alumnae helped collegians with the bake sale for Beverly School for the Deaf. Alumnae assisted with the building of the homecoming float, and were in the crowd to celebrate the chapter's win for most original float. Alumna Lu Weiden's daughter is a new member at Northeastern.

## MICHIGAN

### Central Michigan, Gamma

**Psi**—New members and initiates met the alumnae members of their Triads at the chapter retreat.

### Eastern Michigan, Gamma

**Sigma**—Nineteen alumnae are participating in the Triad program, which is bringing great pride to collegians. For homecoming, Gamma Sigmas welcomed alumnae to the house



Omicron Phis learned self defense at Alfred University.

for a barbecue. The second annual alumnae gathering is in the planning stages.

### Ferris State, Zeta Nu—

Alumnae organized a sisterhood lock-in to brighten chapter spir- its and promote unity.

### Grand Valley, Xi Psi—

Collegians volunteered to help alumnae at Shawnee Elementary where they assisted teachers in catching up on work. Alumnae assisted with rush by helping with decorations and producing a senior letter for the preference ceremony. At homecoming, alumnae attended the parade with collegians and were honored with a lasagna dinner. At Founders Day, Grand Rapids alumnae were also honored with dinner. For initiation in mid-November, alumnae joined collegians for a brunch reception. Collegians and alumnae joined in early December for a Christmas party. Participants in the newly implemented Triad program feel fortunate to have so many opportunities to get to know Delta Zeta alumnae.

**Michigan, Alpha Eta**—Flint alumnae chapter members spent Founders Day with colle- gians and even prepared dinner

for them. The alumnae also presented the chapter with a quilt that now hangs in the par- lor. Alumnae returned for homecoming and joined colle- gians at a barbecue.

## MINNESOTA

### Moorhead, Theta Nu—

Members welcome alumnae participation in rush and have enjoyed the many activi- ties to get to know alumnae better with the Triad pro- gram. One alumna attended lamplighting and presented chapter history to the mem- bers. A group of alumnae auctioned off "recycled" Delta Zeta wear and donated the proceeds to the chapter. A large group of alumnae spent the evening with collegians at the annual semiformal.

### St. Cloud, Theta Mu—

Collegians traveled to Minnea- polis for the Twin Cities alum- nae Founders Day luncheon where Triads groups were formed at the celebration.

## MISSOURI

### Central Missouri, Epsilon

**Gamma**—The Warrensburg alumnae chapter honored Epsilon Gammas with a Christmas

party, where everyone feasted on delicious baked goods and sang Christmas carols.

### Lindenwood, Omicron

**Omicron**—Members enjoyed a joint Founders Day celebra- tion with St. Louis alumnae and Iota Xi chapter members.

### Missouri/Kansas City, Xi

**Phi**—One of the chapter's goals this year is to become more active with the local alum- nae chapters. And, the goal seems to have been reached and exceeded! Greater Kansas City alumnae hosted the chap- ter for an afternoon of food and fun at the annual spring picnic, and, in the fall, were on hand to assist with rush preparations and formal rush weekend. A few weeks into the semester, Xi Phi hosted an open house and housewarming party for par- ents, alumnae and other Greeks on campus. Alumnae even brought gifts! Many alumnae attended the chapter retreat and several Xi Phi charter members were on hand to introduce new members to the chapter's history. Triads were formed that evening; the groups worked together throughout the eight-week program. Collegians attended the alum- nae chapter's annual Flame Fantasy fall fashion show. College Chapter Director Anita Tienken and her daughter, Xi Phi Shelley Tienken, modeled in the fashion show. Founders Day was celebrated with alum- nae from Greater Kansas City, Clay-Platte, Johnson-Wyandotte, Lawrence, Topeka, and colle- gians from William Jewell. Both collegians and alumnae danced the night away at the Rose and Diamond Ball. Greater Kansas City alumnae held their November monthly meeting at



the house, and Xi Phis were invited. The semester ended with a holiday parents-alumnae party at the house.

#### **Missouri/St. Louis, Iota**

**Xi**—Members observed Founders Day with Omicron Omicrons from Lindenwood College. Chris Sikora was honored as Outstanding Alumna of the Year at the celebration.

#### **Northeast Missouri, Delta**

**Sigma**—Over 100 collegians and ten alumnae were on hand to honor Georgia Warner Walter with the presentation of the Golden Rose at the chapter's Founders Day celebration.

#### **Northwest Missouri,**

**Epsilon Rho**—More than 40 alumnae, some from as far as Texas, returned for the chapter's alumnae tea following the homecoming parade. Several alumnae assisted with rush parties, and Angela Walker's mother, also an EP, spoke during preference night. Two alumnae also attended initiation. The chapter is editing a monthly alumnae newsletter.

#### **William Jewell, Zeta Rho**

Alumnae were on hand to assist with rush and were honored with an alumnae tea during homecoming weekend. The tea provided a perfect opportunity for alumnae to see the newly decorated chapter room. The Clay-Platte alumnae chapter invited Zeta Rhos to their Pampered Chef party fund-raiser. Alumnae were provided the opportunity to contribute funds to the chapter's philanthropy fundraiser for Gallaudet.



What a stair-full of Kappa Psis at Shippensburg University!

## **NEBRASKA**

#### **Creighton, Theta Eta**

Alumnae and collegians celebrated Founders Day with a potluck dinner honoring new members. During the ice breaker, the alumnae and new members were teamed; then they dined together. Mary Alice Williams, Theta Eta, and an NBC anchor, was on campus to speak to journalism students. Theta Upsilon alumna Rosemary Divine was initiated with the spring semester new members. Last May, graduating seniors met the Omaha and Metropolitan alumnae at a luncheon at Mahoney State Park.

#### **Nebraska Wesleyan, Beta**

**Tau**—When alumnae and collegians gathered for Founders Day, they formally introduced the Triad program and established Triad groups. Activities of Triads included dining out, decorating pumpkins for a local nursing home, going to the movies and bowling. Past Inter-

national President Marvona Easley Tavlin was guest speaker at BT's initiation banquet.

## **NEW HAMPSHIRE**

#### **Plymouth State, Kappa**

**Epsilon**—Members welcomed back alumnae for a homecoming weekend celebration and look forward to more alumnae activities in the spring. Spring events will coincide with the new member education program. College Chapter Director Donna Pond was on hand for the chapter's retreat.

## **NEW JERSEY**

**Rowan, Xi Kappa**—Many alumnae stopped by to offer support during the 24-hour float building event for homecoming. Two alumnae, Peggy Olivera and Raylene Basile, chaired the event for the chapter, and were as thrilled as collegians with the second place parade win. The chapter is publishing a semester newsletter to keep alumnae informed.

## **NEW YORK**

**Alfred, Omicron Phi**—It was an exciting first year with alumnae for this new chapter. Every chapter alumna returned for the homecoming festivities and were on hand to celebrate the prize-winning float. Dee Richardson returned to participate in the Big Sister, Little Sister ceremony and initiation. Almost every alumna returned for the chapter formal, and each was presented with an engraved glass listing the names of the founders and charter members of Omicron Phi.

## **NORTH CAROLINA**

#### **Barton College, Theta**

**Omega**—When the chapter met at an alumna's home, the alumnae presented new members with their first turtles. Alumnae also shared a homecoming picnic with collegians and formed Triad groups with new members and initiates.

**Lenoir-Rhyne, Zeta Xi**—The chapter hosted their annual alumnae tea on the Delta Zeta hall following the homecoming football game.

#### **North Carolina/Chapel Hill,**

**Xi Sigma**—Alumnae Chair Kelly Doyle is compiling a detailed address list of chapter alumnae. The list, which will also include information as occupation, will serve as both a newsletter address list and a basis for establishing a networking or mentor program. The chapter publishes its newsletter quarterly. Alumnae assisted with behind-the-scenes work for rush. New College Chapter Director Jodi Haire is organizing an alumnae advisory board for the chapter.

#### **North Carolina/Charlotte,**

**Kappa Phi**—Alumnae were present every night of formal rush to assist collegians behind the scenes. Formal rush resulted in a quota pledge class of 26! Collegians learned about alumnae life when the chapter hosted a Triads dinner on the Delta Zeta floor. Many alumnae attended the fall formal at the Radisson and enjoyed an evening of dinner, dancing and award presentations.



**North Carolina/Wilmington, Xi Theta**—Collegians treated alumnae to a Christmas party in their honor.

**North Carolina State, Omicron Lambda**—In a successful rush (which brought both quota and total!) alumnae provided much advice and even snacks for preference night. At the chapter's initiation, Leann Bass received her badge from her mom, Sandra Golden Bass, past national officer. Collegians and alumnae honored the founders of Delta Zeta in a joint ceremony at the Velvet Cloak Inn. Both parents and alumnae were honored at the Colonnade Parent's Weekend. The event was planned and organized by chapter Colonnade Chair, Shannon Riley, and alumna Linda Oxenford, a real life mother-daughter team. Several collegians assist alumna Martha Schweitz with her kindergarten class.

**Purdue, Xi Omega**—Collegians honored College

Chapter Director Sonia Wise by nominating her for Chi Omega's Mary Owen Advisory Excellence Award.

**Western Carolina, Theta**

**Iota**—Collegians are trying to keep alumnae informed with a chapter newsletter. Many alumnae returned to homecoming and enjoyed an alumnae tea hosted by the chapter.

## OHIO

**Bowling Green, Gamma**

**Tau**—The collegiate chapter was treated to a chapter dinner, compliments of the alumnae. Three alumnae returned for a 20-year reunion at homecoming. Other alumnae helped work the Panhellenic Council sorority alumnae tent at homecoming.

**Mount Union, Omicron**

**Iota**—The chapter keeps alumnae informed with a monthly newsletter of upcoming events, alumnae news, and introductions of new members.

Collegians invited alumnae to the house for cookies and punch following the homecoming football game. Alumnae also shared the Founders Day celebration and the sisterhood retreat with collegians.

**Miami, Alpha**—Alumnae are invited to all philanthropy, new member and homecoming events as well as Founders Day. The homecoming picnic proved successful with more than 30 recent alumnae returning. Alumnae and collegians observed Founders Day with a brunch at Michael's in uptown Oxford. The chapter has established a scholarship in memory of Hillary Brooke Taylor. An Alpha alumna will serve on the interview board.

**Ohio Northern, Zeta**

**Kappa**—Vice President of New Member Education Nicole Fortier organized "alumnae night" to give new members, as well as initiates, a chance to hear the history of the chapter. It also provid-

ed alumnae and members a chance to get better acquainted. ZK also implemented the Triad program. Alumnae assisted with formal rush. Collegians are hoping they'll also respond to the invitation to participate in the chapter's philanthropy bowl-a-thon.

**Wright State, Kappa Iota**—

Even though WSU is a commuter campus and gathering alumnae is difficult, the chapter's goal is "Striving for Excellence" and includes building alumnae relations into a strong bond of sisterhood. Collegians have contacted the local alumnae chapter and joint activities, like a spring alumnae dinner, are on the calendar for winter and spring quarters. The chapter is also gathering addresses so alumnae can receive a monthly newsletter. Alumnae have attended several rush events and the chapter Christmas party.

## PENNSYLVANIA

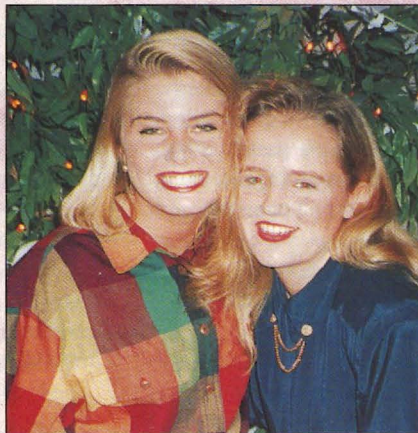
**California of Pennsylvania, Zeta Epsilon**—Many alumnae were on hand to see Heidi Schmidt and Michelle Sauro named to the homecoming court and Holly Schmidt crowned as homecoming queen.

**Drexel, Epsilon Zeta**—

Alumnae and collegians joined forces for several philanthropic events. Together, they clean the school yard each fall at Archbishop Ryan School for the Deaf. Epsilon Zetas assisted the Central Philadelphia alumnae chapter with their annual fundraiser for the deaf and hearing-impaired. The event was a step-a-thon where participants ran up the 100 steps at



Fraternity sweethearts at Wisconsin/Eau Claire: Epsilon Omega's Liza Tinkham and Cathy Sethney.



Big Sister Cameron Smith met Little Sister Katy Brimson at Lambda Xi's Big/Little Sis Hunt at Texas A & M.



Philadelphia Art Museum. Collegians contributed time, manpower, donations, and some even ran the steps! Alumnae assisted with formal rush, from making invitations to attending parties and serving refreshments. Alumnae also enjoyed a Christmas party with collegians and a Triad dinner with new members. Last spring, alumnae were honored with a luncheon which featured a silent auction.

### Indiana of Pennsylvania, Gamma Phi

The homecoming alumnae tea featured a chapter slide show and provided a good time for collegians, parents and alumnae to celebrate the chapter's first place win in homecoming float competition. New members and their big sisters were honored at an alumna's home with Sundae Sunday. At the event, alumnae provide materials for new members to first create turtles, then ice cream sundaes.

### Kutztown, Kappa Rho

When the alumnae chapter had its annual poinsettia sale, Kappa Rho earned \$450. Joint activities with alumnae included Founders Day and a rush workshop with alumnae and collegians from Lehigh. The chapter has nearly doubled its membership and owes a great deal of their success, according to Chapter Editor Sarah Babij, to their new rush adviser, Cheryl Berenzenski.

**Lehigh, Xi Pi**—Collegians welcomed alumnae to several events during Lehigh Lafayette Weekend, an event comparable to homecoming. Collegians and alumnae attended the football game and socials.

The chapter hosted a reception on Saturday and prepared an elaborate brunch on Sunday for alumnae. The chapter also welcomed back alumnae for Young Alumnae Weekend in mid-September.

**Millersville, Xi Tau**—The chapter welcomed alumnae to its first chapter retreat. Following the homecoming game, collegians treated alumnae to a picnic. Some alumnae also attended lamplighting events.



New alumnae honored at Omicron Alpha's senior dinner at St. Mary's are Valerie Garcis, Katrina Van Leeuwen, Dee Dee Gonzalez, Yovhany Abril and Lauri Malone.

### Muhlenberg, Xi Iota

Collegians honored alumnae with a brunch at the house during homecoming festivities. They enjoyed a joint Founders Day ceremony. The seven fall new members are participating in the Triad program, and are enjoying secret alum sisters.

### Pittsburgh/Johnstown, Lambda Epsilon

When the new member is pledging, she receives an "alum chum." The chum is responsible for encouraging the new member throughout her pledgeship. Alumnae also attended a weekend retreat which included a haunted hayride, carving

pumpkins and a parent's luncheon.

### Shippensburg, Kappa Psi

Alumnae were on hand for a homecoming tea and to help members celebrate the chapter's second place winning float entry.

### Slippery Rock, Zeta Phi

The chapter invited alumnae to a homecoming picnic at a collegian's home.

50th anniversary banquet. The event honored both Delta Zeta, chartered in 1991, and its local, Sigma Iota Beta, founded in 1944. Two weekends honoring alumnae were the All-Greek alumnae weekend in late September and the Delta Zeta alumnae weekend in late October. Jointly, about 35 alumnae returned. When the memorial tree planted in honor of Kristen Marie Hatch (who was killed by a drunk driver in 1990) died, alumnae came to the rescue by quickly gathering enough funds to provide for an even better tree than before!

### Rhode Island, Beta Alpha

The chapter invited alumnae to the house for a formal dinner to celebrate Founders Day. Following a skit about the founders, all gathered in the great room as a photo album was passed around and alumnae told favorite college memories. Alumnae also volunteered to serve on the house corporation board, and many were on hand to help collegians landscape the front yard and plant flowers down the walkway. At homecoming, BAS also honored alumnae with a brunch and reserved block tickets for the football game. Prior to the game, alumnae and collegians ate barbecue under the Delta Zeta tent erected near the field. Alumnae were also invited to a holiday dessert party and gift exchange.

**Temple, Delta Tau**—Collegians hope to become more involved with alumnae next semester and have several program ideas including a reunion and a brunch. Legacy Karen Heim is one of eight new members who pledged in the fall.

### West Chester, Iota Rho

Collegians celebrated Founders Day with Chester County alumnae; two Golden Roses were honored at the ceremony.

## RHODE ISLAND

### Bryant College, Omicron Delta

More than 150 alumnae returned for the chapter's

## SOUTH CAROLINA

### Winthrop, Lambda Sigma

Several alumnae attended the chapter retreat at New Heritage Resort in Fort Mill where they joined in horseback riding, a cookout and a hayride. Alumnae were



also honored with a Christmas drop-in and were welcomed to the semiformal. Collegians are hoping alumnae will contribute recipes to the Delta Zeta cookbook, a ways and means project. Members welcome new College Chapter Director Tonya Husky Benfield and new House Corporation President Jane Hartz.

## TENNESSEE

### Middle Tennessee, Iota

Iota—Alumnae were on hand for every rush workshop during the summer, and three alumnae (Christy Gregory, Heather Hargis and Betsy Drewery) sang during rush. Several alumnae also attended the new member retreat. Iota Iotas hosted Founders Day at the Hazelwood Dining Hall and welcomed alumnae from both Murfreesboro and Nashville. Many alumnae were also on hand when Iota Iota celebrated its 25th anniversary with a formal at the Nashville Marriott.

## TEXAS

### Angelo State, Lambda

Omicron—Alumnae assisted collegians with the Second Annual Delta Zeta Golf Tournament. Alumnae also rode on the homecoming float and joined collegians for a Founders Day dinner and ceremony.

St. Mary's, Omicron Alpha—Chapter Editor Veronica Davila writes, "Many of our alumnae have contributed in some way or another to our chapter, bringing about a significant improvement that has touched the lives of the sisters of Delta Zeta." Jodi Thesing-

Ritter has contributed a \$75 scholarship to be used for the dues of a member who would not be able to be a part of Delta Zeta for financial reasons. Norma Barrientes challenged the chapter to raise money by selling Tupperware and earned 30% of the profit. Katrina Van Leeuwen has employed four Omicron Alphas as part-time employees at her new store, American Heritage Gallery at Rivercenter Mall. Alumnae helped colle-



Kappa Iotas from Wright State enjoyed a sleepover at Missy Deas's home.

gians win their fourth consecutive Greek Week victory by participating in events as the obstacle course and relay race. Alumnae won first place in every event in which they competed. The new college chapter director, Karen Lee Johnson, a first year law-student, entertained collegians and alumnae at Founders Day with stories she'd collected while traveling for a year as a Delta Zeta chapter consultant. The fall new member class includes two legacies, Melinda Castillo and Tanya Avila.

### Stephen F. Austin, Zeta

Psi—Alumnae were on hand to see Piper Wright and Draci Frink honored as homecoming duchesses. Alumnae were honored with a tea prior to the football game.

### Tarleton State, Xi Nu—

Chapter Editor Eileen Coker writes that the chapter's involvement with alumnae has significantly improved over the past semester. The Stephenville alumnae chapter

alumnae chapter was quick to respond. The alumnae chapter even held a fund-raiser at a pizza parlor with a percentage of the profits going to Iota Psi. Alumnae were on hand for both the Founders Day picnic and the parent's picnic. Collegians treated the children of alumnae to some fun when they brought a Moon Walk tent to the back yard of the house.

### Texas A & M, Lambda Xi—

Following initiation, the chapter organized an alumnae luncheon where chapter members met with their Triads. The luncheon honored new initiates and encouraged alumnae to become Triad members.

## VIRGINIA

### Longwood, Epsilon Tau—

The chapter published a newsletter and mailed it to all recent alumnae. When Longwood Panhellenic Council sponsored a walk for sorority members, five Delta Zeta alumnae attended. Ten alumnae supported the chapter's booth at Oktoberfest where members sold cotton candy and raffled a mountain bike for philanthropy. Collegians are hoping alumnae will send their favorite recipes for the chapter fund-raising cookbook. Alumnae contributing recipes will receive cookbooks.

### Old Dominion, Theta Phi—

Alumnae helped the chapter celebrate its anniversary by attending the anniversary ball at the Day's Inn at Virginia Beach.

Radford, Xi Delta—When alumnae returned for homecom-

brought lunch to the members at the summer rush workshop. Alumnae also attended rush each evening and, on preference night, introduced the rushees as they entered. The chapter is publishing a newsletter and hopes to include an alumnae section in it. The alumnae chapter created Christmas ornaments for each member of the chapter.

### Texas/Arlington, Iota

Psi—When the chapter encountered some extra financial obligations, the



ing, collegians honored them with a party on Downey Street.

**Randolph-Macon, Omicron Zeta**—For the 100th anniversary game against Hampden-Sydney College, the oldest small college rivalry in the south, alumnae traveled with collegians on the buses to the game. Collegians, alumnae and parents gathered for a reception at the house on parent's weekend. Returning alumnae were also honored at homecoming.

**Virginia Tech, Kappa Theta**—The chapter concluded homecoming weekend with a Sunday morning brunch honoring alumnae.

### WASHINGTON

**Washington, Kappa**—Alumnae were honored with a dinner the Friday night prior to the homecoming game and were invited to the chapter's holiday party. Alumnae also returned for the Big-Little Sister ceremony and were photographed with their Delta Zeta families. Alumnae were also invited to a chapter enrichment session, where Lancome makeup consultants provided color profiles and make-overs. Women also received free gifts. Alumnae and collegians pair together according to interests and majors in the chapter's Triad program. The program, according to Chapter Editor Katherine Wallace, has increased alumnae participation in Kappa events and has helped the new members realize just how much the sorority can help them with their futures.

### WASHINGTON, D.C.

**Gallaudet, Omicron Sigma**—Approximately 15 alumnae were in attendance for a catered lunch on Founders Day. One alumna even donated a sweatshirt to the chapter.

### WEST VIRGINIA

**Glenville State, Theta Xi**—Three alumnae returned to the house for a weekend in early December to organize an alumnae association. The busy weekend (which included eating

### Marshall, Delta Upsilon

Several alumnae assisted with rush. Recent alumnae living in the area participate in sisterhood events as roller skating and serenading. During homecoming, alumnae were honored with an informal reception. Founders Day formal and football games also provided opportunities for collegians to get together with alumnae.

### WISCONSIN

**Carroll College, Gamma**

hayride, singing, and sharing sisterhood memories. At homecoming, alumnae were honored with a reception in the suite. Alumnae from as far away as Chicago attended the Christmas semiformal at the Pettit National Ice Center, an Olympic speedskating and training facility.

### Whitewater/Eau Claire,

**Epsilon Omega**—The chapter, under the direction of alumnae co-chairs Amy Hurt and Kellie Krick, is strengthening and enriching the alumnae office like never before, reports Chapter Editor Melissa Burg. The work began over the summer as a committee compiled current addresses. The chapter made extra effort to make alumnae returning for homecoming feel more welcome. Since many of the returning alumnae stayed together in hotels, goodie bags and special poems were prepared and left for them at the local hotels. The next month, alumnae were honored with the annual brunch, this year at the Mandarin Club. Enough alumnae have volunteered their time to begin the Triad program. Alumnae were recognized for contributions to the sorority at the winter formal at the Cabin Ridge Lodge.

### Wisconsin/Whitewater,

**Epsilon Kappa**—Collegians accepted an invitation from Golden Rose Ora Jones for a visit, where they enjoyed cookies, singing and storytelling. Alumnae were welcomed back for homecoming.



Another pair of Delta Zetas meet in Athens: Lisa Meirou of Delta Sigma at Northeast Missouri State and Shauna Vick, Lambda Delta at University of Virginia.

homemade chili and sharing cookies and college stories) was productive as alumnae met with graduating seniors, elected officers, and "got the ball rolling." A newsletter to alumnae is in the works; they have pledged their help and support to the chapter.

**Theta**—Collegians welcomed help and advice from alumnae during rush as alumnae served punch, helped with skit rehearsals, and provided enthusiasm and motivation. The chapter introduced the new Triad program during the fall retreat, where alumnae joined in horseback riding, a





## Foundation Videos Available

Looking for a quick and easy alumnae chapter program? Well, roll out the TV, hook up the VCR and "movie-down" with some terrific Delta Zeta Foundation videos. The videos are perfect for quick viewing, leaving plenty of time for good conversation, refreshments and even a business session at an alumnae chapter meeting.

Delta Zeta's philanthropy visual aid library (located at Headquarters) contains over 15 titles on philanthropy and foundation work; all videos are available for loan.

The newest and hottest title is "People Vs. Noise." Although 2000 Blockbuster stores have it available free, it's not available in every city. This 27-minute Better Hearing Institute production on hearing protection and hearing help is of top-professional quality with superior camera work, scripting and editing. It's narrated by Richard Dysart (of "L.A. Law" fame) and features Delta Zeta's own Foundation President Joan Lowry. Catch a few more stars in a viewing of BHI's production, "Listen Up With Norm Crosby," a 17-minute video dealing with celebrities who overcame hearing loss.

Learn all about the history of Delta Zeta's philanthropy programs (and catch a glimpse of Florence Hood Miner) in the

10-minute video "Delta Zeta Philanthropy."

And, see where Delta Zeta's dollars go at Gallaudet in "The Promise of Tomorrow" a 13-minute professional video produced by Gallaudet and made especially for Delta Zeta. It describes the partnership between Delta Zeta and Gallaudet, along with interviews with Delta Zeta scholarship recipients. Another Gallaudet video, "Gallaudet University: The Spirit Lives", runs 18-minutes and provides an overview of Gallaudet.

Or, combine a Gallaudet video with a House Ear Institute production like "Share the Vision" which describes the House Ear

Institute in Los Angeles. A more serious House Ear production, "My Perfect Child is Deaf", describes the fears and challenges parents encounter upon hearing the diagnosis that their child is deaf. The video runs 29 minutes and provides an excellent educational opportunity for all parents.

Top off any showing with the dynamite 90-second television public service announcement featuring Florence Henderson and Delta Zeta collegians.

To request a video, call Headquarters at 513-523-7597. A complete list of videos was included in the fall Foundation mailing.

## National Historical Museum and Headquarters Expansion

In keeping with the Delta Zeta Foundation Capital Campaign theme, "Build on Yesterday and Reach for Tomorrow," Delta Zeta and the Foundation continue to grow and expand. The Foundation's new addition to our National Historical Museum and Headquarters is the perfect example. To meet the financial obligations of this expansion project, the Delta Zeta Foundation has undertaken a capital campaign.

Since our founding in 1902, Delta Zeta has grown to over 145,000 members. Our National Museum and Headquarters houses

our history. Our future is rooted in the past. It is for this reason that we want to capture our history so that it can continue to be passed on to other generations. It is imperative we know who we are, what our values are, and how those values can be applied in our fast paced, ever changing world.

That's why contributions to the Foundation ensure Delta Zetas will go forth into the world each year with the values we hold sacred — values that consistently enrich the larger community of which we all belong.

## Joan Lowry to Preside Over Council for Better Hearing and Speech Month

Joan Dondrea Lowry, president of the Delta Zeta Foundation and Better Hearing Institute treasurer and board member, has been elected 1995 honorary president of the Council for Better Hearing and Speech Month.

As honorary president of Council for Better Hearing and Speech Month, a public information consortium of 28 organizations, Joan will preside over the Council's next annual meeting and represent the organization at ceremonial functions during the 1995 campaign.

Joan, who was recently re-elected as BHI's treasurer, has served on the BHI board since 1991 and is one of the featured personalities in the BHI video, "People vs. Noise."

### Please include me in the Capital Campaign!



Enclosed is my contribution to the Delta Zeta Foundation in the amount of \_\_\_\_\_.

☐ Check enclosed.

☐ Please charge my ☐ Visa or ☐ Mastercard.

Account Digits

Signature \_\_\_\_\_ Expiration Date \_\_\_\_ / \_\_\_\_

☐ I am interested in receiving further information about Capital Campaign giving opportunities.

Name \_\_\_\_\_ Chapter \_\_\_\_\_

Street Address \_\_\_\_\_

City \_\_\_\_\_ State \_\_\_\_\_ Zip \_\_\_\_\_

Please clip and return to The Delta Zeta Foundation • 202 E. Church St. Oxford, OH 45056



Dear Delta Zeta Sisters,

California, here we come! And your presence will make the 1995 Convention perfect! Come and join us June 23-28th at the beautiful Westin Mission Hills Resort in Rancho Mirage, California, for the best Delta Zeta convention ever! There will be dynamic Delta Zeta speakers, educational presentations by qualified Delta Zetas, an inspirational initiation service, wonderful food, plenty of fun — and the best five days of sisterhood you can imagine!

So grab your suitcase for an action-packed convention; bring your family and/or friends with you for a before or after vacation adventure in Southern California. The 1993-1995 International Council, Foundation Trustees, Convention Committee and the sisters of Province XV will be looking forward to hosting you for a most unforgettable experience that we know you won't want to miss!

*Sandra M. Nesbitt*

Sandra McAlister Nesbitt  
International President

Welcome to Rancho Mirage, California

After 35 years, Delta Zeta will return to the West Coast and the State of California for our Forty-Second National Convention at the Westin Mission Hills Resort in Rancho Mirage, California. Delta Zetas will gather at the intersection of Bob Hope and Dinah Shore Drives to plan, to celebrate, to exchange ideas, and to create golden memories.

Our Province XV sisters look forward, as do I, to welcoming all our Delta Zeta sisters for a memorable five days of our sisterhood at its finest. We will greet new collegiate and alumnae chapters, recognize our top chapters and individuals, make some plans for our sorority's future and experience that sisterhood which our Founders foresaw almost 93 years ago.

I invite you to spend a couple of extra days before or after convention enjoying the Westin magic with its 24 hour pool, water slides, golf and tennis courses, jogging trails, and relaxing ambience. Take the next couple of days (a holiday weekend) and journey down to San Diego or up to Los Angeles and the many attractions of these magnificent vacation destinations. Make this a once-in-a-lifetime vacation and a memorable Delta Zeta convention. Families are especially welcome this year and our room rates have been designed to encourage you to share this time.

I will be awaiting your arrival at the Westin Mission Hills on June 23 and the opportunity to help you live the Delta Zeta spirit. California, here comes Delta Zeta!

*Anne Marie Jones*

Anne Marie Jones Gavin  
Convention Chairman

## Try a Family Convention/Vacation

The Westin Mission Hills Resort and Delta Zeta invite all of us to bring family members. This unique low rise resort set in the majestic Coachella Valley of Palm Springs has a wide range of activities for all ages and interests.

The resort boasts two championship golf courses (by Pete Dye and Gary Player), seven night lighted tennis courts, a Health Club, two driving ranges, three practice putting greens, croquet, badminton, shuffleboard and regulation sand volleyball.

The centerpiece of the magnificent entranceway highlights the cascading palm tree and waterfall lined 24 hour pool with two whirlpools and a 60 foot water slide. The Las Brisas pool is a lagoon style design sure to

entice any water lover. Its design mirrors the nearby Indian Canyon oasis.

The Cactus Kids children's activity center helps youngsters participate in a wide range of sports and instructional activities. Beautifully landscaped pedestrian paths entice walkers and nature lovers to meander throughout the 360 acre resort.

The resort invites Delta Zetas and guests to spend a couple of days before and/or after convention relaxing and enjoying this five star facility for \$60 per room. (Two children staying in the room with parents are free!) Scheduled to conclude immediately prior to a holiday weekend, Delta Zeta's Forty-Second Convention is a unique opportunity for a fun-filled vacation for all involved. Won't you join us?



# SORORITY

## FORTY-SECOND NATIONAL CONVENTION

WESTIN MISSION HILLS  
RANCHO MIRAGE,  
CALIFORNIA  
JUNE 23-28, 1995



**PALM SPRINGS  
DESERT RESORTS®**  
*The Year Round Resort*

### TENTATIVE PROGRAM

Friday, June 23, 1995

10:00 a.m. - 5:00 p.m.  
7:00 p.m.

Registration  
Opening Banquet

Saturday, June 24, 1995

9:00 a.m.  
11:00 a.m.  
12:00 noon  
1:00 p.m.  
3:00 p.m.  
6:45 p.m.  
8:00 p.m.

Opening General Session  
Financial Seminar  
Convention Picture  
Foundation Luncheon  
General Workshop Session  
Initiation  
Lamplighting Banquet

Sunday, June 25, 1995

9:00 a.m.  
  
12:00 Noon  
2:00 p.m.  
6:30 p.m.  
7:30 p.m.

Memorial Service  
General Business Meeting  
Alumnae Luncheon  
Committee Report  
Kennel Club  
Fun Night

Monday, June 26, 1995

7:00 a.m.  
9:00 a.m.  
11:30 a.m. - 4:00 p.m.  
7:00 p.m.

Special Friends Breakfast  
Women's Issues Workshop  
Training Sessions  
Collegiate Awards Banquet

Tuesday, June 27, 1995

9:00 a.m.  
12:00 Noon  
2:00 p.m.  
7:00 p.m.

General Business Meeting  
Buffet Luncheon  
Carolyn Barnes Gullatt Symposium  
Installation Banquet

Wednesday, June 28, 1995

Departures

Please note: The Westin and Delta Zeta have arranged for all Delta Zetas to have a special rate two days prior to and two days after Convention. Consult the registration form and the article found elsewhere in this issue.





**VISITORS**  
**Convention Registration Form**  
**DELTA ZETA NATIONAL CONVENTION**  
**Westin Mission Hills Resort**  
**Rancho Mirage, California**  
**June 23 - June 28, 1995**

Please type and return to Delta Zeta Sorority, 202 East Church Street, Oxford, Ohio 45056, postmarked no later than May 1, 1995. Total amount due must accompany this form. Reservations cannot be accepted after May 10. No refunds for cancellations will be made after May 10. This form is for visitors only. Delegates receive registration forms by mail.

Name \_\_\_\_\_  
(last) (first) (maiden) (husband's)

Home Address \_\_\_\_\_ Phone \_\_\_\_\_/\_\_\_\_\_  
(street) (city) (state) (zip)

School Address \_\_\_\_\_ Phone \_\_\_\_\_/\_\_\_\_\_  
(street) (city) (state) (zip)

School \_\_\_\_\_ Chapter \_\_\_\_\_ Initiation Year \_\_\_\_\_ Alumna \_\_\_\_\_ Collegian \_\_\_\_\_

Age Group (check one): ☐ Under 21 ☐ 21-30 ☐ 31-40 ☐ 41-50 ☐ 51-60 ☐ over 60

Roommate choice (if any — must be a visitor also) \_\_\_\_\_  
(name) (chapter)

Check if: ☐ Golden Rose: Date Received/Eligible \_\_\_\_\_ ☐ Order of Pearl: Date Received/Eligible \_\_\_\_\_ ☐ New Member

**Please complete according to the visitor categories of your preference:** ☐ Smoker ☐ Non-Smoker

**1. Full time participant**

Registration fee ..... \$175.00 If postmarked before May 1 ..... \$125.00  
Convention Package (five nights/9 meals,  
tax, gratuities, activities) ..... \$650.00 If postmarked before May 1 ..... \$575.00  
(Add \$165 for single room)

TOTAL COST \_\_\_\_\_

**2. Early Arrival/Late Departure**

You may arrive early and/or stay after Convention at a cost of \$33.00 per person double, or \$66.00 single occupancy per day. Two children under 18 in same room with parents are free before, during, and after Convention.

Reservations to be made through Delta Zeta Sorority. Payment to Westin at departure time.

Arrival date \_\_\_\_\_ Departure date \_\_\_\_\_ Total # days \_\_\_\_\_

Names of family members with you \_\_\_\_\_

**3. Daily Visitor**

Registration fee ..... \$35.00 per day TOTAL DAYS \_\_\_\_\_  
Daily package (hotel, meals, tax, gratuities, activities) ..... \$125.00 per day  
(Add \$33.00 for single room) TOTAL COST \_\_\_\_\_  
Check day attending: ☐ 6/23 ☐ 6/24 ☐ 6/25 ☐ 6/26 ☐ 6/27

**4. Meals only. Reservations must be made at least 48 hours in advance. For refund, cancellation must be received 48 hours prior to event. (Please reserve for June 23rd by June 10th.) Circle choices:**

	June 23	June 24	June 25	June 26	June 27
Lunch		Foundation Luncheon \$30.00	Alumnae \$30.00	Training Day \$25.00	Buffet \$30.00
Dinner	Formal Opening \$40.00	Lamplighting \$40.00	Fun Night \$40.00	Collegiate Awards \$40.00	Installation \$50.00 (favor included)

TOTAL COST \_\_\_\_\_

**5. Workshops/Business Meetings only (No meals or hotel accommodations)**

Registration fee — entire Convention ..... \$175.00 If postmarked before May 1 ..... \$125.00  
Registration Fee — daily ..... \$35.00 TOTAL COST \_\_\_\_\_

**PAYMENT IN FULL MUST ACCOMPANY THIS FORM**

TOTAL DUE \_\_\_\_\_

**MUST BE POSTMARKED BY MAY 1, 1995**

AMOUNT ENCLOSED \_\_\_\_\_



# Flame Eternal



## ALPHA

Eleanor Lafferty Alexander  
Lois Akerstrom Binkley '40  
Victoria Carson Canfield '17  
Barbara June Dingess Rice '51  
Lucretia Ann Saunders '41  
Betty Davis Taylor '62

## GAMMA

Dorothy Bradford Lilja '27  
Janet Bullen Munnis '41

## EPSILON

Dorothy Demint Brune '29  
Florence Angela Ross '52

## ZETA

Luella Geyer '31  
Nancy Fritzler Morris '66

## KAPPA

Shirley Schoettler Joscelyn '46

## LAMBDA

Trena Olson Widger '41

## MU

Gladys Barnum Egilbert '17

## OMICRON

Mildred Clark Carroll '30  
Florence Walko Van Dyke '47

## PI

Dorothy Bovey Potterveld '29  
Marie Clark Soloman '21

## SIGMA

Vicky Carol Gardner '85  
Mattymac Hope Nahr '38  
Lois Cope Nonnemacher '37

## UPSILON

Esther Hurtt Hodge '20  
Ivy Kvernstoen Kirk '38

## PHI

Eva Dailey Volker '63

## CHI

Eleanor Howorth Fisher '41  
Diana Hoenselaar Geister '53  
Eileen Huffman Starrett '41

## PSI

Marie Miller Moore '31  
Carol Doub Rhodes '47

## ALPHA ALPHA

Beatrice Tear '23

## ALPHA BETA

Mary Pallasch Crossland '40  
Eileen Wilson Dammers '35  
Judith Cox Kuter '61  
Helen Topping Stowell '25

## ALPHA DELTA

Eleanor Chaney Gardner '30

## ALPHA EPSILON

Ione Dixon Kubik '25  
Ruth Landrith Odebrecht '32

## ALPHA IOTA

Barbara Balcom Cowin '41

## ALPHA LAMBDA

Mildred Jamison Luce '30

## ALPHA NU

Ruth Emigholz MacLeod '25  
Lois Young Shereman '28

## ALPHA XI

Martha Shrewsbury Gates '36

## ALPHA OMICRON

Ada Grace Tedder '36

## ALPHA SIGMA

Eunice Nicholson Williamson '31

## ALPHA PHI

Charline Hill Selig '28

## ALPHA CHI

Helen Ehlers Luvisi '62

## ALPHA PSI

Mary Lamar Miles '25

## BETA BETA

Lula Mae Fowler '31

## BETA GAMMA

Florence Humphries Calkins '35

## BETA DELTA

Frances Stickley Barry '43  
Olive Hudson Harwell '41  
Frances Simpson Stewart '44

## BETA THETA

Marie Bogosian Barber Bitterman '46

## BETA KAPPA

Elizabeth Turner Dillon '44

## BETA LAMBDA

Louise Hendricks '33

## BETA NU

Helen Shimer Purinton Jackson '41  
Margaret Miller Johnson '51

## BETA XI

Carol Kemp Henley '60  
Ann Sturkie Williams '46

## BETA RHO

Helen Mutch Dean '45  
Mary Hynes Swing '50

## BETA SIGMA

Carole Plant Davis '55  
Helen Sheppard Greer '41  
Luella Conrey Hackleman '41  
Martha Garriss Jordan '46  
Jewell Anderson McHone '41

## BETA PHI

Anna North Dorsey '42

## BETA OMEGA

Joan Marie Annucci Dunne '47

## GAMMA GAMMA

Ruth Maurine Zahn '55

## GAMMA ZETA

Lorraine Howery Moorhouse '78

## GAMMA MU

Patricia Stoner Stice '50

## GAMMA SIGMA

Nancy Witt Elliott '68  
Gladys Lutze Varty '56

## GAMMA CHI

Betty Morrison Elliott '57  
Agnes "Florence" Collier Frazier '57  
Alice Houser Hinton '56

## DELTA DELTA

Linda Beeler Duvall '57

## DELTA EPSILON

Janet Katherine Pruser '63

## DELTA RHO

Kathryn Maxwell Simmons '29

## DELTA SIGMA

Marie Starbuck Adams '26

## DELTA UPSILON

Jo Anne Miller '56  
Carroll King Geer '57

## DELTA CHI

Joan Colledge Mitchell '57

## DELTA PSI

Alice Izant Kent '56

## EPSILON BETA

Mary Ethelyn Cloutier '56

## EPSILON EPSILON

Betty Johnson Sinclair '45

## EPSILON THETA

Joyce Maruski Morris '61

## EPSILON MU

Faye Maxey Floreth '56

## ZETA ALPHA

Marjorie Senet LeBlond '65  
Betty Kolves Schmidt '62

## ZETA SIGMA

Glenda Kay Hayward '63

## THETA GAMMA

Virginia Ahern Gay '62

## THETA EPSILON

Sauna M. Bunton '84

## THETA ZETA

Genevieve Livingston Winkelman '62

## THETA ETA

Angela Marie Maher '92

## THETA NU

Sharon Renee Koppinger '76

## THETA UPSILON

Viola Melton Blackford '27

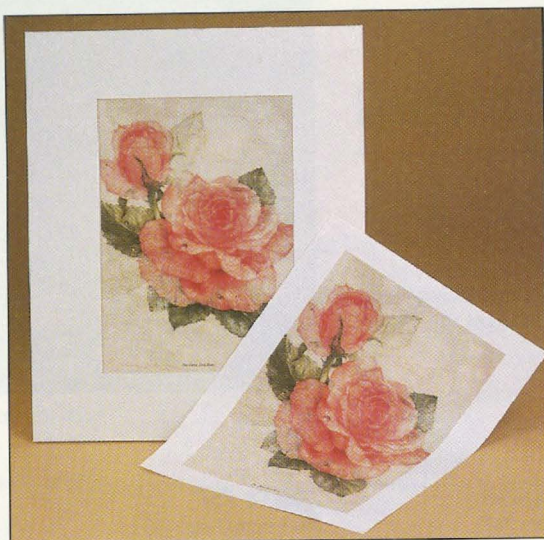
## THETA PHI

Mary Davis Dryden '57

## PHI BETA

Edith Jirsa Harrington '32  
Nadine Menary Johnson '41





### ROSE PICTURE

"The Delta Zeta Rose" from an original work by Margaret Beverly Bunn, Auburn University alumna

Print, **RP** .....\$10.00

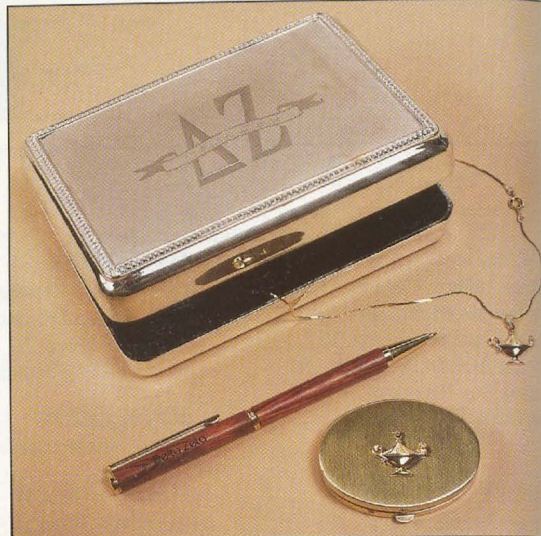
Print dry-mounted to foam core backing to fit 11 x 14 frame, **RPM**.....\$25.00

Silver monogrammed jewelry box, **MCJB**.....\$27.00

Lamp necklace **HBN** .....\$ 5.00

Rosewood ballpoint pen **CAL-P**.....\$13.00

Oval pin box, **HBP**....\$15.00



**DELTA ZETA PRINT** can be personalized for someone special.

Pink mat, **BTLP** .....\$13.00

Deep green mat **BTLG** .....\$13.00

## Gifts from deZigns

202 East Church Street • Oxford, OH 45056  
Call in your order or ask for a Delta Zeta DeZigns catalogue.

1-800-886-PINK



### FOREVER SOAP

The design lasts through the life of this French-milled soap.

Single bar with DZ letter **AFS1**.....\$ 3.75

Single bar with pink rose **AFS2**.....\$ 3.75

Gift set of three bars **AFS3**.....\$10.00

Candle with DZ letters **AFS4**.....\$ 8.00

### TURTLE DANGLE EARRINGS

**HBE**.....\$12.00



we could earn  
**\$ Half-A-Million**  
for DZ Scholarships...

...if every Delta Zeta ordered one magazine from the Reader's Digest QSP Program.

Call 1-800-678-2673 for details or send check made payable to DZ with renewal or order form

Delta Zeta Magazines  
Delta Zeta Headquarters  
202 East Church Street  
Oxford, Ohio 45056





U.S. Postal Service  
**STATEMENT OF OWNERSHIP, MANAGEMENT AND CIRCULATION**  
 Required by 39 U.S.C. 3685

1. Name of Publication  
 LAMP of Delta Zeta (The)

2. Issue Date  
 0 8 8 7 2 5 4 5/29/94

3. Issue Frequency  
 QUARTERLY

4. Issue Period  
 4

5. Issue Price  
 \$5.00

6. Complete Mailing Address of Known Office of Publication (Street, Box, County, State and ZIP+4 Code) (Do not leave blank)  
 202 East Church Street, Oxford, Ohio 43056-1389

7. Complete Mailing Address of General Business Office of Publisher (Do not leave blank)  
 202 East Church Street, Oxford, Ohio 43056-1389

8. Full Names and Complete Mailing Addresses of Publisher, Editor, and Managing Editor (Do not leave blank)  
 Publisher: Delta Zeta Sorority, 202 East Church Street, Oxford, Ohio 43056-1389  
 Editor: Susan M. McCreary, 5517 S. 74th East Avenue, Tulsa, Oklahoma 74145  
 Managing Editor: Susan M. McCreary, 5517 S. 74th East Avenue, Tulsa, Oklahoma 74145

9. Owner (Do not leave blank. If owned by a corporation, its name and address must be stated and also immediately thereunder the names and addresses of stockholders owning or holding 1 percent or more of total amount of stock. If not owned by a corporation, the names and addresses of the individual owners must be given. If owned by a partnership or other unincorporated firm, its name and address, as well as that of each individual must be given. If the publication is published by a company or other organization, its name and address must be given.)  
 Full Name: DELTA ZETA SORORITY  
 Complete Mailing Address: 202 East Church Street, Oxford, Ohio 43056-1389

10. Known Bondholders, Mortgagees, and Other Security Holders Owning or Holding 1 Percent or More of Total Amount of Bonds, Mortgages or Other Securities (Do not leave blank)  
 Full Name: \_\_\_\_\_  
 Complete Mailing Address: \_\_\_\_\_

11. For Completion by Non-Profit Organizations: Publication for the Public or for the Proprietor (Do not leave blank)  
 (a) If checked during the preceding 12 months, the purpose of the publication is to (check one)  
☐ For the Proprietor  
☐ For the Public  
 (b) If checked during the preceding 12 months, the purpose of the publication is to (check one)  
☐ For the Proprietor  
☐ For the Public

12. For Completion by Non-Profit Organizations: Publication for the Public or for the Proprietor (Do not leave blank)  
 (a) Total No. Copies (Net Press Run)  
 42,766  
 41,500  
 (b) Paid and Unpaid Circulation  
 Paid: 0  
 Unpaid: 42,766  
 (c) Total Paid and Unpaid Circulation  
 42,766  
 41,500  
 (d) From Distribution by Mail, Carrier or Other Means  
 324  
 862  
 (e) From Distribution by Mail, Carrier or Other Means  
 40,917  
 40,637  
 (f) From Distribution by Mail, Carrier or Other Means  
 1,849  
 1,013  
 (g) From Distribution by Mail, Carrier or Other Means  
 0  
 0  
 (h) Total (Sum of 12b, 12c and 12d) (Should equal net press run shown in 12a)  
 42,766  
 41,500

13. I certify that the statements made by me above are correct and complete.  
 Signature: Susan M. McCreary  
 Title: Editor

PS Form 3526, Feb. 1997

## Sign Language Interpreter Needed

Delta Zeta Headquarters is in need of DZ alumnae who are R.I.D. certified or qualified sign language interpreters. Send résumé by April 30, to Cindy Menges, Delta Zeta Headquarters, 202 E. Church Street, Oxford, OH 43056.

DZ members in Canada or the United Kingdom — to organize alumnae clubs in your area call the following:  
 for the United Kingdom: Mrs. Linda Tapp, 42 Cadogan Place, London SW1X9RU, England.  
 for Canada: Beverly Frost, R.R. #1, Terra Cotta, Ontario LOPINO, Canada

**FOR ALUMNAE ASSISTANCE CALL:  
 1-800-6-ALUMNA**

# DIRECTIONS

IN DELTA ZETA CAREER NETWORKING

## Occupational Codes:

- 01 Education
- 02 Finance
- 03 Medical
- 04 Law
- 05 Secretarial/Clerical
- 06 Media, Communications, Advertising & Journalism
- 07 Marketing and Sales
- 08 Cosmetology
- 09 Arts-i.e. Photography, Musicians, Artists & Actors
- 10 Business Administration & Management

- 11 Ranching/Farming
- 12 Travel
- 13 Community Social Service
- 14 Interior, Fashion & Floral Design
- 15 Military
- 16 Computer
- 17 Engineering
- 18 Insurance & Real Estate
- 19 Food Service/Hotel/Motel
- 20 Science & Technology
- 21 Flight Attendants, Reservations, Controllers & Pilots
- 22 Architecture

- 23 Religious
- 24 Librarian/Museums
- 25 Landscaping/Forestry/Geology/Geography
- 26 Athletic/Dance/Recreation
- 27 Personnel/Guidance & Counseling
- 28 Retired
- 29 Politician/Government
- 30 Animal/Veterinary
- 31 Public Relations
- 32 Homemaker/Home Economist

## Name/Address Change

Please print or type and mail to Delta Zeta Sorority, 202 East Church Street, Oxford, OH 43056. Members should use parents' address while in college. Please include your mailing label with this form.

I am currently a Delta Zeta Officer. Title \_\_\_\_\_

Name \_\_\_\_\_ Phone (H) \_\_\_\_\_ / \_\_\_\_\_ - \_\_\_\_\_

Address \_\_\_\_\_ Last \_\_\_\_\_ First \_\_\_\_\_ Maiden \_\_\_\_\_ Phone (W) \_\_\_\_\_ / \_\_\_\_\_ - \_\_\_\_\_

City \_\_\_\_\_ State \_\_\_\_\_ Zip \_\_\_\_\_

This is a new address \_\_\_\_\_ Yes \_\_\_\_\_ No \_\_\_\_\_

Married Name \_\_\_\_\_ Husband's First Name \_\_\_\_\_ Date of Marriage \_\_\_\_\_

Occupation \_\_\_\_\_ Company \_\_\_\_\_

Title \_\_\_\_\_ Company Address \_\_\_\_\_

I agree that my name/address may be released to any Delta Zeta requesting information regarding employment in my field or area.

Signature \_\_\_\_\_



Send all notices of address changes  
and member deaths to:  
DZ International Headquarters  
202 East Church Street  
Oxford, OH 45056