



THE
LAMP
OF
DELTA
ZETA
SPRING 1989



Capture the Spirit!



Convention Chairman Carolyn Gullatt and National President Norma Andrisek invite you to Williamsburg for Delta Zeta's 1989 Convention.

Capture the spirit! The spirit of Delta Zeta and '76 combine to make an unforgettable, historically inspired 39th National Convention in Williamsburg, Virginia. The excitement of Delta Zeta's biennial Convention will be enriched by the Americana setting of the Colonial Capitol. The National Council, Convention Committee, Virginia alumnae and collegiate chapters are all anxious to make this celebration of our sisterhood an explosion of renewed friendship and rededication to our Founders, principles and precepts.

So, capture the spirit! Celebrate Delta Zeta with the star-spangled Convention of 1989!

Carolyn Gullatt
Convention Chairman

You are invited to be a part of Delta Zeta's Williamsburg Convention. Amid life as it was in 18th century America, Delta Zetas will find the excitement, fun and promise of the 1989 meeting. With the sights and sounds of colonial times as background, we will forge the ever changing pattern of the Sorority's future.

We look forward to sharing this most special time with each of you in a place where the very principles of freedom, equality and association were forged. Come follow the historic path of Williamsburg to Delta Zeta's thirty-ninth National Convention.

Norma Andrisek
National President



THE LAMP OF DELTA ZETA

FOUNDERS OF THE SORORITY



Miami University
Oxford, Ohio 1902

Alfa Lloyd Hayes, 1880-1962
Mary Collins Galbraith, 1879-1963
Anna Keen Davis, 1884-1949
Julia Bishop Coleman, 1881-1959
Mabelle Minton Hageman, 1880-1929
Anne Simmons Friedline, 1879-1932

THE ORDER OF THE LAUREL

Irene Caroline Boughton, 1904-1988
Grace Mason Lundy
Elizabeth Coulter Stephenson, 1881-1939
Myrtle Graeter Hinkly, 1893-1987

THE LAMP

The LAMP of Delta Zeta, official magazine of the sorority, is published quarterly by the Delta Zeta Sorority, 202 East Church St., Oxford, OH 45056.

Send all editorial material to the Editor, Mrs. Robert L. McKeeman, 5517 S. 74th E. Avenue, Tulsa, OK 74145. Send all matters of a business nature to Delta Zeta National Headquarters, Oxford, OH.

Send all contributions for Gallaudet College, House Ear Institute and other Founders Memorial Foundation philanthropies through the Delta Zeta Founders Memorial Foundation, and all contributions to the National Historical Museum to Delta Zeta National Headquarters, 202 E. Church St., Oxford, OH 45056.

EDITOR

Gwen Moss McKeeman
5517 S. 74th E. Avenue
Tulsa, Oklahoma 74145

CHAPTER EDITOR

Diane Jones Skelton

Volume 78 Number 1 SPRING 1989

Contents

- 4 Woman of the Year Honored
- 6 ΔZ Joins Alcohol/Drug Coalition
- 7 Homecoming Queens and Sweethearts
- 9 Our Volunteers
- 11 Museum Notes
- 12 Convention in Williamsburg
- 15 Academics
- 16 From the Lampwriter
- 18 NPC Interim Session
- 20 Alumnae Chapters Write . . .
- 22 Delta Zeta on Campus
- 40 Sigma's Kirsten Odden
- 41 Campus Sightings & Sounds
- 42 What Happened to You After College?
- 44 Reader Survey
- 45 Directory
- 47 Flame Eternal



ABOUT THE COVER

Sigma chapter's president Marla Hilburn reigned as Homecoming Queen at Louisiana State University. Additional pictures of queens and sweethearts are on pages 7 and 8. Photo by Michael's Photography.



MEMBER

COLLEGE FRATERNITY EDITORS ASSOCIATION

Woman of the Year Honored



National President Norma Andrisek presents Justice Yvonne Kauger with the Woman of the Year medallion.

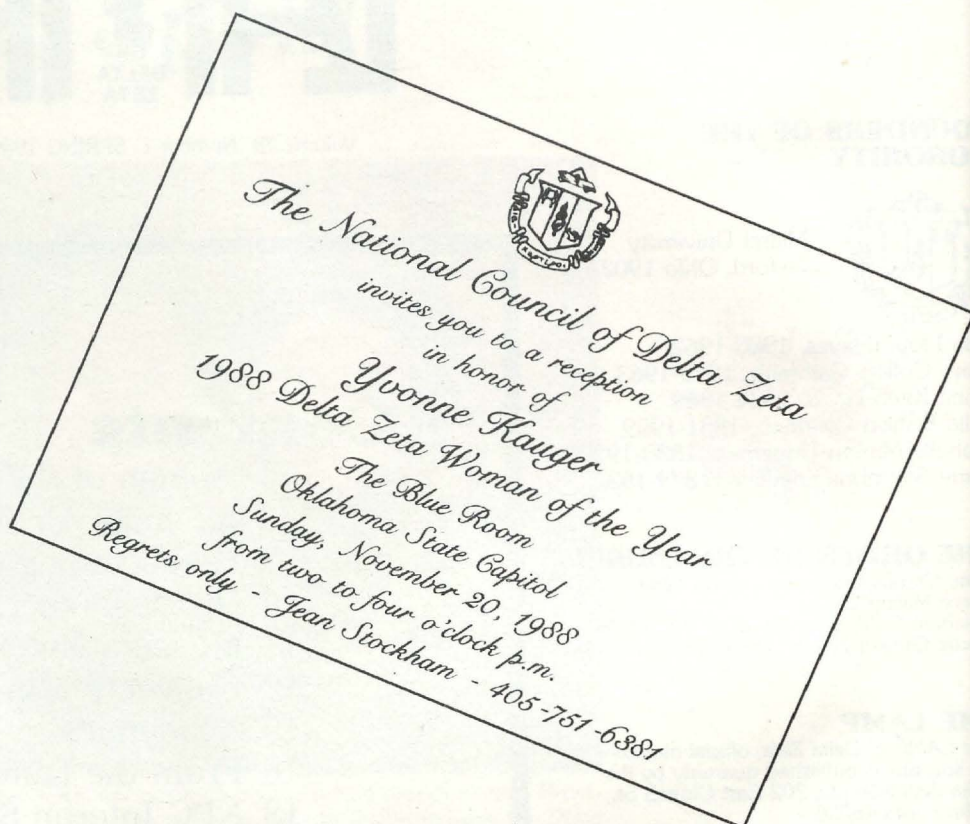
by **Jean Nelson Stockham,**
Eureka-II

Sunday, November 20, dawned clear and cold in Oklahoma City, following the first snowfall of the season. Early church-goers expected driving problems, but lo and behold, the streets were clear, only the lawns and trees were snow-covered!

At two in the afternoon, Delta Zeta sisters, relatives, friends and colleagues began to gather in the Blue Room of the Oklahoma State Capitol, and for two hours Yvonne Kauger was greeted and congratulated on receiving Delta Zeta's highest honor, that of being named Woman of the Year.

National President Norma Andrisek presented the beautiful and newly redesigned Woman of the Year medallion to Justice Yvonne Kauger from Epsilon Lambda chapter at Southwestern Oklahoma State University. Appointed to the Oklahoma Supreme Court in 1984, Yvonne was retained for a six-year term at the recent election and was happy to share that news with everyone.

In accepting the award, she told the group assembled, "You have made this a special day for me and my family. We thank you." Yvonne then paid tribute to Oklahoma Delta Zetas who,



Delta Zetas at the reception include Norma Andrisek, Deanna McKinnon, Pattie Hulsey, Glennie Gregory, Woman of the Year Yvonne Kauger, Sherry Lambert, Susan Mease, Jean Stockham, Debbie Bruce, Linda Looper. On the front row (right) Marylois Dreiling, Ruth Wolf, Sylvia Pardue.



Yvonne's daughter, Jonna Sinclair, and her husband, Assistant Attorney General Ned Bastow, join in congratulating our Woman of the Year.



U. S. Congressman Wes Watkins of Oklahoma chats with Yvonne Kauger during the reception.

she said, had always found her when she appeared on a "lost" list and had been unfailingly kind and always interested in her and her activities.

"If you want someone who's loyal, trustworthy and kind, look for a Delta Zeta," she stated.

Delta Zetas present at the reception included National Vice President of Alumnae Affairs Deanna Alleman McKinnon, National Director Susan Mease, Province Alumnae Director Pattie Cantrell Hulsey, Province Collegiate Director Sherry Trenfield Lambert, Oklahoma City Alumnae President Glennie Gregory Jones (OSU-AE), College Chapter Presidents Lisa Addison (CSU-EY) and Rexann Helms (OSU-AE), collegians

from Oklahoma State and Central State Universities and alumnae from Oklahoma City, Edmond and Muskogee. Epsilon Lambda alumnae attending were Meredith Metcalf Cunningham, Margaret Howard, Honor Howard Anderson and Betty Hill Kenney.

Oklahoma City Alumnae President Glennie Jones presented Yvonne with a guest book from the chapter and asked everyone present to sign it and add a message of congratulations.

A very special guest was Yvonne's daughter, Jonna Sinclair, who had arrived from London, England the night before in the snowstorm. Also present were Yvonne's husband, Assistant Attorney General Ned Bas-

tow, and her parents, John and Alice Kauger of Colony, Oklahoma.

W. C. Sellers, Sapulpa, Oklahoma, Jonna's godfather, drove down to offer his congratulations. The Mark MacGuigans, he a justice on the Canadian Court of Appeals and she on the Court of Appeals of Oklahoma, were on hand to offer best wishes, as were Mr. and Mrs. A. Camp Bonds from Muskogee. Mr. Bonds served on the Judicial Nominating Committee that nominated Yvonne to be a justice.

Coming from Ada, Oklahoma, to toast the Woman of the Year were U.S. Representative Wes Watkins from the 3rd District and his wife, Lou. Governor and Mrs. Bellmon were forced to decline because of the illness of Mrs. Bellmon's mother. The weather in western Oklahoma also kept Yvonne's adopted Cheyenne family, the Cleo Sipes family, from attending, but Connie Hart, who did the bead work for the Indian dress which her mother made for Yvonne's Indian-naming ceremony, was in attendance.

Jean Stockham coordinated the Woman of the Year reception with the help of Province XVI and the Oklahoma City alumnae chapter.



Collegians from Oklahoma State-AE and Central State-EY join in congratulating the Woman of the Year.



Focus: Delta Zeta Joins Fraternity Coalition for Alcohol/Drug Education

by Phyllis Snape Favorite
National Vice President of
Collegiate Affairs

Once upon a time a young woman went to college and, in the course of many events, joined a sorority. Her world was opened to many new experiences through the sorority. One of those experiences became a lifelong struggle with alcoholism . . .

While a recent study indicates Greeks have no greater inclination toward alcohol and/or drug abuse than the average, non-Greek collegian, the Greeks, because of their visibility, have received greater notoriety and public attention. This has been especially true in recent years.

The problems that are found within an individual or family in which substance abuse is prevalent are paralleled in a sorority chapter: financial problems, behavior problems, low grades, poor self-esteem, chaos, inability to handle or express feelings for fear of rejection and denial. Alcohol and drug related problems are leading causes of suicide.

Kappa Sigma Fraternity has led the effort, under the direction of Joe Nelson, chairman of Kappa Sigma's Alcohol and Drug Commission, and with John Unverzagt of Atlanta, Georgia, chairing and directing the task, to bring this issue to the forefront of all Greek groups, National Panhellenic Conference and National Interfraternity Conference groups alike. The possibility of producing a Greek-sponsored alcohol/drug education program was first tested at a meeting held in August 1988. While some groups, such as Delta Zeta, have programs to address substance abuse, it was apparent a joint effort would allow all groups to pool their resources and information and, more importantly, present a united front on this issue. This unity would benefit the local chapters in their efforts to be responsible in their social behavior, as well as to develop an atmosphere where each national organiza-

tion's policies are better understood and respected by both the national's chapter and other groups on campus. Perhaps even more necessary, this unified endeavor will send a message to college administrations that all Greeks are not the hedonistic animals they are portrayed on film, in the press, and in publications. This is imperative in this era of "Greek bashing."

The National Fraternity Coalition for Alcohol/Drug Education has been established to develop a medium to get the word out to collegians regarding substance abuse. The recreational user/social drinker is the target group, as this is one of the fragile areas that can determine whether a person will develop a more serious problem later on. A meeting of the Coalition was held in December 1988, in Atlanta, Georgia, with Delta Zeta represented by National Vice President of Collegiate Affairs Phyllis Favorite and National Social Chairman Sara Carruthers. This meeting solidified the purpose of the Coalition and further defined its mission. The priority of the Coalition at this time is to deal with the area of alcohol and Greeks.

A video, with accompanying materials, to address this social issue was established as the project on which the National Fraternity Coalition for Alcohol/Drug Education will focus. It is the Coalition's hope that this vehicle will have the greatest impact to achieve a positive change in behavior of social drinkers.

Delta Zeta Sorority has been asked to participate in this project and is proud to do so. Funds are being solicited toward this project from all NPC and NIC groups and members, and Delta Zeta has already committed to the 'seed money' needed to provide the go-ahead for this vital project. This is being made possible by a grant

"Do You Know Bill W.?"

Delta Zeta encourages you to contact Joe Nelson, Chairman of Kappa Sigma's Drug and Alcohol Education Program, P.O. Box 322, Cartersville, GA 30120

from the Delta Zeta Foundation. Delta Zeta is also proud of the fact that Sara Carruthers is volunteering her experience and talent from her background of radio and television to the production of the video.

Just as Delta Zeta has lent its support to MADD this past December, it is Delta Zeta's hope that by participating in this project we will serve our membership by educating them about the potential of a lifelong struggle with a disease that cuts short or lessens productive lives, that takes some of the shining and best that Delta Zeta has and prevents them from being the best they can be, handicapping them in a way that affects not only themselves, but those around them. We hope that those who have not had to deal with substance abuse will not turn away from this issue and think "it doesn't affect me." Substance abuse affects everyone, especially when one out of four college students have alcoholic parents or grandparents, raising their likelihood to abuse alcohol/drugs considerably.

Look within your college chapter, your alumnae chapter, your social groups around town. Is there someone within that group whose life is being wasted by alcohol? Think about it.

While the Coalition is not lulling itself into a sense that this one effort will cure all the ills, its motto "Together We Can" states that we must and will start somewhere to make a difference and to show our memberships we do care about their well-being. Delta Zeta looks forward to the time when this video is produced and made available for distribution, and we welcome your support for this vital project.



Deanna Hawkins is Greek Goddess at Northern Kentucky University. Kappa Beta sisters offer congratulations.



*Rina Patrick, BT
Nebraska Wesleyan*

Homecoming Queens and Sweethearts



*Mary Lynn Powell, KΞ
Duquesne University*



*Cindy Jacobs, ΓN
Eastern Illinois
University*



*Rhonda McCullough, ΕΓ
Central Missouri*



*Vickie Myers, Glenville-ΘΞ, Miss
Parkersburg Homecoming*



Heather Waugh, Eureka College-Π with attendants Kim Whither and Denise Cavanaugh, also Pi chapter.



*Lisa Kay Draughn, Alabama-ΑΓ
Miss Corolla 1988*



*Darcey Deines, ΔΩ
Fort Hays State*



*Yvonne Keyes, ΕΘ
Clarion University
ΣΧ Sweetheart*



*Gail Garnish, ΑΙ
Rochester
ΣΦΕ Sweetheart*



*Sherri Stritter, ΑΓ
Alabama
ΦΚΨ Sweetheart*



*Marsha Lafferty, ΞΒ
Eastern Kentucky
ΣΧ Derby Queen*



*Christy Hendricks, ΞΒ
Eastern Kentucky
ΘΧ Sweetheart*



*Lisa Brooks, ΕΕ
CSU/Fresno
ΣΑΕ Sweetheart*



*Kathy Hovde, ΘΦ
Old Dominion
ΚΑ Rose*

Our Volunteers — Bless Them!

by Susan Mease
National Director

Most of us have said at some point, "I just don't have time for Delta Zeta." We have husbands, children, jobs, aging parents, all sorts of demands and there's just no more room. So, who are the people who fill all the volunteer needs of Delta Zeta? Are these women who have somehow avoided all the entanglements to which the rest of us are heir? Why do they make room in their lives for the Delta Zeta experience?

Carin Brown Steckler (Washington-K), the CCD for Kappa chapter at the University of Washington, waited over 30 years after her graduation to become "reinvolved" in Delta Zeta. When Kappa chapter was recolonized, Carin was asked to fill in as alum president and that put her on the House Corporation. From there, she became CCD — a position she has held for five years. Carin works full-time as Administrative Assistant to the President of Alexander & Alexander. She uses some of her vacation every year for National Convention, Leadership Conference, rush, teas, and other chapter activities. Carin has three grown children who are amazed that she has "sisters" all over the country and chapter friends of 43 years duration. She says her CCD work is very time consuming but the chapter is prospering and she enjoys being a part of it. "I love it, so no complaints from me."



Carin Steckler

Merry Westbrook Adamcik (Houston-ΔΘ), a National Director, also works full-time (AT&T) and she and her husband have two children, Scott — 9 and Emily — 2. Merry says



Roy and Merry Adamcik



Emily Adamcik



Scott Adamcik

that her usual answer when someone asks why she "does" Delta Zeta is that she needs something to keep her busy between midnight and 6 a.m. but that's really too flippant. Delta Zeta is sort of ingrained in her. There was always an alumna advisor at her chapter meetings at the University of Houston so Merry grew up in Delta Zeta believing a continued commitment after college was something you just did. She had good role models. Merry says she gets a lot of self-satisfaction working with collegiate chapters; many of her most rewarding times were spent as a CCD and a PCD. She gets a charge out of seeing tentative freshman women develop into self-assured sorority women, Delta Zetas.

Merry acknowledges that volunteering for Delta Zeta does require personal sacrifices and juggling; something is always up in the air and undone. She moved into a new house the week before Province XVII weekend in 1983 and the only thing she unpacked was the ΔZ stuff. Province Weekend went fine but the house was a mess. She's had two children while doing Delta Zeta work; took six weeks off from being CCD for the

first one but no time off as PCD for the second one. Province Weekend was six weeks after Emily was born. Merry, too, uses personal vacation for some of her National Council responsibilities. She says, "Call it a sense of obligation, a repayment, or a gift of oneself, Delta Zeta work is something I do for me. I get a great enjoyment out of it that can't be described."

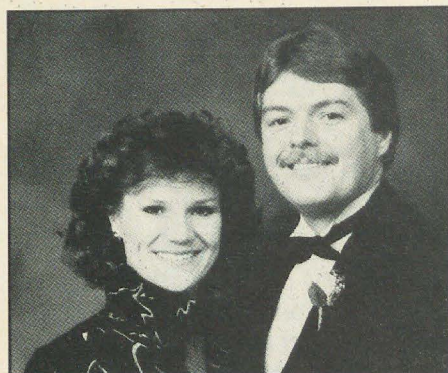
Jennifer Plenge (Kentucky-AΘ) is the PCD of Province XX. She owns and manages two Hallmark shops which means, as she puts it, that she's in charge of everything from hiring and firing to the taking out of the garbage. She usually works 40-45 hour weeks but during holidays that jumps to 60-70 hours. She reserves Monday and Tuesday nights for Delta Zeta paperwork and phone calls. Her chapters benefit from her occupation because she lets them buy rush supplies through the stores at cost.

Jennifer took ten years off from Delta Zeta when she graduated from college — always an excuse about her job or not wanting to get involved. Now she regrets wasting ten years that could have gone to the sorority. The sorority gives her a sense of being needed; her ΔZ work satisfies her love of people and need to belong to a group — a group that cares about its members. Even when being a PCD is overwhelming or frustrating or disappointing, the good times far outweigh the bad for Jennifer.

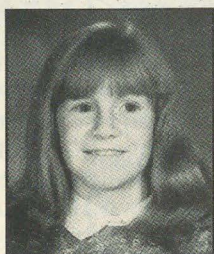


Jennifer Plenge

Janet Eisler Havener (Central Missouri State-EΓ) has been CCD for Iota Xi, PAD for Province XIV, PCD for



Jan and Gary Havener



Katie Havener

Province XII and then for X and XII. When she resigned as PCD she became ways and means chairman for the Ft. Collins alumnae and is currently president. She spent the summer helping Marianne Cravens (CCD, Delta Xi) make curtains for the chapter house at the University of Northern Colorado. Jan is employed as a health/office aide at an elementary school. She and her husband have a 9-year-old red-headed daughter, Katie. Jan says one red-head equals at least four nonred-headed children!

Jan believes she'll always serve Delta Zeta in one capacity or another because "it's meant so much to me over the years. It all started when, at 18 years of age, a group of women asked me to join their organization because I had something to bring to it — something in me they considered an asset to the group. The feeling of worth I gained is a debt I owe to Delta Zeta, one I can only try to repay through service."

Pamela McClure Cronenwett (Northwestern-AA) is in her 7th year as PAD for Michigan, Province VI. She has also held a variety of offices over the last 17 years for the Metropolitan Detroit alumnae chapter and is in her 8th year as treasurer. She is also an active member of the Dearborn Branch of AAUW. Pam is not currently

working outside the home but she has a daughter in 12th grade and a son who just graduated from high school.

Pam says she doesn't know why she does what she does. If she did know, she'd "bottle it and take it with me when I do my visitations." She believes the main reason is that she really enjoys the women she's met in Michigan and around the country. "I feel that in a small way, I'm giving back to Delta Zeta. Delta Zeta has given me a lot. When I was in college, I was initiated into the Alpha Alpha chapter at Northwestern, and then transferred and affiliated with the Gamma Sigma chapter at Eastern Michigan. Having sisters ready to welcome me gave me the support I needed during a difficult transition period. In addition to the support and friendship I've received from my sisters, both as an alumna and collegian, Delta Zeta has given me the opportunity to develop new skills. I was hired for my last two jobs on the basis of skills I learned in Delta Zeta, not on the basis of my degree. In fact, my last job was a direct result of networking with a sister. And another sister first got me involved in AAUW. In short, Delta Zeta has opened a lot of doors for me and given me some wonderful opportunities!"



Pam Cronenwett

Ann Clay Elkins Hawkins (Southwestern-TZ) has been the SRC for Texas since 1975. She considers it more a hobby than a job as she has always been a letter writer and that's what the job takes. She considers it the perfect job for a person who does not live in a college town (where there is a collegiate chapter to work with) but who wants to do something to contribute to Delta Zeta.

Ann works as a secretary to the Glycerine and Chlorohydrin Oxides & Glycols Technology Centers at Dow Chemical Company in Freeport, Texas. Her husband is a chemist for Dow and they have two children —

Heather and Greg.

For Ann, the rewards of her Delta Zeta activities are the friends. "My collegiate and alumnae ΔZ memories are some of the best memories of my life. Delta Zeta has brought me many wonderful friendships that I would never have had if I had not gotten involved as SRC. The only frustration is that I attend Province Weekends and National Conventions then return home and have no alumnae chapter to share my experiences or my pictures with." Ann reminds us to keep those voluntary references coming!



The Hawkins: Ann, Greg, Jerry and Heather.

Marcia Earl Humpal (Baldwin-Wallace-ΓA) is National Awards Chairman. She likes this because it's a job she can do at home and she gets to meet, if only on paper, the nominees for the Grace Mason Lundy, Florence Hood Miner and Woman of the Year awards. As Marcia says, "These sisters are our sorority's best, and it is always inspiring to read of their accomplishments and aspirations. They are our heritage . . . and our future."

Marcia works as a music therapist conducting music mainstreaming programs between handicapped preschoolers and regular nursery schools. She and her husband have two children — Greg, 13 and Caryn, 10. Even though Marcia has less time right now to give to "on the road" service for Delta Zeta, it still plays a large role in her life. She says she tries *never* to miss the monthly meetings of the Berea alumnae chapter. "This group is extremely special to me; these are my friends — from various walks of life, and from numerous different geographic areas — who have many things in common, but who



Marcia Humpal leads a music group composed of pre-schoolers enrolled in centers operated by the Cuyohoga County's Board of Mental Retardation and Developmental Disabilities.

were originally brought together by our sorority membership. I cannot imagine feeling more comfortable with any other group of people. Delta Zeta has afforded me many oppor-

tunities, but nothing can compare to the friendships I have made through our organization. I may not see a sister for two years, but when we meet once again at a national convention, it

is like only a week or so has passed. I guess that friendship is what it's all about."

So, why do these women and hundreds of others "do" Delta Zeta? Why do they make room in lives that are already busy to spend time and energy as unpaid volunteers. The common thread seems to be that they feel Delta Zeta has given them so much and continues to enrich their lives, so they owe something in reciprocation. They pay that debt in a variety of ways and they acknowledge that the way they pay the debt varies in different periods of their lives, but the connection is always there.

What are *you* doing to repay your debt to Delta Zeta?



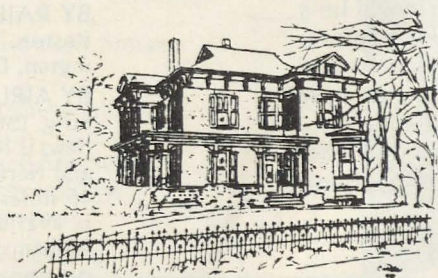
Museum Notes

Within the past few months a number of Delta Zetas have asked if the National Historical Museum has an Endowment Fund. Indeed, we do! As you may know, an endowment fund is a sum of money for *permanent* investment, the annual interest from which is used to support a museum's ongoing operations and activities. In other words, monies contributed specifically to the Museum's Endowment Fund are never spent; the principle amount remains invested and the work of the Museum is financed through the use of the annual interest derived from the basic fund.

Several years ago the Museum Board of Trustees established the Endowment Fund with the hope that it eventually would be large enough so that interest would provide for ongoing maintenance and replacements. At present, the Trustees rely on special gifts when furnishings and

equipment are needed to house memorabilia.

Just recently former National Presidents Irene Caroline Boughton-Iowa-I, and Myrtle Graeter Hinkly, DePauw-Δ, both members of Delta

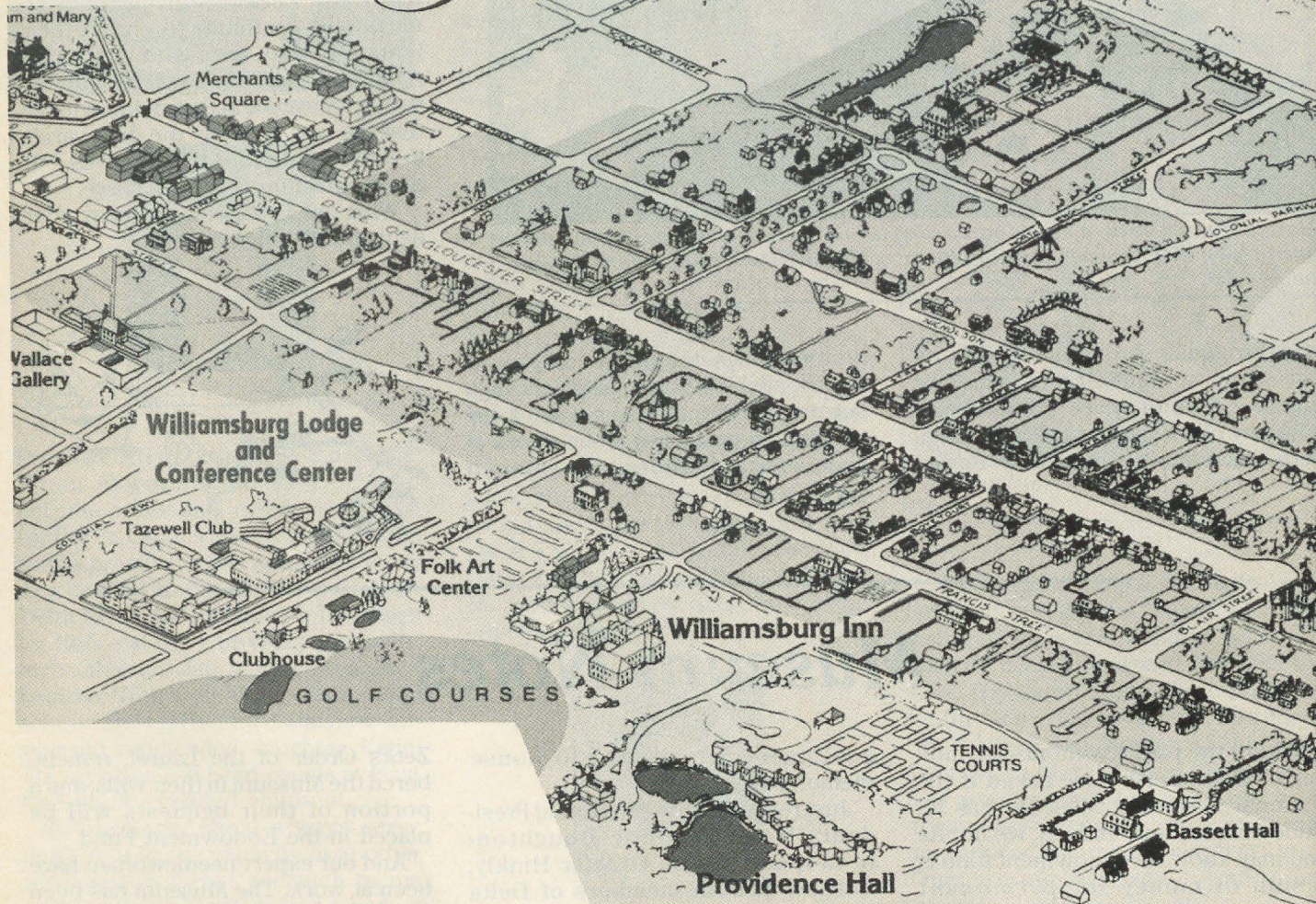


Zeta's Order of the Laurel, remembered the Museum in their wills, and a portion of their bequests will be placed in the Endowment Fund.

And our expert needlewomen have been at work. The Museum has been enhanced by the addition of a crewel picture done by Betsy Bradley Leach, USC-AI, for the California suite. This authentic Victorian design is called *Merton Vase of Flowers* and is stitched with Paternayan Persian wool yarn in fifteen different stitches. It measures 22" x 22" and is in a gold leaf frame with a blue velvet filet.

The Plantation Sampler, done in 18 count cross-stitch and with 25 colors and shadings, was completed by Gwen Moss McKeeman, Northeastern State University-ΔΦ, for the Oklahoma room (the "wicker" room for those who don't know). Approximately 14" x 14", the sampler is double matted and framed in gold.

Colonial Williamsburg



The collegians and alumnae of Province XXV are delighted to welcome you to the 39th National Convention. We are proud that the National Council choose the Colonial Capitol of Williamsburg and we hope that each Delta Zeta attending will enjoy our hospitality.

As we come together for this convention, it will be a time to look back at our past and build onto our future, much like the spirit of Williamsburg symbolizes. A time to greet old friends and make new ones. A time to enjoy special moments with ΔZ sisters across the nation.

Our very best to each Delta Zeta and may this 1989 National Convention be a most enjoyable and memorable experience.

Linda Regner
Province Collegiate Director

Shelley Belson Stepp
Province Alumnae Director

Transportation

BY AUTOMOBILE: Williamsburg, Virginia, is located at Exit 56 on Interstate 64, about midway between the cities of Richmond and Norfolk.

BY RAIL: Williamsburg is served by Amtrak from Boston, New York, Philadelphia, Baltimore, Washington, D.C., and Richmond with daily service.

BY AIRLINE: Three nearby airports serve Williamsburg. Patrick Henry International Airport at Newport News is 14 miles away. Richmond International Airport and Norfolk International Airport are approximately 45 miles from the city. Regular limousine service is available between each airport and Colonial Williamsburg's hotel facilities.

BY PRIVATE PLANE: Patrick Henry Airport at Newport News and Williamsburg-Jamestown Airport, the latter a general aviation facility in the outskirts of the city.

The background of the entire page is a dark, textured surface with stylized, light-colored fireworks or starburst patterns. These patterns are concentrated on the right side and bottom, with some fainter ones on the left. The fireworks have multiple sharp, radiating lines, giving them a star-like appearance.

TENTATIVE PROGRAM

FRIDAY, June 30

10:00 AM - 5:00 PM	Registration
8:00 PM	Formal Opening Banquet
10:00 - 11:00 PM	Informal Reception

SATURDAY, July 1

9:00 AM	Opening Business Meeting
12:00 Noon	Collegiate Awards Luncheon
2:00 - 5:00 PM	Workshops
5:00 PM	Budget Presentation
7:30 PM	Initiation Banquet
	Initiation

SUNDAY, July 2

9:00 AM	Business Meeting
10:45 - 11:45 AM	Workshops
12:00 Noon	Rose Luncheon
	Free Afternoon
7:30 PM	Fun Night - Pups & Hounds

MONDAY, July 3

9:00 AM	Commemorative Service
10:00 - 11:45 AM	Workshops
12:00 Noon	Panhellenic Luncheon
2:00 PM	Fair
7:30 PM	Medallion Banquet

TUESDAY, July 4

9:00 AM	Business Meeting
12:00 Noon	Buffet Luncheon
2:00 PM	Free Afternoon
7:30 PM	Processional
8:00 PM	Banquet

WEDNESDAY, July 5 Departures

VISITORS
Convention Registration Form
DELTA ZETA NATIONAL CONVENTION
Williamsburg Lodge - Williamsburg, Virginia
June 30 - July 5

Please type and return to Delta Zeta Sorority, 202 East Church Street, Oxford, Ohio 45056, postmarked no later than **May 1, 1989**. Total registration fee must accompany this form. Except those made for individual meals, reservations cannot be accepted after **May 15**. No refunds for cancellations will be made after May 15. This form is for visitors only. Delegates received registration forms by mail.

Name _____ (last) _____ (first) _____ (maiden) _____ (husband's)
 Home Address _____ (street) _____ (city) _____ (state) _____ (zip) Phone _____/
 School Address _____ (street) _____ (city) _____ (state) _____ (zip) Phone _____/
 School _____ Chapter _____ Initiation Year _____ Alumna _____ Collegian _____
 Age Group (check one): Under 21 _____ 21-30 _____ 31-40 _____ 41-50 _____ 51-60 _____ over 60 _____
 Roommate choice (if any) _____ (name) _____ (chapter)

Are you a Golden Rose? _____ Do you have a Golden Rose certificate? _____
 Are you a Past National Officer? _____ Office Held/year _____
 # of Previous Conventions attended _____ Would you participate in singing/entertainment programs at Convention? _____

Please complete according to the visitor categories of your preference: Smoker _____ Non-Smoker _____

1. Full time participant
 Registration fee \$90.00
 (after May 1 - \$125)
 Convention package (five nights/13 meals, tax,
 gratuities, activities) \$525
 (add \$150 for single room) TOTAL COST

2. Early Arrival/Late Departure
 You may arrive early and/or stay after Convention at a cost of \$105 double or \$135 single per day, including meals.
 Reservations to be made through Delta Zeta Sorority. Payment to The Lodge at departure time.
 Arrival date _____ Departure date _____ Total # days _____

3. Daily Visitor
 Registration fee \$25 per day
 Daily package (hotel, meals, tax, gratuities
 activities) \$105 per day
 (add \$30 for single room)
 Check days attending: 6/30 _____ 7/1 _____ 7/2 _____ 7/3 _____ 7/4 _____ TOTAL DAYS _____
 TOTAL COST

4. Meals only. Reservations must be made at least 24 hours in advance. For refund, cancellation must be received 48 hours prior to event. Circle choices.

	June 30	July 1	July 2	July 3	July 4
Lunch		Collegiate Awards \$18	Rose \$18	Panhellenic \$18	Buffet \$18
Dinner	Formal Opening \$30	Initiation \$30	Fun Night- Pups-n-Hounds \$30	Medallion Banquet \$30	Installation \$35
TOTAL COST					

5. Workshops/Business Meetings only (No meals or hotel accommodations)
 Registration fee - entire Convention \$90
 (After May 1 \$125)
 Registration fee - daily \$25 TOTAL COST

FULL PAYMENT OF BALANCE DUE MUST BE POSTMARKED BY MAY 15, 1989
 TOTAL DUE _____
 AMOUNT ENCLOSED _____
 BALANCE DUE _____

Congratulations

Academics — Spring 1988

#1 GPA ON CAMPUS AMONG SORORITIES

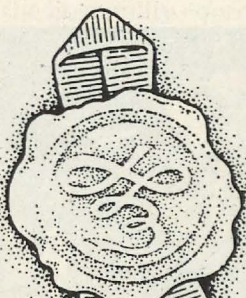
TrentonState-AA	Wisconsin/Eau Claire-EΩ	Nevada/Las Vegas-IΦ
Kutztown-KP	Wisconsin/Whitewater-EK	West Texas State-ZZ
Muhlenburg-EI	Nebraska Wesleyan-BT	Pan American-ΘO
Mansfield-IΘ	N.E. Missouri State-ΔΣ	New Orleans-ΘK
California of PA-ZE	N.W. Missouri State-EP	Nicholls State-KA
Rochester-AI	William Jewell-ZP	Northern Kentucky-KB
Slippery Rock-ZΦ	Denver-P	Atlantic Christian-ΘΩ
Youngstown State-KX	Ft. Hays State-ΔΩ	UNC/Charlotte-KΘ
Northwood-EH	Northern Colorado-ΔΞ	Tampa-ΔB
Carroll-IΘ	California State/Los Angeles-ΘP	Old Dominion-ΘΦ

CHAPTERS ABOVE ALL-SORORITY AVERAGE

Maine-AY	Western Michigan-ΠI	Southwest Texas-IA
Massachusetts-EA	Indiana-E	Southwestern-ΓZ
Rhode Island-BA	Carroll-IΘ	Stephen F. Austin-ZΨ
Muhlenberg-EI	Wisconsin/Eau Claire-EΩ	New Orleans-ΘK
Indiana of PA-IΦ	Northern Illinois-ΓP	Middle Tennessee-II
Mansfield-IΘ	Western Illinois-EO	Northern Kentucky-KB
Shippensburg-KΨ	Eastern Illinois-ΓN	Appalachian State-AΨ
Robert Morris-EΧ	Southern Illinois-ΓΩ	Atlantic Christian-ΘΩ
Rochester-AI	Nebraska Wesleyan-BT	Lenoir-Rhyne-ZΞ
Slippery Rock-ZΦ	Central Missouri-EΓ	UNC/Charlotte-KΦ
Fairmont-EI	N.W. Missouri-EP	Georgia-ZII
Bowling Green-ΓT	Denver-P	Florida State-AΣ
Wittenberg-BX	Northern Colorado-ΔΞ	Tampa-ΔB
Youngstown-KX	Tarleton State-EΝ	Longwood-ET
Central Michigan-ΓΨ	Texas/Arlington-IΨ	Old Dominion-ΘΨ
Ferris State-ZN	West Texas State-ZZ	

CHAPTERS ABOVE ALL-WOMEN'S AVERAGE

Maine-AY	Southern Illinois-ΓΩ	Memphis State-ΓI
New Hampshire-ΘΓ	Nebraska Wesleyan-BT	Middle Tennessee-II
Rhode Island-BA	N.E. Missouri-ΔΣ	Eastern Kentucky-EΒ
Indiana of PA-IΦ	N.W. Missouri-EP	Northern Kentucky-KB
California of PA-ZE	William Jewell-ZP	Appalachian State-AΦ
Bowling Green-ΓT	Denver-P	South Carolina-BΔ
Wittenburg-BX	Southwestern-ΓZ	Georgia-ZII
Youngstown-KX	Stephen F. Austin-ZΨ	Alabama/Huntsville-AK
Franklin-Ψ	New Orleans-ΘK	Florida State-AΣ
Indiana-E	Nicholls State-KA	Tampa-ΔB
Carroll-IΘ	Southern Mississippi-EM	Longwood-ET



From the Lampwriter



The December mail almost got the best of my postman! There for a while I was getting everything on the block. Thanks to all *The LAMP* readers for your interesting letters and cards. It is so rewarding to know you read . . . and care enough to write!

There are several name changes in the Directory of this issue. November weddings brought new names to Headquarters Administrator Cindy Winslow who is now Mrs. Michael Menges, and to National Ritual Chairman Karen Kind Manuel who became Mrs. Andrew Veitch. Earlier, Philanthropy Collegiate Coordinator Rhonda Reifschneider added Roe to her name.



Betsy London's green turtle embroidered pink panties were a gift from former Housing Projects Manager Sue Jones Allen.



Sue and Chris Skambis with 10-day-old Adrienne.

Foundation Trustee Joyce Low London shared this picture of four-month old Betsy London, complete to pink panties with a green turtle embroidered thereon. Our newest legacy is Adrienne Elaine, daughter of National Academics Chairman Sue Adrianson Skambis and husband Chris, born January 19.



Timothy and Jonathan McKeeman

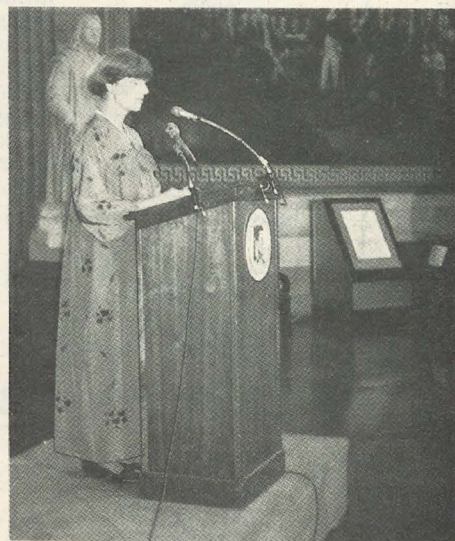
And just because . . . here are the pride and joy of the McKeemans . . . Grandson Timothy was three in September and brother Jonathan is 1½. They aren't normally this serious when posing for Nana's camera.

Three Delta Zetas met by chance while on a study trip with the Cultural Studies Academy in Salzburg, Austria, last July. Geneve Butcher Blade (Wisconsin-T) of Cape Coral, Florida, and Marcia Cassler Bernheisel (Penn State-IΔ) were taking a course in music history, "Mozart and His World." Louise Weishaar Kiefer (Baldwin-Wallace-IΔ) was coordinator of German classes for CSA. Also on the trip was Dr. John Benhart, geography professor at Shippensburg University and for CSA. He had served as an advisor to our Kappa Psi chapter for two years.

Former National Officer Doris Ellingson Riede and former PAD Ada Grace Tedder, both Breneau-AO, sent news of other Breneau Delta Zetas. Joan M. Pafford, '66 was named 1988 Volunteer of the Year by Breneau, recognition for enlisting alumnae to assist in the recruitment of prospective students, and Dr. Martha Taylor Hatcher, '40, Professor of Science, received the Distinguished Service Award for her service to Breneau.

Jean T. Schmidt, Iowa-I, was selected by the Southern California Peace Corps Service Council to represent them at the Journals of Peace, a 24-hour vigil for the late John F. Kennedy, founder of the Corps. The ceremony was held November 22, marking the 25th anniversary of his death. Returned Peace Corps volunteers shared their experiences in the capitol rotunda in Washington D.C.

Jean served as an English teacher in the Corps in Seoul, Korea, from 1972 to 1974. Her presentation featured excerpts from letters sent home during that period. While speaking, she wore a Korean gown called a *hanbok*.



Jean Schmidt speaks at Journals of Peace in Washington, D.C.

Following the program, a commemorative Mass was held at St. Matthews Cathedral. Jean carried the Korean flag in the processional of countries the Peace Corps had served. In attendance were Kennedy family members and friends and former corps volunteers. Jean currently teaches and resides in Long Beach, California.



Lori Hudson watcher former Indianapolis 500 champ Al Unser fix himself a taco during lunch at the Indianapolis Motor Speedway. (AP Laserphoto)

The *Franklin Reporter* ran a story about Lori Richart Hudson, Franklin-Ψ, who is the hospitality coordinator for the Roger Penske race team. She's been with the team for three years and travels to every Indy car race (from Long Beach to Miami) with the team. When she takes lunch to the track, it's anything from a taco bar to crab and shrimp stuffed filet of sole, to gallons of strawberries for 50 to 100 people. Between racing seasons she does catering from her Atlanta, Georgia, home. Lori was president of Psi chapter and Panhellenic at Franklin.

The *Dayton Daily News* (Ohio) carried a story about Harriet Hazinski, Wisconsin-T, who has sent hand-painted Christmas greetings for 50 years. Harriet starts working on

her Christmas cards in November, sketching her design to the strains of classical music. If the sketch isn't ready by Thanksgiving, she said she starts to get a little worried. Hazel is also a volunteer with the national headquarters of the American Association of Retired Persons.

And now, all you Delta Zeta skydivers listen up! Jennifer Lam, Ashland-ΘΨ, wants to contact those of you who love the skies and she hopes to find four or six to sport the rose and green of Delta Zeta in national demonstration jumps. To her knowledge, there are no Greek women teams. So . . . if you are interested, write Jennifer at 6557 Chestnut Ridge Road, Hubbard, Ohio 44425. Her telephone number is 216/354-0557.

They say teachers have a great impact on their students . . . and Elsie Boemker Langenbach, Central Missouri-EΓ, evidently did. She taught both Lisa and Terri Bill in the 1st and 2nd grade. When Terri pledged Delta Zeta at William Jewell, she received a congratulatory note from her former teacher. And then sister Lisa pledged, so the three got together for lunch at the St. Louis Art Museum to share sorority stories.



Lisa Bill, Elsie Langenbach and Terri Bill at the St. Louis Art Museum.

In 1979 *The LAMP* printed a letter from Marie Klapperich Jackson, Illinois-AB, telling of her two granddaughters, age 9 and 5, who had been born with genetic hearing defects. We recently had another letter from Marie, updating the story of the girls' mother's heroic efforts to teach her

daughters to talk as their prime means of communication. Frustrated by a system which believed sign language was the only way the deaf child could be taught to communicate, they finally subscribed to a correspondence course for parents of preschool deaf children and the hard work began. Years of working hours daily with Ami and then Lori, repeating and repeating, has been most rewarding. Jean Leal thought she'd never hear, "Thank you for making me talk," but she has and her efforts have resulted in both daughters being in a position to make their own statement to society.



Mabel Barber

I recently learned that Mabel Williams Barber was Kentucky Mother of the Year for 1988. A former chapter director for Morehead State University-KT, Mabel was recognized for her 42 years of work with Kentucky school children; her philosophy of parenting; her children's accomplishments and her many years of public service, particularly in the areas of education, religion and medicine.

Peggy Haskell Benjamin, Nebraska-Z, has a new book, *Adventures in Old Wyoming, 1879-1884*, off the press. It is the story of Peggy's uncle, Cap Haskell and his early days on a Wyoming ranch. Cap Haskell

(continued on page 19)

NPC Holds Interim Session

by Betty Mullins Jones
NPC Delegate, AΦ

The National Panhellenic Conference held an Interim Session October 28 to 30, 1988, at Loew's Ventana Canyon Resort in Tucson, Arizona, with 26 delegates, 71 alternate delegates, and 38 visitors attending the opening meeting. The purpose of this Interim Session was to hear recommendations from the "Project Future" Committee and to consider changes in the *Manual of Information*.

The College Panhellenics Committee, the Alumnae Panhellenics Committee, the Publications Committee, and the Project Future Committee — as well as the Executive Committee, the Advisory Committee, the National Presidents, and the Central Office Executives — had meetings on Thursday prior to the opening of the Conference sessions.

Following the theme of "Cherish the Past and Chart the Future," Conference Chairman Beth Kersten Saul (Alpha Epsilon Phi), reported to the delegation by basing her remarks on Charles Dickens well-known opening paragraph to *A Tale of Two Cities*. "The best of times" is the era of prosperity in which the Greek world is presently thriving, with new chapters, rising memberships, and expanded services. "The worst of times" is the proliferation of problems with alcohol and substance abuse, eating disorders, harassment, hazing, and poor behavior which has evoked harsh criticism from the public and negative reactions from school administrations. At this meeting, Chairman Saul suggested, we shall be considering new ideas and analyzing our Conference so that we can make decisions together.

Jean Wells (Kappa Kappa Gamma) was chairman of the Resolutions Committee, and 37 resolutions were brought before the delegation — most of them rising from recommendations made by the subcommittees of the Project Future Committee.

The Project Future Committee,



NPC's latest informational brochure was prepared by the National Panhellenic Editors Conference.

appointed at the 50th session at New Orleans in 1987 and chaired by Norma Jorgensen (Kappa Alpha Theta) was divided into five subcommittees: Finance, chairman, Jean Scott (Pi Beta Phi); Structure, chairman, Gloria Nelson (Gamma Phi Beta); Collegiate Concerns, chairman, Phyllis Pryor (Kappa Kappa Gamma); Services, chairman, Dorothy Skinner (Alpha Gamma Delta), and Public Relations, chairman, Kathie Nye (Delta Delta Delta). Each subcommittee reported its findings and made its recommendations to the Conference.

Among the resolutions adopted by

the Conference was one establishing a Coordinator of Consulting Visits. The Coordinator will be appointed from the College Panhellenics Committee to work with panhellenics to provide for further development of a service to assist panhellenics. Established last biennium, the concept of sending consulting teams to campuses desiring help in improving their panhellenics has proved so successful that the Conference has agreed to expand the service.

Another resolution recommended that NPC member fraternities disband their auxiliary groups. In the past, NPC has recorded its disapproval of men's auxiliary ("Little Sister") groups, but this is the first time that the Conference has requested its members to prohibit their own auxiliaries. Copies of this resolution were sent to the Association of Fraternity Advisors, the Fraternity Executives Association, National Interfraternity Conference and all College Panhellenics.

National Interfraternity Conference, the Association of Fraternity Advisors and National Panhellenic Conference are attempting to encourage activities to promote positive cooperation between the men's and the women's fraternities, and NPC is attempting to eliminate activities such as games, contests, and promotions which are destructive, demeaning, abusive, or which promote negative images of the Greek community.

At the 50th Biennial Session the Conference voted to establish an NPC Archives Collection, to be housed at a suitable university. At this Interim Session, the ad hoc committee, composed of archivists from the member groups (Virginia Cain, Delta Delta Delta; Joan Howard, Sigma Kappa; Mary Edith Arnold, Kappa Alpha Theta) with the NPC Archivist, Cynthia McCrory (Alpha Sigma Tau), as chairman, recommended that the Archives be located at the University of Illinois. The Kappa Alpha Theta

Foundation has allocated \$10,000 to assist in this project.

The Services Committee of the Project Future Committee has as a priority to implement the computerization of the Central Office, so the Executive Committee has been authorized by the Conference to select an ad hoc committee from among fraternity women in the Indianapolis area to evaluate business procedures and make recommendations to the Executive Committee.

One of the areas of major emphasis in Project Future is Public Relations. The adverse publicity which Greeks have been receiving is devastating. The Public Relations committee has proposed, and the Conference has approved, a three-year public relations program which will involve all member groups of NPC and their individual chapters. This program will be implemented by the NPC Public Relations Committee, which will schedule appropriate events to promote a positive image of women's fraternities. Delta Gamma has contributed \$10,000 to underwrite the cost of employing a public relations firm to assess the resources presently available within the National Panhellenic Conference and to provide professional expertise.

A resolution offered by the Collegiate Concerns Committee and adopted by the Conference provides for the Executive Committee to appoint an ad hoc committee to study the extent and nature of hazing activities among women's fraternities and to report their findings to the Conference. And a resolution from the Alumnae Panhellenics Committee and supported by the College Panhellenics Committee asks that the term "suicide," as it is used in collegiate membership recruitment, be completely eliminated from the Panhellenic vocabulary, and the phrase "Intentional Single Preference" be substituted.

The Awards Committee has established an additional category in the National Panhellenic Conference Award for overall excellence, thereby dividing the award into three categories: campuses with two to five chapters; campuses with six to ten chapters; and campuses with over ten chapters. The committee has also

established a new award, to be called the NPC Progress Award, for the most improved panhellenic, and an award for excellence in scholarship programming and high academic standards, to be called the NPC Scholarship Award.

Emphasizing the importance of scholastic achievement, the Conference adopted a resolution recommending that each College Panhellenic and its member chapters strive to maintain an all-sorority scholastic average above the all-women's average through programming and recognition of academic excellence.

The Publications Committee had prepared a revision of the *Manual of Information* which was sent to the

delegates before the meeting. Each delegate was assigned to a specific section of the revised manual and met in study sessions with members of the Publications Committee to read through the draft and make suggestions. The committee will use these suggestions to prepare the draft of a 12th edition of the *Manual of Information* to be considered for final approval at the next regular session of the Conference, to be held in November 1989. Copies of the proposed edition will be in the hands of the delegates approximately three months prior to the 51st Biennial Session so that full consideration may be given to it. Cynthia McCrory is Chairman of the Publications Committee.

The Lampwriter (continued)

was a popular storyteller among both children and adults for his 75 years and Peggy has shared 17 of his tales, each a complete story in itself. Earlier, Peggy had written a biography of her Ohio parents building a life in the Nebraska Sandhills during the 1880s. The youngest of seven children, Peggy is a former Province Collegiate Director and past president of Nebraska Writers Guild and a member of American PEN Women.

Betty Schneider Fenton, Past National Officer and longtime CCD for Sigma chapter at LSU and a winner of the Alice Huenefeld Outstanding CCD Bracelet, was honored by Sigma and the Baton Rouge alumnae upon her retirement. They presented the Betty Fenton Scholarship Fund in appreciation of her devoted and invaluable services to Sigma and to the alumnae chapter.

And Past National President Grace Mason Lundy sent a sprig of rosemary "for remembrance" and praised *The LAMP* and said reading it made her 94th birthday a happy one. And Happy Going-for-95, Grace, dear.



Betty Fenton with daughters Carol and Kay (standing), Barbara seated.

Alumnae Chapters Write . . .



Kathy O'Malley Elwood, Illinois State-AP receives the charter for the Hinsdale Area (Illinois) alumnae chapter from PAD Phyllis Berens Ross, Fort Hays State-ΔΩ.



Gold Coast alumnae at their "pecan packing party." L to r, Pat Beatty, Bowling Green-IT; Barbara Boehringer Turner, Westminster-ΘΔ; Anita Voden Teloh, Bowling Green-IT, and Shay Oscarson, Northland-IX.



Founders Day in Covington, Kentucky: L to r, PCD Jennifer Plenge, National Activities Chairman Jeanine Triplett, Guest Speaker Florence Miner, Alumnae Chapter President Michelle Preist, PAD Carol Harper and Kappa Beta CCD Linda Allen.

ARLINGTON (Texas) alumnae and Texas/Arlington-IV collegians stuffed and packaged over 9500 ribbons for college and alumnae chapters in Delta Zeta's emphasis program, **MADD Project Red Ribbon**, and the chapter sent about 200 "Santa" letters to area children.

AUSTIN (Texas) alumnae chapter provided sack lunches for collegians at Southwest Texas State-IA during formal rush and worked the concession stand at a football game for the Texas State School for the Deaf.

BIRMINGHAM (Alabama) alumnae provided much-needed gloves to the Birmingham PATH (Partnership for Assistance to the Homeless) Program.

DENVER (Colorado) alumnae chapter shared Founders Day with Rho chapter at the University of Denver. Their annual outstanding alumna award was presented to Beth Hibler Allen, Kansas State-Λ.

EASTERN ILLINOIS AREA alumnae were saddened at the death of Lena McNeel Anderson, long-time supporter of Gamma Nu chapter who had been presented her 75-year membership certificate just last spring. Gamma Nu chapter has been presented with numerous silver awards given to Lena through the years.

ENID (Oklahoma) alumnae donated turkeys to the needy in the Enid area and provided puzzles for a local hospital.

FORT WALTON BEACH (Florida) alumnae sponsored a Thanksgiving Dinner Giveaway raffle as a fund raising project, with proceeds donated to the local Speech and Hearing Center.

HOUSTON (Texas) alumnae chapter sponsored two children from the Houston School for Deaf Children with funds from their first Fashion Festival.

HUNTSVILLE (Alabama) alumnae chapter's 21st annual Arts and Crafts show had over 155 exhibitors. The event is renowned for its excellence and is always an eagerly awaited event in Huntsville. Proceeds are used to support philanthropy projects and the chapter was recognized by the Huntsville Hospital Foundation for its continuing contributions to the hospital. Huntsville alumnae chapter was honored as one of six organizations to have contributed over \$100,000 to the hospital. A handsome plaque is displayed prominently in the lobby of the hospital.

LONGVIEW AREA AND TYLER (Texas) alumnae chapters met jointly for their Founders Day celebration and ceremony.

INDIANAPOLIS NORTH CENTRAL (Indiana) alumnae chapter joined **INDIANAPOLIS** for Founders Day and presented a ΔZ necklace to Nancy Daughters, president of the Indianapolis alumnae chapter which was

celebrating its 75th anniversary. The necklace is to be passed to future presidents. Indianapolis North Central alumnae also participated in the state wide Flame Fantasy, Indiana's philanthropic fund raising event.

MEMPHIS (Tennessee) helped Gamma Iota at Memphis State celebrate its 40th anniversary at Founders Day and held a successful carport sale to benefit Gamma Iota.

OMAHA (Nebraska) alumnae chapter raised almost \$1,000 by selling a coupon book called Pleasure Pac. The book had coupons for restaurants, entertainment and shopping.

ORANGE COUNTY (California) netted \$2,000 for ΔZ charities from their very successful Christmas Boutique, luncheon and fashion show.

PANHANDLE (Texas) alumnae helped Zeta Zeta at West Texas State celebrate their 20th anniversary and sent "Santa" letters as a means of raising money for philanthropy.

SACRAMENTO (California) again combined the Sacramento Panhellenic Luncheon attendance, followed by ΔZ Founders Day celebration and presentation of the Golden Rose award to Carolyn Reed Travis, USC-AI.

SEATTLE (Washington) alumnae celebrated Founders Day at the Sand Point Naval Base Officers Club with Ernestine Collins, Past National President of Sigma Kappa and long-time Panhellenic Advisor at Washington, as a special guest.

SOUTHERN NEW JERSEY alumnae hosted the fourth annual Regional Founders Day luncheon in Pennsauken with 90 Delta Zetas attending from Eastern Pennsylvania and New Jersey.

STILLWATER (Oklahoma) alumnae chapter presented 11 silver bells to Alpha Epsilon at Oklahoma State for use during formal dinners at the house. Their December meeting was a Christmas Dining Out with a gift exchange and a patch-work Christmas ornament auction.

TAMPA (Florida) alumnae have started a big/little sister program with Delta Beta collegians at the University of Tampa and provided food for the chapter during final exams.



Twin Cities (Minnesota) alumnae chapter welcome new alumna initiate Marie Bergman Metcalf into their group. Marie is pictured front row left, with sponsoring member June Shepherdson Barnhill, center. The collegians who conducted the ceremony are from Wisconsin/Eau Claire-EΩ chapter.

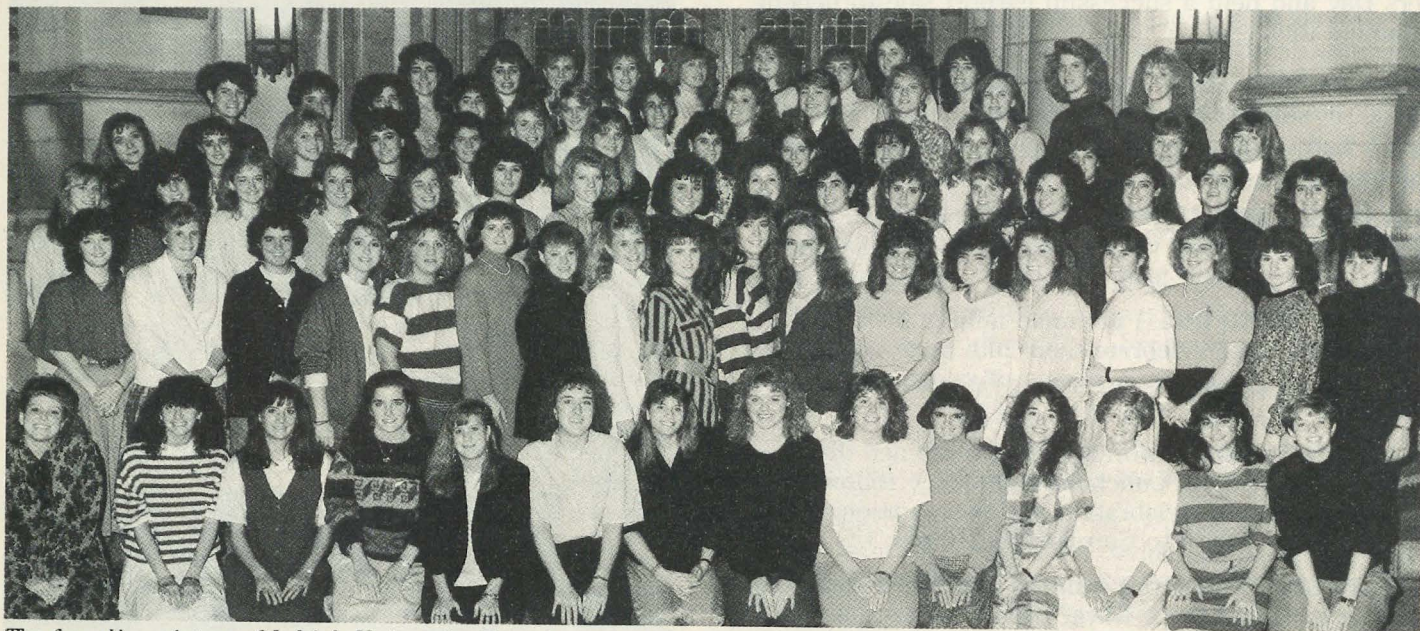


Lambda Rho members at Illinois State honored their first Golden Rose alumna at Founders Day. L to r, Bloomington-Normal alumnae President Karla Hart Weldon, Colorado State-BΣ, Lina Hakes Schneider, Eureka-II, the Golden Rose recipient, and Gail Easley McKee, Eastern Illinois-I'N, PAD, Province IX South.



Delta Zeta Pride Nationwide

Delta Zeta on Campus



The founding sisters of Lehigh University- $\Xi\Omega$ colony. Installation was February 25.

by Diane Jones Skelton

ALABAMA

Alabama, Alpha Gamma — Sixty-six fall pledges joined chapter members to celebrate homecoming first place victories in spirit cup competition, lawn decorations and quad games. The pledges earned top honors in choreography dance competition. Alumna Kim Draughn was a member of homecoming royalty. Fall activities also included helping clean the local community in a Greek Against Garbage Clean-Up, assisting with a cookout for Brice Hospital patients and hosting a chapter scholarship dinner with special guest Acting President of Alabama, Dr. Sayers. Alpha Gamma also sponsored a candidate in United Way Bachelor Bid. Lisa Kay Draughn, Miss Petal, Mississippi, is Miss Corolla. Pam Burgess attended an Alcohol Awareness press conference in New York as president of the campus Bacchus group.

Alabama-Huntsville, Lambda Kappa — Fifteen coeds chose Delta Zeta in fall formal rush. The new pledges enjoyed celebrating Founders Day at a banquet at Tom Beill Center, along with a pledge retreat at Wendy Campbell's country home. Other activities included fraternity mixers with Sigma Chi, Pi Kappa Alpha and Delta Chi. Members and dates enjoyed a buffet and danced the night away at the pledge formal, "One Moment in Time." More than 100 members also enjoyed a hayride to Sharon Johnston Park. Lambda Kappas also worked as hostesses at the Delta Zeta Arts and Crafts Show benefitting the Huntsville Hospi-

Spring Installations of fall colonies include

San Diego State University

Gamma Omicron

February 18, 1989

Lehigh University

Xi Pi

February 25, 1989

Northeastern University

Xi Upsilon

March 18, 1989

Pennsylvania State University

Gamma Delta

April 9, 1989

Ohio Wesleyan University

Alpha Rho

April 22, 1989

North Georgia College

Xi Xi

April 29, 1989

tal. Karen Johnston reigned over homecoming festivities.

Auburn, Beta Xi — Sixty-five new fall pledges were on hand to enjoy socials with Sigma Pi, Sigma Nu, Pi Kappa Phi and Beta Theta Pi. Delta Zeta then arranged a lake party for the three other "two letter" sororities. Delta Zeta joined with two other sororities to welcome Sigma Kappa to the Auburn campus. Alumnae met new pledges at the chapter's Alum Salad Supper. Joy Underwood is serving as Panhellenic vice president, while Amy Barber is president of Junior Panhellenic. Amy also serves in the basketball hostess group, Dunkin Darlings. Other hostesses for athletic groups are Amanda Bruce, basketball; Amy Guirato, tennis; and Renee LaPierre, baseball. Serving as Peach Bowl hostesses were Cathy O'Brien, Kelley Stone, Amanda Robertson and Lynne Dodd. Melissa Bolles is a soccer sweetheart, while Susan Dacy is sweetheart of Beta Theta Pi, and recipient of an ODK Award. Jennifer Cannon was one of the top twenty Miss Homecoming candidates. Kelley Hudson is a member of Angel Flight, and Melanie Bianco is a member of Mariners. Lara Hester is a member of the Auburn Dance Team.

Auburn-Montgomery, Lambda Nu — The 17 fall formal rush pledges celebrated at a pledge formal with a Mardi Gras theme. They also enjoyed two fraternity "swaps." Phi-

lanthropy events included working at the Boys Club Haunted House, waitressing at Lions Club Pancake Booth, a pledge rummage sale (to raise money for initiation), and working at a rock-a-thon for United Way. Ginger Trammell chaired the rock-a-thon project. Misty McMullen is the business manager for the campus' first yearbook.

Samford, Alpha Pi — Delta Zeta pledged 25 girls in formal fall rush. The new pledges helped members celebrate with the crowning of Delta Zeta Hope Haslam as homecoming queen. Members joined alumnae for a candlelight ceremony honoring founders at the Reid Chapel. Members joined other sororities to sponsor a campus-wide alcohol awareness band party. Delta Zeta sponsored a photography booth at Fall Carnival which benefits campus ministries. New Chapter President Melissa Bootes was dedicated, energetic and determined to make her first meeting perfect. At the end of the perfect meeting, her concentration slipped a bit and she declared the meeting "overturned" instead of "adjourned." Her good natured sisters understood! Melissa is a new member of Pi Gamma Mu. Hope Haslam was named to *Who's Who Among Students in American Universities and Colleges*, and was one of eight seniors honored at Hanging of the Green. Angela Faulk is first runner-up to Miss Entre Nous. Elise Olive copped first place honors in the US Karate Tournament.

ARKANSAS

Arkansas Tech, Lambda Alpha — Delta Zeta won the Outstanding Organization Participation Award during ATU's Alcohol Awareness Week. Other philanthropy efforts came in campus clean-up, a Halloween party at the Children's House, a Friendship School party, and Christmas caroling at a home for the elderly. Members also raised funds with a garage sale, car wash, button sale and Halloween treat sale. Lambda Alpha also participated in the Baptist Student Union Greek Rally. Darla Whitten is Panhellenic president, while Kelli Riley edits the school newspaper. Order of Omega includes Holly Kearney, vice president, and Stephanie Meeks.

CALIFORNIA

UCLA, Alpha Chi — A vivacious group of new pledges was presented to an audience of parents and honored with a reception. Pledges continued the day of celebration with a formal date party at the Marina International Hotel. The energetic class supplies the chapter with entertainment of songs or skits each Monday. Delta Zeta teamed with Phi Delta Theta for homecoming, and participated in activities as blood drive, relay races, banner and t-shirt contests, a dinner exchange, and a party exchange. Members took their dads to the UCLA-WSU football game for Dads' Day. Some UCLA professors joined Delta Zeta for a traditional Monday night dinner. Alpha Chi was honored to loan the chapter house to Xi Omicron for initiation. AX alumna Wendy Greene is college chapter director for Xi Omicron. The intramural football team made it to the quarterfinals in competition. Philanthropies included collecting toys at Christmas and participating in a canned food drive for the homeless. Parents treated daughters to food for a pre-finals dinner

to keep the energy level high for studying. Serving on the Greek Week Executive Committee are Julie Atwater and Stephanie Reeves. As a community service officer at UCLA, Diana Dormier escorts people to and from unsafe areas on campus, and remains available in case of emergency. Jennifer Dalton is on the varsity women's crew team, and Lisa Welch is general manager for KLA, campus radio station. She also serves on the UCLA Communications Board. Eva Jordan and Diana Cormier volunteer at the UCLA Medical Center. Hilary Judd and Leslie Eagle are members of the UCLA Concert Choir.

California-Fresno, Epsilon Epsilon — Delta Zeta's 25 new pledges were honored with a Pledge Presents which included a brunch with parents and big sisters. Social events included the Diamond Ball and three fraternity exchanges. Pledges raised money with a pancake breakfast at the house, and danced along with a western theme at the pledge dance. Alumnae were honored with a brunch on Founders Day.

California-Los Angeles, Theta Rho — Delta Zeta once again added the largest pledge class on campus. The pledges, numbering 15, were presented to the Greek community at Formal Presents at the Westin Bonaventure Hotel. October 22 was a busy day for chapter members with three big activities planned. The day began with a Founders Day ceremony, brunch and fashion show with alumnae. Following that, members participated in the House Ear Institute Kid Safe program by helping with the child safety classes for hearing impaired children. To conclude a busy Delta Zeta Day, members attended a Greek Night party celebrating a successful rush. Interesting enrichment programs for the chapter included alumna Marlene Rico speaking on Acots and Other Entertainers for Kids, alumna Karyn Laurenzello speaking on what it is like to be an alumna, and finally, a program on self-defense, to which other sororities were invited. Members and pledges celebrated Big-Little Sister Revealing with pizza. Alumnae and collegians celebrated Thanksgiving with a dinner. Martina Llamas won a \$200 scholarship from the East LA Rotary Club, while Celene Molina won a swimming scholarship. Mary Yao was named to the Dean's List, and Jan Tipton is chief justice for the Interfraternity-Sorority Council.

Chico, Delta Chi — Delta Zeta began the year with a strong rush adding 45 new pledges, the



Samford-AP: Krish Whorton and Hope Haslam.

largest pledge class in recent chapter history. These energetic pledges took third place in the Sigma Nu Softball Tournament, raised \$300 for a retreat and house gift by selling "bed tucks" to other sorority houses, and sponsored a retreat for the chapter at a nearby health club. The retreat, based on a Hawaiian theme, included plenty of food, door prizes, and a back drop for photo taking. Pledges even thought to cater the next morning's breakfast! Chapter activities included winning the TKE Canister Drive (a new T.V. for the house was the prize!), raising \$300 for a Greek suffering from leukemia, collecting canned foods for the needy, assisting at the Mesa Vista School Halloween pumpkin carving, and welcoming Delta Chi Fraternity for a breakfast, complete with contests, races and television cartoons. Delta Zeta placed second in intramural volleyball, and welcomed more than 200 parents for the chapter's annual parents' day. Initiates transformed the house into a haunted house to entertain pledges at Halloween. Diane Ehn is serving as president for Women in Communications, while Julie Waddell is president for the West Coast Intercollegiate Horse Show Association, the National Intercollegiate Horse Show Association, and the Chico State Horse Judging Team.

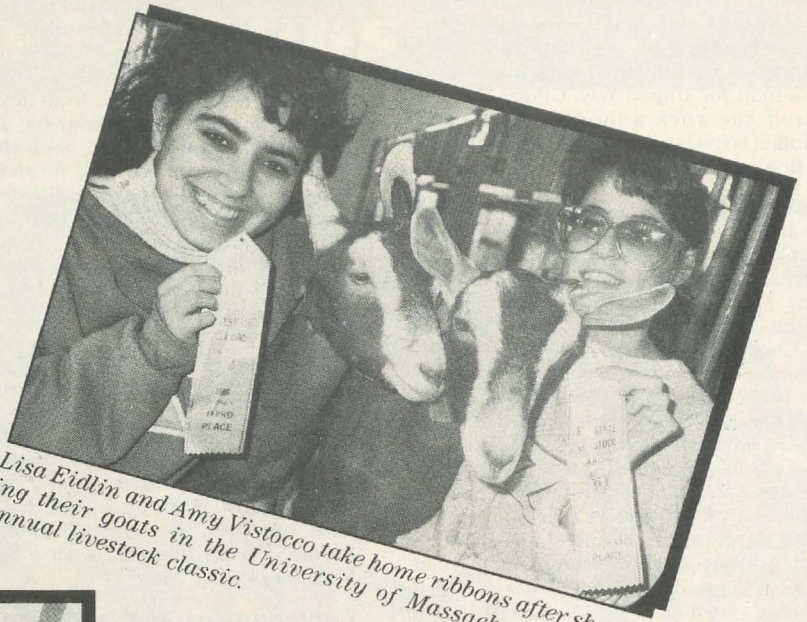
Loyola Marymount, Xi Omicron — Delta Zeta, following four days of formal rush, welcomed new pledges with a balloon arch between one building and another, and erected a huge banner on the wall of a building that read "Climb Out of Your Shell. Rush Delta Zeta." Members and new pledges celebrated in



Recently installed Xi Omegas of Purdue attend a groundbreaking ceremony for their new home in Tower Acres.



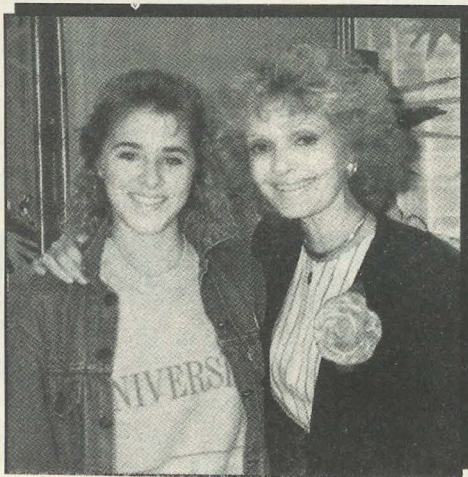
Pittsburgh/Johnstown-AE members Dina Yan, Susan Smith, Karen King, Tawnya Barbero and Tina Halyama pose during fall rush.



Lisa Eidlin and Amy Vistocco take home ribbons after showing their goats in the University of Massachusetts 53rd annual livestock classic.



William Jewell-ZP members enjoy their bid day barbecue: Jeanna Schelle and Angela Johnson.

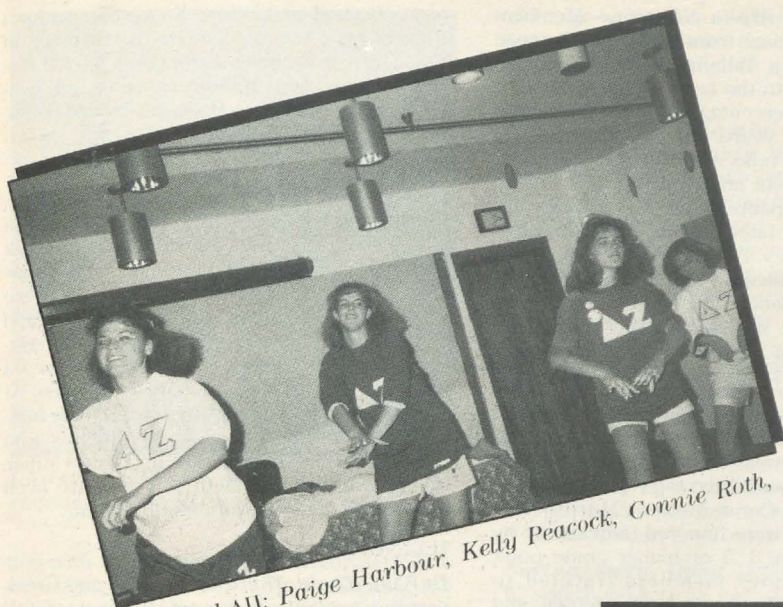


Wisconsin/Stout-ZN's Heidi Roeder meets sister Florence Henderson at Prange's in Madison.



It is a pledge retreat for the new pledges of Iota Iota at Middle Tennessee. Their theme: ΔZ sisterhood . . . pass it on.

**Delta Zeta Pride
Nationwide**



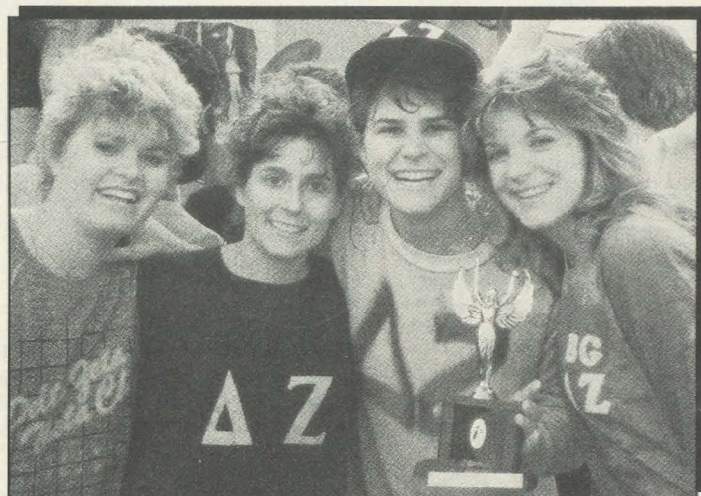
Samford-All: Paige Harbour, Kelly Peacock, Connie Roth, Melissa Bootes.



A gangster applying lipstick? Epsilon Sigma's Sandra Niedballa gets ready for a fraternity mixer at Wayne State.



Lambda Sigmas from Winthrop College take a break during their philanthropy walk-a-thon.

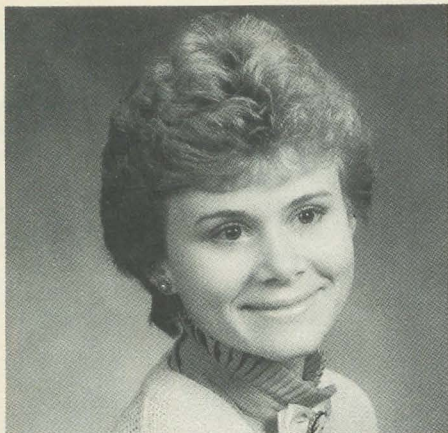


Gamma Taus display a trophy won at Bowling Green's Greek Week.



Beta Lambda's intramural football team members take a break with KA Coach Jim Schwan at the University of Tennessee.

**Delta Zeta Pride
Nationwide**



Gina Circirelli, Edinboro-1Δ is a summa cum laude graduate with 4 years of straight 4.0. She received an honors medallion as outstanding psychology department graduate and is listed in Who's Who.

the park at the marina. Delta Zetas spent a busy fall raising funds and helping others. Philanthropy efforts included costuming for Halloween and visiting sick children at the pediatric pavillion at County General-USC, making Christmas wreaths to sell on campus, raising \$10,000 for the school by assisting with the alumni phone-a-thon, working with the health center for the Great American Smokeout, and selling M & M's to fatten the chapter treasury. Members are joining other Greeks to sell calendars designed by deaf artists. The sales benefit a deaf scholarship foundation. The social calendar now includes a dance at the marina following Pledge Presents. This year's Black and White Formal was held on a boat that cruised Los Angeles harbor for four hours. Members Teri Eidon and Anne Marie Downs who are studying in Europe this year, have already located a Delta Zeta from Ohio State overseas, and have proved what a small Delta Zeta world it is! Members send special thanks to Alpha Chis for the use of the AX house for chapter initiation.

CONNECTICUT

Connecticut, Gamma Beta — The chapter welcomed a pledge class numbering 31 with activities including a picnic and a formal to introduce the new pledges. Gamma Betas joined with the men of Chi Psi to win second place overall in homecoming competition. In the lip sync competition, they performed their version of "Parents Just Don't Understand." The team also created a float featuring a juke box depicting the music through the years of UCONN, following the campus homecoming theme. Chapter Editor Laura Baxter writes a touching farewell to retiring College Chapter Director Helen Huff, noting that Helen has "never asked for any recognition and that is what makes her especially great . . . without her support and dedication the chapter would not be where it is today . . . she has touched all of our lives and we are going to miss her as our CCD."

FLORIDA

Florida State, Alpha Sigma — Members welcomed collegians from Tampa and alumnae for State Day in Tallahassee. Alpha Sigma walked away with the Loving Cup Award, the award for top percentage of initiates and the pledge program award. Mary Durrett won the Lucile Crowell Cooks Award for her contributions to Delta Zeta and campus events. More than 100 participants entered Delta Zeta's 5K Run this year. A father and his deaf son were among the entries. The activity and social calendar also included a Founders Day banquet and ceremony, annual Crush Social, Halloween with children at W. T. Moore and a Rose and Diamond Formal. Rene Dancisin won the Miss Eyes Contest in Delta Gamma Anchor Splash.

Tampa, Delta Beta — The coveted Pride of the Province Award went to Delta Beta at province festivities. Other awards came for reaching total, quota, and top reporting. Lanie Carroll, Susan Cone, Melissa Murphy and Fonda Satziner were honored individually by the province for 3.5 or higher grade point averages. Chapter members traveled to Sarasota Beach for the three day retreat, and welcomed family members for a brunch during family weekend. Members sponsored a kissing jail during Oktoberfest, delivered "Ghost Grams" at Halloween as a fund raiser and held a Christmas gift sale. Pledges won first place in the pledge sing. Members lent their assistance to the community "Sincerely Santa" project for needy children and supported the Kentucky Derby sponsored by the Leukemia Society. Delta Zeta joined with other Greeks for an All Sorority Picnic and Christmas party.

GEORGIA

Georgia, Zeta Pi — In a successful formal rush, Delta Zeta added a quota pledge class of 58. Now that the second addition of the house is completed, 69 Delta Zetas moved in! Members celebrated Founders Day and honored the chapter founders with a "second" birthday party. Social activities included four fraternity mixers, a masquerade ball at Halloween, and a Christmas Crush party. Pledges participated in TKE's Hairy Dog Spirit Drive, and the chapter teamed with Pi Kappa Phi to win a second place in homecoming banner competition. Mary Ortero was a member of the homecoming court. The intramural football team reached the semi-finals. The chapter sponsored a parents' weekend inviting parents to share their daughters' "home away from home." Air Force Angel Flight includes Melanie Whitten, Tracy Miller, Betsy Carmichael, and Jan Collins. Carol Conley, Kim Harris, Christine Forsberg, Christine Berilla, and Karon Ziemke are Georgia Girls. Kristen Kirk is a member of the University Concert Choir. Diane McMahon and Rana Carpenter are Dean's Aids. Heather Lucas serves on the Freshman Council.

Georgia College, Lambda Pi — This year's quota pledge class, numbering 27, began their activities with a pledge retreat at the home of Heather Tomlinson. For a fund raiser pledges sold donuts. They also created fruit baskets for the other Greeks on campus at Thanksgiving. The chapter calendar included bowling, roller skating and ice cream social sisterhood activities, an enrichment program on self-defense, participating in intramural football

and volleyball, and joining Kappa Sigmas for a trick or treat social. Members participated in the American Diabetes Association Bucket Brigade, and created Halloween cards for residents of Central State Hospital. Pledges regularly visit a local nursing home.

Georgia State, Delta Delta — Four fraternities participated in events as bulletin board, events day, lip sync and Mr. Levi's contest in Delta Zeta's successful Turtle Race. The week long events raised \$2000 for speech and hearing. Delta Zeta donated \$500 to Scottish Rite Children's Hospital via Sigma Nu. Parents and sorority members gathered for a Parent's Night-Founders Day combination which featured a covered dish dinner and Gallaudet video. At presstime, the chapter was third in both football and volleyball, and second in tennis. Kim Breen is a Miss GSU finalist, and Laura Miller, Shelly Williams and Beth Kurlicec have been tapped for Inceptors orientation team.

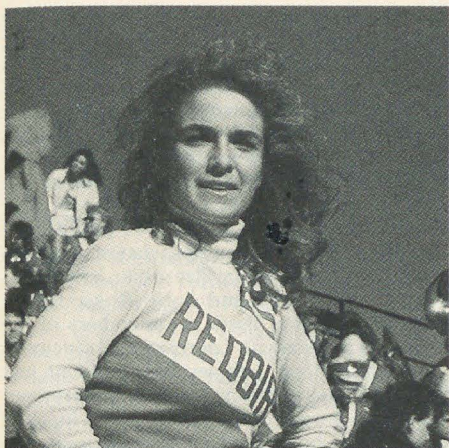
ILLINOIS

DePaul, Theta Theta — Campus and Greek service proved an important part of fall activities for Theta Theta. In the Organization Fest, Delta Zeta compiled the largest number of names for its mailing list and welcomed 173 girls to their booth. For Greek Week, Delta Zeta sponsored a Greek movie night. Members donated old coats and sweaters in campus coat drive for the homeless, and participated in Students United for Drinking Sensibly. Delta Zeta sponsored a food drive for philanthropy, while several members "fasted" for 24 hours during Hunger Awareness Week. Delta Zeta added 15 pledges in formal rush, which centered around the theme, "Be All You Can Be . . . A DZ!" Alpha Lambda Delta, freshman academic honorary, tapped Patty Fortsas, Therese Humphrey, Janette Smalgio, and Anita Jayaraj. Marie Michuda captured a part in the campus opera and presented a senior recital. Kristin Belmonte is vice president of the management club.

Eastern Illinois, Gamma Nu — Chapter Editor Margaret Elliott writes that members are planning an alumnae banquet in conjunc-



Lynette Glucin, Northwestern-AA is making a name in Northwestern's theatre productions. She is a soloist in NU Dance Ensemble and assistant dance choreographer for NU's major winter production.



Laura Desino, AP is a varsity cheerleader at Illinois State University.

tion with the celebration of the chapter's 49th anniversary on campus in April. Alumnae are asked to call or write the house and to "come see old friends and meet new ones." Homecoming proved that hard work pays off when Cindy Jacobs was crowned homecoming queen and the chapter placed second in float competition. Socials included a festive rose ball honoring and recognizing pledges and chapter members, and a Halloween party with the men of Sigma Chi. Mary Kennedy is a newly elected senator.

Eureka, Pi — Old Elm, the traveling trophy for the organization accumulating the most points during homecoming week, went to Delta Zeta after the chapter placed in all events, including talent show, window decorations, parade, Greek games and chant. Heather Waugh reigned as homecoming queen, while Denise Kavanaugh and Kim Whitler served on the royalty court. Delta Zeta teamed with two fraternities to sponsor an all-campus Halloween costume dance, and joined all Greeks to raise funds for UNICEF. Eureka Dames members helped Delta Zeta co-sponsor "Christmas in the Chapel," a community event. Pledges assisted the American Cancer Society during National Smoke-Out. Amidst all the activities, members found time to study. The lounge was declared a library, and brain building food as vegetables was available for little breaks from the books during "Eat Smart, Be Smart Day." The food and studying worked as five members earned perfect 4.0's for first term. Those five, who helped Delta Zeta maintain the highest GPA among all campus organizations, were Pam Feterl, Billie Jo Dean, Denise Kavanaugh, Jeanette Malafa and Karen Wells. Delta Zeta added six upperclass pledges in informal rush. The pledges awakened initiates for a bright and early breakfast, and later delivered Christmas stockings filled with candy and serenaded the men of TKE, Lambda Chi Alpha, Alpha Phi Alpha and Delta Sigma Phi.

Illinois, Alpha Beta — Members jumped into the homecoming theme of Illini Pow Wow and teamed with Triangle to create a colorful and imaginative float called Pow Wow Luau. The float featured hula dancers, a twelve foot volcano, and a chief on a surf board. The creation won first place honors. Social events included a Delta Zeta Dude Ranch dance, an olympic

exchange with Sigma Phi Epsilon, and parties with Sigma Nu, Delta Tau Delta, and FIJI. Greeks joined together to sponsor a campus blood drive.

Illinois State, Lambda Rho — ISU sororities celebrated their largest rush quota this year — 50! And, Delta Zeta was one of only five houses to reach this quota. Delta Zetas and Alpha Sigma Phis created the second place winning float for homecoming. Sixty-seven members participated in an adopt-a-grand-parent program with a local nursing home. Shawn Steubinger won the University Curriculum Committee Congressional Award, and Chris Hoffer was named to the ISU Reinstatement Committee by the Normal Town Council. Laura DeSino is a varsity cheerleader, while Kisten Lynch is a member of Academic Senate. Members of honoraries are Laura Devincin, Kappa Delta Epsilon; Dawn Hunt, Order of Omega, and Michon Israel, Order of Omega and National Golden Key Honor Society.

Northwestern, Alpha Alpha — In a "Sharing It" sisterhood activity, each house member has a heart pin on her door and another which she passes to a non-house member to share. Members danced to the music of a live band at the fall pledge formal, and honored friends with a holiday reception with special guest, Santa. Members raised money with Alpha Tau Alphas for the Cystic Fibrosis dance marathon, and built a third place winning float with Lambda Chi Alphas for homecoming. Parents were honored with a Saturday morning brunch and reception featuring rush entertainment. Pledge mom stringing was exciting, as pledges followed mazes of string to learn the identities of pledge moms. Dianne Todd is the Illinois winner in the Stakeholder Essay Competition. Lana Hartshorn was tapped for Order of Omega and Janie Zerbi was a homecoming court semi-finalist. Lynette Calucin was a soloist in NU Dance Ensemble and assistant choreographer for a campus production. Lauri Hamilton and Leslie Stephens are both 1989 Graffiti Dancers and captured roles in campus musicals.

Southern Illinois, Gamma Omega — With exciting numbers as *Simply Irresistible*, *Future's So Bright*, and *The Football Rap*, the Delta Zeta-Phi Sigma Kappa combo won first place honors in the Great Saluki Tailgate Competition. In Parents' Weekend competition, Delta Chi and Delta Zeta won third place in the Wild, Wild Mid-West Float Competition. Delta Zeta volunteered the most hours for the blood drive, while pledges participated in a safe Halloween festival. Members brought joy to children in Operation Happy Holidays, enjoyed a fall masquerade ball, and welcomed alumnae for Founders Day. Sphinx Club members are Sonya Gibbs, Lori Mills and Cindy Harvey. Gail Johnson and Lisa Sproule, blood drive coordinator for Greek Council, are senators.

Western Illinois, Epsilon Omicron — Members welcomed 23 new pledges in fall formal rush. Cook Zelma Dixon and her husband Gilbert were honored by Delta Zeta on their wedding anniversary and members celebrated the holidays with an all house Thanksgiving dinner. Epsilon Omicrons rang bells for the Salvation Army at Christmas, and seniors brought laughter as well as tears with the pre-

sentation of their senior wills. Elizabeth Scott was tapped for Order of Omega and Golda Ewalt won Foxy Lady honors in an Alpha Gamma Rho philanthropy event.

INDIANA

Ball State, Gamma Chi — The 29 new pledges exhibit great organizational skills as they have already honored graduating seniors with a dinner and Christmas caroled with the pledges of Beta Theta Pi. On the province level, Gamma Chi traveled to **DePauw** for Province Day, and brought home honors for outstanding sorority education. Kathy Altweis was named Spirit of Delta Zeta recipient. Members and alumnae enjoyed a fund raising Pink and Green Auction. Each participant crafted a Delta Zeta gift to be auctioned. Members also joined alumnae to celebrate Founders Day. Delta Zeta honored homecoming queen and king candidates with a tea, and teamed with Delta Chi for homecoming competition. Parents were honored with a luncheon during Parents' Day. Members pumpkin serenaded fraternities at Halloween, and enjoyed a sisterhood overnight at the local YMCA.

DePauw, Delta — Indiana Delta Zetas traveled to Greencastle for Province Day in early September. Delta welcomed collegians and alumnae on the busy day that began with a tour of the Delta Zeta house, where the basement had been converted to a market featuring specialties from Balfour and Creative Business. Next, visitors made their way to the Union Building for seminars and to hear National Officer Anne Marie Gavin speak on the national budget. At a beautiful luncheon, chapters presented rush skits and favorite songs. Delta was recognized for top philanthropy efforts, and Carol Lareau was named best pledge in the province.

Franklin, Psi — The chapter won the coveted Flame Fantasy trophy for selling the most tickets to benefit speech and hearing for the Indianapolis alumnae dinner and fashion show. Joy Culley accepted the trophy for the chapter for their second consecutive win. Collegians joined alumnae again, this time at Christmas at the home of Alumnae President Jean Reuff for



Susan Taylor and Joy Miller from Lambda Pi at Georgia College "take a break" during football practice.



Moorhead State University's Theta Nu sisters sent Christmas greetings via photograph.

the traditional Christmas dinner. Representatives from other Greek organizations joined Delta Zetas at the chapter Christmas Formal. Initiates surprised pledges by rising at 2 a.m. one morning to decorate the Christmas tree and transform the suite into a holiday paradise. Pledges were then awakened to the sounds of Christmas carols. At another annual holiday fete, the Christmas Spread, seniors presented Christmas songs poking fun at chapter members prior to the gift exchange. At the earlier "Turkey Spread", pledges and classes had performed skits. Senior Heather McCulloch is studying abroad in Harlaxton College, England, while collegians Joy Culley and Stephanie Taylor are joining alumnae Nancy McDaniel and Peggy Brown on a college sponsored trip to Germany. Stephanie is feature and special projects editor for *The Franklin* newspaper and a member of Collegiate Journalists. Jenny Rice is a member of the Student Orientation Corps; Heather McCulloch was tapped for history honorary Phi Alpha Theta.

Indiana, Epsilon — Colorful candy and balloons adorned the house in the successful 20-party rush featuring the theme "Bye-Bye Birdie." Despite the rainy weather, Delta Zetas put on happy faces and smiles to welcome new pledges. In true Panhellenic spirit, Delta Zeta welcomed Kappa Delta and visited with Kappa Alpha Theta, as Greek women exchanged hospitality and living quarters during sister sorority week. Delta Zetas are lending their support in welcoming Tri Sigma Sorority to the campus. At the Parents' Weekend Dinner, members raised money for a house gift with an auction. Campus activities included participating in homecoming with Phi Kappa Psi, and teaming with Sigma Chi for IU Sing. Social events included tailgate parties, dinner exchanges, a Christmas party for the house staff, and a Christmas dance. An underprivileged family enjoyed a Christmas party sponsored by Delta Zeta. Beth Tisa presented a modern dance recital, while Debbie Van Renterghem presented an opera recital. Ver-

onica Cortez won runner-up honors in IU Intramural Table Tennis Tournament. Rush Counselors included Debbie Hudler, Sharon Mrzlock and Elise Pokrzywinski. Shelly Sloan, as a football recruiting intern, was a guest on TV personality Bill Mallory's talk show. Miss Indiana-America visited the house to talk on her experiences in beauty pageants and present health care tips at an enrichment program.

Purdue, Xi Omega — Members are gearing up for formal rush with a few fantastic informal rush parties. Open Houses featured the theme Sororities on a National Level, and rushees were taken on a singing tour from New York to LA, back through Oklahoma and home to Purdue. Casual parties centered around Peter Pan in Delta Zeta Land. Members appreciate the loan of props and costumes from Delta-DePauw, and the use of Pi Kappa Alpha's Fraternity House for rush. Xi Omega won the "Up and Coming Chapter Award" at Province Day, while Brenda McCoy was named outstanding senior. Alumnae presented Xi Omega with a lovely silver coffee server for the new house in Tower Acres at the chapter's first Founders Day. Phi Kappa Sigma and Delta Zeta won the John W. Hick Spirit Award for standing above the rest in enthusiasm and school spirit during football season. The two main philanthropy projects, coordinated by Barbie Lane, included a Volley-athon with Phi Kappa Theta and the Battle of the Bands with Sigma Alpha Epsilon. The first raised enough cash to purchase two hearing aids for a Lafayette girl, while the latter raised \$1500 for the American Cancer Society. The chapter's two intramural volleyball teams finished fourth and sixth overall among 30 teams, while the tennis team of Joelle Simon and Christy Masterson finished eighth among 200 teams! Members donned fifties' costumes and pink and green sunglasses to serenade fraternities with songs as "Jailhouse Rock" and "My Boyfriend's Back." Earning Dean's List honors were Trish Rudolph, Deanna Vietti, Julie Melone, Christy Masterson, Kelly Smith, Michelle Zoncick, Lynn Jordan, Julie Wesling,

Lisa Zanghi and Diane Harshbarger. Named to honoraries are Kelly Smith, Skull and Crescent; Diane Harshbarger, Phi Kappa Phi; Lisa Eickoff, Laura Shannon, Jennifer Roberts, Julie Wesling, Michelle Zoncick, Society of Women Engineers; and Lori Baldauf, Sandra Cugier, Melissa Lamb and Nancy Strezovski, American Society of Interior Designers. Serving on Student Union Board are Stephanie Bathje, Sharon Osha, Amy Lengle, M. J. Noel and Renee Krueger. Purdue Student Association members are Joelle Simon, Nancy Strezovski, Karen Caston, Candy Berry and Julie Rose. Renee Krueger and Amy Travis are members of the choral club. Women's Lacrosse Club includes Laura Onderdonk, founder and president, and Tina Stephanski. Tammy Wilson is first runner-up to Ms. Purdue Bodybuilder and winner of the couples bodybuilding competitions. The student host organization includes Kristin Kjelstrom and Duann Vanderslice. Kelly Smith is a member of the Old Masters Hostess and Central committee. Goldusters Drill Team includes Stephanie Bathje, Mandy Smith, Chris Peterson and Darlene Csernick. Laura Shannon is former captain of the Boiler Babes Pep Squad. Pharmacy Club includes Julie Melone and Duann Vanderslice. Crystal McWhorter is a member of the *Exponent* newspaper staff, and Laura Shannon received the Golden Gavel Award.

IOWA

Iowa, Iota — Delta Zeta holds a campus record as Iota grasped its third consecutive Greek intramural football championship — a first three time consecutive win for any group. The kazoo band, comprised of Delta Zeta spectators, is already warming up cheers and half-time entertainment for next season. The snowball formal was a spectacular winter attraction as it created a winter wonderland of glitz, glitter, metallic snowflakes and holiday treasures. Confetti and horns helped Delta Zetas and Lambda Chi Alphas ring in the new year a little early — midnight on November 19. Plans for spring include hosting province day, and sponsoring the fundraising Dating Game. Patterned after the TV show, the Dating Game features prizes donated by merchants. Proceeds go to philanthropy. Heather Kadlec is the university intramural tennis champion, and Kelly Thompson is a women's basketball cheerleader. Beverly Haas serves on the security committee for the Student Senate.

KANSAS

Fort Hays, Delta Omega — Darcey Deines, nominated by her Delta Zeta sisters, beat out other Greek and campus contenders to win the title of Fort Hays State Homecoming Queen. Pledges, who earned money with a car wash, treated initiates to a party, complete with a deejay. For further entertainment, pledges presented a "rap" about each member of the senior class. Parents were invited to tour the house, attend a football game, and join their daughters for dinner following the game. Social events included a Halloween party with Sigma Chi, and a Christmas semi-formal where Santa dropped in to deliver filled stockings to members' dates. Members trimmed the tree and decorated the house to Christmas music, and then celebrated with a Christmas dinner and gift exchange. Pledges moved into the house for a

weekend in mid November. After their departure, big sisters found notes telling the time and place for a yogurt rendezvous. Members sold magazines for philanthropy. Delta Zetas teamed with Sigma Chi to win the coed volleyball championship in their division. The touch football team took second place and earned university runner-up honors.

KENTUCKY

Eastern Kentucky, Xi Beta — This year 13 fraternities, a record number, participated in Frat Man's Classic. Delta Zeta won second place in Beta Theta Pi flag football, and third in both Sigma Chi Derby events and Lambda Chi Alpha Watermelon Bust. In fact, Delta Zeta has placed in every Greek philanthropy project on campus. Members teamed with KA to build a homecoming float, enjoyed three fraternity mixers, and are collecting money to buy presents for children of inmates. Marsha Lafferty is Sigma Chi Derby Queen, Christy Hendricks reigns as Sweetheart of Theta Chi. Julie Wietholter is an officer for the student support committee of BSNA, and Felicia Ross is a finance co-chairman for a state leadership conference. Chris Propp serves as vice president of Sigma Delta Tau English honorary, while Beth Bolton is secretary for Kappa Delta Pi education honorary.

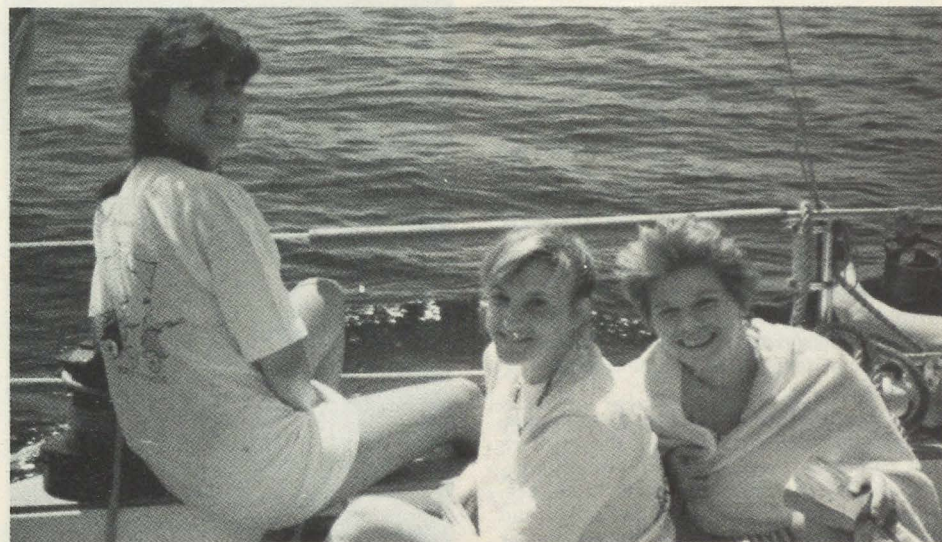
Louisville, Beta Gamma — Florence Hood Miner, trustee of the National Historical Museum, charmed Beta Gammas with her glowing personality and stories of years gone by at the chapter's 60th Anniversary and Founders Day celebration. Mrs. Miner connected the past with the present and gave a small glimpse of the future of Delta Zeta. The founders became more real in each heart and mind, reports Chapter Editor Donna Norman, who added that the occasion will not be forgotten for it is one that each member will hold dear for the rest of her life. Beta Gamma's annual Thanksgiving Dinner has outgrown the house and is now held in the Lincoln Room of the Student Center. The tasty meal fed to a hungry crowd once again proved the domestic talents of Delta Zetas. Members helped the Louisville Zoo distribute candy to children at Halloween, and enjoyed socials with Delta Upsilon and Lambda Chi Alpha. At presstime, the chapter was winning intramural competition, and had already won third in campus soccer, second in sorority soccer, and second in the swim meet. Pledges won TKE Skit competition. Jennifer Jenkins and Heidi Weigel were members of homecoming court. Beta Gamma also captured the trophy at Sigma Chi Alpha Derby. Ten of the 20 members of the Student Organization for Alumni Relations are Delta Zetas. Leading the group are Lori Hebel, president; Cindy Overton, executive vice president and Donna Norman, secretary. Cardinal Bell Host Group includes Robin DeArmond, Robyn Guinn and Teri Spellman. Resident Assistants are Karen Stites, Robin DeArmond and Jennifer Jenkins. SOS members are Jennifer Jenkins, Robin DeArmond, Robyn Guinn, and Heidi Weigel. Larissa Whelan is captain of the freshman mentor program. Donna Norman serves as a senator and on the executive council for Student Association for Voter Empowerment. Public Relations Student Society of America includes Robyn Guinn and Polly Moriarty. Lori Hebel is a rush counselor.

Northern Kentucky, Kappa Beta — Province and national dignitaries helped KBs celebrate Founders Day at the Riverview Restaurant overlooking the Cincinnati skyline and Ohio River. Special Guest of Honor was Florence Hood Miner. For philanthropy, members collected \$1000 worth of canned goods and joined TKEs to cheer up patients at Cincinnati's Children's Hospital on Halloween. Chapter activities included a pledge retreat, jazzercise enrichment night and fraternity mixer. Members wished the campus a Merry Christmas with a large sign in the University Center. Chapter President Deanna Hawkins, a homecoming queen nominee, is this year's Greek Goddess.

LOUISIANA

LSU, Sigma — Members and alumnae honored Past National Officer Betty Fenton for her long service to Delta Zeta at a Founders Day Banquet at Louisiana Country Club. At the event, members announced the establishment of a scholarship in Betty's name. Delta Zeta Marla Hilburn reigned over LSU Homecoming. Members decorated the house for homecoming and participated in Greek Week. Carla Rowland is Panhellenic first vice president, and Gigi Bloon was named to Greek Week Who's Who. Kelly Trosclair is PIKE Dreamgirl. Writing Greek columns for the newspaper are Allison Bourgeois, Michelle Giogingo, Lisa Lucas and Madison Hopson.

Louisiana Tech, Theta Epsilon — Named to Senior Who's Who are Shannon Spigner, Cora Corwan, Jenny Tanner and Karmon Coleman. Kim Watson is a member of Gamma Beta Phi and recipient of an academic scholarship. Deona Martin won the Paul Douglas Congressional Scholarship. Nikki Prevost is a student government representative. Members of honoraries include Cora Corwan, Psi Chi, and Shannon Spigner, Omicron Delta Kappa and Mortar Board. Members "decked the halls" as they Christmas caroled for residents of nursing homes. Members participated in the homecoming parade, honored alumnae with a tea, and are sponsoring two contestants in the annual Miss Tech Pageant.



Stephie Jabbs, Kim Seidman and Lisa Alexander, Rochester-AI members are sailing during a campus break.

Nicholls, Kappa Alpha — Delta Zeta boasts five members of the homecoming royalty. Jenny Amedee reigned over festivities, with Fran Lafaso, Judy Bergeron, Michelle Authement and Renee Plaisance as maids. The 24 fall pledges are enjoying the many Delta Zeta activities which included their own Pledge Harvest Dance, two fraternity socials, a pledge-initiate weekend retreat and enrichment programs. Kappas Alphas stressed unity this semester as they set aside one night a week (in addition to meeting night) for sisterhood activities. Times included a movie night, buffet day, dinner at Politz's Restaurant, dessert at Yum Yum Yogurt, and dinner before socials. Buddy Week helped remind initiates just how important and special pledges are. Members raised \$500 with a fashion fundraiser which featured t-shirts and sweatshirts. The chapter assisted alumnae with the golf tournament and worked at the Thibodaux Playhouse. KA sponsored a needy family at Christmas. Senators include Judy Bergeron, Shelly Badeaux and Kelly Badeaux. Gina Ziegler is Delta Sigma Pi Pledge Class President and communications chairman for the Student Government Association. Jennifer Kelly is a member of Delta Sigma Pi and was Circle K's outstanding member in September. Denean Cevine is vice president of Phi Eta Sigma.

MASSACHUSETTS

Massachusetts, Xi Alpha — Members raised \$800 for Gallaudet and the chapter treasury by sponsoring a swim-a-thon. They collected pledges for swimming laps, and swam for two hours on a Saturday morning to earn the funds. Chapter chairmen also coordinated a water safety enrichment program with the event. Members visited a local nursing home on a Sunday morning to sing, visit and enjoy coffee with residents. Two lives were brightened from the event, as one member became so attached to one of the residents after that visit that she visits her new friend weekly. Delta Zeta also sponsored jewelry sales and worked the booth as a fund raiser in the campus center. In Mass Transformation Goes Underground, members helped other Greeks plant tulips on campus. In

a secretly planned "activity worth trying", members learned yoga and relaxation techniques. For homecoming, members built a "Peanuts" float. In a new chapter event, members invited families to spend the day with Delta Zeta. Following a brunch, members enjoyed free time with families and a chapter dinner at a restaurant. Even those whose families couldn't attend were encouraged to join in the activities. Friends from class, dorms and other sororities were invited to a make your own sundae night at the house. To celebrate top grades, members enjoyed a scholarship dinner where those earning Dean's List honors received certificates. The top scholar won a frozen yogurt certificate. To encourage relieving exam stress, the academic chairman provided each member's door with a balloon bouquet. Following the completion of each exam, the member proudly popped a balloon. Members participated in a voter registration drive. Social events included a Dash For A Date Party, exchanges and a formal. Pledges cooked a traditional dinner for the chapter. Leading Panhellenic are Missy Silverstein, president, and Naomi Linder, treasurer. Tracy Levy was tapped for Order of Omega.

Northeastern, Xi Upsilon — Starting a sorority isn't an easy task, but it was slowly completed when ten coeds took the initiative to go Greek at Northeastern. In the spring of 1987, these girls were Gamma Phi Deltas, one of two local sororities on campus. This wasn't enough, though; these young ladies wanted someone who could show them the Greek way, teach them about the Greek system and to understand them when things weren't going the way they wanted. After writing letters to every national sorority, the girls received their first reply, which, of course, was Delta Zeta. Two Delta Zeta representatives visited the anxious group, who then petitioned Delta Zeta. Xi Upsilon becomes the first Delta Zeta colony in Boston. At present, members are looking forward to their first formal rush. A Delta Zeta reigned over homecoming activities, while members created a float of Uncle Sam. For fundraising events, members baked brownies to sell during finals. Members also assisted with a bake sale at Beverly School for the Deaf and collected toys for the poor.

MICHIGAN

Central Michigan, Gamma Psi — Members proudly traveled to Grand Rapids to meet the new Delta Zetas at **Grand Valley State College**. Gamma Psi won the Most Improved Panhellenic Sorority honor on campus. Chapter activities included joining other Greeks to bake cookies for the elderly and Christmas carol. Members also provided a Halloween Party for children, donated toys for tots at the Indian reservation, sponsored a canned good drive for underprivileged families, and provided a Thanksgiving dinner basket for a needy Mt. Pleasant family. The chapter initiated 20 members in late November.

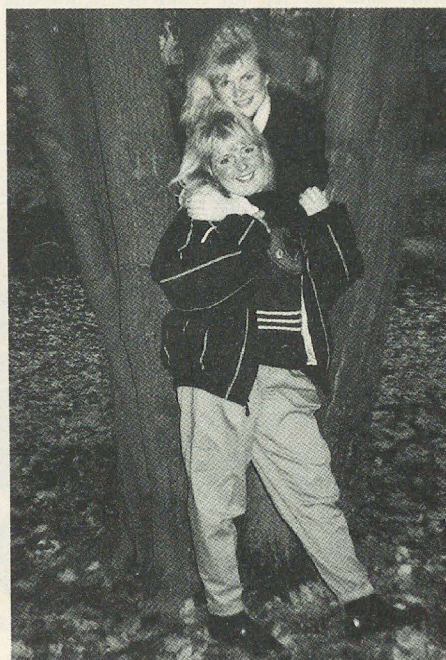
Michigan Tech, Lambda Theta — Alumnae and parents joined members for the chapter's first Parent/Alumnae Weekend during homecoming. Guests enjoyed a Founders Day ceremony, reception, a home football game, and live evening entertainment at Nutini's Supper Club. Highlights of the weekend included Michele Converse, chapter president, being



Gloria Kalnick, ΔΘ at Michigan Tech, enjoys the ΔZ hayride.



It is a party in the park for Kappa Betas Joy Beatty, Madge Everett and Cindy Weak at Northern Kentucky.



Amy Izold and Sherry Cieslak-ΘΨ, during Ashland's homecoming cookout.

named a homecoming queen finalist, and the chapter placing third in float competition. Members retreated to Twin Pines Resort in Keewanaw, enjoyed a hayride, planned a Get Your Sister A Date Party, and worked at the Copper Country Mall's Kids Fair. Delta Zeta participated in an Academic War against Alpha Sigma Taus. As winners, Delta Zeta received movies and refreshment, compliments of the loser. Gabrielle Palmer earned Dean's List honors. A Panhellenic reorganization now schedules formal rush in the fall, rather than spring.

Northwood, Xi Eta — Members "raised the colors" in a balloon launch for Founders Day. In a community awareness project on drug abuse, members organized a non-alcoholic function called Let's Party. Pledges said thanks to their "moms" with a dinner and night at the movies. Campus service projects include working with the Administration and distributing pamphlets. Other activities included a Christmas raffle, chapter retreat and a booth at Auto Show.

Western Michigan, Gamma Pi — Delta Zetas began the semester by pledging quota — 27 fun, enthusiastic women. Members fired up school spirit for homecoming with fraternity partner, FIJI. The duo placed first among Greeks and fourth overall. Anne Spicer was second runner-up in the homecoming court. In intramurals, the Delta Zeta-Pi Kappa Alpha Team placed second in floor hockey, while the Delta Zeta-Delta Chi volleyball team made it to the semi-finals. Delta Zeta also co-sponsored a team in softball. Gamma Pis pooled their efforts for philanthropy with a volleyball tournament which raised \$220. Members also found time to collect for the March of Dimes and finish second in Sigma Chi Derby Days. Sisterhood activities included an apparel painting party and Christmas gift delivery to other Greeks. Pledges got to know each other better during a retreat at Battle Creek YMCA. Delta Zeta excelled academically by achieving the third highest GPA among sororities last winter. Capturing Dean's List honors were Leanne Baltare, Christine Bracewell, Heidi Cousino, Denene Johnson, Heather O'Neill and Kathleen O'Neill. Amy Rotramel, Christine Bracewell and Michelle Sorrentino are members of Order of Omega. Michelle is also on the Panhellenic E-Board as Rho Chi advisor.

MINNESOTA

Moorhead, Theta Nu — Delta Zeta celebrated 25 years on campus with an open house for alumnae and members. Following the open house, members celebrated with a dinner dance. Members created "Turtles on Parade" as a homecoming entry, and enjoyed a Thanksgiving dinner together. Sara Stetz and Lisa Peterson serve as student advisors and assist students with academic course selections. Patrice Spindler is studying at Oxford; Kira Kimball was elected to the student senate. New Pi Sigma Epsilon members are Lori Weatherly and Kerry Gromer.

St. Cloud, Theta Mu — Chapter President Michelle Haux dressed as a turtle mascot and walked along with the Delta Zeta convertible entry, filled with members donning Delta Zeta sweatshirts, in the homecoming parade. Members ended Lamplighting Week with a slumber party complete with movies, munchies and pil-

low fights. Members visited St. Cloud Manor on Halloween to serve refreshments and sing "pumpkin" carols to the elderly residents. Dorm Council members are Christi Gustasson, secretary, and Jacque Challman. Jacque is also a member of the Fencing Club. Member Jill Watkins who is presently in Alnwick, England, wrote members telling them how handy knowing the Greek alphabet is when traveling in Greece.

MISSOURI

Central Missouri, Epsilon Gamma — Rhonda McCullough reigned over homecoming festivities, with Lisa Winegar reigning as first princess. The chapter captured second place in the homecoming walking competition entry. Following the theme of Memorable Moments, members dressed as the 1984 Mules and Jennies Basketball Champion, danced a song "We Are the Champions." Delta Zeta also won the CMSU All Sports Trophy after winning first in volleyball, second in football, and reaching the soccer playoffs. Members sold red and black balloons for a half-time release to fatten the chapter treasury with \$97. Members entertained parents with rush songs at the Parents' Day Dinner at The Paradise Club. Pledges and alumnae exchanged gifts at a Christmas dinner. While munching on s'mores and roasting marshmallows, members shared what Delta Zeta means to each at a campfire retreat at a local park. Lisa Winegar and Melissa Martin captured two leading roles in the campus production of "Noises Off", while Lisa also won second runner-up honors in the Miss Johnson County Pageant. Order of Omega Greek honorary tapped Denise Marshall and Tracie Carrizzo.

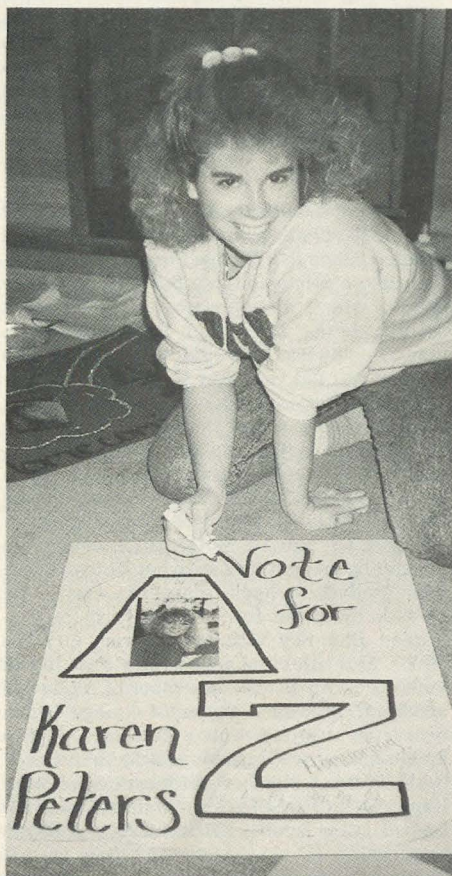
Northeast Missouri, Delta Sigma — Delta Zeta, known as the singing sorority during rush, helped establish a new campus record by pledging the largest quota ever in formal rush — 36! Delta Zeta teamed with Phi Lambda Chi to win second place in homecoming float competition. For philanthropies, members teeter-tottered with Alpha Kappa Lambda for a week. Delta Zetas washed cars for the United Way and rang bells for the Salvation Army at Christmas. With five members as senators, Delta Zeta has the largest representation in the Student Senate. Beth Buczynski was tapped for Order of Omega honorary.

Northwest Missouri, Epsilon Rho — Weeks of hard work paid off as Delta Zetas won first place in sorority skit and overall skit competition, first in sorority float and first in individual clowns during homecoming festivities. Chapter President Amy Chartier was a member of the homecoming court. Alumnae were honored with a tea during homecoming. Chapter philanthropies included a canned food drive, donating to United Way and Amnesty International, and the annual Headstart children's Christmas party with Delta Chi. New members of Kappa Delta Pi education honorary are Andrea Smith, Christine Dorgan, Mary Yepsen, Erin Cotter and Colleen Park. Jennifer Davis is a cheerleader and Denise Ibsen is a member of the varsity track team.

William Jewell, Zeta Rho — With 93 members, Zeta Rho is currently the largest chapter in Missouri, and boasts the third highest grade point average nationally. The coveted Stocks-



Lori Barker, $\Theta\Xi$ runs track at Glenville State.



Julie Cavalier creates homecoming posters at Ohio Northern-ZK chapter.

dale Golden Cup Trophy and first place in homecoming competition wins also boosted chapter pride. Sarah Gore won Miss Cutie Pan honors in homecoming. Community and campus service ranked high on the list of chapter activities as members participated in an all-campus Greek food drive, teamed with alumnae to create Christmas ornaments for needy children at a deaf preschool, and sparked a campus wide collection of funds for the families of six firemen killed in a Kansas City explosion. Members learned the deaf alphabet at a philanthropy program, and worked in the soup kitchens in City Union Mission one day a week. Members assisted with Habitat for Humanity, which builds homes for the needy. Each member paid for a homeless person's Thanksgiving dinner. Pledges prepared formal invitations to invite initiates to Arrowhead Yacht Club for a Mardi Gras celebration. Members donned Mardi Gras masks and received beads and sweatshirts for party favors, after following metallic streamers of purple, green and gold to the brilliantly decorated country club on a lake. Other social events included a Date Dash and a Shindig Dance and Hayride. Sisters relieved stress prior to exams at a pizza party where they received 20 free pizzas for passing out coupons for Big Cheese. Parents were entertained with skits and an auction at a spaghetti dinner for Parents' Day. A speaker from Gallaudet spoke for Founders Day. Members are awaiting the returns of Michelle McGraw, Stephanie Funston, Doris Miles and Kim Rinacke who have been studying overseas. Tisha Turner, Lisa O'Brien, Julie Mackie and Jackie Foster are now off to study abroad. Leading the College Union Activities Council is Jenny Lee, the president and director who spoke at Parents' Day Convocation in the absence of the college president. Other council members are Michelle McGraw, Kelly Skaggs and Leslie Wilson. Ellen Burnett serves as president for Cardinal Blazer admission organization. Other members are Amy Chastain, Sarah Bailey, Dana Dailey, Susan Fickling, and Rhonda Stiens. Alpha Lambda Delta freshman honorary members are Leslie Wilson, treasurer, Shara Clevenger, vice president, and Susan Wilbers, secretary. Susan and Shara traveled to Ohio State for the national Alpha Lambda Delta convention where they were the sole representatives from Missouri. Leslie Wilson is Panhellenic delegate and production manager for the *Hilltop Monitor* newspaper. Amy Chastain was named top sophomore senator, and Rhonda Stiens is a basketball cheerleader. Christy Rush, a member of Overflow honorary choral group, joins Shara Clevenger in Shepherd as a share time leader group. Laura Webb is Shepherd coordinator. Lynn Spurhat presented a solo in the Chapel Choir production of the "Messiah." Playing varsity sports are Kirsten Larson, basketball, and Anne Piepergerdes, swim team.

NEBRASKA

Nebraska Wesleyan, Beta Tau — For the second consecutive year, a Delta Zeta reigned over homecoming festivities. Reigning Queen Rina Patrick was crowned by last year's queen, Emily England, past chapter president. Pledges are treated royally as seniors surprise them with invitations to their apartments for goodies, sophomores take them out to lunch and ice skating, and they trick or treat at each initiate's



Lyssa McDaniel, Southwestern-ITZ plays Margaret in "Much Ado About Nothing" during her theatre internship in London.

room. The pledges, in turn, transformed an old hut into a real barn, and invited everyone to don their cowboy gear, and do some foot stompin' at a pledge sponsored Barn Party. Other social events included the Panhellenic Ball, a Zeta Psi serenade, and Shipwreck Party with Phi Kappa Tau. Delta Zetas borrowed their moms' old "hippie" clothes to join other Greeks at a sixties theme dance. Members also joined other sorority members for a Panhellenic barbecue. Members decorated pumpkins at a study break, and served brunch to parents on Parents' Day. Colonade Chairman Denise Munderloch helped reestablish the parents' club which had ceased to function five years earlier. Administrative Management Society includes Denise Munderloch as vice president and Anne Jablonski as secretary-treasurer. Kerry Leslie serves on the Board of Trustees for NWU. Megan Huffnagle placed third in dramatic interpretation and second in prose and dramatic duo in forensics. Jennifer Marsh is a member of the swing choir. Joan Korte, Jen Marsh, Marcy Seymour, Carol Garcia, Roxie Saylor, and Laura Boyer all captured roles in theatre productions. Catherine Wengert is a member of Psi Chi honorary.

NEW HAMPSHIRE

New Hampshire, Theta Gamma — After meeting more than 300 rushees at exciting rush parties as "Shipwrecked With Dee Zee," and "Washington, D. Z.," Delta Zeta chose a quota pledge class of 34 excited girls. And, the chapter also boasts a 100% initiation of its pledge class! Parents of initiates and pledges were treated to a slide show and delicious buffet at Parents' Brunch. Delta Zeta teamed with the men of Acacia for homecoming events. They placed second overall in Wacky Olympics and first in the Battle of the Greek Stars. Enrichment topics provided information ranging from self-defense to eating disorders. Other activities include a tie-dye party and an All You Can Eat Pancake Breakfast. Members participated in a regional Greek Leadership Conference at UNH, and worked a social service

project to help fingerprint local school children for official records. Sigma Nus and Delta Zetas bowled their way to the intramural play-offs. Delta Zeta, under the leadership of Panhellenic delegates Amy Stackhouse and Brenda Briggs, sponsored a needy family at Thanksgiving. Angela Silletta and Amy Rebecchi, UNH cheerleaders, participated in the national cheerleading competition in Dallas. Colleen McQuade dances with the UNH Dance Company, while Jennifer Enmderlin edits the *Main Street* magazine.

Plymouth, Kappa Epsilon — When the college chose "Remember When" as a homecoming theme, Delta Zeta chose Woodstock. Dressed in tie-dyes, members donned a float to remember Woodstock in the annual parade. KEs also organized children in the traditional window painting contest and announced winners at a celebration party for the participants. Parents were treated to a brunch and dinner at the chapter house during Parents' Weekend. Kerri Mather swims with the varsity women's swim team, and Lisa Mosnicka won the Governor's Success Grant.

NEW JERSEY

Trenton, Lambda Lambda — When Trenton played a football game against Gallaudet, Delta Zeta presented cheerleaders with a banner reading "Delta Zeta Loves Gallaudet — Our National Philanthropy!" following the game. Cheerleaders then gave Delta Zeta a cheer. Members are learning sign language in their enrichment programs. Members also worked with young children at the Katzenback School for the Deaf with Halloween projects. Pledges collected canned goods from the dorms to donate to a church for local distribution. Delta Zeta teamed with local fraternity Alpha Psi Chi and took third place in lip sync and second in yell contest during homecoming.

NEW MEXICO

New Mexico, Gamma Xi — Delta Zeta joined other Panhellenic groups to show off their fall pledge classes in a Pledge Presentation. Members also participated in a Sorority Exchange Dinner where all members go to different sorority house for dinner. Enrichment programs included a Choices alcohol program and another on "fail your way to success." Homecoming activities included a tailgate party, a second place in Greek house display, and the crowning of Delta Zeta Cherie Gonzales as queen. Parents enjoyed joining daughters for an award breakfast, picnic and open house during Parents' Weekend. 1980 Delta Zeta Woman of the Year Dr. Martha McDonald honored the chapter by presenting it with her Woman of the Year Medallion. Jack-o-lanterns carved by pledges lined the front of the yard for Halloween. Blue Key National Honorary includes Marie McCulloch, Laura Dolin and Robin Podenik. Marie is also a member of Alpha Chi academic honorary. Order of Omega Greek honorary tapped Kathy Bennett, Robin Podenik, Cherie Gonzales and Melissa Seery. Kathy is also a member of education honorary Kappa Delta Pi. SPURS sophomore honorary tapped Lucy Jacobs, Katrina Hall and Rayna Sandoval.

NEW YORK

Clarkson, Xi Rho — Delta Zeta placed sec-

ond in Greek Week, and raised over \$200 for Canton-Potsdam Hospital with a co-sponsored haunted house. Parents joined members for the Brunch and Academic Banquet and were delighted to see the number of academic awards presented. Members also participated in a Panhellenic sponsored Crop Walk with residents of the community. Nancy Hoesch is Alpha Epsilon Pi Sweetheart, and Beate Fulton was tapped for the civil engineering honorary Chi Epsilon.

Rochester, Lambda Iota — Delta Zeta Vickie Fishman, as publicity chairman for Panhellenic Council, is introducing the Greek system and the campus to UR's newly chartered Order of Omega. Making plans for Greek Week are Gail Garnish, chairman of the executive board, Aimee Woods, awards co-chairman, and Lisa Kless, philanthropy co-chairman. Leading the Hill Court Council are Pegla Perez, president, and Mary Ellen Gowday, secretary. Melissa Martinez, Kathy Durbeck, Kate Hollister and Stacey Sneirson studied abroad in the fall. Chapter activities include collecting dimes for the deaf, honoring parents and alumnae with a homecoming reception, honoring faculty members with a Wassail party at Christmas, and hosting a "Life Series" session. Following apple picking at Kristen Boyd's, hungry members sat down to a homecooked breakfast. Pledges prepared a Chinese meal for the entire chapter, and Thanksgiving dinner for collegians and alumnae. Pledges also serenaded fraternities prior to the holidays and enjoyed ice skating.

NORTH CAROLINA

Appalachian, Lambda Phi — Members traveled to Blowing Rock for a successful chapter retreat. Ideas for chapter improvements and solutions to problems emerged when discussing positive and negative points of the chapter. Members shared Founders Day ceremonies with Zeta Xis from **Lenoir-Rhyne**. KAs teamed with Delta Zetas to sponsor a MDA dance, for which Delta Zeta alone raised over \$500. Members then teamed with Chi Omegas to again raise over \$500 in a philanthropy walk-a-thon. Other philanthropies include visiting a nursing home once a month and the sponsorship of an entry in the special olympics. Pledges were honored and presented with roses at the pledge ball. Special contributions by Delta Zetas are honored in a new Sister of the Month and Sister of the Week chapter program. Lisa Doss is KA



Julie Wesling and Christy Masterson enjoy Xi Omega's Halloween costume party at Purdue.

National Council is pleased
to announce
Spring 1989 colonies at
Grand Valley State University
Allendale, Michigan
St. Mary's University
San Antonio, Texas
and a return
to
Eastern Michigan University
Gamma Sigma
Ypsilanti, Michigan

Sweetheart. Elly Ebbs was named most active Panhellenic representative, and Jacquie Sessa plays on the varsity tennis team.

Lenoir-Rhyne, Zeta Xi — WPCQ and WBTV featured Delta Zeta's project for the holidays on their news broadcasts. For the project, members traveled to Charlotte to decorate the Day Shelter for the homeless. After spending a week making Christmas decorations, the members used them to brighten the shelter and help the homeless feel the spirit of Christmas. Delta Zeta represented every fraternity on campus on the homecoming court. The seven Delta Zetas chosen as homecoming representatives were Chrisee Dyer, Theta Xi; Angela Helton, Theta Chi; Greta Roach, Honeybears; Kathy Sarant, Pi Kappa Phi; Malynda Scholl, TKE; Teresa Sullivan, cheerleaders; and Tracy Wilson, Delta Zeta. The chapter's entry won second place in the homecoming float contest. Upperclass women and transfer students enjoyed sundaes and had an opportunity to get to know Delta Zetas in a chapter sponsored party. Members traveled to **Appalachian State** to celebrate Founders Day with Lambda Phis. The chapter also sponsored a Halloween Party and Carnival for girls in the Big Sister Program of Catawba Valley. After bobbing for apples, throwing darts and fishing for prizes, the honorees trick or treated on the Delta Zeta hall. Delta Zeta Doozies won the intramural football championship. Speakers from Crisis Services spoke to Greeks in a Panhellenic Forum. Members welcomed new College Chapter Director Paula Romeol, and ended the semester with a Christmas social. New members of Mu Sigma Epsilon honorary are Angela Helton, Tracy Wilson, Lynn Woodard and Susan Martin. Alyssia Johnson was elected sophomore class president.

North Carolina-Wilmington, Xi Theta — Delta Zeta was the only sorority on campus to reach quota in fall formal rush. The 21 new pledges had a busy pledgship as they participated in activities as Rosebuddy Week and Tiny Turtle Week, and wowed the audience with a symbolic skit and song in Greek pledge presentation. They also sponsored donut, bake and candy cane-o-gram sales to earn funds to assist a child with a hearing impairment and purchase a gift for the chapter. Pledges also joined chapter initiates for a sisterhood retreat at Rose Hodges' beach cottage at Ocean Isle Beach. Majorie Dawson, started a chapter tra-

dition that has followed several generations. Majorie gave a Delta Zeta sweatshirt featuring handmade letters. Each time the recipient received a little sister, she added the name of the new pledge to the sleeve and passed down the shirt. Consequently, the shirt provides a Delta Zeta "family tree." National Ways and Means Chairman Jamie Hammill and Xi Theta alumna Gina Humphrey were guest speakers at Founders Day. Other chapter activities included a Christmas semi-formal, the pumpkin carving and serenade for fraternities, a Christmas tree sale, and sponsoring the "Best Group of Men" on campus contest. The chapter donated money to purchase a warm coat, clothes and hat for a five year old, the student of a Delta Zeta alumna. The alumna reports that the little boy couldn't believe all was for him, and he proudly wore the new clothes all day long. Participants in the freshman leadership program were Katie Smith, Mandy Hartman and Jennifer Melton. Laura Wright is working on an honor project under a NASA grant. Juniors elected Kris Solomon as vice president. Sherry Brisson is a resident assistant.

Western Carolina, Theta Iota — Boasting a quota pledge class of 18, Theta Iota began an active semester of community projects. Members have adopted a hearing and speech impaired boy at a group home, and carried goodies on a visit to the nursing home for Halloween. Delta Zeta also participated in the CROP clean-up walk with other Greeks, and donated money to a Greek sponsored game ball run during football season. In homecoming, Delta Zeta teamed with Pi Kappa Alpha to build a float, and presented a skit at the pep rally. Alumnae were honored with a homecoming tea, and two Delta Zetas were included in homecoming royalty. Initiates and pledges got to know each other better at a "sub-construction" sandwich social and chapter retreat.

OHIO

Ashland, Theta Psi — The chapter's 19 new pledges organized a campus fashion show. The chapter's first annual car wash netted \$400 for an area school to purchase new playground equipment. Parents and daughters enjoyed a cookout at a local park on Parents' Day. Homecoming activities included honoring alumnae with a cookout after the game, and participating in the spirit contest and attending the game. Tracy Duchoslav was a member of the homecoming court. Members joined with Wooster alumnae for Founders Day. Eagle Elite includes Nicole Conroy, Sheri Ackerman, Michelle Davidow, Lynnette Rickett, Laurie Tesar, Kim Lee, Arlene Goody and Lisa Schroeder. Buffy Fowler and Kathy Haber are cheerleaders.

Baldwin-Wallace, Gamma Alpha — The Delta Zeta Choo-Choo, a new rush theme featuring "getting on board the train of friendship and fun," proved successful when Gamma Alpha added a quota pledge class numbering 21 in fall formal rush. Pledge Educator Niki Frances has devised a "Turtle Toaster" program to enable pledges to get to know initiates better. At each pledge meeting, two or three initiates called "Turtle Toasters," tell the pledges about themselves and, in turn, get to know the pledges better. Members canvassed neighbor-

hoods hanging voting information on doors for a chapter fund raiser.

Kent State, Gamma Kappa — Fifty new pledges joined Delta Zeta, doubling the chapter's size. Members had worked hard for rush and followed the philosophy of Delta Zeta Field Representative Christina Mullin who explained that rush is "fun," only "because we're with our sisters!" This is a message that has also helped the chapter deal with its increased size and enjoy each other's company. Delta Zetas are looking forward to moving into the new home at the beginning of spring semester. Social events included a Halloween costume party with Delta Tau Delta, a party with Alpha Phi, Phi Sigma Kappa and Theta Chi, and a hayride with Phi Kappa Tau. New pledges were honored with a cookout. Members also enjoyed a "Paint the Town Pink and Green" date party, and rounded out the semester with a retreat.

Miami, Alpha — For the first time, parents got a taste of rush as daughters delighted them with rush entertainment for Parents' Weekend. Delta Zeta members of Miami University Choraliers also sang, while seniors presented roses to their parents. The conference was held at Marriott Sharonville and opened with a special prayer offered by Michael Grogan, the chapter president's father. Members concentrated on academics and community involvement. The philanthropy project, "Puttin' On the Hits Air Band Contest" was a huge success. Proceeds benefitted The Rita School for the Deaf in Cincinnati. Kellee Cohen, Brenda Ebel, Traci Hatte, Diana Snieder and Amy Tieran are members of Advertising, Inc.

Ohio Northern, Zeta Kappa — For the second consecutive year, Delta Zeta added a quota pledge class. This year's class numbers 27! Pledge activities included pumpkin carving, bowling, a hayride, and a game of "clues" to learn the identities of big sisters. During finals, initiates helped "psych" pledges for their first final exams by showering them with signs, inspirational poems, and "care packets" complete with all the necessities to survive final exams. Following the theme of "Wildest Dreams," Delta Zetas won second place in the pushmobile races, created banners, and built a float. Karen Peters was a member of the homecoming court. Members sold ghost insurance for Halloween in a Panhellenic sponsored philanthropy. Delta Zeta tops all sorority sales with \$90. The insurance provided clean up following any Halloween pranks. Members celebrated Halloween with a big-little sister pump-



Clarkson University-EP: Sandy Auger, Michelle Tyler, Robin Estill.



An award winning banner from Ohio Northern's Greek Spirit Day is displayed by Heather Buhi and Sheley Hlad of Zeta Kappa.

kin carving and a party with Sigma Pi. Delta Zeta also participated in intramural volleyball. Members of the varsity swim team are Melody Carter and Deb Simpson. Cheerleaders are Monica Baker, Becky Beers, Jacquie Buckey and Kelly Starcher. Heather Buhi was named a Greek of the Month by Panhellenic Council.

Wittenberg, Beta Chi — Sisters were thrilled to return to what appeared to be a "brand new house" this term. Due to the efforts of the executive board and the house corporation, all the bathrooms and the basement were repainted, retiled and carpeted over the summer. The basement is now a more entertaining spot, featuring new furniture, a beverage center, lights, a VCR and a huge DZ painted on the wall opposite the door. A busy term included fundraising, philanthropy, social, campus and Greek Week activities. Members raised more than \$800 by sponsoring a sweater sale on campus during Parents' Weekend. For philanthropy, members adopted grandparents from St. John's Center Nursing Home. Weekly, girls deliver cards, small gifts and cheerful visits to their grandmother or grandfather. The annual hoe down, held at a local barn, featured a square dance caller and a hayride complete with Delta Zeta songs. A Christmas party bringing the term to an end included a catered dinner, dancing and movies with a Christmas theme. Delta Zeta created banners for both homecoming and alcohol awareness week, and sponsored a booth at the Greek End Party. At presstime, members were readying their "DZ Goes Broadway" skit for formal rush. Audrey Henninger is a new member of Pick-in-Pen. Ellen Eachter is a member of Union Board and Lisa Gagliardi is a cheerleader.

OKLAHOMA

Northeastern, Delta Phi — A busy chapter calendar included sponsoring a canned food drive for battered women, traveling to Tulsa to celebrate Founders Day, and participating in the annual blood drive. Delta Zeta won the Noise Parade and competed in intramural volleyball. The chapter also sponsored a bake sale and attended three dances for the Student

Council for Exceptional Children. Lisa McKinney is Panhellenic president.

PENNSYLVANIA

California of Pennsylvania, Zeta Epsilon

— At the University Presidential Banquet, Delta Zeta was honored with first place in Greek activities, and a third place overall recognition for service, academics, activities and fundraising. Parents joined their daughters to celebrate the chapter's 30th anniversary on Parents' Day. Members teamed with Delta Sigma Phi to build a homecoming float, and were delighted when Anna Valla was named a member of the homecoming court. Delta Zetas enjoyed a Halloween mixer with Sigma Kappa, Phi Kappa Theta, and Theta Xi. Graduating seniors were honored with a Christmas banquet. Within the community, sisters collected canned goods in a Greek Thanksgiving Food Drive, Christmas caroled to raise money for the Pittsburgh's Children Hospital, and sponsored a Christmas present for a needy child in conjunction with the Salvation Army. Dean's List honors went to Luisa Graziani, Sue Templin, Erin Peeples, Kway Saxe, and Heidi Schock.

Clarion, Epsilon Theta — Successful parties including "At the Movies With Delta Zeta" produced an open rush pledge class of 18. Members participated in Sigma Chi Derby Days, and teamed with Sigma Phi Epsilon to build a homecoming float depicting one of Clarion's historical landmarks. Freshman Traci Dyer and Junior Janice Bish were members of the homecoming court. A ninety minute enrichment program on self defense proved beneficial to sisters. Members celebrated Founders Day with a brunch, and Christmas caroled for residents of the Clarion Retirement Home. Yvonne Keyes is Sweetheart of Sigma Chi. Sharon Hixson serves as secretary for ASPA and Peggy Gible is second lieutenant in Circle K.

Indiana of Pennsylvania, Gamma Phi — The informal rush pledge class has named itself "The Lucky 13" — quite appropriate for a class numbering 13. Delta Zeta provided an

information booth for sorority philanthropy at the university activities fair. Homecoming highlights included winning \$275 with TKE for a second place float entry. The float followed the campus theme of Wide World of Sports as it depicted hockey. Alumnae were honored with a tea during homecoming. Delta Zeta also participated in Indiana's Festival of Lights where merchants and organizations lined the main street of town, lighting candles and singing carols. Members also participated in a powderpuff football game. Delta Zeta placed second in Delta Gamma Anchor Splash competition, and entered Nikki DeJulia, a one semester transfer from Slippery Rock (and a Delta Zeta!) as their Queen Neptune contestant. Enrichment programs included attending a "coming to terms with your family" seminar and an hour of aerobics and talk on physical fitness. Fund raisers included donut sales, candy sales and a raffle for a dinner for two at the Brown Hotel. Pledges earned money by assisting JC Penney's with credit card applications. Delta Zeta's entry in the Mr. IUP contest placed second. Fraternity sweethearts include Elizabeth Greeman, Sigma Chi, and Linda Souders, Theta Chi.

Kutztown, Kappa Rho — In a successful rush, members presented a Delta Zeta Broadway party and a Rock Around the Clock party to inspire 24 girls to pledge Delta Zeta. During homecoming, KP placed third with an "Our Gang" float. Members celebrated Founders Day with alumnae from Lehigh Valley and collegians from Muhlenberg. At the dinner, Cindy Herr and Amy Van Zandt were recognized for achieving the highest GPAs during spring semester. Philanthropies included manning a telephone for Hillside School in Allentown and selling lollipops to raise money for Gallaudet. Social activities included several mixers with other sororities and fraternities. Pumpkin carving, a pledge sponsored spaghetti dinner, and a Christmas formal rounded out the calendar. Mary Ann Bartek has participated in several on campus musical events and presented a solo in a jazz concert.

Lehigh, Xi Pi Colony — Seventy-nine young ladies were initiated December 3 to culminate an energetic and rewarding pledgship. Since pledging Delta Zeta in mid-September, the colony members made Delta Zeta a noticeable force on campus. They began with a letter day and delivered balloons to all fraternities. Fraternity socials followed including a graffiti party with Chi Phi and a party with Lambda Chi Alpha. Other activities included a sisterhood retreat, informal rush ice cream social, a band party, study breaks, Founders Day ceremony, a Hawaiian party, a sisterhood dinner, a semi-formal, Parents' Weekend brunch and slide show, and finally, an initiation banquet! Delta Zetas joined other Greeks to participate in Southside Alive, a carnival to benefit charity. At the event, Delta Zeta teamed with Delta Tau Delta to sponsor a football toss booth. Delta Zetas from Muhlenberg and Temple performed the initiation ceremony, while special guests included collegians from Connecticut. Tau Beta Pi engineering honorary tapped Amy Wilkove and Peggy Ryan. Allison Camp is vice president of the student senate, while one member presides over the Student Activities Council. Laura Kupfrian is an assistant hall director, while Robyn Suriano is assistant edi-

tor of the school newspaper. Debbie Bard and Amy Tilton run varsity track.

Mansfield, Iota Theta — The chapter's homecoming float featured a baby grand piano made of paper flowers and banner which read "It's A Grand Day for the Mounties and DZ!" Iota Thetas participated in Alcohol Awareness Week, the blood mobile drive and Toys for Tots. Founders Day celebration included a spaghetti dinner. Pledges sponsored a "Crush" sale, and chapter members enjoyed dancing, a slide show and fabulous time at the 23rd Annual Rose Ball. When Iota Theta purchased a new VCR for the lounge, their first guests, Phi Kappa Theta Fraternity, brought a stuffed turtle as a gift for the movie party. Lisa Wilson is president of Panhellenic, while Cathy Myers is secretary of the Music Therapy Club. Stephanie Hahn, Cathy Myers, Maria Gnan, Val Smith, Karen Kenney and Lisa Pek all participated in the Brahms Requiem Chorus and Orchestra Concert.

Muhlenberg, Xi Iota — Members were honored to serve as big sisters and as the initiation team for the new colony at **Lehigh**. Delta Zeta entered a float for the homecoming parade and welcomed back alumnae with a tailgate party. Members joined Lehigh alumnae chapter for a Founders Day dinner at The Ambassador. Philanthropy projects included raising money for both United Way and Cystic Fibrosis, and assisting with a Halloween party for a group of orphans. Members sponsored a team to participate in a volleyball marathon benefitting the Hunger Task Force. Parents were honored with a reception for Parents' Weekend. Freshmen men were welcomed with a tea, and the chapter sponsored Change of Pace, a singing group, to perform at the campus cafe. Members also formed intramural basketball and soccer teams. Social events included a hay ride, tie-dye party, and holiday semi-formal. Enrichment programs included a talk on AIDS, participating in the Great American Smoke-Out, and a mock drink party. Fund raisers included a car wash, magazine sales and a pizza raffle in each dorm during final exams. To boost spirits during exams, members devised a "secret sister" project. After receiving notes, cards, gifts and decorated doors, members met their secret sisters at a study break at the house. Leigh Valley alumnae chapter honored Julie Rohmer with their Charlotte Fields Silversteen Friendship Award, and presented Tracey Kleppinger with a check for earning the highest GPA in the chapter.

Robert Morris, Xi Chi — In a successful formal rush, Delta Zeta reached both quota and total. The chapter is participating in the "presenters for patients" program at the West Hills Nursing Home. Each member visits and presents a gift to one of the patients. During Alcohol Awareness Week, Delta Zeta won first place in the Mocktail Contest. The winning mocktail was served at that evening's non-alcoholic pub. Sisterhood events included a movie night, special weekend events, intramural competition, and the annual Christmas party. Several sisters posed as elves to help out with the pictures with Santa on campus. Amy Carley was crowned Snowball Queen at the annual Snowball Dance.

RHODE ISLAND



Clarion University's Epsilon Thetas pose for The LAMP.

Rhode Island, Beta Alpha — For the 12th consecutive year, BA pledged quota. This year's class numbers 51 and is the largest pledge class in chapter history. These energetic pledges "raided the house" at Christmas. After decorating the kitchen with streamers, they awakened initiates for a 5 a. m. surprise breakfast. Delta Zeta teamed with Phi Sigma Kappa and Sigma Alpha Epsilon to place first in the team division in Greek Week. BA also placed second in sorority competition and first in Greek Sing. Members won fourth place honors in the float competition, while Christine Sturgis was honored as first runner-up to homecoming queen. Delta Zeta joined with Alpha Xi Delta to raise \$700 for a local battered women's center. Other community projects included the Second Annual MDA Bowl-a-thon, and Project Pumpkin and Project Sunrise to help the elderly with yardwork and cleaning.

SOUTH CAROLINA

South Carolina, Beta Delta — Fifteen fraternity men participated in this year's Most Eligible Bachelor Pageant sponsored by Delta Zeta. Entries competed in areas as "clothes that best fit the personality," date wear, and acting. Prizes ranged from modeling contracts with well-known agencies to dinner for two at local restaurants. The \$600 proceeds benefitted Gallaudet. More funds were earned for Gallaudet with a benefit raffle offering a free spring semester scholarship. For the third consecutive year, a Delta Zeta reigned over Sigma Chi Derby Days. This year's Derby Darling was Maria Walker. Members welcomed parents for a drop-in and breakfast banquet on Parents' Weekend. Socials included a Christmas semi-formal at a hotel, and a "down under" dance with an Australian theme organized by the pledges. Delta Zetas volunteered their time for the blood drive, and provided helping hands for Delta Upsilon's game ball run which benefitted Muscular Dystrophy. Other chapter members participated in Bowling for Kids, which benefitted handicapped children. Delta Zeta provided two holiday parties for children at Brennan School for the Deaf. Karen Dillard was tapped for Kappa Delta Epsilon honorary. Mitzi Garson will be dancing at the original movie loca-

tion of "Dirty Dancing," as a dancer in the Dirty Dancing Tour.

Winthrop, Lambda Sigma — Delta Zeta added 18 pledges in formal rush. Members worked at Carowinds Amusement Park in the fall to help pay rush expenses. The busy chapter calendar also included distributing tootsie rolls to retarded children in the community, placing third in women's intramural football and sponsoring a walk-a-thon for philanthropy. A meaningful candlelight meeting at the house provided each sister an opportunity to express the importance of Delta Zeta to her. The appropriate occasion was Founders Day. Members donned formal attire for a Christmas semi-formal which featured a deejay. Fraternity members were delighted to hear the singing voices of Delta Zetas and receive the delicious cookies and candies as Delta Zetas organized a caroling party. Following the serenades to other Greeks, members attended a Winthrop basketball game (dressed in jerseys, of course!).

TENNESSEE

Middle Tennessee, Iota Iota — Delta Zeta won the spirit trophy and second place honors in Sigma Chi Derby. Shannon Castle was named first runner-up to Derby Darling. Chapter activities included two fraternity mixers, two sisterhood breakfasts, a sister night, and a parents' brunch. Pledges enjoyed a retreat at Camp Marymount, and were presented "formally" at a pledge formal. Delta Zetas collected money for the homeless for the Magic Dollar program. Nashville alumnae and IIs teamed to raise money for philanthropy with an art show in Nashville. Holiday festivities included a pledge pumpkin carving, a chapter Thanksgiving dinner and a Panhellenic Christmas caroling at local nursing home.

Tennessee, Beta Lambda — In the chapter's road block to benefit Gallaudet, members worked two hour shifts from eight to six on Saturday to raise \$1761. The intramural flag football team won their quarterfinal match, and placed third among the 15 sorority participants. Delta Zeta also participated in volleyball and tennis. During Greek Week, the chapter

Kappa Zeta celebrates 20 Year Reunion at University of North Texas



Kappa Zetas are proud of the recent name change of their university . . . from North Texas State University to University of North Texas.



Kappa Zeta's Parent/Alumnae Committee: Beth Cook, Jill Rippa, Susan Brauer, Monica Mendez.



Bess McDonald Townsend, SMU-AΨ, a long-time alumna supporter of Kappa Zeta with Patsy Parrish, UNT-KZ.

placed second in Greek Olympics. For Thanksgiving, each member donated two canned goods and a box of band-aids to a Panhellenic drive to aid the needy. Members also enjoyed meeting members of other sororities in a Panhellenic Progressive Dinner. Members also participated in a campus blood drive. The pledge class, which numbers 48, placed second in the Panhellenic Talent Show, and invited 11 children from the Tennessee School for the Deaf to the suite for a Halloween party. The party included face painting, games, prizes and refreshments. Pledges also organized a breakfast for initiates prior to the Kentucky-Tennessee football game. Other activities included a formal to present the pledges, and several fraternity mixers. Delta Zeta teamed with Pi Kappa Phi for homecoming activities. In a special Founders Day celebration, Golden Rose Helen Carson, a Beta Lambda founder, was honored. Kristy Stokes, the chapter's new Col-

lege Chapter Director, read excerpts from Founder Julia Bishop's diary. Camilla Malcolm and Kim Allen are rush counselors, while Michelle Decker is secretary-treasurer for Junior Panhellenic. Liz Cain is vice president of the American Society of Interior Design and a member of Omicron Nu Honor Society. Melissa Cramer is a member of Alpha Lambda Delta and Gamma Beta Phi honoraries. Camilla Malcolm was tapped for Order of Omega, while Missy Shaver serves as historian for Delta Sigma Pi. Wendy Simpson is a member of the yearbook staff, while Alissa Lampolt is a reporter for *The Daily Beacon*. Stephanie Quin, a member of Delta Sigma Pi and Phi Eta Sigma, won the Undergraduate Business Executive Golden Key. Tina Stevenson is a pom-pom dancer. Amy Goan modeled for Pi Kappa Alpha's calendar, while four members have been named UT Timettes.

TEXAS

Houston, Delta Theta — Celebrity judges, including the U of H head football coach and a professional football player, took turns striking the gong in the chapter's Gong Show for philanthropy. The winner walked away with a trophy and \$100. After the chapter participated in a skate-a-thon for neuro fibrosis, the chairman of the skate-a-thon visited the chapter to explain about the disease and how the money would be used. She also thanked the chapter for support, and presented them with a poster size picture of the event and a trophy. Other events included a luncheon with Alpha Chi Omega, a fund-raising spaghetti dinner, sponsoring Turtle Races, and participating in the Pike Ropepull. Members celebrated Founders Day at the Southwest Hilton. U of H Alumni named Melanie Stinson and Patty Fitzpatrick, Sigma Chi Fight Night Queen, as Buggy Beauties.

North Texas, Kappa Zeta — The 20th anniversary celebration of Kappa Zeta provided the opportunity to show off the quota pledge class of 42 and to welcome alumnae, who enjoyed meeting new sisters and rekindling old friendships. The weekend festivities began in the chapter room with an informal coffee, included a formal dance at the Sheraton, and concluded with a Sunday morning buffet. KZ's first College Chapter Director, Bess Townsend, along with Patsy Parrish, Mary Denney, Margaret Sorrels, Diane Krause and many others were all on hand to share special memories of Kappa Zeta. Delta Zeta was honored by Panhellenic for the most improved grades, with an overall GPA of 2.72. Chapter members earning a 3.0 or better included Denise Burton, Becky Clem, Julie Moyle, Lori Myckleby, Dean's List; and Kim Alesch, Sarah Alyea, Julie Behnken, Leight Bonebrake, Julie Bowman, Molly Greer, Kristine Hallingstad, Kimberly King, Moniza Mendez, Paula Romano, Lisa Trotter, Laurie Voorhoeve and Maria Wohlfeld. Delta Zeta is leading in intramural participation points, and won first place among Greeks in a swim meet, and then placed second in overall university competition. Susan Brauer won the Greek Women's Single Racquetball Tournament, and placed second in university competition. Philanthropy projects included donating funds to assist the homeless in Mexico following the Hurricane Gilbert disaster; participating in the Denton State School's Halloween Carnival for

the mentally retarded; adopting a needy family at Christmas, and donating to the Denton Food Bank at Thanksgiving. Pledges sponsored a trick-or-treating event for local children. The social calendar included mixers with four fraternities, the chapter's annual Woodsey Date Party complete with hayride and a Christmas date party. Pledges honored initiates with a Broadway Show Tunes theme party, complete with t-shirts. At the event, pledges proudly presented the chapter gift — a banner displaying the Delta Zeta Crest. Delta Zeta teamed with Sigma Chi Delta for homecoming festivities. Scholarship winners include Diane Fin-nestead, the Sally Maxwell Sharples Scholarship for freshman voice majors; Denise Burton, John Houston Douglas/ Mary Carlise Webb Scholarship; Julie Behnken, C. J. Red Davidson Scholarship; Marcy McGee, President's Council and Meadows Foundation Scholarship; and Wendy Keller, Jack Finger Scholarship for Fashion Design. Julie Moyle was tapped for Blue Key honorary, and Monica Mendez is new Pan-hellenic President.

Stephen F. Austin, Zeta Psi — In true Pan-hellenic spirit, members joined with other sororities for fall sisterhoods. Delta Zetas and Alpha Chi Omegas roller-skated, and Zeta Psis sponsored a Grab-A-Sister party at a nearby park. Each Delta Zeta invited a friend from another sorority to the event. Delta Zeta won first place in the clothing collection, scavenger hunt, and canned food drive in Sigma Chi Derby Days. Delta Zeta sponsored a Tee-Off as a fund raiser, and enjoyed serving as caddies for the day. Winners received a trophy. T-shirts for the event proved a profitable fund raiser. Founders Day celebration included a continental breakfast. Delta Zetas welcomed trick-or-treaters to the house on Halloween night, and decorated the house following the theme Election 88 at homecoming. Alumnae were honored with a tea following the homecoming football game. Members donated a turkey to a less fortunate family at Thanksgiving, and fielded teams for both flag football and volleyball intramurals. Suzanne Rouse was the junior homecoming duchess.

Southwestern, Gamma Zeta — In their SING performance during homecoming, Delta Zeta presented DEE ZEE Dancing, a takeoff from the movie *Dirty Dancing*. The chapter sang and danced to "Be My Baby," and "Do You Love Me?" Leigh Ann Clemons did a solo "Cry to Me," and as a grand finale three members performed a mambo routine to "Time of My Life." For community service, members donated canned goods to Faith Lutheran Church, while pledges distributed flyers with red ribbons for MADD. Delta Zeta placed second in Greek Week College Bowl, a trivia contest. Other activities included three fraternity mixers, Monster's Night for Halloween, and a "Takin' it to the Slopes" fall party. Alpha Kappa Psi business honorary includes Laura Kimball, Leigh Shamp and Diane Nguyen. Alpha Psi Omega theatre honorary includes Lyssa McDaniell and Leigh Ann Clemons. Latisha Campbell, a founder of Student Christian Fellowship, is also a member of Cardinal Key, Southwestern English Society and Alpha Chi honorary. Sharon Graham holds membership in Delta Omicron, Cardinal Key and Alpha Chi honoraries, and Southwestern English Society, Student Foundation and the Upward Bound

Christian Group. Mask and Wig Players includes Leigh Ann Clemons, Lyssa McDaniell, Erin Allen, Jolene Ferguson and Rachel Foote. Members of Lacrosse Club are Lai Eng, Carrie Yeoman, Kimberly Herbert and Stacy Flood, treasurer. Southwestern English Society includes Dianne Gott, Stacy Flood and Kristy Elvis. Pema Baca is a manager trainer for the women's volleyball team, while Donna Hastings is an intramurals director. Jolene Ferguson is a Southwestern cheerleader. Maria Gelabert serves on student judiciary, while Leigh Shamp is active in College Republicans. Carrie Yeoman serves on the Student Allocations Committee. Kimberly Herbert is a member of the Political Science Society, while Kristy Elvis is active in the Student Coalition for Organized Peace Effort. Janis Abel is a member of the Art Association.

Texas A & M, Lambda Xi — Pledge Presentation offered parents an opportunity to meet the chapter members and visit the house. The afternoon began with an Italian buffet at the house and concluded with a formal presentation banquet at the Hilton. Each pledge was presented, with her father, to her big sister. The next morning all returned to the Hilton for a brunch. Prior to presentation, pledges, through pledge pal activities, were able to meet all initiates before choosing a big sister. The pledge pal activities, which lasted several weeks, included decorating doors, a picnic, pink and green gifts and a luncheon. Each week an initiate served as a pledge pal for a different pledge. Finally, in a campus treasure hunt, pledges learned the identities of their official big sisters. On the social side, members enjoyed fraternity mixers with Phi Delta Theta, KA, Sigma Phi Epsilon, and Pi Kappa Alpha.

VIRGINIA

Longwood College, Epsilon Tau — Members joined with other Greeks in the second annual Sweep the Town. In the event, fraternities and sororities broke into mixed teams and gathered trash across the town of Farmville. Delta Zeta added 12 pledges in fall informal rush, and enjoyed a Halloween costume party at the Longwood Cabin. Greek Council officers include Mitzi Simmons, president, and

Cindy Forrester, publicity chairman. Shannon Patterson was elected to the college judicial board.

Old Dominion, Theta Phi — "A Rap to the Dee Zee Shuffle," the "Wizard of Oz," "Delta Zeta Rainbow" and "DZ Happy Days" presented by an enthusiastic chapter enabled Theta Phi to pledge a quota pledge class of 22 in fall formal rush. The chapter is now at total, and believes the goal of 100% initiation is in reach. A busy semester included a pledge retreat at the KOA Campground. Initiates traveled along to reveal the identities of Turtle Pals, and present a big-little sister ceremony and a candle passing. Parents joined daughters for the Founders Day celebration — a boat ride over the Elizabeth River to the Sea Wall Restaurant. At the luncheon, parents and daughters enjoyed hearing guest speaker Cindy Sparks, a member of Theta Phi's second pledge class. Fraternity parties included three mixers, while Delta Zeta treated two fraternities to meals. For a "Crush" date party, members invited two men on which they had "crushes." The semi-formal event, complete with orange crush and hors d'oeuvres, turned out terrific as many members found their formal dates and some new boyfriends. Alumnae joined members and dates to dance away the evening at the Holiday Inn at the chapter's Anniversary Ball.

Radford, Xi Delta — Delta Zeta see-sawed for 24 hours during homecoming weekend to raise \$800 in a See-Saw-a-Thon benefitting the campus speech and hearing clinic. Alumnae were welcomed to homecoming with a balloon lift off. Delta Zetas hold the campus water polo championship, and placed second in flag football. Members trick or treated with a fraternity for canned goods for a Halloween philanthropy. Serving as Rho Chi counselors for spring rush are Kerrie Kennison, Leslee Ford, Kimmie DeWind, Kim Butler, Stacey Robert and Tisa Washburn. Rho Lambda honorary tapped Jenny Tinney, Kerrie Kennison, Kim Urban and Roberta Keyser. Tina Washburn was tapped for Omicron Delta Kappa honorary leadership fraternity.

Virginia, Lambda Delta — Delta Zeta Razzle Dazzle Classic, a fraternity intramural



The executive board of newly-installed Xi Tau chapter at Millersville in Pennsylvania.

competition for philanthropy, raised over \$1000 for a local charity this year. The chapter placed first in the Billy Hill Memorial Run for the American Heart Association. Fall informal rush included a Garden Party, a barbecue and a softball game. Nine pledges were initiated first semester.

Virginia Tech, Kappa Theta — After beginning a busy semester with participation in Phi Mu Greek Sing and Tri Delt Decathlon, members retreated to Smith Mountain Lake to prepare for even more upcoming fall events. Teamed with Sigma Phi Epsilon, Delta Zeta participated in homecoming events and celebrated with a "Come to the Islands" party. The Second Annual Frat Man's Classic included almost 20 fraternity entries, making it a newly established tradition on campus. Delta Zeta is currently in first place in female flag football. Holiday festivities included a Thanksgiving dinner for girls to flaunt their culinary talents; a Christmas Cookie Exchange; and contributing canned food to be distributed through a Christmas storehouse to the less fortunate. Semi-formal weekend included a hayride the first night, and a dance the following night. Newly elected Student Alumni Associates are Beth Gabriel and Jennifer Stitt. Jennifer was also named to the 1991 Class Ring Design Committee. Shelloy Kiger is assistant Panhellenic rush chairman, while Debbie Cook reigns as Sigma Nu Sweetheart.

WASHINGTON

Washington, Kappa — Members will proudly present their formal rush theme party, Peter Pan, at National Convention. Parts of the production have already been featured on a local Seattle television station. The enthusiastic 32 (quota!) pledges added in formal rush sold mistletoe grams as a holiday fund raiser. Kappa placed first in the IMA softball competition. Members also participated in an auction to raise money for Big Brothers of King County. Seattle Supersonics cheerleaders include Torrie Telford and Christie William. Alumna Debbie Williams is the first female to be accepted to the UW Medical School. Dana Kusakabe is a princess and serves on the queen court committee for the Great Seattle Japanese Queen Court.

WEST VIRGINIA

Fairmont, Epsilon Iota — The Fairmont Ballroom turned into a big league ballpark when members suspended baseball caps from the ceiling, and decorated the room with bats, balls and gloves to create a DZ Dugout for a baseball rush. Delta Zeta scored big and added 15 pledges, putting the chapter over campus total with 50 members. Delta Zeta and Sigma Pi teamed efforts to build the second place winning float in the homecoming parade. Linda Kirby reigned as homecoming queen. Members celebrated Founders Day at the Western Sizzler.

Glenville State, Theta Xi — Delta Zeta earned the highest overall grade point average among Greeks last spring. It was also above the all-women's average! Members created a float for the 1958 GCS football team to ride atop in the homecoming parade. Delta Zetas rode a fire truck in the parade, and then all members attended the game — in the pouring down rain! Members advertised the chapter sponsored



Marshall University-ΔΥ: Homecoming attendants are Meredith Lutz and Amy Smith.

blood drive by placing posters on campus and working with the drive itself. A spaghetti dinner proved a tasty fundraiser. Members assisted with the Angel Tree project which offered students a chance to purchase Christmas presents for needy children. Vickie Myers, Miss Parkersburg Homecoming and Miss Teen West Virginia, recently won a national talent search and will appear in an upcoming motion picture. Lori Barker is an NAIA Cross Country participant. She has traveled to nationals for the past three years, and has placed 177 in a field of 330.

Marshall, Delta Upsilon — The chapter added 33 pledges in formal rush, and earned the highest grade point average among Greek initiates and pledges last spring. Delta Zeta won Panhellenic's outstanding rush and Panhellenic spirit awards. During homecoming, Sherri Richmond handled the queen's commit-



National President Norma Andrisek adds to her sweatshirt collection when she visits Millersville for Xi Tau's installation.

tee, while Beth Winter chaired the week's events. Delta Zeta royalty included Meredith Lutz, sophomore attendant, and Amy Smith, junior attendant. Delta Zeta, teamed with Lambda Chi Alpha, won the homecoming banner competition. Philanthropy projects included joining Lambda Chi Alpha to sponsor a Halloween party for needy children, and sponsoring a needy family at Christmas. A "Pie In the Face" fund raiser brought in \$60. For community service, members assisted the Huntington Chapter of MADD to sponsor a "Tie One On" campaign to remind people not to drink and drive, especially during the holidays. For a sisterhood activity, members went to a haunted house, then returned to the chapter house for scary movies and popcorn. Amy Smith was inducted into the Order of Omega, and Melissa Roush was tapped for Omicron Delta Kappa leadership honorary.

Shepherd College, Kappa Mu — A busy chapter calendar included unique and continuous sisterhood activities. Members gathered at Missy Mizell and Jenny MacKinnel's apartment for the first Tie Dye Party. Each person brought something to tie-dye, from shorts to t-shirts to socks. To continue to strengthen the friendships in the chapter, members enjoy secret sister type activities. For the entire semester, each member received a Turtle Buddie to keep watch on her. For holidays and special occasions other secret pals go to work as Boo Buddies on Halloween, Pixies at Christmas, and Final Buddies for exams. Members enjoyed a fall retreat at Ann Dunn's home in Charlestown. Delta Zetas spread their sisterhood to other sororities by entertaining local sorority Omega Chi Alpha with a pizza party, and welcoming the new sorority on campus Sigma Sigma Sigma with a "Being National Is Nicer" reception. Tri Sigmas returned thanks with posters the next morning. Community service included donating non-perishable foods and a turkey to a needy family at Thanksgiving, pumpkin carving with children at Shepherd's Day Care Center, and visiting the Martinsburg VA Center to bowl, play cards, pool or ping pong, and socialize with the veterans hospitalized there. Delta Zetas treated themselves to a visit and tour of the Gallaudet campus. The outing included lunch in the Gallaudet cafeteria. Chapter enrichment topics included date rape and self defense. Members helped keep the campus and community clean as they assisted Lambda Chi Alphas in cleaning up the football stadium and raking leaves at the Camp Frame Campground. Hot dogs, roasted marshmallows and s'mores helped wipe away the memories of hands aching from raking. Members also assisted with an Arthritis Foundation Phon-a-thon. The newly organized alumnae chapter joined collegians to celebrate KM's 15th birthday on Founders Day. The annual pancake breakfast for Parents' Weekend was successful, but not uneventful as College Chapter Director Missy Link ended up in the kitchen helping cooks make "round" pancakes. Parents were honored later that day with a reception in the College Center. The first Mother Daughter Luncheon ended in tearful happiness as mothers, aunts and grandmothers were able to catch the Delta Zeta spirit as each realized the special friendships and the special sisters her daughter, granddaughter or niece has found in Delta Zeta. The luncheon, at the



Eastern Illinois-ΓN members are studying at the house.

Inn at Blackford's Crossing, featured a special ceremony honoring the guests. For fundraising, members sold Christmas wrapping paper.

West Virginia Tech, Iota Pi — In a successful formal rush, Iota Pi reached quota and is now one member away from total. Pledges enjoyed a fall retreat with initiates where they created t-shirts with pink and green handprints and colorful designs. Each shirt also reads "Delta Zeta Pledge Retreat 88" and includes the names of the big and little sisters. Last spring's rock-a-thon raised over \$600 for Gallaudet. The event, held in the Kanawha Mall, was televised on the local news. Delta Zeta's Man of the Year contest raised \$115.70 for House Ear Institute. Awards at province day included quiz bowl, best scrapbook, social and sorority education. Sherry Pinion was named outstanding junior; Kathryn Kendo won model pledge honors and Kelli Tyree earned the highest pledge GPA in the province. *Who's Who Among American College Students* lists Kelli Tyree, Ruth Cook and Kelli Poff. Kathryn Kendo was named spring formal queen for Sigma Phi Epsilon. Kelli Poff captured the lead in a Tech Player production.

WISCONSIN

Carroll College, Gamma Theta — The pledge class numbers 13. Delta Zeta received the highest grade point average on campus honors last spring when they earned a 3.1. Delta Zeta joined other Panhellenic groups to welcome new Carroll President Dan C. West and his wife, Sydney, with a reception. Energetic pledges sponsored a "crush" sale. The canned drinks, with special messages for sweethearts, were delivered by pledges. Members have adopted Mary Ellen Murray as their official "grandmother." She is a resident of Avalon Nursing Home, and members visit her weekly to talk and bring special gifts. Chapter Editor Beth Ann Nowak writes that members reap great rewards knowing someone actually believes in the members and loves them like her own children. And, since their "grandmother" has no relatives, she, too, feels that someone really cares. Beth Ann is captain of the football and basketball cheerleaders. Romy Leigh Blask is also a cheerleader.

Wisconsin-Stout, Zeta Beta — Delta Zeta pledged campus total of 15 in formal rush, to



Houston-ΔΘ: Shannon Frazier, Amy Sumrall, Serene Rognon, Tanny Goerke and Nicole Charest.

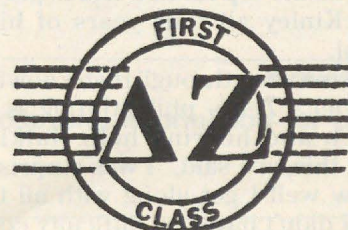
bring the chapter to total. Chapter activities included a Halloween party with Sigma Tau Gamma, chapter dinners and a Founders Day ceremony. For homecoming members built a float and went to the football game. Fund raisers included Halloween and Christmas tuck-ins, and mistletoe sales. Guest speakers for enrichment programs covered topics as job interviewing, AIDS and sexually transmitted diseases. Excited members are finally ordering chapter jackets. The jackets will be white with pink and green ribbing. The back will read "Delta Zeta Sorority — UW-Stout" in green and feature a pink DZ. Each member has the option of placing her name on the jacket. Suzanne Brown is returning from her exchange studies in Scotland. Kim Ess placed in the top five in the Miss Minnesota-Miss USA competition.



Tennessee-BA: Jamie Ray, Jennifer MacPherson, Greta Ridenour and Anissa Henderson.



Northwestern-AA: Sylvia Klatt, Karoline Lewis, Michelle Paloian and Meg Kissher.



Sigma's Kirsten Odden



Sigma's Kirsten Odden with big sister Alicea Staggs.

by **Bunnie Cannon, LSU-Σ**

Sigma chapter of Louisiana State University received 65 pledges last fall, taking quota for the 28th consecutive year. This time, however, one of the pledges is just extra special. Her name is Kirsten Odden and she has bilateral sensorineural hearing loss which means she suffers nerve deafness in both ears.

Kirsten was born in California and had lived in various places before settling down with her family in Baton Rouge in 1983. She attended McKinley Senior High School where she was enrolled in the gifted and talented program. During her high school years she achieved many honors, was ranked 18th out of 200 students and graduated with a 4.0 overall grade point average. She also received the most valuable player award for three years in team tennis. She was the top ranked tennis player at McKinley all four years of high school.

Kirsten went through rush knowing that Delta Zeta's philanthropy is in speech and hearing help. Talking about this, she said, "I was surprised at how well I got along with all the girls. I didn't have any difficulty com-

municating and associating with them."

Being a freshman is always difficult. Along with meeting new friends and keeping up with school work, the hardest thing Kirsten has had to deal with is to overcome problems communicating with others. "It was always hard for me to meet someone new and establish the fact that I have a hearing loss — I wanted to be like everyone else. I was too self-conscious. I wanted to hear what everybody else heard. I realize now there is nothing wrong with admitting my

hearing loss, especially when I am having problems with another person. Despite my hearing loss, I lead a very normal life."

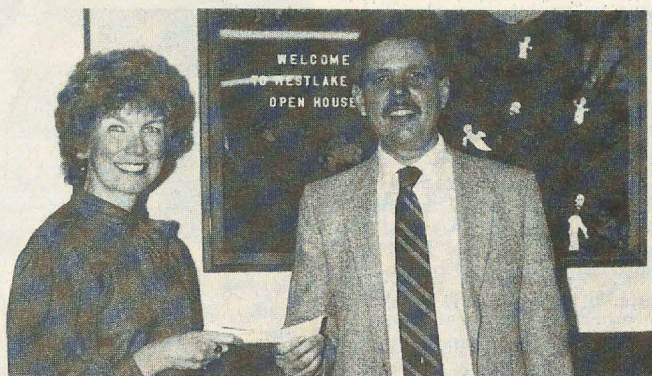
Kirsten has contributed so much during her pledgeship. Treasurer of the pledge class, she was looking forward to February initiation. She speaks straight from the heart when she says, "The girls are caring, understanding and are willing to help me with any difficulties I have. I feel comfortable and at home in the ΔZ house. In Delta Zeta, I receive tons of love and I am glad I can return it."

Foundation Grant Aids Berea Center

Handicapped students at the Westlake Developmental Center benefited greatly from a Delta Zeta Foundation Grant, written for them on behalf of the Berea (Ohio) alumnae chapter. The funds were used to provide two programs from professional fine arts groups from the Cleveland area. A presentation of the Fairmont Theatre for the Deaf demonstrated stories and concepts through the use of sign language.

Many of the school's students com-

municate through simple signing, so this production was especially enjoyable and meaningful to them. Another special event was provided by The Cleveland Opera. Students were treated to an explanation and excerpts from *Hansel and Gretel*. Selected students then traveled to the State Theater in downtown Cleveland to view the actual performance of this opera. Additional funding for these projects came from the Westlake Fine Arts Club and the Westlake PTCU.



Westlake Developmental Center's principal, Jeff Corbacho accepts a check from the Delta Zeta Foundation on behalf of the Berea, Ohio, alumnae chapter. Making the presentation is Marcia Humpal, a member of the alumnae chapter and music therapist at the facility.

Campus Sights & Sounds

LITTLE SISTER programs have been banned by Convention action by Alpha Tau Omega and Beta Theta Pi.

WALTER CRONKITE is donating an additional 20 years of accumulated papers to his alma mater, the University of Texas.

AN MBA CLASS at Wheeling Jesuit College plans to renovate an old theatre to include a dining facility as well as stage presentations and large screen athletic programs. They are working in a course entitled "Entrepreneurship and New Venture Management."

THE POPULATION of Auburn, Alabama is 33,000. The capacity of the University's football stadium is 85,157.

THE UNIVERSITY of California at Berkeley has unveiled the first phase of its microfilmed, encyclopedic "History of the Vietnam War." The collection contains voluminous information from all the governments and organizations involved in the war plus diaries, memos, and radio broadcasts from Hanoi. Microfiche of 365,000 pages will be sold to universities and others.

PHI MU and Alpha Sigma Phi at Bethany College (W. Va.) sponsored a "haunted house" at Halloween to raise money for a hospitalized girl from the community. The Alpha Sig house was built in 1889 and some say they have seen the ghost of the original owner.

UNIVERSITY of Georgia President Charles B. Knapp (Phi Delta Theta) at 41 is the youngest president of a major American research university.

NEW JERSEY Institute of Technology opens a research center to tackle problems of hazardous waste, beach pollution and landfill capacity.

SIGMA ALPHA EPSILON members at Northern Iowa held a Snowcone Party featuring non-alcoholic cones flavored to taste like Pina Colada, Mai Tai, Daiquiri, etc.

ENDOWED TREES: A special endowment was established in 1987 at the College of Wooster (Ohio) for the care of the 1,500 trees on the campus.

THE ARIZONA legislature has authorized special car license plates bearing the colors, mascots, and names of Arizona State, University of Arizona and Northern Arizona. Selling for \$25, the schools will receive \$17 to be used for student aid. In Florida, nine state-assisted universities benefit from license plate revenue.

THE UNIVERSITY of North Dakota Foundation received \$100,000 from AT&T to establish an endowment in memory of James Olson, former CEO of AT&T and a North Dakota alumnus.

GEORGIA TECH lets prospective students apply by dialing into its computer and Penn State has computers in 10 state high schools to provide admission information and help students track their applications.

THE UNIVERSITY of Dayton plans to offer a formal degree in aerospace engineering. The University has performed research for the Air Force at Wright-Patterson Air Force Base since 1949.

THE LARGEST university library fine for an overdue book: \$1,053.60 for a book checked out of the University of Cincinnati in 1905 and returned in 1968 (the fine was waived). Peterson's Alma Mater.

THE LONGEST road trip ever: Willamette University's football team was stranded on Oahu for three months after playing the University of Hawaii the day before Pearl Harbor. Peterson's Alma Mater.

— A service of the National Panhellenic Editors Conference Brass Tacks Committee, Eileen Rudolph, ΔΔΔ, chairman.

HAVE YOU CHANGED YOUR NAME OR ADDRESS?

Please print or type and mail to Delta Zeta Sorority, 202 East Church Street at Campus Avenue, Oxford, OH 45056. Members should use parents' address while in college.

IMPORTANT: You must cut out the mailing label from this issue and paste it here.

We cannot process changes without your label. Thank You.

I am currently a Delta Zeta Officer. Title _____

My new address will be _____

street/apt. #

city/state/ZIP

effective date

If mailing label does not show your married name, please include the following information for our membership files.

Married name

Husband's first name

Date of marriage

What Happened to You After College?



KATHY HODGE ABRAHAMSON, North Texas-KZ, lives in Arlington, Texas, where she is a homemaker/piano teacher. Her full-time job is to care for son James, almost two, and husband Bill. Kathy expected a second child in November. She's also a pianist for her church and loves sewing, crafts and shopping.

DENISE LEWIS, Florida State-AΣ, is a 2nd Lieutenant in the U.S. Air Force Nurse Corps, serving as a staff nurse at Willford Hall USAF Medical Center, Lackland AFB, San Antonio, Texas. She enjoys reading, movies, white water rafting, the beach and hiking.

EUGENIA REYNOLDS HINGER, West Texas State-ZZ, and her husband own and operate Bruce Spruce Ranch, a guest ranch with 14 log cabins and 32 RV spaces at the foot of Wolf Creek Pass out of Pagosa Springs, Colorado. They winter in Texas. Sons are Chris and Russell. Eugenia enjoys reading, her Sunday School Training Union and the Canyon ΔZ alumnae group.

DONNA RUSCH BEISEL, Houston-ΔΘ, is a reporter for KTRH Radio in Houston. KTRH is an all-news station and Donna primarily covers medical and school board news. She enjoys dancing and is a member of Actors Coalition of Texas. Her husband is Craig.

CHERYL MOHR HASELSTEINER, Western Illinois-EO, lives in Hewitt, Texas, with husband Jim and has just received her Master's of Science Education at Baylor University in Waco. She enjoys church activities, aerobic dance, music, animals and jogging.

JOY KLOEPPPEL DULANEY, Oklahoma State-AE, lives in Flower Mound, Texas, with husband Jamie, a senior systems analyst, and children Krystal and Jaron.

LYNDA NEINAST DAVIES, Wisconsin/Whitewater-EK, lives in San Antonio, Texas, with husband Scott, a geophysicist. Children are Colin, Kristen and Ryan. She is a full-time teacher of the gifted and talented, teaching grades K through 5 in a pull-out program that includes 4 schools. She enjoys sewing, knitting, crocheting, counted cross-stitch, smocking, tennis, piano, computers and reading.

PAMELA DAY, North Texas-KZ, lives in Dallas and teaches in the Plano ISD. She is also a drill team/dance instructor for 55 girls. They perform at football and basketball games, competitions and a spring show. She also judges drill team tryouts and competitions. She enjoys dance, politics, sports, music, reading and decorating her house.

KATHY DICORTE ELLISOR, Texas A&M-AΣ, flew for Delta Airlines before pursuing a teaching career in Houston and Victoria, Texas. She became a homemaker full-time in 1984 for husband Grover E. Ellisor III, a petroleum consultant, and son Grover, IV (Roe). Active in the Victoria Junior League, her volunteerism has been directed toward education. She enjoys watercoloring, traveling, her family and church.

GRACE E. LOVELL, Texas A&M-AΣ, is an accountant in the corporate office of Century Papers in Houston. She planned graduate school at St. Thomas University in the fall and enjoys travel, tennis, water skiing, golf, writing and movies.

LYNN BRAMMER CLEMENTS, Old Dominion-ΘΦ, lives in Portsmouth, Virginia, where she is education coordinator for the Virginia Marine Science Museum. Her husband is Carl and children are Reid and Leslie. Lynn enjoys her children, gardening, sewing and fishing.

SUSAN BOONE JENKINS, Atlantic Christian-ΘΩ, lives in McLean, Virginia, with husband David and daughters Mandy and Meredith. She enjoys counted cross-stitch, reading, PTA and is a volunteer teacher.

ROBIN DONNA STEWART, Shepherd-KM, lives in Fairfax, Virginia, where she is a primary counselor for Northwest Center Children's Group Home. A second part-time job is as substitute shelter manager for Arlington Temporary Shelter, providing structure for battered women and/or homeless families in the county.

LINDA MCLAUGHLIN, Concord-EΔ, lives in Bluefield, Virginia, where she is weekend weather person and control room operator at WVVA Television. During the week she is responsible for all of the computer graphics used during two daily newscasts. She enjoys television and weather, tennis, bowling and traveling.

KARA BARKER PRICE, West Virginia Tech-III, was married last May to Bret Price, a finance accountant, and they live in Scott Depot, West Virginia. Kara is an engineering technician for Columbia Gas Transmission in Charleston. She "enjoys reading about ΔZ very much" and likes cross-stitch, crochet, piano and exercise.

CONNIE McCLURE, Fairmont State-EI is a home economics teacher in Elkview, West Virginia, but is a volunteer ski patrol on weekends at Snowshoe Ski Resort. She also sponsors the Elkview Junior Ski Club and coaches girls tennis.

BARBARA ROACH CLARK, Wisconsin/LaCrosse-ZO is a paralegal with a small law firm in Kenosha, Wisconsin. She and husband Jeff enjoy country crafts and antiques and spend a lot of time browsing through country stores. She loves contact with ZO sisters.

DIANE MARIE KOLBERG, Wisconsin/Whitewater-EK, lives in Janesville, Wisconsin where she works as a youth counselor at Rock Valley Correctional Programs. She likes horseback riding, dancing, music and reading.

And this concludes the questionnaires received before we started publishing this column in last summer's *LAMP*. Do stay tuned . . . there are many more!

SPRING FEVER



NEW Applique argyle sweatshirt.** White with pink and green corduroy accent. \$28.00

The "CREST". White shirt with full color screen. \$16.00

NEW Applique Bow sweatshirt.** Madras bow and letters on a white or pink sweatshirt. \$28.00

Handpainted Sunset on white shirt. Each one done individually and signed by artist. T-shirt - \$16.00 Sweatshirt - \$20.00

9HPTS NEW HANDPAINTED AND SIGNED TURTLE SHORTS.** 50/50 poly-cotton with elastic waist. White only. \$14.00

928 Madras "Box Jams"...longer than boxers but, 2 inches shorter than jams. \$16.00

953T Oversized madras applique greek letters on 100% cotton T-shirt. \$12.00

953NS Oversized madras applique greek letters on 50/50 poly-cotton tank top. \$12.00

We use only premium quality shirts and offer sizes medium, large and extra-large.

CREATIVE BUSINESS EVENTS, INC. 4159 CLEVELAND HIGHWAY, GAINESVILLE, GA 30506 (404) 983-3778						
Name:	ITEM NO.	SIZE	COLOR	Quant.	DESCRIPTION	PRICE
Address:						
Phone:						
WE HONOR: MasterCard () Visa () ◀ ◀ ◀ Check One						
EXP. DATE	Credit Card Signature Required					
▼ CREDIT CARD NUMBER ▼						
PLEASE ALLOW 4-6 WEEKS FOR DELIVERY AS UNPREDICTABLE DEMAND FOR CERTAIN ITEMS COULD CREATE A DELIVERY DELAY. WE WILL MAKE EVERY EFFORT TO SEND YOUR MERCHANDISE PROMPTLY AND YOU WILL BE NOTIFIED OF ANY DELAYS OVER 30 DAYS. ALL CHECKS AND CREDIT CARDS ARE CASHED UPON RECEIPT. PLEASE DO NOT SEND CASH OR MONEY ORDERS. MAKE CHECKS PAYABLE FOR THE TOTAL AMOUNT OF THE ORDER (INC. SHIPPING AND HANDLING) PAYABLE TO CREATIVE BUSINESS EVENTS—DELTA ZETA.		SHIPPING, INSURANCE & HANDLING		ITEM TOTAL		
ALL RETURNED CHECKS ARE SUBJECT TO A \$10.00 SERVICE CHARGE. ALL RETURNED CARTONS ARE SUBJECT TO A \$5.00 SERVICE CHARGE		Order Total Via Surface Via Air \$25.00 & Under \$3.95 \$5.25 \$25.01-50.00 \$4.95 \$6.50 \$50.01-75.00 \$5.95 \$8.50 \$75.01-100.00 \$7.95 \$10.50 \$100.01-200.00 \$9.95 \$12.50 \$200.01-300.00 \$11.95 \$15.50 \$300.01-400.00 \$14.95 \$18.50 ADD \$2.50 for each additional: \$50.00 for surface. ADD \$5.00 for each additional \$50.00 for air		SHIP. & HANDL. (See Chart) ADD 6 1/2% SALES TAX IF SHIPPED TO CALIFORNIA ADD 4% SALES TAX IF SHIPPED TO GEORGIA GRAND TOTAL ▶▶▶		
		A PORTION OF EACH SALE WILL GO TO YOUR SORORITY NATIONAL OFFICE.		PRICES SUBJECT TO CHANGE		

Reader Survey

What do you think?

To determine how *The LAMP* can serve its readers better, we are asking you to fill out this survey. Please answer each question honestly. Your answers are confidential. Return the form (or a xerox of same) to *The LAMP*, Gwen M. McKeeman, Editor, 5517 South 74th East Avenue, Tulsa, Oklahoma 74145. Results will be published in a future issue.

1. What is your age?

- ☐ under 22 ☐ 23-30
☐ 31-40 ☐ 41-65 ☐ over 65

2. Which best describes your work situation?

- ☐ Now employed fulltime outside home.
☐ Now employed parttime outside home.
☐ Fulltime homemaker with young children; plan to return to outside employment when children are older.
☐ A career homemaker; do not expect to work outside home.
☐ Student.
☐ Retired.

3. Are you active in a Delta Zeta chapter now?

- ☐ Yes, in college chapter.
☐ Yes, in alumnae chapter.
☐ No, would like to be.
☐ No, not interested.
☐ Yes, as a national, province, local officer or advisor.

4. Which describes your *LAMP* reading habits best?

- ☐ I always read *The LAMP*, and usually read every article.
☐ I always skim through *The LAMP*, read some articles, look at the photos.
☐ I sometimes look through *The LAMP*, sometimes don't bother.
☐ I never or very rarely read *The LAMP*.

5. Who reads or looks at your *LAMP*s?

- ☐ Just me.
☐ My family.
☐ Friends, neighbors, others.

12. List additional comments.

6. How long do you usually keep your *LAMP*?

- ☐ A week or so.
☐ About a month.
☐ Until the next issue arrives.
☐ Indefinitely, I save them all.

7. How frequently do you read each of these regular *LAMP* features?

- | Always | Some-
times | Never | |
|--------------------------|--------------------------|--------------------------|---|
| <input type="checkbox"/> | <input type="checkbox"/> | <input type="checkbox"/> | "Official" news, such as chapter installations, new officer elections or appointments, convention reports, etc. |
| <input type="checkbox"/> | <input type="checkbox"/> | <input type="checkbox"/> | Directory |
| <input type="checkbox"/> | <input type="checkbox"/> | <input type="checkbox"/> | Features |
| <input type="checkbox"/> | <input type="checkbox"/> | <input type="checkbox"/> | Delta Zeta on Campus |
| <input type="checkbox"/> | <input type="checkbox"/> | <input type="checkbox"/> | Alumnae Chapters Write... |
| <input type="checkbox"/> | <input type="checkbox"/> | <input type="checkbox"/> | The Lampwriter |
| <input type="checkbox"/> | <input type="checkbox"/> | <input type="checkbox"/> | Alumnae Profiles (What Happened to You After College?) |
| <input type="checkbox"/> | <input type="checkbox"/> | <input type="checkbox"/> | Flame Eternal |
| <input type="checkbox"/> | <input type="checkbox"/> | <input type="checkbox"/> | Contributor Lists |

8. Things you'd like to see in *The LAMP* that are not there now.

9. Things you'd like to see discontinued in *The LAMP*.

10. Have you particularly enjoyed any special article printed in the last year or so? Tell us what you liked best.

11. How would you rate *The LAMP*?

- | | Excel-
lent | Good | Fair | Poor |
|--------------------|--------------------------|--------------------------|--------------------------|--------------------------|
| Cover appeal | <input type="checkbox"/> | <input type="checkbox"/> | <input type="checkbox"/> | <input type="checkbox"/> |
| Graphic design | <input type="checkbox"/> | <input type="checkbox"/> | <input type="checkbox"/> | <input type="checkbox"/> |
| Editorial quality | <input type="checkbox"/> | <input type="checkbox"/> | <input type="checkbox"/> | <input type="checkbox"/> |
| Editorial content | <input type="checkbox"/> | <input type="checkbox"/> | <input type="checkbox"/> | <input type="checkbox"/> |
| Overall impression | <input type="checkbox"/> | <input type="checkbox"/> | <input type="checkbox"/> | <input type="checkbox"/> |

Directory

NATIONAL COUNCIL

PRESIDENT: Norma Minch Andrisek (Mrs. John R.), 319 Janice Drive, Berea, OH 44017
VICE PRESIDENT OF MEMBERSHIP: Marvona Easley Tavlin (Mrs. Michael), 2710 Devonshire Drive, Lincoln, NE 68506
VICE PRESIDENT OF ALUMNAE AFFAIRS: Deanna Alleman McKinnon (Mrs. Mike), 12109 Victoria Place, Oklahoma City, OK 73120
VICE PRESIDENT OF COLLEGIATE AFFAIRS: Phyllis Snape Favorite (Mrs. Robert D.), 522 Melissa Lane, State College, PA 16803
SECRETARY: Sandra McAlister Nesbitt (Mrs. Milton), 3519 Castle Ridge Rd, Montgomery, AL 36116
TREASURER: Anne Marie Jones Gavin (Mrs. William), 3264 Swan Drive, Vineland, NJ 08360
DIRECTOR: Patricia Canady Rosser (Mrs. David), 1609 Indian Rocks Road, Clearwater, FL 34616
DIRECTOR: Merry Westbrook Adamcik (Mrs. Roy), 614 Rozelle Avenue, Sugar Land, TX 77478
DIRECTOR: Lynnda Wolf Hoefler (Mrs. Robert), 1287 Denise Drive, Kent, OH 44240
DIRECTOR: Susan Mease (Ms), 857 N. Van Dorn Street, Alexandria, VA 22304
PAST NATIONAL PRESIDENT/NATIONAL PANHELLENIC CONFERENCE DELEGATE: Carolyn Barnes Gullatt (Mrs. John H.), 4008 Hyridge, Austin, TX 78759
NATIONAL PANHELLENIC CONFERENCE ALTERNATES: Marvona Easley Tavlin (Mrs. Michael), Deanna Alleman McKinnon (Mrs. Mike), Norma Minch Andrisek (Mrs. John R.)

NATIONAL HEADQUARTERS

NATIONAL HEADQUARTERS: 202 East Church Street at Campus Avenue, Oxford, OH 45056. (513) 523-7597
NATIONAL HEADQUARTERS ADMINISTRATOR: Cindy Winslow Menges
FIELD REPRESENTATIVES: Michelle Albrecht, Lisa K. Albright, Deanna Bardsley, Kathi Dawn Bray, Leann Danner, Devra D. Dimpfl, Sheila McCarthy, Lisa Moses, Christina Mullin, Wendy Lynn Myers, Jody Shultz, Kimberly Ward.

THE LAMP

Gwen Moss McKeeman (Mrs. Robert), 5517 S. 74th E. Avenue, Tulsa, OK 74145

EXTENSION

DIRECTOR OF EXTENSION: Carolyn Barnes Gullatt (Mrs. John H.), 4008 Hyridge, Austin, TX 78759

DELTA ZETA SUBSCRIPTIONS

Norma Swebston McIntyre, Box 24145, Columbus, OH 43224

DELTA ZETA FOUNDATION

PRESIDENT: Joan Dondrea Lowry (Mrs. Bob-Bill), 578 Yarmouth Lane, Bay Village, OH 44140
SECRETARY: Donna Edwards Happ (Mrs. William V.), 39968 Pearl Drive, Murietta, CA 92362
TREASURER: Patricia Canaday Rosser (Mrs. David), 1609 Indian Rocks Road, Clearwater, FL 34616
MEMBERS: Joyce Low London (Mrs. John), PO Box 6458, Las Cruces, NM 88006
 Katey Bosworth Sandy (Mrs. Jonathan), 18630 NW Tolovana, Portland, OR 97229

COMMITTEES

ELIZABETH COULTER STEPHENSON SCHOLARSHIPS: Joyce Low London (Mrs. John) P.O. Box 6458, Las Cruces, NM 88006
GRADUATE SCHOLARSHIPS: Priscilla "Pat" Beatty (Miss), 3691 NW 95th Terrace #1202, Ft. Lauderdale, FL 33321
GALLAUDET UNIVERSITY: Lucille Bolstad May (Mrs. Leland B.), 5100 Dorset Avenue, #406, Chevy Chase, MD 20815
HOUSE EAR INSTITUTE: Betty Paul DeWitt (Mrs. Norman), 23630 Oak Rest Lane, Harbor City, CA 90710
UNDERGRADUATE SCHOLARSHIPS: Glenna VanderMeer Paukstis (Mrs. Charles), 1304 Lake Park, Birmingham, MI 48009

HISTORICAL MUSEUM BOARD OF TRUSTEES

PRESIDENT: Elizabeth Baker Devereaux, (Mrs.), 304 Wood Lomond Ct., Huntington, WV 25705
TRUSTEES:
 Carol Selway Bertz (Mrs. Michael), 6544 S. Heritage Place East, Englewood, CO 80111
 Carolyn Barnes Gullatt (Mrs. John H.), 4008 Hyridge, Austin, TX 78759

PROVINCE COLLEGIATE AND ALUMNAE DIRECTORS

I. Maine, Massachusetts, Vermont, New Hampshire, Connecticut, and Rhode Island

PCD: Francis Robinson Carnes (Mrs. Michael), 252 Washington Street, Arlington, MA 02174
PAD: Janice Jelks Cox (Mrs. Stanford), 313 Elm Street, Framingham, MA 01701

II. New York, New Jersey and Delaware

PCD: Linda Dennison, 3000 Ford Rd. Apt. L-8, Bristow, PA 19007
PAD: Cynthia Schafer Plucinski (Mrs. Donald), 633 South Edge Park Dr., Haddonfield, NJ 08033

III. Pennsylvania and Western New York

PCD III-C: Judy Kline, 312 O'Toole Dr., Hagerstown, MD 21740
PCD: III-W: Maria Blair Katsafanas, 4190 Middle Rd 1, Allison Park, PA 15101
PAD III-W and -C: Jane Simmons Riccardi (Mrs. Robert), 150 Par Dr., Pittsburgh, PA 15236
PCD III-E: Leslie Helms Seese, 5544 Monastery Ave., Philadelphia, PA 19128

Florence Hood Miner, (Mrs. Arthur), 1040 Avenue H, Nevada, IA 50201
 Susan Mease (Ms), 857 N. Van Dorn Street, Alexandria, VA 22304
PRESIDENT EMERITUS: Lucile Crowell Cooks (Mrs.)
DIRECTORS EMERITUS: Grace Pritchard Gorham (Mrs.)
 Mary Lou Ragel Vineyard (Mrs. Phillip W.)

HISTORIAN EMERITUS

Grace Mason Lundy (Mrs. H. M.), 3207 N. 25th St., Phoenix, AZ 85016

STANDING COMMITTEES

AWARDS (ALUMNAE AND COLLEGIATE): Marcia Earl Humpal (Mrs. David), 26798 Mangrove Lane, Olmsted Falls, OH 44138
COLONNADE CLUBS: Mary Ann Gallatin French (Mrs. John), 2322 N.W. 58th Circle, Oklahoma City, OK 73112
CONSTITUTION AND BYLAWS: Elizabeth Baker Devereaux (Mrs.), 304 Wood Lomond Ct., Huntington, WV 25705
FIELD ACTIVITIES: Phyllis Snape Favorite (Mrs. Robert D.), 522 Melissa Lane, State College, PA 16803
FINANCE: Anne Marie Jones Gavin (Mrs. William)
HOUSING ADMINISTRATIVE: Norma Minch Andrisek (Mrs. John R.)

REGIONAL HOUSING CHAIRMEN:

Sandy Sebrell Bailey (Mrs. Bruce), 639 N. Portage Path, Akron, OH 44303
 Connie Burns Baird (Mrs. James), 9039 Gunnison Drive, Dallas TX 75231
 LaDonna Johnson (Miss), 16850 NE 23rd Place, Bellevue, WA 98008
 Kathleen Johnson Sledge (Mrs. Joe W. Jr.), 1700 Dearing Place, Tuscaloosa, AL 35401
 Teresa Grimm (Mrs.), 286 Oakland Ave., Arlington, MA 02174
COLLEGE CHAPTER FINANCES: Lynnda Wolf Hoefler (Mrs. Robert), 1287 Denise Drive, Kent, OH 44240
INSURANCE: National Headquarters, 202 E. Church Street, Oxford, OH 45056
WAYS AND MEANS: Jamie Hammill, 5516 Lakeshore Dr. #310, Columbia SC 29206
HISTORY: Florence Hood Miner (Mrs. Arthur), 1040 Avenue H, Nevada, IA 50201
JUDICIARY: Dianne Fellows Guild (Mrs. Douglas), 16 Andrews Drive, South Burlington, VT 05401
PLEDGE EDUCATION: Sandra McAlister Nesbitt (Mrs. Milton), 3519 Castle Ridge Rd., Montgomery, AL 36116
MUSIC: Carol Carson Konet (Mrs. Glen), 15568 Cottonwood Oval, Cleveland, OH 44130
PHILANTHROPY: Patricia Canady Rosser (Mrs. David), 1609 Indian Rocks Road, Clearwater, FL 34616
ALUMNAE COORDINATOR: Joyce Low London (Mrs. John), PO Box 6458, Las Cruces, NM 88006
COLLEGIATE COORDINATOR: Rhonda Reifschneider Roe, 3101 Meadowmoor Street, Ft. Worth, TX 76133
RITUAL: Karen Kind Veitch (Mrs. Andrew), 36 Rilling Ridge Road, New Canaan, CT 06840

COMMITTEES

NETWORKING: National Headquarters, 202 E. Church Street, Oxford, OH 45056
NEWSLETTER: Diane Jones Skelton (Mrs. Danny), 1725 Chipco, Tyler, TX 75703
REFERENCES: Alberta Doran Curran (Mrs. Tom), 116 Dublin Woods Drive, Cary, NC 27513
ALUMNAE:
MEMBERSHIP: Carol Selway Bertz (Mrs. Michael), 6544 South Heritage Place East, Englewood, CO 80111
COLLEGIATE:
ACADEMICS: Sue Adrianson Skambis (Mrs. Christopher), 836 South Lake Adair Blvd., Orlando, FL 32804
ACTIVITIES: Jeanine Peterson Triplett (Mrs. Brian), 1920 Roanoke Avenue, Louisville, KY 40205
ENRICHMENT: Katherine Day Hager, (Mrs. Alan), 130 Main Street #1W, Trappe, PA 19426
SOCIAL: Sara Carruthers (Miss), 601 Glenway Drive, Hamilton, OH 45013
SORORITY EDUCATION: Ellen Kroll Jenkins (Mrs. Paul), 1101 Ramblin Court, Greenwood, IN 46142

PAD III-E: Cynthia Schafer Plucinski (Mrs. Donald), 633 So. Edge Park Dr., Haddonfield, NJ 08033

IV. West Virginia

PCD: Penny Payne Fioravante (Mrs.), HC 63 Box 91, Tiny Ridge Farm, Sumerco, WV 25567
PAD: Doretta Pugh Osburn (Mrs. Thomas), 314 Roxalana Hills Dr., Dunbar, WV 25064

V. Ohio

PCD: Sandy Sebrell Bailey (Mrs. Bruce), 639 N. Portage Path, Akron, OH 44303
PAD: LeeAnn Vogelberger August (Mrs. Donald), 3235 Bloomsbury Circle NW, Canton, OH 44708
CO-PAD: Elaine McManus Freed (Mrs. William), 721 Donald Ave., Dayton, OH 45420

VI. Michigan

PCD: Olive McLauchlan Neelands (Mrs. James), 1699 Littlestone, Grosse Pte Woods, MI 48236
PAD: Pamela McClure Cronenwett (Mrs. William), 25720 West Hills Drive, Dearborn Heights, MI 48125

VII. Indiana

PCD: Elisabeth Petrucce (Miss), 5527 N. Haverford Ave., Indianapolis, IN 46220

PAD: Karen Bauble Brammer (Mrs. Phillip), 1700 North Thorn Tree, Muncie, IN 47304

VIII. Wisconsin

PCD: Geri L. Palmer (Miss), 312 N. 50th St., W. Milwaukee, WI 53208

PAD: Rochelle Lebahn Andress (Mrs. Brad), 1077 Rusch Rd., Hudson, WI 54016

IX. Illinois

PCD-N: Lisa Straub Kelly, (Mrs. Michael), 245 East Vallette, Elmhurst, IL 60126

PCD-S: Refer to Merry Adamcik, PCD Coordinator

PAD-N: Phillis Berens Ross (Mrs. Norman), 5800 S. Corona Dr., Palatine, IL 60067

PAD-S: Gail Easley McKee (Mrs. Donald), 776 10th St., Charleston, IL 61920

X. Iowa and Nebraska

PCD: Barbara Tweed Holland (Mrs. George), 287 Village Dr., Ames, IA 50010

PAD: Christina Wifvat Gammell (Mrs. Jim), PO Box 65, Granger, IA 50109

XI. Missouri

PCD: Dana McMillan (Miss), 541 W. 11th #101, Kansas City, MO 64105

PAD: Eileen Hoffman Doe (Mrs. Larry), 2 Locust Drive, Florissant, MO 63031

XII. Minnesota, North Dakota and South Dakota

PCD: Jeri Seals Weigand (Mrs. Gregg), 6185 Boyer Path, Invergrove Heights, MN 55075

PAD: Julie Hause (Miss), 6605 Clinton Ave. South, Richfield, MN 55423

XIV. Colorado and Kansas

PCD: Gail Persak Beets (Mrs. Kenneth), 5963 W. Indore Place, Littleton, CO 80123

XIV-E. Kansas Alumnae Chapters

PAD-E: Carolyn McCandless Woodling (Mrs. Charles), 3112 Creekwood, Lawrence, KS 66044

XIV-W. Arizona, Colorado, New Mexico, Utah, and Wyoming Alumnae Chapters, except Las Cruces, NM

PAD-W: Margaret Poe (Miss), 6161 East Grant Rd., Apt. 809, Tucson, AZ 85712

XV-S. Southern California, Southern Nevada and Hawaii

PCD: Nancy Bach (Miss), 420 S. Madison #114, Pasadena, CA 91101

PAD: Barbara Phillippi Lancaster (Mrs. Richard), 4923 Libbet Avenue, Van Nuys, CA 91436

XV-C. Northern California and Northern Nevada

PCD: Linda Lesniak Szymanski (Mrs. Robert), 931 Notre Dame Avenue, Concord, CA 94518

PAD: Wendy Wood LaBounty (Mrs. William), 2099 Janice Drive, Pleasant Hill, CA 94523

XV-N. Oregon, Washington, Montana, Idaho and Alaska

PCD: Refer to Merry Adamcik

PAD: Helga Kohlenberg Clark (Mrs. William), 4866 123rd Place, S.E., Bellevue, WA 98006

XVI. Oklahoma

PCD: Sherry Trenfield Lambert, (Mrs.) 13548 East 38th St., Tulsa, OK 74134

PAD: Pattie Cantrell Hulsey (Mrs. Stephen), 15708 E. 80th St. North, Owasso, OK 74055

STATE REFERENCE CHAIRMAN

ALABAMA: Judith M. Buchanan, 1843 Ski Lodge #3, Birmingham, AL 35209 **ALASKA:** Kathryn Miller Mosley (Mrs. Larry), PO Box 61642, Fairbanks, AK 99706
ARIZONA: Debra Will Welch (Mrs. Wm), Box 9614, Scottsdale, AZ 85252-9614 **ARKANSAS:** Jeania Standridge Evans (Mrs. Jerry), Rt. 2, Box 530, Russellville, AR 72801
CALIFORNIA (North): Joyce Rogers Stoffey, 277 Newbury, Hercules, CA 94547, **CALIFORNIA (South):** Janet Breitweiser Savage (Mrs. Tom), 5102 Woodwind Lane, Anaheim, CA 92807 **COLORADO:** Diane Vyhalek (Miss), 13625-B E. Yale Ave, Aurora, CO 80014 **CONNECTICUT:** Ann Collins Gill (Mrs. Edward), 53 High Point Road, Westport, CT 06880 **DELAWARE:** Charlotte Mickel Catton (Mrs.), Box 102 Kendal at Longwood, Kennett Square, PA 19348 **DISTRICT OF COLUMBIA:** Pamela Siders Grizzle (Mrs. John), 1145 Autumnhaze Ct., Herndon, VA 22070 **FLORIDA:** Cindy Brown Helton (Mrs. Charles), 1601 Berkshire Avenue, Winter Park, FL 32789 **GEORGIA:** Linda Angel Leedham (Mrs. Gary), 550 Flying Scot Way, Alpharetta, GA 30201 **HAWAII:** Dorothea Bettencourt Ovio (Mrs.), 45-109 Kokokahi Place, Kaneohe, HI 96744
IDAHO: Rilla Soderstrom Percala (Mrs. George), 8800 Craydon Drive, Boise, ID 83704 **ILLINOIS:** Refer to National Reference Chairman Alberta Curran **INDIANA:** Jane Gustafson Thompson (Mrs. Mark), Route 1, Box 162, Pendleton, IN 46064 **IOWA:** Nancy Northey Pringnitz (Mrs. Douglas), R.R. Box 8158, Spirit Lake, IA 51360 **KANSAS:** Kayla Kerns Eddy (Mrs. Stephen), 2124 S. Lennox, Olathe, KS 66062 **KENTUCKY:** Joy Morton Coleman (Mrs. Kenny), 1728 Hawthorne Lane, Lexington, KY 40505
LOUISIANA: Jane Weaver Mathes (Mrs. Jimmy), 12538 Sherbrook Drive, Baton Rouge, LA 70815 **MAINE:** Denise A. Pitt (Miss), 23 Lindale Avenue, Biddeford, ME 04005
MARYLAND: Pamela Siders Grizzle (Mrs. John), 1145 Autumnhaze, Ct., Herndon, VA 22070 **MASSACHUSETTS:** Abbye Klayman Warren (Mrs. Stephen), 80 Bailey St., Stoughton, MA 02072 **MICHIGAN:** Cathy Lynn Miner (Miss), 4116-27 Crooked Tree SW, Wyoming, MI 49509 **MINNESOTA:** Kelly O'Brien Elliott (Mrs. Todd), 8299 131st Street West, Apple Valley, MN 55124 **MISSISSIPPI:** Mary Halley Huch (Mrs. Donald), 317 Lamar Ave. Hattiesburg, MS 39401 **MISSOURI:** Kayla Kerns Eddy (Mrs. Stephen), 2124 S. Lennox Dr., Olathe, KS 66062 **MONTANA:** Barbara Kirsch Hamilton (Mrs. W.B.), 16400 SE 135th Sp. 26, Clackamas, OR 97015 **NEBRASKA:** Carole Sorensen (Miss), 828 Judge Ave., Broken Bow, NE 68822 **NEVADA:** Lori Figgins (Miss), 647 Peppertree Circle, Henderson, NV 89015 **NEW HAMPSHIRE:** Angela Piper Shipman (Mrs. John), 8 Bayberry Lane, Exeter, NH 03833 **NEW JERSEY:** Debra Bass (Miss), 357 Shea Dr., New Milford, NJ 07646 **NEW MEXICO:** Elverine Robison Everett (Mrs. Bert), 10308 Chapala Place NE, Albuquerque, NM 87111 **NEW YORK:** Mary Frances Sims (Miss), 95 B Ball Road, Syracuse, NY 13215 **NORTH CAROLINA:** Debra Wood Pressley (Mrs. Chuck), Route 1, Box 1516, Ashville, NC 28804 **NORTH DAKOTA:** Kelly O'Brien Elliott (Mrs. Todd), 8299 131st Street West, Apple Valley, MN 55124 **OHIO:** Susan Wisheart Little (Mrs. Donald), 5151 E Boulevard NW, Canton, OH 44718 **OKLAHOMA:** Ruby Gray Purdum, (Mrs. C.B.), Route 1, Box 147, Dewey, OK 74029 **OREGON:** Barbara Kirsch Hamilton (Mrs. W.B.), 16400 SE 135th Sp. #26, Clackamas River Village, Clackamas, OR 97015 **PENNSYLVANIA:** Debbie Fries (Miss), 1060 Oldstone Road, Allentown, PA 18103 **RHODE ISLAND:** Jill Morris Marshall (Mrs. Robert), 109 Pinecrest Dr., Pawtucket, RI 02861 **SOUTH CAROLINA:** Vicki Lynn Jinnette (Miss), 2436 Reynolds Drive, Columbia, SC 29204 **SOUTH DAKOTA:** Doris Dalin Huffman (Mrs. Richard Jr.), 1535 S. State Street, Aberdeen, SD 57401
TENNESSEE: Joyce Lockhart Gary (Mrs. Wallace), 1347 Greendale Ave., Memphis, TN 38127 **TEXAS:** Ann Elkins Hawkins (Mrs. Jerry), 103 Live Oak Lane, Lake Jackson, TX 77566 **UTAH:** Jean Peters Christensen (Mrs. William), 1669 Yalecrest Ave., Salt Lake City, UT 84105 **VERMONT:** Angela Piper Shipman (Mrs. John), 8 Bayberry Lane, Exeter, NH 03833 **VIRGINIA:** Kathy Shephard Newcomer (Mrs. Rick), 11148 Forest Edge Drive, Reston, VA 22090 **WASHINGTON:** Karen Fellows Soyk (Mrs. Lon), 31033 38th Ave., South, Auburn, WA 98001 **WEST VIRGINIA:** Lisa Bergeria Blankenship (Mrs. Glen), 208 N. State Street, Athens, WV 24712 **WISCONSIN:** Leila Yancy Wells (Mrs. William), 427 E. Bluff, Madison, WI 53704 **WYOMING:** Diane Vyhalek (Miss), 13625-B East Yale Ave, Aurora, CO 80014

XVII-N. Texas, New Mexico Collegiate Chapters, Texas and Las Cruces Alumnae Chapters

PCD-N: Diane Krause (Miss), 900 Ashford Lane #1106, Arlington, TX 76006

PAD-N: Colette Thomas Bennett (Mrs. Jess), 4402 Meadow Creek Trail, Apt. E-15, St., Angelo, TX 76904

XVII-S. Texas

PCD-S: Connie Moorhead Dempsey (Mrs. Jeff), 5301 Timberwilde Circle, Ft. Worth, TX 76112

PAD-S: Elsie Wheeler McTee (Mrs. Clifford), 4322 St. George, Corpus Christi, TX 78413

XVIII. Louisiana and Mississippi

PCD: Virginia Schattner Bryan (Mrs. Larry), 2404 Brownlee Road, Bossier City, LA 71111

PAD: Ida Marie Carter Nelson (Mrs. John), 126 Fremont Avenue, Shreveport, LA 71105

XIX. Tennessee

PCD: Clara Smith (Ms), 502 Belle Pointe Ct., Nashville, TN 37221

PAD: Jean Cox Garibaldi (Mrs.), 6616 London Dr., Memphis, TN 38119,

XX. Kentucky

PCD: Jennifer Plenge (Ms), 904 Dana Marie Drive, Louisville, KY 40223

PAD: Carol Sharpe Harper (Mrs. Spencer E. Jr.), 3309 Green Hill Lane, Louisville, KY 40207

XXI. South Carolina and North Carolina

PCD: Patricia Blackwell McLain (Mrs. Chip), 7402 Quail Meadow Lane, Charlotte, NC 28210

PAD: Patricia Menendez Tector (Mrs. John), 907 Winslow Court, Cary, NC 27513

XXII. Georgia

PCD: Cathy Kramer Leake (Mrs. Charles), 4458 Glengary Dr., Atlanta, GA 30342

PAD: Pamela Kruse Wright (Mrs. Ron), 614 South Park St. #8, Carrollton, GA 30117

XXIII. Alabama

PCD: Kathy Clark (Miss), 500 Snows Mill Ave. #1020, Tuscaloosa, AL 35406

PAD: Elizabeth (Lisa) Williams Terry (Mrs. Rick), 2252 Westmead Drive, Decatur, AL 35603

XXIV. Florida

PCD: Karly Klemp Burns (Mrs. Lawrence), P.O. Box 58050, Tierra Verde, FL 33715

PAD XXIV-S: LeeAnn Williford (Miss), 4200 12th St., #1015, West Palm Beach, FL 33409

PAD XXIV-C: Ellen Stavros (Ms.), 8673 Longwood Dr., Largo, FL 33543,

PAD XXIV-N: Diana Spivey Bishop (Mrs. Harry), 197 Burgess Rd., Pensacola, FL 32503

XXV. Virginia, Maryland, Washington, D.C.

PCD: Linda Regner (Miss), 5576 Burnside Drive, #8, Rockville, MD 20853

PAD: Shelley Belson Stepp (Mrs. Larry), 2328 Wistar Street, Richmond, VA 23229

XXVI. Arkansas

PCD: Jacqueline Fabbri Gardner (Mrs. Richard Jr.), P.O. Box 2034, Russellville, AR 72801

PAD: Dauna Jackson Jones (Mrs. Thomas S.), Route 1, Box 75, Pottsville, AR 72858

Flame Eternal

Katharine Hollister, University of Rochester-AI, was killed in the crash of Pan Am 103 on December 21. Katharine, a junior, was returning home after an exchange program in England.

ALPHA

Elsa Thoma Baer '11
Linda Klepper Graning '62

BETA

Almyra Gilchris Hyne '26
Elsie Marguerite Montag '25
Mildred Kratzer Hencle '28

GAMMA

Margaret Kelly Jacobberger '29
Marcelle Holen Sullivan '30

DELTA

Lena McNeel Anderson '17
Elizabeth Logan Jordan '35

EPSILON

Irene Beatty Lyons '27

THETA

Ferne Alford Davis '24

MU

Rose Thompson Beeson '30
Helen Harris Graves '19
Elisabeth Utz McCammon '26
Cornelia Elbow Phillips '22
Verna Lane Slaven '18

OMICRON

Marjorie Ransick Thomas '61

PI

Camille Darnall Stevenson '19
Mary Townsend Welsh '43

TAU

Evelyn Horton Hayes '22

UPSILON

Margaret Fuller Dodderidge '29

CHI

Eileene Morency Edson '34
Margo Masters Lagood '74

PSI

Charlotte Trout Green '21
Sadie Kretheotis McMillin '45
Mary Symms Pratt '29
Katrina Ragsdale '28
Betty Schimpf Burdette '40

OMEGA

Mildred Dodds Cheadle '21
Helen Rankin McPheeters '22

ALPHA ALPHA

Harriet Larson Cox '27
Helen Buendert Dixon '28
Jeannette Hollister Kean '25
Florence Baasel Nelson '34
Josephine Earlgwine Wilkinson '40

ALPHA BETA

Connie Rylander '60

ALPHA ETA

Marjorie Jones Thompson '28

Delta Zeta • Spring 1989



Each of you has a specialness that is wrapped
in the beauty of the rose you honor,
And your love blazes like the light of
your lamp.

Outstretched and open, your hands
reached out to me,
And I marveled at how much you
Willingly and graciously gave of
yourselves.

You listened carefully, grasping every
shade of
meaning from my words.
You allowed me an openness of
expression without
judging or accusing.

You accepted me and all facets of my
being,
and you have earned my trust and
admiration.

With you there are no expectations to
meet,
I enjoy being completely at ease with
you,

Since you allow me to unlock and free
the real me.

I feel secure in our friendship because
you

never turn away from me.

Your ever-present concern and devotion
overwhelm me.

Your trust and love humble me;

your presence blesses me,

In you I have found the true definition
of

the word "sisters".

With Love and Thanks,
Cherise Galasso

ALPHA THETA

Ruth Madison Darnaby '26
Donna Williams Stiles '58

ALPHA KAPPA

Henrietta Morey Bradley '32

ALPHA PI

Dorothy Youngblood Wooyerd '27

ALPHA SIGMA

Myra McLean Hicks '33

ALPHA CHI

Natalie Farrell Wilmott '29

ALPHA PSI

Iris Brown Worthington '34

BETA DELTA

Kathryn Houlihan Skok '46

BETA ZETA

June Montgomery Reynolds '33

BETA THETA

June Reidler Kimmel '31
Viola Sweet Merkle '36
Lois Everett Cook '62

BETA KAPPA

Mildred Marshall '23
Esther Klingebiel McKee '30

BETA PI

Thelma McConnell Hawes '30

BETA SIGMA

Anne Okane '33

GAMMA KAPPA

Ann Brown Halverstadt '29
Ruth Shaw Kelley '27

GAMMA SIGMA

Bess English Hathaway '25

DELTA THETA

Norma Ruth Greenhill '21

EPSILON THETA

Margaret McCue Bonsall '40

ZETA PI

Agnes Barnes Browder '25

THETA DELTA

Mary Lynn Minteer Wavle '79

THETA ZETA

Inez Fredrick Thornton '17

IOTA DELTA

Henrietta Marie Kuhn '78

IOTA LAMBDA

Geraldine Marie Guida '73

KAPPA PHI

Penny Renee Thomas

PHI BETA

Helen Hillsburg Lamphere '26



They're all Kappa Alphas: Mary Grace Johnson, 1987 Homecoming Queen at Nicholls State University, joined former Field Representative Debbie Raziano, now NSU Alumni Director, in congratulating the 1989 Queen and her court. L to r, Mary Grace, Michelle Authement, Judy Bergeron, 1988 Homecoming Queen Jennifer Amedee, Fran Lafaso, Renee Plaisance and Debbie.

POSTMASTER: Send 3579 immediately to Delta Zeta Sorority, 202 E. Church St., Oxford, OH 45056

DELTA ZETA SORORITY
202 East Church Street at Campus Avenue
Oxford, OH 45056

Address Correction Requested

Nonprofit Org.
U.S. Postage
PAID
Kansas City, MO
Permit No. 6732