



THE  
**LAMP**  
OF  
DELTA  
ZETA  
SPRING 1988





*Xi Sigma colony members at the University of North Carolina at Chapel Hill eagerly await installation.*

## **Tentative Installation Dates for new chapters**

Oklahoma State University

Alpha Epsilon

February 19-21

DePauw University

Delta

February 26-28

Duquesne University

Kappa Xi

March 11-13

University of North Carolina

Xi Sigma

March 25-27

University of Illinois

Alpha Beta

April 15-17



*Alpha Beta colony members at the University of Illinois display ΔΖ spirit on campus.*



# THE LAMP OF DELTA ZETA

Volume 77 Number 1 SPRING 1988

## FOUNDERS OF THE SORORITY



Miami University  
Oxford, Ohio 1902

Alfa Lloyd Hayes, 1880-1962  
Mary Collins Galbraith, 1879-1963  
Anna Keen Davis, 1884-1949  
Julie Bishop Coleman, 1881-1959  
Mabelle Minton Hageman, 1880-1929  
Anne Simmons Friedline, 1879-1932

## THE ORDER OF THE LAUREL

Irene Caroline Boughton  
Grace Mason Lundy  
Elizabeth Coulter Stephenson, 1881-1939  
Myrtle Graeter Hinkly, 1893-1987

## THE LAMP

The LAMP of Delta Zeta, official magazine of the sorority, is published quarterly by the Delta Zeta Sorority, 202 East Church St., Oxford, OH 45056.

Send all editorial material to the Editor, Mrs. Robert L. McKeeman, 5517 S. 74th E. Avenue, Tulsa, OK 74145. Send all matters of a business nature to Delta Zeta National Headquarters, Oxford, OH.

Send all contributions for Gallaudet College, House Ear Institute and other Founders Memorial Foundation philanthropies through the Delta Zeta Founders Memorial Foundation, and all contributions to the National Historical Museum to Delta Zeta National Headquarters, 202 E. Church St., Oxford, OH 45056.

## EDITOR

Gwen Moss McKeeman  
5517 S. 74th E. Avenue  
Tulsa, Oklahoma 74145

## CHAPTER EDITOR

Diane Jones Skelton

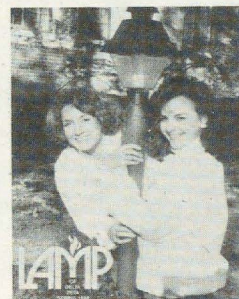


MEMBER

COLLEGE FRATERNITY EDITORS ASSOCIATION

## Contents

- IFC New Chapter Installations
- 4 Woman of the Year
- 6 Maltby house
- 7  $\Xi\Phi$  at Missouri
- 10 NPC meets in New Orleans
- 12 Parent Resource Center
- 13 Museum receives gifts
- 14 Acoustic Neuroma alumna
- 15 Book of Honor
- 16 Delta Zeta on campus
- 30 Leadership conferences
- 33 Museum contributions
- 37 Hearing Help Grants
- 38 From the Lampwriter
- 40 Flame Eternal
- 42 Campus sights and sounds
- 44 Directory



## ABOUT THE COVER

Two University of Illinois-AB colony members await chapter installation. Dates of the upcoming installations are listed on the inside front cover.



# ΔZ honors Woman of the Year

by Patricia Menendez Tector,  
University of Detroit-ΕΦ

Monday evening, November 16, in Raleigh, North Carolina was cool and slightly drizzly but inside Alumni Hall at North Carolina State University there was growing warmth from the candles on the table and the friendship of Delta Zetas, university officials and friends who had gathered to honor the 1987 Woman of the Year Kay Yow, East Carolina University-ΖΑ. Kay is Head Coach of the North Carolina State University Women's Basketball Team and 1988 United States Olympic Head Coach for Women's Basketball.

National President Norma Minch Andrisek presented the Woman of the Year Award. As Kay accepted, she shared how touched she was by the award and how a great part of her success is also because of the people who have been around her in various stages of her life who have been supportive in deeds and in thoughts thereby enabling her to be the very best person she can be.

Delta Zetas at the reception included Past National Director Sondra Golden Bass, National Reference Chairman Alberta Doran Curran, Raleigh Alumnae President Cindy Fulcher Wilson (WCU-ΘΙ), College Chapter President Lesley Harris (ECU-ΖΑ), and members past and present of Zeta Lambda at East Carolina University. Province XXI PAD Patricia Menendez Tector presented Kay and classmate, Carolyn Taylow Oldham, with their silver membership certificates and collegians from ECU sang "Dream Girl of Delta Zeta" to Kay.



*Kay Yow (left) receives the Woman of the Year award from National President Norma Andrisek.*



*Collegians from East Carolina University-ΖΑ surround Kay after singing to her.*





*"Official ΔZ family" present to celebrate with Kay are Past National Officer Sondra Bass, National President Norma Andrisek, PAD Patricia Tector, Field Representatives Sharon Rothrock and Lee Ann DeReus and National Reference Chairman Alberta Curran.*

Other guests included the Chancellor of North Carolina State University and his wife, Dr. and Mrs. Bruce Poulton, the Athletic Director Jim Valvano, Associate Athletic Director Nora Lynn Finch, many other university officials, former NCSU Women's Basketball Team members, minister at her church, Reverend and Mrs. Charles Denhart, and other friends and supporters from the community. All were pleased to have been included in the festivities and welcomed the opportunity to warmly congratulate Kay on being 1987 Woman of the Year. Mr. and Mrs. Hilton Yow, of Gibsonville, North Carolina, Kay's parents, and her sister, Debbie Yow Bowden had planned to attend the reception but were

unable to do so when Mrs. Yow required hospitalization.

A special presentation was made to Kay by Leigh Good and Elizabeth Larschan, members of our newest colony at University of North Carolina-Chapel Hill, and Field Representatives Sharon Rothrock and Lee Ann DeReus. They had made Kay an "I (Heart) ΔZ" sweatshirt out of Carolina blue material with the UNC mascot in the letters. Kay was given permission by her bosses at NCSU to accept the shirt once it was duly noted the heart was very red (one of the NCSU colors).

Patricia Tector coordinated the Woman of the Year reception with the assistance of the Raleigh alumnae chapter.



*Elizabeth Larschan and Leigh Good from Xi Sigma colony at UNC-Chapel Hill present Kay with a sweatshirt in UNC colors!*



*Classmates from ECU-ZA join Kay for the presentation. Left, Sondra Day Reed; right, Peggy Davis Carter.*





*National Historical Museum with Maltby house in the background.*



*Maltby House as viewed from the Museum driveway.*

## Trustees purchase Maltby house

by Florence Hood Miner,  
National Historian

As with all growing organizations and families, many times they outgrow their original homes. Delta Zeta, which is both, had slowly outgrown its Oxford home. The necessary office equipment was encroaching on the museum.

Other national headquarters for fraternities in the past had to purchase property either adjacent or nearby to house their offices. When the Maltby house, next door to Delta Zeta's Museum and Headquarters, came on the market at a reasonable price, the Trustees voted to purchase it.

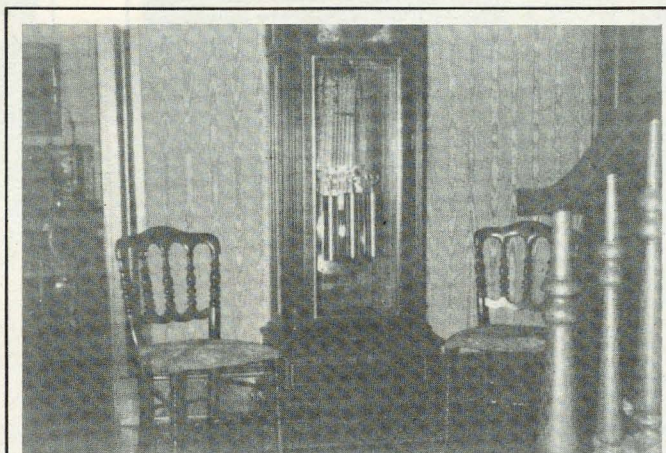
We had already been renting the garage for storage purposes, and our parking was at a minimum. The office employees had to park down the street or we would have had no visitor or delivery driveway.

If you check the accompanying pictures you will see what a choice piece of property the Maltby house would be as an addition to our museum. Additional parking space can be utilized. This house has long been a popular apartment complex for students as it is adjacent to the campus. Presently, one of the apartments has been taken over by the Curatorial committee as they catalogue and sort memorabilia from donations and Museum files.

The remaining apartments are rented, which cover expenses. The original down payment was made possible through the generous donations of former trustees of the Museum, Lucile Cooks, Grace Gorham, Betsy Leach, Aurel Ostendorf and Mary Lou Vineyard.

Our new addition is listed on the National Register of Historical

Places, and was built around 1852 for the Rev. Henry Maltby. It is Oxford's finest example of a Greek Revival residence. Eventually, when funds are available, the remaining apartments can be converted to Delta Zeta's use. Meanwhile the expanded parking space and storage room is a much needed asset.



Olga Reed Davis and her husband George came to convention last summer and brought two lovely antique chairs as a gift to the Museum. Since Olga is from Theta chapter at Ohio State it is appropriate that her pair of chairs, upholstered by her husband, should grace the grandfather clock, a gift from Cleveland Delta Zetas in the entry room of the Museum.



# *Xi Phi added to chapter roll*



*The newest addition to the Delta Zeta chapter roll: Xi Phi chapter, University of Missouri at Kansas City.*

by **Barb Poremba**  
Connecticut-ΓΒ

Kansas City, Missouri is known for many things, the home of the Royals, TWA's hub, the "City of Fountains," but it now boasts about the newest addition to the University of Missouri/Kansas City . . . Delta Zeta's Xi Phi chapter. UMKC is set directly in the center of Kansas City's Plaza area and enrolls approximately 7500 undergraduate students, many of whom commute from the surrounding areas. Chi Omega and Alpha Delta Pi were the only two national sororities for more than two decades until Delta Zeta's colonization on April 3, 1986.

Two members of the local sorority, Pi Theta Psi, Jeannie Morris and Debbie Adkisson attended MIFCA/

MAPCA in the spring of 1986 in pursuit of a national sorority. Norma Andrisek, then Director of Extension, and Field Representative Shawn O'Halloran made a presentation soon after to the local group, along with two other national sororities. During the presentation, Norma Andrisek remarked, "You'll just know which sorority will be the right choice." At that moment those women realized what their decision would be. On April 3, 1986 the new colony of sixteen women felt that they had accomplished the world when they proudly donned their rose and green ribbons and pledge pins. Shawn O'Halloran advised the group throughout the spring of 1986 and returned for their

first fall rush in September.

Over the summer, a most intriguing woman came forward from the Greater Kansas City alumnae chapter and volunteered to be the CCD for this new group. Meryl Lin McKean, a graduate of Central Missouri State University, is a well know television personality in Kansas City, as she is a news reporter for WDAF-TV (an NBC affiliate) and president of the alumnae group also. This dynamic woman became the backbone and motivator of the colony.

From April of 1986 to November of 1987, the Xi Phi colony's determination and energy lead them through the obstacles presented at this unique academic institution. Car washes,





*"Official family" members helping Xi Phi celebrate installation are (back row, l to r) Barb Poremba, Carolyn Woodling, Dana McMillan, Eileen Doe. Front row, Meryl Lin McKean, Janet Armstrong, Golden Rose member Dora Deiger Bice (Kansas-AΦ), Norma Andrisek and Carolyn Gullatt.*

Halloween parties for local children, clothing to Children's Mercy Hospital, retreats at the lake and a picnic with the Greater Kansas City alumnae chapter were all a part of the agenda, along with RUSH. On a campus such as UMKC, commuter students are carrying a full academic schedule, working part/full time, generally have some family commitments, and sometimes find it difficult to secure the extra time and energy needed to join a sorority. Field Representative Sharon Rothrock was on hand throughout intervals of 1987 to add to their enthusiasm and help them reach their goal of total membership, thirty-five.

Fall of 1987 was the real rush toward the last stage of the initiation goal. In June they had obtained a house and began to make it look like "home" as well as a communications center for activities and a meeting place. September brought National Director Merry Adamcik and a successful rush consisting of a 50's Grease party, ΔZ Tours the Big Apple, and Preference night. Delta Zeta pledged 16 new and excited women, reaching their last phase of the goal, campus total.

The week prior to installation was a busy time for the Xi Phi women. Lamplighting inspirational gifts were sent from Central Missouri State-EG, the big sister group, as well as many letters and cards from Delta Zetas around the country. Field Representative Barb Poremba was on hand to



*Dr. Gary Widmar, vice chancellor at the University of Missouri/Kansas City welcomes Delta Zeta to the campus.*



*Installing officers are from Epsilon Gamma chapter at Central Missouri State University.*

assist in the final details and lamplighting ceremonies. A sisterhood song night and friendship circle were mid-week surprises, followed by a pre-event pizza party with the initiation officers on the eve of their big day.

November 21, 1987 began with a beautifully performed initiation service by the women of CMSU. Initiation officers were Leann Danner, Carol Kirgan, Chris White, Gina Morely, Jennifer Turner, Mendy Eckerle, Dianna Manos, Sara Collins, Jill Statton, and CCD Penny Williams.

The traditional installation banquet was held at the Embassy Suites Hotel in the heart of Kansas City's Plaza area. Past National President and Director of Extension, Carolyn B. Gullatt was the toastmistress. The invocation was given by Leigh Almand. Province Alumnae Director Eileen Hoffman Doe and Province Collegiate Director Dana McMillan welcomed the Xi Phi women to Province XI. Jeannie Morris, president of the colony speak about some of the ups and downs of the colony and it's determination to succeed. Collegiate Chapter Director Meryl Lin McKean expanded on the warmth and love that has grown within this group and her very positive experience of working with them. Field Representative Barb Poremba read a poem on behalf of all the women who had the opportunity to work with this chapter, one on the topic of reaching the goals set forth by Susan Polis Schultz.

Janet McBurney Armstrong, (Oregon State-X) Delta Zeta's 1974





*Initiate Heather Manis receives a rose from Barb Poremba.*

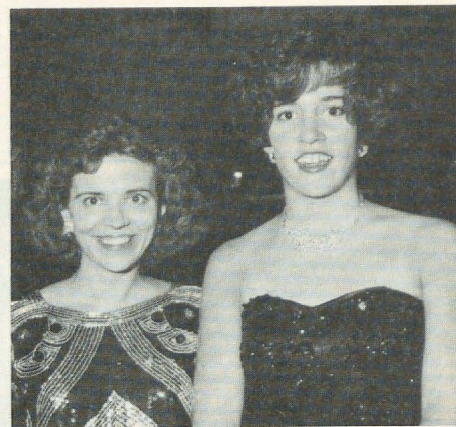


ΞΦ

Woman of the Year, was the keynote speaker. Jan shared the value of sisterhood and opportunity for alumnae communication through examples from her own past which has taken her to many countries and U.S. cities. Dr. Gary Widmar, Vice Chancellor of Student Affairs, gave remarks from UMKC on the value of the Greek experience and its place at this institution.

The installation service was conducted by National President Norma Minch Andrisek. Panhellenic Advisor Carol Clark, accepted the chapter on behalf of the university. Several members from the newly installed chapter sang, "The Rose," as Barb Poremba conducted the Rose Ceremony. The banquet ended with the traditional Friendship Circle.

Charter members of the Xi Phi chapter are: Debbie Adkisson, Leigh Almand, Denise Atchinson, Lisa Castro, Susan Cleeton, Kim Deathridge, Velanie Edwards, Jeni English, Lisa Helwig, Michelle Hestand, Lisa Kolenda, Beck Landis, Kerry Leftwich, Lee Ann Lundy, Heather Manis, Jeannie Morris, LeRae Olds, Melanie O'Neal, Marla Ressler, and Katie Shea.



*Xi Phi CCD Meryl Lin McKean with Chapter President Jeannie Morris.*



ΞΦ



National Council is pleased to announce  
the return of Kappa Xi Chapter  
to  
Duquesne University  
Pittsburgh, Pennsylvania  
with the pledging of a local  
sorority of 50 members.



# NPC meets in New Orleans



*Delta Zeta's delegation to the 50th biennial session of National Panhellenic Conference in New Orleans: L to r, Editor Gwen McKeeman, First Alternate Marvona Tavlin, NPC Delegate Carolyn Gullatt, Third Alternate Norma Andrisek, COE Cindy Winslow and Second Alternate Deanna McKinnon.*

by **Ginger Banks**  
NPC Delegate,  
Alpha Omicron Pi

Salutes to the past and the future, and discussions about issues of the present were among the highlights of the 50th Biennial Session of the National Panhellenic Conference. The gathering of representatives of the 26 member groups was held at the Fairmont Hotel in New Orleans, LA from Nov. 4 to Nov. 7, 1987.

Sidney G. Allen (Alpha Sigma Alpha), 1985-87 Conference Chairman, emphasized that providing increased educational opportunities, a goal she had as Chairman, would be a major thrust of the NPC meeting.

Accordingly, the NPC delegates were offered four major educational programs during the meeting.

The first program was the presentation of a 13-minute videotape, "Greeks Today, Here to Stay," which was prepared by the NPC Executive Committee. Produced in association with the University of Illinois, the tape outlines the advantages of Greek membership. The tape is available through the NPC Central Office to college panhellenics, Greek advisors, and other interested parties.

Three Greek advisors provided insights into their jobs during a panel discussion entitled "A Day in the Life of a Greek Advisor."

Presenter Terry Appolonia of Indiana University of Pennsylvania and incoming President of the Associa-



tion of Fraternity Advisors identified five major issues confronting college women: (1) drug abuse (including alcohol); (2) self-esteem (date-acquaintance rape, eating disorders, and hazing); (3) sexual identity; (4) personal and chapter liability; and (5) academic achievement.

In describing her role as a Greek advisor, Kim Padulo of San Diego State University emphasized the many hats she wears and the many skills she has developed as a result.

Jill Zimmerman of the University of New Orleans outlined the importance of university interaction with the parents of its students since her university is a commuter campus.

A third educational program was presented by Zeta Tau Alpha on "Eating Disorders." Dr. Sue Beth Hudson, Emergency Physician in Tidewater, VA, and Judith Royal, Licensed Professional Counselor and Foundation Director of the Women's Therapy Center in Norfolk, VA, focused on the

prevalence of eating disorders among college women.

They stated that approximately one out of every four college women exhibit symptoms of anorexia or bulimia. According to the presenters, sorority women tend to be particularly susceptible to eating disorders because of their eagerness to achieve and comply with society's demands for slenderness.

Another societal concern was the topic of the fourth educational program. Gary Bonas, Assistant Director of Student Activities and Greek Advisor at Villanova University, tested the delegates' knowledge about AIDS. Bonas, 1987-88 President of the Association of Fraternity Advisors, discussed many of the misconceptions and current knowledge about the disease and how they are affecting college students. Bonas also presented a videotape about AIDS which was produced by Kappa Alpha Theta.

In addition to considering such social issues, the NPC delegates addressed particular panhellenic matters through the adoption of nine resolutions. The Conference:

- Clarified procedures for preferential bidding and bid-matching. The new procedures will be included in the *National Panhellenic Conference Manual of Information* and "How To" For College Panhellenics.
- Amended Unanimous Agreement, Panhellenic Compact, Number 4 to clarify the intent that a signed Preference Card is binding. "If the rushee receives a bid under the preference system, she is ineligible to be pledged to any other national fraternity on the same campus for one calendar year . . ."
- Reaffirmed extension procedures which require approval of the "proper authority" before an NPC group may establish a chapter on a campus. The Conference also decided that NPC member groups must inform interest groups/local groups or individuals that formal permission to pursue extension must be obtained from the proper authority as defined in the Unan-



ymous Agreements.

— Voted to provide a professional educational session for Panhellenic Advisors attending regional conferences and/or other appropriate meetings.

In other actions, the delegates established the NPC Liaison Committee with the Fraternity Executives Association as an NPC Standing Committee; eliminated the Surveys and Projects Committee as an NPC Standing Committee; agreed that the insignia of the National Panhellenic Conference may be used by member groups and clarified that each provision within the seven subject categories of the Unanimous Agreements is a Unanimous Agreement.

Saluting the past, the Conference voted to establish an NPC Archives Collection which will be housed at a suitable university which has a broad interpretation of NPC member groups. An ad hoc committee consisting of professional archivists and/or historians who are members of NPC member groups will select the institution and implement the project.

In addition to the seven business sessions, representatives had many opportunities to exchange ideas during informal meetings, luncheons, and dinners.

The Alumnae Panhellenic Brunch utilized a Mardi Gras theme to honor alumnae panhellenics which had demonstrated responsible communication with their NPC Area Advisors and which had served their communities. Receiving Citations of Merit were:

Arlington, TX; Birmingham, MI; Chicago North Shore, IL; Clear Lake, TX; Columbus, OH; Denver, CO; Detroit, MI; Diablo County, CA; Escondido, CA; Hawaii; Houston, TX; Indianapolis, IN; Lubbock, TX; Mexico City; Montgomery, AL; Newport Harbor, CA; and Phelps County, CO.

Also Reading, PA; Riverside, CA; Rockford, IL; Schenectady, NY; South Brevard County, FL; South Jersey, NJ; Southwest Dallas County, TX; Topeka, KS; Youngstown, OH; and Waco, TX.

College panhellenics and the outstanding advisor were honored during the Awards Banquet held on Nov. 7. Hosted by Alpha Epsilon Phi, the toastmistress was 1985-87 NPC Chairman Sidney G. Allen.

Awards announced during the banquet were:

*National Panhellenic Conference Award* (to the college panhellenic with a membership of seven or more NPC groups for overall panhellenic excellence and adherence to NPC guidelines): 1st, University of Illinois; 2nd, Colorado State University; and 3rd, University of Maryland.

*Awards Committee Award* (to the college panhellenic with a membership of six or fewer NPC groups for overall panhellenic excellence and adherence to NPC guidelines): 1st, Birmingham-Southern College; 2nd, University of South Florida; and 3rd, Milliken University.

*Fraternity Month Award* (for the most outstanding public relations program): 1st, University of Florida; 2nd, University of Tennessee; and 3rd, University of Illinois.

*College Panhellenics Committee Award* (for excellence in rush): 1st, University of California, Santa Barbara; 2nd, San Diego State University; and 3rd, University of Washington.

*Outstanding Advisor Award*: Kim Padulo, San Diego State University.

The future directions of the Conference will be explored by a new committee, Project Future, which was established by incoming Conference Chairman Beth Saul (Alpha Epsilon Phi).

Comprised of a representative from each NPC member group, Project Future will assess NPC approaches, policies, and procedures through study groups in five major areas: finance, structure, collegiate concerns, services, and public relations. Overall chairman of Project Future will be Norma Jorgensen (Kappa Alpha Theta).



Beth Kersten Saul, Alpha Epsilon Phi, 1987-1989 NPC Chairman.

"NPC must be proactive in seeing future problems coming and prevent them," said Beth Saul in her remarks to Conference delegates upon assuming the chairmanship. "We must contemplate several alternatives and select those that are in keeping with our underlying philosophy, but that are meeting the needs of our times."

The incoming Chairman selected as the theme for the 1987-89 biennium "Cherish the Past, and Chart the Future." Joining her on the NPC Executive Committee are Secretary Louise Kier (Phi Sigma Sigma) and Treasurer Marianne Mendelson (Delta Phi Epsilon).

In concluding her remarks as incoming chairman, Beth Saul said, "We will have some difficult decisions to make. We must examine the quality of our programs, our future financial resources, and trends in our society and the university."

"However, our Panhellenic Creed is clear in purpose and philosophy. It states our goals and our mission, but leaves paths of implementation for long-term vitality in (NPC's) very capable hands."

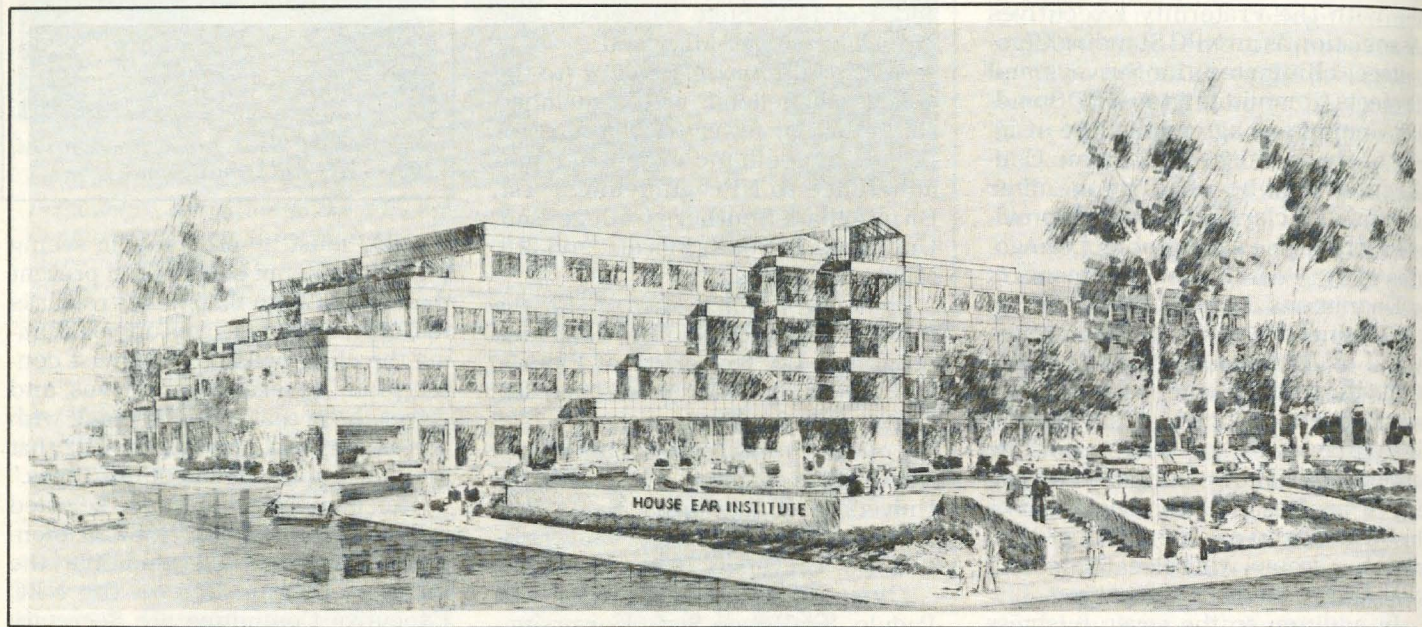
## FOR FUN AND FRIENDS, START AN ALUMNAE PANHELLENIC

Thinking about organizing an Alumnae Panhellenic group in your town or city? For help, contact your NPC Advisor for Prospective Alumnae Panhellenics:

Jan Covington (Mrs. R. L.)  
1112 Walnut Drive  
Morgan City, Louisiana 70380



# Parent Resource Center planned at new House Ear Institute



by Betty Paul DeWitt USC-AI

A campaign has been launched to raise \$75,000 to finance the "Delta Zeta Foundation Parent Resource Center" in the Children's Center at the new House Ear Institute which began construction in Los Angeles in February, 1988.

The Center will include a "total media library" for children with ample space for shelving, tables, chairs and displays. The 600 square foot area also will include a work room, storage areas and a librarian and secretary's office.

Parents of hearing-impaired children often feel a sense of loss accompanied by shock, anger, guilt or denial. They soon realize that their knowledge is limited and find that public libraries do not have adequate material on deafness and hearing impairments. This new center will help correct this problem.

The Institute at present leases space from the St. Vincent Medical Center and is located in a former dormitory remodeled and adapted as a research center. When the new 120,000 square foot complex is completed, it will provide adequate space

for the staff which has grown from 30 employees in 1974 to 80, with further room for expansion.

The House Ear Institute was founded in 1946 by Howard P. House, M.D. as a non-profit organization and does not seek or receive government funding. During the past 16 years, William F. House, M.D., and the Institute staff have developed a new electronic device, the cochlear implant, which provides the formerly unaidable deaf with a sense of sound.

By using this device the deaf person can hear his own voice, identify environmental sounds and learn to understand and produce spoken language. This and other projects have made the Institute one of the foremost hearing research centers in the nation.

House Ear Institute was adopted as a national philanthropy at Delta Zeta Convention in 1983. Since that time, the Founders Memorial Foundation has worked toward informing the membership about the overall work done at the Institute.

It is hoped that members everywhere will contribute to this building

program. All contributions are tax-deductible and should be made payable to the Delta Zeta Founders Memorial Foundation. Indicate they are for the House Ear Institute and mail them to the Foundation at National Headquarters.





# Museum receives gifts



*Irene Boughton's gold bracelet reflects the unions with Delta Zeta.*

by Susan Mease, Samford-AII

Many fascinating, beautiful, unique items have come to light as the Delta Zeta National Historical Museum curatorial staff gradually work their way through the many boxes of memorabilia at Oxford.

Irene Boughton, a Past National President and long-time Executive Secretary, recently sent a large number of items she collected or was given during her years in ΔZ service. There are three bracelets which were gifts from Burr, Patterson, Auld Jewelers and are indicative of a period when jewelery was much less expensive than it is now. One bracelet is made up of 12 gold washed oval links with five amethyst colored stones in the links and the Delta Zeta Crest mounted on the middle link. The second bracelet is of sterling with a green stone and stylized silver flowers with the Crest in the middle link. The third bracelet is yellow and rose gold with gold roses and the Crest in the middle link.

There is also a spectacular gold charm bracelet which Miss Boughton wore to represent the groups merged into Delta Zeta. The charms are a ΔZ lamp recognition pin, Theta Upsilon badge, Phi Omega Pi badge, ΔZ crest

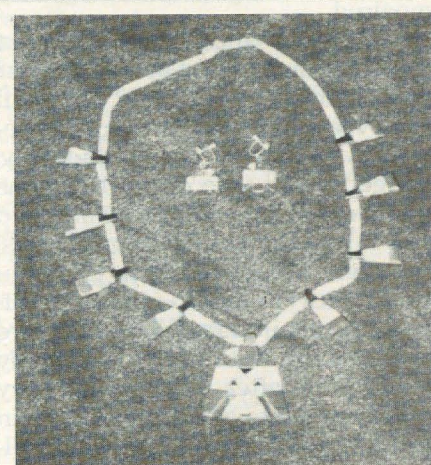
dangle, ΔZ recognition badge, Delta Sigma Epsilon badge, Colonnade Club pin replica, Beta Phi Alpha badge, replica ΔZ pledge pin and a medallion with staggered ΔZ letters and ICB engraved on the reverse.

There are four "Lamps of Learning" from Irene's collection and a red satin robe which she kept to wear especially for Council meetings, various convention favors and programs, her Order of the Laurel, her initiation certificate into Iota Chapter on October 12, 1921, and a sterling spoon given to Iota graduating seniors in 1923 with her name engraved on the back. There is also her Order of the Golden Rose presented April 17, 1971 and signed by Elizabeth Devereaux who was National President to Irene Caroline Boughton, Executive Secretary. In a nice illustration of "what goes round, come round," Liz Devereaux symbolically received these items in her role as president of the National Historical Museum.

Irene also provided a tangible link between the Founders and the present time by donating a set of 12 sterling teaspoons monogrammed "F"

which had belonged to Anne Simmons Friedline and the Delta Zeta badge belonging to Alpha Lloyd Hayes.

There is no "typical" donation to the National Historical Museum but Irene Boughton's gifts are representative of the variety of things that make their way to Oxford to remind us of Delta Zeta past.



*This thunderbird necklace was sent by Myrtle Carlisle of Delta Sigma Epsilon. This is an unusual example of Navajo art made of coral, turquoise and black vinyl. A truck filled with phonograph records had turned over on the reservation and the Indians incorporated the bits of records in their jewelry.*



*Curatorial committee meets in Oxford: Grace Pritchard Gorham, Betsy Bradley Leach, Lucile Crowell Cooks.*





# Acoustic Neuroma alum tells it like it is!

by Marianne Belding Willing  
Ohio State University-Θ

Acoustic Neuroma . . . hardly household words and certainly a mouthful. But those two words have brought me a new and personal appreciation of Delta Zeta's philanthropy, help for the hearing impaired.

Although I realized for a number of years that the hearing in my right ear was deteriorating, it was not until three years ago that seemingly unrelated symptoms occurred. Suddenly, my feet would take off in directions on their own from which I wanted to go and I would make sudden lurches. One night I blacked out in the bathroom. We were due to move to a different house in a few days and were busy packing. But I went to my family doctor who, after a few preliminary tests, sent me to a neurologist. He, in turn sent me to have a CAT scan, telling me it was probably a tumor in my right ear. I had an appointment with a neurosurgeon who explained that an acoustic neuroma is a benign tumor in the inner ear which "flowers out" into the skull base. It can displace brain cells, causing various problems.

During the month of December 1984, I was in and out of the hospital — tests made, a shunt inserted to drain excess fluid from my brain, and finally, five days before Christmas, the delicate micro-surgery was performed to remove the tumor from my ear canal.

Among the results of this surgery (severity of results depend on the size of the tumor) certain nerves controlling facial movements are damaged or destroyed. This causes partial facial paralysis, an eyelid that won't close, "dry eye" because of the inability of the lacrymose gland to produce tears, difficulty in swallowing, one-sided hearing loss, balance problems and other physical and emotional problems.

My first look in a mirror after my



Marianne Willing

operation showed half the hair shaved off my head, the right half of my face sagging, my right eyelid taped closed. My loving husband and children gathered around and helped make Christmas Day in the hospital a special event. Two months later I went back for an operation which separated a nerve in my neck which was then attached to the facial nerve. This, growing very slowly, regenerates the facial nerve and, hopefully, results in a return to more normal function on the affected side.

I did not at first realize that I had also, over time, sustained some hearing loss in my "good" ear. I found I was having difficulty hearing on the telephone. The orontologist suggested a hearing aid. I tried several types before I got a "bi-cros" which consists of a radio transmitter on the non-hearing side and a radio receiver on the hearing side, both incorporated in the earpieces of my eyeglasses. This enables me to hear conversations on my deaf side. It has its drawbacks. (Several time I have picked up brief radio-transmitted sentences on CBs and certain electrical fixtures create an annoying hum.) But things are so much better with it

than without it and I can hope that miniaturization of computer chips and other technical devices can be used to produce improvements in the future.

Balance problems, related to my hearing loss, are always with me. I have fallen flat on my face enroute to the Baltimore Aquarium. In Moscow, I hopped off the bus taking passengers from plane to terminal and crash-landed against the side of the building. I fell on an escalator at Kennedy Airport. In a French railway station I leaned over to pick up my suitcase and kept going over. These are among the inconveniences I am learning to live with.

My facial paralysis is better though my smile is still lop-sided. I can now close my right eye but I can't wiggle both sides of my nose. Just recently I started using new eye drops which makes it possible for me to drive a car after two and a half years. My tongue is half numb and I still carry and use straws with hot liquids.

The most trying for me is the difficulty of hearing in group situations. The buzz of conversations is just that — a buzz. Face to face I can usually understand most people. But at a ΔZ meeting, I don't register what the person across the room is saying. Sometimes I get a word here and there so I think I can piece together the connecting idea. This has led to some hilarious misunderstandings. I hear the lower tones but have difficulty with higher ones. (I can understand men better than women.) I sometimes wish my sons would shave off their mustaches as they conceal lip movements. Music has become lost to me because distortion makes it all atonal.

My husband Ed and I are enthusiastic travelers and since my operation

(continued on page 15)



# Book of Honor, a loving tribute



Delta Zetas continue to designate their contributions to the Founders Memorial Foundation as honor gifts which pay tribute to that special someone deserving a thank you or recognition, i.e., happy birthday or anniversary, new baby, campus or community achievement, outstanding service, etc. Gifts received are acknowledged with a special card sent to the honored person by the Founders Memorial Foundation. These contributions are tax deductible and are used to supplement Scholarships, Hearing Help Funds and the Foundation Endowment Fund. BOOK OF HONOR gifts received from July 1, 1986, to June 30, 1987, honored the following:

Mary Margaret Calhoun Fore  
Mary Ann Gallatin French  
Anne Marie Jones Gavin  
Sylvia Sue Schrader Gorman  
Carolyn Barnes Gullatt  
Donna and Bill Happ  
Ann Elkins Hawkins  
Patrick Ford Henley  
Laura Cain Herschl  
Carolyn Kelleway Hiland  
Lynnda Wolf Hoeffer  
Barbara Tweed Holland  
Huntsville AL alumnae chapter  
Judith Sherin Kline  
Evelyn Barr Kramer  
Karen Krammer  
Diane Krause  
Diane Dershem Kreider  
Barbara Phillipi Lancaster  
Cathy Kramer Leake  
Tracy Wilson LeSieur  
Frances Pickens Lewis  
Joyce Low London  
Joan Dondrea Lowry  
Genevieve MacMillian  
Arlene Newman Marshall  
Jane Ann Maxwell  
Brittany Ann McKeating  
Gwen Moss McKeeman  
Deanna Alleman McKinnon  
Elsie Wheeler McTee

Susan L. Mease  
Kyle Raymond Michaelson  
Florence Hood Miner  
Carol Johnson Miskell  
Eunice Murial Moe  
Michael Timothy Monteen  
Sandra McAllister Nesbitt  
Carl Robert Palm  
Elizabeth Petrucce  
Debbie Raziano  
Rhonda Reifschneider  
Patricia Canady Rosser  
Samford-All chapter  
San Antonio, TX alumnae chapter  
Kathleen Bosworth Sandy  
Patricia Schaefer  
Gail Schoonover  
Teresa Johnson Severy  
Mary Beth Shobel  
Charlotte Fields Silversteen  
Sue Adrianson Skambis  
Diane Jones Skelton  
Maija T. Smith  
Marvona Easley Tavlin  
Lisa Fisackerly Tuttle  
University of Alabama-AI chapter  
Karen Mast Wake  
Adrienne Jamieson White  
Amanda Kristin Williams  
Cynthia Lynn Winslow

Emily Kaye Adamcik  
Merry Westbrook Adamcik  
Sue Jones Allen  
Norma Minch Andrisek  
Auburn-BE chapter  
Carrie Baker  
Nita Midgley Baldwin  
Sondra Golden Bass  
Mary Blair  
Ann Butler Booth  
Elizabeth Barbieri Bragg  
Carol Ann Dowling Britt  
Debbie McWhirter Bruce  
Beverly Baldwin Burnsed  
Clark Alan Bush  
Nicholas Raymond Chrisian  
Catherine Avery Clay  
Lois Walker Coates  
Kristin Comet  
Lucile Crowell Cooks  
Kristin Cornet  
Jodi Cox  
Pamela McClure Cronenwett  
AZ Lamplighters of Southern California  
Karen Martin Dessel  
Elizabeth Baker Devereaux  
Betty Paul DeWitt  
Wendy Armour Dickinson  
Donna Hudson Dunn  
Hayley Hudson Dunn  
Phyllis Snape Favorite  
Penny Payne Fiorvante

## Acoustic Neuroma alum (continued)

we have made two trips to Europe and will soon leave on another. However, I have to rely on Ed to keep directions, time tables and meeting places straightened out and I often miss much of what the guide is saying.

Nevertheless, being an acoustic neuroma "alumna" has not been all bad. About a year after my operation, I was invited, along with Ed, to the charter meeting of the Wilmington chapter of the Acoustic Neuroma Association. The national group, founded just six years ago, is an all-volunteer self-help group whose members are ex-patients, relatives, friends and professionals such as physicians, nurses, audiologists and physical therapists. Locally, we have had physician-speakers as well as the chance to exchange experiences related to this condition and ways of coping with others who have "been there." The national organization

publishes a quarterly newsletter and sponsors an annual symposium with lectures and workshops led by physicians and other professionals. Of greatest importance is meeting others from all over the United States who look like you do and have undergone the same or similar problems.

In less than 10 cases out of a hundred having hearing losses, this is due to acoustic neuroma. Are there any other Delta Zetas out there who have had this condition? I would love to hear from you.

The Acoustic Neuroma Association, P.O. Box 398, Carlisle, PA 17013, also welcomes as members those who have been afflicted with other cranial tumors and have undergone similar problems.



# Delta Zeta on campus



*Student Government Association Senators at Nicholls State-KA include Kelly Badeaux, Shelly Badeaux, Lea Ziegler and Mary Grace Johnson. Not pictured are Adrienne Callais and Nicol Rubichaux.*

by Diane Jones Skelton

## ALABAMA

**Alabama, Alpha Gamma** Delta Zeta is the first recipient of the Student Government Association's Spirit Cup as the most spirited Greek organization on campus. Enthusiastic members attended pep rallies (with spirit in tow), decorated the house with signs, participated in school activities (including homecoming's blood drive, canned food drive and Quad games), and won second place honors in homecoming lawn decorations. Delta Zeta won the much prized Homecoming Spirit Cup, and a few weeks later at the Alabama-Auburn game, won the overall Spirit Cup Award. Three of the 12 *Corolla* favorites are Lisa Kay Draughn, Stephanie Vaughn, and Stacy Whisenut. Kelli Abbott is among the Top Twenty beauties. Delta Zetas spent the first Saturday in December caroling for more than 40 residents at the Presbyterian Retirement Home.

**Alabama-Huntsville, Lambda Kappa** — A quota pledge class enjoyed a pledge retreat at a cabin on beautiful Lake Guntersville, modeled fashions for a winter fashion show, and held their formal at the Huntsville Marriott. At the UAH Hockey Homecoming pep rally, Delta Zeta won the spirit contest by sweeping the skit, banner and cheering competitions. More than a hundred Delta Zetas and their dates gathered to roast marshmallows and ride atop the hay at the Delta Zeta hayride, and members served at the "dry bar" on campus during Alcohol Awareness Week.

**Auburn, Beta Xi** — Delta Zetas adapt to change well! And Beta Xi proved the fact as they rushed in the Foy Union Ballroom this fall while dorm renovation was underway. Four of the sororities that moved to temporary dorms celebrated the move with a Now You See Us, Now You Don't Relocation Party. The fall for-

mal rush was successful, as Beta Xi added 55 pledges. The new dorm will be ready next year. Homecoming festivities included fraternity socials, fraternity-sorority lawn socials, and a tea for alumnae and parents. Shannon Kelly and Kelly Eldridge were among the Top 20 for Miss Homecoming. Members learned tips on job hunting at a quarterly enrichment program on interviewing. Beta Xi won second place in Aubie Mascot Calendar sales, and the volleyball team is currently undefeated and on the way to the playoffs. Members treated Headstart children to Halloween and Christmas parties, and baked over 1000 cookies for fraternity men for the holidays. Hostesses for Auburn sports teams include Michelle Estes, Lynne Dodd, Cameron Woosley, Karen McInnis and Amanda Bruce, basketball; Karin Peitsch, Dara Miller, soccer; Lacey Goodwin, Amy Giurato, swim and diving team; Lara Hester, Tracy Hill, Angie Patton, baseball; and Debbie Ownes, Cathy O'Brien, Lori Thomas, Dana Baker, Karen Reece and Catherine Hoover, tennis. Jennifer DeMocko is a member of the Tiger Pause Dance Team, while Amy Keahey is a member of Beta Alpha Psi. Courtney Cook serves as vice-president of University Singers.

**Auburn Montgomery, Lambda Nu** — *Who's Who Among Students in American Universities and Colleges* lists Laurie Cutts, Tammy Knapp, Renee Wood Salley and Jackie Palmer. Jackie was also tapped for Omicron Delta Kappa leadership honorary. Kelly Dugan is a freshman senator. Tauna Little captured a role in the AUM production of *Playmates*. Chapter Treasurer Laurie Cutts chaired the campus Harvest Moon Festival, while Sarah Noble chaired the AUM Rock-a-thon. Lambda Nus sold cokes and baked goods at the Harvest Moon Festival. Delta Zeta sold raffle tickets to benefit United Way, and supported the Student Government Association by participating in skating parties, movies, blood drives, goofy

golf and SGA dances. Members enjoyed three exchanges with fraternities.

**Jacksonville, Lambda Gamma** — Delta Zeta is enjoying one of its most successful years since the chapter's installation in 1977. In formal rush, Delta Zeta pledged 10. Since quota was 26, the chapter began open rush immediately, and now boasts a pledge class numbering 30. At a United Way fundraising day, Delta Zeta organized a *Student Slammer*. From the day's events, United Way gained \$300 with \$140 from the slammer! Another philanthropy project consisted of stuffing Halloween bags for the children at the Cerebral Palsy Center. Social events included the pledge formal at Indian Oaks Country Club, four fraternity socials, and a Grab A Date Party. Recipients of scholarships include Carla Byrum, Jenny Wright, Patti Hipp, Marianne Britz, and Anderia Smith. ROTC sponsors are Jennifer Higgins, Christi McCarty, Michelle Hatcher and Gretchen Smith. JSU Athletic Hostesses are Janet Fowler, Penny McGee, Amy Henderson, and Becky McCay. Members of the Student Senate are Lisa Blanton, Elise Tillman, Kathy Daley and Jenny Southerland. Campus honoraries include Lisa Blanton, OAK; Elise Tillman, and OAK, and Jennifer Higgins, SΔX. Angela Askew is vice-president of Panhellenic Council, and Marianne Britz won the 1987 Service Award from the nursing community.

## ARKANSAS

**Arkansas Tech, Lambda Alpha** — The chapter's best overall participation in Alcohol Awareness Week brought an award for the third consecutive year. Senior Joyce Chapman was chairman. The chapter's entry in the homecoming parade placed second and they participated in a campus beautification project. Leisa Cossey is listed in *Who's Who Among Students in American Universities and Colleges* and is a member of Alpha Chi honor society. Joyce Chapman was recognized by Order of Omega for outstanding interfraternity contributions. Renee Wooley is sweetheart of Theta Chi and Allyson McEwen is vice president of Panhellenic. Selected for the President's Leadership Program were Renee, Jackie Gronwald, Stephanie Meeks and Allyson. Angie Alexander and Teresa Gustavus are co-captain and captain of the ATU flagline. Orientation advisors are Leisa Cossey and Kathy Lowrey and Theresa Duncan is a homecoming maid. Bacchus members are Teresa Mitchell, Theresa Duncan, Susan White and Kim Saylor.

**Central Arkansas, Epsilon Xi** — Delta Zeta added 26 pledges in a successful fall rush. When nearly completed with their pledgship, these enthusiastic pledges surprised initiates by dropping by their homes to serenade them with *Silent Night*. Social events include a *Wipe Out* "beach" party at the Conway Holiday Inn. Decorations included beach scenery, sand, and a mini skateboard. Members celebrated the holidays with a Christmas formal. Alumnae



returned to celebrate a joint Homecoming-Founders Day Tea and favorite instructors were also treated to a chapter tea. Robyn Lowery, first runner up to Miss Arkansas USA, won first-runner-up honors for campus pledge queen. Amy Davis was first runner up to Miss Body Beautiful.

## CALIFORNIA

**California-Long Beach, Delta Alpha** — Winning the Dean's Trophy for the third consecutive year highlighted the fall semester for Delta Zeta. Chapter activities included a Founders Day celebration with alumnae at Lakewood Country Club, a Mystery Date Dance, a winter semi-formal, second place wins in Sigma Pi softball and Alpha Gamma Omega Wallyball. Delta Zeta participated in Kappa Sigma Powderpuff and enjoyed five fraternity exchanges. Kappa Sigmas transformed their house into a golf course and drove Delta Zetas from tee to tee in a golf cart at their exchange. Members enjoyed a retreat at Big Bear Mountain, and moms were treated to a Mother-Daughter Brunch. Enrichment capsules included lively topics like time management, study habits, and aerobic shoe selection. Delta Zeta supported charity events by selling crush-grams, and working for the blood drive and Shoreline Marathon. Other Greeks are taking notice of the new Delta Zeta morale — and LAMP Editor Diana Risco attributes much of this morale to the president's new Special Sister Award presented weekly at chapter meetings. The award recognizes outstanding participation by chapter members. Cheri Hanan, Jenny Beckett and Diana Risco earned Dean's List honors. Betsy Gage serves Panhellenic as secretary.

**California-Los Angeles, Theta Rho** — Although the Los Angeles earthquake interrupted rush, closed campus for a week, and damaged the chapter house, Delta Zeta ended the second week of rush with a pledge class of 15! Pledges coordinated a spaghetti dinner for other Greeks, alumnae and parents as a chapter fundraiser. Following the dinner, initiates decorated the dining room with streamers, posters and balloons and surprised pledges with a "half-way" through pledgship party. Other chapter activities included enrichment

capsules of nutrition and alcohol awareness, an all-dorm pizza party, and capturing the fall football intramural championship. Recipients of scholarships include Lisa Nagato, Pasadena Foothill Alumnae Scholarship; Julie Devita, Maria Savage Nursing Scholarship; Celene Molina, swimming scholarship; and Jackie Bozajian, Savannah, Georgia College of Art and Design Scholarship. Sandy Schuelke serves as vice-president of Ambassadors for Cal State LA; Rosalina Gonzalez is also an Ambassador. Julie DeVita serves as treasurer of Alpha Tau Delta. Jackie Bozajian won the Union '76 Art Industry Award, the Standard Brand Art Award, and the Otis Parsons Scholastic Art Award.

**Loyola-Marymount, Xi Omicron** — In a successful rush, Xi Omicron added 29 pledges — the largest pledge class since colonization. Fall activities included the first Black and White Ball, and raising funds for the chapter by working for hourly wages at May Co. Department Store's one day sale. In another chapter fundraiser, Lynn Brady, Jayme Lorentz, Eileen Venzon and Suzanne Hawn rowed for cash in the Loyola Crew Meet. The Delta Zeta team clocked the fastest rowing average and earned \$350 to go to philanthropy. *Who's Who* lists Michelle Storrie and Jennifer Mulvihill. Chapter President Kelly Palmer also serves as president of the campus service group. Terrie O'Connel is head resident advisor, while Amie Losi is a resident advisor. Franca Dell'Olio serves as co-captain of the cheering squad.

**San Francisco, Xi Lambda** — Members are enjoying the first Delta Zeta room. Though the room isn't very large, it's just the right size to squeeze almost the entire chapter through the doors. The University Center Lounge provided the perfect locale for the chapter's first Pledge Presents. The pledges, in long white dresses, were presented to family and friends by big sisters who related interesting facts about their little sisters. The chapter calendar included a car wash, potluck dinners before meetings, and a Christmas party with the Mt. Diablo alumnae chapter. At the party, collegians and alumnae created Christmas ornaments for hospitalized children.

**San Jose, Gamma Lambda** — As a result of hours of tedious practice, Delta Zeta took first place honors in Homecoming yellfest. The

"yell" consisted of a spunky dance routine and spirit song to the tune of Madonna's *Where's The Party?* Delta Upsilon were so impressed with Delta Zeta's turnout of over 60 members to yellfest that they honored them with a tailgate party. Overall, Delta Zeta won a third place for homecoming involvement and won first place in the ATΩ Ping-Pong-a-Thon. Pledges organized a canned food drive that provided over 1000 cans to a local food bank. Other community projects included carving jack-o-lanterns for a children's hospital, and painting props, decorating trees, and riding a float for the Christmas in the Park celebration. Members joined other Greeks to attend a campus alcohol awareness seminar. From magazine sales, Gamma Lambda earned \$1500 for the chapter treasury. San Francisco Forty-Niner Ronnie Lott has donated a gift certificate to a local restaurant for the Delta Zeta with the highest academic average. Moms enjoyed a slide show and Founders Day Mothers' Tea, while dads were treated to a father-daughter barbecue prior to a football game.

## COLORADO

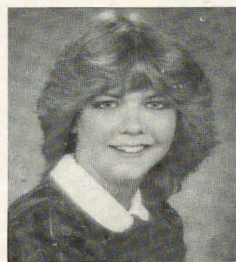
**Denver, Rho** — Following a formal rush featuring poodle skirts and a Fifties theme, Rho participated in informal rush, and now boasts a pledge class numbering 34. The enthusiastic pledges won Pledge Presents during Greek Week. Delta Zetas joined other Greeks to sponsor a benefit bowl-a-thon for a campus fraternity man suffering from cancer. Members danced the night away at the Black and White Formal at the Hyatt Regency. Stacey Strahs, senior class president, was crowned homecoming queen. Stacey is also a member of the senate, winter carnival staff, Bacchus, Rho Lambda, and Omicron Delta Kappa. Robin Haas served as vice-president of the senate, and is a member of Order of Omega, Bacchus, and Omicron Delta Kappa. Nicole Lord serves on a senate committee and is a member of Bacchus. Susie Bradbury is on the winter carnival staff, while Bev Ahrens is a member of Rho Lambda. Laurie Johnson serves as president of Rho Lambda. Alleson Smithers and Andrea Laub play on the varsity tennis team. Jenny Cortese is freshman class president.

**Northern Colorado, Delta Xi** — Using the theme "Delta Zeta Cruise Lines" Delta Xi's hard

## Sweethearts



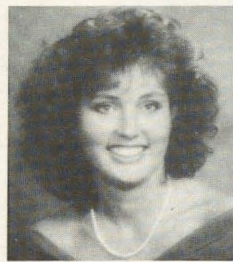
Leda Eannace,  
Indiana of PA-ΓΦ,  
Phi Delta Theta



Pamela Brown,  
Clarion-EO,  
Kappa Delta Rho



Renee Wooley,  
Arkansas Tech-AA,  
Theta Chi



Suellen Ferguson,  
Kentucky-AO,  
Sigma Phi Epsilon



Lisa Brewer,  
Jacksonville-AT,  
Sigma Chi





It was the Wreck Tech parade and Auburn-BE pledges are with "Aubie" the university mascot.

work and enthusiasm paid off with a quota pledge class of 19. They carved pumpkins for the fraternities, built a homecoming float with Delta Chi and held a fall formal for pledges. Instead of intramural football, Delta Xis elected to do volleyball instead. The season ended on a 1 and 6 record, so of course there was no playoff spot. Order of Omega members are Marci Brown, Di Edginton, Irish Tesone and Susan Bateman. Heather Brennen is Panhellenic secretary and Tracy Katzel is treasurer.

## FLORIDA

**Florida State, Alpha Sigma** — Founders Day proved the busiest time of the year for Alpha Sigmas. The day began with a five kilometer run benefitting Gallaudet and concluded with a banquet and dance. Members served as drivers in the Centel Classic Golf Tournament at the Killearn Country Club. Delta Zeta teamed with Phi Gamma Delta to construct a float and create a banner for homecoming. The intramural soccer team placed second in competition. Twenty-eight pledges were initiated and presented big sisters with scrapbooks, poems and original songs. Susan Littlefield is a member of Scalphunters spirit organization.

**Tampa, Beta Delta** — Delta Zeta started off the spring semester with a highly successful Paint the Town. The ΔZ-sponsored week included field events, gong show and competitions between fraternities and other organizations, sign-ins at diners and cafes, a hat snatch competition, and mug sales. Then, Delta Zeta competed in Phi Delta Theta Frolics, homecoming festivities, intramural events, fraternity socials and thank you socials. Rho Lambda Greek honorary includes Lanie Carroll, Connie Koppin and Josie Fessenden.

## GEORGIA

**Georgia College, Lambda Pi** — Pledges surprised initiates with a 5 A.M. wake-up call and a breakfast of sweet rolls and juice. Members learned more about each other playing "The

Sister Game," a take-off on *The Newlywed Game*, at a chapter cook-out at Heather Tomlinson's house on Lake Sinclair. Initiates raised funds with sales of M & Ms, while pledges sold Halloween singing spookgrams. Pledges were presented at Pledge Debut, which included a formal dance. Chapter members collected aluminum cans to sell for philanthropy, and donated canned goods to a local food drive for needy families. Delta Zeta participated in intramural football. Members of the cheerleading squad are Kellye Blanchard, Sandy McCurley, Cindy Bishop and Jennifer Clance.

## ILLINOIS

**DePaul, Theta Theta** — The new Delta Zeta pledge class, the largest on campus, calls itself the Adorable Double Dozen. Delta Zeta began the year at the Organization Fair with the theme "Go First Class with Delta Zeta." Members have been busily collecting aluminum cans for philanthropy, selling candy for the chapter treasury, donating blood and collecting food for the university-wide Hunger Awareness Week. Delta Zetas support the Blue Demon basketball games with their own section in the stands, filled with cheering members. Fraternity queens include Denise Koehn, ΦKΘ, and Chris Arendt, ΔΣΙΙ.

**Eureka, Pi** — With a post office theme of "Go First Class with Delta Zeta," Pi added seven pledges in fall rush. In homecoming, Delta Zeta won the Old Elm traveling trophy for accumulating the most points during homecoming. Laura Barnes reigned over the festivities, with Lisa Wegner, Bahija Fouad and Debby Ritze as senior homecoming attendants. Enrichment programs included hug therapy and hair techniques. Other activities included participating in UNICEF carnival and dance, the national smoke-out and Christmas in the Chapel. Delta Zeta sponsored both an all-campus dance for college men and a 1988 Men of Eureka College Calendar.

**Eastern Illinois, Gamma Nu** — Forty three

eager pledges joined Gamma Nu. Jennifer Engels was crowned 1987 homecoming queen and her freshman attendant was Jamie Sidwell. Marie Burge is vice president-elect of the Panhellenic Council and Betsey Watkins is captain of the women's swim team. Cathy Gravitt was 2nd runner-up in the Miss Illinois Pageant and Stephanie Allen will intern this spring at Walt Disney World. She was chosen from a field of 550 college students for one of five tour guide positions.

**Illinois, Alpha Beta Colony** — One hundred-thirty women comprise AB's recolonization pledge class. But, these energetic women didn't wait for the official ceremony to begin their Delta Zeta fun. The day prior to pledging, they participated in the campus tradition of distributing pompons to the crowd at the Ohio State game. Members celebrated Founders Day and joined Alpha Delta Pis to collect canned goods for the Matteus House for underprivileged children.

**Northern Illinois, Gamma Rho** — Following the addition of 41 dazzling pledges in rush, Delta Zeta joined with Pi Kappa Alpha to win first place in homecoming softball. Members raised \$100 with a homecooked pancake breakfast, treated four professors to a dinner exchange, participated in a blood drive, invited Delta Gammas to a seminar on rape prevention, and sponsored a chapter workshop on relationships. Parents were honored with a Parents Day at Matthew Boone's Restaurant.

**Northwestern, Alpha Alpha** — Delta Zetas united during formal rush with the theme "My Sisters Stand By Me." Vice-President of Membership Lana Hartshorn created a dance to the song. Since the dance required a partner, members utilized it to liven up tiring rush workshops, and keep chapter spirits soaring. And, spirit did soar when Delta Zeta added a quota pledge class of 38. The pledges enjoyed activities as trick-or-treating to initiates' rooms, following balls of yarn to "unwind" the identity of big sisters, and "A Night Under the Stars" formal. Parents' Weekend included a brunch for Delta Zetas and families, rush entertainment, and a Saturday night pizza dinner. Members, alumnae and friends surprised House Mom Falbe with a High Tea for her birthday. In preparation for the annual holiday party, members created ornaments, hung greens and lights, and decorated the house. The next day, house guests enjoyed freshly baked Christmas cookies and hot cider in a festive atmosphere. Earning 4.0's for spring quarter were Susan Bristow, Pam Georgelos and Lisa Plunkett.

**Southern Illinois, Gamma Omega** — Community projects included volunteering hours of work for the Red Cross Blood Drive, and baking cookies and helping children decorate them in Operation Happy Holidays. After decorating the chapter Christmas tree, members caroled for other Greeks. Delta Zeta joined with Delta Chi Fraternity to win first place in the Great Saluki Tailgate. Campus leaders include Lyn Klink, president of Order of Isis and recipient of the Distinguished Service Award; Michelle Lee, president of Panhellenic Council; Paige Puiett, secretary of Plant and Soil Science Club; and Becky Ward, secretary of Order of Isis. Darlene Rutkowski is a mem-



ber of Golden Key National Honor Society and the Sphinx Club. Darlene is listed in *Who's Who Among American College Students*. Monique Kirkwood and Heidi Diedrich are Student Life Advisors and members of the Student Orientation Committee. Cindy Harvey serves as assistant director of Pyramid Public Relations Agency. Angela Accettura is a member of the Sphinx Club, and Sarah Hazelton serves as historian for Phi Alpha Theta.

**Western Illinois, Epsilon Omicron** — In formal rush, Delta Zeta gained 23 pledges. Six more pledges were added in open rush for a pledge class numbering 29. Homecoming honors included third in Paint the Town, and second in float competition. Delta Zetas served as marshals for the homecoming parade. Members won second place honors in powder puff football. Pledges sold candy as a fundraiser, while EO's used funds from a car wash and alumnae donations to purchase a video recorder for the chapter. Summer house improvements included painting the upstairs, the chapter room and TV room; and new furniture and vertical blinds for the chapter room and TV room. Jennifer Heacock is president of Tri-Beta biology honorary.

## INDIANA

**Ball State, Gamma Chi** — For the third consecutive year Delta Zeta pledged quota. This year's class numbers 26. The chapter's successful rush skit, MΔZ, was presented at Province Day at **Franklin College**. Chapter activities included participating in a Salvation Army food drive, blood drive, and in Campus Chest, a campus organization that provides scholarships through various fund raisers. Delta Zeta joined other Greeks with a Greek Auction where groups sold theme parties to each other. Members sold raffle tickets for the Indianapolis Flame Fantasy and teamed with Beta Theta Pi for homecoming. Janet Ulshafer reigned over Watermelon Bust festivities. Tammi Halvorson was named outstanding pledge in the province and Jessica Peterson is a freshman delegate to the student senate.

**Franklin, Psi** — At Province Day, held on the Franklin campus, Psi was named the Most Up and Coming Chapter in the province. The chapter also won the Flame Fantasy trophy for the largest contribution to speech and hearing in the province. Alumnae told stories of their college days and cooked collegians a great dinner to celebrate Founders Day. Holiday events included a Christmas dinner with alumnae, a chapter Christmas spread and gift exchange, and a Christmas dance. Initiates awakened at 3 A.M. after Thanksgiving break to sneak into the suite and decorate the Christmas tree. When the final touches were complete, pledges were awakened with Christmas carols. Philanthropy efforts also included collecting for the American Diabetes Associations.

**Indiana, Epsilon** — At Province Day at **Franklin**, Epsilon was honored for the most outstanding pledge program in the province for the third consecutive year. Dads were treated to a picnic at Cascades Park and Chairman Jody Heltzel arranged block seating for the football game on Dads' Weekend. For Parents' Weekend, members and parents again enjoyed block seating at the game. They enjoyed a din-

ner following the game and a brunch the next morning. A special event of this Parents' Weekend was a Delta Zeta Auction. Parents were asked to make a donation for the auction, which was held at the dinner. The chapter earned \$800 from the auction. Members donated their money and their time to shop for a needy family. The family was then treated to a Christmas party at the house, complete with Santa Claus and all the Delta Zeta elves.

**Southern Indiana, Lambda Beta** — When Delta Zeta raised over \$400 for Special Olympics, the sorority's representative, Laila Rayes, was crowned queen of the annual Pumpkin Bust sponsored by Lambda Chi Alpha. Chapter honors at province day included most activities and highest academics. Individual honors went to Katie Sermersheim, spirit of Delta Zeta; Karla Rothrock, pride of the province; and Lisa Sallee, Light of the Lamp Award. Members helped fraternities collect for the Arthritis Foundation and UNICEF, and co-sponsored a Red Cross Blood Drive. Members enjoyed several fraternity mixers and helped with Masquerade Mania, a campus Halloween event complete with a band, fortune tellers, caricature artists, and hayrides. The theme of this year's pledge presentation ball was "Time of Your Life." Delta Zetas raised over \$3000 by selling food at the annual Fall Festival. Other fundraisers included bake sales, raffling a wicker shelf, and "I Have a Crush on You" note sales. Pledges learned the identity of their Panda Pals following two weeks of deciphering clues. At the Panda Party, pledges were served bowls of ice cream, with the name of the Panda Pal at the bottom of the bowl — under the ice cream! Parents were honored with a parent-daughter dinner. After wins in softball, football, volleyball and basketball, Delta Zetas are leading the intramurals competition. Members of honoraries are Sheila Leistner, Shea Loftin, Katie Sermersheim, and Karla Rothrock, Order of Omega; Shea Loftin, Karla Rothrock, Kappa Delta Pi; and Mini Jain, Sigma Zeta. Holly Wade is a member of Mid America Singers. Chairman of campus events for the Activities Programming Board are Karla Rothrock, spring week; Laila Rayes, Eagle Grand Prix; and Angie Ether-ton, homecoming. Candy Conley, Ellen Hay and Shelly Meyers are all members of Amigos freshman orientation group. Feathershakers pompon members are Candy Conley, Beth McCallister, Jill Dorris, Karla Rothrock, Angie Catt and Kelly Mayo. Holly Wade and Scarlett Hatchett are cheerleaders. Lee Ann Sallee is a member of Junior Panhellenic.

## IOWA

**Iowa, Iota** — After Delta Zeta won the sorority flag football championship for the second consecutive year, a crowd of Delta Zetas gathered in Kinnick Stadium to see the team play for the overall championship. Unfortunately, the team lost the championship, but retains the title of sorority champion. Alpha Tau Omega teamed with Delta Zeta to "Celebrate With Music" in homecoming festivities. Community activities included setting up the course, providing refreshments, assisting runners, and babysitting during the Iowa City Hospice Race. Members also planned a Halloween party for a local retirement home. Holiday festivities included celebrating the new year early with a November party, and the annual Christmas Cozy, com-

plete with Santa and a decorated house. Committees are now planning the upcoming philanthropy, The Dating Game. Chris Underwood is chairman of the Greek Week Olympics.

## KANSAS

**Fort Hays, Delta Omega** — Greeks "united by separating" this fall during Greek Week. Members from different houses created All Greek teams for Greek Week activities. Events for the week included serenade by Greek women, serenaded by Greek men, faculty dinner, delivering of cookies to faculty, a volleyball tournament, and Greek games. The Sigma Chi-Delta Zeta team won the Alumni Award for homecoming float building. Other activities included a telethon for university fund raising, a semi-formal, and the raffling of a \$500 doll house as a chapter fundraiser. Darcey Deines is a new member of Order of Omega.

## KENTUCKY

**Eastern Kentucky, Xi Beta** — October was hectic for Delta Zeta, as the chapter sponsored its Sixth Annual Frat Man's Classic benefitting Gallaudet. Thirteen of the 15 campus fraternities participated. Besides working hard for the Delta Zeta philanthropy, members have assisted other Greeks with their philanthropies. Xi Beta teamed with AXA to sponsor a moneymaking mock casino at the All Greek Carnival. Proceeds benefitted United Way. Delta Zeta also participated in the March of Dimes Walk-a-thon. Rita Holtzclaw reigned as



*Pi chapter's Laura Barnes reigned as homecoming queen at Eureka College.*





*Chancie Brown, AΘ  
reigned as Sigma Chi  
Derby Queen at  
Kentucky.*



*Darsi Neff was named  
Miss Greek University  
of Oregon-Ω.*



*Central Oklahoma-EY's  
Amy Reimer was  
1987-88 Outstanding  
Greek Woman.*



*Liz Dawes was named  
to Who's Who at  
Tarleton State-ΞN.*

AXA Watermelon Bust Queen. New members of honoraries are Chris Propp, Sigma Tau Delta, and Laurel Orlovsky, Phi Upsilon Omicron.

**Kentucky, Alpha Theta** — This year's successful Frat Man's Classic raised \$1000 for Delta Zeta philanthropy, with the winning fraternity raising \$280 for its contestant. Other philanthropic endeavors included beginning a Futures for Youth Scholarship to help youths find jobs, working at a silent auction for the Living Arts and Sciences Foundation, visiting the UK Medical Center Children's Ward on Halloween, contributing to United Way, and working at a banquet for PACE (Protection Against Child Exploitation). Members also rang bells for the Salvation Army, caroled at the Shriner's Hospital and sponsored a canned food drive for a needy family. Melanie Jones and Michelle Newby won second place in the KA Halloween Pumpkin Carving benefiting Muscular Dystrophy. Delta Zeta sponsored free hearing checks on campus. Fundraisers included raising money for the Greek Activities Steering Committee and selling magazines to benefit the chapter treasury. Collegians and alumnae joined for a tailgate party prior to the Tennessee game, and parents were honored with a Parents' day at the Hyatt. Members also found time to enjoy several fraternity mixers, a lock-in with little sisters, a Sister Appreciation Day, a Grab-a-date — formal, a surprise breakfast for little sisters, a visit from **Morehead** Delta Zetas, and an enrichment program on needlework with alumnae. Chancie Brown reigned as Sigma Chi Derby Queen and placed among the top 16 for homecoming queen. Tracy Lowery captured eighth place in the Christmas Seals Contest.

**Louisville, Beta Gamma** — Delta Zeta finished second overall in Greek Week competition after winning firsts in flag football and the banner contest. Pledges won a second place honor for the chapter. Individuals winning events were Malory Thomas, Cathy Herbert and Haleh Krauter. Pledges took second place honors in TKE Skits. Delta Zeta again sponsored Esta, an annual event to promote alcohol awareness. The informative evening

provided a party with non-alcoholic beverages. Kristi Bailey reigned as Queen of the Watermelon Patch, while ΔZ won overall honors in the Lambda Chi Alpha event. Five of the 15 homecoming queen candidates were Delta Zetas. Shannon Conlon, Robyn Guinn, Michelle Hitter and Lori O'Daniels were on hand to see sister Teresa Stepp crowned as homecoming queen. Delta Zeta participated in the homecoming pep rally, sponsored a float in the parade, and honored alumnae with an open house. Fraternities received carved and decorated pumpkins at the Pumpkin Serenade. Each member brought a covered dish, as all gathered to celebrate Thanksgiving before the holidays began. Delta Zetas and Chi Omegas joined for a Christmas dance. Karen Stites and Michelle Hitter are new members of Order of Omega. Rho Lambda includes Robyn Guinn, Laura Witt, Robin Nally, Lori Hebel and Michelle Hitter. Rose Marie Wotojaseski is a member of the Student Council.

**Morehead, Kappa Tau** — Delta Zeta added 28 pledges in fall rush, placing the chapter well over total. Much of this year's rush success is credited to the new theme skit, "Catch the Wave of Delta Zeta," along with the enthusiastic attitudes of members. The 17th Annual Delta Zeta Theta Chi Haunted House raised \$800 for each organization's philanthropy. Delta Zetas and Theta Chis celebrated the conclusion of the three day event with a mixer. Homecoming activities included participating in the parade and the All Greek Alumni Luncheon, and welcoming Delta Zeta alumnae with a chapter room tea. Dana Dotson and Margaret Blackwell were members of the homecoming court. Pledges participated in Chi Omega Follies. At present, Kappa Taus are in first place in intramurals. Fundraising efforts included sales of Halloween-grams and Thanksgiving-grams. *Who's Who Among American Colleges and Universities* lists Susan DeArmond, who produces the Miss MSU Pageant. Margaret Blackwell, a MSU cheerleader, will be traveling to national cheerleading competition in San Diego. Karen Franklin is new Panhellenic president. Order of Omega tapped Jami Weddle and Shelley Tobergta.

**Northern Kentucky, Kappa Beta** — A busy chapter calendar included activities with the NKU Baseball Team and four fraternities. In an exciting Greek Week, members participated in swimming, biking, track, basketball and volleyball events. Delta Zeta pledges won the pledge-initiate singoff. Members and dates also enjoyed a mid-semester progressive dinner party. Sisters Nights Out included Favorite Movie party and a scavenger hunt (planned by the pledges!). Enrichment programs covered topics as AIDS, cosmetics, and hair styling.

## LOUISIANA

**LSU, Sigma** — Campus officials and Greek presidents were among the 80 guests on hand for the Delta Zeta reception honoring retiring Panhellenic Director Julia Farris, Director of Greek Affairs Bud Richey, and new Assistant Director of Greek Affairs Kathy Marcel. Delta Zeta promoted Greek unity by joining with seven other Greek groups for a Lottery Night Exchange. Fraternities dressed their "Beaus With Bows" to enter Delta Zeta's philanthropy benefit, a male beauty pageant. Sigmas raised funds for Lambda Chi Alphas, who lost their house in a recent fire, with a spaghetti dinner. Delta Zeta placed second overall in Muscular Dystrophy Week and won another second place for homecoming decorations. Students from the Louisiana School for the Deaf trick-or-treat at the sorority house. Pledges hunted for clues for the identities of big sisters, and finally found them wearing identical hats in a Madhatter's Day. Pledges also enjoyed a retreat in Pass Christian. Members donned 1930s attire for a Big Band party featuring the Buddy Lee Orchestra. Rho Lambda tapped Jill Waldrop and Michelle Todd. Alicea Staggs is a member of Sigma Alpha Iota. Daneen Berry was a member of the *Nutcracker* cast, while Cherie Fontenot and Gigi Bloom were extras in the movie, *Everybody's All American*. Cherie was among the top ten finalists for homecoming queen. Mary Langlois was named one of the top ten freshman by Mortar Board. Gretchen Bernard is a LSU Calendar Girl.

**Louisiana Tech, Theta Epsilon** — For the



first time in Tech history, formal rush coincided with the first week of classes. After a week of combining rush and classes, 27 coeds chose Delta Zeta. Pledges learned the identities of their big sisters by following balls of yarn through Hide-Away Park. When Tech celebrated Moms' Weekend, Delta Zeta honored visiting parents with a tea. Members gathered at the lodge and walked to the homecoming pep rally. The next day, they rode a decorated truck in the homecoming parade. Many members attended a Panhellenic sponsored non-alcoholic dance.

**New Orleans, Theta Kappa** — For the fourth consecutive semester, Delta Zeta earned top academic honors among sororities. When National Panhellenic Conference met in New Orleans in the fall, Theta Kappas assisted with registration. Betsy Fournier coordinated decorations for the NPC alumnae brunch. Other activities included trick-or-treating for UNICEF, an early Thanksgiving dinner at Peggy Ketchum's home, selling root beer at Fall Fest, and joining alumnae for the Founders Day celebration at Augie's Glass Garden Restaurant. The 13 pledges were welcomed with a dance at Lafreniere Park Foundation Center. Members enjoyed a scavenger hunt with Lambda Chi Alphas. Order of Omega tapped Hilda Marino and Julie Stephens. The Starlette Dance Team includes Toni Dorn and Melanie Morgan.

**Nicholls State, Kappa Alpha** — Mary Grace Johnson was named homecoming queen and her maids included Lea Ziegler, Wendy Waguespack and Fran Lafaso. Nominated for *Young Women of America* are Wendy and Kelly Rodrigue. *Who's Who* named Shelly Boudreaux, Shana Goulas and Kelly Rodrigue. Melinda Brushier is managing editor of *Nicholl's Worth* and freshmen senators to Student Senate are Shelly and Kelly Badeaux. Other senators are Lea Ziegler, Mary Grace Johnson, Adrienne Callais and Nicol Rubichaux.

#### MAINE

**Maine, Alpha Upsilon** — Pledges honored initiates with a beach party. The following night all enjoyed a sleep-over, where initiates surprised pledges with a breakfast in their honor. Pledges then surprised initiates with a breakfast serenade. Members enjoyed a Halloween sisterhood party at Julia Atkinson's home. Delta Zeta was the only sorority to participate in the homecoming parade. Other activities included a successful Choices Alcohol Awareness Program, a Trust Your Sister Date Party, fund raising bake sales, and a Christmas caroling party. At Founders Day, Alpha Upsilon's honored Clair Sanders, Class of 1936, with a Golden Rose ceremony.

#### MASSACHUSETTS

**Massachusetts, Xi Alpha** — In a unique no-quota formal rush, Delta Zeta added 11 pledges, the largest number added by any sorority. Delta Zeta then pledged five more girls in open rush, to make Delta Zeta the largest sorority on campus. Delta Zeta's Wizard of Oz float won third place honors in homecoming. Approximately 30 alumnae returned to celebrate Founders Day with the chapter. Xi Alphas raised \$300 for the chapter treasury with sales of Crush cans "for the one you love." The Honor Society for the College of Natural Resources tapped Naomi Linder and Tracy Levy. Sue Minton

serves as vice president of Order of Omega; Pam Rosenthal is also a member of the honorary.

#### MICHIGAN

**Central Michigan, Gamma Psi** — Members "christened" their new house at 810 South Main with three open house celebrations — one for Greeks, one at homecoming, and one for parents' day. Delta Zeta pledges joined Tri Sigma pledges to collect canned food for the needy. Members sponsored a Halloween party for the physically and mentally handicapped children of Mt. Pleasant. As an enrichment program, Delta Zeta sponsored a cancer information night on campus. Other activities included Panhellenic Unity Week, Panhellenic Scholarship Tea, the Rose Petal Ball, and a senior farewell.

**Ferris, Zeta Nu** — Delta Zetas are celebrating the new university status of Ferris. Homecoming activities included building a float with Delta Sigma Thetas, participating in all other homecoming events, and honoring alumnae with a homecoming tea. Delta Zetas honored their own with awards at the Founders Day celebration and formal. Delta Zetas collected returnable pop cans and bottles for Project Starburst, a non-profit organization benefitting the needy of Mecosta County. Heidi Tamm is on the Dean's List.

**Michigan Tech, Lambda Theta** — Holiday festivities included a chapter party presented by two Golden Rose alumnae, Secret Santa pals, and a Christmas gift exchange and tree decorating party. Area underprivileged children were treated to a Christmas party by Delta Zetas and Sigma Phi Epsilons. Delta Sigma Phis and Delta Zetas Christmas caroled for residents of Cypress Gardens Senior Citizens Home. Members welcomed Field Representative Dawn Levreau for officer training and a ritual workshop, participated in homecoming, enjoyed three fraternity mixers, and planned a Sadie Hawkins Hayride. Kris Bobish represented Delta Sigma Phi as a Winter Carnival queen contestant.

**Northwood, Xi Eta** — Delta Zeta was the only sorority to pledge quota during formal rush. The pledge class, which numbers 30, is the

largest in Xi Eta's history. Four Delta Zetas served as team captains for this year's Auto Show, Excellabration. Captains were Carol Hosack, recreational vehicles; Janis Hotze, Volvo; Patty Kastran, cars and concepts; and Shelly Randa, Ferrari. Delta Zeta sponsored a fund raising food booth at the event. Other chapter activities included celebrating Founders Day, enjoying a social with Gamma Psi's from Central, and raking leaves with proceeds benefitting the Midland Big Sister Program. At an early December retreat at Houghton Lake, members exchanged gifts from Secret Santas and enjoyed a giant slumber party.

**Wayne State, Epsilon Sigma** — After adding five pledges in formal rush, Delta Zeta began a busy semester of community service, sisterhood activities and socials. Members helped serve the hungry and homeless at the Detroit Soup Kitchen, collected clothes for the poor, raised funds to purchase books for the needy, donated funds to purchase a Christmas ornament for the Detroit Children's Hospital Festival of Trees, and wrote 150 Christmas cards for Military Mail Call. Parents learned about Delta Zeta at an informative Parents' Night at the Student Center Building. Enrichment topics included CPR and other life-saving techniques. Social events included two fraternity mixers and a hayride. Members delivered home baked cookies and serenaded fraternities wishing them a Happy Thanksgiving. Field Representative Dawn Levreau was on hand for Founders Day, and spent a week assisting the chapter. Members got to know pledges better at a conversation-filled evening of card playing at Tina Zielkenat's home. Fundraisers included sales of caramel apples, caramel corn and candy. Carolyn Sharpe was first runner up to the homecoming queen; Sandra Niedballa was tapped for Golden Key.

#### MISSISSIPPI

**Southern Mississippi, Epsilon Mu** — Delta Zeta and Alpha Tau Omega Fraternity sponsored the Second Annual Halloween Haunted Forest in association with Coca-Cola and the Hattiesburg Parks and Recreation Commission. The event, held at a local nature trail, is a community service project designed to raise money for the Hattiesburg Parks and Recreation Commission and the Grace Christian Elementary School PTA. With the combined efforts of the two Greek groups, over 100 hours of work helped raise approximately \$3500. The mayor of Hattiesburg recognized Delta Zeta with a plaque for outstanding contribution and tireless effort devoted to organizing, coordinating and implementing the Halloween Haunted Forest. Delta Zeta was also praised in the editorial column of the USM *Student Printz* and received a letter of appreciation from Dr. Aubrey K. Lucas, USM president. To celebrate USM's 75th anniversary during homecoming, Delta Zeta built a float and sold t-shirts featuring the "USM 75 and Soaring" them During Greek Unity Week, Delta Zeta paired with a fraternity and collected books for children with hearing and speech disorders. EM welcomed a visit from Field Representative Diane Rolnick. Linda Marie Jones was tapped by Omicron Delta Kappa honorary.

#### MISSOURI

**Central Missouri, Epsilon Gamma** — Fifty



*Enthusiastic Southern Indiana-AB members Katie Sermersheim and Michelle King at the chapter rush retreat.*





*Kappa Alphas dominate the Nicholls State dance team, the Colonelettes, and university cheerleaders. From the left (back row), Fran Lafaso, head cheerleader and Lea Ziegler, cheerleader. Colonelettes on the front row are Barrie Maggio, Kelly Hawthorne and Holly Jackson. Not pictured are cheerleader Tammy Theriot and Colonelettes Melissa McLaughlin, Jennifer Bouchereau, Suzanne Delaune (captain) and Gina Ziegler.*

initiates traveled to **University of Missouri-Kansas City** for the installation of Xi Phi colony. Members jumped for 24 hours, six at a time in one hour shifts, in the chapter's Fifth Annual Trampoline-a-thon. Parents' Day activities included a CMSU football game and a buffet following the game. Members sang and danced their way into the hearts of homecoming parade judges by singing Michael Jackson's *ABC*. Members donned brightly colored ABC blocks, following the homecoming theme of "CMSU — Aviation to Zoology." Delta Zeta won a second place trophy for their building blocks, and campaigned hard to help queen candidate Ramona Underwood earn a spot among the top ten homecoming queen candidates. Epsilon Gammas are anxiously preparing to host State Day at Tan-Tara in the Ozarks in early April.

**Missouri-St. Louis, Iota Xi** — St. Joseph's Institute for the Deaf received money from the Delta Zeta sponsored Road Rally, while residents enjoyed a Christmas party sponsored by Delta Zeta. Other chapter activities included the annual hayride to Valley Mountain Ranch, a Founders Day Banquet at Yacavelli's, and the Killarney Rose Ball at the Harley Hotel.

**Northeast Missouri, Delta Sigma** — In homecoming festivities, Delta Zeta sponsored a banner contest, participated in campus wide game of Twister with hopes of breaking a Guinness record, and teamed with Phi Lambda Chi to win second place in the float decorating contest. Rochelle Amundson and Cheryl Feldewerth were queens in a human chess game, and Cathy Buscher won first runner-up honors in homecoming queen competition. Delta Zeta also participated in the raft races. A

Delta Zeta bake sale raised \$103 for United Way. In conjunction with Sigma Kappa Sorority, members collected 11 bags of canned goods for the needy. The chapter's sporty new uniform consists of a green cardigan sweater with the crest on the left side, khaki slacks or skirt, and a white, pink or black blouse or turtleneck.

**Northwest Missouri, Epsilon Rho** — Two new formal rush parties, *M&Z* and *Sing Me A Rainbow*, proved successful as Delta Zeta added 23 pledges in rush. In homecoming festivities, Delta Zeta won a second place cash award in float competition, and a fourth place in Variety Show, while the top five queen finalists included members Lynda Ahlschwede and Deanna Bardsley. Epsilon Rho tried something new this semester by having the Killarney Rose Formal in the fall. Philanthropies included a canned food drive for Thanksgiving and a Delta Chi-Delta Zeta Christmas party for the children of Headstart. Moneyraisers included the sale of magazine subscriptions, painting Greek letters, and working a day at Worlds of Fun Amusement Park. Delta Zeta leads intramural competition after making it to the finals in flag football, and capturing a third place in the swim meet. Pledge-initiate activities included a country sing, charades, a popcorn grab, and a Lamplight Week Pledge Banquet. To end a successful semester, members celebrated Christmas at the home of EP alumna Karen Hoskey. Members of honoraries include Lynda Ahlschwede, Darcy Darrah, Cardinal Key; Barb Allen; Darcy Darrah, Melonie Mikesell, Kappa Delta Pi; and Toni Wantland, Geography Honor Society. Serving as sorority rush counselors were

Debbie Young, Ann Reichert, Colleen Park, Rose Hass, Kelley Langford and Linda Gillespie. Student Ambassadors includes Lynda Ahlschwede and Darcy Darrah. Officers for American Society of Personnel Administration are Lynda Ahlschwede, president, and Deb Swearingin, vice president. NMSU Steppers includes Century Lawson; Laura Wake is a cheerleader. Kelley Langford serves on the Agriculture Council, while Linda Bixler is president of the Accounting Society. Annie Arts is a member of the tennis team, and Deanna Bardsley earned first runner-up honors in the Miss NMSU Pageant. Laura Gripp is a member of the university's touring choir, and Angie Webb captured a role in a university play.

**William Jewell, Zeta Rho** — Pledges creatively announced their pledge formal, Mistletoe Madness, by singing Christmas carols containing the date, time and place of the formal. Delta Zeta teamed with Lambda Chi Alpha for homecoming events, which included Greek Sing. Alpha Delta Pis and Delta Zetas combined efforts to create Christmas baskets for the elderly. Zeta Rhos joined Xi Phis from UM-KC for Founders Day. Laura Webb is co-chairing *Tatler*, and has members Jenny Lee, Angie Moore and Jill Sullivant serving as committee chairmen. Angie Johnson captured a role in the school production of "Cock-a-Doodle-Andy."

## NEBRASKA

**Creighton, Theta Eta** — Delta Zetas celebrated sisterhood and ignited enthusiasm for the second half of the semester with a *ΔZ Goes Gung Ho Week*. The week's activities included picnics and other sister sharing activities. Alumnae provided the food, while collegians provided the entertainment at a joint Founders Day potluck dinner. Sorority Education Chairman Barbara Quinn devised a Delta Zeta game of Jeopardy which matched alumnae teams against collegiate teams. Theta Eta won homecoming's yell contest and was asked to lead a cheer during the second time-out of the homecoming basketball game. The flag football team reached the intramural semi-finals, after beating the rival sorority for six successive seasons. For philanthropy, initiates participated in the Peace and Justice Fair on campus by setting up and manning booths. Terese Marso and Christine Ireland were tapped for the National Jesuit Honor Society, Alpha Sigma Nu.

**Nebraska Wesleyan, Beta Tu** — A busy fall calendar was highlighted with the annual Barn Party, which featured country-style entertainment of Country Gold, featuring member Janna Hemphill and her family. Members donned their cowboy attire accented with red bandana favors, danced to the music of Country Gold, and enjoyed hot apple cider and powdered donuts in a barn decorated by the pledges. Other social activities included a Phi Kappa Tau and Willard Ice Cream Social, TKE Toga Party, Zeta Psi South of the Border Party, Opposites Attract Date Party, Theta Chi Oktoberfest, and Panhellenic Ball. Tau Kappa Epsilon's "Ski" livened up the weekly Wednesday night dinner at the house by preparing a Japanese meal for the Delta Zetas. Ski even enrolled in cooking classes to prepare the meal. His efforts of fried rice, meat salad and special chicken were rewarded as a line of hungry Delta Zetas stretched into the foyer. Members wore white *ΔZ* shirts and sunglasses



for their "tough image" shuffle-wrap skit presented at Phi Tau Shuffle. Members enjoyed an enrichment program on preparing job resumes, and Honey Queen LaCinda Madison, BT, led a Honey Sunday philanthropy project. Members showed support of a sister cast member by attending the campus production of *Fools*. In the biggest philanthropy project of the semester members arose at 5 A.M. to collect cans for recycling. Chapter President Emily England reigned over homecoming festivities. Laura Boyer edits the NWU yearbook, and Joan Korte is a member of Plainsman Players. Members of honoraries include Julie Ott, Mu Phi Epsilon; Kathy Kneale, Beth Gonzales, Cardinal Key; Tracy Smith, OAE; Lisa Scharp, Kimberly Kleveland, Linda Neyens, Alka Desai, BBB; Laura Boyer, ΦΓΜ; Kristen Coffey, Keana Kechley, and Lynne McKnight, ΨΧ.

#### NEVADA

**Nevada-Las Vegas, Iota Phi** — Delta Zeta celebrated two major victories last semester, as the chapter won the Sigma Chi Derby Days and raised \$2000 for philanthropy in the process. The second victory came when member Valerie Pida was crowned as the fourth consecutive Delta Zeta to wear the UNLV Homecoming Crown. Valerie is a cheerleader, coach to the Las Vegas Starlets junior cheering squad, performs with the other cheerleaders and Beach Boys at Caesar's Palace, and is an inspiration to her chapter. Philanthropy Chairman Erika Holotik arranged for several sign language classes for members, then planned a roller skating and pizza party for local hearing impaired children. Delta Zetas and Delta Sigma Phis joined the children for the day, and received front page coverage in the local papers. Alumnae joined collegians for Founders Day celebration at Tropicana on the Strip. Iota Phis had the largest turnout for College Day, Thanksgiving canned good drive, Panhellenic bake sale and rush workshops. Pledges organized the first annual Christmas formal, and members earned chapter funds by selling scarlet and silver balloons at the first football game. Rebel fans released the helium filled balloons after the first touchdown. Campus leaders include Chelly Bender, Valerie Pida, Ann Potenza, head, and B.J. Willard, cheerleaders; Karen Hare, SGA Publication Board Chairman; Liz Ritter, retiring Panhellenic president; Laura Hatcher, Panhellenic secretary; and Gloria Navarro, Pre-Law Fraternity vice president. Kathleen Riley won the world champion baton twirling title and Susan Eversole was runner-up to Derby Darling. Kristen Hess won a tennis scholarship.

#### NEW HAMPSHIRE

**New Hampshire, Theta Gamma** — Thirty-five girls comprise Delta Zeta's quota-plus pledge class from formal rush. At UNH Greek Awards, Delta Zeta won the Best Overall Sorority title for the third consecutive year. Other Greek honors included best pledge program and best alumnae relations. Delta Zeta teamed with Sigma Phi Epsilon to build a homecoming float. Delta Zeta raised the most money to benefit the United Way in Greek Tricycle Race. In intramural competition, Delta Zeta reached the basketball semifinals and bowling finals. Pledges raised \$500 for the chapter with a pancake breakfast, and plan to use the money to purchase new letters for the

house. Members raised money for Gallaudet with the sales of "UNH — The Ultimate Greek Experience" t-shirts. Deena Gangloff, Gale Goodman, Maureen Moynihan, and Peggy Busby were accepted as exchange students at San Deigo State, and Sarah Wyman will spend next semester in France. Lisa Srager will study in Rome next semester. Michelle Buckman is a member of the UNH Dance Company, and Angela Silitta and Amy Rebecchi are cheerleaders.

**Plymouth State, Kappa Epsilon** — Members dressed in liederhosen and hats with feathers as they represented Germany's Oktoberfest in "Homecoming — An International Celebration." Members participated in the banner and parade competition, and sold PSC homecoming cups as a fundraiser. In intramural sports, Delta Zeta placed third in softball, and at press-time were competing in an indoor soccer tournament. Other chapter activities included a Founders Day dinner, Parents' Weekend reception at the house, and participation in the Red Cross Blood Drive and Greek Week. Members joined Plymouth Grade School children to paint store windows for Halloween. Following the painting, all retreated to the grade school to enjoy Halloween games and desserts prepared by Delta Zetas. Each child received a participa-

tion award. Susan Silsby is a first place diver on the women's varsity swim team, while Leslie Brickett plays women's varsity field hockey. Lisa Mosnicka participated in the Economic Geography Bowl.

#### NEW JERSEY

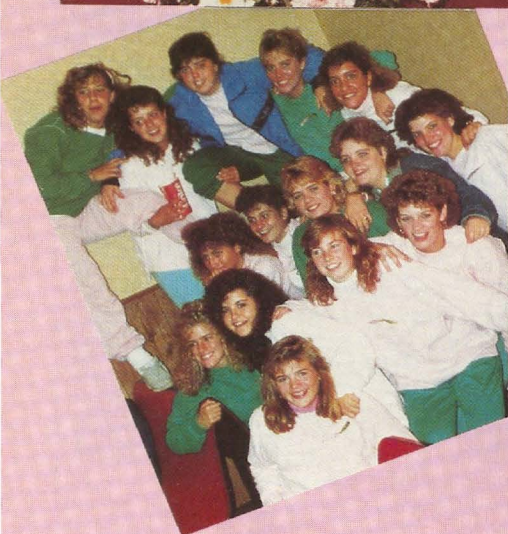
**Rider, Iota Kappa** — IKs welcomed Delta Zetas from **Trenton** and **Glassboro** for Province Day at Rider. The Day's activities included workshops, song presentations, IK's presentation of their *Grease* skit, and a "bring and brag" session where chapters told of their successes. The day ended with an awards banquet where IK won the best display award. Laura Pankoski was recognized as the IK with the highest cumulative average. At Panhellenic Banquet, Delta Zeta President Deborah Hardy, a Dean's List scholar and member of the Order of Omega, won the Order of Omega President's Award. Also listed on the Dean's List are Ana Lisa Rolon, Carolyn Buessar, and Laura Pankowski. Laura, also a member of Order of Omega, was honored by Panhellenic with House Manager Recognition and the Panhellenic Scholarship Award. Stacie Kaplan is new Order of Omega president. Holding Panhellenic Executive Board positions are Janine Hanrahan, president; Cathy Windish, vice president; and Lisa Kaplan, rush chairman.



*Miami Shakerettes with the marching band are Alpha chapter members Kelly Troyan, Lynda Muscarello, Leigh Ann Willenborg and Kim Kerneck.*



# Pledges, beautiful pledges . . .









**Trenton, Lambda Lambda** — Delta Zeta boasts the largest pledge class on campus, following two fall rushes. The upperclass pledge class number 13. The chapter traveled to **Rider** for Province Day. For Family Fest, members created an entry for the Build Your Own Scarecrow competition. Following the theme Greek is Unique, the Delta Zeta scarecrow, dressed in the finest pink and green money could buy, resembled a Greek goddess and donned a sash emblazoned with the theme.

#### NEW YORK

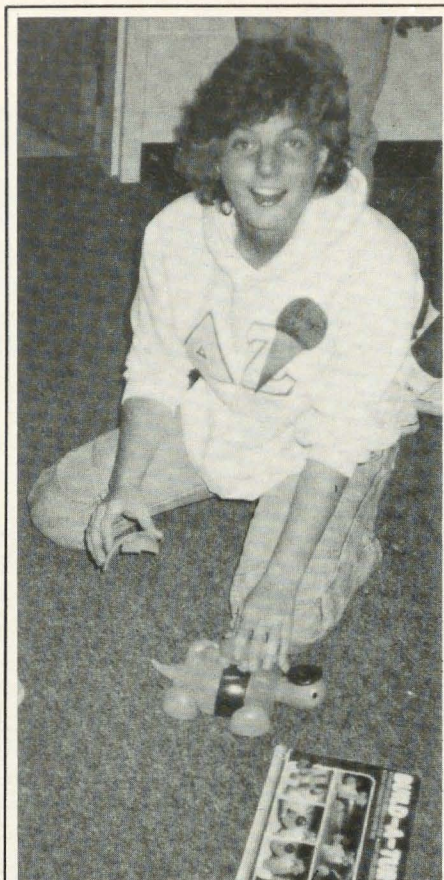
**Clarkson, Xi Rho** — The chapter placed second overall in Greek Week and Carla Maruzzi was chosen Greek Goddess. Xi Rho also boasts 100% initiation of fall pledges. A haunted house benefit added funds to benefit the local Canton-Postdam Hospital. Kitty Hoenig received the Bonnie Award from the chapter for the highest cumulative grade point.

#### NORTH CAROLINA

**Atlantic Christian, Theta Omega** — Delta Zetas rocked with the elderly in a Rock-a-thon at Elder Care Center. Members enjoyed singing for the residents and the special conversations that followed. At Christmas, Delta Zetas returned to carol for the residents, and knew they were appreciated when one  $\Delta Z$  received a hand-knitted gift from one of the elderly women. Activities also included the Pledge Formal at Wilson Country Club, preparing a party for the chapter-sponsored child at The School for the Deaf, assisting a City Council candidate with her campaign, playing in a volleyball tournament, and placing luminaries on campus for Christmas. Missy Hester was third runner-up in homecoming queen competition.

**East Carolina, Zeta Lambda** — Organ Donor Awareness Week, sponsored by Delta Zeta in conjunction with Carolina Organ Procurement Agency, increased public awareness of the need for organ donors with media publicity, publication distribution, and personal appearances by Delta Zetas. The successful week surpassed the sorority goal of 100 persons signing donor cards, when 209 people agreed to be donors. Five national Greek organizations received national commendation from Delta Zeta and the Carolina Organ Procurement Agency for their overwhelming support of the project. Delta Zeta and the university chancellor also received a letter from the state director of COPA thanking Delta Zeta for sponsoring the successful week. Members got to know each other better when sharing the celebration of Founders Day with a closed weekend. Delta Zeta won the Greek division in flag football, and went on to final competition. Zeta Lambda sponsored a Halloween party for the Deaf Pre-School of Greenville, honored pledges with a fall formal, welcomed parents for dinner and a football game during Parents' Weekend, and took part in Panhellenic's Alcohol Awareness Week. Members enjoyed three fraternity socials. When Zeta Lambda's Kay Yow was named Delta Zeta Woman of the Year, members attended a huge reception in her honor in Raleigh, and serenaded Kay with *Dream Girl* of Delta Zeta.

**Lenoir-Rhyne, Zeta Xi** — Homecoming was a Delta Zeta affair as Kerl Von Dohlen reigned as queen, with Gina Mayes as second runner-up. The chapter also won second place in the



*Birthdays occur even during rush. Xi Theta Sandy Drummond has a "build-a-turtle" to celebrate at North Carolina/Wilmington.*

homecoming float competition. Philanthropies included adopting a grandfather at an area rest home and collecting canned goods for the needy. Mary Safrit and Kim Kiser are members of Mu Sigma Epsilon academic honorary.

**North Carolina-Charlotte, Kappa Phi** — Thirteen remains a lucky number for Kappa Phi as the chapter pledged a quota class (32) for the thirteenth consecutive year! Ten Kappa Phis represented the chapter at the formal pledging of the colony at **North Carolina-Chapel Hill**, where 131 girls were pledged to Delta Zeta. Delta Zetas, undefeated in both football and soccer, captured the All-Campus Championship in both sports. Philanthropies included the Second Annual Most Eligible Bachelor Contest, which raised \$500 for Gallaudet; a drawing for a dozen roses on Sweetest Day; a spaghetti dinner with the Charlotte alumnae to raise Book of Remembrance funds; participation in a blood drive, and entertaining children at a day care center. Delta Zeta raffled off free tuition for a spring semester as a fund raiser. Pledges honored initiates with a party and football jersey favors, while pledges and initiates joined for a retreat in Boone. Jill Hildenbrandt is Kappa Sigma Sweetheart, while Wendy Petree is Miss NC Cover Girl. Crystal Evans was third runner-up in the Miss 49er Pageant. Student Government representa-

tives include Leigh Anne Deese, Jill Hildenbrandt, Leigh Lawing, and Tamara Jarrett.

**North Carolina/Wilmington, Xi Theta** — Xi Theta made quota of 20 and sold Christmas trees to raise money for philanthropy. Named to *Who's Who* were Sherry Brisson, Sue Hannon, Felici Raines, Swayne Sharpe and Laura Wright. Lisa Acanfora is treasurer of Panhellenic.

#### OHIO

**Ashland, Theta Psi** — Chapter Historian Kim Wansor reports that "much emphasis has been placed this year on community and campus service." The \$400 cash Delta Zeta won in the campus homecoming float contest was designated for philanthropy. Members then sponsored a Dance-A-Thon, a Senior Football Players' Best Legs Contest, hot dog and cookie sales, with all proceeds going to local and national philanthropy. Chapter President Julie Stember coordinated the hearing test of each Delta Zeta at the on-campus speech and hearing clinic. Delta Zeta showed area high school seniors around campus, and took them to dinner and the football game in conjunction with the school's Senior Escort Service. An energetic pledge class held a chapter birthday party for initiates and organized a sorority enrichment fashion show featuring the "in" designs for this year. Delta Zeta captured another first place win in Sigma Nu's Air Band Contest, and won the cheerleader's spirit award for homecoming. Jody Shultz and Traci Au were members of the homecoming court. Varsity basketball cheerleaders include Julie Stember, Jill Allen, Trey Beck and Sarina Lynch. Members of the Eagle Elite Dance Team are Jody Schultz, Buffy Fowler, Arlene Goody, Amy Izold, Kathy Haber, Sherry Cieslak and Steph Kaatz. Kim Sackett is a member of the John Roberts Power Modeling Group.

**Bowling Green, Gamma Tau** — Twenty-six fraternity, sorority and independent teams participated in the Annual Delta Zeta-Theta Chi Volleyball Tournament. Proceeds from the event went to Gallaudet. Other chapter activities included a Steak-n-Beans dinner, with those earning a 3.3 or better dining on steak. Members played games and brainstormed ideas for future events at a Founders Day house retreat. Delta Zeta won the homecoming spirit award. Members and dates enjoyed a holiday party, with sweatshirts featuring the "Grinch" as favors.

**Miami, Alpha** — Delta Zeta teamed with Sigma Phi Epsilon to win top honors in Bandstand Air Band Contest, and finished sixth overall in Greek Week. Alphas celebrated Founders Day with a dinner for members and alumnae. Parents' Weekend included a brunch and tours of National Headquarters. The social calendar included a "grab-a-date" party to a Reds game, a Mexican fiesta, tail-gates before football games, and fraternity exchanges. The winter formal included a banquet. Delta Zetas teamed with Kappa Sigmas to build a homecoming float. Members learned to tie-dye at a sisterhood party, and collected money to purchase Christmas candy for St. Rita's School for the Deaf. Kelly Troyan was selected for the Entrepreneurs Society, and Nicola Roberts and Deb Delaet were selected for the Student Foundation.



**Ohio Northern, Zeta Kappa** — Delta Zeta welcomed a quota pledge class of 24, won the homecoming banner award, captured the homecoming float Judges' Award, and treated parents and alumnae to a picnic at the house. At Halloween, pledges and initiates carved pumpkins, went to a haunted house, and celebrated at a costume party. Though all the members didn't master the art of candlewick stitchery, all enjoyed the unique enrichment program. Pledges organized a VCR party as a study break; ZKs celebrated Christmas with a dinner-dance. Taffy Howard is Panhellenic treasurer. Junior varsity cheerleaders are Karen Peters, captain, Julie Newell, Debbie Simpson, and Tracey Thiron. Lauren Theodore is Sigma Phi Sweetheart.

**Ohio State, Theta** — The 34 formal rush pledges discovered the identities of their big sisters in a unique scavenger hunt. After following clues, each pledge matched the old sock she was given at the beginning of the hunt with an old sock held by an initiate. Members participated in the All Greek Balloon Lift Off benefiting Juvenile Diabetes and sold turtleneck shirts as a fund raiser. Delta Zeta's representative Geniene Pernotto created a "happy camper" theme for Alpha Gamma Rho's original party theme competition. Delta Zeta's sign entry won second place in Phi Kappa Tau Pumpkin Sale. Teamed with Phi Kappa Psi, Delta Zeta won third in homecoming sign competition, second in game competition, and second in an OSU trivia game. Members honored a Golden Rose and their own chapter award winners at Founders Day. Christy Geers won a Beani-Drake Scholarship Award, while Linda Webber was selected for Phi Alpha Delta pre-law fraternity. Kendall Allen is a member of Ohio Staters.

## OKLAHOMA

**Oklahoma State, Alpha Epsilon Colony** — Robbin Harrison colony LAMP editor, writes that "Alpha Epsilon of Delta Zeta is like a sunrise. It is a bright and hopeful new colony . . . of 76, each one unique, outgoing and dedicated to making Delta Zeta a top house . . . the success of recolonization was immediately apparent. The beautiful gray sorority house, right in the center of campus, soon became the center of everyone's attention. The pink and green clad pledge sisters ascended on Sigma Chi Derby Days determined to make a terrific first impression . . . and picked up the first of seven awards they would win during the first semester of the year." Awards that followed were first for Dads' Day participation. AXA Clothes Drive, Phi Psi 500, third in homecoming events. The colony intramural team won first place honors at the All University Swim Meet, with Captain Lori Johnson winning first in five individual events. "Fall days passed in a blur of formal dinners, dances, studying, pledge retreat, turtle pals and rose buddies, seven philanthropy projects, a silver bell semi-formal, and enjoying big sisters from other supportive sororities on campus." Robbin reports that the national officers and field representatives interviewing prospective members were looking for leadership ability. Robbin then lists the following colony members and their activities: Lori Johnson, Vicki Jo Stephens, Cheryl Sossamon, President's Leadership Class; Lisa Slinkard, home economics *Spectrum* editor; Alicia Steele, homecoming steering committee; Tamela Ekstrom, delegate to Oklahoma Collegiate Leadership Council Convention; Jennifer Harbaugh, DECA and Residence Hall officer; Sabrina Holiday, Phi Eta Sigma freshman honorary member; Rachel Spraker, Advertising Club; and herself, Robbin Harrison, Society of Professional Journalists.

**Central State, Epsilon Upsilon** — Two of three most prestigious sorority awards went to Delta Zeta at Greek Week Convocation. Delta Zeta was honored for the highest grade point average, and Chapter President Amy Reimer was named Outstanding Greek Woman. Delta Zeta was the only sorority represented on the CSU Blood Drive Executive Board, with Caryl Sandhaus and Tammy Cornwell serving. The chapter participated in the blood drive, welcomed parents and friends to a Halloween open house prior to the football game, and sponsored its annual potato dinner. Moms and dads brought stockings to their daughters at the Parents' Club Christmas Party. Members "dragged" their moms to the house for a slumber party. Following a fall fashion show, lively fun began as moms and daughters teamed up for a scavenger hunt. Next came a game in which moms and daughters answered questions about each other. Leann Coyner, Associated Women Students treasurer and member of Alpha Lambda Delta honorary, won a CSU Foundation Scholarship. April Eck is a Phi Alpha Epsilon honorary member, and joins Deanna Wynn as a mat maid for the wrestling team. Caryl Sandhaus was tapped for Kappa Delta Pi education honorary.

## OREGON

**Oregon, Omega** — Delta Zeta added 20 pledges in fall rush and placed second out of 11 sororities in Greek Week last spring. Their 12 foot Godzilla entry won first place in the Greek Week float competition. Alumnae, parents, friends and campus officials were on hand for Delta Zeta's first Pledge Presents. The first annual "Delta Zeta Hear and Now", a tuition give-away, earned \$1000 for local and national philanthropy. Darsi Neff is reigning Miss Greek University of Oregon.

## PENNSYLVANIA

**California of Pennsylvania, Zeta Epsilon** — Chapter President Dawn Irwin returned from national convention with new and good ideas, plus the video of convention. Members enthusiastically began the year with these ideas and hopes of establishing a Colonnade Club for parents. ZEs weren't disappointed when they attended the dance at which the homecoming court was announced. They went in support of member Amy Swauger, who was honored as a member of the court. Delta Zeta then went on to win second place in the Greek division with their homecoming float. Delta Zeta also participated in the annual Greek Thanksgiving Canned Food Drive, assisted at the California Fire Hall Las Vegas Night, enjoyed a Halloween mixer with three other Greek groups, and enjoyed a sister sleep-over and gift exchange at Christmas. Cindy Benedict was honored by the English Department at a banquet where she received the Major Minor Award for the highest grade point average in the department.

**Clarion, Epsilon Theta** — Delta Zeta placed first in Sorority Feud, invited dates for a hayride to Cooks Forest, caroled at a local nursing home, donated Halloween candy for a party at the campus speech and hearing clinic, and built a homecoming float. Lizz Koones is news editor for the *Clarion Call* campus newspaper. Susan Daniels has been a cast member of several campus productions, and Pam Brown is Kappa Delta Rho Sweetheart.

**Edinboro, Iota Delta** — Chapter members are awaiting April 18 when Iota Delta will be observing its sixty years as a continuing group at Edinboro. Activities for the year have focused on "togetherness." Philanthropy included a donation to the United Way and service work included joining other sororities



*Lambda Sigma members observe Founders Day at Winthrop College.*





*Muhlenberg's homecoming queen is  $\Xi$ I's Lisa Horning who is joined by supportive sisters.*



*Theta Psis at Ashland won the homecoming spirit contest with the most alumnae in attendance.*

at the campus blood drive to help the Red Cross workers, participating in World Food Day, visits with an "adopted" grandmother at Springs Manor as well as their annual Presidential Ransom to benefit abused wives and mothers at Horizon House. Dean's list includes Kim Aikins and Gina Circirelli and Gina has been selected for inclusion in *Who's Who*. Jennifer Bunsey chairs the Panhellenic publicity committee while Pan Devlin and Debra Kerestman serve as treasurer and secretary respectively.

**Indiana of Pennsylvania, Gamma Phi** — Laurel Pogoda reigned as homecoming queen and Leda Eannace is sweetheart of Phi Delta Theta Fraternity.

**Kutztown, Kappa Rho** — Members joined Lehigh Valley alumnae and Xi Iotas from **Muhlenberg** for a joint Founders Day celebration at the Ambassador Restaurant. Big and little sisters kept busy with activities as a Halloween pumpkin carving contest, bowling night, and a Christmas party. Parents' Day included a luncheon before the football game and working at the Greek Casino that evening. For philanthropy, members donated decorated pumpkins and cookies to the residents of Kutztown Manor and presented Christmas gifts to underprivileged children in the Allentown area. KPs also volunteered to work at a phone-a-thon benefitting children with learning disabilities. Members enjoyed a winter formal at Stokessay Castle. Cindy Hampton joins Mary Bartek in the University Choir. Mary Ann is also a member of the jazz band.

**Mansfield, Iota Theta** — One-fourth of the Mansfield students listed in *Who's Who in American Colleges* are from Delta Zeta. Listed are Rochelle Snyder, Patty Geer, Kris Schwartzmeier and Beth Bitner. Maria Gann is a member of Sigma Alpha Iota music honorary. Leading the Mansfield Activities Council are Kim Thornton, president, and Jean Edling, vice-president. Karen Roken is a physics and math tutor, and Lisa Pek is president of Students Against M.S. Members stenciled flowered hearts to accent the freshly painted pale pink wall in the chapter lounge. Three  $\Delta$ Zs

were members of the homecoming court. Members dressed as Peanuts characters were the highlight of the homecoming parade, which featured a Charlie Brown theme. For community service, Delta Zeta sponsored an Alcohol Awareness Week, and assisted with the blood drive, toys for tots, Students Against Multiple Sclerosis and Mansfield Foundation projects. Sisterhood activities included a chapter camp out and the annual Rose Formal.

**Muhlenberg, Xi Iota** — Delta Zeta was honored with the Allentown Spirit Award for the coordination and help in planting trees for Arbor Day. Delta Zeta also won \$100 for the third highest participation for a Greek organization at the Scotty Wood Basketball Tournament. The eighty-eight members of Delta Zeta celebrated and cheered around the homecoming float carrying Senior Lisa Horning,  $\Xi$ I, homecoming queen. Philanthropies included participating in bowl-a-thon for cystic fibrosis, a phone-a-thon for United Way, a telethon and phone-a-thon for Dream Come True (which grants wishes for terminally ill children), and distributing excess food from the government for the American Red Cross. The intramural team reached the soccer playoffs, and members learned karate at a self-defense program designed for women. Enrichment topics included AIDS and alcohol awareness. Xi Iotas welcomed **Millersville** Delta Zetas for a Founders Day Weekend which included a barbecue, fraternity party, and bagel brunch. Other activities included a night at the movies on Halloween, a faculty reception, a midnight sing-along around campus, and playing bingo with residents of the Phoebe Nursing Home in Allentown. Final exam "goody" packages raised money and helped relieve stress at the end of the semester. Marci Stearns captured the lead in the school production of *Anything Goes*.

**Pittsburgh, Omicron** — Delta Zetas displayed their spirit at Pitt football games by hanging banners and participating in homecoming parade and games. Omicron pledged quota in rush, and the new pledges have enjoyed sleep overs, a cupcake decorating party, a sundae

party and button sales. Big and little sis activities ranged from pizza parties, to spaghetti dinners to ornament exchanges. Mixers included lively themes as Dating Game, Olympics, Mexican, and costume. The social calendar also included a hayride with entertainment by a one-man-band. Omicrons proudly conducted the ribboning ceremony at **Duquesne**. Fundraisers included selling candy bars, shirts, and raffle tickets. Panhellenic officers include Gina Buscaglio, secretary, Lee Quarrie, Rho Chi chairman, and Susan Charlton, alumni relations chairman. Other Rho Chis are Michele Spodak and Toneanne Biesuz. Greek Week committee chairmen are Gina Buscaglio and Beth Modzelewski. Debbie Majewski serves as an executive board member and secretary of Greek Week. Beth Modzelewski is Pi Lambda Phi Sweetheart. Sign Connection, a club designed to assist the hearing impaired, includes Susan Charlton, Mara Lenetsky and Pam Bandalo among its members. Mara recently visited Gallaudet with the group. Marie Hnarakis and Joyce Zinski are resident assistants. Stephani Kaweck is a member of Emerging Leaders.

**Pittsburgh-Johnstown, Lambda Epsilon** — Members released 500 helium balloons and birds from the interior of a huge hot air balloon-shaped homecoming float entry. The float, which followed the campus theme "60 Years of Shaping the Future," depicted "Up, Up and Away Into the Future." The float won a cash prize as best entry. Delta Zeta also won another cash prize for homecoming window scene. Delta Zeta was named most enthusiastic and most spirited of all organizations by the Alumni Association (for another cash prize). Homecoming also included a lunch for alumnae. Donna Baranik and Lisa Marton were homecoming court members. Parents brought covered dishes and members created hors d'oeuvres for a special Parents' Day dinner. Members donated food for a Christmas dinner at St. Rochus Church.

**Shippensburg, Kappa Psi** — Changes in the university's Greek rush program shortened and intensified rush. Delta Zetas worked enthusi-



astically with the new schedule and added 15 pledges, the largest class on campus. All were initiated in late November for the chapter's third consecutive 100% initiation. Kappa Psi celebrated its 15th anniversary with a homecoming tea. Leslie Howard was a homecoming finalist, and Rita Sterner was tapped to Order of Omega. Kendra Weaver is listed in *Who's Who in American Colleges and Universities*. Leah Marks serves as Panhellenic president.

**Temple, Delta Tau** — Chapter Editor Amy Oravitz writes of a Delta Zeta transferring to Temple from **Muhlenberg College**. This Delta Zeta left a college of 1500 to attend a university of 32,000. Feeling a bit lonely, she spotted an unmistakable character — the pink and green turtle of Delta Zeta — when walking through the Student Center. Much to her delight, Delta Zeta had recently installed Delta Tau chapter at Temple. The sisters of Delta Tau welcomed the newcomer with open arms and made her feel right at home. "What they say is true," Amy writes. "A Delta Zeta can go just about anywhere and find another girl who shares that special honor of being a Delta Zeta." And who was that lonely Xi Iota transfer? None but the reporting LAMP Editor Amy Oravitz. Delta Tau's first formal rush was successful with a quota pledge class. Delta Taus served as toastmistresses at Founders Day luncheon for the first time since 1967. Members collected toys for abused children, raised money for cystic fibrosis, formed a powder puff football team, and enjoyed a winter formal at the Warwick. Amy Beaver designed the winning title for the Greek newsletter, and Michelle Pinto founded the Panhellenic newsletter. Fern Friedman serves on the steering committee for UCAS Honor Society. Stephanie Popp is a member of Alpha Delta Mu.

## SOUTH CAROLINA

**South Carolina, Beta Delta** — Delta Zeta won second place overall in Sigma Chi Derby Days, and Maria Walker was named Derby Darling. For Parents' Weekend, Melissa Baber and Charlene Beach planned a successful party, brunch and tailgate for moms and dads. Parents were also on hand to share the Founders Day ceremony with their daughters. Frances Maynard, a President's List 4.0 scholar, serves as secretary of the Sorority Council. Julie Hyatt serves as scholarship chairman for the same council. Denise Kinard was tapped for Alpha Chi honorary, and Jill Mitchell won the Thomas J. Robertson Scholarship for banking and finance. Terri Young is treasurer of the Student American Pharmaceutical Association. Mandy Powers will appear in the motion picture *Boys Life*, now filming in South Carolina. Sherry Anderson, as a member of the Carolina Croquette line, performed before a crowd of 7000 plus at the 15th Annual USC Christmas Music Festival. At the same celebration, Peggy Stephenson and Lynn McElveen performed with the USC Concert Choir, and Laurie Mitchell, USC's feature twirler, gave a solo performance. Laurie Mitchell presented Vice-President George Bush with a Carolina football jersey during half time at a USC home football game. Dawn Jordan is a hostess for the football recruiting program, while Lil England, Missy Martin and Barbara Bluestien were hostesses for the Boston College Soccer Team at the Met Life Tournament at USC.

**Winthrop, Lambda Sigma** — Delta Zeta added 16 pledges in fall rush, and at presstime were busily preparing for spring rush. The fall pledges assisted philanthropy by raising funds with car washes and working at Carolwinds; they also donated coloring books to the school's speech and hearing clinic. Lambda Sigma celebrated their chapter's tenth anniversary with a tea for alumnae and dinner dance on Founders Day weekend. The chapter's walk-a-thon raised \$800 for Gallaudet. Other successful fund raisers were candy sales, car washes, and working at Carolwinds.

## TENNESSEE

**East Tennessee, Delta Eta** — National Vice-President of Alumnae Affairs Deanna McKinnon and Beta Lambdas from **University of Tennessee** were on hand to help Delta Eta welcome 12 pledges in fall formal rush. The energetic pledges organized the Christmas Rose Formal and raised funds for the event by selling donuts and baked goods. The dinner-dance also included rose buddy gift exchange and a display of pledge scrapbooks, pillows and paddles. Delta Zeta placed first in the Greek Week chariot race, and competed in the banner, skit and carnival competitions for homecoming. Delta Zeta placed second in volleyball and captured the spirit award in Sigma Chi Derby Days. ΔZ reached the playoffs in intramural football, won a \$75 cash prize for second place in a lip sync contest, helped Junior Panhellenic with a clothes drive, and collected hundreds of cans of food for the Volunteer ETSU Food Drive. Sisterhood was personified when Delta Eta sponsored a Hug-A-Sister Day and members exchanged hugs each time they saw one another. Rhonda Hooks, an *Outstanding College Student of America* honoree, is Panhellenic treasurer. Mary Golden serves Panhellenic as parliamentarian. Melanie Hammon serves on the Greek Judiciary Board, and joins Rhonda Hooks and Kym Miller in membership in Rho Lambda honorary. Lisa Talbott and Kelly Gentry earned perfect 4.0s in spring. Jenny Johnson is Junior Panhellenic vice-president.

**Middle Tennessee, Iota Iota** — Members participated in numerous homecoming events and treated each other with presents daily during Big Sis Week; enjoyed two mixers; and raised funds by working at Starwood Amphitheatre. Pledges planned a retreat. Delta Zeta joined other sororities with an international progressive dinner. Groups traveled from sorority room to sorority room sampling foods from different countries. New members of Tau Omicron are Marlene Finney, Leigh Anne Fite, Melinda Hutchinson and Kim Hutto.

**Tennessee, Beta Lambda** — Delta Zeta pledged quota for the third consecutive year since recolonization. Alumnae joined collegians for a Founders Day Banquet. Delta Zeta assisted the Interfraternity Council with a Christmas party for underprivileged children, and sponsored a philanthropy balloon sale. Delta Zeta earned a third in homecoming lawn display and a fourth place with the float entry. The intramural football team was honored with a Team of the Week award. Rhea Ann Weir was tapped for Beta Gamma Nu, an honorary for the top one-fourth of the engineering students.

## TEXAS

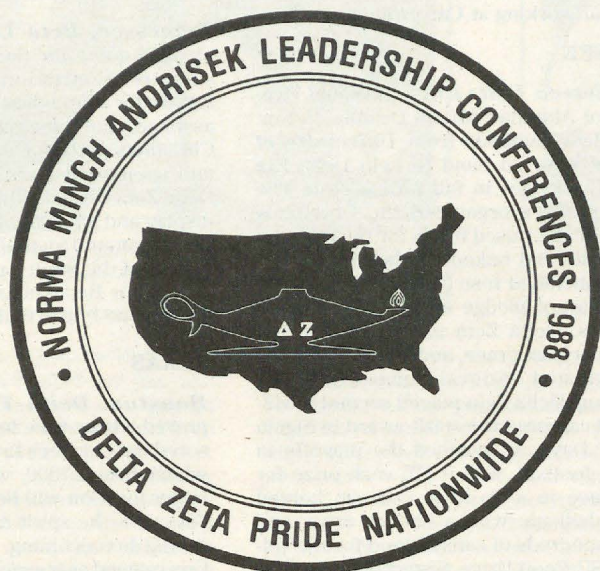
**Houston, Delta Theta** — Homecoming proved a busy time for Delta Zetas, who sponsored the chapter's first Gong Show. The event, which raised \$500, was so successful that a larger location will be needed next year. Delta Zeta won the spirit award and display award during homecoming. Chapter President Jodi Cox reigned as queen; Vivian Penniger was first runner-up and Tracy Morris was a finalist. When Delta Zeta sponsored a Halloween party for children at the Houston School for the Deaf, television news crews arrived to film the event. Pledges honored new National Director Merry Adamcik with a \$200 donation to the Founders Memorial Foundation in her name. Pledges also worked at the Jaycees' Haunted House. Greek Week awards included a third place overall, the spirit award, the Mini 500, second place in olympics, and top honors in the pledge chili cook-off. Members enjoyed several fraternity



*Theta Omicrons at Pan American University assisted in the 60th anniversary celebration of the university.*



## The National Council of Delta Zeta takes PRIDE in announcing the 1988 NORMA MINCH ANDRISEK LEADERSHIP CONFERENCES



- |              |  |
|--------------|--|
| June 24 - 26 | University of Virginia<br>Charlottesville, Virginia<br>University of Iowa<br>Iowa City, Iowa                 |
| July 8 - 10  | University of Rhode Island<br>Kingston, Rhode Island<br>Louisiana State University<br>Baton Rouge, Louisiana |
| July 22 - 24 | Indiana University<br>Bloomington, Indiana<br>Oklahoma State University<br>Stillwater, Oklahoma              |
| July 29 - 31 | University of Alabama<br>Tuscaloosa, Alabama<br>UCLA<br>Los Angeles, California                              |

Phyllis Snape Favorite,  
Chairman

mixers, Founders Day with alumnae at the Hilton, and a Christmas Rose Ball at the Magnolia Ballroom. Stacy Binder was the third consecutive Delta Zeta to win Fight Night Queen honors. Linda Roesel modeled for Houston's Hot-test Calendar. Lisa Foley serves as special events director for the Student Association. The honors program includes Kim Adams and Andrea Bright, who is also an Ambassador.

**Southwest Texas, Iota Alpha** — Fall semester Iota Alpha worked diligently on a special all-campus project in which campus groups joined together to "try and make a difference" at Christmas for San Marcos residents. Groups collected toys and canned goods and dedicated many hours to raising money for the project and wrapping of gifts. Chapter Editor Karen Barney reports that the project has really helped Southwest Texas' relationship with the residents of the community. In homecoming, Delta Zeta won second place in soapbox derby and top honors for the display closest to theme. The First Annual Dee Zee Tee Off golf tournament for philanthropy was successful. Delta Zeta also participated in intramural flag football and volleyball.

**Stephen F. Austin, Zeta Psi** — When the State of Texas declared Alcohol Awareness Week in October, Delta Zetas sold personalized Greek awareness buttons. Delta Zetas wore their buttons daily. In homecoming competition, Delta Zeta's entry placed first in its division. In intramural flag football, the Delta Zetas finally boast of a winning season — this year placing fourth overall. In the Panhellenic spirit, Delta Zetas welcomed Alpha Chi Omegas for a sisterhood. For philanthropy, members collected for "Save the Turtles," an endangered species ecology group. Delta Zetas teamed with Sigma Chis to sponsor a campus football tournament. Pledges raised funds with a car wash and a raffle for a ski trip to Breckenridge. Sherry Purcell was honored by the American Marketing Association as a Member of the Month.

**Tarleton, Xi Nu** — Thirty-one girls pledged Delta Zeta following a successful formal rush. That's a quota class! Delta Zeta entered a float in the homecoming parade, won first place in the Tarleton Christmas Tree Decorating Contest, and placed fourth among 12 teams in intramural volleyball. Xi Nus enjoyed three fraternity mixers, skated with little sisters at a skating party, and organized a canned food drive. Members send a big thanks to the Stephenville alumnae for the great baked potato party planned by alumnae. Order of Omega honors the top ten percent of all Greeks on campus. Leading Order of Omega are Terri Mayfield, president; Missy Bearden, vice-president; and Vicki Higginbottom, secretary-treasurer. Other members are Kathy Gibson and Liz Dawes. Liz was recently selected for *Who's Who Among Students in American Universities and Colleges*. Tracy Gray is vice president of finance for Pi Sigma Epsilon marketing fraternity, and Deann Davis is a member of Alpha Phi Sigma criminal justice honorary.

**Texas-Arlington, Iota Psi** — Delta Zeta started off fall with an outstanding pledge class numbering 38. This pledge class started a winning streak by winning the participation award at Pledge Presents which was followed by a chapter win in the Annual UTA Bed Races.



Delta Zeta then went from last year's sorority football champion to this year's university champion. This winning streak continued with first place wins in both swimming and tennis. Chapter members returned to reminisce at the chapter's 20th anniversary celebration. Pledges put together puzzle pieces to learn the identities of big sisters at Big Sis-Little Sis Night. Little sisters then received sweatshirts that matched those of their big sisters. Big and little sisters also enjoyed an ice cream social, while pledges and initiates alike enjoyed a chapter retreat. Philanthropy projects included a miniature golf tournament to raise funds for speech and hearing impaired, a visit to the Children's Wing at Arlington Memorial Hospital, passing out candy to speech and hearing impaired students at Hill Elementary, and sponsoring a Most Eligible Bachelor Contest to raise money for speech and hearing impaired. Panhellenic officers include Chris Polozola, treasurer, and Jillann Horton, vice-president in charge of rush. Kellie Eckstein is a Student Congress representative.

**West Texas, Zeta Zeta** — Delta Zeta added 18 pledges in formal rush, and raised \$348.50 for Amarillo Speech and Hearing Center by working as waitresses at Pizza Hut one day. Members also participated in a Halloween party with the children from the Amarillo Speech and Hearing Center. Chapter members and many alumnae were on hand for a ZZ Founders Day reception for Province Collegiate Director Diane Krause. ZZs joined with alumnae for a Christmas recipe exchange, and hope to publish a cookbook containing the recipes. Delta Zetas ushered for the university performance of *The King and I*, and have scheduled an etiquette program for the campus prior to the all university formal. Shannon Wiles danced in the Lone Star Ballet production *The Nutcracker*, and Kathy Nelson was first runner-up to homecoming queen.

#### VIRGINIA

**Longwood College, Epsilon Tau** — Delta Zeta celebrated a successful formal rush with the theme of Fantasy Island. ET added a quota pledge class of 12 bringing the total chapter membership to 58 and over ceiling! Family members were invited to view the chapter in a slide show and participate in Oktoberfest Weekend. Delta Zeta earned the highest sorority grade point average for fall and spring of last year. Kim Cecil earned a perfect 4.0 in spring, and Erin Duffy won the Paul Douglas Teachers' Scholarship of \$5000 for academic excellence and participation. Fall activities included a Halloween date party, and enrichment programs on makeovers, a sheltered workshop for the community, and AIDS. Over the summer, Samantha Bennett studied in France, Marilyn Flowers studied in Spain, and Lisa Rakes toured Japan.

**Radford, Xi Delta** — Canoeing, Twister, big sister-little sister "newlywed" game, Scruples, song practice, and rush workshops were on the agenda for a sisterhood retreat at Camp Carysbrook, an area campground. Members concluded the afternoon with an emotional candlepass, bonfire, and sing-song. Delta Zetas see-sawed in one hour shifts to raise \$600 for the campus speech and hearing center in the Delta Zeta See-Saw-a-thon. Greeks and independents provided a great deal of support for

Delta Zeta's Third Annual Fraternity Pledge Battle, featuring mini-Greek games for fraternity pledges. Members trick-or-treated for canned goods for the needy, welcomed back alumnae for homecoming weekend, sponsored a haunted house with Sigma Phi Epsilon, and enjoyed a Christmas formal at an area hotel. Rho Lambda honorary tapped Anne Crabbs, Laura Hudak, and Trisha Binns. Rho Chi rush counselors were Jennifer Tinney, Roberta Keyser and Laura Wessels. Alicia McKenna is a new member of Omicron Delta Kappa honorary. Samantha Hayes is studying abroad for the semester.

**Virginia, Lambda Delta** — Sixteen fraternities participated in Delta Zeta's Razzle Dazzle Football Classic, which raised \$1000 for Gallaudet. Co-sponsors New York Seltzer, Body Le Bronze and Lifelines, made it possible for Delta Zeta to provide a \$100 video electronics gift certificate for the winner of the two-day tournament. Special t-shirts were also printed and sold for the event. Other activities included garden parties prior to football games, and a homecoming brunch where Richmond alumnae performed a special ceremony for parents. Delta Zeta enjoyed mixers with seven fraternities, a Sweetheart Party with a neighboring fraternity, and a bonfire-hayride. Twice during the semester members were caught by surprise with the announcement of a "dash for dates." Members had thirty minutes to find dates and gather at a restaurant. Delta Zeta placed first among the 18 teams participating in the American Heart Association benefit race. Intramural teams won 3-on-3 Basketball and competed in tennis, football, and volleyball. Lynne Humphrey serves as president of Monroe Hill Residential College and is a member of Raven Society scholastic service group. Kim Jenkins is a member of Omicron Delta Kappa honorary.

#### WASHINGTON

**Washington, Kappa** — After a successful rush, Kappa welcomed 40 pledges that represent both quantity (it's one of the largest pledge classes on campus) and quality as shown through the numerous pledge activities. Pledges enjoyed an overnight retreat, sold Christmas stocking-grams, and organized the Double Vision Pledge Dance, where members and dates dressed identically. Alumnae joined collegians for a Founders Day brunch. Delta Zeta entered the sign competition and enjoyed a progressive dinner with several fraternities during homecoming. Kappas also participated in Derby Days to benefit numerous charity organizations. Members donned formal attire to help out at a gourmet dinner and auction at the Westin Hotel benefiting the local Big Brothers organization. On Halloween night, members passed out candy to children trick-or-treating store to store at a local shopping area. Members caroled for parents at the Parents' Club Christmas Party at the house. Mary Chapman reigns as Miss Queen Ann (a Seattle suburb) and assists that community in numerous philanthropic events. Karen Thompson is captain of the Husky cheering squad. Christie Williams is on the Seattle Supersonic Rally Squad.

#### WEST VIRGINIA

**Marshall, Delta Upsilon** — Following a successful rush, Delta Zeta is close to total. Mem-



*Laurel Pogoda, Gamma Phi, with Tim Bukowski, reigned over homecoming at Indiana of Pennsylvania.*

bers participated in the Annual Pike's Peak, and built a float during homecoming activities. Pledges placed second in the homecoming banner contest while initiates took first place in the banner contest for the first home football game. The chapter made, then presented Halloween treats to the administration and faculty. ΔZ teamed with three other Greek groups for a Halloween informal, enjoyed a chapter pizza party, and went bowling with Tri Sigmas. Members sold tickets for the Rotary Club as a fundraiser, baked cookies and caroled for other Greeks on campus, collected for the Mental Health Association, and made donations to United Way and the Shriners. Past President Lada Gibson is listed in *Outstanding College Students in America*.

**Shepherd, Kappa Mu** — Formal rush parties included a beach theme complete with a Beach Boys medley and a *Jungle Book* party. Following formal rush, KM added pledges in open rush to reach total. KMs traveled to **Millersville**, Pennsylvania for a rival football game and enjoyed spending the night with Delta Zetas there. In a unique fundraiser, Delta Zetas picked apples at the home of member Kathy Alexander; KMs then sold the fresh apples on the roadside. Other activities included distributing programs and collecting ticket money for a production at the Creative Arts Center; creating a skit and banner for homecoming; welcoming alumnae with a homecoming reception; and sponsoring a pancake breakfast for Parents' Weekend. By setting up a booth in the Creative Arts Center, members informed new students about Delta Zeta. The busy fall calendar also included sponsoring the All Greek Christmas Dance, singing "I Heard It Through the Grapevine" in Airband, collecting trash in a community service project, and selling candy bars door to door. A "field trip" to Gallaudet proved both educational and a bit more exciting than anticipated. It seems members were stranded in a jammed elevator for more than an hour. But sisters were willing to comfort each other when they felt the elevator slip, and KMs proved they really know what sisterhood is about! Fortunately, no one was harmed, and Chapter Editor Susanne Heath





*Xi Omicron at Loyola Marymount boasts three cheerleaders: Stephanie Schwab, Amie Lynn Losi and Franca Dell'Olio.*



*A break in the flag football game at Creighton. Theta Eta's Lisa Raider, Jane Benda, Anne Meert and Mary Beth Gake.*

recommends the Gallaudet tour to all nearby chapters. New pledges learned Delta Zeta songs on the KM hayride — where Delta Zetas boarded a hay wagon that continually travels the campus while pledges sing. Wendy Martin performed a solo from *Annie* in a choir concert at the Creative Arts center.

#### WISCONSIN

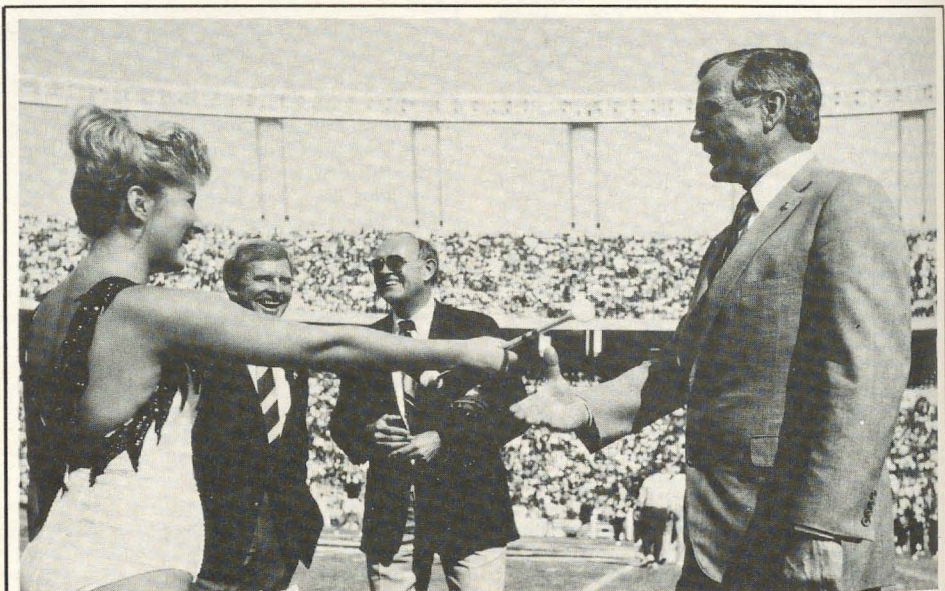
**Carroll College, Gamma Theta** — Delta Zetas enjoyed a foot-stomping, hand-clapping evening at their first Western Theme Barn Dance at the Kettle Moraine Ranch. The barn dance was preceded by a hayride the night before to get members into that good ol' west spirit. During homecoming, Delta Zetas showed their spirit by dressing as raisins and singing "I Heard It Through the Grapevine." Alumnae joined collegians for a Founders Day dinner at the Carroll Campus Center. Delta Zetas teamed with other Panhellenic women to collect canned food for the needy. Santa Claus appeared as Delta Zetas celebrated an early Christmas at Shakey's Pizza Party. As the girls were opening presents and enjoying pizza, Santa popped in to distribute the gifts. A young boy at a nearby table questioned Santa's authenticity, but Santa assured the lad, as he presented him with a candy cane, that the reindeer were out back and Santa was just catching a pizza before resuming his long trek back to the North Pole. When the young boy jumped off Santa's lap and joyously rushed to his parents displaying his candy cane, Delta Zetas captured the spirit of Christmas deep in their hearts.

**Wisconsin-Eau Claire, Epsilon Omega** — At this reporting period last year, Epsilon Omega consisted of four initiates. Bravely, a goal was set to do well in formal rush. This formal rush, Delta Zeta pledged the largest number of girls during formal rush, and the chapter now consists of eight initiates and 14 pledges. Delta Zeta built a homecoming float and enjoyed Thanksgiving dinner with TKE. Pledges sold ghostgrams for a Halloween fund raiser, and all enjoyed a Christmas dance and caroling with a fraternity. Epsilon Omega welcomed Kendra Mixer, Delta Omega-**Fort Hays**, when she came to Eau Claire on the National Student Exchange Program. Members took a weekend trip to Fort Hays to visit Kendra's chapter. Kendra currently serves EO as corresponding secretary and is big sister to two new pledges.

Kendra is also a UWEC cheerleader. Michelle McDonald is a member of the pompon squad, and Judy Stolley is sweetheart of Phi Sigma Epsilon. Sheryl Hallman is a member of the National Spanish Honor Society.

**Wisconsin-Stout, Zeta Beta** — A successful fall rush featured parties as MΔZ, where initiates acted out short skits as 501 Jeans and a Delta Zeta Rap. Forty-five rushees participated, and Delta Zeta pledged a quota pledge class. These energetic pledges planned a barn party for the chapter and managed to unload 15 bales of hay into an attic for an authentic barn atmosphere. The pledges also carved pumpkins for campus fraternity presidents, worked at the campus blood drive, and held a raffle for a compact disc player. Delta Zeta sold Crush cans as a fund raiser, sold raffle tickets at home football games, cooked breakfast for pledges, and created baskets for little sisters.

**Wisconsin-Whitewater, Epsilon Kappa** — Delta Zetas enjoyed three chapter dinners fall semester, bid farewell to seniors with a senior send-off, went on two chapter retreats, and planned enrichment programs on AIDS and discretion. Big and little sister teams enjoyed weekly lunches in the University Center and dinner on the town. For community service, members participated in a Thanksgiving food drive, and presented food and gifts to a needy family at Christmas. Seven Delta Zetas traveled to the MIFCA/MAPCA northern conference at University of Iowa. Attending were Jodi Theumling, Denise Wamser, Kathleen Jensen, Nancy McMahon, Terilynn Geissner, Sally Winsor and Sue Amundson. Leading Panhellenic are Nancy McMahon, vice president; Terilynn Geissner, rush coordinator; and Denise Wamser, parliamentarian. Susan Thompson represented the Greek system as homecoming representative.

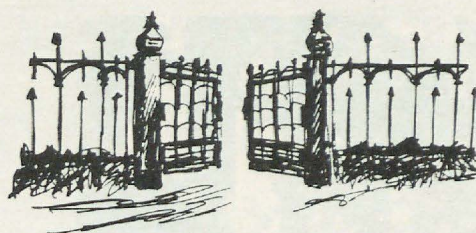


*Beta Delta's Laurie Mitchell, featured twirler of the USC band, tries to coax Vice President George Bush into twirling her baton before the South Carolina-North Carolina State game. In the background are SC Governor Carroll Campbell and USC Athletic Director Robert Marcum. Photo courtesy of the Greenville News, photographer Fred Rollison.*



# Museum Contributions

*A heritage for our yesterdays.  
A home for our todays.  
A hope for our tomorrows.*



December 1, 1986 through November 30, 1987

## Chapters

Alpha  
Theta  
Sigma  
Alpha Gamma  
Alpha Pi

Alpha Sigma  
Beta Gamma  
Gamma Lambda  
Gamma Xi  
Gamma Phi

Delta Omega  
Zeta Nu  
Zeta Rho  
Theta Gamma  
Kappa Nu

Lambda Beta  
Lambda Delta  
Lambda Nu  
Lambda Xi  
Xi Delta

Xi Eta

## Alumnae Chapters

Arlington, TX  
Brazos Valley, TX  
Cypress Creek, TX  
Greater Seattle, WA  
Harrisburg, PA

Houston, TX  
Huntsville, AL  
Kent, OH  
Lawrence, KS  
Lehigh County, PA

Long Beach, CA  
Los Angeles, CA  
Miami, FL  
Muncie, IN  
Northeastern New Jersey  
Orange County, CA

Platinum, FL  
Portland, OR  
Southwest Florida  
Shreveport, LA  
Sun Coast, FL

Tulsa, OK  
Twin Cities, MN

Youngstown, OH  
Whittier-West Covina, CA  
Wichita, KS

## Individuals

Virginia Abercrombie  
Martha Abert  
Kathleen Accordino  
Kathleen Adam  
Merry Adamcik

Barbara Adams  
Sharon Adamski  
Delilah Aho  
Stephanie Aide  
Helen Albrecht

Rebecca Aldrich  
Kathleen Alexander  
Ernestine Allen  
Shirley Allison  
Joanna Alseth  
Mary Ambler

Violet Anderson  
Aurelia Anderson  
Reba Anderson  
Jeanette Andreson  
Nancy Andrews

Juanita Anthony  
Carolyn Anthrop  
Muriel Antonacci  
Alison Ariail  
Lily Armstrong

Muriel Arndt  
Joann Arnholt  
Elise Artelt  
Rozella Ashbaucher  
Dana Askew

Helen Awbrey  
Diane Babcock  
Cheryl Babel  
Leona Babyak  
Elsa Baer

Sandra Bailey  
Joan Baird  
Coy Baker  
Carri Baker  
Nita Baldwin

Ruth Ball  
Virgie Bancroft  
Charlotte Baratti  
Ruby Barham  
Karen Barkey

Alice Barron  
Carole Barry  
Janet Barth  
Marjorie Bastin  
Lillian Bauer

Ann Beath  
Thelma Becker  
Naida Beckett  
Virginia Beggs  
Virginia Bennett

Camila Bennett  
Jeanne Berge  
Alice Bergeson  
Doris Berkey  
Carol Bertz

Sandra Betz  
Dora Bice  
Lois Binkley  
Thelma Birt  
Elaine Blasko

Marion Bliedorn  
Elva Boeckemeier  
Jean Boeker  
Maude Bonar  
P. Bondurant

Ruth Bonelli  
Nita Bonneze  
Alice Bowers  
Francele Boyer  
Elizabeth Bragg

Karen Brammer  
Mary Brandman  
Blanche Branscomb  
Becky Brashear  
Miriam Breese

Elsa Brenner  
Lucille Brenner  
Judith Breon  
Pamela Brewer  
Alice Brewer

Isabel Brinkman  
Jane Brodt  
Sandra Brogden  
Marilyn Brough  
Shawna Brown

Debra Brown  
Hilliary Bryan  
Patricia Bryant  
Suzanne Buchmann  
Martha Burde

Beverly Burnsed  
Elizabeth Burnside  
Mary Bush  
Judy Calandra  
Lilian Callenbach

Cecile Calvi  
Eleanore Cammack  
Cynthia Campbell  
Lois Canzoneri  
Terri Cardona  
Marie Carle

Kathleen Carmichael  
Juanita Carnelley  
Jennifer Carpenter  
Annette Carron  
M. Carson

Diane Cart  
Janet Carter  
Peggy Carter  
Carolyn Cartwright  
Dorothy Cassady

Pearl Castello  
Adeline Cerovac  
Adeline Chamberlin  
Mary Chandler  
Daisy Chapman

Cynthia Charles  
Margaret Chase  
Catherine Chatowski  
Jean Cheslok  
Lilyan Chooljian  
Violet Cianciotto

Loa Clark  
La Rue Clark  
Shirley Clark  
Catherine Clay

Jolayne Cleary

Ethel Cleary  
Carmin Cleavenger  
Alice Clegg  
Geneva Clemans  
Jane Clements  
Patrice Clevenger

Lois Coates  
Mary Colla  
Tracey Colvin  
Leila Colwell  
Helen Compton  
Harriet Conner

Shirley Cook  
Winifred Cook  
Lucile Cooks  
Catherine Cooksey  
Joy Cooper  
Dorothy Corley

Frances Coston  
Gwen Cotabish  
Betty Covell  
Suzanne Cowley  
Ella Cozens

Louise Cragun  
Martha Craig  
Elinor Crain  
Dorothy Crooks  
Judith Crowell

Delores Currier  
Ninetta Dack  
Jean Dallas  
Marjorie Danilson  
Mildred Dauterive

Avis Davidson  
Jane Davis  
Naomi Davis  
Donna Dawson  
Hilda Decker

Ethel Delay  
Georgann Delling  
Jane Demarest  
Martha Denman  
Louise Denny

Elizabeth Devereaux

April Devers  
Ruth Deverter  
Iris Dicks  
Shirley Dillon

Claire Dixon  
Phyllis Docherty  
Anne Dodds  
Ruth Dodds  
Clarissa Donnelly

Yvonne Doty  
Martha Dougherty  
Kathryn Dowell  
Shirley Downing  
Lucile Doyle

Helen Drake  
Verna Draper  
Laura Duchene  
Gladys Dueringer  
Mae-Mae Dunagan

Dena Dunlap  
Mary Dunn  
Paulene Dunn  
Doris Durham  
C. Joanne Durham

Janice Dwyer  
Darlene Dymerski  
Evelyn Dziamba  
Martha Eagle  
Vida Earlenbaugh

Hilda Eastwood  
Dorothy Edwards  
Lillian Eggers  
Ardis Ehas  
Ruth Ehlers

Bonita Ehlers  
Margaret Elder  
Dorothy Eldred  
Janet Elliott  
Elizabeth Elliott

Helen Emerson  
Mildred Emery  
Lain J. Eskew  
Alice Etscorn  
Gertrude Etzler

Jane Evans



# Lucile Cooks honored by Miami



*Presentation of scholarship in Lucile's honor: L to r, J. Paul McNamara, former chairman of Board of Trustees; Douglas M. Wilson, vice president for university relations, Paul G. Pearson, president of Miami University, and Marnie Sambert, first recipient of the scholarship.*

Lucile Crowell Cooks, Miami-A, has again been honored by her alma mater Miami University, by a Scholar-

Leader Room scholarship named after her in Stoddard Hall. Ceremonies were held outside on the campus last October with Marnie Lambert, a junior political science major, receiving the first award.

Scholar-Leader Room scholarships provide recipients with a chance to live free in a specially furnished room in either Stoddard or Elliott Hall. They also benefit from special programs designed to compliment their academic and leadership skills.

A reception was held for Lucile, who was the first woman to serve as chairman of the Miami Board of Trustees, in the home of Mr. and Mrs. Doug Wilson. He is vice-president for university relations. Her family and many old friends in the administration and former board of trustees attended.

In her acceptance speech Lucile remarked "that by establishing this scholarship it will encourage young women to study political science and allied subjects so that they will use their education and talents to seek appointive and elective office in government or in the diplomatic and international service."

There will be a plaque with Lucile's name on the exterior of the room, and her picture and biography on an interior plaque. The scholarship will be given annually to a woman who shows leadership abilities.

Vaudeth Evans  
Kathryn Evans  
Helen Fackrell  
Eleanor Farnsworth

Mary Farquhar  
Minnie Fenenga  
Mary Fera  
Lynn Ferguson  
Esther-Luc Fish

Mildred Fisher  
Judith Fisk  
Cynthia Fitzpatrick  
Neita Flenniken  
Margaret Floegel

Matilda Forbes  
Mary Margaret Fore  
Judith Forsythe  
Juddie Fortson  
Carla Foster  
Patricia Foxworthy

Mary Ann French  
Dorothy Frese  
Debbie Fries  
Helen Frisch  
Opal Frith

Jacqueline Fritz  
Margaret Frye  
Virginia Fuhrmeister  
Beatrice Fulcher  
Judith Fultz

Martha Furman  
Barbara Furrer

Lenora Galbreath  
Bernice Gale  
Eleanor Gallagher

Marion Garner  
Sharon Garner  
Lauan Garnjost  
Nancy Gaston  
Anne Marie Gavin

Gayann Gaymer  
Erna Gellman  
Meredyth Gentry  
Kathleen Geosits  
Elizabeth Gheopreal

Almeda Gilkey  
Ann Gill  
Doris Gillespie  
Alida Ginn  
Elsie Gipson

Mary Gist  
Dorothy Glaser  
Amy Glasgow  
Dorothy Glass  
Jeanne Goebel

Margaret Goetz  
Rebecca Gohring  
Ann Goode  
Patricia Goodwin  
Inez Gordon

Nancy Gordon  
Grace Gorham  
Donna Gorshe  
Claire Goss

Hannah Gough

Melba Grafius  
Carrie Grafton  
Diane Grasse  
Frances Greene  
Sophie Griffith

Dorothy Griffith  
Yvonne Grosjean  
Lynn Grosskreutz  
Karen Guidry  
Ethel-Mae Gullette

Elizabeth Hagan  
Marjorie Haines  
Mabelle Hall  
Edith Hall  
Tammy Hamilton

Ann Hancock  
Stephanie Hand-  
Campbell

Evelyn Hanna  
Mathilde Hanning  
June Hanselman

Marilyn Hansen  
Cathy Hanusch  
Sally Harbath  
Patricia Harlow  
Elizabeth Harman

Ruth Harms  
Florence Harnau  
Carol Harper  
Dorothy Harrington  
Casslyn Harris

Diane Harris  
Cynthia Harris  
Kathryn Hart  
Darlye Harvey  
Norda Haskins  
Nancy Hatfield

Carola Haugen  
Helen Hayler  
Mary Heard  
Hazel Hearin  
Carmen Heer

Sherri Hefty  
Patricia Hendrick  
Margaret Heiser  
Liane Heisohn  
Diane H. Hencken

Louise Hendricks  
Marlene Henselman  
Jeannette Heritage  
Janice Herrmann  
Sally Hessling

Frances Hewitt  
Mildred Hickel  
Barbara Hiebert  
Helen Higley  
Marjorie Hilton

Harriett Hittinger  
Martha Hoefler  
Kathryn Hoffman  
Louise Holbrook  
Sharon Holloway

Ruth Horton

Allison Hostetter  
Marjorie Houghton  
Carolyn Howard  
Donna Huch

Mary Hudson  
Lillian Huffstetler  
Joan Hunerwadel  
Petronilla Hungerford  
Carol Imlay

Margaret Irish  
Fredna Irvine  
Lois Jackson  
Ellen Jackson  
Ruth Jaenecke

Betty James  
Betty Jamieson  
Helen Jansen  
Ellen Jenkins  
Frances Jenkins

Kathleen Jessee  
Cindy Jewell  
Aileen Jewett  
Persis Johns  
Helen Johnson

Mildred Johnson  
Marion Johnson  
Jane Johnson  
Diane Johnson  
Frances Johnson

Lois Johnson  
Uree Johnson  
Ruth Johnson

Susan Johnston  
Glennie Jones

Marian Jones  
Elizabeth Jones  
Christine Jones  
Dolores Jones  
Ann Jordan

Araby Judd  
Virginia Karmalski  
Jeannette Kean  
Frances Keith  
Ludella Keller  
Gretchen Kelsch

Elaine Kerley  
Marilyn Kerner  
Charlotte Keys  
Frances Kiernan  
Carol Killingsworth

Anita King  
Nancy King  
Audrey Kinzer  
Dorothy Kirby  
Elizabeth Kirk

Genevieve Klein  
Lois Klein  
Virginia Klieger  
E. Klopfenstein  
Muriel Knight

Elizabeth Knox  
Beverley Kolb  
Martha Kothe



Elizabeth Kowalewski Evelyn Kramer	Sharon Marquardt Susan Marshall	Anna Mitchell Zona Mitchell	Aurel Ostendorf Alece Otto Diana Overland Barbara Owen Adelaide Owens	Mary Rea Helen Rea Vera Read Vera Ream Ann Reed Donna Reid	Doris Sandoz Dorothy Sandusky Wilma Sanford Lucretia Saunders Kathleen Saunders Lowell Sawyer
Evelyn Kritchevsky Drusilla Krockenberger Denise Laine Charlotte Lamb Myrle Lane	Bonita Marshall Arlene Marshall Carol Marshall Cheryl Martella Bernice Martin	Shirley Mixson Linda Mock Peggy Moore Florence Moore Geraldine Moore Audrey Morava	Harriet Oyler Catherine Palmquist Charlotte Parker Louise Parker Shirley Parli Alice Paton	Helen Reiss Martha Reissig Dorothy Reminger Linda Remington Ethel Remler Nancy Reynolds	Carmel Scaglione Joanne Scarborough Janet Scarpelli Rowena Schaber Tina Schaffer Grace Schindler
Elsie Langenbach Mary Lark Eleanore Lasca Joan Lathouse Ruth Lautaret	Christine Martin Marianne Martinson Laverle Martz Catherine Mason Jane Mathes	Marian Morelock Leora Morley Florence Morse Roma Morton Mary Moss	Cecile Patton Glenna Paukstis Jeanette Paul Terece Pavlovich Ardelle Payne Sandra Peed	Vera Reynolds Kathleen Lynch-Reynolds Theresa Rhea Virginia Rice Hazel Rich Dorothy Rich	Carolyn Schluter Martha Schmitt Joretta Schnieder Catherann Schrader Lena Schroeder Beryl Schutte
Louise Lawrence Patricia Lawrence Nancy Lawson Betsy Leach Margaret Lee	Jane Maxwell Lucille May Mary McCann Mary McCarty Nancy McCarty	Neva Mount Margot Mudd Margaret Mumma Suzanne Murdoch Virginia Murrell	Pamela Peters Dorothy Peterson Joann Pfost Elizabeth Phelps Sue Pickerill Prudence Platt	Johanna Richardson Kathryn Richardson Altabelle Riddle Doris Riede Dorothy Rieke Virginia Riekse	Ruth Schwartz Marjoire Schwegler Elaine Carol Scott Elizabeth Scott Margaret Scripps Paula Sears
Brenda Ley Marilyn Leyland Dorothy Liebig Betty Lieder Helen Linde	Edith McCollister Mary McCullough Traci McDonald Viola McElligott Phylis McEwen	Gertrude Murry Jean Narmore Edna Nauman Dorothy Naumann Helen Neel	Mary Platz Jennifer Plenge Mary Plummer Edna Ponder Janice Popolo Joann Poppy	Helen Rinehart Gloria Rivette Phyllis Roach Linda Roark Goldie Robinson Barbara Rockwood	Anita Selger Teresa Severy Christi Shady Rhoda Shannon Janet Shaw Gladys Shaw
Martha Linville Arlene Little Evelyn Littlefield Lucile Logan Lynne London	Gloria McGinley Velma McKee Jane McKinney Dorothy McLaughlin Margaret McLeish	Ruth Neely Smith Neely Marcia Neese Ida Nelson Saundra Nelson	Betty Potter Elizabeth Potts Patricia Powell Mary Prager June Priest Una Primmer	Ferdinand Roesch Elizabeth Rolfe Sonja Romanowski Dorothy Roken Sara Ross Patricia Rosser	Mary Shaw Emily Shaw Claire Short Kathryn Shotwell Thelma Shough
Mary Long Diane Lopez Doris Loria Mildred Love Debra Lovecky	Onna McManus Tami McNeil Marybelle Meade Barbara Medlicott Ruth Meister	Sherry Nelson Sandra Nesbitt Kimberly Newalany Lois Nichols Jane Nichols	Audry Prindle Nancy Pringnitz Enid Pritchard Diane Proffitt Sarah Purbaugh Ruby Purdum	Elena Rossi Maryann Rossman Marilyn Roth Martha Routsong Inez Rowlands Gladys Russell	Julia Shumaker Kimberly Shuping Dyanne Sidner Ann Sietaty Charlotte Silversteen Dorris Silverthorn
Arnice Lovell Marjorie Lovewell Leona Lucha Suzanne Lund Carol Lutgens	Lona Meister Mildred Mendia Laurel Meyers Lisa Michelini Jane Miles	Helen Nolop Margaret Northridge Margaret Norton Mary Nunnally Roberta O'Neal Louise Odee	Irene Putnam Lyn Putnam Helen Radke Dulcie Randall Jane Rawlings Carolyn Ray	Veda Ryan Jennifer Rybicki Rachel Ryder Margaret Sabine Muriel Sadler Vera Sadler	Andrea Simons Virginia Simpson Mary Simpson Roberta Sims Bernice Sjostrom Susan Skambis
Francis Lutze Virginia Lynch Shirley Lyster Carol Mabe Susan Mabee Ruth MacMaster	Elaine Miller Carolyn Miller Florence Miller Elaine Miller Blanche Miller	Barbara O'Halloran Anna Olds Velma Oliver Joyce Omer Diane Orth			
Elsie Malkin Helen Mamarchev Agnes Mann	Evelyn Mills Ruth Milner Karen Miron	Doris Osten			

## President to lead Hearing & Speech campaign

President Ronald Reagan will serve as national chairman of the Council for Better Hearing and Speech Month's tenth annual May campaign on behalf of 24,000,000 Americans with communicative disorders. The Council is a national consortium of 19 leading non-profit organizations, including Delta Zeta Sorority and Foundation, concerned about hearing and speech.

President Reagan has had a right

ear hearing loss for many years, the result of a gun fired near him during filming of a movie, according to John W. House, M.D., his ear physician. The President began wearing a hearing aid in 1983, and added a second aid the next year to gain better hearing balance and better understanding amid background noise. He will appear in public service messages providing an umbrella for hundreds of community campaigns across the

U.S.

Delta Zeta Sorority collegiate and alumnae chapters all across the nation will be sending a powerful message. Although over ten percent of all Americans have some type of problem with communication, most can be helped. And that's true whether you are President of the United States or a child who has yet to start grade school.



Kathryn Skok  
Phyllis Slattery  
Kathleen Sledge  
Pauline Smeed  
Frances Smith  
Dorothy Smith

Eleanor Smith  
Hilda Smith  
Marguerite Smith  
Gladys Smith  
Kathy Smith  
Sarah Smith

Maribeth Smith  
Susan Smith  
Louise Smith  
Fanne Smith  
Georgene Smith  
Ola Smith

Clara Smith  
Mary Smothers  
Shirley Snell  
Patricia Snider  
Mary Snider  
Flora Snyder

Jane Snyder  
Lore Solo  
Mary Spangler  
Isabelle Spangler  
Mildred Spilman  
Ann Spoth

Marion Sprague  
Marjorie Springer  
Jane Stafford  
Sharilyn Stanley  
Maureen Stebner  
Carin Steckler

Ruth Steele  
Ella Steen  
Janet Sterling  
Anne Stevens  
Fredna Stewart  
Gwendolyn Stewart

Anne Stockman  
Jeannie Stockton  
Kimberly Stocz  
Karen Stone  
Diane Street  
Debra Stull

Virginia Suhring  
Dorothy Swartz  
Maida Tabor  
Mildred Tallman  
Margaret Tallon  
Nola Tarr

Marvona Tavlin  
Lois Taylor  
Noel Templeton  
Deborah Terrible  
Carolyn Thalheim  
Evelyn Thomas

Florence Thomas  
Patricia Thomas  
Gale Thomas  
Gail Thomason  
Jane Thompson  
Eva Thompson

Caroline Thompson  
Irene Thomson  
Rena Thomson  
Leone Threlkeld  
Nancy Thullbery  
Susan Thuney

Nancy Tickel  
Vee Toner  
Robin Touns  
Susan Trapletti  
Jean Trattner  
Esther Trautwein

Carolyn Travis  
Sue Trevarrow  
Brenda Trietch  
Ruth Tucker  
Mary Tymeson  
Lynn Tyson  
Florence Umfrid

Peggy Valley  
Florence Van Dyke  
Linda Van Loon  
Mary Vanhoosear  
Nancy Vanwye  
Tracy Varner

Helen Vaughan  
Helen Viger  
Mary Lou Vineyard  
Claudia Vollmer  
Kathleen Wachsmuth

Lael Walding  
Alice Walker  
Mary Walker  
Ann Walls  
Dolores Walsh  
Elizabeth Walters

Kay Walther  
Melba Warbasse  
Marianne Warley  
Sandra Warwick  
Patricia Watson  
Genevieve Wayman

Lucille Weir  
Maxine Weirich  
Marjorie Wellmerling  
Mary Welsh  
Kathryn Wenger  
Mary West

Dian Westerberg  
Margaret Westley  
Emma Wetzel  
Lynn Whayne  
Trudy Wheeler  
Marcia Whipple

Jean Whisler  
Sarah Whitaker  
Bernice White  
Veryl White  
Gladys Whitesell  
Mary Wick

Lydia Wiekpking  
Ruth Wikoff  
Jane Wille  
Llwanda Williams  
Julia Williams  
Louise Williams

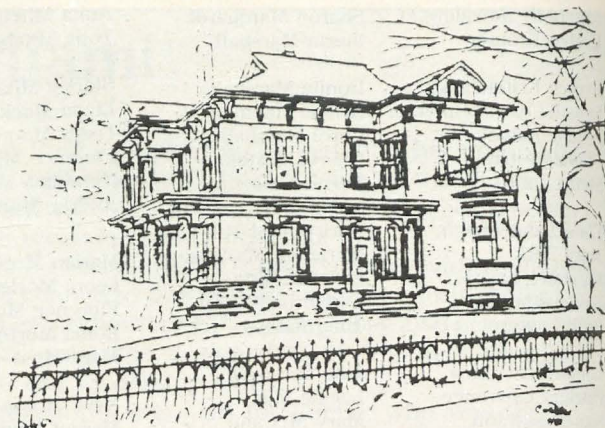
Bonnie Williams  
Maryalice Williamson  
Leeann Williford  
Virginia Wilson  
Helen Wilson  
M. Wilt

Kathleen Windau  
Beatrice Wise  
Luvola Wisenski  
Virginia Wittorff  
Susan Wixsom  
Janet Wolfe

Vera Wolford  
Eudora Wood  
Mary Woods  
Martha Woodward  
Dorothy Woodyerd  
Doris Wyckoff

Nancy Wykes  
Beulah Young  
Sandra Young  
Gayle Young  
Virginia Zehe  
Melanie Ziegler

Kenna Zierer  
Nancy Zoldak  
Lola Zook  
Karen Zwergel



Thank you,  
Thank you,  
Thank you!!!

## HONOR CIRCLE

### Contributor

Province VI  
Province VI  
Province Alumnae Directors  
Alpha Gamma Chapter  
Beta Delta Chapter

Lambda Sigma Chapter  
Zeta Xi Chapter  
Albuquerque Alumnae  
Oklahoma City Alumnae  
St. Petersburg Alumnae

St. Petersburg Alumnae  
Ann Anderson  
Lois Coates  
Lucile Cooks  
Janice Cox

Margaret Houser CeVile  
Carolyn Gullatt  
Duana Jones  
Lois Klein  
Alice Matthews

Cynthia Plucinski  
Eileen Smith  
Jane Snyder  
Edna Walker  
Margaret Barfield

Judy Loeckle  
Elsie McTe  
Diane Sehy  
Elizabeth Devereaux

### In Honor of . . .

Patricia Rosser  
Loretta Gilewicz  
Charlotte Silversteen  
Barbara Martin  
Mary Margaret Fore

Sandy Bass  
Tama D. Ross  
Kathryn Maxwell Simmons  
Deanna McKinnon  
Mrs. Herman Platz

Lucile Cooks  
Brevard County Alumnae  
Induction into Golden Rose  
1985-1987 National Council  
Charlotte Silversteen

Marcia Baird Whipple  
Norma Andrisek  
Jeania Evans  
Lillian Eggers  
Leighann Hilbun

Charlotte Silversteen  
Lucile Cooks  
Eileen Doe  
Polly Binnicker  
Marcia Baird Whipple

Marcia Baird Whipple  
Marcia Baird Whipple  
Marcia Baird Whipple  
Norma Andrisek



# Hearing Help Grants



The Founders Memorial Foundation annually awards grants to alumnae chapters to assist with local "hearing help" philanthropic endeavors. Grants up to \$500 are made possible by tax deductible contributions to the Founders Memorial Foundation Hearing Help Fund. Alumnae chapters must apply by April 1st. The following grants were awarded in 1987:

\$500.00 to DEAF COMMUNITY SERVICES OF SAN DIEGO on behalf of the North San Diego County alumnae chapter. Child abuse among families with deaf children has become a frequent occurrence. Deaf Community Services is developing a video to educate children about touching. All the actors are deaf and interpreter services are needed. This grant will pay for 25 hours of interpreter services.

\$500.00 to OKLAHOMA SOCIETY FOR CRIPPLED CHILDREN: DIAL-A-HEARING PROGRAM on behalf of the Oklahoma City alumnae chapter. By dialing a local telephone number, a person can check his or her own

hearing by listening to a pre-recorded tape. The caller listens to beeps at two different sound levels and is told to contact a physician if all the beeps are not heard. Grant monies will be used to expand the program into new communities in the state.

\$400.00 to FAIRMOUNT THEATRE FOR THE DEAF on behalf of the Cleveland Westside alumnae chapter. Fairmount Theatre For The Deaf provides classes in sign theatre and entertainment throughout the country for both the hearing and the deaf. Because they are a traveling theatre company they need portable telecommunications (TTD) devices to communicate with the office etc. This grant will be used toward the purchase of this necessary telecommunications equipment.



*Sherryl Pickett Robinson, New Orleans-OK, (second left) president of the Greater New Orleans alumnae chapter, presents a \$300 check for the Louisiana Hearing Dog Program to Board Members Richard A. Vavrick, Elsie Gelpi Rubin, Sophie Newcomb-BY, and Susie Grappe. The grant was received from the Founders Memorial Foundation.*



*Signing "Thank You" to Delta Zeta are members of the Fairmount Theatre of the Deaf. Cleveland alumna Lynn Snodgrass Damberger presents the check and signs the "u." The \$400 grant was received from the Founders Memorial Foundation.*

\$300.00 to SOUTHERN HEARING AND SPEECH FOUNDATION, HEARING DOG PROGRAM on behalf of the New Orleans alumnae chapter. Hearing dogs have become a vital means of improving the quality of life for the hearing impaired. Grant monies will generally assist this new program as they train and provide dogs for hearing impaired applicants. They hope to place 12-16 dogs the first year.

\$250.00 to ALL CHILDRENS HOSPITAL SPEECH AND HEARING CLINIC on behalf of the St. Petersburg alumnae chapter. This grant will be used to purchase computer software to assist in the continuing education of parents, patients and the community.



# From the Lampwriter



The Holiday Season brought news and notes from here and there. One I meant to mention in the last issue was a brief message from Grace Mason Lundy, Indiana-E.

"Just a note to tell you I think the LAMP that just came will have to go down in ΔZ history as the very best!!

"Beautiful job, welcome news, happy prospects! Of course the report of the *restored* chapters is my special joy. Love, best wishes and keep it going. Grace."

Kathleen Cordry Fears, Texas-AT wrote from Tyler, Texas. "I especially enjoyed the last issue with the picture of your 'friends and sisters.' It was so nice to see the familiar faces." Kaye was an original member of that group and served as Tulsa alumnae president in 1959.

An announcement from Oklahoma City University School of Law brought welcome news that the Juris Doctor Degree has been conferred upon Deborah McWhirter Bruce, Central State University-EY, former National Vice President of Membership. Congratulations, Debbie!

-----  
The Delta Xi chapter at the University of Northern Colorado has a most unusual house mother, or do we call them house directors now? CCD Marianne Cravens calls her "Kansas Kate." Kate Gienger collects hats! Every nook and cranny of her room at the ΔZ House is filled with her collection and she has shown and talked about her hat collection in Nebraska, Kansas and Colorado.

Kate became a hat historian quite by accident. She was living in St. Francis, Kansas in 1974 when a community theater production of *Okla-homa* was staged. Kate wanted a part in the play. She was asked to be the costumer and said she would do that job if she got a part. And she did. She placed a one-line advertisement in the local paper asking for old hats for the play. She received so many that, in desperation, she placed another ad asking people to stop sending them. It didn't work. Hats still kept appearing.



*Kate Gienger*

At one time she had more than 750 but many were damaged by a basement flood. Her present collection numbers about 500.

One of the most interesting is a crocheted replica of a hat recovered from the Titanic. In fact, one of her hats was even "on loan" at convention last summer and was pictured in the convention memories article in the last LAMP.

In her presentations Kate talks about the origin of hats and in studying their history has come up with a theory about why women wear them. The more frustrated and repressed women have been, the more fanciful, large and unusual their hats. "After all, we have to have some outlet for our creativity and uniqueness," she said.

One of her most historical hats is a flat, straw hat with silk flowers and a net on top. It was worn by a women's suffragette leader in a parade for women's rights in 1919 in Topeka, Kansas.

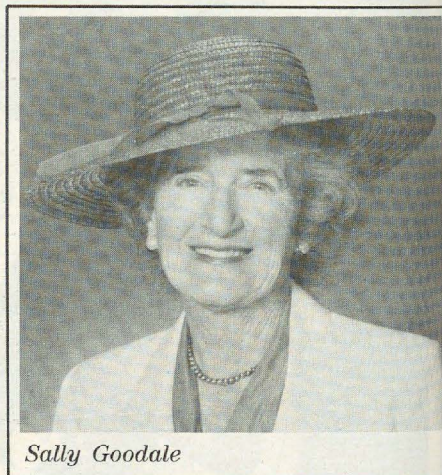
Up until the 1960s, women still wore hats, but Jackie Kennedy's "pill-box" hats — which were small and designed to accent rather than cover — and her elaborate hair styles led to the decline of hat wearing. "Jackie didn't always wear hats, so women

thought they could do the same," Kate said.

"Hats are coming back in style and women are wearing them now because they want to, not because fashion dictates they should.

"There's a charm — just something — about wearing hats that adds to a woman's esteem," she said.

-----  
Sarah McCann Goodale, George Washington University-ΔΔ, has had a distinguished real estate career that has involved three states, 40 years and travel around the world with her International Real Estate Organization known as FIABCI. Sally, now Ambassador at Large of FIABCI Arizona, was the organizer and founder of the local group, one of the largest chapters in the United States, and for the last two years has served as Secretary-General of the Professional and Educational Exchange Committee of the international world-wide organization, representing 40 countries. She was honored by the presentation of the Medal of Honor by FIABCI USA. Sally is a member of the Phoenix alumnae chapter.



*Sally Goodale*

-----  
At age 83, Mayor Jean Kitts Young, Oregon-Ω of King City, Oregon is in her prime. She is the unquestioned



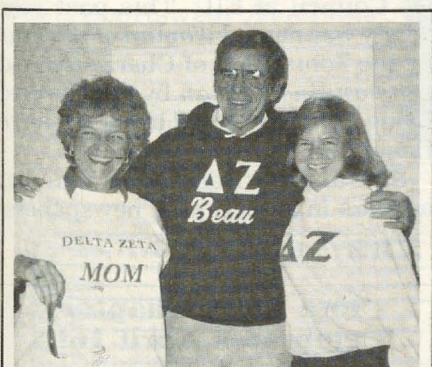
leader of a "retirement" city in which the average age is 76. A source of inspiration and knowledge to young politicians, a tireless volunteer for causes she believes in, she is also a loving grandmother who whips up goodies in her kitchen.

"I want to wear out, not rust out," Jean says. Her heavy schedule finds her attending several meetings a week for various government, political and charity organizations.

As Mayor of King City since 1980, she has made sure her community does not take a back seat in having its concerns known at local, county and state levels. King City residents have an enviable voting record - 85% voter turnout even on their worst days, with over 3000 registered voters.

Jean served on the King City Council for 8 years before stepping up to the Mayor's seat. Most of her public service career has been spent on other people's campaigns and also such volunteer pursuits as Girl Scouts, PTA, Oregon's Wage and Hour Commission, National Foundation for Infantile Paralysis and the American Cancer Society.

Last but not least, Jean has made time to participate in Delta Zeta functions, attending luncheons and meetings, and lending her support to Omega chapter.



*Dannie and Wayne Toon, parents of Louisville-BF's Maria wore their ΔZ "attire" to film Beta Gamma rush activities. We've always said Delta Zeta is family!*

Alumnae from around the country are finding second careers as volun-

teers in the AARP's Tax-Aide program. After an intensive training in January each year in cooperation with Internal Revenue Service, they are providing free tax assistance to any middle or low income people, age 60 and over, who need help with their federal, state or local tax returns.

Senior taxpayers are given special emphasis and consideration to insure they receive all the benefits to which they are entitled. As one volunteer put it, "I wish the program lasted longer than two months, it is the most rewarding thing I do."

Two Delta Zetas who are active volunteer leaders in this program are Hazel Mae Thomas Minogue, University of Louisville-BF and Marjorie Hancock Weise, Denver University-P. Hazel is the local coordinator for Tax-Aide in Falls of Rough, Kentucky, finishing her fifth year in the program. Marjorie is an overall coordinator in the area of American Fork, Utah and has served eight years in this community service, five in Minnesota and three in Utah.

An outstanding Delta Zeta in the Cleveland Eastside alumnae chapter is Pat Higgins Leach, Miami University-A, of Novelty, Ohio. Pat found a need and filled it. Teens from junior high and high school age needed a place to go to socialize with others. What better use could be made with an old vacant building than to renovate it and call it Chesters! The township of Chesterland let Pat and her staff use the building. It services the West Geauga school district and surrounding areas.

Through the generosity of time, effort and money given by many people, Pat's wonderful idea became a reality. Much work needed to be done to the building — the water system was updated, it was cleaned, painted, the electrical system restored and even furniture donated.

As a rule, Friday night is for the junior high students and Saturday night is for the senior highs. The building is chaperoned by about ten adults (parents) and could have as many as 185 teenagers per night.

Some of the activities are ping-pong, video games, pool, foosball, stereo, big screen TV with movies, D. J.'s and occasional bands. Sometimes

there is a nominal fee to get in, but most of the time it is free. And all, thanks to a lady with an idea.



*Jolly Ann Davidson*

Jolly Ann Horton Davidson, Drake University-IE has been inducted into the Iowa Women's Hall of Fame. Jolly Ann, a former ΔZ province director and committee chairman, has long been recognized for commitment to public service, public broadcasting and dedication to excellence and equity in education. She has also received the Drake University's Alumni Distinguished Service Award.

Our Historian reminds me I should mention an honor I received last fall. A Citation of Merit was presented by my alma mater, Northeastern State University in Tahlequah, Oklahoma for "outstanding service." It has joined the ΔZ and NPC mementos in my ΔZ office.

*JS*



# Flame Eternal

## ALPHA

Mae Drake Joyner '24

## GAMMA

Mae Lahti Burrington '30

Valborg Tanner Olson '30

## EPSILON

Jeannette Calvin Hewett '16

## ZETA

Sarah Yost Liephart '16

Ruby Knepper Mitchell '10

## KAPPA

Gertrude Sisler Pfeifer '14

Clara Knausenber Holmes '17

## LAMBDA

Alma Brainard '20

## MU

Phillis Vanstrum Bell '21

Barbara Martha Mensing '18

## XI

Louise Dohrmann Stricken '18

## PI

Winifred Wright Metzler '30

Esther Brown Ranes '27

## TAU

Jennie Bailey Bruce '23

## UPSILON

Virginia Benedict Burdette '42

Janet Akerlind Fodness '59

Anna Peterson Walsh '41

## ALPHA ALPHA

Marylouise Leimgruber Appleton '35

Dorothy Mohr '29

## ALPHA BETA

Marybelle Thompson Gardiner '38

## ALPHA EPSILON

Geordia Coffey Camp '26

## ALPHA THETA

Bettye Mosby Newton '48

## ALPHA PI

Julia Schonhoff Wyatt '71

## ALPHA SIGMA

Bette Copps Grason '47

Natalie Lamb '25

## ALPHA TAU

Donna Kemp Laosa '77

## ALPHA CHI

Rosamond Barker Marseilles '32

## BETA KAPPA

Gloria Jenkins Wandrey '66

## BETA CHI

Jane Moser Liotti '58

## DELTA PHI

Margaret Whitlow Stanfield '74

## DELTA CHI

Patricia Newell Meek '50

## EPSILON DELTA

Mary Holdren Collins '61

## EPSILON KAPPA

Patricia Edna Pechauer '67

## EPSILON MU

Jane Schafer Warfel '43

## ZETA LAMBDA

Anne Riddick Carroll '64

## THETA ETA

Kathleen Tuhy Gordon '59

## IOTA ALPHA

Geraldine Neumann Cope '41

## IOTA UPSILON

Claudia Sparks Nelson '74

## PHI BETA

Anna Luther Pratt '29

Helen L. Gillham '27

Orpha Overman Tam '27

## Sandy Rives named gold medalist for volunteer work



Sandy Rives

Sandra Belt Rives, Northwestern-AA has been named a gold medalist by a national public relations organization for her volunteer

work at Eastern Illinois University.

The Council for Advancement and Support of Education (CASE) of Washington, D.C. has selected Sandy, wife of EIU President Dr. Stan Rives, as one of four gold medal winners throughout the United States.

CASE, with its 2,800 colleges, universities, and independent elementary and secondary school members, is the largest institutionally based education association in America. It serves as the principal public affairs arm for higher education.

Sandy has been active in many activities in East Central Illinois, including the coordination of Women's Exposition and Health Fair held annually each spring at Eastern Illinois University.

Started in 1986, this year's Expo attracted 1,200 women from 108 communities. Held each spring, the Expo is one of Illinois' largest events for women.

In 1986 she was elected a *Woman*

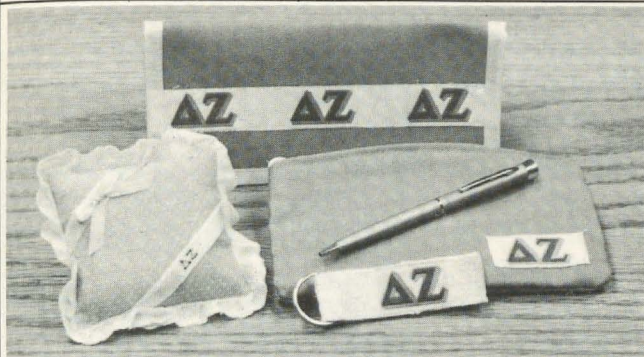
of Achievement by the Women's Studies Council at EIU. This past year Sandy was named *Woman of the Year* by the Zonta Club of Charleston and *Outstanding Woman* by the Covered Bridge Girl Scout council of Terre Haute, Ind.

She also writes a column that appears in several area newspapers.

### Iota Delta Chapter Celebrates April 16th

Alumnae are planning to return to Edinboro on April 16, 1988 to observe 60 years as a continuing group at the university. If an alumna has not contacted the CCD during this year to be certain the chapter knows where to send information please write with your current address update to: Mrs. Emma Williams, 121 Terrace Drive, Edinboro, PA 16412.





## Some Old . . . Some New for Delta Zeta

- 962CB - Pink Canvas Checkbook Cover .....\$5.00
- 962MC - Pink Canvas Make-Up, Glasses, Pen or  
Miscellaneous Case .....\$3.00
- 962KR - Pink Canvas Keyring.....\$3.00
- 987 - Garland Pen with Crest on Crown .. \$10.00
- 963 - Sorority Pin Pillow .....\$5.50

905 - Delta Zeta Crest  
multi-colored on white  
sweatshirt..... \$16.00

909 - Pink and Kelly Appli-  
que turtle available on Pink  
or White sweatshirt \$28.00

901 - Polo shirt in Pink  
w/Green Delta Zeta \$16.00

914 - Grid Design Pink and  
Kelly on White sweatshirt.  
\$16.00



All Sportswear Available

CREATIVE BUSINESS EVENTS, INC.

Rt. 9—80B, Gainesville, Ga. 30506

(404) 983-3778

Name:	ITEM NO.	SIZE	COLOR	Quant.	DESCRIPTION	PRICE																																																							
Address:																																																													
Phone:																																																													
WE HONOR: MasterCard ( ) Visa ( ) ◀ ◀ ◀ Check One																																																													
EXP. DATE	Credit Card Signature Required																																																												
CREDIT CARD NUMBER																																																													
<p>PLEASE ALLOW 4-6 WEEKS FOR DELIVERY AS UNPREDICTABLE DEMAND FOR CERTAIN ITEMS COULD CREATE A DELIVERY DELAY. WE WILL MAKE EVERY EFFORT TO SEND YOUR MERCHANDISE PROMPTLY AND YOU WILL BE NOTIFIED OF ANY DELAYS OVER 30 DAYS. ALL CHECKS AND CREDIT CARDS ARE CASHED UPON RECEIPT. PLEASE DO NOT SEND CASH OR MONEY ORDERS. MAKE CHECKS PAYABLE FOR THE TOTAL AMOUNT OF THE ORDER (INC. SHIPPING AND HANDLING) PAYABLE TO CREATIVE BUSINESS EVENTS—DELTA ZETA.</p>																																																													
<table border="1"> <thead> <tr> <th colspan="3">Shipping, Insurance, &amp; Handling</th> <th colspan="2">ITEM TOTAL</th> </tr> </thead> <tbody> <tr> <td>Order Total</td> <td>Via Surface</td> <td>Via Air</td> <td>SHIP. &amp; HAND.</td> <td></td> </tr> <tr> <td>\$25.00 &amp; Under</td> <td>\$3.95</td> <td>\$5.25</td> <td>Add 6 1/2% Sales Tax if Shipped To California</td> <td></td> </tr> <tr> <td>\$25.01-50.00</td> <td>\$4.95</td> <td>\$6.50</td> <td>Add 4% Sales Tax if Shipped To Georgia</td> <td></td> </tr> <tr> <td>\$50.01-75.00</td> <td>\$5.95</td> <td>\$8.50</td> <td>GRAND TOTAL</td> <td></td> </tr> <tr> <td>\$75.01-100.00</td> <td>\$7.95</td> <td>\$10.50</td> <td>PRICES SUBJECT TO CHANGE</td> <td></td> </tr> <tr> <td>\$100.01-200.00</td> <td>\$9.95</td> <td>\$12.50</td> <td></td> <td></td> </tr> <tr> <td>\$200.01-300.00</td> <td>\$11.95</td> <td>\$15.50</td> <td></td> <td></td> </tr> <tr> <td>\$300.01-400.00</td> <td>\$14.95</td> <td>\$18.50</td> <td></td> <td></td> </tr> <tr> <td colspan="3">ADD \$2.50 for each additional \$50.00 for surface.</td> <td colspan="2"></td> </tr> <tr> <td colspan="3">ADD \$5.00 for each additional \$50.00 for air.</td> <td colspan="2"></td> </tr> </tbody> </table>							Shipping, Insurance, & Handling			ITEM TOTAL		Order Total	Via Surface	Via Air	SHIP. & HAND.		\$25.00 & Under	\$3.95	\$5.25	Add 6 1/2% Sales Tax if Shipped To California		\$25.01-50.00	\$4.95	\$6.50	Add 4% Sales Tax if Shipped To Georgia		\$50.01-75.00	\$5.95	\$8.50	GRAND TOTAL		\$75.01-100.00	\$7.95	\$10.50	PRICES SUBJECT TO CHANGE		\$100.01-200.00	\$9.95	\$12.50			\$200.01-300.00	\$11.95	\$15.50			\$300.01-400.00	\$14.95	\$18.50			ADD \$2.50 for each additional \$50.00 for surface.					ADD \$5.00 for each additional \$50.00 for air.				
Shipping, Insurance, & Handling			ITEM TOTAL																																																										
Order Total	Via Surface	Via Air	SHIP. & HAND.																																																										
\$25.00 & Under	\$3.95	\$5.25	Add 6 1/2% Sales Tax if Shipped To California																																																										
\$25.01-50.00	\$4.95	\$6.50	Add 4% Sales Tax if Shipped To Georgia																																																										
\$50.01-75.00	\$5.95	\$8.50	GRAND TOTAL																																																										
\$75.01-100.00	\$7.95	\$10.50	PRICES SUBJECT TO CHANGE																																																										
\$100.01-200.00	\$9.95	\$12.50																																																											
\$200.01-300.00	\$11.95	\$15.50																																																											
\$300.01-400.00	\$14.95	\$18.50																																																											
ADD \$2.50 for each additional \$50.00 for surface.																																																													
ADD \$5.00 for each additional \$50.00 for air.																																																													
<p>All returned checks are subject to a \$10.00 service charge. All returned cartons are subject to a \$5.00 service charge.</p> <p>A PORTION OF EACH SALE WILL GO TO YOUR SORORITY NATIONAL OFFICE.</p>																																																													



# Campus sights and sounds

**DELTA TAU DELTA** members from Washington State University ran a Domino's pizza 341 miles across the state in less than 47 hours, earning \$2,300 for the Arthritis Foundation.

**ALSO RUNNING.** Last year Sigma Phi Epsilon members at Penn State raised \$3,000 for the Special Olympics by running the game ball to West Virginia University. This year the WVU members ran the football to Penn State.

**FORDHAM UNIVERSITY** School of Law offers a one-day class named "Torts 'n' Tarts: Or How to Handle the Interview Lunch."

**"COINLESS" PAY PHONES** are being tested in buildings at the University of Michigan. The phones use plastic cards that can be purchased in \$2, \$5, and \$10 denominations.

**WOMEN** comprise 58.6% of the undergraduates in America's 75 pharmacy schools.

**TRANSYLVANIA UNIVERSITY** (Ky.) plans to supplement faculty salaries from a \$5 million trust established by former owners of the *Louisville Courier Journal*.

**UNIVERSITY OF PENNSYLVANIA's** Wharton School hosts "Out of the Garage," a symposium on bringing high-tech products to market. (*Wall Street Journal*)

**MORE THAN 10,000** students are enrolled in entrepreneurial courses. At least 350 colleges and universities now have courses on the subject. (*WSJ*)

**QUEENS COLLEGE** (N.Y.) has been given a "treasure-trove" of hundreds of Louis Armstrong's unreleased recordings and unpublished musical composition. (*UPI*)

**DENTAL SCHOOLS** are suffering. First-year enrollments have declined by almost 28% since 1978. (*U.S. News*)

**A HEARING EXPERT** at Auburn University is fitting canines with hearing aids. Researchers at Texas A&M and Tufts are also working on the project. The device is wrapped with foam rubber instead of the plastic used for humans.

**GEORGIA TECH** researchers are developing a computerized poultry-processing line to inspect chickens for disease and other flaws. (*WSJ*)

**MORE CHICKENS.** Cornell University animal psychologists have discovered that piped-in music by Vivaldi makes chickens gain weight faster. The chickens are also soothed by red mittens as "surrogate" mothers.

**AT BRADLEY UNIVERSITY** any student on a meal plan may bring one guest to a meal each month without charge.

**THE AT&T** Foundation has awarded 118 grants totaling over \$3 million in support of science and engineering education at 39 American colleges and universities.

— *A service of the National Panhellenic Editors Conference Brass Tacks Committee, Eileen Rudolph, ΔΔΔ, chairman.*

## MEMORIAL CIRCLE

Contributions made to the National Historical Museum  
12/1/86 - 11/30/87

### Contributor

Province XVII-N  
Albuquerque Alumnae  
Albuquerque Alumnae  
Chicago Alumnae  
Chicago Alumnae Afternoon Group

Corpus Christi Alumnae  
Dayton Alumnae  
Delta Zeta Sorority  
Flint Alumnae  
Greencastle Alumnae

Metro-Detroit Alumnae  
Metro-Detroit Alumnae  
Muncie Alumnae  
St. Petersburg Alumnae  
St. Petersburg Alumnae

St. Petersburg Alumnae  
St. Petersburg Alumnae  
Ann Booher  
Ann Booth  
Lucile Cooks

Elizabeth Devereaux  
Elizabeth Devereaux  
Gertrude Fariss  
Phyllis Favorite  
Amy Glasgow

Grace Gorham  
Margaret Hanley  
Frances Hewitt  
Zeta Rho Chapter  
Ellen Jenkins

Mary Karstaedt  
Betsy Leach  
Jo Lefler  
Velma McKee  
Florence Miner

Doris Riede  
Valda Rispoli  
Martha Sharkey  
Carolyn Segawa  
Alice L. Steinmeyer

Mary Winchester

### In Memory of . . .

Myrtle Hinkly  
Pearl McCabe Lundy  
Alice Bell Gordon  
Dorothy Mohr  
Eleanor Schweitzer Keats

Debbie Blackman Cox  
John Andrisek  
Helen Silversteen  
Grace Milledge  
Myrtle Hinkly

Dorothy Krebs Maledon  
Myrtle Hinkly  
Martha Townsend  
Gerold Cooper  
Mr. M. Theodore Keil

Thomas Goodwin  
Ida Alvarez Breck  
William Freed  
Myrtle Hinkly  
Myrtle Hinkly

Mabel Lawrence  
John Andrisek  
Myrtle Hinkly  
Myrtle Hinkly  
Geraldine Newmann Cope

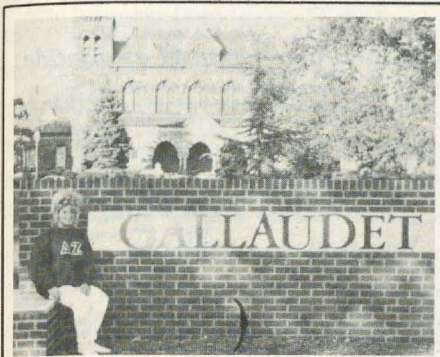
John Andrisek  
Mary Alice Struss  
Adelaide Doran  
Connie Holmes  
Mary Elizabeth Brown

William Freed  
Sarah Leiphart  
William Freed  
Myrtle Hinkly  
Myrtle Hinkly

Caroline Sjoblom Tema  
Myrtle Hinkly  
William Freed  
Nancy Mattingly Cooke  
Alice B. Steinmeyer  
Rhea Freidel Schultz  
Amanda Thomas



# Gallaudet Scholarship Recipients



*Mara Lenetsky, Pittsburgh-O visited the Gallaudet campus.*

## Betsy Bachtel

Betsy is from Columbus, Ohio, where she attended and graduated from Brookhaven High School. In 1984, Betsy enrolled at Gallaudet, and is presently a junior majoring in Social Work. In her spare time, Betsy enjoys running track and cross-country, and was selected as an All-American for track, as well as Athlete of the Year, by the American Association of Athletics for the Deaf. Betsy also enjoys reading and cross-stitch. After graduation, Betsy hopes to work as a counselor for the deaf, and also plans to coach track. She also is interested in serving with the Peace Corps.

## Joan Emerick

Joan is from Johnson City, New York, and graduated from Johnson

City Senior High School. Prior to enrolling at Gallaudet, Joan received an Associate of Arts Degree from the State University of New York, and also attended Broome Community College for one semester. Joan is now a Junior at Gallaudet, majoring in Social Work. She has been named to the Dean's List, and received a Spanish Scholarship in the summer of 1987. Joan is a member of the National Association of Social Workers, and served on the Planning Committee for a Social Work workshop conducted this past spring. She has served Gallaudet as a tutor and dormitory counselor, and enjoys working with people. In the future, Joan hopes to work as a counselor with individuals who are chemically-dependent, or with those individuals who become deaf later in life.

## Paula Holbrook

Paula is from Lansing, Michigan. Prior to enrolling at Gallaudet, she attended Leslie Public High School and Lansing Community College. Paula spend several years working as a professional bookkeeper before coming to Washington in 1986. Now a sophomore, she is majoring in Education, and hopes to work on government programs designed to increase deaf awareness and the rights of handicapped individuals. Paula has worked as a counselor for deaf chil-

dren, and enjoys horseback riding, reading and writing in her spare time.

## Denise Harriton

Denise was born in Portage, Pennsylvania, and graduated from the Western Pennsylvania School for the Deaf in Pittsburgh. Prior to enrolling at Gallaudet, she attended Mt. Aloysius Junior College for two years. This year, Denise is a sophomore at Gallaudet, planning to major in science. In her spare time, she enjoys reading and various facets of art. Denise is undecided about her future job, but is interested in working for the National Aeronautics and Space Administration.

## Karen Solomon

Karen is from Lake Grove, Long Island, New York, and graduated from Sachem North High School. At present, Karen is a senior, majoring in Education and Psychology. She is a member of Kappa Delta Pi Education Honor Society, and has been named to the Dean's List from 1984 to 1987. Karen also is a member of the National Organization for Women, and has worked at Gallaudet as both a tutor and assistant for the Dean of the School of Education. In the future, she plans to work as either a teacher for the deaf or as a school psychologist.

## HAVE YOU CHANGED YOUR NAME OR ADDRESS?

Please print or type and mail to Delta Zeta Sorority, 202 East Church Street at Campus Avenue, Oxford, OH 45056. Members should use parents' address while in college.

**IMPORTANT: You must cut out the mailing label from this issue and paste it here.**  
**We cannot process changes without your label. Thank You.**

I am currently a Delta Zeta Officer. Title \_\_\_\_\_

My new address will be \_\_\_\_\_

street/apt. #

city/state/ZIP

effective date

**If mailing label does not show your married name, please include the following information for our membership files.**

Married name

Husband's first name

Date of marriage



Completed questionnaires provide information for our Alumnae Profile section and are also used as a guide to finding Delta Zetas to interview for other stories in *The LAMP*.  
Please type or print.

Name \_\_\_\_\_  
 \_\_\_\_\_ First \_\_\_\_\_ Maiden \_\_\_\_\_ Married \_\_\_\_\_  
 Street Address \_\_\_\_\_  
 City \_\_\_\_\_ State \_\_\_\_\_ Zip \_\_\_\_\_

Your College Chapter \_\_\_\_\_

Phone:  
Area Code ( )

Occupation: (Please give title and describe your duties as fully as possible)

1. The American Association of  
2. attended under the high school  
3. and was elected an officer  
4. during those and other years  
5. especially a young man in the  
6. known in the early 1920s

(If more space is needed, please use an additional sheet)

Date of Marriage:

Husband's First Name and Occupation:

Names and birthdays of  
children: \_\_\_\_\_

---

---

---

---

Degrees: \_\_\_\_\_

[illegible]

(If more space is needed, please use an additional sheet)

44



# Directory

## NATIONAL COUNCIL

**PRESIDENT:** Norma Minch Andrisek (Mrs. John R.), 319 Janice Drive, Berea, OH 44017

**VICE PRESIDENT OF MEMBERSHIP:** Marvona Easley Tavlin (Mrs. Michael), 2710 Devonshire Drive, Lincoln, NE 68506

**VICE PRESIDENT OF ALUMNAE AFFAIRS:** Deanna Alleman McKinnon (Mrs. Mike), 12109 Victoria Place, Oklahoma City, OK 73120

**VICE PRESIDENT OF COLLEGIATE AFFAIRS:** Phyllis Snape Favorite (Mrs. Robert D.), 570 Lancashire Lane, State College, PA 16803

**SECRETARY:** Sandra McAlister Nesbitt (Mrs. Milton), 2100 Rexford Road, Montgomery, AL 36116

**TREASURER:** Anne Marie Jones Gavin (Mrs. William), 3264 Swan Drive, Vineland, NJ 08360

**DIRECTOR:** Patricia Canady Rosser (Mrs. David), 1609 Indian Rocks Road, Clearwater, FL 34616

**DIRECTOR:** Merry Westbrook Adamcik (Mrs. Roy), 614 Rozelle Avenue, Sugar Land, TX 77478

**DIRECTOR:** Lynnnda Wolf Hoefler (Mrs. Robert), 1287 Denise Drive, Kent, OH 44240

**DIRECTOR:** Susan Mease (Ms.), 857 N. Van Dorn Street, Alexandria, VA 22304

**PAST NATIONAL PRESIDENT/NATIONAL PANHELLENIC CONFERENCE DELEGATE:** Carolyn Barnes Gullatt (Mrs. John H.), 4008 Hyridge, Austin, TX 78759

**NATIONAL PANHELLENIC CONFERENCE ALTERNATES:** Marvona Easley Tavlin (Mrs. Michael), Deanna Alleman McKinnon (Mrs. Mike), Norma Minch Andrisek (Mrs. John R.)

## NATIONAL HEADQUARTERS

**NATIONAL HEADQUARTERS:** 202 East Church Street at Campus Avenue, Oxford, OH 45056. (513) 523-7597

**NATIONAL HEADQUARTERS ADMINISTRATOR:** Cindy Winslow

**FIELD REPRESENTATIVES:** Lisa K. Albright, Cynthia Lee Anderson, Kathi Dawn Bray, Lee Ann De Reus, Sheila Judge, Sheila McCarthy, Christina Mullin, Wendy Lynn Myers, Diane Rolnick, Sharon Rothrock and Kim Saari.

## THE LAMP

Gwen Moss McKeeman (Mrs. Robert), 5517 S. 74th E. Avenue, Tulsa, OK 74145

## EXTENSION

Carolyn Barnes Gullatt (Mrs. John H.), 4008 Hyridge, Austin, TX 78759

## DELTA ZETA SUBSCRIPTIONS

Norma Swepston McIntyre, Box 24145, Columbus, OH 43224

## FOUNDERS MEMORIAL FOUNDATION

**PRESIDENT:** Joan Dondrea Lowry (Mrs. Bob-Bill), 578 Yarmouth Lane, Bay Village, OH 44140

**SECRETARY:** Donna Edwards Happ (Mrs. William V.), 39968 Pearl Drive, Muriota, CA 92362

**TREASURER:** Katey Bosworth Sandy (Mrs. Jonathan), 18630 NW Tolovano, Portland, OR 97229

**MEMBERS:** Joyce Low London (Mrs. John), PO Box 6458, Las Cruces, NM 88006

Patricia Canady Rosser (Mrs. David), 1609 Indian Rocks Road, Clearwater, FL 34616

## COMMITTEES

**ELIZABETH COULTER STEPHENSON SCHOLARSHIPS:** Sarah Jane Shank Houston (Mrs. Harold), 3358 Ramblewood Place, Sarasota, FL 34237

**UNDERGRADUATE SCHOLARSHIPS:** Donna Edwards Happ (Mrs. William V.), 39968 Pearl Drive, Muriota, CA 92362

**GRADUATE SCHOLARSHIPS:** Glenna VanderMeer Paukstis (Mrs. Charles), 1304 Lake Park, Birmingham, MI 48009

**GALLAUDET UNIVERSITY:** Lucille Bolstad May (Mrs. Leland B.), 5100 Dorset Avenue, #406, Chevy Chase, MD 20815

**HOUSE EAR INSTITUTE:** Betty Paul DeWitt (Mrs. Norman), 23630 Oakrest Lane, Harbor City, CA 90710

## NATIONAL HISTORICAL MUSEUM BOARD OF TRUSTEES

**PRESIDENT:** Elizabeth Baker Devereaux, (Mrs.), 18 Pembroke Lane, Huntington, WV 25705

**VICE PRESIDENT:** Susan Mease (Ms.), 857 Van Dorn Street, Alexandria, VA 22304

**SECRETARY:** Carol Selway Bertz (Mrs. Michael), 6544 S. Heritage Place East, Englewood, CO 80111

**TREASURER:** Carol Sharpe Harper (Mrs. Spencer E. Jr.), 3309 Green Hill Lane, Louisville, KY 40307

## PROVINCE COLLEGIATE AND ALUMNAE DIRECTORS

**I. Maine, Massachusetts, Vermont, New Hampshire, Connecticut, and Rhode Island**

**PCD:** Francis Robinson Carnes (Mrs. Michael), 252 Washington Street, Arlington, MA 02174

**PAD:** Janice Jelks Cox (Mrs. Stanford), 152 Tremont Street, Malden, MA 02148

**II. New York, New Jersey and Delaware**

**PCD:** Refer to Merry Westbrook Adamcik, PCD Coordinator

**PAD:** Cynthia Schafer Plucinski (Mrs. Donald), 51 Truman Avenue, Noddenfield, NJ 08033

**III. Pennsylvania and Western New York**

**PCD III-E:** Judith Sherin Kline (Mrs. Patrick E.), 312 O'Toole Dr., Hagerstown, MD 21740

**MEMBERS:** Carolyn Barnes Gullatt (Mrs. John H.), 4008 Hyridge, Austin, TX 78759

Florence Hood Miner (Mrs. Arthur), 1040 H. Avenue, Nevada, IA 50201

**PRESIDENT EMERITUS:** Lucile Crowell Cooks (Mrs.), 7400 Sun Island Drive S., Apt. 404, South Pasadena, FL 33707

**DIRECTOR EMERITUS:** Grace Pritchard Gorham (Mrs.), 1510 East 31st Street, Tulsa, OK 74105

Mary Lou Ragle Vineyard (Mrs. Phillip W.), P.O. Box 188, Hounds Ears Club, Bowling Rock, NC 28605

**CURATOR/ARCHIVIST:** Betsy Bradley Leach (Mrs.), 1244 Valley View Road, #116, Glendale, CA 91202

## HISTORIAN EMERITUS

Grace Mason Lundy (Mrs. H. M.), 3207 N. 25th St., Phoenix, AZ 85016

## STANDING COMMITTEES

**AWARDS (ALUMNAE AND COLLEGIATE):** Marcia Earl Humpal (Mrs. David), 26798 Mangrove Lane, Olmsted Falls, OH 44138

**COLONNADE CLUBS:** Mary Ann Gallatin French (Mrs. John), 2322 N.W. 58th Circle, Oklahoma City, OK 73112

**CONSTITUTION AND BYLAWS:** Elizabeth Baker Devereaux (Mrs.), 18 Pembroke Lane, Huntington, WV 25705

**FIELD ACTIVITIES:** Phyllis Snape Favorite (Mrs. Robert D.), 570 Lancashire Lane, State College, PA 16803

**FINANCE:** Anne Marie Jones Gavin (Mrs. William)

**HOUSING ADMINISTRATIVE:** Norma Minch Andrisek (Mrs. John R.)

**HOUSING PROJECTS MANAGER:** Sue Jones Allen (Mrs. Tom), 2415 Custer Cove, Richardson, TX 75080

## REGIONAL HOUSING CHAIRMEN:

Sandy Sebrell Bailey (Mrs. Bruce), 639 N. Portage Path, Akron, OH 44303

Connie Burns Baird (Mrs. James), 9039 Gunnison Drive, Dallas TX 75231

LaDonna Johnson (Miss), 16850 NE 23rd Place, Bellevue, WA 98008

Kathleen Johnson Sledge (Mrs. Joe W.), 1700 Dearing Place,

Tuscaloosa, AL 35401

**COLLEGE CHAPTER FINANCES:** Lynnnda Wolf Hoefler (Mrs. Robert), 1287 Denise Drive, Kent, OH 44240

**INSURANCE:** National Headquarters, 202 E. Church Street, Oxford, OH 45056

**WAYS AND MEANS:** Jamie Hammill Mooror (Mrs. Carter), 1504 Quail Valley West, Columbia, SC 29210

**HISTORY:** Florence Hood Miner (Mrs. Arthur), 1040 H Avenue, Nevada, IA 50201

**JUDICIARY:** Dianne Fellows Guild (Mrs. Douglas), 16 Andrews Drive, South Burlington, VT 05401

**PLEDGE EDUCATION:** Sandra McAlister Nesbitt (Mrs. Milton), 2100 Rexford, Montgomery, AL 36116

**MUSIC:** Carol Carson Konet (Mrs. Glen), 15568 Cottonwood Oval, Cleveland, OH 44130

**PHILANTHROPY:** Patricia Canady Rosser (Mrs. David), 1609 Indian Rocks Road, Clearwater, FL 34616

**ALUMNAE COORDINATOR:** Joyce Low London (Mrs. John), PO Box 6458, Las Cruces, NM 88006

**COLLEGIATE COORDINATOR:** Rhonda Reifschneider, 5233 Cameron Creek Court #270, Ft. Worth, TX 76132

**RITUAL:** Karen Kind Manuel (Mrs.), 36 Rilling Ridge Road, New Canaan, CT 06840

## COMMITTEES

**NETWORKING:** National Headquarters, 202 E. Church Street, Oxford, OH 45056

**NEWSLETTER:** Diane Jones Skelton (Mrs. Danny), 1725 Chipco, Tyler, TX 75703

**REFERENCES:** Alberta Doran Curran (Mrs. Tom), 116 Dublin Woods Drive, Cary, NC 27513

## ALUMNAE:

**MEMBERSHIP:** Carol Selway Bertz (Mrs. Michael), 6544 South Heritage Place East, Englewood, CO 80111

## COLLEGIATE:

**ACADEMICS:** Sue Adrianon Skambis (Mrs. Christopher), 836 Lake Adair Blvd., Orlando, FL 32804

**ACTIVITIES:** Jeanine Peterson Triplett (Mrs. Brian), 1920 Roanoke Avenue, Louisville, KY 40205

**ENRICHMENT:** Jane Daily Snyder (Mrs. Eric J.), 13127 Gascogne Court, Creve Coeur, MO 63141

**SOCIAL:** Beth Ballreich Wexler (Mrs. William C.), 6374 Derbyshire Lane, Loveland, OH 45140

**SORORITY EDUCATION:** Ellen Kroll Jenkins (Mrs. Paul), 1101 Ramblin Court, Greenwood, IN 46142

**PCD: III-W:** Maria Alana Blair (Miss), 850 I Presque Isle Drive, Pittsburgh, PA 15239

**PAD:** Diane Dershem Kreider (Mrs. Edward), 6204 Elmer Avenue, Harrisburg, PA 17112

## IV. West Virginia

**PCD:** Penny Payne Fioravante (Mrs.), HC 63 Box 91, Tiny Ridge Farm, Sumnerco, WV 25567

**PAD:** Doretta Pugh Osburn (Mrs. Thomas), 1005 Red Deer Drive, Hurricane, WV 25526

## V. Ohio

**PCD:** Sandy Sebrell Bailey (Mrs. Bruce), 639 N. Portage Path, Akron, OH 44303

**PAD:** LeeAnn Vogelberger August (Mrs. Donald), 3235 Bloomsbury Circle NW, Canton, OH 44708



## VI. Michigan

*PCD:* Olive McLaughlan Neelands (Mrs. James), 1699 Littlestone, Grosse Pointe Woods, MI 48236  
*PAD:* Pamela McClure Cronenwett (Mrs. William), 25720 West Hills Drive, Dearborn Heights, MI 48125

## VII. Indiana

*PCD:* Elisabeth Petruccie (Miss), 4502 Candletree Circle #2, Indianapolis, IN 46254  
*PAD:* Karen Baurle Brammer (Mrs. Phillip), Route 1, Box 177, Gaston, IN 47342

## VIII. Wisconsin

*PCD:* Lisa Morris Miller (Mrs.), 2737 James, Marinette, WI 54143  
*PAD:* Rochelle Lebahn Andress (Mrs. Brad), 1077 Rusch Drive, Hudson, WI 54016

## IX. Illinois

*PCD:* Valerie Trigg Craig (Mrs. Robert), 915 Lincoln Highway, Rochelle, IL 61068  
*PCD:* Cathy Nott Otto (Mrs. Brian), RR #2, Box 127, Bloomington, IL  
*PAD:* Sara Rosier Bush (Mrs. Peter), 230 Foxdown Road, Holland, MI 49424

## X. Iowa and Nebraska

*PCD:* Barbara Tweed Holland (Mrs. George), 287 Village Dr., Ames, IA 50010  
*PAD:* Christina Wifvat Gammell (Mrs. Jim), PO Box 65, Granger, IA 50109

## XI. Missouri

*PCD:* Dana McMillan (Miss), 541 W. 11th #101, Kansas City, MO 64105  
*PAD:* Eileen Hoffman Doe (Mrs. Larry), 2 Locust Drive, Florissant, MO 63031

## XII. Minnesota, North Dakota and South Dakota

*PCD:* Jeri Seals Weigand (Mrs. Gregg), 6185 Boyer Path, Invergrove Heights, MN 55075  
*PAD:* Paula McKean McQuillen (Mrs. Daniel), 16072 Baywood Lane, Eden Prairie, MN 55344

## XIV. Colorado and Kansas

*PCD:* Gail Persak Beets (Mrs. Kenneth), 5963 W. Indore Place, Littleton, CO 80123

## XIV-E. Kansas Alumnae Chapters

*PAD-E:* Carolyn McCandless Woodling (Mrs. Charles), 3112 Creekwood, Lawrence, KS 66044

## XIV-W: Arizona, Colorado, New Mexico, Utah, and Wyoming Alumnae Chapters, except Las Cruces, NM

*PAD-W:* Margaret Poe (Miss), 1439 Mifflin Avenue #5, Ashland, OH 44805

## XV-S. Southern California, Southern Nevada and Hawaii

*PCD:* Karen Martin Dessel (Mrs. Tom), 6210 Cordoba Court, Long Beach, CA 90803  
*PAD:* Barbara Phillippi Lancaster (Mrs. Richard), 4923 Libbet Avenue, Van Nuys, CA 91436

## XV-C: Northern California and Northern Nevada

*PCD:* Linda Lesniak Szymanski (Mrs. Robert), 931 Notre Dame Avenue, Concord, CA 94518  
*PAD:* Wendy Wood LaBounty (Mrs. William), 2099 Janice Drive, Pleasant Hill, CA 94523

## XV-N. Oregon, Washington, Montana, Idaho and Alaska

*PCD:* Refer to Merry Adamcik  
*PAD:* Helga Kohlenberg Clark (Mrs. William), 4866 123rd Place, S.E., Bellevue, WA 98006

## XVI. Oklahoma

*PCD:* Refer to Merry Adamcik  
*PAD:* Linda Singer Looper (Mrs. Danny), 6508 Dulane Circle, Oklahoma City, OK 73132

## XVII-N. Texas, New Mexico Collegiate Chapters, Texas and Las Cruces Alumnae Chapters

*PCD-N:* Diane Krause (Miss), 900 Ashford Lane #1106, Arlington, TX 76006  
*PAD-N:* Trudy Wheeler (Miss), 6047 Orchid Lane, Dallas, TX 75230

## XVII-S. Texas

*PCD-S:* Connie Moorhead Dempsey (Mrs. Jeff), 5301 Timberwilde Circle, Ft. Worth, TX 76112  
*PAD-S:* Elsie Wheeler McTee (Mrs. Clifford), 4322 St. George, Corpus Christi, TX 78413

## XVIII. Louisiana and Mississippi

*PCD:* Virginia Schattner Bryan (Mrs. Larry), 2404 Brownlee Road, Bossier City, LA 71111  
*PAD:* Ida Marie Carter Nelson (Mrs. John), 126 Fremont Avenue, Shreveport, LA 71105

## XIX. Tennessee

*PCD:* Vickie Adcock (Miss), 425 Westfield, Nashville, TN 37221  
*PAD:* Violet Henson Anderson (Mrs. Charles A.), 102 Blue Hills Court, Nashville, TN 37214

## XX. Kentucky

*PCD:* Jennifer Plenge (Ms.), 904 Dana Marie Drive, Louisville, KY 40223  
*PAD:* Carol Sharpe Harper (Mrs. Spencer E. Jr.), 3309 Green Hill Lane, Louisville, KY 40207

## XXI. South Carolina and North Carolina

*PCD:* Patricia Blackwell McLain (Mrs. Chip), 7402 Quail Meadow Lane, Charlotte, NC 28210  
*PAD:* Patricia Menendez Tector (Mrs. John), 907 Winslow Court, Cary, NC 27513

## XXII. Georgia

*PCD:* Cathy Kramer Leake (Mrs. Charles), 4458 Glengary Dr., Atlanta GA 30021  
*PAD:* Marge Klingensmith Lovewell (Mrs.), 96 The Prado NE, Atlanta, GA 30309

## XXIII. Alabama

*PCD:* Kathy Clark Peregoy (Mrs. Tony), 517 Carol Villa Drive, Montgomery, AL 36109  
*PAD:* Elizabeth (Lisa) Williams Terry (Mrs. Rick), 2252 Westmead Drive, Decatur, AL 35603

## XXIV. Florida

*PCD:* Karly Klemp Burns (Mrs. Lawrence), P.O. Box 58050, Tierra Verde, FL 33715  
*PAD:* Barbara Boehringer Turner (Ms.), 6543 Blvd. of Champions, North Lauderdale, FL 33068

## XXV. Virginia, Maryland, Washington, D.C.

*PCD:* Linda Regner (Miss), 5576 Burnside Drive, #8, Rockville, MD 28053  
*PAD:* Shelley Belson Stepp (Mrs. Larry), 2456 Stone Post Terrace, Richmond, VA 23233

## XXVI. Arkansas

*PCD:* Jacqueline Fabbri Gardner (Mrs. Richard Jr.), P.O. Box 2034, Russellville, AR 72801  
*PAD:* Dana Jackson Jones (Mrs. Thomas S.), Route 1, Box 75, Pottsville, AR 72858

## STATE REFERENCE CHAIRMAN

**ALABAMA:** Judith Nelson (Miss), Box 975, 400 Buckeye Street, Athens, AL 35611 **ALASKA:** Kathryn Miller Mosley (Mrs. Larry), PO Box 61642, Fairbanks, AK 99706  
**ARIZONA:** Patricia Knowles Wells (Mrs. Ray), 8630 E. Hazelwood St., Scottsdale, AZ 85251 **ARKANSAS:** Jeania Standridge Evans (Mrs. Jerry), Rt. 2, Box 530, Russellville, AR 72801 **CALIFORNIA (North):** Martha Henry Burde (Mrs. Walter), 24685 Camino del Monte, Carmel, CA 93923 **CALIFORNIA (South):** Janet Breitweiser Savage (Mrs. Tom), 5402 Woodwind Lane, Anaheim, CA 92807 **COLORADO:** Diane Vyhnaek (Miss), 13625-B E. Yale Ave., Aurora, CO 80014 **CONNECTICUT:** Ann Collins Gill (Mrs. Edward), 53 High Point Road, Westport, CT 06880 **DELAWARE:** Charlotte Michel Catton (Mrs.), 102 Kendal at Longwood, Kennett Square, PA 19348  
**DISTRICT OF COLUMBIA:** Pat Dansbury (Miss), 1722 19th Street NW, #105, Washington, DC 20009 **FLORIDA:** Cindy Brown Helton (Mrs. Charles), 1601 Berkshire Avenue, Winter Park, FL 32789 **GEORGIA:** Linda Angel Leedham (Mrs. Gary), 550 Flying Scot Way, Alpharetta, GA 30021 **HAWAII:** Dorothea Bettencourt Ovio (Mrs.), 45-109 Kokokahi Place, Kaneohe, HI 96744 **IDAHO:** Rilla Soderstrom Perala (Mrs. George), 8800 Craydon Drive, Boise, ID 83704 **ILLINOIS:** Mary S. Konkowski (Miss), 814 Panorama Drive, Apt. 2-B, Palatine, IL 60067 **INDIANA:** Jane Gustafson Thompson (Mrs. Mark), Route 1, Box 162, Pendleton, IN 46064 **IOWA:** Alaire Swedlund Bornholtz (Mrs. Tim), 4534 Perry Way, Sioux City, IA 51104 **KANSAS:** Kay Koger Lauer (Mrs. William), 120 Mulberry, Cottonwood Falls, KS 66845 **KENTUCKY:** Joy Morton Coleman (Mrs. Kenny), 2031 Edgeworth Drive, Lexington, KY 40505 **LOUISIANA:** Jane Weaver Mathes (Mrs. Jimmy), 12538 Sherbrook Drive, Baton Rouge, LA 70815 **MAINE:** Denise A. Pitt (Miss), 23 Lindale Avenue, Biddieford, ME 04005 **MARYLAND:** Pat Dansbury (Miss), 1722 19th Street NW, #501, Washington, DC 20009  
**MASSACHUSETTS:** Abbye Klayman Warren (Mrs. Stephen), 4116-27 Crooked Tree SW, Wyoming, MI 49509 **MICHIGAN:** Cathy Lynn Miner (Miss), 4116-27 Crooked Tree SW, Wyoming, MI 49509 **MINNESOTA:** Kelly O'Brien Elliott (Mrs. Todd), 7360 Gallagher Dr. Apt. 225A, Edina, MN 55435 **MISSISSIPPI:** Mary Halley Huch (Mrs. Donald), 317 Lamar Ave. Hattiesburg, MS 39401 **MISSOURI:** Michaela K. Kerns (Miss), 409 West 104th, Kansas City, MO 64114 **MONTANA:** Barbara Kirsch Hamilton (Mrs. W.B.), 16400 SE 135th Sp. 26, Clackamas, OR 97015 **NEBRASKA:** Carole Sorensen (Miss), 3027 W. Capital Avenue, #26 Grand Island, NE 68803 **NEVADA:** Lori Figgins (Miss), 647 Peppertree Circle, Henderson, NV 89015 **NEW HAMPSHIRE:** Angela Piper Shipman (Mrs. John), 8 Bayberry Lane, Exeter, NH 03833 **NEW JERSEY:** Debra Bass (Miss), 357 Shea Dr., New Milford, NJ 07646 **NEW MEXICO:** Elverine Robison Everett (Mrs. Bert), 10308 Chapala Place NE, Albuquerque, NM 87111 **NEW YORK:** Mary Frances Sims (Miss), 95B Ball Road, Syracuse, NY 13215 **NORTH CAROLINA:** Debra Wood Pressley (Mrs. Chuck), Route 1, Box 1516, Asheville, NC 28804  
**NORTH DAKOTA:** Kelly O'Brien Elliott (Mrs. Todd), 7360 Gallagher Dr. Apt. 225A, Edina, MN 55435 **OHIO:** Susan Wisheart Little (Mrs. Donald), 5151 E Boulevard NW, Canton, OH 44718 **OKLAHOMA:** Pattie Cantrell Hulsey (Mrs. Stephen), 3912 S. Union, Tulsa, OK 74107 **OREGON:** Barbara Kirsch Hamilton (Mrs. W.B.), 16400 SE 135th Sp. #26, Clackamas River Village, Clackamas, OR 97105 **PENNSYLVANIA:** Debbie Fries (Miss), 1060 Oldstone Road, Allentown, PA 18103 **RHODE ISLAND:** Jill Morris Marshall (Mrs. Robt.), 109 Pinecrest Dr., Pawtucket, RI 02861 **SOUTH CAROLINA:** Vicki Lynn Jinnette (Miss), 304 Charbonneau, Columbia, SC 29210 **SOUTH DAKOTA:** Doris Dalin Huffman (Mrs. Richard Jr.), 1535 S. State Street, Aberdeen, SD 57401 **TENNESSEE:** Joyce Lockhart Gary (Mrs. Wallace), 1347 Greendale Ave., Memphis, TN 38127 **TEXAS:** Ann Elkins Hawkins (Mrs. Jerry), 103 Live Oak Lane, Lake Jackson, TX 77566 **UTAH:** Jean Peters Christensen (Mrs. William), 1669 Yalecrest Ave., Salt Lake City, UT 84105 **VERMONT:** Pat Peereboom Neubauer (Mrs. Robert), 22 Hillwinds, Brattleboro, VT 05301 **VIRGINIA:** Kathy Shepich Newcomer (Mrs. Rick), 11148 Forest Edge Drive, Reston, VA 22090 **WASHINGTON:** Karen Fellows Soyk (Mrs. Lon), 31033 38th Ave., South, Auburn, WA 98001 **WEST VIRGINIA:** Lisa Bergeria Blankenship (Mrs. Glen), 208 N. State Street, Athens, WV 24712 **WISCONSIN:** Geri L. Palmer (Miss), 312 N. 50th St., Milwaukee, WI 53208 **WYOMING:** Donna McElroy Frerichs (Mrs. William), 3301 Alta Vista Drive, Laramie, WY 82070





**cruise the**

**CARIBBEAN**

**DELTA ZETA SORORITY**

*and*

**TRAVEL RESOURCES**

*a division of Banc One Travel formerly Village Square Travel  
present*

**A Caribbean Cruise  
Aboard Royal Caribbean's  
*The Song of America***

**September 11-18, 1988**

*Ports of Call: Cozumel, Mexico*

*Georgetown, Grand Cayman*

*Ocho Rios, Jamaica*

*Labadee, Haiti*

Total luxury, total comfort, endless sun, swaying palms, and exciting island ports — a sure formula for a Caribbean cruise experience that will last a lifetime.

Shopping bargains at duty-free prices, coupled with sparkling white beaches and living history lessons, provide cruise ship passengers with memories and mementoes they will treasure forever. Your cruise includes the opportunity to meet new Delta Zeta friends, dance the night away in exotic romantic settings, and enjoy a wide range of activities included in your fare.

*Take advantage of our special Delta Zeta discount price:*  
**ONLY \$1,249.00 per person for an inside cabin, Category J**

*— or —*

**\$1,389.00 per person for an outside cabin, Category F**

*This price includes: round trip airfare, shipboard accommodations as reserved, all meals, services and entertainment provided on board. Port tax of \$25.00 per person is not included. For a color brochure and further details please call*

**TRAVEL RESOURCES**

**1-800-932-8771 or in Ohio 1-800-233-3689  
or in Cleveland 216-243-4667**





*Stephanie Bell and Mari Lyn Berryman of Alpha Theta chapter at the University of Kentucky smile as they collect for the Salvation Army.*

POSTMASTER: Send 3579 immediately to Delta Zeta Sorority, 202 E. Church St., Oxford, OH 45056

DELTA ZETA SORORITY  
202 East Church Street at Campus Avenue  
Oxford, OH 45056

Address Correction Requested

Non-Profit Org.  
U.S. Postage  
PAID  
Permit No. 131  
Tulsa, OK