

THE  
**LAMP**  
OF  
DELTA  
ZETA  
SPRING, 1984

## Special Historical Issue







*Carolyn Gullatt, Lucile Cooks and Norma Andrisek prepare to cut the rose and green ribbons after the dedication service.*

## Building on Yesterday, Reaching for Tomorrow

The theme of our 1983 National Convention was proven once again on the occasion of Delta Zeta's 81st birthday weekend which was celebrated with the dedication of our National Historical Museum and Headquarters.

**BUILDING ON YESTERDAY, REACHING FOR TOMORROW . . .** So we went "Back Home to Oxford," back to our beginnings, back to our roots, back to where it all began in 1902. Could there be a more appropriate location for our Museum and Headquarters? Through the years we have read of committees looking and hoping to go "back home" with our National Headquarters - and now that dream is realized.

**BUILDING ON YESTERDAY, REACHING FOR TOMORROW . . .** While we are returning to the place of our beginnings with its long-standing traditions which are such an inherent part of Delta Zeta, we are also reaching for our future in our "new" Headquarters. Our plans allow for continued growth as new procedures and technological improvements come into existence. In effect, the hope is to merge the best of the old and new for a combination of excellence in Delta Zeta, all wrapped up in a lovely Victorian package.

**BUILDING ON YESTERDAY, REACHING FOR TOMORROW . . .** This special historical issue of The LAMP is a sharing of Delta Zeta's dedication weekend, a permanent record of a momentous event in Delta Zeta. The dream came true because of each of you who through your loyal and devoted support made our Museum and Headquarters possible. A dream came true - through you - our future.

In our Delta Zeta Bonds,

*Carolyn B. Gullatt*



# THE LAMP

of  
Delta  
Zeta

Volume 73 Number 1 Spring 1984

## Founders of the Sorority



Miami University  
Oxford, Ohio 1902

Alfa Lloyd Hayes, 1880-1962  
Mary Collins Galbraith, 1879-1963  
Anna Keen Davis, 1884-1949  
Julia Bishop Coleman, 1881-1959  
Mabelle Minton Hageman, 1880-1929  
Anne Simmons Friedline, 1879-1932

## THE LAMP

The Lamp of Delta Zeta, official magazine of the sorority, is published quarterly by the Delta Zeta Sorority, 202 East Church St., Oxford, OH 45056.

Send all editorial material to the Editor, Mrs. Robert L. McKeeman, 5517 S. 74th E. Avenue, Tulsa, OK 74145. Send all matters of a business nature to Delta Zeta National Headquarters, Oxford, OH.

Send all contributions for Gallaudet College, House Ear Institute and other Founders Memorial Foundation philanthropies through the Delta Zeta Founders Memorial Foundation, Delta Zeta National Headquarters, 202 E. Church St., Oxford, OH 45056.

## EDITOR

Gwen Moss McKeeman  
5517 S. 74th E. Avenue  
Tulsa, Oklahoma 74145

## STAFF

Diane Jones Skelton  
Sheila Hillis Nixon  
Meryl Lin McKean Maxwell

**CFEA**  
1883-1983  
CENTENNIAL

MEMBER  
COLLEGE FRATERNITY EDITORS ASSOCIATION

## Contents

- 4 Delta Zeta Comes Home
- 13 Back Home to Oxford
- 14 Historical Museum and Headquarters
- 15 Delta Zeta and Miami University
- 16 Miami and Delta Zeta as I Remember
- 18 Reception Honors Woman of the Year
- 20 NPC Meets in Arizona
- 23 Ways and Means Projects Committee
- 28 Flame Eternal
- 28 Attention: All Delta Zetas
- 29 Directory
- 31 From the Lampwriter



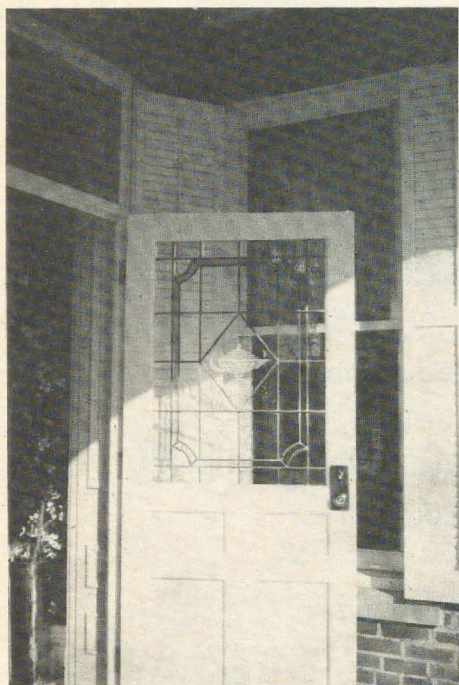
## ABOUT THE COVER

This special historical issue of The LAMP is devoted to the story of Dedication Weekend . . . the "Back Home to Oxford" story of our National Historical Museum and Headquarters. Our lovely Victorian home is pictured on the cover and our story starts on page 4.



## Welcome to Oxford, Ohio

# Delta Zeta Comes Home



*The doorway is inviting . . .*

It was the weekend of October 22 and 23. The autumn leaves in Oxford, Ohio, were their most colorful, following a refreshing, much-needed rain. And indeed, Robert Frost was right! Miami University does seem to be "the prettiest college that ever there was." These gorgeous surroundings only seemed to enhance the elegance of the structure at the corner of Campus Avenue and Church Street for the hundreds who came to celebrate a dream come true.

It was a joyous occasion, this "Back Home to Oxford" weekend . . . and Founders Day was indeed the appropriate time to dedicate Delta Zeta's new National Historical Museum and Headquarters.

Festivities started on Friday evening when the National Council

hosted a reception and dinner in the Caroline Scott Harris Room at Shriver Center on the Miami campus for the Board of Trustees of the Museum and Past National Officers. Engraved gold keys were symbolic mementos of this special occasion.

The 1809 Room at Shriver Center was the scene for the informal Saturday luncheon. Alpha chapter members later conducted campus tours for first-time visitors.

### **"BACK HOME TO OXFORD" BANQUET**

The "Back Home to Oxford" banquet on Saturday evening was a celebration not only of homecoming, but of Delta Zeta's eighty-first birthday. National President Carolyn Barnes Gullatt presided.

The invocation was given by Teresa Johnson Severy, National Vice President of Membership, and several musical selections were presented by members of Alpha chapter.

At the request of the National President, Jean Coleman Lisle again wore "Mama's pretty pink dress" and shared more delightful excerpts from her mother's letters. Lucile Crowell Cooks, President of the Board of Trustees; Norma Minch Andrisek, Past National President, and Florence Hood Miner, National Historian, all spoke on their areas of involvement in the project we had come to dedicate.

Alpha chapter members conducted the traditional candlelighting ceremony honoring our Founders and the evening closed with the singing of *Delta Zeta Lamps are Burning*.

### **DEDICATION DAY**

Dedication Day dawned with the threat of rain, and occasional showers did occur but did not dampen the spirits of the Delta Zetas. Plan A, the dedication ceremony

planned on the lawn of the house, was relinquished for Plan B, a move to the Heritage Room at Shriver Center. In its own way, this was better. This is the room with the "Miami Heritage" mural by Ed Fulwider. The mural includes Delta Zeta insignia in addition to that of the four fraternities founded at Miami.

Lucile Cooks presided at the dedication service and the invocation was given by the Rev. Robert K. Foster, Director of the Sesquicentennial Chapel at Miami University. Lucile introduced important fraternity guests and various university officials. Dr. Paul G. Pearson, President of Miami, spoke briefly of the university's warm feelings for fraternities and sororities and how pleased the university is to have Delta Zeta "back home."

Dr. Phillip Shriver, President Emeritus of Miami, spoke of his initial letter to former Miami Trustee Chairman, Lucile Cooks. "Four fraternities were founded at Miami.



*Carolyn Gullatt welcomes guests and introduces a number of important people at the "Back Home to Oxford" banquet.*





*Lucile Cooks smiles with delight. The DAY has finally come!*



*Jean Coleman Lisle wears "Mama's pretty pink dress" to share more excerpts from her mother's letters.*



*Delta Zeta's birthday cake has 81 candles.*



*Mary Margaret Calhoun Fore announces the Woman of the Year award winner at the "Back Home to Oxford" banquet.*



*Alpha chapter members conduct the traditional candlelighting ceremony honoring our Founders.*



*Lucile Cooks gives Architect Hal Barcus a golden key memento.*



*Michigan alumnae were well represented at the Dedication.*





*H.C. Barcus, architect on the renovation project presents the keys of the house to Trustee President Lucile Cooks.*

Three national headquarters are located near the campus. Why not Delta Zeta?" He mentioned that he was pleased to be the second Miami president to be influential in the life of Delta Zeta. Dr. Guy Potter Benton whom we all know to have been very much involved in the founding of Delta Zeta was the first of course, but Dr. Shriver feels most proud to have influenced - or invited - Delta Zeta to return.

Dr. Shriver spoke of the early days of Miami and its growth from around 250 students in 1902 when Delta Zeta was born to more than 18,000 today. He mentioned the finding of a little copper box when old Hepburn Hall was razed in 1968. When it was opened it contained campus papers, the Oxford newspaper, some currency in paper and coin, and a little parchment scroll. The little scroll was tied with two ribbons (rose and green of course) and the names of all the Delta Zetas from 1902 to 1905. He concluded his warm and friendly remarks with "Welcome back . . . how good it is to have you."

A surprise presentation by Lynn Ferguson, president of Alpha chapter was most heartwarming. The chapter presented the original Delta Zeta charter, feeling it should be "at home" in the Historical Museum.

Mr. C.H. Barcus, architect on the renovation of our home presented the official keys of the house to Lucile Cooks, and with the passing of the keys, Carolyn Gullatt spoke on our rededication and our faith in what the future holds for Delta Zeta.

The Heritage Cup, a new award announced at last summer's Convention, which is to go to the chapter contributing the most to the new Museum and Headquarters, was presented to Alpha chapter.

A reception followed the ceremony and then the group returned to the corner of Campus Avenue and Church Street and the long-awaited tour of the Delta Zeta National Historical Museum and Headquarters.

## HISTORY

And now for a little historical background that you will find interesting. Our beautiful "new" museum and headquarters was built in 1884 by Frank McCord, using some of the bricks and woodwork from Oxford's First Presbyterian Church which stood on the site from 1835 to 1883. It was subsequently occupied by Frank McCord and Miss Elizabeth McCord.

Following Miss Lizzie's death, the house was purchased by long time Oxford residents, Mr. and Mrs. W.O. Cullen, who lived in the house for almost 30 years. We are indebted to Avis Cullen for much of this information and history.

Mrs. Cullen wrote: "Attending the open house on Sunday which the



*Lucile Cooks presents the first Heritage Cup award to Alpha chapter president Lynn Ferguson.*

Delta Zeta Sorority has established as a national headquarters and museum at 202 East Church Street, we were delighted to see the old house where we lived for 29 years entering in a very handsome way a fourth tour of duty.

"It brought back many memories."

Shortly after the Cullens moved to Oxford in 1935, Mrs. Cullen began a search for a larger house or duplex to rent so their daughters would have a play ground. One day she knocked at the Campus Avenue entrance to the house at 202 East Church Street.

"A little old lady, whom I later found was Miss Elizabeth McCord, opened the door just a crack, but I could see the dining room table was covered with papers and magazines. When I asked if she wanted to rent any part of the house, she asked: 'Do you smoke?' My answer was no. Then, 'Do you drink?' I could answer no to that too, but the combination of clutter and censorship didn't appeal to me and I backed off.

"Later Miss Lizzie brought to the Oxford Press office articles which she wanted printed on the dangers of demon rum, and she was ahead of the attorney general. She often warned young men she saw smoking a cigarette as she passed them on the street: 'Young man, don't you know you are putting a nail in your coffin?'

"There was a Presbyterian Church at 202 East Church Street but the congregation voted in 1883 to sell it and Frank McCord, Lizzie's bachelor brother, bought it for \$1,550. It was razed and in 1884 he built the present house, making sure he had three-way exposure in seven of the ten rooms. Miss Lizzie and Frank at times rented rooms to students."

One Oxford resident recalled that



*Lucile Cooks and Lynn Ferguson, president of Alpha chapter, display the original Delta Zeta charter issued by the State of Ohio.*





*The fireplace in the parlor matches the fireplace in the library.*



*This is a view toward the front doors. The half moon banquette on the right, the Oriental rug on the floor and the beautiful crystal chandelier add to the beauty of a guest's first view of our home.*



*The Texas and New Mexico room shows a corner of the rosewood piano, and the highbacked chairs and glass topped pedestal table. The Persian Oriental rug has a tree of life pattern. The chandelier is Austrian crystal.*





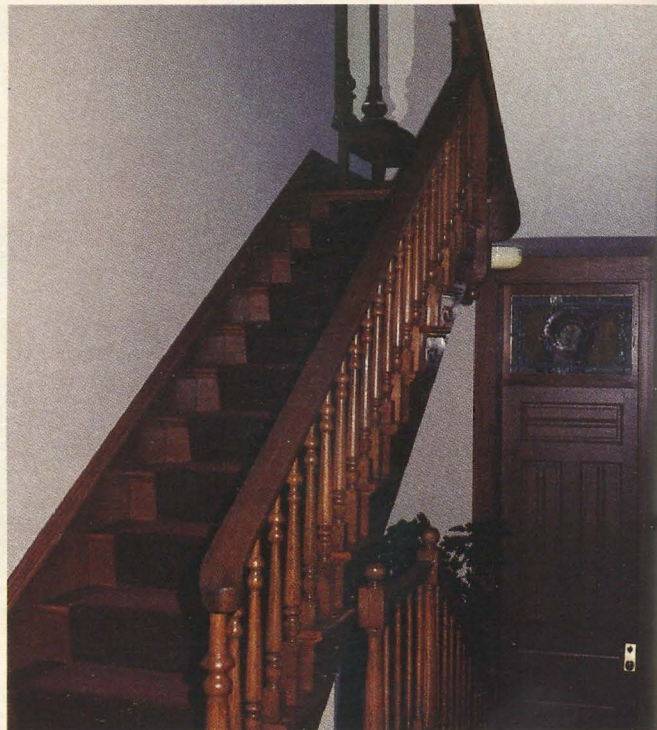
*In the background is one of six lighted display cabinets in the library. The chandelier is brass as are the floor candleholders on either side of the fireplace.*



*The Louis XIV cardtable and chairs are in the library. A portion of the office next door shows to the right.*



*The antique settee and chair from the Coleman home, part of the California suite.*



*This is the restored "front" staircase. To the right are the door featuring the Miami crest and the staircase to the lower level.*



*The back staircase is to the left and to the right can be seen the stairs to the third level. We're looking toward the front and the doorway directly ahead is to the mini-kitchen.*



# Attention

## All

# Delta Zetas

*Bill and Avis Cullen lived at 202 East Church Street for 29 years. They recall fond memories as they tour the Museum and Headquarters.*

when he sat on the porch there with young women in the evening, Miss Lizzie would turn on the light. The minute she went indoors, however, the boys would twist the light bulb, the better to enjoy the moonlight.

"It was said, too, that Miss Lizzie made it a habit to caution the girls: 'Please don't hang your stockings in the bathroom. Frank has a weak heart.'

In her declining years, Miss Lizzie was property poor. She shut herself into two rooms, the dining room and kitchen, and used only one fireplace for heat. She died in 1941 and the house stood vacant for a couple of years while the estate was being settled. It was advertised that the house would be sold at a sheriff's auction.

Mrs. Cullen added that she mentioned this fact to the manager of the Oxford Lumber Company and he remarked that "the best thing to do with that house is to knock it down." She continued:

"The children of the neighborhood went in through a basement window and called it a haunted house. (We have heard rumors that 'Blanche' floats around the parlor and library!)

"But the location was desirable and it looked like a sound brick house. We went to look at it. We found a slate had fallen off the roof resulting in a leak and the moisture had made some of the wall paper

hang in shreds. A cat had gotten in and couldn't get out; the odor was less than pleasant. There was only one light cord hanging from the ceiling in each room. Some of the walls looked like they had been used in an archery contest. No one knew whether the furnace would work; and there was only one small bathroom upstairs and one old copper tub downstairs.

"Regardless of all this, we felt the place had possibilities for a couple who had more ambition and energy than money . . . we thought the extra space could be made into small efficiency apartments for which there was a demand.

"We went to the sale and were almost the only bidders. No one wanted a white elephant at a time when the war had caused shortages of wiring, plumbing and heating supplies. Our bid of \$6,700 was accepted.

"When we moved in, we had to cook on a hot plate for several weeks. Bill searched every junk yard in Cincinnati and Hamilton. Shanty Pierson put electrical outlets in the baseboards and around; Leroy Vanness did papering; Bill added partitions and shelving; I plastered up holes and painted. *What busy weekends!*"

Mrs. Cullen recalled with fond memories their years in the house . . . all the weekends spent on painting, papering, yard work.

### CULLEN YEARS IN THE HOUSE

"When we bought the house, the yard was a weed patch. One Saturday afternoon when the yard was full of youngsters, I offered each child cookies, and a triple-dip ice cream cone which could then be had for 5¢ at Folker's on East Park Place, for each half bushel of dandelions which was dug. It worked! Later Rhoda (a Cullen daughter) called it open, slave labor."

She went on to talk about pigeons on the windowsills and bees in the attic . . . and the furnace which was not too reliable.

"We inherited a tree peony and it lived with us as long as we were in the house. It produced as many as 50 lovely large pink blossoms each spring.

"Arthur Conrad helped us plan a sunken garden and we built a small pool, a grill and wood bins under it;

planted forget-me-nots, viburnum and other flowers.

"There were garlands of pink Dorothy Perkins roses on the fence; blue morning glories at the corner, a magnolia tree, many Virginia blue bells. One year I planted 500 white and purple crocus between the fence and sidewalk. Even after we sold the house, I kept the orange poppies by the fence alive because Billy Luce, who lived across the street, said they smiled at her."

Many people painted pictures of the house, both before and after the loving care given it by the Cullens. And it was often opened for the benefit of one organization or another. Mrs. Cullen concluded:

"We are fond of the old house and congratulate Mrs. Lucile Cooks for suggesting that the Delta Zetas buy it and Hal Barcus the architect and all others who have helped to bring it to its blossoming present. We wish for it many more years of usefulness."

### THE OXFORD PRESS

Mr. Bob White of the *Oxford Press* was most kind in supplying pictures and in permitting us to use much of the material from his coverage of the dedication weekend. In his own column, *Beneath the Tower*, he wrote:

"But the afternoon highlight was Delta Zeta's new museum and national headquarters at 202 East Church, the handsome Victorian (1884) brick residence at the corner of East Church and Campus Avenue. Carefully restored, the structure



*Interior Designer and ΔZ's Housing Projects Chairman, Sue Jones Allen.*





*In the background is one of six lighted display cabinets in the library. The chandelier is brass as are the floor candleholders on either side of the fireplace.*



*The Louis XIV cardtable and chairs are in the library. A portion of the office next door shows to the right.*

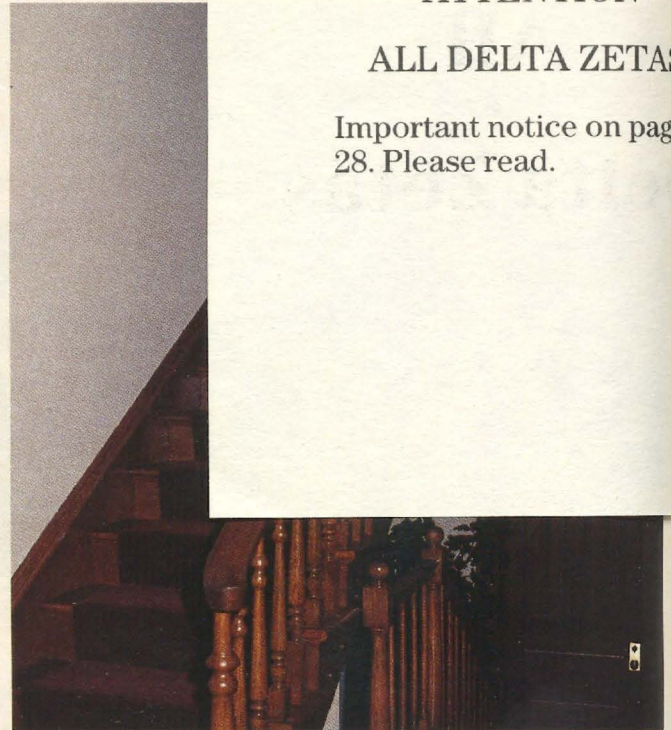


*The antique settee and chair from the Coleman home, part of the California suite.*

## ATTENTION

### ALL DELTA ZETAS

Important notice on page 28. Please read.



*This is the restored "front" staircase. To the right are the door featuring the Miami crest and the staircase to the lower level.*



*The back staircase is to the left and to the right can be seen the stairs to the third level. We're looking toward the front and the doorway directly ahead is to the mini-kitchen.*





*Bill and Avis Cullen lived at 202 East Church Street for 29 years. They recall fond memories as they tour the Museum and Headquarters.*

when he sat on the porch there with young women in the evening, Miss Lizzie would turn on the light. The minute she went indoors, however, the boys would twist the light bulb, the better to enjoy the moonlight.

"It was said, too, that Miss Lizzie made it a habit to caution the girls: 'Please don't hang your stockings in the bathroom. Frank has a weak heart.'

In her declining years, Miss Lizzie was property poor. She shut herself into two rooms, the dining room and kitchen, and used only one fireplace for heat. She died in 1941 and the house stood vacant for a couple of years while the estate was being settled. It was advertised that the house would be sold at a sheriff's auction.

Mrs. Cullen added that she mentioned this fact to the manager of the Oxford Lumber Company and he remarked that "the best thing to do with that house is to knock it down." She continued:

"The children of the neighborhood went in through a basement window and called it a haunted house. (We have heard rumors that 'Blanche' floats around the parlor and library!)

"But the location was desirable and it looked like a sound brick house. We went to look at it. We found a slate had fallen off the roof resulting in a leak and the moisture had made some of the wall paper

hang in shreds. A cat had gotten in and couldn't get out; the odor was less than pleasant. There was only one light cord hanging from the ceiling in each room. Some of the walls looked like they had been used in an archery contest. No one knew whether the furnace would work; and there was only one small bathroom upstairs and one old copper tub downstairs.

"Regardless of all this, we felt the place had possibilities for a couple who had more ambition and energy than money . . . we thought the extra space could be made into small efficiency apartments for which there was a demand.

"We went to the sale and were almost the only bidders. No one wanted a white elephant at a time when the war had caused shortages of wiring, plumbing and heating supplies. Our bid of \$6,700 was accepted.

"When we moved in, we had to cook on a hot plate for several weeks. Bill searched every junk yard in Cincinnati and Hamilton. Shanty Pierson put electrical outlets in the baseboards and around; Leroy Vanness did papering; Bill added partitions and shelving; I plastered up holes and painted. *What buy weekends!*"

Mrs. Cullen recalled with fond memories their years in the house . . . all the weekends spent on painting, papering, yard work.

### CULLEN YEARS IN THE HOUSE

"When we bought the house, the yard was a weed patch. One Saturday afternoon when the yard was full of youngsters, I offered each child cookies, and a triple-dip ice cream cone which could then be had for 5¢ at Folker's on East Park Place, for each half bushel of dandelions which was dug. It worked! Later Rhoda (a Cullen daughter) called it open, slave labor."

She went on to talk about pigeons on the windowsills and bees in the attic . . . and the furnace which was not too reliable.

"We inherited a tree peony and it lived with us as long as we were in the house. It produced as many as 50 lovely large pink blossoms each spring.

"Arthur Conrad helped us plan a sunken garden and we built a small pool, a grill and wood bins under it;

planted forget-me-nots, viburnum and other flowers.

"There were garlands of pink Dorothy Perkins roses on the fence; blue morning glories at the corner, a magnolia tree, many Virginia blue bells. One year I planted 500 white and purple crocus between the fence and sidewalk. Even after we sold the house, I kept the orange poppies by the fence alive because Billy Luce, who lived across the street, said they smiled at her."

Many people painted pictures of the house, both before and after the loving care given it by the Cullens. And it was often opened for the benefit of one organization or another. Mrs. Cullen concluded:

"We are fond of the old house and congratulate Mrs. Lucile Cooks for suggesting that the Delta Zetas buy it and Hal Barcus the architect and all others who have helped to bring it to its blossoming present. We wish for it many more years of usefulness."

### THE OXFORD PRESS

Mr. Bob White of the *Oxford Press* was most kind in supplying pictures and in permitting us to use much of the material from his coverage of the dedication weekend. In his own column, *Beneath the Tower*, he wrote:

"But the afternoon highlight was Delta Zeta's new museum and national headquarters at 202 East Church, the handsome Victorian (1884) brick residence at the corner of East Church and Campus Avenue. Carefully restored, the structure



*Interior Designer and ΔZ's Housing Projects Chairman, Sue Jones Allen.*





*Members of the Board of Trustees are pictured in the library. Standing, l to r, Mary Lou Ragel Vineyard, Betsy Bradley Leach, Norma Minch Andrisek, Elizabeth Rogers and Doris Ellingson Riede. Seated are Lucile Crowell Cooks, Florence Hood Miner and Carolyn Barnes Gullatt.*



*National Council gathered in the parlor: Elizabeth Barbieri Bragg, Anne Marie Jones Gavin, Patricia Canady Rosser, Carolyn Barnes Gullatt, Norma Minch Andrisek, Phyllis Snape Favorite, Mary Margaret Calhoun Fore, Teresa Johnson Severy, Lucile Crowell Cooks and Marvona Easley Tavlin. Seated on the floor are Dianne Fellows Guild and Charlotte Fields Silversteen.*



*Past National Officers are also in the parlor. Standing, l to r, Mary Lou McConnaughey Barth, Florence Hood Miner, Grace Pritchard Gorham, Doris Ellingson Riede, Arlene Newman Marshall and Lisbeth Innis Francis. Seated are Evelyn Adams Costello, Gwen Moss McKeeman, Mary Lou Ragel Vineyard and Betsy Bradley Leach.*

combines, in the words of Architect Hal Barcus, the duties of museum, office building, meeting site, guest lodge 'and dormitory' for the Delta Zeta officers, administrative staff and occasional member-guests. Having often visited there when it was the home of the W.O. Cullen family, I was pleased to see how well the high ceilinged interior adapted to the demands (automatic sprinkler system, fire escapes, office equipment) and new uses without losing any of its nineteenth century charm. It is a wonderful new addition to the Oxford community and its proximity to Campus Avenue links it with the nearby headquarters of four other fraternal organizations: Phi Kappa Tau, Beta Theta Pi, Phi Delta Theta and Delta Sigma Pi. To borrow from Jerry Herman's 'Dolly' lyrics, 'Hello, Delta Zeta. It's Nice to Have You Back Where You Belong.'

#### LET US TOUR THE HOUSE

And now for your "travel with us" through the house. First of all, our sincere thanks to Sue Jones Allen, Delta Zeta's own Housing Projects Chairman, who did our interior design. Reflected against the structure of a Victorian house are the patterns, colors and fabrics of 1983, while the furnishings are timeless in their design. This carries out the theme that Delta Zeta is richly steeped in history, but alive for today and growing for the future.

Many hours of collaboration and design went into each piece of custom crafted furniture which was brilliantly executed by George Benfonte of Dallas, Texas. The draperies are by Lancaster and Associates, Inc. and the silk floral arrangements and plants by Jim Bagwell, Inc.

We enter the house through the Church Street doors . . . the outside door contains a frosted etched Lamp in a leaded beveled clear glass frame, encircled with rose stained glass. The transom glass is stained glass, bearing the name "Delta Zeta." The inner double doors are etched with long stemmed roses.

We step into the reception hall which has a distinct deco flavor. The walls are upholstered in rose silk moire and the floors are natural hardwood parquet. An Austrian crystal chandelier is overhead and Persian Oriental rugs cover part of the





*Lucile's family: L to r: Clark Davies, Lucile's grand-daughters Meg Davies, Kimberley Davies, Leda Marie Cooks; Jill Cooks and Stephen Cooks. In the foreground with Lucile are daughters Connie Cooks Roberts (left) and Mella Cooks Davies (right).*



*Beverly and Bill Winslow, Cindy's parents, were invaluable in helping with "last minute chores." Left to right, Cindy, her grandparents, Mr. and Mrs. W.H. Winslow, Sr. and parents Mr. and Mrs. W.H. Winslow, Jr.*

floor area. There is a faux marble deco reception podium for the guest book and a floral patterned matelasse on a half moon banquette. The reception area has been donated by Ohio Province.

The Texas and New Mexico Room (parlor) is to the right. The crystal chandelier hangs above parquet floors covered with a Persian Oriental rug in the tree of life design on a rose and cream background. The hand carved French settee is finished in oxblood stain with lacquer overlay and is covered in European combed cotton velvet. Rose silk moire fabric upholsters the walls above the chair rail. Two high-backed chairs are upholstered in a patterned cream jacquard fabric. A beautiful carved rosewood piano (circa 1880) in the square grand fashion was donated by the Cooks family. There is a tufted French bench in burgundy and white pin dot jacquard fabric. In the bay windows are shirred balloon drapes in a Jacobean print on European cotton. It is definitely a French flair.

Across the hall is the Florida Room (library) which is Old World Classic. Lighted memorabilia cabinets line the walls, finished to blend with the original woodwork in the house. The Louis XIV card table in cracked finish and inlaid top has four matching arm chairs. There are two large English club chairs and ottomans in matelasse fabric. The floor is covered with a Persian Oriental rug with a large center medallion on a deep burgundy background. The chandelier is large scaled brass. A table draped in the same fabric as the

draperies (shirred balloon draperies in a Jacobean print on European cotton) holds a large black porcelain vase filled with hand-made silk flowers reproducing all the colors of the downstairs area.

The powder room just down the hall has walls upholstered in a small English print on a European cotton. To the left and right are offices. The left, the reception area, opens onto the Campus Avenue side and is the entry to National Headquarters. The stained glass insert of the door is the Delta Zeta Crest. The opposite office is the Central Office Executive's. Additional work areas fill the former kitchen and butler's pantry and a new little kitchen has been added. The office area floors are covered in burgundy plush pile.

We now backtrack to the front staircase which has been completely restored to its former beauty. On the landing is a tall pier mirror from the Julia Bishop Coleman home which has been given to Delta Zeta by Jean Coleman Lisle and her family. A crystal chandelier hangs overhead.

The upstairs hallway is large and at present holds a grandfather clock, a gift from the Cleveland alumnae groups. A gateleg table and three empire chairs flank one wall and a Victorian carved table with Italian marble top, also given by the Lisle family, holds a Chinese porcelain bowl filled with fanciful silk flowers.

Tucked into a former closet is a mini-kitchen complete with microwave.

The two "front" bedrooms, with connecting bath, form the California

Suite. The Southern California room contains brass day beds, a small scale secretary, an empire chair and an armoire in museum finish. The windows have shirred balloon draperies and the wallpaper and fabrics are coordinated.

The Northern California room has two shirred upholstered headboard beds and an antique settee and rocker from the Coleman home, also given by Jean Lisle. Draperies are shirred balloon, and wallpaper and fabrics are coordinated. An antique parlor set from Grandmother Cooks' home has been given by Connie Cooks Roberts.

The Michigan bedroom, named in honor of Evelyn Adams Costello, has Oriental fretwork headboards and chairs in tortise finish and pleated balloon draperies with contrasting pleats. There is an Oriental chest of drawers and the bedcoverings, draperies and table covers are in rose and green embroidered chintz. The wallpaper is stylized Oriental.

The next bedroom has two four poster beds in pickled pine finish with matching chest, desk and chair. An upholstered platform rocker completes the grouping. Wallpaper and fabrics are printed chintz and the draperies are shirred tie-backs with soft Roman shades. This room has been donated by Past National President Myrtle Graeter Hinkley in memory of her sister, Hope.

The last bedroom is furnished with antique wicker pieces lacquered dusty rose. Rose, cream and grey striped wallpaper compliments the

*(continued on page 27)*





*Our Presidents in attendance: Seated, Evelyn Adams Costello, president 1954-1958 and Lisbeth Innis Francis, 1971-1973. Standing, left, Norma Minch Andrisek, 1977-1981 and current National President, Carolyn Barnes Gullatt.*



*Vice President of Alumnae Affairs  
Charlotte Fields Silversteen.*



*Louisville from Province XX with PCD Jennifer Plenge and Jeanine Peterson, Field Representative from Louisville-BF chapter.*



*Members of Beta Theta Pi fraternity present a beautiful counted cross stitch picture of the Beta Campanile, a striking part of the Miami campus, to Central Office Executive Cindy Winslow.*



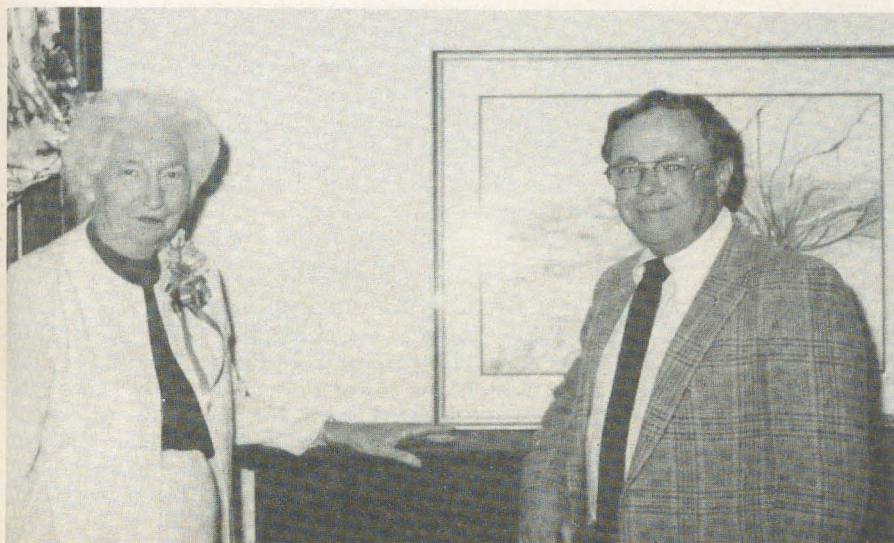
*Dianne Guild (left), National Secretary, with Field Representative Linda Regner and Vice President of Collegiate Affairs Marvona Tavlin.*



*Xi Beta members at Eastern Kentucky.*



# Back Home to Oxford



*Historian Florence Miner chats with Cindy Winslow's father Bill in the executive office. On the mantle is a painting by Peggy Haskell Benjamin, Nebraska-Z, former PCD and relative of first pledge Elizabeth Coulter Stephenson.*

Delta Zeta has come full circle in this October of 1983.

In the autumn of the year 1902, six women created the sorority on the campus of Miami University in Oxford, Ohio. After 81 years, Delta Zeta has moved back to Oxford into her own home. This residence, at the corner of Campus and Church streets, will house not only the working headquarters of Delta Zeta, but will be a museum of Delta Zeta past and present.

During these 81 years, where have the business and archives of Delta Zeta been kept? Many places! In the beginning, Alpha chapter directed all of the activities of the sorority, held all of the offices, and issued charters to the new chapters.

By 1910 Delta Zeta had spread to six chapters and the National Council officers (then called Grand officers) included members from the other universities. Each of these officers kept her own files and worked out of her home.

At the 1920 Convention in Denver, Colorado, with Delta Zeta now at 22 chapters, a reorganization committee

recommended "that the office of Grand Secretary be the central office of the sorority, and that the office of supplies be the office of the Registrar and also act as a clearing house for all Delta Zeta affairs."

This plan worked for two years, but with the chapter list now reaching 30, the 1922 Convention voted to employ a full time secretary and rent offices in The Johnson Block in Muncie, Indiana. Since the Muncie site had been chosen because of President Rene Smith's proximity, when she moved, the office also moved, this time to Indianapolis, Indiana in 1924.

When Texan Myrtle Malott was elected president in 1928, the office moved with her to San Antonio. Again, with Margaret Pease as president, the move was made in 1934 to a suite in Carew Tower, Cincinnati, Ohio. Even then "the dream of going back to Oxford is still before us, and we look forward to the time when we shall go home to the place of our birth."

In 1940, with President Grace Lundy in nearby Bloomington, Delta

Zeta again packed her boxes and moved back to Circle Tower in Indianapolis. When the sorority had overgrown a suite of rooms, it was decided that a permanent home was needed. A large residence at 3561 Pennsylvania Avenue was purchased, with an upstairs apartment for Executive Secretary Irene Boughton, who had made four moves.

This served as National Headquarters from 1956 to 1969 when the site was considered undesirable and was sold. With President Betty Agler, Headquarters moved to a suite in the Beggs Building in downtown Columbus, Ohio.

At the 1981 Convention in New Orleans during Norma Andrisek's presidency, Lucile Cooks presented the delegates with an available historic residence just off the Miami campus in Oxford, Ohio, that could be purchased for not only a National Headquarters, but a permanent Delta Zeta Museum.

The convention voted to purchase the property, and with President Carolyn Gullatt, National Council appointed a board of trustees to incorporate the building as an Historical Museum. The trustees and members of the National Council met in Oxford the following summer. Since then, Delta Zetas everywhere have been asked to contribute to the furnishings and restoration needs.

The moving of the equipment, files, and archives materials to Oxford was accomplished in September, and on this October of 1983, Delta Zeta has truly come "Home to Oxford."

Florence Hood Miner  
National Historian

The National Council  
is pleased to announce the  
Xi Eta Colony  
at  
Northwood Institute  
Midland, Michigan



# Historical Museum and Headquarters

*Delta*

## A Heritage for our Yesterdays

The Delta Zeta Museum makes it possible to bring together the important documents, significant material and special mementos that are the rich heritage of the sorority's past. These reminders of what has gone before, the record of all who have served and contributed are here preserved for future generations to cherish and maintain. The history of the sorority continues. The todays and tomorrows become yesterdays and new chapters in the Delta Zeta story will be written. The safe keeping of that proud heritage is now assured.

## A Home for our Todays

The center of Delta Zeta activity, the National Headquarters, is here. A symbol of all that the sorority is, our home reflects what and who we are to friends, commu-

nity and associates. In it, we plan, direct, guide and meet current challenges and responsibilities. Built on yesterday's foundation and tomorrow's dreams, Delta Zeta's todays are secured in the strength, beauty and durability of her new home.

## A Hope for our Tomorrows

Delta Zeta's home is, most of all, a commitment to tomorrow. It is an affirmation of the ideals and principles upon which the sorority was founded and our belief in their continued value for those yet to come. While we cherish our yesterdays and rejoice in our todays, we dream of tomorrow. Our home is our hope - an expression of faith in what the future holds for Delta Zeta.

*zeta*

I do not have the reminiscence of Jean Lisle and Lucile has told you how this all came about. I would like to talk about what this Museum and National Headquarters means to Delta Zeta.

I suppose that when Delta Zeta bought the house at 202 E. Church Street, if she had torn it down and built a new, more contemporary structure, our perceptions of the sorority and the community's reception of us might have been considerably different. Delta Zeta chose not to tear down, however, but rather to make its home in a building reflective of the time of her founding. The house, therefore, says a great deal about us. As a home for our todays, it reflects what and who we are to our friends, the community and our associates. In it we may plan, direct, guide and meet current challenges and responsibilities with the most efficient and modern office tools.

As a museum, our Delta Zeta home makes it possible to bring together the most important documents, significant material and special mementos that are the rich heritage of the sorority's past. These reminders of what has gone before, the records of all who have served and contributed are preserved for future generations to cherish and maintain. The safe keeping of our proud heritage is now assured.

While we cherish our yesterdays and rejoice in our todays, we dream of our tomorrows. So, most of all, Delta Zeta's home is a commitment to tomorrow. It is an affirmation of the ideals and principles upon which the sorority was founded and our belief in their continued value for those yet to come.

Probably the most significant feature of the house are the windows of our home - the beautiful stained glass windows with the Miami seal, the Delta Zeta crest, the Lamp and the rose. Delta Zeta looks not through clear glass to its future but rather to a future tinted by those principles represented by and seen through our windows. Because they are the ideals upon which we have built, our vision is clear and those values will continue to color our deeds and our actions.

So we look through our windows with the seal of the university that nurtured us, the crest of the sorority that has enriched us, the Lamp and the rose. I am sure that our Founders are with us on this special occasion and they are saying - "You have remembered us well - now, look to the future." We look to Delta Zeta's bright and shining future.

- Norma Minch Andrisek



# Delta Zeta and Miami University



*Norma Andrisek, Past National President, speaks of the dreams and hopes for Delta Zeta's future.*



*President Paul G. Pearson welcomes Delta Zeta "Back Home to Oxford" and to the Miami University community.*

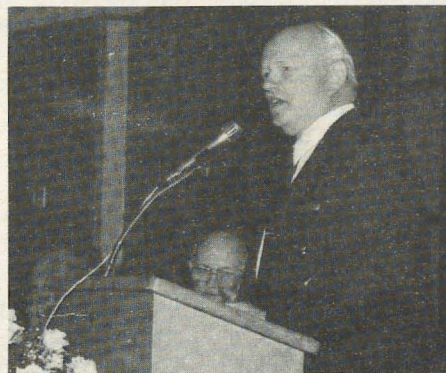
"How pleased Mama would be to know that Delta Zeta is going home." These words, spoken by Jean Coleman Lisle, daughter of Julia Bishop Coleman, at the 1983 Delta Zeta National Convention, surely express the feelings of Delta Zetas everywhere in considering the move back to Oxford. For here it all began with those six young women — confident, optimistic and enthusiastic — laying the foundation for what would become one of the largest national sororities and forming a circle of friendship that would grow through service, high standards and sisterhood.

From its beginning, Delta Zeta has been intertwined with the place of its birth with Dr. Guy Potter Benton, Miami University's president in 1902 and the sorority's Grand Patron, instrumental in its founding. Priding itself on the fraternities founded here, Delta Zeta's Founders and Dr. Benton would do honor to Miami with a sorority of its own. Eighty some years later, another Miami University president, Dr. Phillip Shriver, would again influence Delta Zeta's future through his assistance and encouragement in returning Delta Zeta's National Headquarters to Oxford.

Delta Zeta's Founders were filled with a pioneer spirit for, not only were they among the first women at Miami, but their dedication and perseverance served to gain recognition for women and to establish them as partners in the proceedings and purpose of the university. The Delta Zeta Museum is a testimony to our Founders and to those who followed. It is a chronicle of the history of women in academic circles as well.

So Delta Zeta comes home to the red brick buildings of Miami, the tree lined streets, the bell chimes, the Founders Walk and the friendliness of Oxford, Ohio. To Alfa Lloyd, Mary Collins, Anna Keen, Julia Bishop, Mabelle Minton, Anne Simmons and all who have made it possible — thank you. Like Julia, we are happy to be home.

- Norma Minch Andrisek



*Dr. Phillip Shriver, President Emeritus of Miami University, and a ΔZ father.*



*Pictured with the first ladies of Delta Zeta are three Miami first gentlemen. Left to right, Paul G. Pearson, University President; John Millett, President Emeritus and Phillip Shriver, President Emeritus. L to r on the front row, Norma Andrisek, Lucile Cooks and Carolyn Gullatt.*



# Miami and Delta Zeta as I Remember . . .



*Mae Joyner, long-time chapter advisor at Alpha chapter with Alpha's oldest alumna Elsa Thoma Baer who was initiated in March, 1911.*

**by Elsa Thoma Baer, Miami-A '11**

I am a living link between the Founders of Delta Zeta and Delta Zeta today. I am sometimes credited with having known all six of the Founders, but this is not quite the case. I did know Guy Potter Benton, Grand Patron of Delta Zeta, Alfa Lloyd Hayes, Julia Bishop Coleman, Mabelle Minton Hageman and Anna Keen Davis very well. I believe I met Anne Simmons Friedline briefly, but do not recall ever having met Mary Collins Galbraith.

At the time I entered the Hamilton High School in September 1905, Miss Julia Bishop began teaching in our school. She called it her freshman year. We all learned to love her for her real talent as a teacher, her patience with our foibles, and her ready sense of humor. I believe she had a feeling of kinship with our class for in the spring of 1909 she invited us, all 57 of us, to spend the day at her home in Loveland.

We traveled down by train in the morning. The first order of business

was to meet all members of her family. At noon we enjoyed a picnic dinner on the lawn. We traveled home in the late afternoon happy and at peace with each other and the world. I shall never forget that day. And now 74 years later on the day Delta Zeta came "Home to Oxford," I have met her daughter. Mrs. Jean Coleman Lisle, just as charming a lady as her mother!

Alfa Lloyd Hayes was an Oxford girl but I believe was living in Indianapolis at the time I was at Miami. Alfa was a blonde in the time when blondes were not so prevalent as today. She had an ever-ready smile and a strong sense of business about her. Two incidents of my acquaintance with her stand out in my memory. It was at the time when Alfa was grand president and I was president of the local chapter that she informed us that she would attend our weekly chapter meeting. At that time we were holding our meetings in the Erodolphian Literary Society's

room on the top floor in Old Main. This room was especially suitable for our meeting. At one end of the large room was a dais with flanking white Roman columns and white plaster of Paris busts of Roman notables were placed at intervals about the room. At the appointed hour, officers and members of the chapter had taken their places and waited and waited but no Alfa appeared. So we went ahead and had our meeting and were just disbanding when we heard steps. We hastily took our places and were all ready when a smiling Alfa appeared in royal purple from head to toe. Needless to say that after our unscheduled dress rehearsal, the meeting went very well and we were approved.

I was privileged to represent Alpha chapter at the National Convention at Winona Lake, Indiana in the summer of 1912. Our number was small. The mornings were spent in caring for sorority business. The afternoons were spent bathing in the lake. A description of my bathing suit will give some idea of how the company looked as we gathered at the lake side. The ensemble included a suit of black peau de soie (the material reclaimed by a clever mother from an elegant black dress), a skirt to cover the bloomers until I actually got into the water, black stockings and bathing shoes and a black rubber cap. Evenings we enjoyed dress up dinners and our formal banquet. I believe Bess Coulter Stephenson, first pledge and instrumental in organizing the Cornell chapter, was elected Grand President at that convention.

Mabelle Minton Hageman was a tall, slender, aristocratic looking girl with black curly hair and a rather dark complexion. I knew her well because her cousin lived next door to us in Hamilton. Mabelle had a good deal of responsibility in the rearing of her younger brothers and sisters. She was always a faithful Delta Zeta. At one time in my senior



year at Miami, she invited four of us Delta Zetas for the weekend at her farm home near Oxford. To make the outing complete, she invited four Miami men down for a Saturday evening party.

Anna Keen Davis lived in Cincinnati. There was an aura of happiness and expansive good will about her which was very attractive. One enjoyed being in her presence. It is she who was responsible for organizing the first Alpha alumnae group. Its purpose was to foster the continuation of those friendships so intimate and dear in college and incidentally to strengthen the young national Delta Zeta organization. This group faltered, but much later another was begun at the instigation of Lydia Osborne Wiepking. Sorority rushing at Miami was by no means governed by the same rules year after year. It might be eight weeks before pledging, or second semester pledging, or even second year pledging. I seem to remember that second year pledging was the rule only one year. The long term of no pledging brought too many infractions of the rushing rules.

There were only three sororities during my years at Miami. Rush parties were comparatively simple with ample opportunity for person to person interplay between rushees and actives. There was one rush party, however, which was the envy of all on campus. This was the Delta Zeta theatre party. This involved a trip by the noon train to Cincinnati for all rushees, members of the chapter and the Dean of Women as chaperone. Arriving in Cincinnati, we went to the theatre showing of the play of the year. Immediately following we went to the Gibson House or the Sinton Hotel for dinner. We boarded the train at the old 5th and Baymiller station for the return trip to Oxford at 10 o'clock. There being very few passengers other than Delta Zetas we were soon relieving our high spirits by singing "Once there was a bunch of girls, all in a college town" or "ΔZs happy ΔZs." One lonely traveler remarked that this was the first time he had ever heard of a happy disease.

There were no sorority houses at Miami but in the year 1911-12 Hepburn Hall was full and Bishop Hall not complete so Delta Zeta was per-

mitted to rent a house on N. University Ave. Lois Pierce was our stewardess and with a fine black lady as cook, managed our boarding department. Miss Sara Norris was our chaperone and encouraged us in the ways of gracious living. Each Thursday afternoon we held open house for any who cared to come over. A Ouija Board, owned by Helen Coulter, furnished a welcome diversion at these open houses. The interest in and conjecture about the mysterious pronouncements of Ouija became so widespread that Dr. Powell, head of the Philosophy Department, appeared at one of our Thursday teas to assess the wonder of it all.

From 1909 to 1913 there were three sororities at Miami - Delta Zeta national and Phi Tau and Pi Delta Kappa locals. Phi Tau was a split of Delta Zeta and Pi Delta Kappa from a teacher's college group. In the spring of 1912 Phi Tau became a chapter of Delta Delta Delta and Pi Delta Kappa a chapter of Chi Omega. At one time during these four years, Delta Zeta was approached by Kappa Kappa Gamma or Kappa Alpha Theta, I forget which, about joining their

national sorority. It was clearly indicated that the Alpha chapter only was considered and since this was the case, Alpha girls decided to forget the matter.

This is how I remember it all in October 1983 when Delta Zeta came "Home to Oxford."



National Director Phyllis Favorite (center) with Nancy Prittie and Carrie Livingston of Alpha chapter.

*Our Heavenly Father, as we gather together in a time of celebration for Delta Zeta, hear our thoughts and our needs.*

*To the world I promise temperance and insight and courage, to crusade for justice, to seek the truth and defend it always. Help us, dear Lord, to be firm and fair in our commitments, not to take the easy way out of a difficult situation, to be honest in our appraisals. Guide us, we pray, when we must stand alone in our convictions.*

*To those whom my life may touch in slight measure, may I give graciously of what is mine. Lead us, we pray, to tasks that will make this a better world by our diligent efforts. In Delta Zeta there are no impossibilities with your guidance.*

*To my friends, understanding and appreciation. Teach us respect for each other's strengths and tolerance of our shortcomings.*

*To those closer ones, love that is ever steadfast. We ask that you watch over all those we love and hold dear and that you remind us to be ever mindful of their needs.*

*To my mind, growth. Knowledge and an open mind are tantamount to service not only to others but to ourselves. Encourage us, Father, to explore new horizons and grow in wisdom.*

*To myself, faith that I may walk truly in the light of the flame. Help us to believe in ourselves, to be strong, and dedicated to our tasks.*

*As we assemble here in Oxford, rejoice with us in Delta Zeta's accomplishments. Our pride in our heritage knows no bounds. The determination of our six Founders gives Delta Zeta fond hopes and dreams for the future.*

*Rejoice with us Lord in our return home and guide us as we prepare for tomorrow so that truly our flame will endure forever. In Jesus' name. Amen.*

- Teresa Johnson Severy



# Reception at Sigma Chapter Honors Woman of the Year



*National President Carolyn Gullatt presents the Woman of the Year medallion to Ruth Loyd Miller.*

**by Gloria Pohlman Hecker, LSU-Σ**

The Sigma chapter house at Louisiana State University was the setting for the presentation of the 1983 Woman of the Year medallion to Ruth Loyd Miller on October 30.

Hosted by Sigma chapter members and the Baton Rouge alumnae chapter, the reception was attended by members of the LSU Board of Supervisors, university officials, representatives of campus fraternities and sororities, Delta Zetas from throughout the state and many relatives and friends of Ruth Miller.

Guests were greeted at the door by housemother Nancy Moon. In the receiving line were Betty Schneider Fenton, LSU-Σ, CCD; Nita Roberts

Bonnecaze, LSU-Σ, president of Baton Rouge alumnae chapter; National President Carolyn Barnes Gullatt, and Ruth Loyd Miller.

Gladys Means Loyd, Ruth's mother, had a special place of honor. Ruth's husband, Judge Minos D. Miller - M.D. to friends - mingled with the guests and renewed many old acquaintances. There were cries of joy and teary eyes as many Sigma alumnae met for the first time in years. Ruth was especially delighted to see her "little sister," Elsie Faget Tompkins from New Orleans.

In the dining room guests were served from a table centered with pink roses. Coffee and punch were

served from side tables. Co-chairmen, both LSU-Sigas, were Phyllis Beshel Grandbouche and Laurie Ledet Landry.

Committee chairmen and members of the house party included Mary Davidson Eberhart, LSU-Σ; Annie Claire Irvine Mote, FSU-AΣ; Susan Lewis Childs, Texas A&M-AΣ; Gloria Pohlman Hecker, LSU-Σ, president of the House Corporation, and Geraldine M. Marks, president of the Colonnade Club. Other members of the group, all Sigmas, were Jane Demarest, Kay Fenton, Katrina Doiron, Debbie Dantin Musso, Debbie Montgomery Esperson, Ann Champagne Solanos, Barbara Fenton Benton, Connie Fauver Anderson and Una Fournet Daigre.

Sigma chapter members assisting were Stacie Comeaux, Bonnie Childress, Joy Harvey, Marie Standing, Carla Ledet, Margaux Finn, Katie Houde, Nancy Goss, Tracy Oubre, Tracy Talbot, Maggie Martin, Chris Marks, Colleen Webre, Mary Pat Carona, Carrie Comeaux, Mignon DeVille and Kathy Bacot.

The presentation ceremony was held in the front courtyard with Stacie Comeaux, chapter president, presiding. National President Carolyn Gullatt formally presented the Delta Zeta Woman of the Year medallion to Ruth Miller. In her acceptance remarks, Ruth spoke of her years as a collegiate member of Sigma chapter and of the many members of her family who are Delta Zetas. She presented autographed copies of her recently published books on Shakespeare to the chapter.

At the close of the ceremony our Woman of the Year was serenaded with *Dream Girl of Delta Zeta*.





Ruth Miller and Carolyn Gullatt, center, with province and chapter officers. Left to right, Jean Funck Person, UNO-ΘK, Province XVIII Collegiate Director; Nita Roberts Bonnezaze, LSU-Σ, Baton Rouge alumnae chapter president; Betty Schneider Fenton, LSU-Σ, CCD; Stacie Comeaux, Sigma chapter president, and Jane Weaver Mathes, USL-ΔK, Louisiana State Reference Chairman.



Stacie Comeaux, president of Sigma chapter, presents the chapter's gift to Ruth Miller. In the background are Gloria Pohlman Hecker, LSU-Σ; president of the House Corporation, Jean Funck Person, PCD and Carolyn Gullatt.



Advisory Board members of Sigma chapter are Katrina Sally Doiron, Laurie Ledet Landry, Phyllis Beshel Grandbouche, Susan Lewis Childs, Barbara Fenton Benton, Debbie Dantin Musso, Kay Fenton, Debbie Montgomery Esperson, Janie Demarest and Nita Roberts Bonnezaze.



Greeting Ruth Miller (right) are (l to r) Susan Lewis Childs, Texas A&M-ΛΞ; Barbara Fenton Benton, LSU-Σ; Betty Schneider Fenton, LSU-Σ, and Carolyn Gullatt.



The Sigma charter, dated November 17, 1917, hangs in the chapter room. Pictured with charter member Gladys Means Loyd is National President Carolyn Gullatt.



## 48th Biennial Session

# NPC Meets in Arizona



*NPC Delegates and Past Chairmen: Top row, left to right, Mrs. Alexander Jones, AΦ; Mrs. Sam Fore, ΔZ; Mrs. Jack Mills, ΠΒΦ; Mrs. Donald Danielson, ΔΓ; Mrs. Wilbur Pryor, ΚΚΓ; Mrs. William Katz, ΣΔΤ; Mrs. Joseph Schultz, ΔΦΕ; Mrs. Douglas Crandall, ΑΧΩ; Mrs. E. Brooks Lilly, ΑΔΠ; Second row, Mrs. J. Allen Nye, ΔΔΔ; Mrs. Ronald Saul, ΑΕΦ; Mrs. William Thompson, ΘΦΑ; Mrs. Sidney G. Allen, ΑΣΑ; Mrs. Charles McCrory, ΑΣΤ; Jeanne Manley, ΖΤΑ; Mrs. Albert N. Jorgenson, Jr., ΚΑΘ; Mrs. D.W. Ferris, ΧΩ; Mrs. Isham P. Nelson, ΓΦΒ. Front row - all Past NPC Chairmen - Mrs. Karl Miller, ΣΚ; Mrs. William Nash, ΑΞΔ; Mrs. George Roller, ΑΟΠ; Mrs. W.F. Williamson, Jr., ΦΜ; Mrs. Mary K. Barbee, ΣΣΣ; Mrs. Dennis Foxworthy, ΑΓΔ; Mrs. Robert L. McKeeman, ΔΖ, and Miss Minnie Mae Prescott, ΚΔ.*

Sunny Arizona and the luxury of the Registry Resort in Scottsdale provided the setting for the forty-eighth session of National Panhellenic Conference on November 2-5.

Representing Delta Zeta were Mary Margaret Calhoun Fore, NPC Delegate, and alternate delegates Carolyn Barnes Gullatt, Norma Minch Andrisek and Teresa Johnson Severy. Gwen Moss McKeeman attended the National Panhellenic Editors Conference and Cindy Winslow participated in meetings of the Central Office Executives . . . both held in conjunction with the NPC session.

Mary K. Barbee, Sigma Sigma Sigma, 1981-1983 NPC Chairman, set the tone of the meeting with her opening

remarks: "For the past two years, I have had continued opportunity to examine the essence of this Conference and I am struck by the amazing correlation between what I consider to be one of the most phenomenal organizations that exists, which is the National Panhellenic Conference, and the qualities of excellent corporate operations within the United States."

Characterizing NPC as an organization shaped by values and commitment to them, Mary stated that descriptions of excellent corporations can also be applied to NPC. "We are willing to state what we stand for on paper," she said and "and our Unanimous Agreements are unparalleled in other organizations.

"We represent two million women and may be the



largest volunteer organization in this country," Mary said. "There are many ways of looking at our cohesive power and strength.

"... We have important challenges to face," she added. "But we should remember that NPC makes things happen."

The work of three ad hoc committees and the Conference's response to them clearly demonstrated the main focus of the meeting.

The Ad Hoc Committee on Central Services, chaired by Minnie Mae Prescott, Kappa Delta, recommended the establishment of an office for the Conference "for central and accessible storage of records and a permanent address for banking, IRS and other legal purposes."

Recognizing that NPC materials and records have long been stored in homes or in member group offices, the committee stated that such an NPC office is needed not only to enhance efficiency, but to "promote our credibility ... in the eyes of our membership, the Greek and academic worlds and the media."

The Conference adopted the central office establishment recommendation with the provision it is to be ratified by member groups.

The group also adopted a position statement on the relationship between NPC member fraternities and host institutions.

An Ad Hoc Committee chaired by Betty Merman, Sigma Kappa, drafted a proposed statement which is based on criteria outlined in the Panhellenic Creed. The statement, which emphasizes cooperation and

common interests between universities and NPC groups, led the Conference to ask for a committee to explore the possibilities of entering into similar joint statements with other interfraternal groups.

On another issue of great concern, the Conference adopted a resolution about alcohol.

Stating that two out of every three women treated for alcohol abuse are under the age of 35 and that 88 percent of all college students drink, Ad Hoc Alcohol Committee Chairman Patricia Danielson, Delta Gamma, asked for the adoption of a resolution that recommends that each NPC group "include programming that discourages the abuse of alcohol and promotes the individual choice of moderate and responsible use or abstinence."

Other business action includes:

—Amending the Bylaws to state that NPC groups "... must have as a pledge no woman who has broken her pledge with, or had her pledge broken by another NPC fraternity on the same campus until after the expiration of one calendar year from the day she was originally pledged."

—Amending the Compact to say "No woman student shall be asked to join a fraternity during any school recess except during a formal rush period and the ensuing continuous open bidding held immediately prior to an academic term."

—Reaffirming the position of recommending early fall formal rush periods. (A resolution to this effect was adopted on the recommendation of the Scholarship and Early Fall Formal Rush Committee chaired by Mary Burt Nash, Alpha Xi Delta, which

*(continued on next page)*



*National Presidents: Top row, l to r, Miss Ginger Banks, AOII; Mrs. Ronald Robinson, AΣA; Mrs. Charlotte Cooper, ZTA; Mrs. Jon Scott, IIBΦ; Mrs. Milton DeVoe, AΦ, and Mrs. Ralph Clarkson, ΣK. Second row, Mrs. Stephen Waymire, ΔΓ; Mrs. Richard Stegall, KΔ; Mrs. R.O. Bronsing, ΓΦΒ; Mrs. William Bradford, KAΘ; Mrs. Keith Cochran, AXO; Mrs. Thomas King, AΣT; Mrs. William Hiner, ΣΣΣ; Mrs. Robert Litter, ΦM; Mrs. Charles Nitschke, KKG, and Mrs. M. Curtis Paddock, ΘΦA. Front row, Mrs. John Gullatt, ΔZ; Mrs. Dan Madio, AΔΠ; Mrs. J. Robert Blackburn, AΞΔ; Mrs. Kirk Cocke, XΩ; Mrs. J.A. Flanagan, AΓΔ, and Mrs. Philip Cohen, AΕΦ.*



*The Delta Zeta Delegation: Top row, l to r, Norma Andrisek, Mary Margaret Fore, Teresa Severy and Cindy Winslow. Front row, Gwen McKeeman and Carolyn Gullatt.*





*National Panhellenic Editors: Top row, l to r, Rochelle Hargis, AΣT; Mrs. Roland Hultsch, AΦ; Ann Daly, AΓΔ; Nancy Wallace; ΔΓ; Second row, Mrs. Michael Hinz, AΘΠ; Mrs. Charles S. Hyatt, XΩ; Denise McGuinness, ΣΣΣ; Mrs. Robert L. McKeeman, ΔZ; Mrs. William Ford, ΠΒΦ; Mrs. Phil Riske, ΓΦΒ; Mrs. Morton Grant, ΣΔT; Mrs. Carol R. Gast, AΞΔ. Front row, Mrs. Gary Ablard, AΔΠ; Mrs. David B. Selby, KΚΓ; Mrs. John C. Gallup, KAΘ; Mrs. George Rudolph, ΔΔΔ; Mrs. Neil Bardach, ΣK; Jennifer Lamb, KΔ; Susie Caldwell, ΦM, Denise Barker, AXΩ.*

determined that early rush can enhance the scholarship of pledges.)

—Adopting a procedure to be used when an NPC member group may have violated the Unanimous Agreements and/or acted contrary to Panhellenic ethics.

—Reaffirming the 1972 resolution that member groups look with disfavor on auxiliary groups to men's fraternities because those activities are in conflict with NPC policies.

Alumnae Panhellenic awards were presented at an Alumnae Panhellenic luncheon to the following Panhellenics: Akron, Atlanta, Bloomington-Normal, Carrollton, Charlotte, Chicago Northwest Suburban, Clear Lake, Clearwater, Denver, East Bay, Escondido, Farmers Branch, Findlay, Fort Wayne, Houston, Indianapolis, Lubbock, Northern Virginia, Phoenix, Portland, Riverside, Sacramento, Schnectady, St. Louis, Toronto, Tulsa, Twin Cities, Washington, D.C. and Wilmington.

Collegiate awards were presented at the Awards Banquet which concluded the Conference. The *Fraternity Month Award* for the most outstanding public relations program was presented to the University of Kentucky. Arizona and James Madison were runnersup. Ball State received honorable mention.

The *Awards Committee Trophy* for the College Panhellenic with six or fewer NPC member groups which best recognizes true Panhellenic spirit was presented to Louisville with Puget Sound and California-Riverside named runnersup.

The *NPC Award* for the College Panhellenic with a membership of seven or more groups which best recognizes true Panhellenism was presented to Oklahoma, with Illinois and San Diego runnersup.



*Central Office Executives: Top row, l to r, Mrs. Robert Cameron, KΚΓ; Mrs. Eleanor Mayer, XΩ; Mrs. Thomas Shupert, ΓΦΒ; Mrs. Earl Raven, AΓΔ. Second row, Mrs. James Shumway, AΦ; Mrs. Rex Lewis, AΘΠ; Judy C. Price, ΦM; Mrs. Howard Rossner, ΔΦE; Mrs. B.J. Smith, ΔΔΔ; Mrs. James Gillespie, AΔΠ; Marcia H. Bond, KAΘ; Jane E. Kinderman, ΣΣΣ. Front row, Mary E. Henkel, KΔ; Rose Marie Fellin, AΣA; Mrs. Irving Linderman, ΣΔT; Mrs. W. Hale Watkins, KΚΓ; Mrs. Charles Leonard, AXΩ; Cindy Winslow, ΔZ; Mrs. Virginia Fry, ΠΒΦ, and Mrs. Thomas Gregory, AΞΔ.*

The newest award, for excellent rush practices, called the *College Panhellenics Award*, was presented to Clemson with Brenau and California-Fullerton named as runnersup.

The Executive Committee for the 1983-1985 biennium is composed of Chairman Cynthia McCrory, Alpha Sigma Tau; Secretary Sidney Allen, Alpha Sigma Alpha, and Treasurer Beth Saul, Alpha Epsilon Phi.

Delta Zetas enjoyed a pleasant break in Conference activities with an evening "out" with Phoenix alumnae. A number of local Delta Zetas also attended the NPC Alumnae Panhellenic luncheon and the Awards Banquet.

delta zeta

The National Council  
proudly announces colonization  
of a chapter at  
Muhlenberg College  
Allentown, Pennsylvania



# Ways and Means Projects Committee Planned

by Patricia Canady Rosser,  
National Director

National Council has voted to establish a Ways and Means Project Committee for the sorority. The committee's purpose is to have responsibility for developing ways in which Delta Zetas can earn money through various projects and by developing a "how to" booklet regarding these projects. All projects will be in keeping with Delta Zeta standards.

The committee will be members representing Delta Zeta's alumnae and collegians and will be headed during this biennium by Pat Rosser, National Director.

The projects will include a wide range of activities appropriate for both short range and long range planning as well as activities which will cover the national scope of Delta Zeta. These projects will be divided into eight areas. These areas and examples of projects include:

6. *National Projects:* Those projects which will be advertised on a national basis, especially between Provinces.  
Cookbooks, stationery, buttons
7. *Alumnae Membership:* Upgrade our communication system between the chapters and the alumnae through correspondence as well as set a goal that each Delta Zeta alumna will pay annual dues to the sorority . . . that's \$5.00 a year, folks!
8. *Bed & Breakfast:* Organize Delta Zeta hospitality across the country.

The committee will also establish long range fund raising goals for the sorority. Let's face it . . . if the sorority has more funds coming in, it can

go on those campuses that require houses, as well as better serve existing chapters. This sorority belongs to everyone who has ever been initiated into Delta Zeta, and it is every initiated member's responsibility to do her part.

But you may be saying, "What can I do? I live miles from an organized chapter—alumnae or collegiate." Let me share some ways others have helped.

First, have you ever helped run a fund raiser? Then share the steps from start to finish with us. That "how to" booklet needs to be a composite of fund raising ideas from all over the country. In fact, National Council thinks it's so important, that they have authorized a gift to the alumna or collegian who submits the

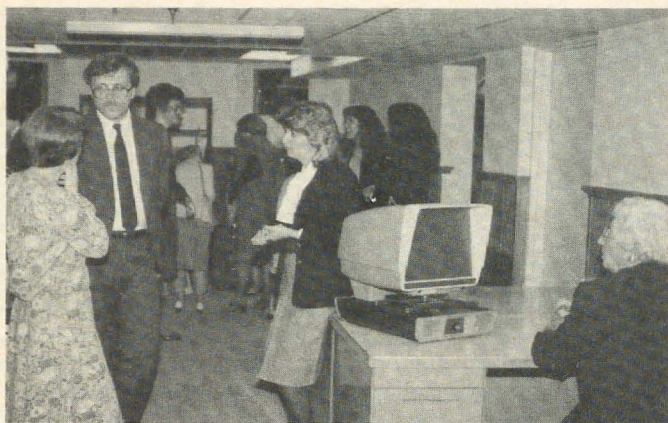
(continued on next page)

1. *Mini-Fund Raisers:* Those which require 2-6 months preparation.  
Rummage sales, car washes, card parties, suppers, bazaars
2. *Long Range:* Those which take at least a year's preparation.  
Antique shows, horse shows, golf classics, flame fantasies
3. *Collegiate Projects:* Those specially suited for college campuses.  
Dance-a-thons, bicycle races, canoe races, skate-a-thons
4. *Magazine Subscriptions:* Buying your magazines through Delta Zeta is a win-win situation. Get into it if you're not already!
5. *Marketplace:* Direct mail.  
Approving a list of suitable items which will have the appropriate Delta Zeta insignia which can be offered to both collegians and alumnae to purchase.



Guests crowd the reception hallway. Picture is taken from back staircase.





*Betty Rogers of the Oxford alumnae and Past National Treasurer Grace Gorham explain functions of the lower level office to Mr. and Mrs. Mark Jacobsen of Development Dynamics Group, Inc. in St. Louis.*



*Anne Marie Gavin explains the functions of one of the offices.*



*Trustee Doris Riede (not pictured) explains the third floor conference room to visiting collegians.*



*Vice President Teresa Johnson Severy greets guests in the Michigan room.*

## Ways and Means Projects (continued)

best fund raiser in either the mini or long range areas.

Next, are you buying your magazines through Delta Zeta? It's really easy and it means you get magazines at *no extra cost* and Delta Zeta gets a percentage. If you'd like, you can buy your magazines through your collegiate chapter or your alumnae chapter if you want to spread the wealth a little. Think of it this way, someone gets the mark-up, either the magazine or Delta Zeta. We feel it should be Delta Zeta, don't you?

Are you talented in crafts or some other way? The Marketplace will have a host of ways in which you could sell a crest design, an appropriate turtle, or a rose. Let your imagination soar . . . just remember to keep

all items within Delta Zeta standards. That means no insignia on pants backsides or on ashtrays or glasses which are obviously used for alcohol.

When was the last time you wrote to the alumnae from your chapter? Do you know if your chapter is still active, and how active? Have you ever wondered if they need you? Then you can start the alumnae communication between your chapter members and at the same time encourage them to be dues paying members, like yourself.

Or do you enjoy company? That's what the Bed & Breakfast is all about. Simply put, it's giving graciously of what is mine . . . a place to sleep and a meal to a visiting Delta Zeta traveler in your city.

So, get your thinking caps on and decide today to be an active member of your sorority. Contact Sherrie Loader, Alumnae Ways & Means Committee Chairman, or Pat Rosser, National Director and let either know that you want to help. They will put you in touch with the appropriate person. If you really want to work, let Pat know that you'd like to serve on the committee. Look in the directory of The LAMP for her address. She'll be happy to hear from you!

(By the way, the deadline for turning in fund raising ideas is April 10 so a booklet can be compiled for next year's usage. Be sure to include your name, address, and phone number in case you need to be contacted.)



# LAMP SUBSCRIPTION

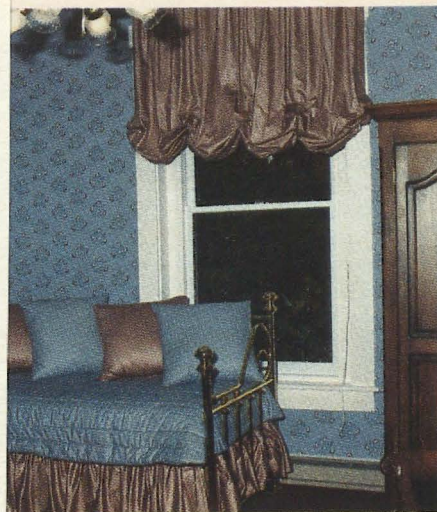
I do wish to continue to receive The LAMP of Delta Zeta.  
(Members should use parents' home address while in college.)

First Maiden Married

Street

City State Zip

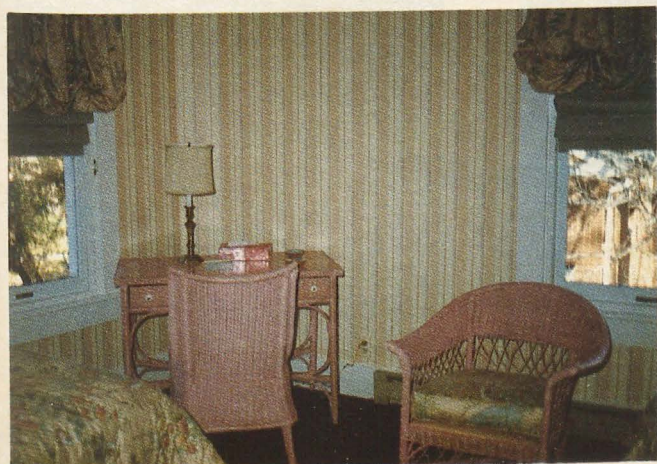
(Please copy entire top line from mailing label on back page of the current issue of The LAMP.)



*Brass daybeds with trundles are part of the California suite furnishings.*



*The Michigan room is Oriental in design.*



*The "wicker" bedroom.*



*A crystal chandelier hangs from the staircase ceiling. On the left is the pier mirror given by the Lisle family.*





*Betty Rogers of the Oxford alumnae and Treasurer Grace Gorham explain function level office to Mr. and Mrs. Mark Jacobsen Dynamics Group, Inc. in St. Louis.*



*Anne Marie Gavin explains the functions of one of the offices.*

**DELTA ZETA SORORITY**  
Corner of Campus Ave. and Church St.  
202 East Church Street  
Oxford, OH 45056



*Vice President Teresa Johnson Severy greets guests in the Michigan room.*

## Ways and Means Projects (continued)

best fund raiser in either the mini or long range areas.

Next, are you buying your magazines through Delta Zeta? It's really easy and it means you get magazines at *no extra cost* and Delta Zeta gets a percentage. If you'd like, you can buy your magazines through your collegiate chapter or your alumnae chapter if you want to spread the wealth a little. Think of it this way, someone gets the mark-up, either the magazine or Delta Zeta. We feel it should be Delta Zeta, don't you?

Are you talented in crafts or some other way? The Marketplace will have a host of ways in which you could sell a crest design, an appropriate turtle, or a rose. Let your imagination soar . . . just remember to keep

all items within Delta Zeta standards. That means no insignia on pants backsides or on ashtrays or glasses which are obviously used for alcohol.

When was the last time you wrote to the alumnae from your chapter? Do you know if your chapter is still active, and how active? Have you ever wondered if they need you? Then you can start the alumnae communication between your chapter members and at the same time encourage them to be dues paying members, like yourself.

Or do you enjoy company? That's what the Bed & Breakfast is all about. Simply put, it's giving graciously of what is mine . . . a place to sleep and a meal to a visiting Delta Zeta traveler in your city.

So, get your thinking caps on and decide today to be an active member of your sorority. Contact Sherrie Loader, Alumnae Ways & Means Committee Chairman, or Pat Rosser, National Director and let either know that you want to help. They will put you in touch with the appropriate person. If you really want to work, let Pat know that you'd like to serve on the committee. Look in the directory of The LAMP for her address. She'll be happy to hear from you!

(By the way, the deadline for turning in fund raising ideas is April 10 so a booklet can be compiled for next year's usage. Be sure to include your name, address, and phone number in case you need to be contacted.)





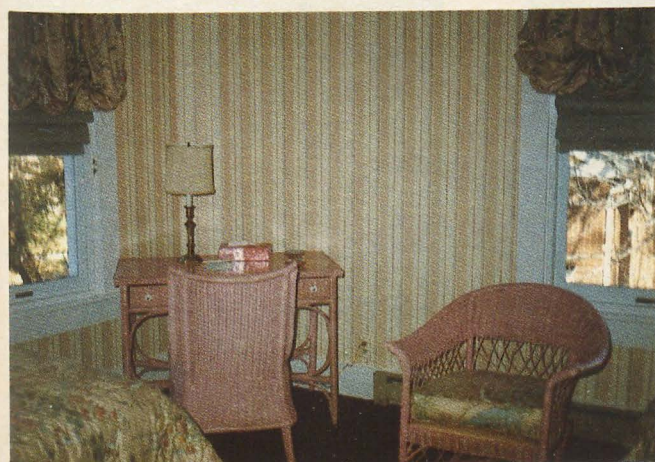
*This bedroom is furnished with four poster beds in pickled pine. All bedrooms have ceiling fans.*



*Brass daybeds with trundles are part of the California suite furnishings.*



*The Michigan room is Oriental in design.*



*The "wicker" bedroom.*



*A crystal chandelier hangs from the staircase ceiling. On the left is the pier mirror given by the Lisle family.*





*A portion of the California suite.*



*Cleveland alumnae gave this beautiful grandfather clock.*

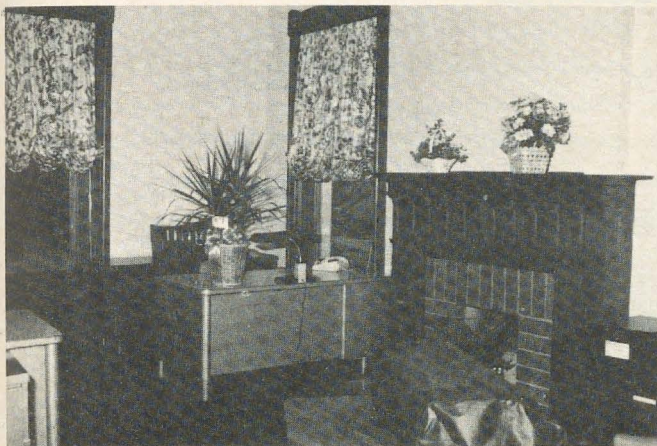


*The executive office also has a fireplace.*



*The fourth bedroom or "wicker" bedroom.*





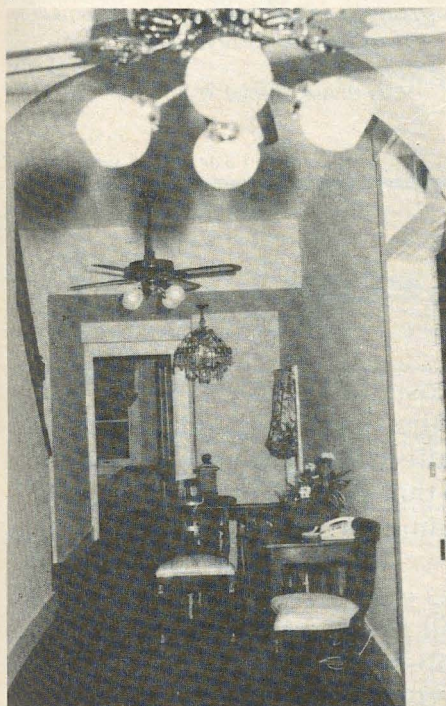
*The reception office opens onto the Campus Avenue entrance.*



*Jean Coleman Lisle (center left) shows visitors some of the history displays in the file rooms.*

## **Delta Zeta Comes Home**

*(Cont'd. from page 11).*



*This view of the second floor hallway shows the dropleaf table and empire chairs. Directly to the right is the Michigan bedroom and directly ahead is the "wicker" room.*

draperies, headboards and bed coverings in delicate print with contrasting grey linen. The headboards are shirred upholstered.

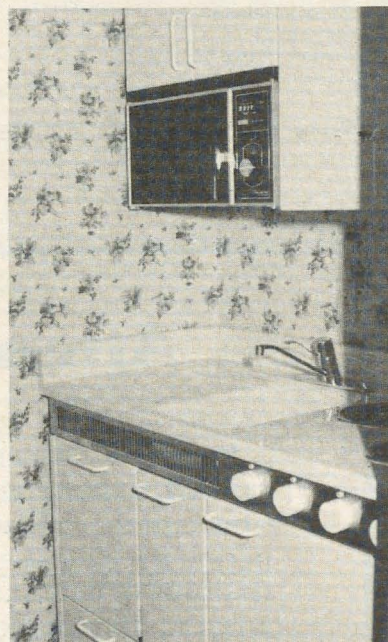
Each bedroom has a private bath and all second floor carpeting is burgundy plush pile.

A staircase to the third floor opens into a large room which contains the conference room furniture from the Columbus office. A bath and ample closet space (to store rollaway beds) add to the spaciousness of this area. Rose colored plush pile carpeting covers the floor.

Now, back to the second floor and down the back staircase to the first floor. Down the hallway and a turn to the left beside the front staircase brings us to the side entrance opening onto the parking area. A stained glass window contains the seal of Miami University.

On down the staircase brings us to the lower level and the "working" area of Headquarters - files, desks, machines, supplies, etc. Several rooms offer neat and tidy areas for an efficient, functioning National Headquarters. The floor of the lower level is covered with commercial level loop in beige tweed.

And now your guest tour of "our" home is complete. Do enjoy the pictures! October seems long ago as press time on this historical issue of **The LAMP** fast approaches, but the memory is still brilliant. And Delta Zeta has come home to Oxford at last!



*The mini-kitchen off the second floor hallway.*

The National Council  
proudly announces installation  
of  
Iota Chapter  
University of Iowa  
February 4, 1984

*LS*



# Flame Eternal

## *GAMMA*

Doris Hodlich Barron '29  
Leona Train Rienow '25

## *ZETA*

Irene Shelburn Snow '30  
Bertha Leona Steeves '27

## *THETA*

Marie Bluett Powers '13

## *IOTA*

Rowena Bedell Vavra '21

## *KAPPA*

Neva St. Peter Bellman '26  
Edith Monk Poortvliet '18  
Margaret Savage Porter '28

## *MU*

Eleanor Este Bartlett '19  
Helen Atkisson Dow '21  
Margaret Pope Fraser '22  
Lurana S. Lord '23  
Eunice Merrill Nelson '26  
Vivian Osborn '24  
Diane Wishart Purdy '54  
Vina Queisser West '26

## *PI*

Elvera Reimer Schmidt '45

## *SIGMA*

Elaine Menville Shuman '35

## *TAU*

Marion Worthing '31  
Letty Hayes Young '40

## *UPSILON*

Doris Fischer Kuball '31  
Rose Rosendahl Lentfer '23

## *CHI*

Martha Wikberg Hobson '22  
Margaret Hurst Leatherman '37

## *OMEGA*

Marion Gay Williams '29

## *ALPHA BETA*

Evelyn Cox Simmons '28

## *ALPHA EPSILON*

Julia Bell Biegler '53  
Mabelle Agnes Carlson '27

## *ALPHA THETA*

Louise Tiley Wilson '29

## *ALPHA KAPPA*

Ruth Richardson Reen '32

## *ALPHA TAU*

Doris Jean Bridges '27

## *ALPHA CHI*

Dorothy Siewert Wallar '32

## *BETA IOTA*

Mildred Eddins Brickey '28

## *BETA LAMBDA*

Jaclyn Horner Maguire '48

## *BETA MU*

Barbara Pontious McDow '48

## *GAMMA GAMMA*

Doris Bender Byers '55

## *GAMMA NU*

Joan Brewington Bradshaw '59

## *GAMMA UPSILON*

Helene Cochran Shreve '32

## *DELTA OMICRON*

Ruth Hatfield Makar '44

## *DELTA PHI*

Allye Fortune Huneryager '53

## *DELTA OMEGA*

Vina Nickels Oldach '59

## *EPSILON KAPPA*

Peggy Alderson Schryer '43

## *PHI BETA*

Mary Rouse Oswald '55

## Attention! All Delta Zetas

Increased concern over the production and mailing costs of *The LAMP* created a thorough study which prompted action at the 36th National Convention . . . that a subscription to *The LAMP* be limited to a five year period for all those initiated after August 1, 1984. After that period, those desirous of continuing to receive the magazine would simply renew their subscriptions at the current publishing rate.

To further assure that only those Delta Zetas desirous of receiving *The LAMP* remain on the mailing list, we are asking that all present lifetime subscribers indicate their desire to remain on the subscription list by detaching the postal card in this issue and returning it to National Headquarters by November 1, 1984. If you do *not* wish to continue to receive *The LAMP*, then you simply do nothing. You may, of course, resume your subscription at any time by notifying National Headquarters.

A lifetime membership is not changed in either instance. This is strictly a monetary measure. If you read and enjoy *The LAMP* and wish to continue to receive it, please return the attached card and you will continue to receive the magazine on a lifetime basis.



# Delta Zeta Directory

## NATIONAL COUNCIL

*President:* Carolyn Barnes Gullatt (Mrs. John), 4008 Hyridge, Austin, TX 78759  
*Vice President of Membership:* Teresa Johnson Severy (Mrs. Raymond), 2127 Northampton Way, Lansing, MI 48912  
*Vice President Alumnae Affairs:* Charlotte Fields Silversteen (Mrs. Allan), 513 Toll Road, Orelan, PA 19075  
*Vice President Collegiate Affairs:* Marvona Easley Tavlin (Mrs. Michael), 7411 Briarhurst Circle, Lincoln, NE 68506  
*Secretary:* Dianne Fellows Guild (Mrs. Douglas), 16 Andrews Drive, South Burlington, VT 05401  
*Treasurer:* Anne Marie Jones Gavin (Mrs. William), 3264 Swan Drive, Vineland, NJ 08360  
*Director:* Elizabeth Barbieri Bragg (Mrs. Lawrence), 2972 Leopold Avenue, Hacienda Heights, CA 91745  
*Director:* Lucile Crowell Cooks (Mrs. Rudolf), The Ambassador #404, 7400 Sun Island Drive South, South Pasadena, FL 33707  
*Director/Pledge Programs:* Phyllis Snape Favorite (Mrs. Robert), 570 Lancashire Lane, State College, PA 16803  
*Director:* Mary Margaret Calhoun Fore (Mrs. Sam), 459 Summit Circle, Fredericksburg, TX 78624  
*Director:* Patricia Canady Rosser (Mrs. David), 1609 Indian Rks. Road, Clearwater, FL 33516  
*Past National President:* Norma Minch Andrisek (Mrs. J. R.), 319 Janice Drive, Berea, OH 44017  
*National Panhellenic Conference Delegate:* Mary Margaret Calhoun Fore (Mrs. Sam), 459 Summit Circle, Fredericksburg, TX 78624  
*Alternates:* Carolyn Barnes Gullatt (Mrs. John)  
Norma Minch Andrisek (Mrs. J. R.)  
Teresa Johnson Severy (Mrs. Raymond)

## NATIONAL HEADQUARTERS

*Delta Zeta National Headquarters:* Corner of Campus Avenue & Church Street, 202 E. Church Street, Oxford, OH 45056  
*Delta Zeta Subscriptions (Collegiate & Alumnae):* Box 24145, Columbus, OH 43224  
*National Field Representatives:* Karen Giles, Judy Markel, Jeanine Petersen, Linda Regner, Vickie Adcock, Diane Sorensen, Suzanne Jewhurst, Lisa Straub

## THE LAMP

Gwen Moss McKeeman (Mrs. Robert L.), 5517 S. 74th E. Avenue, Tulsa, OK 74145

## EXTENSION

Norma Minch Andrisek (Mrs. J. R.), 319 Janice Drive, Berea, OH 44017

## FOUNDERS MEMORIAL FOUNDATION

*President:* Arlene Newman Marshall (Mrs. Norman L.), Rt. 2, Box 78, Port Lavaca, TX 77979  
*Secretary:* Betty Paul DeWitt (Mrs. Norman), 23630 Oakrest Lane, Harbor City, CA 90710  
*Treasurer:* Shirlyn Chaffin (Miss), 6561 Santa Cruz Place, Reynoldsburg, OH 43068  
*Members:* Mary Lou McConaughy Barth (Mrs. William), 1662 Villa South Drive, West Carrollton, OH 45449  
Mary Margaret Calhoun Fore (Mrs. Sam), 459 Summit Circle, Fredericksburg, TX 78624

## NATIONAL HISTORICAL MUSEUM BOARD OF TRUSTEES

*President:* Lucile Crowell Cooks (Mrs. Rudolf), The Ambassador #404, 7400 Sun Island Drive South, South Pasadena, FL 33707

## PROVINCE COLLEGIATE AND ALUMNAE DIRECTORS

### I. Maine, Massachusetts, Vermont, New Hampshire, Connecticut and Rhode Island

*PCD:* Angela Piper Shipman (Mrs. John), 8 Bayberry Lane, Exeter, NH 03833

*PAD:* Gay Thorro Rose (Mrs. Jack), 124 Roxbury Road, Niantic, CT 06357

### II. New York and New Jersey

*PCD:* Sylvia Lounsbury Fix (Mrs. Wayne), 36 Crystal Springs Lane, Fairport, NY 14450

*PAD:* Amy Furesz Curry (Mrs. James), 338 Marvin Ave., Hackensack, NJ 07601

### III. Pennsylvania and Delaware

*PCD:* Judith Sherin Kline (Mrs. Patrick E.), 207 Robinwood Dr., Hagerstown, MD 21740

*PAD:* Diane Dershem Kreider (Mrs. Edward), 6204 Elmer Avenue, Harrisburg, PA 17112

### IV. West Virginia

*PCD:* Lisa Bergeria Blankenship (Mrs. Glen), P.O. Box 779, Athens, WV 24712

*PAD:* Mary Barnette Sender (Mrs. Robert), 140 Meadow Drive, Scott Depot, WV 25560

### V. Ohio

*PCD:* Lynnda Wolf Hoefler (Mrs. Robert), 1287 Denise Drive, Kent, OH 44240

*Trustees:* Norma Minch Andrisek, 319 Janice Drive, Berea, OH 44017; Carolyn Barnes Gullatt, 4008 Hyridge, Austin, TX 78759; Florence Hood Miner, 1040 H. Avenue, Nevada, IA 50201; Aurel Fowler Ostendorf, Rt. 1, Box 262 A1, Kapwaa Kauai, HI 96746; Mary Lou Ragel Vineyard, 4998 62 Ave. South, St. Petersburg, FL 33715; Doris Ellingson, 4661 Lake Avenue, White Bear Lake, MN 55110; Elizabeth Baker Devereaux, 18 Pembroke Lane, Huntington, WV 25705; Betsy Bradley Leach, 1244 Valley View Rd., Glendale, CA 91202

## HISTORIAN EMERITUS

Grace Mason Lundy (Mrs. H. M.), 3207 N. 25th St., Phoenix, AZ 85016

## STANDING COMMITTEES

*Colonnade Club:* Mary Ann Gallatin French (Mrs. John), 2322 N.W. 58th Circle, Oklahoma City, OK 73112  
*Constitution and Procedure:* Lisbeth Innis Francis (Mrs. Robert), 2508 Belle Terre Drive, Birmingham, AL 35226  
*Finance:* Anne Marie Jones Gavin, Chairman, Lucile Crowell Cooks, Mary Margaret Calhoun Fore, Norma Minch Andrisek, Patricia Canady Rosser and Carolyn Barnes Gullatt, ex officio.  
*History:* Florence Hood Miner (Mrs. Arthur), 1040 H Avenue, Nevada, IA 50201  
*Judiciary:* Dianne Fellows Guild (Mrs. Douglas), 16 Andrews Drive, South Burlington, VT 05401  
*Ritual:* Karen Kind Manuel (Mrs.), 36 Rilling Ridge Road, New Canaan, CT 06840

## COMMITTEES

*Activities (Collegiate):* Margaret Stone Grosse (Mrs. Robert), 21 Terrace Walk, Berkeley CA 94707  
*Alumnae Relations:* Scott Thompson Douget (Mrs. Michael), 6715 E. 78th Ct., Tulsa, OK 74133  
*Awards (Collegiate & Alumnae):* Marcia Earl Humpal (Mrs. David), 26798 Mangrove Lane, Olmsted Falls, OH 44138  
*Bylaws and Standing Rules:* Lisbeth Innis Francis (Mrs. Robert), 2508 Belle Terre Drive, Birmingham, AL 35226  
*Housing:* Ruth Heller Horton (Mrs. Frank C.), 2742 Washington Blvd., Huntington, WV 25705  
*Housing Projects:* Sue Jones Allen (Mrs. Tom), 2415 Custer Cave, Richardson, TX 75080  
*Newsletter (Collegiate & Alumnae):* Patricia Heneghan Pelkofer, (Mrs. C. G.), 252 South Winebiddle St., Pittsburgh, PA 15224  
*Philanthropy (Collegiate):* Joan Dondrea Lowry (Mrs. Bob-Bill), 578 Yarmouth Lane, Bay Village, OH 44140  
*Philanthropy (Alumnae):* Priscilla (Pat) Beatty (Miss), 3691 Northwest 95th Terrace, Apt. 1202, Sunrise, FL 33321  
*Pledge Programs:* Phyllis Snape Favorite (Mrs. Robert), 570 Lancashire Lane, State College, PA 16803  
*Programs (Alumnae)/Ways and Means:* Sherrie Campbell Loader (Mrs. Charles), 565 Church, Portland, ME 48875  
*Programs (Collegiate):* Marvona Easley Tavlin (Mrs. Michael), 7411 Briarhurst Circle, Lincoln, NE 68506  
*References:* Ruby Gray Purdum (Mrs. C. B.), Rt. #1, Box 147, Dewey, OK 74029  
*Scholarship (Collegiate):* Sharon Strassler Kryger (Mrs. Steve), Box 2, Neligh, NE 68756  
*Social:* Mary Thoreen (Miss), P.O. Box 794, Mars Hill, NC 28754  
*Elizabeth Coulter Stephenson Scholarships (Collegiate):* Sarah Jane Shank Houston (Mrs. Harold), 3358 Ramblewood Place, Sarasota, FL 33577  
*Sorority Education Chairman:* Ellen Kroll Jenkins (Mrs. Paul L.), 1101 Ramblin Court, Greenwood, IN 46142  
*Standards:* Lee McFalls Rodekohl (Mrs. Larry), 901 Platte Avenue, Cheyenne, WY 82001  
*Ways & Means Projects:* Patricia Canady Rosser (Mrs. David), 1609 Indian Rks. Road, Clearwater, FL 33516

*PAD:* Lois Randolph Nesgoda (Mrs. Leonard), 5652 Alberta Dr., Lyndhurst, OH 44124

### VI. Michigan

*PCD:* Janelle Kiszka (Miss), 550 Chamberlain St., Apt. 1008, Flushing, MI 48433

*PAD:* Pamela McClure Cronenwett (Mrs. William), 25720 West Hills Drive, Dearborn Heights, MI 48125

### VII. Indiana

*PCD:* Elizabeth Petruccie (Miss), 4508 Candletree Circle #11, Indianapolis, IN 46254

*PAD:* Elaine Listenberger Smock (Mrs. Steven), 9561 E. Southport Road, Indianapolis, IN 46259

### VIII. Wisconsin

*PCD:* Danice Whalen (Miss), 913 1/2 S. Roosevelt, Green Bay, WI 54301

*PAD:* Lynn Marie Shebesta (Miss), 422 Hudson Avenue, West, Mankato, MN 56001

### IX. Illinois

*PCD:* Teresa Johnson Severy (Mrs. Raymond), 2127 Northampton Way, Lansing, MI 48912

*PAD:* Gail Easley McKee (Mrs. Don), 776 10th Street, Charleston, IL 61920



## X. Iowa

*PCD:* Janet Eisler Havener (Mrs. Gary), 4343 N. Sheridan Ave., Loveland, CO 80537

*PAD:* Kay Morrow Wright (Mrs. Terry), 10477 Juan Calle, Des Moines, IA 50322

## XI. Missouri

*PCD:* Mary Tripodi (Miss), 2123 Lilly Avenue, St. Louis, MO 63110

*PAD:* Eileen Hoffman Doe (Mrs. Larry), 2 Locust Drive, Florissant, MO 63031

## XII. Kansas, Nebraska and Collegiate chapters of Colorado

*PCD:* Janet Eisler Havener (Mrs. Gary), 4343 N. Sheridan Ave., Loveland, CO 80537

*PAD:* Carolyn McCandless Woodling (Mrs. Charles), 3112 Creekwood, Lawrence, KS 66044

## XIII. Minnesota, North Dakota and South Dakota

*PCD:* Jeri Seals Weigand (Mrs. Gregg), 6185 Boyer Path, Inver Grove Heights, MN 55075

*PAD:* Sylvia Lee Kafkas (Mrs. John), 3505 Humboldt Ave., South, Minneapolis, MN 55408

## XIV. Colorado, Wyoming, Utah, Arizona and New Mexico Alumnae Chapters only (See Province XVII)

*PAD:* Mary Jo Harriss Messlin (Mrs. Carl), 2998 S. Akron Court, Denver, CO 80231

## XV SOUTH. Southern California, Southern Nevada and Hawaii

*PCD:* Karen Martin Dessel (Mrs. Tom), 2015 Studebaker Road, Long Beach, CA 90815

*PAD:* Barbara Phillippi Lancaster (Mrs. Richard), 4923 Libbit Ave., Van Nuys, CA 91436

## XV CENTRAL. Northern California and Northern Nevada

*PCD:* Susan Kelly Warren (Mrs. Robert), 212 Farm Lane, Martinez, CA 94553

*PAD:* Ruth Rue Behnke (Mrs. Albert), 2241 Sacramento St., San Francisco, CA 94115

## XVI NORTH. Oregon, Washington, Montana, Idaho and Alaska

*PCD:* Susan Kelly Warren (Mrs. Robert), 212 Farm Lane, Martinez, CA 94553

*PAD:* Helga Kohlenberg Clark (Mrs. William), 4866 123rd Place S.E., Bellevue, WA 98006

## XVI. Oklahoma

*PCD:* Mary Malone Snider (Mrs. Charles), 2120 Columbus, Muskogee, OK 74401

*PAD:* Deanna Alleman McKinnon (Mrs. M.L.), 12109 Victoria Place, Oklahoma City, OK 73120

## XVII. Texas, Collegiate chapters of New Mexico, and Las Cruces, NM Alumnae Chapter

*PCD:* Merry Westbrook Adamcik (Mrs. Roy), 614 Rozelle Avenue, Sugarland, TX 77478

*PAD-N:* Annette Fowler Nall (Mrs. Garry), Box 136, WT Station, Canyon, TX 79015

*PAD-S:* Ann Butler Booth (Mrs. W. Ray), 14735 Oak Bend, Houston, TX 77079

## XVIII. Louisiana and Mississippi

*PCD:* Jean Funck Person (Mrs. John D.), 4808 Craig Ave., Kenner, LA 70062

*PAD:* Lizetta M. Frederick (Ms.), 1721 Victor II Blvd., Morgan City, LA 70380

## XIX. Tennessee

*PCD:* Clara Schnakenberg Smith (Mrs. Dale), 310 Cotton Road, Franklin, TN 37064

*PAD:* Violet Henson Anderson (Mrs. Charles A.), 102 Blue Hills Ct., Nashville, TN 37214

## XX. Kentucky

*PCD:* Jennifer Plenge (Ms.), 904 Dana Marie Drive, Louisville, KY 40223

*PAD:* Carol Sharpe Harper (Mrs. Spencer E., Jr.), 3309 Green Hill Lane, Louisville, KY 40207

## XXI. South Carolina and North Carolina

*PCD:* Sondra Golden Bass (Mrs. J. Albert, Jr.), 6425 Chapman Court, Raleigh, NC 27612

*PAD:* Patricia Menendez Tector (Mrs. John), 907 Winslow Court, Cary, NC 27511

## XXII. Georgia

*PCD:* Sue Adrianson Skambis (Mrs. Christopher), 230 West Lake Sue Ave., Winter Park, FL 32789

*PAD:* Marge Klingensmith Lovewell (Mrs.), 96 The Prado NE, Atlanta, GA 30309

## XXIII. Alabama

*PCD:* Sandra McAlister Nesbitt (Mrs. Milton), 241 Landmark Dr., Montgomery, AL 36117

*PAD:* Lassie Jo Rounds Simms (Mrs. Jack), 208 Willow Creek Rd., Auburn, AL 36830

## XXIV. Florida

*PCD:* Sue Adrianson Skambis (Mrs. Christopher), 230 West Lake Sue Ave., Winter Park, FL 32789

*PAD:* Susan Mease (Miss), 2095 Sunset Point Road, #2405, Clearwater, FL 33575

## XXV. Virginia, Maryland, Washington, D.C.

*PCD:* Sharon Lamb (Miss), 4600 John Hancock Ct., #301, Annandale, VA 22003

*PAD:* Gail Lutz Verley (Mrs. William), 1735 North Troy, Apt. 413, Arlington, VA 22206

## XXVI. Arkansas

*PCD:* Jacqueline Miner Gardner (Mrs. Richard, Jr.), P. O. Box 2034, Russellville, AR 72801

*PAD:* c/o National Vice President Alumnae Affairs

## STATE REFERENCE CHAIRMEN

**ALABAMA:** Madge Vinton Sorrell (Miss), Rt. 1, Pike Road, AL 36064 **ALASKA:** Caroline Dunbar Valentine (Mrs. Craig), 3838 Westminster Way, Anchorage, AK 99504 **ARIZONA:** Refer to National Reference Chairman **ARKANSAS:** Jeania Standridge Evans (Mrs. Jerry), Rt. #2, Box 370, Russellville, AR 72801 **CALIFORNIA (North):** Martha Henry Burde (Mrs. Walter), 24685 Camino del Monte, Carmel, CA 93923 **CALIFORNIA (South):** Janet Breitweiser Savage (Mrs. Tom), 5102 Woodwind Lane, Anaheim, CA 92807 **COLORADO:** Tressa Moor Brasse (Mrs. Lawrence), Box 146, Calhan, CO 80808 **CONNECTICUT:** Ann Collins Gill (Mrs. Edward), 53 High Point Rd., Westport, CT 06880 **DELAWARE:** Cindy Andrew (Miss), 5068 W. Brigantine Ct. Mermaid Run, Wilmington, DE 19808 **DISTRICT OF COLUMBIA:** Pat Dansbury (Miss), 1722 19th St. NW #501, Washington, D.C. 20009 **FLORIDA:** Cindy Brown Helton (Mrs. Charles), 1601 Berkshire Ave., Winter Park, FL 32789 **GEORGIA:** Refer to National Reference Chairman **HAWAII:** June Burnell Solomon (Mrs. Albert K.), 208 Seaside Towers, 435 Seaside Ave., Honolulu, HI 96815 **IDAHO:** Rilla Soderstrom Peralta (Mrs. George), 8800 Craydon Dr., Boise, ID 83704 **ILLINOIS:** Terry Mellen (Miss), RR #1, Coal City, IL 60416 **INDIANA:** Karen Manley Davies (Mrs. Roger L.), 812 S. 5th St., Terre Haute, IN 47807 **IOWA:** Alaire Swedlund Bornholtz (Mrs. Tim), 3601 Lafayette, Sioux City, IA 51104 **KANSAS:** Kay Koger Laver (Mrs. William), 120 Mulberry, Cottonwood Falls, KS 66845 **KENTUCKY:** Mary Penrod (Miss), 67 Gaddis Dr., Ft. Thomas, KY 41075 **LOUISIANA:** Jane Weaver Mathes (Mrs. Jimmy), 12538 Sherbrook Dr., Baton Rouge, LA 70815 **MAINE:** Candace Hilton Smith (Mrs. Nelson L.), R.R. 2, Box 505A, Yarmouth, ME 04096 **MARYLAND:** Pat Dansbury (Miss), 1722 19th St. NW #501, Washington, D.C. 20009 **MASSACHUSETTS:** Mary Catherine Davis (Miss), 25 Bayberry Circle, Millis, MA 02054 **MICHIGAN:** Lee Ellen Angeloff Kerr (Mrs.), 45739 Utica Green E., Bldg. 21, Utica, MI 48087 **MINNESOTA:** Grace Dollohan (Miss), 4040 15th Ave. South Apt. 1, Minneapolis, MN 55407 **MISSISSIPPI:** Lanell Long McLeod (Mrs. James), Rt. 3, Box 433, Brandon, MS 39042 **MISSOURI:** Michaela K. Kerns (Miss), 10540 Washington #304, Kansas City, MO 64114 **MONTANA:** Jackley Meyers (Miss), 212 N. Ewing, #4, Helena, MT 59601 **NEBRASKA:** Carole Sorensen (Miss), 3027 W. Capital Ave., #26, Grand Island, NE 68801 **NEVADA:** Lori Figgins (Miss), 647 Peppertree Circle, Henderson NV 89015 **NEW HAMPSHIRE:** Karen Macriganis (Miss), Box 296, Lacomia, NH 03246 **NEW JERSEY:** Debra Bass (Miss), 357 Shea Dr., New Milford, NJ 07646 **NEW MEXICO:** Cheeta Northrip McNury (Mrs.), 2507 Baylor Ave., Alamogordo, NM 88310 **NEW YORK:** Mary Frances Sims (Miss), 95 Ball Road-High Acres, Syracuse, NY 13215 **NORTH CAROLINA:** Linda Angel Leedham (Mrs. Gary), 4414 Woods End Lane, Matthews, NC 28105 **NORTH DAKOTA:** Kathie Ryckman Anderson (Mrs. Owen), Box 8052, University Station, Grand Forks, ND 58201 **OHIO:** Sandra Sebrill Bailey (Mrs. Bruce), 541 Willard Rd., Aurora, OH 44202 **OKLAHOMA:** Pattie Cantrell Hulsey (Mrs. Stephen), 3912 S. Union, Tulsa, OK 74107 **OREGON:** Barbara Kersch Hamilton (Mrs. W. B.), 12601 S.E. Market, Portland, OR 97233 **PENNSYLVANIA:** Debbie Fries (Miss), 1060 Oldstone Road, Allentown, PA 18103 **RHODE ISLAND:** Patricia Webster Boynton (Mrs. William), 63 Benefit Street, Warwick, RI 02886 **SOUTH CAROLINA:** Sharon Youngblood Parsell (Mrs. David), 2 Kingsbury Rd, Rt. 9, Greenville, SC 29609 **SOUTH DAKOTA:** Doris Dalin Huffman (Mrs. Richard, Jr.), 1535 S. State Street, Aberdeen, SD 57401 **TENNESSEE:** Joyce Lockhart Gary (Mrs. Wallace), 1347 Greendale Ave., Memphis, TN 38127 **TEXAS:** Ann Clay Elkins Hawkins (Mrs. Jerry), 103 Live Oak Lane, Lake Jackson, TX 77566 **UTAH:** Jean Peters Christensen (Mrs. William), 1669 Yalecrest Ave., Salt Lake City, UT 84105 **VERMONT:** Pat Perreboom Hoefler (Mrs. David), 22 Hillwinds, Brattleboro, VT 05301 **VIRGINIA:** Sue Kuether Sippel (Mrs. Leonard), 1109 Five Points Rd., Virginia Beach, VA 23454 **WASHINGTON:** Karen Fellows Soyk (Mrs. Lon), 31033 38th Avenue South, Auburn, WA 98002 **WEST VIRGINIA:** Sherry Hornsby Miller (Mrs. William), 2609 Jefferson, Point Pleasant, WV 25550 **WISCONSIN:** Mary Ann Myhrvold Janssen (Mrs. Paul), 312 Andrew St., Wukwonga, WI 53149 **WYOMING:** Donna McElroy Frerichs (Mrs. William), 3301 Alta Vista Drive, Laramie, WY 82079





*Our home looks elegant in the snow, too.*

## From the Lampwriter

Thanks to all of you for the delightful Christmas greetings and notes. Things just got a little too hectic around the McKeeman household, so please take this as my own greetings to you!

The article in the last LAMP by Photographer Pete McKeeman brought lots of nice comments. Perhaps I should explain that he is our #1 son and **IS** married! (That is to answer an inquiry from a sorority editor!) Special thanks to Sigma Tau Gamma's Bill Bernier for his kind words, "The article by Pete McKeeman on photography in your Winter edition of The LAMP was great!"

I had to chuckle when I received a Christmas card and note from a long-time, long-lost sorority sister who shall remain nameless. She wrote, "I know this comes as a shock. I seldom, if ever, read The LAMP but I did and Pete's picture and the byline struck a familiar note. I read on to

discover you are the Editor . . ." And I thought all 75,600 of you on the mailing list read The LAMP from cover to cover!!!

This is a letter I want to share with you.

"I have the pleasure of typing Delta Zeta's magazine each quarter here at ColorGraphics and I just wanted to let you know that it truly is a pleasure!

"Unfortunately, I never belonged to a sorority, but I truly enjoy reading about Delta Zeta. It appears to be a very fine and worthwhile organization and after typing I feel I personally know all the ΔZs. I hope some day my daughters will become Delta Zeta sisters!

"Again, I just wanted you to know what a pleasure I have reading, and being able to help, The LAMP. Sincerely, Bea Lane." (Naturally, your editor did inquire as to the ages of the Lane daughters.)

LAMP staff members have

changed names and addresses. Meryl Lin McKean became Mrs. Patrick Maxwell recently and staff artist Sheila Nixon moved from Tulsa to New Jersey and she and husband Tom became the parents of a son, Conor Thomas, in October.

My special thanks also to National Vice President Marvona Tavlin and to Carin Metcalf of the Headquarters staff for sharing their pictures of our Museum and Headquarters. They added to our picture story for you.

Gwen Moss McKeeman  
Editor



# Delta Zeta is a Rainbow

Delta Zeta is a rainbow. For rainbows are very special

People get excited when they see a rainbow, welcoming it with open arms.

A rainbow is the beauty after the storm—the rain and thunder—the yelling and tears.

But the earth needs a storm to nourish it for growth,

As Delta Zeta needs a storm to show the human imperfection; to learn from the mistakes in order to grow twice as strong.

A rainbow is calming

calming with love and openness.

Yes, the beauty after the storm

As Delta Zeta is beautiful, beautiful from within.

A rainbow displays all of nature's "true" colors in a brilliant array, and style.

Delta Zeta has "true" individuals—

nothing artificial;

they too have a brilliant array—in their interests and talents.

Yet like the rainbow each individual has a color which fits into the arch—

In just the right place to make the rainbow what it is and what it can become,

For without one color the rainbow would collapse—

It needs each color's support

For without one color it would be nothing.

Delta Zeta is:

The red—filled with love of sisterhood—to the world and to each other; with a touch of anger and many roses to refresh and soften.

Delta Zeta is:

The orange—bright with joy and laughter; a home, a family; not only to enjoy but to make comfortable for others.

Delta Zeta is:

The yellow—golden as the sunshine; and as the sunshine's rays dance easily, so does the love of Delta Zeta.  
It is flexible—willing to change.

The gold is yellow—a golden badge and lamp—pure.

Delta Zeta is:

The green—filled with hope and vigor.  
always working  
always striving  
always accomplishing.

Delta Zeta is:

The blue—it is vast; as the sky filled with opportunities and dreams, like wishes made on a star.

Delta Zeta is:

The indigo—it is trust in each other, in the world, and in oneself.

For indigo is faith,

and

faith is trust.

Delta Zeta is:

The violet—the deepest color from within—a commitment, not only for today but for a lifetime.

Not to say "I am a Delta Zeta"

but

to live and be a Delta Zeta everyday.

Delta Zeta is a rainbow

all the colors

upholding one another

and blending together.

There is no end to Delta Zeta, however.

Delta Zeta goes on forever,

so one may ask me

"Then there is no pot of gold?"

but ah,

I shall answer,

"There really is no end to a rainbow either—

no one ever finds the "pot of gold," but Delta Zeta is filled with many "pots of gold."

For Delta Zeta's "pot of gold" is found

each day

over and over again

through sisterhood and love

and as the gold is found—

each piece is returned twice

by a smile

of a sister's love.

Christy Lynn Myrastek  
SIU-IΩ

POSTMASTER: Send 3579 immediately to Delta Zeta Sorority, 202 E. Church St., Oxford, OH 45056

Delta Zeta Sorority  
Corner of Campus Ave. and Church St.  
202 E. Church St.  
Oxford, OH 45056

Address Correction Requested

Non-Profit Org.  
U.S. Postage  
PAID  
Permit No. 131  
Tulsa, OK