

THE
LAMP
OF
DELTA
ZETA
SPRING, 1983



The President Writes



Dear Delta Zeta sisters,

The 1981 National Council set goals and priorities very soon after Convention. One top priority goal was a new edition of our Delta Zeta history. This goal is about to become a reality. In your latest issue of *The LAMP* was a card offering you a chance to reserve your copy of a soon-to-be published hard-bound edition of our history. In this issue is a similar card for your convenience.

The history committee has been busy writing, re-writing and revising this history. We are grateful to Florence Miner for her acceptance of the committee appointment as history editor to aid Grace Mason Lundy in this endeavor. Elizabeth Coulter Stephenson in 1918 gave the early chapters a history she wrote. Since that time there have been four history publications, in 1923, 1934, 1952 and 1967. Each was a special edition of *The LAMP*. All of these four were written by Grace Mason Lundy.

Her love and devotion to Delta Zeta is evidenced by her many achievements in and for Delta Zeta and her continuous service since she left school. Her story, in part, is on page 8 of this issue of *The LAMP*.

For her loyal devotion, her continued caring, realizing her concern for the ritual and history have been prominent and foremost in her interests, we wish to honor Grace. We hereby proclaim her as our National Delta Zeta Historian Emeritus. With this honor, we recognize her talent for the written word-apropos, to the point-and the point was always Delta Zeta.

"You are too good not to be better" and "Delta Zeta is better known as always being better" are two of my favorite Grace-isms, as I call her most quotable quotes.

Our thanks, Grace, with loving appreciation for your cherishing and preserving our past through the histories you have written.

Carolyn B. Gullatt

Carolyn B. Gullatt



THE LAMP

Volume 72 Number 1 Spring 1983

Founders of the Sorority



Miami University
Oxford, Ohio 1902

Alfa Lloyd Hayes, 1880-1962
Mary Collins Galbraith, 1879-1963
Anna Keen Davis, 1884-1949
Julia Bishop Coleman, 1881-1959
Mabelle Minton Hageman, 1880-1929
Anne Simmons Friedline, 1879-1932

THE LAMP

(USPS 585-640)

The Lamp of Delta Zeta, official magazine of the sorority, is published quarterly by the Delta Zeta Sorority, 21 East State Street, Columbus, Ohio 43215.

Send all editorial material to the Editor, Mrs. Robert L. McKeeman, 5517 S. 74th E. Avenue, Tulsa, OK 74145. Send all matters of a business nature to Delta Zeta National Headquarters, Columbus, OH.

Send all contributions for Delta Zeta Founders Memorial Foundation and Gallaudet College to Miss Shirlyn Chaffin, Treasurer, 6561 Santa Cruz Place, Reynoldsburg, OH 43068

EDITOR

Gwen Moss McKeeman
5517 S. 74th E. Avenue
Tulsa, Oklahoma 74145

STAFF

Diane Jones Skelton
Virginia Gilbert
Sheila Hillis Nixon
Meryl Lin McKean



MEMBER
COLLEGE FRATERNITY EDITORS ASSOCIATION

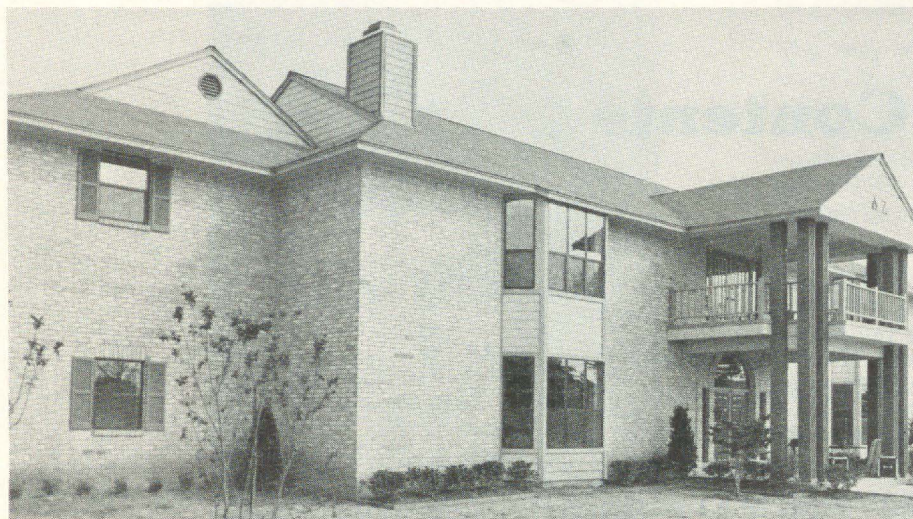
Contents

- 2 New House at Texas A & M
- 5 Historical Museum
- 6 Woman of the Year
- 8 GML Named Historian Emeritus
- 10 Story of a Recolonization
- 12 Delta Zeta from Coast to Coast
- 14 Convention in Big D
- 15 Miss Tall International
- 16 Chapter Honor Roll
- 18 Delta Zeta on Campus
- 31 Application for ΔZ Employment
- 32 Message to Alumnae
- 33 Alumnae Profiles
- 34 Findlay's 100 Years
- 36 Alumnae Chapters Write
- 38 Flame Eternal
- 39 Directory
- 41 from the lampwriter

ABOUT THE COVER

Our cover picture is of the painting commissioned by Mr. and Mrs. William Pitcher in honor of their daughter, Cindy, who is a member of Texas A & M-ΔE chapter. The story of the new house at Texas A & M is on page 2.

New Chapter House Dedicated at Texas A&M



The Lambda Xi home is at 1501 Olympia in College Station, Texas.

by Shelley Emshoff, TAMU—ΛΞ

From a soggy, uneven field with a sign lost among the weeds saying, "Future Home of Delta Zeta," to an edifice of splendor, the home of eight year old Lambda Xi chapter at Texas A&M University is a sight to behold!

In the Spring of 1982 the chapter members came together with local alumnae, National President Carolyn Gullatt and Project Manager Sue Jones-Allen (UT-AT), in drizzly weather to break ground with the shovel sinking in the wet soil. Contrary to the weather was a sunshine of sisterhood among the chapter members as they stood, singing under umbrellas, on the land soon to hold their home.

Before completion, the forty-five girls who were to live in the house stayed in a small apartment complex several miles from campus. No matter

the destination, all of the members managed to pass the house as if it were on their way. Each day showed progress and the house was ready for occupancy the first week of October.

One month later, on November 6, the chapter held the Fourth Annual Parents Weekend and the house dedication.

Driving down the sloping Dominik Street toward Olympia Way, the first of the nine new sorority houses is Delta Zeta.

The three-bedroom apartment where everyone sat on the floor for meetings had been replaced by an elegant combined classical and Greek revival styled home with 19 bedrooms and a chapter room large enough to seat the 120 chapter members in an organized fashion.

The sun shone brightly Saturday morning as chapter president Dawn Rollins welcomed the nearly 400

Delta Zetas, family and friends gathered in front of the house for the dedication. Faces revealed happiness and pride as the huge rose and green ribbon stretched across the double doors was cut. Those presented with recognition for their efforts in making the dream a reality were Carolyn Gullatt; Beverly Brademan Malazzo (TAMU-ΛΞ), Brazos Valley alumnae chapter president; Cathy Stawnicz Lyles (Sam Houston-ZΘ), president of the House Corporation; John Zimmerman, architect and Nancy Farris, collegiate house manager.

Special recognition was given to Sue Jones-Allen whose title is Project Manager, but whose duties and accomplishments exceed the title. She not only helped with arranging financing and overseeing construction, but was responsible for decorating and furnishing the home. A business woman and homemaker, Mrs. Allen commuted two hundred miles from Dallas each week during construction. A plaque outside the parlor, her favorite room, dedicates this room to Mrs. Allen.

Others recognized were Mary Margaret Calhoun Fore (SMU-AΨ), National Vice President of Alumnae



The English watercolor print chintz on the walls is repeated on the Chippendale camel-back sofas of the living room.



Project Manager Sue Allen receives recognition for her work and dedication. Presenting the plaque is Dawn Rollins, $\Lambda\Xi$ president. Seated are (left) Carolyn Gullatt and (right) Arlene Newman, Past National Officer.



National President Carolyn Gullatt, Project Manager Sue Allen and President of the House Corporation Cathy Lyles (left) cut the ribbon, opening the new chapter house.

Affairs; Merry Westbrook Adamcik (Houston- $\Delta\Theta$), Province XVII Collegiate Director; Arlene Newman (Houston- $\Delta\Theta$), Past National Secretary; Nancy Walker (Iowa State-BK), National Field Representative; Henrietta Salazar, housemother; Ann Nighswonger Harris (Alabama- $\Lambda\Gamma$), Collegiate Chapter Director, and House Corporation board members Lyles, Malazzo, Susan Eller Guest (TAMU- $\Lambda\Xi$), Elizabeth Lyne Scott (TAMU- $\Lambda\Xi$), Judy Swindall Gortney (Samford- $\Lambda\Gamma$) and Elizabeth Ann Putnam (TAMU- $\Lambda\Xi$).

Closing the ceremony, the collegians, lining the perimeter of the crowd, sang "Consider Yourself at Home."

The guests were invited in through the rose-colored front doors. The color reminds Delta Zetas of the Killarney rose etched in the small window of each door. Above the doors is a fan-shaped window etched with the words "Delta Zeta" in script, with the crest and the Lamp.

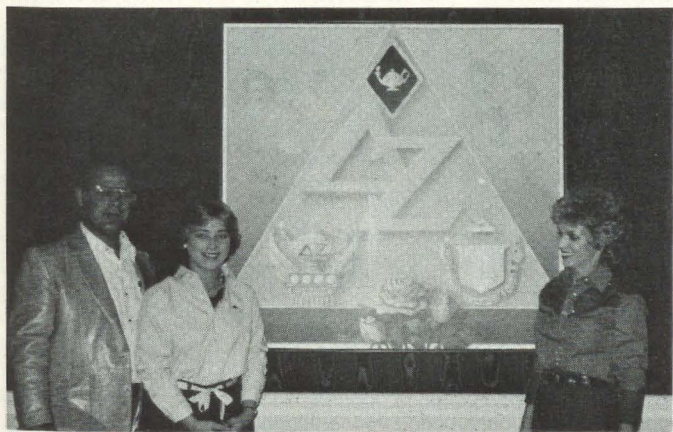
The colors of rich hunter green and varying shades of rose with accents of slate blue are carried throughout the

house. The parlor walls are upholstered in an English watercolor print chintz matching the Chippendale camel-back sofas. The dining room with green moire taffeta wallcovering is furnished with tables for six and eight to seat fifty-five.

One unique feature of the house is a mini-kitchen with full modern cooking facilities for the girls' personal use. All bedrooms are suites with a bathroom connecting two rooms.

Overlooking the back courtyard and multi-tiered fountain are two sto-

(continued on next page)



Mr. and Mrs. William Pitcher and their daughter Cindy before the lovely painting of Delta Zeta's heritage which they had commissioned in honor of Cindy's birthday.



Beverly Brademan Malazzo (TAMU- $\Lambda\Xi$), Brazos Valley alumnae chapter president presents a plaque listing donations made to the house.

Many years ago when the West was being settled, neighbors from miles around would work together to help a fellow neighbor build a home or barn. When the sun set low and the work was finished, it was time to eat, dance and celebrate their accomplishment.

Delta Zeta of Texas A&M University, along with alumnae, professional architects, friends and parents, have also worked long and hard to build a home to call their own. Now is the time for celebration.

Please join us for the Fourth Annual Parents' Weekend, November 6 and 7, as we honor you, our parents and friends, by sharing our home which is symbolic of our unity and love.

ries of informal sun rooms divided by the central staircase.

In the afternoon, the parents participated in field events with their daughters at a local park. Parents threw eggs to each other, raced while carrying pumpkins and enjoyed visiting in a casual atmosphere.

That evening on the parking lot decorated in a country theme with hay and calico ribbons, the crowd, clad in western attire, enjoyed a typical barbeque dinner. Each of the forty-four pledges escorted by a parent or sponsor was presented by Janet Bailey, pledge trainer, and guests and mem-

bers kicked up their heels to a square dance.

Sunday morning was a day of "togetherness" as the parents gathered for a brunch. Though it was crowded, it was wonderful to have everyone together in a home shared by all, instead of a rented place.

The parents and alumnae have returned to their homes, the landscape workers are planting more grass and shrubs and workmen are adding the final touches. This is the beginning of many years of happiness in a house symbolic of the love shared among Delta Zetas everywhere.



This is a corner of one of the informal sun rooms.

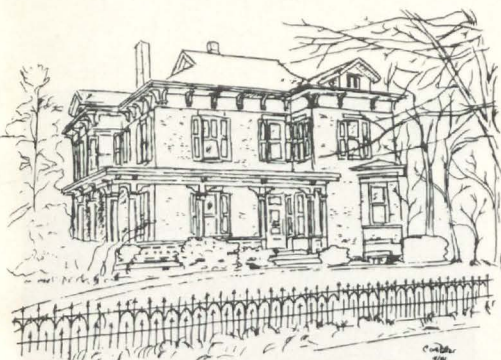


Pictured in the formal living room are (standing, l to r) Merry Adamcik, PCD; Ann Harris, CCD; Sue Allen, Project Manager; Carolyn Gullatt, National President, and Nancy Walker, Field Representative. Seated are Cathy Lyles, House Corporation president; Arlene Newman, Past National Officer, and Mary Margaret Fore, National Vice President of Alumnae Affairs.



A Texas barbeque on the parking lot preceded a Saturday evening square dance.

Progress Being Made on Museum



by Lucile Crowell Cooks, Miami-A
Chairman, National Historical Mu-
seum

Two Presidents of Miami University have been most instrumental in the life of Delta Zeta. Dr. Guy Potter Benton assisted our Founders in the organization of the sorority and Dr. Phillip R. Shriver encouraged us to move our National Headquarters to Oxford, thereby joining the three men's fraternities. Beta Theta Pi, Phi Delta Theta and Phi Kappa Tau were founded at Miami also, and have had their national offices in Oxford for a number of years. It has been most helpful to visit their offices, as well as the national office of the professional business fraternity of Delta Sigma Pi, for ideas and suggestions as we work and plan the restoration of our Oxford home.

Interior restoration is now underway. We are hoping that by the time you read this article, most of it will be completed. Until one is involved in a restoration project, it is difficult to comprehend all of the necessary steps involved. Mr. Barcus, our architect, first had to submit plans for the restoration to the Oxford City Council in order to secure a building permit and to meet the specifications of the Oxford zoning code. In our case, rather than use up the yard for parking, we had to seek additional parking spaces for our staff which were generously offered by the nearby McCullough-Hyde Memorial Hospital. Once the structural changes which include new heating and air conditioning, plumbing and electrical rewiring, have been completed during the winter months the next step will be interior decoration and furnishing.

Our "Wish List," compiled by Doris Reide, Chairman of Special Gifts and Acquisitions, has already brought results. We now have pledged a rosewood square grand piano, made before the turn of the century, a three piece parlor set, a bookcase from the Alfa Lloyd Hayes family, Victorian pieces from the family of Julia Bishop Coleman, with other furniture promised. A grandfather clock has been undertaken as a project by the Cleveland Eastside alumnae chapter. Other articles we are wishing for include oriental rugs large and small, clocks, tables, mirrors, lamps, dressers, chests, chandeliers, pictures and paintings, picture frames, silver, and articles suitable for mantel display. If someone or a chapter would like to select one of these wishes as a project over a period of years, just let us know!

To clarify what is meant by "Charter Circle," let us assure you that anyone who has contributed to the National Headquarters Building Fund from 1979-1981 or to the National Historical Museum from 1981 to the dedication date in October 1983, will be considered in the Charter Circle and listed in an appropriate manner.

The Continuing Circles are for those who will be giving to the National Historical Museum in the future in addition to what has already been contributed, and they are divided into Founders, Diamond, Lamp, Column, Heritage, Alfa and Friendship. As you continue to send your annual deductible contribution, your status in the Circles will be adjusted accordingly as a careful record will be maintained.

For those of you who have wills, we urge you to include a bequest to the Delta Zeta National Historical Museum, Inc. Upon receipt of a bequest,

the name and chapter of the donor will be placed on a beautiful Memorial plaque. Again, your contribution can be made in honor of or in remembrance of a loved one and the names will be inscribed in our Book of Remembrance.

Betsy Leach is chairman of Archives and Florence Miner is chairman of History, so their work of necessity must be closely coordinated. Anyone who has any material that you believe may belong in the archives or that has historical value, don't hesitate to contact us.

Mary Lou Vineyard, chairman of Sorority Relations, has already written to Province Collegiate Directors and Province Alumnae Directors to join together in each province or state in the undertaking of a definite project. Two of the larger provinces are pledging to furnish bedrooms. How exciting it will be for you to visit the Museum in Oxford and see your name or that of your chapter or province inscribed suitably in specific rooms!

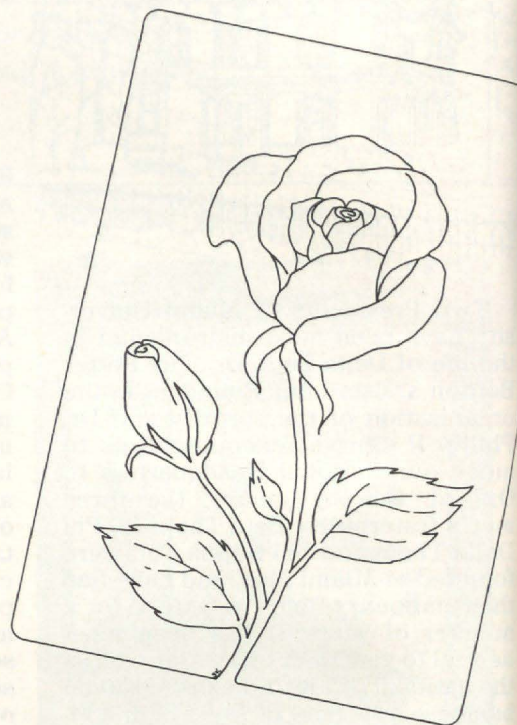
Betty Rogers, a Professor at Miami University, is Treasurer and has the tedious task of recording all of the contributions made. We are hoping that the volume received will necessitate assistance for her.

Thousands of dollars have been given by our chapters to local and national philanthropies through the years. However, this is the year to be kind to Delta Zeta, for we want each one of you to have a part in making our Oxford home lovely, appropriately furnished historically, a repository for our archives, and an efficient office for our National Headquarters. No matter how small or large your gift may be — do be a part of this once in a life time project — *The Delta Zeta National Historical Museum, Inc.*

1982 Woman of the Year Honored in Connecticut



Pictured with 1982 Woman of the Year Ethel Mae Gullette are (l to r) Karen Kind Manuel (B-W-ΓA), President of the Fairfield County alumnae chapter; Dianne Fellows Guild (DePauw-Δ), National Secretary; Mary Margaret Calhoun Fore (SMU-AΨ), National Vice President of Alumnae Affairs; Ann Collins Gill (Conn.-ΓB), Reference Chairman for Connecticut; Gay Thorr Rose (Edinboro-ΙΔ), Province I PAD, and Angela Piper Shipman (UNH-ΘΓ), Province I PCD.



by Mary Margaret Fore, National Vice President of Alumnae Affairs

More than eighty Delta Zeta sisters and friends of 1982 Woman of the Year Ethel Mae Bishop Gullette (Minn.-Γ) gathered for a social hour and formal dinner preceding the official presentation at the historic Roger Sherman Inn, New Canaan, Connecticut on Wednesday, November 10.

Karen Kind Manuel (B-W-ΓA), Fairfield County alumnae chapter president and National Ritual Chairman, was in charge of arrangements and presided. Delta Zeta national, province, state and local officers recognized were Mary Margaret Calhoun Fore (SMU-AΨ), National Vice President of Alumnae Affairs; Dianne Fellows Guild (DePauw-Δ), National Secretary; Gay Thorr Rose (Edinboro-ΙΔ), Province I Alumnae Director; Angela Piper Shipman (UNH-ΘΓ), Province I Collegiate Director; Lois Randolph Nesgoda (Minn.-Γ), Province V Alumnae Director; Ann Collins Gill (Conn.-ΓB), Connecticut State Reference Chairman; Mary Catherine Davis (Duchesne-KΞ), Massachusetts State Reference Chairman; Kathy Vlerebome (Miami-A), CCD at U. Mass-ΞA, and Colleen O'Connell (URI-BA), CCD at URI.

Ethel Mae's husband, Bill; Pauline Wittmack, matron of honor to Ethel Mae forty-six years earlier from St. Paul, Minnesota; Ida Crane Magennis (NYU-BΩ), a member of Beta Phi Alpha initiated into Delta Zeta with Ethel Mae; Ida's husband, Jack, of Garden City, New York; Dorothy Forrest, Ethel Mae's co-pianist for twenty eight years; their duo-piano coach, Juliet Shaw and other associates of Ethel Mae's from professional music, church and civic organizations were introduced.

Following the recitation of the Delta Zeta Creed, authored by posthumously named 1982 Woman of the Year, Dorothy Mumford Williams (Adelphi-AZ), the invocation was given by the Reverend Charles Crawford Smith, pastor of the New Canaan Congregational Church. Mr. Smith recalled the standing ovation received by the honoree of the evening following his announcement of her Delta Zeta honor at the preceding Sunday's worship service.

Dianne Guild reviewed the formal Woman of the Year announcement detailing Ethel Mae's accomplishments and contributions as a nationally acclaimed duo-pianist,



Ethel Mae and Bill Gullette



University of Connecticut-ΓB collegians sang for the Woman of the Year.

noted photo-historian, active community organizer and fund-raiser. (A summary of these activities appears in the Winter, 1982 issue of *The LAMP*.)

In presenting the traditional Woman of the Year silver medallion designed in 1957 by Eleanor Hansen Nichols (Wisconsin-Γ), Mary Margaret recalled the inauguration of the award in 1950 by then National Vice President of Alumnae Betsy Bradley Leach (USC-AI). The award is presented annually on or near Founders Day to an alumna member selected by National Council who has achieved recognition in her chosen career, professional or volunteer. Each year collegiate and alumnae chapters are invited to nominate a candidate for the award. The medallion, personally handcrafted each year by Eleanor Nichols, named 1979 Woman of the Year, is a circle, symbolizing the everlasting friendship in Delta Zeta, around the Greek letters ΔΖ, shadowed by the flame of love and loyalty to our sisterhood. The six indentures around the circle represent the six founders.

Accepting the award, Ethel Mae responded with loving appreciation for all those whose paths had touched hers through the years. She expressed genuine gratitude for the many greetings and gifts from Delta Zetas, family and friends, including a cablegram from Spain.

Representatives of the Gamma Beta chapter at the University of Connecticut serenaded the honoree. A framed copy of the calligraphed banquet invitation was presented to Ethel Mae by Ann Gill and Pamela Bartholutti Libertiny (KY-AΘ), Fairfield County Panhellenic secretary.

The singing of "Delta Zeta Lamps are Burning" by all present closed the evening's program.

Delta Zeta: 1902-1982

Are you interested in how many beautiful Delta Zetas have appeared in the Miss America contests? Do you want a complete list of the Woman of the Year recipients? How about award winning chapters from the first convention in 1910 to the present? Are you interested in the mergers that helped to make Delta Zeta a great sorority?

What national honors has your chapter won? What inspired the ΔΖ colors of rose and green? What Delta Zeta was honored along with Presidents Ford and Reagan as distinguished Greeks during the Bicentennial? Do you know where all the ΔΖ Conventions have been held?

Where can you find the answers to these questions? Why, in the new Delta Zeta History, of course!

Delta Zeta from 1902 to 1982, our story in permanent, hard back form, can be yours by completing the card form found in this issue of *The LAMP* and returning it to the National Headquarters, along with your check for \$20, which includes postage and mailing.

This beautiful volume will be the fifth History published by Delta Zeta, but the first to appear not as an issue of *The LAMP*. Every chapter, college and alumnae should want a copy for the library or files, every alumna should be interested in the growth and sisterhood of Delta Zeta in an 80 year span.

Make your check payable to Delta Zeta Sorority and mail it to National Headquarters, 21 East State Street, Suite 600, Columbus, OH 43215. Don't delay. Order your copy now!

Grace Mason Lundy Named Historian Emeritus



Eight Past National Presidents attended the 1960 Convention in Pasadena, CA. Standing, l to r are Bernice Hutchison Gale, 1952-54; Frances Westcott, 1946-48; Rene Sebring Smith, 1920-26 and Grace Mason Lundy, 1940-46. Seated are Helen Woodruff Nolop, 1958-1962; Irene Boughton, 1936-38; Evelyn Adams Costello, 1954-1958, and Gertrude Houk Fariss, 1948-1952.

The National Council proudly announces the naming of GRACE MASON LUNDY as National Historian Emeritus. No other member has given longer "service unceasing in promoting the welfare of Delta Zeta." Delta Zetas everywhere acknowledge a great debt to this sister who has continued service on the national as well as local Delta Zeta scene for more than sixty years.

Grace Esther Mason, initiated into Epsilon chapter at Indiana University, served her chapter as editor and president. Graduating in 1919 with a degree in Sociology and Economics, she was enroute to graduate study in social work when she attended the 1922 National Convention in Ithaca, New

York. It was at this convention Delta Zeta planned to open a Central Office and Grace E. Mason was selected to serve as the sorority's first Executive Secretary. She held this position four years, doubling as Historian on National Council and issuing the first Delta Zeta History in December, 1923.

After her marriage in May, 1926, to Hubert M. Lundy, she served as LAMP Editor (1926-28) and Delta Zeta's first employed visiting delegate from 1928-1930. During this time she prepared the first *Delta Zeta Manual* and assisted with the publication of the *Blue Book for Pledges*. From 1930-34, she was National Alumnae Vice President; 1934-1936, LAMP Editor and Chairman of the History and Ritual

committees; 1936-1938, History Chairman; 1938-1940, Extension Vice President; 1940-1946, National President; 1946-1948, Past National President. From 1948 to 1983 as Chairman of the History committee she produced the Golden Anniversary Historical Issue of The LAMP (Volume 41, Number 4 and Volume 42, Number 1 in May and September, 1952) and the fourth History Issue of the LAMP in 1967.

Other Delta Zeta historians were Elizabeth Coulter Stephenson, 1916-1920; Julia Bishop Coleman, 1920-1922, and Georgia Lee Chandler Hornung, 1926-1928. Grace has credited these contributors in the published histories.

In 1948, Council established the Grace Mason Lundy Award "in recognition of her many years of loyal and devoted service to Delta Zeta." The award is "presented to senior members of Delta Zeta who throughout their college years have given greatest evidence of loyalty, devotion and service to their chapters and to their sorority. Judgment shall be based upon tangible evidence of a good scholastic record and participation in chapter and campus activities, but still more upon the possession of



Hats were very much "in" at this 1958 Illinois State Day. Grace Lundy was probably the most popular State Day speaker ever and much in demand everywhere.



Grace Lundy, as National Ritual Chairman, instructed the Province Collegiate Directors in the initiation service at the 1975 Convention in Columbus. Pictured with Grace and the PCDs are Convention Initiate Jackie Groza, National Vice President Norma Andrisek and National Director Carolyn Gullatt.

those ideals and standards and that spirit which reflects genuine comprehension of [. . .] womanhood and true sense of the meaning of sorority membership." (*Code of Regulation*, Reg. XVIII,c.)

At the 1966 National Convention, Grace and Irene C. Boughton, retiring as Executive Secretary after thirty-eight years in the office, were named to the Order of the Laurel. A cherished tradition from Theta Upsilon, the Order honors members for sorority service of unusual merit, and covering a period of many years.

Two of Grace's sisters were Delta Zetas, Miriam Mason Swain and Rachel Mason Peden. Both were published journalists and Delta Zeta Women of the Year in 1966 and 1972, respectively. Grace's only daughter, Cynthia, was the 1950 Convention initiate and served as National Vice President of Alumnae on the 1970-1973 Council.

LAMP Editor (1928-1934) and National President (1934-1936) Margaret Huenefeld Pease wrote "Grace Mason Lundy - An Appreciation" intro-

ducing the 1934 History Edition:

Written by Grace Mason Lundy, . . . [*The Story of Delta Zeta*] is an excellent word picture of the growth and achievements of Delta Zeta in the thirty-three years of the sorority's existence.

It is altogether fitting at this time at the very beginning of this story of Delta Zeta to pause to take note of the one who not only has written it for us but who has contributed so much to the story itself; to pay homage to her who has given so much of her time and painstaking effort to making this story what it is.

It is an impossible task to write, in a few words, of the unselfish loyalty and splendid idealism which Grace Mason Lundy has devoted to her sorority. She has served Delta Zeta as Historian, Registrar, Editor, First Vice President, Visiting Delegate, Chairman of the Ritual and Insignia Committee, a member of the Constitution Committee, and was the first Execu-



National Council elected at French Lick Springs, IN in 1942 speeds departing delegates. L to r, Grace Lundy, Evelyn Costello, Ileen Taylor, Mildred Keezel, Frances Westcott and Julia Bower.

tive Secretary. One of her greatest single contributions to the sorority was the writing of *The Manual*, a complete guide for officers, a book that could have been written only by one of her great understanding of the sorority and her genius for the descriptive word. Grace Mason Lundy has the supreme gift of saying big things in little words, a real test of merit. Happy, with a keen buoyancy of spirit that makes her enthusiasm contagious, she is the inspiration for many of her humble followers."

The above quotation was written after only eleven years of service. The evidence of her influence and inspiration over the next fifty years is chronicled in the many manuals and materials we use today. Here's to GRACE MASON LUNDY, love and appreciation.

Mary Margaret Calhoun Fore
National Vice President of Alumnae Affairs

Story of a Recolonization



The Kappa chapter house has three fireplaces. Santa was apt to be confused but pledges Sonya Carlson and La Donna Johnson were hopeful as they waited with Field Representative Jeanine Peterson (center) beside the fireplace in the TV room. The alternating red and green stockings (59 of them) were made by pledge Anne Hedstrom.

This is a story about the rebirth of a chapter . . . of the faith and courage of its alumnae, not to mention the hard work and dedication of our very special recolonization team of National President Carolyn Gullatt, Past National President and Extension Director Norma Andrisek and Field Representatives Nancy Walker and Jeanine Peterson.

Kappa chapter at the University of Washington in Seattle was first installed in 1914 and continued until several years ago when extremely low membership forced the National Council to declare the chapter inactive. The huge chapter house remained, maintained by the local House Corporation and with Mrs. Cecile Herrmann still in place as house-mother. Boarders occupied the rooms of former collegians.

Then came last Spring when the University of Washington Panhellenic Advisor, Mrs. Ernestine Collins, former National President of Sigma Kappa, and the UW Panhellenic Coun-

cil decided another group was needed back on campus. Delta Zeta was contacted.

Officers visited the local alumnae and asked for their help in this gigantic undertaking. Alumnae discussed the issue and on the faith that Kappa could once again maintain a chapter on the Washington campus, proceeded to borrow the some \$200,000 necessary to completely renovate the house.

The recolonization was successful, as evidenced by the 61 lovely new pledges to date, but this story will have to wait until a later issue of *The LAMP* when the pledges of Kappa have met the goals set for them and the chapter is re-installed!

Now what has been accomplished? There's a new roof, guttering and downspouts, the chimneys have been repaired, a new firebox and damper is in the small living room, the sun decks were resurfaced, rotting railing was replaced. The 2nd and 3rd floor bathrooms in the old wing have been completely gutted and replaced, those in the new wing repaired. All rotten windows were completely removed and replaced with thermopanes, all other windows were repaired and puttied. EVERYTHING was painted, inside and out and additional electrical outlets installed, along with some new fixtures. An extra waterline into the house created additional water pressure. The houseboys' bathroom was replaced.

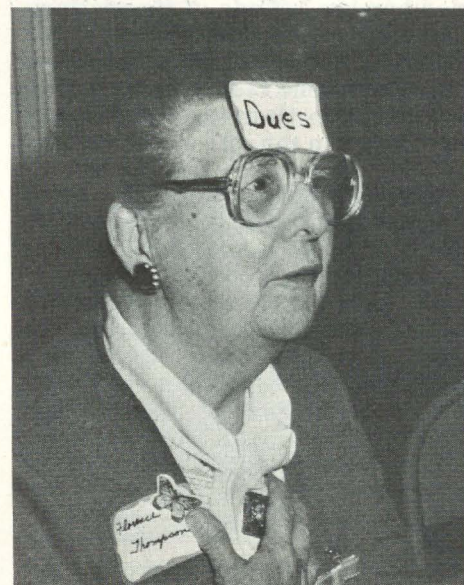
The kitchen sports a brand new refrigerator with sliding glass doors and a new dishwasher with new dishes, pots and pans and silverware. The whole first floor has new furniture in all three living rooms and new carpeting in two. And there is a Japanese tea garden off the formal living room.

On November 13th the alumnae were invited to the house for Founders Day and to meet the new pledges. The remodeling had been completed and house tours were given.

Many alumnae were involved in

this vast undertaking, of course, but some worked "above and beyond." For instance, Louise Maurer Inlow, House Corporation president, and Bette Bretz Crawford, Treasurer, virtually took up residency at the house. Carol Braman spearheaded the decorating, deserving credit for the tasteful manner in which it was undertaken. Carin Brown Steckler, president of the Seattle alumnae chapter, hosted weekly Corporation Board meetings throughout the project in addition to taking charge of extra projects (little things like polishing *all* of the silver.) PAD Helga Clark served as liaison with National and Karen Fellows Soyk, House Financial Advisor was always available for special projects. The list could go on and on.

Kappa's success story, the new chapter, will be presented in the future when the colony is installed, but we simply had to precede it with the "background" story on how a chapter can be recolonized, and successfully, when the alumnae care!



Florence Sivesind Thompson, K '37 helped collect dues from the alumnae attending Founders Day.



Julie Pelaso, a new Kappa pledge finds the same warmth in Mrs. Herrmann enjoyed by so many Delta Zetas through the years.



Kappa alumnae Carin Brown Steckler, president of Seattle alumnae, Laura Elwell Castellow and Glenna Manning Richards renewed memories of their days in the Kappa chapter house.

Kappa's Model Housemother

by Vivian Mackey,
Seattle Alumnae Chapter

Right out of a flower shop in Sunnyside, Washington, Kappa chapter picked a rose 14 years ago in the person of Mrs. Cecile Herrmann. All of the Delta Zetas realized that their new housemother seemed warm and capable, had big brown eyes and a winning smile, but little did they know what a prize bouquet of womanly talent, generosity, ingenuity and love they had found. Through the years, all who have been fortunate enough to be near this remarkable person recognize that she had been far more than the ordinary housemother.

Mrs. Herrmann grew up in Sioux City, Iowa. Perhaps the great open spaces made her the living proof of the slogan of the United States Army Air Force, "The difficult we do immediately. The impossible takes longer."

This lovely lady brought her skills as a former florist and uses them to beautify the house. She always knows just where to buy the freshest flowers and how to arrange them. She has decorated for the weddings of countless Delta Zeta brides, for graduations or other special occasions, because she does not sever relationships that

mean a lot to her.

Mrs. Herrmann always keeps wheels under everyone. "Now, let's see, Julie, your plane leaves at 6:45. I'll take you to the airport." "If that's Beth on the phone, tell her I'll meet her." "Well, I'm sorry I can't take you today, Jean, but here are the keys to my car. I'm sure you can find someone to drive you." These are typical snatches overheard at Kappa.

Girls who become ill swear that even Mother Tums herself cannot say "There, there" as soothingly as Mrs. Herrmann.

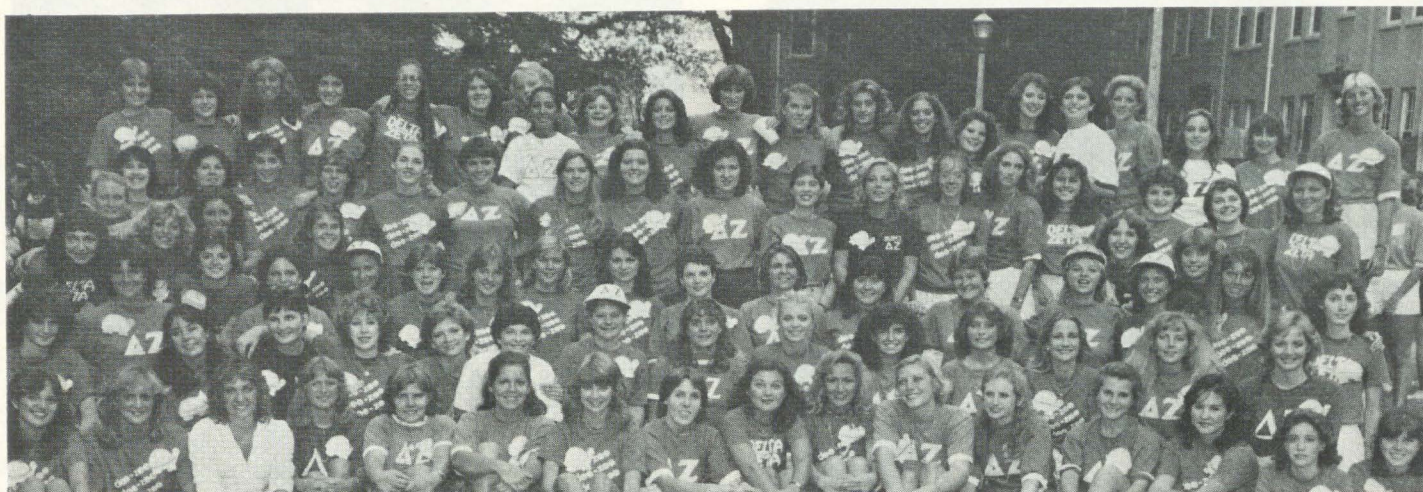
Then, there has been the matter of shopping. Sunnyside, Washington is in the eastern part of the state. It is the home of the Washington apple and all manner of good garden fruits and vegetables. Much of this produce reaches the house in crates or boxes. Too much? Mrs. Herrmann is in the kitchen canning the extras. There is a rumor, not untrue, that if she "spots a bargain" needed at the house, she buys it with her own money. When asked for the invoice, she says, "Oh, I guess I didn't keep it. Forget it. I meant to buy it anyway." Mrs. Her-

mann has been approached by several other groups of Greek "orphans" who would dearly love to engage the services of this fantastic lady, but she is a Delta Zeta at heart. If an Emmy or an honorary membership were available, it would surely go to this housemother who has made a house a home.



Jeanine Peterson, Field Representative, is pictured with HC treasurer, Bette Bretz Crawford, or "Mrs. Moneybags" as she has been fondly dubbed.

Delta Zeta from Coast to Coast



This is Beta Delta on Bid Day, 1982 with their 35 new pledges!

Meet Beta Delta at South Carolina

by Vicki Jinnette, USC-BA

Chartered in 1801 as South Carolina College, the University of South Carolina is among the oldest state universities and the first to be supported continuously by annual state appropriations. In the years before the Civil War it achieved a reputation for academic excellence in the classical tradition and was known as one of the best endowed and most distinguished colleges in the United States. South Carolina College was essentially an elitist institution of classical studies.

The college was closed completely in June, 1862, when the entire student body volunteered for service in the Army of the Confederacy. The buildings, used by the Confederate government as a hospital, were likely saved from destruction by General Sherman only through the presence of both Union and Confederate wounded.

During World War II, the campus was virtually transformed into a naval base, when there were extensive training programs conducted here. Classes were taught year round, some beginning before dawn in the winter,

with many professors being reassigned to teach navigation and communications.

In recent years, the university has emerged as a leading educational institution of 17 academic units, the newest of which is the School of Medicine which admitted its first students in 1977. Today the university has an enrollment of almost 36,000 on all campuses. Of these, over 26,000 are on the Columbia campus with more than a quarter graduate students.

Located in the exact center of the state, the University of South Carolina is in the midst of the state's capital and largest city, Columbia. For the university's 26,000 students, there is always plenty to do, for Columbia is not the usual quaint little college town. The home of the state legislature, Columbia offers many students the opportunity to work as Senate and House pages, learning first-hand the operations of state government.

Columbia boasts a wide cultural atmosphere. Several theatre groups in the area present first-rate productions of popular Broadway shows.

The University of South Carolina's Departments of Theater and Music provide entertaining and stimulating productions and concerts throughout the year. The Carolina Coliseum has hosted the Commodores, the Bee Gees, Barry Manilow, Willie Nelson, Jimmy Buffet and various other big-name performers.

As with any university within a large city, social activities abound. Students never have an opportunity to get bored with the infinite number of night clubs, movie theaters and shopping centers.

Sports are a vital part of USC. The Gamecock baseball team went to the College World Series in Omaha, Nebraska, for the second year in a row. In 1980, Carolina's own George Rogers won the Heisman Trophy, the first in the university's history. Although Carolina's football team has never been nationally renowned, Gamecock fans are still the most enthusiastic in the state.

The Greek system at Carolina is a strong one. Panhellenic and the Interfraternity Council work closely

Delta Zeta from Coast to Coast



This is Beta Delta on Bid Day, 1982 with their 35 new pledges!

History in permanent, hard-back form, can be yours for a special pre-publication price of \$20, postage and handling included.

Complete the information requested on the other portion of this card and mail with your check or money order to Delta Zeta National Headquarters, 21 East State Street, Suite 600, Columbus, OH 43215.

Meet Beta Delta at South Carolina

by Vicki Jinnette, USC-BA

Chartered in 1801 as South Carolina College, the University of South Carolina is among the oldest state universities and the first to be supported continuously by annual state appropriations. In the years before the Civil War it achieved a reputation for academic excellence in the classical tradition and was known as one of the best endowed and most distinguished colleges in the United States. South Carolina College was essentially an elitist institution of classical studies.

The college was closed completely in June, 1862, when the entire student body volunteered for service in the Army of the Confederacy. The buildings, used by the Confederate government as a hospital, were likely saved from destruction by General Sherman only through the presence of both Union and Confederate wounded.

During World War II, the campus was virtually transformed into a naval base, when there were extensive training programs conducted here. Classes were taught year round, some beginning before dawn in the winter,

with many professors being reassigned to teach navigation and communications.

In recent years, the university has emerged as a leading educational institution of 17 academic units, the newest of which is the School of Medicine which admitted its first students in 1977. Today the university has an enrollment of almost 36,000 on all campuses. Of these, over 26,000 are on the Columbia campus with more than a quarter graduate students.

Located in the exact center of the state, the University of South Carolina is in the midst of the state's capital and largest city, Columbia. For the university's 26,000 students, there is always plenty to do, for Columbia is not the usual quaint little college town. The home of the state legislature, Columbia offers many students the opportunity to work as Senate and House pages, learning first-hand the operations of state government.

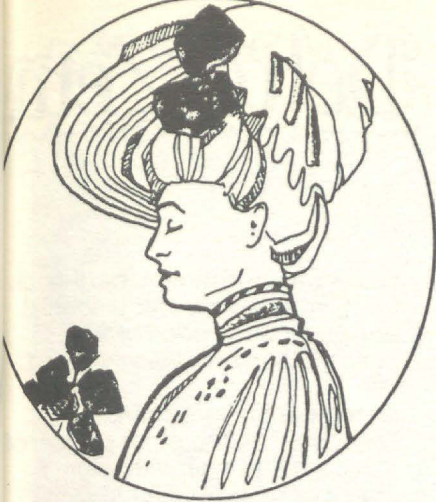
Columbia boasts a wide cultural atmosphere. Several theatre groups in the area present first-rate productions of popular Broadway shows.

The University of South Carolina's Departments of Theater and Music provide entertaining and stimulating productions and concerts throughout the year. The Carolina Coliseum has hosted the Commodores, the Bee Gees, Barry Manilow, Willie Nelson, Jimmy Buffet and various other big-name performers.

As with any university within a large city, social activities abound. Students never have an opportunity to get bored with the infinite number of night clubs, movie theaters and shopping centers.

Sports are a vital part of USC. The Gamecock baseball team went to the College World Series in Omaha, Nebraska, for the second year in a row. In 1980, Carolina's own George Rogers won the Heisman Trophy, the first in the university's history. Although Carolina's football team has never been nationally renowned, Gamecock fans are still the most enthusiastic in the state.

The Greek system at Carolina is a strong one. Panhellenic and the Interfraternity Council work closely



NOW IT CAN BE TOLD . . .

CCD Ruth Patterson and her husband, Dr. Robert Patterson, who is BD's faculty advisor.

with all chapters in improving all aspects of Greek life. Panhellenic and IFC sponsor every few years a mini-convention called "Tri-State" as Greeks from all schools in the states of North Carolina, South Carolina and Georgia are invited to attend. Some topics covered include hazing, pledging and alcohol control.

While each chapter at Carolina is very competitive with the other, we all pull together to support Greeks as a whole. We all chose and elected Greek endorsed candidates for the student government executive positions and the Homecoming Queen. Needless to say, Greeks hold all the influential posts on campus. Greek membership comprises only 10 percent of the entire student body, but

our 10 percent does more and is more widely recognized than the entire other 90 percent. Today there are 10 sororities and 16 fraternities at Carolina.

Beta Delta was founded at USC in 1928, the year after the state legislature allowed sororities back on campus. Immediately one of the largest chapters, Delta Zetas became involved in student government and the then popular literary societies. Delta Zeta continued to grow and prosper until the 1970s when bad leadership and bad luck emerged. Beta Delta began shrinking in membership due to lack of interest in rush and began to lose its respected campus image.

In 1979, Beta Delta rushed with only 23 members. That year they pledged 26 and have since continued to improve during rush. For the first time in about 20 years, Delta Zeta pledged quota of 36 during this year's formal fall rush. Today, membership stands at 100 and we are the third largest sorority on campus.

Continually improving our image on campus, Delta Zeta is ranked fourth among sororities in scholarship and last year's Greek Awards banquet, we received the "Most Improved Scholarship" award.

Delta Zeta locally supports "Project Scooter," a pre-school for hearing impaired children. Each year through various fundraisers we award a needy child a scholarship to help with his school expenses. In addition, members help by babysitting, performing



It's Beta Delta's award winning softball team. And coach?

office duties, and giving parties for the children on Christmas, Easter and Halloween.

Delta Zetas sponsor an annual bowlathon to raise money for Galaudet. This year we sponsored our first "fraternity classic" which pitted all of the fraternities against each other in flag football. The week was highlighted by a band party as the finale.

Our CCD, Mrs. Ruth Patterson, busy woman that she is, is also fundraising chairman for the Ronald McDonald Home of Columbia. From our money earned in Sigma Chi Derby Days, we donated \$250 to the home and attended its grand opening celebration held in December.

As with any Greek letter society, Delta Zetas know how to socialize. Our formal Rose Ball in the spring is the hit on campus. The evening begins

(continued on page 35)



Genie Fogle, Pringle Hopkins, Diane Krause, field representative and Vicki Jinnette, chapter president, on Bid Day at South Carolina.



It was a busy time at Homecoming . . . lots of chicken wire to cover at float time.



CCD Ruth Patterson and her husband, Dr. Robert Patterson, who is BD's faculty advisor.

with all chapters in improving all aspects of Greek life. Panhellenic and IFC sponsor every few years a mini-convention called "Tri-State" as Greeks from all schools in the states of North Carolina, South Carolina and Georgia are invited to attend. Some topics covered include hazing, pledging and alcohol control.

While each chapter at Carolina is very competitive with the other, we all pull together to support Greeks as a whole. We all chose and elected Greek endorsed candidates for the student government executive positions and the Homecoming Queen. Needless to say, Greeks hold all the influential posts on campus. Greek membership comprises only 10 percent of the entire student body, but

our 10 percent does more and is more widely recognized than the entire other 90 percent. Today there are 10 sororities and 16 fraternities at Carolina.

Beta Delta was founded at USC in 1928, the year after the state legislature allowed sororities back on campus. Immediately one of the largest chapters, Delta Zetas became involved in student government and the then popular literary societies. Delta Zeta continued to grow and prosper until the 1970s when bad leadership and bad luck emerged. Beta Delta began shrinking in membership due to lack of interest in rush and began to lose its respected campus image.

In 1979, Beta Delta rushed with only 23 members. That year they pledged 26 and have since continued to improve during rush. For the first time in about 20 years, Delta Zeta pledged quota of 36 during this year's formal fall rush. Today, membership stands at 100 and we are the third largest sorority on campus.

Continually improving our image on campus, Delta Zeta is ranked fourth among sororities in scholarship and last year's Greek Awards banquet, we received the "Most Improved Scholarship" award.

Delta Zeta locally supports "Project Scooter," a pre-school for hearing impaired children. Each year through various fundraisers we award a needy child a scholarship to help with his school expenses. In addition, members help by babysitting, performing



It's Beta Delta's award winning softball team. And coach?

office duties, and giving parties for the children on Christmas, Easter and Halloween.

Delta Zetas sponsor an annual bowlathon to raise money for Galaudet. This year we sponsored our first "fraternity classic" which pitted all of the fraternities against each other in flag football. The week was highlighted by a band party as the finale.

Our CCD, Mrs. Ruth Patterson, busy woman that she is, is also fundraising chairman for the Ronald McDonald Home of Columbia. From our money earned in Sigma Chi Derby Days, we donated \$250 to the home and attended its grand opening celebration held in December.

As with any Greek letter society, Delta Zetas know how to socialize. Our formal Rose Ball in the spring is the hit on campus. The evening begins

(continued on page 35)



Genie Fogle, Pringle Hopkins, Diane Krause, field representative and Vicki Jinnette, chapter president, on Bid Day at South Carolina.



It was a busy time at Homecoming . . . lots of chicken wire to cover at float time.

Exciting, Busy, Fun Convention Planned in Big D



Dear Delta Zeta Sisters,

It is indeed an honor and a privilege to have been asked by our National Council to serve as your 1983 National Convention Chairman. The fun and excitement of the days we shall spend together in Dallas have already filled much of my time.

Convention is multi-purpose time — there are traditions, renewed friendships, new friendships, work, goal setting, evaluations, planning, and a myriad of other facets to the Diamond Days we shall spend in Dallas. But most of all convention is Delta Zetas, sisters, sharing and enjoying together.

Your National Council is happy to welcome you to the Fairmont Hotel in Dallas, Texas, June 17-21, 1983. Province XVII is one of the largest Delta Zeta provinces and 1983's convention will mark a first in our history - a convention in Texas. Many Delta Zetas over the years have expressed a desire to hold a convention here; it has probably been the most frequently suggested site. We were thrilled to accept the wonderful offer from the Fairmont Hotel thereby making a dream come true for many Delta Zetas.

We look forward to one of the largest conventions in Delta Zeta's history. Please plan to come and be with us for all or part of this unique experience. You will find a visitor's registration form and further details in the Winter issue of *The LAMP*. I look forward to greeting each of you personally during the days we are in Dallas. May this be a rewarding fun-filled experience for each and every-

one of us from near or far, collegiate or alumnae chapter delegate, officer or visitor. For we are all Delta Zetas, and that is what convention is all about. See you in the Big D!

In Delta Zeta,

Anne Marie Gavin
1983 National Convention Chairman



Anne Marie Gavin



DELTA ZETA NATIONAL CONVENTION

Fairmont Hotel
Dallas, Texas
June 17-21, 1983

TENTATIVE PROGRAM

Friday, June 17

10:00 AM - 5 PM Registration
8:00 PM Formal Opening Banquet

Reception honoring National Council and all Past National Council Officers immediately following the banquet.

Saturday, June 18

8:30 AM Opening General Session
12:00 PM Panhellenic Luncheon
2:00-4:00 PM Workshops
4:30 PM Budget Presentation, Coopers & Lybrand Awards Banquet
7:30 Evening of Fun

Sunday, June 19

7:00-8:30 AM Breakfast, Our Delta Zeta Foundations (Museum and Founders Memorial)
8:45-10:00 AM General Business Meeting
12:00-1:30 PM Luncheon Buffet
2:00-5:30 PM Workshops
7:00 PM Initiation Banquet
9:00 PM Initiation

Monday, June 20

7:00-8:30 AM Pups and Hounds Breakfast
8:45 AM General Business Meeting
Afternoon Open
7:00 PM Processional and Formal Installation Banquet

Tuesday, June 21

Departures

Susan Kennedy is Miss Tall International

by Meryl Lin McKean

Susan Kennedy (University of Alabama-AT) will have many "tall tales" to tell at the completion of her year as Miss Tall International, and every one of them will be true.

Susan, who stands 5 feet 10 1/2 inches tall, represents the Tall Clubs International organization in promoting "tall awareness." She visits TCI member clubs, makes public appearances and talks with the manufacturers of cars, clothing, etc., to help make life better for tall people everywhere.

The 27-year-old beauty won the local title of Miss Tall Houston in April, 1982. Three months later, Susan's club, The Towering Texans of Houston, hosted the TCI Convention and the Miss Tall International Pageant. She won the title over 18 queens from other clubs across the U.S. and Canada.

"It was an exhilarating feeling to be Houston's representative, and to actually win!" says Susan.

She believes her height has enabled her to develop self-confidence and leadership skills easily, and she says those skills have been an important factor in her personal and business development.

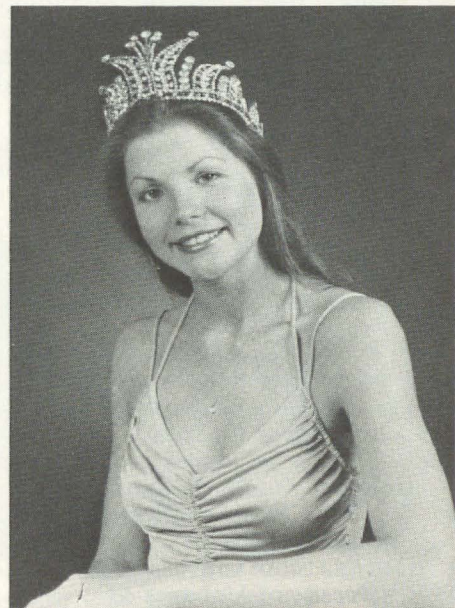
Currently an employment administrator with a regional stock brokerage firm, Susan is a 1977 graduate of the University of Alabama where she was a member of Alpha Gamma chapter of Delta Zeta.

She was an Air Force ROTC Drill Team sponsor, a Corolla Beauty Pageant Favorite and Top 20 Beauty, a Homecoming Queen finalist and a member of Phi Delta Phi French Honorary.

Following graduation, Susan traveled throughout the U.S. as a Delta Zeta Field Representative. She has been editor of the Houston Delta Zeta alumnae newsletter and has been named an "Outstanding Young Woman of America."

Susan says being Miss Tall International is a "challenge and a responsibility."

"Perhaps through my PR appearances or a newspaper article, a tall young adult will sit up straight, walk tall and begin to take pride in a special gift."



Susan Leigh Kennedy, Miss Tall International 1982. Photograph by Genie Mims.

Chapter Honor Roll

The following chapters pledged QUOTA in Fall Formal Rush, 1982

Nebraska Wesleyan University-BT
University of Northern Colorado-ΔΞ
California State University-Fullerton-IY
California State University-Long Beach-ΔA
Northeastern State University (Oklahoma)-ΔΦ
University of Houston-ΔΘ
North Texas State University-KZ
Pan American University-ΘO
Stephen F. Austin University-ZΨ
Texas A&M University-ΛΞ
Louisiana State University-Σ
Nicholls State University-KA
Eastern Kentucky University-XB
University of Louisville-BΓ
Northern Kentucky State University-KB
Atlantic Christian College-ΘΩ
East Carolina University-ZΛ
Lenoir Rhyne College-ZΞ
University of North Carolina-Charlotte-KΦ
University of South Carolina-BΔ
Western Carolina University-ΘI
Georgia College-ΑΠI
Georgia State University-ΔΔ
University of Alabama-ΑΓ
Auburn University-BΞ
Auburn University-Montgomery-ΑΝ
Jacksonville State University (Alabama)-ΑΓ
Old Dominion University-ΘΦ
University of Central Arkansas-EΞ

University of Connecticut-ΓB
University of New Hampshire-ΘΓ
University of Rhode Island-BA
Plymouth State University-KE
Rider College-IK
California State College (Pennsylvania)-ΓΦ
Clarion College-EΘ
Kutztown State College-KP
University of Pittsburgh-O
Robert Morris College-ΞX
Fairmont State College-EI
Shepherd College-KM
Baldwin-Wallace College-ΓA
Bowling Green State University-ΓT
Miami University (Ohio)-A
Ohio State University-Θ
Wright State University-KI
Youngstown State University-KX
Indiana State University at Evansville-AB
University of Wisconsin-LaCrosse-ZO
University of Wisconsin-Stout-ZB
Eastern Illinois University-ΓN
Illinois State University-AP
Western Illinois University-EO
Iowa State University-BK
University of Missouri-St. Louis-IΞ
Northeast Missouri State University-ΔΣ
William Jewell College-ZP
Fort Hays State University-ΔΩ

The following chapters reached TOTAL or are largest on their campus.

University of Alabama- $\Delta\Gamma$
 Auburn University-B Ξ
 Auburn University-Montgomery- $\Delta\Lambda$
 Jacksonville State University (Alabama)- $\Delta\Gamma$
 Florida State University-A Σ
 University of Tampa- ΔB
 Old Dominion University- $\Theta\Phi$
 Arkansas Tech University- ΔA
 University of Central Arkansas-E Ξ
 University of Louisville-B Γ
 Northern Kentucky State University-KB
 Appalachian State University- $\Delta\Phi$
 Atlantic Christian College- $\Theta\Omega$
 East Carolina University-ZA
 Lenoir Rhyne College-Z Ξ
 University of North Carolina-Charlotte-K Φ
 University of South Carolina-B Δ
 Western Carolina University- ΘI
 Winthrop College-A Σ
 Columbus University- $\Delta\Psi$
 Georgia College- $\Delta\Pi$
 Georgia State University- $\Delta\Delta$
 Oglethorpe University-B Φ
 Northeastern State University (Oklahoma)- $\Delta\Phi$
 Northwestern State University (Oklahoma)- ΔO
 Angelo State University- ΔO
 University of Houston- $\Delta\Theta$
 North Texas State University-KZ
 Pan American University- ΔO
 Stephen F. Austin University-Z Ψ
 University of Texas-Arlington-I Ψ
 Texas A&M University-A Ξ
 Louisiana State University- Σ
 Nicholls State University-KA
 Central Missouri State University-E Γ
 University of Missouri-St. Louis-I Ξ
 Northeast Missouri State University- $\Delta\Sigma$
 William Jewell College-ZP
 Creighton University- ΘH
 Nebraska Wesleyan University-BT
 University of Northern Colorado- $\Delta\Xi$
 Winona State College-ZY

California State University-Fullerton-IY
 California State University-Long Beach- ΔA
 University of California-Chico- ΔX
 San Jose State College- ΓA
 Indiana State University-Evansville- ΔB
 University of Wisconsin-Stout-ZB
 University of Wisconsin-Whitewater-EK
 Eastern Illinois University- ΓN
 Illinois State University- ΔP
 Northern Illinois University- ΓP
 Iowa State University-BK
 University of Charleston-ZT
 Fairmont State College-EI
 Shepherd College-KM
 West Virginia Institute of Technology-III
 Virginia Polytechnic Institute-K Θ
 Ashland College- $\Theta\Psi$
 Baldwin-Wallace College- ΓA
 Bowling Green State University- ΓT
 Miami University (Ohio)-A
 Ohio State University- Θ
 Youngstown State University-KX
 Central Michigan University- $\Gamma\Psi$
 Wayne State University-E Σ
 University of Connecticut- ΓB
 University of New Hampshire- $\Theta\Gamma$
 Plymouth State College-KE
 University of Rhode Island-BA
 Rider College-IK
 California State College (Pennsylvania)-ZE
 Clarion State College-E Θ
 Indiana University of Pennsylvania- $\Gamma\Phi$
 Kutztown State College-KP
 University of Pittsburgh-O
 University of Pittsburgh-Johnstown-AE
 Robert Morris College- ΞX
 Shippensburg State University-K Ψ
 University of Massachusetts- ΞA
 Glenville State College- $\Theta\Xi$
 Indiana University-E
 University of Virginia- $\Delta\Delta$

Delta Zeta On Campus



North Texas State-KZs baked cakes for each fraternity on campus to welcome them back to school.

by Diane Jones Skelton

ALABAMA

Alabama, Alpha Gamma — In Homecoming '82, pledges and initiates combined their talents to produce one of the best house decorations and pledge skits with the theme "The Greatest Homecoming on Earth." Initiates sewed and hammered to disguise the house as a large circus tent with trapeze artists hanging from the roof and elephants tramping across the front lawn. Pledges donned their circus costumes, cotton candy headpieces, popcorn and M & M box outfits and paraded downtown with other sororities. Alpha Gamma hosted their first Christmas open house and welcomed other sorority and fraternity presidents, house mothers, faculty, student leaders and administrators. Sheree Martin is Panhellenic president and Simone Wilkens is Junior Panhellenic secretary. Top *Corolla* beauties are Sara Selikoff and Jill Duncan. Mandain Noel is a *Corolla* favorite and Chi Phi Calendar Girl. Crimson Courtiers basketball hostesses are Pat Summerlin, secretary, Kem Sumner and Sandra Rogers. Angel Flight includes Marci Payne and Debbie King. Mandain Noel is also a Crimson Kaydette. Holly Kilgore is on the executive board of the School of C & BA and Catherine Crawford is a Phi Beta Kappa.

Alabama-Huntsville, Lambda Kappa

— Student Government Association leaders are Kim Taylor, legislator, and Linda Finley, member of the Publications Board. Fall pledges were honored at the chapter's first pledge formal in mid-November at the Sheraton Ballroom. Pledges were presented roses. Members of Village Singers-UAH Choir are Teresa Hinkle and Jeri Royer.

Auburn, Beta Xi — A vivacious pledge class won first place in the Wreck Tech parade dressed in pajamas donning Auburn spirit, and later placed third in the Burn the Bulldogs Parade. Pledges honored initiates with a big sister appreciation day and surprised initiates with a wake-up breakfast. Lisa Glass was among the top five for Miss Fall Rush and Judy Buchanan is president of Jr. Panhellenic. Missy Harris is second vice-president of Panhellenic. ODK honorary tapped Susan Davis Jones, while Ronna Hickman is a member of *Who's Who in American Colleges and Universities* and Phi Kappa Phi. Beth Ansley is president of Fashion, Incorporated. Tiger Paws, Auburn dance team, includes Carrie Buxton, Jan Kucera and Jean Carroll. Auburn Entertainers includes Jenny Simmons, Angela White and Holly Sims.

Auburn-Montgomery, Lambda Nu — Omicron Delta Kappa leadership honorary lists Teresa Harris and Renee Payne. Dana Duncan, Elena Bass, Kathy Jernigan and Julie Nadeau are members of the Silhouettes basketball dance team headed by AN alumna Susan Schneider. After pledging a quota pledge class of 29, AN kept busy with fall activities including a tootsie roll drive, Halloween party, blood drive and Greek Week.

Jacksonville State, Lambda Gamma

— A busy chapter includes three members in the Student Nurses Association, a member of the American Diabetes Association and one member of Student Accounting Association. There are three ROTC sponsors and one Ranger sponsor. Three Delta Zetas belong to Phi Beta Sigma, while two are on the flag line. Lambda Alpha Epsilon honorary includes two Delta Zetas while one is president of Masque and Wig Drama Society. One member is vice-president of the Psychology Club and another is president of her dormitory. ROTC chose Pam Champion as the Distinguished Military Student. Lambda Gamma placed third in both the blood drive and Miller Drive. The Miller Drive netted a \$1000 prize for the chapter treasury. Members also collected pennies for Gallaudet.

ARKANSAS

Arkansas Tech, Lambda Alpha

— Rushees were on hand as Delta Zetas won a football pep rally spirit stick. Lambda Alphas also won third places in intramural softball and Homecoming float competition. Members delighted children at the Morrilton Orphanage with Christmas coloring books, crayons and a visit from the Delta Zeta Santa Claus. Panhellenic leaders include Gerry Bregard-Layrock, rush chairman, and Lisa Yerby, Greek Week chairman. Mary Bane is an ATU exchange student at Westfield, Massachusetts. Sara Beth Farrow is Worthy Matron of the Eastern Star.

Central Arkansas-Epsilon Xi

— Delta Zeta teamed with Phi Sigma Epsilon to capture a first place trophy in Homecoming float competition. Epsilon Xis also placed third in Alma Mater competition and second in banner competition. At campus Halloween Carnival, Delta Zeta pledges won the award for best booth and Kay Bright was honored as the Ugliest Witch. Another honor came as Delta Zeta won the sorority flag football championship during Greek Week. *Who's Who in American Colleges and Universities* lists Kay Bright, Kim Graves and Charla Weaver. Student Activities Board members are Lisa Clement and Mary Tiefel. Kimberley Staha is second runner-up to

Sorority Pledge Queen. Miss City Beautiful is Becky Lee Taylor. Ambassadors Student Tour Group includes Kim Graves, Stacia Hester and Charla Weaver. Charla is also a senator.

Henderson State, Epsilon Pi — Members feel somewhat proud to have pledged eight pledges in formal rush when quota was a small 12. Chapter spirits are high with motivation by Field Representative Diane Krause. Epsilon Pi won the Spirit Stick four times during the football season. Members raised \$400 for the Arthritis Foundation and Gaye Goodrow is sweetheart of Phi Lambda Chi.

CALIFORNIA

California State-Chico, Delta Chi — Halloween was a fun time for the chapter as members pumpkin carved at the Mesa Vista School for the Hearing Impaired. This year an instructor at the school taught the chapter some practical sign language. Pledges carved Greek letter pumpkins for fraternities and pumpkin caroled the gifts to each fraternity house. This year's pledge class listened to their Sigma Nu coaches attentively, as they went undefeated to win a proud first place in the Sigma Nu pledge softball tournament.

San Jose, Gamma Lambda — The chapter is keeping its tradition alive of winning or placing in every Greek or campus event. This fall Delta Zeta won the spirit competition among sororities in Homecoming. Their publicity stunt of crowding 19 members in a Volkswagen bug drew a large crowd. Delta Zeta placed first in flag football intramural sports and Lisa Bickford was named a Homecoming princess. AIESEC Business Club elected Denise DeNardi president. Panhellenic scholarship awards went to Shelly Berger, Julie Pendleton, Laura Burnell and Teresa De-whirst. Members especially enjoyed this

year's Colonnade event which included a father-daughter football game followed by a submarine sandwich dinner. Gamma Lambdas traveled to the University of San Francisco to help formally pledge 30 girls at the new colony.

COLORADO

Denver, Rho — Members nailed the Delta Zeta Greek letters onto the front of the chapter house on sorority row just prior to formal rush. The chapter pledged 11 girls. Members honored their House Board with a formal dinner and enjoyed a Halloween exchange at the Lambda Chi Alpha house. Other exchanges included Kappa Sigma and Alpha Gamma Delta. Rho earned \$300 for philanthropy by selling Gold C Coupon Books and volunteered to help at the March of Dimes Haunted House. Chapter President Karen Micek reigned over Homecoming activities and Delta Zeta won the ΔY Spirit Contest. Susan Fischer is a member of *Who's Who in American Colleges and Universities* and Donna Rowell is a Hornbeck Scholar. Janet Meloy is State Chairman of College Republicans. Mary Alice Laflin is business representative for UD Women's Resource Center for Higher Education and sophomore representative for UD Business Commission.

Northern Colorado, Delta Xi — Mortar Board tapped Coleen Downs, treasurer, and Kelly Herzog. Junior Honor Society lists Melinda Scott. Debbie Harper and Linda Luthy are cheerleaders and Cathy Monahan and Stephanie Schall are on the tennis team. Julie Hatchell is Panhellenic rush chairman and Mary Lou Cranny is a member of the education sorority. Sigma Chi sweetheart is Kim Konrad. Sallie Scoot danced in Dance '82. Chapter activities included playing intramural football and volleyball; participating in high school visitation day; making Halloween

cookies for the Parent-Child Center, and adopting two grandparents. Chapter chairman Leslie Orcutt started a Colonnade Club during Homecoming.

CONNECTICUT

Connecticut, Gamma Beta — For the third consecutive year Delta Zeta proudly showed their skill and teamwork in building another successful float for the Homecoming parade. Delta Zeta won both the Grand Marshall's Trophy and the Greek Participation first place. Philanthropy projects included working at the bloodmobile and a canned food drive for the soup kitchen. Members also created Christmas ornaments and caroled for the local convalescent home. Gamma Beta pledged 16 in formal rush.

FLORIDA

Jacksonville, Iota Omega — The chapter won first place in intramural football for the third year and at Founders' Day in Tallahassee won both the Loving Cup Award and the Quota Award. Susan Lee Pearson was named Panhellenic's Outstanding Pledge among the four campus sororities.

Tampa, Delta Beta — Members have been involved in several service projects including orientation, supporting the vote for "A Penny for the Good Life," ushering for several cultural events around Tampa assisting at the Florida Symphony Classic Run and various campus services. ΔB is number one overall in intramurals and Karla Ahrens, Maureen Merrigan and Donna Berry have been initiated into Alpha Chi, national honorary. Donna Berry, Marsha Fleming, Maureen Merrigan and Ann-Marie Sepuka have been appointed resident advisors on campus. Heidi Tolvanen and Leona Peszka are residence hall officers.



The Alpha Gamma house at Alabama was decorated as a circus tent for Homecoming, complete with a trapeze artist and elephants out in front.



Delta Zetas at Glassboro State-ΕΚ took the theme of "Happy Birthday America" for Homecoming. ΕΚ seniors are Sandy Clark, Ellen Keefe, Susan Gerald, Dee Modrak, Maryann McNamara and Patty Paterson. Uncle Sam is Lanie Kuznick.

GEORGIA

Georgia College, Lambda Pi — Delta Zeta's quota pledged class of 20 enjoyed a ride on the Milledgeville Chamber of Commerce trolley following formal rush. The trolley was decorated with pink and green streamers. Delta Zeta is participating in flag football. Pledges and initiates planned a popcorn party to reveal the identities of big sisters.

Georgia Southern, Iota Nu — Members traveled to Tallahassee for a combined Province Day and Founders Day where they won the Province Promise Award. This was the first year for a Georgia Southern football homecoming and Delta Zeta was quite a part of it. In Homecoming competition, IN won first place in downtown window painting decoration and second place with their animated character, Donna Sims, E.T. The 26 chapter pledges helped initiates sell donuts and memo pads and wash cars for fund raisers. They all enjoyed a dance in November at Forest Heights Country Club. *Who's Who in American Colleges and Universities* tapped Patricia Pate. Donna Streat is a member of Gamma Beta Phi and Patti Thurmon is historian for Kappa Delta Pi. Diane Peel is vice-president of auxiliary affairs for the Student Government Association.

ILLINOIS

Eastern Illinois, Gamma Nu — Delta Zeta welcomed 35 new pledges to the chapter following formal rush. Pledges joined the initiates for hard work at Homecoming to win a first place in the decorated car division. Cindy Feltz reigned over Homecoming activities. Campus sororities and fraternities each nominated candidates for a Penny King and Queen Contest sponsored by Delta Zeta. Winners received free nights at local restaurants and the pennies went to philanthropy. Members Christmas caroled at a local nursing home, treated parents to a banquet during parents week-end and learned sign language at a standards meeting. Fund raisers include a car wash and raffle. Pi Kappa Alpha Fraternity chose Jacquelyn Putlak as a Calendar Girl. Audrey Berman and Angelynn Richardson are student senators. Panhellenic second vice-president is Karin Kraai.

Illinois State, Lambda Rho — Trish Watkins was ΣΦΕ's Miss Knockout in their annual philanthropic endeavor making it the third consecutive year a ΔZ has won. APs had their annual pig roast for visiting alumnae at Homecoming and entertained parents with a Parent Potluck. Renee Young is listed in *Who's Who* and Pam Becker has been tapped by Rho Lambda.

Southern Illinois, Gamma Omega — Fall activities included a slumber party, car wash, slide show on the history of Gal-



Award recipients at Orange County (CA) Founders Day were serenaded by Bern Oziminski (CSU-Fullerton-IY) and Carol Williams Gibbs, Long Beach-ΔA's CCD.

laudet, scavenger hunt with new fraternity Alpha Epsilon Pi and a fourth place win with their Homecoming float. Alumnae joined collegians for a Founders Day brunch during Homecoming Weekend. Members delivered a costumed pumpkin to the children's ward of Memorial Hospital and enjoyed a Winter formal. Sandi Ribolzi is Panhellenic secretary and Kathy Schill is president of Order of Isis, Greek honorary. Members welcomed new housemother Lorretta Harris with a reception and are proud to say that Elizabeth Mestas Schill, ΔP, is continuing as CCD. She has served the chapter as CCD for 14 years, is still busy working fulltime, serving as membership chairman of Carbondale City Panhellenic, treasurer of the Carbondale alumnae chapter, president of Carbondale Business and Professional Women's Club, member of St. Francis Xavier Catholic Women's Club, member of Southern Illinois University-Carbondale Women's Club, and member of Carbondale Morning Etude Club. Her husband is chapter faculty adviser and the eldest of her two daughters is newly elected chapter president.

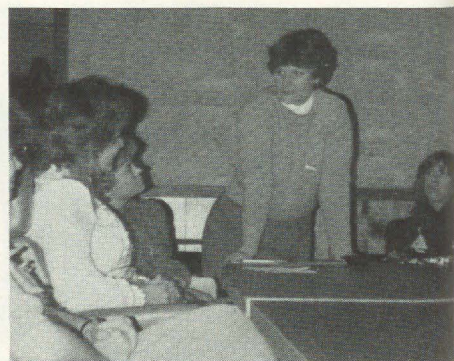
Northern Illinois, Gamma Rho — Delta Zetas and the 19 new pledges participated in Sigma Chi Derby Days to raise money for the Wallace Children's Village. Sororities competed for one week in a dance contest, spirit night, fun 'n games and queen's contest. Delta Zeta teamed with Phi Sigma Kappa for Homecoming activities and won a first place in water volleyball. The float placed third. Members collected for the American Diabetes Association and assisted at the Aurora Blood Bank drive. Social events included a Barn Dance in West Chicago for a good ol' country time, and later a Winter formal at Indian Lakes Country Club in Bloomington. NIU Silverettes include Julie Folkes, Jenny Hrubby, Cheryl Stimson. Jenny Hrubby is queen of the Houby Pageant. *Who's Who in American Colleges*

and Universities and ΣΘΤ tapped Jamee Freund. Sandy Kruger is secretary of Finance Student Advisory Board and member of the finance honor society. Kathi Smithberger is vice-president of Marketing Students Advisory Board, while Kim Schaefer is program director of the Advertising Club. Swim team includes Karen Peterson and Sheryl Pritchett. Phi Alpha Phi Honor Society tapped Darcy Card. Nancy Thompson is a member of ROTC and Carol Mann is secretary of Management Student Advisory Board.

Northwestern, Alpha Alpha — Delta Zeta joined Psi Chi Fraternity to give out helium filled purple and white balloons at the Friday night Homecoming parade. Other Homecoming activities included an alumnae brunch. Cynthia Murphy was named a Homecoming queen semi-finalist and Katherine Carlis was a Homecoming Committee chairman. Katherine and Cynthia both are charter members of the Order of Omega national honor society. Margaret Daniel is president of Jr. Panhellenic Association and Cara Moy is Chicago's representative to the national Miss China Town competition. AA thanks its alumnae for their generous contributions enabling the redecoration of the first floor living room and the library and for the gracious support in the November phona-thon. Over 120 alumnae pledged money and the collegians really enjoyed talking to them.

INDIANA

Ball State, Gamma Chi — Gamma Chis returned to Ball State to find their suite beautifully redecorated in rose and green. Special activities included participation in the watermelon bust festival, a "kne-slapping, foot-stomping" barn dance and hayride, a Homecoming Queen's tea, a Colonnade picnic. They participated in Derby Days and made Halloween tray favors for hospitals, rang bells for the Salvation Army and sang Christmas carols at area nursing homes. Suzanne Carter was initiated into Gold Key honorary and Carol Terpstra was elected historian of Phi Upsilon Omicron, Home Ec honorary.



Colorado State Day found PCD Janet Havener in a serious discussion with Colorado collegians.



The ΔZ spirit shines at Stout as Zeta Betas show their awards! L to r are Robyn Badgli, Patti Wohlberg, Nancy Linder, Sue Unwrath, Janet Barry and Renee Williams.



Fall rush at Georgia Southern-IN found a nautical party skit.

Donna Conway received the Most Improved Greek Scholar at the Greek scholarship banquet and Julie Oberlies was nominated for *Who's Who* and chosen for Order of Omega.

DePauw, Delta — Activities chairman Annie Bucholtz and Standards chairman Kimberly Anderson wanted to "Dazzle DePauw" with Delta Zeta. The two put Delta Zeta signs and posters throughout the house, left personal notes and candies in each member's mailbox, and encouraged all to wear their Delta Zeta sportswear or to dress up and wear their badges to "Dazzle DePauw." The pledges especially enjoyed reviewing for their pledge exam. As they journeyed through the house, initiates asked pledges specific questions concerning Delta Zeta. If they answered correctly they were rewarded with candy or small treats. Members of honoraries are Lynn Sanders, Kim Price and Jennifer Yoakum, Kappa Delta Pi; Ann Lampport, Amy Jo Englebright, Duzer Du Drama. Kathy Kahlenbeck is a 4-H leader and Kim Wheat is vice-president of the Concert Choir.

Franklin, Psi — Psi Chapter raised the most money for speech and hearing and therefore Lee Ann Hadley, senior, was named Miss Flame Fantasy at the Flame Fantasy dinner in Indianapolis. The chapter participated in a Bowl-a-thon for the Cancer Society. A strong intramural football team won the school tournament and traveled to Ohio State to defeat the Cincinnati University girls' team. On the basketball team are Chris Chastain, Teresa Melgard, Linda Smith and Becky Whitney. Sugar Bear Pom Pon Squad includes Gina Mancuso. Terri Johnson and Lisa Stephan, captain, are cheerleaders for the varsity men's teams.

Indiana, Epsilon — Epsilon and ZBT paired to plan the Dance of Care dance-athon to raise money for the World Hunger

Association. Twenty-five couples danced to live music for 45 minutes at a time, taking 15 minute breaks between sets. Couples could dance any or all of the 24 hours. Seven couples danced the entire time but only one won the grand prize, a trip to Beaver Valley, CO. Anita Walters, chairman, was pleased as Epsilon helped raise \$1,700 for the Association. Epsilon also took first place in Greek Classic during Homecoming festivities and paired with ΣΦΕ to win the most points playing Hoosier Ball and various other competitions. They hosted their second annual presidents' dinner, inviting presidents from different chapters, Panhellenic association and the IFC to an open house and dinner. This gathering - unique on this campus - will become an annual event.

Indiana-Evansville, Lambda Beta — Delta Zeta was the only sorority on campus to pledge quote-this year, 18 girls. Fall activities included a bonfire at a river camp, attending the Greek Formal, sending two delegates to Flame Fantasy and selling M & Ms and baked goods. Members spent a weekend making Christmas centerpieces, wreaths and hearth pieces to sell. Philanthropy projects included a haunted house, raising funds for the state hospital and participating in a nativity scene for *Christmas at the Zoo*. Members supported the local nursing homes by creating tray favors for Christmas. A tasty fund raiser was the sale of potato skins, toppings and soft drinks which raised almost \$2000. Student Government Association includes Donna Cook, vice president, Robin Goen and Robin Bridges, Supreme Court, and Holly Wilson and Karen Begle, senators. Amy Gartner is clerk of SGA. Michelle Good is a cheerleader and Lisa Jenkins is president of Panhellenic. Student Union Board includes Ronda Cutteridge, vice-president, and Karen Begle, director of program-

ming.

IOWA

Iowa State, Beta Kappa — Delta Zeta teamed with Sigma Alpha Epsilon for a Las Vegas Party Night Homecoming service project. Dressed in togas, bunny costumes and black and white, the Greeks rolled in \$500 for the Lupus Foundation in Ames. Members are hoping this year's skit "Simply A Point of View" will be a sure winner in Varieties skit sweepstakes. Delta Zeta directors are Mary Wagner and Karmel Hoffman. BK had reached sweepstakes for the past two years. At Founders Day the campus honored alumna Ardith Nielsen Forsythe, BK, with the Florence Forbes Award. Student advisors on campus include Lynda Paxton, IFC Panhellenic Blood Drive; Joni Pederson, School of Business; Marla Dille, Campus Chest. Presidents of campus groups are Wendy Huntley, Orchesis I; Paula Petras, Food and Nutrition Club; and Mary Beth Kissell, Naiads synchronized swimming. Joyce Johannson is a Panhellenic executive member, Senior Class Council member, and vice-president of Communications Group. Mary Beth Kissell serves on Panhellenic's Judiciary Council. Teri Reese is a student government representative. Sue Nielson, third runner-up to Miss Iowa, is a member of ISU Pom Pons. Val Miller handles publicity for Campus Chest.

KANSAS

Fort Hays State, Delta Omega — Homecoming activities included an open house, aiding the Tiger Booster Club, and hanging a banner reading "Delta Zeta Supports The Tigers." ΔΩ Christi Hockersmith reigned over Homecoming activities.

KENTUCKY

Eastern Kentucky, Xi Beta — Delta

Zeta started its year at Eastern Kentucky by sponsoring a Frat Man's Classic to benefit Gallaudet. It is the only competitive activity for fraternities on campus. What could have been disaster ended happily ever after for Xi Beta. As a grand finale for the Frat Man's Classic, a bon fire in a wheat field was planned. Unfortunately directions were wrong, and Delta Zeta had a bon fire in the wrong wheat field. Delta Zeta won first place, sorority division, in AXA's Watermelon Bust and Mary Osborne was a Homecoming finalist.

Morehead, Kappa Tau — Marcia Phillips, Panhellenic president, was a member of the Homecoming Court. Carmen Adams recently placed as first runner-up in the National Morgan Horse Association competition. Robin Buckland is State Parliamentarian for Phi Beta Lambda. Members traveled to Eastern Kentucky University for the installation of the Delta Zeta colony. Alumnae were honored with a Homecoming tea, and Betty Jo Peters, Morehead alumnae president, was honored. Members collected gifts for Christmas for Morehead Group Home. At presstime, Delta Zetas were in second place in intramural competition.

LOUISIANA

LSU, Sigma — LSU Golden Belles includes Lisa Stackpole and Bonnie Childress. Gina Martello is Sweetheart of Baton Rouge and Rusanne Jourdan is Miss Baton Rouge. Queen of the Babe Ruth World Series is Cheryl Brignac. Rho Lambda honorary tapped Leslie Prescott and Susan Adolph. Delta Zeta rated front page coverage in the Baton Rouge paper with their Big Band Party. Sigma won third place in the Air Band competition for Muscular Dystrophy and another third place in Homecoming decorations. The volleyball team led by Athletics chairman Anna Quiroga was undefeated. Children from the Louisiana School for the Deaf trick-or-treated at the Delta Zeta House.

Nicholls, Kappa Alpha — Delta Zeta was honored to serve as hostess for several campus events including all home athletic games, the Panhellenic picnic, and the President's Testimonial Banquet. KA collected dimes to be used for a campus scholarship for a major in speech and hearing therapy. The chapter placed third overall in Homecoming activities and all members rode on the float. Kappa Alpha pledged quota for the 14th consecutive year and sponsored a successful All Greek Sock Hop benefitting the national philanthropy. Other philanthropies included adopting grand parents, aiding the city library, sponsoring a dart booth at a church fair, and organizing clothes and canned food drives. Nicholls cheerleaders are Sandy Kane and Heidi Tomeny. MaLaura Blanchard is a member of the dance team and Frances Henery is a senator.

Northwestern, Epsilon Beta — Pledge trainer Debbie Keen devised a unique way



Kris Titzer and Shelley Dennis (Indiana State-Evansville-AB) took advantage of food offered at the chapter's Fall Festival Booth.



Two of our favorites at Colorado State Day, left, National Reference Chairman, Marianne McKeeman Cravens, OSU-AE and right, Janet Eisler Havener, PCD, CMSU-EI.



Nebraska Wesleyan-BT's Syd Ogborn, Marsha Schone and Shelly Slaughter just before the formal preference party.

to reveal little and big sister teams. Each pledge received a bag of peanuts and as she opened the peanuts she discovered one lucky peanut with her big sister's name hidden inside. Debbie had pre-labeled the bags with the pledges' names. Delta Zeta aided other Greeks in purchasing a projector for the NSU High School Relations Department and collecting for the annual Christmas Festival. Members collected dimes for the deaf and sponsored a dance and window washes as fund raisers. *Who's Who* tapped Pam Strange. Christine Avant is president of Sigma Tau Delta and Stacia Caldwell is a member of the Ski Team.

MAINE

Southern Maine, Lambda Zeta — Almost 100 people attended ΔZ's tenth anniversary celebration in the Fall. Sherri Musetti was crowned Greek Goddess during Greek Week activities and Denise Pitt is president of Panhellenic.

MICHIGAN

Michigan Tech, Lambda Theta — Members are excited about their first Flames of Delta Zeta Calendar which will feature 12 male Tech students. Proceeds will go to Gallaudet. Delta Zetas are leading the way to establish a Panhellenic Association at Tech. ΔZ will serve as first president as the first sorority on campus. Members enjoyed a Labor Day picnic, a retreat to Rabbit's Bay, and helped Sigma Phi Epsilon collect over \$600 for Bay Cliff Camp for underprivileged children. Delta Zetas collected parts, wheels, a hood, fans, steering wheel, hub caps and even a gasoline can to produce a Hobo car for Homecoming. Members welcomed alumnae for a Founders Day brunch. Kathy Taylor was graduated with honors.

MINNESOTA

Moorhead, Theta Nu — Delta Zetas here are producing a calendar, too. This one, a Tri-College Calendar, features models from Moorhead and the two neighboring colleges, North Dakota State and Concordia. In actuality, two calendars will be printed. One will feature male models, the other female. Members are sponsoring and helping to guide a Brownie troop. Founders Day was celebrated with a dinner and ceremony. Melanie Minton Sinks, a new Delta Zeta pledge, is quite interested in her family history. There are strong indications she is a distant relative of Founder Mabelle Minton. Sigma Tau Gamma chose Margo Denman as their sweetheart. Ginger Almer is Panhellenic Woman of the Quarter and Panhellenic president.

St. Cloud, Theta Mu — Delta Zeta had a successful formal rush and boasts the largest pledge class on campus. This year's pledge class numbers ten. Bette Boline was campus coordinator for Homecoming week and is also Special Events

Coordinator for the University Program Board. Bonnie Goergen is copy editor of *The Chronicle*. Delta Zeta entered an antique car in the Homecoming parade and celebrated Founders Day with a reception and ceremony.

Winona, Zeta Upsilon — At presstime, Delta Zeta was the largest sorority on campus and was preparing for Greek Week, which will include a Greek invasion of a basketball game, an All Greek Dance, a philanthropy kidnap, and a campus Christmas tree lighting. In November, members celebrated the chapter's 20th anniversary. Members built a Homecoming float and rode in a car in the parade. Following the game all enjoyed a bar-b-que. The philanthropy project for the quarter was an Alumnae-Phon-a-thon. Members telephoned alumnae for contributions for two weeks. Union Program Council Chairmen are Suzanne Torney and Cheryl Wright. Christy Adolphson is Panhellenic president and Carol Miller is co-chairman of the Muscular Dystrophy Super Dance. Karen MacArthur and Carol Miller attended the area MIFCA/MAPCA conference at Iowa State and enjoyed staying at the Delta Zeta House in Ames.

MISSISSIPPI

Southern Mississippi, Epsilon Mu — Delta Zeta chose *Silent Night* as their entry in Song Fest. Members dressed in flannel nightgowns and slippers and carried stuffed animals and red candles. They sang the first verse in English, then in French, followed by English in acappella. Because of the philanthropy of Gallaudet, Anelese Mapp signed *Silent Night* while members sang. On the final verse, members blew out candles, one by one, and sat and cuddled their stuffed animals. At the end, only Anelese was standing and she

signed the word *Peace*. Delta Zeta's song fest director was Rene Reedy. Members are busy with open rush and hosted a Panhellenic fall open rush party in the chapter room. Pledge Sally Roberts dressed as the great pumpkin and visited all the Greeks on campus wishing them a Happy Halloween from the Delta Zetas. EM sponsored a softball throw in the United Way Halloween Carnival, and a philanthropy jar sits atop the television in the chapter room for contributions to Gallaudet. Members and pledges enjoyed a retreat, sleeping in tents and cooking outdoors, at the State Park. Members of OΔK are Amy Fredericks and Donna Huch, also a member of Order of Omega. Rhonda Smith is president of Eta Sigma Gamma and Lori Ehlers is a member of Gamma Beta Phi. Mijanou Rodriguez is on the Modeling Squad. Sally Roberts is a member of Phi Beta Lambda and the International Food Services Executives Association.

MISSOURI

Central Missouri, Epsilon Gamma — Debbie Gish was crowned Homecoming Queen and the chapter won first place in the cheering contest at the pep rally. They celebrated Founders Day with local alumnae and provided cookies and orange juice to those donating blood at a local drive. EG's participated in campus intramurals with the volleyball team winning All Greek and second in the all campus category. Gail Spotts belongs to the public relations student association and press photographers student association. Jackie Johnson is a member of Personnel Management Association and Cherri Halsey belongs to the fashion and business club. Basketball cheerleaders are Becky Bailey and Lisa Winter. Dean's List in-

cludes Maureen Lumbach, Kim Cole and Gail Spotts. Tami Jones is on the all conference volleyball team, conference champions. Alumnae entertained the chapter with a Christmas dinner.

Northeast Missouri, Delta Sigma — For the fifth year Delta Zeta has pledged quota, this year the only sorority on campus to do so. Delta Zetas on the Homecoming Court were Jane Barry, third runner-up, and Geri Funke, second runner-up. *Who's Who in American Colleges and Universities* tapped Jane Barry and Vanessa Howe. Jana Holzmeier placed first in the sophomore women's division of vocal competition, sang at the NEMO Jr. Miss Pageant, and won the Burdman Family Memorial Scholarship. Members joined Alpha Kappa Lambda to teeter-totter for a solid week and raise \$400 to buy playground equipment for the handicapped. A catchy fund raiser was an M & M cooler count. A cooler was filled with M & Ms and for 25¢ a guess, one could try her luck.

Northwest Missouri, Epsilon Rho — Members returned to their newly remodeled chapter room in the basement of Roberta Hall. The hall now houses all sororities and Delta Zeta has its original room back. Members enjoyed a hayride, a Christmas informal, and joined Delta Chi to sponsor a Christmas party for Headstart children. The Homecoming float was patterned after the musical *Showboat*. Lisa Neal was campus Homecoming chairman. Nancy Martin is a member of the pom pon squad and Mary Sanchez is university editor for the *Northwest Missourian*. Sue Barrie is Panhellenic president.

William Jewell, Zeta Rho — Delta Zeta teamed with the men of Kappa Alpha to build a first place Homecoming float win-



It was a Fantasy Island party for the Fall pledge class at Central Arkansas EΔ. Here are some of the pledges.



East Carolina's 75th Diamond Jubilee Homecoming featured award winning house decorations for Zeta Lambda chapter.



Denise Dryer, Stephen F. Austin-ZΨ is crowned by Texas Governor Clements.



Debbie Gish, Central Missouri-EΓ (Photo by Jeff Murphy)



Elena Tribby, Appalachian State-ΛΦ



Homecoming Queens



*Maryjane Lawson
Lenoir-Rhyne-ZΞ*



Cindy Feltz, Eastern Illinois-ΓN



Susie Zink, Shippensburg State-KΨ



Lori Montgomery, Houston-ΔΘ

ner. This year's theme was "The Unique Creations of Walt Disney" and the float featured a Cardinal riding Dumbo. Members welcomed 21 new pledges, enjoyed a Founders Day luncheon, and ended intramural football with a 2 and 2 record. Helping plan *Tatler* fundraising event are Kim Durnell, general co-chairman; Deanna Steinbeck, co-chairman for queen's presentation, and Cindy Clark, photographer.

NEBRASKA

Nebraska Wesleyan, Beta Tau — Traditionally, members decorate the house after Thanksgiving with cherished decorations from years past and add some new ones. The tree in the living room, garlands, and wreaths helped set a Christmas mood. Following the decorating, members enjoyed a study break with treats and Christmas caroling. Santa dropped by for a visit one Sunday, gifts were exchanged and seniors presented a skit. A busy social calendar included the Dad-Brother Weekend, with a noon bar-b-que, basement beautification party, and watching the Nebraska-Penn State game. Campus homecoming and Parents' Week-end were other busy times. Alumnae joined members for a Founders Day ceremony and dessert party. Other functions included a barn party and Panhellenic Ball. Beta Tau participated in ΦKT's Volleyball-a-thon for charity, at which members helped play volleyball for 20 hours. Perhaps the best candle passing secret ever kept was that of the candle passing for Housemother Marcile Kolternan for her birthday. Members presented her with birthday cards and a mother's pin. First place scholarship awards went to Ann Askey, Nancy Baruth, Tera Beerman, Laura Buxton, Marsha Goff, Sarah Gross, and Kim Mickels. Marsha Schone was elected to the Board of Trustees.

NEW JERSEY

Glassboro, Xi Kappa — Members constructed their Homecoming float around the decade of the 70's. The float featured a large Bicentennial birthday cake with candles. Uncle Sam was out front waving and seniors were inside the cake. Members made it to the semi-finals in powder puff football—won, then lost, but still had fun. Fundraisers included sales of watches, carnations and popcorn. Popcorn proceeds went to Project Santa for the needy children of the country. The fall pledge class numbers seven. Early Childhood Club officers are Ellen Keefe, president, Lanie Kuznick, vice president, and Susan Gerald, secretary. Dee Modrak is president of the Sociology Club. Sandy Irving is vice president of Hawthorn Hall and treasurer of both Elementary Education Club and Delta Kappa Pi.

Trenton, Lambda Lambda — With much thanks to Field Representatives Terri McNeer and Anne Leine, ΛΛ seems to be the strongest it's been since installa-

tion in 1977. Twelve new pledges have just been added. Members Christmas caroled for the sick, packed Thanksgiving baskets, and participated in campus Greek Day activities. ΛΛs worked at the state amusement park, Great Adventure for one weekend to raise money for rush and pledging. The college honored Greeks with the Feast of the Golden Lion Banquet. President Janine Lange and Cindy Leary represented Delta Zeta. The semester ended with a holiday dance at a local firehouse. Janine Lange was tapped for *Who's Who in American Colleges and Universities*.

NEW MEXICO

New Mexico State, Gamma Xi — Cheerleader Evelyn Rodriguez was an attendant to the Homecoming Queen, and the chapter placed 2nd on house display. Immediately after Homecoming the chapter had its annual fundraising enchilada dinner, raising more than \$1,650. Much of the success of this dinner goes to Evelyn Rodriguez' parents who came to town especially to help with the cooking.

NEW YORK

Rochester, Lambda Iota — Members welcomed National Treasurer Anne Marie Gavin to the Founders Day lunch and enjoyed her sharing of rush and activity ideas. Alumnae were also honored with a Homecoming brunch. This year's International Dinner featured France and an exquisite gourmet menu. After an enjoyable sorority Thanksgiving dinner, pledges distributed paper bag turkeys filled with goodies and sang to fraternities. Other activities included a fall cook-out with Delta Sigma Phi Fraternity and participation in Sigma Chi Derby Days. The three sororities on campus began Panhellenic rushing this fall. Jennifer Glenn won the Rochester Alumni Nursing Scholarship and Wendy Hauler is goalie on the Finger Lakes Region Team for this year's Mideast Field Hockey Tournament.

NORTH CAROLINA

Appalachian, Lambda Phi — Delta Zeta pledged quota, 41, the largest in the province. Total membership is now 107, the largest since the 1972 installation. To help the pledges feel more a part of the sisterhood, initiates planned three special weeks, Turtle Week, Creed Week and Rose Week to involve pledges and enable pledges and initiates to better know each other. To celebrate the chapter's tenth anniversary, members invited alumnae to Sugar Mountain Ski Lodge in Banner Elk. Many alumnae returned for a brunch and great reunion. Members celebrated Founders Day at the Holiday Inn. Fraternity parties with unique themes included a Halloween mixer, a New Year's Eve mixer, a What Were You Doing When the Titanic Sank? mixer and a Stranger mixer.

Chapter fundraisers included corsage sales at Homecoming and the top fundraiser of the year, working at the Appalachian Bookstore. ΔΖs joined other Panhellenic groups for an inner-sorority Thanksgiving dinner. Chapter service projects included collecting canned goods for a needy family and taking fruit baskets to residents of a nursing home. Zolorist Pennel drove her pink and green jeep in the Christmas Parade with Delta Zetas riding. Surrounding the jeep were a dozen sisters costumed as elves throwing candy to children. Kynlon Hovis and Margaret Blankenship were among the ten finalists for Homecoming Queen. *Who's Who* lists Cathia Tribby, Clarinda Moss and Dottie Kibler. Following the last formal meeting of 1982, seniors gave their last wills and testaments and juniors provided a prophecy.

Atlantic Christian, Theta Omega — Using the theme "50's" ΘΩ added 14 pledges in formal rush. Selected for *Who's Who* were Monica DiDomenico, Sarah Taylor and Katherine Sutherland. The chapter experienced a big loss when CCD Karen Yerby left to attend graduate school at East Carolina. They wrote, "she has not only been an advisor and a leader, but she has most of all been a true friend. She is always willing to listen and to offer her help in all areas, no matter how busy she is." They love you, Karen.

East Carolina, Zeta Lambda — Zeta Lambda added 23 pledges this fall and initiated 9 earlier pledges. They celebrated Parents Weekend with the theme of Hoedown and observed Founders Day at the Ramada Inn. They had award winning house decorations at Homecoming and for fundraisers sold calendars, cookbooks and had several bake sales. ΖΑ also gave blood and collected for the March and Dimes. They won first place in the ΛΧΑ clothing drive. Sue Richards is Delta Sigma Phi sweetheart and Lorealee Lindquist placed first in an ECU tennis tournament.



Evelyn Rodriguez, a cheerleader at NMSU-ΓΞ, was attendant to the Homecoming Queen.



Jana Holzmeier NMSU-ΔΣ placed first in the sophomore women's division of vocal competition, sang in the Junior Miss Pageant and won the Burdman Family Memorial Scholarship.

Lenoir-Rhyne, Beta Xi — Chapter vice president Mary Jane Lawson reigned over campus Homecoming festivities. She is also a Honey Bear and member of Student Court. *Who's Who* tapped Barbi Sentman, Mary Jane Lawson and Billye Jackson. Mu Sigma Epsilon members are Nina Glander and Barbi Sentman. Members delighted children at the North Carolina School for the Deaf when they came in costumes to the Halloween party. Other activities included a jump-a-thon for Cancer, a Homecoming corsage sale, participation in a hospice program, adopted Grandparents, and working in a phon-a-thon for the Lenoir-Rhyne Endowment Fund. The chapter earned \$100 as second place winner in the endowment fund campaign.

NORTH DAKOTA

Minot, Theta Pi — The membership is low at 15, but Theta Pi is a whirlwind of energy and honor winners. Members teamed with Mu Sigma Tau fraternity to build a float featuring Disney characters and the famous Disney castle which won first prize for best float in the Homecoming parade. The ΔZ house display took second place with its theme *The Wizard of Oz*. Delta Zeta won the spirit award at the Homecoming game and delighted at seeing the crowning of Pledge Trainer Colleen Gannon as Homecoming queen. Chapter president Beth Erickson was a member of the Homecoming committee. Delta Zetas volleyball team captured the championship and remained undefeated. Tammy Larson is a member of Kappa Delta Pi education honorary.

North Dakota, Upsilon — Delta Zeta teamed with Sigma Nu to win the best theme award for their Homecoming float.

Judy Ross was chairman of the Homecoming Committee. Members donated to the Alpha Phi philanthropy fund raiser, sponsored a Christmas party with BΘII for the mentally retarded, donated a turkey box to the poor at Thanksgiving, and collected canned goods for the Salvation Army. Tammy Johns is a member of *Who's Who in American Colleges and Universities*, Mortar Board, Pi Theta Epsilon and is Lt. Governor of Circle K. Alison Johnson is a student advisor to the Dean of the Management Department.

OHIO

Baldwin-Wallace, Gamma Alpha — Past National President Norma Andrisek and Field Representative Linda Regner were on hand to enjoy ΓA's pledging of a quota pledge class numbering 11. Members learned from Patti Foley to sign the Delta Zeta song *Remember* and presented it at the Mother-Daughter Yarn Party. Gamma Alphas enjoyed a pledge formal and sold M & Ms to help pay for costumes for Sing. Kim Rifici is Panhellenic president and Delta Zeta's nominee Jeff Rayman, ΔXA, won the Greek God contest. Paula DeArdo and Laura Lane were members of the Homecoming Court.

Bowling Green, Gamma Tau — Delta Zeta raised \$900 for Gallaudet with their fourth annual volleyball tournament. Cindy Nelson was chairman with Denise Cappy, Sue Steggeman and Joanne Kuhn as assistants. Delta Zeta placed third in ΣΦΣ's Mud Tug. The chapter won second in the spirit competition. Mary Beth Nedrich served as chairman for the aluminum can drive for Delta Zeta. ΓT placed sixth in the drive and won \$500 award. *Who's Who in American Colleges and Universities* lists Mary Sue Anders and Judy Markel. Judy was also senior representative in Homecoming. Orientation Board members are Lori Beranek and Paula Stewart. Leslie James is president of Pledge Panhellenic Council.

Findlay, Theta Tau — Members and pledges played volleyball for 14 hours in their campus-community volleyball marathon. The event, held in the gym, benefited Gallaudet. The chapter also participated in intramural volleyball and built a Homecoming float, while many jogged in the Oilier Run. At Family Parents' Weekend, ΘT honored parents with a dinner and sing-along. Members set and cleared tables for the alumnae chapter cake walk and bazaar. Homecoming Court included Maurine Galvin, senior attendant, Krystine Pituch, junior attendant. Maurine is secretary of Student Government, while Sharyl Renner is Sophomore president. Kelly Kirkendal is a football and basketball cheerleader. Deb Leg is photographer for *The Oblesik*. Sharyl Renner is a member of the Pep Band, while Krystine Pituch is a WLFC disc jockey and football manager.

Miami, Alpha — For the third consecutive year, Alphas swam energetically in their annual swim-a-thon to benefit St. Rita's School for the Deaf in Cincinnati. Under the direction of Philanthropy Chairman Liz Kempf, Delta Zeta honored the students with a party after the swim-a-thon. The 130 Alphas celebrated Founders Day in an unusual way. The ceremony was held at the new University conference center, Marcum Center, following a shrimp dinner. Oxford alumnae joined the collegians for the memorable evening. Laurie Bechtel is Delta Tau Delta Sweetheart and Lisa Etnyre, member of Miami's Swim Team broke the school butterfly record. The ΔZ-ATΩ team placed third in Greek Week float building.

Ohio State, Theta — The chapter is thrilled with its 34 new pledges, quota. They finished a successful Homecoming with ΣAM and are to plan Greek Week with ΣX. They defended their sorority intramural football championship quite successfully. Jenny Bogen and Carolyn King are on the Panhellenic executive board. Barb Martin is a member of the Scarlet and Gray Show and Mara Schmidt is on the drill team, the Scarlet Steppers.

Wittenberg, Beta Chi — The year started off on a winning note as members captured the first place trophy in the annual Homecoming float contest. Philanthropies included a bowl-a-thon for the Springfield Big Brothers and Sisters, plant donations to a nursing home, and aluminum tab collection for money for kidney machine patients. Inter-sorority activities included study breaks, an exchange dinner and the annual Sorority Sing. Members also participated in an all campus clean-up and Greek scavenger hunt. Social events included the annual Hill-Billy Hoe Down, complete with bales of hay and square dancing. Members are busy planning for Province Day scheduled for Wittenberg in April. Fundraisers included sales of plants, donuts, and Halloween candy-grams. Plans are underway to redecorate the chapter living room.

OKLAHOMA

Central State, Epsilon Upsilon — *Who's Who in American Colleges and Universities* lists Lynda Cearfoss, Sherry Andrews and Sheryl Kudy. Kathi Bray and Karen Pollay are senators. Karen Jean Jeannot is a Calendar Girl and Kelli Beemer is Freshman Queen. Theresa Byler is a member of Fillies and Toni Splane is captain of CSU Rifemen. Delta Zeta joined the men of TKE to scream and spook to raise \$1,325 in the world's largest haunted house "Nightmare." The house was featured on *P. M. Magazine* and hopefully will be listed in *The Guinness Book of World Records*. At presstime, Delta Zeta was leading in all school intramural sports. The chapter had already won all swimming awards.

Northeastern, Delta Phi — Leading Panhellenic are Joan Billington, president-elect and Julie Holmberg, vice-president. Members of honoraries are Rhonda Rider, Julie Holmberg, Rho Theta Sigma, and Laura Bode, Alpha Chi. Members won the Red Cross Blood Drive Award for the most hours worked by a Greek organization. Other activities included selling Homecoming mums, entering the Homecoming banner contest, supporting "Light Up Tahlequah" philanthropy, and helping campus fraternities sponsor a Christmas party for needy children. Delta Zeta welcomed 18 pledges (quota, plus) and added three to reach total.

Northwestern, Delta Omicron — Senior Susan Perkins won the Oklahoma Kids Talent Search with her original comedy dialog "Bonita Banghart and the Story of Superman." She received the Denbo Diamond Award; Discoveryland, radio and television appearance; a trophy; a professional photo session; shares of stock; a week-end at a state lodge; and will appear before the state legislature. Susan is a member of Cardinal Key with Lisa Dozier, Julie Tedder, and Cindy Prochaska. Lisa, Julie and Cindy are also listed in *Who's Who*. Red and Black Scroll elected Mary Myers historian-reporter. Delta Zeta was the only women's organization to enter the Alva Chamber of Commerce bed races, collected old toys and clothes for the needy, and sold Delta Zeta calendars as a fundraiser. Members enjoyed a Founders Day celebration at the home of alumna Nelda Elmore Heasley, and enjoyed a Barn Dance with ΣΘΚ.

Oklahoma City, Gamma Upsilon — Leeann Arbuckle was initiated into Alpha Psi Omega and Pledge Anna Bevilacqua is on the drill team. The chapter sold M & Ms for fundraising and sang their winning State Day song for local alumnae at Founders Day.

Oklahoma State, Alpha Epsilon — Delta Zeta sponsored its most successful Haunted Park yet in the five years of the project. Farm House Fraternity helped AE scare on this Halloween to earn over \$700 for UNICEF and Stillwater Speech and Hearing. Members helped ATQs with their annual service project — washing cars of campus police, local police and nearby highway patrolmen. Teamed with Triangle Fraternity, AE won third place for house decoration and the overall engineering award at Homecoming. Karen Wakefield placed third in Sigma Phi Epsilon Super Star competition. Pledge trainer Katie Huppert devised a new big-little sister dinner. No ordinary tableware was allowed, and big and little sisters presented each other with large utensils as beaters, wire whips, spatulas to tackle the main course — spaghetti! Spurs members are Marnie McRee, Lori Dunn and Nikki Williams. Alpha Lambda Delta honorary in-

cludes Karen Wakefield and Nancy Woods. Karen is also a member of Angel Flight. Carroll Schakelford is a member of Army Blades and Dawn Wiegand handles publicity for the SGA. Sheila Bryant is a member of Patchin Panel freshman women's honorary. Phi Gamma Deltas named Michelle Suter as their sweetheart.

PENNSYLVANIA

California State, Zeta Epsilon — Karen Schwenning and Christine Bottegale were Homecoming Queen candidates and the chapter teamed with Delta Chi for a second place float win.

Drexel, Epsilon Zeta — Fundraising Chairman Janet Woods worked overtime to devise original and fun fundraisers for the chapter. Members sold chances on a Commodore Vic 20 personal computer, which was raffled in December. The chapter also made money from sales of Class Mate Calendars. EZs Christmas caroled at a nursing home and donated food to the People's Emergency Center. Sunday afternoons in the fall were spent on the football field with Epsilon Zetas involved in Panhellenic intramurals. An interesting standards program presented data on hypertension. Debbie Henwood and Beth Pearson earned perfect 4.0s last Spring. Vicki Darrah is ΣII Sweetheart and Barbara Ann Crane is Greek Goddess.

Edinboro, Iota Delta — The chapter initiated 100% of its Fall pledges and rated second overall in quality point average among the Greek organizations. As a service project, members provided cool refreshing orange drink for parents and families of freshmen on move-in day. Philanthropy projects included the annual Halloween party for Sarah Reed Children's Center, a canned food drive at Thanksgiving, food label collection for

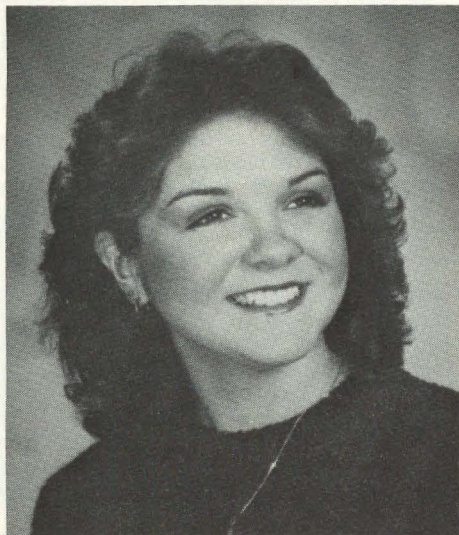
Big Brothers and Sisters, and a continuing grocery bag collection for Edinboro Community Food Co-op. Members served a tailgate meal for moms and dads at Parents Day, welcomed a new chapter grandmother from San Rosario Home, and are making plans for a dormitory chapter room. Vaune Pelletier and Suzanne Easler are listed in different editions of *Who's Who*. Vaune was runner-up in Edinboro's Top College Women, part of *Glamour's* nationwide search. Lynn Friend is Panhellenic second vice-president.

Indiana of Pennsylvania, Gamma Phi — Delta Zeta added ten beautiful pledges in formal rush and joined Sigma Nu to build a first place winning Homecoming float. The float represented Holland. Founders Day was celebrated with a pot luck dinner in the sorority room. Philanthropies included a Christmas party for deaf students at the University School and continued assistance to the girl adopted through the Christian Children's Fund.

Mansfield, Iota Theta — At Mansfield's 125th anniversary Homecoming, Delta Zeta depicted Homecoming queens throughout the years on their float. Thirty-two Delta Zeta alumnae returned to the delight of the collegians. Iota Thetas created ΔZ Winter Wonderland for their informal rush party. Snow flakes, "Think Snow" signs, turtles wrapped in mufflers, and a ΔZ Ski Lodge and ΔZ Gift Shop provided a wonderful setting for the skit about snow bound sisters. Social events included a Halloween hay ride and Fall dinner dance. Active in Panhellenic are Marie Feola, vice president, Shelly Brandt, Meribeth Wetzel, and Theresa Welfling. Meribeth and Donna Fufaro are both active in College Players. Concert Choir and Mansfieldians include Dana Bass and Teresa Jani. Deb Miller and Shelly Henry are resident assistants. Officers of ΣAI honorary are Lisa Luksic, sergeant at arms, and Teresa Jani, social chairman. Laura McAndrews is a senator. Jody Tartar serves as treasurer of the Criminal Justice Club and a tour guide for the Student Administration Committee.

Pittsburgh, Omicron — Delta Zeta started a great year in fall rush by pledging 13 (and exceeding quota by three!). Planning Greek Week were Joann Rawa, Greek Sing chairperson, and Yvetter Mitchell, Concert chairperson. Delta Zeta organized a bridal fashion show complete with gowns, tuxedos and a wedding cake to raise over \$500 for the Arthritis Foundation during Greek Week. Andrea Gorney is Panhellenic vice president and Tracey Charles is a justice on Panhellenic's Judicial Board. At Christmas Ornament Exchange, big and little sisters exchanged ornaments and sang Christmas carols while trimming the tree.

Shippensburg, Kappa Psi — Susie Zink reigned over SSC's Homecoming and will represent the school at the Apple Blossom



Jennifer Hruby reigned as Houby Queen at Northern Illinois-TP.

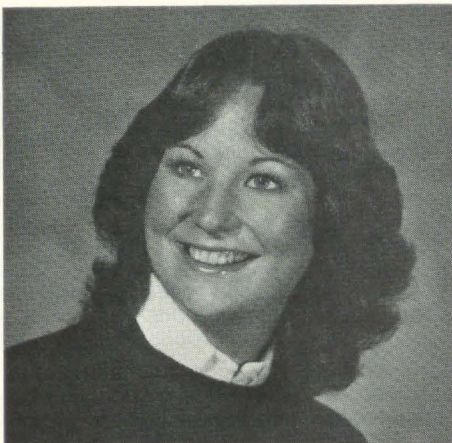
Festival in Winchester, Virginia. ΔZ teamed with ΔXA to produce a spectacular display of color that captured the \$300 first place award at Homecoming. Lambda Chi Alpha nominated their sweetheart Robin DeRogates for the Homecoming Court. Judy Breski is Sigma Tau Gamma Sweetheart and Susie Zink is Kappa Sigma Sweetheart. Kappa Delta Pi honorary includes Pam Burgess, Cindy Bailey and Susie Zink. Susie is also president of the Public Relations Club and winner of the journalism award. Cecelia Ferrer won the Ellen J. Watson Award while Colleen Okonieski won the American Business Women's Association Scholarship. Suzi Shea is a student senator. At Province Day, Kappa Psi won awards for membership, philanthropy, standards and was named Pride of the Province. Pledges trick-or-treated for UNICEF while the chapter aided the SSC Foundation in a Phon-a-thon to raise money from alumni throughout the country. $K\Psi$ celebrated its tenth anniversary in September.

West Chester, Iota Rho — Chapter members were excited when senior Ellen Samph transferred to Nevada-Las Vegas and was immediately involved in activities with Iota Phi chapter. Dayle Quigley will be in Tennessee for a semester taking research dealing with drug resistant leukemia cells at St. Jude's Cancer Research Center, the only undergraduate ever to be accepted at St. Jude's. Lisa Straubinger will be completing her teaching in England. IPs won the Panhellenic scholarship award for the second year in a row. Lynn Ciervo was chosen to be a choreographer in the Spring Dance Production Workshopshow. As the chapter editor wrote, "The Iota Rhos of WCSC may have been 'laying low' for a few semesters but we are on the upward swing in making ΔZ #1 at West Chester State!"

SOUTH CAROLINA

South Carolina, Beta Delta — Delta Zeta pledged 36, quota pledge class. The football team placed third in Kappa Sigma's Sorority Football Tournament. Fifteen fraternities participated in the First Annual Delta Zeta Fraternity Classic Football Tournament. Each team member received a tee-shirt and winners received trophies and refreshments. Parents were treated to a luncheon, football, game and buffet breakfast during Parents Weekend. The Dean of Student Discipline spoke on teacher harassment, roommates who break housing rules, unfair grading procedures and guidelines for protecting rights of students — an enlightening standards program. Angela Hill is secretary of Panhellenic and Sammy Murredo was honored by Panhellenic for top scholarship.

Winthrop, Lambda Sigma — Delta Zetas walked approximately 75 miles from Rock Hill to Columbia in a walk-a-thon benefitting Gallaudet. Girls walked in



Michelle Suter, OSU-AE is Phi Gamma Delta Sweetheart.

groups of three or four for distances of seven miles, then alumnae picked up the girls and drove them to Columbia College. Lambda Sigmas gathered together at the college, then walked three more miles en masse to the State House in downtown Columbia. To the strains of song *Rocky*, the girls bounded up the steps of the State House Building. Their goal had been reached! And, Gallaudet is \$1600 richer. Beta Deltas from USC served the walkers refreshments following the unusually cold and rainy day's activities. Delta Zeta participated in Panhellenic's rock-a-thon-dance-a-thon benefitting philanthropy, sold Christmas chocolate kisses to raise money, participated in a Save the Sea Turtles program, and initiated 13 new members. Sallie Warren won a Rotary Scholarship to study in Peru.

TEXAS

Angelo State, Lambda Omicron — The chapter had a retreat over an October weekend at Lake Brownwood. Campus Greeks, including Delta Zeta, held a Halloween dance for the mentally retarded. Homecoming found four nominees for Homecoming Queen and a third place float win. Their theme was "Fly Delta." Kathy O'Dwyer is on the Dean's list, was a homecoming duchess, is president of her dorm and an ASU twirler. Renee Ricks was runnerup to Miss Greek and Karri Page is Panhellenic president. Debbie Schmiotz is a member of Mamselles.

Houston, Delta Theta — Delta Zeta pledged quota for the nineteenth year in formal rush and welcomed new pledge class adviser, Kimberly Anne Kennedy, IZ. The active pledge class placed second in AKA's Rope Pull. Members participated in ΣX 's Chili Cook-off and joined Houston alumnae for a Founders Day lunch at Brennan's. Chapter president Lori Montgomery reigned over Homecoming festivities and helped the local CBS affiliate broadcast the weather report live from the campus. She rode in the Cotton

Bowl parade.

North Texas, Kappa Zeta — The busy quota pledge classes of 38 participated at the Denton State School Carnival and sold Mexican dresses as a fundraiser. KZ welcomed all the other pledge classes on campus by sending flowers to all Greek groups on Formal Bid Acceptance. Fraternities were welcomed back to campus with special cakes decorated with the respective fraternal colors. The clever $\Sigma\Phi E$ - ΔZ homecoming float followed the campus theme of "Ring in the Tradition." The float, which captured the spirit award, featured E.T. and the upcoming alumni phon-a-thon with the theme N.T. Alumni Phone Home. Later, Kappa Zeta participated in the university phon-a-thon to greatly surpass the goal of \$35,000. Delta Zetas, who especially enjoyed talking to ΔZ alumnae, played an important role in this success. Kappa Zeta joined Lewisville alumnae for Founders Day brunch celebration and welcomed them to the chapter room where they held their Alumnae Craft Auction. Members traveled to Arlington for the NT-UTA game, and were welcomed to the Iota Psi chapter house. In November the chapter traveled to Wursthfest in San Marcos and spent two days and nights in Austin. Members produced their second annual *Men of NTSU Calendar*, and from reading other chapter reports, credit goes to Kappa Zeta for this innovative calendar idea which Delta Zeta chapters everywhere are putting into action. Delta Zeta won a trophy in ΣN 's Tug of War, sponsored a Chili Booth at KZ's Fall Celebration, traveled to Dallas for their Christmas Party, and enjoyed mixers with $K\Sigma$, ΦKA and $\Sigma\Phi E$. Lori Bannister, Barb Boles and Melody Ballard taught the chapter sign language. Order of Omega tapped Susan Resley and Gaye Leonard won a Panhellenic scholarship. Honor roll for 3.5 or better includes Pam Day, Wendy Kramme, Gaye Leonard and Susan Resley.

Southwest, Iota Alpha — Runners-up to Homecoming Queen were Paige Lueking, first; Beth Barclay, second; and Dana Taylor, third. Beth Barclay was also first runner-up to Chili Queen at Chilympiad. Members welcomed alumnae for a Founders Day tea, and reached the play offs in volleyball. Iota Alpha sponsored a party to raise money for philanthropy and participated in all Homecoming events. IAs again enjoyed their Christmas party, decorated their tree and house and lined the sidewalk with candles.

Stephen F. Austin, Zeta Psi — SFA's Homecoming activities were an important part of the Fall semester with $Z\Psi$ joining ΘX in the building of their Homecoming float, "Deep in the Heart of Texas." The week ended when Denise Dryer was crowned Homecoming Queen by Governor Bill Clements. The philanthropy chairman organized "scissor sisterhoods" and the chapter would meet for brief periods

Festival in Winchester, Virginia. ΔZ teamed with $\Lambda X A$ to produce a spectacular display of color that captured the \$300 first place award at Homecoming. Lambda Chi Alpha nominated their sweetheart Robin DeRogates for the Homecoming Court. Judy Breski is Sigma Tau Gamma Sweetheart and Susie Zink is Kappa Sigma Sweetheart. Kappa Delta Pi honorary includes Pam Burgess, Cindy Bailey and Susie Zink. Susie is also president of the Public Relations Club and winner of the journalism award. Cecelia Ferrer won the Ellen J. Watson Award while Colleen Okonieski won the American Business Women's Association Scholarship. Suzi Shea is a student senator. At Province Day, Kappa Psi won awards for membership, philanthropy, standards and was named Pride of the Province. Pledges trick-or-treated for UNICEF while the chapter aided the SSC Foundation in a Phon-a-thon to raise money from alumni throughout the country. $K\Psi$ celebrated its tenth anniversary in September.

West Chester, Iota Rho — Chapter members were excited when senior Ellen Samph transferred to Nevada-Las Vegas and was immediately involved in activities with Iota Phi chapter. Dayle Quigley will be in Tennessee for a semester taking research dealing with drug resistant leukemia cells at St. Jude's Cancer Research Center, the only undergraduate ever to be accepted at St. Jude's. Lisa Straubinger will be completing her teaching in England. IPs won the Panhellenic scholarship award for the second year in a row. Lynn Cervo was chosen to be a choreographer in the Spring Dance Production Workshopshow. As the chapter editor wrote, "The Iota Rhos of WCSC may have been 'laying low' for a few semesters but we are on the upward swing in making ΔZ #1 at West Chester State!"

SOUTH CAROLINA

South Carolina, Beta Delta — Delta Zeta pledged 36, quota pledge class. The football team placed third in Kappa Sigma's Sorority Football Tournament. Fifteen fraternities participated in the First Annual Delta Zeta Fraternity Classic Football Tournament. Each team member received a tee-shirt and winners received trophies and refreshments. Parents were treated to a luncheon, football, game and buffet breakfast during Parents Weekend. The Dean of Student Discipline spoke on teacher harassment, roommates who break housing rules, unfair grading procedures and guidelines for protecting rights of students — an enlightening standards program. Angela Hill is secretary of Panhellenic and Sammy Murredo was honored by Panhellenic for top scholarship.

Winthrop, Lambda Sigma — Delta Zeta walked approximately 75 miles from Rock Hill to Columbia in a walk-a-thon benefitting Gallaudet. Girls walked in

girls and drove them to Columbia College. Lambda Sigmas gathered together at the college, then walked three more miles en masse to the State House in downtown Columbia. To the strains of song *Rocky*, the girls bounded up the steps of the State House Building. Their goal had been reached! And, Gallaudet is \$1600 richer. Beta Deltas from USC served the walkers refreshments following the unusually cold and rainy day's activities. Delta Zeta participated in Panhellenic's rock-a-thon-dance-a-thon benefitting philanthropy, sold Christmas chocolate kisses to raise money, participated in a Save the Sea Turtles program, and initiated 13 new members. Sallie Warren won a Rotary Scholarship to study in Peru.

TEXAS

Angelo State, Lambda Omicron — The chapter had a retreat over an October weekend at Lake Brownwood. Campus Greeks, including Delta Zeta, held a Halloween dance for the mentally retarded. Homecoming found four nominees for Homecoming Queen and a third place float win. Their theme was "Fly Delta." Kathy O'Dwyer is on the Dean's list, was a homecoming duchess, is president of her dorm and an ASU twirler. Renee Ricks was runnerup to Miss Greek and Karri Page is Panhellenic president. Debbie Schmiotz is a member of Mamselles.

Houston, Delta Theta — Delta Zeta pledged quota for the nineteenth year in formal rush and welcomed new pledge class adviser, Kimberly Anne Kennedy, ΓZ . The active pledge class placed second in $\Lambda K A$'s Rope Pull. Members participated in ΣX 's Chili Cook-off and joined Houston alumnae for a Founders Day lunch at Brennan's. Chapter president Lori Montgomery reigned over Homecoming festivities and helped the local CBS affiliate broadcast the weather report live from the campus. She rode in the Cotton

welcomed them to the chapter room where they held their Alumnae Craft Auction. Members traveled to Arlington for the NT-UTA game, and were welcomed to the Iota Psi chapter house. In November the chapter traveled to Wursthfest in San Marcos and spent two days and nights in Austin. Members produced their second annual *Men of NTSU Calendar*, and from reading other chapter reports, credit goes to Kappa Zeta for this innovative calendar idea which Delta Zeta chapters everywhere are putting into action. Delta Zeta won a trophy in ΣN 's Tug of War, sponsored a Chili Booth at $K\Sigma$'s Fall Celebration, traveled to Dallas for their Christmas Party, and enjoyed mixers with $K\Sigma$, $\Phi K A$ and $\Sigma \Phi E$. Lori Bannister, Barb Boles and Melody Ballard taught the chapter sign language. Order of Omega tapped Susan Resley and Gaye Leonard won a Panhellenic scholarship. Honor roll for 3.5 or better includes Pam Day, Wendy Kramme, Gaye Leonard and Susan Resley.

Southwest, Iota Alpha — Runners-up to Homecoming Queen were Paige Lueking, first; Beth Barclay, second; and Dana Taylor, third. Beth Barclay was also first runner-up to Chili Queen at Chilympiad. Members welcomed alumnae for a Founders Day tea, and reached the play offs in volleyball. Iota Alpha sponsored a party to raise money for philanthropy and participated in all Homecoming events. IAs again enjoyed their Christmas party, decorated their tree and house and lined the sidewalk with candles.

Stephen F. Austin, Zeta Psi — SFA's Homecoming activities were an important part of the Fall semester with $Z\Psi$ joining ΘX in the building of their Homecoming float, "Deep in the Heart of Texas." The week ended when Denise Dryer was crowned Homecoming Queen by Governor Bill Clements. The philanthropy chairwoman organized "scissor sisterhoods" and the chapter would meet for brief periods

Please reserve _____ copies of the new History of Delta Zeta at special publication price of \$20.00 each, postage and handling included.

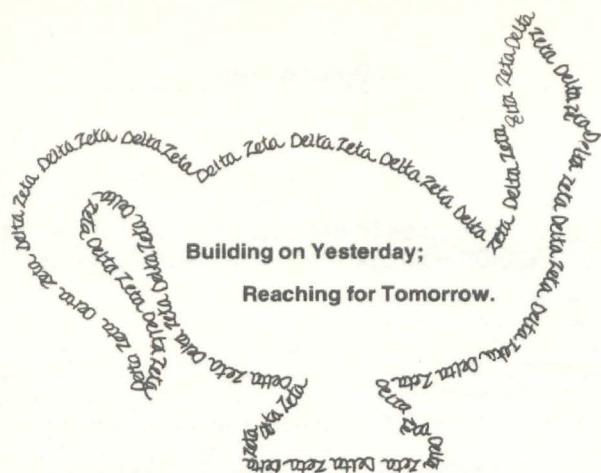
Print your name _____

Address _____

City _____

State _____

Make your check payable to Delta Zeta Sorority and mail to Delta Zeta National Headquarters, East State Street, #600, Columbus, OH 43215.



es, a beautiful, permanently bound copy of Delta Zeta's history 1902-1982 can be yours by reserving your copy now.

cky Jones.

Middle Tennessee, Iota Iota — Chapter pledges were winners of the Alpha Delta Pi Penny Drop. All sororities participated in this event. The sorority with the most pennies at the end of two days is the winner and they get to donate all the money collected by all the sororities to the charity of their choice. The highly spirited Delta Zeta pledge class decided to donate the money to Vanderbilt's Children's Clinic. They won first place and a big trophy at the Future Farmers of America's Barnyard Showdown.

VIRGINIA

Longwood, Epsilon Tau — Among the 11 sororities on campus, Delta Zeta ranked first academically. A unique rush party began with dorm-storming, followed by a party at a new restaurant with Theta Chis from Hamden-Sydney. Fifty-five freshman women attended. A tasty fund raiser was the sale of cheesecakes. Honorary organization Geist tapped Cindy Thurman, Katherin Joyce and Diane Johnson. Ginger Moss captured the lead in *Ten Little Indians* and Natalie Wack is a member of the Dance Company. Pam Svoboda and Nancy Dashiell are both members of an honor society. Karen Long placed third in the Miss East Coast Surfing Championship in Norfolk.

Old Dominion, Theta Phi — Cheering ODU on are cheerleaders Ann Robinson, LeAnn Shoemake and Cathy Link. *Who's Who in Colleges and Universities* tapped Nicole Mistele. Theta Phi pledged quota of 12. The intramural team made it to the women's finals. An Anniversary Ball celebrated the chapter's sixteenth year of founding, and Debbie Russo was named Dream Girl and recipient of the Tidewater Alumnae Outstanding Sister Award. Members entertained deaf children with a Halloween party and joined the Tidewater alumnae chapter for Founders Day.

party, restaurant party, tailgaters and a fall semi-formal. Delta Zeta Homecoming queen candidate Beth Barwick didn't win the crown, but she stole the hearts of Greeks. At a party following the game, Sigma Chis hung a huge banner reading "We Love You, Beth" and every brother signed it. In intramurals, the flag football and flickerball teams were undefeated, and went to the play-offs along with the volleyball team. Priscilla Remines is student regional vice-president, representing 17 schools, for the American Society of Interior Designers. Laurie Donaldson is vice-president of Society of Women Engineers. Order of Omega tapped Beth Moss.

WEST VIRGINIA

Concord, Epsilon Delta — For the first time in recent history Concord's Panhellenic sponsored a fall formal rush. With the Broadway theme *Annie* EΔ pledged six. Cindy Parker, member of honoraries Gamma Beta Phi, Kappa Delta Pi and Cardinal Key, was first runner-up at Homecoming. Pi Kappa Alpha and Delta Zeta teamed their skills in Homecoming with



Laura Lane and Paula DeArdo of Baldwin Wallace-ΓA were in the 1982 Homecoming Court.



Mary Wagner and Kris Hinson of ISU-BK show their "support" for ΔZ.

the theme *E.T.* Other members of honoraries are Karen Tramel, Phi Beta Lambda, Barbie Cline and Laura Hurst, Gamma Beta Phi.

Glenville State, Theta Xi — Theta Xi stuffed goodie bags for the GSC football team's road trips. They also have several fundraisers and a dance to raise funds for the State Day they will host in the Spring. Susie Ballengee and Lou Ann Pettit joined the Panhellenic powder puff football team which won over a nearby campus competitor. Lou Davidson had the lead in Neil Simon's off Broadway production of "Barefoot in the Park." Jamie Copenhaver belongs to Kappa Delta Pi. The annual "Rose Ball" Christmas dance was the last activity before the Christmas holiday.

Marshall, Delta Upsilon — Special guest Terri McNeer presented the Delta Zeta history at the Founders Day ceremony. Members welcomed alumnae for a Homecoming tea and sponsored a fraternity soccer tournament. Delta Upsilon played bingo with residents at Presbyterian Manor, a home for the elderly. Bingo prizes were handmade by members. Fund raisers included a rummage sale and sale of freshman survival kits. Gamma Beta Phi members include Dawn Bibbiee and Beth Hamrick. Teia Hoover is secretary of Sigma Delta Chi.

Shepherd, Kappa Mu — The chapter entertained campus Greeks with an autumn formal dance, stressing Greek unity. Vicki Boyer, Julie St. Maire and Kathy Shepic were Homecoming princesses.

West Liberty, Iota Tau — Members and alumnae enjoyed a formal dinner for Founders Day. IT Christmas caroled at a local nursing home and recently initiated 14 pledges. Fundraisers included the sales

to cut out tray favors for the local hospitals. Zeta Psi also made it into the playoffs in intramural flag football to keep their reputation as a leader in intramurals. Leanne Hunter and Denise Dryer are listed in *Who's Who*.

TENNESSEE

East Tennessee, Delta Eta — Rho Lambda Greek honorary for outstanding junior and senior women tapped Susan Baughan, Darleen Freeman, Becky Ginder, Sonya Musick and Lydia Pullum. Becky Elliot, member of Phi Kappa Phi honorary, edits the *Buccaneer* yearbook. Delta Zeta raised the most money for Pi Kappa Alpha's philanthropy in the annual Pike's Peak event and won first place honors for their Pike Man Shooting Gallery Booth. Delta Etas bid goodbye to former CCD Carolyn Barnett Seaman with a special farewell message and glass plate at their Christmas party. New CCD is Becky Jones.

Middle Tennessee, Iota Iota — Chapter pledges were winners of the Alpha Delta Pi Penny Drop. All sororities participated in this event. The sorority with the most pennies at the end of two days is the winner and they get to donate all the money collected by all the sororities to the charity of their choice. The highly spirited Delta Zeta pledge class decided to donate the money to Vanderbilt's Children's Clinic. They won first place and a big trophy at the Future Farmers of America's Barnyard Showdown.

VIRGINIA

Longwood, Epsilon Tau — Among the 11 sororities on campus, Delta Zeta ranked first academically. A unique rush party began with dorm-storming, followed by a party at a new restaurant with Theta Chis from Hamden-Sydney. Fifty-five freshman women attended. A tasty fund raiser was the sale of cheesecakes. Honorary organization Geist tapped Cindy Thurman, Katherin Joyce and Diane Johnson. Ginger Moss captured the lead in *Ten Little Indians* and Natalie Wack is a member of the Dance Company. Pam Svoboda and Nancy Dashiell are both members of an honor society. Karen Long placed third in the Miss East Coast Surfing Championship in Norfolk.

Old Dominion, Theta Phi — Cheering ODU on are cheerleaders Ann Robinson, LeAnn Shoemake and Cathy Link. *Who's Who in Colleges and Universities* tapped Nicole Mistelet. Theta Phi pledged quota of 12. The intramural team made it to the women's finals. An Anniversary Ball celebrated the chapter's sixteenth year of founding, and Debbie Russo was named Dream Girl and recipient of the Tidewater Alumnae Outstanding Sister Award. Members entertained deaf children with a Halloween party and joined the Tidewater alumnae chapter for Founders Day.

Virginia Tech, Kappa Theta — Delta Zeta aided Interfraternity Council and other Panhellenic groups for a Blacksburg community project called the Christmas Store. The Store provided food, clothing and toys for needy community residents at low prices or in return for working at the store. Kappa Theta, with the help of many enthusiastic pledges from the Delta Zeta colony at nearby Radford, collected huge amounts of cans by trick-or-treating for canned goods throughout the town. ΔZ won Panhellenic's award for the collection and received a trophy at the nationally televised Virginia Tech-Virginia football game. Other community service projects were collecting for the United Way and co-sponsoring, with the German Club, a Christmas party for underprivileged children. Kappa Theta delivered Christmas cookies to the eight other sororities on campus. The social calendar was filled with events including a beach party, restaurant party, tailgaters and a fall semi-formal. Delta Zeta Homecoming queen candidate Beth Barwick didn't win the crown, but she stole the hearts of Greeks. At a party following the game, Sigma Chis hung a huge banner reading "We Love You, Beth" and every brother signed it. In intramurals, the flag football and flickerball teams were undefeated, and went to the play-offs along with the volleyball team. Priscilla Remines is student regional vice-president, representing 17 schools, for the American Society of Interior Designers. Laurie Donaldson is vice-president of Society of Women Engineers. Order of Omega tapped Beth Moss.

WEST VIRGINIA

Concord, Epsilon Delta — For the first time in recent history Concord's Panhellenic sponsored a fall formal rush. With the Broadway theme *Annie* EΔ pledged six. Cindy Parker, member of honoraries Gamma Beta Phi, Kappa Delta Pi and Cardinal Key, was first runner-up at Homecoming. Pi Kappa Alpha and Delta Zeta teamed their skills in Homecoming with



Laura Lane and Paula DeArdo of Baldwin Wallace-FA were in the 1982 Homecoming Court.



Mary Wagner and Kris Hinson of ISU-BK show their "support" for ΔZ.

the theme *E.T.* Other members of honoraries are Karen Tramel, Phi Beta Lambda, Barbie Cline and Laura Hurst, Gamma Beta Phi.

Glenville State, Theta Xi — Theta Xis stuffed goodie bags for the GSC football team's road trips. They also have several fundraisers and a dance to raise funds for the State Day they will host in the Spring. Susie Ballengee and Lou Ann Pettit joined the Panhellenic powder puff football team which won over a nearby campus competitor. Lou Davidson had the lead in Neil Simon's off Broadway production of "Barefoot in the Park." Jamie Copenhaver belongs to Kappa Delta Pi. The annual "Rose Ball" Christmas dance was the last activity before the Christmas holiday.

Marshall, Delta Upsilon — Special guest Terri McNeer presented the Delta Zeta history at the Founders Day ceremony. Members welcomed alumnae for a Homecoming tea and sponsored a fraternity soccer tournament. Delta Upsilon played bingo with residents at Presbyterian Manor, a home for the elderly. Bingo prizes were handmade by members. Fund raisers included a rummage sale and sale of freshman survival kits. Gamma Beta Phi members include Dawn Bibbiee and Beth Hamrick. Teia Hoover is secretary of Sigma Delta Chi.

Shepherd, Kappa Mu — The chapter entertained campus Greeks with an autumn formal dance, stressing Greek unity. Vicki Boyer, Julie St. Maire and Kathy Shepic were Homecoming princesses.

West Liberty, Iota Tau — Members and alumnae enjoyed a formal dinner for Founders Day. IT Christmas caroled at a local nursing home and recently initiated 14 pledges. Fundraisers included the sales



*Clarinda Ross, Appalachian- $\Delta\Phi$, has had leading roles in many ASU theatre productions, appearing most recently as "Mary" in *Vanities* which played to sold out crowds at ASU.*

of candy, baked goods, pizzas and Christmas candy canes. Freshman girls enjoyed a popcorn party and watched the Steeler-Dallas football game in the sorority lounge. Delta Zeta and Lambda Chi Alpha performed skits based on Disney World for the Homecoming festivities. Delta Sigma Pi business fraternity initiated Beth Cotton and Sharon Scott.

West Virginia Tech-Iota Pi — Iota Pi is proud of their membership, only two from total, since they were installed just a year ago. President Penny Payne, Lisa Wu, Jan Bailey and CCD Virginia Pomroy Gray (Charleston-ZT) joined Zeta Tau at Charleston in their Founders Day program and the Iota Pis celebrated their first Founders Day as a chapter. Katrina Albright and Lisa Wu are 4.0 scholars and those listed in *Who's Who* include Katrina, Lisa, Terri England and Mary Ellen McConahy. Mala Lee and Margie Paxton are members of Alpha Psi Omega and Natalie Kenicki and Jan Bayley belong to Pi Alpha Psi. Mala Lee, Penny Payne and Marjie Paxton had leads in the Tech Players' presentation of *Paragons*. Dr. Gray is director of the Players.

WISCONSIN

Wisconsin-Eau Claire, Epsilon Omega — At Delta Zeta State Day, Epsilon Omegas honored were Jill Johnson, sorority education; Jill De Smith, treasurer award; and Nancie Feast, most spirited. Parents Weekend coincided with the date of Founders Day, so members invited parents to the Founders Day ceremony.

Daughters then took parents to brunch. Members enjoyed a delightful Christmas dinner dance at a local supper club.

Wisconsin-Stout, Zeta Beta — Members traveled to Eau Claire for State Day and won awards for membership and display and the coveted Province Award. ZBs sold posters and Garfield post cards as successful fund raisers. Members enjoyed a Fifties social with the Phi Sigs and participated in the Renaissance Festival during the holiday season. New initiate Heather Hagen is on the varsity volleyball team. Members are enjoying food and gifts from their secret turtle pals.

Wisconsin-Whitewater, Epsilon Kappa — Homecoming theme this year was "Greatest Show on Earth" and five Delta Zetas were on the 13 member steering committee. EKs took first place in the bed rally decoration and race and Cathi Reukema represented them in the Homecoming talent contest. An open house followed the football game and new pledges met alumnae who had returned to visit. Jamie Linden is Outreach director for a local radio station and Kathi Smetana is $\Lambda\chi\alpha$ sweetheart. A night "just with the girls" found the chapter at an Italian restaurant for dinner followed by a Christmas exchange party and a visit by Santa Claus.



Virginia Polytech-K Θ s were delighted to serve ice cream to the Delta Zeta pledges at Radford, our new $\Xi\Delta$ colony.

THERE SHE GOES

To see what Delta Zeta women are
Look through the LAMP of yesteryear and now—
That constant flame reflecting near or far
Intelligence and charm on every brow.
So let us wear our badge for all to see,
And smile to hear, "There goes a Delta Z."

—Vivian Mackey
UW-K

Maurine Achauer, Foundation Treasurer



Dr. Maurine Achauer, NMSU- $\Delta\Sigma$, is the only woman to be an officer of a men's fraternity foundation.

Dr. Maurine Poage Achauer, Northeast Missouri State University- $\Delta\Sigma$, is a trustee and treasurer of the Sigma Tau Gamma Fraternity Foundation, the only woman in the world to hold such an office.

Dr. Achauer was honored as one of the outstanding graduates at NMSU in 1937. She subsequently went to the University of Nebraska where she received the Ph.D. degree in educational psychology. Her dissertation was on "Vocational Choice for Teachers College Women."

She and her husband, the late Reynolds Achauer (Sigma Tau Gamma), were owners of the Vernaz Drug Company in Warrensburg, Missouri, for many years. Dr. Achauer is a widely-known community leader in Warrensburg, where she makes her home. She was recently named to the Governor's Council on Aging.

She is a clinical psychologist now associated with Mid-America Rehabilitation, specializing in care for the elderly.

1990

(7-)

JOURNAL OF DOCUMENTATION

A Message to Alumnae

by Susan Mease (Samford-AL),
PAD Province XXIV and Pat Rosser
(Georgia Southern-IN), PCD
Province XXII & XXIV

Think of how abandoned you feel on seeing a "Gone Out of Business" sign on one of your favorite shops. Now try to gauge your feeling as you imagine that sign hanging on Delta Zeta. The situation hasn't come to that - yet, but too many alumnae aren't doing anything to avoid this scene!

You didn't graduate from Delta Zeta when you left school; you simply assumed alumna status. You are an alumna no matter what, so why not be an active one? In business terms, don't throw away the investment you made in Delta Zeta through college. You now have ready-made contacts anywhere in the country by just calling the Province Alumnae Director who can find an alumna in virtually any town you can name.

Delta Zeta helps you maintain your old friendships, perhaps through newsletters, National Conventions, or State Days and establish new friendships through your local alumnae chapter, National Conventions, and State Days. As an active Delta Zeta you are also continuing your growth as a concerned citizen through philanthropy and educational activities.

Besides being good for you, being an active alumna is good for Delta Zeta. You will probably pay \$10 or \$15 annual dues as an alumna compared to \$15-\$25 or more a month as a collegian. If there were more alumnae paying dues some of that burden of support could be lifted from the collegians. You are also strengthening Delta Zeta by bringing in your talents and by being an example of the rush argument of the lifelong nature of sorority membership.

Active alumnae are vital to collegians. They provide guidance as advisors, CCDs, PCDs, and PADs. They donate money to redecorate a house or meeting room or to build a house to colonize a new chapter. They provide the ever essential references. They provide food or kitchen help or moral support for rush. Some especially understanding alumnae send junk food

kits to help the collegians through mid-terms and exams. They have parties for local high school girls to rush Greek before college. They draw upon their own talents, perhaps flower arranging, interior design, cooking, job interviewing and resume writing to help in whatever way they can. Alumnae constitute a network for new graduates looking for jobs or trying to find a place to live, a church and a doctor in a new town. Most importantly, alumnae are role models. If a collegian sees alumnae who are supportive and there, the collegian will follow that lead and become that kind of alumna and we'll be in great shape. If you haven't been this kind of role model, ask yourself how you can expect your own chapter or one close to you to do well if you fade off into the sunset after graduation. Building Delta Zeta is everyone's job!

Jo Lynch is Outstanding Volunteer

by Alice Munsol Keil, (Adelphi-AZ),
St. Petersburg Alumnae Chapter

Jesselyn Johns Lynch, (St. Lawrence University, AM '26) has been awarded a plaque by the City of St. Petersburg's Department of Leisure Services as Volunteer of the Month. Jo's service involves the management of circulation of 360 books a month from the St. Petersburg Public Library to residential neighbors, with the collection changing each month.

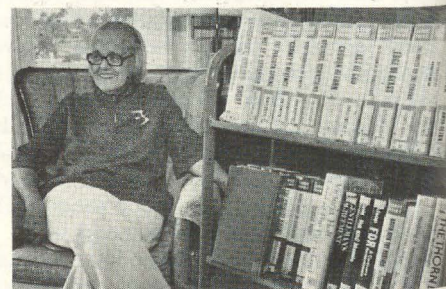
The need arose when the city budget cut out bookmobile service. Storage of current volumes is accommodated in Jo's own apartment with distribution twice a month in the congregate living room downstairs. Jo has a few helpers.

This project is only one of many that our sister crams into her days. For years she has read to local patients once a week, "something funny." Even as president of the alum-

You don't need to be an alumna in a vacuum or do things only for collegians; alumnae and collegians can work and have fun together. They can share philanthropy projects, teas for special occasions for the collegiate chapter or alumnae chapter, pancake breakfasts, luncheons (maybe for no special reason but fun), Founders Day or State Day, and joint parties with dates and husbands. Collegians can return some favors through caroling parties or babysitting or simply saying "thank you."

Deep down, all of us care what happens to Delta Zeta. However, in some of us that feeling is buried a little too deep. Let's bring Delta Zeta to the forefront of our lives and show how very much we care as alumnae for our sorority. We'll be alumnae for many more years than we were collegians; let's do a good job!

nae chapter in 1981-1982 she found time to hostess at the Museum of Fine Arts, and serve as a judge regularly for the annual Spelling Bee sponsored by the chapter and the St. Petersburg Times, the award-winning city newspaper. Active as a member of Panhellenic, she also gives two book reviews a year to the AAUW.



Jesselyn Johns Lynch, St. Lawrence-AM

Alumnae Profiles

JONETTE MARCELLO CAPRA, Baldwin-Wallace-ΓA, lives in Butler, PA where she is a reading specialist for the Butler area school district. She is teaching eighth grade developmental and remedial reading and is coaching junior high cheerleading. She is also a Tupperware dealer. Her husband Larry is an investment banker. Interests lie in reading, charcoal drawing, crafts and sharing her husband's favorite hobby of fishing.

SANDRA PATE WHITE, Western IL-EO, teaches fifth grade in Peoria, IL and is a candidate for a doctoral degree in curriculum and instruction at Illinois State. She like tennis, church choir and professional organizations. She has also participated in community theatre groups. Her husband Dale is a teacher and their children are Cynthia and Julie.

JANEAN MITCHELL BUSHUR, Eastern IL-ΓN, is a home economist for Martin's IGA Superstore, the largest volume IGA grocery store in the nation. She works with all public relations areas from questions from consumers to food seminars, cooking schools and training student interns. Her husband Steve is a lithographer. She likes foods, sewing, jazzercise, and all sports, but especially jogging. She's been a twirler for 15 years and says it is great exercise!

NANCY SMITH EIDAM, Oregon-Ω, is a professional show horse trainer and instructor. She and her husband Arnold operate a 320 acre farm in the heart of Willamette Valley, where they raise Morgan horses. She likes photography, painting and crafts.

PHYLLIS CARLSON HOWELL, Northern Illinois-ΓP, is a volunteer chairman for the Garden Center of Greater Cleveland, is on the social ministry committee for her church and is very involved with Golden Trefoil, a group which raises money to offer opportunities for needy Senior Girl Scouts. Phyllis has served the Cleveland Eastside alumnae as president as well as conceiving the idea and then organizing a Fairmount Theatre of the Deaf benefit. In her spare time, she enjoys painting and enameling. Her husband Bob is a professional square dance caller and she spends much of her time supporting his endeavors. They have two children and seven grandchildren.

ALINE DELLING MANZI, Miami (FL)-BN, is a housewife but also executive director of A Country Theatre, a professional theatre company. She is active volunteering in girl scouts and the Dutchess County Council, specializing in outdoor program and leader training. Husband Joseph is an engineer and children are Margaret, Maryanne, Joseph and Thomas. She likes youth agency work, ecumenical church work, camping, hiking, nature study and conservation.

RUTH HART STROMBERG, Miami-A, is now retired but was an attorney in private practice and then worked in the U.S. Department of Housing and Urban Development, Labor, and HEW in Cleveland. She also worked two years in legislative services at the Library of

Congress and served for two years as Assistant Law Director for the City of Cleveland. Her husband Robert is an engineer and grown children are Carol S. Pancoast, Ellen Lautz and Robert H. Stromberg. She likes free lance writing, painting and gardening.

ELLEN SIMON LINDEMANN, Illinois-AB, is a design engineer for a public utility in Atlanta. She has repaired old concrete dams, designed a bridge, performed flood studies and has analyzed dams for stability and given dams "yearly checkups." Her husband Bruce is working on a PhD. in the Veterinary Medicine College at the University of Georgia. Ellen likes ceramics, cooking, skiing, painting and crafts and working to decorate their house and yard.

CYNTHIA MARSHALL FULLER, Lamar-ΔΔ, lives in Modesto, CA where she is a fulltime housewife, mother, parttime college student, Brownie leader, classroom volunteer and children's church teacher. She hopes to be a registered nurse after June, 1985. Her husband Richard is sales manager for E. & J. Gallo Winery and their daughters are Carole and Laura. She likes needlepoint, bridge and recently made a wedding kneeler for their church.

TERRI LARKS STANCHI, Houston-ΔΘ, owns her own business called Transitions. She is an image consultant, doing wardrobe, hair and skin care consulting for men and women. She loves shopping, dancing, traveling, racquetball, meeting people and music, both classical and jazz. Her husband Rob is a manufacturer's representative and sales manager.

TAMI FRANCIS SCHOELING, Northwestern Oklahoma-ΔO, is a farm wife and mother of Travis and Brooke. She also sells needlecraft. Husband Lelon is helped by working and tending cattle, harvesting and sowing wheat. Harvesting duties include cooking meals for the crew and driving the wheat to the elevators. In sowing season, she drives a tractor.

GEORGIA DELIS HOOK, Baldwin-Wallace-ΓA, lives in Bay Village, OH where she recently was elected to the Board of Trustees, Baldwin-Wallace College. She serves on the student affairs committee and as liaison to the National Alumni Council of B-W and is secretary of the National Council. She's been active in many volunteer positions, along with church and choir activities. Georgia has traveled extensively in Europe, the Orient, Israel, Mexico and the Caribbean. Husband John is an investment banker and children are John and Deborah. Interests are travel, tennis, skiing and music.

MELISSA LEE KLOPFER, South Carolina-BΔ, is currently employed as an elementary teacher for the Department of Defense Dependant Schools in Japan. She has been fortunate enough to travel throughout the Pacific and was recently selected to attend a task force meeting in Tokyo to help develop a book for use by kindergarten teachers. She loves being overseas but does miss those weekend football games!

ΘT Helps Findlay Celebrate 100 Years



These Past Homecoming Queens are all Delta Zetas from ΘT. L to r are Helen Rolf Kirkendall, '75; Pam Morgan, '81; Pam Kruse, '80; Debra Kotterman Warren, '73, and Jane Schroeder Brinkman, '74.

by Krystine Pituch, Findlay-ΘT

1982 is Findlay College's Centennial year. In observance of this celebration, Theta Tau Chapter of Delta Zeta has been actively involved.

In January the celebration began with a Founders Day Weekend. Many collegiate members participated in the birthday party bash, the Founders Day Service of Worship and the Centennial Ball. A centennial lecture series was introduced in which members ushered and escorted. Findlay College turned to Delta Zeta first because of our reliability and willingness to get involved.

In the Spring, Clara Cohen, West Hebron, New York, ΘT, 1978 had an art exhibition in the Egner Fine Arts Center. Also, two Theta Tau collegians were included in the revival of the May Day Celebration. Senior Jill Davidson and sophomore Krystine Pituch were in the May Day Court. These two women were treated to a special luncheon and honored at the May Day dance. To end the Spring semester, the Theta Tau chapter prevailed to win the Greek Week Competition.

The Fall semester was most significant for the Theta Tau women of Findlay College. Homecoming was

one of grandeur and splendor as several of the Homecoming Queens returned to their alma mater. Past queens who attended a special luncheon and football game were Audrie Miller Hutson, 1946; Debra Kotterman Warren, 1973; Jane Schroeder Brinkman, 1974; Helen Rolf Kirkendall, 1975; Pam Kruse, 1980; and Pam Morgan, 1981.

To continue the festivity of the centennial commemoration, the 1982 queen and court wore authentic antique dresses and appeared in the parade on a horse-drawn wagon. Theta

Tau president, Maureen Galvin was chosen senior attendant, while Krystine Pituch represented the junior class. The Delta Zetas also built a float. The theme for the parade was "Findlay College - A Centennial of Learning Together." Pledge Kelly Kirkendall was selected 1982-83 football and basketball cheerleader and sophomore Sharyl Renner loaned her musical talent to the Oiler Pep Band.

Alumna Geraldine Harrington Lacney, 1975 made history on Oct. 9, 1982 as she became the first woman to be inducted into the Findlay College Athletic Hall of Fame. Gerry starred in basketball and softball at F.C., lettering four straight years in both sports. She also earned two letters in volleyball. Following graduation Gerry played professional basketball for one season with the Arkansas Lassies. Currently she is a health and physical education teacher in Limestone, N.Y.

While at Findlay College, Gerry served as president, treasurer, and guard. She also attended National Convention in 1973, representing ΘT chapter. Gerry won Findlay's Junior Scholarship Award (Dean C. Morey) for the highest GPA.

This year's recipient of the Dean C. Morey Junior Scholarship award went to Lisa A. Huffman, an accounting major. This award was presented at our own special Founders Day.

The National Council is proud to announce
the reestablishment of the charter

for the

Tidewater (VA) Alumnae Chapter

the restoration to charter status of the

Wooster (OH) Alumnae Chapter

and the

organization of two new clubs

Anne Arundel County (MD) Alumnae Club

Greater Hartford (CT) Area Alumnae Club

ΔZ Celebrates 10th Year

by Margie Rae Castergine Nickerson,
Southern Maine-ΔZ '77

Some 70 Delta Zeta sisters and their guests came back to the University of Southern Maine to celebrate the 10th year reunion of their Lambda Zeta chapter. In 1972 the local chapter of Omega Zeta Chi was installed as a chapter of the Delta Zeta sorority. Approximately 140 initiated sisters later, Lambda Zeta sisters reunited to renew old friendships and make new ones. A history of the chapter was read, as well as a chapter trivia history, which was enjoyed by all sisters young and old! The past chapter presidents joined in the cutting of the cake, songs were sung, and a buffet was served.

Ten years on campus will not seem a very long time to many of Delta Zeta's older chapters, but the Lambda Zeta sisters are proud of keeping Delta Zeta's spirit alive against some, at times, overwhelming odds. The small school of U.S.M. has two campuses of Portland and Gorham that are separated by 10 miles. The two campuses have approximately 8,000 students in attendance, but only one campus (Gorham) has dormitories — Portland is a commuter campus linked to Gorham by a shuttle bus system.

The small Gorham campus, which houses 1,065 students, has 4 sororities. One semester when all four sororities initiated only 32 new members, Delta Zeta had 19 of them! Although every year has not been as affluent, Lambda Zeta has always held its own in the Eastern-most U.S. state. None of the sororities at U.S.M. have houses, which makes communication between members spread over 4 dormitories much tougher than it could be.

In 1975, CCD Nola Stewart Cote, then a pledge, put the Delta Zeta Creed to music and it was presented that year at the National Convention in Columbus, Ohio. The song has remained an integral part of the chapter's rituals and the words of the song's chorus still ring loud and clear in the ears of all sisters of the Univer-

sity of Southern Maine's Lambda Zeta chapter:

*Golden lamp and Killarney rose,
Symbols of joy every sister dear holds.*

*A million tomorrows will all pass away,
Ere I forget Delta Zeta's joys that are mine today.*



Presidents of Lambda Zeta at Southern Maine: L to r, top row: Catherine Foster, '78; Maureen Sorel Brydon, '79; Karene Gilbert, '80; Sheryl Hersey, '81, and Denise Pitt, '82. On the first row (l to r) are Maine SRC Candace Hilton Smith (UM-AY), Joanne Schwalbenberg Duran, '77; Marjorie Mann Malone, '76; Jane McGuire, '75; Margie Rae Castergine Nickerson, '74; and CCD Nola Stewart Cote.

ΒΔ (continued)

with a formal dinner followed by dancing. The pledges plan and sponsor a pledge dance held in the early Fall and during the holiday season, everyone is in good spirits by the time the festive Christmas party rolls around.

Delta Zetas have been known to plan some outrageous theme mixers held throughout each semester with the fraternities. A "General Hospital" mixer saw more Luke and Lauras than ever imagined. The "Southern Plantation" mixer was complete with hoop skirts and mint juleps and, of course, dozens of dashing Rhett But-

lers.

Delta Zetas do have fun together, but when it's time for seriousness, we get right down to business. We aid in service projects such as Carolina Cares, a university-wide project to aid needy families during the Christmas season; Lambda Chi Alpha canned food drive; Sigma Nu Little 500; Sigma Alpha Epsilon's Superdance for Muscular Dystrophy; and the list goes on. Helping others has allowed Delta Zetas to see how lucky we are and to share that fortune with others.

Plans are in the making for Province XXI Day to be held at Carolina this year, February 25-26. At the previous Province Day, Beta Deltas racked up on the awards, carrying home most improved chapter, best pledge training program, an award for having total, and sister, Lisa Jones, received a Golden Crest. President Vicki Jinnette won a Golden Crest in 1981 as a sophomore.

At Convention, past president Paige Lackland won a Founders Memorial Scholarship Award. Paige, now graduated, is working toward an alumnae chapter for the Columbia area.

At USC's commencement last May, Delta Zeta won the Chaplain's Award for Volunteer Service for our work with Project Scooter. It was the first time the award had been given to a group rather than an individual. The philanthropy chairman in 1981, Betsy Patterson, was named Volunteer of the Year by Project Scooter.

Awards received and accomplishments made by individual members show the wide range of personalities in Delta Zeta. Beta Delta must have been the role model when everyone speaks of Delta Zeta's varied interests and individuality. From scholars to beauty queens to athletes, Beta Delta has it all.

While we're sure Beta Deltas sound much like Delta Zetas all across the country, we like to think there's something special about being a Delta Zeta at Carolina.

Alumnae Chapters Write . . .



Admiring the beautiful reindeer plant holders made for Oklahoma City's 1982 Flame Fantasy are Deanna Alleman McKinnon, Texas-AT; Mary Ann Gallatin French, OSU-AE; Glennie Gregory Jones, OSU-AE, and Mr. Jack Thornton, husband of Evelyn Husband Thornton, ND-Y.

by Meryl Lin McKean

Oklahoma City, OK . . . The alumnae chapter's annual Flame Fantasy in September netted \$2,400 for the Oklahoma Society for Crippled Children. The money will be used to buy a machine that can detect disabilities of the ear. Gallaudet College and Delta Zeta Founders Memorial Scholarship Fund also received \$300 each from the proceeds.

The chapter has established the Marylois Dreiling Award to be presented annually at Founders Day to an alumna who has made many contributions to the chapter. An engraved silver tray was presented to Marylois naming her the 1982 recipient of the award.

Charlotte, NC . . . Kappa Phi Chapter from UNC-Charlotte provided the program as Charlotte alumnae celebrated Founders Day with a luncheon at a local country club. Mary Edwards Hendrick, alumnae scholarship chairman, presented a scholarship in the amount of \$162 from the alumnae to an outstanding Kappa Phi member. Golden Rose recipient was Mary Wacaster Hough.

Members collected canned goods for needy families at Thanksgiving, purchased hearing aid batteries for the needy and provided Christmas dinner for a low income family.

Anne Arundel County, MD . . . The newly-organized alumnae club in Anne Arundel County held a Founders Day luncheon at the home of Lois Lee Porter (FSU-AΣ) in Severna Park, MD. Fourteen ladies were present. PAD Gail Verley led the ceremony and each member was presented hand-painted bookmarks with a pink rose and Delta Zeta on them.

Clay-Platte Counties, MO . . . A young man who had lost his job because of a hearing problem will now be able to keep on working, thanks to the Clay-Platte alumnae chapter. The man was only able to provide half of

the \$500 needed to purchase a new hearing aid. Alumna Donna Bogle learned of his plight, and the chapter voted to send him a check for \$250.

The group began the Christmas season by decorating stockings for each child who attends the Hearing Impaired Pre-school at Children's Mercy Hospital in Kansas City.

Tidewater, VA . . . The Tidewater alumnae chapter was chartered on Founders Day 1982 through the efforts of National Director Charlotte Silversteen, PAD Gail Verley and several area alumnae. The new charter was presented to the alumnae during a luncheon at Old Dominion University.

Jacksonville, FL . . . Donna Ferguson Meyers (Georgia State-ΔΔ) received the Outstanding Alumna Award from the Jacksonville alumnae chapter. Golden Rose recipients were Frances Cartmel Bedell (FSU-AΣ), Virginia Miller Clark (FSU-AΣ), Florence Mott Dart (FSU-AΣ), Kathrine Johnson Lorraine (FSU-AΣ) and Carolyn Bosserman Mansfield (Adelphi-AZ).

Huntsville, AL . . . "Pink Checks for Pink Cheeks" was the theme of the fifteenth annual Delta Zeta Arts and Crafts Show in November. Chairman Marilyn Guffin put together a show of 145 craftsmen from all over the Southeast. The Huntsville alumnae raised \$13,000 with a large portion of the proceeds going to decorate and furnish the Infant and Parent Feeding Room at Huntsville Hospital. The Delta Zeta "pink checks" will be helping produce healthy "pink cheeks" by providing a comfortable atmosphere for mothers feeding their intensive care infants.

Columbus, OH . . . Alumnae were given 230 captioned filmstrips which they, in turn, donated to the Ohio School for the Deaf. Members assisted Theta chapter at Ohio State University with formal rush. The November meeting was held at the Theta chapter house and included a standards program for the collegians titled "How to Dress in a Man's World."

Nashville, TN . . . The alumnae chapter held bingo benefits and plans to hold a kitchen shower to aid the Hospital Hospitality House in Nashville. Alumnae met the 28 new pledges of Iota Iota Chapter at Middle Tennessee State University during a Founders Day celebration.

Colorado Springs, CO . . . A reception was held to honor Mrs. Frank (Edith Johnson, Concord-EΔ) Mancari's 50th anniversary as a member of Delta Zeta. The Golden Rose ceremony was held at the home of her daughter, Sarah Mancari McLeod (Marshall-ΔY.) Mrs. Mancari currently serves as national chairman of Delta Zeta's Carville program.

St. Louis, MO . . . Delta Zeta alumnae were instrumental in the success of "Sorority Showcase." College-bound girls and their parents were invited to visit each sorority's exhibit at the Plaza Frontenac in St. Louis County.

Members were busy gathering recipes for a fundraising cookbook. Proceeds will be used for hearing equipment and other philanthropic projects.

Alumnae Chapters Write . . .

Orange County, CA . . . Wedding gowns from the past, and women's and children's clothing were modeled at the annual luncheon, fashion show and boutique in November. Proceeds will be donated to the Providence Speech and Hearing Center, Taft School for the Deaf and Iota Upsilon Chapter at Cal State-Fullerton.

Five Golden Rose recipients were honored at a Founders Day celebration. They are Virginia Ball Mahan (Missouri Valley-IT), Cora Cave Smith (California-M), Ima Coates Vance (Colorado State-BΣ), Geraldine White Slaughter (UCLA-AX) and Irene Bursley Poyas (UCLA-AX).

Indianapolis South Suburban, IN . . . Alumnae celebrated Founders Day in a unique way. Jan Kress Main (DePauw-Δ) and Ellen Kroll Jenkins (Indiana University-E) prepared and hosted a chinese dinner for 20 alumnae and 12 collegians.

Grand Forks, ND . . . Upsilon sisters who had attended the University of North Dakota between 1970 and 1980 gathered in Grand Forks for a reunion on September 10-11, 1982. Reunion chairmen Diane Thomte Clinton, Jean Haley Harper and Diana Kjelshus Tangsrud mailed pink and green invitations with personal information questionnaires to 140 "Seventies" alumnae. The questionnaires were placed in a scrapbook, and those in attendance were grateful to read about those sisters who were unable to attend the reunion.

Phoenix, AZ . . . The theme of Founders Day was "The Way We Were—Eighty Years Ago." Six alumnae dressed in costumes circa 1902 depict the sorority's founders. Their attire for the luncheon included long skirts, Gibson girl shirtwaists, high collars, lace ruffles, leg of mutton sleeves and beaded reticules and capes.

Denver, CO . . . Carol Selway Bertz (Ohio State University-Θ) was named 1982 Outstanding Alumna. Mabel Friesen (Nebraska Wesleyan-BT), Margaret Ross Chemelick (Knox College-N), and Margaret Klefman Bregitzer (Ohio Wesleyan-AP) were Golden Rose recipients. Members learned about the Hearing Dog Program during a meeting at the training facility of the American Humane Association. The group's annual fundraising auction, "Gifts Galore," was held in December.

Harrisburg, PA . . . The group is selling stationery to raise money for another scholarship to be presented to a hearing-impaired student attending Gallaudet College from the Central Pennsylvania area. A September covered dish supper, "Salads and Sweets," was a delicious crowd pleaser. In October, a speaker from Hearing Service discussed hearing conservation and correction.

Chicago, IL . . . The Loop Group has had a revival under Carol Horgan Hendricks' chairmanship. It was formed years ago primarily for those working in Downtown Chicago. The group meets at various restaurants in the area.

Six new alums were among the 23 people who gathered for the alumnae chapter's Founders Day luncheon. Member Patricia Snider (Bowling Green-IT) has received the 1982 Faculty Member of the Year Award given by the Endowment Fund of Morton College.

Gold Coast Area, FL . . . Diane Salade Neralic (West Liberty-IT) was voted the chapter's Outstanding Alumna. The group is continuing a scholarship for a deaf college student, as well as continuing financial support of the collegiate chapters in Florida. Alumnae have worked on craft and gift items for three bazaars.

Lehigh County, PA . . . Margaret Harmon (Louisiana Tech-ΞE) is the chapter's newest Golden Rose recipient. National Director Charlotte Silversteen and one pledge and five initiates from nearby Kutztown State College joined the alumnae for a Founders Day dinner.

Sacramento, CA . . . Members who gathered for Founders Day enjoyed gourmet box lunches. Golden Rose certificates were presented to Ruth Johnston Barsdale (Cincinnati-ΞI) and Alice Zimmerman Brownfield (UCLA-AX).

State College, PA . . . Alumnae honored Helen Oldham (Iowa State-BK) at a dinner and presented her with a Golden Rose pin. Before retiring to State College, she was on the University of Chicago staff and worked in agricultural research with the USDA.

Aurora, IL . . . In September, a representative of Waubensee Community College talked with Aurora alumnae about hearing programs on the college level. On Founders Day the alumnae met for dessert and coffee followed by a ceremony.

Cleveland Eastside, OH . . . The chapter assisted at a Halloween party for 70 costumed children at the Millridge School for the Hearing Impaired.

Carla Arnold Woodcock (Kent State-ΓK) was chosen 1982 recipient of the local Service to the Rose Award. Elma Van Wye Craven (Kent State-ΓK) and Betty McMullen Rhea (Syracuse-AK) were presented Golden Rose certificates during a Founders Day luncheon at the Cleveland Skating Club.

Franklin, IN . . . Franklin alumnae are proud of Ruth Doub Callon (Franklin College-Ψ). Ruth is the Women's Basketball Coach at Franklin College. Her 1981-82 team was runner-up in District 21 of the NAIA. Ruth's teams have also chalked up state small college championships in 1977, 1979 and 1980.



Tulsa alumnae honored three Golden Roses at 1982 Founders Day. They are (l to r) Willa Bailey Vandaveer (Emporia State-ΔΠ), Ella Cole Whitman (NSU-ΔΦ) and Elizabeth Cox Towle (Baker-H).

Flame Eternal

ALPHA

Grace Browder Ziegler '35

BETA

Marjorie McGrail Conway '26

DELTA

Lucy Manning Grimmesey '22

EPSILON

Portia Cooper Laughlin '23

Belle Mowrey Smuck '17

Edna Foutch Wheeler '32

Edith Cumings Wright '27

ZETA

Gladys Enyeart Gelwick '21

Fern Jenkins Miller '25

Beatrice Eno Moore '23

Nancy Jenkins Smith '69

ETA

Helen Barnes Marquis '14

THETA

Elinor J. Barnes '22

IOTA

Helen Mooty Hennessy '28

LAMBDA

Elza McGraw Green '20

Leah McIntyre Reardon '20

Grace Samson '26

MU

Virginia Arthur Beeman '40

Violet Osborn Kearney '21

Miriam Phillips Laing '33

Helen Dunn Parker '25

SIGMA

Beth Jolly Bacot '24

Elizabeth McGuire '27

TAU

Jean Gates Puls '47

Elise Roberts Rogers '28

UPSILON

Marjorie Ringoen Owen '32

Constance Margaret Stegenga '19

PHI

Dr. Margaret Irene Grieve '23

Gertrude Tunnard Van Arkel '25

CHI

Edna Vance Carlson '31

Frances Laird Wilson '20

ALPHA ALPHA

Eleanor Agnes Locher '32

Viola Themann '27

ALPHA GAMMA

Sarah Hilda Langston '46

Clara Polson Wright '40

ALPHA EPSILON

Helen Whitaker Carleton '23

Rena Alice Fountain Floyd '24

ALPHA THETA

Elizabeth DeVault Tate '63

ALPHA KAPPA

Ethel Slater Ellis '27

ALPHA LAMBDA

Josephine Higman Day '28

ALPHA OMICRON

Nathalie Beville Fant '32

ALPHA PI

Anna Dupuy Barrett '33

Lyde Thomasson Dearborn '30

Catherine Howle Gordon '29

Mary Holley Hancken '27

Eugenia Perry Henrique '28

ALPHA SIGMA

Gwendolyn Powell Martin

Jeannette Washburn '29

ALPHA PHI

Mildred LaSure Gilmore '24

ALPHA CHI

Helen Denney Bowman '27

BETA NU

Nancy Grover Williams '56

BETA XI

Dorothy Adkins Hammond '54

BETA UPSILON

Corilla Smith Barrow '29

DELTA XI

Margaret Ruth Taylor '27

DELTA OMICRON

Audrey Bainum Kinzie '57

DELTA PI

Ida Mae Franz '17

EPSILON EPSILON

Dorothy Schmidt Chester '30

ZETA KAPPA

Mary Raabe Calvert '35

ZETA TAU

Judith Cadle Hartzog '72

PHI BETA

Nadine Troyak Brink '37

Joan Pasereski Fleckenstein '58

Dr. Cooks Dies in Florida

Dr. Rudolph O. Cooks, husband of Lucile Crowell Cooks, National Director, died November 5 in St. Petersburg, FL. The Cooks retired to Florida in 1971 after Dr. Cooks, who was a physician and surgeon, had practiced in the Cleveland, OH area for 40 years. They spent the summers on South Bass Island at Put-in-Bay, OH.

Also surviving are his Delta Zeta daughters, Mella Cooks Davies of Shaker Heights, OH and Constance Cooks Roberts of Detroit, sons Richard of Lakeland, FL and Stephen of Worthington, OH and nine grandchildren.



Pam Dugmore, Wright State-KI is Ohio State Honey Queen.



Krystine Pituch and Maureen Galvin, Homecoming attendants, Findlay-OT.

With Apologies

A letter from Dorothy Brock Ryland, Sigma '37, assures us she is alive and well in Memphis, TN. She was mistakenly listed in the Flame Eternal column of the Winter LAMP.

Delta Zeta Directory

NATIONAL COUNCIL

President: Carolyn Barnes Gullatt (Mrs. John), 4008 Hyridge, Austin, TX 78759
Vice President of Membership: Debbie McWhirter Bruce (Mrs. Bill), 5008 NW 62nd Street, Oklahoma City, OK 73122
Vice President Alumnae Affairs: Mary Margaret Calhoun Fore (Mrs. Sam), 459 Summit Circle, Fredericksburg, TX 78624
Vice President Collegiate Affairs: Dwayla Finch Porter (Mrs. Arthur), 1121 Osage Drive, Stillwater, OK 74074
Secretary: Dianne Fellows Guild (Mrs. Douglas), 16 Andrews Drive South, Burlington, VT 05401
Treasurer: Anne Marie Jones Gavin (Mrs. William), 3264 Swan Drive, Vineland, NJ 08360
Director: Teresa Johnson Severy (Mrs. Raymond), 2127 Northhampton Way, Lansing, MI 48912
Director: Lucile Crowell Cooks (Mrs. Rudolf), 1936 Dolphin Blvd. S., St. Petersburg, FL 33707
Director: Charlotte Fields Silversteen (Mrs. Allan), 513 Toll Road, Orelan, PA 19075
Director: Sarah Jane Shank Houston (Mrs. Harold), 3358 Ramblewood Place, Sarasota, FL 33577
Past National President: Norma Minch Andrisek (Mrs. J. R.), 319 Janice Drive, Berea, OH 44017
National Panhellenic Conference Delegates: Dwayla Finch Porter (Mrs. Arthur), 1121 Osage Drive, Stillwater, OK 74074 *Alternates:* Carolyn Barnes Gullatt (Mrs. John), Norma Minch Andrisek (Mrs. J. R.)

NATIONAL HEADQUARTERS

Delta Zeta National Headquarters: Suite 600, 21 E. State Street, Columbus, OH 43215
Delta Zeta Subscriptions (Collegiate & Alumnae): Box 24145, Columbus, OH 43224
National Field Representatives: Ann Leine, Terry McNeer, Nancy Walker, Jill Banks, Diane Krause, Linda Regner, Jeanine Petersen

THE LAMP

Gwen Moss McKeeman (Mrs. Robert L.), 5517 S. 74th E. Avenue, Tulsa, OK 74145

EXTENSION

Norma Minch Andrisek (Mrs. J. R.), 319 Janice Drive, Berea, OH 44017

FOUNDERS MEMORIAL FOUNDATION

President: Mary Lou McConaughy Barth (Mrs. William), 1662 Villa South Drive, West Carrollton, OH 45449
Secretary: Sarah Jane Shank Houston (Mrs. Harold), 3358 Ramblewood Place, Sarasota, FL 33577
Treasurer: Shirlyn Chaffin (Miss), 6561 Santa Cruz Place, Reynoldsburg, OH 43068
At Large: Arlene Newman (Miss), 40 Crestwood, Houston, TX 77007
 Betty Paul Dewitt (Mrs. Norman), 23630 Oakrest Lane, Harbor City, CA 90710

NATIONAL HISTORICAL MUSEUM BOARD OF TRUSTEES

President: Lucile Crowell Cooks (Mrs. Rudolf), 1936 Dolphin Blvd. South, St. Petersburg, FL 33707

Trustees: Norma Minch Andrisek, 319 Janice Drive, Berea, OH 44017; Carolyn Barnes Gullatt, 4008 Hyridge, Austin, TX 78759; Florence Hood Miner, 1040 H Avenue, Nevada, Iowa 50201; Aurel Fowler Ostendorf, Apt. 402-A, 3-3400 Kuhio Hwy., Lihue, Hawaii 96766; Doris Ellingson Riede, 103 Lake Avenue, White Bear Lake, MN 55110; Dr. Elizabeth Rogers, 302 W. Vine Street, Oxford, OH 45056; Mary Lou Ragel Vineyard, 4998 62nd Avenue S., St. Petersburg, FL 33715; Betsy Bradley Leach, 1244 Valley View Road, No. 116, Glendale, CA 91202.

STANDING COMMITTEES

Colonnade Club: Mary Ann Gallatin French (Mrs. J.I.), 2322 N.W. 58th Cir., Oklahoma City, OK 73112
Constitution and Procedure: Lisbeth Innis Francis (Mrs. Robert), 2508 Belle Terre Drive, Birmingham, AL 35226
Finance: Anne Marie Jones Gavin, chairman, Lucile Crowell Cooks, Mary Margaret Calhoun Fore, Norma Minch Andrisek and Carolyn Barnes Gullatt, ex officio.
History: Florence Hood Miner (Mrs. Arthur), 1040 H Avenue, Nevada, IA 50201
Ritual: Karen Kind Manuel (Mrs.), 36 Rilling Ridge Road, New Canaan, CT 06840

COMMITTEES

Activities/Social (Collegiate): Malissa Wilson Hawkins (Mrs. William), 409 Camperdown Way, Greenville, SC 29601
Alumnae Relations: Christa Creason Chaussee (Ms.), 211 S. Pleasant Ave., Ridgewood, NJ 07450
Awards (Collegiate & Alumnae): Marcia Earl Humpal (Mrs. David), 26798 Mangrove Lane, Olmsted Falls, OH 44138
Housing: Ruth Heller Horton (Mrs. Frank C.), 2742 Washington Blvd., Huntington, WV 25705
Newsletter (Collegiate & Alumnae): Patricia Heneghan Pelkofer (Mrs. C.G.), 252 South Winebiddle St., Pittsburgh, PA 15224
Philanthropy (Collegiate): Joan Dondrea Lowry (Mrs. Bob-Bill), 578 Yarmouth Lane, Bay Village, OH 44140
Philanthropy (Alumnae): Priscilla (Pat) Beatty (Miss), 3691 NW 95th Terrace, Apt. 1202, Sunrise, FL 33321
Programs (Alumnae): Sherrie Campbell Loader (Mrs. Charles), 565 Church, Portland, MI 48875
References: Marianne McKeeman Cravens (Mrs. Scott), 4455 Hollyhock Street, Ft. Collins, CO 80526
Rose Shop Chairman: Karen Fellows Soyk (Mrs. Lon), 31033 38th Ave., South, Auburn, WA 98002
Scholarship (Collegiate): Margaret Stone Grosse (Mrs. Robert), 21 Terrace-Walk, Berkeley, CA 94707
Elizabeth Coulter Stephenson Scholarships (Collegiate): Sarah Jane Shank Houston (Mrs. Harold), 3358 Ramblewood Place, Sarasota, FL 33577
Sorority Education Chairman: Ellen Kroll Jenkins (Mrs. Paul L.), 1101 Ramblin Court, Greenwood, IN 46142
Standards: Lee McFalls Rodekohr (Mrs. Larry), 901 Platte Avenue, Cheyenne, WY 82001
National Rush Committee Members: Susan Adrianson Skambis (Mrs. Christopher), 230 West Lake Sue Ave., Winter Park, FL 32789
 Marvona Easley Tavlin (Mrs. Michael), 7411 Briarhurst Circle, Lincoln, NE 68506

PROVINCE COLLEGIATE AND ALUMNAE DIRECTORS

I. Maine, Vermont, New Hampshire, Massachusetts, Connecticut and Rhode Island

PCD: Angela Piper Shipman (Mrs. John), 8 Bayberry Lane, Exeter, NH 03833
PAD: Gay Thorro Rose (Mrs. Jack), 124 Roxbury Road, Niantic, CT 06357

II. New York and New Jersey

PCD: Teresa Johnson Severy (Mrs. Raymond), 2127 Northampton Way, Lansing, MI 48912
PAD: Amy Furesz Curry (Mrs. James), 338 Marvin Ave., Hackensack, NJ 07601

III. Pennsylvania and Delaware

PCD: Phyllis Snape Favorite (Mrs. Robert), 570 Lancashire Lane, State College, PA 16801
PAD: Diane Dershem Kreider (Mrs. Edward), 6204 Elmer Avenue, Harrisburg, PA 17112

IV. West Virginia

PCD: Sherry Hornsby Miller (Mrs. William), 2609 Jefferson, Pt. Pleasant, WV 25550
Acting PAD: Charlotte Fields Silversteen (Mrs. Allan), 513 Toll Road, Orelan, PA 19075

V. Ohio

PCD: Lynnda Wolf Hoefler (Mrs. Robert), 1287 Denise Drive, Kent, OH 44240
PAD: Lois Randolph Nesgoda (Mrs. Leonard), 5652 Alberta Dr., Lyndhurst, OH 44124

VI. Michigan

PCD: Janelle Kiszka (Miss), 4505 Cedardale Lane, Flushing, MI 48433

PAD: Pamela McClure Cronenwett (Mrs. William), 25720 West Hills Drive, Dearborn Heights, MI 48125

VII. Indiana

PCD: Beth Melton (Miss), 966 Varsity Drive, Evansville, IN 47712
PAD: Gelaine Listenberger Smock (Mrs. Steven), 9561 E. Southport Road, Indianapolis, IN 46259

VIII. Wisconsin

PCD: Danice Whalen (Miss), 913 1/2 S. Roosevelt, Green Bay, WI 54301
PAD: Kay Morrow Wright (Mrs. Terry), 10477 Juan Calle, Des Moines, IA 50322

IX. Illinois

PCD: Gail Easley McKee (Mrs. Don), 776 10th Street, Charleston, IL 61920
Acting PAD: Charlotte Fields Silversteen (Mrs. Allan), 513 Toll Road, Orelan, PA 19075

X. Iowa

PCD: Janet Eisler Havener (Mrs. Gary), 4343 N. Sheridan Ave., Loveland, CO 80537
PAD: Kay Morrow Wright (Mrs. Terry), 10477 Juan Calle, Des Moines, IA 50322

XI. Missouri

PCD: Cherine Heckman (Miss), 214 West 1st, Apt. 11, Maryville, MO 64468
PAD: Eileen Hoffman Doe (Mrs. Larry), 2 Locust Drive, Florissant, MO 63031

XII. Kansas, Nebraska and the collegiate chapters of Colorado

PCD: Janet Eisler Havener (Mrs. Gary), 4343 N. Sheridan Ave., Loveland, CO 80537

PAD: Carolyn McCandless Woodling (Mrs. Charles), 3112 Creekwood, Lawrence, KS 66044

XIII. Minnesota, North Dakota and South Dakota

PCD: Jeri Seals Weigand (Mrs. Gregg), 549 19th Avenue, North, South St. Paul, MN 55075

PAD: Sylvia Lee Kafkas (Mrs. John), 3505 Humboldt Ave., South, Minneapolis, MN 55408

XIV. Colorado, Wyoming, Utah, Arizona and New Mexico (ALUMNAE CHAPTERS ONLY)

PAD: Mary Jo Harris Messlin (Mrs. Carl), 2998 S. Akron Court, Denver, CO 80231

XV. SOUTH Southern California, Southern Nevada and Hawaii

PCD: Karen Martin Dessel (Mrs. Tom), 2015 Studebaker Road, Long Beach, CA 90815

PAD: Elizabeth Barbieri Bragg (Mrs. Lawrence), 2972 Leopold Ave., Hacienda Heights, CA 91745

XV. CENTRAL Northern California and Northern Nevada

PCD: Susan Kelly Warren (Mrs. Robert), 212 Farm Lane, Martinez, CA 94553

PAD: Ruth Rue Behnke (Mrs. Albert), 2241 Sacramento St., San Francisco, CA 94115

XV. NORTH Oregon, Washington, Montana, Idaho and Alaska

PAD: Helga Kohlenberg Clark (Mrs. William), 4866 123rd Place S.E., Bellevue, WA 98006

XVI. Oklahoma

PCD: Donna Sonaggera Brooks (Mrs. Mike), 241 West Durham Street, Broken Arrow, OK 74012

PAD: Doris Wright Sandoz (Mrs. N. O.), 624 SW 51st St., Oklahoma City, OK 73109

XVII. Texas and the collegiate chapters of New Mexico

PCD: Merry Westbrook Adamcik (Mrs. Roy), 6222 Ariel, Houston, TX 77074

PAD: Annette Fowler Nall (Mrs. Garry), Box 136, WT Station, Canyon, TX 79015

XVIII. Louisiana and Mississippi

PCD: Jean Funck Person (Mrs. John D.), 4808 Craig Ave., Kenner, LA 70062

PAD: Lizetta M. Frederick (Ms.), 3208 E. Lafouche Ct., Kenner, LA 70062

XIX. Tennessee

PCD: Clara Schnakenberg Smith (Mrs. Dale), 605 Netherland Dr., Hermitage, TN 37076

PAD: Violet Henson Anderson (Mrs. Charles A.), 102 Blue Hills Ct., Nashville, TN 37214

XX. Kentucky

PCD: Jennifer Plenge (Ms.), 904 Dana Marie Drive, Louisville, KY 40223

PAD: Carol Sharpe Harper (Mrs. Spencer E., Jr.), 3309 Green Hill Lane, Louisville, KY 40207

XXI. North Carolina and South Carolina

PCD: Sondra Golden Bass (Mrs. J. Albert, Jr.), 6425 Chapman Court, Raleigh, NC 27612

PAD: Patricia Menendez Tector (Mrs. John), 907 Winslow Court, Cary, NC 27511

XXII. Georgia

PCD: Patricia Canady Rosser (Mrs. David), 1609 Indian Rks. Road, Clearwater, FL 33516

PAD: In care of National Vice President Alumnae Affairs

XXIII. Alabama

PCD: Sandra McAlister Nesbitt (Mrs. Milton), 241 Landmark Dr., Montgomery, AL 36117

PAD: Lassie Jo Rounds Simms (Mrs. Jack), 208 Willow Creek Rd., Auburn, AL 36830

XXIV. Florida

PCD: Patricia Canady Rosser (Mrs. David), 1609 Indian Rks. Rd., Clearwater, FL 33516

PAD: Susan Mease (Miss), 2095 Sunset Point Road, #2405, Clearwater, FL 33575

XXV. Virginia, Maryland and Washington, D.C.

PCD: Mary E. McAuliffe (Miss), 11462 Orchard Lane, Reston, VA 22090

PAD: Gail Lutz Verley (Mrs. William), 3079 South Buchanan St., Apt. 2C, Arlington, VA 22206

XXVI. Arkansas

PCD: Jacqueline Miner Gardner (Mrs. Richard, Jr.), P. O. Box 2034, Russellville, AR 72801

PAD: In care of National Vice President Alumnae Affairs

State Reference Chairmen

ALABAMA: Madge Vinton Sorrell (Miss), Route 1, Pike Road, AL 36064 **ALASKA:** Caroline Dunbar Valentine (Mrs. Craig), 3838 W. Minster Way, Anchorage, AK 99504 **ARIZONA:** Margaret Ann Poe (Miss), 4720 West Rose Lane, Glendale, AZ 85301 **ARKANSAS:** Jeania Standridge Evans (Mrs. Jerry), Rt. #2, Box 370, Russellville, AR 72801 **CALIFORNIA (North):** Martha Henry Burde (Mrs. Walter), 24685 Camino del Monte, Carmel, CA 93923 **CALIFORNIA (South):** Janet Breitweiser Savage (Mrs. Tom), 5102 Woodwind Lane, Anaheim, CA 92807 **COLORADO:** Tressa Moor Brase (Mrs. Lawrence), Box 146, Calhan, CO 80808 **CONNECTICUT:** Ann Collins Gill (Mrs. Edward), 53 High Point Rd., Westport, CT 06880 **DELAWARE:** Cindy Andrew (Miss), 5068 W. Brigantine Ct. Mermaid Run, Wilmington, DE 19808 **DISTRICT OF COLUMBIA:** Pat Dansbury (Miss), 1722 19th St. NW #501, Washington, D.C. 20009 **FLORIDA:** Cindy Brown Helton (Mrs. Charles), 1601 Berkshire Ave., Winter Park, FL 32789 **GEORGIA:** Nancy Winslow Carroll (Mrs. William), 1518 1/2 Heath Street, Augusta, GA 30904 **HAWAII:** June Burnell Solomon (Mrs. Albert K.), 208 Seaside Towers 435 Seaside Ave., Honolulu, HI 96815 **IDAHO:** In care of Marianne McKeeman Cravens (Mrs. Scott), 4455 Hollyhock Street, Ft. Collins, CO 80526 **ILLINOIS:** Terryl Mellen (Miss), RR 1, Coal City, IL 60416 **INDIANA:** Karen Marley Davies (Mrs. Roger L.), 812 S. 5th St., Terre Haute, IN 47807 **IOWA:** Alaire Swedlund Bornholtz (Mrs. Tim), 3601 Lafayette, Sioux City, IA 51104 **KANSAS:** Jane Smith Furman (Mrs. Richard), 4017 W. 68th Terrace, Prairie Village, KS 66208 **KENTUCKY:** Barbara Rinehart Plenge (Mrs. Stephen), Rt. 5, Cedar Grove Rd., Shepherdsville, KY 40165 **LOUISIANA:** Jane Weaver Mathes (Mrs. Jimmy), 12538 Sherbrook Dr., Baton Rouge, LA 70815 **MAINE:** Candace Hilton Smith (Mrs. Nelson L.), R.R. 2, Box 505A, Yarmouth, ME 04096 **MARYLAND:** Pat Dansbury (Miss), 1722 19th St. NW #501, Washington, D.C. 20009 **MASSACHUSETTS:** Mary Catherine Davis, 25 Bayberry Circle, Millis, MA 02054 **MICHIGAN:** Terri Anderson Miller (Mrs. Bruce), 2476 Sharma Lane, Howell, MI 48843 **MINNESOTA:** Grace Dollohan (Miss), 4040 15th Ave. South Apt. 1, Minneapolis, MN 55407 **MISSISSIPPI:** Lanell Long McLeod (Mrs. James), Rt. 3, Box 433, Brandon, MS 39042 **MISSOURI:** Mechaela K. Kerns (Miss), 10540 Washington #304, Kansas City, MO 64114 **MONTANA:** Jackley Meyers (Miss), 343 W. Lawrence, #4, Helena, MT 59601 **NEBRASKA:** Carole Sorensen (Miss), 3027 W. Capital Ave., #26, Grand Island, NE 68801 **NEVADA:** Lori Figgins (Miss), 647 Peppertree Circle, Henderson NV 89015 **NEW HAMPSHIRE:** Karen Macriganis (Miss), Box 296, Laconia, NH 03246 **NEW JERSEY:** Debra Bass (Miss), 357 Shea Dr., New Milford, NJ 07646 **NEW MEXICO:** Louise Seitzinger Longenecker (Mrs. Donald), 1417 W. 8th Street, Silver City, NM 88061 **NEW YORK:** Mary Frances Sims (Miss), 95 Ball Road-High Acres, Syracuse, NY 13215 **NORTH CAROLINA:** Linda Angel Leedham (Mrs. Gary), 4414 Woods End Lane, Matthews, NC 28105 **NORTH DAKOTA:** Kathie Ryckman Anderson (Mrs. Owen), 816 N. 39th St., Grand Forks, ND 58201 **OHIO:** Sandra Sebrell Bailey (Mrs. Bruce), 541 Willard Rd., Aurora, OH 44202 **OKLAHOMA:** Ruby Gray Purdum (Mrs. C. B.), Rt. #1, Box 147, Dewey, OK 74029 **OREGON:** Barbara Kersch Hamilton (Mrs. W. B.), 12601 S.E. Market, Portland, OR 97233 **PENNSYLVANIA:** Debbie Fries (Miss), 57 Pine Hill Rd., Front, Mount Pocono, PA 18344 **RHODE ISLAND:** Patricia Webster Boynton (Mrs. William), 63 Benefit Street, Warwick, RI 02886 **SOUTH CAROLINA:** Sharon Youngblood Parsell (Mrs. David), 2 Kingsbury Rd, Rt. 9, Greenville, SC 29609 **SOUTH DAKOTA:** Doris Dalin Huffman (Mrs. Richard, Jr.), 1535 S. State St., Aberdeen, SD 57401 **TENNESSEE:** Joyce Lockhart Gary (Mrs. Wallace), 1347 Greendale Ave., Memphis, TN 38127 **TEXAS:** Ann Clay Elkins Hawkins (Mrs. Jerry), 324 Pine St., Lake Jackson, TX 77566 **UTAH:** Jean Peters Christensen (Mrs. William), 1669 Yalecrest Ave., Salt Lake City, UT 84105 **VERMONT:** Pat Perreboom Hofer (Mrs. David), 22 Hillwinds, Brattleboro, VT 05301 **VIRGINIA:** Sue Kuether Sippel (Mrs. Leonard), 1109 Five Points Rd., Virginia Beach, VA 23454 **WASHINGTON:** Karen Fellows Soyk (Mrs. Lon), 31033 38th Avenue, South, Auburn, WA 98002 **WEST VIRGINIA:** Mary Barnette Sender (Mrs. Robert), 140 Meadow Dr., Scott Depot, WV 25560 **WISCONSIN:** Mary Ann Myhrvold Janssen (Mrs. Paul), 9330 W. Dixon Street, Milwaukee, WI 53214 **WYOMING:** Donna McElroy Frerichs (Mrs. William), 3301 Alta Vista Drive, Laramie, WY 82070

From The Lampwriter

Sometimes being an Editor has its advantages. Of course one receives all kinds of interesting mail—even some complimentary letters, and one can thrive on this. But then, there are nice surprises, too.

Recently I received a note from Lauan Garnjost of our San Francisco-Bay Cities Alumnae chapter in which she mentioned she was sending a copy of their recently published cookbook. And, she added: "hope you enjoy reading and using it, with our chapter's compliments."

I don't profess to be an excellent cook (I do think I am a *good* cook!) but I collect cookbooks like they are going out of style! This one is excellent. It's a good value for only \$5.85 which includes mailing. If you are interested, Lauan's address is 1600 Navellier Street, El Cerrito, CA 94530.

Alpha Phi Fraternity recently informed us that one of our Delta Zetas, Rosie Gomez at Georgia State-ΔΔ had been awarded a \$250 Alpha Phi Fellowship for 1982-83. Their Fellowships are given at schools where Alpha Phi formerly had chapters. What a nice idea!

Our Dorothy Scott Gibbs (Syracuse-AK) was recently awarded the Hildesheim Vase by the Ohio Classical Conference at its annual meeting. The Hildesheim Vase, a travelling trophy which has been given annually since 1925 to an outstanding classics program in the State of Ohio, is a full-scale silver replica of an ancient Roman *krater*, or wine-mixing bowl. The original, which is now in the Berlin Museum, is part of a hoard of silver which was unearthed in 1867 near Hildesheim, Germany, by soldiers digging fortifications for the Franco-Prussian War. It is believed the silver service may have belonged to the Emperor Augustus' step-son, Drusus, who was killed while fighting in Germany.

The award is based on the entire Latin program, including courses offered, students' examinations and projects, letters of support from administrators, students and parents, students who have continued their study of the classics in college and activities such as the Junior Classical League which have spread the influence of Latin into the community.

Dorothy teaches Latin, French and German at Fairmont West High School in Kettering, OH. She is a sponsor of the local chapter of the Junior Classical League, through which her students have won ribbons and trophies in state and national competition, and a gold medal in the National Latin Exam.

Dr. Mary Louise Shannon (FSU-AΣ) was able to take advantage of Spring Break at Florida Junior College where she is a professor of

speech and humanities and made a trip with a group to the People's Republic of China.

Now, Mary Louise is a jogger and proceeded to do so between 5:50 and 6:30 a.m. on the city streets and hotel grounds of such cities as Shanghai, Wuxie, Nanking, Suchow and Peking.

Quite often she was the only jogger in the streets and nearly always was the only Caucasian jogger - and never did she meet a Chinese woman jogger. Cautious, friendly stares were the reactions of the milling mobs of workers, all similarly clad, enroute to factory jobs, to the "yellow" lady running 2 miles a day.

"It was a wonderful way to start the day," Mary Louise wrote. "A great way to see people at their version of 'stand 'n snak' or to get a look through open doors at the starkness of the housing units, or to see babies and young children enroute to nursery schools. In addition, groups of older Chinese gather in the morning for a graceful exercise form known as shadow boxing."

Only twice did our ΔZ-jogger become apprehensive. Once, when at 5:30 a.m. the fire escape door and the doorway to the steps were locked and the elevators not running. A call to the hotel manager had to be made to let the 'locked in' jogger out. Another morning, the heavy hotel entrance gates were securely closed upon returning from a jog and so a wait was necessary - until hotel help reported to work and the gates were opened, the jogger was 'locked out.'

And so, until the next time, keep those cards and letters coming. Santa Claus brought me a bigger mail box for Christmas!



Dorothy Scott Gibbs (Syracuse-AK) and the Hildesheim Vase.

LG



This is pledge day at Seattle, the University of Washington-Kappa chapter recolonization.

POSTMASTER: Send 3579 immediately to Delta Zeta Sorority, Suite 600, 21 E. State St., Columbus, OH 43215

Delta Zeta Sorority
21 E. State St. Suite 600
Columbus, OH 43215

Address Correction Requested

Non-Profit Org.
U. S. Postage
PAID
Permit No. 131
Tulsa, OK