

LAMP

OF
DELTA
ZETA

SPRING 1982



The President Writes



Since June I have had the privilege of installing two new chapters in Delta Zeta. One of the chapters was a recolonization at a campus where we once had a chapter; one was on a campus as a new entity. In both instances I have been extremely pleased with the young women representing us. Both groups have young women any chapter would be proud to include in their membership. Both groups were full of excitement and impatience — excitement at the idea of their initiation and impatience to have it done so they would be “real Delta Zetas” as one member put it.

Each group also impressed me with their sameness of ideals: the determination to be the best possible representatives of their campus and in their community, both individually and collectively as Delta Zetas.

Since returning home I have had the time to reflect on these two groups. They are totally different areas of the country — the far Northeast and the Southeast — and on different types of campuses — a large public university and a small private school. A common denominator they share is their desire for excellence in every phase of their involvement — their schooling, their careers and especially their sorority. The groups have other important similarities. Both have strong alumnae support in the area and both have administrative approval and support from their universities. Each group is the most recent addition to the campus.

A colony requires a special kind of young woman, one who is not afraid of the new, one who is willing to accept a challenge of the untried and one who is not afraid of the hard work and long hours necessary to prepare a colony for full membership with all of Delta Zeta's privileges and responsibilities. These young women accepted our invitation, our requirements for the number of members, the learning of our traditions, the knowledge of our procedures, the various college programs, the pledge examinations — all new and different to those not previously in a sorority. And they passed these tests with flying colors. These two new chapters at the University of Tampa and the University of Massachusetts are featured in this issue of the *LAMP*. We welcome them as we welcome all those who are to come to the best there is — to our Delta Zeta.

Carolyn S. Sullatt



LAMP

Volume 71 Number 1 Spring 1982

Founders of the Sorority



Miami University
Oxford, Ohio 1902

Alfa Lloyd Hayes, 1880-1962
Mary Collins Galbraith, 1879-1963
Anna Keen Davis, 1884-1949
Julia Bishop Coleman, 1881-1959
Mabelle Minton Hageman, 1880-1929
Anne Simmons Friedline, 1879-1932

THE LAMP

(USPS 585-640)

The Lamp of Delta Zeta, official magazine of the sorority, is published quarterly by the Delta Zeta Sorority, 21 East State Street, Columbus, Ohio.

Send all editorial material to the Editor, Mrs. Robert L. McKeeman, 5517 S. 74th E. Avenue, Tulsa, OK 74145. Send all matters of a business nature to Delta Zeta National Headquarters, Columbus, OH.

Send all contributions for Delta Zeta Founders Memorial Foundation and Gallaudet College to Mrs. William Barth, 1662 Villa South Drive, West Carrollton, OH 45449.

EDITOR

Gwen Moss McKeeman
5517 S. 74th E. Avenue
Tulsa, Oklahoma 74145

STAFF

Diane Jones Skelton
Virginia Gilbert

Contents

- 2 Woman of the Year
- 4 Delta Zeta Recolonizes at Tampa
- 6 Xi Alpha Installed at Massachusetts
- 8 The Now! . . . NPC
- 11 Our National Committee Chairmen
- 14 Delta Zeta from Coast to Coast
- 18 On Campus
- 30 Profile of a Collegian
- 31 Flame Eternal
- 31 Straight-A Collegians
- 32 Chapter Honor Roll
- 34 Alumnae Chapters Write . . .
- 36 Alumnae Profiles
- 38 Mrs. Music, Edna Mae Nauman
- 39 Directory
- 41 Campus Sights and Sounds

ABOUT THE COVER

Pictured are the badges of the 26 member groups of the National Panhellenic Conference. The artist, Lois Guthrie, ΔΔΔ, did the drawing for "Going Greek in the 80's", the new public relations package prepared by the National Panhellenic Editors Conference. Mrs. Guthrie calculates she drew 415 pearls, five rubies, 11 sapphires and four diamonds.

“Sisterhood really does have meaning”

Woman of the Year Honored in St. Louis



The Woman of the Year medallion.

*by Mary Margaret Calhoun Fore, SMU-AΨ
National Vice President of Alumnae Affairs*

“Sisterhood really does have meaning.” These words were expressed by Alice Hanson Jones (Washington-K), the 1981 Delta Zeta Woman of the Year as she acknowledged receipt of the award from National President Carolyn Barnes Gullatt. The presentation was made at the St. Louis alumnae chapter's annual Founders Day banquet, October 27, at the Top of the Sevens restaurant in Clayton, MO. Twenty-four floors above the city of St. Louis, crystal bud vases holding Killarney roses and greenery decorated the tables from which the magnificent panoramic view of city and suburban lights was enjoyed. Individual places were marked with rose colored three dimensional Delta-shaped programs and tiny rose colored candles in green leaf-shaped gum drop holders.

Tana Borgers Ortinau (UMSL-IΞ), vice president of the host St. Louis alumnae chapter, served as toastmistress and introduced special guests Carolyn Gullatt; Mary Margaret Fore, National Vice President of Alumnae Affairs; Mrs. William H. Danforth, wife of the chancellor of Washington University, and Dorothy Brockhoff, contributing editor of the *Washington University*

Magazine and author of “Where There is a Will” - a six page feature article in that magazine's Winter 1979 issue about Dr. Jones. Former presidents of the St. Louis alumnae chapter, including Mary Elizabeth Morris, M.D. (Ohio State-Θ), a member of the 1951 Woman of the Year Honor Court, were presented.

Jane Daily Snyder (Northwestern-AA), alumnae chapter president and college chapter director for Iota Xi at the University of Missouri - St. Louis, gave the welcome and recognition of the collegians. Kim Walz, UMSL-IΞ chapter president, made inspirational remarks and presented the collegiate chapter members who sang several Delta Zeta songs.

Mary Margaret read the formal announcement of Dr. Jones' selection as 1981 Woman of the Year, briefly detailing her accomplishments. In spite of the many awards and prestigious recognition Dr. Jones has received as an internationally known economic historian, the most audible reaction from the audience came when it was noted she jogs one to one and one-half miles three times weekly at the age of 76.

In presenting the award, Carolyn recalled the inauguration of the Woman of the Year award. In 1950, Betsy Bradley Leach (USC-AI), then National Vice President of Alumnae, proposed and presented with the approval of the National Council the award to honor Delta Zeta alumnae who have achieved national recognition in



Alice Hanson Jones, Delta Zeta Woman of the Year.

their chosen careers whether professional or volunteer. Each year alumnae and collegiate chapters are invited to nominate a candidate for the award. The award is announced and presented on Founders Day.

The traditional silver medallion was designed and crafted in 1957 by Eleanor Hansen Nichols (Wisconsin-T) of Wilmington, DE, at the request of then National President Evelyn Adams Costello (Knox-N). Each honoree since that year including Eleanor herself in 1979 has received a personally engraved medallion. The design is a circle, symbolizing the everlasting friendship in Delta Zeta, around the Greek letters Delta Zeta shadowed by the flame of love and loyalty to our sisterhood. The six indentations around the circle represent the six founders.

Alice Jones devised her revolutionary research technique providing data for the three volumes entitled *American Colonial Wealth - Documents and Methods* published by Arno Press, NY in 1977 and *Wealth of a Nation To Be: The American Colonies on the Eve of the Revolution* published by Columbia University Press in 1980. Alice's impact on economic history has been compared to an important discovery in the world of medicine.



Iota Xi (University of Missouri - St. Louis) sings at Founders Day.

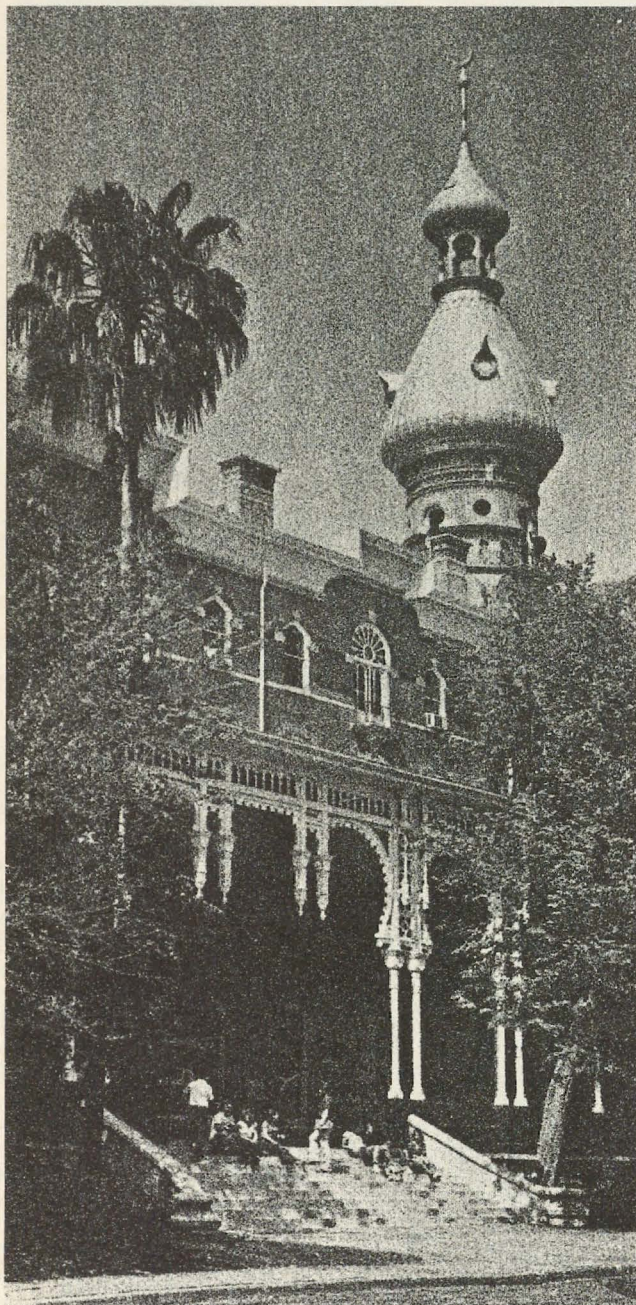
Alice Hanson Jones - daughter, sister, wife, mother, scholar, teacher and sports enthusiast, internationally recognized "economic historian of the first rank" and loyal Delta Zeta sister fulfills in every measure the criteria established for the Delta Zeta Woman of the Year award.

The banquet closed with the Founders Day candle-lighting ceremony and the circle of friendship.



Pictured at the St. Louis celebration are Tana Ortinau, St. Louis alumnae vice president; Jane Snyder, St. Louis alumnae president and CCD for Iota Xi; Carolyn Gullatt, National President; Alice Hanson Jones, Woman of the Year; Kim Walz, president of UMSL-Iota Xi, and Mary Margaret Fore, National Vice President - Alumnae Affairs.

Delta Zeta Recolonizes at Tampa



Historic Plant Hall on the campus at the University of Tampa.

Plant Hall, formerly the Tampa Bay Hotel, provided a unique and beautiful setting for the initiation of Delta Beta chapter as Delta Zeta returned to the University of Tampa. This exceptional building, a national Historic Landmark and the focal point of the campus, is the main classroom and office facility.

A local group had been formally pledged to Delta Zeta on January 18, 1980. Following a successful fall rush, the colony reached the campus total of forty to make possible the reestablishment of Delta Beta Chapter. The installation was a joyous occasion for the campus, community and the Bay Area alumnae, many of whom attended the lovely initiation service performed by members of Alpha Sigma chapter at Florida State University.

The installation banquet was held at the new Tampa Marriott Hotel with alumnae, administrators, families and friends attending. Norma Andrisek, Past National President, presided. Sarah Jane Houston and Lucile Cooks, National Directors, extended greetings and shared the many notes of congratulations sent to the new



National President Carolyn Gullatt presents the charter to Delta Beta President Louise Gilbert as Arlene Shearer, Assistant Student Affairs Advisor, represents the University of Tampa.



Initiates and pledges of Delta Beta Chapter at the University of Tampa.



Province and National Officers attending the Tampa installation are (standing, l to r) Betty Nelson, State Reference Chairman; Sarah Jane Houston, National Director; Patricia Rosser, Province Collegiate Director; Louise Gilbert, ΔB Chapter President; Lucile Cooks, National Director; Susan Mease, Province Alumnae Director, and Colleen Quinley, National Field Representative. Seated are Carolyn Gullatt, National President, and Norma Andrisek, Past National President.

chapter from Delta Zetas all over the country. Patricia Rosser, Province Collegiate Director, and Susan Mease, Province Alumnae Director, welcomed the new chapter on behalf of Province 24.

Louise Gilbert, colony president and 1981 Convention initiate, responded by thanking all who had shown support to the colony during its growth period. She also explained the role of the campus administration in encouraging sororities by starting one large local group which eventually broke into the three national sororities now on the campus - Delta Gamma, Alpha Chi Omega and Delta Zeta.

Arlene Shearer, Assistant Student Affairs Advisor, represented the University and brought greetings from Dr. Richard Cheshire, President of the University of Tampa. Carolyn Gullatt, National President, was the installing officer. She presented the president's gavel to Louise and the new charter to the chapter officers.

The chapter received many gifts including a lovely silver punch bowl from the National Council. A special gift was a silver tray from Betty Nelson, State Reference Chairman for Florida, and her husband, Don. The Nelson's daughter, Kristi, is the College Chapter Director for Delta Beta and was the colony president for Lambda Sigma Chapter at Winthrop, South Carolina when it was installed.

The installation banquet closed with the Rose Ceremony presented

(continued on page 13)



Members from Florida State University's Alpha Sigma chapter installed the newest Florida chapter.

Xi Alpha Chapter Installed at University of Massachusetts

The University of Massachusetts at Amherst is located in one of the most picturesque sections of the state. Some 150 buildings are situated on over 1,100 acres of land with many of these structures providing magnificent views of the Connecticut valley. Chartered in 1863, the University of Massachusetts ranks among the outstanding educational institutions of the country in a state where the first secondary school in America was established by the Puritans in 1635.

On December 4, 1981, Delta Zeta became a part of this great University with the installation of its first Massachusetts chapter, appropriately named Xi Alpha. Included in a Greek community of fourteen fraternities and nine sororities, Delta Zeta joins sister National Panhellenic Conference sororities Alpha Chi Omega, Kappa Kappa Gamma, Chi Omega, Sigma Delta Tau, Sigma Kappa and Sigma Sigma Sigma.

Delta Zeta was selected to colonize on the campus in March, 1981 by the University Greek Expansion Committee. Field Representatives Patti Floyd and Susie Szabo pledged the first colony members in April. A Delta Zeta house was opened in September and Delta Zeta pledges participated in formal rush and worked with field representative, Terry McNeer in continuing the colonization.

Through the fall, excitement grew as goals were reached and the installation weekend approached. On December 4, forty young women were initiated by members of Beta Alpha chapter, the University of Rhode Island.

The Installation banquet was held at the beautiful Hotel Northampton, Northampton, Massachusetts on Saturday, December 5. Chapter members were joined by parents, families and friends. Special guests of Delta Zeta included Loring Barnes, Past

President of Panhellenic, Bryan O'Connor and Bryan Beaudreault, past and present IFC presidents and Jim Floyd and Peggy Jablonski of the Greek Affairs Office, all of whose support had meant so much to the new chapter. Also participating in the evening's activities were Delta Zetas from the installing chapter, Beta Alpha, and the University of Connecticut ΓΒ, the University of New Hampshire-ΘΓ and the University of Southern Maine-AZ.

Norma Andrisek, Past National President and extension director, served as the toastmistress of the banquet. She cautioned the University of Massachusetts to be prepared for Delta Zeta and Delta Zeta to be prepared for Xi Alpha because all who have worked with this new chapter have been impressed by their enthusiasm and determination to provide the very best sorority experience.



Xi Alpha Chapter at the University of Massachusetts.



Pictured are National and Province officers who attended the installation weekend. Standing (l to r) Terry McNeer, National Field Representative; Gay Rose, Province Alumnae Director; Kathy Vlerebome, chapter advisor; Karen Manuel, Province Collegiate Director, and Mary Davis, State Reference Chairman. Seated (l to r) Dianne Guild, National Secretary; Carolyn Gullatt, National President; Karen Johnson, Xi Alpha president, and Norma Andrisek, Past National President.



Members of the initiation team from Beta Alpha chapter, University of Rhode Island.

The Rev. J. Joseph Quigley, a special friend of the chapter, gave the invocation. The chapter was welcomed by the Province Collegiate Director, Karen Manuel, and the Province Alumnae Director, Gay Rose. New advisor, Kathy Vlerebome offered her good wishes and support. Karen Johnson, colony president, who had been initiated at the 1981 National Convention, gave a brief description of all that had brought the chapter to this day and offered her thanks and appreciation to all of those who had made the installation possible. Dianne Guild, National Secretary, brought greetings from Delta Zetas throughout the country. Lambda Zeta Chapter at the University of Southern Maine sang the Delta Zeta creed and a song written by their pledge class.

A special 'thank you' was the presentation of roses to Terry McNeer, national field representative, by Xi Alpha in appreciation for her help. Terry responded, expressing her pride and faith in the new chapter. Leslie Chambers, Greek Area Director, welcomed Delta Zeta on behalf of the University. Dr. Henry Koffler, Chancellor of the University of Massachusetts, highlighted the evening with his remarks as he offered the support of the University and expressed his impression that Delta Zeta is the best! All agreed!



Karen Johnson, colony president, accepts the Xi Alpha charter from National President Carolyn Gullatt.



Dr. Henry Koffler, Chancellor, University of Massachusetts, welcomed Delta Zeta to his campus.

The most important moment arrived as Carolyn Gullatt, National President, officially installed Xi Alpha chapter, presenting the president's gavel to Karen Johnson and the charter to the chapter officers. Following the presentation of gifts, the traditional rose ceremony and friendship circle, the evening's activities were concluded.

A New England snowstorm blanketed the Amherst area on Sunday, December 6, forcing an early departure by many of the weekend participants. The reception for the chapter went off as planned, however, with members of the college and Greek community, parents and friends gathering in the University Center to greet the new Delta Zetas.

Xi Alpha chapter members are Carol Frances Amoroso, Cheryl Marie Bell, Beth Mechan Brown, Ellen Margaret Brown, Elise Jill Cassuto, Cathy Ann Claypoole, Carrie Elizabeth Collins, Marcia Sharon Cooper, Shelia Margaret Curran, Lisa Ann Demarkis, Laurie Anne Dickson, Judy Lea Goldman, Brenda Lee Hajjar, Jean Marie Hakkila, Karis Scott Holt, Cindy Bliss Johnson, Karen Johnson, Lauren Jan Kaufman, Norma Jeanne LaPointe, Nancy Lee Leader, Lauren Lee L'Esperance, Elizabeth MacDonald, Mary Elizabeth McVey, Karen Ann Orłowski, Elaine Palumbo, Christine Papageorge, Pamela Beth Papier, Yvette Lillian Rheault, Juanita Lorreen Rivera, Wendi Sue Rodman, Ana Louisa Rodriguez, Debbie Rae Rosenthal, Pamela Jane Salshulta, Alison Elizabeth Schule, Barbara Schwartz, Linda Jean Souza, Elizabeth Anne St. Jean, Louise Tosches, Lisa Wary and Laura Weinman.

The Now! . . . NPC

National Panhellenic Conference 1981 - Denver

*by Dwayla Finch Porter (OSU-AE)
NPC Delegate*

Denver's mile high setting at the foot of the Rockies provided a magnificent, ever-changing panorama as delegates and visitors arrived for the forty-seventh session of the National Panhellenic Conference. Representing Delta Zeta were Carolyn Gullatt, National President; Dee Porter, NPC Delegate; Norma Andrisek, Past National President and alternate delegate, and Gwen McKeeman, LAMP editor and Past Chairman of the National Panhellenic Conference.

The theme of the conference, held from November 1 through November 4, was "The Now! . . . NPC." Minnie Mae Prescott, Kappa Delta, 1979-1981 Chairman, related in her report: "I gather that in today's terminology the 'Now Anything' is supposed to be a very desirable, satisfactory and up-to-the-minute state of affairs. I regret to have to say that in my opinion, NPC has not reached the goal which is indicated by the 'Now NPC.'

"I think we are trying. There are evidences that we are making an effort to be flexible and innovative. We have come a long way, but we have a long way to go, I believe. Therefore, let us not look upon the 'Now NPC' as an accomplished goal, but rather as a challenge for charting our course in the future. An accomplishment which will never, in my opinion, be fully realized until and unless we have the complete, sincere and dedicated co-operation of all twenty-six member groups of our conference."

That was the spirit of the four day conference as all twenty-six member groups explored issues and concerns of today . . . concerns such as hazing, extension ethics, rushing and pledging procedures, alcohol abuse and the economy that affect each member group and therefore, the National Panhellenic Conference.



NPC DELEGATES AND PAST CHAIRMEN—Top row (left to right) Mrs. Isham P. Nelson, Jr., Gamma Phi Beta; Mrs. John H. Allen, Alpha Sigma Alpha; Mrs. Jack P. Mills, Pi Beta Phi; Mrs. D. W. Ferris, Chi Omega. Second row—Mrs. Paul Laederach, Delta Gamma; Mrs. Richard Wall, Alpha Chi Omega; Mrs. E. C. Kontz, III, Zeta Tau Alpha; Mrs. James Greene, Theta Phi Alpha; Mrs. Arthur Porter, Delta Zeta. Third row—Mrs. William Katz, Sigma Delta Tau; Mrs. Mary K. Barbee, Sigma Sigma Sigma; Mrs. Wilbur M. Pryor, Jr., Kappa Kappa Gamma; Mrs. Alexander Jones, Alpha Phi; Mrs. E. Brooks Lilly, Alpha Delta Pi. Fourth row—Mrs. Charles R. McCrory, Alpha Sigma Tau; Mrs. A. N. Jorgensen, Jr., Kappa Alpha Theta; Mrs. B. Melvin Swire, Phi Sigma Sigma; Mrs. J. Allen Nye, Jr., Delta Delta Delta; Mrs. Joseph Schultz, Delta Phi Epsilon; Mrs. Ronald Saul, Alpha Epsilon Phi. Bottom row are past chairmen, Mrs. L. D. Foxworthy Alpha Gamma Delta; Mrs. William Nash, Alpha Xi Delta; Mrs. Karl B. Miller, Sigma Kappa; Miss Minnie Mae Prescott, Kappa Delta (1979-81 biennium chairman); Mrs. Robert L. McKeeman, Delta Zeta; Mrs. W. F. Williamson, Jr., Phi Mu; Mrs. George K. Roller, Alpha Omicron Pi.



NATIONAL PANHELLENIC EDITORS MET IN CONJUNCTION WITH NPC MEETINGS—Top row (l-r) Denise McGuinness, Sigma Sigma Sigma; Denise Barker, Alpha Chi Omega; Jennifer Lamb, Kappa Delta; Mrs. Robert E. Goss, Alpha Sigma Alpha; Mrs. Neil Bardach, Sigma Kappa. Second row (l-r) Mrs. Thomas Dudley, Alpha Sigma Tau; Mrs. George Rudolph, Delta Delta Delta; Mrs. John Gallup, Kappa Alpha Theta; Mrs. David Selby, Kappa Kappa Gamma; Mrs. Michael Hinz, Alpha Omicron Pi. Third Row (l-r) Mrs. William Ford, Jr., Pi Beta Phi; Mrs. Carol R. Gast, Alpha Xi Delta; Mrs. Robert L. McKeeman, Delta Zeta; Mrs. Roland Hultsch, Alpha Phi; Ann Daly, Alpha Gamma Delta. Bottom row (l-r) Debra Bloom, Phi Mu; Mrs. Charles S. Hyatt, Chi Omega; Mrs. Phil Riske, Gamma Phi Beta; Mrs. James Levinson, Alpha Epsilon Phi; Mrs. Hale Watkins, Delta Gamma.



Delta Zetas at the NPC Awards Banquet were joined by University of Denver officials for this picture. A local group had petitioned Delta Zeta and had been approved by the university, so Delta Zetas had just learned that our Rho chapter is now back on the DU campus. In the picture are (top row) Scott Douget, Denver alumnae president; Robert Burrell, Dean of Students; Tom Goodale, Vice Chancellor of Student Affairs. (Second row) Nancy Yokomizo, local alumnae Panhellenic representative; Barbara Robel, Greek Affairs Advisor at Kansas State University; Carol Bertz, National Alumnae Relations Chairman, and Marianne Cravens, National Reference Chairman. (first row) Carolyn Gullatt, National President; Ann Norton, Panhellenic Advisor at Denver University; Dwayla Porter, NPC Delegate; Norma Andrisek, Past National President, and Gwen McKeeman, LAMP Editor.

The historic Brown Palace Hotel registration desk was the scene of many greetings of Greek friends as the delegates, alternates, presidents and visitors registered. Several committee meetings were held prior to the opening business meeting. Carolyn Gullatt attended the meeting of National Presidents. Dee Porter and Norma Andrisek attended the College Panhellenics committee meeting as Norma will serve as area advisor for the college Panhellenics in Western Pennsylvania and Dee will be area advisor for Oklahoma Panhellenics. Welcomed back by many NPC friends was Gwen McKeeman who attended the Editors' meetings.

On Sunday, after a brief tour of scenic Denver sights, we were guests of Kappa Delta at a reception in their National Headquarters located on the campus of the University of Denver. Denver Delta Zeta alumnae at the reception included Jo Messlin, Province Alumnae Director; Scott Douget, Denver alumnae president; Carol Bertz, National Alumnae Relations Chairman, and Ann Norton, Panhellenic advisor at the University of Denver.

The highlight of the opening NPC session was the slide presentation prepared by the National Panhellenic Editors Conference. "Going Greek in the Eighties" is a public relations package prepared to introduce the freshman student to the benefits of fraternity experience. These materials - slide presentation, brochure and poster - are ideal for alumnae and college Panhellenics

and parent-student organizations. The professionally narrated slide show can be purchased with accompanying brochures and posters.

Committee reports reflect growth in sorority membership in the 1979-1981 biennium. There has been a 6% increase in sorority membership in the 26 member groups. Eight new alumnae and fourteen new collegiate Panhellenics also reflect growth of NPC. Extension is a good barometer of the health of the sorority system; sixty extension inquiries were made during the past biennium.

A panel on regional and area conferences was conducted by Donna Irwin, NPC Regional Meeting Coordinator. Members of the panel were Barbara Robel, Panhellenic Advisor at Kansas State University and the Mid-American Panhellenic Council Association's Executive Director (Barb is a Delta Zeta, KSU-A); T. J. Schmitz, Fraternity Executives Association president; Mary Boyd, Alpha Phi National President; Barbara Laederach, NPC Area Advisor; Jane Arkens, NPC Consultant to the Western Regional Panhellenic Conference, and Lisa Widner, Vice President of Area III of the Western Regional Panhellenic Conference.

Information was given by this panel on a historical prospective of regional conferences and the current status of NPC participation in the regional conferences.

(continued on next page)

NPC in Denver

The delegates were presented with a reprinting of "NPC: An Historical Record of Achievement." What a joy to see in this historical record pictures of Alfa Lloyd Hayes at the 1912 National Panhellenic Congress; Grace Mason Lundy at the 1943 NPC meeting and our own Past NPC Chairmen, Rene Sebring Smith, 1931, and Gwen Moss McKeeman, 1977. "A National Panhellenic Review" which reflects actions of the conference was updated by NPC Secretary Mary Barbee, Sigma Sigma Sigma, and given to the conference delegates.

During the meeting in Denver, Denver Delta Zeta alumnae chapter hosted a reception for the ΔZ delegation. Other Delta Zetas who attended this reception were Lee Rodekohl, National Standards Chairman; Marianne Cravens, National Reference Chairman; Jo Messlin, PAD; Jan Havener, PCD; Carol Bertz, National Alumnae Relations Chairman; Delta Xi chapter CCD, Rhonda Page, and members of Delta Xi chapter from Northern Colorado University.

A panel on NPC/National Organizations/PH Advisors was led by Phyllis Pryor, Kappa Kappa Gamma, Chairman of the College Panhellenics Committee. Members of this panel were Judy Abrahamson, Assistant Director of Student Activities, Ball State University; Adele Williamson, Phi Mu NPC Delegate; Adlon Jorgensen, Panhellenic Advisor, University of Illinois; Myra Foxworthy, Alpha Gamma Delta NPC Delegate, and Robert Schwartz, Assistant Dean of Students, University of North Dakota.

The panel discussed effectiveness of current contacts between NPC and the national associations of deans, fraternity advisors and the National Interfraternity Conference; the changing profile of the Panhellenic Advisor and the role of NPC in clarifying procedures. Also David L. Westol, Theta Chi National Vice President and Assistant Prosecuting Attorney, County of Kalamazoo, MI, talked to the delegates on legal matters concerning the fraternity world.

During the 47th Session, two amendments to the Unanimous Agreements and four Resolutions were passed.

One amendment to the Unanimous Agreements further clarifies extension procedures. It reads:

- WHEREAS some confusion exists in the proper establishment of National Panhellenic Conference groups on campuses with functioning Panhellenic Councils, and
- WHEREAS the relationship between the host university and each chapter of the College Panhellenic Council are necessary to maintain an orderly and mutually productive panhellenic system: be it
- RESOLVED that the College Panhellenics Agreement, 1, c. be amended by the addition of the words, "with the approval of the proper authority" after the word "campus" and before the word "it" the statement will then read,

When a National Panhellenic Conference chapter is installed on a campus with the approval of the proper authority it shall become a regular member of the college Panhellenic association.

The other amendment deals with the issue of a chapter urging a rushee to list only one choice on her preference card.

WHEREAS the practice of listing only one preference in Preferential Bidding defeats the purpose of the system, and frequently leaves a rushee unplaced, therefore, be it

RESOLVED that The Standards of Ethical Conduct, item 4, be amended by adding the following clause:
or suggest that a rushee list only one choice on her preference card.

Item 4 will then read:

No fraternity member shall suggest to any rushee that she refuse a bid from one group in order to wait for a bid from another group or suggest that a rushee list only one choice on her preference card.

The Awards Banquet was held November 4 and the new Executive Committee was installed. Mary K. Barbee, Sigma Sigma Sigma, is the 1981-1983 Chairman of the Conference. Secretary is Cynthia McCrory, Alpha Sigma Tau, and the treasurer is Sydney Allen, Alpha Sigma Alpha.

As the conference was concluded the delegates felt it is absolutely essential that all 26 sororities respect and obey the spirit of all Unanimous Agreements and the recommended policies and procedures which were adopted by the NPC member groups. To quote Past NPC Chairman Mary Burt Nash, Alpha Xi Delta: "Cooperation - not competition must be our goal."



The "official" Delta Zeta delegation to NPC: Norma Andrisek, Past National President and Alternate Delegate; Carolyn Gullatt, National President and Alternate Delegate; Dwayla Porter, NPC Delegate, and Gwen McKeeman, NPC Past Chairman and LAMP Editor.

They're a Diverse Group

Our National Committee Chairmen

by Virginia Gilbert

They're a diverse group — housewives, teachers, architects, television personalities and performers — but they have at least one common interest: Delta Zeta programs.

Delta Zeta's national committee chairmen are responsible for coordinating collegiate and alumnae chapter work in each of our program areas. Thanks to their individual talents and collective effort, collegians and alumnae can look forward to well-planned, creative suggestions and guidelines for the 1981-83 biennium.

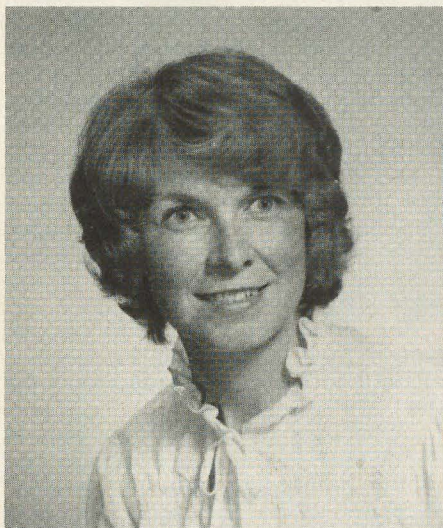
So meet seven national chairmen — some are new faces, while others have served Delta Zeta on a national basis for years. They have different interests — although several did list swimming as a hobby — but you'll find that each has that special kind of Delta Zeta enthusiasm that makes our program work.

Donna Stipek Collegiate Activities

A charter pledge of Lambda Rho chapter at Illinois State University, Donna Snyder Stipek was named Most Outstanding Collegian of Province IX in 1976. She was president, treasurer, Greek Council delegate and public relations chairman for Lambda Rho, earning a degree in education while making the dean's list for six semesters. She was named to *Who's Who in American Colleges and Universities*.

Donna was Lambda Rho's CCD for three years, and received her province's Marie Spencer Outstanding CCD award in 1980.

"My husband and I recently moved from Illinois to Buffalo, New York. John is vice president of the Buffalo division of Precision Dental Ceramics, Inc.," she said. "We hope to start snow skiing this winter."



Marcia Humpal, National Awards
Chairman

She's an avid reader, loves horseback riding and swimming, and calls herself a 'domestic engineer.' "I love to cook," Donna said, "and we are expecting our first baby in early June. As for now, Buddy, an English foxhound, is a very important part of our family."

Marcia Humpal Collegiate and Alumnae Awards

A member of Gamma Alpha chapter at Baldwin-Wallace College, Marcia Earl Humpal served as corresponding secretary, Panhellenic delegate and president. She was a member of several campus honoraries as well as the editor of the Women's Self-Government Association Handbook, and was a member of the homecoming court and a dormitory officer.

Marcia was named Pride of Province V as a senior, and has served as CCD of Gamma Alpha chapter as well

as holding numerous offices in the Berea, Ohio alumnae chapter. She was a National Awards Committee member during the last biennium and was a member of the 1981 National Convention Committee.

"My husband Dave is a social studies teacher at Berea High School, and summers find him running a golf course as a part-time job. Our son Greg started kindergarten this fall, and Caryn was three in November. Both children love swimming — as do their parents!

"After graduation I taught elementary music for five years. I still do some substitute teaching and have taught private flute lessons here at home. I also have done some post-graduate work in elementary education," she added. "I'm active in church music committees and preschool PTA and love Jazzercise (a dance fitness program)."



Donna Stipek, National Activities
Chairman



Amy Glasgow, National Newsletter Chairman

"I especially enjoy the alumnae group and all of the activities that go into making ΔZ a strong national sorority. Meeting sisters from all over the country and reading of their many accomplishments on their award nomination forms has been a wonderful experience."

Amy Glasgow Newsletters

Amy Reeh Glasgow is an alumnae initiate of Delta Zeta at Southwest Texas State University's Iota Alpha chapter. "I was initiated at San Marcos when Iota Alpha was installed in spring of 1964," Amy said. "I was immediately appointed telephone chairman of the San Antonio alumnae chapter, then elected vice president for programs, served as president in 1968-70 and again in 1977." She holds a degree in English with minors in German and journalism.

Amy served as Region West public relations chairman in the early 1970s and is a former member of the LAMP staff. She received the Achoth Award in 1977 and the Province XVII Alumna Service Award in 1976. This is her fourth year as National Newsletter Chairman.

"My husband Thurman, a pilot among other things, spent almost 30 years in the Air Force. We have lived in New York, Mississippi, Illinois, Shreveport, Germany, London, Denver and finally Texas," she said. "We have four children. I spent the first 20 years of married life as a housewife,

and I later taught school and worked as a real estate appraiser.

"I enjoy sewing, reading, collecting plates, and talking on the telephone, and I learned to swim at age 60. We own a large RV and enjoy visiting our five grandchildren (one girl and assorted boys). We hope to travel to Canada next year."

Margaret Grosse Collegiate Scholarship

Margaret Stone Grosse is an initiate of Mu chapter at the University of California-Berkeley and is a graduate of the University of California at Davis, where she received her degree in physical education and art. She has taught at the California School for the Deaf in Berkeley, the Episcopal Mission to the Deaf and was director of the Ft. Lewis preschool for two years.

She is serving as president of the San Francisco Bay Area alumnae chapter and is a Camp Fire leader. She's active at University Christian Church and is vice president of the Albany High School PTA.

She substitute teaches in the Albany School System and is a member of the Northern California Board for the Christian Church.

"Whenever possible I take part in the distance swimming events and go to the mountains with my family," Margaret said. "The family includes my husband Bob, our son Richard and our daughter Marya."



Margaret Grosse, National Scholarship Chairman



Joan Lowry, National Philanthropy Chairman (Collegiate)

Joan Lowry Collegiate Philanthropy

Joan Dondrea Lowry was an active member of Gamma Alpha chapter at Baldwin-Wallace College, serving as pledge class president and secretary as well as vice president of the student council, head cheerleader and the Women's Self-Government Association. She was named an Outstanding Freshman and Senior Woman and was a member of the homecoming court.

Joan has served the Berea, Ohio alumnae as president and vice president, and has been a member of the National Rush Committee and the National Nominating Committee. She has also served as National Standards Chairman and National Scholarship Chairman.

She serves on the board of directors for the United Health Foundation for her county.

"Professionally, I'm in the radio and television business," she said. "I'm news director, acting general manager and hostess of the Golden Crescent interview show on WLRO Radio, and the hostess of the Joan Lowry Show on Channel 35 here in Bay Village.

"Bob-Bill was a Lambda Chi Alpha at Baldwin-Wallace and is a manufacturer's agent for C.J. Scott Co.," Joan said. "Our son Christopher is at Miami University and is active in Beta Theta Pi."



Amy Glasgow, National Newsletter Chairman

"I especially enjoy the alumnae group and all of the activities that go into making ΔZ a strong national sorority. Meeting sisters from all over the country and reading of their many accomplishments on their award nomination forms has been a wonderful experience."

Amy Glasgow Newsletters

Amy Reeh Glasgow is an alumnae initiate of Delta Zeta at Southwest Texas State University's Iota Alpha chapter. "I was initiated at San Marcos when Iota Alpha was installed in spring of 1964," Amy said. "I was immediately appointed telephone chairman of the San Antonio alumnae chapter, then elected vice president for programs, served as president in 1968-70 and again in 1977." She holds a degree in English with minors in German and journalism.

Amy served as Region West public relations chairman in the early 1970s and is a former member of the LAMP staff. She received the Achoth Award in 1977 and the Province XVII Alumna Service Award in 1976. This is her fourth year as National Newsletter Chairman.

"My husband Thurman, a pilot among other things, spent almost 30 years in the Air Force. We have lived in New York, Mississippi, Illinois, Shreveport, Germany, London, Denver and finally Texas," she said. "We have four children. I spent the first 20 years of married life as a housewife,

and I later taught school and worked as a real estate appraiser.

"I enjoy sewing, reading, collecting plates, and talking on the telephone, and I learned to swim at age 60. We own a large RV and enjoy visiting our five grandchildren (one girl and assorted boys). We hope to travel to Canada next year."

Margaret Grosse Collegiate Scholarship

Margaret Stone Grosse is an initiate of Mu chapter at the University of California-Berkeley and is a graduate of the University of California at Davis, where she received her degree in physical education and art. She has taught at the California School for the Deaf in Berkeley, the Episcopal Mission to the Deaf and was director of the Ft. Lewis preschool for two years.

She is serving as president of the San Francisco Bay Area alumnae chapter and is a Camp Fire leader. She's active at University Christian Church and is vice president of the Albany High School PTA.

She substitute teaches in the Albany School System and is a member of the Northern California Board for the Christian Church.

"Whenever possible I take part in the distance swimming events and go to the mountains with my family," Margaret said. "The family includes my husband Bob, our son Richard and our daughter Marya."



Margaret Grosse, National Scholarship Chairman

Moving?

A change of address card is inserted in this magazine for your convenience. If you are prompt to send Delta Zeta your new address, it can be entered in the LAMP magazine file before the next issue is mailed.

Joan Lowry, National Philanthropy Chairman (Collegiate)

Joan Lowry Collegiate Philanthropy

Joan Dondrea Lowry was an active member of Gamma Alpha chapter at Baldwin-Wallace College, serving as pledge class president and secretary as well as vice president of the student council, head cheerleader and the Women's Self-Government Association. She was named an Outstanding Freshman and Senior Woman and was a member of the homecoming court.

Joan has served the Berea, Ohio alumnae as president and vice president, and has been a member of the National Rush Committee and the National Nominating Committee. She has also served as National Standards Chairman and National Scholarship Chairman.

She serves on the board of directors for the United Health Foundation for her county.

"Professionally, I'm in the radio and television business," she said. "I'm news director, acting general manager and hostess of the Golden Crescent interview show on WLRO Radio, and the hostess of the Joan Lowry Show on Channel 35 here in Bay Village.

"Bob-Bill was a Lambda Chi Alpha at Baldwin-Wallace and is a manufacturer's agent for C.J. Scott Co.," Joan said. "Our son Christopher is at Miami University and is active in Beta Theta Pi."

Greek Alphabet

A alpha	N nu
B beta	Ξ xi
Γ gamma	O omicron
Δ delta	Π pi
E epsilon	P rho
Z zeta	Σ sigma
H eta	T tau
Θ theta	Υ upsilon
I iota	Φ phi
K kappa	X chi
Λ lambda	Ψ psi
M mu	Ω omega



Marianne Cravens, National Reference Chairman

Marianne Cravens References

Marianne McKeeman Cravens had a head start on her Delta Zeta career — her mom is Gwen Moss McKeeman, past National Panhellenic Chairman and current LAMP editor.

Marianne was president of Alpha Epsilon chapter at Oklahoma State University and also served as pledge class president, activities chairman and intramural sports chairman. She was Panhellenic intramural sports director and was on the OSU water ski team and the dean's list.

She served as State Reference Chairman for Southern California and was Province Collegiate Director for Province XV.

Marianne and her husband Scott live in Ft. Collins, Colorado, where they keep busy with outdoor sports and working with stained glass. They have been downhill skiing for some time and did some scuba diving while in Southern California. Now that they're in snow country, they are eager to become expert cross-country skiers. Professionally, Marianne is a landscape architect with EDAW in Fort Collins and Scott is a design engineer with NCR.

Lee Rodekohr Standards

Kathy Lee McFalls Rodekohr was an active member of Epsilon Xi chap-

ter at the University of Central Arkansas, where she was a member of *Who's Who in American Colleges and Universities*, *Who's Who in Greeks*, Alpha Chi and Gamma Beta Phi scholastic honoraries and several music groups. She was colonnade chairman, newsletter chairman, song leader and philanthropy chairman for her chapter and was a member of the drill team.

She served as a Delta Zeta fielder in 1975-76, and represented her school on a USO tour to Europe and the Azores before graduation in 1975 with a degree in speech pathology and music education. She and her husband Larry live in Cheyenne, Wyoming.

"Larry is a pilot with the Wyoming Air Guard and is employed by Wilson Equipment Co. as their pilot and rentals department manager," Lee said. "We were married in 1979 — with Delta Zeta sisters as bridesmaids, of course. I have been entertaining in club circuits since 1975 and enjoy working with the Cheyenne Little Theatre group and charity style shows.

"Larry and I are members of the First Baptist Church where I serve as pianist, sing and accompany the choir," she said. "In addition to my music career, I am employed part-time as an instructional aide in the speech and language lab by the Laramie County School District.

"Though music takes up most of my time, I do enjoy needlepoint — especially during our snowstorms!"

Province Day

Province XXIV held a combined Founders Day/State Day on October 24, 1981, in Tampa. This was the first State Day in several years so all stops were pulled. The theme for the day was "I ♥ ΔΖ" and the girls from Florida State University provided buttons with that message.

This was the first State Day for all the collegians and the first time most of them had seen a Golden Rose ceremony. It was also the first contact with collegians for many of the alumnae who don't have a college chapter nearby. Consequently, both groups found much to learn from the other, the whole reason to have a State Day.



Lee Rodekohr, National Standards Chairman

Tampa Installed

(continued from page 5)

by Colleen Quinley, National Field Representative. Colleen had continued the work of another Field Representative, Patti Floyd, in preparing the chapter for installation.

The weekend came to an end as Delta Zetas and campus and community representatives returned to historic Plant Hall for a reception in honor of the new chapter.

Initiates are Karla Ahrens, Nancy Alff, Karen Amarnek, Donna Berry, Suzanne Brackman, Sandra Davis, Kathi Drenning, Kim Engle, Marsha Fleming, Holly Fredericks, Catherine Geier, Jewel Hanson, Dolores Holland, Anne Joyce, Colleen Kazel, Theresa LaDouceur, Ivonne Mazarredo, Maureen Merrigan, Constance Niemiec, Monica Rogers, Kay Smith and Cara Smalley.

Chapter pledges are Barbara Anderson, Dawn Budy, Cherie Duerr, Dawn Eichhorn, Daye Holland, Janis Hospodar, Lisa Ligon, Sandra Lofland, Margaret Marshall, Tamara Mowbray, Leona Peszka, Laurie Rogers, Dawn Sobering, Robin Stephenson, Heidi Tolvanen, Melissa Turner, Beth Werner and Phoebe Wieler.



Marianne Cravens, National Reference Chairman

Marianne Cravens References

Marianne McKeeman Cravens had a head start on her Delta Zeta career — her mom is Gwen Moss McKeeman, past National Panhellenic Chairman and current LAMP editor.

Marianne was president of Alpha Epsilon chapter at Oklahoma State University and also served as pledge class president, activities chairman and intramural sports chairman. She was Panhellenic intramural sports director and was on the OSU water ski team and the dean's list.

She served as State Reference Chairman for Southern California and was Province Collegiate Director for Province XV.

Marianne and her husband Scott live in Ft. Collins, Colorado, where they keep busy with outdoor sports and working with stained glass. They have been downhill skiing for some time and did some scuba diving while in Southern California. Now that they're in snow country, they are eager to become expert cross-country skiers. Professionally, Marianne is a landscape architect with EDAW in Fort Collins and Scott is a design engineer with NCR.

Lee Rodekohr Standards

Kathy Lee McFalls Rodekohr was an active member of Epsilon Xi chap-

ter at the University of Central Arkansas, where she was a member of *Who's Who in American Colleges and Universities*, *Who's Who in Greeks*, Alpha Chi and Gamma Beta Phi scholastic honoraries and several music groups. She was colonnade chairman, newsletter chairman, song leader and philanthropy chairman for her chapter and was a member of the drill team.

She served as a Delta Zeta fielder in 1975-76, and represented her school on a USO tour to Europe and the Azores before graduation in 1975 with a degree in speech pathology and music education. She and her husband Larry live in Cheyenne, Wyoming.

"Larry is a pilot with the Wyoming Air Guard and is employed by Wilson Equipment Co. as their pilot and rentals department manager," Lee said. "We were married in 1979 — with Delta Zeta sisters as bridesmaids, of course. I have been entertaining in club circuits since 1975 and enjoy working with the Cheyenne Little Theatre group and charity style shows.

"Larry and I are members of the First Baptist Church where I serve as pianist, sing and accompany the choir," she said. "In addition to my music career, I am employed part-time as an instructional aide in the speech and language lab by the Laramie County School District.

"Though music takes up most of my time, I do enjoy needlepoint — especially during our snowstorms!"

Province Day

Province XXIV held a combined Founders Day/State Day on October 24, 1981, in Tampa. This was the first State Day in several years so all stops were pulled. The theme for the day was "I ♥ ΔΖ" and the girls from Florida State University provided buttons with that message.

This was the first State Day for all the collegians and the first time most of them had seen a Golden Rose ceremony. It was also the first contact with collegians for many of the alumnae who don't have a college chapter nearby. Consequently, both groups found much to learn from the other, the whole reason to have a State Day.



Lee Rodekohr, National Standards Chairman

Tampa Installed

(continued from page 5)

by Colleen Quinley, National Field Representative. Colleen had continued the work of another Field Representative, Patti Floyd, in preparing the chapter for installation.

The weekend came to an end as Delta Zetas and campus and community representatives returned to historic Plant Hall for a reception in honor of the new chapter.

Initiates are Karla Ahrens, Nancy Alff, Karen Amarnek, Donna Berry, Suzanne Brackman, Sandra Davis, Kathi Drenning, Kim Engle, Marsha Fleming, Holly Fredericks, Catherine Geier, Jewel Hanson, Dolores Holland, Anne Joyce, Colleen Kazel, Theresa LaDouceur, Ivonne Mazarredo, Maureen Merrigan, Constance Niemiec, Monica Rogers, Kay Smith and Cara Smalley.

Chapter pledges are Barbara Anderson, Dawn Budy, Cherie Duerr, Dawn Eichhorn, Daye Holland, Janis Hospodar, Lisa Ligon, Sandra Lofland, Margaret Marshall, Tamara Mowbray, Leona Peszka, Laurie Rogers, Dawn Sobering, Robin Stephenson, Heidi Tolvanen, Melissa Turner, Beth Werner and Phoebe Wieler.

Delta Zeta from Coast to Coast

by Donna Gilbert-KZ

Photographs by Dana Benton-KZ

October 5, 1968, marked the day that officially introduced Kappa Zeta on the campus of North Texas State University in Denton, Texas.

Formally, the Kappa Zeta colony, under the sponsorship of Mrs. Bess McDonald Townsend, Dr. Ellen Wright and Miss Ruth Gray, was organized in May 1967. From that time, the group remained together in strong bonds of friendship and furthered its growth and activities on the North Texas campus.

It was on May 7, 1968, that Kappa Zeta was pledged and ribboned by members of Iota Psi from the University of Texas at Arlington. All 26 pledges were formally accepted into the sisterhood of Delta Zeta on Oct. 5, when Zeta Theta chapter from Sam Houston State College conducted the initiation ceremonies.

It was the first time in 15 years that a colony had petitioned and been accepted as a new sorority on the North Texas campus. North Texas State University was established in 1890 as a Normal College in the city of Denton. In 1899, the grounds and buildings were offered to the state by the city of Denton. Eight presidential terms and three name changes have occurred since the school became state supported.

This year has been an exciting and rewarding time for Kappa Zeta, with many worthwhile projects and awards. It also proved to be a significant time of growth for the chapter in number and sisterhood.

Kappa Zeta became the envy of all the other sororities on campus with its first all-male, 1981-82 Flames of Delta Zeta calendar. Applications and pictures were received from 80 men across campus. Some of them were so excited about the calendar, they turned in a complete portfolio of themselves! The number was narrowed to 24 semi-finalists and then 12 finalists were chosen after some long,



Kappa Zeta's 1982 Executive Board - back row l to r, Susan Resley, treasurer; Dana Benton, corresponding secretary; Lisa Greenwood, recording secretary. Front row, l to r, Corine Cesario, rush chairman; Pam Day, president, and Marta Beyen, pledge trainer.

Meet Kappa Zeta at North Texas State University

tough decision-making. Kappa Zeta received a lot of good publicity and the project was well supported on campus and throughout the Greek system. The calendars sold for \$3.50 each and the chapter made around \$1,500. Plans are already in progress for next year's Flames of Delta Zeta.

A major accomplishment of the chapter this year was the NTSU Panhellenic Scholarship award for being number one in scholarship in the Greek system. Kappa Zeta had the

highest GPA over all the other 29 sororities and fraternities on campus. This was the result of a well organized and supervised study hour program for both actives and pledges.

At the Delta Zeta National Convention in June, Kappa Zeta received recognition for its Excellence in Newsletter. Each month a newsletter is sent out to all alumnae, parents and members. It contains reports from all officers and chairmen concerning past and upcoming events of the

chapter. This serves as a line of direct communication to keep every aspect of the chapter informed.

On the field and in the alleys, Kappa Zeta took several first place intramural titles. They received first place in softball in the Spring and first place in football in the Fall among the Greek system. The All University Bowling title was brought home, preceded by the Greek bowling championship.

Besides working for the chapter, members work to help other people. The Kappa Zeta philanthropy program has done a lot to help people in the Denton community and has helped Delta Zeta receive community recognition. A new idea was incorporated for the collecting of canned goods to give to the needy. At the last meeting of every month each member is required to bring one can of food to the meeting. The cans were collected at the door and this is a requirement for entering the meeting. This project turned out to be a success and during the semester a total of 204 cans were collected.

The pledges chose to go to the Cumberland Presbyterian Childrens Home as their project for the community. They took toys and cookies for the children and each pledge spent two hours playing games and entertaining the children.

Another event was the craft auction sponsored by the Lewisville alumnae and the members of Kappa Zeta to raise money for their philanthropy. Each member was asked to bring three craft items, donations or cookies to sell at the auction. The crafts included Christmas ornaments and gifts and Delta Zeta trinkets.

In an effort to promote Delta Zeta on campus and among the other Greeks, an all sorority banana split party was held. Each Kappa Zeta invited a member of another sorority to help establish better unity among the Greeks. It was a great success and is being planned as an annual event.

Kappa Zeta has continued to grow and overcome many obstacles in its development. In 1972, Kappa Zeta had only 11 members and was being considered for closing. Today it has grown to 71 members. Each year brings new growth and ideas while Kappa Zeta continues to make its place on the North Texas campus.



The calendar committee, whose bright idea is the envy of campus! Barb Boles, Marta Beyen, Susan Resley, Jody Heath, Pam Day, Gaye Leonard and Dana Benton.



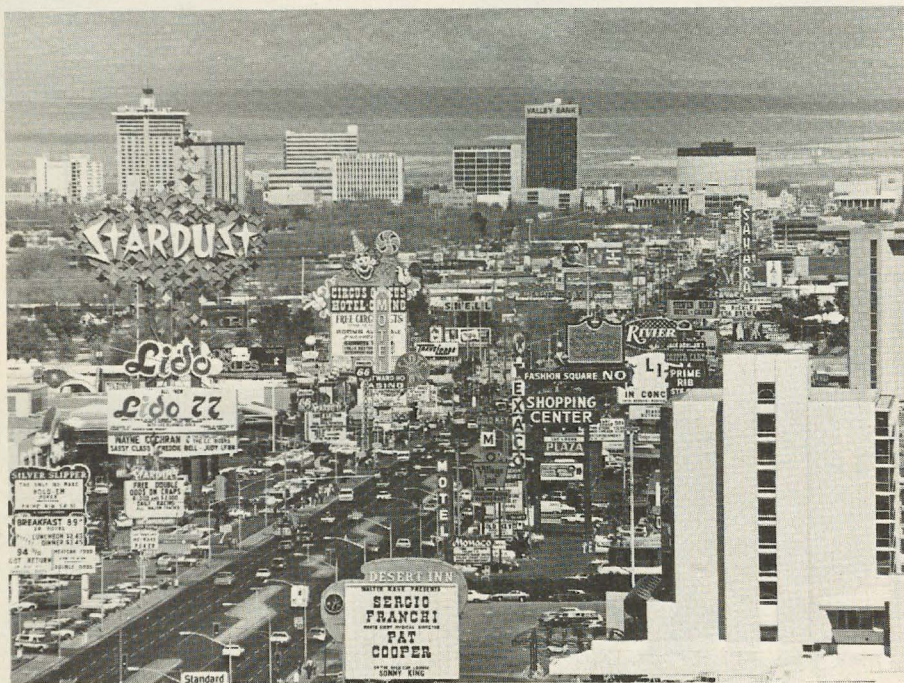
Barb Boles typifies a philanthropic endeavor - the "Collection of Cans".



North Texas Panhellenic Honors: Kathy Fisher was named outstanding alumnae coordinator and Pam Day was named outstanding rush chairman. Not pictured is Debbie Watson, outstanding Panhellenic scholarship.

Delta Zeta from Coast to Coast

Meet Iota Phi at University of Nevada-Las Vegas



Las Vegas, Strip Area. No where but Las Vegas will you find Iota Phi chapter!

As one might well suppose, tourism is the number one industry in Southern Nevada, with about one-third of the work force employed in the hotel, recreational and support service industries. Las Vegas, which means "The Meadows" in Spanish, is now the second fastest growing metropolitan area in the United States. Since 1950, when there were fewer than 50,000 residents, the valley's population has mushroomed to ten times that amount.

To millions the world over, Las Vegas means "The Entertainment Capital of the World." Aside from being a 24-hour city with dazzling casinos and stage shows, the area is the hub of the scenic and serene Mohave Desert. The mammoth Hoover Dam is a

"must see." Lake Mead and the Colorado River provide excellent fishing and water sports.

A mere one hour ride from the valley floor is 11,900 foot Mount Charleston, ideal for camping and winter skiing. For sheer natural beauty, there's the Valley of Fire and Spring Mountain Ranch which multi-millionaire Howard Hughes once owned. The climate is a healthful, semi-arid one. The sun shines 86% of the time and the average high temperature is 80, the average low, 52.

The University of Nevada, Las Vegas began when the administration at the University of Nevada, Reno assigned an instructor to teach night classes at the Las Vegas High School auditorium in 1951. In the Fall of 1954

a 180-acre campus was opened in Las Vegas and was officially named Nevada Southern University by the state legislature. The campus, designed to blend with the surrounding desert terrain, is situated in a valley that parallels the Las Vegas strip, the most famous resort and entertainment center in the world.

In January, 1969 the university was granted autonomy under the state's higher education system, giving it status equal to that of the University of Nevada, Reno, and thus the name change to the University of Nevada, Las Vegas (UNLV).

From 1951 to 1981 the University has grown from one full time faculty member and a student body of 12 to a university with over 10,000 students. Colleges within the university are Allied Health, Arts and Letters, Business and Economics, Education, Hotel Administration and Science, Mathematics and Engineering. 1982 will mark the university's 25th year of recognition.

In 1968 the Iota Phi chapter of Delta Zeta was installed by collegians from neighboring California campuses. The chapter had been formed in 1966 as a local, Delta Phi Delta. It was secured through the efforts of Arlene Crawford Southard, who later became IΦ's first college chapter director; Frances Alexander Saxton, president of the Las Vegas alumnae; Francie Schwaegaerle, president of Iota chapter, and the Las Vegas alumnae.

Joining Delta Zeta at approximately the same time were Phi Mu and Alpha Delta Pi. The fraternities on campus were Alpha Tau Omega, Kappa Sigma, Delta Sigma Phi, Alpha Epsilon Phi, Tau Kappa Epsilon and Chi Sigma Chi. All Greeks were new on campus during the 1967-68 school year.

The Consolidated Students of the University of Nevada, Las Vegas is the governing student body at UNLV. Delta Zetas are among the 11 Greek



Iota Phis all dressed up for the Dirty Shame (western store) fashion show at a radio sponsored tailgate party before a UNLV football game.



Pledge Betsy Heil is pictured at the flea market where sales helped the pledge class treasury!



Ronna Rubin, communications major. She films programs for the University television station and the local public service station. One program was the Greek of the Week with the first Greek featured Iota Phi's treasurer, Catherine Clay.

members who fill the twenty member CSUN Senate. Catherine Clay, a re-elected Hotel Senator, is the vice chairman of the bylaws committee and received the "Done Good Award" which is given to an outstanding senator who gives much hard work and dedication to CSUN. Lisa Griffith is an Arts and Letters College Senator.

For philanthropy this fall, chapter members modeled clothes from the Dirty Shame (country western store) at a KVEG I LOVE LAS VEGAS tailgate party (radio sponsored) at the Silver Bowl before the UNLV Rebels' first home football game. The pledge class taught the chapter how to make Christmas wreaths and painted mirrors. These were sold at a local flea market to raise money for the pledge class.

One other innovative idea to stem from the chapter was informal movie nights during October. The chapter rented movies from a video rental store and munched popcorn as they watched them. This not only determined what movies to see, but provided an outlet for those who couldn't afford to "go out." As the editor said, "Sisters Night Out became Sisters Night In."

So this is the story of the ΔZ chapter that goes to school in that vibrant community called Las Vegas!



Denise Curcio and Delane Fitzpatrick depict typical big and little sisters.

Delta Zeta On Campus



Gamma Iotas at Memphis State teamed with ΣΧ to place first in the Panhellenic sponsored All-Sing.

by Diane Jones Skelton

ALABAMA

Alabama, Alpha Gama—Gretchen Reinartz is a member of *Who's Who in American Colleges and Universities*, a *Corolla* yearbook favorite, Lambda Chi Alpha's sweetheart, member of Phi Upsilon Omicron honorary and president of the School of Home Economics. Leigh Ann Harrison is the top *Corolla* beauty and Debra Nesbitt is Miss University of Alabama. Lauren Jorgensen and Lisa DeBardelben were among the top ten for Homecoming Queen.

Alabama-Huntsville, Lambda Kappa—Serving one year terms in the Student Legislature are Ruth Aldridge, Debbie Martinez, Betsy Mosgrove and Alison Polk. Maureen Mattoon, Betsy Mosgrove and Linda Tucker are members of the dance team. Lambda Kappas, placing a major emphasis on philanthropy, recently teamed with Alpha Tau Omegas for a successful 22 hour trampoline jump-a-thon. Under the chairmanship of Christi Griffin the members raised cash for the Multiple Sclerosis Foundation. Members also donated \$100 to an apothecary fund for hearing impaired children of the Huntsville City Schools. The chapter also participated in a Greek picnic with boys from Sheriff's Boys' Ranch. The philanthropy auction and raffle raised \$3,000 for the Boys' Ranch.

Auburn, Beta Xi—Their September report was missing because chapter editor Ann Steinhilber was seriously injured in a car-train accident, but Ann's December report is all inclusive. ΒΞ pledged quota of 46 in formal rush and the chapter has been busy ever since. Pledges met their big sisters at their annual paper bag mask hunt. A new head dorm resident replaced retiring ΔΖ Lucy Warren who had been with the chapter since the Panhellenic dorm was built. Activities include a roller-disco, formal pledge dance, Homecoming, a hoedown-disco, western social, hippie social, a prayer breakfast and their annual Christmas party. Kathy Saal is Aubie calendar editor. (Aubie is Auburn's official mascot and rated in the top five college mascots nationwide.) Kathy and Tamara Davis are Hall of Fame Bowl hostesses; Beta Alpha Psi (accounting) members are Diane Lynch and Patti Roach; Missy Harris belongs to Phi Psi, textile honorary. Ronna Hickman is a member of Delta Sigma Pi and assistant treasurer of the Student Government Association. Stacy Hader holds membership in Omicron Delta Kappa and is listed in *Who's Who*. Ann Steinhilber belongs to Alpha Zeta (agriculture honorary), is president of the Agricultural Communications Honor Society and is a council representative for the

School of Agriculture. Sports team hostesses are Elizabeth French, Melanie Crowe, Mary Beth Saal, Suzanne Hart, Maureen Elia and Jill Scott. Joy Yeager was a runner-up to Miss Lee County Agriculture and Suzanne Nash was chosen Miss Glom Beauty (yearbook).

Auburn-Montgomery, Lambda Nu—Omicron Delta Kappa leadership honorary tapped Regina Garret, Lisa Parma, Paige Steelman, Nancy Steger and Danielle Rowe. Danielle also won the Panhellenic scholarship. Lambda Nu is at top membership after pledging a quota class of 23 in formal rush. Delta Zeta placed fourth in both basketball and football. In the Greek Toga Contest, Paige Steelman's toga took top honors with Elena Bass as second place winner. Lambda Nu sponsored a Rock and Roll-athon in the cafeteria to benefit both Gallaudet and AUM Speech and Hearing Center. Terri Mitchell designed t-shirts which the chapter sold.



Leigh Ann Harrison, ΑΓ, was chosen top Corolla Beauty at the University of Alabama. Was she surprised!



Alpha Gamma's Debra Nesbitt is Miss University of Alabama.

Jacksonville, Lambda Gamma—Delta Zeta boasts its largest pledge class to date. It numbers 37. The chapter won first place honors in the Red Cross Blood Drive and the \$200 second place prize in the "Sign Up for a Miller Button Contest." The victory also included free t-shirts for members. Philanthropy Chairman Donna Bible collected a toy from each $\Lambda\Gamma$ for the CEC Christmas Fund for Needy Children. Members of honoraries are Marie Manis, Delta Omicron music; Beth Ann Hill, Phi Eta Sigma scholastic; Vickie Stephens, Sigma Tau Delta English. Tina Grant is a member of the Marching Southerners flag corps and Regency Indoor Guard. Robbie Benefield is in her second year as a Marching Ballerina. Robbie is also third runner-up to Miss Cleburne. Vickie Stephens, Hannah Bramlett and Marie Manis are members of acapella choir. Debbie Holt is an officer in the business and law fraternity, $\Lambda\Lambda\text{E}$. Vickie Page placed fifth in Homecoming Queen competition.

Livingston, Kappa Lambda—Cindy Etheridge reigned as queen of Mobile's Azalea Trail, while Melanie Corgill won an Azalea Trail scholarship and trustee scholarship. Karen Wilkinson won a trustee scholarship. Barbara Reeves is a member of Freshman Honors Program. Debbie Holladay and Donna Haley are both cheerleaders and LU Hostesses. Deborah Jordan is a hall monitor and Panhellenic vice-president. Roxie Luker is SGA vice-president. Members cooked 60 pounds of chili for a chili supper fund

raiser, decorated a truck for Homecoming, and sold monster-grams at Halloween. The chapter won the spirit stick for best spirit among campus organizations at a pep rally and volunteered time to the University for telephoning prospective students.

Samford, Alpha Pi—Junior Jennifer McGraw has received the title of Little Colonel for her Angel Flight province. As Little Colonel, she serves as protocol officer for her area, which includes ten schools scattered throughout Alabama, Georgia, South Carolina and Florida. Her main duties are organizing a protocol workshop and acting as liaison between Angel Flights and Arnold Air Society Squadrons in the area. She will represent her chapter at national conclave in New Orleans. Jennifer is also a member of Tri Beta biology honorary, an assistant biology lab instructor and AII rush chairman. Deborah Moffett is one of 12 IIKA Calendar Girls. Angi Spruiell is a member of Crimsonettes Drill Team. Alpha PIs made happy books for a children's hospital and donated canned goods for Thanksgiving baskets.

ARKANSAS

Arkansas Tech, Lambda Alpha—ATU Goldiggers, hostesses for athletic events, include Kathy Miller, Melinda Millwee, Christy Montgomery, Sheila Ritchie, Lisa Yerby and Paula Hart. Vicky Robertson is a majorette. Mary Jo Allen is a member of Golden Girl Drill Team and Mary Bane is a drummer with the band. Phi Lambda Chis chose Sharon Mabry as their sweetheart. Cheryl Tolbert is January's Calendar Girl for Arkansas Tech. *Who's Who in American Colleges and Universities* tapped Kelly Berryhill. Lambda Alphas sponsored a clean up drive for dorm parking lots,



Jennifer McGraw is Angel Flight's "Little Colonel" at Samford's Alpha Pi chapter.



Deborah Moffett, Samford- AII , is Pi Kappa Alpha Calendar Girl.

sold M & M's to raise funds, helped sponsor a blood drive, and presented a spirit award for donors of boxes used in the school bonfire.

Central Arkansas, Epsilon Xi—An enthusiastic pledge class of 30 helped the chapter win a coveted first place at the Homecoming Pep Rally. Delta Zeta costumed a coach as the Incredible Hulk, keeping with the campus Super Heroes theme. Members placed first again in the Alma Mater competition with songleaders Beth Boyd and Jenny Helms directing. Though the Homecoming parade was cancelled due to weather, entries were still judged. Delta Zeta placed second in float, first in potpourri and first in decorated vehicle. Melanie Hendrix was a Homecoming maid. Members collected aluminum cans for recycling and sold Wreck Tech buttons the week prior to the rival game. Philanthropy chairman Melanie Hendrix arranged a visitation program with children from Faulkner County Day Care Center for physically impaired or mentally ill students. The director of the center was quite impressed with the Delta Zetas. In fact, this was the first time the successful project of taking the children out to lunch had even been considered. Delta Zeta, for the second year, won both awards at Halloween Carnival — best booth and ugliest witch. Approximately 90 professors and staff members were invited to Delta Zeta's Favorite Instructor Tea in early December. June Moreland is Miss Sorority Pledge Queen, while Shari Coble was second runner-up and Stephanie Smithwick a



Arkansas Tech-AA's Mary Jo Allen, a Golden Girl, and Vicky Robertson, band majorette.



Pink Panthers at Eastern Illinois (TN) are Marcie Murphy, Laura Knapp, Kim Mitchell, cheerleader, Lynda Brown and Kelly Fisher. Not pictured is cheerleader Vikki Lamendola.



Vickie Hoffman, ΔO, is senior drum major of the Northwestern Oklahoma University band.

finalist. Melanie Hendrix was last year's queen. Active in student government are Kim Graves, Pam Brewer, senators; Sharon Johnson, Senate Freshman Class vice-president; Janie Tiefel, Gwen Rednor, Student Activities Board. Dee Fuller represents Delta Zeta on the Senate Entertainment Committee. Operation Awareness, a freshman orientation service organization, includes Kim Hall, India Brown, Kay Bright, Janice Bossier and Leisha Woodcock. UCA Ambassadors are Karen Nunnally, Janie Hickerson, Stacia Hestir and Kim Graves. Charla Weaver and Kim Hall served as Youth Congressmen representing UCA at State Youth Congress. Jenny Helms, Cathy Clark, Cindy Calvert, Beth Boyd and Tamara Morris are members of the concert choir. Karen Hendrickson and June Moreland are two of four feature twirlers for the UCA band. Fran Phillips is on the flag line. Liz Reimer plays number one position on the UCA tennis team and Terri Conder is on the basketball team. Gamma Beta Phi honorary tapped Karen Nunnally, Suzy Strikland, Kim Graves and India Brown.

Henderson, Epsilon Pi—Delta Zeta boasts a quota-plus pledge class numbering 18. And, needless to say, the dorm is full! Members placed second in intramural football, and first among sororities. Delta Zeta won the first place prize in Reddie Rainbow Day — \$25 cash. A carnation sale netted almost \$200 and sale of homemade cookies proved a yummy fund raiser.

CALIFORNIA

California State-Chico, Delta Chi—Dorina Macias reports proudly that Delta Zeta has remained the largest sorority on campus for a calendar year. She continues . . . "Delta Chi seems to be growing bigger and stronger every semester, especially after pledging quota for two consecutive semesters." Members celebrated Founders Day with a tea at a member's home and celebrated Delta Chi's 25th anniversary. ΔXs wrapped presents at a local shopping center to benefit the American Retarded Citizens' Group. Members sold tickets for the Greek fund raiser and again delighted children with the traditional pumpkin carving at Mesa Vista. Ellen Downing was first runner-up to Homecoming Queen.

San Jose, Gamma Lambda—Fran Leal and Lori Salcido planned a successful spaghetti dinner as a fund raiser for the chapter. The project, which raised \$500 for philanthropy and chapter programs, was so successful that the Sigma Nu Dining Room was needed to accommodate all the guests. Pledges earned \$80 by selling Turtle Tune singing telegrams, and almost another \$80 by selling mistletoe. Alumna Renee Richardson returned to pass on her Homecoming crown to Delta Zeta sister Marty Anne Thomson.

CONNECTICUT

Connecticut, Gamma Beta—Delta Zeta was one of two sororities on campus to

pledge quota during the first formal rush. Members are spending a good part of the semester working at the newly acquired sorority house. Twelve Delta Zetas reside in the on-campus house. With a Homecoming float depicting the tea party from *Through the Looking Glass*, ΓB placed second in the Greek division and earned a beauty trophy. The campus Homecoming theme was Myth, Magic and Madness. A wide variety of food sales, M & M's to donuts, netted chapter funds.

GEORGIA

Georgia Southern, Iota Nu—Georgia Power named Jannie Smith as one of Georgia's Outstanding Young Leaders. Lynn Hightower represented GSC at PRSSA National Convention for public relations majors. Donna Sims reigns as Delta Tau Delta Sweetheart. Debbie Butcher is Panhellenic President. Iota Nu placed third in Derby Day skit competition, while Janet Wickert was Miss Daring Debut. Carol Ann Lee place third in Miss Derby competition.

ILLINOIS

Eastern Illinois, Gamma Nu—The chapter sponsored a "Penny King and Queen" contest to raise money for philanthropy. Each Greek group sponsored a candidate. Pictures were placed on the outside of cans and people put pennies into the cans to vote for their favorite candidates. The contest, held in the Student Union, lasted a week. Fraternity sweet-

hearts are Terry Mellen, TKE, Pam Geskey, ΦΣΕ; Sandie Morgan, ΔΣΦ, and Robin Furtney, ΑΧΑ. Shari Sullivan and Cindy Feltz received the Omega Award, given for contributions to the Greek community. Four ΔΖ's are on the Pink Panthers Pom-Pon squad and two are varsity cheerleaders.

Illinois State, Lambda Rho—The chapter entertained visiting alumnae at Homecoming with a fantastic pig roast and football game. A philanthropic project was a 24 hour ping pong and pool tournament. They made \$500. Jodi Johnson was chosen Miss Knockout Queen for ΣΦΕ's boxing tournament. Mary Deprin received an American Chemical Society undergraduate analytical chemistry award.

Northern Illinois, Gamma Rho—The Delta Upsilon Homecoming dynasty almost crumbled this year, when the Delta Zeta - Sigma Pi team inched within one point of winning the overall competition. The Delta Upsilon team has won for the past six years. To win overall second place, the ΔΖ-ΣΠ team placed second in water polo; first in decathlon of fun and games; and second in float competition. They were the only Greeks to place in the float competition. Delta Zeta teamed with Sigma Pi again to reach the playoffs and place third in intramural softball tournament. Debbie Bowen won the Delta Gamma Anchor Splash Beautiful Eyes contest again. The contest, in its second year, offers students an opportunity to cast penny votes for photographs of contestants' eyes (only).



Following a week of exciting Homecoming activities, Shelly Walters (West Liberty-IT) was crowned 1981 Homecoming Queen. Shelly is vice president of membership and song-leader for Iota Tau.

Northwestern, Alpha Alpha—The chapter was honored to have Mary Margaret Fore, National Vice President - Alumnae Affairs, at Founders Day brunch. She conducted the Golden Rose ceremony honoring two alumnae, Mrs. Ken Rehage (Tau '33) and Mrs. Arthur Eilers (Tau '33). The Golden Roses didn't recognize each other on sight, but found they'd both been actives at Tau at the same time. Needless to say, they had a lot of catching up to do! Other activities included inviting favorite profs over for Favorite Faculty Dinner, and chapter members toured rooms of actives living throughout campus at the Roving Room Party. Pledges cooked a gourmet dinner. They held their first phon-a-thon in October, calling alumnae, and raised \$2,000 for much needed house repairs (thank you, alumnae). They're selling M & M's to raise money for Gallaudet.

Western Illinois, Epsilon Omicron—Homecoming and Founders Day fell on the same day and activities started early with an eight a.m. Founders Day Ceremony. Delta Zeta went on to place second in float competition and Kerry Ann Jamison served on the Homecoming Court. Delta Zeta placed first in the Delta Tau Delta Big Wheel Tournament and in the TKE Powder Puff football match. Members visited McDonough Hospital during the Christmas holidays to entertain children. Kerry Jamison is a member of Mortar Board and Nancy Opperman and Cindy Kirby are members of Phi Gamma Nu business society.

INDIANA

DePauw, Delta—Hiking over 18 acres of woods laden with leaves, grilling hamburgers over an open fire, toasting marshmallows and sipping hot chocolate proved an ideal way to relax after midterms. The Delta Zetas enjoyed the six hour get-away on Founders Day. Pledge Trainer Tracy Lain explains the tradition of chapter moms ... "Moms leave small gifts and poems for their daughters for a week hinting at the mom's identity. At the beginning of the annual mom-daughter party, each pledge receives the end of a ball of yarn and is told her mom awaits on the other end. Pledges begin string winding journeys that carry them all over the house, upstairs and downstairs, under and over furniture. Some moms tie candy or notes on the yarn. Daughters find their moms in the end, maybe in a shower, closet or even on phone duty."

IOWA

Iowa State, Beta Kappa—Delta Zeta teamed with Theta Xi to create the Homecoming lawn display "The Timeless Gears of Excellence." On four separate gears, the display depicted great Iowa State events ... Veishea, graduation, dance marathon and football. At night, the display featured a light show, music and lights ra-



Delta Omicron's Cindy Hawth is Miss Rodeo Oklahoma. She's a student at Northwestern State University.

diating from a twenty-five foot replica of the Campanile. Bundled in coats and mittens, members Christmas caroled for fraternities and a retirement center. Seniors arose early one December morning, decorated the tree and then awakened the rest of the house with Christmas carols, bells and candles. Anne Paxton is Mortar Board President. Ann Porter and Mary Lee serve on the Varieties Central Committee. Karen Cabalka and Kay Miller are on the Veishea Central Committee. Marla Dille serves on the Campus Chest Central Committee. Diamond Darling bat girls are Karin McKinney and Cindy Prewert. Val Miller is a basketball statistician and recruiting hostess. Good Timer swim meet timers are Karin McKinney and Lisa Hugnet. The State of Nebraska honored Wendy Weihe with the title Countess of Aksarben. Michelle Rudi is a wrestling cheerleader.

KANSAS

Fort Hays, Delta Omega—Paul McDonald Chevrolet sponsored a day-long promotion pitting teams from Delta Zeta, KJLS radio and Pepsi Cola against Sigma Phi Epsilon. KAYS radio and Coca Cola. The day began with a Chevy Truck Bonanza parade followed by three competitive events — Cup Up, Truck Up and Change Up. In Cup Up, teams of five members filled Pepsi and Coke cups with water and raced across the used car lot, placing the cups on white lines spelling out CHEVY TRUCKS. Although Delta Zeta had 42 more cups on the lines, the fraternity time was faster. However, an unscheduled water fight cost Sigma Phi Epsilon 20 points and Delta Zeta had a chance for victory. In Truck Up competition, each

team was allowed 1,000 pounds of team to push a small Chevy pick-up around a building three times and back to the starting line. Delta Zeta won the event. Breaking the tie was Change Up competition, in which four-man teams jacked-up a truck, changed the tire, and drove across the finish line. The fraternity won with seconds to spare and earned the prize of \$100, 25 cases of Coke and team t-shirts. Delta Zeta won 25 cases of Pepsi and used them as refreshments at the annual Game-a-thon. With help from the Sigma Phi Epsilons, the Game-a-thon raised \$700 for hearing impaired and Hays Early Childhood Development Center. The Game-a-thon consists of each Delta Zeta playing games for at least two hours to fill contributors' pledges. Order of Omega tapped Marisa Thurman, Donita Ribordy and Joan Herl. Seventh Calvary honorary chose Lisa Lessman and Shari Leitner. Jodi Dannels is a member of Society of Collegiate Journalists.

KENTUCKY

Kentucky, Alpha Theta—Delta Zeta staged its Sixth Annual Classic, FMC, in early October. The event, basically a track meet between fraternity pledge classes, helps encourage friendly competition among the 20 UK fraternities and raises money for the Kentucky School for the Deaf in Danville. The four day event begins on Thursday with a Kick Off Party and award for the fraternity with the highest attendance. On Friday, fraternities compete in a Scavenger Hunt for unusual items as Killarney roses, turtle candles and alligator bumper stickers. The track events begin on Sunday and last for five hours. Individual and group trophies are awarded and a coveted trophy goes to the

most spirited team. Admission to the track meet provides the philanthropy funds. Television Channel 36 covered this year's events. Pam Baker and Libby Morris are Sweetheart Majorettes with the Wildcat Marching Band. Amy Page is Phi Sigma Kappa Moonlight Girl and Amey Hugg was a member of the Homecoming Court. Jennifer Johnson, Lady Kay Mascot for the girls basketball team, won last year's cheerleader award. Amey Hugg is vice-president of Mortar Board. Alison Deetz and Jeana Branham are members of Lances honorary. Caroline Pike is a member of Psi Chi honorary. Tamara Whitehouse place third in the Miss Oldham County scholarship pageant.

LOUISIANA

Louisiana Tech, Xi Epsilon—Marla Watson, member of Tech's tennis team, is ranked first locally and third in the state. She also received the Most Valuable Player Award. Lisa Baker, member of freshman honorary, Daisy Chain, is included on the President's and Dean's Lists and was a finalist for the F. J. Taylor Award. Lisa Downey won the Elizabeth Coulter Stephenson Award and was named to the President's and Dean's Lists. Pledge Trainer Janet Gerami and the pledges planned a terrific Halloween costume party for the chapter. Lois Wingfield, dressed as Miss Piggy, won top costume honors.

Nicholls State, Kappa Alpha—Chapter pledged quota of 20 for 13th consecutive year. Mary Becnel reigned as Homecoming Queen. Mary, Kathie Phillips and Jeanie Hillman were elected to *Who's Who*. All of the members and pledges participated in a collection for the deaf during the Halloween season and the chapter

sponsored a Sock Hop Dance for all campus Greeks, profits going toward a philanthropic endeavor. The pledges sponsored a harvest dance as a gift to the members ... admission was a can of food for the needy. Following the Christmas dinner and gift exchange, the chapter went caroling with their alumnae.

MAINE

Maine-Orono, Alpha Upsilon—Delta Zeta, teamed with Sigma Chi, helped Panhellenic raise \$1,000 for United Way by spending an afternoon collecting returnable bottles. Mums for Your Mom was a profitable Delta Zeta booth during Parents' Weekend. Proceeds went to Galaudet College.

MICHIGAN

Michigan Tech, Lambda Theta—Delta Zeta, with Alpha Gamma Delta, Alpha Sigma Tau and two local sororities, sponsored a Rape Awareness Program in the Union Ballroom. The standing room only crowd listened to five speakers — a rape victim, a police officer, two counselors and a district attorney. A movie and question and answer period followed to conclude the two and a half hour seminar. Other Fall events included a Labor Day picnic, food booth at K-Day and retreat at Rabbit Bay. Members joined Sigma Phi Epsilon to collect over \$2,000 for underprivileged children at Bay Cliff Health Camp. Lambda Theta received a service plaque from American Cancer Society for help with an informational drive to alert the public of Cancer and its signals.

Northern Michigan, Zeta Omega—At the Panhellenic Dance, Delta Zeta Lisa Seccia was named outstanding pledge; Frieda Schwartz, outstanding initiate, and



Deanna Welling, Chairman of Kappa Chi's bike-a-thon at Youngstown State University is interviewed by news men just before the big race.



This is a break between time laps at the Kappa Chi bike-a-thon at Youngstown State.



Pam Morgan, OT, was Homecoming Queen at Findlay College.

Debbie Dianich Helstowski, outstanding alumna. Rhonda Fredricks is vice-president of Panhellenic and Cheryl Adcock is Greek representative on the Intramural Advisory Council. Kellie Carr and Cherese Strojny are cheerleaders for NMU ice hockey. Delta Zeta sponsored an alumnae brunch at Homecoming and ushered for the third year at ice hockey games. The chapter aided Marquette General Hospital with a blood drive and collected canned goods for the Salvation Army. Zeta Omegas and Phi Kappa Taus invited the Lambda Theta Chapter of Delta Zeta and the Phi Kappa Taus from Michigan Tech for a Halloween costume party on the day of the rival football game between the two schools.

Western Michigan, Gamma Pi—Delta Zeta and the Sigma Pi Fraternity teeter-tottered for 60 hours on campus and raised over \$500 for Big Brothers and Big Sisters of America. Panhellenic awards included Gail Barrie as outstanding rush chairman, and Terri Badour and Deb Beard as recipients of The Paidea Award, junior scholastic honor. During Sigma Chi Derby Week, led by ΔZ Derby Queen Wendy Zimmer, ΓΠ took third place overall and first place in spirit. Halloween was marked with a Mystery Masquerade Party where adventurous men accepted invitations without knowing which Delta Zeta would be the date. Pledges raised enough money to sponsor three families at Thanksgiving. Delta Zetas moved into a historical home this year and are actively participating in the area's Restoration Association. Through this organization,

members are donating food and helping with a Christmas Party for area children.

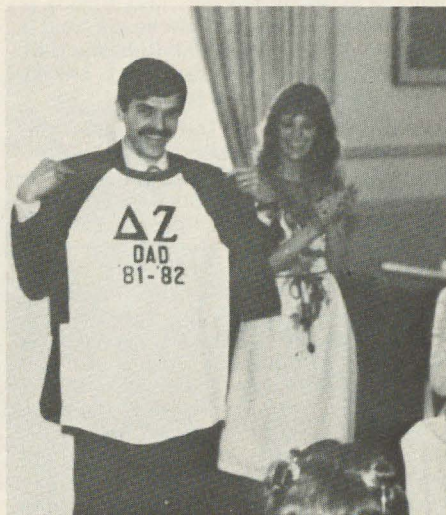
Wayne State, Epsilon Sigma—On Founders Day the chapter celebrated its 25th anniversary with a silver jubilee luncheon. About 200 alumnae joined the festivities. Guest speakers were the first chapter president Hope Delbridge Figgis, and the first CCD, Joy Schumann Wheeler (Mich. State—BP). Collegians entertained the alumnae with their current chapter songs and the alumnae shared many past favorites. Displays included scrapbooks and awards presented to the chapter during its 25 year history. After a general meeting in the fall, the pledge class sponsored a ΔZ-ert Alert when they brought different favorite recipes for baked goods and sold both the recipes and the food.

MISSISSIPPI

Southern Mississippi, Epsilon Mu—It was a busy Fall for EM, ending with an early December Christmas party. The pledge class presented a poem they had written entitled "Twas the Night Before Finals." Their 14 foot Christmas tree was a beautiful sight, twinkling for the USM campus to enjoy. Sheila Currie was chosen for *Who's Who* and was also tapped into Omicron Delta Kappa (senior women's honorary). Panhellenic president for 1981, Sheila was instrumental in bringing Rho Lambda (Panhellenic recognition society) to the USM campus and is serving as charter president. Amy Frederick is the Baptist Student Union Fellowship chairman and a member of Pi Delta Phi (French honorary). Kim Ingram is a member of the Residence Hall Association and Donna Huch is also a member of Pi Delta Phi.

MISSOURI

Central Missouri, Epsilon Gamma—Delta Zetas spent many busy hours on philanthropy projects during the Fall. Members joined the men of Whitman Air Force Base to sponsor a Halloween party for the children of Higginsville State School. The day was filled with games, dancing to the children's favorite records and a costume contest. Members later earned \$25 for philanthropy by bidding on a Delta Zeta book bag. The highest bidder bought the bag, but the other bidders paid too! Members earned \$80 for speech and hearing by raffling four tickets to an ELO/Hall & Oats Concert. The most recent philanthropy project was a wheelchair basketball game benefiting a charity for exceptional children. In January, members participated in the CMSU campus phon-a-thon to raise money for scholarships and loans. Pledges earned funds by selling Christmas stockings and donuts. Gail Spotts is a member of Special Student Service Committee while Anne Yendrick is co-director for CMSU Mulekickers. Kathy Britt serves as president of South Yeater hall Council.



It's Dads' Day at Northeast Missouri State and ΔZ Dad Dr. Richard Heun tries his t-shirt for size as ΔΣ's Past President Janet Mertz looks on.

Nancy Noland is a member of Delta Sigma Pi professional business fraternity. Nancy and Debbie Cooper were contestants in the the Miss Missouri Pageant. Tami Jones plays on the CMSU Volleyball Team and was named to the All Tournament Team.

Missouri-St. Louis, Iota Xi—Members and alumnae celebrated Founders Day jointly with a dinner at Top of the Sevens Restaurant where Alice Hanson Jones was honored as Woman of the Year. The chapter sang and performed the Founders Day Ceremony. Parents enjoyed a banquet in their honor in mid-October. Members collected for Muscular Dystrophy and sponsored a road rally commencing UMSL Fest Week and promoting school spirit. Iota Xi is at total in membership. Sharon Cox is a member of Pi Kappa Alpha's Dream Girl Court.

Northwest Missouri, Epsilon Rho—Delta Zeta pledged more girls in formal rush than any other sorority. With a possible quota of 36, Delta Zeta pledged 31. The four day formal rush had 220 rushees participating. Sandie Montgomery is serving as Panhellenic president. The chapter joined an All Greek attempt to break the human domino fall record. The men of Sigma Phi Epsilon sponsored the event to break the *Guinness Book* record. The record breaking fall was held on the football field, and, with all Greeks participating, the record of 400 was raised to 600. As the name implies, human domino consists of persons lining up one after the other with arms out to catch the other's fall. Omaha and Kansas City media covered the event. Delta Zeta joined Delta Chi to sponsor a Headstart Christmas party. Kelly Hamilton edits the yearbook with Karen Brede-

meier as assistant editor. Diana Bishop is a wrestling cheerleader. Michealla Neal is head resident assistant at Roberta Hall. Lisa Neal will serve the campus as overall Homecoming chairman for 1982.

Northeast Missouri, Delta Sigma—Dr. Richard Heun, professor of communication, is the seventh honorary ΔZ Dad. The title goes to administrators and faculty who actively support Delta Zeta. Vanessa Howe was a finalist for Homecoming Queen. Peggy Schoen is listed in *Who's Who in American Colleges and Universities* and *National Registry of Outstanding College Graduates*. She is also included in the National Dean's List and 1983 NMSU Outstanding Seniors Directory. Philanthropy projects included trick-or-treating for UNICEF, Christmas bell ringing for the Salvation Army and collecting canned goods for a Cambodian refugee family housed locally. Delta Sigma boasts total membership.

William Jewell, Zeta Rho—A meaningful Founders Day celebration consisted of a dinner out and beneficial lecture on the role of women today. Thirty-five dads attending Dads' Day enjoyed a luncheon and joined their daughters at a WJC football game. Dads also weighed in and donated two cents a pound to philanthropy. The total weight neared \$40. Delta Zeta placed second in Homecoming and pledged quota of 22 in formal rush. Pledges thought they were going to a regular meeting, when they were surprised by members with a Christmas nacho and cheese party. Two initiates, costumed as elves, handed out the presents. Playing varsity are Kelly Armatic, basketball, and Shelly Hamilton, swim team. In England, participating in the International Student Program are Joanna Whipple, Kathy Mackey, Karen Vincent, Jeanie Hirsch and Wendy Hughes. Pam Silvey and Wendy Hughes are on the *Tatler* yearbook staff. Jeanie Hirsch participated in a national discussion contest.

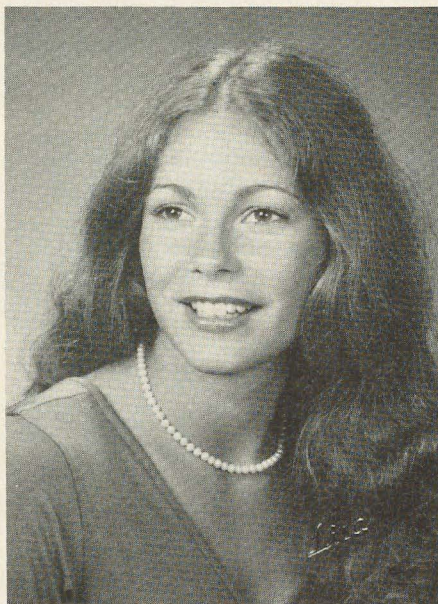
NEBRASKA

Creighton, Theta Eta—It's a Small World with Delta Zeta, the chapter theme party for formal rush, was set in a 1920's speakeasy with members dressed as club dancers and flappers. Theta Eta pledged a quota class for the fifth consecutive year and is at chapter limitation. Pledges quickly got into the swing of Greek life as they joined other sorority pledges to surprise initiates with an all sorority wake up breakfast. Delta Zeta placed second in Greek olympics and won the sorority-fraternity chariot race. Members sponsored a spaghetti dinner raising over \$100 for Gallaudet. Kaki O'Brien is a member of the Creighton cheerleading squad. Kelly McQueen reigned as Helen of Troy at the first all-university Greek Week dance. She serves the chapter as president. Panhellenic representatives are Jamie Hansen

and Sheila Nix, while Junior Panhellenic includes Patty Welch and Diane Cain. Delta Zeta participated in the first MIFCA/MAPCA northern area conference in the Fall. Theta Eta sent Ruth Ellis, Meg Zivkovich, Patty Welch and Diane Cain to University of Minnesota for the day long program encompassing all areas of Greek life. Members returned with many ideas for rush, sorority education, effective meeting planning, alumnae relations, and building leadership skills.

NEW HAMPSHIRE

Plymouth, Kappa Epsilon—In February, Delta Zeta sponsored its annual Miss Plymouth State College Scholarship Pageant, a Miss America preliminary. Members look forward to the event and keep busy with the mechanics of the pageant. Girls sell program advertising, contact judges and participants, handle sound, lighting, props, make-up and choreography. Chapter editor Joanne Stratoti reports that members were proud to hear that their pageant is considered one of the best run and organized in the state. Kappa Epsilon sponsored a Halloween Window Painting Contest for area elementary children. With a Super Heroes theme, children depicted everything from Snoopy to Spiderman with hopes of winning free roller skating passes. Members enjoyed a sorority family dinner in which everyone prepared a dish. Twenty-two alumnae enjoyed Homecoming Weekend with the chapter.



Lisa Gaydos, Northern Michigan—Zeta Omega, is in the Homecoming Court.

NEW JERSEY

Glassboro State, Xi Kappa—The chapter's entry in the Homecoming parade placed third with a title of "Dracula's Harem." On the float were Dracula's castle, coffin, Dracula himself and his ghostly harem. The parade theme was "Haunted Homecoming Happenings." Xi Kappa ranked second in women's flag football.

Rider College, Iota Kappa—Evelyn Shelby was chosen Sorority Woman of the Year. Evie has been chapter president for a year and a half and serves as social chairman for the College Panhellenic Council. Barbara Pallotto won first place in a three mile run for the March of Dimes. Barb is also captain of the women's hockey team. She was named NJAIW Division 11 all conference goalie. Lisa Conti is sweetheart of Zeta Beta Tau. Penny Richardson is a member of Phi Sigma Tau (philosophy) and Arline Lohli is a member of Beta Beta Beta (biology). Marion Trautwein has been elected president of the College Panhellenic for 1982.

NEW YORK

Rochester, Lambda Iota—The chapter catalogued books for the Rochester School for the Deaf library at a workshop at the Canandaigua Lake retreat. The workshop was one of many designed to get the year's activities off to a good start at the chapter's first retreat. ΛI helped Rochester Alumnae make ribbon rose tray favors for nursing home residents. Members sold hot cider and candy canes as ways and means projects, while pledges sold donuts door-to-door and hot cider at home football games to defray pledging costs. Pledges also made paper-bag turkeys filled with candy as Thanksgiving gifts for other sororities. Delta Zeta cordially opened its facilities during finals to dorm residents for study space. Members of the pep squad are Sue Olivieri, Laura Scanlan and Kathy Stark. Ellie Bertin, Mary Beth Egan and Victoria Stanton are resident advisors. Doreen Fiorelli presented a voice recital at Eastman School of Music, while Ellie Bertin was tapped for Keidaeans, UR honor society. Laura Jane Hyde is a Student Association senator and Susan McDermott and Sue Olivieri are Hill Court Dorm Council members. Susan is also Greek editor for the yearbook. Nancy Phillips is participating in the Junior Year Abroad program. Cyndy Smith manages the men's swim team for U of R. The men of Zeta Beta Tau presented Lambda Iota with large rose and green ΔZ Greek letters to decorate the balcony and identify the Delta Zeta living area.

NORTH CAROLINA

Lenoir-Rhyne, Zeta Xi—Chapter editor Nancy Burne wrote: "The sisters, it seems, always have something unexpected occur that brings us closer together. This event

was very unpleasant but we stuck together through it all. Two days after the Big and Little Sis Banquet, every member and pledge got terribly ill. It lasted two days and during this time the few unaffected cared for the others. Even those who had been sick but recovered quickly did what they could. The Health Department finally determined that it was food poisoning from the restaurant where the banquet was held. It's over now but being cared for by people you love makes it a little easier to be away from home and ill. It was so obvious that our sisters and pledges really did love one another by their concern when it would have been easier and safer to stay away from them. Not knowing it was food poisoning, the chance of catching the illness was considered a strong possibility but was shrugged off in order to make our sick sisters a little more comfortable." Stephanie Jordan, Deneise Powell and Julie Ketner have been listed in *Who's Who Among Students in American Colleges and Universities*.

OHIO

Ashland, Theta Psi—Dads' Day at Ashland was fun time, with a football game and dinner. At the dinner, each Dad was presented with a poem written by his daughter and they were passed out during a ceremony. Many fathers commented on how nice it was to feel a part of their daughter's sorority and to be able to see what Delta Zeta is all about. Thanksgiving dinner was at the Phi Kappa Psi house with the men doing the cooking. The "learning disabilities Halloween party" was held with Kappa Sigma. Everyone dressed up and greeted the children, playing games with them, carving pumpkins and trick-or-treating in the different rooms. The chapter also learned the Greek alphabet in sign language - two letters at each meeting. Carla Henning was named to *Who's Who*. The Ashland College *Collegian* quoted Carla as listing Delta Zeta as her most prominent activity. Jone Bodell is the Ashland College women's basketball manager.

Baldwin-Wallace, Gamma Alpha—Three Delta Zetas were nominated by fraternities for Homecoming Queen. Barbara Huff, Alpha Tau Omega's candidate, was first runner-up. Lambda Chi Alphas nominated Sandra Pearson and Phi Kappa Taus chose Theresa Peters as their candidate.

Bowling Green, Gamma Tau—Gamma Tau held its second annual volleyball tournament with 39 teams participating. First and second place trophies were awarded to fraternity, sorority and independent entries. A houseparent contest was held in conjunction with the tournament. Two functions netted \$1,143 which is targeted for Gallaudet College. Alicia Dolce and Linda Scott received the Panhellenic



Micky Life escorted Sheperd College's 1981 Homecoming Queen, Patty Reynolds, KM, as chapter president Linda Regner offered congratulations.

award for highest Big-Little Sister grade point - both with a 4.0 for spring semester. Linda Weiger is vice president of Phi Eta Sigma and Lori Jones is editor of the Greek yearbook.

Findlay, Theta Tau—Senior Pam Morgan reigned over Homecoming activities. Other Delta Zetas in the court were Heidi Myers and Krys Pituch, sophomore attendants. Krys is also a varsity cheerleader for football and basketball. Junior varsity cheerleaders are Dana McKibben, Suzy Tullis, Lynn Piatt. Lisa Huffman is a basketball varsity cheerleader. Theta Tau pledged eleven new members in a successful rush. Profitable money makers included selling tickets for the county fair, washing cars and selling M & M's.

Miami, Alpha—While banquet guests paid up to \$5000 for dinner without a glimpse of the President, four Delta Zetas

stood beside President Reagan, directed members of the press, rode in the Presidential motorcade and dined in the Cincinnati Hotel in late November. The Delta Zetas, Sara Carruthers, Shelley Boehk, Lili Kayloe and Beth Kinch, learned the behind the scenes organization of a president coming to town when they began working with his Advance Committee six hours before the President arrived. Delta Zeta teamed with Pi Kappa Alpha to capture the second place honors among 43 Greek organizations in Homecoming float competition. Founders Day celebrations coincided with Homecoming; alumnae and collegians enjoyed a brunch, celebrating both in the suite. Alpha again sponsored the ΔZ Swim-a-thon to raise money for Galludet. Parents were honored with a Parents' Weekend banquet and serenade in Cincinnati. Judy Williams serves as president of Order of Omega Greek honorary.



Kathy Cook, Indiana of PA-ΓΦ, is sweetheart of Theta Chi.

Ohio Northern, Zeta Kappa—With the theme of "Our Two — Can Do", the Delta Zeta entry, featuring a colorful seven foot Tucan bird, captured best overall honors and \$25 in Homecoming float competition. The exciting Homecoming weekend also included a second place win in pushmobile for the Delta Zeta team of Lana Edwards, Lynne Downs, Lisa Pond, and Pat Bowden. Jani Evans was a member of the Homecoming court. The annual alumnae tea concluded a wonderful Homecoming weekend. Barb Hoffert and Laura Kotnik participated in a walk-a-thon for philanthropy, while members trick-or-treated for UNICEF. Members traveled to Findlay for a Founders Day Tea.

Wittenberg, Beta Chi—Members teamed with three other Greek organizations to build a second place winning Homecoming float. Delta Zeta joined Phi Gamma Delta for a football game and cookout. The highlight of the social calendar was a hoe down held at a hall on the outskirts of Springfield. The party was complete with a fireplace and hay. Members raised money with a porch sale. A mum sale at Parents' Weekend raised cash for the CF Foundation of Springfield.

Wright State, Kappa Iota—"ΔZs Dazzle Las Vegas" proved a successful Fall rush theme as Delta Zeta was one of three sororities to pledge a quota class of 12. The chapter pledged two more girls in open rush. Members enjoyed an old-fashioned hay ride and cook-out. Residents of Montgomery County Nursing Home were treated to bingo, prizes, refreshments and caroling at the Delta Zeta Christmas party in their honor. Members participated in October Daze and raffled a turkey for ways and means.

Youngstown, Kappa Chi—The fourth annual Delta Zeta Bike-a-thon raised \$640.25 for Gallaudet, Founders Memorial Fund and Youngstown Hearing and Speech Center. This year, members donning bike-a-thon t-shirts featuring a turtle riding a bike, cycled 2 times around the one-mile course through the campus. Each member raised at least \$25 on the pledge per mile basis. Newspaper, television and two radio stations covered the event. After the long 20-mile ride on a hot afternoon, members cooled off with a splash in the campus fountain and then picnicked at the house. Of the six semifinalists for Homecoming Court, four were Delta Zetas. The girls were chosen on a basis of campus and community contribution and involvement and academic achievement and individual interviews. Rene Timko and Lisa Yelic were semifinalists and Judy Kuhn and Tammy Mapes went on to the finals. In Homecoming float competition, Delta Zeta teamed with Phi Kappa Tau to build a first prize winner. The float, following the parade theme of The Best of Times, featured a large rotating penguin, the school mascot, pointing to a heart, birthday cake, graduation cap and Greek letters, symbols of the best of times in a collegian's life.

OKLAHOMA

Northwestern Oklahoma, Delta Omicron—Pledges and initiates transformed a jeep into a huge turtle for the Homecoming parade. Homecoming candidate Lise Coussens, attired as Lady Ranger riding and roping, was atop the turtle. The lively float entry took third place honors. Members sold silk Homecoming mums for quite a profit. Following the Homecoming game, the chapter sponsored a fund raising dance. KXLS radio added extra entertainment to the evening. Delta Zeta Andrien Thomas had reigned over the Homecoming activities. Delta Zeta and a local fraternity spent a long Saturday painting the stadium bleachers in alternating colors of red and black. The painting party lasted from 7 a.m. to 5 p.m. Cindi Hauth is Miss Rodeo Oklahoma and a Calendar Girl. Clare Lingenfelter is Miss Northwestern and Jacque Annis is Miss NWOSU. Victoria Hoffman is Senior Drum Major. Iola Goodman, Arlene Jacks and Julie Prowers are members of the 1981 Oklahoma Honor Band.

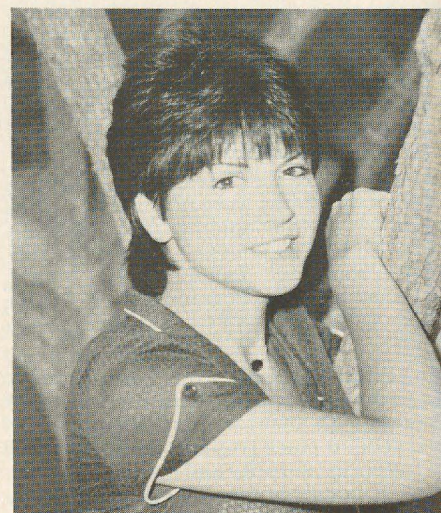
Northeastern, Delta Phi—Calendar Girls for Phi Sigma Epsilon are Heather Turner, Doreen Curry, Sherri Hogan and Brenda Baller. Robin Carr and Geri Carr are NSU Calendar Girls. Members of Redman Review Drill Team are Kathleen Counnaughton, Linda Ballew and Brenda Ballew. Donna Baker is a new editor of the *Northeastern* campus newspaper and Suzanne Metz is secretary of Panhellenic. Suzanne Myers serves as Executive Travel Director for Northeastern Activi-

ties Board. Becky Brand plays on the varsity tennis team and Rhonda Rider is president of Tau Beta Sigma honorary. Members traveled to Tulsa to celebrate Founders Day with alumnae. Delta Phi joined other Greeks in sponsoring a Christmas party for 35 children. Father Winston presented an interesting program on sign language to the chapter. Members enjoyed a TV night when the movie *Grease* was aired. The evening provided a good practice session for the rush songs from the music of *Grease*. The chapter earned a plaque for volunteer time and blood donated in the NSU Blood Drive.

PENNSYLVANIA

Indiana of PA, Gamma Phi—Diana Lynn Anderson was named to *Who's Who*. She has been a hall counselor for two years and is currently head hall counselor in one of the university's residence halls. Gamma Phi members assisted a local alumna whose husband had a terminal illness by selling t-shirts with the slogan, "I'm betting on Moe." Kathy Cook is sweetheart of Theta Chi and Maria Blair is sweetheart of Phi Kappa Psi. Pledging Kappa Delta Phi honorary education fraternity are Cynthia Weaver and Roseann Fernal.

Pittsburgh, Omicron—Chapter editor JoLyn DelBalso reports that Delta Zeta surpassed pledge quota with 18 new members to have the best rush on Pitt's campus. Founders Day and Homecoming provided a double celebration for Omicron with a pre-game brunch for members and alumnae. Delta Zeta joined Zeta Beta Tau and Delta Sigma Phi to capture second place in Homecoming float competition. The next day, members and alumnae concluded a festive weekend with a Founders



Diane Anderson, Indiana of PA-ΓΦ, is listed in *Who's Who Among Students in American Colleges and Universities*.

Day Dinner. Delta Zeta placed second in Sigma Chi Derby Days, which raised money for Children's School for the Blind. Omicron ranked top in scholarship among Greeks. Jane Hartline and Kathy Miskin have been selected by the Latin American Studies Department to spend seven weeks in the Dominican Republic for studies in their respective fields. They each also receive \$1000 scholarships. Jane is a senior and Kathy is a sophomore.

Robert Morris, Xi Chi—Delta Zetas received the first place award at the All Greek Spirit Night when the fraternities and sororities wore their letters and attended a basketball game. Of course, the team won, too. Lindy Dinato, Beth Baker and Paula Sarnelli were candidates for the RMC Snowball Queen. Karen Petulipac was selected by RMC to participate in the all star volleyball game.

Shippensburg, Kappa Psi—Collegians and Harrisburg Alumnae teamed to sponsor Ship's Super Shin Skate, a ten kilometer and two kilometer race. The race benefited Gallaudet College. Kappa Psi won first place overall in the sorority division in Greek Week and welcomed back alumnae with a sisterhood party and tea during Homecoming festivities. Fraternity sweethearts are Donna Denby, Sigma Tau Gamma, and Paula Burgess, Acacia.

Slippery Rock, Zeta Phi—For the sixth consecutive year, Delta Zeta placed first in the annual Homecoming float competition. The 1981 theme was "Return to the Ramblin' Gamblin' Wild West" and the chapter created an authentic Western saloon complete with dancing girls. At the Founders ceremonies, Kathy Hammill, Robyn Lawther, Amy Freisleben, Wendy Wanser, Lynn Job, Chris Beres and Diane Paul were honored for making the Dean's List.

RHODE ISLAND

Rhode Island, Beta Alpha—The poster read, "FISH-A-GRAM: Send a wish with a fish to your favorite dish!" And for \$1 (which did include the bowl) purchasers could send the bowl, fish and wish to the person of their choice. Proceeds from this three day project will go to Gallaudet College. Three days in November were set aside for a Sorority Sister Swapping program with four members from each sorority living at four different sorority houses for the weekend. The purpose was to get to know women from other chapters and to see the differences and similarities of others. Sister swapping was unusual since it had never been done before but turned out to be quite successful. Panhellenic also paired the four sororities on campus with kitchens with the four without kitchens for a dinner night. Beta Alpha had 30 members of Alpha Xi Delta over for a delicious manicotti dinner.

SOUTH CAROLINA

South Carolina, Beta Delta—Beta Delta chapter members made beautiful music with popular singer and musician Barry Manilow. Joy Turbeyville and Marion Bonneville as members of the internationally known Carolina Concert choir assisted Manilow in singing "One Voice." The choir surrounded Manilow's revolving stage at the end of the concert to perform the choral melody. Beta Delta is busy with Project Scooter, a facility for children with hearing impairments. The Delta Zetas sponsored a bowl-a-thon to raise money for this project.

TENNESSEE

Memphis State, Gamma Iota—Clad in brilliant vests of blue and gray, Sigma Chi and Delta Zeta captured first prize in the Panhellenic sponsored All-Sing. The presentation opened with *Cabaret* and later wooed the audience with snappy dance steps to *Mame*. The finale was *What I Did for Love*. Campus leaders include Ellen Bailey, member of Alpha Lambda Delta, Sigma Tau Delta, Honor Student Association, and 3.5 and 4.0 clubs. Ellen also co-edits the *HSA Newsletter* and serves as prose editor for *Memphis State Review*. Karen Barkley is chairman for Angel Flight, member of Student Ambassador Board and Order of Omega and *Who's Who* honorary. Sherry Ihrig is a representative to Smith Hall Council and member of honorary Student Association, Alpha Lambda Delta and biology honorary. Kim Krone serves as secretary of Golden Key and is a member of Honorary Student Association, Gamma Beta Phi and 3.0 and 3.5 clubs.

TEXAS

Angelo State, Lambda Omicron—During finals, Delta Zetas packed nutritional survival kits with treats as sunflower seeds, jerky, Cracker Jacks, Tootsie Roll pops and bubble gum. They also added rose and green pencils imprinted with "I Survived Finals at ASU." The survival kits proved to be appreciated fund raisers. The Delta Zeta float featuring a turtle in a cowboy hat copped first place honors at Homecoming. Members toughed out the rain to win the Greek football game. In mid-November, 39 Lambda Omicrons packed up and traveled to Chapter President Tesa Bunsen's home town of Marfa, Texas for a weekend retreat highlighted with workshops, hiking mountains at Fort Davis and viewing the natural phenomenon, the Marfa lights. Members attended church together on Sunday. AO joined other sororities to sponsor a Halloween dance at the Help Center.

North Texas, Kappa Zeta—At the Panhellenic Association Awards Day, held in the Delta Zeta Chapter Room, KZ

won the scholarship award. Debbie Watson earned the Panhellenic scholarship. Kathy Fisher was honored for outstanding dedication and service to Panhellenic and Pam Day received the outstanding rush chairman award. Sue Gardner will serve as vice president for social for Panhellenic next year. Delta Zeta honored other sororities with an all sorority mixer in the chapter room. Each KZ invited another sorority member and treated her to a banana split. Members collected aluminum cans as fund raisers and sponsored a booth at Kappa Sigma Fall celebration. Members gathered canned goods at Thanksgiving and donated clothes to Goodwill. In conjunction with the national philanthropy of speech and hearing, each member will have her hearing screened at the campus clinic. Standards programs included a woman police sergeant discussing rape prevention and a fashion representative discussing building and coordinating a wardrobe on a college budget. The standards committee is also compiling a magazine including clippings on diet, exercise, fashion and beauty. Special guest, LAMP editor Gwen Moss McKeeman, spoke at the Founders Day Luncheon with the newly formed Lake Cities/Lewisville Alumnae and Kappa Zeta.

Pan American, Theta Omicron—For the first time in 25 years, Pan American reintroduced the festive Homecoming parade, and Delta Zeta was there with a car decorated as a turtle. Delta Zeta sponsored a whipped creme pie booth at the



New Pledge Linda Zepeda expresses excitement at being chosen by Iota Psi (University of Texas - Arlington). Assistant Pledge Trainer Kelly Eidson agrees!



Cynthia Stout was a Homecoming Queen candidate for Gamma Xi at New Mexico State.

Carnival of the Great Pumpkin and participated in the Bronc-Olympics. Philanthropy Chairman Vicky Sanchez taught the chapter sign language. Members then put their knowledge to use when Theta Omicron visited the Jose de Escando School regional speech, hearing and handicapped center. ΔΖ President Gloria Garcia served both Panhellenic and Greek Council as president and was honored as a Student of the Month. Alma Gloria Ramos is president of University Center Program Council, a UCPC senator, Greek council member and recipient of the Outstanding Student of the Year award. Sondra Sissile represents the Science and Math Department in the Senate.

Sam Houston State, Zeta Theta—The chapter worked as ushers at the 50th annual Texas prison rodeo in October with funds raised going toward the purchase of a new sofa for the television room and the Christmas formal. The chapter met with the Huntsville alumnae at Founders Day and the pledges received their sister pearls. Sister pearls are alumnae who provide pledges with encouragement and support during their first months in Delta Zeta.

South West Texas, Iota Alpha—Members are creating new chapter traditions to go with their new house. Christmas is now celebrated with a tree decorated with rose and green bows and handcrafted ornaments made by IAs. Delta Zetas released balloons in school colors of gold and maroon at the Homecoming football game. Iota Alpha and Kappa Alpha Christmas caroled at the Care Inn Nursing Home. Members en-

joyed the Big-Little Sister banquet at the Aquarena Springs Hotel. The Delta Zeta team made it to the football play-offs. SW Texan spirit squad includes Carol Fowler and Brenda Robinson. Gina Walker is a member of Alpha Chi honorary, Order of Omega and Student Foundation. Dale Graham is a member of education honorary Kappa Delta Pi. Among the newly elected members of Gaillardian honorary is Alyce Young.

Southwestern, Gamma Zeta—The rush retreat, held at a Texas ranch home about two hours from campus, proved a time for rush chairman Lesly Windham to discuss rush strategy with members. The meeting proved to be more entertaining than expected when nearby cattle gathered to sing along on rush songs. Members enjoyed a hay ride through the beautiful Central Texas countryside and videotaped various events to add to their sisterhood movie for formal rush. Delta Zeta placed second in the Chilli Cook Out at Southwestern's first Greek Week. Members also enjoyed a Greek toga party, collected canned food for a needy family, and adopted a child through Christian Children's Fund. Philanthropy chairman Leigh Anne Horton arranged for aid to 11 year-old Uma Venkatesh of India.

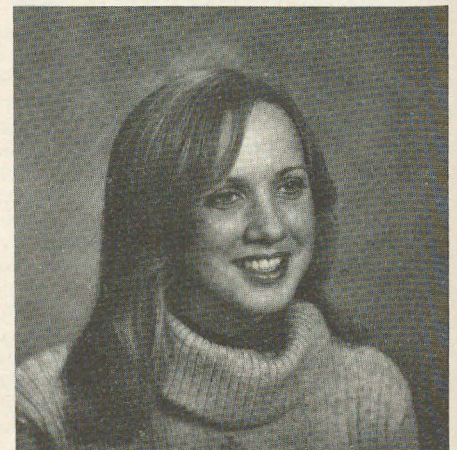
Texas-Arlington, Iota Psi—Saddles and Spurs spirit organization includes Gretchen Kipp, Susan Wardlow, Connie Moorhead and Kelly Edison. Louri O'Leary is head cheerleader and Melinda Manning is president of UTA's Amateur Racquetball Association. Law Society includes Missy Harders, Cheryl Phillips, Susan Herskowitz and Jan Gibson. Representatives to Student Congress are Cheryl Phillips, Tammy Peacock, Mindy Kunze and Kathi Vastine. Christy Sisk, vice-president of the freshman class, won a Presidential Leadership Scholarship and is a member of Honors Program and Wesley Foundation. Tammy Peacock and Lisa Moorhead are members of Mamselles Modeling Club. Mindy Kunze serves as secretary for the American Marketing Association and Order of Omega. Claire Barney sings with Stacey Harrisberger in a cappella choir and chamber singers. Jennifer Cotton serves Panhellenic as vice-president. Cindy Singeltary, Susan Herskowitz and Missy Harders are members of Phi Eta Sigma honorary. Susan is also a member of Alpha Chi and Pi Sigma Alpha honoraries. Tammy Trotter is a member of the Student Art Association. Members gathered together at Chuck E. Cheese, a local pizza and game establishment and invited friends and family to join them for all the pizza they could eat. The manager donated 30% of the profits to the sorority philanthropy. It was over \$300. Iota Psi again pledged quota.

VIRGINIA

Longwood, Epsilon Tau—At presstime,

the spirited pledge class carried the highest grade point among sorority pledge classes and the chapter ranked second academically. Delta Zeta sponsored a fund raising chili dinner to benefit Sigma Phi Epsilon's underprivileged children's program. Members also served lunch at Special Olympics. Karen Long was a finalist in Miss Virginia World Pageant and Pam Svoboda placed in the nationals of intercollegiate horseback riding. Members of honoraries are Faith Lancaster, Cindy Thurman, Ginger Moss, Alpha Psi Omega dramatics; Pam Svoboda, Stacie Southwick, Delta Psi Kappa physical education; and Melissa Mabry, Lychmos, math and science.

Virginia Tech, Kappa Theta—Fall Quarter at Virginia Tech found Kappa Theta with a packed calendar. The first weekend back the chapter went to Smith Mountain Lake for a rush retreat and just to get back together after the summer break. Informal rush began the following week so this provided the perfect opportunity to brush up on songs and skits and to make decorations. Field Representative Lee Ann Martin spurred the girls on with extra ideas and inspirations. Her help and the chapter enthusiasm and hard work paid off as KΘ accepted nine pledges after preferentials to put the chapter back up to 75 members. Tech's fall total. Plans for winter formal rush are in progress. A "Go Greek Week", sponsored by Panhellenic and IFC includes Monday as pin day with all fraternity and sorority members wearing their badges. Next is balloon day. See a balloon? You've found a Greek to ask about Greek life. Wednesday the Greeks pull on orange and maroon, Tech's colors for school spirit. Letters are the fashion on Thursday with hats and sorority paddles topping off the week on Friday.



Patti Glockzin, Wisconsin-Stout-ZB, is listed in Who's Who Among Students in American Colleges and Universities.



Cynthia Stout was a Homecoming Queen candidate for Gamma Xi at New Mexico State.

Carnival of the Great Pumpkin and participated in the Bronc-Olympics. Philanthropy Chairman Vicky Sanchez taught the chapter sign language. Members then put their knowledge to use when Theta Omicron visited the Jose de Escando School regional speech, hearing and handicapped center. ΔZ President Gloria Garcia served both Panhellenic and Greek Council as president and was honored as a Student of the Month. Alma Gloria Ramos is president of University Center Program Council, a UCPC senator, Greek council member and recipient of the Outstanding Student of the Year award. Sandra Sissile represents the Science and Math Department in the Senate.

Sam Houston State, Zeta Theta—The chapter worked as ushers at the 50th annual Texas prison rodeo in October with funds raised going toward the purchase of a new sofa for the television room and the Christmas formal. The chapter met with the Huntsville alumnae at Founders Day and the pledges received their sister pearls. Sister pearls are alumnae who provide pledges with encouragement and support during their first months in Delta Zeta.

South West Texas, Iota Alpha—Members are creating new chapter traditions to go with their new house. Christmas is now celebrated with a tree decorated with rose and green bows and handcrafted ornaments made by IAs. Delta Zetas released balloons in school colors of gold and maroon at the Homecoming football game. Iota Alpha and Kappa Alpha Christmas caroled at the Care Inn Nursing Home. Members en-

Attn: Addressograph

DELTA ZETA SORORITY
21 East State Street
Suite 600
Columbus, OH 43215

joyed a hay ride through the beautiful Central Texas countryside and videotaped various events to add to their sisterhood movie for formal rush. Delta Zeta placed second in the Chili Cook Out at Southwestern's first Greek Week. Members also enjoyed a Greek toga party, collected canned food for a needy family, and adopted a child through Christian Children's Fund. Philanthropy chairman Leigh Anne Horton arranged for aid to 11 year-old Uma Venkatesh of India.

Texas-Arlington, Iota Psi—Saddles and Spurs spirit organization includes Gretchen Kipp, Susan Wardlow, Connie Moorhead and Kelly Edison. Louri O'Leary is head cheerleader and Melinda Manning is president of UTA's Amateur Racquetball Association. Law Society includes Missy Harders, Cheryl Phillips, Susan Herskowitz and Jan Gibson. Representatives to Student Congress are Cheryl Phillips, Tammy Peacock, Mindy Kunze and Kathi Vastine. Christy Sisk, vice-president of the freshman class, won a Presidential Leadership Scholarship and is a member of Honors Program and Wesley Foundation. Tammy Peacock and Lisa Moorhead are members of Mamselles Modeling Club. Mindy Kunze serves as secretary for the American Marketing Association and Order of Omega. Claire Barney sings with Stacey Harrisberger in a cappella choir and chamber singers. Jennifer Cotton serves Panhellenic as vice-president. Cindy Singeltary, Susan Herskowitz and Missy Harders are members of Phi Eta Sigma honorary. Susan is also a member of Alpha Chi and Pi Sigma Alpha honoraries. Tammy Trotter is a member of the Student Art Association. Members gathered together at Chuck E. Cheese, a local pizza and game establishment and invited friends and family to join them for all the pizza they could eat. The manager donated 30% of the profits to the sorority philanthropy. It was over \$300. Iota Psi again pledged quota.

VIRGINIA

Longwood, Epsilon Tau—At presstime,

Quarter at Virginia Tech found Kappa Theta with a packed calendar. The first weekend back the chapter went to Smith Mountain Lake for a rush retreat and just to get back together after the summer break. Informal rush began the following week so this provided the perfect opportunity to brush up on songs and skits and to make decorations. Field Representative Lee Ann Martin spurred the girls on with extra ideas and inspirations. Her help and the chapter enthusiasm and hard work paid off as KΘ accepted nine pledges after preferentials to put the chapter back up to 75 members, Tech's fall total. Plans for winter formal rush are in progress. A "Go Greek Week", sponsored by Panhellenic and IFC includes Monday as pin day with all fraternity and sorority members wearing their badges. Next is balloon day. See a balloon? You've found a Greek to ask about Greek life. Wednesday the Greeks pull on orange and maroon, Tech's colors for school spirit. Letters are the fashion on Thursday with hats and sorority paddles topping off the week on Friday.



Patti Glockzin, Wisconsin-Stout-ZB, is listed in Who's Who Among Students in American Colleges and Universities.

CHANGE OF ADDRESS CARD. Please advise Delta Zeta promptly if there is a change or correction in your name or address as shown on the back cover. It is not necessary to return this card if the mailing label is correct. Members should use parents' home address while in college.

IMPORTANT. You must cut out the mailing label from this issue and paste it here. We cannot process changes without your label. Thank You.

I am currently a Delta Zeta Officer. Title _____

My new address will be _____
street/apt. #

city/state/ZIP _____ effective date _____

If mailing label does not show your married name, please include the following information for our membership files.

Married name _____ Husband's first name _____ Date of marriage _____

and were proud of their two representatives in the Homecoming court, Nancie Feest and Karen Weaver. Founders Day was celebrated with local alumnae and the chapter toured local nursing homes and delivered Christmas baskets and sang carols. They enjoyed State Day awards received in November...the province spirit award, Family Feud costume award, chapter achievement award, outstanding pledge award and an award for formal rush display...quite an array!

Wisconsin-Stout, Zeta Beta — Patti Glockzin was named top vice president of rush at the recent Wisconsin State Day...a tribute to her and to the chapter for pledging a large quota pledge class. Patti is also president of Stout Management Society and is listed in *Who's Who*. Homecoming found them hosting visiting alumnae with a Rodeo Roundup brunch. Their Homecoming float received first for humor and technical concepts.

Wisconsin-Whitewater, Epsilon Kappa—The chapter hosted Province Day in November and were delighted when La Crosse-ZO, and Eau Claire-EΩ, chapters came a night early. Epsilon Kappa won the turtle award for reporting and entertainment award for song and skit. Treasurer Cathy Johnson was named outstanding treasurer for the second year. Delta Zeta participated in Homecoming games and took first place in Dizzy Bats, Bed Rally Costumes and Talent Show group costumes. The chapter trick-or-treated for UNICEF and carved pumpkins for a local nursing home. The round robin Christmas party was unusually fun, as members Christmas caroled at the first house, exchanged presents at the second, and enjoyed refreshments at the third. Epsilon Kappas enjoyed a project of house surprises one month. Each week two members volunteered for half an hour party on Monday night. The original parties included a Sundae night, a Knox blocks night, a chocolate fondue fete; all provided fun study breaks. Many alumnae joined the initiates and 14 new pledges for the chapter's silver anniversary celebration and dinner at the Gobbler. For fund

Student union and president of Student Social Work Organization. Epsilon Delta's treasurer Patty Riffle was elected to receive the Spirit of Delta Zeta plaque for chapter involvement and dedicated sisterhood at the Founders Day dance. Renee Warden and Alice Russell shared the standards award. Delta Zeta visited Princeton Hospital children's ward to deliver treats, collected canned goods, and located more than 40 books for Windy Mountain Center for Special Students. Pom pon members are Jill O'Quin and Cindy Parker. Cathy Jack was reappointed as editor of the *Pine Tree* annual. Patricia Barker is a photographer on the *Pine Tree* staff. Proud Concordiana, a campus organization of selected students and faculty working for the betterment of the campus through tours, publicity and presentations, includes Sara Pate, Joy Butcher, Laura Hill and Cathy Jack.

Glenville State, Theta Xi—Vicki Parrish and Lou Ann Pettit were elected senior princess and sophomore princess for Homecoming and the Theta Xi float placed second. Founders Day was celebrated in conjunction with a home football game. Philanthropies included a canned food collection for a welfare family for Thanksgiving and a Christmas package for the same. The chapter held a two day Ham and Soupbean dinner to raise money for miscellaneous expenses. They had a bean bag toss on campus as part of the GSC homecoming carnival. Chapter members' activities would fill the LAMP if we listed them all, but know they are busy!

Marshall, Delta Upsilon—A quota pledge class numbering 16 sponsored a car wash, pop bottle drive, popcorn ball sale, donut sale, and canned goods drive for Christmas baskets. They also decorated for the Pink Rose formal. Delta Zeta again sponsored its annual soccer tournament between campus fraternities, which ΣAE won again for the third year. In IIKT ball, Delta Zeta placed third. At Pike's Peak, Stephanie Mitsionias found enough ping pong balls in the mud hunt to capture a first place for Delta Zeta. Through fund



Robin Woody is the third Delta Zeta in four years to be chosen by student body vote as Fairmont State's Homecoming Queen. She was crowned by EI sister Cathy O'Dell.

raisers, Delta Upsilon is helping purchase a closed caption television unit for a local deaf girl. One successful fund raiser was a Count the Corn Contest where participants guessed the number of candy corn pieces in a jar. A Thanksgiving turkey was the prize. Delta Zeta also contributed to Stella Fuller Foundation for the underprivileged and rang bells at Christmas. Cyndi Harless was re-elected as off campus representative to the Student Senate and Julie Hill was appointed as Panhellenic vice-president. Teia Hoover serves as vice-president of society of professional journalists, Sigma Delta Chi. Carla Legge is vice-president of campus chapter of Distributive Education Clubs of America. Debbie Fredrickson captured a role in the *Sound of Music* production.

Shepherd, Kappa Mu—Members traveled to Fairmont State to spend a weekend with EI Chapter. The Fairmont ΔZs presented a welcome party with many surprises for Kappa Mu, including an opportunity to ride a mechanical bull. Founders Day celebration consisted of a turkey dinner with all the trimmings and a sing-a-long of Delta Zeta songs. Philanthropy projects included a Halloween party for gifted children and filling a Thanksgiving basket for a needy family. Members enjoyed the first annual All Greek autumn formal. Patty Reynolds reigned a Homecoming Queen and Deb Talley is captain of the pom pon squad. Linda Regner is also on the pom pon squad.

WISCONSIN

Carroll College, Gamma Theta—At November's Province Day in Whitewater, the chapter won both the pledge training award and province award. The chapter won the \$25 second place award in Homecoming float competition. Eight girls ran in Al McGuire's run to earn over \$400 for the Children's Hospital of Milwaukee. Gamma Theta also trick-or-treated for UNICEF. Jayne Perry, with other members of the cheerleading squad, was invited to cheer for the Green Bay Packers.

Wisconsin-Eau Claire, Epsilon Omega—Chapter members rode in the Homecoming parade in a double-decker bus, complete with streamers and balloons and were proud of their two representatives in the Homecoming court, Nancie Feest and Karen Weaver. Founders Day was celebrated with local alumnae and the chapter toured local nursing homes and delivered Christmas baskets and sang carols. They enjoyed State Day awards received in November. . . the province spirit award, Family Feud costume award, chapter achievement award, outstanding pledge award and an award for formal rush display. . . quite an array!

Wisconsin-Stout, Zeta Beta — Patti Glockzin was named top vice president of rush at the recent Wisconsin State Day. . . a tribute to her and to the chapter for pledging a large quota pledge class. Patti is also president of Stout Management Society and is listed in *Who's Who*. Homecoming found them hosting visiting alumnae with a Rodeo Roundup brunch. Their Homecoming float received first for humor and technical concepts.

Wisconsin-Whitewater, Epsilon Kappa—The chapter hosted Province Day in November and were delighted when La Crosse-ZO, and Eau Claire-EΩ, chapters came a night early. Epsilon Kappa won the turtle award for reporting and entertainment award for song and skit. Treasurer Cathy Johnson was named outstanding treasurer for the second year. Delta Zeta participated in Homecoming games and took first place in Dizzy Bats, Bed Rally Costumes and Talent Show group costumes. The chapter trick-or-treated for UNICEF and carved pumpkins for a local nursing home. The round robin Christmas party was unusually fun, as members Christmas caroled at the first house, exchanged presents at the second, and enjoyed refreshments at the third. Epsilon Kappas enjoyed a project of house surprises one month. Each week two members volunteered for half an hour party on Monday night. The original parties included a Sundae night, a Knox blocks night, a chocolate fondue fete; all provided fun study breaks. Many alumnae joined the initiates and 14 new pledges for the chapter's silver anniversary celebration and dinner at the Gobbler. For fund

raiser, EK sold stationery, candy and singing telegrams. Pam Welsh, Cindy Divan and Cheryl Jones represented Delta Zeta in a trivia show, The Greek Connection, and placed second in the sorority division. Cheryl Jones, Lori Scheibe, Jill Kerr, Sarah Hohensee and Eva Waddel jumped rope in the marathon benefitting Student Council on Education of Children.

WEST VIRGINIA

Concord, Epsilon Delta—Though the ΔZ-IKA Homecoming booth was rained out, Joy Butcher, with a raincoat and wet smile, placed as first runner-up. The catchy theme was Joy to the World. Joy is a recent initiate, senior, Student Advocate at Concord, past president of the Baptist Student union and president of Student Social Work Organization. Epsilon Delta's treasurer Patty Riffle was elected to receive the Spirit of Delta Zeta plaque for chapter involvement and dedicated sisterhood at the Founders Day dance. Renee Warden and Alice Russell shared the standards award. Delta Zeta visited Princeton Hospital children's ward to deliver treats, collected canned goods, and located more than 40 books for Windy Mountain Center for Special Students. Pom pon members are Jill O'Quin and Cindy Parker. Cathy Jack was reappointed as editor of the *Pine Tree* annual. Patricia Barker is a photographer on the *Pine Tree* staff. Proud Concordiana, a campus organization of selected students and faculty working for the betterment of the campus through tours, publicity and presentations, includes Sara Pate, Joy Butcher, Laura Hill and Cathy Jack.

Glenville State, Theta Xi—Vicki Parrish and Lou Ann Pettit were elected senior princess and sophomore princess for Homecoming and the Theta Xi float placed second. Founders Day was celebrated in conjunction with a home football game. Philanthropies included a canned food collection for a welfare family for Thanksgiving and a Christmas package for the same. The chapter held a two day Ham and Soupbean dinner to raise money for miscellaneous expenses. They had a bean bag toss on campus as part of the GSC homecoming carnival. Chapter members' activities would fill the LAMP if we listed them all, but know they are busy!

Marshall, Delta Upsilon—A quota pledge class numbering 16 sponsored a car wash, pop bottle drive, popcorn ball sale, donut sale, and canned goods drive for Christmas baskets. They also decorated for the Pink Rose formal. Delta Zeta again sponsored its annual soccer tournament between campus fraternities, which ΣAE won again for the third year. In IIKT ball, Delta Zeta placed third. At Pike's Peak, Stephanie Mitsionias found enough ping pong balls in the mud hunt to capture a first place for Delta Zeta. Through fund



Robin Woody is the third Delta Zeta in four years to be chosen by student body vote as Fairmont State's Homecoming Queen. She was crowned by EI sister Cathy O'Dell.

raisers, Delta Upsilon is helping purchase a closed caption television unit for a local deaf girl. One successful fund raiser was a Count the Corn Contest where participants guessed the number of candy corn pieces in a jar. A Thanksgiving turkey was the prize. Delta Zeta also contributed to Stella Fuller Foundation for the underprivileged and rang bells at Christmas. Cyndi Harless was re-elected as off campus representative to the Student Senate and Julie Hill was appointed as Panhellenic vice-president. Teia Hoover serves as vice-president of society of professional journalists, Sigma Delta Chi. Carla Legge is vice-president of campus chapter of Distributive Education Clubs of America. Debbie Fredrickson captured a role in the *Sound of Music* production.

Shepherd, Kappa Mu—Members traveled to Fairmont State to spend a weekend with EI Chapter. The Fairmont ΔZs presented a welcome party with many surprises for Kappa Mu, including an opportunity to ride a mechanical bull. Founders Day celebration consisted of a turkey dinner with all the trimmings and a sing-a-long of Delta Zeta songs. Philanthropy projects included a Halloween party for gifted children and filling a Thanksgiving basket for a needy family. Members enjoyed the first annual All Greek autumn formal. Patty Reynolds reigned a Homecoming Queen and Deb Talley is captain of the pom pon squad. Linda Regner is also on the pom pon squad.

Profile of a Collegian



Gretchen Reinartz, University of Alabama-AI.

by Suellen Eubanks, University of Alabama-AI

After a full day of classes she gets into something comfortable, usually her navy sweatpants, looks for the glue and with a pencil in one hand rushes from her room to the basement. She stretches across the floor of the television room and can be seen searching through scraps of cloth pieces of carpet samples. "No, that won't do. Oh, there it is. Somebody come here and tell me what you think." These remarks can be heard coming from the room. That's Gretchen working on another one of her interior design projects.

Gretchen Reinartz is a senior majoring in interior design at the University of Alabama. She is also a very active member of Alpha Gamma chapter. Mention her name to any member or student around campus and one will find she is into everything. She was recently selected for *Who's Who Among Students in American Universities and Colleges*, nominated for the Grace Mason Lundy award by her sisters, and chosen as a member of Phi Upsilon Omicron honorary professional fraternity in Home Economics. This year she was also named Crescent Girl of Lambda Chi Alpha fraternity.

Gretchen's enthusiasm in school and sorority activities began as a freshman at the University and as a

pledge of Alpha Gamma. Her eyes glisten when she describes her experience of rush. "Something very special was felt as I came through the Alpha Gamma house and that feeling has stayed with me ever since."

Through the years she has represented Alpha Gamma on campus in many different activities. She is currently the president of the School of Home Economics, is a member of the University Liaison group to the president and was selected as a Corolla Yearbook Favorite during the annual Corolla beauty pageant. "When a sister receives an honor or an award everyone in the chapter shares the excitement," Gretchen said.

Gretchen has made many valuable contributions and brought recognition to her chapter by her active role in Panhellenic. This year she has served as a rush counselor and is a member of the Panhellenic Board of Review and the Greek Board.

Her future plans include opening an interior design shop of her own, marriage and a family. She also plans to remain active in the Alpha Gamma chapter as an alum. "When I leave Alabama," Gretchen said, "I will take with me the memories that I cherish of my sisters and remain a Delta Zeta for life."

Zeta Psis have "Reunion Weekend"

*by Lyn Powers Bratten,
Stephen F. Austin-ZΨ*

The alumnae of Zeta Psi Chapter from Stephen F. Austin State University from the years of 1967 to 1974 including some 1980 graduates held a "Weekend Reunion" at the Hyatt Regency Hotel in Dallas, Texas on November 14th and 15th. The alumnae from Houston, Dallas, San Antonio

and Austin areas planned the event. The idea to have a reunion in Dallas originated from the Houston area Delta Zetas who meet monthly for dinner. The Dallas area alumnae were contacted. They organized the activities and telephoned others in the area. The visiting alumnae were met at the airport in Dallas.

That evening, a "reunion party" was held at the Hyatt Regency Hotel in downtown Dallas. The activities of the evening included films (old rush parties, big sis - little sis parties, pledge parties, and other school happenings), scrapbooks, songs, and lots of old photos.

On Sunday morning, brunch was held at the Hyatt Regency Hotel and plans were discussed for future reunions to be held in Houston and San Antonio, Texas.

Some Dallas alumnae are trying to keep an updated address list. Please send any addresses or changes to Lyn Powers Bratten, 2806 Cambridge Dr., Carrollton, Texas 75007 or Pam Moss Cavender, 6634 Lovington, Dallas, Texas 75252.

Panhellenic House Slippery Rock

SLIPPERY ROCK, PA—The Slippery Rock State College Panhellenic Council has achieved a first among sororities in the East. This fall, the eight national chapters at SRSC dedicated the Panhellenic House, a house owned by the college and designated for use by the Council. The sisters now have a home on campus.

Once the use of the house was obtained, the job of cleaning and redecorating it fell to the sorority sisters, who pitched in to clean, paint and maintain the inside of the house. "Everyone worked on painting and cleaning the inside," said Cathy Skidmore, Panhellenic Council president. "They really take pride in it."

Flame Eternal

GAMMA Joan Tema Weaver '52	NU Jeannette Shearer Liska '34 Katherine Weinman McGrew '30 Grace Milliken Wegehenkel '27	BETA PSI Nell Seabrook Cuttino '34
DELTA Marietta Clearwaters Zechiel '21	RHO Henrietta Theys '27	BETA OMEGA Laurette Hess Drucker '37 Laura Bancroft Dunsmore '25
EPSILON Dorothy Meyer Leitch '33 Naomi Woods Pittenger '15	SIGMA Vivian Dyer Thornton '40	DELTA ETA Cheryl Ann Vorel '83
ZETA Berniece Preston Estes '35	TAU Evelyn Tough Crowe '27 Margaret Kerr Ertell '23	DELTA MU Page Lohmann Watson '26
ETA Etta Haxton Merry '13	PSI Frances Deputy Abel '15 Faye Deputy Walters '22	DELTA PHI Betty Jo Carter Maxwell '44 Vera Mulholland Phillips '52 Faye Hensley Cunningham '48
THETA Elizabeth Schwab Carpenter '67 Lucile Crowner Mast '29 Mary Louise Zaring '32	ALPHA ALPHA Ruth Smith Kappelman '33 Carolyn Hameister Melvin '48	EPSILON SIGMA Joan Stumph Bramson '53
KAPPA Violet Lucille Brown '28	ALPHA THETA Mildred Lewis '31	ZETA KAPPA Esther Emler Ricketts '34
MU Ruth Haskell Ewing '30 Marjorie Campbell Henry '36 Edith Spare Ihnen (Edith Head) '23 Rosalind Fowler Keen '20 Katharine Parker Kimball '31 Edith Ueland Knollin '18 Jacqueline Bakosh Nielsen '51 Gladys Wright Penney '18 Sarah Patrick Sproul '29 Dorothy Morton Wylie '23 Hazel Bartlett Zerolis '30	ALPHA NU Alice Louese Headrick '32	ZETA PSI Lauren Riley Miles '68
	BETA GAMMA Helen Craig Samuels '34	LAWRENCE Ruby Johnson Swartzlow '24
	BETA PI Marjorie Bourg Juenemann '49	
	BETA TAU Margaret Mary Bivans '36	

Straight-A Collegians

Margaret Grosse, national scholarship chairman, has announced that the following Delta Zetas have overall cumulative grade point averages of 4.0. This is indeed an accomplishment, so let us all congratulate these straight A scholars!

Province III	California State College - ZE Dawn Liggett Donna Rocca
Province IX	Northwestern University - AA Alexandra Cowen
Province XI	William Jewell College - ZII Becky Bray Jean Hirsch Jeanette Meyer
Province XII	Creighton University - OH Patti Helke

	Fort Hays State University - ΔΩ Lori Erbacker Nancy Hudson Lisa Lessman
Province XIII	University of North Dakota - Y Alison Johnson
Province XXI	Lenoir-Phyne College - ZΞ Sarah Vogelburg

Margaret also reported that 207 Delta Zetas earned a semester grade point of 4.0 for Spring semester, 1981.

Chapter Honor Roll

The following chapters pledged **QUOTA** in Formal Rush, 1981

University of Connecticut
University of Rhode Island
Glassboro State College
University of Pittsburgh
Shepherd College
Ashland College
Baldwin-Wallace College
Bowling Green State
University
Findlay College
Miami University
Ohio Northern University
Ohio State University
Wright State University
Youngstown State
University
Central Michigan
University
Ferris State College
Wayne State University
Franklin College
Indiana State University—
Evansville
University of Wisconsin—
Stout
DePaul University
Eastern Illinois
University
Iowa State University
University of Missouri—
St. Louis
William Jewell College
Creighton University
Fort Hays State University
Nebraska Wesleyan
University
California State University—
Long Beach
University of California—
Chico

Gamma Beta
Beta Alpha
Xi Kappa
Omicron
Kappa Mu
Theta Psi
Gamma Alpha

Gamma Tau
Theta Tau
Alpha
Zeta Kappa
Theta
Kappa Iota

Kappa Chi

Gamma Psi
Zeta Nu
Epsilon Sigma
Psi

Lambda Beta

Zeta Beta
Theta Theta

Lambda Rho
Beta Kappa

Iota Xi
Zeta Rho
Theta Eta
Delta Omega

Beta Tau

Delta Alpha

Delta Chi

Central (Oklahoma) State
University
Northeastern (Oklahoma)
State University
Northwestern (Oklahoma)
State University
Angelo State University
University of Houston
Stephen F. Austin
University
University of Texas—
Arlington
Texas A & M University
Louisiana State University
Nicholls State University
University of Louisville
Northern Kentucky
University
Appalachian State
University
East Carolina University
University of North Carolina—
Charlotte
Western Carolina
University
Georgia State University
Oglethorpe University
Auburn University
Auburn University—
Montgomery
Jacksonville (Florida)
University
University of Tampa
Old Dominion University
University of Central
Arkansas
Henderson State University
Slippery Rock State College

Epsilon Upsilon

Delta Phi

Delta Omicron
Lambda Omicron
Delta Theta

Zeta Psi

Iota Psi
Lambda Xi
Sigma
Kappa Alpha
Beta Gamma

Kappa Beta

Lambda Phi
Zeta Lambda

Kappa Phi

Theta Iota
Delta Delta
Beta Phi
Beta Xi

Lambda Nu

Iota Omega
Delta Beta
Theta Phi

Epsilon Xi
Epsilon Pi
Zeta Phi

The following chapter have reached **TOTAL** or are the largest on their campus.

University of New Hampshire	Theta Gama	Nebraska Wesleyan	Beta Tau
University of Rochester	Lambda Iota	University	
University of Pittsburg— Johnston	Lambda Epsilon	University of California— Chico	Delta Chi
Shippensburg State College	Kappa Psi	Central (Oklahoma) State University	Epsilon Upsilon
Northern Illinois University	Gamma Rho	Northwestern (Oklahoma) State University	Delta Omicron
Western Illinois University	Epsilon Omicron	Stephen F. Austin University	Zeta Psi
Central Missouri State University	Epsilon Gamma	University of Texas— Arlington	Iota Psi
Northeast Missouri State University	Delta Sigma	Texas A & M University	Lambda Xi
Northwest Missouri State University	Epsilon Rho	Louisiana State University	Sigma
California State University— Fullerton	Iota Upsilon	University of Louisiana	Beta Gamma
California State University— Los Angeles	Theta Rho	Morehead State University	Kappa Tau
South West Texas State University	Iota Alpha	Northern Kentucky State University	Kappa Beta
West Texas State University	Zeta Zeta	Appalachian State University	Lambda Phi
Lenoir Rhyne College	Zeta Xi	East Carolina University	Zeta Lambda
University of South Carolina	Beta Delta	University of North Carolina— Charlotte	Kappa Phi
Georgia College	Lambda Pi	University of North Carolina— Wilmington	Xi Theta
University of Alabama	Alpha Gamma	Georgia State University	Delta Delta
Florida State University	Alpha Sigma	Oglethorpe University	Beta Phi
Ashland College	Theta Psi	Auburn University	Beta Xi
Baldwin-Wallace College	Gamma Alpha	Auburn University— Montgomery	Lambda Nu
Bowling Green State University	Gamma Tau	Arkansas Tech University	Lambda Alpha
Miami University	Alpha	University of Central Arkansas	Epsilon Xi
Ohio Northern University	Zeta Kappa	Mansfield State College	Iota Theta
Ohio State University	Theta	Indiana University	Epsilon
Central Michigan University	Gamma Psi	Virginia Polytechnic Institute	Kappa Theta
Franklin College	Psi	University of Virginia	Lambda Delta
Eastern Illinois University	Gamma Nu		
Iowa State University	Beta Kappa		
William Jewell College	Zeta Rho		

Alumnae Chapters Write

Enid, OK — Alumnae held a raffle for ceramic Mr. and Mrs. Santas and netted \$100. They also made Christmas door decorations for each patient at a local nursing home. Some members helped with Salvation Army bell ringing.

Cleveland Eastside, OH — A benefit was held for the Fairmount Theatre of the Deaf, one of just two professional deaf theatres in the United States. The actors presented the dialogue for Neil Simon's *The Odd Couple* via speech as well as sign language, thus creating a unique theatrical performance for the audience. The Delta Zeta group had "bought out the house" and earned \$100 for the Theatre of the Deaf.

Colorado Springs, CO — For five years the Colorado Springs Fine Arts Center has had a festival of trees. Delta Zetas brought new mittens and red hearts to decorate their tree at the Center. It was on display to the public for two weeks before Christmas and then was donated to the Colorado School for the Deaf and Blind.

Orange County, CA — Orange County alumnae's annual boutique and luncheon was at the activity center of the Church of the Foothills in Tustin. Proceeds went to Iota Upsilon at Cal State-Fullerton, the Providence Hearing Clinic for the Deaf, Orange, and the Taft School for the Deaf, Santa Ana. The latter school is part of the school for the hearing. By making and donating salads, sandwiches and desserts, as well as making items to sell, they raised about \$1,200.

Oklahoma City, OK — Their 1981 Flame Fantasy boutique was under the direction of Chairman Deanna McKinnon (Texas-AT). The purpose of the boutique is to raise funds for Oklahoma City and Putnam City Public Schools' hearing impaired programs. Christmas ornaments, ceramic items, novelties and baked goods were sold at the boutique while foursomes played bridge. Luncheon was served and two fashion shows presented. One show featured fall fashions for the working woman and the other featured designs of Oklahoma City designer, Alan Jones, son of Frances Hackler Jones (OCU-ΓΥ.) Alan is currently a high school senior well on his way to becoming the next Calvin Klein.

Santa Monica, CA — Six members of the Santa Monica alumnae chapter were presented with their fifty year membership certificates at the Founders Day luncheon held in Los Angeles. Members so honored are Charlotte Smale Andrew, USC-AI; Marie McFadden Courtemanche, USC-AI; Louise Miller Hurle, USC-AI; Lyda Richman Nagel, USC-AI; Dianthalin Lollin Verange, UCLA-AX, and Marie Ruth Clithero Yacorzynski, Washington-K.

The Los Angeles alumnae chapter was hostess for the luncheon with Santa Monica and San Fernando alumnae chapters and Los Angeles State-ΘP members participating in the celebration.

Aurora, IL — President Lois Houlne' wrote that Aurora is pleased to have three Golden Rose members in their chapter. They are Jean Adair Larson, Maurine Dunlap Carlson and Lois Lamoreaux Houlne'.

Harrisburg Area, PA — Harrisburg alumnae finalized plans early in the fall for "Ship's Super Shin Shake," a ten kilometer race and two kilometer fun run held in October at Shippensburg State College. This exciting and challenging ways and means project was co-sponsored by the alumnae chapter and Kappa Psi chapter at Shippensburg. Proceeds will be used for a scholarship for a local student attending Gallaudet College.

The chapter also presented a traveling trophy to Kappa Psi. It will be given each month to the girl chosen by the sisters as the most active.

The Founders Day ceremony honored members who founded the Harrisburg alumnae chapter 20 years ago. These dedicated Delta Zetas are Anne Yeakel Brubaker, Temple-ΔT; Natalie Dann Craumer, Bucknell-BΘ; Jean Kunkle Rowland, Penn State-ΓΔ, and Joanne Cottle Storch, Bucknell-BΘ.



Orange County, CA Golden Rose members are Irene Taylor McCandless (Nebraska Wesleyan-BT) and Blanche Bouteiller Kaiser (California-M) left, welcoming new Golden Rose recipients, Velma Stanck Nagle and Vera Stull Ferraris (UCLA-AX).

Alumnae Chapters Write . . .



Shown accepting her Golden Rose certificate at Raleigh, NC's Founders Day is Mary Betts Hoadley (Swarthmore-BH). Left is Karen White Dunn (East Carolina-ZA), vice president, and right, Alberta Doran Curran (Longwood-ET), president of Raleigh alumnae chapter. Not pictured but honored was Ann LeSturgeon Covington who was a charter member of Alpha Theta chapter at Kentucky.

Fairfield County, CT — Connecticut alumnae have been quite busy this fall. They are so pleased to have a new chapter nearby and visited the Gamma Betas at the University of Connecticut in September to help with a rush party. They celebrated Founders Day by inviting prospective members. The November meeting was a crafts night to make Christmas items for sale in a local boutique. This is the second year for this successful fundraiser.

Raleigh, NC — Raleigh alumnae celebrated Founders Day by honoring two local Golden Roses with a dinner and candlelight ceremony at the North Carolina State University Faculty Club. Being honored were Mary Betts Hoadley, Swarthmore-BH ('31) and Ann Le Sturgeon Covington, who was a charter member of the Alpha Theta chapter at the University of Kentucky ('23).

Bartlesville, OK — President Julia Bodenhamer (William Jewell-ZP) approached the group with an idea for a "Cookie Jar" booth at the Y-Market sponsored by the local YWCA. This market has an 11-year tradition of attracting top quality arts and crafts and of drawing large crowds during its two day run. The group approved and Julia proceeded, acquiring a brown and white checked tablecloth and two matching aprons for salespersons to wear. In addition, she made large original "bear" signs advertising the cookies. The giant bear

cookie cutter was designed and created from sheet metal and a local merchant donated styrofoam trays for use in packaging. Once this was done, two days of baking had all the cookies ready for decorating.

When the Y-Market opened at 10 a.m. on that particular November day with 64 exhibitors displaying their wares, the Delta Zeta table held 200 beautiful bear cookies priced at \$1 each. Questions as to the salability of the bears were soon answered as all 200 were sold by 12:30 on opening day!

As the Y-Market profits will be used for various local and national Delta Zeta philanthropies, and the \$28 paid to the YWCA for table rent will be added to its World Fellowship Fund which benefits women and children throughout the world, a very enjoyable project has thus benefited others in many ways.



Julia Moore Bodenhamer (William Jewell-ZP) and son Jonathan at the Bartlesville alumnae chapter's "Cookie Jar" booth.

Alumnae Profiles

MERRIE C. OLSON CRUMLY, UCLA-AX, lives in Honolulu and is director of "The Reading Clinic" which is diagnosis and remediation of children through adults having remedial, developmental and/or learning disabilities. The clinic began in 1959. Merrie piloted the first learning disability program in Hawaii and the first nation-wide in public schools in 1961. She also taught school in Southern and Central California and Hawaii. Her husband, W. Curtis Crumly is a teacher. Interests are stamp collecting and painting.

GAIL BREED WILLEKE, New Hampshire—ΘΓ, is the business manager of the Biology Department at Portland State University, involved in budget management, purchasing, accounting, supervising graduate teaching assistants, etc. She has taught biology at St. Olaf College in Northfield, MN, served as project leader for clam ecology study at Oregon State School of Oceanography and as a lab supervisor and technician at the OSU veterinary school. Her husband is Jeff, a student of electronics and cabinet maker and her interests lie in horseback riding, crafts, antique refinishing, photography and hiking.

ARLENE MEHL WEYHMULLER, Adelphi-AZ, is a speech, hearing and language pathologist at the intermediate school in Ocean City, NJ. She lives with husband Robert, a learning disabilities consultant, in Somers, NJ and enjoys cooking, teaching, dancing, decorating and traveling. She completed graduate study at Trenton State College.

KATHLEEN WENGER REYNOLDS, Kansas State-A, has a degree in Home Economics and Journalism which she puts to use as a home service advisor for Kansas City Power & Light, advising consumers on wise use of electricity. She presents programs to clubs and schools on insulation, ventilation, weather stripping, caulking and other energy-saving improvements. She also does programs on microwave cooking, portable appliances, senior citizen recipes, etc. She's involved with sorority and church work and enjoys writing, water skiing and music. Her family includes Robert, who is a designer, and son Christopher, who is 4.

LUCIA H. DUNCAN, De Pauw-Δ, received her Juris Doctor in 1977 at the University of Georgia and is now Corporate Counsel for the world's largest international computer software firm which is headquartered in Atlanta. Her functions include negotiating, problem-solving and advisory, with much time spent reviewing existing contracts. She likes photography, reading (anything!), needlecrafts, all sports, music and dancing and has been actively involved in the Georgia legislature.

BETTY GREENWELL KASSULKE, Louisville-BΓ, is a prison warden for a multi-security female institution in Kentucky. She supervises a staff of fifty and treatment program of 120 incarcerated females. Betty was involved in prison reform before it was popular or mandated with such changes as integration of the institution, illumination of compulsory activities and the development of academic and vocational education, counseling programs, self-help groups and resident council. Her husband Howard is a retired prison administrator and children are Jamie, 8 and Martha, 6. Interests include fishing, tennis, astrology and meta-physics.

CAROL BROWN McGREW, Western IL-EO, lives in Cedar Falls, IA where she is a parish associate at Bethlehem Lutheran Church where as a lay professional she teaches confirmation, Sunday school, Altar Guild. She preaches at the nursing home chapel and special services and is an ex-officio member working with such committees as church workshop, evangelism, etc. She calls in hospital visitations, shut-ins, inactives, youth work, etc. her husband LeRoy is head of the Chemistry Department at the University of Northern Iowa and their children are Clark, Laura and L. Andrew. Her major interest is Danish stitchery.

JINICE ETMUND BEACON, UCLA-AX, lives in Irvine, CA where she is the owner of *Designs by Jinice*. Combining her own and her mother's art and business abilities, she now sells hand painted needlepoint in more than 23 states. She also teaches needlepoint at Orange Coast College and designs for the mass market. She gives credit to husband Steve for being a booster and supporter of her venture into business. She is at home with the business while still enjoying Christa and Jeff who are 14 and 8.

PHYLLIS PENNINGTON DILLARD, UCLA-AX, moved to Brawley, CA in 1934 because the community promised young teachers a \$100 annual bonus! She later married a local rancher, Fred Gieselmann. After his death she continued to run his ranch, becoming known as the "Flax Queen of the Imperial Valley" because she raised more flax per acre than anyone else. Activities are too numerous to mention but in 1980 she received the Branding Iron award from the Brawley Chamber of Commerce for community work. Her husband Bill says "She is one of the most outstanding women in Imperial County ... and she was that way before I met her." Their daughters are Deborah and Jill.

MARILYN NORTON REEG, Western Michigan-ΓΨ, lives in Grand Rapids, MI where she is branch sales manager for World Book-Childcraft International, Inc. - one of six women holding this position in 87 branches. She supervises activities of over 1,000 representatives and area, district and division managers in Michigan, covering two-thirds of the state. Her husband David is an educator and their children are Crystal, Ryan, Lorie and Amy. She likes handcrafts and needlework, reading and backwoods camping.

DIANA HART WALKER, Penn State-ΓΔ, now lives in Winter Garden, FL where she is a bank examiner with the Federal Deposit Insurance Corporation in Orlando. She is a compliance examiner and goes to different banks each week and writes reports which go to Washington and back to the bank to insure compliance with the various Federal laws and the safety and soundness of the banking system. Husband Ken is a self-employed computer analyst. Interests are scuba diving, boating, sailing and fishing, along with tennis, horses and jogging.

HELEN CUMMING DAVIES, NYU-BQ, is an internal auditor for a bank in Rockville, MD, spot checking cash trial balances, trouble-shooting, etc. Her husband Alan is a system analyst for the National Bureau of Standards and their three grown children are Dave, Malcolm and Emily. She enjoys photography and swimming.

Alumnae Profiles

GAIL CALLAHAN DiNUNZIO, Virginia Tech-KΘ, is a decorating/fabric consultant in Framington, MA and finds this work exciting, rewarding, interesting, challenging and just very enjoyable. She earned her degree in Political Science but her interest and aptitude for decorating led her in this direction. Her husband is Camillo, a civil engineer. She met him in New York while working for Avis Rent-A-Car at LaGuardia Airport. This was her happy experience there. The terrifying one was when that bomb exploded near the TWA baggage claim area, killing 13 persons and injuring many others (including two girls with whom she worked.)

EVALYN WINTERS HARTLINE, Virginia Tech-KΘ, is an interior landscape specialist in Columbia, MD. She designs and sells indoor plantings for a large interior landscaping company in Rockville, MD. Her husband Joseph is an engineer and her interests and hobbies include houseplants, gardening, her cat, sailing, cooking, antique shopping, decorating - and Redskins football!

SHARON LOUISE SMITH, LSU-Σ, is currently Associate Counsel-Labor for the Southern California Rapid Transit District. She's active in preparations for upcoming labor negotiations between the SCRTD, which serves a five county area of Southern California, and the United Transportation Union, the Amalgamated Transit Union and the Brotherhood of Railroad Clerks, Baggage Handlers, et al. Sharon earned her Juris Doctor at Loyola Law School in Los Angeles. A native Californian, she makes her home in a cabin approximately 2,000 feet up the side of Mount Wilson with an assortment of mentally deficient cats, and a *very* shrewd opossum. She enjoys playing poker, sport fishing, arguing and foreign travel. Sharon's mother, Ola Baxter Smith, California-M, commented: "She's been arguing with me ever since she was three. At least now she gets paid for it."

MARY HOPSON TURNER, Western IL-EO, has a B.S. in Home Economics Education and has done graduate work at Western Illinois State, Colorado State and the University of Illinois. She was an extension advisor in Home Ec for 14 years but is now a homemaker, doing free-lancing Home Economics, substitute teaching, etc. Her husband Ron is a tool dealer and children are Alicia and Renee. She listed snowmobiling and macrame as favorite interests, along with sewing, gardening, needlepoint and traveling.

JOAN T. SMITH SCHULZE, Illinois-AB, resides in Sunnysvale, CA where she is an artist, lecturer and instructor. She has a studio, but travels throughout the country to teach and exhibit her work. Her solo art shows range from New York to California. But, she doesn't paint on canvas! Using a variation on blueprinting, the mixed media works, using a cyanotype process are collages combining aspects of quilt making, photography and xerography. Joan's husband is James, an engineer, and their children are Derk, Dusty, Nicole and Trevor.

JOAN ROMANKO HOENNINGER, Drexel-EZ, lives in Harleyville, PA where she is an in-plant new products coordinator for Mrs. Paul's Kitchens, Inc. She travels to their five plants, coordinating changes in formulas, scaling up new product formulation or to adapt to processing equipment. She's a liaison between test kitchen research and plant formulation. Her husband Tom is a civil engineer.

CAROLANN GOLDEY SMITH, Virginia Tech-KΘ, is a nuclear engineer in nuclear fuels division of Houston Lighting and Power, working in nuclear analysis which involves incore fuel management of a nuclear reactor. Her husband Jeffrey is a chemical engineer. Carolann lists jogging, swimming, quilting, cross stitch and indoor plants as interests and hobbies.

Florida Delta Zeta is Panhellenic President

Two hundred women from nineteen national sororities make up the membership of the Fort Lauderdale, FL Alumnae Panhellenic Association. Elected president is Delta Zeta's Marilyn Long Green (Northwest MO State-EP).

Marilyn has served as philanthropy chairman, club woman of the year chairman, second vice president and first vice president of the Panhellenic Association. She has also held several offices in the Gold Coast Area alumnae chapter of Delta Zeta, including two terms as president.

Marilyn and her husband, Richard, a Phi Delta Theta from Iowa State University, have three children - Karen, 7; Brian, 2, and Susan, 6 months. They live in Lighthouse Point, FL.

The Gold Coast Delta Zetas are very active in Panhellenic as a list of board and committee members reflects each year. Gold Coast president Pat Beatty (Bowling Green-IT) organized a Panhellenic Past Presidents recognition luncheon to honor presidents of the past 56 years. Honored that day was Shirley Knight Small (Florida State-AΣ) who was Panhellenic president in 1978-79. Shirley was also honored as Panhellenic Woman of the Year.

Ohio Alumnae Raise Money for Scholarships

A "Celestial Fashions" luncheon and style show was hosted by the Cleveland Eastside and West Side alumnae to raise money for scholarships which will be given in 1983 when Delta Zeta's Julie Kishel Foster (Baldwin-Wallace-ΓA) will be president of the Cleveland Panhellenic.

This special day was organized by Margaret Bade Mason (Baldwin-Wallace-ΓA) and her committee and was a total success as it garnered over \$600 for the scholarship fund.

Mrs. Music, Edna Mae Nauman

by Lois M. Adamek, ISU-BK
Sacramento Alumnae Chapter



Mrs. Music herself, Edna Mae Burnham Nauman, California State at Chico, ΔΧ '29.

There is no such plight as "career burn-out" for Edna Mae Burnham Nauman (California State University-Chico, ΔΧ '29), a veteran composer of music for over thirty years. Her books on piano instruction methods, published by Willis Music Co., Florence, KY, are generally regarded as some of the best in methods instruction. Older classics are "A Dozen a Day" (1950) and the six-book method course "Step by Step" (1959). They are distributed world-wide and available in four languages.

Edna Mae's newest composition, coming out shortly, is a two-book series, "Play it in Many Keys, Please." She is also working on a new "Lite Series" of sheet music, mainly pop compositions arranged for younger players. She has three more books in the wings called "Modern Sounds of Music," which are contemporary in sound. All that, plus workshops for music teachers which she conducts all over the country, keeps Edna Mae very busy. Her enthusiasm, shown by the statement, "I'm always writing. I'm always thinking of new pieces," is no doubt the basis for her deft melodies.

Edna Mae majored in piano at the University of Washington and at California State University at Chico. She taught music in the primary schools of Sacramento and had her own studio for many years. She and her husband live in Sacramento where she is a Golden Rose member of the alumnae chapter.



Susan A. Skambis (Florida Southern-BM) presents a "Welcome to Delta Zeta" gift to the new collegiate chapter at the University of Tampa from the Orlando/Winter Park alumnae. In the background are Susan Mease (Samford-AII), PAD and Patricia Rosser (Georgia Southern-IN), PCD.

Delta Zeta Directory

NATIONAL COUNCIL

President: Carolyn B. Gullatt (Mrs. John), 4008 Hyridge, Austin, TX 78759
Vice President of Membership: Debbie M. Bruce (Mrs. Bill), 5008 NW 62nd Street, Oklahoma City, OK 73122
Vice President Alumnae Affairs: Mary Margaret C. Fore (Mrs. Sam), 459 Summit Circle, Fredericksburg, TX 78624
Vice President Collegiate Affairs: Dwayla Dean F. Porter (Mrs. Arthur), 1121 Osage Drive, Stillwater, OK 74074
Secretary: Dianne F. Guild (Mrs. Douglas), 16 Andrews Drive South, Burlington, VT 05401
Treasurer: Anne Marie J. Gavin (Mrs. William), 3264 Swan Drive, Vineland, NJ 08360
Director: Isabel (Terri) Severy (Mrs. Raymond), 2127 Northhampton Way, Lansing, MI 48912
Director: Lucile C. Cooks (Mrs. Rudolf), 1936 Dolphin Blvd., S., St. Petersburg, FL 33707
Director: Charlotte F. Silversteen (Mrs. Allen), 513 Toll Road, Orelan, PA 19075
Director: Sarah Jane S. Houston (Mrs. Harold), 3358 Ramblewood Place, Sarasota, FL 33577
Past National President: Norma M. Andrisek (Mrs. J. R.), 319 Janice Drive, Berea, OH 44017
National Panhellenic Conference Delegate: Dwayla Dean F. Porter (Mrs. Arthur). *Alternates:* Carolyn B. Gullatt (Mrs. John), Norma M. Andrisek (Mrs. J. R.)

NATIONAL HEADQUARTERS

Delta Zeta National Headquarters: Suite 600, 21 E. State Street, Columbus, OH 43215
Delta Zeta Subscriptions (Collegiate & Alumnae): Box 24145, Columbus, OH 43224
National Traveling Representatives: Jennie Crawford, Anne Leine, Lee Ann Martin, Terry McNeer, Colleen Quinley, Nancy Walker

THE LAMP

Gwen M. McKeeman (Mrs. Robert L.), 5517 S. 74th E. Avenue, Tulsa, OK 74145

EXTENSION

Norma M. Andrisek (Mrs. J. R.), 319 Janice Drive, Berea, OH 44017

DELTA ZETA FOUNDERS MEMORIAL FOUNDATION

President: Mary Lou M. Barth (Mrs. William), 1662 Villa South Drive, West Carrollton, OH 45449
Secretary: Sarah Jane S. Houston (Mrs. Harold), 3358 Ramblewood Place, Sarasota, FL 33577
Treasurer: Shirlyn Chaffin (Miss), 6561 Santa Cruz Place, Reynoldsburg, OH 43068

PROVINCE COLLEGIATE AND ALUMNAE DIRECTORS

I. Maine, Vermont, New Hampshire, Massachusetts, Connecticut and Rhode Island

PCD: Karen K. Manuel (Mrs. Thomas), 36 Rilling Ridge Rd., New Canaan, CT 06840

PAD: Gay T. Rose (Mrs. Jack), 124 Roxbury Road, Niantic, CT 06357

II. New York and New Jersey

PCD: Sally Collins (Miss), 1515 Fox Run Drive, Plainsboro, NJ 08536

PAD: Acting Province Alumnae Director: Charlotte F. Silversteen (Mrs. Allan), National Director, 513 Toll Road, Orelan, PA 19075

III. Pennsylvania and Delaware

PCD: Phyllis S. Favorite (Mrs. Robert), 570 Lancashire Lane, State College, PA 16801

PAD: Charlotte F. Silversteen (Mrs. Allan), 513 Toll Rd., Orelan, PA 19075

IV. West Virginia

PCD: Sherry H. Miller (Mrs. William), 2609 Jefferson, Pt. Pleasant, WV 25550

PAD: Acting Province Alumnae Director: Charlotte F. Silversteen (Mrs. Allan), National Director, 513 Toll Road, Orelan, PA 19075

V. Ohio

PCD: Lynnda W. Hoefler (Mrs. Robert), 1287 Denise Drive, Kent, OH 44240

PAD: Barbara E. Shelton (Mrs. Glen), 727 Carnahan, Findlay, OH 45840

At large: Arlene Newman (Miss), 2200 Post Oak Blvd., Suite 310, Houston, TX 77056
 Betty P. Dewitt (Mrs. Norman), 23630 Oakrest Lane, Harbor City, CA 90710

STANDING COMMITTEES

Colonnade Club: Florence H. Miner (Mrs. Arthur), 1040 H. Avenue, Nevada, IA 50201
Constitution and Procedure: Lisbeth I. Francis (Mrs. Robert), 2508 Belle Terre Drive, Birmingham, AL 35226
History: Grace M. Lundy (Mrs. H. M.), 3207 N. 25th St., Phoenix, AZ 85016
Ritual: Phyllis S. Favorite (Mrs. Robert), 570 Lancashire Lane, State College, PA 16801

COMMITTEES

Activities/Social (Collegiate): Donna S. Stipek (Mrs. John), 752 Forest Edge Drive, East Amhurst, NY 14051
Alumnae Relations: Carol S. Bertz (Mrs. Michael), 6544 S. Heritage Place, E., Englewood, CO 80110
Awards (Collegiate & Alumnae): Marcia E. Humpal (Mrs. David), 26798 Mangrove Lane, Olmsted Falls, OH 44138
Housing: Norma M. Andrisek (Mrs. John R.), 319 Janice Drive, Berea, OH 44017
Newsletter (Collegiate & Alumnae): Amy R. Glasgow (Mrs. Thurman), 502 Tammy Drive, San Antonio, TX 78126
Philanthropy (Collegiate): Joan D. Lowry (Mrs. Bob-Bill), 578 Yarmouth Lane, Bay Village, OH 44140
Programs (Alumnae): Sherrie C. Loader (Mrs. Charles), 565 Church, Portland, ME 48875
Philanthropy (Alumnae): Priscilla (Pat) Beatty (Miss), 3691 NW 95th Terrace, Apt. 1202, Sunrise, FL 33321
References: Marianne M. Cravens (Mrs. Scott), 4455 Hollyhock Street, Ft. Collins, CO 80526
Rose Shop Chairman: Karen Soyk (Mrs. Lon), 31033 38th Ave., South Auburn, WA 98002
Scholarship (Collegiate): Margaret S. Grosse (Mrs. Robert), 21 Terrace-Walk, Berkeley, CA 94707
Elizabeth Coulter Stephenson Scholarships (Collegiate): Sarah Jane S. Houston (Mrs. Harold), 3358 Ramblewood Place, Sarasota, FL 33577
Standards: Lee M. Rodekohr (Mrs. Larry), 901 Platte Avenue, Cheyenne, WY 82001
National Rush Committee Members: Marvona E. Tavlin (Mrs. Michael), 5424 Pawnee, Lincoln, NE 68506
 Susan A. Skambis (Mrs. Christopher), 230 W. Lake Sue Ave., Winter Park, FL 32789

VI. Michigan

PCD: Isabel J. Severy (Mrs. Raymond), National Director, 2127 Northampton Way, Lansing, MI 48912

PAD: Pamela M. Cronenwett (Mrs. William), 25720 West Hills Drive, Dearborn Heights, MI 48125

VII. Indiana

PCD: Caryol M. Fitzpatrick (Mrs. Caryol), 534 Cielo Vista Drive, Greenwood, IN 46142

PAD: Gelaine L. Smock (Mrs. Steven), 9561 E. Southport Road, Indianapolis IN 46259

VIII. Wisconsin

PCD: Sandi Betz (Miss), 3011 Agnes St., Eau Claire, WI 54701

PAD: Kay M. Wright (Mrs. Terry), 10477 Juan Calle, Des Moines, IA 50322

IX. Illinois

PCD: Gail E. McKee (Mrs. Don), 776 Tenth Street, Charleston, IL 61920

PAD: Elaine M. Whitesel (Mrs. John), 225 W. Center Ave., Lake Bluff, IA 60044

X. Iowa

PCD: Sandra H. Horton (Mrs. R. E.), 2119 Country Club, Ames, IA 50010

PAD: Kay M. Wright (Mrs. Terry), 10477 Juan Calle, Des Moines, IA 50322

XI. Missouri

PCD: Sandra H. Horton (Mrs. R. E.), 2110 Country Club, Ames, IA 50010

PAD: Eileen H. Doe (Mrs. Larry), 2 Locust, St. Louis, MO 63031

XII. Kansas, Nebraska and the collegiate chapters of Colorado

PCD: Janet E. Havener (Mrs. Gary), 4343 N. Sheridan Ave., Loveland, CO 80537

PAD: Carolyn M. Wooding (Mrs. Charles), 3112 Creekwood, Lawrence, KS 66044

XIII. Minnesota, North Dakota and South Dakota

PCD: Jeri S. Weigand (Mrs. Greeg), 549 19th Avenue, N., South St. Paul, MN 55075

PAD: Sylvia L. Kafkas (Mrs. John), 3505 Humboldt Ave., South, Minneapolis, MN 55408

XIV. Colorado, Wyoming, Utah, Arizona and New Mexico (ALUMNAE CHAPTERS ONLY)

PAD: Mary Jo H. Messlin (Mrs. Carl), 2998 S. Akron Court, Denver, CO 80231

XV. SOUTH Southern California, Southern Nevada and Hawaii

PCD: Karen M. Dessel (Mrs. Tom), 2015 Studebaker Road, Long Beach, CA 90815

PAD: Elizabeth B. Bragg (Mrs. Lawrence), 2972 Leopold Ave., Hacienda Heights, CA 91745

XV. CENTRAL Northern California and Northern Nevada

PCD: Janet Kerr Tener (Mrs. Ralph), 30-A Heather, San Francisco, CA 94118

PAD: Ruth R. Behnke (Mrs. Albert), 2241 Sacramento Street, San Francisco, CA 94115

XV. NORTH Oregon, Washington, Montana, Idaho and Alaska

PCD: Care of National Vice President Collegiate Affairs

PAD: Care of National Vice President Alumnae Affairs

XVI. Oklahoma

PCD: Donna S. Brooks (Mrs. Mike), 241 West Durham Street, Broken Arrow, OK 74102

PAD: Doris W. Sandoz (Mrs. N. O.), 624 SW 51st St., Oklahoma City, OK 73109

XVII. Texas and the collegiate chapters of New Mexico

PCD: Merry W. Adamcik (Mrs. Roy), 6222 Ariel, Houston, TX 77074

PAD: Annette F. Nall (Mrs. Garry), Box 136 WT Station, Canyon, TX 79015

State Reference Chairmen

ALABAMA: Mrs. Wesley Thigpen, 4005 Pickfair Street, Montgomery, AL 36116 **ALASKA:** Mrs. Terry J. Gustafson, 2604 Glenkerry Dr., Anchorage, AK 99504 **ARIZONA:** Miss Margaret Ann Poe, 4720 West Rose Lane, Glendale, AZ 85301 **ARKANSAS:** Mrs. Jerry Evans, Rt. #2, Box 370, Russellville, AR 72801 **CALIFORNIA (N):** Mrs. Walter Burde, 24685 Camino del Monte, Carnel, CA 93923 **CALIFORNIA (S):** Mrs. Keith Mulder, 7536 Rowena St., San Diego, CA 92119 **COLORADO:** Mrs. Lawrence Brase, 1023 Denver Ave., Box 146, Calhan, CO 80808 **CONNECTICUT:** Mrs. Edward Gill, 53 High Point Rd., Westport, CT 06880 **DELAWARE:** In care of Mrs. Scott Cravens, 4455 Hollyhock Street, Ft. Collins, CO 80520 **DISTRICT OF COLUMBIA:** Miss Pat Dansbury, 1773 Lanier Place, NW, Apt. 18, Washington, D.C. 20009 **FLORIDA:** Mrs. Donald E. Nelson, 4503 LaVilla Lane, Tampa, FL 33611 **GEORGIA:** Mrs. Scott Cravens, 4455 Hollyhock Street, Ft. Collins, CO 80520 **HAWAII:** Mrs. Albert Solomon, Jr., Apt. 401, Fairway Manor, 2465 Ala Wai Boulevard, Honolulu, HI 96815 **IDAHO:** Mrs. W. L. Lundquist, 1004 S. Logan, Moscow, ID 83843 **ILLINOIS:** Mrs. Lester D. Brue, 484 Timber Ridge, Apt. 206 B, Coral Stream, IL 60187 **INDIANA:** Mrs. Roger L. Davies, 812 S. 5th St., Terre Haute, IN 47807 **IOWA:** Mrs. Tim Bornholtaz, 3601 Lafayette, Sioux City, IA 51104 **KANSAS:** Mrs. Richard Furman, 4017 W. 68th Terrace, Prairie Village, KS 66208 **KENTUCKY:** Mrs. Stephen Plenge, Rt. 5, Valley View Farms, Shepherdsville, KY 40165 **LOUISIANA:** Mrs. Jimmy Mathes, 12538 Sherbrook Drive, Baton Rouge, LA 70815 **MAINE:** Mrs. Nelson L. Smith, R.R. 2, Box 505A, Yarmouth, ME 04096 **MARYLAND:** Mrs. Pat Dansbury, 1773 Lanier Place, NW, Apt. 18, Washington, D.C. 20009 **MASSACHUSETTS:** Miss Mary Davis, 25 Bayberry Circle, Millis, MA 02054 **MICHIGAN:** Miss Kim Bunker, 5405 Wild Oak Lane, East Lansing, MI 48823 **MINNESOTA:** Mrs. James Goke, 1022 N. 31st Avenue, St. Cloud, MN 56301 **MISSISSIPPI:** Mrs. James McLeod, Rt. 3, Box 433, Brandon, MS 39042 **MISSOURI:** Mrs. P. A. Smith, 5220 N. Cypress, Kansas City, MO 64119 **MONTANA:** Miss Jackley Meyers, 343 W. Laurence, #4, Helena, MT 59601 **NEBRASKA:** Miss Carole Sorenson, 3027 W. Capital Ave., #26, Grand Island, NE 68801 **NEVADA:** Miss Lori Figgins, 647 Peppertree Circle, Henderson NV 89015 **NEW HAMPSHIRE:** Miss Karen Macriganis, 1156 N. Main Street, Opechee Gardens, Apt. 30 Laconia, NH 03246 **NEW JERSEY:** Miss Debra Bass, 357 Shea Dr., New Milford, NJ 07646 **NEW MEXICO:** Mrs. Donald Longenecker, 1417 W. 8th Street, Silver City, NM 88061 **NEW YORK:** Miss Mary Frances Sims, 95 Ball Road, High Acres, Syracuse, NY 13215 **NORTH CAROLINA:** Mrs. John Tector, 907 Winslow Court, Cary, NC 27511 **NORTH DAKOTA:** Mrs. Owen Anderson, 816 N. 39th St., Grand Forks, ND 58201 **OHIO:** Miss Beth Phillips, 4643 17th St., NW, Canton, OH 44708 **OKLAHOMA:** Mrs. C. B. Purdum, Rt. #1, Box 147, Dewey, OK 74029 **OREGON:** Mrs. Frederick Ivers, 1525 SW Maple, Albany, OR 97321 **PENNSYLVANIA:** Miss Debbie Fries, 904 N. 20th St., Apt. C, Allentown, PA 18104 **RHODE ISLAND:** Mrs. William Boynton, 63 Benefit Street, Warwick, RI 02886 **SOUTH CAROLINA:** Mrs. David Parsell, 2 Kingsbury Rd, Rt. 9, Greenville SC 29609 **SOUTH DAKOTA:** Mrs. Richard Huffman, Jr., 1535 S. State St., Aberdeen, SD 57401 **TENNESSEE:** Mrs. Wallace Gary, 1347 Greendale Ave., Memphis, TN 38127 **TEXAS:** Mrs. Jerry Hawkins, 324 Pine St., Lake Jackson, TX 77566 **UTAH:** Mrs. William Christensen, 1669 Yalecrest Ave., Salt Lake City, UT 84105 **VERMONT:** Mrs. David Hoefler, 22 Hillwinds, Brattleboro, VT 05301 **VIRGINIA:** Mrs. William Verley, 3079 South Buchanan St., Apt. 2C, Arlington, VA 22206 **WASHINGTON:** Mrs. Lon Soyk, 31033 38th Avenue, South, Auburn, WA 98002 **WEST VIRGINIA:** Miss Cheryl Snodgrass, 1 St. Charles Place, Charleston, WV 25134 **WISCONSIN:** Mrs. Paul Janssen, 3416 N. 86th St., Milwaukee, WI 53222 **WYOMING:** Mrs. William Frerichs, 3301 Alta Vista Drive, Laramie, WY 82070

XVIII. Louisiana and Mississippi

PCD: Marlene M. Allen (Mrs. Arthur), Rt. 1, Box 296, Natchitoches, LA 71457

PAD: Jean F. Person (Mrs. John D.), 4808 Craig Ave., Kenner, LA 70062

XIX. Tennessee

PCD: Pattie I. Martin (Mrs. Joe), 359 Binkley Drive, Nashville, TN 37211

PAD: Violet H. Anderson (Mrs. Charles A.), 102 Blue Hills Ct., Nashville, TN 37214

XX. Kentucky

PCD: Mrs. Bill Bruce, National Vice President of Membership, 5008 NW 62nd Street, Oklahoma City, OK 73122

PAD: Carol S. Harper (Mrs. Spencer E., Jr.), 3309 Green Hill Lane, Louisville, KY 40207

XXI. North Carolina and South Carolina

PCD: Sondra G. Bass (Mrs. J. Albert, Jr.), 6425 Chapman Court, Raleigh, NC 27612

PAD: Patricia M. Tector (Mrs. John), 907 Winslow Court, Cary, NC 27511

XXII. Georgia

PCD: Patricia C. Rosser (Mrs. David), 1609 Indian Rks. Road, Clearwater, FL 33516

PAD: Care of National Vice President Alumnae Affairs

XXIII. Alabama

PCD: Sandra Nesbitt (Mrs. Milton), 241 Landmark Dr., Montgomery, AL 36117

PAD: Carolee L. Followill (Mrs. Richard), 2123 48th St., E., 19B Timberland, Tuscaloosa, AL 35405

XXIV. Florida

PCD: Patricia C. Rosser (Mrs. David), 1609 Indian Rks. Rd., Clearwater, FL 33515

PAD: Susan Mease (Miss), 2095 Sunset Point Road, #2405, Clearwater, FL 33515

XXV. Virginia, Maryland and Washington, D.C.

PCD: Mel McAuliffe (Miss), 3715 Holmes Lane, Alexandria, VA 22302

PAD: Acting Province Alumnae Director: Charlotte F. Silversteen (Mrs. Allan), National Director, 513 Toll Road, Orelana, PA 19075

XXVI. Arkansas

PCD: Marsha S. O'Daniel (Mrs. Keith), Rt. #2, DeWitt, AR 72042

PAD: Care of National Vice President Alumnae Affairs

Campus Sights and Sounds

TO COMBAT GROWING THEFTS, university libraries are starting to list their missing volumes in a new computerized register that will enable booksellers anywhere in the country to check for "hot books" before they purchase old or rare volumes. (*Chronicle of Higher Education*)

BALLET STAR Edward Villella taught some ballet exercises to the West Point football team to avoid back strain and pulled hamstrings.

THE COLUMBUS SCHOOL OF LAW at Catholic University will soon offer a program in media law. The university announced creation of the Institute of Communications Law Studies which will provide intensive training in the theory and practice of communications law. (*Collegiate Hedlines*)

PRIORITY PARKING is granted to car-poolers by Marshall University (WV). A single passenger car driver has to wait several semesters for a parking permit.

A SCHOLARSHIP RESEARCH service links students with about 50,000 private educational grants. Some are unusual, such as the one at the University of Arizona which offers \$500 to a student with high grades who can also rope cattle. (*On-Campus Report*)

FOREIGN STUDENTS could increase from the 312,000 now to more than a million in the early 1990s suggests a committee of the American Council on education. This would be 10% of all students on U.S. campuses. The committee also reports that the Soviet Union is actively recruiting students from the non-aligned nations, increasing their numbers by 20% a year as an important tool of foreign policy. (*Chronicle*)

"THE COSMIC BLOW" was a May fete bubble-blowing event sponsored by the art department at Nebraska Wesleyan. Faculty and students used the windows and roof of Old Main and filled the sky with streams of bubbles.

WOMEN NOW COMPRISE half or more of the accounting students in graduate schools of business. (*Chronicle*)

THE DALLAS COWBOY CHEERLEADERS were imported by Kent State to increase sagging attendance at homecoming football. Attendance tripled. (*Chronicle*)

ENGINEERING SCHOOLS are short at least 2,000 teachers. The 270 schools lose their faculty to industry where salaries are much higher. Some schools are freezing or even cutting enrollment because of lack of faculty. Eight of the biggest industries have put up \$200,000 to help recruit teaching talent. (*Forbes*)

TO RAISE MONEY for its campus projects, the Freshman Board of the Student Union at DePauw is selling T-shirts imprinted "Harvard: The Depauw of the East."

A NEW GLUE made from peanut hulls has been invented by a University of Georgia scientist. It is expected that this glue will be used by industry, replacing conventional glue based on phenol derived from petroleum.

THE PEOPLES REPUBLIC of Bulgaria has given Ohio State \$25,000 to help establish a permanent Bulgarian program. A full-time professorship for Bulgarian language, literature, and culture will be established when the fund reaches \$250,000. Currently, courses in Bulgarian are offered every third year.

A "PARTY PATROL" of student government members at Illinois State monitors complaints from area residents about noisy student parties. The patrol tries to get the parties to cut down noise or to eliminate other nuisances. (*Collegiate Hedlines*)

KAPPA SIGMAS at Southern Colorado University saved the city of Pueblo \$5,000 by installing nine bus stop shelters when city work crews were not available. Local newspapers reported a shower of goodwill toward Kappa Sigma resulted.

"Campus Sights and Sounds" is provided as a service of the National Panhellenic Editors Conference.

OFFICIAL DELTA ZETA INSIGNIA AVAILABLE ONLY FROM NATIONAL HEADQUARTERS

Official badges

1. Tiffany-set zircon 25.50
2. Flush-set zircon 25.50
3. Pledge pin 2.50

Guard pins

4. Plain, 1 letter 9.50
- Plain, 2 letters 10.50
5. Engraved, 1 letter 11.50
- Engraved, 2 letters 12.50
6. Crown-set pearls, 1 letter 26.50
- Crown-set pearls, 2 letters 39.50
7. Close-set pearls, 1 letter 24.50
- Close-set pearls, 2 letters 35.50
8. Crown-set opals, 1 letter 40.00
- Crown-set opals, 2 letters 65.00

Dangles. For college chapter officers.

Each is available in 10K gold or gold klad.
 10K gold dangle 11.75
 Gold klad dangle 6.50

9. President
10. Vice president-rush
11. Vice president-pledge training
12. Treasurer
13. Corresponding secretary
14. Guard
15. Recording secretary
16. LAMP editor
17. Philanthropy chairman
18. Standards chairman
19. Historian
20. Social chairman

21. Scholarship chairman
22. Song chairman
23. Activities chairman
24. Parliamentarian
25. Big sister

Alumnae dangles

26. Alumnae chapter president
- Gold klad, 1 pearl 8.50
27. CCD, 10K gold 22.50
28. PCD, 10K gold 24.50
29. National committee chairman, 10K gold 24.50
30. PAD, 10K gold 24.50

All jewelry orders and inquiries about jewelry should be directed to Delta Zeta National Headquarters, 21 E. State St., Columbus, OH 43215. Prices include all taxes, postage and handling. An order processing charge of \$1 must be added to orders of less than \$10.

Official approval is necessary for all badges, and Golden Rose pins. When ordering badges, use the official order form and forward to National Headquarters.



POSTMASTER: Send 3579 immediately to Delta Zeta Sorority, Suite 600, 21 E. State St., Columbus, OH 43215

Delta Zeta Sorority
 21 E. State St. Suite 600
 Columbus, OH 43215

Address Correction Requested

Non-Profit Org.
 U. S. Postage
PAID
 Permit No. 1
 Tulsa, OK