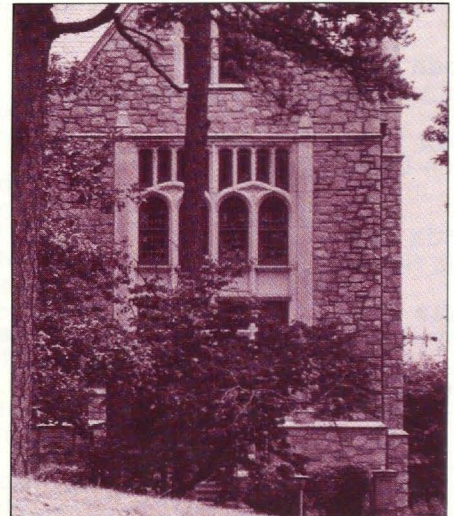
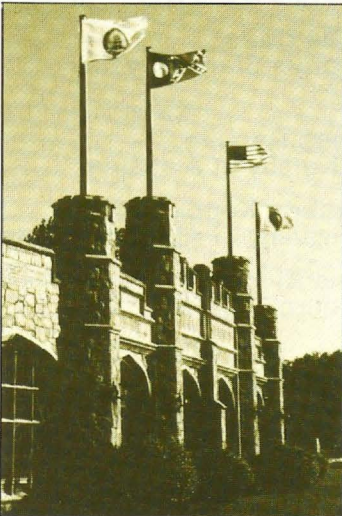


the lamp of  
**DELTA  
ZETA**  
spring 1980





# DELTA ZETA

## Chapter Membership Honor Roll for Spring and Fall 1979

Chapters making quota or total during formal rush  
according to the campus requirements.

<p style="text-align: center;">I</p> <p><b>Beta Alpha</b> University of Rhode Island</p>	<p style="text-align: center;">XI</p> <p><b>Iota Xi</b> University of Missouri-St. Louis</p>	<p><b>Lambda Xi</b> Texas A &amp; M University</p>
<p style="text-align: center;">II</p> <p><b>Xi Kappa</b> Glassboro State College</p> <p><b>Lambda Iota</b> University of Rochester</p> <p><b>Lambda Lambda</b> Trenton State University</p>	<p><b>Delta Sigma</b> Northeast Missouri State College</p> <p><b>Epsilon Rho</b> Northwest Missouri State University</p> <p><b>Zeta Rho</b> William Jewell College</p>	<p style="text-align: center;">XVIII</p> <p><b>Sigma</b> Louisiana State University</p> <p><b>Epsilon Beta</b> Northwestern State University (Louisiana)</p> <p><b>Kappa Alpha</b> Nicholls State University</p>
<p style="text-align: center;">III</p> <p><b>Epsilon Zeta</b> Drexel University</p> <p><b>Kappa Psi</b> Shippensburg State College</p>	<p style="text-align: center;">XII</p> <p><b>Theta Eta</b> Creighton University</p> <p><b>Beta Tau</b> Nebraska Wesleyan</p> <p><b>Delta Xi</b> University of Northern Colorado</p>	<p style="text-align: center;">XX</p> <p><b>Beta Gamma</b> University of Louisville</p> <p><b>Kappa Tau</b> Morehead State University</p>
<p style="text-align: center;">IV</p> <p><b>Zeta Tau</b> University of Charleston</p>	<p style="text-align: center;">XV</p> <p><b>Iota Upsilon</b> California State College-Fullerton</p> <p><b>Delta Alpha</b> California State University- Long Beach</p> <p><b>Gamma Lambda</b> San Jose State College</p>	<p style="text-align: center;">XXI</p> <p><b>Theta Omega</b> Atlantic Christian College</p> <p><b>Zeta Lambda</b> East Carolina University</p> <p><b>Zeta Xi</b> Lenoir Rhyne College</p> <p><b>Kappa Phi</b> University of North Carolina- Charlotte</p> <p><b>Theta Iota</b> Western Carolina University</p>
<p style="text-align: center;">V</p> <p><b>Theta Psi</b> Ashland College</p> <p><b>Gamma Alpha</b> Baldwin-Wallace College</p> <p><b>Gamma Tau</b> Bowling Green State University</p> <p><b>Alpha</b> Miami University</p> <p><b>Zeta Kappa</b> Ohio Northern University</p> <p><b>Theta</b> Ohio State University</p>	<p style="text-align: center;">XVI</p> <p><b>Epsilon Upsilon</b> Central State University (Oklahoma)</p> <p><b>Delta Phi</b> Northeastern State University (Oklahoma)</p>	<p style="text-align: center;">XXII</p> <p><b>Lambda Sigma</b> Winthrop College</p> <p style="text-align: center;">XXIII</p> <p><b>Lambda Pi</b> Georgia College</p> <p><b>Delta Delta</b> Georgia State University</p>
<p style="text-align: center;">VII</p> <p><b>Lambda Beta</b> Indiana State University-Evansville</p> <p><b>Epsilon</b> Indiana University</p>	<p style="text-align: center;">XVII</p> <p><b>Delta Theta</b> University of Houston</p> <p><b>Theta Omicron</b> Pan American University</p> <p><b>Iota Alpha</b> Southwest Texas State University</p> <p><b>Zeta Psi</b> Stephen F. Austin State University</p> <p><b>Iota Psi</b> University of Texas-Arlington</p> <p><b>Zeta Zeta</b> West Texas State University</p>	<p style="text-align: center;">XXIV</p> <p><b>Alpha Gamma</b> University of Alabama</p> <p><b>Lambda Kappa</b> University of Alabama-Huntsville</p> <p><b>Beta Xi</b> Auburn University</p>
<p style="text-align: center;">IX</p> <p><b>Lambda Rho</b> Illinois State University</p> <p><b>Gamma Rho</b> Northern Illinois University</p> <p><b>Epsilon Omicron</b> Western Illinois University</p>		<p style="text-align: center;">XXV</p> <p><b>Lambda Delta</b> University of Virginia</p>
<p style="text-align: center;">X</p> <p><b>Beta Kappa</b> Iowa State University</p>		<p style="text-align: center;">XXVI</p> <p><b>Epsilon Xi</b> University of Central Arkansas</p>



## Founders of the Sorority



Miami University,  
Oxford, Ohio, 1902

Alfa Lloyd Hayes, 1880-1962  
Mary Collins Galbraith, 1879-1963  
Anna Keen Davis, 1884-1949  
Julia Bishop Coleman, 1881-1959  
Mabelle Minton Hageman, 1880-1929  
Anne Simmons Friedline, 1879-1932

## The Lamp

The LAMP of Delta Zeta, official magazine of the sorority, is published quarterly by the Delta Zeta Sorority, 21 East State Street Columbus, Ohio, 43215. Second class postage paid at Columbus, Ohio.

## Special Features:

Norma Andrisek,  
National President  
Grace Lundy,  
Past National President

## Staff:

Ruth Gerstner  
Gloria Lynch  
Norma McIntyre  
Jean Southworth

Send all contributions for Delta Zeta Founders Memorial Foundation and Gallaudet College to:

Mrs. William Barth  
1662 Villa South Drive  
West Carrollton, OH 45449

Send change of address and all correspondence of an editorial or business nature to Delta Zeta National Headquarters, 21 East State Street, Columbus, Ohio 43215. Change of address form on back cover.

## Contents

- 2 The President Writes
- 3 ΔZ Installed at Oglethorpe
- 6 ΔZ History with Grace Lundy
- 7 Founders Memorial Foundation
- 8 Breaking Sound Barriers
- 11 Reference Form
- 12 Careers in Computers
- 14 Delta Zeta on Campus
- 21 Alabama Chapter Donates Flagpole
- 22 Softball Coach
- 23 Delta Zeta Author
- 24 Collegians Once Again
- 28 Flame Eternal
- 29 Alumnae Profiles
- 31 Directory
- 40 Letters

## About the Cover

The buildings shown in our cover design are some of the unusual and old structures that enhance the Oglethorpe University campus. Photos courtesy of Mr. Bill Wolpin of Oglethorpe University.

### POSTMASTER:

Please send notice of undeliverable copies to  
Delta Zeta, 21 East State Street, Columbus, Ohio 43215





# The President Writes:

On November 28, 1979, the Delta Zeta Founders Memorial Fund and the Delta Zeta Foundation were officially merged to form the Delta Zeta Founder's Memorial Foundation. This corporation will serve to organize and operate the charitable endeavors of Delta Zeta.

I know this news is most welcomed by all Delta Zetas and particularly by those who gave their efforts to the conception of the original Delta Zeta Foundation and to those who organized the Founders Memorial Fund. By combining the two into one, Delta Zeta has taken a giant step forward in carrying out the purposes inherent in both.

Our appreciation is expressed to all of those who have worked so diligently on behalf of the Foundation and the Fund. Our thanks for the cooperation that has brought about this merger which so greatly enhances the best interests of Delta Zeta and those she tries to serve.

*Norma Andrusik*

National President

## Flashbacks from the LAMP

*Excerpts from the pages of past LAMPS that show how much we've changed . . . and how little!*

### 70 years ago, 1910

*From the report of the ninth annual conference of National Pan Hellenic:*

"The report of the committee on Extension was presented by Miss Smith, Pi Beta Phi, and it was stated that after investigation, Alpha Delta Phi \* and Delta Zeta were admitted into the National Pan Hellenic Conference."

*\*In 1913 the name was changed to Alpha Delta Pi.*

*From a list of Model Chapter House Rules devised by Pan Hellenic:*

"Gentlemen may not call during the week except on permission of the chaperon, but may call Friday, Saturday and Sunday evening until 10:30 p.m.

"No member of the chapter shall be out of the house after 10 o'clock except by special permission of the chaperon."

### 50 years ago, 1930

*From the seven-page article titled "To Smoke or Not to Smoke . . . That Is the Question":*

"The answers (from deans of women at colleges with Delta Zeta chapters) were as varied as the institutions to which they (questionnaires about smoking practices on campus) were sent. Forty-two answers were received. Of these, twenty-seven have no university ruling against smoking (by women). Of this number, five answered "No university ruling but strong sentiment against." In fourteen colleges AWS (Association of Women Stu-

dents), WSGA (Women's Self Government Association) or similar organizations have made a rule against smoking. The penalties range from 'lectures' to 'cancellation of room contract' . . . to 'expulsion'. On only five campuses is smoking generally accepted. Thirty-six deans answered 'No' to the question 'Is smoking generally permitted in sorority houses?'"

*From an article titled "Legal Disabilities of Women", an address by Miss Cooper of the National Woman's Party at Alpha Province Convention, May 1929:*

"The National Woman's Party launched the present Equal Rights campaign seven years ago, after the suffrage victory. Soon after the campaign was started, it drafted and had introduced into Congress the Lucretia Mott Equal Rights Amendment to the National Constitution, which states that 'Men and women shall have equal rights throughout the United States and every place subject to its jurisdiction.'"





*Members and College Chapter Director of newly chartered Beta Phi chapter of Delta Zeta.*

## **Delta Zeta Installed at Oglethorpe**

*by Cyndi Clark-ΔΔ*

Beta Phi chapter of Delta Zeta was reinstated February 2 at Oglethorpe University in Atlanta after having been off the campus for 37 years. "It's like a dream come true," said Amaryllis Pickett Barnes, past national officer and a charter member of Beta Phi.

Beta Phi's return began this past September when Dr. Manning Pattillo, president of Oglethorpe, contacted Delta Zeta National Headquarters about a local sorority, Gamma Delta Epsilon, which was interested in going national. Betty H. Agler, past national president, Mrs. Barnes, and Melba Connell George, another Beta Phi charter member, met with this group of young women. The local sorority was accepted as a colony of Delta Zeta and went into rush under the supervision of Cyndi Clark, a past field representative.

Following a successful semester, installation weekend was set for February 1 and 2. On Friday evening, February 1, Delta Delta chapter from Georgia State University performed the initiation ceremony on the Oglethorpe campus. Afterwards, Delta Zetas from Georgia State-ΔΔ and Georgia Southern-IN taught several of their favorite songs and cheers to the Beta Phi members.

On Saturday evening, to further celebrate the occasion, an installation banquet was held at the Radisson Inn in Atlanta. New Delta Zeta badges shone brightly on these charter members: Diane Freeman, Lisa Birer, K. Elizabeth (Betsy) Duggan, Deborah LaBonne, Michele Lend, Tracy Marshall, Patricia Ortleb, Carol Peck, Marjorie Weiffenbach, Anita Wright, Linda Barkis, Laura

Bell, Marla Cohen, Robin Fine, Jane Fishman, Jennifer Giles, W. Gina Peterson, Sally Petree, Linda Stelle, Denise Suyehiro, Linda Triguero, Laura Turner and Maureen White.

Delta Zeta guests for the evening were: Norma Minch Andrisek, national president; Betty Agler, past national president; Amaryllis Barnes, past national officer; Rita Shook Robb, Province XXII collegiate director; Hazel Bentley Eubanks, University of Georgia-ZII, 1971 Delta Zeta Woman of the Year; Carolyn Lee Wills, Georgia State-ΔΔ, 1976 Delta Zeta Woman of the Year; Vickie Sanders Childers, Georgia Southern-IN, president of the Atlanta Alumnae chapter and Melba Connell George, former Province XXII alumnae director.

*(Continued on next page)*





*Officers of Beta Phi chapter display the cake served at the Installation Banquet, Michele Lend, Vice President Membership, Diane Freeman, President, Betsy Duggan, Recording Secretary, Carol Peck, Treasurer and Mary Weiffenback, Vice President Pledge Training.*



*Dr Manning M. Pattillo, Jr., President of Oglethorpe University, addresses members, friends and guests at the Delta Zeta Installation Banquet.*



*Cyndi Clark, College Chapter Director of Beta Phi chapter is a former president of Georgia State-ΔΔ chapter and also a former Delta Zeta National Field Representative.*

Representing the college were: Dr. Pattillo, Dr. John Thames, dean of students, and Mr. Stephen Schmidt, president of the board of trustees, and their wives and Dr. Johanna Sharp, faculty advisor to Beta Phi.

Norma Andrisek conducted the installation service. She presented the gavel to Beta Phi President Diane Freeman, the charter to the chapter executive board, and the gift from National Council to the chapter.

Other gifts were presented from the Atlanta Alumnae by Vickie Childers, and from the Georgia State and Georgia Southern chapters by their presidents, Joy Gipson and Andrea Howard. Rita Robb, PCD, and Cyndi Clark, Georgia State-ΔΔ, college chapter director, also presented gifts.

Miss Georgia College, Gayla Norris of Lambda Pi chapter, sang a medley of Broadway show tunes and "What I Did For Love" as her brother, Jimmy Norris, accompanied her on the piano. The Georgia Southern chapter presented a Delta Zeta song, and the Georgia State chapter sang "Today" as Cyndi



Clark presented each new sister with a rose. To conclude the celebration, members of Delta Zeta's newest chapter, their parents and friends joined together in the circle of friendship and sang "Delta Zeta Lamps Are Burning."

Oglethorpe was the first of the many well known colleges and universities in the Atlanta area to have national sororities on its campus. Beta Phi chapter of Delta Zeta was first installed in 1941. World War II brought declining enrollments and forced all three of the national sororities at Oglethorpe to discontinue, Delta Zeta being the last to leave the campus. Since then, one of the other sororities, Chi Omega, has also returned to Oglethorpe. Three fraternities, Chi Phi, Sigma Alpha Epsilon and Kappa Alpha, have chapters at Oglethorpe.

Oglethorpe is a small, private, nondenominational university located on a charming, 180-acre wooded campus about eight miles northeast of downtown Atlanta. It was established in 1835 in the tradition of an English university and patterned in particular after Corpus Christi College at Oxford, England. The massive stone buildings, as well as the traditional liberal arts curriculum and the faculty-mentor system, are evidence of its English heritage.

Oglethorpe offers studies in five general areas: the humanities, social studies, science, education, and business and economics. It cooperates with other institutions to offer dual degrees in liberal arts combined with visual arts or engineering. An internship period is a significant part of each student's program. Special courses of study have been set up in pre-professional fields, urban studies, medical technology, business administration and other fields. In addition to a solid academic background, Oglethorpe provides students with a full range of extracurricular activities, a recently renovated 160,000-volume library, a new student center and an opportunity to enjoy the many social and cultural advantages of Atlanta.

All of Delta Zeta joins Province XXII in welcoming Beta Phi chapter at Oglethorpe University.



*Some of the Delta Zetas attending are Vickie Childers, Melba Connell George, Rita Robb, Norma Andrisek, Carolyn Lee Wills, Hazel Eubanks and Amaryllis Barnes.*



*The initiating team from Georgia State-ΔΔ entertain with Delta Zeta songs.*



*Sharing in the festivities are Mr. Stephen Schmidt, Mrs. Schmidt, Dr. Johanna Sharp, Norma Andrisek, Diane Freeman, Dr. Pattillo, Mrs. Pattillo and Dr. Thames.*



# Delta Zeta History with Grace Mason Lundy

A traditionalist, which I am, finds real satisfaction in the definite upswing of interest among our younger members, in the history of their own chapters, and of the whole sorority. The questions and reports from college chapter historians are lively and refreshing. A summary of what has been done in the way of national history seems in order right now, and it is hoped it will be a new spur to keeping vivid and continuing chapter records.

\* \* \*

I became Historian in 1922, succeeding Julia Bishop Coleman and Elizabeth Coulter Stephenson, both well qualified to record the early years of Delta Zeta. Mrs. Stephenson had indeed begun to write the story, choosing to do it in a rather poetic form, as the story of a Rose Garden, with the Founders as gardeners and early chapters as the roses. Her record had not come to publication, but was incorporated in the second history, which I presented. . . As Delta Zeta would be "of age" in 1923, we decided to pay attention to that event with a published history, so in the fall of 1923 the LAMP was a History Issue. Small, soberly clad in the dull brown paper covers being used at that time, it was still a "first", a landmark, and received with favor. . . The ensuing ten years were years of growth and change with Delta Zeta, and in 1934 a LAMP issue of two numbers combined to form a History of over 300 pages, quite comprehensive and well illustrated. All too soon, it seemed, Delta Zeta was about to observe her Golden Anniversary! So, at the National Convention of 1952, in New Orleans, a Golden Anniversary History was ready. It was again presented as the LAMP and came in two issues, May and September of 1952. The successor to this edition was the Summer 1967 LAMP, which contained a concise, but still complete, telling of the story of Delta Zeta. This was very well received. Now, of course, it is time for a new History, and, although its completion has been delayed by various circumstances, it is definitely in the making and will, according to present hopes, be the first History to appear independently, as a book in its own right rather than as a LAMP issue.

Chapters which are too young to have the early histories as part of their LAMP file might inquire among the alumnae in their area or with whom they have contact whether these members could help by gifts of old LAMPs. Not only the History issues, but any and all issues, carefully bound and filed in the chapter library, would be a real joy and treasure, and I cannot too strongly urge that attention be given to this possible action by alumnae members.

Meantime, the current generation of chapter historians seems to be coming into keener awareness of the value and interest of a good chapter history, carefully written, illustrated as fully as may be, noting the growth and accomplishments of the chapter as a whole, and especially keeping a record in words and pictures of its own chapter VIPs, the members who have brought recognition to the sorority and whom their chapter is proud to honor. . . As National Historian since 1922 I look forward with great expectations to the accomplishments of the new era, the 1980s. And a lot of you will be right there when Delta Zeta is ready to recognize her 100th birthday, 100 years of Love and Service! So fill those years with the very best of Delta Zeta History!

*Grace Mason Lundy*  
Grace Mason Lundy, National Historian

P.S. I am inclined to think it might be fitting to close this account with the poem, "Re-Dedication," which is in the September 1952 history number. It is written, as you know, by my own sister Miriam, but after all, she is one of our Women of the Year, has a recognized status as an author of children's books, and I have always thought this poem was truly inspiring, truly significant. I'll let you decide. . .

## Re-dedication

*Flame of the Lamp, we will tend thee,  
Ever faithfully, eagerly;  
Gleam of the Lamp, we will follow thee  
With unswerving footsteps.  
Warmth of the Lamp, we will share thee,  
Lighting new torches of friendship.*

*Flame of the Lamp, fire of the Lamp,  
Burn in our hearts forever.  
Flame of dreams, fire of deeds,  
Glow in our hearts forever.  
Fair flame, white fire, enkindle  
Flame on the altar of life,  
Fire on the hearthstone of life.*

*That we may see;  
That we may be clear-visioned and worthy  
Of bearing the Undying Flame.*

Miriam Mason Swain, E



# Delta Zeta Founders Memorial Foundation

## Founders Memorial Fund and Foundation Merge

To the Alumnae and Collegiate Sisters of Delta Zeta Sorority—

This will announce the Delta Zeta Founders Memorial Foundation.

As its name suggests, it is a merger of the Delta Zeta Foundation and the Delta Zeta Founders Memorial Fund. As Delta Zeta Sorority is stronger for the mergers which have been made in the past, so we feel this is in the tradition of Delta Zeta seeking the best for its members.

The Delta Zeta Foundation was instituted to manage the memorials, bequests and remembrances made to the sorority for the purpose of establishing scholarships. In 1961, Helen Woodruff Nolop set up the Foundation, and it was incorporated under the laws of the State of Minnesota. The directors were appointed by National Council. In 1969, in order to comply with a ruling of the Internal Revenue Service, the funds of the Foundation and Delta Zeta Sorority were separated for tax purposes. Subsequently, the by-laws of the Foundation were changed, and somehow the appointment of directors by National Council was eliminated, thus removing jurisdiction for the Foundation from National Council but continuing the use of the name Delta Zeta, with all attendant responsibilities ascribed to National Council and the sorority.

The Delta Zeta Founders Memorial Fund was set up solely with the intention of honoring the Founders in a special way during the Diamond Jubilee Anniversary year of the sorority. However, it now seems

in the best interests of the Fund and the Foundation to merge the two. The Delta Zeta Founders Memorial Foundation has been set up with the advice and assistance of our attorney, Mr. Fred Milligan, Jr., in consultation with the Internal Revenue Service, and it will operate under the laws of the State of Ohio.

The directors of the Delta Zeta Founders Memorial Foundation will be appointed by the National Council of Delta Zeta Sorority. This one Foundation will eliminate a tremendous amount of duplication. Many girls apply to both the Fund and the Foundation for assistance. Time, energy and a great deal of money will be saved by having applications made to the new Foundation, since all monies available for scholarships will be in one place.

Funds of the Foundation are managed by the First Trust Company, N.A., 100 East Broad Street, Columbus, Ohio. This assures a continuity which is most desirable. Bequests and legacies which have been given by and for individuals to the Delta Zeta Foundation will continue unchanged. It is hoped new scholarship funds will be set up while older funds continue to grow. The Book of Remembrance will still receive smaller donations.

Basically, this merger means only that there is now one fund in place of two. And we have tried to outline some of the reasons this seems, as stated, to be in the best interest of Delta Zeta Sorority now and for years to come.

With Delta Zeta love and concern,

*Mary Lou Barth*  
*Florence Harvey*  
*Tat Dunn*  
*Betty H. Oster*

Officers of the Delta Zeta  
 Founders Memorial Fund  
 Mary Lou Barth, President

*Sarah Jane Houston*  
*Charlotte Silverstein*  
*Shirlyn K. Chaffin*

Officers of the Delta Zeta  
 Foundation  
 Sarah Jane Houston, President

*Mary Lou Barth*  
*Shirlyn K. Chaffin*  
*Sarah Jane Houston*

Officers of the Delta Zeta  
 Founders Memorial Foundation  
 Mary Lou Barth, President  
 Shirlyn Chaffin, Treasurer  
 Sarah Jane Houston, Secretary



# Delta Zetas Breaking Sound Barriers

by Norma Sweptson McIntyre ©

Inability to share feelings with hearing people can be an unending trauma for the deaf. People easily understand what it's like to feel pain, hunger or cold. And most of us can immediately empathize with grief, despair or fear . . . but if we can hear, we cannot really know what it's like not to hear.

Living in a world without sound is America's largest, but one of the least recognized, disabilities. According to the National Institutes of Health, at least one out of 15 Americans is afflicted by partial or complete hearing loss. Yet, deafness attracts fewer than one percent of the dollars spent on medical research.

In an effort to be understood, the deaf strive to understand. They struggle to communicate with hearing people by using unconventional language systems, methods which do not easily convey feelings or understanding. Sign language, as the name implies, is an exchange of information by means of manual signs or gestures. But the information exchanged through sign language cannot express what the deaf person really experiences.

The Delta Zetas profiled here believe though the deaf must live in a silent world, they need not walk alone. They reach for more sensitive educational and social outlets to keep those who cannot hear from being strangers in their own families and communities. Each, in her own way, works to break the sound barriers that hinder the deaf from finding safe, happy and productive niches in the mainstream of life.

**Frances Bonkemeyer Merrill**, University of North Carolina-KΦ, is the First Lady of Gallaudet College.\* Since her husband, Dr. E. C. Merrill, Jr., became president of the college ten years ago, she has assisted deaf

persons of all ages, and has been a "mother" away from home for hundreds of deaf students.

As a hostess to visiting dignitaries, one of her continuing projects is to restore the 1868 campus residence where three former Gallaudet presidents and their families lived. She says she wants it to be "a treasure of Victorian America and a vital part of the heritage of all deaf people."

Frances finds energy to keep up with many activities that bring to the hearing world a deeper awareness of deaf people. She is a member of the President's Committee for Employment of the Handicapped, which recommends public policies that benefit deaf citizens.

For the past several years, she has served as liaison between Gallaudet College and Delta Zeta chapters for the Delta Zeta Endowment at Gallaudet. This fund, established to assist the hearing impaired young people who attend the college, provides scholarships annually to deserving Gallaudet students.

For her support and advocacy of the deaf American, Frances was named an honorary member of the Gallaudet College Alumni Association, an honor which speaks for itself.



*Frances Merrill, "My greatest satisfaction has come from assisting people with normal hearing to understand deaf people, and to learn about their tremendous potential and ability."*



*Mabel Finnell, "I've taught cerebral palsy children, handicapped children and normal children, but the deaf teaching was the most rewarding."*

**Mabel Northern Finnell**, University of Denver-P, the daughter of deaf parents, says she never felt her home life was very different from that of her friends. Her mother and father, both Gallaudet College graduates, entertained many of the early deaf educators, including Helen Keller, in their home. Meeting these famous people led to Mabel's studying at Gallaudet College after she graduated from Denver University.

Three generations of Mabel's family have taught and assisted the deaf. After her training at Gallaudet College in 1933-34, she taught the deaf in Kansas, Colorado and California. In the 1950s, she also taught cerebral palsied children. Mabel's nephew, Dr. Jerry Northern, is director of speech and hearing at the University of Colorado Medical School.

It was her father who got the TV industry to print ball scores on the screen. (Mabel says her father tells a story that when she was born, he and her mother were concerned about her learning to talk. "Later," she says, "he realized that it was no problem. The problem was how to shut me up.")

As retirees, Mabel and her husband, Vernon, travel all over the

\*Gallaudet College is an independent, liberal arts college for the deaf. It is the only institution of its kind in the world. The 92-acre campus is located in the northeastern section of the nation's capital.

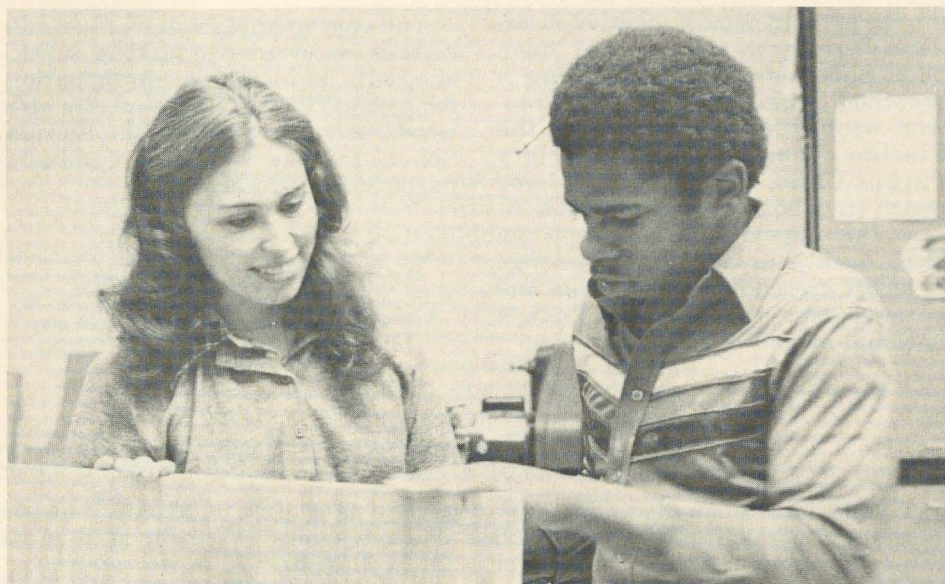


world; they recently returned from a trip to Peru. Their two children, Sue and Lee, are grown, and these days Mabel helps her husband operate a motel in Tucumcari, New Mexico, which allows her ample time to enjoy needlework, painting and to win prizes in gardening. As a member of the National Association of Interpreters for the Deaf, she receives frequent calls to interpret.

**Judy Phillips**, Georgia State-ΔΔ, joined the faculty of the Atlanta Area School for the Deaf after receiving a B.S. degree in deaf education. Two years later, she interrupted her teaching career to return to college to earn a master's degree in special education at the University of Tennessee.

At UT Judy studied about sheltered workshops for the deaf, which caught her attention because they provided students with a practical knowledge about the world about them. Her sheltered workshop training at UT led her to the position she presently holds as industrial arts teacher for the middle school at Atlanta's School for the Deaf.

Judy says she gets as excited about a finished project as the students do because "I've seen the struggle they've gone through, and the frustrations they've felt. I also see the smiles they can't hold back when the parts finally come together and work properly." Her nine classes



*Judy Phillips, "Helen Keller said, 'Blind people are cut off from things and deaf people are cut off from people.' I hope through my work I can keep our students from being cut off from the people they need so much."*

this quarter are composed of students who are deaf, hard of hearing or deaf with multiple handicaps. This spring, student interest is running high for a special project to construct go-carts to be followed by a go-cart rally.

**The Reverend Columba Gilliss**, OSH, George Washington University-ΑΔ, is as Episcopal priest in charge of St. Ann's Church for the Deaf in New York City. The most

visible part of her work is leading worship and preaching on Sundays and holy days in total communication (sign language and spoken English simultaneously).

The needs and concerns of the congregation call her to visit deaf people in hospitals and their homes, counsel couples preparing for marriage, sponsor a weekly senior citizens' group and try to make the larger community really hear those who are deaf.

While most of its members have been profoundly deaf since birth or childhood, the church also serves those losing hearing as adults and the hearing parents of deaf children.

**O. Ann McKissick Scroggie**, University of Tennessee-BA, received her degree from UT in speech and hearing. She married her husband, Everett, in July 1961, and while he returned to UT to pursue a M.S. in audiology, Ann taught 5- and 6-year-old children at the Tennessee School for the Deaf. In 1967, she completed graduate school and received a degree in special education, with a major in education for the deaf.

Since 1968 Ann and Everett have held teaching posts at the University of Florida in the departments

*(Continued on next page)*



*Columba Gilliss, "As the pastor of a deaf congregation my responsibility is to proclaim the Gospel in a language known and used by the people and to help them affirm their own dignity as full partners with others. It is important for us to show that God understands sign language, too."*



for speech and communicative disorders. During this time, they have been successful in establishing a preschool program for deaf children. Ann wrote the initial grant for the Florida Easter Seal Society Parent-Child Deaf Program, for which they both are consultants.

In this capacity, they spend one week each year at Camp Challenge to assist preschool deaf children and parents. This unique camp is now a national model.

Ann concentrates much of her volunteer work in conducting workshops in nonverbal communication for parents of deaf children. She also serves as a consultant to the Florida School for the Deaf and conducts parent-teacher workshops.

*Ann Scroggie, "For me, my husband and three children, a guiding light for our lives is the phrase, 'To those whom my life may touch in slight measure, may I give graciously of what is mine.'"*



## ΔΖ Collegiate Chapters Support Hearing Assistance

A volleyball tournament in Ohio, a garage sale in Texas and a cakewalk in New Mexico all have something in common. They're ways Delta Zeta collegiate chapters raised money this year for the national philanthropy.

Some of the chapters worked for local hearing clinics and programs, others donated their earnings to Gallaudet College, the world's only college exclusively for the deaf.

Projects reported to the LAMP are:

**Youngstown State-KX** ... Chapter members rode a 20-mile course mapped out by Philanthropy Chairman Janice Dubos in the Second Annual Delta Zeta Bike-A-Thon. The \$700 proceeds went to the Youngstown Speech and Hearing Center, Gallaudet College and the Founders Memorial Fund.

**North Texas State-KZ** ... Members assisted the Dallas Alumnae with a fund raising party to aid hearing.

**Western Carolina-ΘΙ** ... All members are learning the deaf alphabet, and the chapter is providing hearing aid batteries for children at Camp Laboratory School.

**Northwestern-AA** ... Candy sales raised funds for Gallaudet.

**Bowling Green State-ΓΤ** ... More than \$500 was raised for Gallaudet via a volleyball tournament.

**Southern Mississippi-EM** ... The chapter sponsored a 24-hour Rock-a-thon in the university student union to earn money for Gallaudet.

**Tennessee-BA** ... A Big Orange Balloon Sale at the Auburn football game boosted school spirit and netted money for the Tennessee School for the Deaf.

**Alabama in Huntsville-AK** ... This chapter donated \$100 to the pre-school hearing impaired class at Lakewood Elementary School in Huntsville. The money will be used for a "Hearing Alert" campaign.

**Kentucky-AΘ** ... The Lexington Hearing and Speech Center was the real winner of the fourth annual Delta Zeta Frat Man's Classic track meet.

**New Orleans-ΘΚ** ... At a standards program an audiologist taught chapter members the deaf alphabet and some common phrases in sign language and finger spelling. They used these to communicate with the

children at the Hilda Knoff School for the Deaf when the chapter sponsored its annual Halloween party for the children.

**New Mexico State-ΓΞ** ... An old fashioned cakewalk was the method this chapter chose to raise funds for the university speech and hearing department.

**West Texas State-ZZ** ... Collegians joined with local alumnae in a garage sale to benefit the local speech and hearing center.

**Wisconsin-Whitewater-EK** ... Children at Delavan School for the Deaf were delighted with toys collected for them by this chapter.

**Texas at Arlington-IΨ** ... Each month, members who have a birthday deposit a nickel for each year of their age in a special birthday bank. That money, plus some obtained by returning soft drink bottles for the deposits, will be sent to Gallaudet at the end of the year.

**Miami-A** ... "The Splash Heard 'Round the World" was the name this chapter gave its first annual swim-a-thon. Special t-shirts and posters advertised the swim-a-thon in advance. The chapter was able to raise \$1700 with one day of swimming; each sister swam at least 20 laps and some did as many as 100! The money will go to Gallaudet and Miami's new speech and hearing clinic.

Delta Zeta's interest in the problems of the deaf began in 1944 when members of the Detroit alumnae chapter gave a hearing aid to an underprivileged child.

Ten years later, looking for a channel through which to extend their growing service to the hearing impaired, several Delta Zeta alumnae visited Gallaudet College. As a result, in 1954, Delta Zeta adopted the Edward Miner Gallaudet Library as one of its nationwide "Adventures in Friendship" projects.

In the 1970s, more and more alumnae and collegiate chapters of Delta Zeta recognized the unique challenge and opportunity to help the deaf population through their financial support of Gallaudet College.

*from Gallaudet pamphlet, 1979*





# Alumnae:

Our collegiate chapters need your voluntary reference on a special girl you know who will be attending school where there is a Delta Zeta chapter. Your time spent in notifying that chapter about a valuable rushee is priceless. Each year many of our pledges are the direct result of a personal reference before rush. Please help all our Delta Zeta chapters and forward your completed reference for those special girls in your neighborhood, school, church, etc. to the college chapter director or chapter president for that school. They are listed in the directory in this issue of the LAMP. On behalf of all our Delta Zeta chapters, thank you.

*Anne Marie Gavin*

Anne Marie Gavin  
National Director,  
National Reference Chairman

## Personal Reference Form

Name of rushee ..... Father's name .....

Address .....  
Street City State ZIP

Father's occupation .....

High school attended ..... Year of graduation .....

College she expects to attend .....

Expected major .....

High school scholastic record .....

High school activities .....

Honors, awards, talents .....

Relationship to Delta Zeta ..... Other sorority .....

Please check the following:	Excellent	Average	Below Average
Accepts responsibility	_____	_____	_____
Poise and personality	_____	_____	_____
Leadership potential	_____	_____	_____
Dependability, adaptability	_____	_____	_____

Will you tell this girl she is being sponsored? .....

.....  
Your name Your chapter

.....  
Your address

List your name this way: Betty Smith Jones (Mrs. Robert)



# Careers in Computers

by Lee Williams

The last half of the 20th Century has become an age of computers. Starting with the first sale of a computer to a business firm in 1954, electronic data processing (EDP) has wholly permeated American economic life, and technological advances have reduced computer "hardware" as large as a freight car to the size of a matchbox. The advent of microelectronics has made it possible to have thousands of electronic circuits on a fingernail-size silicon "chip," resulting in such modern-day wonders as the digital watch. Today's computers work at speeds hundreds of times faster than their predecessors.

The EDP phenomenon has led to an explosion of computer-related careers. The most popular of these is computer programming: producing the plastic or paper tape "software" that directs computers in all their operations.

## The Computer Programmer: An Aptitude for Logical Thinking

Computers are not "thinking machines." They cannot do anything they are not instructed to do by the computer programmers, whose precise, step-by-step instructions are written in a special computer language. (COmmon Business Oriented Language, or *COBOL*, is a business data processing language; *FOR*mula *TRAN*slating system, or *FORT*ran, is often used for scientific data processing.) A career in computer programming requires a logical mind and the ability to think-through a problem. Programs are like formulas, into which the computer plugs the variables. Programs do not contain problems, but solutions.

Computer programmers fall into three categories. *Systems programmers*, who generally work for computer manufacturers, write instructions that make it easier to program computers; they have intimate knowledge of how computers function. *Business applications programmers* work for companies that



Deborah Bliss Gately - Programming is like playing a game.

buy computers to perform such functions as payroll processing and inventory control. Because computers are essential to many scientific operations, the third category, *scientific applications programmers*, has some of the most interesting and well-paid programming careers. Their educational requirements are more stringent, requiring a sound knowledge of mathematics and the appropriate scientific area.

Deborah Bliss Gately, University of Arizona-BI, is a business applications programmer for American Hospital Supply Corporation in Santa Barbara, California. Debbie, who has a math degree, followed an older sister into data processing.

"Her advice to take accounting courses in school was very helpful," says Debbie, because in business applications programming, "knowledge of accounting is an asset." Majors in math, business administration, accounting, or liberal arts are acceptable to most employers, who usually provide training for their programmers. More important than college major are aptitudes for logical thinking and problem-solving, but prospective programmers are well-advised to include business administration and data processing courses in their curricula.

"Those interested in systems programming," adds Debbie Gately, "would be wise to work toward a degree in computer science."

After receiving training at Bank of America in San Francisco, where she worked for seven years, Debbie took a position with her current employer, where she oversees programs for marketing and sales forecasting, inventory management, and order entry. She also does her company's systems programming. Debbie's view of her job exemplifies that of many successful people in data processing.

"Writing a new program or finding a problem with the existing one is like solving a puzzle or playing a game," she says. "It can be a lot of fun!"

Beginning salaries for applications programmers average about \$13,200 per year; for systems programmers, \$14,900. Experienced applications programmers may earn as much as \$23,500 annually; systems programmers, \$25,000.

Scientific applications programmers, who are frequently required to have an advanced degree, earn \$18-27,000.

## The Systems Analyst: Getting the Job Done with Computers

Systems analysts analyze business (or scientific) problems and design solutions that utilize computers. These solutions must then be "sold" to management, a fact which requires that analysts have communications and report-writing abilities in addition to an extensive knowledge of computer hardware.

Barbara Randel King, Central Missouri State-EE, is a systems analyst for the Palm Beach County School Board in Florida. She works closely with the directors of the payroll, personnel, finance, budget, and employee relations departments, and supervises a team of programmers.

"My main task is to help the departments run efficiently," says Barbara. "Once a system request has been defined, I design the sys-



tem and present it to our user departments. When it is approved, I write the specifications for my programmers. This includes designing the file and access method, data input flow, forms, and all the programming requirements."

A growing number of employers seek systems analysts with a degree in computer science, information systems, or data processing. A fifth year with a business administration major rounds out the ideal background for a career in business systems analysis. Scientific systems analysts must have a degree in math, physics, or the appropriate engineering area.

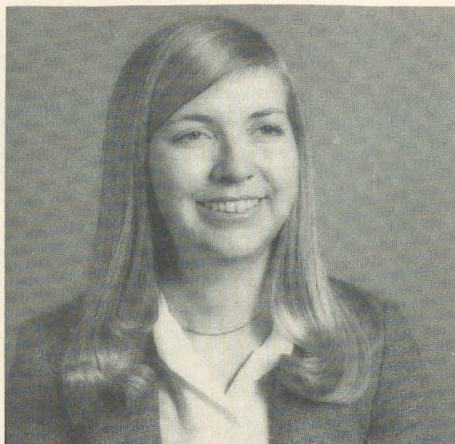
Beginning business systems analysts earn from \$14,200 to \$20,000 per year; experienced workers, \$22-29,000. Scientific systems analysts earn \$20-30,000 annually.

Systems analysis supervisors may earn salaries as high as \$40,000.

#### **The Computer Scientist: In the Forefront of Technology**

The most prestigious computer occupations are in research and are reserved for those with advanced degrees. They are also the most remunerative. Ph.D.-level computer scientists receive starting salaries of about \$25,000, while experienced researchers' salaries are frequently in the \$35-40,000 range.

Mary S. Pickett, Iowa State University-BK, is an associate senior computer scientist at General Motors Research Laboratories in Detroit, Michigan. She has also worked at the Jet Propulsion Labo-



*Mary S. Pickett - Discovering less prejudice than one would expect.*

ratory while in graduate school at Purdue and for RCA in New Jersey.

Some of the ongoing projects in Mary's department at G.M. involve robots, computer vision, and "interfacing" to the computer in English rather than a specialized language.

"For the past several years," says Mary, "I have been developing and implementing a programming system for minicomputers and microcomputers used in manufacturing applications, such as quality control, energy monitoring systems, and warehouse inventory. The system consists of a specialized language for programming the computer, a compiler (which is a program that translates a program written in our specialized language into a language the computer understands), an operating system to support the programs written in our language, and other related software."

The computer language Mary developed for her project is currently being considered by an American National Standards Institute committee as a prospective part of an extension to a current national standard programming language.

Mary believes the computer field in general offers excellent opportunities for women.

"Because it is a relatively new and dynamic field, it is an exciting field in which to work. Each individual can make a significant contribution. And because there have been outstanding women involved from the beginning, there is far less prejudice against women than you would ex-

pect in a high-paying technical field."

Should a person not intend to pursue a career in the computer field, Mary thinks she should take an introductory course anyway, to "demystify" computers.

"This is because computers are having such a large impact on one's everyday life," says Mary. "Even my local gas station and pizza parlor both recently installed microcomputers."

A sign that we are, indeed, living in a Computer Age!

## **Jean Young Honored in Portland**

The Crystal Room of the Benson Hotel in Portland, Oregon, was filled to capacity when Jean Kitts Young, University of Oregon- $\Omega$ , was honored for her more than 50 years of volunteer service to the city of Portland, to Multnomah and Washington counties, and to the state of Oregon.

Jean was completely surprised—she'd been told she'd been invited to tell the history of the Oregon Republican Women's Federation to Portland's newest club. Wendell Wyatt, former U.S. representative, was master of ceremonies, and eight "toasters" remarked on Jean's service to the Cancer Society, Oregon Census, Republican Party, P.T.A. and state legislature. Former National President Gertrude Houk Fariss told of Jean's service to Delta Zeta, and Jean's grandson Bill Jordan humorously told what it's like to answer her constantly ringing telephone.

Jean's record extends from work with the Stars of Oregon Salvage Committee during World War II to being named 1966 Woman of Accomplishment by the *Oregon Journal*, to serving as a councilwoman in King City, where she currently lives.

Doris Read Thoen, Oregon State-X, was on the dinner committee and many of Jean's Delta Zeta friends and her sister Nina Kitts, University of Oregon- $\Omega$ , were among the guests.



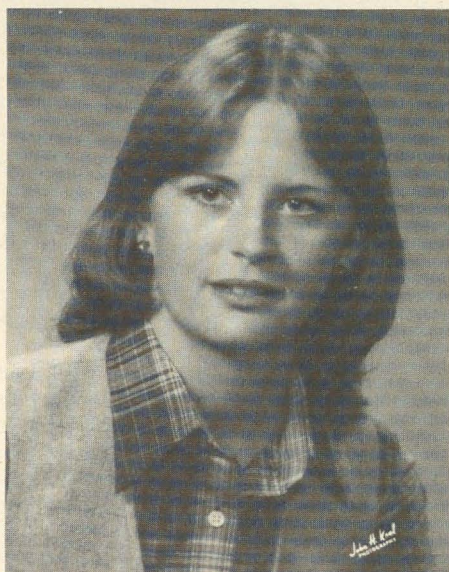
*Barbara Randel King - Working with the department directors.*



# Delta Zeta on Campus



*Cheering for the Indiana State-Evansville teams are these six members of Lambda Beta chapter. Standing from left to right are Pom Pon Girls Donnetta Pearce, Kendra Barrett, Stephanie Goodman and Erin Donnan. Kneeling are Donna Trautvetter, another Pom Pon Girl, and Lori Carroll, cheerleading captain.*



*Catherine Bathke of Epsilon Kappa chapter, Wisconsin-Whitewater, was named Outstanding Pledge of Province VIII at the 1979 State Day.*



*Donna Sharpe of Lambda Phi chapter was named Kappa Alpha Sweetheart at Appalachian State.*

Eight members of Lambda Xi chapter were named Distinguished Students at Texas A & M. A parents weekend held in October was such a success the chapter plans to repeat it next year. Lambda Xi participated in the United Way fund drive and, along with other Greeks, gathered over \$2,900 in donations. Jane Gray Nelson, PCD, was taken to a haunted house when she visited the chapter in October. The chapter held its annual Fallfest in November, with entertainment by singer Peggy Reeves. The Christmas Formal was held early in December.

Three members of Iota Theta chapter were on the Mansfield State (Pennsylvania) homecoming court — Tracey Davis, Terry Myers and Mindy Miller. Iota Theta won Panhellenic awards for highest scholarship by initiates and by pledges and initiates combined.

Iota Psi chapter at Texas-Arlington has been busy with rush, mixers, sisterhood projects, money-raising and intramurals. On Founders Day the chapter met with the Fort Worth Alumnae. It has set up a "Guardian Angel" situation with area alumnae for help with problems. Iota Psi held a mother-daughter tea in September and is now starting a Colonade Club.

Delta Theta pledges at the University of Houston raised money with a spaghetti dinner, and the whole chapter sponsored an all-school roller skating party to enrich the ways and means fund. The chapter joined Houston Alumnae for Founders Day. Barbara Sharp and Sheryl Welch were named to *Who's Who*. Sheryl Welch is Miss Alief Texas, Ana Espinel is Miss Ecuador of Houston, and Janet Moseley is first runner-up for Miss Hemisphere.

Alpha Alpha chapter was commended by Northwestern (Illinois) Panhellenic for the manner in which it conducted fall rush. The chapter philanthropy chairman has organized a program based on individual participation in various volunteer activities at Northwestern and in the Evanston community. Alpha Alpha pledges placed second in the first annual Northwestern Pledge Olympics, a contest among all the sorority pledge classes. Cathy Hammer is a rock music producer at a campus radio station, Robin Heilbrunn is an archaeological field assistant, Susan Rieck is a member of the NU fencing team, Debora Saloman is president of NU Garde, a student service organization, Carolyn Thompson is president of the Undergraduate Psychology Council, Karen Baker is editor of *Northwestern Engineer*. Mary-Carol Kooi was finalist for Navy Ball queen.



**Kappa Chi** chapter at Youngstown State in Ohio won the first place trophy at Sigma Chi Derby Week and took second in campus intramurals. The chapter won the sorority scholarship award with a 3.1 average. Kim Kibler won an individual scholarship award.

"The Swinging Sixties" was the theme of the rush parties held by **Epsilon Theta** chapter at Clarion State in Pennsylvania. The chapter trick or treated for Polk State Institute, collected for the National Hemophilia Foundation and provided Thanksgiving dinner for a needy family. At a Founders Day dinner and ceremony CCD Lois Linnan was presented with a badge and Kimberly Diesel was named Diamond Girl. Ten members were score card carriers at a Clarion State boxing match.

**Kappa Zetas** won a trophy for giving the most blood at North Texas State for nine consecutive semesters. The chapter also captured first place in the 1978-79 sorority sports league. Jane Hestand is president of Panhellenic and Debbie Watson is treasurer. Teri Wit is editor of the Greek system yearbook. Working with Theta Chi fraternity, the chapter won the President's Award for its homecoming float.

At the University of New Orleans, **Theta Kappa** chapter participated in the university's first Greek Week — planting a tree, participating in a pool tournament and suitcase race, and raising money for the American Lung Association. A dance ended the week. For Halloween, initiates and pledges teamed to carve pumpkins with the Greek insignia of each fraternity and sorority on campus. The pumpkins were then distributed to the appropriate table in the University Center.

**Epsilon Mu** chapter at Southern Mississippi took second place in the originality category of the homecoming float competition. The chapter joined with Sigma Phi Epsilon fraternity to sponsor a haunted house for Halloween. Children from Ellisville State School (for the mentally retarded) were guests at the house and all proceeds went to the United Way. Donna Lockhart is president of Junior Panhellenic and Amanda Sproles is secretary of Panhellenic.

**Lambda Rho** chapter at Illinois State reached quota/total in fall rush for the sixth consecutive year. The chapter entertained with a parents' potluck and alumni homecoming brunch, Christmas Formal and exchanges with other Illinois State sororities and fraternities. Cathy Dalfonso was named Roller Queen of the skate-a-thon sponsored by Sigma Phi Epsilon and Delta Delta Delta in October.



*Shown are the new pledges of Lambda Pi chapter at Georgia College. Delta Zeta was the only sorority at Georgia College to make quota during fall rush and is now the largest sorority on the campus.*

**Epsilon Kappa** chapter at Wisconsin-Whitewater placed first in the treasure hunt and bed rally held during homecoming festivities in October. Pledges had to follow strings woven throughout the house to find a present from their big sisters. Big and little sisters carved pumpkins, which were donated to a nursing home. The chapter trick-or-treated for UNICEF, raising \$78. At Province VIII day, Epsilon Kappa was named best chapter in Wisconsin and won awards for activities, collegiate education and singing.

At the University of Illinois, Founders Day was celebrated with a dinner at the Alpha Beta house. The alumnae named Anna Boris the outstanding junior and presented a copy of *Roget's Thesaurus* to the Alpha Beta library in her name. A number of chapter members are active in Illinois Panhellenic. Audrey Palekas is a member of the varsity swim team, and Julie Johnson plays on the varsity golf team.

**Iota Alpha** chapter at Southwest Texas State filled quota during fall rush. Chapter President Melissa Mote was elected to the homecoming court. Becky Salter, president of Panhellenic, is a new member of the Student Organizations Advisory Committee. Fall money-raising projects included campaigning for a contestant in the Chilympiad chili contest, a dunking booth, selling candy and putting together a recipe book. The chapter collected books and magazines for the V.A. hospital in Temple and trick or treated for UNICEF.

**Lamba Phi** chapter at Appalachian State (North Carolina) won first place in women's cross country intramurals and took third place in the 12-hour run sponsored by the Boone Road Runners Club. The chapter also ran a haunted house for community children, participated in a blood drive and held an alumnae brunch.



After acquiring new pledges during fall rush, **Beta Gamma** chapter has become the largest sorority at the **University of Louisville**. During the past school year, Beta Gamma was named the outstanding team in women's intramurals, and it is currently defending its title with wins in softball, tug-of-war and soccer. Alice Nickens played in a softball World Series. Rose and Barbara Elpers play varsity volleyball, and Sheila Sheeran is on the varsity field hockey team. Linda Horton is treasurer of Lambda Sigma sophomore honorary, and Joanna Palmer is the president of Louisville Panhellenic. Susan Mullin, Anabel Ishkanian and Carina Crouse are Louisville Belles, athletic department hostesses.

First prize for a homecoming float at **Shepherd College** in West Virginia went to **Kappa Mu** chapter for its "Wizard of Oz" creation, which featured chapter members dressed as Dorothy and the other Oz characters. Sue "Boo Boo" Lechner was second runner-up for homecoming queen and Melissa Tayman was sophomore representative on the homecoming court. The chapter is sponsoring a 12-year-old Brazilian girl. Their contributions will help with housing, nutrition, medical and dental care, and education.

A first place trophy for spirit went to **Gamma Xi** chapter for its contributions to the **New Mexico State** homecoming. Members decorated football players' lockers, held spirit rallies, and even placed "Go Aggies" flags in the cafeteria desserts. Vicki Skillman was a homecoming princess. Gamma Xi also took first in Sigma Chi Derby Days. Lee Sullivan and Karen Medina are cheerleaders; Therese Aragon, Kathy Armijo and LaNelda Rolley are student ambassadors; and Pam Shreffler and Jackie Kerby are Crimson Scholars.

Members of **Xi Kappa** chapter at **Glassboro State College** in New Jersey chuckled over the resourceful solution their president and PCD came up with to a potentially embarrassing situation. It seems President Debbie Vandegrift was dressing for the opening banquet of the National Convention last June when she discovered she had forgotten to pack her white evening gloves. She sought advice from former Xi Kappa President Maureen Lewis, newly appointed Province II PCD. Maureen had an idea. She lent one of her gloves to Debbie, and each of them covered her bare hand with her wrap, leaving no one the wiser.



*Epsilon Kappa pledges from Wisconsin-Whitewater shown with the new chapter mascot, a large stuffed turtle auctioned off at State Day. Epsilon Kappa outbid everyone else by pooling its money.*

Delta Zeta was the only sorority to meet quota during fall rush at **Western Carolina**. **Theta Iota** chapter also placed first in the homecoming skit contest and was judged to have the best sorority float in the homecoming parade. The chapter took second place in the annual Pike's Peak contest sponsored by Pi Kappa Alpha fraternity. The chapter was honored to have been invited to a mixer with every fraternity at WCU. Chapter members trick-or-treated for UNICEF, held a Halloween party at the campus daycare center. Each month, the chapter visits a different church for worship services, and also each month the chapter provides a refreshment basket for the university department it selects as most outstanding. In addition, Theta Iota has begun a canned goods drive to provide food for six needy families.

**Gamma Lambda** chapter at **San Jose State** teamed with Theta Chi fraternity to win first place in the homecoming float competition. Debbie Wilson was first runner-up for homecoming queen. The chapter held a luncheon with the Northern California Alumnae in observance of Founders Day.

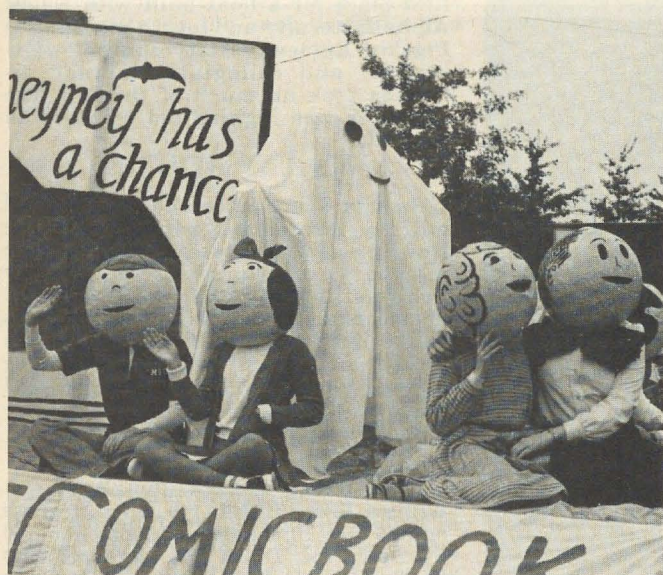


*Mindy Miller, Mansfield State-IØ, is a member of the National Budget Committee of the Student National Education Association (SNEA). She attended a budget committee meeting in Washington, D.C., in November, was a Pennsylvania delegate to the SNEA convention in Albuquerque in January, and will be a student delegate to the National Education Association (NEA) convention in Los Angeles in July.*





*Twin sisters Trudy and Trecia Parrish of Theta Omicron chapter at Pan American University in Texas were chosen Outstanding Young Women of America for 1979. Trudy is president of Theta Omicron and of Pan American Panhellenic. Trecia is chapter vice president-membership.*



*Iota Theta chapter won first place for this float in the Mansfield State College homecoming parade. The theme was comic book characters, and under the Sluggo, Nancy, Blondie and Dagwood masks are Karen Hoffower, Tracy Miller, Sue Randall and Beth Black. Behind Casper, the board reads, "Cheyney (the opponent) has a ghost of a chance." This is the third consecutive year Iota Theta has taken first place in the float competition.*



*Members of Gamma Lambda's first pledge class since the chapter was reactivated at San Jose State in April 1979 gather for a photo.*



*There are a lot of fraternity sweethearts in Delta Theta chapter at the University of Houston. Shown here are: Front row, Barbara Sharp, Pi Kappa Alpha Sweetheart; Karen Knoblauch, Sigma Chi Sweetheart; back row, Belinda Baker, Kappa Alpha Rose Court; Maureen Keenan, Sigma Alpha Epsilon Sweetheart Court; Terri Larks and Lori Thornton, both of the Pi Kappa Alpha Sweetheart Court.*





*Ready for a rush skit are these three members of Iota Alpha chapter at Southwest Texas State. From the left, they are: Cary Lacobee, Cathy Bulger and Julie Gray.*



*Janice Arden, Dr. Mary Wallace, Kay Samppala, Julie Carpenter, Linda Neal, Colleen Walsh and Sharon Larson, all of Lambda Theta chapter at Michigan Tech, at an all-IFC going away party for Dr. Wallace, Lambda Theta CCD. Dr. Wallace, who was also director of student activities and IFC advisor at Michigan Tech, has taken a new position as coordinator of Greek affairs at Virginia Polytechnic Institute and State University.*

Mary Radle represented Zeta Beta chapter on the Wisconsin-Stout homecoming court. Pam Haas was named most outstanding Delta Zeta in Province VIII at Wisconsin State Day. Zeta Beta won chapter awards for prompt reporting and a "Turtle City" display.

Alpha chapter at Miami University (Ohio) has its largest-ever pledge class this fall, thus making quota for the eighteenth year in a row. During the two-week rush period Alpha chapter held four different parties with a central theme of Medley of Music.

Epsilon chapter at Indiana University has a newly-decorated reception room, done in rust, blue and off-white. Epsilon alumna Grace Mason Lundy, past national president and national historian, was the special guest for Founders Day. Mrs. Lundy entertained with stories of Delta Zeta and Epsilon history. In October the chapter held a Fall Fling, Barn Dance and took part in Homecoming. In November, parents weekend and open rush took place. The fall activities concluded with a holiday dance in December.

Zeta Zeta chapter at West Texas State met its quota during fall formal rush. Homecoming activities included winning first place for a float built with Kappa Alpha fraternity and fourth place in the Pigskin Review variety show. Pledge-initiate and collegiate-alumnae activities took up much of the fall. The semester was highlighted by the Fall Formal.

Gamma Tau chapter held its annual holiday dinner for seniors and the Bowling Green State (Ohio) faculty members of their choice. Kathy Schweisthal was chairman of BGSU homecoming floats and Laura Lewis was snake dance chairman. Cindy Myers took second place in the homecoming queen contest. The chapter raised money with a bake sale and a bagel sale and collected for UNICEF.

Liz Putman of Zeta Rho chapter at William Jewell in Liberty, Missouri, was one of just 10 college students honored by Delta Mu Delta national business administration honor society. Zeta Rho filled fall rush quota. The chapter took first place in the Greek Sing under the leadership of Lynn McCoy and Cathi Weekes. Carolyn Crews and Marla Woody were finalists for homecoming queen. Rebecca Jones was elected Cutie Pan (chosen by money donations which are given to charity).



**Theta Mu** chapter at **St. Cloud State** in Minnesota doubled its size in fall rush. Grace Dollahon, a transfer from Wisconsin-Eau Claire, Epsilon Omega, was elected Greek Council president. Laura Fahrenkrug and Allison Enderle were candidates for homecoming queen.

The **Wright State** soccer team in Dayton, Ohio, had members of **Kappa Iota** chapter as its ball girls. Other chapter activities included collecting canned goods for the needy, selling sub sandwiches at WSU's October Daze, helping answer phones for the Jerry Lewis Telethon and running a dunking booth at the Fairborn Sidewalk Sales. Becky Bush is president of Wright State Panhellenic and Patty Kneer is chairman of the Inter Club Council. Patty Bache is secretary-treasurer of Phi Eta Tau honorary and a recipient of a Delta Zeta Foundation Scholarship.

**Kappa Psi** chapter at **Shippensburg State** (Pennsylvania) joined with the Harrisburg Alumnae for a Founders Day ceremony. The chapter came in second in the Shippensburg homecoming float contest.

Nashville Alumnae invited **Iota Iota** chapter at **Middle Tennessee State** to join them for Founders Day ceremonies. The chapter got a second place award for homecoming activities. Iota Iota cut jack-o-lanterns for each sorority and fraternity on campus.

## Break a Leg

The old Broadway expression wishing a performer good luck really backfired for Delta Theta's Sandi Goebel. Sandi was to entertain at rush parties by doing a ballet to "If You Believe," and as the first party approached, chapter members, in keeping with show biz tradition, told her to "break a leg." As fate would have it, Sandi slipped while doing a jump at the first party. She insisted she was not seriously injured and continued to perform throughout the rush parties. Afterward her ankle began to bother her. X-rays showed a fractured ankle and doctors put Sandi into a cast for six weeks. Her University of Houston sisters applauded her courage and determination and vowed to never again ask anyone to break a leg, even in jest.



*Members of Delta Pi chapter at Emporia State pose in T-shirts designed for intramural sports by Kim Krueger. Front Row: Dee Dee Nichols, Judy Phelps, Sandy Smith and Donna Rowley. Second row: Jackie Peaster, Barbe Keller, Janice Snyder. Third row: Karen K. Thill, Pam Cooke. Back row: Jeanine Mimick, Kim Krueger.*



*Pledges of Alpha chapter at Miami University are a fun-loving group.*

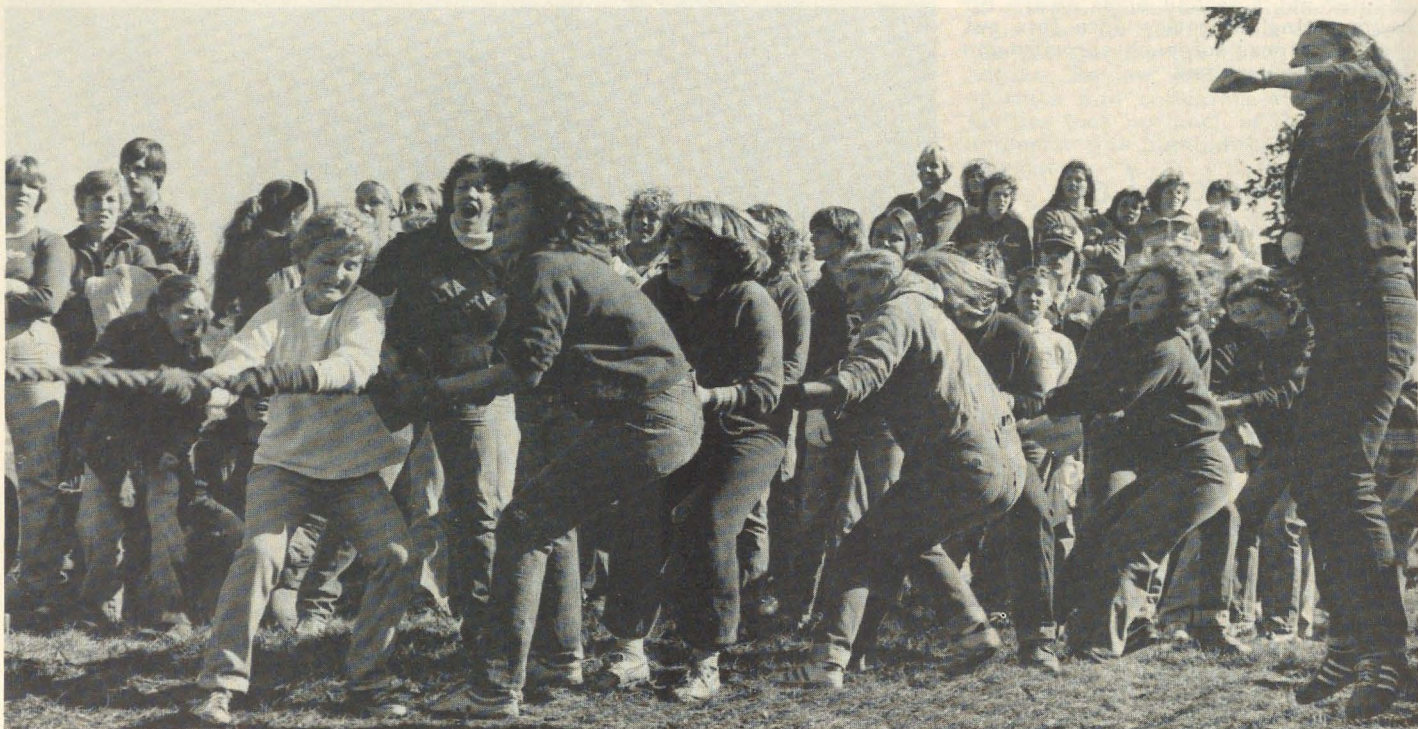




*As a Founders Day project, Theta Omicron chapter at Pan American University presented six palm trees to the city of McAllen, Texas, in honor of the six Founders of Delta Zeta. Chapter members shown are: Trudy Parrish, Julie Parrish, Gloria Garcia, Vicky Sanchez, Sylvia Zamora and Trecia Parrish.*



*Greek Goddess at Ashland College in Ohio for the past two years has been a Delta Zeta. Keeley Smith (left) was the 1979 winner of this award, and her Theta Psi chapter sister Valerie Anderson (right) was the 1978 winner.*



*Gamma Chi chapter at Ball State pulled its way to second place in the Theta Xi Tug-of-War held in conjunction with the university's 1979 homecoming. The chapter was also judged second in overall spirit.*



## Alabama Chapter Donates Flagpole

Lambda Kappa chapter at the University of Alabama in Huntsville presented American and Alabama flags and a flagstaff to the university. A presentation ceremony was held in November in Bicentennial Park with Dr. John Wright, president of the university, accepting the gifts from Laura Roach, president of the chapter.

Former Alabama Senator John Sparkman was a special guest at the ceremony. Senator Sparkman helped the chapter obtain the American flag, which had flown over the United States Capitol. The Alabama flag had flown over the state capitol and was secured with the help of former Governor George Wallace. Betty Heusch Agler, past national president, was a special Delta Zeta guest of the chapter and spent the day getting better acquainted with the Lambda Kappa sisters. The university chorus provided a program of patriotic music as a background to



*Dr. Wright accepts an American flag from Laura Roach as Senator Sparkman and Betty Agler look on.*

the presentation.

The flag ceremony marked the reaching of a goal the Lambda Kappa members had worked toward for two years, with much help from an alumnae committee composed of Lois Walker Coates, University of Alabama-AG, Catherine Walker Evans, University of Alabama-AG, Betty Long Wyskida, Alabama at Huntsville-AK and Betty Green

Byrne, University of Kentucky-AΘ. Mrs. Byrne, chairman of the alumnae committee, is also CCD for Lambda Kappa.

The chapter members and committee worked with government officials, university staff, planning committees and flag pole companies. It took a lot of effort, but Lambda Kappa had a dream and saw it realized.



*Vee Toner, AAU award winner.*

## Vee Toner Honored

Vee Shakarian Toner, University of Pittsburgh-O, was awarded a gold medallion in recognition of her service to swimming at the recent national AAU convention held in Las Vegas. Vee, who was the 1969 Delta Zeta Woman of the Year, is well known for her work with swimmers in her hometown of Pittsburgh and throughout the country.

She has served as manager-chaperone of the U.S. Olympic women's swimming team, officiated at the Pan American Games and served on the U.S. Olympic Committee. She is also the only woman to have served as president of the Allegheny Mountain Association of the AAU.

The award was presented by Aquatics, Inc. of the United States, a combined organization of water sports.

## No. 1 California Social Worker

Mary Reed Horn, University of Miami-BN, was named California Social Work Practitioner of the Year for 1979. Mary, who lives in Burbank, California, is social worker supervisor of the Therapeutic Group Home of the Children's Bureau of Los Angeles.

Mary was instrumental in planning, opening and developing the group home. As a clinical social worker, she provides psychotherapy, group therapy and houseparent consultation. Mary also works with foster and adoptive child services.

She received a master's degree in psychiatric social work from Tulane in 1945.



# Brenda Marshall: Softball Star and Head Coach

Softball is more than a game to Brenda Marshall. It is a career, one that she has been pursuing for most of her 24 years and one at which she is doing remarkably well. Last fall she began her duties as head coach of the women's softball team at West Texas State University, and, though it is her first collegiate coaching assignment, she is well qualified for the job.

She received a softball scholarship to the University of Texas at Arlington, from which she received a bachelor's degree in physical education in 1978. She lettered in each of her four years on the UTA women's softball team, and was named the most valuable softball player at UTA in both 1976 and 1977 when the team played in the College Women's Softball World Series. A starting outfielder, she also pitched occasionally and led her team in batting all four years. Twice she was named UTA Female Athlete of the Year.

While at UTA, Brenda became a member of Iota Psi chapter of Delta Zeta and served terms as its activities chairman and intramural chairman. She was named outstanding activities chairman in Texas and was nominated for the Florence Hood Miner Award in 1977.

"My sorority experience taught me how to get along with all kinds of people, to become patient and understanding," Brenda said, adding that she finds these skills valuable in her coaching.

Brenda was one of just 60 women asked to try out for the United States women's softball team for the 1979 Pan American Games. In order to prepare for the tryouts, Brenda, who was then pursuing her master's degree at Baylor University, followed a strict regimen of practice,

exercise and workouts. It paid off as she was one of the 18 women selected for the team, which went on to win a gold medal at the Pan American Games in Puerto Rico last July. Brenda reported that two of the biggest thrills of her life occurred at the Games. "The first was when the U.S. delegation walked into the stadium for the opening ceremonies and the second was when we received our gold medals and our national anthem was playing."

Brenda was guest of honor at the Women's Class A Slow-Pitch Nationals in Grand Prairie, Texas, in September and threw out the first pitch for the tournament.

"Softball has always been the main part of my life. I always set high goals for myself and I felt that coaching college was the ultimate goal," Brenda said.

At West Texas, Brenda is head softball coach and assistant basketball coach for the women's teams. She said coaching women's teams is becoming as competitive as coaching men's teams and that there are plenty of openings for qualified women as colleges seek women to coach women.

The most fulfilling part of her job, she says, is "to be a part of these students' lives and to help them realize how sports competition can be one step on the ladder of life. People have helped me and have given me the opportunity to enjoy something I love so I would like to be able to do the same for others."

Brenda said this is the first year WTSU has given full support to softball and she hopes to work with the new program to eventually build a nationally-recognized softball team. "The main reason I took this job is that it would be a real chal-

lenge because fast pitch softball is not supported well in the Panhandle region and maybe I can change this."

Brenda credits her family with being the strongest influence in her life. "My parents have always been very supportive of the things my brother and I do. My father and brother coached the first team I was on. Mom kept the scorebook. My parents are the greatest in the world. Our friends always came to our house (in Corpus Christi) to play because my parents were so neat."

Her brother Bruce was also an outstanding athlete at UTA and now coaches high school football and baseball in Corpus Christi. Her mother Norma is a registered nurse and her father E. O. Marshall was a Corpus Christi policeman for 39 years before his death in 1978.

"Everyone in our family was pretty independent, but each of us in our own way had a family bond. My parents taught us to take care of ourselves and take initiative in the tasks that we do. I wish there was some way to repay my parents for all they've done, but that would be impossible, so I try to live a good life that would make them proud."



*Brenda swings the bat.*



## ΔZ Author JoAnn Loebel

Children can learn to preserve flowers and to create handsome arrangements and crafts with them by following the easy-to-read instructions and illustrations in a new book co-authored by Jo Ann Schowalter Loebel, University of Wisconsin - T. Titled *Flowers Are for Keeping*, it gives step-by-step directions for picking, drying and arranging flowers, berries, seed pods and other flora. The book is written for 9- to 12-year-olds, but older children and adults should also find it informative and enjoyable.

The three different methods of preserving flowers — air drying, pressing and silica gel — are each given a chapter. Other chapters deal with creating a picture, adding wires to make bouquets, special occasion arrangements and gifts to make with dried flowers.

This is the first publication for Jo Ann, who said, "My co-author, Joella Cramblit, has 10 years of writing experience but little knowledge of the world of flowers. I have been drying flowers for over 10 years but had no idea how to put a book together, and

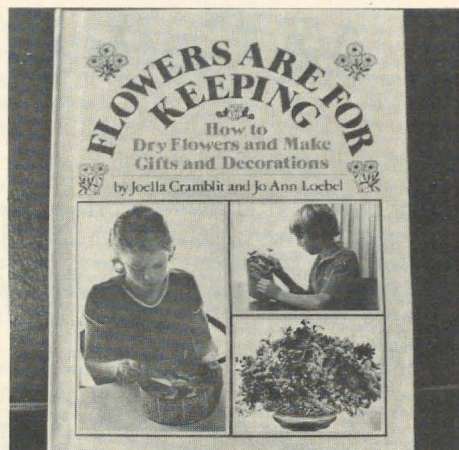


JoAnn Loebel

so we made a very compatible and efficient team."

Jo Ann is on the speakers list of the Garden Club of Illinois and said the book was an outgrowth of the slide shows, lectures and demonstrations she has given for the past several years. "A hobby of photography that led to the color slide programs has been enlarged to doing black and white photography for the book," she said.

And she adds, "Quite unexpectedly, I also did the drawings. I put together some suggested illustra-



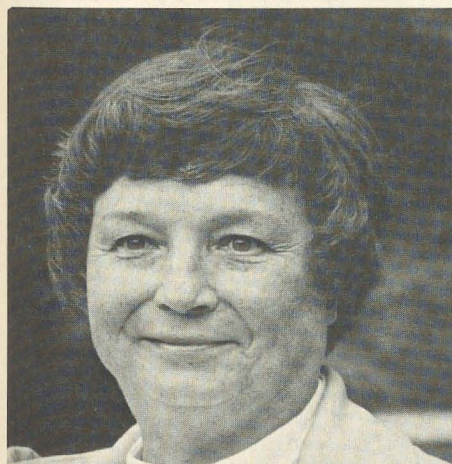
Beth Loebel and John Cramblit are pictured on their mothers' book.

tions, the editor liked them, and that turned out to be another fascinating learning experience."

Jo Ann and her husband Clarence, vice president of Guarantee Trust Life Insurance Company of Chicago, have six children and three granddaughters. The family lives in Northbrook, Illinois, where Jo Ann is a member and past president of the Pine Grove Garden Club.

*Flowers Are for Keeping* by Joella Cramblit and Jo Ann Loebel, published by Julian Messner, New York, August 1979.

## Delta Zeta Alumnae Recognized



A recent inductee into the Ohio Women's Hall of Fame in Columbus was Rachel Bair Redinger, Wittenberg-BX. Rachel is the founder and producer of *Trumpet in the Land*, an outdoor historical drama presented throughout the summers in Dover, Ohio.



Quint Cities Alumnae (Illinois-Iowa) honored five women with Golden Rose certificates in conjunction with Founders Day ceremonies. Shown are: Deborah Fry Anderson, Iowa State-BK, president of the alumnae chapter; Elvina Cady Anderson, Iowa State-BK; Vera Monroe Lee, Iowa-I; Elizabeth Watson, Coe; and Anna Hulett Roberts, Eureka-IL. Lillian Berve Malone, Iowa-I, the fifth Golden Rose, was absent.



# **ΔZ Collegians...for the Second Time!**

*by Ruth Gerstner*

In the past decade, college enrollments have changed greatly. Although most college students still fall into the traditional 18- to 22-year-old range, an increasing percentage are older. This is particularly true among women, both on the undergraduate and graduate levels.

What is it like to go back to college when you've been out of school for ten or more years? Six Delta Zetas who've done it shared some thoughts about their back-to-college experiences. And, though each story is as individual as the women themselves, certain similarities stand out.

Each said the support and encouragement of her family played a big part in her decision to go back to school and in helping her to stay there. Each had to organize her time efficiently to juggle papers and tests with family duties and activities. Each found the experience very positive — so much so, in fact, that most went far beyond their original goals.

## **Marjorie Raja Lamb**

In 1969, after 17 years as a full time mother and homemaker, Marjorie Raja Lamb of Minerva, Ohio, returned to the teaching career she had retired from at the birth of her first child in 1952. Marjorie, a member of Gamma Alpha chapter, had married her high school sweetheart, James Lamb, shortly after both graduated from Baldwin-Wallace College in 1950.

Several factors influenced Marjorie's decision in 1975 to begin work on a master's degree. She thought the degree would increase her effectiveness and job security as a teacher. Her children were leaving home to go to college themselves and appeared headed for graduate work, and since her husband already had a master's in music education (He's a high school marching band director), she half-jokingly said, "I didn't want to be the only one in the family with just a bachelor's."

"My own children (two daughters and two sons) said they hated it when there were 'old ladies' in their undergraduate classes, because they took so much from class time because of their lack of background and by relating their experiences. So I resolved to 'be good' — keep my mouth shut and my mind open. I also went to my beautician to have the gray hairs colored."

"My greatest trauma was my first test. My heart was going thump-thump-thump. I had to say to myself, 'Come on, Marj, you can do it.' Well, I managed a B and heaved a sigh of relief. Honestly, one of my concerns was whether I was still able to learn and retain."

After successfully tackling other challenges, including a new vocabulary in the field of education and extensive library research, Marjorie received a master of education degree in developmental reading in 1979.

She said, "When it came to graduation, it was no 'in absentia' for me. I was going to participate in all the pomp and circumstance offered. As I was handed my diploma, I told the gentleman, 'Better late than never.' He laughed. I did too. It was fun."

Today, Marjorie teaches second grade, working with gifted and able readers, is active in the Canton Area Delta Zeta Alumnae, and is planning a thirtieth wedding anniversary trip with her husband to Scotland and Finland this summer.

## **Mary Ridgeway Powell**

Mary Ridgeway Powell of Thomasville, Georgia, returned to school in 1975 to complete work on a bachelor of arts degree interrupted in 1963 by the birth of her first child. She'd been a math major at the University of Georgia and a member of Zeta Pi chapter when she married Leonard B. Powell in 1962.

"My decision to return to school after 12 years was based on a personal goal to obtain a degree, and I had no career ambitions," Mary said. "My children were 12 and 10 years old when I began and I had the full support of them and of my husband, Len (vice president of Powell Nurseries, Inc.)"

She chose to attend Valdosta State College, about 40 miles away. "I took two core curriculum courses in the summer of 1975, made two A's and was very encouraged. My first disappointment came in the fall as I tried to continue my major in math and soon realized that I no longer had the interest in math which would be needed to succeed after such a long time. I changed my major to history and quickly found my niche there."

"Because many of the teachers and administrators were close to my age, I felt none of the awe or intimidation which often characterizes student-teacher relationships. This attitude led to friendships and personal relationships with many of these people which I'm sure I would not have developed earlier," she explained.

"After graduation in June, 1977, I decided to continue because I enjoyed school so much. I completed 25 hours towards a master's degree, stayed out of school for almost a year (during which time I realized how much school meant to me) and returned to complete 15 more hours by June, 1979. In August, the department chairman called to ask me if I would consider being a graduate assistant for 1979-80. This offer was the biggest thrill for me. I love the work that I'm doing, and I'm pleased to have this opportunity. I will complete my master's degree requirements this June."

Mary is undecided about what she'll do after that. She's thinking about studying for a doctorate at Florida State University or, alternately, taking the education courses needed to get a high school teaching certificate. She's currently serving terms as a director of the VSC Alumni Association and as a trustee of the VSC Foundation.



### Rebecca Daily Peeples

Former Alpha Pi Chapter President Rebecca Daily Peeples of Birmingham, Alabama, graduated from Howard College in 1937 and returned again as a student 19 years later.

In the intervening time, she married Ross Peeples and had two children. Her goal was to take the education courses necessary to renew her teaching certificate so she could begin a long-postponed career as a teacher.

The decision to return to college was hard for Rebecca to make. "Could I do it? Could I keep up with the younger students? What would they think of me? What about my household routine? Could I possibly sandwich in time for study? she asked herself. "Then I would think about my alternatives; arthritis hindered many of my activities, and for a period I had been confined to the rocking chair. Many physical activities were curtailed, so I looked for new outlets. I considered school again, but I had many doubts. While I hesitated, my husband encouraged me; and in 1965 I enrolled to renew my teaching certificate — a decision I now realize has brought many dividends.

"In the classroom, my first reaction was fear. I lacked confidence, not only in giving reports, but in taking tests. However, I found out that much that I had feared lost came back to me once I began studying. I had the encouragement of my professor, and soon the approval of the younger students as I proved that I could do the work."

After completing the education courses and a student teaching program, Rebecca taught English and public speaking in a Birmingham high school for 19 years. Twice, she led student groups on study tours to Europe, thus fulfilling a life-long desire to see London and Paris.

Rebecca and her husband, the former secretary-treasurer of the *Birmingham News*, are now both retired. They give a lot of their time to a language mission Rebecca set up at their church to teach English to Vietnamese who have settled in the Birmingham area.



*Marjorie Lamb — graduation ceremonies were fun.*



*Mary Powell — reached her goal and kept going.*

### Lorry Gonczo Waldrup

Dolores (Lorry) Gonczo Waldrup of Hartsdale, New York, a 1955 graduate of the University of Detroit and a member of Epsilon Phi chapter, said she re-entered college "via the back door."

As the mother of four children, she was invited in 1970 to participate in a consortium studying New York teacher certification methods.

"Once I became involved, I realized how teaching had changed and was continuing to change since I had last taught in 1963. I was fascinated! I took the credited summer workshops, got New York permanent certification and was actively involved in this project for four years.

"Meanwhile, a part-time job opened up in our school district. It involved teaching basic skills to under-achievers on the seventh grade level. I really had not wanted to return to the classroom, but decided this would be a great opportunity to get my feet wet, to see firsthand the changes which had taken place and to work with older students."

The experience was so rewarding to Lorry that she decided to go back to school for a master's degree in special education. She enrolled in the program at Manhattanville College and managed to finish in three semesters while simultaneously holding two teaching jobs. She carried at least eight credit hours a semester while working full time during the day as a high school teacher and twice weekly at an evening school. "That year was a particularly tough one," she admitted. "I was never home; however, I had family support — my children, especially the two older girls, took over the household chores for me." Still, she said, "I'll never forget that year; I often wonder how I got through it."

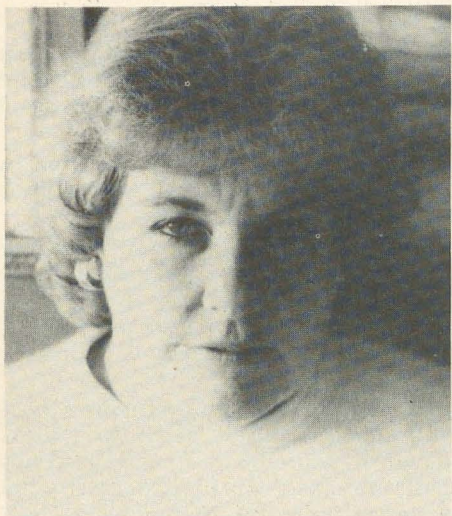
A strong sense of purpose helped. "I had a goal. I was extremely happy for I knew what I wanted," Lorry said. "I have no regrets."

She is now a special education teacher in a school near her home and works with students who cannot function in regular classes.



*Rebecca Peeples — overcame her doubts and fears.*

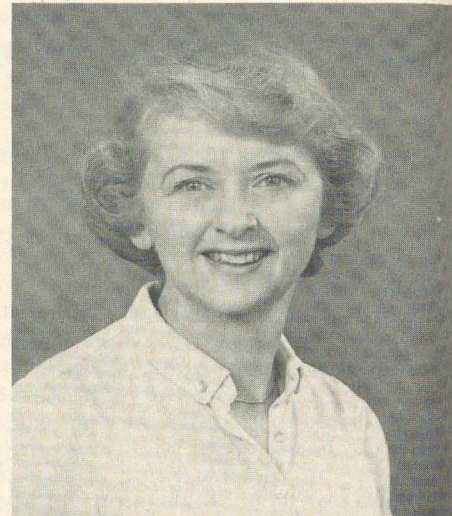




*Lorry Waldrup — completed master's program quickly.*



*Janice Fuller — the extra work was worth the effort.*



*Evelyn Kritchevsky — spent 14 years in graduate school.*

#### **Janice Crockett Fuller**

More and more employers are offering incentives for their employees to earn college credits in courses related to their jobs. Janice Crockett Fuller of Ellsworth, Maine, used such an opportunity. Janice, a 1950 graduate of the University of Maine where she was initiated into Alpha Upsilon chapter, is a registered nurse.

She said, "I have always enjoyed school and the challenge of learning. Consequently, eight years ago when I returned to full employment as a nursing instructor, I took advantage of a side benefit. We were reimbursed for six college credit hours a year if they related to our work. I did just this for several years. It was my husband (Samuel Fuller, a traffic engineer) who encouraged me to enroll in a master's program rather than take courses without a goal."

Janice was accepted into the graduate nursing program at Maine. "I felt apprehensive, realizing my commitment and the expectations of me. It was a much busier schedule — maintaining a home, working full time, taking at least four courses a year. I could not have done it without the support and encouragement of my family. I did enjoy it, although sometimes the dust at home got pretty thick and some weekends I had to forgo family activities." The Fullers have two sons and a daughter.

Janice believes returning to college was worth all the effort and recommends it to anyone thinking about it. "I never thought in earlier years that I would ever return to school. I am very pleased that I did matriculate in graduate school. . . It has given me a great sense of satisfaction, of fulfillment, and has made me a better educator and a more interesting person," she said.

Currently, Janice is an instructor in a three-year hospital school of nursing, teaching nursing fundamentals to freshmen and psychiatric nursing to juniors.

#### **Evelyn Sholtes Kritchevsky**

Although she stayed close to her field throughout the years after receiving a B.S. and M.S. in chemistry from Northwestern University in 1944 and 1946, Evelyn Sholtes Kritchevsky of Bryn Mawr, Pennsylvania, did not begin pursuing her doctorate until 1964.

After marrying in 1947, Evelyn held several low level jobs in chemical research as she accompanied her husband on the cross-country moves his career necessitated. She also taught at a small New Jersey liberal arts college for two years before deciding at the age of 31 that it was time to start a family.

"The subsequent ten years were devoted to my three children's early years. We moved to Pennsylvania shortly after the second child was born, and I soon found full time mothering was proving to be smothering and confining, so I found a part-time position as a laboratory instructor in another small liberal arts college close to my home. This two- or three-afternoons-a-week job lasted for eight years, keeping me more or less current in chemical education as it saved my sanity. Those years demonstrated the necessity of having a Ph.D. degree if I ever wished to get back into full time teaching, as the job market in higher education was slowly but surely tightening," Evelyn said.

She was accepted into the University of Pennsylvania's graduate group in chemistry as a part-time student and began her doctorate studies at the same time her youngest child entered kindergarten. In the first four years, she eliminated, one by one, the first steps — entrance, qualifying, foreign language and cumulative exams.

"Those first years back in college found me arising at 5 or 6 a.m. to study before the rest of the household was up, getting the children off to school, going to class, studying in the university library until it was time to leave to pick up the children at school, and going into my wife and mother act until the children



were in bed, which was never early enough," Evelyn said.

The next step was research and, Evelyn explained, "I was nominally a full time student for three years while doing research for my dissertation. 'Full time' to the university meant paying full tuition, but no one kept track of my hours, so I was able to keep the same schedule throughout the years. I took the summers off, as no graduate courses were given. In 1970, when my youngest child was 10 and my oldest only two years away from college, money began to seem very important. The research was almost finished and all that remained to do was to correlate the data, write the dissertation, present a seminar and defend the thesis in a final oral examination. I spent quite a bit of time that year as a substitute teacher in a local high school.

"In the fall of 1971 I started teaching full time at the college where I am currently employed, thinking I could finish up in a year or so by working evenings and weekends. I soon found that family and household activities prevented any work on my dissertation except in summer vacations when I had the large blocks of time necessary for efficient progress. I finally received the degree in December of 1978, 14 years after the start."

Evelyn doesn't think her family was deprived because of the time she spent as a student. "My school activities always took a second place to my roles as a wife and mother. My husband (David Kritchevsky, associate director of the Wistar Institute of Anatomy) did not have to do any more around the house than he ever did. My children don't remember missing any-

thing, as they had all the lessons, scouts, cats and dogs that the other kids had."

There were some negative aspects. Evelyn said she had to give up most of her social life in order to make time for graduate work, family and home. The long time it took her to attain her degree has made it practically impossible for her to change her job to a more prestigious institution or to private industry. She is presently an associate professor of chemistry and chairperson of the Department of Chemical, Life and Health Sciences at Spring Garden College in Philadelphia. Evelyn doubts the increased pay she will get with a doctorate in the coming years will equal the direct and indirect costs of achieving it.

On the positive side, she said, "The rewards are psychic. I feel good about myself and about reaching a goal that seemed unattainable at one time. And I do have an increased measure of job security, which is important in these days of shrinking college enrollments."

Would she do it again? "Yes, I am quite sure that I would. Like having a baby, the pain is soon forgotten and the good remains with you."

\* \* \*

If any conclusion can be drawn from these women's stories, it might be that it's never too late to go back to school if that's what you want to do. It takes determination, a cooperative family and some specific goals, but it's quite possible to add "student" to a job description that already reads, "Wife, mother, homemaker, employee." It won't be easy, but it will be rewarding and satisfying, say these Delta Zetas.

## Delta Zeta Alumnae Honored



*Denver Alumnae Chapter honored Clarice Donly Gardner, Iowa-I, at its Founder's Day luncheon. Clarice won the Achoth Award at the 1979 National Convention for continued service to Delta Zeta. Carol Selway Bertz, Ohio State-Θ, president of the Denver alumnae and national chairman of alumnae relations, is shown here with Clarice.*



*State College (Pennsylvania) Area Alumnae held their second Golden Rose ceremony in October. Sally Fife Blaney, Ohio Wesleyan-AP, (right) State College's first Golden Rose, presented pins to Lorraine Ossian Anderson, Iowa-I, (left) and Catherine Conner Knerr, Illinois-AB, (center).*



# Flame Eternal

## *Alpha*

Elizabeth Guilford Lee '37  
Mary L. Hanzely Waskosky '53  
Ruth Roudebush Young '25  
Ruth Warner Starr '27

## *Beta*

Harriet Armstrong '23

## *Gamma*

Dorothy Munns Linn '34

## *Delta*

Bonnie Miller Donaldson '17

## *Zeta*

Wilda King '28

## *Theta*

Margaret James Griffith '44  
Clarabelle Magrew Erdman '33  
Anna Young Sturgeon '21  
Catherine Roberts Lotze '24

## *Kappa*

Margaret Thomson Leipham

## *Mu*

Marion Barry Corten '29  
Edna Knipper '32  
Atha Woodward O'Conner '23  
Amy Hengelsberg Pletsch '26  
Salome Boyle Malsor '22

## *Omicron*

Henriette Schlegel Jones '19  
Mary McElroy Leasure '26  
Cynthia Dean Helsel '31

## *Pi*

Edith Rose Cook '22

## *Rho*

Margaret Bonney Horton '17  
Juanita Myers Myers '48

## *Sigma*

Theresa Lurry '24

## *Upsilon*

Wilma Grinley Peterson '30  
Eleanor Hoven Westerberg '31

## *Phi*

Grace Swingler Martin '34

## *Chi*

Josephine Yoder Wallace '38

## *Psi*

Birdena Donaldson '25

## *Omega*

Veeda Patton Gent '23

## *Alpha Epsilon*

Evelyn Carson Long '46

## *Alpha Omicron*

Elizabeth Reed Hobbs '31

## *Alpha Rho*

Eleanor Horice Leach '32

## *Alpha Sigma*

Carolyn Stephens Barfield '55

## *Alpha Chi*

Helen Morris Hansen '28

## *Alpha Omega*

Hazel Smith Krogfoss '36

## *Beta Gamma*

Jean Wood Beatty '29

## *Beta Kappa*

Eleanor Tregoning '26

## *Beta Phi*

Catherine Littleton Wooten '34

## *Gamma Alpha*

Esther Schultz Saunway '40

## *Gamma Delta*

Linda Ranick Jones '63

## *Gamma Iota*

Audrey Massey Jenkins '59

## *Gamma Kappa*

Jean Bishop Clyne '57

## *Gamma Mu*

June Smith Johnson '55

## *Gamma Phi*

Nancy Shepherd O'Connell '57

## *Delta Rho*

Grace Spoelstra Carden '32

## *Delta Chi*

Rita McCloud Rothney '28

## *Epsilon Gamma*

Teresa Holden '81

## *Zeta Eta*

M. Ruth Hatchett '26

## *Zeta Nu*

Joyce Schwander Kibbie '66

## *Zeta Pi*

M. Charleen McLemore O'Hara '66

## Attention, Writers and Photographers

The LAMP welcomes its readers to submit stories and photos for possible publication. We can use well-written stories and professional quality photos with a strong Delta Zeta interest; that is, about Delta Zeta members or about topics of special interest and concern to sorority

women. Short humorous or informative paragraphs, again with a Delta Zeta angle, are also appreciated.

We cannot offer any monetary reward, but all authors and photographers will be given a byline or credit line as well as several extra copies of the magazine for their portfolios.

Stories should be typewritten, double spaced. Stories of about 500 words are preferred. If possible, the story should be accompanied by an appropriate black and white photograph.

Photos should be either glossy black and white prints, color slides or color transparencies. Most color

prints are unacceptable. Best results are achieved with a 35mm camera. Usually, photos taken with an instamatic or instant print camera will not be usable.

Please include your name, address and phone number with all material submitted. Material will not be returned unless a stamped, addressed envelope is provided. We cannot reprint material which has been published elsewhere, and we reserve the right to edit for style, content and length.

Send your stories and photos to the LAMP of Delta Zeta, 21 E. State St., Suite 600, Columbus, Ohio 43215.



# Alumnae Profiles

## JANE IRWIN

DePauw '57 - Δ

*Vocation:* Consultant in management development, conducts credit union workshops. Is also part owner of a low calorie/no sugar bakery in Sacramento, Calif.

*Interests:* Advancement of women and men in our changing society, in careers and personal lives.

ΔZ

## CHRISTINE GORMLY WHITTEN

Baldwin-Wallace '66 - ΓA

*Vocation:* Assistant coordinator for development and public relations of the Washington, D.C., Opera. Coordinates fundraising activities, writes press releases, schedules artists' appearances in the area, and is developing a computer program for contributors.

*Family Update:* Husband, Peter, writer and university professor; son, Teddy. Lives in Greenbelt, Md.

*Interests:* Theatre, ballet, reading and music.

ΔZ

## SHARON HOY FINLEY

Southwest Missouri State '64 - EN

*Vocation:* Homemaker and minister's wife. Formerly was a kindergarten teacher and plans to resume teaching when her son is older.

*Family Update:* Husband, Kendale, minister; son, Keith Wesley. Lives in Troy, Mo.

*Interests:* Singing in church and community choirs; raising houseplants; cooking, eating and learning about organic foods.

ΔZ

## LINDA R. LEY

Sam Houston State '76 - ZΘ

*Vocation:* County extension agent, Hopkins County, Texas. Serves as 4-H coordinator and assists in all other areas of home economics extension service. Was named 1979 "Rookie of the Year" by the Texas Association of Extension Home Economists. Presently doing graduate work in home economics at East Texas State University. Lives in Conroe, Texas.

*Interests:* Crafts, especially home accessories, recreation for youth.

ΔZ

## JILL B. GALLAGHER

Kentucky '65 - AΘ

*Vocation:* International flight attendant with Pan American World Airways since 1967. Travels to Europe, Far East, Middle East, Central and South America and the South Pacific. Lives in Foster City, Calif.

*Interests:* Tennis and snow skiing.

ΔZ

## KATHRYN TINGLEY MURSENER

Eureka '36 - Π

*Vocation:* Housewife, former schoolteacher. Assisted her late husband in his teaching and coaching career and in his insurance agency.

*Family Update:* Husband, Fred, deceased; son, Jerry. Kathryn lives in Kewanee, Ill.

*Interests:* Church, Sunday School teaching, handwork, collectibles, politics.

ΔZ

## MARTHA McCOY TIEGREEN

Emporia State '69 - ΔΠ

*Vocation:* Fourth grade teacher, girls' sports coach, basketball official.

*Family Update:* Husband, John, with Bell Telephone; children, Mandy, Tim and Joshua.

*Interests:* Children, jogging, cooking, church work, outdoor activities.

ΔZ

## BARBARA WILLIAMS GEE

Maine '62 - AY

*Vocation:* Starting MLS program at the University of Pittsburgh School of Library and Information Science. Part-time substitute high school chemistry teacher. Before marriage in 1974 worked for 11½ years as an information chemist with DuPont in Delaware.

*Family Update:* Husband, Robert, vice president of Drano Corp.; seven stepchildren.

*Interests:* Genealogy, fishing, gardening, tennis, music.

ΔZ

## MARY JANE FLICKINGER JACKSON

Indiana '59 - E

*Vocation:* Administrator and supervisor in the Montgomery County (Md.) Public Schools, surrogate parent for handicapped students.

*Family Update:* Husband, Robert, news correspondent; daughters, Julie, Patty and Peggy. Lives in Washington, D.C.

*Interests:* Special education, board member of the Washington Hearing Society.

ΔZ

## CLARE HOGGLING JONES

Drake '67 - ΓE

*Vocation:* Special Education teacher. Was one of the first teachers of preschool classes for developmentally learning disabled children age 3 to 5. Wrote the curriculum and is now developing a parents training program. Has published several professional articles.

*Family Update:* Husband, Douglas, president of Doug Jones and Associates; daughter, Lindsay. Lives in Avon Lake, Ohio.

*Interests:* Delta Zeta alumnae, AAUW, NEA, writing, decorating, golf, tennis.

ΔZ



# DELTA ZETA SUBSCRIPTIONS

## Double Your Commission!

Each renewal or new subscription sent through Delta Zeta's Subscription Service in May 1980 will earn a 20% commission for the college or alumnae chapter named to receive the credit. This offer is valid only from May 1 through May 31, 1980.

When you think about  
renewing your favorite magazine ...  
remember:

### Our magazine service includes:

- ...Renewal notification on all subscriptions.
- ...A numbered acknowledgment to confirm each order.

### Mail orders filled within five days of their receipt.

- ...Due to different publishing and mailing schedules, please allow 30-90 days for publishers to mail first copies on new subscriptions.

### Attractive gift cards signed and mailed for:

- ...Christmas (mailed on Dec. 10th)
- ...Birthdays
- ...Anniversaries
- ...All Gift Occasions

We welcome orders from the families and friends of Delta Zetas  
who wish to help any of our chapters earn money.

-----detach here-----

## Magazine Order Form

(PLEASE PRINT)

Attention: Subscribers ... Delta Zeta Chapters do not handle orders or money. Subscriptions should be sent directly to DELTA ZETA SUBSCRIPTIONS, P.O. Box 24145, Columbus, OH 43224.

Date \_\_\_\_\_ Amount enclosed \$ \_\_\_\_\_

☐ College Chapter or ☐ Alum Chapter to receive

credit for this order: \_\_\_\_\_

**IMPORTANT.** Please make checks payable to: DELTA ZETA SUBSCRIPTIONS  
(No orders accepted without full payment)

Subscriber (person magazine is to be sent to)

Street \_\_\_\_\_ City/State/Zip \_\_\_\_\_

NAME OF MAGAZINE \_\_\_\_\_

New \_\_\_\_\_ Renewal \_\_\_\_\_ No. of Years \_\_\_\_\_

If the subscriber is a student or an educator, complete this section to receive Student/Educator rate if offered.

School \_\_\_\_\_

☐ Educator: Title \_\_\_\_\_

☐ Graduate: Year Studies End \_\_\_\_\_

☐ Undergraduate Studies End \_\_\_\_\_

(Publisher's special offers accepted provided they are for a full year.)

### Is This A Gift?

If so, write the name of the giver here \_\_\_\_\_

Street \_\_\_\_\_ City/State/Zip \_\_\_\_\_

**NO CARD SENT UNLESS REQUESTED**

Gift Card ... Birthday \_\_\_\_\_ Christmas \_\_\_\_\_ Anniversary \_\_\_\_\_ General \_\_\_\_\_ No Card \_\_\_\_\_

Card to Arrive \_\_\_\_\_ 19 \_\_\_\_\_ Card to be signed \_\_\_\_\_



# DELTA ZETA DIRECTORY

## NATIONAL COUNCIL

*President:* Norma M. Andrisek (Mrs. J. R.), 319 Janice Drive, Berea, OH 44017  
*Vice President of Membership:* Carolyn B. Gullatt (Mrs. John), 4008 Hyridge, Austin, TX 78759  
*Vice President Alumnae Affairs:* Mary Margaret C. Fore (Mrs. Sam), 73 Townhouse Lane, Corpus Christi, TX 78412  
*Vice President Collegiate Affairs:* Patricia S. Dunn (Mrs. Stephen), 18470 Sobey Road, Saratoga, CA 95070  
*Secretary:* Eleanor S. Fariss (Mrs. James), 17721 Bothell Way, NE, Seattle, WA 98155  
*Treasurer:* Florence H. Harvey (Mrs. Stephen), P.O. Box 456, Westfield, NJ 07091  
*Director (Sorority Education):* Debbie M. Bruce (Mrs. Bill), 5008 NW 62nd, Oklahoma City, OK 73122  
*Director (References):* Anne Marie J. Gavin (Mrs. William), 3264 Swan Drive, Vineland, NJ 08360  
*Director:* Dianne F. Guild (Mrs. Douglas), 16 Andrews Drive, South, Burlington, VT 05401  
*Director (ECS Scholarship):* Sarah Jane S. Houston (Mrs. Harold), 3358 Ramblewood Place, Sarasota, FL 33577  
*Director (Pledge Training):* Dwayla Dean F. Porter (Mrs. Arthur), 1121 Osage Drive, Stillwater, OK 74074  
*Past National President:* Betty H. Agler (Mrs. B. H.), Suite 600, 21 E. State Street, Columbus, OH 43215  
*National Panhellenic Conference Delegates:* Dwayla Dean F. Porter (Mrs. Arthur), Norma M. Andrisek (Mrs. J. R.), Betty H. Agler (Mrs. B. H.)

## NATIONAL HEADQUARTERS

*Executive Secretary:* Betty H. Agler (Mrs. B. H.), Suite 600, 21 E. State St., Columbus, OH 43215  
*National Field Consultant:* Debbie Raziano, Suite 600, 21 E. State St., Columbus, OH 43215  
*National Field Representatives:* Susan Griffin, Terry Heath, Bunny Nash, Trudy Wheeler, Suite 600, 21 E. State St., Columbus, OH 43215  
*Extension:* Betty H. Agler (Mrs. B. H.), Suite 600, 21 E. State St., Columbus, OH 43215

## DELTA ZETA FOUNDERS MEMORIAL FOUNDATION

*President:* Mary Lou M. Barth (Mrs. William), 1662 Villa South Drive, West Carrollton, OH 45449  
*Secretary:* Sarah Jane S. Houston (Mrs. Harold), 3358 Ramblewood Place, Sarasota, FL 33577  
*Treasurer:* Shirlyn Chaffin (Miss), 4431 Danforth, Columbus, OH 43224  
*At large:* Norma M. Andrisek (Mrs. J.R.)  
 Florence H. Harvey (Mrs. Stephen)

\*Alumnae chapters not chartered)

## PROVINCE I-Maine, Vermont, New Hampshire, Massachusetts, Connecticut and Rhode Island

*Province Collegiate Director:* Karen K. Manuel (Mrs. Thomas), 36 Rilling Ridge Road, New Canaan, CT 06840

School/Chapter	President	Chapter Address	College Chapter Director/Advisor & Address
Keene State College — KII			
Univ. of Maine, Orono — AY	Lynette Seekins	216 Kennebec Hall, Orono, ME 04469	Cathy Brown (Miss), CCD, 7 Harris Road, Orono, ME 04473
Univ. of New Hampshire — 6F	Cathleen Hines	25 Madbury Road, Durham, NH 03824	Angela P. Shipman (Mrs. John), CCD, 8 Bayberry Lane, Exeter, NH 03833
Plymouth St. College — KE	Jeanne Anderson	Student Apt. 80, Plymouth, NH 03264	Cynthia W. Litchfield (Mrs. Bryan), Advisor, 38 Pleasant Street, Plymouth, NH 03264
Quinnipiac College — KY			
Univ. of Rhode Island — BA	Deborah Donnell	18 Fraternity Circle, Kingston, RI 02881	Alexis S. Di Martino (Mrs. Gregory), CCD, Shadowblow Farm, Tower Hill Road, Wakefield, RI 02879
Univ. of Southern Maine — AZ	Judith Curley	416 Wood Hall, Gorham, ME 04038	Nola S. Cote (Mrs. Roger), CCD, P.O. Box 165, Standish, ME 04084

*Province Alumnae Director:* Gay T. Boeckmann (Ms.), 124 Roxbury Road, Niantic, CT 06357

Chapter	President/Address	Chapter	President/Address
*Bangor, ME		*Green Mountain, VT — Cecile C. Dorso (Mrs. David), RFD 1, Box 98J, Jericho, VT 05465	
Casco Bay, ME — Barbara H. Maurais (Mrs. Robert), RFD #3, Wm. Knight Road, So. Windham, ME 04082		*Niantic, CT — Gay T. Boeckmann (Ms.), 124 Roxbury Road, Niantic, CT 06357	
Fairfield County, CT — Jane M. Yeourakis (Mrs. John), 350 Grovers Avenue, 8E, Bridgeport, CT 06605			

*State Reference Chairmen:* Connecticut — Ann C. Gill (Mrs. Edward), 53 High Point Road, Westport, CT 06880  
 Maine — Candace H. Smith (Mrs. Nelson L.), Box 189, RFD 2, Cumberland Center, ME 04021  
 Massachusetts — In care of Mrs. William Gavin, 3264 Swan Dr., Vineland, NJ 08360

## STANDING COMMITTEES

*Colonnade Club:* Doris O. Berkey (Mrs. Fred), 296 W. Bridge Drive, Berea, OH 44017  
*Constitution and Procedure:* Lucile C. Cooks (Mrs. Rudolf). Refer all correspondence in care of National Headquarters.  
*History:* Grace M. Lundy (Mrs. H.M.). Refer all correspondence in care of National Headquarters  
*Ritual:* Linda A. Hobbs (Mrs. Phillip), 1772 Coventry Rd., Columbus, OH 43212

## COMMITTEES

*Activities/Social (Collegiate):* Linda G. Fisk (Mrs. Conrad), Old Walpole Road, RFD 3, Keene, NH 03431  
*Alumnae Relations:* Carol S. Bertz (Mrs. Michael), 6544 S. Heritage Place, E., Englewood, CO 80110  
*Awards (Collegiate & Alumnae):* Janis L. Rose (Mrs. R. Michael), 118 Shihmen Ct., Antioch, TN 37013  
*Bylaws & Standing Rules:* Lucile C. Cooks (Mrs. Rudolf). Refer all correspondence in care of National Headquarters.  
*Delta Zeta Subscriptions (Collegiate & Alumnae):* Box 24145, Columbus, OH 43224  
*Housing (Collegiate & Alumnae):* Suzanne W. Zanes (Mrs. Robert), 3716 Stoney Creek Road, Ft. Worth, TX 76116  
*Newsletter (Collegiate & Alumnae):* Amy R. Glasgow (Mrs. Thurman), 502 Tammy Drive, San Antonio, TX 78216  
*Philanthropy (Collegiate):* Joan D. Lowry (Mrs. Bob-Bill), 578 Yarmouth Lane, Bay Village, OH 44140  
*Philanthropy (Alumnae):* Priscilla (Pat) Beatty (Miss), 3691 NW 95th Terrace, Apt. 1202, Sunrise, FL 33321  
*Programs (Alumnae):* Judy W. Ridgway (Mrs. Wayne), 1807 Atascosa, Portland, TX 78374  
*References:* Anne Marie J. Gavin (Mrs. William), 3264 Swan Drive, Vineland, NJ 08360  
*Scholarship (Collegiate):* Margaret S. Grosse (Mrs. Robert), 21 Terrace-Walk, Berkeley, CA 94707  
*Elizabeth Coulter Stephenson Scholarships (Collegiate):* Sarah Jane S. Houston (Mrs. Harold), 3358 Ramblewood Place, Sarasota, FL 33577  
*Standards:* Allyson K. Mayse (Mrs. Bert), 11807 Carvel, Houston, TX 77072

## THE LAMP

In care of The LAMP Committee, Suite 600, 21 E. State Street, Columbus, OH 43215

## PROVINCES

New Hampshire — Sharon P. Drewes III (Mrs. Arthur), #2 Vista Drive, Hooksett, NJ 03106  
 Rhode Island — Patricia Webster (Miss), 22 Reservoir, Rumford, RI 02916  
 Vermont — Pat P. Hofer (Mrs. David), 22 Hillwinds, Brattleboro, VT 05301



## PROVINCE II — New York and New Jersey

*Province Collegiate Director:* Maureen Lewis (Miss), 15 Ash Street, Westwood, NJ 07675

<i>School/Chapter</i>	<i>President</i>	<i>Chapter Address</i>	<i>College Chapter Director/Advisor &amp; Address</i>
Glassboro St. Col. — EK	Deborah Vandegrift	2 Dickinson Road, Glassboro, NJ 08028	
Rider College — IK	Karen Scully	Box 6400, Lawrenceville, NJ 08648	
Univ. of Rochester — AI	Karen Miosi	P.O. Box 5777, River Station, Rochester, NY 14627	Sylvia L. Fix (Mrs. Wayne), CCD, 36 Crystal Spring Lane, Fairport, NY 14450
Trenton State Col. — AA	Pamela Bergin	325 Clearfield Avenue, Apt. 1A, Trenton, NJ 08618	
William Paterson St. College — AI			

*Province Alumnae Director:* Sue Ward (Miss), 27A Great Wood Court, Apt. 3, Fairport, NY 14450

<i>Chapter</i>	<i>President/Address</i>	<i>Chapter</i>	<i>President/Address</i>
Buffalo, NY		Rochester, NY — Joan M. Schreiner (Mrs. Edwin), 9 Whispering Meadow, Pittsford, NY 14534	
*Long Island, NY — Madeline Kloetzer (Miss), 218 Concord Ave., West Hempstead, NY 11552		Southern, NJ — Eleanor K. Springer (Ms.), 186 Cypress Ct., Marlton, NJ 08053	
Mid Jersey, NJ — Lorraine N. Persiani (Mrs. Maurice), 4 Coronet Ct., Trenton, NJ 08619		Tri-County, NY — Kathy K. Lapp (Mrs. Alfred), 362 Washington Avenue, Cedarhurst, NY 11516	
Northeastern, NJ — Betty P. Wotton (Mrs. Robert), 28 Hering Road, Montvale, NJ 07645		*Westchester Co., NY — Mary S. McNamee (Mrs. Donald), 260 California Road, Yorktown, NY 10589	
Northern, NJ — Charlotte F. Larsen (Mrs. Walter), 15 Stella Drive, Bridgewater, NJ 08807			

*State Reference Chairmen:* New Jersey — Debra Bass (Miss), 357 Shea Drive, New Milford, NJ 07646

New York — Mary F. Sims (Miss), 95 B Ball Road-High Acres, Syracuse, NY 13215

## PROVINCE III — Pennsylvania and Delaware

*Province Collegiate Director:* Carol J. Miskell (Mrs. Richard), 176 Seminole Avenue, Pittsburgh, PA 15237

<i>School/Chapter</i>	<i>President</i>	<i>Chapter Address</i>	<i>College Chapter Director/Advisor &amp; Address</i>
California St. Col. — ZE	Joanne Adams	415 Second Street, California, PA 15419	Nancy C. Natali (Mrs. Alan), CCD, 837 Wood Street, California, PA 15419
Clarion St. College — EO	Ann Truitt	607½ S. Street, Clarion, PA 16214	Lois S. Linnan (Mrs. Paul), CCD, 240 Toby Street, Clarion, PA 16214
Drexel Univ. — EZ	Frances Antolina	3415 Race Street "B", Philadelphia, PA 19104	Leslie L. Salvitti (Mrs. Alfred), CCD, 720 Cornell Avenue, Drexel Hill, PA 19026
Duquesne Univ. — KE			Emma Mae R. Williams (Mrs. Jack), CCD, 121 Terrace Drive, Edinboro, PA 16412
Edinboro St. Col. — IA	Cynthia Mineard	CU-Box D-3, Edinboro, PA 16412	Susan F. Ingmire (Mrs.), Advisor, 1332 School Street, Indiana, PA 15701
Indiana Univ. of PA — GF	Janet Wesling	712 School Street, Indiana, PA 15701	Karen S. Jacobson (Mrs. Charles Jr.), CCD, RD #1, Box 157, Covington, PA 16917
Kutztown St. Col. — KP	Deb Fries	529 S. Briar Cliff, Kutztown, PA 19530	M. Susan Ruffner (Miss), Advisor, 651 Bigelow St., Pittsburgh, PA 15207
Mansfield St. Col. — IO	Mary Watson	Box 221, Laurel B, Mansfield, PA 16933	J. Leah Smith (Miss), Advisor, 333 Tioga, Johnstown, PA 15905
Pennsylvania St. Univ. — GA			Judith S. Kline (Mrs. Patrick), CCD, 207 Robinwood Drive, Hagerstown, MD 21740
Univ. of Pittsburgh at Johnstown — AE	Denise Ranegar	Box 2127, 3990 Fifth Ave., Pittsburgh, PA 15213	Crisey Ferrone (Miss), Advisor, 2414 Linden Drive, Allison Park, PA 15101
Shippensburg St. Col. — KY	Sue Totzke	UPJ 224 Heather, Johnstown, PA 15907	Helen H. Schmude (Mrs. Keith), CCD, 131 School Road Alapocas, Wilmington, DE 19803
Slippery Rock St. Col. — ZF	Kit Tull	208 Chateau Apts., Shippensburg, PA 17257	
West Chester St. Col. — IP	Mary Beth McGinty	347 Towers Hall, Slippery Rock, PA 16057	
Westminster Col. — OA	Geraldyn Quinn	831 Wayne Hall, West Chester, PA 19380	
	Barbara Briggs	301 Galbreath Hall, New Wilmington, PA 16142	

*Province Alumnae Director:* Charlotte F. Silversteen (Mrs. Allan), 513 Toll Road, Orelana, PA 19075

<i>Chapter</i>	<i>President/Address</i>	<i>Chapter</i>	<i>President/Address</i>
Bucks County, PA — Mary Kay E. Stoloski (Mrs. Edward), #5 Leslie Place, Newton, PA 18940		*Pittsburgh East, PA — Patricia H. Pelkofer (Mrs. C. G.), 252 South Winebiddle Street, Pittsburgh, PA 15224	
*California, PA — Janet Bristor (Miss), 1251 Park, Washington, PA 15301		Pittsburgh South Hills, PA — Lois A. Porter (Mrs. Samuel), 1256 Rolling Meadow Road, Pittsburgh, PA 15241	
Chester County, PA — Lynn W. Tyson (Mrs. Andrew), 33 Ridge Road, Malvern, PA 19355		State College, PA — Nancy Cooper (Miss), Box 43, Centre Hall, PA 16828	
Harrisburg, PA — Jan A. Diehl (Mrs. Maynard), 4809 Sweetbriar Drive, Harrisburg, PA 17111		Wilmington, DE — M. Ernestine B. Crawford (Mrs. Harry), 737 Taunton Road, Tarrington, Wilmington, DE 19803	
Indiana, PA — Susan S. Delaney (Mrs. Jack), 122 Greenview Drive, Indiana, PA 15701			
Philadelphia North, PA — Joanne Z. Bobiak (Mrs. Lawrence), 269 Bickley Road, Glenside, PA 19038			

*State Reference Chairmen:* Delaware — Marianne B. Willing (Mrs. Edwin), 805 West-over Road, Wilmington, DE 19807

Pennsylvania — Marion H. West (Mrs. George), Rt. 2 Hemlock Acres, Punxsutawney, PA 15767

## PROVINCE IV — West Virginia

*Province Collegiate Director:* Anna Lou H. Jones (Mrs. John), 935 Elmhurst Avenue, St. Albans, WV 25177

<i>School/Chapter</i>	<i>President</i>	<i>Chapter Address</i>	<i>College Chapter Director/Advisor &amp; Address</i>
Univ. of Charleston — ZT	Jan Hannabass	3410 34th Street, Nitro, WV 25143	Delaina B. Given (Mrs. Kenneth), CCD, 75 Kenna Drive, South Charleston, WV 25309
Concord College — EA	Belinda Davis	510 B. Towers, Athens, WV 24712	Deborah Gore (Miss), CCD, 218 West Concord Street, Athens, WV 24712
Fairmont State Col. — EI	Cathy O'Dell	Route 7, Box 264, Fairmont, WV 26554	Martha H. Swisher (Mrs. Larry), CCD, Rt. 6, Box 76M, Fairmont, WV 26554
Glenville St. Col. — OE	Beverly Hamric	103 N. Lewis Street, Glenville, WV 26351	Frances R. Gillespie (Mrs. David), CCD, 497 Walnut Street, Glenville, WV 26351
Marshall Univ. — AY	Donna Snyder	1695 6th Avenue, Huntington, WV 25701	Ruth H. Horton (Mrs. Frank), Advisor, 2742 Washington Blvd., Huntington, WV 25705
Shepherd College — KM	Debbie Ramey	Walnut Hill Orchards, Charles Town, WV 25414	Anita R. Link (Mrs. Adam), CCD, Broad View, Box 66A, Shenandoah Junction, WV 25442
West Liberty St. Col. — IT	Shelly Ziegler	304 Boyd Hall, West Liberty, WV 26074	Karen Bailey (Miss), CCD, 305 12th Street, Glen Dale, WV 26038



**Province Alumnae Director: Mary B. Semder (Mrs. Robert), 969 Zerkle Street, St. Albans, WV 25177**

**Chapter President/Address**  
 Charleston Area — Mary Thompson (Miss), 513 Highland Avenue, Apt. 1, South Charleston, WV 25303  
 Fairmont — Martha H. Swisher (Mrs. Larry), Rt. 6, Box 76M, Fairmont, WV 26554

**Chapter President/Address**  
 Greater Wheeling — Susie F. Likins (Mrs. Ken), 10 Wade Avenue, Wheeling, WV 26003  
 Greater Huntington — Patricia Shevac (Miss), 128 4th Avenue, Apt. 12, Huntington, WV 25703

**State Reference Chairman:** In care of Mrs. William Gavin, 3264 Swan Drive, Vineland, NJ 08360

**PROVINCE V — Ohio**

**Province Collegiate Director: Phyllis S. Favorite (Mrs. Robert), 903 Woodland Avenue, Van Wert, OH 45891**

<i>School/Chapter</i>	<i>President</i>	<i>Chapter Address</i>
Univ. of Akron — ØZ	Peggy Ware	384 Power Street, Akron, OH 44304
Ashland College — ØΨ	Lisa Jo Hocking	508 Samaritan Avenue, Ashland, OH 44805
Baldwin Wallace Col. — ΓΑ	Gayle Roberts	305 Klein Hall, Berea, OH 44017
Bowling Green St. Univ. — IT	Kathy Schweisthal	101 Delta Zeta House, Bowling Green, OH 43403
Findlay College — ØT	Kim Clemons	323 Frazer Street, Findlay, OH 45840
Kent State Univ. — ΓK	Lucy Ream	212 Univ. Drive, Kent, OH 44240
Miami Univ. — Α	Stacie Burns	220 Ogden Hall, Oxford, OH 45056
Ohio Northern Univ. — ZK	Elizabeth Ford	Box 111, Brookhart Hall, Ada, OH 45810
Ohio State Univ. — Ø	Susan Szabo	212 E. 15th Avenue, Columbus, OH 43201
Col. of Steubenville — ØΣ	Georgia Lentz	Box 268, Steubenville, OH 43952
Wittenberg Univ. — BX	Cindy Kalinich	923 N. Fountain Avenue, Springfield, OH 45504
Wright State Univ. — KI	Laura Morgan	2237 Jacavanda Drive, Dayton, OH 45431
Youngstown St. Univ. — KX	Christine McDowell	2834 Poland Village Blvd., Poland, OH 44514

**College Chapter Director/Advisor & Address**  
 Elizabeth S. Stetz (Mrs. Stephen), Advisor, 2450 6th Street, Cuyahoga Falls, OH 44221  
 Alice K. Fetzter (Mrs. Howard), CCD, 132 Morgan, Ashland, OH 44805  
 Marcia E. Humpal (Mrs. David), CCD, 26798 Mangrove Lane, Olmsted Falls, OH 44138  
 Ann Z. Morrow (Mrs.), CCD, 5703 Bernath Ct., Toledo, OH 43615  
 Stephanie M. Piechowiak (Mrs. Michael), Advisor, 525 Madison Avenue, Findlay, OH 45840  
 Lynnda W. Hoefler (Mrs. Robert), CCD, 1287 Denise Drive, Kent, OH 44240  
 Clarissa Bodell (Miss), Advisor, 1280 Knollwood, Lima, OH 45801  
 Linda A. Hobbs (Mrs. Phillip), CCD, 1772 Coventry Road, Columbus, OH 43212  
 Mary Lou M. Barth (Mrs. William), CCD, 1662 Villa South Drive, West Carrollton, OH 45449  
 Linda Colarossi (Miss), CCD, 1310 Inverness, Youngstown, OH 44502

**Province Alumnae Director: Barbara E. Shelton (Mrs. Glen), 727 Carnahan, Findlay, OH 45840**

**Chapter President/Address**  
 Akron — Annette R. Foster (Mrs. Larry), 2024 Falls Avenue, Cuyahoga Falls, OH 44223  
 Berea — Bonnie B. Smith (Mrs. Bruce), 9334 Driftwood Drive, Olmsted Falls, OH 44138  
 Canton — Jane C. Jacko (Mrs. Dennis), 417 Terry Drive, NE, Massillon, OH 44646  
 Cincinnati — P. B. Moore (Ms.), P.O. Box 41174, Cincinnati, OH 45241  
 Cleveland Eastside — Nancy B. Dovgan (Mrs. Ronald), 5574 Ericson Lane, Willoughby, OH 44094  
 Cleveland Westside — Janice Brundage (Miss), 1742 Wagar Road #206B, Rocky River, OH 44116  
 Columbus — Connie T. Wilt (Mrs. William), 5437 Rockwood Road, Columbus, OH 43229  
 Dayton — Elaine M. Freed (Mrs. William), 721 Donald Avenue, Dayton, OH 45420  
 Findlay — Cynthia B. Fitzpatrick (Mrs. Tom), 933 Thornapple, Findlay, OH 45840  
 Hamilton — Mary C. Spoerl (Mrs. Sam), 802 Gray Avenue, Hamilton, OH 45013

**Chapter President/Address**  
 Kent — Ruth M. McGrath (Mrs. James), 347 Miller Avenue, Kent, OH 44240  
 Lake County — Shelley B. Knaggs (Mrs. Ronald), 6430 Painesville-Warren Road, Painesville, OH 44077  
 \*Lorain County — Barbara L. Johnston (Mrs. Paul), 762 N. Abbe Road, Elyria, OH 44035  
 \*Medina — Sharon K. Bowers (Mrs. John), 622 Smokerise Drive, Medina, OH 44256  
 \*Middletown — Carol K. Selvar (Mrs. D. T.), 805 Stanley Street, Middletown, OH 45042  
 \*Oxford — Kathryn K. Fishburn (Mrs. Geoffrey), 1020 Tollgate Drive, Oxford, OH 45056  
 Springfield — Cindy Fisher (Miss), Chairman, 603 Torrence Drive, Springfield, OH 45503  
 Toledo — Sherry B. Rickenberg (Mrs. James), 14185 River Road, Grand Rapids, OH 43522  
 Wooster — Sandy S. Byrne (Mrs. John), 901 Bucholz, Wooster, OH 44691  
 \*Youngstown — Cheryl Fleming (Miss), 130 Elruth Ct. Apt. 41, Girard, OH 44420

**State Reference Chairman:** Beth Phillips (Miss), 4643 17th Street, NW, Canton, OH 44708

**PROVINCE VI — Michigan**

**Province Collegiate Director: Isabel J. Severy (Mrs. Raymond), 2127 Northampton Way, Lansing, MI 48912**

<i>School/Chapter</i>	<i>President</i>	<i>Chapter Address</i>
Central Michigan Univ. — IΨ	Denise Zukowski	1819 Deming Drive, Apt. 3, Mt. Pleasant, MI 48858
Ferris State College — ZN	Terri McCririck	510½ Linden, Big Rapids, MI 49307
Michigan Tech. Univ. — ΑΘ	Sharon Larson	509 W. Houghton Avenue, Houghton, MI 49931
Northern Michigan — ZΩ	Marilyn Kritzman	Box 80, Univ. Center, Marquette, MI 49855
Wayne State Univ. — ΕΣ	Ellen Kessler	15246 Cedar Grove, Detroit, MI 48205
Western Michigan U. — ΓΠ	Sharon Pruitt	623 N. Cedar, Kalamazoo, MI 49007

**College Chapter Director/Advisor & Address**  
 Karen Millar (Mrs.), Advisor, 3195 Concourse, Mt. Pleasant, MI 48858  
 Lorraine Miedema (Mrs.), CCD, 1017 Loudon, Big Rapids, MI 49307  
 Martha Janners (Dr.), Advisor, 1300 Cedar Street, Hancock, MI 49930  
 Olive Anne M. Neelands (Mrs. James), CCD, 1699 Littlestone, Grosse Pointe Woods, MI 48236  
 Ellen Dwar (Miss), CCD, 3235 Stonebridge #7, Kalamazoo, MI 49002

**Province Alumnae Director: In care of National Vice President Alumnae Affairs**

**Chapter President/Address**  
 Flint — Barbara Y. Miller (Mrs. Donald), 340 Westcombe Avenue, Flint, MI 48503  
 Grand Rapids — Sue C. Derridinger (Mrs. Peter), 914 Giddings, SE, Grand Rapids, MI 49506  
 Kalamazoo — Diane K. Gallivan (Mrs. David), 1230 Meadowbrook, Kalamazoo, MI 49008  
 \*Lansing-East Lansing — Rebecca R. Hart (Mrs. John), 842 E. Round Lake Road, DeWitt, MI 48820  
 \*Marquette — Jenny B. Kronk (Mrs. Thomas), 812 Northland Drive, Marquette, MI 49855

**Chapter President/Address**  
 Metropolitan Detroit — Pamela M. Cronenwett (Mrs. William), 25720 West Hills Drive, Dearborn Heights, MI 48125  
 Oakland County — Betty T. Betker (Mrs. George), 3633 Dukeshire, Royal Oak, MI 48072  
 Saginaw — Cyndy W. Tonkavich (Mrs. Kim), 1121 Curwood, Saginaw, MI 48603  
 Ypsilanti-Ann Arbor — Marsha F. Gamble (Mrs. Daniel), 2632 Hawks Avenue, Ann Arbor, MI 48104

**State Reference Chairman:** Elsie W. Wirth (Mrs. Edward), 730 Wattles Road, Bloomfield Hills, MI 48013



## PROVINCE VII — Indiana

*Province Collegiate Director:* Caryol M. Fitzpatrick (Mrs. Max), Rt. #1, Box 182, Whiteland, IN 46184

<i>School/Chapter</i>	<i>President</i>	<i>Chapter Address</i>	<i>College Chapter Director/Advisor &amp; Address</i>
Ball State Univ. — IX	Marla Pittman	412½ W. North Street, Muncie, IN 47303	Karen K. Courtney (Mrs. Robert), CCD, 217 Charter Drive, Muncie, IN 47303
DePauw University — Δ	Shannon Coghlan	411 Anderson Street, Greencastle, IN 46135	Alice G. Thompson (Mrs. James), CCD, 3781 W. Stones Crossing Road, Greenwood, IN 46142
Franklin College — Ψ	Karen Melvin	Elsey Hall, Franklin, IN 46131	Beth Melton (Miss), CCD, 923 Varsity Drive, Evansville, IN 47712
Indiana St. Univ. — AB	Jean Cline	923 Varsity Drive, Evansville, IN 47712	Catherine W. Lynch (Mrs. H. M.), CCD, 4326 Beacon Ct., Bloomington, IN 47401
Indiana Univ. — E	Julie Fountain	1423 N. Jordan, Bloomington, IN 47401	

*Province Alumnae Director:* Gelaine L. Smock (Mrs. Steven), 9561 E. Southport Road, Indianapolis, IN 46259

<i>Chapter</i>	<i>President/Address</i>	<i>Chapter</i>	<i>President/Address</i>
Anderson — Jane G. Thompson (Mrs. Mark), 555 S. Pendleton Avenue, Pendleton, IN 46064		Indianapolis — Anne Mascari (Miss), 6220 E. 55th Place, Indianapolis, IN 46226	
Bloomington — Cindy Blair, 2723 Williamsburg Ct., Apt. 26-E, Columbus, IN 47201		Indianapolis South Suburban — Sandra M. McCormick (Mrs. Michael J.), 5626 Personality Ct., Indianapolis, IN 46227	
*Columbus — Nancy B. Van Wye (Mrs. Roy), 1218 Franklin Street, Columbus, IN 47201		Lafayette — Jan S. Smith (Mrs. Jeffrey), 114-6 Nimitz Drive, West Lafayette, IN 47906	
Ft. Wayne — Marsha W. Mueller (Mrs. Max), 2435 Hoagland, Ft. Wayne, IN 46807		Muncie — JoAnn H. Sparling (Mrs. John), 2800 W. Woodbridge Drive, Muncie, IN 47304	
Franklin — Becky T. Rosenberger (Mrs. Scott), 3301 N. Auburn, Indianapolis, IN 46224		*Terre Haute — Alice E. Reck (Mrs. Lawrence), 220 Kean Lane, Terre Haute, IN 47803	
Greencastle — Julia C. Shumaker (Mrs. Arthur), 602 Anderson, Greencastle, IN 46135			
*Hammond — Joanne H. Ricci (Mrs. Dean), Box 3610 Kingsway Drive, L.O.F.S., Crown Point, IN 46307			

*State Reference Chairman:* Karen M. Davies (Mrs. Roger), 812 S. 5th Street, Terre Haute, IN 47807

## PROVINCE VIII—Wisconsin

*Province Collegiate Director:* Sandi Betz (Miss), 3011 Agnes Street, Eau Claire, WI 54701

<i>School/Chapter</i>	<i>President</i>	<i>Chapter Address</i>	<i>College Chapter Director/Advisor &amp; Address</i>
Carroll College — ΓΘ	Lynda Johnson	228 N. Charles, Waukesha, WI 53186	Donna S. Agnelly (Mrs. Edward), CCD, 28921 Grove Lane, Watertown, WI 53185
Univ. of WI-Eau Claire — ΕΩ	Jody Wetterau	322 W. Grand Avenue, Eau Claire, WI 54701	Brenda Lee Vanderloop (Mrs.), CCD, 1721 9th Street, Eau Claire, WI 54701
Univ. of WI-LaCrosse — ZO	Susan Gaus	2017 Main, LaCrosse, WI 54601	Jan S. Mailey (Mrs. David), CCD, 2525 So. 32nd Street, Apt. #23, LaCrosse, WI 54601
Univ. of WI-Stevens Point — ZX	Lisa Horn	2540 5th Avenue, Apt. #7, Stevens Point, WI 54481	Wanda U. Bembenek (Mrs. Chet Jr.), CCD, 3808 Pinewood Drive, Stevens Point, WI 54481
Univ. of WI-Stout — ZB	Susan Unrath	1901½ S. Broadway, Menomonie, WI 54751	Margaret W. Ingram (Mrs. Terrance), CCD, Rt. 1, Box 16B, Menomonie, WI 54751
Univ. of WI-Whitewater — EK	Beth Paynter	136 S. Cottage Street, Whitewater, WI 53190	Lynn B. Grosskreutz (Mrs. John), CCD, 412 S. Summit, Whitewater, WI 53190

*Province Alumnae Director:* In care of National Vice President Alumnae Affairs

<i>Chapter</i>	<i>President/Address</i>	<i>Chapter</i>	<i>President/Address</i>
*Eau Claire — Lesley B. Gillingham (Mrs. Richard), Rt. 2, Box 90, Eau Claire, WI 54726		*Sheboygan — Linda A. Hass (Mrs. James), 3919 Swallow Drive, Sheboygan, WI 53081	
*Milwaukee — Nancy P. Periman (Mrs. Charles), 921 Lynne Drive, Waukesha, WI 53186		*Whitewater — Patricia J. Dobbratz (Mrs. Dennis), 15360 Elmont Lane, New Berlin, WI 53151	

*State Reference Chairman:* Jan P. Blackburn (Mrs.), 618A W. Capital Drive, Hartland, WI 53029

## PROVINCE IX—Illinois

*Province Collegiate Director:* Gail E. McKee (Mrs. Don), 776 10th Street, Charleston, IL 61920

<i>School/Chapter</i>	<i>President</i>	<i>Chapter Address</i>	<i>College Chapter Director/Advisor &amp; Address</i>
Bradley Univ. — ZA	Terry Proefrock	1514 W. Fredonia, Peoria, IL 61606	Diana A. Mayer (Mrs.), Advisor, 914 W. Mass. #C, Peoria, IL 61606
DePaul Univ. — ΘΘ	Diane Sandoval	1624 N. Mango, Chicago, IL 60639	Kathy P. Daly (Mrs. Jerome), CCD, 2100 S. 47th Avenue, Cicero, IL 60650
Eastern Illinois U. — ΓN	Kelly Wall	1528 4th Street, Charleston, IL 61920	Gail E. McKee (Mrs. Don), CCD, 776 Tenth Street, Charleston, IL 61920
Illinois State Univ. — AP	Denise Sick	410 S. Oak, Normal, IL 61761	Donna Snyder (Miss), CCD, 4 Linnwood Drive, Bloomington, IL 61701
Univ. of Illinois — AB	Bridget Armstrong	710 W. Ohio Street, Urbana, IL 61801	Debbie R. Barrett (Mrs.), P.O. Box 54, CCD, Kaneville, IL 60144
Northern Illinois Univ. — IP	Jill Krueger	1010 Blackhawk, DeKalb, IL 60115	Elaine M. Whitesel (Mrs. John), CCD, 225 W. Center Avenue, Lake Bluff, IL 60044
Northwestern Univ. — AA	Vicki Kohn	717 Univ. Place, Evanston, IL 60201	Elizabeth M. Schill (Mrs. Thomas), CCD, 1805 W. Freeman, Carbondale, IL 62901
Southern Illinois U. — ΓΩ	Brenda Coble	712A. S. University Avenue, Carbondale, IL 62901	Rhonda R. DuBord (Mrs.), CCD, 535 S. Randolph St., Macomb, IL 61455
Western Illinois Univ. — EO	Susan Schutte	537 Elting, Macomb, IL 61455	

*Province Alumnae Director:* In care of National Vice President Alumnae Affairs

<i>Chapter</i>	<i>President/Address</i>	<i>Chapter</i>	<i>President/Address</i>
Aurora — Darla H. Mullner (Mrs. Donald), 36 Sumerset, Boulder Hill, IL 60538		*DeKalb — Eileen W. Dammers (Mrs. Clifford), 591 Normal Road, DeKalb, IL 60115	
Bloomington-Normal — Sally S. Braid (Mrs. William), RR1, Shirley, IL 61772		*Du Page Valley — Marjorie P. Cole (Mrs. Kenneth), 453 Raintree Drive, #2-C, Glen Ellyn, IL 60137	
Carbondale — Elizabeth M. Schill (Mrs. Thomas), 1805 W. Freeman, Carbondale, IL 62901		*Greater Peoria — Sandra A. Gasparovich (Mrs. Stephen), 4920 Woodwind Court, Peoria, IL 61607	
Champaign-Urbana — Lorna E. Green (Mrs. R. Gerald), 105 S. Turner Drive, Mahomet, IL 61853		*Madison-St. Louis —	
*Charleston — Mary B. Williams (Mrs. Ned), 2249 Cortland Drive, Charleston, IL 61920		Rockford — Mary C. Caruana (Mrs. Roger), 1221 Bedford Lane, Rockford, IL 61107	
Chicago — Carole Horgen (Miss), 5441 N. East River Road, Apt. 411, Chicago, IL 60656		Rock Island, Moline and East Moline See Province X (Quint Cities)	
*Chicago S. Suburban — Judy T. Putzi (Mrs. Raymond), 1501 Perry, Crete, IL 60417		*Springfield — Kathy H. Hoffmann (Mrs. Fred), 1516 S. Lincoln, Springfield, IL 62704	
Chicago West Suburban — Marion Conrad (Miss), 1515 Newberry, LaGrange Pike, IL 60525			

*State Reference Chairman:* Leanne D. DeLaurenti (Mrs. John L.), Indian Trail Farm RR2, Pocahontas, IL 62275



## PROVINCE X—Iowa

Province Collegiate Director: Alaire S. Bornholtz (Mrs. Tim), 3601 Lafayette, Sioux City, IA 51104			
School/Chapter	President	Chapter Address	College Chapter Director/Advisor & Address
Drake Univ. — IE			
Univ. of Iowa — I	Tammy Broderick	223 S. Dodge, Iowa City, IA 52240	Kay T. Ingham (Mrs. Bruce), Advisor, Box 315, Hills, IA 52235
Iowa State Univ. — BK	Mary Jean Noble	2138 Sunset, Ames, IA 50010	Barbara T. Holland (Mrs. George), CCD, 287 Village Drive, Ames IA 50010
Morningside College — ΔM			
Province Alumnae Director: Kay M. Wright (Mrs. Terry), 10477 Juan Calle, Des Moines, IA 50322			
Chapter	President/Address	Chapter	President/Address
Ames — Jeanne M. Dixon (Mrs. James), 817 8th Ames, IA 50010		*Sioux City — Lynn K. Suffield (Mrs. Thomas), 4127 Ridge Avenue, Sioux City, IA 51106	
Cedar Rapids — Mary Lou K. Wiley (Mrs. Douglas), 4400 Deer View Road, NE, Cedar Rapids, IA 52402		Quint Cities — Deborah F. Anderson (Mrs. Frederick), 2208 Lincoln Road, Bettendorf, IA 52722	
Des Moines — Cynthia M. Walker (Mrs. Robert), 3806 Brinkwood Road, Des Moines, IA 50310		*Waterloo-Cedar Falls — Mary Lou S. Snyder (Mrs. William), 803 Oak Park Blvd., Cedar Falls, IA 50613	
Iowa City — Sharon C. Duytschaver (Mrs. Michael), RR1, Box 114, West Liberty, IA 52776			
State Reference Chairman: Jean G. Hanna (Mrs. Michael), 3028 Cheyenne Blvd., Sioux City, IA 51104			

## PROVINCE XI—Missouri

Province Collegiate Director: Lillian K. Truesdale (Mrs. James), 4823 N. College, Kansas City, MO 64119			
School/Chapter	President	Chapter Address	College Chapter Director/Advisor & Address
Central MO State Univ. — EF	Carolyn Coleman	D206 Panhellenic Hall, Warrensburg, MO 64093	Marian O. Ulrich (Mrs. Robert), CCD, 322 Goodrich, Warrensburg, MO 64093
Univ. of MO-St. Louis — IE	Margaret Hoffmann	12033 Branridge, Florissant, MO 66203	Lillian K. Truesdale (Mrs. James), CCD, 4823 N. College, Kansas City, MO 64119
Missouri Valley Col. — FF			Ruth W. Towne (Dr.), CCD, 709 N. Davis, Kirksville, MO 63501
MO Western St. Col. — KN	Tammy Baker	4525 Downs Drive, Dorm 124-A, St. Joseph, MO 64507	Katherine N. Clark (Mrs. Stephen), CCD, 302 W. 2nd, Maryville, MO 64468
Northeast MO St. Univ. — ΔΣ	Nancy Putman	515 E. McPherson Apt. 5, Kirksville, MO 63501	Phyllis B. Ross (Mrs.), CCD, 6908 NW Birch Place, Kansas City, MO 64151
Northwest MO St. Univ. — EP	Wendy Taff	12610 Blue Ridge Ext., Grandview, MO 64030	
William Jewell Col. — ZP	Robin Rollins	Semple Wing, Liberty, MO 64068	
Province Alumnae Director: Elvera R. Bartels (Mrs. Henry), 6924 North Cosby, Kansas City, MO 64151			
Chapter	President/Address	Chapter	President/Address
Clay-Platte — Carolyn H. Nelson (Mrs. Ford), 1012 W. 70th St., Kansas City, MO 64113		*St. Joseph —	
Greater Kansas City — Lois G. Weisel (Mrs.), 6005 E. 127th, Grandview, MO 64030		St. Louis — Jan D. Tyler (Mrs. Patrick), 11738 Parish Drive, Bridgeton, MO 63044	
Kirksville — Liza H. Darr (Mrs. Robert), Box 432, Lancaster, MO 63548		Warrensburg — Phyllis S. Blondefield (Mrs. Clark), 945 Ridge Drive, Warrensburg, MO 64093	
Marshall — Wilma B. Amary (Mrs. Issam), 711 W. Plaza Drive, Marshall, MO 65340			
*Maryville — Sarah W. Arnold (Mrs. Keith), 1107 Crestview Drive, Maryville, MO 64468			
State Reference Chairman: Jeanne Nowacki (Miss), 5839 J. Cedar View Place, St. Louis, MO 63128			

## PROVINCE XII—Kansas, Nebraska and collegiate chapters of Colorado

Province Collegiate Director: Laaree Mugler (Miss), 8202 Monrovia, Lenexa, KS 66215			
School/Chapter	President	Chapter Address	College Chapter Director/Advisor & Address
Creighton Univ. — OH	Claire Remington	219 N. 49th Street, Omaha, NE 68131	Marsha M. Simmons (Mrs. John), CCD, 4013 Belair, Council Bluffs, IA 51501
Emporia St. Univ. — ΔΠ	Karen Thill	1005 Merchant, Emporia, KS 66801	Linda T. Van Gundy (Mrs. Myron), CCD, 1925 W. 24th #308, Emporia, KS 66801
Ft. Hays St. Univ. — ΔΩ	Cheryl Kvasnicka	410 W. 6th, Hays, KS 67601	Joyce Schraeder (Miss), Advisor, 112 W. 5th, Hays, KS 67601
Nebraska Wesleyan — BT	Mary Lynch	2401 N. 51st Street, Lincoln, NE 68504	Carole Sorensen (Miss), CCD, 5105 Huntington #7, Lincoln, NE 68504
Univ. of Northern Col. — ΔΞ	Jamie Teichert	1717 10th Avenue, Greeley, CO 80631	Karen Ireland (Miss), CCD, P.O. Box 1110, Windsor, CO 80550
Province Alumnae Director: Susan R. Wilkerson (Mrs. Monty), 3131 Burton, Topeka, KS 66605			
Chapter	President/Address	Chapter	President/Address
Emporia, KS — Candice Peterson (Miss), 218 W. 12th, Apt. 1, Emporia, KS 66801		*Manhattan, KS — Barbara C. Splichal (Mrs. Jimmy), Route 5, Box 70A, Manhattan, KS 66502	
*Hays, KS — Denise T. Parker (Mrs. Douglas), 107 W. 36th, Hays, KS 67601		Omaha, NE — Janet V. Benton (Mrs. Robert), 11115 Hilltop Avenue, Omaha, NE 68164	
Johnson — Wyandotte County, KS — Mary Jane M. Merrill (Mrs. Myron), 6809 Mastin, Merriam, KS 66203		Topeka, KS — Muriel S. Morgan (Mrs. Robert), 1130 Orleans, Topeka, KS 66604	
Lawrence, KS — Dora G. Bice (Mrs. L. E.), 2117 Barker, Lawrence, KS 66044		Wichita, KS — Marlene M. Heineman (Mrs. Charles), 3234 Custer, Wichita, KS 67217	
Lincoln, NE — Marvona E. Tavlin (Mrs. Michael), 5424 Pawnee, Lincoln, NE 68506			
State Reference Chairmen: Kansas — Jane S. Furman (Mrs. Richard), 4017 W. 68th Terrace, Prairie Village, KS 66208			
Nebraska — Sue Ann L. Volkmer (Mrs. Greg), Box 110, Eagle, NE 68847			

## PROVINCE XIII — Minnesota, North Dakota, and South Dakota

Province Collegiate Director: Dale H. Leaf (Mrs. Donovan), 319 W. Wabasha, Winona, MN 55987			
School/Chapter	President	Chapter Address	College Chapter Director/Advisor & Address
Dickinson St. Col. — IB	Mary Jane Kessel	Woods Hall, Dickinson, ND 58601	Coleen B. Wheeler (Mrs. L. Ray), CCD, 1369 Sims Street, Dickinson, ND 58601
Minot State — ΘΠ	Winnie Coyne	2509 W. Central, Minot, ND 58701	Leann Artz (Miss), CCD, 1515 12th Street, NW #3, Minot, ND 58701
Moorhead St. Univ. — ΘN	JoAnn Weldon	1025 7th Avenue, South, Moorhead, MN 56560	Roberta Curley (Miss), CCD, 1617 3rd Avenue, South, Apt. 3, Fargo, ND 58103
Univ. of North Dakota — Y	Roberta Anderson	2724 University Avenue, Grand Forks, ND 58201	Cindy D. Pollard (Mrs. William), CCD, 28 15th Avenue, N., St. Cloud, MN 56301
St. Cloud St. Univ. — ΘM	Allison Enderle	525 3rd Avenue, South, St. Cloud, MN 56301	Dale H. Leaf (Mrs. Donovan), CCD, 319 W. Wabasha, Winona, MN 55987
Winona St. College — ZY	Carol Froelich	75½ E. 5th, Winona, MN 55987	



**Province Alumnae Director: In care of National Vice President Alumnae Affairs**

**Chapter** **President/Address**  
Twin Cities, MN — Sylvia L. Kafkas (Mrs. John), 3505 Humboldt Ave., South, Minneapolis, MN 55408

**State Reference Chairmen:** Minnesota — Lyn Swiderski (Miss), 904 Pearl Drive, Apt. 103, Marshall, MN 56258  
North Dakota — Kathie R. Anderson (Mrs. Owen), 1261 N. Parkview Drive, Bismarck, ND 58501

**Chapter** **President/Address**

South Dakota — Doris D. Huffman (Mrs. Richard Jr.), 1535 S. State Street, Aberdeen, SD 57401

**PROVINCE XIV — Colorado, Wyoming, Utah, Arizona and New Mexico (ALUMNAE CHAPTERS ONLY)**

**Province Alumnae Director: Janet E. Havener (Mrs. Gary), 4343 N. Sheridan Avenue, Loveland, CO 80537**

**Chapter** **President/Address**  
Albuquerque, NM — Eloise H. Kollman (Mrs. R. L.), 4818 Crest Avenue, SE, Albuquerque, NM 87108  
Colorado Springs, CO — Linda N. Nelson (Mrs. John), 2218 Eagle View Drive, Colorado Springs, CO 80909  
Denver, CO — Carol S. Bertz (Mrs. Michael), 6544 S. Heritage Place, East, Englewood, CO 80110  
Ft. Collins, CO — Sandra C. Robbins (Mrs. James), 2249 W. Stuart Street, Ft. Collins, CO 80521

**Chapter** **President/Address**  
Las Cruces, NM — Trica W. Hazelton (Ms.), Box 3175, Las Cruces, NM 88003  
Phoenix, AZ — Margaret Ann Poe (Miss), 4720 West Rose Lane, Glendale, AZ 85301  
Roswell, NM —  
Salt Lake City, UT — Josephine T. Stottern (Mrs.), 4323 Crusader Drive, Murray, UT 84107  
Tucson, AZ — Carol Lauer (Miss), 4332 E. Hayhurst, Tucson, AZ 85716

**State Reference Chairmen:** Arizona — Margaret Ann Poe (Miss), 4720 West Rose Lane, Glendale, AZ 85301  
Colorado — Tressa M. Brase (Mrs. Lawrence), 1023 Denver Avenue, Box 146, Calhan, CO 80808  
New Mexico — Louise S. Longenecker (Mrs. Donald), 1417 W. 8th St., Silver City, NM 88061

Utah — Jean P. Christensen (Mrs. William), 1669 Yalecrest Avenue, Salt Lake City, UT 84105  
Wyoming — Donna M. Frerichs (Mrs. William), 3301 Alta Vista Drive, Laramie, WY 82070

**PROVINCE XV — California, Washington, Oregon, Idaho, Montana, Nevada, Alaska and Hawaii**

**Province Collegiate Director: Carolyn O. Wilke (Mrs. Walter), 108 Via Florence, Newport Beach, CA 92663**

<b>School/Chapter</b>	<b>President</b>	<b>Chapter Address</b>
CA St. Univ. - Chico — ΔX	Cindy Quinn	16 Woodside Lane, Chico, CA 95926
CA St. Univ. - Fresno — EE		
CA St. Univ. - Fullerton — IY	Pam Martinez	2652 E. Balfour, Fullerton, CA 92631
CA St. Univ. - Long Beach — ΔA	Anne Tally	148 Molino Avenue, Long Beach, CA 90803
CA St. Univ. - Los Angeles — OP	Sharlene Carlson	3713 Revere Avenue, Los Angeles, CA 90039
Univ. of NV - Las Vegas — IΦ	Susan Moore	4080 Maulding Avenue, Las Vegas, NV 89118
San Jose St. Col. — ΓA	Debbie Rizzi	182 S. 10th, San Jose, CA 95113
Univ. of Washington — K		

**College Chapter Director/Advisor & Address**  
Janice C. Martell (Mrs. Dave), CCD, 6 New Dawn Circle, Chico, CA 95926  
Carolyn O. Wilke (Mrs. Walter), CCD, 108 Via Florence, Newport Beach, CA 92663  
Karen M. Dessel (Mrs. Tom), CCD, 2015 Studebaker Road, Long Beach, CA 90815  
Melinda Love (Miss), CCD, 12011 Pacific Avenue #6, Los Angeles, CA 90066  
Mary B. Irtz (Mrs. Theodore), CCD, 4850 LaFonda Drive, Las Vegas, NV 89121

**Province Alumnae Coordinating Team: Mary Margaret C. Fore (Mrs. Sam), Chairman, National Vice President Alumnae Affairs**  
Cherie P. Burke (Mrs.), 46 E. Highland #D, Sierra Madre, CA 91024  
Joanne M. Tracy (Mrs. Joseph), 26 Hartwood Court, Lafayette, CA 94549

**Chapter** **President/Address**  
Bakersfield, CA — Stana M. Bright (Mrs. Larry), 509 Bobwhite Ct., Bakersfield, CA 93309  
Central San Fernando Valley, CA — Louise D. Goudchoux (Mrs. Gerald), 5401 Rhodes Avenue, North Hollywood, CA 91607  
Chico, CA — Jan Kirkendall (Miss), 783 Portal Drive, Chico, CA 95926  
\*Corvallis, OR — Linda S. Ivers (Mrs. Frederick), 5154 N.E. Willamette, Corvallis, OR 97330  
Delta Zetas By The Sea, CA —  
Glendale-Burbank, CA — Frances J. HeWitt (Mrs. Albert), 1123 N. Jackson, Glendale, CA 91207  
Greater Seattle, WA — Helga K. Clark (Mrs. William), 4866 123rd Pl. SE, Bellevue, WA 98006  
Honolulu, HI — Hildegard H. Owen (Mrs. Richard), 1090-B Kumukumu Street, Honolulu, HI 96825  
Humboldt County, CA — Sherry M. Griffith (Mrs. Dayton), 3020 Melody Ct., Bayside, CA 95524  
Las Vegas, NV —  
Long Beach, CA — Suzanne G. Scholton (Mrs. Sanford), 2011 Velez Drive, San Pedro, CA 90732  
\*Los Angeles, CA — Bertha S. Westerberg (Mrs. Ralph), 3516 W. 83rd Street, Inglewood, CA 90305  
\*Midnight Sun, AK — Roxann Scott (Miss), 7248 Hennings Way, Anchorage, AK 99504  
Monterey Peninsula, CA — Mary Margaret D. Winslow (Mrs. Richard), 1035 Halsey, Monterey, CA 93940  
Mt. Diablo, CA — Wendy W. LaBounty (Mrs. William), 2099 Janice Drive, Pleasant Hill, CA 94523  
Orange County, CA — Elizabeth F. Irish (Mrs. Alan), 3201 Hartford Road, Orange, CA 92669

**Chapter** **President/Address**  
Pasadena-Foothill, CA — Lucille S. Beal (Mrs. David), 1885 Robin Road, San Marino, CA 91108  
Portland, OR — Doris M. Soderstrom (Mrs. Clifford), 7170 SW Hyland Way Ct., Beaverton, OR 97005  
Reno, NV — Marie L. Nelson (Mrs. Edward), 490 Scorpio Circle, Reno, NV 89511  
\*Rouge Valley, OR — Susan L. Meltzer (Mrs. Wm.), 2260 Fir, North Bend, OR 97459  
Sacramento, CA — Louise R. Carnes (Mrs. Cliff), 3949 Linus Way, Carmichael, CA 95608  
\*San Diego N. County, CA — Judy B. Dolan (Mrs. Thomas), 1980 W. El Norte Parkway, Escondido, CA 92026  
San Francisco Bay Cities, CA — Rose T. Beeson (Mrs. Fred), 1443 Hopkins Street, Berkeley, CA 94702  
San Francisco Peninsula, CA — Cheryl E. Seehorn (Mrs. Robert), 1606 Hampton Avenue, Redwood City, CA 94061  
San Jose, CA — Jodi H. Picard (Mrs. Stephen), 5875 Bufkin Ct., San Jose, CA 95128  
Santa Monica, CA — Betty I. Kearley (Mrs. Harold), 554 Tahquitz Place, Pacific Palisades, CA 90272  
South Bay, CA — Margaret L. Navarra (Mrs. Anthony), 1904 Lasita Place, San Pedro, CA 90732  
South Bay, CA — Margaret L. Navarra (Mrs. Anthony), 1904 Lasita Place, San Pedro, CA 90732  
Spokane, WA — Geneva Foss (Miss), West 707 Fifth Avenue, Apt. 1010, Spokane, WA 99204  
\*Tacoma, WA — Georgia S. Sedgwick (Mrs. Thomas), 410 Harvard Avenue, Tacoma, WA 98466  
\*Whittier, CA — Betty B. Bragg (Mrs. Lawrence), 2972 Leopold Avenue, Hacienda Heights, CA 92745

**State Reference Chairmen:** Alaska — Judy H. Gustafson (Mrs. Terry), 2604 Glenkerry Drive, Anchorage, AK 99504  
California (North) — Martha H. Burde (Mrs. Walter), 24685 Camino del Monte, Carmel, CA 93923  
California (South) — Maurine W. Moore (Mrs. Randall), 4355 Cannington Drive, San Diego, CA 92117  
Hawaii — June B. Solomon Jr. (Mrs. Albert), Apt. 802, The Hawaii Kai Plaza, 6770 Hawaii Kai Drive, Honolulu, HI 96825

Idaho — Gertrude C. Lundquist (Mrs. W. L.), 1004 S. Logan, Moscow, ID 83843  
Montana — Kathleen E. Baumann (Mrs. Eugene), 713 Knapp Street, Wolf Point, MT 59201  
Nevada — Kay J. Stockstill (Mrs. Thomas), 4129 Meadowglen Way, Las Vegas, NV 89121  
Oregon — Linda S. Ivers (Mrs. Frederick), 5154 N.E. Willamette, Corvallis, OR 97330  
Washington — Karen F. Soyk (Mrs. Lon), 31033 38th Avenue, South, Auburn, WA 98002



## PROVINCE XVI—Oklahoma

**Province Collegiate Director:** Mary Ann G. French (Mrs. John), 2322 N.W. 58th Circle, Oklahoma City, OK 73112

School/Chapter	President	Chapter Address
Central St. Univ. — EY	Kathy Allen	1000 N. Chowning, Edmond, OK 73034
Northeastern Ok. St. Univ. — ΔΦ	Sharon Sossamon	202 NW Leoser, Tahlequah, OK 74464
Northwestern Ok. St. Univ. — ΔO	Carol Nance	1101 Church Street, Alva, OK 73717
Oklahoma City Univ. — ΓY	Mary Flanagan	Box 85, Walker Hall, Oklahoma City, OK 73107
Oklahoma State Univ. — AE	Mary Anne Dorland	224 S. Jefferson, Stillwater, OK 74074

College Chapter Director/Advisor & Address
Jeanie J. Spangler (Mrs. John), CCD, 2528 NW 36th Street, Oklahoma City, OK 73112
Mary M. Snider (Mrs. Charles), CCD, 2120 Columbus, Muskogee, OK 74401
Charlene M. Bradt (Mrs. Myron), CCD, 1006 5th Street, Alva, OK 73717
Pam W. Neville (Mrs. James), CCD, 5413 NW 114th, Oklahoma City, OK 73132
Sherry T. Lambert (Mrs. Robert), CCD, 1523 Willham Drive, Stillwater, OK 74074

**Province Alumnae Director:** Doris W. Sandoz (Mrs. N. O.), 624 SW 51st Street, Oklahoma City, OK 73109

Chapter	President/Address
Alva — Betty Jo G. Ritter (Mrs.), 1201 Oklahma Blvd., Alva, OK 73717	
Bartlesville — Ruby G. Purdum (Mrs. Calvin), Rt. 1, Box 147, Dewey, OK 74029	
Enid — Nancy E. Leslie (Mrs. James), 3002 Candlestick, Enid, OK 73701	
*Norman — Brison D. Gooch (Mrs.), 935 Mockingbird Lane, Norman, OK 73069	

Chapter	President/Address
Oklahoma City — Jean N. Stockham (Mrs. Frank), 2613 NW 112, Oklahoma City, OK 73120	
*Stillwater — Sherry T. Lambert (Mrs. Robert), 1523 Willham Drive, Stillwater, OK 74074	
Tulsa — Vera H. Williams (Mrs. Clifford), 5371 S. 74th E. Avenue, Tulsa, OK 74145	

**State Reference Chairman:** Ruby G. Purdum (Mrs. C.B.), Rt. #1, Box 147, Dewey, OK 74029

## PROVINCE XVII—Texas and the collegiate chapters of New Mexico

**Province Collegiate Director:** Jane G. Nelson (Mrs. J. Michael), 1933 Maxwell Drive, Lewisville, TX 75067

School/Chapter	President	Chapter Address
Angelo St. Univ. — ΔO	Ann Earney	4816 Greenbriar #67, San Angelo, TX 76901
Univ. of Houston — ΔΘ	Belinda Baker	4361 Wheeler #2218, Houston, TX 77004
Lamar Univ. — ΔA	Patricia Mendez	9060 McLean, Beaumont, TX 77707
New Mexico St. Univ. — ΓΞ	Cary McDonald	Box 3973, Las Cruces, NM 88003
North Texas St. Univ. — KZ	Lara Blair	200 Avenue D #359, Denton, TX 76201
Pan American Univ. — ΘO	M. Shannon Hargraves	1706 Lemon Avenue, Edinburg, TX 78539
Sam Houston St. Univ. — ZΘ	Dana Duer	Delta Zeta House, SHSU, Huntsville, TX 77341
Southwest Texas St. — IA	Pat Rasmussen	202 Shalamar, San Marcos, TX 78666
Southwestern Univ. — ΓZ	Kimberly Kennedy	Delta Zeta Box, S.U. Station, Georgetown, TX 78626
Stephen F. Austin Univ. — ZΥ	Lee Martin	Box 6762, Nacogdoches, TX 75961
Texas A&M Univ. — ΔΞ	Kara Die	1001 Harvey Road #126, College Station, TX 77840
Univ. of TX—Arlington — IΥ	Kathy McAlpin	425 S. Oak #208, Arlington, TX 76010
West Texas St. Univ. — ZZ	Teresa Jones	Box 414, WT Station, Canyon, TX 79016

College Chapter Director/Advisor & Address
Judy Harms (Miss), CCD, 2566 Sunset Blvd., San Angelo, TX 76901
Merry W. Adamcik (Mrs. Roy), CCD, 6222 Ariel, Houston, TX 77074
Dianne H. Bellard (Mrs. Thomas), CCD, P.O. Box 1723, Beaumont, TX 77704

Mary C. Denny (Mrs. Henry), CCD, Rt. 2, Box 271, Aubrey, TX 76227
Kay P. Walther (Mrs.), Advisor, 933 Fairway, Edinburg, TX 78539

Tandy H. Fuller (Mrs. Ralph), CCD, P.O. Box 5117-WAS, Austin, TX 78763
Janice P. Langley (Mrs. Al), CCD, 203 Shady Oak Drive, Georgetown, TX 78626
Mary Louise P. Bingham (Mrs. Drake), CCD, Rt. 5, Box 43, Nacogdoches, TX 75961
Ann N. Harris (Mrs. Robert), CCD, 1213 Brook Hollow, Bryan, TX 77801
Gina Forsythe (Miss), CCD, 2211 Lincoln Drive, #508, Arlington, TX 76011
Diane W. Fitzgerald (Mrs. Jim), CCD, 1417 Hillcrest, Canyon, TX 79015

**Province Alumnae Director:** Annette F. Nall (Mrs. Garry), Box 136, WT Station, Canyon, TX 79015

Chapter	President/Address
Arlington — Suzanna M. Edwards (Mrs. Jack), 6509 Collard Ct., Ft. Worth, TX 76180	
Austin — Sherry P. Saenz (Mrs. Gilbert), 12315 Knoll Ridge, Austin, TX 78758	
Beaumont — Diane H. Bellard (Mrs. Thomas), P.O. Box 1723, Beaumont, TX 77704	
*Brazos Valley — Marilyn Scamardo (Miss), 3518 Midwest, Bryan, TX 77801	
*Brazosport Area — Prella M. Phillips (Mrs. J. James), 54 Forest Ct., Lake Jackson, TX 77566	
Central — Judy E. Corwin (Mrs. Mike), 9904 Forest View, Waco, TX 76710	
Corpus Christi — Debbie B. Cox (Mrs. Albert), 509 Grant Place, Corpus Christi, TX 78411	
Edinburg-McAllen — Sharon R. Elliott (Mrs. Robert), 425 S. Rose Ellen Circle, McAllen, TX 78501	
Dallas — Sue J. Allen (Mrs. Tom), 2415 Custer Cove, Richardson, TX 75080	
Denton — Mary C. Denny (Mrs. Henry), Box 271, Rt. 2, Aubrey, TX 76227	
El Paso — Lynette S. Meyer (Mrs. Larry), 1807 Ron Cerrudo, El Paso, TX 79936	
Ft. Worth — Suzanne W. Zanes (Mrs. Robert), 3716 Stoney Creek Road, Ft. Worth, TX 76116	
*Greater Longview Area — Cheryl W. Parr (Mrs. James), 604 Lorraine Ct., Longview, TX 75604	

Chapter	President/Address
Houston — Linda P. Stappenhorst (Mrs. Michael), 4604 Birch, Bellaire, TX 77401	
Huntsville — Donna C. Price (Mrs. Joseph), Rt. 1, Box 83, Lovelady, TX 75851	
*Jasper-Newton — Tama Jo G. Rawson (Mrs. Jerry), Box 884, Jasper, TX 75951	
Lubbock — Donna Read (Miss), 3302 21st, Lubbock, TX 79410	
Midland — Jann W. Buttery (Mrs. W. O.), 3216 Frontier, Midland, TX 79701	
*Nacogdoches Area —	
*No. Harris County — Nuala D. Sperry (Mrs. John), 10611 Brentway Drive, Houston, TX 77070	
*Odessa — Elizabeth S. Sibert (Mrs. Scott), P.O. Box 6383, Odessa, TX 79762	
*Rio Grande Valley — Myrtle G. Hinkly (Mrs. Edward), Ft. Brown Apts., #6004 Brownsville, TX 78520	
*San Angelo — Elizabeth A. Bray (Mrs. Charles), 2809 Briargrove Lane, San Angelo, TX 76901	
San Antonio — Marian B. Gonzalez (Mrs. Jorge), 3247 Swandale, San Antonio, TX 78230	
*San Marcos — Amy N. Bingham (Mrs. Harvey), P.O. Box 314, San Marcos, TX 78666	
Texas Panhandle — Beth L. Nelson (Mrs. Vaughn), 1407 Creekmore, Canyon, TX 79015	
*Wichita Falls — Patricia H. Clarke (Mrs. Calvin), 3500 Univ., Wichita Falls, TX 76308	

**State Reference Chairman:** Ann Clay E. Hawkins (Mrs. Jerry), 324 Pine Street, Lake Jackson, TX 77566

## PROVINCE XVIII—Louisiana and Mississippi

**Province Collegiate Director:** Marlene M. Allen (Mrs. Arthur), Rt. 1, Box 296, Natchitoches, LA 71457

School/Chapter	President	Chapter Address
Louisiana St. Univ. — Σ	Janie Demarest	P.O. Box 17770-A, Baton Rouge, LA 70893
Louisiana Tech Univ. — ΞE	Kelly Berry	Univ. Club Apts., #26, Ruston, LA 71270
Univ. of New Orleans — ΘK	Sherry Sewell	4828 Bissonet Drive, Metairie, LA 70003
Nicholls St. Univ. — KA	Karen Collins	323 St. Mary Street, Apt. #1, Thibodaux, LA 70301
Northwestern St. Univ. — EB	Melinda Palmore	808 Woodyard Drive, St. Denis #10, Natchitoches, LA 71457
Univ. of Southern MS — EM	Victoria Bond	Southern Station, Box 6075, Hattiesburg, MS 39401
Univ. of Southwestern LA — ΔK		

College Chapter Director/Advisor & Address
Betty S. Fenton (Mrs. Richard), Advisor, 2151 E. Ramsey Drive, Baton Rouge, LA 70808
Carolyn F. Talton (Dr.), CCD, Rt. #3, Box 59-2A, Dubach, LA 71235
Marlene M. Allen (Mrs. Arthur), CCD, Rt. 1, Box 296, Natchitoches, LA 71457
Gloria E. Lynch (Mrs. John), CCD, 310 Julia Street, Thibodaux, LA 70301
Donna L. Breedon (Mrs. Lacy), CCD, Rt. 2, Box 806, Natchitoches, LA 71457
Pam P. Sims (Mrs. Rudy), CCD, 109 Regency Road, Hattiesburg, MS 39401



**Province Alumnae Director: In care of National Vice President Alumnae Affairs**

*Chapter President/Address*  
 \*Alexandria, LA — Lillie J. Jeansonne (Mrs. Harold), 1819 Simmons, Alexandria, LA 71301  
 Baton Rouge, LA — Kitty K. Waltman (Mrs. Robert), 4211 Lake Sherwood Avenue, East, Baton Rouge, LA 70816  
 Bayou Area, LA — Francis B. Ordoyne (Mrs. Glen), 1501 St. Mary St., Thibodaux, LA 70301  
 Jackson, MS — Sarah Jane K. Adkins (Mrs. William), Box 161-230 Old Hwy. 49, South, Jackson, MS 39208  
 \*Mississippi Gulf Coast, MS — Marilyn S. Labarbera (Mrs. John), 212 Miramar, Biloxi, MS 39531

*Chapter President/Address*  
 \*Lafayette Area, LA — Jayne H. Carl (Mrs. Donald), 215 Reeve Avenue, Lafayette, LA 70506  
 \*Natchitoches, LA —  
 New Orleans, LA — Jean Funck (Miss), 3532 Tolmas Drive, Metairie, LA 70002  
 \*Ruston, LA —  
 Shreveport, LA — Tracey T. Cox (Mrs. John T. Jr.), 555 Dunmoreland Drive, Shreveport, LA 71106

*State Reference Chairmen:* Louisiana — Jane W. Mathes (Mrs. Jimmy), 14363 Firethorn St., Baton Rouge, LA 70815

Mississippi — Lanelle L. McLeod (Mrs. James), Rt. 3, Box 433, Brandon, MS 39042

**PROVINCE XIX—Tennessee**

**Province Collegiate Director: In care of National Headquarters**

<i>School/Chapter</i>	<i>President</i>	<i>Chapter Address</i>
East TN State Univ. — AH	Becky Jones	P.O. Box 13457, Johnson City, TN 37601
Memphis St. Univ. — II	Karen Barkley	P.O. Box 90682, Memphis, TN 38152
Middle TN State Univ. — II	Mary Neligan	Box 2360, Murfreesboro, TN 37132
Univ. of Tennessee — BA	Janet Barham	Box 526, 2117 Andy Holt Ave., Knoxville, TN 37916

*College Chapter Director/Advisor & Address*  
 Carolyn B. Seaman (Mrs. Daniel), CCD, 2405 Larkspur Drive, Johnson City, TN 37601  
 Linda B. Boswell (Mrs. Sam), CCD, 3549 Mynders Avenue #9, Memphis, TN 38111  
 Judith D. Ace (Mrs. Donald), CCD, 310 Grandview, Murfreesboro, TN 37130  
 Helen B. White (Mrs. Jack), CCD, 6305 Bowstring Trail, Knoxville, TN 37920

**Province Alumnae Director: In care of National Vice President Alumnae Affairs**

*Chapter President/Address*  
 \*Johnson City — Carolyn B. Seaman (Mrs. Daniel), 2405 Larkspur Drive, Johnson City, TN 37601  
 \*Knoxville — Patricia S. Mallicote (Mrs. R.E.), 11636 Gatesmill Drive, Knoxville, TN 37922

*Chapter President/Address*  
 \*Memphis — Susan C. Balogh (Mrs. Kenneth), 5837 Scottsdale, Memphis, TN 38118  
 Murfreesboro — Martha H. Whaley (Mrs. Gary), MTSU, Box 329, Murfreesboro, TN 37132  
 \*Nashville — Debbie S. Rice (Mrs. Thomas), 5101 Parishwood Ct., Nashville, TN 37211

*State Reference Chairman:* Victoria Z. Dalton (Mrs. Phillip), Box 163, Lewisburg, TN 37091

**PROVINCE XX—Kentucky**

**Province Collegiate Director: Pam Cupp (Ms.), 1321 Alexander Pike, Apt. 305-A, Ft. Thomas, KY 41075**

<i>School/Chapter</i>	<i>President</i>	<i>Chapter Address</i>
Univ. of Kentucky — AΘ	Mary O'Bryan	319 Columbia Terrace, Lexington, KY 40508
Univ. of Louisville — BΓ	Sherie Lynch	4023 Lupino Ct., Louisville, KY 40213
Morehead St. Univ. — KT	Jessica Slonkosky	810 Nunn Hall, Morehead, KY 40351
Northern Kentucky Univ. — KB	Cathy Suggs	25 Winding Way, Ft. Thomas, KY 41075

*College Chapter Director/Advisor & Address*  
 Janet S. Thomas (Mrs. Mark), CCD, 2180 Old Frankfort Pike, Lexington, KY 40511  
 Patricia S. Sorg (Mrs. John), CCD, 2212 Steier Lane #2, Louisville, KY 40218  
 Glenna E. Campbell (Mrs. Marion), CCD, 1301 Sherwood Forest, Morehead, KY 40351

**Province Alumnae Director: Diana L. Hohman (Mrs. Howard), 4604 Deepwood Drive, Louisville, KY 40222**

*Chapter President/Address*  
 Lexington — Baxanna A. Oney (Mrs. Larry), 709 Terry Street, Winchester, KY 40391  
 Louisville — Jane H. Cheatham (Mrs. Charles), 4109 Samoset Ct., Louisville, KY 40299

*Chapter President/Address*  
 \*Morehead — Nadine C. Griffith (Mrs. Winston), Rt. 5, Box 252, Forest Hills, Morehead, KY 40351

*State Reference Chairman:* Baxanna A. Oney (Mrs. Larry), 709 Terry Street, Winchester, KY 40391

**PROVINCE XXI—North Carolina and South Carolina**

**Province Collegiate Director: In care of National Headquarters**

<i>School/Chapter</i>	<i>President</i>	<i>Chapter Address</i>
Appalachian St. Univ. — ΛΦ	Sally Bowman	A.S.U. Box 0984, Boone, NC 28608
Atlantic Christian Col. — ΘΩ	Denise Sawyer	Box 5041, Wilson, NC 27893
East Carolina Univ. — ZA	Donna Wilkie	801 E. 5th Street, Greenville, NC 27834
Lenoir-Rhyne Col. — ZΞ	Cindy Stonesifer	Box 1353, Hickory, NC 28601
Univ. of N. Carolina—Charlotte — KΦ	Robyn Faircloth	425 Dorm 73, Charlotte, NC 28223
Univ. of N. Carolina—Wilmington — ΞΘ	Jan Johnston	212 S. 3rd Street, Kure Beach, NC 28449
Univ. of S. Carolina — BΔ	Anne Marie Van Besien	Box #85123, Columbia, SC 29225
Western Carolina Univ. — ΘI	Penny Caldwell	401B Walker, Cullowhee, NC 28723
Winthrop College — ΔΞ	Linda Teal	Box 6405, Winthrop Col. Station, Rock Hill, SC 29733

*College Chapter Director/Advisor & Address*  
 Jackie C. Pollock (Mrs. Robert), CCD, Rt. 1, Box 90-B, Boone, NC 28607  
 Linda S. Riley (Mrs. Thomas), CCD, 1302 Lakeside Drive, Wilson, NC 27893  
 Elvena P. Rogers (Mrs. Ken), CCD, 5001 Vescova Ct., Charlotte, NC 28212  
 Margie C. McKenzie (Mrs. W.G. Jr.), CCD, 201 Springdale Drive, Wilmington, NC 28403  
 Sue Ann W. Roughton (Mrs.), CCD, 3725 Harigate Road, Columbia, SC 29218  
 Virginia C. Hodge (Mrs. Stephen), CCD, Box 7, Cashiers, NC 28717  
 Frances D. Davis (Mrs. Joe), CCD, 350 College Avenue, Rock Hill, SC 29730

**Province Alumnae Director: Margaret M. McIntire (Mrs. Jack), 2523 Cherbonne, Greensboro, NC 27407**

*Chapter President/Address*  
 Charlotte, NC — Elvena P. Rogers (Mrs. Kenneth), 5001 Vescova Ct., Charlotte, NC 28212  
 \*Columbia, SC —  
 Greensboro, NC — Elaine A. Cryderman (Mrs. Keith), 401 Hassellwood Road, Jamestown, NC 27282

*Chapter President/Address*  
 \*Greenville, NC — Margaret M. McIntire (Mrs. Jack), 2523 Cherbonne, Greensboro, NC 27407  
 Greenville County, SC — Sharon Y. Parsell (Mrs. David), 2 Kingsbury Road, Greenville, SC 29609  
 Raleigh, NC — Patricia M. Tector (Mrs. John), 907 Winslow Ct., Cary, NC 27511

*State Reference Chairmen:* North Carolina — Ashley Angel (Miss), 4622 H., Mercury Dr., Greensboro, NC 27410

South Carolina — Sharon Y. Parsell (Mrs. David), 2 Kingsbury Road, Greenville, SC 29609



**PROVINCE XXII—Georgia**

<i>Province Collegiate Director:</i> Rita S. Robb (Mrs. Robert), 600 Spring Creek Court, Marietta, GA 30067			
<i>School/Chapter</i>	<i>President</i>	<i>Chapter Address</i>	<i>College Chapter Director/Advisor &amp; Address</i>
Columbus College — AΨ	Terri Hughes	4662 Rowland Avenue, Columbus, GA 31907	Linda I. Foshee (Mrs. David), CCD, 5160 Yosemite Drive, Columbus, GA 31907
Georgia College — AΠ	Betty Ann Allgood	221 North Jackson Street, Milledgeville, GA 31061	Terriessa H. Barman (Mrs. Everett), CCD, 550 Allen Memorial Drive, Milledgeville, GA 31061
Georgia Southern — IN	Andrea Howard	Landrum Box 8375, Statesboro, GA 30458	Bernice F. Kellogg (Mrs. Craig), CCD, 113 Herty Drive, Statesboro, GA 30458
Georgia State Univ. — ΔΔ	Joy Gipson	P.O. Box 502, Univ. Plaza, Atlanta, GA 30329	Amaryllis P. Barnes (Mrs. Ray), CCD, 2424 Glenwood Drive, NE, Atlanta, GA 30305
Oglethorpe Univ. — BΦ	Diane Freeman	2857 Hermance Drive, Atlanta, GA 30319	Cyndi Clark (Miss), CCD, 5209 Hidden Hills Court, Stone Mountain, GA 30088

*Province Alumnae Director:* In care of National Vice President Alumnae Affairs

<i>Chapter</i>	<i>President/Address</i>	<i>Chapter</i>	<i>President/Address</i>
Atlanta — Vickie S. Childers (Mrs. Gary), 4161 Buckingham Ct., Marietta, GA 30066		*Macon —	
*Columbus —		Milledgeville — Gloria E. Smith (Mrs. Edward), 121 Vinson Highway, Milledgeville, GA 31061	

*State Reference Chairman:* Kimberly G. Henry (Mrs. John), General Delivery, Mineral Bluffs, GA 30559

**PROVINCE XXIII — Alabama**

<i>Province Collegiate Director:</i> Ginger B. Cowley (Mrs. Stephen), 12 Maury Dr., Mobile, AL 36606			
<i>School/Chapter</i>	<i>President</i>	<i>Chapter Address</i>	<i>College Chapter Director/Advisor &amp; Address</i>
Univ. of Alabama — AΓ	Kim Holland	P.O. Box 6273, University, AL 35486	Patti L. DeWitt (Mrs. Steven), CCD, 2 Hillswood, Tuscaloosa, AL 35401
Univ. of AL in Huntsville — AK	Laura Roach	3810 Vogel Drive, Huntsville, AL 35810	Betty G. Byrne (Mrs. William), CCD, 10309 Foothills Circle, SE, Huntsville, AL 35803
Auburn University — BE	Kim Drake	Dorm D-201, Auburn, AL 36830	Ann H. Cheney (Mrs. Robert), CCD, 3506 Ramsey Road, Montgomery, AL 36111
Auburn U. at Montgomery — AN	Tammy Sullivan	1150 Bassett Drive, Montgomery, AL 36116	Denise W. McCullars (Mrs. W.), CCD, 1518 Pomotaw Trail, Anniston, AL 36201
Jacksonville St. Univ. — AΓ	Terri Sarrels	% Jeanne Smith, 607 Sparkman Hall, Jacksonville, AL 36265	Mary Jean R. Tartt (Mrs. Tom), CCD, Drawer A, Livingston, AL 35470
Livingston Univ. — KA	Karen James	L.U. Box 53, Livingston, AL 35470	Janette W. Woods (Mrs. David), CCD, 3136 Paradise Acres, Bessemer, AL 35020
Samford Univ. — AII	Sue Hendrix	SU Box 1323, Birmingham, AL 35209	

*Province Alumnae Director:* Carolee L. Followill (Mrs. Richard), 2123 48th Street, E., 19 B. Timberlane, Tuscaloosa, AL 35401

<i>Chapter</i>	<i>President/Address</i>	<i>Chapter</i>	<i>President/Address</i>
Auburn — Atha P. Beard (Mrs. Doyce), 1113 Willow Run, Opelika, AL 36801		*Mobile — Sandra W. Halliday (Mrs. George Jr.), 1311 Mixon Avenue, Bay Minette, AL 36507	
Birmingham — Joetta H. McDonald (Mrs. Harold Jr.), 4933 Indian Valley Road, Birmingham, AL 35244		Montgomery — Peggy B. Jeffcoat (Mrs. Blake), 3439 Richmond Road, Montgomery, AL 36111	
Huntsville — Louise G. McDonough (Mrs. George), 1902 Fairmont Road, Huntsville AL 35801		*Muscle Shoals Area —	
*Livingston —		Tuscaloosa — Betty H. Judice (Mrs. J. Murphy), 213 Fox Run, Tuscaloosa, AL 35401	

*State Reference Chairman:* Maxine G. Thigpen (Mrs. Wesley), 4005 Pickfair Street, Montgomery, AL 36116

**PROVINCE XXIV — Florida**

<i>Province Collegiate Director:</i> Patricia C. Rosser (Mrs. David), 1609 Indian Rks. Road, Clearwater, FL 33516			
<i>School/Chapter</i>	<i>President</i>	<i>Chapter Address</i>	<i>College Chapter Director/Advisor &amp; Address</i>
Florida State Univ. — AΣ	Leslie Clark	749 W. Jefferson, Tallahassee, FL 32304	Sally Collins (Miss), CCD, 275 John Knox Road #K-204, Tallahassee, FL 32303
Jacksonville Univ. — IQ	Carol Gerstner	8090 Atlantic Blvd., Apt. #A 21, Jacksonville, FL 32211	

*Province Alumnae Director:* Elsie K. Bailey (Mrs. W. Knapp), 801 S. Federal Highway, Apt. 717, Pompano Beach, FL 33062

<i>Chapter</i>	<i>President/Address</i>	<i>Chapter</i>	<i>President/Address</i>
Brevard County — Johnnie M. Lane (Mrs. James), 1605 Phyllis Drive, Merritt Island, FL 32952		Orlando Winter Park — Gwyn O. Mercer (Mrs. Larry), 2217 Depauw Avenue, Orlando, FL 32804	
Clearwater — Ruth M. Whitson (Mrs. William), 4306 Villa Rosa, Holiday, FL 33589		Sarasota-Bradenton — Shirley H. Cook (Mrs. David), 3300 Duncan Avenue, Sarasota, FL 33579	
Gold Coast Area — Anita V. Bridges (Mrs. Daniel), 6513-2 Bay Club Drive, Ft. Lauderdale, FL 33308		St. Petersburg — Virginia R. Klieger (Mrs. Gerald), 4151 Sunrise Drive, S., St. Petersburg, FL 33705	
Jacksonville — Donna F. Meyers (Mrs. J. V.), 3439 Randolph Street, Jacksonville, FL 32207		Southwest — Hollis D. Smith (Mrs. Charles), 2170 S. Street, Ft. Myers, FL 33901	
*Lakeland —		Tallahassee — Mildred K. Hebert (Mrs. Alvin), 2404 Tupelo Terrace, Tallahassee, FL 32303	
Miami — Jane Everitt (Miss), 8520 SW, 102 Avenue, Miami, FL 33173		Tampa — Alice R. Gault (Mrs. Kenneth), 6712 Whiteway Drive, Temple Terrace, FL 33617	

*State Reference Chairman:* Betty C. Nelson (Mrs. Donald), 4503 LaVilla Lane, Tampa, FL 33611

**PROVINCE XXV — Virginia, Washington D.C. and Maryland**

<i>Province Collegiate Director:</i> Barbara H. Martin (Mrs. Willis), 1404 Aquia Drive, Stafford, VA 22554			
<i>School/Chapter</i>	<i>President</i>	<i>Chapter Address</i>	<i>College Chapter Director/Advisor &amp; Address</i>
Longwood College — ET	Kim Hannan	Box 1116, Farmville, VA 23901	Gretchen Unterzuber (Miss), CCD, Box 73, Farmville, VA 23901
Old Dominion Univ. — ΘΦ	Cathy Ann Hunter	3840 Liberty Ridge Road, Virginia Beach, VA 23452	Cindy Sparks (Miss), CCD, 2404 Ballahack Road, Chesapeake, VA 23322
VA Polytechnic Inst. — KΘ	Pam Collins	317 Graves Avenue, Blacksburg, VA 24061	Mary Lou Barringer (Miss), CCD, 3303 H. Circle Brook Drive, SW, Roanoke, VA 24014
Univ. of Virginia — ΔΔ	Helen Rungwerth	150 Chancellor Street, Charlottesville, VA 22903	Carolann Goldey (Miss), Advisor, 114 B. Harris Road, Charlottesville, VA 22903



**Province Alumnae Director: In care of National Vice President Alumnae Affairs**

**Chapter** **President/Address**  
 Richmond, VA — Kathy K. Zehler (Mrs. John), Rt. 14, Box 318 S, Richmond, VA 23231  
 Tidewater, VA — Lynn B. Clements (Mrs. Carl), 4405 Wakeforest Drive, Portsmouth, VA 23703

**Chapter** **President/Address**  
 \*Virginia Peninsula, VA — Eleanore K. Jacobson (Mrs. Ronald), 905 Lacon, Newport News, VA 23602  
 Washington, D.C. — Janet B. Swann (Mrs. Glen R.), 8440 Washington Avenue, Alexandria, VA 22309

**State Reference Chairmen:** District of Columbia — In care of Mrs. William Gavin, 3264 Swan Drive, Vineland, NJ 08360  
 Maryland — Mary Schwarz (Miss), 660 Thurber Dr., W. Apt. C6, Columbus, OH 43215

Virginia — Susan D. Wiegand (Mrs. Thomas), 100 Jolly Roger Cove, Aquia Harbour, Stafford, VA 22554

**PROVINCE XXVI — Arkansas**

**Province Collegiate Director: Marsha S. O'Daniel (Mrs. Keith), 321 W. Maxwell, DeWitt, AR 72042**

**School/Chapter**  
 Arkansas Tech. Univ. — AA  
 Univ. of Central Ark. — EE  
 Henderson St. Univ. — EII

**President** **Chapter Address**  
 Debra Turner Rt. 4, Box 484, Russellville, AR 72801  
 Reta Young 1931 Martin Street, #6, Conway, AR 72032  
 Connie Young H-1769, Arkadelphia, AR 71923

**College Chapter Director/Advisor & Address**  
 Jacqueline M. Gardner (Mrs. Richard), CCD, P.O. Box 866, Russellville, AR 72801  
 Dorothea C. Westmoreland (Mrs. David), CCD, #3-N. Davis, Conway, AR 72032

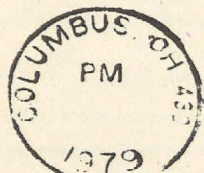
**Province Alumnae Director: In care of National Vice President Alumnae Affairs**

**Chapter** **President/Address**  
 \*Conway — Rebecca F. Jessup (Mrs. Tim), 113 N. Second, Jacksonville, AR 72036

**Chapter** **President/Address**  
 \*Little Rock — Sandy S. Ledbetter (Mrs. Joel), 7 Fox Hunt Trail, Little Rock, AR 72207

**State Reference Chairman:** In care of Mrs. William Gavin, 3264 Swan Drive, Vineland, NJ 08360

# LETTERS



I want to take this opportunity to tell you how much I enjoy reading the articles in the LAMP concerning Delta Zeta career girls.

Perhaps you would want to consider a feature on the social work professions as a large number of female college graduates take positions in the social science field. Although social work is a traditional female field and, from that standpoint is neither new or exciting, the scope of the social work field has indeed expanded, bringing with it a vast new opportunity for challenging and vital social work positions.

*Ginny Conyers Vayda-KT  
 Morehead State*

Would you like to write to a Delta Zeta mentioned in this issue of the LAMP? In order to protect their privacy (and that of all members) we cannot give out addresses, but we will be glad to forward your letters to them. Here's all you have to do: Put your letter in an envelope, seal it and stamp it; put your return address on the envelope and write the Delta Zeta's name on it. Then enclose this letter in another envelope addressed to us: Delta Zeta Sorority, Addressograph Dept., 21 E. State St., Columbus, Ohio 43215.

The composite cover design on the winter LAMP surprised and pleased me, but for the record I must make a correction.

I did not design the original Grace Mason Lundy award but on request made bracelets for several years. My design featured similar four bands (for the four years of college) but instead of a lamp I had a flame with ΔZ superimposed. The closing was made to receive the engraved name of the recipient. It's possible it was never photographed.

Mary Margaret Fore certainly did a great job culling information from the raft of material I sent. Again, thank you for all the work that went into preparing the LAMP article.

*Eleanor Hansen Nichols-T  
 University of Wisconsin*

Many thanks. I especially like the 'careers' articles that have been appearing lately.

*Linda Koontz English-BΘ  
 Bucknell*



*Champaign-Urbana (Illinois) Alumnae Chapter presented a \$100 grant to the Champaign association for Parents and Teachers of Deaf Children. Shown are Lorna Enokian Green, Illinois-AB, alumnae president; Steve Palmer, association president, and Stephanie Palmer, his daughter.*





Many moons ago an eager beaver college journalism student who was her chapter editor wrote the then editor of The Lamp, Grace Mason Lundy, offering to assist with the convention Lampkin.

And that is how one Lamp editor started. She and another future Lamp editor labored till the wee hours so that copy could be put on the early morning boat to the mainland as this convention was held on an island in Canada.

At that same convention Margaret Huenefeld Pease was elected Lamp Editor, and Grace went on to greater glories. When Margaret herself became National President, this same eager beaver collegian, now an Alumnae President, was asked by her to be convention Lampkin editor. This time the copy went over the mountain to the printer in Asheville, North Carolina.

If you ask either of the above delightful and talented Delta Zetas what they loved most, they will reply editing the Lamp was the most fun and most rewarding. And we might add that both of them still write a mean typewriter, and can come up with purple prose whenever called upon. What is it they say about old soldiers? Well, old editors never fade away, they continue to brighten the pages wherever they are.

ΔΖ

To some it may seem that we have been editor forever, but it is only twelve years. But this is twice as long as any of the previous editors. At one convention an attractive collegiate delegate (and aren't they all?) asked if we had been editor ever since Mrs. Lundy! Now that is quite a few years, plus quite a few editors!

In fact, when we set out to write a history of The Lamp at the time of our changing to the larger size in 1975, we discovered we were the seventeenth editor. The Lamp's first editor was Ruth Gaddis Jeffries, Arizona cum Indiana. Her granddaughter and my daughter were both members of Beta Iota chapter, and our correspondence with her had produced many an historical nugget.

The Lamp has undergone many changes since her term as editor, both in size, format, color, and, yes, style as styles in journalism have changed even as fashions. During our term we changed not only in size, but added color, and watched the price of printing raise

astronomically, as well as the cost in postage.

We have edited under the direction of five national presidents and three different printing firms. But with all the changes the function of our magazine has never changed: "To keep the feeling of Delta Zeta alive and flourishing—an island of permanency."

ΔΖ

President Norma has asked us to tell of some of our experiences, and probably the high point from a newspaper standpoint was getting the story concerning the choosing of Edith Head as ΔΖ Woman of the Year on the Associated Press wire.

If you haven't noticed, sorority and fraternity news are not on the list of things the wire services love to print. At the time we were moonlighting on the local newspaper which subscribed to the AP so our publisher was game. Our paragraph was called in to the Des Moines office, where heads were shaken, but since the recipient was of national fame, they sent it on to the Chicago office, which promptly called back to ask WHY was the dateline in Iowa when Edith Head was so obviously California? Came a simple reply from our man, "Because the PR Director lives in Iowa!" So Delta Zeta and Edith made it, all over the country.

ΔΖ

We must admit we enjoyed the issue which featured Delta Zeta men, and other sorority editors were envious of our many prominent males. After the issue hit the stands, we heard of more delightful spouses and sons, so the 1976 article was only the tip of the iceberg.

ΔΖ

We must also admit that we have enjoyed over the years "eating" with the Delta Zetas. Delightful cookbooks compiled by alumnae chapters have been reviewed for the Lamp, as we have discovered that breathes there a woman so liberated that she doesn't respond to a good dish and its recipes? We have eaten in imagination with California, Texas, Oklahoma and Washington, D.C.

And of course the food highlights of any editor's dream have to be the interviews with our two home economists extraordinaire, Jean Wickstrom Liles at *Southern Living*, and Mercedes Bates who directs the Betty Crocker kitchens for General Mills. And then there is the annual page of Christmas recipes of Elsie Boatman in Honolulu who bakes a fresh mango pie that has even strong men drooling.

ΔΖ

The Lincoln Alumnae entered a Delta Zeta Christmas tree this year in the annual display, called turtles and bows. The members made rose and green felt turtles decorated with sequins for the ornaments and sent us one for our own tree, which we shall cherish. So many

wonderful ideas, rose and green ideas, cross our desk that we should be busy forever if we tried them all. But as the chapter editor Del Rae Redman from Minot asked, "Can't we share ideas?" What works in the frozen north provinces may not always translate into the warm Southwest, but Delta Zetas are wonderful at adapting.

ΔΖ

My brother, who had a ΔΖ wife himself, described me once as a "professional Delta Zeta" when they asked how come I was always all over the country. And between conventions and chapter visitations you get to know well many many sisters so that a list of friendships formed would fill a book greater than *Who's Who*, and certainly much more fun.

A local ΔΖ husband once remarked that you could drop Florence anywhere in the world and she would find an interesting Delta Zeta. Last winter we stayed at a small villa on the beach at Zihuatanejo with only twelve guests, and after several days of soaking up the sun, all on a first name basis, somehow the conversation got around to colleges, and guess what—the most intriguing of the women was a Michigan Delta Zeta, and as our husbands said: "We were off to the races."

ΔΖ

As we look out our window at the dreary winter Iowa landscape, our thoughts turn longingly to the article we wrote after a visit to the Honolulu alumnae chapter, strictly social. Imagine a supper meeting in the moonlight and soft breezes, or a luncheon in a thatched hut on the beach where we learned all the interesting things these Delta Zetas were doing in this island paradise—moved from mainland chapters. Only one had reversed the procedure by being born in Hawaii and going to Nebraska to college.

Phyl Evans' University Professor husband tried to teach us the Hawaiian language and we did learn that they have a word that can mean many things—"hello," "goodbye," and even "love," so with this we hang our lei on the Lamp Post and to all of you,

ALOHA,  
florencehoodminer

With this issue of the LAMP, Florence Miner closes out her career as editor. Florence has worn many Delta Zeta hats but the one she favored most was the one smudged with printer's ink. That has been Delta Zeta's good fortune.

Through her Lampost column, her prolific correspondence, and the many miles she has traveled, she has endeared herself to Delta Zetas everywhere. Those who know her will understand that our appreciation goes to her, not only for her contributions as LAMP editor, but for her sure and steady smile, good humor and friendship as well.

Thank you, Florence.  
Norma Andrisek



# OFFICIAL DELTA ZETA INSIGNIA

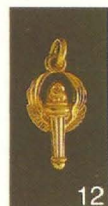
AVAILABLE ONLY  
FROM NATIONAL  
HEADQUARTERS

Each dangle shown is available in 10K gold for \$12.50 and in gold plate for \$4.50. All Delta Zeta jewelry may be ordered from National Headquarters. Please add postage and other applicable charges as explained below.



1. President
2. Vice President Rush
3. Vice President Pledge
4. Treasurer
5. Corresponding Secretary
6. Guard

7. Recording Secretary
8. Lamp Editor
9. Philanthropy Chairman
10. Standards Chairman
11. Historian



12. Social Chairman
13. Scholarship Chairman
14. Song Chairman
15. Activities Chairman
16. Parliamentarian
17. Big Sister

Official approval is necessary for all badges, Daughter-Granddaughter Pendants and Golden Rose Pins. All jewelry orders must be sent to National Headquarters. Inquiries about availability and prices of other Delta Zeta items should be directed to National Headquarters. When ordering badges, use the official order form and forward to Delta Zeta National Headquarters, 21 E. State St., Suite 600, Columbus, OH 43215.

A postage and handling charge of \$1.00 for each order must be included. For all orders under \$10.00, an order processing charge of \$2.00 must be included. Prices include gold surcharge where applicable.

State, County, and Municipal taxes, wherever they are in effect, must be added to all prices quoted.

## CHANGE OF ADDRESS OR NAME

Clip and mail to Delta Zeta National Headquarters, 21 East State Street, Columbus, Ohio 43215

Miss  
Mrs.  
Ms.

Given Name

Maiden Name

Husband's last name,  
if married

Collegiate Chapter

Year of Graduation

Date Change is Effective

New Address

(City)

(State)

(Zip Code)

If you wish to have the LAMP mailings discontinued, Please indicate \_\_\_\_\_

If you are currently a national, province, or chapter officer for Delta Zeta, please indicate office held \_\_\_\_\_

Optional Information:

Husband's first name

Date of Marriage

Delta Zeta Sorority  
Suite Six Hundred  
Twenty-one East State Street  
Columbus, Ohio 43215

Send 3579 Immediately to Delta Zeta Sorority

Second class postage  
paid at Columbus,  
Ohio and at additional  
mailing offices.