

*the*  
**Lamp**

O F D E L T A Z E T A



VOLUME 45

**SPRING 1956**

NUMBER 3



# What **TO DO** When

---

---

## College Chapters

### ● April

- 1—A combined report from first vice-president, second vice-president and scholarship chairman concerning chapter membership.
- 1—President sends letter to Province Director.
- 1—Scholarship Chairman will report the chapter scholarship grade and ranking as soon as released by the college after each quarter or semester to College Chapter Administrator and Province Director.
- 1—Rush Chairman's Report Form #1, pages 1 and 2, to be mailed immediately following formal rushing.
- 1—Rush chairman sends cards thanking alumnae for recommendations. (New forms)
- 1—First vice-president sends notification of pledging cards to State Chairman and Province Director. Typed history cards must be mailed to National Headquarters 2 weeks after pledging.
- 1—Press chairman sends clippings (when publicity occurs) to Director of Public Relations.
- 1—Report of Standards Chairman to College Chapter Administrator and Province Director.
- 1—President completes forms for new officers (as soon as elected by chapter), and mails to Executive Secretary and College Chapter Administrator.
- 5—Treasurer mails report (chapters using white materials).
- 12—Treasurer mails report (chapters using yellow materials).
- 20—Corresponding Secretary mails Statistical Report to National Headquarters.

### ● May

- 1—A combined report from first vice-president, second vice-president and scholarship chairman concerning chapter membership.
- 1—President sends letter to Province Director.
- 1—Scholarship Chairman will report the chapter scholarship grade and ranking as soon as released by the college after each quarter or semester to College Chapter Administrator and Province Director.
- 1—Rush Chairman's Report Form #1, pages 1 and 2, to be mailed immediately following formal rushing.
- 1—Rush Chairman sends cards thanking alumnae for recommendations. (New form)
- 1—First vice-president sends notification of pledging cards to State Chairman and Province Director. Typed history cards must be mailed to National Headquarters 2 weeks after pledging.
- 1—Press Chairman sends clippings (when publicity occurs) to Director of Public Relations.
- 1—Report of Standards Chairman to College Chapter Administrator and Province Director.
- 5—Treasurer mails report (chapters using white materials).
- 10—Rush Chairman reports to College Chapter Administrator and Province Director of Rush School. Send party plans to Province Director.
- 12—Treasurer mails report (chapters using yellow materials).
- 15—Annual Report must be postmarked on or before this date. Historian's report co-signed by president and placed in chapter history notebook.
- 20—Applications for Grace Mason Lundy Award, Florence Hood Award, and Arlene Davis Aviation Scholarship must be postmarked on or before this date and sent to College Chapter Administrator.
- 20—Corresponding Secretary mails Statistical Report to National Headquarters.
- 28—Convention delegate checks to see that she has sent convention registration blank and check.

## Alumnae Chapters

### ● April

Election of chapter officers. Secretary sends list of chapter officers to National Headquarters immediately after election.

### ● May

- 10—Submit nominee for Woman of the Year.
- 10—Résumé of year's activities or special reports should be sent by retiring President of the alumnae chapter to the Director of Alumnae before May 10.
- 28—All convention registrations must be sent.

### ● June

- 5—Alumnae LAMP Editor: Prepare news letter and mail to LAMP Editor for June 15 deadline.
-



# THE *Lamp* OF DELTA ZETA

**ELLEN KROLL JENKINS**  
*Editor*

## *Contents for* **SPRING, 1956**

Why You Should Come to Miami Beach .....	131
Convention Registration Blank .....	133
A Delta Zeta and Her Unusual Talent .....	134
Theta Sigma of Queens Becomes Delta Epsilon of Delta Zeta .....	137
"Follies" Prove to be Successful Therapy .....	139
Family Album .....	142
1956 State Days .....	143
Deans from Coast to Coast .....	145
Music and Activities Come Naturally for Mary Lou .....	147
Alpha Chi Goes "Mediterranean Modern" .....	148
Oklahoma's Maid of Cotton .....	150
Lamp Lighters .....	153
News of the Alumnae .....	155
The Golden Flame Eternal .....	170
Directory .....	171



THE LAMP OF DELTA ZETA is published four times a year in Autumn, Winter, Spring and Summer by the George Banta Company, Inc., official printers to the sorority, at 450-454 Ahnaip Street, Menasha, Wisconsin.

\$2.00 per year. Life subscription \$25.00. Printed in U.S.A.

Entered as second class matter October 18, 1909, at the postoffice at Menasha, Wisconsin, under the Act of Congress of March 3, 1879.

Acceptance for mailing at special rate of postage provided for in section 1103, Act of October 3, 1917, authorized September 26, 1918.



Send all material for publication to Mrs. Paul L. Jenkins, 5926 E. 43rd St., Indianapolis 26, Indiana; all changes of address and advertising information to Miss Irene C. Boughton, 450 Ahnaip St., Menasha, Wisconsin, or 1325 Circle Tower, Indianapolis 4, Indiana.

COPYRIGHT 1956 BY DELTA ZETA SORORITY

Postmaster: Please send copies returned under labels form 3579 to Delta Zeta Sorority, 1325 Circle Tower, Indianapolis 4, Indiana. Return Postage Guaranteed.





1



2



3



4



5

## Roney Plaza Hotel

SCENES you can enjoy at the Delta Zeta national convention at the Roney Plaza Hotel, Miami Beach, Florida, July 1-5, 1956. (1) The ocean lounge. (2) The Imperial dining room. (3) Ocean side view of the hotel. (4) The Ivy Terrace. (5) The palm shaded garden walk.



# Why You Should Come to Miami Beach

By Joan Nielsen, B N, *Society Editor*, Miami Daily News

**I**F I WERE one of the drum-beaters who climbs out of his coconut palm tree roost to send out signals about why you should come to Miami Beach in July, I'd sell you on our climate. But, he's paid to write prose about our palmy peninsula. I'm not.

Of course, most of the press agented matters are directed to winter tourists, the snowbirds who fly south to escape the slush. And the captains of industry who pilot their families into our alabaster palaces along the shore, for sun and fun.

Yet, during the summer, Miami is highly touted as the place for "Two Weeks With Play," to attract the secretaries. And those white collars are soon traded for sunbacks.

When you've lived here for 16 years, you know that summertime is even better than the winter season, because the places and streets are less crowded.

You, you lucky Delta Zetas, can come to Miami in July, when "tourist prices" are not prevalent. July's for fun-lovers, not fund-spenders. And you can stay at the Roney Plaza Hotel, where Walter Winchell covers his Broadway beat during the winter.

Hot here in July? Not on your typewriter!

Statistics prove that 90-degree temperatures are a rarity. And those nights! Brisk breezes blow through your rooms, cooling and refreshing, and giving you no cause for insomnia. Fact is, Miamians prefer to stay here in summer because it's cooler than northern cities.

Of course, friend press agent would tell you to visit an assortment of spots, like Vizcaya, the Venetian estate built by the late James Deering on the shores of Biscayne Bay. It's been the site for many balls, of the costume variety, this season.

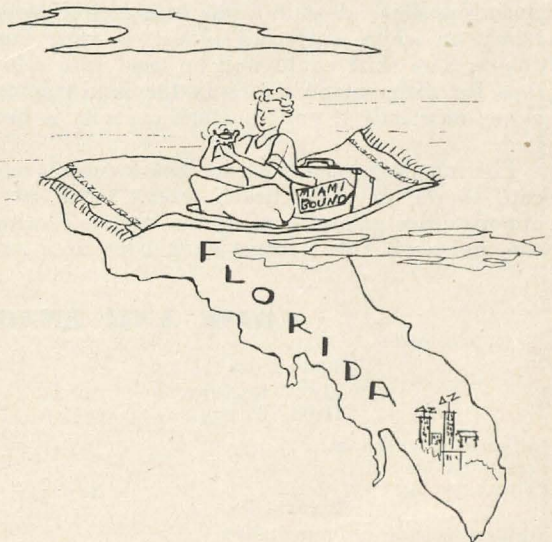
The Parrot Jungle, where the colorful birds will pose for pictures on your shoulders; the Monkey Jungle, where simians run wild and you're the one who's caged in; the Spanish Monastery; Hialeah Race Course, the home of flamingoes and thoroughbreds; the University of Miami, with its modern dormitories; Seminole Indian Villages along the banks of the canals, where primitive modes of living are still employed (although they do use Singer Sewing Machines to sew their colorful costumes beneath

the "chickee" huts) and the Fontainebleau Hotel, the structure which made headlines when it opened last year, are all possible look-see spots.

Miami Beach has reached you-all, by Godfrey (Arthur)! Steve Allen, Dave Garroway and many more nationwide television programs have emanated from this spot, to show you the palms, the sun, that moon (we've checked—it WILL be out!) and our ocean.

Completely flat, the land and its tropical foliage will amaze you if you've never seen this type of area. And clean? It's absolutely spotless in this town, because we've no smokestacks or industry to cloud our sky. No smog, either. (An aside to Californians—we do have "occasional" rain, but of no more than 15-minute duration; it's over before it starts, practically. And no C of C official is breathing down my neck, either!)

Greater Miami can only be greater if y'all make plans to come here during convention, July 1-5. We promise to keep you busy with excitement!



VIA MAGIC LAMP AND MAGIC CARPET DELTA ZETAS  
COME TO CONVENTION—  
JULY 1-5, 1956  
RONEY PLAZA HOTEL  
MIAMI BEACH, FLORIDA



# Fashions for Florida

*Della DZ had a great query  
About convention clothes, oh deary!  
What to wear and what to pack?  
The problem gave Della a pain in the back.  
To help Della and other conventionites  
Here are some "wardrobe words" and good advice.*

**P**LANNING a wardrobe for convention needn't give you or Della a pain. With the help of a recent summer in Florida and all sorts of advice from experts with MW degrees (wardrobe mistress), we've compiled a compendium of the wardrobe to assist Florida-bound DZs.

Of course the attractive rainbow colored cottons and/or synthetics in your wardrobe will be grand for Florida's sunshine. (Even Californians will be seen in it come July 1.) Sheaths or billowing skirts—whichever do the most for you, bring them. Prints or plain, sleeveless or sleeved, your most flattering summer frocks will be just right for morning and most afternoon activities.

For special occasions you'll want to join the other DZ glamor lovelies in evening wear at the three formal dinners. (One formal, short or long, would see you nicely through all; two would be delightful; three would be dazzling and undoubtedly require an extra suitcase.)

Initiation calls for a completely white outfit, including shoes. A white dress (mind, no colored trim) or white skirt and blouse is your best choice. The skirt could well be used with other tops for different occasions in the semi-tropical clime, especially if your luggage capacity is limited.

For fun in the sun, tuck in your swimsuit and cap, shorts, or other beach wear. You'll have opportunities galore to enjoy the famous Florida sun and surf. Don't forget sunglasses or a sun

hat of some sort. A supply of sunburn remedies can be purchased on location to save space in your bags.

Because the moon over Miami has a cooler temperature than Old Sol, you'll find a sweater, stole, or light jacket not amiss for evening excursions or enjoying the sea breezes on the beach.

Shoes in Florida are among the most colorful anywhere, so ignore your inhibitions and bring along the giddy pink sandals you've been dying to wear. Include a pair of comfortable walking shoes for sightseeing excursions. A pair of white sandals or pumps can do double duty for afternoon or formal evening wear. Slippers, beach shoes, play shoes, are all good to have—again, if your luggage permits.

Accessories will naturally be determined by the dresses and frocks you have chosen for convention wear. Scarves, flowers, jewelry, belts, all take little space, but frequently can give one basic dress the magic ability to seem as two or three different ones.

Almost through with your packing? Tuck in your nightie and robe, soap flakes for your "miracle" fabrics, and a small mending kit. A pocket notebook, pencil, and a supply of two-cent stamps (for post cards to envious friends) can be mighty handy.

Pin on your lamp of gold, polish your brightest smile, and we'll see you in Miami Beach, Florida, July 1-5, Miss Fashionplate.

## COME AND ENJOY THIS SCHEDULE!

### SUNDAY, JULY 1

8:00-11:00—Registration  
11:00—Brunch

Initiation in afternoon  
Formal Banquet  
Formal opening

### MONDAY, JULY 2

Business meeting and roundtables  
Formal Honors and Awards Dinner

### TUESDAY, JULY 3

Discussion groups in morning  
Free afternoon—play  
Garden buffet supper  
Song Fest

### WEDNESDAY, JULY 4

Discussion groups morning and afternoon  
Informal Dinner  
Stunt night

### THURSDAY, JULY 5

Business sessions  
Formal installation banquet

### FRIDAY MORNING, JULY 6

Convention disbands



## TRAIN FARES TO MIAMI, FLORIDA

	Round Trip First Class (Includes Tax)	Lower Berth One Way (Includes Tax)		Round Trip First Class (Includes Tax)	Lower Berth One Way (Includes Tax)
Boston .....	\$141.22	\$16.85	Los Angeles .....	\$213.10	\$32.14
Chicago .....	110.92	16.68	Minneapolis .....	136.28	17.19
Cincinnati .....	94.82	14.09	New Orleans .....	76.71	12.25
Cleveland .....	120.98	17.02	New York .....	115.35	15.87
Dallas .....	111.67	18.06	Pittsburgh .....	122.51	17.02
Denver .....	152.95	22.83	Portland .....	222.87	38.99
Des Moines .....	114.62	18.26	San Francisco .....	213.10	32.14
Detroit .....	120.98	17.02	Seattle .....	222.87	38.99
Indianapolis .....	104.90	19.49	Washington, D.C. ....	92.23	13.74

## ROUND TRIP PLANE FARES TO MIAMI

	First Class (Includes Tax)	Tourist Plane (Includes Tax)		First Class (Includes Tax)	Tourist Plane (Includes Tax)
Boston .....	\$192.05	\$113.08	Los Angeles .....	\$319.44	\$252.34
Chicago .....	175.26	110.66	New Orleans .....	100.51	98.34
Cincinnati .....	148.35	88.66	New York .....	167.67	96.80
Cleveland .....	156.75	113.74	Pittsburgh .....	147.66	104.60
Dallas .....	159.94	126.94	San Francisco .....	378.93	274.34
Detroit .....	164.34	122.98	Seattle .....	397.32	305.65
Indianapolis .....	146.74	104.61	Washington D.C. ....	138.35	87.56

**Many tourist planes fly at night which would bring you into Miami in the morning.**

### Registration—Hotel Reservation Blank for Delta Zeta Convention Roney Plaza Hotel, Miami Beach, Florida, July 1-5, 1956

Fill out and mail to our Convention Chairman,

MRS. PHILIP W. VINEYARD, 6737 North Wildwood, Chicago 30, Illinois

Registration Fee \$25.00 enclose with this form

NOTE: This constitutes your room reservation so in order to be assured of a room assignment, please send this reservation by June 1. Hotel room, luncheon and dinner \$13.40 per day. Breakfast *not* included. (Two or three in room.) Single rooms \$16.50 per day.

Name ..... Grad. Class ..... Chapter ..... Province .....

Home address .....

Official Delegate for ..... College Chapter

Official Delegate for ..... Alumnae Chapter

National officer ..... State Chairman .....

Province Director ..... CCD .....

Alumnae Director ..... Alumnae visitor .....

Committee Chairman ..... College Chapter Visitor .....

Preference for roommates .....

.....

Plane ..... Train ..... Driving ..... Approx. arrival time ..... Reservation beginning .....



# A Delta Zeta and Her Unusual Talent Bring Beauty into Her Community

**E**LEANORE HANSEN NICHOLS (Mrs. James B.), charter member of the Wilmington, Delaware, Alumnæ Chapter, is distinguishing herself through her unusual talents in arts and crafts.

Mrs. Nichols is shown here with a recent creative art commission, chased bronze medallions on the doors of the St. Mark's Evangelical Lutheran Church, Wilmington, of which she is a member. The beautiful medallions tell the message of the Life of Christ as found in the four gospel accounts.

Mrs. Nichols majored in applied arts at the University of Wisconsin. She has taught silver work for a number of years at the Wilmington Society of the Fine Arts, applied arts in the

Wilmington Public Schools, and at the Y.W.C.A. She spent the summer of 1947 in Sweden studying at the Goldsmith Company of Stockholm for six months. Other than the door medallions, another of her major projects has been the construction and chasing of the decorative sconces for the assembly room in the American Swedish Historical Museum in Philadelphia.

Besides her professional work, Mrs. Nichols has served as president of the Altar Guild of her church, a member of the Building Committee, chairman of the Furnishings Committee, and treasurer of the Women's Missionary Society and has held the positions of secretary and editor for her Delta Zeta alumnæ chapter.



ELEANOR HANSEN NICHOLS (above) is the artist who created these chased bronze medallions depicting the life of Christ. They are mounted on the doors of St. Mark's Evangelical Lutheran Church, Wilmington, Delaware.



# Versatile with Enamel

By Anne Monroe Wintzer

**R**UTH COLTON GLEACH, ☉, a member of the Richmond, Virginia, Alumnae Club is something of a pioneer when one considers enameling on metal. Although this is an ancient art, Mrs. Gleach and a friend, Mrs. J. H. Marks, have found it utterly fascinating and not long ago opened Oak Studio in Chesterfield County, Virginia, where they pursue their modern hobby twice weekly. Ornamental enameling on copper and silver is still tedious and somewhat unpredictable. However, today's improved colors, modern kilns and purer metals offer these hobbyists a real field day.

The process of enameling is best described as a succession of cleanings, coatings, dryings, firings. Mrs. Gleach prefers transparent enameling where as many as five or six coats of enamel are applied. One good coat suffices for the opaque type. There is always an element of suspense—or rather the risk of overfiring and overenameling. But there are compensations for colors do deepen under firing and the result may be a two tone motif. No two pieces come out the same.

It is impossible to make an exact duplicate of some favorite piece.

Mrs. Gleach was brought up in Columbus, Ohio, and was a Delta Zeta at Ohio State University. She was a member of the East Side Cleveland Alumnae before moving to Richmond several years ago. Currently she is treasurer of the Richmond Alumnae Club. While in Cleveland she studied with Dorothy Harkins for two years. Her enamel work has been exhibited in Cleveland as well as at the Virginia Museum in Richmond. She has more recently studied painting with Hans Gassman and her work was included in the last Valentine Museum (Richmond) biennial. Ruth's latest achievement—and one of which she is extremely proud—is being eligible for membership in the new Richmond Artists Association.

Mrs. Gleach enjoys her attractive home in Richmond with her husband, Frederic E. Gleach, tax commissioner for the Chesapeake and Ohio Railroad, and their son, a recent graduate from the University of Richmond.

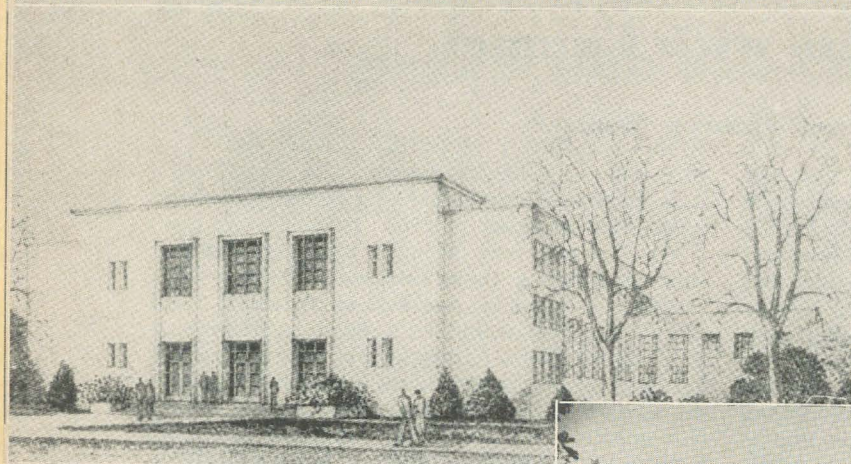
## WOULD YOU LIKE TO TRANSFER OR BE A GRADUATE COUNSELOR IN 1956?

If you like to work with people, have an adventuresome spirit, acceptable grades and enthusiasm for your sorority, you will enjoy this opportunity. Delta Zeta has some scholarships to offer and if you are interested, please write to

MRS. GEORGE C. HAVENS  
3018 School Street  
Des Moines 11, Iowa



*Scenes*  
OF  
QUEENS COLLEGE CAMPUS  
FLUSHING, NEW YORK





# Theta Sigma of Queens Becomes Delta Epsilon of Delta Zeta

**E**XCITEMENT was the keynote on December 4, as it should be, after the solemn inspiring initiation ceremony, which had just taken place at Queens College for the new members of Delta Epsilon chapter. Flashbulbs popped, friendships were renewed, and it seemed as if the pitch of excitement was growing higher and higher at the Pilgrim Inn, scene of the installation banquet.

The witching hour arrived—national officers and honored guests were seated at the head table and every one was ready to talk of initiation, exchange news, and make plans, and eat.

The formal program of installation followed and was conducted by Jean Cody Sullivan, National Director of College Programs. Grace was said by Ida Fleming and welcome messages from Delta Zeta Chapters, national officers, and friends were read by Irene Boughton, Executive Secretary, while expressions of welcome into Delta Zeta were given by Mrs. Virgil D. Barker, Director of Province II, Susan Healy, president of Long Island Alumnae chapter, and Mrs. Gustav G. Freygang, speaking for New York City, Northeastern New Jersey, and Northern New Jersey Alumnae chapters. All speakers emphasized the meaning of Delta Zeta locally, nationally, and internationally; the value of belonging to such a national organization as Delta Zeta, the good it

is doing in the many communities in which it has members, the development of the character of each individual as she contributes to Delta Zeta, thus making her a better citizen.

The response given by Marilyn Adams, president of Delta Epsilon Chapter.

An inspired address by our National President, Mrs. Russell T. Costello, urged all Delta Zetas to keep their "lamps burning" as the Greek heroes of old kept their "torches burning"—an example of self-sacrifice and loyalty to an ideal thus accomplishing physical and spiritual growth. The installation service followed immediately and was conducted by Mrs. Costello.

Dr. George B. Spitz, Jr., Associate Dean of Students, in his formal acceptance of the new chapter for Queens College, sketched the history of the group on campus. Theta Sigma was founded in 1937, the very same year that Queens College, a co-educational liberal arts institution, was authorized by resolution of the Board of Higher Education of the City of New York, as a unit of the municipal system of higher education.

In its eighteen years on campus, Theta Sigma, now Delta Epsilon of Delta Zeta, has contributed to and participated in many college activities. Among them are frequently first and usually

*(Continued on page 149)*



MEMBERS OF THE NEWLY INSTALLED DELTA EPSILON CHAPTER ARE: back row: Carol Wichern, Ellen Regan, Diane Silz, Dorothy Paraskos, Michele Kinsella, Drena Weber, Ann Vetzigan, Florence Salimeno, Marilyn Bock, Concetta Romano, Rosanne Cardone, Mary K. Skellenger, Estelle Stefanski, Roberta Pettane, Florence Eissler, Audrey Cilak, Lynn Navarro, Vivian La Ferlita, Charlotte Schmidt; second row: Diana Chiarello, Ruth Mundorff, Patricia Doyle, Marilyn Adams, Angela Panza, Carol Scalone, Joyce Martinez; front row: Annette Sintich, Beatrice Stevens, Loretta Klamut, Rosemary Rizzo, Barbara Schloemer, Marie Ryan.



FIRST NIGHTERS at the "Femme Follies" were Catherine Hicklin Romy, I, project chairman and president of Indianapolis alumnae; Hugh P. O'Brien, chairman of the Indiana state board of correction; and Helen Kincaid Hudson, B M, Woman's Prison superintendent.



## PRISON SHOW

*A Great Success*

NANCE FRIDLIN, E, coaches the chorus line for a routine in the three-night show sponsored by the Indianapolis Alumnae.

MARJORIE LARUE RHODES, E, works on tap choreography with stars of the production.





# **"Follies" Prove to be Successful Therapy**

**at Indiana Women's Prison**

**By Isabelle Early Schmidt, A N**

**"F**ORTY inmates, 18 to 65 years old, will sing and dance tonight in the final performance of 'Femme Follies' in the Woman's Prison. The show has been sponsored and produced by Delta Zeta Alumnæ more for its therapeutic value than any money-making properties."

The above is quoted from an article which appeared in the *Indianapolis Star* on Saturday, May 21, 1955.

If the members of the Indianapolis alumnæ of Delta Zeta needed any convincing that the population of the Indiana Women's Prison are human beings remarkably similar to any other group that might be selected at random from some of our larger cities, their work with these women in producing the variety show "Femme Follies" would have done that convincing.

This show was presented for four nights last May;—on Wednesday, for those of the women who did not take part in the show and for the administrative staff of the prison, and on Thursday, Friday, and Saturday nights for guests of Indianapolis Delta Zeta alumnæ. Because of the excellence of the performance, these guests were more than happy to contribute a small sum for the privilege of viewing the show. The money thus collected has been put into a fund to be used at the superintendent's discretion for further therapeutic projects.

When Mrs. Helen Hudson, B M, the prison superintendent, first discussed with the Indianapolis Alumnæ the question of whether they would be interested in working with her staff in this sort of undertaking, a great deal of pro and con discussion went on among the alumnæ who would be most involved.

At the time the alumnæ were not involved in any special philanthropic project other than Gallaudet College, with which all Delta Zeta groups are concerned. Many of our members had expressed an interest in becoming participants as well as donors in a local project of some sort. Mrs. Hudson is very convincing in presenting her belief that the involuntary members of her institution have a deep need to feel that people "outside" are interested in them. She reasons that the fulfillment of this need, if it can be accomplished, along with the training programs the inmates are receiving while confined, will help them, when released, to adjust more normally to their families and their community.

It was finally decided to undertake the production of some sort of show at the prison, and committees were set up for the actual work.

Selection of a script to be followed was considered important as the unique position held by the performers might cause lines innocent enough in the ordinary amateur production to give offense either to the cast or to the audience. The purpose of the show was to furnish an opportunity for some of the talented women to have an outlet for their abilities and to work with others, under suitable direction, to include these various talents in a production that would give pleasure to the invited guests as well as to the performers. It was decided to have a variety show, concentrating on singing and dancing, and emphasizing attractive costumes for the choruses, using a bright but simple background, and relying on lighting for change in effect.

To Catherine Hicklin Romy, I, fell the task of organizing the project, assisted by Ruth Clausen Reasor, A B, Jeanette Caudle Harding, Ψ, and Isabelle Early Schmidt, A N. Volunteers were sought for the different tasks involving special knowledge or talent. Nance Fridlin, E, was placed in charge of production and direction because of the experience she had had at Indiana University with student productions. Marjorie LaRue Rohdes, E, made the dance arrangements and directed the dancing choruses. Mrs. Kathryn Sandefur, who is employed part time at the institution as a choir director, made the choral arrangements and directed the singers. She was assisted in the musical accompaniments by Beverly Farquer Sawyer, Δ.

Katharine Fillmore Lemons, A N, who is an active participant in the Indianapolis Civic Theater group agreed to find scenery and found suitable backdrops at Shortridge High School. Other necessary props were furnished by L. S. Ayres and Company where Miss Fridlin is employed. The various schools and persons contacted were glad to cooperate in allowing the various materials to be used.

Dancing chorus costumes were designed by Miss Fridlin after consultation with Mrs. Hudson and Mrs. Rohdes. Mrs. Reasor, Geraldine Shaw Carrington, A N, Betty Moffet Furst, T, and Charlotte Baker Collier, E, did the actual cutting and sewing of these costumes, assisted in the sewing by whatever alumnæ were available.



The fitting of the costumes presented difficulties, as it was hard to get the twenty some girls involved measured in the time that was available after their daily activities were over and before their early bed time. The final pins were not removed and the last snaps in place on some of the costumes until time for the curtain to go up on opening night. But it speaks well for the costume committee that all costumes held together with no embarrassing situations developing, even though they were subjected to pretty rugged use in the course of the four performances.

It was necessary for the performers to dress in one of the cottages—"cottage" refers to the brick structures in which the women have their rooms, their dining rooms and sitting rooms—because of the lack of sufficient dressing space in the rooms on each side of the chapel stage where the Follies were presented. Temporary dressing rooms were made of the two entry halls of one of the cottages and with hooks and mirrors they served very nicely. But it meant a 100 yard walk from the stage to the dressing room for those performers who had to change costumes. A few of the young women taking part appeared in six different numbers. It is a testimonial to the value of early hours and regular planned meals for keeping in top physical condition that these girls were able to be down the twelve steps of the chapel stair, over to the dressing room to change and back to the chapel stage again ready to sing or dance without getting completely out of breath.

There were forty inmates who took part in the hour long production which included twelve acts, beginning and ending with the entire cast on the stage singing a "Good Evening" number.

Solo numbers were a blues singer, an accordionist, a dancer who did an adagio type dance with a mop, and a pantomiming dancer who did things with a rope that required skillful timing for the clever effect produced.

There was a song and dance number in jeans, very hillbilly in style, and a quartet, smooth and sophisticated, and very, very "blue." The dancing chorus did a routine in the opening chorus in green satin costumes with bright neck frills and contrasting slippers. There was a chorus of tap dancers in bright red and white costumes and red shoes who put real vigor into their number and never failed to be called back for a repeat of their routine.

The choir and the spiritual singers were a high point of the program; the latter were dressed in white and purple robes borrowed by Mrs. Hudson from the Music Club Chorale in Lake Wales, Florida. Miss Virginia McGruder, from a Negro church group which visits the prison, accompanied the spiritual singers when they did a

number featuring a rhythm portrayal by three blue clad "angels" and using the song "Nobody Knows the Trouble I See."

The only number suggestive of prison life was a pantomime by three performers clad in stripes, sporting balls and chains and clutching at iron bars to the recorded music of "Riot in Cell Block 9." In the last number these same girls were spotlighted while the entire cast put their hearts and souls in the singing of "Let Me Go, Governor" to the tune of "Let Me Go, Lover." The audience's sense of humor was tickled by this number and as Bill Wildhack wrote in his column "Don't Quote Me," in the *Indianapolis News*, it brought down the house every night.

There were all the problems usually connected with an amateur production plus those things that had to be considered because of the extraordinary position of the members of the cast. Rehearsals had to be timed to comply with state laws. Delta Zeta alumnae working in the prison had to remember to observe rules such as those regarding presence of administrative personnel when a certain number of the population were present and the prompt answering of the intra-prison telephone system. It might have been easy to forget these rules, for working with those women who were assigned to help was like working with any group—school, church, club,—putting on a show. Temperament, character, intelligence, these moods are not confined to persons in or out of prison. Actually the only readily distinguishing feature of the prison population when they were working along with the members of the alumnae was the flowered cotton dress which is the regular costume and which each woman makes for herself when she first comes. Then, of course, there is a certain camaraderie that exists between persons who are living together and tends to hold off outsiders for awhile until they are accepted into the group.

It was strange to think that when we left the prison after an evening rehearsal, these women who had been singing so well, learning dance routines, arguing over formals, worrying about make-up, would be confined to their rooms and expected to retire at 8:30 while we went on home to our families or to other engagements. It was hard to believe that they had been so hostile to society that it had been necessary to take them away from that society for awhile.

Tickets and programs for the Follies were printed by the state. Virginia Kiracofe Romberg, Δ, and Janet E. Leihenseder, E, helped to make them up. Anita Brownlee Platte, A N, was in charge of tickets, and guests were checked in at the gates from lists that had been made up ahead of time. A state policeman was in attend-



ance at all times, although his assistance was never needed for anything more serious than help in setting up a card table for the use of the ticket committee.

Besides Delta Zetas and their guests, many state officials attended. The families of some of the performers who lived nearby were able to obtain tickets through Mrs. Hudson's office.

Mrs. Romberg and Miss Leihenseder, who handled publicity as well as programs, were a little puzzled as to how to handle the former, in the fear of giving too little or too much to a project of this sort. The matter was taken out of their hands when the *Indianapolis Star*, hearing of the unusual show, contacted Mrs. Hudson and Mr. Hugh P. O'Brien, chairman of the state board of correction, and asked for permission to take pictures and run an article in Saturday morning's paper. All publicity as well as script, costumes, etc. had to be cleared through Mr. O'Brien's department anyway so the Delta Zeta alumnae were delighted with this solution of the publicity problem. Marilyn Ceigler, E, was in charge of recruiting alumnae to usher and Beth Bolton, E, and Ruth May Railsback Armstrong, Δ, made up a list of patrons and patronesses.

Two high school students handled the lights—Maureen Schmidt and Dick Tracy—after they were set up by Tom Lemons.

Besides the Delta Zetas named there were a large number who served in one way or another, selling tickets, sewing snaps, loaning formals, pressing costumes, dressing performers.

Mrs. Hudson gave an opening greeting to the audience before each performance. On the last night everyone was surprising everyone else. It was Mrs. Hudson's birthday and the cast sang "Happy Birthday" while Mr. O'Brien presented a large bunch of roses from the staff just before the final curtain. In the meantime, Mrs. Hudson, knowing nothing of these plans, had fixed herself up in typical old fashioned prison matron's garb,

complete with straggly blonde wig and huge bunch of clanking keys to wind up the last night's performance in hilarious fashion.

After the final performance the cast members were entertained with punch and cookies, and a month of unusual activity was brought to a close.

Dozens of problems had been dealt with as they arose. When rain threatened on the last day, a tent was borrowed from a convenient funeral home, for the necessity of having the cast outside after their acts made the weather a considerable factor. Tardy enforcement of a new state regulation released several girls from the prison just about the time rehearsals got underway and caused some changes in the program. Once or twice a little friction developed among performers concerning too much mugging or over formals, but a little calmness and patience seemed to be all that was needed to straighten things out.

The only place such a show has been tried before to our knowledge is at Marysville, Ohio, but it has been discontinued there. If the population here in the Indiana Women's Prison wants to take part and can benefit by the associations, both temporarily and in future social relations, it will be a rewarding project for the Indianapolis alumnae, regardless of the financial success. However, all money made on the presentation will go back into a fund for similar projects or for the purchase of recreational facilities.

Mrs. Hudson feels that the show was a good morale builder for the women taking part and those working with the Indianapolis Delta Zeta alumnae in getting the show ready, and according to Mrs. Romy, who is president of the alumnae group this year, a similar program will be sponsored every year, if it is needed and can be worked out.

All photos are used by the courtesy of the *Indianapolis Star*.

MUSIC FOR DREAMING . . . . .

. . . And Dream Girls—that's the Delta Zeta Record. "Dream Girl of Delta Zeta" on one side and a medley of popular DZ songs on the other invoke musical memories of those special events in your college days. Send for your record with this convenient order blank:  
Please send me . . . . . copies of the Delta Zeta Record, for which I enclose \$1.50 for each record. (Includes cost of handling and postage.)

Name: .....  
Address: .....  
.....

Mail order to: National Headquarters, 1325 Circle Tower, Indianapolis 4, Ind.





## DELTA ZETA FAMILY ALBUM

### DELTA ZETA FAMILIES ENJOY THE GOLDEN CIRCLE

Our third Delta Zeta family to be honored is that of Bertha Phebus Kemmerling, Epsilon Chapter, Indiana University, 1920. All Delta Zetas from the Hoosier State, they are: left to right, Mary Jean Kemmerling Skelton, Delta Chapter at DePauw, 1946; Joan Kemmerling Trumbo, Epsilon, 1952, and Doris Kemmerling Whitmore, also of Delta, 1947.



## 1956 State Days

ALABAMA	April 28	Union Bldg., A.P.I. Auburn	Luncheon
ARIZONA	April-May	Tucson	Luncheon
CALIFORNIA (Northern)	April 28	El Nido LaFayette	Discussions Luncheon
CALIFORNIA (Southern)	April 21	Lakewood Country Club Long Beach	Luncheon Fashion Show
COLORADO	May 13	Delta Zeta House Ft. Collins	Luncheon Workshop
IDAHO	Spring	Spokane, Washington	
INDIANA	May 5	Ball State Teachers College Muncie	Workshop Luncheon
IOWA	May 19	Hotel Kirkwood Des Moines	Luncheon
KANSAS	May 25	Student Union, Kansas State College, Manhattan	Luncheon
MICHIGAN	April 20-21	Kellogg Center, M.S.U. Lansing	Province Convention Workshop, Luncheon
MINNESOTA	May 12	Radisson Hotel Minneapolis	Luncheon
MISSOURI (and eastern Kansas)	May 5	AAUW Clubrooms Kansas City	Luncheon
MONTANA	Spring	Spokane, Washington	
NEBRASKA	April 7	Hotel Lincoln Lincoln	Workshop Luncheon
NEW JERSEY	May 19	Nassau Tavern Princeton	Luncheon
NEW YORK (Metropolitan)	April 14	O'Hagens Larchmont	Luncheon
OHIO	April 28	Wittenberg College Springfield	Round tables Luncheon
OKLAHOMA	April 7	Tulsa	Luncheon
OREGON	Spring	Corvallis	Luncheon
PENNSYLVANIA	April 7	State College	Workshop Luncheon
PENNSYLVANIA (West)	April 7	Hetzel, Union Bldg. University Park	Round tables Luncheon
TEXAS	March 3-4	Driskill Hotel Austin	Texas Treasures Weekend (Swinging on a Star) Luncheon
UTAH	April 21	Makoff's Salt Lake City	
VIRGINIA	April	Arlington	Luncheon, visit Gallaudet College
WASHINGTON (Eastern)	Spring	Spokane	
WISCONSIN	May 5	Merrill Hills Country Club, Waukesha	Luncheon





ANNE H. MEIERHOFER  
*Dean of Students*  
*Illinois Wesleyan University*



JOAN M. SCHAEFER  
*Counselor of Women*  
*University of Southern California*



EVELYN B. MORRIS  
*Dean of Women*  
*University of Rhode Island*



JOAN S. SMITH  
*Dean of Women*  
*Southwestern University*



EDNA L. AGNEW  
*Dean of Women*  
*Ottawa University*



## Deans From Coast to Coast

**E**ACH year a brief list of Who's Who in Delta Zeta appears in the rushing booklet "Let's Look Into This." Prominent in that list are the names of Delta Zetas who are doing outstanding work as deans of women in colleges and universities throughout the country. (It might be stated here that the word "dean" is used unofficially, since the official titles of these women vary greatly.)

Included in any list of Delta Zeta deans would be Dr. Eunice C. Roberts, A B, Assistant Dean of the Faculties and Director of Women's Educational Programs at Indiana University and a member of the 1953 Woman of the Year Court of Honor; Helen Pool Rush, Dean of Women at the University of Pittsburgh and founder of Cwens; Ernestine Cookson Milner, Dean of Women, Guilford College, North Carolina; Helen Mathewson Laughlin, Dean of Women, Emeritus, U.C.L.A. and founder of Phraeteres; and Florence Case, recently retired Dean of Women, Wisconsin State College.

Perhaps one of the newest deans in point of service is Mrs. Joan Smith, Dean of Women at Southwestern University, Georgetown, Texas. A member of both Alpha Psi and Alpha Tau chapters, she served the latter as rush captain and the former as treasurer and president. She is a member of A.A.U.W., National Association of Nursery Education, Childhood Education Association, and the recorder of the Texas Association of Deans of Women. Away from the office, Mrs. Smith's time is divided between her two sons, Lawrence and Richard, and golf and swimming. Recently elected to membership in Pi Lambda Theta and Cardinal Key, she is listed in *Who's Who in American Education* and was the recipient of the Hopkins scholarship for child study at the University of Texas.

Anne Hurst Meierhofer is Dean of Students and Adviser to Foreign Students at Illinois Wesleyan University. A graduate of the University of Illinois, she served Alpha Beta chapter as rush chairman and president. Her current memberships and offices include president of Beta chapter of Delta Kappa Gamma; member of the state planning and state program committees of  $\Delta K \Gamma$ ; Pi Lambda Theta; secretary of Illinois Wesleyan chapter of Phi Kappa Phi; past secretary of the Illinois Deans of Women Association; and the fellowship committee of A.A.U.W. She writes that her few and far between leisure moments are spent working with ceramics.

Franklin College alumna Edna Luree Agnew is Dean of Women and Assistant Director of

Personnel at Ottawa University in Kansas. As an undergraduate, she was treasurer and president of Psi chapter; later she served as faculty sponsor for the chapter from 1945 to 1953. The Psi Alumnae Association remembers her as a past secretary and she is currently a member of the Kansas City Alumnae chapter. Miss Agnew also holds membership in A.A.U.W., Kansas State Deans of Women, and the National Association of Deans of Women. She mentions traveling, the theatre and musical concerts as her special interests.

Women's problems aren't new to Joan Metcalf Schaefer who was Dean of Women at Carnegie Institute of Technology and is now Counselor of Women at the University of Southern California. A member of Alpha chapter, she formerly was a music supervisor and teacher in northern Ohio schools. In college she was a member of Mortar Board, Kappa Delta Pi, Mu Phi Epsilon, and president of A.W.S. Currently Mrs. Schaefer belongs to N.A.D.W., the California Deans' Association and P.E.O. Since her husband, William A. Schaefer is associate professor and director of bands in the U.S.C. School of Music, it is only



LOIS JACK SWANSON



natural that symphonic music be among her special interests, along with ballet, poetry, biography, and contemporary art.

Evelyn B. Morris is Dean of Women at the University of Rhode Island. A graduate of the University of Wisconsin, she is an honor initiate of Beta Alpha chapter and a former treasurer of the South Counties Alumnae chapter. Her other organizations include Providence Plantations Branch of A.A.U.W., president; N.A.D.W.; and the Rhode Island Association of Deans and Advisers of Girls.

Another California dean is Lois Jack Swanson, Associate Dean of Students at Long Beach State College. Her graduate work was done at the Uni-

versity of Iowa where she also served as alumna adviser for Iota chapter. Mrs. Swanson's special interest is family life education, a field in which she taught for a number of years. She holds membership in Soroptimist International of Long Beach; the California Association of Women Deans; N.A.D.W.; American Personnel and Guidance Association, Psi Chi; and the Long Beach Mental Hygiene Society. She writes that her 13-year-old son Stephen is a motor boat enthusiast and is learning to water ski. Mrs. Swanson also meets once or twice yearly with several other Iota chapter member contemporaries who are all in the Los Angeles area. These meetings have been held since 1934.

• • •

## SUMMER RUSH AHEAD!

Prepare for it now by ordering your party supplies all at one time. And support the Endowment Fund by purchasing them through Delta Zeta's own Project Committee. See page 151 for a complete list of napkins, place cards and other party products available.

**M**ANY contributions have been made to our National Philanthropy through the beautiful new Memory Book at National Headquarters. We are certain that others of you will avail yourselves of this opportunity. What better way could you choose to honor friends or relatives who have passed away than to have their names inscribed in the Memory Book and to know that your contribution is being used for a worthwhile philanthropy.

The following form is printed for your convenience.

### A gift to the Delta Zeta Memorial Fund

In Memory of .....  
(Print name in full)

Send remembrance card to .....  
(Print name in full)

.....  
(Street address) (City) (Zone) (State)

From .....  
(Print name of donor)

.....  
(Street address) (City) (Zone) (State)

Was deceased a Delta Zeta .....? Chapter ..... Class .....

Amount of check enclosed .....

Please mail this form and check to Delta Zeta National Headquarters, 1325 Circle Tower, Indianapolis 4, Indiana, and the necessary information will be sent to the Memory Book Chairman, Mrs. Harold Harding.



## Music and Activities Come Naturally for Mary Lou

**A**CTIVITY in community service work comes naturally to Mary Lou Kishel McDade, Jr. The immediate past president of the Baldwin-Wallace College Women's Club, she is a native Cleveland, wife of an outstanding attorney, and the mother of two children. While residing on Cleveland's East Side, she served as LAMP editor, treasurer, secretary, and frequent committee member of the alumnae chapter there. Since affiliating with the Cleveland West Side Alumnae in 1951, she has served as treasurer and currently is president.

A busy Girl Scout Leader in Bay Village, Ohio, throughout the past three years, Mary Lou has found time to combine work on the membership committee of the Bay Village Women's Club, and in the Bay PTA with service as senior member of the music committee of the Bay Presbyterian Church, where she is also junior choir accompanist, substitute Sunday School teacher, and an active member of the Presbyterian Women's Club. In the meantime she has, since 1947, held office successively as corresponding secretary, recording secretary, vice president and president of her college alumnae group. She

has also seen service regularly as a Community Chest and March of Dimes campaigner, a Heart Fund team captain, and a volunteer school census taker.

Mary Lou, a member of Gamma Alpha, and her husband Hi met at Baldwin-Wallace during their junior year. As a matter of fact, it happened during Leap Year, and Mary Lou took full advantage of it. She asked him for the first date.

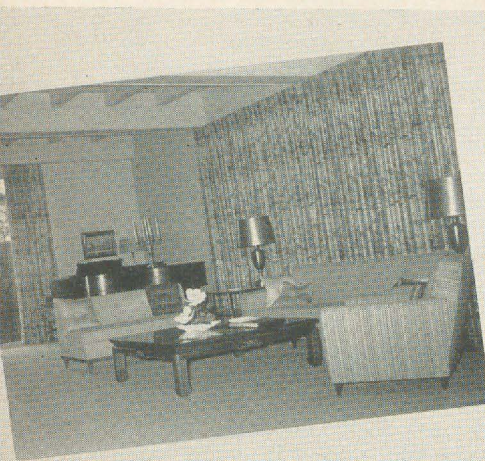
Not to be outdone by his wife's activities, Mr. McDade is currently serving as national president of the Baldwin-Wallace Association of Alumni and Former Students.

There's always music in the air at the McDade home. Mr. McDade, who played in dance bands while attending college, joins the family musical sessions with his guitar. Mary Lou is not only an accomplished pianist, but also plays the harp and bassoon. Karen, age 12, has studied piano for six years, played the flute for four years, and recently started organ lessons. Karen's teacher for two of her six years of piano study was her mother. Seven-year-old Hiram, III, affectionately known as "Butch," will soon start piano lessons, but now his main interest is baseball.

*THE MCDADE'S television takes second place to the guitar, piano and flute when activities aren't occupying the family. Ready for a family concert are Hiram L. McDade, Jr., Mary Lou Kishel McDade, Γ A, and their children Karen and Hiram, III.*



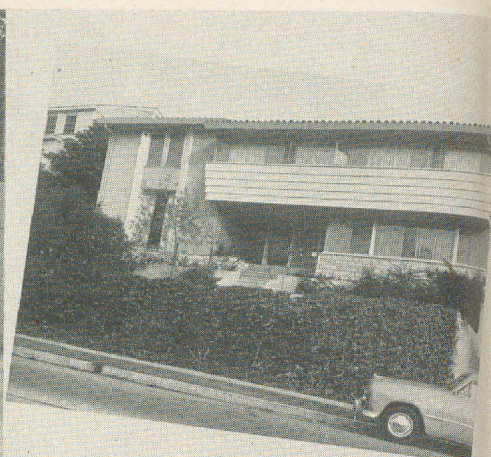




A CORNER of the living room which shows the "conversational grouping" of the furniture. Subtle shades of brown and green are the featured colors of the decor.



LOOKING THROUGH the glass wall of the library at the waterfall in the patio.



FRONT VIEW of the Alpha Chi chapter house, newly remodelled in Mediterranean modern style.

## Alpha Chi Goes "Mediterranean Modern"

**D**ESIGNED for greater comfort and more spacious living, the remodelled chapter house of Alpha Chi now bears but a slight resemblance to its former structure. The new architectural design is Mediterranean modern, while the interior has been refurbished in a subtle, contemporary modern style.

The foyer is accented by an extraordinary starburst chandelier, which is one of the outstanding features of the lower level. The additions include a small date room at one side of the entrance hall, while on the other side may be found a spacious room for the town girls, complete with ample closet space and a large powder room.

Done in subtle shades of brown and green, and accented by bright pillows of various colors, the enlarged living room is further enhanced by a wide picture window. The new furniture includes a large sectional couch, which may be used in small informal groups, a feature of great convenience for rushing.

For more informal entertaining the new library is ideal. It features a cozy fireplace, rich wood panelling, and a wall of glass, providing a view of the patio, with its shrub-surrounded waterfall.

Also on the lower level is the housemother's suite, which is designed for comfort and privacy, as well as convenience for the execution of her duties.

The second floor includes a new front wing, with four additional bedrooms. Another feature is the new sundeck, which provides a comfortable area for leisure hours. Extending to the back of the lot is the third level, a large dormitory. Although there is room for twelve people, it is designed to allow the privacy of a smaller room. With the aid of built-in bunk sections, the dormitory is broken down into three parts, each part resembling a small room.

With the help of the Mothers' Club, the upstairs has been permanently decorated throughout. Formerly, the girls decorated their rooms each semester, utilizing their own time and money. Now, each room has its own individual color scheme, but allowances are made for any personalized touches the girls might care to add.

Completing the newly remodelled and redecorated house is the chapter room. Although unchanged in size, it has been repainted and refurnished. With the added space throughout the rest of the house, the chapter room may now be devoted solely to its original purpose, without need for conversion into a dormitory, which was the case before the remodelling took place.

With the spacious and warm modern decor of their new chapter house, the Alpha Chis may be sincerely proud.

—HILDEGARD HILLER, A X



## Theta Sigma of Queens Becomes Delta Epsilon

(Continued from page 137)

placing in the inter-sorority pledge competition of presenting skits just prior to initiation; winning and regularly placing in the annual "Dime Follies" held to raise funds for the March of Dimes; always placing and sometimes winning the Annual Song Fest; winning three Campus Queen contests and last year winning the Snow Queen Contest at the Winter Carnival in the Berkshire Mountains; four members are Cheer Leaders and five are members of the Angel Squadron of the Air Force R.O.T.C.; several members are on the Dean's List and many in the honor service society, Sigma Alpha; and they have had members on the Student Council.

Decorations at the banquet were in charge of the Northeastern New Jersey Alumnae chapter and were executed by Stella DePasquale, president of New York City Alumnae chapter, and Mrs. Freygang of the Northern New Jersey Alumnae chapter. There were runners of Christmas greens down the center of the tables and "hanging" on the branches were clusters of gold balls, with gilded pine cones and nosegays of rosebuds.

Hostess for the Presentation Tea held at Queens College, was the Long Island Alumnae chapter. The tea table with its lace cloth, arrangements of pink carnations and snapdragons, and glistening silver, was a charming background for national officers, faculty, Panhellenic members, visiting Delta Zetas, parents, and honored guests, as they became acquainted with the newly initiated college members.

Delta Epsilon members are Marilyn T. Adams, Marilyn Bock, Roseanne Cardone, Diana Chiarello, Michele B. Kinsella, Loretta Klamut, Vivian K. LaFerlita, Joyce A. Martinez, Angela Panza, Dorothy D. Paraskos, Ellen J. Regan, Rosemarie E. Rizzo, Concetta M. Romano, Marie Ann Ryan, Florence M. Salimeno, Carole G. Scalone, Barbara A. Schloemer, Charlotte E. Schmidt, Diana M. Silz, Mary K. Skellenger, Estelle V. Stefanski, Beatrice L. Stevens, Ann L. Vetzgian, Drena Weber, and Carole A. Wichern.

Alumnae members are Audrey Cilak, Patricia Doyle, Patricia Jones, Florence Eissler, Ruth Mundorff, Lynn Navarro, Roberta Pettane.

• • •

## READ 'EM AND REAP-

### *... Profits for Your Endowment Fund!*

IT'S SO easy to support the Delta Zeta Endowment Fund through Delta Zeta's own Magazine Agency. Remember that it can handle all renewals and special offers you may receive; simply fill out such blanks and send them to the Delta Zeta Magazine Agency as you would any subscription. Here are just a few of the magazines available:

	1 year	2 years	3 years		3.50	5.50	7.50
American Girl (ages 10-17)	3.00	5.00	7.00	Good Housekeeping	3.50	5.50	7.50
Atlantic Monthly	6.00	11.00	16.00	Harper's Magazine	5.00	8.00	10.00
Charm	3.50	6.00		Ladies' Home Journal	3.50	6.00	8.50
Christian Herald	3.00	5.00	7.00	Newsweek	6.00	9.00	12.00
Coronet	3.00	5.00	7.00	Parents' Magazine	3.00	5.00	7.00
Esquire	6.00	10.00	12.00	Saturday Evening Post	6.00	10.00	14.00
				Wee Wisdom (ages 5-13)	2.00		

## MAGAZINE ORDER BLANK

Please enter my subscription to .....

for ..... years for which I enclose ..... (Checks payable to the Delta Zeta Magazine Agency.)

Credit..... Name: .....

.....Chapter Address: .....

Mail order to: Esther Lorenz, 1000 37th Street, Des Moines 11, Iowa or on the West Coast to: Mrs. Charles Tourtelot, 1001 Hook Avenue, Pleasant Hill, Calif.

Happy holidays are coming up—and whether you're planning a special vacation or just like to read about interesting places, you'll enjoy Holiday magazine, the nation's choice for fun, travel guidance and places to visit. And support the Endowment Fund by subscribing through your own Delta Zeta Magazine Agency: 1 year, \$5.00; 2 years, \$8.00; 3 years, \$11.00.





OKLAHOMA'S MAID OF COTTON FOR 1955-56 IS LADONNA KRAMER, F Y. *She is shown here in a cotton lace formal, part of her prize wardrobe.*

## Oklahoma's Maid of Cotton

CHOSEN this fall to be Oklahoma's Maid of Cotton for 1955-56 was LaDonna Kramer, a Delta Zeta from Oklahoma City University. She was selected from a group of twenty finalists who represented various parts of the state.

Each year the Cotton Council of Oklahoma sponsors a contest to choose a girl who will represent this state in the final Maid of Cotton contest in Memphis, Tennessee. As Maid of Cotton, LaDonna was awarded a cotton wardrobe. This was her official wardrobe which she wore on her all-expense-paid trip to Memphis in December where the National Cotton Council was host to the twenty finalists who hailed from cotton producing states throughout the nation.

LaDonna is a sophomore in the school of music and a junior member of the music faculty at OCU, teaching piano in the preparatory department. Other campus activities in which she is active are Sigma Alpha Iota, honorary music fraternity for women, choir, and Piano Club, of which she is president. She is also courtesy chairman of her sorority chapter, Gamma Upsilon.

—BETTY WALLS, F Y



## Delta Zeta Products

Remember that Delta Zeta products are available for sale to individuals, college and alumnae chapters. Support the Delta Zeta Endowment Fund by ordering these supplies through the Project Committee:

<i>Gold-Engraved with DZ Crest</i>		<i>Color</i>	<i>Price</i>	<i>Quantity</i>
E-1	Stationery	White	\$1.35	48 sheets (24 crested)
E-2	Informals, small (3" x 4")	White	4.50	100
E-3	Informals, large (4" x 5")	White	3.25	50
E-4	Place Cards	White	3.40	100
 <i>Gold-Imprinted Party Supplies</i>				
P-5	Napkins, beverage size	Wh., Green, Pink, Assrtd.	8.00	500
P-6	Napkins, luncheon size	Wh., Green, Pink, Assrtd.	8.50	500
P-7	Guest Towels	White	2.60	100
			1.40	50
P-8	Coasters	Green	2.05	100
P-9	Foil Ash Trays	Gold	3.50	100
P-10	Matches, narrow 10-strike	Black	2.90	100
 <i>Gift Items and Miscellaneous</i>				
G-11	Matches, 20-strike, crested	Black	1.15	24, gift box
G-12	Playing Cards, Crested	Green, Brown	2.75	Double Deck
G-13	Ash Tray, Ceramic	Green	1.25	
G-14	Picture Frame, Ceramic	Black	1.50	
G-15	Medallion Key Chain, plastic	Gold DZ	.85	
G-16	Correspondence Sampler (6 sets stationery, small informals; 4 large informals)	White	1.15	box
G-17	Hostess Pack (16 bev. napkins, 8 coasters, foil trays, 10-strike matches)	Green	1.25	set
Z-18	Seals, Gold Lamp Design	Green	1.00	90
M-19	Place Mats, Map Design	White	4.00	100
			2.00	40

Order blanks and complete information, with samples, have been sent to chapters. All orders should include payment in full (checks payable to Mrs. J. Harold Williamson), plus 25 cents packing charge for orders under \$5.00. Address all orders (in duplicate) or inquiries to:

**Mrs. J. Harold Williamson, 523½ N. Serrano, Los Angeles 4, Calif.**

## Program Note

Wouldn't you like to have an intimate visit with one of your "Adventures in Friendship"? Marion Worthing, 1955 Woman of the Year, has taken movies in color on the campus of Gallaudet College. On a lovely spring day you will meet some of the students, the president, our own Lucille Pendell, librarian; see the ground-breaking ceremony for the library, and a typical June commencement.

Write to Miss Irene C. Boughton, 1325 Circle Tower, Indianapolis 4, Indiana, and reserve this film with accompanying script. It will make an interesting and informative addition for both undergraduate and alumnae chapter programs.





Birmingham alumnae entertained all Birmingham Delta Zetas and their mothers with a fashion show and coffee in December. Alumnae members took this opportunity to become better acquainted with the college girls and to introduce the idea of a Mother's Club to the mothers. Representatives of the various college chapters reported on their activities of the past year, and Mrs. Tom Jones, alumnae president, reviewed the year's work of the alumnae chapter.

Pictured at the coffee table are models Nancy Nighswonger, Liz Ritchey, Julia Franklin, Phyllis Sheppard, Lucy Roy and Susanne Acker. Serving are Mary Reese (dark dress) and Mrs. Robert Vann (seated).



Sphinx, honor society for senior women at Alabama Polytechnic Institute (Auburn), was installed as the 95th chapter of Mortar Board in November, 1955. Lucy Roy, president of Beta Xi chapter, is president of the new Mortar Board chapter. Shown at the presentation of the charter are Laura Fulkerson, editor; Kathleen Jones, Mortar Board district director; Ruth Mary Wise, vice president; Lois Carter, treasurer; Lucy Roy, president; and Shirley Brown, secretary.

Three members of Beta Xi were initiated as alumnae members of Mortar Board. They are Elizabeth L. "Mimi" Simms, Winifred Hall Harris and Betty Sturkie Prather.



# AN IMPORTANT MESSAGE for You . . .

*From Doris Gillespie, National Recommendation Chairman*

Delta Zeta is looking to YOU for recommendations! The success of our membership selection program depends upon each alumna accepting her responsibility for providing complete information on potential Delta Zeta members.

Use this recommendation blank TODAY! Follow through by telling your rushee that you have recommended her to Delta Zeta. Your cooperation will assure our collegiate chapters another successful year.

## ATTENTION ALUMNÆ!

Alpha Beta of Delta Zeta (University of Illinois) rushes early to secure pledges for the fall of 1956 (due to the shortage of housing).

Formal rushing—May 18-20 for Chicago girls

Similar rushing—May 18-20 for all others

Please send your recommendations immediately to Alpha Beta, Delta Zeta, 710 West Ohio Street, Urbana, Illinois

## DELTA ZETA RUSHING INFORMATION FORM

Name ..... Age .....  
Home Address .....  
Street ..... City .....  
Parent's Name .....  
College expects to attend ..... When? .....  
Secondary or Preparatory School ..... Year graduation .....  
College previously attended .....  
Scholastic record .....  
Extra-curricular activities .....  
Honors .....  
Church Preference ..... Hobbies, talents .....  
What course does she plan to follow? .....  
In what capacity have you known this girl? (Teacher, counsellor, family friend, etc.) .....  
.....  
Name of Alumna ..... Chapter .....  
Address .....  
Street ..... City .....

Send this information to your State Membership Chairman or chapter rush chairman at once.



# Delta Zeta Rush Chairmen—1956

- ALPHA—*Miami University*  
Kay Glasgo—2884 Landon Dr., Silver Lake, Cuyahoga Falls, Ohio.
- GAMMA—*University of Minnesota*  
Judy Swenson—436 W. California, St. Paul, Minn.
- DELTA—*DePauw University*  
Diane Woodward—1040 Genesee Ave., Warren, Ohio.  
Gail Lone—2424 Bonds Ave., South Bend, Ind.
- EPSILON—*Indiana University*  
Phyllis Maul—R.R. 2, Box 158, Pendleton, Ind.
- THETA—*Ohio State University*  
Janet Bouton—212 E. 15th, Columbus, Ohio.
- IOTA—*University of Iowa*  
Joan Frost—1128 E. Columbia, Davenport, Iowa.
- KAPPA—*University of Washington*  
Judy Sahlberg—804 E. 100th, Seattle, Wash.
- MU—*University of California*  
Anne Kent—5439 Russell Ave., Los Angeles, Calif.
- NU—*Knox College*  
Darlene Daer—5433 Dale Ave., Loves Park, Ill.
- XI—*University of Cincinnati*  
Helen Seelmeyer—7727 Kenwood Rd., Cincinnati 27, Ohio.
- OMICRON—*University of Pittsburgh*  
To be elected.
- PI—*Eureka College*  
Roberta Meredith—Williamsville, Ill.
- SIGMA—*Louisiana State University*  
Marianne Hurst—New Roads, La.
- TAU—*University of Wyoming*  
Ruth Towns—Route 4, Janesville, Wis.
- UPSILON—*University of North Dakota*  
Jean Wentsel—721 South 4th, Grand Forks, N.D.
- PHI—*Washington State College*  
Sharon Specht—Box 465, Poulsbo, Wash.
- CHI—*Oregon State College*  
Joan Holzmeyer—Rt. 3, Box 201, Dundee, Ore.
- PSI—*Franklin College*  
Betty Jane Sanderson—R.R. 5, Camden, Ind.
- OMEGA—*University of Oregon*  
Joan Kraus—2880 Onyx Ave., Eugene, Ore.
- ALPHA ALPHA—*Northwestern University*  
Sue Hoch—240 N. Lake, Gary, Ind.
- ALPHA BETA—*University of Illinois*  
Terry Butler, Saybrook, Ill.
- ALPHA GAMMA—*University of Alabama*  
Nancy Nighswonger—812 1st St., S.W., Birmingham, Ala.
- ALPHA DELTA—*George Washington University*  
Sallie Harris—3114 16th St., N.W., Washington, D.C.
- ALPHA EPSILON—*Oklahoma A. & M.*  
Sylvia Leigh—601 E. 14, Okmulgee, Okla.
- ALPHA ZETA—*Adelphi College*  
To be elected.
- ALPHA THETA—*University of Kentucky*  
Carla Greene—1552 S. Elm, Bartlesville, Okla.
- ALPHA KAPPA—*Syracuse University*  
Lois Begor—Tahawus, N.Y.
- ALPHA PI—*Howard College*  
Julia Franklin—108 Hawthorne Rd., Birmingham, Ala.
- ALPHA SIGMA—*Florida State University*  
Kate Ramsey—Blountstown, Fla.
- ALPHA TAU—*University of Texas*  
Rebecca Brown—2012 Santa Monica, San Antonio, Texas.
- ALPHA UPSILON—*University of Maine*  
Gayle Prince—25 Van Buren Ave., Castleton-on-Hudson, N.Y.
- ALPHA CHI—*University of California, Los Angeles*  
Mary Jane Upton—3780 West Blvd., Los Angeles 16, Calif.
- ALPHA PSI—*Southern Methodist University*  
Shirley Burrig—Box 217, Angleton, Texas.
- BETA ALPHA—*University of Rhode Island*  
Denise Demarais—1086 Stafford Rd., Fall River, Mass.
- BETA GAMMA—*University of Louisville*  
Barbara Bailey—Camp Shantituck, Shepardsville, Ky.
- BETA DELTA—*University of South Carolina*  
Mary Duke, Rt. 2, Box 66, Kingstree, S.C.
- BETA THETA—*Bucknell University*  
Elizabeth Jones—219 Bell Ave., Hasbrouck Heights, N.J.
- BETA KAPPA—*Iowa State College*  
Marilyn Werner—Cresten, Iowa.
- BETA LAMBDA—*University of Tennessee*  
June Reed—714 Oliver Dr., Knoxville, Tenn.  
Peggy Staniforth—1618 W. Cumberland, Knoxville, Tenn.
- BETA MU—*Florida Southern College*  
Kathy Kosar—634 Portage Tr., Cuyahoga Falls, Ohio.
- BETA NU—*University of Miami*  
Rita Brinkman—607 Villa Bella, Coral Gables, Fla.
- BETA XI—*Alabama Polytechnic Institute*  
Betty Ann Smith—2656 Acorn Ave., N.E., Atlanta, Ga.
- BETA PI—*Albion College*  
Judy Butler—14393 Greenview Rd., Detroit 23, Mich.
- BETA RHO—*Michigan State College*  
Sylvia Jackson—113 N. Darling, Angola, Ind.
- BETA SIGMA—*Colorado A. & M.*  
Pat Kennedy—10900 W. 26th Ave., Denver, Colo.
- BETA TAU—*Nebraska Wesleyan University*  
Nora Mae Brashers—Box 100, Scottsbluff, Neb.
- BETA UPSILON—*H. Sophie Newcomb College*  
Gay Lynn Woods—3912 Patterson Ave., New Orleans, La.
- BETA CHI—*Wittenberg College*  
Carol Roush—Box 124, New Haven, W.Va.
- BETA OMEGA—*New York University*  
To be elected.
- GAMMA ALPHA—*Baldwin-Wallace College*  
Ruth Geib—3008 Massillon Rd., Akron, Ohio.
- GAMMA BETA—*University of Connecticut*  
Joyce Hixson—146 Nelson St., West Springfield, Mass.
- GAMMA GAMMA—*Missouri Valley College*  
To be elected.
- GAMMA DELTA—*Pennsylvania State University*  
Debra Diehm—RD 3, Lititz, Pa.
- GAMMA EPSILON—*Drake University*  
Eleanor Barton—2818 47th St., Des Moines, Iowa.
- GAMMA ZETA—*Southwestern University*  
Paula Foust—4910 Spruce, Bellaire, Tex.
- GAMMA ETA—*Hunter College*  
Trudy Robinson—243 West 15th St., N.Y., N.Y.
- GAMMA THETA—*Carroll College*  
Shirley Beyritz—1034 Center Ct., Delavan, Wis.  
Pat Rydahl—1403 Carney Blvd., Marinette, Wis.
- GAMMA IOTA—*Memphis State College*  
Harriet H. Montgomery—5130 Wheelis Dr., Memphis, Tenn.
- GAMMA KAPPA—*Kent State University*  
Nancy Trevis—1218 Castleton Rd., Cleveland, Ohio.
- GAMMA LAMBDA—*San Jose State College*  
Patricia Ann Page—Rt. 1, Box 356-C, Simi, Calif.
- GAMMA MU—*Illinois Institute of Technology*  
Elaine Point—5628 S. Laflin, Chicago, Ill.
- GAMMA NU—*Eastern Illinois College*  
Shirley Galloway—R.R. #3, Altamont, Ill.
- GAMMA XI—*New Mexico A. & M.*  
Bea Apodaca—221 N. Alameda, Las Cruces, N.M.
- GAMMA OMICRON—*San Diego State College*  
Joyce Darnell—4558 Cherokee, San Diego, Calif.



GAMMA PI—*Western Michigan College*  
Josephine Reader—111 W. State, Scottsville, Mich.  
GAMMA RHO—*Northern Illinois State College*  
Judith Coomes—729 No. Grove, Oak Park, Ill.  
GAMMA SIGMA—*Michigan State Normal College*  
Marlene Janter—1130 Tuckawanna Dr., S.W., Atlanta, Ga.  
GAMMA TAU—*Bowling Green State University*  
Sharon Tamblin—1517 Johnston S.E., Grand Rapids, Mich.  
GAMMA UPSILON—*Oklahoma City University*  
To be elected.  
GAMMA PHI—*State Teachers College*  
Gayle Ann LaBate—412 Adams Ave., Ellwood City, Pa.  
GAMMA CHI—*Ball State Teachers College*  
Jody Wilt—Camp Riley, Bradford Woods, Martinsville, Ind.

GAMMA PSI—*Central Michigan College*  
To be elected.  
GAMMA OMEGA—*Southern Illinois University*  
Pat Parson—Box 274, Crossville, Ill.  
DELTA ALPHA—*Long Beach State College*  
Connie Garr—10122 Russell St., Garden Grove, Calif.  
DELTA BETA—*University of Tampa*  
To be elected.  
DELTA GAMMA—*Transylvania College*  
Joann Wetterau—234 Bonnie Ln., Louisville 18, Ky.  
DELTA DELTA—*Atlanta Div. of University of Georgia*  
To be elected.  
DELTA EPSILON—*Queens College*  
Ann Vetzgian—45-53 189 St., Flushing, N.Y.  
DELTA ETA—*East Tennessee State College*  
To be elected.  
DELTA THETA—*University of Houston*  
Frances Skinner—2401 McDuffie St., Houston, Texas.

## State Membership Chairmen

ALABAMA: Miss Sara Jo Wright, Guin, Ala.  
ALASKA: See Washington.  
ARIZONA: Mrs. Loren Curtis, Box 755, Casa Grande, Ariz.  
ARKANSAS: Mrs. R. C. Medlock, 3111 Ridge Rd., Park Hill North, Little Rock, Ark.  
CALIFORNIA:  
Northern: Mrs. Walter Burde, Rt. 1, Box 667, Carmel Calif.  
Southern: Mrs. David H. Sprong, 408 N. 4th St., P.O. Box 373, Puente, Calif.  
COLORADO: Mrs. Clyde McNerny, 3845 Everett, Wheatridge, Colo.  
CONNECTICUT: Miss Alfreda Oliwa, 5 Prospect, Derby, Connecticut.  
DELAWARE: Mrs. R. C. Schreyer, 8 Van Dyck Dr., Wilmington 3, Del.  
DISTRICT OF COLUMBIA: See Virginia.  
FLORIDA: Mrs. F. B. Hesslein, 530 S.W. 34th Ave., Miami, Fla.  
GEORGIA: Mrs. John Logan, 1200 Meadow Lane, Rt. 1, Dunwoody, Ga.  
IDAHO: See Washington.  
ILLINOIS: Mrs. William Dean, 316 N. Mayfield, Chicago 44, Ill.  
INDIANA: Mrs. Ray Richardson, R.R. 6, Martinsville, Ind.  
IOWA: Mrs. F. W. Copeland, 124 Stanton, Ames, Iowa.  
Recomm. Chr. Mrs. T. A. Kapfer, Greenfield, Iowa.  
KANSAS: Mrs. W. F. Kipper, 720 Leavenworth, Manhattan, Kan.  
KENTUCKY:  
LOUISIANA:  
MAINE: Mrs. Frank W. Howard, 81 Hillsdale Rd., Medford 55, Mass.  
MARYLAND: Mrs. R. C. Schreyer, 8 Van Dyck Dr., Wilmington 3, Del.  
MASSACHUSETTS: Mrs. Frank Pote, 15 Chester Ave., Medford, Mass.  
MICHIGAN: Mrs. Hugh Alborell, 16585 Lindsay, Detroit 35, Mich.  
MINNESOTA: Miss Evelyn McMeans, 206 W. Mill St., Austin, Minn.  
MISSISSIPPI: Mrs. Walter D. Smith, Lexington, Miss.  
MISSOURI: Mrs. J. Carl Jourdan, 5906 Locust St., Kansas City, Mo.  
Co-chm. Recomm. Mrs. Edward G. Deuser, 802 E. 47th St., Kansas City 10, Mo.  
MONTANA: Miss Ruby Swanson, Mt. View Lodge, Troy, Mont.  
NEBRASKA: Mrs. Ben Akert, Box 141, Elkhorn, Neb.  
NEVADA: See Northern California.  
NEW HAMPSHIRE: Mrs. Stanley R. Shimer, 37 Woodman Rd., Durham, N.H.

NEW JERSEY: Miss Ruth Rue, 70 S. Munn St., East Orange, N.J.  
NEW MEXICO: Mrs. H. P. Vanderverter, 505 Wellesley, S.E., Albuquerque, N.M.  
NEW YORK:  
Upstate: Mrs. Clarence Pollatsek, 341 W. Newell, Syracuse, N.Y.  
Co-chm. Recomm. Ina Taylor, 402 Valley Dr., Syracuse, N.Y.  
Metropolitan: Miss Annie Bristow, 210 W. 16th St., New York, N.Y.  
NORTH CAROLINA:  
NORTH DAKOTA: Mrs. Donald L. Anderson, 209½ Euclid, Grand Forks, N.D.  
OHIO: Mrs. George Lenning, 522 Woodview Dr., Dayton 9, Ohio.  
Co-chm. Mrs. John Kunst, 511 Volusia Ave., Dayton, Ohio.  
OKLAHOMA: Mrs. Joseph W. Kelso, 319 N.W. 18th St., Oklahoma City, Okla.  
OREGON: Mrs. Charles Derthick, 955 Marion, Salem, Ore.  
PENNSYLVANIA:  
East: Mrs. Jack W. Warnes, 35 Woodbrook Ave., Swarthmore Hills, Swarthmore, Pa.  
West: Miss Patricia Henneghan, 5401 Camelia St., Pittsburgh, Pa.  
RHODE ISLAND: Mrs. William R. Guise, 7 Cullen Ave., Valley Falls, R.I.  
SOUTH CAROLINA:  
SOUTH DAKOTA: Mrs. Richard E. Huffman, 309 5th Ave., S.E., Aberdeen, S.D.  
TENNESSEE: Mrs. Thomas Scales, 4309 Bates Dr., Nashville, Tenn.  
TEXAS: Mrs. Clifford G. Unruh, 4026 Turnberry Circle, Houston, Tex.  
Co-chm. Mrs. James J. Theo, 4610 Surf Dr., Dallas, Tex.  
UTAH: Mrs. Eugene X. Hall, 715 S. 11th St., Salt Lake City, Utah.  
Co-chm. Mrs. Duncan Holaday, 61 Virginia St., Salt Lake City, Utah.  
VERMONT: See New Hampshire.  
VIRGINIA: Mrs. Arthur L. Blakeslee, 2416 Noble Ave., Richmond, Va.  
EASTERN WASHINGTON: Mrs. Glenn Wimpy, W. 3828 Everett, Spokane, Wash.  
WESTERN WASHINGTON: Mrs. John Majnorich, 4715 East 187th, Seattle 55, Wash.  
WEST VIRGINIA:  
WISCONSIN: Mrs. E. C. Holterman, 124 Breese Terrace, Madison 5, Wis.  
WYOMING: Miss Florence Forbes, Farm Bureau, Court House, Rawlins, Wyo.



# *Delta Zeta—* **an Adventure in Friendship**

Delta Zeta is an adventure in friendship in many ways for many people.

## **COLLEGIATE MEMBERS**

80 Collegiate Chapters. Delta Zeta has acquired five new chapters in the past two years. Total membership has more than doubled in the past ten years.

## **ALUMNÆ MEMBERS**

135 Alumnæ Chapters. Alumnæ expansion continues with steady growth. Every Delta Zeta is a Life Member.

## **MOTHERS' CLUBS**

57 Mothers' Clubs.

## **DELTA ZETA HELPS ITS OWN**

Each year many Delta Zetas experience the bond of friendship in receiving assistance from the Delta Zeta Loan Fund for undergraduate students and the Elsa Ludeke Memorial Fund for graduate students. Many outstanding students have received scholarships from the Elizabeth Coulter Stephenson Scholarship Fund.

Each year Delta Zeta assists its collegiate chapters with loans for housing and redecoration.

The Arlene Davis award is made annually to a Delta Zeta who is studying in the field of aviation.

## **DELTA ZETA HELPS OTHERS**

Aid to Gallaudet College, the only college in the world for the deaf, has received enthusiastic response from alumnæ and collegiate chapters alike. The interest of Delta Zeta in Gallaudet since the 1954 Convention has given new impetus to our already successful Hearing Helps program.

Delta Zeta last fall presented \$300 to Gallaudet College to be used as a scholarship fund for students of Gallaudet.

Delta Zeta will award an annual scholarship of \$500.00 to an outstanding student of audiology in a college or university where a degree is offered in such field. The scholarship is available to either sorority or nonsorority women.

Hearing aids are given locally each year by many Delta Zeta Alumnæ Chapters.

Delta Zeta Collegiate and Alumnæ Chapters support a wide variety of community service projects.



# "Lamp Lighters"

*An abstract of an address given at the 1955 NPC meeting by  
Dr. Kenneth McFarland, Topeka, Kansas.*

**D**R. EDWARD ROSENOW, who became world famous as a member of the staff at Mayo Brothers Clinic, likes to tell of the incident that caused him to become a doctor. It happened when he was an eleven-year-old boy living with his family on a farm in the backwoods of Minnesota. One day his brother became rather violently ill, and while the family sweated it out the father rushed to town for a doctor.

When the doctor arrived he examined the sick boy. He looked in his throat, his eyes, and his ears. He took his temperature and his pulse. He felt his abdomen. All this time young Edward was standing behind a chair studying the anxious expressions of his parents. Presently the doctor turned to the parents, smiled, and said, "You can relax now—your boy is going to be all right." And Edward Rosenow was so impressed with the effect that announcement had on his parents that he says, "I decided that very day I would become a doctor so *I could put light in people's faces!*"

For nearly three decades now I have been increasingly identified with education, industry, business, the professions, and agriculture—and always over wider and wider areas. As a result of this experience I am thoroughly convinced that no person can be personally and happily successful unless his job is one that lets him put light in people's faces.

The first characteristic of these lamp lighting people is that they must have a light *inside of themselves*. It is this light that lets them see to do the right thing and *do it with finesse*. Most people know what is right, and a surprisingly large number of people get around to doing the right thing. But if you want to realize any dividends from doing the right thing, you must do it *with style*.

It is the light that the Lamp Lighter carries that permits him to see how things are in the *other person's situation* and thus *get into the other person's life with him*. Only in this way can one teach, sell, lead, or administer. It is this understanding that prevents one from making the

tragic mistake of believing there are two sets of rules—one for himself and another for other people.

Finally, the Lamp Lighter must keep his light *refuelled*. People sometimes ask me why I so frequently inject a spiritual note into addresses made to business, industrial, professional, and lay groups of all kinds. It is not because I am a theologian. I have never studied an hour of theology in my life. It is simply because I am sincerely trying to do a job. I want the stuff I dispense to be *right*. I want people to take it home and find that it *works* for them, and keeps on working.

Now, the plain fact is that a strong religious conviction is the only thing we have found that will keep a fellow doing the right thing—even when he is headed uphill and even when it is unprofitable. It is not enough to know what is right—there must be an *emotional drive* to keep one *doing* the right thing. In answering this great need we have never found any substitute for spiritual force. If anyone ever comes to us with another equally satisfactory answer, I shall be glad to add it to my arsenal. In the meantime, if you want to keep your lamp lighted you had better keep it connected to the High Line that leads straight back to the Source of Power.

The late Sir Harry Lauder liked to tell of the old Lamp Lighter in his hometown in Scotland. Harry used to observe him every day at dusk. The old man would put a ladder up against a light pole and climb up to light the lamp. When he had lighted that one, he climbed down the ladder and carried it to the next lamp post. Finally, Harry said, "The old man would be out of sight, but I could always tell which way he went by the lamps he had lighted."

So, I close right where I started. If you want to be—not only successful—but personally, happily and permanently successful—then do your job in a way that puts light in people's faces. Do that job in such a way that even when you are out of sight—folks will always know which way you went by the lamps you left lighted.

• • •

## IT'S A GRAND SLAM!

... for you, for the Endowment Fund, for Delta Zeta, when you use DZ playing cards in your home and at your parties. The handsome suede gift box includes a double deck—one pack brown, one pack green—of excellent quality plasticized cards with the Delta Zeta crest in gold. See page 151 for ordering information.



# NEWS from the alumnae



MRS. C. A. ALSETH, A A, and MRS. JULIAN GORMAN, A Ψ, as they appeared in a publicity shot for a style show given by the Dallas Alumnae chapter to benefit Gallaudet College. The show featured high fashion as well as out-of-fashion clothes. (Photo by *Dallas Morning News*.)



# NEWS OF THE *Alumnæ*

## PROVINCE I

### Buffalo

Our delegate, Katherine Wendt, was president of the City Panhellenic group. Because we are a small group, we confine ourselves to cooperating in the Panhellenic projects, which are stuffing envelopes for the Crippled Children's drive and contributing to a local award for outstanding girls graduating from local high schools.

We are quite an informal group, but we do have a theater party each year, and usually a tea and tour of the local art gallery for a special exhibit.

BETTY FAIR LOVELACE, *editor*

### Hartford

In October we joined with the Hartford Alumnæ chapter of Kappa Alpha Theta in sponsoring a bridge-fashion show. We contributed our share of the proceeds to the Mystic Oral School, to help further its work for the deaf.

We were proud to have our own Shirley Raissi as speaker at the November meeting. She is a lawyer and gave a helpful talk on "Buying Property."

Instead of having a grab bag for members at our Christmas party, we donated small gifts to the Middletown State Hospital.

LOIS JOYCE SCHNEIDER, *editor*

### Providence

At the January meeting we rolled cancer bandages and collected used Christmas cards for children in the Charles V. Chapin Hospital. A contribution to the Memorial Fund was made in honor of Mrs. Bessie Wells, Beta Alpha housemother for many years, who died last spring.

Grace Whaley, Rhode Island candidate for Woman of the Year, was honored with a "This Is Your Life" program on Founders' Day. She has set up a scholarship fund for Delta Zeta students. The Mother's Club joined us for the Christmas meeting.

Our annual fashion show will be in May. Miss Rhode Island, a Beta Alpha alumna, will narrate. Profits from this show are given to the hearing aid fund.

The November food sale was a three star event: 1. A financial success 2. Many more alumnæ actively supported the event 3. Sterling candlesticks engraved with the names of the founders were purchased for the chapter with the proceeds.

Two projects for the year are bringing address files up to date and reactivating the alumnæ newsletter *Eaves Dropper*.

ESTHER G. ROWAN, *editor*

### Rochester

The year's programs have included a talk on the adoption of children, a benefit bridge, Founders' Day banquet, and a piano recital by Velora Beck Atkins, Z.

Contributions brought to the Christmas party were used to buy gifts for shut-ins and to send a check to Alpha Kappa chapter.

Since most of the group are homemakers, we enjoyed our trip to the Rochester Gas and Electric Co. for a demonstration of new cooking methods and recipes.

HILDA MCKERROW MACNAB, *editor*

### Syracuse

Nationally we have contributed money for chairs for the Gallaudet Library. Locally we plan to give a hearing aid through the Speech and Hearing Center at Syracuse University.

Proceeds from our annual bridge party provide money for our Hilda Schnauber Scholarship fund. The fifth scholarship will be presented this spring to an outstanding pledge of Alpha Kappa chapter.

Roofus Goofus children's toys and pocketbooks, bill-folds, and jewelry were successful additions to our regular Christmas card project for raising money.

MARY FRANCES SIMS, *editor*

## PROVINCE II

### Long Island

Annually the Nassau group of the Long Island Alumnæ has a meeting at which everyone makes articles for nearby hospitals or institutions. This year we made toys for Meadowbrook Hospital.

All groups of Long Island Alumnæ met with Alpha Zeta chapter at Adelphi College for the celebration of Founders' Day.

The new Queens group has held several organizational meetings. The Nassau group planned a Broadway theater party for February.

DOROTHY TEMEY CASTILLE, *editor*

### Northern New Jersey

In keeping with our theme of "A More Charming You," the year's program emphasizes various facets of this subject. For example, the January meeting featured a beauty demonstration, while in November we learned of man-made fibers and new materials on the market.

We celebrated Founders' Day jointly with the Northeastern New Jersey chapter. Decorations at the Christmas meeting featured beautifully wrapped gifts which were later distributed to a group of elderly women associated with the Newark Charitable Association.

BETH SEVILLE BATES, *editor*

### Northeastern New Jersey

We collected more than five books per member for the Gallaudet Library in November. Other collections included cookies, old clothing and wrapped gifts for donation to the Community Service Center, Mahwah, New Jersey.

Mrs. John Deniston was elected to replace our president, Mrs. Eugene Donohue, who had moved to Detroit.

EVELYN SHOLTES KRITCHEVSKY, *editor*

## PROVINCE III

### Baltimore

To foster more actively the spirit and ideals of Delta Zeta and to promote the interest of Delta Zeta generally, the Baltimore Alumnæ chapter is embarked on a new activity—assistance to a college chapter. Since there is no college chapter in Baltimore, Gamma Phi chapter has been selected. The project was initiated in February





*"Honolulu Advertiser," May 6, 1955*

RECEIVED GIFT—Wayne Yukumoto, right, sixth grader at Royal school, was the happy recipient of a hearing aid, a gift from Honolulu Delta Zeta alumnae chapter. Pictured with Wayne are, from left, Ronald S. Fujii, manager of Sonotone of Hawaii; Mrs. Robert L. Mullen, Delta Zeta president, and Mrs. John Evans, treasurer.



DR. LEONARD M. ELSTAD, president of Gallaudet College, was the principal speaker at the annual banquet of the Indianapolis chapter of Gallaudet College Alumni Association. For the first time this annual affair was open to the public. Members of the Indianapolis Alumnae of Delta Zeta were invited to attend the banquet because of Delta Zeta's interest in Gallaudet College as its national philanthropic project. Mention of this, the Hearing Helps program and the scholarship in audiology and allied fields was made at the program.

Photographed at the banquet were Dr. Elstad, Mary Elizabeth Thumma, A N; Helen Kincaid Hudson, B M; Anita Brownlee Platte, A N; Mr. Lester Stanfill, president of G.C.A.A.; Catherine Hicklin Romy, I; Mary Merrill Stihl, Ψ; Jeanette Caudle Harding, Ψ; Dr. J. A. Raney, superintendent of the Indiana State School for the Deaf.



with a cash gift toward the purchase of furnishings in the chapter room.

Our Christmas philanthropy was directed toward the needy aged, with individual gifts of cash presented to a group of fifteen patients at Baltimore City Hospital.

A tour of Hampton House, Towson, Maryland, a national historic shrine, added to the pleasure of our celebration of Founders' Day.

Other meetings have featured a musical quiz, Christmas party, an amateur night, a "charm" lecture and a rummage sale.

FRANCES ANN STOKES, *editor*

### **Pittsburgh**

Our local philanthropy is the Western Pennsylvania School for the Deaf. Last spring we held our annual benefit bridge at the school, so members might better understand how their money is being used. With the money earned we gave hearing aids to children whose parents could not afford to buy them. This spring the money will be put to the same use, but the benefit will be a bridge-luncheon in Pittsburgh's new Gateway Center.

At our January meeting we discovered what we sounded like on the telephone as the speaker from the Bell Telephone Co. recorded our voices and played them back. She then gave suggestions on how to make our telephone personalities more attractive.

The February meeting is traditionally reserved for working with Omicron chapter in preparation for their extensive February rush.

MRS. J. K. VAN KIRK, *editor*

### **Richmond**

Ruth Colton Gleach, Θ, is a member of the newly organized Richmond Artists Association. Mary Frances Blakeslee, Δ Δ, is treasurer of the Richmond Panhellenic. The only woman member of the Chesterfield County, Va., Bar Association is Anne Monroe Wintzer.

Mrs. Robert Beach, Director of Alumnae Region One, visited the chapter at the November meeting.

Successful money raising projects have been sales of pecans and Tupperware.

ANNE MONROE WINTZER, *editor*

### **State College**

Individual elective honors for members of State College Alumnae include: Mrs. F. J. Doan, chairman of Voters Service Committee of the League of Women Voters; Mrs. H. R. Fortmann, district chairman of the Pennsylvania North Central Home Economics Association and program committee of College Heights P-TA; Mrs. H. K. Wilson, chairman of awards, Scholarship and Loan Fund Board of the American Dietetic Association, awards committee of the American Home Economics Association, and membership chairman of Penn State chapter of Sigma Xi; Winona Morgan, advisory committee for Home Economics Research Branch of the U.S. Dept. of Agriculture and expansion committee for Phi Upsilon Omicron; Mrs. Esther Denniston, corresponding secretary of State College Altrusa Club. All except Mrs. Fortmann are members of Gamma Delta chapter. She is a member of Chi chapter.

Founders' Day was celebrated jointly with the Gamma Delta chapter. Mrs. Doan, Miss Morgan and Mrs. J. U. Ruff were presented awards for outstanding alumnae service.

The annual knit bazaar in December raised funds for hearing aids and the Gallaudet College Library fund.

MAIDA HAL MUSSER, *editor*

### **Washington, D.C.**

Founders' Day was doubly eventful for the Washington, D.C. Alumnae, since member Marion Worthing, T, was officially named Woman of the Year on that occasion. As part of the same evening's program we were treated to a preview of the locally produced color film "Delta Zeta Visits Gallaudet College." This movie was of particular interest to our chapter because Marion Worthing was the photographer and Margaret Fuller Dodderidge, T, wrote the script. Furthermore, Lucille Bolstad May, T, is national chairman of the special committee on Gallaudet College, and Lucille Hunt Pendell, A E, is college librarian. Nevertheless, we don't feel that our enjoyment of the movie was merely pride in a local product. Our alumnae group consist of members of 63 different college chapters, which we believe makes us a rather representative cross-section of Delta Zeta. Therefore, we feel sure that all of you will share our enthusiasm for this movie and we welcome your reactions after you have seen it.

Three auctioneers had difficulty keeping up with the bidding at the seventh annual Christmas auction. Our Christmas party was a joint meeting with Alpha Delta chapter in their apartment.

LUCY CARTER DORITY, *editor*

### **Wilmington**

Connie Knight, B Ω, who is an engineering assistant with the duPont Co., has completed a six week programmers' training course for Univac. She is the second woman in the engineering department to receive such training.

Festive paper napkins are being provided for all trays at the Riverside Hospital on special occasions throughout the year.

A lucrative project was raising and selling pepper plants from seed of the original plant which Mary Ihde received in the hospital.

ELEANOR HANSEN NICHOLS, *editor*

## **PROVINCE IV**

### **Cincinnati**

Dorothy Nichols Dolbey, Ξ, was re-elected a member of the Cincinnati City Council. During her previous term, Mrs. Dolbey was vice-mayor, and for some months served as acting mayor after the death of the mayor.

The chapter contributed to the Gallaudet Library fund and assisted Xi chapter with the redecoration of their house.

The Christmas meeting featured an illustrated talk on the most outstanding art in the Cincinnati Art Museum, emphasizing those works that pertained in any way to Christmas.

The chapter sells boxed candy and bolts of ribbon to members during November and December, a project which has proved successful for the second year.

In August the City Panhellenic Association sponsored a "Campus Carousel Party" in cooperation with a large department store. Girls attending college in the fall were asked to bring their mothers. Collegiate and alumnae members of all sororities acted as hostesses. The program included a skit "Sandy Goes to College," featuring representatives of every collegiate group who spoke about their accomplishments or philanthropies. Delta Zetas emphasized their work with Gallaudet College and their overseas bundles. The skit was followed by a style show and tea. The program was well attended and enthusiastically received by both the girls and their mothers.

DOROTHY CALLANDER TEEGARDIN, *editor*



## Columbus

Columbus Alumnae are especially proud that Theta chapter celebrates 45 years on the Ohio State University campus this year.

The first meeting of 1956 was held at the chapter house in honor of Theta's birthday. Anne Clarke, past president of the chapter, and outstanding graduate, was the speaker for the afternoon. A recent participant in the International Farm Youth Exchange Program, Anne spent the past summer in Ireland, living with families in the northern and southern parts of the country. She is now Home Demonstration Agent for Delaware County, Ohio.

BETTY MEYERS, *editor*

## Dayton

Dayton Alumnae are happy to have purchased a second chair for the Gallaudet Library. We continue giving monthly evening parties for a girls' cottage at the Montgomery County Children's Home.

At the November meeting alumnae enjoyed a demonstration of Christmas gift wrapping. They displayed their ideas in December when a contest was held for the unique and prettiest gift wrapping in the Christmas exchange. An exceptionally fine program for the December meeting was the history and singing of unusual foreign Christmas carols presented by soloist Mrs. Elizabeth Shough.

A new money-making project this year is the sale of ribbon. We continue to collect ten cents from each member not wearing her pin to a meeting.

MIRIAM BURNS WAGNER, *editor*

## Hamilton

Hamilton Alumnae purchased a number of infant layettes and presented them to the Butler County Welfare Association for distribution to infants going into foster homes.

The chapter was active in forming the Hamilton Panhellenic organization. To start the ball rolling, Delta Zeta alumnae sponsored a tea in November at the Hamilton City Club. All college sorority alumnae living in the city were invited, and the response was extremely enthusiastic. Approximately 150 women attended. After a pleasant get-acquainted session, they heard the president of the Cincinnati City Panhellenic, Mrs. Richard E. Cooke, explain the purposes and activities of city Panhellenics. A date was set at that time for the first meet-



HAMILTON ALUMNAE members who worked on the tea to initiate a city Panhellenic are Eileen Bott Lowell, A, arrangements; Ruth Sharp May, A, chapter president; Mary Conroy Spoerl, E, general chairman; and Jo Anne Holbrock Apfeld, A, publicity chairman.

ing of the Hamilton Panhellenic. Mary Conroy Spoerl, E, was elected president at that meeting.

JO ANNE HOLBROCK APFELD, *editor*

## PROVINCE V

### Akron

Helen Cramer Smith, A Δ, was awarded an honorary life membership by the Akron Panhellenic Association for outstanding service to the organization during the past ten years. Helen is one of two to be recognized in this manner since the founding of Panhellenic in 1934.

Clare Denman Vetter received a citation from the Red Cross signed by President Eisenhower, which is the first and only one awarded in Akron, for her work as chairman of the Grey Ladies in Children's Hospital for over 10 years and for having completed 4,000 hours of volunteer service in that institution. When the Rotarians entertained their wives in December, the president gave special recognition to Clare because of this award.

Akron Alumnae contributed \$50 in November to the Gallaudet Library Fund and pledged another \$50 to be paid by June. The February meeting featured the film of Gallaudet and a report by Regional Director Sally Beach of her visit to the college.

The successful November meeting saw the addition of six new members to the roll and 28 members present. Husbands were entertained at the December meeting.

The chapter sponsored the ticket sales for the play "Born Yesterday" in February. A committee served refreshments to the cast and patrons following the performance.

EUNICE WALKER FOOT, *editor*

### Cleveland-East Side

Lucile Crowell Crooks, A, is third vice president of the Cleveland Council of Church Women; second vice president of the Radio & Television Council of Greater Cleveland; district director of the Ohio Congress of Parent and Teacher Association; member of the development council of Miami University and a member of the Board of Trustees of Miami University (appointed by the governor).

In the fall, our group saw the results of its doll-dressing project for the Cleveland Fresh Air Camp and Hospital. Sixty of the young girl patients were presented with dolls completely outfitted. Many of these children have never had dolls of their own.

We made the sale of vacuum packed nuts our money raising project. This year we also sold tickets for the Karamu Theater production of "The King and I."

Speakers at meetings have included Regional Director Sally Beach, aviatrix Arlene Davis, and chapter president Alice Patterson.

ELEANOR M. BEAM, *editor*

### Cleveland-West Side

A little bit of frillery will lift almost any woman's spirits. At our November meeting we set about with colorful felt, scissors, needles, and sequins and turned out decorated collars by the dozens. These went to the Cuyahoga County Juvenile Detention Home where the girls who receive them have gotten themselves into situations that would make anyone "blue." Object of the gifts is to convince the girls that someone "cares." We also collected used radios, magazines and other handicraft materials for the Home.

A fur style show, featuring ten chapter members modeling over forty fur pieces was our first meeting of the year. The Berea group of our chapter had a successful rummage sale in December. Founders' Day was ob-





AT THE LUNCHEON celebrating the charter presentation to Battle Creek Alumnae chapter were Ruth Kelsey, Polly Kirsch, Audrey Raville, Janette Larke, Jean Alborell, State Chairman and Elsie Mayo.

served by both the East and West Side Cleveland groups and Gamma Alpha chapter.

The fun and mystery of Christmas packages was heightened when Delta Zetas from all over the country mailed packages which were auctioned at our annual Christmas party. There were packages from Miami, Florida, to Seattle, Washington.

JULIE KISHEL FOSTER, *editor*

#### **Toledo**

A Tupperware plastics party will be repeated and proceeds will be our contribution to Gallaudet College. Proceeds from a square dance will be used for our local philanthropy, the nursery school of the Frederick Douglass Center. Sales of hosiery and "Handy Labels" have also added to the budget.

A Delta Zeta quiz program highlighted our Founders' Day celebration.

Lou Black, A K, is president of the Toledo Branch of A.A.U.W., succeeding Kay Fessler, A. Thus, Delta Zeta has been the guiding light for that organization for three years and for one still to come.

During Panhellenic Week at a local department store, outstanding women were nominated for the Woman of the Week. Hazel Vossler, O, was runner-up and appeared the next week with other Delta Zetas on a local TV program on which her numerous civic, church and charitable activities were lauded. She represents us on the board of the Frederick Douglass Center.

FERN RILEY WILSON, *editor*

### **PROVINCE VI**

#### **Albion**

Thelma Hawes presented the charter to the Albion Alumnae chapter at the September meeting. She also displayed the chrome tea service intended as a Christmas gift to Beta Pi chapter.

Founders' Day was the occasion for a joint meeting of alumnae and collegiate members at the chapter house. Members presented an amusing and informative skit depicting the various characters engaged in rushing.

JOAN YOUNG, *editor*

#### **Battle Creek**

The Battle Creek Alumnae chapter received its charter

at a luncheon, October 15. Mrs. Jean Alborell came from Detroit to present the charter and speak at the luncheon.

The December meeting was devoted to packaging cookies and candies to be delivered to four nursing homes for aged and infirm.

Films on growing seeds to produce choice flowers and vegetable gardening made up the program for the January meeting.

CLARABELLE MORGAN, *editor*

#### **Detroit**

In December members of the East Side group contributed much to the Christmas spirit at the Mary L. Nursing Home for older people. They made gay tray mats, sent greeting cards to patients, and arranged to have boxes of fruit delivered to the home for holiday enjoyment.

The new Oakland group, organized for those Delta Zetas in that area who prefer evening meetings, is making favors for 100 children's trays for use at local hospitals. Favors were designed by Barbara Wesley and Phyllis Hassberger.

The annual money-raising project involved the distribution of 800 pounds of pecans to be sold by members of the entire alumnae chapter of Metropolitan Detroit. This has been a successful project for the past five years.

The West Siders have volunteered to help Gamma Sigma chapter by designing and making favors for their rush parties.

A certificate in recognition of the chapter's volunteer work in College Women's Volunteer Service and Cancer Aid was recently awarded to the alumnae chapter.

CATHERINE JONES SOMERS, *editor*

#### **Flint**

One of our most eagerly anticipated meetings is our annual cooperative dinner and white elephant sale in May. We have found this a most enjoyable and painless way to augment our treasury.

We are blessed with suburbanite members who graciously open their homes for our June family picnics, where all our potential Δ Z's and their brothers can really brush off the confines of city life and enjoy themselves.

Our most ambitious program each year is our party



for neglected children from the Michigan School for the Deaf, located in Flint. To raise money for this project we have sold cards and small articles such as pocket notebooks and sewing cases.

ELEANOR RAMLOW BULLEN, *editor*

### Lansing-East Lansing

Gifts of food, clothing and toys brought to the December meeting were assembled in baskets and delivered to a fatherless family of eight in our locality.

We had our largest turn-out for the November meeting when Dr. Gerald Prescott, professor of botany and plant pathology at M.S.U., showed slides on Alaska and narrated the pictures, "North to the Arctic."

MARCELINE KIDMAN WEAVER, *editor*

## PROVINCE VII

### Ft. Wayne

A project in which everyone participated was that of hemming 50 dish towels and donating them to the Christmas Bureau. They were put into baskets of food for needy families. Our group has also purchased a chair for the Gallaudet Library and has sent a gift to Psi chapter for their furnishings fund.

We were able to buy jewelry and other gifts at reasonable prices through a special project and still have a profit to add to our contribution to Gallaudet College. This proved to be a pleasant way to increase our funds and do some Christmas shopping, too.

VERA HECHT LAMBERT, *editor*

### Indianapolis

In an effort to bring Delta Zetas everywhere closer together on Founders' Day, we used note paper furnished at this meeting to write to Delta Zetas we "remembered with affection." The notes were mailed out proudly bearing the Delta Zeta stamp and enclosing our deep affection for a Delta Zeta sister. Many of us have enjoyed replies from these friends so remembered at this time.

Sixth grade pupils of Marjorie Byram Young, Δ, gave a lovely program of Christmas carols and dances at the December meeting. When Santa Claus arrived for a personal visit, he found a most receptive audience for his inspiring Christmas message. (Santa was the talented husband of Muriel Jennings Tucker, E.)

ISABELLE EARLY SCHMIDT, *editor*

## PROVINCE VIII

### Galesburg

Each Christmas we sponsor a canned juice shower for the local chapter of the Red Cross.

In January we saw the color movie about Gallaudet College. Juanita Kelly Bednar added to our enjoyment of the movie by telling of her visit there last fall. Members of Nu chapter were invited to this meeting.

Rummage sales are our chief money making projects. Despite the fact that sales locations are booked far in advance, we still find them very worthwhile. We also enjoy combination white elephant and bake sales occasionally at a regular meeting.

We set aside our December meeting for our traditional sandwich shuffle and Christmas party. The program consisted of wrapping gifts we had brought for patients at the Galesburg Research Hospital and playing games.

INEZ MCGAAN BRIGGS, *editor*

### Peoria

Dorothy Gee Jackson, A B, is vice president of the City Panhellenic. Margaret Long Whisenand is president

of the Friendship Foundation for Foreign Students and chairman of the Y.W.C.A. tearoom committee. Helen Giebenhain Clark, Γ, is vice president of the Women's Civic Federation. Violet Neuman Claassen, I, is recording secretary of the Amateur Music Association; and Blanche Cook Baker, E, is on the Board of the Marquette Boys Home.

Claire Austin, a social worker and assistant director of the Florence Crittendon Home in Peoria, talked on "Understanding Our Emotions." She made personal applications to show how important this is to all of us if we wish to live happy, useful lives.

Instead of buying gifts to exchange at our Christmas party, each member was asked to bring something made with her own hands, materials not to exceed 25¢. It was a most interesting experience and indicated many talents among the members.

DELLA W. THEDE, *editor*

### Urbana-Champaign

An Easter bazaar and bake sale will be among the spring activities of the alumnae. This affair will be held at the Alpha Beta house and local chapter members will assist as hostesses. Profits from the bazaar will be used to support the chapter's charity project.

One of the alumnae projects in the fall was the publication of a new membership directory and yearbook.

The Alumnae and Junior groups met jointly at a family picnic in July and for the Christmas party. The Alpha Beta pledges were entertained in November and the seniors will be honored in May.

JANET BARKER PHILLIPS, *editor*

## PROVINCE IX

### Chicago

A scholarship is given annually at Northwestern University for a student who is planning to teach deaf children. Books were collected in January for Gallaudet College.

At the October North Side meeting, Betty Andrews, A Δ, presented an exceptionally interesting discussion of her school (The Day School) which was coupled with delightful human interest bits.

At The Founders' Day celebration Florence Hood Spear, Robe chairman, Delta Zeta, gave a vivid description of the six founders. An award was presented to Susan Fisher as the outstanding member of Gamma Mu chapter.

LUCILE S. PETERSON, *editor*

### LaGrange

Through CARE, the group chose to adopt an orphanage in Korea. Every two months, a package of warm, used clothing and other requisites has been sent to the children.

A silent auction of white elephants at the Christmas party raised fourteen dollars for the treasury.

While we talk over business at meetings, each member is provided with needle and thread to work on initiation robes. The "P.S." on meeting notice cards which says "Bring your own thimble" means there is another batch of white silk to be hand hemmed. The group feels that they are really giving a little of themselves to college chapters all over the country.

FLORENCE HOOD SPEAR, *editor*

### Madison

Mrs. Helen Holterman is the chairman of the legislative committee of the Southern Wisconsin Education Association.



November found us having a successful talent and white elephant sale at which we raised \$59. It was a fine opportunity to show off the Tau chapter house to friends and have a very successful evening. We have donated \$50 to the house building fund.

The Christmas party was celebrated with Tau pledges and provided a wonderful chance to get acquainted.

SUZANNE CHAICLIN BYERS, *editor*

### **North Suburban (Chicago)**

In October our opening tea was held at the impressive new home of Gail Brook Burket and the table displayed the candelabra awarded to Gail in 1954 as Woman of the Year. Betty Dean, Illinois State Chairman, Hazel Buffmire, Province IX Director, Helen Frisch, president, and Gail were in the receiving line.

During January "Town Meetings" held the spotlight, with eleven groups participating. Slides on our local project, The Camp for Diabetic Children, were shown and explained at all meetings. These town meetings permit closer association with Delta Zetas in a smaller area and are always well attended.

Sally Viger, in our monthly newsletter, manages the "Δ Z Trading Post," a successful sales venture converting unwanted items in one home into useful items in another—and money into our treasury.

HAZEL KRAFT EILERS, *editor*

## **PROVINCE X (South)**

### **Des Moines**

Last summer president Inez Fritze contacted the director of the local chapter of the Hearing and Speech Center and learned of the need for redecoration work and new equipment. Our group decided to make this our special philanthropic project so Messieurs and Mesdames Myron Jensen, Jack Haskins and George Peterson took charge of painting the walls and furniture in the pre-school nursery therapy room. The chapter purchased a table, chairs and a lip-reading mirror for the center, also. In the fall members volunteered to help with testing the hearing of grade school children throughout the city.

During the fall while Gamma Epsilon chapter house was being remodeled, redecorated, and refurnished, several of the alumnae had the girls living in their homes. Some members helped by painting and cleaning at the chapter house and the group also presented the chapter with a set of china.

MARY JAY TURNBULL, *editor*

### **Omaha**

Olive Landale is chairman of the project to present a hearing aid to a needy child in the Omaha public schools.

In October, Marcella Cadwell, Director of Alumnae Region Five, was luncheon guest of the Omaha chapter.

Tea towels, jelly, salad bowls, and an electric pad have been given to Beta Tau chapter since September.

Gifts and money were donated by the chapter to the annual bazaar held for the Children's Memorial Hospital.

Our annual Christmas party is a tea for mothers and daughters of alumnae and Delta Zetas home from college.

BERNICE PAGE, *editor*

### **Sioux City**

The alumnae participated in the city Panhellenic party for all girls entering college last fall. Mrs. John Seubert represented the chapter in planning for the party which had a nautical theme.

EVERLYN HANNA, *editor*

## **PROVINCE X (North)**

### **Denver**

Denver alumna, Marcella Cadwell, Director of Alumnae Region Five, spoke on "Why Delta Zeta" at the Founders' Day luncheon. Mrs. Frances Gregory of Long Beach, California, learned of our luncheon through the excellent publicity and arranged to attend, since she was visiting near Denver at the time.

Other meetings have featured a demonstration of centerpiece arrangements, the Christmas party, a rummage sale, a night in Hawaii, a needlework guild program and our annual spring potluck dinner.

PEGGY POND DURBIN, *editor*

### **Twin City**

The Twin City Alumnae decided last year to have personal contact with the deaf locally in Minneapolis by providing a part-time case worker for their recreation center. In addition this fall, a pre-school nursery for the deaf was begun with our members' help. Our December meeting was devoted to wrapping toys for the nursery and sorting pictures for their use. Since there is such an interesting variety of hobbies among our alumnae, the March meeting was used to make and demonstrate materials for help and use in the nursery.

A very pleasant tradition each year is the Christmas party with the entire alumnae chapter and Gamma chapter at the chapter house. This year our gift to the house was a large sunburst clock for the main hall. The clock is set off by matching candle sconces.

The Junior Alumnae section is in charge of State Day with plans for a luncheon in May at which the graduating seniors are the guests of honor.

JOYCE H. MADSON, *editor*

## **PROVINCE XI**

### **Manhattan**

Mrs. M. Russel Dary is chairman of the yearbook committee of A.A.U.W. Mrs. Randall C. Hill is state chairman of the A.A.U.W. educational TV and radio project. Mrs. W. F. Klipper is treasurer of the Manhattan Civic Theatre, and state membership chairman for Delta Zeta.

Leota Shields Evans, A, presented a most interesting program in November on "Symbolism in Christmas Decorations." She pointed out that many of our customs are a strange combination of pagan and Christian ideology and that there is a growing awareness of the need for putting Christ back into Christmas.

Twenty-seven Delta Zetas attended the Founders' Day luncheon at which Mrs. Renna Hunter, A, of Topeka, talked on the meaning and value of our Delta Zeta friendships.

EVERLYN SHAUB BRENNEMAN, *editor*

### **Marshall**

During September our time was devoted to assisting Gamma Gamma chapter before and during rush week. Later we served a covered dish dinner for chapter initiates, pledges and alumnae.

December found us taking orders for fruit cakes to add to our treasury. We assisted Gamma Gamma in remembering a needy family with food, clothing and toys at Christmas time, and we also sent a donation to Gallaudet College.

MILDRED L. WARD, *president*



## Oklahoma City

Oklahoma City Alumnae chapter includes many active leaders. Among them are: Polly Ryder Leopold, Ohio Wesleyan University, president of Oklahoma City and County Girl Scout Council, director of Oklahoma City P.T.A. Council, and in charge of the reading and library service of the Congress of Parents and Teachers; Naomi Sengel Tracewell, B I, chairman of hospitality at Northwest Classen High School P.T.A.; Elsie Steiner Kelso, T T, parliamentarian for the same group and historian for the Hospital Auxiliary of St. Anthony; Doris Seals Goldsmith, A Z, vice president of the Oklahoma County Mental Health and mental health chairman for the P.T.A. City Council; Katharyn Steele Lockard, I, president of the Board of Directors of the Children's Convalescent Hospital; and Emma Lou Tullock Perkins, A B, first vice president of Northwest Classen High School P.T.A. and membership chairman of the State Board of Professional Engineers.

Our philanthropic project for the year is helping the Oklahoma Speech and Hearing Clinic at University Hospital. We are contributing toward the purchase of a hearing aid for a three-year-old girl patient at the clinic. We have also contributed 50 books for the library. One meeting was devoted to making "word pictures," an aid in teaching the young patients. In addition to the local project we have contributed \$25 to Gallaudet College.

We had a double treat at our registration meeting this year. The highlight of the program was a review of *Oklahoma Run* written by Alberta Wilson Constant, a member of the local sorority which later became Gamma Upsilon chapter of Delta Zeta. Our second treat was meeting for the first time in the new Student-Faculty Center at Oklahoma City University.

Our annual fund raising project, the sale of Christmas cards, wrappings and everyday cards netted us \$40.

Founders' Day was observed by the Alumnae and members of Gamma Upsilon chapter with a banquet.

Joyce Ellerbee Outhier, T T, is state chairman in charge of publicity for the March of Dimes.

MARION ROBINSON FRY, *editor*

## St. Louis

Norma West Henderson, A, is president of the Cornelia Greene D.A.R. chapter and treasurer of the College Club of St. Louis. Dr. Mary E. Morris, O, is secretary of the newly formed St. Louis Physicians Orchestra. Nancy Craig, A, has been named public relations director of the Girl Scout Council of Greater St. Louis. Lorraine Gaggin Duggins is co-director, with her husband, of the Youth Group of University Methodist Church.

At our September meeting we were privileged to see a color film, "An African Safari," made by a St. Louis big game hunter especially for the Missouri Historical Society and edited by his secretary, Mary Davis Schultz, B X. A few days later we were excited to learn that the lovely blonde girl shown bagging an elephant and a lion in the film had been chosen as the Veiled Prophet Queen, to reign over St. Louis society.

A buffet supper held during the Christmas holidays, at which we entertained husbands and other guests, was a most successful party. Old-fashioned mixer games were played and general socializing was the rule of the evening. We find parties of this type a good way to get our younger members out, and a good time at a strictly social gathering usually spurs interest in meetings and the work of the chapter.

JEAN NELSON STOCKHAM, *editor*

## Wichita

The September meeting speaker was our own Laura Parker Allen, H, who showed colored slides and told of

her trip to Japan with her family to attend the marriage of her daughter.

Members present at meetings buy chances and draw for one prize at each meeting. The lucky winner brings the gift to be drawn for at the next meeting. A minimum cost is put on the gift. Even in a small group this is fun and it adds a few dollars to our treasury.

MILDRED KING ROHWER, *editor*

## PROVINCE XII

### Corvallis

Corvallis alumnae serve as co-sponsors for a senior Girl Scout troop at the Children's Farm Home, sponsored by the W.C.T.U. The group helps the Girl Scouts with their cooky sales, gives a party for them once a year, and gives them presents at Christmas, as well as having members ready to assist the girls whenever called upon.

This year we entertained the Chi pledges at a Christmas party. After a get-acquainted period, games were played and white elephant gifts exchanged. We very much enjoyed the opportunity of becoming better acquainted with the fine group of pledges of the college chapter.

Approximately \$100 was raised through a rummage sale. Some of the money will be sent to Gallaudet College.

HAZEL SAREMAL EL MAGHRABY, *editor*

### Eugene

The Eugene chapter alumnae have volunteered to assist with the Hearing Clinic in the city. The clinic is especially interested in detecting hearing difficulties in school age children. Hearing aids are then loaned or given to those unable to buy them.

The Marjorie Thompson Reynolds Scholarship Fund benefit bridge was held in February and we were hostesses. This scholarship is awarded to one sorority woman each year who otherwise would not be able to attend school. The fund is perpetuated by sorority donations and the bridge benefit.

In October the Mothers' Club and alumnae held a one day rummage sale which netted \$90. This money will be used for the Omega chapter house. In the fall we purchased carpeting for the hall stairway from money earned the preceding year.

Joan Jacobson explained the meaning of the hula motions and the meaning of Hawaiian songs at our annual party for new pledges.

MARJORIE N. YOUNG, *editor*

### Portland

Members with new positions in other organizations are Florence Sharpe Green, A X, president of the Oregon State College Mothers' Club; Helen Ready Barzee, O, president of the University of Oregon Mothers' Club; Maurine Brown Neuberger, O, co-editor of Washington, D.C. News Letter; Kay Butterfield Larson, A A, managing editor of the *Oregon Nurse Monthly Magazine*; and Betty Jones Walsh, A, president of Franklin High School P.T.A.

Packages of clothes, food and vitamin pills are being sent to a Polish family overseas regularly.

Our treasury was depleted by the hearing aid presentations of last year, so we have been devoting all our energy to money making. The most lucrative projects have been the sale of theater tickets, gummed address labels, and individual bridge parties with a small playing fee. A rummage sale is scheduled.

Collegiate members were invited to our Harvest Time dance on Thanksgiving Friday and to a luncheon during Christmas vacation.



Our most enlightening meeting during the fall was a potluck supper at Willamette View Manor, a modern, luxurious apartment building for the retired. The hostess, Gertrude E. McElfresh, B, has been a Delta Zeta for 43 years and spent several of those years as English Professor at Oregon State College. After a tour of the recreational facilities, the apartment manager gave an interesting outline of the planning and financing that brought about this apartment building.

BETTY SIGURDSON, *editor*

### **Pullman**

Delta Zeta authors made their bow to our community by way of a tea in their honor. None was present in person but fourteen were present by proxy, or by book, actually. Our project of a collection of books by Delta Zeta authors for our public library became a reality when we displayed our initial purchase of fourteen volumes at the tea.

Invitations were sent to all Panhellenic alumnae—and in this sorority minded college town that was a lot. The wording of the invitations piqued the interest of everyone: "Delta Zeta Authors' Tea." What could it be? It was something so new in idea that we're sure many came just out of curiosity.

Marie Moree, originator, promoter, and sponsor of the project, also planned the tea, held during Christmas holidays at the Phi chapter house. When the guests arrived, they were shown the collection of books and our project was explained with plans for continuing it each year. Book plates reading "Presented by Delta Zeta Pullman Alumnae" are in the books, which are on special display at the library.

Pouring at the tea table, in addition to our president Leta Brock, were the past president of the public library board and the president of the City Panhellenic Association. We feel that this "Kickoff" tea has called attention to our activity on behalf of both the library and the sorority and that whenever a Delta Zeta author's bookplate is seen or the book enjoyed it will make an extra friend for Delta Zeta.

BETTY WILSON HIGINBOTHAM, *editor*

### **Salem**

In September Mildred Deischer showed pictures and told of her time spent at Columbia University and other points of interest in the east. Kayrene Butler had toured Europe last summer and showed her slides and gave an interesting talk in November. The December potluck dinner proved we have many fine cooks in our midst. January brought laughs with the annual white elephant gift exchange. One "elephant" was an old Delta Zeta scrapbook complete with dust, and needless to say it brought back many memories. The February meeting was replaced by a benefit bridge to raise money to purchase a chair for the Gallaudet library.

MRS. CHARLES H. DERTHICK, *editor*

### **Seattle**

We began a busy season in September, inspired by a new kind of program. Program chairman Donna Prevost is devoting the entire series of programs to a study of Delta Zeta, little known facts about our origin, and our progress to the present. These programs are designed with two purposes. First, to renew our enthusiasm in Delta Zeta—to become re-inspired and re-dedicated. Second, to lay the groundwork for a very big project here, the raising of funds for a new chapter house.

Guest speakers at Founders' Day were Eleanor Fariss, national director of house corporations; Doris Gillespie, national recommendations chairman; and Lee Amey, president of the corporation board. The 32 new pledges

were presented and the alumnae chapter presented a lamp to the chapter in appreciation for the distinguished activities records being made by the members.

With this inspirational beginning, Seattle Alumnae are occupied in finding ways and means to raise money for the building fund. President Helen Deasy has established two awards (perpetual, we hope) to be presented to the alumna who has given the most inspiration to our group and to the alumna who has given the most devoted service. These awards will be presented in the spring.

We are also proud to assist our own Eleanor Fariss in planning a special luncheon for convention. It will be our first, and we promise an artistic and stimulating theme. Chief assistants are Kay Sugnet, Lorraine Bordesen, Dorothy Carpenter, Helen Leamon, and Betty Lou Stansberry.

We are proud to have our Nella Hulet as Director of Province XII. Delta Zeta is fortunate to claim the loyal and devoted service of one so pretty and charming.

SHIRLEY CAMPBELL, *editor*

### **Spokane**

Our relatively small group has been honored by having several members appointed to positions of distinction this past year. Johnnie Miller Sparber, M, is philanthropic chairman for Panhellenic and, as such, presented Delta Zeta's philanthropy on television. Geneva Foss has been appointed by national council to a committee to judge chapter newsletters.

Through the gains from our money-making rummage and white elephant sales, we were able to be one of the first groups to purchase the new initiation robe pattern and material for our college chapter. The alumnae of Pullman, where Phi is located, are making the robes for the girls.

"Let's All Squeak in the Same Key" was the beautiful talk given by Geneva Foss at Founders' Day. The Christmas party was highlighted by pictures of Hawaii, taken by Dr. Irene Grieve who recently returned from the Islands. The gift exchange was our usual gaily wrapped monetary gift presented to a Spokane group such as the cerebral palsy school or the multiple sclerosis society.

ELEANOR LUMBAR, *editor*

## **PROVINCE XIII**

### **Fresno**

Hedwig Ballaseyus Wheaton, M, was awarded a certificate of appreciation as an outstanding churchwoman and leader from 1944 to 1955 by the First Congregational Church of Fresno.

Myrtle Simpson Walton, M, has been chairman of awards and recognition since 1950 for the Fresno chapter of the American National Red Cross.

MILDRED C. WHEELER, *president*

### **Glendale-Burbank**

Mildred Jacobsen Parkins, Z, is president of the Hoover High School P.T.A. for 1955-56.

The chapter has for its philanthropic project the Glendale Home School for physically handicapped children. This past Christmas gifts of four magazine subscriptions and Christmas trees for each room were made to the school. Arthur Bennett, husband of Ruth Ives Bennett, A X, is principal of the school.

In November Frances Klumpe Frost, M, told of the Handimart in Glendale, a store selling only crafts made by the handicapped. The Handimart is sponsored by the Glendale Assistance League of which Mrs. Frost is a member.

The alumnae sold tickets for a play at the Center Theater in December, sharing the proceeds with the



play's producers. Another money-maker is the sale of magazine subscriptions.

The chapter supported a bridge party given by the Alpha Chi Mothers' Club in the fall. Other outstanding meetings have included a Founders' Day celebration and the Christmas party.

ROBERTA MCCLURE PARSONS, *editor*

## Honolulu

At the Christmas meeting Geraldine Warford Mullen, M, was hostess and gave an interesting account of her recent trip to Mexico, displaying many examples of Mexican crafts. Particularly interesting were her purchases of fine silver tableware and jewelry.

We have outlined a series of programs for future meetings based on hobbies and activities of chapter members. Honoluluans have a wide variety of interests and are very often engaged in interesting pursuits which provide excellent subject matter for informal talks.

Our membership is transient for the most part. There are only about six permanent residents of Honolulu on the chapter roll at the present, and we have a fairly rapid turnover of service wives. We welcome all visiting Delta Zetas to our meetings. If you come to Honolulu, watch the papers, check the club notices, and let us know if you can attend a meeting.

JEAN ROSS MCCLUSKEY, *editor*

## Long Beach

Gladdes Neff is president of the Long Beach Sorop-tomist International Association and Mabel Colton is a member. Frances Gregory, our president, is now CCD for Delta Alpha chapter.

Travel talks have been very interesting and informative entertainment at recent meetings. Jean Davis shared events of her trip in the Orient and Lillian Barna highlighted her two months' "Volkswagen" tour of France, Italy, and Spain. We are looking forward to travel pictures from Jean, Lillian and Mabel Colton in April.

Over fifty members attended the Christmas party which is always a pleasant, hilarious, fun meeting. With Daphne Turk as leader and Irene McCandless at the piano, we enjoyed singing many carols. The gift exchange is real fun as we may exchange our unopened gift for an opened package if we wish. Some gifts are always very popular and are exchanged many times. One is lucky to have one of the last exchange numbers. We all have an informal, noisy, good time.

RUTH E. PLUMMER, *editor*

## Los Angeles

Catherann Schrader, South Gate Realtor, was appointed chairman of the California Real Estate Association's statewide committee on achievement at the inaugural meeting of CREA in San Diego.

Painless extraction of money for our philanthropic project has been accomplished in several different ways this year. In August many of our members attended the Jose Greco concert at the Greek Theatre. This party helped swell the coffers of our treasury in a very agreeable way.

One of our finest speakers this year was Helen Laughlin, dean of women at UCLA, who spoke at our Founders' Day banquet.

Los Angeles Delta Zetas made Christmas time their time to have fun and to help others, too. Our Christmas party combined two ideas to raise extra money painlessly. First, each alumna brought a dollar bill for the drive to furnish the library at Gallaudet. The dollars as they came in were rolled up and stitched to our "money tree." Secondly, beautiful and novel Christmas ornaments manufactured by a sister of two of our mem-



LOS ANGELES ALUMNAE PRESIDENT GRACE HESTER MC-KNIGHT (center) holds the "money tree," the "leaves" of which were sent to Gallaudet College library. Past presidents Mary Alice Hagerty Williamson (left) and Ruth Heinemann Walsh (right) look on admiringly.

bers were sold with a percentage of the profits going to our philanthropic project.

One of our favorite California sports is the more passive one of sunbathing at the beach. We were all delighted to hold our July meeting at the home of Rowena Ingold Yarak, A I, in Hermosa Beach. We wouldn't want the Florida chapters to know, but the day was rather cool, so we did more wading than swimming.

JEANNE DE VIVIER, *editor*

## Marin County

During the fall and winter season Marin County Alumnae continued to serve as room mothers for the



SISTERS LOUISE KOFFEL, A I, AND CLAIRE KOFFEL DAMEWOOD, A X, hold Christmas decorations made by another sister especially for Los Angeles alumnae to sell to earn money for their philanthropy.



local class for hard-of-hearing children. Doris Voights Bloom, M, and Bernice Hutchison Gale, M, gave a Halloween party for the children, and the Christmas celebration was provided by Dorothy Beach Gorman, M, Mrs. Gale, and Connie Lindauer Pritchard, M. Members made favors for the Christmas party. Funds have been provided to supply additional teaching materials for the class.

Our opening meeting of the season was a luncheon at which plans for the year were discussed. A successful white elephant sale covered the cost of the luncheon.

Perhaps the most interesting meeting of the year was the showing of the film on Gallaudet College. We were fortunate to have as guest speakers Mr. and Mrs. Lang Russel. He is Rehabilitation Counselor for the Deaf in the Bureau of Vocational Rehabilitation, State Department of Education, and as such, serves as guidance counselor to California students attending Gallaudet. Mrs. Russel teaches the local class for hard-of-hearing children. A highly informative group discussion brought out many interesting facts about Gallaudet.

A potluck dinner provided the gayest note of the year. Delicious food and dancing guaranteed a successful evening.

JENNIE SLATER BLAHA, *editor*

### **Mt. Diablo Area**

Mrs. Chris Lee Adams, M, was elected to the Lafayette School Board. She is also serving her second year as president of the 32nd district Parent-Teachers Association.

To Gallaudet College the alumnae sent \$25 to purchase a chair for the new library. Instead of exchanging gifts at Christmas we bought stuffed animals for the East Contra Costa School for Retarded Children. Our party for members was a happy exchange of gaily wrapped white elephants.

Our November meeting sparked with original contributions for our "Home-Maid" auction. Proceeds from the sale went into the philanthropic fund.

We are all looking forward to State Day in the spring. As hosts this year, our plans are well under way to make this a successful and well-attended affair.

Summer came to a glorious social culmination in September for all who attended the swimming party at the home of Harold and Ann Beeman Weatherbee, M. "Coach" Hal gave us fins and student floating boards to try our swim talents before serving us delectable barbecued steaks. Dancing under the stars gave an enchanting end to a perfect day.

SHEILA LOVELL HILL, *editor*

### **Orange County**

Charlotte Hodges Peebles, A X, is president of the Women's Fellowship of her church and Betty Burnham Campbell, Z, is newly elected president of the Santa Ana High School P.T.A.

Our final philanthropic project of the year was to give a chair to the library of Gallaudet College.

At Founders' Day, Esther Culp Hatch, II, and Ruthe Chase Wheeler, A X, told interesting items concerning the founding of their respective chapters. Our Christmas party featured talented children of members.

FRANCES H. BILES, *editor*

### **Palo Alto Area**

As a result of our hearing aid project two Delta Zeta husbands built and installed a remote amplifier speaker unit at the Palo Alto Child Guidance Clinic. This unit enables parents to observe and hear their children while they are undergoing treatment without the children's knowledge. Educational toys brought to our Christmas

meeting were presented to the Children's Health Council.

At the annual Christmas meeting members exchanged favorite Christmas recipes with one ingredient wrapped as a gift.

A tea held in September honored Delta Zetas returning to school. The girls' mothers were also guests. Husbands were invited to a potluck barbecue in July.

We honored Dr. Luella Hall, T, our nominee for Woman of the Year, at our Founders' Day luncheon. Mary Palmer Woods, N, gave an interesting account of Japan where she lived for several years.

BETTY WHITLOCK PETERSON, *editor*

### **Pasadena Foothills**

This fall we were happy to give our annual dessert for the Pasadena Braille Club. Members of our group volunteered to make the dessert and to serve.

Founders' Day was celebrated at our first regular meeting of the year. The program included a skit by Lois Hager Concelman, singing and the candlelighting ceremony. Everyone left the November meeting with many ideas for decorations and gift wrapping after a talk on "Holiday Hints." In January Dorothy Painter Truesdail showed beautiful colored slides of her Caribbean tour. With the pictures she gave us much information about the various islands and the inhabitants.

At the December meeting each member brought a new toy to donate to a worthy cause in our area. This year it was the Pasadena Welfare Department.

One of our most successful affairs was our money making bridge luncheon in the summer. It was held at the home of Barbara Griffith and those who did not play bridge took advantage of the swimming pool. We plan to use the money we made for a gift to the newly remodeled Alpha Chi house at U.C.L.A. We have also made a nice sum of money selling magazine subscriptions.

Our fall calendar opened with the annual Husband-Wife dinner party. Dinner, held outdoors, carried out an Hawaiian theme in food and decorations. Attendance at the annual Christmas party was one of the best we have ever had.

DOROTHY MATTESON SHORT, *editor*

### **Phoenix**

Our Panhellenic representative, Joan Daniels, B Σ, was elected second vice president of the Phoenix Panhellenic. Frances Hawes, B P, has been elected Panhellenic representative to succeed Joan.

Fall activities opened with a program planning meeting. Founders' Day was observed with a luncheon. At the Christmas party, Rosalind Fowler Keen, M, showed slides of England and Scotland made during a two months tour of those countries. A musicale was planned for March and in April we journey to Tucson for State Day. Family summer picnics are planned and are always attended by a good crowd.

ROSALIND FOWLER KEEN, *editor*

### **San Diego**

Viola Sommermeyer, Γ, was chairman of a general section at the Southwest Regional meeting of the American Chemical Society held recently in Riverside. Viola, who has served this group since it was chartered in 1941, is the first woman chairman of an A.C.S. section in this region.

November found us busy working on one of our favorite projects—making baby sacques for the San Diego Children's Home Society. At the Christmas party donations, toys and books were collected for the home.

Dash and Zest was the heading on a new monthly



newsletter bringing notice of meetings, interesting items and reminders to alumnae.

Our annual Spring Benefit Bridge Fashion Show, Gingham Gaities, was again a most enjoyable day. Gamma Omicron chapter plans to use part of the proceeds to furnish Girl Scout camperships and also to provide a chair for the Gallaudet library.

CAROL P. RITCHIE, *editor*

### San Francisco-Bay Cities

Our latest philanthropic project was the purchase of a Sound Level Meter, or Decibel, for Herrick Memorial Hospital, and funds were also given for its installation. The Decibel will be used in conjunction with the audiometer, our first gift, to aid in children's hearing research.

In November Gwen Caster showed Beta group exciting colored slides which she took during her year in Europe, where she taught at an army dependents' school in Germany. Beta has been active in making scrap books for Herrick's pediatrics unit.

In December Alpha group again gave a Christmas luncheon honoring the mothers of Mu chapter members. Individual invitations were sent as we like to meet the mothers and show our appreciation of their work for Delta Zeta. At present they are cooperating in the purchase of stainless steel flatware for the chapter. The guest speaker gave a condensed history of Christmas cards, illustrated with her large collection. After the meeting, Christmas wrappings and cards were sold.

At the last Building Board joint meeting of alumnae and Mu chapter members, guests entering the hall of the chapter house found themselves surrounded by walls of aprons for every occasion. Delta group was holding a successful apron sale, proceeds going to Gamma Lambda's building fund.

Because the funds raised were used for an educational philanthropy, Delta Zeta was privileged to use the University of California's new Alumni House when we presented George Cunningham to a large audience. Helen Hambly Cunningham, M, former Berkeley councilwoman, and her husband, residents of New York where he is top executive of an oil exploration company, re-visited Berkeley. Here he presented a commentary to accompany his beautiful and unusual pictures taken in the far-flung corners of the globe to which his work takes him.

In October to aid our local philanthropy, we participated in Herrick's Holiday Fair benefit; we took over the sponsorship of the display of table settings, which ranged from a tea-table of very old Dresden china, to two modern tables.

The summer issue of *The Hospitaler* carried a half-page article on Delta Zeta aid to Herrick Memorial Hospital's pediatrics unit, and a picture of Helen Silvius, our president, and Valerie Menhennet Reynolds, whose husband was builder of the two-way book cart presented by Delta group. Credit is given to: Eleanor Boyle Nichols, who gave \$50 worth of new books; Mabelle Meece Caldwell, who gave an automatic record player; Catharine Cologne Fiorina, who has made many "button gardens" and whom Herrick has named chairman of the pediatrics volunteers; and Alice Monsler Buchholz, in charge of all Delta Zeta projects at the hospital, and a member of the Clinic Board and the Women's Council.

CHARITY BAKER AUSTIN, *editor*

### San Francisco-Peninsula

For the past year our group has made holiday tray favors for the pediatrics ward of Sequoia Hospital. On every holiday each child in the ward has received one of the favors we have constructed.

In August Joan Turnblad showed jewelry which she has collected in her extensive travels. For three years she lived in Athens as a U. S. State Department employee. When it was time to return home, she continued on around the world, stopping in as many places as she could to complete her collection of interesting objects.

Just before Christmas several members attended a party at the Gamma Lambda chapter house. Afterwards we toured the newly decorated house and annex.

A barbecue to which husbands were invited was the feature of our September meeting. Newcomers to the Peninsula were honored at a card party in July.

MARGARET CAFFERATA LINDWALL, *editor*

### Santa Barbara-Ventura

At our Christmas party, gifts for teen-age girls were brought for Juvenile Hall in Santa Barbara.

Because the members of this alumnae chapter are so widely scattered we are now holding meetings separately in each county, and getting together in joint meetings five times yearly.

Our Christmas party started with a steak dinner at the Palms Hotel in Carpinteria and progressed to Margo Franklin's ranch home where white elephant gifts were exchanged.

ELIZABETH CLIFFORD BLOOM, *editor*

### Santa Monica

Grayce Leach Handy, AB, was elected to the board of the UCLA Faculty Women's Club. She is also chairman of the Panhellenic steering committee at UCLA and neighborhood cookie chairman of the University Elementary School. Margaret Jane Work Pollock, A X, is president of the Westside Medical Wives and social chairman of the Santa Monica Assistance League.

Every Christmas we make a special point of helping a needy family with money, food, clothing and toys.

A successful money raising project was the sale of large decorated candles made by Grayce Handy and Jane Gilles Troutman, A T. It is planned to expand this project and make candles to fit other seasonal holidays. Chapter members, even assisted by their husbands, helped us to clear \$152.

We have had our members mentioned in the local papers recently. Becky Allen's husband has just been appointed City Attorney of Inglewood. Travelers abroad include Martha Hellner, A I, head of the physical education department at SMJC and Ruth Richardson Sparks, A X.

LOUISE BLAKE SHAW, *editor*

### South Bay

The program chairman has provided many interesting programs for us. In September we had a talk on floral arrangements. In October we heard an interesting and informative lecture on interior decorating. At our Christmas meeting each member brought samples of her special Christmas treat and recipes were exchanged.

The South Bay Alumnae chapter will form the reception committee at a tea given by the Delta Zeta Council at the Alpha Chi chapter house. The tea is honoring Joan Schaffer, Dean of Women at the University of Southern California and Lois Jack Swanson, Dean of Women at Long Beach State College, who are both Delta Zetas.

DORIS DAVIS, *editor*

## PROVINCE XIV

### Austin

The October meeting brought before the alumnae a representative of a well-known cosmetic firm, who



demonstrated the use of various beauty preparations, emphasizing that anyone can be more attractive by learning the skill of correct makeup. The alumnae thoroughly enjoyed the demonstration.

Christmas and greeting card sales have resulted favorably for the treasury. We believe they will continue to be a good source of income for the chapter.

On September 22 the Austin Alumnae held a "Mortgage Burning Dinner" honoring Mrs. Clara Weisser, house corporation treasurer and chapter financial adviser. The occasion was the official completion of mortgage payments on the Alpha Tau house and the actual mortgage was burned by Mrs. Weisser. Attending were the members of Alpha Tau, their 44 new pledges, and Irene C. Boughton, Executive Secretary, who assisted in honoring Mrs. Weisser with facts and recollections of her years of unselfish service to the sorority. The alumnae presented her with a scrapbook which included clippings and other mementos of her life since she became a charter member of Alpha Tau in 1924.

EDITH FLETCHER WILLIAMS, *editor*

### **Ft. Worth**

Though we still are small in numbers we voted to join in our national philanthropic enterprise of furnishing the library at Gallaudet College. As we increase in numbers, we plan to start a local project also.

Founders' Day was celebrated in a special way as it was then we received our charter from National. Since our local alumnae chapter was founded on the same day as Delta Zeta itself, we hope it is indicative of our growth in Delta Zeta friendship and stewardship. We were honored to have as our guest Violet Sharratt Whitfield, National Secretary.

Speaker at the December meeting was Mrs. Charles Alseth, Region Four Director. She pointed out the "high roads and by-roads" by which we can make our new chapter a great and growing one.

A benefit bridge is planned to raise money for a hearing aid.

A Holiday Tea in December honored Fort Worth's collegiate Delta Zetas and their mothers.

IRENE C. FRANCIS, *editor*

### **Houston**

The Houston Panhellenic annual scholarship to a University of Houston student has been named "The Houston City Panhellenic Anna K. Chase Memorial Fund" in honor of our recently deceased founder of the Houston Alumnae chapter and of the Panhellenic.

Houston Delta Zetas wrapped the prettiest packages in town this past Christmas. Miss Ing Fletcher came to our November meeting to show us how to make the fancy bows. We all had such a good time and talked so much about it, that we had twice as large a turnout for our December meeting, where we had another excellent program, "Make Your Own Merry Christmas," at which we learned how to make unusual wreaths and decorations.

One of our projects this year is to help the new chapter at the University of Houston off to a good start.

Everyone enjoyed the Christmas coffee honoring Delta Zeta mothers and collegiate members. All were asked to bring a recipe and one ingredient as an assist to Santa.

RUTH CREED, *editor*

## **PROVINCE XV**

### **Memphis**

Mary Lee Strode, T I, was co-chairman of Panhellenic Week, which included registration, a tea at Gerber's,

a movie and an information party in the Adult Education Center at Southwestern.

Next alumnae helped Province Director Hollis O'Neal with the rush school for Gamma Iota. When Mrs. O'Neal visited us again in October we gave a tea honoring her and the new pledges.

Christmas found us celebrating twice. We met with husbands and dates for dancing and later enjoyed a luncheon at the University Club, a happy excuse for those who can't get away at night for a get-together.

"Know Your Delta Zeta" was the program theme in January. When mentioning the history of Gamma Iota chapter we noted that five charter members were present: Helen Gatchel Fly, Jane Alexander Kinney, Bess Young McGhee, Ruth Younghanse Crenshaw, and Marjorie Baggett Landon.

JEAN CLAY COX GARIBALDI, *editor*

### **Tri-Cities**

The Tri-Cities (Bristol, Kingsport, and Johnson City, Tennessee) Alumnae chapter's organization was spurred into existence and activity by the installation of Delta Eta chapter at East Tennessee State College in Johnson City.

Our chapter has met several times in the few months of its organization and has helped with the pledging and rushing of Delta Eta chapter. We also assisted with the installation banquet and tea on January 28 and 29.

PATSY SMITH, *editor*

## **PROVINCE XVI**

### **Auburn**

Delta Zetas in Auburn received the 132nd Delta Zeta alumnae chapter charter in June, 1955. Although Auburn has had an alumnae club for a number of years, it was a spring inspection visit by Betsy Bradley Leach, Director of Alumnae, to Beta Xi chapter that initiated alumnae efforts to secure a charter.

For its philanthropic project, the chapter plans to work with a district tuberculosis hospital at Lafayette, Alabama.

Auburn alumnae and Beta Xi collegiate members will be joint hostesses at Alabama State Day in Auburn on April 28. Peg Murphy May, A Σ, and CCD for Beta Xi, is State Day chairman.

MIMI SIMMS, *editor*

### **Birmingham**

Mrs. Charles Dill and Mrs. Buel B. Warren are serving as vice presidents of the Vestavia Hills P.T.A., while Mrs. Richard Moxley, Jr., is vice president of the Shades Valley High School P.T.A. Mrs. Alex Cassimus is president of the Junior Women's Chamber of Commerce; Mrs. S. D. Moxley is vice president of the Women's Symphony Committee. Mrs. Warren is also president of the Red Maple Garden Club. Ann Nighswonger joined the staff of Senator Sparkman in Washington in January. Mrs. Willard Mobley is president of the Mimosa Garden Club and with Mrs. Frank McGowan is chairman of the display contest for the Birmingham Festival of Arts.

Alpha Pi chapter and the alumnae joined forces to play Santa to 11 teen-age girls and their house mother from the Mercy Home, Pajamas, gloves, etc., along with special requests of the girls were presented at our fourth annual Christmas party.

At the picnic supper in September each member chose a partner and was given five minutes to chat with her about home life, special interests, etc. After this each introduced her partner to the group.



We save old nylon hose which we sell by the pound. We also save Kraft coupons. At Christmas we sold poinsettias.

Birmingham alumnae were hostesses to collegiates, pledges and mothers from Beta Xi, Alpha Gamma and Alpha Pi chapters at a fashion show and coffee during the holidays. Our professional-looking models were members of the three college chapters.

A letter of appreciation was received by the alumnae chapter from the Dean of Howard College for the tour of Birmingham which we sponsored for all freshman girls.

MARY GRIMES WINGATE, *editor*

### Montgomery

We, in the Montgomery Alumnae Chapter are proud of the activities of our small group, but we feel our most successful venture is our philanthropic project directed by Dorothy Cason Peacock, A II. Early in 1955, she contacted various agencies in order to learn of the needs of any deaf in this vicinity, and found that Montgomery County is fortunate that there are no known deaf persons in need of hearing aids or help. At that time, the county welfare department informed us of the history of a needy and deserving blind family; thus we came to know the story of Lilly Belle Armstrong.

Lilly Belle and four of her brothers and sisters were born blind. Her father, who died about ten years ago, and his sisters had been born with the same condition,



LILLY BELLE ARMSTRONG, a student at the Alabama Institute for Deaf and Blind, who has been aided by the Montgomery Alumnae chapter.

and so it had been inherited by his five children and three grandchildren. Lilly Belle, age 18, and her brother Willie, 14, are students at the Alabama School for the blind; George, 16, is awaiting admission to the State Vocational Training School; and two older sisters, Georgia Lee and Ruby are at home with their three blind children.

At the time we first learned of Lilly Belle, she was in the 9th grade, and was able to play the piano with the inborn rhythms so often found among Negroes. Lilly Belle also has a lovely voice but was unable to be in the choir because she did not own a long dress to wear when this group made public appearances. Her other clothing was almost nonexistent and her personal expenses at the school had been accumulating for several months.

Our alumnae chapter decided to "adopt" Lilly Belle and so we arranged to pay her personal bills and provide necessary clothing as well as a formal, so that now she is an outstanding member of the choir.

Lilly Belle sent us several letters, either typewritten or in Braille, and copies of her report cards. She hoped we could visit her during the summer, so several of us went to see her in her home which is about fifteen miles from Montgomery.

When we found eleven people, eight adults and three small children, living under almost uncomprehensible conditions in a tiny two room clapboard hut, we felt that our help should be extended to include other members of this family.

We have been able to provide clothing for all members of the family, luggage for the school children, and money for their transportation back to school. Also, we again pay Lilly Belle's personal expenses incurred while she is at school. At our November meeting we packed our traditional Thanksgiving basket especially for the Armstrongs, and at Christmas, we made possible a visit from Santa by providing stuffed clowns for the smallest children, cowboy outfits for the little boys, warm shirts for the older boys, and sweaters for the older girls.

In September, our pride knew no bounds for a photographer for a local television station went with us to see the Armstrongs, and took pictures of our "adopted" family, their home, and three members of Delta Zeta as they distributed clothing and luggage. This film was shown on three different local human interest television programs, and then given to us for our own use.

But our greatest pleasure came in the form of a smile on Lilly Belle's face when she fingered the nylon lace on the first "store" slips she has owned; and the amazed expression on the face of little Georgia Lee, age 3, when she examined with her tiny fingers, a stuffed toy; and especially when with tears in her eyes, Ruth, Lilly Belle's mother, told us she remembered us in prayer "Cause" she said, "Nothing could have been, without y'all."

LISBETH INNIS FRANCIS, *president*

### New Orleans

One month before Christmas "Santa's Helpers," a commercial enterprise, brought samples of over 200 toys to the meeting. Everyone was invited to inspect and try out each toy and to order those toys which would meet her gift needs. The chapter was given 10 per cent of the gross order. Our suggestion would be to schedule such a "toy party" one month earlier for greater profit.

The alumnae chapter worked with Beta Upsilon chapter on an "Open House" for Delta Zetas, their families and friends the week the chapter's new (and first) house was ready.



Because of the work and pleasure resulting in and from the acquisition of Beta Upsilon's new house, New Orleans alumnae has spent much of its time and energies in helping the council and chapter behind the scenes in the actual selection, decorating and furnishing.

MARION RICE JENSEN, *editor*

**Tuscaloosa**

The chapter gave swings to a school for underprivileged children. Also we have given two parties for the physically handicapped children.

The most outstanding chapter meeting was one at which Eunice Jenkins, who has made several trips to Europe, presented slides and discussed outstanding items of interest in Europe.

The chapter sold Christmas and note cards for a profit of \$36.

In addition to a rush luncheon for Alpha Gamma chapter, we gave a party honoring the mothers of Tuscaloosa girls in the chapter. We joined with Alpha Gamma in celebrating Founders' Day.

JANE HOLLIS MEHERG, *editor*

**PROVINCE XVII**

**Jacksonville**

Enid Parker Owen, B M, is president of the Jacksonville Panhellenic.

The Alumnae chapter has sent two donations to the Memorial Fund and a donation for a chair for the Gallaudet library.

Alumnae entertained with a Christmas coffee honoring members home from college for the holidays.

MARGARET PARKER, *editor*

**Miami**

Through Portia Cooper Laughlin, E, our hearing aid chairman, we were advised that Adair Cuthrell, age 9, was in dire need of a hearing aid. Adair, who not only is hard of hearing but also has cerebral palsy, was first brought to the attention of Portia by Thelma Pollitt Van Steenberg, a Delta Gamma, who is a personal friend of the Cuthrell family. The alumnae chapter was able to give Adair \$50 through the sale of candy.

The annual initiation of seniors into the alumnae chapter in June was one of our most successful meetings. A talk and demonstration on hair styling was a most unusual and interesting event. With the use of crazy scissors, portable lamps and a fast drying shampoo, one of our girls was transformed into a modern-day Cinderella.

Aside from selling candies we sold Christmas cards which, as in previous years, was quite successful.

The annual alumnae-initiate May party is one that will be long remembered. Colorful balloons, festive food, outstanding memories of the year plus the pleasure of listening to the initiates sing made the party one of our most successful.

A change from the ordinary describes the August dessert meeting. Delicious desserts, frosty punch, and social talk made this a most enjoyable evening.

NANCY FOSTER GRAUMLICH, *editor*

**Orlando**

A very successful plastic party (curtains, pillow covers, tablecloths, shower curtains, etc.) was held.

In December a luncheon was held in honor of initiates home for the holidays. Everyone was presented with a Christmas ornament with her name on it.

Following the Founders' Day luncheon the traditional candlelighting service was held with Belle Calvert Brooks, charter member of Alpha Sigma, acting as toastmistress.

For the annual Central Florida Panhellenic rush tea and fashion show our chapter was in charge of the hostesses. We also made name tags of white cards with variegated glitter for rushees, gold glitter for initiates and silver glitter for members.

JEAN JACKSON CHILES, *editor*

**Tampa**

Virginia Brown was recently appointed membership secretary of the Southeastern Art Association, a professional association for art teachers. Margaret McIntosh is now president of the Women's Missionary Society of the First Baptist Church.

In November we held a benefit chili supper at our meeting to raise funds. The chili was a gift from Stockley's Canning Co., in honor of our "Cook of the Week," Alicia Saxton Lancaster, A Σ. For a number of years we have sold Christmas cards, which seems to be our most successful means of raising money.

In September we met with members of Delta Beta chapter at an outdoor picnic supper. Husbands and dates also enjoyed the swimming and food.

Margaret Jordan McIntosh, A Σ, is now serving her second term as secretary of the Board of Directors of the Tampa chapter of the American Red Cross. She is also on the Board of Directors of the Visiting Nurse Association, Child Guidance Center, and the County Health Department.

ALICIA SIERRA, *editor*

**Change of Your Name or Address**

Please fill in this notice NOW and mail it to  
NATIONAL HEADQUARTERS, 1325 CIRCLE TOWER, INDIANAPOLIS 4, INDIANA

Maiden Name ..... Chapter .....  
Husband's Name..... Date of Marriage .....  
FORMER ADDRESS  
Street and Number .....  
City, and State .....  
PRESENT ADDRESS  
Name .....  
Street and Number .....  
City, Zone and State .....





## The Golden Flame Eternal



But trust that those we call the dead  
Are breathers of an ampler day  
For ever nobler ends. . . .  
—ALFRED LORD TENNYSON

### ALPHA

Mildred Alma Voorheis McKee (Mrs. George) '30, Aug. 1955  
Virginia Gail Humberger Roessner (Mrs. Roland G.) '40, 1955  
Lilla Twitchell Stanton West (Mrs. Clarence C.) '07, Jan. 24, 1956

### BETA

Anita G. Lynch Strahlendorff (Mrs. Arthur C.) '16, Oct. 25, 1955

### ZETA

Edith Honor Cram Booth (Mrs. Frank M.) '27, 1955

### IOTA

Grace E. Phillips Brinkman (Mrs. August A.) '14, Dec. 31, 1954

### KAPPA

Jessamine Anne LeSourd '33, Dec. 19, 1955

### PSI

Flora Mabel Hayes Winchester (Mrs. Oscar R.) '18, 1955

### ALPHA ALPHA

Eileen Alice Hirschfelder Evans (Mrs. Luther J.) '35, Dec. 6, 1955

### ALPHA BETA

Anna Kathryn Told Chase (Mrs. Carroll A.) '23, 1955

### ALPHA ETA

Beatrice Olmsted '34, 1955

### ALPHA THETA

Annie Russell Moore '22, June 1953  
Nancy C. Costello Anderson (Mrs. Milerd J.) '36, Dec. 9, 1955

### ALPHA KAPPA

Rachel Stickney '30, 1955

### GAMMA GAMMA

Caroline Frances Patterson Ferguson (Mrs. William I.), Dec. 19, 1955

### BETA MU

Sarah Kuder '44, Oct. 8, 1955

### BETA CHI

Anna Louise Bell x'33, May 1955



# ● Delta Zeta Sorority ●

*Founded at Miami University, October 24, 1902*

GUY POTTER BENTON, D.D., LL.D., *Grand Patron (Deceased)*

## FOUNDERS

JULIA BISHOP COLEMAN (Mrs. J. M.)	104 Riverside Ave., Loveland, Ohio
MARY COLLINS GALBRAITH (Mrs. George)	3194 Tremont Rd., Sta. B., Columbus 21, Ohio
ALFA LLOYD HAYES (Mrs. O. H.)	3761 N. Meridian, Indianapolis, Ind.
ANNA KEEN DAVIS (Mrs. G. H.)	Deceased
MABELLE MINTON HAGEMAN (Mrs. Henry)	Deceased
ANNE SIMMONS FRIEDLINE (Mrs. Justus R.)	Deceased

## NATIONAL COUNCIL

<i>National President</i>	EVELYN ADAMS COSTELLO (Mrs. Russell T.) 2850 Pine Lake Dr., R.F.D. 3, Pontiac, Mich.
<i>National Secretary</i>	VIOLET SHARRATT WHITFIELD (Mrs. R. H.) 1104 Colfax St., Evanston, Ill.
<i>National Treasurer</i>	AUGUSTA PIATT KELLEWAY (Mrs. Fred) 425 Lakewood Rd., Walnut Creek, Calif.
<i>Director of Alumnae</i>	BETSY BRADLEY LEACH (Mrs. Garold A.) 1865 Hill Dr., Eagle Rock, Los Angeles 41, Calif.
<i>Director of College Programs</i>	JEAN CODY SULLIVAN (Mrs. A. F.) 157 Bellevue Ave., West Haven, Conn.
<i>Director of House Corporations</i>	ELEANOR STRICKLER FARISS (Mrs. James F.) 17721 Bothell Way, Seattle 55, Wash.
<i>Director of Membership</i>	LOUISE WADLEY BIANCHI (Mrs. T. J.) 5727 Ellsworth, Dallas 6, Tex.
<i>Director of Philanthropies</i>	HILDA ALAGOOD JOHNSON (Mrs. Odis A.) Box 351, Thomasville, Ga.
<i>Director of Public Relations</i>	JUANITA KELLY BEDNAR (Mrs. Charles J.) 1737 N. Prairie St., Galesburg, Ill.
<i>National Panhellenic Conference Delegate</i>	GERTRUDE HOUK FARISS (Mrs. C. A.) 2997 S. W. Fairview Blvd., Portland 1, Ore.
<i>Immediate Past National President</i>	BERNICE HUTCHISON GALE (Mrs. Guy H.) 130 Van Winkle Dr., San Anselmo, Calif.

<i>Editor of the LAMP</i>	ELLEN KROLL JENKINS (Mrs. Paul L.) 5926 E. 43rd St., Indianapolis 26, Ind.
<i>National Headquarters</i>	1325 Circle Tower, Indianapolis 4, Ind.
<i>Executive Secretary</i>	MISS IRENE C. BOUGHTON 1325 Circle Tower, Indianapolis 4, Ind.
<i>College Chapter Administrator</i>	MARGUERITE WHERRY HAVENS (Mrs. George C.) 3018 School St., Des Moines 11, Iowa
<i>Board of Trustees of LAMP Fund:</i>	ELEANOR STRICKLER FARISS (1958); IRENE BOUGHTON (1956); AUGUSTA PIATT KELLEWAY (1956); EVELYN ADAMS COSTELLO (1956); FRANCES E. WESTCOTT (1960), chairman, 549 E. 84th St., Indianapolis 20, Ind.
<i>Chairman of National Panhellenic Conference:</i>	MRS. ROBERT C. BYARS, Δ Γ, 7327 Staffordshire, Houston 21, Tex.

## STANDING COMMITTEES

<i>Constitution Committee</i>	Mrs. Rudolf O. Cooks, 2673 N. Park Blvd., Cleveland Heights 6, Ohio
<i>History Committee</i>	Mrs. H. M. Lundy, R.R. #1, Bloomington, Indiana
<i>Mother's Club</i>	Mrs. Francis R. Wilson, 5039 Homerdale Rd., Toledo 13, Ohio

## SPECIAL COMMITTEES

<i>Activities Chairman</i>	Mrs. Robert H. Krueger, Box 4073, Santa Fe, New Mexico
<i>Awards Committee</i>	Mrs. Ralph E. Wollenhaupt, Fontanelle, Iowa
<i>Endowment Fund</i>	Mrs. Harvin Lewis, Apt. 350, Philrich Branch, Borger, Texas
<i>Foreign Aid</i>	Mrs. Jens W. Berg, Jr., Thorbjornud, Jeunaker, Norway
<i>Gallaudet College</i>	Mrs. Leland B. May, 3502 Martha Custis, Alexandria, Virginia
<i>Judiciary Committee</i>	Mrs. R. J. Nolo, Dawson, Minnesota
<i>Local Philanthropic Projects</i>	Mrs. N. G. Heglund, 3301 Chase Dr., Minneapolis 26, Minn.
<i>Magazine Chairman</i>	Miss Esther Lorenz, 1000 37th St., Des Moines, Iowa
<i>Memory Book Chairman</i>	Mrs. Harold K. Harding, 5884 Forest Lane, Indianapolis, Indiana
<i>Audiology and Allied Fields Scholarship</i>	Miss Mildred P. French, 824 Fourth St., Cheney, Washington; Mrs. James Berry, Dr. M. Irene Grieve
<i>Products Committee</i>	Mrs. J. Harold Williamson, 523½ N. Serrano, Los Angeles 4, Calif.
<i>Recommendation Chairman</i>	Mrs. Stuart Gillespie, 5050 37th Ave., N.E., Seattle, Washington
<i>Robe Chairman</i>	Mrs. Paul Spear, 627 S. Lincoln, Hinsdale, Ill.



## Alumnæ Regions

- Region One*—MRS. ROBERT A. BEACH, 32 Third Ave., Berea, Ohio  
Connecticut, Delaware, District of Columbia, Maine, Maryland, Massachusetts, New Hampshire, New Jersey, New York, Ohio, Pennsylvania, Rhode Island, Vermont, Virginia, West Virginia.
- Region Two*—MRS. RAY BARNES, 2424 Glenwood Dr., N.E., Atlanta, Ga.  
Alabama, Florida, Georgia, Kentucky, Mississippi, North Carolina, South Carolina, Tennessee.
- Region Three*—  
Illinois, Indiana, Iowa, Michigan, Minnesota, North Dakota, South Dakota, Wisconsin, Wyoming.
- Region Four*—MRS. CHARLES ALSETH, 3222 Hudnall, Apt. R, Dallas 19, Texas  
Arkansas, Oklahoma, Texas, Louisiana.
- Region Five*—MRS. D. E. CADWELL, 858 S. Josephine, Denver, Colo.  
Colorado, Kansas, Missouri, Nebraska, New Mexico.
- Region Six*—MRS. JOE Y. LEVETON, 1682 S.E. Tenino, Portland 2, Oregon  
Arizona, California, Idaho, Montana, Nevada, Oregon, Utah, Washington.

## Provinces of Delta Zeta

### PROVINCE I: New England, Upper New York

*Director:* JACKIE WILSON KOEHLER (Mrs. Earl H.), 122 Becker Ave., Riverside, R.I.

- Alpha Kappa, Syracuse University*—JANE SHECKELLS, Delta Zeta House, 405 Comstock Ave., Syracuse 10, N.Y.—C.C.D. MARY FRANCES SIMS, 1217 Bellevue Ave., Syracuse 4, N.Y.
- Alpha Upsilon, University of Maine*—ELVA BRACKETT, South Estabrook, Orono, Maine—C.C.D. CLAIRE S. SANDERS, 123½ Main St., Orono, Me.
- Beta Alpha, University of Rhode Island*—JUDITH HENRY, Delta Zeta House, University of Rhode Island, Kingston, R.I.—C.C.D. MURIEL FLETCHER, 15 Little Rest Rd., Kingston, R.I.
- Gamma Beta, University of Connecticut*—JOANNE JONES, Delta Zeta Box, University of Connecticut, Storrs, Conn.—C.C.D. MRS. RUSSELL DECOURSEY, Storrs Heights, Storrs, Conn.
- Hartford, Conn. Alumnæ*—MRS. JOHN JOBSON, 90 Greenwood Drive, Manchester, Conn.
- New Haven, Conn. Alumnæ*—MISS ALFREDA OLIWA, 5 Prospect St., Derby, Conn.
- Providence Alumnæ*—MRS. JAMES H. CROSSLEY, 454 Smithfield Ave., Pawtucket, R.I.
- Rochester Alumnæ*—MRS. WALTER CARNAHAN, 165 Cherry Road, Rochester 12, N.Y.
- South Counties, R.I. Alumnæ*—MRS. THEODORE ODLAND, North Road, Kingston, R.I.
- Syracuse Alumnæ*—MRS. STUART DEAN, 1023 Kinne St., East Syracuse, N.Y.
- Buffalo Alumnæ*—MRS. JAMES G. LOVELACE, 537 Allenhurst Rd., Eggertsville 23, N.Y.

### PROVINCE II: New York City and Long Island and New Jersey

*Director:* FLORENCE WRIGHT BARKER (Mrs. Virgil), 639 Shadowlawn, Westfield, N.J.

- Alpha Zeta—Adelphi College*—JOSEPHINE SALVATO, 3158 Fulton St., Brooklyn, N.Y.—C.C.D. FLORENCE SCHOEN, 33 Cambridge St., Valley Stream, N.Y.
- Beta Omega, New York University*—PAT ANTONELLO, 41-23 9th Ave., Brooklyn, N.Y.—C.C.D. BETTY COLEMAN, 79 W. 12th St., New York 11, N.Y.
- Gamma Eta, Hunter College*—NINA FALUOTICO, 1235 Ward Ave., Bronx, N.Y.—C.C.D. STELLA DEPASQUALE, 4055 Paulding, New York 66, N.Y.
- Delta Epsilon—Queens College*—ROSANNE CARDONE, 216-64 113 Drive, Cambria Heights, N.Y.
- Long Island Alumnæ*—MISS SUSAN HEALEY, 269 Candee Ave., Sayville, L.I., N.Y.
- New York Alumnæ*—MISS STELLA DEPASQUALE, 4055 Paulding, New York 66, N.Y.
- Northern New Jersey Alumnæ*—MRS. A. B. CONCIATORI, 27 Orchard Rd., Chatham, N.J.
- Northeastern New Jersey Alumnæ*—MRS. JOHN J. DENISTON, 422 Upper Blvd., Ridgewood, N.J.

### PROVINCE III: Pennsylvania, West Virginia, Delaware, District of Columbia, Maryland, Virginia

*Director:* LUCILLE BOLSTAD MAY (Mrs. Leland B.), 3502 Martha Custis, Alexandria, Va.

- Omicron, University of Pittsburgh*—BEVERLY NAMESKA, Delta Zeta House, 158 Bellefield Ave., North, Pittsburgh, Pa.—C.C.D. RANIER HAWKINS (Mrs. W. J.), 127 Race St., Pittsburgh 18, Pa.
- Alpha Delta, George Washington University*—CLOTILDA MOSESSO, 6011 10th Pl., Chillum, Md.—C.C.D. MARY LEE CHATRNUCK (Mrs.) 2808 A 16th Rd. South, Arlington 4, Va.
- Beta Theta, Bucknell University*—MARY RUSSO, Box W340, Bucknell University, Lewisburg, Pa.—C.C.D. MRS. WAYNE STEVENSON (JANET) 3 North 3rd, Apt. B1, Lewisburg, Pa.
- Gamma Delta, Pennsylvania State University*—JOAN BARKLEY, Box 435, Simmons Hall, State College, Pa.—C.C.D. MRS. EVA WILSON, 256 E. Irvin Ave., State College, Pa.; MRS. JOHN RUEF, 262 E. Irvin Ave., State College, Pa.
- Gamma Phi, State Teachers' College*—JO-ANN DEMANGE, Room 369, John Sutton Hall, Indiana, Pa.—C.C.D. MARGARET STEWART, 1149 Oakland Ave., Indiana, Pa.
- Baltimore Alumnæ*—MRS. WM. EUSTICE, 1655 Brunwood Rd., Baltimore, Md.
- Pittsburgh Alumnæ*—MRS. CARL P. SAALBACH, 3848 Brownsville Rd., Pittsburgh 27, Pa.
- Richmond Alumnæ*—MRS. WILLARD S. HEMKER, Rt. 8, Westover Gardens, Richmond, Va.
- State College, Pennsylvania Alumnæ*—MRS. HENRY KNERR, 219 Adams Ave., State College, Pa.
- Washington Alumnæ*—MRS. HAROLD T. COOK, 6512 40th Ave., University Park, Md.
- Wilmington Alumnæ*—MRS. EDWARD A. KNIGHT, 7 Carlsle Rd., Brookside Park, Newark, Del.



#### PROVINCE IV: Southern Ohio

Director: BETTY HEUSCH ACLER (Mrs. Norman), 2697 Sunbury Rd., Columbus, Ohio

*Alpha, Miami University*—ANN ANDERSON, Hamilton Hall, Oxford, Ohio—C.C.D. RUTH R. YOUNG (Mrs. Richard J.), 400 E. Withrow Ave., Oxford, Ohio.

*Theta, Ohio State University*—KATHERINE KAISER, Delta Zeta House, 212 15th St., Columbus, Ohio—C.C.D. MARY P. MARTIN (Mrs. Clyde), 3090 Bellwood Ct., Apt. 4, Columbus 9, Ohio.

*Xi, University of Cincinnati*—ZELDA DAVIS, Delta Zeta House, 2811 Swiss Chalet Ct., Cincinnati, Ohio—C.C.D. ALICE BROWN (Mrs. Dwight M.), 598 Terrace Ave., Cincinnati 20, Ohio

*Beta Chi, Wittenberg College*—BARBARA ANDERSON, Delta Zeta House, 923 Fountain Ave., Springfield,

Ohio—C.C.D. MRS. RALPH R. BUSH, JR., 354½ Stanton, Springfield, Ohio

*Cincinnati Alumnæ*—MRS. THOMAS DENHAM, 6033 Montgomery Ave., Cincinnati 13, Ohio

*Columbus Alumnæ*—MRS. GLENN WILLIAMS, 239 Chat-ham Road, Columbus, Ohio

*Dayton Alumnæ*—MRS. HOWARD HARPER, 17 Aberdeen Ave., Dayton 9, Ohio

*Hamilton Alumnæ*—MRS. FRANCIS J. MAY, 963 Harrison Ave., Hamilton, Ohio

*Springfield Alumnæ*—MRS. RALPH R. BUSH, JR., 354½ Stanton Ave., Springfield, Ohio

#### PROVINCE V: Northern Ohio

Director: IRENE NAGY BYERS (Mrs. Philip), 210 Westbridge Dr., Berea, Ohio

*Gamma Alpha, Baldwin-Wallace*—PAULA FOWLER, Emma-Lang Hall, Berea, Ohio—C.C.D. MRS. J. R. ANDRISEK, 209 Fair St., Berea, Ohio

*Gamma Kappa, Kent State University*—KARLYN VAUGHAN, Delta Zeta House, 244 E. Main St., Kent, Ohio—C.C.D. EDNA WHITE (Mrs. Robert), 631 Crain Ave., Kent, Ohio

*Gamma Tau, Bowling Green State University*—CHARLOTTE BENNETT, Delta Zeta House, Bowling Green, Ohio—C.C.D. MISS BERYL PARRISH, 114 N. Prospect, Bowling Green, Ohio

*Akron Alumnæ*—MRS. JACK C. BURKET, 1419 Merriman

Rd., Akron, Ohio

*Cleveland Eastside Alumnæ*—MISS ALICE PATTERSON, 3530 Edison Rd., Cleveland Heights 21, Ohio

*Cleveland Westside Alumnæ*—MRS. HARRY J. OLES, 700 Cortsville Rd., Campbell, Ohio

*Kent Alumnæ*—MRS. FRANK HILL, 179 Chestnut St., Kent, Ohio

*Toledo Alumnæ*—MRS. MARK POWNALL, JR., 915 W. Bancroft, Toledo, Ohio

*Youngstown Alumnæ*—MRS. CHARLES V. WITTENAUER, 204 Forest Hill Ave., Poland, Ohio

#### PROVINCE VI: Michigan

Director: MARJORIE DOYLE BERGMAN (Mrs. Edward), 24535 Lathrup Blvd., Detroit 35, Mich.

*Beta Pi, Albion College*—CAROLYN CARR, Susanna Wesley Hall, Albion, Mich.—C.C.D. THELMA HAWES (Mrs. Paul J.), 101 N. Superior St., Albion, Mich.

*Beta Rho, Michigan State College*—COLETTE JACKMAN, Delta Zeta House, 110 Oakhill, East Lansing, Michigan—C.C.D. GLORIA FRYMIRE (Mrs. Larry), 2403 Devonshire, Lansing, Mich.

*Gamma Pi, Western Michigan College*—SANDRA ROE-LEFS, Davis Hall, Kalamazoo, Michigan—C.C.D. MRS. CHARLES MEANS, 538 Creston, Kalamazoo, Mich.

*Gamma Sigma, Michigan State Normal College*—VAL LEVERITON, Jones Hall, M.S.N.C., Ypsilanti, Michigan—C.C.D. MRS. OLIVER DELANCY, 2523 Elmwood Ave., E. Ann Arbor, Mich.

*Gamma Psi, Central Michigan College*—KATHLEEN PIERCE, Ronan Hall 219, Central Mich. College, Mt. Pleasant, Mich.—C.C.D. BARBARA S. KING, 1001 S.

College, Mt. Pleasant, Mich.

*Albion Alumnæ*—MRS. HARRY WILLIAMS, Jackson Rd., Albion, Mich.

*Battle Creek Alumnæ*—MRS. JOHN P. MAYO, 120 Leland Drive, Battle Creek, Mich.

*Detroit Alumnæ*—MRS. HAROLD G. GROEHN, 14637 Rutland Rd., Detroit 27, Mich.

*Flint Alumnæ*—MRS. ROBERT CHAMBERS, 627 Campbell St., Flint, Mich.

*Kalamazoo Alumnæ*—MRS. DONALD PRANCE, 3107 S. Westridge Ave., Kalamazoo, Mich.

*Lakeshore Alumnæ*—MRS. W. T. HOLT, JR., 1124 West Hill Rd., Muskegon, Mich.

*Lansing-East Lansing Alumnæ*—MRS. CHARLES LOCKWOOD, 5094 Park Lake Rd., East Lansing, Mich.

*Grand Rapids Alumnæ*—MRS. WILLARD E. PEARSON, 1742 Cambridge S.E., Grand Rapids, Mich.

#### PROVINCE VII: Indiana

Director: DORRIS PIKE SILVERTHORN (Mrs. Frank W.), 2710 Kilgore Ave., Muncie, Ind.

*Delta, DePauw University*—MARIETTE CABLE, Delta Zeta House, Greencastle, Ind.—C.C.D. JULIA SHUMAKER (Mrs. Arthur), 602 Anderson St., Greencastle, Ind.

*Epsilon, Indiana University*—MARJORIE JEAN RODEBECK, Delta Zeta House, 809 E. Seventh St., Bloomington, Ind.—C.C.D. PATRICIA FEHL, 534 N. Jordan Ave., Bloomington, Ind.

*Psi, Franklin College*—CAROLE NEESE, Bryan Hall, Franklin, Ind.—C.C.D. MELBA DEMAREE (Mrs.), 447 E. Jefferson, Franklin, Ind.

*Gamma Chi, Ball State Teachers College*—ANNETTIE

GOOD, Lucina Hall, Muncie, Ind.—C.C.D. BETH VAIL, 3206 Devon Rd., Muncie, Ind.

*Ft. Wayne Alumnæ*—MRS. GAIL MYERS, 4040 Nokomis Road, Ft. Wayne, Ind.

*Franklin Alumnæ*—MRS. MARK HANDLEY, 1145 Park Ave., Franklin, Ind.

*Indianapolis Alumnæ*—MRS. GEORGE F. ROMY, 62 N. Sheridan Ave., Indianapolis, Ind.

*South Bend Alumnæ*—MRS. DENNIS O. KEMP, 1001 E. Bowman, South Bend, Ind.

#### PROVINCE VIII: Southern Illinois

Director: RUTH WALSH HYDE (Mrs. Victor), 1413 Cambridge Dr., Westview, Champaign, Ill.

*Nu, Knox College*—NANCY DUTTON, Whiting Hall, Galesburg, Ill.—C.C.D. KATHERINE WEINMAN MCGREW (Mrs. Forest), 745 N. Academy, Galesburg, Ill.

*Pi, Eureka College*—PAULINE CALHOUN, Lida's Wood, Eureka, Ill.—C.C.D. PECCY HAGGARTY (Mrs. William) Box 22, Eureka, Ill.



*Alpha Beta, University of Illinois*—DAWN BUTLER, Delta Zeta House, 710 W. Ohio, Urbana, Ill.—C.C.D. JANET BARKER PHILLIPS (Mrs. David), 405 S. Edwin St., Champaign, Ill.  
*Gamma Nu, Eastern Illinois College*—BILLIE KNOWLES, Delta Zeta House, 860 Seventh St., Charleston, Ill.—C.C.D. LENA ANDERSON (Mrs. Ben), 1435 7th St., Charleston, Ill.  
*Gamma Rho, Northern Illinois State College*—PRISCILLA SCHNEIDER, Neptune Hall, De Kalb, Ill.—C.C.D. BETTY MCKENZIE (Mrs. Ralph), 325 Normal Rd., De Kalb, Ill.  
*Gamma Omega, Southern Illinois University*—PAT

MEZO, 320 W. Walnut, Carbondale, Ill.—C.C.D. IMOGENE BECKEMEYER, 607 S. University, Carbondale, Ill.  
*Eureka Alumnae*—MRS. HARVEY DECK, JR., Sunnyvale, Eureka, Ill.  
*Galesburg Alumnae*—MRS. HAROLD GEORGE, 61 N. Pearl St., Galesburg, Ill.  
*Peoria Alumnae*—MRS. RICHARD W. JACKSON, 313 N. Institute Place, Peoria, Ill.  
*Rockford Alumnae*—MRS. KENNETH BRENNER, 1506 East Gate Parkway, Rockford, Ill.  
*Urbana-Champaign Alumnae*—MISS ALICE APPELL, 1114 W. Nevada, Urbana, Ill.

#### PROVINCE IX: Northern Illinois, Wisconsin

*Director*: HAZEL DUVAL BUFFMIRE (Mrs. Wallace), 2400 Lawndale, Evanston, Ill.

*Tau, University of Wisconsin*—CAROLYN GIESSEL, Delta Zeta House, 142 Langdon St., Madison, Wis.—C.C.D. Mrs. R. F. CNARE, 609 Walton Pl., Madison, Wis.  
*Alpha Alpha, Northwestern University*—RUTH BEERS, Delta Zeta House, 717 University Place, Evanston, Ill.—C.C.D. JAN FAUST (Mrs. James H.), 1576 Oak St., Evanston, Ill.  
*Gamma Theta, Carroll College*—DORIS HILDEBRAND, Voorhees Dormitory, Waukesha, Wis.—C.C.D. MRS. LOIS WESTFALL, 222 Fountain Ave., Waukesha, Wis.  
*Gamma Mu, Illinois Institute of Technology*—GERALDINE VOELKER, 60 E. 32nd St., Chicago 16, Ill.—C.C.D. MARIE W. SPENCER (Mrs.), 60 E. 32 St., Apt. 206, Chicago, Ill.  
*Chicago Alumnae*—MISS ELVIRA RAU, 6030 N. Sheridan Rd., Apt. 1509, Chicago 40, Ill.  
*North Side*—MRS. JEROME J. KLUGE

*Southeast Bridge*—MRS. LAURENCE UEBNER  
*Southwest*—MRS. VERNON A. PETERSON  
*Afternoon*—MRS. TED W. ANTOS  
*South Suburban*—MRS. HERMAN WEIBERS  
*Madison Alumnae*—MRS. WALTER BRUCKS, 4217 Lumley Road, Madison, Wis.  
*LaGrange, Ill. Alumnae*—MRS. J. E. HOWLEY, 333 Ridge Ave., Elmhurst, Ill.  
*Milwaukee Alumnae*—MRS. WALTER J. BEYER, 3347 S. Quincey Ave., Milwaukee, Wis.  
*North Suburban (Chicago) Alumnae*—MRS. SIDNEY FRISCH, 256 Ivy Lane, Highland Park, Ill.  
*Waukesha Alumnae*—CHARLOTTE BECK, N. Beaver Lake Rd., Harland, Wis.  
*Oak Park-Maywood Alumnae*—MISS RUTH BURLEY, 200 S. Ashland, LaGrange, Ill.

#### PROVINCE X (South): Iowa, Nebraska

*Director*:

*Iota, University of Iowa*—JEANICE RAKER, 322 N. Clinton St., Iowa City, Iowa—C.C.D. PAT THOMAS HENDRICKSON (Mrs. Roger), 714 E. College, Iowa City, Iowa  
*Beta Kappa, Iowa State College*—MARILYN SCHWEITZER, Delta Zeta House, 2138 Sunset Dr., Ames, Iowa—C.C.D. BETTY PLATT (Mrs. B. H.), Osborn Cottage, Campus, Iowa State, Ames, Iowa  
*Gamma Epsilon, Drake University*—BARBARA PEARL, Delta Zeta House, 3118 Cottage Grove, Des Moines, Iowa—C.C.D. JOYCE LANE (Mrs. Orville R.), 632 10th St., W., Des Moines, Iowa  
*Beta Tau, Nebraska Wesleyan University*—IDONA VODEHNAL, Delta Zeta House, 4942 Madison Ave., Lincoln, Neb.—C.C.D. RUTH CLIFFORD (Mrs. M. P.), 2371 N.

56th St., Lincoln, Neb.  
*Ames-Boone Alumnae*—MRS. N. J. BIXLER, 1301 Crescent, Ames, Iowa  
*Cedar Rapids Alumnae*—MRS. M. DEANE RINNER, 670 26th St., S.E.  
*Des Moines Alumnae*—MRS. W. R. FRITZE, 3120 Cottage Grove, Des Moines, Iowa  
*Lincoln Alumnae*—MRS. HARVEY SCHULENBERG, 304 S. 17th, Lincoln, Neb.  
*Omaha Alumnae*—MRS. V. L. NEBERGALL—5430 Charles St., Omaha, Neb.  
*Quad City Alumnae*—MRS. HERB SAWINSKI, 2427 Dugan Ct., Davenport, Iowa  
*Sioux City Alumnae*—MRS. JOHN SEUBERT, 5115 Stone Ave., Sioux City, Iowa

#### PROVINCE X (North): Colorado, Minnesota, North Dakota

*Director*: DARLYNE HAMILTON HARIMAN (Mrs. Donald), 1616 Viets Ave., Grand Forks, N.D.

*Gamma, University of Minnesota*—BEVERLY FORINASH, Delta Zeta House, 519 10th Ave., S.E., Minneapolis, Minn.—C.C.D. MISS MARGARET WIPPERMAN, 313 Ninth Ave., S.E. Minneapolis, Minn.  
*Upsilon, University of North Dakota*—MARY PICARD, Delta Zeta House 2724 University Ave., Grand Forks, N.D.—C.C.D. MISS VALBORG OSLUND, 414 Second Ave. S., Grand Forks, N.D.  
*Beta Sigma, Colorado A & M*—ANNE LAMB, Delta Zeta House, 1002 Remington, Fort Collins, Colo.—C.C.D. MARY BENSON (Mrs. Herbert L.), 609 West

Lake, Fort Collins, Colo.  
*Denver Alumnae*—MRS. J. DOUGLAS McCLUSKIE, 35 Viking Dr., Rt. 1, Englewood, Colo.  
*Fort Collins Alumnae*—MRS. ROBERT TEMPLE, 182 Orchard, Vet Village, Fort Collins, Colo.  
*Grand Forks Alumnae*—MRS. J. W. ELLIOTT, PRINCETON Village #11, Grand Forks, N.D.  
*Grand Junction Alumnae*—MRS. H. SUMMERFIELD DAY, 1420 Grand Ave., Grand Junction, Colo.  
*Twin City Alumnae*—MRS. CECIL TAMMEN, 162 W. Lake, Excelsior, Minn.

#### PROVINCE XI: Oklahoma, Missouri, New Mexico, Kansas

*Director*: RUTH SEATS HANSEN (Mrs. Charles E.), 8819 E. 57th Terr., Kansas City 29, Mo.

*Alpha Epsilon, Oklahoma A & M*—PAULA VAN ARSDALE, Delta Zeta House, 224 S. Jefferson, Stillwater, Okla.—C.C.D. HAZEL ROSE NORTON (Mrs. H. Mead), 225 W. Eubanks, Oklahoma City, Okla.

*Gamma Gamma, Missouri Valley College*—ELVERA ROBKER, Young Hall, Marshall, Mo.—C.C.D. MRS. MARTIN J. WARD, 1068 S. English, Marshall, Mo.  
*Gamma Upsilon, Oklahoma City University*—DORIS



WHEELER, 1404 N.W. 2nd, Oklahoma City, Okla.—C.C.D. EMMA LOU PERKINS (Mrs. Cecil), 1016 N.W. 34th St., Oklahoma City 3, Okla.  
*Gamma Xi, New Mexico A & M*—JOYCE SCHNEIDER, Box 292, State College, N.M.—C.C.D. ANNA GARDINER, (Mrs. George), Box 26, State College, N.M.  
*Enid Alumnae*—MRS. HUBERT HITCHCOCK, 821 E. Pine St., Enid, Okla.  
*Kansas City Alumnae*—MRS. EDWARD G. DEUSER, 802 E. 47th St., Kansas City 10, Mo.  
*Manhattan Alumnae*—MRS. RUSSELL M. DARY, 121 N. 8th St., Manhattan, Kan.

*Marshall Alumnae*—MRS. MARTIN J. WARD, 1068 S. English, Marshall, Mo.  
*Oklahoma City Alumnae*—MRS. RALPH A. DREILING, 3015 N. Hudson, Oklahoma City, Okla.  
*Stillwater Alumnae*—MRS. EARLE C. ALBRIGHT, 712 Belles, Stillwater, Okla.  
*St. Louis Alumnae*—MRS. FOY J. ANDERSON, 55 York Drive, St. Louis 17, Mo.  
*Tulsa Alumnae*—MRS. HERBERT DANNE, 5535 S. Birmingham, Tulsa, Okla.  
*Wichita Alumnae*—MRS. JAMES W. FULGHUM, 2246 S. Broadview, Wichita, Kan.

#### PROVINCE XII: Oregon, Washington

Director: MRS. NELLA HULET, 805 Warren Ave., Seattle, Wash.

*Kappa, University of Washington*—THEA REEB, Delta Zeta House, 4535 18th N.E., Seattle, Wash.—C.C.D. LORRAINE BORDSEN (Mrs. Roy), 2354 Yale No., Seattle 2, Wash.  
*Phi, Washington State College*—MARILYN MULRONEY, Delta Zeta House, 1704 Opal St., Pullman, Washington—C.C.D. HELEN BRISTOL (Mrs. Walter M.), 400 High St., Pullman, Wash.  
*Chi, Oregon State College*—JANET MCBWINEY, Delta Zeta House, 23rd & Van Buren, Corvallis, Oregon—C.C.D. IRENE ALBERT (Mrs. Arthur L.), 2955 Jackson St., Corvallis, Ore.  
*Omega, University of Oregon*—GEORGIA TAGGART, Delta Zeta House, 1883 University Ave., Eugene, Ore. C.C.D. MRS. C. M. NESBIT, 2441 Harris Place, Eugene, Ore.  
*Corvallis Alumnae*—MRS. BETH CRAMER, 513 N. 30th St., Corvallis, Ore.

*Eugene Alumnae*—MRS. T. O. MOHR, 409 E. 33rd St., Eugene, Ore.  
*Portland Alumnae*—MRS. E. R. TABRUM, 2216 28th Ave., Milwaukie, Ore.  
*Pullman Alumnae*—MISS LETA BROCK, Elmhurst Apts., Pullman, Wash.  
*Salem Alumnae*—MRS. HAROLD E. SMEDLEY, 775 N. 16th St., Salem, Ore.  
*Seattle Alumnae*—MRS. WARREN DEASY, 3250 Esplanade Drive, Seattle, Wash.  
*Spokane Alumnae*—MRS. DOUGLAS SOLVIE, 4127 South Garfield, Spokane 36, Wash.  
*Tacoma Alumnae*—MRS. HELEN MANKE, 3737 South K. St., Tacoma, Wash.  
*Yakima Alumnae*—MISS M. ELINOR DRISCOLL, 223 Margadella Apts., Yakima, Wash.

#### PROVINCE XIII: California, Arizona, Nevada, Utah

Director: ELEANOR ATTERBURY CORTEN (Mrs. A. H.), 837 Colmar Ave., Oakland 10, Calif.

*Mu, University of California*—PATRICIA PAYNE, Delta Zeta House, 2728 Durant St., Berkeley 4, Calif.—C.C.D. WILMA MITCHELL (Mrs.), 1600 Beverly Pl., Berkeley, Calif.  
*Alpha Chi, University of California, Los Angeles*—MARCIA BRYANT, Delta Zeta House, 824 Hilgard, W. Los Angeles 24, Calif.—C.C.D. MARY KOEHLER (Mrs. Robt.), 917 Corsica Drive, Los Angeles, Calif.  
*Gamma Lambda, San Jose State College*—NANCY CURTIS, Delta Zeta House, 64 S. 10th, San Jose, Calif.—C.C.D. CATHY JOHNSON (Mrs. Desmond), 995 Chapman St., San Jose, Calif.  
*Gamma Omicron, San Diego State College*—MARIANNE GRILLO, 5988 Trojan Ave., San Diego 15, Calif.—C.C.D. MARGARET NESS (Mrs. Lee), 560 Pepper Dr., El Cajon, Calif.  
*Delta Alpha, Long Beach State College*—VALJEANE WORDEN, 2723 Van Buren St., Long Beach, Calif.—C.C.D. MRS. S. M. GREGORY, 3850 Olive St., Long Beach 7, Calif.  
*Fresno Alumnae*—MRS. J. E. WHEELER, 5366 N. Brawley Ave., Fresno, Calif.  
*Glendale-Burbank Alumnae*—MRS. WAYNE REEP, 1542 Columbus, Glendale, Calif.  
*Honolulu, T. H. Alumnae*—MRS. ROBERT MULLEN, 4604 Aukai St., Honolulu, Hawaii  
*Long Beach Alumnae*—FRANCES GREGORY, 3850 Olive, Long Beach, Calif.  
*Los Angeles Alumnae*—MRS. GRACE MCKNIGHT, 1559 N. Kenmore Ave., Los Angeles 27, Calif.  
*Marin County Alumnae*—MRS. JAMES A. SMITH, 375 Holly Drive, Terra Linda, San Rafael, Calif.  
*Monterey Peninsula Alumnae*—MRS. RICHARD A. ROSS,

1325 Military, Seaside, Calif.  
*Mt. Diablo Area Alumnae*—MRS. HANX BEETZ, 3300 N. Lucille Lane, Lafayette, Calif.  
*Orange County Alumnae*—MRS. W. SMITH DORSEY, 425 Elizabeth Way, Fullerton, Calif.  
*Palo Alto Alumnae*—MRS. HAROLD PULS, 324 Trenton Way, Menlo Park, Calif.  
*Pasadena-Foothills Alumnae*—MRS. HOWARD HITCHCOCK, 3635 Greenhill Rd., Pasadena, Calif.  
*Phoenix, Alumnae*—CONSTANCE MILLIGAN, 1641 E. Willeta, Phoenix, Ariz.  
*Sacramento Alumnae*—MRS. RICHARD YOUNG, 1228 El Toro Way, Sacramento 21, Calif.  
*Salt Lake City Alumnae*—MRS. O. A. TANGREN, 145 S. 3rd St. East, Salt Lake City, Utah  
*San Diego Alumnae*—MRS. HUBERT E. STANFORD, 6382 50th St., San Diego 15, Calif.  
*San Fernando Valley Alumnae*—MRS. CHARLES DE LA FAENT, 6300½ Coldwater Canyon Rd., North Hollywood, Calif.  
*San Francisco-Bay Cities Alumnae*—MRS. ALAN SILVIUS, 29 Moffitt St., San Francisco, Calif.; Secretary: MRS. Clyde Rockwell, 512 Boynton St., Berkeley, Calif.  
*San Francisco Peninsula Alumnae*—MRS. JOHN P. HEGARTY, 427 Midway Ave., San Mateo, Calif.  
*San Jose Alumnae*—MRS. ROBERT CRADDOCK, 1551 Georgetown, San Jose, Calif.  
*Santa Barbara-Ventura Alumnae*—MRS. JOHN PROBY, 271 E. Warner, Ventura, Calif.  
*Santa Monica Alumnae*—MRS. THOMAS O. LAWSON, 7720 Henefer Ave., Los Angeles 45, Calif.  
*South Bay Alumnae*—MRS. PHILIP O. DOWNING, 109 Via Los Miradores, Redondo Beach, Calif.



# PROVINCE XIV: Texas

Director: VELMA LOCKRIDGE McKEE (Mrs. M. J.), 3130 Daniels, Apt. #6, Dallas 5, Tex.

*Alpha Tau, University of Texas*—DIANE HOPKINS, Delta Zeta House, 1704 West Ave., Austin 21, Texas—C.C.D. Mrs. WM. B. LEACH, 1402 Wathen, Austin, Tex.

*Alpha Psi, Southern Methodist University*—JANICE PATITSON, Delta Zeta House, 3034 Daniels St., Dallas, Texas—C.C.D. VERA TUGGEY (Mrs. Howard E.), 3444 Amherst, Dallas, Tex.

*Gamma Zeta, Southwestern University*—MARILYN COLEGROVE, Delta Zeta Box, Southwestern University, Georgetown, Texas—C.C.D. Mrs. J. C. TRUEHARDT, Georgetown, Tex.

*Delta Theta, University of Houston*—JEAN McDUGALD, 2047 Jean St., Houston Tex.

*Austin Alumnae*—Mrs. GEORGE C. GORZYCKI, 3306 Clearview Dr., Austin, Tex.

*Dallas Alumnae*—Miss BETTE RUTH HORTON, 5621 McCommas Ave., Dallas 6, Tex.

*Ft. Worth Alumnae*—Mrs. G. M. BRADFELD, 3813 Spurgeon, Ft. Worth, Tex.

*Houston, Alumnae*—Mrs. DONALD W. CALLAHAN, 3913 Charleston, Houston 21, Tex.

*San Antonio Alumnae*—Mrs. KENNETH J. HOLLOWAY, 126 Bryker Drive, San Antonio, Tex.

# PROVINCE XV: Kentucky, Tennessee

Director: HOLLIS O'NEAL (Mrs. Kenneth U.), Rt. 1, Nicholaville Pike, Lexington, Ky.

*Alpha Theta, University of Kentucky*—CAROL ANN WALTER, Delta Zeta House, 185 E. Maxwell, Lexington, Ky.—C.C.D. Mrs. H. A. GARBER, 324 Sycamore Rd., Lexington, Ky.

*Beta Gamma, University of Louisville*—SUZANNE LUCHETA, Delta Zeta House, 2028 S. First, Louisville, Ky.—C.C.D. Mrs. GROVER CORLEY, 1201 Valley Dr., Louisville, Ky.

*Beta Lambda, University of Tennessee*—WILHELMINA HAMMOND, 916 17th S.W., Knoxville, Tenn.—C.C.D. Mrs. CHARLES A. ANDERSON, 2715 Jersey Ave., Knoxville, Tenn.

*Gamma Iota, Memphis State College*—JUDY CRAMER, M.S.C., Memphis, Tenn.—C.C.D. SARAH JANE HOUTON (Mrs. Harold), 103 N. Fernway Rd., Memphis 17, Tenn.

*Delta Eta, East Tennessee State College*—SAVANNA CLINTON, Box 223, Cooper Hall, Johnson City, Tenn.

*Delta Gamma, Transylvania College*—GAIL WAGONER, Hamilton Hall, N. Broadway, Lexington, Ky.—C.C.D. Mrs. LUTIE AZEVEDO, 251 Larch Lane, Lexington, Ky.

*Knoxville Alumnae*—Mrs. FRANK WYLIE, Howard Rd., Knoxville, Tenn.

*Lexington Alumnae*—Mrs. FRED COPLIN, 1406 Fontaine Rd., Lexington, Ky.

*Louisville Alumnae*—Mrs. GROVER CORLEY, 1201 Valley Dr., Louisville 13, Ky.

*Memphis Alumnae*—Mrs. GILBERT P. STRODE, JR., 4812 Marcel Rd., Memphis, Tenn.

*Nashville Alumnae*—Mrs. RUSSELL BUNSON, 503 E. Iris Drive, Nashville, Tenn.

*Johnson City Alumnae*—VIRGINIA COMBS, 1107 Hollston Ave., Bristol, Tenn.

# PROVINCE XVI: Louisiana, Mississippi, Alabama

Director: GERTRUDE MEATHERINGHAM (Mrs. V. H.), 301 Ascott Rd., Birmingham 9, Ala.

*Sigma, Louisiana State University*—MACDA LIEUX, Delta Zeta Box 7674, University Station, Baton Rouge, La.—C.C.D. Mrs. CHAS. W. REED, 126 Richland Ave., Baton Rouge, La.

*Alpha Gamma, University of Alabama*—IMOCENE COVINGTON, Delta Zeta House, University, Ala.—C.C.D. Mrs. FRED LEWIS, 32 Arcadia, Tuscaloosa, Ala.

*Alpha Pi, Howard College*—ELIZABETH RITCHEY, Box 405, Howard College, Birmingham, Ala.—C.C.D. VIRGINIA JONES (Mrs. Thomas Ward), 2132 Southwood Rd., Birmingham, Ala.

*Beta Xi, Alabama Polytechnic Institute*—PHYLLIS SHEPARD, Dormitory #1, A.P.I., Auburn, Ala.—C.C.D. Mrs. E. F. MAY, 546 South Gay St., Auburn, Ala.

*Beta Upsilon, H. Sophie Newcomb College*—LYNN STOKES, 716 Broadway, New Orleans—C.C.D. GLORIA

HECKER (Mrs. J. W.), 6864 Louisville St., New Orleans, La.

*Auburn Alumnae*—Mrs. J. C. GRIMES, Box 1010, Auburn, Ala.

*Baton Rouge Alumnae*—Mrs. H. M. CHENEVERT, 1436 Hearthstone Dr., Baton Rouge, La.

*Birmingham Alumnae*—Mrs. THOMAS W. JONES, 2132 Southwood Rd., Birmingham, Ala.

*New Orleans Alumnae*—Miss MIGNONNE HUCK, 808 Weiblen St., New Orleans, La.

*Montgomery Alumnae*—Mrs. ROBERT D. FRANCIS, 3635 Pelzer Ave., Montgomery, Ala.

*Shreveport Alumnae*—Mrs. G. RANDALL WHITMORE, 488 Ockley Dr., Shreveport, La.

*Tuscaloosa Alumnae*—Mrs. WILLIAM WHITE, 9 Woodlawn Hills, Tuscaloosa, Ala.

# PROVINCE XVII: Florida, Georgia, South Carolina

Director: PINKY GATES HARRIS (Mrs. Jack), 2772 Dover Rd., N.W., Atlanta, Ga.

*Alpha Sigma, Florida State University*—MARTHA SUE MIZELL, Delta Zeta House, 409 S. Copeland, Tallahassee, Fla.—C.C.D. EUNICE WILLIAMSON (Mrs. J. D.), 231 5th Ave., Tallahassee, Fla.

*Beta Delta, University of South Carolina*—AGNES MOORE, U. of South Carolina, Columbia, S.C.—C.C.D.

*Beta Mu, Florida Southern College*—SARAH TROXLER, Delta Zeta House, 12 S. Ingraham, Lakeland, Fla.—C.C.D. MARGARET PARKMAN (Mrs. W. C.), 123 W. Hunter, Lakeland, Fla.

*Beta Nu, University of Miami*—MARY LEE KESTER, 1234 D. Dickinson Ave., Coral Gables, Fla.—C.C.D. Mrs. ROMA O'BRIEN, 2617 Cardena, Coral Gables, Fla.

*Delta Beta, University of Tampa*—VILMA FERNANDEZ, 1518 Fourteen Ave., Tampa, Fla.—C.C.D. BETTY NELSON (Mrs. Donald), 3511 Corona, Tampa, Fla.

*Delta Delta, Georgia State College of Business Administration*—CLAUDIA BRUCE, 234 Second Ave., Decatur, Ga.—C.C.D. JEANNETTE MOON (Mrs. H. Cecil), 3975 Stratford Rd., N.E., Atlanta, Ga.

*Atlanta Alumnae*—Mrs. W. E. ABRAMS, 4516 Wieuca Rd., N.E., Atlanta, Ga.

*Charleston Alumnae*—Miss HAZEL MOORE, 68 Elizabeth Lane, Charleston, S.C.

*Columbia Alumnae*—Mrs. C. R. JACKSON, 4604 Meadwood Rd., Columbia, S.C.

*Jacksonville Alumnae*—Mrs. JAMES HOUSER, 501 Estes Rd., Jacksonville, Fla.

*Lakeland Alumnae*—Mrs. LYLE CURRAN, 409½ South Lake, Lakeland, Fla.

*Miami Alumnae*—Miss VIOLA McWHORTER, 3468 S.W. 24th Ter., Miami, Fla.

*Orlando Alumnae*—Miss DOROTHY PARHAM, 537 Clayton St., Orlando, Fla.

*Pensacola Alumnae*—Miss KAY DAVIS, 1718 Yates Ave., Pensacola, Fla.

*Plant City Alumnae*—Mrs. JOHN B. NEUNER, 811 Mahoney, Plant City, Fla.

*St. Petersburg Alumnae*—Mrs. EDGAR W. MAXSON, 4254 Burlington Ave., N., St. Petersburg, Fla.

*Tallahassee Alumnae*—Miss MARTHA MOORE, 902 N. Gadsden, Tallahassee, Fla.

*Tampa Alumnae*—Mrs. J. M. COARSEY, 6703 Armenia Ave., Tampa, Fla.



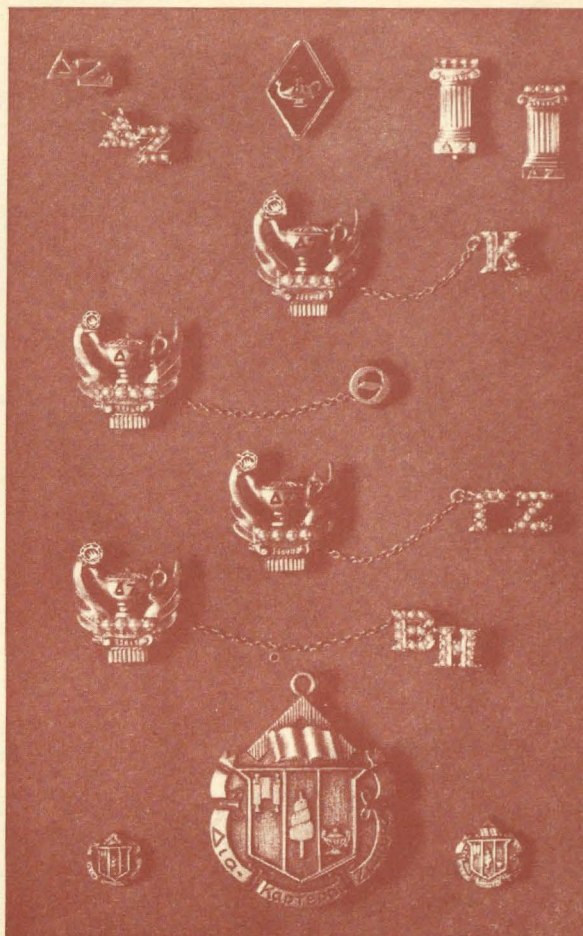
# Your Official Jeweler

## BURR, PATTERSON & AULD COMPANY

2301 Sixteenth Street  
Detroit 16, Michigan

### Catalogues free upon request

When ordering badges, please use the official badge order form and forward same to the Executive Secretary for her approval. Your sorority requires this.



### STANDARD BADGES

Zircon, set flush or tiffany .....	\$13.50
Brilliant cut diamond, flush or tiffany .....	22.50
Medium size diamond, flush or tiffany .....	27.50
.10 Diamond set flush or tiffany .....	62.50
(Be sure to specify your choice of setting for the diamond, flush or tiffany.)	
Recognition pin, staggered letters, crown set pearl .....	10.00
Recognition pin, staggered letters, gold-filled .....	1.25
10K gold .....	2.50
Mother's pin, plain .....	3.00
with pearls .....	4.25
Pledge pin, with safety catch .....	1.00

### GUARD PIN PRICES

	Single Letter	Double Letter
Plain .....	\$2.75	\$ 4.25
Crown set pearl .....	7.75	14.00

(Be sure to mention the name of your chapter when ordering a guard for your pin.)

10% FEDERAL EXCISE TAX MUST BE ADDED TO ABOVE PRICES; ALSO STATE SALES AND USE TAX WHERE THEY ARE IN EFFECT.



Mrs. Maxine Moulton

Box A048

Matheo A.F.B.

Sacramento, Calif.

Entered as second class matter at Menasha, Wisconsin.

If undeliverable return copies and Form 3579 to Delta  
Zeta Sorority, 1325 Circle Tower, Indianapolis 4, Indiana.

**RETURN POSTAGE GUARANTEED**



returned  
address  
by return  
mail

Postage due 3 cents