


THE Lamp

OF DELTA ZETA



IN THIS ISSUE

Convention awards made;
new friendships kindled.
picture story pp. 2-17.

Delta Zetas Overseas.
pp. 24-26; 28-30.

VOL. 57 NO. 3
SEPTEMBER 1968

Convention Awards Name Top Collegiate, Alumnae

(listing includes major awards not pictured)

ACTIVITY AWARDS:

Delta Delta, Iota Alpha, Epsilon Gamma, Epsilon Kappa, Theta Tau, Iota Delta, Gamma Theta, Epsilon Pi, Beta Kappa, Gamma Alpha, Gamma Gamma, Gamma Iota, Gamma Omega, Delta Lambda, Delta Omega, Zeta Alpha, Omicron, Zeta Phi, Theta Psi, Epsilon Xi, Theta, Gamma Pi, Zeta Theta, Theta Delta, Gamma Psi, Epsilon Omicron, Zeta Kappa, Zeta Omega, Theta Omega

SORORITY EDUCATION:

Silver Awards

Epsilon Rho, Epsilon Sigma, Theta Alpha, Iota Theta, Zeta Theta, Alpha Theta

MEMBERSHIP:

Silver (8 yrs. quota and/or limitation in formal rush)

Zeta Epsilon, Zeta Kappa, Epsilon Sigma, Epsilon Kappa, Gamma Zeta, Delta Lambda, Sigma, Epsilon Beta, Delta Delta

Silver (6 yrs. quota and/or limitation in formal rush)

Alpha Theta, Theta Xi, Alpha, Gamma Sigma, Theta Eta

Silver (2-4 years quota and/or limitation in formal rush)

Alpha Upsilon, Beta Alpha, Gamma Beta, Theta Gamma, Delta Epsilon, Iota Zeta, Iota Kappa, Gamma Phi, Zeta Phi, Theta Chi, Iota Delta, Delta Upsilon, Gamma Alpha, Theta Sigma, Theta Tau, Theta Psi, Gamma Pi, Zeta Omega, Psi, Gamma Chi, Gamma Theta, Alpha Alpha, Gamma Epsilon, Beta Tau, Zeta Iota, Delta Theta, Zeta Zeta, Zeta Theta, Zeta Psi, Theta Omicron, Iota Alpha, Alpha Gamma

NEWSLETTERS

Province Letters:

Province VI, excellent; Province III, superior; Beta Tau, excellent; Omicron, superior

Alumnae chapter letter: Los Angeles, Calif.; Washington, D.C.; Birmingham, Ala.; Stillwater, Okla.

PHILANTHROPY:

College Chapter: Epsilon Kappa, superior

(Collegiate):

Collegiate

Gamma Chi, 1st place; Beta Kappa, 2nd place; Delta Delta, 3rd place

Flame Fantasy awards

Gamma Rho, Beta Kappa, Beta Sigma, Zeta Psi, Zeta Theta, Epsilon Xi, w/alum: Alpha Tau, Beta Gamma, Gamma Chi, Theta Omicron

(Alumnae):

Superior Achievement for 2 year period

Denver, Colo.; Greater Kansas City, Mo.; Long Beach, Calif.; Louisville, Ky.; Oakland County, Mich.; Pittsburgh East

Superior Achievement for 4 or more years

Akron, O., Chicago, Ill., Detroit, Des Moines, Houston, Indianapolis, Sacramento, St. Louis, San Francisco-Bay Cities, Pasadena Foothills, Washington, D.C.

Flame Fantasy Awards

Denver, Greater Kansas City, Mo., Houston, Mt. Diablo, Oklahoma City, Philadelphia West, Sacramento, San Diego, Seattle, Wash., St. Louis, Tri Cities, Tenn., Edinburg-McAllen, Tex., w/college, Louisville, w/college, Muncie, w/college, Indiana Council, Michigan Council, St. Calif. Council

PRESS BOOK AWARDS (College Chapters)

Superior: Iota Lambda, Epsilon Mu, Epsilon Epsilon, Iota Psi

Excellent: Delta Lambda, Zeta Nu, Theta Epsilon, Iota Theta, Theta Sigma

SCHOLARSHIP AWARDS

Silver Awards:

Gamma Theta, Gamma Psi, Delta Omicron, Delta Phi, Epsilon Kappa, Epsilon Psi, Zeta Upsilon, Theta Eta, Theta Lambda, Theta Nu, Theta Sigma, Theta Tau, Theta Psi, Theta Omega, Iota Theta

STANDARDS

Alpha Zeta, Beta Theta, Omicron, Gamma Phi, Zeta Phi, Theta Delta, Gamma Chi, Epsilon Kappa, Zeta Omicron, Zeta Alpha, Beta Tau, Chi, Delta Alpha, Delta Omicron, Alpha Psi, Zeta Psi, Theta Omicron, Zeta Xi, Theta Omega, Alpha Pi, Theta Beta

ALUMNÆ AWARDS

Certificates of Merit

Aurora, Ill.; Austin, Tex.; Bartlesville, Okla.; Cincinnati; Cleveland Eastside; Cleveland Westside; Colorado Springs; Dayton, Ohio; Denver, Colo.; Detroit; Central San Fernando Valley; Grand Rapids, Mich.; Johnson-Wyandotte; Kansas City, Mo.; Lincoln, Neb.; Long Beach, Calif.; Manhattan, Kan.; Miami, Fla.; Montgomery, Ala.; Muncie, Ind.; Northern N.J.; Oakland Cnty, Mich.; Pasadena Foothills; Phoenix; Portland, Oregon; Sacramento; St. Louis; San Antonio; San Francisco-Bay Cities; Seattle; Washington, D.C.

16 years excellence: Long Beach, Calif.; Northern, N.J.; Detroit, Mich.

more than 16 years continued excellence: San Francisco-Bay Cities; Dayton, Ohio; Pasadena Foothills, Calif.

DELTA ZETA FOUNDATION SCHOLARSHIP: AUDIOLOGY AWARD: Ann Alfonso, University of Pittsburgh

COLONNADE CLUB AWARDS:

Theta, Kappa, Alpha Epsilon, Alpha Tau, Alpha Psi, Delta Alpha, Delta Mu, Theta Zeta, Dallas Colonnade Club (Beta Club), and Houston Delta Zeta Mothers Club

FOUNDERS AWARD (6 CANDLESTICKS)

Beta Tau, Nebraska Wesleyan; Gamma Theta, Carroll College; Theta Omicron; Alpha Gamma, University of Alabama; Zeta Phi, Slippery Rock.

COUNCIL AWARD (SILVER TRAY)

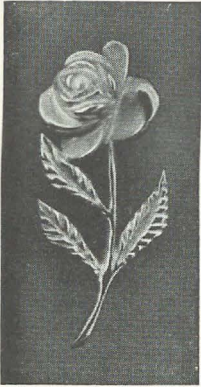
Epsilon Sigma, Wayne State; Epsilon Kappa, Wisconsin State; Gamma Chi, Ball State.

ACHOTH AWARD (ALUMNÆ)

Fern Riley Wilson, Epsilon; Mary Margaret Calhoun Fore, Alpha Psi; Maurine Dunlap Carlson, Nu; Fanita Terry, Epsilon Eta; Marie Berg, Delta Pi; Patricia Heneghan Pelkofer, Omicron; Betty Thompson Betker, Beta Rho; Dorothy Compton Garber, Alpha Theta; Eleanor Hanson Nichols; Eleanor Atterbury Corten, Alpha Chi; Nita Midgley Baldwin, Alpha Sigma; Frances Igo Gregory, Alpha Chi.

Office of Publication, George Banta Co., Inc., Curtis Reed Plaza, Menasha, Wis. 54952

MISS SUE HASTINGS, *Editor*



Golden Rose Pin
For 50 Year Members—\$17.50
Order from National Headquarters



Daughter-Granddaughter Pendant
gold-filled\$4.50
Daughter-Granddaughter Pendant
10K gold\$7.25
(Order from Executive Secretary)

- 2 National Convention Convenes in St. Louis
- 17 New Award Cites Alumnæ Chapters
- 18 Nevada Southern University Granted 177th Charter for Iota Phi Chapter
- 20 California State College—Fullerton Installation Assisted by Province XV College Chapters
- 23 State Province Days Bring Fun, Awards for Collegiate, Alumnæ Chapters
- 24 Overseas feature: Delta Zeta Maintains Thai Home While Husband Conducts Research
- 26 Angi Grooms Tours Vietnam in Miss America Team
- 27 Four DZ's Represent States in College Queen Contest
- 28 Overseas feature: Year in Vietnam with Red Cross Gives Jeanne Memories, Mementos
- 31 Editor's Chatter
- 32 Campus Collegiate Leaders Shine
- 35 Collegiates Take Lead in Campus Activities
- 37 Varied Events Keep Chapters Busy, Active
- 38 Campus Activities Benefit Greatly from DZ Leaders
- 40 Greek Week, Derby Days, Pioneer Days Demonstrate Delta Zeta Enthusiasm, Spirit
- 42 Campuses Praise DZ Beauty, Poise
- 44 DZ's Prove Philanthropies Can Be Fun
- 45 Akron University DZ's Co-Sponsor Egg Hunt
- 46 Announcing Magazine Winners
- 47 Golden Flame Eternal
- 48 Directory—Save this issue

... On the Cover

Jeanne Bokina rides between villages during her year in Vietnam with the Red Cross. See overseas feature pp. 28-30.

Charming and warm, surprise Convention initiate Mrs. Stan Musial greets her new Delta Zeta sisters after initiation ceremonies.

THE LAMP OF DELTA ZETA, official magazine of the sorority, is published Quarterly by George Banta Company, Inc., official printers to the sorority. \$2.00 per year. Life subscription \$25.00. Printed in U.S.A. Second class postage paid at Menasha, Wisconsin. Acceptance for mailing at special rate of postage provided for in section 1103, Act of October 3, 1917, authorized September 26, 1918.

Copyright 1968 by Delta Zeta Sorority

RETURN REQUESTED

Delta Zeta Sorority, 3561 N. Pennsylvania St., Indianapolis, Ind. 46205

Attention All Chapter Lamp Editors:

Send all material for publication to Delta Zeta National Headquarters, 3561 N. Pennsylvania St., Indianapolis, Ind. 46205; all changes of address and advertising information to Mrs. Walter Folger, Delta Zeta National Headquarters, 3561 N. Pennsylvania St., Indianapolis, Indiana 46205. Deadline for Third Quarter issue is June 1, issue will appear in September. Deadline for Fourth Quarter issue is Sept. 1, issue will appear in December. Deadline for First Quarter issue is Dec. 1, issue will appear in March. Deadline for Second Quarter issue is March 1, issue will appear in June.

St. Louis Convention Inspiring, Fun

Under a canopy of star-like clusters, Betty Heusch Agler, National President, called together the 30th Delta Zeta National Convention in elegant Chase Park Plaza Hotel, St. Louis.

Silver arches graced each table, as over 500 women gathered for Opening Banquet June 16. Betty Bosse, president of St. Louis Alumnæ; and Gertrude Murphy Meatheringham, convention chairman; welcomed delegates and officers, officially opening a week of business meetings, workshops, and fun.

Throughout the Convention, Delta Zetas were challenged by speakers.

"We must talk together, listen to each other," urged Dr. Eunice Roberts in her Opening Banquet speech Sunday.

"We have to bridge the gap," said the Indiana Associate Dean, as she discussed the difficulty of alumnæ-collegiate relations.

Dr. Roberts stressed that communications must come from both sides.

"We've got to 'turn on,'" she challenged alumnæ. And to the collegiates she cautioned, "It is folly to seek change for the sake of change."

A surprise guest at Opening Banquet was President Leonard Elstad of Delta Zetas' national philanthropy, Gallaudet College, Washington, D.C. He thanked Delta Zeta for her continuing help.

By early morning, Delta Zetas were in session. Officer reports included announcement of the new additions to alumnæ and collegiate chapters during the last biennium.

Nine alumnæ chapters have been added for a total of 280; Fifteen new collegiate chapters have been added for a total of 176. Three colonies will be installed as collegiate chapters in the coming year.

Initiation Inspires

Delta Zetas watched with awe as past national officers moved through the sacred ceremony of initiation Monday evening. Charming everyone was the Convention Initiate, Lillian Labash Musial.

The wife of Stan Musial, former player with the St. Louis Cardinals, Mrs. Musial revealed that the well-kept secret of her identity had been fun to hide.

"I was at the dinner Sunday night," she laughed. "Someone asked me why I was at the Delta Zeta banquet and I just told them I was a guest of Verne." She referred to Verne Duda, whose husband is president of California State College in Pennsylvania and who was Stan's high school coach and longtime friend.

Caryatides Awards Presented

Women in white flowed into the Khorassan Banquet Room for Lamp Lighting Banquet Monday night. Six chapters were honored for outstanding pledge programs with graceful Caryatides Statuettes. Winners

were ΓΠ, Western Michigan University; ΓΨ, Central Michigan University; ΕΚ, Wisconsin State University-Whitewater; ΘΤ, Findlay College; ΘΧ, Lock Haven State College; and ΖΦ, Slippery Rock State College.

A Tuesday highlight was the welcoming of Kassie Billingsley to Convention. Kassie, a ΖΦ member, had competed in the National College Queen contest during the opening of convention. She arrived in St. Louis after winning Miss Congeniality.

Banquet Has Indian Theme

Tuesday evening the invocation was in sign language, as Indian war maidens from Oklahoma headed the Chapter Awards Banquet. Five beaded and sequined, tribal seals of the civilized Indian tribes of Oklahoma were the backdrop for head table. Teepee programs listed the names of Council in Seminole and Mrs. Agler received a tomahawk as "Big Chief." Awards of all national committee chairmen working on college programs or alumnæ activity were announced.

Pink roses bedecked tables at the Mother-Daughter and Colonnade luncheon Wednesday. The new life memberships cards were explained and a charter membership was given to Betty Agler.

Featured speaker Wednesday afternoon was Dr. Russell Costello, psychiatrist and neurologist, who called his speech "LSD," focusing on liquor, sex, and drugs. That night, brainy bees, beautiful queen bees, and busy bees were all commended at Recognition Banquet.

Wednesday was Delta Zeta night out, and convention goers were treated to a night at the famed St. Louis Muni. "Pajama Game" was the opera presented under the stars.

Mini Skirt Wins Out

Pups yipped, hounds yowled, and the mini skirt won out Thursday evening at Fun Night.

A merry-making atmosphere brought singing and dancing and all pups and hounds yowled with laughter at the antics of Myrtle Graeter Hinkly's convention theme. Woofs were longest and loudest for Irene Boughton and Grace Mason Lundy, veterans of 21 conventions each.

Norma Andrisek then introduced the collegiates. Provinces had combined for skirts, and costumes had been borrowed from every hotel worker. The winning skit featured "The Rose Shop."

Top chapters and individual awards and the installation of the new National Council capped the week's activities.

Banquet toastmistress Betsy Bradley Leach used a theme of "A Rose Is Like Love" for Final Banquet. Nominees for Grace Mason Lundy and Florence Hood Miner awards carried pink velvet roses and led the procession of national officers.

A little sadly, Delta Zetas left friends and fun after a week of inspiring Convention activity.



Sunday registration was hectic.

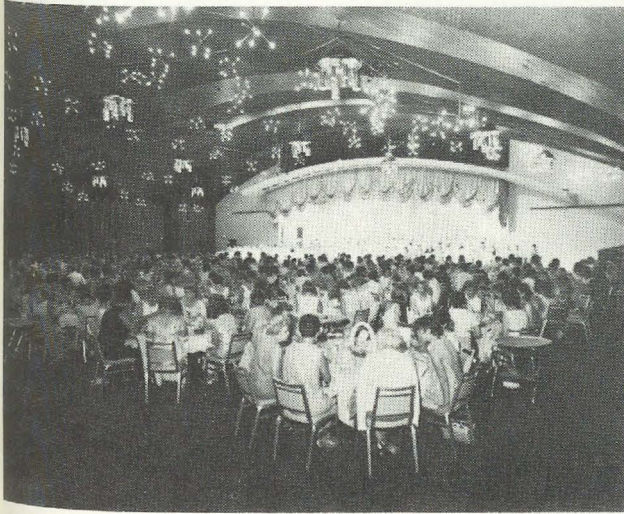
National Convention Convenes in St. Louis



Violet Sharratt Whitfield escorts Irene Boughton in the Opening Banquet processional.



All National Council, past National Presidents, Province Collegiate and Alumnæ Directors and National Committee Chairmen formed a processional for Opening Banquet.



The Khorasson Room was an elegant setting for the over 500 Convention participants.

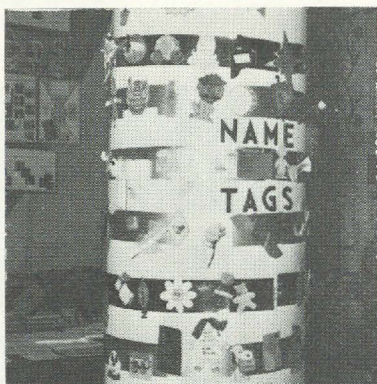


Verne Duda and Mildred Stiff promote Rose Shop wares to Gertrude Meatheringham, convention chairman.

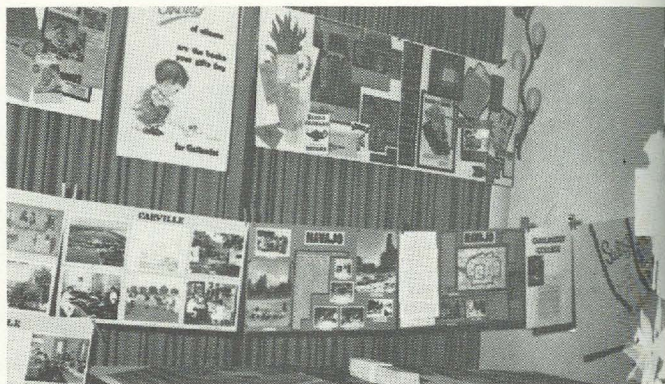
Caryatides Winners, Convention Initiate Thrill Delegates



The pre-initiation Lamplighting ceremony was performed by Iowa and Michigan collegiates.



Rush name tags were a source of ideas.



Displays in the Crown Room attracted attention.



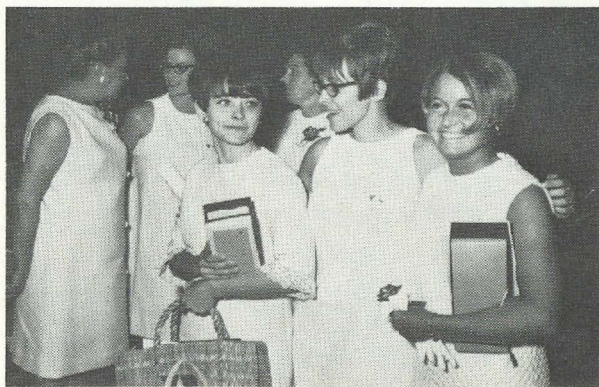
Beginning Monday morning, delegates attended business sessions and workshops, taking lots of notes.



Caryatides winners were ZΦ, Slippery Rock State College; ΘT, Lock Haven College; EK, Wisconsin State University-Whitewater; ΘT, Findlay College; ΓΨ, Central Michigan University; and ΓΔ, Western Michigan University.



William Musial is congratulated after Initiation. Left to right: Mary Lou Ragel Vinyard, Mrs. Musial, Betty Heusch Agler, Betsy Bradley Leach.



Province Collegiate Director Sue Cheske Balough hugs her Caryatides winners.



The Busy Bees, the Scholarly Bees, and the Queen Bees were honored at Recognition Banquet.



Mothers, daughters, granddaughters, and sisters in Delta Zeta have a family portrait.



Betty Heusch Agler received tomahawk as "the big Chief."



Oklahoma war maidens assisted at the Formal Awards Banquet, which had an Indian theme.

Delta Zetas Dine With Indians, Bees; Sing, Receive Awards



Collegiates were commended for philanthropy work. Top awards went to IX, Ball State; BK, Iowa State; and Delta Zeta, Georgia State College.



Alumnæ achievement was cited at Formal Awards Banquet Tuesday.



Over 40 Delta Zeta families were represented at the Mother-Daughter and Colonnade Luncheon.



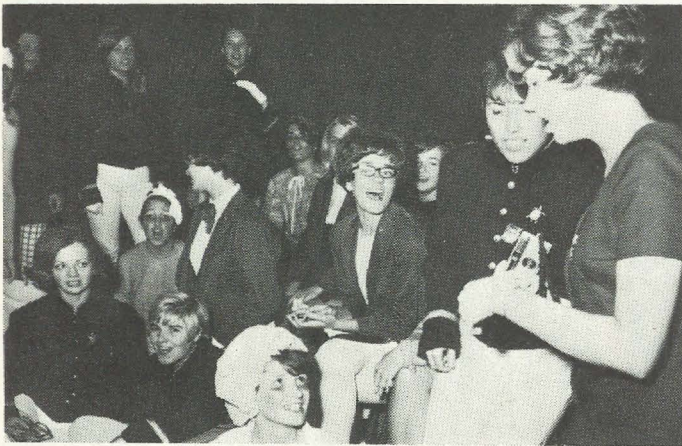
White porcelain lamps were the awards for top chapters in Standards programs. Gamma Chi, Ball State University, was the top winner.



Song leader was Synda Taylor.



The oldest of the Hounds (most years at Convention) line up for honors on Fun Night.



Borrowed costumes and face make-up characterized collegiates during skits.

Pups, Hounds Yowl At Fun Night Antics



Katie Blanche Stallworth lets the two oldest Hounds, Grace Mason Lundy and Irene Boughton, yip for 21 conventions worth.



Gertrude Houk Fariss's ears were feminine.



Gertrude Murphy Meatheringham displays her ears.



Presiding Old Hound Myrtle Graeter Hinkly had furry ears.



Roman toga-sheets made excellent costumes.



"Sob, Sob" was a hilarious skit given by the collegiates on Fun Night.

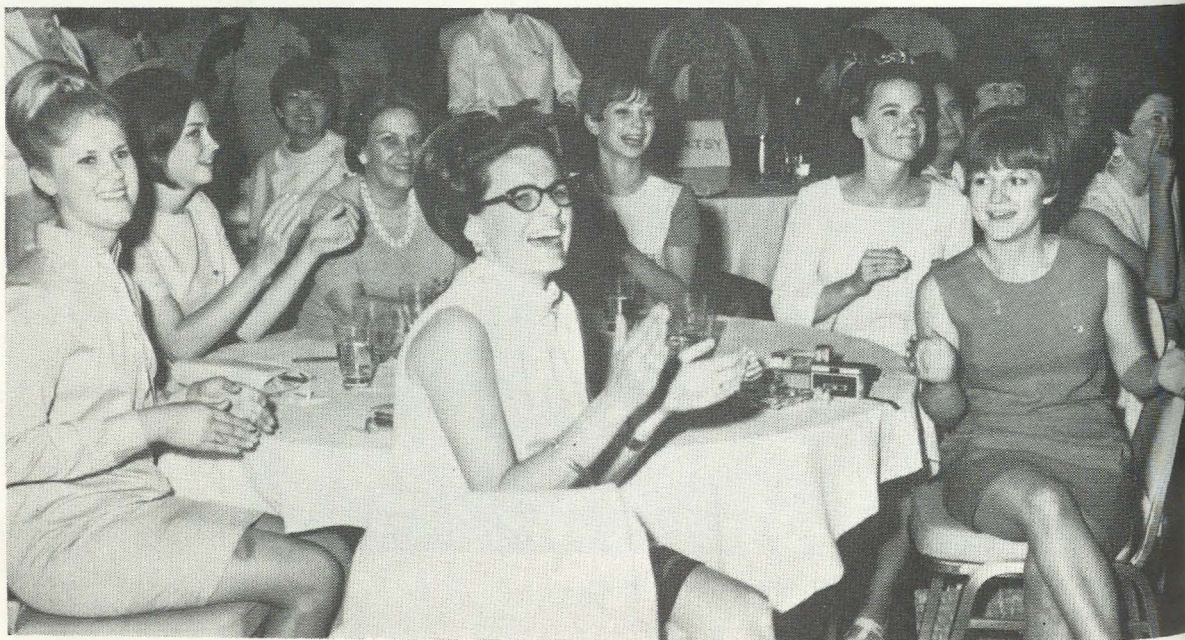
Awards Honor Work Of Alumnae, Collegiates



Kathleen Wood, ZH
Southeastern Okla. State
Arlene Davis Scholarship



The 1966 and 1968 Florence Hood Miner Award winners are pictured with Mrs. Miner. Left is Jane Jones, BN, National Activities Chairman; right, Pamela Whitestone, IX.



Excitement reigned as top individual and chapter awards were announced Friday Night.



Thrilled with her Achoth Award is Nita Midgley Baldwin, BM, CCD for Florida Southern College.



Claudine Malmberg, chapter president of Zeta Omega, Northern Michigan University, accepts the Gertrude Houk Fariss Award for citizenship.



Winner of an Achoth Award for Alumnae contribution was Mary Margaret Calhoun Fore, president of Edinburg-McAllen Alumnae.



Final Banquet head tables seated old and new National Council and past national presidents. Travelling secretaries arrange awards.

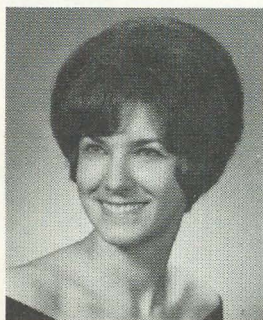


And to the last, we sang together.

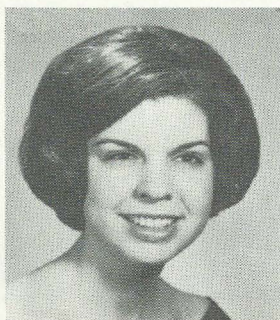


Past winners of Grace Mason Lundy Awards dash up to congratulate Linda Agler, one of twelve 1968 winners. Sherri Anderson, BT; Anne Marie Jones, ΔI; Jane Jones, BN; and Linda Jo Allison, ZZ; were excited too.

Grace Mason Lundy Honors Go to 6 Senior Women



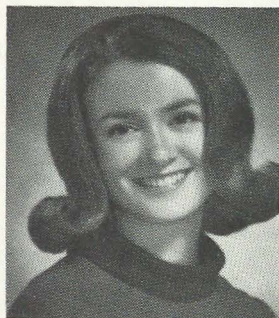
Pamela Whitestine, ΓΧ
Ball State Univ.
Homecoming Queen
Chapter President
Clavia
Pi Omega Pi
Phi Beta Lambda
Miss Indiana Finalist
Miss Heritage Days



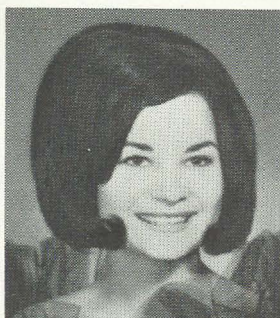
Nancy Ellis, Ε
Indiana Univ.
AWS President
Mortar Board
Chapter President



Florence Hood Miner presents the award to the Outstanding Junior Woman to Pamela Whitestine, ΓΧ, Ball State University.



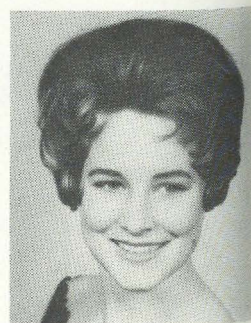
Heather Harden, ΘΗ
Creighton Univ.
Nebraska College Queen
Panhellenic Woman of Year
Dean's List
Gamma Pi Epsilon
Pi Delta Epsilon



Rosemary Bunkley, ΔΘ
Univ. of Houston
Alpha Lambda Delta
Chapter President
Rhee Schultz Scholarship
Cap and Gown
Who's Who
Phi Kappa Phi
Top Ten



Jane Van Dale, ΓΘ
Carroll Col.
Who's Who
Hinky Honey
Student Senate
Chapter President

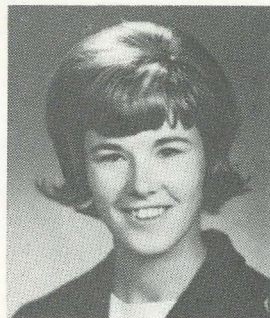


Carol Evans, ΓΞ
New Mexico State Univ.
Mortar Board
Chapter President
Panhellenic Award
Las Campanas
Phi Kappa Phi
Pi Gamma Nu
Top Scholar award

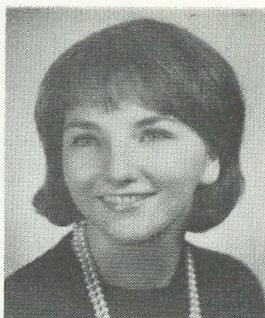
Top Juniors Receive Florence Hood Miner Awards



Linda Agler, Θ
Ohio State Univ.
Mirrors
Public Relations Commission
Award for Outstanding Pledge
Program, 1968
Nominee for Outstanding
Sorority Woman
Pledge Vice-President



Linda Sue Wilkes, Ω
Univ. of Oregon
Mortar Board
Panhellenic President
President's Advisory Council
Psi Theta Upsilon
Chapter President



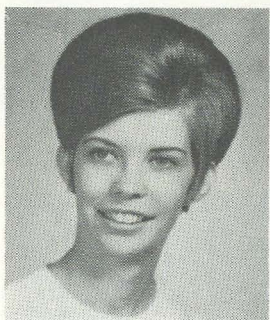
Patricia Ann Wagner, O
Univ. of Pittsburgh
Cwens
Mortar Board
Pi Delta Epsilon
Omicron Sigma Rho
Chapter President



Carolyn Thiele, ZN
Ferris State Col.
College Bowl Team (2 Years)
Who's Who
Dean's List:
Scholarship holder
Chapter Pledge Mistress
President



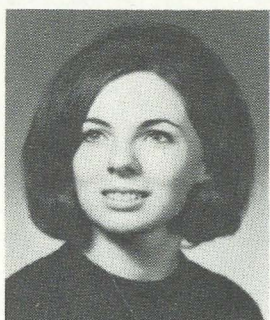
Jane Lamb, ZII
Univ. of Georgia
Alpha Lambda Delta
Who's Who
Phi Psi Omicron
Dean's List
Chapter Treasurer



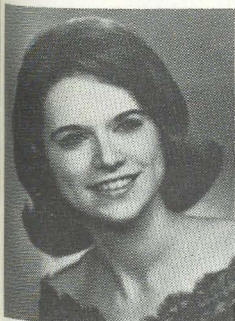
Lane Chambers, AT
Univ. of Alabama
Alpha Lambda Delta
Who's Who
Mortar Board
Phi Beta Kappa
Miss State Day
Chapter President



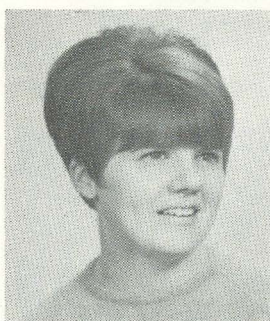
Lynn Rogers, A
Miami Univ.
Alpha Lambda Delta
Cwens
Mortar Board
Pride of the Province
Chapter President



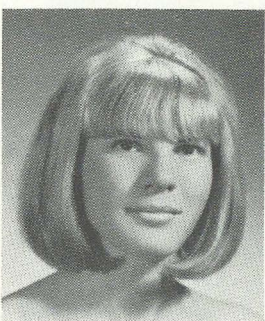
Phyllis Williams, TA
Baldwin-Wallace Col.
Psi Alpha Theta
Kappa Delta Pi
Who's Who
Pride of the Province, 1968
Chapter President



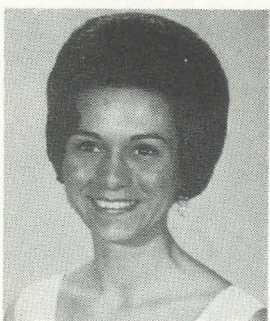
Susan French, IT
Missouri Valley Col.
Who's Who
Sigma Tau Delta
Cap and Gown
Dean's Honor List
Chapter President



Judith Rogge, EK,
Wisconsin State-Whitewater
Who's Who
Student Senate
University Center Board
Chapter President



Margaret Zeiger, EZ
Drexel Inst. of Tech.
Who's Who
Key and Triangle
Omicron Nu
Panhellenic Woman of Year
Chapter President

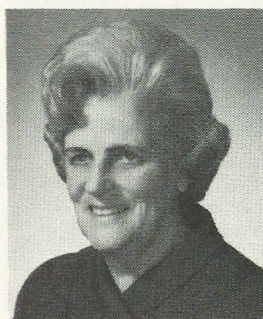


Sandra Crain, BT
Univ. of Louisville
Psi Kappa Psi
Cwens
Mortar Board
Miss Cardinal
"Summa Cum Laude"
Sorority Education Chr.

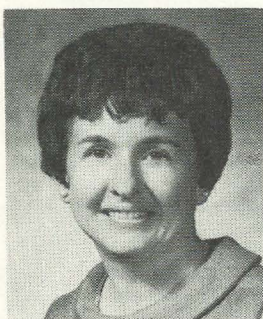
Betty Agler Reelected; Council Installed At Final Banquet



Elections over, Betty Agler hugs a well-wisher.



National President
Betty Heusch Agler, Ξ
Univ. of Cincinnati
Columbus, Ohio



Vice-President (Alumnæ)
Gwen Moss McKeeman, $\Delta\Phi$
Northeastern Okla. State
Tulsa, Okla.



Vice-President
(College Programs)
Elizabeth Baker Devereaux, Θ
Ohio State Univ.
Parkersburg, W.Va.



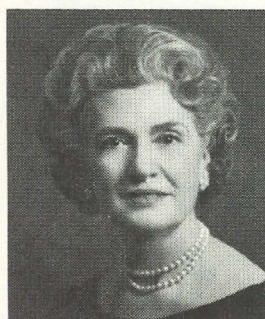
Vice-President
(Membership)
Lisbeth Innis Francis, Ψ
Franklin Univ.
Birmingham, Ala.



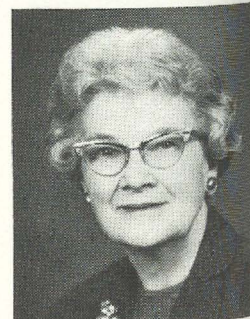
Secretary
Mary Lou Ragel Vineyard, $\Delta\Delta$
Northwestern Univ.
St. Petersburg, Fla.



Treasurer
Grace Pritchard Gorham, $\Delta\Theta$
Northwestern Okla. State
Tulsa, Okla.



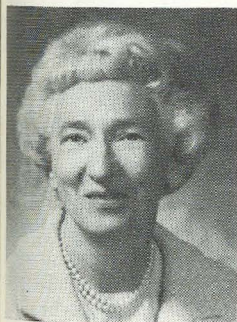
NPC Delegate
Betsy Bradley Leach, $\Delta\Gamma$
Univ. of So. Calif.
Los Angeles, Calif.



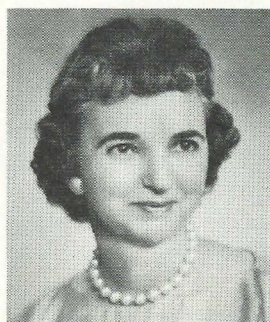
Past President
Grace Mason Lundy, Ξ
Indiana Univ.
Bloomington, Ind.



Grace Mason Lundy, past National President, asks the new National Council to rise for Installation Ceremonies at Final Banquet Friday evening.



Director (Public Relations)
Florence Hood Miner, AB
University of Illinois
Nevada, Iowa



Director (Philanthropies)
Katie Blanche Stallworth, ΔΨ
Southern Methodist Univ.
Austin, Texas



Director (House Corporations)
Mae Banker Dickinson, O
Univ. of Pittsburgh
Slippery Rock, Pa.



Area Director
Cynthia Lundy McCarty, E
Arizona State Univ.
Phoenix, Ariz.



Area Director
Beverly Baldwin Burnsed, ΔΣ
Florida State Univ.
Lakeland, Fla.



Area Director
Marion Hohnke West, ZΦ
Slippery Rock State
Punxsutawney, Pa.



Area Director
Rhea Friedell Schultz, Z
Univ. of Nebraska
Houston, Texas



Area Director
Pat Scannell Dunn, ΓΔ
San Jose State
San Jose, California



Winning the See Loving Cup for cooperation and assistance to National was Theta Xi Chapter, Glenville State College, accepted by Candice Warren, Chapter President.



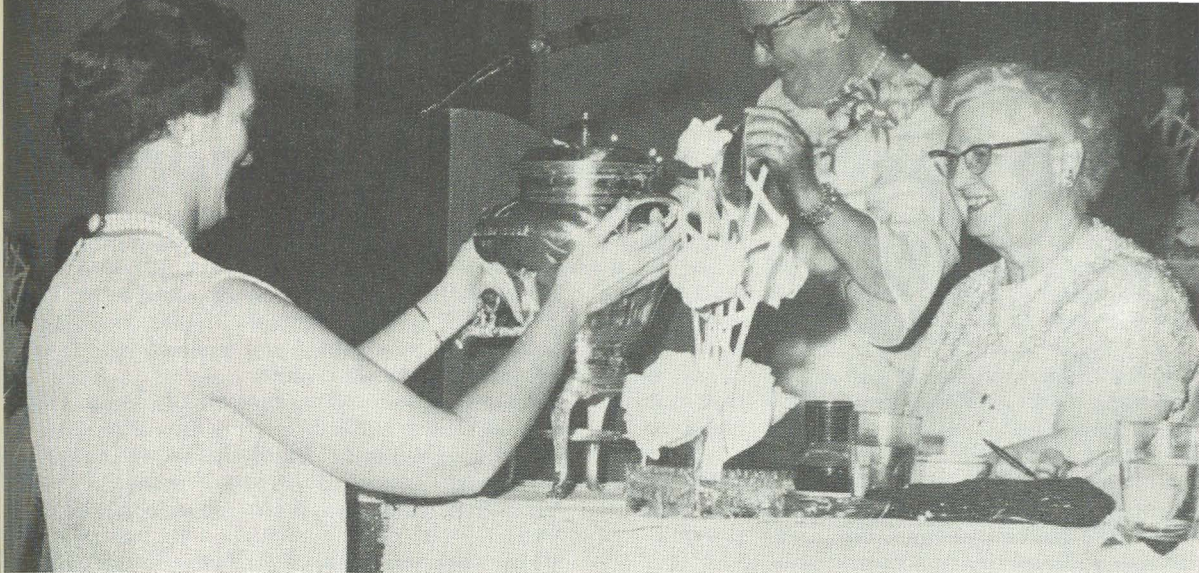
The Genevieve Schmitt Memorial Plaque to the chapter with the highest scholastic rating between conventions went to Beta Theta Chapter, Bucknell University. Accepting was Linda Koontz, president.



Council Awards for the most outstanding chapters over-all went to Gamma Chi, Ball State University, Epsilon Kappa, Wisconsin State College-Whitewater, and Epsilon Sigma, Wayne State University.



Founders' Awards of six silver candlesticks went to Beta Tau, Gamma Theta, Theta Omicron, Alpha Gamma, and Zeta Phi chapters. Award is for chapter improvement.



Post National President Myrtle Graeter Hinkly presented a silver coffee urn to the first alumnae chapter winner of the award in her honor, a gift of Texas alumnae and collegiate chapters. Ann McGinnis, president of the Washington, D.C. alumnae chapter accepts the urn. At right is Frances Wescott, Past National President.

Honors Myrtle Graeter Hinkly

New Award Cites Alumnae Chapters

by GRACE MASON LUNDY, Past National President

In her thought-arousing keynote address, Dean Eunice Roberts urged all Delta Zetas to try harder to listen to each other, to bridge the generation gap between them.

At least twice during Convention, a much-loved alumna presided over events where Delta Zetas listened with their hearts.

On Tuesday evening Myrtle Graeter Hinkly presided over initiation of the Convention Initiate, Lilian Labash Musial, wife of the former St. Louis Cardinal player, Stan Musial.

The familiar, moving ceremony caught up the entire Convention body with its beauty and timeless message, and group participation was a quickening personal experience, often attested in the ensuing days. Delta Zeta spoke. Delta Zetas, collegiates and alumnae, heard and responded.

Again, on Thursday evening, the much exploited communications gap was bridged as Myrtle showed another side of her zest for life, in the utterly hilarious, astronomical nonsense she created while presiding over the Pups and Hounds Fun Night activities. She led the Convention in deciding the crucial issue of whether to wear the mini or the maxi, and the Convention vote brought out the scissors to alter her attire. Gales of laughter followed. Delta Zeta spoke in a different tone, and Delta Zetas, collegiate and alumnae, responded.

The tradition of Convention Fun Night was the idea of Nettie Wills Shugart, Z, at the 1916 meeting, and trademark of Pups and Hounds and their yips for each year of Convention attendance was the brain wave of Margaret Pease in 1930. Myrtle was a revelation and a

delight to the under (way under!) thirties.

Delta Zetas were soon briefed on the statistics: claimed by Delta chapter, an early recruit to National work, Myrtle served as National Registrar, National Treasurer, and two separate times as National President, 1928-1933 (Through the Great Depression), and again from 1938-1940, the longest service of a National President.

For many years, Myrtle lived in and loved Texas. In 1966, she began Delta Zeta activity at Pan American University. She organized the Rio Grande Valley Alumnae and served as its resourceful president. In 1965, she received the Golden Rose for 50 years membership at Texas State Day.

To Katie Blanche Stallworth, whose first Convention elected Myrtle National President came the concept of an award in her honor, an expression of gratitude and as an incentive to other alumnae.

At the Bahamas convention, the project was nurtured. Since alumnae work had never been provided with National recognition for overall excellence in chapter work, Gwen Moss McKeeman, National Vice-President, was pleased with the proposal.

Voluntary contributions from Texas Delta Zetas poured in and a 50 cup silver coffee urn, a travelling award, was chosen. At Convention, Myrtle gave an incredulous gasp, then happily presented the urn to the Washington, D.C. Alumnae delegate.

Generation gap? Problems with LSD? Myrtle has a new meaning which provides inspiration that has no penalties, perils: Laughter, Sisterhood, Dedication.

Nevada Southern University Granted 177th Charter for Iota Phi Chapter

Delta Zeta initiated and installed its 177th chapter into membership with 23 women from Nevada Southern University, Saturday May 18, 1968 at the University Methodist Church, Las Vegas, Nevada.

The charter members of Iota Phi are Dee Anderson, Marsha Anderson, Penny Alton, Constance Marie Boich, Linda Boje, Karin Lee Borgman, Mary Boyer, Carol Brandt, Sharon Lynn Cleveland, Janie Arlene Crosato, Gloria C. Dronet, Rosie Grady, Jacqueline Gulbrandsen, Jill Kim Killy, Barbara Lindsey, Sally Moore, Gertrudis C. Pina, Kathy Quinn, Margaret Eloise Rudishauser, Francie Schwaegerle, Rona Bari Shore and Rosemary Ann Zumtobel.

Initiation was conducted by members from Delta Zeta chapters in Province XV with representatives from University of California at Los Angeles, University of California at Santa Barbara, San Diego State, California State at Long Beach, California State at Los Angeles and California State at Fullerton. Sue Ramsey of Delta Psi acted as President of the initiating team.

Officers in charge of Iota Phi's Installation were Betsy Bradley Leach, National Panhellenic Conference Delegate; Dorothy Varley Breitweiser, Director House Corporations; Louise Haupt Plyley, Province XV College Director; Arlene Crawford Southard, College Chapter Director, Iota Phi Chapter; Frances Alexander Saxton, Las Vegas Alumnae President.

The Installation Banquet was held in the Goldfield Room, Hotel Tropicana on May 18, 1968. Barbara Bozeman Decker, Province Alumnae Director, Province XV served as Toastmistress. Mr. Frank Young, Nevada State Congressman and husband of a Delta Zeta Alumnae, gave the Invocation.

Honored guest and speaker for the banquet was Dr. Donald C. Moyer, Chancellor of Nevada Southern University. Dr. Moyer welcomed Delta Zeta to the University saying, "You're going to add a great deal to this University." Dr. Moyer also expressed his personal feelings were that sororities and fraternities help bridge the gap between higher education and was "glad to see sororities and fraternities come to this young University."

Betsy Bradley Leach addressed the group on the significance of sorority life.

Installation Service was conducted by Dorothy Varley Breitweiser. Dwight A. Marshall, Dean of Women, Nevada Southern University accepted the chapter charter from Mrs. Breitweiser.

A trio from Theta Rho sang "Flowers I Give to Thee" while members of Alpha Chi, Gamma Omicron, Delta Alpha and Theta Rho conducted the Rose Ceremony.

Sunday, following church services at the Guardian Angel Shrine and University Methodist Church, a



Charter members of newly initiated Iota Phi chapter are standing, Gloria Dornet, Rosemary Zumtobel, Linda Boje, Connie Boich, Francie Schwaegerle, Margie Rudishauser, Mary Boyer, Karin Borgman, Rosie Grady, and Rona Shore; and seated, Sally Moore, Jill Lilly, Marsha Anderson, Dee Anderson, Kathy Quinn, Jackie Gulbrandsen, Sharon Cleveland, Janie Crosato, Kathy Larsen, and Barbara Lindsey. Not present for picture were Penny Alton, Carol Brandt, and Gertrudis Pina.

presentation tea was given by the Las Vegas Alumnae group at the home of Alumnae Mrs. Leonard Fayle. Receiving guests were Frances Alexander Saxton, President Las Vegas Alumnae, Francie Schwaegerle, President Iota Phi Chapter, Sharon Cleveland, Louise Haup Plyley, Province XV Collegiate Director, Barbara Bozeman Decker, Province XV Alumnae Director, Dorothy Varley Breitweiser, National Director House Corporations, Betsy Bradley Leach, National Panhellenic Conference Delegate, Arlene Crawford Southard, College Chapter Director Iota Phi Chapter. Members of the Las Vegas Alumnae prepared and served tea and punch. The new initiates were hostesses. Attending the tea were members of Alpha Chi, Gamma Omicron, Delta Alpha, Theta Psi, Delta Psi, Theta Rho, Alumnae from California, Arizona and Nevada, parents and friends of the new initiates, University faculty and representatives of other Greek organizations on campus.

Iota Phi was formed from a local sorority known as Delta Phi Delta, which began in December 1966 and became a Delta Zeta Colony in February, 1968. This chapter was secured thru the efforts of Arlene Crawford Southard, who later became Iota Phi's College Chapter Director, Frances Alexander Saxton, President Las Vegas Alumnae, Francie Schwaegerle, President of Iota Chapter and the Las Vegas Alumnae. All the new initiates are residents of Las Vegas and live at home. Nevada Southern University of Las Vegas is a coor-

dinate campus of the University of Nevada which began in Reno in 1886 as a land-grant college with an enrollment of 50 students.

In 1951, responding to requests from southern Nevada, the University administration assigned one of its instructors to teach night courses at the Las Vegas High School Auditorium. In the fall of 1954 the University opened its present 180-acre campus in Las Vegas. The first baccalaureate degrees were given to 29 students in 1964 and in 1965 was officially named Nevada Southern University by the Nevada State Legislature.

NSU is a commuter, state-assisted, coeducation University of 3,800 students with 14,000 students expected by 1976. Programs and facilities are in progress for Performing Arts in 1969, Law School in 1974 and a School of Dentistry.

NSU campus, designed to blend with the surrounding desert terrain, is situated in a valley that parallels the Las Vegas Strip, the most famous resort and entertainment center in the world.

Other Greek organizations on campus are two sororities, Alpha Delta Pi and Phi Mu and six fraternities, Alpha Tau Omega, Kappa Sigma, Delta Sigma Phi, Alpha Epsilon Phi, Tau Kappa Epsilon and Chi Sigma Chi. All sororities and fraternities were new on campus during the 1967-68 school year. A Panhellenic program was in the forming and was expected to be in effect by September 1968.



At the tea were Mr. and Mrs. John Standish, Mrs. Ruth Rudishauser, Margie Rudishauser and Marsha Anderson. Mr. Standish is on the faculty.



Alumnae hosts Mr. and Mrs. Leonard Fayle pose with newly initiated members of Delta Zeta Sorority, Mary Boyer and Sally Moore.

California State College—Fullerton Installation

Assisted by Province XV College Chapters

Iota Upsilon became the eleventh Delta Zeta chapter in California and the first national sorority for girls attending California State College at Fullerton when 35 collegiates and four alumnæ initiates received Delta Zeta pins during ceremonies at the Alpha Chi chapter house at UCLA on Saturday morning, April 27, 1968. One of the initiates, Sandra Bozeman, had the honor of receiving her badge from her sister, Barbara Bozeman Decker, Alpha Chi, Province Alumnæ Director.

An exciting moment in the life of the new chapter occurred that evening when the new initiates, all dressed in stunning white gowns, watched Iota Upsilon officers receive the gavel, loving cup, and charter from Dorothy Varley Breitweiser, National Director of House Corporations, as she installed the chapter at a formal banquet in the Lake Room of the Los Coyotes Country Club in Buena Park.

Lovely, oblong-shaped floral arrangements of white gladioli, stock, shasta daisies, and pink carnations flanked the head table. An illuminated replica of the Roman lamp was placed in front of the podium. The new initiates, actives from other Province Fifteen chapters, alumnæ, and guests were seated at circular tables decorated with green ribbon and pink net topiary trees sprayed with silver glitter. Chairmen of the banquet were Jay Backman Chavannes and Shirley Graham Johnson, Orange County Alumnæ Chapter.

Toastmistress for the program was Mrs. Decker. Along with Mrs. Breitweiser, Mrs. Decker has guided the group toward installation since it was first organized last fall as an Iota Upsilon colony. Jacque Ander-



Having integral roles in Fullerton's Initiation were left to right, Ann Douglas, president, IT; Betsy Bradley Leach, NPC Delegate; Dorothy Varley Breitweiser, House Corporations; Louise Haupt Pliley, Collegiate Province Director; and center, Julie Donley, recording secretary, IT.



Installed as charter members of Iota Upsilon were, first row: Nancy Jaeger, Elaine Mutz, Pam Reese, Jenifer McKenzie, Mary Ann Douglass, Eileen Forbes, Glenda Miller, Linda Eagleson Lynne Sells and Karen Ruth; middle row: Joyce Wolfe, Patti Redpath, Leslie Dreyfuss, Gloria Cash, Sandra Bozeman, Jacque Anderson, Linda Stevens, Loia Kosvic, Noreen Nolan, Teresa Sheehy, and Darlette Rattenbury; and back row: Julie Donley, Jean Edell, Diana Daily, Pam Quackenbush, MaryKay Kemp, Linde Williams, Diane Pettibone, Paula Arthur, Peggy Smith, Della Dean, Susan Hinzpeter, Rana Matteson, Peggy Clark, Mary Sohn, and Viola Stamatis.

son, one of the initiates, and four or five of her friends wanted very much to be Delta Zetas. December 10, 1967, 22 girls were pledged at the Delta Alpha house, Long Beach State College.

The invocation was given by Rev. Ralph A. Stevens, Vicar of Episcopal Missions. Betsy Bradley Leach, National Panhellenic Conference Delegate, chose "Tomorrow is Yours" as the theme for the main address.

Ruth Gump Thomas, president of Southern California Council, warmly welcomed the new chapter into Province Fifteen. Mary Ann Douglass, president of Iota Upsilon, and Amanda Noel Smith, CCD and an alumna initiate, gratefully responded.

Following the acceptance of the chapter by Louise Haupt Plyley, Province Collegiate Director, Mrs. Decker read a few of the many congratulatory notes sent to Iota Upsilon. Then Genevieve MacMillan, State Membership Chairman, presented the gifts to the chapter president, including the beautiful silver tea service from Delta Zetas throughout the country and the accompanying tray from National Council. A surprise announcement was made when Teresa Sheehy was presented with a trophy representing the highest scholastic average of the chapter. This was given on behalf of the Orange County Alumnae Chapter by Barbara Coxé Hahn, president.

The impressive Rose Ceremony concluded the program when a trio from Gamma Omicron, Lura Kulhavy, Carella DeVol, and Pat Ennis, sang and members of the initiating team presented roses to each girl: Peggy Smith, Jean Edel, Pam Reese, Nancy Jaeger, Teresa Sheehy, Noreen Nolan, Whittier; Linde Williams, Rialto; Julie Donley, Sandra Bozeman, Karen Ruth, Fullerton; Elaine Mutz, Pam Quackenbush, Garden Grove; Peggy Clark, West Covina; Mary Kay Kemp, Jacque Anderson, Covina; Eileen Forbes, Cypress; Paula Arthur, Buena Park; Loia Kosvic,

Hemet; Glenda Miller, Leslie Dreyfuss, Mary Sohn, Rana Matteson, Linda Eagleson, Lynne Sells, La Habra; Linda Stevens, Julian; Jenifer McKenzie, Della Dean, San Bernardino; Gloria Cash, Diane Pettibone, Darlette Rattenbory, Anaheim; Viola Stamatis, Azusa; Diana Daily, Norwalk; Joyce Wolfe, Brea.

Initiating team: Pat Ennis, Jean Palmer, Gamma Omicron; Jeaneen Stoffer, Bonnie Burns, Theta Rho; Sue Ramsey, Pat Aiello, Delta Psi; Nancy Dolezal, Alpha Chi.

The next morning the happy Iota Upsilon girls attended 9 am services at La Habra Hills Presbyterian Church and 10:45 am Mass at Our Lady of Guadalupe in La Habra. That afternoon, dressed in their long white gowns, they were presented to the community at a formal tea at the Fullerton home of Dr. and Mrs. E. M. Pettis (Florence Schultz). Family, friends, and alumnae were received by Miss Douglass, Mrs. Smith, Mrs. Leach, Mrs. Plyley, Mrs. Breitweiser, and Mrs. Decker. Guests enjoyed punch, petits fours, and tea sandwiches on the patio as well as inside, where the many gifts were attractively displayed. The Orange County Alumnae Chapter with Mary Nielson Prager, chairman, was in charge of the tea.

Presiding at the tea table, arrayed with a beautiful arrangement of pink roses, white stock, and pink gladioli on a lovely pale pink tablecloth, were Demaris Stonesifer Adamson, Southern California Council treasurer, Rae Sweet Templin, Mabel Peterson Hart, Mrs. Hahn, Orange County alumnae, Karen Meinecke, pledge advisor.

California State College at Fullerton, opened in 1959, is a rapidly expanding school of over 9,000 students located in the northern boundary of Orange County. It is a liberal arts school giving degrees in music, education, drama, engineering, communications, and other fields.

The National Council of Delta Zeta *announces the chartering of the*

Moorhead-Fargo Alumnae Chapter
Central New Jersey Alumnae Chapter
Terre Haute Alumnae Chapter
Denton (Texas) Alumnae Chapter

and the recent organization of chapters in

Big Rapids, Michigan
Greater Brevard Area, Florida
Gulf Coast Area, Mississippi

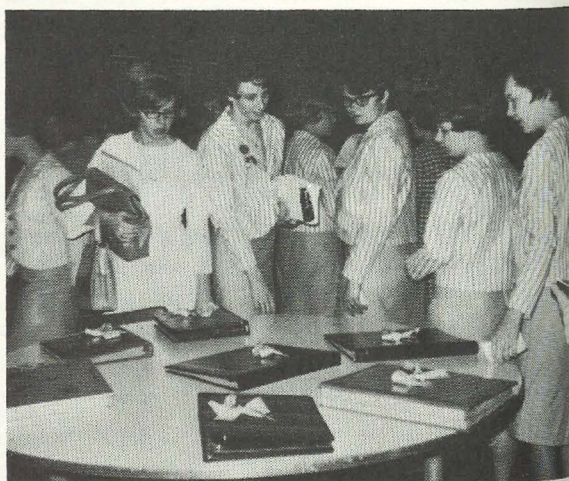
Marquette Area, Michigan
Mt. Pleasant, Michigan
Saginaw, Michigan



"A Delta Zeta State Day Fair" was the theme for Oklahoma State Day, with Tulsa Alumnae and Delta Phi, Northeastern State College, hostesses. Pictured are Ann Weaver Stine, $\Gamma\mathbf{N}$, (Mrs. E. Allan), State Day Chairman; Alma Walker Kritikos, $\Delta\Phi$, (Mrs. Richard), Invitations Chairman; and Mary Parter Crichton, $\Lambda\Sigma$ (Mrs. W. V.), president of Tulsa Alumnae.



Pennsylvania State collegiates and alumnae arrive for State Day meetings.

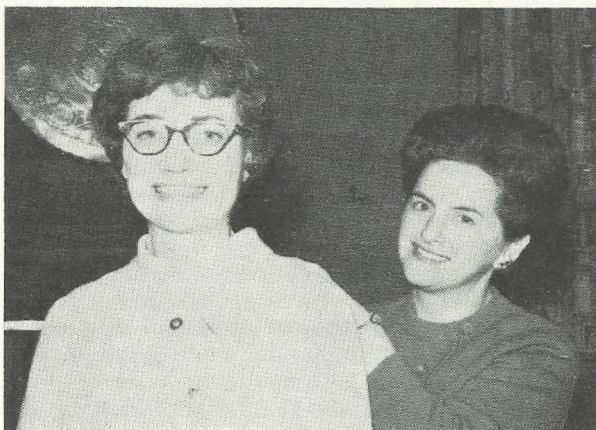


Epsilon Rho collegiates, Northwest Missouri State College, look over press books at Missouri State Day.

State, Province Days Bring Fun, Awards For Collegiate, Alumnae Chapters



National Field Consultant Peg Anderson and Lamp Editor Sue Hastings discuss press books at Colorado State Day with the director of the Colorado State University Hearing Association and a fraternity representative.



Oregon State Day featured Dr. Margaret Woods, National Delta Zeta Woman of the year, as speaker and the naming of Mrs. Preston Orem, left, as Oregon Woman of the year. At right is Mrs. Gus Kikes, general chairman of State Day.



At West Virginia State Day at Glenville State College, National President Betty Heusch Agler was made "Honorary Mountaineer of the State of West Virginia" by Delegate at Large, Robert J. Burke. At right of Mr. Burke is Mrs. Charles Devereaux, National Vice-President (College Programs), and at far right is Mrs. Wilburn, wife of Glenville State College's President.

Delta Zeta Maintains Thai Home While Husband Conducts Research

"Bangkok is a city of stark contrast. New, sleek buildings sit amidst ramshackle huts. A 1965 Mercedes Benz dodges a water buffalo in the streets. Stylish Thai girls in heels ankle around Thai girls in full length sarong skirts, western overblouses and rubber thongs."

This was how Linda Lindahl Osanka described Thailand after her first seven months in the Southeast Asia country. Now, after her fourth Christmas, the Gamma Rho chapter, Northern Illinois Delta Zeta, her famous husband and three children are still living an exciting life.

Linda met and married her strong, muscular husband while they both were students at Northern. Frank finished his B.S. and M.A. degrees from Northern Illinois and later studied anthropology at the Univ. of Mexico in Mexico City. Then began a series of events that springboarded the family to life overseas.

Frank and his family went to Thailand as one of five initial staff members to begin the Counterinsurgency Surveillance Analysis Project in 1964. Frank is with the Stanford Research Institute working under the contract Stanford has with the Thai-US Military Research Development Center (MRDC).

When the Osanka family moved to Thailand, they were curious as to how their American habits and customs would fit into a foreign culture. They found the capitol city of Bangkok cosmopolitan for SE Asian cities in its change over to apartment buildings and night clubs, but these were in stark contrast to the still abundant native houses. They've pitched in by taking language classes and traveling throughout the country. Linda participates in women's clubs and goes to English Conversation Teas where she teaches English and practices her Thai on native women.

The Osankas still keep up some wholeheartedly American traditions. Last November Bangkok had its own "Trick or Treat" Halloween party for their two older children, Jeff and Wendy Sue, as well as for the children from the neighborhood. After snacks and games, Frank escorted the children, dressed in Halloween costumes, from house to house, asking for sweets and fruits.

The creative couple also maintains its own Christmas traditions, even though Thai climate is not so suited to growing the traditional fir.

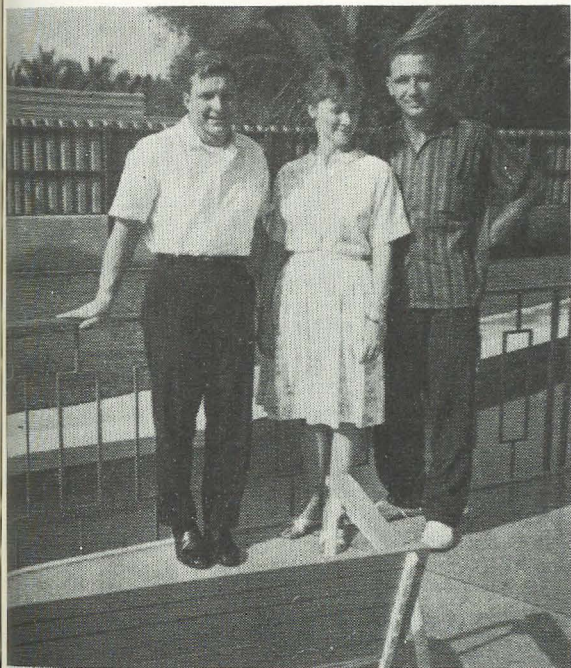
"Our tradition of handmade tree ornaments and



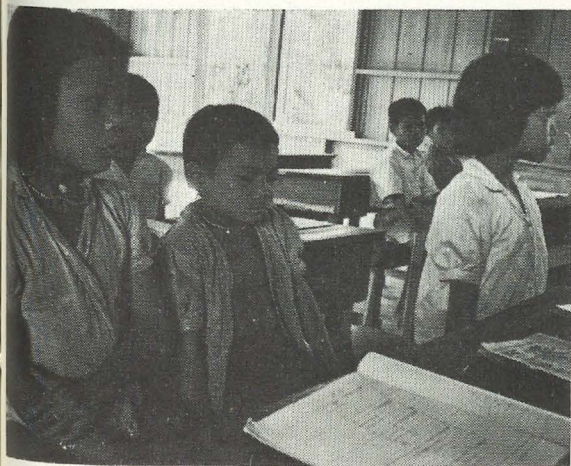
Frank Osanka with Thai/Lao children in a remote school in critical Northeast Thailand. The teacher is a police sergeant for the area.

house decorations is hindered by the lack of pine trees here," Linda explains. "The first year we used a petrified tree six feet tall. The second year we outlined a tree on the wall with lights. Four our third Christmas, we converted a small fern outdoors with lights from last year and cut out two four-foot paper trees for outdoors. Fortunately, we are an adaptable family."

Frank's work in Asia has been stimulating and beneficial, both to Thais and to U.S. officials. One of the significant groups Frank has become interested in is the Mitrapab (Friendship) Education Foundation. The



A visitor to the Osanka home in 1965 was Charles Percy, now US Senator from Illinois. Linda is center with Frank at right.



Village school children pay rapt attention. The picture was taken in a remote section of NE Thailand in January, 1968.

group is a private organization of both Thai and American civilians and military. It is dedicated to contributing to the improvement of Thai elementary education by raising money to build school houses. The goal of Mitrapab is to build a four-room schoolhouse in all of the 71 provinces of Thailand. By December 1966 the group had raised money for 41 schools. And Frank had a major—a novel—role in the project.

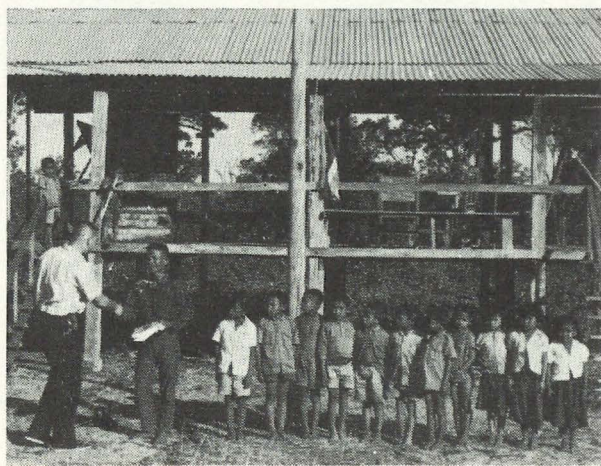
"The money is raised chiefly by staging parachute sky diving exhibitions in the provinces where a school will eventually be built," explains Linda. "Although an officer on the executive committee and therefore not required to jump, Frank jumped in seven provinces in 1966 and ten in 1967."

The foundation also penetrates remotest jungle regions of the country to help the natives provide for themselves some degree of adequate sanitary and medical facilities. With a higher standard of education and better living conditions, the group feels the natives will be socially stronger to resist Communist subversion reaching over the border from nearby Laos, North Vietnam, and even Red China.

Besides contributing to Thailand's schools, Frank is making substantial contributions to our knowledge of Southeast Asia. In his work with MRDC he has spent many months in the remote border regions of Thailand studying guerrilla warfare tactics. Frank uses materials collected to write classified documents for the MRDC and has also published many works of his own.

His book *Modern Guerrilla Warfare* (New York: The Free Press, 1962) has been used extensively by students and is now in its seventh printing even though several books on counterinsurgency have recently been published. He has an article appearing in the *International Encyclopedia of the Social Sciences* (1967) entitled "Internal War: Revolutionary Guerrilla Warfare."

In June of 1965 Frank received a Vigilant Patriot Award from the All-American Conference for his article, "Population Control Techniques of Communist Insurgents: A Sociological Analysis." One of his most



After his interviewing in the school in Nakorn Phanom Province, Frank shakes hands goodbye.

satisfying honors was having his name listed in the 10th edition (August 1966) of *Marquis's Who's Who in the West* as a research sociologist.

While her busy husband travels extensively throughout Thailand, Linda takes on the motherly duties of raising her three children. Frank took his family on a whirlwind tour of world capitals starting with Hong Kong and continuing on to Manila, Taipei, Tokyo, San Francisco, Terre Haute, New York, Glasgow, Dublin, London, Paris, Barcelona, Rome, Athens, and Istanbul and back to Bangkok, spending two nights in each place and about two weeks in the United States.

Linda reports that Wendy Sue, a bouncy, giggly four-year-old is ready to leave again tomorrow.

"'Happiness' for Wendy Sue was being able to

drink water straight from the tap in the States and all the exciting airplane rides," she laughs.

The Osankas are soon to leave their beloved Thai, "a friendly and courteous people to whom smiling comes easily."

In her December, 1967, Christmas letter, Linda wrote, "After being sidetracked by responsibilities here, Frank is again making plans for our return to the United States to complete his work for his PhD. Our tentative plan is to return to the U.S. in August and begin in the Sociology Department at Northwestern University in Evanston, Illinois, in September. We are elated by the recent news that Frank has been assured of a tuition fellowship awarded by the Russell Sage Foundation."

Angi Grooms Tours Vietnam in Miss America Team

"We wouldn't trade these American men for anything in the world," Angi Grooms said.

The lovely brunette Delta Zeta was voicing her reaction to her experiences during a tour of U.S. bases in South Vietnam last fall.

Angi was one of five beauties traveling with a Miss America troupe for 17 days. Miss Alabama of 1966, the striking girl helped put on an hour and a half show with the other girls, visited with the soldiers, and shook hands and said hello and tried to be general morale boosters. They entertained more than 80,000 troops.



Angi Grooms, Miss Alabama 1966, made a 17 day tour of Viet Nam last fall with a Miss America group.

Angie said that the girls' visits to hospitals, where they go through wards to greet the patients unable to see the performance, was "the most rewarding thing."

She called the GI's, "sharp guys, thinking men."

"They don't like being over here," Angi said. "They want to go home. But they feel that they're here to do their job, and we haven't seen any who are not enthusiastic about doing it well as long as they're here."

Angi's part in the entertainment was folk singing, but she feels she did much more good talking to the men themselves, and she learned to respect them.

"I feel I have a much greater respect for the know-how of American men than before and have great pride in their accomplishments."

She found Viet Nam was a much more beautiful country than she had expected.

"I was told that the main reason the Communists want control of the country is because it's so fertile; there are enough rice paddies to feed most of China."

Wherever they went, the girls made friends. At Black Horse, a Cavalry camp, the men chirstened the highest ridge on the perimeter of the camp "Miss America." And helicopters land on "Angi," one of six landing strips renamed for one of the six all American girls.

When Angi returned, she rattled off names of Vietnamese towns like an experienced linguist. She has many memories.

"One night the men baked a cake for me in the shape of Alabama decorated with the state flower and they were always decorating the jeeps we rode in," she said.

On her return to the states, Miss Grooms spent two days relating messages from the men to more than 60 families.

The tour was sponsored by the Miss America Pageant, Pepsi Cola, and USO. Other girls participating were Miss Connecticut 1966, Miss Carolina 1966, Miss Wisconsin 1965, Miss Maine 1964.

4 DZ's Represent States In College Queen Contest

Convention had an unusual highlight Tuesday night when Delta Zetas welcomed Kassie Billingsley to St. Louis, the winner of Miss Congeniality in the National College Queen Contest.

Kassie, a Zeta Phi at Slippery Rock State College, was welcomed royally. A delegation met her at the airport and whisked her to the hotel where collegiates greeted her in the lobby. She walked to the meeting hall and alumnae, seated in tiers for the official convention photograph, serenaded her with "Dream Girl of Delta Zeta."

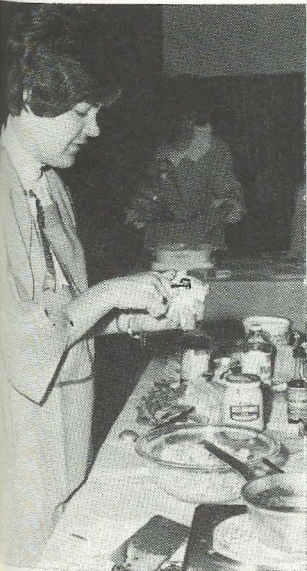
Kassie was the Pennsylvania winner in the College Queen Contest and was competing in Palm Beach the opening days of convention. She flew to St. Louis to be the official Pennsylvania delegate.

Three other Delta Zetas were selected State representatives and participated in the competition.

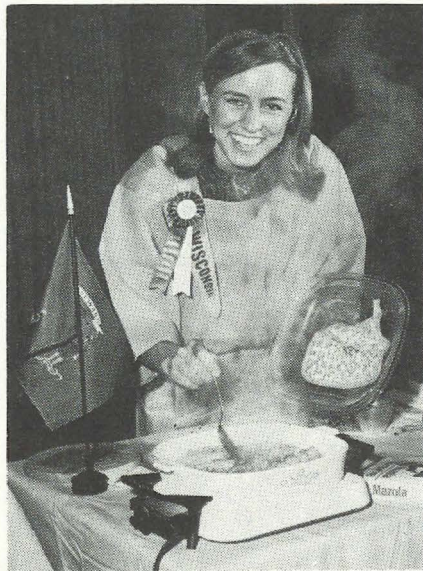
Mary Edwards, a member of Alpha Upsilon chapter at the University of Maine, represented the State of Maine in the pageant. A Delta Zeta was also the State representative from Wisconsin and from Nebraska. Marlys Johnson, Zeta Omicron, is a DZ from Wisconsin State University-LaCrosse. Eileen Lewis, Theta Eta, was the second Delta Zeta in two years from Creighton University to represent her state.



Kassie Billingsley, ZΨ, arrived at Convention to be greeted by her chapter president, Carol Perkins, left; National President Betty Heusch Agler, center, and Mrs. Stan Musial, Convention Initiate.



Working up her supper in the Cook-in section of the contest, is Mary Edwards, AΨ.



Marlys Johnson, ZO, represented Wisconsin in all contests.



Eileen Lewis, ΘH, is pictured with Nebraska Senators Carl Curtis and Roman Hruska in Washington, D.C.

Year in Vietnam with Red Cross Gives Jeanne Memories, Mementos

Reprinted from *Wisconsin State Journal*

Jeanne Bokina is a pretty, blonde, blue-eyed 23-year-old Delta Zeta who has just spent a year "being America" to our men in Vietnam.

Jeanne, or "Sam" as the GIs called her, still suntanned from the hot Eastern sun, spoke quietly, sometimes with emotion, in the living room of her parent's home at 5010 Coney Weston Place, about her Vietnamese experiences as a Red Cross Clubmobile girl.

"I remember the time we went to Hill 55, a Marine hill outside of Da Nang," she said. "We were the first two girls to go out to that unit. They'd stop and stare and say, 'My God, it's an American girl!' I'll never forget that.

"Or the kid in the hospital in Da Nang. He was all bandaged up. All you could see were bandages. He was in real bad shape. Right before we left they took the bandages off and I could see why they had them on.

"His whole head was taped up, he had stitches all over, schrapnel all over, and tubes coming out of his nose and what was left of his mouth. But he could see a little out of his right eye.

"I looked at him square in the face and teased him

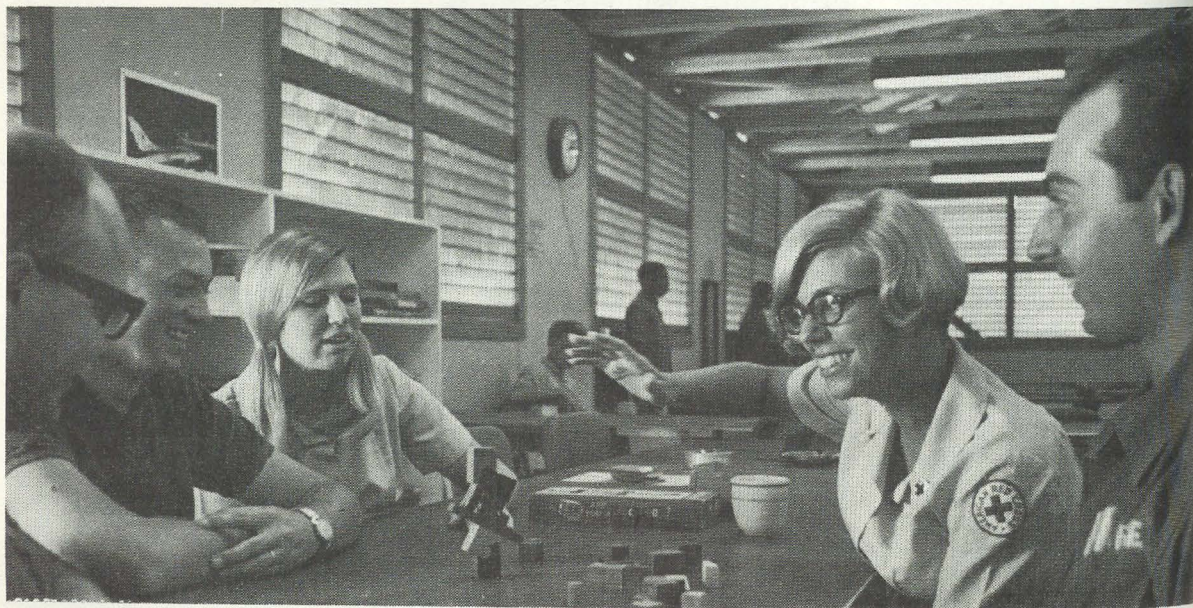
about his peep hole. He responded so beautifully that I wanted to hug him. He was so glad just to see out and to talk to an American girl. It was very touching. I even got him to laugh, but you could tell that when he did, it kind of hurt."

Jeanne was one of approximately 100 young women who are currently stationed at various U.S. military bases throughout South Vietnam to help bolster the morale of our fighting men.

"Just seeing an American girl over there helps remind the men that they do have somebody at home," Jeanne explained. "It's a simple thing, but we are America to them."

Working in small groups, from three to 11 girls, the Clubmobile girls operate the Red Cross Recreation Centers in various base camps where off-duty servicemen gather to read, listen to music, play cards, pool, or ping-pong, or simply enjoy a chat with a girl from home. Over 1,000 men a day visit the large centers; the smaller ones accommodate 400 to 600 men per day.

There is one girl to several thousand men and they also travel by helicopter, jeep, Red Cross boat, or even on foot to visit the men in outlying units where they



Jeanne Bokina has off duty leisure in a game of skill at Phan Rang Air Base, South Vietnam, in January, 1968.

conduct brief, informal recreation programs usually featuring audience-participation games.

"I'd go back and do it all over again," said Jeanne, who cannot, under Red Cross regulations, return to Vietnam for at least six months or a year. "The people were so tremendous, so natural, so truthful. I'd turn right around and go right back if I could. They were the most wonderful people I ever met.

"You see fellows with their arms and legs blown off, their heads smashed in and pieced together, eyes lost, and hearts completely broken. But they're happy just to be alive. You hold their glass so they can take a drink, or light their cigarettes."

To be eligible to become a Clubmobile girl, a young woman has to be over 21 years old, single, and a college graduate.

Jeanne, who graduated in art education from the Stout State University, Zeta Beta chapter, in January of 1967, sent a letter to the Red Cross inquiring about jobs in Vietnam. In the meantime, she had decided to accept a teaching position in Kalamazoo, Mich. When the Red Cross called her one afternoon and asked her

if she still wanted the job, she said she did.

She was flown to Washington, D.C. for a two week orientation program, then to Travis Air Force Base in California. She left from there for Vietnam with nine other girls and about 200 servicemen. Many of the men were younger than she was.

"We were all darn frightened, not knowing a thing about what it would really be like, or who would make it back. When we came in Bein Hoa it was dark out and there were blackout flight conditions—no light on the runway or in the plane either. We were just terrified. The men were scared too. It takes a heck of a lot of courage to step off that plane. More than most people are willing to admit."

Jeanne was stationed in three places in South Vietnam: Nha Trang, Da Nang, and Phan Rang. The girls live in quarters provided by the military and move at least three times in a year.

"You hear guns going off all the time," she said. "We saw the flares at night and heard the planes. It's funny how, if you don't hear them, you realize you don't, and you become very concerned about it. You always hear this constant sound."

"Some days were long and hard and dusty," Jeanne said. "But you really gained a sense of accomplishment when you got a big response from the men. We forgot the heat and dirt and the insects.

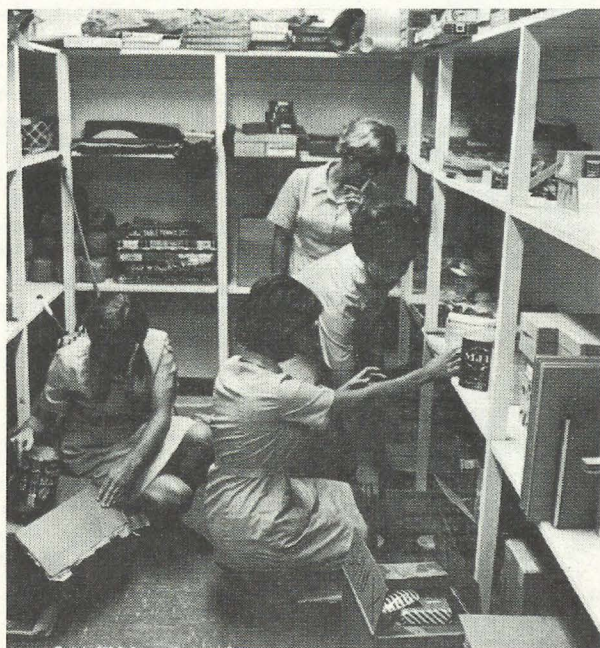
"Funny things happened, too.

"Perfume was so cheap over there that we'd all really splash it on. Especially before we went out into the field. Guys would say, 'why, she even smells like a girl!'

"One day we went to a special forces camp. When we landed the villagers stood perfectly still. They just



A cup of iced koolaid was the treat for an airman standing in the hatch of a C-130 aircraft. Red Cross workers visit men each day to talk, serve a soft drink, and present audience participation recreational programs.



Jeanne and other Red Cross recreation workers pack away recreation supplies sent to Phan Rang Air Base from Milwaukee, Wisconsin. Red Cross chapters in Wisconsin ship several cartons each month to the servicemen at Phan Rang.

stood and stared with dazed eyes. The older people were actually immobile—they had never seen a blonde girl before!

"Another time we drove into a remote village. They were having some kind of a ceremony. When they were all done, the chief came over and we drank rice wine with him. We were with five or six American boys. He called one of the boys over and told him he's like to trade two buffaloes and a jar of rice wine for me. It was the blonde hair that impressed him.

"Incidentally, that was a very good price!"

Jeanne said that she would recommend overseas Red Cross work "for any girl who has the time and the desire to do something for others."

"Even though it's in a war situation," she said, "if they have the courage to go, they should sign up. It's something that can't be taken away from you once you've been there.

"And I'd do it over again. Over and over again. So many things happen each day.

"One time we had a Christmas party for some Vietnamese orphans. We had this fellow in the kitchen. He was crying his eyes out in the kitchen. What do you do? A big man crying? We found out that he had been an orphan when he was a little boy. He was so touched by the concern of the others.

"Another time when I was leaving two fellows gave me a box of candy. It was a box of those chocolate turtles. Where they ever got them I'll never know!

"The whole year is like that.

"I remember one night we were all down at the club and the band started to play 'God Bless America.' Everyone stood up and sang that song with all the sincerity and heart it deserves. At that moment I realized what America was to me and what it meant to the fighting men in Vietnam."

Jeanne, who plans on returning to the University this fall for her master's degree, has brought back letters from boys she has met. One read:

"It was great talking to you, when I talk to you, you made time go by fast. For me. I just want to thank you for talking to me, if sometime I can do something for you just let me no."

Another says: "I'm really going to miss you! Honest! Your smiling face is a real morale booster to me and all the Marines in this hospital."

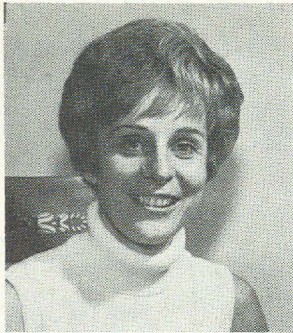
This one was left on a table for her to find:

"Jeanne, my name is Fred and I love you very much. I would like to know if we could have a nice talk when you are here again."

But her most treasured possession is an 8-by-10 framed, handwritten certificate which was presented to her by the servicemen of the 35th Tactical Fighter Wing. She proudly explains that only three other certificates of this kind were ever presented by these men. It reads:

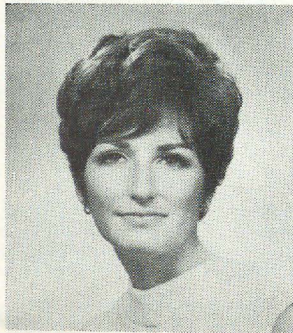
"Your Personality, Charm, and Enthusiasm have made 'Happy Valley' a much happier place for all of us. The officers and men of the 35th Tactical Fighter Wing will miss you. Best of Luck always, Sam."

Alumnae Honor Roll Grows



Beverly Cook Klingensmith

Named Homemaker of the Year in April by the Columbus, Ohio, *Citizen-Journal* was Beverly Cook Klingensmith, A (Mrs. R. W.). The petite mother of two children, Robin, 11, and Tommy, 9, Bev claims her achievement "can not be considered as how many cookies I have made or the challenge of meeting the budget." Rather, she considers her success to be in "organizing all these household duties and homemaking activities and combining them so that the family enjoys and participates in the activities together. She and her nuclear physicist husband spend a lot of time with the family. They camp and sightsee every summer and Bev sponsors a girl scout troop and even got so interested in her daughter's dance and acrobatic lessons that she started taking them herself. She also has time for the community, and is president of the Columbus, Ohio Delta Zeta Alumnae. Her home duties also include getting her husband's breakfast every morning. She also knows little things count. On the Friday before Easter, her husband received an Easter card at his office from a "known" admirer . . . his wife.



Nancy Karger

Talented young Nancy Karger is soaring to fame in New York as a leading lingerie designer. Formerly a Beta Sigma member at Colorado State University, Nancy recently won top honors in the "Grand Put On" competition conducted for young designers throughout America's lingerie and loungewear industries. In 1964, Nancy won the Denver Fashion Group's first scholarship to the Fashion Institute of Technology. Her prize-winning long, pleated lounging culottes with a quilted sweater jacket a la "Bonnie" will be appearing in the Keyline line for fall.

EDITOR'S CHATTER



Lots of campuses have Moms' and Dads' Weekends, but few have devised a Moms Slumber Party. Such was the plan for a delightful weekend at Beta Rho, Michigan State University. The weekend began with howling and bridge tournaments. After a buffet dinner and a show, the girls took their mothers to Shakey's Pizza Parlor a la honky tonk piano. Later, moms climbed into the dormers and the girls cluttered the couches and the floor.

Many chapters report that members will be studying or working overseas. Zeta Rho chapter, William Jewell College, notes that Linda Henny will be one of seven students volunteering to work as assistants to missionaries in Israel this summer. Linda will spend 10 weeks in co-operation with the Home and Foreign Mission Boards. Baptist college students helped raise \$7,000 to support the project.

Gamma Theta chapter, Carroll College, also lists girls who will study or work abroad. Under the Junior Year Abroad program, Jan Demming will be in Lebanon; Judy Warzyn and Sue Baumann in the Philippines. Linda Oleson will travel to Denmark for a Scandinavian seminar.

Two members of the Wittenberg University chapter of Delta Zeta sang in Wittenberg's 65-voice choir when it made a tour of South America last summer.

Susan Hebble and Rebecca Barkimer represented Beta Chi on the nine country tour.

Delta Chapter, De Pauw University, should receive congratulations for winning the Alfa Lloyd Hayes Memorial Scholarship Trophy for the third year in a row. The trophy is given for maintaining the highest scholastic average of all Delta Zeta chapters in Indiana. No wonder the girls won, their average is several points above the campus average.

Alpha Upsilon chapter, University of Maine, lists three Delta Zetas as dorm presidents this fall: Janet Emery, Laurie Goodwin, and Lil Fourina.

When Ann Leonas, Gamma Nu, Eastern Illinois University, was initiated this past winter, there was a proud grandmother present. Ann's grandmother, Mrs. Lena Anderson, was CCD for Gamma Nu for 17 years.

It was a day for several celebrations: Also initiated at Gamma Nu was Pat Mayo, granddaughter of Delta Zeta's first editor of *THE LAMP*, Ruth Jefferies.

Omicron chapter, University of Pennsylvania, came up with a big Panhellenic win in campus elections for the fall. Panhellenic president will be Devra Kimball. Secretary in Panhellenic is also a Delta Zeta: Jean Harris.

Credit should go to Patricia Scott, chapter Lamp editor at University of Southern Mississippi. She did a mountain of work in compiling the June 1 report to *THE LAMP*. Her list of news items and collegiate honors was three pages, both sides, long. To this she added four feature items and gathered over 15 activity and individual photographs. Her chapter sisters won deserved news coverage for their hard work.

Northern Illinois University students should see a lot of Delta Zetas at sports events this year. Linda Nelson and Darcy Taheny will be cheerleaders, and eight other Delta Zetas will be pom pon girls: Lorraine Zanarini, Liz Esquivel, Pat Reiber, Jan Burklund, Arlene Porcaro, Barb Mesics, Eileen Sennott, and Charlotte Perry.

Epsilon Upsilon Delta Zetas at Central State College should be commended for a really fine Panhellenic idea. Last spring the EU Pledges sponsored an all-pledge slumber party at the chapter house for pledges of all the other sororities on campus.

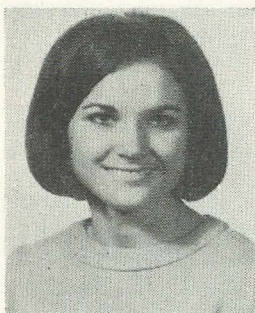
Four out of six contestants in the Philadelphia College of Textiles and Sciences Spring Weekend Queen contests were Delta Zetas from Iota Sigma chapter. Cathy Carpineta was second runnerup.

The Gamma Zeta chapter pledges at Southwestern University came up with a creative idea that might save other bare budgets. When they discovered they had no money for favors for their party, they collected common stones. Painted base coat white and then decorated with Peanuts characters to correspond with the party theme, the stones were unique and clever.

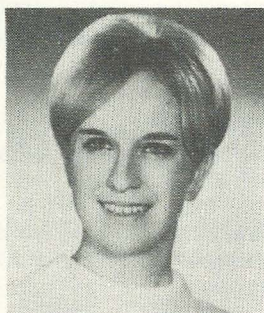
Campus Collegiate Leaders Shine



Baldwin Wallace University Delta Zetas won first place in the 36th Annual Inter-fraternity Sing with "The Wizard of Oz." Director was Nancy MacNamee.



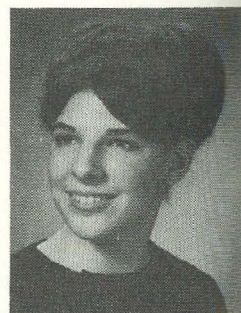
Barbara Phillips, OE
Louisiana Polytechnic Inst.
Dorm Treasurer
Dorm Honor Council
Rose Queen



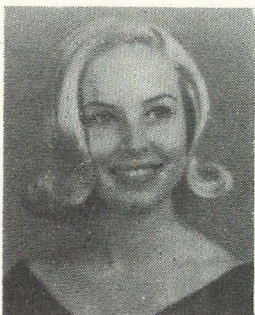
Mary Beth Hutchinson, Δ
De Pauw Univ.
Mu Phi Epsilon
Organists Guild Pres.
Pres. of Class
Chapel Choir Pres.



Shirley Hazlerigg, EM
Univ. of So. Mississippi
Alpha Lambda Delta
Druids



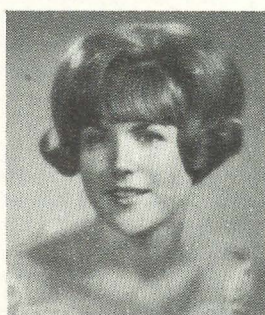
Randi Hurwitz, O
University of Pittsburgh
Miss Pitt
Locke Memorial Award
Debate Team
Mortar Board Pres.
Omicron Sigma Rho



Ann Womack, IN
Georgia Southern College
Miss Ga. Southern Court



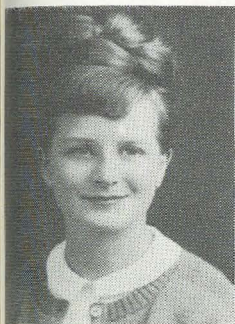
Elaine Sattlem, ΔM
Morningside College
Alpha Lambda Delta Pres.
Psi Chi
Agora
Honors Program



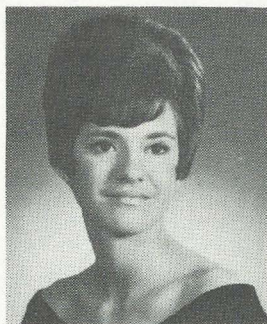
Karolyn Karr, AT
University of Texas
Mortar Board
Yrbk Editor
Orange Jackets
Alpha Lambda Delta
Stu. Gov't. Senator



Mary Lynn Jones, BA
Univ. of Tennessee
Alpha Lambda Delta
AWS Board
Am. Home Ec. Assoc.



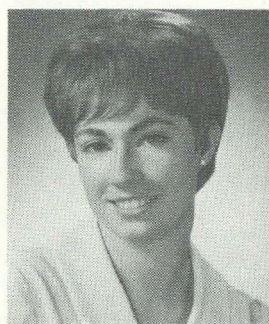
Linda Jo Mangum, BΔ
Univ. of South Carolina
Mortar Board
Phi Beta Kappa
Kappa Tau Alpha
Theta Sigma Phi



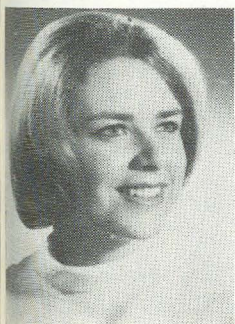
Marsha Braek, ΔΠ
Kansas State Teachers Col.
Who's Who
Homecoming Finalist
Spurs
SNEA State VP



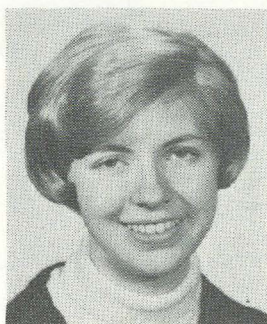
Nelda Sisemore, ΘE
Louisiana Tech
Cwens
Sigma Tau Delta
Alpha Tau Delta
Phi Kappa Phi
Alpha Beta Alpha
Who's Who



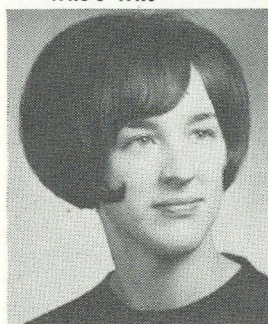
Judy Case, Θ
Ohio State Univ.
Mortar Board
Chimes
Pi Lambda Theta
Alpha Lambda Delta



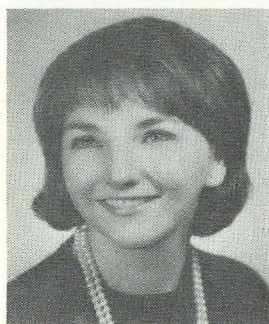
Joyce Thale, Δ
De Pauw University
Phi Epsilon Phi
President of class



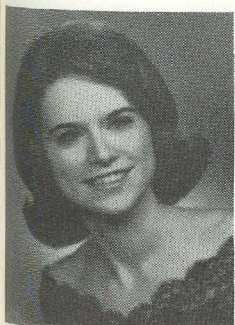
Mary Pickett, BK
Iowa State Univ.
Lampos
Phi Kappa Phi
Gamma Gamma



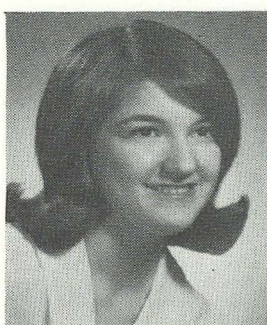
Marie Rosenow, BT
Nebraska Wesleyan Univ.
Kappa Delta Pi
Cardinal Key



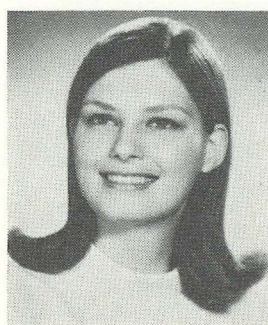
Patricia Wagner, O
Univ. of Pittsburgh
Omicron Sigma Phi
Yearbook Editor
Debate Team



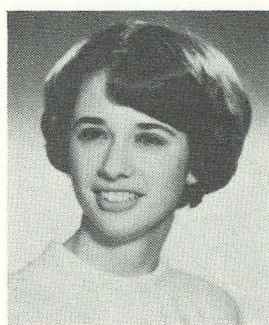
Sue French, IT
Missouri Valley Col.
Cap and Gown
Who's Who



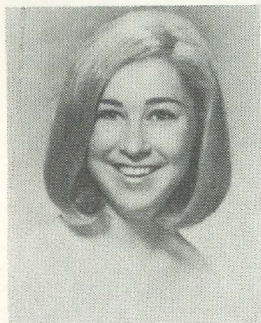
Mary Kauser, Θ
Ohio State
Mortar Board
Pi Lambda Theta
Alpha Gamma Delta
Honors Program



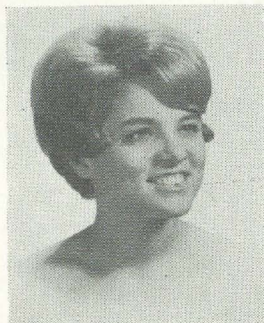
Mary Jane Neale, Δ
De Pauw University
Beta Beta Beta
Sophomore Coordinator
Naiads



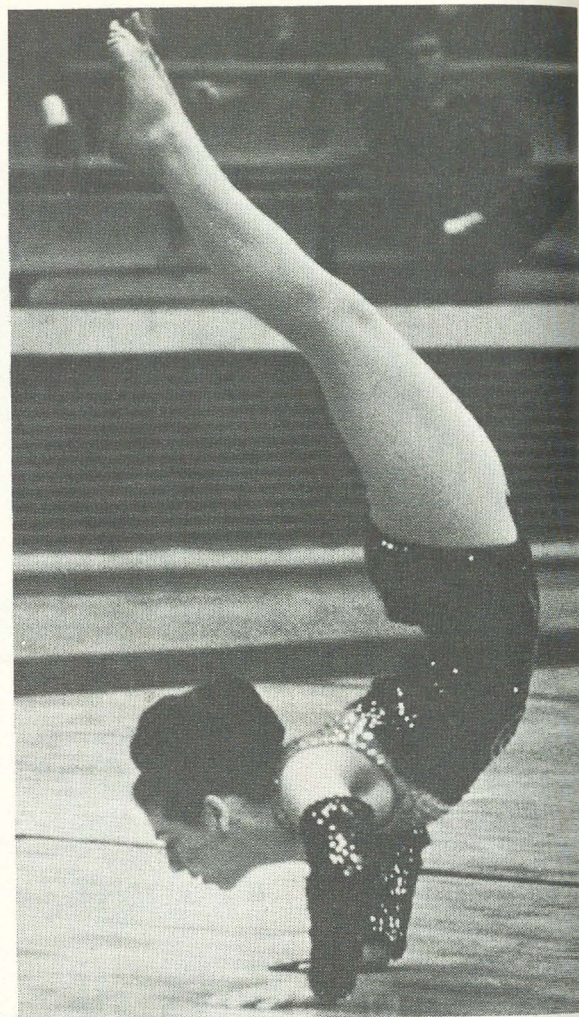
Emily Beaman, Δ
De Pauw University
Alpha Lambda Delta
Mortar Board
AWS Sec.
Secretary of class



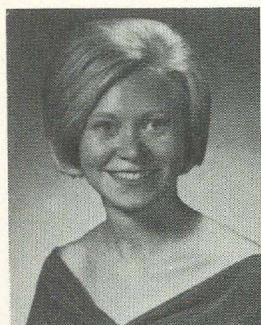
Kathy Morris, BP
Michigan State Univ.
Outstanding Senior
Tennis Doubles Champ



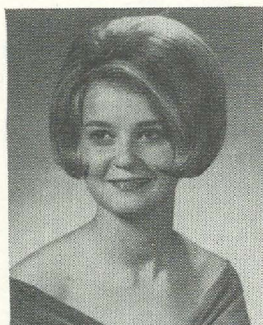
Pam Spillane, BP
Michigan State Univ.
Phi Beta Kappa
Alpha Lambda Delta
Tau Sigma
Kappa Delta Pi
Honors College



Kathy Holman's talent as a dancer has delighted many audiences and helped her be chosen as Miss Molivar County, Miss Mississippi Farm Bureau and second alternate to Miss Southern. She has been operating her own dance studio for five years. She is a member of EM chapter, University of Southern Mississippi.



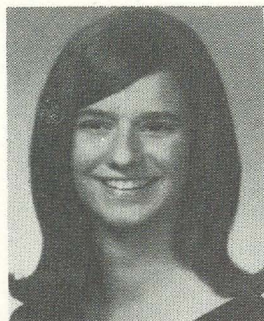
Beth Pollard, AT
Mortar Board—vice pres.
Univ. of Alabama
AWS Board of Directors
Outstanding Junior Woman



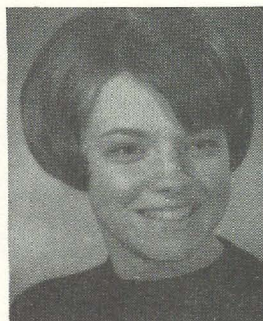
Pam Smith, AT
Univ. of Alabama
Delta Zeta President
Mortar Board
Beta Gamma Sigma



Alma Jo Gault, BA
University of Tennessee
VP Am. Home Ec. Assoc.
AHEA Nat'l Conv. Del.



Rosemary Cox, AO
University of Kentucky
Alpha Lambda Delta
Cwens
Links
Mortar Board Pres.



Jane Van Dale, FO
Carroll College
Scroll
Yearbook Queen Court
Who's Who
Delta Sigma Nu

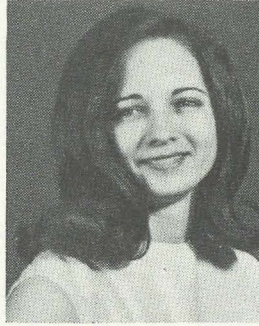


Jean Gordon, ZK
Ohio State Univ.
head cheerleader
Sigma Tau Delta
Letterman Queen
Outstanding Greek Woman

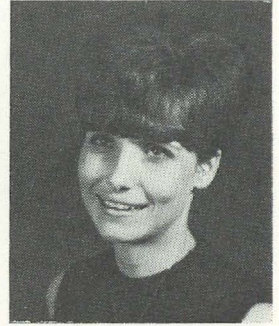
Collegiates Take Lead In Campus Activities



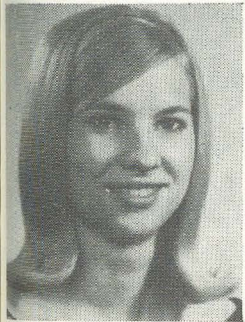
Alpha Sigma, Florida State University, accepts the second place trophy in Campus Sing.



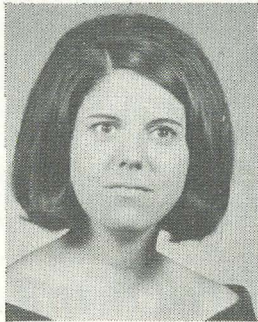
Kate Wood, ZE
Southeastern State Col.
Outstanding Sr. Sen.
Cardinal Key



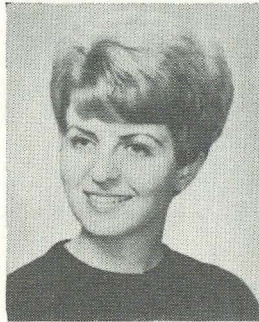
Janet Stroup, ZE
Southeastern State Col.
Who's Who
Cardinal Key



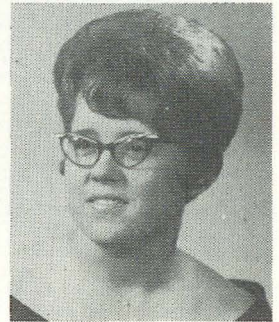
Peggy Feist, ΔO
Northwestern State Col.
Who's Who
Cardinal Key



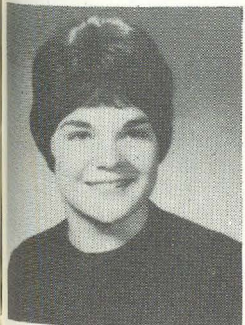
Cathy Cody, ZII
Univ. of Ga.
Panhellenic Sec.
Panhellenic Treas.
Stu. Senator



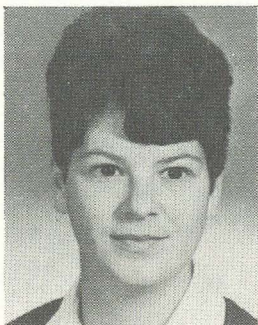
Mary Lynn Braun, ΓN
Eastern Ill. U.
Kappa Delta Pi
Publications Bd.
Who's Who



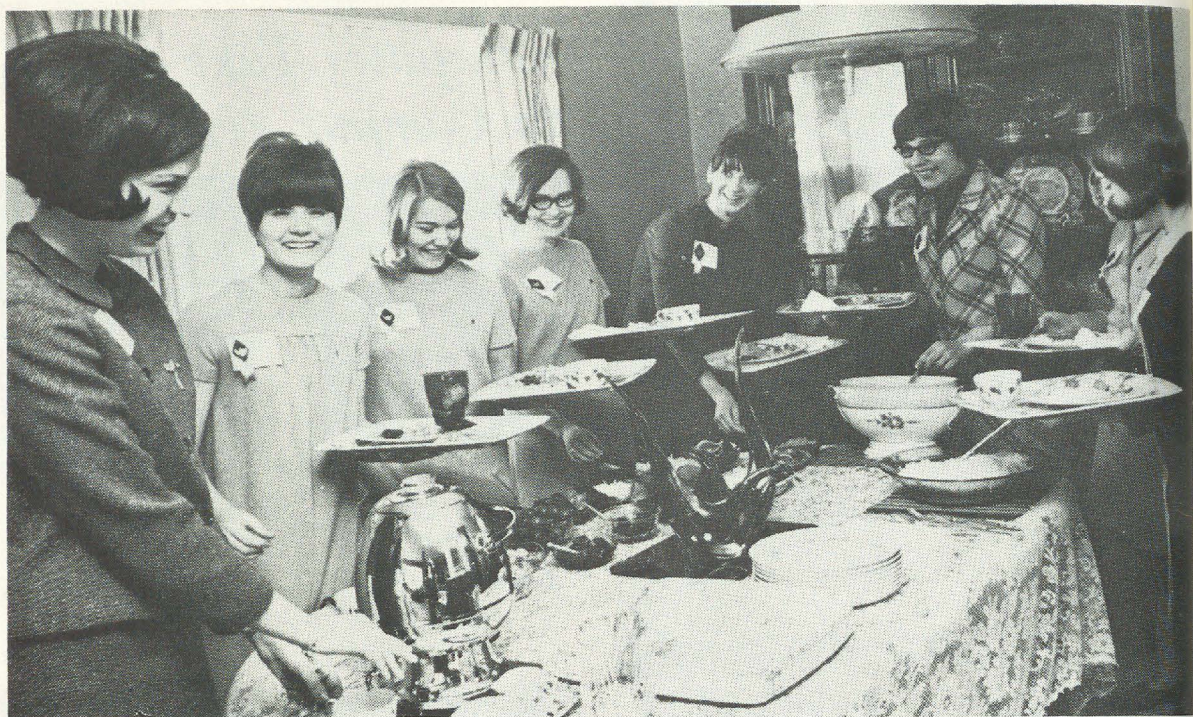
Mary Ann Spaeth, ΔO
Northwestern State Col.
Who's Who
Cardinal Key



Dale Ashman, AT
Univ. of Maine
Phi Kappa Phi
Phi Beta Kappa
Sigma Delta Pi pres.



Barbara Blakely, EΩ
Wisconsin State—Eau Claire
Yearbook Editor
Woodrow Wilson Fellowship



Bloomington, Indiana, Alumnae welcomed the pledges of Epsilon Chapter, University of Indiana, to the annual spring pledge supper held at the home of Dr. Eunice Carmichael Roberts, Associate Dean, IU.

Founders' Day Proclamation

October twenty-fourth marks the sixty-sixth anniversary of the founding of Delta Zeta Sorority. We need to look back over the road we have travelled to our present situation; then we must look far ahead to a new goal we wish to reach, and carefully chart the best road to that desired point. The purpose of our entire journey, the experiences we shall know as we travel, are all contained in our master travel guide, the principles of Delta Zeta as set down for us by our Founders more than sixty years ago.

Recently it has become popular to toss aside or deny the values of spiritual and intellectual endeavor, the striving for personal excellence or involvement in causes requiring personal discipline and personal commitment. As Delta Zetas we shall not be deceived into this false tenet nor pretend that we have outgrown our ideals or decided not to work to bring them to reality.

As we unite in our collegiate chapters or in our alumnae groups, or even as we follow the Delta Zeta pattern individually, we shall find ourselves becoming better able to think for ourselves, and to unite with our sisters in fostering the great purpose of this sisterhood.

In token thereof, it is fitting that we wear our badge and our colors, on October twenty-fourth, and that we join in the appreciation due to those whose vision and example it will be our aim to pass on, to others.

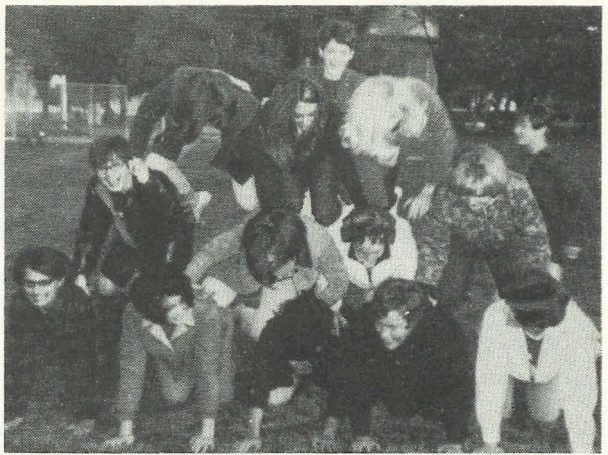
Given under my hand and seal this, the twenty-sixth day of July in the year of our Lord, nineteen hundred sixty-eight and of our sorority the sixty-sixth year.

Betty H. Ogden

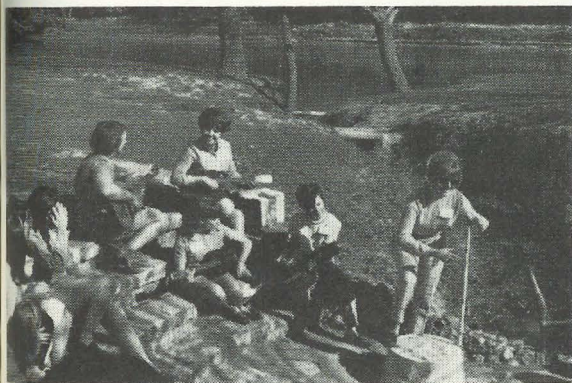
National President



Zeta Pi chapter, University of Georgia, devised a washboard band that made a big hit for Province Day.



On Turnabout Day at Wisconsin State University-LaCrosse, pledges got actives up at 5 a.m. for exercises and antics.



Gamma Zeta chapter, Southwestern University had a Parents' Weekend last spring that featured a picnic and Gutbucket band entertainment.



Five sister pairs were chapter members of Upsilon, University of North Dakota, this past year: front row Valerie Koons, Kathy Van Eeckhout, Joanne Van Ornum, Carol Rose, Mary Teevens. Back row Andrea Koons, Irene Van Eeckhout, Marilyn Van Ornum, Mary Rose, and Jean Anne Teevens.



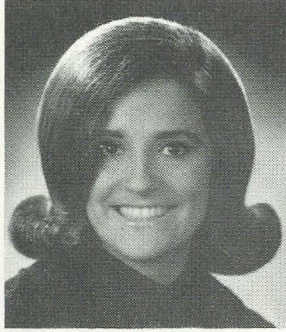
Alpha Tau walked off with high honors at Texas State Day for Thea Entzminger, Best Pledge Trainer; Jan Ratzlow, Best President; Carolyn Karr, Best Activities Chairman.

Varied Events Keep Chapters Busy, Active

Campus Activities Benefit Greatly From ΔZ Leaders



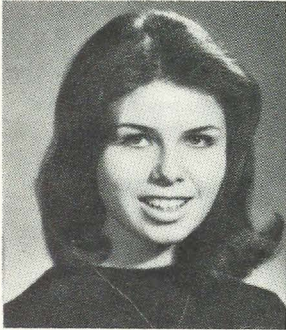
Karyn Volz, Δ
De Pauw Univ.
Pom Pon
Angel Flight



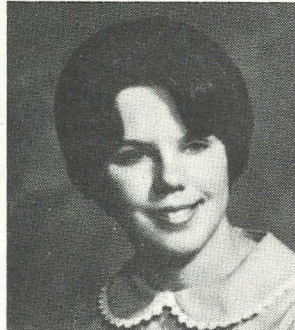
Vernadean Jones, ΔΘ
University of Kentucky
Jr. Panhellenic Advisor



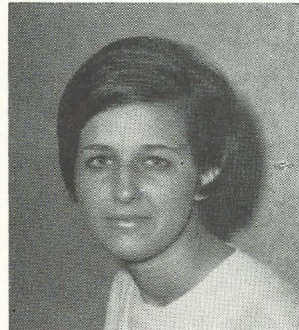
University of Georgia, Zeta Pi chapter, hosted the Southeast
Panhellenic Conference last spring.



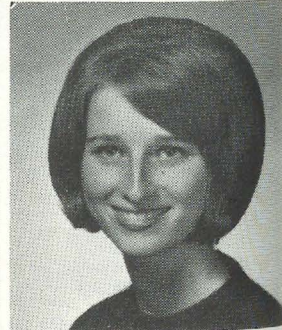
Sue Campbell, Ξ
Univ. of Cincinnati
Panhellenic Pres.



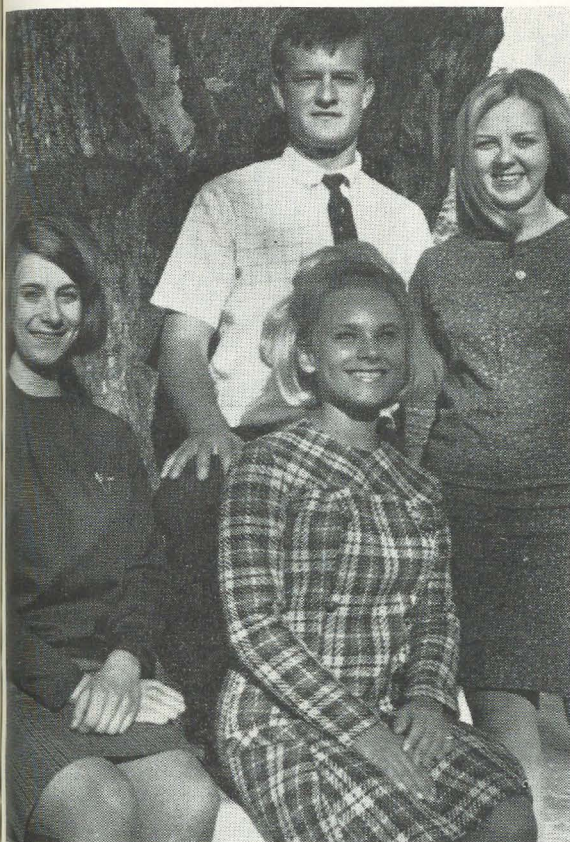
Marsha Packer, ΘΧ
Lock Haven State Col.
Panhellenic Pres.



Brenda Kennedy, ΘΩ
Atlantic Christian Col.
Panhellenic Pres.



Brenda Porter, ΤΝ
Eastern Illinois Univ.
Panhellenic Pres.



Sophomore officers for this year at Central State College include three EΨ girls: Mariann Streller, Evelyn McEachern, and Cindy Denny.



Delta Zetas at Philadelphia College of Textiles and Science took top awards at the First Annual Art Competition. Emily Bauhof, second from left, took first, second and third in photography. Pat Marshall, second from right, and Ann Tamaura (not pictured) took thirds. Winners discuss contest with show director Dr. William Brown, center.



Lamar State College of Technology elected eight members of ΔΔ to the 1968-69 Senate: Karen Blanton, Carol Cobb, Terry Seal, Mary Miller, Pat Hill, Paula Tate, and not pictured Nancy Collins and Brenda Cross.

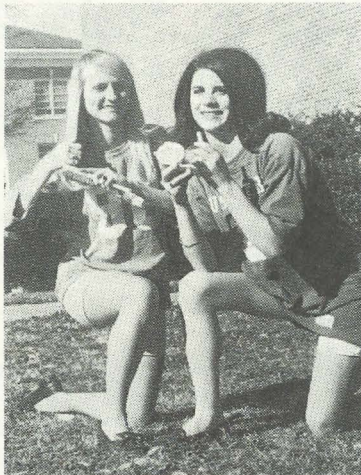
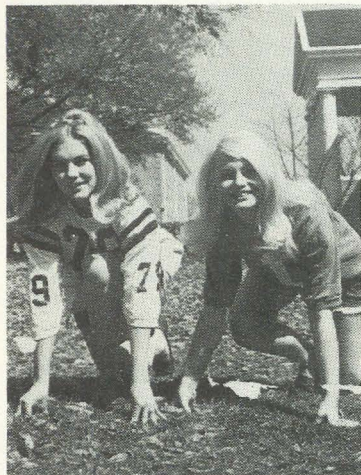


Eastern Illinois University DZ's on Senate this year will be Sue Crum, Connie Eyre (also Student Body President), Carol Saunders, and Teena Pechinis.



The high honor of Gamma Pi belongs to four Epsilon Psi, St. Louis University, girls: Betty Powell, Charlene Steltenpohl, Suzanne Norton, and Barb Wascek.

Greek Week, Derby Days, Pioneer Days Demonstrate Delta Zeta Enthusiasm, Spirit



Eight Delta Zetas from Epsilon Mu, University of Southern Mississippi, played in the Powder Puff football game sponsored by Inter Fraternity Council as part of Greek Week competition.

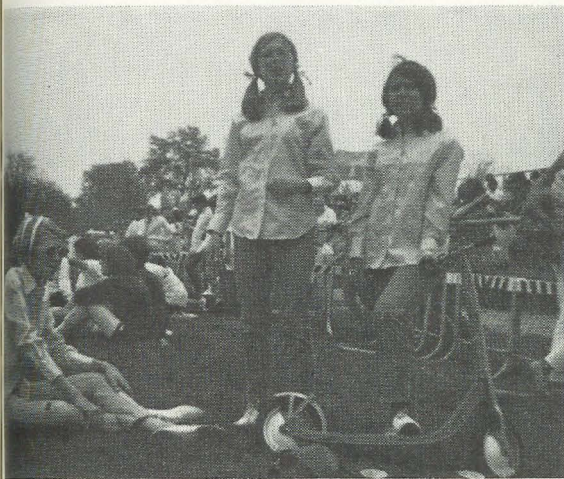
Delta Zeta was the only sorority to have all her nominees elected. The entire student body voted on the various sorority nominees. Left to right are Ky Oakes, Mary Ann Boggan, Dortha Brock, Carolyn Poole, Becky Andrews and Judi Shank.



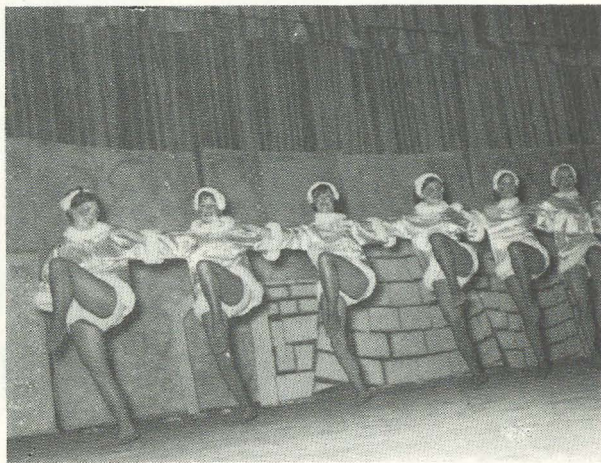
Delta Chi Chapter, Chico State College, marched in the Parade during Pioneer Week.



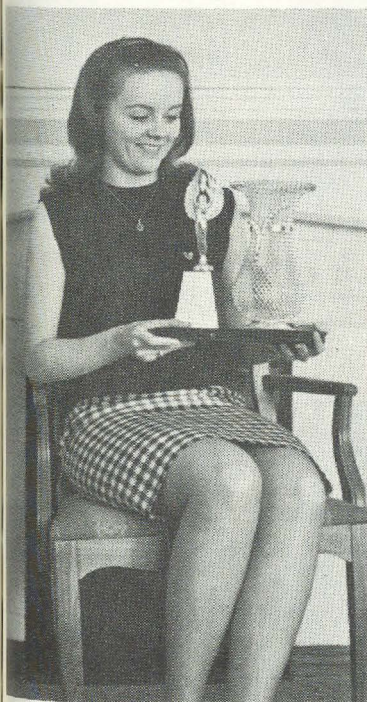
Building the Quad Project. Delta Chi's work hard to get the building up on time at Chico State College.



Scooter race runners at AΘ, University of Kentucky, were Cookie Schmidt, Marci Martien, and Daria Ortynsky. DZ won the scooter contest, the turtle race, and placed Carol Strange as Derby Queen finalist.



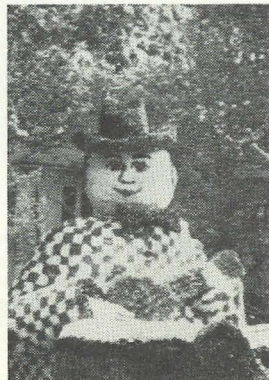
Change of Seasons—Eskimo style, was a winning routine for AT Chapter, University of Alabama, at the Sigma Chi Derby.



Linda Stark, Delta Mu, Morningside College, holds the trophy won for Greek Week after the chapter placed first in Talent Show and Greek Sing and second in Town display.

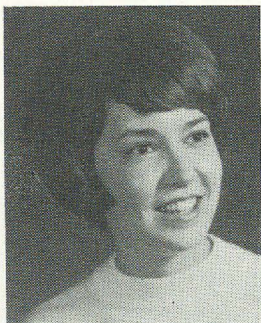


Alpha Upsilon officers, University of Maine, display Greek Weekend Trophies: Helen Fogler, Jane Ames, and Cindy Smith. All won the Greek Games trophy, the Scholarship Bowl, and the All-Points trophy for the most participation.

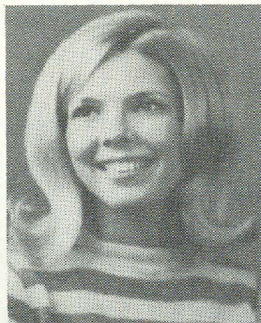


The May float of Zeta Kappa, Ohio Northern University, won first place.

Campuses Praise DZ Beauty, Poise



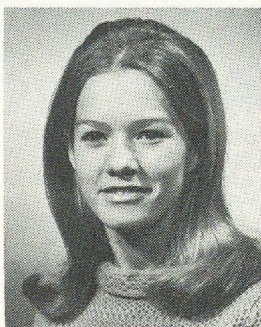
Phyllis Shipman, ZK
Ohio Northern Univ.
Inter-frat Queen
Sigma Pi Sweetheart



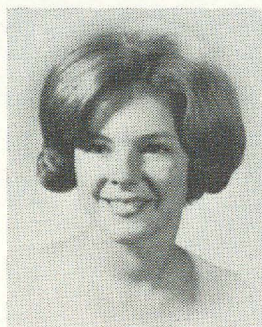
Marianne Burnette, BA
Univ. of South Carolina
Beauty in Beauty-Beast
Contest



Claudia Robinson, AT
Univ. of Alabama
Miss Alabama Universe
Semi-finalist—Miss USA
Cheerleader



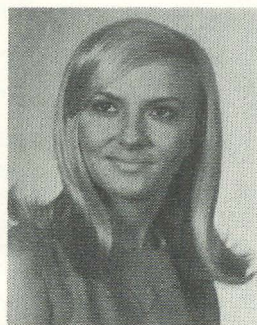
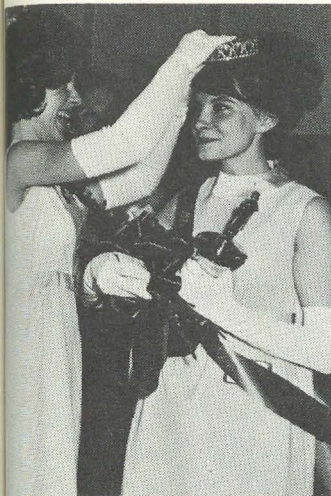
Patty Conlon, EΣ
Wayne State Univ.
Sno-Ball Queen



Nancy Carter, Z Ξ
Lenoir Rhyne Col.
Cheerleader
Miss Fredumen
Miss Salisbury

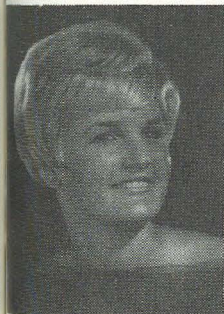


Martha Herbert, EX
Univ. of Wis.—Milwaukee
Campus Carnival Queen

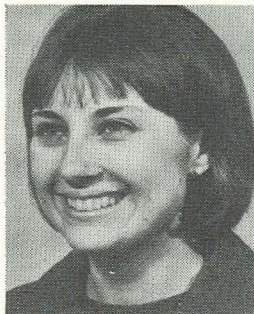


Central State College Delta Zetas walked off with honors in the Miss Edmond of 1968 contest. Alana Radar, ET, left, was crowned Miss Edmond; and Terri Essex, ET, right, was Miss Congeniality and first runner-up.

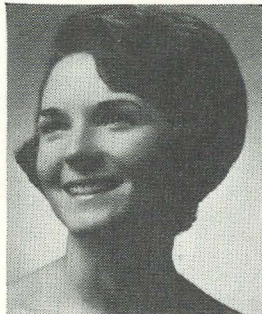
Sherryl Wilson, IN
Georgia Southern Univ.
Homecoming Court
Sigma Pi Sweetheart



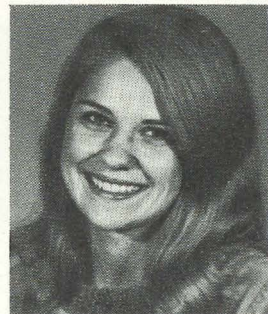
Vicki Hurst, EE
Fresno State Col.
Derby Doll



Kathy Black, EQ
Wis. State Univ.—Eau Claire
Winter Carnival Queen Court
Miss Eau Claire Runnerup
Best Actress



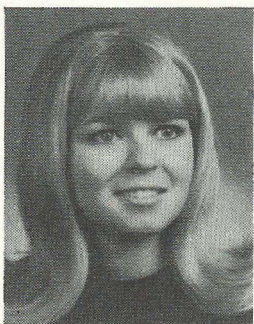
Dale Duke, AS
Florida State Univ.
Gymkana Court



Candi Ford, AP
Highlands University
Miss Wool of New Mexico



Rita George, ES
Wayne State Univ.
Miss Wayne State Court



Penny Laetsch, EX
Univ. of Wis.—Milwaukee
Delta Tau Delta Sweetheart
Best Dressed



Mary Jo Hall, AS
Florida State Univ.
Lil Abner Lead USO
Theatre Under Stars
Lead in Brigadoon
Madrigal Singers

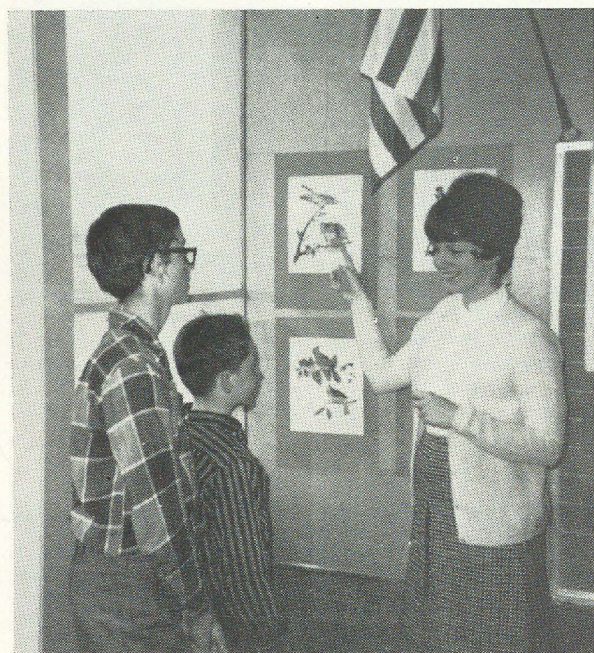


Beth Pittman, EM
Univ. of Mississippi
Miss Hospitality of Miss.
Dixie Darling
Yearbook Editor
Honors Program

DZ's Prove Philanthropies Can Be Fun



A benefit card party made \$300 for Cleveland West Side Alumnae, donated to purchase five projectors for Harrison Oral Classes. Left to right are Mrs. William Trout, Jr.; Laurie Pesarchick, 5; and Mrs. Robert Ehas.



Vicki Piatt and the other pledges of EE chapter, Fresno State College, visited a deaf school and spent at least one hour a week helping the children this year. In the spring, DZ and Delta Sigma Pi co-hosted a barbeque.



Dressed as a bunny, Judy Sykes, EE, Fresno State College, helps children look for eggs at the Easter Egg Hunt sponsored for the children of faculty members by Delta Zeta and Lambda Chi Alpha.

Akron University DZ's Co-Sponsor Egg Hunt



Just catching the kids was a challenge for Delta Zetas from Akron University and their Phi Sigma Kappa co-party-givers.

Members of Theta Zeta chapter at Akron University and Phi Sigma Kappa Fraternity planned an Easter Egg Hunt last spring for the underprivileged children from the Children's Home.

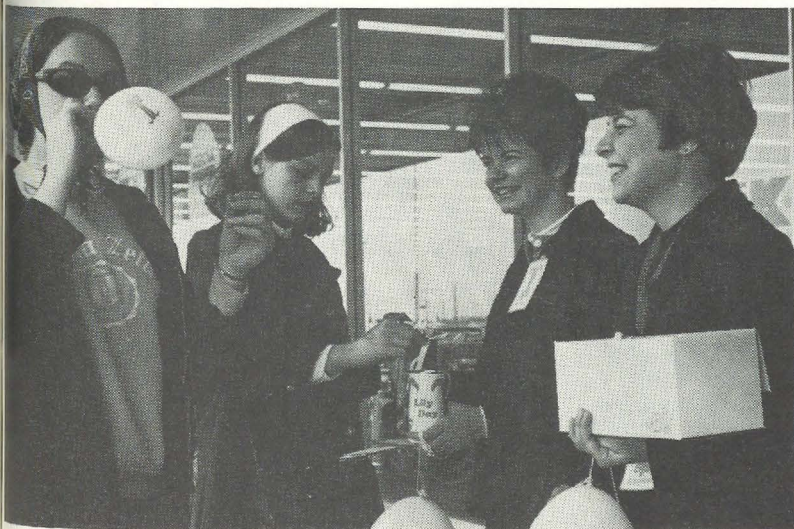
We girls cooked the five dozen eggs on Friday afternoon. A hall was rented for Friday night where an Easter Egg Coloring Party was held. Refreshments and entertainment was provided jointly by the fraternity and our members. With only a few minor mishaps, the egg coloring was completed that night.

On Saturday morning the Phi Sigs began their highly secret mission of skillfully hiding each egg at Sand Run Park near a picnic area which had been reserved earlier.

At noon, the Phi Sigs picked us up and we drove to the Children's Home to pick up the 20 children that we were to take. They were all boys between the ages of eight and ten. It was quite an accomplishment to pack all the kids into the cars.

The kids were turned loose, and we turned loose on the kids, who couldn't seem to understand that the eggs were only in a certain area. We chased them from one end of the park to the other. When we caught them, their fate was sealed: they were given a Big Brother, and soon there ensued a Big Brother-Little Brother piggyback race.

After all the eggs were found, we piled into the cars, this time for the fraternity house where all sorts of goodies were waiting for the kids. There they were entertained with candy, baseball, scrapbooks, music, wrestling matches, and swivel chairs. Final goodbyes were sadly said.



Norbert College Delta Zetas organized a Lily-Balloon Day drive last spring in downtown Green Bay, Wisconsin, to sponsor crippled children and adults to an Easter camp.

SAVE YOUR LAMP

The full directory of officers will not be carried in the next LAMP. Only one page of National Council officers and national committee chairmen will be retained.

Announcing Magazine Winners

(May 1, 1967-April 30, 1968)

FIRST PLACE

Metropolitan Detroit Alumnæ, Michigan
Delta Pi, Kansas St., Kansas

SECOND PLACE

Seattle Alumnæ, Washington
Alpha Epsilon, Oklahoma St. U., Okla.

THIRD PLACE

Auburn Alumnæ, Alabama
Delta Upsilon, Marshall Univ., W.Va.

CONGRATULATIONS and THANKS to these wonderful chapters for their excellent work on the National Magazine Program and for their support of the Endowment Fund !!!

YOU can start your Chapter on its way to being a winner at the end of this year's accounting period (which began May 1) by using the magazine order form printed below.

DON'T FORGET ZIP CODES

DELTA ZETA SUBSCRIPTIONS

P.O. BOX 725

Concord, California 94522

Order Form

Date 19

Chapter to be credited

Address

Amount Enclosed \$.....

Please make checks payable to:
DELTA ZETA SUBSCRIPTIONS

Magazine to be sent to:

Name of subscriber

Street

City & State Zip Code

NAME OF MAGAZINE

No. of Years ☐ New ☐ Renewal

Is this a gift? If so, write in name of giver here.

Street

City & State Zip Code

No Card Sent Unless Requested

Gift Card ☐ Birthday ☐ Christmas ☐ Anniversary ☐ General ☐ No Card ☐
Card to arrive 19..... Card to be Signed

Province Public Relations Coordinators

- Province
- II. Mrs. P. Thomas Cox, 2 Sunny Hill Rd., Vallenova, Pa. 19085.
 - III. Mrs. C. G. Pelkhofer (Pat), 252 S. Winebiddle St., Pittsburgh, Pa. 15224.
 - IV. Miss Gail Rector, R.R. 1, Box 153, Princeton, W.Va. 24740.
 - V. South—Miss Kathryn A. Kaufsman, 1031 Euerette Ave., Louisville, Ky. 40204.
 - VI. Mrs. William Trout, 61 Buckingham Rd., Rocky River, Ohio
 - VII. Mrs. Michael S. Richardson (Jeri-Lynne), 5523 Heather Ave., Osceola, Mich. 48750.
 - VIII. Mrs. Richard Lankford (Ruth), 2524 S. New Jersey, Indianapolis, Ind. 46225.
 - IX. Mrs. Lyle Sampson (Joanne), 963 S. Sheldon St., Richland Center, Wis. 53581.
 - X. Mrs. Wayne Hutchinson (Louise), Route #3, Marion Ill. 62959.
 - XI. Mrs. Geo. Ahern (Elinor), 338 31st St., S.E., Cedar Rapids, Iowa 52403.
 - XII. Mrs. Lester Peters, Griffin Trailer Ct., Macon, Mo. 63552.
 - XIII. Mrs. Edward Fulton (Betty), 4103 Lupine St., Colorado Springs, Colo. 80907.

- XIII. Mrs. Monte Thoen (Doris), 13124 NW Sue St., Portland, Ore. 97229.
- XIV. Mrs. Frank Taggart (Tina Fisk), 6580 Longride Way, Sacramento, Calif. 95831.
- XV. Mrs. Stuart Finke (Ann), 5909 Courtland Dr., Riverside, Calif. 92506.
- XVI. Mrs. N. O. Sandos (Doris), P.O. Box 64, Medicine Park, Okla. 73557.
- XVII. Miss Jane Ann Maxwell, 4162 Kenneth, Beaumont, Tex. 77705.
- XVIII. Mrs. Sammie D. Reidenbach, R.R. 1, Box 26, Keithville, La. 71047.
- XIX. Miss Virginia Combs, 1107 Tolston Ave., Bristol, Tenn. 37622.
- XX. Mrs. Kenneth H. Moore, 1539 Lilac Circle N., Titusville, Fla. 32780.
- XXI. West—Mrs. John R. Orr, Jr., 1540 Panorama Dr., Vesthaven, Ala. 35216.
- XXI. East—Mrs. Charles Wills, 620 Peachtree, N.E., Atlanta, Ga. 30309.
- XXII. Mrs. Jack B. Tower, 66 Fairview East, R.R. 3, Tequesta, Fla. 33458.

★ ★ ★ Golden Flame Eternal ★ ★ ★

- ALPHA
- Helen Creed Dulick (Mrs.) '33x, 5-66
Marion Parker Merriman (Mrs. Richard) '25, 9-61
- BETA
- Helen English Hoadley (Mrs. John) '25, 3-68
Helen Figel Schlatter (Mrs. Lester) '17, 4-21-68
- EPSILON
- Emma Brunger Kennedy (Mrs. Earl) '11, 5-68
- THETA
- Mae McElroy '13x, 12-11-65
- TAU
- Sue Bussey Trowbridge (Mrs. Arthur) '29, 3-28-68
- KAPPA
- Vinnie Dean DeCou (Mrs. Lorenzo) '20x, 5-13-68
- LAMBDA
- Opha Zetta Babb '20x, 5-68
- OMICRON
- Helen Allen Wilhelm (Mrs. S. F.) '34x, 4-27-67
- PHI
- Angelyn Rea Clarke (Mrs. Robert) '20, 5-11-68
Ruth McFarland Dierker (Mrs. Raymond) '23, 3-20-68
Beulah Keagy Tilbury (Mrs. Gilbert) '20, 5-23-67
- CHI
- Hazel Miller Whittaker (Mrs. Lawrence) '24, '67
- RHO
- Ethel Schuyler Fairlamb (Mrs. Charles) '26, 12-22-67
- TAU
- Gladys Wilson Miller (Mrs. J. MacKenzie) '21x, 7-67
- THI
- Lillie Johnson Davis (Mrs. Ward) '28, 10-15-67
- THI
- Edith Thompson Webb (Mrs. Merrill) '23x, 4-27-68
- ALPHA IOTA
- Marjorie Hull Bryant (Mrs. David) '27, 4-19-68
Della Thomas Miller (Mrs.) '39, 2-19-68

- ALPHA LAMBDA
- Ruth Anderson Hoffman '18, 4-68
- ALPHA NU
- Helen Howard Dugan (Mrs. Kenneth) '28x, 11-19-67
- ALPHA PI
- Margaret Hanlin '29, 3-68
- ALPHA CHI
- Marjorie Kittle Van Blaricom (Mrs. Richard) '28, 11-22-67
- BETA TAU
- Ethelyn Ireland Brownson (Mrs.)
- GAMMA ZETA
- Ruth Causey Johnson (Mrs. Ralph) '55, 6-11-68
- GAMMA XI
- Amee Hatcher Burgie (Mrs. Will) 3-68
- GAMMA SIGMA
- Mary Elton Sanger Garrison (Mrs. Noble) '12
- DELTA XI
- Mila Pierce Menefee (Mrs. Ray) '26x, 1-14-67
- DELTA PI
- Lucile Adams Dotson (Mrs.) '26, '67
- DELTA RHO
- Grace Douglass Warrensford (Mrs. Edward) '24
- EPSILON ETA
- Betty Kohler Wikete (Mrs. Peter) '51
- ZETA THETA
- Doris Satterwhite Camp (Mrs. Thomas) '30, 3-23-68
- ZETA KAPPA
- Anna Belle Mohr Flenniken (Mrs. Clifton) '13x
- THETA ETA
- Jeanne Thirtle Prescott (Mrs. George) '55
- BUFFALO STATE
- Margaret Grant '29, 11-17-67
- UNIVERSITY OF OKLAHOMA
- Phoebe Brundage King (Mrs. J. Cobern) '24, 4-25-68

Save this directory. It will not be carried next issue

Delta Zeta Sorority

Founded at Miami University October 24, 1902
GUY POTTER BENTON, D.O., LL.D.
Grand Patron*

FOUNDERS

JULIA BISHOP COLEMAN (Mrs. J. M.)*
MARY COLLINS GALBRAITH (Mrs. George)*
ALFA LLOYD HAYES (Mrs. O. H.)*

ANNA KEEN DAVIS (Mrs. G. H.)*
MABELLE MINTON HAGEMAN (Mrs. Henry)*
ANNE SIMMONS FRIEDLINE (Mrs. Justus R.)*
* Deceased.

THE ORDER OF THE LAUREL

Grace Mason Lundy

Irene Caroline Boughton

NATIONAL COUNCIL OF DELTA ZETA SORORITY

President Betty Heusch Agler (Mrs. B. H.), 20 East 14th Ave., Apt. 7, Columbus, Ohio 43201
Vice-President (Alumnæ) Gwen Moss McKeeman (Mrs. Robert L.), 5517 South 74th East Ave., Tulsa, Okla. 74145
Vice-President (College Programs) Elizabeth Baker Devereaux (Mrs. Chas.), 5 Worthington Lane, Parkersburg, W.Va. 26101
Vice-President (Membership) Lisbeth Innis Francis (Mrs. Robert), 2508 Belle Terre Dr., Birmingham, Ala. 35226
Treasurer Grace Pritchard Gorham (Mrs. C. A.), Box 1723, Tulsa, Okla. 74101
Secretary Mary Lou Ragel Vineyard (Mrs. Philip), 2970 68th Ave. S., St. Petersburg, Fla. 33712
National Panhellenic Conference Delegate Betsy Bradley Leach (Mrs. Gerald A.), 1865 Hill Dr., Eagle Rock, Los Angeles, Calif. 90041
Director (Area East) Marion Hohnke West (Mrs. George G.), Hemlock Acres, R.D. 2, Punxsutawney, Pa. 15767
Director (Area South) Beverly Baldwin Burnsed (Mrs. A. D.), 511 Woodward Dr., Lakeland, Fla. 33803
Director (Area Southwest) Cynthia Lundy McCarty (Mrs. A. W.), 3102 E. Earll Dr., Phoenix, Ariz. 85016
Director (Area West) Patricia Scannell Dunn (Mrs. Stephen), 5069 Northlawn Dr., San Jose, Calif. 95130
Director (Area Midwest) Rhea Freidell Schultz (Mrs. Jacob F.), 5610 Tupper Lake Dr., Houston, Tex. 77027
Director (Extension) Mary Lou Ragel Vineyard (Mrs. Philip), 2970 68th Ave. S., St. Petersburg, Fla. 33712
Director (House Corporations) Mae Banker Dickinson (Mrs. C. A.), R.D. 3, Slippery Rock, Pa. 16057
Director (Philanthropies) Katie Blanche Masters Stallworth (Mrs. Harry G.), 2601 Westover Rd., Austin, Tex. 78703
Director (Public Relations) Florence Hood Miner (Mrs. Arthur J.), 1040 Avenue H, Nevada, Iowa 50201
Past President Grace Mason Lundy (Mrs. H. M.), R.R. 1, Bloomington, Ind. 47401

NATIONAL FIELD CONSULTANT

Gertrude Murphy Meatheringham (Mrs. V. H.), Route 1, Kennesaw, Ga. 30144

NATIONAL HEADQUARTERS

National Headquarters
.... Callie Pressnall Folger (Mrs. Walter C.) (Office Manager), 3561 N. Pennsylvania St., Indianapolis, Ind. 46206

THE LAMP

Editor of THE LAMP Sue Hastings, c/o Nat'l Headquarters, 3561 N. Pennsylvania St., Indianapolis, Ind. 46206
Board of Trustees of THE LAMP Fund: Betty Heusch Agler (1970); Dorothy Varley Breitweiser (1972); Violet Sharratt Whitfield (1970); Irene Boughton (1972), 3801 N. Meridian St., Apt. 306, Indianapolis, Ind. 46208; Grace Pritchard Gorham (Mrs. C. A.) 1970; Mae Banker Dickinson (Mrs. C. A.) 1970

DELTA ZETA FOUNDATION

President—Miss Frances E. Westcott, 549 E. 84th St., Indianapolis, Ind. 46240
Treasurer—Maxine Mason Peterson (Mrs. Kenneth), Rt. 2, Box 808, Tucson, Ariz. 85715
Directors—Gail Patrick Jackson, Margaret Huenefeld Pease, Marjorie Doyle Bergman
Chairman Audiology Scholarship—Miss Anne H. Meierhofer, Dean of Students, Illinois Wesleyan Univ., Bloomington, Ill. 61701

STANDING COMMITTEES

History: Ritual Chairman—Grace Mason Lundy (Mrs. H. M.), R.R.1, Bloomington, Ind. 47401
National Judiciary Chairman—Florence Honbaugh Maier (Mrs. Ralph H.), P.O. Box 456, Westfield, N.J. 07091
Colonade Club Chairman—Edith Johnson Mancari (Mrs. Frank), P.O. Box 621, Holden, W.Va. 25625

COMMITTEES

National Activities Chairman—Jane Gustafson Jones (Mrs. H. Richard), 230 Stradling Rd., Muncie, Ind. 47304
Awards Chairman—Dr. Judith Noble, Route 2, Hickory Grove Park, Ames, Iowa 50010
Carville—Miss Shirlyn Chaffin, 4431 Danforth Rd., Columbus, Ohio 43224
Endowment Fund—Verne Fimeck Duda (Mrs. Michael), California State College, California, Pa.
Magazine Chairman—Engelyn Brown Tourtelot (Mrs. Charles H.), P.O. Box 725, Concord, Calif. 94522
Memory Book Chairman—Ruth Claussen Reaser (Mrs. M. L.), 4918 Whitten Place, Apt. B, Indianapolis, Ind. 46220
National Membership Chairman—Mary Lou McConaughy Barth (Mrs. William T.), 1720 Tennyson Ave., Dayton, Ohio 45406
Navajo Project—Miss Shirlyn Chaffin
Order of Golden Rose—Irene C. Boughton, 3801 Meridian, Apt. 306, Indianapolis, Ind. 46208
Personal Loans and Scholarships—Elaine Scott (Mrs. N. K.), 1260 E. 30th St., Tulsa, Okla. 74114
National Parliamentarian—Miss Amanda Thomas, 1800 N. Devon Road, Columbus, Ohio 43227
National Pledge Training Chairman—Diana Parks Rice (Mrs. David), 5351 Buena Parkway, Haslet, Mich. 48840
National Province Conference and State Day Coordinator—Mrs. Maurine Carlson, 819 Oak Ave., Aurora, Ill. 60506
National Scholarship Chairman—Ellie Bakosh Gregorich (Mrs. Edw.), 2821 Palmerston, Troy, Mich. 48024
National Social Chairman—Mrs. John Baughman (Jean), 227 Queenburg Road, Apt 2, Huntsville, Ala. 35802
National Sorority Education Chairman—Sue Johnson Chappell (Mrs. W. Bruce), 21378 Elcott Parkway, Warrensville Heights, Ohio 44122
National Standards Chairman—Lois Westerman Schrank (Mrs. Benjamin), 5184 Meadow Wood Blvd., Cleveland, Ohio 44129

PROVINCE I—Maine

Chapter/School
 AT—Univ. of Maine
 BA—Univ. of Rhode Island
 FB—Univ. of Connecticut
 ΔI—Jackson College
 ΘP—Univ. of New Hampshire

President
 Jane Ames
 Lorraine Raff
 Chris Aquino
 Gail Durant
 Sue Gregory

PROVINCE II—New Hampshire, Massachusetts, Connecticut, Rhode Island

National Director: MRS. GEORGE G. WEST (MARIAN), Hemlock Acres, R.D. 2, Punxsutawney, Pa. 15767
Chapter Address
 401 York Hall, U. of Maine, Orono, Maine 04473
 DZ House, 70 Lower College Rd., Kingston, R.I. 02881
 DZ House, U. of Conn., Storrs, Conn. 06268
 Metcalf Hall, Jackson College, Medford, Mass. 02155
 DZ House, 25 Madbury Rd., Durham, New Hampshire 03824

PROVINCE III—New York

College Chapter Director
 Miss Claire S. Sanders
 Mrs. Richard Moore (Marion)
 Mrs. John Hill Jr. (Barbara)
 Miss Sondra Szymczak
Address
 1234 Maine St., Orono, Maine 04473
 Middle Road, East Greenwich, R.I. 02818
 8 Ellise Rd., Storrs, Conn. 06268
 37 Elliott St., R. R. 37, Danvers, Mass. 01923

Province Alumnae Director:

Chapter
 *Bangor, Maine—Mrs. Gene Carter, 12 N. Folk St., Bangor, Maine 04401
 Boston, Mass.—Mrs. Doris Sickler, 61 Norwiche Circle, W. Medford, Mass. 02155
 Fairfield Co., Conn.—Mrs. Hugh Treadwell, N. Bald Hill Rd., New Canaan, Conn. 06840
 Hartford, Conn.—Mrs. David Smith, 15 Henderson Dr., E. Hartford, Conn. 06018

State Membership Chairmen: Maine—Miss Velma K. Oliver, 3 Allen Rd., Orono, Maine 04473
 Vermont—Mrs. Raymond Gradual, 105 Lawrence Rd., Derry, N.H. 03038
 New Hampshire—Mrs. Raymond N. Gradual, 105 Lawrence Rd., Derry, N.H., 03038
 Massachusetts—Mrs. Paul Chiavacci (Mary Jane) 851 Coventry Lane, Norwood, Mass. 02062
 Connecticut—Mrs. Edward B. Gill, 53 High Point Rd., Westport, Conn. 06880
 Rhode Island—Mrs. James H. Crossley, 40 Farmland Rd., Warwick, R.I. 02889

PROVINCE II—North—New York

National Director: MRS. GEORGE G. WEST (MARIAN), Hemlock Acres, R.D. 2, Punxsutawney, Pa. 15767

Chapter/School
 AZ—Adelphi Univ.
 BZ—New York Univ.
 FH—Hunter College
 ΔE—Queens College
 IZ—St. John's Univ.
President
 Judy Andresen
 Dorothy Grossman
 Pat Camarano
 Claudine Vacirca
 Karen De Vora
Chapter Address
 66 Floral Ave., Bethpage, N.Y. 11714
 Loeb Student Center, Box 60, New York, N.Y. 10003
 141 Beach St., Staten Island, N.Y. 10304
 175 Catherine Ave., Franklin Square, L.I., New York 11010
 1708 Gates Ave., Ridgewood, N.Y. 11227

State Membership Chairmen: New York (Lower)—Mrs. Wm. Barth, 1720 Tennyson Ave., Dayton, Ohio 45406
 (Upper)—Miss Mary Frances Sims, 1612 W. Onondaga St., Syracuse, N.Y. 13204

PROVINCE II—South—New Jersey

Province Collegiate Director: MISS CELESTE MICHIEWICZ, 125 Sherman Ave., Roselle Park, N.J. 07204

IK—Rider College Beth Bluhm
IM—Monmouth College Linda Stepowany
DZ House, Lawrenceville Rd., Trenton, N.J. 08602
502 Morris Blvd., Toms River, N.J. 08753
Mrs. David Tomlinson (Nancy) 19 Broadway Ave., Trenton, N.J. 08618
Miss Patricia Koziol 418 Franklin St., Elizabeth, N.J. 07206

Province Alumnae Director: MRS. ROBERT F. LEMASSENA (JUDITH), R. D. 1, Box 395B, Hopewell, N.J. 08525

Chapter
 Buffalo, New York—Mrs. J. Roger Tenglund, 216 Roycroft Blvd., Snyder, N.Y. 14226
 Central New Jersey—Mrs. Wayne Kaniper, 47 Kino Blvd., Trenton, N.J. 08619
 *Long Island, N.Y.—Miss Elaine Pasquali, 46 Scott St., RFD #4, Huntington, N.Y. 11743
 Staten Island—Mrs. John Drury, 997 Rensselaer Ave., 8 The Lindens, Staten Island, N. Y. 10309
 Northeastern New Jersey—Mrs. Ado Bolles, 90 E. Crescent Ave., Allendale, N.J. 07401
 Northern New Jersey—Mrs. Wilfred Krayner, 149 Maple St., Summit, New Jersey

State Membership Chairman: New Jersey—Mrs. David Tomlinson, 19 Broadway Ave., Trenton, N.J. 08618

PROVINCE III—Pennsylvania and Delaware

National Director: MRS. GEORGE G. WEST (MARIAN), Hemlock Acres, R.D. 2, Punxsutawney, Pa. 15767

Province Collegiate Director Philadelphia Area: MRS. EDWARD MONAGHAN (PIXIE), 142 Barcladen Rd., Rosemont, Pa. 19010

Chapter/School
 BΘ—Bucknell Univ.
 IΔ—Penn State Univ.
 ΘX—Lock Haven State College
 IΘ—Mansfield State
 O—Univ. of Pittsburgh
 IΦ—Indiana Univ. of Penn.
 EΘ—Clarion State College
 ZE—California State
 ZΦ—Slippery Rock State
 ΘΔ—Westminster College
 IΔ—Alliance College
 IΔ—Edinboro State College
 EZ—Drexel Inst. Tech.
 IΣ—Philadelphia College of Textile and Science
President
 Linda Koontz
 Jane Woolever
 Karen Drewery
 Colleen Moeller
 Valjean Langsdale
 Janice Mansueti
 Karen Monborne
 Marcia Janosko
 Carol Perkins
 Martha Smith
 Hedy Lotney
 Sandra Birnesser
 Kathryn M. O'Donnell
 Ann Tamura
Chapter Address
 Box W068, Bucknell Univ., Lewisburg, Pa. 17837
 606 Hiester Hall, University Park, Pa. 16802
 Box 416B, North Hall, Lock Haven, Pa. 17745
 Box 1005, Laurel Manor, Mansfield, Pa. 16933
 1001 McCormick Hall, Univ. of Pittsburgh, Pittsburgh, Pa. 15213
 314 Elkin Hall, Box 214, Indiana, Pa. 15701
 Box X9, Ralston Hall, CSC, Clarion, Pa. 16214
 R. D. #1, Charleroi, Pa. 15022
 Box 324, Harner Hall, Slippery Rock, Pa. 16057
 310 Galbreath Hall, New Wilmington, Pa. 16142
 Bartlett Hall, Alliance Col., Cambridge Springs, Pa. 16403
 Box H-28-E.C.S., Edinboro, Pa. 16412
 305 Audubon, Wayne, Pa. 19087
 319 W. Chelton Ave., Philadelphia, Pa. 19144

Chapter
 Rochester, N.Y.—Mrs. Wayne Fix, 36 Crystal Spring Lane, Fairport, N.Y. 14450
 Jersey Shore—Mrs. Salvatore Tringola, 1419 Rustic Dr. #5, Asbury Park, N.J. 07712
 Southern New Jersey—Mrs. Thomas S. Cooper, Jr., 17 Old Towne Road, Cherry Hill, New Jersey 08034
 Syracuse, N.Y.—Mrs. Lawrence McCarty, 1625 Stolp Ave., Syracuse, N.Y. 13207
 *Westchester County, N.Y.—Mrs. Donald McNamee, 260 California Rd., Yorktown, N.Y. 10598

College Chapter Director
 Mrs. Donald B. Young (Elsie)
 Mrs. Tamazine C. Miller (Tammy)
 Mrs. George Hayfield (Joan)
 Mrs. Kenneth W. Brace (Mary)
 Mrs. Gordon Pike (Gwen)
 Miss Paula Jerito
 Mrs. Edward Grejda (Gail)
 Mrs. Betty Carson
 Mrs. William A. Storer (Emme)
 Miss Mary Ann Craig
 Mrs. Wm. C. Wenner (Jeannette)
 Mrs. Jack Williams (Emma)
 Miss Judith Ann Spina
 Mrs. Richard Davy (Linda)
Address
 226 S. 4th, Lewisburg, Pa. 17837
 1366 Old Boalsbury Rd., State College, Pa. 16801
 504 Woodward Ave., Lock Haven, Pa. 17745
 50 Mann St., Mansfield, Pa. 16933
 436 Ohio River Blvd., Avalon, Pittsburgh, Pa. 15202
 919 School St., Indiana, Pa. 15701
 40 Campbell Dr., Clarion, Pa. 16214
 New Stanton, Pa. 15672
 109 Grove City, Rd., Slippery Rock, Pa. 16057
 805 Albion St., New Castle, Pa. 16101
 337 South Main St., Cambridge Springs, Pa. 16403
 Box 177, Garden Terr. Edinboro, Pa. 16412
 471 Raritan St., Camden, N.J. 08105
 170 Clubhouse Rd., King of Prussia, Pa. 19406

State Membership Chairman: Pennsylvania—Miss Lee Rupert, 105 Gaskell St., Punxsutawney, Pa. 15767

Province Alumnae Director:

Chapter
***California**—Miss Janet Bristor, 1251 Park, Washington, Pa. 15301
Erie—Mrs. Walter T. Wicker, 629 Cherry St., Erie, Pa. 16502
Harrisburg—Mrs. Robert Rowland, 3 Cornell Dr., Camp Hill, Pa. 17011
Indiana—Mrs. Randall Smith, 1079 Meadowlark St., Indiana, Pa. 15701
***Lancaster**—Mrs. William Lumbeck,
 Philadelphia (North Sub.)—Mrs. Walter Hall, 1317 Bradford Rd., Oreland, Pa. 19075
 Philadelphia (West Sub.)—Mrs. Richard Myers, 536 Grand Ave., Havertown, Pa. 19083

State Membership Chairmen: Pennsylvania—Mrs. George G. West, Hemlock Acres, R.D. 2 Punxsutawney, Pa. 15767
 Delaware—Mrs. Edwin G. Willing, 110 Canterbury Dr., Windsor Hills, Wilmington, Dela. 19803

PROVINCE IV—West Virginia

Chapter/School
 ΔT—Marshall Univ.
 ΕΔ—Concord College
 ΕI—Fairmont State
 ΖΤ—Morris Harvey College
 ΘΞ—Glenville State College
 ΙΙI—W. Va. Inst. Tech.
 ΙΤ—West Liberty State College

President
 Patricia Owen
 Frances Rozell
 Jayne Gramley
 Anne Painter
 Candice Warren
 Elizabeth Rhodes
 Mary Sanchez

Chapter Address
 1695 6th Ave., Huntington, W. Va. 25703
 Box C-172, Concord College, Athens, W. Va. 24712
 304B Garden Lane, Fairmont, W. Va. 26554
 Dickinson Hall, Morris Harvey Col., Charleston, W. Va. 25304
 305 Main St., Glenville, W. Va. 26351
 Box 227, Handley, W. Va. 25102
 318 Rogers Hall, W.L.S.C., West Liberty, W. Va. 26074

National Director: MRS. GEORGE G. WEST (MARIAN), Hemlock Acres, R.D. 2, Punxsutawney, Pa. 15767

Province Alumnae Director: MRS. CHARLES KURNER (MARIAN), 103 Brentwood St., Marietta, Ohio 45750

Chapter
 Athens-Princeton, W. Va.—Mrs. Otto Fredeking, 212 Center St., Princeton, W. Va. 24740

Charleston, W. Va.—Miss Edith Challis, Decota, W. Va. 25055
 Fairmont, W. Va.—Miss Constance Conaway, Barrackville, W. Va. 26559

State Membership Chairman: West Virginia—Mrs. Frank Mancari, P.O. Box 621, Holden, W. Va. 25625

PROVINCE IV—South—Kentucky

Chapter/School
 ΑΘ—Univ. of Kentucky
 ΒΤ—Univ. of Louisville

President
 Joyce Heck
 Patricia Steier

Chapter Address
 DZ House, 319 Columbia Terr., Lexington, Ky. 40508
 3800 Youngwood Rd., Louisville, Ky. 40205

Province Collegiate Director: MRS. JOE C. JAMES (HARRIETT), 513 Tiffany Lane, Louisville, Ky. 40207

Province Alumnae Director: MRS. WM. F. JACKSON (Thelma), 109 Penmoken Park, Lexington, Ky. 40503

Chapter
 Lexington, Ky.—Mrs. Jack L. Yeaste, 1060 E. Cooper Dr., Lexington, Ky. 40503

State Membership Chairman: Mrs. Charles W. Cheatham, Somoset Ct., Hill Ridge Subdivision, Louisville, Ky. 40299

PROVINCE V—Ohio

Chapter/School
 Α—Miami Univ.
 Θ—Ohio State Univ.
 Ε—Univ. of Cincinnati
 ΒΧ—Wittenberg Univ.
 ΡΑ—Baldwin Wallace
 ΡΚ—Kent State Univ.
 ΙΤ—Bowling Green State
 ΖΚ—Ohio Northern Univ.
 ΘΖ—Univ. of Akron
 ΘΞ—College of Steubenville
 ΘΤ—Findlay College
 ΘΨ—Ashland College

President
 Barbara Loden
 Marilyn Tinker
 Kathy Smith
 Jean Swanson
 Karen Kind
 Sally Miles
 Lynn Hagen
 Cincy Brackett
 Janet Hester
 Vicki Limmer
 Carol Shipman
 Vicki DeGiralomo

Chapter Address
 323 Hamilton Hall, Miami U., Oxford, Ohio 45056
 212 E. 15th Ave., Columbus, Ohio 43201
 2811 Swiss Chalet Ct., Cincinnati, Ohio 45220
 DZ House, 923 N. Fountain, Springfield, Ohio 45504
 Findley Hall, B-W, Berea, Ohio 44017
 244 E. Main, Kent, Ohio 44240
 DZ House, BGSU, Bowling Green, Ohio 43402
 Lima Hall—O.N.U., Ada, Ohio 45810
 1088 N. Main, Akron, Ohio 44310
 Box 484, Col. of Steubenville, Steubenville, Ohio 43952
 323 Frazer St., Findlay, Ohio 45840
 508 Samaritan Ave., Ashland, Ohio 44805

Province Collegiate Director: MRS. J. R. ANDRISEK (NORMA), 119 Meadow Dr., Berea, Ohio 44017

Province Alumnae Director: MRS. WILLIAM E. CARMEL (DONNA), 31513 Aldrich Dr., Bay Village, Ohio 44140

Chapter
 ΑΔ—Miss Evelyn Jenkins, 714 S. Johnson, Ada, Ohio 45810
 Akron—Mrs. James S. Murch, 4267 Kindig Spur, Copley, Ohio 44321
 Berea—Mrs. Fred W. Adams, 67 Baker St., Berea, Ohio 44017
 Canton Area—Mrs. Joseph Danner, 2924 17th St., N.W., Canton, Ohio 44708
 Cincinnati—Mrs. Barry Miller, 5533 Hill & Dale Dr., Cincinnati, Ohio 45213
 Cleveland, Eastside—Mrs. John P. Gloeckler, 3812 Woodridge Rd., Cleveland, Ohio 44121
 Cleveland, Westside—Mrs. Richard A. Degli, 7218 Normandy Dr., Parma, Ohio 44134
 Columbus, Ohio—Mrs. Raymond Klingsmith, 12 Woodstock, Columbus, Ohio 43221
 Dayton, Ohio—Mrs. David Klopferburg, 6120 Tanager Way, Dayton, Ohio 45424
 Findlay—Mrs. Walter M. Jackson, 1100 E. Washington, Findlay, Ohio 44830

President and Address

Chapter Address
 100 W. Main, Solon, Mich. 48176

Chapter
 Pittsburgh (East)—Mrs. Robert Nielsen, 2019 Holiday Park Dr., Pittsburgh, Pa. 15239
 Pittsburgh (North)—Mrs. Richard Krotzer, 656 Wyngold Dr., Pittsburgh, Pa. 15237
 Pittsburgh (South Hills)—Mrs. Charles Sullivan, 2418 Southvue, Bridgeville, Pa. 15017
 State College—Mrs. David L. Phillips, 471 Park Lane, State College, Pa. 16801
 Wilmington, Del.—Mrs. Richard Fehnel, 3209 Kammerer Dr., Delwynn; Wilmington, Del. 19803

President and Address

College Chapter Director
 Mrs. Wm. H. Richardson (Nina)
 Mrs. Don Williams (Clara)
 Mrs. James Synder (Carol)
 Mrs. John Jones (Anna Lou)
 Miss Ann Kellerman
 Mrs. John A. Weeks (Ginny)

Address
 2208 Inwood Dr., Huntington, W. Va. 25701
 Weaver St., Athens, W. Va. 24712
 1232 Woodland Crescent, Fairmont, W. Va. 26554
 1927 7th Ave., St. Albans, W. Va. 25177
 7 College St., Glenville, W. Va. 26351
 Box 182 West Liberty, W. Va. 26074

Chapter
 Huntington, W. Va.

President and Address
 Mrs. Paul Browne, 967 Norway Ave., Huntington, W. Va. 25705

College Chapter Director
 Mrs. H. A. Garber (Dot)
 Mrs. Edward Schmitt (Fannette)

Address
 324 Sycamore Rd., Lexington, Ky. 40502
 2414 Brighton Dr., Louisville, Ky. 40205

Chapter
 Louisville, Ky.—Mrs. Lewis G. Chilton, 4327 Wingate Rd., Louisville, Ky. 40207

President and Address

College Chapter Director
 Miss Mary Melvin
 Mrs. John Andrisek (Norma)
 Miss Pat Ostrander
 Mrs. Milton Ogden (Marty)
 Mrs. J. R. Andrisek (Norma)
 Mrs. Jerry Wiland (Joyce)
 Mrs. Jerry Morrow (Ann)
 Mrs. Karl Roider (Catherine)
 Mrs. Wm. Riddle (Altabelle)
 Mrs. Glen Shelton (Barbara)
 Mrs. Carl Reichard (Vivienne)

Address
 516 S. Main St., Oxford, Ohio 45056
 119 Meadow Drive, Berea, Ohio 44017
 8590 Concord Hills Circle, Cincinnati, Ohio 45243
 537 Candace Dr., Springfield, Ohio 45504
 119 Meadow Dr., Berea, Ohio 44017
 432 Burr Oak Dr., Kent, Ohio 44240
 2012 Westwood, Toledo, Ohio 43607
 Route 2, Ada, Ohio 45810
 2746 Elmwood Ave., Cuyahoga Falls, Ohio 44221
 408 Allen Ave., Findlay, Ohio 45840
 1130 Grant St., Ashland, Ohio 44805

Chapter
 Kent—Mrs. James McGrath, 347 Miller Ave., Kent, Ohio 44240
 Marietta-Parkersburg—Mrs. John F. Swan, 113 Lincoln Rd., Marietta, Ohio 45750
 *Middletown—Mrs. Reiner Balzer, 2113 Linda Ave., Middletown, Ohio 45042
 *Oxford—Mrs. Robert Fryman, Morningsum Rd., Oxford, Ohio 45056
 *Portsmouth—Mrs. James P. Grimm, 4620 Scioto Trail, Portsmouth, Ohio 45662
 Springfield—Mrs. Irving D. Stahl, 2110 Park Rd., Springfield, Ohio 45504
 *Solon—Mrs. W. H. Schuler, 530 Wilbur Lane, Portsmouth, Ohio 45662
 *Wesley—Mrs. Don L. Reynolds, 2210 S. Main St., Findlay, Ohio 44830
 *Wesley—Mrs. Don L. Reynolds, 2210 S. Main St., Findlay, Ohio 44830

College Chapter Director

Address
 100 W. Main, Solon, Mich. 48176

Willow Lane, Perryburg, Ohio 43581
 30000 Lakeside Dr., Folsom, Ontario, Canada L4G 0L1
 Address

109 W. Henry, Saline, Mich. 48176
 30702 Freda, Warren, Mich. 4 8093
 21211 Newcastle, Detroit, Mich. 48236
 729 E. Prospect, Marshall, Mich. 49068
 1677 Horizon Heights Dr., Kalamazoo, Mich. 49001
 1001 S. College, Mt. Pleasant, Mich. 48858
 111 Lilac, Big Rapids, Mich. 49307
 Box 938 Marquette, Mich. 49855

GP—Northern Illinois Univ. Linda Bobek DZ House, 1010 Blackhawk Dr., DeKalb, Ill. 60115

Chapter/School
I9—Southern Illinois Univ.
EO—Western Illinois Univ.
ZA—Bradley Univ.
ΘΘ—De Paul Univ.

President
Gloria Sinclair
Sandy Falcetti
Sandra Wolski
Nancy Mooney

Chapter Address
103 Small Group Housing, Carbondale, Ill. 62901
420 W. Adams, Macomb, Ill. 61455
DZ House, 1514 W. Fredonia, Peoria, Ill. 61606
7240 S. Winchester, Chicago, Ill. 60636

Province Alumnae Director: MRS. JOSEPH E. BURNSIDE (BETTY), R #4, Chautauqua Rd., Carbondale, Ill. 62901

Chapter

President and Address

Alton-Wood River—Mrs. Ted Porter, 23 N. Circle Drive, East Alton, Ill. 62024
Arlington Heights—Mrs. Warren Karlsen, 513 S. School, Mt. Prospect, Ill. 60056
Aurora—Mrs. Roger Eichmeier, 415 Cobblestone, Aurora, Ill. 60506
Carbondale—Mrs. Joseph E. Burnside, R. R. 4, W. Chautauqua Rd., Carbondale, Ill. 62901
Chicago—Miss Dorothy Pergande, 5757 North Sheridan Rd., Chicago, Ill. 60626
*Charleston—Mrs. Ben Anderson, 845—6th St., Charleston, Ill. 61920
*Decatur—Sue Curry Poston, 2288 E. North St., Decatur, Ill. 62521
North Suburban—Mrs. Theo. E. Briggs, 730 S. Clifton, Park Ridge, Ill. 60068
West Suburban—Mrs. Gerald Farina, 1637 Mayfair, Westchester, Ill. 60153
South Suburban—Miss Sandra Lee Hecim, 16768 Bulger Ave., Hazel Crest, Ill. 60429
*DeKalb-Sycamore—Mrs. S. L. Toppen, 1706 Margaret Lane, DeKalb, Ill. 60115

State Membership Chairman: Illinois—Miss Sandy Hecim, 16768 Bulger Ave., Hazel Crest, Ill. 60429

PROVINCE X—North—Minnesota, North Dakota and South Dakota

National Director: MRS. JACOB F. SCHULTZ (RHEA), 5610 Tupper Lake, Houston, Tex. 77027

Chapter/School
T—Univ. of North Dakota
ZT—Winona State College
ΘM—St. Cloud State College
ΘN—Moorhead State College
ΘI—Minot State College
IB—Dickinson State College

President
JoAnn Warren
Kay Everson
Kathy Whisler
Sue Foss
Corinne Hansen
Peg Portscheller

Chapter Address
DZ House, 2724 University, Grand Forks, N.D. 58201
311 Washington, Winona, Minn. 55987
525 3rd Ave. So., St. Cloud, Minn. 56301
1303 18th Ave., S. Moorhead, Minn. 56560
DZ House, 725 9th Ave., N.W., Minot, N. Dakota 58701
Box 128, Woods Hall, DSC, Dickinson, N. Dakota 58601

Province Alumnae Director: MRS. CHARLES A. TALLE (HELEN), R.R. 4, St. Croix Beach, Stillwater, Minn. 55082

Chapter

President and Address

Moorhead-Fargo—Miss Patricia Hillestad, 1115 N. 10th St., Fargo, N.D. 58102
Grand Forks, N.D.—Mrs. Lloyd Noack, 1905 Chestnut, Grand Forks, N.D. 58201
*Minot, N.D.—Mrs. David Morstad, 904 20th St., N.W., Minot, N. Dakota 58701

State Membership Chairmen: Minnesota—Miss Dorothy Jones, 1001 E. 77th St., Minneapolis, Minn. 55423
North Dakota—Mrs. J. A. Callenbach, 606 9th St., South Fargo, N. Dakota 58102
South Dakota—Mrs. Richard E. Huffman, Jr., 1535 South State St., Aberdeen, S.D. 57401

PROVINCE X—South—Iowa

Chapter/School
I—State Univ. of Iowa
BK—Iowa State Univ.
I'E—Drake Univ.
ΔM—Morningside College
ΔN—Parsons College
ΘA—Simpson College

President
Lorraine Battani
Clara Schnakenberg
Joan Koopman
Linda Stark
Carol Shafer
Connie Kanatzer

Province Collegiate Director: MRS. JAY ROY (VERA), 2800 44th St., Des Moines, Iowa 50310

Chapter Address
DZ House, 322 N. Clinton, Iowa City, Iowa 52240
DZ House, 2138 Sunset Drive, Ames, Iowa 50010
DZ House, 3118 Cottage Grove, Des Moines, Iowa 50311
DZ House, 3507 Peters Ave., Sioux City, Iowa 51106
Dorm 106, Rm. 5, Parsons Col., Fairfield, Iowa 52556
DZ House, 710 N. Buxton, Indianola, Iowa 50125

Province Alumnae Director: MRS. MYRON E. JENSEN (JEAN), 4118 Maryland Pike, Des Moines, Iowa 50312

Chapter

President and Address

Ames—Mrs. H. Summerfield Day, 1617 Northwestern, Ames, Iowa 50010
Cedar Rapids, Iowa—Mrs. Robert Nechanicky, 4450 Midway Dr., N.W. Cedar Rapids 52405
Des Moines—Mrs. Thomas Andritsch, 549 32nd St., Des Moines, Iowa 50265
*Fairfield, Iowa—Mrs. David Marker, 1100 S. 3rd St., Fairfield, Iowa 52556

State Membership Chairman: Mrs. Thomas Andritsch, 549 32nd St., West Des Moines, Iowa 50265

PROVINCE XI—West—Missouri

Chapter/School
IT—Missouri Valley College
EH—Harris Teachers
EN—Southwest Missouri State
EP—Northwest Missouri State
ZP—William Jewell College

President
Nancy Martin
Nancy Dieckmann
Linda Morgan
Janice Wilkes
Julia Greenwood

Chapter Address
121 MacDonald Hall, Marshall, Mo. 65340
9947 Riverview Dr., St. Louis, Mo. 63127
2002 Ventura, Springfield, Mo. 65804
253 Roberta Hall, NWMSC, Maryville, Mo. 64468
Semple Hall, Wm. Jewell, Liberty, Mo. 64068

Province Alumnae Director: MRS. GEORGE MAGGIO (PEGGY) 10201 Linden, Overland Park, Kansas 66204

PROVINCE XI—East—Missouri

Chapter/School
IT—Missouri Valley College
EH—Harris Teachers
EN—Southwest Missouri State
EP—Northwest Missouri State
ZP—William Jewell College

President
Nancy Martin
Nancy Dieckmann
Linda Morgan
Janice Wilkes
Julia Greenwood

Chapter Address
121 MacDonald Hall, Marshall, Mo. 65340
9947 Riverview Dr., St. Louis, Mo. 63127
2002 Ventura, Springfield, Mo. 65804
253 Roberta Hall, NWMSC, Maryville, Mo. 64468
Semple Hall, Wm. Jewell, Liberty, Mo. 64068

Province Collegiate Director: MRS. JOHN FINKES (VICKIE), 221 Old Watson Rd., Webster Groves, Mo. 63119

College Chapter Director
Mrs. Thomas Schill (Elizabeth)

Address
1805 W. Freeman, Carbondale, Ill. 62901

Mrs. Gerald L. Ulrich (Margaret)
Miss Carol Horgen

516 W. Armstrong, Peoria, Ill. 61606
1344 N. Dearborn, Chicago, Ill. 60610

Chapter

President and Address

DuPage Valley—Mrs. Joe Hutchcroft, 227 So. Highland, Lombard, Ill. 60148
Elgin—Mrs. Jack Dahl, 492 Linn, Crystal Lake, Ill. 60014
Eureka—Mrs. Woodrow Brandon, 105 E. College, Eureka, Ill. 61530
Galesburg—Mrs. Thomas Crowell, Jr., 1065 N. Broad St., Galesburg, Ill. 61401
*Macomb—Mrs. George Ward, 305 S. White, Macomb, Ill. 61455
Peoria—Mrs. Doug Beard, 2605 W. Wardcliff, Apt. F, Peoria, Ill. 61604
Rockford—Mrs. Jerry Stevens, 325 Warren Ave., Rockford, Ill. 61107
Quint Cities (Davenport, Bettendorf, Iowa, Rock Island, Moline, East Moline, Illinois)—Mrs. Norman Pagels, 2319 W. Pleasant St., Davenport, Iowa 52804
Salt Creek—Mrs. Ray Fick, Jr., 299 Prospect, Elmhurst, Ill. 60126
*Springfield—Mrs. Don McNeely, 1 Bonniebrook Rd., Chatham, Ill. 62629
Urbana-Champaign—Mrs. Joyce Sargent, R.R. 3, Champaign, Ill. 61820

College Chapter Director

Mrs. Mike Septon (Verna)
Miss Kay Dunlay
Miss Louise Johnson
Mrs. Ralph Scheer (Helen)
Mrs. Gerald Stordahl (Jacquelyn)
Mrs. Bernet Reinke (Doris)

Address
202 Conklin Ave., Grand Forks, N. Dakota 58201
351 W. Broadway, Winona, Minn. 55987
707 3rd Ave. So., St. Cloud, Minn. 56301
2215 S. River Shore Dr., Moorhead, Minn. 56560
15 Souris Ct., Minot, N. Dakota 58701
207 12th St., East, Dickinson, No. Dak. 58601

Chapter

President and Address

Twin Cities (Minneapolis-St. Paul)—Mrs. Robert Rohrer, 2006 Sheridan Ave., North Minneapolis, Minn. 55426
*Winona, Minn.—

College Chapter Director

Mrs. Steven P. Richardson (Kaye)
Mrs. Richard E. Horton (Sandy)
Mrs. Paul Nurczyk (Nancy)
Miss Beatrice Tift
Mrs. Harold V. Lamb (Charlotte)
Miss Clarice Orcutt

Address
729 Manor Dr., Iowa City, Iowa 52240
2119 Country Club Blvd., Ames, Iowa 50010
104 S.W. 52nd Street, Des Moines, Iowa 50311
4001 Orleans, Sioux City, Iowa 51106
205 E. Burlington, Fairfield, Iowa 52556
1206 North "B" St., Indianola, Ia. 50125

Chapter

President and Address

Indianola—Mrs. R. A. Kaldenberg, 304 N. J St., Indianola, Iowa 50125
Iowa City, Iowa—Mrs. Richard Houston, 3249 Friendship St., Iowa City, Iowa 52240
Sioux City, Iowa—Mrs. Earl A. Logan, 2631 So. Newton, Sioux City, Iowa 51106
Waterloo, Cedar Falls, Iowa—Mrs. Wallace Grant, 2322 Melrose Dr., Apt. A, Cedar Falls, Iowa 50613
Davenport, Bettendorf, Iowa—See Quint Cities, Province IX

College Chapter Director
Mrs. W. E. Morton (Christine)
Miss Fanita Terry
Mrs. Lawson A. Weaver (Billie)
Dr. Wanda Walker
Mrs. J. Robt. Thomas (Connie)

Address
417 East Rae, Marshall, Mo. 65340
5540 Mudock, St. Louis, Mo. 63109
1976 Cedarbrook, Springfield, Mo. 65802
934 W. 3rd, Maryville, Mo. 64468
1303 E. 66th St., No. Kansas City, Mo. 64118

Chapter/School *President and Address* *Chapter Address* *College Chapter Director* *Address*
 Chapter—Miss. G. C. Redford, Jr., RR 4, Marshall, Mo. 65340
 Kansas City—Mrs. Edward L. Landers, 9414 Craig Dr., Overland Park, Kan. 66212
 Kirksville—Mrs. Francis Walter, 52 Leisure Drive, Kirksville, Mo. 63501
 Marshall—Mrs. G. C. Redford, Jr., RR 4, Marshall, Mo. 65340
 Springfield—Mrs. L. E. Lurvey, 2132 N. Glenstone, Springfield, Mo. 65804
 St. Louis—Miss Barbara Drechsel, 7015 Itasca Dr., St. Louis, Mo. 63123
 Warrensburg—Mrs. James Krockenberger, P.O. Box 116, Holden, Mo. 64040

State Membership Chairman: Missouri—Mrs. Robert S. Bagnell, Blackburn, Mo. 65331

PROVINCE XII—East—Kansas and Nebraska

<i>Chapter/School</i>	<i>President</i>	<i>Chapter Address</i>
Z—U. Nebraska	Linda Hammer	425 University Terr., Lincoln, Nebr. 68508
A—Kansas State Univ.	Barbara Klick	DZ House, 1803 Laramie, Manhattan, Kan. 66502
BT—Nebraska Wesleyan	Sharon Cording	DZ House, 2401 No. 51st., Lincoln, Nebr. 68504
ΔΠ—Kansas State, Emporia	Vicki DeLay	DZ House, 1005 Merchant, Emporia, Kans. 66801
ΔΩ—Fort Hays State	Paula Hoss	DZ House, 210 W. 6th, Hays, Kans. 67601
ΘH—Creighton Univ.	Bonnie Schriener	2615 California, Kiewit Hall, Omaha, Nebr. 68131

<i>College Chapter Director</i>	<i>Address</i>
Mrs. Lionel Brown (Barbara)	3607 "B" St., Lincoln, Nebr. 68510
Mrs. E. R. Frank (Jean)	120 S. Delaware, Manhattan, Kansas 66502
Mrs. Robert Dunn (Delores)	2539 Rathbone Rd., Lincoln, Nebr. 68502
Mrs. Raymond Leeds	807 Grove, Emporia, Kansas 66801
Mrs. Joel Moss (Nella)	408 W. 4th, Hays, Kansas 67601
Mrs. D. A. Richards (Sue)	4361 Mason St., Omaha, Neb. 68105

Province Alumnae Director: MRS. THOMAS A. GARDNER (CLARICE), 6902 Montview Blvd., Denver, Colorado 80207

<i>Chapter</i>	<i>President and Address</i>
Emporia Kansas—Mrs. Harry Stephens, 923½ Constitution St., Emporia, Kansas 66801	
Hays, Kan.—Mrs. Robert Collins, 500 W. 20th, Hays, Kan. 67601	
Johnson-Wyandotte—Mrs. Cecil Rough, 816 N. Washington Blvd., Kansas City, Kansas 66102	
County, Kan.—	
Kearney—Mrs. James Slaughter, 1503 W. 36th, Kearney, Nebraska 68847	
Lincoln, Neb.—Mrs. James D. Johnson, 6601 Sumner, Lincoln, Neb. 68506	

<i>Chapter</i>	<i>President and Address</i>
Manhattan, Kan.—Mrs. Wm. Gordon, 1835 Fairchild Ave., Manhattan, Kan. 66502	
Omaha Neb.—Mrs. Wm. Thomas, 4214 N. 92nd Ave., Omaha, Neb. 68134	
Topeka, Kan.—Mrs. George Reid, 3214 Westwood Dr., Topeka, Kansas 66614	
Valley Center, Kan.—Mrs. Leland Johnson, 515 N. Ash, Valley Center, Kansas 67147	
Wichita, Kan.—Mrs. David McVey, 2369 S. Main, Wichita, Kan. 67213	

State Membership Chairmen: Kansas—Mrs. William Wise, 1647 N.E. Parkway, Wichita, Kan. 67208
 Nebraska—Mrs. Oswald C. Mickelmann, 5411 Decatur St., Omaha, Neb. 68104

PROVINCE XII—West—Colorado, Wyoming and Utah

<i>Chapter/School</i>	<i>President</i>	<i>Chapter Address</i>
BΞ—Colo. State Univ.	Judy Guse	DZ House, 801 S. Shields, Ft. Collins, Colo. 80521
ΔΞ—Colo. State, Greeley	Christine Smithson	DZ House 1717 10th Ave., Greeley, Colo. 80631
EA—Western State	Leila McPherson	310 Crystall Hall, WSC, Gunnison, Colo. 81230

<i>College Chapter Director</i>	<i>Address</i>
Mrs. Wm. Franklin	707 W. Mountain, Ft. Collins, Colo. 80521
Mrs. Thomas Dobson	1628 9th Ave., Apt. 25, Greeley, Colo. 80631

Province Alumnae Director: MRS. THOMAS A. GARDNER (CLARICE), 6902 Montview Blvd., Denver, Colorado 80207

<i>Chapter</i>	<i>President and Address</i>
*Cheyenne, Wyo.—Mrs. Jack Varra, 1218 Foyer Ave., Cheyenne, Wyo. 82002	
Colorado Springs, Colo.—Mrs. Warren Riedell 1334 N. El Paso, Colo. 80903	
Denver, Colo.—Mrs. V. Gene Spatz, 5460 E. Jewell, Denver, Colo. 80222	
Ft. Collins, Colo.—Mrs. Lawrence Webber, 139 Pearl St., Ft. Collins, Colo. 80521	

<i>Chapter</i>	<i>President and Address</i>
Greeley, Colo.—Mrs. George H. Sage, 1956 26th Ave., Ct, Greeley, Colo. 80631	
Gunnison, Colo.—Mrs. Richard A. Pigg, 615 N. Boulevard, Gunnison, Colo. 81230	
*Pueblo, Colo.—Miss Ruby L'Harrison, 1608 Mesa Ave., Broadmoor, Colorado, Springs, Colo. 80406	
Salt Lake City, Utah—Mrs. Hal Fackrell, 175 W. 3rd N. Bountiful, Utah, 84010	

State Membership Chairmen: Colorado—Mrs. William M. Baggott, 1516-28th Ave. Ct., Greeley, Colo. 80631
 Wyoming—Miss Alice Halsted 446 1st West Parkway, Sheridan, Wyoming 82801
 Utah—Mrs. Franklin Shafer, R.F.D. 1, Box 3, Tooele, Utah 84074

PROVINCE XII—Southwest—Arizona, New Mexico

National Director: MRS. A. W. McCARTY (CYNTHIA), 3102 E. Earll Drive, Phoenix, Ariz. 85016

<i>Chapter/School</i>	<i>President</i>	<i>Chapter Address</i>
BI—Univ. of Arizona	Joanie Taylor	1125 N. Vine, Tucson, Ariz. 85719
ΓΞ—New Mex. State Univ.	Carol Evans	Box 3973, University Park, N. Mex. 88001
ΔP—Highlands Univ.	Susan Wightman	106 So. Kennedy, Highlands Univ., Las Vegas, N. Mex. 87701

<i>College Chapter Director</i>	<i>Address</i>
Mrs. Betty Sutherlin	934½ E. 10th, Tucson, Arizona 85719
Mrs. A. J. Dye (Rita)	1104 Branson, Las Cruces, N. Mex. 88001
Mrs. Larry C. Abney (Beth)	616 Columbia Ave., Las Vegas, New Mex. 87701

Province Alumnae Director:

<i>Chapter</i>	<i>President and Address</i>
Albuquerque, N.M.—Mrs. Tom J. Landers, 8900 N. E. Robin, Albuquerque, N.M. 87112	
El Paso, Texas—Mrs. Wm. Jones, 157 Riverside Dr., El Paso, Texas 79924	
*Las Cruces, N.M.—Mrs. James F. Melton, Box 1451, University Park, N.M. 88001	
Phoenix, Ariz.—Mrs. Marion Smoker, 4011 E. Hazelwood, Phoenix, Ariz. 85018	

<i>Chapter</i>	<i>President and Address</i>
*Roswell, N.M.—Mrs. Arthur Moore, 1509 S. Lea, Roswell, N.M. 88201	
Tucson, Arizona—Mrs. Palmer Tag, 4366 N. Radin, Tucson, Ariz. 85705	

State Membership Chairmen: Arizona—Mrs Joseph Andriano, 1149 E. McMurray Blvd., Casa Grande, Arizona 85222
 New Mexico—Mrs. R. B. Jensen, 1204 W. Eleventh St., Roswell, N.M. 88201

PROVINCE XIII—Washington, Oregon, Montana, Idaho and Alaska

Province Collegiate Director: MRS. DEAN STEWART (Leah) 11668-18th Ave., S.W., Seattle, Wash. 98146

<i>Chapter/School</i>	<i>President</i>	<i>Chapter Address</i>
K—Univ. Washington	Joan Hietala	DZ House, 4535 18th, N.E., Seattle, Wash. 98105
X—Oregon State Univ.	Cathy Beckley	DZ House, 2311 Van Buren, Corvallis, Oregon 97331
Ω—Univ. of Oregon	Barbara Chapman	DZ House, 1883 University, Eugene, Ore. 97403

<i>College Chapter Director</i>	<i>Address</i>
Miss Aubyn Pullen	4020 N.E. 58th, Seattle, Wash. 98105
Mrs. Gordon Seese (Then)	R.R. #2, Box 14, Albany, Ore. 97321
Mrs. Kenneth S. Wood (Peggy)	1941 Potter St., Eugene, Ore., 97405

Barlesville—Mrs. Melba Anderson, 400 Eastown, Barlesville, Oklahoma 73117
 ZZ—Southwestern State Univ., Cummins, West City, Ala., Okla. 73117
 AA—Lamar State
 ΔΔ—West Texas State Univ.
 ZΘ—Sam Houston State
 ZΨ—Stephen F. Austin State
 ΘO—Pan American State
 IA—Southwest Texas State
 IW—Univ. Texas, Arlington

3634 First Ave., Houston, Tex. 77008
 DZ House, 4135 University, Beaumont, Tex. 77705
 Box 1053 W. T. Station, Canyon, Tex. 79015
 Ave. J, DZ House, Sam Houston St., Huntsville, Tex. 77340
 Box 7501, S.F.A. Sta., Nacogdoches, Tex. 75962
 1400 Pecan, McAllen, Tex. 78501
 Falls Hall #323, STSC, San Marcos, Tex. 78666
 2612 Roseland, Fort Worth, Tex. 76103

Chapter
 Oklahoma City—Mrs. Harriett Murray, 2513 N.W. 30th, Oklahoma City, Okla. 73112
 Mrs. John Wilkenthal, Jr., 8123 Chevy Chase, Houston, Texas 77057
 Mrs. Ed Pearson (Kathleen), 9245 Shepherd, Drive Beaumont, Texas 77707
 Mrs. J. O. Parker (Lena), 1601 8th Ave., Canyon, Texas 79015
 Mrs. Earl G. Evans (Eunice), 1804 Ave. P, Huntsville, Texas 77340
 Mrs. Blanche Phillips, 301 E. Starr, Nacogdoches, Texas 75961
 Mrs. John Hook (Judy), Rt. 2, Box 651 Edinburg, Texas 78539
 Dr. Azalet Little, 724 Burleson, San Marcos, Texas 78666
 Mrs. David Bledsoe (Lanna), 2422 Jewell, Arlington, Texas 76010

Province Alumnae Director: MRS. SAM L. FORE (MARY MARGARET), 1209 Whitewing, McAllen, Tex. 78501

Chapter
 Amarillo—Mrs. Berl Springer, 4302 Emil, Amarillo, Tex. 79106
 Arlington—Mrs. Leonard Kulik, 501 Fuller, Apt. 229, Arlington, Tex. 76010
 Austin—Mrs. John Gullatt, 4008 Hyridge Dr., Austin, Tex. 78759
 Beaumont—Mrs. J. W. McCartney, 6329 Calder, #208, Beaumont, Tex. 77706
 Canyon—Mrs. Larry Cook, Box 115, Canyon, Tex. 79015
 Corpus Christi—Mrs. E. G. Newyear, 501 Miramar, Corpus Christi, Texas 78411
 Dallas—Mrs. Bob L. Dickey, 13666 Pyramid, Dallas, Tex. 75234
 *Denton—Mrs. William P. Vaughan, 813 King's Row, Denton, Tex. 76201
 Edinburg—McAllen—Mrs. Jon R. Wood, 2812 N. 6th St., McAllen, Tex. 78501
 El Paso—Mrs. William H. Jones, 157 Riverside Dr., El Paso, Texas 79907
 Fort Worth—Mrs. Wade P. Ricks, 3555 Cromart Ct., N., Fort Worth, Tex. 76133

State Membership Chairman: Texas—Mrs. T. J. Bianchi, 5727 Ellsworth, Dallas, Tex. 75206

PROVINCE XVIII—Louisiana

Chapter/School
 Σ—Louisiana State Univ.
 ΔK—Univ. of Southwestern La.
 EB—Northwestern State
 ΘE—La. Polytechnic Inst.
 ΘK—L.S.U.—New Orleans

President
 Jeanne Annison
 Susan Ponthier
 Pattye Robinson
 Tinka Godby
 Nancy Kolman

Chapter Address
 DZ House, Box 17674, LSU, Baton Rouge, La. 70803
 Box 1371, U.S.L., Lafayette, La. 70501
 Box 4746, N.S.C., Natchitoches, La. 71457
 2984 B—Louisiana Tech., Ruston, La. 71270
 653 Homestead, Metairie, La. 70005

Province Alumnae Director:

Chapter
 *Alexandria—Mrs. Fred Elsing, Jr., 1216 Wilshire Dr., Alexandria, La. 71303
 Baton Rouge, La.—Mrs. Robert Roland, 3720 Jolly Dr., Baton Rouge, La. 70808
 Lafayette, La.—Mrs. Richard Meaux, 318 Beverly Dr., Lafayette, La. 70501

State Membership Chairman: Louisiana—Mrs. Thomas Fenton, 2037 Steele Blvd., Baton Rouge, La. 70808
 Asst. Louisiana—Mrs. W. M. Eberhart, 1513 Steele Blvd., Baton Rouge, La. 70808

PROVINCE XIX—Tennessee and Arkansas

Chapter
 BA—Univ. of Tennessee
 IT—Memphis State Univ.
 ΔH—E. Tenn. State Univ.
 EZ—State College of Ark.
 EH—Henderson State

President
 Cherry Broadwell
 Meredith Daniels
 Leslie De Long
 Betty Ussery
 Barbara Bethea

Chapter Address
 DZ Suite, 1531 W. Cumberland, Knoxville, Tenn. 37916
 Bx. 90227, Rawls Hall, M.S.U., Memphis, Tenn. 38127
 Box 028, ETSU, Johnson City, Tenn. 37601
 Box 7, State Col. of Ark., Conway, Ark. 72032
 H.S.C., Box 470, Arkadelphia, Ark. 71923

Province Alumnae Director: MRS. BOB L. WHITE (DE ANNA), Route 11, Lakeshore Dr., Kingsport, Tenn. 37667

Chapter
 Tri-Cities, Tenn.—Mrs. Kathy Bright, Route 3, Holiday Hills, Kingsport 37664
 Little Rock, Ark.—Mrs. Wm. Arthurs, 218 N. Taylor, Little Rock, Ark. 72205
 Memphis, Tenn.—Mrs. Timothy Campbell, 395 Patterson, Memphis, Tenn. 38111

State Membership Chairmen: Tennessee—Mrs. Wm. Terrell Siler, 4564 Tricia Dr., Chattanooga, Tenn. 37416
 Arkansas—Mrs. Robert M. Elliott, 323 N. Jackson St., Little Rock, Ark. 72205

PROVINCE XX—Virginia, North Carolina, Maryland and Washington, D.C.

Province Collegiate Director: MRS. LELAND TATE (MILDRED), 111 Cohee Rd., Blacksburg, Va. 24060

Chapter/School
 ET—Longwood College
 ZA—East Car. Univ.
 ZE—Lenoir Rhyne College
 Θ—Western Car. College
 ΘD—Old Dominion
 ΘN—Atlantic Christian

President
 Joan Hall
 Carol Julian
 Elaine Aiken
 Charlotte Ray
 Lannie Marie Reynolds
 Deborah Roberson

Chapter Address
 Box 312, Longwood Col., Farmville, Va. 23901
 ΔZ House, 801 E. 5th St., Greenville, N.C. 27834
 Box 104, L.R. Sta., Hickory, N.C. 28601
 Box 392, W.C.C., Cullowhee, N.C. 28723
 825 Scott St., Norfolk, Va. 23502
 Box 5256 Atlantic Christian College, Wilson N.C. 27893

College Chapter Director
 Mrs. Arthur J. Miller
 Mrs. J. E. Andrews (Jackie)
 Dr. Constance Mynatt
 Miss Carlyle Ellis
 Mrs. Wilton Finley (Lucy)

Address
 7102 Cheshire Dr., Knoxville, Tenn. 37919
 1207 Yorkshire Dr., Memphis, Tenn. 38117
 E.T.S.U., Box 2562, Johnson City, Tenn. 37601
 Box 944, State College of Ark., Conway, Ark. 72032
 824 N. Faculty Place, Arkadelphia, Ark. 71923

Chapter
 Knoxville, Tenn.—Miss Carol McSpadden, 2106 Fairmont Blvd., Knoxville, Tenn. 37917
 Nashville, Tenn.—Mrs. J. R. Smith, 824 Glen Leven Dr., Nashville, Tenn. 37204

College Chapter Director
 Mrs. John O. Wilson (Jean)
 Mrs. Bobby B. Brannon
 Mrs. Ralph Parkinson (Joan)
 Mrs. Carl Smith, Jr. (Dottie)
 Mrs. Glen Hull (Peggy)
 Mrs. Wm. Smith (Barbara)

Address
 Box 367, Farmville, Va. 23901
 108-A N. Meade St., Greenville, N.C. 27834
 717 5th Ave., N.E., Hickory, N.C. 28601
 Box 276, Cullowhee, N. Car. 28723
 1323 Bolling Ave., Norfolk, Va. 23508
 503 W. Vance St., Apt. 4, Wilson, N.C. 27895

Province Alumnae Director: MRS. J. ALBERT BASS, JR., 5105 Liles Rd., Raleigh, No. Car. 27606

Chapter
 Baltimore, Md.—
 Charlottesville, Va.—Mrs. Douglas Tanner, 1418 Hazel St., Charlottesville, Va. 22901

State Membership Chairmen: North Carolina—Mrs. Oscar L. Owens, Jr., 1824 Rivershore Rd., Elizabeth City, N. Carolina 27909
 Virginia—Mrs. Barbara Wilson, 2904 Broad St. N.W., Roanoke, Va. 24012
 Maryland—Mrs. Richard F. Free, 2512 Hillford Dr., Baltimore, Md. 21234
 Washington, D.C.—Letitia Dow Iorio, 13212 Dumbarton Drive, Rockville, Md. 20853

PROVINCE XXI—West—Alabama and Mississippi

Province Collegiate Director: MRS. DOUGLAS GUILD (DIANNE), 11402 S.E. Maplecrest Dr., Huntsville, Ala. 35803

Chapter/School	President	Chapter Address
AT—Univ. Alabama	Pamela Smith	Delta Zeta House, Box 3782, University, Ala. 35486
AT—Samford Univ.	Harla McCurdy	WB-257-A, Samford Univ., Birmingham, Ala. 35209
BE—Auburn Univ.	Mary Louise Bell	Dorm. D, Auburn Univ., Auburn, Ala. 36830
EM—Univ. So. Miss.	Diane Jones	Box 511, Southern Station, Hattiesburg, Miss. 39401
EB—Birmingham Mo.	Patricia Ann Wood	Box 697, Birm. So. Col., Birmingham, Ala. 35204

Chapter
 Richmond, Va.—Mrs. Tell C. Adams, 511 N. Boulevard, Apt. #7, Richmond, Va. 23220
 Tidewater—Mrs. James Pilley, 4101 Thalia Drive, Virginia Beach, Va. 23452
 Triangle Area—Mrs. Ronald H. Fochler, 105 Lansbury Dr., Durham, N.C. 27707
 Washington, D.C.—Miss Anne E. McGinnis, 5120 Bradley Blvd., Chevy Chase, Md. 20015
 *Greensboro, N.C.—Mrs. Norman Fox (Margaret), Rt. 11, Box 983, Greensboro, N.C. 27410

Province Alumnae Director: MRS. HAYWOOD DEDMAN, 6806 Criner Rd., Huntsville, Ala. 35802

Chapter
 Auburn, Ala.—Mrs. James B. Williams, 226 Virginia Ave., Auburn, Ala. 36830
 Birmingham, Ala.—Mrs. Robert Clelland, 519 Greensprings Ave., Birmingham, Ala. 35205
 *Decatur, Ala.—Mrs. Lloyd Nix, 2207 Mountbrook Dr., S.E., Decatur, Ala. 35601
 *Gulf Coast—Mrs. Paul DeFrank, 2602 Shannon Lane, Ocean Springs, Miss. 39564
 Hattiesburg, Miss.
 Huntsville, Ala.—Mrs. John Livingston, 4113 Lakeview Dr., N.W., Huntsville, Ala. 35810

State Membership Chairmen: Alabama—Mrs. James Dunnam—3640 Wilmington Rd., Montgomery, Ala. 36105
 Mississippi—Mrs. John La Barbera, 212 Miramar, Ave., Biloxi, Miss. 39530

PROVINCE XXI—East—Georgia and South Carolina

Province Collegiate Director: MRS. V. H. MEATHERINGHAM (GERTRUDE), Route 1, Kennesaw, Ga. 30144

Chapter/School	President	Chapter Address
AO—Brenau College	Ramah Blackwelder	DZ House, Brenau Col., Gainesville, Ga. 30501
BA—Univ. South Carolina	Margaret Orr	Box 5123, U.S.C., Columbia, So. Car. 29205
ΔΔ—Georgia State	Judy Maynard	33 Gilmer St., S.E., Atlanta, Ga. 30303
ZII—Univ. of Ga.	Marilyn Couey	ΔZ House, 397 S. Milledge, Athens, Ga. 30601
IN—Georgia Southern College	Julie Banks	R.R. 4, Statesboro, Ga. 30458

College Chapter Director	Address
Mrs. Frank Hatcher (Martha)	840 Memorial Dr., Gainesville, Ga. 30501
Mrs. Roy Barnes (Amaryliss)	2424 Glenwood Dr., N.E., Atlanta, Ga. 30305
Miss Gail Hendry	175 Baxter Dr., Apt. K6, Athens, Ga. 30601
Mrs. Craig Kellogg (Grace)	113 Hierty Dr., Statesboro, Ga. 30458

Province Alumnae Director: MRS. R. F. MARTIN (LOUISE), 451 Carriage Dr. N.E., Atlanta, Ga. 30328

Chapter
 *Athens, Ga.—Mrs. Rodney Baine, 690 Duncan Spring Rd., Athens, Ga. 30601
 Atlanta Council of ΔZ—Mrs. Ronald F. Lewis, 5299 N. Peachtree Rd., Atlanta, Ga. 30338
 *Cobb County, Group—Mrs. Stinson Adams, Rt. #5, Marietta, Ga. 30060
 *Suburban Group—Mrs. Gene Ratliff, 3449 Palace Ct., Tucker, Ga. 30084
 *Lampighter Group—Mrs. Howard McGlasson, 3552 Eagle Rock Dr., Doraville, Ga. 30040 and Mrs. Harold Childrey, 3106 Woodrow, Lithonia, Ga. 30058

State Membership Chairmen: Georgia—Mrs. Charles W. Miller, 656 Huntington Pl., S.E., Marietta, Ga. 30060
 South Carolina—Mrs. Edward M. Boland, 371 Carolina Ave., N.W., Orangeburg, S.C. 29115

PROVINCE XXII—Florida

National Director: MRS. A. D. BURNSED (BEVERLY) 511 Woodward Dr., Lakeland, Fla. 33803

Chapter/School	President	Chapter Address
A2—Florida State Univ.	Pixie Bell	749 W. Jefferson, Tallahassee, Fla. 32304
BM—Fla. Southern College	Cheryl Hinson	Box 637, Fla. So. Col., Lakeland, Fla. 33802
BN—Univ. of Miami	Margaret Peek	Univ. of Miami, Box 8408, Coral Gables, Miami, Fla. 33146
IA—Univ. of South Fla.	Susan McClure	309 E. Jean St., Tampa, Fla. 33604
IQ—Jacksonville Univ.	Erin Kallaugher	Box 527, Jacksonville U., Jacksonville, Fla. 32211

College Chapter Director	Address
Mrs. Curtis Kiser	218 Broward St., Tallahassee, Fla. 32301
Mrs. R. B. Baldwin (Nita)	727 Woodward Dr., Lakeland, Fla. 33803
Mrs. William Findley	111 Curtis Parkway, Miami, Fla. 33166
Mrs. Charles Appleton	4905 San Nicholas, Tampa, Fla. 33609
Mrs. T. C. Clark (Virginia)	1441 Northwood Rd., Jacksonville, Fla. 32207

Province Alumnae Director: MISS ADA GRACE TEDDER, 828 E. Cumberland, Lakeland, Fla. 33801

Chapter
 Boca Raton—Mrs. Ruth Jewell, 2143 Bethel Blvd., Boca Raton, Fla. 33432
 Clearwater—Mrs. William W. Whitson, 804 Lotus Path, Clearwater, Fla. 33516
 Fort Lauderdale—Mrs. Fritz Richter, Jr., 4740 N.E. 28th Ave., Fort Lauderdale, Fla. 33308
 Gainesville—Mrs. Donald Oglesby, 1400 N.W. 39th St., Gainesville, Fla. 32601
 *Greater Brevard—Mrs. Kenneth Moore, 1539 Lilac Circle North, Titusville, Fla. 32780
 Jacksonville—Mrs. Gloria King Wilcox, 465 Lora St., Neptune Beach, Fla. 32050
 Miami—Mrs. Jane Everett, 1431 Galliano St., Apt. #5, Coral Gables, Fla. 33134
 Orlando Winter Park—Mrs. Susan Emerson, 725 E. Lake Shore Blvd., Orlando, Fla. 32804

Chapter
 *Palm Beaches—Mrs. Woodrow A. Schad, 1628 Boardman Ave., W. Palm Beach, Fla. 33407
 Pensacola—Miss Myrtle Lois Bailey, 1723 E. Jackson, Pensacola, Fla. 32501
 St. Petersburg—Mrs. Frederic Tuttle, 637-1st St. N.E., St. Petersburg, Fla. 33706
 Sarasota-Bradenton—Mrs. J. B. Goldsmith, 5145 Oxford Dr., Sarasota, Fla. 33581
 *Southwest Florida—Mrs. J. J. Cappelen, Box 658, Ft. Myers, Fla. 33901
 Tallahassee—Mrs. Roy W. Williams, 1562 Christobol Dr., Tallahassee, Fla. 32303
 Tampa—Mrs. C. L. Lancaster, P.O. Box 126, Rockledge, Fla. 32950



The Rose Shop offers items exclusively Delta Zeta, with all profits adding to the Endowment Fund. For your own use, for gifts to Delta Zeta Sisters, for rush parties, for awards. Choose something for every occasion.

Green plastic book marks	\$.10
Match book emery boards, pink, gold10
Rose lint brush75
Bibs for legacies	1.00
Felt pennants75
Pad pink paper, 50 envelopes	1.00
Crested stationery, box	1.35
Crested informals 4 x 5 (50)	3.25
3 x 4 (100)	4.50
Pink DZ pads	each .25
Clips boards to fit	1.00
Quill pens, pink or green25
Large quill pens, pink75
Gold pens50
White plastic long pens25
Miniature DZ flags	each .10
Ribbon book marks, pink10
Green rulers10
DZ map place mats (100)	3.00
Playing cards, double deck	3.00
Score pads	each .20
Tallies	doz. .25
DZ seals, green, gold (100)	1.00
White porcelain lamps	4.00

New items are being designed every month. Write for a catalogue. Send all orders to National Headquarters. Please add 25¢ for mailing.

Your Official Jeweler

BURR, PATTERSON & AULD COMPANY
2301 Sixteenth Street
Detroit, Michigan 48216

Gift Parade Catalogue free on request.

OFFICIAL INSIGNIA

When ordering standard badges (1, 2, and 3), use the official order form and forward to the Executive Secretary for her approval. These forms obtainable from your authorized jeweler or from the National Office. Official approval not necessary on the other items illustrated. Order direct from your official jeweler.

	Sur-charge	
1. Pearl and One Zircon, Set Flush ...	\$.75	\$14.50
2. Pearls and One Zircon, Set Tiffany75	14.50
3. Pearls and One .10 Diamond, Set Tiffany .75		81.50
Pearls and One .05 Diamond, Set Tiffany .75		49.75
Pearls and One .04 Diamond, Set Tiffany .75		36.25
Pearls and One .03 Diamond, Set Tiffany .75		33.00
Pearls and One .015 Diamond, Set Tiffany .75		26.00
4. Greek Letter Recognition Pin, Gold-Filled 10K Gold .25	1.50	2.50
5. Recognition Pin, Greek Letter Style, Crown Set Pearl .25		16.25
Recognition Pin, Lamp Style (Not shown, but same as #10 Lamp)		
Gold-Filled	1.75	
10K .25	3.00	
6. Mother's Pin, with Pearls .25	4.50	
7. Mother's Pin, Plain .25	3.25	
8. Pledge Pin .125	1.25	
9. Monogram Necklace, 10K Drop on an 18" Gold-Filled Neck Chain .25	5.25	
10. Lamp Necklace, 18" Neck Chain, Gold-Filled .400		
11. Lamp Bracket, Gold-Filled .725		

GUARD PINS

	Single Letter	Double Letter
Plain	\$ 3.25	\$ 5.00
Crown Set Pearl	10.25	16.75
Close Set Pearl	7.75	14.00
Engraved	4.00	6.25

Be sure to mention the name of your chapter when ordering a guard.



State, County, and Municipal sales or use taxes must be added to prices, wherever such taxes are in effect.

Delta Zeta Sorority
3561 North Pennsylvania St.,
Indianapolis, Indiana 46205

RETURN POSTAGE GUARANTEED

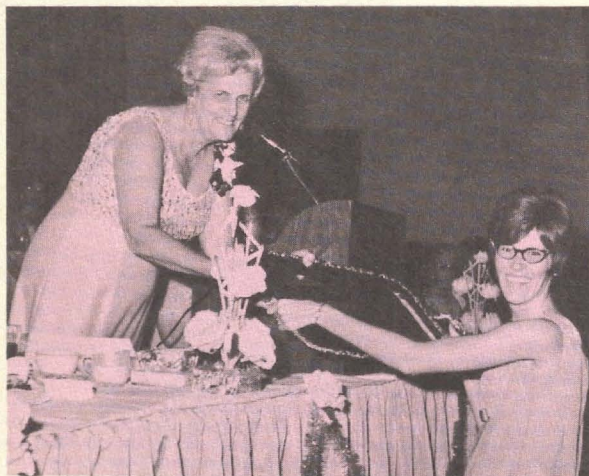
Second class postage paid
at Menasha, Wisconsin



1.



2.



3.



4.

Convention Memories Include Friendships, Awards, Activities

1. Past National Presidents present at convention were, standing, Evelyn Adams Costello, Myrtle Graeter Hinkly, Frances Westcott, and Grace Mason Lundy. Seated, Irene Boughton, Violet Sharratt Whitfield, and Gertrude Honk Fariss.

2. Delta Zetas sang together, worked together at Convention 1968.

3. Accepting one of three Council Awards for the most outstanding chapters is Carol Heid, president of Wisconsin State College-Whitewater.

4. It was a time for greeting old friends and having fun.

5. Past Grace Mason Lundy winners pose with the past president: Sherry Anderson, Ann Marie Jones, Mrs. Lundy, Linda Agler, (1968 winner) Linda Ellingson, and Jane Jones.



5.