

Volume 42 · Number 4 · MAY 1953

# LAMP

The

*of Delta Zeta*









# THE LAMP OF DELTA ZETA

ELLEN KROLL JENKINS  
Editor

*Contents for*  
**MAY, 1953**

The Delta Zeta Creed .....	<i>Frontispiece</i>
Gamma Chi Chapter Fulfills Dream of Hoosier DZ's .....	255
Remember the National Endowment Fund .....	258
A Fulbrighter Returns .....	259
Scenes from Gamma Psi Installation Banquet .....	260
Gamma Psi Becomes Delta Zeta's 75th Chapter .....	261
She Loves Birds .....	262
Salute to Kay Larson .....	265
Collegiate Rushing Chairmen—1953-1954 .....	266
State Rushing Chairmen .....	268
Gamma Taus Enjoy New House .....	269
Marianne Legg Reports from Kwajalein .....	270
DePauw U. President Speaks at Indiana State Day .....	271
Beta Tau Produces Presidents .....	274
Theta Named Outstanding Woman at O.S.U. ....	275
Are You and Your Home Winter Weary? .....	276
Gamma Tau Grad Continues Journalistic Career .....	279
Gamma Epsilon Hostess for Iowa State Day .....	279
Two Gamma Thetas Are Charter Members of Senior Women's Honorary at Carroll College .....	280
Author-Artist Specializes in Mining Towns .....	280
Ohio Celebrates Tenth State Day .....	281
Aluminations by Gradabouts .....	282
Delta Zetas on Campus .....	283
What to Do When .....	302
Delta Zeta Sorority .....	304

THE LAMP OF DELTA ZETA is published four times a year in September, December, March and May by the George Banta Publishing Company, official printers to the sorority, at 450-454 Ahnaip Street, Menasha, Wisconsin.

\$2.00 per year. Life subscription \$25.00. Printed in U.S.A.

Entered as second class matter October 18, 1909, at the postoffice at Menasha, Wisconsin, under the Act of Congress of March 3, 1879.

Acceptance for mailing at special rate of postage provided for in section 1103, Act of October 3, 1917, authorized September 26, 1918.

Send all material for publication to Mrs. Paul L. Jenkins, 4 N. Butler, Apt. 7, Indianapolis, Indiana; all changes of address and advertising information to Miss Irene C. Boughton, 450 Ahnaip St., Menasha, Wisconsin, or 1325 Circle Tower, Indianapolis 4, Indiana.

COPYRIGHT 1953 BY DELTA ZETA SORORITY

Postmaster: Please send copies returned under labels form 3579 to Delta Zeta Sorority, 1325 Circle Tower, Indianapolis 4, Indiana.

# **THE DELTA ZETA CREED**

*To the world,  
I promise temperance and insight and courage,  
To crusade for justice,  
To seek the truth and defend it always;  
To those whom my life may touch in slight measure,  
May I give graciously  
Of what is mine;  
To my friends,  
Understanding and appreciation;  
To those closer ones,  
Love that is ever steadfast;  
To my mind,  
Growth;  
To myself,  
Faith  
That I may walk truly  
In the light of the Flame.*

**DOROTHY M. WILLIAMS**





## Gamma Chi Chapter Fulfills Dream of Hoosier DZ's

By Phyllis Wear Thomas, *Epsilon*

DELTA ZETA returned to Muncie, Indiana, the home of its first national headquarters, when it installed Gamma Chi chapter at Ball State Teachers College in beautiful ceremonies February 28 and March 1. The former local sorority, Omega Sigma Chi, fulfilled its dream and the dream of Indiana Delta Zetas by becoming the fourth D.Z. chapter in the state and the 74th national collegiate chapter. This was the first  $\Delta Z$  chapter installed at an Indiana teachers college. Ball State opened its doors to National Panhellenic sororities three years ago. Preceding Delta Zeta on the campus were Alpha Sigma Alpha, Alpha Sigma Tau, Delta Sigma Epsilon, Sigma Sigma Sigma and Pi Kappa Sigma, all nationals on teachers college campuses and Alpha Chi Omega, Alpha Omicron Pi, Pi Beta Phi and Chi Omega.

Instrumental in the founding of Gamma Chi was Beth Vail, Delta Zeta faculty member, who also founded Gamma Nu at Eastern Illinois College. This occasion was a special thrill to Beth who also saw her own mother, May Vail, initiated as a sister Delta Zeta.

In the West Lounge of the Arts Building February 4, Irene C. Boughton, executive secretary, conducted pledge services for 27 girls assisted by alumnae from Muncie, Indianapolis and Anderson. Following pledging Muncie alumnae honored the new pledges with a coffee hour in the lounge.

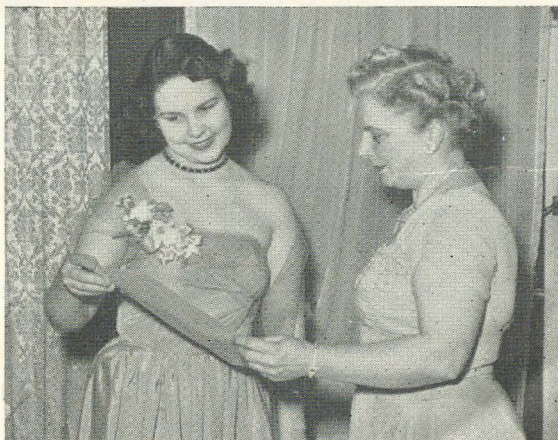
As Omega Sigma Chis the girls won the Ball State Homecoming Float trophy in 1950 and as a result had a piece of their blue ribbon from the float placed in a box in the cornerstone of the new Student Union Building when it was dedicated in 1952.

In 1953 the group won a \$25 war bond by choosing the winning name for the Military Ball. Annually the group holds a closed dance, a Homecoming alumnae tea, a parent-senior banquet, and many money-making activities such as

their ice cream social and rummage sale. Their first big dance as Delta Zetas, The Lamplighters Serenade was held March 21 at the Roberts Hotel.

Gamma Chis are active on campus as well as holding a high scholastic average, and the following girls hold these campus offices: Freda Wilt, president of Gamma Chi, is also vice-president of Panhellenic council, sponsor of Junior Panhellenic and president of Biology Club; Kathy Conelley is secretary of Student Executive Council and was representative to A.W.S. convention at Ohio State college; Lois Joslin is on the council of Lucina Hall; Katie Walsh, treasurer of the Mary Beeman Home Economics club and corresponding secretary of Newman Club; Jeanette Ostrowski is editor of Newman Club; Marilyn Beckett, secretary of the sophomore class; Lois Baker is newly-elected treasurer of A.W.S.; Gail Modlin is concert-mistress of the Ball State Orchestra.

The impressive initiation service was con-



FREDA WILT, president of Gamma Chi, receives the charter from Violet Sharratt Whitfield, extension vice president, at the Installation Banquet.





BETH VAIL, *Gamma Nu* and faculty member of Ball State's education department, welcomes her mother, Mrs. May Vail (left) who is a new alumna initiate of *Gamma Chi*.

ducted on February 28 for 35 girls by members of the national council, alumnae, and collegiate members. Frances Westcott, Violet Sharratt Whitfield, Irene Boughton, and Grace Mason Lundy were assisted by DePauw and Indiana University representatives and Muncie alumnae who also conducted the pledge services for nine alumnae on Saturday morning.

Charter members of *Gamma Chi* chapter are Miriam Acker, Marilyn Beckett, Gail Modlin and Freda Wilt, New Castle; Lois Baker, Quincy, Ohio; Carolyn Clouse, Hope; Kathryn Conelley, Upland; Joan Durkin, Gary; Eula Gibbs, Lebanon; Betty Gligor, East Chicago; Doris Harthan, Muncie; Rita Heuss, Parker; Marjorie Holtsclaw, Evanston, Illinois; Lois Joslin, Indianapolis; Norma Jackson, Richmond; Phyllis Laudenschlager, Peru; Sonya Miller, and Jeannette Ostrowski, Mishawaka; Phyllis Neff, Rochester; Betty Jean Rick, Hayden; Doris Sampson, Rushville; Ruth Shaffer, Burnettsville; Martha Voght, Hartford City; Kathryn Walsh, Kewanna; Edna Olson, Kouts; Barbara Roll, Logansport; and Verna Bryant, Rensselaer.

Alumnae initiated were Marcile Springer, Berne; Jean Pfingstag, Hudson; Joan Beck, Goshen; Ethel Reavis, New Castle; Mrs. May H. Vail, Springfield, Illinois; and Helen Forman,

Muncie and Mrs. Mary Ann Chapman, Ft. Wayne, charter members of *Omega Sigma Chi* when it was founded in 1923. Two of the sorority's sponsors were initiated—Miss Barbara Horn, instructor at Ball Memorial Hospital and Miss Ethelyn Davidson, Ball State faculty member and sponsor of the *Omegas* for over twenty years.

The lovely installation banquet was held March 1 in the ballroom of the Roberts Hotel. Golden Delta Zeta lamps held bouquets of spring flowers and rose candles were entwined with smilax which was also trailed down the center of the table. Gold letters spelling *Gamma Chi* of Delta Zeta stood before the centerpiece of carnations and spring flowers. In charge of the banquet was Mrs. Clair Bullock.

Following the banquet the toastmistress, Irene Boughton, introduced Mrs. Frank Silverthorn representing Muncie alumnae who extended a welcome to guests and the new chapter. Other messages of welcome were brought by Jan Leihenseder, president of *Epsilon* chapter; Jeanette Caudle Harding, Indianapolis alumnae president; Jean Johnston Richardson, Indiana state chairman; and Elizabeth Lowery, president of Ft. Wayne alumnae.

Gail Modlin, a new initiate, played a violin solo accompanied by Martha Voght and a group of *Epsilon* and Delta chapter members sang a medley of sorority songs.

Dr. John R. Emens, president of Ball State Teachers College, pointed out the three phases of



OFFICERS OF *GAMMA CHI* are (in front) Freda Wilt, president; (left to right) Katy Walsh, recording secretary; Miriam Acker, treasurer; Kathy Conelley, rush chairman; and Edna Olson, first vice president.





PICTURED AT THE SPEAKERS' TABLE FOR THE GAMMA CHI INSTALLATION BANQUET are Violet Sharratt Whitfield, extension vice president; Irene C. Boughton, executive secretary; Frances Westcott, past national president, and Martha Wickham, director of women's activities at Ball State Teachers College.

a wonderful experience in his welcome to the new chapter: First, the anticipation, next the realization, and last and best perhaps, the memories. . . . "Build the kind of memories that will bring you pleasure and happiness."

Grace Mason Lundy presented a whimsical review of Delta Zeta history and recollected that the first national headquarters for D.Z. were located in the Johnson Building on South Walnut St. in Muncie in the fall of 1922. Rene Sebring Smith was president then, and she and Grace had brought the accumulations of the years in boxes to be sorted and made into a history.

The principal speaker, Frances Westcott, used as her topic "To my Friends, Understanding and Appreciation." "Putting into practice your Delta Zeta creed and vows is your basis of living. Love is a lubricant which must be used freely many times a day to make the wheels of living turn smoothly," was her advice.

Formal installation was conducted by Mrs. Whitfield. Acceptance of Gamma Chi for Ball State was made by Miss Martha Wickham, director of women's activities. Sunday morning a training school was conducted for the new chapter and advisors.

Climaxing the festivities was a tea held in the lounges of the Arts Building Sunday afternoon to introduce the chapter to faculty, parents and friends. Indianapolis alumnae and Beth Vail were in charge of the tea. In the East Lounge, the



CHARTER MEMBERS OF GAMMA CHI CHAPTER pause during their presentation tea for a formal picture. Front row: Betty Gligor, Eula Gibbs, Joan Durkin, Gail Modlin, Carolyn Clouse, Marjorie Holtsclaw, Jean Rich. Second row: Edna Olson, Marilyn Beckett, Lois Joslin, Phyllis Laudenschlager, Mary Pangborn, Rita Heuss. Third row: Norma Jackson, Jeannette Ostrowski, Lois Baker, Ruth Shaffer, Kathryn Walsh. Fourth row: Verna Bryant, Doris Sampson, Freda Wilt, Martha Vogt, Barbara Roll, Kathy Conelley. Back row: Doris Harthan, Miriam Acker, Sonya Miller, Phyllis Neff.



receiving line consisted of Mrs. Whitfield, Miss Westcott, Miss Boughton, Miss Joan Beck, past president of Omega Sigma Chi, Freda Wilt, president of Gamma Chi, Kathy Conelley, rush captain, Miss Wickham, dean of women, Miss Beth Vail, and Mrs. Richardson.

In Sculpture Hall a large replica of the lamp holding congratulatory messages was on display. Also displayed in the West Lounge was a scrapbook of sorority activities. Presiding at the tea table were Mrs. Bullock, Muncie alumnae president, Mrs. Richardson, Mrs. May Vail and Mrs. Harding. Guests were faculty members, parents and friends, in addition to collegiate representatives of the sorority and alumnae from all over the state.

Ball State Teachers College was founded in 1918 with a gift of property from the Ball family and has grown from one brick building and a frame dormitory to nineteen buildings and im-

mediate plans for expanding the library and adding two women's dormitories. The campus of approximately 180 acres is located in a residential area in the west end of Muncie. Visitors to the campus are impressed by its beauty—the Tudor-Gothic architecture and the vine-covered old Ad building and Science hall reminding one of "The Halls of Ivy." Much of its natural forested area including trees, shrubs and flowers native to Indiana have been preserved and an 18 acre tract called Christy's Woods has been set aside purely for the use of botany students.

Present enrollment stands at approximately 3000 students with 165 faculty members, all full-time instructors holding masters' degrees and a large percentage doctorates. Although primarily a school for training teachers, some students are enrolled in nursing education, dietetics and pre-professional courses.

• • •

## Remember the National Endowment Fund

The new dark green Delta Zeta stamps with their Lamp of Gold will add that individual touch to stationery, place cards, favors, and gifts. Order your packet of stamps for \$1.00 from your local college or alumnae chapter, or from Mrs. Howard McDaniel, 6120 St. Clair, North Hollywood, California.

Incidentally, the proceeds from stamps and magazines all go directly into the National Endowment Fund. The fund is beginning to shape up, thanks to all of your help, and we hope to have it a working amount to meet those chapter emergencies which always seem to arise at the most unforeseen moments.

Our commission on magazine sales is a most painless way to build the Fund. We as subscribers have nothing to lose. If you ever receive any offer as a "special" on subscriptions, we can sell it to you at the same price or combination of

prices. The only difference is that the commission is paid to Delta Zeta when you send the subscription to the National Magazine Chairman of Delta Zeta.

—from Delta Zeta *Alumnae Exchange*, No. 17.





# A Fulbrighter Returns

By Mildred Freburg Berry, Iota

WHEN Norwegian friends shake hands in greeting they invariably add, "*Takk for sist*," which means, "Thanks for the last time we were together." And so I should say to Delta Zetas, to you who have listened to my pleas for equal opportunities for women, for speech handicapped children, for that vanishing educational philosophy, the liberal arts, to all wearers of the Lamp, *Takk for sist!*, and greetings from a people, of whom a few know you well, many know about you, and many, many more would like to know you. Connie Hug Berg, Alpha Iota, many of you know; her husband, a charming conversationalist, is one of the directors of Norway's finest crystal glass factories, Hadeland Glass. Your committee on Hearing Helps has made the acquaintance by letter of Odd Lillemyr, a cerebral palsied boy, ten years old, from a little town, Orkanger, near Trondheim. Odd wears a new hearing aid now, and, at long last, has been admitted to the public school. So Delta Zeta has extended the hand of friendship and help across the sea to this little community on the north-west coast of Norway.

But let us go back: what is it that impresses the traveller as he leaves behind him the tempestuous North Atlantic and enters the quiet fjord of Oslo? Although I am always in an aphasic state in such periods of crisis, I do recall that I was entranced by the music of the language; I still remember the delightful lilt of the speech of the passengers as they thanked the ship's officers before disembarking. *Nydelig, hyggelig, vakert*: who but a Nordmann could roll these words over the tongue with such a musical prolongation of the vowels?

And then as the paralysis of confusion wore off—a unique but true behavioral response with me—I was aware of other sights and sounds and tastes offered by that slender strip of land jutting out into the Norsk Havet. Here was the great, historic street of Oslo, Karl Johan's Gaten, with the King's palace at one end and the railway station at the other, a broad street on which the principal shops were *bok handlerer* and *florist* (*blomster*) venders. Who reads all the books? Every one reads, I suspect, much more than we do in America. The windows are filled with best-sellers in English, Danish, German, and Norwegian. One might argue that the early darkness of

the Norwegian winter (the sun sets at 3:30), the short working day, or the absence of television and continuous radio programs has turned these people to the printed page. All may have contributed to this end but I suspect that the Norwegian is more conscious of the necessity for knowing the world through books than we are. His is a little country, a land whose history is as much of the sea as it is of the land and whose economy is completely dependent upon those distant shores touched by Norwegian ships. His books, indeed, must take him "lands away." So the Norwegian, going home at four o'clock, carries a book with him; he also holds by a tiny loop of string, a paper cone from the *Blomster's*. Perhaps he is going to a friend's home for *Aftens* (supper at eight). He will, of course, present the hostess with three tulips or three roses, or a small bunch of freesias. Flowers are everywhere—summer and winter. I shall never forget the homes along the railroad as we came into Trondheim on a snowy day in February; they were tiny, humble cottages but at every window there were clean white curtains and potted geraniums.

I should be very remiss, however, if I did not tell you that to *blomst* and *bok* we must add *venn* (friend) for the Norwegians are a friendly people. At first glance this observation might not seem quite true. On the streets Norwegians greet each other and shake hands gravely but they do not stop to "visit"; it is not quite seemly to do so. But in their homes they are merry, hospitable, generous to a fault, and touching in their loyalty and devotion. If you want to find the Norwegian at his best, sit with him at *Aftens*, a leisurely meal with delectable *smørbrød*, fish and ale, and later, coffee by the fireplace which stands some three feet above the floor in a corner.

Lest you think that life in this country "consists in eating and drinking," let me say that the days were busy ones at the Children's Clinic of the Rikshospital where I worked. The medical school of the hospital is a part of the University of Oslo so my work was directed by Professor Leif Salomonsen, Head of Pediatrics, and Dr. Marit Skatvedt, Director of the Children's Poliklinikk. We had agreed on two objectives in our first meeting: to initiate a training program for speech therapists and to establish a speech clinic for children handicapped by cerebral palsy, cleft palate, and hearing losses. The re-

(Continued on page 261)

NOTE: Dr. Mildred Freburg Berry was Delta Zeta's woman of the year for 1951.





PHOTOGRAPHED AT THE GAMMA PSI INSTALLATION BANQUET are Dr. Victor Coutant, Mrs. Violet Sharratt Whitfield, national extension vice president; Mrs. Anita Hoag, Miss Irene C. Boughton, national executive secretary; Dr. Judson Foust, vice president Central Michigan College; Mrs. Helene Sooy McCracken, director Province VI; Dr. D. Louise Sharpe, dean of women Central Michigan College; Mrs. Evelyn A. Costello, national Panhellenic conference delegate.

• • •

## Scenes from Gamma Psi Installation Banquet

• • •



NEW INITIATES OF GAMMA PSI CHAPTER pictured just before their installation banquet. Standing: Kathleen Pierce, Josephine Nickora, Elaine Kerr, AnnLynn Bayes, Adrienne McIntyre, Miss Jane McNamara, Sally Dierich, Joellen Strasel, Joanne Ravell, Georgiann Klosowski, Marilyn Wolfe, Marjorie Holzhausen, Sally Perkins, Thelma Daby, Maxine Matthews, Dorothy Galloway, Sue Herrick, Anita Hoag, Donna Fluegge, Ruth Fliegel, Beulah Hawley, Mary Jo Stevens, Patricia Lamoreaux, Barbara Hesch, Donna Dorr Stone, Kay Melin. Seated: Ellyn Bennett, Barbara Watson, Eleanor Kaiser, Maureen Quinlan, Nancy Wild, Miss Barbara King, Marianne Schlemmer, Sue Mason, Betty Larsen.



# Gamma Psi Becomes Delta Zeta's 75th Chapter

THE weekend of May 1-3 was a memorable one in the lives of members of Sigma Phi Omicron local sorority at Central Michigan College of Education, Mount Pleasant, Michigan. The occasion was their affiliation with Delta Zeta to become its 75th chapter, Gamma Psi. A host of activities for the weekend began with formal pledging of new members on Friday night. Activities on Saturday included the impressive formal initiation ceremonies and an installation banquet. Sunday was packed with the training of officers, a general meeting, and a presentation tea, introducing the new Gamma Psi chapter to the campus.

Sigma Phi Omicron is the eighth Central Michigan College local sorority to acquire national affiliation. There are ten sororities on campus.

Highlighting the installation banquet was an address by Mrs. Russell T. Costello, national Panhellenic conference delegate, who spoke on the topic "Each in Our Degree." Dr. D. Louise Sharpe, dean of women at Central, accepted the chapter for the college. Honored guests at the banquet were Central's vice president, Dr. Judson W. Foust and Mrs. Foust.

Presiding at the presentation tea were Miss Gertrude Pratt, Miss Constance Stegenga, and Mrs. Margo Carlin, all from the Central Michigan College faculty, and Mrs. Florence Hood

Spear. The Delta Zeta alumnae group from Muskegon, Michigan, prepared all the decorations and food, freezing dainty pink and green sandwiches and cookies for the tea.

Members of the National Council of Delta Zeta, who were present to install Gamma Psi chapter were Miss Irene C. Boughton, national executive secretary; Mrs. Violet Sharratt Whitfield, national extension vice president; Mrs. Helene Sooy McCracken, director of Province VI; and Mrs. Costello. Delta Zeta representatives from Albion and Michigan State colleges also attended the installation.

The new members of Gamma Psi chapter are Kathleen Pierce, Josephine Nickora, Elaine Kerr, AnnLynn Bayes, Adrienne McIntyre, Sally Dierich, Joellen Strasel, Joanne Ravell, Georgiann Klosowski, Marilyn Wolfe, Marjorie Holzhausen, Sally Perkins, Thelma Daby, Maxine Matthews, Dorothy Galloway, Sue Herrick, Anita Hoag, Donna Fluegga, Ruth Fliegel, Beaulah Hawley, Mary Jo Stevens, Patricia Lamoreaux, Barbara Hesch, Donna Dorr Stone, Kay Melin, Ellyn Bennett, Barbara Watson, Eleanor Kaiser, Maureen Quinlan, Nancy Wild, Marianne Schlemmer, Sue Mason, and Betty Larsen.

JO NICKORA, *Gamma Psi*

• • •

## A Fulbrighter Returns

(Continued from page 259)

sponse both to the course of lectures in speech pathology and to the clinic was most heartening. The Cerebral Palsy Society of Norway was generous in its financial assistance in equipping the clinic and in the enthusiastic support of its fine leaders, Mrs. Henny Ordning and Mr. Kjell Boyesen. But, in sober reflection, we must add that the

program represents only a meager beginning in the habilitation of the speech handicapped child. "We have miles to go before we sleep." I have no doubt, however, about the determination and spirit of the group I left behind. They will go farther yet!



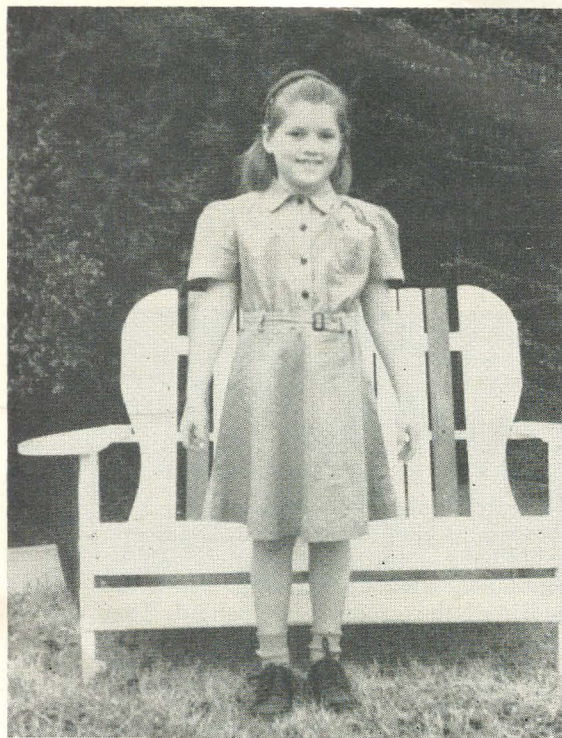
# She Loves Birds

By Clara Brown Chiles

"**C**'MON, let's go out to the Baumgartner's." That is a spontaneous non-seasonal remark often heard in Stillwater, Oklahoma. It is no wonder that children, teenagers and adults all enjoy visiting "Airy Acres" for there are things to see, a pond to wade in and plenty of space for roaming.

"Airy Acres" is the country home of Dr. Frederick M. Baumgartner and Dr. Marguerite Baumgartner, ornithologists, able writers and fun-loving parents of Ted, Billy, Karl and Barbara. It is also the home of one of the few bird banding stations in the state of Oklahoma, and of countless birds and assorted pets (not cats).

Alpha Epsilon now claims Marguerite for its own but occasionally we remember to say "Thanks" to the girls of Beta for finding Marguerite and making her a Delta Zeta. It was back in 1931 when Marguerite Heydweiller was doing graduate work at Cornell University that she became a Delta Zeta. But long before that she had developed interests that were to determine her life work.



BARBARA BAUMGARTNER wears her Brownie uniform.

As a girl—she studied nature first hand near the Heydweiller cottage on Lake Ontario and hiked the nature trails near Rochester. Her extra-curricular activities at the University of Rochester included writing, nature lore, hiking, camping and camp cookery. Summers she spent at the Natural History School in the wooded hills of southwestern New York state. There she studied with a foremost authority on bird songs.

When Miss Heydweiller went to Cornell it was not surprising that she chose to major in ornithology with a doctorate thesis on "The Life History of the Tree Sparrow," one of the most abundant but least known of American birds.

She proved her resourcefulness by using some of the simple experiments that almost anyone can understand. Sometimes she used common household cement to fasten a brightly colored feather into a bird's tail so that she could watch its flight and study its habits.

Once she took several birds ten miles and then released them. All returned within a week. On one occasion she transported birds a much greater distance before releasing them. Time of return varied, one even coming back the next year.

As a part of the necessary research, she spent two summers studying the nesting habits of tree sparrows. That took her to Churchill, Manitoba which is at the edge of the Arctic zone half way up the west coast of Hudson Bay. She usually slept in missions or in a tent but there were times when she built her own campfires and slept outside. It was cold, even in summer near the ice floes and mosquitoes swarmed in the marshlands.

Miss Heydweiller's search took her more than 60 miles along the coast and 10 miles inland. Sometimes she could get near where she wanted to go by riding construction trains or outboard canoes. For the rest of the distance she walked and carried her two cameras and collecting kit.

Thus she became the first woman ornithologist to work alone in the Hudson Bay country. It was because of her careful research and authentic reporting that she was awarded active membership in the American Ornithologist's Union. She is the sixth woman to receive that honor since the founding of the organization in 1833.

Back at Cornell University, another young ornithologist was studying owls. He had a car; she had a cooking kit. Soon the Baumgartner-Heydweiller team began taking their field trips





GOING TO CHURCH ON BOY SCOUT SUNDAY. Left, Billy, Dr. F. M. Baumgartner, Karl, Dr. Marguerite Baumgartner, Ted.

together. After a few years, both received their Ph.D. degrees. Since one day in June, 1936, the team has been Baumgartner-Baumgartner. First they honeymooned in a trailer house and then went on to the new job with the Michigan conservation department.

Since January, 1939, Dr. F. M. Baumgartner has been a wildlife conservationist at Oklahoma A. & M. College at Stillwater. Mrs. Baumgartner's time has been occupied with rearing their family: Ted, almost fourteen; Billy, twelve; Karl, ten; and Barbara, nearing eight. Between babies she found time to continue her scientific experiments, write and market articles and nature stories, act as counselor and lecturer and keep up with the latest developments in her chosen field.

While the children were small, she wrote a series of the life stories of the birds of prey. Several of these, including, "Ookpikjauk the Lonely" (Snowy Owl), "Tercel, King of the Air" (Duck Hawk) and "Barred Owls of the Big Bend," sold to *Nature Magazine* and were later reprinted in other magazines.

And now that Mrs. Baumgartner is Brownie Troop Leader for Barbara and her fourteen little classmates and Den Mother for Karl and a riotous gang of Cub Scouts, life is even more complicated. The Boy Scout troop to which Ted and Billy belong needs help with programs, hikes, campouts and merit badges. Every week there are piano and violin practice sessions to be supervised and several times a month, regardless of season, there are fishing trips and picnics for the children and their current pals.

There is the weekly column "Birds in Oklahoma" (in its fifth year) to be written for the Sunday Magazine section of the *Daily Oklahoman*, and voluminous correspondence with bird lovers throughout the state.

Last fall during the migrating season, the adult members of the Baumgartner family took their turn as night watchers of the moon. The idea was to record the number of birds silhouetted against the moon each hour of the night. They also recorded the angle at which each bird was flying by regarding the full moon as the



face of a clock.

On a recent television appearance over WKK each member of the Baumgartner family had a part. Each boy showed and described the making of a practical, inexpensive type of bird feeding device. Even Barbara displayed a feeding shelf simple enough for children to make and use on their own window ledges.

Mrs. Baumgartner has her bird traps located in an area protected by brush and tall seed-producing weeds. All during the fall, winter and spring she keeps them well filled with feed. They are so arranged that the birds enter to eat and then lose their way and forget how to get out. Several times each day she opens the traps, gently lifts out each bird, records its number or bands it if it has no band and then releases it. Some she calls her "star boarders" for they are frequent visitors. Others stop only once or twice a year.

She "bands" a bird by clamping a numbered aluminum band around its leg. There are tiny bands for the various kinds of sparrows, larger ones for the cardinals, mocking birds and black-birds and big strong ones for the birds of prey. The inside of each band bears the message, "Notify Fish and Wildlife Service." It is through these records that scientists are able to determine the age of birds, their times and speed of migration and group relationships.

Some of these birds travel thousands of miles every year while some remain here. Mrs. Baumgartner knows which is which and often wel-

comes a bird as a dear friend because she knows it is stopping for a free meal before continuing north or south. It may summer in Manitoba; it may winter in Guatemala. Only the bird watchers know and they learn much of what they know through the painstaking efforts of the scientists who man the bird banding stations.

During the summers of 1950 and 1951, the Baumgartner family moved to the A. & M. College Wildlife Camp on Greenleaf Lake near Muskogee, Oklahoma. While there Mrs. Baumgartner organized the five-to-twelve-year-olds into a Junior Audubon Club. One of their activities was to locate and keep records on the bird nests of a 400 acre area. They succeeded in finding more than 150 in 1950 and 300 in 1951. This material is being incorporated into a paper for one of the bird journals and will be included in the state bird book on which Dr. and Mrs. Baumgartner are collaborating.

In addition to the Delta Zeta Alumnae Club, Mrs. Baumgartner is a member of the American Ornithologist's Union, Sigma Xi, Oklahoma Ornithological Society, National Audubon Society, National Wildlife Association, Boy Scouts and Girl Scouts of America, Hawk Mountain Association, Woman's chapter of Isaak Walton League of America, three local P.T.A. groups and Stillwater Writer's Club.

"C'mon, let's go out to the Baumgartners." Marguerite is not only a famous scientist, she is a Delta Zeta who is nice to know.

• • •

Alpha Sigma chapter at Florida State University publishes *Diamond Pointers*, a four page illustrated newspaper which is sent to rushees during the summer. Stories about chapter members, activities, sorority life and Delta Zeta help to acquaint the rushee with Delta Zeta, and incidentally, provide topics for conversation at rush parties.

• • •

## ALUMNAE, THEIR PRIVILEGE AND RESPONSIBILITY

To each of us has been granted the privilege of membership in Delta Zeta. The joys and struggles shared during college days served to draw closer the bonds of friendship. Surely we are not going to allow the precious gift of those friendships to lie idle and unused. The responsibility is ours to continue to foster those ideals and standards which marked for us a way of life so that other

young women might learn to know and benefit from similar experiences. Surely none of us would accept a priceless gift from a friend and make no effort to say "Thank you." Reciprocal manifestations become the lifelong responsibility of the alumnae. The interest and influence of the alumnae are the greatest potential assets of Delta Zeta.

"Once a Delta Zeta, always a Delta Zeta."



# Salute to Kay Larson

. . .

IT SEEMS only yesterday that we were welcoming Kay Butterfield Larson to National Council and to the editorship of the LAMP of Delta Zeta. Actually, however, Kay has given us three years of her talent, energy, and enthusiasm. Her necessary resignation brings with it an inevitable sense of loss, but there is also the conviction that her contribution of leadership in public relations and her vibrancy of personality will make a lasting imprint upon the Sorority, in terms of its growth and progress.

Kay assumed the heavy responsibilities of editing the LAMP at a time when she was greatly needed; for Charlotte Ver Plank had found it necessary to give up her editorship, which had been a long and outstanding one, in the middle of her term of office. Those of us on National Council at the time looked to Kay as the one person best fitted, by virtue of her long and varied service to Delta Zeta and her highly successful professional experience, to assume the difficult task of the editorship "in midstream." We knew, however, that she had just resigned from her demanding and time consuming position as publicity director for the Multnomah County Chapter of the American Red Cross and was launching upon her own career, independently, in the field of public relations. It seemed a difficult time indeed to ask her to undertake such heavy additional responsibilities as those involved in the editorship of the LAMP. Her willingness to do so is a lasting tribute to her loyalty and love for Delta Zeta.

The Delta Zeta road traveled by Kay Larson, from the time of her initiation into Alpha Alpha chapter in the early twenties to that of her highly successful editorship of our LAMP, is one filled with by-paths of service of many and varied kinds. It includes graduate work at the University of Oregon and affiliation with Omega chapter; years of the hardest kind of work in the Portland Alumnae chapter, including that of alumnae chapter president and delegate to the 1938 National Convention at Pasadena; and guidance of the Delta Zeta chapters in the Northwest as Director of Province XII. To her responsibilities as National Editor and those as a member of National Council, she brought a wealth of experience and at the same time an originality of point

of view and independence of thinking which have been a constant stimulation to her fellow workers.

Outstanding in the field of free-lance public relations in Portland, Kay has advanced rapidly from one assignment to another, until the demands upon her time are so great that she has been forced to give up other activities. She has served as executive director for numerous political campaigns, including those to promote a new Portland zoo, the higher educational aid bill, and—most recently—daylight saving time. Kay has also served as publicity and public relations director for several Portland organizations and institutions, including the Registered Nurses' association, the Portland Arts and Crafts Society, St. Helen's Hall, and the Y.W.C.A. With all of this professional work, she has managed to combine generous volunteer service to many organizations, in addition to her first and greatest interest, the editorship of the LAMP. Her abilities have been recognized by the Governor of Oregon, who appointed her on the State Agriculture Board, and by the Mayor of Portland, who named her as a member of the Motion Picture Censor Board.

What are the qualities that make for successful leadership in the Sorority World—in Delta Zeta? Surely they must include first of all generosity of spirit, which inspires willingness to work long, hard hours; a conception of service to others, which inspires a true evaluation of the potentialities of sorority leadership; and a loyalty and devotion to Delta Zeta which make work in the Sorority meaningful and worthwhile. To all of these must be added, in the case of the Editor, a skill and professional ability that will generate justifiable pride in the LAMP, which serves as the mouthpiece of the Sorority, both for Delta Zeta and for the Panhellenic World. Add all of these qualities together—and you will produce a Kay Larson!

Our warm appreciation and love will go with Kay, as she advances to new accomplishments professionally and to increasing acknowledgment of her great abilities. With each such forward step, Kay will bring greater honor and higher recognition not only to herself but to Delta Zeta.

GERTRUDE HOUK FARISS  
*Past National President*



# Collegiate Rushing Chairmen— 1953-1954

(Rushing dates follow address of chairmen)

## PROVINCE I NORTH

- University of Maine*—Alpha Upsilon: Joan LeTourneau, 268 Elm St., Biddeford, Me. (Nov. 15-Dec. 13)  
*University of Rhode Island*—Beta Alpha: Carolyn Angell, 710 High St., Lansdale, R.I. (Dec. 2-12)  
*University of Connecticut*—Gamma Beta: Patricia Buckley, 9 Freeman Ave., New London, Conn. (Undecided)

## PROVINCE I SOUTH

- Adelphi College*—Alpha Zeta: Norma Dia, 7880 85th St., Glendale, L.I., N.Y. (Sept. 27-Nov. 23)  
*Syracuse University*—Alpha Kappa: Mary Lou Talmage, Box 65, East Hampton, L.I. (Oct. 3, 4—17, 18—30)  
*New York University*—Beta Omega: Ann Teska, 167-04 Gothic Dr., Jamaica, N.Y. (Oct. 10-31)  
*Hunter College*—Gamma Eta: Bruna Occhi, 200 E. 97th St., New York City (Beginning of Oct.)

## PROVINCE II

- University of Pittsburgh*—Omicron: Shirley English, 1269 Oakglen, Pittsburgh 4, Pa. (Undecided)  
*George Washington University*—Alpha Delta: Virginia Page, 3518 P St. N.W., Washington, D.C. (Sept. 21-29)  
*Bucknell University*—Beta Theta: Lucille Baylis, 3500 Monroe St., Wilmington, Dela. (Feb. tentative)  
*Pennsylvania State College*—Gamma Delta: Catherine Foglia, 35 Alan Ave., Greenville, Pa. (Sept. 19-Oct. 1)  
*State Teachers College*—Gamma Phi: Elinor Kintz, R.D. 1, Latrobe, Pa. (Feb.-May 1954)

## PROVINCE III

- University of Kentucky*—Alpha Theta: Debbie Schwarz, Box 482, White Sulphur Springs, W.Va. (Sept. 16-28)  
*University of Louisville*—Beta Gamma: Leah Galanter, 2151 Lakeside Dr., Louisville, Ky. (Sept. 14-20)  
*University of South Carolina*—Beta Delta: Betty Hood, Blair, S.C. (Nov. 1-7 [tentative])  
*University of Tennessee*—Beta Lambda: Anne Davis, 3355 Whittle Springs Rd., Knoxville, Tenn. (Sept. 21-26)  
*Memphis State College*—Gamma Iota: Patsy Deming, 1505 Shadowlawn, Memphis, Tenn. (Oct. 1-10)

## PROVINCE IV

- Florida State University*—Alpha Sigma: Marian Martin, 61541 Lake Shipp Dr., Winter Haven, Fla. (Sept. 28-Oct. 4)  
*Florida Southern College*—Beta Mu: Effie Fairchild, 5811 Bayou Grande St., Shore Acres, St. Petersburg, Fla. (Not set up yet)

- University of Miami*—Beta Nu: Eugenia Adams, 1202 S.W. 15 Terr., Miami, Fla. (Oct. 19)

## PROVINCE V NORTH

- Baldwin-Wallace College*—Gamma Alpha: Anita Indoe, R.D. 1, Lodi, Ohio (Sept. 29-Oct. 1)  
*Kent State University*—Gamma Kappa: Mary Ellen Rodebaugh, 2612 Abbott Pl. N.W., Canton, Ohio (Plans not complete)  
*Bowling Green State University*—Gamma Tau: Joanne Campbell, 205 Clifton St., Westfield, N.J. (Feb. 5-25)

## PROVINCE V SOUTH

- Miami University*—Alpha: Nelda Sciarra, 3132 S. Hegry Circle, Cincinnati, Ohio (Sept. 19-Oct. 9)  
*Ohio State University*—Theta: Mary Hough, Rt. 2, Waynesville, Ohio (Sept. 26-Oct. 4)  
*University of Cincinnati*—Xi: Velma Weber, 51 Parkway, Cincinnati 16, Ohio (Sept. 11-27)  
*Wittenberg College*—Beta Chi: Patricia Cowen, 359 Central Park, Rochester, N.Y. (Sept. 19-Oct. 3)

## PROVINCE VI

- DePauw University*—Delta: Georgene Larson, 915 N. 2nd Ave., Maywood, Ill. (Sept. 16-21)  
*Indiana University*—Epsilon: Co-Chairmen, Barbara Jo Cossner, 816 W. 8th St., Bloomington, Ind. and Judy Wear, 805 N. Audubon Rd., Indianapolis, Ind. (Feb. 4-10)  
*Franklin College*—Psi: Betty Schmidt, 3763 Aniston Ct., Cincinnati 27, Ohio (Sept. 21-25)  
*Albion College*—Beta Pi: Olina Grill, 16938 Broadway, Maple Heights, Ohio (Sept. 17-29)  
*Michigan State College*—Beta Rho: Joan Streadwick, 321 Fisher Ct., Clawson, Mich. (Jan. 5-17)  
*West Michigan College*—Gamma Pi: Joan Fox, 803 Montrose, Kalamazoo, Mich. (Feb. 22-March 10)  
*Ball State Teachers College*—Gamma Chi: Kathryn Conelley, R.R. 1, Upland, Ind. (Oct. 30-Dec. 6)  
*Central Michigan College*—Gamma Psi: Barbara Watson, Box 202, Bridgeport, Mich. (Pending)

## PROVINCE VII NORTH

- University of Wisconsin*—Tau: Beatrice Lawrence, 6603 Revere Ave., Wauwatosa 13, Wis. (Sept. 14-28 [tentative])  
*Northwestern University*—Alpha Alpha: Marie Raymond, 1030 Marion St., Oak Park, Ill. (Sept. 17-27)  
*Carroll College*—Gamma Theta: Marjorie Medler, 2553 N. 67th St., Wauwatosa, Wis. (Sept. 17-Oct. 1)  
*Illinois Institute of Technology*—Gamma Mu: Joan Graper, 9430 S. Loomis, Chicago, Ill.



#### PROVINCE VII SOUTH

- Knox College*—Nu: Arlene Wagner, 2834 Elm, Quincy, Ill. (Nov. 18-22)  
*Eureka College*—Pi: Marguerite Johnston, Byron, Ill. (Sept. 14-16)  
*University of Illinois*—Alpha Beta: Jane Sweidal, 1900 E. 84th St., Chicago, Ill. (June 13-18)  
*Eastern Illinois College*—Gamma Nu: Rosemary DeVore, Georgetown, Ill. (Jan. [dates not yet set])  
*Northern Illinois State College*—Gamma Rho: Joyce Stein, R.R. 3, Rochelle, Ill. (Ninth week of school in the Fall)  
*Southern Illinois University*—Gamma Omega: Ann Hunsaker, Vienna, Ill.

#### PROVINCE VIII NORTH

- University of Minnesota*—Gamma: Jean Newgard, 3055 Pillsbury, Minneapolis, Minn. (Sept. 30-Oct. 7)  
*University of Iowa*—Iota: Mary Beth Vandermyde, 308 N. Jackson, Morrison, Ill. (Sept. 13-17)  
*University of North Dakota*—Upsilon: Angelina Raney, Drayton, N.D. (Sept. 13-18 [tentative])  
*Iowa State College*—Beta Kappa: Mary Clayton, Corydon, Iowa (Sept. 15-22)  
*Drake University*—Gamma Epsilon: Pat Moore, R.F.D., Nevada, Iowa (Sept. 24-29)

#### PROVINCE VIII SOUTH

- Colorado A & M*—Beta Sigma: Pat Brunell, 4232 Mari-  
 posa, Denver, Colo. (Sept. 12-21)  
*Nebraska Wesleyan University*—Beta Tau: Joyce Ander-  
 son, Beaver Crossing, Neb. (Sept. 14-17)  
*Missouri Valley College*—Gamma Gamma: Carolyn  
 Snuffer, 5143 Wyndotte, Kansas City, Mo. (Sept. 20-  
 28)

#### PROVINCE IX

- Louisiana State University*—Sigma: Gail Gibbons, Box  
 238, Cinlaire, La. (Sept. 6-11)  
*University of Alabama*—Alpha Gamma: Wanda Shivers,  
 816 Owen Ave., Bessemer, Ala. (2nd week in Sept.)  
*Howard University*—Alpha Pi: Doris Herrmann, Rt. 2,  
 Box 101, Bessemer, Ala. (Sept. 21-25)

- University of Mississippi*—Beta Beta: Marilyn Harper,  
 Mangham, Ia. (Sept. 20-27)  
*Alabama Polytechnic Institute*—Beta Xi: Jacqueline  
 Waller, 4926 8th Terr. S., Birmingham, Ala. (Sept.  
 18-24)  
*Sophie Newcomb*—Beta Upsilon: Gladys Brennan, 7220  
 Spruce St., New Orleans, La. (Not listed)

#### PROVINCE X

- Oklahoma A & M*—Alpha Epsilon: Ann May, Arapaho,  
 Okla.  
*University of Texas*—Alpha Tau: Joan Warner, 2612 St.  
 Anthony, Austin, Tex. (Sept. 12, 13, 15)  
*Southern Methodist University*—Alpha Psi: Nancy Bur-  
 ridge, Angleton, Tex. (Sept. 12-15)  
*Southwestern University*—Gamma Zeta: Marcia Neu-  
 berger, 4783 Bocachica, Brownsville, Tex. (Sept. 13-19)  
*New Mexico A & M*—Gamma Xi: Rebecca Molina, Rt.  
 2, Box 58, Las Cruces, N.M. (Sept. 12-17)  
*Oklahoma City University*—Gamma Upsilon: Theresa  
 Wolf, 1424 N.W. 35, Oklahoma City, Okla. (Sept. 1-4)

#### PROVINCE XI

- University of California*—Mu: Marlene Hight, Rt. 1, Box  
 50, Loleta, Calif. (Sept. 9-19)  
*UCLA*—Alpha Chi: Jacqueline McLaughlin, 3488 Barry  
 Ave., Los Angeles 34, Calif. (Sept. 9-19)  
*San Jose State College*—Gamma Lambda: Claire  
 Schmidt, 1541 Howard Ave., Burlingame, Calif. (Not  
 listed)  
*San Diego State College*—Gamma Omicron: Louise Cu-  
 zick, 7284 W. Point Ave., La Mesa, Calif. (Sept. 1-10)

#### PROVINCE XII

- University of Washington*—Kappa: Jacklyn Richter, Rt.  
 4, Box 518, Puyallup, Wash. (Sept. 15-25)  
*Oregon State College*—Chi: Norma Clark, 440 N.E.  
 Laddington Ct., Portland, Ore. (Sept. 27-Oct. 4)  
*University of Oregon*—Omega: Barbara Schurman, Star  
 Route, Oakridge, Ore. (Sept. 18-23)





# State Rushing Chairmen

---

ALABAMA: Mrs. Clyde Owen, 3629 Whitting, Montgomery, Ala.

ALASKA: see Washington.

ARIZONA: Mrs. Loren Curtis, Box 755, Casa Grande, Ariz.

ARKANSAS: Mrs. R. C. Medlock, 3111 Ridge Road, Park Hill North, Little Rock, Ark.

CALIFORNIA:

Northern: Mrs. Walter Burde, Rt. 1, Box 667, Carmel, Calif.

Southern: Mrs. Theodore Nichols, 3745 Cerritos, Long Beach 7, Calif.

COLORADO: Mrs. D. E. Cadwell, 858 S. Josephine, Denver, Colo.

CONNECTICUT:

DELAWARE: see Maryland.

DISTRICT OF COLUMBIA: See Virginia.

FLORIDA: Miss Lurana Purdy, 911 Monterey St., Coral Gables, Fla.

GEORGIA: Miss L. Anne Bonds, 11 Glenwood Apts., Rome, Ga.

IDAHO: see Washington.

ILLINOIS:

INDIANA: Mrs. Ray Richardson, 465 So. Main, Martinsville, Ind.

IOWA: Miss Esther Lorenz, 1000 37th St., Des Moines, Ia.

KANSAS: Miss Gladys Taggart, 1426 N. Vassar, Wichita, Kan.

KENTUCKY: Mrs. Kenneth V. O'Neal, 712 S. Limestone, Lexington, Ky.

LOUISIANA: Mrs. J. H. McCusker, 1938 Terrace Ave., Baton Rouge, La.

MAINE: Mrs. Frank W. Howard, 81 Hillsdale Road, Medford 55, Mass.

MARYLAND:

MASSACHUSETTS: Mrs. Frank Pote, 15 Chester Ave., Medford, Mass.

MICHIGAN: Mrs. David G. Kistler, 918 South Westnedge, Kalamazoo, Mich.

MINNESOTA: Mrs. Wilbur J. Horton, P.O. Box 234, Aitken, Minn.

MISSISSIPPI: Mrs. Howard M. Raspilair, Route 3, Box 4, Bolton, Miss.

MISSOURI: Mrs. Earl M. Winkle, 645 Pearl Ave., Kirkwood 22, Mo.

MONTANA: Mrs. Roy Malsor, 921 Third St., Bozeman, Mont.

NEBRASKA:

NEVADA: see Northern California.

NEW HAMPSHIRE: Mrs. Stanley R. Shimer, 37 Woodman Rd., Durham, N.H.

NEW JERSEY: Miss Grace O. Poe, 530 Park Ave., Apt. M-6, Orange, N.J.

NEW MEXICO: Mrs. H. P. Vanderverter, 505 Wellsely, S.E., Albuquerque, N.M.

NEW YORK:

Upstate: Mrs. Clarence Pollatsek, 314 W. Newell, Syracuse, N.Y.

Metropolitan: Jean Reincke, 35 Lefferts Ave., Brooklyn, N.Y.

NORTH CAROLINA:

NORTH DAKOTA: Mrs. Donald Hariman, 2423 University, Grand Forks, N.D.

OHIO:

OKLAHOMA: Mrs. Myers Lockhard, 912 N. 40th St., Oklahoma City, Okla.

OREGON: Mrs. Roger C. Hopson, 1888 Melrose Ave., Klamath Falls, Ore.

PENNSYLVANIA:

RHODE ISLAND: Doris Dyson, 44 Eaton St., Providence, R.I.

SOUTH CAROLINA: Miss Margaret Martin, 4102 Parkman Dr., Columbia, S.C.

SOUTH DAKOTA: Mrs. Richard E. Huffman, 309 5th Ave. S.E., Aberdeen, S.D.

TENNESSEE: Mrs. Thomas Scales, 1101 Caldwell Lane, Nashville, Tenn.

TEXAS: Miss Ruth Creed, 3900 West Settlement Road, Fort Worth, Tex.

UTAH—Co-chairman: Mrs. Duncan Holiday, 61 Virginia St., Salt Lake City, Utah; Mrs. Eugene X. Hall, 715 So. 11th St., Salt Lake City, Utah

VERMONT: see New Hampshire.

VIRGINIA:

WASHINGTON: Mrs. Stuart Gillespie, 5050 37th Ave., N.E., Seattle 5, Wash.

WEST VIRGINIA:

WISCONSIN:

WYOMING: Miss Florence Forbes, Farm Bureau, Court House, Rawlins, Wyo.







NEW DELTA ZETA HOUSE AT BOWLING GREEN UNIVERSITY

## Gamma Taus Enjoy New House

**G**AMMA TAU chapter at Bowling Green State University was thrilled last January when they moved into the latest addition to the school's unique housing plan. The red brick Delta Zeta house is constructed in Georgian Colonial architecture. The university owned house is located one block from campus near a scenic windmill.

A second-story sun porch overlooks a one-acre pond where students swim in the summer and ice-skate in the winter. This sun porch and the folding closet doors are an innovation in B.G. sorority houses.

Ample room is provided for 30 women in the three-story house. The chapter president and house chairman have a small suite on second floor. A suite for the housemother is located on the first floor along with a spacious lounge, dining room, laundry room, powder room, and kitchen.

Forest green sliding doors between the lounge and dining room can be closed to convert the latter into a chapter room or study room. With the doors open the combined rooms can be used for parties and dances. The walls of both rooms are elephant grey providing contrast for the bright Driftwood patterned draperies and the modern furniture.

Gamma Tau received its charter in December



JOYCE SCHMIDT and FLO BEATTY relax in the lounge of the new Delta Zeta House on the campus of Bowling Green State University.

of 1950 and considers itself very fortunate to be part of the Bowling Green housing plan.

Ten of the 16 NIC fraternities and all of the 11 NPC sororities live in cottage type dormitories that are constructed, maintained and, except for the lounges, furnished by the university. Sorority members pay slightly higher room rent than do students living in the larger independent dormitories, but the increase more than makes up for the finer living accommodations.

FLO BEATTY, *Gamma Tau*



## Marianne Legg Reports from Kwajalein

DEAR MRS. LARSON:

I thought you might be interested in hearing from a Delta Zeta from "beyond the date line." We are living at the Naval Station on Kwajalein, which is in the Marshall Islands, part of the U.S. Trust Territory in the Pacific. My husband, Lt. Colonel Oliver M. Legg, is Commanding Officer of the 78th Air Rescue Squadron. He has been down here since September, 1951, and I joined him in January 1952. We have three wonderful boys, Jonathan (8), William (5), and Douglass, 10 months, who was born here.

We have had a very interesting tour down near the equator. It is always summer and quite humid but pleasant as long as the winds blow. We have fairly nice quarters facing the lagoon so I never really feel as if I am living on a tiny speck in the Pacific, as I can look across the lagoon and see other little dots that form the rest of the atoll. There are only about 100 families living here so we are comparable to a very small town. We have our share of coffees and bridge parties and manage to keep up with stateside communities.

We organized a P.T.A. for the station school this year. (I was the first president.) We are now organizing a Youth Club where the children of the base can participate in crafts and organized sports and games, learn square dancing, etc.

However, the activity that we are most proud of is our "Terminal Watch Group." This is composed of Naval and Air Force officers' wives who meet every through plane landing at Kwajalein when there are women and children on board. We are like a small Travelers Aid, helping in any way possible to make their stopover here pleasant. Usually it means sitting with the babies in the lounge while the mothers eat in the in-flight mess.

We are very limited on our food here as there are no civilian stores except the native shell shop. All our food comes from the Navy Commissary; and as the reefers only come about once every three weeks, we have long periods with no fresh vegetables or greens. Almost all our milk is frozen and we are just now getting fresh eggs. The Ships Service store carries very little for the women of the station so we all have become patrons of Sears Roebuck and Montgomery Ward.

Life is very peaceful here on Kwajalein. We can never be far from home. Our island meas-

ures about one-half mile wide by two and one-half miles long. There is no one on this island except military personnel and their families plus the workers of the Mid-Pac Construction Company. All the native Marshallese live on Ebeye Island across the lagoon. Many of them are employed on Kwaj. I have a native maid named Neko. She comes over every morning except Sunday on the work boat from Ebeye. She does all the cleaning and washing and ironing plus acting as baby sitter for young Douglass, who adores her. The chief occupations of the Marshallese, except those who work for the Americans, are fishing, gathering copra, and making native handicraft such as shell belts, fans, ship models, and all kinds of weaving. I have several interesting handmade articles that Neko has given me in repayment for favors.

Everyone seems to thrive in this climate. The boys live in trunks and tennis shoes. We all have a grand tan and feel as if we were on a vacation at the beach. It will be most difficult when we get back to civilization to wear stockings and makeup. We all dress quite informally and the standard uniform of the evening for the men is aloha shirts and slacks.

So far as I can tell there are just four sorority girls here: a Chi Omega from USC, a Pi Phi from Washington, a Kappa from Kentucky, and myself from UCLA. I graduated in 1940 and two years later married Ollie, an ATO from UCLA '37. At that time he had received his "regular" commission so we have been on the move all the time. However, I love being an "Air Force wife" and it is at times like this when we are wondering what the next assignment will be that makes this life so exciting. I hope we will be some place near an alumnae chapter. I have met Delta Zetas and gone to several alumnae chapter meetings throughout our travels and have always felt quite at home and among friends. This is one of the advantages I can recommend to belonging to a national sorority.

Hope you enjoyed these ramblings from the Marshalls which show that there are Delta Zetas living everywhere.

Yok we Yok,  
MARIANNE FRANCIS LEGG, *Alpha Chi*

EDITOR'S NOTE: This letter was written in March to Kay Larson, who felt it was worth sharing with all Delta Zetas through the pages of the LAMP.



## DePauw U. President Speaks at Indiana State Day

"**W**E COOPERATE together in our lives so that the best things we know may become a reality," stated Dr. Russell J. Humbert, president of DePauw University, at the thirty-sixth annual Indiana State Day. In his address, the dynamic speaker asked three questions which are pertinent to Delta Zetas everywhere. "1. What do you have as a right to expect from your sorority? 2. What does your sorority have as a right to expect from you? 3. What have we in the community and the nation the right to expect from members of Delta Zeta?"

In answer to the second question, Dr. Humbert noted that from its members, the sorority expects wholehearted and total acceptance of the Delta Zeta creed, an attitude of loyal cooperation, and participation to the fullest possible extent. He warned his audience not to underestimate their importance to Delta Zeta as individuals.

Dr. Humbert went on to say that the community and nation expect knowledgeability, integrity, and acceptance of responsibility from Delta Zetas. He also pointed out that fraternities and sororities have much to offer a college or university.

More than 300 Delta Zetas from Indiana and nearby states attended State Day, April 25, in the

DePauw Memorial Student Union Building in Greencastle. This was the first Indiana State Day not held in Indianapolis. Greencastle alumnae, assisted by Delta chapter were in charge of arrangements for the luncheon and meetings. Mrs. Jonathan W. Houck is president of the Greencastle alumnae.

Before the luncheon separate meetings were held for college and alumnae members. Mrs. Harold McCracken, director of Province VI, led the former, and Mrs. Ray Richardson, state chairman, was in charge of the latter.

Miss Frances Westcott, past national president, presented Delta Zeta's gift of silver candelabra to the DePauw Memorial Student Union Building. Dr. Humbert accepted the gift for the university.

Also on the luncheon program was the presentation of the members of Gamma Chi, Indiana's newest chapter, and an entertaining skit by Delta members, depicting the sorority girl's life.

Following the program, Delta was hostess for an open house and tea at the chapter house. Among those attending State Day were two founders of Delta chapter, Miss Maybelle Hall and Mrs. Martha Railsback Tinsley, past national president.

• • •

## This Delta Zeta Rates Salutes

Second Lieutenant Jeanne Elizabeth Hochberg was graduated May 2 from Associate WAC Company Officer Course VI. The ceremony was held in the WAC chapel of the Women's Army Corps Training Center, Fort Lee, Virginia.

Lieutenant Hochberg was a member of Gamma Beta chapter at the University of Connecticut where she received the bachelor of arts degree. She also attended Willimantic State Teachers College. Before entering the WAC, she taught at Storrs School, Storrs, Connecticut. She is a member of the American Association of University Women and the Panhellenic Alumnae.



2ND LT. JEANNE E. HOCHBERG



# PICTURE Highlights



TALENTED MAE ONG entertains with a hula during Alpha Kappa's Hawaiian rush party.



BETA SIGMA'S DREAM GIRL is Verla Blevins who was crowned at the Kilarney Rose dinner dance, March 28, given by the chapter in the student union of Colorado A & M.



ELIZABETH MCCALLEN, Gamma Iota, was chosen sweetheart of Chi Sigma fraternity at Memphis State College.

DELTA presented their version of "The Wizard of Oz" at the Vigo County Home for Dependent Children. (Seated) Dorothy (Flo Ulrich) is amused by the Tin Woodman (Sally Harris) as (standing) the Scarecrow (Janet Blomgren), the Tree (Elizabeth Glass) and the Cowardly Lion (Carolyn Gipe) wait for the next move.

NEW INITIATES OF ALPHA GAMMA CHAPTER are Gladys Eberhardt; Ernestine Howell, new scholarship chairman; Nancy Greene; Shirley Bradbury, outstanding pledge and new recording secretary; Jean Davidson, outstanding pledge; Betty Ann Hardy, pledge with highest scholastic average and new courtesy chairman; Betty Jo Harper; Joan Cardon, new historian; and Carol Jones.

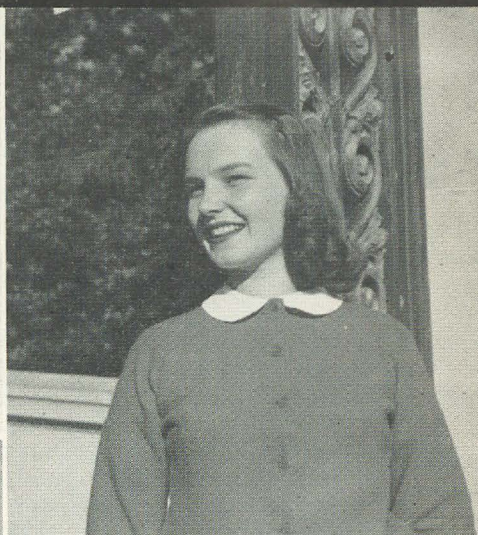




## PICTURE *Highlights*



GAMMA RHOS who were active in working for the 1952 Winter Carnival at Northern Illinois State College are Esther Doxey, publicity chairman; Claire Lawson, election committee; Pat Lipnicke, tickets and bids chairman; Dolores Broderick, member of the court and head of election committee.



JANET JOHNSON, 1952 member of Phi Beta Kappa from Mu chapter.



JACKIE MAY, first vice president of Alpha Delta Chapter, and "Dream Girl" of the chapter.



GERALDINE WILLIAMS CHOCKLEY, past president of Gamma Gamma chapter, was listed in Who's Who in American Colleges and Universities.

EPSILON'S GRADUATING SENIORS were honored at a brunch given by Indianapolis alumnae. Pictured are Patricia Boone, Barbara Goodall, Mary Ann Schrader, Janet Weaver, Mrs. Betty Hupe Potter, Mrs. Elsie Kuerst, housemother, Mrs. Alyce Easter Pfaff, LaWanda Arnold, Linda Farnham, Carolyn Knoll, and Adele Nyberg.







AILEEN ROSS  
1948-49



DOROTHY BLOUGH  
1949-50



MARTHA CLIFTON  
1950-51



JACKIE HARRISON  
1951-52



MARILYN HUNKINS  
1952-53

## Beta Tau Produces Presidents

**F**OR the past five years a member of Beta Tau has been the president of Cardinal Key, an honorary sorority on the Nebraska Wesleyan Campus equal to Mortar Board on other campuses. These girls are Aileen Ross, 1948-49; Dorothy Blough, 1949-50; Marty Clifton, 1950-51; Jackie Harrison, 1951-52; and Marilyn Hunkins, 1952-53.

Members of Cardinal Key are chosen on the

basis of scholarship, campus activities and general personality. New members are tapped into the sorority twice during the year. Beta Tau has had on the average of five of the nine members each year since 1948. Four of the five girls have also been chapter president in the same year that they held Cardinal Key presidency.

DONNA BURROUGHS

The LAMP apologizes to Gail Brook Burket for the omission of her sonnet from the March issue. Gail, a recognized poet, wrote the sonnet to commemorate the Golden Jubilee.

### THE GOLDEN JUBILEE OF DELTA ZETA

For fifty years the golden light has gleamed  
From lamps which symbolize the high ideals  
And leadership of which the founders dreamed.  
How well they wrought each laden year reveals  
In honors and achievements and the quest  
For full perfection. Now from sea to sea  
In concord, myriad loyal hearts attest  
To joyous pride in their fraternity.

Oh, golden lamps, cast greater light afar.  
Give us true graciousness in word and deed,  
New goals to guide us like a steadfast star,  
And deep concern for serving human need.  
Let lighted lamps so shine that earth may know  
Rich blessings from the radiance of their glow.

GAIL BROOK BURKET



## Theta Named Outstanding Woman at O.S.U.

**A** DELTA ZETA was named *Most Outstanding Woman on Ohio State University Campus*. She is Fanne Kehoe of Theta chapter. Among her many activities are Panhellenic vice president, Student Senate vice president, Women's Self Government Association vice president.

She was in the sophomore, junior, and senior honoraries—Mirrors, Chimes, and Mortar Board, respectively. She is also a member of the education honorary, Pi Lambda Theta, and the scholastic honorary, Alpha Lambda Delta. She has been very active in Wesley Foundation, Browning Dramatic Society and above all, Delta Zeta. She has been rush chairman and scholarship chairman for Theta.

Fanne was chosen as Dream Girl of 1952-1953, which is an honor bestowed upon the senior who is the most outstanding in service to Delta Zeta, scholarship, personality, poise and beauty. There are many more wonderful and varied things Fanne has done and we are proud of her.

BEVERLY BAILEY



FANNE KEHOE

## Alpha Pi Entertains Albanian Guest



DR. NUCI KOTTA, with Frances Youngblood (left) and Dorothy Y. Woodyerd, visits the Alpha Pi Lodge at Howard College.

**D**ELTA ZETA stepped out in front on Howard College campus, Birmingham, Alabama, on Wednesday March 18, when Dr. Nuci Kotta, son of the late Prime Minister of Albania, was a distinguished guest to our Lodge. Dr. Kotta was in Birmingham in the interest of the National Committee for a Free and Independent Albania which is working to get his country from behind the Iron Curtain. He is a graduate of the University of Paris and was a Delegate to the Convention of International Lawyers which met recently in Berlin.

Dr. Kotta's visit to Birmingham was under the sponsorship of Frances Youngblood, and he was brought to Howard by Frances and her sister, Dorothy Y. Woodyerd, both of whom are Delta Zeta Alumnae of Alpha Pi chapter. Dr. Kotta expressed great interest in sororities which do not prevail in his homeland and examined the trophies which have been won by our group. Later the members of the active chapter served as honor escorts to our guest, Dr. Kotta, when he spoke before the student body.

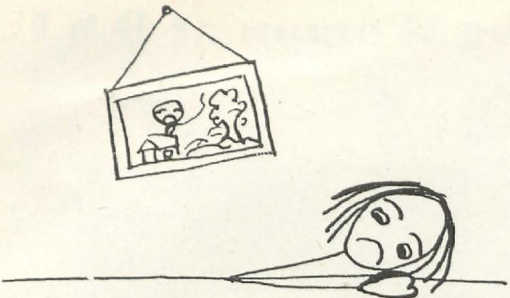
FLOANNELL FUQUA



# Are You and Your Home

## Winter Weary?

By MARJ.



**A**RE you and your home suffering from the dreary winter blues?

Paint up, fix up, and brighten up. Bring the bright fresh colors of spring into your home. Here's how. If you can repaint your walls, do try one of the new spring foliage shades. Find one that will blend with your furniture, draperies and accessories. For a real morale booster, pick an exciting new color from your own spring wardrobe, one that is especially becoming on you. We are always happier when our surroundings complement our own personal appearance.



If the chore of painting your walls makes you feel even drearier, here are a few suggestions for simplifying your home's face-lifting:

Spice up drab brown rooms with accent colors like lemon-rind yellow, driftwood and burnt orange.

Put a new spark in dead grey or blue rooms with Sutter's gold, Jasper red or navy.

Liven up tired green rooms with watermelon pink, sandalwood or copper.

Use white, white, white, everywhere for a new and striking accent color. It accentuates and enlivens all other colors and attracts the outdoor brightness. Place smart white and sharp black in unexpected and uninteresting spots.

Here's where to use your new accent colors in inexpensive but very important spots. Cover throw pillows or television pillows in several different accent colors. Buy a few new ash trays in your accent color and place them in strategic

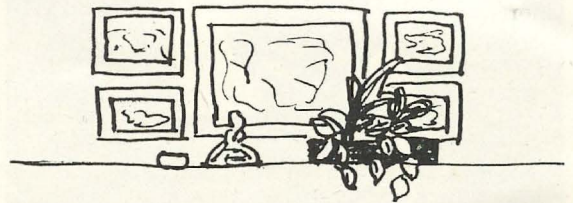
spots. Repaint an old lamp or cover an old lampshade. Put new colored candles in your old candelabra. Find interesting pictures in your home furnishing magazines to frame in inexpensive unfinished frames. Use a colored matt and see how proud you will be of your handsome handiwork. Cover or paint old wastebaskets in shining new colors.

If possible, find a new arrangement for your furniture. Make your conversational group near your windows so that old Mr. Sunshine and Mother Nature can become part of your room.

Buy some new large fresh houseplants. They help bring the feeling of the outdoors into your home. And they're oh! so wonderful for achieving that cozy but elegant look. They soften a hard corner, an ugly entrance, a stiff seating arrangement. And they bring such emphasis to a good conversational grouping. Put planter boxes on hard to treat small windows. Use small plants on decorative shelves.

Rearrange your accessories. Put some of your pieces away for awhile and add a few new ones.

Make an interesting arrangement of those magazine pictures you framed—use them in a group with a fine piece of silver, china or pottery and just see how much more elegant they become.



Find an attractively shaped dead branch from a shrub or tree and paint it white or one of your new hues and incorporate it into a decorative arrangement with several old pictures and a figurine.

Try to incorporate your favorite hobby into an interesting decorative theme and it will be ooh so smart and especially yours. Does your husband



collect antique guns—use them on the walls and above your fireplace, in a kitchen, den, library, or activities room. Are you an antique plate collector, a specialist on cups and saucers, a fine silver expert—use them to their fullest capacity. Decorate an unattractive archway with your plates—hang them down both sides and across the top of the opening. Build special shelves to display your cup and saucer collection. If you have a large collection, don't try to use them all at one time because you will spoil their individuality. Instead, change them when you feel bored—rearranging accessories can be lots of fun.

Are you interested in a long range decorating plan—start now, it's never too early to collect and evaluate your ideas.

The first step in planning a new decorating scheme is to make a complete furniture arrangement of your new room. Make a list of all the activities the room must be called upon to perform: conversational grouping for entertaining, television, teen-agers and their friends, the wee ones and their toys, your own and your husband's activities—reading, writing, sewing, music, and hobbies. Make provision for as many of your activities as you can incorporate in the area available.

Do keep your furniture parallel to the walls (this includes the television—it can be done). By keeping the furniture and walls parallel, you will be able to use more furniture in your room.

Consider your room's center of interest—fireplace, picture window, an outstanding antique, or a fine piece of furniture. Play up to your focal point by building your furniture grouping around it or by placing it on the wall that attracts the most attention (usually the one you see first upon entering a room).

Now decide whether you live a formal or informal life—then choose the period of furniture which best suits your way of life. If you wear sports clothes and always serve buffet style when entertaining, don't choose a formal 18th Century decor—use early American, provincial, or modern.

Now that we have that large problem under control, let's consider the next step—color. Choose color for your home as you would when planning your wardrobe—don't use colors together in your home that you would not wear together.

If you would like to use a patterned fabric in your room, choose it first. But be sure it has colors which you are attracted to, as well as a good design. Use the color from your pattern in solid fabrics for your other pieces of furniture. Don't, don't, don't use more than one pattern in your room. You may use a stripe or a plaid

with a floral or scenic pattern, if it is not to be placed near the pattern. When choosing the colors from your print—try to use a gradation of values (light and dark). Use one light hue, one medium hue and one medium dark hue. Do the same with texture—use some flat textured fabrics and some knobby ones. Try not to use all flat fabrics or all the same fabric—variety holds your interest. By the same token, don't use too many shaggy fabrics or your room may look in need of a haircut.

You may decide to select your color scheme from a wall paper or a favorite painting—do this the same as you would when using a fabric.

If you prefer no pattern at all, yours will be a more ingenious and more interesting job. Here play up concentration of color, repetition of color, sharp contrasts, and much variation in texture. Always repeat a color you have used, but in another area of your room. You can do this with small pieces such as lamps, lampshades, ashtrays and other decorative accessories.

To make your rooms appear larger or less cut-up, paint the woodwork the same color as the wall. Don't use a bright true color in large areas—save them for the small striking touches. Use soft greyed tones for walls, carpets, and the larger upholstered pieces—you will be able to live with them longer this way.

The largest areas in a south or west exposure usually should be a cool color (color grouped around blue on the color wheel). Conversely, in a north or east exposure, use warm colors in the large areas (colors grouped around red and yellow).

Don't forget to consider the tone of your case pieces when deciding your color scheme. Generally, dark mahogany goes well with grey, rose, some shades of orange red, blue, green, and yellow green. Maple looks best with the blues and greens. Colors which flatter blonde woods are more varied and depend upon the basic color in the wood. Blonde furniture that has a grey cast is not complemented by brown tones. Yellow or orange tones do not look well with the rose shades. Study the tone of your wood and try various color chips to see which highlights your furniture.

Now that we have our background planned and our colors organized, we come to the completion and most important part of our decor—the accessories. The selection and arrangement of our accessories is the most important single feature in any decorating scheme. This is what gives a room individuality and character. Accessories change just a room into a place of beauty and create lasting interest for all.

Be very cautious when purchasing accessories.



Be careful to choose the right contour, size, and color for a particular spot. Use several accessories or pictures to create a more outstanding and important group. Don't use too many itsy-bitsy pieces in your room—they tend to confuse your interest. Plan your accessories and their arrangement with imagination and you will have developed a "style" all your own.

In order to visualize and create something new and interesting we must see what can be done and how it can be done. Start now by collecting pictures and suggestions from the many good home furnishing magazines on the market. They will help you more than anything except a decorator—and it's so much more fun to do our own planning. Make a huge scrapbook of all the

things that appeal to you. Incorporate as many as you can into your new decor. Know what you want before you start—it will save you money, time, energy, and the B-L-U-E-S.

Note by Florence Hood Spear:

Marjorie Doyle Bergman, Beta Rho, is in demand around Detroit, Michigan, for her gay and informative talks on interior decorating. Formerly with the J. L. Hudson decorating studios, she now holds classes on the fine points of decorating. She insisted our new French Provincial dining room set have a table with a "distressed" top to be authentic. The new Beta Rho chapter house is being advised by her, and is a joy to behold.

#### MAGAZINES FOR EXCELLENT HOME IDEAS

	1 year	2 years	3 years
House Beautiful	\$5.00	\$7.50	\$10.00
House and Garden	5.00	7.50	10.00
Better Homes and Gardens	3.00	5.00	7.00
Living for Young Homemakers	3.50	6.00	
American Home	2.50	4.00	5.00
Ladies' Home Journal	3.00	5.00	7.00
McCall's	2.50	4.00	
Antiques	6.50		
Antiques Journal	3.00		

When you subscribe through our Delta Zeta Agency you get the lowest rates, best service, and you know that all profits go to the National Endowment Fund.

Send your subscriptions and checks to:

Mrs. Clarence Nelson  
7752 18th N.E.  
Seattle 5, Washington



• • •

## Alumnae Chapter Roster Grows and Grows

Betsy Bradley Leach, Alumnae Vice President, announces the addition since convention of the following alumnae chapters: Wilmington, Delaware; Kalamazoo, Michigan; State College, Pennsylvania; Mt. Diablo, California; Hamilton, Ohio; and Pensacola, Florida. There are now 118 alumnae chapters of Delta Zeta.



## Gamma Tau Grad Continues Journalistic Career

A COLLEGE career full of outstanding activities and achievements is the record of Flo Beatty, who was past rush chairman, recording secretary and editor of Gamma Tau. A member of the class of '52, she won national recognition with her article on "Fraternity Housing at Bowling Green" in the December 1951 issue of *The Fraternity Month*.

Flo was chosen Gamma Tau's 1952 outstanding senior and received listing in the '52 edition of *American College Student Leaders*. In addition, she was a May Queen finalist and on the Journalism Honor Roll for "outstanding work in campus publications."

In the writing field, she won the following honors: *B-G News* feature editor; *Key* yearbook; *Women's Handbook* editor; *Eyas Literary* magazine; secretary of Press club; president of Sigma Phi (local journalism honorary); Lutheran Student association secretary; Boosters' club; Women's Recreational association; publicity chairman for CLEW, Young Republicans' club and the Student Musical; Kappa Alpha Mu (photo-journalism honorary); Dean's List.

Since graduation Flo has been with *The Columbus Citizen* as a feature writer. She is also secretary of the Citizen Unit of the American

Newspaper Guild, publicity chairman for the Columbus Alumnæ Chapter of Delta Zeta, and a member of the Ohio Newspaperwomen's Association. There is no doubt that Flo will continue to add to the outstanding record she began as a Gamma Tau at Bowling Green State University.



FLO BEATTY

• • •

## Gamma Epsilon Hostess for Iowa State Day

GAMMA EPSILON chapter of Drake University was hostess on April 11 to all Delta Zeta chapters, collegiate and alumnæ, in Iowa.

A morning meeting was held for all present concerning rules on "rush" procedure. Luncheon was served at the Des Moines Golf and Country Club with 160 Delta Zetas present. There were 49 Gamma Epsilons, 66 Beta Kappas, 22 Iotas, and other visiting chapter members.

The theme of the luncheon was "Delta Zeta Showers." Miniature umbrellas served as name tags and there were also umbrellas on the table at each place setting, gay in their different colors. Table centerpieces were umbrella-shaped vases

filled with spring flowers. Greek letters of Delta Zeta, made from plastic foam, were placed on each table.

Esther Lorenz, state chairman, served as toastmistress for the program which included a welcome from Coral Peterson, alumnæ president, a recounting of chapter highlights, and presentation of collegiate and alumnæ awards. Cleora Crosby, national field representative, spoke on "Cross Country with Delta Zeta."

After the luncheon program, an open house was held at the Gamma Epsilon chapter house on the Drake campus.

JOANNE FUNK, *Gamma Epsilon*



## Two Gamma Thetas Are Charter Members of Senior Women's Honorary at Carroll College

ON THE campus of Carroll College at Waukesha, Wisconsin, a new senior women's honorary group, SCROLL, was established on April 8, 1952. This organization has as its purpose service to the school and recognition of outstanding senior women.

Charter members were chosen by a committee of junior women. They were selected on the basis of leadership, scholarship, service, loyalty, responsibility, and character. Four seniors were chosen as charter members. Two of these girls were members of Gamma Theta of Delta Zeta: Carol Brain and Jane Goss. Carol, former Gamma Theta president, was elected president of SCROLL. Jane, who was elected treasurer, has been past vice president of Gamma Theta.

The charter members began the work of the organization and elected four new members from the incoming senior class. Two of these were also Delta Zetas: Rita Hagman and Donna Vruwink. Rita was treasurer of the Gamma Theta chapter,



CAROL BRAIN



JANE GOSS

while Donna was rush chairman. All four girls have been extremely active on the campus as well as in Delta Zeta and have nobly earned election to membership in SCROLL.

• • •

## Author-Artist Specializes in Mining Towns

MURIEL SIBELL WOLLE, Alpha Lambda, is still another Delta Zeta author. Her latest book, *The Bonanza Trail*, is being published in June by the Indiana University Press. To gather material for this unique book, Mrs. Wolle traveled over 20,000 miles by car and on foot, visiting hundreds of sites and towns in twelve states, personally following the wilderness trails of the hardy pioneering prospectors. By unearthing old records, by supplementing her account with over one hundred original drawings, she successfully recaptured the authentic flavor of those bonanza days.

*The Bonanza Trail* rediscovers hundreds of towns, explores their past and celebrates their present, tells of lucky strike and sudden ruin, marauding Indians and road agents, violent death and lawless riot, Vigilantes and boothill, fire and flood, and finally—their gradual transition into thriving communities or the forgotten ruins of a lost world. Ghost towns and mining camps of Arizona, California, Colorado, Idaho, Montana, Nevada, New Mexico, Oregon, South

Dakota, Utah, Washington, and Wyoming are covered in this 500 page book.

Mrs. Wolle received many favorable reviews for an earlier book which she and her husband published themselves in 1949. *Stampede to Timberline* presents the whole picture of Colorado mining history from its human side. Many of the places which she had sketched for this book have since disappeared under the ravages of snow, wind, and fire.

The author-artist is professor of Fine Arts at the University of Colorado. She saw her first mining camp twenty-five years ago, and after painting in Central City, published in 1933 the results of her findings in *Ghost Cities of Colorado*. In 1934 appeared *Cloud Cities of Colorado*, the story of Leadville.

Mrs. Wolle says that her adventures in collecting materials for her writing and sketching are only a hobby. The *New York Herald-Tribune* wrote: "... but in delving into the backgrounds of her subjects she has become a highly respected historian."





Some of those at the speakers' table for Ohio State Day are (top row) Madeline Porter, Mary Collins Galbraith, founder; Ruth Wilkins, Alfa Lloyd Hayes, founder; Evelyn A. Costello, national Panhellenic council representative; Marion Goetz, Betty Meyers; (bottom row) Maxine Gethens, Beverly Borman, Marilyn Edrij, Anita Ewing, Mariana Jones, and Joy Traver.

## Ohio Celebrates Tenth State Day

**D**ELTA ZETAS in Ohio had a State Day April 25 that they will remember for a long time. To the nearly 300 college girls and alumnae attending, the founders were only names memorized in their undergraduate days. They never had the opportunity of seeing these wonderful women who made our sorority possible.

So it was a real thrill when Alfa Lloyd Hayes and Mary Collins Galbraith came to Columbus for State Day. They presented a skit and modeled some of the fashions popular at the turn of the Century when they were coeds at Miami Univer-



ALFA LLOYD HAYES watches Mary Collins Galbraith model a hat like those worn during their student days at Miami University. This is part of a skit presented at Ohio's State Day.

sity in Oxford, Ohio. Julia Bishop Coleman was unable to attend. Her part in the founders' skit was taken by one of the founders of Theta chapter, Mrs. Merton V. Porter, Youngstown, Ohio.

Mrs. Hayes and Mrs. Galbraith both spoke at the luncheon held in the beautiful new student union on the Ohio State University campus. Mrs. Hayes laughingly told members she never had a daughter of her own so she had adopted hundreds. Her advice was to "always keep true to the dreams of your youth."

Mrs. Galbraith compared Delta Zeta with "a chain of golden links stretching across the United States. We need the strength that every link gives," she said, "so get behind the link that belongs to you and keep it strong."

In a pre-convention interview with *The Columbus Citizen*, this charming woman with a keen memory said, "I hope that fraternities and sororities will become even stronger. But it will depend on each chapter and on each member's achievements and actions."

"The tie of friendship is stronger than any other. That is why sororities were begun and why they will continue."

Toastmistress for State Day was Mrs. Ralph Wilkins, a Columbus attorney who has distin-



guished herself as a member of the Ohio Legislature.

Delta Zetas from seven collegiate chapters and from nine alumnae chapters attended the convention. In the morning college members attended six workshop sessions on subjects ranging from rushing to scholarship. They were planned by Miss Joan Raudebaugh. Mrs. A. C. Meyers, State Membership Chairman, led a discussion for alumnae.

Mrs. Norman Agler was State Day chairman

assisted by Mrs. Richard Acton and Mrs. Joseph Deuschle. All are affiliated with the Columbus Alumnae chapter. An honored guest was Mrs. Evelyn A. Costello, national Panhellenic council representative.

Attendance awards went to Gamma Kappa (Baldwin-Wallace) and to the Kent Alumnae chapter. Gamma Tau (Bowling Green State University) won the scholarship award. Kent alumnae will be hostess to the 1954 Ohio State Day.

• • •

## ALUMINATIONS BY GRADABOUTS

The *Skyscraper* is the official organ of the New York Alumnae Chapter. It is published periodically with news of activities, persons, and happenings, both local and national. Membership dues for the Chapter include a subscription to the *Skyscraper* for the year.

☆ ☆ ☆

Mrs. Mark H. Latimer, Alpha Tau, is president-elect of the State Auxiliary to the State Medical Society of Texas.

☆ ☆ ☆

Rhea Schultz, Zeta, recently appeared on the Panhellenic program of Station KPRC, Houston, Texas. Anna K. Chase, Alpha Beta, who organized the City Panhellenic Association 23 years ago in Houston, is in charge of the program.

☆ ☆ ☆

Viola Naibert Elsenbast, Iota, was elected president of the Cedar Rapids College club in May. She writes that the club of more than 200 members has a scholarship and loan fund of over \$7000 and gives yearly \$100 scholarships to worthy high school girls.

☆ ☆ ☆

A ten week trip to South America was last summer's exciting experience for Velora Beck Atkins, Zeta. She happened to be in Buenos Aires at the time of Eva Peron's death and told the Rochester, New York, Alumnae chapter about the civilian restrictions which resulted and the strong anti-American feeling evidenced at that time.

☆ ☆ ☆

The Braille Club at Pasadena is continuing its worthwhile recreational classes every Thursday through the summer months with Jane Sisson as chairman and Lobeia Bishop co-chairman. Donations for Dorothy Walker Scott's dream of a home for the blind are still being received. (Note article on page 218 of the March issue.) The address in the March issue of the LAMP should be corrected as follows: Dorothy Scott, 386 South Los Robles, Pasadena, California.

☆ ☆ ☆

Salem Alumnae chapter honored Maurine Brown Neuberger, Omega, and Helen Husband, Upsilon, at a potluck supper in March. Maurine and her husband, Dick, were recently re-elected to the Oregon legislature as representative and senator, respectively. Helen served as secretary for her husband, representative from Lane County, during the legislative session.

☆ ☆ ☆

Peggy Crooke Fry has resigned as director of Province I North to accept a Fulbright Fellowship. She will do research on nutrition in New Zealand. Her husband, Edward I. Fry, also received a Fulbright grant to do archaeological research in New Zealand.

☆ ☆ ☆

Peninsula Alumnae outline the coming year's business and social programs at their May meeting. Their Hearing Aid project is supported by members through contributions to the Memorial Fund and the commissions from magazine sales.

☆ ☆ ☆

The publication of the Chicago Alumnae chapter is called *The Chatterbox*. Because members in Chicago are so widely scattered over the city, the newsletter helps to coordinate meeting notices of the smaller groups within the larger chapter, as well as publicize general meetings and chapter news.

☆ ☆ ☆

Muncie alumnae who assisted with the initiation and installation ceremonies for Gamma Chi chapter at Ball State Teachers College are Claire Bullock, Epsilon, president; Doris Pike Silverthorn, Alpha Alpha; Phyllis Wear Thomas, Epsilon; Beth Vail, Gamma Nu; Ellen Nichols, Inez Mann, and Mrs. George Jenkins.

☆ ☆ ☆

Newly initiated alumnae of Gamma Chi chapter are Joan Beck, 1951-52 president of Omega Sigma Chi (local which became Gamma Chi chapter); Barbara Horn, instructor at Maria Bingham Nurse's Residence on campus and chapter adviser; Mary Ann Chapman and Helen Foreman, charter Omega Sigma Chi members.



# DELTA ZETAS ON CAMPUS

## PROVINCE I NORTH

### Alpha Upsilon—University of Maine

March brought the initiation of a new sister, Carolyn Mahany, and the following new pledges: Arlene Dahlbeck, Auburn; Diana Eslin, Bangor; Bryl Haskell, Lincoln Center; Shirley Putnam, Thomaston; Elizabeth White, Biddeford; Faith Wixon, Winslow, and Katherine Zoidas, Bangor.

Members of Sigma Mu Sigma are Joan Hall and Margaret Robinson. They also have been asked to join Phi Kappa Phi.

The Christmas season brought forth the combined efforts of D. Z. and Theta Chi fraternity as we gave a party for the underprivileged children of the nearby towns. A Valentine's party which is given annually for all new pledges on campus was successfully given by our pledges. Another very big success was a campus tea sponsored by Delta Zeta at the Carnegie Hall building where an art exhibit of contemporary glassware and ceramics was held.

Scholarship bracelets given by the Bangor alumnae group for the highest consistent rank and the greatest improvement in rank were presented to Mary Jean Chapman and Phyllis Webster respectively. Mary Jean was also chosen from Home Economics to go to the Merrill Palmer School for one semester.

The highlight of the social season, the pledge formal, was held at Theta Chi March 21. Donna Richardson, our new president, was elected Dream Girl of Delta Zeta.

Recent elections resulted in the following new major officers: president, Donna Richardson; corresponding secretary, Carolyn Mahany; treasurer, Barbara Pillsbury; vice-president, Margaret Hoyt, and corresponding secretary, Katherine Allen.

KATHERINE ALLEN, *editor*  
DONNA RICHARDSON, *president*

### Beta Alpha—University of Rhode Island

Since last you heard from us, we Beta Alphas haven't been still a minute. A whirlwind rush season was completed with a total of fifteen pledges. They are Nancy Allison, Marilyn Barnes, Joyce Collins, Mary Daniels, Patricia Dodge, Janet Giordani, Barbara Manley, Joan Mason, Marcia Matteson, Nancy Nelson, Marcia Sayles, Mitzi Stauffer, Peggy Sullivan, and Ann Toderland. The theme of the rush party was Never-Never Land, and the house overflowed with pixies, toy-soldiers and a Cinderella. Later on, we used the same central theme in preparing an afternoon of entertainment for children from the Rhode Island Children's Center, an organization caring for orphans and underprivileged children. We still have one more show to do; we've been invited to put on an hour and a half program at the Veterans Memorial Hospital in Providence. This will be the third year we have journeyed to town with props and costumes to entertain at the hospital.

Election of officers was held in March and the following were elected: Joyce Giblin, president; Julie Hovnanian, first vice-president; Carolyn Angell, second vice-president; Claire Buchanan, treasurer; Eleanor Togeman, recording secretary; Jean Berry, corresponding secretary, and Barbara Togeman, historian.

The highlight of this entire semester was the weekend of March 28 and 29. Friday evening the house turned

out in full force for the Sigma Chi Derby, an athletic and stunt contest between women's housing units and walked off with second place. That was just the beginning of a long weekend, however, for Saturday night the pledge formal was held at the chapter house. Sunday afternoon we initiated our pledges and then proceeded to a formal banquet at the Wampanoag Country Club. This banquet was a combination 25th Anniversary and initiation celebration. There were many, many alumnae present and we had as our honored guest from the National Council, Mrs. Sullivan. Guests from our own university included Dr. and Mrs. Carl Woodward, president of the university, and Dr. and Mrs. Harold Browning, Dean of the College of Arts and Sciences.

PATRICIA COLWELL, *editor*  
ELAINE FREEMAN, *president*

### Gamma Beta—University of Connecticut

In April Gamma Beta initiated Dorold Almquist, Anne Budwitz, Georgia Cookson, Natalie Dickinson, Joyce Doherty, Marlene Dowd, Jill English, Norann Gilbert, Mary Jane Hugret, Sonya Joll, Jean Marsh, Madelyn Porell, Barbara Raytkwich, Carolyn Shattuck, and Mary Jane Thomas. The initiation ceremony was followed by a buffet supper and dance and our eighth annual Rose Formal, was dedicated to our new sisters.

New officers are: Lee Smith, president; Ruth Johnson, vice-president; Hildegard Hufschmidt, recording secretary; Rita Coletti, corresponding secretary; Ann Stefanowski, treasurer; Barbara Coleman, historian.

For many years we have been proud of Miss Mildred P. French, our Dean of Women, and a very active Delta Zeta. She is retiring this June and plans to join her family in Washington. Gamma Beta is planning a formal banquet in her honor in May.

The chapter is very actively engaged in campus activities this semester. Jeanette Dube successfully performed the leading role in the Speech and Drama Department's production of "Night Must Fall." Peggy Confrey, social chairman, is the Newman Club's new secretary and also editor of the *Newmanite*. Six girls have pledged Alpha Gamma Chi, the women's service sorority.

Nor are we lacking in honors this year. Lois DeVries and Mary Lou Stefanowski were elected to *Who's Who in American Universities*. Carol Bendz and Connee Vio were initiated into Phi Upsilon Omicron, national home economics honor society. Connee, Lois DeVries and June Sparks were elected to Phi Kappa Phi, national scholastic honor society.

We are the recipients of a trophy for being the most generous contributors among the women's housing units in the last Red Cross Blood Drive.

Two of the pharmacy fraternities have Delta Zetas as their sweethearts. Virginia Caregnato is Sweetheart of Kappa Psi, while Phi Delta Chi claims Patricia Bernhardt as their choice. Audrey Peterson was elected Queen of the Froshmore Dance.

JUNE P. SPARKS, *editor*  
LOIS HEARN, *president*

## PROVINCE I SOUTH

### Alpha Kappa—Syracuse University

Chapter officers for the coming year are Eleanore Hawie, president; Barbara Lewis, first vice president;





LIZ McCANN, PHYLLIS HALLOCK, BARBARA LEWIS, and BARBARA FILIATREAU, aided by the daughter of an alumna, presented a wedding skit for an Alpha Kappa rush party.

Mary Lou Talmage, second vice president; Patricia Webb, recording secretary; Mary Lou Boak, corresponding secretary; Angele Agababian, treasurer; Clara Willey, historian.

Alpha Kappa recently initiated Mary Lou Boak, Liverpool, N.Y.; Grace Bonnert, Scranton, Pa.; Joanne Contreman, Jamestown, N.Y.; Kathleen Dodge, Princeton, N.J.; Rosemary Ferris, Bangor, Me.; Joan Haskin, East Durham, N.Y.; Jane Sheckells, Syracuse, N.Y.; and Suzanne Sweet, Albany, N.Y. The new initiates completed their Courtesy Week by assisting in the cardiograph department of a Syracuse hospital.

Girls initiated into honoraries were Mae Ong, Beta Alpha Psi (accounting); Barbara Filiatreau, Theta Sigma Phi (journalism); Nancy Knapp, Rho Delta Phi (English); other girls were junior, city and foreign students' guides, college officers, weekend chairmen, chapel and club officers.

Our snow sculpture for Winter Weekend portrayed that famous little 'possum, Pogo, and his friend Albert; we also participated in the annual Step singing contest to regain possession of the cup we won last year; our annual Spring Formal was perhaps the event remembered as the most successful of all social affairs sponsored by Alpha Kappa this year. Other socials included a Foreign Students' Tea, two Fireside parties, a Comic Caper party, a reception for our new housemother, a reception for Mrs. Sullivan when she attended the Anniversary Banquet, and coffees with the Phi Gams, Sig Eps, and Theta Alphas. A dinner for our patroness, her husband, and our sponsors was also included in the year's events. State Day was a new experience for most of us, and it was enjoyed so much that we are looking forward to another.

The chapter entered the Spring Weekend float parade; had lots of fun at a Before-Finals picnic, and feted the seniors at the traditional Junior-Senior Banquet. The current fad at the house is an after-dinner badminton tournament. There have been no official champs, but we all acknowledge the ability of several previous award winners.

With all our other activities, we have not neglected

scholarship. The unofficial grade standings show several girls headed for dean's list.

CAROL-LOU FITCHEN, *historian*  
MAE ONG, *president*

### Beta Omega—New York University

In May we initiated Kay Clark, Patricia Kelly, Joan Lamb, Rosemarie Newpert, Sonya Palinich, and Jean Sostillio.

Rushing season started with a formal tea, ended with a supper party and was highlighted by a dance at which was chosen the "Fraternity King of New York University." There were candidates from Delta Sigma Pi, Alpha Kappa Psi, Sigma Phi Epsilon and Theta Chi. In a landslide, Vincent Cappadocia from Upsilon Chapter of Theta Chi Fraternity was elected by the sisters and rushees.

Our pledges participated in the annual Pan-Hellenic "Goat Show" and won third prize for the best show.

We welcome Ave Berg and Penny Howard, sisters from Northwestern and Ohio State respectively. We are all happy to have Ave and Penny with us at NYU.

Beta Omegas along with thousands of other Delta Zetas across the country held elections the last week in March. Pat Coleman was re-elected president; Pat Baublitz, first vice president; Norma Arena and Ann Teska, second co-vice presidents; Mary Kangley, recording and corresponding secretary; Juliette Debonis, treasurer; and Lenice Holley, historian.

Among the sisters of whom we are particularly proud are Betty Balish, who is the president of Mu Kappa Tau, the Marketing Honorary at the School of Commerce; Bess Vallas, who is secretary of the Panhellenic Congress at N.Y.U.; and Norma Arena, the new president of the Evening Spanish Club. Vivian Slezak and Georgia Klett were both elected to the Retailing Honorary Society. Vivian was also elected to the Student Hall of Fame, Beta Gamma Sigma (Senior Honorary) and Sphinx, the honorary society of the School of Commerce. Lenice Holley was elected to the junior honorary at the school of Commerce.

Beta Omega Alumnae Association sponsored the annual formal on April 10 in the "Red Room" of the Hotel McAlpin. It was wonderful to see so many of the alumnae, sisters, and pledges together enjoying themselves.

Beta Omega Alumnae chose the outstanding senior at the senior tea in May. We were all glad to learn that Betty Balish had been selected for the award.

NORMA ARENA, *historian*  
PAT COLEMAN, *president*



VINCENT CAPPADOCIA, chosen "Fraternity King" by Beta Omega chapter, is surrounded by his subjects.



## PROVINCE II

### Omicron—University of Pittsburgh

Omicron recently pledged: Peggy Close, Zora Getting, Shirley Kliss, Marjorie Kroeger, Jane Morrell, Beverly Nemeska, Ruth Roth and Violet Schneider. Two of our new pledges are fraternity sweethearts: Ruth Roth, Theta Chi, and Peggy Close, Lambda Chi Alpha. Peggy is also a member of Heinz Chapel Choir along with the following members: Nancy Creasy, Joan Furman, Norma Kraus, Gloria Heneghan, Ann Holsinger, Ruth Ireland, Beverly Muir, Irene Powlenok, Nancy Robb and Arlene Scott.

With rushing over we have now turned our attention toward the Panhellenic Sing which will be held April 23. Jean Doyle, chairman, and Jane Pickering, assistant chairman, have announced that the theme for this year is "Moonlight Melodies" and that the Delta Zeta sing team will sing "Moonlight on the Ganges" and for our sorority song "The Magic Recipe Song."

Omicron is proud to claim two of the seven nominees for Senior Queen. Betty Pickering and Donna Parks were chosen because of their outstanding achievement in scholarship and activities.

We are also proud to have two of our girls nominated for Spring Carnival Queen. Gloria Heneghan representing Theta Chi and Beverly Nemeska representing Sigma Pi.

NANCY CREASY, *editor*

ARLENE SCOTT, *president*

### Alpha Delta—George Washington University

This year has again been an active one for Alpha Delta Chapter on the George Washington University campus. We occupy a suite of rooms in a university owned building, right on the campus, which we plan to redecorate this summer.

We started off the year with our pledge class taking first place in the poster contest for the Panhellenic Goat Show. Needless to say, we were doubly proud to present them to the campus at our annual Rose Formal given in their honor. At the dance we crowned Jackie May, senior, our "Dream Girl." At the same time we proudly presented Barbara McCall with the coveted activities cup, for being our most outstanding and loyal initiate.

In campus activities we were proud to have members in such active groups as the Colonial Boosters, the Dance Production Group, and the Sailing Association. Marilyn Kettler had the distinction of being crowned "Moonlight Girl" of Phi Sigma Kappa fraternity and also represented the University in the annual fashion show sponsored by Jelleff's department store. Anne McGinnis, our treasurer; Frances Oerlein, our president; and Virginia Page, our Social chairman; were all elected to membership in Delphi, an honorary for outstanding sorority women.

Our social calendar was filled with suppers, and tea dances with fraternities. The most exciting ones were our Valentine Party with Phi Sigma Kappa, and the Hawaiian Supper with Pi Kappa Alpha. We also became better acquainted with our devoted Mother's Club at the Christmas Tea which we gave in their honor. To top off an exciting and eventful year we are planning an excursion to the beach at the end of the semester.

VIRGINIA PAGE, *editor*

### Beta Theta—Bucknell University

After a busy rush week in February, Beta Theta pledged seventeen women. Our preferential party was centered around the theme "An American In Paris," and the decorations included the Eiffel Tower, the Arch of

Triumph and even Maxim's. The following were pledged at that time: Alison Almy, Wilmington, Del.; Louise Bache, Willsboro; Nancy Ennis, Bloomsburg; Margaret Ferguson, Arlington, N.J.; Barbara Fortin, Baldwin, N.Y.; Joanne Foster, Wilmington, Del.; Barbara Josenhans, Valley Stream, N.Y.; Elisabeth Kroeck, South Orange, N.J.; Nancy Kunz, Tenafly, N.J.; Joyce Neeb, Tarentum; Linda Nicholson, Huntington, N.Y.; Virginia Nill, McKeesport; Barbara Noxon, Tenafly, N.J.; Lee Pearah, Laureldale; Patricia Quinn, Chatham, N.J.; Gloria Rubin, Mt. Vernon, N.Y., and Gretchen Swartz, Plainfield, N.J.

Beta Thetas have been active in campus organizations and several members have received honors in the past few months. Isabel Beers, our president, has been selected for *Who's Who*, and was elected "Girl of the Week" by Phi Lambda Theta fraternity. Doris McCrodden has been chosen as one of the fifteen girls in the United States to receive a scholarship from the Danforth Foundation.



GAMMA ETA chapter's fall initiates: Elissa Fuoco, Bruna Occhi, Mary O'Shea, and Frances Breidenbach.

Also, Marty Jones is editor of the *Student Handbook*, and Claudette Kemper is copy editor of *The Bucknellian*, campus newspaper.

The social side has kept us occupied with many activities—including a Big and Little Sister Pajama Party, a card party for the patronesses, and our annual pledge dance, "Delta Zeta Star Theater."

BARBARA ANDERSON, *editor*  
ISABEL BEERS, *president*

### Gamma Delta—Pennsylvania State College

New initiates of Gamma Delta are: Carolyn Baer, Dorothy Gill, Helen Hissey, Betty Rice, and Louise Moreman. Officers for 1953 are: Mary Sullivan, president; Jean Johnston, first vice-president; Catherine Foglia, second vice-president; Peggy Spedding, treasurer; Mary Angel, recording secretary; Carole Kowallis, corresponding secretary; Alice Colbert, historian.

We worked with Phi Sigma Kappa fraternity for "Homecoming" and "Junior Week" floats, and are now working with Phi Kappa fraternity for "Spring Week." "Clowning Around" was the name of our booth for Mardi Gras.



Gamma Delta's gift bazaar in November was very successful, with proceeds going to the National Hearing Aid Fund. Phi Kappa joined us in giving a Christmas party for underprivileged children, and now all the sororities and fraternities are preparing for "Greek Week," a week set aside to further relations with the townspeople.

Three very interesting speakers were present at our standards meetings thus far: Mrs. Frank W. Montgomery, Dr. L. E. Jackson, and Miss Dorothy Hetrich.

Gamma Delta's new officers in campus activities are: Peggy Spedding, treasurer of Future Business Leaders of America, and president of Pi Omega Pi; Irene Stromayer and Jean Johnston, officers in an elementary education organization; Joyce Johnson, treasurer of Chi Theta; Katherine Nicoll, president of dormitory unit, and of Modern Dance Club; Alice Colbert, vice-president of Physical Education Student Council, secretary of Modern Dance Club, and president of Lakonides; Carole Kowallis, vice-president of Officials Club; Nancy Bradfield, secretary-treasurer of Belle Lettre. Marjorie Maxwell is now studying at the Merrill-Palmer School, having been chosen from the senior class in Home Economics.

Alice COLBERT, *editor*  
MARY SULLIVAN, *president*

### Gamma Phi—Indiana State Teachers College

It seems such a short time since Gamma Phi was installed at Indiana State Teachers College, on November 1, 1952, but the time has really flown. Since our installation we have taken in six new pledges: Frances Aglietti, Joan Gatto, Patricia Hobough, Joan Mills, Sally Sipe, and Diane Steigers. They were entertained at our gala formal, "Come to the Mardi Gras," rush party.

Last semester was quite a profitable one for the Gamma Phi of Delta Zeta for we took third place in the scholastic rating of the seventeen fraternities on campus. Four of our members were also included on the Dean's List (excluding seniors). They were: Madeline Chuba, Elinor Kintz, Janice Lutes and Joan Mills. We also had three of our members initiated into a national home economics honorary fraternity. They were: Eleanor Della Vecchia, Madeline Chuba and Joan Mills.

Our big weekend has arrived at last! The gala Panhellenic Dance is being set up on a circus theme with Barron Elliot's orchestra. Before the dance, a banquet is being held for the members and guests at Lewis' Restaurant. Many of our members have been working for quite some time on this dance in order to make it one of the best this season.

Since this is really our first news letter to the LAMP, we would like to say that we are proud to be a chapter of Delta Zeta and that we hope to make you as proud of our chapter as we are of all of you.

DOLORES JURELLA, *editor*  
PATRICIA NEUROTH, *president*

## PROVINCE III

### Alpha Theta—University of Kentucky

The school year of 1952-53 has been a very profitable one both scholastically and socially. At our annual White Ball, held this year in December at the Lexington Country Club, Helen Gum was awarded the trophy for being outstanding woman of Alpha Theta chapter. Helen is rush chairman, secretary of Panhellenic, chairman of Religious Emphasis Week, a member of the Freshman Editorial Committee and still maintains a 2.5 over-all standing out of a perfect 3.0.

Nancy Campbell of Bedford, was initiated into Kappa



*This float, made by Gamma Gamma chapter, won second prize in Missouri Valley College's convocation parade.*

Delta Pi, national education honorary and was elected secretary of Future Teachers of America.

Debbie Schwartz and Barbara Featherstone were initiated into Chi Delta Phi, national literary honorary. Sally Hoffman and Carolyn Turner were initiated into Phi Beta, national music honorary and were elected secretary and treasurer respectively. Jean Fraser is a member of the freshman editorial committee and an editor of *Stylus*, literary magazine, and a pledge to Eta Sigma Phi, national language honorary.

Mary Alice Phillips was chosen Triangle Sweetheart at their annual Christmas dance held in December.

Our members had the highest sorority standing on campus last semester by making a 2.0 over-all standing.

New officers include: president, Sally Hoffman; vice-president, Nancy Campbell; rush chairmen, Debbie Schwartz and Jill Mahoney; recording secretary, Carolyn Turner; treasurer, Wanda Pace; historian, Yvonne Eaton, and social chairman, Helen Gum.

JEAN FRASER, *editor*  
SYLVIA SIMMONS, *president*

### Gamma Iota—Memphis State College

Spring initiates of Gamma Iota are Mary Ann Furlotte, Pat Fitzgerald, Sylvia Sewell, Elizabeth McCallen, Louise Webber, Shirley Quarles, and Shirley Petty.

Elizabeth McCallen was chosen Sweetheart of Chi Sigma fraternity at the Rose Petal Ball, April 10. Ida Stanton is president of Tassel, senior women's honorary. Members of the Beauty Court are Ann Spears and Mary Pollard. Frances Roberts was chosen Freshman of the Year in Home Economics. Ann Spears is president and Louise Webber is secretary of Lambda Delta, freshman women's honorary. Evelyn Cattaneo and Imogene Gordon are members of Tassel. Dixie Golladay, Ida Stanton, and Evelyn were also chosen for *Who's Who in American Colleges and Universities*.

A tea for senior Gamma Iotas was given on May 24. Another tea, honoring Irene Boughton, Executive Secretary of Delta Zeta, was also held this spring.

MONA SLEDGE, *editor*

## PROVINCE IV

### Alpha Sigma—Florida State University

The following women were pledged to Alpha Sigma on March 12: Lola Ann Burnett, Swannanoa, North Carolina; Barbara Capps, Asheville, North Carolina; Harriet



Ruth Davis, Orlando; Margaret Jean Parham, Orlando; Corrie Elizabeth Simmons, Orlando; Betty Louvenia Struth, Milton, and Regina Tharp, Alamosa, Colorado.

Initiated into Alpha Sigma on February 28 were the following: Allie Jane Bird, Perry; Jeannie Brinson, Jacksonville; Doris Ann Craven, Quincy; Phyllis Dye, Miami; Carolyn Glenn, Miami; Rose Howard, Bartow; Joan Mabry, Plant City; Marilyn Price, Columbia, S.C.; Carol Ann Nydegger, Tampa; Helen Jane Williams, Jacksonville; Janis Williamson, Auburndale, and Peggy Haun, Jacksonville.

Installation for the new officers of Alpha Sigma was held on March 2. The new officers are: Carol Trimmer, president; Martha Garret, first vice-president; Marian Martin, second vice-president; Clara Jane Peacock, recording secretary; Patricia Hampton, corresponding secretary; Ann Phillips, treasurer; Jean Beasley, editor, and Shirley Knight, house manager.

Sunday morning following initiation, a breakfast was held at the Seven Seas Restaurant. At this time the pledge awards were presented to: Carolyn Glenn, most loyal and devoted; Peggy Haun, best-all-around; and Carol Ann Nydegger, highest scholastic award.

Claudia Thomas, past president of Alpha Sigma and editor of F.S.U.'s yearbook, *Tally-Ho*, has recently been initiated into the following honoraries: Kappa Delta Pi, Garnet Key and *Who's Who*. Claudia has been active in campus activities and has shown a special love and devotion for Delta Zeta.

Other members recently tapped by honoraries were Natholyn Stephens, Kappa Delta Pi, and Irene Taylor, Los Picaros, Spanish honorary.

Our chapter is proud to have six members selected to serve as Junior counselors next year. They are: Ann Burnett, Barbara Capps, Ann Corbett, Phyllis Dye, Martha Carrett and Rose Howard.

Alpha Sigma was third in the scholastic average for the sixteen sororities here on campus. The chapter moved up from fourth place.

We are busy practicing for the "Little Brown Jug" which is an annual campus sing. This year we are singing Victor Herbert's "When You're Away."

The next two weeks will be very busy ones for us Delta Zetas while we are carrying out plans for our Rose Ball which will be held on April 11. The theme will be "In A Garden Of Roses." The dance will be preceded by a party held at the house on Friday night and a picnic on Saturday afternoon. A breakfast is planned for the members and their dates on Sunday morning.

Harriet Knight was chosen Sigma Chi Sweetheart at the Sweetheart Ball, February 28.

JEAN BEASLEY, *editor*  
CAROL TRIMMER, *president*

### **Beta Mu—Florida Southern College**

During the Christmas season we had two parties. The first was for the Rose Keller Orphanage. We all had a grand time playing Santa Claus for these children. Before leaving for the holidays, we had a joint Christmas party with Sigma Alpha Epsilon fraternity.

In February, we had a tea and banquet honoring Mrs. Sarah Coleman, former faculty adviser, who moved to Jacksonville and Mrs. Helen Keve, province director, who was visiting us at that time. Miss Oween Sumner is our new faculty adviser.

We participated in Founders' Week, which is an annual event on campus. Two of our Seniors, Mary Carlo and Suzanne Rose, were recognized at the Investiture of Seniors by being named to *Who's Who in American Colleges and Universities*. Open house was held during the week also.

One of the high-lights of Founders' Week was the crew races among the sororities on campus. After weeks of practice and preliminary races, our efforts were well rewarded as we qualified to race in the finals. Our team placed second, losing only by one foot. We are one of the few colleges in the country which has girls' crew.

We pledged Barbara Hursey, Durham, North Carolina, and Linda Pearson, Rushville, Illinois, this semester, thus filling our quota.

Delta Zeta had the honor of being the first sorority on campus to be cited for outstanding work. The honor of raising the flag each morning for a week was bestowed upon us.

We played a benefit "scooter-hockey" game against the Quarter Century Club, with the proceeds going to a fellow student.

For one of our standards programs, Phyllis Oudshoff, a Delta Zeta pledge, gave a very interesting talk and showed slides of her trip to Europe this past summer.

Officers elected for the coming year are: Judith Ott, president; Jean Linville, vice-president; Effie Fairchild, second vice-president; Patsy Smith, treasurer; Carolyn Arthur, recording secretary, and Sue Thornton, corresponding secretary.

Our annual formal "Spring Fling" is to be held April 11, at the Tampa Terrace in Tampa.

SUE THORNTON, *editor*  
JUDITH OTT, *president*

## **PROVINCE V NORTH**

### **Gamma Alpha—Baldwin-Wallace College**

Initiated into Gamma Alpha in December were Jeanette Bly, Patricia Garman, DeLee Hileman, Mary Jo Keiper, Norma Shick, Evalyn Sokol, Sally Strock and Effie Vale. Effie Vale was chosen scholarship pledge and Sally Strock was selected outstanding pledge.

Four Gamma Alpha girls were among the twenty seniors from Baldwin-Wallace elected to *Who's Who in American Universities and Colleges*. Our "big four" are Lois Ayers, Virginia Bereit, Marilou Hoag and Jacqueline Carmel.

Chairman of the annual Campus Chest Drive was our Lois Ayers while Ann Davis was co-chairman of the Campus Chest Carnival.

Peggy DeVassie, Marjorie Rucks, and Dorothea Dery were elected to Science Seminar. Dorothea and Marjorie are also active in the Home Economics Club; Dorothea is the reporter for the State Club and publicity chairman for the B-W club; Marjorie is treasurer of the B-W club while two more Gamma Alpha members, Marguerite Olson and Marianna Jones, head the club as president and vice-president. Peggy DeVassie is treasurer of the Arts Nursing Club on campus.

Mary Beth Capers has recently been added to the cheerleading squad and she also represents Gamma Alpha as vice-president of the Sophomore class at B-W. Lois Ayers is the vice-president of the Senior class.

On the Red Cross cabinet are Shirley Wright and Elaine Wicke, as was the sister we recently lost, Nancy Churchill. Elaine is also on the W.R.A. cabinet along with Ann Davies and Marianna Jones.

Ann Davies and Dorothea Dery had parts in the B-W play, "George Washington Slept Here."

Five new members of the Aqualine Club are Virginia Bereit, Ann Davies, Virginia Jennings, Mary Jo Keiper, Sally Strock and Marlene Major.

Gamma Alpha is well represented in the main women's dormitory, Emma Lang Hall, with Jacquelin Carmel and Evalyn Sokol as president and vice-president. And too, Evalyn is the Sophomore representative to Student Council.



Majorettes of the B-W band are Jeanette Bly and Dorothy Heppler.

One of the greatest honors of the year came when Lois Ayers was elected as B-W's Homecoming Queen. In her court was another of our sisters, Virginia Bereit.

Recently pledged and also a new member of our Alumnae Chapter in Cleveland is Arlene Davis who was named Aviation's Woman of the Year. Arlene has won many honors but one of the greatest of these she considers to be the acquiring of her Delta Zeta pin.

Mary Beth Capers was elected Sweetheart Queen by the YWCA members and Patricia Bauer, a freshman, was named Interfraternity Queen by a New York Model agency. The student body elected Shirley Wright as our May Queen. Jacquelin Carmel and Ann Davies were on her court. In the May Day Scuttle race competition Gamma Alpha took first place with a team of Evalyn Sokol, Marlene Major, Marjorie Rucks, Joanne Lent, and Mary Beth Capers.

Gamma Alpha won the Annual Interfraternity Sing; Ann Davies directed the chapter to victory with a Western theme.

Initiated on May 2 were Patricia Bauer, Marjorie Cochran, Jo Herrington, Barbara Lagsdin, Joanne Lent, Marlene Major, Shari McKim, Bonnie Princehorn, and Virginia Sneider.

For participating in the most Red Cross activities, Gamma Alpha won the Red Cross trophy. It was the first year that this award was offered.

### **Gamma Kappa—Kent State University**

Initiation services were held in February for the following: Nancy Barrett, Painesville, O.; Nadine Beck, Steubenville, O.; Joan Brown, Minerva, O.; Joan Buckley, Newark, O.; Sylvia Caruth, Kent, O.; Janet de Nobel, Parma, O.; Marilyn Doney, Cuyahoga Falls, O.; Elsie Engel, Canton, O.; Elaine Erb, Silver Lakes, O.; Marian Loudin Wingard, Kent, O.; Adeline Machura, Cleveland, O.; Thelma Obenauf, Youngstown, O.; Donna Roberts, Sidney, O.; Lynn Wiley, Sebring, O. The following alumnae were initiated: Betty Brant, Remington, Indiana; Virginia Lively, Kent, O.; Janet Shira, Ravenna, O.; Shirley Ulrich, Kent, O. Thelma Obenauf was chosen model pledge and Sylvia Caruth received the scholarship award.

New pledges during the winter quarter were: Delores Anderson, Stow, O.; Eleanor Bujalski, Cleveland, O.; Virginia Colson, Warren, O.; Carole Grosser, Cleveland, O.; Jacqueline Hayes, Andover, O.; Sandra McIntyre, North Canton, O.; and Nancy Norman, Coshocton, O.

Lee Goff Hall, director of Province V visited the chapter in February.

Gamma Kappa sponsored the International Ball, an all-university dance, the proceeds of which sent a Kent student to study abroad.

"Spring Rain" was Gamma Kappa's song for Campus Day. We wore navy and white identical dresses. The theme for the float was "A Steady Stream of Progress," carrying out the theme of Ohio's Sesquicentennial.

Newly elected officers are: Anita Ewing, president; Joan Clark, first vice president; Mary Ellen Rodebaugh, second vice president; Nancy Larson, corresponding secretary; Peggy Walker, treasurer; Barbara Pearsall, recording secretary; Sylvia Caruth, historian.

Our annual Rose Ball was held at Lake Forest Country Club in May. The Rose Girl was chosen and presented a bouquet of roses.

HELEN MARKOTA, *editor*  
ANITA EWING, *president*

### **Gamma Tau—Bowling Green State University**

The following were recently pledged to Gamma Tau: Karlene Anshutz, Cleveland; Shirley Brechmacher, Wakeman; Sue Coburn, Utica; Janet Crane, Toledo; Doris Cvetic, Euclid; Rose Marie Davis, Cary; Barbara Dowds, Bowling Green; Shirley Grimes, Arlington; Marilyn King, Galion; Lillian Koehler, Cleveland; Helen Long, Neapolis; Jeannette Lott, Cleveland; Marilyn Ray, Cleveland; Patricia Reynolds, Lorain; Jean Spencer, Gary, Indiana; Dolores Szostak, Canton; and Joan Wilson, Celina.

Officers for the year who were recently installed are Joy Traver, president; Dorothy Cooley, pledge mistress; Dorothy Baden, rush chairman; Carol Grimes, recording secretary; Phyllis Vradenburgh, corresponding secretary; Helen Harnad, treasurer, and Doris Bender, historian.

Gamma Tau recently had its annual orchestra dance, "Starlight Street." A thousand glittering stars hung from the ceiling and the band stand was made entirely of blue angel hair. Lamp posts and park benches gave added atmosphere.

Our first Christmas party was held in our new house. Presents were given to all and our annual Christmas story was told.

The Toledo alumnae chapter presented Gamma Tau with a silver tea set at a tea given by them for our pledges.

Several college Delta Zetas from Alpha, Xi, Gamma Alpha and Gamma Kappa chapters visited our house during rushing to observe our rushing system.

Recently initiated into Gamma Tau was Rose Majeau, Montpelier, Ohio.

One of our most successful rush parties was centered on a carnival theme. Individual booths were made where games were played. A fortune teller told fortunes in which Delta Zeta played an important part. Popcorn, pink lemonade and hot dogs gave a carnival air to the party.

The Dayton Mothers' club sent three damask tablecloths to us as a special gift. Also the alumnae of Lima sent us a window plant for the bay window of our new lounge.

JOY TRAYER, *editor*  
MARJORIE BAKER, *editor*

## **PROVINCE V SOUTH**

### **Alpha—Miami University**

Alpha Chapter announces the formal initiation of Gwen Smith, University Heights; Marie Gujin, Barberton; and Gayle Crawford, Cincinnati.

New officers are: president, Jane Richey; vice president; Verne Dittmann; recording secretary, Marge Mason; corresponding secretary, Nancy Sweet; treasurer, Doris Green; historian, Dawna Parent; rush chairman, Nelda Sciarra.

A semester full of fun and surprise was started by our traditional Rose Ball Dance held on March 7th. The fun was continued as Greek Week came along. Fraternity open houses, chariot race, beauty contest, Panhellenic discussion groups were all part of the week's festivities. Our own particular addition to Greek Week was the traditional "Mock Rush Party", where the Delta Zetas entertain and "Rush" other sorority girls.

At May Day, Alpha Chapter was very proud of Nancy Hefner and Jane Richey who were tapped for Mortar Board. Nancy Hefner was installed as President of



Women's League. Ann Anderson, Judy Russell, Gail Perin, Joan Shumway were all recognized as counselors for the coming year, while Ann, Joan, and Gail were also tapped for Cwen, Sophomore Women's Honorary. Marge Mason was named managing editor of the *Tomahawk*, campus humor magazine, and she is a member of Women's League Council.

Carol Anderson has been appointed business manager of the *Tomahawk*. Linda Hoff was recently appointed office manager of the *Recensio*, the campus yearbook. Gail Perin has received an appointment as desk editor on the newspaper, the *Miami Student*.

Nancilee Black has been elected to Ye Merrie Players dramatic honorary. Barb Cipolla was elected to Phi Beta Kappa, while Jo Hefner, Barb Cipolla, Lela Brashers, Nancy Hefner, and Jane Richey were elected to Kappa Delta Pi, educational honorary. Betty Plantz was chosen The Rose of Sigma Delta Pi, men's business fraternity and has been entered in the national contest.

A very busy year was brought to a close by the Senior Picnic at Le Swordsville Lake. There, along with the seniors, the outstanding pledge, Ann Anderson; outstanding sophomore, Alice Scott; outstanding junior, Nancy Hefner, and outstanding senior, Jo Hefner were honored.

DAWNA PARENT, *editor*  
JANE RICHEY, *president*

### Theta—Ohio State University

We had an interesting help week and initiated Jane Hoar, Nancy Lees, Grace Miller, Natalie Parker, Mary Priest, Mary Stahl, Ellen Wolfe and Patti Zeigler. These girls worked at the Friendship House and also made favors for the Columbus State School for the blind. Miss Hopwood, the assistant dean of women, was our guest speaker for a social standards meeting on parliamentary procedure.

Theta chapter celebrated its founding with a tea for the alumnae and it was attended by Mary Collins Galbraith, one of our national founders.

A trophy was received by our Delta Zeta chorus for being runner up in the sorority sing contest. Fanne Kehoe was chosen Dream Girl of Theta chapter and also received the honor of being chosen the most outstanding woman on campus.

The new president of the Home Economics club is Anne Clark. Kay Jenkins, a transfer from Florida State College, affiliated with Theta Chapter.

Newly elected and appointed officers are as follows: president, Marilyn Edris; first vice president; Joan Newman; second vice president, Mary Hough; recording secretary, Katherine Rush; corresponding secretary, Phyllis Allomong; treasurer, Carolyn Myers; editor-historian, Beverly Bailey; scholarship chairman, Mary Priest; Panhellenic representative, Anne Clark; social chairman, Nancy Lees; publicity chairman, Mary Stahl; standards chairman, Eileen Holden; activities chairman, Grace Miller.

BEVERLY BAILEY, *editor*  
MARILYN EDRIIS, *president*

### Xi—University of Cincinnati

A big event of March for the chapter was when Betty Chase was chosen as a member of Guidon, the military honorary for junior women. Other honors were bestowed upon the chapter when Marilyn Cones was elected president of the Y.W.C.A., Cora Frytag initiated into Phi Beta Kappa, and Sharon Sander became the senior awardee at the Tri Delt Pansy luncheon.

We held our spring dinner-dance at North Bend Inn and everyone seemed to enjoy themselves.

September brought the beginning of school and also formal rushing. We pledged fourteen girls who were honored at a banquet at Hotel Alms. At this time, Beverly Borman received the outstanding pledge award.

We enjoyed our annual Founders' Day banquet at the Vernon Manor Hotel. Miss Irene Boughton was the guest of honor as we celebrated our fiftieth anniversary.

Another big event of the year was Homecoming. We worked long and hard on our float and were all very proud when it won first prize for the most humorous. Then came the Sophos dance. Sue Randall was our candidate and we entertained at an open house to introduce her.

During informal rush we pledged seven more women.

Gail Hatchel was our candidate for the Sigma Phi Epsilon "Queen of Hearts" dance. In December, Xi chapter held its Christmas formal at the Netherland Plaza Hotel, and everyone seemed to have a marvelous time.

The highlight of February came when Betty Chase was chosen as a member of the Queen's court at the Junior Prom.

We have recently elected our new officers for the coming year. They are: president, Beverly Borman; first vice-president, Betty Chase; second vice-president, Velma Weber; corresponding secretary, Gail Hatchell; recording secretary, Lois Younker; treasurer, Carol Ryner, and historian, Linda Marstall.

We have recently nominated Linda Marstall to be our candidate for Honorary R.O.T.C. Cadet Colonel which will be announced in the near future.

Plans are already underway for our spring formal. Monte Wismann, social chairman, is in charge of the dance.

BETTY CHASE, *historian*  
ALENE VERRAN, *president*

## PROVINCE VI

### Delta—DePauw University

With the excitement of another initiation over, Delta welcomes eleven new girls. They are Helen Bennett,



NEW INITIATES OF DELTA are (seated) Robyn Mumma, Donna Hartsough, Rhoda Wesley; (standing) Grace Hanson, Sonia Persano, Helen Bennett, Joan Simmons, Norma Hawkinson, Jackie Drummer, Janet Spangler, and Ruth Payne. Not pictured: Bev Rudy.



Philadelphia, Pa.; Jackie Drummer, La Moille, Ill.; Grace Hanson, East Chicago; Donna Jo Hartsough, Gary; Norma Hawkinson, Chicago, Ill.; Robyn Mumma, Dayton, O.; Sonia Persano, Morristown, N.J.; Beverly Rudy, Flora, Ill.; Janet Spangler, Kokomo; Joan Simmons, Marion; and Rhoda Wesley, Spencer, Md. In Spring Rush we pledged Elaine Burgess, Lincolnwood, Ill.; Marge Eichmeier, Freeport, Ill.; Mary Jane Kelly, Maywood, Ill.; Marilyn McCellan, Potomac, Ill., and Virginia Paulsen, Des Plaines, Ill.

Delta went philanthropic this spring and we enjoyed every minute of it. Marilee Mercer rewrote one of our rush skits *The Wizard of Oz* and we presented it to the Vigo County Home for Dependent Children in Terre Haute. Madelyn Hatch and Marge Schneider were in charge of the project. Everyone in the house was busy weeks before making beanbags to give to the Home. Jane Rowles, our new president, chartered a school bus and we bounced to Terre Haute where Mr. Ralph Smith, director of the Home, met us. We presented the skit with Flo Ullrich as Dorothy, Sally Harris as the Tin Man, Janet Blomgren as the Scarecrow, Carolyn Gipe as the Cowardly Lion and Elizabeth Class as the Tree. Marilee Mercer narrated and Marilyn Carlson was the accompanist. Then the Cowardly Lion led a Lion Hunt followed by games. Delta enjoyed the trip so much that we plan to go back next year and if possible extend our philanthropic program.

New officers for Delta are Jane Rowles, president; Caroline Hutchins, vice-president and pledge trainer; Joan Pollock and Georgene Larson, rush co-chairmen; Jean Risley, treasurer; Marge Schneider, house manager; Marilyn Carlson, personal chairman; Jeanne Benson, recording secretary; Pat Sale, corresponding secretary; Janet Miller, scholarship chairman; Joan Dehn, social chairman; Ann Keith, activities chairman; Carolyn Gipe, historian; Grace Hanen, editor, and Robyn Mumma and Rhoda Wesley, guards.

For the first time in Indiana Delta Zeta history State Day was observed on a college campus and we here at DePauw were chosen. We had over three hundred D Z's here for State Day festivities which included a luncheon at the Union Building, a speech by Dr. Russell Humbert, president of DePauw, and a tea at the chapter house.

This spring we planned our house dance as a surprise for our seniors. The theme was Cinderella's Ball and the seniors received Lucifers as favors. The dance was a success and the seniors were surprised.

CAROLYN GIPE, *historian*  
JANE ROWLES, *president*

## Epsilon—Indiana University

Epsilon of Delta Zeta is tied with Delta Gamma for the honor of being the house with the largest number of members. We have 74 girls including 25 new pledges. We have won many honors, both group and individual, and also have improved our scholarship. For the last three consecutive years we have received trophies in the Fall Carnival. The first two years we were rewarded for having the most original theme and this year for having the booth with the best front display. Also for the last three years we have backed Phi Delta Theta in the Little 500 bicycle race. Each year our team has placed in the first ten. Joan Tossell was a member of the queen's court for the Junior Prom this Spring, and Darlyne Ganz worked as chairman of the decoration committee.

Linda Farnham is secretary of the A.W.S. and a charter member of the Student Union. Beth Bolton and Judy Wear are on the A.W.S. Board of Standards, Judy being the senior representative for next year. Nancy

Toman is treasurer of Panhellenic and secretary of the junior class.

In the Y.W.C.A., Nancy Toman is president; and Barbara Cassner is secretary, co-chairman of Freshman Camp and a member of Cabinet. Beth Bolton is a member of the executive committee, and Judy Wear is on Council. Shirley Haflich, Nancy Toman, and Linda Farnham serve on the I.U. Foundation, members of which are appointed by President Wells. Also many girls have been appointed to Y.W.C.A. and A.W.S. committees for next year. Gloria McGahan is president of the Christian Science Organization, and Barbara Stevens is vice-president of the Collegiate Chamber of Commerce. Campus publications also have their place. Darlyne Ganz is senior editor of the yearbook, Shirley Haflich is office manager of the *Daily Student*, and Mary Ann Espey is office manager for the *Crimson Bull*, humor magazine.

Seven girls are members of Omicron Delta (commerce). They are Patsy Conroy, Connie Moeder, Nancy Plough—vice-president, Jane Raake, Helen Smith, Barbara Stevens, and Janet Weaver. Also we have made a good showing in Gamma Alpha Chi (journalism) and Pi Lambda Theta (education). In the former are Shirley Haflich, president; Barbara Stevens, vice-president; Darlyne Ganz, reporter, and Betty Knearl. Susie Breedlove, treasurer; Linda Farnham, and Janet Weaver are members of the latter. Susie LeBrun and Darlyne Ganz are members of Delta Tau Mu (I.U. Art Club); and Pat Boone and Susie LeBrun are members of Tau Beta Sigma (music).

Many members have been elected to the various honor and recognition societies. Girls are picked on the basis of grades and campus activities. Alpha Lambda Delta, of which Karen Nygord, Nancy Prichard, Sally Wilkins, and Barbara Zimmerman are members, is a scholastic honorary for freshman women. Kathy Neff, Nancy Prichard, Sally Wilkins, Barbara Zimmerman, and Mary Ann Espey are members of the honorary for freshman and sophomore women, Enomene. Junior or senior women who are members of Pleiades are Mary Ann Espey, Linda Farnham, Nancy Plough, Nancy Toman, and Judy Wear. Mortar Board is the honorary to which all active senior women hope to be pledged. Linda Farnham and Nancy Toman are members of Mortar Board. Mary Ann Schrader is a Phi Beta Kappa, and Janet Weaver is a member of Beta Kappa Sigma, (business honorary equivalent to Phi Beta Kappa).

We have had our share of activities within the house also. We have given two formal dances in honor of our two pledge classes. The Jingle Bell Ball was given for the Fall pledge class, and the ΔZ Mardi Gras was given for the Spring pledge class. We gave a dinner before the Dames Ball and a breakfast after the Junior Prom. Our mothers and fathers were our guests on their own special week-ends. During Fathers' Week-end we turned the dormitory over to our fathers and had them stand on the balcony while we serenaded them. We took our mothers, during their week-end, to the movies and then to the Commons—a typical Saturday night date. Mothers and fathers alike still talk about the good times they had when they visited their ΔZ daughters! Epsilon and Delta Zeta Founders Days were each celebrated with a dinner and a program. Our waiters were honored at a turnabout dinner in which the members of the executive council did the serving and each waiter functioned as a table head. We have participated in intramural sports such as basketball, volleyball, tennis, bowling and ping-pong as a housing unit and made a good showing. Helen Smith won the ping-pong tournament.

Our balcony serves as a very romantic setting for pin and complimentary serenades. When we hear the boys singing from below, we go onto the balcony to listen and



sing in return. Practically every Wednesday evening from five to seven we join one of the fraternities for an exchange dinner, picnic or tea dance. These functions are the custom on our campus for promoting better relations between the houses.

We've invited German exchange students, Miss Bell from the activities office, Dean Roberts—a Delta Zeta from Illinois, and other alumnae—including Grace Mason Lundy—for dinner and have had very interesting discussions afterward. We had a dinner for the graduating seniors, and they were given a Senior Brunch by Indianapolis alumnae, at which each received a monogrammed tea towel.

SUZANNE LEBRUN, *editor*  
NANCE TOMAN, *president*

### **Psi—Franklin College**

Psi chapter has needed to do some redecorating in our suite rooms but lacked sufficient funds. By working together at different money making projects, we are adding money to our furnishings fund. We plan to redecorate this summer.

This past semester, Psi initiated Jo Ann Allen, Camden, Indiana; Barbara Bernston, Shelton, Connecticut, and Lois Spellman, Lakeville, Indiana.

Recently we elected officers for the coming year. They are: president, Betty Jo Hinant; vice-president, Leah McCombs Hooker; corresponding secretary, Nancy Fisher; recording secretary, Vera Lanham; treasurer, Phyllis Wertz; historian, Barbara Bernston, and rush chairman, Betty Schmidt.

Our formal dinner dance was one of the nicest given this year. Our theme was "Belles and Beaus" and was carried out by the decorations, by the programs and by the bow tie favors.

Our annual Christmas faculty tea was nice this year. Also the alumnae gave us a lovely St. Patrick's Day dinner with a clever skit about Delta Zeta's founding.

We have been active in events on campus. Betty Jo Hinant was a director of Operation Follies, an annual Junior presentation. Connie Sunde was in charge of all publicity for Religious Emphasis Week. Several girls were in the one-act plays. Our chapter has also given the chapel program for the students on campus.

PHYLLIS WERTZ, *editor*  
BETTY JO HINANT, *president*

### **Beta Rho—Michigan State College**

Fourteen pledges were initiated at the beginning of this term; three new girls were pledged, and we now have a pledge class of 10. A total of 56 girls are now active in the chapter.

April 10 was the all-college activity "Spartacade," in which all living units construct various booths and side-shows. The affair takes place in the college field house. The public is charged a small fee for admission to the field house and the proceeds are turned over to the Community Chest. Beta Rho's theme was based on the books of Mickey Spillane. The name of the booth and play was "My Gun Is Sick." We worked in co-ordination with Alpha Gamma Rho fraternity.

In addition, Beta Rho cooked their own meals for two days, turning over the money ordinarily paid to the cook for that period to the Community Chest. The girls also shined shoes, sewed on buttons, patched pockets, etc., at various fraternity houses. A small fee was charged for these services. Over \$150 was raised for the Chest.

May 21 was our annual Mother's Day and Sorority Sing. A picnic was held early that Sunday morning for the parents and in the afternoon they attended Sorority

Sing. Beta Rho placed 6th out of 16 with their song "Bye, Bye, Blues."

One of our girls, Phyllis Marie Rainey, home economics senior, received the "Most outstanding Michigan Delta Zeta" award at the annual State Day, Albion College, May 23.

Another active, Joan Streadwick, journalism junior, was elected president of the college Pan Hellenic Council early this spring.

June 4, 5, 6 was the annual college Water Carnival in which all living units construct and enter floats in the competition. The scene of the Water Carnival is the Red Cedar River running through the center of the campus. Beta Rho won Grand Prize in 1951 in conjunction with Delta Sigma Phi. The theme this year was based on slogans. Our slogan was "When In Doubt, Don't." We worked in conjunction with Delta Upsilon on the float.

KAREN OLSEN, *editor*

### **Gamma Pi—Western Michigan College**

Gamma Pi held its formal initiation at the Kanley Chapel on December 10. Afterwards, there was a dessert and a program. Jean Kenny was chairman for the dessert and Janet Gideon was in charge of table decorations. Donna Bush, program chairman, presented the outstanding pledge award, a paddle and a bracelet to Sue Balgooyen. Gloria Allen, president, welcomed the new initiates. Those initiated were: Ricky Dalporto, Sue Balgooyen, Genny Holloway, Marty Mesick and Louise Sundstrom.

December 14, Gamma Pi was invited to go caroling with the Sigma Alpha Delta fraternity. After the caroling, refreshments were served by the SAD's at their new fraternity house.

The Delta Sigma Phi fraternity also entertained Gamma Pi at a Christmas Party. Gifts were exchanged and refreshments served.

Gamma Pi pledged 18 women at the Panhellenic House on March 11. The new pledges are: Judith Adkins, Myra Brieve, Catherine Crawford, Cynthia Hale, Frances Helling, Gloria Hungerink, Patricia Kelly, Delores Lee, Carlene Marker, Henrietta Mahder, Nancy Moss, Grace Murphy, Janet Nelson, Therese Wynn, Sandrena Rooks, Sandra Beaver, Beverly Tait and Ann Carter. Janet Felber was general chairman for the tea.

Installation services for the new officers of Gamma Pi will be held April 12 in the Davis Room of the Walwood Union. The new officers are: president, Joyce Bailey; first vice-president, Nina Hyskha; second vice-president, Joan Fox; recording secretary, Helen Spaulding; corresponding secretary, Marilyn Bomers; treasurer, Carole Olez; standards, Lois Udell; courtesy, Sylvia Smith; activities, Ann Cefalo; scholarship, Louise Sundstrom; publicity and editor, Jean Kenny; junior Panhellenic representative, Joan Fox, and senior Panhellenic representative, Betts Snyder.

Other activities for the spring semester will include the Mothers' Day luncheon, the annual house party, the all-sorority pledge formal and Greek Week.

IRENE SHOEMAKER, *editor*  
GLORIA ALLEN, *president*

### **Gamma Chi—Ball State Teachers' College**

Officers for 1953-54 of Gamma Chi are Phyllis Neff, president; Freda Wilt, first vice president; Kathy Conelley, second vice president; Lois Baker, corresponding secretary; Marilyn Beckett, recording secretary; Doris Sampson, treasurer; Martha Voght, historian; and Katie Walsh, Panhellenic delegate. Appointed officers



are Joan Durkin, Betty Gligor, guards; Carolyn Clouse, scholarship; Doris Harthan, social; Rita Heuss, publicity; Miriam Acker, parliamentarian; Verna Bryant, standards; Jean Rich, courtesy; and Sonya Miller, activities.

In April the chapter pledged four more girls. In spring elections new campus honors were won by Lois Baker, Phyllis Neff, and Kathy Conelley who were chosen treasurer, registrar, and convention delegate, respectively, of A.W.S. Phyllis was also elected vice president of Women's Recreation Association and Kathy was re-elected to the Student Executive Council. Edna Olson, Katie Walsh, and Lois made Kappa Delta Pi (education honorary) while Joan Durkin was chosen for Pi Omega Pi (business honorary). Katie Walsh was also chosen Junior Marshall.

## PROVINCE VII NORTH

### Tau—University of Wisconsin

The following officers were installed into the Tau chapter of Delta Zeta: Audrey Paff, president; Jacqueline Puffer, vice president, in charge of pledge training; Nancy Bermeister, recording secretary; Hellen Hood, treasurer; Nancy Rogstead, corresponding secretary; Beatrice Lawrence, rushing chairman; Karon Kennedy, Panhellenic; Carol Schwartz, scholarship; Nancy Eckblad, standards; Carol Winter, social chairman; Dohna Duher, house president; Joan Boesch, publicity; Jean Gundlach, gifts and flowers; Patricia Day, historian; Joan Gottschalk, song chairman and Jean Oldigs, intramurals.

The events entered this semester were: Humerology, an exchange dinner with Theta Delta Chi and Winter Carnival. For the latter event we won a trophy for third place in the parade.

Events to be entered this spring are: Spring Sing, the Delta Zeta spring formal, Delta Zeta Workshop for the Midwest and State Day. Both of the latter events will be held here at Madison. The house is also planning a party for blind children to be given in the near future.

PATRICIA DAY, *editor*  
AUDREY PAFF, *president*



*Sigmas enjoy play time during their fall house party at Camp Chemekete, Hammond, Louisiana.*

### Gamma Theta—Carroll College

The Gamma Thetas have plunged into a field of activities on the Carroll College campus. This winter we took first place for our creation in snow of an organ, choir master and choir boys in the annual Ice Carnival.

The Spring Carnival, sponsored by the Student Christian Association on campus, also brought fame to the name of Delta Zeta. First place was won for our booth of girls sitting around a swimming pool (a large tank) holding lighted candles which the customers tried to snuff out with squirt guns.

The Gamma Thetas initiated into membership during the past year: Jeanne Choate, Park Ridge, Ill.; Doris Hansen, Itasca, Ill.; Helen Harney, Milwaukee; Elizabeth Mason, Mundelein, Ill.; Elizabeth Bain, South Milwaukee; Sue Henning, Janesville; Nancy Kausler, Ashland; Judy Mickle, Milwaukee; Shirley Schilleman, New London; Patricia Wendling, Morocco, Ind.; Katherine Ann White, Oshkosh; Nancy Hall, Fort Atkinson; Wanda Vogt, Gladstone, Mich.; Nancy Lynard, Wauwatosa, and Virginia Smith, Oak Park, Ill. To lead them will be the following newly elected officers: Marilyn Meidinger, president; Frances Melcher, 1st vice president; Marjorie Medler, 2nd vice president (rush chairman); Wanda Vogt, corresponding secretary; Joanne Raschka, recording secretary; Sue Henning, historian and Maxine Edlbeck, treasurer.

JOANNE RASCHKA, *editor*

### Gamma Mu—Illinois Institute of Technology

During Junior Week the Gamma Mu's were extremely busy and well paid for their efforts. Joan Graper was the over-all fashion show winner. Fern Schalund was the Home Economics department chairman, and her display was awarded second place. All the Gamma Mu's participated in the Inter-Fraternity Sing.

Delta Zeta ranked first among the campus sororities in scholarship last semester.

Three Gamma Mu's were elected to offices during recent elections. Pat Turner is secretary of the Illinois Tech Student Association; Fern Schalund is president of the Illinois Tech Woman's Association, and Gail Fitzgerald is secretary of the sophomore class.

In September the Gamma Mu's will have housing on campus. We will occupy an apartment in the recently completed Carmen Hall.

Joan Graper and Fern Schalund were initiated into Phi Delta Epsilon, the journalism fraternity on campus, of which Delores Jackson is already a member.

Barbara Underwood was elected secretary of Phi Mu Epsilon, the music fraternity on campus.

MARILYN GREEN, *editor*

## PROVINCE VII SOUTH

### Pi—Eureka College

New officers for the coming year are Donna Klopfenstein, president; Marguerite Johnston, vice-president; Luella Ewing, treasurer; and Peggy Magnuson, recording secretary, corresponding secretary and historian.

Birthday dinner for the chapter was held on February 15 with 60 alumnae and chapter members present. This year Pi is organizing a Mother's Club. The mothers were the honored guests at the 36th celebration. The director of Province VII, Mrs. Victor Hyde, was the main speaker at the dinner.

Marie Dyar of Washburn received the Ideal Pledge ring and Carolyn Florea of Mt. Morris received the Ideal



Active ring. Both of these rings are traditions of the chapter donated by the Crabtree sisters.

Carolyn Florea was selected by the college faculty for "Who's Who in American Colleges and Universities" for the 1953 edition. This is an honor conferred each year upon two seniors from the college.

Lyovonne Trad played the leading role in a recent college production of "Elizabeth the Queen." Donna Klopfenstein was in charge of the costuming for this production. Donna also received the lead in the commencement play "St. Anne and the Gouty Rector."

The annual spring formal was held in Peoria at the Hotel Pere Marquette on May 2. A breakfast was held in the chapter room on Sunday morning for the actives and the rushees who were guests.

A traditional tea for the parents and faculty was held on May 17 with 65 people present. Formal initiation of 12 charter members of Pi Mother's Club was held.

An informal tea was held April 13 in the lounge of the dormitory for local girls interested in attending Eureka College in the fall.

MARGUERITE JOHNSTON, *historian*  
LYOVONNE TRAD, *president*

### Alpha Beta—University of Illinois

Alpha Beta is busy working with the Alpha Gamma Rhos on Spring Carnival, which will be April 18.

On March 7, seven girls were initiated into the active chapter of Delta Zeta. They are Janice Black, Cincinnati, Ohio; Betty Briney, Chicago; Jane Edwards, Pinckneyville; Carolyn Cochran, Galesburg; Elsie Krumpke, Peoria; Mary Lou McGowan, Downers Grove, and Donna Ruys, Chicago.

During the recent spring informal rushing we pledged Peggy Carter, Springfield and Joan Ellen Hasman, Chicago.

Jan Barker, our new president, recently attended a Mortar Board tea and was initiated into Theta Sigma Phi, journalism honorary. Other new officers are Sandra Racine, vice president; Jane Swiedal, rushing chairman; Louise Zingrone, treasurer; Mary Lou McGowan, social chairman, and Pat Jaye, standards chairman.

The "Beaux Arts" black and white spring costume dance was given March 21 for the actives by the pledges. Everyone attended in a variety of black and white costumes.

The following were elected to various honorary societies: Mary Lou McGowan, president of Mask and Bauble, dramatics honorary; Jane Swiedel, Phi Chi Theta, commerce honorary; Donna Duerwachter, Theta Sigma Phi, journalism honorary, and Norma Forbes, associate member of Terrapin, women's swimming honorary.

On May 9 our annual Rose Ball formal dinner dance will be held at the Urbana Lincoln Hotel. April 18 some of our members are planning to attend the Delta Zeta Workshop at the University of Wisconsin. Spring rush weekend is May 15, 16 and 17. The week of June 13-18 has been set aside for formal rush.

DONNA RUYS, *editor*  
JAN BARKER, *president*

### Gamma Rho—Northern Illinois State Teachers College

The Gamma Rho chapter elected officers recently. Those who will hold offices during the next year are: Donna Averill, president; Mary Jo Larsen, pledge vice-president; Joyce Stein, rush vice-president; Betty Terry, recording secretary; Nancy Nelson, corresponding secretary; Marilyn Braun, treasurer, and Betty Holley, historian.

On February 15 we initiated our pledge class. They are: Joy Owens, Nancy Luga, Pauline Sweet, Barb Hutson, Carolyn McCoy, Barb Allison, Cheryl Hamper, Barb Bohm, Dolores Fortman, Lucy Rohr, Jo Sasek and Donna Lindsey. At a party afterwards given by our alumnae, Joy Owens was named Dream Girl Pledge and Joan Remec was awarded the title of Dream Girl Initiate.

A highlight in our calendar for the past quarter was a dance held jointly with Sigma Pi Delta, local social fraternity. The theme was Mardi Gras and the decorations consisted of balloons, large masks, instruments made of cardboard and eye masks were given as favors. Everyone came in appropriate costume.

Recent honors go to Isobel Thompson on being initiated into Sigma Tau Delta; Mary Jo Larsen and Madge Christopher were elected to Delta Psi Kappa; Maryann Cosgrove, Emma Lawson and Marilyn Braun to Alpha Psi Omega. What we are most proud of is getting a 1.88 grade average for the last quarter which was the highest of any organization on campus.

JOAN REMEC, *editor*  
CLAIRE LAWSON, *president*



REPRESENTING GAMMA ETA at Hunter College Field Day, May 19, are Mary O'Shea and Stella DePasquale.

## PROVINCE VIII NORTH

### Gamma—University of Minnesota

Gamma chapter began another successful year with twenty-six pledges and twenty-one initiates. We received three top honors during the year. In the fall quarter we were first in the Homecoming Wood Piling contest. In the winter quarter, directed by LaRue Lobitz, we took first place in the Greek Week Songfest singing "Bidin' My Time." During the spring quarter we entered the Campus Carnival with the Phi Sigma Kappas in a show, "Musical Weather-vane," and took the first place trophy for the best show.

Individually there were honors in the scholastic area. Martha Aitchison was initiated into Sigma Epsilon Sigma, the sophomore women's honorary, and Mary Beth Ekberg was tapped for Chimes.



We had beauty, too. Jean Newgard was the 1953 Stardust Queen. This is the second Stardust Queen Gamma has had in three years. LaRue Lobitz, the 1951 Stardust Queen, received a new honor in being selected as the "Ideal Teacher."

Other individual achievements were numerous. Joann Langlie and Marcia Koth received the Order of Ski-U-Mah while LaRue Lobitz and Madge Micheels walked off with the Order of the Gopher. These awards are All-University-Congress awards for outstanding contributions to the campus. Madge Micheels, Mary Beth Ekberg, and Bette Perry were elected president, vice-president, and treasurer of AWS, respectively. Bette was also elected to Education Board. Kathryn Kuske was awarded a silver key for outstanding service to the St. Paul Campus Union Board.

Jan Peterson was appointed to Freshman Cabinet. Jan is also busy teaching dancing. For the second consecutive year we have had the College of Science, Literature, and Arts "Dean for a Day." Last year's Dean was Marcia Koth; this year's Madge Micheels. Madge was also Greek Week Co-chairman.

Chapterwise, Sue Mulvaney was the outstanding pledge and Jean Newgard, Bette Perry, and Mary Cravens have held the position of pledge president. New officers of the chapter are Beth Sarantos, president; Betty Ashmeade, vice president; Jean Newgard, second vice president; Kathy Kuske, treasurer; Viv Cates, recording secretary; and Jean Rosener, corresponding secretary.

MADGE MICHEELS, *editor*  
BETH SARANTOS, *president*

### **Upsilon—University of North Dakota**

Recently initiated into Upsilon were: Bonnie Alger, Jacquelyn Fix, Kitty Kotchian, Rebecca Moore, Karen Shimp and Shirley Wolhowe. Founders' Day was also held that day in conjunction with the initiation.

We are also proud of our new pledges of second semester: Orpha Erickson, Oslo, Minnesota, and Mary Lynne Ostenson, Grand Forks. Merlynn Berge and Beverly Burau were initiated on December 14.

The annual winter carnival was held here in February, and we succeeded in placing second in snow sculpturing. Our theme was "Banana Split With the Gophers," which suggested a huge banana split.

Mary Safstrom, our president, was recently named to Who's Who on campus. Mary was recently in charge of the all-campus fashion show, and Angie Raney and Jacquelyn Fix modeled from our house. Verne Holte played a supporting role in the play. "The Imaginary Invalid."

In conjunction with the North Dakota Crippled Children's Drive, our entire chapter recently sold lilies in the downtown area. This was part of the pre-initiation project of the pledges, who were assisted by the initiates.

Our chapter is now brushing up on our dancing, as we prepare our Follies Act, "Recipe For Happiness" for tryouts.

IRENE KONIG, *editor*  
MARY SAFSTROM, *president*

### **Beta Kappa—Iowa State College**

A new year and a new quarter at Iowa State College brings news from Beta Kappa chapter. Winter rush brought us seven new pledges. They are: Marjorie Booth, Des Moines; Mary Friedrichs, Elgin, Ill.; Lou Ellen Hale, Davenport; Joann Liesener, Ventura; Charlotte Owings, Watseka, Ill.; Shirley Schieder, Cedarville, Ill., and Mary Lou Stewart, Des Moines. March 1, we initiated

four upperclassman pledges, who will move into the chapter house Spring quarter. They are Kay Hacker, sophomore, Weldon; Marcia May, sophomore, Knoxville; Mary West, junior, Janesville; and Jean Wilkerson, sophomore, Cedar Falls.

The new chapter officers, elected the end of winter quarter, are Darleen Bornschein, president; Ruth Ann Gardiner, vice president and pledge trainer; Donna O'Brien, recording secretary; Virginia Paulsen, corresponding secretary; Jane Atwater, historian; Mary Clayton, rush chairman; Carole Nutter, treasurer, and Jackie Kettner, house manager.

Jane Atwater, Jean Goul and Donna O'Brien were initiated into Phi Upsilon Omicron, national home economics professional honorary. Jean Goul was also initiated into Theta Sigma Phi, national women's journalism honorary.

Jean Goul has been chosen publisher for the *Iowa Homemaker*, magazine for the home economics division of the college. Diane Schmeckebier is the new treasurer for that publication. Rachel Bernau and Margy Cole are new column editors.

Ruanne Martin was college chairman for the WSSF drive. Mary Clayton is new vice president for Rush Council. Vivienne Ritter has just completed her term as president of SAL, national women's music honorary. Mary Clayton is the new pledge class president for that organization. Marilyn Wright is also a new SAL pledge.

A number of Beta Kappas have been elected to office in various home economics clubs. Marilyn Wright is new president of Applied Art Club. Jane Atwater has been elected publicity chairman for Child Development Club. Esther Hunter is sophomore representative to Textiles and Clothing Club. Virginia Paulsen is new secretary-treasurer of Foods Club.

Varieties, all college vaudeville, was not only enjoyable, but rewarding this year. We put on a modern dance take-off on a girl who waits for her boy in service, but is left after he returns. We won first place the night it was presented.

Beta Kappas have a finger in almost every college pie, but they find time to socialize. Our Christmas formal was enjoyed by all. Our winter spaghetti dinner, Pasquelle's Place, had the atmosphere of a small Italian restaurant. The pledges give a platter-parade fireside entitled "Come On to My House."

Everyone is looking forward to spring quarter which brings Sor-Dor and Veishea with all their activities. Sor-Dor, sorority and dormitory singing competition, practice is in full swing. Plans for Veishea, Iowa State College educational festival, are well under way. Many Beta Kappas have big responsibilities for Veishea this year. Plans for the Veishea parade float are very important this year, since we won the trophy for the most outstanding float last year.

JANE ATWATER, *editor*  
DARLEEN BORNSCHEIN, *president*

### **Gamma Epsilon—Drake University**

The fall of 1952 was opened in a whirl of rush parties. The theme for our decorated party this year was "Δ Z Island," carried out with palm trees, sand, wild flowers, and food from the islands. We pledged eighteen girls: Sue Bechtel, Des Moines; Joanne Coffland, Rock Island, Ill.; Sandra Cummings, Des Moines; Diane Davis, New York; Merrynell Farnsworth, Cresco, Ia.; Joanne Funk, Bethany, Mo.; Joan Gearhart, Des Moines; Patricia Haller, Park Ridge, Ill.; Marilyn McCormick, Des Moines; Julie Newell, Wilmette, Ill.; Romaine Purcell, Hubbard Woods, Ill.; Bonnie Soutter, Des Moines; Sheila Wittermeyer, Davenport, Ia. In open rush we pledged June Barber, Chicago; Ruth Galbraith, Sac



City, Ia.; Catherine Photiades, Mason City, Ia.; Diane Reese, Des Moines; Betty Riffle, Perry, Ia.

Our new house mother was introduced at a tea attended by the administrative board of the school, and presidents of the organization. We also held a tea for all faculty members on campus to promote closer relationship between students and faculty.

Homecoming at Drake University brought many  $\Delta Z$ 's in the spot light. We had three girls up for Homecoming queen: Diane Morano representing Alpha Epsilon Pi; Jayne Field representing Pi Kappa Alpha; and Sally Wright representing Pi Kappa Alpha; and Sally Wright representing the Pep Club. Di reigned on the queen's court. Our theme for Homecoming house decoration was "Best Wishes to Our Team on Their 60th Anniversary." This was portrayed by a huge wedding cake decorated with roses, and at the very top were football players of past and present. A tea followed the football game.

On October 24th, we celebrated Founders Day. The president and other members gave tribute to the founders, and the rest of the evening was spent socially. Alumnae, college members and pledges attended.

In February we again presented a short skit in song and dance for the annual Bulldog Tales, this year's theme being "In a Doll Shop." The girls designed, and made many of the costumes.

As a social sorority we of course had parties. Our very first was a "Flapper Gay Ninety Party." Every one came in costume and the evening was spent dancing the Charleston and Bunny hop. Our next party came on Friday the 13th, a haunted house party. It was a casual party, but the house turned its gayness into the

haunting moans of a ghost. We had two formal dances, the Winter Formal and The Rose Ball.

When Greek Week End came we practiced day and night for Sweet Heart Sing, held on a non-competitive basis. Then there was campus carnival for which we had a side show and gave the proceeds to the community chest.

Hour after hour was spent stuffing napkins, and fixing the construction for our Drake Relays float "It's a Honey." The next day we were happy to find only one float pictured in the paper—ours. Our Quax beauty for the year, Bonnie Sutter, reigned on the queen's court.

Activities were also kept in tune, for D.Z.'s were represented everywhere. Sally Wright served as rush chairman of Mu Phi Epsilon, on Social-sub, and found herself busy in the music department. Dee Gross was president of Kappa Beta Kappa. Barb Brown and Pat Moore served on the social-sub committee. Betty Turner served as secretary of Phi Mu Gamma and Delta Phi Delta. Betts also played an important part on the convo committee. Diane Morano served as treasurer of Kappa Beta Kappa and president of the Women's Recreational Association. Patty Bunn served as vice president of Phi Mu Gamma and also took part in many of the Drake drama productions. Barbara Pruden and Elizabeth Richards were initiated into Delta Phi Delta, national honorary arts. Kay Brei acted as treasurer and secretary of Phi Mu Gamma. Pat Noel was president of Phi Mu Epsilon, in addition to her many activities in the music department. Ruth Galbreith was president of the Women's Dorm. Marilyn Yeager also served as president of Sigma Epsilon Delta.

ELIZABETH J. RICHARDS, *historian*



ALPHA GAMMAS AND THEIR DATES pause during their Rose Ball held at the Tuscaloosa Country Club, March 13.



## PROVINCE VIII SOUTH

### Beta Sigma—Colorado A. and M. College

Our new pledges of this quarter are Jackie Carlin, Eldean Chung, Katie McFarland, Marge LaRue, Mary Lou Shaller, Jean Patterson, Margaret Hanson and Betty Looney. Our pledges have just finished their Help Week. They painted chairs and tables for the Episcopal Church here in Fort Collins. Our pledges were the first to finish their project this year, before the other sorority pledge classes.

On February 6, we initiated eighteen new members. This is the largest class we have ever had. They are: Pat Cramer, Gerda Wilhelm, Shirley Hutchinson, Kay Childs, Beverly Yarberry, Vivian Cook, Marie Dickman, Barbara Burry, Jeannie Harper, Maxine Hessel, Nina Squires, Dorothy Pricksorn, Laura Rowe, Corrine Miller, Alyce Senti, Jan Goodin, Jeanne Howe and Mari Sherman. We have fifty-five members now.

This year, we have several members who are honorary R.O.T.C. officers. Jackie Woods is one of these and Louise Webster is alternate.

Delta Zetas are really on top this year. Gerda Wilhelm is the new freshman cheerleader and Lynette Newell is head cheerleader.

Delta Zeta placed high in the scholarship on campus, too. We placed third in the sorority classes. The initiates did beat the pledges in their grade average though. Jo Ouder Kirk had the highest initiate average and Marie Dickman had the highest pledge average.

Lynette Newell has been chosen senior class representative for the Associated Women Students. Nina Squires is the new sophomore representative. We are trying to get as many members as we can into student government.

Our annual Rose Dance will be March 28. We have been working hard to make it a memorable occasion for everyone.

Our officers for this next year are: president, Shirley Belier; vice presidents, Mary Troeger and Lynette Newell; rush chairman, Pat Brunell; recording secretary, Marie Dickman; corresponding secretary, Louise Webster; historian, Corrine Miller; treasurer, Margaret Benson; guards, Carol Prout and Jeannie Harper, and parliamentarian, Gerry Pratt.

MARY TROEGER, *editor*  
SHIRLEY BELIER, *president*

### Beta Tau—Nebraska Wesleyan University

Beta Tau enjoyed visiting with alumnae who returned for Homecoming October 31. House decorations were judged and we had a chuck wagon feed at dinner time. Donna Benton was elected as one of the Senior attendants.

November 16, Beta Tau held a 50th anniversary tea in honor of our sorority.

The 18th of November was Wesleyan's Annual Talent Show. We were pleased with Sylvia Slater's taking first prize in vocal solos.

December 18 saw all of the sorority girls looking their prettiest for the annual Panhellenic Ball. Each sorority presented one number for the program. Following the ball we returned home, donned our loafing togs and awaited Santa's visit. The next day, Beta Tau entertained Phi Kappa Tau, fraternity, at an early morning breakfast.

February 14 found Beta Tau initiating her first semester pledges and Sunday, February 15, was the Rose Banquet where Ruby Varana was disclosed as Ideal Pledge.



FEBRUARY INITIATES OF GAMMA GAMMA chapter are (seated) Diane Preefert, Wilma Walker, Barbara Casady, (standing) Betty Harrison, Shirley Hedges, Elvera Robker, Marilee Jones.

The 20th, the girls of Beta Tau entertained their dates at dining and dancing at the annual Rose Formal. Here Harold Rosenau was revealed as D.Z. Man.

BETTY THURMAN, *editor*  
JOYCE McCASH, *president*

### Gamma Gamma—Missouri Valley College

Gamma Gamma initiated seven girls into the sorority: Diane Preefert—Kansas City, Missouri; Shirley Hedges—Kansas City, Missouri; Barbara Casady—Chillicothe, Missouri; Marilee Jones—Bevier, Missouri; Elvera Robker—Platte City, Missouri; Wilma Walker—Farmington, Missouri; Betty Harrison—Garrett Park, Maryland.

Gamma Gamma placed first for the second consecutive year with its Homecoming gate decoration, pot of gold and a Rainbow with "Victory Our Gold" as the slogan.

A hayride started off the parties for the year. This was followed by a bowling party, a "Paddle Party," given by the pledges for the initiates, and then a Christmas party. Planned for April is a costume party at which time the new officers of Gamma Gamma will be presented to the other students of the school. The newly elected officers are: Anna Lois Rickles, president; Wilma Walker, first vice president; Carolyn Snuffer, second vice president; Marilee Jones, recording secretary; Betty Harrison, corresponding secretary; Katherine Janes, treasurer; Diane Preefert, historian.

One of our girls, Geraldine Williams Chockley, was elected to *Who's Who in American Colleges and Universities*.

This spring Gamma Gamma won a prize of twenty-five





SNAPPED AT SIGMA'S MOTHER AND PATRONESSES CLUB party for new mothers are Mrs. Claude Couvillion, president; Pat Neck, president of Sigma chapter; and Mrs. Ellen B. Moore, State Registrar of Land and patroness.

dollars for placing second in the convocation parade. The theme was "Looking Forward"—"1963 Golden Jubilee."

MARTHA THOMAS, editor  
GERALDINE CHOCKLEY, president

## PROVINCE IX

### Sigma—Louisiana State University

Sigma got started this year with a bang! After a successful rush week we added twenty-six new names to our role. As a means of getting "really" acquainted we, equipped with bathing suits and jeans, left for a weekend houseparty at Camp Chemekete near Hammond, Louisiana.

Mrs. J. Wilson Lepine visited the chapter for a week, during which our annual Founder's Day Banquet was held. Approximately seventy-five members and alumnae attended the banquet.

The following weekend presented hayride time again in Louisiana. We, with our dates (natch!!), spent the day at Favrot's Camp.

Getting back to the cultural side of life, Sigma served as ushers for the Baton Rouge Symphony Concert, when two Delta Zeta alumnae were guest singers.

Between weekend festivities, we found time to collect and give 100 per cent to the United Giver's Fund, a city wide drive. We were the first organization to do so.

As volley ball season rolled around we found ourselves in second place in the Women's Recreation Association Tournament.

Formal presentation of the pledges took place at our annual formal dance, preceded by a banquet entertaining members and their dates. In accordance with the theme of the dance, "Delta Zeta Belles," each pledge was presented through the arc of a gigantic silver bell.

During carnival season in Louisiana, Sigmas made front page society news by reigning as queens. Betty Reed reigned as queen of the Krewe of Romany, Baton Rouge, Louisiana. Patricia Neck was queen of Mardi Gras in New Roads, Louisiana. Other beauty spotlights shone upon June Sutton, named as sweetheart of Tau

Kappa Epsilon fraternity; Gloria McDermott and Virginia Easterly appeared in the court of the Pan American Fiesta; Janet Andreas was a nominee for Darling of L. S. U. Gloria McDermott was also Fraternity Sponsor for the Swimming Meet, and Natalie Reulet was a candidate for Queen of the College of Commerce.

Sigmas still aren't too old to enjoy the Easter Bunny. We aided the Baton Rouge Recreation and Park Commission in dyeing easter eggs for their annual hunt.

With election time appearing, Sigma elected the following: president, Pat Neck; first vice president, Wanda Menetre; second vice president, Gail Gibbens; corresponding secretary, Emma Lou Barton; recording secretary, Maude Flannagan; treasurer, Natalie Reulet; historian, Jeanie Dupont.

Parties don't yield to such honors as we have received this past year: Pat Neck—outstanding sociology student, treasurer of Associated Women Students, secretary of Sociology honorary fraternity; Wanda Menetre—Mortar Board; Natalie Reulet—treasurer of the College of Commerce, vice president of Alpha Beta Chi; Gloria McDermott—president of Phi Upsilon, senior advisor; Jeanie Dupont—president of Library Science Club; Dolores H. Dietz—vice president of Library Science Club; Louise Guthrie and Bobbye Blanchard—Phi Kappa Phi; Suzanne Pickell—president of Music School; Patsy Champagne—Sophomore Advisor.

JEANIE DUPONT, historian  
GAIL GIBBENS, president

### Alpha Gamma—University of Alabama

New initiates of Alpha Gamma are: Shirley Frances Bradbury, Miami, Florida; Dorothy Jean Davidson, Tuscaloosa; Gladys Louise Eberhardt, Birmingham; Nancy Zoe Greene, Dothan; Betty Ann Hardy, Tuscaloosa; Betty Jo Harper, Birmingham; Joan Cherokee Cardon, Montgomery; Ernestine Elizabeth Howell, Moundville; Carol Janet Jones, Bessemer; Mary Lucinda Tribble, Fort Payne; and Nina Jone Burnett, Gorgas.

The big event of the year was the Rose Banquet held at the McLester Hotel in March. Awards were presented to the following: Joanne Harper, outstanding initiate; Jean Davidson and Shirley Bradbury, outstanding pledges; Barbara Hunt, greatest scholarship improvement; Joyce Howard, initiate with highest scholastic average; and Betty Ann Hardy, pledge with the highest scholastic average.

Presentation of the new officers was made at the Rose Ball, which followed the banquet. They are: Ann Lightfoot, president; Ann O'Rear, first vice president; Wanda Shivers, second vice president; Claire Hunt, corresponding secretary; Shirley Bradbury, recording secretary; Pat Clark, treasurer; and Joan Cardon, historian.

Committee chairmen are Jo Anne Barnes, parliamentarian; Betty Ann Hardy, courtesy; Betty Jo Woods, publicity; Jean West, activities; Jo Ann Shaw, standards; Peggy Hubbs, social; Ernestine Howell, scholarship and Jane Hollis, house.

Pat Clark was elected to represent the Alabama chapter of Alpha Epsilon Rho at their National Convention in Columbus, Ohio, in April. She is Keeper of the Archives of Theta Sigma Phi, was selected to go to the regional International Broadcasting Station convention in Columbus, South Carolina, and has the lead in the next television show put on by WAPB, the campus radio station. Ann O'Rear was tapped for Pi Tau Chi, the Methodist Honorary. Jean West is a finalist for the Sweetheart of Delta Sigma Pi, the Commerce honorary fraternity. Betty Ann Hardy has been put up by Delta Sigma Phi, social fraternity, for Miss Bama Day. Two of our girls made the Deans List for last semester. They are Joyce Howard and Joy Freundsuh.



We put on a skit for the Theta Chi, Pi Kappa Phi, Delta Chi, and Sigma Phi Epsilon rush parties. Our first standards program was on Helpful Hints on Personal Grooming and Manners given by our girls. The second was given by Hannelore Winter and Erika Hetzel, exchange students here at the university from Germany. Our third program was on Communism given by Dr. Wheeler.

We entered Step Singing in April. We also held two rush weekends in April and May.

JOAN CARDON, *editor*  
ANN LIGHTFOOT, *president*

### Alpha Pi—Howard College

Joy Ruth Williams was Beauty in the Howard College Miss Homecoming contest. She also won an "Oscup" for her performance as the leading lady in "Joan of Lorraine."

Margarite Rutledge was Miss Homecoming and Miss Entre Nous. In addition to being our candidate for Miss State Day Award, she received a ribbon as one of the most outstanding women on our campus. More honors were brought to our chapter by Fran Hamilton who won the Miss Personality Contest, and Billie Ruth Pounds who won a speech trophy. Doris Herrmann received the Pledge Award and Scholarship Trophy.

As a chapter Alpha Pi won the trophy for the best skit presented at Skit Night. We also won an award for the best decorated car in a motorcade. We rank second in scholarship among the sororities on our campus.

FLOANNELL FUQUA, *editor*

### Beta Xi—Alabama Polytechnic Institute

Our newly decorated chapter rooms gave fall rush a perfect start, and we pledged thirty-one girls.

Delta Zetas at Auburn are serving in many capacities in campus organizations: Doris Whaley, vice president of Women's Student Government Association; Janet Taylor, treasurer of the Physical Education Club; Carolyn Wood, president of dormitory; Betty Rae Crane, vice president of dormitory; Rita Kelly, president of the School of Home Economics; Margaret Hatchett, secretary of Sphinx; Betty Rae Crane, president of Women's Recreational Association; Pat Andress, vice president of Decor; Doris Whaley and Rita Kelly selected for *Who's Who in American Colleges and Universities*.

Winter rush closed with our "Flapper Party" and the pledging of five girls. Initiation was held for Barbara Mayne, Doris Lessman, Merry Lou Arthur, Betty Brewer, Barbara Cheney, Ruth Cooper, Anna Cox, Mary Hanson, Eleanor Holt, Alice Needham, Beth Ann Penny, June Reynolds, Lucy Roy, Ann Sanders, Lou Ann Turner, and Betty Ann Ward. Following initiation, big sisters took their little sisters to the Town House for supper.

During Religious Emphasis Week in February, Reverend Sebastian Hill visited us in our chapter rooms and gave a very inspirational talk.

Interesting and varied panels were given in the sorority rooms for Greek Week. The Inter-fraternity Dance, with the presentation of the Greek Goddess brought to a close this year's Panhellenic Workshop. Our candidate for Greek Goddess was Barbara Mayne.

Newly elected officers of Beta Xi are Joanne Powell, president; Emma Lou Thompson, first vice president; Jackie Waller, second vice president; Nancy Smith, recording secretary; Lou Ann Turner, corresponding secretary; Sylvia McCalla, treasurer; Grady Sue Loftin, assistant treasurer; Doris Ray, historian; and Merry Lou Arthur, Panhellenic representative.

The big weekend of the Delta Zeta dance was March

28. Plans included a picnic Friday at Lake Chewacla and "The Rhapsody in Blue" formal on Saturday. Each girl was presented with a French Bouquet which she carried in the leadout. Members, pledges, and dates attended the First Baptist Church on Sunday morning.

Our chapter recently participated in the U.M.O.C. (ugliest man on campus) contest, sponsored by A Phi O. Beta Xi's candidate received second place honor. This event was held to raise money for the March of Dimes.

State Day for Alabama Delta Zeta chapters was held in Birmingham April 18. Beta Xi was co-hostess for this event.

Jackie Waller was elected secretary of the Women's Student Government Association on the Auburn campus.

Initiation was held on April 11 for the following: Peggy Cofield, Vivian Harper, Elizabeth Ann Hicks, Jill Carpenter, Helen Cofer, Nancy Watson, Elizabeth Ann Tille, Ann Fornby, Carol Whatley and Sara Cooper.

Big plans are being made for our house party in Panama City the first weekend in May.

DORIS RAY, *editor*  
JOANNE POWELL, *president*

## PROVINCE X

### Alpha Epsilon—Oklahoma A. & M. College

Alpha Epsilon was honored by having Mrs. Gale, our national president, stay with us during rush—a pleasant beginning for a successful year.

We were proud to show the beautiful new addition of our chapter house to the Oklahoma A & M students and faculty when we held open house. Delta Zeta was also chosen to entertain the annual Panhellenic tea this year.

Membership in many campus organizations is held by members of Alpha Epsilon; Orange Quill, Orange and Black Quill, Sigma Alpha Sigma, Order of Gregg Artists, Pi Omega Pi, Tau Beta Sigma, Sigma Alpha Iota, Omicron Nu, and Pi Zeta Kappa being the honorary organizations. Several members were also named to the Dean's Honor Roll.

A Delta Zeta held the presidency of Peppers, the panhellenic pep club, this year. Pat Parnell was elected head varsity cheerleader and Evelyn Smith was chosen to be on the varsity basketball team.

During the informal rush period we led all the other sororities on the campus in the number of pledges.

An enjoyable time was had when the pledges entertained underprivileged children of Stillwater at a Valentine Party—with the appreciated assistance of the Alpha Gamma Rho Fraternity.

At the initiation banquet this spring, Patty King was named outstanding pledge, Carol Kinnison was honored for having the highest grades in the pledge class, and Lois Lewallen was given the title of best-groomed pledge.

We'll never forget the good times we had at our very successful Sock Hop, Bar-B-Que, Christmas Party, Valentine Party and Rose Formal, when our Dream Boy and Dream Girl were crowned.

LINDA DEUTSCH, *editor*  
JO LEE WEBB, *President*

### Alpha Tau—University of Texas

Alpha Tau started off the semester with thirty-six pledges. Initiated March 1, 1953 were Betty Jo Bernard, Joanne Copeland, Patricia Davis, Jane Fairlee, Bobby Ann French, Louise Green, Florence Henry, Joann Lawton, Joyce Reynolds, Joyce Schnell, Joan Tompkins, Barbara Ann Tucker, Betty Waddill, Joan Warner, Nancy Williams, Marjorie Yerrington and Shirley Yerrington.





**MU CHAPTER, 1953.** Front row: Bernice Bronsdon, Virginia Zachary, Erlene Hampton, Carol Diggles, Nancy Dahill, Sally Akers, Ann McGee, Carolyn Gibson, Carolyn Eakin, Charlene Myska, Barbara Berger. Second row: Marianne Swanson, Dorothy Boone, Joan Tempel, Barbara Emerzian, Rosemary Steffan, Gayle Hamilton, Kathleen Kendall, Julia Hays, Patricia Thill, Elaine Anderman, Barbara Cundey, Carol Pearce, Charlotte Menend, Audrey Pfeiffer. Back row: Marlene Hight, Carole Carlin, Mary Lou Clausen, Dora Lou Moore, Marijane Litzenberg, Harriet Rogers, Diane Young, Lois von Husen, Linda Stohr, Carol Eaton.

Social activities includes many successful open houses. On September 21, we enjoyed a tea for the Austin alumnae and Mothers Club. The Delta Kappa Epsilon fraternity were our guests on October 17, and the Lambda Chi Alpha on November 23. On November 2, two campus clubs, the Cowboys and Silver Spurs and then the Phi Sigma Kappa fraternity were guests on March 13. Our Duke, Tommy Day Smith, Phi Kappa Sigma, was presented on December 13 at our annual Fall Formal. We held our traditional Christmas Party at which we exchanged gifts on December 15.

Our officers for next year are Ann Collette, president; Davia Hawes, pledge trainer; Kathy Newnam, rush captain; Sara Abrego, treasurer; Sammy Kuhn, corresponding secretary; Phyllis Maxwell, recording secretary and Roberta Anderson, historian. Carole Billingsley is assistant pledge trainer and Joan Warner, assistant rush captain.

This spring we will be busy with Roundup in which we will enter a float. Mary Lou Lynch will represent us as a Blue-Bonnet Belle nominee. Varsity Carnival in which we will have a show, and our annual Riverboat Party will be soon. Our next formal will be held here at the house which will be decorated with pink flowers as is our tradition.

Honors included Carol Cook, president of panhellenic on campus, Janis Deckman, president of Omicron Nu, and of teachers education majors in home economics, Ann Kay Harrington won the Mortar Board scholarship cup for the year and is president of the Spanish Club.

Our intramurals honors include mixed bowling first place, and softball second place with trophies for both.

ROBERTA ANDERSON, *editor*  
ANN COLLETTE, *president*

### **Alpha Psi—Southern Methodist University**

1952-53 was the second year for Alpha Psi in our new house. In October we had a Dad's week-end, highlighted by the Kansas-SMU football game and an evening coffee at the house. On November 14 we initiated Virginia Hurt, Phyllis Nelson, Lucia Rick, Nancy Shaw and Helen Smith.

Margaret Sutherland was pronounced Delta Zeta dream girl at the annual formal dinner dance January 10. A western party was held in March. March 21

the following were initiated: Nancy Burrridge, Helen Carnes, Charlene Cuthbertson, Norma Dooley, Joyce Harris, Gwen Harrison, Elaine Jones, Janet Jones, Ann Larson, Joyce Little, Eloise Magness, Dorothy Nettleton, Elizabeth Pruner, Suzi Stapleton and Beverly Whyburn.

Elected for the coming year are Danetta Jennings, president of Gamma Alpha Chi, and Carolyn Schlipf, president of Mu Phi Epsilon. Beverly Campbell has been elected to Phi Beta Kappa and Carolyn Schlipf has been called out for Mortar Board.

CLELA CALDWELL, *historian*  
MARGARET SUTHERLAND, *president*

### **Gamma Upsilon—Oklahoma City University**

Gamma Upsilon found its second year at Oklahoma City University just as thrilling as its first. Delta Zetas participated in numerous activities and reaped honors and awards.

Yvonna McDonald, one of our new initiates, did us proud when her picture was chosen by Fred Waring to head the list of Beauty Queens at OCU.

Our new president, Betty Jo Denny, was elected to the presidency of Cardinal Key, national honorary leadership fraternity for the coming year. This past year the chapter sported four presidents of campus organizations.

Among 1952-53 class officers were Elizabeth Tonini, junior secretary; Cynthia Taylor, sophomore treasurer and Theresa Wolf, freshman treasurer.

Kathleen Robinson, past president, held two editorships on the campus newspaper this year—copy editor and society editor.

At the awards assembly, Lois Fees was presented with the Letzeiser medal for scholarship and Carol Hammers was given the James J. Hayes English award. Gene Ann Hall, Carol Hammers and Betty Jo Denny were listed in Who's Who in American Colleges and Universities and two out of the three graduates made Magna Cum Laude.

Four Delta Zetas represented organizations in the Student Senate during 1952-53; and Gene Ann Hall held the honorary position of assistant justice of the student court.

New initiates of the 1952-53 school year are: Eugenia Atkinson, June DeLaughter, Yvonna McDonald, Katie Hensch, Hallie Payne, Roberta Flynn, Theresa Wolf, Patsy Deason and Caroline Jenks.



## **Gamma Xi—New Mexico A. & M. College**

To be initiated soon are our new pledges: Joy Miller, Capitan; Barbara Joy Buntin, Yuma, Arizona; Sally Ann Beavers, Belen; Rebecca Molina, Las Cruces; Dorothy Ann Beard, Mesilla Park; Gretchen Floyd, Estancia; Margaret Richards, Lordsburg; Patsy Patton, Carlsbad; Kathleen McCormack, Rogers; Peggy Kelly, Tucumcari; Marguerite Woodwell, Farmington; Pat Talley, Las Cruces, and Shirley Walker, Hatch.

New officers installed recently are: Frances Stark, president; Bonnie Russell, vice-president; Della Gates, assistant vice president; Betty Rae Meire, recording secretary; Anabelle Green, corresponding secretary; Barbara Mueller, treasurer, and Suzanne Brumley, historian. The committee chairmen are new initiates.

Anabelle Green, transfer from Gamma Epsilon chapter, was one of two members on our campus with a straight A average for this fall semester. Among the others on campus to make the Dean's list were the following from our chapter: Anabelle Green, Elaine Black, Barbara Buntin, Marguerite Woodwell and Rebecca Molina.

Bonnie Russell was selected to represent the state of New Mexico at the national home economics convention in Kansas City, Missouri, this summer. Bonnie was chosen as delegate from home economics representatives of other colleges in the state. Anna Martin, past treasurer, was chosen as Sun Carnival Princes to represent Lordsburg, in the annual Sun Carnival Festival. The Sun Carnival Festival is an annual event preceding the Sun Bowl game at El Paso, Texas every January first.

Just recently we've added another trophy to our collection by winning first place in the annual Greek Stunt night. Now we are looking forward to the All Greek sing, which we won last year.

SUZANNE BRUMLEY, *editor*  
FRANCES STARK, *president*

## **PROVINCE XI**

### **Mu—University of California**

Initiated to Mu Chapter, Fall 1952: Nancy Aljian, Barbara Berger, Marian Laughlin, Carol Pearce.

Initiated to Mu Chapter, Spring 1953: Joan Alvestad, Elaine Anderman, Dorothy Boone, Bernice Bronsdon, Mary Lou Clausen, Barbara Cundey, Eleanor Hartnett, Sally Kreutzberg, Charlene Myszkka, Audrey Pfeiffer, Harriet Rogers, Linda Stohr, Ruth Thomas.

The D Z's had a full social calendar this year under past social chairman, Kathleen Kendall, and present, Charlotte Menend. One would have thought he was in the middle of filmland had he looked in on the Fall pledge dance held at the chapter house. The theme was "Hollywood" and the house appropriately was decorated with a setting of a Western scene and other film props.

And at the St. Francis Yacht Club in San Francisco the D Z's held their gala winter formal.

The Orinda Country Club was the setting of the lovely annual Spring formal; while later on in the semester, the girls broke all records for chapeaux at the Spring pledge dance, the theme being, what else, "Mad Hatters."

Mu chapter entered a float with Phi Sigma Kappa fraternity in the Big Game parade carrying out the "Beware the Golden Bear" theme in the originality division. And at the Cal Circus, the girls featured a fortune-telling booth. The skill had been previously taught in the school of fortune-telling, held by "gypsy" Pat Thill.

Good angels of Herrick Hospital's Children's Unit, we plan ways to keep hospital life pleasant for the

small patients. Delta Zeta alumnae have started a Welfare Fund and are planning other valuable contributions to the hospital. Many thoughtful gifts and volunteer hours have been given by this group—a little red table and chairs, bibs, shirts and blankets, also holiday favors. The latest plan is to give the hospital an audiometer for use in detecting hearing difficulties.

We are very proud of our participation in campus activities and student government. On the *Daily Cal* staff, Carol Eaton has been appointed senior night editor; and Pharaba Oakley has received a sophomore appointment. The position of Women's Director of the *Cal Engineer* magazine, until recently held by Joan Tempel, is now held by Carole Carlin; and three junior appointments went to Dianne Young, Ruth Thomas, and Lois von Husen. Phyllis Galbraith is office manager of *Pelican*, the campus humor magazine. On the year book staff, *Blue and Gold*, is Helen Zachmann, new associate manager.

By dint of a lot of spirited campaigning for a spirited girl, Mary Lou Clausen became one of the four campus representatives-at-large in the recent student body elections.

We have a good representation on Prytanean, the honorary society for junior women. Recently the impressive Mortar Board tapping ceremonies revealed Lois Folsom to be a new initiate. Lois, in addition to being co-chairman of Elections Council, has been very active in many other campus activities.

And last but far from least is Eleanor Bakosh who has spent many, many hours in service for the student body. She is in Phi Beta Kappa, manager of the *Blue and Gold* and has received a key from Phi Chi Theta, honorary Business Administration society.

CHARLENE ANNETTA MYSZKA, *editor*  
SALLY ROWENNA AKERS, *president*

### **Alpha Chi—University of California, Los Angeles**

Among our social activities this year were two dances: the Christmas formal, held at the Miramar Hotel in Santa Monica, California, and the spring formal dinner-dance, "The Moonlight Mood," held at the Sportsman's Lodge in San Fernando Valley. During spring vacation we all migrated to Balboa Island for a week of sun and fun. We also participated in the annual spring sing festival and held our annual Elections Open House for student body elections.

Speaking of elections, new officers for Alpha Chi are Martha Lou Stites, president; Marilyn Klubescheidt, first vice president; Jacqueline McLaughlin, second vice president; Barbara Bozeman, corresponding secretary; Elizabeth Hollister, recording secretary; Janice Metcalf, treasurer; and Elaine Nahigian, historian.

On March 21 we initiated Faye Ames, Barbara Bozeman, Caroline Briggs, Eleanor Carson, Stella Delavon, Sonia Gausted, Mary Green, Hildegard Hiller, Marilyn Horn, Elizabeth Hollister, Janice Metcalf, Barbara Peck, Naomi Schneck, Kay Tester, Glory Weber, and Betty Williams.

Alpha Chi now boasts two new trophies. One was received for sponsoring John Townley in a contest for the "Biggest Fakir on Campus." The other is the trophy for donating the most pints of blood for the second time in the Red Cross blood drive.

MARJORIE MARTIN, *editor*  
MARTHA LOU STITES, *president*

### **Gamma Lambda—San Jose State College**

Gamma Lambda recently pledged Claire Clarke, Shirley Coate, Georgia Dyer, Gloria Guido, Joan Harvey,



Lenore Helwig, Mary Lou Hobelman, Jean Johnson, Pauline Leijon, Jacqueline Mitchell, Norberta Mosher, Peggy Pasquali and Nathalie Vayssie.

Our pledge dance was held at the Mark Hopkins Hotel on February 7, 1953. The pledges were introduced through a large arch, and they received Delta Zeta necklaces.

Seven members were initiated in impressive ceremonies at the chapter house. They are Jean Hornibrook, Phyllis Johnson, Heather Maclean, Kathaleen Morgan, Lynne Best, Sydney Bresee and Diane Dyke.

In conjunction with Lambda Chi Alpha fraternity, we captured a fourth place in the Annual Novice Boxing Tournament for our theme and dress. We wore medieval costumes to the affair.

Delta Zeta walked off with the first place in the Associated Women's Students Christmas door decoration contest. Our theme portrayed two children waiting for Santa Claus.

Dressed in gay-ninety costumes, we held a hayride exchange with Sigma Pi fraternity. Refreshments and entertainment capped the evening.

We sang "Blue Skies" and "Blue Room" in the annual March Melodies, open to all organizations. We all dressed in blue for this event.

Two standards meetings, a movie on Alaska and a talk on eye glass frame styles, were enjoyed by the chapter as well as frequent visits of faculty members for dinner.

ELAINE WURTS, *historian*  
JOAN PAINTER, *president*

#### **Gamma Omicron—San Diego State College**

Initiation highlighted the beginning of the semester. Yvonne Camillo became a member on December 28, while the "big day" for fall pledges was March 7. Initiated then were Louise Cuziek, Priscilla Gale, Patricia Harper, Joan McCollom, Elaine Miller, Bonnie Morrison and Carol Shea. At the formal dinner dance which followed at Admiral Kidd Officers' Mess, Louise Cuziek was named best pledge and Elaine Miller for best scholarship. The new members presented their pledge trainer, Lois Canzoneri, with a necklace.

Delta Zeta joined with other sororities on campus for a Panhellenic open house at the inauguration of the college's new president, Malcolm A. Love.

Nine new pledges were the result of the informal spring rush. They were: Delta Boren, Willa Campbell, Shirley Colamer, Doris Hellas, Alta Medicott, Sylvia Miller, Barbara Neal, Barbara Silbur and Frankie Vegheer. The pledging ceremony and pledge presents were March 15.

April 18 was the date of the third annual "Gingham Gaities"—a dessert-bridge-fashion show presented by

alumnae and college members. This was a great success financially, and benefited Girl Scout Camperships and Delta Zeta philanthropies. Busy and able chairman, Barbara Harvey, supervised plans.

At the Christmas formal, Joan Trueblood was crowned "Dream Girl." Mothers were honored at our yearly Mother's Day breakfast and seniors at the senior breakfast in June. Joint meetings with Sigma Phi Epsilon, Sigma Pi and Phi Sigma Kappa filled out the social calendar.

CAROL HANNAH, *editor*  
JOAN TRUEBLOOD, *president*

### **PROVINCE XII**

#### **Kappa—University of Washington**

The latest news at Kappa chapter is the recent election of officers. Donna Prevost was re-elected to the position of president for the following year. Other officers include: rush chairman, Jacklyn Richter; pledge trainer, Mary LaRue; standards chairman, Betty Wickman; corresponding secretary, Peggy Burt; recording secretary, Myrna Miller; historian, Rae Peters; treasurer, Jean Harpole, and scholarship chairman, Barbara Ferguson.

Kappa chapter acquired two new pledges, Mary Jane Richter and Gay Hull during the year and spring quarter will see the initiation of Dorothy Crowley.

The chapter was quite proud when it won, for the second time, the apple trophy which is presented to the organization selling the most apples on campus. We hope to do the same next year, thereby earning the right to keep the trophy permanently.

We are also proud of Elizabeth Jollie who was pledged to the Totem Club, an honorary for upperclass women for activity and scholarship and Barbara Ferguson who was pledged to Alpha Kappa Delta, a sociology honorary.

Fun was had by all DZs and their dates at the winter dance which was held in the chapter house this year. The theme being "Your Secret Ambition," the house was effectively decorated with large question marks, bearing the names of each couple. Ambitions varied from becoming a clown to becoming Frankenstein and his wife.

Plans are now being made for the annual spring formal which will be held at the Seattle Tennis club on April 24.

Then on May 17 we will have the annual senior breakfast honoring the graduating seniors and bringing the year to a successful climax.

RAE PETERS, *editor*  
DONNA PREVOST, *president*

• • •



# What **TO DO** When

(For chapter officers, alumnae advisory board chairmen, province directors)

## ● September

Rush Chairman—Opening Day of School: Postcard to both your Province Director and Mrs. T. J. Bianchi, 5727 Ellsworth, Dallas, Texas, giving your name, school address, dates of rushing and your Alumna Rush Adviser's name and address. Please send this although submitted last spring.

*End of Fall Rushing:* Rush Chairman's Form No. 1 completed in triplicate. Send copies to Province Director; to National Headquarters; and to Mrs. T. J. Bianchi, 5727 Ellsworth, Dallas, Texas.

*Within two weeks after pledging:* First Vice-President reports to National Pledge-Training Committee Member naming pledges and other factual data, sends a history record card (typed) for every girl pledged immediately to National Headquarters, and sends a pledge group picture to LAMP Editor, (names and chapter should be written on the back).

15—Chapter officers should check to see that they have all required supplies—pledge books, pledge cards, history record cards, badge order blanks (order direct from Burr, Patterson & Auld) and all forms used by the Vice-President in securing initiation permits. All supplies unless otherwise indicated are ordered from National Headquarters.

15—President holds individual conferences with each officer and committee chairman to check her note book and plan work for the year.

## ● October

1—First Vice-President reports to National Pledge-Training Committee Member.

First report by Scholarship Chairman sent to Mrs. George C. Havens immediately after rushing scholarship averages of pledges.

1—Corresponding Secretary sends revised list of chapter officers to National Headquarters. Vice-President reports to National Membership Committee immediately after pledging.

2—Rush Chairman's Form No. 2 completed and copy sent to Province Director.

2—Publicity Chairmen send news clippings to National Publicity Chairman.

5—Treasurers (using white supplies) send materials to Simplified Audits.

12—Treasurers (using yellow supplies) send material to Simplified Audits.

15—Scholarship Chairman makes report to National Secretary in charge of school not later than October 15. This report includes scholarship and house rules.

15—College Editor: Prepare news letter and mail to LAMP Editor for November 1 deadline.

20—Corresponding Secretary mails chapter monthly statistic report for September with per capita check

to National Headquarters. Copy of report should be mailed to Province Director. Corresponding Secretary also sends list of initiated members to State Chairman.

24—Founders' Day! Wear Delta Zeta colors.

25—Panhellenic delegate report due by November 1 to Mrs. Russell T. Costello, R.F.D. 3, 2850 Pine Lake Drive, Pontiac, Michigan, your Province Director and National Headquarters.

## ● November

1—First Vice-President reports to National Pledge-Training Committee Member.

2—Rush Chairman's Form No. 2 completed and copy sent to Province Director.

2—Publicity Chairmen send news clippings to National Publicity Chairman.

5—Treasurers (using white supplies) send materials to Simplified Audits.

12—Treasurers (using yellow supplies) send material to Simplified Audits.

15—Scholarship Chairman makes report to National Secretary in charge of school not later than November 15.

20—Corresponding Secretary mails chapter monthly statistic report for October with per capita check to National Headquarters. Copy of report should be mailed to Province Director. Corresponding Secretary also sends list of initiated members to State Chairman.

## ● December

1—First Vice-President reports to National Pledge-Training Committee Member.

2—Rush Chairman's Form No. 2 completed and copy sent to Province Director.

2—Publicity Chairmen send news clippings to National Publicity Chairman.

5—Treasurers (using white supplies) send materials to Simplified Audits.

12—Treasurers (using yellow supplies) send material to Simplified Audits.

15—Scholarship Chairman makes report to National Secretary in charge of school not later than December 15.

20—Corresponding Secretary mails chapters monthly statistic report with per capita check to National Headquarters. Copy of report should be mailed to Province Director. Corresponding Secretary also sends list of initiated members to State Chairman.

*House Corporation Boards*—Treasurer sends copy of Income tax form 990 to Collector of Internal Revenue in her state. Also sends copy of Form 990 with copies of year's financial statements to National Treasurer.



## Alumnæ Chapters

### ● **October**

- 1—Secretary sends list of alumnæ who have moved to other cities to the nearest alumnæ organization and to National Headquarters. Secretary also sends copy of yearbook or program to National Headquarters and to Alumnæ Vice-President.
- 1—Secretary sends revised list of officers to National Headquarters.
- 1—Chapter Magazine Chairman places order with Franklin Square Agency for any additional magazine supplies which are needed for the next two months.
- 24—Founders' Day.

### ● **December**

- 1—Treasurer sends copy of Income tax form 990 to Collector of Internal Revenue in her state; also a copy to National Treasurer.

### ● **January**

- 15—Alumnæ LAMP Editor: Prepare news letter and mail to LAMP Editor for February 1 deadline.

### ● **March**

- 15—Chapter LAMP Editor must have required copy for the Summer issue of the LAMP in the hands of the Editor not later than April 1.

### ● **April**

- Election of chapter officers. Secretary sends list of chapter officers to National Headquarters before May 1.

### ● **May**

- 15—Résumé of year's activities or special reports should be sent by retiring President of the alumnæ chapter to the National Alumnæ Vice-President before May 10.

### ● **June**

- 15—Alumnæ Editor: Prepare news letter and mail to LAMP Editor for July 1 deadline.

---

## IF YOU

## Have Changed Your Name or Address

Please fill in this notice NOW and mail it to  
NATIONAL HEADQUARTERS, 1325 CIRCLE TOWER, INDIANAPOLIS 4, INDIANA

Maiden Name ..... Chapter .....

Husband's Name..... Date of Marriage .....

### FORMER ADDRESS

Name .....

Street and Number .....

City, and State .....

### PRESENT ADDRESS

Name .....

Street and Number .....

City, Zone and State .....

---



# ● Delta Zeta Sorority ●

Founded at Miami University, October 24, 1902

GUY POTTER BENTON, D.D., LL.D., *Grand Patron (Deceased)*

## FOUNDERS

JULIA BISHOP COLEMAN (Mrs. J. M.)	104 Riverside Ave., Loveland, Ohio
MARY COLLINS GALBRAITH (Mrs. George)	3194 Tremont Rd., Sta. B., Columbus 12, Ohio
ALFA LLOYD HAYES (Mrs. O. H.)	3761 N. Meridian, Indianapolis, Ind.
ANNA KEEN DAVIS (Mrs. G. H.)	Deceased
MABELLE MINTON HAGEMAN (Mrs. Henry)	Deceased
ANNE SIMMONS FRIENDLINE (Mrs. Justus R.)	Deceased

## NATIONAL COUNCIL

<i>President</i>	BERNICE HUTCHISON GALE (Mrs. Guy H.) 130 Van Winkle Drive, San Anselmo, Calif.
<i>Alumnæ Vice-President</i>	BETSY BRADLEY LEACH (Mrs. Garold A.) 1865 Hill Dr., Eagle Rock, Los Angeles 41, Calif.
<i>Extension Vice-President</i>	VIOLET SHARRATT WHITFIELD (Mrs. R. H.) 1104 Colfax St., Evanston, Ill.
<i>Membership Vice-President</i>	ELOISE WADLEY BIANCHI (Mrs. T. J.) 5727 Ellsworth, Dallas 6, Tex.
<i>Secretary</i>	JEAN CODY SULLIVAN (Mrs. A. F.) 157 Bellevue Ave., West Haven, Conn.
<i>Treasurer</i>	AUGUSTA PIATT KELLEWAY (Mrs. Fred) 425 Lakewood Rd., Walnut Creek, Calif.

## EX-OFFICIO MEMBERS

<i>National Panhellenic Conference Delegate</i>	EVELYN A. COSTELLO (Mrs. Russell T.) 2850 Pine Lake Dr., R.F.D. 3, Pontiac, Mich.
<i>Editor of THE LAMP</i>	ELLEN KROLL JENKINS (Mrs. Paul L.) 4 North Butler, Apt. 7, Indianapolis 19, Ind.
<i>Immediate Past National President</i>	GERTRUDE HOUK FARISS (Mrs. C. A.) 2997 S.W. Fairview Blvd., Portland 1, Ore.
<i>Executive Secretary</i>	MISS IRENE C. BOUGHTON 1325 Circle Tower, Indianapolis 4, Ind.
<i>Executive Office</i>	1325 Circle Tower, Indianapolis, Ind.
<i>Secretary in Charge</i>	IRENE C. BOUGHTON
<i>Chairman of N.P.C.</i>	MRS. WILLIAM H. HUTCHINSON 3545 Penrith Rd., Seattle 5, Wash.
<i>National Panhellenic Delegate</i>	MRS. RUSSELL T. COSTELLO 2850 Pine Lake Dr., R.F.D. 3, Pontiac, Mich.
<i>Board of Trustees of LAMP Fund:</i>	GERTRUDE HOUK FARISS (1958); IRENE BOUGHTON (1956); AUGUSTA PIATT KELLEWAY (1954); BERNICE HUTCHISON GALE (1954); FRANCES E. WESTCOTT (1954).
<i>National Field Representative:</i>	MISS CLEORA CROSBY (mail sent to 1325 Circle Tower, Indianapolis 4, Ind., will be forwarded).

## COMMITTEES

*Building Chairman:* Frances E. Westcott, 549 E. 84th St., Indianapolis 20, Ind.  
*Constitution Chairman:* Mrs. Rudolf O. Cooks, 2673 N. Park Blvd., Cleveland Heights 6, Ohio.  
*National Recommendation Chairman:* Mrs. Jacob F. Schultz, 3444 Locke Lane, Houston 19, Tex.  
*Hearing Help Chairman:* Mrs. Portia Laughlin, 3598 Bayhomes Rd., Miami 33, Fla.  
*National Pledge Training Chairman:* Miss Anne Singleton, 343 N.E. 26th St., Miami 37, Fla.  
 Province I—Miss Barbara Oppel, Hotchkiss Grove Rd., Branford, Conn. (all chapters except AK)  
 Province II—Miss Mary Conroy, 1320 Hamilton Richmond Blvd., Hamilton, Ohio. (also AK)  
 Province III—Miss Janet Hart, 702 S. 3rd St., Goshen, Ind.  
 Province IV—Miss Frances Strickland, 20 28th St., N.W., Atlanta, Ga.  
 Province V—  
 Province VI—Miss Frances Strickland, 20 28th St., N.W., Atlanta, Ga. (Indiana chapters only)  
 Province VI—Mrs. Paul Church, Jr., 502½ E. Lincoln Way, LaPorte, Ind. (Michigan chapters plus Wisconsin chapters)  
 Province VII—Mrs. William Gallagher, Route 1, Box 392, Royal Oak, Mich. (Illinois chapters only)  
 Province VII (North)—Mrs. W. B. Trice, 1619 Cardinal Drive, Ocala, Fla. (and Nu).  
 Province VIII (South)—Mrs. Sam Fore, 875 Estes Ave., San Antonio, Tex. (Plus Gamma Xi from Province X)  
 Province IX—Miss Bess Stevenson, Box 66, Meridian, Miss.  
 Province X—Mrs. John French, 2020 Downing St., Oklahoma City, Okla. (except Gamma Xi)  
 Province XI—Miss Patricia Mix, 722 W. Candelaria Rd., Albuquerque, N.M.  
 Province XII—Mrs. Harold Pasley, Route 1, Box 74, Hillsboro, Ore.  
*Mothers' Club Chairman:* Mrs. Francis R. Wilson, 725 Broer Ave., Toledo, Ohio.  
*Standards Chairman:* Mrs. R. E. Amerman, Wayne University, 4841 Cass Ave., Detroit 1, Mich.  
*History:* Mrs. H. M. Lundy, R.R. #1, Bloomington, Ind.



*Adventures in Friendship Chairman:* Mrs. Samuel E. Hottinger, 70 Hawk St., New Orleans, La.  
*Magazine Chairman:* Mrs. Clarence Nelson, 7752 18th, N.E., Seattle 5, Wash.  
*Golden Jubilee Stamp Project Committee: Chairman:* Mrs. Howard C. McDaniel, 6120 St. Clair, North Hollywood, Calif.; Mrs. Clarence Kearney, 1350 Linden Ave., Glendale, Calif.; Mrs. Edgar House, 1020 Lima, Burbank, Calif.  
*National Activities Chairman:* Mrs. W. G. Hughes, 1500 Oakland Ct., Apt. 312, Cedar Rapids, Iowa.  
*Publicity Chairman:* Mrs. Charles Bednar, 1737 N. Prairie St., Galesburg, Ill.  
*Judiciary Committee Chairman:* Mrs. Raymond J. Nolop, Dawson, Minn.

## Alumnæ Regions

Provinces	States
	REGION ONE—Mrs. Robert A. Beach, 32 Third Ave., Berea, Ohio.
I. (South)	Maine, Vermont, Connecticut, New Hampshire, Massachusetts, Rhode Island
I. (North)	New York, New Jersey
II.	Pennsylvania, West Virginia, Delaware, District of Columbia, Maryland
V.	Ohio
III.	Virginia (only)
	REGION TWO—Mrs. Fred Lewis, 600 Capstone, Tuscaloosa, Ala.
III.	North Carolina, South Carolina, Kentucky, Tennessee
IV.	Florida, Georgia
IX.	Louisiana, Mississippi, Alabama
	REGION THREE—
VI.	Indiana, Michigan
VII.	Illinois, Wisconsin
VIII. (North)	North Dakota, South Dakota, Wyoming, Iowa, Minnesota
	REGION FOUR—Mrs. Lester J. Nieman, 1108 Fenwick, Oklahoma City, Okla.
X.	Texas, Oklahoma, New Mexico
VIII. (South)	Nebraska, Kansas, Colorado, Missouri, Arkansas
	REGION FIVE—Mrs. Joe Y. Leveton, 1682 S.E. Tenino, Portland 2, Oregon
XI.	Arizona, California, Nevada, Utah
XII.	Washington, Oregon, Idaho, Montana

## Provinces of Delta Zeta

PROVINCE I NORTH: Maine, Vermont, Connecticut, New Hampshire, Massachusetts, Rhode Island  
*Director:* PECCY CROOKE FRY (Mrs. Edward L.), 401 Broadway, Cambridge, Mass.

*Alpha Upsilon, University of Maine*—BARBARA GIRARD, Colvin Hall, Orono, Me. *Hartford, Conn. Alumnæ*—Mrs. JOHN HIGGINS, 259 Hartford Ave., Weathersfield, Conn.  
*Beta Alpha, University of Rhode Island*—JOYCE GIBLIN, Delta Zeta House, University of Rhode Island, Kingston, R.I. *New Haven, Conn. Alumnæ*—Miss BARBARA OPPEL, Hotchkiss Grove Rd., Branford, Conn.  
*Gamma Beta, University of Connecticut*—LEE SMITH, Delta Zeta Box, University of Connecticut, Storrs, Conn. *Providence Alumnæ*—Mrs. B. W. MOORE, 81 Oakland Ave., Cranston, R.I.  
*South Counties, Rhode Island*—Mrs. R. E. TABOR, West Kingston, R.I.

PROVINCE I SOUTH: New York, New Jersey  
*Director:* MISS ALICE WOLLER, 9115 Colonial Rd., Brooklyn 9, N.Y.

*Alpha Zeta, Adelphi College*—MARYROSE MCCRYSTAL, 86-71 108 St., Richmond Hill, N.Y. *New York Alumnæ*—Miss GLADYS B. MAYER, 1563 3rd Ave., New York, N.Y.  
*Alpha Kappa, Syracuse University*—ELEANORE HAWIE, Delta Zeta House, 405 Comstock Ave., Syracuse 10, N.Y. *Northern New Jersey Alumnæ*—Mrs. C. L. PENNEY, 36 Brooklake Rd., Madison, N.J.  
*Beta Omega, New York University*—PATRICIA COLEMAN, c/o Potter-Cuneo, 10 E. 9th St., New York, N.Y. *Rochester Alumnæ*—Mrs. HAROLD STAHL, 100 Roosevelt Rd., Rochester 18, N.Y.  
*Gamma Eta, Hunter College*—MARY O'SHEA, 36 Marble Hill Ave., New York 63, N.Y. *Syracuse Alumnæ*—Mrs. JOHN WILKIE, Meyers Lane at Roosevelt Ave., Liverpool, N.Y.  
*Long Island Alumnæ*—MURIEL SCHAUF, 216-20 113th Ave., Queens Village, L.I., N.Y.

PROVINCE II: Pennsylvania, West Virginia, Delaware, District of Columbia, Maryland  
*Director:* LUCILLE BOLSTAD MAY (Mrs. Leland B.), 3502 Martha Custis, Alexandria, Va.

*Omicron, University of Pittsburgh*—NANCY CREASY, Delta Zeta House, 158 Bellefield Ave., North, Pittsburgh, Pa. *Baltimore Alumnæ*—Mrs. HERBERT L. HOOVER, 1447 Kilmore Rd., Baltimore, Md.  
*Alpha Delta, George Washington University*—VIRGINIA PAGE, 3518 P St., N.W., Washington, D.C. *Pittsburgh Alumnæ*—Mrs. JAMES M. McELFISH, 1035 Savannah Ave., Pittsburgh 21, Pa.  
*Beta Theta, Bucknell University*—JACQUELINE JOLLY, Bucknell University, Lewisburg, Pa. *Washington Alumnæ*—Mrs. MILTON F. SPITZ, 2912A 16th Road, South Arlington, Va.  
*Gamma Delta, Pennsylvania State College*—MARY SULLIVAN, 131 Simmons Hall, State College, Pa. *Wilmington Alumnæ*—Mrs. RALPH C. SCHREYER, 8 Van Dyck Dr., Edgemoor Ter., Wilmington 3, Del.  
*Gamma Phi, State Teachers' College*—JANICE LUTES, Room 369, John Sutton Hall, Indiana, Pa.



PROVINCE III: Virginia, North Carolina, South Carolina, Kentucky, Tennessee  
Director: CLARICE DEVERE BOND (Mrs. C. W.), 1617 Graybar Lane, Nashville, Tenn.

*Alpha Theta, University of Kentucky*—SARAH HOFFMANN, Delta Zeta House, 185 E. Maxwell, Lexington, Ky.  
*Beta Gamma, University of Louisville*—MARY KAY WOLFE, Delta Zeta House, 2028 S. First, Louisville, Ky.  
*Beta Delta, University of South Carolina*—HAZEL DUKE, Girls' Dormitory, U. of S. Carolina, Columbia, S.C.  
*Beta Lambda, University of Tennessee*—VIOLET HENSON, 2603 Jersey Ave., Knoxville, Tenn.  
*Gamma Iota, Memphis State College*—IMOGENE GORDON, 844 Inez St., Memphis, Tenn.  
*Beta Psi, College of Charleston*—JEANNE CARTER, 11 Pen Ave., Charleston, S.C.  
*Charleston Alumnae*—MISS HAZEL MOORE, 68 Elizabeth Lane, Charleston, S.C.

*Columbia Alumnae*—MRS. LLOYD McMILLIN, 2814½ Blossom St., Columbia, S.C.  
*Knoxville Alumnae*—MRS. WALTER MUELLENHAGEN, 6100 Easton Road, Knoxville, Tenn.  
*Lexington Alumnae*—MRS. KENNETH FORTUNE, 309 Romany Road, Lexington, Ky.  
*Louisville Alumnae*—MISS DOROTHY GAUPIN, 689 S. Western Parkway, Louisville 11, Ky.  
*Memphis Alumnae*—MISS MARTHA ANN GATTI, 795 North Perkins, Memphis, Tenn.  
*Nashville Alumnae*—MISS JEAN MARIE HAMILTON, 1402 Acklen Ave., Nashville, Tenn.  
*Richmond Alumnae*—MRS. WILLARD S. HEMKER, Rt. 8, Westover Gardens, Richmond, Va.

PROVINCE IV: Florida, Georgia

Director: HELEN MCGERR KEVE (Mrs. C. S.), 1481 Hillview Drive, Sarasota, Fla.

*Alpha Sigma, Florida State University*—CAROL TRIMMER, Delta Zeta House, 409 S. Copeland, Tallahassee, Fla.  
*Beta Mu, Florida Southern College*—JUDITH OTT, Delta Zeta House, Ingram Ave., Florida Southern College, Lakeland, Fla.  
*Beta Nu, University of Miami*—JEAN MCGUIRE, 2550 S.W. First St., Miami, Fla.  
*Atlanta Alumnae*—MRS. ALTON V. HILL, JR., 685 Darlington Circle, N.W., Atlanta, Ga.  
*Jacksonville Alumnae*—MARGARET MCCOOGAN, 1504 Dunsford Rd., Jacksonville, Fla.  
*Lakeland Alumnae*—MRS. THERA HOWARD, 840 S. Florida Ave., Lakeland, Fla.

*Miami Alumnae*—MRS. WALTER E. GILLEN, 2835 S.W. 37th Court, Miami, Fla.  
*Orlando Alumnae*—MRS. T. E. GRASON, 811 E. Concord, Orlando, Fla.  
*Pensacola*—  
*Plant City Alumnae*—MRS. ROBERT L. DIXON, 1603 Burton St., Plant City, Fla.  
*St. Petersburg Alumnae*—MRS. SHEENA JOHNSTON, 2332 Lakeview Ave. So., St. Petersburg, Fla.  
*Tallahassee Alumnae*—MRS. HARRY T. OWENS, P.O. Box 645, Tallahassee, Fla.  
*Tampa Alumnae*—MISS VIRGINIA BROWN, 3706 W. Platt, Tampa, Fla.

PROVINCE V NORTH: Ohio

Director: LEE GOFF HALL (Mrs. Charles A.), 2712 Overlook Rd., Cleveland 6, Ohio

*Gamma Alpha, Baldwin-Wallace College*—MARIANNA JONES, Baldwin-Wallace College, Berea, Ohio  
*Gamma Kappa, Kent State University*—ANITA CAROL EWING, Delta Zeta House, 244 E. Main St., Kent, Ohio  
*Gamma Tau, Bowling Green State University*—JOY TROVER, Delta Zeta House, Bowling Green, Ohio  
*Akron Alumnae*—MRS. DONALD CHURCH, 589 Greenwood Ave., Akron, Ohio  
*Cleveland Alumnae*—MRS. E. C. SPENCER, 3110 Chadbourne Rd., Shaker Heights 20, Ohio

*Kent Alumnae*—MRS. GEORGE MONTCOMERY, Twin Lakes, Kent, Ohio  
*Toledo Alumnae*—MRS. R. L. NICHOLSON, 1733 Evansdale, Toledo, Ohio  
*Westside Cleveland Alumnae*—MRS. OWEN KOLLIE, 14119 Terminal Ave., Cleveland 17, Ohio  
*Youngstown Alumnae*—MRS. E. DEAN MILWAY, 112 W. Park Ave., Youngstown, Ohio

PROVINCE V SOUTH: Ohio

Director: MISS LOIS WESTERMAN, 2419 Salem Ave., Dayton 6, Ohio

*Alpha, Miami University*—JANE RICHEY, 43 Anderson Hall, Oxford, Ohio  
*Theta, Ohio State University*—MARILYN EDRIS, Delta Zeta House, 212 15th St., Columbus, Ohio  
*Xi, University of Cincinnati*—BEVERLY BORMAN, Delta Zeta House, 2811 Swiss Chalet Ct., Cincinnati, Ohio  
*Beta Chi, Wittenberg College*—MAXINE GITHENS, Delta Zeta House, 923 N. Fountain Ave., Springfield, Ohio  
*Cincinnati Alumnae*—MISS ESTHER VANDERVORT, 8253 Camargo Road, Cincinnati 27, Ohio.

*Columbus Alumnae*—MRS. THEODORE GOETZ, 9 E. 12th Ave., Columbus, Ohio  
*Dayton Alumnae*—MRS. FRED BUCKEY, 1661 Newcon Ave., Dayton, Ohio  
*Hamilton Alumnae*—MISS LEONA WESTLAND, 9 Dick Ave., Hamilton, Ohio  
*Springfield Alumnae*—MISS THELMA LEIB, 124 W. Liberty, Springfield, Ohio

PROVINCE VI: Indiana, Michigan

Director: HELENE SOOY MCCracken (Mrs. Harold), 3741 Seyburn Ave., Detroit 14, Mich.

*Delta, DePauw University*—JANE ROWLS, Delta Zeta House, Greencastle, Ind.  
*Epsilon, Indiana University*—NANCY TOMAN, Delta Zeta House, 809 E. Seventh St., Bloomington, Ind.  
*Psi, Franklin College*—BETTY JO HINANT, Bryan Hall, Franklin, Ind.  
*Alpha Eta, University of Michigan*—JOYCE WARNEY, Delta Zeta House, 1824 Geddes, Ann Arbor, Mich.  
*Beta Pi, Albion College*—ANN STOWE, Susanna Wesley Hall, Albion, Mich.  
*Beta Rho, Michigan State College*—JUDITH MATTHEWS, Delta Zeta House, 207 Bogue, East Lansing, Mich.  
*Gamma Pi, Western Michigan College*—JOYCE BAILEY, Spindler Hall, Kalamazoo, Mich.

*Gamma Chi, Ball State Teachers' College*—PHYLLIS NEFF, Lucina Hall, Muncie, Ind.  
*Gamma Psi, Central Michigan College*—NANCY WILD, Barnard Hall, Central Michigan College, Mt. Pleasant, Mich.  
*Detroit Alumnae*—MRS. JOSEPH THOMPSON, 1353 Harvard Road, Grosse Pointe 30, Mich.  
*Flint Alumnae*—MRS. EARLE W. JONES, JR., 2618 Swayze, Flint, Mich.  
*Ft. Wayne Alumnae*—MISS ELIZABETH LOWRY, 1230 Home Ave., Ft. Wayne 6, Ind.  
*Franklin Alumnae*—MRS. MARCIA NEESE, 845 E. King St., Franklin, Ind.



*Indianapolis Alumnae*—MRS. HAROLD K. HARDING, 5629 College Ave., Indianapolis, Ind.  
*Kalamazoo Alumnae*—MRS. HOWARD J. COOPER, 1342 W. Kelgore Rd., Kalamazoo, Mich.  
*Lakeshore Alumnae*—MRS. C. E. FOSTER, 1582 Beach St., Muskegon, Mich.

*Lansing—East Lansing Alumnae*—MISS PATRICIA SCHRAM, 1913 W. Main St., Lansing, Mich.  
*South Bend Alumnae*—MRS. VERA GRACE FRENCH, 415 S. 25th St., South Bend, Ind.  
*Terre Haute Alumnae*—MISS JESSIE WALFORD, 914 S. 25th St., Terre Haute, Ind.

#### PROVINCE VII NORTH: Illinois, Wisconsin

*Director*: DELTA STIEKERT CNARE (Mrs. R. F.), 609 Walton Pl., Madison, Wis.

*Tau, University of Wisconsin*—AUDREY PAFF, Delta Zeta House, 142 Langdon St., Madison, Wis.  
*Alpha Alpha, Northwestern University*—ALICE TENEZAR, Delta Zeta House, 717 University Pl., Evanston, Ill.  
*Gamma Theta, Carroll College*—MARILYN MEIDINGER, Voorhees Dormitory, Waukesha, Wis.  
*Gamma Mu, Illinois Institute of Technology*—PATRICIA TURNER, 2943 Belle Plaine, Chicago, Ill.

*Gamma Omega, Southern Illinois University*—ANN HUNSAKER, 607 S. University, Carbondale, Ill.  
*Madison Alumnae*—MISS FRANCES KLEINERT, R.R. #1, Madison, Wis.  
*Milwaukee Alumnae*—MISS MARION SEMRAU, 1035 Laurel Court, Wauwatosa 13, Wis.  
*Waukesha Alumnae*—CHARLOTTE BECK, N. Beaver Lake Rd., Hartland, Wis.

#### PROVINCE VII SOUTH: Illinois

*Director*: RUTH WALSH HYDE (Mrs. Victor), 106 E. John St., Champaign, Ill.

*Nu, Knox College*—DIANE CHAMBERLAIN, Whiting Hall, Galesburg, Ill.  
*Pi, Eureka College*—DONNA KLOPFENSTEIN, Lida's Wood, Eureka, Ill.  
*Alpha Beta, University of Illinois*—JANET BARKER, Delta Zeta House, 710 W. Ohio, Urbana, Ill.  
*Gamma Nu, Eastern Illinois College*—GAIL EASLEY, Delta Zeta House, 860 Seventh St., Charleston, Ill.  
*Gamma Rho, Northern Illinois State College*—DONNA AVERELL, 513 N. 10th St., De Kalb, Ill.  
*Chicago Alumnae*—MRS. WARREN F. HEWES, 8408 Rhodes Ave., Chicago 19, Ill.  
*North Shore*—MISS FRANCES BROWN  
*North Side*—MRS. ALVIN KEATS  
*Loop-Downtown Group*—MRS. LORENZO C. SCHMIDT

*South Side*—MRS. G. L. BUTE  
*Afternoon*—MRS. PAUL F. GORBY  
*Junior Alumnae Group*—MRS. JOHN LAUVER  
*Eureka Alumnae*—MRS. DON B. PIOLETTI, Eureka, Ill.  
*Galesburg Alumnae*—MRS. WESTON RICHARDS, 1365 W. Losey, Galesburg, Ill.  
*Peoria Alumnae*—MRS. C. E. WOODRUFF, 142 High St., Apt. A, Peoria, Ill.  
*Rockford Alumnae*—MRS. WILLIAM SPRINGER, 1517 S. 4th St., Rockford, Ill.  
*Urbana-Champaign Alumnae*—MRS. B. G. RICKETTS, 518 Fairlawn Drive, Urbana, Ill.  
*West Suburban Chicago Alumnae*—MISS MARION E. CONRAD, 1515 Newberry Ave., La Grange, Ill.

#### PROVINCE VIII NORTH: North Dakota, Wyoming, Arkansas, Iowa, Minnesota

*Director*: KATHERINE DAY HARRIS (Mrs. Halbert M.), 611 Lynn Ave., Ames, Iowa

*Gamma, University of Minnesota*—CATHLEEN SWEENEY, Delta Zeta House, 519 10th Ave., S.E., Minneapolis, Minn.  
*Upsilon, University of North Dakota*—MARY SAFSTROM, Delta Zeta House, 2724 University Ave., Grand Forks, N.D.  
*Beta Kappa, Iowa State College*—ESTHER HUNTER, Delta Zeta House, 2138 Sunset Drive, Ames, Iowa  
*Gamma Epsilon, Drake University*—FAYE ALLYN, Delta Zeta House, 3118 Cottage Grove, Des Moines, Iowa  
*Iota, University of Iowa*—NOLA CARPENTER, 322 N. Clinton St., Iowa City, Iowa

*Ames-Boone Alumnae*—MRS. ARNOLD LIVINGSTON, 216 Campus Ave., Ames, Iowa  
*Cedar Rapids Alumnae*—MRS. GEORGE PETERSON, 2400 34th St., Cedar Rapids, Iowa  
*Des Moines Alumnae*—MRS. JACK HASKINS, 2905 Payne Road, Des Moines, Iowa  
*Quad-City Alumnae*—MRS. WILLIAM B. SCHRODER, JR., 1116 13th Ave., Rock Island, Ill.  
*Sioux City Alumnae*—MRS. DARRELL HANNA, 1026 S. Alice, Sioux City 6, Iowa  
*Twin City Alumnae*—MRS. CECIL TAMMEN, 4225 Brunswick Ave., S., Minneapolis, Minn.

#### PROVINCE VIII SOUTH: Nebraska, Kansas, Missouri, Colorado

*Director*: MISS EDNA ZAMZOW, 1530 N. 32nd St., Apt. #1, Lincoln, Neb.

*Beta Sigma, Colorado A. & M.*—SHIRLEY BELIER, Delta Zeta House, 1002 Remington, Fort Collins, Colo.  
*Beta Tau, Nebraska Wesleyan University*—JOANN HAGEMEISTER, Delta Zeta House, 4942 Madison Ave., Lincoln, Neb.  
*Gamma Gamma, Missouri Valley College*—ANNA RICKELS, Young Hall, Marshall, Mo.  
*Denver Alumnae*—MRS. FRANK, 7800 E. 16th St. Denver, Colo.  
*Fort Collins Alumnae*—MRS. H. G. JORDAN, 428 West Laurel, Fort Collins, Colo.  
*Grand Junction Alumnae*—MRS. THOMAS H. CHRISTY, 2401 Broadway Redlands, Grand Junction, Colo.

*Lincoln Alumnae*—MRS. RICHARD H. YOUNG, 3145 N. 60th St., Lincoln, Neb.  
*Marshall Alumnae*—MRS. ROBERT S. BAGNELL, Blackburn, Mo.  
*Omaha Alumnae*—MISS DORIS ROOT, 4730 S. 48th St., Omaha, Neb.  
*St. Louis Alumnae*—MRS. F. L. STOCKHAM, 5834 Cabanne Ave., St. Louis 12, Mo.  
*Kansas City Alumnae*—MRS. LOUIS C. KIENE, 6733 Montgall Ave., Kansas City, Mo.  
*Wichita Alumnae*—MRS. DWIGHT T. COSTELLO, 831 So. Christine Ave., Wichita, Kan.

#### PROVINCE IX: Louisiana, Mississippi, Alabama

*Director*: MARIE GROSS LEPINE (Mrs. J. Wilson), Laurel Valley Plantation, Thibodaux, La.

*Sigma, Louisiana State University*—PATRICIA NECK, Delta Zeta, Box 7675, University Station, Baton Rouge, La.

*Alpha Gamma, University of Alabama*—ANN LIGHTFOOT, Delta Zeta House, University, Ala.



*Alpha Pi, Howard College*—BETTY JEAN RITCHEY, 7432 Division Ave., Birmingham, Ala.  
*Beta Beta, University of Mississippi*—NANCY MULLIN, Delta Zeta House, University, Miss.  
*Beta Xi, Alabama Polytechnic Institute*—JOANNE POWELL, Dormitory #1, A.P.I., Auburn, Ala.  
*Beta Upsilon, H. Sophie Newcomb College*—PATRICIA HEROY, 1103 Elvis Court, Metairie, New Orleans, La.  
*Baton Rouge Alumnae*—MISS MARY DELL BOGAN, 239 N. 69th St., Baton Rouge, La.  
*Birmingham Alumnae*—MISS DENNY MAE MACKEY, 7618 Division Ave., Birmingham, Ala.

#### PROVINCE X: Texas, Oklahoma, New Mexico

*Director*: LOUISE WADLEY BIANCHI (Mrs. T. J.), 5727 Ellsworth St., Dallas 6, Tex.

*Alpha Epsilon, Oklahoma A. & M.*—PATRICIA PARNELL, Delta Zeta House, 224 S. Jefferson, Stillwater, Okla.  
*Alpha Tau, University of Texas*—ANN COLLETTE, Delta Zeta House, 1704 West Ave., Austin 21, Tex.  
*Alpha Psi, Southern Methodist University*—DOLORES GUPTON, Delta Zeta House, 3034 Daniels St., Dallas, Tex.  
*Gamma Zeta, Southwestern University*—ANN WILKINSON, Delta Zeta Box, Southwestern University, Georgetown, Tex.  
*Gamma Xi, New Mexico A. & M.*—FRANCES STARK, Box 973, State College, N.M.  
*Gamma Upsilon*—BETTY JO DENNY, Route 10, Box 106, Oklahoma City, Okla.

*Jackson Alumnae*—MRS. HERBERT A. WOOTEN, 843 Arbor Vista Blvd., Jackson, Miss.  
*New Orleans Alumnae*—MRS. DONALD W. DODDS, 5127 Louisa Drive, New Orleans, La.  
*Shreveport Alumnae*—MRS. E. A. THARPE, JR., 503 Monrovia St., Shreveport, La.  
*Tuscaloosa Alumnae*—MRS. E. C. WRIGHT, 1 The Downs, Tuscaloosa, Ala.  
*Montgomery Alumnae*—MRS. NICK W. HARRIS, JR., 7 Olivia Ct., Montgomery, Ala.  
*Mobile Alumnae*—MRS. B. W. DEAN, 262 Houston St., Mobile, Ala.

*Austin Alumnae*—MISS VIRGINIA PARKER, 1204 Justin Lane, Austin, Tex.  
*Dallas Alumnae*—MRS. R. F. MITCHELL, JR., 6030 McCommas, Dallas, Tex.  
*Enid Alumnae*—MRS. HUBERT HITCHCOCK, 821 E. Pine St., Enid, Okla.  
*Houston Alumnae*—MRS. ROYAL G. BRANTLEY, 2337 Albano Rd., Houston 5, Tex.  
*Oklahoma City Alumnae*—MARTHA JONES, Rt. 2, Box 253X, Silver Lake, Okla.  
*San Antonio Alumnae*—MRS. TEMPLE G. HOLLAND, 114 Artillery Rd., Fort Sam Houston, Tex.  
*Stillwater Alumnae*—MRS. MELVIN ALBRIGHT, 840 W. Cantrell, Stillwater, Okla.

#### PROVINCE XI: Arizona, California, Nevada, Utah

*Director*: SUE WILLIAMS BEBB (Mrs. Robert S.), 3743 W. 60th St., Los Angeles 43, Calif.

*Mu, University of California*—SALLY AKERS, Delta Zeta House, 2728 Durant St., Berkeley 4, Calif.  
*Alpha Iota, University of Southern California*—LOUISE HANNA, Delta Zeta House, 725 W. 28th St., Los Angeles 7, Calif.  
*Alpha Chi, University of California, Los Angeles*—MARTHALOU STITES, Delta Zeta House, 824 Hilgard, West Los Angeles 24, Calif.  
*Gamma Lambda, San Jose State College*—ANN E. ROGERS, 64 S. Tenth, San Jose, Calif.  
*Gamma Omicron, San Diego State College*—PATRICIA R. HARPER, 4228 58th St., San Diego, Calif.  
*Fresno Alumnae*—MRS. JOHN D. McFEATERS, 207 Meridian, Fresno, Calif.  
*Glendale-Burbank Alumnae*—MRS. RAY E. SHORB, 440 Naomi, Burbank, Calif.  
*Honolulu, T. H. Alumnae*—MRS. JACK N. STEVENS, 210 Center St., Honolulu 18, T. H.  
*Long Beach Alumnae*—KATHERINE MORRISON, 3555 California, Long Beach, Calif.  
*Los Angeles Alumnae*—MRS. EVERETT J. WALSH, 552½ N. Kingsley Dr., Los Angeles 4, Calif.  
*Marin County Alumnae*—MRS. WILLIAM L. BLAIR, 380 Cascade Dr., Fairfax, Calif.  
*Monterey Peninsula Alumnae*—DR. LUELLA J. HALL, 20 Talbot St., Salinas, Calif.

*Orange County Alumnae*—MRS. JOSEPH P. CRITCHFIELD, 123 So. Ohio St., Anaheim, Calif.  
*Pasadena Foothills Alumnae*—MRS. E. HALE BECKMANN, 1220 Devere Dr., Pasadena, Calif.  
*Phoenix Alumnae*—MRS. JOHN A. POBAR, Veterans Hospital, 4102 N. 7th St., Phoenix, Ariz.  
*Sacramento Alumnae*—MRS. DON PEARSON, 3925 Bardey Dr., Sacramento, Calif.  
*San Diego Alumnae*—MRS. J. WILLIAM WARREN, 3103 28th St., San Diego 4, Calif.  
*San Francisco-Bay Cities Alumnae*—MRS. THOMAS W. TAYLOR, 3 Moss Ave., Oakland, Calif.  
*Secretary*: Miss Betty Laughlin, 3630 Cabrillo St., San Francisco, Calif.  
*San Francisco Peninsula Alumnae*—MRS. ROSS M. SMITH, 1649 Molitor Rd., Belmont, Calif.  
*San Jose Alumnae*—MRS. ALDO BALBIANI, 234 W. St. James St., San Jose, Calif.  
*Santa Barbara-Ventura Alumnae*—MRS. SHERMAN J. PEPMULLER, 1255 Woodland Dr., Santa Paula, Calif.  
*Santa Monica Alumnae*—MRS. MARK C. ALLEN, 1730 Robson, Santa Monica, Calif.  
*Mt. Diablo Area Alumnae*—MRS. JUEL LIEN, 108 Poscha Rd., Concord, Calif.

#### PROVINCE XII: Washington, Oregon, Idaho, Montana

*Director*: Johnnie Miller Tustin (Mrs. Johnnie M.), 516 W. 29th Ave., Spokane 44, Wash.

*Kappa, University of Washington*—DONNA PREVOST, Delta Zeta House, 4335 18th N.E., Seattle, Wash.  
*Phi, Washington State College*—LOIS FREESE, 1704 Opal St., Pullman, Wash.  
*Chi, Oregon State College*—KAYRENE BUTLER, Delta Zeta House, 23rd & Van Buren, Corvallis, Ore.  
*Omega, University of Oregon*—PHYLLIS KARN, Delta Zeta House, 1883 University Ave., Eugene, Ore.  
*Eugene Alumnae*—MRS. VERNON L. SPRAGUE, 1765 Skyline Dr., Eugene, Ore.  
*Portland Alumnae*—MRS. FELIX F. FORS, 557 A Ave., Oswego, Ore.

*Pullman Alumnae*—MRS. RAY MOREE, 1501 Charlotte Ave., Pullman, Wash.  
*Salem Alumnae*—MRS. CHARLES H. DERTHICK, 955 Marion St., Salem, Ore.  
*Seattle Alumnae*—MRS. NELLA HULET, 805 Warren Ave., Seattle 9, Wash.  
*Spokane Alumnae*—MRS. C. J. HURD, W. 614 22nd Ave., Spokane, Wash.  
*Tacoma Alumnae*—MISS GERALDINE KEM, Tacoma Indian Hospital, Tacoma, Wash.  
*Yakima Alumnae*—MRS. DAVID LEONARD, 1006 Rose Place, Yakima, Wash.



# Δ Z ALUMNAE AND COLLEGE MEMBERS

ORDER YOUR OFFICIAL Δ Z JEWELRY DIRECT FROM THIS PAGE—TODAY!

## DELTA ZETA

### BADGE PRICE LIST

#### STANDARD BADGES

With Pearls and One Zircon, Set Flush .....	\$12.50
With Pearls and One Zircon, Tiffany Set .....	12.50
With Pearls and One Brilliant Cut Diamond, Flush .....	22.50
With Pearls and One Brilliant Cut Diamond, Tiffany .....	22.50
With Pearls and One Medium Size Diamond, Flush .....	27.50
With Pearls and One Medium Size Diamond, Tiffany .....	27.50

Be sure to specify your choice of setting for the Diamond in Flame, Flush or Tiffany. Flush settings will be used if no choice is stated.

When ordering Badges, please have your Chapter Secretary fill out an official badge order and forward same to the Executive Secretary for her approval. Your Fraternity requires this in every case.

Recognition Pin, Staggered Letters, Gold Filled .....	\$ 1.00
10 Karat .....	2.00
Mother's Pin, Plain .....	2.50
Mother's Pin, with Pearls .....	3.50
Pledge Pins, with Safety Catch .....	per dozen 12.00

#### GUARD PIN PRICES

	Single Letter	Double Letter
Plain .....	\$2.25	\$ 3.50
Crown Set Pearl .....	6.50	11.50

Be sure to mention the name of your chapter when ordering a guard for your pin.

*20% Federal Excise Tax must be added to above prices; also state sales and use tax where they are in effect.*



Delays in delivery will be avoided if proper official release accompanies the order.

Satisfaction is guaranteed on all orders.

SEND TODAY FOR YOUR FREE PERSONAL COPY OF

## THE *Gift Parade*

PUBLISHED BY

YOUR OFFICIAL JEWELERS

**BURR, PATTERSON & AULD CO.**

ROOSEVELT PARK

DETROIT 16, MICHIGAN

AMERICA'S OLDEST—AND MOST PROGRESSIVE—FRATERNITY JEWELERS



Mrs. Fred Hank

P.O. Box 151

O'Fallon, Mo.











NATIONAL  
LIBRARY BINDERY  
COMPANY  
OF INDIANA, INC.  
546 SOUTH  
MERIDIAN STREET  
INDIANAPOLIS

98.12.1