

Property of Chi Chapter 701 fib



# Delta Zeta Lamp

Vol. 13, No. 4

May, 1924



VOL. XIII

MAY, 1924

NO. 4

# Delta Zeta Lamp

---

*May, 1924*

OFFICIAL PUBLICATION OF  
Delta Zeta Fraternity

VERA BROWN JONES, *Editor*  
1115 Church St., Evanston, Ill.







## Contents

---

Evanston Ideal as Convention City.....	549
Convention Program .....	551
Official Delegates to Convention.....	564
The Mailing List .....	569
Convention—As Seen by Others.....	573
Announcements .....	577
Alumnæ Chapter Letters.....	579
Chapter Letters.....	587
Pledges and Initiates.....	606
Honor Roll.....	609
Calendar .....	612
Directory .....	613

---

The DELTA ZETA LAMP is published four times a year by George Banta, official printer to the fraternity.

Subscription price \$1.50 per year, single copies forty cents. Life subscription \$25.00.

Entered as second class matter October 18, 1909, at the postoffice at Menasha, Wisconsin, under the Act of Congress of March 3, 1879.

Acceptance for mailing at special rate of postage provided for in section 1103. Act of October 3, 1917. Authorized September 26, 1918.

*The Grand Council of*  
*Delta Zeta*

*Extends a cordial invitation to*

*Every Delta Zeta*

*To attend the*

*Tenth Biennial Convention*

*To be held at*

*Northwestern University,  
Evanston, Ill.*

*June 23 - 28, 1924*

*Headquarters, The Orrington*



VOL. XIII

MAY, 1924

NO. 4

### **Evanston Ideal As Convention City**

**E**VANSTON, ILL., home of Northwestern University and of many other educational institutions, is ideally situated for a convention city. It is here that Delta Zeta will meet June 23-28. On the western shore of Lake Michigan, twelve miles north of Chicago, Evanston is justly called "The Athens of the Middle West" because of the exceptional atmosphere of culture and refinement that permeates the city. Close to Chicago, reached in twenty minutes on the railroad, its residents are near enough to the metropolis to take advantage of its many activities and yet are far enough away to escape the unpleasant features of city life. Evanston in June is a wonderland of nature. The bathing beaches beckon, the shady walks lure, the spacious campus calls, there are theaters, splendidly appointed hotels and enjoyable motor drives along the famous North Shore, where Chicago's wealthy live. The climate is delightfully cool. Arrangements are being made for all the delegates to tour Chicago and the North Shore by motor.

Evanston gives the advantage of many shops, stores, and theaters and is nationally noted for its places of historical interest. Two blocks from the convention headquarters is Rest Cottage, home of the late Frances E. Willard, now used as national and world headquarters of the W. C. T. U. Evanston is also noted as the cradle of two amendments of the U. S. Constitution: viz., Woman Suffrage Amendment and the National Prohibition Amendment.

Situated in the heart of beautiful Evanston, amid widespread-ing elms and verdant parkways, the Orrington Hotel, conven-



tion headquarters, two blocks from Northwestern University, offers unexcelled comfort, environment and service. The hotel, completed within the past few months at an expense of more than two million dollars, is one of the most elaborately appointed in the country. From its very inception the Orrington has been planned not only for the attractiveness of its apartments but likewise in the pleasure of its restful lounge, its commodious dining-rooms, breezy roof gardens, cheery solarium, and spacious ball-rooms. Here we are assured the utmost in comfort, service and happiness for those who attend the Convention. The Orrington reflects the refinement of the most attractive home where one may dwell comfortably, securely and happily. On the attractive roof gardens the convention delegates will be served from a cuisine unsurpassed by any hotel in the country.

During convention week, there will be ample opportunity for convention guests to visit some of the numerous attractions of Chicago, the second largest city in the country. Wednesday, June 25, all of the convention guests will make a motor tour of the celebrated sixty-mile boulevard system encircling Chicago, passing through numerous beautiful parks. Enroute they will visit the famous Field Museum of Natural History, and will see the Art Institute of Chicago, which has the largest student enrollment of any art school in the world. Many other places of interest will be seen, such as the famous Midway Plaisance and Jackson Park, site of the World's Columbian Exposition in 1893, and the University of Chicago. After the tour the guests will dine and be entertained in one of Chicago's most popular summer gardens.

Registration of delegates will begin Sunday, June 22, at convention headquarters in the Orrington. Convention will be called to order Monday morning at ten o'clock in the gold and orchid ballroom of the hotel by the Grand President.

---

### Together — At Convention

*When Crew and Captain understand each other to the core,  
It takes a gale and more than a gale to put their ship ashore,  
For the one will do what the other commands, although they are chilled  
to the bone  
And both together can live through weather that neither can face alone.*

—KIPLING.

## Convention Program

On Sunday all those present will attend the Methodist church in a body.  
 Sunday, June 22. Registration of Delegates.

Monday, June 23. Registration of Delegates.

- 10:00 A. M. Convention called to order.  
                   Devotional exercises, Dr. E. F. Tittle.  
                   Addresses of Welcome by Alpha Alpha and Chicago  
                   Alumnæ chapters' presidents.  
                   Introduction of Hostesses and Committees.  
                   Address—  
                   Roll Call of Delegates.  
                   Presentation of Credentials.
- 2:00 P. M. Presentation of Business of Convention, Grand President.  
                   Appointment of Committees and Distribution of Business.  
                   Minutes of Council Meetings.  
                   Reports of Standing Committees.  
                   Treasurer's Report.

8:00 P. M. Stunt Party with Iota chapter in charge.

Tuesday, June 24:

- 9:30 A. M. Memorial Service, Mrs. Coleman in charge.  
                   Roll Call.  
                   Report of Grand Council and Standing Committees.  
                   Report of Alumnæ chapters.  
                   Report of Panhellenic Delegate.  
                   Report of Active Delegate. (Suggested that each delegate  
                   give an oral presentation of not more than two minutes.)
- 2:00 P. M. Continuation of above business.
- 5:30 P. M. Beach Supper and Songfest with Tau chapter in charge.
- 8:00 P. M. Business Session.

Wednesday, June 25:

- 9:30 A. M. Opening Exercises.  
                   Roll Call. Extension.  
                   Round Table Discussion. Rushing.  
                   Alumnæ Problems. Big Sister.  
                   Alumnæ Round Table. Finance.
- 2:00 P. M. Continuation of above business.  
                   Report of Findings Committee.

- 4:00 P. M. Auto Tour over Chicago's celebrated Sixty-Mile Boulevards through the Parks, ending with dinner in Chicago. Chicago Alumnæ chapter, Hostesses.

Thursday, June 26:

- 9:30 A. M. Opening Exercises.  
Roll Call.  
Awarding of Convention Prizes.  
General Summary of Business.  
New Policies.
- 2:00 P. M. Continuation of above.
- 4:00 P. M. Initiation.
- 6:00 P. M. Informal Reception and Dinner Guests.  
(Plans are being made to have a representation from Caney Creek present to tell us about their work.)
- 9:00 P. M. Business Session.

Friday, June 27:

- 9:30 A. M. Opening Exercises.  
Roll Call.  
Business Session.  
Report of Convention Expenses.
- 2:00 P. M. Report of Nominating Committee.  
Election of Officers.
- 6:30 P. M. Banquet and Installation of Officers.
- 10:00 P. M. Farewell Party, Ruby Long and Nettie Wills Shugart, Hostesses.

Saturday, June 28:

Meeting of New Grand Council and Standing Committees.

---

### Subscriptions to the Convention Daily

EVERY Delta Zeta, whether she attends the Convention or does not, will need and want the *Convention Daily*. Please send in your subscriptions now, to assist the business management in determining the approximate expense of circulation. Papers will be delivered at Convention, and copies will be mailed to members not in attendance. The subscription price is sixty cents for the four issues. Fill out the blank in the back of the LAMP and mail at once.

---

It's a long way to Convention, but Sigma hearts are right there!



### A Convention Call

**W**HY go to Convention? If you are a member of Grand Council the question will never occur because the reasons for attending are so obvious. You would be so interested in all convention business that you would not even hesitate about it.

There are so many reasons why *alumnæ* particularly should attend Convention. It is the *alumnæ* who are the backbone of the organization. They make up the fraternity and give it prestige. They give it not only prestige but moral and financial support that only *alumnæ* are able to give. An organization is judged by what it produces. The *alumnæ* are the finished products. Delta Zeta has helped mould their characters during the highly impressionable years of college life. Surely they are better women for having had these close associations of fraternity ideals and friendships. There is a close bond of friendship between the *alumnæ* and undergraduate members of Delta Zeta. There is a great need for the influence and guidance of the best and strongest *alumnæ*. Their presence is needed at Convention. They will be doing a genuine service to Delta Zeta by attending. At Convention you can pick up all the broken threads of your fraternity life and learn what is going on and what is likely to go on for the next few years. Perhaps you have not been in close touch and do not know about our new chapters or the new things that Delta Zeta has been doing. How fine it would be to get acquainted with all of the new chapters and the new members of our older chapters, and the members of the Grand Council whose names you have so often heard and to whom you have so frequently written. A special effort is being made to have all the founders and the charter members of all chapters present. Do your bit to encourage their attendance.

When did you last attend a ritualistic service? Model ritualistic ceremonies are a part of the Convention Program.

How splendid it would be were every active girl to be at Convention! Just think of spending a whole week getting acquainted with all of the Delta Zetas from all of our thirty-seven chapters and the *alumnæ*! You cannot afford to miss this opportunity. Seniors, suggest a trip to Convention as a graduation present.

---

Are you ready, Evanston? Watch our dust!

### Greetings from Chicago Alumnae to all Delta Zetas

WE ALL have marveled at the wonders of Aladdin's magic lamp; yet that tale is fanciful and never did or could happen. Far more marvelous and something which is a reality is the fact that the wearers of the lamp of Delta Zeta all over the country will soon be on their way to the Convention in Evanston the week of June 23-28.

With our efficient Convention Chairman (imagine if you can *one person* being Editor of the LAMP and Convention Chairman), and the girls of Alpha Alpha, we of the Chicago Alumnae are planning for and thinking of Convention day and night. We extend to all Delta Zetas a most cordial welcome, yet with all our plans we could not have the Convention without every one of you—you by your coming are bringing the Convention to us!

Both hostesses and guests will know one another so much better after our big house-party in the new Orrington Hotel. We of the Chicago Alumnae are very eagerly looking forward to the pleasure of knowing you. And I am confident you have a treat ahead of you because of the opportunity of knowing what a wonderful group our Alpha Alpha girls are. The test of the strength and influence of any organization is shown by its alumnae groups. Our alumnae is composed of representatives of so many different chapters of our fraternity. We are widely separated in many ways and yet, because we are Delta Zetas, we have a most harmonious, congenial, energetic, dependable group. Surely since they as Chicago Alumnae are simply reflecting the spirit of their own chapters it is no breach of etiquette to say "I am anxious for you to know them, too!" We are all one great united sisterhood and I feel confident we will possess a broader sympathy and understanding and a deeper feeling of unity because of our being together at Convention June 23-28.

RUTH GADDIS JEFFRIES,  
*President Chicago Alumnae.*

---

Do Your Duty, have some  
Zeal! Come to our  
Convention.



### Why Convention?

DO YOU ever feel a lack of inspiration? Does your optimism ever sink a peg at the beginning of new tasks which the daily whirl of college life brings with it? Do you ever find a zero factor in the numerator of the result of your day's accomplishment—or feel that “everyone is queer but thee and me, sister, and at times, even thou art a little queer, methinks”? I hear “no” in solo answer! Then you are just the person to favor us with the sunshine of your rare presence. Don't hide your light under a bushel. I hear another answer, a chorus of “yea”! How human you are! Right before mid-semester examinations many of us having tendencies toward hypochondria. But cheer up! Read your invitation to the Evanston Convention and follow directions faithfully—Convention is the panacea of our ills.

“A little coöperation is a magical thing;  
So attend Convention at the end of this spring.”

This coming together is our end-of-the-day campfire, and basking in the warmth of the friendship of sisters far and near we can enjoy mutually the stories of adventures, conflicts, and victories, which the past year has brought to pass. Come for new ideas, remembering that those we bring as old to ourselves are new to our neighbors. Let us hear about the beautiful floats, the clever stunts for circuses and “feature days,” novel rushing parties, plans for successful budgeting—in short, the cream of campuses student life from East and West, North and South. Alpha Alpha could tell you tales, pathetic and humorous, of our suffering, but we desire sympathy and know you could offer suggestions and recount like experiences, thus helping us to a speedy recovery.

We're all interested in Caney Creek, some of us are interested in local social service work, and we can tell about many interesting little social service projects. So can you all! Every Delta Zeta is interested in campus activity and campus betterment. What movements have brought new life and spirit, harmony and fellowship, to the social life on your campuses during the past year? We want to hear about them. Poor pledge Sue's hands will have lost their lily-white beauty shortly if the stern professor can not be impressed with her serious (so she thinks) attempts



to be scholarly. She has done the chapter's tea dishes since—well, we won't say. Be fair to Sue, and render unto Caesar his own—how do you encourage scholarship, and how, as a group, do you help the girls to get a broad vision of a full, well-rounded college life, its duties and rewards, its exactions and its recompenses? Have you found a golden mean of work and play, and can you hold it up as the *summum bonum* of an attainment? We have these problems to face continually. The more satisfactorily they are solved, the more smoothly and happily does the machinery of family organization run.

Convention brings the opportunity to think over our mutual problems, to broaden our sympathies and enrich our personalities by personal contacts, and to strengthen the bonds of sisterhood among the women of America's colleges and universities. Chapter by chapter we are pearls unstrung lying loose in a beautiful jewel case. We have our intrinsic value thus, no doubt. But time puts on its tarnish! We are wrapped up within ourselves, and become less beautiful by reason of our isolation. Put us together as a necklace, give us the personal touch, and we gleam with our own and added luster, useful and precious. Assemble these pearls at the Convention at Evanston in June, and discuss where, how, and when, the necklace is to be worn, Delta Zeta being a favorite child of Dame Progress whose fashions are always new and better.

Convention the vogue!

EMMA HEIDMAN, A A.

---

### Guest Night

Thursday evening of convention week will be guest night. Representatives from each Northwestern University Greek-letter organization will be invited to dinner and to hear the boys from Caney Creek tell of their work in the mountains. A special invitation is issued for this occasion to all Delta Zeta mothers who will be in the city at this time. We are looking forward to this meeting with much enthusiasm and interest and sincerely hope that we will have a number of our mothers with us.

---

On to Evanston!

## Convention Prizes

### ATTENDANCE PRIZES

Prizes will be awarded to:

1. The chapter having the most members present, including alumnæ.
2. The chapter having the most active members present, including 1924 seniors.
3. The chapter whose active members (excluding official delegate), including 1924 seniors, traveled the greatest number of miles to Convention.
4. The chapter in each of the four zones, having the most members present, including alumnæ.

(Chapter that wins prize number 1 will be excluded from number 4 contest and Alpha Alpha chapter will not compete for any of these honors.)

### ALUMNÆ PRIZES

1. The alumnæ chapter that has the largest percentage of members paying on Life Memberships.
2. The alumnæ chapter having the largest percentage of its members paying on Life Subscription to the LAMP.

### SCHOLARSHIP PRIZES

Every active girl, including '24 seniors, is asked to bring with her credentials for her grades for the year of '23-'24. These credentials should be signed by the registrar of the university; however, if time does not permit, cards for the individual courses signed by the professor, for the second semester will be accepted. The number of hours for each course must be designated. Prizes for the best scholarships will be granted during the week of Convention. Donations for these prizes are being given by the alumnæ chapters. Our National Scholarship committee will be the official judges. (Credentials for all prizes should be ready to file upon arrival of delegates and guests.)

---

Did you say your chapter was the best?

Come to Convention and prove it to the rest.

—*Themis*, Zeta Tau Alpha.

---

See you at Evanston!



### Stunt Night At Convention

Come on along every one—and let's make STUNT NIGHT the biggest and most successful as well as enjoyable night of the Convention. Will you?

I know that there's lots to do—and lots to be done—but if a thing is worth doing at all it is worth doing well—and if every chapter will get behind STUNT NIGHT—I know that it will be done well.

Now our idea is to have all the chapters put on a "Stunt"—limiting each chapter to a certain number of minutes. In this way every one will learn to know just "who's who" at the Convention. Now my chapter, Iota, is in charge of the thing as a whole—and for some unknown reason the responsibility has been placed upon me. If each chapter will send to me within the next week after the LAMP issue (no later) the plan for its stunt—the number of minutes it takes—and the names of the girls involved, I can work out an efficient program. You see we want no duplication of stunts and we must limit ourselves to a definite number of minutes and we do want the names of the girls involved. Now just as soon as I hear from each chapter regarding their plans, I will O. K. them and write you immediately concerning the number of minutes allowed for each chapter and just what time of the evening your stunt will appear.

LET US ALL COÖPERATE ON THIS AND MAKE IT A  
REAL NIGHT OF FUN AND FROLIC

But even fun must be organized and planned—and since we cannot call a committee meeting as we would if it were merely a campus STUNT NIGHT (for it is so much easier to plan a thing if you can get together and "talk"—but we must do the next best thing—WRITE—) PLEASE EVERY SINGLE DELTA ZETA CHAPTER WRITE me immediately after the issue of the LAMP and give me your plans for STUNT NIGHT.

Don't forget to include in your plans:

Your definite plan for Stunt Night.

Number of minutes required for Stunt.

Names of girls participating.

Name of person in charge of stunt.

Here's a chance to get together and show your real coöperative Delta Zeta spirit—and if you respond—Success will be ours.

I know that you will.

VIVIAN A. CONRAD, *Iota*.



### Helpful Hints for Convention Clothing

Clothes for Convention! What kind? Any kind and every kind. Here in Evanston we never know what weather to expect so we are ready for anything. Evanston has been called everything from Venice to The Garden Spot of the World but never the Sahara Desert, but we won't consider any but balmy days. Around Evanston, any sort of outfit from tailored suit, sweater and skirt, flannel dress or dark or light silk dress will be suitable and practical. For the banquet a party dress will be necessary; you will also want an afternoon dress. For the beach party we hope you will bring something washable or guaranteed not to be ruined.

We have two kinds of waves, Marcell and Michigan. To counteract the effects of the latter disastrous kind, we have a hairdressing establishment on every other corner to replace the former, but for the courageous, Lake Michigan will prove a joy and it won't be overcrowded. Some of us begin going in during May so it will probably be fine in June. Near the hotel where the Convention will be held are several tennis courts for those who bring tennis shoes and racquets.

Really you can see that there is no clothes problem, that is unless it rains or snows, and then we can all long for sunshine and it won't be long until we get it. Evanston's middle name in the summer is comfort and unconventionality even if we are having a Convention, so have no fears, that is if—and it probably won't just because I mentioned it.

K. F. B.

---

### Convention

When?

June 23, 24, 25, 26, 27.

Where?

Northwestern University, Evanston, Ill.

Hostesses?

Alpha Alpha and Chicago.

Tau, Chairman of Beach Party and Fraternity Sing.

Iota, Chairman of Stunt Night.

## Our Convention Daily

### ATTENTION JOURNALISTS!

A convention daily has been planned to tell the story of the Convention, delegates and guests from day to day. This publication will be issued four times during Convention, and a call for work on this paper is sent out to all Delta Zeta journalists.

Will all who are coming to Convention and can offer their services get in touch at once with the editor of the LAMP? There will be news stories of convention activities, reports of all meetings, feature stories about Delta Zeta and Delta Zetas, pen portraits of prominent personages in the Convention, numerous illustrations of "Who's Who and How Cum." Here's an opportunity, girls, to tell other Delta Zetas about some unique accomplishments of your chapter, or of some member of your chapter. In other words it is going to be an honest-to-goodness newspaper. It is suggested that you send in advance to the Editor of the LAMP, contributions that by their nature can be prepared now. The editors of the *Daily* will appreciate this as it will simplify their work. They are Izil Polson, Lambda, and Katherine Butterfield, Alpha Alpha.

They want word of any outstanding chapter accomplishments, such as scholarship, completed house plans, purchases, notes paid off, alumnae initiates, or anything else of general interest.

And what about your delegate? Has she made a scholarship record? What are her campus activities? Is she recently engaged, or married?

Is there a poet in the house? We'll make a poetry section if we can get contributions for it. And wouldn't some of you like to break into print with a signed editorial on some phase of fraternity life?

Don't be afraid you'll send in too much material. We want news. Any amount of it is welcome. Won't you, each and every chapter, please put your journalism student, or prize theme writer, or corresponding secretary or some one else to work right away, scouting around for chapter notes for our convention newspaper? We want it to be the best of its kind. And remember, it pays to advertise. Here's your chance to tell all the rest of us all about your chapter.



## *Make Hotel Reservations*

*For the Tenth Biennial Convention  
of Delta Zeta*

Do not fail to reserve your room early.

As there is a limited number of rooms at The Orrington we will have to take extra rooms in near-by hotels. First come first served, so again we say, **RESERVE YOUR ROOM EARLY.**

*Fill out the blanks in back of "Lamp" and mail at once.*



### Chapter Displays At Convention

IN ONE corner of the entrance hall to the Convention room is to be a display of various things of interest from each and every chapter. Word has been sent out for every active chapter to send with its delegate, their scrap book, their college yearbook, snapshot books and trophies. Can not the alumnæ chapters add something to this display? Central Office will do its share for this display by sending all the recent petition books and other things that will be of interest to all Delta Zetas. Do not be afraid to send various things of interest for this display. Do you have an artist in your chapter? If so send a few of her choice productions or have her make something for the occasion. The success of the display depends upon YOU.

---



#### PORTLAND ALUMNÆ

Dorothy Edwards was one time president of Chi chapter. She graduated in '21 and was in Springfield, Mass., for two years but at the present time is assistant Home Economics editor on the *Morning Oregonian*. She says that she likes this work even better than teaching, which she did when in Massachusetts.



#### ACTIVE CHAPTER DELEGATES

Mae Drake, Alpha	Rhea E. Freidell, Zeta	Nell Langford, Upsilon
Augusta Parr, Alpha Gamma	Letha Brattin Gould, Alpha Epsilon	Mary Packer, Psi
Marjorie Van Bolt, Theta Delegate, and President for Next Year		
Carolyn Gordon, Sigma	Gertrude Tunnard, Phi	



## Official Delegates to Convention

### ALPHA

Mae Drake is to be Alpha's official delegate to the Convention. Mae has made a very enviable record during her four years at Miami. She is the president of the Y. W. C. A., a member of Mortar Board and has just been initiated into Phi Beta Kappa. She is without a doubt one of the most capable and popular girls at Miami. You will feel like a small child listening to a fairy story when you hear Mae speak.

### DELTA

Our delegate to the Convention is Helen English, the daughter of Dr. M. N. English, pastor of the M. E. Church in Oak Park, Ill. Helen is a junior this year and is interested in many activities. Just recently she was elected vice-president of Y. W. C. A. and she is secretary of the junior class. She is also a member of the Geneva Club, History Club and the W. S. G. A. Board. Besides these activities her grades prove that she has time for study. Owing to the illness of her mother last spring she had to leave college but she has made up all of her work this year. Also she has time for things in the house and is our newly elected president. She has a happy disposition, a smile for everyone she meets, knows everyone, and is in the midst of all the fun. She is in every way what a true and worthy Delta Zeta should be and it is needless to say we are proud of our Helen.

### ZETA

Rhea E. Freidell, '24, Dorchester, Neb., is Zeta's Convention delegate.

She is very popular in all phases of university life, always has been and is on innumerable committees, was sponsor of Second Battalion, is a member of the W. S. G. A. Council, Girls' Commercial Club, the *Biz-Ad* Staff, junior-senior prom committee and of Valkyrie, senior girls' honorary.



## LAMBDA

Hilmarie Freeman, (Hilma), is Lambda's official delegate to Convention. Hilma is a blonde that I am sure you will love. She hails from a farm in Courtland, Kan., and is a junior in college. She has been active in student affairs, Y. W. C. A., Women's Athletic Association, and is very popular. In fact she was so popular with one man that she is now wearing his fraternity pin.

Hilmarie has shown her reliability in her work as freshman sponsor this year, and as rush captain for a short time. One of the biggest surprises of her life came when she was elected as delegate to Convention, and I want you all to meet her this summer in Evanston.

## OMICRON

Madeline Austin who has been elected as our delegate is a member of the class of '25. Her major is Library work. As for sports she is especially interested in basketball, though you would never guess it to look at her. Her's is a sunny disposition with an exceptionally attractive personality.

She comes instructed by us as to what we feel should be the best policies to follow and we rely on her in points which we may not have thought of.

## RHO

Rho's delegate to Convention is Margaret Minter Beatty, daughter of Dr. and Mrs. J. T. Beatty. She has the blood of a true fraternity girl, her father is a member of the Phi Gamma Delta Fraternity and her brother is a charter member of Alpha Pi Zeta of Lambda Chi Alpha. She is truly a western girl, for she was born and reared in Denver, Colo., is a graduate of the North Denver High School, class of '22 and was active there in Big Sister work and dramatics, indulging in dancing as a pastime.

Soon after entering the University of Denver in September, 1922, she was pledged to Rho chapter and elected pledge president. She takes an active part in all school activities, being a member of the University Drama Club, Spanish Club and the Y. W. C. A., and is a member of its cabinet for next year. In February, 1923, she was initiated and elected vice-president at the annual election following. As such she became pledge supervisor and chairman of the annual banquet committee.

## SIGMA

I take pleasure in introducing you to Carolyn Gordon, Sigma's delegate to Convention. This is her third year in the sorority and she is our parliamentarian. She belongs to Theta Sigma Sigma, the honorary journalistic fraternity, is a member of Y. W. C. A. Cabinet, of W. A. A. and is on the *Reveille* Staff. Carolyn is a very efficient girl and has always taken a keen interest in Delta Zeta and college activities.

## PHI

Gertrude Tunnard, one of our active juniors, is to be our representative at Convention. She is our secretary, and besides excelling in scholarship, takes an active part in campus activities, not only in her Physical Education work but also in music. She has just won her Crimson W sweater and is on W. A. A. Cabinet and is a member of Eurodelphian. We know you will all love her and that she will bring back a very interesting report of all that happens.

## PSI

For an all-round girl on the campus, we can think of no one like our Mary Packer. She belongs to Theta Alpha Phi, honorary dramatic fraternity, Alpha Chi Alpha, honorary journalistic, to say nothing of having won the Panhellenic scholarship cup for the highest scholarship of any girl in school last year, and besides all these lady-like things, Mary played on the sophomore basketball team this year. Yes, she is only a sophomore so you see Delta Zeta can expect big things from her in the two remaining years of her college course. We know you'll like her, because, in spite of her dignified ways, Mary is loads of fun.

## ALPHA ALPHA

Alpha Alpha selected as a delegate to Convention, Helen Brueckner who is qualified to present the best of the chapter to the Convention, to assimilate the ideas presented there and to carry back to the chapter the new methods to be duly considered.

Helen Brueckner is a junior in the School of Commerce and has been active on the campus as well as in Alpha Alpha for three years. Her faithfulness to abide by rules and the quiet way in



which she enforced them resulted in her being elected house president of one of the finest approved houses on Northwestern's campus. Helen has supported one of the outstanding literary societies and a Y. W. C. A. committee.

### ALPHA GAMMA

Miss Augusta Parr, our sunny-haired southern, "littlest sister of all," will represent Alpha Gamma chapter at Convention. She was born in Eutaw, Ala., where she spent the early part of her childhood, moving with her family to Greensboro, Ala., where she entered high school. She won many friends by her sweet disposition and her unusual talent resulted in her election as class musician. She was in the senior play.

Coming to Alabama last year she was initiated April 20 into Delta Zeta and was chosen as one of the Alabama Beauties for last year's *Corolla*. At present she is a member of the Women's Council Honor Committee.

When you see her big, grey eyes and realize how lovable and capable she is you will know why she was elected president of Alpha Gamma for next year. She trusts the world and we trust her.

### ALPHA THETA

Miss Anna Steele Taylor of Nicholasville, Ky., will be Alpha Theta's official delegate to Convention. She is a junior in the College of Arts and Sciences and was selected because of her ability as well as popularity.

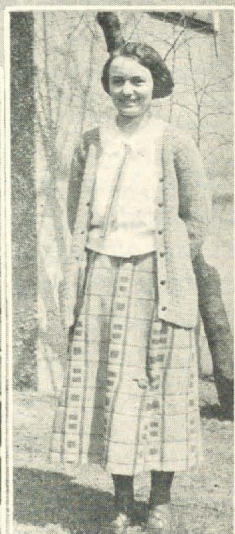
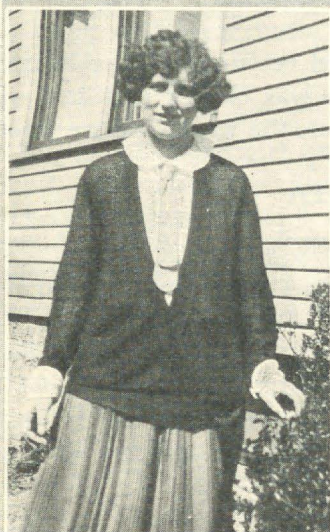
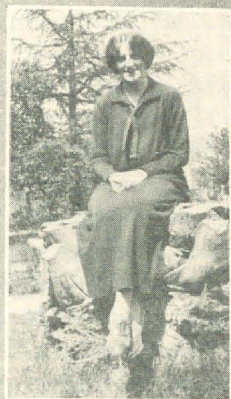
---

Mrs. Evan lives at Ston.  
She invites you every one  
To a party in sweet June.  
Get your DZ songs in tune  
For you will have lots of fun  
When you get to Evanston.

---

There's a big race. Where? To Evanston. And Sigma is running like Spark Plug!





# ACTIVE CHAPTER DELEGATES

Helen English, Delta

Annasteele Taylor, Alpha Theta

Helen Gaynor, Mu

Peggy Felch, Kappa

Rho's Delegate

Helen Zick, Alpha Beta

Madeline Betz, President of Alpha Zeta

### The Mailing List

I'M ONLY just the office boy—that's what the Editor calls me—and of course it's the height of impertinence in me to dare to lift my voice loud enough to be heard outside the editorial den; but I'm going to dare it, and perhaps when the Editor sees that what I have to say has some point, she may do me the honor to put it between the *Anchora* covers. Who knows?

I've been working at this job for nearly a year, (My! such an overwhelming lot of back work had accumulated before I was put to work) and I feel that the fraternity ought to know a thing or two about the preventable waste that goes on in this office. It isn't the Editor that's wasteful, my no, *she's* a regular driver, she works like a slave; in fact I don't see how she put through as much as she did before she had an office "force" (meaning me) and I'm not in the least surprised that she sometimes finds letters still unanswered that came months ago. She's just snowed under with every mail.

No, it's the subscribers themselves that are wasteful and that's why I want to "say a mouthful."

You see, I work at the mailing list, the *Anchora* card file, and in odd moments at the directory, and honest now, you wouldn't believe people could be so careless and yet expect to get *The Anchora* regularly—I take names of subscribers from the initiation blanks and just feel blue when a girl says she lives in Topeka, Kan., or Cleveland, Ohio, and gives no street or number, because I know the post office won't look it up, and her *Anchora* can't be sent with that scant address. Then my boss has to send that slip back to her chapter to be completed and that wastes energy, time and a two cent stamp—especially the stamp—and perhaps brings a protest from the girl because her *Anchora* hasn't arrived.

Speaking of streets, I do wish every one would designate street or avenue. If it simply says First, or Washington or Park with nothing after it, I always assume it's a street, and sometimes I later find it's an avenue.

Then a girl sometimes gives two Christian names on her initiation blank and forgets to draw a line under the one commonly used. Later she may come under the name Virginia



Black, or Jean Black, and after spending much time pulling out and going over drawer after drawer of the card file (there's a great cabinet of them in the office) I discover she's just one person, Virginia Jean Black.

I do wish every girl would *print* her full name on the initiation blanks where it says print them. Most of them do, but sometimes I strike a puzzler, the letters might be *rs*, *es*, *as* or *ss*, and the name being strange is beyond even the power of my chief to guess. If they'd use figures after the word *class*, too, it would be a great help, '24 or '26 instead of senior or sophomore; or I year or III year. My poor brains are weary trying to figure out when they expect to graduate if they were sophomores a year ago, or class II in 1923. Blame my slowness if you wish, but after all when I'm making out the cards for the file it's quicker to write '26 than to stop to work it out. Of course the best of all are the neatly typed sheets like the ones Mu and Alpha Mu sent in this fall. There was speeding up when I came to those sheets, I wasn't wasting time then, I can assure you.

Neither do I waste time when a chapter sends in a clearly written or typed list of girls who are in the chapter this year and the addresses of those who have not returned, all arranged in alphabetical order. No that's easy! and most chapters do that; it's the list of names in any old order that slows me up again. When a whole chapter moves to a new address and in sending in such a list leaves four or five names at the former address, what am I to do about them? Were they dropped off the van in moving? Perhaps Rho can answer!

There is another way in which I have to waste time and that is trying to trace a member who gives only her married name and not even her chapter name. Suppose Mrs. J. S. Jones sends in her name or someone sends it in for her, as a new subscriber. I paw over the *Anchora* file; no Mrs. J. S. Jones. I look up all the Joneses in the directory file; no Mrs. J. S. Jones. In despair I sit down and write a note to some one who sent in her name or to herself to find out her maiden name and chapter—more waste of time—and another two cent stamp.

I wish I could ask every Delta Gamma to give her name in full *every time* she writes and her chapter name. O, yes, many of them do—but I want *every one* to. Mrs. J. S. Jones may turn out



to be Mabel White; if that name, in brackets, had followed her husband's name, it would have been so easy to check up her change of address in the files and to note that she had married since we last heard from her. If she writes herself, it's very easy to sign herself Mabel White Jones, with her husband's initials in brackets before it. Lucky for me, most subscribers are careful about this, and I know all will be now that their attention is called to it.

Speaking of changes in address, I wish you could see the packages of *Anchora* wrappers that come back after every publication. Postage is promised for all the undelivered ones that are returned, and the publishers send the wrappers to this office, sometimes accompanied by the new address, often with the statement "moved, left no address." How on earth can I trace them! I ask you? Well, the only way, is to take the name off the mailing list, even if it is a "lifer" and wait until the subscriber misses her *Anchora* enough to send in her new address, or until it comes in with her chapter list.

When a subscriber sends in a request to change her address, and doesn't give her old address, I have to trace her through the file, instead of transferring her name in the mailing list from New York to Los Angeles or whatever the change may be, and that's a waste of time, but not of a two cent stamp, of course.

I'm going to tell you a secret, the Editor has a rooted aversion to special delivery letters. They are apt to be delivered at such inconvenient times—at 5:00 A. M. on a cold winter morning with the thermometer way below zero, or on Sunday early when she wants to sleep a bit longer, or late at night when she's in her first sound slumber. She says the regular delivery is just as quick and doesn't introduce any disturbance into her orderly life. So please register valuable letters but save your special delivery postage.

One more thing I want to mention, and I will have said my say. Since I've been in this office I've been wondering how many Delta Gammas realize that we have a mailing list of nearly four thousand names. That, plus all the other things the Editor does, means more work than one hard driven Editor can possibly handle. (Our subscribers are great movers, and there are many changes each month). We aren't any two for a cent maga-

zine, I can assure you. We're expanding with every issue of *The Anchora*, with every opening of the college year, and the Editor can't go about visiting chapters without an office force (that's me) to leave the work with while she is gone. When a card comes in signed Polly or Birdie, telling her the writer is moving the end of the month to 135 Parkview Avenue and would like her next *Anchora* sent there, how on earth am I to run her down on the file. There is no name, no old address, no chapter name, and the Editor, who knows her intimately, is miles away, I don't know where. I puzzle a long time over such a card. I followed every possible clue and then swore under my breath (for it would never do to profane the Editorial Den with bad language), that even if a subscriber knows the Editor well enough to address her as Dear Lulu, she ought to sign her name in full, just in case only the "force" is in town.

"Per E. W."

—*The Anchora* of Delta Gamma.

---

In the month justly celebrate  
 The DZ's will congregate  
 In the good ould "Sucker" state  
 For a meet that will be just great.

The thweeteth girl I ever thaw  
 Was ridin' in a railroad cah.  
 Says I to her,  
 Whatcha doin' that fer,  
 A ridin' in that railroad car.

Says she to me  
 Why don't you see  
 That I'm a Delta Z.  
 And I am going way out West  
 To the Convention that's the best.

---

Hitch your hopes to Evanston.



## Convention As Seen by Others

### A Remedy

Are you longin' for something,—  
You don't know just what?  
Are you feelin' all out of tune?  
We'll tell you what ails you,  
Right on the spot!  
You come to Convention next June!

For there you'll find something  
You've lost for a while,  
A relic of dear college days:  
Inspiration and joy  
And that bright, happy smile,—  
Ah! Convention most certainly pays!

You'll meet friends a-plenty  
You've missed through the years,  
Can't you see them and hear them once more?  
They will welcome you so!  
If you only will go—  
You'll be happy as never before!

—*Aglaia* of Phi Mu.

"Convention gives you an opportunity to widen your horizon. Go to Convention with the idea of learning and not with the idea of criticising. You have to dig for good things, but bad ones you can see easily, so it is no achievement to be able to go back from Convention and mimic the peculiar manner, or the rather odd dress of some one from some other chapter, but it is real achievement to be able to find out what things there are about this unique person that makes her a good Theta and an acceptable one, too."—*The Arrow* of Pi Beta Phi.

All sororities recognize the truth of this paragraph:

"That member in the active chapter who is most representative of your chapter, who can contribute most to the constructive discussions at Convention, who can carry back to you the enthusiasm and message she there receives and whose lasting influence will find reflection in the life of the chapter, it is that member active chapters should send to Convention as



their official delegate. It is to be hoped that as many alumnae chapters as possible will be represented in person by an official delegate. Most of all even, we hope for a goodly attendance of all members—especially, those who are not delegates are urged to be present. The spirit and message of Convention should touch the whole membership. Your attendance will accomplish this. Your services and your advice in the matters to be considered are invaluable to the Fraternity. We need one another."

—*To Dragma* of Alpha Omicron Pi.

### WHAT A DELEGATE SHOULD BE

Just what is your idea of a good convention delegate? When we send a girl to Convention what type do we usually select for the honor? Is it the girl who has very conservative ideas concerning college activities and fraternity ideals? Or is she characterized by a due amount of the modern-day "fire" and "pep" and a living embodiment of the principles of "effective speech" a good delegate is a combination of the two; she is neither absolutely progressive nor conservative in thought or action.

The three "c's" in extending a business man credit are—Character, Capacity and Collateral. The three "c's" in choosing a convention delegate are—Character, Capacity and Courage. A girl is bound to succeed at Convention if she possesses a little of each. Groups are often judged by individual members and we are often wont to form an opinion of a chapter in general by its delegate. It is a fallacy in human reasoning and seems unfair but nevertheless it is so.

The responsibility of a chapter in selecting its delegate must be sensed. The distinctive personality of a chapter is carried through her representative to Convention. The bearer of this should be one able to present it at its face value. For those who are to stay at home it is a very consoling thought that you have sent a Kappa who is going to bring back to your chapter a return on your investment.

Of course, the responsibility of the delegate herself is of double strength. You have given her a great honor; what is she going to do with it? No delegate will get out of Convention any more than she puts into it. If she makes a special effort to make friends, and makes herself a distinctive note in the scale of events, she is approaching the fulfillment of her mission. The personal contact at Convention is a splendid opportunity for chapters to be drawn closer together in Kappa spirit. Absorbing what she sees and hears, and adding her individuality to the whole scheme of things will enable her to derive the most out of her part in Convention.

Above all, the good delegate is a lover of human nature. She should be able to give an account of her impressions of the events and the Kappas you have always wanted to meet, in true interesting fashion. She will make you live over those wonderful two weeks with her and make you feel you had almost been with her.

Come on, Kappas! Let's make this our best Convention at Glacier this year.

—EVELYN POMEROY, *Beta Tau*.

## WHAT ARE YOU GOING TO DO?

You talk about your chapter and you emphasize your views,  
 You advocate a method for collecting chapter dues;  
 But what we want is action, and although you aim quite high,  
 You'll have to pull the trigger, or you'll not get by!  
 Oh, all day long and every night the chorus sounds the same,  
 And every echo still resounds with one everlasting name,  
 Oh, it's "K D this" and "K D that" and "K D we're for you,"  
 But when you're home and all alone, *what are you going to do?*

A wise old owl lived in an oak;  
 The more he saw, the less he spoke;  
 The less he spoke, the more he heard;  
 Why can't we be like that old bird?

Phi Delta Theta has served notice on all of its chapters that they must own their own houses by the time of the 1924 Convention or show cause why their charters should not be withdrawn. At the present the fraternity owns seventy-five houses and the new mandate applies to perhaps ten chapters.—*Phi Gamma Delta*.

Madeleine Hickey, Beta '23, received highest honors at the Sorbonne, Paris, France. The university is made up of students from the United States, Canada and Europe. Madeline was second among all these, there being fourteen students from the United States. She was a Phi Beta Kappa and Phi Kappa Phi at Cornell.

---

Don't fail—What?	To Come
Who?	Everyone
Which?	Our Convention
Where?	Evanston

---

**NOTICE** to every loyal Delta Zeta; to be on hand at the leap year Convention.



## INDIANA STATE LUNCHEON

The Indiana state luncheon of Delta Zeta was held in the Riley Room of the Claypool Hotel, March 1, with 134 members present. A representative from Chamber of Commerce came over to "offer the keys of the city."

An interesting program of toasts was arranged, each being preceded by a harp selection after which the toast was named. Frances Hankemeier Ellis spoke on extension, under the heading "From the North, South, East and West." Ruth Robertson, Delta, on "Drifting Back to Dreamland," outlined the ideal Delta Zeta. "An Isle of Golden Dreams," as given by Grace Mason, was easily guessed as being Convention. After the luncheon the active chapters and the Indianapolis alumnæ chapter each gave a clever stunt. The formal dance held at the same place in the evening, honor guests being the members of Tau Gamma Tau, Butler local petitioning for a chapter of Delta Zeta.

## INDIANA PANHELLENIC

Indiana State Panhellenic met at DePauw April 4-5. The chief speaker was Mrs. Mary C. Love-Collins, grand president of Chi Omega. Grace Mason represented Delta Zeta's council at this meeting.

## PHI BETA KAPPAS

Recent Phi Beta Kappa additions are: Alice Kimmel and Helen Hooven, Alpha; Helen Koerner, Beta; Margarette Fristoe, Epsilon, and Emily Heideman, Alpha Alpha. All are class of 1924. Margarette Fristoe is also one of two girls on the I. U. campus to win a W. A. A. varsity sweater this year. Congratulations to these girls, and let us hear from the rest of you!

---

Strength without representation is impossible. Send your delegate to Convention.

## Announcements

### ENGAGEMENTS

Betty Fisher, Xi, to Fred Igler.  
Vivian Feike, Chi, to David Lilly, Σ Γ.  
Helen Jennings, Chi, to Edward Grider, Δ Χ Α.  
Florence Melis, Chi, to Verne Ferguson, Φ Κ Σ.  
Alete Ahlson, Chi, to Edward Aikin.  
Edythe Wood, Omicron, to Chester Houck, Φ Δ Θ.  
Valerie Menhennet, Mu, to Fred Naue.  
Arlie Daniels, Xi, to Raymond Vance, Σ Χ.  
Lucille Ewing, Kappa, to Harry Newellson.

### MARRIAGES

Edna Harrol, Zeta, to Dr. Charles Percy Charlton.  
Henrietta V. Yates, Omicron, to Kenneth Taylor, Δ Τ Δ.  
Jeanette Pusey, Mu, to John Calvin Robb, Π Κ Α.  
Agnes Westlund, Xi, to James P. Harland.  
Hope Rondeau, Chi, to Joseph Harvey Randall.

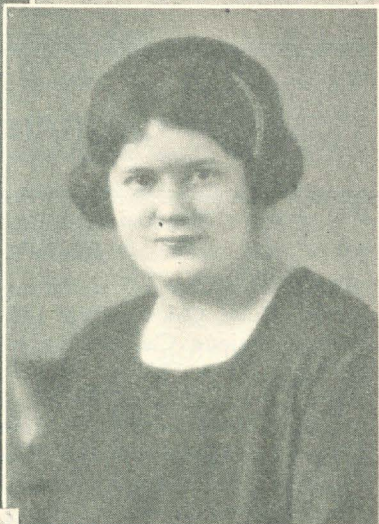
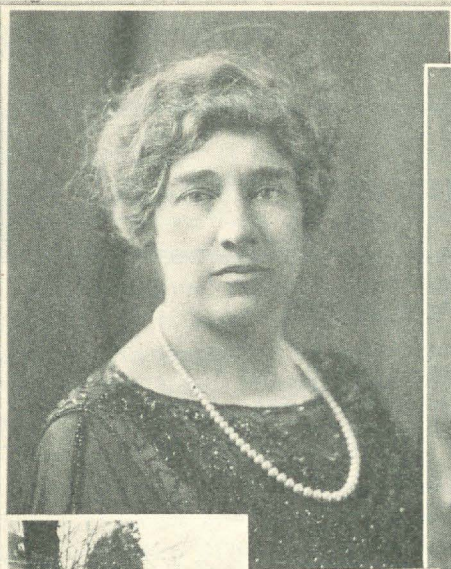
### BIRTHS

To Mr. and Mrs. Frank Byron Haines (Dora McKinley, Mu), a daughter, Winifred.  
To Mr. and Mrs. Frank Spurrier (Mildred Goyette, Mu), a daughter, Jean Emily.  
To Mr. and Mrs. W. P. Taylor (Mary Fairchild, Mu), a son, Benton Chester.  
To Mr. and Mrs. Clarence Steider (Alma Toole, Pi), a daughter.  
To Mr. and Mrs. Alvin Hobart (Phyllis Lyne, Chi), a son, Arthur Lyne, January 22.

### Memorial Service

Tuesday morning at 9:30 there will be a simple memorial service conducted by Julia Bishop Coleman for those whose deaths have occurred since our last Convention.





#### ALUMNÆ DELEGATES

Elizabeth Enyeart Thompson, Lincoln, Neb.

Elizabeth T. Reid, Pittsburgh Alumnae

Salome Boyle, U. S., '22, Berkeley Alumnae

Mrs. Carl Rogert, Cincinnati Alumnae

Ruth Gaddis Jefferies

Marion Spinney, Mu

## Alumnæ Chapter Letters

*Dear Delta Zeta Alumnæ:*

We are so happy to meet you through the columns of this paper. May we not continue the acquaintance at Convention? But before that time, right now, won't you write to the president of your active chapter, ask her who is organizing your chapter alumnæ association; then write to such organizer giving her your membership and pledge of coöperation? If you find that your chapter has no alumnæ organizer, please see that one is appointed at once. Through the chapter Alumnæ Association you will re-establish your contact with your chapter, with your National Organization and with each other. Help us, won't you, to make 1924 the year of reclamation of Delta Zeta Alumnæ?

Very sincerely yours,

JULIA BISHOP COLEMAN,  
*Alumnæ Secretary.*

### CINCINNATI ALUMNÆ

We surely feel that we have had a most successful year in every way. Our meetings have been large and interesting and in this way we have been able to accomplish a great deal. We've grown too—having initiated about eight or nine girls.

We have been able to keep in touch with the active chapter through a committee consisting of four girls, two of whom attend each active meeting. Through the reports of these representatives we become better acquainted with our "little sisters" and are able to keep them and do more for them.

As usual Cincinnati Alumnæ, with Catherine Smith as chairman of the committee, and Bertha Rozalsky as toastmistress, arranged the initiation banquet for Xi chapter, which was held at Hotel Gibson, February 22. As many of us who could attended and we all enjoyed good food, good speakers and a good time!

At our last meeting we were so pleased to have Mary Willey Hoteene and Dorothy Hunter Metzger home for a short visit with us.

We are also pleased to have Iris Hammel (Mrs. Larz) from Miami become one of our members.

If any of you ever happen to be passing through or visiting Cincinnati, please let us know, because we would be so glad to see you.

Fraternally and sincerely,

LUCY DRAPER FULLER.



## DENVER ALUMNÆ

Our meetings are held once a month, and so planned that we always enjoy a snappy business meeting followed by a very delightful social meeting. We were indeed very honored at our last meeting having with us again our Grand Treasurer, Mrs. Edythe Thoesen.

Most of our girls are very active this year. We have several teachers among us who seem unusually busy with their work ranging from athletic coaches to dramatists. Those who are not engaged in a business or professional manner seem to be busied with a combination of these, making very industrious mothers, for we have had three charming babies added to our roll recently.

Melva John has made us very proud of her, for following her graduation last June from Mayo's Hospital at Chicago, she was appointed head of the Emergency Hospital at Washington, D. C. Her record at Mayo's was excellent and her appointment certainly distinguishes her ability. We feel quite distressed because of Stella Willson leaving for California, but we hope that she will let us hear from her often, and wish her the best of success.

At the last meeting of the city Panhellenic, plans were made for the work to be accomplished in the coming year. The clever idea of making equipment for the Children's Hospital was decided upon. Delta Zeta is asked to furnish twenty-two garments to be made in pairs or duplicate garments.

Many plans are being made for the coming year and we are anxious that these shall be accomplished. We are certainly looking forward to what we hope will be the *best of all Conventions*, and sending the best wishes for the Convention of 1924, we remain

Yours in Delta Zeta,

DOROTHY LESLIE.

## LINCOLN ALUMNÆ

The enthusiasm of the Lincoln Alumnæ has grown steadily throughout the year. We have thirty members and the attendance at the monthly meetings averages about twenty-five. It has almost become a custom to meet at a luncheon on Saturday and spend the afternoon together. We have so much visiting to do and so much business to transact that it is difficult to get a motion to adjourn.

At the meeting March 22, our president, Elizabeth Thompson, was elected delegate to the Convention. Several other members are planning to attend. At their meeting we discussed the subject of giving a uniform wedding gift from Delta Zeta to members of Zeta and Lincoln Alumnæ. We would be interested in hearing from other chapters as to their custom and ways and means in regard to this subject.

We have the pleasure of welcoming two new members, Vida Leamor Wymberly, Zeta, '26, and Vera Cleland Wells, Zeta, '22, who have recently moved to Lincoln.

Edna Harol and Doctor Charles Percy Charlton, of Palmyra, Neb., were married March 26 at Des Moines, Iowa. Dr. and Mrs. Charlton expect to go to Chicago where he will do postgraduate work.

We enjoyed the last LAMP very much and regret that we did not do more to have a share in its success.

Yours in Delta Zeta,

LILA BELLE LOVE.

### OMAHA ALUMNÆ

Convention plans have been prominent in the minds of the Delta Zetas who are members of the Omaha Alumnæ chapter and have come in for a good share of discussion at the recent luncheon meetings of the chapter. Katheryn Lowry Kavanagh has been named the delegate from this group with Marie Houska Sweeney as alternate. Geneva Beck hopes to join them at the Convention in Chicago, going there from Indiana where she will spend the summer with relatives. Among others who may represent the Omaha girls at the national meeting are Ethel King Bates, Effie Norris and Clara Dodds Bristol.

The chapter was entertained at luncheon Saturday, March 8, at the home of Mrs. Beck, with Miss Norris assisting. St. Patrick's green appeared in the decorations of the prettily appointed table. Following the luncheon the guests remained for a brief business meeting followed by a social hour. The preceding luncheon was held at the home of Mrs. Bristol with Miss Emily Houska assisting.

The Omaha group has completed plans for a luncheon and matinée in which members of Zeta chapter and a few guests will participate. The Lincoln group came to Omaha for the party. Details were worked out by Mrs. Bates of Omaha and Vivian Knight Harper of Lincoln.

Members of the Omaha chapter recently had the pleasure of a visit with Ruth Burch Barns of Albion, Neb., who spent a week with friends here. She was accompanied by her husband, Dr. Barns. Ruth tells us that her sister, Florence Burch, has been teaching at Salt Creek, Wyo., this year. Salt Creek is in the center of the Wyoming oil fields.

Ruth Odell writes us that she is enjoying California and has enjoyed renewing acquaintances with Delta Zetas there. She is taking an intensive secretarial course.

Friends of Margaret Herman Hughes will be glad to learn that her little son is improving after a serious illness. Her two little daughters have been ill also.

Friends of Mr. and Mrs. Walter Francis Draine, of Kansas, have received announcements of the birth of their third child. The mother, a former Omaha girl and a member of Zeta chapter, is remembered as "Teck" Egan.

The Omaha group learned with interest that Lauda Newlin, a member of Zeta chapter, is the star athlete at the University of Utah, Salt Lake City. Her success in girls' athletics there has attracted the interest of the Utahans. This is her second year there.



The local chapter has completed its second layette for the Christ Child Mission and expects to get the materials for a third. This form of social service has proved popular with the girls.

CLARA R. BRISTOL.

### BERKELEY ALUMNÆ

Since the last edition of the LAMP, the Berkeley Alumnæ group has been primarily interested in the house plans and the financial problems involved in the building of Mu chapter-house. The bids are to be closed this next Saturday, and of course we are all happy to know that the house will soon be started.

Just a glimpse of the plans, in which some of you might be interested: The house is to be more or less V-shaped with a wing along LeConte Avenue and one on Arch Street, the entrance facing the peak of the lot, on Hearst Avenue. There will be a drive across the front with an entrance from both Arch and LeConte. A flat tile entrance will run across the front with French doors on either side opening from the living-room and dining-room. The entrance hall will be in the center with a winding staircase to the second floor. Under the part which swings back, at the back of the entrance hall will be French doors, giving a vista on the formal garden which will fill the back space between the two wings.

Our rummage sale which we mentioned in our last letter, was a success, both from a financial and humorous point of view. I wish we could tell you at least a few of the laughable and peculiar incidents.

Our hope chest is now most filled to the brim and it is a real cedar chest. The tickets are going nicely and we hope for excellent returns by the time the chest is raffled, April 5.

Should any of you be in the Bay Region on the first Saturday of the month drop Geraldine K. Thompson, 245 Mission St., a card.

JEAN QUINAN.

### PITTSBURGH ALUMNÆ

And still we are having showers for those who have married or are going to be married! Between that and voting in new chapters we don't seem to have much time for anything else. But it surely does seem fine to be getting all these new chapters into our Delta Zeta Fraternity, and we are all mighty glad.

Most of my time right now is taken up persuading the girls that they can go to Convention. Being the delegate, the money part is not worrying me at all, so I am showing each one of them how they can easily save enough between now and then to go. I have even gone so far as to take one girl to the bank while she opened up a savings account that will enable her to go. She is doing some tutoring and each time she gets paid I am going to escort her to the bank. On the rest I am using my most persuasive language. Also we are trying to get as many girls to paying

## ALUMNÆ

Have you saved your copies of the LAMP?

Volume 1, entire

Volume 4, nos. 1, 3, 4

Volume 2, entire

Volume 5, nos. 2, 3, 4

Volume 3, nos. 1, 3, 4

are needed to complete files for the Editor, Executive Secretary, and to furnish to the Sigma Alpha Epsilon fraternity for their permanent library files. Will YOU give your old copies to help? Send them to

GRACE E. MASON,

464 Johnson Block,

Muncie, Ind.



on their Life Subscriptions and Life Dues as we possibly can so that we will stand somewhere in the running for the prizes.

Just now one active chapter is going to have to get another house for next year and we are busy having benefit bridges and rummage sales and so forth in order to carry us over a period of moving and refurnishing and that all helps to keep us busy.

We are all wishing that this was at least the first of June so we could be planning about going to Convention and getting everything ready, so until then, we are all saving our pennies and hope you are doing the same.

Yours in the Bond,

ELIZABETH REID.

### PORTLAND ALUMNÆ

The Portland Alumnæ chapter devoted much of its time in the February and March meetings to the discussion of finances and to the election of a delegate to the 1924 National Convention. The president of the chapter, Dorothy M. Edwards, was elected. We hope that more of our girls will have the privilege of attending the Convention.

The members of our chapter and their husbands, (wherever it applied) were entertained beautifully by Ruth Rosebraugh Foster, February 7. Mr. and Mrs. Foster gave the party on their houseboat at the Oregon Yacht Club and I am sure that we were all much thrilled over the good time that we enjoyed.

April 5, Alete Ahlson and her sister Olga Kephart who is visiting from Washington, D. C., are entertaining the Portland Delta Zeta girls, at their lovely home over Portland Heights on the Shattuck Road. These "get-togethers" are most valuable when it comes to really getting acquainted.

Since we last wrote there have been two engagements and one birth announced in our chapter. Miss Lucille Ewing, Kappa, and Alete Ahlson, Chi, are the engaged girls. Phyllis Lyne Hobart is the proud mother of a lovely baby boy, Arthur Lyne, who arrived on January 22.

The members of Portland Alumnæ chapter send greetings to all the Delta Zeta girls.

Sincerely,

FRANCES FYOCK.

### CHICAGO ALUMNÆ

Spring has come! Or at least the calendar so says whether the weather man carries it out by giving us beautiful balmy days or not. Of course, spring to us here in Chicago means but one thing this year and that is *June* and *Convention*. At this time we want to tell you one and all, active and alumnæ, how much we hope you are all coming to Evanston for the great event. We are sincerely hoping that all Delta Zetas will make an effort to gather here at that time and we assure you we will be happy to greet you.

As to our chapter news, we had a lovely matinée party in February when we saw Ruth Chatterton and Henry Miller delight their audience in their usual charming way in *The Changelings*.

In March we joined with the Northwestern girls, the Alpha Alpha, in a bridge party for they are trying so hard to round up funds for their chapter-house. It was a lovely party and all who attended felt they had a wonderful time. Alpha Alpha always entertains beautifully as you who attend Convention will soon find out.

For April we are planning a bridge party of our own at which time we hope to gather dollars for Caney Creek. We are to hold this party at the Edgewater Beach Hotel and we are hoping we will have quite a crowd so it will really prove worth while.

May 2-6 we are to have the Caney Creek boys with us and they will return again to fill another date May 17. We are eagerly looking forward to this treat and they are to talk before several of the best organizations in Chicago and Evanston. We are fondly hoping that this trip will prove well worth while to them.

After our party next month, all of our efforts will be directed towards Convention and we are hoping to see and know you all there, so be sure and don't fail to keep the flame of our own dear Delta Zeta brightly burning by appearing June 23 in Evanston, Ill.

Fraternally,

PAULINE EDWARDS DODD.

### KANSAS CITY ALUMNÆ

Kansas City Alumnæ chapter has reorganized and has passed a very successful winter of bridge teas each month. These teas have been held in the homes of the members and at the Kansas City Athletic Club. A good representation from this chapter is expecting to attend Convention.

ESTHER WEBER.

---

We are glad to welcome our two new alumnæ chapters, Cleveland, and Spokane, and hope to have the pleasure of knowing many of them personally in June, at Evanston.

---

**Doesn't Everyone Love to Attend  
Zeta Ensembles—Take A-Hint**



*The Grand Council of*  
*Delta Zeta.*

*announces*

*the installation of*

*Alpha Kappa Chapter,*  
*Syracuse University*

*Alpha Mu Chapter,*  
*St. Lawrence University*

*Alpha Xi Chapter,*  
*Randolph-Macon Woman's College*

*April, 1924*

## Chapter Letters

### ALPHA—Miami University

It is only three more days until spring vacation and consequently everything is upset and we are all anxious to reach home. Spring shopping visions loom ahead.

We had a very pleasant surprise the other day. When the semester standing of the organizations on the campus was published by the dean's office, Delta Zeta was fourth on the list and the first of all national fraternities and sororities. Mae Drake, Helen Hooven, and Mary Alice Kimmel were elected to Phi Beta Kappa.

The local Panhellenic Council is discussing a change in rules for rushing season. The present three days rushing has many handicaps, which we are trying to overcome. They are also planning a girls' Panhellenic dance this spring—something that will not only add to the social life but to a better spirit of coöperation among the nationals.

Our spring dance is to be held April 19 at the Oxford Retreat.

PAULINE SMITH.

### BETA—Cornell University

The coming Convention seems to be uppermost in the minds of everyone and well it might be, for it is less than three months off. As many of the girls as possible are planning to go, for we all remember the Convention two years ago at Ithaca and wish that we might entertain all the Delta Zetas again. Those that are going are eagerly looking forward to that week in June which they are going to spend at Evanston, Ill., while those of us who will be unable to go, thing and talk about Convention just as much as the others do. The program that has been mapped out looks very interesting and alluring and Beta surely wishes Alpha Alpha the best of luck and success in the Convention!

Now to come down to "local" affairs! We held initiation March 8 with the usual banquet at the Ithaca Hotel. Speeches were in order, of course, though they were chatty little talks rather than speeches, which word always sounds so cold and formal to me. Mary Gilchrist was toast-mistress and our president, Marion McWhinney, welcomed the initiates into Delta Zeta to which welcome one of the freshmen made a charming response.

For us spring vacation begins April 2 and lasts only a week, but we don't mind the short vacation so very much because spring is so beautiful up here. It's always a promising sign of spring when the students again



begin to loiter outside of the various buildings on campus and talk or "pitch pennies" between classes. Spring would not seem natural at Cornell without that pastime. Another hopeful sign is the appearance of our Ford, "Spark Plug," which was brought back to light after spending three months in its winter quarters. It certainly was good to see "Sparky" again and we immediately warmed him up by taking a lovely ride into the country on Sunday.

After we come back from our vacation we are going to give an interfraternity tea and also a dance which will take place some time in May; and soon after that another college year will have come and gone, the last of its kind for those of us who are graduating, but that is one of the things we seniors do not like to talk about or think about, so let's be cheerful and think instead of the few months of college life that do remain for us and let us enjoy them to the fullest.

Fraternally yours,

HELEN KOERNER.

#### DELTA—De Pauw University

Even in the midst of all the spring rains, wind, and snow Delta girls have "kept going." As usual campus affairs are on the increase until it seems every day is busier than the last; and, of course, rush for next year has begun, and we are still rushing for this year. This week we pledged a new girl, who has already distinguished herself in scholarship, and in campus activities.

Our most recent important activity has been Dollar Week for all the girls in school. W. S. G. A. pledged a dollar from each girl to the Endowment Fund, and every dollar was to be earned. You can't imagine the fun! There were so many clever ways for the girls to earn it. One of our girls shoveled snow, others darned, pressed clothes, made candy and sandwiches, shined shoes, and were models for the Fashion Show down town.

Last week-end W. A. A. gave a circus at the gym. There were side shows, big shows, acrobatic stunts,—just like a real circus.

Alba Guyer and Edna Burgett are in the Glee Club concert to be given next week. Edna has also been taken into University Choir for Easter program. Velma Lou Jones and Marion Boyd have been selected for the cast of the big spring production of *Du:er Du*. Jane Johnson, a senior, has been in charge of the bowling tournament. Our bowling team of Jane, Schudle, and Dick, has started out successfully by beating Kappa Kappa Gamma, 724-395. Our sophomores have been working hard in basketball all year.

Several are planning on going to Convention. May we see all of you there? Then we can tell each other so much more of what we do in our various schools and chapters.

Fraternally yours,

HELEN SCHUDLE.





# 1924 SENIORS

Alpha Eta

Alpha

Delta

Alpha Gamma

Psi

Upsilon

Kappa

Theta

Alpha Zeta

Phi

Zeta

Mu



**ZETA—University of Nebraska**

We are very proud of four new pledges which we took in on our last pledge day March 27. They are all worthy girls and we wish that you all might know them.

Initiation and probation for our freshmen was held the past week and we surely did have fun; we have to hand it to our freshmen. They went into probation with the right spirit, and the results are that we know them better and they know and understand us better. The sixteen girls now wearing the lamps are proud possessors and promise to be loyal Delta Zeta sisters.

Zeta girls are very happy over our new Phi Beta Kappa, in Clara Louis Morris of McCool Junction. Forty-one new members were elected to this organization and inasmuch as fewer were taken in and the average was much higher this year, we have reason to be very proud of Clara. All of you Delta Zetas who are planning to be at Convention this summer will have an opportunity to meet her and we feel sure that you will love her as we do.

Zeta is holding her annual *alumnæ* banquet June 6 and we are expecting all of our old members back. Likewise, we extend an invitation to all of you.

Our spring party is being held April 12 at the Knights of Columbus ballroom. We are planning a very elaborate party due to the fact that it is to serve two purposes; first as a rushing party and second as our representative party. We wish that we might have other Delta Zeta groups represented at this time.

Zeta girls are very proud to send their president, Rhea Freidell, to represent them as the Zeta delegate at the National Convention this summer. Just a little secret to you all—the picture of Rhea does not do her justice. You must know her in order to appreciate what she really is and we are anxious for you all to meet her.

We are all looking forward to Convention and Zeta promises to have a good representation there.

MARTHA CLAIRE BAIRD.

**ETA—Baker University**

We are now planning on our Easter vacation which starts next week, and lasts four days. Soon after our vacation our *alumnæ* will give us a three piece set of over-stuffed furniture for our living-room and we are very anxious to see it.

Last week our local Panhellenic had a dinner and an *alumnæ*, senior, junior and sophomore representative from each fraternity was present. Our Panhellenic is planning a picnic for the nonfraternity girls and we are hoping to have it a success.

March 1 we had our spring formal. The rooms on the third floor were used as dressing rooms and those on second as reception rooms. In the receiving line were Lucille Muenzenmayer, our president, Mother

Horrell, Dr. Fleming, president of Baker, and Mrs. Fleming, Mrs. Fischer, an alumna, and our seniors. The whole downstairs was decorated as a Japanese garden, the orchestra was enclosed in a latticed bower in the music room, the lattice in the sun parlor was pale green to match the music room, and that in the dining and living-rooms was pale gray. Trailing over the lattice were rambler roses, wistaria and sweet peas. Every corner was full of cherry blossoms, and every light was covered with a Japanese lantern. Burning incense added a distinctly oriental suggestion. At the center of each of the twenty-three quartet tables was a pagoda; nut cups were of different colored crêpe paper, and the menus and place cards were crested. High school girls dressed in Mandarin suits, with pompoms in their hair, acted as maids and waitresses and distributed to each guest a beautiful leather bill folder with our crest on it. The house was beautiful, the music delightful, the menu delicious, our girls charming, and the guests declared the party a big success.

Our efforts for the next few weeks will be directed toward our spring house-party. Invitations have been sent to high school girls and other rushees. We hope to make the party a great success for our chapter.

Eta chapter sends best wishes to all of her sister chapters.

EVELYN MILLS.

### THETA—Ohio State University

The finals at Ohio State University are over, and the girls in our chapter made very good grades; I believe that the average for the entire chapter will be very close to "B."

Our formal, a favor dance was February 1, and two girls from the chapter at Cincinnati were our guests. They seemed to have an excellent time, and we appreciated very much the privilege of entertaining them.

We are going to hold initiation services very soon, although the date has not yet been set.

We are busily looking for a new house. Our present one, though excellent for the purpose, is too far from the campus.

There has been considerable talk lately in regard to a home of our own and we are to hold a joint meeting with the alumnae to obtain their views as to the advisability of attempting to obtain one.

Marjorie Van Bolt will be our representative to the Convention and several other girls are also planning to attend.

A number of our mothers have become very much interested in Delta Zeta and are planning to organize that they may better assist us in every possible way. Several of them have met at the house, and in order to organize and formulate plans, they are giving a dinner for us at the chapter-house April 4, and it is hoped that not only the mothers of the Columbus girls will be present, but such out-of-town mothers as can make it convenient to do so.

This should give added stimulus to the members, and it is felt that



the appreciation of our work by the mothers of the girls will add greatly to our efforts.

LOLA L. LARASON.

### IOTA—University of Iowa

What to tell first? There's so much to say—anyway we had our formal that I promised to tell you of in my last letter and really it was most beautiful and a decided success (I mean the formal, of course). One of the unique features was a large lamp worked out in flowers. It stood from the floor five feet high in the center of the tables which were arranged in a Delta. Black leather card cases, with gilt edged cards and engraved with a gold D. Z. were the favors while black leather programs in the shape of our crest with the content of the crest stamped in gold helped to carry out our color scheme of gold and black. Miniature gold lamps for nut cups helped, too.

A new project has been launched on our campus; namely, a permanent Interracial Commission to remedy the situation of the foreign students. A Delta Zeta has recently been elected chairman.

Every year a representative women's dinner is given by the Women's Association and do you know that more Delta Zetas were there than any other group; five of them, and Verda James presided.

One thing more—this is not exactly official as yet—but in a day or so scholarship reports are to be out and it is rumored that we are first; in fact several "slips" by those who are in a position to know make us almost positive of the good news.

I'll tell you for sure though, next time—but say, this is the last issue, isn't it? Well you'll hear at the Convention—for of course you are all coming.

In bidding you goodbye let me say that we have enjoyed so much all of your chapter letters and hope that next year we can again "chat" with each other with as much satisfaction as we have in the past.

SEE YOU ALL AT THE CONVENTION.

VIVIAN CONRAD.

### Kappa—University of Washington

I want to tell you first of all, about our initiation because it was just last night. There were seven girls and I don't need to tell you how happy we are to have them. Everything went off fine but I'm afraid to-night that seven doctors will be on hand for seven cases of pneumonia—because



not one coat was buttoned to-day, and the pearls and diamonds braved snow and sleet with the thermometer a mile below zero!

Then comes more good news about Fran Burpee being elected president of W. A. A., Jean Wallace as sophomore representative on Woman's Federation and Laura Beager, Florence Pinnard and Katherine Bone-steel on the Y. W. C. A. cabinet. In the junior girls' Vodvil Delta Zeta was again in the limelight with Evangeline Edwards and Jene Hopkins to represent us,—and now that the new quarter has started we're out looking for some more girls just like them, so rushing is in full swing again!



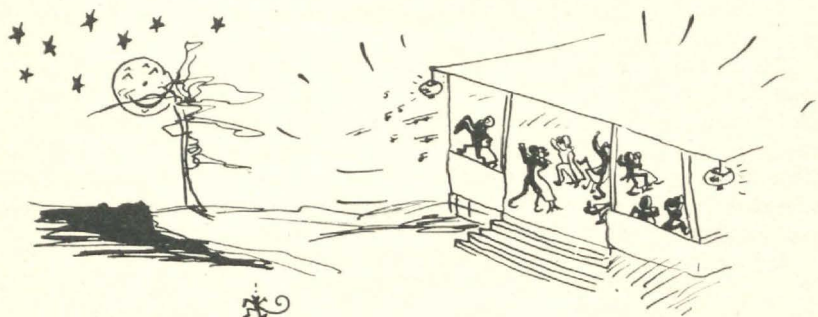
We all miss Freddie Travis and Edith Boyer so much, they left us for "Oregon" this quarter.

February 21 we had our formal. I expect a lot of you girls think because we are way out here in the West that we had a regular Indian War Dance—bonfires and tomahawks with the orchestra all dressed up, jazzing "Those Scalpin' Blues" on their Pom Poms or Tom Toms or whatever they are!! But it wasn't that way at all—even though we did have it right here in our own wigwam. The decorations were lovely—soft lights and spring flowers everywhere and the music was the very best ever.



Tuesday we are having a tea for our house mother, Mrs. Maris, and, oh girls, how I wish we were sending her along to Convention so you could all meet her and know how charming she is. We are hearing every now and then, plans for our spring informal May 16 I believe it is to be on a boat, at some lodge in the mountains, or somewhere.





Next week is the crew race, everyone is so excited and can hardly wait for Saturday to come.



I haven't told you yet about Peggie. She is the girl we are sending to Convention. Margaret Felsh is her real name but we call her Peg for short. She is a dandy girl, but you will all find that out before long.

It's just a little late to close with "Merry Christmas" and Best wishes for the New Year." Maybe I should say "Fraternally yours" or "Yours in the bond" but instead I think I'll just say—goodbye with love from Kappa chapter to all the Delta Zetas.

MADELIN V. BAYLEY.



### LAMBDA—Kansas State Agricultural College

Lambda initiated eight girls at first initiation. Our spring party was held March 22, and a great many of the alumnae as well as rushees were here for it. Our patronesses have promised us a party at the Country Club this spring so our social calendar has not been neglected.

Lambda is getting enthused about Convention and a number of the girls are planning to attend. Hilmarie Freeman, a junior in college and vice-president of the chapter has been elected official delegate.

Edythe Wilson Thoeson was here for a few hours March 2. She could make only a brief visit as she was on her way south to inspect chapters there.

Our candidate in the recent popularity contest, Bernice Flemming, placed second. There were five other girls in college elected to places of honor and we feel proud that our candidate placed second.

VELMA LOCKRIDGE.

## MU—University of California

Mu chapter, in the face of rebuilding, beginning the grind of again paying off the debt of a new house, has "come through the fire" stronger, better, and with a keener appreciation of the bonds of fraternity life.

The last month has shown a spirit of coöperation well worth while. The thirteen girls who have made the best of an overcrowded house are especially to be commended. The chapter roll is now thirty-eight.

As to Mu chapter on the campus, we are unfortunately not very well represented. Two of our seniors belong to Prytanean, honor society, composed of representative women students in activities; one is in athletics, and another is a member of the Women's Executive Committee. A senior, majoring in landscape gardening, belongs to an architecture honor society, and is also on the Senior Week Executive Committee. The president of the junior class of U. C. is a Delta Zeta, as is one of the sophomore editors on the *Daily Californian*.

It is too early to forecast for the freshmen. Their interests are being directed toward participation in divers activities so that their scope or viewpoint will be sufficiently broad to give them an adequate understanding of the student activities.

With only four weeks in which to study for final examinations, the student body is assuming an anxious expression. It will be lost at the time of our elections, in which we look for a good week of campaigning, including the *campi politici* bug.

We're all planning to win the prize for the greatest number at Convention coming from the greatest distance. (Open competition with Kappa chapter.)

Until then, Mu chapter sends greetings, and wishes you were all here to enjoy our gorgeous spring weather. (We add the last about weather, because, being Californians, you expect it of us—it's true though.)

ESTHER MUNSON, '24.

## NU—Lombard College

After all grades were satisfactorily completed for the first semester, Nu began to think of initiation. Because our spring vacation was to be very early in order to allow our basketball team to go to Kansas City to play in the national tournament, we wanted to complete our initiation before we went home.

On February 23 we were invited to a lovely dinner at the home of one of our alumnae and after dinner the pledges were initiated and it surely was a happy group of girls who came back to the dormitory that night; perhaps the seven happiest were our initiates.

Since vacation we have been busy studying for and taking our annual fraternity examinations as well as completing our college mid-semester tests.

Another honor has come to Nu. A new scholarship fraternity, Phi



Kappa Phi, has been established at Lombard College and the first seniors and a few alumnae of later years whose grades warranted were initiated March 28. In this first initiation Delta Zeta was represented by one alumna and one senior. We hope to have more girls next year and all of our girls are working hard to gain this new honor for Delta Zeta.

EVELYN ADAMS.

### OMICRON—University of Pittsburgh

Well here we are in the middle of another semester and Delta Zeta still as active as ever. We have pledged two new girls since you heard from us last; both are the sweetest ever and one is already a shining light in the basketball world at Pitt. We initiated five a couple of weeks ago, making the active chapter roll now twenty-four. The only thing we regret is that we must lose our beloved seniors so soon.

What's that? Why of course we are going to Convention. That is, some of us are going, and it surely is not because we don't want to that the rest of us are not. But you know everyone can't have everything one wants, so we will have to be satisfied to hear about the good times from our more fortunate sisters who go to Northwestern. The chapter is sending Magdalen Austen, one of the juniors as the official delegate of Omicron.

Best wishes to all our sisters in Delta Zeta.

DOROTHY LILlich.

### XI—University of Cincinnati

The girls of Xi chapter are very busy at the present time planning many interesting affairs and hopefully looking forward to their success. We are getting together all the old things we can possibly find for our rummage sale April 12 in one of the poor down-town districts. We are also planning with the alumnae chapter to give a card party at the Hotel Sinton May 10. This, besides being a good way to make money, will be a pleasant social affair.

The freshmen girls are entertaining the actives with a luncheon-bridge April 19.

Our spring dance is to be given the latter part of May at one of the country clubs and as it will be the last dance of the year, it will form the climax of our social activities.

We are pleased to announce the formation of a Delta Zeta Mothers' Club. The first meeting was held at the home of Mrs. Linn DeBeck last month. Meetings are to be held once a month. We are very glad to have the support of such an organization and know that their ready coöperation will prove a great help to us.

We dread the approach of graduation as it brings with it the loss of six of our very best girls. These are Dorothy DeBeck, Sue Ely, Betty Fisher, Florence Roth, Mildred Schmid, and Hazel Burk. Dorothy DeBeck, Betty

Fisher and Hazel Burk are members of Mystic Thirteen, a senior honorary women's fraternity, which limits its membership to thirteen.

Many of the girls of Xi chapter are expecting to attend the Convention. We are eagerly awaiting the time and hope to see you all at Evanston.

MAY OLIVER.

### RHO—Denver University

We all thought that after the finals were over and the new semester was well started, that Rho girls would sit back and take a rest. Such, as it happens, has not been the case. It seems the new semester brings new activities and new fun which keep us all as busy as ever. Just before the new semester, we had a rush party at the house, which was, I believe, the most successful one we have ever had. Every girl was given a mandarin jacket and cap, with a long pig-tail, and we played Mah Jongg and then were served small figures of Chinese men and women in frozen form and cake with Mah Jongg characters outlined in the frosting. As a climax, we were given entertainment by the pledges of Lambda Chi. Soon after this party we pledged six girls.

On Washington's birthday, our pledges, now initiated, entertained us with a supper at the home of Helen Carpenter. Just before serving, they presented us with two dozen forks engraved with  $\Delta$  Z. Also we received three dozen napkins embroidered with lamps. Miss Daly later presented us with two dozen embroidered napkins. Miss Daly is certainly a treasure. We chose her for our patroness some time ago, and loved her so much that we now have her initiated into the Denver Alumnæ chapter. She seems to be a fairy godmother who knows what we want and produces it.

On March 1, we held our initiation for first semester girls and initiated eight girls at the home of Margaret Beatty, finishing the day with a banquet at the Argonaut Hotel.

Our subscription dance March 14 was a wonderful success and we swelled our house fund by more than \$100.00. We are now planning a dinner-dance to be held at the Mt. Vernon Club, and expect it to be as successful as our last year's spring dance.

We girls here in Denver are certainly thrilled to have the new chapter at Boulder. Many of us have spent a day or so at the Pi Delta house, and we learned to like the girls very much. We feel that we are fortunate in having them for Delta Zetas.

I suppose all Delta Zeta girls are planning to go Convention or wishing they could. Let's make it the best ever!

Fraternally,

ELVIE HUBBARD.

### SIGMA—Louisiana University

Examinations for our second semester are just over and five pledges made their grades. They will be initiated April 14.

Sigma was honored by a visit from Mrs. Edythe Wilson Thoesen. She



gave us a thorough inspection and was willing to advise and encourage us in all of our undertakings. Although Mrs. Thoesen was here just two days we all learned to love her very much and feel indebted to her for her assistance.

The Blazers, senior girls' honorary organization, offered a silver loving cup to the sorority who won the championship in basketball. Last year the Chi Omegas won the cup. We were determined that they should not keep it another year, so we got up a good team and won the championship ourselves.

One of the biggest problems before our chapter is that of building a house. Those chapters who own houses never have to bother about a building fund, but it's a perfect nightmare to us. What would you do if you had to build a \$20,000 house and had only one year to raise the money? You see, the Greater Agricultural College will be ready in a year to take the place of L. S. U. and each fraternity and sorority has to build its own house. The minimum cost of these houses will be \$20,000. We are working hard to reach this goal. Sigma is planning a minstrel now to be given next month for the benefit of the building fund.

Three seniors from Sigma are living in the Home Economic practice cottage. Our freshmen are entering into college activities with a vim. Three of them were nominated for W. A. A. Executive Board and two for Y. W. C. A. officers.

LUCILE WILKINSON.

EDITOR'S NOTE: If you want to learn how other chapters are raising money to build houses, come to Convention.

V. B. J.

#### UPSILON—University of North Dakota

"Between the hustle and bustle, when activities demand most our power,  
Comes a pause in the day's occupation, that is known as the D. Z. hour."

We'll hope that Longfellow doesn't object to our so cruelly distorting his poem, but he wasn't living when Delta Zeta was founded so we wrote about D. Z. for him.

In our last letter we told you how anxiously we were looking forward to the Carney Song Contest. It is over now and once more the seniors walked off with the fifty-dollar check. The Delta Zeta seniors very graciously showed their generosity by giving a dinner to the three losing classes at the house to celebrate their victory.

The next event in song contests with us will be held next Tuesday evening when the four classes in Delta Zeta will compete for a prize by singing Delta Zeta songs. An original song is to be given by each class.

We must not fail to tell you; we have another loving cup, yes another one. This is third one we have received in three successive years for selling the most *Dakotas*, the annual publication of the university. This is the fifth loving cup we have won.

Our birthday banquet was a great success, and oh, we had such a good time and we were all so proud to be Delta Zetas. Nell Langford acted as toastmistress and those who responded to toasts were Luella Marcott McCanna, Ethel Rosendahl, Dorothy Torlekson and Marguerite Kops. Alice Melbye was in charge of the banquet. We received many beautiful gifts from our alumnæ for our birthday which have added most artistic touches to the house. The actives and pledges joined in presenting a fifty-dollar bond to the house.

Dean and Mrs. O. P. Cockerill are now patron and patroness of Delta Zeta. In honor of Mrs. Cockerill we gave a tea to which we invited all of the faculty men's wives and representatives from each sorority. Agnes Van Arsdale was in charge of the tea.

Mr. and Mrs. Jenkins, also patron and patroness, entertained the chapter members at a dinner party in their home recently. We had a wonderful time.

We are planning to entertain the new local sorority which has just been organized on our campus.

Campus Cut Up, an annual event sponsored by the Y. M. and Y. W. of the university, is to be held in the near future. Each sorority and fraternity has charge of a booth. Delta Zetas and Sigma Chis are co-operating in planning one large booth.

Upsilon sends the best of wishes to all other chapters.

KATHERINE PRATT.

### PHI—State College of Washington

The second semester is well under way bringing with it added work, not only in classes, but in outside interests as well. The scholarship list for last semester was read in chapel recently and we were proud when Delta Zeta was read second on the list of forty-one groups. We have set our goal for first this semester as we think the scholarship cup on our mantel would be something to be proud of.

Delta Zeta is well represented on the different class teams in basketball and indoor baseball. Thelma Shafer, who is manager of baseball, is pitching for the seniors, Frances Helmer plays a good game on second for the juniors and Marie Anderson and Helen Sennis are playing for the sophomores and freshmen respectively. Carol Cornish is on the senior basketball team, Gertrude Tunnard and Agnes Bushnell on the junior and Dorothy Anderson on the sophomore.

Minnie Doescher was recently pledged to Lambda Kappa Sigma, honorary pharmacy fraternity, Agatha Lewis to Pi Lambda Theta, educational fraternity and Kathryn Tracy to the Eurodelphian Literary Society. Anna Truedson was elected as vice-president of Women's League for the coming term and Carol Cornish was appointed to serve on the Women's Big Five for Campus Day. Gertrude Tunnard was elected dancing manager for W. A. A. and president of the Physical Education Majors' Club, of which she is a charter member. Frances Helmer is reported for W. A. A.



We pledged six lovely girls this semester of whom we are very proud and we know they will be splendid Delta Zetas. Soon after that we initiated six girls and it is so nice to have them as full-fledged members.

We gave our spring informal at the White Owl last week, which was artistically decorated in our fraternity colors and the punch girls looked darling in their rose bud costumes. Our annual Modern Writers' Formal at which we entertained the members of the faculty is to be this week-end. It was very successful last year and we hope it will be so this year too.

We wish success to all Delta Zetas everywhere.

AGNES BUSHNELL.

### CHI—Oregon Agricultural College

Third term registration is completed and we are already in the whirl of activities and rushing. This is going to be a busy term. The annual Women's Stunt Show is to be given April 11-12; Campus Week-end comes May 15-17, and there are to be field trips and other things too numerous to mention. May 10 is to be Women's Day on the campus. As many mothers as can are coming down, and the day is to be devoted to activities of the college women. We are planning a pleasant time for our mothers.

Several of our girls were among those selected to help in the Home Economics demonstration at the Multnomah Hotel during the spring vacation. We have felt the need of more participation in student activities, so this means much to us.

At last we have taken definite steps towards establishing a building fund and securing lots, and it really looks as though we will have our own home some day. We hope that it won't be very far off.

There seems little to say, since it is near the beginning of the term, but will promise a more "newsy" letter next time.

Best wishes from Chi.

LOIS FENDALL.

### PSI—Franklin College

We have just closed a most successful basketball season, our team being state champions and, we think, world champions, their record being so enviable. Last Tuesday evening we celebrated our victories with a great college dinner where we had lots of eats and lots of fun listening to Jesse Pugh, of Redpath, who was our principal entertainer.

Psi has been rather happy and proud, too. One of our girls, Mary Packer, won the Panhellenic scholarship cup for having the best grades last year, and Delta Zeta, as an organization, stood second in rank above every other organization on the campus in grade standing last semester.

While we have been busy with study, we have not forgotten the activity and social side of college life.

Two weeks ago, we gave a tea for the petitioning chapter at Butler, Tau Gamma Tau, at the beautiful home of Mrs. Winchester, one of our patronesses, at Greenwood. We were charmed with the girls, and wish you all could meet them.

We wish all the chapters as successful a year, and hope to see you all next June.

MARY PACKER.

#### ALPHA ALPHA—Northwestern University

This letter will probably be a rather incoherent hymn of praise; praise because we are at last to have a house, and incoherent because we are so excited over that that we can scarcely think of anything else. For years we have been working steadily but slowly for the house fund, but quite recently came the word that the sororities which could get together \$15,000.00 in cash or valid pledges could start to build in July. You see the university has planned a woman's quadrangle to contain a large Women's Building and all the sorority houses—all alike in design. Well, we have been working frantically ever since that word came, with the result that our books were handed in to-day showing the required amount. This means that Delta Zeta will be one of the first group to build and we are proud of that because we have been on the campus such a short time compared with some of the others.

Before I get off the subject of house fund, I must tell you about our spring exhibit. It was in the nature of a county fair and was held at the Evanston Woman's Club last Friday and Saturday. Many of the Evanston and Chicago merchants rented booths to display their produce and, in addition, we had a booth where we sold food, a cake judging contest, dancing, children's movies, and a style show. One of the Evanston department stores furnished the clothes to be displayed, and some of our own girls acted as models. Friday it rained! Enough said. We were all so disappointed at the small crowd, but we couldn't blame people for not coming out in the miserable weather we were having. But Saturday night we had such a splendid crowd that we forgot about the night before and put all our thoughts to making good then and there. And we did. We ran out of lemonade three times and the hot dogs were gone before we knew it.

We had installation of officers yesterday. We elected early so as to give our new officers a chance to get started in their work before Convention; Convention spelled with a capital C. It is less than three months away, and the closer it comes the more thrilled we get. We have had a few warm springy days lately which are just enough to make our imaginations run wild, and I could just see and hear those 500 Delta Zetas singing around the beach fire down back of the gym. Can't you see the fire reflected in the diamond of each girl's pin? I wish June would hurry.

But before Convention come lots of things—circus, Women's Week-end, examinations, and graduation. It hardly seems possible that examinations are only two months off; and we do so hate to lose our seniors. But we hope that they can all stay for Convention, so we have another reason to be glad that we are to have the Convention this year. We are waiting not very patiently until the grand march to Evanston starts, and promise each one of you a real, honest-to-goodness, Delta Zeta welcome.

JEAN MAXHAM.



**ALPHA BETA—University of Illinois**

This week Illinois has been celebrating the coming of spring and last Thursday it had its annual parade with all the regular accompaniments. As usual, the "Orph" theater was stormed and the whole town reëchoed with the yells and shouts of the students. One of our alumnae, Gladys Warner, treated us with homemade ice cream and cake afterwards and then we had four serenades so Alpha Beta certainly feels that it has ushered in spring quite thoroughly.

Now that spring has come, we are expecting several "announcements" especially since our president for last semester, Margaret Hoefflin, strolled serenely down to dinner last Tuesday wearing a Triangle pin. We suspect Margaret has started something.

Just now we're all trying hard to get eight hours' consecutive sleep, to keep from eating between meals, and to take one half hour of exercise every day in order that our chapter may win the cup which W. A. A. is offering to the house which keeps these rules most carefully for this week. We're getting awfully tired of oranges and fruit lemonades (we're allowed to eat fruit between meals) but we're bound we'll win that cup.

We have decided on May 10 as the date for our spring dance and we have written to all our alumnae telling them to be sure to come. We are going to have it at the Urbana Country Club and we're counting on one wonderful time!!!

FLORENCE M. HARDING.

**ALPHA GAMMA—University of Alabama**

Mrs. Thoesen has come and gone! We are so happy that we now know Edythe Wilson Thoesen personally. She helped us worlds by giving us good advice about many fraternity matters—especially our house problem.

We must have a house next year. We are trying a new plan which we hope will soon bring in our needed thousands. Delta Delta Deltas are moving into their new home next week. This will complete one sorority court, Kappa Delta, Alpha Gamma Delta, and Tri Delta. If we are lucky enough to raise our money first we will have the privilege of opening a new court.

Our chapter meeting this afternoon was very exciting. New officers for next year were elected. Our new president is Augusta Parr. Those of you who go to Convention will get to meet her as she will be there to represent us officially. I say "officially" because Alpha Gamma is going to send several girls to Convention.

Next year is going to be a hard one for our new officers as several all-important things are going to happen. We have the presidency of Panhellenic and it will be our first experience at trying to run a house, and preferential bidding is going to be introduced into our "rushing rules."

Vachel Lindsay read for us last night. The auditorium was overflowing and we all enjoyed him. He made us feel proud as he said that ours was the best prepared audience he had ever recited to.

We are fortunate in having most of our *alumnæ* working near us, and quite frequently they come and spend week-ends with us. Mary Maude Bailey is coming to-morrow.

We are planning a benefit bridge party for April 12. It will be in progress at three different homes at the same time thus giving us three times the number of tables, and as our *patronesses* are going to furnish refreshments, we can make everything clear.

Our campus is perfectly beautiful. When we have Convention here, it must be in the springtime. There's no prettier spot anywhere than "Bama's" campus in the spring.

We hope to see you all at Convention.

FRANCES PICKENS.

### ALPHA DELTA—George Washington University

"All things come to an end at last," even rushing at George Washington University. March 24 we pledged five splendid girls, a sixth being unable to attend the service on account of illness, and initiated one upper-class girl. We also have another upperclass pledge, making seven pledges in all, and—here's a secret—we have strong hopes of getting two more. After our pledge service we had a delightful supper served at various small tables.

The students of George Washington University have formed themselves into a committee of ways and means to make money for the George Washington University building fund. Alpha Delta chapter held a successful benefit card party at the Burlington Hotel March 18 and we were ably assisted in the undertaking by Mrs. James Irving Steel, one of our *patronesses*, and several of her friends. Numerous Washington merchants donated prizes.

The Washington *Alumnæ* chapter of Delta Zeta gave a delightful rush tea for us at the home of Mrs. Dorothy Zirkle, February 12 from four to six o'clock.

Our two upperclass pledges held the most successful informal dance in honor of the active chapter March 15 at the home of one of the pledges. The girls were presented with silver ribbon waist bands decorated with rosebuds, while the boys' favors were rose and green paper caps. A feature of the evening was a spot dance, the prize for which was a ceiling wax ornament made in the shape of a Delta Zeta lamp, the handwork of one of the pledges.

Now we shall have a long uneventful stretch of time until final examinations, the latter part of May. This will be broken, however, by initiation, the last of April.

Until Convention!

IDAMAY LANG.

### ALPHA ZETA—Adelphi College

I have taken the fatal step and it really wasn't fatal after all—for according to Webster, fatal means calamitous and my becoming a Delta Zeta was certainly not a calamity.



Three of us took the step together and I am sure I will express both the other's feelings when I say we were "thrilled to tears," for that's just exactly what we were. And now that we are full-fledged fraternity girls—well, I don't know, there's some sort of a feeling—one just feels more important, that's all! But come, this letter must relate what our chapter has been doing. In February when a few new freshmen came flocking in, we pledged Anne Krautter. So far it hasn't been such a terribly busy year but now with all the signs of spring beckoning us our hearts turn to house-parties. We are planning to spend four or five days in some "neck o' the woods" during our Easter vacation which comes very late this year—from the eighteenth to the twenty-seventh. Just think of us, some of you, when you're studying hard for an examination, we'll be climbing trees, or playing at some jolly sport.

The Varsity Show, *A Midsummer's Night Dream*, the big event of the year at Adelphi, was presented March 15 and three of our girls took part.

Oh, before I close, I mustn't forget to say that we're gradually becoming one hundred per cent "bobbed hair." In the last month four have had their's cut and before another month elapses we expect many recruits.

FRANCES TROMBLÉ.

### ALPHA ETA—University of Michigan

It is incredible that this is to be our last chapter letter this year, and that spring vacation is only two weeks distant. At present, most of us are living from one blue book to another, for mid-semesters are upon us. House-hunting seems to be our favorite out-door sport, but as yet we have not found one that is suitable, although we are confident that we will have one before school closes.

Mrs. Coleman came to Ann Arbor March 14 and spent the week-end with us. We all enjoyed meeting her very much, as the girls who have had the pleasure of meeting her will readily appreciate.

February 16 we initiated four girls and one patroness. Since then we have pledged six new girls, so that we now have seven pledges. We have also been having rushing parties ever since this semester opened and hope to pledge some more girls before spring vacation. St. Valentine's Day, Washington's Birthday, and St. Patrick's Day all offered us opportunities for novel parties, and we made the most of them.

Two weeks ago the annual junior girls' play was given and had a most successful run of six performances. One of our girls had a leading rôle and three of our juniors took part in choruses. On the opening night the senior girls were guests of the juniors at the play and appeared in their caps and gowns for the first time. Our eleven seniors looked very dignified and remote, but it is hard to make us believe it.

Lantern Night is scheduled for sometime in May. This is a tradition with the women of the University of Michigan and on this night each

class moves a step upward. All this makes commencement seem very near indeed, and, though we are always looking forward to the long summer vacation, we deeply regret the loss of our seniors who have meant so much to us this year.

Every girl in Alpha Eta wants to go to Convention but how to get there seems to be the main difficulty. We do hope that it will be the biggest Delta Zeta Convention ever held, and we are looking forward to seeing many of our new sisters whom we have only heard about, but whom we shall be most anxious to meet.

ELINOR CURTISS.

### ALPHA THETA—Kentucky State University

Alpha Theta is truly sorry, girls, that this is the last LAMP for this year and if you'll cross your heart not to tell, this is why we are sorry. You know it's just in most folks to talk about the things they do and we in Kentucky are certainly not exceptions. Of course we can't very well tell our Greek sisters on the campus; why, they know it all anyway, so we tell you everything. Yes, you have guessed it—spring bonnets in Kentucky are larger in spite of bobbed hair.

Seriously, two very important achievements have been added to this year's list. Lillian Rasch is taking the lead in the annual Stroller play. Booth Tarkington's *Seventeen* is the play and already the order has been placed for Delta Zeta roses; then, Mary Stallings was pledged to Theta Sigma Phi. "Our Mary" is fast making a name for herself on Kentucky's campus.

There was initiation to make things interesting for us, too. All our first semester pledges were initiated for their grades were unusually good. We are depending on them to capture the scholarship cup for us again. Two alumnae were here for initiation. Mrs. Edward Stumbo came down from Caney Creek and we learned so many things about our social work that we hadn't known before. Mrs. Crawford was here from Ft. Thomas. Peg is our Big Sister and we are always delighted to see her coming. By the way, two of the girls are invited to the Delta Zeta formal at Miami and they can hardly wait for the time to come.

We who are seniors say in farewell that Alpha Theta's first birthday is the joy of our lives and may all seniors in years to come be as glad as we to have the little lamp make the new way bright.

BERNICE BIRD BROWNING.

---

Convention is WHAT you make it.



## Pledges and Initiates

### ALPHA—MIAMI UNIVERSITY

#### *Pledge*

Vivian Prillman, Muncie, Ind.

### ZETA—UNIVERSITY OF NEBRASKA

#### *Pledges*

Mildred Milton, Long Pine, Neb.

Virginia Green, Lincoln, Neb.

Lucille Faucett, Lincoln, Neb.

Dana Backer, Geneva, Neb.

### IOTA—IOWA STATE UNIVERSITY

#### *Pledges*

Margaret Triplett, Storm Lake, Iowa.

Wilma Wood, Everly, Iowa.

Ruth Tarnisica, Missouri Valley, Iowa.

Helen Yepson, Yetter, Iowa.

#### *Initiates*

Ruth McClenahan, Des Moines, Iowa.

Helen Cole, Woodbine, Iowa.

Vera Hood, Independence, Iowa.

Eleanor Douglas, Adel, Iowa.

Mary Ellis, Lineville, Iowa.

### LAMBDA—KANSAS STATE AGRICULTURAL COLLEGE

#### *Initiates*

Anna May Davy, Lamar, Colo.

Marie Gilmore, Herrington, Kan.

Bernice Rogers, Abeline, Kan.

Patricia Smith, Topeka, Kan.

Karleen Garlock, Kansas City, Mo.

Mary Jackson, Manhattan, Kan.

Ruth Davison, Kansas City, Mo.

Betty Elkins, Wakefield, Kan.

## NU—LOMBARD COLLEGE

*Initiates*

Frances Bjorling  
 Betty Brundage  
 Doris Whiteside  
 Alice McCreary

Bernice Farwell  
 Frances White  
 Grace Milliken

## XI—UNIVERSITY OF CINCINNATI

*Initiates*

Anna Louise Bell  
 Elizabeth Swing

Lucile White  
 Betty Jones

## RHO—DENVER UNIVERSITY

*Initiates*

Helen Carpenter, Denver.  
 Zoe Behrend, Denver.  
 Roberta McCallum, Denver.  
 Margaret Sylvester, Denver.  
 Frances Giblin, Denver.  
 Louise Dawley, Denver.  
 Henrietta Theys, Denver.  
 Bernadetta Daly, initiated to Mu Alumnae, Denver.

*Pledges*

Edythe Cunningham, Denver.  
 Helen Moe, Denver.  
 Sylvia Morrow, Denver.  
 Eleanor Letts, Denver.  
 Wilma James, Denver.  
 Virginia Smith, Denver.

## UPSILON—NORTH DAKOTA

*Pledges*

Alice Otis  
 Ruth Germo

Theresa Hagen

## CHI—OREGON AGRICULTURAL COLLEGE

*Initiates*

Helen Currie  
 Dorothy Nicolle  
 Florence Melis  
 Frances Leinenweber

Alice McCool  
 Bernice Treanor  
 Edna Beckett  
 Idamae Schloth



## PHI—FRANKLIN COLLEGE

*Pledges*

Marie Walton  
Miriam Cone  
Lydia Doell

Grace Stoddard  
Catherine Tracy  
Leta Brock

## ALPHA ALPHA—NORTHWESTERN UNIVERSITY

*Pledges*

Catherine Carroll, Unionville, Mo.  
Harriet Gorby, Evanston, Ill.  
Dorothy Harcourt, Chicago, Ill.  
Mildred Johnson, Chicago, Ill.  
Berenice Landon, Oak Park, Ill.  
Marian Sorens, Chicago, Ill.

*Initiates*

Lois Berry, Austin, Ill.  
Jeannette Hollister, Wilmette, Ill.  
Margaret Parker, Chicago, Ill.  
Joy Tibbetts, Lake Forest, Ill.

## ALPHA BETA—UNIVERSITY OF ILLINOIS

*Pledges*

Hazel Clark

Grace Ator

*Initiate*

Bernice Schur

ALPHA DELTA—GEORGE WASHINGTON  
UNIVERSITY*Initiate*

Harriet Rose Staples

*Pledges*

Virginia Richards  
Vivian Robb  
Martha Morgan  
Beulah Chamberlain

Catherine O'Niel  
Bettie Griffin  
Olive Chace

## ALPHA ZETA—ADELPHI COLLEGE

*Initiates*

Virginia Bell  
Margaret Healy

Frances Tromblé

*Pledges*

Katharine Angers  
Anne Krautter

Elizabeth Ray

## Honor Roll

### ALPHA CHAPTER

Helen Hooven .....	Phi Beta Kappa
Mary Alice Kimmel .....	Phi Beta Kappa
Mae Drake .....	Phi Beta Kappa
Marion Parker .....	Y. W. C. A.
Frances Helen Mains .....	Y. W. C. A.

### DELTA CHAPTER

Alba Guyer .....	Glee Club
Edna Burgett .....	Glee Club
	University Choir
Virginia Kiracafe .....	University Choir
Helen English .....	Vice-president Y. W. C. A.
Helen Schudle .....	Vice-president W. A. A.
Ruth Dick .....	Secretary W. A. A.
Edna House .....	Secretary Biology Club
	President Home Economic Club
Jane Johnson .....	Sponsor R. O. T. C.
Beryl O'Hair .....	Y. W. Sub-Cabinet

### IOTA CHAPTER

Esther Van Cleave .....	Y. W. C. A. Cabinet
	Secretary Hesperian Literary Society
Orvilla Orton .....	Y. W. C. A. Council
Charlotte Fisk .....	Delegate to Y. W. C. A. Convention in N. Y.
Catherine Donica .....	Vice-president Women's Forensic Council
Lorraine Luthmer .....	Twelfth Night
Dorothy McClenahan .....	Purple Mask
	Theta Sigma Phi
Dorothy Wilson .....	Theta Sigma Phi

### UPSILON CHAPTER

Olive Berget .....	Delta Phi Delta
Emma Morud .....	Y. W. C. A.
Karless Home .....	Treasurer Y. W. C. A.



## PHI CHAPTER

Ella Mustard .....	Phi Kappa Phi Honor Roll
Carol Cornish .....	Vice-president Y. W. C. A. Crimson W Women's Campus Day Big Five W. A. A.
Margaret Rawson .....	Secretary Mu Phi Epsilon Eurodelphian Second Cabinet Y. W. C. A. Honor Roll
Thelma Shafer .....	Crimson W W. A. A. Cabinet Senior Memorial Committee Honor Roll
Agatha Lewis .....	Pi Lambda Theta
Frances Helmer .....	Chairman Program Committee New- tonian Club <i>Chinook</i> Staff W. A. A. Cabinet Honor Roll
Myrtle Burnham .....	<i>Chinook</i> Staff
Gertrude Tunnard .....	Crimson W W. A. A. Cabinet President Physical Education Club Glee Club Eurodelphian Hockey Honor Team
Agnes Bushnell .....	W. A. A. <i>Chinook</i> Staff
Dorothy Anderson .....	W. A. A.
Marie Anderson .....	W. A. A.
Mabelle Carstens .....	Eurodelphian Radio Players Dramatics
Anna Truedson .....	Vice-president Women's League Women's Council Finance Committee Y. W. C. A. <i>Chinook</i> Staff W. A. A.
Dorothy Butler .....	<i>Evergreen</i> Staff
Evangeline Buckmaster .....	Freshmen Commission Y. W. C. A. <i>Evergreen</i> Staff
Mearle Frese .....	Freshmen Honor Roll Freshmen Commission Y. W. C. A.
Louise Bissett .....	Honor Roll Prize Winner Crimson W. Jamboree

Catherine Tracy .....	Eurodelphian
Evelyn Brandt .....	Prize Winner Crimson W Jamboree
Minnie Doescher .....	Lambda Kappa Sigma
	State College Pharmaceutical Association

## CHI CHAPTER

Wildes Edwards .....	National Intercollegiate Players
Idamae Schloth .....	Madrigal Players
Vivian Feike .....	O. A. C. delegate to Student Volunteer Convention
Ruth Slottee .....	Beaver Staff

## PSI CHAPTER

Beatrice Cauldwell .....	W. A. A.
Thelma Shaw .....	W. A. A.
Mary Eades .....	W. A. A.

## ALPHA ZETA CHAPTER

Madeline Betz, '24.....	President of Curie Chemistry Club Sophomore-Senior Party
Priscilla Stafford, '24 .....	Gift Committee Senior Innovation Committee
Eleanore Becker, '25 .....	Junior Luncheon Committee Music Committee for Athletic Banquet
Helen Fleckles, '25 .....	Oracle Board One-Act Plays Varsity Show
Josephine McEntee, '25 .....	Junior Luncheon Committee
Jean Ross, '25 .....	Junior Prom Committee
Joyce Glaentzer, '26 .....	One-Act Plays
Esther Kec, '26 .....	Chairman of Sophomore Show Sophomore Show
Marion Price, '26 .....	Publicity Committee of Y. W. C. A. Secretary of class
Katharine Angers, '27 .....	Varsity Team Varsity Show Glee Club
Virginia Bell .....	Junior-Freshman Party Committee
Frances Tromble .....	Junior-Freshman Party Committee

## ALPHA THETA CHAPTER

Lillian Rasch .....	Lead in Annual Stroller Play
Mary Stallings .....	Theta Sigma Pi



MARCH							APRIL							MAY							JUNE							
S	M	T	W	T	F	S	S	M	T	W	T	F	S	S	M	T	W	T	F	S	S	M	T	W	T	F	S	
						1			1	2	3	4	5						1	2	3	1	2	3	4	5	6	7
2	3	4	5	6	7	8	6	7	8	9	10	11	12	4	5	6	7	8	9	10	8	9	10	11	12	13	14	
9	10	11	12	13	14	15	13	14	15	16	17	18	19	11	12	13	14	15	16	17	15	16	17	18	19	20	21	
16	17	18	19	20	21	22	20	21	22	23	24	25	26	18	19	20	21	22	23	24	22	23	24	25	26	27	28	
23	24	25	26	27	28	29	27	28	29	30				25	26	27	28	29	30	31	29	30						
30	31																											

## 1924

May 1—Finance Report and balance sheet due.

May 1-10—Installation of active chapter officers.

May 15—Send summer addresses to Central Office.

May 15—Chapter Panhellenic representative shall send to National Panhellenic delegate a detailed report of Panhellenic conditions in her college.

June 1—Finance and balance sheet due.

June 1—See that second semester grades have been sent in to scholarship committee.

June 23-28—National Convention at Evanston, Ill.

# Delta Zeta Fraternity

Founded at Miami University October 24, 1902

GUY POTTER BENTON, D.D., LL.D., *Grand Patron*

President, University of the Philippines

## FOUNDERS

ALFA LLOYD HAYES  
ANNA KEEN DAVIS  
MABELLE MINTON HAGEMANN

ANNA SIMMONS FRIEDLINE  
MARY COLLINS GALBRAITH  
JULIA BISHOP COLEMAN

## GRAND COUNCIL

- Grand President* .....RENE SEBRING SMITH  
135 E. 52nd St., New York, N. Y.
- Grand Vice-president* .....JULIA BISHOP COLEMAN (Mrs. J. M.)  
208 Riverside Ave., Loveland, Ohio
- Grand Secretary* .....MARITA OELKERS LITTAUER (Mrs. F. J.)  
127 Larchmont Ave., Larchmont, N. Y.
- Grand Treasurer* .....EDYTHE WILSON THOESSEN (Mrs. H. J.)  
Canon Park, Boulder, Colo.
- Editor of LAMP* .....VERA BROWN JONES (Mrs. E. E.)  
1115 Church St., Evanston, Ill.
- National Big Sister* .....NETTIE WILLS SHUGART (Mrs. C. M.)  
2225 S. 27th St., Lincoln, Neb.
- Historian*.....GRACE E. MASON  
464 Johnson Blk., Muncie, Ind.
- Registrar* .....MYRTLE GRAETER MALOTT (Mrs. Carl)  
San Benita, Tex.
- Parliamentarian* ..... RUBY LONG  
Cashmere, Wash.
- Extension Chairman* .....GEORGIA CHANDLER HORNUNG (Mrs. H. V.)  
8238 Lawton Ave., Detroit, Mich.
- 
- 
- Executive Secretary* .....GRACE E. MASON  
464 Johnson Bldg., Muncie, Ind.
- Delta Zeta Panhellenic Delegate* .....RENE SEBRING SMITH
- President of National Panhellenic*....DR. MAY AGNESS HOPKINS, Z T A  
619 Medical Arts Building, Dallas, Tex.



## STANDING COMMITTEES OF DELTA ZETA

- Social Service:* Chairman, Arema O'Brien Kirven (Mrs. F. E.), 27 Berkeley Place, Columbus, Ohio.
- Examination and Educational:* Eulene Kramer Sullivan (Mrs. M. F.), Chairman, Ft. Riley, Kan.; Izil Polson, 4641 Sheridan Rd., Chicago, Ill.; Jean Spiers Helgeson (Mrs. Gail), Aberdeen, S. D.
- Big Sister:* Nettie Wills Shugart, Lincoln, Neb. Big Sister of each active chapter.
- Patronesses and House Management:* Chairman, Ada Robertson, 1566 W. 51st St., Los Angeles, Cal.
- Scholarship:* Luella Hall, 23 South Hutchins St., Lodi, Cal.; Leone Barngrover, 3817 Peters Ave., Sioux City, Iowa; Grace Hoadley, 2010 Sherman Ave., Evanston, Ill.; Adelaide Adams, 329 N. Scoville Ave., Oak Park, Ill.
- Extension:* Chairman, Georgia Lee Hornung (Mrs. H. V.), 8238 Lawton Ave., Detroit, Mich. *Visiting Representative:* Frances Hankemeier Ellis (Mrs. F. E.), R. R. M. Bx. 388 H, Indianapolis, Ind.
- Ritual and Initiation:* Chairman, Esther Culp Litchfield (Mrs. Orville), Lacon, Ill., Violet Ironmonger, Mountain Lakes, N. J., and Minnie Ellison Gray (Mrs. Howard), 5300 West 41st Ave., Denver, Colo.
- Constitution:* Chairman, Louella Reader Brown (Mrs. George), 420 S. Green St., Wichita, Kan. Mary Polson, K. S. A. C., Manhattan, Kan., and Beulah Kelley, 1615 Wood Ave., Kansas City.
- Finance:* Chairman, Mrs. Edythe W. Thoesen, Boulder, Colo.; Barbara Murray, Alpha, Beta, Y. W. C. A., Cheyenne, Wyo., Pi, Nu, Delta, Epsilon, Psi, Iota; Nellie Ellison Miles (Mrs. Robert), 5300 W. 41st Ave., Denver, Colo., Xi, Theta, Sigma, Alpha Gamma, Alpha Delta; Constance Stegenga, 120 Hitchcock, Alpena, Mich., Upsilon, Alpha Alpha, Alpha Beta, Tau, Alpha Eta; Gamma; Leah McIntyre Reardon (Mrs. L. H.), 302 Physicians Bldg., Sacramento, Cal., Mu, Kappa, Phi, Omega; Stella Wright Eley (Mrs. Glenn), Oketo, Kan., Zeta, Lambda, Eta, Rho Alpha, Epsilon.
- Convention:* June 23-28, 1924. Chairman, Alpha Alpha Chapter. Assisted by Chicago Alumnæ Chapter.

# Provinces of Delta Zeta Fraternity

## ALPHA PROVINCE

### COLLEGE

ALPHA—Miami University, Oxford, Ohio  
BETA—Cornell University, Ithaca, New York  
THETA—Ohio State University, Columbus, Ohio  
XI—University of Cincinnati, Cincinnati, Ohio  
OMICRON—University of Pittsburgh, Pittsburgh, Pennsylvania  
ALPHA DELTA—George Washington University, Washington, D. C.  
ALPHA ZETA—Adelphi College, Brooklyn, N. Y.

### ALUMNÆ

Cincinnati, Ohio  
Columbus, Ohio  
New York City, New York  
Pittsburgh, Pennsylvania  
Washington, D. C.  
Cleveland, Ohio

## BETA PROVINCE

### COLLEGE

GAMMA—University of Minnesota.  
DELTA—De Pauw University, Greencastle, Indiana  
EPSILON—Indiana University, Bloomington, Indiana  
NU—Lombard College, Galesburg, Illinois  
PI—Eureka College, Eureka, Illinois  
TAU—University of Wisconsin, Madison, Wisconsin  
PSI—Franklin College, Franklin, Indiana  
ALPHA ALPHA—Northwestern University, Evanston, Illinois  
ALPHA BETA—University of Illinois, Champaign, Illinois  
ALPHA ETA—University of Michigan, Ann Arbor, Mich.

### ALUMNÆ

Indianapolis, Indiana  
La Fayette, Indiana  
Ft. Wayne, Indiana  
Eureka, Ill.  
Franklin, Ind.  
Chicago, Ill.

## DELTA PROVINCE

### COLLEGE

ZETA—University of Nebraska, Lincoln, Nebraska  
ETA—Baker University, Baldwin, Kansas  
IOTA—Iowa State University, Iowa City, Iowa  
LAMBDA—Kansas State Agricultural College, Manhattan, Kansas  
RHO—Denver University, Denver, Colorado  
SIGMA—Louisiana University, Baton Rouge, Louisiana  
UPSILON—University of North Dakota, Grand Forks, N. D.  
ALPHA GAMMA—University of Alabama, Montgomery, Ala.

### ALUMNÆ

Lincoln, Nebraska  
Omaha, Nebraska  
Denver, Colorado  
Kansas City, Missouri



## EPSILON PROVINCE

### COLLEGE

KAPPA—University of Washington, Seattle, Washington  
MU—University of California, Berkeley, California  
PHI—State College of Washington, Pullman, Washington  
CHI—Oregon Agricultural College, Corvallis, Oregon  
OMEGA—University of Oregon, Eugene, Oregon  
ALPHA EPSILON—Oklahoma State College, Stillwater, Okla.  
ALPHA IOTA—University of Southern California.

### ALUMNÆ

Seattle, Washington  
San Francisco, California  
Portland, Oregon  
Los Angeles, California.

---

## Chapter Directory

### COLLEGE

ALPHA—Miami University, Oxford, Ohio.  
President—Leah Rose, West Hall.  
Secretary—Eleanor Lafferty, Elm Place.  
Treasurer—Marian Parker, West Hall.  
Chapter Editor—Pauline Smith, West Hall.  
Chapter Big Sister—Mildred Boatman Finley (Mrs. John), Alpha,  
1108 Oxford Ave., Dayton, Ohio.

BETA—Cornell University, Ithaca, N. Y.  
House—200 Highland Ave., Ithaca, N. Y.  
President—Marion McWhinney.  
Secretary—Evelyn Ross.  
Chapter Editor—Helen Koerner.  
Chapter Big Sister—Dorothy Douglas Zirkle (Mrs. Jos.), Beta, 1851  
Irving St. N. W., Washington, D. C.

GAMMA—University of Minnesota, Minneapolis, Minn.  
House—1111 4th St. S. E., Minneapolis, Minn.  
President—Helen Woodruff.  
Secretary—Sylvia Larson.  
Treasurer—Arlyne Ostrom.  
Big Sister—Lillian Lloyd Billings (Mrs. W. A.), Alpha, 1325 W. 27th,  
Minneapolis, Minn.

DELTA—DePauw University, Greencastle, Ind.  
House—602 E. Washington St.  
President—Marian Boyd.  
Secretary—Edna House.  
Treasurer—Hazel McNary.  
Chapter Editor—Helen Schudel.  
Chapter Big Sister—Catherine Sinclair, Delta, 2246 College Ave.,  
Indianapolis, Ind.

EPSILON—Indiana University, Bloomington, Ind.  
House—E. Seventh St., Bloomington, Ind.  
President—Dorothy Walker.  
Secretary—Lillyon Snyder.  
Treasurer—Mildred Baxter.  
Chapter Editor—Mary Broadbent.  
Big Sister—Gladys Hartman Ruoff (Mrs. F. L.), Epsilon, 783 East  
Drive, Woodruff Pl., Indianapolis, Ind.

ZETA—University of Nebraska, Lincoln, Neb.

House—557 S. 16th St., Lincoln, Neb.

President—Rhea Freidell.

Treasurer—Clara Morris and Vivian Harper.

Secretary—Arlene Neslor.

Chapter Editor—Martha Claire Baird.

Chapter Big Sister—Mrs. Fayette Davis, Zeta, 1219 C St.

ETA—Baker University, Baldwin, Kan.

House—720 Dearborne St.

President—Lucile Muenzenmayer.

Secretary—Mary Read.

Treasurer—Agnes Kerr.

Chapter Editor—Evelyn Mills.

Chapter Big Sister—Beulah Kelly, Eta, 1615 Wood Ave., Kansas City, Kan.

THETA—Ohio State University, Columbus, Ohio.

House—1863 Summit St., Columbus, Ohio.

President—Marjorie Van Bolt.

Treasurer—Carol Van Bolt.

Secretary—Gertrude Reed.

Chapter Editor—Kathryn Kauffman.

Chapter Big Sister—Arema O'Brien Kirven, Theta.

IOTA—Iowa State University, Iowa City, Iowa.

House—400 N. Clinton St.

President—Verda James.

Treasurer—Catherine Donica.

Secretary—Lois Sensor.

Chapter Editor—Vivian Conrad.

Chapter Big Sister—Dorothy Banks, Iota, Burlington, Iowa.

KAPPA—University of Washington, Seattle, Wash.

House—4535 18th Ave. N. E.

President—Anita Graybill.

Secretary—Sylvia Troch.

Treasurer—Laura Beager.

Chapter Editor—Marguerite Barber.

Chapter Big Sister—Annah Shelton, Kappa.

LAMBDA—Kansas State Agricultural College, Manhattan, Kan.

House—1111 Bluemont Ave.

President—Kate Hassler.

Secretary—Edith Norris.

Treasurer—Leila Colwell.

Chapter Editor—Velma Lockridge.

Chapter Big Sister—Izil Polson, Lambda.

MU—University of California, Berkeley, Cal.

House—

President—Mary Louisa Powers.

Secretary—Virginia Vail.

Treasurer—Aletha Kinney.

Chapter Editor—Esther Munson.

Chapter Big Sister—Margaret Pope, Mu, 3545 Grove St., Oakland, Cal.

NU—Lombard College, Galesburg, Ill.

President—Opal Bradfield.

Secretary—Lois Fuller.

Treasurer—Lucille Thompson.

Chapter Editor—Evelyn Adams.

Chapter Big Sister—Edna Thoreen, Nu, East Main St.



Xi—University of Cincinnati, Cincinnati, Ohio.

President—Dorothy DeBeck, 1850 Kinney Ave., Evanston, Cincinnati, Ohio.

Secretary—Florence Roth, 2719 Hampshire Ave., Cincinnati, Ohio.

Treasurer—Clara Elizabeth Findlater, Navarre Bldg., Cincinnati, Ohio.

Chapter Editor—Sue Ely, 1508 Dixmont Ave., Cincinnati, Ohio.

Chapter Big Sister—Elaine De Beck Fisher (Mrs. Cherrington), Xi.

OMICRON—University of Pittsburgh, Pittsburgh, Pa.

House—4635 Center Ave., Pittsburgh, Pa.

President—Virginia Eaton.

Secretary—Leona Reschke.

Treasurer—Magdalene Austin.

Chapter Editor—Dorothy Lillich, Wilkinsburg, Pa.

Chapter Big Sister—Niella Snyder Reese (Mrs. Alex.), Omicron, 7419 Idlewood St.

Pi—Eureka College, Eureka, Ill.

President—Irene Reiterman.

Secretary—Dorothy Warner, Lidas Wood Annex.

Treasurer—Hazel Miller.

Chapter Editor—Wilmina Houtz Gillan (Mrs. W. H.).

Big Sister—Mary Hoover Jones (Mrs. S.), Pi.

RHO—Denver University, Denver, Colo.

House—1950 So. University Ave.

President—Pauline Garrett.

Secretary—Jessie McCallum.

Treasurer—Esther Simmons.

Chapter Editor—Elvie Hubbard.

Chapter Big Sister—Minnie Ellison Gray (Mrs. Howard), Rho, 5300 W. 41st St.

SIGMA—Louisiana University, Baton Rouge, La.

House—542 Boyd Ave., Baton Rouge, La.

President—Willie Mae Frey.

Secretary—Estelle McClendon.

Treasurer—Alma Dodson.

Chapter Editor—Lucile Wilkinson.

Chapter Big Sister—Laura Powers, Sigma, McComb City, Miss.

TAU—University of Wisconsin, Madison, Wis.

House—10 Langdon St., Madison, Wis.

President—Hazel Young.

Secretary—Lorraine Kreatz.

Treasurer—Helen Robinson.

Chapter Editor—Lois Barry.

Chapter Big Sister—Hallie Deloney Ivory (Mrs. I. P.), Sigma

UPSILON—University of North Dakota, Grand Forks, N. D.

House—315 Hamline St.

President—Janice Simenstad.

Secretary—Clara Soliah.

Treasurer—Olive Berget.

Chapter Editor—Katherine Pratt, 419 N. 5th St.

Big Sister—Eveline Kloster, Upsilon.

PHI—State College of Washington, Pullman, Wash.

House—511 Colorado St.

President—Ella Mustard.

Secretary—Gertrude Tunnard.

Treasurer—Agatha Lewis.

Chapter Editor—Agnes Bushnell.

Big Sister—Mildred French, Lambda, 4th Ave. and Stephens St.,  
Spokane, Wash.

CHI—Oregon Agricultural College, Corvallis, Ore.

House—3 Park Terrace.

President—Irene Shelton.

Secretary—Vivian Cramer.

Treasurer—Bessie Hoopes.

Chapter Editor—Lois Fendall, 400 N. 29th St.

Chapter Big Sister—Zelta Fieke, Chi, 26th St. and Monroe St.

PSI—Franklin College, Franklin, Ind.

President—Gladys King.

Secretary—Olga Welch.

Treasurer—Jane Linkenhelt.

Chapter Editor—Mary Packer.

Big Sister—Florence Drury, Nu, Essex Apt., Middle Drive, Woodruff  
Place, Indianapolis, Ind.

OMEGA—University of Oregon, Eugene, Ore.

House—381 E. 12th St.

President—Beulah Wright.

Secretary—Elsie Skoog.

Treasurer—Charlotte Newhouse.

Chapter Editor—Doris Parker.

Big Sister—Gertrude McElfresh, Beta.

ALPHA ALPHA—Northwestern University, Evanston, Ill.

President—Anette Mayhew.

Secretary—Audrey Beem.

Treasurer—Bertha Shoemaker, 1725 Orrington Ave., Evanston, Ill.

Chapter Editor—Thelma Chamberlin.

Chapter Big Sister—Marcelene Roberts Snorf, Alpha, Wilmette, Ill.

ALPHA BETA—University of Illinois, Champaign, Ill.

House—509 E. Chalmers St.

President—Margaret Hoefflin.

Secretary—Lucia Miller.

Treasurer—Florence Frier.

Chapter Editor—Florence Harding.

Chapter Big Sister—Marie Dobyns, Alpha Beta, Grayville, Ill.

ALPHA GAMMA—University of Alabama, University, Alabama.

President—Louise Wheeler.

Secretary—Nell Duke.

Treasurer—Sarah Daniel.

Chapter Editor—Frances Pickens.

Chapter Big Sister—Martha McGinnis Brown (Mrs. H.), Alpha,  
Uniontown, Ala.

ALPHA DELTA—George Washington University, Washington, D. C.

President—Theresa Lawrence, Herndon, Va.

Secretary—Dorothy Ladd, 6109 Brookville Rd., Chevy Chase, Md.

Treasurer—Louise Hiatt, 3116 13th St., N. W., Washington.

Chapter Editor—Idamay Lang, 31 Adams St. N. W.

Big Sister—Ruth May Railsback Armstrong (Mrs. Robt.), Delta, 829  
The Chastleton, Washington, D. C.

ALPHA EPSILON—Oklahoma State College, Stillwater, Okla.

House—324 Main St., Stillwater, Okla.

President—Velma Anderson.



Secretary—Marie Wharton.

Treasurer—Letha Brattin.

Editor—Clara Brown.

Big Sister—Marion Burns, Eta, 34th and Frederick St., Kansas City, Mo.

ALPHA ZETA—Adelphi College, Brooklyn, N. Y.

President—Madeline Betz, 252 Putnam Ave., Brooklyn, N. Y.

Secretary—Josephine McEntee, 196 Hancock St., Brooklyn, N. Y.

Treasurer—Esther Keck, 352 Argyle Road, Brooklyn, N. Y.

Chapter Editor—Eleanor Becker, 322 Arlington Ave., Brooklyn.

Big Sister—Harriet Littig, Alpha Zeta, 21 Claremont, New York City.

ALPHA ETA—University of Michigan, Ann Arbor.

House—407 E. Huron St.

President—Louise Mattern.

Treasurer—Elizabeth Wright.

Secretary—Jewel Heiser.

Chapter Editor—Elinor Curtis.

Big Sister—Betty Hutchins Barclay, Alpha, Detroit, Mich.

ALPHA THETA—Kentucky State University, Lexington, Ky.

House—110 E. High St., Lexington, Ky.

President—Gertrude Collins.

Secretary—Sarah Thorn.

Treasurer—Virginia Duff.

Chapter Editor—Bernice Bird Browning.

Big Sister—Margaret Henderson Crawford (Mrs. Kenneth), Alpha, Ft. Thomas, Ky.

ALPHA IOTA—University of Southern California, Los Angeles, Cal.

House—1211 West 28th St.

President—Mae Miller.

Secretary—Yvonne McFadden.

Treasurer—Hildegard Wilkinson.

Chapter Editor—Helene Peterman.

Big Sister—Lucille Goodykoontz.

ALPHA KAPPA—Syracuse University, Syracuse, N. Y.

House—100 Waverly Ave.

President—Cornelia Henderson.

Secretary—Laura Smith.

Treasurer—Elsie Welker.

Chapter Editor—Ruth Eaton.

ALPHA MU—St. Lawrence University, Canton, N. Y.

House—5 University Pl.

President—Ethel Hardick.

Secretary—Gladys Mount.

Treasurer—

ALPHA XI—Randolph-Macon Woman's College, Lynchburg, Va.

President—Annie Lee Young.

Secretary—Elizabeth Du Bose.

Treasurer—Almeda Garland.

## ALUMNÆ

### Indianapolis, Ind.

President—Florence Drury, Essex Apt., Middle Drive, Woodruff Pl., Indianapolis.  
Secretary—Bonnie Miller Kettery.  
Treasurer—Belle Mowry Smuck (Mrs. W.), 2816 Ruckle St.  
Time of Meetings—Second Saturday, 3 p. m.

### Cincinnati, Ohio.

President—Alene Mossmeier Rogert (Mrs. Carl), 50 S. Warwick Apts., Reading Rd.  
Secretary—Lucy Draper Fellber (Mrs. W. M.), 3740 Clifton Ave.  
Treasurer—Katherine Kealing Denham (Mrs. Thomas), 6435 Ridge Ave.

### Columbus, Ohio.

President—Ann Young Sturgeon (Mrs. Geo.), 70 Pacemont Rd.  
Secretary—Madeline Baird, 315 W. 9th Ave.  
Treasurer—Henrietta Jettinghoff, Bryden Rd.

### Lincoln, Neb.

President—Mrs. Elizabeth Thompson, 1340 P St.  
Vice-president—Mrs. Esther Foster, 2445 A St.  
Secretary—Ruby Kuepper, 2045 Pepper Ave.  
Chapter Editor—Lila Belle Love, 1448 South St.

### New York City.

Acting President—Violet Ironmonger, Mountain Lake, N. J.  
Secretary—Marion Schaaf, 1913 Bogart Ave., New York, N. Y.  
Treasurer—Dorothy Stewart, 140 W. 16th St., New York, N. Y.  
Chapter Editor—Margaret Luckings, 143 W. 94th St., New York, New York.  
Meetings—First Saturday.

### Seattle, Wash.

President—Beatrice Fryer Swendsen, 2103 Queen Anne Ave., Apt. C.  
Secretary-Treasurer—Frances Skagerlind Elliott, 1415 North 46th St.  
Corresponding Secretary—Bae Bassett Dana, 2930 Warren Ave.

### La Fayette, Ind.

President—Hazel Sarles Hogan (Mrs. Wm.), 200 Perrin Ave.  
Secretary—Miss Stella Clark, 522 Perrin Ave.

### Omaha, Neb.

President—Geneva Hursh Beck (Mrs. A. V.), 2555 Meredeth St.  
Secretary—Clara Dodds Bristol (Mrs. John), 2538 Dodge St.  
Treasurer—Rose Bergman Rosenblum (Mrs. A.), 1520 Izard St.

### Ft. Wayne, Ind.

Secretary-Treasurer—Gladys Hand, 2516 South Harrison St.

### San Francisco, Cal.

President—Salome Boyle, 2172 Blake St., Berkeley, Cal.  
Secretary—Jean Fuller Quinan, 1943 Marin Ave., Berkeley.  
Treasurer—Helen Wetzel, 1943 Marin Ave., Berkeley, Cal.  
Chapter Editor—Miss Margaret Pope, 3545 Grove St., Oakland.

### Washington, D. C.

President—Dorothy Douglas Zirkle (Mrs.)  
Secretary—Mrs. Robert Armstrong.  
Treasurer—Marguerite Henrich Kellogg (Mrs. R.), 4003 Eighth St., N. W.



Denver, Colo.

President—Lyndall Monroe Reed (Mrs. Chas.), 2550 West 43rd Ave.,  
Denver, Colo.  
Secretary—Grace C. Stueland, 246 S. Sherman St.  
Treasurer—Jean Wallace Kellogg (Mrs. H. B.), 2711 Franklin St.,  
Denver, Colo.  
Chapter Editor—Dorothy Leslie, R. 2, Box 527a, Edgewater, Colo.

Pittsburgh, Pa.

President—Dorothy Wigman, 103 Overbrook Rd., Mt. Oliver Br.  
Secretary—Elizabeth Reid, 920 Aiken Ave., East End.  
Treasurer—Niella S. Reese, 7419 Idlewood St.

Kansas City, Mo.

President—Mrs. Frank Troop, 1125 East 28th St.  
Secretary-Treasurer—Mrs. Helen B. Marquis, 3408 Smart St.  
Chapter Editor—Norma West, 1004 Monroe Ave.  
Time of Meetings—Third Saturday.

Portland, Ore.

President—Dorothy M. Edwards, Oregonian Bldg.  
Secretary—Frances Faust Fyock, 8020 72nd Ave., S. E.  
Treasurer—Lucille Ewing, 654 Clackamas St.

Eureka, Ill.

President—Opal O'Brien, 359 Pine St., Canton, Ill.  
Secretary—Ella Snook, Magnolia, Ill.

Franklin, Ind.

President—Theodosia Beasley, Franklin, Ind.  
Secretary-Treasurer—Elizabeth Means, Teachers' College, Indian-  
apolis, Ind.

Chicago, Ill.

President—Ruth Gaddis Jeffries (Mrs. Robt.), 5445 Cornell Ave.  
Secretary—Camille Branham, 613 Fullerton Parkway.  
Program Comm. Chairman—Marian Dittman, 1438 Norwood Ave.  
Treasurer—Aura Splinter, 1442 Belle Plain Ave.  
Chapter Editor—Helen Trimpe, 529 Wellington Ave.

Berkeley, Cal.

President—Miss Lois Litchfield, 1566 W. 51st St., Los Angeles, Cal.  
Secretary—Gladys Marquardt, 376 Broadway, Huntington Park, Cal.  
Treasurer—Pauline Parkhurst, 6142 Afton Pl., Hollywood.  
Time of Meetings—Last Saturday of each month.

Ft. Wayne, Ind.

President—Pearl King Meyer.  
Vice-president—Ethel Martin Clugston.  
Secretary—Gladys Hand.

Detroit, Mich.

President—Mrs. D. G. Platt, 8100 E. Jefferson Ave.  
Secretary—Margaret Fenkell, 4525 Virginia Park.  
Treasurer—Helene Sooy, 818 E. Grand Blvd.

Kansas City, Mo.

President—Marion Burns, 34th and Frederick St., R. 4, Kansas City,  
Kan.  
Secretary—Grace Benjamin, 4201 Virginia Ave.  
Treasurer—Helen Barnes Marquis, 3408 Smart Ave.

# THE LAMP OF DELTA ZETA

## SUBSCRIPTION BLANK

Date.....

MISS GRACE MASON,  
464 Johnson Block,  
Muncie, Indiana.

Enclosed find one dollar and a half (\$1.50) for one year's subscription to the LAMP.

Name in full .....

Chapter .....

Address .....Street .....

City and State .....

---

---

## ROOM RESERVATION

Convention Chairman,  
1115 Church St.,  
Evanston, Ill.

Enclosed find \$5.00 as the initial payment of the convention expenses.

Name in full .....

Address .....

Chapter (active) ..... (alumnæ) .....

Suggestions for room mates .....

Make checks payable to Vera Brown Jones.

---

---

## CONVENTION DAILY SUBSCRIPTION BLANK

Enclosed find \$.50 for subscription to Convention Daily.

Name .....

Address .....Street No. ....

City and State .....

Please check—Delivered at Convention—Mail to above Address.

Mail checks to Vera Brown Jones, 1115 Church St., Evanston, Ill.



## CHANGE OF ADDRESS BLANKS

*Cut this leaf out and mail today*

MISS GRACE ESTHER MASON,  
464 The Johnson,  
Muncie, Indiana.

Please note the following change of mailing address for the next number of the LAMP and future numbers until further notification.

Maiden name ..... Chapter .....

Married name .....

New Address .....

---

---

News item for the LAMP:

MISS GRACE ESTHER MASON,  
464 The Johnson,  
Muncie, Indiana.

Please note the following change of address and other data for the fraternity catalog and directory:

Maiden name ..... Chapter .....

Married name .....

New Address .....

Date of leaving college ..... Degree.....

Profession .....

---

---

YOU WHO DID NOT GET THE "LAMP"—DID you send  
your new address? Then tear this sheet out—and send it in!

I am .....

Of ..... chapter, class of .....

My old address was .....

My new address is .....

This will hold good until .....

I have the following News Items for the LAMP.....

This sheet to be sent to Delta Zeta Central Office, 464 Johnson  
Block, Muncie, Ind.

# FAVORS FOR THE SPRING PARTY

Novelties of rare distinction  
have been assembled in our  
1924 line to help make your  
party a great success.

"A BOOK FOR MODERN GREEKS"

Sent on Request.

**BURR, PATTERSON & CO.**

*Official Jewelers to Delta Zeta*  
DETROIT, MICH.



# A Life Subscription to The Lamp

*Costs  
Only* \$25.00

---

*Payable in Five Annual  
Installments of Five Dollars Each*

---

Send Your Subscription to  
GRACE MASON, Executive Secretary  
464 Johnson Bldg. Muncie, Ind.

# BANTA'S GREEK EXCHANGE

A Panhellenic  
Journal Pub-  
lished in the in-  
terest of the Col-  
lege Fraternity  
World



Published Quar-  
terly in January,  
April, July and  
October. Price  
\$2.00 per year.

GEORGE BANTA - - - - - Editor-in-chief  
EDWARD E. RUBY - - - - - Fraternity Editor  
MARGARET KILLEN BANTA - Exchange Editor  
GEORGE BANTA, Jr. - - - - - Business Manager

Contains articles on timely subjects by the best  
authorities in the Greek World. Also has an  
authentic directory of the officers of all the differ-  
ent fraternities and sororities. Its motive is to  
further the cause of the Greek-letter organiza-  
tions.

*The Collegiate Press*

**GEORGE BANTA PUBLISHING COMPANY**

**MENASHA, WISCONSIN**



# *Delta Zeta Publications*

---

THE LAMP: Official organ of the Fraternity. Editor, Vera Brown Jones, 1115 Church St., Evanston, Ill. \$1.50 per year. Forty cents per copy. Life subscriptions, \$25.00 or in annual installments of \$5.00 or more.

DELTA ZETA SONGBOOK: Price \$2.00.

THE CONSTITUTION: Price 50 cents.

THE RITUAL: Price 25 cents.

THE MEMBERSHIP CERTIFICATE: Price \$1.00.

THE DIRECTORY OF THE DELTA ZETA FRATERNITY: Price 50 cents.

THE DELTA ZETA SYMPHONY: Price \$1.00.

PREPARATORY COURSE OF STUDY FOR DELTA ZETA FRESHMAN: Price 50 cents.

Make checks payable to Delta Zeta Fraternity and Address all orders to

Executive Secretary

GRACE E. MASON, Muncie, Ind.

464 Johnson Bldg.





