

IN THIS ISSUE

Rush is an adventure in friendship—a picture essay.

Sigma Chapter reaches 50 years.

Convention in St. Louis

VOL. 57 NO. 1
MARCH 1968



Miss Sue Hastings, AA
Northwestern University
New Lamp Editor

New Lamp Editor Sue Hastings Makes Third from Chapter

A third LAMP Editor has been named from Alpha Alpha. Sue Hastings will be continuing the loyalty and leadership exemplified by Kay Butterfield Larson, editor in the '40's, and Jan Smith Otwell, editor in the '50's. Congratulations to Sue, Alpha Alpha, and to Northwestern's School of Journalism.

It is a real pleasure for me to introduce our new LAMP Editor, Sue Hastings. Sue is young. She is a tall attractive blond. She has a wonderful natural poise, maturity, and outgoing personality. Although she is only 24 years old, qualities such as these have brought her much respect and many friends, not only in Delta Zeta but also in teaching and community work.

Sue's mother is MARY SWANSON HASTINGS of Gamma chapter. Having heard of Delta Zeta as a little girl, Sue wanted to have a sorority experience.

Upon entering Northwestern University in Evanston, Illinois, Sue pledged Delta Zeta. Her enthusiasm and sense of responsibility in each office held led her to the chapter presidency of Alpha Alpha her junior year. Then, typically Sue, she sought new experiences and chose to be chairman of the building expansion program rather than to be president a second term. That year, she supervised the addition of a two-story quad bedroom and the remodeling of the basement of the chapter house.

She brought honor to Delta Zeta on the Northwestern campus. She was on the all-campus May Week executive board, president of the Women's Athletic Association, in Shi-ai honorary, one of 50 outstanding junior women, Woman of the Year for WAA, on the board of governors for the all-school variety show, and received the Panhellenic Scholarship.

Journalism has always been Sue's interest. While in high school she won two first places in Minnesota state-wide competition for newswriting and make-up. It was quite a surprise to the judges to find that the author of the prize-winning sports articles was a girl!

Sue had two articles in THE LAMP during a stint as chapter LAMP editor in her college days. She also was awarded a trip to New York by *Reader's Digest* Magazine to do a story. This coming summer she will be back at Northwestern University to be head women's counselor and work with the NU Cherubs, high school students outstanding in journalism.

For the past three years Sue has been teaching journalism in Cherry Creek High School just outside of Denver. Sue supervises the school newspaper and year book. Photography, with her own equipment, is another special interest.

An article by Sue appeared in *Contemporary Magazine-Denver Post*. She is also guiding two students who are writing an article for *Parents Magazine*.

Her energy and enthusiasm also carries over to the Denver community. She is public relations officer in both the Northwestern Alumni Club and in AAUW. Recently she was chosen one of two teachers to be appointed to the Communications Committee for her whole district.

Excitement has also been part of Sue's life. The past two summers she has taken high school students to Europe on a travel-study program to France, Switzerland, Italy, and England.

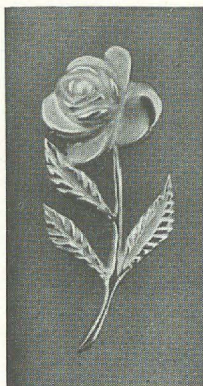
While this will be Sue's first issue of THE LAMP, she has been making many contacts in Delta Zeta. Last summer on her way back to Denver she stopped in Des Moines to meet Delta Zeta workers attending the Rush Committee Workshop. In November she attended the National Panhellenic Conference in New Orleans where she joined the other sorority editors.

We are greatly indebted to our versatile former Executive-Secretary, Irene Boughton for becoming acting editor following our great loss and sadness in the passing of Mary Kay Moon last spring. Mary Kay's work even during her last illness and the subsequent efforts of Irene are evidence of the dedication to Delta Zeta that kept our Lamp shining even through untimely tragedy.

Now we enter a new era. Let us welcome Sue and give her our full support. She will have many challenges to meet: her own new ideas, selection of representative material and, as always, meeting the budget. Knowing her charm and her abilities, it is with confidence and pride that I present to you SUE HASTINGS, our new Editor of THE LAMP. May her dreams for Delta Zeta continue to come true.

Violet Sharratt Whitfield
Past National President

MISS SUE HASTINGS, *Editor*



Golden Rose Pin
For 50 Year Members—\$17.50
Order from National Headquarters



Daughter-Granddaughter Pendant gold-filled \$4.50
Daughter-Granddaughter Pendant 10K gold \$7.25
(Order from Executive Secretary)

- 2 NPC Charmed by New Orleans
- 5 Margaret Woods, Author, Lecturer, Named Delta Zeta Woman of the Year
- 6 Homecoming Victories Show ΔZ Enthusiasm
- 8 Pledge Programs Stress Fun, Growth, Pride in Delta Zeta
- 10 LSU's Sigma Chapter Celebrates 50 Years; U. of Texas—A., Minot State Installed
- 12 Lamp Glows for Old, New
- 13 Province VI Shines
- 20 Michigan, Indiana Hold Successful Flame Fantasies
- 22 Meet Us in St. Louis: Convention 1968
- 24 Delta Zetas Prove Leaders in College Panhellenics
- 27 RUSH Is Meeting New Friends—a pictorial essay
- 35 Editor's Chatter
- 36 A Collegiate Sweep in Beauty, Leadership
- 39 Delta Zeta Honors Laud Hard Work
- 40 Activities Bring New Experiences, Growth
- 42 Alumnæ Philanthropies Support Worthy Endeavors
- 43 Delta Zeta in White House, Johnson Wedding
- 44 Outstanding Alumnæ Include Mayor's Wife, 3 'Yearbook' Awards
- 45 Community Leadership Builds ΔZ Image
- 46 Philanthropies Fun, Profitable
- 48 Directory

... On the Cover

Mark Twain's St. Louis with its modern Gateway Arch national monument will set the stage for National Convention 1968, June 16-21.

The exciting climax to Rush comes on Pledge Sunday when Delta Zetas pin pledge pins on their new sisters. A pictorial essay studies that elusive, exciting emotional feeling of rush, pages 27-34. Photos were taken at Delta Delta Chapter, Georgia State College.

THE LAMP OF DELTA ZETA, official magazine of the sorority, is published Quarterly by George Banta Company, Inc., official printers to the sorority. \$2.00 per year. Life subscription \$25.00. Printed in U.S.A. Second class postage paid at Menasha, Wisconsin. Acceptance for mailing at special rate of postage provided for in section 1103, Act of October 3, 1917, authorized September 26, 1918.

Copyright 1968 by Delta Zeta Sorority

RETURN REQUESTED

Delta Zeta Sorority, 3561 N. Pennsylvania St., Indianapolis, Indiana 46205

Attention All Chapter Lamp Editors:

Send all material for publication to Delta Zeta National Headquarters, 3561 N. Pennsylvania St., Indianapolis, Ind. 46205; all changes of address and advertising information to Mrs. Walter Folger, Delta Zeta National Headquarters, 3561 N. Pennsylvania St., Indianapolis, Indiana 46205. Deadline for Third Quarter issue is June 1, issue will appear in late August. Deadline for Fourth Quarter issue is Sept. 1, issue will appear in December. Deadline for First Quarter issue is Dec. 1, issue will appear in March. Deadline for Second Quarter issue is March 1, issue will appear in May.

NPC Charmed By New Orleans

Two centuries old French Quarter of nostalgic New Orleans was the delightful setting for the fortieth bien-nium session of National Panhellenic Conference, Nov. 1-5, 1967. There was little time for sight-seeing, antique hunting, or strolling famed Bourbon Street however, as delegates at the Royal Orleans Hotel addressed themselves seriously to the many challenges facing fraternities on today's campus.

Mrs. Karl Miller, Sigma Kappa, National Panhellenic Conference Chairman, presided. Heading the Delta Zeta delegation was Mrs. Garold Leach, NPC delegate. Alternates Mrs. Robert Whitfield and Mrs. Russell Costello were prominent Delta Zetas, heading the standing committee on Housing and the Conference committee on Resolutions.

Also attending were Mrs. B. H. Agler, national president; Mrs. Walter Folger, central office manager; and Miss Sue Hastings, national LAMP editor. All executive secretaries and all editors meet in simultaneous conference.

Collegiates attending Friday and Saturday meetings were Miss Linda West and Miss Andrea Coppedge, ΔΔ, Georgia State College; Miss Carol Hopkins, ΔK, University of Southwestern Louisiana, and Miss Judy Tuggles, ΑΠ, Samford University. Miss Laura McQuaig, Σ, LSU, and Miss Cacki Van Geffen, ΘK, LSU-NO, arrived for the Saturday evening formal banquet.

Reporting on the NSA Congress held in August 1967 was Mrs. George Rudolph, Delta Delta Delta. She noted that NSA urges continued agitation in the areas of the anti-draft movement and student control of student government. Organizations supporting NSA include HEW, CIA, the Office of Education, many foundations, and the Office of Economic Opportunity. Since spring, 1966, OEO has contributed \$376,000 to NSA.

An evening panel discussion titled, "Challenge and Response" was moderated by Mrs. Robert A Ryan, Jr., Alpha Gamma Delta. Estimating that there will be six million students attending junior colleges by 1975, the panel urged delegates to re-design pledge education programs to fit the upperclassman. It was also suggested that NPC sororities provide statistics and information to public relations officers which combats false reports of a declining fraternity system.

A challenge to fraternities to address themselves to the purposes of the university was issued by Dr. John A. Hunter, president of Louisiana State University, dinner speaker. He urged fraternity women to be leaders and standard bearers in change that is orderly and constructive.

1967 Resolutions in Review

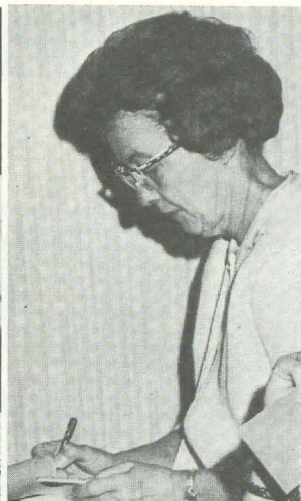
A brief review of some resolutions passed by the 1967 Conference includes: re-emphasis on the principle of rotation of college panhellenic officers; disapproval



Collegiate Panhellenic Delegate Carol Hopkins, ΔK, University of Southwestern Louisiana, attended workshop briefing sessions conducted by NPC delegates.



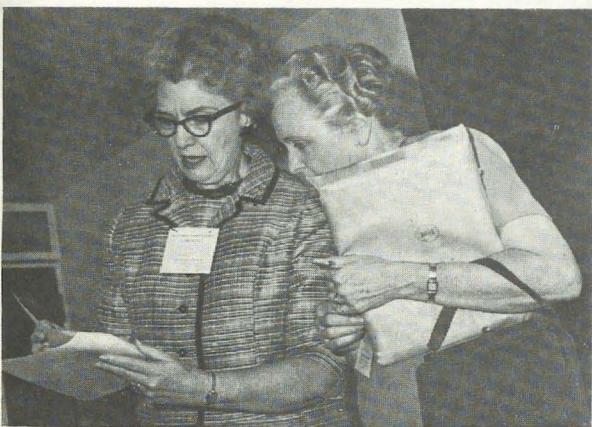
Receiving guests at a reception for national officers following NPC was Mrs. B. H. Agler, national president, with Mrs. Frank Quin looking on.



At the left is Judy Tuggles, $\Delta\Gamma$, Samford University, collegiate panhellenic delegate. At right, Mrs. Walter Folger, office manager, takes notes.



Laura McQuaig, Σ , Louisiana State University, chats with Mrs. Gerald Clause, New Orleans Alumnae president, at Saturday's formal banquet.



Conferring on the schedule of meetings are Mrs. Garold Leach and Mrs. Edward Costello, NPC delegates, who headed the Delta Zeta delegation.



Collegiates Andrea Coppedge and Linda West, $\Delta\Delta$, Georgia State College, talk to Mrs. George Roller, Alpha Omicron Pi, incoming chairman of NPC biennium.

of women's auxiliaries to men's fraternities; publication of brochures describing the enriching educational value of national women's fraternities, if budget permits; a review of existing policy on relationships between city and college panhellenics; endorsement of major objectives of a city panhellenic: to keep well informed on fraternity trends, to promote the fraternity system, to improve the public image and to stimulate a continuing interest in panhellenic affairs; requesting college panhellenics to limit rush registration fees to a minimum clerical fee; limitation of Greek celebrations to a single weekend with emphasis on the constructive, inspirational aspects of fraternity life.

Committee reports were presented to the conference. Among pertinent comments from chairmen were:

Surveys and Projects Committee—Miss Ray Sommer, Sigma Delta Tau, reported that the number pledged in 1965-66 showed an over-all increase of 5

per cent over 1964-65, a $13\frac{7}{10}$ per cent increase over 1963-64, and a 13 per cent increase over 1962-63. Thirty-two campuses reported an increase in NPC groups, 13 reported a decrease, and 13 new campuses were shown opening to NPC.

Housing—Mrs. Robert Whitfield, Delta Zeta, urged extreme caution in plans for building. In addition to high interest rates prevailing, she questioned fraternity ability to compete with the new high-rise dorms and their facilities.

College Panhellenics—Mrs. Landon A. Freear, Phi Mu, expressed the great need for Panhellenic education and urged member groups to work with their chapters in pointing out NPC agreements, recommendations, and resolutions. Area conferences are of concern where they have produced resolutions which infringe upon the individual autonomy and rights of the National organizations of the college chapters involved.



Coffee's poured for the convening of National Council following NPC. Left to Right around table are Mrs. J. R. Riede, Mrs. Robert McKeeman, Mrs. Gary Schlosstein, Mrs. B. H. Agler, Mrs. Robert Whitfield, Mrs. Garold Leach, Mrs. George Havens, and Mrs. Edward Bergman.

Collegiates, Deans Join Group

The weekend brought 95 collegiate and 35 deans to the Conference where commendations were awarded to 77 college panhellenics, including Georgia State College where Panhellenic President Andrea Coppedge, $\Delta\Delta$ of Delta Zeta, accepted. Students and deans attended general sessions and participated in smaller discussion groups concerned with scholarship, standards of conduct, rushing, and the need for Panhellenic co-operation in strengthening the sorority position on campus.

In her address at the Saturday evening banquet, Dean May A. Brunson of the University of Miami charged women's fraternities to examine themselves for their relevancy to the university.

"The ideals of sororities," said Dean Brunson, "are relevant. But are the practices?"

She urged a study of pledge education, the moral and social standards of the chapters, extracurricular activities, and scholastic achievement, if the chapter is to achieve relevancy with the purposes of the university.

Serving on the Executive Committee for the next NPC biennium are Mrs. George K. Roller, Alpha Omicron Pi, chairman; Mrs. Carl A. Frische, Zeta Tau Alpha, secretary; Mrs. Robert A. Ryan, Alpha Gamma Delta, treasurer.

Central Office Executives enjoyed exchanging ideas and comparing notes on office operation, office equipment, conventions, and training schools with special

emphasis on arrangements for the schools and financing them.

Editors Present Brochure

Presenting a handsome brochure titled "Operation Brass Tacks," the National Panhellenic Editors Conference chose four of the nine provocative articles previously published for display at the conference. The program was originated by the Editors Conference in 1963 to broaden the informational scope of the college sorority magazines through publication of articles on topics of mutual concern and timely interest to their readership. Enthusiastic response has brought over 200 requests for reprints from civic, professional, and youth groups.

Speaking to the editors on typography and layout was Dr. Paul Fisher of the University of Missouri.

Following NPC, New Orleans alumnae held a lovely formal reception for national officers at the home of Mrs. W. A. Holton. As with other NPC groups, Delta Zeta National Council held a meeting in New Orleans following NPC. Arriving for National Council meeting and in time for the reception were Mrs. Gary Schlosstein, national secretary-treasurer; Mrs. Robert L. McKeeman, national vice-president (alumnae); Mrs. J. R. Riede, national vice-president (college programs); Mrs. Edward Bergman, national vice-president (membership); and Mrs. George C. Havens, college chapter administrator.

Margaret Woods, Author, Lecturer, Named Delta Zeta Woman of the Year

by POLLY BOYD, Seattle Alumnæ

Margaret Staeger Woods, noted lecturer and author in the field of creative education, has been named Delta Zeta Woman of the Year for 1967. She was presented with the sterling silver medallion of this award at the Founders' Day celebration of the Seattle alumnæ and Kappa chapter, as the announcement was made simultaneously all over the country at similar functions.

Mrs. Woods graduated from Washington State University where she was a member of Phi chapter. She holds a master's degree in education from the University of Washington in Seattle.

An associate professor of education at Seattle Pacific College, Mrs. Woods recently was instrumental in setting up a program for a master's degree in creative education.

Her new book, *Sequential Steps in Poetry and Story Dramatization: Pictorial Presentation*, just came off the presses in January (1968). Other recent works are *Wonderworks* and *Thinking, Feeling, Experiencing: Toward Realization of Full Potential*.

In setting up creative education programs and lecturing at colleges, Mrs. Woods has traveled to almost every state in the nation, including Hawaii.

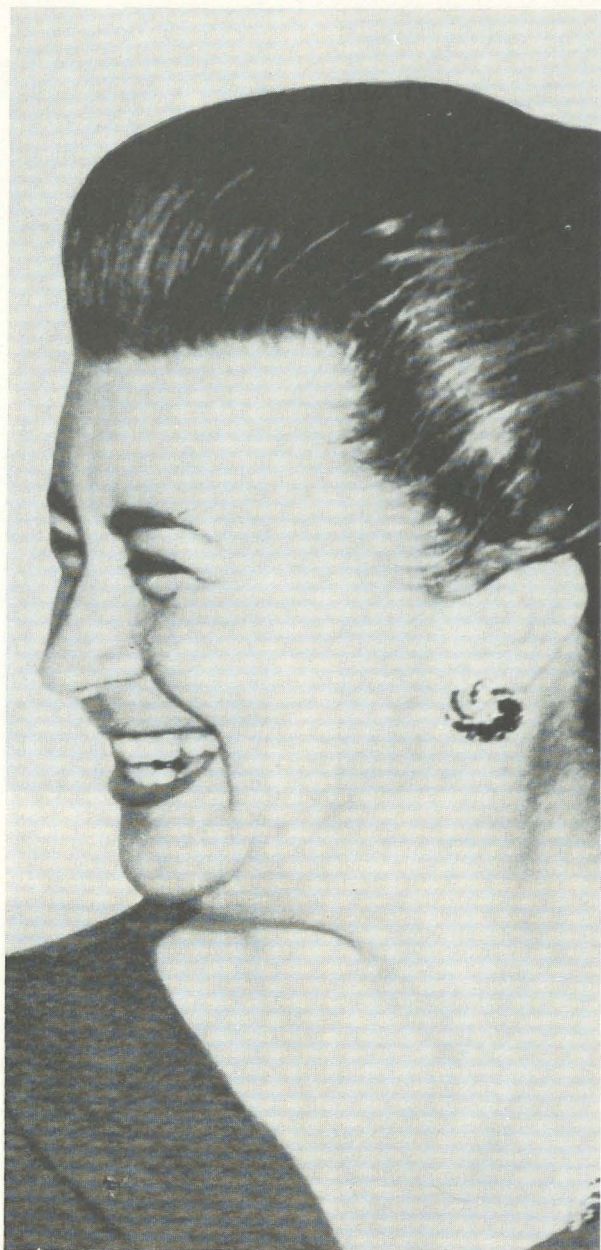
Mrs. Woods is immediate past-president of Elementary-Kindergarten-Nursery Department of the National Education Association. She is also a member of the Washington State Advisory Committee for the preparation of teachers of the young child.

In Seattle, she is known as the founder of the PTA-sponsored pre-school program in creative dramatics in public libraries, "Let's Pretend with Fours and Fives." She was director of the Children's Center at Seattle's World Fair, and later, of the much larger Children's Center in the Better Living Center at the New York World Fair (LAMP, 1st quarter 1965).

Last year she received a special services award for contribution to children and youth by the Washington Congress of Parents and Teachers, of which she is a life member.

Creativity program development has been her main interest since she was made chairman of the creative arts symposium in 1958 when the Association for Supervision and Curriculum Development met in Seattle.

"I think imagination is the key that unlocks doors," she says. "Imagination makes the difference between poverty of spirit and richer more effective living."

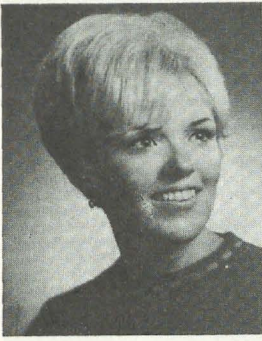


Margaret Staeger Woods, Φ
Delta Zeta Woman of the Year

The ASCD will meet again this year (1968) in Atlantic City, 10 years following the Seattle meeting. Mrs. Woods will chairman the colloquium *Fostering Creativity in the Curriculum*.

In private life, she lives in Seattle with her husband, Frederick Earl Woods, a Boeing Aircraft Company executive. They have two married children, Mrs. F. Daryl Templeton, Lake Oswego, Oregon; and Frederick Waring Woods, Los Angeles, California. As each has a son, she is a grandmother twice.

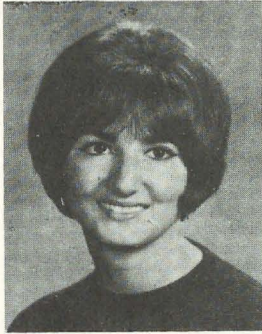
Mrs. Woods was nominated by Seattle Alumnæ, Kappa, and Epsilon Nu chapters.



Vicki Megrath, ZO
LaCrosse State Univ.
Homecoming Queen



Ellen Grenzow, ZB
Stout State Univ.
Homecoming Queen



Ginny Gualtieri, ΘΣ
College of Steubenville
Homecoming Queen



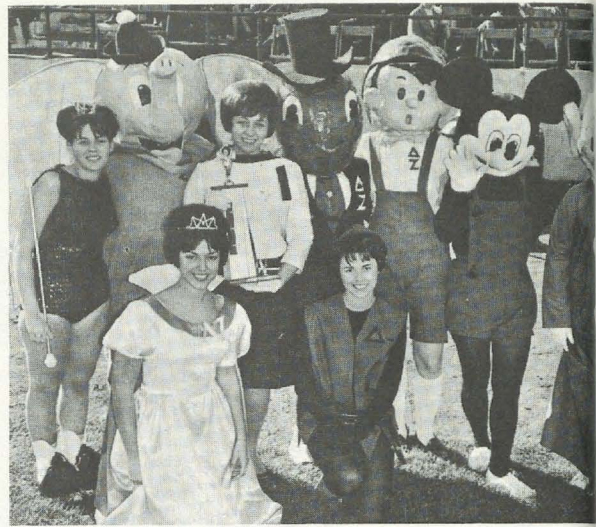
Dianne Haddox, ΘT
Findlay College
Homecoming Court



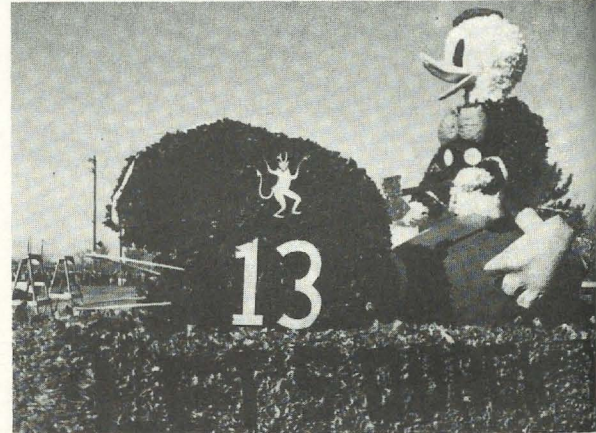
Kathleen Gradner, O
University of Pittsburgh
1st place float trophy



Maureen O'Connor, ZX
Wisconsin State Univ.—S.P.
Homecoming Court



Nine OT Disney characters rode Findlay's winning float.



Donald Duck rode the ZX chapter 1st place float at Wisconsin State University-Stevens Point.



Zeta Nu at Ferris State College was first at Homecoming.

Homecoming Victories Show Δ Z Enthusiasm

Homecoming courts revealed Delta Zeta beauty and float and decoration competition produced trophies for creative, well-planned projects in 1967.

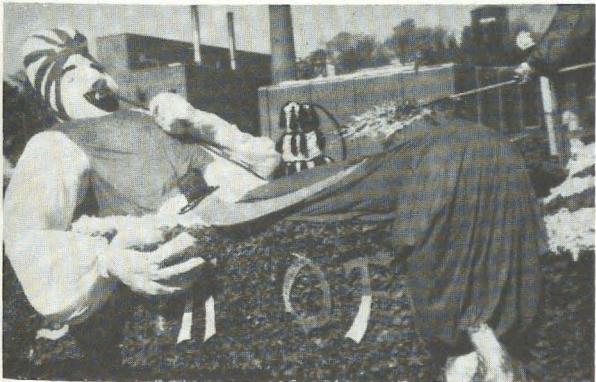
Topping it all was enthusiasm, as BΘ public relations chairman Lynn Comes illustrates: "We put to-



West Texas State had a Delta Zeta Homecoming Queen: Renée Owen of ZZ chapter.



St. Norbert Delta Zetas, ΘΔ chapter, had a 1st place float.



Slippery Rock State College ZΦ's took 1st place honors with their float, Sheik of Araby.



Linda Johnson, ΘM, rode the winning float at St. Cloud State homecoming and helped ΔZ and TKE win the "Sir Pep" award.

gether a collapsible train, symbol of the rival team, which shot off a gun and fire extinguisher when our Bucknell University bison lunged down in his dynamite box. Four ΔZ's and two Sig Eps marched with the float in granny gowns and grampa outfits as LeHigh Mourners, while two ΔZ's and three Sig Eps effervescently *can-canned* throughout the whole parade dressed as Bucknell "bobby-soxer" cheerleaders. It was a cold morning, drizzling rain all the time—and we were the only ones who kept smiling. It was easy though. We know we had a great float and great guys to work with. Delta Zeta enthusiasm never gets drenched!"

Another chapter was ZB at Stout State University, who campaigned for Ellen Grenzow with two girls dressed in a Spanish bull costume who danced around campus with a "Viva, Ellie" sign. They also serenaded her at all the dormitories.

Many chapters added to a queen tradition. Eastern Michigan University TΣs put two girls on the court. Delta Zetas there had been picked queen *every* year since 1962.

Delta Zeta chapters reporting victories but submitting unusable color pictures or snapshots, or no pictures at all included: EZ, Drexel Institute, queen and two other ΔZ's on the court; Baldwin Wallace College, three ΔZ's on the homecoming court; EΠ, Henderson State College, queen and 1 court attendant; EΘ, Clarion State College, IK, Rider College, and ZΦ, Slippery Rock State College, homecoming queen; AA, Northwestern University, and BI, University of Arizona, 1st place house decoration; IZ, St. John's University, 1st place float; ΘX, Lock Haven State College, honorable mention house decoration; IΔ, Edinboro State College, AY, University of Maine, and ΘM, St. Cloud State, homecoming court member.

Pledge Programs Stress Fun, Growth, Pride in Delta Zeta

by PEG BENJAMIN
National Pledge Training Chairman

A pledge training program has as many facets as the diamond in the Delta Zeta pin. Successful pledge trainers key their meetings to cover subjects which will help to integrate Delta Zeta pledges to college life: academic, extracurricular, and social sides.

Basically, the program must train, stimulate, and inspire. Since 100 per cent initiation is a goal, scholarship is a prime requisite. Also important is the integration of a pledge to sorority life—to teach her the responsibilities of pledges and the chapter to each other, and to instill in her both pride in her chapter and pride in being a member of the national organization.

But there must always be fun. The girls are learning to know each other and are developing friendships that will last a lifetime. Working together on campus activities, planning and carrying out a philanthropy project, doing something special for big sisters, pledges are establishing themselves.

Each chapter has its own traditions, and these add a personal touch to the pledge training program.

At ΘX , Lock Haven State College, the chapter honors a different pledge every three weeks by awarding the traveling charm bracelet to her for having improved the most in a particular area.

The pledge training program at Lock Haven builds national pride by assigning pledges to give reports on the Founders and other important Delta Zetas throughout the pledging period.

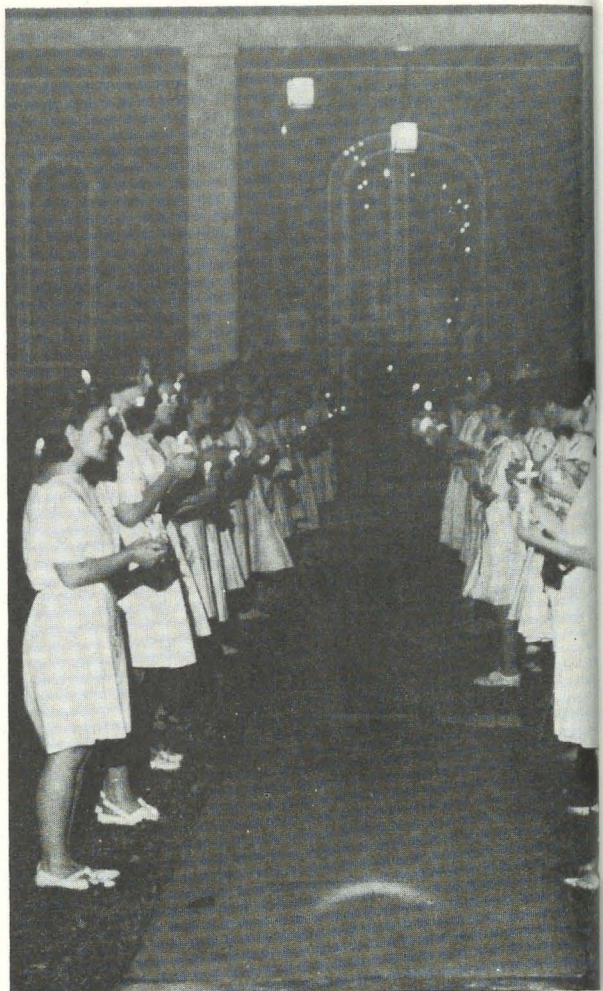
The Theta Chi pledges of Delta Zeta help to build good campus relations too. They carve Halloween pumpkins and deliver one to each fraternity and sorority on campus.

At $\Delta \Omega$, Fort Hays State College, each new pledge receives a handmade memento from her chapter pledge mother. A stuffed green cotton whale is the annual gift, a true bed-brightener in the dorms.

Delta Zetas of $\Gamma \Phi$ chapter, Indiana University of Pennsylvania, started the 1967 pledge program off with the novel idea of allowing the pledges to dress up in costume. The initiated sisters were surprised at the parade of pledges in the chapter room after meeting. The pledge trainer wrote, "It created a fun evening and sisterly closeness."

At Alpha chapter, Miami University, the entire pledge program is integrated around a Lamp Lighting Board, which is a replica of the national insignia, the Delta Zeta pin, made of plywood (approximately $2\frac{1}{2}$ by 3 inches) and cut into five parts.

Each section of the pin represents one aspect of Delta Zeta: The base is friendship, the lamp is sorority life, the flame is scholarship, and the wings are philan-



Basic to a good pledge program are good pledges. Epsilon Kappa initiated members bid farewell to rushees on the evening of the preferential parties.

thropies and activities. To assemble the pin, each pledge must fulfill the requirements in the five categories.

None of the requirements is new, but the Lamp Lighting board does provide new incentive as well as providing a means of checking on whether or not the pledges are participating in the requirements. The pledges must have the whole pin assembled before they are initiated. When the requirements are completed for one part of the pin, the pledge trainer and her assistant hold a simple inspiration ceremony at the end of the pledge meeting.

Singing together and using pledge meetings to teach national and chapter favorites becomes a positive part of many programs. Several chapters end each meeting with a new song. Each week, the song for the next pledge meeting is taught by the song leader.

Learning that Delta Zeta membership carries with it responsibility to the panhellenic system as a whole should be integrated into the program as well. At $\Gamma \Sigma$, Eastern Michigan University, the pledges have exchange breakfasts with the pledges of other sororities.



Good pledge programs have fun aspects as well as serious ones. $\Delta\Theta$'s at the University of Kentucky pretend with paddles.

Writing about one of the exchanges, pledge trainer Lynda Roeske says, "It was a big success. We sang some of our songs, and they sang some of theirs. We also talked about ways in which to improve Greek relationships on this campus."

Perhaps most important as a generating force for a strong pledge training program is the philosophy of the chapter toward their new sisters. Ψ chapter at Franklin College recognizes that the key to a happy pledge is not only a feeling of being wanted and loved, but giving her the knowledge that she is being treated as an individual. "Pledges like to be included in the responsibilities that others share in making the chapter a success," writes the pledge trainer.

Integrating all these facets creates a happy group of new sisters, come initiation time. Many chapters have good programs. Special credit should go to the following chapters who have consistently good pledge training programs:

1. Epsilon Sigma, Wayne State University
2. Zeta Theta, Sam Houston State
3. Alpha Tau, University of Texas
4. Zeta Psi, Stephen S. Austin College
5. Omicron, University of Pittsburgh
6. Zeta Epsilon, California State College of Pennsylvania
7. Beta Lambda, University of Tennessee (most improved this year)

Pledge Training Honor Role

1966-67

Quota Plus 100% Initiation

Psi, Franklin College
 Alpha Omicron, Brenau College
 Beta Alpha, University of Rhode Island
 Beta Kappa, Iowa State University
 Gamma Beta, University of Connecticut
 Gamma Theta, Carroll College
 Gamma Pi, Western Michigan University
 Gamma Rho, Northern Illinois University
 Gamma Phi, Indiana State University of Pennsylvania
 Gamma Psi, Central Michigan University
 Epsilon Beta, Northwestern State (Natchitoches, La.)
 Epsilon Kappa, Wisconsin State University—Whitewater
 Epsilon Phi, University of Detroit
 Epsilon Psi, St. Louis University
 Epsilon Omega, Wisconsin State University—Eau Claire
 Zeta Beta, Stout State University
 Zeta Phi, Slippery Rock State College
 Zeta Omega, Marquette University
 Zeta Rho, California State—Los Angeles
 Theta Tau, Findlay College
 Theta Chi, Lock Haven State College
 Iota Delta, Edinboro State College

Acceptable Pledging + 100% Initiation

Beta Delta, University of South Carolina
 Zeta Chi, Wisconsin State University—Stevens Point
 Theta Phi, Old Dominion College

LSU's Sigma Chapter Celebrates 50 Years; U. of Texas—A., Minot State Installed

by ANNE DONNES, NANCY HEATH, and
CHARLOTTA MASTEL

One chapter reached 50 years in 1967, creating a legacy of honorable tradition for two new chapters who received charters in formal ceremony at the University of Texas-Arlington, Texas; and Minot State Teachers College, Minot, North Dakota, Delta Zeta national officers were on hand to congratulate collegiates and alumnae.

Sigma chapter, Louisiana State University, celebrated a joint national Founders Day and chapter Golden Anniversary with a luncheon, a reception, and a coffee Oct. 28-30.

Nine charter members were guests of honor along with Mrs. B. H. Agler, national president, and Mrs. V. H. Meatheringham, national field consultant.

Midday Saturday, Oct. 28, 250 ladies attended a luncheon in the Royal Regency Room of the LSU Union. They witnessed the induction of the charter members into the Order of the Golden Rose.

Among the charter members present were Miss Josie Burris, Mrs. L. D. Gremillion, Mrs. L. E. Himler, and Mrs. C. A. Loyd, all of Baton Rouge; Mrs. Roger Dodson, Amite, La.; Mrs. R. S. Marbut, Athens, Ga.; Miss Irma Scott, Vinton, La.; Mrs. W. D. Smith, Benton, La.; and Miss Catherine Winters, Natchitoches, La. They received golden rose pins and membership certificates.

The charter members presented silver trays to the chapter in memory of Mrs. Antoinette Slayden Tucker, former LSU dean of women; and in honor of Mrs. Sydney Fairchild in whose home Sigma chapter was organized in 1917.

Mrs. Loyd, her two sisters and her daughter, presented a silver platter in honor of her mother, Mrs. Delle Bonner Means, and her aunt, Mrs. Stella Bonner Johns, for their help in the early days of Sigma chapter.

Iota Psi 11th for Texas

Iota Psi members were initiated Nov. 11, 1967, and the chapter installed, making University of Texas—Arlington the newest Delta Zeta collegiate group and the eleventh Texas chapter.

Zeta Psi chapter, Stephen F. Austin College, con-



Sigma's honored guests included Mrs. V. H. Meatheringham, national field consultant; Mrs. Frank Quin, Jr.; Mrs. B. H. Alger, Delta Zeta national president, and Mrs. Robert Bonnacase.



Order of the Golden Rose and charter members of Sigma chapter include Miss Irma Scott, Mrs. Mabel Himler, Mrs. Gladys Loyd, and Mrs. Laura Marbut, four of the nine present at the Golden Anniversary celebration.

ducted the ceremonies in the Bluebonnet Room of the E. H. Hereford Memorial Student Center. Margaret Ann Miller, chapter president, and ZΨ members came to Arlington to welcome their new Texas sisters.

A formal banquet was held that evening in the student center cafeteria. Pink paper roses graced the tables.

Special guests included Mmes. B. H. Agler of Columbus, Ohio, national president; Robert L. McKee-man of Tulsa, Okla., national vice-president in charge



Theta Pi girls are left to right by rows, La Donna Lee, Betty Ehr̄eth, Sheryl Bergstrom, Joan Wiely, Carlotta Mastel, Jane Eggen, Judy Bradley, Elaine Larson, Joan Mertens, Corine Hansen, Audrey Solheim, Susan Arnold, Myrna Heller, Penny Hoffard, Susan Bowles, Kathy Mark, Linda Jackson, Kandace Bergan, Beatty Baker, Pamela Fasset, Marsha Young, Beth Melgaard, Kathy Eman, Betty Smith, Margaret Alex, Helen Feldman, and Cindy Liner.



Margaret Ann Miller, ZΨ chapter president, and her sisters initiated Dorothy Smith, left, chapter president IΨ, and the members of the newest Texas chapter.

of alumnae; Phillip Vineyard of St. Petersburg, Fla., national director of extension; William B. Carr of North Redland Hills, Texas province president; Jane Ann Maxwell, state public relations director from Beaumont; Harry G. Stallworth of Austin, province vice-president; D. P. Shore, president of Fort Worth alumnae.

Mrs. Stallworth presented a trophy to be awarded each year for outstanding scholarship. Mrs. Vineyard

presented the Delta Zeta chapter with the charter, with Colonel Charles McDowell, dean of student life, accepting on behalf of the school.

On Sunday a tea was held by local alumnae for new chapter members, their guests, parents, delegates of all sororities represented in Arlington City Panhellenic, and local social organizations represented on the University of Texas—Arlington campus.

Present national sororities are Delta Zeta and Phi Mu. Iota Psi chapter of Delta Zeta was formed from the Zongola local sorority.

Theta Pi Installed at Minot

The initiation and installation ceremonies held April 22 and 23, 1967, linked Theta Pi Chapter of Delta Zeta at Minot State College, Minot, North Dakota, to the largest sorority in Panhellenic Council.

Formal initiation of the new chapter was conducted by Mrs. Gary Schlosstein, national secretary-treasurer, and Mrs. James Benjamin, national pledge training chairman. Miss Garnet Cox, dean of women, accepted the newly installed chapter on behalf of the college.

Among the gifts received by the chapter was a silver tea service from the national organization of Delta Zeta chapters, presented by the national officers. Congratulatory notes from some of the 170 college chapters were read. Mr̄s. Benjamin spoke on the purposes of the sorority and each one's responsibility after graduation.

On Sunday afternoon, the formal presentation tea was held in the Student Union Ball Room. President and Mrs. C. P. Lura were special guests.



Fifty year memberships were conferred Mrs. Charles Cross, Mrs. F. J. South, and Miss Ida Franz.



Order of the Golden Rose went to Mrs. Mason Snow, Mrs. Elizabeth Allen, Mrs. Mabel Adair Johnson, and Mrs. William Billings.

Lamp Glows for Old, New

Two alumnae groups recently conferred 50-year membership awards, another celebrated a 10-year anniversary, and a fourth announced the receipt of a new alumnae charter, completing a circle of lasting friendship in Delta Zeta.

The Order of the Rose for 50 years of sorority membership was conferred in April, 1967, on Mrs. F. J. South and Miss Ida Franz, charter members of Epsilon chapter of Delta Sigma Epsilon, founded in May, 1917. ΔΣΕ merged with Delta Zeta in July, 1956. They were presented with a Killarney rose, a certificate of membership in the Order of the Golden Rose and a gold rose pin with a pearl in its heart from the local chapter.

The St. Petersburg Alumnae proudly hosted Mrs. William Billings, A, sister of one of the founders, Alpha Lloyd Hays, and three other members of the Order if the Golden Rose, Mrs. Mason Snow, Θ; Mrs. Elizabeth Allen, Mrs. Mabel Adair Johnson, Δ, for their 1967 Founders Day celebration.

In celebration of its tenth anniversary, the Wooster, Ohio, Alumnae Chapter of Delta Zeta held its annual mother-daughter banquet. The May dinner program included the chapter's history dating from the origin in May, 1957, the receiving of its charter at Miami University, Oxford, Ohio, in May, 1958, to the present.

The program was climaxed by a book review given by Nancy Longshore Brest, Alpha Chi Omega.

The Delta Zeta Alumnae Chapter of South Jersey received its charter at a Founders Day luncheon Oct. 15, 1966. The presentation was made by Mrs. H. M. Lundy, past national president and currently a national director and historian.



At the Wooster, Ohio, Alumnae tenth anniversary luncheon were Charlotte King Pierce, ΓΩ, charter member and past president; Nancy Longshore Brest, guest speaker; Inez White Fritze, N, immediate past president; and Anita Indoe Reynolds, ΓΑ, president.



Mrs. H. M. Lundy announces the granting of South Jersey alumnae the charter as Miss Joanne Wrigley, Mrs. Mario Lavicola and Mrs. Thomas Cooper look on.



Zeta Omega chapter at Northern can attest to Michigan's well-known season of snow.

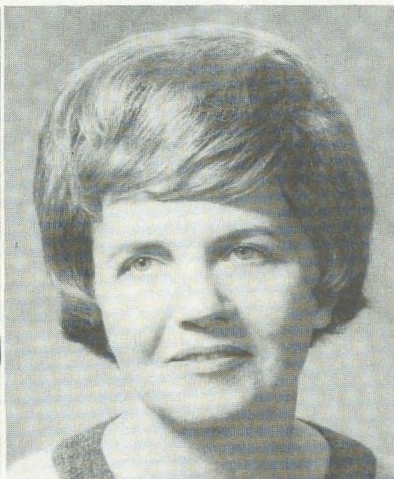
Province VI Shines



Sue Cheskie Balogh, EΣ '61
Province Collegiate Director

Surrounded by girls she serves is new province collegiate director in Michigan, Sue Balogh. Sue served as pledge trainer and chapter president of her chapter at Wayne State. Following graduation she served on the advisory boards of EΣ (pledge training) and EΦ (standards). In 1964, she was appointed C.C.D. at EΦ.

Wayne State alumni activity has claimed much of her time. She was director of publicity for the Women of Wayne State Day two years and served as a member-at-large on the national council of this growing organization.

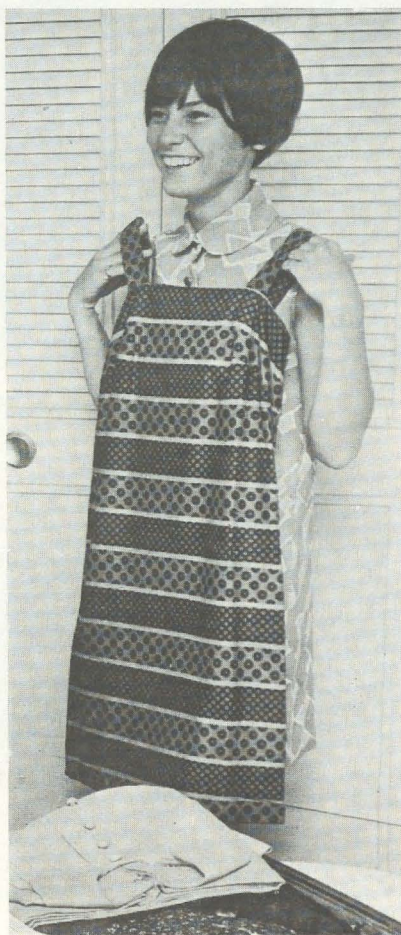


Loretta Majewski Gilewicz, BP '49
Province Alumnae Director

Loretta Gilewicz has worked in alumnae groups of Delta Zeta since her graduation from Michigan State University.

Loretta began as a member of the Detroit Juniors and went on to the Detroit East Side alumnae where she served two years as chairman. She was then elected president of the Metropolitan Detroit Alumnae. In 1966, she became province director.

Related to her Delta Zeta work, Loretta is on the board of directors for the Detroit Speech and Hearing Center. She has worked on the references committee for DZ for five years.



Ginny Brand, ΓΠ, packs her bags for France, Kalamazoo's Ambassador.

Eastern, Northern, MSU Specialize

Very much a part of Michigan State University is the Beta Rho chapter of Delta Zeta. Traditions and ivy-covered halls mingle with the hopes and never-ending construction for the future in a gently rolling expanse of 1,440 acres. Some 40,000 students attend Michigan State, just outside the Michigan Capitol City of Lansing.

Beta Rho became a part of MSU In May, 1941. Delta Zeta is one of 22 sororities. The majority, including BP, have houses in close proximity to campus.

Beta Rhos have spent their 26 years at Michigan State establishing traditions and memories. Dad's Day is an annual fall event. Pledges and actives treat their fathers to a buffet luncheon at the house and to a Michigan State football game. A Christmas party with the bus boys is a highlight of finals week. Triad, semi-formal, pledge-sponsored dance is another Beta Rho Tradition, held in conjunction with two fraternities. A surprise, "Let's Make Grades breakfast is part of every pledge's memory. The spring Water Carnival



The Gamma Sigma final rush party at Eastern has a Playboy Bunny theme.



Sorority bowling champions at Michigan State University last spring were Beta Rho girls.



Carol Ann Reardon, $\Gamma\Sigma$
Detroit Rose



Sandy Goodman, $\Gamma\Sigma$,
Homecoming Candidate

brought the Alpha Kappa Psi and Delta Zeta team a second place trophy.

Beta Rhos were sports kings last year with trophies for all-university basketball, and tennis doubles, sorority bowling and blooper ball. They also list many campus leaders. Mary Roe served as chapter president and vice-president of President's Council during the same term. Two girls were named to Tower Guard, another was one of 50 outstanding seniors. They also had a Miss Michigan contestant, Joanne Niska, and Jan Melville is was Phi Kappa Psi Junior 500 queen.

Philanthropies have included candy and a Christmas party for deaf children. The Beta Rhos help the Lansing alums teach deaf teens to dance and then to get them ready for their "debut" on WJIM-TV's "Swing Lively." They helped organize, stock, and staff a community center for underprivileged children with the Michigan State Panhellenic Council.

ZΩ's Are Dawn Decorators

Zeta Omega girls were busy last fall. Efforts were rewarded with a first place float, a Delta Zeta Homecoming queen, Kay Voss, and another ZΩ, Maureen Kelly, on the court. Early risers would have found them making tiny paper roses or molding paper mache. They also won second in sports competition.

Zeta Omega chapter is located on the rapidly expanding campus of Northern Michigan University. Established in 1899, Northern opened its doors to 32 students. Today this campus overlooking Lake Superior has an enrollment of 7,000.

1963 was an eventful year: Northern reached university status, and Zeta Omega was installed as an active chapter of Delta Zeta. Northern's campus flourishes with the Greek activities of 4 sororities and 10 fraternities.

As a philanthropic project, ZΩ sponsors a fall cos-

tume dance, the Bunyan Ball, which is a benefit for the Karen Wilson Ranta Loan Fund. Zeta Omega also participates in the Ugly Man Contest conducted to raise money for the Bay Cliff Health Camp. They combine with Alpha Phi Omega fraternity to prepare the camp for summer use by cleaning and painting.

The annual German Party begins with a Christmas party for underprivileged children. Each couple, dressed in German costume, care for a child while he decorates, sings songs, and receives small gifts. The sorority girls and their dates then go to the Alpine Room of the Chalet for a German dinner and pledge program.

All Events Week earned a trophy for sports and one for snow statue for Zeta Omega. The girls worked in snow and icy water to create "Battle Creek's Best to You" for the theme, "Salute to Michigan." Snowy Yogy Bear and Tony Tiger looked almost alive.

Zeta Omega won the sorority plaque for the highest grade average in 1965 and again in 1966 with a 2.9 average.

ΓΣ Has Homecoming Tradition

Founded by the state legislature in 1849, Eastern Michigan University is the home of Gamma Sigma of Delta Zeta. From just over 1,000 students in 1889, Eastern today has grown to 12,900 students.

Gamma Sigma's girls do not have a house, and residence halls provide a home for most sisters. Joan Szilvaygi and Diane Taylor are resident advisors; Carol Reardon holds the position of assistant head advisor; and Lindsay Cotter is the chief manager of an office staff: all coveted jobs.

Gamma Sigma has a long history of homecoming queens. In 1962 Mary Fitsharris began the reign for five consecutive years. She was followed by Pam Goedert and then Teena Ford. Teena's little sister Karen Rajcze was queen in 1965. The following year, Kay Connolly took the throne. Each queen was accompanied by another Delta Zeta on the court.

Last fall, the Delta Zetas let somebody else have the throne, but still placed three girls in the top ten: Connie Beal, Patti Abbett, and Sandy Goodsmen. Connie and Patti were named to the Homecoming court.

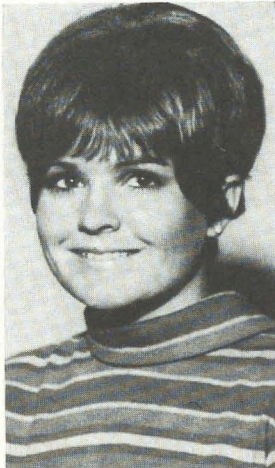
It is not only homecoming queens that the girls specialize in. Carol Logan was on the Military Ball court and Sheila Cassidy on the Snow Queen court. This past summer, Carol Ann Reardon was crowned Detroit's Rose, which took her over to Ireland to compete internationally. Linda Roeske was first runner-up in her home-town's Regatta Queen.

Each pledge class participates in a community project. Easter baskets are made in the spring for the children's hospital and a Christmas party is given annually with Theta Chi for underprivileged children.

This spring, incorporated into the standards program, Gamma Sigma has scheduled a meeting with Mrs. George Romney. The topic will be, "A Woman's Place in Society."



Connie Beal, ΓΣ
Homecoming Court



Patti Abbett, ΓΣ
Homecoming Court

Wayne, U. of D., Albion Girls Earn Praise

Wayne State Delta Zetas always find time to socialize. Last winter they livened up a long cold spell by giving a Think Summer party complete with lawn chairs in the snow and packed lunches for their dates.

ΕΣ was founded at Wayne State University in 1948 while the school was still known as Detroit College of Medicine. In 1956, WSU became a state university and today has over 33,000 students.

A crowning glory to lots of work was received at the 1966 National Convention. ΕΣ walked off with the Founders Award for the most improved chapter, as well as a Scholarship Award and a Membership silver pitcher. Jan Michalek was named recipient of the Grace Mason Lundy Award and Charlene Keebler was named to the Florence Hood court. The two girls had each been named "Pride of the Province" at Michigan State Day.

Sororities at Wayne earn Christmas presents for needy children by each group selling one edition of the school newspaper, a competition won by the ΔΖ's three straight years. A special ΔΖ tradition is serenading fraternities. Wayne is a commuter school and there are no sorority houses. The fraternities do have houses, so they serenade them.

Last spring, ΔΖ's won both the Games Trophy and Spirit Trophy during Greek Week. For Fun Festival at Bob-lo Island amusement park, they displayed the prize-winning float. Four girls were tapped for mortar board in May.

Wayne works at a school for retarded children and sponsors a Camp Fire Girls Troop. They also hold a clothing drive for Navajo Indians.

Delta Zetas shine in sports and as campus beauty queens and leaders. Cheerleaders include Leslie Taliaferro and captain Gayann Pryor. Vay Tyson is AWS president and a member of Sno-ball court. Sue Unruh has two titles, Miss Medic Alert and Governor's Lady. Our list of stars also includes Aileen Cronin, VP of Panhellenic Council, and Mary Crandall, Greek Week Chairman.

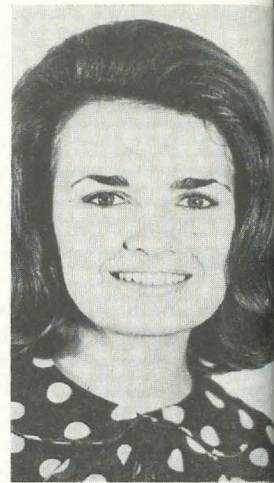
Detroit Attracts National Interest

University of Detroit's ΔΖ's manage to draw national publicity regularly with prize-winning booth ideas.

Last year the choice of an ice cream booth where the purchase of ice cream entitled the buyer to vote for either the Republican or Democratic senatorial candidate hit major papers across the country. This fall, a



JoAnn Sarafin, EΦ
ΦΚΘ Sweetheart
Army ROTC Queen



Pat Wietchy, EΦ
Magi Sweetheart
Student Court Sec.

philanthropy project on campus for the Navajo Indians drew interested spectators and reporters as college students lost their beards.

The Epsilon Phi chapter is located in the heart of the city, on the campus of a Jesuit school with buildings indicating its age and tradition, and modern libraries, dormitories, and administrative offices indicating its recent growth and its plans for the future. The undergraduate population at U. of D. numbers about 8,500.

Five sororities are represented in the Panhellenic Council. ΔΖ was founded there as a chapter of Delta Sigma Epsilon in 1952. In 1956, Delta Sigma Epsilon merged with Delta Zeta, and Epsilon Phi chapter came into being.

Each year the Delta Zetas co-sponsor a campus dance with a fraternity which nets approximately \$500 in profit. ΕΦ's also participate in the winter-time Mardi Gras. Last year Ginny Day was secretary of the entire Mardi Gras committee.

ΕΦ has its share of outstanding leaders on campus. This year's president Carol Knopes is an editor on the school newspaper and received the journalism outstanding service award. Kathy Karas is a feature editor. Marge Maruschak, a student senator, received the award for the highest scholastic averages of all sorority pledges. Four girls were tapped for Mortar Board equivalent last spring.

Beauty goes with talent. Army ROTC Queen and sweetheart of Phi Kappa Theta is ΔΖ Social Chairman JoAnn Sarafin. Sweetheart of Magi Fraternity for two years is Pat Wietchy, chapter rush chairman. Rifles Sweetheart Carol Niemic serves on the Student Union Board as well.

Beta Pi Builds ΔΖ Image

Beta Pi Chapter of Delta Zeta is located in Southern Michigan at rapidly expanding Albion College, a Meth-



Wayne State held their annual dinner dance at Essex Country Club, Ontario, Canada, in 1967.



Wanda Wasterwich, chairman of booth, shaves off a beard in the University of Detroit ΔZ's prize-winning shave-in.



2nd place float built by BII chapter at Albion.

ΔZ's participate in Greek Weekend in May: canoe races on the Kalamazoo River, a soap box derby with fraternities pushing the cars driven by sororities, the crowning of a Greek Goddess, and in the evening, a carnival. This fall, the Homecoming float won second place. This spring, they will be devoting one day to cleaning up the city of Albion with other Greeks.

BII also co-sponsors Albion College Players, promoting student and faculty interest. Delta Zetas help with the small children in the city's Day Care center and plan on adopting a little boy in the near future.

Each year in the late spring, graduating seniors and summer brides are honored at a tea. Also, each summer, they have a retreat to make plans for fall rush and to catch up on the summer happenings of sisters.

The members of Beta Pi have been busy building the image of Delta Zeta on Albion's campus. With the aid of C.C.D. Miss Peg Wiesenberger (a former Beta Pi and presently a dorm House Mother), they are striving for a closer sisterhood in which they can exemplify the high ideals of Delta Zeta.

odist affiliated school with a present enrollment of 1,700 students.

A Delta Zeta chapter has been located on this campus since 1940, one of eight nationals. The BII's have a brand new lodge.

Ferris, Central, Western List Honor, Activity

Gamma Pi Chapter of Delta Zeta Sorority is located on the campus of Western Michigan University in Kalamazoo, Michigan. Construction is a way of life for the diversified, 18,000 population student body, as buildings seem to appear every semester. East Campus is the center of business and speech, with its old buildings and beautiful hills. West Campus has modern, architecturally beautiful facilities. The valley between is the site of new high rise dorm complexes. Twelve national sororities and 20 national fraternities abide.

Delta Zeta is the oldest sorority on Western's campus. In 1949, TII was colonized by Pat Mullins, AII transfer, and supervised by Margaret Wherry Havens (Mrs. George), present college chapter administrator. On March 3, 1950, Gamma Pi was granted their charter. That year was climaxed by the initiation of 14 members by the National Council at the National Convention on Mackinaw Island.

With this inspiration and solid beginning, Gamma Pi has maintained a top position in all phases of campus life. We have been the only sorority to place first in Sorority Sing for two consecutive years. They are the only sorority on campus to consistently place in the uproarious Delta Upsilon Variety Night. They have won the Blood Drive for seven consecutive semesters.

Our sisters are leaders in many different groups. Debby Poulos was elected Miss Derby Day Queen. A fraternity presented her with a pink and green lamp—nonetheless. Linda Todd reigns as Homecoming Queen, crowned by Linda Doyle, another Delta Zeta. Miss Western Michigan of 1965 and runner up for Miss Michigan was Susan Bieganowski. Karen Plecka, on the court of the 1967 Snow Queen, is also Senior Class treasurer and past secretary of Panhellenic Council. Last summer, Ginny Brand was Kalamazoo's Ambassador to France.

The chapter has received the Activities Award eight years in the Michigan province and last year won the province scholarship award and Most Improved Scholarship plaque from Panhellenic. Panhell also chose Katie Humphries chairman of 1967 Greek Week.

In philanthropic activity, Gamma Pi sponsors an annual food drive and supports national projects. Several sisters work on tutorial projects and read to the blind.

Zeta Nus Win Trophies

Zeta Nu was presented at the 1962 National Convention as a brand new Delta Zeta Chapter. Located at Ferris State College, they inhabit a relatively new state college on the Michigan scene. Ferris Institute had, for



Gamma Pi won the Grand Trophy at the Freshman Carnival with this booth.

many years, been designed primarily for male students. With the coming of the state college, female enrollment increased, new academic programs were developed, and Greek life flourished.

ZN's walked off with four first place trophies in major campus events last year. They began their kick off with a Homecoming Float victory, "Chivalry Through the Eyes of a Child," and then captured a display win in the Winter Snow Carnival. In the Spring they were the first sorority to win with our entry in the Ugliest Man on Campus contest. Spring's enchanting days also helped them capture first place in Greek Sing.

Trudy Proctor, then president, received the National Pledge Award at Convention in the Grand Bahama Islands for our chapter last summer.

In money raising, they sell candy, sponsor dances, and have a daily coffee hour. Last summer they joined the men of Theta Alpha Sigma at a dunking booth at the county fair.

Each year sisters from Gamma Psi Chapter celebrate Founders Day with ZN. St. Valentine's Day is celebrated traditionally by sending each fraternity a Valentine message in Greek. Easter greetings are shared at a party with the men of Sigma Alpha Mu. Parents



Linda Todd, Gamma Pi Homecoming Queen at Western Michigan, was crowned by former queen Linda Boyle, also a Delta Zeta.

Day banquet is the perfect opportunity to show off our parents and to familiarize them with our sorority. Awards are distributed at this banquet.

This fall ZN was voted Best Sorority on campus in a secret ballot survey. This award is based on sisterhood, behavior, scholarship, citizenship, and leadership.

Gamma Psi Activity Varied

Gamma Psi is one of 10 sororities on Central Michigan's campus. Central was founded in 1892 and has since grown to the size of 10,000 students. C.M.U. is primarily a teachers and liberal arts college.

Gamma Psi became a chapter of Delta Zeta sorority in 1953. Since that time the chapter has received the Council Award two times and the Province Award several times. Miss Barbara King, our advisor, has also been awarded the Acoth Award.

Philanthropies activities consist of singing to the patients at the Mt. Pleasant State Home and Training



Brothers congratulate their new chapter sweetheart, Laurie Colburn of Zeta Nu and Ferris State College.



Ferris State College captured the Homecoming float competition with this Cinderella Coach.

School, and making Christmas gifts for the children's wards of the Community Hospital. Gamma Psi also helps with the Cancer Drive in the Mt. Pleasant area.

The chapters standards meetings have ranged from speakers on Viet Nam to wig demonstrations and judo or self protection demonstrations.

For public relations $\Gamma\Psi$ holds a very lovely tea for all the housemothers and administrative personal on campus. Last winter Gamma Psi and Sigma Chi Fraternity built a snow sculpture for the Holiday Inn here in Mt. Pleasant.

Other activities $\Gamma\Psi$ has during the year are Dad's Day, Mom's Weekend, Rose Petal Ball, Parent's Day Picnic, House party, and Date Dances.

Gamma Psi holds many honors on Central's campus. Cindy Charlebois is C.M.U.'s Snow Queen, and Marilyn Lowe another sister is first runner up. $\Gamma\Psi$ has a number of girls who were elected to *Who's Who* and Senior Women's Honor Board.

Michigan, Indiana Hold Successful Flame Fantasies

Two state-wide Flame Fantasies in Michigan and Indiana together raised over \$2,000 last November to benefit speech and hearing programs in those states and across the country.

Michigan Council of Delta Zeta held its first Flame Fantasy luncheon and fashion show on Saturday, Nov. 11 at the Roostertail in Detroit. Tickets were sold out two weeks before and a capacity crowd of 550 Delta Zetas and guests from all over the state forgot about the wintry weather while viewing the colorful resort and travel wear featured in Delta Air Lines "Flight Into Fashion."

Miss Norma Wildes, Coordinator of Women's Services for Delta, narrated the fashion show which included originals flown in from Jamaica and Puerto Rico, as well as costumes from Miami Beach, California, and New York.

Proceeds from the luncheon, over \$1500, will be used to benefit philanthropic endeavors of the chapters all over the state. A major portion of the money will be used to buy equipment for the Detroit Speech and Hearing Center, the only Michigan affiliate of our national philanthropy, NAHSA.

The theme of the luncheon was in keeping with the grand prize, a "Delta Dream Vacation for Two to Miami Beach." Huge pink crepe paper roses, ensconced in palm fronds, decorated each table and ringed the stage. Smaller roses added a finishing touch to the door prizes donated by collegiate and alumnae chapters throughout the state.

The first prize winner was awarded plane tickets, a week's stay at the Statler Hilton Plaza in Miami, and use of a Hertz car during that time.

The second prize of the afternoon was a beautiful set of Mikasa bone china, complete service for eight. By coincidence, it was won by newlyweds from Ferris College at Big Rapids and was personally delivered by a very enthusiastic group of collegiates and alums who had driven the several hundred miles to attend the luncheon. A lovely mink boa was the third prize.

Luncheon guests were escorted to their tables by the attractive hostesses, actives from Epsilon Sigma chapter at Wayne State University, attired in perky green outfits. Their former CCD, Miss Cathy Dritsas, served as Toastmistress.

Special guests included Mr. and Mrs. Raymond Lindahl, director of the Detroit Speech and Hearing Center; Mr. Don Jacobs, Delta Air Lines representative; Mr. Ron Weimer, representative for Mikasa; and Miss Eileen Moses of Michelle Boutique.

The committee responsible for Michigan's successful



Zeta Nu collegiates from Ferris State chat at luncheon.



Detroit Alumnae Door Prize Committee included Mrs. Thomas Rossman, Mrs. Paul Jablonski, Mrs. Stanley Singer, Jr., Mrs. Gerald Morrison, and Mrs. David Benner, chairman.

first venture was headed by Mrs. Laurence Trevarrow of Oakland County. She was assisted by Mrs. L. M. Gilewicz of Detroit.

A theater tour of New York City was the theme and grand door prize at the third Indiana Flame Fantasy Nov. 4.

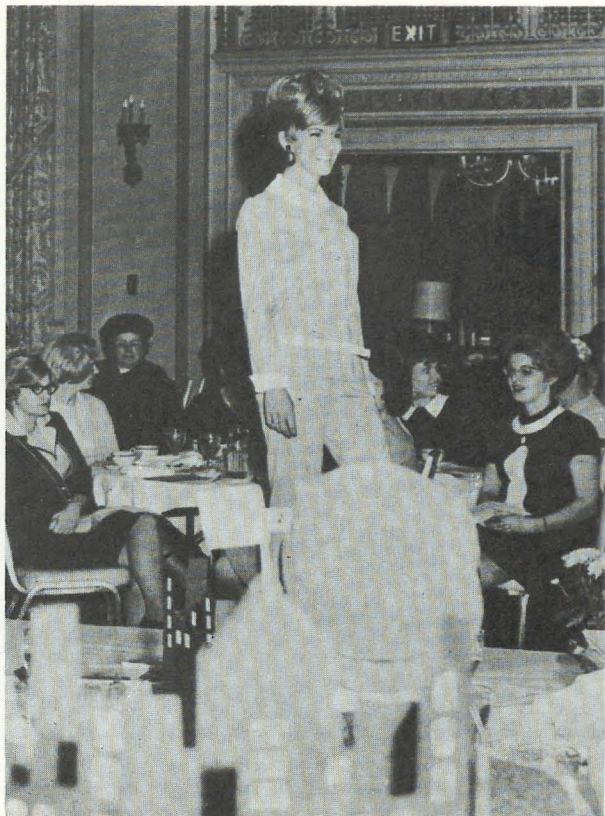
With a profit of over \$700, the Indiana Council of Delta Zeta alumnae gave the money earned at the charity luncheon and style show to the Indiana Deaf School and the National Association of Speech and Hearing Agencies.

More than 250 Indiana ΔZ's and friends attended the annual luncheon held at the Indianapolis Athletic Club, which was decorated with silhouettes of the New York skyline.

The grand prize of a trip for two to New York City with tickets to Broadway plays and many other attractions was won by Mrs. Thelma Harkless, a ΔZ alumna from Acton, Indiana.



Alurna Carol Degen gives instructions to Patty Webster and Aileen Cronin, EΣ, collegiate hostesses, for Michigan Fantasy.



Mrs. Ted Fullhart, Delta Zeta alumna, models in Indiana Flame Fantasy style show last November in Indianapolis.



Delta Zeta alumna Thelma Harkness, right, won a trip to New York in Indiana's Fantasy luncheon. Mrs. Gretchen Erickson, chairman, presents the "ticket."

A style show with New York holiday fashions was presented by the Wm. H. Block Co. of Indianapolis with Miss Dorothy Goodridge, Block's fashion coordinator, providing the commentary. Collegiate chapters of Indiana each were represented by two girls who served as hostesses. Delta of

Depauw sent Vicky Burton and Dot Filer; IU's Epsilon chapter was represented by Cathy Gibson and Sherri Nakagawa. Ball State's Gamma Chi group provided Ritz Frontczak and Carol Wellendorf to be hostesses. Sally Hopkins and Barbara Bryan represented Franklin's Psi chapter.

Special guests at the Delta Zeta luncheon included Mrs. Howard Adkins, executive secretary of the Indiana Deaf School; Mrs. Miriam Mason Swain, author and 1966 Delta Zeta Woman of the Year; Mrs. Robert Rock, wife of Indiana lieutenant governor; Mrs. Alfred J. Lamb, wife of assistant superintendent of Indiana Deaf School; Mrs. Harold W. Houston, Delta Zeta Province vice-president; Miss Pam Whitestine, Ball State University Homecoming Queen and Gamma Chi chapter president; Mrs. Frank Silverthorn, national director of philanthropies; Miss Anita Bayless, television personality; Mrs. William Shields, court judge of Noblesville; and Mrs. John J. Barton, wife of Indianapolis mayor.

Headed by Miss Gretchen Erickson of Indianapolis, Delta Zeta alums from all over Indiana served on the planning committee.

Plans are already underway for the fourth Flame Fantasy for Indiana. The above group met late in November and chose Mrs. Karl Keller as new state chairman to head next year's luncheon planning.



As the historic "Gateway to the West," St. Louis has been chosen as the spot to commemorate our nation's western expansion. The 630-foot Gateway Arch on the downtown waterfront is the nation's tallest monument.—photo courtesy Chamber of Commerce of Metropolitan St. Louis.

Meet Us in St. Louis: Convention 1968

With the refrain of the 1904 World's Fair theme, "Meet me in St. Looney, Looney, meet me at the Fair," came eternal notoriety to the bustling Missouri capital. A friendly, folksy place with a sophisticated side too, St. Louis is an endearing city.

Founded 11 years before the Revolutionary War, history nods its head to us from every corner. The doughty French city fathers live on in street and family names and historic landmarks dot the town.

"A river of some size," Mark Twain's beloved Mississippi, runs by, upon which rise a splendid riverfront complex of apartments, entertainment areas, a king size sports stadium, and the magnificent Gateway Arch, St. Louis's pride and symbol of municipal grandeur. And for the nostalgic, an excursion steamboat leaves river dock twice daily for a roll along "dat ol' man river."

If you find a minute, dash over to the city's fine Art Museum, amble through the famous St. Louis Zoo, or be impressed by the glassy glory of the Jewel Box, a floral conservatory. Don't forget to shop! The Chase-Park Plaza is set smack in the throbbing west end sector.

Join us, Delta Zetas. Convention is a time for learning, exchanging, rewarding, all nestled in an exciting setting. Workshops and firesides will aim at improving

leadership. Ritual services will inspire us. Awards banquets will honor those of us outstanding in accomplishment. Come share a part of Mark Twain's World.

Convention Information

Dates: June 16-21, 1967

Convention registration is from 1:30-5:30 P.M. Sunday June 16. Guests may not register into the hotel before 1 P.M. The opening banquet is 7 P.M. Convention meetings last through Friday evening, June 21, with the installation and awards banquet.

Transportation

A limousine from the airport to the hotel costs \$1.75 and takes 30 minutes. A taxi from the train station costs approximately \$1.75 and takes 20 minutes.

Parking

Parking is free for guests if you drive your car into the garage and park it yourself. The attendant at the door will park it for a charge.

Tipping

Bell boys should be tipped 25 cents per article upon

arriving and leaving the hotel. Waitress tips are included in your charge per day.

Clothes

Bring summer suits and dresses and include a sweater because of air conditioning. You will need an all-white dress (no colored trim) for the lamp lighting banquet and white, gold, or silver shoes. For the three formal banquets, bring short or preferably long formals. Because this is a city hotel, pants will not be proper dress at any time. The hotel has a pool, so you may wish to pack a swimming suit.

Preregistration: deadline May 1, 1968

Preregistration fee is \$25. All convention participants, regardless of official capacity, *must* send the blank below with the fee to Mrs. Callie Folger, 3561 N. Pennsylvania St., Indianapolis, Indiana 46205. Make checks payable to Delta Zeta Sorority.

Pre-convention Fantasy Planned

A Flame Fantasy Fashion Show will be held June 16, opening day of National Convention, at the convention site, the Chase-Park Plaza Hotel. This will be the third fashion show given by the St. Louis alumnae to benefit the Gallaudet School for the Deaf in St. Louis and Gallaudet College, Washington, D.C.

Stix, Baer and Fuller, a leading St. Louis department store, will do the fashions. Models will be recruited from among the St. Louis alumnae and their children. Door prizes will be awarded.

Conventioneers who are interested in attending may contact St. Louis Alumnae Flame Fantasy Chairman, address listed below, for further information. Only a limited number of tickets will be available.

MRS. JOHN FINKES
221 W. Old Watson Rd.
St. Louis, Missouri 63119

Delta Zeta Convention Preregistration and Hotel Reservation

Chase Park Plaza Hotel, St. Louis, Missouri
June 16-21, 1968

Mail this blank and your \$25 preregistration fee to:

MRS. CALLIE FOLGER
3561 N. Pennsylvania St.
Indianapolis, Indiana 46205

Name married women give maiden name also

Home address

College Address (for collegiates)

Chapter college chapter alumnae chapter graduation date

National Officer College Chapter Visitor

Province Collegiate Director State Membership Chairman

Province Alumnae Director Official Alumnae Chapter Delegate

Committee Chairman Alumnae Chapter Visitor

Official College Chapter Delegate College Chapter Director

Arrival date Time Plane Train Car

Reservation package plan: includes 6 nights and 16 meals—6 dinners, 5 lunches, and 5 breakfasts.

(1) single room: \$155.00 per person

(2) double room: \$136.00 per person

(3) room for 3 or more: \$127.00 per person

Choice of a roommate name home address chapter

How many conventions have you attended?

Would you be willing to work on the Convention newspaper, the *Lampkin*?

In what college honoraries, professional organizations, or queen courts were you a member?

(example: Mortar Board, Theta Sigma Phi, Sigma Chi sweetheart)

Delta Zetas Prove Leaders In College Panhellenics

Delta Zeta can proudly say that her collegiates are shouldering a mighty load of leadership in the organization of panhellenic groups across the country this year. Over 30 Delta Zetas are currently serving as president of college panhellenics.

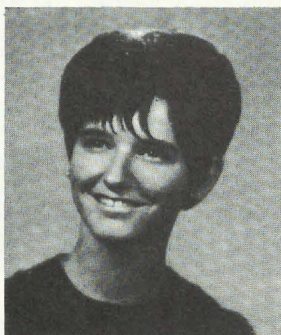
The panhellenic organization on each college or university campus is the coordinating body for the women's social fraternities. The aim of local panhellenics is to work for the best interests of fraternities as a whole. One or more members of each national group

belongs to panhellenic council. The group may invite local sororities to send delegates also.

One of the most important jobs of college panhellenics is to plan rush. Panhellenic officers guide the planning of a rushing schedule, outline rules, and set up a neutral office to handle invitations to the parties and the bids. They may also sponsor a Greek Week, workshops for their own members or other panhellenics, a junior panhellenic for pledges, scholarship programs and philanthropy projects.



Nancy Bowman, ΔΧ
Chico State College



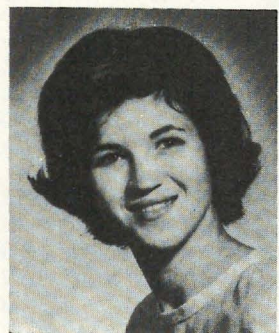
Mary Pfaff, ΕΚ
Wisconsin State Univ.-W.



Linda Sue Wilkes, Ω
University of Oregon



Judy Rank, ΙΩ
Southern Illinois University



Kathleen Thompson, ΔΔ
George Washington Univ.



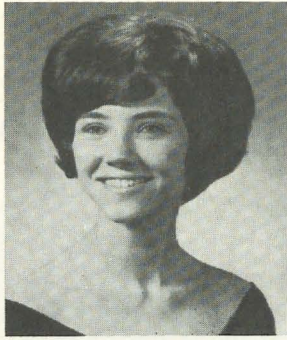
Pat Rapp, ΘΦ
Old Dominion College



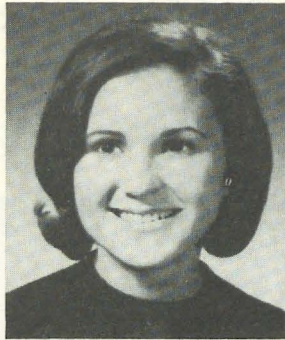
Andrea Coppedge, ΔΔ, Georgia State College, receives a commendation for her campus panhellenic at National Panhellenic Convention in New Orleans in November, 1967.



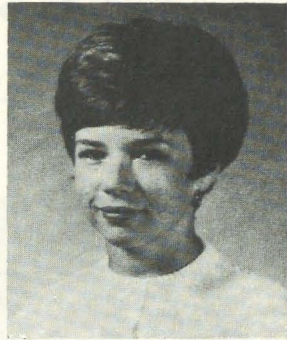
Vicki Poindexter, ΘΑ
Simpson College



Barbara Benton, ΘΙ
Western Carolina University



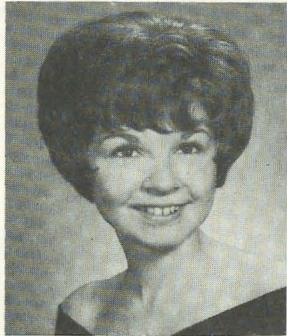
Mary Roberts, ΒΘ
Bucknell University



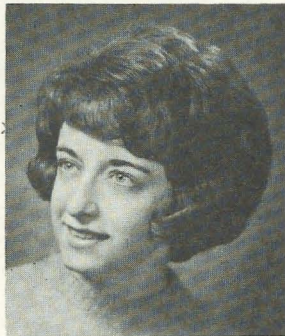
Patricia Cheshire, ΕΞ
State College of Arkansas



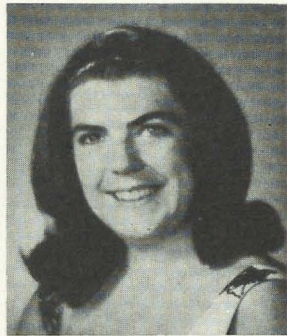
Janice Roberts, ΕΡ
Northwest Missouri State



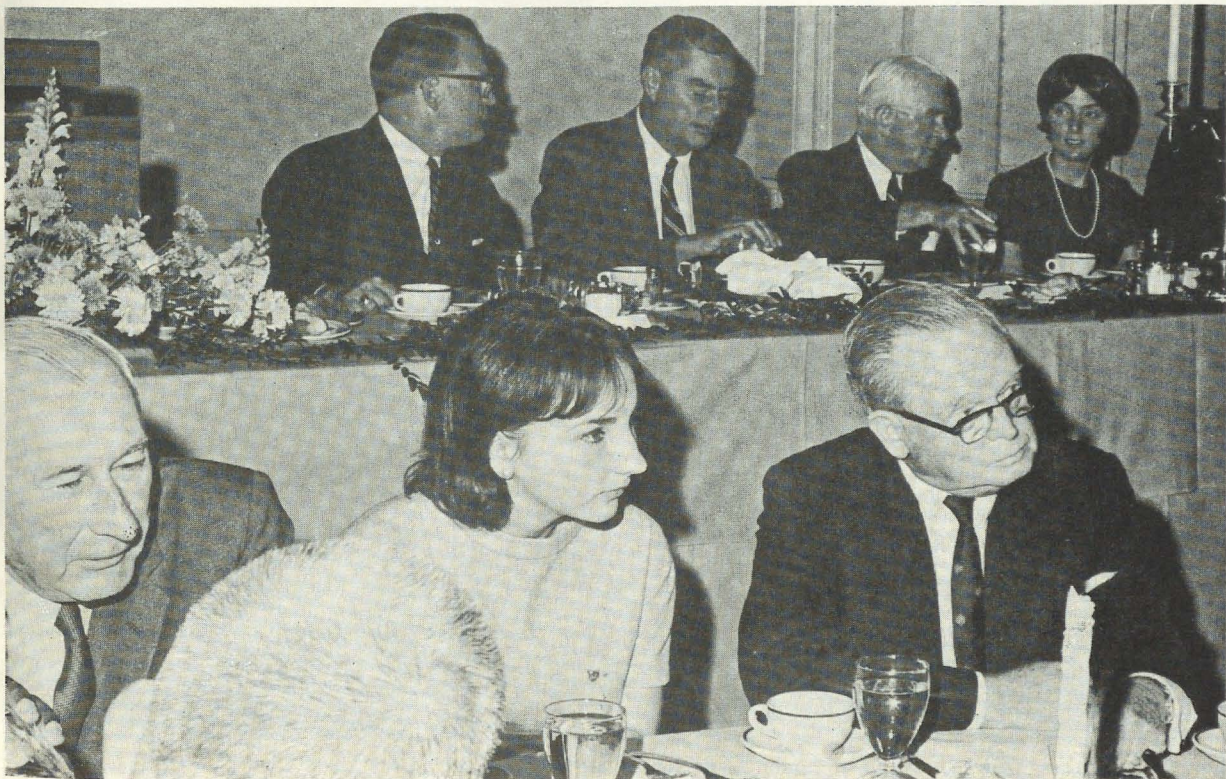
Jill Emrick, ΓΧ
Ball State University



Nancy Wherley, ΙΒ
Dickinson State College



Jean Ann McCain, ΘΒ
Birmingham Southern College

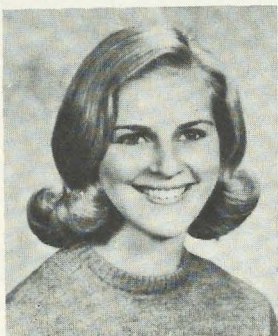


The IFC and Panhellenic Association of the University of Pittsburgh sponsored a dinner Oct. 18 to acquaint the university chancellor with the Greek system. Co-chairmen of the event were Herb Ferrer, Delta Sigma Pi, and Randi Hurwitz, Delta Zeta. Pictured is Pat Wagner, O, president of Delta Zeta and editor of the campus yearbook, between two Board of Trustee members.

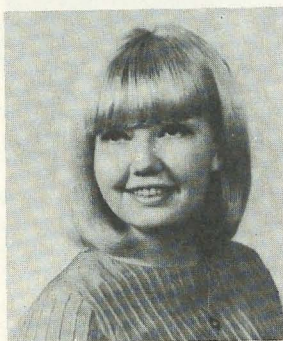
Panhellenic Presidents Continued . . .



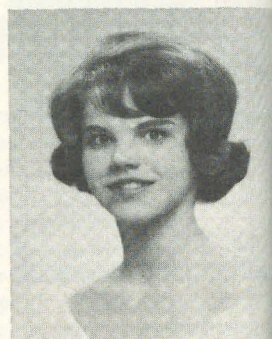
Mary Martha Rogers, Ψ
Franklin College



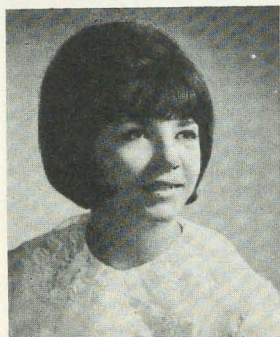
Carol Figore, ΘΔ
Westminister College



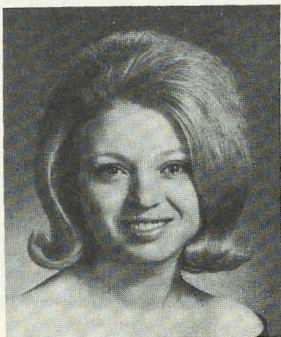
Judy Gunderson, ZB
Stout State University



Ann Marie Brennan, ΕΨ
St. Louis University



Barbara Bickford, ΔΩ
Fort Hays State



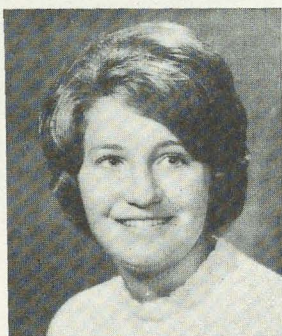
Carolyn Bird, ΖΖ
West Texas State



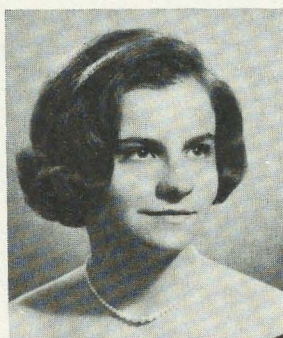
Libbye Sloan, ΓΗ
New Mexico State University



Andrea Coppedge, ΔΔ
Georgia State College



Karen Drewery, ΘΧ
Lock Haven State College
('68-69)



Linda Jablovski, ΙΖ
St. John's University

Subscribe to Convention Newspaper; Order Lampkin Now

Want to know all the news as it happens? Subscribe to the *Lampkin*, daily newspaper during National Convention.

If you just can't be in St. Louis next June 16-21 for Delta Zeta's grand gathering, learn about the happenings via the official convention paper. Four issues, mailed hot off the press, will reach you at home as national officers are elected, issues resolved, and new friendships kindled.

Subscription is only \$2.50. Mail the coupon below

to Mrs. Callie Folger, c/o National Headquarters, 356 N. Pennsylvania, Indianapolis, Indiana 46205. Make checks payable to Delta Zeta Sorority.

Lampkin Subscription

name
address
.....

*RUSH is
meeting new friends*





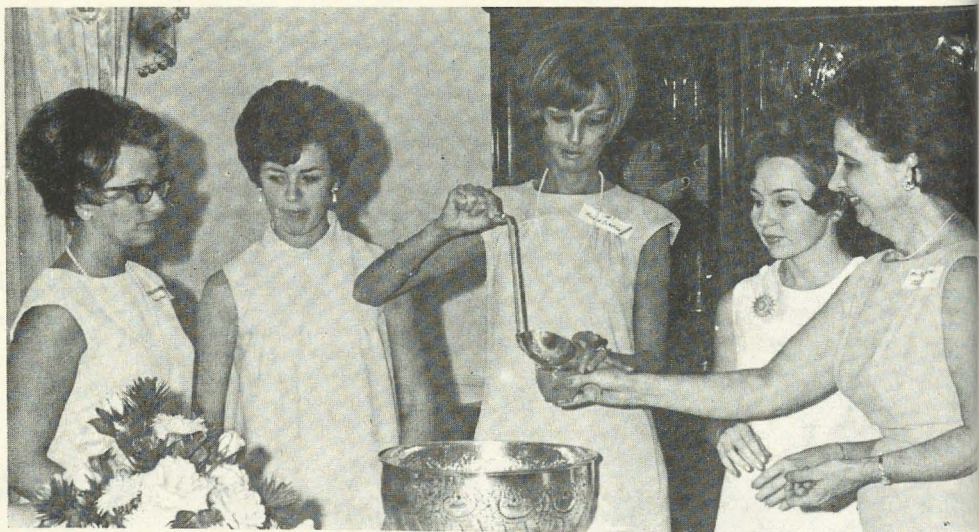
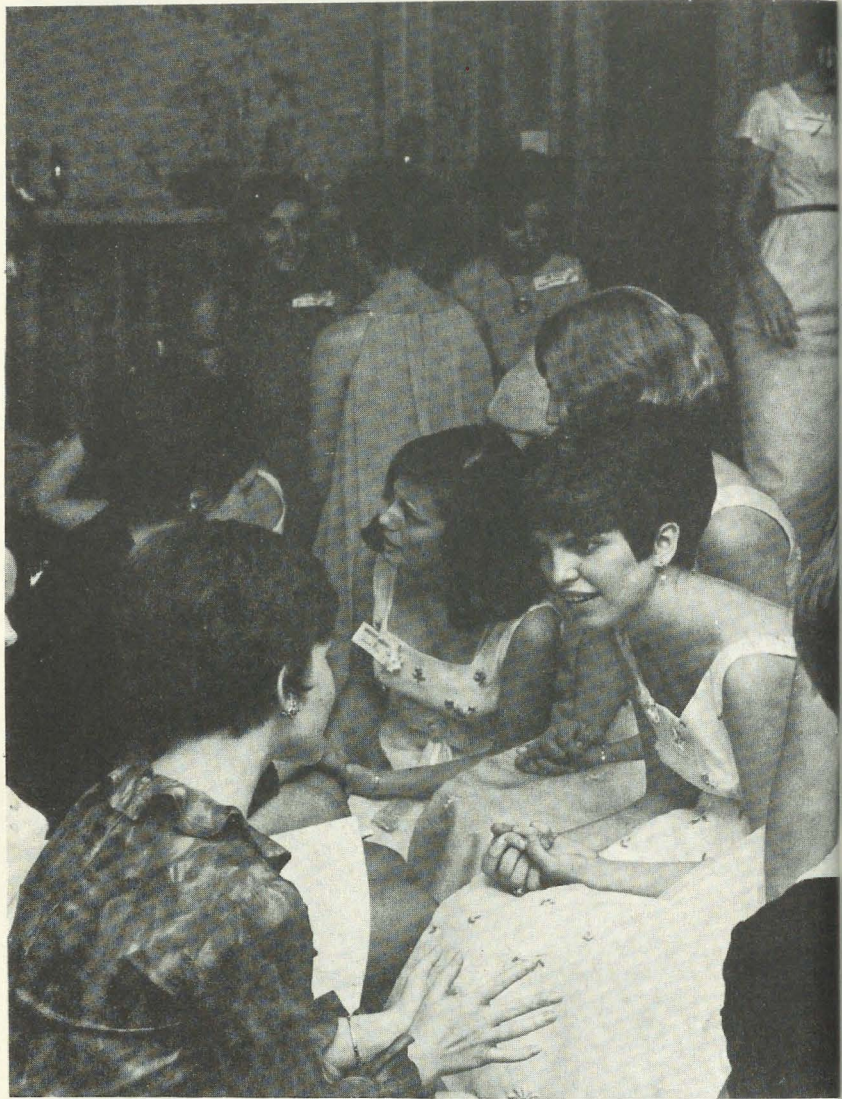
*Inviting college women
in their formative years
to look at
what Delta Zeta stands for,
inviting them
to ask questions and to evaluate.*







*Introducing
the fun of sorority life,
laughing
and enjoying ourselves,
learning
to know the rushees better.*





*Aided
by our mothers
and
faithful alumnae;
talking, discussing,
explaining;
and offering
sisterhood.*





*And joyfully
greeting those
who choose
to accept
our challenge.*



EDITOR'S CHATTER

It's certainly been a pleasure to organize and assemble this first issue . . . a little hectic, but still a pleasure. We hope some of the new ideas tried interest you—the bold layout, grouping of pictures, the new pictorial essay, the modern, flat paper. Please comment, pro and con. It's time we heard what you like.

Pouring over collegiate and alumnae chapter letters, we've discovered so many interesting tidbits that get passed over for more dominant, important articles. Sorority life has so many spices, it's time we laughed and crowded over a few.

For instance, BK chapter at Iowa State reports a most unusual happening during rush week last fall. The girls were staging a Mary Poppins theme party and wanted some authenticity. A very helpful neighbor helped them rig up a device so that Mary could "fly" down to meet the rushees.

The project worked, and attracted more than rush-ees. Milling in the street were brothers from all surrounding fraternities, townspeople, and a big crowd of other onlookers.

Let's pat on the back the Beta Thetas of Bucknell University who proudly announce that they have at least one girl in every campus activity (over 40 different activities). That's the way to make Delta Zeta well known.

Hats off to Gamma Zeta of Southwestern University, too, for their leadership. The Delta Zetas hold the office of president of the house councils in three out of four women's dorms. Kati McQueery, Suzie May, and Janet Summers hold the honor. Ronni Rather ran a close second in the election for president of the fourth dormitory.

Epsilon Kappa, the chapter of Wisconsin State University at Whitewater, have traditionally received a campus award for the highest over-all grade point among housing units. Dr. Walker D. Wyman, president of the university, acknowledged this achievement in the fall, 1966, with an invitation for tea at his home.

When news of President Wyman's resignation was announced last spring, the Delta Zeta's decided an evening reception in the Chapter House would give everyone a chance to bid the President farewell.

"The event was a tremendous success," writes chapter Lamp editor Pat Gober. "In acknowledgement of academic honors, the President added an autographed edition of his latest book to our growing library. Mrs. Wyman's contribution to our home was a painting she had done herself. It depicts an apple blossom tree in front of the Wyman house in springtime. She wanted the Delta Zetas to remember them, because they will never forget the ΔZ's from Whitewater."

It's always interesting to hear about families of Delta Zeta combinations. The Stephen F. Austin girls, Zeta Psi chapter, report two sets of sisters, four mother-daughters, and a mother-daughter-aunt. Beverly and Emily Bush are currently members, as are Anne and Cathy McConville. Karen Wisler, Rand Moore, Linn Anderson, and Jenny Curry have Delta Zeta mothers, and Carolyn Weaver reports that both her mother and aunt are part of the tradition.

Tau chapter at the University of Wisconsin has a one-family legacy. Karen Riley joined sophomore sister Patricia this year. Their mother, Marie Kappus Homeyer, and her three sisters, Julia Kappus McCabe, Ger-vaise Kappus Stephen, and Joan Kappus Wendland, are all alums of Alpha Beta, University of Illinois.

And Zeta Lambda, East Carolina University, had a most happy initiation last spring. Mrs. Annie Belk Deem was a pledge at the University of Mississippi, but was not initiated, for personal reasons. On April 20, she was initiated as an alumna, with her daughter, Beverly.

Sometimes we run across good ideas that ought to be passed on to other chapters. The Beta Iotas at the University of Arizona have a cute, thoughtful tradition. Pledge Moms pack an "exam survival kit" full of food for their pledge daughters for their first finals week.

Outstanding Delta Zetas often pair up. A big-little sister team at Delta Omicron, Northwestern State College, took highest chapter honors. Linda Nichols was named Outstanding Active of the Year; her little sister, Beverly Friend, was chosen Outstanding Pledge.

LaCrosse State University ZO's had another outstanding twosome. Homecoming Queen last fall was Vicki Megrath. Sigma Tau Gamma Calendar Queen for 1967 is Fran Noyce, Vicki's little sister.

Activities, honoraries, and programs differ considerably from campus to campus, and each successive editor goes through a process of deciphering meanings from chapter newsletters. It would take a creative head, however, to get a first round meaning from a news item from Delta Theta, University of Houston.

Carol Lewis reports, "Delta Theta won first prize for the Most Original Kill in the annual Phi Kappa Theta Hunt." Hmmm.

A final note to all of you concerning pictures for the Lamp: Color photos can not be used. Black and white snapshots are at best, inferior. Try to enclose a black and white glossy, identified with by the full name, chapter, and college or alumnae chapter of all those pictured. Alumnae should be identified Joan Brown Smith, ΓB (Mrs. Robert).

A Collegiate Sweep In Beauty, Leadership



Eugena Bookas, AZ
Adelphi University
Queen Greek Orthodox
Youth of America



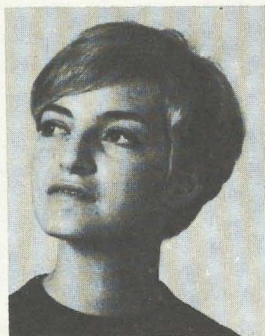
Pat Murday, IK
Rider College
AWS President
Who's Who



Pat VanHaften, BI, University of Arizona, became Miss National Rural Electrification and presided over 985 high school students from 27 states for Rural Electric Youth Day in Washington, D.C. She met President Lyndon B. Johnson, who addressed the group. Pat presides over 1,000 rural electric companies.



Toni Canale, OK
Louisiana State U.-N.O.
Campus Favorite



Roberta Anderson, IA
Edinboro State College
Yearbook Editor



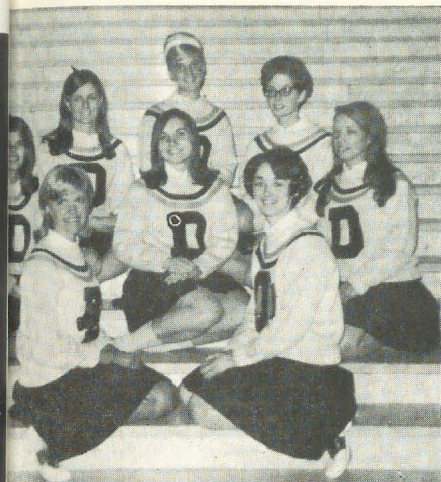
Evelyn Ng, IA
Southwest Texas State
Campus Favorite
Empress Fall Carnival
Beauty & Beast Queen
ACE Vice-President
All-College Beauty Court



Sue Keebler, BI
University of Arizona
Hi & Smile Queen
Soph. Class Sec.
Phi Chi Theta
Spurs
Alpha Lambda Delta



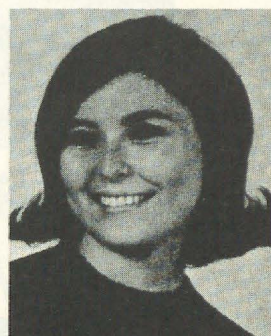
Featured in Monmouth College's production of "The Imaginary Invalid" were Anita Nelson (center) and Jeanne Jones (right), IM chapter.



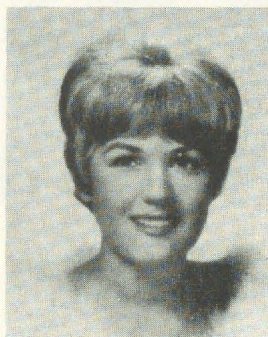
Eight of 11 Drexel Institute cheerleaders are members of EZ chapter: Top row Tinker Harris, Jill Beaver, Winnie McMichael; middle row Jeanne Pronesti, Edie Tegethoff, Linda Kleckner; bottom row Wendy Costello and Lynn Krauss.



Tamie Nierth, ΔΘ
University of Houston
Pom Pom



Karen Kristy, ΙΔ
Edinboro State College
AWS President



Cindy Charlebois, ΤΨ
Central Michigan University
Who's Who
Snow Queen
Homecoming Court



Carol Ayers, ΖΖ
West State Texas
Who's Who
ΣΤΔ Pres.
Class Sec.
NKA
Personality
Queen Court



Susan Thomas, ΘΚ, Louisiana State University—N.O.
High School Cover Girl

Susan Thomas, Theta Kappa at Louisiana State University, New Orleans, earned the title national "High School Cover Girl of 1967," and was presented with a \$1,000 "Scholarship Fund" prize last June.

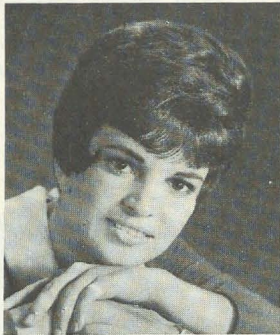
Susan was chosen from thousands of nation-wide entrants in this annual contest to find the girl who best typifies the charm, personality, and wholesome good looks of the ideal American teenager. The contest, now in its sixth year, is sponsored by Noxell in conjunction with Co-Ed, a monthly magazine for high school students.

Susan also won an all-expense-paid trip to New York, where she was photographed for the October cover and inside pages of Co-Ed magazine.

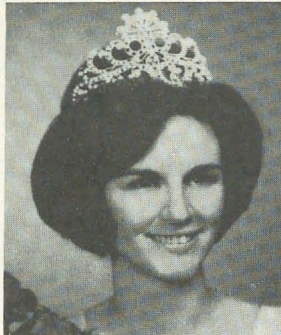
Susan entered LSU-NO in the fall of 1967 and pledged Delta Zeta. She has another credit already on her list. She is sweetheart of ΦΚΣ fraternity, Tulane University.



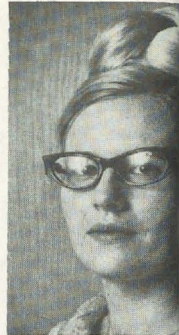
Sandy Erickson, ΔA
California State-L.A.
Maid of Cotton



Diane Davis, ΔA
California State-L.A.
Homecoming Court
TKE Sweetheart Court



Sally Downing, ΓΣ
New Mexico State
Miss New Mexico



Jane Bergford, ΘN
Moorhead State Co
Who's Who
Alpha Lambda Del



Sally Kovach, BP
Michigan State Univ.
Kappa Delta Phi
Alpha Lambda Delta
Honors College



Jean Marsh, Δ
Kansas State Univ.
Mortar Board
Omicron Nu



Barbara Gill, ΘN
Moorhead State College
Who's Who
Alpha Lambda Delta



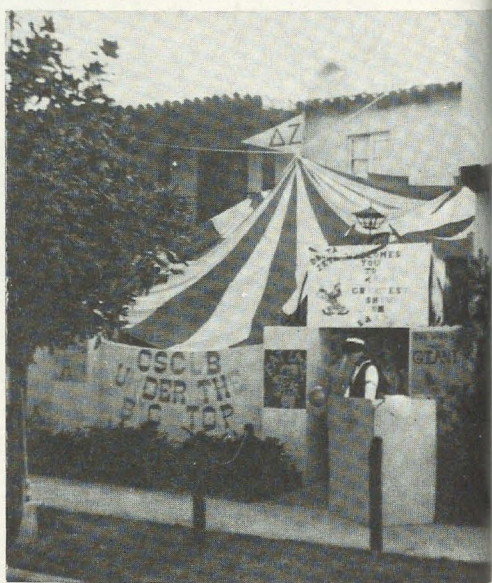
Molly Kutlow, ΙΣ
Philadelphia College
Yearbook Editor
Senior Society



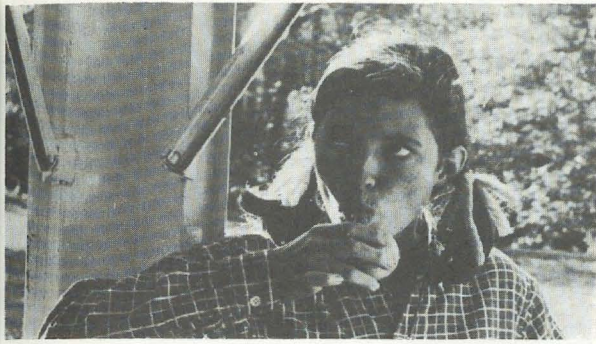
Karen Plecha, ΓΠ
Western Michigan Univ.
Snow Queen Court
Sr. Class Treas.
Beta Beta Beta



Ann Rae Hardin, ΘE
Louisiana Tech
Who's Who
Summa Cum Laude
Outstanding Senior
Phi Kappa Phi



ΔA, California State College at Long Beach,
took first place honors at Homecoming for house
decorations.



Pat Marshall, Σ , Philadelphia College, is a freckle-faced Daisy Mae who loved the orange sticks.



Iota Sigma girls get ready for the tricycle race at Philadelphia College Derby Days.

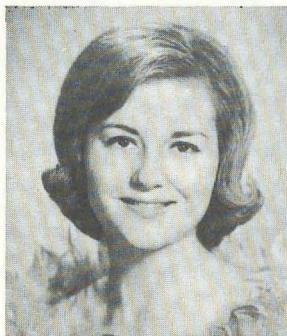
Delta Zeta Honors Laud Hard Work



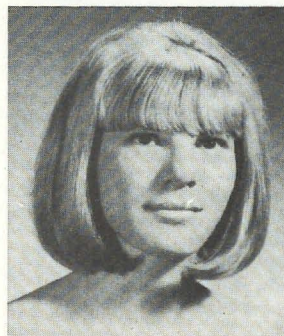
The Mud Bath was the dirtiest contest for BN's Derby Days at University of Miami.



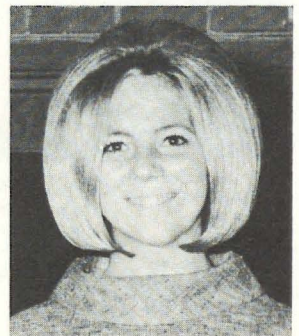
Barb DeCamp, $\Delta\Xi$
Colorado State Univ.
Prom Queen
Miss Congeniality
Calendar Girl



Jo Nelly, IA
Southwest Texas State
Sigma Tau Delta
Kappa Delta Pi
Sec. Student Body

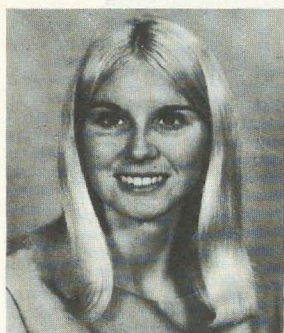


Margaret Ziegler, EZ
Drexel Institute
Dean Ryder Schol.
Panhell Woman of Year
Key & Triangle
Omicron Nu



Rosalyn Hester, IA
Southwest Texas State
Who's Who
Dorm President
Kappa Delta Pi
Alpha Chi

Activities Bring New Experiences, Growth



Fran Noyce, ZO
Wisconsin State U.-L.
Calendar Queen



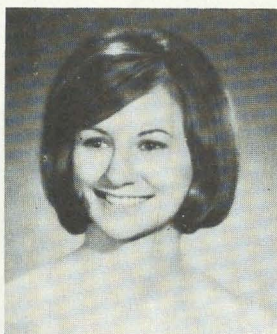
Pam Horkey, EI
Fairmont State College
AWS Vice-President
Flames
Dorm President



Delta Zeta is represented on World Campus Afloat, Chapman College, by Margaret Ellis Tarbell, Syracuse University, and Susan Reale, $\Delta\Xi$, Colorado State College. Thirteen foreign campuses will be visited in the 1968 semester.



Judith Bradley, $\Theta\Pi$
Minot State College
All-Campus Queen



Dorothy Roosevelt, BP
Michigan State Univ.
Honors College



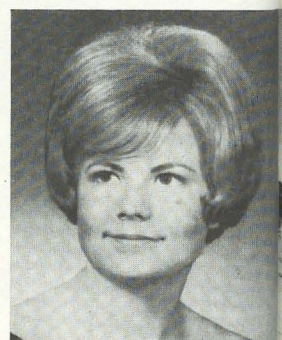
Mary Ann Cochran, ZA
Bradley University
Who's Who
Mortar Board
Carnival Queen
Kappa Tau Alpha
Sigma Delta Chi



Jennifer Miller, $\Theta\Delta$
Westminster College
Homecoming Court
May Queen
Stu. Council Sec.
Rho Gamma



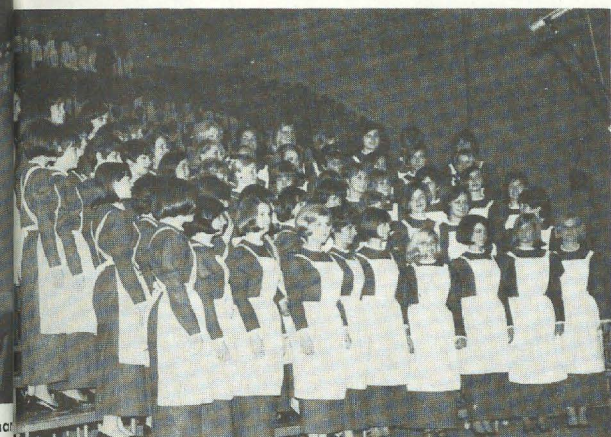
Linda Bornall, Π
Memphis State Univ.
Greek Goddess Court
Miss Walk Safely
Desoto Beauty Court



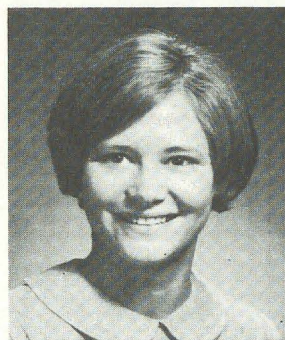
Sue Schmidt, $\Delta\Pi$
Kansas State Teachers
Jr. Panhell Pres.
Frosh Sec.
Sec. Interclass Council



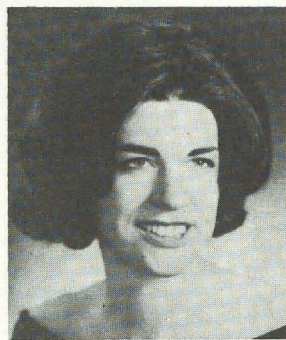
Heather Harden, ΘH , Creighton University, represented Nebraska as College Queen in a contest for Best Foods last June and was picked one of 10 finalists in a 10-day pageant where contests in cooking, current events, home economics, fashion, driving, and poise and personality set a brisk pace. Heather was nominated by her Delta Zeta chapter, selected as one of the top four in Nebraska by national headquarters, and eventually chosen by Nebraska students as their representative. She is shown receiving congratulations for second place in one of the contests of the pageant.



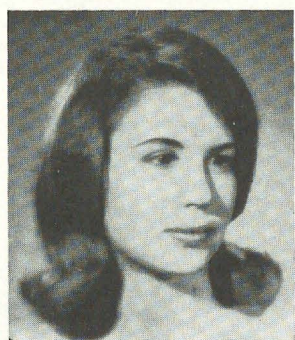
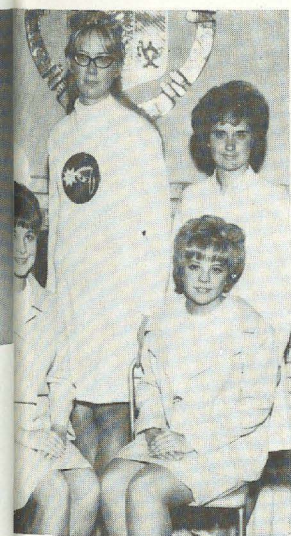
Chapter won second place in Baldwin-Wallace's 35th annual Interfraternity Sing. Theme was "Mary Poppins."



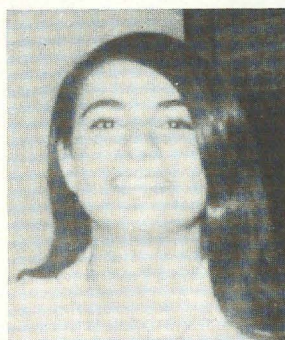
Tina Jefferis, T
University of Wisconsin
Panhellenic Rush Chr.



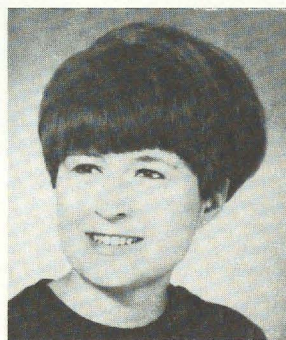
Bonnie Badger, Δ
Kansas State University
Mortar Board
Kappa Delta Pi
Phi Kappa Phi



Judy Brand, BP
Michigan State Univ.
Phi Kappa Phi
Tau Sigma
Alpha Lambda Delta



Germaine Greco, AZ
Adelphi University
John Henry Cardinal
Newman Honor Soc.
Vice Pres. Newman
Youth, NY Province



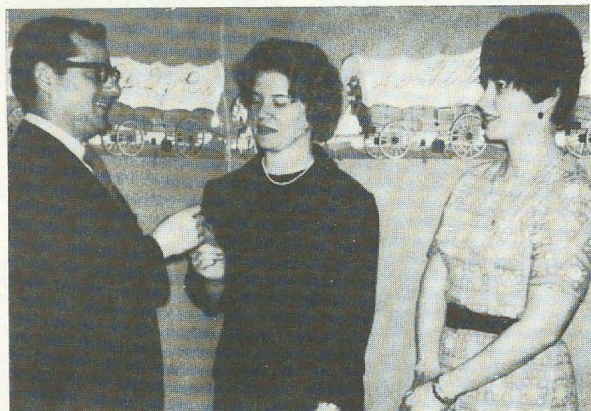
Maureen Martin, ZA
Bradley Univ.
Who's Who
Yearbook Editor
Angel Flight Officer

New Mexico State honorary members include Marsha Rottstedt, die Willey, and Teresa Cook, ding, Spurs; and Carol Evans Diane Ceroky, seated, Las panas.

ΔΖ Alumnae Support Worthy Endeavors



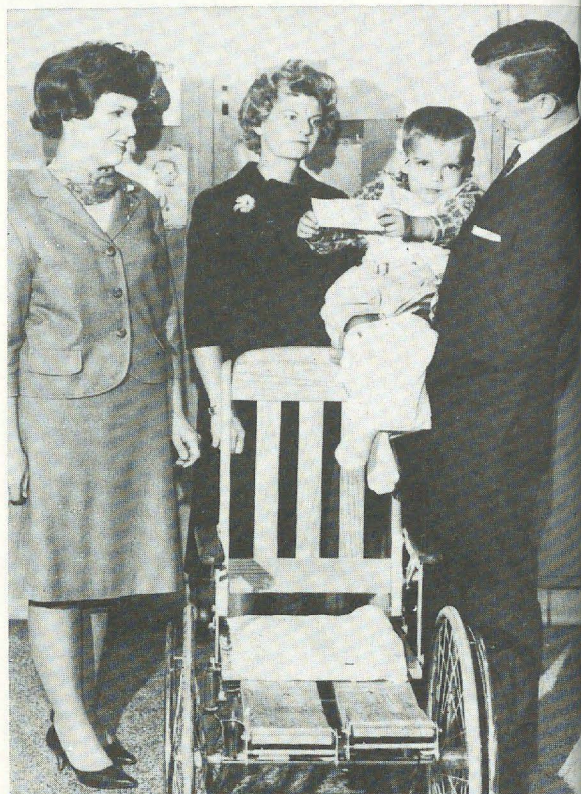
The Toledo Alumnae chapter marked their tenth year of assistance to the preschool department of the Hearing and Speech Center with a check for \$100. Mrs. Francis Wilson, president; Mrs. John Hogan and Mrs. Henry Roll presented the check to Martin Kutnyak, director.



The State College, Pa., Alumnae presented a check for \$240 this year to the Speech and Hearing Clinic. Mrs. John Zimmerman presents the check to Dr. George Haspiel, assistant director, with Mrs. Ralph Harmon looking on. Delta Zeta contributions have furnished one entire playroom.

1968 Nominating Committee

All nominations for the 1968-70 National Council officers must be sent to the 1968 National Convention Nominating Committee 90 days before Convention. March 20, 1968 is the deadline. Send nominations to chairman Fran Benowicz, Mrs. C. A., 6569 No. Tahoma Ave., Chicago, Illinois 60646.



Dayton Delta Zeta alumnae are busy helping raise money for new Barney Hospital for children with a Parliamentary Procedure Workshop. Business and professional organizations in the city were contacted. A prominent Dayton attorney conducted the sessions. Shown are Mrs. Homer Deaton and Mrs. Dale Lefler, Delta Zetas, patient Jimmy, and Mr. Jerry Green, Barney Director of Community Relations.



Dorothy Hazeltine, Chicago Alumnae, holds one of hundreds of small star-shaped, stuffed dolls made for distribution Christmas time to Children's Memorial Hospital.



Marie Fehmer, AT, University of Texas, serves in the White House as a Johnson secretary. She was also a bridal attendant in the wedding of Lynda Johnson last December.

Delta Zeta in White House, Johnson Wedding

Marie Fehmer, AT alumnae from the University of Texas, was an attendant in the White House wedding of Lynda Johnson last December.

Marie has been a secretary to President Lyndon B. Johnson since his election to vice president under Kennedy. Marie and Lynda were friends before the president's daughter's college days, and spent a summer holiday in Rome just before Lynda began rush week at the University of Texas in 1966.

When Lynda came to the Delta Zeta rush party she brought the girls a picture of Marie and a young naval captain with a caption reading, "Lynda Bird Johnson and escort dine out in Rome." Lynda had ducked down and escaped the photographer.

Marie obtained the job under President Johnson through an interview with the first lady at a radio-TV station owned by the President. The University of Texas recommended the brunette, who graduated with honors from the school of business.

Since the time of her appointment, Marie has held "the most exciting job in the world." A fragile but super efficient secretary and a diplomat, Marie claims, "From my desk, I see the world pass by."

Death Saddens ΔZ's

News of the death of Josephine Mason Davidson Dec. 1, 1967, saddened Delta Zetas across the country who knew this faithful member or her loyal family: Grace Mason Lundy, Miriam Mason Swain, Rachel Mason Peden, Nina Mason Pulliam, Kathleen Mason and their brother James B. Mason.

A talented pianist, Joie brought to her professional work as an editor high artistic standards and a fresh creativeness which brought her wide recognition among her journalistic associates.

A listening center in the Sidwell Friends School of Washington, D.C., has been established as a memorial to her interest in cultural opportunities for young people.

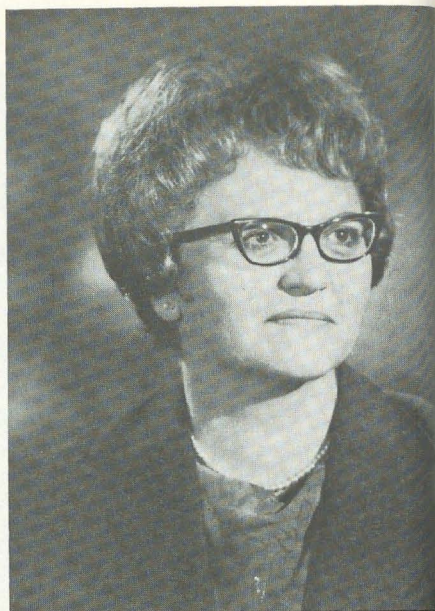
Outstanding Alumnae Include Mayor's Wife, 3 'Yearbook' Awards

The first lady of Corpus Christi is used to civic life.

Margaret McGlann Blackmon (Mrs. Jack) spent 20 years practicing law—taking time off to have three children—and preparing briefs for her lawyer husband, now mayor of Corpus Christi, Texas. In addition to her already crowded schedule, she holds down a job as clerk of court of the court of civil appeals. Now she'll be part of the background in the city's social functions during her husband's two year term.

As the wife of the mayor she "will go with Jack when he cuts ribbons and that sort of thing . . . But I will stay in the background."

Margaret is an active member of the Corpus Christi Delta Zeta Alumnae, presides as president of the Lawyers Wives Club, and is a member of the PTA, Civinettes, and Eastern Star.



Margaret McGlann Blackmon, AΨ
(Mrs. Jack)



Mrs. Lois Johnson presents President R. B. Bonds a check for the Baldwin Wallace College Library Fund from the Berea Alumnae Chapter of Delta Zeta.



Dorothy Santen Ryan, AΘ
(Mrs. Robert)
Outstanding Personalities
of the South



Margie McIntyre, ZII
Outstanding Young
Women of America



Nelda Carter Wilson, AΞ
(Mrs. Travis)
Outstanding Young
Women of America



Deanne Stephens Rich, AΥ, models a sari as part of her entertainment at Rochester, N.Y., Alumnae meeting.

Community Leadership Builds ΔZ Image



Barbara Baxter Dunn, ΓB

Barbara Baxter Dunn, rated headlines last November as she became the lone East Hartford, Conn., Republican on an otherwise all male Democratic slate to win a seat in the Connecticut State Legislature. She was the first East Hartford Republican to reach the Legislature in 20 years. Soon after, she was named acting assistant minority leader of the House of Representatives, an honor rarely given a freshman legislator. She was named East Hartford's "Republican of the Year." Active in academic affairs, Barbara serves as secretary of the University of Connecticut Alumnæ Council Board of Directors and has recently been nominated for *Who's Who Among American Women*.



Helen Linkenhel Fulton, Ψ
(Mrs. C. K.)

With her husband, Helen Linkenhel Fulton (Mrs. C. K.), operates the only private seed testing laboratory in Oregon. Acclaim for their work grows. Right now, the couple is using x-ray to determine damaged seed and seed quality, thereby speeding up the time involved in developing and shipping seeds to farmers around the country.

Salem, Oregon, Alumnæ know Helen well, for she serves as philanthropy chairman of their active group. This past fall, Helen announced that a former student of the Oregon School for the Deaf had graduated from Gallaudet College and is now employed as a librarian. The Salem Delta Zetas helped this girl through the years, but Helen's personal interest gave the girl courage to succeed.



Mary Elizabeth Shaw Kent, ΓE
(Mrs. Royce)

Mary Elizabeth Shaw Kent (Mrs. Royce) attended a music seminar in Siena, Italy, last summer where she and other music teachers battled the problem of language and succeeded. The program was arranged by the St. Louis Institute of Music and the Chigiana Musical Academy of Siena.

Mary was also treated to a tour of the French and Italian Rivas and a visit to Monoco that included a mint tea party in the tent of a sheik, arranged by an American teacher from Rabat. The group visited Seville and Madrid in Spain before flying home from Rome.



Ruth Long Dary
(Mrs. M. Russell)

Ruth Long Dary (Mrs. Russell M.), current president of the Manhattan, Kansas, Alumnæ, also serves as president of the Woman's Kansas Day Club. Ruth and her family shared in the early growth of Kansas, and it was natural for her to become active in the group since its purpose is to develop loyalty and pride in the state and to uncover and preserve historical documents concerned with the growth of Kansas. The club has a membership of 1,500.

Ruth was president of the Manhattan Alumnæ when the group was founded and helped in the reactivation of the Lambda chapter. She came into Delta Zeta in 1940 through Beta Phi Alpha where she had been province director. She was given the Achoth Award for outstanding alumnæ in 1964.



Linda Davies, philanthropies chairman and chairman of the Toys for Tots Variety Show; a marine assistant; a guest from orphanage; and Irene Smith, mistress of ceremonies; inspect toys donated for the BF, University of Louisville show.

Philanthropies Fun, Profitable

Sponsoring variety shows, making pancakes, collecting cans and auction items, and creating a bazaar, Delta Zeta collegiates and alumnae are busy raising money for philanthropies.

"To see the lighted Christmas tree with all the toys beneath it for underprivileged children, brings out the true meaning of Christmas," writes Linda Davis, BF, University of Louisville.

Their project is an annual "Toys for Tots Variety Show." Greek groups and all dorms are invited to enter competition for the best act. Trophies are given in both men's and women's divisions.

Admission to the variety show is either a toy or a donation. Marines from the Louisville corp help the Delta Zetas by collecting toys at the door and later distributing them. Over 400 toys and \$120 in donations were collected at the second annual event last November.

The night of the show, children from nearby orphanages are guests. Delta Zetas provide entertainment while the judges compile votes.

Elgin Alumnae Has Bazaar

An active group is the Elgin, Illinois, Alumnae Chapter. Their Christmas bazaar in November, 1966, netted



Orphanage guests inspect the Christmas tree and the presents for children with a BF sister, Pat Steier.

over \$400 and brought close, personal ties between Delta Zetas and parents of deaf and dumb children in Lake and Henry counties.

The parents themselves had founded a group to raise money for teaching aids for the children. A newspaper article on their progress mentioned an AB alumna who had roomed with an Elgin alumna in college. These women decided the parents' group's efforts connected



IT sisters from Alliance College collected cans for underprivileged families in the area.

them directly with Delta Zeta's major philanthropy in deafness, and through this contact, decided to hold a Christmas bazaar.

The event was a huge success. The Delta Zetas had produced all handmade Christmas decorations, ornaments, and center pieces. The parents' group helped with publicity.

"We all got a good feeling about the results of our project," writes Marilyn Dahl, Elgin Alumnae president. "We felt that we were furthering the work and publicizing the cause of this hard-working group of parents, who by their own efforts, had succeeded in getting education for their special children."

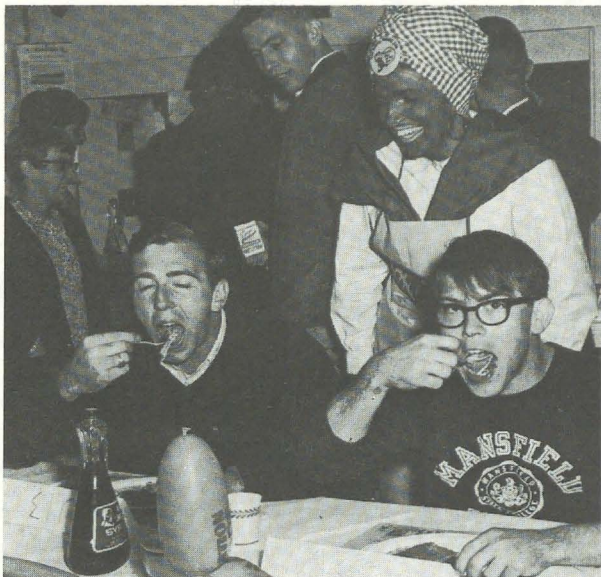
Pancake Jamboree a Success

Another collegiate chapter fostered an enterprising project last fall, and it, too, was a resounding smash. An Aunt Jemima sister was even on hand to watch the Mansfield, Penn., population gobble up pancakes.

Over 500 eaters helped Iota Theta chapter at Mansfield State College make a success of their Pancake Jamboree.

The girls went beyond having just a breakfast. Among the events sponsored was an Inter-fraternity Glutton Contest. A Sigma Tau Gamma brother managed to eat 41 pancakes.

Jamboree chairman Susan Fellows and her chapter sisters got townspeople interested by going into the schools. They sponsored a poster contest for elementary children. Mr. Henry Driver, Quaker Oats representative, helped the girls and selected the most creative Aunt Jemima poster to be sent to the Quaker Oats



Even Aunt Jemima, a IO sister from Mansfield State College, had to chuckle at eaters in the Inter-fraternity Glutton Contest.

publicity house in Chicago, Illinois. They also awarded door prizes throughout the day.

"Bonds of sisterhood were felt as everyone participated with a whole-hearted effort to make the Pancake Jamboree a success," writes Janet Knight, public relations chairman.

Money raised by IΦ will be used for donations to the American Hearing Society, The Heart Fund, and Navajo Indians.

IT Sponsors Charity Drive

Porch lights shone bright, and one door even held the message, "Delta Zetas, knock hard; we are home." It was the evening of Wednesday, Nov. 15, and the sisters of the Iota Gamma Chapter at Alliance College were collecting canned goods for needy people in the Cambridge Springs area of Western Pennsylvania.

Iota Gamma, a relatively new chapter of Delta Zeta founded in 1966, sponsored the charity drive in conjunction with the Exchange Club of Cambridge Springs.

A few weeks before the drive, flyers with the slogan, "Delta Zeta's at your door asking you to help the poor," were displayed in the store windows of the town. Articles announcing the activity were printed in the local newspaper; pink and green name tags were constructed for identification purposes.

Nov. 15 had been arbitrarily chosen as a date that would escape the icy weather of winter in Cambridge Springs; as it happened, one of the first heavy snowfalls of the year came that day. Undaunted by the cold, all 35 sisters pooled together the available cars and canvassed the area.

A few hours after the 7 p.m. starting time, the Exchange Club was richer by some 450 cans and packages to fill their Christmas baskets for the needy.

Delta Zeta Sorority

Founded at Miami University October 24, 1902
GUY POTTER BENTON, D.O., LL.D.
Grand Patron*

FOUNDERS

JULIA BISHOP COLEMAN (Mrs. J. M.) *
MARY COLLINS GALBRAITH (Mrs. George) *
ALFA LLOYD HAYES (Mrs. O. H.) *

ANNA KEEN DAVIS (Mrs. G. H.) *
MABELLE MINTON HAGEMAN (Mrs. Henry) *
ANNE SIMMONS FRIEDLINE (Mrs. Justus R.) *
* Deceased.

THE ORDER OF THE LAUREL

Grace Mason Lundy

Irene Caroline Boughton

NATIONAL COUNCIL OF DELTA ZETA SORORITY

President Betty Heusch Agler (Mrs. B. H.), 20 East 14th Ave., Apt. 7, Columbus, Ohio 432
Vice-President (Alumnæ) Gwen Moss McKeeman (Mrs. Robert L.), 5517 South 74th East Ave., Tulsa, Okla. 741
Vice-President (College Programs) Doris Ellingson Riede (Mrs. J. R.), 103 Lake Ave., White Bear Lake, Minn. 551
Vice-President (Membership) Marjorie Doyle Bergman (Mrs. Edward), 5217 Riverview Lane, Lisle, Ill. 605
Secretary-Treasurer Jean Ericsson Schlosstein (Mrs. Gary B.), Michaels St., Cochrane, Wis. 544
National Panhellenic Conference Delegate Betsy Bradley Leach (Mrs. Garold A.), 1865 Hill Dr., Eagle Rock, Los Angeles, Calif. 900
Director (Area East) Elizabeth Baker Devereaux (Mrs. Charles), 5 Worthington Lane, Parkersburg, W.Va. 261
Director (Area South) Lisbeth Innis Francis (Mrs. Robert), 2508 Belle Terrè Dr., Birmingham, Ala. 352
Director (Area West) Gloria MacNeven Frymire (Mrs. Larry), 16 Olympus Dr., Naperville, Ill. 605
Director (Area Midwest) Kathryn Doub Hinman (Mrs. Winfield C.), 27310 Wellington Dr., Franklin Village, Mich. 481
Director (Extension) Mary Lou Ragel Vineyard (Mrs. Philip), 2970 68th Ave. S., St. Petersburg, Fla. 337
Director (House Corporations) ... Dorothy Varley Breitweiser (Mrs. Roy), 2717 Firethorne Ave., Fullerton, Calif. 926
Director (Philanthropies) Dorris Pike Silverthorn (Mrs. Frank W.), 2710 Kilgore Ave., Muncie, Ind. 473
Director (Public Relations) Dee Ann Stephens Connor (Mrs. Larry), 3861 New Salem Ave., Okemos, Mich. 488
Immediate Past President Violet Sharratt Whitfield (Mrs. R. H.), 3230 Park Pl., Evanston, Ill. 602

NATIONAL FIELD CONSULTANT

Gertrude Murphy Meatheringham (Mrs. V. H.), Route 1, Kennesaw, Ga. 30144

NATIONAL HEADQUARTERS

National Headquarters Callie Pressnall Folger (Mrs. Walter C.) (Office Manager), 3561 N. Pennsylvania St., Indianapolis, Ind. 462

SIMPLIFIED AUDITS

Helen Woodruff Nolop (Mrs. Ray), 2520 N. 48th Pl., Phoenix, Ariz. 85008

COLLEGE CHAPTER ADMINISTRATOR

Marguerite Wherry Havens (Mrs. George C.), 5518 Grand Ave., Des Moines, Iowa 50312

FIELD SECRETARIES

Marian DeLay, Linda Lenox, Sheila Pilger, Sheri Anderson

THE LAMP

Editor of THE LAMP Sue Hastings, c/o Nat'l Headquarters, 3561 N. Pennsylvania St., Indianapolis, Ind. 462
Board of Trustees of THE LAMP Fund: Betty Heusch Agler (1968); Dorothy Varley Breitweiser (1972); Jean Ericsson Schlosstein (1968); Violet Sharratt Whitfield (1970); Irene Boughton (1968), 3801 N. Meridian St., Apt. 306, Indianapolis, Ind. 46208
Editor of Sidlights Ellen Kroll Jenkins (Mrs. Paul), 5926 E. 43rd St., Indianapolis, Ind. 462

DELTA ZETA FOUNDATION

President—Miss Frances E. Westcott, 549 E. 84th St., Indianapolis, Ind. 46240
Treasurer—Maxine Mason Peterson (Mrs. Kenneth), Rt. 2, Box 808, Tucson, Ariz. 85715
Directors—Gail Patrick Jackson, Margaret Huenefeld Pease, Marjorie Doyle Bergman
Chairman Audiology Scholarship—Dr. Eunice Roberts, Kirkwood Hall, 101, Indiana University, Bloomington, Ind. 474

STANDING COMMITTEES

Constitution & Procedure Chairman—Evelyn Adams Costello (Mrs. Russell T.), 3790 Lakecrest Dr., Bloomfield Hills, Mich. 48013.
Alumnæ—Iva Nelson Olson (Mrs. Loren D.), 10648 Balboa Dr., Sun City, Ariz. 85351.
Corporation—Dorothy Varley Breitweiser (Mrs. Roy), 2717 Firethorne Ave., Fullerton, Calif. 92631.
House Corporation By-Law and Constitution Chairman—Genevieve Webb MacMillan (Mrs. Archie), 1050 Ladera Dr., Long Beach, Calif. 90801.
History: Ritual Chairman—Grace Mason Lundy (Mrs. H. M.), R. 1, Bloomington, Ind. 47403.
Judiciary Committee—Florence Honbaugh Maier (Mrs. Ralph H.), 18 Lamberts Mill Rd., Westfield, N.J. 07091.
Colonnade Club Chairman—Francine Frakes Howard (Mrs. A. Parker), 4401 Perry Way, Sioux City, Iowa 51104.

COMMITTEES

Activities Chairman—JoAnn Hoover Franke (Mrs. Roger), 1900 Elm, Hays, Kan. 67601.
Awards Committee—Florence Hood Miner (Mrs. Arthur J.), 1040 Avenue H, Nevada, Iowa 50201.
Carville—Miss Shirlyn Chaffin, 4431 Danforth Rd., Columbus, Ohio 43224.
Chapter Newsletters—Dorothy Best Rich (Mrs. Earl), 773 Michigan St., Eaton Rapids, Mich. 48827.
Endowment Fund—Florence Hood Miner (Mrs. Arthur J.).
Flame Fantasy Chairman—Patti Volbrecht Phillips (Mrs. J.), 300 E. Alster, Arcadia, Calif. 19006.
Gallaudet College—Miss Patricia Schaefer, 303 Tara Lane, Muncie, Ind. 47304.
Magazine Chairman—Engelyn Brown Tourtelot (Mrs. Charles H.), P.O. Box 725, Concord, Calif. 94522.
Memory Book Chairman—Ruth Clausen Reasor (Mrs. M. L.), 4918 Whitton Pl., Apt. B, Indianapolis, Ind. 46220.
National Membership Chairman—Mary Lou McConnaughey Barth (Mrs. William T.), 1720 Tennyson Ave., Dayton, Ohio 45406.
Navajo Project—Miss Shirlyn Chaffin.
Nominations Committee Chairman—Frances Benallack Benowicz (Mrs. C. A.), 6569 N. Tahoma Ave., Chicago, Ill. 60646.
Order of Golden Rose—Irene C. Boughton, 3801 Meridian, Apt. 306, Indianapolis, Ind. 46208.
Personal Loans and Scholarships—Marguerite Wherry Havens (Mrs. George), 5518 Grand Ave., Des Moines, Iowa 50312.
Pledge Training Chairman—Peggy Haskell Benjamin (Mrs. James W.), 1876 South 116th St., Omaha, Neb. 68144.
Province Conference and State Day Coordinator—Lois Westernman Schlosstein (Mrs. Benjamin M.), 5184 Meadow Wood Blvd., Cleveland, Ohio 44124.
Scholarship Chairman—Ellie Bakosh Gregorich (Mrs. Edw.), 2821 Parkmerston, Troy, Mich. 48024.
Sorority Education Chairman—Kay Morrow Wright (Mrs. Terry), 10 Beaver Ave., Des Moines, Iowa 50310.
Standards Chairman—Evelyn Cox Simmons (Mrs. R. E.), 341 Dorchester Rd., Akron, Ohio 44320.

* (Alumnae chapters not chartered)

PROVINCE I—Maine, Vermont, New Hampshire, Massachusetts, Connecticut, Rhode Island

Acting Province Collegiate Director: MRS. JAMES CONCELMAN (LOIS), 23 Sniffin Rd., Westport, Conn. 06880

<i>Chapter/School</i>	<i>President</i>	<i>Chapter Address</i>	<i>College Chapter Director</i>	<i>Address</i>
AT—Univ. of Maine	Diane Hadley	320 Penobscot Hall, Univ. of Maine, Orono, Maine 04473	Miss Claire S. Sanders	123½ Maine St., Orono, Maine 04473
BA—Univ. of Rhode Island	Lorraine Raff	DZ House, 70 Lower College Rd., Kingston, R.I. 02881	Mrs. Richard Moore (Marion)	Middle Road, East Greenwich, R.I. 02818
FB—Univ. of Connecticut	Lynn Thompson	DZ House, U. of Conn. Storrs, Conn. 06268	Mrs. John Hill Jr. (Barbara)	8 Allise Rd., Storrs, Conn. 06268
AI—Jackson College	Sue Gray	Hodgdon Hall, Jackson College, Medford, Mass. 02155	Miss Sondra Szymczak	37 Elliott St., 2nd rear, Danvers, Mass. 01923
OT—Univ. of New Hampshire	Sandra Whitcomb	DZ House, 25 Madbury Rd., Durham, New Hampshire 03824	Miss Myra Davis	20 Main St., Durham, N.H. 03824

Province Alumnae Director:

<i>Chapter</i>	<i>President and Address</i>	<i>Chapter</i>	<i>President and Address</i>
*Bangor, Maine—Mrs. Gene Carter, 12 N. Folk St., Bangor, Maine 04401		*Kingston, R.I.—	
Boston, Mass.—Mrs. Doris Sickler, 61 Norwich Circle, W. Medford, Mass. 02155		Providence, R.I.—Miss Doris Dyson, 165 Missouri Drive, Warwick, R.I. 02886	
Fairfield Co., Conn.—Mrs. Roy Billings, 22 Lakeview Dr., Stamford, Conn. 06905		*Springfield, Mass.—Mrs. Richard Dorshimer, 131 Wenonah Rd., Longmeadow, Mass. 01100	
Hartford, Conn.—Mrs. Paul E. Milott, Jr., 580 E. Silver Lane, East Hartford, Conn. 06118		Storrs, Conn.—Mrs. Russell Wheeler, Jr. Columbia Lake, Columbia, Conn. 06237	
<i>State Membership Chairmen:</i> Maine—Miss Velma K. Oliver, 3 Allen Rd., Orono, Maine 04473			
Vermont—Mrs. John Rider, 10 Marshall Dr., Burlington, Vt. 05401			
New Hampshire—Mrs. Raymond N. Gradual, 105 Lawrence Rd., Derry, N.H., 03038			
Massachusetts—Mrs. Paul Chiavacci (Mary Jane) 851 Coventry Lane, Norwood, Mass. 02062			
Connecticut—Mrs. Edward B. Gill, 53 High Point Rd., Westport, Conn. 06880			
Rhode Island—Mrs. James H. Crossley, 40 Farmland Rd., Warwick, R.I. 02886			

PROVINCE II—New York and New Jersey

Province Collegiate Director: MRS. CHARLES ALSETH (JOANNA), 15 Garden Place, Hempstead, N.Y. 11550

<i>Chapter/School</i>	<i>President</i>	<i>Chapter Address</i>	<i>College Chapter Director</i>	<i>Address</i>
AZ—Adelphi Univ.	Judy Anderson	66 Floral Ave., Beth page, N.Y. 11714	Miss Suellen Filipek	16 Brower Ave., Woodmere, New York 11598
BQ—New York Univ.	Joyce Utermolen	47 E. 87th St., New York, N.Y. 10028	Mrs. David W. Schropfer (Gloria)	58 Soundview Drive, Stamford, Conn. 06902
PH—Hunter College	Rosemarie Curiale	86-74 58th Ave., Elmhurst, N.Y. 11373		
AE—Queens College	Lucretia Scharf	69-25 62 Ave., Middle Village, N.Y. 11379		
IZ—St. John's Univ.	Joanne Monaco	12 Fern Drive West, Jericho, N.Y. 11753		
IK—Rider College	Mary Kern	DZ House, Rider College, Trenton, N.J. 08638		
IM—Monmouth College	Bette Deency	41 Park Pl., Red Bank, N.J. 07701		

Miss Barbara Garbely 96 Neptune Ave., Apt. 7, Deal, N.J. 07723

Province Alumnae Director: MRS. ROBERT F. LEMASSENA (JUDITH), R. D. 1, Box 395B, Hopewell, N.J. 08525

<i>Chapter</i>	<i>President and Address</i>	<i>Chapter</i>	<i>President and Address</i>
Buffalo, New York—Mrs. Earl Fischer, 495 Carmen Rd., Amherst, N. Y. 14226		Rochester, N.Y.—Mrs. Stanley Blow, 52 Astor Dr., Rochester, N.Y. 14610	
*Central New Jersey—Mrs. Robert G. Kuzy, 50 Middleton, Willingboro, N. J. 08046		*Jersey Shore—Miss Barbara J. Garberly, 96 Neptune Ave., Apt. 47, Deal, N.J. 07723	
*Long Island, N.Y.—Mrs. Ludwig Herrman, 8 Lindens, Roslyn, New York 11576		Southern New Jersey—Mrs. Thomas S. Cooper, Jr., 17 Old Towne Road, Cherry Hill, New Jersey 08034	
Staten Island—Mrs. John Drury, 997 Rensselaer Ave., 8 The Lindens, Staten Island, N. Y. 10309		Syracuse, N.Y.—Mrs. Lawrence McCarty, 1625 Stolp Ave., Syracuse, N.Y. 13207	
Northeastern New Jersey—Mrs. Ado Bolles, 90 E. Crescent Ave., Allendale, N.J. 07401		*Westchester County, N.Y.—Mrs. Richard Brown, 1 Garrett Place, Bronxville, N.Y. 10708	
Northern New Jersey—Mrs. Robert F. LeMassena, RR#1, Box 395B, Hopewell, N. J. 08525			

State Membership Chairmen: New York: (Lower)—Mrs. Wm. Barth, 1720 Tennyson Ave., Dayton, Ohio 45406
(Upper)—Miss Mary Frances Sims, 1612 W. Onondaga St., Syracuse, N.Y. 13204
New Jersey—Mrs. Ado F. Bolles, 90 E. Crescent Ave., Allendale, N. J. 07401

PROVINCE III—Pennsylvania and Delaware

Province Collegiate Director: MRS. C. A. DICKINSON (MAE), R.D. #3, Slippery Rock, Pa. 16057

Province Collegiate Director Philadelphia Area: MRS. EDWARD MONAGHAN (PIXIE), 142 Barcladen Rd., Rosemont, Pa. 19010

<i>Chapter/School</i>	<i>President</i>	<i>Chapter Address</i>	<i>College Chapter Director</i>	<i>Address</i>
BQ—Bucknell Univ.	Barbara Dangman	Box W-506, Bucknell Univ., Lewisburg, Pa. 17837	Mrs. Donald B. Young (Elsie)	226 S. 4th, Lewisburg, Pa. 17837
GA—Penn State Univ.	Barbara Neuhoff	206 Hiester Hall, University Park, Pa. 16802	Mrs. Taniazine C. Miller (Tammy)	1366 Old Boalsbury Rd., State College, Pa. 16801
OX—Lock Haven State College	Becky Dill	North Woolridge Hall, Box 415B, LHSC, Lock Haven, Pa 17745	Mrs. George Hayfield (Joan)	504 Woodward Ave., Lock Haven, Pa. 17745
IO—Mansfield State	Linda Mase	Laurel Manor, Box 1012, Mansfield, Pa. 16933	Mrs. Kenneth W. Brace (Mary)	50 Mann St., Mansfield, Pa. 16933
O—Univ. of Pittsburgh	Patricia Wagner	701 Amos Hall, Univ. of Pitts, Pittsburgh, Pa. 15213	Mrs. Gordon Pike (Gwen)	142 N. Sprague Ave., Pittsburgh, Pa. 15202
GF—Indiana Univ. of Penn.	Linda Neely	208 Stewart Hall, Box 77, Ind. U. of Pa. Indiana, Pa. 15701	Miss Paula Jerito	919 School St., Indiana, Pa. 15701
EO—Clarion State College	Linda Oleksa	Shafer Hall No., CSC, Clarion State Col., Clarion, Pa. 16214	Mrs. Edward Grejda (Gail)	40 Campbell Dr., Clarion, Pa. 16214
ZE—California State	Ann Johnston	Box 329, Longanecker Hall, 631 Second St., California, Pa. 15419	Mrs. Henry Price (Carol)	301 3rd St., California, Pa. 15419
ZF—Slippery Rock State	Judy Mooney	Box 189, Harner Hall, Slippery Rock State Col., Slippery Rock, Pa. 16057	Mrs. William A. Storer (Emme)	221 Elm St., Slippery Rock, Pa. 16057
OA—Westminster College	Melanie K. Smith	304 Galbreath Hall, New Wilmington, Pa. 16142	Miss Mary Ann Craig	805 Albion St., New Castle, Pa. 16103
IF—Alliance College	Patricia Koziol	Bartlett Hall, Alliance Col., Cambridge Springs, Pa. 16403	Mrs. Wm. C. Wenner (Jeannette)	337 South Main St., Cambridge Springs, Pa. 16403
IA—Edinboro State College	Nancy Dunbar	Earl Hall, Box 274, E.S.C., Edinboro, Pa. 16412	Mrs. Jack Williams (Emma)	Box 177, Garden Terr. Edinboro, Pa. 19136
AT—Temple Univ.	Rose Alice Hoerst	2640 Cedar St., Philadelphia, Pa. 19125	Mrs. Kenneth Stebner (Maureen)	8632 Yale Pl., Philadelphia, Pa. 19136
EZ—Drexel Inst. Tech.	Margaret Zeiger	212 N. 34th, Philadelphia, Pa. 19104		
IE—Philadelphia College of Textile and Science	Patricia Marshall	306 Stow Rd. Elkins Park, Pa. 19117		

Mrs. Richard Davy (Linda) 170 Clubhouse Rd., King of Prussia, Pa. 19406

Province Alumnae Director:

Chapter
President and Address
 *California—Miss Janet Bristor, 1251 Park, Washington, Pa. 15301
 Erie—Mrs. Walter J. Wicker, 629 Cherry St., Erie, Pa. 16502
 Harrisburg—Mrs. Robert Rowland, 3 Cornell Dr., Camp Hill, Pa. 17011
 Indiana—Mrs. John D. Varner 414 Oak St., Indiana, Pa. 15701
 *Lancaster—Mrs. William Lumbeck, 407 Glen Ridge Dr., Lancaster, Pa. 17601
 Philadelphia (North Sub.)—Mrs. Walter Hall, 1317 Bradford Rd., Oreland, Pa. 19075
 Philadelphia (West Sub.)—Mrs. Richard Myers, 536 Grand Ave., Havertown, Pa. 19083

State Membership Chairmen: Pennsylvania—Mrs. George G. West, Hemlock Acres, R.D. 2 Punxsutawney, Pa. 15767
 Delaware—Mrs. Edwin G. Willing, 110 Canterbury Dr., Windsor Hills, Wilmington, Del. 19803

PROVINCE IV—West Virginia

Chapter/School
 ΔT—Marshall Univ.
 ΕΔ—Concord College
 ΕΙ—Fairmont State
 ΖΤ—Morris Harvey College
 ΘΞ—Glenville State College
 ΙΙΙ—W. Va. Inst. Tech.
 IT—West Liberty State College

President
 Peggy Miller
 Eyvonne Mayhew
 Peggy Lohse
 Sandra J. McCoy
 Marilyn Sue Strickling
 Sharon Miller
 Mary Sanchez

Chapter Address
 Delta Zeta House, 1616—5th Ave, Huntington, W. Va. 25703
 Box C-404, Concord College, Athens, W. Va. 24712
 317 North Hall, Fairmont, W. Va. 26554
 362 Witcher Rd., Belle, W. Va. 25015
 305 E. Main St., Glenville, W. Va. 26351
 Box 115, Lavada Ratchiff Hall, W.V.I.T. Montgomery, W. Va. 25136
 318 Rogers Hall, W.L.S.C., West Liberty, W. Va. 26074

National Director: MRS. CHARLES DEVEREAUX (ELIZABETH), 3514 Cadillac Dr., Parkersburg, W. Va. 26101

Province Alumnae Director: MRS. CHARLES KURNER (MARIAN), 103 Brentwood St., Marietta, Ohio 45750

Chapter
President and Address
 Athens-Princeton, W. Va.—Mrs. Otto Fredeking, 212 Center St., Princeton, W. Va. 24740

Charleston, W. Va.—Mrs. John M. Jones, 1927 Seventh Ave., St. Albans, W. Va. 25177
 Fairmont, W. Va.—Miss Connie Conoway, Barrackville, W. Va. 26557

State Membership Chairman: West Virginia—Mrs. Frank Mancari, Kayford, W. Va. 25116

PROVINCE IV—South—Kentucky

Chapter/School
 ΑΘ—Univ. of Kentucky
 ΒΓ—Univ. of Louisville

President
 Joyce Heck
 M. Candis Healy

Chapter Address
 DZ House, 319 Columbia Terr., Lexington, Ky. 40508
 2028 S. 1st St., Louisville, Ky. 40208

Province Alumnae Director: MRS. WM. F. JACKSON, (Thelma) 109 Penmoken Park, Lexington, Ky. 40503

Chapter
President and Address
 Lexington, Ky.—Mrs. Paul E. Bastin, 105 Goodrich Ave., Lexington, Ky. 40503

State Membership Chairman: Mrs. Charles W. Cheatham, 6804 Moorhaven Dr., Louisville, Ky. 40218

PROVINCE V—Ohio

Chapter/School
 Α—Miami Univ.
 Θ—Ohio State Univ.
 Ζ—Univ. of Cincinnati
 ΒΧ—Wittenberg Univ.
 ΓΑ—Baldwin Wallace
 ΓΚ—Kent State Univ.
 ΓΤ—Bowling Green State
 ΖΚ—Ohio Northern Univ.
 ΘΖ—Univ. of Akron
 ΘΞ—College of Steubenville
 ΘΤ—Findlay College
 ΘΨ—Ashland College

President
 Linda Jackson
 Jacqueline Nahodil
 Wanda Willrich
 Dorothy Pedrick
 Phyllis Williams
 Jenny Ruppert
 Marcia Littell
 Jean Gordon
 Linda Barbuto
 Mary Virginia Gualtieri
 Mary Anzalone
 Janis Thompson

Chapter Address
 Hamilton Hall, Miami U., Oxford, Ohio 45056
 212 E. 15th Columbus, Ohio 43201
 2811 Swiss Chalet Crt., Cincinnati, Ohio 45220
 DZ House, 923 N. Fountain Ave., Springfield, Ohio 45504
 Findley Hall, Baldwin Wallace, Berea, Ohio 44017
 244 E. Main, Kent, Ohio 44240
 Delta Zeta House, BGSU, Bowling Green, Ohio 43402
 213B Lima Hall, Ada, Ohio 45810
 845 E. Waterloo Rd., Akron, Ohio 44304
 Box 494, Coll. of Steubenville, Steubenville, Ohio 43952
 ΔΖ House, 323 Frazer St., Findlay Col., Findlay, Ohio 45840
 508 Samaritan, Ashland, Ohio 44805

Province Alumnae Director: MRS. WILLIAM E. CARMEL (DONNA), 31513 Aldrich Dr., Bay Village, Ohio 44140

Chapter
President and Address
 Ada—Miss Evelyn Jenkins, 714 S. Johnson, Ada, Ohio 45810
 Akron—Mrs. James S. Murch, 4267 Kindig Spur, Copley, Ohio 44321
 Berea—Mrs. David E. Jones, 26259 Crange Rd., Olmsted Falls, O. 44138
 Canton Area—Mrs. William Hudson, 3741 Ashwood Dr. N.W., Canton, Ohio 44714
 Cincinnati—Mrs. Merlyn Heusinkveld, 8484 Fernwell Dr., Cincinnati, Ohio 45231
 Cleveland, Eastside—Mrs. Robert McCloud, 7633 Hidden Valley Dr., Chesterland, Ohio 44026
 Cleveland, Westside—Mrs. Jack Davis, 17506 Franklin Blvd., Lakewood, Ohio 44107
 Columbus, Ohio—Mrs. Raymond Klingensmith, 2247 Woodstock Rd., Columbus, Ohio 43221
 Dayton, Ohio—Mrs. David Kloppenburg, 6129 Tanaget Way, Dayton Ohio 45449

Chapter
President and Address
 Pittsburgh (East)—Mrs. Robert Nielsen, 2019 Holiday Park Dr., Pittsburgh, Pa. 15239
 Pittsburgh (North)—Mrs. Jos. Barr, 319 Frederick Ave., Sewickly, Pa. 15143
 Pittsburgh (South Hills)—Mrs. Charles Sullivan, 2418 Southvue, Bridgeville, Pa. 15017
 State College—Mrs. John Zimmerman, 726 Glenn Rd., State College, Pa. 16801
 Wilmington, Del.—Mrs. Richard Fehnel, 3209 Kammerer Dr., Delwynn, Wilmington, Del. 19803

College Chapter Director
Address
 Mrs. Wm. H. Richardson (Nina) 2208 Inwood Dr., Huntington, W. Va. 25701
 Mrs. Don Williams (Clara) Weaver St., Athens, W. Va. 24712
 Mrs. James Synder (Carol) 1232 Woodland Crescent, Fairmont, W. Va. 26554

Miss Ann Kellerman 7 College St., Glenville W. Va. 26351
 Mrs. Sanford Harrison (Ann) 1000 1st Ave., Apt. 1, Montgomery, W. Va. 25136
 Mrs. John A. Weeks (Ginny) Box 182 West Liberty, W. Va. 26074

Chapter
President and Address
 Huntington, W. Va. Mrs. Paul Browne, 967 Norway Ave., Huntington, W. Va. 25705

College Chapter Director
Address
 Mrs. H. A. Garber (Dot) 324 Scymore Rd., Lexington, Ky. 40502
 Mrs. Edward Schmitt (Fannette) 2414 Brighton Dr., Louisville, Ky. 40205

Chapter
President and Address
 Louisville Ky.—Mrs. Lewis G. Chilton, 4327 Wingate Rd., Lexington, Ky. 40207

College Chapter Director
Address
 Miss Mary Melvin 516 S. Main St., Oxford, Ohio 45057
 Mrs. Richard Krisher (Jane) 8586 Hallridge Ct., Cincinnati, Ohio 45231
 Mrs. Milton Ogden (Marty) 537 Candace Dr., Springfield, Ohio 45504
 Mrs. J. R. Andrisek (Norma) 119 Meadow Dr., Berea, Ohio 44017
 Mrs. Jerry Wiland (Joyce) 432 Burr Oak Dr., Kent, Ohio 44240
 Mrs. Jerry Morrow (Ann) 2012 Westwood, Toledo, Ohio 43607

Mrs. Wm. Riddle (Aldabelle) 2746 Elmwood Ave., Cuyahoga Falls, Ohio 44221
 Miss Helen Reimund 1521 Tiffen Rd., Findlay, Ohio 45840
 Mrs. Carl Reichard (Vivienne) 1130 Grant St., Ashland, Ohio 44805

Chapter
President and Address
 Kent—Mrs. Harris Dante, 502 Dansel, Kent, Ohio 44240
 Marietta-Parkersburg—Mrs. John F. Swan, 113 Lincoln Rd., Marietta, Ohio 45750
 *Middletown—Mrs. Reiner Balzer, 2113 Linda Ave., Middletown, Ohio 45052
 *Oxford—Mrs. Robert Fryman, Moringsum Rd., Oxford, Ohio 45056
 *Portsmouth—Mrs. James P. Grimm, 4620 Scioto Trail, Portsmouth, Ohio 45662
 Springfield—Mrs. Irving D. Stahl, 2110 Park Rd., Springfield, Ohio 45504
 Toledo—Mrs. John Hogan, 4608 Wickford Drive, Sylvania, Ohio 43560
 Wooster—Mrs. Don L. Reynolds, 2910 Graustark Path, Wooster, Ohio 44619
 Youngstown—Mrs. Charles Miller, 5660 Sillman Pl., Youngstown, Ohio 44512

PROVINCE VI—Michigan

Chapter/School
 BP—Mich. State Univ.
 E2—Eastern Mich. Univ.
 E3—Wayne State Univ.
 E4—Univ. of Detroit
 BII—Albion College
 IIT—Western Mich. Univ.
 I3—Central Mich. Univ.
 ZN—Ferris State College
 Z0—Northern Mich. Univ.

President
 Nora Piennig
 Laurie Hilde
 Renee Vermeersch
 Carol Knopes
 Christine Humphrey
 Nancy Flynn
 Cindy Charlebois
 Carolyn Thiele
 Cheryl Anderson

Province Collegiate Director: MRS. KENNETH BALOGH (SUE), 13323 Averhill, Detroit, Mich. 48215

Chapter Address
 DZ House, 110 Oakhill, M.S.U., East Lansing, Mich. 48823
 216 N. Washington, Ypsilanti, Mich. 48197
 1224 Maryland, Grosse Pointe Park, Mich. 48230
 17597 Stoepe, Detroit, Mich. 48221
 213 Whitehouse Hall, Albion Col., Albion, Mich. 49224
 1305 California, Apt. 307, Kalamazoo, Mich. 49001
 233 Sloan, C.M.U., Mt. Pleasant, Mich. 48858
 234 Taggart Hall, Ferris St., Big Rapids, Mich. 49307
 362 Magers Hall, N.M.U., Marquette, Mich. 49855

College Chapter Director

Mrs. M. J. Nyrkkanen (Carolyn)
 Nan Shuttleworth
 Miss Margaret Weisenberger
 Miss Martha Joyce Keegan
 Miss Barbra King
 Miss Helen Wild
 Mrs. Allen Janonis (Nancy)

Address

109 W. Henry, Saline, Mich. 48176
 1211 Rademacher, Detroit, Mich. 48209
 W. Hall, Albion College, Albion, Mich. 49224
 6177 Horizon Heights Dr., Kalamazoo, Mich. 49001
 1001 S. College, Mt. Pleasant, Mich. 48858
 611 Lilac, Big Rapids, Mich. 49307
 Box 938 Marquette, Mich. 49855

Province Alumnae Director: MRS. LORETTA M. GILEWICZ, 473 Allard Rd., Grosse Pointe Farms, Mich. 48236

Chapter

Albion—Mrs. Edward Henderson, Route 1, Albion, Mich. 49224
 Battle Creek—Mrs. Dale Dittmer, 149 Homcrest, Battle Creek, Mich. 49017
 *Big Rapids Alumnae—Mrs. Robert Everin, 11 Colonial Arms Apt., Big Rapids, Mich. 49307
 Detroit—Mrs. Howard G. Nowka, 22700 Alexandrine, Dearborn, Mich. 48124
 Flint—Mrs. Earl Senninger, 802 Blanchard Ave., Flint, Mich. 48503
 Grand Rapids—Mrs. Roger Meyer 2231 Sylvan S.E., Grand Rapids, Mich. 49506

State Membership Chairman: Michigan—Mrs. Edward C. Wirth, 730 W. Wattles Rd., Bloomfield Hills Mich. 48013
 Asst. Michigan—Mrs. Frederick L. Lutz, 15520 Amherst, Birmingham, Mich. 48010

PROVINCE VII—Indiana

Chapter/School
 Δ—DePauw Univ.
 E—Ind. Univ.
 Ψ—Franklin College
 FX—Ball State Univ.

President
 Verna Baughman
 Anita Junken
 Naomi Jane Singer
 Pamela Whitestine

Province Collegiate Director: MRS. BERNARD WALDMAN (GLENNALOU), 54728 Merrifield Dr., Mishawaka, Ind. 46544

Chapter Address
 DZ House, 411 Anderson, Greencastle Indiana 46135
 DZ House, 1423 N. Jordan, Bloomington, Ind. 47401
 Elsey Hall, Box 66, Franklin Col., Franklin, Ind. 46131
 Klipple Hall-Ball State Univ., Muncie, Ind. 47301

College Chapter Director

Mrs. Ray H. French (Martha)
 Mrs. N. A. Fattu (Jeannette)
 Mrs. Max Fitzpatrick (Carol)
 Mrs. Allen Winters (Rita)

Address

106 E. Seminary St., Greencastle, Ind. 46135
 921 Sheridan Rd., Bloomington, Ind. 47403
 RR 1, Box 177-A, Whiteland, Ind. 46184
 515 No. Tillotson Ave., Muncie, Ind. 47304

Province Alumnae Director: MRS. HAROLD HOUSTON (SARAH JANE), 52 Creal Ct., Rt. 7 Terre Haute, Ind. 47805

Chapter

Anderson—Mrs. Donald Simmons, 3213 Sherman Court, Anderson, Ind. 46014
 *Bloomington—Mrs. John A. Robinson, 1717 E. Hunter Ave., Bloomington, Ind. 47401
 Columbus—Mrs. Robert Luckhardt, 1118 Pennsylvania St., Columbus, Ind. 47201
 Fort Wayne—Mrs. F. R. Roese, 8736 Maraville, Ft. Wayne, Ind. 46805
 Franklin—Mrs. Rolland Neese, 1131 Hillview Dr., Franklin, Ind. 46131
 Greencastle—Mrs. Robert Breese, 712 Dogwood Lane, Greencastle, Ind. 46135
 Indianapolis—Mrs. K. P. Potter, 7336 Lowe Dr., Indianapolis, Ind. 46226

State Membership Chairman: Indiana—Mrs. John Thomas, 321 N. Irvington, Indianapolis, Ind. 46219

PROVINCE VIII—Wisconsin

Chapter/School
 T—Univ. of Wisconsin
 PΘ—Carroll College
 EK—Wisconsin State, Whitewater
 EX—Univ. Wisconsin, Milwaukee

President
 Carolyn Pectz
 Sue Howard
 Judi Rogge
 Patricia Weber

National Director: MRS. WINFIELD HINMAN (KATHRYN), 27310 Wellington Dr., Franklin Village, Mich. 48025

Chapter Address
 DZ House, 142 Langdon, Madison, Wis. 53703
 135 S. East Ave., #307 Waukesha, Wis. 53186
 604 W. Main St., Whitewater, Wis. 53190
 2235 N. 57th St., Milwaukee, Wis. 53219

College Chapter Director

Mrs. Charles Periman (Nancy)
 Mrs. David O. Jones (Ora)
 Mrs. James Daquoin (Mary Jo)

Address

921 Lynn Dr., Waukesha, Wis. 53186
 335 Graham St., Whitewater, Wis. 53190
 8221 W. Okla. Ave., Apt. 3, Milwaukee, Wis. 53219

Co-Province Collegiate Director: MRS. TOM WEGNER (DOROTHY), 740 Carol St., Eau Claire, Wis. 54701

EQ—Wisconsin State, Eau Claire
 ZB—Stout State Univ.
 ZO—W.S.U., La Crosse
 ZX—Wis. State Univ., Stevens Point
 ΘA—St. Norbert College
 IE—Wisconsin State Univ., Oshkosh

Sandra Peterson
 Colleen Balko
 Sharon Chitwood
 Maureen O'Connor
 Elaine Michellini
 Cheryl Hartford

433 Towers, Eau Claire, Wis. 54701
 347 A. South Hall, Menomonie, Wis. 54751
 506 Oakland Ave., La Crosse, Wis. 54601
 Box 51 Delzell Hall, W.S.U., Stevens Point, Wis. 54481
 301 MM. McCormick Hall S.N.C. West DePere, Wis. 54178
 1226 Titan Court, W.S.U., Oshkosh, Wis. 54901

Mrs. Rita Mahan

221 W. 3rd St., Menomonie, Wis. 54751

Miss Carolyn Sands
 Mrs. Michael Wisneski
 Mrs. Kenneth J. Hammond
 (Dorothy)

203 Greenbrier, Park Ridge, Stevens Point, Wis. 54481
 1155 Cherry St., Green Bay, Wis. 54301
 4330 Winneconne Rd., Oshkosh, Wis. 54901

Province Alumnae Director:

Chapter

*Eau Claire—
 *Fox River Valley—Mrs. Gene Hockemeyer, 1712 E. Frances St., Appleton Wis. 54911
 *La Crosse, Wis.
 Madison—Mrs. Conrad Biorke, 2009 Prairie Road, Madison, Wis. 53711
 *Beloit-Janesville—Mrs. Lester Harlow, 805 Elmwood, Beloit, Wis. 53511

State Membership Chairman: Mrs. John Kellog, 8 Brokaw Place, Appleton, Wis. 54911

President and Address**President and Address****Chapter**

*Menomonee Falls—Mrs. Robert J. Allen, 3500 Studio Ct., Brookfield, Wis. 53005
 Waukesha—Mrs. Arnold Harrits, 228 S. Charles St., Waukesha, Wis. 53186
 *Whitewater—

PROVINCE IX—Illinois

Chapter/School
 AA—Northwestern Univ.
 AB—Univ. of Illinois
 IN—Eastern Illinois Univ.
 IP—Northern Illinois Univ.
 IQ—Southern Illinois Univ.
 IO—Western Illinois Univ.
 ZA—Bradley Univ.
 ΘΘ—De Paul Univ.

President
 Natalie Krewitzky
 Lila Koets
 Mary Braun
 Marti Kamschulte
 Marcia Rodriguez
 Charlene Krutmeier
 Susan Conlan
 Diane Rojas

Chapter Address
 DZ House, 717 University Pl., Evanston, Illinois 60201
 DZ House, 710 W. Ohio, Urbana, Ill. 61801
 DZ House, 1528 S. 4th St., Charleston, Ill. 61920
 DZ House, 1010 Blackhawk, De Kalb, Ill. 60115
 103 Small Group Housing, Carbondale, Ill. 62901
 420 W. Adams, Macomb, Ill. 61455
 DZ House, 1514 W. Fredonia, Peoria, Ill. 61606
 6221 W. Grand, Chicago, Ill. 60639

College Chapter Director
 Mrs. Raymond F. Johnson (June)
 Mrs. John Stubbs
 Mrs. Don McKee (Gail)
 Mrs. Robert Williams (Georgia)
 Mrs. Thomas Schill (Elizabeth)
 Mrs. John Nickson (Lois)
 Mrs. James P. Lawrence (Louise)

Address
 816 Madison St., Evanston, Ill. 60202
 1609 Chevy Chase Dr., Champaign, Ill. 61820
 776 10th St., Charleston, Ill. 61920
 520 Leonard Ave., DeKalb, Ill. 60115
 1805 W. Freeman, Carbondale, Ill. 62901
 312 Elting, Macomb, Ill. 61455
 200 Lake Shore Drive, Washington, Ill. 61571

National Director: MRS. WINFIELD HENMAN (KATHRYN), 27310 Willington Dr., Franklin Village, Mich. 48025

Province Alumnae Director:

Chapter President and Address
 Alton-Wood River—Mrs. Ted Porter, 23 N. Circle Drive, East Alton, Ill. 62024
 Arlington Heights—Mrs. Warren Karlsen, 5135 S. School, Mt. Prospect, Ill. 60056
 Aurora—Mrs. Roger Eichmeier, 425 Cobblestone, Aurora, Ill. 60506
 Carbondale—Miss Kathryn Kimmel, 309 E. Main, Carbondale, Illinois, 62901
 Chicago—Miss Dorothy Pergande, 5757 Sheridan Rd., Chicago, Ill. 60626
 Charleston—Mrs. Ben Anderson, 845—6th St., Charleston, Ill. 61920
 *Decatur—Sue Curry Paston, 2288 E. North St., Decatur, Ill. 62521
 North Suburban—Mrs. Theo. E. Briggs, 730 Clifton, Park Ridge, Ill. 60068
 West Suburban—Mrs. James Wagner, 613 Lakeside Drive, Hinsdale, Ill. 60521
 South Suburban—Miss Sandra Lee Hecim, 16768 Bulger Ave., Hazel Crest, Ill. 60429
 *DeKalb-Sycamore—Mrs. S. L. Toppen, 1706 Margaret Lane, DeKalb, Ill. 60115

State Membership Chairman: Illinois—Mrs. Wendell Swanson, 115 Kurlene Drive, Macomb, Ill. 61455

PROVINCE X—North—Minnesota, North Dakota and South Dakota

Province Collegiate Director: MRS. RANDALL JONES (PAT), 5015 Wentworth Ave., South, Minneapolis, Minn. 55419

Chapter/School
 T—Univ. of North Dakota
 ZT—Winona State College
 ΘM—St. Cloud State College
 ΘN—Moorhead State College
 ΘP—Minot State College
 IB—Dickinson State College

President Chapter Address
 Irene Von Eeckhout
 Patricia Fischbach
 Mary Harris
 Sue Foss
 Judy Bradley
 Rita Blood
 DZ House, 2724 University Ave., Grand Forks, N.D. 58202
 311 Washington, Winona, Minn. 55987
 525 3rd Ave. So., St. Cloud, Minn. 56301
 1303 18th Ave., S. Moorhead, Minn. 56560
 DZ House—725 9th Ave., N.W. 2, Minot, N. Dakota, 58701
 Woods Hall, DSC, Dickinson, N. Dakota 58601

College Chapter Director
 Mrs. Willis Peterson (Marlene)
 Miss Kay Dunlay
 Miss Louise Johnson
 Mrs. Ralph Scheer (Helen)
 Mrs. David Morstad (Marilyn)
 Mrs. Doris Reinke

Address
 207 Division St., Grand Forks, N.Dak. 58201
 351 W. Broadway, Winona, Minn. 55987
 707 3rd Ave. So., St. Cloud, Minn. 56301
 2215 S. River Shore Dr., Moorhead, Minn. 56560
 904 20th St., N.W., Minot, No. Dak. 58701
 207 12th St., East, Dickinson, No.Dak. 58601

Province Alumnae Director: MRS. CHARLES A. TALLE (HELEN), R.R. 4, St. Croix Beach, Stillwater, Minn. 55082

Chapter President and Address
 *Moorhead-Fargo—Miss Patricia Hillestad, 1115 N. 10th St., Fargo, N.D. 58102
 Grand Forks, N.D.—Miss Mary Ellen Reetz, 1117-25th Ave., S. Grand Forks, N.D. 58201
 *Minot, N.D.—Mrs. David Morstad, 906 20th St., N.W., Minot, N. Dakota 58701

State Membership Chairmen: Minnesota—Miss Dorothy Jones, 1001 E. 77th St., Minneapolis, Minn. 55423
 North Dakota—Mrs. J. A. Callenbach, 606 9th St., South Fargo, N. Dakota 58102
 South Dakota—Mrs. Richard E. Huffman, Jr., 1535 South State St., Aberdeen, S.D. 57401

PROVINCE X—South—Iowa

Chapter/School
 IA—State Univ. of Iowa
 BK—Iowa State Univ.
 IE—Drake Univ.
 AM—Morningside College
 ΔN—Parsons College
 ΘA—Simpson College

President
 Judith Mitchell
 Diane Bowen
 Joan Koopman
 Fay Nelson
 Carolyn Leech
 Vicki Poindexter

Province Collegiate Director: MRS. JAY ROY (VERA), 2800 44th St., Des Moines, Iowa 50310

Chapter Address
 DZ House, 322 N. Clinton, Iowa City, Iowa 52240
 DZ House, 2138 Sunset Drive, Ames, Iowa 50012
 DZ House, 3118 Cottage Grove, Des Moines, Iowa 50311
 1500 Morningside, Sioux City, Iowa 51106
 ΔZ Dorm #106 Parsons, Fairfield, Iowa 52556
 DZ House, 710 N. Buxton, Indianola, Iowa 50125

College Chapter Director
 Mrs. Steven P. Richardson (Kaye)
 Mrs. Richard E. Horton (Sandy)
 Mrs. Paul Nurczyk (Nancy)
 Miss Beatrice Tift
 Mrs. Harold V. Lamb (Charlotte)
 Miss Clarice Orcutt

Address
 729 Manor Dr., Iowa City, Iowa 52240
 2119 Country Club Blvd., Ames, Iowa 50010
 104 S.W. 52nd, Street, Des Moines, Iowa 50312
 4001 Orleans, Sioux City, Iowa 51106
 205 E. Burlington, Fairfield, Iowa 52556
 1206 North "B" St., Indianola, Ia. 50125

Province Alumnae Director: MRS. MYRON E. JENSEN (JEAN), 4118 Maryland Pike, Des Moines, Iowa 50312

Chapter President and Address
 Ames—Mrs. Carol Seikmeir, 723 9th St., Ames, Iowa 50010
 Cedar Rapids, Iowa—Mrs. Robert Nechanicky, 4450 Midway Dr., N.W. Cedar Rapids 52405
 Des Moines—Mrs. William Wheatcraft, 2206-70th St., Des Moines, Iowa 50322
 Fairfield, Iowa—Mrs. David Marker, 305 W. Hempstad, Fairfield, Iowa 52556

State Membership Chairman: Mrs. Thomas Andritsch, 549 32nd St., West Des Moines, Iowa 50265

Chapter/School

President

Chapter Address

College Chapter Director

Address

Chapter/School
 IT—Missouri Valley College
 ΔΣ—Northeast Missouri State
 ET—Central Mo. State
 EH—Harris Teach.
 EN—Southwest Missouri State
 EP—Northwest Missouri State
 EW—St. Louis Univ.
 ZP—William Jewell College

President
 Susan French
 Janet White
 Linda Medley
 Donna Cowee
 Angie Pyle
 Christie Beal
 Cecelia Garcia
 Marva Kapp

Chapter Address
 Conway Apt. 2, M.V.C., Marshall, Mo. 65340
 205 Ryle Hall, N.E. MSTC Kirksville, Mo. 63501
 ΔZ Wing D200 Panhellenic Hall, C.M.S.C., Warrensburg, Mo. 64093
 3967 Juniata Ave., St. Louis, Mo. 63123
 317 N. Burton, Springfield, Mo. 65802
 253 Roberta Hall, NWMSC, Maryville, Mo. 64468
 3601 Lindell Blvd., St. Louis, Mo. 63108
 Semple Hall, Wm. Jewell, Liberty, Mo. 64068

College Chapter Director
 Mrs. W. E. Morton (Christine)
 Dr. Ruth Towne
 Mrs. W. M. Mayfield (Louise)
 Miss Fanita Terry
 Mrs. Lawson A. Weaver (Billie)
 Dr. Wanda Walker

Address
 417 East Rae, Marshall, Mo. 65340
 709 North Davis, Kirksville, Mo. 63501
 R.R. 2, Centerview, Mo. 64019
 5540 Murdock, St. Louis, Mo. 63109
 1976 Cedarbrook, Springfield, Mo. 65802
 NWMSC, Maryville, Mo. 64468

Mrs. J. Robt. Thomas (Connie) 1303 E. 66th St., No. Kansas City, Mo. 64118

Province Alumnae Chapter: MRS. GEORGE L. MAGGIO (PEGGY), 10201 Linden, Overland Park, Kansas 66204

Chapter
 Clay-Platte—Mrs. David L. Kelley, Rt. 27, Box 124A, Kansas City, Mo. 64152
 Kansas City—Mrs. Edward L. Landers, 9414 Craig Dr., Overland Park, Kan. 66212
 Kirksville—Mrs. Francis Walter, 1320 E. Highland, Kirksville, Mo. 63501
 Marshall—Mrs. G. C. Redford, Jr., RR 4, Marshall, Mo. 65340

State Membership Chairman: Missouri—Mrs. Robert S. Bagnell, Jr., Blackburn, Mo. 65321

PROVINCE XII—East—Kansas and Nebraska

Special Consultant: MRS. A. CLIFFORD ANDERSON (PEG), 5707 St. Paul, Lincoln, Nebr. 68507

Chapter/School
 Z—U. Nebraska
 A—Kansas State Univ.
 BT—Nebraska Wesleyan
 ΔI—Kansas State, Emporia
 ΔΩ—Fort Hays State
 ΘH—Creighton Univ.

President
 Nancy Fritzel
 Barbara Klick
 Lynne Robertson
 Terri Booker
 Cindi Holiday
 Susan Tracy

Chapter Address
 425 Univ. Terr., Lincoln, Nebr. 68508
 DZ House, 1803 Laramie, Manhattan, Kan. 66502
 DZ House, 2401 No. 51st, Lincoln, Nebr. 68504
 DZ House, 1005 Merchant, Emporia, Kans. 66802
 DZ House, 210 West Sixth, Hays, Kans. 67601
 Kiewit Hall, 2615 California #828L, Omaha, Nebr. 68131

College Chapter Director
 Mrs. Lionel Brown (Barbara)
 Mrs. E. R. Frank (Jean)
 Mrs. Robert Dunn (Delores)
 Mrs. Glenn Gimple (Barbara)
 Mrs. Joel Moss (Nella)
 Mrs. D. A. Richards (Sue)

Address
 3607 "B" St., Lincoln, Nebr. 68510
 120 S. Delaware, Manhattan, Kansas 66502
 2539 Rathbone Rd., Lincoln, Nebr. 68507
 1314 Woodland, Emporia, Kan. 66801
 408 W. 4th, Hays, Kansas 67601
 4361 Mason St., Omaha, Neb. 68105

Province Alumnae Director: MRS. THOMAS A. GARDNER (CLARICE), 6902 Montview Blvd., Denver, Colorado 80207

Chapter
 Emporia Kansas—Mrs. Arnold Lister, 2020 E. 6th, Emporia, Kansas 66801
 Hays, Kan.—Mrs. Richard Malmberg, 118 Drum, Hays, Kan. 67601
 Johnson-Wyandotte—Mrs. Richard Furman 4017 W. 68th Terrace, Prairie Village, Kansas 66208
 County, Kan.—
 Kearney—Mrs. James Slaughter, 202 E. 22nd, Kearney, Nebraska 68874
 Lincoln, Neb.—Mrs. James D. Johnson, 6601 Sumner, Lincoln, Neb. 68506

State Membership Chairmen: Kansas—Mrs. William Wise, 1647 N.E. Parkway, Wichita, Kan. 67208
 Nebraska—Mrs. Oswald C. Mickelmann, 5411 Decatur St., Omaha, Neb. 68104

PROVINCE XII—West—Colorado, Wyoming and Utah

Special Consultant: MRS. A. CLIFFORD ANDERSON (PEG), 5707 St. Paul, Lincoln, Nebr. 68507

Chapter/School
 BE—Colo. State Univ.
 ΔΣ—Colo. St., Greeley
 EA—Western State

President
 Janis Yost
 Barbara DeCamp
 Carol Rook

Chapter Address
 DZ House, 801 S. Shields, Ft. Collins, Colo. 80521
 DZ House, 1717 10th Ave., Greeley, Colo. 80631
 105 Hermosa Hall, W.S.C., Gunnison, Colo. 81230

College Chapter Director
 Mrs. Thomas Stegner (Nancy)
 Mrs. Thomas Dobson (Kay)

Address
 R.R. 3, Box 576, Ft. Collins, Colo. 80521
 1814 24th Ave. Pl., Greeley, Colo. 80631

Province Alumnae Director: MRS. THOMAS A. GARDNER (CLARICE), 6902 Montview Blvd., Denver, Colorado 80207

Chapter
 *Cheyenne, Wyo.—Mrs. Jack Varra, 1218 Foyer Ave., Cheyenne, Wyo. 82002
 Colorado Springs, Colo.—Mrs. Warren Riedell 1334 N. El Paso, Colo. 80903
 Denver, Colo.—Mrs. V. Gene Spatz, 5460 E. Jewell, Denver, Colo. 80222
 Ft. Collins, Colo.—Mrs. Eugene Treichler, 5845 Mercury Dr., Ft. Collins, Colo. 80521

Chapter
 Greeley, Colo.—Mrs. George H. Sage, 1956 26th Ave., Ct. Greeley, Colo. 80631
 Gunnison, Colo.—Mrs. Richard A. Pigg, 615 N. Boulevard, Gunnison, Colo. 81230
 *Pueblo Colo.—Miss Ruby L'Herrison, 335 Grace, Pueblo, Colo. 81005
 Salt Lake City, Utah—Mrs. Joseph N. Karren, 1603 E. Parkway Ave., Salt Lake City, Utah 84106

State Membership Chairmen: Colorado—Mrs. Leonard Snyder, 1418 La Port Ave., Ft. Collins, Colo. 80521
 Wyoming—Miss Alice Halsted 446 1st West Parkway, Sheridan, Wyoming 82801
 Utah—Mrs. Franklin Shafer, R.F.D. 1, Box 3, Tooele, Utah 84074

PROVINCE XII—Southwest—Arizona, New Mexico

Province Collegiate Director: MRS. RICHARD BERLEMANN (JOY), Box 2003, U.P. Station, Las Cruces, N. Mexico, 88001

Chapter/School
 BI—Univ. of Arizona
 ΓΣ—New Mex. State Univ.
 ΔP—Susan Wightman

President
 Joanie Taylor
 Jeanne Blackmon
 Claire Holdenreid

Chapter Address
 SUPO 9181, Tucson, Ariz. 85704
 Box 973, University Park, New Mex. 88001
 106 South Hall, Highlands Univ., Las Vegas, N. Mex. 87701

College Chapter Director
 Mrs. Betty Sutherland
 Mrs. A. J. Dye (Rita)
 Mrs. Larry C. Abney

Address
 9341 E. 10th, Tucson, Arizona 85719
 1104 Branson, Las Cruces, N. Mex. 88001
 616 Columbia Ave., Las Vegas, New Mex. 87701

Province Alumnae Director: MRS. A. W. McCARTY (CYNTHIA), 3102 E. Earll Dr., Phoenix, Arizona 85016

Chapter
 Albuquerque, N.M.—Mrs. Charles Grassham, 825 California, S.E. Albuquerque, New Mex. 87108
 El Paso, Texas—Mrs. Wm. Jones, 157 Riverside Dr., El Paso, Texas 79924
 *Las Cruces, N.M.—Mrs. James F. Melton, Box 1451, University Park, N.M. 88070
 Phoenix, Ariz.—Mrs. Marion Smoker, 4011 E. Hazelwood, Phoenix, Ariz. 85018

Chapter
 *Roswell, N.M.—Mrs. Van Wayne Witt, 1512 South Kentucky, Roswell, N.M. 8820
 Tucson, Arizona—Mrs. G. E. Wright, 5636 East 8th Tucson Arizona 85711

State Membership Chairmen: Arizona—Mrs. Joseph Andriano, 1149 E. McMurray Blvd., Casa Grande, Arizona 85222
 New Mexico—Mrs. R. B. Jansen, 1204 W. Eleventh St., Roswell, N.M. 88201

PROVINCE XIII—Washington, Oregon, Montana, Idaho and Alaska*National Director:* MRS. LARRY FRYMIRE (GLORIA), 16 Olympus Dr., Naperville, Ill. 60540

Chapter/School
 K—Univ. Washington
 X—Oregon State Univ.
 U—Univ. of Oregon

President
 Sandy Newman
 Cathy Beckley
 Barbara Chapman

Chapter Address
 DZ House, 4535 18th, N.E., Seattle, Wash. 98105
 DZ House, 2311 Van Buren, Corvallis, Oregon 97330
 DZ House, 1883 University, Eugene, Ore. 97403

College Chapter Director
 Mrs. Gean Stewart (Leah)
 Mrs. Gordon Seese (Thea)
 Mrs. Kenneth S. Wood (Peggy)

Address
 11668 18th Ave., S.W., Seattle, Wash. 98146
 R.R. #2, Box 14, Albany, Ore. 97321
 1941 Potter St., Eugene, Ore., 97405

Province Alumnae Director: MRS. PRESTON OREM (BETH), 7738 S.W. 51st Ave., Portland, Ore. 97219

Chapter
 Corvallis, Ore.—Mrs. J. Lloyd LeMaster, 10 Edgewood Way, Corvallis, Oregon 97330
 Eugene, Ore.—Mrs. Bob Spence, 240 Sterling Drive, Eugene, Ore. 97402
 *Klamath Falls, Ore.—Mrs. Fred Goeller, 234 S. Riverside, Klamath Falls, Ore. 97601
 *Rogue Valley, Ore.—Mrs. William Meltzer, 1551 Johnson, Medford, Oregon 97501
 *Olympia, Wash.—Mrs. C. Arthur Martin, 3532 Mary Elder Rd., Apt. #1, Olympia, Wash. 98502
 Portland, Ore.—Mrs. John Wainright, 3535 Burnside, Portland, Ore. 97214
 Salem, Ore.—Mrs. A. A. Friesen, 421 Taybin Rd. N.W., Salem, Oregon 97304
 Oregon Council of ΔZ—Mrs. Kenneth Wood, 1941 Potter St., Eugene, Oregon 97405

State Membership Chairmen: Washington—Mrs. James A. Cloore, 10412 Crestwood Dr. S., Seattle, Wash. 98178
 Oregon—Mrs. Clyde C. Carlson, 3128 N.E. Bryce, Portland, Ore. 97212
 Montana—Mrs. B. S. Everingham, Route 4, Rattlesnake, Missoula, Montana 59801
 Idaho—Mrs. W. L. Lundquist, 1004 S. Logan, Moscow, Idaho 83843
 Alaska—Mrs. Gerard Belanger, 1110 Sixth, Apt. 104, Anchorage, Alaska 99501

PROVINCE XIV—Northern California, Nevada and Hawaii*Province Collegiate Director:* MRS. PAUL D. TRY (BARBARA) 3339 Sueno Dr., San Jose, Calif. 95122

Chapter/School
 M—Univ. California—Berkeley
 PA—San Jose State
 ΔX—Chico State College
 EE—Fresno State College
 ZI—Humboldt State College

President
 Carol Bergfeld
 Kathy Southern
 Carol Brown
 Bonnie Benck
 Kathy Wahlquist

Chapter Address
 DZ House, 2728 Durant, Berkeley, Calif. 94704
 DZ House, 201 So. 11th, San Jose, Calif. 95114
 735 W. First Ave., Apt. B, Chico, Calif. 95926
 DZ House, 5337 N. Millbrook, Fresno, Calif. 93726
 1090 'C' Street, Arcata, Calif. 95521

College Chapter Director
 Mrs. Hollis Walker (Nelle)
 Mrs. Paul D. Try (Barbara)
 Mrs. Vernita Schwartz
 Mrs. Dick Palmquist (Cathy)
 Mrs. George Hartford (Linda)

Address
 1342 Carlotta Ave., Berkeley, Calif. 94703
 3339 Sueno Dr., San Jose, Calif. 95122
 1673 Park Vista Dr., Chico, Calif. 95926
 6039 N. Moroa Ave., Fresno, Calif. 93704
 989-13th St., Arcata, Calif. 95521

Province Alumnae Director: MRS. BRYANT KING (DARLYNE), 840 Crossbrook Ct., Moraga, Calif. 94556

Chapter
 Chico, Calif.—Co. Pres. Mrs. James Canfield, 1142 Wendy Way, Chico, Calif. 95926
 Fresno, Calif.—Mrs. Sam Reid, 3124 E. Santa Ana, Fresno, Calif. 93726
 Hayward Area, Calif.—Mrs. Malcolm Campbell, 14883 Western Ave., San Leandro, Calif. 94578
 Honolulu, Hawaii—Mrs. Nicholas Ovio, 45-015 Malulani St., Kaneohe, Hawaii 96944
 Humboldt, Calif.—Mrs. Dayton Griffith, 1131 Austin Way, Arcata, Calif. 95521
 Marin County, Calif.—Mrs. Charles Hamilton, 75 Kensington Rd., San Anselmo, Calif. 94960
 Monterey Peninsula, Calif.—Mrs. C. D. Starnes, Rt. #1, Box 360, Carmel, Calif. 93921
 Mt. Diablo, Calif. Area—Mrs. Robert Ottesen, 10 Hetfield Place, Moraga, Calif. 94556

State Membership Chairmen: Northern California—Mrs. Walter Burde, Route 3, Box 986 Carmel, Calif. 93921
 Hawaii—Mrs. Albert K. Solomon, Jr., Apt. 208 Seaside Towers, 435 Seaside Ave., Honolulu, Hawaii 96815
 Nevada—Mrs. Morris Vitale, 1355 Granite Dr., Reno, Nev. 87502 South Nevada—Asst. Mrs. W. W. Southard, 311 Parkway East, Las Vegas, Nevada 89106
 South Nevada—Asst. Mrs. W. W. Southard, 311 Parkway East, Las Vegas, Nevada 89106

PROVINCE XV—Southern California*Province Collegiate Director:* MRS. WILLIAM ROUSE (DIANA), 3062 Salmon Dr., Los Alamitos, Calif. 90720

Chapter/School
 AX—Univ. of California at Los Angeles
 IO—San Diego State College
 ΔA—Calif. State College at Long Beach
 ΘP—Cal. St., Los Angeles

President
 Karen Olson
 Pamela Jane Holloway
 Barbara Hetzel
 Janice Cull

Chapter Address
 DZ House, 824 Hilgard, Los Angeles, Calif. 90024
 DZ House, 5074 College Ave., San Diego, Calif. 92115
 148 Molino, Long Beach, Calif. 90804
 510 S. Mound, So. Pasadena, Calif. 91030

College Chapter Director
 Mrs. Richard Owen (Hildegard)
 Mrs. Wm. V. Happ (Donna)
 Mrs. Richard Powell (Kathy)
 Mrs. Raymond Pyley (Louise)

Address
 320 21st St., Manhattan Beach, Calif. 90266
 8721 Hartzell Dr., Spring Valley, Calif. 92077
 7829 Coolgrove, Downey, Calif. 90240
 1270 Cordova, Apt. 3, Pasadena, Calif. 91106

Province Alumnae Director: MRS. ROBERT L. DECKER (BARBARA), 615 Jambolaya, Anaheim, Calif. 92805

Chapter
 Bakersfield, Calif.—Mrs. Jon Crawford, 4000 Hinsdale, Bakersfield, Calif. 93306
 Central San Fernando Valley, Calif.—Mrs. Lewis List, 18921 Dukas St., Northridge, Calif. 91324
 Dz's by-the-sea—Mrs. Diane Richards, 960 Coronada Dr., Costa Mesa, Calif. 92626
 Downey Area, Calif.—Mrs. Charles L. Youde, 10344 Triston Dr., Downey, Calif. 90241
 Glendale-Burbank, Calif.—Mrs. R. H. Parsons, 4415 Alta Canyon, La Canada, Calif. 91011
 Long Beach, Calif.—Mrs. Charles Paige, 2660 Marber, Long Beach, Calif. 90815
 Los Angeles, Calif.—Miss Dallas Shenk, 147 S. New Hampshire, Los Angeles, Calif. 90004
 Orange County, Calif.—Mrs. Ernest Templin, 706 Pueblo Pl., Fullerton, Calif. 92632

State Membership Chairman: Southern California—Mrs. Raymond C. Pyley, 1270 Cordova Apt. #3, Pasadena, Calif. 91106**PROVINCE XVI—Oklahoma***Province Collegiate Director:* MRS. N. K. SCOTT (ELAINE), 1260 E. 30th St., Tulsa, Oklahoma 74114

Chapter/School
 AE—Okla. State Univ.
 OK—Okla. City Univ.

President
 Pamela Sue Cheatham
 Gwen Young

Chapter Address
 DZ House, 224 S. Jefferson, Stillwater, Okla. 74074
 2900 N.W. 28th, Okla. City, Okla. 73106

College Chapter Director
 Miss Janice Spooner
 Mrs. J. L. French (Mary Anne)

Address
 239 S. Hester, Apt. #4, Stillwater, Okla. 74074
 2222 N.W. 58th Circle, Oklahoma City, Okla. 73112

Chapter
 Oklahoma City—Mrs. Harriett Murphy, 2513 N.W. 58th, Oklahoma City, Okla. 73112

Chapter
 VZ—Oklahoma City Univ.
 WZ—Oklahoma City Univ.
 Alv—Mrs. Gladys Dotter, 807 1st St., Alva, Okla. 73717
 Bartlesville—Mrs. Melvin Albright, 400 Lahoma, Bartlesville, Oklahoma 74003
 Edmond—Mrs. Raymond Shaffer, 4404 N.W. 36th St., Oklahoma City, Okla. 73112
 Enid—Mrs. Pat Haines, 1921 E. Maple, Enid, Okla. 73701
 *Norman—Mrs. Brison D. Geoch, 935 Mockingbird Lane, Norman, Oklahoma 73069

State Membership Chairman: Oklahoma—Mrs. Wendell Burke, 2212 Ann Arbor Ave., N., Oklahoma City, Okla. 73127

PROVINCE XVII—Texas

Chapter/School
 AT—Univ. Texas
 AY—Southern Methodist
 IZ—Southwestern Univ.
 AO—Univ. of Houston
 AA—Lamar State
 ZZ—West Texas State Univ.
 ZO—Sam Houston State
 ZP—Stephen F. Austin State
 OO—Pan American State
 IA—Southwest Texas State
 IV—Univ. Texas, Arlington

President and Address
 Janis Ratzlow
 Terry Davis
 Linda Cooper
 Carol Quinn
 Meredith Montagnet
 Carolyn Bird
 Denice Pope
 Margaret Miller
 Karen Hatfield
 Ellen Edom
 Dorothy Smith

Chapter Address
 DZ House, 2315 Nueces, Austin, Tex. 78705
 DZ House, 3034 Daniels, Dallas, Tex. 75205
 Box 153, S.U. Sta., Georgetown, Tex. 78626
 1731 Peer, Houston, Tex. 77043
 4135 University, Beaumont, Tex. 77705
 Box 1397, W.T.S., Canyon, Tex. 79015
 DZ House, Ave. J, Huntsville, Tex. 77340
 Box 4980, SFA, Nacogdoches, Tex. 75962
 RR 1, Box 568 Pharr, Tex. 78577
 Les Chateaux, Apt. E6, San Marcos, Tex. 78666
 419 S. Davis, Arlington, Texas 76010

Province Collegiate Director: MRS. WILLIAM B. CARR (BARBARA), 4716 Blaney Ave., Ft. Worth, Texas 76118

Province Alumnae Director: MRS. HARRY G. STALLWORTH (KATIE BLANCHE), 2601 Westover Rd., Austin, Texas 78703

Chapter
 Amarillo—Mrs. S. S. Stephens, 3622 Royal Rd., Amarillo, Tex. 79107
 Arlington—Mrs. Richard Moody, 105 W. Lavender Lane, Arlington, Tex. 76010
 Austin—Mrs. John Gullatt, 4008 Highridge, Austin, Tex. 78731
 Beaumont—Mrs. Pat Parker, 1897 Corley, Beaumont, Texas 77701
 Canyon—Mrs. Jerry Puckett, 505 11th Ave., Canyon, Tex. 79015
 Corpus Christi—Mrs. E. G. Newyear, 501 Miramar, Corpus Christi, Texas 78411
 Dallas—Mrs. Bob L. Dickey, 13666 Pyramid, Dallas, Tex. 75234
 *Denton—Mrs. Bess M. Townsend, N.T. Station, 6154, Denton, Texas 76203
 Edinburg—McAllen—Mrs. Sam Fore, 1209 Whitewing, McAllen, Tex. 78501
 El Paso—Mrs. William H. Jones, 157 Riverside Dr., El Paso, Texas 79907
 Fort Worth—Mrs. D. P. Shore, 2200 Glenco Terrace, Fort Worth, Tex. 76110
 Houston—Mrs. Harvey Holliman, 2202 Brooktree, Houston, Tex. 77008

State Membership Chairman: Texas—Mrs. T. J. Bianchi, 5727 Ellsworth, Dallas, Texas 75206

PROVINCE XVIII—Louisiana

Chapter/School
 Z—Louisiana State Univ.
 AK—Univ. of Southwestern Louisiana
 EB—Northwestern State
 OE—La. Polytechnic Inst.
 OK—L.S.U.-New Orleans

President and Address
 Laura McQuaig
 Sharon Lee
 Cheryl Terry
 Nelda Sisemore
 Catherine Van Geffen

Chapter Address
 AZ House, Box 17674, L.S.U., Baton Rouge, La. 70809
 Box 241, U.S.L., Lafayette, La. 70501
 Box 799, N.S.C., Natchitoches, La. 71457
 Box 101, Rt. 3, Ruston, La. 71270
 1329 Sylvia, Metairie, La. 70005

Province Collegiate Director: MRS. FRANK W. QUIN, JR. (HANNAH-NELL), 6017 River Rd., Shreveport, La. 71105

Province Alumnae Director: MRS. FRED ELSING, JR. (LYNDA), 1216 Wilshire Dr., Alexandria, La. 71303

Chapter
 *Alexandria—Mrs. Fred Elsing, Jr., 1216 Wilshire Dr., Alexandria, La. 71303
 Baton Rouge, La.—Mrs. Paul T. Barber, 2257 Cloverdale Ave., Baton Rouge, La. 70808
 Lafayette, La.—Mrs. Richard Meaux, 318 Beverly Dr., Lafayette, La. 70501

State Membership Chairman: Louisiana—Mrs. Thomas Fenton, 2037 Steele Blvd., Baton Rouge, La. 70808
 Asst. Louisiana—Mrs. W. M. Eberhart, 1513 Steele Blvd., Baton Rouge, La. 70808

PROVINCE XIX—Tennessee and Arkansas

Chapter
 BA—Univ. of Tennessee
 FI—Memphis State Univ.
 AH—E. Tenn. State Univ.
 EZ—State College of Ark.
 EI—Henderson State

President and Address
 Rosemary Hunter
 Linda Payne
 Pat Murden
 Cathy Reed
 Jackie Wilkins

Chapter Address
 Box 2232—831 Volunteer Blvd., Knoxville, Tenn. 37901
 2990 Mandale Dr., Memphis, Tenn. 38127
 Box 028, E.T.S.U., Johnson City, Tenn. 37602
 Box 567, S.C.A., Conway, Ark. 72032
 H.S.C., Box 1680, Arkadelphia, Ark. 71923

Province Collegiate Director: MISS GLENDA RAINY, Rt. 12, Tazewell Pike, Knoxville, Tenn. 37918

Province Alumnae Director: MRS. BOB L. WHITE (DE ANNA), 17 Cliftstone Apts., Kingsport, Tenn. 37664

Chapter
 Tri-Cities, Tenn.—Mrs. Jack Bright, 12129 Waverly Rd., Kingsport, 38128
 Little Rock, Ark.—Mrs. Joe Mahan, 403 Nebling Rd., Little Rock, Ark. 72205
 Memphis, Tenn.—Mrs. Charles Bramlett, 4345 Rhodes, Memphis, Tenn. 38111

State Membership Chairmen: Tennessee—Mrs. Wm. Terrell Siler, 4564 Tricia Dr., Chattanooga, Tenn. 37416
 Arkansas—Mrs. Robert M. Elliott, 323 N. Jackson St., Little Rock, Ark. 72205

Chapter
 Mrs. J. L. French (Mary Anne)
 Stillwater—Mrs. Maurice Roney, 417 Orchard Lane, Stillwater, Oklahoma 74074
 Tulsa—Mrs. W. J. Crichton, 5518 E. 65th Place, Tulsa, Okla. 74135
 Weatherford—Mrs. Carl Steiner, 1010 Indiana, Weatherford, Okla. 73096

College Chapter Director
 Mrs. Forrest R. Mitchell (Paulette)
 Mrs. Wm. Knight (Eleanor)
 Mrs. Angus Springer (Frances)
 Miss Scherrie Watson
 Mrs. Ed Pearson (Kathleen)
 Mrs. J. O. Parker (Lena)
 Mrs. Earl G. Evans (Eunice)
 Mrs. Blanche Phillips
 Mrs. John Hook (Judy)
 Dr. Azalette Little
 Mrs. David Bledsoe (Lanna)

Address
 2709 Pecos St., Austin, Tex. 78703
 6935 Dalhart Lane, Dallas, Texas 75214
 Box 249, S.U. Station, Georgetown, Texas 78626
 P.O. Box 2446, Houston, Texas 77001
 9245 Shepherd, Drive Beaumont, Texas 77707
 1601 8th Ave., Canyon, Texas 79015
 1804 Ave. P, Huntsville, Texas 77340
 301 E. Starr, Nacogdoches, Texas 75961
 Rt. 2, Box 351 Edinburg, Texas 78539
 724 Burleson, San Marcos, Texas 78661
 404 Woodcrest Lane, Apt. 137, Arlington, Texas 76010

Chapter
 Huntsville—Mrs. Bennie Simons, 2516 Robinson Way, Huntsville, Texas 77340
 Lubbock—Mrs. Ernest Nalle, 3410 45th St., Lubbock, Texas 79413
 *Midland—Mrs. Charles Barton, 1710 Harvard, Midland, Texas 79701
 *Odessa—Mrs. Rose Kinser, 2515 Roper, Odessa, Texas 79762
 Port Arthur—Miss Sarah Sims, 3716 Fifth St., Port Arthur, Texas 77640
 *Rio Grande Valley—Mrs. E. B. Hinkly, Box 173, Port Isabel, Texas 78578
 San Antonio—Mrs. Walter C. Dunlap, 8416 Laurelcrest Place, San Antonio, Tex. 78209
 San Marcos—Miss Laura Whittenberg, Commons Hall SWTC, San Marcos, Tex. 78666
 *Waco—Mrs. D. R. Zaggie, 5420 Lake Charles St., Waco, Texas 78712
 *Georgetown—Mrs. Jim Reid, 1702 Hutto Rd., Georgetown, Texas 78626
 *NASA Area—Mrs. George Sandars, Box 634, Pearland, Texas 77581

College Chapter Director
 Mrs. Travis C. Snyder (Sydney)
 Mrs. Van M. Woodward (Mattie)
 Miss Dorothy Hines
 Mrs. Rose M. Smith (Kay)

Address
 1150 Aster St., Apt. 113, Baton Rouge, La. 70808
 311 Whitfield Dr., Natchitoches, La. 71457
 Box 4943, Tech. Station, Ruston, La. 71270
 2423 Pace Blvd., Apt. 47, New Orleans, La. 70114

Chapter
 Lake Charles, La.—Mrs. Leon R. Ford, MRH-BN241, Sulphur, La. 70663
 New Orleans, La.—Mrs. Gerald Clause, 4926 Sierra Madre, New Orleans, La. 70127
 Shreveport, La.—Mrs. John R. Bowman, 2009 Horton Ave., Shreveport, La. 71105
 *Ruston, La.—Mrs. W. E. Baugh, Riser Rd., Ruston, La. 71270

College Chapter Director
 Mrs. Hale Hamilton (Bonnie)
 Mrs. J. E. Andrews (Jackie)
 Dr. Constance Mynatt
 Mrs. Jeff Farris (Fatsy)
 Mrs. Lucy Finley

Address
 1512 Forrest Ave., Apt. 54, Knoxville, Tenn. 37916
 1207 Yorkshire Dr., Memphis, Tenn. 38128
 E.T.S.U., Box 2562, Johnson City, Tenn. 37602
 518 Donaghey, Conway, Ark. 72032
 Box 674, Arkadelphia, Ark. 71923

Chapter
 Knoxville, Tenn.—Miss Carol McSpadden, 2106 Fairmont Blvd., Knoxville, Tenn. 37917
 Nashville, Tenn.—Mrs. J. R. Smith, 824 Glen Leven Dr., Nashville, Tenn. 37204

PROVINCE XX—Virginia, North Carolina, Maryland and Washington, D.C.*Province Collegiate Director:* MRS. LELAND TATE (MILDRED), 111 Cohee Rd., Blacksburg, Va. 24060

Chapter/School
 AΔ—George Washington Univ.
 EΤ—Longwood College
 ΖΑ—East Car. Univ.
 ΖΞ—Lenoir Rhyne College
 ΘΖ—Western Car. College
 ΘΔ—Old Dominion
 ΘΘ—Atlantic Christian

President
 Eleanor Dibala
 Judy Reese
 Carol Julian
 Katie Harris
 Becky Young
 Jacqueline L. Thomas
 Frances Gladson

Chapter Address
 2416 K St., N.W. Washington, D.C. 20006
 Stubbs 226, Longwood Col., Farmville, Va. 23901
 ΔΖ House, 801 E. 5th St., Greenville, N.C. 27834
 Box 645, L.R. Sta., Hickory, N.C. 28601
 Box 1881, W.C.C., Cullowhee, N.C. 28723
 1002 Rockbridge Ave., Apt. 147, C. Norfolk, Va. 23508
 Box 5102 Atlantic Christian College, Wilson N.C. 27893

College Chapter Director
 Mrs. Jos. L. Ralston (Myra)
 Mrs. John O. Wilson (Jean)
 Mrs. K. E. Schmude (Helen)
 Mrs. R. T. Parkinson (Joan)
 Mrs. Carl Smith, Jr. (Dottie)
 Mrs. Glen Hull (Peggy)
 Mrs. Wm. Smith (Barbara)

Address
 2909 Holly St., Alexandria, Va. 22305
 Box 367, Farmville, Va. 23901
 1219 Airlee Ave., Kinston, No. Car. 28501
 521 10th St., N.W., Hickory, No. Car. 28001
 Box 276, Cullowhee, N. Car. 28723
 1323 Bolling Ave., Norfolk, Va. 23508
 503 W. Vance St., Apt. 4, Wilson, N.C. 27895

Province Alumnae Director: MRS. J. ALBERT BASS, JR., 5105 Liles Rd., Raleigh, No. Car. 27606

Chapter
 Baltimore, Md.—

President and Address

State Membership Chairmen: North Carolina—Mrs. Oscar L. Owens, Jr., 1824 Rivershore Rd., Elizabeth City, N. Carolina 27909
 Virginia—Mrs. Barbara Wilson, 3921 Bolton St. NE, Roanoke, Va. 24012
 Maryland—Mrs. Richard F. Free, 2512 Hillford Dr., Baltimore, Md. 21234
 Washington, D.C.—Letitia Dow Iorio, 13212 Dumbarton Drive, Rockville, Md. 20853

PROVINCE XXI—West—Alabama and Mississippi*Province Collegiate Director:* MRS. DOUGLAS GUILD (DIANNE), 11402 S.E. Maplecrest Dr., Huntsville, Ala. 35803

Chapter/School
 AΓ—Univ. Alabama
 AΠ—Samford Univ.
 BΞ—Auburn Univ.
 EΜ—Univ. So. Miss.
 ΘΒ—Birmingham So.

President
 Lane Chambers
 Gail Daniel
 Becky Windham
 Diane Jones
 Marilyn McGough

Chapter Address
 Box 2652, University, Ala. 35486
 WB-259-B Samford Univ., Birmingham, Ala. 35209
 207 Dobbs Hall, Auburn University, Auburn, Ala. 36830
 Southern Box 343, Hattiesburg, Miss. 39401
 Box 352, Birm. So. Col., Birmingham, Ala. 35204

College Chapter Director
 Mrs. Cecil M. Youngson (Angie)
 Mrs. Wm. Miller, Jr. (Patty)
 Mrs. Thomas McMurty (Betty)
 Mrs. Donald Hinton (Pat)
 Miss Ethel Salter

Address
 Box 6174, University, Ala. 35486
 1121 Oxmoor Ave., Birmingham, Ala. 35209
 265 Chewalea Dr., Auburn, Ala. 36830
 216 S. 23rd, Hattiesburg, Miss. 39401
 1429—32nd St., Birmingham, Ala. 35218

Province Alumnae Director: MRS. HAYWOOD DEDMAN, 6806 Criner Rd., Huntsville, Ala. 35802

Chapter
 Auburn, Ala.—Mrs. Robert Williams, 546 Moore's Mill Rd., Auburn, Ala. 36830
 Birmingham, Ala.—Mrs. Robert Clelland, 519 Greensprings Ave., Birmingham, Ala. 35205
 Hattiesburg, Miss.—
 Huntsville, Ala.—Mrs. John T. Wheeler 7404 Martha Drive, Huntsville, Ala. 35802

State Membership Chairmen: Alabama—Mrs. James Dunnam—3640 Wilmington Rd., Montgomery, Ala. 36105
 Mississippi—Mrs. Robert Ross—1040 Meadow Heights Dr., Jackson, Miss. 39206

PROVINCE XXI—East—Georgia and South Carolina*Province Collegiate Director:* MRS. V. H. MEATHERINGHAM (GERTRUDE), Route 1, Kennesaw, Ga. 30144

Chapter/School
 AΘ—Brenau College
 BΔ—Univ. South Carolina
 ΔΔ—Georgia State
 ΖΠ—Univ. of Ga.
 ΙΝ—Georgia Southern College

President
 Suzanne Granbery
 Brenda Smith
 Linda West
 Marilyn Covey
 Julie Banks

Chapter Address
 ΔΖ House, Brenau Col., Gainesville, Ga. 30501
 Box 1252, U.S.C. Columbia, So. Car. 29205
 33 Gilmer St., S.E., Atlanta, Ga. 30303
 ΔΖ House, 397 S. Milledge, Athens, Ga. 30601
 Windburn Hall, Statesboro, Ga.

College Chapter Director
 Mrs. Frank Hatcher (Martha)
 Mrs. Virginia Eagles DeTurk
 Mrs. Roy Barnes (Amaryllis)
 Miss Gail Hendry
 Mrs. James O. Culbreth

Address
 840 Memorial Dr., Gainesville, Ga. 30501
 Cornell Arms, Apt. 8D, Columbia, S.C. 29201
 2424 Glenwood Dr., N.E., Atlanta, Ga. 30305
 175 Baxter Dr., Apt. K6, Athens, Ga. 30601
 Nottingham Trail, Statesboro, Ga.

Province Alumnae Director: MRS. R. F. MARTIN (LOUISE), 451 Carriage Dr. N.E., Atlanta, Ga. 30328

Chapter
 *Athens, Ga.—Miss Lynn Benson, 160 Davis Estates Rd., Athens, Georgia 30601
 Atlanta Council of ΔΖ—Mrs. D. Carl Duval, 2880 Knellwood Trail, E. Point, Ga. 30044
 *Cobb County, Group—Mrs. Charles W. Miller, 656 Huntington Place S.E., Marietta, Ga. 30060
 *Suburban Group—Mrs. R. F. Lewis, 3149 Barkside Ct., Chamblee, Ga. 30005
 *Lampighter group—Mrs. R. F. Martin, 451 Carriage Dr. N.E., Atlanta, Ga. 30328

State Membership Chairmen: Georgia—Mrs. Charles W. Miller, 656 Huntington Pl., S.E., Marietta, Ga. 30060
 South Carolina—Mrs. Edward M. Boland, 371 Carolina Ave., N.W., Orangeburg, S.C. 29115

PROVINCE XXII—Florida*Province Collegiate Director:* MRS. A. D. BURNSED (BEVERLY), 511 Woodward Dr., Lakeland, Fla. 33801

Chapter/School
 AΖ—Florida State Univ.
 BΜ—Fla. Southern College
 BΝ—Univ. of Miami
 ΙΑ—Univ. of South Fla.
 ΙΩ—Jacksonville Univ.

President
 Dian Warren
 Victoria Anne Bayly
 Margaret Peck
 Rose Marie Cali
 Barbara Wely

Chapter Address
 ΔΖ House, 749 W. Jefferson, Tallahassee, Fla. 32304
 Box 214, Fla. So. Col., Lakeland, Fla. 33802
 402 N. Howard Ave., Tampa, Fla. 33606
 Box 144, Jacksonville Univ., Jacksonville, Fla. 32211

College Chapter Director
 Dr. Estella Pomroy
 Mrs. R. B. Baldwin (Nita)
 Mrs. Thos. Sandridge (June)
 Mrs. Charles Appleton
 Mrs. T. C. Clark (Virginia)

Address
 2020 Continental Ave., Apt. 123, Tallahassee, Fla.
 727 Woodward Dr., Lakeland, Fla. 33803
 8040 S. W. 138th St., Miami, Fla. 33156
 4905 San Nicholas, Tampa, Fla. 33609
 1441 Northwood Rd., Jacksonville, Fla. 32207

Province Alumnae Director: MISS ADA GRACE TEDDER, 828 E. Cumberland, Lakeland, Fla. 33801

Chapter
 Boca Raton—Mrs. Ruth Jewell, 2143 Bethel Blvd., Boca Raton, Fla. 33432
 Clearwater—Mrs. Janet Munnis, 1607 Tuscola Rd., Clearwater, Fla. 33516
 Fort Lauderdale—Mrs. Fritz Richter, 124 4740 N.W. 20th Ave., Fort Lauderdale, Fla. 33308

Chapter
 *Palm Beaches—Mrs. Earl Hinman, 276 Camellia St. Palm Beach Gardens Lake Park, Florida 33403
 *Pensacola—Miss Myrtle Lois Bailey, 1223 E. Jackson, Pensacola, Fla. 32501



The Rose Shop offers items exclusively Delta Zeta, with all profits adding to the Endowment Fund. For your own use, for gifts to Delta Zeta Sisters, for rush parties, for awards. Choose something for every occasion.

New items are being designed every month. Write for a catalogue. Send all orders to National Headquarters. Please add 25¢ for mailing.

Your Official Jeweler
BURR, PATTERSON & AULD COMPANY
 2301 Sixteenth Street
 Detroit, Michigan 48216

Gift Parade Catalogue free on request.

OFFICIAL INSIGNIA

When ordering standard badges (1, 2, and 3), use the official order form and forward to the Executive Secretary for her approval. These forms obtainable from your authorized jeweler or from the National Office. Official approval not necessary on the other items illustrated. Order direct from your official jeweler.

1. Pearl and One Zircon, Set Flush\$14.50
2. Pearls and One Zircon, Set Tiffany 14.50
3. Pearls and One .10 Diamond, Set Tiffany 70.00
- Pearls and One .05 Diamond, Set Tiffany 40.00
- Pearls and One .04 Diamond, Set Tiffany 35.00
- Pearls and One .03 Diamond, Set Tiffany 32.00
- Pearls and One .015 Diamond, Set Tiffany 26.00
4. Greek Letter Recognition Pin, Gold-Filled 1.50
- 10K Gold 2.50
5. Recognition Pin, Greek Letter Style, Crown Set Pearl 15.00
- Recognition Pin, Lamp Style (Not shown, but same as #10 Lamp)
 Gold-Filled 1.75
- 10K 3.00
6. Mother's Pin, with Pearls 4.50
7. Mother's Pin, Plain 3.25
8. Pledge Pin 1.25
9. Monogram Necklace, 10K Drop on an 18" Gold-Filled Neck Chain 5.00
10. Lamp Necklace, 18" Neck Chain, Gold-Filled 4.00
11. Lamp Bracelet, Gold-Filled 7.25

GUARD PINS

	Single Letter	Double Letter
Plain	\$ 3.25	\$ 5.00
Crown Set Pearl	10.25	16.75
Close Set Pearl	7.75	14.00
Engraved	4.00	6.25

Be sure to mention the name of your chapter when ordering a guard.

Crested stationery, box	\$1.35
Crested informals 4 × 5 (50)	3.25
3 × 4 (100)	4.50
Pink DZ pads	each .25
Clip boards to fit	1.00
Quill pens, pink or green25
Large quill pens, pink	1.00
Gold pens50
White plastic long pens25
Miniature DZ flags	each .10
Ribbon book marks, pink10
Green rulers10
DZ map place mats (100)	3.00
Playing cards, double deck	3.00
Score pads	each .25
Tallies	doz. .50
DZ seals, green, gold (100)	1.00
White porcelain lamps	4.00



State, County, and Municipal sales or use taxes must be added to prices, wherever such taxes are in effect.

Delta Zeta Sorority
3561 North Pennsylvania St.,
Indianapolis, Indiana 46205

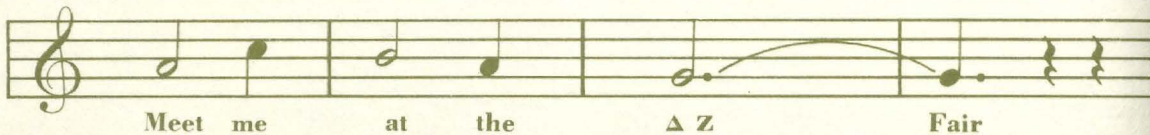
RETURN POSTAGE GUARANTEED

Second class postage paid
at Menasha, Wisconsin

The National Council of Delta Zeta
announces the chartering of the
Triangle Area (North Carolina) Alumnae Chapter
and recent organization of chapters in

Denton, Texas
Georgetown, Texas
NASA Area, Texas

Muscle Shoals Area, Alabama
Central New Jersey
Jersey Shore, New Jersey



STATE AND PROVINCE DAYS

ALABAMA	March 30	Montgomery
COLORADO	April 20	Student Center, Fort Collins
FLORIDA	March 30	Boca Raton
INDIANA	March 9	Hotel Marrott, Indianapolis
KANSAS	March 30	Kansas City, Kansas
KENTUCKY	March 30	Executive Inn, Louisville
MICHIGAN	March 30	Grosse Point
MISSOURI	March 30	Maryville
NEW JERSEY	April 6	Nassau Inn, Princeton
NO. CAROLINA	April 5-7	Raleigh
OKLAHOMA	April 26-27	Hotel Mayo, Tulsa
OREGON	March 30	
PENNSYLVANIA	April 20-21	Seven Springs Resort, Champion, Pa.
SO. CALIF.	April 20-21	Saddleback Inn, Santa Ana
TENNESSEE AND		
ARKANSAS	April 27-28	Ramada Inn, Nashville
TEXAS	April 20-21	Inn of the Six Flags, Arlington
NEBRASKA		Kearney
ILLINOIS		Peoria

REGISTRATION FOR DELTA ZETA STATE AND PROVINCE CONFERENCE

State or Province

I wish to attend your State conference

Please send me

Cost

Place

Time

Date

My name address

Chapter

Please cut out and send to Province Alumnae Director for further information