

**T H E**

**L A M P**

**VOLUME 19 • NUMBER 4**





**T H E**

**L A M P**

**JUNE • 1930**



COPYRIGHT 1930  
BY  
DELTA ZETA SORORITY









**MARGARET H. PEASE**  
*Editor*

**IRENE BOUGHTON**  
*Executive Secretary*

## ***Contents for*** **JUNE, 1930**

Discrimination or Exploitation .....	<i>Edna H. Porter</i>	259
Call to Convention .....		262
Strike Up the Band .....		263
Convention Brevities .....		263
Let's All Sing at Convention .....		264
Convention Committees .....		264
Delegates to the Delta Zeta Convention .....		265
Fifty-five .....		267
Delta Zeta Pictorial Life .....	Facing Page	268
Registration Blank .....		269
Madison News Via <i>The Convention Daily</i> .....		269
College Fraternity Editors' Ass'n Creed .....		270
Officers of the College Fraternity Editors' Ass'n .....		270
Average Yearly Salary for Part Time Editors is \$1,141 .....		
.....	<i>Leland F. Leland</i>	271
What Spells Fraternalism? .....	<i>Alpha Burkart Wettach</i>	272
Maud Carson Gittman .....		273
"Pease Porridge Hot" .....		274
Alumnæ Chapter Letters .....		275
Active Chapter Letters .....		279
Directory .....		297



The DELTA ZETA LAMP is published by the George Banta Publishing Company in the months of January, May, June and November at 450-454 Ahnaip St., Menasha, Wisconsin, official printer to the sorority. Life subscription \$30.00.

Entered as second class matter October 18, 1909, at the postoffice at Menasha, Wisconsin, under the Act of Congress of March 3, 1879.

Acceptance for mailing at special rate of postage provided for in section 1103, Act of October 3, 1917, authorized September 26, 1918.



# CONVENTIONATA



*Can you guess the name of the convention initiate?*

★ ★ ★

*Lucky Thirteenth Convention. Are you superstitious?*

★ ★ ★

*Don't forget your costume for the Costume Cotillion.*

★ ★ ★

*Who will win the Song Cup?*

★ ★ ★

*Is your stunt planned? Remember, Stunt Night, July 10.*

★ ★ ★

*Real Movies of Vest. Don't miss them. July 11.*

★ ★ ★

*Take the trip to the Dells. July 13. Again the lucky thirteen.*

★ ★ ★

*Time: 8:00 A.M. Place: Union Station, Chicago. The Girl: You.*

★ ★ ★

*If you can't sing, whistle, but bring your songbook!*

★ ★ ★

*Young folks, old folks, everybody come,  
Come to our convention, you'll have a lot of fun.*

★ ★ ★

*No registration is taken for granted. Fill out the blank!*

★ ★ ★

*Are you sure you know the Chapter Roll?*

★ ★ ★

*Don't forget to get your certificate when you buy your ticket. Take your  
folder with you.*

★ ★ ★

*Don't forget your camera, bathing suit, sports equipment, pencil, costume,  
and all white outfit!*



# THE LAMP

Vol. 19



No. 4

## Discrimination or Exploitation

*By Edna H. Porter,\* Iota*

**W**HEN the Cheerful Cherub announced in her usual sprightly way that,

*"Destiny hands me my life  
Whether I like it or no.  
No one but I can decide  
How I re-act to it though!"*

she probably was thinking of herself as a person rather than as a professional woman.

A year ago in an address delivered at Alpha Province Convention, and printed later in *THE LAMP*, Miss Cooper of The Woman's Party gave a clear, interesting and necessary insight into the inevitable reactions of successful and advanced business and professional women towards legal discrimination, based largely on laws affecting their political and legal status and property rights, but also in part to legislation passed primarily for the protection of girls and women in industry.

\* Secretary, Business and Professional Department, National Board of the Young Womens Christian Association, 600 Lexington Avenue, New York City.

Because many of us who are loyal to Delta Zeta have found in attempting to deal with problems arising in connection with our professions, those of social work or the Young Women's Christian Association secretaryship, that other large groups of employed women must, of necessity, have very different reactions to such protective legislation, we have asked for this opportunity to present another viewpoint. This is not done from the angle of debate or argument but with the desire that Delta Zetas as they think and work for the right kind of legislation may work towards such action as will protect any group needing protection, while releasing groups at present handicapped by legislation which results in unfair discrimination.

With varying degrees of consciousness we, as women consumers, are aware of the thousands of wage earning women who in this highly mechanized and specialized age feed and clothe us, providing us with both the necessities and luxuries of life. Often we are all too unaware



of the destiny which hands them their life and their inevitable reaction to conditions they, as individuals, are powerless to change.

While it is impossible in a brief article to give even a meager outline of these conditions, it is possible to give a short comparison of the professional and industrial woman's problems.

The industrial woman usually begins work in her early teens. The professional woman begins work in her twenties or early thirties.

The industrial woman rarely has more than an eighth grade education. The professional woman must continue educational activity throughout her life.

The industrial woman learns a mechanized job in a few days or weeks. The professional woman needs a lifetime in which to acquire and perfect her skill.

The industrial woman enters industry, not as an individual, but as one of a new shift or group, dozens or scores often beginning work at the same time.

Almost any girl can take the easily trained industrial woman's place. The professional woman makes her own individual place which no one else can exactly duplicate.

The industrial woman competes therefore with women of her own kind, in a market easily filled and often crowded. The professional woman competes with men and other professional women in a field, which crowded or not, always has room at the top and provides satisfying recognition for work well done.

The industrial woman cannot bargain alone for her wage or control the number of hours she is asked to spend in repeating an endlessly monotonous task to earn that wage. The system under which she works demands in the main "cheap labor" and the only recognition she usually receives for work well done is escape from unemployment. The professional woman has the protection of professional standards of remuneration set by the professional group to which she belongs. The system under which she works demands expert service and usually, even at its lowest levels, pays a reasonable price for that service. Legal

limitation of hours in the creative task provided by most professions is a great handicap to professional workers.

The professional woman has every right to demand freedom from legislative restriction so that she may accomplish that professional advancement in fields so recently occupied exclusively by men which is desirable and necessary, not only for her own welfare, but for the welfare of the race.

The industrial woman, equally, has a right to expect protection in her field, in which advance can only be made as the group advances together. Responsibility for this advancement must rest in part with the entire public which is the ultimate consumer of the goods produced by the industrial group and this public can, perhaps, most effectively express through legislation its desire for reasonable protection for the group from exploitation. As far as competition with men is concerned, protective legislation in the industrial field reduces this problem, and works for the good of both groups.

And what about girls and women in business? The tremendous increase in high school population is turning an ever widening stream of girls into the business world. These younger girls, college age, eager, ambitious, are facing problems their older and often highly successful sisters in the business world were never obliged to meet.

The age of mechanization, slowly but surely, is making its impress upon the business world and as a result thousands of girls are operating office machines under situations that are becoming increasingly like those under which industrial women work. Mergers, with their consequent policy of centralization, have developed the efficiency expert, and clerical workers are finding their work is being speeded up and that the variety of processes assigned to an individual worker are being reduced. With this reduction follow inevitably less opportunity for advancement and less security in employment, for new girls can be trained easily and soon become equally valuable while being paid less salary.



The successful, expert business woman needs the freedom to progress due the professional woman. On the other hand it is easy to believe that the rapidly increasing number of clerical workers may well need protection from exploitation which can so easily occur in any labor market where labor is cheap, easily trained, and where the supply exceeds the demand.

So as we face together this life which destiny hands women today and as we work towards various solutions of its evident problems in which we are all involved, not so much because we are students, home makers, professional wom-

en, business, or industrial women, but because we share economic life together both as producers and consumers, it does seem necessary to consider carefully and with open minds the needs of all groups of women. To urge fair and open minded consideration of such problems in a Delta Zeta magazine, is of course, totally unnecessary as Delta Zetas by their genuine interest in varying phases of public questions have demonstrated.

[In the LAMP for November, 1929, an article entitled "Legal Disabilities of Women" appeared. The Editor would be pleased to hear expressions of opinion on both of these articles.]

## Volunteers Wanted!

### *to work on the LAMPKIN, official Convention Paper*

Again *The Lampkin* will shine forth, wag its tale, wiggle its nose, or otherwise show its appreciation for being brought forth from cold storage after 10, these many years! Would you like to be a newsboy, just for a day? Would you like to write newsy news about new people? Would you like to pry and probe and probe and pry into the innermost heart secrets of the convention hounds? Could you write a sob story about the constitution? Would you like to be a devil? (A printer's devil we hasten to add.) Can you draw? Will you?

If you would like to work on *The Lampkin*, and it will be fun, fill out and mail the attached form. Virtue is its own reward.

.....  
I wish to work on *The Lampkin*, the convention paper. On editorial staff ☐, in clerical capacity ☐, on business staff ☐, on art staff ☐.

Signed .....Chapter .....

Address .....

(Send to Mrs. John W. Pease, 4719 Winton Road, Cincinnati, Ohio.)



## Call to Convention . . .

**DON'T** be afraid of the number thirteen. Let's dispel the Jinx and make this the biggest, most enthusiastic, most worth while convention in the history of Delta Zeta, not in spite of, rather because of the fact that it is the thirteenth biennial meeting.

This year, the convention meeting place has been selected in the center of the Delta Zeta population. The railway fare is low from all points surrounding Madison and special rates may be obtained during the summer from all far West points, and the certificate, or fare and one-half rate should be an inducement to all others. If you are going East or West plan your vacation so that you may stop over in Madison. You will have an enjoyable time, you will broaden your contacts, you will renew old acquaintances and make new ones, you will be showing your interest in and your loyalty to your sorority.

The convention committee is planning for an attendance of 300. Fill in and return the registration blank which you will find in this copy of *THE LAMP* and assure yourself of a reservation and a royal welcome.

LISETTE REINLE,  
Convention Marshal

## Oh Yez! Oh Yez! Oh Yez! . . . . . . Hear Ye! Hear Ye! Hear Ye!

**THIS**, Delta Zetas, is a dreadfully formal *Writ of Habeas Corpus* (you know, bring the body, dead or alive) for everyone of you to appear at the Thirteenth Biennial Convention of Delta Zeta Sorority, July 7-12 in Madison, Wisconsin. This invitation cannot possibly be refused—in fact it is a command!

One can never really express "Welcome" on paper, but you must realize how sincerely Delta Province welcomes you now, when you experience the results of all the plans and efforts which have been made to give you a glorious time at convention. Madison welcomes you, and Madison, you will find, has "that certain thing," that elusive charm, you will adore.

Convention is Delta Zeta in its most splendid and beautiful reality . . . all its rewards, its joys, its loyalties. Wherever you are, pack your little ol' suitcase in just such a way that when you unpack it again you'll be in . . . why don't you know? . . . Madison, of course!! Won't you? July 7, lucky seven, lucky day, lucky us, lucky thirteenth convention.

HELEN WOODRUFF,  
Assistant Convention Marshal



# ● Strike Up the Band

---

**STRIKE** up the band, call out the guards, run up the colors, we are all set for a most unusual convention! In a few days, it will be, "When a body meets a body," in the Assembly Room of the Union Station in Chicago, on the Jackson Street side. Old acquaintances will be renewed, new ones will begin, a rush for the "Special," and the Thirteenth Biennial Convention will become a reality. A week of good times, inspirational talks, meeting the person we most want to meet, singing together, talking together, laughing together, and dancing together, playing together, meeting together, dining together, and together witnessing our lovely ritualistic

services, indeed a week of exceptional opportunities.

Centrally located, Madison is an ideal spot for this lucky thirteenth convention. Come, join in the fun! This is to be a convention where everybody knows everybody else. You'll need no introduction. Shall we see you in the Assembly Room on Monday morning, July 7, with bag and baggage, ready to step aboard the Milwaukee at eight o'clock? As the convention folder said, "The Convention Special, the Chapter House on Wheels." Come, join in the fun for a week you will never forget! Plan now! Plan hard! But Come!

## Convention



## Brevities

¶Don't forget the dates: July 7-12.

¶Nor the place: Hotel Loraine, Madison, Wisconsin.

¶We all travel together from Chicago, meeting in the Assembly Room of the new Union Station (Jackson Street entrance), and leaving at 8:00 A.M. for Madison, via the Chicago, Milwaukee, St. Paul, and Pacific R.R., arriving in Madison at 12:20, giving us all time to get registered and settled before the reception at four that afternoon.

¶If you wish parlor car reservation from Chicago, be sure to so indicate on your Registration Blank.

¶Don't forget, those of you who do not have a summer tourist rate, be sure to ask for certificate when buying your ticket. This will entitle you to one-half fare on your return trip, provided we have 150 certificates.

¶Consult railroad folder, enclosed with last *Sidelights*, for dates of purchase of tickets under certificate plan.

¶Further information regarding tickets, routes, etc., will be given on request. Write Mr. E. J. Wellinghoff, 204 Dixie Terminal Building, Cincinnati, Ohio. Some of you may remember Mr. Wellinghoff from the San Francisco Convention Special.

¶Of course you may bring your mothers, sisters, husbands, aunts, brothers, friends, with you to convention! They will not attend sessions of convention, but they are given the same train and hotel rates. Bid them welcome!

¶Pledges are especially welcome at convention; are urged to attend.

¶"Sing, sisters, Sing! Let Convention ring. . . ." Practice up on your favorites.



¶Is your province stunt all planned? Are you all set to win the big stunt night prize?

¶Do you have your costume for the cotillion? It has been suggested that we have our costumes represent some phase of American history. This is just a suggestion. It is the hope of the committee planning this affair that this be a truly lovely costume party. Bring a costume with you and come prepared to have a jolly time at the Costume Cotillion. Yes, there will be favor dances and prizes for costumes.

¶Are you a hound, or a pup?

¶Remember, an *all white* outfit for the pledge and initiation service which will

be given by members of the National Council.

¶Bring your pencils and pens to take notes. Notebooks will be provided.

¶Surely you will not want to miss the Dells. This post convention trip will be one of the high lights of your convention experience. Do not miss it. The date—July 13. The time—9:00 A.M. Lunch at the Dells, a delightful three and one-half hours boat trip through some of the most beautiful scenery in the United States, and back to Madison in time to catch the evening train into Chicago. Sign up on the registration blank for the post convention trip to the Dells.

---

## Let's All Sing at Convention

---

A SINGING chapter is a happy chapter," or "A singing chapter is a good chapter." Take out that "chapter" and put in "convention" and you are right once more. Get out your Manual and read once again the chapter on "Chapter Singing" 'ere you embark for Madison. *Then* get out your song-book and sing, sister, sing! We have heard a great deal lately about singing in the rain and the bath tub and the bass viol. How about a new one "Singing at Convention." Sing! Sing whether you can or no, it will swell the triumphant chorus. Learn to sing all of these songs, yes, and a little bit more.

"Delta Zeta Lamps Are Burning," "'Neath Moon and Sun," "When the Moon Plays Peek-a-Boo," "Grace Before Meals," "Dream Girl of Delta Zeta," "Love for Delta Z," "It's Just a Little Lamp," "The Rose Song," "Delta Zeta All for Thee," "Sunshine and Shadows," "Lamp of Gold," "Look for the Flame That's Burning," and your favorite chapter songs.

For, as Thackeray says, "Music stirs the feelings of love, peace, and friendship." What better than a singing convention?

---

### Convention Committees

---

HOSTESS—Delta Province.

CONVENTION MARSHAL—Lisette Reinle, Helen Woodruff, Assistant.

REGISTRATION AND CREDENTIALS—Irene Boughton, Hazel Egan, Assistant.

TRANSPORTATION—Margaret Buchanan.

CONVENTION STUNTS—Katherine Morrison.

PARLIAMENTARIAN—Rene Sebring Smith.

DEVOTIONS—Past Presidents.

COSTUME COTILLION—Annette Steele Ladd.

CONVENTION PHYSICIAN—Dr. Helen Johnston.

RESOLUTIONS—Anne Simmons Friedline.

RECOMMENDATIONS—Julia Bishop Coleman.

NOMINATIONS—Ruby Long.

PLAY DAY—Hostess Committee.



# DELEGATES to the



## Delta Zeta Convention

ALPHA—Marian Parman. Chapter president for coming year. Mortar Board.

BETA—Arlene Van Derhoef, Fine Arts, '32. Sorority president next year. Plays violin, piano, and trumpet. Likes dogs and horseback riding. Winner of cup for fencing. Manager of Rifle, Dot and Circle. W.A.A. Council.

GAMMA—Alice Kelm. President of local Panhellenic. President of Panhellenic Association of Urban Universities. President Gamma chapter. Interested in business, personnel work, sports, horseback riding, and dancing. Reliable and an able executive.

DELTA—Jane Isackson.

EPSILON—Jeanette Duryee. An active Y.W.C.A. worker. Very capable and dependable with a most pleasing personality.

ZETA—Gertrude Chittenden, '31. President for next year. Secretary Home Ec Club. Vice-president of Omicron Nu, national honorary society. Secretary Ag Executive Board. Treasurer Phi Upsilon Omicron.

ETA—Lois Snell, chapter president, interested in dramatics.

THETA—Selma Fraas.

IOTA—Marguerite Russell, chapter president.

KAPPA—

LAMBDA—Ruth Widestrand, president for coming year. Interested in athletics.

MU—Marian Geddes.

NU—Grace Egan.

XI—Virginia Foy, '32. President for next year. Capable as a leader and active in University Discussion Groups and Panhellenic.

OMICRON—Sarah Moore. Member Cwens, W.S.G.A. Commission. Vice-president of chapter. Volunteer at Sotio Settlement and chairman of Cathedral Committee at Pittsburgh. Alert and charming.

PI—Nina Coleman, president for next year. President Panhellenic, vice-president of Junior class. A fine all-around girl.

RHO—Eleanor Cox, chapter president. Member Kappa Delta Pi and Spanish Club. A capable and likeable girl.

SIGMA—

TAU—Margaret Jenkins, chapter president. Will make a charming hostess.

UPSILON—Coral Krostine, president for next year. Active in Y.W.C.A. and Girl Reserve work, debating and public speaking, on *Dacotah* staff. Co-operative.

PHI—Lois Hamilton, president for coming year. Home Economics major.

CHI—Mary Bennett, very popular and in many activities: National Collegiate Players; Varsity Women's Debate; Day Editor of *Barometer*; Theta Sigma Phi; Cap and Gown; Phi Kappa Phi; W.A.A.; Orange "O"; and Department Editor of *Beaver*.

PSI—Thelma McPheeters.

OMEGA—Virginia Peyton, chapter



president. Secretary in business office of *Oregon Daily Emerald*. Scholarship honor roll, and member of Master Dance.

ALPHA ALPHA—Mildred Marsh.

ALPHA BETA—Audrey Weis. Rushing chairman for next year. Interested in sports. Member Annonian Literary Society and Gold Feathers. An all around girl.

ALPHA GAMMA—Marie Wiley.

ALPHA DELTA—Loretta Cunningham. Unusual executive ability. Pianist.

ALPHA EPSILON—

ALPHA ZETA—Miriam Kullman. Chapter president for next year. Interesting and lively personality. Swimming and riding. Lead in Soph Show.

ALPHA ETA—Helen Aulph.

ALPHA THETA—Sara Reynolds

ALPHA IOTA—Katherine Ryan, chapter president, member of Spinsters, junior honorary.

ALPHA KAPPA—Mildred V. Campbell. Member of University Chorus and Phi Gamma Phi. An able executive, jolly, kind, and tactful.

ALPHA LAMBDA—Lorene Hodges, chapter president for coming year; *Silver and Gold staff*; Big Sister University Woman's Club.

ALPHA MU—

ALPHA NU—Mary Elizabeth Thumma, chapter president.

ALPHA XI—Sarah Mendenhall. Chapter president for next year. Panhellenic representative. Book review editor of *Sun Dial*, Randolph-Macon's weekly.

ALPHA OMICRON—Margaret Adams.

ALPHA PI—Jeanette Morgan, newly

elected president. House president of Girls' Dormitory, member Y.W.C.A. and Y.W.A. Panhellenic representative. Her special interest is music.

ALPHA RHO—Vivian Janney, newly elected president. Freshman Cottage Advisor. O.W.U. debate team. Writes poetry and jingles. Reads beautifully.

ALPHA SIGMA—Margaret Murphy, outstanding on campus; member Freshman Commission; chairman Asher Committee; representative to Senate of F.S.C.W.

ALPHA TAU—

ALPHA UPSILON—Esther Moore.

ALPHA PHI—Wilma Taylor. Chapter president. President of W.A.A. Member Jay Janes.

ALPHA CHI—Gertrude Haserot, an active, all-around girl in sports.

ALPHA PSI—

ALPHA OMEGA—Katharine Hoffman. ning personality. Versatile. Y.W.C.A. leader. Interested in dancing.

BETA ALPHA—Virginia B. Lovejoy. President of W.S.G.A. Interested in sports. Guard of basketball team.

BETA BETA—Frances Pettyjohn, chapter president. Secretary Student Council. Member of Alpha Lambda Delta. Co-ed editor of "Y" Book. Student assistant librarian.

BETA GAMMA—Jean Allen, newly elected chapter president. President of Panhellenic. Hockey, Players Club. Capable and well like on the campus.

BETA DELTA—Sarah Calhoun. Freshman Y.W.C.A. Cabinet. Recent initiate.

BETA ZETA—Ruth M. Wilson.

## ***Alumnae Delegates***

BATON ROUGE—

BERKELEY—

BIRMINGHAM—Annabel Hendon

CHICAGO—Mrs. F. O. Toof

CINCINNATI—Mrs. John W. Dalzell

CLEVELAND—

COLUMBUS—

DAYTON—

DENVER—

DETROIT—

FT. WAYNE—

INDIANAPOLIS—Frances Westcott

KANSAS CITY—Karleen Garlock

LINCOLN—Effie Noll

LOS ANGELES—Mrs. Raymond Meunter

MINNEAPOLIS—ST. PAUL—Helen Woodruff

NEW YORK—

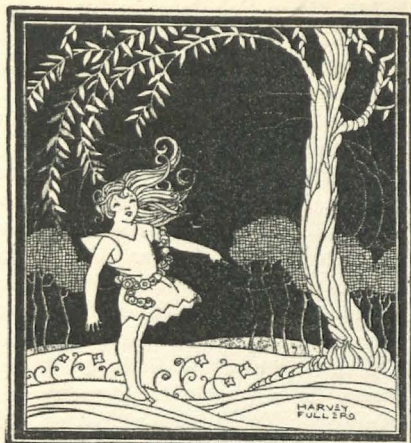
PITTSBURGH—Venus Shakarian

PORTLAND—Agnes Christie

SEATTLE—Ruth Elizabeth Sutton

WASHINGTON, D.C.—





• 5 •  
• 5 •  
**Fifty-  
Five**  
• 5 •  
• 5 •

**BETA ETA**, the fifty-fifth chapter of Delta Zeta, was installed on May 10 at Swarthmore College, Swarthmore, Pennsylvania.

I wish each of you could visit Swarthmore, the lovely little village, just a few minutes from Philadelphia, and Swarthmore College, with its charming buildings of native stone, its quaint little church of the Friends Society, its beautiful old trees, the historic Benjamin West House, and its student body of alert, keenly intelligent, and purposeful young men and women. I think it was this quality of the student body which impressed me most of all, although I will admit a fondness for the natural beauty of the campus, the perfect little gems of fraternity lodges, the most attractive sorority lodges, and for Bond Memorial where the initiation services were held.

Swarthmore is rich in tradition, and its history is most interesting. Quoting from the petition of Alpha Delta Tau, which became Beta Eta of Delta Zeta:

Swarthmore College was founded in 1864 through the efforts of members of the Religious Society of Friends, for the purpose of securing to the youth of the Society an opportunity for higher educational training under the guarded supervision and care of those of their own religious faith. Other applicants are admitted on the same terms as Friends and nothing of a sectarian character now exists in the instruction or in the management of the college.

There are over twenty college buildings.

Among them is the Benjamin West House, where Benjamin West was born in 1724.

The total endowment of the college is three and one-half million dollars.

Within recent years the college has received many munificent gifts from its various alumni and friends. Among these are the Clement M. Biddle Memorial Library of the Friends Historical Society, the Morris L. Clothier Stadium, and the Isaac H. Clothier Memorial Chapel.

Students capable of doing more independent work than that required to fulfill the ordinary requirements for the A.B. degree are allowed to volunteer at the end of the sophomore year to read for the A.B. degree with honors. Admission to the status of an honor student depends upon the quality of the applicant's work in the first two years. In the consideration of this record, special aptitude is regarded as more important than a mere high average of grades all around. The honor system at Swarthmore was established by President Aydelotte."

Alpha Delta Tau was organized in November, 1928, by a small group of representative women of the campus.

From the first the group established itself as a secret order and conducted itself on a basis of equality with the other fraternities. It has since selected women of its own choice and has in every instance followed strictly the laws of the local Panhellenic Association. Although the fraternity has remained small, each year since its establishment it has acquired a freshman group which in qualities of ability, personality, and character competes most favorably with the freshman groups of the national fraternities located there.



The activities of its members are many and varied. The group has consistently ranked high scholastically since the date of its founding. There are fifteen groups on the campus, including men and women. At the end of the first semester 1928-29, Alpha Delta Tau, by the official scholastic rating of the college, was highest of all these groups with an average by the Swarthmore point system of 1.98. At the end of the second semester of the year 1928-29, Alpha Delta Tau dropped to third place, having an average of 1.85. It was surpassed only by Chi Omega, with an average of 1.91, and Bond Club with an average of 1.86.

There are six other national sororities on the Swarthmore campus, Kappa Alpha Theta, Pi Beta Phi, Kappa Kappa Gamma, Delta Gamma, Chi Omega, and Phi Mu. Five fraternities maintain chapters there, Kappa Sigma, Phi Kappa Psi, Delta Upsilon, Phi Sigma Kappa, Phi Delta Theta. There is one local, Theta Sigma Pi, established in 1924.

Fifteen girls were initiated and installed as Beta Eta of Delta Zeta, a representative group with varying interests and activities. Frances Burlingame, assistant professor of education at Swarthmore who will next year be dean of women at Elmyria College. Miss Burlingame received her Ph.D. from Harvard University. Mary Elizabeth Betts, a junior, is manager of women's debate, a member of the debate squad, and of the orchestra. Marian Colson, a senior, member of the Classical Club, and class hockey and archery teams. Esther Dudley, a junior, who transferred from an Illinois college in her sophomore year. Cecilia Garrigues, a senior honor student, took her junior year abroad, receiving a diploma from the University of Paris. She is a member of the Classical Club, president of the French Club, winner of Junior Blazer, a member of the varsity swimming team, and of her class hockey and basketball teams. Helen Grumpelt, a sophomore, is a member of the Sophomore Court, and working for a scholarship. Margaret Gurney is a senior and an Honor Student. She has held the

White Open Scholarship for four years, is auditor Womens Student Government Association, a member of Sigma Xi, and of chorus. Margaret is Panhellenic Delegate for the group. Mary McKenzie, a senior, was president of the group this past year. Katherine Patterson, a junior, is editor elect of the *Women's Student Handbook*, secretary-treasurer Coranto, and is junior editor *Phoenix*. Helen Mitchell Smith, a sophomore, is interested in swimming and is trying out for manager of the sport, and also for the *Halcyon* staff. Mary Alice Williams, is a graduate student. Edith Margaret Zabriskie, a junior, is the newly elected president of the group. She is organization editor of *Halycon*, a member of chorus, and is interested in dramatics. Three freshmen, Dorothy Underwood, Helen Flanagan, and Barbara Crosse were initiated.

Miss Katherine Goodall, Alpha Kappa, is alumna adviser for the group, and has been their guiding star for the past several months. Miss Goodall assisted at the time of their pledging in March, and was indeed a help to the installing officer at initiation. It was Kay who gave the pledge training and examination, who notified the Delta Zetas in the vicinity, who assisted the Alpha Delta Tau girls in their plans for initiation, for the lovely tea in the afternoon after the services, and in their arrangements for their perfect initiation banquet.

The many letters and telegrams from the chapters and officers were indeed appreciated by the girls. They received bouquet after bouquet of flowers from the groups on the campus, from their alumna advisor, and from our nearest chapter, Beta Epsilon. It was a thoroughly charming occasion.

The members of the installing team were Katherine Morrison, Omicron, and Annette Steele Ladd, Alpha Delta, province officers, Helen Collins McElwee, Tau, alumna advisor of Beta Epsilon, Katherine Goodall, Alpha Kappa, Rachel Casey, Epsilon, girls from Beta Epsilon, and Margaret Pease, representing the national council.



# Delta Zeta Pictorial Life



LILLIAN HARDEE, *Alpha Xi*  
*Attendant to the May Queen at Randolph-Macon*



# Delta Zeta Pictorial Life



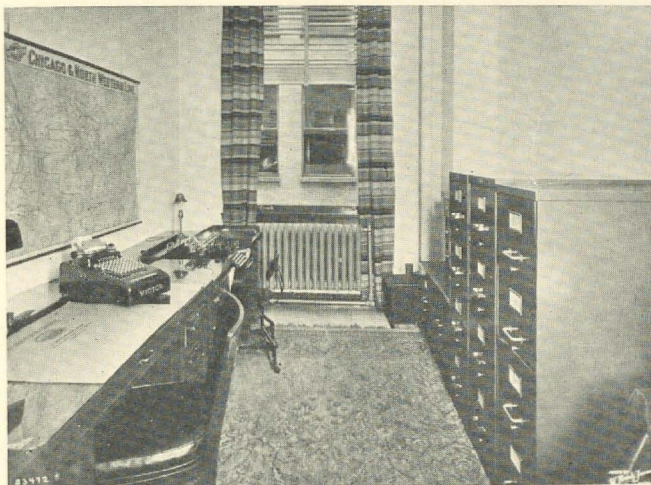
*Banta's Greek Exchange*

THE ILLINOIS BUILDING AT INDIANAPOLIS  
Where the Central Office of Delta Zeta is located. Stop here on  
your way to Convention.



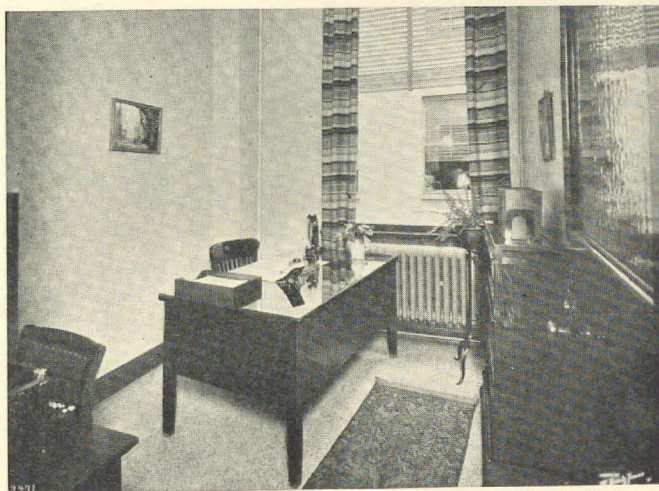
# Delta Zeta Pictorial Life

*See this En route!*



*Banta's Greek Exchange*

WORK ROOM



*Banta's Greek Exchange*

OFFICE OF THE EXECUTIVE SECRETARY

# Delta Zeta Pictorial Life



MYRTLE GRAETER MALOTT, *National President*  
Will greet you at the Thirteenth  
Convention.



# Delta Zeta Pictorial Life



LOIS E. HIGGINS, *First Vice President*



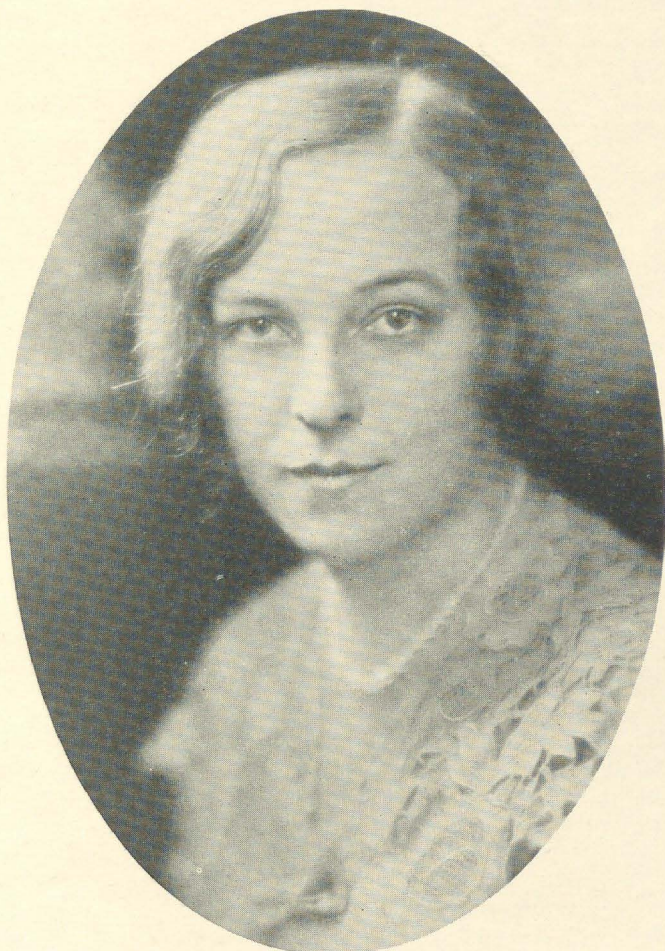
# Delta Zeta Pictorial Life



FANNIE PUTCAMP SMITH, *Second Vice President*



# Delta Zeta Pictorial Life



MARGARET H. PEASE, *Editor of "Lamp"*



# Delta Zeta Pictorial Life



IRENE C. BOUGHTON  
*Executive Secretary*



WINONA E. JONES  
*National Treasurer*



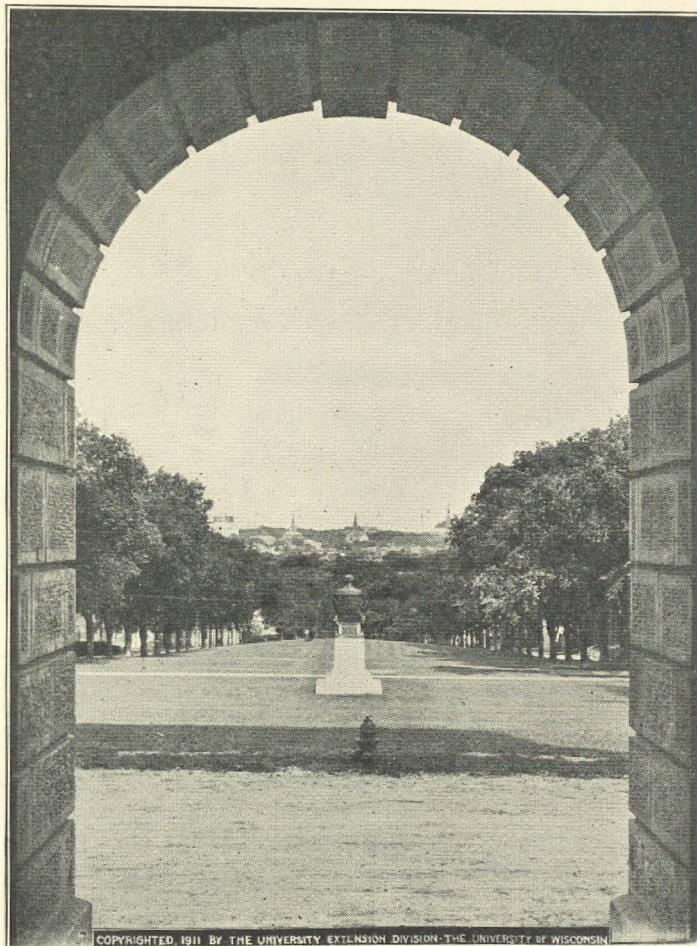
RUBY LONG  
*National Secretary*



MARGARET BUCHANAN  
*Transportation Chairman*



# Delta Zeta Pictorial Life

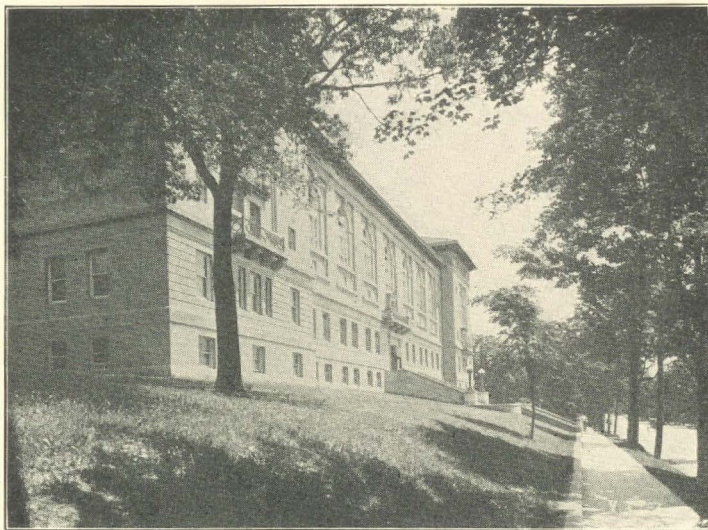


COPYRIGHTED 1911 BY THE UNIVERSITY EXTENSION DIVISION THE UNIVERSITY OF WISCONSIN

"OPEN DOOR" OF THE UNIVERSITY OF WISCONSIN,  
SHOWING THE CITY IN THE DISTANCE



# Delta Zeta Pictorial Life



LATHROP HALL—WOMEN'S BUILDING



BIRD'S-EYE VIEW OF MADISON SHOWING THE NARROW ISTHMUS ON WHICH THE CITY IS BUILT, WITH LAKE MENDOTA TO THE RIGHT AND LAKE MONONA TO THE LEFT IN THE BACKGROUND.



# Delta Zeta Pictorial Life



BETA ETA OF DELTA ZETA, SWARTHMORE COLLEGE

LEFT TO RIGHT: TOP ROW—PATTERSON, BETTS, VINSON, ZABRISKIE, GURNEY.  
MIDDLE ROW—GARRIGUES, FLANAGAN, DUDLEY, COLSON.  
BOTTOM ROW—SMITH, MCKENZIE, GRUMPELT, CROSSE.



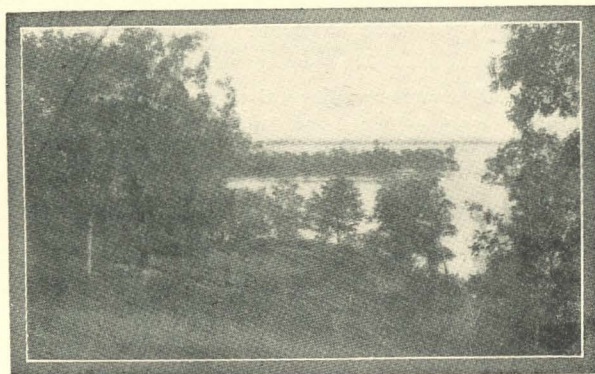
LORRAINE HOTEL



# Delta Zeta Pictorial Life



THETA CHAPTER HOUSE



PICNIC POINT—FAVORITE RENDEZVOUS OF CANOEISTS



LISETTE REINLE  
*Convention Marshal*



**July 7 - 12, 1930**





# College Fraternity Editors Ass'n CREED

**TO** STIMULATE and encourage those engaged in college fraternity journalism; to form a center for the intercourse and exchange of views of all those interested in fraternity editing; to establish a community of interest through personal contacts; to raise the standard of fraternity journalism and the excellence of fraternity publications; to publish books and periodicals helpful to members; to co-operate with the Interfraternity Conference in the dissemination of information for the good of

that body and of the entire fraternity system; to discourage the publication in the press of ambiguous and injurious matter by supplying correct information; to educate the public in the character, ideals, and purpose of college fraternities and of their agent, the Interfraternity Conference; and generally to do all things that will aid in elevating our profession and tend toward an intelligent understanding of the purpose of college fraternities by the public.

## Officers of the College Fraternity Editors Ass'n . . .

*President:* LELAND F. LELAND, Editor, *Teke*, of Tau Kappa Epsilon.

*Vice-President:* J. HAROLD JOHNSTON, Editor, *Shield and Diamond* of Pi Kappa Alpha.

*Secretary-Treasurer:* ALBERT S. TOUSLEY, Editor, *The Delta Chi Quarterly*.

*The Executive Committee:* The above officials and ERIC A. DAWSON, Editor, *The Sigma Alpha Epsilon Record*; HAROLD P. DAVISON, Editor, *The Unicorn* of Theta Xi.

*Regional Advisors:* Southern—H. B. HANDY, Editor, *The Kappa Alpha Journal*; Midwestern—CHARLES E. THOMAS, Editor, *The Delta* of Sigma Nu; Far Western—KING WILKIN, Editor, *The Emerald* of Sigma Pi.

*Past Presidents:* WILLIAM C. LEVERE, *Sigma Alpha Epsilon*; CHESTER W. CLEVELAND, *Sigma Xi*; CECIL J. WILKINSON, *Phi Gamma Delta*; GEORGE BANTA, JR., *Phi Delta Theta*.

*Editor of Publications:* LELAND F. LELAND, *Tau Kappa Epsilon*.





# Average Yearly Salary for Part Time Editors is \$1141\*

**By LELAND F. LELAND**

*During the fall an official survey of the salaries paid fraternity magazine editors was conducted by the College Fraternity Editors Association, which is a subdivision of the Interfraternity Conference. The results were interesting and unusual. A summary of the report, as read before the editors at their annual meeting held in New York on November 30, is published herewith.*

**MONEY**, money, who gets the money," may have been the thought in the minds of the several fraternity editors and business managers last year when they suggested that the incoming administration of the College Fraternity Editors' Association conduct a survey of the membership to determine how generally salaries were paid, whether or not the majority did their work as a "labor of love," and what the average of salaries paid might be.

Money is of great import to us all, and it was in the spirit of being of definite service that such a survey was made by the questionnaire route.

The results were surprising enough. In the first place nearly 50 per cent of the total membership replied to the questionnaire, the majority of these, in turn, being editors. This is not a condemnation of laxity on the part of business managers so much as it is an explanation that many editors are also business managers, and that many business managers are also secretaries receiving their salaries for secretarial work rather than devoting any great amount of time to the business management of the fraternity magazine.

In the second place it was surprising to note at first blush that "the labor of love" idea is almost as obsolete as the Saturday night bath and the old surrey, for out of the thirty-nine part

time (or should we say "night time") editors it was found that twenty-seven are paid and twelve are not.

Again, it was surprising to note that the five full time editors who reported, have excellent jobs and we hereby go on record as favoring full time jobs for all college fraternity editors. The average for fully employed editors is \$4,660.

But to the report. There were as we have said, forty-eight replies. Thirty-nine are part time editors, five are full time, four editors are also business managers, and one manager is also secretary.

These forty-eight editors receive during the year \$61,290. The thirty-nine part time editors receive a total of \$28,490 in salaries ranging from nothing to \$2,000, while the lowest paid editor in this group receives \$50. The average for the thirty-nine is therefore (counting the twelve who receive nothing), \$730 per year. Deducting the twelve who work gratis we have an average of \$1,141, which, if this report is to be accepted as criterion, is what the part time average editor can expect his fraternity to pay him.

Turning now to the full time editors we find that the lowest is paid \$1,800 and the highest \$7,500. The total is \$23,300 or an average of \$4,660. Explanation must be made here that nearly all of the full time editors act as business managers of their magazines and assist with office work, inspections, issue secret publications, and do other miscellaneous work.

The oldest fraternity represented has fifty chapters, is ninety-six years of age and pays its editor \$600 per year. The youngest represented is five years old and pays its editor \$500.

\* Notice this is *Fraternity* editors, not *Sorority* editors.



Quarterlies still hold the preponderance of favor. Of the number questioned twenty-eight publish four times each year, three publish five times, two publish six times, two publish seven times, four publish eight issues, one nine and one ten. Of the remaining number the fraternity name was not listed and no frequency mentioned. It is interesting to note that forty-six of the forty-eight reporting signed their names, and their fraternity affiliation.

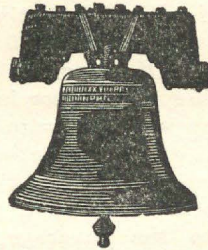
Interesting sidelights that bear commenting reveal that only twelve out of forty-eight do not receive salaries for their efforts, and of this number only one stated that his was a "labor of love" and that none of his fraternity's officials were paid. Five reported that all their expenses were paid and that they were allowed an indefinite sum, with no restrictions, for stenographic hire. One reported that he was given a budget, a

set of specifications as to the size of the magazine, and was allowed to keep whatever was left after all expenses were paid: undoubtedly an incentive toward efficiency. One editor receives, in addition to his salary, a paid up \$25,000 life insurance policy at the age of sixty, and one reported a step-up from \$720 to \$1,000 a year plus expenses.

There is, apparently, no relationship between the age and size of fraternity (based on membership and numerical chapter strength), and the frequency of issue and the amount of salary paid the editor. It is apparent, however, that a fraternity, in order to support a full time editor must have a chapter strength of more than fifty, for of the five full time editors reporting, the smallest has fifty-four chapters and the largest has ninety-two, while the youngest is sixty-one years old.

—*Banta's Greek Exchange*

## What Spells Fraternalism



**I**DEALS—spirit—friendship—these are the intangible forces that spell fraternalism.

Your fraternity is and will be, whatever you make it. Pride in things not of our own doing is a curse if it makes us complacent. Should we boast of our fraternity or should we conduct ourselves so that our fraternity shall be proud of us? Shall we be satisfied with the work of others or shall we be the workers? Each of you can and should have a part in the history that will be made at convention in June. History is made day by day, yet it is expression that solidifies it, and so Convention is an epoch in the life of the fraternity. There all of us together learn from each

other what this great sisterhood has meant, and what it is to mean for the future.

It is to you as sharers in our fraternity, conceived in the noble spirit of its founders, maintained by the tireless effort of its officers and strengthened by its ever coming members, that I appeal. You have been chosen because of your loyalty to that broader sisterhood—Humanity. Can you fail to come, that you may help us discern our objects and direct our powers vigilantly and steadfastly for a greater and finer Zeta Tau Alpha.

ALPHA BURKART WETTACH, former grand president of Zeta Tau Alpha, in *The Themis* of Zeta Tau Alpha.



# Maud Carson Gittman



I CAN think of nothing that everyone does not know about me already except my age, and I have no idea of trying to remember back that far to satisfy even my own curiosity.

I was born on a big plantation in Rowan County, North Carolina, of Scotch-Irish ancestry, and of course into the Presbyterian faith, as John Knox is on the trunk of my family tree. I grew up a healthy tom-boy girl, and in due season was sent off to a denominational school of the blue stocking type.

Too much discipline and mathematics, and too little freedom and nature—human and otherwise—did not promote my happiness, and I soon lost my desire for a degree. It was then I brow-beat my parents into consenting to my leaving school, and taking up training for a nurse in a large southern city. The only thing interesting about this phase of my life is that my associate in this discontent and eagerness for a career in the business world was Lulu Vollmer, who has since become a popular playwright. She landed in a business office, and I, in a white cap and gray uniform, in a hospital.

After a few years of disillusionment for her, she left for New York and wrote *Sun Up*, and won fame. I graduated and won—a husband and “Sun Set,” at least that was the prediction for girls in those days, but I have always been too busy to stay set. First I became proficient in all the household arts, then, in keeping with the other progressive young women of my set, I became one of the leaders in the equal suffrage movement in this state, which did not popularize me then, but of which I am now proud to be a charter member.

Then came the influenza epidemic of

1918, and the fearful toll of life at Camp Jackson. The distress call came for all married nurses to come to the rescue. I felt a little out of practice, for my husband had been so scandalously healthy that he had not given me a day's experience in ten years. But I went, and have never quit some form of public health work since. After the war was over, and the nurses returned home from service, the “Old Maid's Union” of both sexes lined up against me, and said my place was in the home. But my pay checks have continued to come in regularly in spite of their efforts. I have not forgotten how appalled I was when I had plenty of leisure and used to search the old cemeteries of my ancestors at home, and read, first, second, and third relict of So and So, departed this life such and such a date. Many of them, no doubt, just gave up rather than defy the convention that hedged them in, and made them stay *put*, when nerves and inclination could not be disposed of so easily. I decided I might become a relic to my husband, but not a deceased relict. I am busy, sometimes I fear I am too busy to enjoy life. I direct my home, and a small farm on the edge of town where I live. I conduct a tuberculosis clinic at the City Hospital every day, where thousands of people have been examined, diagnosed, and some sent to camp for treatment, others warned in time how to prevent the advance of the disease. I am also coeding at the university where I am delving into everything except mathematics, and best of all I am a charter member of Beta Delta of Delta Zeta. To do all this, and at the same time keep the healthy husband, who is the father of boxing at the university, eating out of my hand, is a *big job* for any woman.





AS THE days creep along, or rather fly past, and our term of office draws to a close, we are prone to grow sentimental, and, for various and sundry reasons, including, yea, personal pomp and vanity, we desire to go out in a burst of flame. That is easy for me, taking into consideration the title of this column. Like the deaf old woman who, with ear trumpet in hand was seated in church and told, "You may sit here, but remember, one toot and out you go." I'll heed that admonition, toot, and out I'll go. Selah!

Being an editor, so called for no good reason, I like to read my own words, my own opinions, my own stirring preachings, but the aforesaid editorial *flair*, tells me, and rightly, that it's *news* the readers want. This one man affair is all right in some lines, but not, I hold, in this most exclusive field. So, my last toot is this, please have pity, gratitude, compassion, sympathy, and *news* for the next editor. Whoever she may be she will often become discouraged, even as I, with this trying hard, working on a many-hour-a-day, no-pay scale, to give you a really worth while magazine. Help her by gathering *news*, sending in pictures, articles, drawings, anything

that will be of general interest to our readers. She will appreciate it, be assured of that.

Here is a suggestion from the *Palm* of Alpha Tau Omega, and it is a splendid one.

The *Palm* will pay a reward of a thousand dollars and equivalent thanks for an automatic yelper that will go off like an intermittent alarm clock only more so when attached to a *Palm* sent to a subscriber who has moved and left no address and is thus laying a foundation for an indignant letter by and by asking whether he is expected to pay for something he never got, by hek.

—*Banta's Greek Exchange.*

If women continue to grow more active in politics, Congress will hereafter be composed of a majority, a minority, and a sorority!

—*Life.*

#### MAILING LISTS

Here is what happens to an average thousand names on a mailing list after three years, according to *Printer's Ink*:

410 have changed addresses from one to four times.

261 have moved to parts unknown.

7 have died.

1 has gone to jail.

Examination of our own mailing list gives the further information that of the 410 who have changed addresses from one to four times, 410 have forgotten to notify us of same from one to four times.—*Kappa Alpha Theta*



---

# ALUMNAE CHAPTER LETTERS

---

**GERTRUDE HOUK FARRISS, *Editor***

**414 East 47th Street North  
Portland, Oregon**

## CHICAGO ALUMNÆ CHAPTER

Our Chicago alumnæ chapter turned out in a record-breaking number for the annual Panhellenic luncheon which was held at the Medinah Athletic Club on March 22. We were seventy-six strong, while the next largest group attendance boasted only fifty-one. Thus you see we have reason to be proud of ourselves.

The usual procedure at these luncheons in past years has been to have each sorority group sit at its own respective table. This time the plan was reversed, and the alumnæ from each university or college sat at their respective tables. It turned out to be an excellent idea. Luncheon was served to the 618 guests present, and our own Mrs. Ruth Jeffries, Alpha, presided.

In our last letter we wrote that we were

going to have a Delta Zeta Sisters' party for the sisters of some of our far and near Delta Zetas. This party was held at the Alpha Alpha chapter house in Evanston, and it was more than a sisters' party. We did have twelve representative sisters present, but we also had many of our own Chicago alumnæ members who haven't been giving us an opportunity to see them often.

It was a very happy bridge party in a real Delta Zeta house, something like it used to be, you know, when we were all back in college.

We are still keeping our bridge party scores for the final tournament in June, which has come to be a real affair.

HELEN ZEPP, *Editor*

## CLEVELAND ALUMNÆ CHAPTER

Banners have been folded, billboards dismantled, slogans abandoned, and we have emerged from it all with a new set of officers. Were we to sound their praises and accomplishments we should fill reams, and so we can merely give them to you with the caption—"Officers for 1930-31": president: Hazel Bowen, Alpha; vice-president: Margaret Crawford Brush, Xi; secretary: Frances Brandt, Theta; treasurer: Margaret Walz, Alpha Eta; Panhellenic representative: Aurel Fowler Beckett, Alpha Eta; Alternates: Gwendolyn Drake Herron, Tau, Margaret Carpenter Terry, Alpha; member-at-large: Lillian Major Eggers, Alpha; LAMP editor; Evelyn Martens, Alpha Rho.

Our delegate to convention is Florence Lowell of Theta chapter.

In connection with our officers we are about to inaugurate a new plan, that of having a very simple but complete ceremony with which to install the "executives." This thought has just budded, and we're doing our best to make it bloom and save it from being "nipped in the bud." (And I suppose if this were a chapter letter I'd be paying twenty-five cents for that last bit of slang.) We shall strive valiantly and keep you informed of the outcome of our plan.

As for future plans—we just do not have any; we are riding along on the glory of our past accomplishments and saving any little thoughtlets that might stray in through the maze of vacation and summer rushing plans for our first executive committee meeting of the fall.

EVELYN G. MARTENS, *Editor*

## DALLAS ALUMNÆ CLUB

The Dallas alumnæ club has recently prepared a yearbook containing the program for the year, the places of meeting, and the roster of membership with the addresses and chapters of each member. These books, appropriately done in rose and green were presented to the club by Miss Mady Lamor.

During midterm rush week we entertained the active chapter with a musicale at the home of Mrs. Homer Chapman.

At the February meeting Mrs. F. D. Smith

gave a talk on "The Relation of the Alumnæ to the National Organization." She also called our attention to the new Delta Zeta Publications, the *Pledge Book*, *The Manual* and the *Course of Study*. At the March meeting Mrs. James B. Nevitt spoke on "Social Conventions," and for April Miss Ruby Brannin will discuss "Rushing." The election of officers for the coming year will also be held at the April meeting.

Quite a few of our members were present



at a luncheon given by Alpha Psi chapter at the Dallas Athletic Club in honor of Mrs. Malott who stopped in Dallas on her way to Panhellenic Congress.

One of our members, Virginia Bruce, has recently been honored by election to membership in Alpha Theta Phi (honorary Schol-

arship organization at Southern Methodist University, petitioning Phi Beta Kappa.) Miss Bruce has been teaching in the Dallas public schools for the last two years and is taking extension work with the university at the same time.

MARY BATEMAN, *Editor*

## HOUSTON ALUMNÆ CLUB

The new LAMP is an inspiration to make a letter really worth while.

The Houston club would first like to introduce two Delta Zeta members who are new to Houston. First, Mrs. Gertrude McElfresh, Beta, former national treasurer, has spent the winter in Houston on sabbatical leave from Oregon State College, Corvallis, Oregon. The club dreads to have this leave end. Second, Miss Helen Converse, Sigma and Gamma, is now in Houston, and the club plans to keep her here.

Having received the *Delta Zeta Manual*, *The Delta Zeta Course of Study*, and the *Blue Book for Pledges of Delta Zeta*, the Houston club has outlined a study course, covering the sections given in the *Course of Study*.

Much more can be told now about the new city Panhellenic of Houston. Delta Zeta holds the first presidency. Mrs. C. A. Chase, former Houston alumnæ club president, put the organization into effect and was elected to be its first president. There are nineteen sororities represented.

Following our usual custom, we hold meet-

ings on Saturday before the first Wednesday in each month, for the latter is Panhellenic day.

Three outstanding social events have taken place since the last letter. On Valentine Day the Houston club entertained with a bridge party at the home of Mrs. Thomas B. Wheaton, in honor of husbands and beaux.

On March 8, Mrs. T. H. Pomery entertained the Houston Delta Zetas with a bridge luncheon, honoring Mrs. McElfresh, her sister.

On March 22 Mrs. T. E. Kennerly entertained with a morning bridge and luncheon, honoring Mrs. C. A. Chase, retiring club president and new president of city Panhellenic. The guest of honor received a beautiful rose bowl from the hostess and a Delta Zeta bar pin from the club.

Houston Delta Zeta club boasts a pledge. She is Mrs. Dessie Gross, who pledged Alpha Tau during rush week in February. She formerly attended the University of Texas.

It is just time for bluebonnets and roses in Texas. Would that all could come to share them with us.

MASEL WOOD

## INDIANAPOLIS ALUMNÆ CHAPTER

A feeling of uncertainty and mysticism has been hovering in my subconscious mind for the last few days; a feeling that April 1 should have a certain significance, something that I must heed and must not overlook. At last I found the meaning of my bewildered thoughts: "The LAMP letter." Our charming editor, Mrs. Pease, has set this date down as the last day of grace for the LAMP letter. I shall not fail her.

How I wish that I had you and you and you, too, here with me to give me a few suggestions. As it is, here I am snowbound, in South Bend, waiting for the sun to shine through and melt the snow which has so rudely crowded the highways and makes driving impossible.

Back in Indianapolis everything is astir and in full force. April 12 is the day for our State Luncheon and Dance, and really what a very great responsibility this is!

How pleasant it always is, however, to meet once again the various girls from over the state! It is surely worth while.

Once in a while I catch a glimpse of some Delta Zeta going down the street, the bits of straw or the dust on the walk seem to leap

into the air as she passes on, and my only solution as to her whereabouts is that she is on her way to a committee meeting.

The various committees are certainly "putting things over" with a bang. Mrs. Thomas Grinslade is general chairman, Miss Frances Westcott, chairman of the luncheon; Miss Helen Kingham, chairman of the dance; Miss Harriett Kistner, chairman of "stunts"; Miss Mary Kinsley, chairman of favors; and Mrs. Katherine Benson, in charge of decorations. Ordinarily, we have between two and three hundred Delta Zetas at our party. You are able to appreciate, I am sure, what a real event it is. It will be held this year at the Columbia Club.

With the passing of the State Luncheon and Dance our thoughts will probably be directed to our National Convention. We are awaiting circulars giving information all about it. How tempting the cooler breezes of Wisconsin, as contrasted with the stifling July heat of Indiana.

Again I say "good-by," and I sincerely hope that I shall have the pleasure of meeting you in Madison.

MARY SMALL ALLEN, *Editor*



## KANSAS CITY ALUMNÆ CHAPTER

A party at Pauline Edward Dodd's home is an outstanding social event on our calendar; therefore, when Pauline issued invitations for a bridge tea February 15, the response was very good. Ruth Bonnewits was assisting hostess at the gathering of bridge players, including the "sharks" who won the prizes, Dorothy Buschell, Karleen Garlock, Ruth Bryant, and Lydia Nissen, proving that Epsilon, Lambda, Alpha Phi, and Eta chapters have clever girls. (The writer confesses she is a mediocre player.)

Laura Parker, Eta, whom several of us had not seen for a couple of years, was a week-end guest of Joyce Hawes recently. And, speaking of Joyce, she has acquired a saintly expression since accepting her new position! Some of her Alpha Alpha sisters would scarcely know her now.

Convention was the chief topic of conversation at our March luncheon, spring clothes being second. The memories of other conventions are dear to us who have had the privilege of attending; thus our delegate, whoever she may be, will have the thrill that comes once in a life time.

Cula Buker, Lambda, recently underwent a major operation at Research hospital. The nurses say she is a model patient, always smiling, after seven weeks of suffering. We anxiously await her complete recovery.

A nominating committee has been plotting against some of our alumnæ. I heard (and this isn't gossip) that a certain pretty Alpha Phi is slated to be our next president, but I can't disclose her identity, nor tell anything else I heard!

MARION BURNS, *Editor*

## LOS ANGELES ALUMNÆ CHAPTER

How time does fly! A whole year has gone by since I began writing letters to **THE LAMP** and the time has come for new officers. I hand over my pen—or shall I say type-writer—to the new editor as the new officers begin their term.

We have been having very interesting meetings. In January Merle Herzog, Alpha Iota, entertained the girls with an informal social evening and in February there was a bridge given by Phyllis Babcock, Alpha Chi. An interesting feature of the afternoon was a trip to the Orient which Harriett Sterrett and Hazel Rudbach shared with us. Harriett and Hazel have just had a most interesting experience, having spent six months in that part of the world. They were in the Hawaiian Islands, China, Japan, and the Philippine Islands and brought back interesting curios which we all enjoyed.

In March the meeting was with Frances Muentner. A book review on Elizabeth Nye, sculptor, was given by Mrs. Edwin Goodwin whose husband is librarian at the University of California at Los Angeles. Our "Husband and Friend Auxiliary" (as the boys call it) met at a husband's home during the meeting and later joined us for refreshments—as men would, of course.

We feel that we have very attractive plans for the future. On April 12 Clara Gilbert Taylor will give a bridge party. A theater party is scheduled for May 6 at the President Theater, a benefit for the new Alpha Chi house at Westwood. This will be in charge of Frances Muentner, Anne Hartman, and Gladys Marquardt. Later in May the alumnæ will entertain the seniors from U.S.C. and U.C.L.A. The June meeting will be a beach party.

GRACE HESTER, *Editor*

## NEW YORK ALUMNÆ CHAPTER

"Tweet, Tweet," said the birds, and I knew it was spring, but that meant much more to me than a general awakening of the flowers and the bees. Besides "tweet, tweet," the twenty-second was ringing in my ears, a day—yes, a *red letter day*, when our own alumnæ association bridge would be in full swing, way up in the clouds which hover about the twenty-eighth floor of Panhellenic House. And I, as chairman of the affair, felt quite important. In fact, I almost forgot I was only a school teacher, as I ushered the notables to their respective tables. But as more came, and *more*, the newcomers had to "overflow" to the ball room on the second floor of the building. As a result of this arrangement, I am entirely sick of elevators. I hope to write a book some day on "Around the World in Elevators," because, it seems to me, I traveled miles that afternoon in an

effort to form a connecting link between the "upper" and "lower" regions. But the affair certainly turned out to be a success as a result of the efforts of the Committee, Josephine McEntee and Alice Underwood. The attractions proved to be the food, "tea and cakes," plus the prizes, the dainty organdie handkerchief cases.

Our second spring event will come April 13, when we plan to give a tea at Panhellenic House (no, *really*, we don't live in the place). Our purpose is to welcome our sister sororities at this time. We hope to have Dr. Blanche Colton Williams with us, as speaker. Mayhap, there will be a novel entertainment. We wish we might be more definite about the whole affair, because it ought to prove very interesting.

ALICE MUNSON, *Editor*



## PORTLAND ALUMNÆ CHAPTER

Here it is time for another letter to *THE LAMP* to be mailed, and I am just starting to write mine. I just wonder how many of you seem to have a touch of spring fever as I. This pleasant weather we've been enjoying just doesn't seem especially conducive to writing letters. Since the mailing date for this letter is today, I'll just put down what news I happen to know and send this along at once.

The alumnæ of Chi and Omega chapters have been assisting the active chapters all they could to swell their building fund. As you know, the Omega girls are enjoying their new Delta Zeta home now, and Chi chapter expects to start building this spring, if it is at all possible.

## TWIN CITY ALUMNÆ CHAPTER

In the spring our fancies turn to parties. Twin City alumnæ chapter entertained at a Hope Chest Tea Saturday, May 10, at the chapter house. There will be a happy "bride to be" in Houston, Texas, when Helen Converse hears that hers was the lucky number drawn for said treasure. We alumnæ rejoiced when it was announced that we had cleared \$300 on this project.

Our entertainment committee has planned a spring rush party for our graduating seniors. We will pack a picnic lunch and motor to the summer home of Mrs. Myrtle Johnson,

The last meeting of our Portland Delta Zetas was a little different from our previous meetings. We were invited to a buffet supper at the home of Mrs. Alice Feike Wieman. Assisting Mrs. Wieman were Elva Slattee and Florence Kruse. These three had prepared a delightful meal for us, which those present thoroughly enjoyed. Bridge was the entertainment of the evening.

We have just elected our delegate to Convention for this summer and have planned a bridge party for May 3, in order to defray expenses of the trip. Agnes Christie, our president, has been chosen to represent us. In my next letter I will tell you all about the success of our bridge party.

VIVIAN COPPLE, *Editor*

White Bear Lake. Velma Lockridge, our mistress of ceremonies, has hinted of dancing, swimming, and all manner of delightful doings.

The *Gammaphone* keeps us informed of our far-away members as it collects bits of news from other cities. Pearl Soderberg wrote a most interesting letter of her art experiences in Detroit.

We northerners are all excited about convention at Madison during July 7 to 12. We will meet you there.

BEATRICE HARRIS, *Editor*



# ACTIVE CHAPTER LETTERS

## GAMMA

**INITIATES:** Mary Paker, Ruth Ruckle, Ruth Schumacher, Janet Houg, and Maxine Kaiser.

**PLEDGES:** Leila Kencki and Iria Allanae.

The new quarter rolled in with spring rushing and the election of officers. Alice Kelm was not only elected Gamma Chapter President, also has the distinction of being elected President of the Urban Panhellenic Association at their fourth national conference at Columbus, Ohio last month. Another of our Juniors, Louise Clousing, is running for Senior President of W.S.G.A.

Margaret Cayze was in charge of the breakfast for the new initiates at the New Nicollet Hotel, and the initiates were entertained at the customary alumnæ dinner given at the Curtis the night before initiation.

Towards the close of last quarter Delta Zeta came out with second cup in the inter-house basketball games. Christine Westgate shone as the Delta Zeta star forward. Second place was also captured by Delta Zeta in the booth contest at the W.A.A. Annual Penny Carnival. The booth consisted of an old fashioned garden of real flowers, in which Mae Sweet and Marian Gross, dressed in colonial costumes, sold small candy corsages.

Minnesota Masquers, our campus dramatic organization, offered a silver loving cup for ticket sales, and Delta Zeta won the treasured trophy due to the excellent sales drive conducted by Maxine Kaiser.

On April 24 the Mothers' Club had a waffle dinner, and on the next night we had our annual affair, The Step-Out. Marcelle Holen lead with the help of a peppy orchestra at the Flame Room of the Radisson. This is our benefit affair and we hope to repeat our success of last year.

Spring vacation is over, and despite the weather, we are ambitious, and plans for our spring formal are in progress. We are losing twelve seniors this June, but spring rushing, a new system, will probably show a dozen new diamonds or more.

VALBORG TANNER, *Editor*  
MARCELLE HOLENA, *President*

## ZETA

Another LAMP letter finds us in the midst of midsemester examinations, which are accompanied of course, by strict study hall, increase in proctors, several cram sessions and an extra gallon of "midnight oil." All this only goes to show that Zeta is still keeping right after that old friend "scholarship."

First of all I must tell you of our most

recent and most important accomplishment. March 28, we initiated seventeen girls! We are quite proud of the fact that so many of our pledges made their pins, and are a little "upish" over the fact that we had one of the largest initiation lists of any sorority on the campus. By starting at 10:30 we finished initiating at 5:30 A.M. just in time for a much appreciated breakfast.

I must tell you of some of the social events we have had since our last letter. We celebrated our twentieth anniversary on February 12. I am afraid Mr. Lincoln was a little neglected for I don't believe his birthday was even mentioned. Mrs. Nettie Wills Shugart, one of our own charter members, gave a short talk, after which we lighted our birthday candles.

Our formal party was a grand and glorious affair which was held in the new ballroom of the Cornhusker Hotel. About 200 couples attended, and from all appearances I'm sure everyone had a good time. The pledges surprised us with a house dance a few weeks ago, and we all agreed that they showed remarkable talent as hostesses. It was a "sports" party, and the house was cleverly decorated with everything from boxing gloves to roller skates. Even our dates came dressed in knickers, so everything was in keeping except the weather—and of course we would have some good old Nebraska winter on the very day when we should have had spring.

Zeta is holding her place in intramural sports again this season. One of our basketball teams went into the semifinals while the other won the finals. Several of our girls won places on class teams, too. Gertrude Chittenden, Florence Anderson, and Louise Cottier were chosen for the upper-class team, Ruth Shelburn for the sophomore team, and Frieda Barclay and Mazzine Babcock for the freshman team.

Florence Anderson was elected president of the Girls' Commercial Club, and also the delegate for the national convention of Phi Chi Theta, honorary business administration sorority. This convention is held in Boston, so Florence is having many applications for the job of "traveling companion" or "chaperon." So far none of us have been accepted. Mazine Wullbrandt, a new initiate, pledged Phi Chi Theta a few weeks ago.

Adeline Woods, our editor, is quite ill at her home in Lincoln at the present time. That accounts for the rather disjointed character of this letter. Cheer up, though, for we are sure Adeline will be back in harness before another letter is due.

ADELINE WOODS, *Editor*  
IRENE SHELBURN, *President*



## ETA

PLEDGE: Genevieve Watson.

INITIATES: Marcial Burroughs, Naomi Muzenmayer, Lucile Ham, and Rachel Wilson.

These glorious spring days it's almost impossible to concentrate on textbooks, committee meetings, chapter reports, and the like, but somehow writing a letter to *THE LAMP* is a little different. As a matter of fact, it has been dreadfully hard to keep silent all these months when we've had some interesting bits of news to scatter abroad. Do you remember that we mentioned the W.A.A. "Fun Fest" in our first letter, and aired our hopes of winning the cup for giving the best stunt? Believe it or not, that's one dream that came true for Eta. Now we have another cup perched up on our mantel beside its twin, received two years ago. You see, each group participates only every other year.

Since the spring elections several of our girls have new offices. Mary McHenry represents us on the Y.W.C.A. Cabinet, Margaret Thorpe is publicity chairman for the College Sunday School, and Doris Baker is on the new Epworth League Cabinet. Our initiates have also been initiated into W.A.A., and two of them are candidates for officers for next year.

The second semester brought us our new pledge, described by one of our faculty guests as "a tall, distinguished-looking blonde." She was a freshman at the Kansas City Junior College the first semester. We'll have many things to report about Genevieve when she is better known on the campus.

Did any of you listen in on Baker's annual Birthday Program, broadcast through WDAF on February 12? A trio composed of Genevieve Watson, Margaret Thorpe, and Susanna Ditto sang "Dream Girl of Delta Zeta," accompanied on the piano by Doris Baker. We certainly appreciated the greetings sent in to us by alumnae who were listening in from all parts of the country.

On February 22 we gave a Colonial Formal. That implies, of course, weeks of planning and work on paper flowers. We decorated the first floor with masses of sweet peas, morning-glories, boxes of ferns, and painted "stone" walls. On the second floor we constructed a little wistaria bower where mint julep was served. Little Colonial maids served the five-course dinner which was the main feature of the evening. Dancing is not allowed in the sorority houses at Baker; so the success of our formals depends upon the banquet, the music, and other entertainment, and the decorations. And we really do have a wonderful time!

Our most recent social event was the annual Panhellenic Tea, given this year at the Phi Mu house, with all the nonsorority girls as our guests. In spite of the uncertain

weather which threatened to ruin our new spring outfits, the tea was a decided success.

Last Friday evening we decked ourselves out in evening dresses or men's suits and attended the annual W.A.A. dance—for ladies only. One of our members received a prize at the close of the evening for having suggested the new name, the "Beau Belle Balle," which will be given to the event from now on.

Cupid has invaded our ranks three times this year—even before springtime!—and said invasions have been made public in three clever announcement parties. If it weren't for love, sisterly and otherwise, how would the world go 'round?

Spring has been ushered in by a host of miscellaneous activities on the Baker campus, as on every other campus. Plays and programs, club activities of all sorts, "High School Play Day," under the auspices of the W.A.A., a musical comedy, *The Private's Daughter*—these are some of the extracurricular interests which occupy our time and make us love college. And besides all these, we are now having rushees to entertain nearly every week-end, for Panhellenic has abolished house parties and we are allowed to have only five week-end guests at a time. "It's a great life. . . .," as the old saying goes, and we're trying hard not to weaken! How are the rest of you faring?

HAZEL GIFFORD, *Editor*  
LOIS LUCILLE SNELL, *President*

## IOTA

INITIATES: Thelma Baine, Ruth Beggs, Lois Eggers, Lois Jack, Alice Knudson, Genevieve Knudson, Laura Koop, Vivian Kuhl, Lisa Lundin, Esther Ostergard, Frances Pence, Louise Rice, Jeanne Walsh.

Life has been so interesting at Iota chapter since I last wrote to *THE LAMP*.

Among the most notable event was Mrs. Malott's visit. Mrs. Friedline, who has been with us this year, deserves much credit for Mrs. Malott's visit, but Iota received the benefit. She stayed three days, and we came to feel that we knew her quite well.

Our regular spring initiation was held March 22. It was the loveliest initiation we have ever had, and now we have thirteen charming new initiates. The service was followed by our usual formal banquet. Mrs. Friedline gave one of the toasts, a greeting from national, and we hope the new girls felt as inspired to bigger and better things as we did. I am sure they will make loyal Delta Zetas if they did.

This next week-end we are going to begin our spring rushing. The local Panhellenic Council has begun to enforce a new rule this spring. Each sorority is limited to one week-end for the girls whom we are rushing in the city, and one to out-of-town rushing. It simplifies matters somewhat but I do not



know how effective it will be. We are having two dinners, a tea dance, a bridge luncheon, and a breakfast for the Iowa City girls. Plans seem quite exciting!

Seven seniors graduate in June. Just as we send the message of love and the wish of success with the seniors who go from Iota chapter, we send the same words to all of the seniors in Delta Zeta.

MARY LOUISE FLEMING, *Editor*  
MARGUERITE RUSSELL, *President*

## LAMBDA

**INITIATES:** Rose Grossardt, Claflin, Kansas; Marjorie Stafford, Leonardville, Kansas; Nina Lodge, Wellington, Kansas; Lucia Kirkwood, Fort Leavenworth, Kansas; Hazel Roney, Hutchinson, Kansas; Clella Fisher, Fellsburg, Kansas; Helen Lichty, Sabetha, Kansas.

Spring is here with a flurry of new pins and new officers which arrived in Lambda's midst almost simultaneously. Only a few days after initiation we had to bid our worthy president of the past two years, Dorothy Wagner, good-by and pledge our loyal support to Ruth Widestrand who is aiming to pilot Lambda through another successful year. Ruth was rush captain last year and proved herself worthy of the responsibility which has been thrust upon her. Also Lambda is holding her breath and watching a rainbow-hued bubble with a spic and span brand new chapter house in its heart float around. Yes, it's true. The very near future seems to hold a new house for us and perhaps we may have it for the fall term of 1930.

Our freshmen surprised us and ushered the month of March in like the perfect little lambs that they are by turning the chapter house into a miniature wayside inn known as the "Tavern of the Green Hand." There was plenty of peppy music, and confetti, refreshments and favors were there for the benefit of the actives and their dates.

We are all beginning to fear for our lives as we have discovered a marksman in our midst—Evelyn Longren, a junior, made the varsity women's rifle team which won nine out of twelve intercollegiate matches. As a reward she will receive an R.O.T.C. sweater.

More about Dorothy Wagner—she is celebrating her exit from office and a few nights ago came in wearing the badge of a loyal supporter of Beta Theta Pi. Dot finishes this year so we see that the future holds no business career for her. "We offer her congratulations."

Spring also renews interest in a subject which has been uppermost in the minds of all of us this year and that is rushing. What better time could we ask for rush parties to prepare these little high school girls for college next year? Lambda plans a house-

cleaning bee and then a week-end party the first week in April.

Another kind of rushing is going on weekly in our chapter too. One night each week we are "at home" to a number of our instructors. They come down to the house and we have a friendly chat over our coffee cups. We find them all very pleasant people instead of intellectual bores.

We feel very sorry to lose five senior Delta Zetas this year. In June Verna Latzke, Chapman, Kansas; Mary Rankin, Kansas City, Kansas; and Leah Schreiner, Ramona, Kansas, will receive their bachelor of science degrees in home economics. Dorothy Wagner, Topeka, Kansas, will receive her bachelor of science in applied art, and Saloma Davis, Carthage, Missouri, will receive her bachelor of science degree in rural commerce.

I almost forgot. Now that our new house is so near a reality, we are trying every way we can to increase our building fund. We have filled a cedar hope chest with linen and it will be raffled off by the alumnae of Lambda in Kansas City. Also a benefit bridge has found a place in our social calendar.

OLIVE JO CLARK, *Editor*  
RUTH WIDESTRAND, *President*

## MU

**INITIATES:** Virginia Caldwell, Monica Calderwood, Aubrey Kennedy, Virginia Clark, Susan Powell, and Naida Jovanovich.

**PLEDGES:** Ernestine Payne, Hilda Smith, and Augusta Pardee.

Four engagements in three months—Nuf Sed.

You might wonder if we had time to do anything else, but attend announcements. However, we have had a very informal tea dance, with perfect food, good music, and plenty of men to make this tea a high spot in the semesters' activities.

The pledges were honored at the Valentine's Dance this year. Betty Bates had charge of the decorations—the old Saint could not have made the house more like a Valentine.

We are hoping to refurnish our house very soon. Our Mothers decided to help us and on the first Saturday in March gave a very successful bridge party. In return for this and innumerable other considerate things that they have done for us we gave them a dinner. This dinner was enjoyed so much that we are looking forward to another chance to entertain our parents.

We're going to have a library soon we hope. In expectation of this event we had an "Alumnae Bring a Book" tea. Each alumna brought as many books as she wished. It was fun to have the alumnae come back to have tea with us, and it is also perfect to have new books to read.

Oh! the crowning event of the semester,



and for six of us the big event of our college life, initiation! After the impressive services we had a very gay banquet. Carol Meaney was toastmistress, and the entertainment that she arranged forms an integral part of that wonderful day.

AUBREY KENNEDY, *Editor*  
KATHERINE AXLINE, *President*

## XI

INITIATES: Martha Selbert, Virginia Lee, Margaret Rockell, Elizabeth Seale, Betty Heusch.

Much has happened since our last letter and we don't know just where to begin. The most important thing of course, was initiation which was held at 4:00 P.M. on April 26, 1930, at the Chamber of Commerce. The beautiful ceremony was followed by a banquet, with toasts by the initiates. Each year at this banquet Xi chapter presents a Delta Zeta ring to the initiate having the best grades, and the best all around pledge receives a pearl guard. These honors were presented to Margaret Rockell and Martha Selbert, respectively.

The chapter scholarship cup, another coveted honor, was awarded Dorothy Nichols who has attained the highest average in the chapter.

Our social activities closed with the spring formal for the freshmen. Everybody voted it the nicest and most enjoyable event of the year.

During the second week in May we held our annual house party at the Hermitage Club. The applied arts girls attended the full week while the rest of us ran up over the week-end. Although the weather was somewhat unsettled everybody seemed to have had the "time of their lives."

So ended, for four of us, our college career. The rest are looking forward to more happy years in Xi chapter.

DOROTHY NICHOLS, *Editor*  
DOROTHY KEATING, *President*

## PI

INITIATES: Mary Eleanor Harrod, Helen Williams, Martha Jones, Ruth Fuller, Virginia Crum, Sarah Fleming, and Caroline Lawer.

Second semester opened with one of the finest birthday celebrations that Pi has ever seen, a very special one honoring our seventeen charter members. Seventy-five actives, pledges, alumnae, and guests graced our candle-lit and rose-bedecked table. The clever pup party the Saturday evening before, together with the shower for Elizabeth Cleaver Noonan on Sunday morning completed a perfect week-end.

On March 15, Lida's Wood assumed the hue of Old Erin and forty couples celebrated St. Patrick's Day. Dublin U's Ball, with programs in the form of diplomas, a

lively orchestra, and two novel favor dances was a huge success.

Our alumna adviser, Mrs. Mary Hoover Jones, has flaunted our banner again by writing the prize-winning pageant celebrating the Diamond Jubilee of the college. Judith Wetzel, Mary Gunn, Margaret Cleaver, and Eva Thompson all have leading rôles in this pageant.

We could not close without telling about our five seniors who have stood by us so loyally for four years.

Eva Thompson, our outgoing president, has been very active in college life having been president of the Women's Athletic Association, secretary of Panhellenic, secretary of the Senate, a member of Pi Kappa Delta, the national forensic fraternity, and Beta Pi Theta, national French fraternity besides having a lead in the Senior class play and being actively interested in all school functions. We will miss her capable leadership, but our incoming president promises to follow well in her footsteps.

Kathryn Williams, our brilliant mathematic major and capable treasurer for two years has steered us very successfully through our financial year. Kathryn is president of the mathematics club, a member of Beta Pi Theta, and has been a very successful rush captain for us.

Judith Wetzel is our social worker. She has had the leadership of several Girl Reserve's groups and has taught at several of their summer camps. She has been a responsible member of the sorority, performing her duties well. Judith has the leading feminine rôle in our spring pageant. Judith has also held several Y.W.C.A. offices.

Zora Bruington, our efficient secretary, is a member of Beta Pi Theta and is actively interested in many campus activities. Socially, she is a "whiz" and quite in demand.

Harriet Campbell, vice-president, has a string of activities after her name which is hard to equal. She is member of Beta Pi Theta, has been president of the English club, is a member of the *Prism* staff and column conductor for the college newspaper, has been a member of Woman's Council for three years, has held several Y.W.C.A. offices, is an officer of the Senior class, and a member of the Senate. She was the winner of 1928 convention song contest together with Mary Evelyn Gunn.

ALICE LEISING, *Recording Secretary*  
NINI J. COLEMAN, *President*

## RHO

On Saturday, March 1, Rho initiated eleven girls into Delta Zeta. It is enough to say that we are very proud of our new initiates. The initiation services were followed by a formal banquet and dance given by the new initiates and pledges. We were happy and honored to have with us at our banquet



Mrs. Carl Malott, our president and Miss Rene Sebring Smith, new chairman of the National Panhellenic Congress.

Rho considered herself fortunate to be located in the city where the National Panhellenic Congress met in February. At the huge banquet given for all Greek-letter women we met our national officers and got a peek at those of other sororities.

On Monday evening, April 7, we observed the thirteenth birthday of Rho chapter. Alumnae, actives, and pledges celebrated with a birthday dinner and a general reunion.

One of our last year's graduates, Elizabeth Kirkpatrick, sprung a surprise when she wired the news of her marriage. She is now Mrs. Bright Oglesby.

Miriam Smiley, our outgoing president, was chosen as one of the delegates from Denver University to attend the Rocky Mountain Women's Student Council conference at Laramie, Wyoming, during the week of April 14. Dorothy Grass was lately initiated into Alpha Zeta Pi, honorary language fraternity, and Eleanor Cox, a senior, was pledged to Kappa Delta Pi, honorary educational organization. Evelyn Bumpas, a sophomore, has had parts in both of the recent Drama Club plays, *The Admirable Crichton* and *Redemption*.

The mothers of the new initiates were recently entertained by the Mothers' Club at a luncheon at the Blue Parrot Inn.

At the last meeting of the active chapter new officers were chosen. Eleanor Cox is our new president.

With the coming of spring we are all looking forward to our annual spring dinner dance which is usually held at a mountain club. This dance will climax college life for our three seniors, Elizabeth Butler, Rose Draper, and Arvilla Ledgerwood.

Rho of Delta Zeta mourns the death of Sylvia Morrow Chafin known to us as "Slide." We extend our sincere sympathy to those who knew and loved her.

HELEN LYONS, *Editor*  
ELEANOR COX, *President*

## UPSILON

PLEDGES: Mildred Owens of Kildeer, North Dakota; Nellie Dillon, Chicago, Illinois; Adelaide Hardy, Sidney, Montana; and Selma Olson, Dunseith, North Dakota.

Upsilon chapter has had a big year so far and the girls are all working to make Delta Zeta bigger and better. Among our pledges we have two girls who have been elected to Pi Lambda Theta, honorary educational fraternity. They are Marion Van Meter, a senior and Blanche Harding, a junior.

Since the last letter we have pinned up some very lovely girls. Mildred Owens belongs to the Quill Club and was on the honor roll for the first semester. Blanche Harding is a Delta Phi Delta, honorary art.

One of our girls, Frances Van Arsdale, has had to leave school because of the death of her father. She is in Cincinnati, Ohio, now but we expect her back sometime in May to spend a few days with us.

Every year North Dakota has what is called a "Carney Song Contest" and cups are awarded to the fraternities and sororities having the highest attendance at the practices which are held for about three weeks before the contest. Delta Zeta won three of these cups this year—the freshman, sophomore, and senior ones.

Delta Zeta went out for basketball this year and we had a lot of fun doing it. Our best game was with the Delta Gammas. Those who played on our team were Marjorie Miller, Sally Espe, Dorothy Wathys, Louise Thompson, Inez Anderson, Edith Whittemore, Edna Eide, and Blanche Hagert.

We had a party at the chapter house on March 15. Varsity Players furnished the music and everyone enjoyed it to the greatest degree.

One of our alumnae, Marguerite Cops, is a designer and has one of her dress designs in the February number of "The Woman's Home Companion." She has studied abroad and is very successful in her work.

We have started "scumming" preparing for the spring initiation. The scums are entertaining us very royally and are really a very clever group of girls. They have put on many clever stunts for us, one of them being a radio broadcasting station from which each of them did some special stunt.

Our formal is going to be May 23. We are going to have a dinner at the Dacotah Hotel and dance at the chapter house, the Dacotah Hotel entertainers furnishing the music for both.

We have ten seniors this year—Edith Whittemore, Blanche Hagert, Hazel Olson, Wilma Grinley, Velma Hurmence, Sylvia Rudser, Dorothy Burgess, Jean Robbins, Marion Van Meter, Edna Eide.

CAROL KROSTUE, *Editor*  
JEAN ROBBINS, *President*

## PHI

INITIATES: Viola Long, Elizabeth Patterson, Harriett Goddall, Ruth Styles, Lorraine Schnebly, Leah Wallace, Ella Berry, Lillian Chambers, Helen Treptoe and Isabel Houff.

PLEDGES: Fern Newbern, Hazel Bloom, Jennie Dorrance, Julia Gould, Dorothy McCarthy, Elva McDonald, Barbara Kohler, Elizabeth Kohler, Marian Walker.

Spring has come early to the State College of Washington this year and finds all the Delta Zetas at Phi chapter busily practicing for a serenade which we are going to give April 25. We think it will be lots of fun.

Our second semester rushing was very successful. We have nine new pledges as a re-



sult. Also, we have just initiated ten new members of whom we are very proud.

We have four girls on the college honor roll this semester, Virginia Watt, Harriett Goddall, Elizabeth Wilde and Doris Schnebly. Elizabeth Wilde received the recognition pin for being the member with the highest grades in our chapter, and Harriett Goddall won the little lamp incense burner for having the highest grades among our pledges.

In the dance drama which will be given this spring we have three girls, Elizabeth Kohler, Virginia Watt, and Jean Duncan. Grace Wilcox, member of Mu Phi and one of our seniors, is going on the Glee Club trip again for the fourth year. She is not only a member of the Glee Club but also a member of the women's quartet.

Two of our members, Virginia Watt and Doris Schnebly, were recently initiated into Pi Gamma Mu, the national social science honorary. Virginia was also chosen as a new member of Pi Lambda Theta, women's education honorary, and Edna Fischer has just made Gamma Alpha Chi, advertising honorary.

We have nine seniors graduating this year and we'll certainly be sorry to lose them. They are all active and outstanding girls, and it won't seem just right without them next year. The loss of seniors is something we all have in common though, isn't it? So we may all well sympathize with one another.

DORIS SCHNEBLY, *Editor*  
LOIS HAMILTON, *President*

## CHI

INITIATES: Gwen Bodle and Maxine Jenks. Chi started the new term by winning the scholarship cup again. Once more and the cup will be ours to keep.

Our formal this year was at the Hotel Benton. It was a grille dance and decorations were palms, red tapers, and floodlights. Six girls from Omega chapter came.

About March 1 we gave a tea at which alumnae, patronesses, and mothers were our guests. We also gave a bridge luncheon for the housemothers on the campus.

Plans are being made for our annual get-together or Chi Rendezvous on April 25 and 26. We hope to make this the best ever.

The last of the month Chi is sponsoring a moving picture, *The Vagabond King*, by which we hope to make money for our new chapter house.

The new officers are to be installed on April 7. Mary Bennett is our new president.

LETTER UNSIGNED

## PSI

We will regret very much when a few more months roll by for we will be losing some very outstanding members of Psi chapter as they will be receiving their last words of authority from their Alma Mater.

One whom we will surely miss is our president, Margaret Shipman. She has been very outstanding in social activities on our campus. Next year when we go to Student Council meetings we will not see and hear Margaret reading the minutes. She has been the secretary this year. When Gold Quill an honorary group was organized this year Margaret was chosen one of its charter members for her outstanding work for Franklin. The little song birds wanted a leader last fall but they didn't look long until Margaret was elected president of the Girl's Glee Club.

Another girl who will be missed more than we can tell is Cleo Winter, for hardly a committee is working around here on the campus that does not have Cleo right on the spot helping as a main worker. She also has a position that is not given to many girls, that of president of Women's Self Governing Association. It takes a girl of unexcelled personality and executive ability to fill that place. Gold Quill did not leave Cleo out of its members either as a girl that Franklin College wanted everyone to know that they were proud to have.

Catherine Carter will be missed in the chemistry department for her excellent work and she is being rewarded for it by receiving a scholarship in the chemistry department at the University of Nebraska where she will go next year to start work on her masters. This isn't all that she is interested in for she is secretary of Kappa Delta Pi. The financial condition of the rifle club might not be so good if Catherine didn't keep things straight by being its treasurer. She is much interested in athletics and this is shown when we look up the membership of W.A.A. and find her numbered there. I also forgot to tell you that she is an active worker in the chemistry club.

Fourth and last among those who leave us this year is Ruth Beaman. She has not been with us quite as long as the others, since she has completed her college career in three and a half years, nevertheless we shall miss her. As sorority chaplain and editor she has filled her position well and in every measure succeeded. She is a member of Rifle Club and there has held an office. Since she was chosen for the varsity squad we know that she has ability along this line. She is also a member of the W.A.A. and has taken an active part. Thus as to the others, we give Ruth our wishes to success in her post graduation days and only hope that her sister will fill her place as well next year.

RUTH BEAMAN, *Editor*  
MARGARET SHIPMAN, *President*

## OMEGA

PLEDGES: Jessie Judd, Alice Collier and Ethel Carlson.

Since Helen Rankin, our editor, has been so busy getting out the Omega *Flame*, I



promised to write *THE LAMP* about what we have been doing this term.

We have been very much occupied with open house, our formal, the tea that our freshmen give to freshman women all over the campus as a means of getting acquainted, and the usual social and scholastic affairs. We certainly were in a whirl February 7 and 8, the nights of our open house and formal. There were so many things to do and so much fun to be had. We were certainly proud to show the campus our new home, which everyone agrees is one of the most beautiful on the campus. We received many gorgeous flowers for that occasion. We were happy to have as guests, several Chi girls. The freshman tea, which is an annual Delta Zeta affair originated by the girls of this chapter, was very successful.

Eldress Judd, our retiring president has done much to make a name for herself and for Delta Zeta on the campus. Some of her activities were: president of Y.W.C.A.; president of Heads of Houses; Mortar Board; W.A.A.; Hermian, physical education honorary; Master Dance group; Phi Theta Upsilon, upperclass service honorary; 1929 Junior Week-end Directorate.

Other members who have been active on the campus are: Grace Yoakley, assistant in the household arts department; Emma Meador, Glee Club; Helen Hutchinson, Glee Club and Philomelete, study group; Louise Smartt, Panhellenic secretary; Ruby Gibson, secretary-treasurer of the Daly Club; June Goodale, Pi Sigma, Latin honorary; Ethel Carlson, Master Dance group; Alice Collier, Philomelete; Florence Jones, member of Y.W.C.A. cabinet and Kwama, sophomore service honorary; Betty Carpenter, assistant copy manager on the *Oregon Daily Emerald*; Helen Rankin, assistant night editor on the *Oregon Daily Emerald*; Beatrice Bennett, on the honor roll for the fall of 1929, member of Pot and Quill, night editor of the *Emerald* and on the *Oregana* staff; Eleanor Wood, Cabinet member of Y.W.C.A. and member of the cast in the all campus play, *The Last of Mrs. Cheney*; Jessie Judd, Philomelete and Y.W.C.A. cabinet member; Virginia Peyton, member of the rally committee, on the honor roll for fall and winter terms, and secretary at the *Emerald* business office; Dulce Butterfield, on the Greater Oregon committee and on the *Oregana* staff; Audrey Forsstrom, on the Greater Oregon committee and in Philomelete; Virginia Richmond, assistant copy reader on the *Emerald*.

We are expecting a visit from Alice Wieman, our Province President, whom we shall be happy to meet.

We are looking forward to a happy spring term and a big year.

DULCE BUTTERFIELD, *Editor*  
VIRGINIA PEYTON, *President*

## ALPHA ALPHA

PLEDGES: Eleanor Fretter, Chicago, Illinois; Helen Green, Chicago, Illinois; Olive Mae Morrill, Big Rapids, Michigan; Dorothy Pergande, Milwaukee, Wisconsin.

INITIATES: Queta Brenner, Doris Fager-son, Maurita Gaggin, Jane Hayes, Lois Lamoreaux, Victoire Lespinasse, Marian Nessler, Dorothy Owen, Josephine Reuse, Gladys Rodda, Carlene Rosboro, Roberta Rogers, Jane Taft, Louise Warkentine.

Since our last letter, Alpha Alpha chapter has been increased by fourteen new initiates and four new pledges. On the morning of March 9, fourteen Delta Zeta lamps were proudly displayed by fourteen very happy girls. Alfa Lloyd Hayes very graciously consented not only to attend the initiation, but also to take part in it.

Before saying another word about "us," we want to congratulate Mrs. Pease on the very attractive new *LAMP* and also to vote unanimously in favor of continuing the chapter letters.

Now as for honors! Marie Johnson was on the senior honor roll, Audrey Fahringer on the junior, and Doris Hopkins, Evelyn Watt, and Mildred Marsh on the sophomore. Evelyn, moreover, was given a lovely book for being one of the six freshman women obtaining the highest averages last year, and, to make the story complete, was elected to Ro Ku Va, junior honorary society.

Beth Phillips is secretary-treasurer of the Senior class. Eleanor Balzer is a member of the Student Council of the School of Speech. Alice Dinkeloo has just been appointed to the University Foundation, an alumni body. Victoire Lespinasse has been pledged to Nu Sigma Phi, a medical sorority. Victoire will enter the School of Medicine next fall. Pat Smeed is on the editorial staff of the *Purple Parrot* and incidentally had her picture in the December issue of *College Humor* as a representative campus girl. Ruth Struebing made a name for herself in the freshman play and has also been appointed to the freshman social committee. One of our brand new pledges, Helen Green, had the feminine comedy lead in the W.A.A. Men's Union show *Whoa There!*, which was produced last week. We are very proud of Helen for her clever performance.

On February 15 we held our formal at the Edgewater Athletic Club. Don't ask us whether or not we had a good time. The question would be superfluous—everybody did. The favors were military brushes in black leather cases—and the men really liked them! The program covers were adorable silhouettes.

For a whole year we have been waiting for this issue to announce the engagement of our present president, Jessie Knapp, '30, to Robert E. Webster of Montclair, New Jer-



sey. The wedding is planned for September.

As for the future—we have planned a tea to introduce our new hostess, Mrs. Norris, to the campus. For May we are planning a Mothers' Day tea and our spring party. We are also starting our plans for the "World's Greatest Collegiate Circus," to be held in May. But more about these next time.

We'll see you at Madison!

MILDRED MARSH, *Editor*  
JESSIE KNAPP, *President*

## ALPHA BETA

INITIATES: Nancy Embree, '33, DeKalb, Illinois; Ann Voelkel, '32, Tuscola, Illinois; Mable Martin, '31, Kankakee, Illinois; Marjory Kendall, '32, Waukegan, Illinois; Clarissa Bogart, '31, Downers Grove, Illinois; Louise Crabbe, '31, Johnstown, Pennsylvania.

PLEDGES: Elizabeth Hayney, '33, Chicago, Illinois; Mary Lavin, '33, Chicago, Illinois; Reedith Reeves, '33, Urbana, Illinois; Fern Radditz, '33, Chicago, Illinois.

Initiation was perfect. Following "Courtsey Week," on March 8 six new Delta Zeta lamps shone brightly. On March 9 we had our formal initiation dinner at the house. Ann Voelkel was awarded both the scholarship ring and the activities pin—we predict a great future for Ann. Nancy Embree received the song pin.

SENIORS: Anne Meierhofer, our retiring president, who has so faithfully served Alpha Beta of Delta Zeta during the past four years, insists she is going to teach public speaking next year. Anne is a member of Sigma Delta Phi, honorary Public Speaking fraternity, was a member of Varsity debating team and First Council of Woman's League. We are expecting Anne to do big things in the world as she has already proved herself proficient in both Alpha Beta and Alma Mater work. Ruth Mary Johnson, one of the most outstanding women on campus this year, was president of W.A.A., member of the Student Council, Torch, and Mortar Board. Next year Johnnie plans to teach physical education. Sis Roe also plans to teach physical education. Marguerite Koelln, and Mary Louise Grieger, our retiring secretaries both plan to teach somewhere, some place. Wilma Snider plans to enter a hospital to continue her study of dietetics. Mary Hackett, who has so faithfully served Alpha Beta as treasurer will probably be teaching a "class of one" next year. Betty Elich, social chairman is also graduating—we will miss Betty and the wonderful parties she gave us this year. Irene Ebling expects to teach French, and Peg Osborne, our efficient parliamentarian is also leaving us and joining the ranks of the alumnae. Betty Peckenpaugh, who is receiving her masters degree in history, also plans to teach

—it was mighty nice to have "Peck" back with us this year.

We are proud to announce that the new Y.W.C.A. vice-president is a Delta Zeta—Genevieve Dixon. Other girls are also out for new laurels. Eloise Bonnet has been pledged to Annonian Literary society, Wilma Busenbark, our new president, has won the distinction of having one of the highest averages in the Law School. Billie is a member of the *Illinois Law Review*, Phi Beta, and Kappa Beta Pi. Mable Martin, one of our new initiates, is a member of Mask and Bauble and Sigma Delta Phi. Mable had the honor of being a member of the cast of *Beggar on Horseback* which was the first play to be given in the University's New Lincoln Hall Theater.

And here is some of the most exciting news of all—hold your breath everyone. Alpha Beta has purchased a new lot on Pennsylvania Avenue, Urbana. The girls are busily making plans for their "dream house" and invite you one and all to visit them.

On March 1 we gave our spring formal at the Champaign Country Club, and if ever there was a successful dance that was it. The gowns were gorgeous and the orchestra gave us some real honest-to-goodness music.

Dr. and Mrs. Donald Taft entertained all of the Delta Zeta girls in their home recently with a delightful bridge party. Mr. and Mrs. McCaskill gave us a charming tea in their home February 13.

Spring has come to Illinois, and has brought, and is bringing, a number of exciting events. First of all there is Easter vacation, April 17-22. Plans are being made for our spring informal to be given April 26 in the chapter house. The week-end of May 9 we are entertaining our Mothers and May 16-17 is Interscholastic week-end when the campus is host to high school students and the fraternities and sororities open their doors to these visitors. And then, final exams, Senior Ball, and Commencement. How quickly the college year passes!

Will see you at Madison in July.

MABLE MARTIN, *Editor*  
WILMA BUSENBARK, *President*

## ALPHA DELTA

Could there ever be a more successful antidote for a case of the blues than Alpha Delta's adorable pledges? Everytime I see one on the campus (even if it's just a glimpse as she disappears around a corner) I get the most delicious thrills all up and down my back.

First there is Elizabeth Graham, whom they have chosen president. When she isn't supervising the behavior of her sister pledges and seeing that they toe the mark, she is kept quite busy learning to architect. Who knows but some day she may attain fame designing Delta Zeta houses with real Roman



baths in every room. All we can boast so far is a goldfish bowl! Next comes Grace Aasen, who hails from far-away North Dakota, and whose peculiar hobby is collecting "A's." I wish you could all have heard her speech at the annual Panhellenic Scholarship Luncheon which she attended as the pledge making the highest grade in our sorority. Everybody present was astonished at her remarkable composure, for the rest of those scheduled to "speechify" were making shredded wheat of their napkins.

And then there is quiet little Ruth Schooley, who spends most of her time trying to put over a strong, silent act. But we've managed to lift her iron mask and thus call her bluff. She's Delta Zeta material all right. Eleanor Chaney, besides being a systematic treasurer, has a special weakness for dead dog-fish and various other likeable species of biological varieties. We can always tell when she's just had Zoö lab, for she starts lamenting about all the different kinds of soap she's been trying. Jean Kelly helped Troubadours put over their yearly musical comedy in proving herself an asset to the stage crew. In addition to helping them, she is always lending us a hand and no task is enough to faze her.

Virginia Gummel is our representative in athletics, and she has covered herself with glory in the class swimming meets. She also does creditable work in track (I know, 'cause I have to run around the field likewise, clad in one of those ducky little affairs they disguise us in for gym). She is a reporter for the *Hatchet*. Her aunt recently gave us some of the loveliest lampshades you ever saw.

Last of all, Virginia Ladd, who is really and truly a most efficient secretary. That she is capable of fulfilling the noble position thrust upon her was shown by the attendance at the tea for the other sorority pledges. Apparently, not a single invitation went astray. The tea was, in itself, a noble effort, for it was admirably executed and there was an interesting assortment of unusual eats.

We hope that we will some day have the opportunity of convincing Mrs. Lundy that it doesn't always rain in Washington. However, we trust she enjoyed her visit here and her trip to Mt. Vernon. She seemed quite pleased with an original edition of a Roman lamp which she found in a little Oriental shop we patronize, The Pagoda.

And I say, Mrs. Editor, before I close, how about a page or two to be devoted to the methods of rushing employed in other universities? We have just pulled through a siege of it and all thoughts had been relegated to the darkest recesses of our already overloaded minds when now we must drag them forth again, dust them off, and refurbish them with trimmings that we may offer them as suggestions for next year's system.

As you might guess, we were most satisfied with the results of this year's work-out.

Note: This is not the end—'tis but the beginning.

MARION COX, *Editor*  
ALETHEA LAWTON, *President*

## ALPHA KAPPA

PLEDGES: Ruth Ellis, and Geraldine Retan of Syracuse, Gladys Dieseth of Newark, N.J., and Betty Kingsley of Clairton, Pennsylvania.

This semester we have been doing quite a bit of rushing. We have had a bridge and several informal dinners.

Dr. Holzwarth, the head of the German department, and his wife recently accepted our invitation to become patrons of Alpha Kappa. During March we entertained the Holzwarths and Mr. and Mrs. Gorse, also of the German department, at formal dinner.

March 19 the chapter attended the performance of *New Toys*, Margaret Greene, '31, played a leading rôle.

Lorraine Vallencourt, '32, was on the team which recently won a debate against Union College.

Marion Minnes, '30, is in charge of pageant costumes for Women's Day. Other members of the chapter are working on various committees for Women's Day.

Margaret Greene, '31, has been pledged Zeta Phi Eta, honorary and professional oratorical fraternity.

Ruth Clark, '30, has been initiated into Pi Lambda Sigma, honorary and professional library fraternity.

At present we are practicing for annual step-singing contest.

The next big event is our spring formal, and then June and good-by for another year!

BEVERLY CHISHOLM, *Editor*  
MARION E. KNOWLES, *President*

## ALPHA LAMBDA

INITIATES: Lucille Brady, Nell Inness, Rachel Trout, and Jean Sutherland of Boulder, Colorado; Lobelia St. Germaine, Duluth, Minnesota; and Helen Tracy, Denver, Colorado.

PLEDGES: Alberta Pryde, Rock Springs, Wyoming; Marion Rodell, Mt. Harris, Colorado; Grace Cunningham, Seattle, Washington; Delia Bell, Boulder, Colorado.

Alpha Lambda feels that it has had one of the greatest honors that any chapter can have. This honor was that of entertaining for almost an entire week our National President, Mrs. Malott. Mrs. Malott and Mrs. Thoesen, the Epsilon Province President both attended our initiation which was held February 28, 1930.

Thrills upon thrills are the only words to



express our feelings for we not only had the privilege of entertaining Mrs. Malott but were able to have our other delegates to the National Panhellenic Congress with us for several hours. These delegates were Miss Rene Sebring Smith, who is now President of National Panhellenic Congress, Mrs. Pease, Editor of *THE LAMP*, and Mrs. Litchfield, Fullerton, California.

Almost our entire chapter attended the banquet, open to all sorority women, which was given by the Panhellenic Congress. It certainly was one thing that we will never forget.

Jessie Carmichael, president of our active chapter and Lorene Hodges both work for the *Silver and Gold*, the University of Colorado newspaper. Jessie is the society editor and Leren is a reporter.

Helen Tracy and Alberta Pryde are our debaters. They have earned a place in the finals, which take place soon and we are hoping for the best.

Lobelia St. Germaine has been very active in dramatics this year and has played the leading part in several of the Little Theater Plays.

Virginia Dannenbaum, who belongs to Orcaus, an honorary dancing society, had the lead in the chorus of the University Operetta both this year and last.

Helen Tracy, Bessie Marie Africa, and Lobelia St. Germaine gave a very clever act at our University Women's League Vaudeville. It was a clog dance on roller skates.

Alpha Lambda gave a rush tea in Denver during the spring vacation. About fifty guests were invited.

JESSIE CARMICHAEL, *President*

## ALPHA MU

The weeks are passing quickly towards our spring vacation and June.

On February 22 Alpha Mu held a Valentine house party.

Varsity basketball, ever a source of interest, has been doubly interesting because Marion Kennedy played on the team. Marion played excellent basketball throughout the season and made trips with the team to Canada and to Connecticut. Madeline Musacchio played on the Junior class team which won the interclass championship.

On St. Patrick's day, Mrs. Bullis, our housemother, gave us a surprise party. Each girl was given a lovely gift for her hope chest.

The mails at the Delta Zeta House are very heavy these days with our six seniors in eager search for positions. We all hope they will get just what they want despite the fact that we shall miss them very much when they are gone.

Our social calendar includes Charter Day on May 5. May Breakfast and the Moving

Up Day exercise on May 17, our formal dinner dance on May 24. Then June, commencement, and farewell to another college year.

CAROLYN WYMAN, *Editor*  
MILDRED K. WALLS, *President*

## ALPHA NU

PLEDGES: Virginia Gray, Indianapolis; Zoe McFadden, Lawrence, Indiana; Grace Miller, LaFayette, Indiana; Wilda Swango, Switz City, Indiana.

INITIATES: Harriet Jones and Jo Ann Griffey.

Did you all think Alpha Nu had fallen off the map? We really haven't, in fact, we're very much alive. Harriet Jones won the activity and scholarship bracelet which is now traditional in the chapter to be handed down each initiation. She also has received one of the seven Golden Eaglets in Indianapolis in recognition of her exceptional work in Girl Scouts.

Alpha Nu just has "oodles" of activities. We have seven girls in the College Glee Club, and that is more than any other one organization on the campus. We have three girls in National Collegiate Players, and these same girls are in Thespis too, which is another dramatic organization. The literary talent is upheld by Ruth Marie Price and Betty Wilson. Ruth Marie is the only underclassman who is a charter member of Butler's chapter of Kappa Tau Alpha. She is assistant women's editor of Butler's daily, *The Collegian*, and Betty Wilson is copy editor of the same paper. Our artists are Betty Stone and Jo Ann Griffey. We have one girl staying at the house who is from Delta. She is not affiliated but she is an artist too. Our debaters are Ruth Marie Price, and Rose Hay, they are members of the varsity debate team. Romance now steps in—seven girls in the chapter have pins—two of them are from other schools. We are represented in the following clubs and organizations: Classical, Spanish, French, Rido, International Relations, Scarf Club, Chimes, Torch, Y.W.C.A., and Woman's League.

The pledges have been busy socially, with open house, a bridge party, and a dance. The active chapter gave a benefit dance March 1, and cleared \$60. We had a ten piece band and could they play dance music!

We have our lot all paid for now—yes we do have a lot on fraternity row in case you didn't know—and we have a starter on our building fund too.

Our Mothers' Club is very active.

My fingers are worn out with so much news. I have written the letter for the first and last time and now I turn over the utensils and responsibility to Betty L. Wilson, our new *LAMP* editor.

RUTH TRILLER, *President*  
MARCELLA MATHEWS, *Editor*



## ALPHA OMICRON

INITIATES: Margaret Avent, Jacksonville, Florida; Betty Bachus, Oswego, New York; Mary Love Crovatt, Thomasville, Georgia; Lucy Daffin, Marianna, Florida; Anne Hilliard, Salem, New Jersey; Mary Ruth Rosser, LaFayette, Georgia; Jane Sherrard, Uniontown, Pennsylvania; Leone Sherrod, Thomasville, Georgia; Christine Topham, Roanoke, Virginia; Vera Wilhelm, Roanoke, Virginia.

Since our last LAMP letter the time has been crowded with interesting events both on the campus and in the chapter. First of all I think initiation which took place on Sunday March 9 is the most important and we are proud to say that we have ten new Delta Zeta's who are the finest ever! Their gift to the house was a lovely cabinet radio which we are all enjoying to the fullest extent. The Delta Zeta ring for the most outstanding pledge was awarded to Leone Sherrod, but only after very conscientious deliberation for they were all so good it was really a great task to make the decision.

Mrs. Lundy paid us the visit which we had eagerly awaited in March and we found only one drawback—she didn't stay long enough! She possesses one of the most charming personalities we have ever seen and of course every one of us fell in love with her at first sight. We wish we could be selfish and have her with us all the time and oh how we envy those chapters near her!

As a result of the annual popularity elections on the campus we were fortunate in landing three places: "Most Fearless"—Elaine Boughner, "Most Athletic"—Jacque Snyder, "Most Sincere" Rachel Peterson. We also have three places on the Student Government Council: Point Committee, Margaret Adams; Reporter to *Alchemist* (school paper), Jane Sherrard; Door Keeper, Anne Hilliard.

Lucy Daffin plays an important rôle in a dramatic club play, *The Thirteenth Chair*, to be presented April 12 in the auditorium and Jane Sherrard is stage manager for the same play. Elaine Boughner has the leading rôle of "Katherine" in *The Taming of the Shrew*, the annual Shakesperian play, to be presented at commencement in June and she will play opposite Percival Vivian, that noted Shakesperian player from New York. Emily Crovatt is on the producing staff of this play.

Our seniors, Elaine Boughner, Jacque Snyder, Rachel Peterson, all took an active part in the senior stunt which was in the form of a faculty "take off." Jane Sherrard acted as "Night Club Host" for the freshman stunt while Edna Bassett modeled in the junior "Fashion Review" and all the sophomores made names for themselves in "More Whoopce." A cup is given for the

best stunt of the year and as yet it has not been announced but of course we each think our own class should have it. The freshmen have us worried though for their performance was a "knockout," and we're glad to say quite a few of our girls were in it.

At present we are glad to have Evelyn Fritz, '27, visiting us. She came for Elaine Boughner's oratory recital which was given March 27. Elaine added another laurel to her already long chain and also brought more honor to Delta Zeta when she read "The Road To Rome" in such a charming manner. Her outstanding ability and charming personality combined made this performance equal to any professional one and we are very proud to claim her as our own.

Alpha Omicron was third in line for the scholarship cup last semester only losing second place by a fraction of a point. We hope to be first next time and we are working toward that goal.

We are glad to announce that Johnnie Magruder, New Smyrna, Florida, has promised Delta Zeta and she will be pledged within a few days.

EMILY CROVATT, *Editor*  
ELAINE BOUGHNER, *President*

## ALPHA PI

PLEDGES: Billie Batson, Catherine Davis, Mary Nunnally, Elizabeth Stockard, Marjorie Self, all of Birmingham, and Ethel Woods, of Pineville, Kentucky.

INITIATES: Wilma Buck, Uniontown, Alabama; Anna Stuart Dupuy, Birmingham, Alabama; Leona Feltus, Birmingham, Alabama; Louise and Dorothy Galloway, Pineville, Kentucky; Susie Gullledge, Birmingham, Alabama; Lilyclaire Meadows, Lowndesboro, Alabama.

Howard College, our Alma Mater, has realized two of her dreams—that of an attractive new cafeteria, and the opening of the beautiful Student Activity Rooms. Next September we hope to have in reality our fondest dreams, a \$40,000 student activity building.

At our recent sorority election Janette Morgan was elected president of our chapter and representative to National Convention this summer. Annabel Hendon was re-elected big sister of the chapter, and she has also been elected President of the Birmingham alumnae chapter for the coming year. Louise Bellsnyder, our retiring president, was initiated into Sigma Sigma Kappa, honorary educational sorority. Lilyclaire Meadows is president of the Freshman Commission of the Y.W.C.A., and Marjorie Self, reporter. Just think of making an "A" average during your four years in college! That is exactly what Louise Sanders did, only she is finishing in three years, and was elected to Pi Kappa Tau. Margaret Fitz-



patrick made Beta Pi Theta, French honorary society. Three of our girls are proud of making their basketball letters, and these girls are: Louise Bellsnyder, Margaret Fitzpatrick, and Lilyclaire Meadows. Susie Gullledge played very successfully the part of Irene in *Her Husband's Wife*, which was presented by the Allied Arts Club. We are proud of Wilma Buck and Leona Feltus who were chosen by Rudy Vallée to represent the Pi Kappa Alpha and Chi Sigma Gamma fraternities respectively in the feature section of *The Entre Nous*. Janet Morgan, Margaret Fitzpatrick, Eloise Lassiter, Mary Moore Bain, and Ethel Woods took part in the *Roaring Review* which was sponsored by the *Lions Club* of Birmingham. On March 14 College Stunt Night was held, and we assure you that Leona Feltus, Louise Bellsnyder, Margaret Fitzpatrick, and Mary Moore Bain were quite entertaining.

Next September, and all the year through, we are going to miss Augusta Piatt, Louise Bellsnyder, Eloise Lassiter, and Atholine Allen for you see they are seniors. We wish them the greatest success and happiness!

Our freshmen entertained the upperclassmen with a lovely bridge party at the home of Katherine Wharton. Each honor guest was presented with a portfolio of monogrammed stationery. We had a wonderful time, but speaking of good times!

Seven girls became our sisters in the bond of Delta Zeta on Friday afternoon, March 14. On Saturday night, March 15, with these new wearers of the badge as our honor guest, we held our Rose Banquet at the Tutwiler Hotel. A bunch of happy roses were seated around a banquet board which was the shape of a Delta. Eloise Lassiter made a charming toastmistress, and Mrs. Bohannon, Annabel Hendon and Mrs. Billy Bancroft made appropriate toasts. The place cards were in the shape of paddles with the coat-of-arms on them, and diaries marked the place of each new initiate. After the banquet we enjoyed a dance given by our alumnae.

*If these delights thou canst give,  
In Delta Zeta, I mean to live.*

MARY KATHERINE WATERS, *Editor*  
LOUISE BELLSNYDER, *President*

## ALPHA RHO

**PLEDGES:** Jeannette Ash, Versailles, Ohio; Elva Heidrick, Elyria, Ohio; Martha Johnson, Columbus, Ohio; Lorraine Peiper, Wheeling, West Virginia; Marjorie Sannar, Elyria, Ohio.

**INITIATES:** Virginia Bramley, Willoughby, Ohio; Frances Hooker, Columbus, Ohio; Florence Paryzek, Shaker Height, Ohio; Elizabeth Ackerman, Pittsburgh, Pennsylvania; Ellen Ackerman, Pittsburgh, Pennsylvania; Kathryn Boring, Delaware, Ohio;

Elizabeth Jackson, Fairmont, West Virginia; Marie Riddell, Cleveland, Ohio; Berneida Smith, Dayton, Ohio; Mary Elizabeth Sprow, Sandusky, Ohio.

**HONORS:** Phi society (Junior Phi Beta Kappa), Elizabeth Jackson; Delta Phi Delta (Art), Elizabeth Menke, Elizabeth Archer; Orchesis (Dancing), Ella Richey Wells, Marie Riddell, Lorraine Peiper; Dance Drama, Martha Strauch, Louise Redfern, Pauline Ryder, Grayce Meinhart, Ella Richey Wells; Woman's Athletic Association, Ella Richey Wells; Numerals, Elizabeth Ackerman, Ellen Ackerman, Elizabeth Archer, Martha Izant, Lorraine Peiper; Monnett Hall Social Committee, Martha Izant; Freshman Commission, Y.W.C.A., Elizabeth Ackerman, Advisory Board; Ellen Ackerman, secretary; *Transcript* business staff, Martha Izant; lead in the Commencement Play, Pauline Ryder.

Having our ranks reinforced by ten newly initiated girls spurs Alpha Rho on with greater hope for large undertakings at Ohio Wesleyan. (And, may I add, that we found it necessary to invest in chairs in order to accommodate the big increase in meetings!) As you will notice in our list of new honors, a goodly portion has been taken by freshman girls. Shortly before initiation the pledge group entertained us in grand night club manner. If any of you happened to be listening in on the broadcast (by our "golden voiced" Berneida), you know that they gave us a "choice" program.

Inasmuch as we are scattered about in dormitories and freshman cottages, our social chairman, Louisa Worley, conceived of the idea of having dinner together occasionally at the rooms on the night of active meetings. This proved quite successful. To add to the facility of working the plan, our thoughtful sisters in the Cleveland alumnae chapter gave us silverware for Christmas. This gift has helped us in all forms of entertainment and is greatly appreciated. Our one and only dance of the semester was in May, a formal at the Odevene country club, to which we especially invited our alumnae.

As usual we are trying to raise money; this time it is for better rooms. With our increase in household equipment, we need expansion of territory. All cast-off clothes, victrola records, and the like go toward our rummage sale.

A number of our girls are scheming big things for July. You know what I mean! They are counting on meeting many of you about whom we read and never see. Be sure to look for us when you reach Madison. Louise Redfern will be there attending summer school at that time. She is one of our best known women and holds the office of Panhellenic president next year.

GRAYCE MEINHART, *Editor*  
PAULINE V. RYDER, *President*



## ALPHA SIGMA

INITIATES: Elsie Taylor, Tampa; Alice Buford, Tallahassee; Edna Mae Duval, Tallahassee; Marion Grady, Tallahassee; Janet Girardeau, Monticello; Mary Lou Anderson, Monticello; and Virginia Tyler, Pensacola.

So many exciting things have happened lately here in Alpha Sigma that it is difficult to know just where to begin. The most recent and, of course, the most important is initiation. It is important to us for two reasons, the initiation of seven splendid girls and Mrs. Lundy's visit. Mrs. Lundy was with us for almost a week. On Thursday afternoon Freshman Commission of the College Government Association was tapped. Alice Buford, one of our new initiates was among the thirty girls chosen from the Freshman class to serve on commission. On Friday night the Junior class held its Annual Minstrel in which Idella Wells, Alpha Sigma senior, had an important rôle. The King and Queen of the Carnival were crowned on that evening. Mary Lamb was the maid to the Queen and Idella was her knight. The Rose Banquet was held at the Floridan Hotel. Elsie Taylor was presented the Scholarship Cup and Marion Grady was presented a bar pin with the coat-of-arms for having the greatest number of campus activities. Early Tuesday morning Mrs. Lundy left us to join Mrs. Malott in New Orleans.

### HONORS

1930—Idella Wells, Odd Demonstration, Senior Play, Junior Minstrel, Coronation of the Carnival Court, Kappa Delta Pi, national educational honorary, Alpha Chi Alpha, national literary honorary, Phi Kappa Phi, national scholastic honorary.

1930—Mary Lamb, Senior Play, Coronation of Carnival Court.

1932—Virginia Miller, Assistant Advertising Manager of *Flambeau*.

1932—Margaret Murphy, Sophomore Representative to Senate, C.G.A.

1933—Marion Grady, Varsity volleyball team, "F" Club, captain freshman volleyball team, president Freshman class, secretary of College Government Association.

1933—Alice Buford, Freshman Commission, C.G.A.

MARGARET MURPHY, *Editor*  
?????, *President*

## ALPHA UPSILON

Here are two sure signs that spring is well advanced—the last LAMP letter is due and the seniors are carrying their canes.

We held our informal dance March 8 at Monitor Hall in Arono. The Harmaniacs furnished the music. Dr. and Mrs. Small and Mrs. Sullivan were chaperons. Everybody had a splendid time in spite of the rain.

The plans for our banquet April 23 and our formal dance April 25 at the Country Club are already under way.

HONORS: Katherine Veazie, '30, has been elected president of Mt. Vernon House, and Aline Campbell, '30, has been re-elected president of Balentine Hall, an honor which has never before been conferred on the house president. Der Deutsche Verein, the honorary German fraternity, elected two of our girls to its membership—Margaret Fowles, '32, and Helena Conant, '31. The twins, Rachel and Rebecca Matthews, were elected to Phi Beta Kappa and Rebecca also was elected to Phi Kappa Phi.

PAULENE M. DUNN, *Editor*  
M. ALINE CAMPBELL, *President*

## ALPHA PHI

PLEDGES: Janette Frowe, Ft. Pierce, Florida; Irene Oliver and Alice Gallup, Kansas City, Missouri; Elizabeth Fyffe, Blackwell, Oklahoma; and Delores Ogroskey, Winfield, Kansas.

INITIATES: Ruth Anderson, Aline Burges, Dorothy Frederick, Elizabeth Fyffe, Carol Lea Penrose, Catherine Owen, Virginia Rice, Jean Taylor, Wade Verdier, Delores Ogroskey, LaBerta Weiss, and Linda Windhorst.

As for honors, we have them in abundance. Our president, Wilma Taylor, is also president of W.A.A.; secretary of Jay Janes, pep group; took part in the Tau Sigma dance recital; is treasurer of rifle club; and is an active member in Quack Club, honorary swimming organization. Irene Moon is a member of the Glee Club and went on the trip over the state. Margaret Kilbourne, Jane Tucker, Virginia Rice, and Dorothy Frederick are members of MacDowell, honorary fine arts society, Carol Lea Penrose, Foline Eppstein, and Margaret Kilbourne are members of Quill, honorary literary society. Carol Lea also was recently pledged to Theta Sigma Phi, honorary journalism organization. Ruth Pratt and LaBerta Weiss were elected to Phi Beta Kappa and the latter also was made one of the eight members of Mortar Board. Katherine Morris was elected secretary of Kappa Beta, Christian church sorority. Wade Verdier and Jane Tucker received high rank in the Fencing Club. The latter also recently received a scholarship from the Art Student's League in New York. Beatrice Funk belongs to the German and Botany Clubs. LaBerta Weiss, Ruth Pratt, and Katherine Morris made the Dean's Honor Roll. Cece Goddard and Dorothy Frederick were chosen members of El Ateneo, honorary Spanish Club, and LaBerta Weiss was the recipient of a fellowship from the University of Iowa. Dorothy Frederick also had a prominent part in the Tau Sigma dance recital.

But all work and no play truly makes Jack



a dull boy; so we have kept up our social activities as well as scholastic ones, with a lovely informal party March 1; and our formal dinner dance on Friday evening, May 16 at the Hotel Eldridge. It was, of course, the nicest party of the year. Then, our ever-busy housemother, Mrs. Harwood, is steadily building the Delta Zeta Mothers' Circle into an active organization, and the monthly meetings are both practical and interesting. The last one of the year will be combined with a benefit bridge, the proceeds to go to Vest. Practically every Wednesday, we entertain with guest dinners for rushees, and on Sundays we entertain faculty members. Just recently we invited our brothers, cousins, and boy friends for Sunday dinner. Our patronesses give teas every month in order to become better acquainted with our girls, and these are always very enjoyable.

One of the interesting events of this semester was "Health Week," or "Courtesy Week," an extremely modified "Hell Week," and the pledges had the time of their lives, so to speak. Between the secret planning of both the actives and the pledges, we had a grand, exciting week-end.

Now that spring is here, we are having our yard landscaped and is it going to look grand? The father of one of our girls has charge of it.

KATHERINE MORRIS, *Editor*  
WILMA TAYLOR, *President*

## ALPHA PSI

INITIATES: Betty Knox, Katherine Huneke, Virginia Price, Beverly Seahorn, and Harriet Smith.

We are all still under the influence of our initiation which we held March 29 at the home of one of our national officers, Mrs. F. F. Smith. You who are allowed to have chapter houses perhaps do not understand how an initiation can be held anywhere else but we assure you that it can. We all insist that Mrs. Smith's living room was especially built for our service, for it is just the proper size and has exactly the right exits and entrances. At any rate it forms a lovely setting for initiations and every one of Alpha Psi's services has been held there.

Beverly Seahorn is a graduate student taking her M.A. in History.

Alpha Psi has received several scholastic honors recently. We were rather disgruntled to find that again we had missed first place in sorority scholarship ranking by a small fraction of a point, but we were somewhat consoled by the number of our members who were on the honor roll. Besides, Alpha Theta Phi (local honorary scholastic fraternity petitioning Phi Beta Kappa) elected to membership two of our girls, Virginia Bruce and Octavia Edwards. Virginia had the highest average of the senior girls who were initiated this year and Octavia was one of

the three juniors whose grades entitled them to membership in what had until last year been an organization for seniors only.

This year at our initiation banquet we carried out the lamp motif since for the first time the banquet was not graced with the presence of our pledges. That night we had with us Mrs. Elroy Fulmer, a charming Mu alumna who was identified with Iota chapter last year. She is staying in Dallas this year while her husband helps direct the Dallas Little Theater.

In the last letter I mentioned the fact that Alpha Psi was getting up an alumna news letter. I think that I should amend that statement, for *The Alpha Psi Sighter* is a most attractive little sheet and merits a more ambitious title than "letter." It was sent out some time ago and the enthusiastic comments of our alumnæ have proved to us its desirability.

This year for the first time Delta Zeta had a basketball team to enter in the sorority tournament. We won the first game and lost the second but we don't feel very bad about our defeat for Katheryn Hoffman (our next president) was put on the S.M.U. papers honor team and Florine Adams, a pledge, was awarded a place on the second team. The rest of us (especially those of us who didn't get hurt) think that that's quite enough to make up for the bruises and sprains that were much in evidence during the weeks of practice.

OCTAVIA EDWARDS, *Editor*  
MARGARET BOREN, *President*

## BETA ALPHA

We Beta Alphas have had a very successful year, successful from every standpoint. We have been well represented in all college activities, have won a scholarship cup, and have initiated twelve new Delta Zetas. We regard the last as our greatest achievement.

We are very busy trying to get everything done before the end of the school term. Our most interesting social event was a party we gave for our new patron and patroness, Dr. and Mrs. Robert Learmouth. Everyone came in costume representing some famous (or infamous) character from fiction or history. On that night such personages as Senator and Mrs. Caesar, Mark Anthony and Cleopatra, and Lorna Doone and John Rudd were abroad. Alice Todd was mistress of ceremonies. Our next important event was our May breakfast which was May 1. Then all the Beta Alphas get up at five o'clock and cook breakfast so that customers may be served promptly at six! The annual May day, on which the May Queen is crowned, is being prepared for. There are several of our girls taking part in the pageant with which the day is always celebrated.

Muriel Fletcher has been elected the assistant editor of the *Beacon*, the college



paper; Marion Coggeshall was chosen assistant editor of the *Frosh Beacon*; and Virginia Lovejoy is on the Junior Prom committee. Marion Coggeshall won the scholarship prize offered to our freshmen by the Beta Alpha juniors. Beta Alpha is proud of its achievements but the thing of which we are most proud is the present senior class.

On June 10, Beta Alpha will send seven Delta Zeta alumnae into the world. Five of the seven plan to enter the field of home economics. Genella Dodge, Dorothy Kenyon, and Irene Walling plan to teach while Alice Todd and Margaret Pierce plan to do technical work. Susan Brucker expects to teach chemistry and Ruth Lee plans to become a botanist. We do not like to see them go but we wouldn't have them stay. . . . We wish them and all other Delta Zeta alumnae elects the best of luck!

ALICE TEW, *Editor*  
RUTH LEE, *President*

## BETA BETA

INITIATES: Mary Hazel Miles, Louise Puffer, Virginia Owen.

The main event in the life of Delta Zetas here for the past two months has been preparation for and having initiation, but we have had some minor events to keep us excited and busy in between times. The first one was a big bridge party honoring our pledges of the year. We didn't have elaborate decorations, just a lighted replica of our golden lamp on the mantel above the huge open fireplace, and vases of our lovely pink roses about the large room, and colored mints on the tables. We did use Delta Zeta cards at all the tables. Many of our guests remarked how pretty they were. As luck would have it, the tea room where we had the party is painted in green with rose and cream draperies. You can imagine how pretty the total effect was. The favors were dainty dance handkerchiefs, the girls' high score prize a necklace, the boys' a golf pencil, and the consolation prize a perpetual calendar in brass with the school seal. We used a new idea for cutting the consolation prize. Dixie Jackson, the chairman of the social committee, passed around a basket heaped with sweet peas with rose and green ribbons dangling from it. Each guest drew one. On each was tied some foolish little toy and on one the package of the consolation prize.

Just before spring holidays two of our girls were elected to honor societies. Harriet Jackson, a graduate student pledge, was initiated into Pi Kappa Pi, the official local scholastic society. She is the only girl in the history of the University to make a straight A record from the time of her entering the school, through her four years of work, and on through her graduate work. Lou Ella Garrett, our president for this year,

was elected to Chi Delta Phi. We are naturally very proud of both these girls.

Then came initiation. How proud we were when three more glowing lamps burned forth, when three more Delta Zeta roses bloomed in our garden. Myrtle Mason, our president of last year, came back to be with us. We were certainly glad to have her, only we wished some more of our alumnae could have been with us. Isn't it fascinating to watch the circle of a chapter and of our national group increase?

Oh, yes, don't let me forget that the girls said, "Please tell Mrs. Pease that Beta Beta votes unanimously for a continuation of the practice of having chapter letters. All of us enjoy all of them so much."

And don't think we aren't excited about convention! Hope I see you all there.

Greeting to our sisters, from Beta Beta.

CATHERINE McFARLANE, *Editor*  
LOU ELLA GARRETT, *President*

## BETA GAMMA

PLEDGES: Mary Alice Baker, Glenna Smith, Madonna Tallerday, Cecil Sullivan.

INITIATES: Virginia Durham, Katherine Heine, Lillian McNulty, and Henrietta Redding.

Rush is over, and we have almost settled back into our ordinary course of existence. The mid-semester rush is not as exciting as that in September, because, according to Panhellenic rules, we are allowed only two weeks and one party. But we made the most of it, and our party was certainly a success. It was a luncheon bridge at the University Club. Everything about it was practically perfection, and it went over big!

This semester we are emphasizing scholarship, and our ambition is to have one of the very highest averages, if not *the* highest on the campus. We have some charts which are quite works of art, really, and at the end of the month we check up on the grades of both actives and pledges. If the grades are good, we get a pat on the back; if not, something else.

We are also trying out something new in our chapter—a point system. By this we will know better the general standing of every one. In counting points, there are included scholarship, campus activities, sorority affairs (such as supper meetings and parties), and miscellaneous, offices in clubs, thoughtfulness to each other, and other good deeds. We check up on our points every month. This system serves two purposes—first, to bring up the pledges in the way they should go, and second, to help us to decide which of the actives deserves the Alumnae Award given at the end of the year to the best all-round Delta Zeta.

Recently we had a party at the house, and everyone had a marvelous time. Some of



the new initiates have been talking about it ever since, and so we intend to have another one very soon.

We were very fortunate in having Mrs. Crawford, our province president, pay us a visit. We had our regular Monday supper meeting on Tuesday, and it was quite a grand occasion. Wednesday evening we had dinner at Denunzio's, after which we went to a picture show. Thursday at noon, there was a luncheon given by the dean of women and Panhellenic, in honor of Mrs. Crawford. After that she had to leave to get the bus to Lexington. We were certainly sorry to see her go, because we had such a good time together, and learned a lot of things and profited by a lot of helpful suggestions. We certainly hope Mrs. Crawford will come to see us again.

MARY HEDDEN, *Editor*

EDNA SCOTT JOHNSON, *President*

## BETA EPSILON

INITIATES: Marion Lemming and Serena Baylis.

Since the last letter to *THE LAMP*, the midyear examinations have been completed and everyone has passed them commendably for which we are all happy. However, all good things have sad aspects, and as a result of their success, our president, Mary Casey, and Mary Connelly, have received their degrees and left us. Mary Connelly has a position in a private school in Wilmington, and Mary Casey is resting for a few months.

On March 8 our chapter took part in the pledging of the new chapter at Swarthmore College. We are now looking forward to the time when they will be initiated and hope that we may have the privilege of assisting at that most beautiful of ceremonies. The evening of the same day our new initiates tendered a little party to the chapter at which we had the pleasure of entertaining Miss Katherine Morrison, our province president. She spent the night with us and we like to think it a compliment that she stayed so long with us that she caught her train only as it was about to leave the station.

On Sunday, March 9, we had a parents tea when we also entertained the new pledges from Swarthmore.

Miss Katherine Goodall of Alpha Kappa chapter entertained us at bridge one delightful Saturday afternoon. Such delicacies, such prizes you never did see, and, best of all, each one was presented with a Delta Zeta rose.

Then our Alumna Advisor, Mrs. Irvin Reed MacElwee (Helen Collins, Tau), en-

tertained us at bridge. What a night it was! The rain came down in torrents, but we managed to wend our way to her home in Ridley Park where a most delightful evening awaited us, including an introduction to one we hope will be a Delta Zeta in the future, little Marylyn, Mrs. MacElwee's baby.

Mrs. Lynch, Alumna Advisor of Alpha Mu, visited us and we are hoping that she will soon come again.

We are glad to announce our Spring Formal at the Pelham Club on April 26. We are looking forward to a joyous evening.

THELMA D. FREAS, *Editor*

DOROTHY L. VOLLMER, *President*

## BETA ZETA

PLEDGE: Lois Mabie, Brigham City, Utah.

INITIATES: Marjorie Augustine, Salt Lake City, Utah; Naomi Horne, Mesa, Arizona; Alice Jex, Salt Lake City, Utah; Evelyn Watson, Salt Lake City, Utah.

ACTIVITIES: Marjorie Augustine and Hazel Hall were initiated, recently, into Alpha Beta Theta, local literary sorority. Helen Homer was initiated into Chi Delta Phi, national literary sorority. Ruth Wilson, our president for the coming year, received an award sweater from the Woman's Athletic Association of this University. This is quite an honor, as only three women on the campus have received these sweaters this year. Barbara Hickman, our erstwhile athlete, made the all-star women's basketball team. Phyllis Prater received honorable mention for her ability in basketball. Phyllis was also pledged to the Home Economics Club. She is also very active in Girl Scout work.

We initiated four girls on March 9. And such girls! Who wouldn't be proud to have them for sisters! The initiation and banquet were held in the president's suite of the Hotel Newhouse. As there were four girls, we carried out the four-leafed clover idea. One girl talked about loyalty, one about honor, one about friendship, and one about ideals. Only the newly-initiated members gave the toasts; no active or alumna members talking at all. We thought we would give our new members an opportunity to express themselves, since we had talked to them so much, and upon such varied subjects, while they were pledges! We think they liked it, too.

We have brightened up our chapter rooms by the addition of a radio. The place is twice as popular. It proves to be a better drawing card than we had thought, although it took no sales talk to convince us of the desirability of owning a radio.

ROBERTA E. PACE, *Editor*

EVELYN HADLEY, *President*



## Substitute "The Lamp"

### Your New Address

*Planning to be married?  
Send your address soon,  
New name's as important  
As the honeymoon.*

*Moved across the city?  
Or just down the block?  
Your new address would give us  
A very pleasant shock.*

*Moved across the country?  
Want ANCHORA without fail?  
Just write us where to send it  
You'll get it in the mail.*

*If ANCHORA doesn't reach you.  
Which one is to blame?  
Try sending in your new address  
And don't forget "his" name.*

EDNA J. WILDE  
in the *Anchora* of Delta Gamma

---

### DO IT YOURSELF—

If you want the LAMP, send your changed address in to the Business Office (445 Illinois Bldg., Indianapolis, Ind.).

### YOURSELF

*Why?* Because only first-class mail is forwarded by the post office.

LAMPS returned are not sent out again until the new address reaches us. Postage on back numbers must be paid by the subscriber.



# Delta Zeta Sorority

Founded at Miami University, October 24, 1902

GUY POTTER BENTON, D.D., LL.D., *Grand Patron*  
(Deceased)

## FOUNDERS

JULIA BISHOP COLEMAN (Mrs. J. M.) ..... Loveland, Ohio  
MARY COLLINS GALBRAITH (Mrs. George) .. Fairview Road, Sta. B, Columbus, Ohio  
ANNA KEEN DAVIS (Mrs. G. H.) ..... 4627 Glenshade Ave., Cincinnati, Ohio  
ALFA LLOYD HAYES (Mrs. O. H.) ..... 115 Maple St., Evanston, Ill.  
MABELLE MINTON HAGEMANN (Mrs. Henry) ..... Deceased  
ANNE SIMMONS FRIEDLINE (Mrs. Justus R.) ..... Colorado Springs, Colo.

## NATIONAL COUNCIL

*President* ..... MRS. CARL GRANT MALOTT  
340 E. Huisache Ave., San Antonio, Texas  
*First Vice-President* ..... MISS LOIS E. HIGGINS  
1524 East Fifty-ninth Street, Chicago  
*Second Vice-President* ..... MRS. FREDERICK D. SMITH  
3609 McFarlin Boulevard, Dallas, Texas  
*Secretary* ..... MISS RUBY LONG  
Cashmere, Washington  
*Treasurer* ..... MISS WINONA E. JONES  
Dept. of Physical Education, University of Minnesota, Minneapolis, Minnesota  
*Editor of LAMP* ..... MRS. JOHN W. PEASE  
4719 Winton Road, Cincinnati, Ohio

*Visiting Delegate* ..... MRS. HUBERT M. LUNDY  
445 Illinois Building, Indianapolis, Indiana  
*Executive Office* ..... 445 Illinois Building, Indianapolis, Ind.  
*Secretary in Charge* ..... MISS IRENE BOUGHTON

## NATIONAL PANHELLENIC CONGRESS

*Chairman* ..... MISS RENE SEBRING SMITH, Δ Z  
Y.W.C.A., Long Beach Calif.  
*Secretary* ..... MRS. EDWARD P. PRINCE, Φ M  
Webster City, Iowa  
*Treasurer* ..... MRS. ARTHUR REDD, K Δ  
Uniontown, Ala.  
*Delta Zeta Delegate* ..... MISS RENE SEBRING SMITH  
Y.W.C.A., Long Beach, Calif.

## STANDING COMMITTEES

*Social Service*: Mrs. R. W. Nebel (Alene Davis), Box 471, Munising, Mich.; Mrs. F. O. Toof (Yvonne Wilson); Mrs. John W. Dalzell (Mary Lou Nickerson); Miss Bertha Leming.  
*Health*: Dr. Helen Johnston, 1005 Bankers Trust Bldg., Des Moines, Iowa; Miss Melva John.  
*Constitution*: Mrs. J. M. Coleman, Loveland, Ohio; Mrs. John Pease; Mrs. H. M. Lundy.  
*History*: Mrs. H. M. Lundy, 445 Illinois Bldg., Indianapolis, Ind.  
*Ritual and Insignia*: Miss Ruth E. Robertson, 405 E. Washington St., Greencastle, Ind.; Miss Elaine Ryan. Mrs. F. D. Smith and Mrs. H. M. Lundy members *ex-officio*.



# Provinces of Delta Zeta

## ALPHA PROVINCE

CORNELL UNIVERSITY ( <i>Beta</i> )	SYRACUSE UNIVERSITY ( <i>Alpha Kappa</i> )
GEORGE WASHINGTON UNIVERSITY ( <i>Alpha Delta</i> )	UNIVERSITY OF MAINE ( <i>Alpha Upsilon</i> )
ADELPHI COLLEGE ( <i>Alpha Zeta</i> )	UNIVERSITY OF PENNSYLVANIA ( <i>Beta Epsilon</i> )
ST. LAWRENCE UNIVERSITY ( <i>Alpha Mu</i> )	NEW YORK ALUMNÆ
RHODE ISLAND STATE COLLEGE ( <i>Beta Alpha</i> )	WASHINGTON, D.C., ALUMNÆ
UNIVERSITY OF PITTSBURGH ( <i>Omicron</i> )	PITTSBURGH ALUMNÆ

*President*—MISS KATHERINE MORRISON, 14 Dewey St., Ingram, Pa.

*Secretary-Treasurer*—MRS. JOHN LADD, Washington, D.C., 4422 Lowell St., N.W.

## BETA PROVINCE

UNIVERSITY OF LOUISIANA ( <i>Sigma</i> )	FLORIDA STATE COLLEGE FOR WOMEN ( <i>Alpha Sigma</i> )
UNIVERSITY OF ALABAMA ( <i>Alpha Gamma</i> )	BRENAU COLLEGE ( <i>Alpha Omicron</i> )
RANDOLPH-MACON WOMAN'S COLLEGE ( <i>Alpha Xi</i> )	HOWARD COLLEGE ( <i>Alpha Pi</i> )
UNIVERSITY OF SOUTH CAROLINA ( <i>Beta Delta</i> )	MILLSAPS COLLEGE ( <i>Alpha Omega</i> )
UNIVERSITY OF MISSISSIPPI ( <i>Beta Beta</i> )	BATON ROUGE ALUMNÆ
	BIRMINGHAM ALUMNÆ

*President*—MRS. W. E. BOHANNON, 8108 Second Ave. S., Birmingham, Ala.

*Secretary-Treasurer*—MISS MARGARET BUCHANAN, University of Mississippi, Oxford, Miss.

## GAMMA PROVINCE

MIAMI UNIVERSITY ( <i>Alpha</i> )	BUTLER COLLEGE ( <i>Alpha Nu</i> )
INDIANA UNIVERSITY ( <i>Epsilon</i> )	UNIVERSITY OF LOUISVILLE ( <i>Beta Gamma</i> )
UNIVERSITY OF CINCINNATI ( <i>Xi</i> )	CINCINNATI ALUMNÆ
UNIVERSITY OF KENTUCKY ( <i>Alpha Theta</i> )	CLEVELAND ALUMNÆ
OHIO WESLEYAN UNIVERSITY ( <i>Alpha Rho</i> )	COLUMBUS ALUMNÆ
DEPAUW UNIVERSITY ( <i>Delta</i> )	DAYTON ALUMNÆ
OHIO STATE UNIVERSITY ( <i>Theta</i> )	FORT WAYNE ALUMNÆ
FRANKLIN COLLEGE ( <i>Psi</i> )	INDIANAPOLIS ALUMNÆ

*President*—MRS. K. J. CRAWFORD, 919 N. Ft. Thomas Ave., Ft. Thomas, Ky.

*Secretary-Treasurer*—MRS. LEWIS F. HERRON, 2924 E. 132nd St., Cleveland, Ohio.

## DELTA PROVINCE

UNIVERSITY OF MINNESOTA ( <i>Gamma</i> )	EUREKA COLLEGE ( <i>Pi</i> )
LOMBARD COLLEGE ( <i>Nu</i> )	UNIVERSITY OF NORTH DAKOTA ( <i>Upsilon</i> )
UNIVERSITY OF WISCONSIN ( <i>Tau</i> )	UNIVERSITY OF ILLINOIS ( <i>Alpha Beta</i> )
NORTHWESTERN UNIVERSITY ( <i>Alpha Alpha</i> )	CHICAGO ALUMNÆ
UNIVERSITY OF MICHIGAN ( <i>Alpha Eta</i> )	DETROIT ALUMNÆ
UNIVERSITY OF IOWA ( <i>Iota</i> )	TWIN CITY ALUMNÆ (Minneapolis-St. Paul)

*President*—MRS. G. PHELPS HELGESEN, 806 Fifth St. S.E., Minneapolis, Minn.

*Secretary-Treasurer*—MISS HAZEL EGAN, 812 North Washington Blvd., Kansas City, Kan.

## EPSILON PROVINCE

UNIVERSITY OF NEBRASKA ( <i>Zeta</i> )	BAKER UNIVERSITY ( <i>Eta</i> )
DENVER UNIVERSITY ( <i>Rho</i> )	KANSAS STATE COLLEGE ( <i>Lambda</i> )
UNIVERSITY OF OKLAHOMA ( <i>Alpha Epsilon</i> )	UNIVERSITY OF KANSAS ( <i>Alpha Phi</i> )
UNIVERSITY OF COLORADO ( <i>Alpha Lambda</i> )	DENVER ALUMNÆ
SOUTHERN METHODIST UNIVERSITY ( <i>Alpha Psi</i> )	KANSAS CITY ALUMNÆ
UNIVERSITY OF TEXAS ( <i>Alpha Tau</i> )	LINCOLN ALUMNÆ

*President*—MRS. HENRY J. THOESSEN, Canon Park, Boulder, Colo.

*Secretary-Treasurer*—MRS. A. C. WILSON, 4601 Preston Rd., Dallas, Tex.



## ZETA PROVINCE

UNIVERSITY OF CALIFORNIA (*Mu*)  
UNIVERSITY OF CALIFORNIA AT LOS ANGELES  
(*Alpha Chi*)  
UNIVERSITY OF SOUTHERN CALIFORNIA (*Alpha*  
*Iota*)

UNIVERSITY OF UTAH (*Beta Zeta*)  
BERKELEY ALUMNÆ  
LOS ANGELES ALUMNÆ

*President*—MISS LIZETTE REINLE, 328 Glendale Ave., Oakland, Calif.

*Secretary-Treasurer*—MRS. ARTHUR CRAIG, 2223 Marin Ave., Berkeley, Calif.

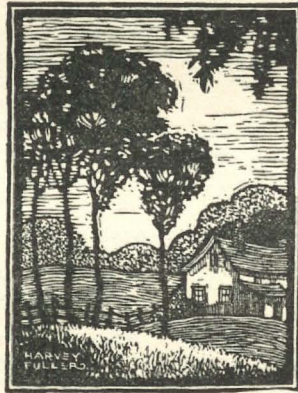
## ETA PROVINCE

UNIVERSITY OF WASHINGTON (*Kappa*)  
OREGON STATE COLLEGE (*Chi*)  
WASHINGTON STATE COLLEGE (*Phi*)

UNIVERSITY OF OREGON (*Omega*)  
PORTLAND ALUMNÆ  
SEATTLE ALUMNÆ

*President*—MRS. ALICE WIEMAN, Route 6, Box 710, Portland, Ore.

*Secretary-Treasurer*—MRS. CLARENCE R. NELSON, 1931 E. McGraw St., Seattle, Wash.





# College Chapter Directory

<i>Chapter</i>	<i>Institution</i>	<i>Cor. Secy.</i>	<i>Address</i>
Alpha, 1902 .....	Miami University	Louise Brayton	302 Oxford College, Oxford, Ohio.
Beta, 1908 .....	Cornell University	Christine Schildwaster	Δ Z House, 200 Highland Ave., Ithaca, N.Y.
Gamma, 1923 ....	University of Minnesota	Helen Schonebaum	Δ Z House, 330-11th Ave., S.E., Minneapolis, Minn.
Delta, 1909 .....	DePauw University	Margaret Miller	Δ Z House, Greencastle, Ind.
Epsilon, 1909 ....	Indiana University	Elsie Morrow	Δ Z House, 809 E. Seventh St., Bloomington, Ind.
Zeta, 1910 .....	University of Nebraska	Neva Beth Turner	Δ Z House, 626 N. 16th St., Lincoln, Neb.
Eta, 1910 .....	Baker University	Waneta Sowers	Δ Z House, 720 Dearborn, Baldwin, Kan.
Theta, 1911 .....	Ohio State University	Catherine Crawford	Δ Z House, 219-15th Ave., Columbus, Ohio.
Iota, 1913 .....	Iowa State University	Jeanne Walsh	Δ Z House, 628 E. Burlington St., Iowa City, Iowa.
Kappa, 1914 .....	University of Washington	Mary Elizabeth Cornu	Δ Z House, 4535-18th Ave., N.E., Seattle, Wash.
Lambda, 1915 ....	Kansas State College	Rose Grossardt	Δ Z House, 1111 Bluemont, Manhattan, Kan.
Mu, 1915 .....	University of California	Virginia Caldwell	Δ Z House, 2311 LeConte Ave., Berkeley, Calif.
Nu, 1915 .....	Lombard College	Dorothy Mundwiler	1361 S. Pearl St., Galesburg, Ill.
Xi, 1916 .....	University of Cincinnati	Virginia Morse	4527 Hector Ave., Cincinnati, Ohio.
Omicron, 1916 ....	University of Pittsburgh	Nancy Lea	132-2nd Ave., Aspinwall, Pa.
Pi, 1917 .....	Eureka College	Mary Eleanor Harrod	Δ Z House, Eureka, Ill.
Rho, 1917 .....	Denver University	Dorothy Grass	1755 Ivy St., Denver, Colo.
Sigma, 1917 .....	Louisiana University	Irma Wall	Zachary, La.
Tau, 1918 .....	University of Wisconsin	Ruth Stamm	142 Langdon, Madison, Wis.
Upsilon, 1919 ....	Univ. of North Dakota	Eleanor Hoven	Δ Z House, 2720 University Ave., Grand Forks, N.D.
Phi, 1919 .....	State College of Wash.	Lucille McCrite	Δ Z House, 511 Colorado St., Pullman, Wash.
Chi, 1919 .....	Oregon Agri. College	Helen Klann	Δ Z House, 3 Park Terrace, Corvallis, Ore.
Psi, 1920 .....	Franklin College	Charlotte Watkins	Girls' Dormitory, Franklin, Ind.
Omega, 1920 .....	University of Oregon	Kathryn Allison	Δ Z House 381 E. 12th St., Eugene, Ore.
Alpha Alpha, 1920	Northwestern University	Jane Taft	Δ Z House, 717 University Pl., Evanston, Ill.
Alpha Beta, 1921 .	University of Illinois	Clarissa Bogart	Δ Z House, 810 S. 3rd St., Champaign, Ill.
Alpha Gamma, 1922	University of Alabama	Mary Silver	University of Alabama, University, Ala.
Alpha Delta, 1922 .	George Washington Univ.	Mary Walker	Δ Z House, 240 Knoblock, Stillwater, Okla.
Alpha Epsilon, 1922	Oklahoma State College		
Alpha Zeta, 1922 .	Adelphi College	Marion Medley	Adelphia College, Garden City, L.I., N.Y.



<i>Chapter</i>	<i>Institution</i>	<i>Cor. Secy.</i>	<i>Address</i>
Alpha Eta, 1922 ..	University of Michigan	Helen Casendy	Δ Z House, 816 Hill St., Ann Arbor, Mich.
Alpha Theta, 1923	University of Kentucky	Florence Ryan	Δ Z House, 322 E. Maxwell, Lexington, Ky.
Alpha Iota, 1923 ..	Univ. of Southern Calif.	Fern Pierson	Δ Z House, 710 W. 28th St., Los Angeles, Calif.
Alpha Kappa, 1924	Syracuse University	Katherine T. Flickinger	115 College Pl., Syracuse, N.Y.
Alpha Lambda, 1924 ..	University of Colorado	Lucille Brady	Δ Z House, 1506-12th St., Boulder, Colo.
Alpha Mu, 1924 ..	St. Lawrence University	Alice Lawrence	Δ Z House, 39 Judson St., Canton, N.Y.
Alpha Nu, 1924 ..	Butler University	Alice Higman	Δ Z House, 4617 Sunset, Indianapolis, Ind.
Alpha Xi, 1924 ..	Randolph - Macon Woman's College	Frances Spessard	R.M.W.C., Lynchburg, Va.
Alpha Omicron, 1924 ..	Brenau College	Vera Wilhelm	Δ Z Lodge, Brenau College, Gainesville, Ga.
Alpha Pi, 1924 ...	Howard College	Josephine Bellsnyder	Box 37, East Lake, Ala.
Alpha Rho, 1924 ..	Ohio Wesleyan Univ.	Helen Laser	Mennett Lodge, Delaware, Ohio.
Alpha Sigma, 1924	Florida State Col. for W.	Virginia Tyler	547 W. College, Tallahassee, Fla.
Alpha Tau, 1924 ..	University of Texas	Cora Mae LaFleur	2608 Guadalupe, Austin, Tex.
Alpha Upsilon, 1924 ..	University of Maine	Gilberta Watters	Balentine Hall, Orono, Me.
Alpha Phi, 1925 ..	University of Kansas	Delores Ogrosky	1043 Indiana, Lawrence, Kan.
Alpha Chi, 1925 ..	University of Calif., L.A.	Antionette Porter	Δ Z House, 1912 Selby Ave., Los Angeles, Calif.
Alpha Psi, 1926 ..	S. Methodist University	Irene Flake	Δ Z Box, S. Methodist University, Dallas, Tex.
Alpha Omega, 1926	Millsaps College	Mary Wacaster	Jackson, Miss.
Beta Alpha, 1928 ..	Rhode Island State Col.	Virginia May	R.I.S.C., Kingston, R.I.
Beta Beta, 1928 ..	University of Mississippi	Mary Louise Puffer	University of Mississippi, Oxford, Miss.
Beta Gamma, 1928	University of Louisville	Virginia Durham	2135 S. First, Louisville, Ky.
Beta Delta, 1928 ..	Univ. of South Carolina	Maude C. Gittman	1225 Main St., Columbia, S.C.
Beta Epsilon, 1928	Univ. of Pennsylvania	Marion Lemming	3420 Walnut St., Philadelphia, Pa.
Beta Zeta, 1928 ..	University of Utah	Barbara Hickman	1187 Charlton Ave., Salt Lake City, Utah.
Beta Eta, 1930 ..	Swarthmore College	Barbara J. Crosse	Swarthmore College, Swarthmore, Pa.



# Alumnae Chapters

## BATON ROUGE, LOUISIANA

*President*—Teresa Lurry, 2337 Government St.; *Secretary*—Laura Redden Extension Dept., L.S.U.; *Editor*—Mrs. Hazel Barman Hearin, Claycutt Road.

## BERKELEY, CALIFORNIA

*President*—Mrs. Lloyd Graham, 999 Lee, San Leandro, Calif.; *Secretary*—Lucille Fawcette, 3146 Division St., San Francisco; *Editor*—Mrs. Paul Princelau, 3209 Liberty, Alameda, Calif.

## BIRMINGHAM, ALABAMA

*President*—Annabelle Hendon; *Secretary*—Sammie Hoover Bancroft; *Editor*—Frances Bohannon, 8104 Underwood Ave.

## CHICAGO, ILLINOIS

*President*—Mrs. F. O. Tooff, 1325 Fargo Ave.; *Secretary*—Margaret Donica, 421 Kedzie Ave., Evanston, Ill.; *Editor*—Ethel Homer, 501 Belmont Ave.

## CINCINNATI, OHIO

*President*—Mrs. John W. Dalzell, 1132 Inglenook Place; *Secretary*—Alice E. Eckman, Morrison Ave.; *Editor*—May E. Oliver, Robison Rd.

## CLEVELAND, OHIO

*President*—Hazel Bowen, 1745 Chapman Ave., Suite 1; *Secretary*—Frances Brandt, 13737 Franklin Ave., Lakewood, Ohio; *Editor*—Evelyn Martens, 240 Oxford Road.

## COLUMBUS, OHIO

*President*—Mrs. W. G. Stoneman, 58 Lexington Ave.; *Secretary*—Helen Murray, West Jefferson, Ohio; *Editor*—Mrs. Arthur W. Raymond, 121 Wilson Ave.

## DAYTON, OHIO

*President*—Mrs. Bruce Lloyd, 205 Oxford Ave.; *Secretary*—Mrs. Robert Canby; *Editor*—Mrs. Frances Baker Schardt.

## DENVER, COLORADO

*President*—Miriam McNerny, 1429 S. University; *Secretary*—Helen

Taylor; *Editor*—Mary Carey, 865 S. Pennsylvania.

## DETROIT, MICHIGAN

*President*—Mrs. William E. Palen, 20150 Litchfield Dr.; *Secretary*—Mrs. W. G. Booth, 210 Highland Ave., Highland Park, Mich.; *Editor*—Mrs. Frank McVey, 3811 Grand Ave.

## FORT WAYNE, INDIANA

*President*—Mrs. Wayne Morrill, 2537 Maple Place; *Secretary*—Mannetta Schneider, 1301 Sheridan Court; *Editor*—Virginia Kiracofe, 36 Madison St., Huntington, Indiana.

## INDIANAPOLIS, INDIANA

*President*—Frances Westcott, 914 E. 42nd St.; *Secretary*—Mary Kinsley, 3519 Birchwood Ave.; *Editor*—Harriet Kistner, 410 E. 46th St.,

## KANSAS CITY, MISSOURI

*President*—Marion Brinton, 1745 W. 49th St.; *Secretary*—Alice Chaney, 4101 Hyde Park; *Editor*—Joyce M. Hawes, 412 W. 47th Bartleston Apt. Hotel.

## LINCOLN, NEBRASKA

*President*—Effie M. Noll, 934 S. 33rd; *Secretary*—Mrs. Sue Worrall, St. Francis Apt. B, 25th & 2; *Editor*—Mrs. Robert Jennings, 901 South 36th.

## LOS ANGELES, CALIFORNIA

*President*—Mrs. Raymond Muentner, 456 Alta Vista, Hollywood, Calif.; *Secretary*—Gladys Marquardt; *Editor*—Florence Osgood.

## MINNEAPOLIS-ST. PAUL, MINNESOTA

*President*—Helen Woodruff, 330 Eleventh S.E.; *Secretary*—Wanda Everett, 4320 Linden Hills Blvd.; *Editor*—Same.

## NEW YORK, NEW YORK

*President*—Mrs. James H. Quinn, 221 Linden Blvd., Apt. 11, Brooklyn N.Y.; *Secretary*—Hilda Persons Horton (Mrs. I. E.), 272 Gates Ave., Brooklyn, N.Y.; *Editor*—Alice Mun-



son, 10926-217th St., Queen's Village,  
L.I., N.Y.

**PITTSBURGH, PENNSYLVANIA**

*President*—Susan Rush, 5522 Bryant  
St.; *Secretary*—Dorothy Lellich, 921  
Savannah; *Editor*—

**PORTLAND, OREGON**

*President*—Agnes Christie, 1027 E.  
Twenty-third St. N.; *Secretary*—  
Florence McCoy, 374 East 37th St.  
N.; *Editor*—Vivian Copple, 5031  
34th Ave., S.E.

**SEATTLE, WASHINGTON**

*President*—Miss Emily Neighbor,  
1533 Thirty-eighth Ave.; *Secretary*  
—Mrs. William Phelps Totten, 6801  
Seventeenth N.E.; *Editor*—Mrs.  
Josephine Dean Brandenburg, 1020  
Seneca St., Washington, D.C.

**WASHINGTON, D.C.**

*President*—Mary Whitney, 3387  
Stuyvesant Pl., N.W.; *Secretary*—  
Ethel Carpenter, 1330 L. St., N.W.;  
*Editor*—Helen Robb, 1770 Kilbourne  
Pl., N.W.

**ALUMNÆ CLUBS:**

Ann Arbor, Michigan  
Bloomington, Indiana  
Boulder, Colorado  
Dallas, Texas  
Eureka, Illinois  
Grand Rapids, Michigan  
Houston, Texas  
Madison, Wisconsin  
Miami, Florida  
Omaha, Nebraska  
Rockford, Illinois  
Sioux City, Iowa  
Syracuse, New York  
Tampa, Florida  
Toledo, Ohio





# Calendar of Alumnae Meetings

## BATON ROUGE, LOUISIANA

Meetings of the Baton Rouge alumnae chapter are held the fourth Monday night of each month at 7:30 P.M. at the homes of the different members, and all visitors or new residents are urged to attend. Call Teresa Lurry (3165) or write 2337 Government St., Baton Rouge. Regular Alumnae Bridge Club meets the third Saturday of each month.

## BERKELEY, CALIFORNIA

In September, October, and November, the meetings are held on the first Tuesday of each month, at 7:30 in the evening. Beginning with December and continuing through June, the first Saturday in each month, at 2:30 P.M., is the regular meeting time. Meetings are held in the homes of members, and all visitors or new residents in the Bay Region are cordially urged to attend. Call Lisette Reinle (Piedmont 5365-J), or write 328 Glendale Avenue, Oakland.

## BIRMINGHAM

We meet the second Saturday in each month at the Hotel Bankhead. The number of the private dining-room in which we meet at one o'clock is posted on the bulletin board in the lobby. Call Miss Alice Brooks at 3-4284 and tell her you will be present.

## BOULDER ALUMNAE CLUB

A cordial welcome will be given all Delta Zetas, by Boulder Alumnae Club. Please call Miss Carmel La Torra, 907 Eleventh, or Mrs. Clarence Burr, 1101 Penn, Boulder, Colorado.

## CHICAGO

The Chicago chapter meets second Saturday at some conveniently located central place. Newcomers or transients are requested to telephone Mrs. F. O. Toof, Sheldrake, 9123, if they find it possible to attend a meeting of the chapter.

## CINCINNATI OHIO

The Cincinnati Alumnae Chapter meets each third Saturday, for a luncheon, followed by business and a social afternoon. Visitors and new members are cordially invited: all such please call Mrs. John Pease, 4719 Winton Rd., Kirby 2967L.

## CLEVELAND

The meetings of the Cleveland Alumnae Chapter take the form of luncheons at homes of members, followed by bridge in the afternoon. Visitors are welcome and should call Mrs. Lewis F. Herron, 2924 E. 132nd St. Meetings are held each second Saturday.

## COLUMBUS, OHIO

The meetings of the Columbus Alumnae Chapter are held on the third Saturday of each month, usually at the homes of members. Newcomers and visitors should call Mrs. K. O. Kesler, telephone University 6766.

## DALLAS, TEXAS

The Dallas Alumnae Club will cordially welcome additions to its membership (or guests who may be in the city for a short time). We meet regularly on the second Wednesday of each month at the homes of various members. Will all newcomers and visitors communicate with Mrs. A. C. Wilson, 4601 Preston Rd., Telephone 5-6580.

## DAYTON, OHIO

The Dayton Alumnae Chapter meets each first Saturday at the Woman's Club or other convenient downtown place. Delta Zetas in the city at meeting times please call Mrs. Earl H. Blaik (telephone Lincoln 1712-R).

## DENVER

The Denver Alumnae Chapter meetings are held the first week of each month alternately on Monday and Thursday evenings at 8:00 P.M. at the homes of members. Visiting Delta Zetas or newcomers are asked to get in touch with Mrs. Clyde McNerny, 1429 South University, phone South 9280W.

## DETROIT

The Detroit Chapter holds monthly meetings at the members' homes on the first Tuesday. Either Jean Ramsey, 843 Longfellow Avenue (Longfellow 3731), or Charlotte Springsteen Herring (phone Garfield 4689-J) will be glad to hear from prospective members or visitors.

## FORT WAYNE, INDIANA

Meetings are held the last Saturday of the month at the homes of members. This chapter is especially anxious to increase its membership and will welcome information concerning Delta Zetas not affiliated. Visitors and new members are invited to communicate with Ruth VanNatta Hunt, 1218 West Packard Avenue, or phone H-19044.

## HOUSTON, TEXAS

The Houston Alumnae Club will be glad to have Delta Zetas in and near Houston attend its meetings, the Saturday after the first Wednesday of each month, at 10:30 A.M., at homes of members. Notify Mrs. Carol B. Chase, or Mrs. Thos. B. Wheaton, Leheigh 0366.



#### INDIANAPOLIS

The Indianapolis Alumnæ Chapter meets each second Saturday. Visitors or new members in the city please get in touch with Mrs. Noble Hiatt, 3606 Balsam Avenue.

#### KANSAS CITY

The meetings are held each first Saturday as the chapter meets for luncheon each first Saturday, at the Kansas City Athletic Club. Ruth Davison, 3412 Holmes, Kansas City, Missouri, would like to hear from new residents. This chapter is especially anxious to increase its membership and will welcome information concerning Delta Zetas not now affiliated with the chapter.

#### LINCOLN, NEBRASKA

The Lincoln Chapter meets the last Monday of each month at 7:30. All visiting Delta Zetas are cordially invited to meet with us when in the city. Visitors and newcomers are urged to communicate with Mrs. E. W. Lantz, 6842 Dudley (telephone M-1735).

#### LOS ANGELES, CALIF.

Meetings are held the second Saturday afternoon of alternate months, the other monthly meetings coming on the second Monday evening of the month. Rose Pipal, 117 N. Avenue 55 (telephone Garfield 6750), or Gladys Marquardt (telephone Lafayette 3177) will be glad to hear from all newcomers.

#### MINNEAPOLIS, MINNESOTA

The Twin Cities Chapter meets twice monthly, on the second and fourth Tuesday evenings at the chapter house, 330 Eleventh Ave., S.E., Minneapolis. Transients and newcomers please telephone Mrs. H. Mason King, Regent 3480.

#### NEW YORK CITY

The New York Chapter meets the third Saturday of each month, an afternoon meeting alternating with an evening one. Girls in New York for any length of time, or visitors who are to be in the city on a meeting day are urged to call Hilda Persons Horton, 272 Gates Avenue, Brooklyn (telephone Starling 7433). Names and addresses of girls coming to New York are gladly received.

#### PITTSBURGH

The Pittsburgh Chapter meets on the third Saturday of each month at different places. Niella S. Reese (telephone Hiland 7273W) will be glad to know of strangers or visitors who could arrange to attend any meeting.

#### PORTLAND, OREGON

The Portland Delta Zetas meet on the fourth Thursday evening of each month at the homes of members, for social meeting. Agnes Christie, 1027 E. 23rd St. N., will be glad to see that visitors and newcomers in the city are notified of meeting, and assist them to meet the chapter.

#### SEATTLE, WASHINGTON

The Seattle Alumnæ Chapter meets on the first Saturday of the month beginning in September and alternates with an evening meeting, a spread on the Tuesday following the first Saturday. Afternoon meetings at two o'clock, and evening meetings at six-thirty. Visitors and newcomers please call Mrs. Harold Swendsen, East 2494.

#### WASHINGTON, D.C.

The Washington Chapter meets on the third Thursday of the month at the homes of members. All meetings are night meetings. Newcomers or visitors please call Miss Dorothy Ladd, Balfour Apartments, Sixteenth and U Streets, for information concerning meeting. New members gladly welcomed.

#### OMAHA, NEBRASKA

The Omaha Club meets third Saturday for luncheon, various members entertaining. Call the president, Mrs. Louis O. Kavanagh, 2313 G Street, South Omaha, or secretary-treasurer, Mrs. W. J. Sweeney, 3302 Burt Street.

#### ROCKFORD, ILLINOIS

Rockford Alumnæ Club meets the third Saturday of every month. Visitors and newcomers please call Mrs. Harrison Trautman, President, 407 Hall Street, or Miss Georgia Saylor, 305 Sherman Street, Secretary.

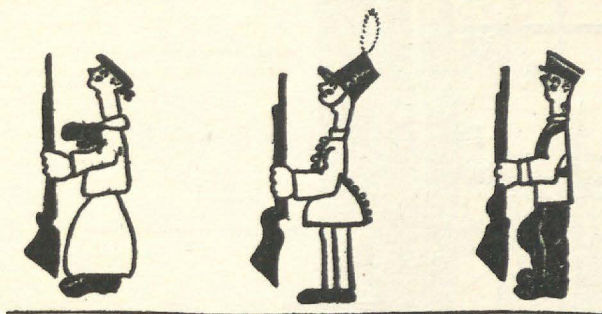
#### TOLEDO, OHIO

The Toledo Alumnæ Club meets once a month. Visitors and newcomers please call Mrs. Harry Scott, President, 3147 Collingwood Avenue, or Mrs. Emerson Messenger, Secretary, 3023 Gunchel Boulevard.

NOTE: This list, which is intended to serve Delta Zetas who go as strangers or visitors to cities in which there are alumnæ chapters, will be completed as fast as the information is received from the chapters. Members are reminded that it is easier for the newcomer to seek our chapter, than vice versa, and every Delta Zeta is urged to take the first opportunity of becoming acquainted with the alumnæ chapter or club.



# ATTEN - SHUN!



## • Delta Zeta Playing Cards •

*Make Wonderful*

CHRISTMAS PRESENTS

BIRTHDAY PRESENTS

BRIDGE PRIZES

DANCE OR RUSH FAVORS

---

## New Special Prices

Rose or Green Backs—Each Stamped With Delta Zeta Crest in Gold

Single Decks .....\$0.75

Double (Bridge) Deck ..... 1.50

---

*Order Now—Specify Color Desired*

---

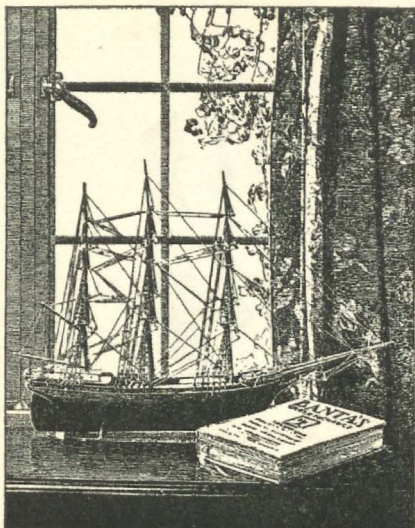
## Order from Central Office

---

---



DEDICATED TO COLLEGE GREEKS



## NEWS OF YOUR FRATERNITY

\$3<sup>50</sup>

*two years*

YOU are invited to become a subscriber to BANTA'S GREEK EXCHANGE, the only interfraternity and Panhellenic magazine published for the fraternity man and the sorority women. ¶ It is the only publication, exclusive of your own magazine, that prints the news of your organization. ¶ It is the official magazine of the Interfraternity Conference and the Panhellenic conference. ¶ It contains a complete directory of all fraternities and sororities and a chronological calendar of conventions and a list of charter grants and chapter installations. ¶ Its departments are many, varied and interesting; its news is timely, alive, up-to-the-minute and vital. Its editorial staff includes such famous men as George Banta and Francis W. Shepardson. They speak in every issue. ¶ BANTA'S GREEK EXCHANGE appeals definitely to college folks; its pages are eagerly read everywhere.

Typographically, it is one of the best printed magazines in America.

BANTA'S GREEK EXCHANGE  
MENASHA · WIS.



# **The Sorority Handbook**

---

**Per Copy \$2.25**

---

***Send Orders to***  
**CENTRAL OFFICE OF DELTA ZETA**  
**445 Illinois Building**  
**INDIANAPOLIS, INDIANA**

---

---

## **T H E P A N H E L L E N I C**

*New York Headquarters for Delta Zeta*  
*also the*

*Metropolitan Rendezvous for All Fraternity and College Women*

Fraternity information on file at the desk.  
New York City Panhellenic Club rooms on the fourth floor.  
Rooms for permanent and transient guests.  
Special rates for summer school students.

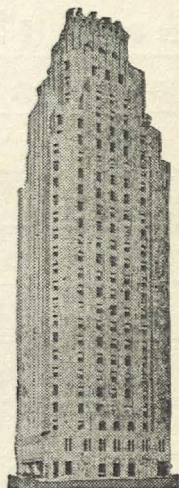
### **RATES**

*Weekly, \$10-\$25, single and outside room.*  
*\$ 9-\$15, per person, double rooms.*  
*Transient, \$2.50, \$2.75 and \$3.00 per day.*

## **THE PANHELLENIC**

3 Mitchell Place  
(49th Street and First Avenue)  
NEW YORK

*Phone Vanderbilt 2640*





Α Β Γ Δ Ε Ζ  
Η Θ Ι Κ Λ Μ  
Ν Ξ Ο Π Ρ Σ  
Τ Υ Φ Χ Ψ Ω

† † † † that  
mystic combination  
of greek letters  
on your badge or  
sweetheart pin is  
most beautifully  
glorified in the  
† jeweled badges †  
created for you by

**burr, patterson & auld co.**  
manufacturing fraternity jewelers  
2301 sixteenth st. ❖ detroit

share the glory of  
your insignia with  
your sweetheart,  
mother and sister.  
write for the badge  
price list of your  
fraternity and a  
copy of the 1930  
† the book for †  
† modern greeks †









26758

