

T H E

L A M P

OF DELTA ZETA

VOLUME 22 • NUMBER 2

**T H E
L A M P
O F D E L T A Z E T A**

JANUARY • 1933



COPYRIGHT 1933
BY
DELTA ZETA SORORITY



T H E

L A M P

O F D E L T A Z E T A

MARGARET H. PEASE

Editor

Contents for JANUARY, 1933

Thirty-One Years and a Century of Progress!	87
A Glimpse of Edinburgh <i>Olive Chace</i>	88
The Dream Girl of Delta Zeta	89
The Edward L. Doheny, Jr., Memorial Library	
..... <i>Florence G. Boller</i>	90
Glamorous Gail Patrick—Delta Zeta.....	
..... <i>Frances B. Gourley</i>	92
Write for Cash or Credit	93
The Legend of Mitre Peak... <i>Elizabeth Carrothers Dill</i>	94
Twenty-Nine Questions	<i>L. Pearle Green</i> 96
Delta Zeta Poems	98
And Some Write Prose	101
The Lampadary	108
College Chapter Letters	110
Alumnæ Chapter Letters	181
Alumnæ Club News	138



Office of publication, 450 Ahnaip Street, Menasha, Wisconsin.

IMPORTANT: The postal laws require prominent display of address of office of publication. Please note that this does not mean that correspondence concerning general fraternity matters should be sent to the publishers. All such matters should be addressed to the proper fraternity officials whose addresses are shown elsewhere.

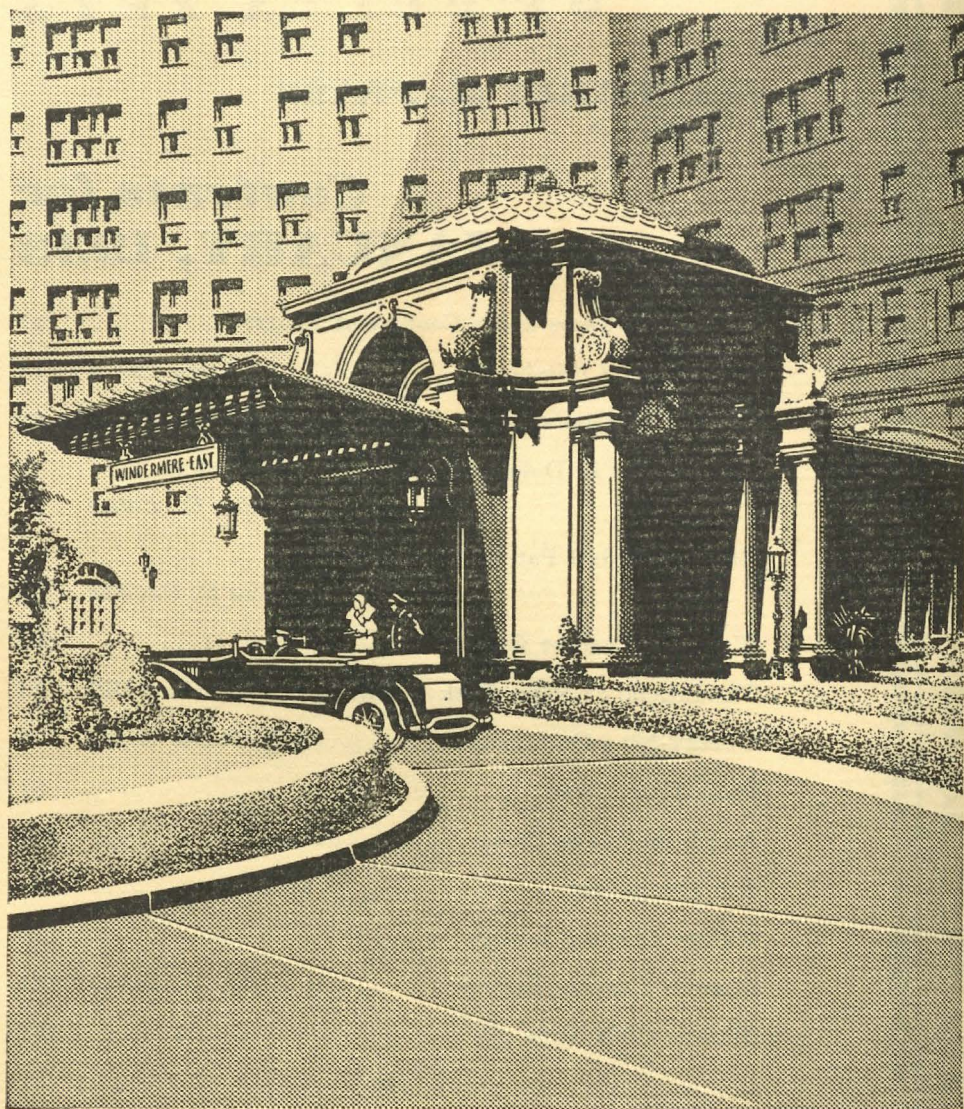
Official publication of Delta Zeta, Margaret H. Pease, Editor. Published in October, January, March and May.

Entered as second class matter at the post office at Menasha, Wis., Oct. 18, 1909, under the Act of Congress of March 3, 1879. Acceptance for mailing at a special rate of postage provided for in the Act of Oct. 3, 1917, Section 1103. Authorized Sept. 26, 1918.

All matter intended for publication must be in the office of the Editor, 4719 Winton Road, Cincinnati, Ohio, on the first day of the month preceding the month of publication: i.e., September 1 for October issue, December 1 for January issue, February 1 for March issue, April 1 for May issue.

The subscription price is \$2.00 a year, Life Subscription \$35.00.

Subscriptions, changes of address, advertising, and inquiries concerning business matters should be sent to 450 Ahnaip Street, Menasha, Wisconsin, or the Central Office, Miss Irene C. Boughton, 1026 Milam Bldg., San Antonio, Texas.



● THE WINDERMERE

Our Convention Hotel

THE L A M P OF DELTA ZETA

Vol. 22



No.2

Thirty-One Years and a Century of Progress!

THE Fourteenth Biennial Convention of the Delta Zeta Sorority will be held at the Hotel Windermere East, Chicago, from June twenty-sixth to thirtieth, inclusive 1933. As you will recall, the last issue of Sidelights announced the convention at the Edgewater Beach Hotel, late in July. Since there have been many requests for an earlier convention, due to the early August date of opening of some of the western colleges and secondary schools, the time and place of convention have been definitely set as June twenty-sixth to thirtieth at the Hotel Windermere East. Earlier dates at the Edgewater could not be arranged.

Naturally, everyone will want to visit the Century of Progress at Chicago and it was because of repeated requests to the council that the convention be held in or near Chicago so that the two trips could be made together, that it was decided to have the convention in the

World's Fair city late in June, 1933.

Hotel Windermere East is located in a lovely spot in Hyde Park, at 56th Street and Hyde Park Boulevard. It faces Jackson Park; is but two blocks from the beach: five minutes on the I.C. or ten minutes on the bus to the Century of Progress Exposition; bridle paths start at the door; an eighteen hole golf course in within ten minutes walk; six blocks from the University of Chicago, and ten minutes ride to the loop! What more could one ask?

As for expenses involved in this convention, the entire cost for the full five days at convention, including meals, rooms, tips, banquets, registration, sight-seeing (including the fair of course), convention daily, everything, will not exceed thirty five dollars, and will perhaps, be less. Start saving your pennies now for the fourteenth Biennial Delta Zeta Convention. Thirty-one years and a *century* of progress!

A Glimpse of Edinburgh



By Olive Chace, Alpha Delta '28

KNOWN as one of the world's most beautiful cities, Edinburgh has a charm for those who spend ever so short a time within her gates, which makes it well nigh unforgettable.

Our first view of Edinburgh seemed symbolic for one object dominated all else. It was illumination week and Edinburgh Castle lighted in celebration, stood out clear, distinct, compelling, above a city wrapped in darkness. Visible as the country is for miles around from the castle walls it was naturally a fortress of conquerors from the time of the Picts and the Romans until modern invention made it useless for defense. A barracks and showplace only, now, the Castle still dominates public interest as it does the landscape. Here it is that Mary, Queen of Scots, gave birth to her son who was to unite England and Scotland under one monarch. Here, also, one may see the great cannon, "Mous Meg," the Banqueting Hall and St. Margaret's Chapel, the tiniest church in Great Britain and the most venerable building in Edinburgh. Of more recent time is the stately National Scottish War Memorial with its awe-inspiring figure of St. Michael, the Guardian, suspended above the roll call of Scotland's dead. There is something impressive in the endless queue of people winding through its corridors and one wonders how many

of them are seeking for the name of someone who now lives in memory alone.

There is no surer way to appreciate the tremendous casualties of our Allies in the World War than to see lists of names in every church, every village, every hamlet, thousands and thousands of them, one name after another.

A unique spectacle in the Castle is the dog cemetery on the very edge of the wall overlooking the city far below. The tiny decorated graves are real memorials made by the soldiers in the castle barracks for their dogs whom they have lost.

As the time gun boomed the hour of one we had luncheon in a delightful tea room in one of the many buildings within the walls, Real Scotch shortbread and tea seemed a perfect ending for our morning on the hill top.

A walk through Princess Street Gardens brought us to another war memorial, much simpler but equally impressive, the Scottish American war memorial presented to Scotland by Americans of Scotch descent. The figure of a youth in kilts with a gun across his knees, and a far away look in his eyes, is seated on a boulder while behind him march his fellow countrymen of all trades, the farmer, the carpenter, doctor, lawyer, and so on, all heads up, answering the call to war. And so real has the

artist made this boy, and so truly Scotch, that it is said that every mother in Scotland who has lost a son can see something of him again in this figure, proud, determined, and yet with heartbreak in his eyes.

At the other end of the gardens a flower clock which keeps perfect time attract curious visitors, both children and adults.

On Sunday we attended the famous St. Giles Church with its formal Church of Scotland service and its parade of the fashionables of Edinburgh. We found in the afternoon, that being Sunday, everything was closed except a few public buildings and a minimum of cafes. Even the ticket agent in the railroad station spends that day at home or in walking up

and down Princess Street as is the usual Sunday occupation. After attending what we had expected to be a vesper service and what turned out to be a real Presbyterian service reminiscent of my church at home, only longer and more involved, we joined the throng along Princess Street for a brief time.

A flying visit to the University of Edinburgh, a ride around the city in the street car, a walk down High Street, where the houses jut out over narrow sidewalks, and in one of which John Knox spent his last year, and we sped away to Glasgow and Loch Lomond where a trip up the Loch amid the most beautiful hills it has ever been my pleasure to see, ended a memorable visit to Scotland.

THE DREAM GIRL of Delta Zeta . . .

JUANITA KELLY BEDNAR (Mrs. Charles J.), Nu, '29, who wrote the words and music for "Dream Girl of Delta Zeta" has had the song published in sheet music form. It has always been a very popular song with the chapters and Juanita wanted it made available in sheet form. In the new form a new verse has been added, and there is an arrangement for a ladies quartet. The whole song has been arranged by Mrs. Clara Huffman Barrows, Eta, and National President of Phi Beta.

The cover design is most attractive and is the work of a friend of Juanita's. The song in its new form sells for thirty-five cents a copy and can be ordered from 194 Blaine Avenue, Galesburg, Illinois.





The Edward L. Doheny, Jr. Memorial Library

REMINISCENT of the culture and learning of the past, yet modern in every detail of equipment, the new Edward L. Doheny, Jr. Memorial Library at the University of Southern California, Los Angeles, is a monument of which every alumnus is justly proud.

The structure and furnishings approach perfection for no detail was too small and no item of expense too large to receive the careful attention of the donors, the Doheny family, who erected the building, at a cost of one million one hundred thousand dollars, as a memorial to the late "Ned" Doheny, prominent alumnus and member of the board of trustees of the university. The library in its beautiful setting occupies one entire block in University Park, facing a landscaped quadrangle known as the Alumni Memorial Campus, the ground being a gift of the Trojan Alumni Association of which Edward L. Doheny, Jr. was president from 1923 to 1925.

Let us make a tour of this magnificent addition to the campus. We choose the main University Avenue entrance and are impressed by the facade, an arched opening in a face of limestone. The archway is formed by a pair of concentric arches, the outer one resting on columns of green marble with carved black marble capitals, and the soffit of the inner arch containing a mosaic band in blue and gold representing the zodiac. Above the massive solid bronze doors is a sculptured medallion showing a teacher instructing two students from a scroll on

which are Alpha and Omega, symbols of all knowledge. On the right of the entrance is a statue of Dante, while Shakespeare stands on the left.

We pull open the great cast bronze doors and find ourselves in a majestic hallway looking up a broad open stairway to the main delivery hall known as the rotunda. We exclaim over the beautiful floor of inlaid marble, the walls of Vaurion stone, and the Portia Santa marble frieze over the delivery desk. Bronze lamps hang from the ceiling which is heavily beamed in wood and panelled in accoustical tile decorated in deep rich colors and gold leaf, applied by hand. For efficiency a pneumatic tube system connects the delivery hall with all stack levels and returned books are carried from a slot in the rotunda to an adjoining workroom for checking, from which they are sent to the stacks by an automatic elevator.

At the end of the main hall to our right we find a treasure room which contains many rare editions. A mural over the doorway depicts a young Egyptian scribe, with the Pyramids as a background, handing on the torch of wisdom to a man of today with skyscrapers towering behind him. The treasure room holds a marble bust of Edward L. Doheny, Jr. by Mario Korbel. The woodwork is English walnut and one of the most interesting features of the room

**By Florence G.
Boller, A I**

is a series of murals depicting the history of the printed word. We'd like to stop here longer but must hurry on to inspect the main reading room on the east.

It is two stories high, seats three hundred persons at massive tables, and houses three thousand reference books, with others in the main stack adjoining. The coffered ceiling is decorated acoustical plaster, the floor rubber tile, and the woodwork, bookshelves, and furniture American walnut. Fourteen printer's marks form a painted frieze around the room. Across the hall to the west is the periodical room decorated in American sycamore, most unusual in effect and very light and airy.

Now we return through the rotunda to the catalogue file room and the office of the librarian, the latter being wainscoted in curly redwood and luxuriously furnished. Let's descend the stairs to the library staff suite in the north wing of the ground floor. There is a formal lounge in American Georgian style, an informal Early American dining room, a modern equipped kitchen, and rest rooms. The staff club room looks out upon a cloistered patio in which there are delightful shrubs and a pool. Also on the ground floor are the art and lecture rooms, the reserve reading room which seats four hundred, the archives, congressional records, university publications, photostat and receiving rooms.

We now ascend two flights of stairs to the second floor to see the graduate study, finished in natural knotty pine, the education reading room in golden oak, the sociology library, and twenty-four cubicles or individual study chambers which are assigned to graduates preparing theses or professors writing books. Twenty-four additional cubicles are on the third floor as are a number of seminar rooms. One of the most notable rooms in the building is a special exhibit room reserved for the use of the

president of the University, Dr. R. B. von KleinSmid. It is wainscoted to the ceiling with finely worked African mahogany and illuminated with crystal chandeliers. Carpet and drapes harmonize with the furniture which is also of mahogany.

The capacity of the library is 500,000 volumes, to be housed in nine stacks, but only seven stacks are now in use. All are served by pneumatic tubes, book conveyor system, and automatic elevator. A private telephone line with automatic communication between departments of the library and an electric paging system add to the convenience and use of the library, aiding both librarian and student. Two passenger elevators with American walnut cars and a freight elevator prove useful to all. Many other mechanical conveniences such as a modern heating plant, plumbing, fire protection, lighting, and ventilating systems add much to its comfort and efficiency.

The air conditioning system is most interesting. The ventilating system keeps all rooms at an even temperature and humidity, with the total fresh air being supplied at the rate of 112,810 cubic feet per minute. A modern precaution is the electrical system which employs no fuses, but in their place small automatic circuit breakers have been installed which indicate immediately what circuit is disabled.

Really, it is hard for us going through the library to decide what is the most extraordinary thing about it—the artistic and cultural side, the decorative woods, stones, and marbles, the books and rare gems, or the many mechanical appliances which make the former more accessible and enjoyable. However, the gratitude of the entire university to the munificent donors for all these benefits will be expressed for years to come in the constant use of the library facilities and the whole community will be enriched because of this wonderful gift.

**Come to Convention! Hotel Windermere East
Chicago—June 26-30, 1933.**

Glamorous

Gail Patrick— *Delta Zeta*



• By •

Frances B. Gourley
Alpha Pi

ALMOST like a fairy story it sounds . . . this story of a college Cinderella. And the title . . . perhaps it should be "From August to September."

Once upon a time, on August first to be exact, Margaret Fitzpatrick was heralded as winner of the "Panther Woman" movie contest sponsored by the Birmingham Post and the Alabama Theater. She was merely one of hundreds of local winners all over the United States. She went to Hollywood to stay a week. Paramount Studios wanted to take a longer look at her. She arranged to stay three days longer. At the end of that time, before the girl who was to play the part of the "Panther Woman" in H. G. Wells "Island of Lost Souls" was chosen, Margaret had a seven-year contract with Paramount Studios. Chosen from 60,000 girls!

And because "Margaret Fitzpatrick" is too long to be strung across a theater front in electric lights, something had to be done about it, for the seven-year contract may lead to stardom. So they changed the name to "Gail Patrick." And if you can't find it in the Delta Zeta directory you can find it listed on the roll of the Paramount Stock Company which has only fifty members—mostly stars!

Margaret's career does not seem surprisingly meteoric when we consider her previous record. She was the first girl to be president of the student body at

Woodlawn High School, one of the largest high schools in the city of Birmingham. A slight prejudice was all that defeated her by a very few votes in her race for the same office at Howard College, a Baptist co-educational institution. She was a popular leader in every activity on the campus, in her sorority, in sports, in the classroom, for she was graduated under the Honors System, a system used at Howard College whereby students are orally examined before their professors.

Her college annual yields this information about her: Margaret Fitzpatrick, A.B., Delta Zeta, Beta Pi Theta, Pi Kappa Theta, Delta Kappa. Allied Arts Club (1, 2, 3, 4) Secretary (3), President (4), Honor Roll (1, 3), Y.W.C.A. (1, 2, 3, 4), President Freshman Commission (1) Treasurer (3), President Beta Pi Theta (3), Crimson Staff (3, 4), Entre Nous Staff (4), W.A.A. (3, 4), Riding and Swimming Club (1), College Humor "Collegiate Hall of Fame" (2), Junior Marshal (3), Hypatia (4), Carnival Chairman (3), Glee Club (3), Parade Committee (2, 3), Treasurer Junior Class (3), Secretary Sophomore Class (2), Student Council (4), Woman's Panhellenic Council (4), Vice-president (4), Woman's Debating Council (2), Vice-president (2), Delta Kappa (4) Biology Assistant (3), Chairman Student Body Programs (4).

Margaret wears only red, black, or white, or a combination of these. Her mother and her brother have moved to California.

At the end of the first six months, Paramount will have a chance to re-

new its "option" on her. Her first minor rôle will be in a sequence with May Robson in "If I Had A Million."

In the meantime, Margaret is delaying her intended career as a lawyer and future governor of Alabama.

Write for Cash or Credit

IT WILL be to the credit of yourself (if you are an undergraduate) and your fraternity, and incidentally restore the jingle to your pocket, if you will write an essay for *The American Scholar*, the quarterly journal published by Phi Beta Kappa for all interested in intellectual life.

The essay should consist of about 2000 words on any subject of general interest to educated readers. It should be scholarly but not technical, and must be well written. All essays accepted by the Editorial Board of *The American Scholar* will be printed as main articles with the name of the author's college and fraternity indicated, and an honorarium of \$25 will be paid the author. This journal will have the privilege of reprinting any such article and of publishing any essay which *The American Scholar* finds unsuited to its use. Your essay should reach the editor of *The American Scholar*, 145 West 55th Street, New York, N.Y., by the end of March.

The American Scholar is now in its second year. The editor reports that Walter Lippmann wrote: "Congratulations on the latest issue of *The American Scholar*. You are making an extraordinarily good and useful quarterly." Bruce Barton characteristically remarked of *The American Scholar*: "As I told you last year, I didn't think you could; but you have."

Other readers have written: "I certainly like the practical turn which most of the articles in the recent issue take; the essay entitled 'The Passing of American Individualism' is worth an entire

year's subscription, and is a most timely and valuable contribution." "The magazine is not technical, but it is scholarly—thoroughly well informed as to what is discussed, besides putting it out in clear language, with no trace of time-serving or propaganda. . . . No thinking man, confused frequently by the fogs and unbased assertions characteristic of today's press and political spellbindery, can get along without your valuable quarterly." "So far I think you have confounded the critics who predicted a stodgy, self-satisfied publication. I've found good sense and good writing in every issue so far."

The American Scholar already lists among its authors: James Truslow Adams, Carleton Beals, Gilbert Chinard, Stephen P. Duggan, Hermann Hagedorn, Norman Hapgood, Murray Seasongood, Frederick J. E. Woodbridge, Alvan E. Duerr, Frank Aydelotte, John Erskine, and Owen D. Young.

The following list of subjects of articles which have appeared may suggest the nature of your own essay: "Can the U.S.A. Flout Spanish-American Sentiment," "Washington, Capitalism, and Nationalism," "The Nature of Man," "Reparations and War Debts," "The Passing of American Individualism," "Thomas Jefferson as a Classical Scholar," "The Philosophy of Bolshevism," "A New Day for Scholarship," and "The Fraternity and Scholarship."

It would be better, of course, if you could see a copy of the magazine before writing. Inquire at your library for it

(Continued on page 107)



I WAS spending my vacation on a ranch in the heart of the Davis Mountains—that portion of Texas which is noted for its lofty and imposing mountains, its beautiful green and fertile “cañadas” fed by the “charcos,” or deep water-hole springs.

Driving out the highway from Alpine to Ft. Davis, I caught my first glimpse of that famous old jagged Mitre Peak, rising 7,500 feet into the heavens, and shaped so like a bishop’s mitre. Now, I knew that this peak had been used as a land measure by the first white man to brave this country, but what I did not know was how this peak received its name. So I asked my Mexican friend, Pilar, and I pass this “leyenda,” on to you, as it was told to me.

Many, many moons ago, when the Comanche Indians made their annual September Moon raids into Old Mexico through this country, in order to plunder the rancherías there, a Comanche lad named El Sol was severely wounded and somehow left behind on the Mexican side of the great Rio (Rio Grande). Although in great pain, he was able to drag himself slowly to the settlement of La Junta, where Ojinaga now stands. There he was found by Padre Zavelata, who was making his daily rounds to the

casitas of the village. It was indeed a blessing for El Sol that the kind Padre found him, for the Indians and Mestizos (mixed blood) living in La Junta did not look with favor on the Comanche and his raidings, and would have killed El Sol on sight. But the kind Padre

The Legend of

bathed the wounds of El Sol and dressed them as best he could.

At first Padre Zavelata and El Sol could not understand one another except by signs. But, finally, by the Spring Moon, El Sol had learned much from the father, had learned all concerning the white man’s God and the blessings that came from Him to those who believed in Him. By summer, El Sol was well and strong again. But now he must find his own people. He knew where they would be at this time of the Moon. They would be growing corn by the great Charco by the side of the high Signal Mountain. And Padre Zavelata, would he not come with him and teach his own people all about the white man’s God? Maybe he would be of such good to them that they would make no more raids. Is it not so?

But Padre Zavelata did not want to make this uncertain journey, alone with El Sol. Neither did he feel that his efforts to convert the Comanches would be of much avail, as the padres previously sent to them had been killed. But El Sol pleaded so earnestly, and promised him every protection, also, would not El Sol see to it that all of his great nation of peoples, the Comanches, would take the white man’s God? So, the story goes, in the month of July, Padre Zavelata and El Sol left La Junta together, to find the great Charco where the Comanches were now growing their maize.

It was very hot, dry, and the charcos became more scarce the farther they traveled from the great Rio. But El Sol knew the way. Si, there would be two big mountains, they would cross these,

By

Elizabeth Carrothers Dill*

* Elizabeth Carrothers Dill, *Epsilon*, ex-'17, has recently published a series of articles in the Sunday *Dallas News*, dealing with her experiences in the Davis Mountains of Texas. She is now preparing a legend similar to this for a magazine. DALLAS ALUMNÆ CLUB

then very far to the north a dry flat plain and then a pass, next, Signal Mountain and the Charco! But alas! This had been El Sol's first raiding trip, and he became less sure of his route as they progressed. The days were longer and longer, the way more tedious and the

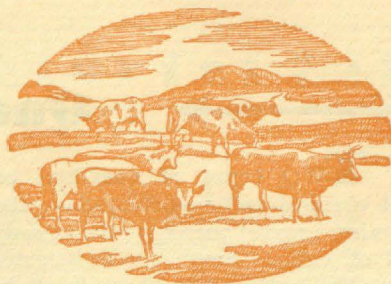
Mitre Peak

Padre bruised his feet constantly on the jagged rocks. And the heat!

Then one day the worst happened. The Padre lost his footing and dropped through a deep crevice. It took all of El Sol's strength and ingenuity to get the Padre out alive, and then they found he had an injured foot. Bad, this was very bad. But El Sol was now of great faith. So he lifted the Padre to his shoulders and carried him. More days of heat, and the thirst, even the cactus leaf had such a little of bitter moisture! Then there came the day when El Sol gently lowered his burden to the ground and fell face downward and did not move. And the Padre sat in agonized silence beside him and prayed. Ah, Dios! Si! He must know best! But to die, with so little accomplished in His name! And this brave lad, he must not die, too.

How it burned and scorched one—this sun! Even the blue sky, Gracias a Dios! What was it? Off to the North—against the clear blue of the sky there seemed to rise suddenly before him the form of the great bishop—no—not all—but the headdress—the beautiful mitre—there it was shining against the blue! Padre Nuestro! No! It was just his old eyes! How they fooled one, in this heat! But, no. He looked again. He could still see it! Ah, Gracias a Dios! A sign! It must be a sign from Heaven!

In his excitement he shook the still form of El Sol. El Sol half-roused from his deep and exhausted sleep, and listened bewilderedly to the Padre. He looked to where the Padre pointed. He jumped up in his great joy! The Moun-



tain, Signal Mountain, and there would be his people!

And Pilar will tell to you, as she told to me, that the great faith of these two, the Padre and the Indian lad, led them in safety to the Charco of the Comanches. And from then to this day this majestic peak of the Davis Mountains has been called Mitre Peak.



HEIGH HO! COME TO THE FAIR

And the Delta Zeta Convention

THE railroads have announced special rates for the summer of the Century of Progress. A return trip ticket, good all season (sixty day ticket), is offered at the rate of a fare and a half. A thirty day round trip is offered for the cost of one way ticket plus one-third. There will also be a sixteen day ticket which will be good in coaches only, at a fare and one-tenth. Corresponding decreases in Pullman cost are anticipated but have thus far not been announced.

There has also been announced recently approximately a twenty-five per cent reduction in round trip fares on all bus lines, and it has been rumored that the American Airways are contemplating a decrease in round trip rates for the duration of the fair. Now, if gasoline costs keep decreasing, if the roller skating craze keeps up and if the rubber tires don't fall off all the kiddie kars, there won't be any excuse for anyone not getting to this convention.

We don't care how you arrive, freight, express, or parcel post, just COME.

TWO types of questions confront the fraternity world today: those becoming acute through the gradual shift of college emphasis and customs during the last decade; those created by the present unusual economic conditions.

Those created by present economic conditions are being solved on most campuses by careful economies and cooperative effort. Where student bodies are much reduced in size, and large new houses are only partially clear of debt, solution is less sure.

Are there too many fraternities represented on some campuses? At the Interfraternity conference meeting Thanksgiving week-end, it was asserted that a field was overcrowded in a state university if more than 55% of the students were fraternity men, in a privately endowed college the maximum might be 75%. Would similar percentages hold for women students? If these percentages are even approximately correct, how about the policy of those colleges which demand—"fraternity affiliations for every student who wants such connections"?

Have fraternities been too critical in their selection of members? Visiting fraternity officers often wonder why this and that outstanding student is not a fraternity member. It may be by choice, but, if so, what is wrong with the chapters on that campus that they do not attract such students? Where a freshman delegation is too small, aren't there desirable girls in other classes who would strengthen a chapter? How meet the problem of the girl who wants to join but "can't afford to now"? Wouldn't a fund to meet such situations be a better alumnae gift than the usual new house furnishings? Wouldn't the omission of one chapter dance provide such a fund?

But when we begin to cut down on chapter activities we become a party

to more unemployment, as one campus found out recently. In a glow of enthusiasm Panhellenic decided that each house could help tide over the shortage in its budget by the girls waiting on themselves at table, and by substituting victrola and radio for the usual orchestra at dances. But, countered the university, then what will happen to the sixty student waiters who are depending on that work for their living expenses this year? and to the thirty men who are paying their way through college by playing in college orchestras? To what extent have chapters become their brothers' keepers? Is it a square deal, to follow the style set by business and economize at the expense of the other student?

Immediate concern with such pressing questions must not crowd out study of the vital questions that must be answered if the future of fraternities is to be protected.

How is fraternity life to be adjusted to meet changing college conditions? What changes, you ask? The great increase in two year students of two classes: those transferring from junior colleges, those dismissed with a certificate at the end of sophomore year as not qualified to profit by further years in college. The trend, not even halted by depression days, toward the building of more and more dormitories. The rule that all freshmen must live in dormitory. The limit placed on number of students and the rigidly enforced selective process.

What shall be the scholarship goal of a fraternity? High rank as a group, or real intellectual interests? What on campus and in fraternity is most conducive to fine scholarship. How about the chapter house tutor system? Would a change in chaperon qualifications bring

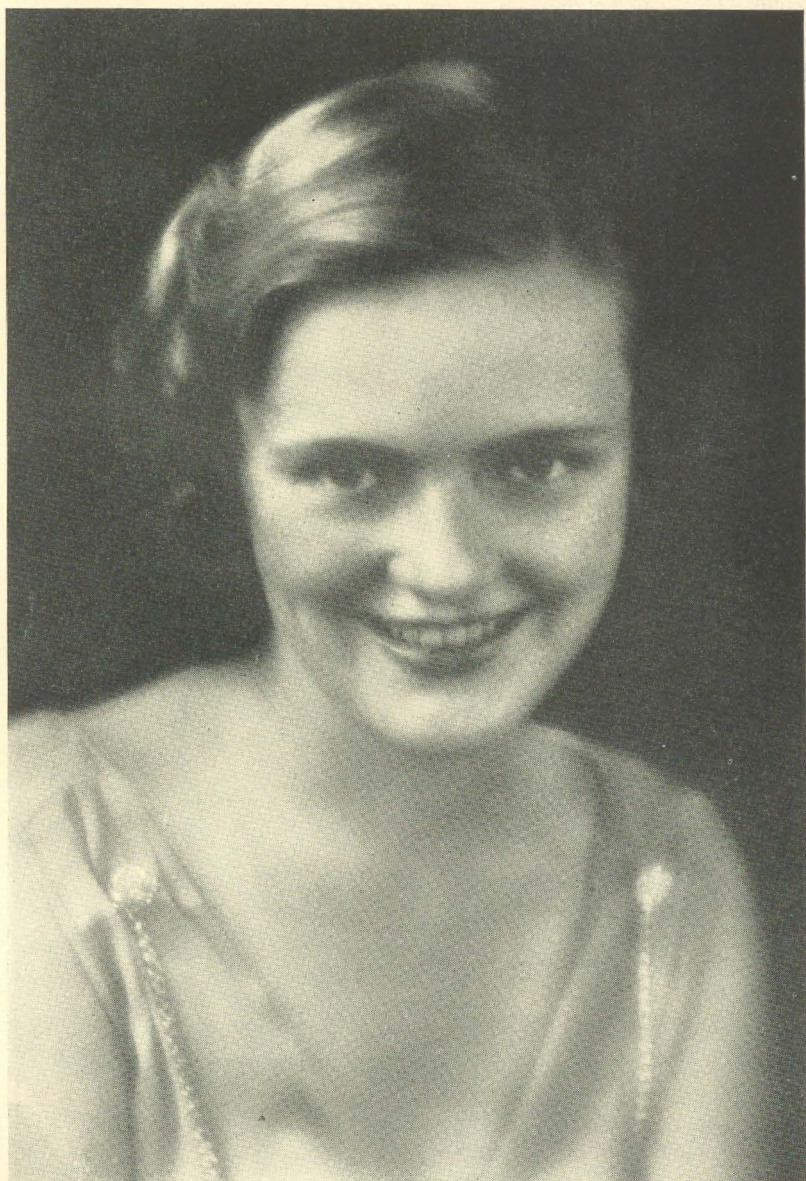
[Continued on page 97]

Delta Zeta Pictorial Life



GAIL PATRICK (MARGARET FITZPATRICK, ALPHA PI), AND GARY COOPER

Delta Zeta Pictorial Life



JANE CONWAY, *Sigma*
"Louisiana Sweetheart"

Delta Zeta Pictorial Life



JOYCE LANE ALLEN, *Sigma*
Rush captain for 1931, Delta Gamma Delta, daughter
of the Governor of Louisiana

Delta Zeta Pictorial Life



JULIA MARGARET GOEMANS
President Alpha Zeta, President of class four years,
Lantern (Petitioning Mortar Board)

Delta Zeta Pictorial Life



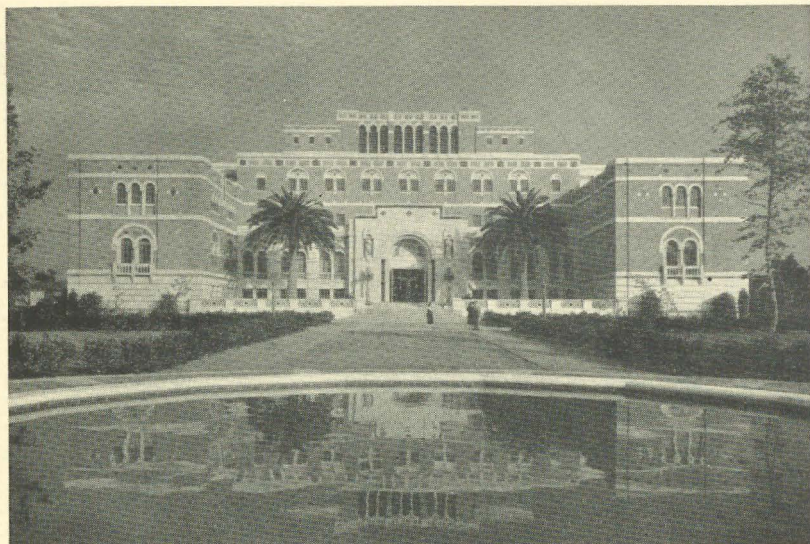
MARIE M. STRUVE, *Tau*
(See text)

Delta Zeta Pictorial Life



MYRTLE B. JOHNSON
Chairman Magazine Agency Committee

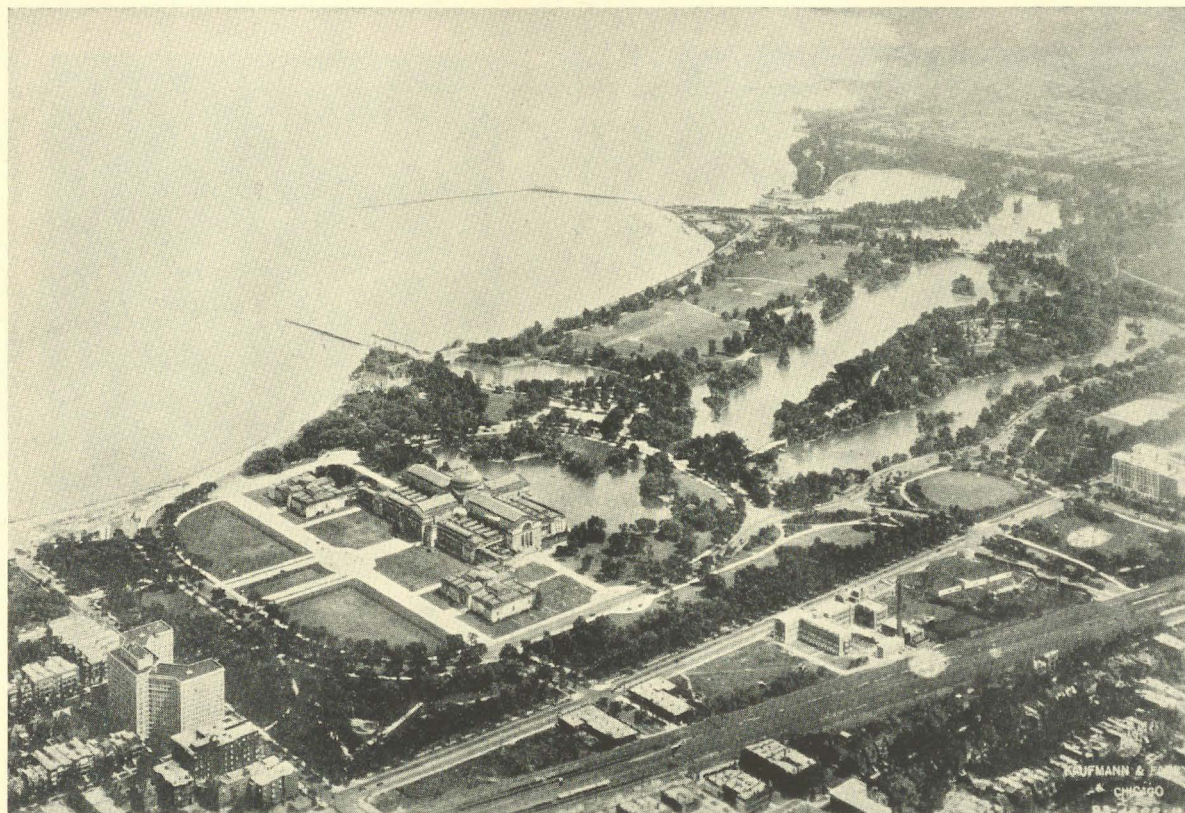
Delta Zeta Pictorial Life



FRONT VIEW OF EDWARD L. DOHENY, JR., MEMORIAL LIBRARY, UNIVERSITY OF SOUTHERN CALIFORNIA (See text)



RUTH PEPPIN, MARJORIE SACHS, ETHEL SALE, JANE DAILEY, DOROTHY STEVENSON, GERALDINE BROWN, *Mu*

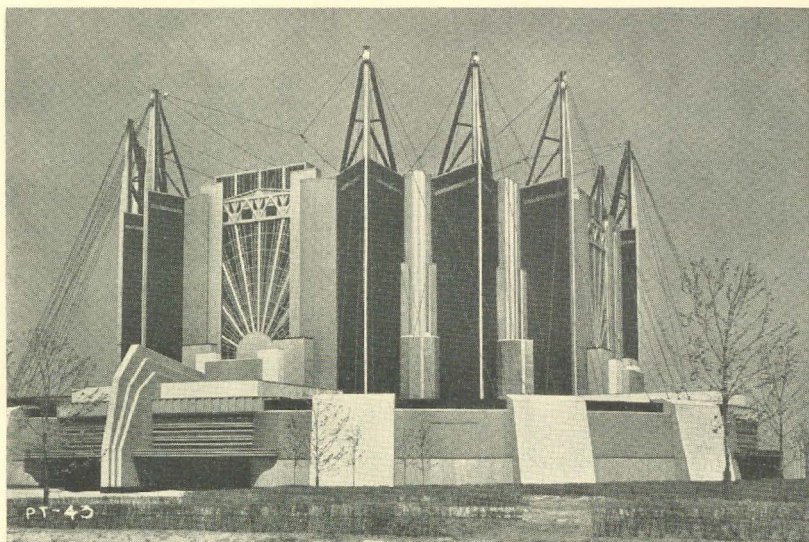


Hotel Windermere East, lower left; Jackson Park with Museum of Science and Industry, center; Lake Michigan and beach in distance



ENTRANCE, HOTEL WINDMERE EAST
Delta Zetas will gather here June 26-30, 1933

Delta Zeta Pictorial Life

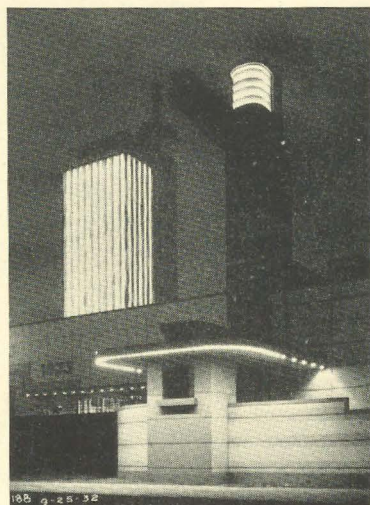


Travel and Transport Building, Chicago's 1933 Century of Progress exposition

SEE THESE AT CONVENTION



View of the Hall of Science, showing the interior of the great courtyard



Concealed neon illumination makes the south view of the Hall of Science a captivating scene at night

Delta Zeta Pictorial Life



XI PLEDGES



PLEDGE GROUP OF PSI CHAPTER

Delta Zeta Pictorial Life



JUNIORS OF KAPPA ENTERTAIN THE SENIORS AT THE SENIOR BREAKFAST



ALPHA BETA ACTIVES

Delta Zeta Pictorial Life



LUCILLE GIFFORD, *Alpha Kappa*
Secretary Junior Class, treasurer
Panhellenic, managing editor of
The Onondagan, Junior beauty,
vice-president of chapter



MERLE ALEXANDER
Vice-president Sigma, beauty sec-
tion of *Gumbo*, '31, member of
Delta Gamma Delta



EVE ALSMAN FULLER, *Epsilon* and
Tampa Alumnae Club



DR. VIVIAN MILLAR AMIDON, *Xi*

Delta Zeta Pictorial Life



LOIS SWANSTROM
Rushing chairman of Gamma



MARY ELLEN HOHIESEL
Former President Alpha Chi
Chapter



DOROTHY WRIGHT
President of Alpha Nu



VIRGINIA DURHAM
President of Beta Gamma

Delta Zeta Pictorial Life



MIRIAM JAMES
President of Rho



PSI CHAPTER'S SENIORS



MARY WACASTER, *Alpha Omega*, '33
Winner of Founder's Medal and
English Medal for highest grades
for four years, president of chapter



ELEANOR MOFFETT
Vice-president of Rho

Delta Zeta Pictorial Life



JANE ARMSTRONG, *Theta*
Treasurer Panhellenic at Ohio State



JEAN GAYER, *Theta*
Treasurer



ANN STONE, *Theta*
Chapter president



HELEN GALLOWAY, *Theta*

29 Questions

[Continued from page 96]

into the chapter houses college trained women whose presence would stimulate finer intellectual standards?

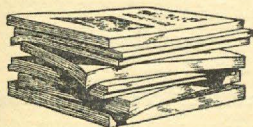
What is the best housing plan for a college? Or, is the best plan for one college, the worst for another? How can fraternity practices be adapted to such a best plan? Should there be a limit on cost of a chapter house? Should there be a limit on number a house is built to accommodate? Should residents in such a house be strictly limited to that number? Who is to control living conditions and costs in chapter houses? Which is best for the college, a Commons, or dining rooms in individual houses? Where

chapter houses are impracticable or forbidden, is the preferred plan chapter lodges, or fraternity rooms in a woman's building or union?

We have no panacea to offer for any of these problems. We do have confidence that by study and discussion the fraternity women can solve them all. And so—we present them as vital material for chapter meeting programs, and, we hope, as a preliminary step toward the solution of twenty-nine questions.

L. PEARLE GREEN,
*Chairman, National
Panhellenic Publicity
Committee*

Attention—One Moment Please



AND, speaking of magazines, which, of course, you were not, may I remind you the Delta Zeta Agency is doing a great business, and that you may subscribe to *any* and *all* publications thru it. Special offers, as for instance, the seventeen issue offer of *Time* may be placed thru our agency. Also, if you are met by the story, "I got a cook book from *Good Housekeeping* when I placed my subscription with it." don't be alarmed, but step right up and say in a loud voice, "Lady, my agency will give you the same cook book, if you so specify." May I bore you by repetition? We can meet any offer of any news agency.

And, have you sent in the subscriptions to all the magazines coming to your home, marking on the order the expiration date of your present subscription? If not, make yourself a Committee of One to attend to this at once.

And, you know, magazines make excellent gifts. Some of the girls report giving them for bridge prizes and say the donee welcomes the prize with great acclaim.

And, please may we not hear from you?

DELTA ZETA AGENCY
Mrs. Lewis V. Johnson, Chr.
3237 47th Ave., S.
Minneapolis, Minnesota

Hokkus

(After the manner of "Three Women Poets of Japan")

Afraid,

*I opened the door
And looked at the morning.
It was not beautiful.
You were not there.*

*My dream was a star.
I reached for it—
And as I touched it with my fingertips—
It dropped from the sky.*

MARY KELLER, Alpha Iota

Goodbye

*Then
Like a sudden blotting out
Of a dream
Even the cold white moon
Was gone,
Leaving me nothingness.*

*And the only sound I heard
Was the hollow cracking
Of my own heart.*

MARY KELLER, Alpha Iota

Japanese Fairy Tale

*"The moon princess paused at the peak
of the sky:*

*Her curved crescent slenderness lilting
In sharp-pointed tinkles that turned into
stars*

*And dripped through a cloud that was
tilting.*

*"The moon princess paled at the sight
of the sun.*

*She drew back her cloud covers closely.
She wanted his warmth,—yet she feared
she would fade*

*In his light; so she glanced down mor-
rosely."*

*You part your lips, Lilos, your eyes open
wide,*

You say to me, "What happened then?"

*And I answer you: "Look! It is happen-
ing now!"*

*But you flee from me—through the rice
fen . . .*

*Dawn, etched in silver, closed the eyes
of the lingering stars with cherry blos-
som dust.*

MARY KELLER, Alpha Iota

Night

*Night draws her
Velvet-spangled cloak
A little closer,
Reaches up and
Lights the moon,
Puts the Stars in place.
Night walks out
Through Sunset Portals,
And with measured tread
Goes to the arms
of waiting morning—
Her lover!*

BETTY BACHUS, Alpha Omicron

Brenau Campus

*High overhead a southern sky
Is gazing with its dreamy eye
Upon a southern symphony
Of black and silver filigree.*

*There never was a silhouette
Could snare such beauty in its net,
Nor ever has a poet's dream
Enthralled such rhythm in its scheme.*

*A silver moonbeam, lost below,
Is weeping out its tale of woe
With lonesome, tiny, sparkling tears,
Into a lake, to calm its fears.*

*The weeping willows by its side
Embrace it on its forlorn glide,
And take it in their silky hair
To see if they might keep it there.*

*But mother moon, while gliding past,
Has spied her runaway at last.
She lets down one long dreamy ray
To bring it home, before the day.*

*And all this happens in our sleep
While you and I a vigil keep
Forever in our earthly minds
O'er Brenau Campus and its finds.*

BARBARA FLAHERTY, Freshman

Beauty

*There is beauty in all things,
In a sunset flaming across the sky,
In a drop of dew on a spider's web,
In the delicate colors of butterflies' wings,
In the maiden slimness of white birch trees,
In the very depths of your brown eyes
when you look at me and smile.*

ELEANOR P. CLARKSON, Beta, '34

Heritage

*Music and candle light,
The flickering of dying embers.
O moth, be not too anxious for the flame.
Thy heritage is darkness and the night.*

ELEANOR P. CLARKSON, Beta, '34

Difference

*When I am with the others
Talk flows incessantly
But no one ever says a thing—
Or so it seems to me.*

*When I'm with you, and we converse
We're never overheard.
You and I can say so much
And never speak a word.*

GWEN THOMPSON, Zeta, '34

Love Letter

*I love you madly. As I write
The words to tell you I adore
You, the phrases sound familiar—
But then, I've loved before.*

*You aren't my sort of person. There are things
About you, that I hate, despise—
I've heard that you are worthless. Maybe so
But still, I like your eyes.*

GWEN THOMPSON, Zeta, '34

I Have Found Beauty

*I have found beauty
In the darkness of a summer sky
Hung low with silver stars.*

*I have found beauty
In the sad, sweet notes of Liebestraum
And the mellowness of organ music.*

*I have found beauty
In the blues and greens of Nature's artistry
And the subtle fragrance of the freesia.*

*I have found beauty
In laughing eyes and parted lips
And the smile of a friend.*

*I found beauty
In the love light that suffuses all
And promises immortality.*

MARY BOHNSTADT, Alpha Nu

A Call

*I heard a call today, a strange wild call.
I thought of wild geese, but it is not
time for them
I thought of owls, but 'tis too sunny a day.
A thought came of a bird from distant climes
Then I saw
A small boy whistling on his way to school.*

FRANCIS PATTON, Alpha Beta

To Shelley

*Most sweet of Beauty's voices, and most sad,
Lover of sea and stars and winds that blow,
Had I but power of words with music glad
I'd sing thy praise till all the world should know
Thy wonder and should love thy song as I,
And hear in me a faint far-echoing
Of thy loved voice. But I can only sigh
And think of what I would do could I
but sing.*

*Instead the sky-lark winging through
the blue
The wind from out the west who wakes
the wood
Or night with hair unbound all wet with
dew,
Or heaven shadowed by a cloudy hood,
All in their turn unite to sing thy praise,
And render more that vain my limping
lays.*

FRANCIS PATTON, Alpha Beta

Follies

*They told me to be good, and sow
My joys in steadfast rows;
That I would find my pleasures grow
From virtuous thought and pose.*

*But here and there I scattered far
My follies, one or two.
Now mid my flowers of the past
These have the brightest hue.*

MARY SALOME BETTS, Alpha Xi

To an Old Oak

*Old tree, so worn and old and knarled,
That stands beside the path, apart,
You seem to bear the imprint of the
years,
The mysteries of the ages in your
heart.*

*Like an ancient warrior pondering o'er
the past,
You scarcely heed the world upon its
way.
Your thoughts must be of secret, pro-
found things—
The solemn wonders of a former day.
And yet you almost seem, sometimes, to
smile,
Your branches murmur as I pass,
Perhaps you only dream of Pipes of
Pan,
And fairy footsteps dancing through the
grass.*

MARY SALOME BETTS, Alpha Xi

Technocracy?

*Digging in dirt,
Men in blue overalls
And stained blue shirt,
Greasy with sweat,
Down in a hole
With the bottom all wet.
Digging, shoveling, loading.*

*Digging in dirt
With jaws of steel.
Grinding gears and spurt
Of steam. What worth,
Oh, God, with these machines
Have men on earth,
Digging, shoveling, loading?*

JANE REINEKING, Tau, '34



**Come to Convention! Hotel Windermere East
Chicago—June 26-30, 1933.**

Commuter's College

GIVE a cheer for the non-resident college! The commuter's college! The institution that is based on sound reason and solid fact! Approved by the older generation, not understood by the younger!

You have heard of the advantages of a resident college; correct supervision of studies and daily life, the teaching of self-reliance and independence, the inculcating of individuals with the spirit and tradition of a college campus, lasting friendships, and of course, education. It cannot be that the non-resident college has no advantages, no good features! Are we students of such an organization wasting our time? Emphatically no!

These matters of self-reliance and independence, are excellent for the mature world, but is a college freshman able to accept these responsibilities? A high-school graduate has been tested for his fund of knowledge in various fields, but has he been tested for his common sense and sane judgment? The high-school graduate has been living in a protected atmosphere. He has had home and food provided—his wants have been satisfied. Can he be trusted to know the best way? An abrupt change into the life of the dormitory involves a grave readjustment of ideas, habits, and conscience. The college freshman is still malleable—such an adjustment harms both the student and the organization. He needs a gradual weaning away from parental influences. The present non-resident college is one method of approach. The responsibility of mature problems is tempered by the home life, which can slowly let down more and more of the decision and work on the shoulders of the growing individual, who is being tremendously influenced by his environment. Too, life after college graduation is often a return to home

bonds, exchanging the lecture room for the office. Is it necessary to thrust the heir of the family out of the home and then bring him back into it?

In a non-resident college, there is apt to be a loss of college spirit and tradition, but this loyalty reverts to the class and the fraternity. Competition between the classes builds up loyalty, and the bond among the individuals of the fraternity is strengthened and kept, so that the fraternity becomes more of a factor in the success of its members.

As for lasting friendships, the day college has a much better chance to produce those which will last after college graduation. The daily contact is not as intimate as in a resident college, but the proximity of permanent residences, all within a small radius from the college, insures a more lasting and close association. The sorority also can keep in touch with its alumnae more easily.

As for education, the non-resident college has more chance to work unhindered by college traditions and festivals. Education is its prime motive for being, and students do not attend a day college only to experience "college life," which does not have so much chance to flourish.

And lastly, the day college has one exclusive advantage, less expense. A girl can go to a non-resident college without working, as a girl, in similar circumstances, at a resident college, must do to earn room and board. Sorority expenses are also less because house costs are eliminated.

Ask the students of a non-resident college if they think that this institution has its place in the world. They will convince you that you should "give a cheer for the non-resident college."

ZOE H. McLEAN, *Alpha Zeta*

Mary Bennett, Outstanding Delta Zeta

HAVE you heard the big news about Mary Bennett?" And then we all gather 'round to hear about her latest accomplishment. We are so proud of her we adore talking about her. And at last we've just bubbled over and we simply must let all the Delta Zetas know what Mary's done now. She has the lead in the world premiere of "Low Bridge," written by the city editor of the New York Times, which is being produced at the University of Iowa.

Oh, but Mary still belongs to Chi Chapter. My yes, she was our president for two years. We have loaned her to Iota, but she shall always be a part of us because no one could ever take her place.

There is just one lucky thing about the rest of the chapters not having known Mary—you aren't jealous of the two of us who have had her. But you all will be, just a little bit when I tell you how Mary can do everything and do it well.

That's the reason, of course, why she was selected as the outstanding woman in the senior class last year. That honor would just about have to be given to the woman who had more honorary keys than anyone else on the campus, wouldn't it? Let's see if I can remember them all: Kappa Delta Pi; Par-

thenia local physical education; Theta Sigma Phi, National Collegiate Players; Phi Kappa Phi; Cap and Gown, petitioning Mortar Board. Then, too, she was vice-president of the senior class.

But that isn't all. I've scarcely begun. Journalism was one of her big lines. She was a day editor on the daily newspaper, and associate editor of the annual; the two highest positions a woman can fill. She was always doing things in athletics, and brought us all to our feet cheering the night she won over even the men in the R.O.T.C. horse show. Also she wears a two-stripe sweater for varsity debate, and an Orange "O" for athletics.

The biggest thrill of all was seeing our Mary on the stage. In the lead in the Pacific coast premiere of Susan Glasspell's "Alison's House" we all thought she was wonderful, and everyone else agreed with us.

Mary is getting her master's degree in speech at the University of Iowa on a Delta Zeta scholarship this year. We miss her—and the only thing to do is to jump in and work hard to see if five or six of us can't do as much for Delta Zeta as this one little girl is doing all by herself.

ADENA JOY, *Chi*

Journalism Extension Courses at Nebraska

THE two courses in journalism offered by the University Extension Division at the University of Nebraska were developed by Mrs. Lawrence Pike (Ruth Shad, *Zeta*), according to Mrs. J. F. Thompson, secretary of the Division. One of the courses is for high school students; the other gives college credit.

The high school course stresses the use of the main principles of journalism in the high school news column in the home town paper or in the high school paper itself. The course also gives a gen-

eral survey of the journalistic field, attempts to teach the student how to read the newspaper, and gives some work in news writing, news editing, ethics, and current events so that the student will appreciate what he finds in the paper. It is used as a supervised course in Nebraska high schools; that is, students in high school register for it as a part of their high school work. A regular period of study, supervised by a high school teacher, is set aside for the work. The teacher does not conduct a recitation; instead, the student uses the entire time

for preparing a lesson which is sent to the University Extension Division for correction and grading. The students are required to edit either a high school column or a newspaper, and Ruth Pike states that she has had everything from a mimeographed newspaper several pages in length to two columns of news matter in a local paper made up in one corner to resemble a newspaper and called the *Courier*.

The college course, Journalism 61x, *The American Newspaper*, gives more detailed work in news writing and attempts to give the layman an appreciation of the daily and weekly newspapers that come into his hands. It is developed on the theory that most everyone reads a newspaper although few ever work for one. Hence, the stress is laid on how to judge a paper and not on how to work for one. Students are required to read a daily and a weekly newspaper and to make clippings as a part of their regular work.

The college course has been in the files less than a year, but during that year a number of interesting people have taken the work. Among them are several teach-

ers, a housewife, and advertising manager of a state daily, a minister, a law student, a country correspondent for a large city daily, and an inmate of the Nebraska State Penitentiary. Mrs. Pike feels that this last named student is the most interesting student so far, for his papers are original and individual. In addition, he has a marvelous sense of humor, and his letters are the source of many smiles. Not long ago a letter requesting a reference book came from him. In one corner of the letter he had pasted a picture of a baboon, and he put his convict number at the bottom of it.

Ruth Pike, as assistant instructor in English in correspondence courses and associate editor of Extension Division publications has been dealing with correspondence students for more than five years. She feels that her work is equally as interesting as any classroom teacher's could possibly be. She never sees the majority of her students, but a great deal can be learned about them through their letters and their lessons.

LINCOLN ALUMNÆ CHAPTER

Franklin's Sunday School

WHAT are the religious inclinations of present day college students? Do students in general have a faith that guides and directs their every act?

Franklin College is in the midst of a great movement, one that centers about the church. In spite of the fact that this institution is a denominational one its atmosphere has never been truly religious. It seems that during the recent business and economic collapse there has arisen a definite need in the life of every individual for some religious guidance. Franklin has felt this need and the students are responding admirably.

A special college Sunday School class has been organized with the president of the college in charge. Fraternity houses are empty on Sunday mornings and sorority girls who formerly used the

day to rest or do other work are in church!

Franklin College is coming closer each day to that ideal for which they strive:

"To love truth and to seek it above material things; to ennoble and be ennobled by a common fellowship; to keep the energies of life at full tide; to cultivate an appreciation of the beautiful; to work well and to play with zest; to have an open mind; to value friends, striving to be worthy of them; to live simply and with reasonable economy; to have faith, hope, and charity; to be an earnest disciple in the school of Him who brings the abundant life; such is the spirit and ideal of Franklin College, whose ancient motto is 'Christianity and Culture.'"

JEANNETTE CAUDLE, *Psi*

Sigma Proud of These

LOUISIANA'S Sweetheart" is the title that has been given a charming little blue-eyed blonde whose proudest possession is her Delta Zeta pin.

Jane Conway, sophomore at Louisiana State university, was chosen to represent her university at a ball given in Shreveport when L.S.U. played Centenary College in November. She is originally from Shreveport and only moved to Baton Rouge last year when she entered the university, and when her father was elected Secretary of State.

Jane is as capable as she is lovely, for she was chosen president of the freshman class last year, and is now president of the sophomore class. Sigma hopes she keeps up the good work in her next two college years. Jane was rush captain last summer, too, and we have a group of prize pledges as witnesses to her success in that office.

"Louisiana's Sweetheart" is majoring in English and plans to specialize in Library Science later.

Another active of whom Sigma boasts is brunette, gay, Joyce Love Allen, daughter of the Governor of Louisiana.

Joyce's father ran for the gubernatorial office after her initiation, and you can imagine how deeply interested in politics the entire chapter became. We were all campaigning for Mr. Allen and all were absolutely sure of his election.

Joyce is the first "young lady of the state" to live in the new executive man-

sion, although her father is the third governor to occupy it, and the lovely colonial home is always gay with her friends, for Joyce is one of the most popular girls at Louisiana State. Delta Zeta has entertained there with several parties.

A junior at L.S.U., Joyce is taking pre-law, so we have hopes of Joyce following in her father's footsteps to become one of the leaders in the state, although she prefers a home to a career.

Sigma is proud, too, of her "youngest co-ed," for though she is the mother of two sons, one of whom is in the university, Mrs. J. L. Oubre is just as enthusiastic about Delta Zeta, and takes just as active a part in all sorority affairs, as any other of Sigma's pledges.

"I'm taking a regular freshman course," Mrs. Oubre laughs, "with first year French, English grammar, and a full sixteen hour schedule. I love all of it!" She is in the school of music working for a B.M. degree.

Mrs. Oubre was an ardent golfer until this year when her school and sorority duties forced her to give up her daily 18 holes. She was for some time woman golf champion of the local country club and proudly displays 25 trophies won in state and local contests.

One of Mrs. Oubre's sons, Joe, is a pre-medical student in his second year at the university, while Billy attends the university high school.

LOUISE DUGAS, *Sigma*

A Florida Delta Zeta Alumna

MRS. Walter Pliny Fuller of St. Petersburg, Florida, is a Delta Zeta Alumna to whom the rest of us Delta Zetas like to point with pride. Medium in stature, she is blue blond type, with very blue eyes that are so ready to laugh, and has burnished gold hair full of that natural wave and sheen that anyone might envy. She is a very gracious hostess and entertains extensively

in her home located on the shore of one of St. Petersburg's bays. Her home is of Spanish architecture built on spacious grounds and approached through an avenue of palms. Mrs. Fuller received us in her library on the second floor, which commands a full view of the bay and, farther out, the Gulf of Mexico. I thought what glorious sunsets she must be able to enjoy from such a setting, a

pleasure fully appreciated by anyone of her artistic capacity.

It is through her artistic accomplishments and connections with Art Club work that she is particularly outstanding out in Florida. Her journalistic work, however, runs it a close second. But to go back a few steps in my narrative.

Mrs. Fuller, before her marriage to Walter Fuller in 1923, was Eve Glen Alsman of Sullivan, Indiana. She was graduated from Sullivan High School as an honor student, having finished a four year high school course in three years. Being interested in music at that time she went to Crescent College and the Conservatory at Eureka Springs.

In 1916 she entered Indiana University and became a member of the Delta Zeta Sorority, serving as President of Epsilon Chapter during her senior year. Her college years were replete with campus activities and honors. She served as reporter, then feature writer and associate editor of the Indiana Daily Student, the college newspaper, and associate editor of the Hoosier, at that time the university magazine. Later she was feature editor, junior assistant and editor-in-chief of the Arbutus, the year book of Indiana University. She was the second woman to hold the latter position. She also held an office in Theta Sigma Phi, national journalistic sorority.

She came to St. Petersburg in 1921 to accept a position with the St. Petersburg Times, first as society editor and later as reporter and feature writer. During this time she also did special correspondence work for northern newspapers. In June 1923 she married Wal-

ter Pliny Fuller, a former newspaper man of St. Petersburg.

From 1926 to 1930 Mrs. Fuller served as chairman of the Fine Arts Department of the Florida Federation of Women's Clubs. During this time she inaugurated and edited "Florida Book Review" in connection with this work. In March 1930 she was elected president of the Florida Federation of Arts, which position she still holds. This is an organization of all the art clubs of the state, designed to encourage better art in Florida. She is also president of the St. Petersburg Branch of the League of American Pen Women and contributor to various Florida newspapers and magazines, as well as membership chairman for Florida Southern States Art League.

Now for Mrs. Fuller's latest commission, which she considers the most important work she has ever attempted; chairman, Art Jury, Florida Commission, A Century of Progress, International Exposition, Chicago, 1933. The duties of this position are to decide upon mural paintings, decorations and other artistic features of Florida's building at the Fair and she is now extremely busy with a state-wide competition for murals which will depict the historical progress of the state from Ponce de Leon's time to our own.

Mrs. Fuller says her hobbies are cats, cooking and flowers. Her hopes, however, run in a serious vein. She hopes some day to write a real novel of the Florida of today and to have Florida recognized as the art center of America.

VIOLET COARSEY, *Tampa Alumnae Club*

A Yankee on a Southern Campus

NO MORE zero winters nor the ultra-sophistication of Wisconsin for me, after spending a winter in the Sunny South!

The flat Alabama campus, just within elbow reach for an 8 o'clock has its advantages even over beautiful lakes and

hills, the morning after an "A" dance.

I was spotted the first day I arrived here as another Yankee by my big feet, and for wearing a hat and gloves to class. Now I answer "Heah" to the roll call and have even adopted the Southern greeting "Hey."

But there's a thrill in hearing your date draw "Y'all sure looking sweet tonight, sugah," that I didn't get up home. Organdie dresses, Sunday teas, and the informality of the campus life has drawn me back this year to serve in my

office as chapter president, in the hopes that I might be taken for a "Southern Lady."

MARJORIE RITTENHOUSE, *Tau*
and *Alpha Gamma*

Panhellenic Day at L. S. U.

LOUISIANA State University began this year what we hope will become a lasting custom. All the sororities on the campus celebrated Panhellenic Day.

One sunny afternoon the docks at Baton Rouge were crowded with laughing, happy girls. Dressed in pajamas and flopping hats, or in bright sport frocks, they trooped up the gangplank of one of the biggest pleasure boats on this end of the Mississippi, the steamer, *Capitol*.

Finally we heard the shrill whistle that meant "let's go" and, hanging over the side of the boat we watched the big stern-wheel slowly begin churning the brown water into foaming white. We were off!

We moved slowly up the river. The skyline of Baton Rouge, consisting mainly of our 33-story capitol building, faded into the horizon and was replaced by green banks, willows overhanging the water and oaks trailing Spanish moss.

There was a marvelous band on the boat and we danced and *danced*. Just before dusk we had supper, delicious of course, and made even better by the cool breeze blowing over the deck, the lazy Mississippi rolling below, and the green banks on either side.

During supper we turned around and began the homeward trip. We had gone about 40 miles up the river and had enjoyed every minute of it.

We danced some more but most of us were too tired to do anything but hang over the side of the boat, watching the slow-moving water and thinking of many things. Others sat in groups chatting happily about the day's happenings. When we arrived at Baton Rouge we all hated to leave the boat but when the last minute that we could remain had passed we trudged ashore to climb into waiting cars, and to talk about Panhellenic day for many a day afterwards.

LOUISE DUGAS

Alpha Deltas Take Apartment

YOU Delta Zetas who are living in houses can never know what an enormous thrill it is to have an apartment all your own, and what an even greater thrill it is to move off campus.

After spending several years in a single room of one of the university buildings here at George Washington, Alpha Delta chapter has moved into an English basement apartment of two rooms, kitchen and bath. Do you wonder that we simply love to entertain and show off our prized possession?

In the middle of the summer the university officials informed us that they

needed our room for a seminar class, thus answering the question, once and for all, "To move or not to move?" We stored our furniture and began to look for a new place to drop our books between classes. After much discussion everybody finally agreed on a place just six doors down from our old home, right across from the college, but not actually on the campus.

Then the work began, getting it clean and buying new furniture, to say nothing of putting several different ideas of interior decorating into effect. It's been hard, but we've all enjoyed it. Just ask

anybody who saw the before and after stages if we haven't worked nothing short of a miracle in the few weeks we had before school and rushing.

Our reward has been to have all of our rushees remark about the loveliness of our new domicile. And you should see the Alpha Deltas beam.

Write for Cash or Credit

(Continued from page 93)

or of your professors, particularly Φ B K members. A single copy may be ordered from the above address for 50 cents.

Your essay may concern the contribution of the fraternity to scholarship or education, or may be a paper prepared for class work or other purposes, if it has not been published. Care should be taken not to plagiarize. It would be well for you to get a professor's criti-

cism before sending in your manuscript.

Whether you are a member of Φ B K or not does not matter, for *The American Scholar* asks only that the material be good and interesting. Neither is its circulation restricted to members. Since this offer has been made to undergraduates of all fraternities, it is hoped that the scholarship standing of our fraternity will be worthily upheld.



Come to Convention! Hotel Windermere East
Chicago—June 26-30, 1933.

DEAR EDITOR: You can darkhole this if you like, without fear of our wrath. But if you do, please make a little box somewhere in *THE LAMP*, saying "Thank you, Miss Emilie Reuger Princeleau. Signed, the Lampadary et al." Because at last the Lampadary has an avowed fan. (Oh no, two—don't forget the Ed.) She asked for "another smudge," and so we joyfully dedicate this one to Miss Princeleau, and wish her a Merry Christmas, 1933.

And now, Dear Readers (if any): The Lampadary has been out for a long recess, and in case you wonder why, we have a very good reason, which will be found at the end of the copy as a footnote. (We meant footnote.)* This reason is copyrighted and may not be used by defaulting chapter editors, without permission from the Lampadary who will give permission under no circumstances.

We come back into *THE LAMP* now, filled even yet with the excitement of election, and will the readers please pardon us if political references creep in. (We guarantee that no political bacteria will creep in.) Do the readers agree to pardon us? (We would like official pardons signed by Miss Amanda Thomas, of the Pardon board of Ohio State Penitentiary. We once had a long talk with Miss Thomas at the prison, and she was wearing a red patent leather rose on her dress, if that means anything. We didn't ask.)

Well, dear sisters, and those who live more cheaply, we want to urge every Delta Zeta to look over her old photograph and love letter file and give some thought to the forgotten man. Who knows dear sisters in Delta Zeta and those almost all in, and those practically kicked out, too,—who knows whether the forgotten man, if he belonged to a decent fraternity, might not be looked up, dusted off, and invited to the formal for some less fortunate sister?

(Vote for Roosevelt, he knows all about the forgotten man.)

And while you are voting, be generous. Vote for Hoover, too. We'd vote for him, just for the sake of the two cars in every garage. We simply burn up with eagerness to go running out to our garage (née woodshed) and finding that second car where one grew before. Especially since there's just barely room for one car in there, and a small one at that. (You vote for Hoover, somebody really ought to.)

Oh dear, we must get our minds away from the election. Besides, there is one other important thing the Lampadary wishes to bring up—our newest kinsman, Lord Jim Lundy. Lord Jim (James David on the chapter roll) is a distant relative of his mother GML and also of his father HML. And—mark this well—the Lampadary is his proud godfather! Lord Jim has big, brown eyes and infinite patience. He was extremely hideous at first, wearing dark spectacles and heavy gum boots and carrying a walking stick, but now at the age of three or four months he is a very handsome young man, and undoubtedly well fitted for the presidency. In fact, as his campaign manager we can truthfully say Lord Jim has never made one promise that he failed to keep, has made not one single vote-getting gesture, has supported his party (Birthday) in every instance, and if elected, will try to fill the place capably. (Vote for Lord Jim Lundy, sample ballots sent on receipt of 10c to help defray mailing costs.)

We come next to Irene Boughton's letter, jogging us up about the copy this time, and we know she just hated to write that letter. She says Margaret Pease has had a very strenuous trip travelling since the first of October.

Imagine that, girls, on the road since the first of October! We have looked up the details and find out the following tale of courage:

Margaret H. (creamed) Pease has been knocking around the U.S.A. since the first of October, trying to bum her way to San Antonio, to the National office. Imagine our poor little thin Margaret, bidding a tearful farewell to her handsome woodcutter, John Honeycomb Pease. She then took up her little satchel, filled with the Delta Zeta national scandals, and briefs for several of her most important cases. (No, of course not, they were law cases.)

Well, anyway, our little heroine started out with a rolls-royce under each arm and eating a third one, and turned her face toward Texas. (Her head works on a swivel you know, so that the face is easily turned at will. Or at John. She has only one face, too, so it has to be turned every time she looks at any new object.)

After wandering around for about three weeks, she found herself lost in the wilds of Detroit, Michigan, where she stopped for a brief word of prayer with Miss Marion V. Ackley of Burr Patterson—no, by the way, Miss MVA is Mrs. XYZ, now, which we think is a grand idea since Mr. XYZ is handsome and rurally inclined and probably a Kappa pledge. We mean to write a poem for Mrs. XYZ sometime which will go like this:

Three cheers for Mrs. XYZ!
Long may she live, and happilie!
And Mr. XYZ, to wit,
May his affairs improve a bit.

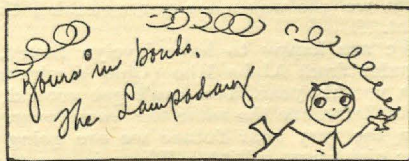
Well, to get back to MHP, after leaving Detroit (because it was just too big for a little girl to carry with her) she got several rides,—automobiles, hand-cars by courtesy of the Monon railway, grain elevators, and so on—She at last reached Nova Scotia where she founded three chapters and two paragraphs. She then went out and sent a telegram to

John. "Am lost, please wire money to return on which."

She reached Columbia, Missouri, just in time to vote (voting for Sabina T. Murray, housemother. The election was a landslide). Here she wrote and published three of her best-known novels "Life of the Bee," "Three Musketeers" and "Mary Had a Little Lamp." She also wrote her famous opera "Banta's Greek Exchanged for Burr Patterson's," in which the chorus of Greek senioritas brought down the house.

At last, in despair of reaching Texas she went to a nearby post office and bought a postcard which she addressed to Irene Boughton. She then wrapped herself securely in the postcard and mailed it, and reached Texas safely within three days (vote for John W. Pease, he's going to run for LAMP Editor if she doesn't come home soon).

We know we have written too much already, but we just wanted to add one more thing. You know our school at Pippa Pass—or is that our National Bridge club? Is our school at Caney Creek, or is it Sugarcane Creek. Or have we still got a school, now that Louella and Winthrop Kellogg have proved that chimpanzees learn faster than children? (Chimp Pansy may be ahead so far, but we bet on Chimp Kellogg, what with his mother a Phi Beta Kappa and all that.) Anyway, as we were saying, our school in Coats, pants, no Vest, Kentucky—oh let's drop the subject. MERRY CHRISTMAS EVERYBODY, especially Aunt Lois Cummings.



* The reason is because.

**Come to Convention! Hotel Windermere East
Chicago—June 26-30, 1933.**

● COLLEGE CHAPTER LETTERS ●

Letters for this department must be postmarked not later than October 10, January 30, and March 30.

M. H. P.

Letters missing:

Rho

Alpha Alpha
Alpha Eta
Alpha Upsilon

Beta Beta
Beta Eta
Beta Theta

ALPHA

NEW PLEDGES: Mary Ellen Biery, Findlay; Ruth Britton, Hannibal, Mo.; Audreybelle Clauer, Springfield; Nancy Costello, Covington, Ky.; Virginia Craig, Cincinnati; Janice De Cumbe, Lakewood; Jean Forrest, Fremont; Virginia Green, London; Barbara Haywood, Washington, D.C.; Dorothy Ireland, Lima; Altabelle Jensen, Mt. Gilead; Gwen Lehman, Lakewood; Ruth Minnis, Hamilton; Helen Richey, Youngstown; Kathleen Robinson, E. Cleveland; Francelia Seely, Oak Harbor; Lona Shillig, Sandusky; Florence Shank, Hamilton; Doris Smith, Akron; Florence Smith, Hicksville; Marcia Strenick, Dayton; Barbara Symonds, Adena; Harriet Thomas, Springfield; Shirley Watson, Lakewood; Charlotte Wells, Dayton.

Our rush week was one of the best rewarded ones we have ever had—but, of course, we think the same every year. Honestly, though, our twenty-five new pledges make us all beam. Let us tell you of our parties—the two informal ones and one formal. The first informal was a cabaret party at the home of a patroness. Music was furnished by our own Campus Owls—and Delta Zeta songs were sung.

Another patroness offered her home for a vanity party, while our formal banquet was held at Scott Manor.

Another whole day was added to the period of silence this year, so our wait to know whom we got was more nerve-racking than usual.

We are happy to have Evelyn Sovey, a transfer from Alpha Rho (Ohio Wesleyan), with us this year. You can't get around it, Delta Zetas are the same the world over.

In the very near future we are going to have eight new initiates. There is one thrill right after another. We're expecting things to happen after eight new Lamps are lit.

Scholarship was one of our problems last year which straightened itself out nicely. Marjorie McKillip, one of our seniors got the ring for the active with the highest semester average, while Grace Browder got the one for the pledges. All together, the chapter is using its brains.

We are entertaining our new pledges in about two weeks with a pledge dance. At this affair we always have one of our "bigger" times. Looking ahead to Founders' Day, too! A banquet, at which we hope all the founders who find it possible, will be present.

JANET PEARCE, *Editor*

JEANNETTE Hidy, *President*

BETA

PLEDGES: May Katharyn Gyger, Grad., Letitia M. Hall, '35, Florence K. Taylor, '36.

This fall Beta shed a silent tear over the departure of fifteen seniors last June and then got busy. And by the way, we are mighty proud of our class of '32 because of the way they hustled around and got themselves jobs before the rest of us could blink an eye. Who said depression?

Then came the news that Meda Young, '35, would not be back until February. The moral to that is don't get sideswiped by a truck the week before you are planning to come back to school. At that point, the chapter president and the rushing chairman began to show signs of gray hair, but Micawber was not the only one for whom something was always turning up. This time it was someone, a very wonderful someone in the person of Mrs. Loucks, our province president and a Beta alumna. She took hold of things in a way that was wonderful to behold, and formal rushing was put across with a bang. Pirates were the order of the day for the first period. Then it was China with chop suey, rice cakes, and all the fixings, and last period we came back to a rose garden in ol' Virginny with George and Martha Washington as host and hostess. Alexander and Mrs. Hamilton graciously made it a foursome, and of course a minuet was in order.

Later in the evening a gentleman of color suddenly appeared, did a tap dance with great solemnity, and mysteriously vanished. And then with Delta Zeta Lamps Are Burning and the Evening Song, another year's formal rushing was brought to a close.

Right in the middle of things Mrs. Horning, a delegate from national, came and

gave us some excellent suggestions. She was able to stay for one party, and just make believe we weren't proud to have a receiving line with a national representative and our province president in it as well as Mrs. Ranger, the best chaperon Beta has ever seen.

Then too, we have a brand new alumna adviser, Mrs. Dixon, formerly Marguerite Decker, '10, one of the charter members of Beta Chapter, who is to be assisted by Laura Allen, '31. Does anybody wonder why we are looking forward to a successful year?

ELEANOR P. CLARKSON, *Editor*
MARY G. McLOUTH, *President*

GAMMA

PLEDGES: Maxine Mason, Verna Cords, Betty Hanson, Bernice Rudy, Sally Thornton, Martha Erickson, and Jane Snader.

INITIATES: Kathryn Arndt, Jayne Eastman, Maxine Elsenpeter, Betty Graves, Eleanor Haverland, and Mildred King.

Five girls from our chapter visited the Iota Chapter during their rushing season this fall.

Clarice Berg, one of our last year's grads, is studying at the Barton School of Architecture at Cambridge, Massachusetts, where she received a scholarship this year.

Bernadine Courtney, an alumna, has returned from a year of study in Germany, and we were honored with several piano selections last week at one of our rushing dinners.

CHARLOTTE THOMPSON, *Editor*
RUTH NIELANDER, *President*

DELTA

Delta Chapter, for all its new house, is still level headed and studious, in spite of all predictions made by people with no faith in humanity. Elta Forkel and Betty Logan have both been awarded scholarships for their high scholastic standing.

We wish to thank those chapters and national council for their well wishes on entering our new home. It is yours to come and visit anytime you like.

After being with us ten years and becoming one of our dearest college friends, we were very sorry to say "good bye" to Mother Calhoun who has gone to live with her son in Chicago, Illinois. We will miss her at Delta Chapter and we hope that she will come and visit us sometime.

MARY SARGENT, *Editor*
JUNE BARNES, *President*

EPSILON

PLEDGES: Mona Stanley, '36, and Wilma Rutherford, '36, Connersville, Indiana; Mary Louise Kirkpatrick, '36, Crawfordsville; Dorothy Meub, '36, Indianapolis, Indiana.

HONORS: Virginia Freed, '33, Intramural head on W.A.A. Board, Varsity Tennis, Program Chairman of Atlantatides; Helen Trusler, '35, secretary of sophomore class, debating team; Maxine Norton, '35, and Mary L. Kirkpatrick, '36, Glee Club; Dorothy Meyer, '33, president of Der Deutche Verein; Elsie Morrow '35, Lelah Hiday, '34, Mary K. Murray, '34, Chi Gamma; Beulah Young PG., president of Pi Lambda Theta; Ann Cruiseman, '34, varsity basketball; Charlotte Thompson, '35, Y.W.C.A. Board, Alpha Lambda Delta, varsity basketball.

On May 31, of last school year, we enjoyed one of the best events of our social season, our Pirate dance. Decorations were carried out with anchors and life-savers hanging around on the walls and our chapter room was fixed up to represent a mess hall of a pirate ship. We had small tables decorated with red and white checkered table cloths. Music was furnished by the Oriental Sereaders from Indianapolis.

Elsie Morrow, '35, is back in school after two years. We are all very glad to welcome her back to the chapter.

Mrs. Edith Cumings, one of our alumnae, was honored by Epsilon by a birthday dinner. The cake had 25 candles for it has been that long since she had been initiated by Epsilon. She was presented with a small gift. After dinner we had a mock court at which each active girl gave points in favor of the defendant, Mrs. Cumings.

We held our annual Founders' Day banquet at the chapter house on the evening of October 24. Table decorations consisted of flowers and candles. The following alumnae were present: Mrs. Louis Cumings, Mrs. Pansy Batman, Mrs. Francis Ellis, and Miss Georgia Finley.

Epsilon is contemplating a good time at the annual pledge dance to be held November 11. It will be celebrated in the regular Armistice Day fashion with programs and decorations in red, white, and blue.

The Bloomington alumnae entertained the chapter in honor of the pledges with a picnic at Cascades Park on October 8.

We are entertaining Miss Agnes E. Wells, Dean of Women, and Miss Lydia Woodbridge, assistant dean, at dinner on October 30.

LELAH K. HIDAY, *Editor*
VIRGINIA LEE FREED, *President*

ZETA

PLEDGES: Dorothy Mitchell, Hebron, Neb.; Margaret Hopper, Forest City, Mo.; Dorothy Cathers, Omaha, Neb.; Lucille Darrington, Weston, Iowa; Mildred McGill, Tekamah, Neb.; Valora Beck, Clover Schwartz, Mercedes Knox, Dora Langevin, Lincoln, Neb.

Zeta Chapter was very fortunate this year

to have Mrs. Malott, our National President, with us during part of "Rush Week." Her inspiration and encouragement will surely help us make this a better year for Delta Zeta than ever before.

It seems as if good things all come at once, and this year they came during "Rush Week." The day after Mrs. Malott's arrival there came to us a pleasant surprise in the news that we had ranked third highest in scholarship in a group of twenty-two sororities. And have we made good resolutions to keep that scholarship up to where it belongs!

Two of our girls went to national conventions this summer as official delegates. Maxine Wullbrandt went to Minneapolis, Minnesota, to the convention of Gamma Epsilon Pi, national business women's sorority. Dorothy Luchsinger was sent to Lexington, Kentucky, to the meetings of Phi Upsilon Omicron, national professional home economics sorority.

Helen Boelts, Gwen Thompson, and Dorothy Cathers are contributors to the *Awgwan*, our humor magazine. Dorothy, Gwen, and Thelma Sterkel are also reporters for the *Daily Nebraskan*, the student newspaper. Thelma is also secretary of the Swimming Club.

This year we have two girls assisting in "labs." Blanche Bartos in Architectural Drawing and Lucille Mills in Physiology lab. Last spring Dorothy Luchsinger was elected to Omicron Nu, national home economics honorary.

We certainly can't complain about our pledges not going out for activities. They're certainly taking in all the teas in a big way. We can't take five steps without seeing piles of apples, with a conspicuous sign—"Two for five cents—No credit extended." In other words, help the cause. The pledges have decided to buy punch cups with the profits of this enterprise. We're hoping there's lots of profit.

The girls in the lounge room are just finishing up a wild serenade and I can't stand isolation any longer. Good-bye until next time. DOROTHY LUCHSINGER, *Editor*

EVELYN O'CONNOR, *President*

ETA

PLEDGES: Miriam Braun, '36, Centralia, Kan., and Hazel Spare, '36, Reserve, Kan.

This is the beginning of the seventy-fifth year of Baker University and the twenty-third year of Eta Chapter's existence.

We have quite a few honors on the campus. Marcial Burroughs and Genevieve Watson are members of the college choir. Miriam Braun, Rachel Wilson, and Dorothy Jillson, all violinists, and Naomi Muenzenmayer (graduate, '32), saxophonist, are enrolled in the college orchestra. Wilma Klopfer was elected president of the Home Economics club and Elizabeth Cox is editor of the club.

Marcial Burroughs is vice-president of the Y.W.C.A. Dorothy Canham is president of the Woman's Athletic Association.

Our rush parties were quite successful as parties. The title of the rush week was "Around the World with Delta Zeta." Our parties were named "Oriental Shadows," "Land of the Windmills," "The Wishing Well," "Spanish Fiesta," "Igloo Inn," and "Rose Dinner Dance."

The Alpha Phi Chapter at Kansas University had their rush week right after ours, so some of our girls went up there and attended their parties.

On the evening of September 20 all the actives went up to Alpha Phi Chapter and put on a model initiation for the national president, Mrs. Carl Malott.

Mrs. Malott visited our chapter a few days. On September 22, we gave a formal tea at the chapter house in her honor. On Saturday, October 1, the actives gave a feed for the pledges after the dates had left.

DOROTHY JILLSON, *Editor*

MARCIAL BURROUGHS, *President*

THETA

PLEDGES: Catherine Smith, Eunice Evans, Helen Dorsey, Beatrice Dunn, Mary Sue La Heist, Alberta Hobstetter, Ruth Sargent, Nelda Orth, Mary Adelaide Barthelow, and Valeria Kessler.

Another school year was begun, and we are planning on a bigger and better year for Theta Chapter. We had a fine rushing week and feel that we owe much of our success to our rushing chairman, Helen Galloway. Before rushing began, our house was practically all redecorated and it looks very attractive now.

Another very interesting function for us this fall was a food shower which the Mothers Club had for us. Each member brought any and all kinds of food and pooled it for the benefit of the house. Many of the alumnae were present and everyone had a grand time.

Since we are speaking of our Mothers' Club, we had a very impressive tea, at which the rushees were presented to our mothers.

Among the actives this fall we are very happy to have with us, Helen Jones, from Alpha Chapter; and Florence Perysack from Alpha Rho Chapter, who is taking her Master's in French.

Among our pledge group this year we have Valeria Kessler who is the daughter of a former member of Theta Chapter. Eunice Evans, another of our pledges, was a former pledge at Alpha Chapter, Miami University.

MARGARET STEVENS, *Editor*

ANN STONE, *President*

IOTA

PLEDGES: Beryl Bigelow, Dorothy Callan, Dorothy Callaher, Janet Redfield, Mary L.

Murphy, Ruth Lotspeich, and Lucille Cook.

HONORS: The first thing that we must tell you about is, of course, that our president Vivian Kuhl was elected president of Mortar Board. This is the highest honor anyone can receive on this campus. She is also the secretary of Phi Sigma Iota, honorary romance language sorority and secretary of Y.W.C.A. Ruth Lotspeich is president of Seals Club, women's honorary swimming organization and W.A.A. board member. Lucille Cook is a member of university orchestra. Laura Koop is secretary of Theta Sigma Phi, honorary journalism sorority. Helen Blake is a member of Forensic Council and Phoebe Pfeiffer a member of Union Board. Mary Bennett a graduate student from Chi who is living with us this year has the lead in the next university play.

SOCIAL: Rushing this fall was rather hard but successful we think. Our Delta Zeta night club, Butterfly breakfast and Delta Zeta night were all very effective and clever. The alumnae chapter had charge of the Delta Zeta night. This was a "Ballyhoo" party disclosing all the secrets of rushing and finally showing the real thing—a Delta Zeta girl wrapped in cellophane carrying a corsage of Kilarney roses and singing "Dream Girl." It was very effective and of course we thought fitting.

The next event we are planning is open house, when our pledges will be introduced to the different fraternity men on this campus.

Living with us this year, we have Mary Bennett, a graduate from Chi, and Betty Pollock, and Bernice Burns, two graduates from our own chapter.

We were fortunate enough to have five girls from Gamma Chapter visit us this fall.

Some of the Iota girls just returned from a week-end at the Beta Kappa house. They have been making us jealous by telling of the fun they had.

M. MULHOLLAND, *Editor*
VIVIAN KUHLE, *President*

Letter not typed.

KAPPA

PLEDGES: Frances Grimsdell, Winnie Seifert, Bernice Mars, Ethel London, Pauline Shady.

Kappa Chapter is beginning its new year with enthusiasm again, eager to get back into the full swing of studies and activities. We point with pride to our old president, Alice Horstman, who won a medal and a huge cup at the Northwest Women's Champion Pistol Match which was held during Fleet Week at Fort Lawton this summer. This cup was first won by Edna Cristofferson who is famous as a writer and an aviatrix. Dixie Stanley is in charge of an A.W.S. group which will study dancing under her leader-

ship in whatever manner they choose, either by learning to dance, studying its history, seeing famous dancers or the like. Verna Jensen, our tireless treasurer, is active in the Scandinavian and Inkwell Clubs. She is on the rifle team as is also Alice Horstman and to which our new pledge, Pauline Shady, also aspires. Betty Audley is a member of Orchesis, dance honorary, and Winnie Seifert, our new representative to Spurs, is active in A.W.S. as is Mary Ellen McGonagle and Kay Coulon. Lucille Keeney, Mildred Kravik, and Ethel London are working with the Y.W.C.A., the first two being on the council.

Mary Benton has just recently been initiated into the American Association of Penwomen and it is rumored that a story of hers has been accepted. We are expecting Margaret Cahalan to resume her activities with the University Orchestra very soon and are looking forward to seeing some of our drama students. Betty Audley, Lucille Keeney, and Mildred Kravik in some University Productions.

MILDRED KRAVIK, *Editor*
KAY COULON, *President*

MU

PLEDGES: Beverly Balstar, Geraldine Butler, Marjorie Cherry, Frances Moulton, Margaret Rector, Shirley Ridley, Anita Robison, Betty Lou Ruff, Laura Shaeffer, Anna Shawn, Bernadette Soares, and Mildred Waddell.

Rush week began on August 5 under a Panhellenic ruling that every sorority give its first rush function in the form of a large tea, the rushees visiting the houses of their choice. As a result of a successful rushing season, we feel proud of our new pledges. We also had a pleasant surprise awaiting us when we returned to school this fall. Several of the rooms had been newly varnished and painted, while our den has been completely furnished in colonial style. The older pledges presented the house with one of the lamps for the room.

The social season started out right with a dance on September 16, honoring our new pledges; it was held at the chapter house. On October 16 initiation is expected to take place for six of our girls, Geraldine Brown, Jane Dailey, Ruth Peppin, Marjorie Sachs, Ethel Sala, and Dorothy Stevenson. On October 22, we are planning a bridge-tea. Several of the girls are modeling for a fashion show to be held in conjunction with the tea.

We are planning on observing Founders' Day, October 23, with a buffet supper, and we are hoping that many alumnae will attend.

Our formal is to be given on November 12, at the Claremont Country Club. Due to a Panhellenic ruling there are to be no formal teas this year. Of course this is rather a

disappointment, but we now are concentrating on making our formal a success.

On November 5, the U.S.C.-California football game is to be held in Los Angeles. A number of the girls are planning to attend and are looking forward to this event. The Big Game this year with Stanford is to be held on November 19. We are holding open-house on the day of the game.

The pledges have already become interested in campus affairs, and judging by the spirit of the girls, our scholastic standard is bound to improve. Our study-table is more of a success than ever, and every day finds the campus library filled with Delta Zeta girls. On the evening of the meeting of the Building Association the pledges entertained with the annual freshman show, and we were happy at seeing so many alumnae attend.

Mu Chapter is well represented in activities, and many of us have been appointed to class committees.

With our plans well organized and the thought of coming good times we feel we are well on our way to a successful semester. Letter unsigned.

NU

PLEDGES: Louise Gibbs, '36, LaFayette, Ill.; Harriet Morgan, '35, Port Byron, Ill.; Marjorie Mercer, '35, and Alice Tate, '35, Galesburg, Ill.; Helen Johnson, '35, Moline, Ill.; Margaret Mullen, '34, Gary, Ind.; and Pauline Sorrell, '35, Peoria, Ill.

After quite a period of indecision, at last the fraternities and sororities at Knox College were given permission to abolish deferred pledging, and to return to the system of early pledging.

Of course, rush week was crammed full of social events of various kinds. Parties were limited by Panhellenic to five rushees and five active members, so of course our entertaining had to be done on a very small scale. But we feel that we made up for this prohibition when we gave our Annual Rose Banquet on September 23, at the Galesburg Club. The key-note, of course, was the pink rose and the color scheme was rose and green. A three-course dinner was served, followed by a short program, which was based on the various characteristics of the rose. During the program the rushees were presented with corsages made up of pink rose-buds.

We of Nu Chapter are all thrilled by the fact that our alumna, Juanita Kelly Bednar, has secured permission to publish her "Dream Girl of Delta Zeta." Mrs. Bednar is certain that it will be ready for publication at least by Christmas, and I am sure all true Delta Zetas will be proud to see our song in sheet music form.

We have tackled our studies with a new zeal inspired by the fact that we are the proud winners of the scholarship cup

awarded by the college each semester to the fraternity and sorority possessing the highest scholarship. Proud of this distinction on the campus, we are going to do our best to retain the cup.

During the first part of this month we had as our visitor, Mrs. Leslie Drew, our province director. We feel that her visit to us came at a very opportune time, as she had many helpful suggestions on rushing and organization.

HELEN CHRISTINE ALLEN, *Editor*
LOUISE LARSON, *President*

XI

INITIATES: Virginia Betts and Gertrude Winklemann.

PLEDGES: Lisabeth Darden, Eileen Dunn, Mary Lou Eich, Dorothy Hancock, Mary Lou Jewett, Ruth Klein, Clara Jane Knapp, Yolande Schnieder, Mildred Tudor, Vivian Voorheis, Cincinnati; and Alberta Krehbiel, Erie, Pennsylvania; Marian Lockwood, Paducah, Kentucky.

"U.C., that is the magic name." To the tune of our thrilling Alma Mater, thousands find their way through the portals of old McMicken. This year, we are all set to do things. There are many new buildings on the campus, a new botany building and a new physics building. The university has a new president this year, Dr. Raymond Walters, formerly of Swarthmore.

Rushing was a big success. Everyone of our parties had been carefully planned and executed, and the Cincinnati Alumnae Chapter deserves lots of praise and thanks for taking over six of our parties.

We had a very serious and impressive formal this year and the idea was greatly appreciated by all rushees.

JANE OEHLER, *Editor*
BETTY HEUSCH, *President*

OMICRON

Although our chapter is much smaller than last year because we lost fifteen seniors and two girls transferred to other schools and one new initiate was married, we look forward to a very active year. One of the most interesting events which took place on the campus this fall was Lantern Night, a tradition at Pitt. Nearly all of our girls took part in some way or another. Mary Garber represented "Scholarship" in the pageant while Evelyn Mease represented "Friendship." The pageant was given on the lawn of one of the buildings. This week is Panhellenic Conference Week, and we are naturally very much interested because Mary Garber is Panhellenic President. On Founders' Day we are looking forward to having a formal banquet and dance at the Athletic Club of Pittsburgh. This summer the Delta Zetas

held a chapter house party at the cottage of Mabel De Forest at Geneva-on-the-Lake. Mabel is now president of the Pittsburgh Alumnae Chapter of Delta Zeta. The table discussions were of great interest to all of us because subjects such as "Of what value are honorary fraternities?" and "What effect do these honorary fraternities have on the girls who are not chosen for them?" Sunsets on the Lake were very inspiring and the talks we had after sunset in the dusk of approaching evening helped to make the older members become better acquainted with the new initiates.

HELEN MILLIRON, *Editor*
BETTY CASSEL, *President*

PI

Before we begin the new year's plans we will review Pi chapters accomplishments of the past. We were especially proud of our eight initiates, many of whom have already begun to bring honors to Delta Zeta. Merna Good won first place in the "Scholars," Virginia Ball also won recognition in the "Scholars." Mary K. Garber and Marietta Fitzgerald were elected to the Eureka Players. Betty Richardson won a place on the Womans Tennis Team.

To our seniors we owe special recognition; Margaret Cleaver was Katherina in the senior play "Taming of the Shrew." Margaret was also chosen by the students to preside over the May Fete as May Queen. Florence Lyons led the grand march in the Junior-Senior Promenade. Julia Beoletto sang the feminine lead in the opera "Faust" presented by the Music Department; Julia also sang her senior voice recital Sunday before commencement (a coveted date). We wish them much success in their work this coming year.

The sixteenth Annual Spring Formal was held at the Peoria Country Club. Florence Lyons was toastmistress and cleverly introduced each person responding to her toasts. After a delicious dinner, the evening was spent in dancing. We were especially happy to have had as our guests for the evening five of our patronesses.

The chapter entertained a number of guests at a Rush Party. A buffet dinner at the home of the Cleavers, with dancing, bridge and other games in the corridor, followed by a slumberless party.

One of our girls, Virginia Ball, had the opportunity to meet several other Delta Zetas, as she spent the summer with her Aunt Esther Culp Litchfield, a charter member of Pi, in California.

MARTHA JONES, *Editor*
MARY E. HARROD, *President*

SIGMA

PLEDGES: Kathleen Averett, Goldie Booth, Mabel Carpenter, Mary Agnes Johnson, Jeanne Le Grone, Mary Elizabeth LeBlanc,

Margurite Lurry, Mary Eleanor Lutz, Elizabeth McCook, Dorothy Nugent, Sue Ott, Emily Orstendorf, Mrs. J. L. Ouber, Bernice Shearer, Dorothy Supple, Marietta Tannehill, Laura Winslow, Becky Wolf.

Sigma feels that she has started this school year off with a "bang" by pledging eighteen of the nicest freshmen on the campus. We expect big things from all of them.

We had a busy and interesting rush season. One of our most successful parties was a "barn dance" in the summer which we hope to make an annual affair; then we had a lovely tea at the governor's mansion in the fall, an operetta, an Egyptian dinner dance, and a morning coffee. The dinner dance, which was our "big party," carried out an Egyptian theme, with palm trees for place cards, miniature pyramids on the tables, and the sphinx in the background. The entertainers were dressed as Egyptian dancing girls and during dinner were grouped around the throne of an "Egyptian princess."

The morning coffee really celebrated the promising of our rushees, for it was given at the end of rushing season. We had it at the lovely new home of one of our active members, Jane Conway.

Three Delta Zetas were initiated into Delta Gamma Delta, a local intersorority. These were: Joyce Love Allen, Evelyn Sheets, and Kathleen Averett.

Dorothy Zeagler was made treasurer of Pi Sigma Alpha, a national government fraternity, and Helen Brock elected to the vice-presidency of Y.W.C.A.

Because our president, Beth Snider, did not return to school this year we have elected a new president, Helen Brock, our former vice-president. Merle Alexander has been elected vice-president to fill Helen's place. We all feel badly about Beth not coming back to school but are sure Helen will fill her place capably.

Recently we held "open house" for the fraternities on the campus. Each had fifteen minutes in which to meet our new pledges, dance, and drink punch, (of course, they all overstayed their time), and we all enjoyed it immensely.

LOUISE DUGAS, *Editor*
HELEN BROCK, *President*

TAU

PLEDGES: Genevieve Butcher, Fort Atkinson, Wisconsin; Mary Hipple, Lock Haven, Pennsylvania; Jane Lester, Annabelle Pierstorff, and Ruth Ann Piper, Madison, Wisconsin; Anita Pleuss, Manitowoc, Wisconsin; Jean Sacia, Galesville, Wisconsin; Doris Schouten, Keokuk, Iowa; Carol Tredennick, Madison, Wisconsin; Lucile Vetting, Manitowoc, Wisconsin; Harriet Quall, Clintonville, Wisconsin.

Our first week was a whirl of rushing. It

began with an afternoon of tea and ended with a formal dinner dance. The other days were filled with luncheons and dinners.

And then to spite the peculiar economic condition we pledged five new girls and re-pledged two other girls. We were happy and proud to welcome them to our chapter.

Then, too, our activities have taken no downward slant. Delta Zeta has been represented in university activities from the very start of the year. Freshman week or the so-called Orientation week of the University of Wisconsin had a Delta Zeta as its director, Elanora Pfeffer, '33.

Delta Zeta was also well represented on other Orientation week committees. Many of the girls had charge of groups of Freshman women.

Along State Street here in Madison a picture of Delta Zeta's representative in present activities may be seen. Marilla Egger, '33, is prominent these days for she was Chairman of the Fathers' Day Mailing committee. Marilla is also chairman of a committee for homecoming.

Among other Delta Zetas of importance we find Margaret Lutze, '33, Chief of the Women's Division for the Badger, University Singers, Y.W.C.A. cabinet, and Secretary of the Union Subsidiary board.

Dorothy Shekey, '33, is Chairman of the Finance committee and also as a member of the Y.W.C.A. cabinet. Dorothy is also a member of Phi Beta, the honorary speech sorority.

This week finds a guest of importance with Tau. Mrs. Pease, editor of *THE LAMP*, is spending the first of the week with us. She attended our chapter meeting of Wednesday, October 5.

Football, almost another word for autumn, has started and Saturday afternoon finds us at Camp Randall, the football stadium. We are looking forward to the week-ends when we can welcome "the sisters" from other chapters.

There's definite promise of a Halloween party for Tau of Delta Zeta on October 29 at the chapter house. Formal or informal, the preponderant question of the day, has been settled. Our new pledges voted it informal and to them we acquiesce.

LIDA WINDEMUTH, *Editor*
MARGARET LUTZE, *President*

UPSILON

PLEDGES: Flora Kennedy, Phyllis Madsen, Marian Norby, Catherine Neville, Dorothy Clayton, Ramona Haroldson, Emma Jean Grady, Ella Jones, Fern Tikalsky, and Evelyn Waechter.

INITIATES: Margaret Bergstrom and Clarice Hildre.

Upsilon has just emerged from another very successful rush-week, and pledged ten

new girls at formal pledging services. The events of rush-week were under the direction of Marian Muehl, rush captain, and came to a fitting climax when our new group of pledges were added to the chapter.

A dinner was given in their honor, with Evelyn Quam in charge. Short speeches of welcome were given by Margaret Bergstrom, for the pledges; Harriet Anderson, for the actives, and Hannah Eielson, for the alumnae.

We have scarcely had time to catch our breath before we find ourselves confronted with Homecoming activities. With Ol' Man Depression still planting both feet squarely in North Dakota, the Greek letter groups have agreed to enter only one contest each, either the floats in the parade, or house and lawn decorations. Upsilon has chosen the latter, and Harriet Anderson is in charge. We hope to be able, in the next letter, to tell you of winning a prize.

Margaret Kindschi and Myrtle Anderson have gone to Iowa State College this year in search of knowledge in home economics. We miss both girls in our chapter, but feel sure they will find many new friends in Beta Kappa Chapter.

Upsilon Chapter has just been honored with a visit from Mrs. John W. Pease, editor of *THE LAMP*. Mrs. Pease arrived in Grand Forks Sunday, October 7, and was with us until Tuesday. Practically every minute of her time was occupied, but she was always cheerful and eager to help us whenever possible. Instead of the usual tiresome tea for visiting delegates, Mrs. Pease was the honored guest at a dinner Sunday. Chapter presidents of all the sororities on the campus were present, and Mrs. Pease had a chance to visit with them all. Sunday afternoon we had an informal open house for our patronesses, and the alumnae members took Mrs. Pease to dinner in the evening, at which time she conferred with that group.

On Monday, Mrs. Pease was occupied with additional conferences and a meeting with the pledge group. In the evening we conducted formal initiation services, and made the ceremony more realistic by taking Margaret Bergstrom and Clarice Hildre into active membership. The initiation was followed by an active meeting.

Quo Vadis, senior women's honorary group has just received a charter from Mortar Board, national honorary organization, and Upsilon is pleased to be represented among the charter members. Mildred Owens, chapter president, was elected to Quo Vadis.

Marguerite Kops, an alumna of Upsilon Chapter has just been elected to Who's Who in North Dakota. Miss Kops is one of New York's leading designers, and at the age of 28 is one of the youngest persons to be included in North Dakota's Who's Who.

Kathleen Robertson, a charter member of Upsilon, is making a name for herself in the free lance field, and has just had another article published by McCall's. Upsilon girls watch eagerly for Miss Robertson's articles, and wish to congratulate her on her success.

Mrs. Thomas Harding and Mrs. Merritt Johnson, two alumnae members of Upsilon, are again on the Wesley College faculty. Mrs. Harding is teaching expression and Mrs. Johnson is a violin instructor.

Undaunted by the fact that the graduation of Louise Thompson left our trio without an alto, Margaret Bergstrom and Jeanette Anderson, the two remaining girls, have enlisted the services of Clarice Hildre. The new group made their first appearance for Mrs. Pease, and have been asked to sing at the Homecoming informal. They are accompanied by Aileen Rice. We are very proud of this group and hope to have a picture for *THE LAMP* soon.

DOROTHY MATHYS, *Editor*
MILDRED OWENS, *President*

PHI

PLEDGES: Evelyn Tonsfeldt, June Briggs, Helen Johnson.

INITIATES: Nan Mac Nab, Gladys Vickers, Eleanor Martin, Evelyn Thornber, Helen Strain.

Are you ready to start on the Phi newspaper? This promises to be one, so settle back in ye old rockers, gather up your knitting, and we'll begin.

This summer our domicile was rejuvenated and what rejuvenation! A delegation of two traveled to Spokane in a rumble seat (what a ride!) and selected two Orientals and a Numbdah for our drawing room and sun porch respectively and new drapes were made. When our members and pledges returned this fall they hardly knew the place.

A decided decrease in the college enrollment brought down our fall number of pledges with a bang but we have three new ones of which we are justly proud. We pride ourselves in having the most congenial group on the campus and we have certainly made a name for ourselves among prospective rushees.

October 7 the college "Open House" was held. It is a tradition on the campus—the men's groups visit and dance at the women's groups for eight minutes with two minutes between groups. It is always a gala evening, many old and new friends and prospective dates are met.

October 14 is the Women's Jamboree, also a tradition, held the same evening as the men's traditional "Smoker." We are going dressed as Japanese girls with bright coolie coats, pom-poms, and umbrellas. It is "A Good Time Was Had By All" mixer, dancing predominating.

Last year our chapter worked to bring up our scholarship and very successfully accomplished its task. This year we are striving for activities. One of our pledges, Florence Ness, is a member of Spur, Historian of Lambda Kappa Sigma, a member of the American Pharmaceutical Association, and is active in Y.W.C.A. She, with Jane Palmer, are our "A" students. Jane is also a Spur and a member of the French Club.

Zylda Lambert, Jane Palmer, and Esther Daniel made the Chinook staff, the college year book. Jane and Esther also made the Evergreen staff, the tri-weekly publication of the college.

We are hoping for a good debate season this fall. Our old debaters, Zylda Lambert and Imogene Rorick are back, and having last year lost only in the final and tell-tale debate, we are praying for them to attain this year the final award, a battle well fought and won. Imogene made Forensic Circle, a debate honorary.

Helen Treptow is Secretary-Treasurer of Panhellenic, also of Gamma Beta, a women's local Economic Society. Lucille McCrite, our president, is vice-president of the same organization.

One of our alumnae, Lois Hamilton, has made a name for herself in Washington, D.C. at Walter Reed General Hospital. Another of our girls, Ruth Helmer, has secured an apprenticeship there.

Gladys Vickers is a member of the College Rifle Club.

Marie Lloyd betook herself from us this year and is now teaching and taking training at the Clarke School for the Deaf at Northampton, Massachusetts.

Eleanor Martin and Virginia Watt made the first all college play of the season, "Michael and Mary."

ESTHER DANIEL, *Editor*
LUCILLE MCCRITE, *President*

CHI

PLEDGES: Bessie Jean MacLeod, Helen Tilander, Ruth Henderson, Jean Beard, Jessie Hulery.

We've a full house! Everyone whose school was transferred to the university, registered in something else here, and all of us who needed one, found a job. So we're all started on another big year—and as the largest sorority on the campus.

Delta Zeta journalists are fairly over-running the campus right now. Ruth Currin has just been appointed feature editor of the daily newspaper, and activity editor of the annual. Adena Joy has been promoted to day editor, with Ruth Lundgren as her assistant. Becky Brown is a day editor, and "Jackie" Morency, Marian Fitzpatrick and Vivian Rowland are staff members.

Evalyn Eisenbrey is social chairman on the Y.W.C.A. cabinet for this year; Adena

was discussion group chairman last year. Bessie Jean MacLeod, Dorothy Atwood and Marian are Big Sisters; Dina Visetti is a Big Sister captain. Adena was general chairman of the "Y" membership and financial campaign this fall, and Evalyn, Bessie Jean and Dina worked on the committee.

Ruth Currin, Eleanor Jenks and Dorothy Atwood are in Madrigal. Jackie and Jean Beard made the orchestra, and Jackie is one of the few girls playing in the R.O.T.C. band.

Vivian is soon to be initiated into Spurs, and Adena into Phi Kappa Phi.

Now let's go back to spring term and talk about some of the things we were doing then. Mary Bennett was chosen as the outstanding woman in the senior class, and was also in the Who's Who section of the annual. Ruth Currin was one of six girls who had a full page portrait in the popularity section.

We added several new honoraries to our list. Virginia Merriss was initiated into Orchestis, dancing honorary; Louise Lerch made Kappa Delta Pi; and Adena was elected to Theta Sigma Phi, Phi Kappa Phi, and Cap and Gown, petitioning Mortar Board.

Mary and Adena were on the varsity debate team. They both made a trip to Washington State and the University of Idaho, and Adena also went to the University of Washington, and into Nevada and California.

Adena was elected to one of the three student body offices open to women, secretary of the co-op board. Jackie also ran for vice-president of the junior class.

We have lost Ruth Dahlberg as our faculty and alumna adviser because her husband has been transferred to the university. Elizabeth Barnes, director of dramatics, has returned from a year of travel and study abroad and is now our alumna adviser. Mrs. Gertrude McElfresh, charter member of Beta Chapter, is our faculty adviser.

ADENA JOY, *Editor*
IRENE LEACH, *President*

P.S.—Ruth Currin doesn't know it yet, but a "big bird" on the campus just told me that he had appointed her on the homecoming committee.

PSI

INITIATES: Elta Mitchell, Franklin; Marjorie Forsyth, Trafalgar, Indiana; Irene Aiken, Franklin.

PLEDGES: Margaret Beeson, Gladys Lloyd, Franklin; Arlene Brewer, Greenwood, Indiana; Hannah Hood, Rochester, Indiana; Joyce Vinson, Dupont, Indiana; Lucile Clarke, Greenwood, Indiana; Florence Clarke, Franklin, Indiana; Elizabeth Dewar, Maxine McPeck, and Evelyn Montgomery, Indianapolis, Indiana.

Psi Chapter started things off with a bang this year and ended rush with ten grand pledges. And are we proud of them! Our parties were the nicest on the campus (so we have been told). One was a formal dinner in the form of a ship party, and the afternoon party was a clever theater party, although of course, we Delta Zetas provided the show.

We are boasting of two Delta Zeta faculty members this year. Mrs. Althea Whitesides is head of the home economics department, and Roberta Trent has been given the head of the music department.

Our chapter is certainly carrying away the class offices this year. Kathryn Doub is secretary of the senior class; Frances Beaman is vice-president of the junior class, while Dorothy Stroud is the treasurer; Beatrice Deckard is secretary of the sophomore class; and Evelyn Montgomery is treasurer of the freshman class. Two of our girls are members of Gold Quill, equivalent to Mortar Board, and Jeannette Caudle was recently elected president of that organization. Gwendolyn Horton is a member of the student council executive board, and Kathryn Doub is a member of the Senior Board.

Delta Zeta is not lacking in the music department. Five of our girls were elected to the chapel choir and three play in the college orchestra. Lucile Clarke, a pledge, has the honor of being called the most outstanding violinist in school.

We are making plans for the best year in Delta Zeta history at Franklin. We are planning a serenade for homecoming which is the 21st of October, and the pledges are already hard at work on a dance to be given for the actives.

JEANNETTE CAUDLE, *Editor*
KATHRYN DOUB, *President*

OMEGA

PLEDGES: Thelma Lundy, Lucille Nelson, Margaret Peattie, Esther Krabbe, Marjorie Powell, Naomi Hornschurch, Delores Burk, and Maxine Mortenson.

Omega Chapter's social activities started with an informal tea which was given for all house presidents and Mrs. C. L. Schwerling, Dean of Women.

We are very fortunate in having an active and interested Mothers' Club, which is always doing lovely things for the girls.

Jacqueline Laraway, a friend of our housemother, was hostess to the girls at an informal tea on Thursday afternoon. It was given in Mrs. Eldridge's rooms.

Although this is only the third week of classes, we have already made plans for a number of interesting affairs. On Sunday November 6, the chapter will honor its new housemother, Mrs. Vivian Eldridge, at a formal tea. A large number of faculty and

townspeople have been invited, as well as many students on the campus.

A "Depression Idea" will be the motif for our annual pledge dance on Saturday November 12. We are all looking forward with much anticipation to this event.

The newly organized alumnæ club has invited the new pledges to a buffet supper Sunday evening October 16, at the home of Mrs. Knowlin.

Mrs. Walter Yoe, of Portland, is to be our guest at a formal dinner Thursday, November 13. Additional guests will be Mrs. Carey Burden and Mrs. A. R. Sether.

Omega girls also make a name for themselves in many other lines. Alyce Cook has been awarded a scholarship to the Cornish School of dancing at Seattle. She was a member of Master Dance group and Theta Sigma Phi.

FLORENCE NOMBALAIS, *Editor*
ELAINE ANDERSON, *President*

ALPHA BETA

PLEDGES: Alegra Montgomery, Frances Patton, Eleanor Keppner, Harriet Murphy, Helen Lines, Margery Goodwin, Kathryn Block, Julia Daniel.

HONORS: Mary Patton, President of Kappa Beta Pi, legal sorority; Betty Haynie, chairman of Junior faculty reception; Hazel Marie Hoyle, Torch, honorary Junior Women's society; Mary Patton, Senior Ball committee.

We Alpha Beta girls and our dog, Rex, who spent his summer with Nancy Embree in De Kalb, Illinois, were overjoyed to return this fall and find ourselves the owners of a lovely new chapter house.

As soon as rushing was over this fall we found ourselves in the throes of an exciting political campaign. Fortunately for us our candidates were elected in all three classes. Margaret Snider, Louise Clow, Betty Haynie, and Frances Patton were our outstanding politicians.

H. M. HAYLE, *Editor*
NANCY EMBREE, *President*

ALPHA GAMMA

PLEDGES: Jane Thorpe, South Dakota; Ad-die Ditmars, Viola Milne, Mobile, Alabama; Hazel Brannon, Alabama City; Margaret Thomas, and Rosalind Jackson, Tuscaloosa, Alabama.

INITIATE: Jean Cody, Springfield, Massachusetts.

Rush is over and we consider ourselves very lucky to have such a group of splendid pledges. We entertained a great deal and our largest party was a progressive dinner. It was very successful and quite a novelty. Nearly fifty girls attended and of that number twenty were rushees. The party started

at the sorority house where cocktails were served and from there we went to several homes in town where delightful courses were served by our patronesses.

We were very fortunate during rush to have Mrs. Gerald Cowan, our province president, with us to help and inspire us at a time when she was most needed.

Jean Cody and Marjorie Barrows have been elected chairman and vice chairman respectively of the Sophomore class in the School of Home Economics.

On September 27, we had initiation service for Jean Cody. The following night the Rose Banquet was given in Jean's honor.

We have one of our charter members back with us this year. Gladys Clayton, of Montgomery, Alabama, who is working for her Master's degree in Romance Languages.

Two of last year's graduates are back this year. Alma Vaughan, Florida, is working for her Master's in English; and Mary Bain, Birmingham, Alabama, is working for her Master's in Education. That is one advantage of a Master's—it brings back our old members to us for a few more years.

Marguerite Matlock, a transfer from Randolph-Macon (Alpha Xi), and University of Wisconsin where she attained her Master's, is studying here this year.

MARJORIE BARROWS, *Editor*
MARJORIE RITTENHOUSE, *President*

ALPHA DELTA

Our annual rush season began Sunday, October second, and is to continue through the twelfth. The parties given up to date have been very successful, the initial function being a tea, followed by an "Arty Party" at which paper plate portraits, statuary produced from modeling clay and artistic paper mats were made. An art exhibit was held later in the evening and prizes were awarded.

Monday evening we entertained with a dance at the Wesley Heights Country Club. Tuesday was planned to be given over to a Gypsy Party, which included a straw ride from our new apartment to the home of Elizabeth Martin in Clarendon, Virginia, a treasure hunt, and huge bonfire in the surrounding woods, but because of a downpour of rain, we were obliged to stay inside and roast "hot-dogs" over a log fire. However, the rain couldn't spoil our pleasure, and we had great fun playing bridge and cooking our dinner.

Our closed date was for Wednesday afternoon, at which time Alpha Delta entertained at a Chinese luncheon, followed by bridge. Due to the fact that the other sororities on campus had their closed dates from Thursday through Saturday, our next party is scheduled for this evening, its atmosphere to be of a nautical nature. We plan to dress as sailors and to entertain our rushees with

sea chanties and games with a salty tang. The dancers among us will contribute to the theme with their version of the sailors' hornpipe. We hope that we will pledge even more rushees than we did last year.

We almost forgot to tell you that our alumnae are helping us with our rushing this afternoon by giving a Mothers' Tea, to which our own mothers and those of the rushees have been invited. Our program also includes a Bowery Party tomorrow night at the home of Annette Ladd, province director, a Rose Luncheon Tuesday at noon in the apartment, at which time the rose legend is to be read. Tuesday evening we are planning to give a Studio Party at the Denishawn Studios, with program under the direction of Denishawn. Our final banquet is to be held on Wednesday evening.

HELEN LYON, *Editor*

F. ELEANOR GARDNER, *President*

ALPHA ZETA

PLEDGES: Norma Trifari, Theresa McAllynn, Edith Kerbs.

HONORS: June Hamilton was elected Secretary of the Sophomore class. Zoe McLean, '35, has been elected Treasurer of the Y.W.C.A. and Helen Denton, '35, has been appointed to the Cabinet of the same organization. Our president, Julia Goemans, who has been president of her class for four years, has been elected to Lantern, a Senior honorary society. Ethel Johnston served on the Junior-Freshman Luncheon Committee and on the Panhellenic Tea Committee.

Alpha Zeta has started off with a bang this year by having a supper meeting at a quaint little place called Fireside Inn. Everybody had a glorious time even though the Inn did not live up to its name. We had three darling rushees as guests. The scarcity of the rushees was caused by the new second semester rushing system installed by the local Panhellenic Association. We have free rushing with the exception of the fact that we may not have more than three rushees at a social function; also a new student must pay for her own luncheon. Our rushing is progressing remarkably with a list of over thirty and four months to go!

Our biggest event has been the acquisition of a new Delta Zeta house at Freeport, Long Island which is just fifteen minutes from college. This has proved a godsend to commuters and rushees. The house boasts of a cat named Minnie-Tom which is self-explanatory. Minnie-Tom recently presented us with a family.

A very active year has been planned including a bridge party, Halloween Celebration, and a formal dance—all to take place within the next two months.

EDNA HANES, *Editor*

JULIA GOEMANS, *President*

ALPHA THETA

PLEDGES: Louise Payne, Eva Mae Nunnelly, Elinor Hillenmeyer, Lexington, Kentucky; Mary Evelyn Cracraft, Mayslick; Virginia Murrell, Somerset, Kentucky; Mary Katherine Williams, Memphis, Tennessee.

Greetings, laughter, and gaiety ushered in the fall season for Alpha Theta. Our alumnae, many of them from out of town, were a help at this time. Under the direction of our clever and efficient social committee, we enjoyed a series of delightful rush parties. Among the most attractive were a "Bell-Hop" tea, and our formal Rose Dinner. These brought a close to our whirl of good times.

I can't go on without telling you something of our Rose Dinner for it was an especially lovely event. Pink roses and tapers were featured as decorations, and the menu was carried out completely in the colors of rose and green. Between courses, our president, Dorothy Compton sang "The Love Song," and as she sang, presented each rushee with a dewy, Killarney rosebud.

Last Friday night, September 30, the new girls received their bids. The house fairly buzzed, and we were bubbling over with excitement as we received them. After refreshments we went to a pep meeting, arranged for the Kentucky-Sewanee football game.

The next night the girls were formally pledged, after which a buffet supper was served. On Sunday afternoon the first open house of the season was given in honor of the new girls.

The pledges held their first meeting last week, at which time Louise Payne was elected president of the pledges.

HELEN HIXON, *Editor*

DOROTHY COMPTON, *President*

ALPHA IOTA

PLEDGES: Ethel May Bowen, Rowena Ingold, Sally Griffiths.

INITIATES: Nadine Goodheart, Virginia Hayselden, Edythe Kaneen, Mildred Money, Ruth Urton, Anna Massa.

HONORS: We are proud of all the new honors that have come to our members recently. Lyda Richman is a member of the Y.W.C.A. Cabinet and Spooks and Spokes, the Junior Women's Honorary. Marion Richardson has received the Bowen Cup for extemporaneous speaking and it is to be added to our cups. She also has been elected to Spooks and Spokes and is representative for the Council of International Relations at University of Southern California. Marie Drake is the fashion editor for our daily paper and is very active in the Cinema League, a new club on the campus. Mabel-alice Hachten was recently elected to Epsilon

Phi, honorary English fraternity, and is a member of the Y.W.C.A. Cabinet; she also is senior editor of the university annual, *El Rodeo*. Katharine Henze is a new member of Phi Xi Theta, professional commerce fraternity. Nadine Goodheart is chaplain of Athena Literary Society; Margaret Thomas is on the Wampus staff and is a new member of Theta Sigma Phi, honorary journalism fraternity. Mildred Money and Virginia Hayselden are officers of Pi Kappa Sigma.

And now comes the grand and glorious news, Alpha Iota has won the Scholarship Cup at the university for the highest scholarship among all sororities on the campus last semester. In the last two years we have come up from almost the bottom to the top of the scholarship list. We are so proud of ourselves, and now our only worry is to keep it.

Our social year is well started. We introduced our new pledges to the campus with a very successful tea dance last Friday and now we are planning an informal dance on November fifth following the U.S.C. vs. California football game. Alpha Iota is particularly busy at this time preparing for a visit from our LAMP Editor, Mrs. Margaret Pease, who is to arrive in Los Angeles very soon. We are looking forward to her visit with pleasure and have many interesting plans for her stay with us.

With social activities in full swing and sorority affairs moving along smoothly, we are looking forward to a splendid year.

BETTY EBNER, *Editor*

LYDA-BLITHE RICHMAN, *President*

ALPHA KAPPA

NEW PLEDGES: Dorothy Dorchester, '35, Leonia, New Jersey, and Doris Bradley, '33, Vernon, New York

We have just had a delightful visit from Mrs. Georgia Lee Hornung. Conferences were arranged making it possible for each girl to get really acquainted with her. Problems, both of interest and aid to the chapter, were discussed. She offered some very fine suggestions which will certainly help us during the next year. We were all extremely pleased when Mrs. Hornung returned after her visit to Cornell to be present at our opening rush tea, which was held on October 1.

The tea was voted a great success by all of the girls. We were delighted as well as proud to have Mrs. Lowe and Mrs. Clarence Pollatsek pour. In the receiving line with Mrs. Hornung, were Gladys Dieseth, our president, Mrs. Herbert Burchard, our chaperon, and Mrs. Jordon Zimmerman, our alumnae adviser. It surely seemed like old times to have so many of our alumnae back with us including Edith Lawson, Claraellen Way, Henri Etta Morey, Ruth Richardson Reen.

We are planning some very interesting functions for rushing during the next two weeks, one party to be entitled, "Harlem Night Club" in which all of the girls will dance and entertain with novel skits.

ACTIVITIES: Ruth Ellis, '33, has been elected to Pi Mu Epsilon, Honorary Mathematics Society. Since the last edition of *THE LAMP*, Lucile Gifford survived the cuts and was selected one of the six junior beauties. Lucile is also treasurer of Panhellenic as well as being managing editor of the *Onondagan*, the Syracuse year book. Laura Way also proved herself victorious and is now an associate editor on the staff of the *Onondagan*.

JANE WEAVER, *Editor*

GLADYS DIESETH, *President*

ALPHA LAMBDA

PLEDGE: Ann Hennessy.

INITIATE: Frances Copeland.

Frances Copeland was nominated for a membership in "Spur," the honorary society for sophomores.

We have had a number of interesting social affairs. Steak fires are grand in Colorado. There are so many marvelous places for out-door frolics around Boulder. Our dance was a sports affair, and everybody had the best time, wearing low heeled shoes at a dance, for a change. A number of our girls were graduated, and we certainly miss them. Of course, we have had the usual round of fraternity tea dances and buffet suppers this quarter.

We are making all sorts of clever plans for intriguing rush parties. Kathryn Wright is our rush chairman, and she is a splendidly original person.

MARJORIE SELF, *Editor*

NELLE IMNESS, *President*

ALPHA NU

PLEDGES: Elizabeth Beckman, Maurine Campbell, Eleanor Eagan, Mildred Langdon, Marian Sones, and Evelyn Wright.

Our chapter has moved since its last news, and now has its lighted letters hanging on a cozy little home in which we anticipate another joyous college year together. We are very happy to have as our new chaperon Miss Sabina Murray, former national executive secretary of Delta Zeta. She has enriched our chapter with her guidance and her friendship.

The trials and tribulations of rush are over. We had a tea at the chapter house on Monday of rush week and called on the rushees every morning. On Saturday afternoon we gave a luncheon at the Trees. The guests received wood place cards decorated with the sorority colors and letters. We had music, dancing, and sorority songs.

Our traditional rose dinner was held in Hunter's Lodge at the Marott Hotel. Our songs were sung to lighted pledge and active pins which were hung in the lodge. We were happy to have many alumnae members at our dinner.

So now we are patting Marjorie Campbell, our rush captain, on the back, and we feel mighty proud of our new pledges, three of whom are Delta Zeta sisters.

Dorothy Wright, our president, was initiated into Theta Sigma Phi. She is chairman of the Panhellenic rush rules committee, and secretary-treasurer of the Sorority President's Council.

Mary Bohnstadt, a junior, was appointed chairman of freshman week, and was a delegate to the Y.W.C.A. Conference at Lake Geneva. She also is secretary of Woman's League, a member of Student Council, and a member of Chimes, junior honorary for women.

Florence Condrey is a member of Thespiis, a Butler dramatic organization. Alene McComb is a member of the Panhellenic expense committee.

MARY BOHNSTADT, *Editor*
DOROTHY WRIGHT, *President*

ALPHA XI

PLEDGES: Mabel Williams, Rosalie Baker, Frances Davis, Virginia Fish, Nell Elizabeth Currier, Mary Ella Lawton, Jane Whitte, and Margaret Lambeth.

TRANSFER: Thryza Branton from Alpha Omega Chapter.

When we think back over the summer months to the things that happened at the end of the last school year, it seems ages ago, yet in another way, it seems as though it were just yesterday. May Court was lovely last year and Lillian Hardee and Leila George Cram were elected to be in the court. Frances Spessard's and Lillian Hardee's pictures were selected by McClelland Barclay to appear in the feature section of the *Helianthus*, the college annual. Cara Sneed and Frances Spessard were elected to Pi Gamma Mu, a national social science fraternity. Cara Sneed received a scholarship to Columbia University and Sarah Blanchard received one to Simmons College. Mary Salome Betts had the third highest scholastic average in the freshman class last year. Leila George Cram is archery champion on campus and received a silver pin at the National Telegraphic Meet for making a score above 325.

Alpha Xi Chapter was well represented in the election of class and Student Government officials for this year. Nell Hogan Bray, who is president of our chapter this year, is on the staff of the *Sun Dial*, the college newspaper. Nell Hogan was also elected editor-in-chief of the *Old Maid*, a humorous

college publication. Nell was also elected Senior Class representative on Student Committee. Sue Byerly was elected Junior class representative on Student Committee. Salome Betts was elected to the Y.W.C.A. sophomore cabinet, and is secretary of Y.W.C.A. Salome is also mechanical adviser on the business staff of the *Sun Dial*. Margaret Lambeth was elected president of East Hall, one of the dormitories on campus. Leila George Cram was elected treasurer of the international relations club. Catherine McLaughlin and Sue Byerly are members of the dramatic club. Louise Copenhaver and Peggy Isaac are members of the Glee Club.

Of course, rushing was foremost in our minds when we came back this year and our rush teas were very successful. The first was an Oriental tea, and the incense and gay candles burning in the corners added much to the atmosphere. One of the girls was dressed to represent Buddha and each rushee was made to bow before her. All the girls wore Chinese pajamas and the informal atmosphere gave us opportunity to make many interesting friendships.

The other was a formal tea and offered quite a contrast to the first tea. One room was changed into the rose garden, and looked quite realistic. Grass was put on the floor, the doorway was changed into a rose arbor, and trellises, covered with pink roses, were banked against the walls.

Mrs. Keezel, who was here with us during this rush week, helped us very much, and we enjoyed having her with us.

EMMA GADE HUTAFF, *Editor*
? ? ? , *President*

ALPHA OMICRON

PLEDGES: Barbara Flaherty, '34, and Helen Towner, '34, Mt. Lebanon, Pennsylvania; Jeanne Snyder, '33, Beaver, Pennsylvania; Julia McCaskill, '33, Marianna, Florida, and Emma Mae Umbarger, '33, Marion, Virginia.

SPECIAL EVENTS. Pledging—September 23, 1932; Founders' Day banquet—October 24, 1932; Halloween Party—October 30, 1932.

The girls of Alpha Omicron returned to school full of enthusiasm and with the determination to work hard and truly accomplish something.

Rushing was in full swing for the next two weeks. Panhellenic had inaugurated the "preferential system" of rushing this year, quite a change from the "open" rules to the new. However, our rushing hasn't stopped. We are keeping our eyes open for new "lands to conquer." During the rushing season we entertained our rushees at two formal teas, pledging following the last tea.

Mrs. John Keisel of Ocala, Florida, our province president, honored us with a visit during the week of October 9. We admire

her so much, but her visit was altogether too short. At a tea on October 11, we introduced her to the faculty and the college community.

On Founders' Day we had an impressive service and banquet at the chapter house.

On Halloween the pledges entertained the actives at a delightful party. The living room was cleverly transformed into the proverbial witches' den. We bobbed for apples, popped corn, and roasted marshmallows.

It is still early in the year to announce elections to honorary organizations on the campus, but Alpha Omicron has kept right up with the elections so far. Esther Miller, our vice-president, was recently elected to the Brenau League of Women Voters, election to which is based on excellence in the social sciences. Other members in the chapter are Elizabeth Magruder, senior, of New Smyrna, Florida, Mildred Potter, senior, of Princeton, Indiana, Betty Bachus, senior of Fort McKinley, Philippine Islands, and Julia McCaskill, senior of Marianna, Florida. Mildred is also a member of Pi Gamma Mu, national honorary social science fraternity.

Mildred must have another paragraph for her laurels. She is one of the "Three Freshmen" broadcasting amusing playlets prepared, directed and enacted by them, each Monday evening at 6:15 from Station WSB in Atlanta. During Governor, now President-elect Roosevelt's recent trip to Atlanta, Mildred, with the other two "freshmen" interviewed him. His son, James Roosevelt, assisted them with their broadcast. Listen in. It is 6:15 Central Standard Time. They talk about everything from soup to nuts in true collegiate freshman manner.

Betty Bachus was recently elected First Associate Editor of the Alchemist, Brenau Newspaper, and Vice-President of the Brenau Wings, a Flying Club. She is also an assistant in the publicity office of Brenau.

Jean Wells, sophomore in the School of Speech, coached a play, "The Keepers Darkened" presented by the Play Production Class in the Brenau Little Theater. Her work won splendid criticism.

BETTY BACHUS, *Editor*
MILDRED POTTER, *President*

ALPHA PI

Well, how have you been since our last correspondence? That's a foolish question, of course, but it's customary. We're always tip top, aren't we?

We're progressing so well here, in fact, we can hardly keep up with ourselves. It's been so long since the news from our chapter has been published, I think I could fill THE LAMP with merely Alpha Pi's gossip.

In the past early spring, after we had such a successful Rose banquet and dance, we sisters caught the breath of spring and

the fragrance of the rose. We practically lived together and had numerous picnics and open air parties to invigorate our spirits. There were house parties, and we did our share and three-fourths of everyone else's in giving one in Cuba, Alabama. Then it was time to look over a few rushees before school was out and prepare ourselves for a merry whirl and gay vacation rush. And did we have it? Madame! Just listen while I tell you part of the things we did. There was so much, some must be touched lightly to make room for the others.

At first there were "spend the day" parties, and "please stay with me tonights"; and then there were many all day picnics where swimming, boating and regular outings were enjoyed. One, I remember, was followed by an old-time square dance which was quite a sensation. Nobody knew how but everyone tried.

We tried staying indoors some, too, and managed quite a few bridge parties. There was one delightful party after another all the summer, sometimes having as many as four a week, with a different group of girls in the sorority acting as hostesses each time.

But we varied now and then to make the rush more interesting. One novel idea was expressed in a treasure hunt, watermelon cutting, and an effective pirate dance afterwards.

We sought amusement at various times in the form of theater parties with feasts afterwards, and different small luncheons given by individual girls.

The really grandest affair of our summer rush, however, was a large bridge party and tea combined. The bridge party was both pretty and amusing but the tea was especially effective with ice punch bowls set in different gardens of the estate and the pink and green color scheme carried out to perfection.

Later on, after school started, we were graciously entertained at a tea by the alumnae. Then we were only allowed two more rush parties in groups over six. One we had as a spread at the home of our new patroness, Mrs. O. D. Street, and the other a dance in the form of a Delta Zeta night club. It was another novel idea, with cigarette girls, a bar where punch was served and an amusing program. We didn't have time for much else except "I promise you" from the girls, but you should see the "yes" girls we got. They are ten of the cutest and most worthwhile girls I have ever seen, and Alpha Pi is proud of every one of her new children. They are: Maxine Dupuy, Newell Bryan, Helen Malone, Francis Kinne, Mildred Maxwell, Grace Mangun, Elizabeth Hoover, Mildred Godwin, Margaret Godwin, Varina Shelton.

Not only are we proud of our younger generation, but of the older ones, too. Here

we have Margaret Fitzpatrick, one of our graduates, who climaxed the summer for us by "crashing Hollywood." After winning in a local Panther Woman contest, she was given a trip to Hollywood as a prize. There, as always, she went over with a "bang." Paramount studios signed her up with a seven year contract. More power to her, eh?

In the chapter we have the Vice-President of Allied Arts Club; Secretary of the Allied Arts Club; two members in the honorary debating fraternity; a member in Hypatia; President of W.A.A.; Secretary of W.A.A.; President and Vice President of Y.W.C.A. We're still having elections all along, and we are still in the game. Besides that, you should see our Alpha Pi going out for everything else on the campus.

IDELL TURNER, *Editor*

STUART DUPUY, *President*

ALPHA RHO

PLEDGES: Margaret Campbell, Shaker Heights, Ohio; Margaret Klefman and Roberta Lanning, Lakewood, Ohio; Eleanor Schaff, Chambersburg, Pennsylvania; Maxine Squires, Norwalk, Ohio; and Courtney Foulton, Elyria, Ohio.

HONORS: Phi Society, Margaret Campbell; W.A.A. Ellen Ackermann, Elizabeth Ackermann; Singers Club, Courtney Foulton, Eleanor Schaff; President Outing Club, Ellen Ackerman; Committee of 88, Courtney Foulton, Maxine Squires; Sophomore Commission, Margaret Campbell; Y.W.C.A. Cabinet, Ellen Ackermann; Technical staff for "Once in a Life Time," Kay May Schmid, Margaret Grosser; Transcript, Elizabeth Ackermann, Courtney Foulton; Chemistry Club, Margaret Campbell; French Club, Mary Catherine Stealey; Fire Marshall of Austin Hall, Ellen Ackermann; Wesleyan Player's, Kay May Schmid; Sociology Club, Blanche Monkosky.

Last year before school closed the Seniors and pledges were honored with a banquet, where we said "good-bye" to our Seniors and "hello" to our new pledges. Several of our alumnæ were present: Frances Hooker, '30, Amelia Lane, '24, Ruth Trafter, '24, and Pauline Ryder, '30.

Coming back to school we found nine of our members were absent from the group, including the new President we had chosen for this year! Due to illness she was unable to come back to finish her last year. Missing from our circle also, were our Vice-President and Rush Captain. This necessitated an election of officers the very first thing. Our new President is Elizabeth Ackermann, a well-known girl on the campus and a capable leader. Katherine Boring was chosen Vice-President, and Mary Catherine Stealey, Rush Captain.

Since our group is so small we realized

that each one of us would have to work harder than ever before. We feel very much encouraged by the fact that we have already pledged three girls from the upper classes.

As all good citizens of this country are dating events as before or after election, so we are dating things before and after rushing. Rushing this year is considerably different from the preceding years; it extends over a period of two weeks. An informal tea on Sunday, October 9 will begin the program of events. There then is a week of rest (as far as the Freshmen are concerned) during which upper class women may not associate with the Freshmen women. The following Friday, the sororities have a progressive reception. On this occasion we are permitted to invite the girls we wish to visit us. Next on the program are four parties, given four consecutive nights. This ends the period, and on Saturday we will find out who our new pledges are.

Instead of their regular meeting last week the pledges went on a steak roast at the O'Shaughnessy Dam.

The actives could not let our pledges get ahead of us so before our meeting this week, we had a chili con carne supper. It was a big success, thanks to our social chairman, Margaret Grosser. The hit of the feed was the Dutch bread which was something new to most of us.

We are now looking forward to Homecoming when we will welcome back many of our alumnæ.

KAY MAY SCHMID, *Editor*

ELIZABETH A. ACKERMANN, *President*

ALPHA SIGMA

PLEDGES: Gwendolyn Adair, Lakeland, Fla.; Frances Bennett, Sarasota; Evilo Bromley and Kathryn Rice, Tampa, Fla.; Marie Cotterill and June Dixon, Tallahassee, Fla.; Virginia Haymond, Plant City, Fla.; Mary Veach, Fort Lauderdale, Fla.; Adelle Way, St. Petersburg, Fla.

We opened the school year with twenty actives and two old pledges back. After an exciting week of rushing which formally opened with a tea on Saturday, September 17, and closed the following Friday with a "promise" supper, we pledged nine darling girls. We were doubly happy on pledge day in that we were able to count twenty-three alumnæ. That's loyalty and we appreciate it.

We have already had our "Fall Inspection" and incidentally it proved rather exciting because Mildred, our Province Inspector and now Mrs. James Keezel, was a blushing bride. We are sincerely hoping that Mildred can make many trips to her home chapter this year. We are very proud of her work in Delta Zeta and the spirit in which she does it.

Ava Leatherman White, charter member,

is back at F.S.C.W. this year, not as a student, however, but as assistant instructor in chemistry and a great help to the chapter.

ALICE BUFORD, *Editor*
??, *President*

ALPHA TAU

PLEDGES: Lula Cone, Lubbock, Frances Eaves, Austin, Helen Gage, Austin.

INITIATES: Jean Best, Lometa, Frances Lockhart, Austin.

HONORS: Kathryn Rich, Stel Marie Culotta, University Light Opera Company.

We are starting the new school year off right in a new house. It is a large two-story house with lots of room, and of course the welcome sign is always out for Delta Zetas. The new address is 2511 Nueces.

We kept our apartment open all summer and what with alumnæ coming in all the time we had a busy time. Those in town were Minelma Curling, Ruth Brown, Pat Murphy, Alma Philips, Ann Cook, Virginia Rich, Lois Paul, Marian McDowell, and Mary Hammond. We had a number of picnics this summer and one slumber party which is described in detail elsewhere. What an exciting time we did have!

The new fall semester seems to be starting off well with lots of activity. Stel Marie Culotta is back in school after a year away. Sybil Thomas and Octavia Edwards are also back in town with us. We had our formal open house October 8, which was the night after initiation services were held for Jean Best and Frances Lockhart. A new group of officers has just come in. They are Jean Best, president; Kathryn Rich, vice-president; Stel Culotta, secretary; Catherine McFarlane, treasurer; Frances Lockhart, chapter editor; Kathryn Rich, rush captain. We have also enjoyed several informal afternoons of bridge, open-houses, and buffet suppers. We are beginning a regular Tuesday evening buffet supper for pledges, initiates, and alumnæ.

Mrs. Malott and Irene Boughton came over for a flying visit the week-end before the Texas-S.M.U. game and again for the game. Then of course we had our Founders' Day banquet October 24, which was very lovely with our new president presiding as toast-mistress.

We were glad to have a number of girls from Alpha Psi Chapter with us for the week-end of the Texas-S.M.U. game. After the game a buffet supper was served. It was attended by Mrs. Joe Fred Cason, Helene St. John, and Eleanor Power from S.M.U.

FRANCES LOCKHART, *Editor*
JEAN BEST, *President*

ALPHA PHI

PLEDGES: Stella Cutlip, Eleanor Frowe, and Lorene Miller, Lawrence; Jacqueline

Vandeventer and Margaret Wolf, Kansas City; Jean Dunn, Arkansas City.

ACTIVITIES: Alice Gallup, our president, is a member of Mortar Board, honor society for senior women of outstanding leadership in activities and scholarship. She is also a member of Mu Phi Epsilon, honorary musical sorority, Y.W.C.A. cabinet, the Dean's choir, and Phi Chi Delta, Presbyterian church sorority. Margaret Beaumont is a reporter for the University *Daily Kansan*, a member of the K. U. Press Club, assistant editor of the *K Book*, and a member of Phi Chi Delta. Elsie Penfield belongs to Phi Chi Delta and the women's glee club; she is our representative to Panhellenic council, is editor of the *K Book* and a member of the Y.W.C.A. cabinet. Rosa Lee Conrad is our intramural representative, a member of the basketball team and of Jay Janes, university pep organization. Her name also appears on the Dean's honor roll. Gladys Kroesch is a member of the Wesley Foundation cabinet, Kappa Phi, Le Cercle Francais, and of the Y.W.C.A. Industrial Committee. Elizabeth Brandt belongs to Quill Club, national honorary writing fraternity. Pearl Herman is a member of Phi Chi Delta, Westminster Student Cabinet, and plays in the university orchestra. Eleanor Frowe and Jean Dunn are both members of Phi Chi Delta and of Y.W.C.A. committees. Jean is also active in the Bacteriology Club. Margaret Wolf belongs to Kappa Phi and is a member of the Finance Committee of Y.W.C.A. Stella Cutlip and Jacqueline Vandeventer belong to the Spanish club, El Attenes. Jacqueline is also a member of the German Club, Y.W.C.A. and Phi Chi Delta.

The activities of the new school year at K.U. are now in full swing. Rush week has become a thing of the past, and the freshmen have been initiated into the university at a ceremony equally inspiring to the neophytes and the upperclassmen who renewed their allegiance to K.U. and her traditions at that time.

As for the social activities of our chapter so far—we have entertained rushees at dinner and a spread that was chock full of the traditional "collegiate" atmosphere. We gave a small tea for Mrs. Malott, who spent several days visiting us at the first of the year. Fraternity and sorority housemothers and our patronesses were again invited to tea to meet our new housemother, Mrs. Nauman, on the first of October, and on the next Friday one of our patronesses, Mrs. Baker, entertained the chapter members, Mother Nauman, and several town women who are patronesses and mothers at a lovely tea in her home. That same night we held open house for fraternity men of the university.

Intramurals have already started on the campus. Volley ball practice has begun, and competition between the sorority teams that

are now being organized is not far off. Tennis matches are being played now. Our girls who are taking part are Rosa Lee Conrad, Pearl Herman, Stella Cutlip, and Margaret Wolf. Rosa Lee is also manager of all the intramural games for our chapter and official captain of the various teams.

ELIZABETH BRANDT, *Editor*
ALICE GALLUP, *President*

ALPHA CHI

PLEDGES: Doris Burke, Gene Brakebille, Ruth Evans.

INITIATE: Jean Benson.

HONORS: Phyllis Bourn initiated into Prytanean, Junior-Senior women's honorary, and and chosen for rôle in *Faust*; Sara Lacy elected vice-president of Kappa Phi Zeta, librarian sorority; Phyllis Pennington elected senior class secretary, on Freshman Elections Committee, on Senior Council, and in the campus production, *Once In A Lifetime*; Mary Cast on Y.W.C.A. cabinet and chairman of Publicity Committee; Hazel Wisdom initiated into Pi Kappa Sigma, educational sorority, and elected as its recording secretary, chairman of the Crafts Committee in the Y.W.C.A., and initiated Philokalia, professional art society; Dorothy Watson initiated Philokalia; and elected its vice-president; Anna Ubbe chosen for cast in *Faust*.

With all of the joys of the Olympic year behind us, and yet still before us, we are starting off into the old grind again. One of the aforesaid joys was in the form of a picnic at Malibu Lake last spring, which the pledges gave the actives. Everyone had a peachy time swimming and dancing at the club house and then getting back to nature with a real picnic lunch and hiking.

Just after this we gave a tea for our mothers, which really included the paternal side of the family, too. A very thrilling gift descended into our midst from our Mothers' Club in the form of a grand piano. It was like a gift from the gods!

In May everything seemed to culminate in one big deluge of events. Elections for offices on the campus took place and we ran Dorothy Watson in a close race for A.W.S. vice-presidency. And as a result of another election Phyllis Pennington was elected secretary of the senior class.

We had a week-end beach party at Balboa, and it was glorious fun, everyone accumulating more tan by day and "tripping the light fantastic" by night.

Near the end of the month we gave a dinner shower for Marian Stites, our faculty adviser. The family is now three, and war-rants anticipation of a future member of Delta Zeta.

The crowning events of the year came crowded together in one day—Senior Day and the Spring Formal. The Juniors did

themselves proud as hostesses—even to making perfect connections with the weather man. A waffle breakfast served in the garden of one of our pledges was topped off by a swimming party at the beach. And old King Sol did his duty by his profession for most of us returned to the house all a-glow for tea and, the reading of the last wills and testaments of the senior. We ended the day with our Spring Formal at the Hotel Knickerbocker.

The summer was interspersed with meetings and several rush parties up to formal rush week, during which one of the outstanding events was that of the Delta Zeta Wedding. It has become a tradition to have the Delta Zeta Wedding each formal rush week—choosing one of our new brides for the occasion. And the thrill of it all came with our new pledges which are charming.

At present we are in the very midst of concocting plans for Hi Jinks, at which the sororities compete in skits and costumes. The Delta Zetas have carried off prizes in preceding years and we hope to run true to that form.

Then the very next week is Homecoming with its bonfire, Pajamarino, and open-houses, so off we launch on another full year, more members, more fun!

MARY CAST, *Editor*
VESTA HOWARD, *President*

ALPHA PSI

PLEDGES: Frances Gardner, Wichita Falls, Texas; Ruth Nell Hargis, Anna Margaret Hudnall, Dixie Marie Martin, Eleanor Powell, Frances Russell, and Helene St. John, all of Dallas, Texas, and Anna Belle Perkins, Petrolia, Texas.

Rush week at Alpha Psi Chapter began September 26, and ended October 1, with a formal open house, honoring our new pledges.

For our rush week parties the theme was a tour around the world with Delta Zeta, beginning with a Bon Voyage luncheon and a Spanish tea. One of our most attractive parties was a Chinese dinner. The room was filled with boxes covered with crepe paper, each accommodating two girls. We sat on pillows on the floor, using the boxes for tables. Incense and a girl dressed as Buddha gave a Chinese atmosphere. The dinner, eaten with chopsticks, was our idea of a typical Chinese meal.

The remaining parties had Italy, Holland, Ireland, England, France, Broadway, and the Southern Methodist University campus as motifs.

We were very fortunate in having our National President, Mrs. Malott, with us for the latter part of rush week.

Immediately after formal pledging, we gave a dinner in honor of our new pledges at a small Mexican restaurant here. We en-

joyed it so much and hope to have another soon.

JANE ESTELLE YEARGIN, *Editor*

MARTHA STEWART, *President*

Letter not typed.

No pictures: no extras.

ALPHA OMEGA

PLEDGES: Rachel Breland, Wesson, Miss.; Mary Lynn Houston, Grenada; Jessie McDaniel, Tupelo; Eva Hickman, Jackson; Katherine Martin, Houston; Mary Frances Wyatt, Jackson; Daree Winstead, DeKalb; Addie Huddleston, Mendenhall; Margaret McNeil, Jackson; May Hull, Lawrence; Lou Ellen Applewhite, Wesson; Kathleen Hales.

One Friday night not so long ago a bunch of girls I know sat down in one big huddle and heaved a great sigh of relief, "Thank Heaven rush season is over!" And then sat up again to beam proudly on our twelve new pledges (and three of 'em are redheads). After receiving their bids at 7 A.M., the girls were entertained by the chapter members at breakfast at Glenna Moore's. (And did they need nourishment after being dragged out of bed at such an unholy hour!) They were pledged at 7 o'clock that night and afterward we had an informal party at the "Echo of Sweets." We are now planning to entertain our pledges at a buffet-dance, but more of that next time. At present they are settling down to work, and trying hard for the Delta Zeta bracelet we offer each year to the pledge making the highest average for the first term.

Even this early in the year we have attained some honors we are proud of. Juanita Winstead was chosen as assistant in the English department while Ann Lewis holds the same position in the Mathematics department. Ann has also won a scholarship in voice and is vice-president of the Y.W.C.A. Elizabeth Heitman is treasurer of the Girls' Glee Club, Adamae Partin and Ann Lewis are on the staff of the *Bobashela*, the Millsaps yearbook. Adamae was also elected secretary-treasurer of the student body last spring and is on the Y.W.C.A. cabinet.

We have several very pleasant hangovers from last year. Mary Wacaster won two medals at graduation. One was the highest average during her four years. The other was a medal for the highest four year average in English. Betty Parker and Elizabeth Heitman were elected to Chi Delta Phi, the national honorary literary sorority on the campus.

Our twins have scored again! In class elections last week, Juanita and Oneita Winstead were elected to one office—secretary-treasurer of the senior class. By the way, they now have a "spare tire," their little sister, Daree, who is among our pledges.

Of the graduates of last year, Mary Wa-

caster is teaching in Edwards. Douglas Banks won a scholarship to the Y.W.C.A. training school at Blue Ridge, North Carolina. Betty Parker is teaching at Clark's Business College in Jackson, Glenna Moore is doing graduate work at Mississippi College, and Sarah Stevens is working in Mobile, Alabama.

ELIZABETH HEITMAN, *Editor*

JUANITA WINSTEAD, *President*

BETA ALPHA

PLEDGES: Dorothy Dickson, '33, Harriet Payne, '33, Anne Freeman, '34, Helen McKechnie, '35, Mary Van Benschoten, '35, Alice Ventrone, '35, Ruth Coggeshall, '36, Dorothy Compson, '36, Ellen Dunn, '36, Mary Hawcroft, '36, Louvan Lockwood, '36, Ruth Lockwood, '36, Genevieve Lynsky, '36, Marion Manns, '36, Evelyn Oates, '36, Jean Randall, '36, Alice Rogers, '36, Mildred Waters, '36, Ann Welch, '36, Lois Whitaker, '36.

HONORS: Marion Goggeshall, Economics Prize, Only co-ed to make Phi Kappa Phi, Honor Certificate; Charlotte Waters, '34, Varsity Hockey, chairman of Junior Picnic; Ruth Newman, '34, Honor Certificate; Elizabeth Rodger, '33, Senior Vigilance Member; Ann Freeman, '34, Junior Vigilance Member; Virginia Cooper, '34, chairman of Blazer Committee; Elinor Streeter, '34, Honor Certificate; Lynette Goggin, '35, Panhellenic Shield for highest Freshman Honors, Honor Certificate, Triangle Club Scholarship; Mary Van Benschoten, '35, Varsity Hockey, and Janet Macomber, '34, Beacon Board.

Station R.I.S.C. broadcasting from the frequency of nine hundred miles. We have here with us the famous Beta Alpha of Delta Zeta, who received such note for success of their recent rushing season about which we will tell you. Much scouring and scrubbing heralded the arrival of the Frosh for the first rushing season in the new house. Shining knockers, glistening windows and polished furniture greeted the eyes of the newcomers.

Activities formally opened with the Student Government Tea at which the Frosh "date books" were given out. With a group so large there was difficulty in narrowing the number as they were all so fine.

The first Friday everyone decked in their finery waltzed and tangoed around the social room. The next afternoon a gay bunch of hoboes tramped along the road to "Onion Point" where hamburgers and coffee, cooked over an open fire disappeared miraculously among forty upperclassmen and freshman. The finger and thumb supper at the house, as everyone sat around the open fire, was more fun than could be imagined and so little trouble to clean up.

At about this time "Alice" sent out her

invitations to "Wonderland" where the formal rush party was held. Seventeen eager Frosh entered through the rabbit hole to gaze at Humpty Dumpty on the mantel, the duchess and her baby, the king and queen, and all the other famous inhabitants of wonderland. After dinner, Tweedldum and Tweedledee with the lobsters, the bunny, and the mad-hatter appeared right out of the story book to entertain them.

On Thursday morning the pledge service for sixteen was held and this was followed by the regular pledge breakfast at Kingston Inn.

Perhaps the most important event that has happened to Beta Alpha was the visit of Mrs. Hornung. She arrived just in time to straighten all problems and give Beta Alpha a good start on the right road. In the few short days she was in Kingston everyone grew to love her and to hope she would visit us again soon.

This letter just had to be held over for Honors Assembly where Marion Goggeshall received the prize for the highest ranking Senior girl. Panhellenic Shield came to Delta Zeta again, to Lynette Goggin, who also received the Triangle Scholarship. Seven Delta Zeta girls received honor certificates. It was a disappointment to find that Delta Zeta was second instead of first in scholarship rating.

LYNETTE J. GOGGIN, *Editor*
M. LEOTA HARRIS, *President*

BETA GAMMA

PLEDGES: Eileen Buehart, Marie Huff, Wanda Gorbet, Mary Louise Marcucilli.

So many, many things have happened since the last LAMP appeared that Beta Gamma is quite perplexed where the news starts. It's a wonderful new year, crammed with new joys and new honors.

Rushing season commandeered by Edna Lang and ably marshalled by Evelyn Parker Tharp is over on this campus and we are terribly proud of our new pledges. One of them, Marie Huff, is a true artist and entertains over the radio station WLAP with her lovely music.

We were quite proud of our pajama party held during rushing season. Cunning little framed silhouettes, made by our president, were the favors.

This year we have moved to the first floor apartment of the building we inhabited last year. The first few weeks prior to rush were one mad scramble to get curtains up and floors waxed. Now we are settled and justly delighted with our own handiwork. We started collecting pennies to buy some musical instrument. Try it some time, it's fun! Finally we incited the pity (or admiration) of Bob Muth, a friend of Helen Hoeger, and believe it or not, he bought us a radio.

The Mothers' Club has rallied to the call and produced two beautiful rag rugs and there are promises of more in the future.

On October 7, Beta Gamma opened its doors to the entire campus with an informal tea dance as a means of introducing our new pledges.

Reminiscing over last year's good times we are reminded of that beautiful initiation service that was held on April second for the six initiates and the lovely dance given that night at the chapter house in their honor. Ethel Jones is wearing the Jean-Allen-Strohmenger ring for the best all-round pledge.

Later in the month came the pledges' dance for the actives at the home of Mary Jean Newhall. We needn't mention the fun and frolic of that occasion.

Just before examinations in June, Beta Gamma was delighted to welcome Mrs. Mark Handley, province director, who inspired and charmed us at once. The entire chapter with Mrs. Handley, attended the W.S.G.A. banquet over which Eleanor Ritter, Delta Zeta presided. At this meeting Mary Hebden was announced as member of Chi Delta Phi, international literary society, and Virginia Durham, our new president, as the senior member of the advisory board of the Women's Athletic Association.

The summer although separating Delta Zetas far and wide was not without its fun. In June all of us went picnicking to the summer home of our patroness in the hills of Indiana. Later an outing to the camp of Gibson Caummisar on the Ohio River, found all the Delta Zetas on hand.

We were very sorry to lose two of our girls, Mary Hebden and Johanna Fitzgerald by graduation but as Mary is back to try for her Master's, and Jo is near at hand in the alumnae chapter, we won't let go of them entirely.

FANNY BOLLING ARTHUR, *Editor*
VIRGINIA DURHAM, *President*

BETA DELTA

PLEDGES: Miriam Bradham, Emma Jean Clowney, Elizabeth Dukes, Sophie Fickling, Evelyn Lipscomb, Ella Lynch, Alita Martin, Thiesen Ray, Natalie Smith, Josphine Southerland, Kitty Sparks, and Virginia Timmons.

Have we been busy and are we going to be? Well the proverbial dog with fifty fleas and two juicy bones is the epitome of inertia compared to us busy Beta Deltas, and why shouldn't we be busy, with our editor-historian (the lady of the flourishing pen), Dorothy Byrd marrying William Taylor an alumnus of our dear ole Alma Mater, and leaving us minus a gifted scribe? Too, Elizabeth Ewart, our corresponding secretary has announced her engagement and consequen-

tial inability to return to school. Of course we're bemoaning the loss of these gifted two. Dorothy has already been made instructor of violin in the city schools of Florence, South Carolina, where she has taken up her abode.

Poor deluded Freshmen! Before we got 'em it was "Mary, honey, we simply couldn't do without you!" and now that we've got 'em and have no time to play at present (we have to catch up on those back lessons during rush week!), it's "Freshmen! be useful, can't you!" But anyway, it's a grand bunch we landed; in fact it's noised about that the pick of the freshman crop abide at Delta Zeta House!

We are expecting a visit from our province director, Mrs. Keezel (the former Miss Mildred Mullock) whom we had with us last year. We are glad to welcome her back, new title and all!

Our house looks simply elegant (old colonial style) with its white paint and huge columns. And inside—well were so awestruck at the very thought of it that words fail us! But, when we get all the little pretties added that we're planning, we'll give you some inside close-ups via the kodak route.

Beta Deltas are all thrilled over the coming initiation of some of our pledges. The Delta Zeta pledge pin certainly rests on the right people, Josephine Griffin one of our very prominent pledges is considered among the most outstanding and influential girls on the campus. What will she be as an initiate?

CATHERINE TYAS, *Editor*
EDYTHE CARLISLE, *President*

BETA EPSILON

This first of the year's letters to the LAMP must be rather a summing up of the summer's activities than a report of those of this school year for we have not yet been back on campus for very long. This summer we again followed the plan which we found at once so pleasant and so profitable last year, that of having small card parties at Delta Zeta House every two weeks during the summer months. Here the members of Beta Epsilon who remain in town can get together, talking over good times and making plans for the fall. While the groups are often small because so many of us are vacationing, nearly everyone gets in at least once during the summer with the result that it is not nearly so hard to get started on our fall program as it might be if we had no regular way of seeing each other during the summer.

This letter comes from a house in the throes of renovation—you all know what that means! Right now the front the house, parts of the interior, and the floors are being painted with the result that it is neces-

sary to walk carefully. We hope soon, however, to be able to display, for the honor of Delta Zeta, a house looking finer than ever before.

MARY KINSEY, *Editor*
MARION LEMING, *President*

BETA ZETA

This autumn we moved into an attractive six-room apartment for the winter. The apartment is located on the very fringe of the campus, and to those visitors who come, our sorority girls seem very much like October brides anxious about budgets and kitchen curtains and balanced luncheons. To plan for the new home has been a whirlwind of fun; at first we didn't believe that the furniture would fit in at all, but after much maneuvering and serious consultations, we found a place for everything. To make the apartment even more wonderful, we have a new piano.

Much of the success has been due to our new house mother, Mrs. A. T. McCanne. In an incredibly short time she became Mother McCanne to all of us. Her enthusiasm about the sorority is contagious; with her as the mother and Pete as the guide the coming year promises to be successful.

We opened our fall social season with a formal tea in honor of Mrs. McCanne and Miss Jean Slavens, our very charming new Dean of Women. Rushees were invited, our patronesses, faculty members, and friends of the sorority on the campus and in social circles. The affair was given in the lounge of one of the smart hotels in town; the artistically arranged furniture, the tall baskets of copper dahlias and crimson zinnias formed a colorful background for the girls in pastel formals.

For the first time since the founding of our college, freshman girls may be rushed before the spring quarter. Formerly a freshman joined an organization just three weeks before the close of school, but now we may rush the first week after Christmas.

MARJORIE AUGUSTINE, *Editor*
JEAN PETERS, *President*

BETA IOTA

PLEDGES: Mildred Jessup, Harriet Taylor, Estelle Collins, Eloise Leppla, Almeda Hunter.

INITIATES: Lillian Vezetti, Margaret Turney, Mary Harper, Helen Harper, Jessie Anklam, Katherine McKinley, Lillian Woolf, Alice Love.

HONORS: Margaret Webster and Lucille Larmour were graduated with distinction; Mary Harper won Freshman Honors; Katherine McKinley is a charter member of Kappa Beta Pi, women's honorary legal fraternity; Lillian Vezetti has been elected secre-

tary to University Players and has been pledged to National Collegiate Players.

This year we have several of our graduates back: Helen Harper, Lillian Woolf, and Alice Love. Rushing, as usual, was hectic but thrilling. Panhellenic here at Arizona allows us two weeks' rush season consisting of a formal tea, four luncheons, and four dinners which may be either formal or informal.

This year the whole campus celebrated Homecoming together instead of each house having its own celebration. Of course the university always has a celebration but this time we simply made it a general affair. There was a parade, each organization having a float in it, a barbecue for the whole campus, a football game, and a dance to wind up the proceedings.

We've all been fearfully studious of late. No sooner had we recovered our breath from rushing and Homecoming than our professors proceeded to bury us under an avalanche of preliminary "D" exams. But we emerged with very few casualties and most of us are feeling rather complacent as a result.

Our Founders' Day banquet was attended by many of our alumnae as well as members and we all thoroughly enjoyed it, though the thought of the death of Anna Simmons Friedline rather sobered us all. Probably the happiest person there was Katherine McKinley who had been initiated the day before. Kay's face was almost as bright as her "lamp." And of course we were happy too in having a brand new Delta Zeta in our midst.

Our new Alumna Adviser is Mary Taylor, one of the charter members of Mu Chapter. And our first Delta Zeta daughter is also Mrs. Taylor's daughter Harriet, one of our pledges this fall. Estelle Collins another one of our pledges is a sister to Lucille Collins, who was Beta Iota Chapter's first president.

We are looking forward to a visit early in November from Mrs. Pease, our National Editor.

ALICE LOVE, Editor
LILLIAN VEZETTI, President

BETA KAPPA

PLEDGES: Caroline Eichling, Evanston, Ill.; Maxine Merrick, Ames, Iowa; Bernadine

Fullerton, Boone, Iowa; Marie Taverner, Decorah, Iowa; Anne Hitzhusen, Cartersville, Iowa.

INITIATES: Myrtle Bein Walters, Helen Purinton, Pearl Clinch, Ruth Shaw, Ella Brooks, Blanche Rosa, Lucille Tiggs, and Esther Compton.

The spring formal was held at the house May 21. Shirley Dana, 5 year old daughter of Mr. and Mrs. F. C. Dana, Mrs. Dana is an alumna of Kappa Chapter, did a solo dance and sang "When the Moon Plays Peek-a-boo" as a specialty number. Six girls from Iota came for the dance.

Seven Beta Kappas were added to the alumnae list this spring. They are Dellora La Grone, Lila Whitehouse, Helen Penrose, Leona McClaran, Eva Darting, Marie Budolfson, and Phyllis Heins.

Seventy 4-H girls stayed at the house during the state convention in June. We cleared approximately \$115 from the project. We served meals to them as well as providing beds for them.

Mrs. Maud H. Wallace, Cedar Falls, Iowa, is our new housemother. She is charming and motherly, and we are looking forward to a pleasant year with her.

Rushing started October 8 and will continue until October 18. After this period of formal rushing, there will be no more rushing and pledging until after Christmas. Pre-school rushing was dropped this year as an economy measure. By this short rushing period, it is hoped that girls who are definitely interested in pledging will pledge at this time. Very simple parties are being planned. No decorations or favors are allowed.

Five Iota girls spent the week-end of October 8 at the house helping us rush.

Homecoming is scheduled October 15. An all-college barbecue is planned for the evening of October 14, followed by open houses at dormitories and sorority houses.

Mary Alice Bolt, Alpha Epsilon, transferred to Iowa State College last summer and is living in the house. Margaret Kindchi, Upsilon, an active member, and Myrtle Anderson, a pledge from Upsilon are in school here but on account of college rules, cannot live in the house this quarter.

EDITH S. DARLING, Editor
LUCILLE TIGGES, President pro tem

**Come to Convention! Hotel Windermere East
Chicago—June 26-30, 1933.**

● ALUMNAE CHAPTER LETTERS ●

Letters for this department must be postmarked not later than October 10, January 30, and March 30.

M. H. P.

Letters missing:

Baton Rouge
Dayton

Kansas City
Minneapolis-
St. Paul

Pittsburgh

BIRMINGHAM ALUMNÆ CHAPTER

Frances Ferrell was elected treasurer to succeed Nell H. Howard. Augusta Piatt, vice-president, is proving to be an efficient acting president.

Susie Gullidge entertained Margaret Fitzpatrick with a dinner party at her home. Margaret represented the *Birmingham Post* and the Alabama Theater in a movie contest in Los Angeles.

Mabel H. Bradley and baby, of Vera Cruz, Mexico, have vacationed in Birmingham and New York this summer. Mary Kat Waters visited friends and relatives in New York and Washington.

After their marriage at high noon in Yonkers, N.Y., Mr. and Mrs. Carlos L. Henriquez, Jr. (Eugenia Perry, former Alpha Pi), left for Lake Pequanock in Westchester County, New York, where they spent the remainder of the summer. They will make their future home at 103 Seminary Avenue, Yonkers, N.Y.

Addilee Mattison visited her sister in Pittsburgh, Pa., this summer. Anna J. Howle (Alpha Pi) and children enjoyed several weeks at Biloxi. Elizabeth Sadler has returned from a visit to New York and Boston.

Marie N. Norton is an active member of the Brenau Alumnæ Association which meets in Birmingham at regular intervals.

Janet Morgan and Augusta Piatt exchanged summer visits. Later Augusta visited relatives in Lexington, Ky. Edith F. McElroy and husband, Judge McElroy, visited at the judge's old home in Cuba, Ala.

Daisy Hoover has recovered from a recent operation in Birmingham and has returned to Clearwater, Fla., where she will spend the winter.

Mary E. McP. Harris formerly of Chattanooga now resides at 111 South 78th Street, Birmingham.

FRANCES B. GOURLEY, *Editor*

CHICAGO ALUMNÆ CHAPTER

In our last letter we mentioned a quilt being raffled to raise money for Vest. Perhaps you would be interested to know that it was won by Shirley Fanshier (Alpha) of Lake Bluff, Ill. Incidentally, the chapter made \$54.00 on the raffle, not bad for these times.

The February luncheon at Marshall Field's was quite a unique affair. The South Side girls were hostesses and as entertainment they had the Illinois Bell Telephone Company show movies of their international service, how Chinatown in San Francisco communicates with Hong Kong.

In April a luncheon was held at the Vassar House Tea Room, with the West Side group as hostesses. They invited the Vice-Consul from China who spoke on the Chinese-Japanese situation. As that was the topic of the day, we were extremely interested in hearing full details from one who was familiar with the operations of both governments.

The June luncheon was held at the Southern Tea Shop and at that time we had the pleasure of having as our guests Irene Boughton and Myrtle Malott. We played bridge after luncheon and had quite an exciting time as there were several prizes for those holding extraordinary cards.

Since June all meetings were cancelled while we went our different ways during the summer. There were some interesting vacations. Our President, Beulah Huff, took her baby girl to Wyoming and lived in a log cabin in the mountains for six weeks.

Yvonne Toof had an unusual experience while at Vest taking part in the duties of a "frontier nurse." Her stories were thrilling and they sounded far removed from present day conditions as we know them.

Peg Wilson and Wilma Busenbark, her

sister, are still combing the sand out of their hair after camping along Lake Michigan.

We ushered in our fall season with a luncheon in October.

We are looking forward to Founders' Day, which is generally celebrated with a banquet at the Northwestern University chapter house. This year the girls spoke of having a formal tea but as yet no definite plans have been made.

CINCINNATI ALUMNÆ CHAPTER

Good evenin' Delta Zetas:

This is Cincinnati Alumnæ Chapter broadcasting over Station YIDZ (Yours in D. Z.). We have great news for you this evenin'—a real honest to goodness program! Are you listenin'?

First of all, our officers announce a new régime for the ensuing year. Meetings are to be quite varied with interesting speakers, book reviews, teas, parties, picnics, and banquets. Next, our dues have been reduced to two dollars for the year. All past dues are cancelled. Old Man "Dep" is to be banished now and forever! We have reverted to the old hostess type of entertaining. No more paying sixty cents for luncheon or dinner. A large group of hostesses are serving, each paying a two dollar fee. Various members have donated the use of their homes. Are you with us?

We want to announce that our yearbooks are the most novel to be seen anywhere. They are folders with the names of officers, meetings, hostesses and directory all in one. Ginny Peters is responsible for these books.

Now the surprise, twelve fine pledges of Xi Chapter have been won from the battle which just waged between the sororities at the University of Cincinnati. The alumnæ

Sometime late in November or early December we will have our annual Benefit Bridge Party, the only money-raising event for Vest of the year.

Our downtown meetings last year worked out so nicely with girls from each section of the city acting as hostesses that we are continuing that practice this year and we are anticipating some unusual entertainment.

DOROTHY BERRY, *Editor*

chapter feels mighty proud to have had a part in the rush parties. Six of the parties were sponsored and given at the homes of several of the alumnæ. First, a breakfast; next, a gypsy party; then a sports party; a lavender and old lace party and last, a tea. The formal, which completed the parties, was given at one of our swanky Country Clubs. It sure is great to renew old times and get some of "ye Olde" college spirit again. If you haven't tried it, listeners, why don't you look up that active chapter of yours.

Now for some gossip about the gals! Our Marg (Margaret Pease) is still a very busy person both with Delta Zeta and civic enterprises. But her efficiency is appreciated by many and so she is much sought. Florence Dalzell is in Social Service work and in these times is kept especially busy. Dr. Vivian Amidon has started practicing medicine, having completed her internship at Bethesda Hospital. Florence Ford is working in the clinics at General Hospital as well as keeping up her literary achievements.

Space and time is limited in telling you about all of us but we hope you listen in during the next issue, and, until then—

ARLIE DANIELS VANCE, *Editor*

CLEVELAND ALUMNÆ CHAPTER

Let me tell you about our first experiment which was a success. It was a delightful tea in the home of our hospitable president. A real get-together-talk-it-over-tea which delighted us all. The informality of it was a pleasant contrast to our former monthly luncheons, held in some public eating place and being sponsored by three or four hostesses.

However, let me tell you of one or two things that we consider interesting. First of all, several of our girls have made a business of calling on prospective co-eds who will attend colleges where we have chapters. They were armed with material of different schools only so far as generalities went. My what fun they had dodging such questions as "Where is Monnett Hall"; "How do we get from the station to the campus?" and "Will

somebody meet us?" when they hadn't the slightest idea. But they had so many interesting bits of news to tell these young damsels that we, of Cleveland chapter, feel confident that a fine impression was enjoyed by all. The callers feel that more was accomplished in this manner than rushing girls in large numbers. What do you think? Have you tried it? Do you like the idea? Anyhow it was a thought, the thought was brought to life, and so, Cleveland experimented. Our results will have to be brought to you later.

Founders' Day banquet is our next function. A true Delta Zeta spirit was in evidence last year and we are anticipating a renewal of this spirit.

Another bit of news about our callers. They are rounding up the names of all new Delta Zetas in Cleveland and just think, we

are rushing them. Doesn't that sound exciting? We hope our rushees will enjoy this idea and accept our bid to join forces with the Cleveland Alumnae Chapter. Should you read this letter and think of someone that you know in Cleveland, whom you believe is unknown to us, will you be kind to both

your sister who may be lonesome in our big city, and to us, who wish to welcome her, and let us know her name and address. We will then get our callers busy, and we, who are not callers, too, will unite in a hearty welcome.

LOUISE KENNEDY, *Editor*

COLUMBUS ALUMNÆ CHAPTER

The first meeting was held at the sorority house and was just an informal one for the purpose of electing a new vice president and a new LAMP editor. At that meeting plans began to brew for the year.

The Founders' Day banquet was a huge success. It was a formal affair, and held at the sorority house. There were approximately fifty there, including actives, pledges, and alumnae. Mrs. Charles Russell Petree acted as toastmistress. We were honored again this year with the presence of one of our Founders—Mary Collins Galbraith. She kept us in an uproar for several minutes with stories of "when she was a girl and attended college." That was in the days when "unmentionables" were so bulky that they required an extra "telescope" in which to carry them. Anne Stone, the president of the active chapter gave a short speech. Garnet Nagle expressed the feeling of the pledge chapter (modified perhaps to suit the occasion). The program ended by singing "Delta Zeta Lamps are Burning," by candle light, and I must admit that little shivers ran up and down my spine, after all these years.

Our next meeting was held at the Penitentiary. Don't be alarmed, it was at the warden's residence. Amanda Thomas was the hostess and assisting her were: Helen and Ruth Murray, Marie Baber, Mrs. Charles Petree, and Mrs. Arema O'Brien Kirven. There were about thirty there, and everyone compared notes on something new. A new baby, new puppies, new kittens, new

clothes. Those of us who had nothing new raved about our sister's new baby. Our guest speaker gave us a talk on new books from the Newbrook Library. So we all feel quite up-to-the-minute.

Mrs. Adelaide Kesler has charge of the arrangements for the Christmas Package Wrapping Party to be held at the sorority house. This party is to be attended by actives, pledges, and alumnae. The object is to bring gifts and wrap them for the Community Center at Vest. To add spice to the evening, each girl has drawn the name of another girl in the chapter, and is purchasing her toy for this girl, to be accompanied by an appropriate verse.

The loveliest event of the year is the bridge-tea to be held at the home of Mrs. Frank Hartford on Bexley Park Road between Christmas and New Year's Day. She has a beautiful home, and if the Christmas decorations equal those of previous years, they will be lovely.

Amanda Thomas and Mrs. Charles Petree took important parts in the dedication of the Elm Tree Service held before the new State Office Building here in Columbus last week. The Daughters of the American Revolution dedicated the tree in honor of the George Washington Bicentennial. Amanda Thomas opened the services, and Mrs. Charles Petree (Elizabeth Darraugh) escorted the Governor's Secretary from the State House to the platform, where he made his address.

MARY GEHRING, *Editor*

DENVER ALUMNÆ CHAPTER

Activities of the Denver Alumnae seem to be centering more and more in active co-operation with and support of Rho and Alpha Lambda chapters. Alumnae of both chapters are included in the roster of officers and committee chairmen, and our Province Director, Bernadetta Daly, is an active member. Bernadetta, Elvie Hubbard Bartholic, alumna adviser for Rho, Helen Bell Goody, chairman of the alumnae committee on rushing, Margaret Mason, head of the house board for Rho, and others, bring to alumnae meetings up-to-date minute accounts of what is going on, and arrangements are made to give whatever help is needed.

Denver Alumnae not only assisted with the entertaining at summer and fall rush

parties in Denver and in Boulder, opening their homes for some of the affairs, but also gave an afternoon bridge party in honor of senior high school girls in May, and a progressive rush dinner in September.

Alumnae manned the kitchen, and poured when Rho introduced its pledges at a tea to which fraternity men were invited.

It is the intention to have alumnae delegates at all active meetings and active delegates at all alumnae meetings, thus bringing about a closer relationship between the two groups.

Denver Alumnae announce the awarding of scholarship recognition pins to Elizabeth Butler Baughman and Margaret Duffy.

All of us are very proud of Leila Brown

Maul, who has just completed her year as president of City Panhellenic. Highly eulogistic tributes were paid to her at the fall luncheon at which she turned the gavel over to her successor.

Under the very efficient chairmanship of Lyndall Monroe Reed, Denver Alumnæ made a generous contribution of new garments in pairs to the Needlework Guild, which distributes apparel, household linens, etc., to needy families through the Visiting Nurses' Association.

Denver Alumnæ's first meeting in the fall was a lovely party at which Lois Ritchie entertained. The girls remembered appreciatively the musicale at the home of Helen Moe Ainsworth which closed last year's program. Helen has a lovely soprano voice and is quite in demand as a soloist. She had persuaded some of her musical friends to come in, and the numbers which they and Helen and Eleanor Moffett gave contributed

to a particularly delightful evening. The girls who had not been able to be at the annual picnic at Elitch's in July were assured what a good time they missed. Margaret Bonney Horton was hostess for the second fall meeting, and the Halloween appointments made the social hour after the business session a festive one. A most interesting year under the leadership of Florence Farnham Adams, president, and Florence Fry, program chairman, seems assured. Singing of Delta Zeta songs is being featured.

It seems only fitting to close with a word of tribute from Denver Alumnæ to the memory of Anne Simmons Friedline. Her passing gave a new sad note to our observance of Founders' Day. She was, of course, very close to Colorado Delta Zetas, and remembrance of her sincere devotion to the advancement of the sorority will long continue to be deeply influential.

DORIS R. WILDER, *Editor*

DETROIT ALUMNÆ CHAPTER

The first meeting of the year was held at the home of Helen Cudworth the evening of October 12. Plans for the meetings this year were discussed. We decided to hold the meeting on the second Saturday of each month, so far as possible. We will have luncheon first at some tea room, at a nominal charge, as we feel that this year the girls will come out if we can keep the expenses down.

At the end of the evening we gossiped and then Helen, who is a Domestic Science teacher, served a lovely lunch with rose and green predominating.

Won't all Delta Zetas who have moved to Detroit lately get in touch with Katherine Washington, 4011 Montgomery, phone—Euclid 2802W, and come to our meetings?

JEAN MACAULAY PALEN, *Editor*

FORT WAYNE ALUMNÆ CHAPTER

No regular meetings are held during the summer, but nevertheless we managed to have something doing to bring us together. On August 6 we held our annual lake picnic at the cottage of Mrs. Walter at Tri-Lakes. This picnic was for Delta Zetas and their families. Everyone had such a good time and plenty to eat.

All during the summer groups of us have been gathering at sewing parties. We sew instead of playing bridge. I really don't know whether we do a lot of sewing, but we do have fun.

The girls have also been active looking for girls going away to schools this fall. These girls have been entertained individually at teas, and informal parties. Then on August 15 we held our big final rush party,

a luncheon bridge, at the Orchard Ridge Country Club. It surely was lovely and Helen Benton and Mrs. Wayne Morrill should be complimented. Everything was carried out in colonial appointments. Bridge tallies marked our places and at each guest's place was a small colonial corsage which brought forth much exclamation. After the luncheon, bridge was played and a prize was awarded the guest having highest score. It was a darling green lamp. After that we sat around, talked and some of us danced to radio music. We were very proud that Mrs. Malott was able to be with us for this party. Aurora Yetta, past president of Epsilon at Indiana University, was also a Delta Zeta guest there.

NORMA JOHNSTON, *Editor*

INDIANAPOLIS ALUMNÆ CHAPTER

The Indianapolis Alumnæ of Delta Zeta became quite like the active chapters with rush this fall. We gave a lovely tea at the home of Mrs. Walter Smuck, in honor of the girls entering DePauw, Indiana, and Frank-

lin, we sincerely hope it met with success.

Our spirits were certainly at the very lowest point of the "Repression" this fall when we learned that our newly elected president, Mrs. Robert Hill, was to move to

Newark, New Jersey. Everyone hated to see "Our Clissie" go, but hope that she will like her new home. Mrs. Roy H. Peterson has been elected to fill the unexpired term, so we are all assured of a very able leader.

We were quite happy to welcome to our group, Mrs. Harrison Gale, from our California chapter, who has moved to Indianapolis, and promises to become quite active in our Indianapolis Alumnæ.

Members of Alpha Nu Chapter at But-

LINCOLN ALUMNÆ CHAPTER

The Lincoln Alumnæ Chapter is more than proud of Zeta Chapter this fall. The small group of girls who returned for the year, with the willing aid of the girls anywhere near Lincoln, entered the rushing activities with a zest that spelled triumph.

The new dormitory for freshmen girls at Nebraska made competition quite keen for the Greek letter groups. Nine splendid girls were pledged however, and life is one interesting buzz at the house. The girls feel that they were especially favored at the rush season by having our National President, Mrs. Myrtle Graeter Malott present, to cheer and inspire them. How much she brought to them of the richness, the high purpose and ideals and the splendid tradition of Delta Zeta. She surely imbued each one with greater pride in and desire to exemplify in her own life the spirit of Delta Zeta. The lessons in enthusiasm and zeal for Delta Zeta were not limited to the college chapter, but our

LOS ANGELES ALUMNÆ CHAPTER

Los Angeles has been teeming with excitement for months, but nearly all our lingering Olympic guests have left and we now return to our own comparatively trivial "doings." It really was a thrill entertaining visitors from all over the world this summer.

Our only summer gathering was a beach party followed by a dinner dance at the Deauville Beach Club in Santa Monica.

Los Angeles Alumnæ Chapter was entertained on September 10 at the home of Leora Morley, bridge furnishing the diversion of the afternoon. Alpha Iota Alumnæ girls served as hostesses. Several members we hadn't seen for some time came with lots of interesting news to tell. We were sorry to say good-bye to Kathleen Westmoreland who left two days later for Tucson, Arizona, where she is teaching.

NEW YORK ALUMNÆ CHAPTER

We had our first alumnæ meeting on Saturday, October 15, and had a fine turnout. It was held at Dorothy King's home in Brooklyn, where we always meet at least

once a year and enjoy her hospitality. This time we had with us one of the representatives from national, Mrs. Georgia Hornung, who has been visiting various Eastern col-

ler University, and the new members of the Indianapolis Alumnæ were our guests at a tea at the home of Mrs. George Davis. Mrs. Robert Miller, of Detroit, our former president was there, also Miss Sabina T. Murry, who is the new house mother of the Butler chapter. It seemed like old times to have them with us again.

We are now all looking forward to our Founders' Day dinner, at Mrs. Noble Hiatts'.

MARY A. CARRIGER, *Editor*

alumnæ group likewise gained a renewed ardor for Delta Zeta, a wider vision for Delta Zeta—and a more universal love and appreciation for all young womanhood. We are all grateful to Mrs. Malott for this timely visit and hope she will come again and often.

Our chapter is well represented on the campus by Mrs. Elizabeth Thompson who is chairman of College Panhellenic. This is the second year she has held this important position, which carries the responsibility of final passing upon all rushing problems.

An innovation in our alumnæ chapter this year is to have at least each alternate meeting at the chapter house, meeting with the college chapter for their meeting and then holding our meeting later. We believe this close contact will prove most helpful to both groups and bring about the much needed cooperation of such groups.

JOSEPHINE GRAVES, *Editor*

Alpha Iota Alumnæ counteracted the "depressed" condition of the chapter pocketbook by a very profitable bridge benefit at the attractive home of Jean Delavan, on the 17th of September.

Ruth Emerson Stransky, our Los Angeles Alumnæ president, and a committee of dandy workers are already busy planning a benefit bridge to be given in November. They are praying for an equally successful response.

Plans are also being formulated for our Founders' Day banquet, which again will be held at the Alpha Chi house in Westwood. We're hoping to have Rene Sebring Smith with us on that occasion. She always adds "that certain something" to Founders' Day.

FLORENCE GALENTINE BOLLER, *Editor*

leges. I'm sure that everyone got a lot out of meeting her and hearing her talk, and that we're going to benefit a great deal by her visit.

Our active chapter now has a house at Freeport, Long Island, and are already planning a busy fall and winter, in which we are included. They are giving a bridge this Saturday (October 22) for us and it will be fun to attend and see their new place and renew old acquaintances.

The Panhellenic has arranged for us to

hold meetings there twice a year, and as it is such a lovely place and convenient for most of us to get to I'm sure that we'll have big turn-outs.

Bridges, bridges, everywhere. Besides the one this Saturday, we are having our regular Alumnæ Bridge in February, and the Panhellenic bridge is coming on November 12. They are always lots of fun, so we don't mind how many there are to attend.

ALTHEA DEAN HOYT, *Editor*

PORTLAND ALUMNÆ CHAPTER

The first meeting of the year of the Portland Alumnæ group will not be held until October 22. At this meeting election of officers will be held.

We have been inactive since my last letter

of the spring and therefore there is no news to write up at this time. We are going to make a big effort to make the coming year a banner year for Portland Alumnæ.

EVELYN CHAMBERS, *Editor*

SEATTLE ALUMNÆ CHAPTER

The Founders' Day banquet was held at the Dolly Madison Tea Room and was a very enjoyable event. The appointments were lovely, the management taking out the best linen, lace tablecloths and crystal candelabra for the occasion. The candlelighting ceremony to me is always new and beautiful.

The loss of Kirsten Larson Newbury is felt keenly throughout our chapter. She met death accidentally through carbon monoxide poisoning in the garage of her home. Her keen mind, willingness and ability to work and her loyal friendship leave a gap that no one will ever be able to fill.

Our Homecoming dinner was attended by such a crowd that it had to be served buffet style and of course with so many people in attendance, success is assured.

The University of Washington held Washington State College to a scoreless tie and of course that added much to the occasion,

and then too there were a few girls there whom we haven't seen for many moons and with everyone gabby and chatty a good time and a very satisfactory one was the result.

The regular alumnæ meeting during October was held at the home of Martha Liska Davis. There were forty-one in attendance, a record breaking crowd. After a short business meeting we played bridge and the committee devised a clever plan whereby you had a prize and then you didn't. Someone came along if they had made a grand slam and took it away from you. At the end though, the prizes were distributed to the satisfaction of all.

Eleanor Strickler is piloting the Seattle Alumnæ through a mighty fine year—everyone recognizes and appreciates her leadership—Minnesota girls will probably say, "I told you so!"

EMILY NEIGHBOR, *Editor*

WASHINGTON ALUMNÆ CHAPTER

Washington Alumnæ Chapter began its fall activities with a benefit bridge sponsored by three of its members and held at the home of Mrs. Gertrude Evans. It was found to be of such assistance to a sadly depleted treasury that others are planned for the coming winter.

A most enthusiastic opening meeting was held at the home of our new president, Margaret Neumann on Thursday, October 20, at which plans were made for the coming year.

Just by way of adding excitement to an always happy occasion—the first meeting after a summer of vacationing—three of the girls had important announcements. Ethel Carpenter was not present but sent the usual

five pound box of candy to let us know that she will soon be known by another name. Bessie or rather Elizabeth McIntyre for so she insists upon being called, appeared with a lovely emerald upon the appropriate finger which foretells of her marriage to the brother of her sister Delta Zeta, Mary Whitney. Beulah Chamberlain likewise admitted that she is about to embark upon matrimony. If this keeps up, just pity the poor girls who are on a diet—although at the rate at which Ethel's candy disappeared they seem to be few and far between this year.

Katherine and Chadwick Houck have just moved into their new house which was built this summer and those who have seen it pronounce it perfect in every detail.

The founding of Alpha Delta Chapter was commemorated by a picnic supper at the home of Annette Ladd. Although obliged to eat indoors due to a recent rain, we spent the rest of the time reminiscing beside the fountain in the garden.

Rushing is in full swing at George Washington University and the active chapter has an unusually well planned program and the new chapter rooms, which have been taste-

fully decorated, are proving to be of distinct advantage. The alumnæ chapter is looking forward to their use at alumnæ meetings as well. Those of us who have labored over meals cooked behind a none to steady screen upon a tiny gas burner and wondered where we could possibly find room for another salad plate, have eyes for nothing but the spacious kitchen with real cupboards.

OLIVE CHACE, *Editor*



AGAIN Marie Struve, Tau, '25, made the design for lovely Delta Zeta Christmas card. In fact, she made not only the design, but cut the wood block for it, so all that had to be done was have it printed. The Christmas card last year and the Delta Zeta Book Plate were also her work.

Marie was graduated from the University of Wisconsin in 1925. She studied

art there and also at the Art Institute of Chicago. She holds membership in the National Federation of Business and Professional Women's Clubs, in Quota, International, and is Educational Director of Epsilon Sigma Alpha, Educational Sorority.

Aside from conducting an art school in her studio, Marie is connected with an advertising agency in Davenport, Iowa.

● ALUMNAE CLUB NEWS ●

Material for this department must be postmarked not later than October 10, January 30, or March 30.

M. H. P.

AKRON CLUB

Although we are a very small group, we keep struggling along and hope some day to grow into a full-fledged alumnae chapter.

We hold our meetings at the homes of members proceeding in alphabetical order. They are usually on the third Monday of each month, beginning with September and continuing through June. We alternate each month between afternoon and evening meetings.

An election of officers was held at the May meeting. Mrs. Vernon P. Hine, after serving as our president for two years, gave up her office to Mrs. Charles L. Jones, and Mrs. Samuel P. Baird, Jr., was replaced by Mrs. John Alter as secretary and treasurer. Mrs. Lawrence Youse was elected Panhellenic representative.

Mrs. L. W. Baker entertained club members and their husbands at a picnic and bridge party at her home in June. The picnic tables were set on the spacious lawn overlooking a most beautiful flower garden.

The mothers and their kiddies enjoyed a midsummer "get together" with a swim and picnic at one of the many lakes in the vicinity of Akron.

We are anxious to have any visiting Delta Zetas or any newcomers to our city get in touch with us through our president, Mrs. Charles L. Jones (Edith Anderson).

ANNABEL BAIRD, *Correspondent*

DALLAS CLUB

The Dallas Alumnae Club combined forces with Alpha Psi Chapter so completely during the summer months that our news will necessarily be a repetition of that of the active chapter. Our joint meetings every Monday night, concerned primarily with rush problems, have infused us all with a fresh supply of Delta Zeta spirit, and the fruits of our labors were quite obvious on pledge day this fall.

Aside from rushing, the high spot of the summer was a Delta Zeta camp at Lake Dallas, about thirty miles from the city. We, and our dates, drove up Friday and came back Sunday. The entertainment consisted of motor boat rides, midnight swims, dancing, bridge, and much singing to the consternation of the other campers in the vicinity.

The rush season of 1932 was begun last May with a big tea for the prospective rushees and their mothers. Then followed a formal party in the middle of the summer. The fall season was a mad rush of three dates a day, with a breathing space of one day in the middle. The last day was quite triumphant when Mrs. Malott, who was visiting Alpha Psi, pinned rose and green ribbons on eight charming pledges. A very successful open house came that night as a grand climax.

Now that all that is over we will settle down to our normal alumnae interests for the year. Our schedule is a monthly supper, followed by either a business meeting or a program, at the homes of various members. A yearbook, outlining the activities for the year and listing the officers, committees, and hostesses, will be ready for the first meeting. Mrs. H. L. Miller, former director of this province, is our president for the current year.

We plan in the near future to give a Panhellenic tea for the representatives from all the alumnae clubs of the various sororities in Dallas. These teas, which have become an annual event with all the alumnae organizations, are a great help toward becoming acquainted with other sorority women.

Our next interest for the winter is to sponsor the organization of a Mothers' Club for Alpha Psi.

MARY BATEMAN, *Correspondent*

JACKSONVILLE CLUB

The Jacksonville Alumnae Club of Delta Zeta was formed at a meeting held September 26, 1932, at the home of Margaret Adams. Our aim is to support Delta Zeta in general, especially the chapter at Tallahassee and our local Panhellenic. The following officers were elected: Mildred Harris, Alpha Sigma, president; Mrs. Jason Smith, Alpha Sigma, vice-president; Margaret Adams, Alpha Omicron, secretary; Mrs. Thomas Wheaton, Mu, treasurer; Virginia Miller, Alpha Sigma, corresponding secretary; Anne Mathews, Alpha Sigma, parliamentarian and Mrs. Robert White, Alpha Sigma, historian. We have a membership of seventeen and expect to have a lively alumnae club.

We plan to have two meetings a month, a business meeting each second Monday at the George Washington Hotel and a lunch-

con each fourth Saturday also at the George Washington.

We worked as a group this summer and gave several rush parties for girls entering college this fall. We expect to continue our rushing through the winter and have many other activities planned. We will be able to tell you more about them in our next letter.

VIRGINIA MILLER

MILWAUKEE CLUB

We are the new Milwaukee Delta Zeta Club, one year of age, and are stepping into our second season with the same worthy president we had last, Beth Phillips. Our vice-president is Trent Alexander Gladden; Janet Smith is secretary, Ruthella Dodge Kamerling is treasurer and Marion Wheelihan represents us in Panhellenic. Our meetings are held every second Thursday evening in the month at the various homes.

We hope, this year, to top the accomplishments of last, which were quite ambitious at that for beginners. For one thing, we've adopted a room at Vest and are planning to furnish it. We feel that it is an exceptionally worthy cause. We gave a very successful benefit bridge toward defraying the initial cost of the room, and we have sent clothing for the students themselves. Mrs. Frederick O. Toof gave us the pleasure of a visit and told us interestingly of the things that are being done for the Kentuckians in the locality. In that way we felt very close to these people who obviously need every possible assistance.

To add to our accomplishments, we very recently acquired two sons in Delta Zeta. Evan Leuth Bourne and Doris Burdick Joys are the proud mothers and the rest of us, the doting pseudo "aunties."

That, I think is a fair story for the length of our existence and we hope to continue in good deeds.

IRMA HAAK LOOMIS, *Editor*

NEW JERSEY CLUB

On Saturday, December 3, fifteen Delta Zetas met at the home of Althea Hoyt in Nutley. We were very much encouraged by the attendance and by the fact that several who could not come on that particular day had written expressing an interest and promising to try to come another time.

In order to facilitate our getting acquainted cards bearing the name of the individual, her college chapter letters, and school, were provided for each of us. These we penned on "convention fashion." To open the meeting each member present gave her name, chapter, and school, and told us what offices she had held and what she is now doing.

A general discussion followed and then of-

ficers were elected. Of course it was impossible to even attempt to settle all the questions raised at our initial meeting. But we are confident that everything will be taken care of in due course. One of the matters uppermost in our minds is the type of social service work we shall be able to undertake in the beginning.

When we had exhausted the time that one short afternoon afforded we adjourned until January 7.

But before leaving Nutley we all enjoyed tea, coffee, and delicious cakes which Althea's hospitality furnished.

It is regrettable that neither time nor space will permit our telling you who each of the girls is, where she is living, and what she is doing, because we have come from several schools, we live in rather widely separated towns, and seem to have chosen a variety of professions.

EMILY J. COX, *Editor*

OMAHA CLUB

Delta Zeta Alumnae opened the year's program with a Dutch treat luncheon at the Chamber of Commerce on the third Saturday in September. Mrs. Waldo Shallcross and Mrs. O. C. Michelmann, retiring president and vice-president, were in charge of arrangements.

Election of officers followed the social hour. Mrs. Walter Scott (Mildred Johnson) was elected president and Mrs. Louis D. Kavanagh (Katheryn Lowry) was named secretary-treasurer. The group decided to alternate luncheon with dinner meetings during the year. The third Monday evening in October will be the first dinner meeting. Delta Zetas who are in Omaha are cordially invited to affiliate with the club and are asked to call either the president or the secretary.

This year the club will try no-host down town meetings until the first of the year. Most of the members have many outside interests and find the down town meetings a saving of time and effort.

Included among Delta Zeta Alumnae in Omaha are women with varied interests, Girl Scout work, Camp Fire work, Omaha Social Settlement House, College Club, literary and book clubs, D.A.R. and other charitable or study groups claim the attention and time of the members. Professionally we are represented on the teaching staffs of Omaha Municipal University and the city high schools, in social work, in restaurant management and in journalistic free lancing. Home and children and social activities also come in for their share of interest.

Unsigned

TAMPA CLUB

The Tampa Alumnae Club has numerous activities to report since our last letter to *THE LAMP*.

Aside from our regular monthly business meetings, we had one social meeting each month, from January to July, at which we entertained visiting Delta Zetas and rushees. The latter part of June a number of the Alpha Sigma actives from over the state gave a house party at Haven Beach, which is only a short distance from Tampa. At various times during the week members of the Tampa Club took our Tampa rushees over to the beach to enjoy swimming and meet the active members who were there.

During the summer we gave three large rush parties and seven of the rushees who were guests of these parties pledged Delta Zeta at Alpha Sigma this fall.

The first of these summer parties was a beach party held at the Don Ce-sar Hotel at Pass-a-Grille on the Gulf of Mexico. Our guests were twelve prospective college girls from Tampa and towns nearby.

The second was a mixed party for club members with husbands and girls with dates. It was held at the Morocco Club on Temple Terrace Estates, where both swimming and dancing could be enjoyed. The Plant City Delta Zetas and their rushees joined us at this party, making it one of our largest affairs with approximately seventy present.

The last party was the nicest, we think. It was held a couple of days before the girls left for school and was given at Oak Shadows, a very select luncheon club. We were fortunate in having Delta Zetas from Plant City, Winter Haven, Lakeland and St. Petersburg with us so in all we had fifty-two present. This was our Rose Luncheon, an event we inaugurated in Tampa this season, hoping to make it an annual event hereafter. Of course, there were quantities of pink roses and rose tapers used in the decorative scheme, with hand painted roses on the place cards, which contained the program and menu. Mrs. W. T. Covode, our club president, presided at the luncheon and our program consisted of a toast to Delta Zeta, solos and group singing of Delta Zeta songs and a talk by Mrs. Fuller on "Our College Friendships."

Mrs. Fuller was initiated at Epsilon Chapter but we are very proud that we can now count her among our Florida Alumnae. In fact she is one of the most outstanding Delta Zetas in the state.

Our solos were beautifully sung by Daphne Stout of Plant City, an Alpha Sigma junior. Daphne's accompanist was Laura Way of St. Petersburg, an Alpha Sigma alumna. Laura is quite an artist in her line too, being a master of the pipe organ as well as the piano.

Daphne has recently joined our alumnae club, as she is remaining out of school to fill a radio contract in Tampa. She, with two other girls, compose a trio called the Happy Sisters, who broadcast several times each week over WDAE, the *Tampa Times* Station. Daphne sang Delta Zeta Dream Girl in one of her radio programs during rush week at Alpha Sigma and dedicated the number to the Delta Zetas of Florida, which certainly thrilled all of us. We know Daphne is going to do big things.

Nita Midgley is another new member of our Tampa Alumnae Club. She did excellent work scholastically last year at Alpha Sigma and was tapped to Freshman Commission there. She was unable to return to school this year so she will be an active member of our club.

We lose one member this year to Jacksonville. Mrs. Lomax McGowan has moved to Jacksonville, 1714 Silver Street, and we certainly will miss her enthusiasm and cheerfulness very much. She is also an alumna of Alpha Sigma and formerly a Jacksonville girl.

With the close of the 1932 rushing season and pledging at Alpha Sigma, we have only taken time for one good breath and are now making plans for the coming year.

VIOLET COARSEY, *Correspondent*

TOLEDO CLUB

The first meeting of the Toledo Alumnae Club was held September 20, ably presided over by our new president, Mrs. Karl Aschbacher. The treasurer, Mrs. Merrill Sterritt, gave us the heartening news that our treasury held enough money to furnish a scholarship for one semester to some upperclassman at the University of Toledo. The university recently published the fact that many of the seniors needed aid to finish their university courses this year, and while there are no national sororities at the institution, consequently no Delta Zetas to aid, our members felt that Delta Zeta friendship should be used to further a civic enterprise. Marian Barth is investigating the list of candidates for a scholarship, and we will have a report from her at our next meeting.

There is need in Toledo for aid in many ways, and since our club, even though the members are true Delta Zetas, has not been exempt from the general lack of funds, we decided to proffer what assistance we could by sewing for organizations in certain afflicted districts. At one school alone in Toledo there are over a hundred and fifty children who come to school barefooted and without underclothing. We expect the rest of our meetings this year to be spent plying the needle, although some of us worthy school teachers are more apt at refurbishing minds than bodies.

Several interesting parties were given last year by our members. One evening at Mrs. Aschbacher's we crawled around on the floor playing potato golf, which is a good idea for a game to limber up the rushees at active chapter parties. We played guessing games to the top of our bent, and ended the evening by making gum drop horrors from tooth picks, feathers, and scraps of materials, and, of course, gum drops. The holder of the highest number of points was amply rewarded by a package of Delta Zeta book plates.

At our final party in the spring, three future Delta Zetas were present, Sue Scott, four year old daughter of Mrs. Harry M. Scott, "Sister" Sterritt, and Mrs. Aschbacher's three year old daughter. The party was a picnic at Catawba Beach Club on Lake Erie, and the hostess was Zara Timmerman.

One of the best things about being an alumna member is hearing news about old friends. Mrs. Steen Sorenson (Zora Johnson, Theta), was in Toledo this summer with the American Legion convention in her capacity as secretary of the Women's Auxiliary of that organization. Two Theta roommates were married within eleven days of each other: Frances Tromble was married to Wilbur MacKay in Chicago, and spent part of her honeymoon in Greenville attending the marriage of Joanna Menke to Nickolas White. Delta Zetas held an unofficial convention at each affair. Mrs. Sterritt is leaving soon to spend the winter in Florida.

DOROTHY BARDO, *Editor*

WICHITA CLUB

In the spring of 1930 several of the Delta Zetas living in this section of the country felt the need of an alumnæ club and on May

10 a group of eight Delta Zetas were entertained in Arkansas City. Since that time three meetings during each school year have been held in different towns and the membership has grown to eighteen.

Our activities have been rather limited due to the fact that the girls are so scattered as to residence. Our three general meetings each year are luncheons, the first being a Founders' Day luncheon on the Saturday nearest Founders' Day. There are ten girls living in Wichita so we have a meeting and bridge each month on the last Friday night.

Our first meeting this year was a tea at the home of our president, Miss Gladys Taggart, on Saturday, September 17—just an informal affair for the purpose of seeing each other again and catching up on the summer's news.

We are so anxious to help Delta Zeta grow in southern Kansas and if anyone has a friend or relative who should be rushed for an active chapter, don't fail to send us her name and address and we will be so happy to do our best in any possible way.

The Wichita Delta Zeta Club observed Founders' Day with a luncheon at the Green Parrott Inn on Saturday, October 22. There were ten girls at the table representing six chapters. Quite a cosmopolitan group, we thought. The color scheme was in yellow and white using flowers in fall colors as a centerpiece and yellow tapers. A tiered birthday cake placed in front of Gladys Taggart, our president, held the candles honoring our founders. Just before dessert she gave a tribute to our founders and the candles on the cake were lighted. A short business meeting was held following luncheon and plans made for the year.

R. MARTEN, *Secretary*

**Come to Convention! Hotel Windermere East
Chicago—June 26-30, 1933.**

Delta Zeta Sorority

Founded at Miami University, October 24, 1902

GUY POTTER BENTON, D.D., LL.D., *Grand Patron*
(Deceased)

FOUNDERS

JULIA BISHOP COLEMAN (Mrs. J. M.)104 Riverside Ave., Loveland, Ohio
MARY COLLINS GALBRAITH (Mrs. George) ..3068 Tremont Rd., Columbus, Ohio
ANNA KEEN DAVIS (Mrs. G. H.).....4627 Glenshade Ave., Cincinnati, Ohio
ALFA LLOYD HAYES (Mrs. O. H.)807 Dobson, Evanston, Ill.
MABELLE MINTON HAGEMANN (Mrs. Henry).....Deceased
ANNE SIMMONS FRIEDLINE (Mrs. Justus R.).....Deceased

NATIONAL COUNCIL

President.....MRS. CARL GRANT MALOTT
1026 Milam Bldg., San Antonio, Texas
First Vice-President.....MRS. HUBERT M. LUNDY
R.R. No. 2, Bloomington, Indiana
Second Vice-President.....MISS LISETTE REINLE
328 Glendale Avenue, Oakland, California
Secretary.....MISS RUBY LONG
Cashmere, Washington
Treasurer.....DOCTOR HELEN JOHNSTON
1424 Des Moines Bldg., Des Moines, Iowa
Editor of LAMP.....MRS. JOHN W. PEASE
4719 Winton Road, Cincinnati, Ohio

Executive Office.....1026 Milam Building, San Antonio, Texas
Secretary in Charge.....MISS IRENE BOUGHTON

NATIONAL PANHELLENIC CONGRESS

Chairman.....MRS. EDWARD P. PRINCE, Φ M
Webster City, Iowa
Secretary.....MRS. ARTHUR REDD, K Δ
Uniontown, Ala.
Treasurer.....HARRIET W. TUFT, B Φ A
2282 Union Street, Berkeley, Calif.
Delta Zeta Delegate.....MISS RENE SEBRING SMITH
Y.W.C.A., Long Beach, Calif.

STANDING COMMITTEES

Social Service: Mrs. F. O. Toof, Director, 835 Seward St., Evanston, Ill.
Constitution: Mrs. John M. Coleman, Loveland, Ohio; Mrs. Hubert M. Lundy;
Mrs. John W. Pease.
History: Mrs. Hubert M. Lundy, Bloomington, Indiana.
Building: Mrs. Arthur Craig, 2223 Marin Ave., Berkeley, Calif., chairman.

Provinces of Delta Zeta

PROVINCE I

Maine, Vermont, Connecticut, New Hampshire, Massachusetts, Rhode Island
UNIVERSITY OF MAINE (*Alpha Upsilon*) RHODE ISLAND STATE COLLEGE (*Beta Alpha*)
Director: MILDRED P. FRENCH, Connecticut Agricultural College, Storrs, Conn.

PROVINCE II

New York State

CORNELL UNIVERSITY (*Beta*) SYRACUSE UNIVERSITY (*Alpha Kappa*)
ADELPHI COLLEGE (*Alpha Zeta*) NEW YORK ALUMNÆ CHAPTER
Director: MRS. J. CLINTON LOUCKS, 207 Sweeting Avenue, Syracuse, N.Y.

PROVINCE III

Pennsylvania, New Jersey

UNIVERSITY OF PITTSBURGH (*Omicron*) SWARTHMORE COLLEGE (*Beta Eta*)
UNIVERSITY OF PENNSYLVANIA (*Beta Epsilon*) BUCKNELL UNIVERSITY (*Beta Theta*)
PITTSBURGH ALUMNÆ CHAPTER
Director: MISS KATHRYN GOODALL, 21 N. Clinton Ave., Aldan, Pa.

PROVINCE IV

Virginia, West Virginia, Delaware, Maryland, District of Columbia

GEORGE WASHINGTON UNIVERSITY (*Alpha Delta*) WASHINGTON D.C. ALUMNÆ CHAPTER
RANDOLPH-MACON WOMAN'S COLLEGE (*Alpha Xi*)
Director: MRS. JOHN LADD, 4422 Lowell Street N.W., Washington, D.C.

PROVINCE V

North Carolina, South Carolina, Georgia, Florida

BRENAU COLLEGE (*Alpha Omicron*) UNIVERSITY OF SOUTH CAROLINA (*Beta Delta*)
FLORIDA STATE COLLEGE FOR WOMEN (*Alpha Sigma*)
Director: MRS. JAMES E. KEEZEL, Box 505, Gainesville, Fla.

PROVINCE VI

Alabama, Mississippi, Louisiana, Tennessee

UNIVERSITY OF ALABAMA (*Alpha Gamma*) MILLSAPS COLLEGE (*Alpha Omega*)
HOWARD COLLEGE (*Alpha Pi*) BATON ROUGE ALUMNÆ CHAPTER
LOUISIANA STATE UNIVERSITY (*Sigma*) BIRMINGHAM ALUMNÆ CHAPTER
UNIVERSITY OF MISSISSIPPI (*Beta Beta*)
Director: MRS. GERALD COWAN, 6420 Hamilton Avenue, Cincinnati, Ohio.

PROVINCE VII

Kentucky, Indiana

UNIVERSITY OF LOUISIANA (*Beta Gamma*) INDIANA UNIVERSITY (*Epsilon*)
UNIVERSITY OF KENTUCKY (*Alpha Theta*) BUTLER UNIVERSITY (*Alpha Nu*)
DEPAUW UNIVERSITY (*Delta*) FORT WAYNE ALUMNÆ CHAPTER
FRANKLIN COLLEGE (*Psi*) INDIANAPOLIS ALUMNÆ CHAPTER
Director: MRS. MARK HANDLEY, 349 West King Street, Franklin, Indiana.

PROVINCE VIII

Ohio, Michigan

OHIO WESLEYAN UNIVERSITY (<i>Alpha Rho</i>)	CINCINNATI ALUMNÆ CHAPTER
OHIO STATE UNIVERSITY (<i>Theta</i>)	CLEVELAND ALUMNÆ CHAPTER
UNIVERSITY OF CINCINNATI (<i>Xi</i>)	COLUMBUS ALUMNÆ CHAPTER
MIAMI UNIVERSITY (<i>Alpha</i>)	DAYTON ALUMNÆ CHAPTER
UNIVERSITY OF MICHIGAN (<i>Alpha Eta</i>)	DETROIT ALUMNÆ CHAPTER

Director: MRS. RUDOLF O. COOKS, 14 South Center St., Versailles, Ohio.

PROVINCE IX

Illinois, Wisconsin

KNOX COLLEGE (<i>Nu</i>)	UNIVERSITY OF ILLINOIS (<i>Alpha Beta</i>)
EUREKA COLLEGE (<i>Pi</i>)	UNIVERSITY OF WISCONSIN (<i>Tau</i>)
NORTHWESTERN UNIVERSITY (<i>Alpha Alpha</i>)	CHICAGO ALUMNÆ CHAPTER

Director: MRS. LESLIE DREW, 166 Woodland Avenue, Winnetka, Illinois.

PROVINCE X

North Dakota, South Dakota, Iowa, Minnesota

UNIVERSITY OF IOWA (<i>Iota</i>)	IOWA STATE COLLEGE (<i>Beta Kappa</i>)
UNIVERSITY OF NORTH DAKOTA (<i>Upsilon</i>)	TWIN CITY ALUMNÆ CHAPTER
UNIVERSITY OF MINNESOTA (<i>Gamma</i>)	

Director: HELEN WOODRUFF, 330 Eleventh Avenue S.E., Minneapolis, Minn.

PROVINCE XI

Nebraska, Kansas, Missouri

UNIVERSITY OF NEBRASKA (<i>Zeta</i>)	UNIVERSITY OF KANSAS (<i>Alpha Phi</i>)
BAKER UNIVERSITY (<i>Eta</i>)	KANSAS CITY ALUMNÆ CHAPTER
	LINCOLN ALUMNÆ CHAPTER

Director: EDNA WHEATLEY, 510 N. Fourth Street, Arkansas City, Kansas.

PROVINCE XII

Arkansas, Oklahoma, Texas

OKLAHOMA A. & M. COLLEGE (<i>Alpha Epsilon</i>)	SOUTHERN METHODIST UNIVERSITY (<i>Alpha Psi</i>)
UNIVERSITY OF TEXAS (<i>Alpha Tau</i>)	

Director: MRS. RANDALL E. WALKER, 417 N. Tacoma, Tulsa, Okla.

PROVINCE XIII

Colorado, Utah, New Mexico, Wyoming

DENVER UNIVERSITY (<i>Rho</i>)	UNIVERSITY OF UTAH (<i>Beta Zeta</i>)
UNIVERSITY OF COLORADO (<i>Alpha Lambda</i>)	DENVER ALUMNÆ CHAPTER

Director: BERNADETTE DALY, 154 Marion St., Denver, Colo.

PROVINCE XIV

California, Arizona, Nevada

UNIVERSITY OF CALIFORNIA (<i>Mu</i>)	UNIVERSITY OF ARIZONA (<i>Beta Iota</i>)
UNIVERSITY OF SOUTHERN CALIFORNIA (<i>Alpha Iota</i>)	BERKELEY ALUMNÆ CHAPTER
UNIVERSITY OF CALIFORNIA, L.A. (<i>Alpha Chi</i>)	LOS ANGELES ALUMNÆ CHAPTER

Director: MRS. ARTHUR CRAIG, 2223 Marin Avenue, Berkeley, California.

PROVINCE XV

Washington, Oregon, Idaho, Montana

UNIVERSITY OF WASHINGTON (<i>Kappa</i>)	UNIVERSITY OF OREGON (<i>Omega</i>)
WASHINGTON STATE COLLEGE (<i>Phi</i>)	PORTLAND ALUMNÆ CHAPTER
OREGON STATE COLLEGE (<i>Chi</i>)	SEATTLE ALUMNÆ CHAPTER

Director: ELIZABETH SUTTON, Marlborough House, Apt. 505, 122 Boren, Seattle, Wash.

College Chapter Directory

<i>Chapter</i>	<i>Institution</i>	<i>President</i>	<i>Address</i>
Alpha, 1902	Miami University	Jeannette Hidy	17 Bishop Hall, Oxford, Ohio.
Beta, 1908	Cornell University	Mary McLouth	Δ Z House, 200 Highland Ave., Ithaca, N.Y.
Gamma, 1923	University of Minnesota	Ruth Nielander	Δ Z House, 330-11th Ave. S.E., Minneapolis, Minn.
Delta, 1909	DePauw University	June Barnes	Δ Z House, Greencastle, Ind.
Epsilon, 1909	Indiana University	Virginia Lee Freed	Δ Z House, 809 E. 7th St., Bloomington, Ind.
Zeta, 1910	University of Nebraska	Evelyn O'Connor	Δ Z House, 626 N. 16th St., Lincoln, Neb.
Eta, 1910	Baker University	Marcial Burroughs	Δ Z House, 720 Dearborn, Baldwin, Kan.
Theta, 1911	Ohio State University	Anne Stone	Δ Z House, 212-15th Ave., Columbus, Ohio.
Iota, 1913	State Univ. of Iowa	Vivian M. Kuhl	Δ Z House, 223 S. Dodge, Iowa City, Iowa.
Kappa, 1914	University of Washington	Kay Coulon	Δ Z House, 4535-18th Ave. N.E., Seattle, Wash.
Mu, 1915	University of California	Susan Powell	Δ Z House, 2311 Le Conte Ave., Berkeley, Calif.
Nu, 1915	Knox College	Louise Larson	175 N. Arthur Ave., Galesburg, Ill.
Xi, 1916	University of Cincinnati	Betty Heusch	1252 Paddock Hills, Cincinnati, Ohio.
Omicron, 1916	University of Pittsburgh	Betty Cassel	1333 Taylor Ave., New Kensington, Pa.
Pi, 1917	Eureka College	Mary Eleanor Harrod	Δ Z Box, Eureka, Ill.
Rho, 1917	Denver University	Miriam James	1411 Milwaukee, Denver, Colo.
Sigma, 1917	Louisiana State University	Helen Brock	820 St. Hypolite St., Baton Rouge, La.
Tau, 1918	University of Wisconsin	Margaret Lutze	Δ Z House, 142 Langdon, Madison, Wis.
Upsilon, 1919	Univ. of North Dakota	Mildred Owens	Δ Z House, 2720 University Ave., Grand Forks, N.D.
Phi, 1919	State College of Wash.	Lucille McCrite	Δ Z House, 811 Linden, Pullman, Wash.
Chi, 1919	Oregon Agri. College	Irene Leach	Δ Z House, 23rd and Van Buren, Corvallis, Ore.
Psi, 1920	Franklin College	Kathryn Doub	College Dormitory, Franklin, Ind.
Omega, 1920	University of Oregon	Elaine Anderson	Δ Z House, 1670 Alder St., Eugene, Ore.
Alpha Alpha, 1920	Northwestern University	Roberta Rogers	Δ Z House, 717 University Pl., Evanston, Ill.
Alpha Beta, 1921 .	University of Illinois	Nancy Embree	Δ Z House, 710 Ohio St., Urbana, Ill.
Alpha Gamma, 1922	University of Alabama	Marjorie Rittenhouse	Δ Z House, Univ. of Alabama, University, Ala.
Alpha Delta, 1922 .	George Washington Univ.	Eleanor Cheney	2006 G St. N.W., Washington, D.C.
Alpha Zeta, 1922 .	Adelphi College	Julia Goemans	58-28 St. Felix St., Evergreen, L.I., N.Y.

<i>Chapter</i>	<i>Institution</i>	<i>President</i>	<i>Address</i>
Alpha Eta, 1922 ..	University of Michigan	Alice M. Mahnke	Δ Z House, 328 East Williams, Ann Arbor, Mich.
Alpha Theta, 1923	University of Kentucky	Dorothy Compton	Δ Z House, 218 S. Limestone, Lexington, Ky.
Alpha Iota, 1923 ..	Univ. of Southern Calif.	Lyda-Blithe Richman	Δ Z House, 710 West 28th St., Los Angeles, Calif.
Alpha Kappa, 1924	Syracuse University	Gladys Dieseth	Δ Z House, 115 College Pl., Syracuse, N.Y.
Alpha Lambda, 1924	University of Colorado	Nelle B. Inness	Δ Z House, 1506-12th St., Boulder, Colo.
Alpha Nu, 1924 ..	Butler University	Dorothy E. Wright	342 Berkeley Rd., Indianapolis, Ind.
Alpha Xi, 1924 ..	Randolph-Macon Woman's College	Nell Hogan Bray	Box 80, R.-M.W.C., Lynchburg, Va.
Alpha Omicron, 1924	Brenau College	Mildred Potter	Δ Z House, Brenau College, Gainesville, Ga.
Alpha Pi, 1924 ..	Howard College	Anna Stuart Dupuy	2501 Bessemer Blvd., Birmingham, Ala.
Alpha Rho, 1924 ..	Ohio Wesleyan Univ.	Jeanette Ash	Monnett Hall, Delaware, Ohio.
Alpha Sigma, 1924	Florida State College for Women	Mary Porter Allan	Δ Z House, 547 W. College, Tallahassee, Fla.
Alpha Tau, 1924 ..	University of Texas	M. Jean Best	Δ Z House, 2511 Nueces, Austin, Tex.
Alpha Upsilon, 1924	University of Maine	Berla M. Smythe	Balentine Hall, Orono, Me.
Alpha Phi, 1925 ..	University of Kansas	Alice Gallup	Δ Z House, 1043 Indiana, Lawrence, Kan.
Alpha Chi, 1925 ..	University of Calif., L.A.	Vesta Howard	Δ Z House, 824 Hilgard, West Los Angeles, Calif.
Alpha Psi, 1926 ..	Southern Methodist Univ.	Martha Stewart	Δ Z Box, S. Methodist Univ., Dallas, Tex.
Alpha Omega, 1926	Millsaps College	Juanita Winstead	Millsaps College, Jackson, Miss.
Beta Alpha, 1928 ..	Rhode Island State Col.	M. Leota Harris	Δ Z Lodge, R.I.S.C., Kingston, R.I.
Beta Beta, 1928 ..	University of Mississippi	Myrtle Mason	University of Miss., Oxford, Miss.
Beta Gamma, 1928	University of Louisville	Virginia Durham	Δ Z House, 2010 S. 3rd, Louisville, Ky.
Beta Delta, 1928 ..	Univ. of South Carolina	Edyth Carlisle	1621 Green St., Columbia, S.C.
Beta Epsilon, 1928	Univ. of Pennsylvania	Marion Leming	Δ Z House, 3420 Walnut St., Philadelphia, Pa.
Beta Zeta, 1928 ..	University of Utah	Jean Peters	152 10th E., Salt Lake City, Utah
Beta Eta, 1930 ..	Swarthmore College	Helen Flanagan	Swarthmore College, Swarthmore, Pa.
Beta Theta, 1930 ..	Bucknell University	Marie Groff	Bucknell University, Lewisburg, Pa.
Beta Iota, 1930 ..	University of Arizona	Lillian Vezzetti	Δ Z House, 1602 E. 2nd St., Tucson, Ariz.
Beta Kappa, 1931	Iowa State College	Florence M. Meyer	Δ Z House, 209 Hyland, Ames, Iowa.

Alumnae Chapters

BATON ROUGE, LOUISIANA

President—Alma Dodson, King Hotel;
Editor—Grace Sheets, Box 314, University Station.

BERKELEY, CALIFORNIA

President—Mrs. Orrin Gibson, 960 Ventura Avenue; *Editor*—Mrs. Henry Grady, 25 Menlo Place.

BIRMINGHAM, ALABAMA

President—Augusta Piatt, 1709 14th Ave. S.; *Editor*—Mrs. Paul Gourley, 8104 Underwood Avenue.

CHICAGO, ILLINOIS

President—Mrs. Hugo F. Huff, 6458 N. Irving Avenue; *Editor*—Florence Hood, 5222 West 24th Street, Cicero, Illinois.

CINCINNATI, OHIO

President—Mrs. Lauren Schram, 1726 Bella Vista Place; *Editor*—Mrs. R. F. Vance, 1239 Paxton Rd.

CLEVELAND, OHIO

President—Aurel Fowler, 10411 Edgewater Drive; *Editor*—Louise Kennedy, 1492, S. Taylor Road, Cleveland Hgts.

COLUMBUS, OHIO

President—Katherine Backus, 38 12th Ave.; *Editor*—Mildred Worley, 2286 Indiana Avenue.

DAYTON, OHIO

President—Ruth Switzer, 27 Cambridge Avenue; *Editor*—Mrs. George Lenning, 1956 Rugby Road.

DENVER, COLORADO

President—Della M. Golden, 708 13th St.; *Editor*—Mrs. Pauline Vickers, 827 Milwaukee.

DETROIT, MICHIGAN

President—Shirley King, 646 Hazelwood; *Editor*—Mrs. William Palen, 20150 Lichfield Rd.

FORT WAYNE, INDIANA

President—Virginia Jackson, 309 E. Foster Parkway; *Editor*—Norma Johnston, 1031 Archer Avenue.

INDIANAPOLIS, INDIANA

President—Mrs. R. E. Hill, 637 Berkeley Road; *Editor*—

KANSAS CITY, MISSOURI

President—Henrietta Conrad, 431 N. 16th Street, Kansas City, Kan.; *Editor*—Alice Chaney, 4101 Hyde Park, Kansas City, Missouri.

LINCOLN, NEBRASKA

President—Mrs. Richard F. Wood, 525 South 13 Street; *Editor*—Josephine Graves, 2225 South 27 Street.

LOS ANGELES, CALIFORNIA

President—Mrs. John Stransky, 2067½ N. Vermont Ave.; *Editor*—Mrs. A. D. Boller, 3800 South Flower.

MINNEAPOLIS-ST. PAUL, MINNESOTA

President—Lucile Munger, 1234 Sherburne Ave., St. Paul; *Editor*—Valborg Tanner, 1746 Grand Ave., St. Paul.

NEW YORK, NEW YORK

President—Dorothy King, 387 East 5th St., Brooklyn, N.Y.; *Editor*—Althea Hoyt, 418 Hillside Avenue, Nutley, New Jersey.

PITTSBURGH, PENNSYLVANIA

President—Susan Rush, 5522 Bryant St.; *Editor*—

PORTLAND, OREGON

President—Mrs. V. Lyle McCroskey, 1684 Peninsular Avenue; *Editor*—Evelyn Chambers, 649 Brae Mar Court.

SEATTLE, WASHINGTON

President—Eleanor Strickler, 4535 18th Ave. N.E.; *Editor*—Emily Neighbor, 1533 38th Ave.

WASHINGTON, D.C.

President—Margaret Neuman, No. 6 East Woodbine St., Chevy Chase, Maryland; *Editor*—Olive Chace, 6 Virginia St., Chevy Chase, Maryland.

Alumnae Clubs

PRESIDENTS

MADISON, WISCONSIN: Mrs. Garret Cooper,
415 Fitch Court

TOLEDO, OHIO: Mrs. Karl P. Aschbacher,
530 Lowell Drive

TAMPA, FLORIDA: Mrs. W. T. Covode, 5506
Cherokee Avenue

SIOUX CITY, IOWA: Mrs. E. B. Lake, 3165
Dearborn

BLOOMINGTON, INDIANA: Mrs. Leon Baker,
534 South Lincoln Street

SYRACUSE, NEW YORK: Mrs. Frederick Mil-
ler, 204 3rd St., Liverpool, N.Y.

HOUSTON, TEXAS: Mrs. T. E. Kennerly, 1812
South Boulevard

OMAHA, NEBRASKA: Mrs. Waldo Shallcross,
Ralston, Nebraska

GRAND RAPIDS, MICHIGAN: Norda Haskins,
Route 4

DALLAS, TEXAS: Mrs. H. L. Miller, 5033 Live
Oak

BOULDER, COLORADO:

ROCKFORD, ILLINOIS: Mrs. Rudolph Trank,
1850 Rural Street

ANN ARBOR, MICHIGAN: Mrs. W. R. Hum-
phreys, 1435 Cambridge Road

AKRON, OHIO: Mrs. Vernon P. Hine, 863
W. 10th Street, Columbus, Ohio

EUREKA, ILLINOIS: Mrs. Eldora Collins

TACOMA, WASHINGTON: Gertrude Tunnard,
Puyallup, Washington

FRANKLIN, INDIANA: Mary Eades, 799
North Walnut

WICHITA, KANSAS: Gladys Taggart, Univer-
sity of Wichita.

MILWAUKEE, WISCONSIN: Beth Phillips, 726
North 31st Street

BANGOR, MAINE:

BINGHAMTON, NEW YORK: Ellen Jeanette
Adams, Front Street, R.F.D. 4

PROVIDENCE, RHODE ISLAND: Grace C. Bright-
man, 15 Pitman St.

TOPEKA, KANSAS: Agnes Anderson, 1310 To-
peka Boulevard.

GRAND FORKS, N.D.: Mrs. Pauline Benson.

MIAMI, FLORIDA:

NEW JERSEY ALUMNÆ CLUB: Mrs. Carl Ful-
ler, 15 Summit St., East Orange, New
Jersey.

Calendar of Alumnae Meetings

BATON ROUGE, LOUISIANA

Meetings of the Baton Rouge alumnae chapter are held the fourth Monday night of each month at 7:30 P.M. at the homes of the different members, and all visitors or new residents are urged to attend. Call Teresa Lurry (3165) or write 2337 Government St., Baton Rouge. Regular Alumnae Bridge Club meets the third Saturday of each month.

BERKELEY, CALIFORNIA

In September, October, and November, the meetings are held on the first Tuesday of each month, at 7:30 in the evening. Beginning with December and continuing through June, the first Saturday in each month, at 2:30 P.M., is the regular meeting time. Meetings are held in the homes of members, and all visitors or new residents in the Bay Region are cordially urged to attend. Call Lisette Reinle (Piedmont 5365-J), or write 328 Glendale Avenue, Oakland.

BIRMINGHAM

We meet the second Saturday in each month at the homes of members. Call one of the captains, Miss Allen 9-3735, Mrs. Abel 3-4490, Mrs. Stone 9-1631, Miss Hendon 3-4655 or 9-6181.

BOULDER ALUMNAE CLUB

A cordial welcome will be given all Delta Zetas, by Boulder Alumnae Club. Please call Miss Carmel La Torre, 907 Eleventh, or Mrs. Clarence Burr, 1101 Penn, Boulder, Colorado.

CHICAGO

The Chicago Chapter meets second Saturday every other month at some conveniently located central place. Sectional meetings are held at homes the second Tuesday of the alternate months. Newcomers or transients are requested to telephone Mrs. Hugo Huff, Sheldrake, 3870, if they find it possible to attend a meeting of the chapter.

CINCINNATI, OHIO

The Cincinnati Alumnae Chapter meets each third Saturday, alternating with each second Tuesday evening. Visitors and new members are cordially invited: please call Mrs. Lauren Schram, Melrose 9763.

CLEVELAND

Cleveland Alumnae Chapter meets for a luncheon, business meeting, and bridge on the second Saturday of one month, followed by an evening spread on the second Monday of the next month. Visitors are welcome and

should call Mrs. Lewis F. Herron, 18519 Lomond Blvd.

COLUMBUS, OHIO

The meetings of the Columbus Alumnae Chapter are held on the third Saturday of each month, usually at the homes of members. Newcomers and visitors should call Mrs. K. O. Kesler, telephone University 6766.

DALLAS, TEXAS

The Dallas Alumnae Club will cordially welcome additions to its membership (or guests who may be in the city for a short time). We meet regularly on the first Thursday of each month at the homes of various members. Will all newcomers and visitors communicate with Ruby Brannon, 4501 Fairfax St.

DAYTON, OHIO

The Dayton Alumnae Chapter meets the first Friday at the homes of members. Delta Zetas in the city at meeting times please call Miss Ruth Switzer, Taylor 3202.

DENVER

The Denver Alumnae Chapter meetings are held the first Monday of each month at 8:00 P.M. at the homes of members. Visiting Delta Zetas or newcomers are asked to get in touch with Mrs. John Adams, 1269 Bellaire, York 3922, or Mrs. Arthur Card, 1250 Lafayette, York 3565M.

DETROIT

The Detroit Chapter holds monthly meetings the second Saturday. Katherine Washington, 4011 Montgomery (Euclid 2802W) will be glad to hear from prospective members or visitors.

FORT WAYNE, INDIANA

Meetings are held the last Saturday of the month at the homes of members. This chapter is especially anxious to increase its membership and will welcome information concerning Delta Zetas not affiliated. Visitors and new members are invited to communicate with Ruth VanNatta Hunt, 1218 West Packard Avenue, or phone H-19044.

HOUSTON, TEXAS

The Houston Alumnae Club will be glad to have Delta Zetas in and near Houston attend its meetings, the first Saturday of each month at homes of members. Notify Mrs. T. E. Kennerly, Hadley 6162.

INDIANAPOLIS

The Indianapolis Alumnae Chapter meets each second Saturday. Visitors or new members in the city please get in touch with Miss Frances Westcott, 914 E. 42nd St.

KANSAS CITY

The meetings are held each first Saturday as the chapter meets for luncheon each first Saturday, at the Kansas City Athletic Club. Ruth Davidson, 3412 Holmes, Kansas City, Missouri, would like to hear from new residents. This chapter is especially anxious to increase its membership and will welcome information concerning Delta Zetas not now affiliated with the chapter.

LINCOLN, NEBRASKA

The Lincoln Chapter meets the last Monday of each month at 7:30. All visiting Delta Zetas are cordially invited to meet with us when in the city. Visitors and newcomers are urged to communicate with Mrs. E. W. Lantz, 6842 Dudley (telephone M-1735).

LOS ANGELES, CALIFORNIA

Meetings are held the second Saturday afternoon of alternate months, the other monthly meetings coming on the second Monday evening of the month. Rose Pipal, 117 N. Avenue 55 (telephone Garfield 6750), or Gladys Marquardt (telephone Lafayette 8177) will be glad to hear from all newcomers.

MINNEAPOLIS, MINNESOTA

The Twin Cities' Chapter meets on the second Tuesday evening of the month at the chapter house, 330 Eleventh Ave. S.E., Minneapolis. Transients and newcomers please telephone Katherine M. Nelson, Atlantic 7879.

NEW YORK CITY

The New York Chapter meets the third Saturday of each month at different places, alternating with an evening one. Girls in New York for any length of time, or visitors who are to be in the city on a meeting day are urged to call Hilda Persons Horton, 272 Gates Avenue, Brooklyn (telephone Starling 7433). Names and addresses of girls coming to New York are gladly received.

PITTSBURGH

The Pittsburgh Chapter meets on the third Saturday of each month, an afternoon meeting. Niella S. Reece (telephone Hiland 7273W) will be glad to know of strangers or visitors who could arrange to attend any meeting.

PORTLAND, OREGON

The Portland Delta Zetas meet on the first Monday evening of each month at the homes of members. Business meeting followed by bridge or other entertainment. Florence

Kruse, 344 E. 37th St., will be glad to see that visitors and newcomers in the city are notified of meeting.

SEATTLE, WASHINGTON

The Seattle Alumnae Chapter meets on the first Saturday of the month beginning in September and alternates with an evening meeting, a spread on the Tuesday following the first Saturday. Afternoon meetings at two o'clock, and evening meetings at six-thirty. Visitors and newcomers please call Mrs. Harold Swendsen, East 2494.

WASHINGTON, D.C.

The Washington Chapter meets on the third Thursday at the A Z rooms, George Washington University at 8:15 P.M. Newcomers or visitors please call Vivian Robb, 1770 Kilbourne Pl. N.W. New members gladly welcomed.

OMAHA, NEBRASKA

The Omaha Club meets third Saturday for luncheon, various members entertaining. Call the president, Mrs. Louis O. Kavanagh, 2818 G Street, South Omaha, or secretary-treasurer, Mrs. W. J. Sweeney, 3302 Burt Street.

ROCKFORD, ILLINOIS

Rockford Alumnae Club meets the third Saturday of every month. Visitors and newcomers please call Helen Loveless, 127 Hall St., or Grace Trank, 1420 E. State St.

TOLEDO, OHIO

The Toledo Alumnae Club meets once a month. Visitors and newcomers please call Mrs. Harry Scott, President, 3147 Collingwood Ave., or Mrs. Emerson Messenger, Secretary, 3023 Gunchel Boulevard.

TAMPA, FLORIDA

Meets first Monday at homes of members. Every second Saturday following business meeting a luncheon is held at Forest Hills Downtown Club. Notify Mrs. W. T. Covode, S-1270.

TACOMA, WASH.

Alumnae club meets the first Friday at 8:30 P.M. at homes of members. Visitors cordially welcomed. Please notify Mrs. G. Arneson, 1109 N. Alder St., Proctor 4202.

NOTE: This list, which is intended to serve Delta Zetas who go as strangers or visitors to cities in which there are alumnae chapters, will be completed as fast as the information is received from the chapters. Members are reminded that it is easier for the newcomer to seek our chapter, than vice versa, and every Delta Zeta is urged to take the first opportunity of becoming acquainted with the alumnae chapter or club.

Delta Zeta Magazine Agency



Subscribe—Renew—Any Magazine Published

General Chairman: Mrs. Lawrence Johnson, 3237 47th Ave. South, Minneapolis, Minn.

District Chairmen

Northeastern District: Mrs. Beth Stevens, 610 Forest Ave., Pittsburgh, Pa.

Maine, Vermont, New Hampshire, Connecticut, Massachusetts, Rhode Island, New York, and Pennsylvania.

Southeastern District: Mrs. W. E. Bohannon, 8180 Second Ave., Birmingham, Ala.

Virginia, Maryland, West Virginia, Delaware, North and South Carolina, Florida, Georgia, Alabama, Tennessee, Louisiana, Mississippi, and the District of Columbia.

Central District: Miss Hazel Bowen, 1830 Beersford, East Cleveland, Ohio.

Ohio, Indiana, Kentucky, Illinois, Michigan, and Wisconsin.

Midwestern District: Miss Hazel Egan, 10 E. 44th St., Kansas City, Missouri.

Minnesota, North and South Dakota, Iowa, Kansas, Missouri, and Nebraska.

Southwestern District: Mrs. Merrill Wrench, Box 325 University Station, Tucson, Arizona.

Arkansas, Oklahoma, Texas, Utah, Arizona, New Mexico, Wyoming, and Colorado.

Western District: Mrs. Alice Wieman, Route 6, Box 710, Portland, Ore. California, Nevada, Oregon, Washington, Idaho, and Montana.

Subscribe—Renew—Any Magazine Published

Benefit our Social Service Fund.

Club your magazines and save money.

Write your district chairman for information.

Delta Zeta Calendar



College Chapters

- All chapter bills must be paid before the tenth of each month.
- Treasurer's report mailed eleventh of each month.
- Semester scholarship reports sent to National Secretary at end of each semester.
- Social Service guarantee due January first.
- Sorority examinations, March 13-19.
- Election of chapter officers, March 20-31. Don't forget convention delegate. Send in names of officers immediately to National Headquarters.
- Installation of officers, April 1-8.
- Alumna adviser elected at last regular chapter meeting of the year and name sent in to National Headquarters immediately for approval.
- Don't forget to renew your subscription to *Banta's Greek Exchange*.
- Order all jewelry from our official jeweler, Burr, Patterson, and Auld Co.

Alumnae Chapters

- Alumnae chapter fee due November 1.
- Social Service guarantee due January 1 from chapters and clubs.
- Per capita fee due March 1.
- Mileage fee due May 1.
- Don't forget to send in a copy of your yearbook or program to National Headquarters.
- Send names of all officers to National Headquarters immediately after election. Don't forget convention delegate.

Lamp: College and Alumnae Chapters and Clubs

- All material for publication, college, and alumnae chapters and alumnae club letters, all pictures, drawings, poems, and features must be sent to the editor and postmarked on or before October 10, January 30, and March 30.
- All changes of address are sent to National Headquarters.

BURR, PATTERSON & AULD CO.

OFFICIAL JEWELERS TO

DELTA ZETA

DELTA ZETA

BADGE PRICE LIST STANDARD BADGES

With Pearls and One Rose Diamond, Set	
Flush	\$10.00
With Pearls and One Rose Diamond, Tiffany	
Set	10.00
With Pearls and One Brilliant Cut Diamond,	
Flush	13.50
With Pearls and One Brilliant Cut Diamond,	
Tiffany	13.50
With Pearls and One Medium Size Diamond,	
Flush	18.00
With Pearls and One Medium Size Diamond,	
Tiffany	18.00
With Pearls and One Extra Size Diamond,	
Flush	22.50
With Pearls and One Extra Size Diamond,	
Tiffany	22.50

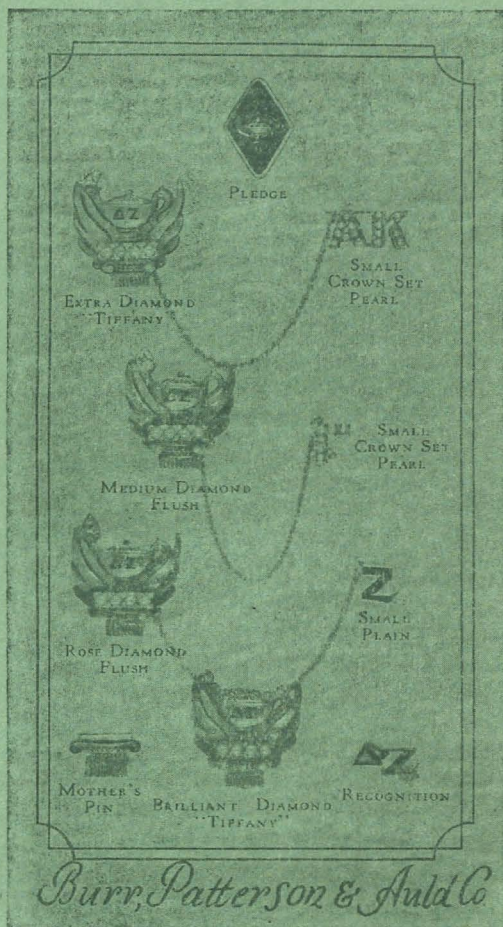
Be sure to specify your choice of setting for the Diamond in Flame, Flush or Tiffany. Flush settings will be used if no choice is stated.

When ordering Badges, please have your Chapter Secretary fill out an official badge order and forward same to the Executive Secretary for her approval. Your Fraternity requires this in every case.

Recognition Pin, Staggered Letters, Gold	
Filled	\$ 1.00
10 K	2.00
Mother's Pin	2.50
Pledge Pins, with Safety Catch..per dozen	12.00

GUARD PIN PRICES

SMALL	Single Letter	Double Letter
Plain	\$2.50	\$ 3.50
Close Set Pearl	4.00	7.00
Crown Set Pearl	5.50	10.00
LARGE		
Plain	2.75	4.00
Close Set Pearl	5.00	8.00
Crown Set Pearl	7.00	12.00



Write for your personal copy of the Book for Modern Greeks
1933 edition just off the press

Sent on request to all Delta Zeta Members

BURR, PATTERSON & AULD CO.

Manufacturing Fraternity Jewelers

2301 Sixteenth Street, Detroit, Michigan

