

# *The* LAMP

ISSUE 2 - 2013

o f D E L T A Z E T A

## *Being More!*

**Delta Zeta brings a  
transformative experience  
to our members**



# Contents



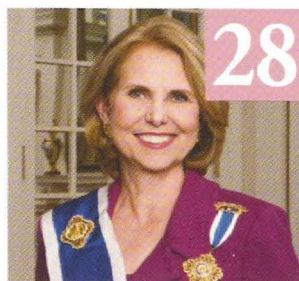
4



8



14



28

Visit <http://www.deltazeta.org> to read the latest issue. If you would like to read The LAMP online to help the Sorority to go green, please email us at [GreenLAMP@dzshq.com](mailto:GreenLAMP@dzshq.com). You will receive an email alert when the next issue is online. If you want to continue to receive The LAMP in its hard copy format, mailed to you three times a year, you need not do anything. Thank you!

## Features

- 4 Being More!
- 8 2013 Norma Minch Andrisek Leadership Conference
- 14 2013 Woman of the Year
- 16 Recommendation for National Council Nomination
- 18 Alumnae Engagement
- 24 Collegiate Profile
- 26 Alumna Profile
- 28 Giving Graciously

## Departments

- 12 National News
- 17 From the Archives
- 20 Distinctive Delta Zetas
- 30 On Campus
- 42 Flame Eternal
- 44 Alumnae News
- 49 Sharing Our Sisterhood
- 52 Foundation



**Delta Zeta Sorority  
National Council 2012 - 2014**

Jeanine Petersen Triplett,  
Louisville (KY) - BG,  
National President

Diane M. Stecher,  
Missouri/St. Louis - IE,  
National Vice President of Membership

Ann Gurley Morrow,  
Southern Indiana - AB,  
National Vice President of Collegians

Leslie Evans Williams,  
Indiana - E,  
National Vice President of Alumnae

Heather Jerden Anderson,  
Texas/Arlington - IP,  
National Vice President of Administration

Cathy Irvin Painter,  
Alabama - AG,  
National Vice President of Finance

Michelle Albrecht Smith,  
California/Los Angeles - AX,  
Past National President

Lynnda Wolf Hoeffler,  
Kent State (OH) - GK,  
National Panhellenic Conference  
Delegate

Founded at Miami University  
- Oxford, Ohio  
October 24, 1902

**Founders**

Alfa Lloyd Hayes, 1880-1962  
Mary Collins Galbraith, 1879-1963  
Anna Keen Davis, 1884-1949  
Julia Bishop Coleman, 1881-1959  
Mabelle Minton Hagemann, 1880-1929  
Anne Simmons Friedline, 1879-1932

**The Order of the Laurel**

Irene Caroline Boughton, I  
(University of Iowa)  
Grace Mason Lundy, E  
(Indiana University)  
Elizabeth Coulter Stephenson, A  
(Miami University)  
Myrtle Graeter Hinkly, Δ  
(DePauw University)  
Norma Minch Andrisk, ΓA  
(Baldwin Wallace University)



# From The National President

**I** received my first issue of The LAMP in the fall of 1979. Since that time, I have kept every single issue and they are proudly displayed in my home office. As I look through them, I am always amazed at how much we have grown as a Sorority over the years. There are many people who have contributed to the growth of Delta Zeta – alumnae volunteers, Past National Officers and, of course, our collegiate chapter members. With our growth over the years, we must recognize that we have been blessed to have a first-rate, full-time staff who are our partners in helping us realize our vision of making Delta Zeta a premier women's organization. Our staff keeps Delta Zeta at the forefront of the National Panhellenic community in terms of program development, risk management programming and organizational trends. Our staff-volunteer partnership is critical to making sure that we have the checks and balances needed to keep Delta Zeta focused on our large goals as an organization, and to make sure we have the structure in place that will allow us to reach those goals.

In the summer of 2012, Delta Zeta launched the Do More. Care More. Be More. campaign at our National Convention. National Council adopted this theme as we believe that it is the essence of what we are all about. We also believe that this philosophy challenges all of us to be better ... not only personally, but collectively as an organization. Our staff members who work at Delta Zeta's home in Oxford, Ohio live by our values and also accept our challenge to be better each and every day. We are proud of our strong partnership. Likewise, our volunteers are the core of Delta Zeta, and our successes would not be possible without them. We thank our volunteers and staff for the many contributions they make to Delta Zeta on a daily basis.

Love in Delta Zeta,

*Jeanine P. Triplett*  
Jeanine P. Triplett, National President

Published since December 1910 by

**DELTA ZETA SORORITY**

The LAMP of Delta Zeta  
Nancy E. Brewer, A, Editor  
(ISSN #0887-2554), official magazine of the  
Sorority, is published three times a year  
by the Delta Zeta Sorority,  
202 East Church Street, Oxford, OH 45056.



FRATERNITY  
COMMUNICATIONS  
ASSOCIATION

Printed in USA.

**POSTMASTER**

Send address changes to Delta Zeta Sorority,  
202 East Church Street, Oxford, OH 45056.

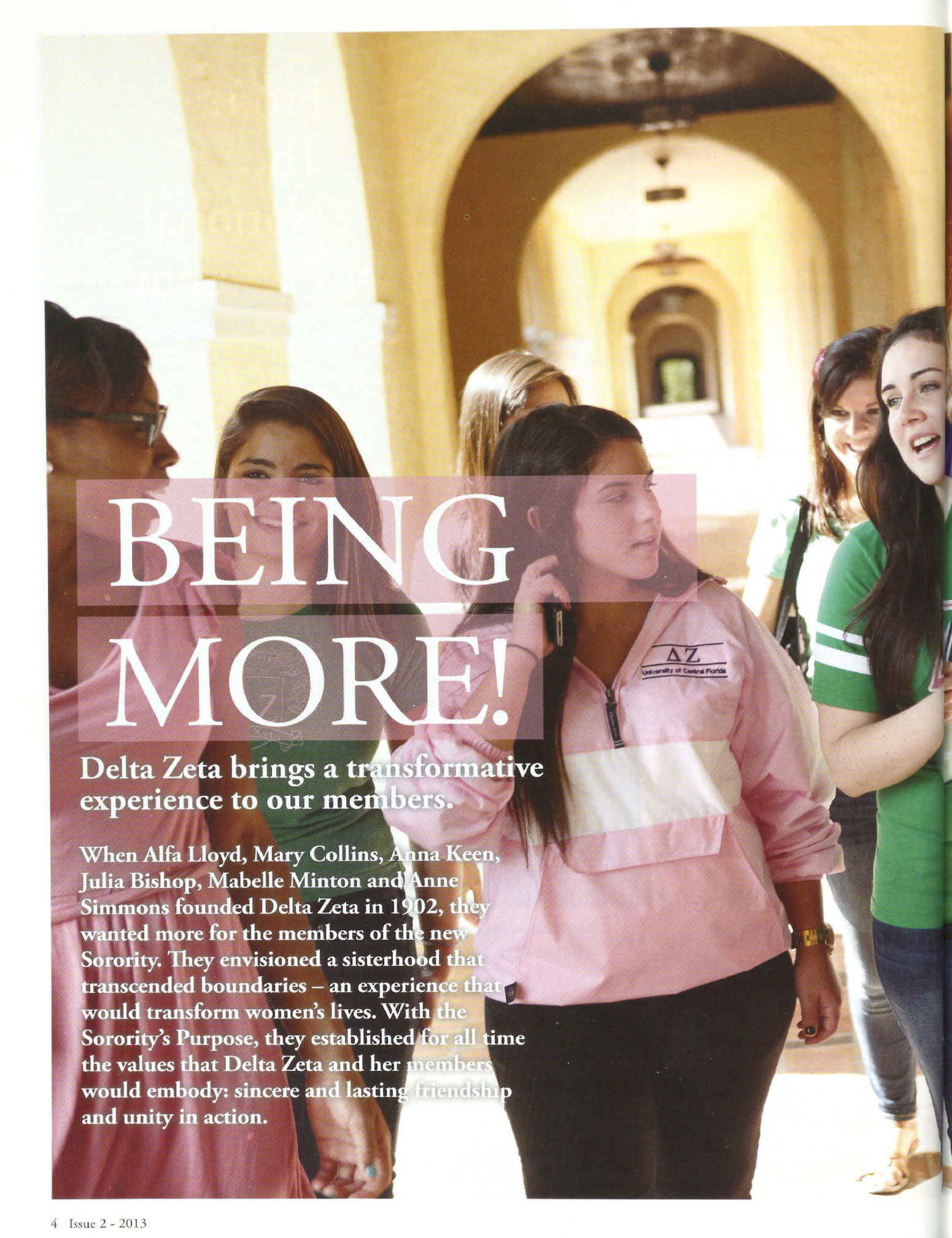
Send all editorial material to  
Delta Zeta National Headquarters,  
Attn: Editor,  
202 East Church Street, Oxford, OH 45056  
(513) 523-7597

General email: [dzs@dzshq.com](mailto:dzs@dzshq.com)  
The LAMP email: [LAMP@dzshq.com](mailto:LAMP@dzshq.com)  
Website: <http://www.deltazeta.org>



National Panhellenic Conference



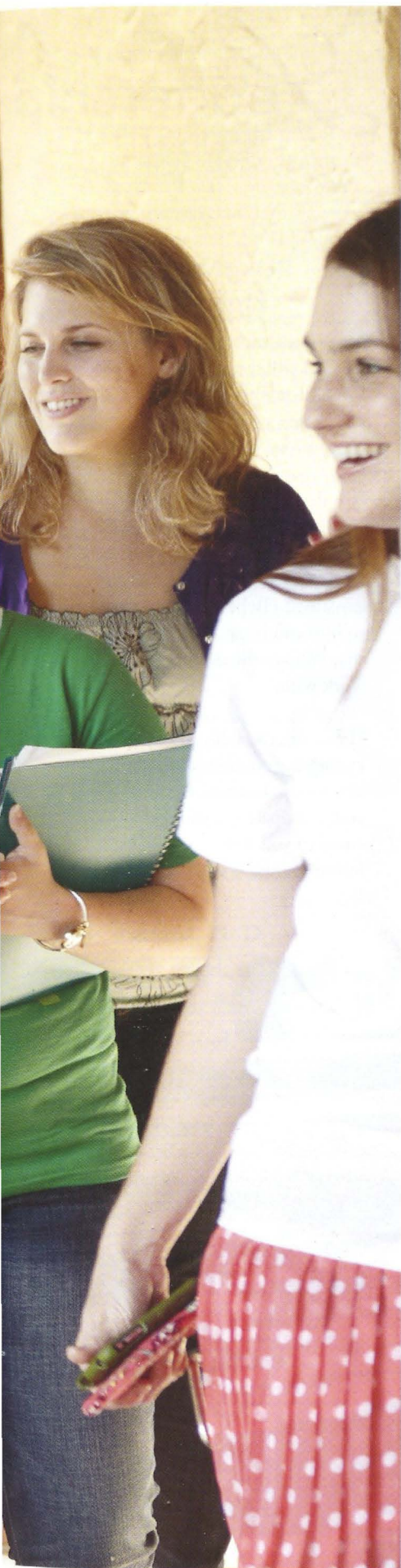


# BEING MORE!

**Delta Zeta brings a transformative experience to our members.**

When Alfa Lloyd, Mary Collins, Anna Keen, Julia Bishop, Mabelle Minton and Anne Simmons founded Delta Zeta in 1902, they wanted more for the members of the new Sorority. They envisioned a sisterhood that transcended boundaries – an experience that would transform women's lives. With the Sorority's Purpose, they established for all time the values that Delta Zeta and her members would embody: sincere and lasting friendship and unity in action.





**R**emaining true to this vision, this year the Sorority announced the most exciting educational initiative in Delta Zeta's history. The Being More! program begins with a four-year experience for collegiate members tailored specifically for Delta Zeta based on a competency model for successful women leaders, founded by The Leadership Institute - Women with Purpose (The LI). Future opportunities for alumnae member development are in progress.

The Delta Zeta experience has always inspired and strengthened our members to become leaders who enrich lives. That experience has a positive, lasting impact on the women our members become, the work they do, and the way they are inspired to lead, serve and give.

Each facet of the collegiate member experience, which focuses on scholastics, standards, service, social, sisterhood and self, is developed through nationally-recognized programs and opportunities for growth. It is an experience that inspires members to reach their full potential (to be more), educates them for character (to care more) and challenges them to solve the problems they will face in this complex world (to do more). The experience fosters a desire to not simply act, but to act intellectually and ethically to change the world.

The LI's competency model, which identifies and defines the top traits for women to be successful leaders, has been validated by top business and community leaders, and allows all women the opportunity to grow and develop as they reach their potential. The competencies identified for Delta Zeta's program are: Confidence, Values and Maintains Relationships, Communicates Effectively, Personal Life Balance, Possesses Expertise and Critical Thinking, and Resolving Conflict.

These competencies mirror the tenets in Delta Zeta's Creed: Faith, Growth, Steadfast Love, Giving Graciously, Temperance, Insight, Courage and Truth. The program will better prepare members to meet the challenges and opportunities they face within their chapters, in leadership roles, and as they transition out of the collegiate experience into alumnae and professional life.

Jeanine P. Triplett, Delta Zeta National President, said, "Our partnership with The Leadership Institute - Women with Purpose ensures that Delta Zeta will stay on the cutting edge of women's leadership experiences and preparation."

The Leadership Institute - Women with Purpose is a nationally-renowned training organization based in Indianapolis, Indiana, founded by women and committed to serving women in their leadership development so that they reach their potential. Erin Fischer, Chief Program Officer of the LI, said, "Delta Zeta is an incredible organization. We can feel the energy and passion of an organization that wants so much for its members. Those are the kind of partnerships we embrace."

PROGRAM SUPPORTED BY  
CONTRIBUTIONS TO  
THE DELTA ZETA FOUNDATION

DELTA ZETA  
*Foundation*



Within Delta Zeta, Being More! will prepare women who will lead with conviction in their chapters and on a national level for the Sorority. Beyond Delta Zeta, these women will be prepared to meet future life experiences with confidence and compassion. Members will be inspired to fulfill their potential and become strong and responsible citizens of the global community.

The four-year collegiate experience is tailored for each class year: freshman, sophomore, junior and senior. Fischer emphasized how the life skills gained from Being More! will provide the foundation from which women can build strong, honest and healthy lives. "The same things that we need now are the things that we'll need later," Fischer said. "It's about having healthy relationships with people, having personal confidence and making sure that you're bringing the best version of yourself to the table each and every day."

Delta Zeta's initiative is truly unique, and uses the Sorority's founding principles to prepare members for challenges in their lives as daughters, students, alumnae, professionals, wives and mothers. The life lessons learned though Being More! carry into academic achievement, professional development, interacting with others, communication effectiveness and personal life balance, among others. Participants fully understand the impact of their actions, the weight their word

carries, the value of opportunity and what it means to be a Delta Zeta in today's world – within and outside of the Sorority.

Fischer said, "Navigating conflict, communicating effectively, living an integrated, balanced life – those things are just as important today as they will be 10-30 years down the road."

Being More! addresses specific needs in each of the four collegiate class years. Moreover, peers have the opportunity to facilitate, allowing them to learn and grow with the participants. "It's a way for women to stay connected and have genuine conversations," Fischer said. "When you trust the women that you are working with, you open up and share the areas that you want to improve and grow in. That's when the magic happens – the 'aha' moment."

Being More! is more than a program. Its principles are instilled in our members, and it becomes a road map to guide them in their personal journey of growth and understanding. Because it contains fundamentals that will serve a woman throughout her life, the potential for her to grow, succeed and influence is limitless.

The confident woman is then inspired to go farther – to embrace leadership, address challenges and live her life with strength and purpose, fulfilling Delta Zeta's ideals as well as her own.



### **Being More! as a Professional**

One of the most valuable lessons women will learn from Being More! is one that The LI's Erin Fischer said employers are hungry for in today's professional world.

"To develop yourself and become self-aware, to be open to feedback and personal development, sets you far apart from other candidates," explained Fischer. "Someone is going to hire you because they truly think that you are the person they want to work with."

"Learning the skills of facilitation, having the confidence to get in front of a group, learning to think ahead and anticipate questions that may come to you – these are all huge resume-builders for women."





In collegiate or alumnae life, our relationships – with ourselves, with others, and with the things we want to accomplish – are an integral part of leading a fulfilling life. Having a greater knowledge of self better prepares you for these relationships and for success in life – success as an honorable and respected human being.

The Sorority has partnered with Plaid, a professional consulting company, to enhance the educational and leadership opportunities we provide to our members. At Delta Zeta's collegiate educational events this year, chapter officers learned how Plaid can guide them to becoming better in all their relationships and, ultimately, life.

Plaid uses The Birkman Method®, a personality assessment tool, to pinpoint specific behaviors, needs and motivations imbedded within each individual.

Results of the assessment outline a person's interests, usual behavior, perceptual filter and stress behavior.



This information is presented to the participant visually by classifying their characteristics in broad colors. Members then explore and discover new insight about themselves and their relationships with those around them. When each person's color interacts with another, the tapestry of these many colors, existing in harmony, creates the pattern of plaid.

Earlier this year, the Sorority began training all active chapter presidents and alumnae leadership on implementing Plaid's programs. Fundraising efforts for the different development programs will continue to support this exciting endeavor. All Delta Zeta undergraduates and alumnae will take part in the Plaid program, giving them the opportunity to enhance their self-awareness and to better understand human behavior.

Dawn Watkins, Ph.D., Vice President of Plaid, sees the enlightenment that Plaid

brings. "Plaid's goal is to help individuals understand themselves so they can better contribute to their organizations and, ultimately, the world around them. Without an understanding of self – for example, what are our true motivators? What stresses us out to the point that it derails progress? – people cannot perform at their optimal level.

"This is true both personally and professionally. In the end, it's about demonstrating that the fraternal movement is filled with students who have the potential to positively lead on college campuses; we have to work together to tap into that potential."

Watkins and her colleagues are excited to work with Delta Zeta. "As we work with Delta Zeta students, staff and volunteers, we are impressed with the shared vision to grow, as individuals and as an organization. With Plaid's goal of tapping into the leadership potential of student leaders, we are excited to partner with an organization that is true to its mission of enriching the world around them," she said.

## The Birkman Method®

Dawn Watkins, Ph.D., Vice President of Plaid, explained why the Birkman Method® is used as an assessment tool.

"There are many excellent assessment tools available to organizations. We prefer the Birkman for a number of reasons. The chief reason is that it offers insights consistent with other tools (like understanding one's strengths), but it also explores how we perform under stress. Understanding one's stress points is important as a leader. It would be great if all of us acted the same all the time and if leadership was always easy. But the truth is that stress doesn't always bring out the best in people, and being a leader is not stress-free. By understanding our stress triggers, we can work to modify them so we're working from a healthier place.



"Part of what we do is teach participants how to recognize stress behaviors in others as well, and meet them where they are, so problem-solving can occur rather than problem escalation.

"Participants have shared with me that they see how they'll be able to use what they learn beyond their college years. We love hearing this! It's because of progressive organizations like Delta Zeta that sorority women can truly effect positive societal change after graduation."



The conference, named for Norma Minch Andrisek, Baldwin Wallace (OH) - ΓΑ, Past National President, and held at Miami University in Oxford, Ohio in off-convention years, is the premiere leadership event for Delta Zeta's collegiate leaders, and an essential element of Delta Zeta's commitment to leadership.



# DO MORE. CARE MORE. BE MORE.

Leadership is personal. It begins with one person, who then shares her vision with others. The thoughtful leader does more. She cares more. She is more, and those she leads become more, too.

**A**t the 2013 Norma Minch Andrisek Leadership Conference, held on July 18-21, 2013 in Oxford, Ohio, collegiate leaders were challenged to find their best self through sessions that guided them through understanding and awareness of themselves. Equipped with this knowledge, these women then discovered how to enthuse and inspire others through love and trust, and lead Delta Zeta to enrich the world.



# 2013 Norma Minch Andrisek Leadership Conference



Through participation in the Norma Minch Andrisek Leadership Conference, participants:

- Took responsibility for themselves, others and Delta Zeta to do more.
- Developed respect for themselves, others and Delta Zeta to care more.
- Challenged themselves, others and Delta Zeta to be more.
- Learned how to use Delta Zeta's principles to enrich the world.

## BEING MORE!

Dynamic keynote speakers and presentations energized the conference participants, imparting indelible messages to them to enable them to do more, care more and be more.

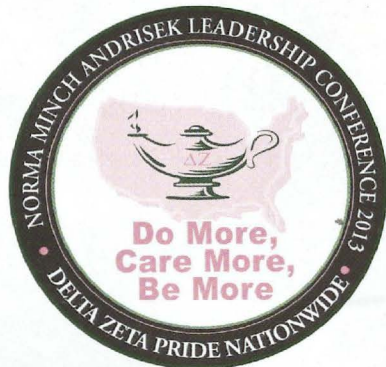
**Mike Dilbeck** is the founder and president of the **RESPONSE ABILITY (RA)** Project (see Issue 3 -2012 of The LAMP). He empowers others to be an Every|Day Hero in their lives and not participate in bystander behavior. He works to expand the RA Project and the Every|Day Hero Campaign, of which Delta Zeta is a sponsor, through articles and blog posts, appearing in the media, and conducting trainings and workshops.

**Pete Smithhisler** is one of the nation's foremost advocates for the fraternal movement due to his extensive work with students, higher education partners, and governmental agencies. Utilizing 25 years of experience in higher education and his current role as president and CEO for the **North-American Interfraternity Conference**

(NIC), he presents students with real world challenges and compels them to broaden their leadership capacity to confront the problems facing fraternity and sorority life. Focusing on the fraternal building blocks of values, Ritual, and service to others, Pete inspires students to fundamentally rethink their individual impact and empowers students to develop the courage to create positive change within their values-based student organizations.

Presenters from Plaid, a professional consulting company specializing in all aspects of personal and organizational development, helped the officers discover more about "Being. Better." Participants' heightened self-awareness led them to understand more about what kind of leaders they can become.





### Alumnae Demonstrate Leadership

Two panel discussions with impressive Delta Zeta alumnae reinforced the bond of sisterhood and demonstrated to the collegiate audience that Delta Zeta is for a lifetime. The conference was honored to have three Past National Presidents, Norma Minch Andrisek, Baldwin Wallace (OH) - ΓΑ, Marvona Easley Tavlin, Southwestern Oklahoma State - ΕΑ, and Michelle Albrecht Smith, California/Los Angeles - ΑΧ, join Jeanine Petersen Triplett, Louisville (KY) - ΒΓ, National President, for an inspired conversation about sisterhood, role models and their leadership journeys.

The second session featured distinguished Delta Zeta alumnae on a panel that offered their best advice on personal and professional success, networking

and resources within Delta Zeta, and mentoring. Panel members were:

- **Sheila Johnson Burkett**, Missouri/ St. Louis - ΙΕ, President and Founder of Spry Digital, LLC., and 2006 Achoth Award winner.
- **Meredith DeBoom**, Iowa - Ι, Ph.D. student at the University of Colorado Boulder, with research focusing on the politics of resource extraction in southern Africa. She is a 2009 Grace Mason Lundy Award winner and served on the Delta Zeta National Academics Committee.
- **Tina Prather McIntosh**, Ball State (IN) - ΓΧ, President and Founder of Joy's House Care and Community for Adults.
- **Barbara Poremba**, Connecticut - ΓΒ, Vice President, National Retail Sales at Coca-Cola Refreshments, and a Delta Zeta Foundation Trustee.

Norma Minch Andrisek gave the collegiate leaders their charge: "The future is here – in this room. Go back to your chapters and create change!" The 2013 Norma Minch Andrisek Leadership Conference provided these collegians with the leadership education to enrich the world.

### You've Got to Have Friends

Friends of Delta Zeta (FODZ) are parents, family, friends, Greek advisors, community members, other students or simply those who believe in our ability to enrich the world.

FODZ volunteer as program faculty and in other roles supporting the educational mission of the Norma Minch Andrisek Leadership Conference.

Chandra Daffer, Fort Hays State - ΔΩ, National Training and Program Development Committee member, says, "Our FODZ's background and experience gives our collegiate members a different perspective on campus life. I know collegians have had some very powerful conversations with FODZ. They truly believe in what we are doing."

Jenny Levering, Director of the Cliff Alexander Office of Fraternity and Sorority Life & Student Activities at Miami University, discusses her experience as a facilitator. "The conference was an outstanding opportunity for students as well as friends of Delta Zeta. From the curriculum to the small group interactions to the historical educational tour of Miami University and the Sorority's birthplace, it was an honor and privilege to participate."







# Where is Delta Zeta Going Next?

## The Sorority Expands with Upcoming Colonizations

**D**elta Zeta Sorority was recently chosen to colonize at Indiana University-Purdue University Indianapolis (IUPUI). IUPUI is Indiana's premier urban public research university. Delta Zeta will become the fifth National Panhellenic Conference chapter on the IUPUI campus when colonization begins in the spring of 2014.

Offering more than 250 degrees in 19 schools, IUPUI is Indiana's most comprehensive university with 30,461 students. The campus has a health and life sciences focus, with a medical school and a nursing school among the largest in the nation. The School of Public and Environmental Affairs at IUPUI ranked sixth in the country in Nonprofit Management in 2012. The university's Robert H. McKinney School of Law ranked one of the ten "Greenest Law Schools" in 2010 by Pre-Law Magazine, and in 2012, IUPUI ranked seventh by U.S. News and World Report in "Up-and-Coming National Universities."

In addition, Delta Zeta Sorority will be colonizing on the University of West Georgia campus in the fall of 2014; returning to colonize at the Bucknell University campus in the fall of 2015 (Bucknell was home to Delta Zeta's Beta Theta Chapter from 1930-1978); and will begin colonization at Murray State University in the fall of 2016. We are excited to be a part of these higher educational institutions and look forward to welcoming their students to Delta Zeta.

"Delta Zeta Sorority is excited about becoming a part of the IUPUI campus," said Jeanine P. Triplett, National President. "This expansion opens new opportunities for the Sorority, and brings personal and leadership development possibilities to women students at the university. Moreover, we look forward to being a valuable and contributing organization to the fraternal community. The university's mission to advance the intellectual growth of students to the highest levels nationally and internationally through research and creative activity, teaching and learning, and civic engagement are aligned with Delta Zeta's core values."



## Lynnda Wolf Hoefler,

### Delta Zeta National Panhellenic Conference Delegate, Appointed to National Panhellenic Conference's Executive Committee

**T**he National Panhellenic Conference (NPC) has appointed Lynnda Wolf Hoefler, Kent State (OH) – ΓΚ, Delta Zeta National Panhellenic Conference

Delegate, to the Conference's Executive Committee for the 2013-2015 biennium. Lynnda serves as Budget & Finance Committee chairman and assumed her duties in October, when the NPC convened in Los Angeles, California, for its annual meeting. The installation ceremony was streamed live from the NPC Annual Meeting, held October 10-12, 2013, and was available via the Delta Zeta national website at <http://www.deltazeta.org>.

The National Panhellenic Conference is the premier advocacy and support organization for the advancement of the sorority experience. The NPC provides support and guidance for its 26 member inter/national sororities/women's fraternities and serves as the national voice on contemporary issues of sorority life. It is governed by a 26-member board and a five-member Executive Committee. The Advocacy Committee chairman, Panhellenics Committee chairman, and Budget & Finance Committee chairman are appointed by the NPC chairman, approved by the Board of Directors and serve as voting members of the Executive Committee.

Lynnda has served as Delta Zeta Sorority's National Panhellenic Conference Delegate on the National Council since 2002. She previously served on the Council as National Vice President of Membership (1993-1998), National Treasurer (1989-1993) and National Director/College Chapter Finances (1987-1991). In addition, she has served on



the National Extension Committee, National Membership Development Committee, National Philanthropy Development Committee, National Housing Corporation and as National Chairman for both the Field Activities Committee and the Finance Committee.

Lynnda has served the National Panhellenic Conference since 1993 as a College Panhellenics Committee Area Advisor for campuses in both Michigan and Ohio. She previously served the conference as the Area Advisor Coordinator for Mid America, on the Judiciary Appeals Committee, the Recruitment Committee, and currently on the Budget & Finance Committee, and has participated in several NPC Consulting Team campus visits. Additionally, Lynnda

serves during sorority recruitment as an RFM Specialist. She is also a member of the Association of Fraternity/Sorority Advisors.

Lynnda, who holds a bachelor's degree in Education for the Speech and Hearing Impaired from Kent State University, works part time as a standardized patient/actor in the Wasson Center for Clinical Skills, Training, Assessment and Scholarship at the Northeast Ohio Medical University in Rootstown, Ohio. She volunteers for various charities in her community, assists her local chapter at Kent State University on the House Corporation Board and is a member of the Kent Alumnae Chapter.

In addition to Lynnda, the Delta Zeta NPC Delegation includes: Phyllis Sundberg Davis, Alabama - ΑΓ, Past National Officer, National Panhellenic Conference First Alternate Delegate, Recruitment Committee Chairman and College Panhellenics Committee Area Advisor; Michelle Albrecht Smith, California/Los Angeles - ΑΧ, Past National President, National Panhellenic Conference Second Alternate Delegate, University Document Review Committee member and College Panhellenics Committee Area Advisor; Kathi Bray Heatherly, Central Oklahoma - ΕΥ, Past National Officer, National Panhellenic Conference Third Alternate Delegate, Alumnae Panhellenics Committee Chairman, Area Advisor Coordinator and College Panhellenics Committee Area Advisor; Jeanine Petersen Triplett, Louisville (KY) - ΒΓ, National President, and Cindy Winslow Menges, Miami (OH) - Α, Executive Director, also attend the meetings of the National Panhellenic Conference.

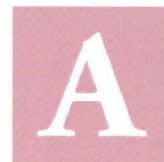
See more about Delta Zeta's history with the NPC in "From the Archives" on page 17.





National Panhellenic Conference  
*the voice for sorority advancement*

## More from the NPC



As the National Panhellenic Conference (NPC) neared the end of the year with its Annual Meeting in October, Jane H. Sutton, Alpha Xi Delta, Chairman,

reported on the organization's progress during 2013.

"NPC's advocacy efforts extended to the NASPA Greek Summit, the White House event on Girls in Leadership, a continuing participation in the Coalition of Higher Education Associations for Substance Abuse Prevention and a new initiative this year with the National Alliance on Mental Illness (NAMI). Through NAMI, we're bringing a new educational resource to students and advisors this year for mental health awareness – which is a centerpiece of this year's annual report.

"More than 130 women spent time on Capitol Hill this spring to advocate for measures that improve the lives of college students everywhere. Panhellenic women have been advocating for better laws during Hill trips for the past 11 years. Many college members give up the traditional spring break trips to mingle with their federal lawmakers, including the historic number of women who were elected to the U.S. Senate.

"About 30,000 women participated on Facebook in NPC's celebration of International Badge Day on March 4 this year, pledging to wear their sorority pins. At the same time, dozens of collegiate women from Columbia University and New York University and alumnae members from the area traveled to Rockefeller Plaza for a live broadcast of "The Today Show" to celebrate with their badges and signs.

"We are recognizing outstanding advisors, Alumnae Panhellenics and College Panhellenics who always provide the best of what sorority women have to offer."



Front: Lisa McCoy, Kathryn Duris and Sara Leary. Back: Caroline Ott, Christina Stevenson, Mary Waterman and Mary Osbourne.

## Delta Zeta Announces 2013-2014 Educational Leadership Consultants

Delta Zeta Sorority introduced the women who were selected to serve as Educational Leadership Consultants for the 2013-2014 school year. The women serving in this position for a second year are designated as such.

- Kathryn Duris, Louisiana State - Σ
- Sara Leary, South Carolina - ΒΔ (second year)
- Lisa McCoy, Rollins (FL) - ΠΘ
- Mary Osbourne, Northern Kentucky - ΚΒ
- Caroline Ott, Ohio State - Θ
- Christina Stevenson, North Carolina/Wilmington, ΞΘ (second year)
- Mary Waterman, San Diego State (CA) - ΓΟ (second year)

Educational Leadership Consultants hold one of the most important jobs in Delta Zeta. Serving as the national liaison to college chapters, they enrich the collegiate experience with their knowledge and cultivate leadership. They visit Delta Zeta's collegiate chapters around the country to advise chapter executive boards and chairmen, assist in the planning and implementation of membership recruitment activities, and deliver leadership development and educational programs throughout the academic year.





**LIVE OUT LOUD**  
CREATING CONVERSATIONS ABOUT MONEY

**Loral Langemeier, Delta Zeta  
2013 Woman of the Year, helps  
thousands find their path and  
create their destiny.**



Loral was a financial expert on the “Dr. Phil” show and has appeared frequently on “The View,” CNN, CNBC and Fox News Channel. Her Live Out Loud philosophy (<http://www.liveoutloud.com>) encourages others to take the first step toward financial freedom.

“I am a single mom,” says Loral, “with a seven-year-old daughter and a 14-year-old son. I teach many single parents, because there can be a lot of excuses in being a single parent. You don’t have to struggle. The thinking I want you to consider is this: Instead of saying ‘I can’t afford it,’ you say, ‘How can I afford it?’ Women have to think bigger about money and their business. Then you become more assertive and say, ‘How am I going to demand that my business make money?’”

With her straightforward message on how to attain financial freedom, Loral has taught thousands of ordinary people how to generate cash and build wealth. As Founder and CEO of Live Out Loud, Loral has shared her proprietary Wealth Cycle® strategies at seminars across the country, teaching people her simple recipe for capitalizing on their skills and passions to build their fortunes.

“Do what you *want to do* instead of living from compromise,” Loral says with enthusiasm and resolve in her voice. “Say, ‘How can I serve? How can I serve people’s lives in such a way that they will compensate me for the exchange of the service?’ Women, especially I think, trade and barter services, and often it is not equal exchange. The thing that you are going to provide to the world, you have to own that and hold that with a lot of value. If you have a charity that you want to give money to, don’t give away your business. You will give to charity the way that you want to give, and then demand your business makes the money.”

# Create the life you want!

**F**or Loral Langemeier, Nebraska Wesleyan – BT, Delta Zeta 2013 Woman of the Year, there are no excuses. She believes that every person can say YES! to their dreams and live the life they have always wanted. While this might sound like a fairy tale to some, Loral is proof that dreams come true. She is one of today’s most dynamic and pioneering entrepreneurial experts and financial strategists. A five-time New York Times and Wall Street Journal best-selling author and a leading educational speaker, Loral has inspired thousands across the country to attain millionaire status by giving them the simple tools to launch innovative businesses that generate cash and build wealth.

Photos: Live Out Loud



## From Midwestern Roots to Empowering Entrepreneurs

Loral says her forthright approach comes from her Midwestern upbringing, which included growing up on a farm in Nebraska and attending Nebraska Wesleyan University, where she became a member of the Beta Tau Chapter. “My sorority sisters are still some of my best friends. I became business partners with some of them. We supported each other a lot. Being in a community and understanding the loyalty of a community is invaluable, and you honor people’s gifts within the community,” she says.

As a collegian, she also knew that she wanted to take a different path than the “occupational” one chosen by many students. Passionate about fitness, Loral started teaching aerobics classes and did personal training her first semester at the university. “I worked my way through school as an entrepreneur,” she says today, as she fondly remembers her Beta Tau sisters taking her classes.

“**An important message for women is that you don’t have to drop out of school to make an entrepreneurial choice. That’s what I find with a lot of people — they say, ‘I dropped out of school because I didn’t want to end up in corporate America.’ You don’t have to drop out — just pick a different path.**”

With degrees in business and finance and a master’s in human development and behavior, Loral worked for two major American corporations, including the Fortune 500 company Chevron, where she built over 200 fitness centers on offshore rigs for the corporation.

After meeting Robert Kiyosaki (before his “Rich Dad, Poor Dad” series), Loral was Master Distributor of his financial board game, Cashflow, then began dealing in real estate. “Others pursued me,” she says. “They wanted me to teach them, which got me into real estate coaching.”

After creating her first \$1 million, Loral says, “Since I knew how to help people get healthy, I figured I’d use those same training skills and help them get wealthy. How you work with people, how you

motivate people, how you coach and inspire people — are similar, no matter what the subject matter.” Loral grew Live Out Loud into a multi-million company in only five years.

Based on her core beliefs, Loral’s coaching is very different than that of many of today’s financial coaches. Loral knows that one of the biggest mistakes many make is concentrating on getting out of debt first rather than creating new money.

Loral likens a business to an airplane. “I want you to make money, and get this plane in the air. So it needs a lot of attention and the first money goes to pay for the gas to get it in the air. If you have bad debt, it is only the result of past bad decisions. Now you’ve changed your mind and you’re going to use good decisions and make some money. So new money will get that plane in the air, and over time you’ll pay down that bad debt. If all you do is pay down bad debt, what do you have in three years? You feel good that you’re out of debt, but you don’t have a marketing machine, you don’t have a website, you’re not making

money. It’s a very different thinking process to grow cash.

“By spending your first money towards growth, then you actually have a business system. You have the ability to create new money with the first money you make,” she concludes.

### Financial Literacy Starts at Home

Loral puts her teachings into practice in her own home, especially with her children, daughter, Tristin, and son, Logan. “When they want something and say they don’t have any money, my first response is, ‘What do you want to do to create some?’” Loral challenges their creativity and intelligence, encouraging them to create their own “businesses” to bring the money in, and instilling a valuable work ethic within them.

“My son loves skiing and for his 14th birthday, he wanted the necessary equipment to start a ski-waxing business,” Loral says. “He charges five dollars per ski. He’s creating new money waxing and tuning skis. At a young age, start teaching your children that money is an exchange of energy. People pay you money for the things they want, while money buys you things you want.”

Loral knows that financial literacy for children is an enormous need in our country. “If you go forward,” she says, “two generations of entrepreneurs would change our nation. Whenever an adult comes to my trainings, they can bring their teen for free. Last year, we did over \$1 million of teen scholarships where teenagers came to my events, typically with a parent, for free. We create teenage entrepreneurs. I was on ‘The View’ with some of my teenage millionaires.”

Loral’s passion is a commitment to families and the environment. Live Out Loud gives to local women’s shelters and adopts local families for the holidays. “Another cause that is near and dear to my heart, probably because I grew up on a farm, is animals,” Loral says. “The Lake Tahoe Bear League is another recipient of my organization’s generosity.”

With the Woman of the Year Award, Delta Zeta’s highest alumna award, giving has come full circle for Loral. “Delta Zeta is, even on a broader national level, honoring people’s gifts, sharing, giving support,” she says. “I remember the nights at the chapter house — the in-house tutoring sessions from someone who was better at some topics than you were. You really take that into your life. That’s how we live life — that collaboration of a community, and the loyalty of a community. How you live in it and make your role in it are some of the most valuable lessons that were passed on to me.”

**Visit Loral on the Web at**  
<http://www.liveoutloud.com/>.

**Read more from Loral in The LAMP online at <http://www.deltazeta.org/aboutus/thelamp>, as she discusses making the entrepreneurial life choice and has more great ideas for instilling financial literacy in your children.**



# DELTA ZETA SORORITY

## Recommendation for National Council Nomination

This form must be postmarked and mailed or emailed no later than Midnight, EST, February 10, 2014 to **both**:

**Karly K. Burns**  
2014 Nominating Committee Chairman  
Past National President  
331 7th Avenue North  
Tierra Verde, FL 33715  
burnsfl@aol.com

**AND**

**Anne Marie Jones Gavin**  
National Constitution Chairman  
3264 Swan Drive  
Vineland, NJ 08361  
amgavin1@comcast.net

I recommend: \_\_\_\_\_  
Last name First name Middle name Maiden name

Address \_\_\_\_\_ Do you know the nominee personally? YES ☐ NO ☐  
Street City State Zip

If yes, how long have you known this nominee and in what capacity? \_\_\_\_\_

If not, why are you nominating this person? \_\_\_\_\_

For what offices are you recommending this nominee? \_\_\_\_\_

Reasons for recommending this nominee: \_\_\_\_\_

Recommended by (Print or type your name) \_\_\_\_\_  
First Maiden Married

Your signature (first, maiden, married name) \_\_\_\_\_ College Chapter Alumnae Chapter

Address \_\_\_\_\_  
Street City State Zip

Home Phone \_\_\_\_\_ Work Phone \_\_\_\_\_  
(area code) (area code)

**Please use an additional sheet of paper if more space is needed. This form may be copied if making more than one recommendation. In order for your recommendation to be considered, you must fill out the form completely, sign the form and mail or email the form as a PDF attachment to both the Nominating Committee Chairman and the National Constitution Chairman. Delta Zeta Sorority assumes no responsibility for confidentiality of information communicated to the committee via electronic means, nor for communication which is misdirected and potentially never received.**

## YOU CAN SHARE IN THE ELECTION OF NATIONAL COUNCIL

Delta Zeta's National Council will be elected by the delegates at the 2014 National Convention held at the JW Marriott Starr Pass Resort & Spa in Tucson, Arizona, in accordance with the provisions in the *Constitution* of the Delta Zeta Sorority. This is a great opportunity for all Delta Zeta members, in good standing, to participate in the nominating process by making a recommendation. Members of National Council are chosen from alumnae members of wide sorority, professional and volunteer experiences or service to Delta Zeta and other organizations.

The Nominating Committee is made up of a Chairman who is a Past National Officer appointed by National Council, and eight members from the following groups: National District Directors or Regional Collegiate Directors, Area Alumnae Directors, College Chapter Directors, National Standing Committee Chairmen, Alumnae Chapters, and College Chapters.

Help Delta Zeta choose the officers who will lead the Sorority by submitting your recommendation forms today.

**Nominating Committee Chairman, Karly K. Burns,**  
East Carolina (NC) - ZA Past National President

**Nominating Committee**  
**Diane DiOrio Raffle,** Edinboro (PA) - 1A  
Area Alumnae Director, Mid-Atlantic Area

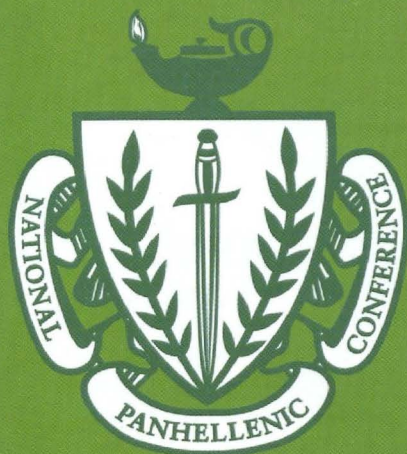
**Tracy Wilson LeSieur,** Texas A&M - AE  
National Standards Chairman

**Sara Lendzinski Eppenstein,** EZ - Drexel University  
**Jessica Smith,** EΘ - University of North Carolina/Wilmington  
College Chapter Directors

**Lyndsay Bradley,** Texas A&M - AE  
Austin Alumnae Chapter - Alumnae Chapter

**California State University/Northridge - Pi Gamma Chapter**  
**Clarkson University - Xi Rho Chapter**  
College Chapters





Delta Zeta Sorority shares the founding year of 1902 with the NPC, and joined the organization in 1910. The National Panhellenic Conference is the premier advocacy and support organization for the advancement of the sorority experience. Delta Zeta members have had the honor of serving the NPC in many capacities. Here are the women who served as NPC Chairmen or chairmen of national committees for the NPC.

## From the Archives

### Delta Zeta's National Panhellenic Conference (NPC) History



Rene Sebring Smith, Miami (OH) - A, and Gwen Moss McKeeman, Northeastern State (OK) - ΔΦ



**R**ene Sebring Smith, Miami (OH) - A, Delta Zeta National President from 1920-1924, was Chairman of the NPC from 1929-1931.

Irene Caroline Boughton, Iowa - I, Delta Zeta National President from 1936-1938, Executive Secretary for Delta Zeta from 1928-66, and Editor of The LAMP from 1940-1945, was NPC Chairman of Central Office Executives in 1949.

Gertrude Houk Fariss, Oregon - Ω, Delta Zeta National President from 1948-1952, was NPC Chairman of the College Panhellenics Committee from 1955-1960.

Evelyn Adams Costello, Knox (IL) - N, Delta Zeta National President from 1956-1960, was NPC Chairman of the City Panhellenics Committee from 1960-1966.

Gwen Moss McKeeman, Northeastern State (OK) - ΔΦ, Delta Zeta Past National Officer and Editor of The LAMP, was NPC Executive Committee Treasurer in 1971; NPC Secretary and Chairman of the Interfraternal Research/Advisory Council from 1973-1975; NPC Chairman from 1975-1977, and the National Panhellenic Editors Conference Chairman from 1989-1991.

Cynthia Winslow Menges, Miami (OH) - A, Delta Zeta Sorority Executive Director, was NPC Chairman of the Central Office Executives from 1989-1991.

Sandra McAlister Fisher, Auburn (AL) - BΞ, Delta Zeta National President from 1994-1998, was Chairman of the NPC Housing Committee from 1999-2001.

Jamie Hammill, South Carolina - BΔ, Past National Officer, was Chairman of the Long Range Planning Committee from 2002-2003.

Anne Marie Jones Gavin, Tufts (MA) - ΔI, National Constitution Chairman and Past National Officer of Delta Zeta Sorority, was Treasurer of the National Panhellenic Conference (NPC) Foundation from 2008-2011.

On the local level, Delta Zetas serve as officers of their college and alumnae Panhellenics.

**As a national leader among women's organizations, Delta Zeta will continue to play a very important role within the National Panhellenic Conference.**



# Alumnae Engagement

This biennium, one of Delta Zeta's national goals is to Engage and Energize our alumnae. Delta Zeta alumnae are connecting, networking and engaging every day!

Here are some great ways to connect through our shared sisterhood.

## CONNECT

### UPDATE YOUR INFORMATION

Go to <http://www.deltazeta.org> and click on "Members" or call us at (513) 523-7597 to ensure you receive The LAMP and stay connected.

### CONNECT WITH YOUR CHAPTER ASSOCIATION

Each member initiated into a Delta Zeta chapter becomes a member of that chapter association. The chapter letter bond is what makes everyone a part of a chapter association.

Contact [Volunteer@dzshq.com](mailto:Volunteer@dzshq.com) or National Headquarters to connect with your Chapter Association.

### FIND A SISTER

Register or log into the Members page of <http://www.deltazeta.org>, then click on "Connect a Lost Sister" from the menu at the bottom of the page, or contact National Headquarters at (513) 523-7597 to connect with a sister or help find sisters by using the Lost Sisters Tool on our national website.

### REUNITE

Delta Zeta reunions and gatherings are happening every day. Find them on the Members page of <http://www.deltazeta.org>.

Go to Events > Reunions and Gatherings, or contact a nearby alumnae chapter or your State Coordinator (contact information is found on the Members page of <http://www.deltazeta.org>. Click on Top Resources > National Directory), follow Delta Zeta's social media channels, or contact National Headquarters at (513) 523-7597.



### STAY INFORMED

Wherever you are, we are! Follow us on Twitter, be a fan on Facebook, follow our Pinterest Board or connect on LinkedIn.



# NETWORK



## PROFESSIONAL OPPORTUNITIES

Delta Zeta is a vast network of women in many professions who can assist with job and candidate searches and professional networking opportunities. Visit Delta Zeta's LinkedIn page via our website (<http://www.deltazeta.org>) to connect with other sisters. State Alumnae Chairmen (SACs) and alumnae chapters offer networking events for graduating seniors and/or can sponsor an alumna to speak to a collegiate chapter about professional development or networking. To learn more, find contact information via the Members page of <http://www.deltazeta.org>. Click on "Chapter Locator" from the menu at the bottom of the page, or contact National Headquarters at (513) 523-7597.

# ENGAGE



## ALUMNAE CHAPTERS

During 2011-2012, alumnae chapter membership increased by 10 percent, and continues to grow! This biennium, Delta Zeta has increased its presence by adding 21 new or reorganized alumnae chapters! Alumnae chapters hold social events, mentor collegians and perform vital philanthropic and service projects. Use the "Chapter Locator" feature at the bottom of the national website page to find an alumnae chapter in your area. And if you don't see one, reach out to your State Alumnae Chairman if you are interested in helping start one!

# VOLUNTEER

## VOLUNTEER OPPORTUNITIES

Join thousands of Delta Zetas who are volunteering their time for Delta Zeta. There are many great volunteer opportunities for alumnae. You determine the time and effort you give – from one hour a month to one hour a week or more. Learn more by going to the Members page on the national website. Click on Leadership > Alumnae Involvement > Volunteer Opportunities with Delta Zeta to apply online and see current opportunities. Or, contact National Headquarters at (513) 523-7597.



49 meet and greets were held in U.S. and Europe during 2012-2014. More than 840 alumnae attended. 29 additional events planned by end of biennium.

## MEET AND GREET EVENTS

Connect with sisters in your area by attending an event for sisterhood and much more. Check the Reunions and Gatherings page on the national website (go to the Members page of <http://www.deltazeta.org>, then click on Events > Reunions and Gatherings) and stay connected to our social media channels for upcoming events.

## RECOMMEND A MEMBER

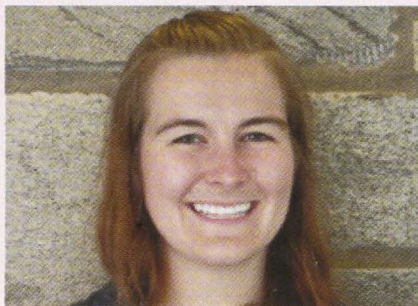
Share your Delta Zeta experience with potential collegiate members! To recommend a member, or introduce a legacy to a Delta Zeta chapter, please use the Recruitment and Legacy Introduction Form online (go to <http://www.deltazeta.org> and click on "Recruitment and Legacy Form" from the menu at the bottom of the page), or contact National Headquarters at (513) 523-7597.



# Distinctive Delta Zetas

Delta Zeta enriches its members' lives and the world community. Delta Zeta collegiate members, fulfilling this philosophy in school and in service through outstanding achievement, are inspirational and exemplify the best of the Sorority.

## Improving healthcare in rural Mozambique



Biomedical engineering student and Epsilon Zeta Chapter member Ivy Koberlein, Panhellenic Delegate, received the prestigious Whitaker International Undergraduate Scholarship for a service project in Chicuque, Mozambique. She is working at the Chicuque Rural Hospital through Drexel University's weServe program. She repairs hospital equipment and teaches hospital technicians how to maintain it.

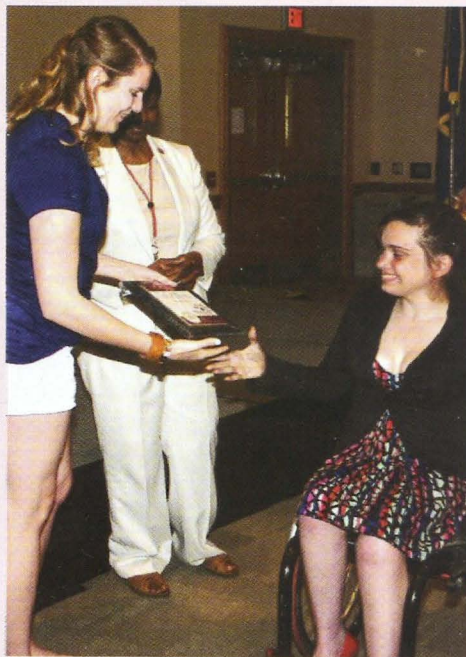
The Whitaker International Program sends U.S. biomedical engineering (or bioengineering) students and graduates overseas to undertake a self-designed project that will enhance their careers within the field.

## Service to her university

Monica Rankin, a member of the Omicron Mu Chapter at the University of South Carolina/Upstate, received the Earl Gordon Medal. The award is presented each year to two members of the graduating

class selected on the basis of service to the university and its students, involvement in campus activities, service to the community, and nobility of character. The award, named after Earl Gordon, the first dean of students at the university, is the highest honor given by the Office of Student Affairs.

## Diversity in Excellence



Brianna Russo (right) accepts the 2013 Diversity in Excellence Woman of the Year award.

Brianna Russo, a member of the Iota Delta Chapter at Edinboro University, was named the Edinboro University 2013 Diversity in Excellence Woman of the Year. She received the award for her commitment to the university. Brianna is a full-time

student athlete on the Fighting Scots women's wheelchair basketball team. In addition, the selection committee recognized her commitment to disability awareness and the inclusion of such students in Greek life on the Edinboro campus.

Brianna says, "I received the award for holding a campus-wide program about what life is really like in a wheelchair. The event brought in Former United States Men's National Wheelchair Basketball Coach, Jim Glatch, and Edinboro fraternity and sorority alumni and collegiate members with physical challenges to answer candidly questions about our daily lives as Greeks with disabilities. None of this would have been possible without Delta Zeta. My planning committee was made up of my chapter sisters, and we reported directly to the director of campus life.

"The night of my program, my sorority sisters sat in the front row and gave me that boost of confidence I needed. Iota Delta has taught me that I can do anything as long as I have sisters behind me. As a result of my program, and the impact it had on the Greeks (inspiring one of the fraternities to adopt the Edinboro wheelchair basketball team as a philanthropy, as well as its lessons in the recruiting of differently-abled students into Greek life), I was nominated for the 2013 Diversity in Excellence Woman of the Year by our Greek Life Graduate Assistant, Robert Smith."



## Outstanding leadership at Temple University

Liz Schell, Delta Tau Chapter President, was recently honored for her outstanding leadership by Temple University's "Her Campus." Each year the organization honors seven outstanding female leaders doing great things on campus and beyond. Her Campus is the number one online community for college women.



A neuroscience major at Temple University, she is the Captain of Administration at Temple University Emergency Medical Services (TUEMS), where she volunteers as an emergency medical technician. Additionally, she is an undergraduate research assistant in the Temple University Cognitive Neuropsychology Lab where she studies mild cognitive impairment in older adults. She is also an active member of Order of Omega and Rho Lambda Honor Societies.

Liz has volunteered with TUEMS since November, 2011, first as a first responder, then emergency medical technician and Infection Control Officer. She has volunteered for the Woodstock Home for Battered Women and Children, Project HOME, National Collegiate Alcohol Awareness Week, Walk a Mile in Her Shoes, Relay for Life, Toys for Tots, the Red Cross and Street Tails Animal Shelter. Liz has also participated in fundraising events for Philabundance, the American Cancer Society®, the American Heart Association, The Starkey Hearing Foundation, The Painted Turtle camp, the Pennsylvania School for the Deaf, the Children's Hospital of Philadelphia, and the Delta Zeta Foundation.

## Distinguished leader speaks on behalf of women in the Congo



Stacie Schwartz, a junior in the Xi Omicron Chapter at Loyola Marymount University, received the Dr. Renee Harrangue Award for service and leadership. The award

recognizes students who have distinguished themselves as leaders in service "with and for others." As an active member of Jewish World Watch (JWW), Stacie speaks on behalf of women in the Congo who have become voiceless rape victims during war. Stacie brought such issues to LMU's campus, organizing the first Congo Awareness fundraiser, and hopes to continue her tireless efforts with JWW and other organizations, to spread awareness of the violence and human rights violations still occurring in the Congo, which is regularly listed a site of one of the world's worst humanitarian crises.



"In my senior year of high school, I learned of the horrors within the Congo through a presentation from Jewish World Watch. I knew I wanted to do something, but I really did not know how to get involved. It was after joining Delta Zeta and witnessing my sisters around me, some of the most hard-working, driven, inspiring women I have ever met, did I finally get the motivation to actively search for a way to work for JWW," Stacie says. "Delta Zeta teaches you not to think of just yourself, but to think of and help others."

## Supporting speech and hearing at Florida State University



Victoria Underwood, an Alpha Sigma collegiate member, pledged to support Florida State University's philanthropic goal of donating \$10,000

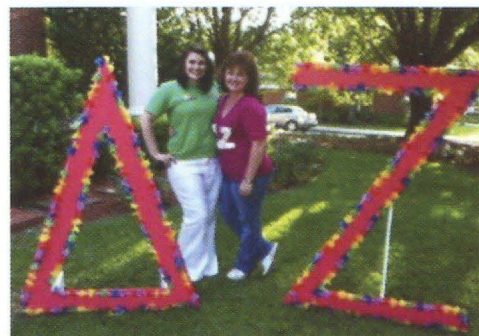
per year for five years toward the College of Communication & Information School of Communication Science & Disorders' planned Integrated Preschool Program. She has committed \$1,000 of her own resources to support the program.

"Delta Zeta's dedication to philanthropies benefiting speech and hearing programs aligns with my personal commitment to give back to Florida State University in general and to the College of Communication and Information specifically," Victoria says. "Delta Zeta taught me that giving back should be personal and something you believe in."

"While the Alpha Sigma Chapter is dedicated to raising money for the Integrated Preschool Program, the Preschool is very close to my

heart, too, because I struggled with significant hearing loss which greatly affected learning how to read. I want children who have the same challenges I had to receive the help they deserve. Delta Zeta taught me to give graciously of what is mine."

Victoria and her mother, Phyllis Swann Underwood, Florida State - AΣ, who coordinated the Delta Zeta Endowment for the School of Communication Science & Disorders Integrated Preschool Program.





# 2012-2013 Florence Hood Miner and Grace Mason Lundy Awards

These annual collegiate awards are often the hallmark of Delta Zeta leaders. National Presidents, Women of the Year and other significant Delta Zeta members have received these important awards – women who have demonstrated inspired leadership as volunteers, in their professions and as Delta Zetas.

## 2012-2013 Florence Hood Miner Awards

The Florence Hood Miner Award was first presented at the 1948 Convention in recognition of Mrs. Miner's service as National Vice President, Editor of The LAMP of Delta Zeta, Historian and other national offices. The award shall be given to members of Delta Zeta who in their junior year made the greatest contribution to their college, chapter and Delta Zeta through outstanding leadership on the campus while maintaining a good academic record.



**Alexandra Butler, Pi Epsilon Chapter,  
Clemson University**

"I would like to work for an international organization and have the chance to travel. I am currently studying abroad in Spain and love seeing different parts of the world."



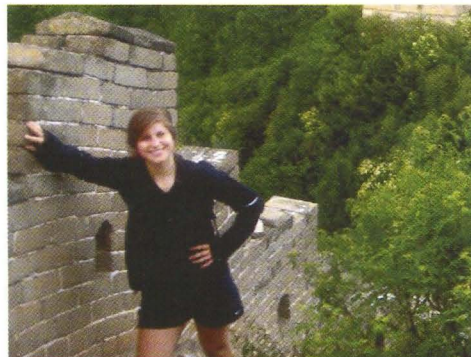
**Tori Heckendorn, Omicron Beta Chapter,  
Richard Stockton College of New Jersey**

"My goal is to be a successful bilingual physical therapist and help patients who can't communicate due to the language barrier. I would like to begin my own physical therapy practice, incorporating holistic health. My passion in life is helping others."



**Shelby Lawson, Beta Gamma Chapter,  
University of Louisville**

"I want to spend a year abroad either teaching or serving as a full-time volunteer in another country. As for a career, I see myself delving into non-profit management at a place similar to my mentorship at our local Family Scholar House. I truly believe my experiences and opportunities in Delta Zeta have helped me set high aspirations."



**Alexis Taylor, Theta Eta Chapter, Creighton  
University**

"I have a love for people, culture and knowledge, and want to raise funds to develop my personal international internship program, possibly helping non-profit micro-financing institutions in India, cultivating the land with organic farmers in New Zealand, or building efficient quality management programs with healthcare professionals in Thailand."



**Katherine Wingate, Xi Upsilon Chapter,  
Northeastern University**

"I will complete and graduate with a Doctorate of Physical Therapy in May 2015 and have an interest in neurology, and brain and spinal cord injuries, as well as sports medicine. I hope to become a clinical specialist in either neurology or musculoskeletal. I have gained numerous transferrable skills through being a part of Delta Zeta that will continue to help me within the community and in my future endeavors."



**Laura Young, Omicron Zeta Chapter,  
Randolph-Macon College**

"I discovered a passion for public service. I plan to pursue a career in political journalism, public service, or student affairs in higher education. Being a part of a team which so directly affects a student's college experience is something I would find rewarding and enjoyable."



# 2012-2013 Grace Mason Lundy Awards

The Grace Mason Lundy Award was first presented at the 1948 Convention in recognition of Mrs. Lundy's many years of service as a National President, Historian and in other national offices. It shall be presented to senior members of Delta Zeta who throughout their college years have given greatest evidence of loyalty, devotion and service to their chapters and to the Sorority.



**Katherine Albrecht, Xi Beta Chapter, Eastern Kentucky University**

"I plan to pursue a Doctoral degree in occupational therapy. I have recently been accepted to Washington University School of Medicine in St. Louis, and will continue my education there. Delta Zeta is the reason I am able to pursue my dreams."



**Lisa McCoy, Pi Theta Chapter, Rollins College**

Lisa, now serving as an Educational Leadership Consultant, says, "After a few years of teaching, I plan to attend graduate school to further my education and knowledge on childhood development. I would not be the woman I am today without Delta Zeta, and I am grateful that I am a part of such an amazing and true sisterhood."



**Caroline Ott, Theta Chapter, The Ohio State University**

Caroline, now serving as an Educational Leadership Consultant, says, "I would like to return to school and receive a Master's in Higher Education and Student Affairs. I have truly found a passion in helping college students transition into the university setting and supporting them in finding their independence. For me, Delta Zeta has meant a chance to not only change the world and the lives of the women around me, but has given me the chance to change my own life for the better."



**Hillary Smith, Epsilon Xi Chapter, University of Central Arkansas**

"I want to go into general dentistry, which will give me the opportunity to educate generations of people about their oral health. I am attracted to the value the profession places on continuing education. Coming from a background that emphasizes making ethical decisions, it is important that my career embodies those values. It is because of Delta Zeta that I developed a heightened sense of social consciousness, acquired a strong work ethic, formed unconditional bonds of friendship, became a prominent leader on the University of Central Arkansas' campus, and developed character consistent with honor, and wisdom gained through leadership experiences."



**Lauren Thornlow, Iota Upsilon Chapter, California State University/Fullerton**

"I plan to obtain a Master's of Information Systems or Master's of Information Technology degree. I will remain involved in Delta Zeta and would like to someday be a collegiate advisor. Delta Zeta provided me with individual growth through education and real-life experiences, but the most rewarding part of my membership is watching the growth and inspiration of others, and thus the success of the chapter."



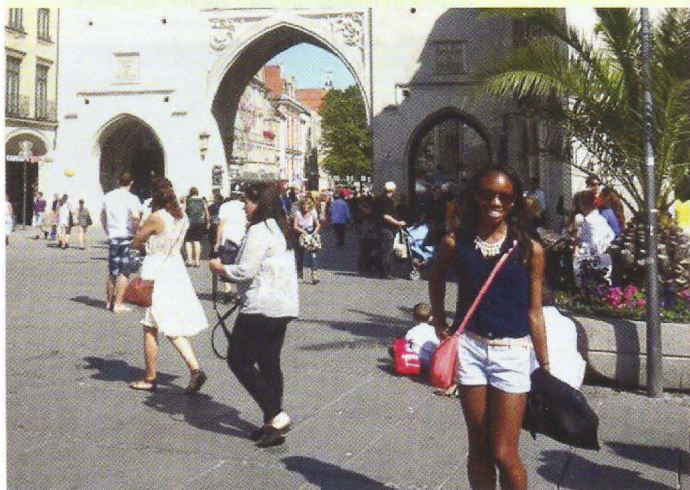
**Paige Waddell, Xi Delta Chapter, Radford University**

"I plan to receive a Doctor of Audiology (Au.D.) degree to become an audiologist. I have always been interested in Communication Disorders, and this is one reason why I chose Delta Zeta. Being a Delta Zeta has furthered my love and passion for my major and my career path. The philanthropic activities that we do reinforce what I love and want to do for the rest of my life. I could not imagine going into a field that did not help others."



# Technology with a Heart

Jordan Jobs of the Epsilon Zeta Chapter at Drexel University makes technology work for people.



Jordan in Munich, Germany. She is currently a Procurement Process Analyst co-op at FMC Corporation, managing her first project in the company with SAP software.

J

ordan Jobs was a commuter student in her first year at Drexel University, an urban campus set in the heart of Philadelphia, Pennsylvania, nationally known for its research and cooperative education programs. Jordan chose as her major a male-dominated and highly technical discipline – Information Systems with a minor in Business. Some first-year college students might be intimidated by these challenges, but not Jordan. She embraced them as an opportunity to excel.

As she attended Drexel University (ranked in the top 100 of “Best Universities” for the past six years by U.S News & World Report), Jordan was seeking her place. Delta Zeta helped her find it. “I chose to join the Epsilon Zeta Chapter because, as a commuter student in a male-dominated major, I thought it was the best way to make friends,” she says. “I loved Delta Zeta immediately, and connected with the women instantaneously because everyone was so genuine.”

While commuter students sometimes feel distanced from their peers on campus, Jordan discovered that Delta Zeta became her haven. “Delta Zeta has been my home away from home,” she says. The Sorority encourages her to succeed, not only for herself, but “to inspire my sisters that there is no mold that they have to fit into,” Jordan says.





Heidelberg, Germany, site of the RISE and RISEprofessional Scholars meeting  
Copyright by DAAD/D. O'Suilleabhain

Now in her third year at Drexel, Jordan has made her mark – not only at the university, but in the Philadelphia community as well. In the summer of 2012, she and Epsilon Zeta sister Kathleen Vaccaro were STAR Scholars at Drexel. The STAR (Students Tackling Advanced Research) Scholars Program matches first-year students with faculty-mentored research or creative projects. Students selected as STAR Scholars must earn a minimum 3.2 cumulative GPA during their freshman year to remain in good standing in the program and are expected to present professional research posters at the STAR Research Day, as well as being invited to present at Drexel's Research Day, and other national and international locations and conferences.

"I worked on how health information is sought by low socio-economic populations. It was a collaboration between the research professors and CHOP (Children's Hospital of Philadelphia) because CHOP is implementing a patient portal for parents to check their children's medical records. I administered

surveys that I designed at five CHOP clinics (three urban and two rural) to parents," Jordan says. "I was featured as a co-author in a conference paper submission to the iConference 2014. The findings should help CHOP decide how to better implement the portal so a wide array of people with different skill levels in technology can access it."

Delta Zeta helped Jordan successfully complete this project. "Due to my community service with Delta Zeta," she says, "collecting the surveys in the urban clinics in Philadelphia was not problematic for me because I've already had the opportunity to give back to the community and engage with people who are different from me. I think being involved in the community you live in is important, and I've been able to do that through my research and my community service with Delta Zeta."

Jordan has found satisfaction in the positions she has held within the Epsilon Zeta Chapter, too. She has been the Health and Wellness Chairman, Athletics Chairman, served as

assistant to the Vice President of New Member Education, and hopes to serve on the Executive Board for the chapter. Beyond Delta Zeta chairmen positions, Jordan served as the head of the Powder-puff Football Committee for Greek Week, leading the Delta Zeta team as undefeated. Currently she is Technology Chairman of Drexel University's Panhellenic Council. "My favorite part of my membership is the continuous opportunity for leadership positions and challenging my abilities," says Jordan.

Her latest endeavor was a research internship abroad through the DAAD RISE Scholar program (<https://www.daad.de/rise/en/>), the German Academic Exchange Service which is a publicly-funded independent organization of higher education institutions in Germany, providing information and financial support to over 67,000 highly-qualified students and faculty for international research and study. "I worked on Smart Home Interface Design by researching different design principles in usability, and worked with electrical engineers at TU Dortmund Universität under my adviser, Falk-Moritz Schaefer," Jordan says. "I also designed the demo of the smart home for the group's future project demo and assisted in the design of the demo room by creating an actual flat with smart home technology inside."

Jordan looks beyond technology to study the human connection. "I'm also interested in how people interact with technology and what makes interfaces and our everyday technology user-friendlier. I am in a technical field, but to stand out amongst my peers when I'm in the corporate world, I plan on using my technical background to communicate effectively with my colleagues or members of future project teams." In her third year out of five at Drexel, Jordan is doing a co-op at FMC Corporation (an American chemical manufacturing company headquartered in Philadelphia, Pennsylvania), which has been a valuable learning experience. Jordan says. "My experience in Delta Zeta through leadership positions has given me the confidence to excel in demanding situations, feel comfortable in front of an audience, and work harmoniously with others."

Delta Zeta has truly opened opportunities for Jordan that she could never have imagined as that first-year commuter student. "The friends I have made in Epsilon Zeta have made my college experience the best it can absolutely be," she says. "I really think I am a better person because of Delta Zeta."



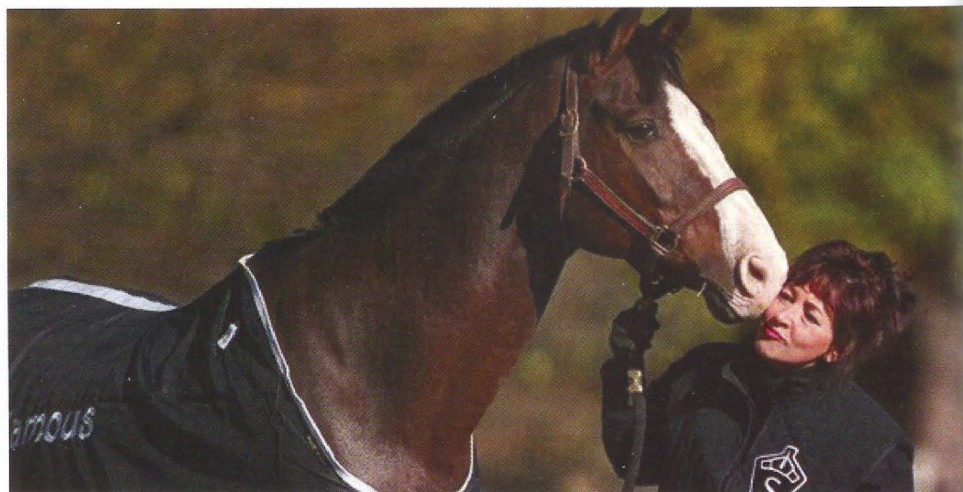


# “To Crusade For Justice”

Nola Tedesco Foulston, Fort Hays (KS) - ΔΩ, stands up for truth and integrity.

**I**'ve been a prosecutor, an AV-rated lawyer\*, animal rights activist, and a serial-killer chaser,” says Nola Tedesco Foulston, Fort Hays (KS) - ΔΩ.

For 24 years, Nola was the elected District Attorney in Sedgwick County, Kansas. With a reputation for being tough on crime and a passionate advocate for victims, especially children, Nola not only prosecuted prominent cases that gained international attention (such as the BTK serial killer Dennis Rader in 2005 and as co-counsel in 2006 before the United States Supreme Court in *Michael Marsh v. State of Kansas* that upheld the constitutionality of the Kansas death penalty law), but she received the prestigious American Bar Association Norm Maleng Minister of Justice Award in 2012, a distinguished honor that has been presented to only nine other attorneys in the country, in recognition of her dedication to justice and her remarkable career.



“When I was a young girl,” Nola says, “my father had a good friend who was an attorney and who was respected and admired for his work. I thought that sounded like a good place for me to be, not realizing how difficult it was at the time for women to be admitted to the profession. Undaunted, I set my sights on law school and met the mark.”

Top: Nola prepared for a press conference when she was District Attorney of Sedgwick County, Kansas.

Below: Nola with one of her beloved horses, Famous, a Swedish Warmblood.

Photos: Wichita Eagle

\*Nola enjoys the privilege of being an AV-rated Attorney by Martindale-Hubbell Peer Review Ratings™, an objective indicator of a lawyer's high ethical standards and professional ability, generated from evaluations of lawyers by other members of the bar and the judiciary in the United States.



“ I didn’t grow up in wealth – I grew up in a loving home and, unfortunately, a lot of children don’t have the benefits that I had as a young person. I tried to make the most of my life. I had ambition and dreams and my parents supported those, and I wish that for every other child, so a lot of my work and focus has been on children’s issues. ”

Under her leadership, the District Attorney’s office grew from 18 to 50 attorneys and implemented its first computer system. “We built bridges with our law enforcement partners, and helped them develop and implement higher standards, because law enforcement was the foundation of our doing well,” Nola continues. “Police officers were trained by my office during their initial time at the police academy. When I was elected District Attorney in 1989, I wanted my office to respond to the community of 500,000, and I wanted it to be the hallmark of professional and ethical conduct. I worked diligently through the years to make sure attorneys, staff and law enforcement under my guidance would follow our mission – ‘to do justice.’”

### Life Lessons through Delta Zeta

“I think people recognized me as a leader before I recognized it in myself, including my sorority sisters,” says Nola with a laugh. She recalls pledging the Delta Omega Chapter because her older sister, JoAnne Tedesco Kreighbaum, also a member of Delta Zeta, convinced her to join. “I maintain my friendships with a number of my sorority sisters, and my sister and I went to the reunion for the 75th anniversary of Delta Omega at Fort Hays State University.”

College and her Delta Zeta experience were integral to Nola’s future success – not only as an attorney, but as a friend, daughter, wife and mother. “Being in a community of women, sharing a home together, and learning how to grow up and grow strong, are the things that I remember well. Along the way, I strengthened my skills – organizational, working smarter, dealing with people and how to be a friend. All were important to my development process as a young woman. We all came from different backgrounds, and we all have gone separate ways, but I still see my Delta Zeta friends.” She adds the most important lesson she learned as a collegian: “I started to take responsibility for my life, and aid others when called upon to assist.”

### The Next Chapter

After retiring as District Attorney in 2013, Nola began a new chapter as a trial attorney at Hutton and Hutton, representing those who have been injured or died as a result of negligence. “I’ve represented two wrongful death cases that involve clients who were the victims of crime, which is just on the other side of what I was doing as a prosecutor,” Nola says. One of her areas of specialty is women’s issues, handling both mesh injury and Mirena IUD cases. She has made a point of representing women throughout her life.

She maintains her long-standing relationship with the Kansas County and District Attorneys Association as an emeritus retired member and this year, she received the Child Start Children’s Champion award for her body of work in addressing critical children’s issues in her community. Nola was instrumental in developing the Division of Sex Offenses and Crimes Against Children, among others (see sidebar) during her tenure as a prosecuting attorney.

An animal lover with two show horses, five dogs and one cat (“My husband, Steve, calls it ‘Nola’s Ark,’” she says with a smile), Nola volunteers for the Humane Society and did work for the Humane Society of the U.S. and Kansas as District Attorney in animal cruelty prevention programs and legislative endeavors.

She spends time with her son, Andrew, who recently completed a master’s degree in accounting. “I was only stressed that he didn’t want to be an attorney since his father and I, his grandfather and great-grandfather were all attorneys,” Nola says. She affirms that her family’s support, including that of her parents, was crucial to her success in her career and personal life.

Nola’s crusade for justice will continue. “I want to live in a peaceful world,” she says, “and I want to leave it better than I found it. I believe in the protection and support

of vulnerable people, of women and children who are in crisis or in need. I want to support and advocate for women, for their future employment rights, for the ability to make their own medical decisions and to be treated at all times and in all places as first-class citizens.”

As District Attorney, Nola Tedesco Foulston initiated many innovative programs into her administration, including the Gang and Violent Crime Division, the Sexual Offender and Predatory Crimes Division, Economic Crime and Elder Abuse Unit, the Substance Abuse and Violent Crimes Division and other programs and initiatives.

Through the years, she has made significant academic contributions to the legal community as an author and lecturer at the Prosecution Advocacy Center and for the National District Attorneys College, where she also served as a regent. Nola has authored many legal articles and treatises, in addition to her role as a national media spokesperson on network television.

Her numerous professional memberships include the Wichita, Kansas and American Bar Associations, Charter Member of the Wesley E. Brown American Inn of Court where she served as a Master, Executive Board Director with the National District Attorneys Association, and a member of the American Academy of Forensic Sciences Jurisprudence Section.

She holds the privilege of admission to practice before the United States Supreme Court, and has received Lifetime Achievement Awards from the Kansas County and District Attorneys Association and from Washburn University School of Law Alumni Association.



A portrait of Lynn Forney Young, a woman with blonde hair, smiling. She is wearing a purple jacket with a blue and white sash and a DAR pin. The background shows a white cabinet with a vase.

# Giving Graciously

Lynn Forney Young, Stephen F. Austin State (TX) – ZΨ, gives graciously as President General of the National Society Daughters of the American Revolution (DAR)

**Do you remember  
when *you* first  
understood  
patriotism, realizing  
that you are a citizen  
of a unique country  
built on freedom  
and democracy?**

**L**ynn Forney Young, Stephen F. Austin State (TX) – ZΨ, discovered her American pride at an early age, with a family that could trace its lineal descent from patriots of the American Revolution. Lynn says, “My grandmother and great-grandmother were members of the National Society Daughters of the American Revolution (DAR), so I was raised knowing I was eligible for membership in that organization.” Today, Lynn is the President General of the DAR, which proudly claims 175,000 members and 3,000 chapters in the United States and around the world. Since its founding in 1890, more than 900,000 members have been admitted to the DAR.

Lynn quickly acknowledges that without Delta Zeta, she would not be the Chief Executive Officer of the nonprofit organization, serving as a volunteer, who also leads a professional staff of 140 at the National Headquarters in the heart of Washington, D.C.



"The first time I ever heard the word 'philanthropy' was when I became a member of Delta Zeta. I was raised with the feeling that I was very blessed in many ways, and it was my responsibility to give back," Lynn says. "It is because of Delta Zeta that I was led to join the DAR and to explore the opportunity to serve with other women. I am so amazed at what women can accomplish."

The non-profit, non-political women's service organization promotes historic preservation, education and patriotism. The DAR's National Headquarters encompasses an entire city block in downtown Washington, D.C. and houses the organization's offices, a genealogical library, decorative arts museum, historic document collection and a concert hall, all open to the public.

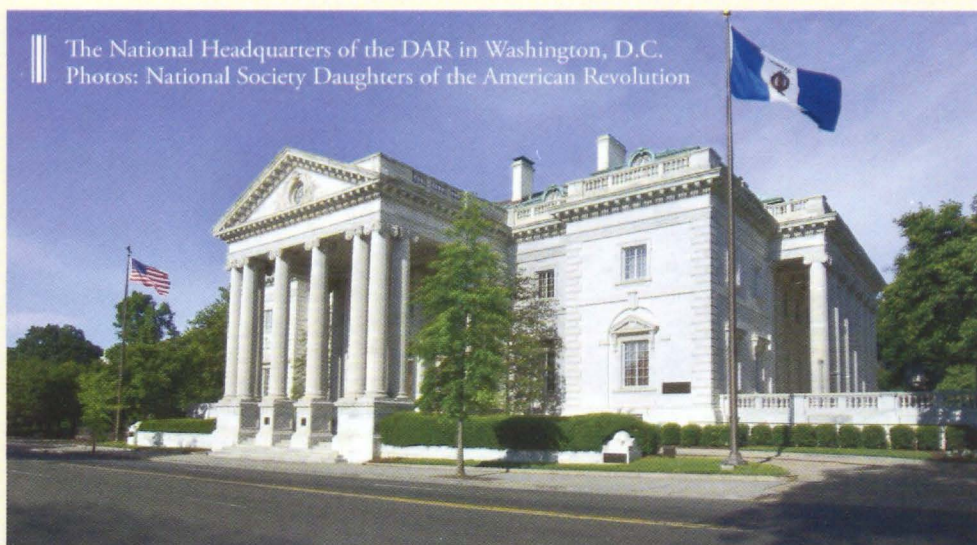
"I am the first President General from the state of Texas," Lynn says. "It is a tremendous privilege and a great responsibility."

### The Honor of Giving

As President General, Lynn has placed an inspiring call to the members of DAR: to give a collective one million hours of community service during her three-year administration, entitled Celebrate America! DAR members give back to their country though service in a myriad of ways that honor the America of today and preserve its history for future generations.

Lynn says, "I've been so inspired by the women that I've met across the country — women from major metropolitan areas, women from all over the world who are DAR members and who are serving. I've met women in rural communities who work very hard to make our country a better place. These women are passionate about the opportunity to give back to America, because we realize how very blessed we are to have the freedoms which we cherish."

With the tenets of good citizenship, honoring the United States' ancestors, educating youth and preserving the past, Lynn says, "The DAR has so many opportunities and a variety of different ways in which our members can serve. For instance, when I was younger, I was involved with Children of the American



The National Headquarters of the DAR in Washington, D.C.  
Photos: National Society Daughters of the American Revolution

Revolution (C.A.R. — the nation's oldest, largest, patriotic youth organization), which I could do with my children. When I lost my father, a World War II veteran who flew two missions on D-Day, it was important to me to say thank you to the veterans. I served in our local hospital to record the oral histories of our veterans for the Library of Congress."

Lynn is nothing short of amazed by the power of women — individually or collectively — striving to make a difference. "In Delta Zeta, I love the sisterhood, the friendships that we make. No matter where I travel, I can find a DAR member just like I can find a Delta Zeta. But most of all, I realize the impact that women working together can make in their communities. And that's what I've learned being a member of Delta Zeta."

DAR members give hundreds of thousands of hours a year in service to their communities and country and have set a goal to give one million hours of service in 2014. "With our Celebrate America! Initiative, we've learned that community service resonates — especially with younger generations. That is a wonderful thing for our country — that we are becoming less self-centered and more purpose-oriented," Lynn affirms.

The DAR embraces new technology to promote the mission of the organization, recruit new members and foster the spirit of giving and patriotism around the country and the world. DAR resources and history (which are available to the public) are made accessible through today's technology, via the DAR website.

**"I feel that it is our responsibility that 'to whom much is given, much is required.' As Americans, we have been given so very much, and we must do what we can to continue to build this country and to strengthen it, to give back to our communities and to our families, to raise patriotic children, be responsible citizens and to encourage others to do the same."**

The DAR and Delta Zeta have many parallels as women's organizations, and even one of the Sorority's Founders, Anne Simmons Friedline, was regent of her DAR chapter, and was elected DAR state regent of Colorado in 1927. Lynn sees the similarities, too.

"I've been enriched by the friendships of the women I have met over the years — in Delta Zeta and the DAR. We have so much in common, and we care about our country. I can't imagine a time that this isn't needed more than now."

Visit the DAR at <http://www.dar.org>.

**Read more exclusives  
about the DAR and Lynn's  
work online.**





LAMBDA LAMBDA

## The College of New Jersey

Volunteered in Ortley Beach, New Jersey to help  
rebuild homes after Hurricane Sandy


Raised more than \$2,000 for  
American Red Cross's Sandy relief fund

Hosted comedy show with comedians  
from Comedy Central channel, raising more than  
\$1,500 for SADS (Sudden Arrhythmia Death  
Syndrome) Foundation

Won Greek Week with Phi Alpha Delta Fraternity

Hosted annual co-ed competition which raised  
more than \$1,000 for national philanthropies



A group of approximately 12 young women, members of the Delta Zeta sorority, are posing for a group photo in a desolate, debris-strewn landscape. They are dressed in winter clothing, including hats, scarves, and gloves. In the background, a white building has been severely damaged, with its structure exposed and debris scattered around. The ground is covered in sand and rubble. The sky is clear and blue.

The Lambda Lambda Chapter (The College of New Jersey) volunteered to clean up Ortley Beach, New Jersey, still recovering from the aftermath of Hurricane Sandy.

# On Campus With Delta Zeta

Just as Delta Zeta's Founders defined leadership over 111 years ago, our collegiate members continue that legacy by leading in the Sorority on their campuses, in their communities and nationally. These are leaders who are enriching today's world.



## ALPHA

### Miami University

Sponsored fundraiser to help Phi Gamma Delta members after their house was lost to fire

## IOTA

### University of Iowa

Placed second in Greek Energy Challenge, recording 39 percent energy decrease

Raised more than \$1,532 for The Painted Turtle camp

## SIGMA

### Louisiana State University

Raised more than \$50,000 with sponsors through 15th annual Miss LSU-USA Pageant, benefiting The Starkey Hearing Foundation, The Painted Turtle camp and Baton Rouge Speech and Hearing Foundation

## ALPHA BETA

### University of Illinois

Joined Greeks and local law enforcement for Champaign Community Coalition Campus Walk for alcohol safety

## ALPHA GAMMA

### University of Alabama

Alexis Paine broke pole vaulting record, earning all-American honors and SEC championship

Participated in Dance Marathon, contributing to total of \$56,131 benefiting Children's Miracle Network

Lindsey Ghiroli and Erica Sucher, Philanthropy Chairman, volunteered at The Painted Turtle camp

## ALPHA THETA

### University of Kentucky

Teamed with Delta Sigma Phi to host Earthball philanthropy event, raising more than \$2,000 for American Red Cross and The Starkey Hearing Foundation

Joined Kappa Alpha for Turtle Tug to benefit the Muscular Dystrophy Association and Lexington Hearing and Speech Center

Supported university's Relay for Life for American Cancer Society®

## ALPHA RHO

### Ohio Wesleyan University

21 members (40 percent of chapter) made Dean's list with GPA of 3.5 or above for spring 2013 semester

## ALPHA UPSILON

### University of Maine

Won second place overall among sororities during Greek Week

Won Sigma Chi's Derby Days for second year in a row, helping to raise \$2,335 for Huntsman Cancer Institute

Won first place out of all sororities in Chi Omega's Wiffle for Wishes

Supported Pink Goes Green by collecting bottles and selling raffle tickets for prizes at a university baseball game

Donated \$1,000 to Doctors Without Borders

## BETA ALPHA

### University of Rhode Island

Raised \$3,692 for Habitat for Humanity of Rhode Island

## BETA GAMMA

### University of Louisville

Hamburgers for Hearing raised money for Heuser Hearing Academy and The Starkey Hearing Foundation

Won Kappa Sigma Innovation and Distinction Award, Panhellenic Sorority of Excellence 2013 Award, Pike Spirit of the University Award, Panhellenic Council Outstanding Service Award, and Phi Kappa Tau Morton Walker Sorority Service Award at Greek Life Awards

University Intramural Champions 2012-2013

Student Life Award Outstanding Program: Miss University of Louisville

Sigma Chi Derby Day Champions

## BETA DELTA

### University of South Carolina

Ranked number one in academics out of all 11 sororities on campus

Donated 20 Build-A-Bears to The Starkey Hearing Foundation

Awarded Sorority of the Year, Chapter Excellence Awards in Scholarship, Service and Involvement and Gold Chapter Excellence Award at Fraternity & Sorority Life Awards

## BETA XI

### Auburn University

Holds third overall GPA out of 17 sororities on campus

Chandler Cushman won Best Chapter President and chapter won Best New Member Program at Auburn University's Panhellenic convocation

Collected more than 400 supplies for Kendall Demonstration Elementary School at Gallaudet University



## BETA TAU

### Nebraska Wesleyan University

Donated \$3,500 towards the \$40,000 raised at Relay for Life event for American Cancer Society®

Was one of 200 teams that bowled to contribute to \$78,100 total raised for Junior Achievement programs



## GAMMA BETA

### University of Connecticut

Participated in 2013 More/Fitness Women's Half Marathon to support Hole in the Wall Gang Camp

## GAMMA KAPPA

### Kent State University

Attended Phi Delta Theta's Soberfest

Supported Flip for the Cure to benefit Cleveland-based J.D. Breast Cancer Foundation



## GAMMA LAMBDA

### San Jose State University

Helped women and children of local shelter after fire destroyed top floors of facility

## GAMMA NU

### Eastern Illinois University

Partnered with Sigma Phi Epsilon Fraternity to win Greek Air Band lip-sync competition

The Alpha Upsilon Chapter (University of Maine) on Maine Day, a day set aside for a campus clean-up effort.

Members of the Beta Gamma Chapter (University of Louisville) at the Heuser Hearing Academy

Chandler Cushman, Beta Xi Chapter President, and Laura Leigh Collins, Vice President of New Member Education, display awards





## **GAMMA XI**

### **New Mexico State University**

Received Most Improved Chapter Award at Greek Awards

First place in Pi Kappa Alpha's powder-puff game to benefit Hemophilia Foundation of New Mexico

Dawnette Goehler received NMSU Greek Life Most Outstanding Chapter President Award

## **GAMMA PI**

### **Western Michigan University**

Holds highest GPA among all 26 Greek groups on campus and above all-women's average for spring 2013

## **GAMMA TAU**

### **Bowling Green State University**

Ranked number one in academics out of 13 sororities on campus

Received Chapter of Excellence Award at BGSU's Greek Weekend

Annual Greek competition and Color Splash (hosted with Phi Delta Theta) benefited The Starkey Hearing Foundation

## **GAMMA CHI**

### **Ball State University**

Raised \$5,050 for The Painted Turtle camp at annual Turtle Tugs event

## **DELTA BETA**

### **University of Tampa**

Hosted third annual Green Gala, raising \$3,923 for The Starkey Hearing Foundation

## **DELTA DELTA**

### **Georgia State University**

Greek Awards included Most Improved Academics and Excellence in Membership Development

Cindy Park, Chapter President, received Recognition for Service Award

Teamed with Kappa Sigma Fraternity for Relay for Life

Hosted annual Golf Tournament, which raised \$1,008 for The Starkey Hearing Foundation

## **DELTA THETA**

### **University of Houston**

Teamed with Sigma Phi Epsilon to raise thousands of dollars for university's Frontier Fiesta and won first place

Won first place in both Kappa Sigma's Softball Tournament and Pi Kappa Phi's Push (People Understanding the Severely Handicapped) Week

## **DELTA SIGMA**

### **Truman State University**

Intramural volleyball champions in 2013

Received Silver Chapter and Best Philanthropy on Campus Greek awards for 2012-2013 school year

Mom's Weekend philanthropy project raised more than \$1,700 for speech and hearing

Annual Big Man on Campus event raised more than \$2,500 for winner Phi Sigma Kappa's philanthropy, Special Olympics

Raised more than \$5,000 for both The Painted Turtle camp and The Starkey Hearing Foundation

## **DELTA TAU**

### **Temple University**

Participated in All-Greek Block Cleanup to beautify community

Took third place in Greek Sing

Won Gold Medal in Greek Olympics and was overall Greek Week winner for Panhellenic Conference division

Collected canned food for Philabundance food bank

## **DELTA UPSILON**

### **Marshall University**

Received Most Spirited Award with Sigma Alpha Epsilon and Chapter of Excellence Bronze Award at Greek Awards

## **DELTA OMEGA**

### **Fort Hays State University**

Received Panhellenic Council Campus and Community Involvement Award, Philanthropy and Community Service Award and Dr. Herb Songer Outstanding Chapter of the Year Award at Greek Week Awards Banquet

Member Alma Hidalgo won Diversity Ally of the Year for second consecutive year

## **EPSILON GAMMA**

### **Central Missouri State University**

Volunteered at local Head Start learning center for comprehensive child development

Top GPA for 14 semesters among all seven Panhellenic sororities on campus

Received Greek Academic Achievement Award and Outstanding Campus Involvement Award

Placed first in intramural volleyball and second in intramural softball



Partnered with Lambda Chi Alpha Fraternity to host annual Teeter Totter-a-thon, raising \$1,738 for The Painted Turtle camp and Delta Zeta Foundation

## EPSILON EPSILON

### California State University/ Fresno

Joined five sororities on campus to contribute \$8,100 of \$16,000 for Sigma Chi Fraternity's Derby Days benefiting Children's Hospital Central California

## EPSILON ZETA

### Drexel University

Received Order of Omega Award for academic excellence and Panhellenic Council Athletic Cup

Won flag football championship, tug-of-war and Greek Tile Display competition during Greek Week

Intramural basketball team won PHC championship title

Teamed with Sigma Phi Epsilon Fraternity to volunteer at Philadelphia Phillies baseball game for Phillies' Red Goes Green recycling program

Partners with university's Lindy Scholars program to tutor children in community

## EPSILON THETA

### Clarion University

Raised money for family of collegiate member who passed away in 2013

Participated in 2013 Spring Community Service Day

Volunteered at Golden Living Center nursing home



Shannon Paquette of the Epsilon Sigma Chapter (Wayne State University), left, with friend Allison.

## EPSILON IOTA

### Fairmont State University

Turtle Trot 5k walk/run raised more than \$5,000 for local girl with speech and hearing challenges

First Sisterhood Week Champions on campus

Donated 50 nonperishable food items to Soup Opera social services

## EPSILON KAPPA

### University of Wisconsin/ Whitewater

Received Chapter Excellence Award

Hosted annual Hoops for Hearing 5-on-5 basketball tournament, raising nearly \$2,000 for The Starkey Hearing Foundation and local philanthropy

## EPSILON XI

### University of Central Arkansas

Raised second highest donation of \$2,687 during university's second annual Relay for Life benefiting American Cancer Society®

## EPSILON OMICRON

### Western Illinois University

Named Five Star Chapter and received President's Award (highest award given among all sororities on campus)

Made nine Build-A-Bears sent to The Starkey Hearing Foundation

## EPSILON SIGMA

### Wayne State University

Volunteered at Michigan's Chevrolet Detroit Belle Isle Grand Prix, raising \$2,000 for Holley Family Village, providing programs to children and adults with deafness, hearing and vision loss

Won first place in university's seventh annual Warrior Games

## EPSILON TAU

### Longwood University

Raised more than \$3,000 during Longwood University's Relay for Life to fight cancer



## EPSILON UPSILON

University of Central  
Oklahoma

Won intramural basketball in the spring

GPA is higher than all-Greek and all-  
women's average

## EPSILON OMEGA

University of Wisconsin/Eau  
Claire

Was part of Greek Week effort which  
raised more than \$30,000 at university's  
Relay for Life event

## ZETA BETA

University of Wisconsin/Stout

Won Greek Olympics

Participated in all-Greek service day,  
doing yard work for senior citizens

Hosted Stoutman 2013 competition to  
benefit muscular dystrophy

## ZETA EPSILON

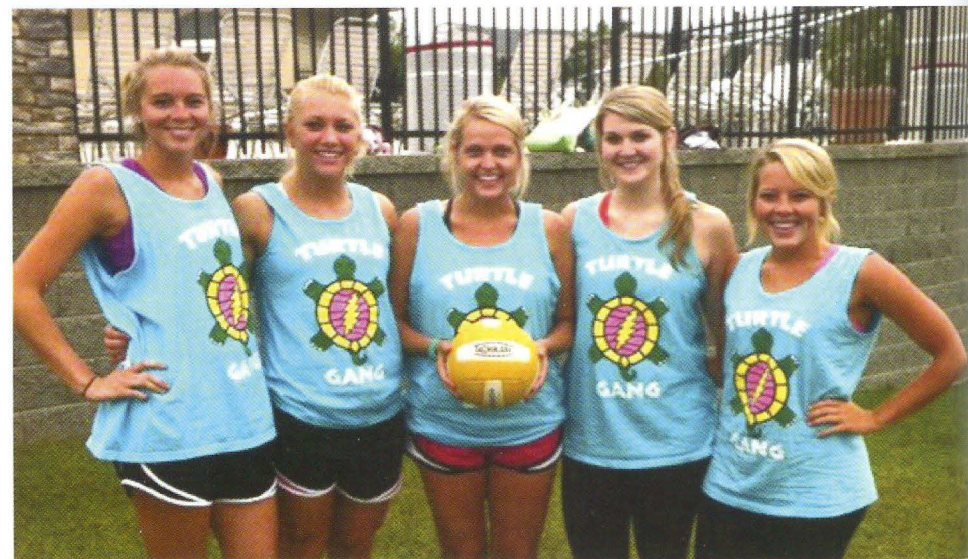
California University of  
Pennsylvania

Participated in annual Big Event, helping  
residents in community with home  
maintenance

Holds highest GPA among all 13 Greek  
organizations on campus

Received President's Award for most  
outstanding sorority on campus

First place in Greek Week, third place  
with Greek Sing performance



## ZETA LAMBDA

East Carolina University

Won second place in Stroll Competition  
and third place in Greek Games

Held inaugural Hotdogs for Hearing  
venue donated 10 percent of proceeds  
for the day to speech and hearing

Volunteered for Children's Miracle  
Network

Top: Members of the Epsilon Upsilon  
Chapter (University of Central Oklahoma)

Bottom: Zeta Lambda Chapter  
(East Carolina University) members  
Sarah Fulcher, Sydney West, Kara Dough,  
Brooke Van De Laarschot and Paige Hudson

Right: Alumnae came to support the  
Theta Omega Chapter at Barton  
College during the Greek Show.



## ZETA PHI

### Slippery Rock University

Named champions of Greek Week with partner Pi Kappa Alpha

Celebrated 50 years on Slippery Rock University's campus with alumnae

Contributed to Make-A-Wish Foundation with all Greeks on campus raising enough funds to grant a child's wish

Mikayla Cowan won Miss Push competition for Push America (People Understanding the Severely Handicapped)

Holds highest GPA out of six sororities on campus

## THETA ETA

### Creighton University

Partnered with Phi Kappa Psi on Jays Jam basketball tournament, raising \$1,000 for The Starkey Hearing Foundation

Received Greek awards for Excellence in New Member Education, Recruitment, Alumni Relations, Philanthropy, Service, University Relations and Campus Involvement, Chapter Development, and named Sorority of the Year

## THETA IOTA

### Western Carolina University

Turtle Tug event raised \$1,350 for The Painted Turtle camp

## THETA KAPPA

### University of New Orleans

First annual Turtle Tug raised \$3,551 for Delta Zeta Foundation and local American Red Cross chapters

Recognized with Excellence in Community Service Chapter Progress Awards, and named Sorority Chapter of the Year during Greek Week

Celebrated 50th anniversary with alumnae

## THETA MU

### St. Cloud State University

Received Chapter of the Year award at university's 2013 Greek Gala

Brittney Tran, Chapter President, received Greek Woman of the Year award

Donated 98 pounds of food to local food pantry

Sent 20 Build-A-Bears to The Starkey Hearing Foundation

Holds highest GPA on campus among all nine Greek organizations on campus

## THETA NU

### Minnesota State University/ Moorhead

Co-sponsored "Walk a Mile in Her Shoes," raising more than \$1,000 for Rape and Abuse Crisis Center of Fargo-Moorhead

Hosted Pancake Feed to benefit The Painted Turtle camp

## THETA PSI

### Ashland University

Participated in retreat for children of Mansfield Sertoma Club, which improves quality of life for those impacted by hearing loss

## THETA OMEGA

### Barton College

Courtney Jernigan, Vice President of Membership, named Top Academic Greek Woman of the Year





Won Barton College Spirit Stick competition and Greek Week

Received President's Trophy for most Greek involvement on campus

Packaged thousands of meals at Hot Dog Dash, hosted by Student Government Association, to benefit Stop Hunger Now

Raised \$1,900 at Hamburgers for Hearing event to benefit Gallaudet University

## IOTA ALPHA

### Texas State University

Placed second overall in Greek Week

Supported Texas State Athletics by sponsoring first-time volleyball tournament in The Delta Zeta Classic

## IOTA DELTA

### Edinboro University

Won first place in Greek Week Costume Contest

Participated in Edinboro's The Big Event, during which more than 200 service projects were completed

## KAPPA BETA

### Northern Kentucky University

Turtle Tug raised \$3,400 for The Painted Turtle camp

## KAPPA MU

### Shepherd University

Has highest GPA of all seven Greek organizations on campus

Raised \$3,044 at campus-wide Relay for Life

Celebrated 40th anniversary with a brunch

## KAPPA RHO

### Kutztown University

Raised \$1,150 at Turtle Tug for The Painted Turtle camp

Raised money for local no-kill cat shelter

## KAPPA TAU

### Morehead State University

Raised \$3,403 for Delta Zeta Foundation during Greek Lip Sync

## KAPPA CHI

### Youngstown State University

Raised \$3,600 for national and local philanthropies, including Youngstown Hearing and Speech Center at fourth Run for the Noise 5k

## KAPPA PSI

### Shippensburg University

Partnered with Phi Delta Theta on Relay for Life and was first group to raise \$5,000 for American Cancer Society®

## LAMBDA ALPHA

### Arkansas Tech University

Participated in Greeks Give Back, contributing to more than \$16,000 in food items collected for local children in need

## LAMBDA GAMMA

### Jacksonville State University

Hosted Turtle Tug, raising \$2,648 for The Painted Turtle camp

## LAMBDA KAPPA

### University of Alabama/ Huntsville

Hosted Battle of the Bands "Rock for Silence" competition, raising \$3,183 to benefit speech and hearing classrooms in local elementary school where chapter volunteers

## LAMBDA NU

### Auburn University/ Montgomery

Hosted Turtle Tug and Hotdogs for Hearing during Greek Week to support The Starkey Hearing Foundation and The Painted Turtle camp

Pancake fundraiser benefited Gallaudet University

## LAMBDA OMICRON

### Angelo State University

Hosted first garage sale to benefit The Starkey Hearing Foundation and San Angelo women and children's shelter

## LAMBDA RHO

### Illinois State University

Received Spirit Award during Chi Omega's March Madness philanthropy event

Participated in "Bring It Back to Normal" community service event

Turtle Tugs raised \$4,519 for The Painted Turtle camp

## LAMBDA PSI

### Columbus State University

Participated in Pi Kappa Alpha Fraternity's Firemen's Challenge to benefit Georgia Firefighters Burn Foundation, Inc.



## XI BETA

### Eastern Kentucky University

Tied for first place at Greek Sing 2013

Fratman Classic event raised more than \$1,000 for The Starkey Hearing Foundation

## XI DELTA

### Radford University

Won Panhellenic Chapter of the Year for second consecutive year

Celebrated Earth Day and Pink Goes Green by planting tree on campus

## XI ETA

### Northwood University

Participated in fifth annual Wheelchair Basketball fundraising event to benefit Midland Special Olympics

## XI THETA

### University of North Carolina/ Wilmington

Recognized for achieving second highest GPA out of all 21 Greek organizations on campus

Hosted philanthropy week on campus and raised more than \$2,700 for Delta Zeta's national philanthropies

Members of the Lambda Nu Chapter (Auburn University/Montgomery)

Xi Omicron Chapter (Loyola Marymount University) members Taylor Waters, Briana Lehman and Katie Marino at Sigma Chi Derby Days

## XI NU

### Tarleton State University

Received Volunteer of the Year (Organization) and Wellness Award at Tarleton Leadership and Services Awards

Lauren Light named Greek Woman of the Year

Volunteered to mentor during university's move-in day for freshmen

Turtle Tug benefited The Painted Turtle camp

## XI OMICRON

### Loyola Marymount University

Received Highest Chapter GPA Award among all six sororities on campus

Participated in annual Beta Boat Race to benefit SAGE Foundation to support literacy among underprivileged youth

Won Sigma Chi's annual Derby Days and contributed to \$9,000 raised to benefit Santa Monica-UCLA Rape Treatment Center





## **XI TAU**

### **Millersville University**

Volunteered for Into the Streets, a national program, to beautify historic Rock Ford Plantation in Lancaster County Central Park

## **XI UPSILON**

### **Northeastern University**

Placed second overall during Greek Week; first in canned goods drive and second in Greek Sing

Fifth highest fundraising team out of 128 teams for Relay for Life

## **XI PSI**

### **Grand Valley State University**

Highest overall Greek GPA out of 35 organizations on campus, highest member GPA, and second highest new member GPA at GVSU

## **XI OMEGA**

### **Purdue University**

Annalise Dietzen, Chapter Secretary, 2013 Homecoming Court member

Hosted Color Run and raised \$1,000 for The Starkey Hearing Foundation

## **OMICRON ZETA**

### **Randolph-Macon College**

Received Greek Academics and Recruitment Awards, the Chapter of Excellence Award and was named Greek Week Champion

Hosted annual Big Man on Campus event, raising \$1,925 to support Delta Zeta's national philanthropies

Adopted highway during college's annual Macon a Difference Day

Raised the most money out of all Greek organizations for Habitat for Humanity

Hosted fundraiser to send member Lindsay Greene, Vice President of New Member Education, to The Painted Turtle camp to volunteer

## **OMICRON NU**

### **University of Windsor**

Celebrated Earth Day and Pink Goes Green by cleaning local streets

Received recognition for planting 11 trees during Essex Region Conservation Authority (ERCA) Tree Planting

Participated in Downtown Mission's "Coldest Night of the Year" event to help homeless

Hosted Turtle Dodgeball Tournament to benefit House Research Institute and Gallaudet University

Shontal Cargill, Chapter President, was Volunteer Coordinator of the University of Windsor Science Rendezvous

## **OMICRON PI**

### **Frostburg State University**

Hosted Color Run to benefit American Cancer Society®

## **PI BETA**

### **University of Hartford**

Named Greek Week winner with Sigma Nu Fraternity

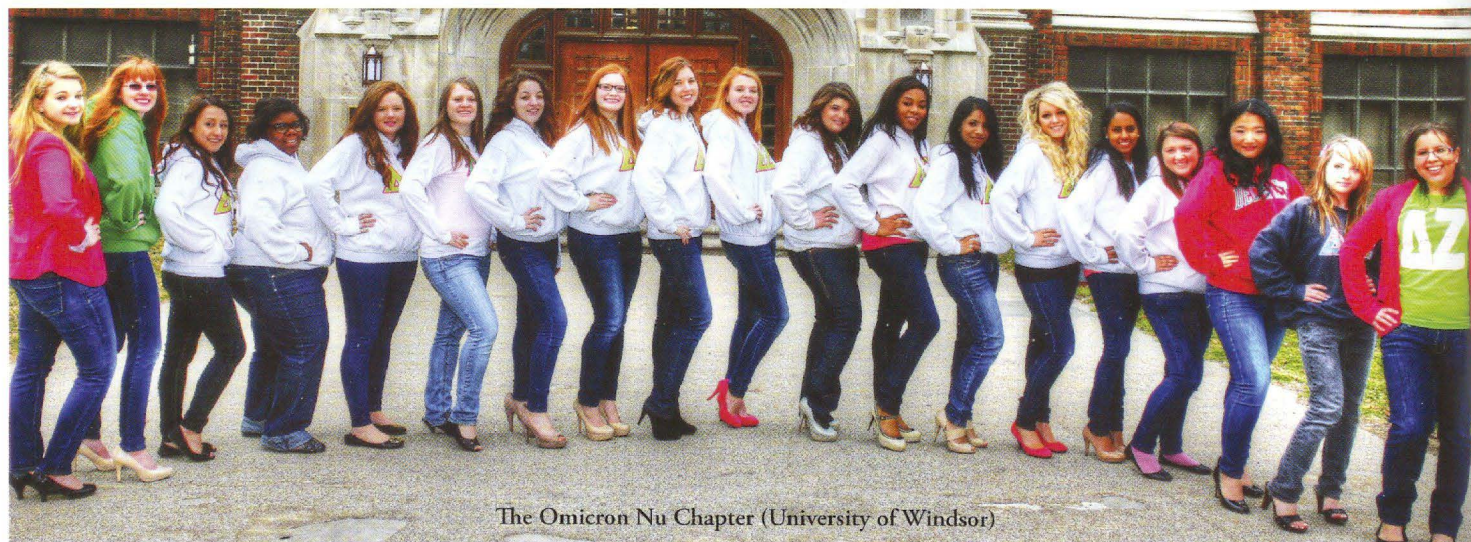
Received Outstanding Philanthropy Program, Outstanding Campus Involvement, Chapter Academic Excellence Spring 2012 and Fall 2012, and Best New Member Class Fall 2012 awards at Greek Life Awards banquet

## **PI DELTA**

### **Wake Forest University**

Raised \$2,092 at annual volleyball philanthropy event for Brian Piccolo Cancer Fund

Raised \$6,195 with Turtle Tug philanthropy event for The Starkey Hearing Foundation and The Painted Turtle camp



The Omicron Nu Chapter (University of Windsor)



## PI EPSILON

### Clemson University

Recognized as Chapter of Achievement through university's Standards of Excellence Program

Won float competition and Turner Fortner won Miss First Friday title at university's First Friday Parade

Raised \$1,792 for charity in the Miss First Friday change wars

Phoenix Children's Hospital

GPA ranked second-highest out of 13 organizations in Panhellenic community

## PI KAPPA

### University of Idaho

Raised \$1,300 for American Cancer Society® in Relay for Life

## PI XI

### University of Central Florida

Donated \$8,000 to The Painted Turtle camp

Team of 48 members participated in Knight Thon dance marathon and raised \$10,400 for Children's Miracle Network

Seniors Jennifer Franz and Rachael McBride of the Pi Zeta Chapter (Arizona State University)

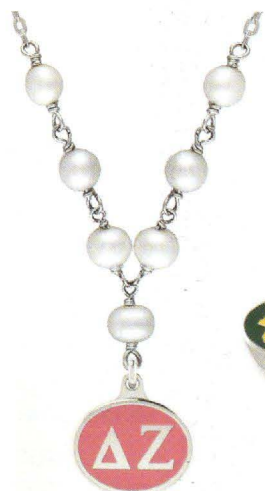
## PI ZETA

### Arizona State University

Raised \$21,000 for The Painted Turtle camp and local hospital at Relay for Life, and raised highest amount for American Cancer Society®

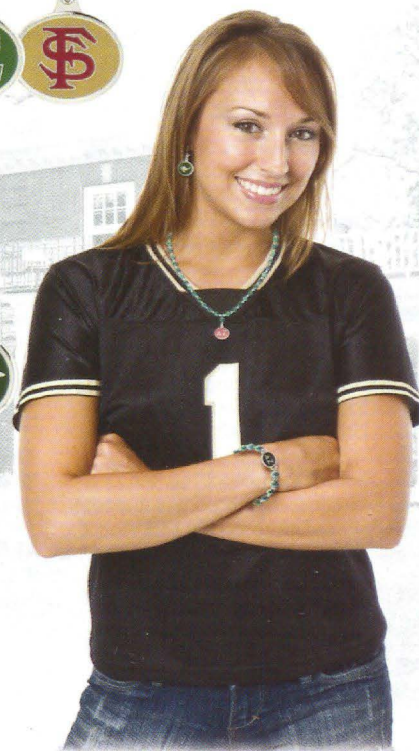
Won second place in Phi Gamma Delta philanthropy event, Phi Gam Beach Jam

Received Best Philanthropy Event award for Delta Zeta Duke Out at university's Greek Awards, which raised more than \$24,000 for Delta Zeta Foundation and



## SPIRIT WITH *Style*

-STERLING SILVER BEADS AND JEWELRY-  
-BEADS FIT MOST BEADED CHARM BRACELETS-  
-MADE IN THE USA-



CHECK OUT THE FULL LINE ON:  
(248)-548-4855

[WWW.COLLEGEJEWELRY.COM](http://WWW.COLLEGEJEWELRY.COM)





# Flame Eternal

Honor your sisters, friends and loved ones with a memorial gift to the Delta Zeta Foundation

(<http://www.deltazeta.org>).

*Obituaries reported from March 26, 2013 through August 31, 2013. Year of initiation is shown after name.*

## ALPHA

Nancy Boyd Tickel - 1962

## BETA

Mabel Lewis Anderson - 1928

## GAMMA

Jeanette Barquist Paul - 1931  
Lois Swanstrom Hirschmann - 1932

## DELTA

Lucille Krugg Mitchell - 1921  
Marilyn Pieper Roth - 1941  
Sue Bartlett Davie - 1953

## EPSILON

Barbara Null Potts - 1944  
Donna Krick Reid - 1945  
Marian Johnson Coapstick - 1956  
Sara Abbott Crippen - 1960

## ZETA

Frances Mangold Issott - 1948

## ETA

Dorothy Braun Jaynes

## THETA

Betty Jane Vanfossen Foreman - 1938  
Mary Blausier Meilwes - 1938  
Violet Kemp Nixon - 1946  
Sharon Allison Decker - 1957  
Harriet Williams McIntire - 1962

## IOTA

Marilyn Jane Devine - 1973

## KAPPA

Helen Dyer Burt - 1939  
Anna Mae Timbers Trohimovich - 1943  
Nancy Evans Tucker - 1952  
Lurline Mahan Lee - 1957  
Betty Frank Casebolt - 1963  
Karen Banks London - 1960

## LAMBDA

Sandra McElwain Lahr - 1966

## MU

Roberta McClure Parsons - 1937  
Dorothy Chipchase Sechrist - 1939  
Mary Louise Lovett Whitehead - 1941  
Jeri McCaffrey Beetz - 1944  
Faye Dennen Hansen - 1948  
Betsy Ross Sievers - 1957  
Marilyn Sandstrom Barnes - 1958  
Virginia Tittsworth Baker

## NU

Mildred Caulkins Quarton - 1931

## XI

Mary G. Nichols - 1932  
Shirley Ehresman Fish - 1946

## OMICRON

Betty Jean Nelson Conquergood - 1943  
Lois Howe Gerhart - 1948

## PI

Eleanor Safford Acklin - 1935  
Betty Paxton Waggoner-Wilson - 1946  
Joan Snyder Smith - 1948  
Virginia Holmes Ross - 1961  
Rebecca Free Shonle - 1986

## SIGMA

Dorothy Jacks Grier - 1950  
Nita Clare Roberts Bonnecaze - 1959  
Joy Harvey Iturralde - 1982

## TAU

Marilla Eggler Fuge - 1930  
Mary Jane Newman Anderson - 1940  
June Woelffer Velander - 1944  
Nancy Bittner Bathke - 1957

## UPSILON

Darlyne Erickson Mostad - 1943  
Jacqueline Paris - 1948  
Mary Picard Embertson - 1955

## CHI

Catherine Bollen Everingham - 1943  
Bonita Miller Linkous - 1949

## PSI

Barbara Frellick Campbell - 1946  
Mildred Clark Stevens - 1951  
Becky Tames Rosenberger - 1974

## ALPHA ALPHA

Mary Geib Levy - 1946  
Marion Zenaty Schlesinger - 1946  
Dolores Arlene Kohl - 1957

## ALPHA BETA

Barbara Starkey Munson - 1950  
Doreen Soukup Nelson - 1963

## ALPHA GAMMA

Etheline Dodson Durrett - 1927  
Lucille Stubbs Williams - 1937  
Mary Widener McCommons - 1944  
Mary Marvin Sproles Anderson - 1947  
Dee Johnson Lenzini - 1963  
Susan Tidwell Kocour - 1965

## ALPHA DELTA

Lois Conklin Hughes - 1944

## ALPHA EPSILON

Betsy Jo McKeel Low - 1980  
Joe Glover Stillwell

## ALPHA ZETA

Ruth Baecker Dick - 1941  
Angele Buschmann - 1942  
Elaine Heiss Trucker - 1945  
Alexandria Renna McNamee - 1951

## ALPHA ETA

Marjorie Matthews Conrad - 1924  
Jacqueline Zipp Kenyon - 1948  
Sarah Thrush Kerr - 1948  
Edith Tews Dunbar - 1949  
Marguerite Merrill Irwin - 1950

## ALPHA THETA

Gene Jones Strickin - 1940  
Marjorie Hedges Bastin - 1949

## ALPHA IOTA

Evelyn Lebeda Pillsbury - 1938  
Heloise Shevling Riddlebarger - 1938  
Margaret Adams Bedwell - 1952

## ALPHA LAMBDA

Jane Herring Bowman - 1931

## ALPHA MU

Esther Rowley Ayers - 1924  
Mary Frost Bordeaux - 1924  
Mary Moses Kentfield - 1924  
Dorothy Lucile Murcray - 1924  
Dorothy Pollock - 1924  
Florence Bernadine Eagan - 1925  
Dorothy Tate Lewis - 1925  
Iva Mae Smith - 1925  
Emilie Fischer - 1926  
Kate Bromaghin Infantine - 1929  
Marjorie Pratt Aston  
Zelma Annette Bancroft  
Mary Kerr Casanova  
Margaret Gallaher  
Alice Taylor Hoyt  
Jessalyn Johns Lynch  
Iola Bull Millard

## ALPHA XI

Leila Cram Sikes - 1931

## ALPHA OMICRON

Peggy Watlington Braselton - 1945

## ALPHA PI

Sarah Hoover Davis - 1928  
Glenda Jean Jackson - 1960

## ALPHA SIGMA

Clarice Varnadore Adkins - 1948  
Mary Louise DeCasper Shannon - 1962  
Tatum Nichole Jacobson - 2009

## ALPHA TAU

Dorothy Gleason Jackson - 1945  
Carol Reinhackel - 1954  
Roy Ann Foster Landtroop - 1955  
Helen Carol Crow - 1956  
Carolyn Thomas Boyd - 1957  
Suzanne Mauk Yates - 1961

## ALPHA UPSILON

Margaret Gorham Murray - 1947  
Mary Bennett Hilbert - 1955

## ALPHA PHI

Sister Anderson Risher - 1947

## ALPHA CHI

Alice Mann Roney - 1962

## ALPHA PSI

Margaret Green Cooper - 1950

## BETA ALPHA

Margaret Lancor Coyle - 1935  
Cora Ida Phillips - 1938  
Doris Owen Pease - 1941  
Judith Stephenson Heelan - 1960

## BETA BETA

Ida Newson Anderson - 1928  
Joan Conerly Hunter - 1928  
Eugenia Campbell Ward - 1928  
Nellie Hathorne Rogers - 1929  
Corrie Campbell Carlton - 1937  
Charlotte Todd Parker - 1938  
Irene Woodruff Waits - 1938  
Margaret Fowler Tuttle - 1940  
Faye Murphy De Leon - 1941  
Hazel Lavonne Laird Bush - 1943  
Edwina Jones O'Hara - 1943  
Edna Acree Moseley - 1944  
Betty Eason Cantwell - 1945  
Lynna Mooney Mitchell - 1945  
Lois Gavin Colegrove - 1946  
Imogene McFadden Coley - 1946  
Audrey Mendez Covington - 1946  
Joan Duval Foster - 1946  
May McMurry Pearson - 1946  
Jean Gerard Scarborough - 1947  
Mavis McDaniel McBride - 1948  
Carolyn Stickerod Snyder - 1948  
Marilyn Burrill Geno - 1949  
Domena Mistillis Reeves - 1951  
Betty Thomas Frost - 1952  
Mary Boykin Williams - 1953

## BETA GAMMA

Juanita Carmen Booth - 1934  
Mary Kathryn Findley App - 1939  
Jane Heslop Feldhaus - 1961

## BETA DELTA

Sarah Calhoun Montant - 1930  
Lois Kirkley Etheredge - 1932  
Kathryn Sparks Lee - 1933  
Sarah Harrison Williams - 1937  
Jamie Dibble Bedford - 1941  
Mary Baxter Harrison - 1947  
Melissa Baber Harvey - 1987

## BETA ZETA

Alice Crandall Bell - 1928  
Geneve Poulson Bluth - 1928  
Neva Saville Harris - 1928  
Mary Blades Norberg - 1928  
Bernice Block Pine - 1928  
Margaret Kephart Glade - 1931  
Viola Hall Neff - 1931  
Virginia Trunkley - 1931  
Nina Hemstreet Butler - 1936  
Ruth Hoggan Robinson - 1936  
Audrey Rongstad Jensen - 1937  
Florence Christensen Kennedy - 1963  
Phyllis Wiscomb Stewart - 1964

## BETA THETA

Helen Hobbs Baker - 1930  
Evelyn Mae Beckworth - 1930  
Ruth Avery Dunlap - 1930



Carol Holderman Curtin - 1939  
Elmira Fries Pilkerton - 1940  
Fay Myers Rudy - 1941  
Margaret Miller Berge - 1944  
Wilma Stohlberg Ayres - 1945  
Mary McCay Miller - 1945  
Marjorie Kohl Dentz - 1946  
Betty Ibach Emery - 1947  
Helen Trimble Csehosi - 1961  
Elsie Wilson Young - 1967

#### **BETA KAPPA**

Alice Manning Ketterling - 1931  
Ruth Olson Feldman - 1938  
Marilyn Pierson Feazell - 1948  
Barbara Allen Young - 1948  
Lois Namette Korslund - 1951  
Judith Cecil Vasbinder - 1959

#### **BETA LAMBDA**

Edna Threlkeld Scales - 1946  
Bobbie Jean Bonham Martin - 1947

#### **BETA MU**

Gloria Morgan Condo - 1945  
Jeanne Devane Gruetzmacher - 1946

#### **BETA NU**

Josephine Macaluso Douglas - 1962

#### **BETA XI**

Ruth King Baldwin - 1940  
Barbara Vinson Everidge - 1948  
E. Jane Patterson Tonn - 1955  
Penny Franklin Roquemore - 1964

#### **BETA RHO**

Alice Hoyt Konde - 1941  
June Merz Garfield - 1944  
P. Ann Chevie Krause - 1944  
Ruth Plank Kilbourne - 1956  
Shirley Hall Martin - 1961

#### **BETA SIGMA**

Adele Melber Sweet - 1943

#### **BETA TAU**

Gwendolyn Fillman Dahlquist - 1942  
Joanne Johns Emerick - 1948  
Lois Knapple Birt - 1949  
Joyce Anderson Rumbaugh - 1951

#### **BETA UPSILON**

Jerry Wolf Boisseau - 1951

#### **BETA CHI**

Ruth Hazel Welther - 1944  
Kathleen Whister Schiller-Thill - 1946

#### **BETA PSI**

Sara Zehe Darby - 1950

#### **BETA OMEGA**

Virginia Capuozzo Kruse - 1962

#### **GAMMA ALPHA**

Harriet Powell Pesek - 1941  
Marilyn Kittringer Sarff - 1948  
Patricia Hancock Marshall - 1954

#### **GAMMA BETA**

Barbara Ann Johnson - 1954  
Arden Lorraine Curtis - 1957  
Patricia O'Brien Califano - 1963  
Barbara Stanley Gibson - 1963

#### **GAMMA GAMMA**

Mary Sutton Waters - 1951  
Exie Vaughn Whitbeck - 1954

#### **GAMMA DELTA**

Carole Kowallis Stone - 1951  
Marjorie Elliott Storch - 1955

#### **GAMMA EPSILON**

Marie Oakes Ogilvie - 1947  
Kay Cochran Roddick - 1956  
Sandra Foster McCrea - 1963

#### **GAMMA ZETA**

Bobbie Jo Graves Rambo - 1956

#### **GAMMA THETA**

Mary Anderson Shaw - 1949

#### **GAMMA IOTA**

Helen Gatchell Fly - 1948  
Harriett Hall Wright - 1954  
Susan Allison Thompson - 1974

#### **GAMMA KAPPA**

Dorothy Redman Mullen - 1950

#### **GAMMA LAMBDA**

Barbara Steinbaug Fischer - 1952  
Elayne Wittenburg Stein - 1964

#### **GAMMA NU**

Betsy Spritts Shimp - 1953  
Nettie Hill Resch - 1956  
Bernice Quick Allen - 1958

#### **GAMMA XI**

Arla Hill Scarborough - 1949  
Betty Butcher Stevenson - 1961

#### **GAMMA PI**

Marie Louise Stevens - 1959

#### **GAMMA RHO**

Mary Jo Larsen Arndt - 1952  
Grace Nickas Russell - 1954  
Betty Rogers McMillion - 1957  
Maria Hyniuk Ryan - 1957  
Charlann Skoar Schwan - 1961

#### **GAMMA SIGMA**

Patricia Kennedy Mumper - 1955

#### **GAMMA TAU**

Kathryn Neff Griffin - 1954

#### **GAMMA PHI**

Suzanne Koelan Green - 1957  
Amy Green Trimble - 1981

#### **GAMMA CHI**

Linda Paulsen Stoneberger - 1958

#### **GAMMA PSI**

Iris Tidey Martin - 1954  
Roxann Gibson Campbell - 1961

#### **DELTA ALPHA**

Janet Gail Bremner - 1975

#### **DELTA GAMMA**

Florence Lorraine King - 1960

#### **DELTA DELTA**

Pamelia Blackshear Shippey - 1958

#### **DELTA THETA**

Mabel Bridges Burridge

#### **DELTA IOTA**

Susan Russell Demaine

#### **DELTA NU**

Barbara Knaack Nielsen - 1961

#### **DELTA XI**

Judy Elbon Martin - 1956  
Marjorie Hall Lupton - 1957

#### **DELTA OMICRON**

Mary Helen Presnall Wilson - 1957

#### **DELTA RHO**

Hildegard Kletke Kirmse - 1958

#### **DELTA SIGMA**

Carol Fox Hays - 1956

#### **DELTA PHI**

Ruby Gray Purdum-Sonnenfeld - 1956  
Mary Webb Remy - 1959

#### **DELTA CHI**

Joan Watson Anderson - 1964

#### **DELTA PSI**

Verena Nortvedt Ziemann - 1957  
Lynnette Boswell Siler - 1958

#### **EPSILON GAMMA**

Carolyn Ekern Peoples - 1956  
Betty Coover Lefman - 1957  
Delores Nicholson Peart - 1958  
Stephanie Gillum Walker - 1965

#### **EPSILON DELTA**

Carolyn Kallmerten - 1956  
Billie Rae Hill - 1957  
Nancy McDonald Reynolds - 1960

#### **EPSILON EPSILON**

Ruth Vanhassel Stinson - 1957  
Medabeth Todhunter Vaughn - 1957  
Pamela Ayers Young - 1958

#### **EPSILON THETA**

Polly Ritts Conner - 1963

#### **EPSILON KAPPA**

Beverly Acklam Ferguson - 1957  
Judith Lenth Lindsay - 1963

#### **EPSILON MU**

Virginia Lola Malone Barnes - 1956  
Edythe Evelyn Gandy - 1989

#### **EPSILON XI**

Patsy Bryant Thielman - 1956  
Annabeth Lawrence Vitritow - 1956  
Margaret Milloway Adcock - 1957  
Ima Carter Paige - 1958  
Beverly Adams - 1959  
Berta Hazzard Hall - 1959  
Ann Oliver Boley - 1964  
Irene Singley Ablondi - 1970

#### **EPSILON SIGMA**

Peggy Napper Emilio - 1965

#### **EPSILON PHI**

Helen Phyllis Newcastle - 1956  
Mary Zeimet McKenna - 1957

#### **EPSILON OMEGA**

Joanne Bullock Halferty - 1958  
Linda Chatt Schroeder - 1966  
Alida Hurc Anderson - 1970

#### **ZETA ALPHA**

Barbara Rempala Fahrney - 1978

#### **ZETA BETA**

Kay Boldt Paladi - 1959

#### **ZETA GAMMA**

Gloria Caldwell Deggs - 1962

#### **ZETA ZETA**

Alma Jo Moore - 1958  
Carol Fite Stout - 1970  
Debbie Zanchettin DeBerry - 1975

#### **ZETA ETA**

Virginia Black - 1958

#### **ZETA KAPPA**

Martha Wheeler Haserodt - 1960  
Patricia Clifford Krisher - 1971

#### **ZETA LAMBDA**

Sarah Elizabeth Ihrle - 1993

#### **ZETA OMICRON**

Cynthia Buneta Lynch - 1975

#### **ZETA PI**

Clementi Lacey-Baker Holder - 1963

#### **THETA BETA**

Claire Morrison Dixon - 1967

#### **THETA GAMMA**

Marguerite Ekdahl Topper - 1962  
Frances Ramsdell Cram - 1963

#### **THETA EPSILON**

Belinda Christine Lazaro - 1991

#### **THETA ETA**

Sharon Leisen Watts - 1962

#### **THETA KAPPA**

Carol Skelton Godfrey - 1963  
Mary Jane Lina Schmidt - 1964  
Catherine Van Geffen Kettenring - 1965  
Judy Mills Powers - 1965

#### **THETA NU**

Janet Mae Paulsen - 1966

#### **THETA XI**

Molly Wheeler Wehrle - 1974

#### **THETA PSI**

Lynn Postiy Hill - 1987

#### **THETA OMEGA**

Carol Hicks Fleet - 1967

#### **IOTA ALPHA**

Barbara Chambers Touchstone - 1964  
JoAnne Jones Elliott - 1974

#### **IOTA THETA**

Dorothy Gerbron Marks - 1966  
Mary Broody Mosca - 1969

#### **IOTA NU**

Faye Alexander Hood - 1968

#### **IOTA TAU**

Pamela Barker Young - 1967

#### **IOTA PSI**

Neita Jones Flenniken - 1967  
Leuna Bess Gilbert - 1967  
Deborah Ferstenfeld Mark - 1993

#### **KAPPA ALPHA**

Claire Tatum Palestina - 1972

#### **KAPPA EPSILON**

Christine Pemrick Rose - 1973

#### **LAMBDA XI**

Kathleen Ann Souther - 1978

#### **PHI BETA**

Ruth Reiner Balzer - 1957



Kathryn E. Campbell, Clarkson - EP,  
accepts the Woodstock Award.  
Photo: Clarkson University



# Clarkson University Enriching the World Alumnae News

Alumnae members make a difference in the world, while inspired by their connection to Delta Zeta and enriched by the Sorority's purpose.



## Outstanding loyalty and service

**Kathryn E. Campbell, Clarkson (NY) - EP**, received the Woodstock Award from Clarkson University. The award honors alumni who have demonstrated outstanding loyalty and service to Clarkson and the Alumni Association, and who have used their Clarkson experience to make a notable contribution to their careers.

As a student, Kathryn was a member of the women's soccer team, the International Student Association, and Sigma Tau Iota and Phi Kappa Phi honor societies. She was a charter member of the Students in Free Enterprise Organization. She has served on the Clarkson Alumni Council for eight years, which include five years as a member of the executive alumni board. She also co-chaired the alumni outreach program.

Kathryn is vice president/senior analyst of product development at AllianceBernstein, leading a number of global product research and design efforts, as well as the ongoing framing of the firm's product strategy.

## Bringing integrity to public service

**Janet Dunn Beihoffer, Miami (OH) - A**, is the Republican National Committeewoman from Minnesota, one of three votes per state to the Republican National Committee.

"It was my Delta Zeta experience where I first discovered my almost instinctive flair for project management," Janet says. As Vice President of Membership, she organized and motivated a team of talented members. The result: the most successful recruitment any sorority at Miami had had in many years. Their success brought recognition from the Delta Zeta national organization. "It was a wonderful adventure and one that foreshadowed the leadership positions I would hold in business, volunteer work and now in politics," Janet continues.

An expert in Minnesota election law, Janet developed and implemented a widely-praised program to help Minnesota election judges and poll challengers maintain election integrity. She has also worked with a number of communities of "new Americans," and currently serves as the state party's Director of Outreach.

As a member of the Republican National Committee (RNC), Janet now works as a liaison between the state and national levels of the party. She also serves as a goodwill ambassador for the party, traveling extensively within Minnesota and giving speeches on American history and culture.



Janet was recently chosen to be one of ten members of an RNC delegation that went to Taiwan for high-level discussions with government and business representatives. On her way home, Janet made a side excursion to spend a couple of days with her U.S. Army captain son, Eric, who is on his third overseas deployment.

She is a member of the adjunct faculty at Minnesota's Metropolitan State University, where she teaches Management Information Systems (MIS). She has been nominated twice for an Excellence in Teaching Award. She has also taught a graduate course at the University of St. Thomas as well as Metropolitan State.

Interspersed with her professional careers, Janet also served on governing boards for social service agencies, church groups, Boy Scouts, the Minnesota Association of Scholars and other civic organizations.

## Advancing the mission of the Fraternal Values Society



**Renee Piquette Dowdy, Wisconsin/Whitewater - EK**, was named as the Assistant Director of Education & Curriculum

Design/Director for the Fraternal Values Society. In this position, Renee is the primary point of contact for the Fraternal Values Society and is heavily involved in serving all of the Society's client organizations in various educational capacities.

The Fraternal Values Society's mission is to illuminate the central values that guided the historical founding of general fraternities and sororities, and to incorporate these values into the contemporary fraternity and sorority experience. Renee serves as a member of Delta Zeta's National Training Committee and has developed leadership training curriculum in that role. She has worked in higher education for the past seven years with experience in residence life and housing, institutional research, leadership development, and fraternity and sorority advising. She is a member of the board for the Center of the Study of the College Fraternity, and an active volunteer with NASPA (National Association of Student Personnel Administrators).



## Miss Texas serves in state defense force

**Lauren Guzman, St. Mary's (TX) - OA**, was crowned Miss Texas. She will be competing in the Miss USA pageant next summer.

She was the winner of Miss Texas Teen USA 2008 pageant. She is a member of the Quick Response Team of the Texas State Guard, a volunteer state military force.



## Delta Zeta helps her realize her dreams



**Olivia Henken, Louisville (KY) - BΓ**, singer, actress and model, appeared on "The Voice," the reality television singing competition on NBC. Olivia has been the headliner at Thunder Over Louisville, the annual kickoff event of the Kentucky Derby Festival, for the past three years. She has opened for country newcomer Kip Moore, country legend Charlie Daniels, Dustin Lynch, Chuck Wicks and Jason Jones.

She recently released her debut album, "The Ride," and lends her beautiful voice to many events, singing the national anthem. Visit her website at <http://oliviacountry.com/home>.

Olivia credits her Delta Zeta experience as integral in inspiring her to reach for her goals. "Delta Zeta has been such a blessing in my life. I was asked to initiate as an alumna after winning the Miss University of Louisville pageant that is hosted by the Beta Gamma Chapter.

"Because the chapter sponsored such a wonderful local event for the Miss Kentucky pageant, I was able to compete on the state level and won scholarships that helped me with my education at the University of Louisville. The chapter started my journey through the Miss Kentucky Organization where I placed first runner-up, won the swimsuit and talent preliminaries and numerous scholarships the second year I competed.

"With the support of my local chapter, I was able to accomplish so many goals that I have set for myself. Now with the support of my sisters, I hope to make a name not only for myself, but bring a success story to the Delta Zeta sisterhood and make my dream come true through 'The Voice.' Becoming an entertainer has been my dream since I was four years old, and I believe this is the platform to make those dreams a reality. I am so honored to be a part of an amazing organization as a Delta Zeta, and I am humbled by all the support I have received thus far."

## Leading San Diego's alumnae and collegiate Panhellenic

**Teresa Leader-Anderson, San Diego State (CA) - ΓO**, San Diego Alumnae Chapter President, was installed as president of San Diego Alumnae Panhellenic. Collegian Sophia Huynh, of the Gamma Omicron Chapter at San Diego State University, is the collegiate Panhellenic president. This is the first time that anyone in San Diego can remember that Delta Zeta members have held the office of president of both the alumnae and collegiate Panhellenic groups at the same time.

## World Affairs Forum Board leader

**M****audie Long, Connecticut - ΓB**, was elected to the World Affairs Forum Board, part of a national network of 90 councils across the country with a shared mission of educating its members, students and the public about global affairs and America's role in the world. She was one of three to be elected to the board. A senior vice president/portfolio manager at U.S. Trust, Bank of America Private Wealth Management, where she is a member of the Military Affinity Group and past member of the Diversity & Inclusion Business Council, she has served as a literacy volunteer in Stamford and Greenwich, Connecticut, and as a committee member for Dress for Success Corporate Guild in Fairfield County. She delivers an annual session on personal finances for young adults, and is a chartered financial analyst. The World Affairs Forum offers between 25 and 30 programs and events annually in Fairfield and Westchester counties.

## Representing the Panhellenic spirit

**Sarah Snyder, Creighton (NE) - ΘH**, Kansas City Alumnae Chapter Vice President of Membership, was honored by the Alumnae Panhellenic Association of Greater Kansas City as one of its Women of the Year. This distinction recognizes special women for their accomplishments and women who represent the entire Panhellenic spirit. These women have served their sorority long past college as well as other community activities.



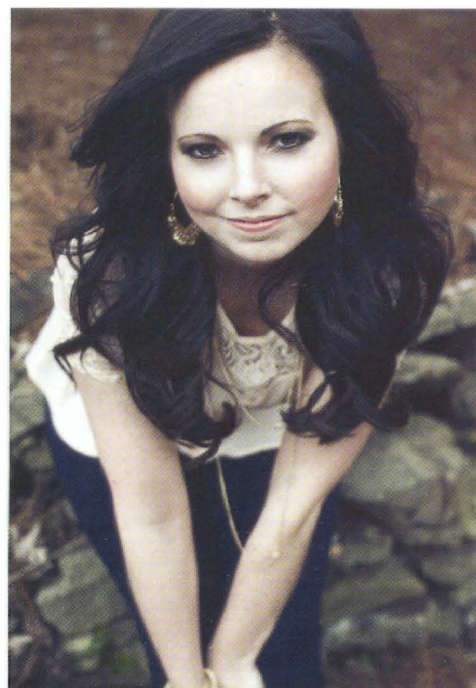
## Delta Zeta contributed to musical success

**B**rittany McLamb, East Carolina (NC) - ZA, says her sorority experience is helping her to find success as an entertainer. "I learned through Delta Zeta the importance of always putting my best foot forward whether it was in school or in everyday life, and this instilled a great amount of confidence and character in me that have carried over into my music career. Delta Zeta set the stage for me to be able to grow as an individual and bloom into the confident, driven and fearless woman and entertainer that I am today!" she says.

After graduating from East Carolina University in 2007 with a bachelor's degree in Social Work, Brittany packed her bags and headed for Music City, Tennessee with her diploma and talent in hand.

While Brittany was born with the natural talent to sing, the style, grace and poise that she brings to the stage each night are all traits she attributes to life lessons she learned as a Delta Zeta. "Being a Delta Zeta helped me to come out of my shell and become a more confident, outgoing person, which is a key element in the entertainment industry," she explains.

She also learned as a Delta Zeta that persistence pays off. After spending six years in Nashville, Brittany has finally landed several successful gigs and has just finished her first complete self-titled EP. The EP is on iTunes and features sweet-sounding power ballads such as "Summer Rain," and fierce female fight songs like "Back from Your Goodbye" and "Mr. Right" (penned by Brittany herself). Whether building relationships in her music



career or personal life, being a Delta Zeta has made a lifelong impact on Brittany. "I can't thank Delta Zeta enough for providing a foundation that allowed me to grow tremendously as a person and shaped my character; all with the power of sisterhood," she says.

VISIT

<http://www.brittanymclamb.com>  
and

<http://www.facebook.com/brittanymclambmusic>.



## Entrepreneurial Woman of the Year

**T**ina Prather McIntosh, Ball State (IN) - IX, President and CEO of Joy's House, (pictured above - center) received the 2013 Starkey Entrepreneurial Woman of the Year Award presented by Harrison & Moberly, LLP and Indianapolis Monthly. Tina founded Joy's House, an adult day service that has assisted hundreds of families, in 1999. Her personal journey as a breast cancer survivor and her contagious enthusiasm and uplifting spirit have inspired others to follow their dreams by her example. Tina is part of the prestigious alumnae panel at the Norma Minch Andrisek Leadership Conference held in convention off-years.

"My roots as a Delta Zeta have deeply impacted my career and my interpersonal relationships, both personal and professional. Through the Sorority, I learned the importance of commitment, hard work and compassion for others – all important in the leadership roles I hold today."

The Starkey Award has been presented to women who have been significant leaders and visionaries in the Indianapolis community. In its 10th year, the award has given recognition to entrepreneurial women business owners in both for profit and not-for-profit companies with inspirational stories of struggle and success.

## Associate Director of Student Affairs

**Natalie Shaak, Millersville (PA)**

- ET, was promoted to Associate Director of Student Affairs at Drexel University.

In this role, she is responsible for the communication and marketing efforts for the entire division, and will continue to develop the award-winning Dragons Against Hazing Initiative she began five years ago in her role as Assistant Director for Fraternity & Sorority Life at Drexel. Natalie volunteers as a facilitator at the Norma Minch Andrisek Leadership Conference, for the Association of Fraternity/Sorority Advisors and for HazingPrevention.org.



## AmeriCorps National Civilian Community Corps (NCCC) leader

**Madison Thompson, Drexel (PA) - EZ**, graduated from the AmeriCorps National Civilian Community Corps (NCCC) program, with 479 other members who completed over half a million hours of service and over 275 projects, including 78 disaster recovery projects.

Each member was part of a team of about 10 other members who completed a series of six- to eight-week-long projects in different communities across the country. NCCC projects support disaster relief, environmental stewardship, energy conservation, infrastructure improvement, and urban and rural development.

Among their many projects, some teams in the graduating classes were called upon to respond to Hurricane Sandy, tornadoes in Moore, Oklahoma, and wildfires in Colorado and California. AmeriCorps NCCC certifies 100 percent of its members in disaster relief, and has responded to national disasters since the program began in 1994.

Madison studied Environmental Engineering at Drexel. "I was able to use the experiences I had with my sisters in the Epsilon Zeta Chapter to foster a positive environment within my NCCC team," she says. "The diversity within our chapter introduced me to a wide range of cultures and encouraged me to explore those cultures further. In NCCC, I was able to use this to relate to the variety of people I interacted with throughout my service. The leadership roles I held in the chapter encouraged me to organize team events when morale was low."

## Excellence in promoting play therapy

**Dr. Tina Paone, Tampa (FL) - ΔB**, a university professor in New Jersey and a therapist in Pennsylvania, was named the 2013 recipient of the Louise and Bernard Guernsey Award for Excellence in Promoting Play Therapy from the Pennsylvania Association for Play Therapy. In 2010, Tina founded the Counseling Center at Heritage in Montgomeryville, Pennsylvania.

The full-service Counseling Center specializes in family therapy and play therapy for children as young as three years old. Since opening its doors, the Counseling Center at Heritage and Tina's work have been featured in media outlets such as Fox News, WebMD, Parents magazine, and Parenting magazine. In addition to running her 12-person team at the Counseling Center at Heritage, Tina is an associate professor at Monmouth University in West Long Branch, New Jersey, where she has



taught graduate students in school counseling since 2006. Tina currently serves as the Department Chair of Educational Leadership, School Counseling, and Special Education. Tina lives in Montgomeryville, Pennsylvania with her husband and three sons.

## Serving the Phoenix Alumnae Panhellenic Association



Susan Norman, Nebraska – Z (left), with Leah Osadchuk, Pi Zeta Chapter collegian and current Panhellenic President at Arizona State University, at the Panhellenic Awards Banquet. "It is exciting to have two Delta Zeta Panhellenic Presidents in the same area," Susan said. Leah received a scholarship at the banquet.

**Susan Norman, Nebraska - Z**, was installed as the Phoenix Alumnae Panhellenic Association President for 2013-2014.

Phoenix Panhellenic Association was established in 1920 and supplies and coordinates volunteers each year at the WM Phoenix Open golf tournament to provide collegiate and continuing education scholarships for sorority women in Arizona. This past year, \$27,000 was awarded in scholarships by the Phoenix Panhellenic Association.



# Sharing Our Sisterhood

**D**elta Zeta values connect members through shared sisterhood at events such as reunions, chapter anniversaries and alumnae events around the country. Delta Zeta sisterhood remains relevant in our members' lives, no matter how many years have passed since graduation from college.

## MID-AMERICA AREA - Illinois, Indiana, Wisconsin



From left: Barb Brumett Baily, Mary Ann Noncek Johnson, Sherry Quigley O'Malley, Linda Wells McNelley, Claudia Browne Curtis and Mary Stoklosa Ferrandino

**Alumnae from Epsilon Omicron Chapter (Western Illinois University) reunite**

Alumnae from the **Epsilon Omicron Chapter of Western Illinois University**, initiated in 1970 (left), enjoyed a reunion at Lake Geneva, Wisconsin.

**Lambda Rho (Illinois State University) alumnae reunite**

Alumnae members of the **Lambda Rho Chapter (Illinois State University)** from classes 1985-1988 reunited to share memories and life updates. The sisters enjoyed stories, laughter and a trivia game that featured both national and Lambda Rho trivia.

## MID-ATLANTIC AREA - Delaware, Maryland, New Jersey, Pennsylvania

**Omicron Chapter (University of Pittsburgh - PA) reunion**

**Omicron Chapter (University of Pittsburgh)** alumnae from the 1980s gathered on the Pittsburgh campus for a mini-reunion. The planning of the event occurred throughout most of 2011, with impressive outreach despite the years and miles between sisters. The weekend included social gatherings, a football game, and was topped off with a visit to the sorority suite for an alumnae brunch hosted by the collegiate chapter. "The entire weekend revived fond memories and ended too quickly. Although many chapters experience periods of excellence, the event reminded everyone of the special bond of sisterhood, and how outstanding a group we were and continue to be," says alumna Amy Schwartz.



**Correction:** Issue 3 -2012 attributed Amy Schwartz's, Pittsburgh (PA) - O, quote to a reunion of Omicron alumnae of the 1970s, which was incorrect. Amy was with the Omicron reunion for members initiated in the 1980s.



## Zeta Phi Chapter (Slippery Rock University - PA) celebrates 50th anniversary



Jenn Raabe Walters, Zeta Phi alumna and College Chapter Director for the Zeta Phi Chapter, Marianne Mayorsky Ponist, Zeta Phi founding member, Golden Rose recipient, and a member of Pittsburgh-South Hills Alumnae Chapter, and Saria Haselrig, Collegiate President of the Zeta Phi Chapter.

Alumnae from **Zeta Phi Chapter (Slippery Rock University - PA)** were welcomed to the chapter's 50th anniversary Golden Jubilee, which was celebrated on March 9, 2013. The event hosted 115 alumnae for an exciting evening of shared sisterhood, memories and networking.

Sarah King, Zeta Phi Collegiate Chapter Editor, said, "It was truly an amazing experience. During the celebration, sisters joined hands while reciting the Creed, which was a moving moment. We were also thrilled to welcome some of the charter members of the chapter to the Golden Jubilee."

## Xi Kappa (Rowan University - NJ, formerly Glassboro State College) alumnae meet for 30-year reunion

College roommates, **Xi Kappa Chapter (Rowan University, formerly Glassboro State College)** alumnae and friends for more than 30 years – Jeannette Fuller Andreula, Linda Cademartori Barba, Stacie Feller Capuano and Susan Wiman Essid – celebrated together on vacation in Naples, Florida. Linda is the Treasurer for the Southern New Jersey Alumnae Chapter.



## SOUTH CENTRAL AREA - Arkansas, Kentucky, Louisiana, Mississippi, Oklahoma, Tennessee

### Theta Kappa Chapter (University of New Orleans - LA) enjoys 50th anniversary celebration

Alumnae from the **Theta Kappa Chapter (University of New Orleans - LA)** gathered to celebrate the chapter's 50th anniversary with its first Order of the Golden Rose recognition. Charter members attending and recognized as Golden Rose recipients were Margaret Christina Fowler, Penny Bourg Anderson, Fay Cannizzaro Cortello, Mary Berteau Alford, Susan Lavista McManus, Margaret Comer Mashburn and Gail Gilly Marquette.





# SOUTHWEST AREA - New Mexico, Texas

Zeta Psi Chapter celebrates 50th year at Stephen F. Austin State University (TX)



The Zeta Psi Chapter celebrated 50 years on the Stephen F. Austin State University (TX) campus. Alumnae were treated to a luncheon with national guest speakers and special guests, and a sisterhood soiree in the evening. More than 275 alumnae attended the weekend.

## Flame Eternal

**Alma Jo Moore, West Texas A&M – ZZ,  
Past National Officer**

It was with sadness that National Council shared the news that Alma Jo Moore, West Texas A&M - ZZ, Past National Officer, passed away on July 17, 2013.

Jo served Delta Zeta National Council as National Director of Public Relations from 1970 to 1972.

After receiving her B.S. from West Texas A&M University, where she became a member of Delta Zeta, she obtained a master's degree in education from Southwestern University in Oklahoma. Jo taught fourth grade and special reading classes at Vega Elementary School for several years, was a reading specialist, and was an administrator of several federal government programs in education. Upon retirement, she was a consultant to several schools in the Texas Panhandle and New Mexico.

She served as an emergency medical technician with Vega Ambulance for many years and served as a certified EMT trainer in the Texas Panhandle, assisting many volunteers to get their EMT certifications. She was a member of Saint Stephen United Methodist Church of Amarillo.

The family suggests memorials be sent to Wildorado Fire Department-Community Center or Wildorado Palo Duro Cemetery, P.O. Box 82, Wildorado, TX 79098.



**Alma Jo Moore,  
West Texas A&M - ZZ**



Send all notices of address changes and member deaths to:  
Delta Zeta National Headquarters  
202 East Church Street  
Oxford, OH 45056  
Phone: (513) 523-7597  
CHANGE SERVICE REQUESTED

PRESORTED  
STANDARD  
U.S. POSTAGE  
**PAID**  
FLORENCE KY  
PERMIT NO. 313



## DELTA ZETA *Foundation* GIVING IS ENRICHING

“ I knew it was time to donate to the Delta Zeta Foundation so that as many collegiate women as possible could have the same experiences that I did. ”

Katie Isaac Franklin, Alfred (NY) - OΦ

Gifts from alumnae to the Delta Zeta Foundation support the personal growth, leadership and scholarship programs of Delta Zeta Sorority. All gifts are welcomed and appreciated. The Guy Potter Benton Society recognizes gifts of \$1,000 - \$2,499. For more information on setting up a monthly gift of \$10 or more, please visit <http://www.deltazeta.org> or contact Chris Kern, Director of Development, at (513) 523-7597 or [DZFoundation@dzshq.com](mailto:DZFoundation@dzshq.com).

**P**ledging Delta Zeta was a defining moment in my life. I remember everything about the recruitment process, about the preference ceremony, and of course, about my initiation. As an initiated member, I built amazing friendships, learned how to lead peers, run meetings and organize events. I also learned a lot about loyalty – what it means to make a promise and agree to live by a set of timeless ideals. The bonds that I created after making that pledge did not end with my university graduation ceremony. I knew, even before that day, that Delta Zeta was a lifelong commitment.

Serving Delta Zeta as an alumna came very naturally. I love meeting other Delta Zetas from around the United States, even around

the world, and I've enjoyed holding a variety of volunteer positions. I am currently serving as President of Delta Zeta's largest and first virtual alumnae chapter, Surfing Sisters, and it has been an honor to lead such an amazing group of women. I realized that "giving graciously of what is mine" wasn't limited just to my time, but also meant donating financially.

The foundations for many of the skills I use on a day-to-day basis professionally were laid when I was a collegian. Bringing new talent to my company is a lot like the recruitment process. And keeping a room full of businesspeople to an agenda feels a lot like running a formal chapter meeting (though much less fun). So, when I achieved some career success, I knew it was time to donate

to the Delta Zeta Foundation so that as many collegiate women as possible could have the same experiences that I did.

A few years ago, I decided to make an annual commitment to the Foundation and joined the Guy Potter Benton Society. It feels good knowing that the Foundation can count on me for a specific amount of money each year, and by setting up automatic monthly payments, it really couldn't be easier to make the donation!

Supporting the Delta Zeta Foundation is critical to helping the Sorority achieve its mission and to providing training and programming to our members. I am thrilled to contribute a small piece to this very worthwhile endeavor!

Visit <http://www.deltazeta.org> or contact Chris Kern, Director of Development, at [DZFoundation@dzshq.com](mailto:DZFoundation@dzshq.com). Call (513) 523-7597