

The LAMP

ISSUE 1 - 2013

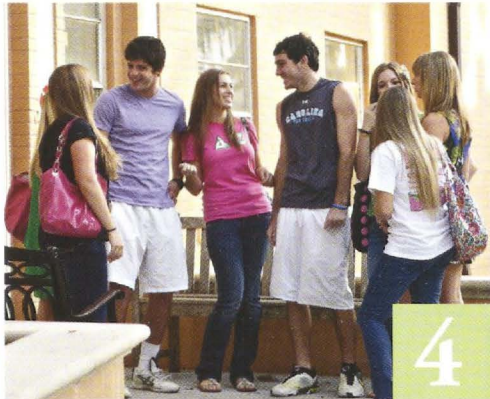
o f D E L T A Z E T A



The Value of the Fraternal Experience

Demonstrating the Relevance of
Fraternities and Sororities on Today's Campus

Contents



Visit <http://www.deltazeta.org> to read the latest issue. If you would like to read The LAMP online to help the Sorority to go green, please email us at GreenLAMP@dzshq.com. You will receive an email alert when the next issue is online. If you want to continue to receive The LAMP in its hard copy format, mailed to you three times a year, you need not do anything. Thank you!

Features

- 4 The Value of the Fraternal Experience
- 11 Recommend a Potential New Member
- 14 Delta Zeta National News
- 16 Distinctive Delta Zetas
- 36 Alumna Profile
- 38 Collegiate Profile
- 42 The Inspiration to Give Graciously
- 49 Sharing Our Sisterhood
- 50 Giving Graciously
- 52 From the Archives

Departments

- 18 On Campus
- 33 Flame Eternal
- 44 Alumnae News

**Delta Zeta Sorority
National Council 2012 - 2014**

Jeanine Petersen Triplett,
Louisville (KY) - BG,
National President

Diane M. Stecher,
Missouri/St. Louis - IE,
National Vice President of Membership

Ann Gurley Morrow,
Southern Indiana - AB,
National Vice President of Collegians

Leslie Evans Williams,
Indiana - E,
National Vice President of Alumnae

Heather Jerden Anderson,
Texas/Arlington - IP,
National Vice President of Administration

Cathy Irvin Painter,
Alabama - AG,
National Vice President of Finance

Michelle Albrecht Smith,
California/Los Angeles - AX,
Past National President

Lynnda Wolf Hoeffler,
Kent State (OH) - GK,
National Panhellenic Conference
Delegate

Founded at Miami University - Oxford, Ohio
October 24, 1902

FOUNDERS

Alfa Lloyd Hayes, 1880-1962
Mary Collins Galbraith, 1879-1963
Anna Keen Davis, 1884-1949
Julia Bishop Coleman, 1881-1959
Mabelle Minton Hagemann, 1880-1929
Anne Simmons Friedline, 1879-1932

THE ORDER OF THE LAUREL

Irene Caroline Boughton, I
(University of Iowa)
Grace Mason Lundy, E
(Indiana University)
Elizabeth Coulter Stephenson, A
(Miami University)
Myrtle Graeter Hinkly, Δ
(DePauw University)
Norma Minch Andrisek, ΓA
(Baldwin Wallace University)



From The National President



o be our best, it all starts with recruitment.

Delta Zeta's vision statement says that we strive to be a "premier" women's organization. In order for Delta Zeta to be the best we can be, we must recognize the importance that recruitment plays in the future of each of our chapters and, ultimately, our national organization. After all, our new members are our future leaders and future alumnae. Membership is a privilege, a gift, a lifetime commitment – it is our responsibility to communicate the expectations of membership to the potential new members during recruitment, not after the fact.

The chapters that articulate our values and how they translate into the Delta Zeta experience during recruitment have a higher membership retention rate, a better experience for their members, and a much stronger chapter. Our values are our foundation, and our members must be committed to living these values each and every day.

This first step in understanding the commitment and dedication required to be a part of Delta Zeta starts with the first conversation an initiated member of Delta Zeta has with a potential new member during recruitment. We have high expectations for our members – academically, financially, morally and socially. Our conversations must focus on what it means to be a member of an organization that expects the best from each and every member.

Recruitment is the time to share the vision and expectation of membership handed down to each of us by the Sorority's Founders through our ritual. They founded Delta Zeta with a pledge to each other to be the best they could be – we should expect nothing less of our potential new members.

Love in Delta Zeta,

Jeanine P. Triplett, National President

Published since December 1910 by
DELTA ZETA SORORITY

The LAMP of Delta Zeta
Nancy E. Brewer, A, Editor
(ISSN #0887-2554), official magazine of the
Sorority, is published three times a year
by the Delta Zeta Sorority,
202 East Church Street, Oxford, OH 45056.

Cover Photo: Courtesy of Miami University,
Cliff Alexander Office of Fraternity
and Sorority Life & Student Activities



POSTMASTER

Send address changes to Delta Zeta Sorority,
202 East Church Street, Oxford, OH 45056.

Send all editorial material to
Delta Zeta National Headquarters,
Attn: Editor,
202 East Church Street, Oxford, OH 45056
(513) 523-7597

General email: dzs@dzshq.com
The LAMP email: LAMP@dzshq.com
Website: <http://www.deltazeta.org>



National Panhellenic Conference

The Omicron Alpha Chapter was part of St. Mary's University's campus-wide service philanthropy event, Continuing the Heritage Day of Service

Photo: Courtesy of St. Mary's University, Office of University Communications

Today's institutions of higher learning exist in an ever-evolving and rapidly changing environment – one that is unique to the educational landscape. What does this mean to fraternal organizations whose chapters reside on these multi-dimensional campuses? How can a fraternity or sorority provide an experience that will become an essential part of the member's life, while staying in step with these dramatic changes?

“For much of the higher education sector, the status quo is not an option. Rising tuition, diminishing state support, skyrocketing student debt loads, declining admissions and changing demographics ... are among

“ Since the American Revolution, fraternities have embraced the principles of freedom of inquiry and liberty of thought and expression.”

Pete Smithhisler,
President and CEO of the North-American
Interfraternity Conference

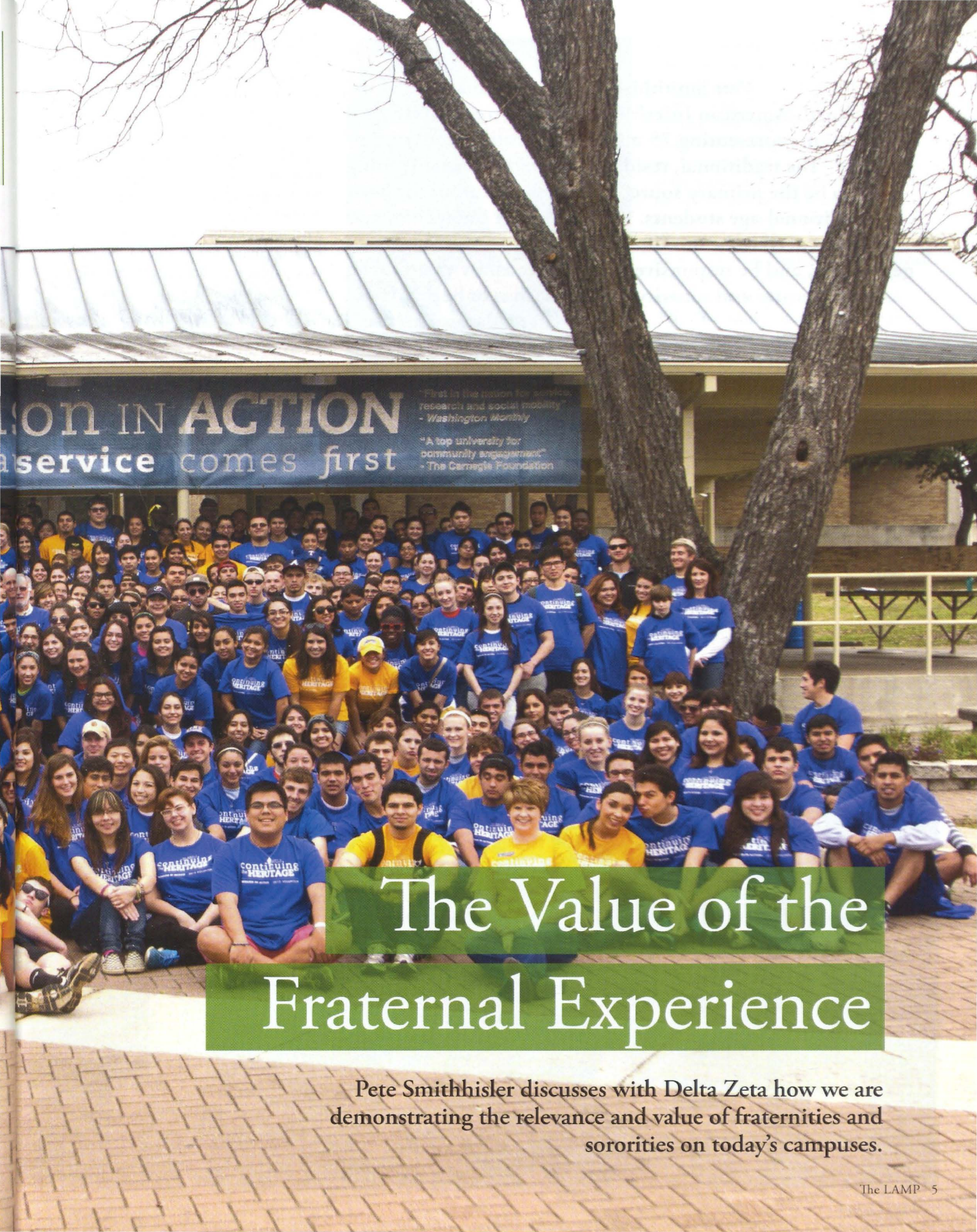
the obstacles,” says the advisory and thought-leader organization Grant Thornton.² A Time/Carnegie Corporation poll taken in late 2012 reported, “The American public and senior administrators at U.S. colleges and universities overwhelmingly agree that higher education is in crisis, ... but they fundamentally disagree over how to fix it.”³

1 Op Ed, “The Value of Fraternity Membership,” for The Daily Journal, Los Angeles, Calif., Jan. 25, 2010.

2 Grant Thornton LLP, “The State of Higher Education 2013.” Retrieved from URL <http://www.grantthornton.com>.

3 <http://nation.time.com/>





The Value of the Fraternal Experience

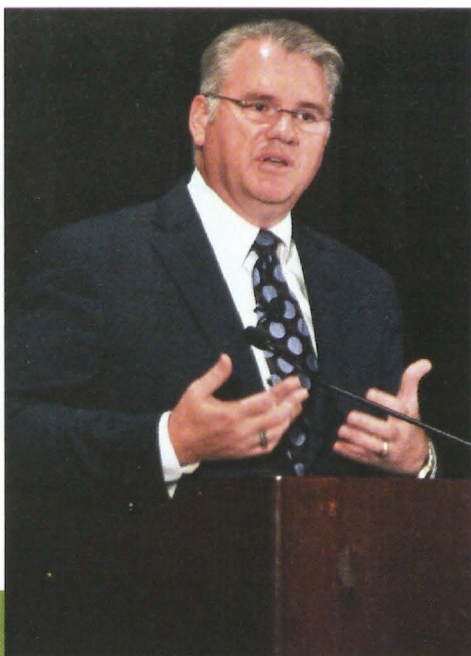
Pete Smithhisler discusses with Delta Zeta how we are demonstrating the relevance and value of fraternities and sororities on today's campuses.

Pete Smithhisler, President and CEO of the North-American Interfraternity Conference (NIC), an organization representing 75 major men's college fraternities, says, "The traditional, residential experience is still going to be the primary source of higher education for most traditional-age students. I do think that fraternities and sororities need to be mindful of the changing needs of each generation, and be responsive to those needs. By that I mean the fraternity and sorority experience has to be adaptable to the co-curricular experience."

With the NIC representing more than 350,000 student members and five million alumni members from college chapters on more than 800 campuses in the U.S. and Canada, Mr. Smithhisler is well aware of the trends on the modern campus. Greek organizations, he says, must be flexible to meet the needs of student members who, for instance, might commute, take evening or online classes, or whose learning takes a detour from the traditional path. "Some students might not be able to always be on campus, for example, but that doesn't mean that they still don't need the connection to their peers and to the co-curricular experience."



Fraternal organizations and their umbrella organizations (North-American Interfraternity Conference [NIC], National Panhellenic Conference [NPC], National Pan-Hellenic Council [NPHC], etc.) are responding to these changes. These organizations are advocates for their member groups, promoting the advancement of fraternal life and enriching the educational purpose of the institutions where their chapters reside. Mr. Smithhisler says, "NIC is re-imagining our resources, ensuring that we're doing outreach to the campus, students, leaders, and doing our best to be a partner as those local Interfraternity Councils work with the community to advance their own goals."



The NIC and its counterparts are also serious about the influences in today's society that threaten the existence of the fraternal experience. "At our recent annual meeting," Mr. Smithhisler continues, "there was significant conversation about our role in addressing the issue of hazing in the undergraduate experience, and what we will commit ourselves to do in order to eradicate hazing from that experience. We're vocal that hazing has no place in the new member experience. We reiterated that alcohol has no role in the recruitment or new member experience, and that values-based fraternity and sorority co-curricular experience is what will ensure our future success."



The Influence of Values Congruence

For fraternities and sororities, meeting the challenges of today's campus while remaining relevant both to the institution and the student body it serves requires that those organizations are strong and stand firm in their core values – both nationally and at the chapter level. That strength and assuredness comes from each member, living their lives according to their organization's principles.

"The role of accountability is critical for values congruence," Mr. Smithhisler says. Not only does this hold true for members within the chapter and the chapter itself, but values congruence also shapes the relationship between the fraternal organization and its host institution.

Values congruence starts in the recruitment stage – finding potential new members who will embody an organization's values in all phases of their lives.

"Let's start with how we recruit and the message that we send to the potential new member," Mr. Smithhisler says. "I think it's critical that we present an accurate description of who we are, what we are, what we expect and what the potential new member can expect from us.

"That mutual selection process needs to be truthful, it needs to be clear, and it needs to bring us the best match. Then we can help to shape and grow both the individual and the organization. With each new member comes a new personality, new skills, new talent, new dreams and new hopes. Those help to shape the differences of each year – and that's what's best about the experience," he continues.

If a chapter doesn't acknowledge that new and diverse membership fuels its lifeblood; if a chapter isn't flexible in meeting changes in student needs, it risks its very existence, and the growth of the fraternity or sorority overall. "When we try to hold on so tightly to what was, sometimes we fail," says Mr. Smithhisler. "That stronghold then prevents the organization from moving forward or growing into its potential."

It Begins with Our Members

Remaining true to our organizational values ensures that fraternal organizations have the ability to be responsive to both student needs and the university's challenges. But the strength of a fraternity or sorority on any given campus is dependent on its individual members.

"Membership is a privilege, not a right. With membership comes great responsibility," Mr. Smithhisler continues. "With that responsibility, each of us needs to lead when it's our turn, and each of us needs to follow with a full heart, and support our sisters during their leadership time. The responsibility aspect is really about living our ritual every day. It's about waking up in the morning and deciding to incorporate the values and the expectations of sisterhood into our decisions, our practices and our balance."

He continues, "I don't agree with the phrase, 'We are our brother or sister's keeper.' What I believe is, that because we are brothers and sisters, it's different than being acquaintances or friends. There is a higher obligation to each other when we're family, and that's part of the values system of our fraternities and sororities. We are going to be there for each other – to encourage and challenge each other to be the best that we can be. We should be mindful that these expectations and values are not just exhibited when it is convenient. When we take our oath, we are saying that we will do this, and we are going to do this forever. And that is where alumnae play a key role."



Alumnae are key to the success of fraternal organizations. They advise and inspire collegiate members, volunteer countless hours, are leaders and role models, and are important to and respected by their alma mater. "Undergraduates need to see the values of our organizations modeled in the alumnae life, and alumnae have an obligation to share with the undergraduates why that can be a) a struggle, or b) a natural part of decision making."

“ As a fraternity man, in my 30-plus years of being a member of Lambda Chi Alpha, I have never once regretted my decision to join my fraternity, but I also understand that that was a gift given to me, and it is my job to continue to give that gift to other men who aspire to the values of Lambda Chi Alpha. ”

Pete Smithhisler, speaking at the Carolyn Barnes Gullatt Symposium, 2012 Delta Zeta National Convention



Supporting the Fraternity and Sorority

The chapter leader is another component of the chapter that is successful in meeting the needs of today's student while remaining true to the organization's principals. "It's about what is best for the organization," Mr. Smithhisler says. "Sometimes folks come in with personal desires and then forget to

incorporate the wants and needs of the entire organization. And you cannot be a selfish leader and be successful or long term."

At the same time, chapter leaders are human and need support from the chapter. "That overwhelmed feeling [for leaders] often comes when individuals try to go it alone," he says. "My best advice to those who are feeling isolated, alone, overwhelmed, at a breaking point, is to stop trying to shoulder the burden

alone, and to start sharing the burden — share obligations with those who care about us most, because that's the essence of being in an organization like a fraternity or sorority — we're in this together. You're not elected into a leadership role for you to do everything alone and personally. You're elected to lead and there's an implied aspect of followership that's part of it. Leadership is about engaging and involving others' skills and talents in order to do our best, to create the best."

“How can you make your big ‘R’ your little ‘r’?”



our little ‘r’ is the ritual, daily habit, or something you do without thought, something that happens naturally. The big ‘R’ is the Ritual – what you learn during the ceremony in which you become a Delta Zeta. I am talking about the oath that you took, the part where you said you will promise to uphold the values of the Sorority.

“And, eventually, you look back at life and realize, ‘I am simply doing Delta Zeta’s work and I didn’t even know I was doing it.’ That is when you know that you have become a Delta Zeta.

“What I am asking you to think about is to make that work a purposeful, intentional act – to make your big ‘R’ your little ‘r’.”

Pete Smithhisler, speaking at the Carolyn Barnes Gullatt Symposium, 2012 Delta Zeta National Convention

About Pete Smithhisler



Pete Smithhisler, President and CEO for the North-American Interfraternity Conference (NIC), is one of the nation’s foremost advocates for the fraternal movement due to his extensive work with students, higher education partners and governmental agencies.

He has been working with college students for more than 25 years in a variety of professional roles. He is passionate about the fraternity experience and regularly affirms, “when done right, fraternities are the premier leadership experience on college campuses.”

Mr. Smithhisler presents students with real-world challenges and compels them to broaden their leadership capacity to confront the problems facing fraternity and sorority life. Focusing on the fraternal building blocks of values, Ritual and service to others, he inspires students to fundamentally rethink their individual impact and empowers them to develop the courage to create positive change within their values-based student organizations.

An expert in training, facilitation and curriculum development, Mr. Smithhisler provides educational opportunities for students to develop life skills and personal values congruence to advance the true meaning of fraternity: the cultivation of individual and collective maturity.

Imagine

“If you can imagine it, you can achieve it; if you can dream it, you can become it.”

William Arthur Ward,
American scholar and author

In his speaking engagements and his work for the NIC, Pete Smithhisler knows that inspiration and imagination motivate fraternal men and women to fulfill their potential and in turn, strengthen their organizations’ influence and foundations.

“One of the things that I often have people do is to think of the best brother or sister that they know,” he says. “I have them describe that person to me, and to share with me what that person does. And often, this person really lives the full meaning of sisterhood. Then I say, ‘As you’re thinking about who the best person is, was that person you? And if it’s not you, why not?’ That’s the only thing that you can control. If you wake up to decide to be the best, even if it’s at 90 percent, it’s still going to be pretty awesome.

“You have to envision what can be in order to have aspirational goals. Without vision, we’re just going through the motions. That’s why it’s so important for officers to go away on retreats; that’s why it’s so important to engage the chapters in weekend activities that allow the members to share a vision and then start talking about how that’s different from reality, and what we need to change in order to get there.”

The Delta Zeta Purpose uses the words, “guidance and unity in action, objects worthy of the highest aim and purpose of associated effort.” That is what Mr. Smithhisler says is needed to remain relevant on today’s campus.

“That’s what we talk about in terms of shared vision, plus collaborative relationships which lead to positive change, because it’s the people working together towards that ultimate goal that drives motivation, initiative, cohesion and acceptance of differences or diverse opinions. And it is the thing that motivates and creates commitment.”

Recommend a Potential New Member

Submit a Reference or Legacy Form today to ensure the future of Delta Zeta.



The Iota Xi Chapter (University of Missouri/St. Louis) on Bid Day.

DELTA ZETA LEGACY POLICY



Over the past several years, Delta Zeta's legacy policy has changed.

With this change, it is now the responsibility of our Delta

Zeta alumnae to complete a Recruitment Introduction Form for their family member(s) and friends who will be participating in formal recruitment. Delta Zeta's legacy policy defines a legacy as a sister/stepsister, daughter/stepdaughter, granddaughter/stepgranddaughter or great granddaughter/great stepgranddaughter. An alumna who wishes to refer a legacy must submit the Recruitment Introduction Form. The form should be sent to the chapter's College Chapter Director (CCD) PRIOR to the beginning of the formal recruitment process. Addresses for CCDs may be found on <http://www.deltazeta.org/member> under Top Links > Chapter Locator or by calling National Headquarters at (513) 523-7597 or via email

at dzs@dzshq.com. A legacy will not be extended the legacy courtesy without a written referral or Recruitment Introduction Form. A legacy with a Recruitment Introduction Form will be invited to one invitational event of a Delta Zeta chapter. Chapters are not required to consider legacies that do not have a completed Recruitment Introduction Form.

While our legacies should be given every consideration for membership during recruitment, it must be noted that Delta Zeta cannot promise an invitation of membership to all legacies. Our Delta Zeta chapters are ENCOURAGED to pledge any legacy that meets the national and chapters' established criteria. We must remember that membership in Delta Zeta is a mutual selection process.

If a chapter wishes to release a legacy (with a completed Recruitment Introduction Form) during the formal recruitment process, the chapter must have approval of the College Chapter Director and the Regional Collegiate Director before removing the legacy from the invitation list.

In the past, Delta Zeta chapters have contacted the alumna of the chapter when the chapter had approval to release a legacy. As more and more campuses across the country use computerized systems to manage recruitment, most chapters and potential new members find out very late at night or very early in the morning who makes up their invitation lists due to the immediate turnaround of the computer system. Because of this timeframe, the alumna recommending the legacy will not be contacted when the legacy has been released.

Each legacy is required to have a minimum grade point average (GPA) of a 2.5 or higher before she may be considered for membership. Please note that exceptions are not made to our 2.5 grade point average pledging requirement. It is also important to remember that our Delta Zeta chapters may set a higher GPA requirement, and in these instances the legacy will need to meet that requirement.

DELTA ZETA MEMBERSHIP RECOMMENDATION POLICY

Delta Zeta encourages our alumnae to submit the Recruitment Introduction Form for all young women going through recruitment on campuses with Delta Zeta chapters.

With Delta Zeta's values-based recruitment membership selection process, these forms can provide additional information to our chapters that is helpful in making sure our chapters

pledge women with high academic standards and leadership potential.

A chapter is not required to extend an invitation to a potential new member who is not a legacy, but has a Recruitment Introduction Form.

As our Sorority has grown and changed, so has the structure of recruitment. We encourage our alumnae to send

recruitment introduction forms to our chapters, as that will continue Delta Zeta on the path of quality membership. Even though not all of our legacies and alumnae recommendations will become Delta Zetas, we want every potential new member to have a positive experience and discover the benefits of fraternal life.



Please complete and submit form on page 13 with this form. Form is also available online at <http://www.deltazeta.org>. Go to Top Links.

RECOMMENDATION INFORMATION (Include with form on next page.)

CALL US

(513) 523-7597 | dzs@dzshq.com.
www.deltazeta.org

Information submitted by _____ ☐ I am an Alumna ☐ I am a Collegian ☐ Alumnae Chapter Submittal
First Maiden Last

Address _____

City _____ State _____ Zip _____

Initiating chapter _____ College or University _____

Year of initiation _____ Phone _____

I recommend this woman? ☐ Yes ☐ No I have known her for _____ years.

Comments _____

Signature _____ Date _____

- ☐ Please attach additional information you may have and wish to share regarding this potential member.
 - ☐ Please send this form to the College Chapter Director (CCD). Addresses available on <http://www.deltazeta.org/member>. Click on Chapter Locator under Top Links. Or, contact Delta Zeta National Headquarters at (513) 523-7597 or dzs@dzshq.com.
 - ☐ Please attach photo if possible.
 - ☐ This form may be copied for additional use.
- Chapter use only - Rec'd _____ Ack _____

DELTA ZETA RECRUITMENT INTRODUCTION FORM

This form is designed to introduce women to Delta Zeta collegiate chapters before they go through recruitment.
A Recruitment Introduction Form is not a guarantee of membership.

Legacy: ☐ Yes ☐ No (Delta Zeta Legacy status does not guarantee an invitation of membership.)

Name _____ College or University _____

Home address _____

City

State

Zip

Campus address _____

City

State

Zip

High school attended _____ GPA _____

Year in College: ☐ Freshman ☐ Sophomore ☐ Junior ☐ Senior College GPA _____

Is this woman a transfer student? ☐ Yes ☐ No

If yes, college previously attended _____

Please list any academic honors, community service and organizations, talents, hobbies and interests. *Please attach additional sheets if necessary.*

Parents' names _____

LEGACY INFORMATION (IF APPLICABLE)

Delta Zeta relatives (check all that apply): ☐ Mother/Stepmother ☐ Grandmother/Stepgrandmother ☐ Sister/Stepsister

Have they discussed Delta Zeta with her? ☐ Yes ☐ No

Name of Delta Zeta _____ Initiation chapter _____
First Maiden Married

Phone _____ Address _____
Area Code City State Zip

Other Greek affiliated relatives _____

Check all that applies to you:

- ☐ I know this potential member personally.
- ☐ I know the potential member's family.
- ☐ I have discussed Delta Zeta with the potential member.
- ☐ This reference was voluntarily sent because I believe this potential member would make an exceptional Delta Zeta.
- ☐ This reference was requested by an alumnae or collegiate chapter.
- ☐ I do not know this potential member personally. The information has been obtained from reliable sources.
- ☐ This reference was requested by the potential new member. I do not know this potential member personally; however, I am forwarding her submitted information to the chapter so that they have additional information regarding her interest.

Delta Zeta Goes to Washington

Since 2004, fraternity and sorority leaders have been working together to build a positive presence in Washington that helps to protect the fraternal experience. The Fraternity and Sorority Political Action Committee, which was incorporated in 2005, has worked to build a positive presence in Washington, D.C.

The public policy agenda focuses on four primary areas: 1) Student Success, 2) College Affordability and Charitable Giving, 3) Access to Safe and Affordable Student Housing, 4) Preservation of a Student's Constitutional Rights.

Approximately 200 fraternity/sorority undergraduates and alumni shared this message on Capitol Hill on April 21-25, 2013, including delegates from Delta Zeta Sorority.

One of the key areas supported is the Collegiate Housing and Infrastructure Act (CHIA) of 2011 (H.R.1327/S.705). If passed, CHIA would allow fraternal organizations to use tax deductible contributions to build, maintain or improve fraternity and sorority houses.

Other areas of policy include participating in broad-based coalitions seeking to preserve the full value of the charitable deduction in the tax code; engaging in the debate about the proper scope of potential federal legislation penalizing students engaged in hazing; and monitoring Congressional action on reauthorization of the Higher Education Act for issue of interest to the fraternal world, especially college affordability initiatives.

For more information, or to take action, visit the Fraternal Government Relations Coalition at <http://www.fgrc.com>.



The Delta Zeta delegation on Capitol Hill included Olivia Feldkamp, Beta Gamma Chapter (University of Louisville), Megan Larkowski, Panhellenic Delegate, Iota Chapter (University of Iowa), Jeanine Petersen Triplett, Louisville (KY) – BΓ, National President, and Cindy Winslow Menges, Miami (OH) – A, Executive Director.

FGRC

Fraternal Government Relations Coalition



advocate | collaborate | educate



NPC
National Panhellenic Conference
the voice for sorority advancement

Delta Zeta Presidents Academy

Exploring Leadership

Producing leaders for today's world begins on campus. Many of our collegiate members lead through service in student government and other student organizations, and in various philanthropic/service events on campus.

The Presidents Academy brings Delta Zeta's collegiate leaders together to discover new ideas about leadership and learn how their values, nurtured in the Sorority, will inspire their chapters' members to commit to and pursue goals that will result in individual and collective success.

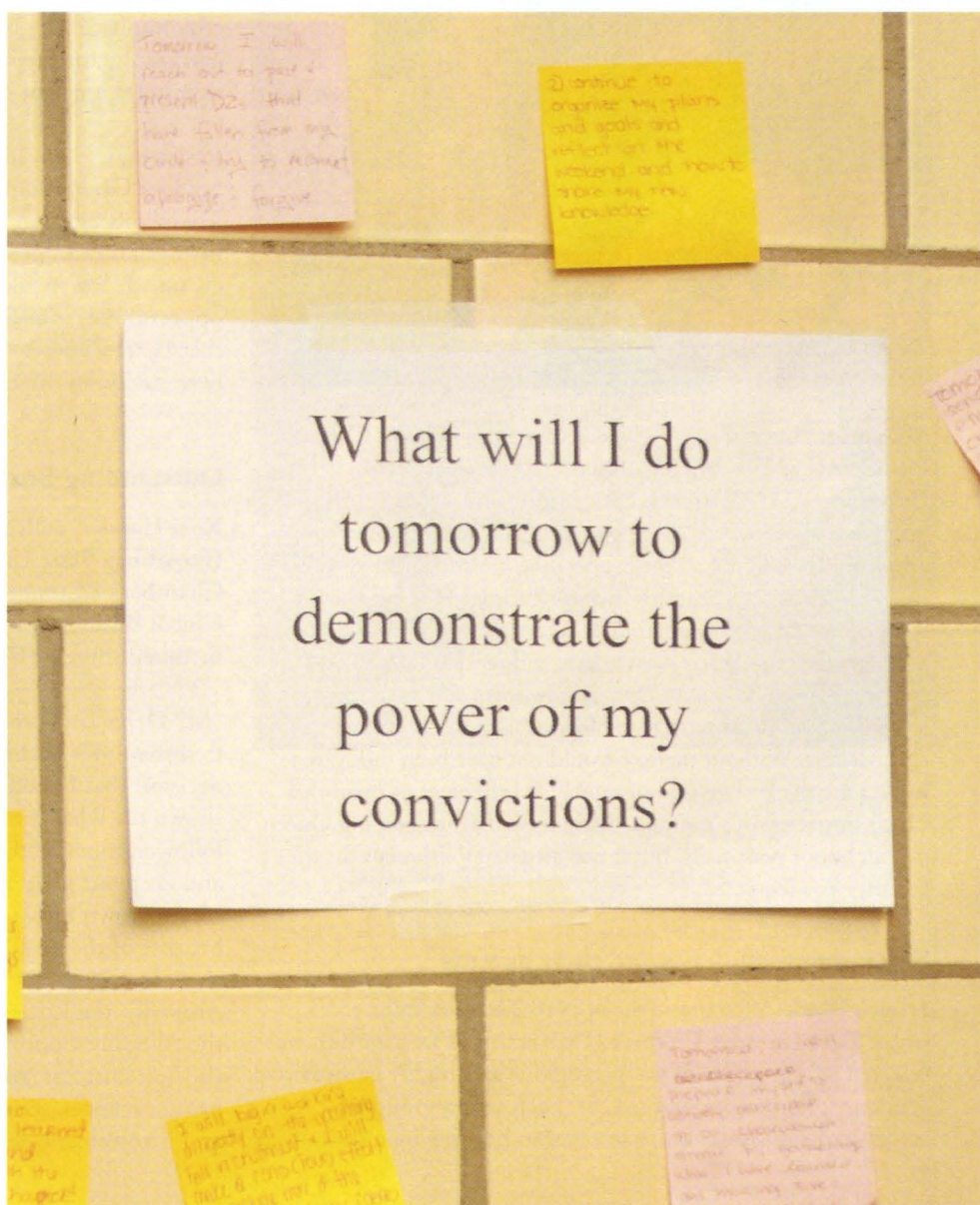
Delta Zeta's collegiate chapter presidents experienced the power of personal knowledge with their participation in programming from our partners with Plaid at the 2013 Presidents Academy, held earlier this year. By taking the personal assessment known as the Birkman Method, participants explored how their skills, interests and behaviors, represented by colors, come together to create a "plaid."

Participants of the Academy were asked the following questions, and the overwhelming response was a positive one:

- As a result of your Presidents Academy experience, do you think you understand key leadership skills needed to lead a collegiate chapter?
98 percent felt they do.
- Can you more effectively create and cultivate relationships than before?
93 percent believed that they can.

- Do you have an increased self-awareness of your leadership style and its impact on your role as President?
99 percent felt they do.

- Will you be able to inspire others towards a shared vision or goal?
98 percent said yes.
- Can you communicate the unique elements which shape our sisterhood?
97 percent said they can.



Distinctive Delta Zetas

Delta Zeta enriches its members' lives and the world community. Delta Zeta collegiate members, fulfilling this philosophy in school and in service through outstanding achievement, are inspirational and exemplify the best of the Sorority.

Peer Leader is Homecoming Queen

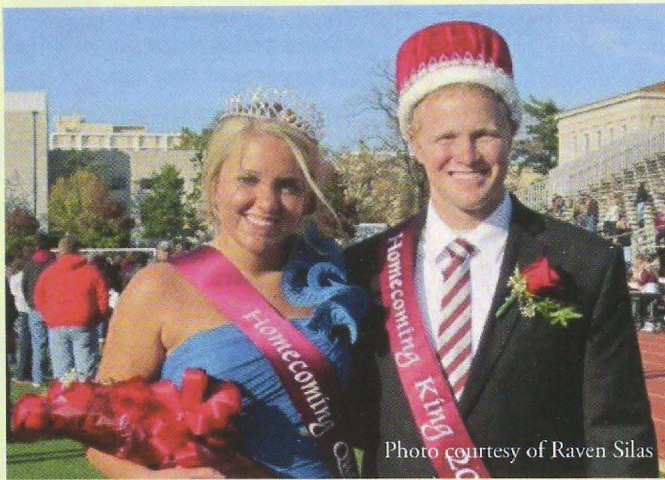


Photo courtesy of Raven Silas

Alexandra "Lexi" Beck, President of the **Epsilon Nu Chapter**, was selected as Homecoming Queen at **Missouri State University**. Lexi is a French Education major, was a SOAR (Student Orientation, Advising, and Registration) Leader for 2012 and is currently a Peer Leader. She is also a member of several student organizations including Order of Omega and Kappa Delta Pi, the international honor society in Education. Lexi says Delta Zeta has been a great influence on her college experience. "Delta Zeta has always meant so much to me because my sisters are my biggest supporters and cheerleaders. Without them, I would not have been motivated to become the best version of myself. It is because of them that I have impacted this campus. Being named Homecoming Queen was an honor personally, but it was an accomplishment for the Sorority as a whole."

Serving new students and their parents

Jessica Black, Vice President of New Member Education of the **Beta Gamma Chapter (University of Louisville)**, was selected as a member of the prestigious and highly competitive Student Orientation Staff (SOS). Each year a group of undergraduate students are selected to become members of

the Student Orientation Staff. In this capacity, they serve as resources for new students and their parents, and assist university staff with the planning and implementation of the programs. SOS students make the orientation experience an exciting and fun welcome for the University of Louisville community. Recognized by the university administration and faculty for their contributions, this team of leaders has a significant amount of responsibility.

Jessica says, "I am incredibly excited to be a member of the Student Orientation Staff at the University of Louisville. My membership in Delta Zeta has inspired me to get more involved on campus. My sisters know my strengths and encourage me to take advantage of the many leadership opportunities available at the university. The high standards that Delta Zeta sets for its members always push me to be the best version of myself that I can be."

Outstanding Business Student in Global Business

Kori Hassler, collegiate member of the **Omicron Pi Chapter (Frostburg State University)**, won the Allegany County Chamber of Commerce Outstanding Business Student in Global Business for the 2012-2013 school year. She is a member of the FSU Global Business Club.

"My Delta Zeta experience took me from a nonchalant freshman to a graduating senior who sees the impact of every decision that I make," Kori says emphatically. "Delta Zeta has shown me what it means to be a leader, and how to be a good follower, too. I want to represent the Sorority as best as I can and keep our good name on campus and with my professors. I have grown into a responsible student, friend and sister all because of the love I have for this organization."

Annually, the Rotary Club of Cumberland joins forces with the Allegany County Chamber of Commerce to celebrate the best business students enrolled in each of the public and private schools, strengthening community understanding of and involvement between business and education.

Helping those in need

Omicron Chapter (University of Pittsburgh) member **Ali Krafft** traveled to Costa Rica on a mission trip and met **Stephanie Meyn**, a collegiate member of the **Sigma Chapter** at **Louisiana State University**. While there, they set up clinics for communities without medical insurance. Ali and Stephanie were also roommates and became good friends while on the trip. Ali is applying to medical school and hopes to be a doctor.

Senior collegiate member **Gabby Marcello** of the **Kappa Alpha Chapter (Nicholls State University)** recently traveled to Alajuela, Costa Rica on a nine-day medical mission trip to help administer medical treatment to underprivileged children.

Delta Zeta Dream Girls

Sophomore **Claire LaRose** and junior **Melody Jennings**, members of the **Theta Theta Chapter** at **DePaul University**, won first and second place in Pi Kappa Alpha's fifth annual Dream Girl competition. All proceeds from the event benefit the Epilepsy Foundation of Greater Chicago. This event has become a tradition within the Theta Theta Chapter, as four previous members have been crowned Dream Girl.

Global Student Leader

Tess Wheetley, President of the **Omicron Epsilon Chapter**, was named a Global Student Leader (GSL) at **Arkansas State University**. The program rewards the most outstanding student leaders on campus with the opportunity to travel abroad and experience other cultures. The students also visit and experience colleges in other countries, learn how they function, and share with them how colleges in the United States function (<http://www.astate.edu>).

Undergraduate Woman of the Year

Alexandria Sabatini of the **Zeta Epsilon Chapter** at **California University of Pennsylvania** was recognized as the Undergraduate Woman of the Year as part of the university's Women of the Year awards. Selections are based on the success of exceptional female students in personal and/or professional life, support of other women and women's issues on campus, and dedication to the university community and the community at large.

(cont'd. on page 32)



From Top to Bottom:
Gabby Marcello, Kappa Alpha Chapter

Emily Fife, Theta Theta Chapter President (center), with Pi Kappa Alpha's Dream Girl runner-up, Melody Jennings (left), and winner, Claire LaRose.

California University of Pennsylvania's Women of the Year award winners Alexandria Sabatini of the Zeta Epsilon Chapter (left), senior International Studies concentration in Political Science and Spanish major, Lisa Spinneweber, Graduate Degree Masters in Nursing, (right) with Dr. Lisa McBride, Special Assistant to the President for EEO/University Ombudsperson.

A photograph of two young women standing in a gymnasium, smiling at the camera. They are wearing bright pink t-shirts with the Greek letters ΔΕΛΤΑ ΖΕΤΑ (Delta Zeta) printed on them in white. The woman on the left has long blonde hair and is wearing dark pants and brown boots. The woman on the right has long dark hair and is also wearing dark pants and brown boots. The background shows rows of empty wooden bleachers in a gymnasium setting.

IOTA ALPHA

Texas State University

Raised more than \$14,000 at its
third annual Mr. Bobcat Pageant to benefit
The Painted Turtle camp

Supported annual Texas State volleyball
tournament, renamed the Delta Zeta Classic
in honor of the chapter's three-year, \$10,000
commitment to sponsor the event.

Members of the Iota Alpha Chapter present check to Texas State University's head volleyball coach, Karen Chisum (center).
Courtesy of Texas State University



On Campus With Delta Zeta

Just as Delta Zeta's Founders defined leadership over 110 years ago, our collegiate members continue that legacy by leading in the Sorority on their campuses, in their communities and nationally. These are leaders who are enriching today's world.

ALPHA

Miami University

Highest yielding philanthropy event on campus, Puttin' on the Hits, raised \$16,776 for St. Rita's School for the Deaf in Cincinnati, Ohio

EPSILON

Indiana University

Won Spirit Award at Indiana University Dance Marathon, and contributed to a record-breaking \$2,125,322 raised at event, which benefited Riley Children's Hospital

THETA

The Ohio State University

Recognized as highest contributor by raising \$7,613 during participation in BuckeyeThon 24-hour dance marathon, benefiting Nationwide Children's Hospital

IOTA

University of Iowa

Paulina Kennedy, Past Chapter President, elected as president of the University of Iowa Panhellenic Council

Contributed \$13,761 toward \$1.5 million raised and volunteered 702 hours at Dance Marathon for the University of Iowa Children's Hospital to help pediatric oncology and bone marrow transplant patients and their families

OMICRON

University of Pittsburgh

Raised more than \$3,000 with Turtle Trot 5k to benefit Western Pennsylvania School for the Deaf (WPSD)

PI

Eureka College

Hosted information table to raise awareness during National Eating Disorders Awareness Week, emphasizing the need for early intervention and treatment

RHO

University of Denver

Held event to provide sandwiches to the homeless while simultaneously raising \$3,700 for Gallaudet University and The Painted Turtle camp

SIGMA

Louisiana State University

Raised more than \$3,000 for local philanthropies with trunk show event

Hosted Miss LSU pageant, with 21 participants, to benefit The Starkey Hearing Foundation, The Painted Turtle camp, the Baton Rouge Hearing and Speech Foundation and Alzheimer's Services of the Capital Area

ALPHA GAMMA

University of Alabama

133 members on Dean's list (3.75 GPA and above) and 43 on President's list (4.0).

ALPHA THETA

University of Kentucky

Contributed \$20,000 toward \$1,113,189 raised at DanceBlue Marathon, benefiting Kentucky Children's Hospital Hematology/Oncology Clinic, and won Large Team Award at event

ALPHA RHO

Ohio Wesleyan University

Received Chapter Community Service Award and Chapter Excellence Award at Greek Awards

Anna Cooper named Greek Woman of the Year

ALPHA SIGMA

Florida State University

Pledged \$50,000 endowment to support Florida State University's School of Communication Science & Disorder's planned Integrated Pre-School Program

Raised \$8,000 for The Painted Turtle camp with annual Clay Classic event

ALPHA UPSILON

University of Maine

Donated \$2,771 to the campus Dance Marathon benefiting Children's Miracle Network

Fundraised for Crossroads Ministries and Good Shepherd Food Bank

BETA GAMMA

University of Louisville

Participated in the university's Dance Marathon and cooked meals for families staying at Ronald McDonald House for Kosair Children's Hospital

Raised \$27,403 during sixth annual Miss University of Louisville pageant to benefit Children's Miracle Network, and provided \$10,000 in scholarships to winners

BETA DELTA

University of South Carolina

Canned Creations event Top Can Contributor with 1,022 cans donated to Harvest Home Food Bank



Earned 2012 Community Service Award for eighth annual Sweet Caroline Bone Marrow and Blood Drive, and hosted successful ninth drive in 2013

The Painted Turtle Trot attracted 150 and raised approximately \$3,000

BETA LAMBDA

University of Tennessee/ Knoxville

Joined 400 students on campus at 12th annual Clifton M. Jones Student Leadership Conference and Martin Luther King, Jr. Day of Service

Alexis Bell named Panhellenic Woman of the Month

BETA XI

Auburn University

Raised \$1,470 at Auburn University Dance Marathon to benefit Children's Miracle Network

Flag football team won Sorority Intramural Championship; volleyball team finished second in Sorority Volleyball League

BETA TAU

Nebraska Wesleyan University

Chapter GPA ranks first for Panhellenic sororities on campus

20th Annual Spaghetti Feed raised \$1,751 for The Painted Turtle camp

GAMMA ALPHA

Baldwin Wallace University

Co-sponsored Silence event with National Student Speech Language Hearing Association (NSSLHA) to raise awareness of communication disorders

Donated goodie bags to Baldwin Wallace University Speech Clinic

GAMMA BETA

University of Connecticut

Raised \$28,951 at HuskyTHON, benefiting Connecticut Children's Medical Center

Shelby Flynn and Erica Mooney took service trip to Jamaica with UConn Greek Life, volunteering at two primary schools

GAMMA DELTA

Pennsylvania State University

Raised more than \$21,500 for THON, largest student-run philanthropy, which benefits pediatric cancer research and treatment

GAMMA KAPPA

Kent State University

Raised \$40,205 during its annual Lip Sync competition benefiting Gallaudet University, House Research Institute, The Starkey Hearing Foundation and The Painted Turtle camp

Highest GPA Award for initiated members and new member for Fall 2012

Won Delta Gamma's Anchor Splash and Alpha Xi Delta's Xi Man competitions

From Top to Bottom
Gamma Delta (Pennsylvania State University) members perform "Cats" at the Greek Sing event. Courtesy of Onward State

Members of the Beta Lambda Chapter (University of Tennessee/Knoxville)





From Top to Bottom
Members of the Gamma Xi Chapter
(New Mexico State University)

Members of the Gamma Lambda Chapter
(San Jose State University)

GAMMA LAMBDA

San Jose State University

Greek-wide Turtle Bowl raised more than \$2,000 for The Painted Turtle camp and speech and hearing

Volunteered 210 service hours in San Francisco Breast Cancer Walk



GAMMA NU

Eastern Illinois University

Supported Girls on the Run's 5k event to empower young women

GAMMA XI

New Mexico State University

Greek Awards included: first place in Greek Olympics, first place in Lambda Chi Alpha's Capture the Flag and Watermelon Bust to benefit North American Food Drive; and highest attendance at "Take Back the Night" sponsored by WAVE (Wellness, Alcohol, and Violence Education)

Received Most Outstanding Campus Outreach Award for i Have a Choice from Unified Prevention of Las Cruces

GAMMA SIGMA

Eastern Michigan University

Katie Reed received Outstanding Executive Member Award at Region Day

Hosted Mr. Greek event, raising \$1,490 for The Painted Turtle camp

Bagged 7,000 pounds of food at Gleaners Community Food Bank

GAMMA TAU

Bowling Green State University

GPA is third highest on campus

Joined 500 students for Martin Luther King, Jr. Day of Service

GAMMA PHI

Indiana University of Pennsylvania

Achieved highest chapter GPA among sororities for Fall 2012 semester

GAMMA CHI

Ball State University

Ranked fourth in academics out of 10 sororities on campus

Hosted Greek family bake-off to support university athletics

GAMMA OMEGA

Southern Illinois University

Awarded second place at annual Greek Sing competition

Volunteered for the St. Jude Children's Hospital event, Up 'til Dawn

Participated in Keep Carbondale Beautiful "adopt-a-spot" program

DELTA ALPHA

California State University/Long Beach

Greek Awards included: President's Award, President's Trophy, Best Chapter Educational Programming, Outstanding Public Relations Award, Best Participation in Campus Organizations, Outstanding External Relations, Outstanding Academic Success Programming, Overall Chapter Management, Greeks Going Green Award, Crest Award, Outstanding Family Relations, Leadership Development, Outstanding Risk Management Program, Outstanding Alumni Relations, Best New Member Program, and Outstanding Inter-Greek Relations

Supported Surf City USA® Marathon and its partnership with the Free Wheelchair Mission's Run for Mobility

Held annual Turtle Bowl to benefit House Research Institute and Delta Zeta Foundation

DELTA BETA

University of Tampa

New members created 120 CD cases for The Painted Turtle camp.

DELTA DELTA

Georgia State University

Achieved highest chapter GPA among all Panhellenic chapters and third highest chapter GPA among all 27 Greek organizations on campus

Hosted event to benefit BeLoved Atlanta, an organization that provides support to victims of human trafficking

DELTA THETA

University of Houston

Campus-wide Gong Show raised \$8,540 for the Center for Hearing and Speech

DELTA OMICRON

Northwestern Oklahoma State University

Made meals for families in need at Kids Against Hunger Northwest Oklahoma

Volunteered at university's foundation donor Thank-a-thon

DELTA SIGMA

Truman State University

Donated \$1,765 to Buddy Packs Program to send healthy food home to students in need

Fundraised for Truman State's Speech and Hearing Clinic and the United Way Foundation

DELTA TAU

Temple University

Held blood drive to benefit BloodBanker, Inc., blood plasma donation advocacy group

Delta Alpha (California State University/Long Beach) member Aislinn Bustos volunteers at Huntington Beach's Surf City Marathon Dog Watching Station.





EPSILON GAMMA

University of Central Missouri

Tied for first place for highest GPA on campus; new members first for overall GPA

Volunteered during Martin Luther King, Jr. Day of Service with 100 service hours given to Warrensburg, Missouri community

Third annual Cinderella Dress Exchange provided 600 prom dresses to middle and high school students in exchange for canned goods donated to local food pantry

EPSILON ZETA

Drexel University

New members won first place in New Member Bowl, which benefited Hurricane Sandy relief efforts

Raised more than \$2,000 at second annual Turtle Tug to benefit Pennsylvania School for the Deaf

Held highest GPA out of six Greek organizations on campus for Fall 2012 and ranked first in Region II academically

EPSILON IOTA

Fairmont State University

Volunteered to help Paw Paw's Christian Center in West Virginia

EPSILON KAPPA

University of Wisconsin/ Whitewater

Recognized for achieving highest chapter GPA among Panhellenic sororities

Raised more than \$2,200 during annual Turtle Race 5k run/walk benefiting The Painted Turtle camp

Recognized for outstanding participation in Panhellenic supply drive for Gigi's Playhouse for children with Down syndrome

EPSILON SIGMA

Wayne State University

Raised more than \$2,000 at its Hustle for Hearing Dance-a-thon event to benefit Gallaudet University

Region VI Days Awards included Excellence in Philanthropy, Academics, New Member Education, Programming and Outstanding Chapter Award

GPA is above all-women's average on campus

Raised \$26,000 during The Heat And Warmth Fund (THAW) Winter Survival Radiothon to help families in need with energy assistance

EPSILON TAU

Longwood University

Won first place for Greek Week and Greek Lip Sync annual dancing and skit competition

EPSILON OMEGA

University of Wisconsin/Eau Claire

Supported local Boys & Girls Clubs by volunteering and providing nutritious dinners for children

ZETA BETA

University of Wisconsin/Stout

Pancake dinner raised \$1,482 for The Painted Turtle camp and The Starkey Hearing Foundation

ZETA EPSILON

California University of Pennsylvania

Received award from AAA (formerly the American Automobile Association) for promoting TXT L8TR campaign to discourage distracted driving

ZETA ZETA

West Texas A&M University

Ranked first in academics among all four Greek organizations on campus

Raised \$10,000 for Kay Yow (East Carolina [NC] - Zeta Lambda and 1987 Woman of the Year) Cancer Foundation during the Delta Zeta-West Texas A&M Pink Out basketball game

Partnered with Kappa Alpha Order to provide winter coats to children in need

Sponsored Advanced Panhellenic Workshop, allowing Greek students on campus to improve Greek Life activities

ZETA KAPPA

Ohio Northern University

Colleen Kerger, Historian, won the university's women's soccer team Coach's Award

Participated in Delta Sigma Phi's annual "Polar Plunge" benefiting the March of Dimes

Epsilon Tau Chapter seniors at Longwood University



Epsilon Gamma Chapter (University of Central Missouri) members during Greek Week competition. Courtesy of Andrew Mather, photographer and The Muleskinner photo editor



ZETA LAMBDA

East Carolina University

Made Valentine's Day cards and gift bags for local Boys & Girls Clubs

Hosted Casey's Prom, a dance for the residents of the Cypress Glen Retirement Community

Intramural soccer team made it to the Final Four in the campus playoffs

ZETA NU

Ferris State University

Hosted a "Celebration of Healthy Hearts" basketball game to increase awareness about heart disease

Hosted blood drive for the American Red Cross

ZETA PI

University of Georgia

Raised \$7,000 with Wing Bash to support speech and hearing community in Northeast Georgia

Partnered with Alpha Kappa Alpha to host campus-wide Go Red for Women event for heart health

Jamie Allen elected East District Director for Georgia Association of Nursing Students

ZETA PSI

Stephen F. Austin State University

Received Panhellenic Event of the Year Award for Eternal Flame, a candlelight vigil recognizing loved ones affected by alcohol

New members hosted dinner for university students, faculty and staff, and raised \$1,200 for The Starkey Hearing Foundation

THETA KAPPA

University of New Orleans

Members brought 200 Build-A-Bears to New Orleans Starkey Hearing Foundation Super Bowl Hearing Mission event

Took second place in Animated Talent Show which kicked off Homecoming festivities

THETA MU

St. Cloud State University

Sent more than 100 cards to U.S. troops for Valentine's Day



From Top to Bottom
Members of the Zeta Epsilon Chapter
(California University of Pennsylvania).
Courtesy of California University of
Pennsylvania

Members of the Zeta Zeta Chapter
(West Texas A&M University)



Carolee Lewis Followill, Alabama - Alpha Gamma, National Academics Chairman (far left), visited the Pi Chapter at Eureka College.



THETA NU

Minnesota State University/
Moorhead

Donated food to Dorothy Day Food
Pantry and clothing to the Dakota Boys
Ranch in Dilworth, Minnesota

Joined alumnae to write letters to soldiers
in Iraq

THETA RHO

California State University/
Los Angeles

New member class donated food to
G.L.A.D. (Greater Los Angeles Agency on
Deafness, Inc.) Deaf Community Center

THETA PSI

Ashland University

Killarney Rose Ball raised more than
\$7,000 for Delta Zeta's national
philanthropies

THETA OMEGA

Barton College

Holds highest GPA among all sororities
on campus for first semester, 2012-2013
school year

Ericka Skinner broke Barton College
records in 800m and one mile run at
Gene Anderson Invitational

Made 40 spirit bandanas for children at
The Painted Turtle camp

IOTA DELTA

Edinboro University

Donated 34 Build-A-Bears with hearing
aids to The Starkey Hearing Foundation

Donated \$1,055 to the Taylor Hattori
Foundation for purchase of wheelchair for
local resident

IOTA UPSILON

California State University/
Fullerton

Won first place in week-long philanthropy
events held by Phi Sigma Kappa, Sigma Nu
and Zeta Tau Alpha

Joined Pi Gamma Chapter (California State
University/Northridge) for Turtle Tug; won
first place in the sorority division

IOTA PHI

University of Nevada/
Las Vegas

Annual Turtle Bowl flag football
tournament benefited The Starkey Hearing
Foundation, Gallaudet University and
The Painted Turtle camp

Turtle Tug raised more than \$4,000 for
The Starkey Hearing Foundation and
The Painted Turtle camp

KAPPA ALPHA

Nicholls State University

Sent care packages to troops serving overseas in Afghanistan

Raised \$5,000 at jambalaya dinner to benefit The Painted Turtle camp

KAPPA EPSILON

Plymouth State University

Holds one of the top overall GPAs for sororities on campus

KAPPA IOTA

Wright State University

Joined Dayton, Ohio Mayor Gary Leitzell in vigil to support the fight against human trafficking

Eleventh annual Mr. WSU competition raised more than \$3,000 for The Painted Turtle camp

KAPPA MU

Shepherd University

Donated Build-A-Bears, fitted with hearing aids, to The Starkey Hearing Foundation

Adopt-A-Highway project beautified community

Participated in campus-wide blood drive

KAPPA TAU

Morehead State University

Intramural basketball team stands undefeated

Won Crowd's Choice Award in Chi Omega's Follies to benefit Make-A-Wish Foundation

Participated in 24 Hours of Service competition between Morehead State University and Eastern Kentucky University

Received Programming Event of the Year award at the 2013 Greek Awards

KAPPA PHI

University of North Carolina/Charlotte

Has second highest GPA among all six Panhellenic sororities on campus

Hosted dance marathon to fund Relay for Life team

Turtle Tug raised more than \$1,000 for The Painted Turtle camp

KAPPA XI

Duquesne University

Big Man on Campus event raised \$2,300 for The Starkey Hearing Foundation

LAMBDA ALPHA

Arkansas Tech University

Held 2013 Miss Tech pageant (Miss America preliminary), awarding \$19,000 in gifts and scholarships to winners

LAMBDA BETA

University of Southern Indiana

Partnered with Gamma Phi Beta to donate teddy bears to the children of Sandy Hook Elementary School in Connecticut

LAMBDA THETA

Michigan Technological University

Placed fourth in Winter Carnival Statue Competition

LAMBDA LAMBDA

The College of New Jersey

Won Chapter of the Year Award at the annual President's Ball

Megan Price White, Temple University (PA) – Delta Tau, College Chapter Director, and Meg Woodworth, past Chapter President, named Outstanding

Chapter Advisor and Outstanding Sorority President respectively

LAMBDA XI

Texas A&M University

Raised \$1,140 during Relay for Life for American Cancer Society

LAMBDA KAPPA

University of Alabama/Huntsville

Lazy Days gift basket auction raised \$1,400 to assist a collegiate sister's family member battling cancer

LAMBDA PI

Georgia College & State University

Partnered with Maybelline to send hundreds of post cards to U.S. troops

Placed second in Greek Week

LAMBDA SIGMA

Winthrop University

Raised money to adopt a sea turtle at South Carolina Aquarium in Charleston

LAMBDA PHI

Appalachian State University

Joined more than 200 students in annual MLK Challenge, honoring the life of Martin Luther King, Jr. through a day of service

XI BETA

Eastern Kentucky University

Hosted its annual Hoops for Hearing basketball tournament to benefit speech and hearing

Placed first in campus-wide philanthropy events sponsored by fellow Greek organizations benefiting sarcoma research, Mothers Against Drunk Driving and MTV's Restore the Shore

Received 2013 Greek Week awards: Most Improved Chapter GPA and Most Improved Chapter

XI ETA Northwood University

Raised \$1,000 through Turtle Tug event to benefit The Painted Turtle camp

XI THETA University of North Carolina/ Wilmington

Thirty-five members recognized for a 3.5 GPA or higher at university's academic banquet

Volunteered on Martin Luther King, Jr. Day at local community center, educating and entertaining children

XI LAMBDA University of San Francisco

Chapter GPA is higher than both all-women's and all-sorority GPA on campus

Participated with alumnae in Breast Cancer Walk in Golden Gate Park to benefit American Cancer Society

Ali's Way event raised \$5,281 for the Leukemia & Lymphoma Society in memory of member Ali Facella

Sent Hurricane Sandy relief packages to New Jersey, inspired by member and New Jersey resident Megan Sappenfield

From Top to Bottom
Lambda Xi (Texas A&M University)
member Amy Tatelbaum studied abroad
in New Zealand.

Members of the Xi Theta Chapter
(University of North Carolina/
Wilmington)

XI NU Tarleton State University

Raised more than \$1,000 for the Susan G. Komen Foundation

Kaylee Carlile is Miss TSU; Kim Davis is May Fete Queen

XI XI North Georgia College & State University

Gold Town Hoedown event raised more than \$1,500 to benefit The Painted Turtle camp and Enotah Family Drug Court, a local rehabilitation center

Donated 12 Build-A-Bears and 20 outfits to The Starkey Hearing Foundation

Members volunteered with on-call medical staff for Special Olympics of Georgia

XI RHO Clarkson University

Claimed first prize in Sigma Chi's Derby Days by contributing \$2,555 of total \$7,100 raised at event

Raised funds for Wheelchair Challenge, benefiting the Wheelchair Foundation

XI TAU Millersville University

Holds second highest GPA among all four sororities on campus

Participates in Adopt-A-Highway to keep community beautiful

Sponsored five children in the Reynolds Middle School Secret Angels Project



XI CHI

Robert Morris University

Held annual Turtle Tug and volunteered 374 service hours to benefit local philanthropy Variety, a children's charity in Pittsburgh

Joined other fraternal organizations on campus to participate in Adopt-A-Highway clean-up initiatives

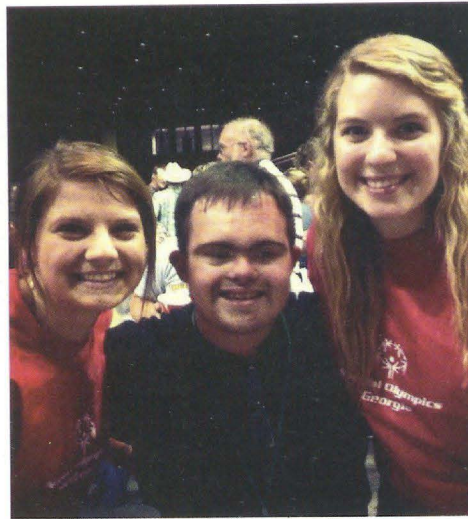
XI PSI

Grand Valley State University

Ranked second in academics out of all eight sororities on campus

Responsible for donation of 61 pints of blood at American Red Cross blood drive

Raised \$1,300 for The Starkey Hearing Foundation with annual Breakfast For Dinner event



From Top to Bottom
Members of the Xi Xi Chapter (North Georgia College & State University) at the Special Olympics of Georgia

Members of the Xi Tau Chapter (Millersville University)

The Xi Nu Chapter (Tarleton State University)

OMICRON ALPHA

St. Mary's University

Participated in campus-wide service philanthropy, Continuing the Heritage (CTH) Day of Service Event, with 700 volunteers and 3,000 service hours

Annual Bowl-a-thon Fundraiser benefiting The Painted Turtle camp and Sunshine Cottage raised \$3,343

OMICRON DELTA

Bryant University

Partnered with football team and coach to host event to raise money for Mike Drake Scholarship Fund





Members of the Omicron Xi Chapter
(Mars Hill College)

OMICRON GAMMA

Ohio University

Raised most money toward \$27,000 total donated for Polar Plunge, benefiting Special Olympics

OMICRON EPSILON

Arkansas State University

Received Panhellenic Pan Award out of all sororities on campus for strong and continuous recruitment

OMICRON LAMBDA

North Carolina State

University

Raised more than \$1,000 for The Painted Turtle camp during Turtle Tug event

OMICRON NU

University of Windsor

Raised more than \$4,000 for W.E. Care for Kids Foundation gala for children's healthcare (as part of Sigma Chi's Derby Days) and The Starkey Hearing Foundation

Raised money for Willow Breast Cancer Foundation and participated in Canadian Breast Cancer Foundation Run

OMICRON XI

Mars Hill College

Joined the Madison County community in welcoming home a state trooper injured in the line of duty

OMICRON PI

Frostburg State University

Maggie Whitesel, Treasurer, Cathy Close, Philanthropy Chairman, Jackie Lukasewicz, Academics Chairman, Gaby Fish, and Jamie Metz Winters, Frostburg State (MD) – Omicron Pi, College Chapter Director, participated in service trip to New Orleans to build Habitat for Humanity home

Contributed to the total of \$10,000 raised at ninth annual Hooley Plunge in support of Special Olympics of Allegany County

Held its Womanless Pageant to raise awareness about violence against women in conjunction with national end campus violence campaign

PI ALPHA

University of Florida

Received Outstanding Risk Management Greek Award

Raised \$21,082 for The Painted Turtle camp with Clay Classic

Received third place and a \$500 donation to chapter's chosen philanthropy in university's Sorority Water Challenge, presented by the Office of Sustainability, Alachua County

PI DELTA

Wake Forest University

Donated more than 100 pounds of coloring books, crayons and toys, collected from 10 Delta Zeta chapters in North Carolina, to Brenner Children's Hospital

PI EPSILON

Clemson University

Raised \$11,717 at its Clay Classic event to benefit The Painted Turtle camp

Turtle Tug raised money for Children's Organ Transplant Association in memory of alumna Ashlea Elizabeth Benson



PI ZETA

Arizona State University

Raised more than \$21,000 during its annual Delta Zeta Duke-Out event, benefiting Phoenix Children's Hospital and The Painted Turtle camp

PI THETA

Rollins College

Received Promise of the Region Award at Region XV Weekend

Erika Reardon recognized as Outstanding Senior of Region XV

PI KAPPA

University of Idaho

Won in the sorority division of university's Greek Week 2013 for third year in a row

Raised \$1,300 for campus-wide Relay for Life to benefit American Cancer Society

From Top to Bottom
Members of the Pi Alpha Chapter
(University of Florida)

Members of the Pi Epsilon Chapter
(Clemson University)



Distinctive Delta Zetas (cont'd. from page 17)

Gamma Xi Student Leader at New Mexico State University

Elizabeth Brown of the **Gamma Xi Chapter (New Mexico State University)** has received many Greek academic achievements awards, is on the Dean's list, and is a Diamond Scholar and a Crimson Scholar. She was also awarded Best Sorority Chapter Leader by the university's Greek Life department, was selected for her art exhibit by AIGA, which promotes graphic design, and received a certificate for masterful graphic design and work ethic.

Elizabeth says none of her achievements would have been possible without her membership in Delta Zeta. "Through Delta Zeta, I have gained invaluable skills, none of which could ever be taught in a classroom. Delta Zeta

blossomed me into the leader I am today and has given me the skills and encouragement to 'move mountains' in all aspects of my life.

"I was inspired to aim for a 4.0 GPA when I saw the Greek Academic Achievement awards given at my first New Member Presentation. My creative side flourished in Delta Zeta with every leadership role I took on. I was continually aspiring to improve my role in that position to help the chapter reach its goals.

"In 2012, I became the president of my campus's newly founded graphic design organization, American Institute of Graphic Arts (AIGA), and helped AIGA flourish because of my experience gained in

Delta Zeta. AIGA held an Awareness Art Exhibition in which one of my pieces (bringing awareness to animal neglect and abuse) was showcased. I also took the skills gained from Delta Zeta into my student employment when I became the student graphic designer for the university's research departments. I was awarded a certificate for Masterful Graphic Design and Work Ethic by the Director of Research IT and the Vice President of Research for NMSU.

"I was awarded Best Chapter Leader of all sororities on campus by Greek Life, and awarded Best Executive Officer by the Gamma Xi Chapter for my work as Vice President of Programs."



Flame Eternal

Honor your sisters, friends and loved ones with a memorial gift to the Delta Zeta Foundation
(<http://www.deltazeta.org>).

Obituaries reported from December 8, 2012 through March 25, 2013. Year of initiation is shown after name.

ALPHA

Norma Wagner Uray - 1946
Gerry Shunkwiler Bowman - 1954
Marguerite Updegraff Brown - 1963

GAMMA

Edith Foster Nystrom - 1924
Ethel Pearson Landon - 1930
Corrine Larson Schreiber - 1957

DELTA

Eleanor Hostetter Herr - 1934
Elizabeth Rice Sido - 1941
Lois Gilger Weiske - 1949

EPSILON

Delores Blacker - 1957

THETA

Maxine Dwiggins Neff - 1938
Norma Sandberg McGrew - 1945
Beryl Covill Schutte - 1948
Robbin Whitestone Harvey - 1952
Edna Jean Parker - 1953
Merrolyn Jones Mertz - 1956

IOTA

Jean Speirs Helgeson - 1920
Vivian Conrad Fortney - 1922

KAPPA

Jeanne Zugehoer Barcelli - 1937
Cecille Wehrli Jensen - 1983

LAMBDA

Sue Shelton Valder - 1963

MU

Barbara A. Kenyon - 1941
Eleanor Reid Hastings - 1947
Kathryn Davies Nelson - 1950
Madeline Gorman Doran - 1963

NU

Christine Gottrick Snyder - 1923
Fairy Snapp Norcross - 1930
Marion Curtis Sheldon - 1944

XI

Vivien Millar Amidon

OMICRON

Marion Elizabeth Clark - 1916
Dorothy Wigman Meyer - 1916
Margaret Boyd - 1917
Mary Rush Forker - 1920
Katharine Bainbridge VonEnde - 1926
Betty Cassel Herr - 1931
Virginia Brinley Petrick - 1931
Suzanne Phillips - 1931
Jessie Vitcheatnain Roper - 1932
Elizabeth Glass Beadling - 1933
Olive Brown Pattison - 1935
Ruth M. Sutter - 1935
Helen Poole Swauger - 1936

Alice Rotzsch Sufit - 1937
Dorothy Strong Minter - 1938
Christina Allan Ford - 1939
Mary Ochsenhirt Amdur - 1940
Grace Atkinson - 1941
Hannah Bechtel - 1941
Ruth Stutzman Bier - 1941
Grace Riethmiller - 1941
Gertrude Gregg Simpson - 1941
Eleanore Mance Sporic - 1941
Geneva Schatz Williams - 1941
Mary Quinn Linhart - 1942
Sister Rose Marie (Augusta) Tamburo - 1944

Gloria Werner Zuckerman - 1945
Vina Elder Dodds - 1947
Marion Urling Vogelsang - 1947
Ann Stinson Benack - 1948
Marjorie Kroeger Blaha - 1953
Shirley Ritz Bhatt - 1954
Josephine Giron Thornton - 1957
Sara Swope Huston - 1961
Janet Rosenzweig Waddell - 1961
Debra Bulat Morgan - 1971
Lynne Georges - 1977

SIGMA

Louise Ethridge Pratt - 1933
Mildred Vorheis Menton - 1936
Mary Marchand Montgomery - 1937
Leona Wilbert Major - 1945
Wallie Row Obier - 1945

TAU

Ardys Taylor Dunwiddie - 1919
Doris Burdick Joys - 1923
Alice Shaw Kartman - 1923
Elizabeth Stone Counsell - 1924
Florence Higgins Engelhorn - 1925
Margarita Olson Ash - 1926
Beth Gardner Coombs - 1926
Edith Smith Pearson - 1926
R. Hintze Quisling - 1927
Cynthia Louise Stokes - 1927
Ruth Blanche Sylvester - 1927
Helen Kundert Walch - 1927
Janet Smith Moebius - 1928
Marion Dwinnell Korfmacher - 1929
A. Marie Richardson Zibell - 1931
Millicent Coombs Freed - 1933
Lucile Vetting Jirikow - 1933
Anita Pleuss Oberland - 1933
Jeanne Marks Monahan - 1944
Charlotte Perthel Slater - 1946
June Kloosterboer Olm - 1947

CHI

Marian Anderson Gearhart - 1938
Alice Arnsbarger Burnette - 1944
Martha Dougall Spitznogle - 1944
RoseMarie Peart Kuenzli - 1949
Janet Kirk Laird - 1959

PSI

H. Louise Patterson Austin - 1946
Lida Anderson Lammert - 1944

Helen McClelland Nugent - 1954
Patricia Jones Wesemann - 1955
Gail Smith Benson - 1958

OMEGA

Ellen E. Burch - 1958

ALPHA ALPHA

Harriet Gorby Narrin - 1924
Eunice Yanke Blanchard - 1928
Frances Garm Egdaahl - 1928
Eleanore Balzer Flynn - 1928
Mildred Marsh Teitgen - 1929
Edyth Stone Hoppert - 1934
Marjorie Mae Kraft - 1938
Dorris Pike Silverthorn - 1939
Dorothy Dietrich Graab - 1945

ALPHA BETA

Josephine Schmalhausen Shurts - 1921
Marie Kappus Homeyer - 1936
Ethel Dunlap Stivers - 1943
Joyce Strong Palmer - 1950
Carol Crouch Curtiss - 1963

ALPHA GAMMA

Martha Whetston Gambrell - 1945

ALPHA DELTA

Dorothy Henry - 1945

ALPHA EPSILON

Margaret Edsel Fitch - 1941
Kathlyn Waugh Segobia - 1967
Charlotte Ann Sanders - 1968

ALPHA ETA

Mary Virginia Cronin - 1923
Lucile Nichols Landis - 1923
Norma Case Casbon - 1924
Hilda Horny Eastwood - 1927
Barbara Paton Eddy - 1927
Robbin Townsley Falk - 1927
Alma Bretschneider Stewart - 1927
Marian Love Macalpin - 1929
Emma Pearl Anderson - 1930
Suzanne Kuivinen Hutchinson - 1948

ALPHA THETA

Evelyn Narren Finnie - 1938
Madeline McMillan Wright - 1951
Martha Eirk Veneman - 1954

ALPHA LAMBDA

Marylouise Harbin Stettler - 1963
Ruth Knopf Tuve - 1965

ALPHA OMICRON

Janie Eubanks Brenner - 1963

ALPHA PI

Betty Simonton Beverly - 1942
Jewel Schweinbraten Seale - 1942
Anita Mobley Gray - 1947
Doris Herrmann Graffo - 1953
Jerri Ann Edwards Peace - 1958

ALPHA SIGMA

Nancy Gonzalez Mills - 1947
Dorothy Nolen Templeton - 1948
Elizabeth Groover Gehring - 1958
Nancy Wagner - 1975

ALPHA TAU

Frances Taylor Love - 1943
Nilda Castro Stinson - 1944
Linda Richardson Lowther - 1958
Debra Rehn Rogers - 1976
Margaret Owens Adcock

ALPHA CHI

Jane Tuttle McCormick - 1939
Joanne Louise Antall - 1973

ALPHA PSI

Celeste Thomas - 1941

BETA ALPHA

Helen Joslyn Losee - 1937
Dorothy Huse Rounds - 1937
Frances Durkin Clifford - 1941
Muriel Skoog Sadler - 1943

BETA GAMMA

Dorothy Gaupin Butler - 1939
Era McGough Smith - 1949
Karen Quillman Sorota - 1965

BETA DELTA

Mary Alice Porter Campbell - 1937
Dorothy Taylor Miller - 1944
Anna McLaughlin Soza - 1950

BETA THETA

Olga Zernow North - 1942
E. Jane Perrin Miller - 1944

BETA KAPPA

Mary Pilgrim Sherman - 1937
Helen Moeckly Marsh - 1939
Elizabeth Shelledy Peterson - 1940
Barbara Wisdom Berry - 1946
Martha Hopkins Kash - 1950

BETA LAMBDA

Rossie Loy Mason - 1933
Barsha Ruth Webb - 1933
Mildred Goudelaack Fipps - 1945
Sara Spencer Dunbar - 1947
Carolyn Best Coleman - 1950
Mary Bridges Rayburn - 1951
Nancy Brownlow Edwards - 1955

BETA MU

Janie Cameron White - 1947
Patricia Williams Ohnikian - 1952
Barbara E. Ferris - 1957

BETA NU

Elizabeth Morse Slaten - 1953

BETA XI

Martha Merkel Gambrell - 1942

Ramona Brazeal Meena - 1951
 Alice Needham Heard - 1953
 Carolyn Smith Straub - 1959
 Wilda Washington Pittman - 1963

BETA PI

Helen Lorraine Marvin Sharp - 1945
 Virginia Zenoniani Karmalski - 1954

BETA RHO

Alice Ewing Brewer - 1952

BETA TAU

Hazel Edgerton Smith - 1949

BETA CHI

Mary Davis Shultz - 1941
 Jeanne McGillivray Neidhart - 1954
 Carole Orndorff Janett - 1966
 Kristine June McComis - 1987

BETA PSI

Jonolyn Stehmeyer Wilson - 1943

BETA OMEGA

Phyllis Louise Ahlers - 1946

GAMMA ALPHA

Ruth Phillips Orrenmaa - 1943
 Dolores Cooper Heinz - 1947
 Jane Keesling Jacobs - 1955

GAMMA BETA

Ruth Gross Rosmarin - 1945

GAMMA GAMMA

Rita M. Ludwig - 1968

GAMMA DELTA

Mary Lewis Abrahamsen - 1951
 Annarae Braker Donmoyer - 1951

GAMMA EPSILON

Elgene Kurtz Shea - 1956

GAMMA ETA

Edna Molina Tobias - 1954

GAMMA THETA

Charlotte Beck Grothey - 1947

GAMMA KAPPA

Joan Butler Yates - 1952
 Shirley Ackerman - 1955

GAMMA LAMBDA

Louise Lapp Hansen - 1949
 Gail Rattray Lussier

GAMMA NU

Mavis Matson Kile - 1949
 Leona Creath Muessman - 1953
 Mary Jane Bland Blackford - 1956
 Patricia Gorsich Cooley - 1957

GAMMA XI

Gloria Jean Maese - 1966
 Evangeline Catanach Andrews - 1967

GAMMA OMICRON

Shirley Davis Shastid - 1953

GAMMA PI

Sondra Stein Williams - 1957

GAMMA RHO

Monica McCarthy Dietz - 1956

GAMMA TAU

Luetta Ruck Veit - 1952
 Connie Brogden Stratton - 1956
 Barb Halbedel Bowe - 1963
 Lynne Berryman Jackson - 1972

GAMMA UPSILON

Nadean Pittman Jones - 1944

GAMMA PHI

Margaret Hasson Snuttjer - 1956

GAMMA CHI

Judith Schneider Blair - 1956

DELTA EPSILON

Margaret Lutz Stein - 1958

DELTA KAPPA

Jenel Moreau Richard - 1960
 Patricia Beidler Lee - 1963

DELTA LAMBDA

RuthAnn Meyer Nicholson - 1965

DELTA MU

Judith White Storms - 1964

DELTA XI

Rusana Blackman Allen - 1958

DELTA OMICRON

Ruth Blew Thurman - 1952
 Laurene Harper Drake - 1956
 Bernice Dreyer Hassinger - 1957

DELTA PI

Donna McCoy Londene - 1957

DELTA TAU

Anne Yeakel Shields - 1957
 Roxanna Schlimm - 1962

DELTA PHI

Freida Havens Sumners - 1956

DELTA CHI

Erleen Carrico Culver - 1957

EPSILON GAMMA

Joy Sanders Mason - 1957

EPSILON EPSILON

Shirley Mencerelli Jones - 1956

EPSILON ZETA

Nancy Nichols Lathlaen - 1957

EPSILON THETA

Sally Ann Shaner - 1959

EPSILON KAPPA

Nancy Sommer Olsen - 1957

EPSILON NU

Sammie Roach Sumners - 1957

EPSILON UPSILON

Ladeana Bullock Rawlings - 1966

EPSILON PHI

Betty Kaminski Burk - 1957

EPSILON OMEGA

Ila Rochholz Fay - 1961

ZETA ALPHA

Alvina Hefeli Breckel - 1967

ZETA GAMMA

Clara Fullen Brewer - 1963

ZETA ZETA

Renna Bellah Barnard - 1960

ZETA THETA

Glenna Brittain Spain - 1971

ZETA TAU

Betty Lowery Fox - 1963
 Mary Thompson Karr - 1966

ZETA PSI

Marsha Ruth Bills - 1969

THETA DELTA

Debora Swatsworth Foster - 1971

THETA EPSILON

Margaret Wilson Harmon - 1962
 Clothilde Tuten Clark - 1963

THETA ZETA

Shirley Myers Maag - 1962

THETA KAPPA

Cheryl Naquin La Franz - 1965

THETA NU

Janet Loy Scoblic - 1969

THETA SIGMA

Barbara Yager Bowden - 1965

IOTA GAMMA

Maria Sekowski Wolanin - 1966

KAPPA EPSILON

Lisa Ann Cripps - 1985
 Melissa Ann Boyd - 1992

KAPPA ZETA

Rebecca Kramer Goldberg - 1989

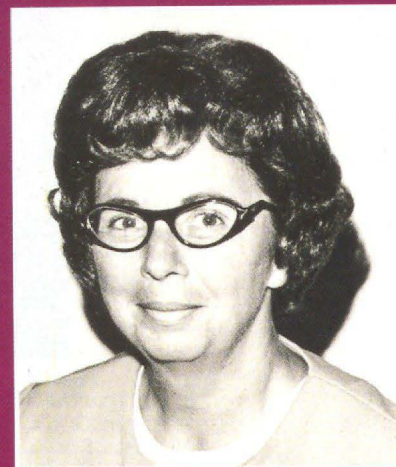
DELTA XI

Brittany Anna Estes - 2008

EPSILON THETA

Emily Irene Schena - 2010

Dorris Pike Silverthorn, Northwestern (IL) – AA, Past National Officer



Dorris Pike Silverthorn, Northwestern (IL) – AA, Past National Officer, passed away on February 7, 2013.

Mrs. Silverthorn served Delta Zeta as National Director of Philanthropies from 1966-1968. She also served as the Muncie Alumnae Chapter President in 1976.

She was co-owner of the Silverthorn Auto Body Shop along with her husband, Frank, who preceded her in death in 1998. Mrs. Silverthorn was member of the High Street United Methodist Church, the Altrusa Business Women's Association, and was very active in the Young Women's Christian Association (YWCA).

Donations in Mrs. Silverthorn's memory may be made to the Delta Zeta Foundation, 202 East Church Street, Oxford, Ohio 45056 or online at <http://www.deltazeta.org>.



Edna "Eddi" Jean Parker, Ohio State – Θ

Edna "Eddi" Jean Parker, Ohio State – Θ, Editor of The LAMP of Delta Zeta from 1963 to 1966, died on February 20, 2013.

After becoming editor, Ms. Parker used more art and different styles of type throughout The LAMP magazine. Professionally, she was a reporter and editor for the Akron Beacon Journal in Ohio. She once said, "I think my editorship was born of the quiet 1950s ... Right after my tenure, things started changing. Students became activists and were more outspoken in their concerns. All that was reflected in the magazine, which continues to reflect our changing campuses."

After graduating from The Ohio State University, Ms. Parker was an airline attendant with Pan American World Airways, which fueled her love of travel. During her journalism career, she was president of the Akron Chapter of Women in Communications, and a national officer and state president of the National Federation of Press Women. She held a bachelor's degree in English and a graduate degree in geriatrics from The University of Akron. Ms. Parker also had a master's in History from the University of Alaska. She was an ardent animal lover. She leaves behind her husband, Robert Crawford, and son, Jonathan.

Donations in Eddi Parker's memory may be made to the Delta Zeta Foundation, 202 East Church Street, Oxford, Ohio 45056 or online at <http://www.deltazeta.org>.



SPirit WITH *Style*

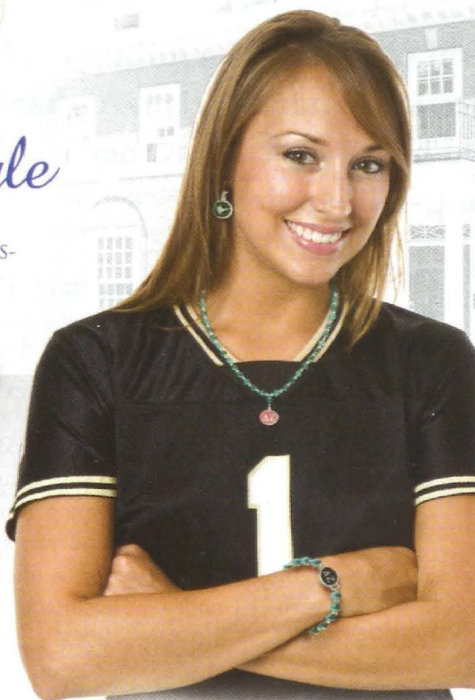
-STERLING SILVER BEADS AND JEWELRY-
-BEADS FIT MOST BEADED CHARM BRACELETS-
-MADE IN THE USA-



(248)-548-4855

CHECK OUT THE FULL LINE ON:

WWW.SCHOOLBEADS.COM



CORRECTION

In the Alumnae News section of Issue 3 - 2012, the headline on page 39 for the news about Tina Penman should have read, "Treasurer for the AVAA," which stands for the Association of Veterans Affairs Audiologists.

On page 25, in the On Campus section, the bottom photo was identified as the Epsilon Sigma Chapter at Wayne State University. The photo was taken at a Founders Day event hosted by the Epsilon Sigma Chapter, and included alumnae and collegiate members from Omicron Nu Chapter (University of Windsor) and Gamma Sigma Chapter (Eastern Michigan University).



Dateline Afghanistan

Atia Abawi, Virginia Tech - KΘ, sat crouched in a military helicopter filled with U.S. Marines, which was flying to a destination in Marjah, Afghanistan. But this was no routine military mission. The soldiers had been briefed that they would be landing in the largest minefield in NATO's history facing Taliban fire.

There was complete silence except for the whirring sound of the helicopter blades," Atia recalls. "There was worry on the Marines' faces. They were thinking about their families – those they had left at home. It reminds you in that moment that these are people's sons, husbands and fathers. Then I thought, 'Why am I doing this? Why am I doing this to my parents?'"

Atia is not a soldier. She is an international correspondent with one of the largest broadcast news networks in the world. And she was flying into the face of mortal danger to tell the world the Marines' story.

"That was the hardest two-and-a-half weeks of my life," Atia says today of her time embedded with the U.S. Marines as they fought

Taliban insurgents. "The threat of coming face to face with the insurgency – and later, of actually stepping on an IED (improvised explosive device) that luckily didn't go off."

Atia Abawi remembers her hunger to tell news stories. As the child of first-generation Afghans, she observed her parents watching the news to stay connected with their country. "I always knew I wanted to be a journalist," she says. "From grade school on, I would follow news stories as a child. I took journalism classes in high school and communication and international studies in college. That made my dream more real."

A profound influence on her ambition to find and tell the truth behind the news was the terrorist attacks of September 11, 2001. "On 9/11, every American was affected," Atia says. "That morning, I was running out of the Delta Zeta house [on the Virginia Tech

campus] with my sorority sister Noelle, heading to a 9:00 a.m. class. One of our sorority sisters called out and told us what had happened. It took away any naiveté I had prior to that. As I watched those images on television, I thought, 'What could have gone wrong?' I think when we found out it was a terrorist attack, it stole innocence from a lot of people. That day reinforced my resolution – I had to go out and tell the stories behind the news. It made me realize that there is a world out there that we don't know. I wanted to see it with my own eyes – to know that what I was seeing was real, and communicate that truth."

Big Dreams, Difficult Journey

Atia's journey from a little girl with big dreams to a staff correspondent who, today, produces and provides on-air reports for NBC News from Afghanistan and other parts of the Middle East, has its roots in an all-American story. "My parents are true heroes," Atia says. "They came to this country after fleeing Afghanistan during the Soviet War. My mother was eight months pregnant with me and my brother was two years old. They came with very little money and worked hard when they came to this country."

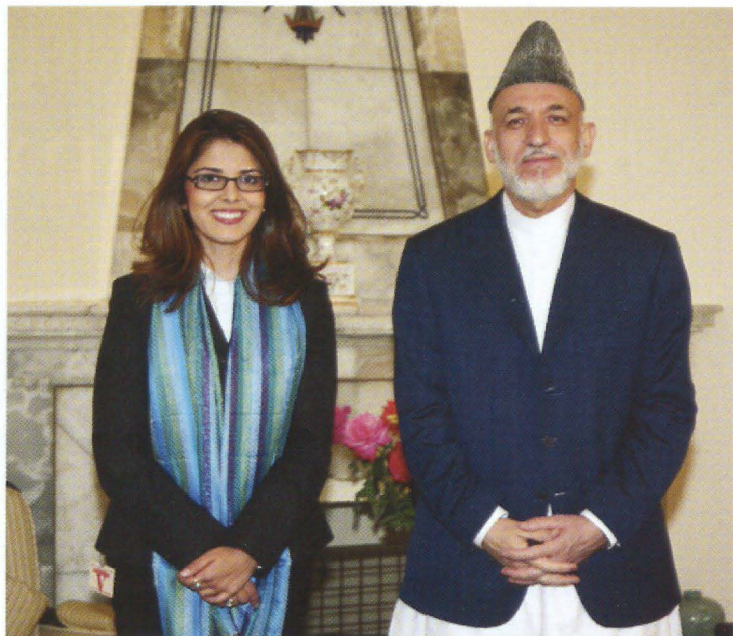
Today Atia's parents live in Virginia and teach the Afghan language. "Mom teaches State Department employees and my father just came back from teaching U.S. Marines in Camp LeJeune, North Carolina. It is a way to help their adopted country."

As a collegian, Atia worked for the student-run television station. "My sorority sisters joke that they never thought I would actually be a reporter," Atia says, laughing. Upon graduation, she began working, but not as a paid journalist. "I did volunteer reporting before turning freelance and wasn't fulfilled," she recalls.

Disheartened and almost ready to give up on her dream, Atia finally obtained an entry-level job with CNN. "I worked my way up to becoming a researcher, assignment editor, producer, and then went back to reporting," she says.

Atia credits her Delta Zeta experience with being a powerful drive to help her become a journalist. "Delta Zeta helped shape who I am today," she says. "I learned a lot from Delta Zeta as a collegian. The experience definitely teaches you how to get along with different people. You learn how to make lasting friendships and how important friendship is. You need those friends. When I was in Afghanistan, before I met my husband Conor, I would call Susan, my sorority sister and college roommate, when I was feeling sad or depressed. She would always pick up the phone and listen — she was always there. I am very lucky to have friends like that!" She also uses social media to stay in touch. "I love Facebook. It keeps me connected to my sisters."

Atia's news stories are balanced with the perspective of the native peoples in the countries she covers. She believes it is fundamentally important for Americans to understand those points of view in order to fully understand the conflicts in the Middle East and around the world. "It's important because the world is getting smaller," she says with passion in her voice. "We need to



Atia with Hamid Karzai, current President of Afghanistan.

understand what is happening to other people in other countries, and understand those countries to make the world a better place. It is vital to living in a peaceful world. People can hate each other without ever having met. There are two sides to every war, and each one is right – at least in their own minds. It doesn't register with a lot of people that there is humanity behind this war. There are families hurting on both sides."

Connecting Hearts

Atia has come to know that humanity firsthand. "The troops I've met have *chosen* to come over here," she says. "They believe in the American way of life and in democracy and in defending it. They are so young – men and women, risking their lives. We need to think about them."

And their families, too, who are left behind. Atia continues, "People who go to war zones can be terribly lonely — they miss their families. Those who are deployed in Iraq and Afghanistan have sacrificed so much."

In Helmand province in Afghanistan, where Atia was embedded with the U.S. Marines, she came to understand an important aspect of her reporting. She provided live video reports and wrote for CNN's website and her public Facebook page about the Marjah offensive, and posted updates on the troops who bravely stood their ground. "As a reporter, you get to know the troops and you form relationships," she said. She kept military families at home informed about their loved ones in Afghanistan. "When I finally had a chance to get back to the Internet," she says, "I broke down in tears reading the comments from the Marines' families. They were so grateful to get a glimpse of their sons through my reporting. It made me happy, but I was also sad because they have to be separated from their families."

(cont'd. on page 41)

Time Travel

Collegian Melissa Brennan's story is inspirational, demonstrating that it is possible to achieve your dreams. Her goal was to visit all seven continents before age 21.

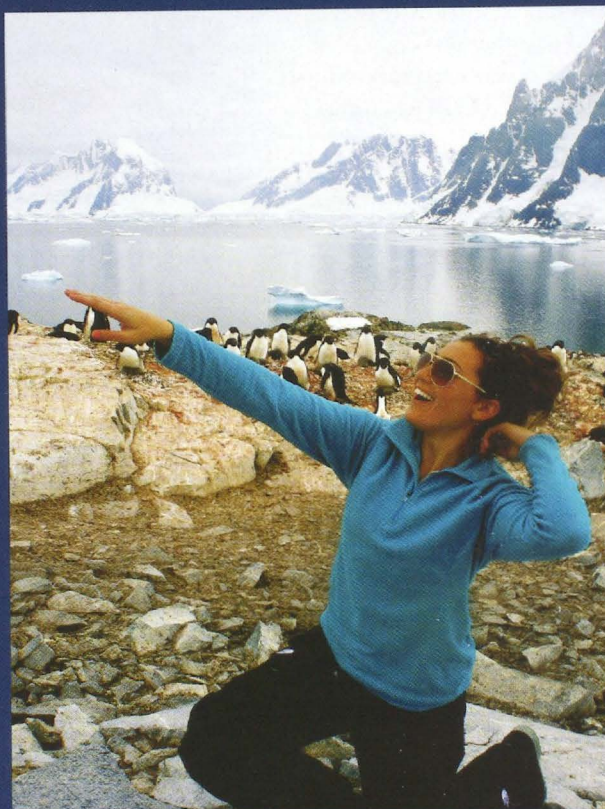
Graduating high school, enrolling in college, picking a major and, perhaps, landing an internship or two — these are the typical milestones one hopes to reach before age 21. For Melissa Brennan of the Pi Zeta Chapter at Arizona State University, however, typical doesn't begin to describe her latest milestone achieved — visiting all seven continents prior to her 21st birthday.

Her goal to reach all seven continents began as little more than a joke.

"I used to Google random countries to find the most interesting and exciting places to go," Melissa says. "When I told my parents I wanted to go to Antarctica, it was sort of a joke, but then I realized I had already been to a majority of the continents; going to all seven was actually a realistic goal."

Melissa fell in love with traveling during the summer of 2007 when she embarked on a trip to Europe through a program for high school students. Inspired by her fellow travelers, she has since toured the world through various organized trips and additional independent travel.

During her latest trip to Antarctica in December 2012, Melissa stepped foot on her final continent just a few weeks



before her 21st birthday. No stranger to solo travel, she had flown to Buenos Aires, Argentina where she spent two nights and had a chance to explore the city with other travelers she met in her hostel before flying to Ushuaia, Argentina — the southernmost city in the world.

From there, Melissa boarded the ship which would transport her to Antarctica for an action-packed adventure. Her trip included hiking and kayaking on and around the glaciers, enjoying the snow and scenery, ringing in 2013 with new friends

aboard the ship and even plunging into the freezing water.

She also encountered Antarctic wildlife including whales, seals and, of course, penguins, which she documented in a YouTube video called "Penguin Highway." The video has been featured on ABCNews.com, CBSNews.com, Huffington Post UK and by other media outlets — garnering attention not only because of the unique penguin behavior Melissa captured, but also because of the interest the story of such a well-traveled 21-year-old holds.





Off the Beaten Path

Although Melissa's extensive list of countries she has visited far exceeds many young women her age, she believes travel is attainable and necessary for every young person.

"If you continue to live in the same place, you don't understand what's going on outside of the U.S. or even on the opposite coast," says Melissa. "You can Google or read books, but until you immerse yourself in a new place, you won't fully see or understand it."

After nearly seven years of traveling, Melissa knows how to achieve this level of understanding in each new place she visits.

"Do things off the beaten path and step outside of the usual touristy places," she advises. "Stay in a hostel or Couchsurf. Meet locals and go out with them. Go to hole-in-the-wall restaurants. "When you travel, look at things that are out of the norm, and always, always talk to people."

Some of Melissa's most memorable trips were those that offered her the opportunity

to experience a place the way locals live.

Her favorite places include Ghana, where she says the people inspired her by celebrating life despite having so little; Fiji, where she experienced a unique generosity, such as when a local helped to guide her tour group through terrain that even her official tour guide struggled to navigate; and finally, Thailand, where she was welcomed into local homes, ate amazing food and experienced the capital of Bangkok.

Delta Zeta: A Place to Call Home

When she is not traveling, Melissa stays busy as a goalkeeper for the ASU women's soccer team and a campus ambassador for Semester at Sea, a study abroad program that she took part in during the summer of 2011 and the spring of 2012. She also calls the Delta Zeta halls of the ASU campus her home and is especially passionate about her experience as a member of Delta Zeta.

"My undergraduate life and my travel have been so impacted by Delta Zeta because my sisters are so supportive by accepting everything outside of my sorority life — travel, soccer, everything; it's like no other group I've ever been a part of," she says.

Melissa equates her experience in Delta Zeta to her experience with travel in that, through both, she has met many different people, experienced new things and learned more about herself.

"It's hard to explain, but the bond you create and the experience is very similar in both situations," she says.

Traveling is, in some ways, what brought Melissa to Delta Zeta in the first place. During her summer 2011 Semester at Sea excursion, she met two Delta Zeta members with whom she immediately bonded. Her connection with these women, and the close friendship they displayed prompted her to go through recruitment that fall and join the Pi Zeta Chapter.

"I went through recruitment in my sophomore year, and I wish I had done it sooner," says Melissa. "Four years is not

nearly enough time to spend in college, especially in the Greek community where you make lifelong best friends."

Melissa enjoys inspiring her sisters to see more of the world through travel, and even spent time traveling with her Delta Zeta big sister, who she celebrated the New Year with in Spain in 2012. Sharing her travel experiences with sisters and meeting Delta Zetas in cities around the world has demonstrated to her how far-reaching the sorority bond can be. "You meet so many people when you travel, but when you meet a Delta Zeta, you bond immediately," she says.

Antarctica may have been the last destination on her seven-continent bucket list, but Melissa doesn't plan to get rid of the travel bug any time soon as she is always planning her next trip.

After she graduates with a degree in broadcast journalism, Melissa has her sights set on New York City, where she hopes to work in radio focusing on — what else but travel? — and documenting her trips and travel advice on her blog entitled, "Meandering Mel" (<http://meanderingmel.com/>). She says a job abroad, perhaps in Singapore, is something she is also considering.

No matter where Melissa may find herself next, she says she looks forward to continuing her involvement with Delta Zeta by staying engaged in the activities of her chapter and connecting with members in other cities after she graduates.

"It's so nice to know that I always have another home here in Delta Zeta," Melissa says.

Melissa says there are a lot of ways to fund traveling while in college.

Here are some tips:

- Apply for scholarships and grants that fund travel, or a semester/term abroad at your school. Check organizations such as the Smithsonian Institution, the Student Youth Travel Association, and National Geographic, all of which offer these types of scholarships. The United Nations offers general travel grants.
- Many countries and organizations, including museums, parks, etc., offer discounts to students who want to travel.
- Register with the tourism office of the country you are interested in visiting. Many airlines use that email list to send special offers to visit that country.
- Check with college tour agencies. If you want to extend your stay, the cost is usually minimal.
- Use frequent flyer miles, or ask your parents if they have miles that you can use. Be flexible in your travel dates and airports, as a two- or three-day window can result in great savings.
- Work or volunteer in countries where cost-of-living expenses are exchanged for labor, or your travel is sponsored through donations.
- Teach English. You will receive pay for your work and have the rewarding experience of expanding the lives of others.

Embedded with the Marines: Atia's Posts

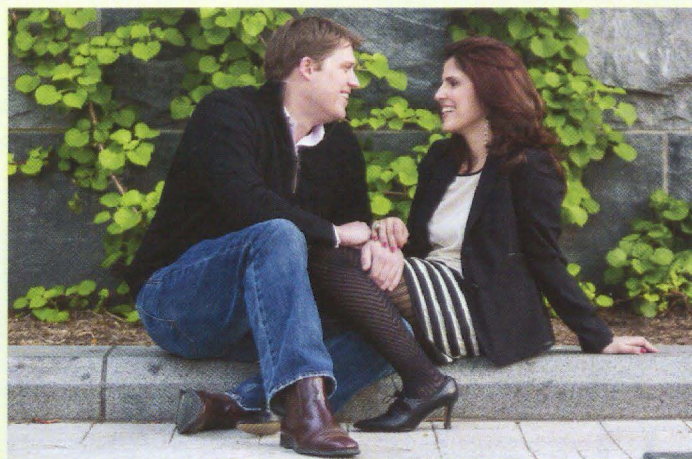
From Atia's Facebook page:

February 26, 2010:

"The comments and messages I'm receiving from the families of the Marines are such a joy to read. They make me smile and some bring tears to my eyes – you guys even made my mom cry. Prayers to all ... xo"

February 24, 2010:

"I left them yesterday and it was like saying bye to my little brothers. Very kind and amazingly sweet young men and great and genuine commanders. They miss you a lot ..."



Atia says the concern for safety has taken on a different dimension since her marriage. "When it's just you, you're fine. You don't worry as much," she says. "But when you start worrying about someone else, it's so much harder. Now Conor is the Mideast correspondent for Fox News. He goes to Libya and other volatile countries, and is in more dangerous situations."

With their fast-paced careers and the chaos they encounter as journalists, how do they find time for each other? "We make our relationship a priority," Atia says. "We talk. We've seen people put their careers before their relationships, and we don't want to do that. We have an apartment in Jerusalem, which is now our home. NBC has been very supportive. They understand when I need to take a break from Afghanistan." As we spoke to Atia, however, she was preparing to travel to Cairo the next day to report on former Egyptian president Hosni Mubarak's trial.

Dateline Afghanistan (cont'd. from page 37)

Like the troops, Atia and her team of journalists are often thrust in the midst of danger when reporting overseas. One of her most vivid experiences was while she and her crew were filming an angry mob of Afghan people who were protesting the 2012 Koran burning at Bagram Airfield. "We were filming the crowd from a distance," Atia says. "They looked as if they were far away. We turned around to go back to our vehicle, and looking around again, saw that the mob was very close. Suddenly, there was a man standing in front of me with a wooden baton in the air, ready to strike me for being a Western journalist. I spoke to my producer in the local language and he turned away, assuming I was just a local girl caught in the crowds." Atia says that it was the second most frightening moment in her life, next to landing in the line of insurgent fire with the Marines.

"You know it's not the safest place," she says. "Security measures are taken. You learn how to act and dress in the situations you are placed in. You're running on adrenaline. If you stop to think about the danger you are in, that is when you could get in trouble. Recently, a young woman from the U.S. Embassy with whom I worked closely was killed by a suicide bomber. It is a sad reminder and can be very depressing."

Love Among the Ruins

In the unlikely arena of war, Atia found love. She met her husband, Conor Powell, in 2009 in Afghanistan when he arrived there as a freelance reporter. They discovered that they had both grown up in the same area of Northern Virginia. They began dating, and covered some of the same news stories together. Time together and away from Afghanistan became precious. They married in 2012.

"Never Give Up!"

Atia's advice for collegiate Delta Zetas interested in broadcast journalism can also be applied to everyone who aspires to their dreams. "Helen Thomas [the former United Press news service reporter and member of the White House Press Corps] gave me some advice that is so basic, but so true. She said, 'Never give up.' She was right. I pushed and pushed, even when I wanted to stop. I kept trying," says Atia with a smile.

"My mother said, 'Always ask. If you don't ask, you won't get,'" she continues. "I would go into meetings with my bosses and ask, 'Can I go here?' The worst thing they could say is 'no.'"

But Atia's true inspiration came from a high school journalism teacher in the most unlikely way. "He asked all of his students separately about our future and what we wanted to do. When I told him I wanted to be a foreign correspondent, he said, 'You're never going to make it. Don't even try.' People can discourage you, but you can't let that stop you," Atia adds.

So the next time you watch the evening news, or see breaking news from the Middle East, look closely. Atia Abawi could be reporting it to you with her trademark immediacy. "It's funny," she says, "that I keep going back to the country from which my family fled!"



Atia Abawi is Publishing a Novel in 2014

Watch for Atia's first novel from Penguin books in the summer of 2014. A novel for young adults, it is a teenage love story set in Afghanistan, entitled "The Secret Sky."

Kim Anspach Ward, Temple
(PA) – ΔT, Guy Potter
Benton Society Member



The Inspiration to Give Graciously

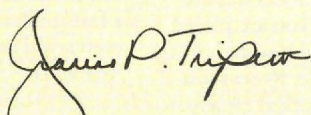
Delta Zeta Sorority relies on the lifelong support of our alumnae for the funding of its educational and leadership programs through the Delta Zeta Foundation. I am inspired to give back to Delta Zeta as a volunteer and a Foundation donor because I know first-hand what that dedication of time and resources does for collegiate members and our Sorority.

I am also inspired by the alumnae who join me in that effort. Take a moment and think about what life in college would have been like for you without Delta Zeta. Would you have taken that leadership role in a campus organization? Would you have changed someone's life through your participation in community service and philanthropy?

Would you have known the sisters you know today who are changing the world through their professional, family or volunteer lives? Would you have been mentored and encouraged to pursue your dreams with confidence?

Please consider making a donation to the Delta Zeta Foundation to "Give Back" if you haven't done so yet. This will help sustain the highest educational, leadership and service experience for Delta Zeta members on campus today.

On behalf of the National Council and all of the many women you inspire and support through your generosity, thank you for giving graciously to Delta Zeta.


Jeanine P. Triplett
National President

Who or what inspires you to "Give Graciously" to Delta Zeta through the Foundation?
Share your story on our Facebook page or email it to DZFoundation@dzshq.com.



Offering Opportunities for Achievement - Kim Anspach Ward

I give back to Delta Zeta because Delta Zeta gave me a great start in becoming a confident young woman, and I want the young women of the future to have that same advantage. Women of all ages have such great opportunities for achievement, and I believe we all have the capacity to help them.

Inspiring Collegians - Lindsay Brewer

As the College Chapter Director of a new chapter, I have made it a priority to discuss with the members the importance of giving back to Delta Zeta supporting the Foundation. I encourage them to participate in the *1902 Loyalty Society* by showing them the ways I contribute as an alumna.



I shared my participation in the "I Heart DZ" Alumnae Challenge, as well as my participation in the Delta Zeta Rose Garden at National Convention. I also educate the members on scholarships awarded by the Foundation and how their support strengthens the Sorority's educational and leadership programs.

I believe it is important for collegians to see examples of alumnae giving in many ways, and hope to inspire them to give back in college and after graduation.

Alumnae Inspired Me - Caitlin Grey

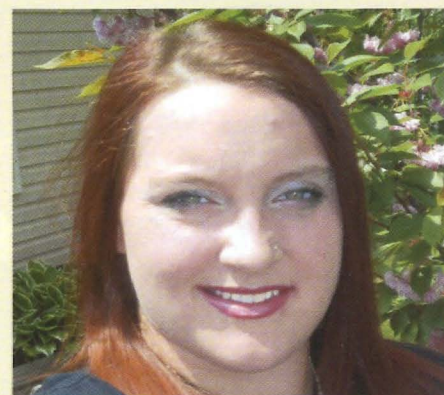
At National Convention last year, I was particularly moved by the alumnae who were recognized for giving back to support our Sorority through the Delta Zeta Foundation. I shared my experience with

my chapter, and we decided to start giving back to Delta Zeta through the Foundation's *1902 Loyalty Society*.

I hope that I have inspired others to continue giving back to Delta Zeta after graduation, just as I was inspired at Convention.

Helping Collegians and Future Delta Zetas - Hollie Engel


Members of our chapter were inspired to give back to Delta Zeta because they knew that donations helped sisters stay in school through scholarships. After seeing how much Delta Zeta and the Foundation impacted their chapter sisters' lives and futures, they were inclined to help make more dreams, goals and wants come true by giving back.



From Top to Bottom
Lindsay Brewer, Tampa (FL) – ΔB,
College Chapter Director,
Pi Xi Chapter - University of
Central Florida

Caitlin Grey, Past President
Theta Psi Chapter
Ashland University

Hollie Engel, Treasurer
Epsilon Sigma Chapter
Wayne State University



Dr. (COL) Migdalia Machado, Bucknell (PA) - BΘ, right, with her sister, Helen Machado, at Dr. Machado's promotion ceremony.

Enriching the World

Alumnae News

Alumnae members make a difference in the world, while inspired by their connection to Delta Zeta and enriched by the Sorority's purpose.

Helping military families cope with challenges

Dr. (COL) Migdalia Machado, Bucknell (PA) - BΘ, presented a workshop on Suicide Awareness at Fort Polk, Louisiana army installation to help family members understand and cope with the emotional chaos of deployment and other challenges of military life.

"While at Bucknell," Dr. Machado says, "I had the leadership role of Social Chairman for the Beta Theta Chapter. My inspiration came from wanting to make a difference as a woman in this society, which in turn led me to explore the military as a potential career. Being a high ranking officer in the Army as a physician helps me to be a good role model for other women.

"I became a military psychiatrist in order to provide services to the service members who so urgently need our support. I am hoping to make a difference in their behavioral health needs. Presently, I serve as the Chief of Behavioral Services at

Bayne-Jones Army Community Hospital in Fort Polk, Louisiana. My department services an 11,000 Active Duty population. My staff consists of approximately 90 personnel, which includes social workers, psychologists, nurse practitioners, psychiatrists and behavioral health technicians."

Dr. Machado obtained an MSS from Bryn Mawr School of Social Work in 1980 and an MBA from Loyola College in Maryland in 1990. She went on to complete her DO degree at Texas College of Osteopathic Medicine, University of North Texas Health and Science Center in 2003. She completed a psychiatry residency at the University of New Mexico in 2012 and is a board certified psychiatrist with her current job as Chief of the Behavioral Health Department at the Bayne-Jones Army Community Hospital in Fort Polk, Louisiana. Dr. Machado is on Active Duty and a colonel in the United States Army.

Answering the needs of foster children



Samantha Jernstrom, Idaho - ΠΚ, has been named as Secretary on the leadership board for the Foster Care Idaho Youth Advisory Board.

Samantha says, "This is the first youth advisory board led by foster alumni in the state of Idaho. We are all former foster youth who have come together to reform and better the foster care system in the seven regions of Idaho. It is completely volunteer-based, and is used to ensure that the voices of foster children are heard."

She knows firsthand the challenges that foster children can face, as she lived in three foster homes and two respite homes (short-term living quarters while children wait to be placed in a foster home) before meeting her adoptive family, Jim and Gayle Jernstrom.

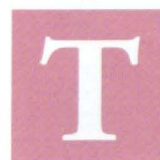
The Jernstroms welcomed her to their home, along with Samantha's biological siblings and other foster children. Their faith and encouragement gave her the inspiration to take classes for both college and high school credit through the WINGS dual credit program (an acronym for WIN by getting a Good Start).

As an alumna, Samantha remains actively involved in supporting the collegiate chapter at the University of Idaho.

Leading young America

Dawn Heuer, Tennessee/Knoxville - BA, was named Program Officer of America's Future Foundation. The mission of America's Future Foundation is to identify and develop young professional leaders for liberty, providing innovative programs and unique opportunities which help them achieve civic self-fulfillment and public service.

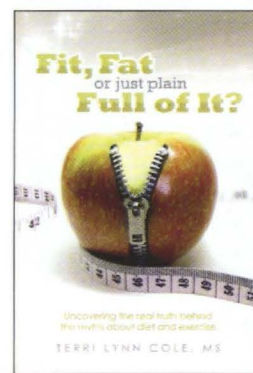
Inspiring a lifetime of good health



Terri Cole Graham, California State/Fullerton - Π*, has published her first book, "Fit, Fat, or Just Plain Full of It?" with HealthyBeat

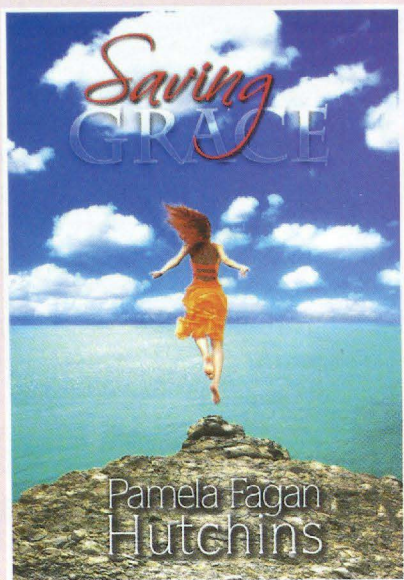
Publishing. This book helps uncover the real truth about many of today's diet and exercise myths, fads and fallacies.

As an award-winning expert in her field of Clinical Exercise Physiology, Terri was also a feature expert on last year's television hit, the Tracy Gold Lifetime documentary on eating disorders called "Starving Secrets."



Terri says membership in Delta Zeta has inspired her to spread the message of good health. "Being a part of Delta Zeta was a true sisterhood, where my sisters and I shared our

personal stories, struggles and experiences with dieting, body image issues, the desire to fit in, and for some of us, eating disorders. Delta Zeta teaches you that people will love and respect you for who you are, that beauty and friendship come in all shapes and sizes, and that philanthropy and sisterhood are not built on what size pants we wear. Delta Zeta influenced me to want to help people get healthy and stay fit the right way. It isn't about getting skinny quick; it's about being healthy long-term."



Award-winning women's mystery fiction

Pamela Fagan Hutchins, Texas A&M - AE, is the author of an award-winning women's fiction mystery, "Saving Grace." It is the first in a mystery series set in Texas and the Virgin Islands. The second book in the series, "Leaving Annalise," will be published in August 2013. Kirkus Reviews says "Saving Grace" is "a lively romantic mystery that will leave readers eagerly awaiting a sequel." Midwest Book Reviews called it "an exciting tale that combines twisting investigative and legal subplots with a character seeking redemption ... an exhilarating mystery with a touch of voodoo."

Pamela also writes relationship humor books which have earned her praise as "the Erma Bombeck of her generation." Visit her website at <http://pamelahutchins.com> for information on her award-winning books.

She says Delta Zeta and the friendship she has shared with her sisters have been instrumental in giving her the inspiration to find her life's calling. "Before I was a member of Delta Zeta, I don't really think I understood true friendship, and definitely not sisterhood," says Pamela. "The young ladies I met [as a collegian] became the women who have been my friends ever since, women who went on to excel in their individual fields.

"The quality of the friends I made – their intelligence, their ambition, and their kind and giving spirit – has been a continuing source of inspiration in my own professional life, and they've given me a lot to aspire to. Two became judges just last year, for instance. Not only are they inspirational, but their support is amazing. My Delta Zeta sisters have cheered me on, posted reviews of my books, and shown up for my book signings. Becoming a member of Delta Zeta was one of the best choices of my life."

Exceptional Panhellenic service



Courtesy of Connie Zieba, Houston Alumnae Panhellenic Association

Sharon Kelley Shelton-Pease, Louisiana State - Σ, and her husband, Tim, were honored by the Houston Alumnae Panhellenic Association (HAPA) for their contributions to HAPA and its Foundation. The Houston Alumnae Panhellenic Association, which has more than 5,000 members, promotes fraternity life through community service as well as the deep friendships found through individual sorority and Panhellenic life.

Sharon was named a Citation Member in 1989 and was recognized as an Honorary Board Member in 2010. She

served as HAPA President in 1989-1990. Currently, Sharon serves on the Foundation Board as a Trustee. Her past offices include HAPF Treasurer and Scholarship Selection Chairman. Honorary Board Members Emeritus and Honorary Board Members have contributed continuous, exceptional, and unselfish service and leadership to the Houston Alumnae Panhellenic Association. A person accorded this highest of honors shall have maintained participation in HAPA for a minimum of twenty years. (<http://www.houston-panhellenic.org/>)

A passion for community service



Megan Lenzzo, Hartford (CT) - PIB, serves in the National Civilian Community Corps (NCCC), an AmeriCorps program.

AmeriCorps is a residential national service program that supports disaster relief, the environment, infrastructure improvement, energy conservation, and urban and rural development. Megan assisted in Corps Member training, which prepares more than 300 Corps Members for full-time service with AmeriCorps NCCC, emphasizing teamwork, leadership development, communication, service learning, and includes certification by the American Red Cross.

As a Support Team Leader, Megan supports the NCCC mission in the Sacramento, California field office by working with team leaders as they lead young adults on their service projects.

Megan says, "I have always had a passion for community service. I enjoy helping people that need my help the most. I found my passion for community service in high school when I joined C.R.E.W. (Community Revitalization Efforts of Wallingford). As an organization, we raised money and found sponsors to fund an alternative spring break trip to New Orleans, Louisiana. I dedicated my last spring break in high school to this trip. In college, I dedicated my spring breaks towards community service in Wilmington, North Carolina and Tuscaloosa, Alabama.

"Community service is enriching – it fuels my heart. I have met so many great people through serving others. Community service has helped me diversify myself and realize how fortunate I am for what I have." For more information about AmeriCorps NCCC, visit the website at <http://www.americorps.gov/nccc>.



Ensuring the role of STEM education

Linda Kennedy, Michigan Technological - ΛΘ, was appointed by the Governor of Michigan, Rick Snyder, to serve on the Michigan Technological University Board of Control, the governing body of the university.

Linda is a shareholder in the Detroit office of Butzel Long PC, one of Michigan's oldest law firms. Previously, she served as in-house counsel for Dow Chemical Co. and as a technical writer for IBM's software solutions division. She holds a bachelor's degree in scientific and technical communication from Michigan Tech, as well as a bachelor's degree in chemistry and a law degree from the University of Minnesota.

"I am honored to assist Michigan Tech to carry out its mission of preparing students to create the future," said Linda. "I have always understood Michigan Tech's commitment to



Courtesy of Michigan Technological University

science, technology, engineering and math (STEM) to be forward-looking and critical to Michigan's economy."

Impacting her profession and her community

Christy Phillips-Brown, Western Carolina (NC) - ΘΙ, National College Chapter Finance Chairman, was named to Charlotte Business Journal's "40 Under 40" list for 2013. The award recognizes professionals who are making major strides in their careers and impacting their communities.

Professionally, Christy is the Director, External Communications at Delhaize America/Food Lion where she leads the company's media and community relations initiatives. She serves on the board of directors of Second Harvest Food Bank and Charlotte Family Housing. She has served Delta Zeta in many capacities, including College Chapter Director, Regional Collegiate Director and National District Director.

Outstanding contributions to the AFA



Allison Lynch St. Germain, Maine - AY, Director of Educational Technologies for Delta Zeta Sorority, received the S. Shelley

Sutherland Outstanding Volunteer Award from the Association of Fraternity/Sorority Advisors (AFA) for her work as editor of the organization's magazine, *Perspectives*, 2008 to 2013. **Teniell Trolan, Ohio State - Θ**, received the same award for serving on the *Perspectives* editorial board. Teniell is a doctoral student at the University of Iowa.

The award was re-named in honor of Shelley Sutherland, AFA Past President and founding member of the Association on the occasion of her retirement and is presented annually to up to eight volunteers in recognition of their outstanding contributions to the Association.

Allison Lynch St. Germain,
Maine - AY



Service to our country

Perianne Jade Tucker, Missouri/Kansas City - ΞΦ, has achieved many accomplishments since graduating in May of 2012. During her collegiate years, Perianne was enrolled in the Army Reserve Officers Training Corps (ROTC) program. She received an "E" at camp which is only awarded to the top 14 percent of cadets. She was also awarded "Distinguished Military Graduate," a distinction which is given to cadets with a GPA in the top 20 percent.

Ordered to active duty, she received her second branch choice, the Military Police, and was awarded graduate school option, allowing her to attend graduate school tuition-free.

Preserving heritage through dedicated service

Three Delta Zeta alumnae met in Washington, D.C. at the conferences of various hereditary lineage groups. All are 50-year members of the Sorority as well as avid genealogists. Each of them is or has been serving in prominent positions in various lineage societies.

Marlene Rathbun Wilkinson, Oklahoma State - AE, is National Presiding Officer of the National Society Descendants of Early Quakers, and



From left, Alice Cramer Byrnes, Wisconsin/Stout - ZB, Marlene Rathbun Wilkinson, Oklahoma State - AE, and Virginia Klaren Buckner, Kentucky - AΘ.

President of the Dutch Colonial Society. She also serves as Governor General of the Order of the First Families of New Hampshire and First Vice President General of Presidential Families of America. She serves as a Consultant for the Hereditary Society Community.

In 2001, Marlene was honored by the National Society Daughters of the American Revolution with the Community Service Award for her years of service to her community. The Navy Relief Society presented her with their highest Meritorious Service Award. She has compiled three family history books, all of them located in major genealogical libraries throughout the United States.

Alice Cramer Byrnes, Wisconsin/Stout - ZB, is the Wisconsin State President of National Society Daughters of Colonial Wars, and Wisconsin State President of National Society Daughters of the

American Colonists. She also serves as Treasurer General for the National Society Colonial Daughters of the Seventeenth Century, Treasurer General of the National Society Dames of the Court of Honor, Marshal General for the Descendants of Sheriffs & Constables of Colonial & Antebellum America, and Auditor for the National Society Descendants of Early Quakers.

Virginia Klaren Buckner, Kentucky - AΘ, served as Second Vice President General of the National Society Colonial Daughters of the Seventeenth Century. Previously, she served as First Vice President General of the National Society Daughters of Colonial Wars (NSDCW), Second Vice President General, and Corresponding Secretary General of NSDCW. In addition, she has served as President of the National Officers Club for NSDCW. She has served in many other societies at the state and local levels.

Sharing Our Sisterhood

Delta Zeta values connect members through shared sisterhood at events such as reunions, chapter anniversaries and alumnae events around the country. Delta Zeta sisterhood remains relevant in our members' lives, no matter how many years have passed since graduation from college.

CENTRAL PLAINS AREA - Colorado, Iowa, Kansas, Minnesota, Missouri, Nebraska, North Dakota, South Dakota



More than 50 members of the **Delta Pi Chapter** of Delta Zeta met in Overland Park, Kansas for a reunion. The women were collegiate members of the chapter from 1965 to 1974 while attending **Emporia State University** (formerly known as Kansas State Teachers' College).

The group enjoyed a weekend of visiting and sisterhood. Activities included a silent auction, which raised \$600 to be contributed to an ESU scholarship established by a Delta Pi alumna, playing bridge, singing Delta Zeta songs, admiring a collection of college days' memorabilia, and catching up on 40 years of life stories.

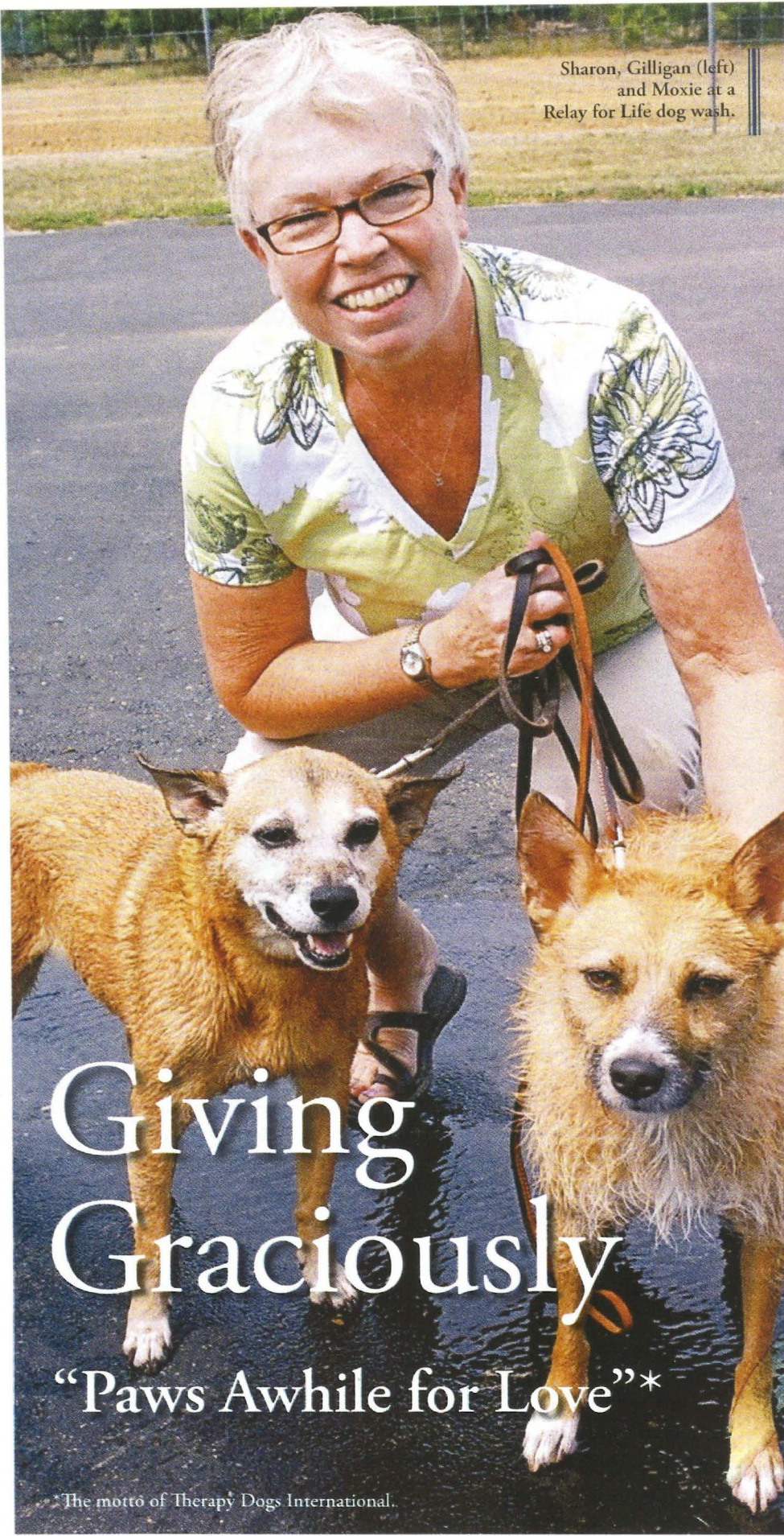
"Reuniting was just like stepping back in time, and we picked up as if we had seen

each other the day before," Jan Buckman, alumna and reunion photographer, said. "Our conversations may have changed from what to wear for a sorority dance to the cost of Medicare supplements, but the bond and familiarity was still the same. Reuniting has been a blessing for me for which I will always be grateful."

Renie Klotz Larson, who worked diligently to find sisters via email, Facebook and searches of Delta Zeta and college records, said, "It was like time paused for 40 years, then resumed once we were all together again. We picked up where we left off and felt as close and comfortable with one another as we did when in college. Four decades didn't change our bonds of sisterhood."

Mary Alice Fields Boten, member of the Kansas City Reunion Committee, added, "I really didn't know what to expect, yet the reunion turned out to be much more than I expected. I assumed we would all be able to bond again, but I had no idea of the depth of that bonding. Each alumna was genuinely interested in her sisters' lives over the last 40-plus years, and was happy for their accomplishments as well as sympathetic regarding difficult times."

The Delta Pi alumnae are planning a retreat at the end of September 2014 and another reunion in Kansas City in 2016. For more information contact Beccy Stolte Oberly at beccyoberly@yahoo.com.



Sharon, Gilligan (left)
and Moxie at a
Relay for Life dog wash.

S

haron Cook Anderson, Miami (OH) – A, has always loved dogs. But she never dreamed that her passion would show her a way to fulfill Delta Zeta's Creed, "To

give graciously," and open a new world to her and those she would help.

A former French and Spanish high school teacher, Sharon now works at Delta Zeta National Headquarters in the initiation department. National Headquarters staff had long known of Sharon's love for dogs as she talked about taking her dog, Bandit, to obedience classes. "At the end of the class, the instructor offered a therapy dog training class," Sharon says. "I had no idea what it was, but I thought, 'Why not?' We did the training and registered with Therapy Dogs International (TDI). The first place we visited was a local nursing home – I approached the home about using a therapy dog to visit the residents. They were delighted to have the program at their facility."

When Bandit passed away, Sharon's second dog (all of which are shelter or rescue dogs), Gilligan, took his place. "I never thought he would be a good therapy dog," Sharon says, laughingly referring to Gilligan's short attention span, "but he does the best job."

There are nearly 25,000 dog/handler teams registered with TDI in all 50 states and Canada. Therapy dogs are trained to provide affection and comfort to people in hospitals, retirement homes, nursing homes, schools, hospices, people with learning difficulties and in stressful situations.

After visiting the nursing home, Sharon wanted to do more. "I saw an article in The LAMP about somebody who was going to the Ronald McDonald House, and I thought, 'I can do that.'" Soon she was visiting the Ronald McDonald House in Cincinnati, Ohio, with Bandit. Looking for other opportunities, Sharon contacted the volunteer office of a local hospital about starting a therapy dog program there. "Bandit and I did a presentation, and it took a year to start the program. It's been in existence for two years now."

Giving Graciously

"Paws Awhile for Love"*

*The motto of Therapy Dogs International.

The Making of a Therapy Dog

"I always say that a therapy dog starts with the right attitude," Sharon says. As far as training, basic obedience training is a good place to begin. "I encourage people to take their dogs out and socialize them," she continues. "Take them places where they will be faced with different or strange situations. A therapy dog needs to be able to handle just about anything, whether it is loud noises, strange machinery, or people who might handle him a little differently than what you expect."

Gilligan's short attention span serves him well in the hospital, where the visits are brief as they go from room to room to visit patients. "The nurses and the staff are just great," says Sharon. "Even the doctors who are very busy will occasionally stop and say 'hi.' They are happy to have Gilligan there."

Gilligan, too, assumes his duties very seriously. "It's as if he is saying, 'This is my hospital,'" Sharon says. "He likes to visit with the families first because they have the animal smells that they've brought from home. Then he visits the patient. He has learned when I tap the bed and say, 'Feet,' he puts his feet up, and patients can scratch his head. If it's okay with the patient, he will jump up in bed and cuddle. The patients love it."

Sharon is always careful to ask if a patient wants a visit, as they might encounter a patient who has allergies, or perhaps just doesn't like dogs.

Breaking Barriers

"Some of the people who take the therapy dog classes are nervous because they don't know what to say to someone who is ill," Sharon says. "I say, 'Just say anything. You'll get a conversation started with your dog.'"

Dogs are intuitive creatures, and know when humans need them. Sharon describes how Bandit stretched himself across the doorway of the room in which a patient had just died, as if he knew he would be needed to comfort the family members. In another instance, she says, "We worked with a special needs class at a middle school, and I had a boy sit on the floor and pet Bandit and tell me about the abuse that goes on in his home."

Sharon is now visiting a juvenile detention center with her dogs. "I thought that this would open up a great opportunity," she says. The detention center houses children and adolescents, 11-17 years in age, and has a school program with two teachers. Sherriff's deputies remain in the room with the handlers and the adolescents. "Most of the kids are sophomores to seniors in high school," Sharon adds. Since she has been visiting, a few more therapy dogs and their owners have joined her. "I'm working to bring in a pit bull rescue or two. Those dogs are really sweet, but some of the kids think that's the kind of 'tough' dog they want when they are released. I want them to see what kind of dogs they can be."

The animals transcend barriers that humans often find difficult to break. "We had a boy at the detention center who told me he was afraid of dogs. This was the first time that we had a very sweet-natured Rottweiler visit with us. The boy was apprehensive, and he said, 'I never had a dog. I don't know what to do with them.' I said, 'You know, this is a safe place. These dogs are all safe. You don't have to worry about it.' I do meet kids who are afraid of dogs and I've found that if I turn the dog around backwards and ask them if they want to pet his back, then they're okay. We adapt to the situation and do whatever we can to make it work."

At the same time, Sharon is instilling some valuable lessons in the adolescents. "I'm trying to get a wide variety of animals so they can see what we're doing. They have to do community service at some point as part of their sentence, and I encourage them to go to the animal shelter to do that service."

Sharing is Giving

Each of Sharon's dogs' different personalities have adapted well to the various situations they encounter in their therapy work. "Bandit was as solid as a rock. I could depend on him anywhere. He was always in control. At the Ronald McDonald House, I would take him in and he would lay down and face the door. He wanted to see everybody who was coming in."

"Gilligan is very social. And Moxie, my newest dog, is just starting as a therapy dog. Moxie's a big kisser. I think she will do really well with a group of children."

Sharon's work has brought fulfillment beyond anything she could have imagined. "I looked for a long time for *the cause*," she says. "It was the article in *The LAMP* that really got me started. I don't think I fully realized what the Creed meant of 'giving graciously of what is mine' until I did this work — then I understood that it means your time, your talents, whatever you have that you can share. That's what our Founders meant. When I had Bandit, I knew he was a special dog, and that I needed to share him. That's how it all got started. I can't imagine not doing it now."

Read online exclusives at <http://www.deltazeta.org>.



Bandit (left) and Gilligan

Send all notices of address changes and member deaths to:
Delta Zeta National Headquarters
202 East Church Street
Oxford, OH 45056
Phone: (513) 523-7597
CHANGE SERVICE REQUESTED

NONPROFIT
PSRT STD
U.S. POSTAGE
PAID
FLORENCE KY
PERMIT NO. 313

"Friendship and
love are our
common treasure.
Our sorority ideals
serve ever to remind
us we can help
others in this game
of life. We can take
nothing out of this
world that we
do not give to it."



Alfa Lloyd Hayes



From the Archives The Order of the Golden Rose

In 1952, Delta Zeta Sorority celebrated its Golden (50th) Anniversary at the National Convention held in New Orleans, Louisiana. Among the many milestones commemorated at that Convention, one of the most enduring would be the initiation of the three remaining Founders of Delta Zeta: Julia Bishop Coleman, Mary Collins Galbraith and Alfa Lloyd Hayes. As founding members of the Sorority, they had written the Ritual and initiated many other women, but they had never been initiated themselves.

At this same Convention, the Founders would also become the charter members of Order of the Golden Rose, which recognized them for 50 years of membership in Delta Zeta. The Founders received specially designed golden rose pins adorned with diamonds. They are the only ones to wear the diamond pins; all other inductees into the Order of the Golden Rose receive pins adorned with pearls.



Founders Mary Collins Galbraith, Alfa Lloyd Hayes and Julia Bishop Coleman at the Golden Anniversary National Convention in 1952.