

VOL. XIV

FEBRUARY, 1925

NO. 3

Delta Zeta Lamp

February, 1925

OFFICIAL PUBLICATION OF
Delta Zeta Fraternity

VERA BROWN JONES, *Editor*
1115 Church St., Evanston, Ill.

[[PRINTED
IN U.S.A.]]

Contents

The Panhellenic Creed	214
The National Panhellenic Congress	215
Panhellenic's Future	221
Committee on Eligibility and Nationalization of Social Groups	223
Committee on Panhellenics	224
Committee on Publicity	226
Our City and College Panhellenics	227
Pleasures and Perils of Alaska	251
The Lovely Person	254
From Our Pledges	258
Songs From Psi	259
Gamma Province Tells the World	260
"The Directory"	262
A Letter	263
In Memoriam	264
Announcements	265
Alumnæ Chapter Letters	267
Chapter Letters	276
Pledges and Initiates	307
Honor Roll	310
Clippings Bureau	320
Directory	333

The DELTA ZETA LAMP is published four times a year by the George Banta Publishing Co., 450-454 Ahnaip St., Menasha, Wis., official printer to the fraternity.

Subscription price \$1.50 per year, single copies forty cents. Life subscription \$25.00.

Entered as second class matter October 18, 1909, at the postoffice at Menasha, Wisconsin, under the Act of Congress of March 3, 1879.

Acceptance for mailing at special rate of postage provided for in section 1103. Act of October 3, 1917. Authorized September 26, 1918.

The Panhellenic Creed

We, the fraternity undergraduate members, stand for good scholarship, for the guardians of good health, for whole-hearted coöperation with our college's ideals for student life, for the maintenance of fine social standards and the serving, to the best of our ability, our college community. Good college citizenship as a preparation for good citizenship in the larger world of alumnæ days is the ideal that shall guide our chapter activities.

We, the fraternity alumnæ members, stand for an active, sympathetic interest in the life of our undergraduate sisters, for the loyal support of the ideals of our Alma Mater, for the encouragement of high scholarship, for the maintenance of healthful physical conditions in the chapter-house and dormitory, and for using our influence to further the best standards for the education of the young women of America. Loyal service to chapter, college and community is the ideal that shall guide our fraternity activities.

We, the fraternity officers, stand for loyal and earnest work for the realization of these fraternity standards. Coöperation for the maintenance of fraternity life in harmony with its best possibilities is the ideal that shall guide our fraternity activities.

We, the fraternity women of America, stand for preparation for service through character building inspired in the close contact and deep friendship of fraternity life. To us, fraternity life is not the enjoyment of special privileges but an opportunity to prepare for wide and wise human service.



VOL. XIV

FEBRUARY, 1925

NO. 3

The National Panhellenic Congress

TO PROMOTE good feeling between local chapters of sororities; to promote social intercourse; to act on all matters of interfraternity interest; to raise standards and to ameliorate any existing evils; to encourage a superior type of scholarship, and to stand for whole-hearted coöperation with the college ideals for student life, are some of the objectives of the National Panhellenic Congress, an organization of nineteen national college sororities.

This association had its origin more than twenty years ago, but it was not until 1911, at a convention at Evanston, Ill., that the basis of the present constitution was adopted, and the name was at that time permanently fixed as National Panhellenic Congress.

It was at this convention at Northwestern University, to which representatives of many national sororities were sent, that the ideals of this organization were fixed which, in the past few years, have meant so much to the progress of college sororities. Since then the aims and purposes of the association, which in reality, is a great coöperative movement for the benefit of all college sororities, have not been much changed. Standards of ethical conduct for students have been discussed at every convention since 1911, and a creed now known as the Panhellenic Creed was prepared by the Editors' Conference of this association, which states briefly the ideals of the American college sorority girl.

This Panhellenic Creed states that the undergraduate members of college sororities who are associated with the National Panhellenic Congress stand for good scholarship, for the guardians of

good health, for whole-hearted coöperation with the ideals of their college for student life, for the maintenance of high social standards and serving of the college community. Alumnæ members of sororities of this congress pledge themselves to stand for an active, sympathetic interest in the life of the undergraduate, for the loyal support of the ideals of their Alma Mater, for the encouragement of high scholarship, for the maintenance of healthful physical conditions where the undergraduates live, and for using their influence to further the best standards for the education of American young women. The fraternity officers, the Creed states, stand for loyal and earnest work for the realization of their fraternity standards. They pledge themselves to coöperate for the maintenance of fraternity life in harmony with its best possibilities. In the final paragraph of the splendid Panhellenic Creed the fraternity women of America pledge their stand for preparation for service through character-building, inspired in the coöperation, contact and deep friendship of fraternity life.

The fundamental idea of the Creed, which is a guide to practically all of the approximately 100,000 fraternity members in America, seems to be that fraternity life does not mean only the enjoyment of special privileges, but that it places an obligation on the student to prepare for wide and wise human service, which, after all, is an opportunity.

The National Panhellenic Congress is an organization whose activities are confined to promotion of ideals for college girls. Some of its service to the sorority is of an extremely practical nature. The association helps sororities in working out problems of purchasing of dormitories, operation of dormitories, selection of chaperons, and rendering helpful influence in the work of the chaperon, governing of the chapter-house, and many other services.

The first sorority conference met at Chicago at 1902, though as early as 1891 a Panhellenic Conference was on record. Early efforts were largely devoted to securing the organization of local Panhellenic Councils in colleges. The purpose of these organizations was primarily that they regulate rushing.

In 1903 it was decided at St. Louis that local Panhellenic Councils should be formed in every college where two or more national sororities were established, and that the members of these councils should consist of one alumnæ and one active member of each

sorority represented. To act on all matters of intersorority interest was the objective of the Panhellenic Congress. This movement has grown until it now comprises in its membership practically all of the national sororities. It is a great coöperative association, rendering service of inestimable value to all college sororities in its membership, because through the organization problems can be solved more wisely, owing to the experience of the officers and members in meeting similar situations for other sororities.

In 1906 the Panhellenic Congress officially disapproved of high school sororities and recommended that admission be refused in college sororities to any women who had belonged to such societies in preparatory schools. Social service work was outlined as a duty of the Panhellenic Congress. Some of the other subjects discussed at this conference held eighteen years ago were that fraternity magazines should be exchanged between all editors and the Panhellenic Congress; that chaperons for sorority houses should be selected, if desired, with the advice of the Panhellenic Congress; social affairs of sororities, scholarship prerequisites for entrance into sororities, and a code for the dismissal of members.

In 1909, at a conference in Chicago, a code for the breaking of pledges, withdrawal of invitations, and the dismissal of members was passed, but it was not until 1911 at Evanston, Ill., that the Constitution, as it now exists, was finally adopted. This association decided that pledge day should be not less than two weeks after the opening of college, and that rushing should be regulated and limited as to expenditure. Some of the other results of the conference were that a model constitution for all college Panhellenics was adopted, that scholarship was encouraged, that a no-rushing policy was adopted, and that an effort was made to pledge all chapters to have all members conform to college social rules. Panhellenics were urged to avoid all public press notoriety. It was recommended that only women who had been several years out of college and who are in close touch with their university and their chapter's life, and in sympathy with National Panhellenic ideals and work, be selected as *alumnæ* members of the Panhellenic Congress. It was also urged that they be given a long tenure of office if they proved to be efficient *alumnæ* representatives.

Concerning high school fraternities the National Panhellenic Congress has asked editors to publish articles against high school fraternities, and has requested them to publish nothing favoring the preparatory school secret society. It has recommended that high school fraternities and sororities be discontinued.

Ten years ago a rule was passed preventing the bidding for sorority membership of any girl who had been a member of a so-called sorority in a high school.

A National Bureau for Chaperons for sorority houses was recently established by the Panhellenic Congress. A committee on chapter houses drew up a set of rules designed to be applicable to any chapter-house.

In proposing standards of ethical conduct a committee recently decided that in case of Panhellenic difficulties all chapters involved will do their utmost to restore harmony and prevent publicity; that any national Panhellenic fraternity whom a local chapter is petitioning shall insist that such a group shall conform to college Panhellenic conditions as to pledging, etc., where it is established; that national Panhellenic fraternity chapters unite in assisting local groups in colleges and universities to obtain national charters; that it is beneath the standards of fraternity women to speak disparagingly of any college woman, to create any feeling between fraternity and nonfraternity women or to allow publication of any report of minor social functions to appear in the public press.

Concerning rushing the Congress has made many recommendations during the last several years. Fifteen years ago it was urged that there be no rushing before matriculation, and ten years ago it was agreed among the members of the Congress that there should be no rushing of high school students. In 1917 it was agreed that these rules are applicable alike to students, pledges, alumnae and patronesses. As early as 1909 it was recommended that there be no initiation of a pledge until ten hours of passing work had been completed, and in 1917 the Congress recommended the scholarship basis of initiation. Somewhat surprising is the information that as early as 1907 the chairman of the National Panhellenic Congress investigated the laws concerning the making and wearing of fraternity pins by unauthorized persons, and reported that it is not illegal to make or to wear a fraternity pin of an organization in which the maker or wearer is not a member.

One highly useful service performed by the Panhellenic Congress for the benefit of the thousands of sorority girls who are represented through their delegates, was a recent survey of the cost of living in fraternity houses and in dormitories and boarding houses. Statistics, the result of this study, have been of great value to persons charged with the management of dormitories for college girls.

Concerning the establishment and regulation of college Panhellenics it has been agreed by the national association that local Panhellenics may be established in colleges where two or more national fraternities exist. It was decided that these Panhellenics shall consist of one alumna and one active delegate from each fraternity represented in the Congress. From the rules of procedure it is determined that the purpose of these Panhellenics is to discuss and act on all matters of fraternity interest in the colleges in which they exist, and especially on such matters as may be suggested to them by the National Panhellenic Congress. That the chapter first established in each college is to organize the Panhellenic was agreed. The chairmanship is to be held in rotation by each chapter in the order of its establishment. It was agreed that patronesses, alumnae and pledges shall be equally bound by rushing rules of the Panhellenic Congress.

Five practical subjects recently placed on the program of every Panhellenic by the National Congress were: health (especially college customs and conditions which affect it); education; vocations; reports by each fraternity of its national work, and contributions of Panhellenic to the college in maintaining high social and scholastic standards.

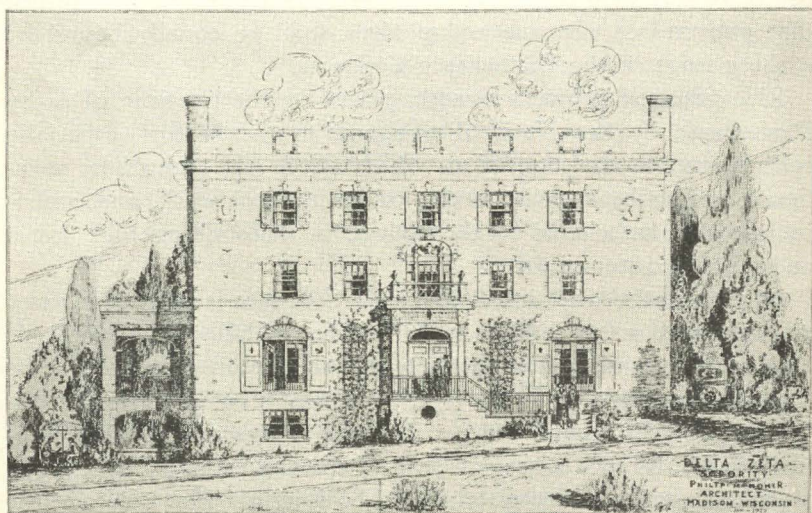
At present the National Panhellenic Congress is seeking to draw up a uniform set of college rules for the guidance of Panhellenic Councils in the numerous colleges who send representatives to the national organization. For two years research has been in progress to complete this set of rules. In 1914 it was agreed at a Panhellenic Conference that some way of making college Panhellenics useful to nonfraternity girls should be sought. For a decade the association has considered this but has not arrived at any practical means.

The National Panhellenic Congress is a great coöperative association rendering important service to sorority girls in the United

States by showing them how they can conduct social service work in schools for under-privileged children, in summer camps for children of congested districts, in hospitals for crippled children, in better conducting their own relations on the campus and after they leave college, and in interpreting to them in a large way the ideals of their sororities.

There are five principal powers delegated to the National Congress. They are : to make laws that pertain to its own government ; to admit petitioning sororities regarded as desirable ; to levy annual dues ; to make final settlement of college Panhellenic difficulties without newspaper publicity, if possible, and to have advisory power over college Panhellenics.

In some of the articles in this issue of *THE LAMP* are described activities of city and local Panhellenic organizations in colleges in which Delta Zeta has chapters. They interpret to us some of the services rendered by the National Panhellenic Congress to Delta Zeta.



TAU CHAPTER HOUSE

PANHELLENIC'S FUTURE

BY DELTA ZETA'S DELEGATE

My experience in relation to National Panhellenic Congress began at the conference called at the Edgewater Beach Hotel in Chicago in 1917. Personally, I believe that that convention marked the transition period in the life of National Panhellenic Congress. The World War had drawn people together in a way they had never been before. People were used to working together and in settling difficult questions. At this time fraternities were beginning to see the value of fraternities existing for some other purpose than the promotion of their own programs and many programs of service during the war offered this opportunity.

At this conference old policies were dropped and new ones adopted. National Panhellenic Congress, from the date of that conference, saw the value of working together for common purposes. Previous to this, one of the big businesses of the conventions had been the settling of college fraternity campus difficulties, but at this time this conception changed to the really constructive policy of bringing the eighteen organizations together in a spirit of understanding and harmony. The point of view of the assembled delegates became that of education rather than legislative or judicial.

The three succeeding conferences have followed out this program of thought, and more and more the vision of what fraternities for women can do has enlarged, as barriers have broken down. Gradually members of National Panhellenic Congress and alumni are beginning to see that there is a bond drawing all Greek-letter women together in a common interest.

The strength of the membership of Greek-letter college fraternities among both alumni and college women is equal to tasks of wonderful development in the lives of our colleges and communities if only we had a more definite organization of developing a program. For nineteen women to sit on a board such as National Panhellenic Congress and then expect to carry back to the different organizations anything of the spirit and plan of such a group is an impossible task.

I believe that National Panhellenic could at least try a new experiment or rather several new experiments. I believe that the work of National Panhellenic Congress has grown too heavy to be carried entirely by volunteer interests. We should have a central office where materials and information are kept and where any organization could write for information concerning fraternities. It should further be the duty of this office to perfect and promote all educational policies and programs of National Panhellenic Congress.

As a further means of carrying out this program, I believe that once in four years we should have an assembly of representatives of all chapters, both alumni and college, of all fraternities for women, where matters of interest to college women and plans as to who we can best function in relation to college, the community and the nation are matters of consideration.

The value of such an assembly to our respective fraternities cannot be over-estimated; neither can we conceive of the effect of the influence of such a movement, as it would promote great programs of education, inspiration and peace throughout the world. We have in our hands an organization which could function as one of the most effective women's organizations of the world. Today we have no united strength, which is really one of the challenges put to us as a question for our existence.

Personally, I believe in fraternities and the things they have accomplished, but I also believe there is this step just ahead. You understand, I am sure, that only the general conception of this idea has been presented, but write me your opinions on this proposed plan, either pro or con. I'll be glad to hear from you.

RENE SEBRING SMITH.

NATIONAL PANHELLENIC CONGRESS COMMITTEE ON ELIGIBILITY AND NATIONALIZATION OF SOCIAL GROUPS

As far back as 1913 it was voted that "The National Panhellenic Congress shall coöperate to create new fraternities and chapters." In 1919 a standing committee was appointed "to assist local social units in colleges and universities in organizing national groups." This work is now in charge of the Committee on Eligibility and Nationalization of Social Groups, which combines the work of the former Committee on Extension with that on Eligibility and Nationalization. The present committee has three members, Rochelle Rodd Gachet, Alpha Omicron Pi, chairman, Rene Sebring Smith, Delta Zeta, and Mrs. E. N. Parmelee, Delta Delta Delta.

In connection with the "Eligibility" feature of its work, this committee handles all applications for admission to the National Panhellenic Congress, and makes recommendations concerning these. Such applications include those of organizations applying for recognition by National Panhellenic Congress, and of groups holding associate membership and desiring full membership. It is also the duty of this committee to keep in touch with associate members of National Panhellenic Congress, and to advise with them.

At the October, 1923, meeting of National Panhellenic Congress, three new national groups were given recognition, following investigation and recommendation by the then Committee on Extension. Beta Phi Alpha was admitted to full membership, and Alpha Delta Theta and Theta Upsilon were granted associate membership. For the intelligent fostering of new groups and their development into new national women's fraternities, a need is felt for more definite and extended information than is now available. Therefore the committee has been giving most of its efforts for the past year to the assembling and building up of a background of information, so that facts may be substituted for guesses wherever possible. A number of requests have been received from local groups as to how to establish a fraternity, but the committee is not, at present, in touch with any sufficient nucleus to warrant an attempt to establish a new national, nor is sufficient

data available to show whether a new national women's fraternity is needed, or desired.

ROCHELLE GACHET, *Alpha Omicron Pi*,
Chairman.

COMMITTEE ON PANHELLENICS

The editor of THE LAMP has asked me to set down for her Panhellenic number the function of the Committee on City Panhellenics.

The various committees were announced almost at the close of the National Panhellenic Congress, giving no one the opportunity to refuse or time to seek much information as to the duties of the office to which they were appointed.

My work on this committee has involved answering letters from Panhellenic women who desired information with regard to the organization of City Panhellenic Associations.

Miss Lillian Thompson, Gamma Phi Beta, was chairman of this committee for at least six years before this chairmanship was assigned to me, and at the last Congress presented such a comprehensive and informing report that the Congress voted to have it published and ready for distribution at a small cost. This report, besides being a history of her work, includes two model constitutions, one for small city organizations and one for a large city organization. There are many suggestions for the work and programs for meetings. Any city Panhellenic wishing a copy of this report may have one if they will write to me and send twenty-five cents in stamps to cover the cost of publication and postage. These are the instructions given me by the Executive Committee of National Panhellenic Congress.

Letters come to me from all parts of the country asking how to organize, and who is eligible to membership; also what local associations may do to help the National Panhellenic Congress. Practically all these and many more questions are answered in Miss Thompson's report.

One constantly recurring question that comes to me concerns the eligibility of special and honorary fraternity members. There are in some cities good enough reasons for granting them associate membership. In other places it makes for complications.

National Panhellenic Congress does not seek to dictate the policy for city Panhellenics, simply to direct when direction is sought or needed.

Members of the nineteen national fraternities that constitute the membership of National Panhellenic Congress are, by virtue of the annual dues paid by their own fraternity, members of National Panhellenic Congress. Each fraternity has but one vote. Office in National Panhellenic Congress is by rotation. The Congress meets once in two years, at a time and place selected by the Executive Committee.

City Panhellenics offer a congenial way of keeping posted on fraternity development and achievements. There are cases where they have helped admirably in an advisory capacity. Some associations maintain one or more scholarships. Some offer rewards for scholastic achievement. In a few cities, Panhellenic clubs offer a congenial and pleasant home to college women for a very much smaller cost than the same comforts can be secured elsewhere. In this one particular, city Panhellenics more than justify their existence.

NANCY B. WOOLLETT, *Chairman,*
Delta Gamma.

COMMITTEE ON PUBLICITY

At the Eighteenth National Panhellenic Congress held in Boston in October, 1923, it was decided to try a new plan for National Panhellenic Congress publicity. Formerly, the sending of material from one committee member to another had so retarded matters that the material was apt to be stale before it reached its readers. It was therefore decided to place the publicity work in the hands of one person, appointed by the Congress, who should work in conjunction with the executive committee.

This chairman has endeavored to furnish Mr. Banta with at least one article of general interest and has sent post card reminders to each National Panhellenic Congress editor, several weeks before copy was due, asking her to send any personals or interesting collegiate items direct to Mr. Banta. Mr. Banta feels that this method of obtaining fresh news has proved a success and urges us to continue. Your chairman will be grateful for suggestions for articles of an informative nature on matters pertaining to the fraternity world.

RUTH SANDERS THOMSON, *Alpha Phi,*
Chairman.

OUR CITY AND COLLEGE PANHELLENICS

Berkeley, California

Panhellenic on the campus is made up of the president and rushing captain of each house on the campus. It meets the first Tuesday of each month at four p. m. in the alumnae rooms of the Students Union. The officers are chosen automatically; the secretary of one year becomes the president of the next succeeding year. Appointment is determined by the order of the seniority of each house on the campus. The activities of Panhellenic cover making of rules and regulations for all sororities on the campus, and the granting of scholarships to worthy girl students. The money for this is raised by "Crawls" (nickel dances) the music for which is furnished free. Panhellenic at U. C. installed the Lawyer System. The expense of the lawyer is borne equally by all the sororities.

Indianapolis, Indiana

Our Panhellenic organization purpose is the same as all other Panhellenics: namely, to bring Greek-letter women closer together and to break down selfish walls that have been builded between the sororities of Panhellenic. The executive committee of Panhellenic, composed of one member from each Greek-letter sorority represented in the city, meets the first Monday of each month. During Christmas week, the Panhellenic bought out the Murat Theater, one of our largest theaters, at which time De Wolfe Hopper was appearing. The proceeds from the play were used in the Panhellenic Scholarship Fund.

Chicago, Illinois

The Panhellenic luncheon was listed on the program for January, but was postponed to February. These luncheons are lovely affairs given by the city Panhellenic. Every national sorority is represented and the officers for each year are appointed in alphabetical order. A delegate from each sorority sits in on the program committee and helps to plan the festivities. There is always a prominent person as the speaker and hundreds of girls attend the luncheon. We are all looking forward to February, the occasion of the annual Panhellenic luncheon here.

Columbus, Ohio

The City Panhellenic Association of Columbus, Ohio, was organized May 13, 1914, at a banquet attended by ninety-seven Greek-letter women representing eight National Panhellenic Congress fraternities. The offices of the association move in regular rotation among the fraternities represented; each fraternity, as its turn arrives, nominates from its membership someone for the office to be filled.

The first business enacted was the establishment of a scholarship cup to be awarded each year to the National Panhellenic Congress fraternity at Ohio State University, which has averaged highest in scholarship for the previous year. The association has always received the finest coöperation from the university registrar in obtaining the grades from which the points are calculated. The "cup" purchased was a handsome coffee urn, which has now been contested for ten times and was this year earned permanently by Alpha Xi Delta for winning it three times in succession. Each year the name of the winning fraternity has been engraved upon the urn. Delta Zeta possessed it one year, receiving it on the record of our chapter for the school year 1918-19.

Our city Panhellenic has really only two meetings each year, a luncheon in the spring and a banquet in the fall. The fall banquet is attended also by the college chapters and it is there that the scholarship cup is awarded, together with a corsage to the individual who has made the highest record.

In May, 1915, a Student Loan Fund was started by city Panhellenic to "aid worthy girls at Ohio State University." Various means have been used to add money to this fund, lectures, bazaars, etc., but for the past few years it has been most successfully accomplished by a per capita tax. The fund is administered by a committee, each member of which is elected for three years, one term expiring every year. The dean of women at Ohio State has assisted the committee in recommending worthy girls who need help to continue in the university. Preference is given upper-classmen.

From the first meeting of ninety-seven persons representing eight fraternities, the organization has grown steadily until five

hundred seventy sat down to a turkey dinner this fall and sixteen National Panhellenic Congress fraternities were represented.

Denver, Colorado

Denver was one of the first cities to organize a city Panhellenic. It now has thirteen representatives including Kappa Alpha Theta, Sigma Kappa, Kappa Delta, Alpha Pi Omega, Alpha Xi, Kappa Kappa Gamma, Pi Beta Phi, Gamma Phi Beta, Delta Zeta, Delta Gamma, Alpha Delta Pi, Delta Delta Delta and Chi Omega.

This organization holds its meetings the first Friday of each month at the homes of the different members where many of the problems of Denver and Boulder are discussed and solved. The program committee arranges various programs that are intellectual as well as social.

The Needlework Guild each year assigns the work of making garments to the different sororities according to the number of girls in each sorority. These garments are distributed throughout the city to the various charity organizations.

The Panhellenic has two big events in the year, a fall luncheon, and a spring luncheon. All of the members of Panhellenic are invited to attend these. The city Panhellenic is a very important organization in Denver.

Pittsburgh, Pennsylvania

A member of any national fraternity belonging to the National Panhellenic Congress, who pays her dues (one dollar a year) is eligible to membership in city Panhellenic. Any National Panhellenic Congress fraternity that has five or more paid up members in city Panhellenic is entitled to representation by one member on one of the two official boards.

Panhellenic is governed by two committees or boards—the executive and the advisory.

The executive board consists of the usual number of officers and not more than four members-at-large. At present we are using two, one of whom is always the president of the preceding year. The office of president rotates among the fraternities and the other offices are assigned by the nominating committee to the fraternities whose turn it is to be represented on the executive board.

All other fraternity representatives that are entitled to it form the advisory board under the chairmanship of the vice-president. This board is primarily the social committee. It is at present the custom here to ask the advisory board to be present at executive board meetings, even though they are not entitled to a vote, for we get the opinions of more of the fraternities in that way. There is also a publicity committee headed by the recording secretary.

There must be at least three general meetings of the entire organization each year. They may take any form desired, but usually they are in the form of a luncheon followed by a program. We are planning to make the last one this year a basket picnic.

Each year a cup is awarded to the fraternity at the University of Pittsburgh that has the highest scholastic standing. A fraternity must win the cup three years in succession to be permitted to keep it. The idea back of this is the usual one of stimulating high scholarship. In addition, a \$100 scholarship is awarded each year to the most worthy university junior who is dependent upon herself for an education. In order to bring this to the attention of girls needing aid it is well advertised on the campus—then anyone desiring to make use of this scholarship for her senior year makes application. A committee from Panhellenic, with the assistance of the dean of women at the university, decides upon the most deserving girl, to whom the chancellor of the university presents the scholarship at the June commencement. A bridge party helps to provide the funds for this scholarship.

The reason for the existence of Pittsburgh Panhellenic is, then, not only to promote friendship among fraternity women of the city, but also to help fraternity women at the University of Pittsburgh.

Seattle, Washington

Object: The object of the city Panhellenic association of Seattle is to coöperate with the college Panhellenic at the University of Washington in the solution of questions of interest to the university and fraternity world, and to do any other work the association sees fit.

Organization: The association is composed of two authorized delegates from each women's fraternity which is eligible to the National Panhellenic Congress. Delegates are elected by respective alumnae organizations.

Time of Meetings: Meetings are held on the third Saturday of the month, exclusive of June, July, August, and are held at the fraternity houses on the campus in alphabetical order.

Officers: The officers are president, vice-president, secretary and treasurer, and they are elected by the delegates of the association. The term of office is one year.

Dues: The dues are \$1.00 a year from each fraternity represented.

The programs at the meetings are varied by talks given by prominent people in the city, architects, et cetera. Questions of interest to all groups are informally talked over.

The association has several loan funds amounting to about \$700. The money is loaned to worthy students who need financial aid to continue their schooling.

Los Angeles, California

There is at present no *alumnæ* Panhellenic on the California campus. This organization used to be in existence, but it was found too narrow in its scope to meet the needs of the many non-sorority women of the university.

So about twenty enthusiastic and public-spirited representatives of Panhellenic evolved a new organization which started out with a membership of 320 (present membership 400), which was open to any woman who was a graduate of any university, or who had had the equivalent of our junior certificate. This club is now known as the College Women's Club.

It has twenty-eight sections, such as social, business, professional, etc., and has regular meetings of all kinds. It's a real social center for college women. Its officers are elected by a nominating committee.

In the original plans, a Panhellenic room was planned, and it was supposed that Panhellenic meetings would go on as usual, as a branch of the College Women's Club, for the benefit of the sorority world. However, the first president under the new arrangement was a member of a house whose policy it was to have no active part in the sorority affairs after graduation, and the Panhellenic part died out for lack of leadership. It would be a simple matter, however, to revive Panhellenic, and hold the meetings at the College Women's Club.

Lincoln, Nebraska

The Panhellenic Council at the University of Nebraska is made up of two representatives from each of the eighteen girls' fraternities on the campus and an advisory and penalizing board of eight members. The council members are chosen by their respective groups. Three of the board members are selected from the university faculty women by the university senate, of which the chancellor of the university is the presiding officer. Four of the board members are selected by the council, two of them students and two of them alumnæ. The eighth member is the dean of women, who is an ex-officio member.

The council is presided over by a chairman, who is one of the three faculty members of the board. Other officers of the council are a vice-chairman and a secretary-treasurer, both of whom are student members, elected by the council to serve for one year. The chairman calls all meetings of the council as need arises, usually every two or three weeks, and presides unless the vice-chairman does so at her request.

The Panhellenic Council fixes standards of conduct and establishes rules pertaining to rushing, initiations, and all other interfraternity matters on the campus. The aim has been to stand for general campus improvement in matters of conduct and good taste. Any flagrant offenses, on the part of groups especially, have been met with a voiced protest from Panhellenic. Panhellenic each year awards a scholarship medal to the girl making the highest average in each of the three first years in college—freshman, sophomore and junior.

The advisory and penalizing board takes cognizance of all infringements on Panhellenic rules, first investigating and discussing such cases as they may be brought to their attention. The offending party is then given a hearing and such penalty is passed as seems to the board just and right. The two student members of this board serve in an advisory capacity, quite largely to prevent getting too far away from the student point of view.

Miami University

The Panhellenic Council of Miami University meets twice a month to discuss the actions that shall be permitted by the fraternal groups.

The officers are president, vice-president, secretary and treasurer. These officers rotate according to the order of founding of the national fraternities on the campus. The local fraternities merely "sit in" at the meetings. They are not allowed to hold office.

The Interfraternity Council maps out rushing rules, decides upon such things pertaining to the fraternities as the number of dances that can be given each year, whether or not there shall be favors, certain expenses in the budget, housing problems, etc.

It is purely a business proposition, and no social affairs are given in which the council participates as an organization.

Cornell

Our local Panhellenic is composed of three members from each of our fourteen sororities. It has a president, who is appointed in rotation from the different houses, and also a secretary-treasurer. It makes the rushing agreement and acts as a court to try infringements of any sorority regulations. It has a meeting every week during rushing and once a month thereafter. It has a large banquet in the spring to which all sorority women are invited.

De Pauw University

The local DePauw Panhellenic functions in regard to all interfraternity affairs and in all matters concerning the relation of the college to the Greek-letter organizations. The members are chosen by the various groups, there being a junior and senior member from each, the senior member having a vote. The officers are two, president and secretary-treasurer, each office reverting each year to the next younger organization on the campus.

The organization meets once a month. All matters concerning rushing and initiations are subject to the council. An outside speaker, interested in modern Greeks, is secured for the monthly meetings.

The council each year gives a banquet to all the girls in the university who make forty points in a semester, thus encouraging scholarship and higher ideals among the co-eds. A cup is presented by the local Panhellenic each year to the organization which is first in scholarship on the campus.

Last year the DePauw Panhellenic entertained representatives of the various Panhellenics in Indiana and an Interpanhellenic organization was founded. It is our hope that such a conference will be held every two years for the colleges of Indiana.

Indiana University

Our local Panhellenic consists of two representatives from each sorority of the campus—a senior and a junior representative. The council meets once a month at the different sorority houses and its officers consist of a president, vice-president and a secretary-treasurer. The presidency rotates—each sorority having a president in order of their founding on the campus. The council is for the purpose of helping the groups in whatever way it can. It makes rush rules which are changed if need be each spring according to the various needs arising. The council keeps a record of all the pledges, initiations and pin removals of the various groups.

The council has pledged \$1,000 to the University Memorial Fund. It often gives card parties to raise money. It also gives a formal dance each year. For the last two years it has helped sponsor the Show Down, an annual affair consisting of a stunt given by each sorority and fraternity on the campus.

The council coöperates with the dean in enforcing necessary rules. Laws made by the local Panhellenic Council are binding on all sororities on the campus. Its greatest work and problem is the regulating of rush.

University of Nebraska

The local Panhellenic Council at the University of Nebraska is composed of faculty women and one representative from each national Greek-letter sorority on the campus.

The officers are chairman, a faculty woman, vice-chairman, an undergraduate, and secretary, also an undergraduate. There is also the Panhellenic board composed of three faculty women, the chairman and the dean of women being *ex officio* members, also three undergraduate women. This board has the power to inflict punishment upon groups who violate laws and rules.

The Panhellenic Council has the power to make all rules concerning rushing, pledging and initiation of girls in a sorority.

They also look after the interests of sorority women in general. For instance, this fall the council passed a ruling that since the sorority women were opposed to being called upon, and imposed upon by campus campaigns, they were to be protected against campaigns in the future.

They hold one regular meeting every month and special meetings may be called if it is deemed necessary.

The council has no social activities as a group.

Baker University

Panhellenic is doing its part in the maintenance of the democratic spirit for which Baker University has always been noted. One of the biggest campus affairs of the year was the party given for the nonfraternity girls. The entertainment was furnished by each sorority putting on a stunt, musical or otherwise, each of which was clever. Delta Zeta put on a three-act farce in pantomime, normal, subnormal and abnormal. Our orchestra furnished music for the dance. Punch and wafers were served. All pins were left at home and there was no cliquing or grouping all evening. We hope to have more social functions of this character this year.

On the second Tuesday of each month two active members and one alumna from each of the sororities meet for six o'clock dinner and business session, and it is there that plans are made for Panhellenic. Every once in a while they work in a picnic.

The officers rotate from year to year, in the order the groups were installed on the campus.

University of Iowa

The local Panhellenic Association is composed of two delegates from each chapter of the thirteen national fraternities represented on the campus and from two local fraternities. The delegates from each chapter are one senior and one lowerclassman. The lowerclassman of one year is to be the senior of the next year, if possible. These are elected by the chapters to serve for two college years and are not substituted unless excused by the president of Panhellenic. The officers of the association are a president, a secretary and a treasurer. Offices are held in rotation by each chapter in the order of its establishment. The officers serve for a

period of one year, the term of office beginning the second Thursday of May, and their duties are those devolving upon such offices.

A local fraternity must meet the following conditions:

1. They shall have met the scholastic averages of Panhellenic fraternities for the previous year.
2. They must have had a chapter-house on the campus for the preceding two years.
3. They must be petitioning a fraternity in the National Panhellenic Congress, and have had some encouragement.
4. They must also be representative in college activities.
5. They must have a chapter of twenty members. The local Panhellenic aims to coöperate as much as possible with a good local organization.

The purpose of the local women's Panhellenic Association of the State University of Iowa is to fix the date of pledging, regulate the rules governing rushing and other local Panhellenic affairs, and to encourage the chapters to take an active interest in all college activities. The formal rushing period at Iowa begins the day before university registration opens in the fall, and continues to Saturday night of that week, allowing usually four days for rushing. The rules against "spiking" prevent a group from talking with a rushee during a period of silence which extends from Saturday night to Sunday at five o'clock. A lawyer sends the invitations for membership in Panhellenic, and receives the rushee's reply, stating her preferences in order. The groups are given the names of those whom they invited who also give them preference. Then the new members are taken to the houses on Sunday evening for pledging. Spring rushing is done in a less formal way. The powers and functions of the Panhellenic Association are many and varied. No girl may be asked to join a fraternity belonging to this organization until she has matriculated in the university. Rules on rushing are printed and sent to every girl who is being rushed. Any person pledged to a Panhellenic fraternity must, in order to be initiated, have passed twelve hours of collegiate work either at the State University of Iowa, or in some accredited college. She must be carrying twelve hours of work and at the time of initiation have a C average on record in the registrar's office. Freshmen must also have a C average on

record at this university. Sophomores, juniors and seniors must have the same average on official record for their preceding semester's work. Girls who were pledged at the end of the second semester may be initiated the next fall if their grades are satisfactory. The first initiation of new upperclass girls may be November 15 or after, and the second initiation may be two weeks after the beginning of second semester. If a pledge leaves school before she is initiated, she is considered released from her pledge at the end of a year's time from the date of pledging. If she returns to the university after that time she may pledge herself to any fraternity. When a pledge is broken, either by the girl or by the chapter, it is reported to Panhellenic, with the reason stated. Any girl may be repledged to a fraternity after one year. A girl who is neither a pledge nor a member may not stay at a chapter-house.

Regular meetings take place the second Thursday of each month at the fraternity houses of Panhellenic members. The order in which the fraternities entertain is determined by the dates of establishment, and then goes on in regular rotation. These dinners are true social affairs at which an elaborate four-course dinner is served. After dinner a business meeting is called and matters relating to the organization are brought up and voted upon. In addition to these monthly meetings, special sessions may be called at the request of any chapter represented in local Panhellenic. These extra meetings may relate to such activities as the Near East Relief, vesper speakers, university convocations, or any other thing of general interest to the students. All chapters announce the arrival of visiting delegates to the president of local Panhellenic, who asks the delegate to address the organization.

The prime social event of the year, however, is the women's Panhellenic formal. This ball takes place in the springtime at Iowa. This year the exact date set is March 7. The ball is held in the men's gymnasium and is one of the most decorative and elaborate formal parties of the year. Only women in Panhellenic chapters may attend but they may invite nonfraternity men, if they wish.

Eureka College

There is a Panhellenic on Eureka campus composed of three representatives from each of the seven fraternities and sororities on the campus. There is a regular time for meeting, but they are never held that often. It has power to a great extent, but never uses it. They have no aim or work to accomplish. So far this year the only plans made are for a party to be held in March. Personally, I feel that too few people really understand the power and purpose of Panhellenic. There seems to be a need of re-organization and a better understanding.

University of Denver

The Panhellenic society at the University of Denver consists of two members from each of the seven sororities: Pi Beta Phi, Gamma Phi Beta, Sigma Kappa, Delta Zeta, Kappa Delta, Zeta Tau Alpha and Alpha Epsilon Phi. This year the Jewish sorority, Alpha Epsilon Phi, has the presidency, and Zeta Tau Alpha the office of secretary-treasurer. Many of you will probably think it queer that the Jewish sorority would be allowed the presidency. Some of the sororities here objected on the grounds that the Jews seemed to run everything in Denver, but we overcame these objections and now they are showing us how perfectly charming and capable they really are. Last year Delta Zeta held the presidency and had a most successful year, both in keeping up the democratic spirit and in introducing some new "reforms."

Our Panhellenic Council is respected as the head of all the sororities and its rulings act as laws. I have often heard of Panhellenics that were merely a farce but ours, we can proudly say, is not of this type.

Before any girl is initiated into a sorority, her name with her grades must be brought up before the council. The council sets the time for rushing and pledging and takes care of all the bids. When a pledge is broken it must be brought before Panhellenic. Recently Panhellenic has instituted the custom of inviting a representative from each sorority to another sorority's dance, and having sorority teas, where each sorority entertains three or four other sororities at a time. Both of these functions help to create a common spirit among the sororities.

Every year Panhellenic opens the social season with the big Panhellenic formal dance which is generally the affair of the sea-

son. For each of the next five years Panhellenic will give \$100 from the proceeds toward the Denver University Endowment Fund. We feel we are at least helping in a small way.

There are a great many more things I could say about our Panhellenic Council, but I must save something for another time.

Louisiana State University

The eight sororities on our campus which are in Panhellenic are, in order of establishment: Kappa Delta, Alpha Delta Pi, Delta Zeta, Chi Omega and Sigma Delta Tau, and three locals, Zeta Sigma, Kappa Gamma and Pi Delta.

Each is represented by a senior and an undergraduate. Panhellenic has given up the unsatisfactory practice of allowing alumnae representatives to attend as there was the tendency for them to take complete charge of the meetings. The president is selected by rotation in order of the establishment of the sorority.

All bids must be issued through Panhellenic. A bid is kept five hours by a rushee, is returned, signed, to the dean's cottage, and from there the girl bidden goes to her chosen sorority house for pledging. Rushing rules are made by Panhellenic at the end of each year, to be in force for the coming year. They are published three times yearly in the weekly school paper and are subject to the approval of the faculty committee on fraternities.

Rushing is "open." Sororities are privileged to talk to a girl before she receives a bid, but any promise made by a rushee is not binding upon her, and she may accept another bid on pledge day. Pledge day and the length of rushing season is set by Panhellenic. Patronesses and alumnae are bound by all rushing rules.

Panhellenic offers a loving cup each year to the sorority having the highest scholastic average. Delta Zeta won second place last year with the average of 85 per cent.

Each year one sorority gives an entertainment for the others according to rotation of presidents.

University of Wisconsin

The local Panhellenic at Wisconsin comprises representatives from every national sorority here. Two local sororities have been invited to send delegates to our meetings as auditors, as we think this may be of mutual assistance and benefit. Panhellenic officers

are president, vice-president, secretary, treasurer and parliamentarian. Panhellenic governs all rushing done by a national sorority, and, as we have the "closed bidding" system here, Panhellenic decides just when rushing shall start in the fall, what functions shall be given, and how long they shall last. Printed copies of rushing rules are sent to all sorority members as well as to all prospective rushees.

As yet, Panhellenic, as a group, has done nothing in the way of social affairs or activities of any sort, but there has been some talk of having a tea once a month for the purpose of becoming better acquainted.

Panhellenic is at present seriously considering a plan of taking away the vote of any sorority whose scholastic average is below the average of all university women. The offending group would lose their vote for one year, in case action should be taken on this matter.

Washington State College

Membership in Panhellenic consists of the chapters of national women's fraternities represented at W.S.C. and all local fraternities admitted by a unanimous vote of those chapters. Each chapter has two representatives, a senior and a junior.

The officers are a president, a vice-president, and a secretary-treasurer. The presidency is filled by the senior delegate of the national chapters in the order of their installation on the campus. The vice-presidency devolves regularly upon the junior delegate of the chapter next in order to that whose senior delegate is president. The secretaryship likewise devolves upon the senior delegate of the chapter next in order to that whose junior delegate is vice-president.

The purpose is to maintain on a high plane fraternity life and interfraternity relationships; to coöperate with college authorities in their efforts to maintain high social and scholarship standards throughout the whole college, and to be a forum for discussion of questions of interest to the college and fraternity world. Proper regulation of rushing is one of the biggest problems that occupies the attention of Panhellenic.

One of the most interesting and broadening features of our local Panhellenic is the report at each meeting by one of the fra-

ternities of the social service work or philanthropic work that her particular fraternity is supporting.

Oregon State College

Panhellenic on this campus is a non-social organization. It functions in the making of rules governing rushing and takes up any matter concerning the houses as a whole. Each house has an equal standing with every other house, regardless of the length of time it has been established on the campus.

Franklin College

The sororities in Panhellenic here are Pi Beta Phi, Delta Delta Delta, Delta Zeta and Phi Beta Gamma, a local. The officers are appointed in rotation, Delta Zeta holding the presidency this year, and Pi Beta Phi the secretaryship. There are no regular meetings, but they are held whenever there are Greek problems to be discussed. There is no particularly strong antifraternity feeling or interfraternity feeling here.

University of Oregon

Our local Panhellenic acts merely as a regulating body for the student activities of the University of Oregon. It has no separate entity or powers other than this.

Northwestern University

The Panhellenic Association at Northwestern University is composed of three delegates from each chapter of the national fraternities represented in this institution, and of the professional fraternities. The delegates from each chapter include one alumna, one senior and one junior, the junior representative being the senior representative for the next year. The delegates are elected by their chapters to serve one year.

Regular meetings of the Panhellenic Association of Northwestern University take place every month, the time and place being decided upon during the first month of the college year, and in case of special meetings only senior delegates are required to be present.

The officers of the local Panhellenic include a president and a

secretary-treasurer who hold their positions for one year, the term of office beginning in June. The officers are the senior representatives. The offices are held by the chapters in rotation, according to the time of their establishment at the university.

A two-thirds vote of all the chapters is necessary to make rules regarding rushing and pledging, and to determine violations of the rules. The power to vote is granted to the senior delegate only, or in case of her absence to the junior delegate. Professional fraternities vote on all matters excepting those pertaining to the taking in of members for which business they have their own Panhellenic board.

Any complaint concerning minor difficulties, individual disagreements, etc., are presented in writing to the local Panhellenic Council through the president, and upon its vote is presented to a committee on arbitration, which consists of four regular alumnae delegates to Panhellenic, to be substituted for when chapter is concerned in the difficulty, and the president. This committee is appointed by the president, and has the power to make decisions and impose penalties. If the report of the committee is unsatisfactory, the complaint reverts to the alumnae council whose decision is final.

University of Illinois

Panhellenic Association of the University of Illinois is composed of three delegates from each chapter of the national fraternities represented here and from several locals that have been admitted. The delegates are one alumna, one senior and one lowerclassman, usually a junior, who becomes the senior delegate the following year.

These delegates are elected by their chapters to serve one college year and are not substituted unless the delegate leaves college. They are fined for non-attendance at any regular meeting unless a written excuse is accepted prior to the meeting.

The local Panhellenic has the power of fixing the date of pledge day, regulating rules for rushing and other matters of local Panhellenic and it encourages chapters to take an active interest in all college activities for the common good.

On February 13 the Panhellenic will give the regular formal dance, which is its chief social affair during the year.

George Washington University

The local Panhellenic at George Washington University is composed of a senior and junior delegate from each sorority on the campus, both local and national.

The officers are a president and a secretary. These offices are held in rotation by the sororities in the order in which they entered local Panhellenic. The presidency is at present held by Zeta Tau Alpha and the secretaryship by a local sorority, Gamma Beta Pi.

Panhellenic regulates the sorority policy at George Washington and can penalize any sorority that violates the rushing or bidding rules. All Panhellenic regulations are subject to the supervision of the dean of women.

The chief social event of the year is the Panhellenic prom, which takes place in the early spring. Another social occasion is that of the scholarship luncheon held each year in May at which a cup is presented to the sorority having the highest average for the past year. The girl having the highest average in each of the four classes goes as a representative of her class and each sorority sends its freshman with the highest grades and an upperclassman with the same qualifications.

Panhellenic also coöperates with the Y.W.C.A., each sorority taking a booth at both the country fair and the annual Y.W.C.A. luncheon.

A new activity here is being tried this year: namely, an inter-sorority basketball contest. As yet no games have been played but each sorority is practicing hard to work up a good team for the coming contest.

Adelphi College

The Panhellenic of Adelphi College is composed of two representatives from each national and local fraternity in the college. There are two officers, the president being chosen from different fraternities in chronological order of their founding in the college; the other officer is the secretary-treasurer. The Panhellenic society has the right to keep a new chapter from entering the society.

University of Michigan

Panhellenic is in its yearly state of reform now, and as some radical changes are being considered, we think it useless to write up the present constitution. We hope that the new rulings will be decided on by the next issue of *THE LAMP*.

University of Southern California

Panhellenic is composed of ten national sororities, a Jewish sorority, and three locals. Office is held by each sorority in order of its establishment on the campus. The secretary becomes president the next year.

Activities of the organization are intersorority basketball and an intersorority and interfraternity parade on Homecoming Day.

Panhellenic coöperates with the university in all the activities and controls rushing.

Meetings are held twice a month. They are attended by three representatives from each sorority.

Two dances are sponsored each year, the proceeds of which go into the Panhellenic scholarship fund.

At the present writing the constitution is being revised so a report on the powers and functions cannot be given.

Syracuse University

The Panhellenic Association was founded by the women's fraternities of Syracuse University in 1904. The aim of the local Panhellenic is to secure better fellowship among the fraternities, and to gain a closer insight into the national association; its duty is to govern the rushing and pledging rules of all fraternities.

The association is composed of three delegates from each fraternity, two from the active chapter, and one from the alumnae chapter.

Officers are president, vice-president, secretary and treasurer. The order of establishment of the fraternities at Syracuse University determines the delegate chosen for president.

The chief social affair is the annual Panhellenic dinner to promote fraternity spirit and coöperation. This year the association also gave a tea for the dean of women.

University of Colorado

The Panhellenic organization of the University of Colorado is composed of two girls, one active and one silent, chosen from each Greek-letter society on the campus. The officers consist of a president and secretary. There is no treasurer.

This organization has power over all intersorority affairs and standards for initiation. Its functions are to encourage and to demand, if necessary, a high scholastic standing, and to foster a democratic spirit among the sorority girls and independent girls of the campus, thus making the independent girls feel as if they had a part in the campus activities.

The organization gives a scholarship cup to the sorority group having the highest scholastic average each quarter, and a bouquet of flowers to the girl having the highest individual average. Then, too, every fall the organization sponsors a tea at one of the sorority houses for the freshmen women. Each sorority is required to send at least one of its pledges as a representative from its respective sorority. This, we find, makes for a better spirit between girls of the various Greek-letter societies.

As for the special features, a part of the time in each meeting, which is held every Monday night, is given over to the discussion of Panhellenic matters, both inside the house and outside of it.

St. Lawrence University

The Panhellenic Association of St. Lawrence University is composed of three delegates from each of the following fraternities: Kappa Kappa Gamma, Delta Delta Delta, Pi Beta Phi, Kappa Delta, Delta Zeta and Phi Omega Phi. The delegates from each chapter are one alumna, one senior, one junior and one alternate. These delegates are elected by their chapters to serve for one college year and are not to be substituted for except by unanimous consent of the Panhellenic Council. Each chapter sends three delegates to all regular meetings.

The officers are a president, a vice-president, a secretary and a treasurer. They are elected at the May meeting of the Panhellenic Council. The officers serve for a term of one year, the term of office beginning at the annual meeting held in May. The duties of these officers are those usually devolved upon such offices.

This organization fixes the date of pledge day, regulates the rules of rushing and of other matters of local Panhellenic interest. The association works for the good of the college and all its women students and also by its coöperation benefits the fraternities of the college and unifies the interests of the fraternity and nonfraternity women.

During the semester each sorority gives an afternoon tea to which many of the townswomen and all of the faculty women are invited and also two members from each other fraternity.

A silver loving cup is awarded yearly at Alumna Chapel by the Panhellenic Association to the freshman girl who has attained a high scholastic standing and has participated in all general college activities.

A silver tray is also awarded by the organization to the fraternity which has attained the highest scholastic standing throughout the year. The fraternity winning the tray three times in succession becomes the owner of the tray.

Butler College

Membership in our local Panhellenic consists of two girls from each organization on the campus. These girls are chosen by their sorority group during their junior year and serve for two years.

The presidency of Panhellenic is given to each group in its alphabetical order. There are only two offices and the secretary automatically becomes president in the following year. At present Gertrude Schmidt, Kappa Kappa Gamma, is president, and Marjorie Childs, Pi Beta Phi, is secretary.

Panhellenic regulates all matters concerning sororities on the campus and pays particular attention to the system of rushing. It has the power to expel any organization from its ranks for disobedience of the rules.

An annual formal dance is the only social function given by Panhellenic and all organization girls are privileged to attend. The affair this season was given in the Riley Room of the Claypool Hotel.

Randolph-Macon Woman's College

On the campus there are eleven national fraternities: Chi Omega, Zeta Tau Alpha, Kappa Delta, Alpha Omicron Pi, Delta

Delta Delta, Phi Mu, Alpha Delta Pi, Pi Beta Phi, Kappa Alpha Theta, Sigma Kappa and Delta Zeta.

They form the Panhellenic Association of Randolph-Macon Woman's College. The organization itself is composed of a president, from the fraternity whose turn it is to hold the executive office, and two members from each of the fraternities represented—the two being the president of each chapter and a junior representative (who will most probably be the incoming president).

The offices are filled according to rotation as the fraternities were established on campus.

The organization is not in connection with the student body association, but a separate and free body acting for and within itself. The organization as a whole promotes high scholarship by yearly awarding a cup to the fraternity of highest standing for the whole year; it does some charity work at Christmas and through meetings (open and closed); it tries to keep each fraternity in touch as much as possible with things of interest in the interfraternal world.

As a whole, however, it has no social functions unless to entertain for newly installed chapters. It has been suggested that there be a yearly banquet but there was never any action taken on the subject. We are not brought together in a purely social gathering except when some visiting official makes her appearance and her fraternity entertains.

Panhellenic's powers are governed to a certain extent by a faculty advisory board. Panhellenic makes her laws, guided by this board, but she has the sole right to execute them. Panhellenic has the right to create a system of rushing with the help of these advisers, name the date for promise and pledge days, grant favors or penalize any fraternity needing such, and determine all rules in regard to fraternity girls and new and old nonfraternity girls.

Brenau College

Regular meetings are held once a month at the different chapter-houses. After the business session light refreshments are served. Each chapter elects three members to represent it. If a delegate sends a substitute more than twice a semester the fraternity is forced to appoint another in her place.

A cup is awarded by Panhellenic to the chapter making the highest scholastic average for the year and the chapter holding the cup for three consecutive years, keeps it.

At the end of each year the Panhellenic gives a banquet which is the only big social affair given by them during the year.

Ohio Wesleyan

The Woman's Panhellenic at Wesleyan is composed of two representatives from both national and local fraternities. The officers are elected by the order of the chapter installation. At present Alpha Delta Pi has the presidency. Delta Zeta, being seventh in order of installation, will have the presidency seven years from now. Panhellenic exercises all power pertaining to women's fraternities. All rushing rules are made and enforced by it. It has had several social functions. Delaware Women's Panhellenic entertained the university Panhellenic at a tea. In March there are plans made for a Panhellenic dance. So far there has not been much coöperation between the women's and men's Panhellenics because we have such different problems with which to deal.

Florida State Women's College

Panhellenic does not play as vital a part on our campus as on others. Nevertheless, it is here and we Greek sisters have to obey its rules. Represented in it are ten national fraternities, Kappa Delta, Chi Omega, Alpha Delta Pi, Delta Delta Delta, Sigma Sigma Sigma, Sigma Kappa, Pi Beta Phi, Delta Zeta, Kappa Alpha Theta and Zeta Tau Alpha.

The president is chosen in succession as the fraternities appeared on this campus and the secretary from the one next in succession, the chapter having this position choosing its officer. A Delta Zeta will be president in 1927.

Every so often open Panhellenic meetings are called for a forum to discuss affairs such as rushing entertainment, etc., and for talks when a visiting national officer is on the campus.

Then closed Panhellenic is composed of three members from each fraternity, one from the senior, junior and sophomore classes of said fraternity. This decides questions which are not necessary to be brought before open Panhellenic for discussion. Working as an inner group, Panhellenic Council is composed of the presi-

dents of the various chapters. Next year's rushing rules have not been decided on.

One unique feature of our local Panhellenic is our alumni council which meets with closed Panhellenic for discussion on rushing, grading system and entertainment.

The Jacksonville organization offers a loving cup to the chapter making the highest average in regard to scholarship, thus promoting a keen rivalry in this respect. Kappa Delta has held the cup for the last three years.

During the school year many teas and receptions are given among the different fraternities showing the good will among the chapters.

University of Texas

Panhellenic in the University of Texas is composed of three representatives from each of the twelve nationals and the one local sorority on the campus, one member being an alumnus, one a junior, and one a senior, if possible. Panhellenic meets regularly once a month and is presided over by the president, who is chosen each year from the different sororities in rotation, the other officers, vice-president, secretary and treasurer, being chosen in the same way.

Each delegate to Panhellenic is allowed a vote and a three-fourths majority is required before any question can pass.

The dues consist of five dollars yearly from each chapter, three monthly from each to be used as the council sees fit, and two dollars and fifty cents is the fine imposed for the absence of representatives from the meetings. At present, Panhellenic is contributing the three-dollar assessment fund to United Charities in Austin.

Panhellenic decides all questions in regard to university rush rules and other matters which concern all the Greek-letter societies. There is a Panhellenic loving cup given each year to the chapter which has made the highest scholarship average during the past year, and before many years we hope to have that cup for Delta Zeta.

Last fall Panhellenic gave a very beautiful reception in honor of Kappa Alpha Theta, winners of scholarship cup, and Alpha Chi Omega and Delta Zeta, the two new sororities on the campus.

The social side of Panhellenic is not neglected, but the members look to it for something more. In our dean of women, Miss Lucy J. Newton, Panhellenic has as sympathetic and helpful an adviser as could be found anywhere, and with her help, a new series of programs for the monthly meetings during the remainder of this year is just now being taken up, involving special study of such questions as "Panhellenic—Local and National," "Panhellenic's Work on the Campus of the University of Texas," "How to build up the Freshmen Morally, Physically, Intellectually and Spiritually," and "Our House Chaperons—their Duties and Qualifications."

University of Maine

The Panhellenic at the University of Maine is at present being reorganized. The council has written to many other colleges to find out what other Panhellenics are doing. Perhaps next time, we may have something really worth telling.



ALPHA OMICRON CHAPTER HOUSE

Pleasures and Perils of Alaska

REPORTED BY A DELTA ZETA

THOSE who know Alaska through geographies and the movies think that Alaska and ice and snow are synonyms. Such persons are both right and wrong, but they are mostly wrong. Nome in the winter is frozen up and cannot be reached by water. Several hundred miles to the interior there is ice and snow a goodly part of the year, but there are 1,300 miles of coast line about as thickly populated as the rest of Alaska put together where there is less ice and snow than in many of the middle western states.

Winter along the coast, and particularly at Cordova, can be called the wet season. In the fall of 1923 it rained at Cordova for two months, with six, not clear days, but days in which it did not rain quite so hard. This rain was accompanied by a most violent wind. It is quite wonderful how the wee shacks perched on hill-sides hang on when the wind sweeps by them at forty miles an hour, but they do. Only one building came down this past winter and that was about ready to fall anyway. Several roofs were carried away and the sidewalks (of wood) at several points were overturned like so much paper. During the month of October, 1923, the records at Cordova show that thirty-nine inches of rain fell.

It is interesting to see what little regard the Alaskans have for weather conditions. One never hears of an Alaskan *not* going anywhere on account of a storm. Every person along the coast has a rain outfit—boots, slicker and sou'-wester. (A sou'-wester is a rubber hat shaped like a fireman's hat.) If the ladies wish to go to a dance on a stormy night they tuck their skirts under their rain coats, carry their slippers under their arms and off they go. An umbrella is a rare sight and the person who attempts to carry one has a rare time, for an Alaskan gale has no respect for that particular work of man.

After the rainy season is over the winter cold sets in. If the snow does not come too soon there is wonderful skating. After the snow comes all turn their attention to sledding and skiing. Winter hangs on a long time in Alaska. Spring frequently seems to be on the verge of bursting forth when a snow storm comes blowing down a river or off a mountain.

When summer finally comes, with her continuous day light and bright sunshine, there is no place this side of heaven to equal Alaska. In mid-summer there are twenty hours of daylight. It is surprising the small amount of sleep one needs during the summer. Every minute of leisure time is spent walking, boating or fishing. There is not a great deal of swimming as there are but few good beaches along the coast and the lake waters are generally too cold.

The people of Alaska are put into two classes, whites and Indians. It is said that of the 59,000 inhabitants of Alaska fifty per cent are Indians. By Indians are meant half-breeds, Eskimos and natives. Of the 29,000 whites in Alaska it has been estimated that there are less than 400 illiterates.

The Eskimos of Alaska are believed to be of Tartar origin. It is probable that the race came from Japan some time in the remote past, for the Eskimos seem to have some of the marked Japanese characteristics. However, it is quite evident that the Eskimo came from the Siberian coast to Alaska. There is a distinction made between the Eskimo and the Indian, although both are natives of Alaska. The Eskimo has not come into contact with civilization as the Indian has. While they are probably of the same race (the yellow race) the Indian has become so mixed with Russian and Japanese that many believe that the Eskimo is quite a different people from the Indian. It is considered that the Eskimo is more intelligent than the Indian.

The ingenuity of the Eskimo is well illustrated by one of the methods he uses to catch the polar bear. The polar bear is by far the most ferocious of all the bear family and he enjoys Eskimo meat about as well as the Eskimo does bear meat, so it is a matter of who is the more clever. The polar bear travels on a well defined trail so that he can easily be tracked. As soon as an Eskimo discovers a bear track he proceeds to plot against Mr. Bear. He takes small, thin, flexible strips of whale bone and cuts them into pieces about twelve inches long. After these small strips have been sharpened they are rolled into balls about four inches in diameter and dipped into fat, then into water and are set out to freeze. One of these frozen balls of whale bone is placed on the bear track. Mr. Bear comes along, sees a queer object, sniffs it, discovers it to be fat and eats it greedily. As soon as the heat

of the bear's body comes into contact with the frozen object it not only melts the ice but also the fat about the whale bones. When the bones are released in the bear's intestines the poor bear is in such pain that it is easy for an Eskimo to come upon him and kill him with a spear.

However, the majority of the white people in Alaska do not come into contact with the Eskimos, for they inhabit the extreme northwestern part of the country. The Indians are the people who live among the whites. They are not a particularly intelligent race, probably due to the mixture of their blood and their lack of contact with civilization. It seems that many of them have acquired most of the white man's vices and few of his virtues. The most intelligent of the Indians is the Thlinket tribe, which is scattered over the southeastern part of Alaska. The center of the tribe is at Metlakatla, where they have an Indian settlement. This settlement was founded by Father Duncan about fifty years ago. Thanks to his teachings and training, the Thlinket Indians have become good American citizens. To the westward are found the Aleut Indians. This tribe has never shown any signs of aggressiveness and has not been bettered by civilization. While the Thlinket offered resistance to the invasion of the white man, the Aleuts were always submissive. It is believed that the Aleuts of today are as much Russian and Japanese as they are Indian. The Alaskan natives are decreasing noticeably. Each year there are fewer. It seems that they cannot adapt themselves to civilization and they are fast dying off.

ANNETTE STEEL,
Alpha Delta.

The Lonely Person

Written by Laeta Bartlett, a member of Scribblers' Club of the University of Colorado, of Alpha Lambda chapter.

HE MOVED slowly, stopping many times from house to field. The halting and feeble gait had the curious effect of having but recently become a part of old Byam Callen. As a matter of fact, three days before old Byam had trudged from his little house to his little field with straightened back and unfaltering old legs. The change had come with the heavy letter of David's wife that was in his pocket now. One particular plaint was uppermost in his mind to the exclusion of lesser woes. He would never again be able to putter about getting his own supper of bread and milk after Sarah Penderr, who "did for" him, had gone home for the night. It was at suppers that he kept up his brave pretense of Mother—only at suppers. Now he must give that up—it would be like burying her again. The old soul of him revolted; a sob fought in his throat.

He was going in search of the Child, who was his only confidante. The load he had borne alone for three days cried out to be shared, and there was only the Child. Only she knew that he filled two bowls instead of one with milk and ate his supper with Mother. The pathos and comfort of the old man's little play had appealed in a curious, grown-up way to the woman-soul of the Child.

She came darting to meet him.

"What's the matter, Dear?" she called.

It was a name for him of her own coining. "You've been cryin' inside o' you. So've I been cryin', only, gracious, I did it outside! Shoes 'n' stockin's again—" She broke off quickly at closer sight of his troubled face, for here was something worse than shoes and stockings.

Old Byam fumbled for the letter. In a tremulous voice, he read it to the Child, his fingers fluttering the crisp pages.

"That was three days ago," he said at the end, "an' thay're comin' tonight."

"Oh—tonight!"

"Nobody's got any business to take care o' me if I don't want to be took care of. I want to be left just as I be—just as I be!"

he fumed, glaring at the Child in the need of someone to glare at. She rocked her little thin knees, sitting in the grass; the Child was thinking deeply.

"I know!" she exclaimed at length, "we'll practice her comin'! Then you won't mind it so much when she does; you're kind o' scared, Dear. Gracious, *I'd* be!—if my son's wife came an' took care o' me 'thout bein' introduced a speck!"

The Child rattled on excitedly, for the possibilities of play intoxicated her. She teetered on one foot in the joy of creation.

"I'll be David's wife, you know. All of the things you'll have to say to her you can say to me an' get used to 'em. We'll practice 'em. I'll dress up, too. Oh, I know the way!—you wait! You just be here at the Pines at four o'clock."

The day dragged uncannily. The thing that he dreaded he longed to have "over with." When Sarah Penderr had plodded home at length, he went out in the pantry and took down Mother's bread-and-milk bowl and carried it into his own room. It shook in his old hands; it might have been full of the heavy tears of his soul. Then went to the Child under the Pines. She trailed to meet him, funny and serene in her mother's long skirt and a bonnet.

"I'm David's wife," she announced airily. "I presume you're his father ain't you? You look's if you were. (Now say: 'This is an unexpected,' quick!)

It was an "unexpected" that old Byam said. "I didn't ask you to come! I'll be honest with ye, ma'am, I didn't. I've been dreadin' ye all day; seemed as though I couldn't stand it. Folks haven't any call to come 'til I ask 'em to. I don't want to be took care of. I want to be left as I be. Just 'cause I'm old—you'll be old some day, everybody'll be. Folks can choose for themselves if they be old—"

Suddenly he began to sob. The play that had been cast for a a comedy was a tragedy. It was the piteous grief of old age, and the Child, who was a woman-child, sank down with him in the grass and comforted him. They were lost to their surroundings; the old pines sighed over their heads in soft sympathy.

David's wife and David did not come that afternoon, or the next, or the next. To old Byam it was a respite. He drew a long breath again and went back and forth from his little house to his little field with brisk steps.

Then, one day Sarah Penderr failed to appear, and the simple machinery of Byam's household stopped. In the midst of his perplexity, Byam looked up to see a lovely person standing in the doorway. She nodded and smiled.

"Mrs. Penderr isn't able—isn't coming today," the Lovely Person said, "she thought I might do. If you show me where the pots and pans are—if you like parsnip stew, I can make beautiful ones!"

Like 'em—parsnip stews! Mother had made the beautiful ones. He flew fussily about, showing the Lovely Person the "ropes." The two of them worked together; in an hour they were on the most friendly terms.

"This is fun. May I come tomorrow? If you'd let me come over tomorrow—*maybe* you'd like my raspberry pies."

She came the next day. He liked the parsnip stew, and the raspberry pies—he liked the Lovely Person, and when Sarah Penderr came, instead, the days were blanks to old Byam; so he sent back hinting little messages.

Some night—old Byam did not confide this even to the Child—he meant to ask the Lovely Person to come for supper with him and Mother. She reminded him o' Mother. He got down Mother's bowl with tender hands. He would fill it in the beautiful old way—the Lovely Person would understand. Some night—he would wait a little longer.

The late summer days merged into the soft glory of autumn. Sarah, by September, had ceased to come over at all; quite in the natural course of things the Lovely Person had taken her place. The comfort and delight of it occupied Byam's mind.

The Child's summer stay had come to its close, but he scarcely missed the Child.

"Good-bye, Dear," she said mournfully. "*Last* summer you was sorry when I left you!"

But old Byam was watching a Person in his doorway. It was the appointed night; he had invited her to supper. She had made

a little ceremonial feast of it with flowers and Mother's full bowl at Mother's place.

"Good-bye!" the Child called after him, "I'm a-goin' so there—oh! the stage's stoppin' to your door!" she added in sudden excitement.

Indeed the stage was stopping at old Byam's door. His strained vision caught sight of David—but David's wife? He was filled with wrath that they must come tonight and interrupt his little feast. They might have waited.

"Father! This is great. We've come bag and baggage, and you can't get rid of us."

"She—David's wi—, I suppose she's here, too?"

"Alice? Bless you, yes. She's in the house. Father, don't worry—you're going to like *her*."

Suddenly the Lovely Person came to the door. She was coming up to him—David's wife—Alice. She slipped a slender hand through the old man's arm. "I haven't taken it off," she whispered, and he knew that she meant Mother's bowl of bread and milk.

LAETA BARTLETT,
Alpha Lambda.

The chapter-house at the University of Denver will be opened during the summer. We would like to have any Delta Zetas coming for summer school, stay at the house. It is one block from the campus and half way between town and the campus.

Anyone interested write—

Edith Willedge, House Manager,
1506 Twelfth, Boulder, Colo.

FROM OUR PLEDGES (Epsilon)

There were some awful seniors
As heartless as could be
Who organized the Black Mark Plan
To scare each C. P. (secret freshman organization)
And now we dare not wear our shoes
As we go to bed to sleep,
For we might make a little noise
Or cause a board to creak.
And then some wrathful senior
To Mary B. would trot—
“That freshman made a little noise
So mark her down a jot.”
We dare not gaze upon a man
Nor say “Howdy-do” to Doc
We mustn’t even know they live
Till after four o’clock.
We must clean up all the housework,
We must answer every call,
We must dust the steps and dining room
And clean the upper hall.
And if, by chance, our president
Should chance to wander nigh
We must bow and scrape and suffer
Until she has passed us by.
We dare not sneeze, we dare not breathe,
We dare not say “Gosh Dern,”
We dare not speak from eight till four—
They are just awful stern.
We have to laugh at senior jokes,
We have to fix their chairs—
We get for all our misery
Only haughty glares.
We have to let them all be first
In passing through the door,
We have to give up our dessert
If a senior wishes more.

SONGS FROM PSI

To the Tune of *Smiles*

There are Pi Phis, and there are Tri Delts
There are Thetas, and K. K. G's,
Sigma Kappa, and Delta Gamma, and Alpha Phis,
Chi Omega, Phi Mu, Zet Tau Alpha,
And a score of others just like these.
But the girls who make their lives the noblest
Are the girls of Delta Z.

GRETCHEN SCHARF.

Tune of *Beta Song*

How'd you like to be a Delta Zeta?
How'd you like to wear a D. Z. pin?
How'd you like to gaze upon a diamond,
Fairest gems will ne'er grow dim?
How'd you like to have a D. Z. friendship,
Friendship that will last through life?
How'd you like to be a D. Z. always?
How'd you like to live a D. Z. life?

GEORGIA GUNDER.

Tune of *Silent Night*

Delta Z., Delta Z., best of all frats for me.
With thy friendships so loyal and true
And our vows that we've made to you.
We will ever hold dear, dear to our own Delta Z.

Delta Z., Delta Z., best of all frats for me.
With thy lamp lighting all the world
And thy banners o'er all unfurled
We will ever be true, true to our own Delta Z.

MILDRED PHILLIPS.

Tune of *My Wonderful One*

My own Delta Z., how I love you and honor,
Your precepts I'll ever hold true.
You are my ideal, it's the lamp I'll be wearing
When I am full worthy of you.
It's you, Delta Z., to you I'll e'er be loyal,
Your precepts I'll ever hold high.
Your love light is burning, while my heart is yearning
To be a D. Zeta in Psi.

NAOMI MASON.

GAMMA PROVINCE TELLS THE WORLD

BECAUSE it is our first, and we are naturally rather excited about it, Gamma Province already has plans under way for its province convention. Where? Indianapolis! When? June! Doesn't that sound well, even though it is months away?

Indianapolis seemed the logical choice because it is the home of our Central Office, which assures us of having our sessions helped by the peppy presence of Grace Mason; and also, because it is the home of our baby chapter, whose members are more than anxious to show to Indianapolis the attractive Delta Zetas who are certain to attend, and—this is a secret—because they are vain enough to want to show off the most attractive house which they have acquired, in spite of the fact that they are less than a year old and are located in a municipal university.

The chief object of our convention will be to have round table discussions of the problems which are presenting themselves to our chapters, and to furnish an opportunity for the girls of these states to really know each other, and to get a broader meaning of Delta Zeta sisterhood.

One thing, and a very important one, which is planned, is a really model initiation, so that the initiation service in this province can be standardized. We are hoping that each chapter will have an eligible candidate who can be initiated then. Another idea is for a model rush party. This will be planned by a committee, and is to be as novel and complete as possible, the committee acting as hostesses and the rest of us being the guests. Rush parties are such difficult things unless you are very experienced, that we feel some of our younger chapters will benefit greatly by this.

Our round table discussions will include one each for chapter presidents, house managers and treasurers; also one for ways and means of making money, Panhellenics and their purposes, second voting, freshman training and discipline, province organization, scholarship standards, campus activities, and other topics of vital interest.

For our social events—well—a dance, a banquet following the initiation, a luncheon at our new Athletic Club, an athletic day, a buffet supper at the Alpha Nu chapter-house followed by a

display of our own talent in the form of a vaudeville, and oh, so much more which I will save for later on. This much is just a hint to show you that I really meant it when I said our plans were well under way.

GLADYS HARTMAN RUOFF,
President of Gamma Province.



SIGMA CHAPTER HOUSE

"The Directory"

FRRIENDS and sisters, this exclamation, which has been variously muttered, hissed and sighed by us all for the last two years, is now about to come forth as a large and jubilant shout. Yes, the directory will be ready for you almost as soon as you receive and thoroughly read this copy of *THE LAMP*. All initiates since 1922 convention will receive the copy free, and others may be ordered at the very reasonable price of fifty cents, the five tenths of a dollar!

This is the most elaborate directory Delta Zeta has yet attempted. Following Myrtle Malott's plan, there are three files, the alphabetical, the chapter and the geographical.

Alphabetical tells the most; in fact, it tells all we know about you if you have been good to us and answered our questions. Geographical file will list you under your city and state, and the chapter file will list you according to your chapter and the name you wore when initiated.

There are many items missing in this directory, although lots and lots of you have helped with data concerning yourselves and others. If we have made a mistake about you, we are sorry—and hope you will send us the real facts. Also, we hope some of you will know where we can find some who will be listed under the "Lost" chapter so we can find them again!

To our regret, we have had to give in each case the most permanent possible address; this prevents our using more or less temporary business addresses which would have the advantage of sometimes bringing to light girls whose presence in a given place was not known. We hope to be able to make up a great deal for this through *THE LAMP*. Then, too, there will be blank pages and plenty of extra space, so that you can do editing for yourself, for directory changes are like the poor—they are certainly always with us. Both comedy and tragedy have been ours as we have tried to make up a true and complete directory of Delta Zeta, and it is with an odd feeling blended of fear, trembling, some pride, and relief, that we sent it off to the printer and prepare to face your verdict. Our plea in this case is for leniency—remember it is our first offense, and how gladly we promise not to repeat it!

Yours, the worse for wear,

COMPILERS OF THE CATALOG.

A LETTER

Los Angeles, California.
730 S. Catalina St.
January 31, 1925.

To the Members of Delta Zeta.

Dear Sisters:

It is obviously a physical impossibility for me to attempt to answer all the individual loving letters and beautiful expressions sent me by the members of our Fraternity. I therefore avail myself of the columns of THE LAMP to express my gratitude. I am the recipient of so many lovely missives and beautiful flowers that words fail me in the attempt to express my thanks. Then there is the more substantial gift which quite overwhelms me.

Delta Zeta has a large place in my affections, and the best I can do is to promise to try to be good enough to deserve all this kindness.

With best wishes for the prosperity of every chapter, and growing usefulness for our great organization, I am

Gratefully and fraternally yours,

GUY POTTER BENTON,
Grand Patron.

In Memoriam

Vera Balfour, Phi, January 23.

Bessie E. Sutton, Tau-Phi, January 25.

Sympathy

There is starlight through the shadows for the feet that have to tread
In the path of secret sorrow, with the hidden tears unshed;
There's the glory of the sunset flaming red down in the west,
When the storm is hushed to stillness and the waters sink to rest.

There's a lamp that God has lighted where the shadowed pathways are,
And it sheds a softened radiance, like the shining of a star;
There's a haven of sweet refuge from the deeply hidden pain,
Where the heart that long has suffered sees God's rainbow through the rain.

There's an angel in the shadows—oftentimes in human guise—
Who, in silent understanding, sees the tears that blind our eyes;
For the words may be unspoken—quiet waters running deep—
When the sympathy of friendship is outpoured on those who weep.

There's a twilight in the evening when the throb of pain is stilled,
And the heart, through human friendship, with the peace of God is filled;
And the twilight touches softly all the valley we have trod,
When a true friend's love sustains us like an angel sent from God.

—*Author Unknown.*

Announcements

ENGAGEMENTS

- Lillian Mager, Alpha, to William Eggers, B Θ II.
 Helen Langlie, Gamma, to Sidney Anderson, University of Pennsylvania.
 Dorothy Eaton, Delta, to Ralph Shufflebarger, A T Ω, Iowa University.
 Faye Richardson, Delta, to Lee Thorn, Δ X A, Wabash College.
 Estelle Hamrick, Delta, to Alfred Baldwin, Σ A E, Purdue University.
 Ida Sheets, Delta, to Henry Poturn, Chicago, Ill.
 Rhea E. Freidell, Zeta, to Jacob F. Schultz, Φ T E.
 Dorothy Leland, Rho, to Aubrey Williams, Φ Δ Θ.
 Audrey Von Housen, Iota, to Coyle Knowles, Θ X, Iowa.
 Irene Barner, Lambda, '26, to Richard Angle, X Σ.
 Billie Schauer, Mu, '23, to Tevis Martin.
 Else Jaeggi, Mu, '19, to Harry Lee Hess.
 Pauline Gravenor, Tau, to George Lange, Σ Φ E.
 Alice Butler, Psi, to Carl Winters, K Δ P.
 Grace Lynch, Alpha Alpha, '25, to Franklin Miller, Notre Dame.
 Helen Brueckner, Alpha Alpha, '25, to Philip F. Kingsley, Θ Ξ.
 Alice Ansley, Alpha Gamma, to Manchester Paget.
 Marie Warrel Hickman, Alpha Gamma, to William Kantz.
 Betty Spear, Alpha Iota, to Jack Moffit.
 Evelyn B. White, Alpha Lambda, to Harold Gray of Brush, Colo.
 Genevieve Funk, Alpha Lambda, to Robert H. Felix, Δ Σ Φ.
 Doris Mader, Alpha Pi, to F. F. Lamberth.
 Clara Carlisle, Alpha Tau, to Dan Wieser.
 Ura Swann, Alpha Tau, to August Braswell.
 Marie Smoot, Alpha Rho, to Charles O'Grady, Ξ Ψ Φ, Ohio State University.
 Rose Casler, Alpha Rho, to Carlton Seeley, Θ Δ Ψ, Ohio Wesleyan.
 Isabel Richardson, Alpha Sigma, to Ralph Griffin.
 Virginia Jones, Alpha Nu, to Carl Anderson, Θ Ξ, Purdue.

MARRIAGES

- Helen Hoover, Alpha, to Thomas Munns, B Θ II.
 Margaret McArthur, Alpha, to Robert Stevens, Δ K E.
 Marjorie Miller, Alpha, to Clyde King.
 Marguerite Martin, Alpha, to George Ramsey, Φ Δ Θ.
 Ruth Greenfield, Gamma, to William Loney, Φ P Σ.
 Miriam Mason, Epsilon, to Maurece M. Swain. At home, Spencer, Ind.
 Martha Gasoway, Delta, to William Smock. At home, Burrows, Ind.

- Martha Hall, Iota, to Stanley W. Coon, Larsburg, N. M.
 Lucille Whiting, Iota, to Paul J. Shannon, Los Angeles, Cal.
 Angelyn Conrad, Theta, to Howard McCracen.
 Phyllis Van Atta, Theta, to Crawford Daley.
 Wilma Hegewald, Kappa, to Wm. Thiesen.
 Martha Hall, Lambda, to Stanley Coon, Σ A E.
 Pauline Clarke, Lambda, to George Guiglimoni. At home, Whipple, Ariz.
 Dorothy Duncan, Mu, to Emery Liston.
 Else Freda Jaeggi, to Harry Lee Hess.
 Bess Brundage, Nu, to George McIntyre.
 Christine Gollrick, Nu, to William Snyder.
 Virginia Eaton, Omicron, to A. L. Billingsley.
 Zelta F. Feike, Chi, to Benjamin W. Rodenwald, A Γ P.
 Dorothy M. Edwards, Chi, to Bruce C. Bean, Φ Σ K.
 Dolores Catlow, Omega, to Arthur Moore.
 Mabel Schmitz, Alpha Alpha, '24, to Ralph R. Obenchain, Φ K Σ. At home, Orrington Hotel, Evanston, Ill.
 Vera Jones, Alpha Beta, to John Barnard. At home, Huntington Park, Cal.
 Marion Bishop, Alpha Gamma, to Steven Moxley.
 Louisa Wheeler, Alpha Gamma, to Lloyd McEachern.
 Mary Jane Eiland, Alpha Gamma, to Herbert Steed.
 Lyda Rideout, Alpha Eta, '23, to Armstrong Kern, Acacia.
 Vivian Nafe, Alpha Eta, ex-'24, to James Boxall.
 Alice King, Alpha Iota, to Lawrence White.
 Frieda Maria Phillips, Alpha Iota, to Ralph Kingston Cooper, Σ X.
 Jessie Weaver, Alpha Kappa, to Arthur Bussman.
 Winifred Williams, Alpha Nu, to Jerry Williams, A X A.
 Georgie Dancy, Alpha Tau, to Everton Kennerly.
 Dorothy Burr, Alpha Tau, to Tom Banks.
 Hazel Cobb, Alpha Pi, to N. B. Odum.

BIRTHS

- To Mr. and Mrs. Robert Muller (Dorothy Featheroff, Alpha), a son and a daughter.
 To Mr. and Mrs. Lincoln J. Carter (Elizabeth Yenne, Delta), a daughter, Janice Elizabeth.
 To Mr. and Mrs. Fred Peck (Dorothy Spencer, Epsilon), a son.
 To Mr. and Mrs. Dale Beeler (Fern Fields, Epsilon), a son.
 To Mr. and Mrs. Robert Wieland (Beatrice Meyers, Theta), a daughter.
 To Mr. and Mrs. John Grady (Marian Clark, Lambda), a son, Clark John.
 To Mr. and Mrs. E. G. Arney (Virginia Othmer, Tau), a daughter, Norma Virginia.
 To Mr. and Mrs. Max Clark (Barbara Carther, Psi), a daughter.
 To Mr. and Mrs. H. H. Roberts (Gwendolen S.), a daughter, Jean.

Alumnæ Chapter Letters

A NEWS LETTER FROM ETA PROVINCE

Eta Province is probably much better known as the province of the Pacific Northwest. Since the province includes just the states of Idaho, Oregon and Washington, our chapters are geographically quite near one another. In fact, no chapter is isolated, for Phi chapter, located at Washington State College, is only a short distance from the alumnæ chapter at Spokane. Mildred French, a Lambda girl, has for several years been in Spokane and has given untiring service to Phi chapter. We appreciate what she has done in the past and when her year at Columbia is over we shall joyously welcome her home.

Chi and Omega chapters, located at Oregon Agricultural College and the University of Oregon, are only thirty miles apart and last fall they celebrated their Founders' Day banquet together; then too, Chi has Zelta Feike, who is now Mrs. Benjamin Radenwald, and Mrs. McElfresh right there in Corvallis with them. It would seem that so much was quite enough but in addition the alumnæ chapter of Portland is reasonably close and, I am sure, begins to feel the responsibility of hemming napkins for the girls and helping solve the coal problem. Best of all, Elizabeth Coulter Stevenson, our past national president, lives in Portland and is associated with the alumnæ chapter.

Kappa chapter, located at the University of Washington, is fairly surrounded by members of the Seattle alumnæ chapter and I believe every Kappa would tell you that alumnæ are splendid people by whom to be surrounded.

The Seattle alumnæ chapter has been very active this fall and from among their number Martha Johnson, former president, has been chosen as province secretary.

Our province has only begun to function, but we are becoming acquainted through letters and later we shall have inspection trips and next summer we are hoping for a province convention. It may be held near Portland, since that is central and so if many Delta Zetas expect to attend one of the numerous conventions to be held in Portland next summer, please let us know who you are and maybe you can arrange to attend our province convention. While we shall just be getting acquainted with each other our hearts are big enough to include any who may be near us who wear our Delta Zeta lamp.

RUBY LONG.

BERKELEY, CALIFORNIA

The opening of school and rushing occupy the attention of the active girls. Financial and physical recovery after holidays occupy the alumnae, who are pretty generally attending to duties neglected or interrupted by the holidays.

Preparations for the big rummage sale to be held at the Free Market on January 31 are going on with "wim and vigor" and plans are being made for starting work on our hope chest.

The California-Pennsylvania football game on New Year's Day at the Stadium started the New Year right by a victory for California of 14-0.

Every other Wednesday has been set aside for informal Delta Zeta get-together luncheons. Any Delta Zeta, active or alumnae, in San Francisco on such a Wednesday may go to the Hotel Plaza on these days during the noon hour and ask for the Delta Zeta table. No reservations need be made. The lunch is a plate lunch. Next time you have shopping to do, drop in and see who's there; you may meet an old friend.

ELSE JAEGGI HESS.

Postscript

Although our corresponding secretary has already sent in the chapter letter, I am afraid that she is shy about telling about herself and has neglected to recount the most interesting alumnae event of the holidays.

The Event mentioned was the marriage of Else Jaeggi and Harry Lee Hess on December 20 at our new sorority house. The house is just the place for a wedding; it is so spacious and formal. A color scheme of lavender and white was carried out with artistic simplicity and the soft glow of many candles enhanced the beauty of the room. Else made a perfectly beautiful bride. As she came down the circular staircase, in a gorgeous white dress with a filmy veil falling around her, you just couldn't be anything but thrilled. Her sister, Hedwig, was matron of honor and Mrs. Howard, our house mother, gave her away, so you see it was very much a Delta Zeta affair. We are all glad that they have chosen to make their home in Oakland and that Else will continue to be a member of this chapter.

S. E. B.

CHICAGO, ILLINOIS

Since our last letter, Chicago alumnae have had two meetings. The first of these was the Christmas party held at the Home for Destitute and Crippled Children on Chicago's west side. About thirty of the children were our guests. Lillian Schuler had prepared a Mother Goose program which delighted the children beyond words. The girls contributed enough gifts so that each child in the home (ninety) received a Mother Goose book, with crayons to color the pictures, and dolls, games, books and toys for the ones who were able to attend the party. Ruth Jeffries, out of a warm heart for all little children, supplied these little cripples with delicious

tarts which the Queen of Hearts distributed. About twenty girls enjoyed the party.

For their gift to Caney Creek the chapter gave fifty pairs of pillow cases, enough for the needs of the new dormitory.

On January 10, the girls met at the home of Camille Branham on Fullerton Parkway. A short business meeting was followed by a social hour and plans were discussed for the card party in April, the proceeds of which are to be for the benefit of Caney Creek. We always have a fine time with Camille and everyone enjoyed the meeting.

In our next letter we hope to tell the good results of our card party. Don't let any one forget—we want to know when you come to Chicago, your address and phone number—we want to meet you and gather you into the fold of Chicago alumnae chapter.

HELEN TRIMPE.

CINCINNATI, OHIO

Shortly after Christmas, we Cincinnatians had the pleasure of meeting one of our founders, Anna Simmons Friedline. Amelia Voss kindly offered her pretty house for an informal tea which we gave in honor of Mrs. Friedline and Mrs. Coleman. Mrs. Coleman, we regret to say, was prevented from coming. We enjoyed seeing our friends and talking over fraternity affairs with our guest of honor, whom we found to be charming.

Our regular Christmas meeting was a very nice one, indeed. We always look forward to the meeting in December. This year our hostesses invited us to Gray Manor, an attractive hilltop hotel where we had a delicious luncheon, an interesting business meeting, and fun at cards. Rummaging through the piles of handkerchiefs and wash cloths, which were our contributions to Vest Community Center, was an interesting activity.

Now that the rush and excitement of Christmas is over, we shall settle down into the regular routine, but we hope to have something of interest to tell you for all that.

ALENE ROGERT, *Secretary pro-tempore*.

COLUMBUS, OHIO

Since our last letter, the biggest event with Columbus Alumnae has been the annual Christmas party which was held at the home of Amanda Thomas. About twenty-five gathered to enjoy a wonderful buffet supper and later the exchange of toy gifts, mostly of a noise-making variety. After our fun with these, they were added to the Christmas cheer which was being provided for a worthy poor family by the Sunday School class of Ann Young Sturgeon.

In December, we gave a benefit card party at the Delta Zeta house which was very successful. Others are being planned for later dates.

At the January meeting, held yesterday at the home of our newest bride, Lillian Johnson Raymond, we planned for the Washington's Birthday tea which we give every year for the college chapter, pledges and all Delta Zeta mothers, and we shall tell you all about it in our next letter.

While our president, Amanda Thomas, is enjoying the balmy breezes of Florida, Mary Fergus Dute, the capable vice-president, is very ably handling the reins.

Elizabeth Joyce is now a member of the Fine Arts faculty at Ohio State University, where she is teaching advanced drawing.

The college chapter has recently inaugurated a delightful plan. On the second Tuesday of each month they give a "spread" at the house, which all alumnae are urged to attend. This affords us a splendid opportunity to get together informally with Theta chapter and especially to get better acquainted with the pledges. Last week sixteen alumnae attended. The pledges entertained with a stunt on "Visitors' Day." The scene was a primary school. The "children" presented their program of recitations, pantomimes, songs, essays, etc., with but few blunders to the audible delight of admiring "mothers" and "aunties." Especially wonderful were the names of the various youngsters, though I believe "Philtie McDirty" takes the prize. Needless to say, the act left us weak from laughing.

MADELINE BAIRD.

DENVER, COLORADO

With the beginning of the new year we have all made resolutions that we hope to carry out. Many of our girls returned to Denver for the Yuletide, and thus made possible several happy gatherings where plans for the coming year were suggested.

The alumnae assisted the active girls entertain at a card party during the Christmas season. Tickets were sold and the proceeds were used to help meet some of the expenses of the Delta Zeta house.

Mrs. Lola Upton Sylvester entertained the members of Mu Alumnae at a card party on Saturday, January 3. There were six tables and at each table a different game was played. All remained at the same tables but changed partners. Prizes were given to the one scoring the highest at each table.

Bernadetta Daly and Pauline Garrett attended the national convention of the National Speech Arts Association, held at Evanston, Ill., during December. They stayed at the Orrington Hotel while there, and have brought back many greetings from Delta Zetas whom they met. They say that all the delightful memories of our own Delta Zeta convention were recalled while making this trip.

DOROTHY G. LESLIE.

FORT WAYNE, INDIANA

Mrs. Pearl King Meyer entertained the Fort Wayne chapter of Delta Zeta at her home on Thieme Drive on December 27. The afternoon was spent in playing bridge, after which dainty refreshments were served.

A number of girls were home for their Christmas vacation, which made the event even more pleasant. Among them was Georgia Saylor, from Chicago.

INDIANAPOLIS, INDIANA

We have had a year of big meetings and plans are on foot for a group of lively spring meetings. On February 14 we had planned to have a valentine luncheon bridge at the home of Mrs. Robert Allen, but since the Panhellenic also has a card party planned for that afternoon, we shall only have the luncheon and then attend the Panhellenic card party in a body. Our luncheon and the card party are to be given at the Polly Primm tea room, which now occupies the old home of Meredith Nicholson.

As soon as the valentine party is over, our state luncheon and dance committees will be busy. Our state affair is to be given at the Hotel Lincoln on March 20. This year we are very proud to have with us the members of our Butler College chapter. This will be their first state party.

ALMA DAVIS PETERSON.

KANSAS CITY, MISSOURI

Well, we suppose everyone has fully recuperated from her Christmas vacation and that all the letters in this issue will be fairly bubbling over with ideas and plans for 1925, and, as the old saying is, "Better late than never," we extend to each of you the wish for a most prosperous and bright new year.

Our first meeting of this year will be a valentine bridge party which will be held in one of our homes. We hope at this time to make plans for our usual monthly meetings, and perhaps we can tell you more of what we expect to do later on.

As we have been requested to give you a brief outline of Panhellenic as to its organization and activities, I will try to give you an idea of what we are doing here in Kansas City. We now have nineteen members on the board, seventeen sorority and two junior representatives. One meeting is held each month of the school year at the University Women's Clubhouse. This meeting usually consists of a luncheon, business session and afternoon bridge. Besides these monthly meetings there are two annual (open) meetings to which all members of any sorority are extended a cordial invitation.

For several years past the social welfare work of Panhellenic was taken care of entirely through benefits of different nature, but for the past two years this feature of the work has been conducted through the A.A.U.W. At present scholarship fund is maintained and each year one high school

girl is given the benefit of this, which enables her to continue her education. Of course no one is restrained from giving personal gifts if they so desire, but the financial support of this fund is given entirely through this organization. This money is obtained wholly through membership dues and not by benefit means.

In addition to this, voluntary workers are sent to the Children's Bureau, a government agency, to help in clerical and general office work; also to the baby clinics for children under six years of age.

This is about all of the outside work we can do at the present time.

ESTHER H. WEBER.

LOS ANGELES, CALIFORNIA

At our January meeting next week we shall have the installation of new officers. Our chapter is so disorganized during the summer months that we have found it better to have the new officers work with the organization in its prime. Thus we begin with the new year. Most of our meetings are held at the chapter house of Alpha Iota. There are, however, some meetings and sometimes dinners at the homes of members or at different tea rooms.

The chapter again extends an urgent invitation to any Delta Zeta visiting Los Angeles. We meet on the last Saturday of each month.

G. E. MARQUARDT.

OMAHA, NEBRASKA

Business and pleasure have been combined at the winter meetings of the Omaha Alumnae chapter. The chapter also has done its bit of charity work by making layettes for the Christ Child Mission, a form of service adopted by the club more than a year ago.

Marie Houska Sweeney opened her home for the November luncheon. Plans were then made for assisting with the Christmas program at the Delta Zeta Community Center at Lackey, Ky. The Omaha girls gave pens, pencils, ink wells and ink as their share in the Christmas frolic for the youngsters at the Center.

The chapter then arranged to have a little Christmas party of its own. Clara Dodds Bristol invited the girls to her home for the party which was held the Saturday before Christmas. Each one of the members brought a gift for the Christmas pool and drew a gift from the pool. The girls were happy to have Margaret Herman Hughes with them at this meeting, it being the first she has attended this year.

Katheryn Lowry Kavanagh entertained the group very delightfully at a down-town tea room at the January meeting. Plans for the spring series of meetings have not been made.

Effie Norris, president of the Omaha chapter, spent the Thanksgiving and Christmas recesses with relatives in Iowa.

Ruth Odell, who is teaching in the Marlborough School in Los Angeles,

was in Omaha during the holidays. She was en route to New York City for a brief visit.

Mr. and Mrs. Walter Hughes (née Herman) are the parents of a daughter. Little Miss Hughes, who is their fourth child, was born just before Christmas.

Mr. and Mrs. Ford Bates have recently taken possession of their handsome new Dutch colonial home. Mrs. Bates is pleasantly recalled as Ethel King.

CLARA R. BRISTOL.

LINCOLN, NEBRASKA

On Saturday, January 10, the *alumnæ* met for a one o'clock luncheon at the Lincoln Hotel with Nettie Shugart, Lila Belle Love and Blanche Austin as hostesses. We had a delightful time visiting and reading several letters from *alumnæ* who are scattered in various parts of the country. Among the letters read was one from Fannie Putcamp Smith, a charter member of Zeta chapter. We are proud of the record Fannie has made and we wish her success as president of Epsilon Province.

Our December meeting was an evening meeting with Mrs. Thompson at Ellen Smith Hall. We were all told to bring our thimbles and Mrs. Thompson kept us busy for a while hemming two dozen hand towels for the girls at the school in Kentucky.

For several years the Lincoln *Alumnæ* have given at Christmas time some useful and much needed gift for the house. This Christmas we gave a new rug for the chapter room.

Venus Leamer Tyler, also a charter member of Zeta chapter, surprised us with the announcement of a daughter, Jessie Lou, born August 22. They are living in Nebraska City, where Mr. Tyler is practicing law. Since Nebraska City isn't so far away we shall expect to see Venus and Jessie Lou occasionally.

We are sorry to lose Esther Burritt Foster, who is leaving Lincoln this week for her new home in Los Angeles where Mr. Foster has accepted a position as attorney for the Union Insurance Company. Esther has always been one of our most faithful workers and her going away will be keenly felt by all.

BETH P. BARTON.

PITTSBURGH, PENNSYLVANIA

The sun is shining for the first time in several days in the "Smoky City" and I feel that it is a good omen in the writing of this letter.

Pittsburgh *alumnæ* are very much pleased to have had a national inspector, Marcelle Pendery, with us. We have never had anyone visit us in this capacity before, and oh, how much we did enjoy her. She gave us some wonderfully helpful suggestions and much inspiration for the betterment of our chapter. We feel that we owe a great deal to Marcelle Pendery

for showing us new ways of coöperating with the active chapter. One way she suggested—perhaps you all follow it?—is to have two alumnæ present at the collegiate chapter meetings. We liked the plan so well that we are asking them to send us representatives in return. During Miss Pendery's visit here, Henriette Schlegel Jones entertained both chapters at one of her delightful teas.

At a shower given by Dorothy Naumann, '24, the marriage of Virginia Eaton, '24, to A. L. Billingsly, of Houston, Tex., and Pittsburgh, was announced as an event of October, 1924. Mr. Billingsly is a Pitt man. At present Virginia is teaching in Philadelphia and will continue until the end of the term.

Our meetings this year have been particularly enjoyable. We have been holding them at the homes of the different girls and we have had many lovely out-of-town trips as our members are pretty well scattered.

We are very sorry to have had Niella Reese resign as Big Sister to the active chapter. Niella worked faithfully at this position for over two years and her good judgment and sensible outlook have been of great benefit to both Pittsburgh chapters.

Many of the alumnæ are planning to attend the active chapter formal February 27 at the University Club.

ELIZABETH T. ASKIN.

PORTLAND, OREGON

With the hurry and flurry of Christmas shopping, parties, etc., over, we shall now get down to our definite year's program with our many new year's resolutions to make this the most fruitful and successful year ever in the history of Delta Zeta.

On the afternoon of December 27 forty-eight Delta Zetas of Portland gathered at the University Club for a luncheon. It was really an unofficial province convention for all the western chapters were represented and reports from each of the chapters were given, telling of past happenings as well as plans for the future. This has become an annual affair and each year we have a few more present. Some of us of the Portland chapter learned a number of things about our own chapters that hadn't been brought to us before.

The first Monday night of the month is our monthly meeting date and we meet in a business office, in a business-like way and really "get down to business." When we have our social times we dispense with business, bring our husbands and babies along, and really get acquainted with the whole family.

The Portland chapter joins me in wishing you all a most prosperous new year.

ALICE FEIKE WIEMAN.

SEATTLE, WASHINGTON

In looking back over the past twelve months, as we are sure to do at the beginning of the new year, we feel that we have made long strides for Delta Zeta and hope that they may be longer and more sure footed for the coming year. Our bazaar, the high point of the year, was a wonderful success and we are already looking forward to next year's.

Our work for the spring has turned to the active chapter and we are going to devote our efforts for a short time toward getting into closer touch with the girls who will be future "alums," so we are having parties for each of the classes individually, beginning with the pledges, and we find that we have lovely girls.

Then too, we want to know our families, so on the third Sunday of each month we have a tea for everyone interested in Delta Zeta. We are also profiting by these, and so our work progresses for another year.

In conclusion Seattle alumnae wish to extend to Delta Zeta girls everywhere wishes for happiness and prosperity for the coming year and desire to see a better year for Delta Zeta.

CLARA PENBERTHY WILSON.

Chapter Letters

ALPHA—Miami University

We are back again after a wonderful Christmas vacation and while we were not so anxious to start to classes again, nevertheless we could hardly wait to see each other. As usual, we stayed up until the wee small hours that first night of our return, talking over all we had "gleaned" during vacation.

And now, exams are upon us! Oo—h! how we all shiver when we think of them. The senior class, however, isn't quite as downhearted as the rest because these are their last exams and June will find them with nothing to worry about. To all of our sisters who are also experiencing exams at this time we wish the best of luck.

After exams, our next thought is of initiation. We hope to initiate all of our pledges and have set the day for February 21. Initiation services will be held in the afternoon and afterward we will celebrate with our annual initiation banquet for our "newest" sisters in the chapter. Alpha alumnae always return to Oxford faithfully at this time and we hope that number will be greater than ever this year.

Oh yes, I almost forgot to tell you about our new athletic arrangements for basketball season. This year we are having intersorority basketball games and at an open athletic meeting the other day the different organization standings were announced. We were all quite thrilled to find that Delta Zeta headed the list in having the greatest percentage of girls out. Our juniors are out one hundred per cent. Our next game is scheduled with the Tri Delts. So far we have been successful in all our games.

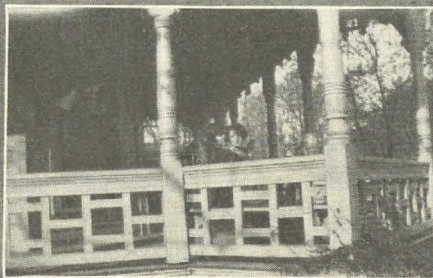
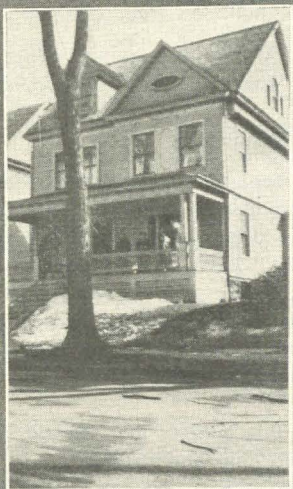
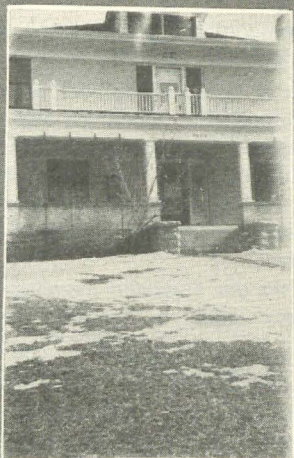
FLORENCE HILL, *editor*.

MARIAN PARKER, *president*.

BETA—Cornell University

Our campus looks as if the millenium were coming. Never a vacant seat in the library; never a student absent from class these days! No more of those excited noisy groups talking about everything! Where one finds a group, one hears the whispered words—Pro. . . Bust. The "profs" would be "bookwormy" indeed, if they didn't suspect something. Our exams are only a week away. The real difficulty comes, however, at the beginning of the new term when we recover from this temporary insanity while the professors, finding that we really can study hard, pile on a whole new supply.

We have a lovely new place for our initiation banquet which we are planning for March 7. It is in the banquet room of the new Ithaca Sav-



Zeta Chapter House
Alpha Sigma House
Psi Chapter House

Alpha Lambda House
Alpha Mu Chapter House
Theta Chapter House as decorated for
Homecoming game; it won first prize for
sorority houses.

ings Bank Building, an architectural addition to Ithaca since the convention of 1922.

We've been talking over plans for a new home and are hoping that ambition and effort will swell our sinking fund. Of course, we own the house where we now live, but we would like something a little nicer.

Our Women's Athletic Association has decided to have intramural basketball contests between teams from the different women's dormitories and sorority houses. We're having lots of excitement getting our team together.

After our fraternity meeting on January 19, we had a shower for one of our engaged girls, Evelyn Ross, who is graduating in February. Lovely things just rained down. We all wanted to get married.

We hope you all survived your semester examinations.

MARY GILCHRIST, *editor*.

LEONA RUOFF, *president*.

GAMMA—University of Minnesota

Here we are back in school again and THE LAMP is waiting for our news. Doesn't time fly though? Last quarter, which ended at Christmas, was such a busy one and we put off so many things thinking that winter quarter wouldn't be nearly so busy and that we'd have time to catch up on everything. Now winter quarter is here and we are gasping for breath as usual. School is in full blast and we are fairly swamped with things to do.

Rushing starts again in a week and next Sunday we are having initiation for seven very fine and clever girls, and a million other things are constantly looming into view.

As we have had only two weeks of school this quarter there really isn't so much news because we have just started working and rushing.

I wish that everyone of you could be here now to see our Minnesota weather—maybe I should say "feel" our weather, but at any rate I wish you were here. We are skating, skiing, tobogganing to our hearts' content, and wish you could share it with us.

GERTRUDE JOHNSON, *editor*.

LORINDA LARSON, *president*.

DELTA—De Pauw University

It seems only yesterday that we were writing you our plans for our Christmas party, while now our main thoughts concern final examinations. We can hardly realize that school is half over.

Elizabeth Chambers, who has been out of school for two years, is returning to us next semester and we shall all be so very happy to have her back with us. She is very capable, a most excellent student and a staunch worker on Delta Zeta.

Elizabeth Jones, of Xi chapter, and Helen Stewart, a junior pledge, will also be coming into the house, so we shall have eighteen girls.

During the holidays at the state convention of student volunteers Doris Leavitt was elected state secretary. She is actively engaged in religious activities in school and we are very proud of the record she is making.

We are looking forward to initiation, which will probably be the latter part of February, and as we have fourteen pledges we hope to have quite a large initiation.

GLADYS LANE, *editor*.

HELEN ENGLISH, *president*.

EPSILON—Indiana University

Did you ever notice how many times your happiness depends upon easy access to water, that common, colorless, fluid which is not appreciated until it is missed? We have been appreciating it thoroughly now for a couple of weeks. As this is being written the town is completely without water, the students depending upon the university supply. You should see us trail over to the gym for drinks and shower baths. The girls usually carry their soap and towels in handbags; the boys, however, have long ago discarded such half-way measures.

Truly, we students are at a disadvantage. It doesn't rain; the Ancient Mariner cannot console us with his "Water, water, everywhere, and not a drop to drink!" Some day—and the day is fast approaching, if not already here—Epsilon will be a chapter of dark-skinned girls whose *alumnæ* will recognize shadowed features only faintly familiar.

In spite of the water shortage we go as best we can. Just now we are frantically attempting to review for finals which have been set up a week—to some people's great joy and many people's dismay. It seems that one of our senior girls, Juanita Collins, is not a bit phased by the lack of water. Without any apparent difficulty at the last minute but with plenty of steady endeavor through four years, she has become our latest Phi Beta Kappa. We are so proud of her. Also, speaking of honors, Florence Salaroglio made Pi Lambda Theta, honorary educational fraternity.

I suppose you are all very busy studying for finals, so here's hoping you review the very questions that are asked. We're so busy thanking fortune that we're not ducks that we haven't had much time to do anything else.

LILLYON SNYDER, *editor*.

CLYDE JACOBS, *president*.

ZETA—University of Nebraska

With our first semester so nearly completed, Zeta girls look back over a fall full of hard work and excitement, but with its full share of pleasure and happiness. One never failing source of excitement is rushing. After a series of dinners, teas and various kinds of parties, we have pledged twenty-two girls who are anxiously awaiting probation and initiation.

Zeta entered into the subscription contest of *Awgwan*, monthly publica-

tion of Sigma Delta Chi, and took third place, receiving but few less subscriptions than the two sororities ranking highest.

Thanksgiving vacation, though short, brought with it many pleasant activities. It was almost equal to our Homecoming, due to the fact that we had the pleasure of having so many of our alumnæ back with us. A special dinner was given for them, and also our big winter party was held that week-end. We wish that all of you sisters might have been present at our winter party which was held at the Lincoln ballroom. It was considered a real success, both in decorations, which were of Christmas trees and holiday novelties, and the spirit into which all so wholeheartedly entered.

Our freshmen had charge of our Christmas party, which is an annual affair with us. They aroused in us a real Christmas spirit with a Santa Claus and a Christmas tree loaded with gifts. Stunts and special entertainment by them made the party a happy one and left many cherished memories with each of us.

We are all looking forward to a very happy week-end February 14-15, when we are planning a clever and very unusual valentine costume party to be held at the chapter-house the evening of the fourteenth. Sunday we are having a formal dinner, sponsored by the alumnæ in honor of Zeta's birthday. We are glad to give to you all the peppy song composed by our freshmen, and sung to the tune of the popular song "Doodle-De-Doo."

The best frat for me
The best thing to be
Is Delta Zeta, Delta Zeta,
We like the rest
But the one we like best
Is Delta Zeta, Delta Zeta.
We've got the pep
We're known on the campus,
We've got the pep
And nothing can damp us,
We love it so
Wherever we go,
We sing for the Delta Zetas.

CONSTANCE STEVENS, *editor*.

RHEA FREIDELL, *president*.

ETA—Baker University

It doesn't do for Eta girls to think of the present. We are in the midst of semester finals and are in the pit of despair. The only light we see is shed by memories of the past and promises of the future. Let us see what has happened recently to make us happy. Not long ago we took our orchestra with us and serenaded all of the fraternities. It was lots of fun and we all stopped at the café for a chili feed afterwards. We have had a tea for our patronesses and mothers. Just before going home

Christmas we did an unheard of thing! Delta Zetas gave Baker men a shock. They asked them for dates—but it was in celebration of leap year. We called for the men, had a line party to the picture show, and then retreated to Polly's where we had made reservations. The only thing we hate about it is, we can't do it again for four long years, and none of us expect to be here then.

The future promises a house party and spring formal to all survivors of finals, and to the freshmen something more, initiation. The actives are as anxious for initiation as are the pledges.

ETHEL M. HOMER, *editor*.

MAUDE MCCOMAS, *president*.

THETA—Ohio State University

So much has happened since the last letter that I must begin at the very beginning in order not to forget anything.

Theta chapter had a very successful rushing season last November. We gave six parties, the limit for each sorority, and at the end pledged fifteen precious girls. Many of them are very talented and are making use of their abilities in campus activities.

For our Homecoming game, the last of November, we entertained many of our alumnæ, as well as guests from other chapters, at the house, which was decorated cleverly enough to win first prize for sorority houses. This increased our collection of cups by one.

In December each one of us dressed a doll for Caney Creek, and I believe that we had almost as much fun with them as the children themselves had. Before vacation we had our Christmas party, for which each girl drew the name of one for whom she got an appropriate little present, which was later given to the children's hospital.

We have planned to give, on the second Tuesday of each month, a spread for both active members and alumnæ, to keep us in closer touch. We have had one of these parties, which was very successful.

We are going to have our formal on January 30, and, although the committee is keeping everything quite secret, we are all looking forward to a wonderful dance.

KATHARINE A. KAUFFMAN, *editor*.

MARJORIE VAN BOLT, *president*.

IOTA—University of Iowa

We are well into the new year without having said the cordial things about hoping this would be the brightest and best for our Delta Zetas, everyone; but we'll take this opportunity to express our happiness in starting out to make '25 a memorable year.

Santa Claus came to actives and pledges alike at the charming Christmas tree party which the freshmen gave for the actives. With the candles on the little fir tree and the big open fire, we were delighted to sit on the floor

for the singing, which is a chapter tradition for our Christmas parties. Regaled with pajamas and laughter we heard the funny verse which accompanied each little gift that Santa Claus (Lois Cobb) distributed, and then sat more guardedly while we balanced plates of cake and sherbet. After the refreshments we quieted down again for the lovely carols, and then slipped away wishing each other a merry Christmas, for vacation began the following day.

On December 6, the pledges were our hostesses at a dance at the house. The party was the very best we have ever had because the music was simply alive from the first dance straight through. The rose and green cornucopias slipped over the chandeliers, and the reindeer room with snow and pine trees were most unusual, and, oh yes, the programs were darling things with leather covers of our shade of green. The punch, too, was exceptional, for it contained cider and spice and everything nice. Our chaperons were "Mother" Rhoads and the Harts. Mr. Hart is a professor of sociology here and is a very good friend of our group. After these two lovely parties we could almost open doors and carry packages for our pledges—but, however that may be, we went home feeling a sincere Christmas friendliness.

The Monday that we came back there was much to be done because on Thursday Delta Zeta was to entertain the local Panhellenic at dinner, an event which comes once in two years. We had a new Chase baby grand piano coming as a Christmas gift from the pledges, present and future, and that was an item of big interest, but not so involved as another coming improvement, for we were making new window draperies for the two big drawing rooms. Having decided upon an economical venture, we bought pretty materials and made the curtains ourselves. They were all planned before vacation, but what a heap o' sewing to the things to make 'em up! And wot a life, to change old fixtures for new! Let me briefly pass over the scenes of the daughters of Delta Zeta sewing on fringe, sewing on hooks, putting the rings onto the tie backs, and then finally perspiring fluently as we hung the glass curtains and sewed them on over the rods and hooked the other overdrapes on. The dinner which followed was entirely to the queen's taste. The house was in perfect order by the middle of Thursday afternoon and the extra tables were set. The committee, with deft fingers, put the flowers and place cards on before anyone arrived. The cook had prepared an excellent dinner and from there on the party was perfect.

Our new piano was delayed so that it arrived too late for the Panhellenic dinner, but it came last week and we are all joyful over it because the mahogany is beautiful and the tone is liquid and sustained.

On January 12 three Iowa women who have become well known because of their Happy Tribe and War Relief work, gave a dinner for forty-two university girls, the ones the committee, named by President Jessup, thought would be most successful in life. Four of our girls were invited to the dinner, which gave us a singular honor.

Iowa has had a fright over the spread of smallpox from Minnesota into northern Iowa, and when we came back after vacation everyone had to be vaccinated. Various pitiful tales might be told but the editor knows of no one so desperately ill as she was. The fact that this is the thirteenth day and the editor is still unable to flea hop, just finishes the sad story of her limping days.

We initiated three of our girls last Sunday morning, Blanche Lois Wiley, a sophomore, and Marjorie Reichenbach and Gladys Clifton, both juniors.

The approaching university journalism party next week-end, the military ball on February 6, and the senior hop on February 20, insinuate themselves into our minds, in spite of the fact that we must be studying for the semester examinations. As we forge ahead in preparation for the reckoning days, the last week of this month, we glance from the tail of our eyes at the scholarship cup on our mantel as we pass into the dining room—and wonder. We wonder how we'll stand when the grades are out, because we have such a large chapter that we probably will not be first. Anyway, our hopes are high!

We wish you a belated
But befreighted
And happy
New year.

JUDITH TORNELL, *editor*.
ESTHER VAN CLEVE, *president*.

KAPPA—University of Washington

Here it is time to write another letter to THE LAMP, and with the new year Kappa has several things to say. The main thing we are doing this year seems to be traveling. Three of our girls from last year have returned to school this quarter. Also we are very glad to have with us Rose Kilkenny from Omega. Two seniors left us last month; Eunice Churchill married Antone Kneivel, Delta Tau Delta, and is now in Montana. Marion Taft has a splendid position in the university library in Idaho. Frances Burpee, who has already done so much in activities, is now Washington's delegate to the athletic conference in California.

Since our last letter we have another pledge, Eleanor Anderson, who, with our other pledges, makes fourteen aspiring Delta Zetas.

Kappa is always interested in fun and dances—who isn't? Our informal this fall was at the chapter-house and the social committee had supplied an old spinning wheel, armloads of leaves and even an Indian tepee to make the dance truly "autumny." In just three weeks we are giving our formal "way up" on the forty-eighth floor of the Smith Building. Doesn't that sound interesting? We wish you could all be with us.

AMELIE NICHOLS, *editor*.
LAURA BEAGER, *president*,

LAMBDA—Kansas State Agricultural College

Our local Panhellenic consists of both freshman and senior Panhellenic. In senior Panhellenic there are two representatives and one alumna member from each group, and freshman Panhellenic has two representatives from each group.

Freshman group is mostly social, to bring younger groups together. Senior Panhellenic meets at one of the houses once a month for dinner and has a short business meeting afterwards.

The officers are president, vice-president, secretary, treasurer, and parliamentarian. The offices are held in succession as the groups were installed—Delta Zeta being first in office and always has first vote.

This Panhellenic makes rush rules by which the groups abide, and settles disputes as to rushing. The grievance committee has charge of this.

One formal party is given each year, thus bringing the groups closer together. Teas are sometimes given for visiting school artists.

EDITH NORRIS, *editor*.

IRENE BOMER, *president*.

MU—University of California

First of all I feel forced to speak of the "beautiful weather we've been having here in sunny California." To-day is the most spring-like day—a day made especially for picnics when classes and studying are entirely superfluous. Now, that is the proper fashion in which to start any letter from California, isn't it? But nevertheless, it's entirely true, say we, blushing proudly.

The chapter news is scarce so far. College has just been open a week and we're trying hard to realize that it is time to settle down to work again. We've made the same resolutions as to studying faithfully every day and not leaving everything to be done just before exes, but we'll probably break them as soon as the spring-fever attacks us.

This letter has to go in so early that we can't give any report on the results of our rushing season, but the bids were sent out Sunday and we shall receive the answers Wednesday, so the next letter will tell you about our new pledges.

MARJORIE LEWIN, *editor*.

VIRGINIA VAIL, *president*.

NU—Lombard College

This is the end of a very successful year for Delta Zeta and for Lombard. The football season ended with every score a victory for Lombard and she now stands at the head of the I.I.A.C. teams. The basketball season has opened, and is as phenomenally victorious as that of football.

Delta Zeta has merited her usual share of honors, for at Homecoming this year we carried away the first prize for our float. It was a roadster decorated in olive and gold and made to represent a huge football. A

frame was made to cover the car, which was covered with green leaves and gold roses.

In the evening, to finish our victorious day, a sandwich shuffle was held at the home of our president, Ludella Malcolm. There were a number of alumnae present, among them a new one whom we were all glad to welcome, Marion Dipnam, who is teaching Latin at St. Mary's, Knoxville, a short distance from Galesburg.

Two of our girls, Lucille Thompson and Inez White, were pledged and initiated into Lambda Phi Delta, professional fine arts sorority. Maurie Nelson was selected to serve on the junior prom committee.

We did not have a Christmas party this year but used our money to buy silverware for our house. Our first attempt to raise money for our house fund happened just before the holiday season. We held a bridge party and sold over two hundred tickets, and, besides this, we had a bake sale in the hall the same afternoon and realized quite a sum on that. The prizes for the party were donated by the active girls. There were twenty in all and our foodstuffs for the sale were solicited from our town alumnae. A certain group of girls had charge of the party and another group the sale.

The next social event scheduled is the formal which is to be held on March 21. We are already planning for it and everyone is busy at work on some committee. The color scheme is to give a rainbow effect with a judicious use of palms and roses for the desired effects. It is to be a supper dance and we have engaged tiny tots to dance the Delta Zeta extra.

Two new women's fraternities have been organized on the Lombard campus, Phi Sigma Theta and Gamma Pi Alpha; also a new men's fraternity, Omega Tau Upsilon, an honorary English fraternity, Sigma Tau Delta, and a debating fraternity, Pi Kappa Delta.

Semesters with their appalling shroud of mental gloom are now upon us. Light cuts—midnight oil—saturated intellects—exams!!!! Hopeful Delta Zetas and maybe (????) the cup again next year.

MARION QUIGLEY, *editor.*

LUDELLA MALCOLM, *president.*

XI—University of Cincinnati

Here we are back at school with the Christmas holidays only a pleasant memory and exams only a week off. It hardly seems possible, but it is true.

Although it is rather hard for the girls of Xi chapter to get together during the holidays, since we have no house and live about the city, we were fortunate enough to get together twice during the holidays besides meeting once for song practice. Catherine Leyman entertained the "actives" and "pledges" with a delightful bridge party. Then too, we had our formal dinner dance at the Business Men's Club at which everyone had a wonderful time.

Just before the holidays our pledges gave a studio party for the active

chapter at the home of Dorothy Cummings. It certainly was a lovely party and we all had a wonderful time.

Our Mothers' Club entertained the mothers of the pledges at a bridge party at the home of Mrs. Leyman on the day after the party given at Leyman's for the actives. Elaine Fisher, one of the alumnae, entertained the pledges with a tea, so you see there have been lots of Delta Zeta parties.

For our social service work at Christmas time we sent gifts to a group of boys at Lackey, Ky. Each girl was given the name and age of a boy to whom she was to send a gift.

I don't believe there is any more to tell. At present we are all at work on term papers and preparing for exams.

MAY E. OLIVER, *editor*.

MARY MCEVILLEY, *president*.

OMICRON—University of Pittsburgh

Omicron chapter has completed its fall rushing season with six new girls. They are quite enthusiastic and promise to make fine Delta Zetas, of whom we can be proud. They are now planning a benefit bridge for the active chapter, which they expect to give on February 8. We all very much appreciate this effort.

We had the pleasure of having Marcelle Pendery, our province president, with us for a week the first part of December. She held a personal conference with each of the girls, and in other ways helped us so much that we were really sorry to see her leave. We feel very proud of our province president and have a warm feeling for her.

We are preparing now for our formal, to be held in the University Club on February 27. Most of the girls are anxiously looking forward to this event.

Omicron chapter wishes to take this opportunity to extend greetings to all chapters, and to wish them the greatest of success and prosperity.

HELEN R. MILAR, *editor*.

MAGDALENE AUSTIN, *president*.

PI—Eureka College

Pi chapter is still trying to settle down after the Christmas vacation and prepare for semester exams. We are all busy during the week with Y.W., glee club, basketball and numerous other college activities. We are planning little parties at least once a week so that we may be continually inspired to do our best for Delta Zeta.

Our house mother could not return after Christmas. We are all bewailing our loss for we loved her so much. In the short time she was here we girls all found a real mother in her. As yet we have no permanent chaperon, but we hope to be fully settled soon after second semester begins.

We are also waiting for exams—then grades. After that will be initiation and more really, truly Delta Zeta girls. We are hearing rumors of

the pup party and of our birthday dinner which makes us all anxious to have our annual reunion.

JOSEPHINE SMITH, *editor*.

FRANCES ROBESON, *president*.

RHO—University of Denver

It is almost inconceivable that we are starting a new year, and I wonder how many of us can say that we are starting a clean slate. I know that everyone has had a wonderful vacation and has come back to school with greater enthusiasm.

We girls thought it about time to be making some money, so we took it upon ourselves to have a rummage sale, which added a few dollars to our treasury.

We are very proud, indeed, to say that out of thirty-three members, there were twenty-nine present at our Panhellenic dance this year. This was the largest representation of the school. Don't we feel big!

We gave a bridge tea at one of our big tea rooms, at which one hundred twenty-five persons were entertained.

On December 22, we had a Christmas party at the sorority house. We had a Christmas tree, and everyone brought something for our house. A little bit of everything was brought, and I'll assure you that our pledges were especially appreciative of some of the things.

Our pledges are very much delighted over the fact that we shall give them a dance on January 26.

Wishing every chapter a most prosperous new year.

SYLVIA MORROW, *editor*.

MARGARET BEATTY, *president*.

SIGMA—University of Louisiana

There is so much to tell that it is hard to know just where to begin.

Our dance is as good as anything, however. Instead of having a Founders' Day banquet we had a dance which has been conceded to be the best given by a sorority this year. We sent out 500 invitations. Rose and green formed the color scheme with caps, noise makers, and confetti as favors. Everyone termed it a huge success.

In our annual popularity contest held on the campus Sigma placed for two firsts. Lucille Wilkinson was voted the wittiest co-ed, matching her victory of last year. Elizabeth McGuire won the best co-ed athlete by a large margin. Katherine Day was second in the race for most intelligent co-ed while Effie Mae Dewitt, an alumna who is teaching physical training at the university, placed second for the most popular professor. Lavinia McGuire placed second for the best all-round co-ed. Mary Wall, pledge, was third for the prettiest. Evelyn Howe was voted fourth place for most intelligent co-ed, Edna McLean fourth for best dancer, and Nell Gribble, pledge, fourth for "fliest freshie."

At the opening of the second term we enjoyed a little flurry of rushing and as a result may announce the pledging of Helen Converse of St. Paul, Minn., Flora Evans of Lake Providence, and Elinor Menville of Baton Rouge. Katherine Howard and Mitalyne Floyd of New Orleans were pledged before the Christmas holidays.

The most important event to us has been the visit of Katherine Winters, inspector, who is a charter member of Sigma. In her we found the inspiration that comes from appreciating the fact of our national affiliations. She brought us new ideas and the will to make greater efforts. We gave a tea for her to which we invited representatives of the other campus sororities, several of whom sent her lovely flowers. Her visit was all too short for the pleasure she brought us.

Sigma is very proud of her pledges. Out of nineteen, eighteen made their grades and will be initiated very soon. This record is unequalled on the campus. The local requirement for a freshman to be initiated is an 80 per cent average. We are proud to announce the average of 85 per cent for the group.

Intersorority basketball games will be played on February 4, 5 and 9. Sigma has begun practices and we hope to keep the cup which we won last year.

Edna McLean was recently initiated into Theta Sigma Sigma, local honorary journalistic sorority. Sigma now has five girls who are members of this creditable organization.

A tea will be given Friday, February 23, for our new patronesses whom we shall announce later. The tea will be carried out in gypsy style.

RACHEL VIOLETTE, *editor.*

LAVINIA MCGUIRE, *president.*

TAU—University of Wisconsin

We hate to keep harping about our house but it's the thing uppermost in the mind of every Tau girl at present. Even the impending exams seem secondary—right now, at least, because we've just been through our new house and, in spite of the carpenters' tools, the boxes and the general mess, it's wonderful! (At least, it's going to be!)

A living room at the left of the roomy entrance-hall—a long room, with windows at each end and French doors on one side, opening onto a porch overlooking the lake—and a fireplace—and a view. Such a lovely view—Lake Mendota, and Picnic Point, and the hills beyond. But let's stay in the house. To the right of the hall is the coziest library—big enough, but not too big. Back of this is a larger room, our chapter room, equipped with efficient closets. Directly back of the entrance hall is Mrs. Cook's suite. Our house is on a hill so that the basement isn't a basement at all; part of it is the kitchen and dining room—and the dining room has a fireplace, too. We have showers down there to use when we come in from bathing—a neat arrangement, don't you think? Upstairs, we have rooms for thirty-two girls, in suites of two studies and one dormitory.

Now some news about some of the girls. Evan Lueth, who graduates this June, is going to Europe right after graduation. On January 20, Olga Anderson, who was "just about everything" up here, in '23, is going to "Ma Ferguson's" inaugural ball with Captain George Cantrell. She's been in Texas since she graduated, teaching physical education. We're all anxious to hear what kind of a time she has at the "party."

Speaking of parties, our junior prom is only a few weeks away and we're all getting out our best bibs and tuckers for the occasion. Junior prom at Wisconsin is thrilling, but we're not thinking entirely about the frills of life. We are making money—and in the simplest way! We wanted so many nice things for the house that we decided we'd better earn a little money so we could have them, and Mil Sexauer has shown us how to make money. Last week, on two different nights, ten of us went down to the kitchen and made sandwiches—hundreds of 'em. The girls who lived outside the house took 'em back to their boarding houses and sold 'em for ten cents apiece and we made over twenty-seven dollars—clear!

We've told about the honors, engagements and so forth on another page so we won't say any more—except that we're proud of our girls—every last one of 'em, bless 'em. And bless you—our best to each and every one of you!

C. B. EBERLY, *editor*.

LORRAINE KREATZ, *president*.

UPSILON—University of North Dakota

I wonder if all other chapters are facing the much dreaded week of examinations as we are. Of course we shall survive with no serious results and we really should not worry so, but it seems an old and proper custom to worry about them so we are doing our share.

Upsilon has had many pleasant and interesting visits from chapter members and visitors from other chapters since our last chapter letter was sent. Olga Stenmo, one of our girls who finished her sophomore year last spring, has entered Northwestern University. She visited a few days at the chapter-house previous to her departure. Kathleen Robertson of New York City, one of our alumnae, was a visitor during the Christmas holidays. A party was given in her honor at the chapter-house with Janice Simenstad in charge of arrangements. Dorothy Torkelson, a graduate of last year, visited at the house a short time ago. Dorothy is teaching in high school at Cooperstown.

Lois Higgins of Chicago, our province president, inspected our chapter the week previous to the Christmas vacation. During her visit with the chapter our patronesses entertained for her at a dinner at the home of Mrs. H. E. French, and the chapter gave a tea in compliment to her at which Clara Soliah and Karleen Home were in charge. On Sunday a dinner was given at the house and alumnae, actives and pledges were present.

Shortly before Christmas our house mother, Mrs. Coggsball, entertained the chapter at a delightful Christmas dinner. Nothing in the line of food

and decorations that is suggestive of Christmas was omitted. We had such a good time!

The annual Christmas party for the entire chapter and the alumnae was held at the chapter-house. Lois Ferguson had charge of this party. Our Christmas tree made its first appearance that evening and it was surely pretty. That is one evening of the year when we truly are a bunch of children. If you could drop in on us as we are opening our gifts, of untold value, hear us blow horns and see us wind up the autos and race across the floor, play with dolls and munch pop corn balls, you would either think it was our second childhood come upon us or that traces of our first childhood were taking vent in our actions. We trust the latter!

Two important events of the school year are nearing, the Dacotah sales drive and the Carney song contest. The latter is one of the important features of the program for Founders' Day. You see, the outcome of this contest is a check for fifty dollars which goes to the class that sings the best, so we are all concerned.

We are pleased to welcome Hazel Gunderson, a sophomore, into active membership in Delta Zeta and we have also had the pleasure of pledging Ruth Rudser, a freshman. We shall initiate five more girls in the near future.

A great deal of interest is now being shown over the interclass basketball games. Alice Otos is our leading player and if she succeeds in her present attempts, she will have the whole chapter well practiced and educated to play the game better than we work cross-word puzzles.

KATHERINE BETH PRATT, *editor*.

JANICE E. SIMENSTAD, *president*.

PHI—University of Washington

Here we all are back in school again after the holidays, with rumors of fast-approaching semester exams as an incentive for some of us to burn the midnight oil a bit longer if we expect to keep up to our present ranking on the scholarship list.

The first of the year, one never saw a Delta Zeta sitting around the house, idle, for we were all busy every spare moment, and perhaps some that should not have been spare, working for our bazaar. We held it at the Davenport Hotel in Spokane on the afternoon of November 29. At the same time, we staged a regular family reunion, for all the girls, active and alumnae, who could find any possible means of getting there, went up to Spokane for the occasion. We all enjoyed working for it, and giving it, but best of all, it was as great a success financially as socially, for we cleared nearly \$400. Now we are planning to make it an annual affair, at least until we get a home of our own.

It seems as though we have been busy doing everything since our last letter. First, intergroup debate occupied our minds, then, basketball, and now the baseball schedule has just been posted. Last Saturday we played Alpha Chi Omega at basketball, beating them 21-2. Next week we play the Tri Dels.

Tuesday morning at Associated Students' meeting, sweaters for athletic honors and certificates of membership in Phi Kappa Phi, senior honorary scholastic society, were given out. We were very well represented, for Frances Helmer and Agnes Bushnell each received crimson W sweaters and three of our seniors, Gertrude Tunnard, Myrtle Burnham and Ruth Henrichsen received Phi Kappa Phi certificates. Myrtle Burnham and our house mother, Miss Carolyn Young, were also recently elected to membership in Pi Lambda Theta, women's educational honorary.

The new Commons Building, upon which work has been progressing all this last summer, has just been completed. It contains two large dining halls which accommodate students from three of the dormitories, three banquet rooms of varying size, and a tea room where we may run in between classes for any form of nourishment from a five-cent bar of candy to a whole dinner.

All the houses are looking forward to open house, which is to be held February 13-14. Each of the fraternities is to call at each of the girl's houses, according to schedule, for ten or fifteen minutes of dancing and getting acquainted. This is a new custom on this campus, and one that we feel sure should foster a greater spirit of friendliness.

RUTH HENRICHSEN, *editor*.

GERTRUDE TUNNARD, *president*.

CHI—Oregon State College

We are settled for a new year and a new term with a great many interesting things ahead of us as well as behind us. First of all, we are looking forward to initiation, and well we may, for we shall have eleven fine girls to present to you as sisters. We are so proud of them, and you would be too, if you could only see them and know them as we do.

The second event of first magnitude was our formal dance, given last week-end. Our decorations were simple but pretty. The color scheme was rose and black. In the center of the floor we had built a wishing well where ducks and fishes sported. Each one concealed the snapshot of a girl and the men wished and fished for the feature dance. For the last dance two of our girls sang "Delta Zeta Lamps Are Burning" and lights flamed up in a large reproduction of our pin. It seemed quite a fitting close for the evening. Among our several guests were sisters from Omega chapter.

We have been very busy and happy, and between weddings, return of girls not here last term, and adding activities to our list we have had little time to waste—even on cross-word puzzles.

Miss Barnes, our faculty member, attended the national conventions of Teachers of Speech and National Collegiate Players in Evanston during the holidays. She was the only representative from west of the Rockies and had the distinction of being the only woman speaker on the program. She said that one of the most enjoyable parts of the trip was meeting so many Delta Zetas. Nine of them, from different states, got together for lunch-

eons several times and came to the conclusion that they were all very glad to be sisters.

Basketball season is in full swing and in the intersorority games we played the Tri Delts to a tie twice before we succeeded in winning. Two or three of our girls are going out for class teams.

ALICE MCCOOL, *editor*.

RUTH SLOTEE, *president*.

PSI—Franklin College, Indiana

What we have done and what we are planning to do we want all of you to know. We should like very much to have all of you here for a little chat but since that is impossible we shall have to write.

We had a delightful dinner and theater party about three weeks before Christmas. We went to see *Rain*, a drama which was playing at English's. After the play we had dinner in the English tea room. The favors at the party were leather bill folds with the Delta Zeta crest embossed in gold.

On December 14 we had an art design bazaar. We sent our alumnae letters asking them to send us something hand made. We found that this was a wonderful way to get in touch with the alumnae and for them to find out what was going on in their own chapter. They responded wonderfully and as a result Psi made a neat little sum! We are going to use this money as a nucleus for purchasing new furniture for our house.

On December 16 we had a patroness tea in honor of our new patroness, Mrs. Shufflebarger. Our pledges furnished the program, which consisted of stunts and their Delta Zeta songs which they composed. We are planning a series of teas for the new year in order that our girls may become better acquainted with our patronesses and our lady faculty members.

We had a delightful Christmas party the night before leaving for the holidays. It started with a delightful dinner, after which we had our annual grab bag. Our honor guest was our new chapter Big Sister, Theodosia Beasley. After the party we went Y.W.C.A. caroling.

Franklin's basketball team has added another victory to the list during the holidays. It was over Purdue. We have a very interesting schedule ahead of us.

Now we are looking forward to final examinations. We are all studying very hard as we want to keep Psi's average as high as possible. Jane Linkenhelt, one of our girls, won the Panhellenic cup for the highest average during the past year.

The four Indiana Delta Zeta chapters are planning for their state luncheon and dance. We hope that the other neighboring chapters will all have their get-together times as they are very worth while.

BIRDENA E. DONALDSON, *editor*.

MARY PACKER, *president*.

OMEGA—University of Oregon

Although the winter term at our university is just fairly started, a lot of nice things have happened at our chapter. We had hoped to be able to tell you that we won the debate cups again this year but we can't—we lost by one point. However, two of our girls who debated this year, Dorothy Newman and Helen Louise Crosby, were elected to both the varsity debate team, and Zeta Kappa Psi, national debating organization. There were only four pledges to Zeta Kappa Psi this year so we surely were proud when we had two of them. We have great hopes for the cups next year.

Our president, Gertrude Helen Houck, was recently elected to Theta Sigma Phi, national journalistic society, so we are rapidly adding to our list of honoraries.

Socially, too, we have been very busy. At the beginning of the term we honored our house mother, Mrs. Grace Russell, with a formal tea in the Woman's Building. About three hundred invitations were issued and the tea was very successful.

During the Christmas holidays, the alumni chapter of Delta Zeta at Portland gave a luncheon at the University Club. Girls were represented from the chapters at the University of Washington, Oregon Agricultural College, Washington State College, and our own University of Oregon. Mrs. MacElfrish was toastmistress—and, as you know—a very charming one. During the luncheon she had girls from the various colleges sing their respective school songs, and we also had some interesting and intimate talks from different girls.

Omega is planning a formal dance to be given at the Hotel Osburn in Eugene on February 14. We are thinking of making it a grill dance. Although it would probably lose some of its formality, we believe it would be distinctly different.

We are going to have some "newly initiates" soon and then we really ought to have something *more* to tell you. We also have a new pledge, Dora Williams.

GLENN A FISHER, *editor*.

GERTRUDE HELEN HOUCK, *president*.

ALPHA ALPHA—Northwestern University

Alpha Alpha has finished a very successful year and is well started in another. The biggest thing we did in 1924 was to go over the top with the money for our new house which will be started, we hope, next spring. It has taken some hard, steady work but we love Delta Zeta and how eagerly we are looking forward to our D. Z. home.

The exams are upon us and we are burning the midnight oil. After they are over we shall be in the midst of second semester rushing.

HARRIET GORBY, *editor*.

ANNETTE MAYHEW, *president*.

ALPHA BETA—University of Illinois

Everybody back from Christmas vacation and so busy that those good times before and during vacation are almost like a dream! We *did* have such a good time for there was the Christmas party with a tree, funny presents with original poetry from which we learned so much about ourselves, and there was the Christmas dance, one of the peppiest and most successful dances we have ever had with confetti and bright streamers to help us make merry. Then came the holidays and some of us hadn't been home since September so it was a "grand and glorious feelin'" when we left and we were almost as glad to get back.

Now we're swamped with work, as is usually the case after a vacation. The pledges took their pledge examinations Saturday and they are hoping to be initiated before long. Our semester finals begin next week and we're striving to raise the house average this semester. That means hours of work, few dates and plenty of sleep. When they are all over and second semester has started we shall celebrate with our formal dance at the Champaign Country Club on February 14.

We are giving an Easter dance at the Morrison Hotel in Chicago on April 11. We hope that all Delta Zetas who live in or near Chicago or who will be visiting in Chicago during Easter vacation will attend that dance. Tickets are three dollars (\$3.00) and you can secure them by writing to Bernice Schur, Kenilworth, Illinois, or to us.

Some of our girls are coming back to school for second semester and the new girls are moving into the house so we'll have a new family.

ILAH MENDENHALL, *editor*.

HELEN E. ZICK, *president*.

ALPHA GAMMA—University of Alabama

Exams are like the poor, "We have them always with us," quotes almost any 'Bama co-ed you meet at present—but "Delta Zeta is never poor. We find them always working," quotes the member of Alpha Gamma chapter.

So many wonderful things have happened to us that I fear I shall not remember them all. First, Louise Perry made Phi Beta Kappa. She is one third of our seniors and will graduate in two weeks with highest honors.

Hazel Brown won the Capstone beauty contest and her picture will lead the beauty section of our college annual, *The Corolla*.

Before Christmas we had a bazaar and it proved a very "cents-ible" venture.

We have just initiated four girls. Naturally, we were thrilled over that, but the usual glory of initiation was enhanced by the presence of Catherine Winters and our own Sara Newsome, province inspectors. I hope most of you know Catherine Winters—she is so dear and is the very essence of Delta Zeta ideals. She told us so many inspiring things about ourselves, so many of those glorious traditions that help to make Delta Zeta what it is!

If you do not believe the men love Delta Zetas too—just look at the list

of marriages and engagements we are sending in, and—sh—it is a secret but methinks I have seen the sparkle of the diamond elsewhere; I'll keep you posted.

GLADYS F. OGLESBY, *editor*.

AUGUSTA PARR, *president*.

ALPHA DELTA—George Washington University

How fast time does fly! Here it is almost time for midyears and it seems as though it were only yesterday that we opened our room for the year.

We do feel though that we have accomplished a great deal since the opening of college. In the first place we have pledged nine of the loveliest girls on the campus and are just as proud of them as we can be. They have organized themselves and have elected a president, secretary and treasurer to take care of all matters that relate to pledges. Their treasurer collects pledge and other fees and their secretary takes care of their correspondence. We feel that they are, in this way, preparing themselves to take an active and useful part in the fraternity life after they have taken their full Delta Zeta vows.

We were very happy this fall to have a visit from Mrs. Julia Bishop Coleman, our national president whom many of us had the pleasure of meeting for the first time. We feel very much honored that she came to see us herself and those three days she spent with us are among our most delightful memories.

Rush season being over, we decided that the Christmas holidays was just the time to have a party "just for ourselves" and so on December 30 we held a dance in the College Hall at which everybody spent a delightfully informal evening.

Now our examinations loom before us and everything else is being submerged for the time being, for we do so hope that when the scholarship cup is presented next spring we shall hear the name of "Delta Zeta" called.

OLIVE CHACE, *editor*.

VERA L. STAFFORD, *president*.

ALPHA EPSILON—Oklahoma Agricultural and Mechanical College

The new year is here and with it new hopes and aspirations for Alpha Epsilon. "Our Mother" spent the holidays with her daughters in Chicago and is back with us. She is such a gift to each of us. She knows the heart of every girl, her hopes, failures, strong and weak points, and guides our household wisely.

The reception honoring Miss Burns has not been mentioned. What an inspiration Marion Burns is to each girl of the Alpha Epsilon chapter. We all love her dearly and every minute of her stay is a cherished memory in our lives.

Cupid played an important rôle during the vacation. Alice Fountain an-

nounced her engagement to a very worthy Alpha Gamma Rho and Bess Sullivan, a pledge, was married and did not return to school.

Vera Vandenburg was a great success as "Mother" in the *Boomerang* and also starred in the orchestra recital. Cata Fariss was elected to Omicron Nu, national home economics honor society.

CATA FARISS, *editor*.

VERA VANDENBURGH, *president*.

ALPHA ZETA—Adelphi College

Since we are now in the middle of our final exams, all extracurriculum work seems especially different—even the task of writing our letter to THE LAMP. As a result it will be short and snappy.

Two months ago we pledged nine girls of which we are extremely proud. A few weeks after pledging, our chapter held a bridge at the Chateau Buckingham and, to top the season, a dance at the Hotel McAlpin during Christmas week. This event was a large success. Both Beta and New York Alumnæ chapters supported us royally. It hardly seems possible that time can pass so quickly, but in two weeks after exams we shall initiate our pledges. Initiation banquet will follow at the Hotel Margaret. We are sure that the pledges are looking forward to the time that they will be real Delta Zetas.

JOSEPHINE SÁNCHEZ, *editor*.

HELEN JEAN ROSS, *president*.

ALPHA ETA—University of Michigan

Alpha Eta chapter has passed through another rushing season, this time informal, and we consider ourselves very fortunate in the girls whom we have pledged. We gave a formal dance in honor of all eleven of our pledges in one of the private ballrooms of the Michigan Union December 5—ages ago.

We have formed a plan of having an informal party each month for just ourselves, town alumnæ, actives and pledges. Our December party came just a few days before Christmas vacation. All the girls were at the house for dinner and afterwards we had a Christmas tree. Everyone received a sensible present and our "house" received lovely gifts from patronesses, "alums," actives and pledges. Then the pledges amused us with some clever stunts.

Early in December we entertained several members of the faculty at a Sunday afternoon tea. We had a very good attendance at our tea in spite of the fact that four other sororities were entertaining the faculty the same day.

The Michigan chapter of Panhellenic held a banquet in the ballroom of the Michigan Union a few days after vacation. The delegates to Panhellenic had been feeling that the sororities on the campus were too self-centered, that they were not working together, and that Panhellenic meant

very little to them, and to remedy this condition, the banquet was decided upon as a means of bringing all of the members of all the sororities together in a body. The banquet was very successful. Each sorority was represented by the majority of its members. There were addresses by Jean Hamilton, dean of women, the president of the Women's League, and the banquet committee.

At our January party we employed ourselves making candy cane costumes for the fancy dress ball to be given by the Women's League. All the sororities on campus attend in groups and contend for prizes for the cleverest, most artistic or funniest costumes. Delta Zeta, making her second appearance as a national sorority, won an honorable mention, and as the prize was a small box of stationery, does not feel too oppressed at not being first.

As for studies—finals are less than two weeks away—need we say more?

SARITA DAVIS, *editor*.

THYRA SHEFFIELD, *president*.

ALPHA THETA—University of Kentucky

"We, who are about to die, salute you."

Yes, I know the phrase has been used until it is ragged, but it expresses so well the plight of us who are facing exams. Some of us already are in the throes of death wrestling with economic, chemistry, mathematics, and all the other subjects which have been ascribed by popular tradition as anathema to the feminine mind. Our tea dance yesterday afternoon was our one last "fling" before throwing ourselves to the lions. Honest-to-goodness, we've talked exams and thought exams so much that we are growing quite hysteric (made that word myself) and giggly.

Basketball season is in full sway for the co-eds and there is much of groaning and creaking of stiff joints to be heard from Alpha Theta girls in going up and down steps. This year it was decided by the higher authorities that there should be no varsity girls' team and no girls' intercollegiate games but that instead there should be interfraternity and boarding home games. The girls resented this at first but there has been so much enthusiasm aroused that everyone is quite pleased with things as they are and has entered the games whole-heartedly.

We are looking forward to initiating our pledges who are busy deserving to wear a really, truly Roman lamp.

MARY ELIZABETH DEPEW, *president*.

ALPHA IOTA—University of Southern California

Now that "Merry Christmas" and "Happy New Year" are over the grind of school work has started once again. It isn't all grind, however, for there are lots of all-U affairs to look forward to as well as many sorority functions. The first activity of the new year will be our formal dance which is to be held tonight, January 16, at the Encino Country Club.

We are all anticipating a jolly good time and are having hard work to keep our minds upon such other matters as will insist upon requiring attention. I will tell you what our programs are since no one will see this letter until after this dance is over. They are (the programs, I mean) darling little leather bound diaries with the Delta Zeta crest put on in gold.

The pledges are giving a tea for all the mothers and fathers Sunday afternoon at the chapter lodge. Speaking of pledges makes me think to tell you that we have another dandy girl to add to our list. I'm sure that no chapter has more willing ones than we have. They are always doing something to please and help the active chapter.

Social activities will soon cease as we must do some studying for final exams which start the last of this month. After that we start our rushing once again. This year we do not have formal rushing in mid-semester, although we have a week set apart as the one in which we are to have five parties, one of them being a night date.

We have just recently finished our games in an intersorority basketball contest and were defeated by one point. The championship lies between the Tri Delts and the Kappa Delts, who will meet sometime next week to play off.

JEAN DELAVAN, *editor*.

YVONNE MACFADDEN, *president*.

ALPHA KAPPA—Syracuse University

Pleasant reminiscences, sombre thoughts and interesting plans for the future seem to be demanding equal shares of attention from the Alpha Kappa girls.

The reminiscences are pleasant because they remind us of that eventful week in November when many of our alumnae were here for the annual "Kum-Back" day at Syracuse, and also of the dance in the evening with Miss Pendery, several of the Beta girls, and our alumnae all with us. Then came Miss Pendery's visit, during which we were able to secure a better understanding of the aims and ideals of Delta Zeta; and we couldn't forget to mention our new Chickering baby grand piano (which caused Alpha Kappa to almost burst with pride); then our annual Christmas party for the House, for which it should be very thankful considering the many fine things which it received, and our Christmas dance, the holidays, and now for the sombre thoughts which are caused by (doubtless you have already guessed) EXAMS, which begin this week.

But Alpha Kappa could not feel that way long, so already we are planning what activities we shall try to make next semester, also the fine formal we are going to have in the spring, and last, but not least, the province convention when we Syracusans will be hostesses to our sisters of Alpha Province.

Such are the thoughts of Alpha Kappa!

A. MARGUERITE RISLEY, *editor*.

MILDRED CURTISS, *president*.

ALPHA LAMBDA—University of Colorado

Final examinations are over, and we are again free to look upon an undimmed horizon for new and bigger opportunities. With the exception of a few casualties the Delta Zeta girls came through the examinations unscathed and with fairly high grades.

Our last big event was the formal tea dance which the pledges gave for the seniors the afternoon of December 6. The house was a profusion of Christmas greens and decorations varying from mistletoe to Santa Clauses. Punch and cakes were served to the guests during the course of the afternoon.

This party was followed by a Christmas dinner on December 10 which the sorority mothers gave for their daughters. The pledges had been summoned to appear at the house at the appointed hour, but for what occasion they knew not. Quivering and with faltering steps they came. On reaching the house they seemed to sense a mysterious atmosphere, but not one word would the seniors tell them. At six o'clock the doors to the dining room were thrown open and the freshmen beheld the tables, decorated in the Christmas colors, red and green, at which they were bidden to find their places. They were served a three-course dinner. The lights had been turned out and only the soft mellow glow from the red burning tapers lighted the room. This was truly a surprise to the freshmen.

Just before the holidays began we pledged two girls, Dorothy Young, of Denver, and Jane Norton, of Leadville, and another last week, Shirley Gunter, of Boulder.

Our next big event, and perhaps the biggest task that Alpha Lambda has yet undertaken, is initiation, which we are planning to hold the last part of January. This initiation will be the first ceremony that we have ever carried out, and naturally we are looking forward to it with eagerness.

Then comes our formal dance, but I am going to wait until next time to tell you about that so that I shall be able to give you all the details. Until then goodbye.

FLORENCE GOURE, *editor*.

PHOEBE GAUMER, *president*.

ALPHA MU—Syracuse University

Alpha Mu is starting the new year with enthusiasm and pep. Our attention at present is directed toward preparation for finals which will be held within a week. Our big ambition is to go over one hundred per cent strong in the number of hours passed. We are going to do it!

We had the pleasure of having Miss Pendery, our province president, with us last week-end. She gave us a great deal of inspiration and advice which we heartily appreciated. During her stay here we gave a card party which proved a success.

Last Friday afternoon we gave our Panhellenic tea for this semester. Everyone enjoyed herself and it proved successful.

We are enjoying very cold weather at present at St. Lawrence. Yesterday several of the girls went snow-shoeing and skiing while others went skating. When they arrived home they were chilled and some had frozen noses. This morning the thermometer registered thirty degrees below zero.

BERNICE MCGILL, *editor*.

GLADYS MOUNT, *president*.

ALPHA NU—Butler College

In mentioning Christmas I feel as if I should get behind some convenient barricade to dodge the cat calls of "Old Stuff" and "That's all over now," but since there is a scarcity of news otherwise, I'm afraid you will have to risk boredom and listen to the exciting tale of our Christmas doings.

In the first place we had a "kid" party on the Wednesday before vacation. Alberta Coburn was in charge and in spite of all sorts of underhanded bribery and even threats we knew nothing of the entertainment to be given us beyond the fact that we were to have a "pome" to recite, and were to dress as little children—any age. Names were also drawn and it was quite astonishing how many of our sorority sisters we met shopping in the ten cent store that next week wearing that harrassed look that says, "Now I wonder if this will do for Johnny."

After our usual Wednesday night dinner we were all sent to bed with the exception of a favored few who knew there wasn't any Santa Claus, and were behind the scenes, so to speak. A few tried to peek but we—er—they, couldn't see anything, which was the only time we regretted the arrangement of our living room, being very well satisfied otherwise. All good things arrive eventually, however, and when Alberta called us we scrambled down the stairs with wild shrieking and pushing.

In spite of intense listening we hadn't heard them bring anything large into the living room but there stood a beautifully decorated tree loaded down with gifts. Across the mantel was a row of little stockings filled with candy. We finally quieted down enough to listen to the reading of a beautiful little story called the "Legend of the Rose," written by Alberta, and then we were all called upon for our performances. I'm sure the children for miles around would have been fairly green with jealousy if they could have heard some of the "rendering" that went on.

Then the gifts were distributed! They were supposed to be appropriate but I'm quite sure that that time it took the whole sorority and several bystanders to push my car out of "dead center," I hadn't even heard of the pledge who gave me a toy automobile; and Katie Fillmore, who is engaged to a certain young man whose last name is Lemon, is being suspiciously watched since she received a lemon squeezer. Toy telephones were in abundance too, for ours rings incessantly and many are the harsh words spoken when waiting for one's favorite young man to call, and about a dozen other young men have the same idea at the same time.

After we had played with our toys and everyone tried to talk at the same time and louder than everyone else, until we were feebly waving our

hands and uttering hoarse groans, refreshments were served and an unnatural silence reigned while we ate our ice cream and cake.

Friday noon the entire chapter ate lunch at the house, and later received gifts from the grab bag. Mrs. Gordon, our house mother, gave us a lovely little rose jar for the rose petals from decorations for special D.Z. dinners, the pledges gave us a victrola, the alumnae gave us a beautiful mahogany chair for our hall, Ruth Simmering gladdened our hearts with a huge scrapbook with the crest in bronze on the top, and Adele and Hester Renard presented us with a dozen goblets with D.Z. engraved on them. Now you see why I especially wanted to tell about our Christmas.

More news—at this rate I'll have to fear the censor and her shears. You see, to our great joy, we came out second in scholarship among the national sororities on the Butler campus, so now we wear long faces and joke about the extension they will have to put on the bottom of the page next year to find room for us, all for fear someone will think we are boasting. And then you know that old saying about "Pride goeth before a fall"! We're not superstitious—just careful!

Mrs. Julia Bishop Coleman was our very welcome guest for lunch recently and has signed a special place in our book reserved for national officers. We're anxiously hoping now that the other blanks will soon be filled.

Last night was a double celebration. Frances Taft, of Seattle, was our guest for dinner, and Helen Howard, our youngest pledge, had a birthday cake with candles on it, and white ice cream with a big seventeen in pink.

Exams are so close that all one hears on the campus is "Well I take mine next Saturday," and "Oh you do! I have two on Friday and then no more until the next week." Being in on the secret we can translate the mystic words and shiver accordingly.

From now on the campus is given over to study in all forms and degrees, which reminds a certain lowly editor of Alpha Nu chapter that there is a certain paper hanging over said person's head that is figuratively the very image of that keen edged knife hanging by a thread over the king's head, therefore—

Until next time,

KATHLEEN DYER, *editor.*

LOUISE RUNDELL, *president.*

ALPHA XI—Randolph-Macon Woman's College

It was a real privilege to have our national president with us. Mrs. Coleman came to our campus the middle of November and she helped us out of many small difficulties. This was our first official visit since installation and it was both enjoyable and beneficial.

Things have been running smoothly in our chapter. We have had regular weeking meetings and open house every other week and we enjoyed making the Christmas bags for our Community Center in Kentucky.

About a week before Christmas holidays we had a Christmas tree and

party at our house. We were just in the midst of our fun when the heads of all the other chapters on our campus came to see us and brought us Christmas presents from their chapters. They had been planning to give us a shower as a sort of welcome to the campus, and Christmas came so soon that they made it a Christmas shower. Their gifts were lovely linens, cut glass, electric waffle irons and Haviland china. Needless to say we were just overjoyed. Our patronesses also gave us beautiful presents.

We wish to express our appreciation for all the Christmas cards we received from our sister chapters. They made us very happy.

Our pledge day will be March 7 and we are looking forward to pledging our six promisees.

We send our love to all Delta Zetas.

ANNIE LEE YOUNG, *editor*.

BOWERS MACKORELL, *president*.

ALPHA OMICRON—Brenau College

School again and work, work, work for exams are coming.

We had little pledge day just before the holidays began. At this time we pledge only girls who have been here in school the year before. We sent three bids and received three of the most attractive pledges. After our exams, which will be about the first of February, we have big pledge day at which time any girls on the campus can be pledged. Shall write you more about that later.

Saturday night, November 8, our lodge was the scene of much gaiety. It was the occasion of our first formal rush party.

This party was in the form of a dinner dance. The house was decorated to suit the architecture, which is that of a Swiss mountain lodge. The long living room with its log fire at one end was used for dancing while the adjoining sitting room was reserved for those not caring to participate. Leah Beth Conner, who is our very attractive and efficient president, received the guests at the door. Sarah Bridge served punch on the porch, which was barked with pines. Lorene Wakefield, dressed as a little girl, sang a song entitled "The Little Brown Bear said Woof." She was accompanied on the piano by Nina Jones. Lorene then presented each guest with a favor in the form of a small bear tied with rose and green ribbon on which was written in gold D.Z.

The grand march was led by Leah Beth Conner at which time confetti was distributed to the tune of many college songs. The music for the occasion was furnished by three members of our school "The Brenau Busters Jazz Orchestra." A supper, which carried out the northern idea and our colors, was served to the guests at ten o'clock.

The climax of the evening came with the D.Z. lead out. All lights were extinguished. A big yellow moon looked out from one corner of the room, between a bank of southern pines, upon the members of D.Z. and our rushees.

Oh, how I wished that every Delta Zeta could have been present at our

party. It was a grand success and from all accounts the best that has been given here.

MARIE NEWSOM, *editor*.

LEAH BETH CONNER, *president*.

ALPHA PI—Howard College

Greetings, dear sisters, we Alpha Pi girls are as happy as can be. We count our year's work a successful one. Rush is over and we have pledged seven of the brightest, sweetest, most lovable girls you ever met. Girls, you ought to know them. We are so happy that we can at last call them our own and are so proud that they are now wearing our rose and green.

Our rushing parties were a great success this year and our camp on the lake was just lots of fun. Then our D.Z. formal was a grand one—there was nothing lacking.

Aside from our happiness over our girls and rush, we have at last moved into our new room. It's beautiful, we think. Our alumnae have been so nice in presenting us with beautiful gifts for it. We gave a Christmas party and everybody showered us with useful things. We are proud of our alumnae club and thank them for the beautiful tea they gave in our and Alpha Gamma's honor during the Christmas holidays.

ADDILEE MATTISON, *editor*.

DAISY HOOVER, *president*.

ALPHA RHO—Ohio Wesleyan University

There is certainly a feeling of suspense on the Ohio Wesleyan campus. Rushing doesn't begin until February 3. There are very stringent rules against personal rushing so we are just choosing the girls we intend to rush and are trying to interest them in Delta Zeta. We are hoping for good results as this is our first Delta Zeta rushing.

Women's fraternities are permitted to have one dance a semester. We had our formal on the tenth and feel it was a howling success. We carried the decorations out in the form of a Japanese garden. We were very much pleased and encouraged with the success of our first social function. We were very happy to have Marjorie Van Bolt, president of the Theta chapter, as our guest.

Before Christmas we entertained our patronesses and mothers at a Christmas party. Santy came and was good to us all. Card playing was the entertainment of the evening.

For our Christmas social service work, our preps sent out thirty stockings of candy to our school in Kentucky. We also sent sundry articles which would be useful to the kiddies.

The university has rented two houses in Delaware to be women's Panhellenic houses. Delta Zeta has engaged a room in one of them. We will furnish it to our own liking. It will be used for chapter meetings and as a meeting place for the girls. We feel it is a great step toward sorority houses.

We know we have the good wishes of all the chapters for our rushing next month and we wish you success if you have not already rushed and congratulations for all who have successfully rushed.

VIRGINIA B. FLEMING, *editor*.

MARGARET JOHNSTON, *president*.

ALPHA SIGMA—Florida State College for Women

An inspector, a week at the lake, Thanksgiving, pledging, Christmas vacation and new year's resolutions have all had their share in making this one of the busiest seasons ever.

Br-r-r—an inspector. What is one like? Will she look down on us through rimmed spectacles, and—but all our fears were over when Sara Newsom stepped off the train. "Who ever loved who loved not at first sight" was again proven for we adored Sara—Phi Beta Kappa pin, dimples and all. Then that glorious week-end at the lake with her. (Let me say to all social chairmen when in doubt as to how to entertain the inspector, plan a camping trip—that is, if you have a camp like Flastacowa.) Our college is the proud possessor of a lovely camp, a two-story building built on the shores of Lake Bradford just five miles from the school. Here we enjoyed all the pleasures of camping—canoeing, swimming, kodaking, hiking and eating. But even after two days of such we were not too tired that night after we returned to civilization to enjoy a banquet given at the Leon Hotel. And oh how we hated to say goodbye to Sara—in fact, we couldn't let her go until she'd promised another visit to Florida real soon.

Our calendar has been filled with parties, too—Miss Carmichael, our patroness, gave us a delightful one where we enjoyed playing Delta Z. instead of heart's dice; then there was the huge interfraternity pledge party given in the Alpha Delta Pi house. Panhellenic decided that instead of the pledges of each fraternity entertaining separately that all the pledges should give one together and invite two initiated members of each fraternity. This proved very successful and everyone reported that the party was one of the best ever given on our campus. Add to these the delightful evening spent with Annie Flagg and Lila for the completed list.

In between we found time for a little rushing and on December 5 we pledged Alvina Loessner, thereby adding another Titian beauty to our membership. (Alpha Sigma is the proud possessor of three fiery red heads but we get along beautifully.) While we're speaking of pledging let me tell about the pledge skit. To promote Panhellenic spirit and to introduce the pledges of the different fraternities, Panhellenic decided that the pledges of each fraternity should give an original skit, to be given in two nights, five each night and to be judged on originality, number of pledges introduced and Panhellenic spirit. We were so proud when it was announced that Delta Zeta had won for the first night but the final award went to Pi Beta Phi.

The fraternities on our campus have been glad to welcome a new member into our midst, Beta Gamma of Zeta Tau Alpha. They are grand girls and Delta Zeta joins in wishing them all kinds of success.

Alpha Sigma has just settled down after a most delightful Christmas vacation and our number is rather depleted, due to matrimony and other scourges. We are looking forward, not with pleasure however, to mid-term examinations. If any of our other sisters have the same fate to face—here's wishing them the best of luck.

ELIZABETH G. CARTMEL, *editor.*

ANNIE FLAGG WILDER, *president.*

per NATALIE LAMB, *recording secretary,*
(*president away from college.*)

ALPHA TAU—Texas University

We have been so busy that we feel as though we are one hundred per cent "dizzies." Just now we are all trying to recuperate from the two weeks of Christmas holidays, having come back with bigger, better ideas for the future.

We had quite a successful rush week in the fall, due in large measure, doubtless, to our competent rush captain, Charlotte Knowd. We were fortunate to have Mrs. Malott and several alumnae with us to help with our luncheons, "bridges," rose bud tea, dinner dance, mah jong party and Spanish dinner, all of which were delightful—but not any too delightful, for the nine little sisters we received at the end of the week, nor the tenth whom we pledged a few weeks later. Early in October the active members gave a tea honoring the pledges and patronesses. Our house was beautifully decorated in pink Killarney roses and carnations. Sandwiches, hot tea, nuts and mints were served to about one hundred fifty guests who called during the afternoon. Later in October we gave a banquet in honor of our seven initiates. Miss Landrum, our faculty representative, was the toastmistress of the evening, and the scheme of the toasts modeled on the idea of a Delta Zeta symphony orchestra was quite unique, since she is a talented musician and instructor in music in our university.

Sunday before we went home for the holidays we had our Christmas tree at the chapter-house, and the parents, patronesses and members gave presents to the chapter. We can hardly wait to see the many lovely gifts which we received adorning our new house this fall.

All of our girls are back this term and we are especially proud to say that several made the honor roll. We take part in numerous activities on the campus. Ruth Bell has charge of the Junior Y.W.C.A., Martha McDowell and Lillian Augspurger are on the Y.W.C.A., Charlotte Knowd has been elected to Alpha Phi Epsilon, honorary literary society. Melba Mitchell is a recent initiate into Theta Sigma Phi, honorary journalistic fraternity. Zeta Bates, one of our pledges, has made Orchesus, the honorary dancing club.

We have been quite fortunate in having Olga Anderson, instructor in physical training, with us from Tau chapter. Her advice and friendship has meant so much to us, and if all Tau is like she is, then Alpha Tau could not have a better sponsor chapter. Tau is so very far away—and so

many of the rest of you are—that it would seem we would feel lonely, estranged and unfamiliar, living away down here on the Gulf of Mexico; but when there is something great like Delta Zeta to bind us together, distance does not mean so much. And let's hope that lots of us will see lots of you at the next convention.

DOROTHY MIMS, *editor*.

JANET STARK, *president*.

ALPHA UPSILON—University of Maine

We met for a Christmas party on December 10, at the Swiss Chalet, an old hunting lodge not far from the campus. After a few games, Santa Claus took from the tree a card for each girl. On the card was written a few mysterious words or a rhyme which was supposed to tell us where our gifts were hidden. Amid a great deal of fun and laughter, the search began under chairs and couches, on the rafters, behind the curtains—everywhere one could think of, but in the end we were all well rewarded. Later, refreshments were served consisting of green ice cream on top of which stood a little kewpie bearing ΔZ on his tummy, cake that had ΔZ in red candies, pop corn and candy. We sat around the open fire and sang all the Delta Zeta songs we knew—and wished we knew more.

Besides that party, we have had two others recently. You see, it is nearly time for bids to come out again. Our four pledges have just taken their examination and we hope to initiate them soon.

ANNETTE MATTHEWS, *editor*.

ANNIE M. FULLER, *president*.

Pledges and Initiates

THETA

Initiates

Dorothy Bardo, Toledo.
Margaret Garner, Columbus.
Isabelle Glander, West Alexandria.
Charlotte Hays, Columbus.
Margaret Higgins, Columbus.
Margaret King, Columbus.
Dorothy Llewellyn, Pittsburgh.
Ruth Lloyd, Portsmouth.
Mary Schooler, Columbus.
Evelyn Sherer, Bucyrus.
Anne Tilley, Columbus.

Pledges

Alice Bosmith, Cincinnati.
Romaine Downing, Columbus.
Ruth Evans, Columbus.
Helen Hollenbeck, Columbus.
Mary McCracken, Sidney.
Mildred Long, Columbus.
Charlotte Michell, Columbus.
Elizabeth Morgan, Columbus.
Jeanette Perrin, Columbus.
Virginia Pierce, Cleveland.
Pauline Ridenour, Columbus.
Esther Roberts, Columbus.
Bess Sanger, Cincinnati.
Ruth Shaffer, Columbus.
Josephine Shultz, Lakewood.
Ruth Hollinger, Akron.

SIGMA

Pledges

Katherine Howard, New Orleans, La.
Mitalyne Floyd, New Orleans, La.
Helen Converse, St. Paul, Minn.

THE LAMP OF DELTA ZETA

Flora Evans, Lake Providence, La.
Elinor Menville, Baton Rouge, La.

TAU

Pledges

Marion Keeler, Chicago, Ill.
Leona Parks, Cedar Rapids, Iowa.
Elsie Roberts, Brimfield, Ill.
Ruth Stibbe, Peshtigo, Wis.
Dorothea Vandervest, Chicago, Ill.

Initiates

Frances Gore, Madison, Wis.
Isadore Clissold, Chicago, Ill.

OMICRON

Pledges

Lois Turbett, 5510 Coral St., Pittsburgh, Pa.
Esther Huebner, 109 Arlington Ave., Pittsburgh, Pa.
Katherine Hooper, 100 Sterrett Place, Crafton, Pa.
Helen Reid, 920 Aiken Ave., Pittsburgh, Pa.
Elizabeth Kettering, 87 Martsolf Ave., West View, Pa.
Ruth Scanlon, 415 S. Rebecca St., Pittsburgh, Pa.

ALPHA ETA

Pledges

Elizabeth Cronin, Marshall, Mich.
Ruth Clapp, Utica, N. Y.
Hazel Huy, Cleveland, Ohio.
Eleanore Horny, Detroit, Mich.
Margaret Pepler, Rockford, Mich.
Carolyn Slipika, Sutton's Bay, Mich.

ALPHA KAPPA

Pledges

Irene Follette, Binghamton, N. Y.
Edith Morton, Adams, Mass.

ALPHA NU

Initiates

Hope Carter
Louise Rundell
Zerelda Rubush
Kathleen Dyer

Katherine Fillmore
Frances Quirk
Mary Kinsley
Margaret Bell
Virginia Jones

Pledges

Dorothy Duesenberger
Ruth Emigholz
Lucille Gullette
Catherine Rubush
Phyllis Nordstrom
Helen Howard
Ruby Gibson
Ada Rubush
Elizabeth Kitzinger
Lee Zwickel

ALPHA OMICRON

Pledges

Elsie Kuck, Savannah, Ga.
Mary Peck, Martinsburg, W. Va.
Mae Hurst, Miami, Fla.

ALPHA PI

Pledges

Eugenia Perry
Nellie Grace Freeman
Frances Bohannon
Olivia Basenburg
Alice Brooks
Annabel Hendon
Claudie Mae Hoover

ALPHA SIGMA

Initiates

Mildred Bullock, Ocala, Fla.
Lila Yantis, Lake Stearns, Fla.
Olive Whaley, Ocala, Fla.
Isobel Richardson, St. Petersburg, Fla.

Pledge

Alvina Loessner, Lake City, Fla.

Honor Roll

ALPHA CHAPTER

Marian Parker	President of Mortar Board Treasurer of Y.W.C.A. Wells Hall House Chairman
Dorothy Switzer	Representative to Panhellenic Council Classical Club Athletics
Florence Hill	Spanish Club Classical Club Liberal Arts Club
Camilla Fry	Spanish Club Athletics
Ruth Roudebush	Athletics
Naomi Terman	Dramatics Home Economics Club
Francis Helen Mains	Honor Roll First Cabinet Y.W.C.A.
Lucile Crowell	Dramatics Vice-president of Cleveland Club Athletic Board
Daisy Eaton	Dramatics Secretary of Junior Class Secretary to Dr. MacMillan
Alice Shephard	Honor Roll Second Cabinet Y.W.C.A. Vice-president Classical Club
Mary Francis Rawley	Honor Roll Vice-president of Sophomore Class
Mildred Morningstar	Honor Roll Secretary of Sophomore Class Student Assistant in Spanish Department
Maria Bickham	Honor Roll Liberal Arts Club Athletics
Vivien Prillaman	Classical Club French Club Athletics

BETA CHAPTER

Clara Reubel	German Club
	Women's Glee Club
Elsie Montagu	German Club
	Women's Glee Club
Helen Grant	Women's Glee Club
Eleanor Eulenstein	Women's Glee Club
Florence McClure	Women's Glee Club
Leona Ruoff	Women's Glee Club
Jean Bettis	Women's Rifle Team
	Women's Soccer Team

DELTA CHAPTER

Fern Schuette	Mathematics Club
Edith Hill	Freshman Commission
Betty Engle	Rifle Club

EPSILON CHAPTER

Zena Dinehart	Vice-president W.S.G.A.
	Mortar Board
Catharine Howard	President Y.W.C.A.
	Mortar Board
	Classical Club
Lillyon Snyder	Vice-president W.A.A.
	W.A.A. Board
	Sweater Girl
Florence Salaroglio	Pi Lambda Theta
Dorothy Benner	Freshman Debating Team
	President Freshman Y.W.C.A. Commission
Clyde Jacobs	Vice-president Panhellenic
	History Club
	Botany Club
Margaret Rowand	Pleiades
	Botany Club
	Outing Club
Dorothy Lambert	Vice-president Outing Club
	W.A.A.
Dorothy Worrell	Glee Club
	University Chorus
Genevieve Collins	Glee Club
	W.A.A.
Bertha Reinhart	Glee Club
	Cosmopolitan Club
	Outing Club
Juanita Collins	Classical Club

PHI BETA KAPPA

Mary Broadbent	Secretary Chemistry Club
	Hockey Varsity
	W.A.A.
Thelma Harr	Captain Varsity Hockey
	W.A.A.
Dort Davis	Soccer Varsity
Gladys Stringer	Outing Club
	W.A.A.
Mary Melton	W.A.A.
Alice Anderson	Outing Club

ZETA CHAPTER

Rhea Freidell	Secretary W.S.G.A. Council
Betty Luce	University Orchestra
Mabel Krapp	University Orchestra
Barbara Morris	Vesper Choir
	Mystic Fish
Bernice Cox	Vesper Choir
Wilma Henderson	Freshmen Commission
Phyllis Walters	Silver Serpent
	Big Sister Movement
Lucille Hill	Xi Delta
	Tassels
Blanche Stevens	<i>Cornhusker</i> Staff
	Vesper Choir
	Leader of Y.W.C.A. Discussion Group
Constance Stevens	Vesper Choir
	Kappa Phi
	Leader of Y.W.C.A. Discussion Group
Martha Baird	Panhellenic Representative
	University Players
Florence Surber	University Players
Norma Stiles	<i>Cornhusker</i> Staff Illustrator
Betty Bosserman	<i>Cornhusker Countrymen</i> Staff
	Secretary Phi Epsilon
	<i>Farmer's Fair</i> Board
Wilma Perry	<i>Cornhusker Countrymen</i> Staff
Dorothy Abbott	Big Sister Movement
Fern Jenkins	Big Sister Movement
Claire Nesotr	<i>Cornhusker</i> Staff

THETA CHAPTER

Carol Van Bolt	Girls' Glee Club
Dorothy Bardo	Sophomore Hockey Team
	Y. W. C. A. Committee

Dorothy Llewellyn	Women's Student Council Big Sister Committee Sophomore Volley Ball Team
Gertrude Reed	Y.W.C.A. Finance Committee Panhellenic Representative Women's Ohio Committee
Marguerite Fulton	Lead in Strollers Dramatic Society Browning Dramatic Board
Frances Baker	Mortar Board President of Women's Panhellenic Browning Dramatic Society
Ruth Lloyd	Member Debating Team
Charlotte Michell	Freshman Cabinet
Virginia Pierce	Co-ed Editor of <i>Phoenix</i> (Freshman Magazine) Freshman Cabinet Student Council
Helen Hollenbeck	Freshman Glee Club
Betty Morgan	Freshman Glee Club

IOTA CHAPTER

Esther Van Cleve	Phi Beta Kappa
------------------------	----------------

SIGMA CHAPTER

Marie Louise Berret	Theta Sigma Sigma Y.W.C.A. Newman Club
Fannie Day Booth	Delta Gamma Delta Chorus Y.W.C.A.
Sylvia Campbell	Delta Gamma Delta Y.W.C.A.
Katherine Day	Biological Club Y.W.C.A.
Alma Dodson	Junior Basketball Squad
Carolyn Gordon	Theta Sigma Sigma Assistant Editor of <i>Reveille</i> Education Club
Marie Louise Gross	President of Newman Club Biological Club Adams Debating Club
Evelyn Howe	President of Blazers Y.W.C.A. Scholarship in Psychology
Josephine Langston	Biological Club Y.W.C.A.

Velma Lyons	Biological Club Y.W.C.A.
Lavinia McGuire	President Student Government Secretary Y.W.C.A. Executive Board W.A.A.
Elizabeth McGuire	Best all-round Co-ed Athlete Adams Debating Club Executive Board W.A.A.
Edna McLean	Delta Gamma Delta Theta Sigma Sigma Dramatic Club W.A.A.
Nora Norris	Hikers' Club Y.W.C.A. Biological Club
Myrle Scarle	Adams Debating Club Y.W.C.A. W.A.A.
Margery Stewart	Y.W.C.A. Cabinet Semi Chorus Chorus
Sarah Maxie Simmons	Y.W.C.A. L.S.U. Orchestra String Quartet
Eleanor Talton	Y.W.C.A. Biological Club
Rachel Violette	Scholarship in English Secretary of Scribblers' Club U.R. of Y.W.C.A.
Lucille Wilkinson	Chorus President Senior Co-ed Class Honor Council

TAU CHAPTER

Helen Robinson	Mortar Board Secretary Senior Class Secretary W.A.A. Board
Gwen Grake	Crucible W.S.G.A. Judiciary Committee Intercollegiate W.S.G.A. Treasurer
Lillian Twenhofel	Crucible Sophomore High Honors W.S.G.A. District Chairman
Lois Barry	Dolphin Club President '24 Varsity Swimming Team Orchesus

Isadore Clissold	Dolphin Club
	Y.W.C.A. Cabinet
Doris Burdick	Outing Club President
	Outing Club Board
	W.A.A. Board
Martha Dalrymple	Forensic Board Secretary
Frances Gore	Sophomore Commission
Virginia Larson	Outing Club Board
Lila Hicks	Orchesus

OMICRON CHAPTER

Elizabeth Seville	Pi Lambda Theta, national honorary education
Helen R. Milar	Sigma Kappa Phi, national honorary foreign language
Dorothy L. Parker	Quill Club
Katherine Morrison	Mortar Board Recognition List
Venus Shakarian	Mortar Board Recognition List
Ruth Stultz, pledge	Mortar Board Recognition List

PSI CHAPTER

Marjorie Gray	Vice-president Dormitory
	Dormitory House Council
Dorothy Best	Pi Kappa Delta
	Varsity Debate Team
Audra Bedster	Vice-president Socratic Club
	Dormitory House Council
Mary Packer	Women's Debate Team
	President Panhellenic
Jane Linkenhelt	Scholarship
Mary Merrill	Chairman of Conference Commission
	Y.W.C.A.
	Reporter <i>Franklin</i> Staff
Thelma Newton	Boosters' Club
Bessie Rueff	Y.W.C.A. Secretary
Thelma Shaw	W.A.A. Executive Board
	Varsity Volley Ball Team
Beatrice Cauldwell	<i>Almanack</i> Staff
	Secretary Junior Class
Naomi Mason	Winner of Volley Ball
Berdina Donaldson	Women's Intercollegiate Debate Team
	Treasurer of Women's Dormitory

CHI CHAPTER

Gertrude Helen Houk	Theta Sigma Phi
Dorothy Newman	Zeta Kappa Psi
	Varsity Debate Team
Helen L. Crosby	Zeta Kappa Psi
	Varsity Debate Team

OMEGA CHAPTER

Georgia English	Varsity Debate
Idamae Sclothe	Varsity Debate
Lois Fendall	Memorial Union Drive
Clara Miller	Memorial Union Drive
Inez Johnson	Secretary Freshman Y.W.C.A. Cabinet
Elva Slottee	Treasurer Freshman Y.W.C.A. Cabinet
Gladys Emerson	Publicity Chairman Sophomore Cotillion
Floreine Knebel	Beaver Staff

ALPHA ALPHA CHAPTER

Jean Maxham, '25,	Varsity Soccer
Annette Mayhew, '25,	Varsity Soccer and Varsity Swimming
Mary O'Gara	Vice-president Laurean Literary Society
Helen Larson	Frances Willard Oratorical Contest

ALPHA DELTA CHAPTER

Edith Finney	President of the Women's Glee Club
	Registrar of the George Washington Cen-
	tral High School Graduates Club
	Member of the Junior Week Committee
Mary Francis Weagel	Vice-president of the Women's Glee Club
Vivian Robb	Captain of the George Washington Hockey
	Team

ALPHA LAMBDA CHAPTER

Evelyn White	Booster's Club Operetta
Clare Ohlson	Kappa Delta Pi

ALPHA KAPPA CHAPTER

Mildred Curtiss	Secretary-Treasurer of Sociology Club
	Senior Executive Committee
Dorothy Park	Pi Mu Epsilon, honorary mathematical fra-
	ternity
	Pi Lambda Theta, honorary pedagogical
	fraternity
	Student Church Council

Ethel McCartney	Pi Mu Epsilon
	Pi Lambda Theta
Alica Haith	Pi Mu Epsilon
Anne Halloway	Cosmopolitan Club
Margaret Ellis	Cosmopolitan Club
Irma Loope	Junior Executive Committee
Edith Bogart	Social Chairman of Educational Club
Glenevieve Watkin	Girls' Glee Club
Mabel Gilfford	Girls' Glee Club
Helen Henderson	Sophomore Executive Committee
Katherine Atwell	Alpha Xi Alpha, honorary art and design fraternity

ALPHA XI CHAPTER

Catherine Parnell	All-star Hockey Team
Bowers MacKorell	Intercollegiate Debating team
Susie Cobbs	Intercollegiate Debating team

ALPHA TAU CHAPTER

Ruth Bell	Treasurer Panhellenic
	Honor Roll
	Senior Y.W.C.A. Cabinet
Charlotte Knowld	Glee Club
	Ashbel Literary Society
	Honor Roll
Frances Murphey	W.A.A.
	Honor Roll
Melba Mitchell	Theta Sigma Phi
	Texan Staff
	Honor Roll
Zedau Bates	Orchesus
Gertrude Moore	Freshman Commission
Lillian Augspurger	Glee Club
Martha McDowell	Y.W.C.A. Cabinet
	Ashbel Literary Society
	Honor Roll
Mildred Wisian	H.E. Club
Alma Phillips	H.E. Club
Alma Wood	Honor Roll

ALPHA OMICRON CHAPTER

Sarah Bridge	Y.W.C.A. Cabinet
Leah Beth Conner	Vice-president Zeta Phi Eta
	Cushman Club

Pearl Jones	President Athletic Association Secretary Southern Athletic Association President Junior Class
Thelma Peterson	Executive Council Editor of Annual
Sibyl Strickland	Executive Council Vice-president B. Natural Club
Ruth Stoner	Business Manager of Annual Circulating Manager Alchemist
Sarah Bridge	Business Manager Alchemist Exchange Editor Alchemist
Marie Newsom	Social Editor Alchemist
Cecile Strickland	Honor Board
Four International Club Members:	
Louise Schoolfield, Thelma Peterson, Sarah Bridge, Marie Newsom	
American Red Cross Life Saving Corps:	
Sarah Bridge, Thelma Peterson, Ruth Stoner, Pearl Jones	

ALPHA UPSILON CHAPTER

Annie Fuller	Phi Beta Kappa <i>Sodalitas Latina</i> Dean's List
Joy Nevens	President Contributors' Club
Margery Bailey	Physics Assistant
Velma Oliver	<i>Sodalitas Latina</i> Dean's List
Harriet Page	Basketball
Dorothy Mossler	Math Club
Madeline McPhetres	Math Club Dean's List
Jessie Wood	Basketball
Emily Pendleton	Contributors' Club Dean's List
Amy Adams	Y.W.C.A. Cabinet Treasurer Contributors' Club Varsity Hockey
Margaret White	French Club
Annette Matthews	College 4-H Club Dean's List

ALPHA PI CHAPTER

Daisy Hoover	President Panhellenic Y.W.C.A. Cabinet
Elizabeth Sadler	Secretary Sophomore Class Manager Basketball

Addilee Matheson	Vice-president Dramatic Club Student Council Representative
Ive Pearl Ray	Music Medal Honor Society
Mary Elizabeth McPherson ..	Honor Society Dramatic Club
Mary Shields	Omicron Nu, honorary Caleb Dorr Scholarship

"The Feet of the Wind," a poem written by Vera Balfour, one of the Phi sophomores, was recently accepted for publication in *The College Anthology of Modern Verse for 1924-25*.

Clippings Bureau

Following is a description of the building which the Y.W.C.A. is erecting at Long Beach, Cal., where Rene Sebring Smith, former president of Delta Zeta, is director:

Y.W.C.A. MAY BE READY BY FEBRUARY

OFFICIALS EXPECTING TO MOVE INTO NEW BUILDING AS SOON AS POSSIBLE—
MOST OF BRICK WORK COMPLETED

Construction to Start Next on Large Swimming Pool for Women

Plans are now being made to move into the big Y.W.C.A. building at Sixth and Pacific about February 1. The structure, which is to be one of the most modern and complete homes for women to be found anywhere in the West, is costing about \$367,000 and covers a full quarter of a block, the ground itself costing \$72,000.

Solid comfort and substantial features have been emphasized in the brick and concrete building which W. G. Reed, the contractor, is putting up on the plans of Julia Morgan, the architect, but a handsome terra cotta tile trim will add to the exterior ornamental feature of the building.

The brick work is now about seventy per cent finished, the carpentering is well along and partitions for rooms are being erected, the plumbing is seventy per cent completed and work on the swimming pool, to be erected in the alley back of the building, is ready to begin. This pool will be twenty-three by sixty feet, part tile and concrete and served by a filter system of the latest type.

Work of fitting up the cafeteria on the north end of the first floor, and the kitchen adjoining, is ready to begin now. This cafeteria will seat 250 comfortably. A refrigerator system is to be installed and the building will be able to have its own ice manufacturing plant.

A new feature has just been decided upon. It is to utilize the roof over the swimming pool for a volley ball court, which is expected to prove a popular addition. Installation of the heating system and sheet metal work is now well along.

Apparatus will be installed shortly in the big gymnasium built on the south side of the first floor. The patio or court which will be in the center of the rectangular-shaped building, will be sowed with grass and the center of it will contain a fountain as an additional attractive feature.

Showers are being installed for both the gymnasium and the pool and locker and dressing rooms will be provided. There will be a regulation sized tennis court on the roof of the gymnasium.

An interesting feature of the building is the kitchen on the fourth floor which will permit home cooking for those of the girls who desire to do it, while they can do their laundry work in the special laundry on the third floor. The main laundry is in the basement.

There will be thirty-five single rooms and thirty-seven doubles in addition to two dormitories of five beds each and one of three and a sleeping porch on the Pacific Avenue side.

There are two connecting arcades on the Pacific Avenue side, one on the second and one on the fifth floor.

The building is finished with a Mission tile roofing. Fire escapes are all enclosed and there will be three entrances, two on Pacific Avenue and one on Sixth Street to the cafeteria.

BIRMINGHAM, ALABAMA

DELTA ZETA TEA EVENT OF NEW YEAR

Many out-of-town guests and local girls representing several colleges attended a colorful tea given by the Birmingham Alumnæ club of the Delta Zeta sorority Thursday afternoon.

The function was in honor of Alpha Pi chapter of Delta Zeta, at Howard College, and Alpha Gamma chapter, of the University of Alabama. Gladys Harllee, president of the club, was hostess at her home.

Representatives were in attendance from Delta Zeta chapters, at Brenau, Randolph-Macon, Howard and Alabama. Among the guests were Dr. and Mrs. Frank Owsley, of Vanderbilt; Mary Armentrout, Granada College, Miss.; Marie Newsome, Brenau; Catherine and Evelyn White, Hollins College, Va.; Edith Ferrell and Susie Cobbs, Randolph-Macon; Ruth Billings, Tuscaloosa; Louise Perry and Gertrude Clapp, of Alabama.

The receiving line was made up of Miss Harllee, president, and Aileene Gullihorn, secretary-treasurer, local alumnæ club; Daisy Hoover and Frances Newman, president and vice-president of the Howard chapter; Louise Perry and Gertrude Clapp, president and secretary of the Alabama chapter; Dorothy Hickman and Mrs. Hazel Cobb Odum, big sisters to Howard and Alabama clubs.

A color scheme of old rose and Nile green, Delta Zeta colors, was heightened by use of Killarney roses, the sorority flower. Mrs. P. Z. Harllee received at the door, with Marie Hickman and Mrs. Odum pouring tea.

Members of the hostess club are: Marie Hickman, Sara Newsom, Frances Pickens, Sara Hafner, Nannie Myrtle Price, Alice Ansley, Naomi Pool, Dorris Mader, Aileene Gullihorn, Gladys Harllee, Mary Bunn Gay, Anna Johnston, Mabel Hodges, Nell Hodges, Dorothy Peterson, Mrs. Lloyd McEachern, Mrs. Steve Moxley and Mrs. Odum.

GAMMA

Evelyn M. Kelm, 2105 Carter Ave., is a member of Delta Zeta sorority. She also belongs to the W.S.G.A. and the University Y.W.C.A., and has taken an active part in *Ski-U-Mah* and *Gopher* drives on the campus.

Mrs. William R. R. Loney (Ruth Marjorie Greenfield) is the daughter of John Greenfield, 917 Twenty-first Ave. S. E. Mr. and Mrs. Loney have returned from their wedding trip and are at home at 3800 Portland Ave. Their marriage took place at Delta Zeta sorority house.

IOTA

Mary Agnes Flannagan, A3 of Iowa City, a Delta Zeta, is secretary and treasurer of the Classical Club, an organization of students interested in Greek and Latin which was organized in 1904.

DAWSON CHOSEN AS CHAIRMAN OF SENIOR BLOWOUT

WILL ENGINEER DANCE IN MEN'S GYM ON FEBRUARY 20

Pick Eight Assistants For Management of Event

Announcement was made yesterday by Hobart S. Dawson, L3 of Iowa City, all-senior president, of the appointment of Carl I. Dietz, L3 of Neola, to the chairmanship of the senior hop, the annual formal party of the senior classes of the university, which will take place Friday evening, February 20, in the men's gymnasium.

Those appointed to assist Dietz in the management of the senior hop are the following: Murray O. Klingaman, Cm3 of Brookline, Mass.; Herbert W. Rathe, M4 of Waverly; Ceylon B. Hayden, D4 of Des Moines; Frank L. Woodward, S4 of Blackport, Idaho; *Alice Timberman, A4 of Massena*; Byrd P. Cryst, A4 of Osceola; Isabelle E. McDonald, A4 of Cherokee; and S. Paul Shoemaker, P2 of Albia.

Installation of Freshman Commissioners followed the recognition services. The committee in charge of arrangements were Mildred Eck, A2 of Des Moines; Rayma Rawson, A3 of Strawberry Point; Alene Baird, A3 of Delta, Colo.; Edna Westerstom, A3 of Madrid; and *Helen Cole, A2 of Woodbine*.

FORTY-FIVE CO-EDS ATTEND MATRICES MEETING

EACH WRITER SIGNIFIES PARTICULAR FIELD OF INTEREST

Last evening forty-five aspiring women journalists met in the Journalism Building to discuss the formation of a new society for women interested in writing. Each woman was asked to sign up for the type of writing

which she was most interested in, and at the next meeting a series of lectures will be given on the topic in which the most women were interested.

Dorothy Wilson, A4 of Mason City, acting president of Theta Sigma Phi, which is the sponsor of this group, outlined the different types of writing which students might participate in.

Miss Wilson extended an invitation to the group to attend a reception to be given by Theta Sigma Phi and Sigma Delta Chi for those attending the press convention here on November 14.

A nominating committee for officers of the group was appointed as follows: Mildred Augustine, A3 of Ladora; Agnes Ann Kelleher, A4 of Des Moines and Esther Fuller, A1 of Mount Ayr. The election of officers will be held at the next meeting.

A committee was appointed by Miss Wilson to draw up a constitution for the organization. The following women were named: Zoe Lemley, A4 of Brighton; Katharine Macy, A2 of Adel, and Marie Herzer, A3 of Des Moines.

LEADERS EXPLAIN COMMISSION IDEALS TO MEMBERS

SELECT WOMEN FROM ENTIRE FRESHMAN CLASS

The members of the Freshman Commission for the coming year were named at the installation service held yesterday afternoon in connection with the recognition service of the Y.W.C.A.

Among those chosen were *Aileen Carpenter, of Iowa City*, and *Genevieve McClellan, of Des Moines*, Delta Zetas.

The purpose of Freshman Commission is "to be to the freshman women of the university as the Y.W.C.A. Cabinet is to all the women students." This group working as a unit will interpret campus problems especially in their significance to freshmen.

Members of last year's commission who were replaced yesterday afternoon by the installation of the new were: Eleanor Gamble, of Jefferson; *Ruth Tamisiea, of Missouri Valley*; Frances Schreurs, of Muscatine; Marion Rambo, of Otumwa, Margaret Kahlke, of Chicago; Mary Paulen, of Waterloo; *Pamela Dulaney, of Sergeant Bluffs*; Virginia Ball, of Iowa City; Alberta Crozier, of North Liberty; Alice Cox, of Montezuma; Emily Patterson, of Keokuk; Mildred Eck, of Des Moines; Ella Kraushaar, of Waverly; Mary Lou Allen, of Des Moines; Katherine Hutchinson, of Rockwell; Louise Nelson, of Des Moines; Beatrice Messer, of Hartley; Helen Bein, of Davenport; Dorothy Kane, of Osage, and *Vera Hood, of Independence*.

TAGGART-DALZELL

Mr. and Mrs. Thomas Dalzell were guests at the Theta Xi fraternity and Delta Zeta sorority houses this week before going to La Crosse, Wis., where they will make their new home.

WORLD PROBLEMS ARE DISCUSSED BY Y.W.C.A. COUNCIL

Mable Morris, A4 of Newton, led in the Y.W.C.A. council discussion which followed a breakfast Sunday at 8:15 as special observance of the national week of prayer. Twenty council members and the women of the student volunteer group were present for the breakfast and discussion. Mae Becker, A4 of Elkad; Edna Miler, A3 of Brooklyn; Viola Lake, A4 of Iowa City, and *Vivian Conrad, A4 of Burlington*; working with Miss Morris led in the discussion of problems which are shared by the students of this university in common with other students of the world.

Some of the problems discussed were: The Y.W.C.A. and its relation to industrial women; our relation to students of other lands, and the phases of Christ's life which most appealed to the typical college woman.

TWELVE AWARDED ACQUATIC LAURELS

KINNEY, TIMBERMAN, TIE FOR FIRST PLACE IN NOVICE MEET

Shirley Kinney and Alice Timberman tied for first place in the novice swimming meet held at the women's gym last evening at 7:15. The winners received a silver medal; and their winning prohibits them from ever taking part in another novice meet.

The winner of second place, Dorothy Herrick, and of third place, Viola Thisius, were awarded ribbons.

Each entrant was permitted to compete in only four of the seven events on the program. Winners in each of the events were as follows:

Swimming for form in the side, under arm, and crawl stroke: first, Shirley Kinney; second, Alice Timberman; and third, Viola Thisius.

Twenty-yard back stroke: first, Helen Springer; second and third, combined, Alice Roose, Florence Nordman and Dorothy Herrick.

Forty-yard side stroke: first, Rosanna Chesterman; second, Shirley Kinney; and third, Alice Roose.

Plunge for distance: first, Letha Harrison; second, Viola Thisius; third, Ruth Heimbaugh.

Forty-yard free style: first, Alice Timberman; second, Helen Monosmith; and third, Dorothy Herrick.

Twenty-yard breast stroke: first, Louise Nelson; second, Viola Thisius; and third, Florence Nordman.

Plain diving: first, Dorothy Herrick; second, Helen Monosmith; and third, Letha Harrison.

Anyone of the entrants, except the winners of the medal, is eligible to enter any event in another novice meet but the one in which she took first place at this meet.

Judges of the meet were Helen Saum, instructor in swimming, Joyce Brady and William A. McCullough.

NEPTUNE WEDDING CAUSES STIR IN WHIRL OF SOCIETY

A wedding of great interest to members of the university will be held Thursday and Friday evening in the men's gym. Contrary to usual custom, the ceremony will be repeated on the second night, to accommodate all the friends of the bride and her followers. No other event this year has had more prominent actors taking part. Father Neptune is possibly the best known of the characters.

In fact, this wedding is a feature of the Eel-Seal Revue, which will be given this week. The characters will all be taken by members of the Seal's organization, who are putting on this feature. Father Neptune, who will give away the fair bride, will be taken by Eleanor Chase, A3 of Clinton. The bride, wearing a veil which will literally be floating, is Shirley Kinney, A4 of Mason City.

The part of the groom will be played by Margarita McGovney, A4 of Iowa City. The other parts of the feature are Best Man, *Alice Timberman*, A4 of Massena; Minister, Helen Monosmith, A3 of Fort Dodge; Maid of Honor, Helen Springer, A2 of Leon; Flower Girl, Eve Mae Prunty, A2 of Des Moines; Ring Bearer, Rosanna Chesterman, A3 of Sioux City; Maids of Honor, Helen Smith, A3 of Sioux City; Dorothy Herrick, A1 of Cherokee; Mary Gore, A3 of Sidney; Ruth Heinbaugh, A2 of Superior, Wis.; Mildred Augustine, A3 of Ladora; Doris Green, A4 of Des Moines; Dorothy Wilson, A2 of Greene; and Emily Russell, A4 of Aberdeen, S. Dak.

170 LANDLADIES INVITED TO TEA

DISCUSSION OF HOUSING PROBLEM TO FEATURE ENTERTAINMENT

One hundred seventy invitations were mailed from the office of the dean of women for the landladies tea which will be held in the drawing room of the liberal arts building today at four o'clock.

The discussion of the afternoon will be opened with an address from Dean Adelaide Burge. After a round table consideration of the everyday problems, the following program will be given: reading, Lucile Morsche, A2 of Sioux City; *piano solo*, *Judith Tornell*, A4 of Pilot Mound; and vocal solo, Esther Dyke, A3 of Iowa City. Tea will be served by the women's association.

In her letters of invitation Dean Burge urges all women who rent rooms to university women to meet with her at this time for a conference, which she feels will be mutually beneficial.

AFTERNOON VARSITY IS SCHEDULED FOR ARMISTICE DAY

Afternoon varsity for next week does not mean Saturday afternoon varsity. In this case it means Tuesday afternoon, for the third afternoon varsity of the season will be held on Armistice Day.

Managers of the affair have set the hour for opening at 2:30 P. M. instead of the usual hour of 3 P. M., thus affording an extra thirty minutes to those who would celebrate the day with dancing.

Hostesses for the afternoon will be *Dorothy Wilson, A4 of Mason City*, and *Velma Critz, A3 of Iowa City*.

Another deviation from the Saturday schedule will be varsity held on the afternoon of Thanksgiving Day.

Melba Carpenter, a Delta Zeta, played the rôle of Mrs. Titus Dudgeon in George Bernard Shaw's *The Devil's Disciple*, December 10-11.

SORORITIES TO HOLD INTERPROFESSIONAL MIXER NEXT FRIDAY

The Liberal Arts drawing room will be the scene of an interprofessional sorority mixer, on Friday evening, November 21.

The hostesses for the affair are Ruth Wolcott, M4 of Spirit Lake, representing Nu Sigma Phi; Ruth Hoadley, Cm4 of Cedar Rapids, Gamma Epsilon Pi; *Doris Rae, L1 of Caldwell, Idaho, Kappa Beta Pi*; Julia Field, A4 of Forest City, Theta Sigma Phi, and Lewine Murphy, P2 of Waucoma, Kappa Epsilon.

W.A. WILL INCLUDE POINT SYSTEM IN STUDENT HANDBOOK

DATE FOR CO-ED HOP ALSO SET BY COUNCIL AT MEETING

Plans Are Made to Put Personal Interest Cards on File

Plans were made for a freshman handbook, a filing system for the personal interest cards, and the date was set for the co-ed hop, at W.A. meeting yesterday afternoon.

The handbooks which are planned will contain information useful not only to freshman women but to others as well. The revised point system, which governs the number of offices which a student may hold at one time will no longer be an unexplained mystery. The social regulations of the university will be found therein and ignorance will be no excuse before the law. A revised constitution of the Women's Association and a schedule of activities for women completes the content.

The publicity department is in charge of this publication with *Dorothy Wilson, A4 of Mason City*, as chairman. The book will be available some time next week to any women who desire it.

The personal interest cards for women which were attached to the registration blank last fall will be filed for reference use by the organization this week. These will be available upon request and will be of use in determining the interests of the women of the university. Any activ-

ities, such as literary societies or choirs, may learn who would be interested in joining by means of this file.

The co-ed hop also approacheth. On February 14 at the varsity the women of the university will celebrate the day of Saint Valentine. The upperclass women will draw names of freshman women to sponsor at the party as they did for the sponsor-sponsee party in the fall. The upperclass women will call for the freshman whose name she draws and escort her to the party. The programs will be in the form of hearts and the affair will carry out the valentine motif throughout.

LAMBDA

MISS HOLMAN GRANTED LEAVE

Professor Araminta Holman, head of the department of applied art at K.S.A.C. since 1913, has been granted a leave of absence for the second semester for study abroad. Miss Holman will leave immediately for France where she will attend the Paris Ateliers, the Paris branch of the New York School of Fine and Applied Art, which is under the direction of President Frank Alvah Parsons.

Miss Holman, who is a graduate of the New York School of Fine Arts, will enroll in graduate courses which include lectures given at the school on the History of France and its art, lectures at the important museums, trips to Versailles and Fontainebleau, with studio work in interior architecture and decoration, costume design, and illustrative advertising.

SIGMA

SOME STUDENT LEADERS

LAVINIA MCGUIRE

Lavinia McGuire, of Monroe, La., senior in the college of arts and sciences at the Louisiana State University, is president of the co-ed body for the school session of 1924-25. This is her third year at L.S.U., her freshman year having been spent at Randolph-Macon Women's college, Lynchburgh, Va.

Miss McGuire is a prominent figure on the campus having been an active participant in many college activities. During her first year at L.S.U. she made the girls' track team of which she has been a member ever since. At the close of last session she represented the university at the Young Women's Christian Association conference held annually in Blue Ridge, N. C.

During her second year at L.S.U., Miss McGuire served as president of the Y.W.C.A. and also as a member of the *Gumbo* staff. She represented the co-eds at the Student Government Conference held in the spring of 1923 in Columbus, Miss. She was pledged by the Blazers, women's hon-

orary fraternity, in recognition of her ability as a student and her participation in college activities.

In addition to being president of the co-eds, Miss McGuire is secretary of the Y.W.C.A., a member of the executive board of the Women's Athletic Association, and chairman of the committee on the extension of the honor system in the colleges of Louisiana. She also made the senior volley ball team for this year.

Miss McGuire is a member of the Delta Zeta national Greek-letter sorority and of the Panhellenic Council representative body of the sororities on the campus.

CHI

UNION CAMPAIGN GENERALS NAMED

OFFICIAL LEADERS FOR FOUR CLASSES AND FACULTY TO HEAD CAMPUS
DRIVE—STUDENT HELP ASKED

Numerous Committees to Solicit Funds During Schedule Period

Colonels and captains of the four classes and faculty have been appointed preparatory to the coming Memorial Union Campaign. Members of the committees, acting as colonels, captains and lieutenants, have been selected with great care, owing to the magnitude of the undertaking. Students not appointed will be given every opportunity to aid the committees in the drive.

The senior section is composed of Robert Theiring, colonel; Marcella Sandon, *Lois Fendall*, Earl Farra, John Curran, and Dick Robbins, captains.

MISS BARNES ATTENDS EASTERN CONVENTION

REPRESENTATIVE OF PUBLIC SPEAKING DEPARTMENT IS ONLY WOMAN ON
LARGE PROGRAM

Miss Elizabeth M. Barnes, assistant professor of public speaking, attended the national convention of Teachers of Speech held at Northwestern University, Evanston, Ill., from December 29 to January 1.

BASKETBALL HONORS GO TO DELTA ZETAS

EXTRA PERIOD IS REQUIRED TO BEAT TRI DELT TEAM

Alpha Rho, Wauna Club, and Cluba de Amigas Are Also Victors
in Fast Contests

The Delta Zetas, after two tie games in the intramural basketball series, won from Delta Delta Delta with a score of 14-12 last night. The

Delta Zetas were ahead at the end of the first half with nine points to their credit against six for their opponents. The competition was keen from the start as a result of a tie game played between these two teams last Friday. Lois Fendall took high point honors with fourteen points to her credit.

Luck was the deciding factor in the final score as extra time was given to play off the tie by giving time for one basket to be made. The line-up for Delta Zeta was Lois Fendall, Vivian Cramer, Katherine Lindley, captain, Wildes Edwards, Carrie Jennings and Vernita Herron. The Delta Delta Delta team consisted of Evelyn Genoe, Alfreda Beck, Rosina Porter, Ruby Starkweather, Dorothy Lucker, Leona Myers, captain, and Marion Hoskins.

OMEGA

GIRLS' DEBATE TEAMS CHOSEN

WILLAMETTE-O.A.C. CONTEST IS FIRST MEET LISTED—TWO SQUADS
PICKED

Japanese Exclusion Act to Be Discussed

The women's varsity debate team which will meet Willamette and O.A.C. in a triangular debate, in February, was picked Saturday by E. W. Merrill, women's forensic coach. The team was chosen from a squad of eight women, who have been working on the debate question since the early part of last term.

The other four members of the squad were not eliminated, said Coach Merrill, but will begin at once to work on the California-Washington triangular contest which will be held later this spring.

NAMES ARE GIVEN

The women chosen for the Willamette-O.A.C. debate are: affirmative, *Dorothy Newman* and *Mildred Bateman*; negative, *Aline Buster* and *Margaret Woodson*. The affirmative team will meet Willamette and the negative debaters will compete with the team from Corvallis.

The question to be decided is that of the Japanese exclusion act. This subject was used in the doughnut meets of last term and will be the topic in the final doughnut contest to be staged this week.

TEAM MEMBERS EXPERIENCED

The members of the squad chosen to take part in the California-Washington contest are: affirmative, *Beatrice Mason* and *Cecil McKercher*; negative, *Flora Campbell* and *Helen Louise Crosby*. These speakers will also act as alternates in the Willamette-O.A.C. debate.

All of the members of the teams are experienced in forensic work

and are able speakers, said Coach Merrill, and the women's debates this year are expected to be successful.

DELTA ZETA HONORS HOUSE MOTHER AT TEA

Delta Zeta entertained with a formal tea Saturday afternoon in Alumni Hall in honor of Mrs. Grace Russell, Delta Zeta house mother. About three hundred invitations were issued. In the receiving line were Mrs. Virginia J. Esterly, Mrs. Grace Russell, Gertrude Houk, Dorothy Abbott and Ruth Lane.

Mrs. Walter Barnes, Mrs. Alfred Schroff, Eunice Zimmerman and Florence Alden presided at the tea service. During the receiving hours, Madame Rose McGrew sang, and Esther Christensen gave several piano selections.

ALPHA ALPHA

(Chicago Tribune)

DELTA ZETA'S FUND RAISED FOR N.U. HOME

That the flapper co-ed has stick-to-it-iviness and business ability under her bobbed hair is seen in an announcement yesterday that after ten years of scrimping and saving the Delta Zeta sorority of Northwestern University has accumulated its quota and is about to have its own home.

The last of the houses available in the quadrangle to be built near the campus next spring, yesterday was awarded the sorority. Starting ten years ago, the girls built up their fund with style shows, bazaars and running a refreshment stand at a suburban golf club. Annette Mayhew is president of the Northwestern chapter and Joy Tibbetts was chairman of the house committee which completed the fund raising.

SOCCERETTES PLAY FIRST GAME AT N.U.

SENIORS AND SOPHOMORES KICK WAY TO 2-2 TIE

Showing a great deal of individual ability but a lack of smoothly working team work, the senior and sophomores women's soccer teams played to a 2-2 tie in the first interclass game of this sport at Northwestern. The only evidence of team play was in the senior forward line where the inners and outers worked well together and with the center often passing the sophomore defense.

In the first half the seniors had everything their own way, scoring two goals and holding the sophomores scoreless. Helen Smallpage played a clever game near the goal and kicked both the scores for the seniors. She was aided by the swift passing between *Annette Mayhew* and Dorothy Pearsons, which fooled the sophomore defense continually.

Offensively, the sophomores were greatly improved in the second half, and kept the ball in their opponents' half of the field most of the time. Before five minutes of the second half were over the sophomores' forward

line had rushed through the senior defense quickly enough to enable Janet Bonar to shoot the two goals which tied the score. They kept on threatening the senior goal, but the opposing defense strengthened and held them.

Marion Youngquist was an important factor in the senior defense and succeeded in blocking many sophomore kicks for goals. Toward the end of the game she got the ball many times as the sophomores neared the goal and kicked out of dangerous territory. *Jean Maxham* and *Florence Nelson* were also good on the defense and gave the seniors many chances to break the tie score, but the opposing defense also held.

"Though the playing was bunched at times and showed a lack of technique, promising material was in evidence which gives hopes for better games in the future," is the opinion of Miss Frazier. "When the girls have played the game longer they will be much more skilled in using tricky foot and body work. Already there has been improvement because of the excellent instruction of Coach "Jock" Patterson who has been helping the coaching staff of the Physical Education Department all fall."

ALPHA ETA

FANCY DRESS PARTY GIVEN BY WOMEN'S LEAGUE IS SUCCESS

FIVE AWARDS ARE MADE FOR CLEVEREST AND PRETTIEST COSTUMES

The Women's League fancy dress party, held Saturday evening in Barbour Gymnasium, was one of the most successful in the history of the organization. The affair, which has become an annual event to which girls only are admitted, is marked by its splendor and gayety.

Five sets of prizes were awarded to the various groups on the basis of the attractiveness, originality and the most amusing costumes. Adam's house received first prize as the best small group, for its "Cain" and "Abel." Of the larger groups, Sigma Kappa's set of blocks was chosen as most original, with honorable mention to the kitchen band by Alpha Chi Omega, the *candy sticks* by Delta Zeta, Alpha Gamma Delta's jazz band, and Delta Delta Delta's league bricks.

The prize for the prettiest went to the Pied Piper of Hamelin by Pi Beta Phi, with the pierrots by Kappa Kappa Gamma as second and Chi Omega's cross-word puzzle as the most amusing. Westminster house girls, who came as convicts, were chosen as the most effective. Honorable mention was given to Delta Gamma's woofie dolls, Betsy Barbour's orphanage, and Alpha Phi's Sunday School picnic.

The three honor societies, Mortar Board, Wyvern and Senior Society, each gave a stunt after the fancy dress awards were given, the *senior class* winning first prize, a take-off of the health service physical examination for freshmen.

The judges for all prizes were Mrs. M. L. Burton, Mrs. J. R. Effinger,

Mrs. A. S. Whitney, Mrs. J. A. Bursley, Dean Jean Hamilton, Mrs. Amy Hobart, Grace Richards, Dr. Margaret Bell, Ethel McCormick and A. L. Lake.

The music for the dancing, which continued until eleven o'clock, was furnished by the Kappa Sigma orchestra. Novel refreshments were served.

SCHEDULE PANHELLENIC BANQUET FOR THURSDAY

The entire chapter rolls of all the sororities on the campus will be entertained at a Panhellenic banquet to be held at six o'clock Thursday in the Michigan Union dining room. Charlotte Blagdon, '25, president of the Women's League, and Margaret Dixon, '25, vice-president, will address the women after the banquet.

The purpose of the affair, which is a social innovation this year, is primarily to explain the real meaning of Panhellenic to the women and to emphasize the need for organized effort and interest.

Edna Kadow, '25, is general chairman of the function. She will be assisted by *Thyra Sheffield*, '25, and Evelyn Wideman, '25.

ALPHA XI

SPRING DEBATERS CHOSEN

JAPANESE IMMIGRATION, SUBJECT

The two debating teams which are to represent Randolph-Macon in the annual triangular debate with Sophie Newcomb and Agnes Scott have been chosen. *Bowers Mackorell*, the president of the local Debating Council, Evelyn Thompson, and Mary Johnson will comprise the team debating against Sophie Newcomb in New Orleans. *Susie Cobbs*, Laura Loving and Virginia Parks will be the team to debate against Agnes Scott's team at Randolph-Macon. Both teams are composed of Randolph-Macon's best ability and talent for the debating platform and we are expecting victory over our formidable opponents this year. The subject submitted and selected by the Debating Councils of the three colleges is: "*Resolved*, That the Immigration Act of 1924 will promote the best interests of the United States." The debates will take place at the three southern colleges on the evening of March 20.

ALPHA OMICRON

Pearl Jones, president of the Brenau Athletic Association and a member of Alpha Omicron of Delta Zeta, has accepted the directorship of the southern district of athletics, which consists of the states of Alabama, Mississippi, Georgia and Florida.

Louise Stokes, a Delta Zeta alumna of Alpha Gamma chapter, who now lives in Atlanta, Ga., and Edith Jonas, an alumna of Alpha Omicron chapter, who lives in Lenore, N. C., were present November 8 for the Delta Zeta rush party at Brenau College, Gainesville, Ga.

Delta Zeta Fraternity

Founded at Miami University October 24, 1902

GUY POTTER BENTON, D.D., LL.D., *Grand Patron*

FOUNDERS

ALFA LLOYD HAYES
ANNA KEEN DAVIS
MABELLE MINTON HAGEMANN

ANNA SIMMONS FRIEDLINE
MARY COLLINS GALBRAITH
JULIA BISHOP COLEMAN

NATIONAL COUNCIL

National President.....JULIA BISHOP COLEMAN (Mrs. J. M.)
104 Riverside Drive, Loveland, Ohio

National Vice-president.....GEORGIA CHANDLER HORNING (Mrs. H. V.)
8238 Lawton Ave., Detroit, Mich.

National Secretary.....EDYTHE WILSON THOSEN (Mrs. H. J.)
Canon Park, Boulder, Colo.

National Treasurer.....MYRTLE GRAETER MALOTT (Mrs. Carl)
931 W. Craig Place, San Antonio, Tex.

Editor of LAMPVERA BROWN JONES (Mrs. E. E.)
1115 Church St., Evanston, Ill.

Historian.....GRACE E. MASON
1340 Park Ave., Indianapolis, Ind.

Executive SecretaryGRACE E. MASON
1340 Park Ave., Indianapolis, Ind.

Delta Zeta Panhellenic DelegateRENE SEBRING SMITH
Y.W.C.A., Long Beach, Cal.

President of National Panhellenic.....DR. MAY AGNESS HOPKINS, Z T A
619 Medical Arts Building, Dallas, Tex.

STANDING COMMITTEES OF DELTA ZETA

Social Service: Arema O'Brien Kirven (Mrs. Frank), 27 Berkeley Place, Columbus, Ohio; Alene Davis, Δ Z House, Ann Arbor, Mich.; Amanda Thomas, Box 511, Columbus, Ohio; Mrs. Frank Harper, 9 Berkeley Place, Columbus, Ohio.

Health Committee: Dr. Helen Johnston, 1005 Bankers Trust Bldg., Des Moines, Iowa; Dr. Wilhelmina Scott, Lancaster General Hospital, Lancaster, Pa.; Dr. Mary Hill Fulstone, Wellington, Nev.; Melva John, Emergency Hospital, Washington, D. C.; Gladys M. Taggart, 1544 10th St., Des Moines, Iowa.

Examination and Educational: Evalene Kramer Sullivan (Mrs. M. F.), Chairman, Ft. Riley, Kan.; Izil Polson, 1111 Bluemont Ave., Manhattan, Kan.; Marion Spinney, 4033 E. 17th Ave., Denver, Colo.

Scholarship: Louella Hall, Hotel Lodi, Lodi, Cal.

Extension: Edythe Wilson Thoesen.

Constitution: Violet Ironmonger, Mountain Lakes, N. J., chairman; Mildred French, 417 W. 120th St., New York, N. Y.; Mrs. Mary Dranga Campbell, Callowhill St., East End, Pittsburgh, Pa.; Margaret Gladney, Box 494, Beaumont, Tex.

House Management: Irene Boughton, 3824 Jackson St., Sioux City, Iowa; Marion Burns, 34th and Frederick Sts., Kansas City, Mo.; Mrs. J. R. Thompson, 1340 R St., Lincoln Neb.; Louise Mattern, 816 Hill St., Ann Arbor, Mich.

Songbook: Virginia Smith, 3113 E. Cherry St., Seattle, Wash.; Dorothy Wigman, 103 Overbrook Blvd., Mt. Oliver Branch, Pittsburgh, Pa.; Evelyn Ross, 1174 Ashland Ave., Columbus, Ohio; Mrs. M. Jerome Hubert, Delmoor Bldg., Cincinnati, Ohio.

Vocational Guidance: Bertha Rogalsky, 138 Kinsey Ave., Cincinnati, Ohio; Thelma Jones, Mary Lou Wickerson, 10 Bella Vista Place, Cincinnati, Ohio.

Finance: Myrtle Graeter Malott, 931 W. Craig Place, San Antonio, Tex., chairman.

Leila B. Colwell, 904 Bluemont, Manhattan, Kan.

P
Z
T
A E
H

Bernice Klotz, Wilson, Kan.

Δ
E
O
Ψ
Θ

Constance Stegenga, 120 Hitchcock, Alpena, Mich.

A A
A B
Γ
Ξ
A P

Mrs. Leah McIntyre Rearden, 302 Physicians Bldg., Sacramento, Cal.

A I
M
K
A A
Υ

Barbara Murray, 310 S. 35th St., Billings, Mont.

B
A M
A K
Σ
A Γ

Esther Simons, 404 West Ave., Alamosa, Colo.

A Θ
A Ξ
A Π
N
Π

Sallie Boyle, San Francisco, Cal.

A H
A N
A
I
X

Florence L. Becker, Liberty, N. Y.

A Z
A Δ
A O
A Σ
(A Υ) A
A T
Φ
Ω

Beulah Nelson, Cashmere, Wash.

Convention: June 1926—Berkeley, Cal. Mu Chapter hostesses

Provinces of Delta Zeta Fraternity

ALPHA PROVINCE

President—Marcelle Pendery, 880 W. 181 St., New York, N. Y.

COLLEGE

BETA—Cornell University, Ithaca, N. Y.
OMICRON—University of Pittsburgh, Pittsburgh, Pa.
ALPHA ZETA—Adelphi College, Brooklyn, N. Y.
ALPHA KAPPA—Syracuse University, Syracuse, N. Y.
ALPHA MU—St. Lawrence University, Canton, N. Y.
ALPHA UPSILON—University of Maine, Orono, Me.

ALUMNÆ

New York, N. Y.
Pittsburgh, Pa.

BETA PROVINCE

President—Catherine Winters, Florida State College for Women, Tallahassee, Fla.

COLLEGE

SIGMA—Louisiana University, Baton Rouge, La.
ALPHA DELTA—George Washington University, Washington, D. C.
ALPHA GAMMA—University of Alabama, University, Ala.
ALPHA OMICRON—Brenau College, Gainesville, Ga.
ALPHA PI—Howard College, Birmingham, Ala.
ALPHA SIGMA—Florida State College, Tallahassee, Fla.
ALPHA XI—Randolph-Macon Woman's College, Lynchburg, Va.

ALUMNÆ

Washington, D. C.

GAMMA PROVINCE

President—Gladys Hartman Ruoff (Mrs. F. L.), 783 East Drive, Woodruff Place, Indianapolis, Ind.

COLLEGE

ALPHA—Miami University, Oxford, Ohio.
DELTA—DePauw University, Greencastle, Ind.
EPSILON—Indiana University, Bloomington, Ind.
THETA—Ohio University, Columbus, Ohio.
XI—University of Cincinnati, Cincinnati, Ohio.
PSI—Franklin College, Franklin, Ind.
ALPHA ETA—University of Michigan, Ann Arbor, Mich.
ALPHA THETA—Kentucky State University, Lexington, Ky.
ALPHA NU—Butler College, Indianapolis, Ind.
ALPHA RHO—Ohio Wesleyan University, Delaware, Ohio.

ALUMNÆ

Indianapolis, Ind.
Cincinnati, Ohio.
Columbus, Ohio.
Cleveland, Ohio.
Ft. Wayne, Ind.
Franklin, Ind.
La Fayette, Ind.
Detroit, Mich.

DELTA PROVINCE

President—Lois Higgins, 5427 University Ave., Chicago, Ill.

COLLEGE

GAMMA—University of Minnesota, Minneapolis, Minn.

IOTA—Iowa State University, Iowa City, Iowa.

NU—Lombard College, Galesburg, Ill.

PI—Eureka College, Eureka, Ill.

TAU—University of Wisconsin, Madison, Wis.

UPSILON—University of North Dakota, Grand Forks, N. Dak.

ALPHA ALPHA—Northwestern University, Evanston, Ill.

ALPHA BETA—University of Illinois, Champaign, Ill.

ALUMNÆ

Chicago, Ill.

Eureka, Ill.

EPSILON PROVINCE

President—Fannie Putcamp Smith (Mrs. F. D.), Southern Methodist University, Dallas, Tex.

COLLEGE

ZETA—University of Nebraska, Lincoln, Neb.

ETA—Baker University, Baldwin, Kan.

LAMBDA—Kansas State Agricultural College, Manhattan, Kan.

ALPHA EPSILON—Oklahoma State College, Stillwater, Okla.

ALPHA TAU—University of Texas, Austin, Tex.

ALUMNÆ

Lincoln, Neb.

Kansas City, Mo.

ZETA PROVINCE

President—Margaret Pope Fraser (Mrs. Harold E.), 1456 Sacramento St., San Francisco, Cal.

COLLEGE

MU—University of California, Berkeley, Cal.

RHO—Denver University, Denver, Colo.

ALPHA IOTA—University of Southern California, Los Angeles, Cal.

ALPHA LAMBDA—University of Colorado, Boulder, Colo.

ALUMNÆ

San Francisco, Cal.

Denver, Colo.

Los Angeles, Cal.

ETA PROVINCE

President—Ruby Long, Cashmere, Wash.

COLLEGE

KAPPA—University of Washington, Seattle, Wash.

PHI—State College of Washington, Pullman, Wash.

CHI—Oregon Agricultural College, Corvallis, Ore.

OMEGA—University of Oregon, Eugene, Ore.

ALUMNÆ

Seattle, Wash.

Portland, Ore.

Spokane, Wash.

Chapter Directory

ALUMNÆ

Berkeley, Cal.

President—Helen Wetzel, 1943 Marin Ave.
Secretary—Dorothy Morton, 946 San Benito.
Treasurer—Helen Kendall Chapman, 6420 Telegraph Ave., Oakland.
Editor—Elsie Jaeggi, Oakland High School, Twelfth and Jefferson Ave., Oakland.

Chicago, Ill.

President—Ruth Gaddis Jeffries (Mrs. Robt.), 5445 Cornell Ave.
Treasurer—Aura Splinter, 1442 Belleplaine Ave.
Secretary—Camille Branham, 613 Fullerton Parkway.
Editor—Helen Trimpe, 529 Wellington Ave.

Cincinnati, Ohio.

President—Mrs. M. Jerome Hubert (Dorothy Smith), Romaine Apartments.
Secretary—Mrs. Wm. Maxwell Fuller (Lucy Draper), 3332 Morrison Ave.
Treasurer—Mrs. Edward C. Marshall (Edith Durrell), Ridge Ave.

Cleveland, Ohio.

President—Ruth Davis, Theta, 10305 Lake Ave.
Secretary—Mildred Foureman, Theta, 3138 Kensington Rd., Cleveland Heights, Ohio.
Treasurer—Marvene Howard, Alpha, c/o Cleveland Electric Illuminating Co., Cleveland, Ohio.

Columbus, Ohio.

President—Amanda Thomas, Box 511.
Secretary—Hazel Stevens (Mrs. W. A.), 1046 Linwood Ave.
Treasurer—Marie Smith Baber (Mrs. John), West Jefferson, Ohio.

Denver, Colo.

President—Mrs. Minnie Ellison Gray (Mrs. Howard), 5300 W. 41st Ave., Denver.
Secretary—Bernadetta Daly, 1357 Kalamath St.
Treasurer—Miriam O'Brien, 1654 S. Pearl St.
Chapter Editor—Dorothy Leslie, R. 2, Box 490, Edgewater, Colo.

Detroit, Mich.

President—Mrs. W. A. Houser, 12083 Cloverlawn Ave.
Secretary—Lillian Prance, 1344 W. Grand Blvd.
Treasurer—Laura Marshall, Business Institute, 4709 Woodward Ave.
Editor—Bernice Elliott, Highland Park High School.

Eureka, Ill.

Ft. Wayne, Ind.

President—Marie Thrush.
Treasurer—Virginia Jackson.
Secretary—Marion Thrush Weathers, Garrett, Ind.
Editor—Ruth McDaniels.

Indianapolis, Ind.

President—Mrs. Walter Smuck, 2816 Ruckle St.
Vice-president—Mrs. Robert Allen, 3272 McPherson.
Secretary—Mrs. Frank Abel, 2108 N. Meridian, No. 22.
Treasurer—Helen Pearson, 2932 Central.

Kansas City, Mo.

President—Marion Burns, 2502 N. 34th St., Kansas City, Kan.
Secretary—Beulah Kelly, 944 Ann Ave., Kansas City, Kan.
Treasurer—Mrs. R. D. Marquis, 3408 Smart Ave., Kansas City, Mo.
Chapter Editor—Esther Weber, 1415 Walker Ave, Kansas City, Kan.

Lincoln, Neb.

President—Lila Belle Love, 1448 South St.
Vice-president—Blanche Austin.
Secretary-Treasurer—Ruby Knepper, 2045 Pepper Ave.
Editor—Pearl Barton.

Los Angeles, Cal.

President—Mrs. Fred H. Stone, 1566 W. 51st St.
Secretary—Regina Reis, 96 W. Emerson, Monterey Park, Cal.
Treasurer—Pauline Parkhurst, 6142 Afton Place, Hollywood, Cal.
Editor—Gladys E. Marquardt, 376 Broadway, Huntington Park, Cal.

Omaha, Neb.

President—Geneva Hursh Beck (Mrs. A. V.), 2555 Meredith Ave.
Secretary—Clara Dodds Bristol (Mrs. John), 2538 Dodge St.
Treasurer—Rose Bergman Rosenblum (Mrs. A.), 5120 Izard St.

New York, N. Y.

President—Violet M. Ironmonger, Mountain Lakes, N. J.
Vice-president—Marion C. Schaaf, 1913 Bogart Ave., New York, N. Y.
Secretary—Dorothy Schumann, 71 Winthrop St., Brooklyn, N. Y.
Treasurer—Dorothy King, 387 E. 5th St., Brooklyn, N. Y.
Editor—Kathleen Robertson, Apt. 47, 618 W. 177th St., New York, N. Y.

Pittsburgh, Pa.

President—Elizabeth Askin, 1 Wheeler Ave., Ingram, Pa.
Secretary and Editor—Margaret Ralston Wilson, 214 W. North Ave.,
Pittsburgh, Pa.
Treasurer—Elizabeth Austen, 305 Center St., Aspinwall, Pa.

Portland, Ore.

President—Naomi Coffield, 710 Porter Bldg.
Secretary—Alice Feike Weiman, 1009 E. 16th St. N.
Treasurer—Jean Kitts, 1434 Wisteria Ave.

Seattle, Wash.

President—Gertrude Sisler, 711 Thirty-third Ave.
Secretary and Treasurer—Dorothea Jackson, 1847 Shelby.
Editor—Clara Penberthy Wilson (Mrs. G. E.), 2837 Thirty-third Ave. S.

Spokane, Wash.

Washington, D. C.

President—Mrs. Dorothy D. Zirkle, The Calverton, Washington, D. C.
Secretary—
Treasurer—Mrs. E. Remington Kellogg, 4003 Eighth St., N. W., Wash-
ington, D. C.
Editor—Miss Alice Baldwin, The Argyle Apt., Washington, D. C.

COLLEGE

ALPHA—Miami University, Oxford, Ohio.

President—Marian Parker, 30 Wells Hall.
Secretary—Camilla Fry, 34 Wells Hall.
Treasurer—Frances Helen Mains, 40 Wells Hall.
Editor—Florence Hill, 47 Wells Hall.
Big Sister—Mrs. Park J. Smith.

BETA—Cornell University, Ithaca, N. Y.

House—200 Highland Ave.
President—Leona Ruoff, Δ Z House.
Treasurer—Anita Gehan, Δ Z House.
Secretary—Esther Conroy, Risley Hall.
Editor—Mary Gilchrist, Risley Hall.
Big Sister—Florence Becker, Liberty, N. Y.

GAMMA—University of Minnesota, Minneapolis, Minn.

House—1112 S. E. 6th St.
President—Lorinda Larson.
Secretary—Gertrude Rider.
Editor—Gertrude Johnson.
Big Sister—Mrs. W. A. Billings (Alpha), 1325 W. 27th St., Minneapolis, Minn.

DELTA—DePauw University, Greencastle, Ind.

President—Helen English.
Vice-president—Helen Schudel.
Secretary—Alba Guyer.
Treasurer—Ruth Dick.
Editor—Gladys Lane.
Big Sister—Catherine Sinclair, 2446 College Ave., Indianapolis, Ind.

EPSILON—Indiana University, Bloomington, Ind.

House—809 E. 7th St.
President—Clyde Jacobs.
Secretary—Helen Lewis.
Treasurer—Juanita Collins.
Editor—Lillyon Snyder.
Big Sister—Mrs. Frank Duncan, Gosport, Ind.

ZETA—University of Nebraska, Lincoln, Neb.

House—557 N. 16th.
President—Blanch Stevens.
Secretary—Phyllis Walters.
Treasurer—Fern Jenkins.
Editor—Constance Stevens.
Big Sister—Mrs. Mae Bennett, 2700 Ryons Ave.

ETA—Baker University, Baldwin, Kan.

House—720 Dearborne St.
President—Maude McComas.
Secretary—Evelyn Mills.
Treasurer—Ruth Burns.
Editor—Ethel Homer, 202 Baker St.
Big Sister—Beulah Kelly, Muncie, Kan.

THETA—Ohio State University, Columbus, Ohio.

House—76 Fifteenth Ave.

President—Marjorie Van Bolt, 85 E. Oakland Ave.

Secretary—Gertrude Reed.

Treasurer—Carol Van Bolt.

Editor—Kathryn Kauffman.

Big Sister—Arema O'Brien Kirven, 27 Berkeley Place.

IOTA—Iowa State University, Iowa City, Iowa.

House—400 N. Clinton.

President—Esther Van Cleave.

Secretary—Lorraine Luthmer.

Treasurer—Virginia Douglas.

Editor—Judith Tornell.

Big Sister—Dorothy Banks, Burlington, Iowa.

KAPPA—University of Washington, Seattle, Wash.

House—4535 Eighteenth St.

President—Laura Beager, 4535 18th N. E.

Secretary—Dorothy Benham, 1204 E. 75th St.

Treasurer—Louise Ellinger, 4535 18th N. E.

Editor—Amelia Nichols, 610 Twenty-second Ave. N.

Big Sister—Gertrude Sisler, 711 33rd Ave.

LAMBDA—Kansas State Agricultural College, Manhattan, Kan.

House—1111 Bluemont.

President—Irene Barner.

Secretary—Anna Mae Davy.

Treasurer—Ruth Davison.

Editor—Edith Norris.

Big Sister—Izil Polson, 830 Bertrand.

MU—University of California, Berkeley, Cal.

House—2311 LeConte St.

President—Virginia Vail.

Secretary—Dorothy Cooper.

Treasurer—Mary Greenberg.

Editor—Marjorie Lewin, 136 Parkside.

Big Sister—Salome Boyle.

NU—Lombard College, Galesburg, Ill.

President—Ludella Malcolm, 767 Bateman St.

Secretary—Maurie Nelson, 67 N. Pearl St.

Treasurer—Lucille Thompson, R.F.D. 6, Galesburg, Ill.

Editor—Marion Quigley, 1042 N. Broad St.

Big Sister—Edna Thoreen, 1115 E. Main St.

XI—University of Cincinnati, Cincinnati, Ohio.

President—Mary McEvelley, 2525 Observatory Road, Hyde Park, Cincinnati, Ohio.

Secretary—Virginia Dale, 2256 Park Ave., Walnut Hills, Cincinnati, Ohio.

Treasurer—Dorothy Hetzel, 2840 Linwood Road, Hyde Park, Cincinnati, Ohio.

Editor—May E. Oliver, 6262 Robison Road, Pleasant Ridge, Cincinnati, Ohio.

Big Sister—Elaine DeBeck Fisher (Mrs. Cherrington).

OMICRON—University of Pittsburgh, Pittsburgh, Pa.

Chapter Rooms—1401 Bryn Mawr Road.

President—Magdalene Austen, Center Ave., Aspinwall, Pa.

Secretary—Margaret Boleky, Orchard Ave., Bellevue, Pa.

Treasurer—Katherine Morrison, 14 Dewey Ave., Ingram, Pa.

Editor—Helen R. Milar, 501 Library Ave., Carnegie, Pa.

Big Sister—Niella Snyder Reese, Idlewood St.

PI—Eureka College, Eureka, Ill.

House—Eureka, Ill.

President—Frances Robeson.

Secretary—Louise Coleman.

Treasurer—Josephine Felter.

Editor—Josephine Smith.

Big Sister—Mary Hoover Jones.

RHO—Denver University, Denver, Colo.

House—1950 S. University Ave.

President—Margaret Beatty, 2142 S. Milwaukee.

Secretary—Roberta McCallum, 2823 Vallejo St.

Treasurer—Dorothy Ellis, 2500 E. 11th Ave.

Editor—Sylvia Morrow, 1622 Dawning St.

Big Sister—Mrs. Lola Sylvester, 264 S. Grant St.

SIGMA—Louisiana University, Baton Rouge, La.

House—542 Boyd Ave.

President—Lavina McGuire.

Secretary—Marie Louise Berrel, 215 St. Charles.

Treasurer—Sarah Maxie Simmons, 132 St. Joseph's St.

Editor—Rachel Violette.

Big Sister—Effie May Dewitt, 325 Royal St.

TAU—University of Wisconsin, Madison, Wis.

House—10 Langdon St.

President—Lorraine Kreatz

Secretary—Martha Dalrymple.

Treasurer—Gwendolyn Drake.

Editor—Clara Eberly.

Big Sister—

UPSILON—University of North Dakota, Grand Forks, N. Dak.

House—315 Hamline St.

President—Janice Simonstad, 706 Walnut St.

Secretary—Lois Ferguson—East Grand Forks, Minn.

Treasurer—Olive Berget.

Editor—Katherine Pratt, 419 N. 5th St.

PHI—State College of Washington, Pullman, Wash.

House—511 Colorado.

President—Gertrude Tunnard.

Secretary—Dorothy Butler.

Treasurer—Myrtle Burnham.

Editor—Ruth Henrichsen.

Big Sister—Flossie Folsom, 2112 N. Howard, Spokane, Wash.

CHI—Oregon State College, Corvallis, Ore.

House—3 Park Terrace.

President—Ruth Slottee.

Secretary—Georgia M. English.

Treasurer—Lois Fendall.

Editor—Alice McCool.

Big Sister—Zelta Feike.

PSI—Franklin College, Franklin, Ind.

House—Franklin, Ind.

President—Mary Packer.

Secretary—Mary Ring.

Treasurer—Dorothy Best.

Editor—Berdina Donaldson.

OMEGA—University of Oregon, Eugene, Ore.

House—381 E. 12th St., Eugene, Ore.

President—Gertrude Helen Houk.

Secretary—Doris Parker.

Treasurer—Nell Miller.

Editor—M. Glenna Fisher.

Big Sister—Alys Sutton McCroskey (Mrs. Lyle).

ALPHA ALPHA—Northwestern University, Evanston, Ill.

President—Annette Mayhew, 6967 Sheridan Road, Chicago.

Secretary—Vivienne Morin, 635 Maple Ave., Wilmette, Ill.

Treasurer—Bertha Shoemaker, 1725 Orrington Ave., Evanston, Ill.

Editor—Harriet Gorby, 1411 Main St., Evanston, Ill.

Big Sister—Pauline Edwards Dodd (Mrs. C. A.), 4407 Magnolia Ave., Chicago, Ill.

ALPHA BETA—University of Illinois, Champaign, Ill.

House—509 E. Chalmers St.

President—Helen Zick.

Secretary—Ethel Mortenson.

Treasurer—Florence Frier.

Editor—Ilah Mendenhall.

Big Sister—Dorothy Gee, Lawrenceville, Ill.

ALPHA GAMMA—University of Alabama, University, Ala.

President—Augusta Parr.

Secretary—Thyra Muckle.

Treasurer—Gertrude Clap.

Editor—Gladys Oglesby.

Big Sister—Sara Newsom.

ALPHA DELTA—George Washington University, Washington, D. C.

Rooms—2022 G St. N. W.

President—Vera Stafford, 2905 Eleventh St. N. W.

Secretary—Ida May Lang, 25 Adams St.

Treasurer—Martha Morgan, 214 Eighth St. N. E.

Editor—Olive Chace, 6 W. Virginia St., Chevy Chase, Md.

ALPHA EPSILON—State Agricultural College, Stillwater, Okla.

House—308 Jefferson St.

President—Vera Vandenburg.

Secretary—Lucille Hunt.

Treasurer—Letha B. Gould.

Editor—Alice Fountain.

Big Sister—Miss Marian Burns, Kansas City, Kan.

ALPHA ZETA—Adelphi College, Brooklyn, N. Y.

President—Helen Jean Ross, 252 Rugby Road.

Secretary—Esther Keck, 352 Argyle Road.

Treasurer—Marjorie Atkins, 1424 Caton Ave.

Editor—Josephine Sanchez, 1572 Seventy-third St.

Big Sister—Miss Harriet B. Littig, 7 Summit Rd., Port Washington, N. Y.

ALPHA ETA—University of Michigan, Ann Arbor, Mich.

House—816 Hill St., Ann Arbor, Mich.

President—Thyra Sheffield.

Secretary—Joy Carp.

Treasurer—Elinor Bauschard.

Editor—Sarita Davis, 914 Vaughn St.

Big Sister—Ruth Simering, Epsilon, Romeo, Mich.

ALPHA THETA—University of Kentucky, Lexington, Ky.

House—110 High St.

President—Mary Elizabeth Depew.

Secretary—Ann Williams.

Treasurer—Mary Stallings.

Editor—

Big Sister—Mrs. Kenneth Crawford, 620 S. Fort Thomas St., Fort Thomas, Ky.

ALPHA IOTA—University of Southern California, Los Angeles, Cal.

House—902 W. 30th St.

President—Yvonne MacFadden.

Secretary—Beata Giddings.

Treasurer—Jessie Earl.

Editor—Jean Delavan.

Big Sister—Lucille Goodykoontz, 837 S. Burlington.

ALPHA KAPPA—Syracuse University, Syracuse, N. Y.

House—100 Waverly Ave.

President—Mildred Curtiss.

Secretary—Elizabeth Woodman.

Treasurer—Ethel McCarney.

Editor—Marguerite Risley, 867 Sumner Ave.

Big Sister—Mrs. D. B. McLean, 417 S. Crouse Ave.

ALPHA LAMBDA—University of Colorado, Boulder, Colo.

House—1506 Twelfth St.

President—Phoebe Gaumer.

Secretary—Anne Trimble.

Treasurer—Claire Ohlson.

Editor—Florence Goure, 1042 Tenth St.

Big Sister—Edythe Wilson Thoesen, Cañon Park.

ALPHA MU—St. Lawrence University, Canton, N. Y.

House—5 University Ave.

President—Gladys Mount.

Secretary—Marian Lawrence, 5 Harrison St.

Treasurer—Dorothy Pollock, 19 Elm St.

Editor—Bernice McGill.

Big Sister—Ethel Hardick, King's Park, Long Island, Box A.

ALPHA NU—Butler College, Indianapolis, Ind.

House—5815 E. Washington St.

President—Alberta Coburn.

Secretary—Katherine Fillmore.

Treasurer—Zerelda Rubush.

Editor—Kathleen Dyer.

Big Sister—Mrs. Kobert Franklin Miller, 140 Hampton Drive.

ALPHA XI—Randolph-Macon Woman's College, Lynchburg, W. Va.

President—Bowers MacKorell, Box 78, R.-M. W. C.
Secretary—Elizabeth DuBose, Box 148, R.-M. W. C.
Treasurer—Almeda Garland, Box 50, R.-M. W. C.
Editor—Annie Lee Young, Box 265, R.-M.W.C.
Big Sister—Marjorie Harris, R.-M. W. C.

ALPHA OMICRON—Brenau College, Gainesville, Ga.

Δ Z Lodge—Gainesville, Ga.
President—Leah Beth Connor.
Secretary—Sara Bridge.
Treasurer—Sibyl Strickland.
Editor—Marie Newsom.

ALPHA PI—Howard College, Birmingham, Ala.

All Mail to Box 37, East Lake, Ala.
President—Daisy Hoover.
Vice-president—Frances Newman.
Secretary—Elma Almgren.
Treasurer—Elizabeth Sadler.
Editor—Addilee Mattison.
Big Sister—Miss Peterson.

ALPHA RHO—Ohio Wesleyan University, Delaware, Ohio.

President—Margaret Johnston, Austin Hall.
Secretary—Louise Zurmehly, Monnett Hall.
Treasurer—Mary Bartter, Austin Hall.
Editor—Virginia Fleming, Monnett Hall.
Big Sister—Amanda Thomas, Box 511, Columbus, Ohio.

ALPHA SIGMA—Florida State College for Women, Tallahassee, Fla.

President—Annie Flagg Wilder, 136 Jennie Murphree Hall.
Secretary—Mary Cornelia Saunders, 132 Jennie Murphree Hall.
Treasurer—Pauline Jernigan, 129 Reynolds Hall.
Editor—Elizabeth Cartmel, 240 Jennie Murphree Hall.
Big Sister—Catherine Winters.

ALPHA TAU—University of Texas, Austin, Tex.

House—215 Archway.
President—Janette Stark.
Secretary—Charlotte Knowd.
Treasurer—Frances Murphy.
Editor—Dorothy Mims.
Big Sister—Clara Carlisle, College Incarnate Word, San Antonio, Tex.

ALPHA UPSILON—University of Maine, Orono, Me.

President—Annie Myrtle Fuller, Balentine Hall.
Secretary—Velma Oliver.
Treasurer—Harriet Page.
Editor—Annette Matthews.
Big Sister—Edith Hilton, Greenville, Me.

A Life Subscription to The Lamp

*Costs
Only* \$25.00

any time; and may cost you less if you act NOW.

SEE ANNOUNCEMENT ELSEWHERE IN
THIS ISSUE

Send Your Subscription to

GRACE E. MASON, Executive Secretary

1340 Park Ave.

Indianapolis, Ind.