

TRULY LEADING CHANGE

The embodiment of the  
Delta Zeta experience

SO THE WORLD MAY HEAR

Delta Zeta honored  
at 2015 Starkey Gala

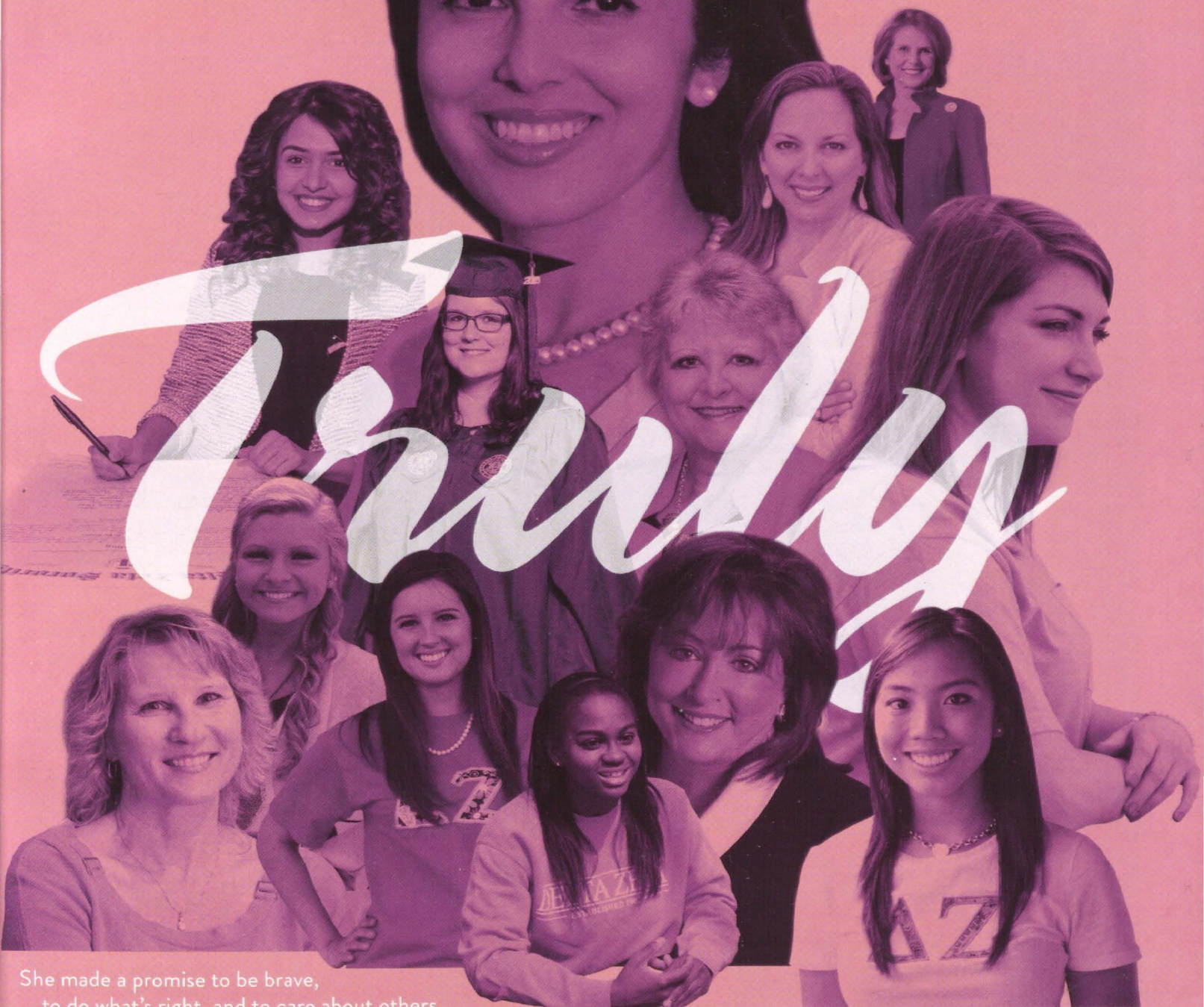
2015 WOMAN OF THE YEAR

Leading with authenticity and  
committed to positive change

# *The* LAMP

Fall / Winter 2015

OF DELTA ZETA

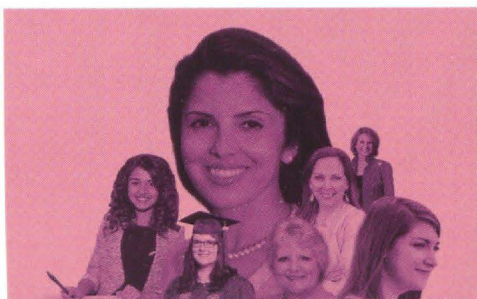


She made a promise to be brave,  
to do what's right, and to care about others.

She said she would grow, love and give graciously. Each of us knows a woman like her.

We call her sister. She is truly Delta Zeta.

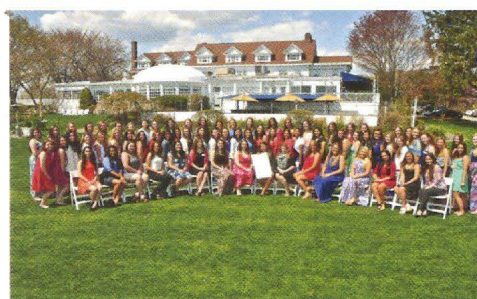




**04** Truly  
A promise to keep



**12** 2015 Woman of the Year  
Susan Pearson Gambardella, Connecticut - ΓΒ



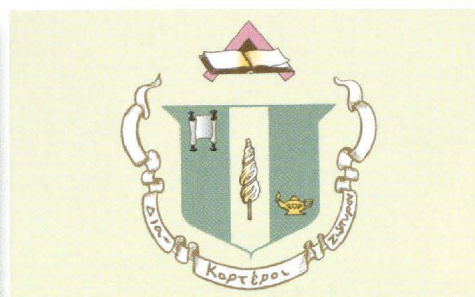
**14** Transforming the Campus  
The Pi Tau Chapter is installed at Sacred Heart University

Visit [deltazeta.org](http://deltazeta.org) to read the latest issue. If you would like to read The LAMP online to help the Sorority to go green, please email us at [GreenLAMP@dzshq.com](mailto:GreenLAMP@dzshq.com), and include your full name, chapter of initiation and mailing address.

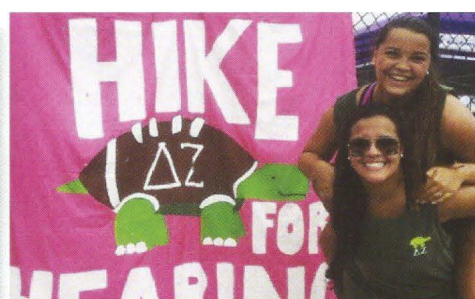
You will receive an email alert when the next issue is online. If you want to continue to receive The LAMP in its hard copy format, mailed to you three times a year, you need not do anything. Thank you!



**10** 2015 Starkey Hearing Foundation Gala  
Delta Zeta Sorority Honored



**13** National Council Nomination Form  
Share in the Election of National Council



**17** Hike for Hearing  
The Hike is underway!

Published since December 1910 by Delta Zeta Sorority. The LAMP of Delta Zeta, Nancy E. Brewer, A, Editor (ISSN #0887-2554), official magazine of the Sorority, is published three times a year by the Delta Zeta Sorority, 202 East Church Street, Oxford, OH 45056.

### POSTMASTER

Send address changes to Delta Zeta Sorority, 202 East Church Street, Oxford, OH 45056.

## DEPARTMENTS

**18** ON CAMPUS  
Delta Zeta chapters are leading for positive change.

**44** TRULY DISTINCTIVE  
Collegiate leaders transform the world.

**46** TRULY PURPOSEFUL  
Alumnae achievers inspired by Delta Zeta's purpose.

**48** FLAME ETERNAL

**51** SHARING OUR SISTERHOOD

**52** FOUNDATION

Send all editorial material to  
Delta Zeta National Headquarters, Attn: Editor,  
202 East Church Street, Oxford, OH 45056  
(513) 523-7597

General email: [dzs@dzshq.com](mailto:dzs@dzshq.com)  
The LAMP email: [LAMP@dzshq.com](mailto:LAMP@dzshq.com)  
Website: [deltazeta.org](http://deltazeta.org)



Printed in USA.



National Panhellenic Conference



DELTA ZETA SORORITY  
NATIONAL COUNCIL 2014 - 2016

Diane M. Stecher  
Missouri/St. Louis - **IE**  
National President

Leslie Evans Williams  
Indiana - **E**  
National Vice President of Membership

Christy Phillips-Brown  
Western Carolina (NC) - **OI**  
National Vice President of Collegians

Karen Martin Campbell  
California State/Long Beach - **ΔA**  
National Vice President of Alumnae

Heather Jerden Anderson  
Texas/Arlington - **IP**  
National Vice President of  
Administration

Cathy Irvin Painter  
Alabama - **AT**  
National Vice President of Finance

Michelle Albrecht Smith  
California/Los Angeles - **AX**  
Past National President

Jeanine Petersen Triplett  
Louisville (KY) - **BT**  
National Panhellenic Conference  
Delegate

Founded at Miami University  
Oxford, Ohio  
October 24, 1902

FOUNDERS

Alfa Lloyd Hayes, 1880-1962  
Mary Collins Galbraith, 1879-1963  
Anna Keen Davis, 1884-1949  
Julia Bishop Coleman, 1881-1959  
Mabelle Minton Hagemann, 1880-1929  
Anne Simmons Friedline, 1879-1932

THE ORDER OF THE LAUREL

Irene Caroline Boughton, **I**  
(University of Iowa)  
Grace Mason Lundy, **E**  
(Indiana University)  
Elizabeth Coulter Stephenson, **A**  
(Miami University)  
Myrtle Graeter Hinkly, **Δ**  
(DePauw University)  
Norma Minch Andrisek, **ΓA**  
(Baldwin Wallace University)

FROM THE PRESIDENT

I BELIEVE



In the midst of the holiday season, we would like to pause and reflect upon all that for which we are grateful. In Delta Zeta, we are genuinely thankful for our members, partners, and strategic alliances — each one of you are special, and we would not be where we are today as an organization without you.

While we all take different paths in life, have varied backgrounds, and are committed to Delta Zeta for different reasons, our bond is based on the fundamental truth that we believe in the values of our organization, and support a very worthy and much-needed cause. I saw this firsthand when serving on Starkey Hearing Foundation hearing missions this year. I know personal philanthropy is an integral part of each of our

members' lives — we believe in the power of giving graciously to make our world better.

We represent women who desire to have a positive impact on those whose lives we touch, and use our collective voice to make a real difference in changing the landscape for women on our campuses, in our communities and those around the globe. I believe that we are stronger together and stand unified in our timeless mission to create leaders for a world of change.

The National Council hopes you are able to take some time during the upcoming holidays for rest and reflection. We look forward to what good lies ahead for all of us and celebrating more successes with you in 2016!

In Delta Zeta,

*Diane M. Stecher*  
Diane M. Stecher  
National President



# Truly

*... a promise made with sincerity – a promise to keep.*

## **“THAT I MAY WALK TRULY IN THE LIGHT OF THE FLAME.”**

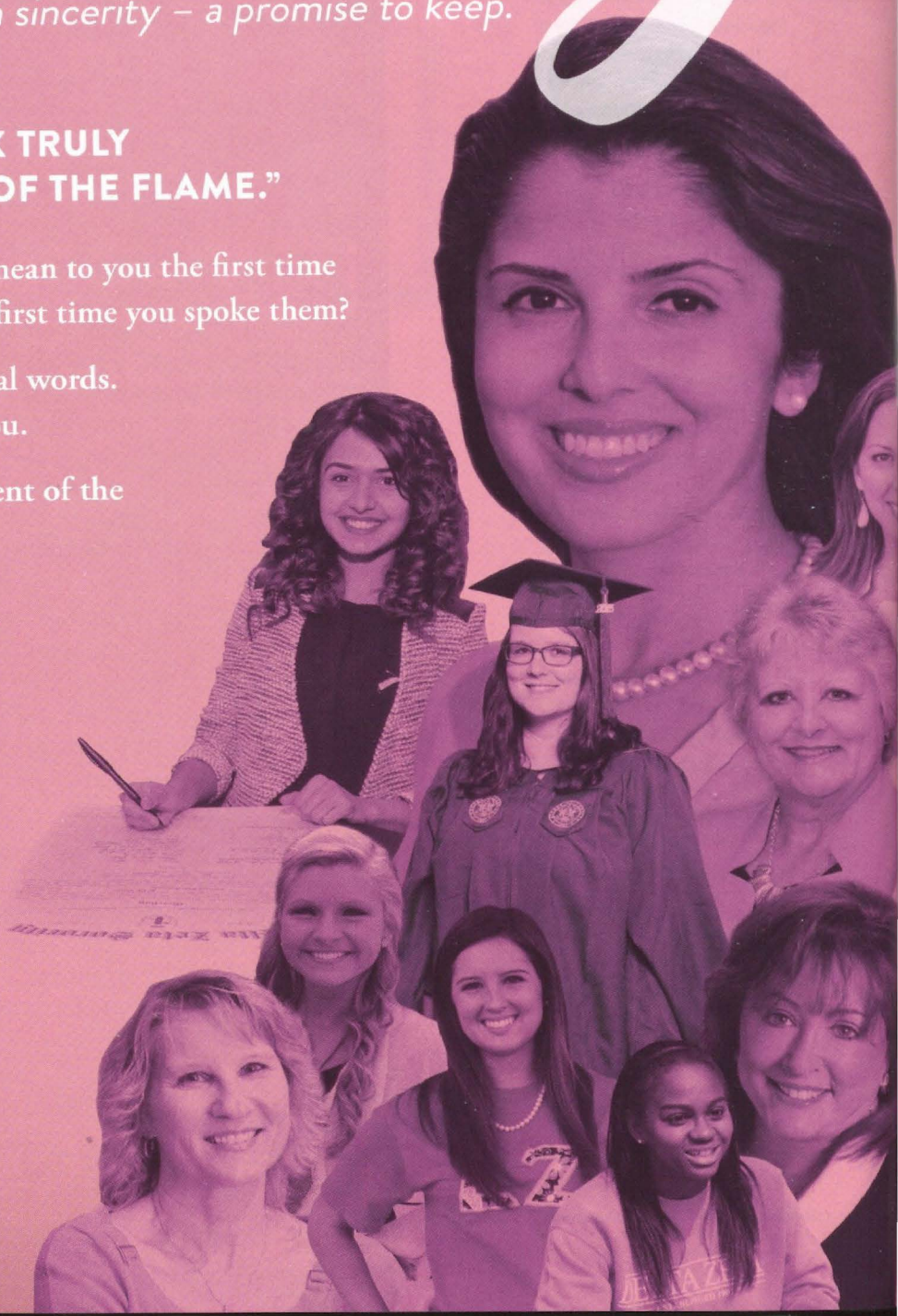
What did those words mean to you the first time  
you heard them ... the first time you spoke them?

They are deeply personal words.  
They became part of you.

They are the embodiment of the  
Delta Zeta experience.

Because of Delta Zeta,  
we live truly in our  
lives — as students,  
professionals, wives,  
mothers, daughters,  
sisters and friends.

We are embedded  
in communities  
worldwide.  
We are truly  
changing the world.



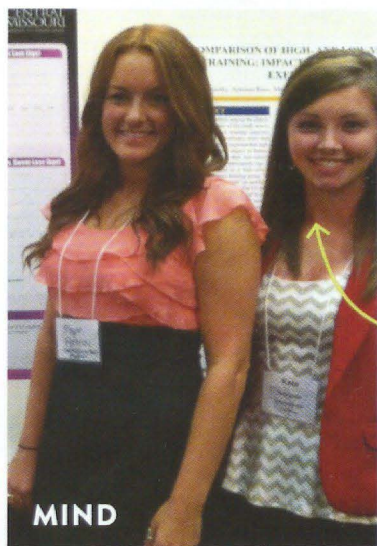


### **"TO MY MIND, GROWTH;"**

Truly excels on campuses, brings integrity to our careers, raises our families and makes a difference for those who cannot help themselves. Living our authentic lives reflects on all that has brought us to where we are today. Our membership experience in Delta Zeta Sorority is a significant and influential part of that journey. Our values are vows we make to ourselves, strengthened by the confidence found, the friends made and the lives touched in Delta Zeta.

Kate Smith, Chapter Guard, and Megan Fortney, Epsilon Gamma Chapter (University of Central Missouri), designed and conducted a research project through their Exercise Physiology course while in college. Their abstract was chosen for presentation and publication by the American College of Sports Medicine (ACSM).

Kate says that her Delta Zeta experience inspired her to undertake the research. "Delta Zeta sets high expectations," she says. "It took a significant amount of time and effort to undertake this opportunity for research."



**MIND**

*"As Delta Zetas, we are here to challenge academic expectations, for which we are rewarded in many ways."*

— KATE SMITH, EPSILON GAMMA CHAPTER (UNIVERSITY OF CENTRAL MISSOURI)

*"Delta Zeta has made me more confident and a stronger leader, helping me follow my goals to save the environment."*

— LILI FIKTER, ALPHA RHO CHAPTER (OHIO WESLEYAN UNIVERSITY)

### **FAITH**



### **"TO MYSELF, FAITH"**

But we always come back to the personal experience that is ours alone in Delta Zeta. Delta Zeta brings possibility to our members, and that possibility fuels opportunity — to become our best selves through the Delta Zeta experience, and to use that experience to truly change our world.

Lili Fikter, Academic Chairman of the Alpha Rho Chapter at Ohio Wesleyan University, is a zoology, geology and environmental studies major who studied in Australia and New Zealand.

"My membership in Delta Zeta has influenced my goals and encouraged me to help the environment. One of the biggest is through the opportunities for personal development and leadership that the Sorority has offered. As a member of Delta Zeta, I am able to put my best self forward. I have also been given leadership opportunities that I would not have had."



*"You learn how to make lasting friendships and how important friendship is. You need those friends."*

— ATIA ABAWI, VIRGINIA TECH - KΘ

**"TO MY FRIENDS, UNDERSTANDING AND APPRECIATION; TO THOSE CLOSER ONES, LOVE THAT IS EVER STEADFAST;"**

Living truly finds its resolve in the support of sisterhood. Delta Zeta reflects each of our members who know true friendship. That friendship gives them inspiration to strive, achieve and lead. Sisterhood enables us to give graciously. It is that giving that changes us and changes the world.



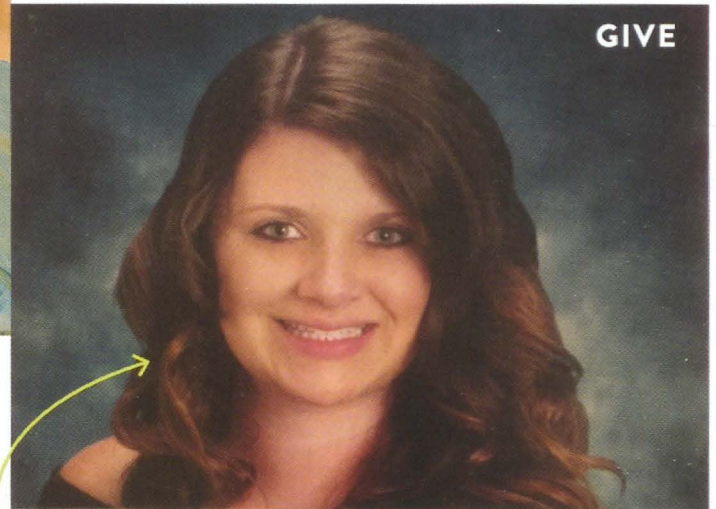
PHOTO COURTESY OF CONOR POWELL

Atia Abawi, Virginia Tech - KΘ, author and foreign correspondent who has reported for CNN and NBC and is based in the Middle East, says, "I learned a lot from Delta Zeta as a collegian. The experience definitely teaches you how to get along with different people. You learn how to make lasting friendships. When I was in Afghanistan, before I met my husband Conor, I would call Susan, my sorority sister and college roommate, when I was feeling sad or depressed. She would always pick up the phone and listen — she was always there. I am very lucky to have friends like that!"

**"TO THOSE WHOM MY LIFE MAY TOUCH IN SLIGHT MEASURE, MAY I GIVE GRACIOUSLY OF WHAT IS MINE;"**

We know the power of philanthropy. We know the power of partnership. We are acting now to make change happen, and so change the world for the better through our national philanthropy, speech and hearing, and through our national service project, The Painted Turtle camp. Our members support causes and volunteer for greater good around the world with heartfelt conviction. Each giving in her own way personifies Delta Zeta's altruism and our belief in giving graciously.

Taylor Ridenour is the past Philanthropy Chairman of the Gamma Kappa Chapter at Kent State University in Ohio. "During recruitment, Delta Zeta offered a wide range of opportunities to get involved, so I joined and was soon part of the philanthropy team. I had a relatively small job that included helping the Lip Sync (Philanthropy Event) Chairman. Although it was an established event with a budget, there was still so much work to do. I loved



*"It is important to help others reach their goals."*

— TAYLOR RIDENOUR, GAMMA KAPPA CHAPTER (KENT STATE UNIVERSITY)

it! And I set a goal to someday become the Philanthropy Chairman.

"But it wasn't all about our chapter. We were encouraged to get involved in others' philanthropy and service events on campus. Doing that prepared me for the job of Philanthropy Chairman. It takes an

entire Greek community to raise the kind of money we did. By the time our class graduated, those connections had helped us raise over \$200,000. Some of the money went right back into our community, some went to our national speech and hearing philanthropy partner."



*“I started to take responsibility for my life, and aid others when called upon to assist.”*

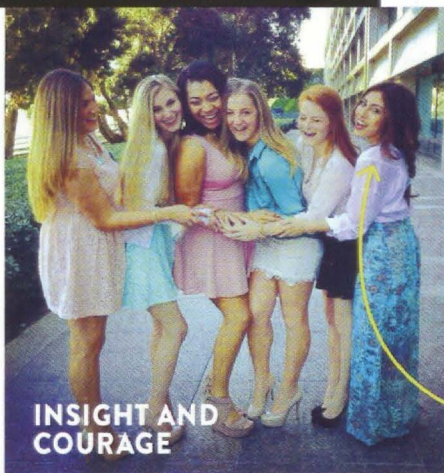
— NOLA TEDESCO FOULSTON, FORT HAYS (KS) - ΔΩ

**“TO CRUSADE FOR JUSTICE, TO SEEK THE TRUTH AND DEFEND IT ALWAYS;”**

Our Founders had a noble vision for Delta Zeta when they founded the Sorority in 1902. The strength of our values and a steadfast focus on “the attainment of a high standard of morality; to inculcate elevated sentiments and noble principles,” as our purpose states, is built on integrity.

Each member of Delta Zeta promises to make that vision come true when she initiates and lives the Delta Zeta experience truthfully. She speaks out when she sees injustice. She acts when the truth must be championed. She is an advocate, a role model and an exemplary citizen. She does this with the support of her sisters and faith in herself.

Nola Tedesco Foulston, Fort Hays (KS) - ΔΩ, is a retired District Attorney in Sedgwick County, Kansas and advocate for women and children who are in crisis or in need. “Being in a community of women, sharing a home together, and learning how to grow up and grow strong are the things that I remember well from my Delta Zeta experience. I started to take responsibility for my life, and aid others when called upon to assist. I want to live in a peaceful world, and I want to leave it better than I found it. I believe in the protection and support of vulnerable people.”



**“TO THE WORLD, I PROMISE TEMPERANCE, INSIGHT AND COURAGE,”**

To walk truly in the light of the flame is more than a line to recite — it is a promise to our Founders and to the world that we are truly global citizens, leading for positive change. We have the courage to make that change happen. We are the leaders who embody fearlessness. We believe in the strength of women and the fraternal system.

Alexya Garcia, a collegiate member of the Xi Omicron Chapter (Loyola Marymount University), is a singer-songwriter and performer. “My sisters support my creative side. It’s a privilege for me to have sisters like that. They really keep me grounded. I think the role that I have right now — aside from being an artist — is to be a student and a healthy person in the community. By healthy, I mean constantly reflecting and making sure that I am able to contribute to my sisters — to always be of help to others. When it comes to the community, I try to be the best student and citizen that I can possibly be, and if that means doing service. I make sure I do that. By starting with morality and values, that’s really the best and most simple way you can give back to a community and be there for others — not just yourself.”

*“My sisters’ support allows me to do it all ... I’ve never had that relationship before with other women.”*


— ALEXYA GARCIA, XI OMICRON CHAPTER (LOYOLA MARYMOUNT UNIVERSITY)

**W**e are at the crossroads of advancing Delta Zeta much as our Founders were when they sat down with Dr. Guy Potter Benton, 13th President of Miami University, to draft the Articles of Incorporation that would take the Sorority to the national level and beyond.

Delta Zeta *lives Truly*. Delta Zeta is the women of our Sorority. Our stories tell Delta Zeta’s past and present. The lives we inspire beyond our own will write the Sorority’s future and make change happen in the world. The road to global citizenship and life-changing service is possible only with our members — the lifeblood of the Sorority. We are on the journey together. We are truly Delta Zeta.

*Tell us where you are in your Truly unique journey, and how Delta Zeta has made that journey possible. Visit [truly.deltazeta.org](http://truly.deltazeta.org) to find out how you can tell your story, and don’t forget to use the hashtag #TrulyDZ.*



A photograph of two young women standing outdoors. The woman on the left is smiling and holding a large book. The woman on the right is also smiling and has her arm around the first woman. In the background, there is a car and some trees. The entire image has a pinkish-purple tint.

**LET'S REPRESENT  
AND INSPIRE  
ONE ANOTHER**



Our Creed says, "To those whom my life may touch in some slight measure may, I give graciously of what is mine." It's a promise, really, to live our lives and to use what's ours in a way that makes life better for others. As a Sorority, we develop programming and partner with likeminded others so that our members are empowered to keep that promise. As members, we encourage one another to live our lives this way; not because it's a college thing but because it's a life thing. And because, well, it's our thing.

---

### **DELTA ZETA IS AMAZING**

We're creating a premiere membership experience that's relevant for women. It starts with friendship, revolves around shared values and lasts a lifetime.

### **WE'RE LIFELONG LEARNERS**

Becoming our best self is a lifelong process. It's part classroom, part life experience. So we prioritize academics and developing life skills.

### **WE'RE EMPOWERED TO LEAD AND SERVE**

Given the right development opportunities, each of us can become an effective leader. We can make good decisions and help others get things done.

### **WE'RE GLOBAL CITIZENS**

It's entirely possible to see a need and do nothing about it. But not here. We spend a lot of our time together working with others to make our communities, and those the world over, better.

### **WE GIVE GRACIOUSLY**

We're sensitive to the needs of others and make meeting those needs a priority.

---



To learn more about the Delta Zeta brand of sorority, visit [truly.deltazeta.org](https://truly.deltazeta.org) on your computer or smartphone.

To join the conversation, use #TrulyDZ on Facebook, Twitter and Instagram.





## Delta Zeta takes the stage at the **STARKEY HEARING FOUNDATION GALA**

"In 1902, Delta Zeta's Founders established as the Sorority's purpose 'to develop plans for guidance and unity in action; objects worthy of the highest aim and purpose of associated effort.' That is what our partnership with Starkey and everyone who makes speech and hearing possible means to the world."

Cindy Winslow Menges, Delta Zeta Executive Director

Grace Murimi, Principal of Kerugoya School for the Deaf; Tani Austin, Co-Founder, Starkey Hearing Foundation; President George W. Bush; Michelle Christie, Executive Director of No Limits; Cindy Winslow Menges, Miami (OH) - A, Delta Zeta Executive Director; Diane M. Stecher, Missouri/St. Louis - IE, Delta Zeta National President and Bill Austin, Co-Founder, Starkey Hearing Foundation

Because the ability to hear affects everyone around the world, our commitment to a global effort is needed. Because lives are changed forever through the gift of hearing, Delta Zeta is acting now.

In March, 2015, the Sorority pledged to raise \$5 million over the next five years

for speech and hearing, and to donate that amount to the Starkey Hearing Foundation. This commitment is part of Delta Zeta's strategic plan to grow, enhance, improve and advance the organization, while enriching its membership and changing the world.

We believe, as do Tani and Bill Austin, that in

giving the gift of hearing, lives are changed forever. Communication is possible. And through that communication, building peace in the world is possible. Delta Zeta has partnered with Starkey Hearing Foundation since 2006 to advance our national philanthropy of speech and hearing to a global level.



Delta Zeta Sorority was honored at the Starkey Hearing Foundation Awards Gala on July 26, 2015. Delta Zeta joined the ranks of past honorees such as President Bill Clinton, Archbishop Desmond Tutu, Muhammad Ali, Sister Rosemary Nyirumbe, Forest Whitaker, Barbara Bush, Marlee Matlin and many more. Honorees at the 2015 gala included President George W. Bush and No Limits, which works to change deaf and hard-of-hearing children's lives.

Cindy Winslow Menges, Miami (OH) - A, Executive Director, accepted the honor on behalf of Delta Zeta from Tani Austin, Co-Founder, Starkey Hearing Foundation. "Delta Zeta Sorority is a global network of inspired women who translate their passions through leadership, service and philanthropy to enrich their communities and change lives," she said. "We are embedded in communities around the world.

"Each of us has a higher purpose, and Delta Zeta's commitment to service enables women to fulfill our Creed which says, in part, 'To the world, I promise temperance, insight and courage ... to crusade for justice .... To those whom my life may touch in slight measure, May I give graciously of what is mine.'"

Cindy spoke of her recent visit to Matamoros, Mexico on a Starkey mission which changed her life. "When you touch a person's shoulder,

look into their eyes, and smile – and they return with a smile and keep looking at you – you are communicating," she said. "When you turn the hearing aid on and increase its level, at the point in time in which the person hears, their eyes light up. You keep looking in each other's eyes. You see understanding.

"While humbled and thankful to Starkey for this honor, we know there is much work to be done. We are all citizens of the world community. We are responsible for enriching lives, so all may hear and understand."

How are you inspired by Delta Zeta  
as we take the global stage to  
change the world? Tell us on Twitter  
@DeltaZetaNatl using the hashtag  
#TrulyGlobal.





*“Lead with authenticity, self-awareness and the commitment to be a catalyst for positive change.”*

**Susan Pearson Gambardella**, Connecticut – ΓΒ, Vice President and Executive Assistant to the Chief Executive Officer and Chairman of The Coca-Cola Company, 2015 Woman of the Year, understands the importance of women helping women. “As women, we need to role model the right behaviors and be a positive advocate for other women as well as ourselves,” said Susan.

Susan is a dynamic leader who has excelled in business, industry and non-profit roles, nationally and internationally, personifying Delta Zeta’s values in her life and profession. She has had international opportunities to speak to organizations regarding the importance of women in the workplace. With a career that encompasses two multi-national companies, Procter & Gamble and Coca-Cola, in various sales, general management and leadership positions, Susan makes it a priority to help develop and mentor women everywhere she has worked.

“I am honored to be the Woman of the Year,” said Susan. “I learned so much from my Delta Zeta experience at a young age. Many of the core leadership principles that I carry with me today are ones that I learned through being in a sorority.”

*“I have a group of lifelong friends, many of which I have collected along the way, but the foundation started and still remains with my Delta Zeta sisters in college.”*

Susan has served in various leadership roles during her 23 years with The Coca-Cola Company. In her current position, she serves in a Chief of Staff role to the Chairman and CEO, Muhtar Kent. Prior to this role, Susan has served in key leadership positions at Coca-Cola, including Vice President of the global Wendy’s account team; Senior Vice President, Integrated Marketing; Central Region Vice President, Food Service; and Vice President, National Sales.

“There’s a sense of pride that comes from building brands people love and making the most of ourselves as a company and as individuals,” said Susan. “At Coca-Cola, I’ve been fortunate to work for managers who have spent countless hours mentoring and guiding me throughout my career. That’s why it is so important for me to give back to the next generation of leaders.”

# 2015 WOMAN OF THE YEAR

**Susan Pearson Gambardella, Connecticut – ΓΒ**

Susan was 2014 Chair of The Women’s Foodservice Forum (WFF) Board of Directors, Executive Committee, and Past Chair of WFF’s Annual Leadership and Development Conference. WFF is the foodservice industry’s premier leadership development resource, advancing women leaders and driving growth for individuals and organizations.

“As I grew into more senior leadership positions, I had and still have the immense gratification of helping others to realize the very best of themselves and grow to their full potential,” said Susan.

*“Above all, lose the concept of ‘balance’ – if you know what is important to you, you will make the right decisions for you, your family and your career.”*

Susan shares her philosophy on creating a fulfilling life and advice on succeeding in your career. Read more at [deltazeta.org](http://deltazeta.org).

**DO YOU KNOW A POTENTIAL WOMAN OF THE YEAR? NOMINATE HER BY FEBRUARY 10, 2016**

**VISIT [DELTAZETA.ORG/MEMBER](http://DELTAZETA.ORG/MEMBER) > RESOURCES**





## DELTA ZETA SORORITY

### Recommendation for National Council Nomination

This form must be postmarked and mailed or emailed (as a PDF file) no later than Midnight, EST, February 10, 2016 to both:

Lynnda Wolf Hoefler  
2016 Nominating Committee Chairman  
Past National Officer  
2981 Telber Court  
Stow, OH 44224  
LHflr@aol.com

**AND**

Anne Marie Jones Gavin  
National Constitution Chairman  
301 Gosling Way  
Glassboro, NJ 08028  
AMGDZ1@aol.com

I recommend: \_\_\_\_\_  
Last name First name Middle name Maiden name

Address \_\_\_\_\_ Do you know the nominee personally? YES ☐ NO ☐  
Street City State Zip

If yes, how long have you known this nominee and in what capacity? \_\_\_\_\_

If not, why are you nominating this person? \_\_\_\_\_

For what offices are you recommending this nominee? \_\_\_\_\_

Reasons for recommending this nominee: \_\_\_\_\_

Recommended by (Print or type your name) \_\_\_\_\_  
First Maiden Married

Your signature (first, maiden, married name) \_\_\_\_\_ College Chapter Alumnae Chapter

Address \_\_\_\_\_  
Street City State Zip

Home Phone \_\_\_\_\_ Work Phone \_\_\_\_\_  
(area code) (area code)

Please use an additional sheet of paper if more space is needed. This form may be copied if making more than one recommendation. In order for your recommendation to be considered, you must fill out the form completely, sign the form and mail or email the form as a PDF attachment to both the Nominating Committee Chairman and the National Constitution Chairman. Delta Zeta Sorority assumes no responsibility for confidentiality of information communicated to the committee via electronic means, nor for communication which is misdirected and potentially never received.

### YOU CAN SHARE IN THE ELECTION OF NATIONAL COUNCIL

Delta Zeta's National Council will be elected by the delegates at the 2016 National Convention held at the Orlando World Center Marriott in Orlando, Florida, in accordance with the provisions in the *Constitution of the Delta Zeta Sorority*. This is a great opportunity for all Delta Zeta members, in good standing, to participate in the nominating process by making a recommendation. Members of National Council are chosen from alumnae members of wide sorority, professional and volunteer experiences or service to Delta Zeta and other organizations.

The Nominating Committee is made up of a Chairman who is a Past National Officer appointed by National Council, and eight members from the following groups: National District Directors or Regional Collegiate Directors, Area Alumnae Directors, College Chapter Directors, National Standing Committee Chairmen, Alumnae Chapters or Virtual Alumnae Chapters, and College Chapters.

Help Delta Zeta choose the officers who will lead the Sorority by submitting your recommendation forms today.

#### NOMINATING COMMITTEE CHAIRMAN

Lynnda Wolf Hoefler, Kent State (OH) - ΓΚ  
Past National Officer

#### NOMINATING COMMITTEE

Jean Funck Person, New Orleans (LA) - ΘΚ Andrea Johnson Rogers, Hartford (CT) - ΠΒ  
Area Alumnae Director, South Central Area Regional Collegiate Director, Region I

Barbara Jones Brotherton, Minnesota State/Moorhead - ΘΝ  
National Philanthropy Chairman

Kara St. John, Clarkson (NY) - ΞΡ  
Clarkson University

Jamie Bero, Clarion (PA) - ΕΘ  
Marshall University  
College Chapter Directors

Caroline Ouellette, Ohio Northern - ΖΚ  
Greater Boston Alumnae Chapter  
Alumnae Chapter

West Texas A&M University - Zeta Zeta Chapter  
Indiana University-Purdue University Indianapolis - Pi Omicron Chapter  
College Chapters





# TRANSFORMING THE CAMPUS

**DELTA ZETA SORORITY WELCOMES THE PI TAU CHAPTER AT  
SACRED HEART UNIVERSITY IN FAIRFIELD, CONNECTICUT**

The Pi Tau Chapter at Sacred Heart University (SHU) was installed on May 3, 2015. As a colony, Pi Tau welcomed the members of Kappa Phi, a local sorority at the university, to its membership. Kappa Phi had been a part of the Sacred Heart campus since 1993, and its members are dedicated to making a difference on campus and in the surrounding community. "Kappa Phi's motto, 'Friendship and Sisterhood,' speaks eloquently to the core values of Delta Zeta Sorority," said Diane M. Stecher, National President. "We are honored to have the members of Kappa Phi become charter members of our chapter at Sacred Heart University."

The Pi Tau Chapter of Delta Zeta is the seventh sorority on the SHU campus, and has grown quickly in both numbers and leadership, making its presence known on campus.

In attendance at the installation ceremony, at a venue overlooking Long Island Sound, were parents of the colony members, Andrea Johnson Rogers, Hartford (CT) – IIB, Regional Collegiate Director – Region I; Sarah McCracken, Northwestern (IL) – AA, Director of Program Development; Laura Osborne, SHU Director of Greek Life; Alicia Farrell, Hartford (CT) – IIB, Diane M. Stecher, Missouri/St. Louis – IΞ, National President, and Educational Leadership Consultants Cindy Park, Georgia State – ΔΔ; Brette Powell, Appalachian State (NC) – ΛΦ; and Caroline Ott, Ohio State – Θ. Members and advisors from the Pi Beta Chapter (University of Hartford) were in attendance, as well as local alumnae.

Delta Zeta Sorority is honored to be a part of the Sacred Heart University community. Diane M. Stecher said, "Our

Are you a charter member  
of one of Delta Zeta's collegiate  
chapters, including our newest ones?  
Tell us about your experience in helping  
to establish a chapter on Twitter  
@DeltaZetaNatl with the hashtag  
#TrulyFounding.

*“Delta Zeta Sorority brings a new level of enthusiasm and passion to the Sacred Heart University community, which has challenged each of the members of the Panhellenic community to strive to be more, care more and do more. Delta Zeta's presence assists the university's mission in calling forth the intellectual potential of our students.”*

*Laura Osborne, Director of Greek Life,  
Sacred Heart University*

partnership with the university allows the Sorority to bring a values-based experience to Sacred Heart's students. Delta Zeta's values are congruent with the university's 'commitment to passionate service and relentless pursuit and embrace of intellectual exchange.'"



# 2015-2016 EDUCATIONAL LEADERSHIP CONSULTANTS

## Has your chapter met one of the Educational Leadership Consultants (ELCs)?

These women hold one of the most important jobs in Delta Zeta. Serving as the national liaison to college chapters, they are truly leaders who enrich the collegiate experience with their knowledge. Visiting collegiate chapters around the country, they advise chapter executive boards and chairmen, assist in the planning and implementation of membership recruitment activities, and deliver leadership development and educational programs throughout the academic year.

Interested in becoming a consultant?

Applications are due each year.

Visit [deltazeta.org](http://deltazeta.org) under Leadership >

Educational Leadership Consultants to apply.

*Top: Megan Severson, Western Illinois - EO; Allison Armstrong, Minnesota State/Moorhead - ΘN; Brette Powell, Appalachian State (NC) - ΛΦ (second year); Roxanna Lamb, Northeastern (MA) - ΞΥ and Jessica Black, Louisville (KY) - ΒΓ. Middle: Mary Waterman, San Diego State (CA) - ΓΟ, Associate Director of Chapter Services; Erin Caligiuri, Robert Morris (PA) - ΞΧ; Adrienne Maxwell, Ball State (IN) - ΓΧ; Briana Harvell, West Texas A&M - ΖΖ and Mandi Wise Evans, Ball State (IN) - ΓΧ, Director of Membership Services. Bottom: Kathryn Malone, South Carolina - ΒΔ; Kassandra DiPlacido, Duquesne (PA) - ΚΞ; Alexa DiAntonio, San Diego State (CA) - ΓΟ; Dayna Wolfe, Washington - Κ, Sara Sabulsky, Missouri State - ΕΝ and Taylor Winter, Kent State (OH) - ΓΚ.*







If you could do anything in the world with more confidence, what would it be?

*"Confidence is a journey. To understand your success, you must first start with understanding who you are. If you practice authentic confidence, you won't hold yourself back."*

Erin Fischer, fraternal life advocate and founder and CEO of The Leadership and Training Studio, guided the audience on a journey to authentic confidence: how to have the courage to find confidence and take that confidence into every part of life.

Did you meet Lynn Forney Young, Stephen F. Austin State (TX) – ZΨ, 2014 Woman of the Year?



Lynn Forney Young, Stephen F. Austin State (TX) – ZΨ, 2014 Woman of the Year, made a special appearance at the conference, receiving her Woman of the Year pin and greeting collegians on tours through the National Historical Museum and Headquarters.

## THE 2015 NORMA MINCH ANDRISEK LEADERSHIP CONFERENCE



We're learning so much at #NMALC15! Thank you @DeltaZetaNatI for yet another amazing opportunity. - @DeltaZetaSDSU

Keep the conversation going! We'd love to hear your responses to the questions below and more about your experiences on Twitter @DeltaZetaNatI using the hashtag #TrulyInspired.

### Was your chapter represented at the 2015 Norma Minch Andrisek Leadership Conference?

More than 400 collegiate officers gathered in Oxford, Ohio on July 23-26, 2015 for the 2015 Norma Minch Andrisek Conference.

The inspirational weekend began with a welcome from Diane M. Stecher, National President. "Please keep these words in mind as you experience this weekend of learning and leading: Enhance, Grow, Improve and Advance, which is the direction of Delta Zeta's 2015-2020 Strategic Plan," she urged the audience.

Learning experiences were led by Delta Zeta alumnae in higher education and by Friends of Delta Zeta (FODZ) who are fraternal professionals from campuses around the country and who support Delta Zeta's mission.

### Are you resilient?

*"Most people don't fear change — they fear loss. Sometimes the best things can come out of the moment of letdown. Be brave, take risks — nothing can substitute experience."*

Krystal Clark, Director of the Office of Student Leadership Development at Vanderbilt University, inspired collegians to be resilient in their leadership roles.

### "Because of Delta Zeta, I ..."

Delta Zeta alumnae, who are past and present national officers and/or professionals in their field, spoke about their collegiate journeys in Delta Zeta to become the leaders they are today, inspiring the collegians to live authentically and confidently.



Delta Zeta Sorority's Hike for Hearing ([dzhikeforhearing.org](http://dzhikeforhearing.org)) provides a way for the Sorority's chapters and members to raise money for speech and hearing to meet the \$5 million goal we pledged to the Starkey Hearing Foundation.

As some Delta Zeta chapters kicked off Hike for Hearing events in late spring and throughout the summer of 2015, they told us of their successes (as of early October, 2015) toward their five-year goal.

The LAMP will continue to update our readers as chapters hold their Hike for Hearing events throughout the 2015-2016 school year. Visit [dzhikeforhearing.org](http://dzhikeforhearing.org) for the latest updates, and read more at [deltazeta.org](http://deltazeta.org).

# HIKE FOR HEARING

*Delta Zeta*

**WHO:** Pi Beta Chapter (University of Hartford)

**WHERE:** Talcott Mountain, Connecticut

**RAISED:** \$3,348

**GOAL:** \$7,500

"Why hike? Because no one should go without hearing the phrase 'I love you' from the people they care about."

*Tiana Thurmond, Treasurer*

**WHO:** Delta Sigma Chapter (Truman State University)

**WHERE:** Thousand Hills State Park in Missouri

**RAISED:** More than \$2,500

**GOAL:** \$5,000

"Leading the Hike for Hearing was truly an honor, since it was our first hike event. A lot of hard work went into planning. To have 219 people participate was incredibly rewarding! I am extremely proud of what we accomplished. It is such a great start to our philanthropy efforts this semester."

*Ashley Bredow, Philanthropy Chairman*



**WHO:** Pi Xi Chapter (University of Central Florida)

**WHERE:** Campus-wide Hike for Hearing silent flag football tournament

**RAISED:** More than \$8,000

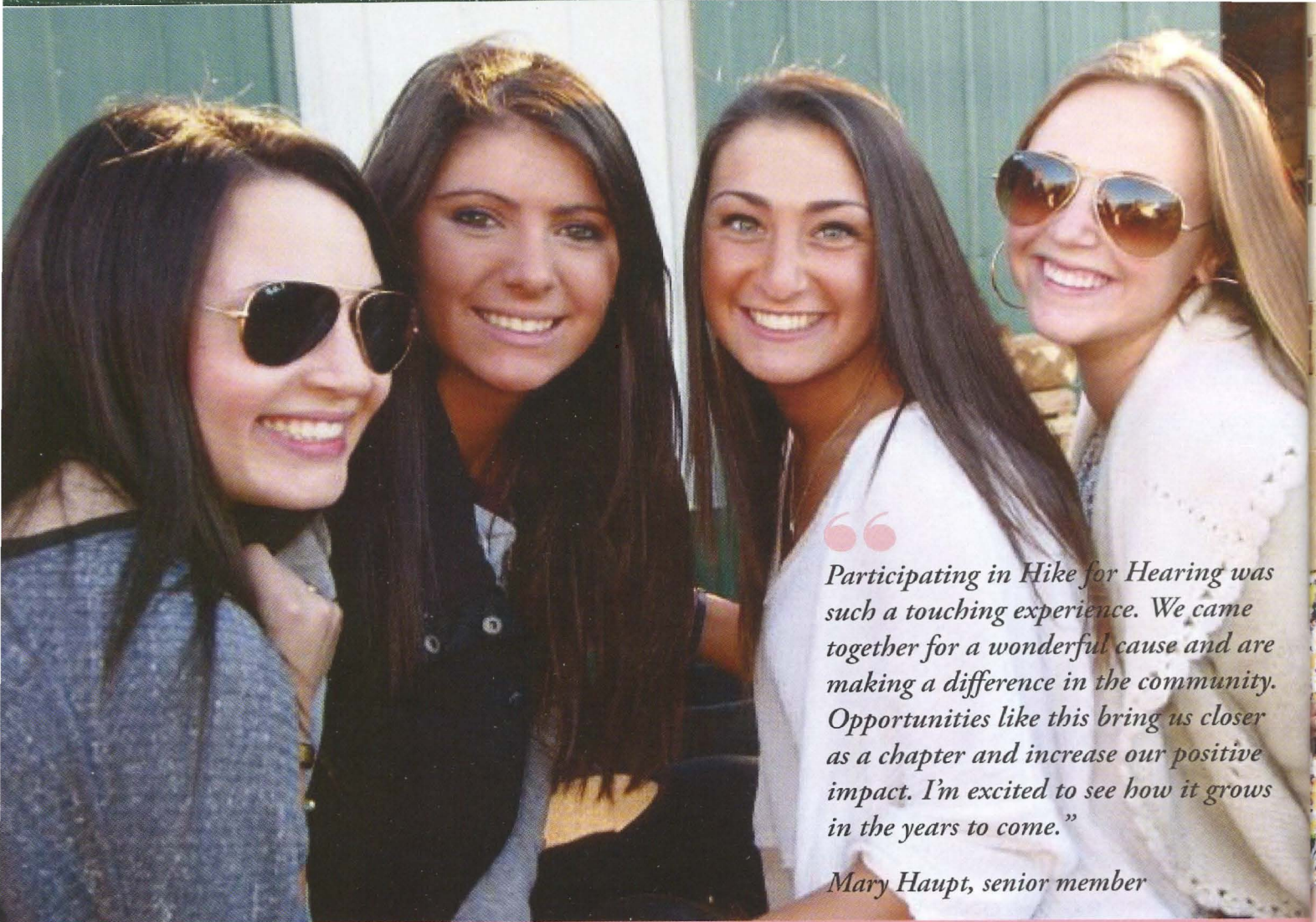
**GOAL:** \$10,000

"More than 20 teams and organizations competed. It was incredibly humbling to see the players remain silent on the field to support Starkey Hearing Foundation. We can't wait to see this event grow in the future! We also joined the Pi Theta Chapter at Rollins College for Hike for Hearing to raise more than \$4,000 (Pi Theta's goal is \$5,000). It meant so much to be able to support a cause that we care about with other women who share the same values and have the same philanthropic motivations as we do."

*Kenna Pell, LAMP Editor and Alumnae Relations Chairman*







*“Participating in Hike for Hearing was such a touching experience. We came together for a wonderful cause and are making a difference in the community. Opportunities like this bring us closer as a chapter and increase our positive impact. I’m excited to see how it grows in the years to come.”*

*Mary Haupt, senior member*

## A NEW LOOK ... A NEW DIRECTION... ON CAMPUS

Something is different about On Campus! We are introducing a new model for collegiate chapter news: inspirational, experiential and exciting.

You will notice less emphasis on data, more emphasis on stories and the women behind those stories. Less text and more photos. A focus on truly significant chapter news that has national implications and global potential.

All of our collegiate chapters are important, and we gratefully acknowledge the efforts of the LAMP Editor in each chapter. To recognize the important work those editors do, we are listing contributors here, but directing our readers to read more chapter stories via the digital LAMP at [deltazeta.org](http://deltazeta.org). Watch for more in upcoming LAMP issues.

## ON CAMPUS

We are the collegiate chapters of Delta Zeta Sorority, truly leading on our campuses, in our communities, and nationally, fulfilling the promise to change the world.

### ALPHA

Miami University

Won Outstanding Collaborative Event Award at university's Student Engagement and Leadership Awards for Puttin' On The Hits philanthropy event

Raised more than \$4,000 through Hike for Hearing

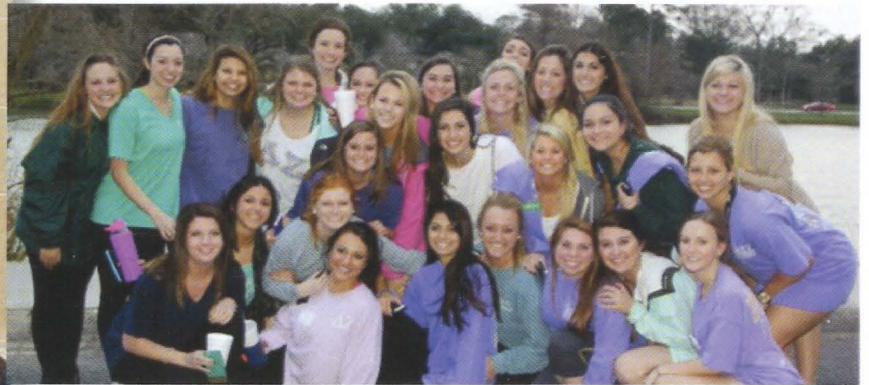




## KAPPA

University of Washington

Raised more than \$5,000 to support Fred Hutchinson Cancer Research Center Foundation, Delta Tau Delta's philanthropy



## SIGMA

Louisiana State University

Received Outstanding Philanthropic Event Award for Miss LSU pageant, which raised \$60,000 for local philanthropies and Delta Zeta's national philanthropy

## RHO

University of Denver

Raised more than \$9,400 benefiting Starkey Hearing Foundation and Delta Zeta Foundation

“

*Our goal was to raise enough money for three hearing aids, but we surpassed that goal with the most successful event ever.”*

*Zoe Diaz-McLeese, LAMP Editor*

## OMICRON

University of Pittsburgh

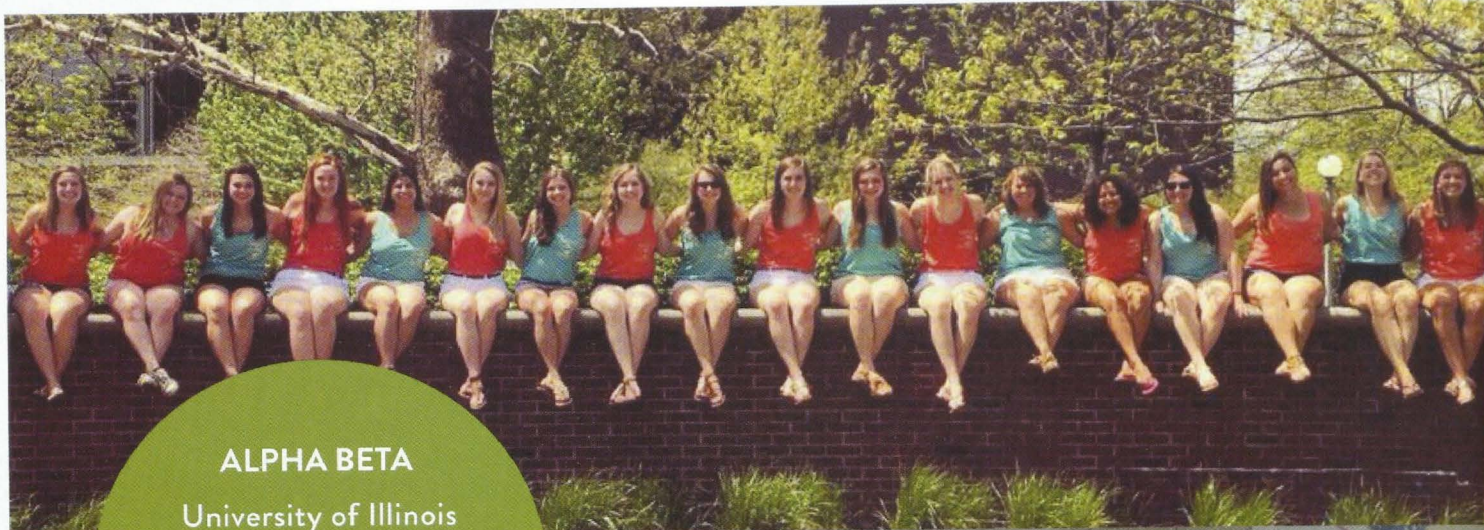
Hosted campus-wide Hike for Hearing event, raising more than \$1,400

“It was touching to see the people who supported this event. Brothers from fraternities on campus, sisters from other sororities, parents and friends gathered at the beautiful river-walk trail in their Hike For Hearing t-shirts. It was a wonderful opportunity to unite forces as a chapter and understand our responsibility and capability to change lives.”

*Lucy Scalo, LAMP Editor*







## ALPHA BETA

University of Illinois

Raised over \$19,000 for  
The Painted Turtle camp;  
senior Caleigh McArdle  
volunteered at camp

## ALPHA THETA

University of Kentucky

Won National Panhellenic Conference's Month of the Scholar  
out of 12 sororities on campus and received Outstanding  
Academic Excellence Award at Greek Awards Banquet



*Scholarship is a core value to our Sorority, and it is exciting  
to be recognized for our academic achievements on campus!"*

*Sydney Winchester, Academics Chairman*



## ALPHA SIGMA

Florida State  
University

Won Sorority of  
the Year Award at  
2015 Greek Awards



## ALPHA UPSILON

University of Maine

Donated more than \$1,000 to university's Madelyn E. and Albert D. Conley Speech, Language and Hearing Center





## BETA GAMMA

University of Louisville

Held highest GPA out of 24 fraternal organizations on campus for Spring 2015 semester

Gave more than \$9,127 to RaiseRed, benefiting university's Pediatric Hematology and Oncology Clinic

## BETA KAPPA

Iowa State University

Raised \$2,000 for Starkey Hearing Foundation

## BETA DELTA

University of South Carolina

Donated \$3,500 to local speech and hearing organizations

Raised \$2,700 at third annual campus-wide The Painted Turtle Trot 5k, which had 140 participants



*It was great having sisters cheer me on as I made my way through the course. I loved seeing both sisters and friends coming out to support The Painted Turtle camp."*

Maisy Paxton, Webmaster



## BETA XI

Auburn University

Raised \$10,836 for Starkey Hearing Foundation and The Painted Turtle camp







### BETA TAU

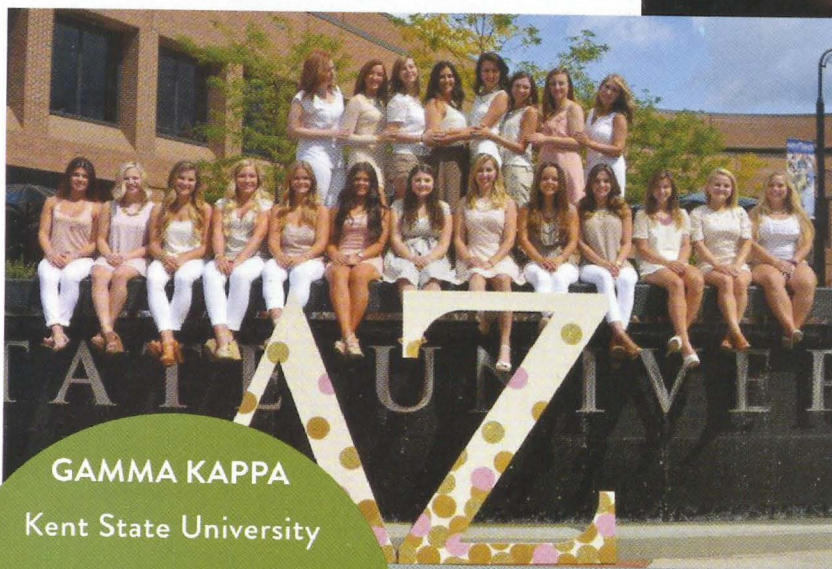
Nebraska Wesleyan University

Hosted 22nd annual Spaghetti Feed to raise \$1,918 for The Painted Turtle camp

### GAMMA DELTA

Pennsylvania State University

Partnered with Delta Tau Delta for annual IFC/Panhellenic Dance Marathon (THON) raising \$120,608 for Penn State Hershey Children's Hospital



### GAMMA KAPPA

Kent State University

Holds highest GPA out of seven sororities on campus for the past three semesters

Raised more than \$77,000 for speech and hearing with lip sync event

“

*The support we received from our Greek community was outstanding. We were amazed when we found out that the event raised more than \$77,000 this year.”*

Katie Smith, LAMP Editor

### GAMMA LAMBDA

San Jose State University

Raised nearly \$4,000 for The Painted Turtle camp



### GAMMA PI

Western Michigan University

Received Standard of Excellence Greek Life Award

### GAMMA OMICRON

San Diego State University

Raised \$3,000 for The Painted Turtle camp



### GAMMA SIGMA

Eastern Michigan University

Received Overall Chapter of Excellence Greek Award

### GAMMA CHI

Ball State University

Raised more than \$5,600 for The Painted Turtle camp

### GAMMA TAU

Bowling Green State University

Awarded Greek Chapter of Excellence for third consecutive year by university's Division of Student Affairs







### DELTA BETA

University of Tampa

Raised more than \$3,400 through  
Green Gala to benefit  
Starkey Hearing Foundation

### GAMMA OMEGA

Southern Illinois University

Hosted philanthropy event that raised over \$2,000 for Starkey Hearing Foundation



### DELTA DELTA

Georgia State University

Annual "Hit for Hearing" Golf Tournament raised more than \$2,600 to benefit Starkey Hearing Foundation



*This event allowed us to contribute to Delta Zeta's national's goal of donating \$5 million to the Starkey Hearing Foundation in five years. It was a fantastic feeling when our chapter succeeded in the execution of such a great event to benefit a cause so dear to our organization."*

*Dani Martinez, Philanthropy Chairman*

### DELTA THETA

University of Houston

Named Best Sorority by student newspaper, The Cougar, and the Center for Student Media





## DELTA XI

University of Northern Colorado

Maintained number one all-Panhellenic GPA for the 2014-2015 academic year out of five sororities on campus



## DELTA SIGMA

Truman State University

Named Greek Life Chapter of the Year

Donated nearly \$4,000 to Starkey Hearing Foundation



*It is wonderful to hear the stories of the power of our philanthropic work from our National President, and we take pride in the fact that our philanthropy aids those in need worldwide."*

Brianne Bannon, LAMP Editor

## DELTA TAU

Temple University

Raised more than \$4,400 for The Painted Turtle camp





## EPSILON DELTA

### Concord University

Hamburgers for Hearing raised \$1,000 for  
Starkey Hearing Foundation



## EPSILON NU

### Missouri State University

Raised \$12,000 for  
The Painted Turtle camp

Ranked first in Community  
Service Hours and Philanthropic  
Donations by Fraternity and  
Sorority Life

## EPSILON OMICRON

### Western Illinois University

Received Five Star Chapter Award and, for  
ninth consecutive year, President's Award of  
Excellence





## EPSILON UPSILON

University of Central Oklahoma

Received Chapter of the Year Fraternity  
and Sorority Life award

Raised \$2,300 for The Painted Turtle camp



## EPSILON OMEGA

University of Wisconsin/Eau Claire

Top-ranked for GPA for Spring 2015 semester  
out of three sororities on campus

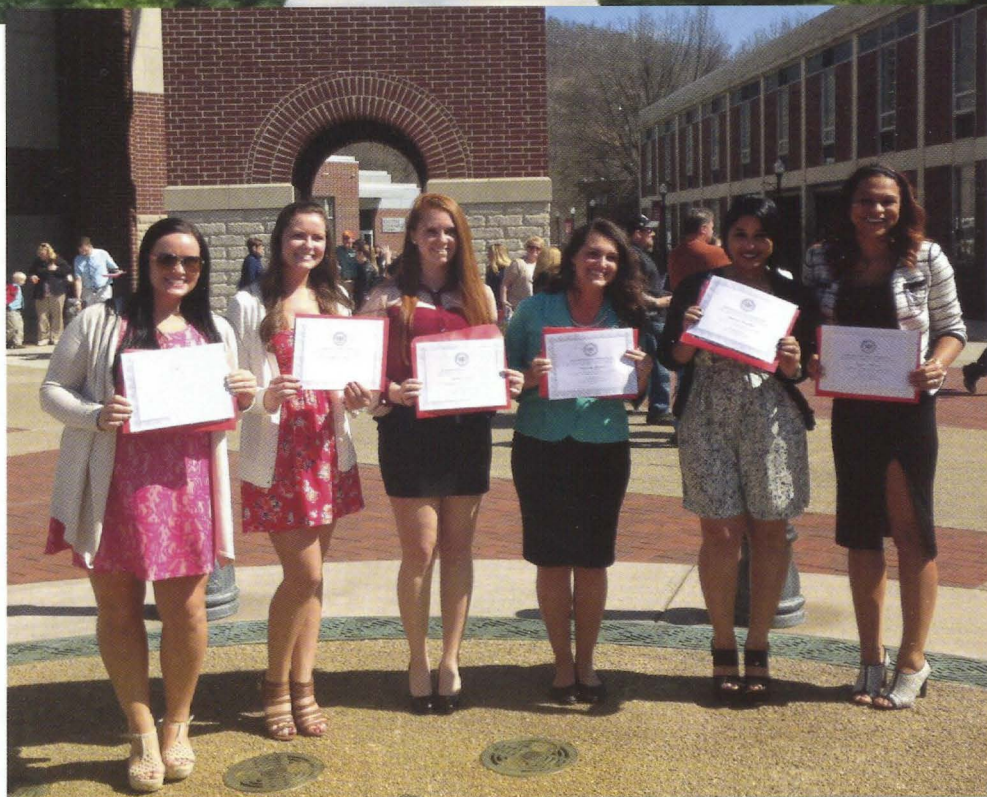


## ZETA EPSILON

California University of  
Pennsylvania

Raised more than \$2,100  
for university's Communication  
Disorders program

Received President's Award  
for most outstanding chapter  
on campus







## ZETA PI

University of Georgia

Received Outstanding Service Award from UGA Panhellenic

Sponsored \$1,000 grant for local elementary classes to provide sign language dictionaries



*Many of the children's parents cannot sign, thus limiting their communication with their families. Many of the families cannot afford to purchase these dictionaries on their own due to medical costs associated with treating hearing challenges. The dictionaries help students and their families practice signing together."*

Ashley Stigler, LAMP Editor

## ZETA PHI

Slippery Rock University

Received Outstanding Educational Event Panhellenic and Interfraternity Council Awards



*By demonstrating a caring pride within the community in which we live, we are living and leading by example, which draws others in the community into doing the same. Community pride is a very strong force."*

Victoria Blatz, Member



## ZETA RHO

William Jewell College

Won Greek Organization of the Year award

## ZETA PSI

Stephen F. Austin State University

Raised \$1,500 for The Painted Turtle camp and Starkey Hearing Foundation



*One of our members lost her father to cancer this past fall. This event helped her receive some closure and allowed her to feel connected to her father and those who have lost loved ones to cancer."*

Niki O'Shea, LAMP Editor

## THETA ETA

Creighton University

Hosted campus-wide Amazing Race, raising \$6,900 for The Painted Turtle camp

Raised more than \$11,850, the highest team amount on campus, at university's Relay for Life to benefit American Cancer Society





## THETA KAPPA

University of New Orleans

Won Outstanding Chapter of the Year during Greek Week



*Every year, Greek Week awards are given out at an alumni social, so members got to meet some alumnae they hadn't met yet. Alumnae also came to our Honors Banquet at the end of the year."*

Hannah Mohr, LAMP Editor



## IOTA ALPHA

Texas State University

Raised \$2,000 to help victims of floods that struck Wimberley, San Marcos and Austin

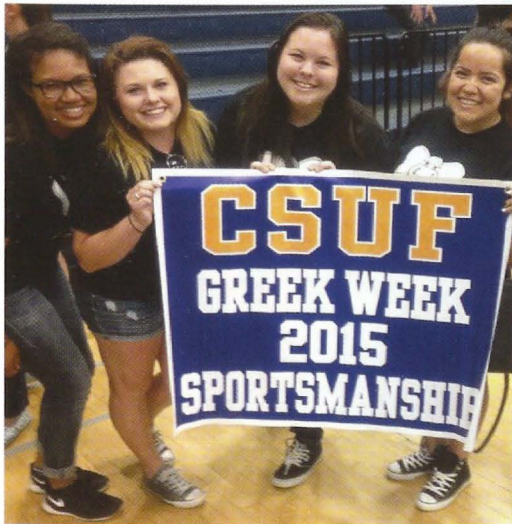
*"During these disasters, we knew we had to help where we could. Some of our sisters traveled to Austin to deliver the donations and volunteer. The Austin Disaster Relief Network was so thankful and appreciative. It was great to see that even small acts of kindness make such a difference!"*

Tori Green, LAMP Editor

## IOTA XI

University of Missouri/St. Louis

Holds highest GPA for 2014-2015 school year among all six Greek organizations on campus



## IOTA UPSILON

California State University/Fullerton

Raised more than \$3,000 in total and dedicated 2,619 hours to speech and hearing and The Painted Turtle camp, CSUF Greek community's philanthropies and to the Orange County community at large





## KAPPA ALPHA

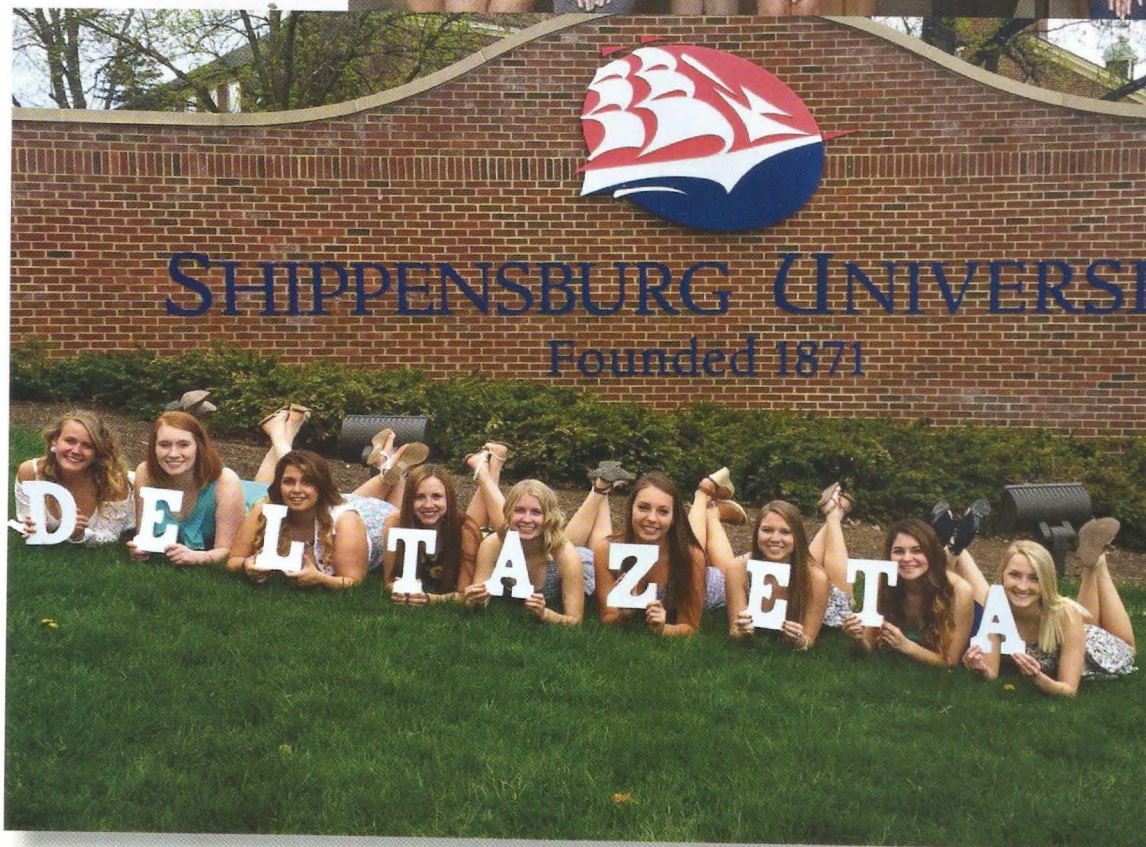
Nicholls State University

Raised more than \$12,200  
for the Delta Zeta Foundation,  
Starkey Hearing Foundation and  
The Painted Turtle camp

## KAPPA TAU

Morehead State University

Raised more than \$3,500 for  
The Painted Turtle camp



## KAPPA PSI

Shippensburg University

Raised more than \$4,600 for  
Relay for Life

## LAMBDA ALPHA

Arkansas Tech University

Received Gold Chapter  
of Excellence  
at Greek Awards

Hosted 60th Miss  
Arkansas Tech Pageant,  
which awarded  
more than \$24,000  
in gifts and scholarships



## KAPPA PHI

University of North Carolina/Charlotte

Recognized with highest GPA for 2014-2015 among all six sororities on campus



## LAMBDA BETA

University of Southern Indiana

Raised more than \$4,100 for Relay for Life to benefit American Cancer Society



## LAMBDA GAMMA

Jacksonville State University

Raised more than \$1,300 and gave 250 hours of time to The Painted Turtle camp



## LAMBDA THETA

### Michigan Technological University

Awarded Outstanding Academic Program for 2014-2015 school year

Raised more than \$3,700 at 2015 Carnival for a Cure Relay for Life



## LAMBDA OMICRON

### Angelo State University

Received university's Organization of the Year award



## LAMBDA PHI

### Appalachian State University

Ninth annual Turtle Trot raised more than \$4,700 for Appalachian Communication Disorders Clinic, to date giving more than \$49,700 to clinic

Awarded Black and Gold status for excellent performance by Office of Fraternity and Sorority Life





## LAMBDA PSI

Columbus State University

Raised nearly \$3,000 for The Painted Turtle camp

## XI ETA

Northwood University

Raised \$1,500 for The Painted Turtle camp



## XI THETA

University of North Carolina/Wilmington

Raised \$3,000 for Starkey Hearing Foundation





## XI IOTA

Muhlenberg College

Raised more than \$5,300 for Valley Youth House, which aids abused, neglected and homeless youth and their families



## XI NU

Tarleton State University

Raised over \$5,000 for The Painted Turtle Camp

“

*All of the philanthropy events are to ultimately give back to the world around us. No matter how big or how small the impact we make, we know that it helps our community. We believe that it's the small things that make a big difference.”*

*Lindsey Teran, LAMP Editor*



## XI OMICRON

Loyola Marymount University

Holds highest GPA for Spring 2015 semester out of all seven sororities on campus



## XI RHO

### Clarkson University

Received perfect score in Fraternal CORE Program, school-administered review that assesses the chapter in academics, philanthropy and presence on campus



## XI TAU

### Millersville University

Received highest rating for GCAT Award, given by All-Greek Council for attending character-building events

## XI UPSILON

### Northeastern University

Hosted its Spikes for Tykes volleyball tournament, raising \$1,045 for The Painted Turtle camp







## XI PSI

Grand Valley State University

Raised more than \$1,600 for The Painted Turtle camp and \$3,600 for local charities

## XI OMEGA

Purdue University

Holds top all-sorority GPA out of 16 sororities for Spring 2015 semester

Raised \$3,000 for a sister's father diagnosed with brain cancer



## OMICRON GAMMA

Ohio University

Won Sorority of the Year at university's Greek Life Awards





## OMICRON DELTA

### Bryant University

Received the Amy Voita Impact Award for chapter development and leadership at Northeast Greek Leadership Association (NGLA) Conference

Donated \$2,000 to Starkey Hearing Foundation and Hole in the Wall Gang Camp in Ashford, Connecticut

## OMICRON BETA

### Stockton University

Held highest GPA out of four sororities for Spring 2015



## OMICRON EPSILON

### Arkansas State University

Donated more than \$3,700 to Camp Aldersgate, serving children with disabilities, youth and senior adults in a camp environment



## OMICRON ZETA

### Randolph-Macon College

Received Chapter of Excellence Fraternity and Sorority Life Award

Received 2014-2015 Godfrey N. Smith Award at school's Honors Convocation, recognizing commitment to academic excellence, service to the greater community and creating a positive reflection of fraternity and sorority community



## OMICRON LAMBDA

North Carolina State University

Raised more than \$11,000 for  
Starkey Hearing Foundation



## OMICRON MU

University of South Carolina/Upstate

Raised more than \$3,000 for March of Dimes

## OMICRON XI

Mars Hill University

Won the highest ranking for  
Women's GPA, Most Social, and  
Best Overall Sorority  
from Greek Life



## OMICRON NU

University of Windsor

Holds highest GPA for 2014-2015 school year  
out of two sororities on campus



## PI ALPHA

University of Florida

Raised more than \$52,000  
at university's Dance Marathon to  
raise awareness and funds for  
pediatric cancer research



“

*This year, the Dance Marathon at the University of Florida raised more than \$2,000,000, becoming the second largest dance marathon in the nation. We are so proud of Pi Alpha for working so hard for the kids!”*

*Brooke Liston, President*



## PI DELTA

### Wake Forest University

Co-hosted annual volleyball tournament with Lambda Chi Alpha, raising \$4,500 for Brian Piccolo Fund for cancer research

Raised over \$5,000 for The Painted Turtle camp



“

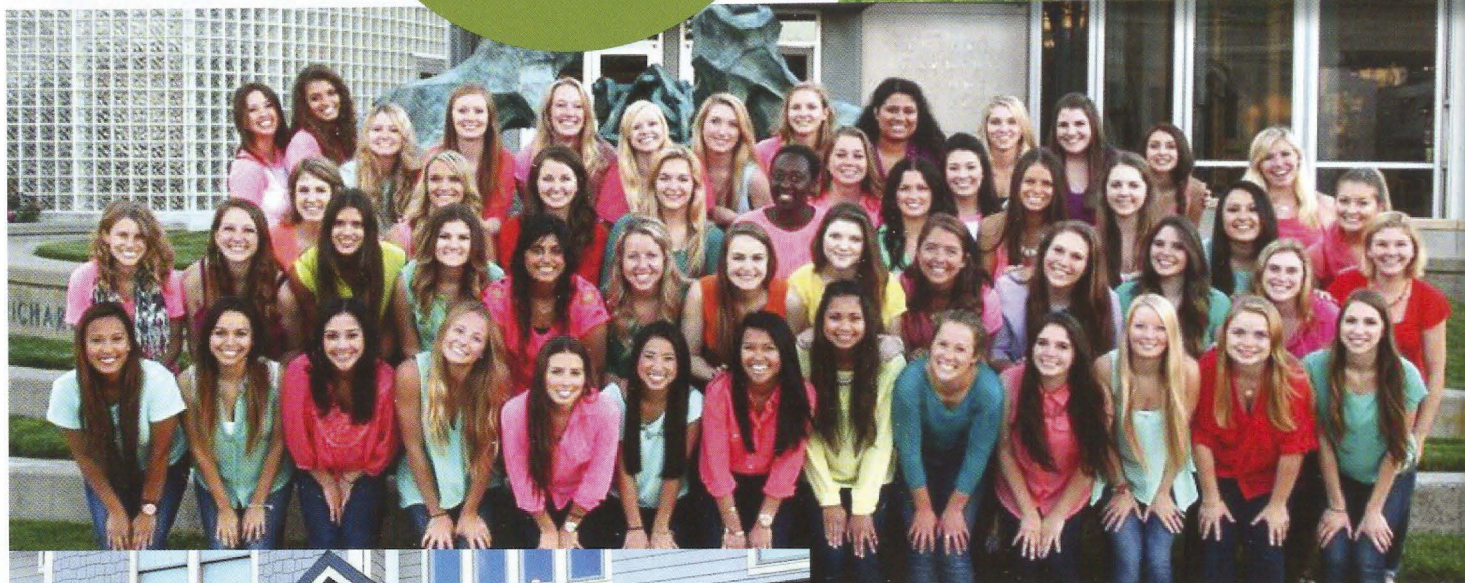
*The original goal that we set for our DZ Dukeout philanthropy event was \$35,000, which is \$5,000 more than last year. We thank all participants and donors who helped us have an incredibly successful Dukeout.”*

*Andrea Aceituno, Historian*

## PI ZETA

### Arizona State University

Raised more than \$44,600 for The Phoenix Children's Hospital, The Painted Turtle camp, Gallaudet University and Starkey Hearing Foundation



## PI LAMBDA

### University of Tennessee/Chattanooga

Raised more than \$8,000 in two days for Starkey Hearing Foundation



## PI TAU

### Sacred Heart University

Hosted Sing It For Starkey karaoke event, raising \$1,115



*Sing It For Starkey was one of my best memories at Sacred Heart! It was so amazing to see so many people gather together to support such a wonderful cause. Seeing so many people helping people in need is one of the best things I can ask for as a sorority woman and Philanthropy Chairman."*

*Brianna White, Philanthropy Chairman*

Read news from these chapters  
at [deltazeta.org](http://deltazeta.org)

PI  
Eureka College

ALPHA RHO  
Ohio Wesleyan University

BETA ALPHA  
University of Rhode Island

GAMMA NU  
Eastern Illinois University

DELTA UPSILON  
Marshall University

DELTA OMEGA  
Fort Hays State University

EPSILON GAMMA  
University of Central Missouri

EPSILON EPSILON  
California State University/Fresno

EPSILON THETA  
Clarion University

EPSILON XI  
University of Central Arkansas

EPSILON TAU  
Longwood University

ZETA XI  
Lenoir-Rhyne University

THETA MU  
St. Cloud State University

THETA OMICRON  
University of Texas/Rio Grande Valley

THETA PHI  
Old Dominion University

THETA OMEGA  
Barton College

IOTA DELTA  
Edinboro University

KAPPA BETA  
Northern Kentucky University

KAPPA MU  
Shepherd University

KAPPA RHO  
Kutztown University

LAMBDA XI  
Texas A&M University

LAMBDA NU  
Auburn University/Montgomery

XI BETA  
Eastern Kentucky University

XI DELTA  
Radford University

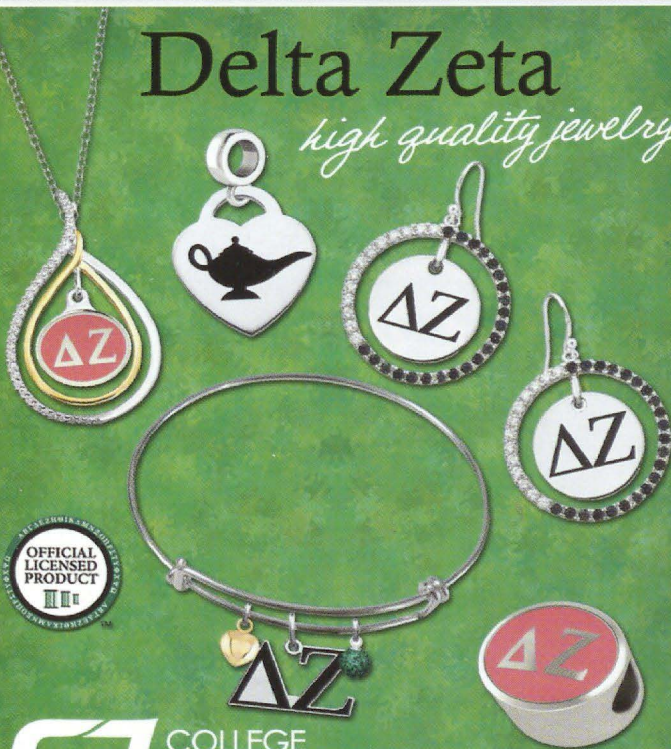
OMICRON ALPHA  
St. Mary's University

PI GAMMA  
California State University/  
Northridge

PI XI  
University of Central Florida

PI RHO  
University of West Georgia

Delta Zeta  
*high quality jewelry*



COLLEGE  
JEWELRY  
248.250.9663

[www.collegejewelry.com](http://www.collegejewelry.com)









For all things  
Delta Zeta.

**DZDeZigns.com**

*Walk truly in the light of the flame  
with your new Truly merchandise  
by DZ DeZigns.*

**Dark Grey Truly Branded V-Neck**

100% Cotton. Uni-Sex. Sizes S-L.

GMS208

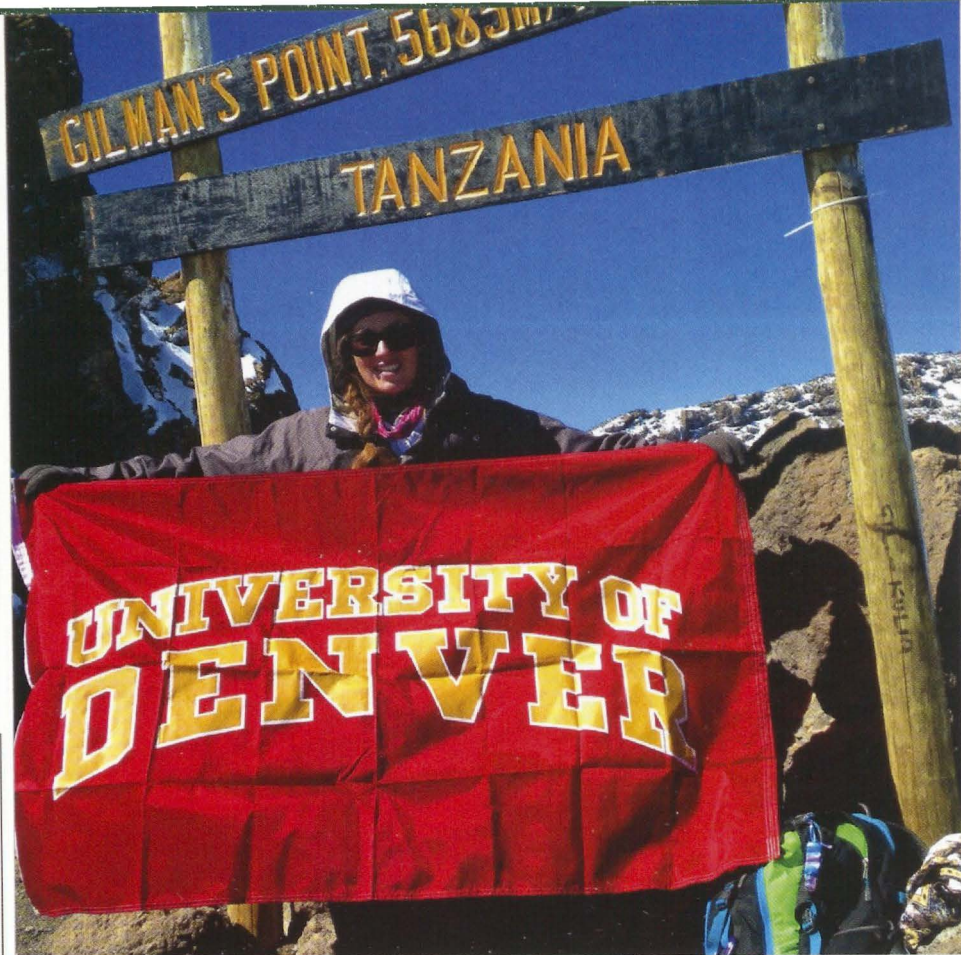
\$24.50

**Silver Delta Zeta Monogram Necklace & Chain**

GMS1470

\$25.00





“

*It was definitely one of the hardest things I've ever done.”*

*Kim Nesbitt, Rho Chapter  
(University of Denver)*

In the fall of 2014, Kim Nesbitt, a collegiate member of the Rho Chapter at the University of Denver, studied abroad on the island of Zanzibar off the coast of Tanzania in East Africa. "After my program ended," she says, "some friends from my program and I decided to climb Mount Kilimanjaro, the tallest free-standing mountain in the world and the tallest in Africa. It took five days to make it to the summit. It was definitely one of the hardest things I've ever done, especially when I was told I might not ever be able to do high-altitude hiking due to a medical condition. But I made it to the tallest point in Africa and had an amazing time!"

## Truly DISTINCTIVE

AS COLLEGIATE LEADERS, WE CONTINUE THE FOUNDERS' VISION AS WE TRULY TRANSFORM OUR CAMPUSES AND COMMUNITIES. READ MORE AT [DELTAZETA.ORG](http://DELTAZETA.ORG).

“

*I hope to give people the best representation of America that I can.”*

*Rebecca Olsho, Epsilon Zeta Chapter  
(Drexel University)*

Pre-junior international studies student Rebecca traveled to Milan, Italy as one of 120 student ambassadors at the World's Fair, Expo Milano, a world conference that brings people together every four years to discuss world issues and events. The exposition site attracted 29 million visitors.

Rebecca said, "As an ambassador, I want to help show the rest of the world what America is really like and about, as some have stereotypes about America. I'm hoping to break some of those stereotypes."



Rebecca was one of Drexel University's first students with a concentration on international studies. Her greatest interests are in subjects like the impact of natural gas and oil reserves on the environment and international relations.



“

*I am excited to work with the students and staff to create the best possible college experience for all.”*

*Lillie Bourgeois, Kappa Alpha Chapter  
(Nicholls State University)*

Lillie, a junior majoring in biology, was elected as Nicholls State University's Student Government Association's (SGA) 2015-2016 President. She has been active in the SGA since she was a freshman. Lillie served as a senator for the College of Nursing and Allied Health, as well as the College of Arts and Sciences, and she held committee chair positions on SGA. She was awarded Outstanding Senator of the Year in 2014 and two SGA Senator Scholarships for her achievements and dedication as a senator. Lillie has served as Kappa Alpha's Activities Chairman, Parliamentarian, Ritual Guard and on various chapter committees. Lillie is also involved in various other campus organizations.



“

*I want to inspire my little sister with the goals and values that Delta Zeta represents; leading by example for others on how to be a mature, confident woman.”*

*Danielle Oddo, Delta Beta Chapter  
(University of Tampa)*

Danielle is the current titleholder of Miss Clearwater USA 2015, "My sisters are my greatest support team," she says. "When I was going to compete for the title, they were instrumental in preparing me for the competition. The sense of family and show of affection gave me comfort knowing that whether I won the title or not, they would be proud of me because of the bond that we share."

Danielle talks to children about volunteering and helping the community, and is a member of Big Brothers Big Sisters. "I have always believed in helping others, whether being a cheerful visitor, or participating in improving someone's life."



holars, majoring in international area studies and economy. She interviewed officials about the on to gain a deeper insight into her discipline. sustainability, environmental sustainability and



# Truly PURPOSEFUL

## ALUMNAE NEWS

We are the alumnae of Delta Zeta, truly connected to the Sorority and inspired by the Delta Zeta's purpose. Read more at [deltazeta.org](http://deltazeta.org).

“*I learned that philanthropy was not just donating money; rather it was giving of oneself and using our talents to serve others.*”

LYNN FORNEY YOUNG,  
STEPHEN F. AUSTIN STATE (TX) - ZΨ

Lynn Forney Young, President General of the Daughters of the American Revolution and Delta Zeta 2014 Woman of the Year, met Queen Elizabeth II of England during the launch of a collaborative project with King's College London to digitize archives of King George III.

The DAR, founded in 1890 and headquartered in Washington, D.C., is a non-profit, non-political volunteer women's service organization dedicated to promoting patriotism, preserving American history, and securing America's future through better education for children.

HEART LANIER SHAPRÉ  
(NÉE GWEN LANIER WHITESELL),  
INDIANA - E

An actress in film and theater, with credits including “Pay It Forward” (2000) and “Heart Condition” (1990), who served as a board member for the Screen Actors Guild/AFTRA, Heart (center) has volunteered in Los Angeles as a counselor with at-risk youth and at the Veteran's Hospital helping injured soldiers.

She volunteers at Opportunity Village in Las Vegas, Nevada, to help intellectually-challenged adults and at the Muscular Dystrophy Association (MDA) Telethon, answering donation telephone calls. She arranges a talented group of tribute artists (imitating Willie Nelson, Neil Diamond and Judy Garland, among others) plus local talent to entertain at the Veteran's Skilled Nursing Home five times a year. Heart is a longtime supporter of the USO, and received a medal of merit from President Ronald Reagan for serving on one of his task forces.



“*Being a member of Delta Zeta reinforced my belief in serving the community.*”





“  
*If you are not doing it with love,  
you are not doing it right.*”

**MELANIE GRISSINGER, SHIPPENSBURG (PA) - KΨ**

Honored as 2014 International Girls On The Run® (GOTR) Coach of the Year, Melanie helps girls understand themselves, value relationships and teamwork and understand how they connect with and shape the world at large. Girls On The Run inspires girls to be joyful, healthy and confident using a fun, experience-based curriculum that creatively integrates running.



“  
*My experiences in Delta Zeta  
greatly validated my passions  
to use my voice to initiate  
positive change.*”



Jill DeStefano (foreground)

“  
*In Delta Zeta, I learned how to  
bring a group together toward a  
common goal.*”

**JILL MEYER DESTEFANO,  
CALIFORNIA STATE/LONG BEACH - ΔΔ**

Jill, an environmental advocate, volunteers to work toward preserving the natural state of Tule Springs located in Las Vegas, Nevada. Tule Springs, a desert ecosystem, consists of small lakes forming an oasis part of the Mojave Desert. “When I found out that future streets in this area had been named, I said ‘Whoa, wait a minute! We’re going to allow developers to build over thousands of years of history?’” Jill said.

Jill developed a campaign to make the area near her home a new national monument managed by the National Park Service. After years of the Protectors of Tule Springs’ hard work and support, the Senate passed the bill for the new National Park Service National Monument in 2014.



**DR. LEE ANN DE REUS, IOWA STATE - BK**

Co-Founder of Panzi Foundation USA, Dr. Lee Ann De Reus engages in strategic advocacy to end violence against women, and provides grants to Panzi Hospital to heal women and restore lives. Panzi Foundation USA raises awareness about the challenges in eastern Democratic Republic of Congo.

She is the Associate Professor of Human Development & Family Studies and Women Studies at Pennsylvania State University-Altoona. For Delta Zeta, she served as an Educational Leadership Consultant from 1986-1987.

Dr. De Reus frequently visits Panzi Hospital in eastern Congo to conduct research, develop programs for rape survivors, and inform her advocacy work in the U.S. She is a 2009 Carl Wilkens Fellow and has received the Spirit of Internationalization Award given in honor of her commitment to global service and outreach along with numerous awards from Penn State University.



# FLAME ETERNAL

Honor your sisters, friends and loved ones with a memorial gift to the Delta Zeta Foundation ([deltazeta.org](http://deltazeta.org)). Obituaries reported from February 3, 2015 through August 13, 2015. Year of initiation is shown after name.

## ALPHA

Harriet Burky Smith - 1930  
Ruth Eichelbarger Schramm - 1932  
Martha Zehring Scanlan - 1935  
Freda Lust France - 1936  
Virginia Bucher Daum - 1937  
Gertrude Burrage Eyrich - 1938  
Edna Githens Campbell - 1939  
Donna Abbott Randolph - 1939  
Jean James Baron - 1942  
Margery Meyer Schmidt - 1945  
Mary Ellen Cowles Kopenhoefer - 1947  
Karen Pederzolli Dietrich - 1971

## DELTA

Beryl Zimmerman Burton - 1934  
Elizabeth Smock Wickman - 1943

## EPSILON

La Donna Cox Hoinash - 1944  
Millie Jane Raake Sommer - 1952  
Sharon Swain Hiatt - 1958  
Carolyn Bates-Greenman - 1964

## THETA

Magdalene Wachholz Dumke - 1942  
Bonnie Oyler Griffiths - 1953  
Dolores Plasendale Brown - 1960  
Sharon O'Brien Stansifer - 1962  
Courtney Lynn Williams - 1998

## IOTA

Julie Henderson Wertman - 1959  
Jan Stephenson Cohn - 1994

## KAPPA

Claire Webb Harper - 1944  
Carolyn Rapp Nicolai - 1955  
Theresa Ann Allman - 1987

## LAMBDA

Barbara Swinney Robel - 1963

## MU

Jean Rogers Lemmon - 1943  
Jean Houser Mills - 1943  
Freda Liskey Camozzi - 1963

## NU

Inez McGaan Briggs - 1934  
Jeneinne Anderson Warnell - 1949  
Judith Meyer Schreiber - 1954

## XI

Cora Freytag Stephens - 1950  
Rebecca Merrill Gilliam - 1972

## OMICRON

Jane Pickering Beering - 1952

## PI

Jeanne Crawford Brush - 1940  
Marla Kylander Hershberger - 1961  
Christine Hershberger Miner - 1965

## RHO

Donna Lindgren Kofman - 1947

## SIGMA

Doris Thorgeson Delambre - 1936  
Nellie Tucker Harper - 1938  
Mary Bogan Gerald - 1948  
Patricia Lowery Hanemann - 1954

## UPSILON

Ada Lohse Bagley - 1949

## CHI

Elaine Drake Mohr - 1942  
Betty Verla Vaughn - 1944  
Barbara Weis Koch - 1945  
Laura Abell Johnston - 1954

## PSI

Jacqueline Hershberger Stinson - 1953  
Barbara Moulden Rominger - 1959  
Kathryn Murray Kennedy - 1960

## OMEGA

Nancy Humble Harper - 1947

## ALPHA ALPHA

Barbara Brett Vetter - 1954  
Claire Libbert VandenOever - 1958  
Janine Foster Woody - 1972

## ALPHA GAMMA

Mary Maxwell Stephens - 1951  
Dorothy Hutchins Dill - 1954  
Patsy Barnes Harmer - 1958  
Patti Baker Fansler - 1965  
Corbyn Kelly Wile - 2013

## ALPHA DELTA

Grace Bunker Hutton - 1947

## ALPHA EPSILON

Jo Lee Webb Booker - 1951

## ALPHA ZETA

Mildred Herreilers Lutgens - 1944  
Mary Dolores Perrone - 1950

## ALPHA ETA

Ruth Parsons Edge - 1948

## ALPHA THETA

Bettie Sanford Hesse - 1945  
Martha Gatewood Ross - 1948

## ALPHA IOTA

Eunice Johnson Gilbert - 1944  
Althea Aleko Miller - 1952

## ALPHA OMICRON

Jo Cain Kowalski - 1941  
Doris DeHoff Walter - 1947

## ALPHA PI

Mary Hamilton Walker - 1953  
Joyce Goodwin Bradley - 1959  
Elizabeth Watson Hudson - 1983

## ALPHA SIGMA

Hilda Alagood Johnson Blich - 1938  
Camilla Bartley Weems - 1948  
Christina Marie Desantis - 2004

## ALPHA TAU

Kathleen Cordry Fears - 1944  
Joyce Schnell Trask - 1953  
Virginia Cator Langley - 1954  
Jane Ann Maxwell - 1956

## ALPHA UPSILON

Carolee Joan Sampson - 1963

## ALPHA CHI

Vernie Paul Deniston - 1943  
Betty Ann Halicus Rauch - 1945  
Lenora Beth Preston Cook - 1946  
Dorothy Louise Strang - 1950  
Barbara Bozeman Decker - 1953  
Hildegard Hiller Owen - 1953

## ALPHA PSI

Norma Henderson Hirmon - 1948  
Pamela Parr Lawrence - 1950  
Janet Jones Hubbard - 1953

## BETA ALPHA

Jean Yare Anderson - 1940  
A. Josephine Starr Dugan - 1940  
Hope Tracy Yeaw - 1940  
Dorothy Partington Crossley - 1945  
Barbara Roussin Nagel - 1947  
Lucille Cashman Dey - 1949  
Barbara Ann DeMaria - 1961

## BETA BETA

Kathryn Belk Deem

## BETA GAMMA

Mary Ellen Volk Heim - 1943

## BETA DELTA

Margaret Smithy Tye - 1945  
Pringle Hopkins - 1981

## BETA KAPPA

Wilma Highland Haukom - 1937  
Joan Weber Lorange - 1947  
Lila L. Fie - 1950  
Dorothea Jean Steven  
Hunsberger - 1950

## BETA LAMBDA

Johneta Lewis Smith - 1934  
Alice Hamilton Reid - 1945  
June B. Burnett - 1947

## BETA MU

Louise Mitchell Pierce - 1944  
Geraldine Koestner Krueger - 1949

## BETA XI

Bonnie Penn McKay - 1945  
Barbara Ann Hutchison Peake - 1947  
Bettye Waites Estes - 1948

## BETA PI

Jane Kompass Trites - 1944  
Rebecca Monroe Veach - 1962

## BETA RHO

Mary Knapp Granger - 1952  
Joan Petrunick Shaw - 1952

## BETA SIGMA

Margaret Benson Morjig - 1952

## BETA PSI

Gertrude Horres Lackey - 1941  
Beulah Simpson Wilks - 1941  
Mary Jervey Battle - 1942  
Addie Kinard Smith - 1942  
Jacqueline Smith Mappus - 1944  
Anne Dabbs Nelson - 1945  
Beverly Beach Rice - 1945  
Frances Blalock Horres - 1945

## GAMMA ALPHA

Jean Sherrer Heran - 1942  
Lois Hurst Ross - 1943  
Mida Musser Cook - 1944  
Luella Edington Avellone - 1945

## GAMMA BETA

Elizabeth Ventres Blaschik - 1944  
Carol Smith Crooks - 1945  
Marie Spino Luciano - 1951

## GAMMA DELTA

Beverly Joyce Drain - 1946  
Eleanor Kelly Lantzy - 1946  
Dorothy Carol Frese - 1964

## GAMMA EPSILON

Berneil Maxey Drake - 1956

## GAMMA IOTA

Nancy Perry Williams - 1959

## GAMMA KAPPA

Evangeline Serceij Morel - 1948  
Helen Markota Mocker - 1952  
Marcia Gray Lover - 1960

## GAMMA MU

Phyllis Hegar Schmidt - 1948



**GAMMA NU**

Marilyn Stephan Roe - 1953  
 Betty Ball Buckler - 1956  
 Mary Beth Piersol Pettitt - 1956  
 Margery Thomas Heath - 1957

**GAMMA XI**

Laferne Chappell Williams - 1970

**GAMMA PI**

Betty Deyoung Robbins - 1962  
 Kathryn Gayle Stoughton - 1963  
 Lynn Joyce Chandler - 1967

**GAMMA RHO**

A. Louise Simpson Behrends - 1956

**GAMMA SIGMA**

Betty Baker Lieder - 1956

**GAMMA TAU**

Luella Cruzen Kabat - 1950  
 Amaryllis Russell Van Allen - 1956  
 Jenna Fisher Jeske - 2005

**GAMMA UPSILON**

Willa Cole Ross - 1945

**GAMMA CHI**

M. Joan Frazier Williams - 1954  
 Berta Swails White - 1956  
 Mary Ann Holthouse Murray - 1965

**GAMMA PSI**

Winifred North Grobbel - 1954  
 Marilyn Adelman Bethuy - 1956  
 Margie McDonald Stickney - 1958  
 Rebecca Perkins Clabuesch - 1970

**GAMMA OMEGA**

Doris Steinmarch Savoie - 1958

**DELTA ALPHA**

Mary Margaret Leuer - 1954  
 Lynda Robb Jones - 1960

**DELTA XI**

Charlotte Morris McBride - 1967

**DELTA OMICRON**

Winona Maddox Schnitzer - 1957

**DELTA PI**

Mary Ann Mercer - 1965

**DELTA UPSILON**

Dorothy Dudley Mayne - 1957

**DELTA PSI**

Nancy Durland Hays - 1958  
 Ronni Raty Kruse - 1962  
 Lynn Hammock Burtness

**DELTA OMEGA**

Joann Hoover Franke - 1957

**EPSILON EPSILON**

Georgia Rogers Cucuk - 1956

**EPSILON KAPPA**

Jean Pierce Mavis - 1957

**EPSILON MU**

Becky Underwood Brechtel - 1959

**EPSILON NU**

Becky Allen Braden - 1957

**EPSILON PI**

Mildred Gnau Greenwood - 1967

**EPSILON RHO**

Patricia Logan Cornett - 1959

**EPSILON UPSILON**

Edna Cook Baptiste - 1956

**ZETA BETA**

Judith Laduke Smith - 1957

**ZETA ZETA**

Hope Bussey McKenzie - 1973  
 Buni Leigh Browning - 1984

**ZETA THETA**

Sharon Gasaway Brun - 1959

**ZETA LAMBDA**

Kathryn Belk Deem - 1967

**ZETA OMICRON**

Sherry Polenska Nutt - 1968

**ZETA RHO**

Marlene Johannsen Tingler - 1969

**ZETA PSI**

Patsy Sherwood Bresie - 1963  
 Beverly Bush Morris - 1966  
 Stephanie Williams Crespin - 1998

**THETA BETA**

Katherine Pritchett Clark - 1962

**THETA ZETA**

Frances Staskus Laurence - 1963

**THETA IOTA**

Carrie Sue Cagle Wood - 1967

**THETA XI**

Sue Sullivan Morris - 1968

**THETA PHI**

Barbara Constable Palombo - 1974

**IOTA ALPHA**

Emma Barber Smith - 1972

**IOTA GAMMA**

Frances Marie Palaszynski - 1966

**IOTA PSI**

Carol Crutchfield Schlesinger - 1976

**KAPPA ALPHA**

Mary Grace Johnson Dalton - 1987

**KAPPA IOTA**

Debra Nichol Hurley - 1979

**KAPPA MU**

Wendy Redick Mills-Myers - 1986

**LAMBDA GAMMA**

Pennie Bunton Tate - 1982

**LAMBDA KAPPA**

Betty Long Wyskida - 1978

**LAMBDA XI**

Patricia Bennett Walter - 1984

**XI BETA**

Susan Marie Webb - 1982

**XI TAU**

Julie Beaulieu Chronister - 2005

**OMICRON ZETA**

Meredith Marie Zoby - 1994

**PHI BETA**

Jeanne Moore Crandell - 1957

### Hilda Alagood Johnson Blitch, Florida State - $\Delta\Sigma$ , Past National Officer



It is with sadness that the National Council shares the news that Hilda Alagood Johnson Blitch, Florida State -  $\Delta\Sigma$ , Past National Officer, passed away on May 18, 2015 in Highlands, North Carolina.

Mrs. Blitch served on Delta Zeta's National Council as Vice President of Membership from 1948 to 1952, as Vice President of Extension from 1952 to 1954 and as National Director of Philanthropies from 1954 to 1956. As a collegiate member of the Alpha Sigma Chapter at Florida State University, she served as President, as well as serving on Student Senate. As an alumna, she was on Alpha Sigma's house corporation board and was a Province Director.

She worked with the United States Army Engineers for four years (known today as the U.S. Army Corps of Engineers) and served on the Board of Directors of Florida State University Alumni Association.

Memorial gifts may be made to the charity of your choice or to the Church of the Incarnation, 520 Main Street, P.O. Box 729, Highlands, NC 28741.



# 'Tis the season to save with GEICO.

Delta Zetas could get a special discount on  
car insurance and when you complete a quote,  
GEICO gives back to Delta Zeta!



Get a free quote.

**GEICO**<sup>®</sup>

[geico.com/greek/DeltaZeta](http://geico.com/greek/DeltaZeta)  
1-800-368-2734

DELTA  ZETA

*Truly.*



Some discounts, coverages, payment plans and features are not available in all states or all GEICO companies. Discount amount varies in some states. One group discount applicable per policy. Coverage is individual. In New York a premium reduction may be available. GEICO is a registered service mark of Government Employees Insurance Company, Washington, D.C. 20076; a Berkshire Hathaway Inc. subsidiary. GEICO Gecko image © 1999-2015. © 2015 GEICO



# SHARING OUR SISTERHOOD

## BLUE RIDGE AREA - North Carolina, South Carolina, Virginia, Washington, D.C., West Virginia

Zeta Lambda Chapter (East Carolina University) alumnae reunite.



"This group meets every other summer at the home of Susan Booth Stevenson. Such a great time!"

Delta Zeta values connect members through shared sisterhood at events such as reunions, chapter anniversaries and alumnae events around the country. Delta Zeta sisterhood remains relevant in our members' lives, no matter how many years have passed since graduation from college. Find more at [deltazeta.org](http://deltazeta.org).

## GREAT LAKES AREA - Canada, Michigan, Ohio



Floor: Gloria Miller Clouse and Sally Stoltz Evans  
Seated: Louise Lauck Cashman, Pam Purcell Koger, Nancy Farrel Spinning, Sharon Rhoad Beebe, Suncoast (FL) Alumnae Chapter President, Ginny Rolla Massimo and Janice Petko.

"All of us have known each other for more than 50 years. Graduating classes of 1962-1965 from Ohio Northern University, Zeta Kappa Chapter, were represented at a mini-reunion. We had a great time!"

## CENTRAL PLAINS AREA - Colorado, Iowa, Kansas, Minnesota, Missouri, Nebraska, North Dakota, South Dakota



## Rho Chapter Centennial Celebration

### SAVE THE DATE!

THE RHO CHAPTER AT THE UNIVERSITY OF DENVER  
IS TURNING 100!

Events will take place on April 28, 29 and 30, 2017, in the Denver, CO area.

Additional details to follow. Please direct all questions to [dzrho100@gmail.com](mailto:dzrho100@gmail.com).

## MID-ATLANTIC AREA - Delaware, Maryland, New Jersey, Pennsylvania



### SAVE THE DATE!

IOTA THETA CHAPTER (MANSFIELD UNIVERSITY)  
CELEBRATES 50TH ANNIVERSARY ON MARCH 12, 2016

The Iota Theta Chapter at Mansfield University will be celebrating its 50th anniversary on March 12, 2016. More details will be coming soon. For more information, or to RSVP, please contact Susan Fellows Standefer, Chapter Association Contact, at [Counsel2@ptd.net](mailto:Counsel2@ptd.net).



Send all notices of address changes and member deaths to:

Delta Zeta National Headquarters  
202 East Church Street  
Oxford, OH 45056  
Phone: (513) 523-7597

PRESORTED  
STANDARD  
U.S. POSTAGE  
**PAID**  
FLORENCE KY  
PERMIT NO. 313

“  
I give back to honor my  
grandmother, a Delta Zeta who  
passed away before I had the  
chance to meet her.

Giving back and being involved  
makes me feel closer and  
connected to her.”

Emily Minor Speight,  
East Carolina (NC) – ZΛ



DELTA ZETA  
FOUNDATION

**THERE ARE MANY WAYS TO GIVE BACK TO DELTA ZETA. EMILY DOES IT FROM HER HEART. “DELTA ZETA HAS SHAPED WHO I AM NOW. I WANT TO SHOW THAT BY DOING WHAT I CAN FOR THE ORGANIZATION,” SHE SAYS.**

**A** singer and songwriter in Nashville, Tennessee, Emily was a Top 50 Finalist on the Fox series, “American Idol” and owns an online women’s apparel and accessories shop, [lulubboutique.com](http://lulubboutique.com).

“Holding positions in my chapter while in college helped me find the confidence and leader within me,” Emily continues. “As an alumna, I am the Volunteer Engagement Coordinator in Tennessee. I am so excited to spend time volunteering for Delta Zeta and reaching out to the new alumnae in the area.”

Emily incorporates the gift of giving learned in Delta Zeta into her business. “I work with a lot of sororities in my women’s boutique and offer them a chance to give back to their philanthropy when they make a purchase.”

Are you a young alumna like Emily, discovering new opportunities since graduating from college? How did Delta Zeta inspire you as you make your unique journey in life?

A gift to the Delta Zeta Foundation is one way to help another young woman create a life that is meaningful and filled with purpose.

Visit [deltazeta.org](http://deltazeta.org) or contact Beth Vaughn, Chief Advancement Officer, at [DZFoundation@dzshq.com](mailto:DZFoundation@dzshq.com), or call (513) 523-7597 for more information. Read more of Emily’s story at [deltazeta.org](http://deltazeta.org).