

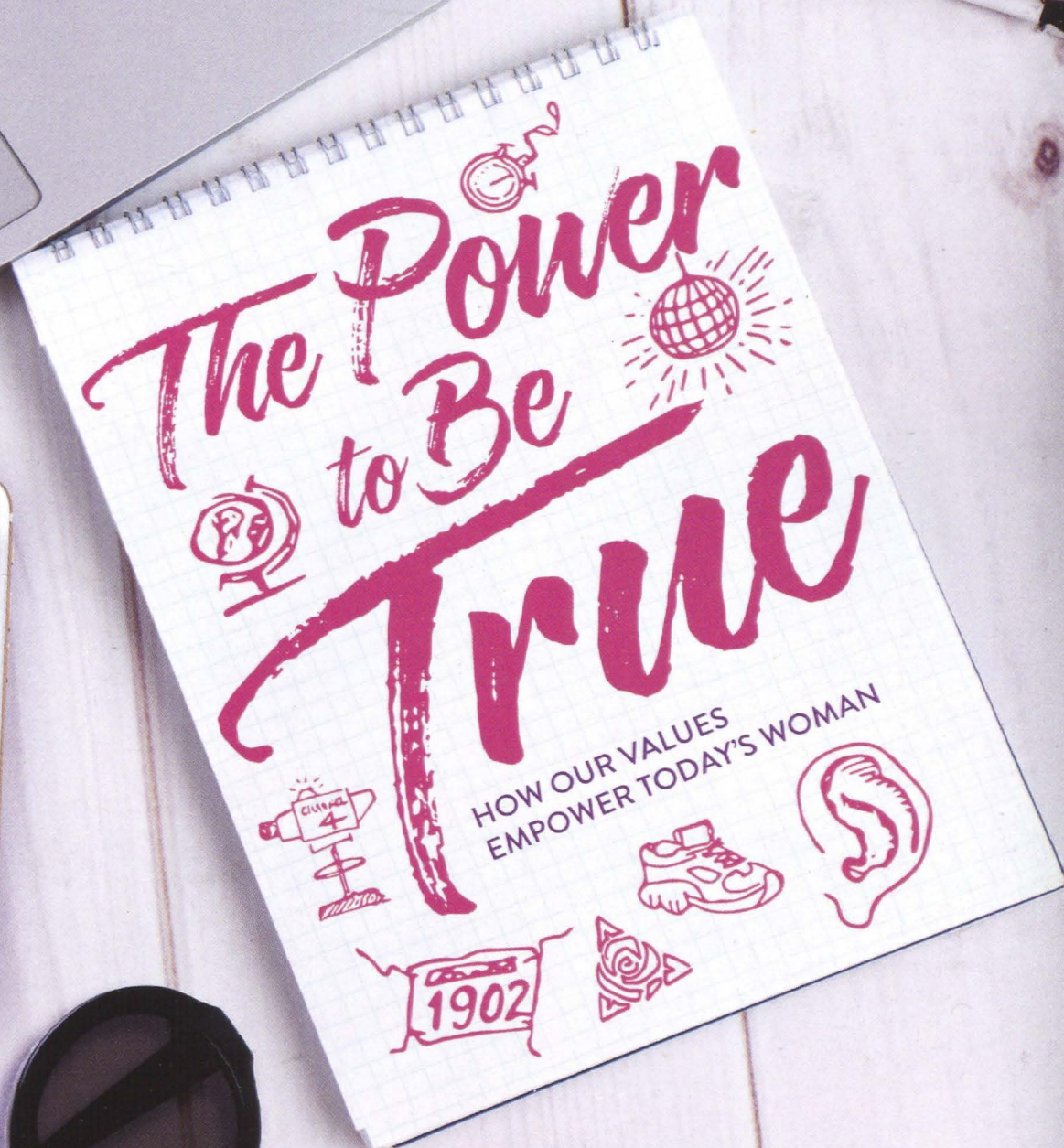
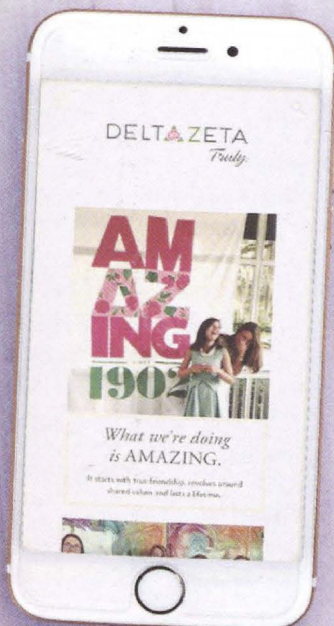
HEART FOR HEARING
Delta Zetas are empowered
to change lives.

2016 NATIONAL CONVENTION
Orlando, Florida becomes
Truly Amazing!

TO WALK TRULY
In the Light of the Flame,
giving graciously

The LAMP

OF DELTA ZETA



FALL 2016



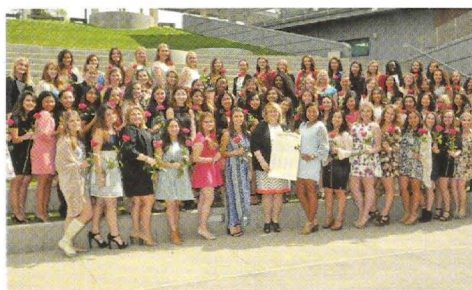
- 04** **The Power to Be True**
How Our Values Empower Today's Woman



- 12** **To Walk Truly**
A Bold Plan, A Visionary Campaign



- 16** **Heart for Hearing**
We All Have Heart



- 24** **Transforming the Campus**
Delta Zeta Welcomed to New Communities



- 08** **Truly Amazing**
Delta Zeta Convention 2016



- 15** **Giving Hearing Globally**
Delta Zetas are Global Citizens for Hearing



- 18** **2016 Florence Hood Miner and
Grace Mason Lundy Awards**



- 48** **National Convention Alumnae Awards**
Alumnae Members and Chapters Honored

DEPARTMENTS

- 20** **TRULY DISTINCTIVE**
Collegiate Leaders Transform the World

- 28** **ON CAMPUS**
Delta Zeta Chapters are Leading for Positive Change

- 46** **TRULY PURPOSEFUL**
Alumnae Achievers Inspired by Delta Zeta Purpose

- 50** **FLAME ETERNAL**

- 52** **FOUNDATION**

Visit deltazeta.org to read the latest issue. If you would like to read The LAMP online to help the Sorority to go green, please email us at GreenLAMP@dzshq.com, and include your full name, chapter of initiation and mailing address.

You will receive an email alert when the next issue is online. If you want to continue to receive The LAMP in its hard copy format, mailed to you three times a year, you need not do anything. Thank you!

Published since December 1910 by Delta Zeta Sorority. The LAMP of Delta Zeta, Nancy E. Brewer, A, Editor (ISSN #0887-2554), official magazine of the Sorority, is published three times a year by the Delta Zeta Sorority, 202 East Church Street, Oxford, OH 45056.

POSTMASTER

Send address changes to Delta Zeta Sorority, 202 East Church Street, Oxford, OH 45056.

Send all editorial material to Delta Zeta National Headquarters, Attn: Editor, 202 East Church Street, Oxford, OH 45056 (513) 523-7597

General email: dzs@dzshq.com
The LAMP email: LAMP@dzshq.com
Website: deltazeta.org

**DELTA ZETA SORORITY
NATIONAL COUNCIL 2016 - 2018**

Diane M. Stecher
Missouri/St. Louis - **IE**
National President

Leslie Evans Williams
Indiana - **E**
National Vice President of Membership

Christy Phillips-Brown
Western Carolina (NC) - **OI**
National Vice President of Collegians

Barbara Jones Brotherton
Minnesota State/Moorhead - **ON**
National Vice President of Alumnae

Christi Schneeberger Mayer
Shepherd (WV) - **KM**
National Vice President of Administration

Stacey Wheeler Slaughter
Washington - **K**
National Vice President of Finance

Michelle Albrecht Smith
California/Los Angeles - **AX**
Past National President

Jeanine Petersen Triplett
Louisville (KY) - **BI**
National Panhellenic Conference
Delegate

Founded at Miami University
Oxford, Ohio • October 24, 1902

FOUNDERS

Alfa Lloyd Hayes, 1880-1962
Mary Collins Galbraith, 1879-1963
Anna Keen Davis, 1884-1949
Julia Bishop Coleman, 1881-1959
Mabelle Minton Hagemann, 1880-1929
Anne Simmons Friedline, 1879-1932

THE ORDER OF THE LAUREL

Irene Caroline Boughton, I
(University of Iowa)
Grace Mason Lundy, E
(Indiana University)
Elizabeth Coulter Stephenson, A
(Miami University)
Myrtle Graeter Hinkley, Δ
(DePauw University)
Norma Minch Andrisek, ΓA
(Baldwin Wallace University)



Printed in USA.



National Panhellenic Conference

FROM THE PRESIDENT

LEGACY



As I go through my daily activities, I often wonder if I am making a difference in the world. Am I creating my legacy? In Delta Zeta, we volunteer and have the ability to influence tens of thousands of women, young and seasoned. I have seen our Delta Zeta support system in action. So, what will my legacy look like? As Maya Angelou so eloquently articulated, "I've learned that people will forget what you said, people will forget what you did, but people will never forget how you made them feel."

As we live our lives, we are building a foundation on which we "construct" the traditions and the legacy we leave behind. One of the most important components of building a legacy is maintaining integrity. If you don't possess integrity, the foundation of that legacy is not sound. Integrity is a core principle evident in a person of high values. But just as important as integrity, we must always remember to consider others' interests being as important as our own. We can strive to be number one in some aspects of our lives, but we need to remember to always build up those others around us. So love your neighbor, even if you don't see eye to eye. It is called respecting others' values and opinions.

The value of working hard is never in vain and is a large part of building a legacy. Working hard also leads to taking risks. And, you must take risks in order to gain. There is a difference between a calculated risk and a risk taken carelessly. Take time to thoroughly think through these risks. Don't give up when you fail. Failure is only temporary. Giving up is permanent. Remember, you will reap what you sow and every action you take has a consequence. If you don't like life's consequences, then you may want to reevaluate your actions.

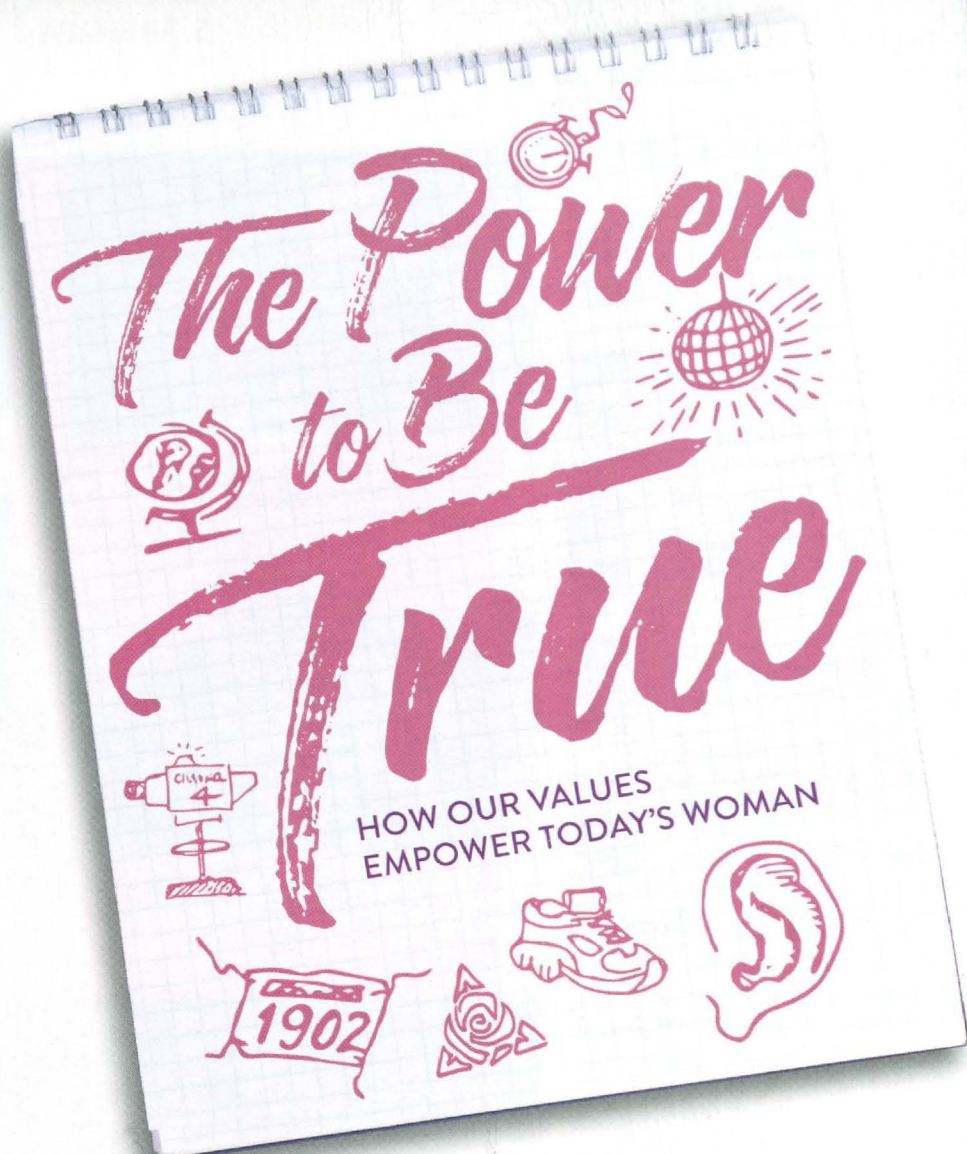
You must never stop in the pursuit of a legacy. The persistent, passionate person ultimately prevails. When we live our lives in service to others, good things will follow. I truly believe this is so. Always lead others with the heart of a helper, and others will want to help, too.

We can create a better future for Delta Zeta, our own lives and the world. No matter what we may have failed to create in the past, in making the commitment to examine our accomplishments and look for new and better ways to contribute to Delta Zeta, the people we love, and humanity, we will create a legacy. A legacy lives forever.

As Maya reflected, "Try to be a rainbow in someone's cloud."

In Delta Zeta,

Diane M. Stecher
Diane M. Stecher
National President



TODAY, WE LIVE IN A WORLD THAT HUMANKIND HAS NEVER EXPERIENCED BEFORE.

It is a world that leaves us incredulous (either for better or worse), is awe-inspiringly beautiful, touches the most human part of our soul, or sears us with unbelievable cruelty. In a world where virtual reality and reality merge, blur and make us question our sanity and our values, what do we believe? And does what we believe and do make a difference in such a world?

Women who are discovering their place in today's world are finding a very different world than their sisters of 20, 30, 40 or more years ago. Those women might say they knew with a little more certainty what the world was about when they were 18 or 22. Right and wrong were more clearly delineated. Even in times of discord and strife, they knew what they believed in, and what values others stood for. Their sisters remained by their side. But today, even they have their doubts in a world of turmoil.

Conflict seems to be everywhere. Each person believes that their opinion is the correct one. Many people take a critical stance with little concern for others, with little interest in making a situation

better. We may wonder if there is someone out there who holds dear the values that we do — the values we pledged to in our beloved Delta Zeta Creed.

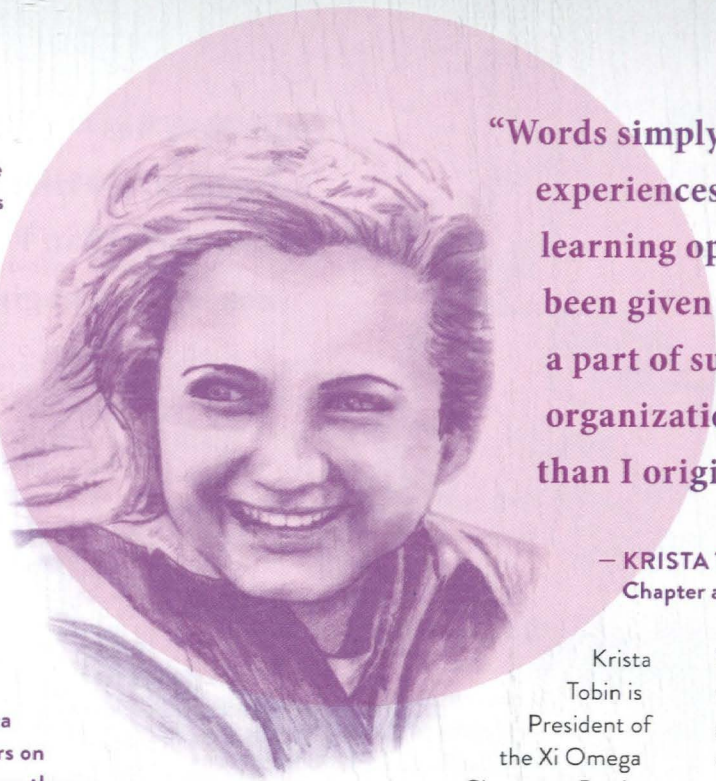
There are women who are strong, unafraid and who believe that living truly in this world will bring change for the better. Those women are Delta Zetas. The Delta Zetas who became members 65 years ago, because the genuine sisterhood and values of faith, giving, love, truth and courage have guided them all of their lives. The Delta Zetas who just became members on a college campus in 2016 because they found a place filled with love that helps them grow, lead and serve in the light of truth.

Delta Zeta has always welcomed a woman's unique talents, passions and aspirations. She seeks a place that will support, inspire and move her. The women whose friendships she treasures encourage and strengthen her. She discovers a new and exciting part of herself that enables her to fulfill her dreams. She lives her purpose truly.

Because of you, because of the extraordinary women who are Delta Zetas today, and because of the extraordinary women who came before us, Delta Zeta is truly amazing! And our members are doing truly amazing things to make a world of uncertainty a world that holds hope.

We are women who live truly in our lives — as students, professionals, wives, mothers, daughters, sisters and friends. We share the Delta Zeta experience, which is at once personal and unique to each of us, yet is the common bond that brings us together as sisters.

In living our authentic lives, we discover who we are and what we are meant to do. The satisfaction and happiness we have in finding ourselves empower us to reach our potential. Only then can we give back and make a difference. It is that giving that changes us and the world for the better.



“Words simply cannot describe the experiences, friendships and learning opportunities that I have been given to better myself. Being a part of such a premier women’s organization was so much more than I originally expected.”

— KRISTA TOBIN, President of the Xi Omega Chapter at Purdue University

Krista Tobin is President of the Xi Omega Chapter at Purdue University. Majoring

in business management, with a concentration in Global Leadership and Human Capital, Krista will graduate in May, 2017.

“Being able to truly immerse myself in the appreciation and understanding of our values and Creed has allowed me to make our sacred ritual into my daily Ritual,” she said. “It has also been a catalyst to have the drive to achieve personal and organizational goals, as well as wanting to serve for my family, sisters, community and national philanthropy. Having the experiences of knowing how it can impact not only myself but also those around me is so rewarding.”

Krista’s leadership and involvement, both inside and outside of Delta Zeta, has included serving as the Purdue University Dance Marathon Finance Director, participating in the Indiana Greek Leadership Conferences (IGLC), as charter member of the Fraternal Values Society, participant in the Chapter President’s Leadership Advance (CPLA), graduate of Fraternity Sorority Cooperative Leadership Institute, and as a graduate of the Undergraduate Interfraternity Institute (UIFI:Purdue).

“Delta Zeta has influenced my life in many ways,” she said. “I truly could not

imagine my life without the impact of what Delta Zeta has done for me. I have gained the understanding of resiliency, dedication, integrity and values that now define me as an individual. Being able to grow, enhance, advance and improve my life is nothing short of the truth. I am so thankful and honored to have all these opportunities to take on leadership roles that have shaped me into who I am today.”

Our members’ stories make up the story of Delta Zeta. From the story of six brave young women in 1902 who dared to create an organization for women on a campus that just a few months previously had admitted only male students, to the story of Delta Zetas giving in hearing missions in the Dominican Republic, Mexico, Guyana, and throughout the United States, and leading globally on campuses and in communities, our Sorority’s reach and our members’ impact for good continues to grow. Our Founders wanted women to live truly, have the opportunity to move ideas forward and make a profound difference in this world. Just imagine how proud they would be of you and Delta Zeta today!





**“Delta Zeta has
influenced my life in
more ways than I
could ever imagine.”**

— KIERSTYN PARÉ,
President of the Omicron
Nu Chapter at the
University of Windsor,
Canada

Kierstyn Paré is pursuing a degree in Business at the University of Windsor. She hopes to begin her own business and have the chance to explore the world while making a difference in people's lives.

“I am passionate about our National Philanthropy, Speech and Hearing,” said Kierstyn. “When I first joined Delta Zeta, I was introduced to the Starkey Hearing Foundation and

the importance it places on helping those with hearing challenges. I have never been affected by hearing loss in my life, and Delta Zeta has taught me that just because something doesn't affect you personally, it doesn't mean it doesn't exist.”

The Omicron Nu Chapter created a video of the chapter members reciting the Creed in sign language to show support for Gallaudet University, the world's only university designed to be barrier-free for deaf and hard-of-hearing students. Omicron Nu is planning its Hike for Hearing in the Fall of 2016, and has included an ASL (American Sign Language) Chairman in the chapter who will teach the members sign language.

“I've learned that raising money is great, but educating others is even better,” Kierstyn said. “This is only the beginning for not only our chapter but for myself as well. There is so much to learn, and Delta Zeta has given me the foundation to learn it all.”

Delta Zetas receive the encouragement and empowerment to change their lives through a unique journey of personal growth and readiness for the future. We do philanthropy and service as a means to explore our passions and impact the world in a meaningful way. Our personal philanthropy, now known as Heart for Hearing, taps into our passions and teaches us how our personal networks can help us do more. While we are making a change to better the world, we are changing, too – transforming with the realization of true purpose.

As our collegians discover the power of living truly through the influence of Delta Zeta, our alumnae find that Truly Amazing continues to have meaning in their lives, long after college.



"The Sorority continues to impact my career and life."

— SARAH BETH THORNTON,
Alabama/Huntsville - Lambda Kappa,
Huntsville Alumnae Chapter President

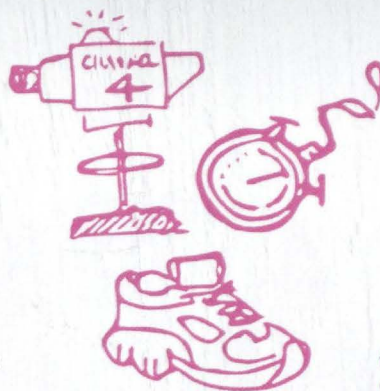
Sarah Beth, an account manager at WVTM13 in Birmingham, Alabama, said, "Delta Zeta actually jump-started my career!" She began her career in the creative services department of a small TV station in Huntsville, Alabama, then was given an opportunity in sales at the station. That is "where I found my calling in helping local businesses create their brand and grow their business through TV advertising," she said. Later, Sarah Beth moved to WVTM13 in Birmingham.

"As a collegian, I served as the Philanthropy Chairman and planned several events," said Sarah Beth, "which I included on my resume. When the general manager of the FOX affiliate in Huntsville, Alabama saw my event experience, she knew I would be a perfect fit as an intern in the promotions department who planned and co-hosted hundreds of events each year. Once the internship ended, I was offered a part-time position and, upon graduation, a full-time job."

When the Lambda Kappa Chapter at the University of Alabama/Huntsville or the Huntsville Alumnae Chapter hosted philanthropy events, Sarah Beth arranged free commercials and air time to promote the events. "It is a beautiful thing when a career and a passion come together!"

While she truly enjoys her career, Sarah Beth's true passion is nonprofit organizations. When she moved to Birmingham, she chose to volunteer with Ronald McDonald House. "It was an easy cause to fight for since a Huntsville alumna's son was diagnosed with cancer on Christmas Eve and was immediately transported to St. Jude where the family stayed at a Ronald McDonald house. This sister's connection with this organization showed me just where my heart wanted to serve."

The alumnae chapter has raised \$675,000 since 1967 for the Huntsville Hospital Foundation, Starkey Hearing Foundation and the Delta Zeta Foundation. Now Sarah Beth is helping to organize the Once Upon a 5K storybook-themed event to continue the amazing work. "I've encouraged all of our women to take a huge step in it. This is something truly amazing that I get to do with my chapter," she said.



Our Founders had a noble vision for Delta Zeta when they founded the Sorority in 1902. They founded Delta Zeta for you. They wanted you to be the best you, and knew that the Delta Zeta experience would give you the confidence, courage and curiosity to become your best – to take your life and transform it, to live your dreams, and to make the world a better place. Delta Zeta empowers leaders who crusade for justice and give graciously.

Each of you promised to make that vision come true when you initiated and as you live the Delta Zeta experience truthfully. You speak out when you see injustice. You act when the truth must be championed. You are an advocate, a role model, an exemplary citizen and a leader. You do this with the support of your sisters and faith in yourself.

You are empowered to lead and serve in a world that needs those who "crusade for justice, seek the truth and defend it always." We are together as women and true friends who are inspired to make change for good happen. We are truly amazing!



WHO DO YOU KNOW THAT IS TRULY AMAZING?

Tell us about her!
Email LAMP@dzshq.com
or use the Submit News form on
the DZ App.

AM AZ ING

Truly. AM  AZING
DELTA ZETA CONVENTION 2016

2016 National Convention

Delta Zeta is Truly amazing. It is what we do. It is who we are. It is on display in each special moment that a woman lives her life, influenced and guided by her Delta Zeta experience.

At the 52nd National Convention of Delta Zeta Sorority, held at the Orlando World Center Marriott, Orlando, Florida, delegates, visitors and friends were truly amazed by the power of love and the resolve to make a difference in the world that the women of Delta Zeta possess. To walk truly comes from living Delta Zeta values. Every woman in Orlando at the National Convention affirmed that commitment.

Delta Zeta was proud to present \$300,000 to The Painted Turtle camp, which supports children's medical needs, inspires them to reach beyond their illnesses, and provides care, education and respite



**“We are a lot like those six women.
We need to challenge ourselves and stand
up to things we will not tolerate. How are
we going to lead?”**

— **DR. LORI HART**, Director of Prevention Education
for Pi Kappa Phi Fraternity, Carolyn Barnes Gullatt
Symposium speaker



Dr. Lori Hart, Director of Prevention Education for Pi Kappa Phi Fraternity, Carolyn Barnes Gullatt Symposium speaker



From left, Diane M. Stecher, Missouri/St. Louis - **IE**, Delta Zeta National President; Alexis Madrid of The Painted Turtle camp; Barbara Jones Brotherton, Minnesota State/Moorhead - **ON**, National Philanthropy Chairman; and Virginia Gilbert Loftin, Alabama - **AI**, Delta Zeta Foundation President.



Diane M. Stecher, Delta Zeta National President with Tani Austin, Co-founder of Starkey Hearing Foundation, alumna initiate of the Alpha Chapter, Miami University (Oxford, Ohio), and Cindy Winslow Menges, Miami (OH) - A, Delta Zeta Executive Director.

“I wasn’t in a sorority and didn’t have the community such as you have to draw from – that is something extremely special. With the leadership that you have, with these women that are setting high standards, you ask a lot of yourself.”

Tani Austin, Co-founder of the Starkey Hearing Foundation, was the 2016 Convention initiate. Our members proudly welcomed her into our sisterhood. Tani’s dedication to speech and hearing matches that of Delta Zeta’s. She and her husband, Bill, are pioneers in the field of speech and hearing, and believe that the gift of hearing, which brings the gift of communication, is the path to world peace.

for their families.

The installation of the 2016-2018 National Council brought a close to a memorable 52nd National Convention.

“Today the key to leadership is empowerment,” Diane Stecher, National President for the 2016-2018 biennium, said. “Delta Zeta empowers the woman. Our mission in life is to offer our gifts to benefit one another, to create mutual gain. This is called teamwork. The very nature of empowerment is that you are able to influence outcomes.

“One action, one thought, one idea to empower and encourage can be the one catalyst that pushes us forward towards realizing our potential that resides within each of us.”



The 2016-2018 National Council: Jeanine Petersen Triplett, Louisville (KY) - **ΒΓ**, National Panhellenic Conference Delegate; Christi Schneeberger Mayer, Shepherd (WV) - **KM**, National Vice President of Administration; Barbara Jones Brotherton, Minnesota State/Moorhead - **ΘΝ**, National Vice President of Alumnae; Christy Phillips-Brown, Western Carolina (NC) - **ΘΙ**, National Vice President of Collegians; Diane M. Stecher, Missouri/St. Louis - **ΙΞ**, National President; Leslie Evans Williams, Indiana - **Ε**, National Vice President of Membership; Stacey Wheeler Slaughter, Washington - **K**, National Vice President of Finance; and Michelle Albrecht Smith, California/Los Angeles - **ΑΧ**, Past National President.

'Tis the season to save with GEICO.

Delta Zetas could get a special discount on
car insurance and when you complete a quote,
GEICO gives back to Delta Zeta!



Get a free quote.

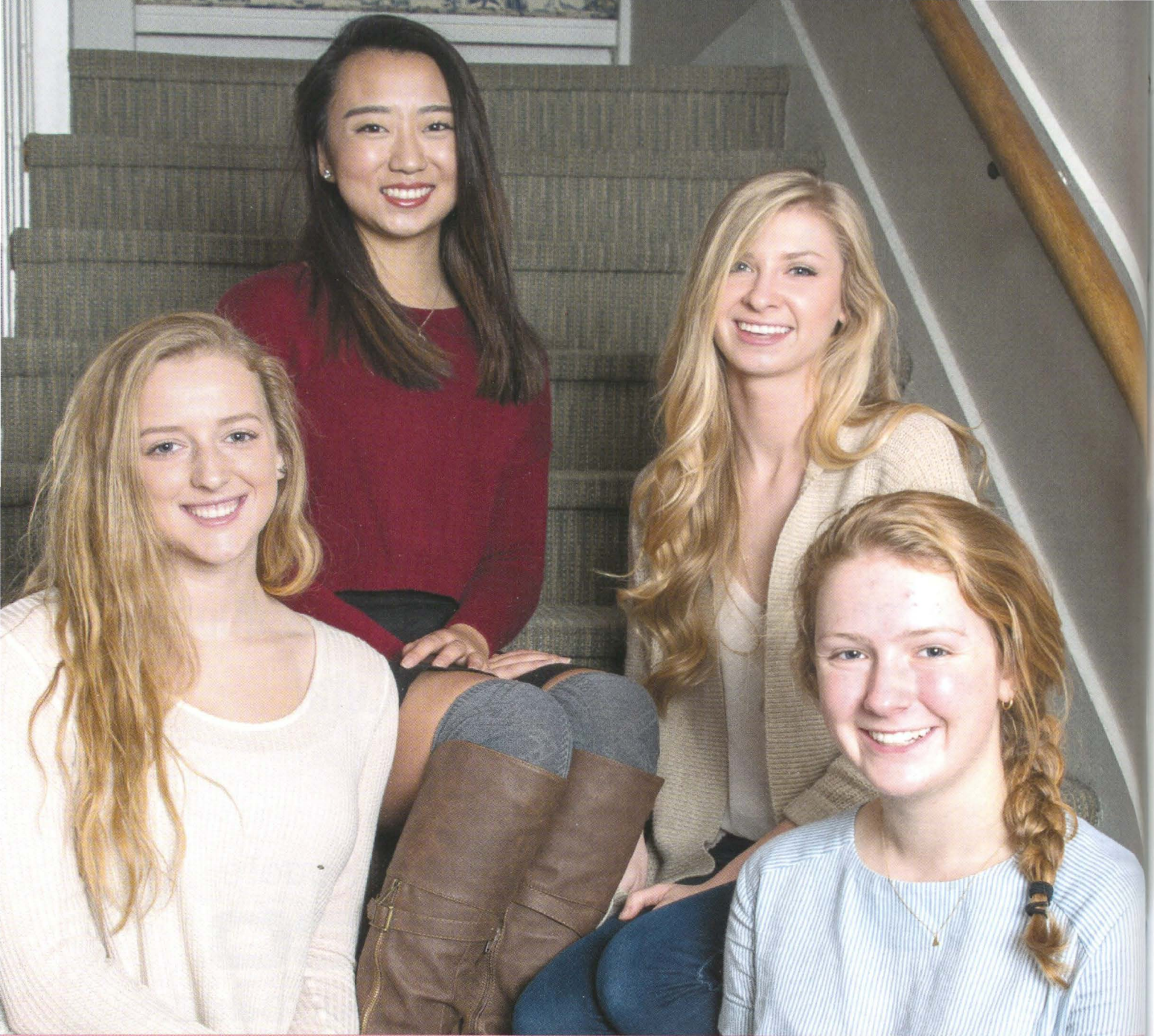
GEICO[®]

geico.com/greek/DeltaZeta
1-800-368-2734

DELTA  ZETA

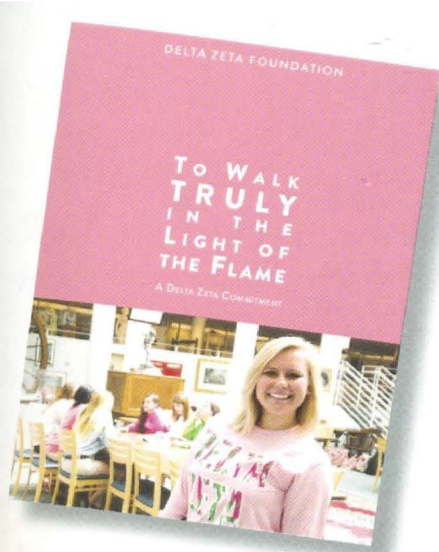


Some discounts, coverages, payment plans and features are not available in all states or all GEICO companies. Discount amount varies in some states. One group discount applicable per policy. Coverage is individual. In New York a premium reduction may be available. GEICO is a registered service mark of Government Employees Insurance Company, Washington, D.C. 20076; a Berkshire Hathaway Inc. subsidiary. GEICO Gecko image © 1999-2016. © 2016 GEICO



To Walk TRULY Campaign is Launched





In 2014, the National Council Set the Table for our Sorority with a new strategic plan, establishing a course for Delta Zeta to expand our leadership training opportunities.

This visionary plan ensures that every member has the best experience available on her campus and, most importantly, empowers Delta Zeta sisters to change the world for the better.

"What Delta Zeta does for young women matters now, more than ever. This plan allows us to provide for the needs of today's women," said Diane Stecher, Delta Zeta Sorority National President.

This plan is bold, but it ensures Delta Zeta is the premier women's organization. This is not the first time our Sorority has set ambitious goals, and it certainly will not be the last. But in order to achieve these goals, the Sorority needs more financial resources.

To grow those resources, the Delta Zeta Foundation has launched the historic To Walk TRULY in the Light of the Flame capital campaign. The campaign will provide additional financial resources to provide personal growth for every member through relevant, strategic and ever-evolving member development programming; critical skills training for Chapter Presidents and their College Chapter Directors through our annual Presidents Academy; and expanding our Norma Minch Andrisek Leadership Conference for emerging chapter leaders to be held every year instead of every other year.

This campaign is the largest in Delta Zeta history with a goal to raise \$3.5 million to empower Delta Zeta sisters. "This campaign ensures Delta Zeta will be the premier women's organization. We will have the resources to help every sister develop confidence, learn to resolve conflict and develop interpersonal communication skills through the Being More! member development program," noted Campaign Co-chairman Virginia Gilbert Loftin, Delta Zeta Foundation President. "We will be able to help Chapter Presidents and emerging leaders develop the skills they need to lead chapters and keep sisters safe."

The campaign will provide funding for the following:

- \$2 million to endow the Being More! member development program
- \$525,000 to double the number of participants who attend the Norma Minch Andrisek Leadership Conference
- \$675,000 to educate Chapter Presidents and College Chapter Directors through the annual Presidents Academy
- \$300,000 to enhance Clutch, Delta Zeta's signature risk education tool

Delta Zeta sisters have already started answering the call to invest in the future and have committed \$2.9 million to this historic effort. "I am so impressed by our sisters' commitment to the next generation," shared Michelle Albrecht Smith, Campaign Co-chairman and Past National President. "Our sisters' willingness to dream big and give graciously has been overwhelming."

"These early commitments have laid the groundwork for the next phase of this campaign," said Alumnae Area Campaign Chairman, Anne Marie Jones Gavin, Past National Officer. "We will be focusing on 13 geographic areas over the next year for the campaign. We are hosting events in Dallas, Los Angeles, Orange County, Philadelphia, Cleveland, San Francisco, Washington, D.C., Atlanta, Tampa, Charlotte, Houston, Chicago and Cincinnati. We want alumnae all over the country to have the opportunity to participate in this campaign."

Sisters can also visit deltazeta.org/campaign for more information about the campaign and upcoming events.

DONOR LIST

As of August 1, 2016

Merry Westbrook Adamcik, Houston (TX) - ΔΘ
 Tiffany Boyd Adams, Miami (OH) - Α
 Heather Jerden Anderson, Texas/Arlington - ΙΨ
 Jennifer Plenge Arington, Kentucky - ΑΘ
 Sandra Sebrell Bailey, Ohio State - Θ
 Sondra Golden Bass, Tennessee/Knoxville - ΒΑ
 Carol Selway Bertz, Ohio State - Θ
 Karly K. Burns, East Carolina (NC) - ΖΑ
 Karen Martin Campbell, California State/Long Beach - ΔΑ
 Susan Wallace Christmas, California State/Long Beach - ΔΑ
 Cheryl Wassink Couch, Minnesota State/Moorhead - ΘΝ
 Pamela McClure Cronenwett, Northwestern (IL) - ΑΑ
 Phyllis Sundberg Davis, Alabama - ΑΓ
 Marlo L. Dorsey, Missouri/Kansas City - ΞΦ
 Sandra McAlister Fisher, Auburn (AL) - ΒΞ
 Anne Marie Jones Gavin, Tufts (MA) - ΔΙ
 John J. Gottschall, Chief Financial Officer, Delta Zeta Sorority
 Dianne Fellows Guild, DePauw (IN) - Δ
 Paula LeAnn Harfst, Washington - Κ
 Carol Sharpe Harper, Louisville (KY) - ΒΓ
 Kathi Bray Heatherly, Central Oklahoma - ΕΥ
 Lynnda Wolf Hoefler, Kent State (OH) - ΓΚ
 Sandra Hart Horton, Iowa State - ΒΚ
 Chris Kolodgie Kern, Missouri/St. Louis - ΙΞ
 Tracy Wilson LeSieur, Texas A&M - ΑΞ
 Virginia Gilbert Loftin, Alabama - ΑΓ
 Marjorie Klingensmith Lovewell, Minnesota - Γ

Joan Dondrea Lowry, Baldwin Wallace (OH) - ΓΑ
 Anne Cecile McGinnis, Oklahoma City - ΓΥ
 Paula McKean McQuillen, Drake (IA) - ΓΕ
 Susan Lee Mease, Samford (AL) - ΑΠ
 Cindy Winslow Menges, Miami (OH) - Α
 Ann Gurley Morrow, Southern Indiana - ΛΒ
 Cathy Irvin Painter, Alabama - ΑΓ
 Ruth Weider Patterson, Wittenberg (OH) - ΒΧ
 Deanna Alleman Pendleton, Texas - ΑΤ
 Christy Phillips-Brown, Western Carolina (NC) - ΘΙ
 Barbara Poremba, Connecticut - ΓΒ
 Debbie Raziano, Nicholls State (LA) - ΚΑ
 Nancy Russell, California State/Fullerton - ΙΥ
 Kim Anspach Rutkowski, Temple (PA) - ΔΤ
 Charlotte Fields Silversteen, Temple (PA) - ΔΤ
 Michelle Albrecht Smith, California/Los Angeles - ΑΧ
 Beverly Baldwin Burnsed Spencer, Florida State - ΑΣ
 Jane Spurgeon, Missouri/St. Louis - ΙΞ
 Diane M. Stecher, Missouri/St. Louis - ΙΞ
 Marvona Easley Tavlin, Southwestern Oklahoma State - ΕΑ
 Lorrie Flores Tijerina, St. Mary's (TX) - ΟΑ
 Jeanine Petersen Triplett, Louisville (KY) - ΒΓ
 Beth Vaughn, Chief Advancement Officer, Delta Zeta Foundation
 Leslie Evans Williams, Indiana - Ε
 Constance Teaford Wilt, Ohio State - Θ
 Sonja Nay Wise, DePauw (IN) - Δ
 Carolyn McCandless Woodling, Central Missouri - ΕΓ

Delta Zeta Foundation Receives NICF Award



The Delta Zeta Foundation was honored with the North-American Interfraternity Conference Foundation (NICF) Award for Best Use of a Foundation Grant in support of Delta Zeta's Truly Connected Women's Conference. The inaugural professional women's conference was held in February 2016 in Atlanta, Georgia. Accepting the award for Delta Zeta were Beth Vaughn, Chief Advancement Officer, and Alicia Favata, Hartford (CT) - ΠΒ, Director of Alumnae Engagement.

*"There is so much to do.
With your support, with your
help, you know, we have been
able to effectively change
hundreds of thousands of lives."*

Tani Austin, Starkey Co-founder



Delta Zeta contest winners are trained in the proper way to do hearing aid fittings before their mission in Toluca, Mexico.

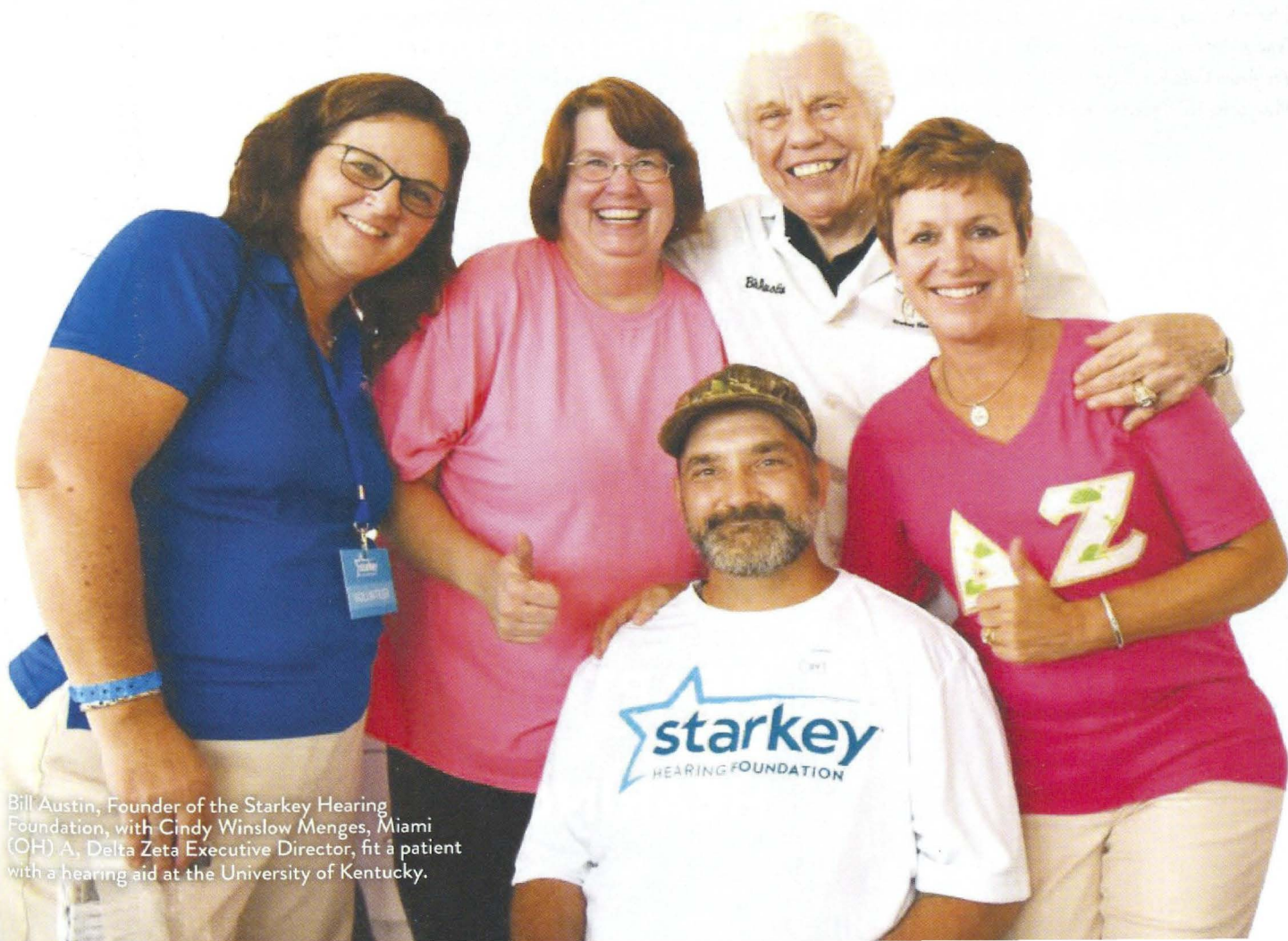
GIVING HEARING GLOBALLY

A major milestone was reached in the Heart for Hearing campaign and announced at the 2016 National Convention. When launched in 2015, the goal was to raise \$5 million in five years for the Starkey Hearing Foundation. Diane Stecher, National President, was thrilled to present Starkey with a \$1 million check and announce that Delta Zeta was well on its way to reaching that goal. As of this printing, Delta Zeta members and chapters had raised \$1.3 million.

The Sorority has joined Starkey on national and international missions as well to provide hearing aids to those in need in Guyana, Haiti, Peru, the Dominican Republic, Mexico, and in Kentucky and other areas of the United States where needed.

We also announced the winners of our global mission contest who began their journeys with Starkey this fall, and are sharing their stories with us along the way on our social media channels.

We give graciously to change lives so the world may hear.



Bill Austin, Founder of the Starkey Hearing Foundation, with Cindy Winslow Menges, Miami (OH) A, Delta Zeta Executive Director, fit a patient with a hearing aid at the University of Kentucky.



*some hiked,
all had heart.*

In doing so, you inspired a new name for our
national philanthropy fundraising.

The Delta Zeta *Heart for Hearing* is what happens when women are empowered to do the things that change lives. Whether you're hiking, hitting home runs, playing dodgeball, or making a Facebook post, when you do it for Speech and Hearing — you're all heart.

So that you're free to create events and ask for donations that benefit our National Philanthropy in ways that resonate close to home, the *Hike for Hearing* is now *Heart for Hearing*. So the world may hear.

**HEART
FOR 
HEARING**



I HAVE
HEART

HEART FOR HEARING AWARENESS CAMPAIGN

1. Cut out the Heart poster
2. Take a selfie and tag five friends
3. Use the hashtag **#iHaveHEART**

be entered to win Heart for Hearing prizes

SHAPING LEADERS

These annual collegiate awards are often the hallmark of Delta Zeta leaders — women who have demonstrated truly inspired leadership as volunteers, in their college careers and as Delta Zetas.

2016 Grace Mason Lundy Awards

First presented at the 1948 Convention in recognition of Mrs. Lundy's many years of service as a National President, Historian and in other national offices, it shall be presented to senior members of Delta Zeta who throughout their college years have given greatest evidence of loyalty, devotion and service to their chapters and to the Sorority.



Lillie Bourgeois
Kappa Alpha Chapter
Nicholls State University



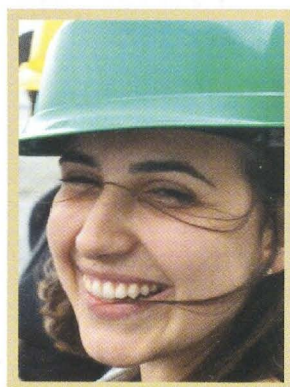
Allison Carpenter
Omicron Zeta Chapter
Randolph-Macon College



Rebecca Neumann
Omicron Epsilon Chapter
Arkansas State University



Madison Norwich
Pi Beta Chapter
University of Hartford



Danielle Sitro
Xi Upsilon Chapter
Northeastern University



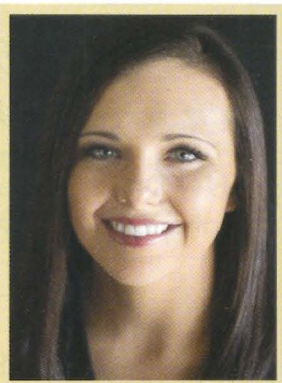
Katie Swing
Kappa Beta Chapter
Northern Kentucky
University



Jacie Zoerb
Beta Tau Chapter
Nebraska Wesleyan University

2016 Florence Hood Miner Awards

First presented at the 1948 Convention in recognition of Mrs. Miner's service as National Vice President, Editor of The LAMP of Delta Zeta, Historian and other national offices, the award shall be given to members of Delta Zeta who in their junior year made the greatest contribution to their college, chapter and Delta Zeta through outstanding leadership on the campus while maintaining a good academic record.



Sierra Archer
Delta Omega Chapter
Fort Hays State University



Jessica Eason
Lambda Kappa Chapter
University of Alabama/
Huntsville



Jacqueline Gilbride
Gamma Tau Chapter
Bowling Green State University



Rachel Rudolph
Xi Upsilon Chapter
Northeastern University



Taylor M. Smith
Epsilon Sigma Chapter
Wayne State University



Madeline Stine
Kappa Beta Chapter
Northern Kentucky
University



THE

Truly DISTINCTIVE

As collegiate leaders, we continue the Founders' vision as we truly transform our campuses and communities. Read more at deltazeta.org.

“

I was a part of something much bigger than myself.”

— JENN DICKEY, Kappa Mu Chapter
Shepherd University

Jenn attended the first United State of White House Women in June of 2016. The White House Council on Women and Girls, together with the Department of State, the Department of Labor, the Aspen Institute and Civic Nation, convened the first United State of Women Summit, a large-scale effort to rally together advocates of gender equality to highlight what women have achieved, identify the challenges that remain, and chart the course for addressing them. Experts, advocates, and grassroots and business leaders who work in both domestic and international arenas gathered to highlight key issues affecting women and girls and best practices to carry on into the future.

Jenn was invited by First Lady Michelle Obama's staff after a nomination from a fellow Shepherd University student. She spent the day with other women who believe in empowering women and standing up for women's rights.



Carrie Ingerman is a caring sister and an exceptional member of Delta Zeta.”

— LAUREN IMOLA,
Purdue (IN) $\Xi\Omega$, Alpha Alpha
College Chapter Director

Alpha Alpha Chapter member Carrie Ingerman was awarded Outstanding Sorority New Member of the Year by Northwestern University's Fraternity & Sorority Life for her commitment to the community and the Sorority.

She founded a campus organization called Beyond Compliance that aims to build a community for students with disabilities, increase visibility and awareness about disabilities on campus, and empowers students with disabilities to be their own advocates.

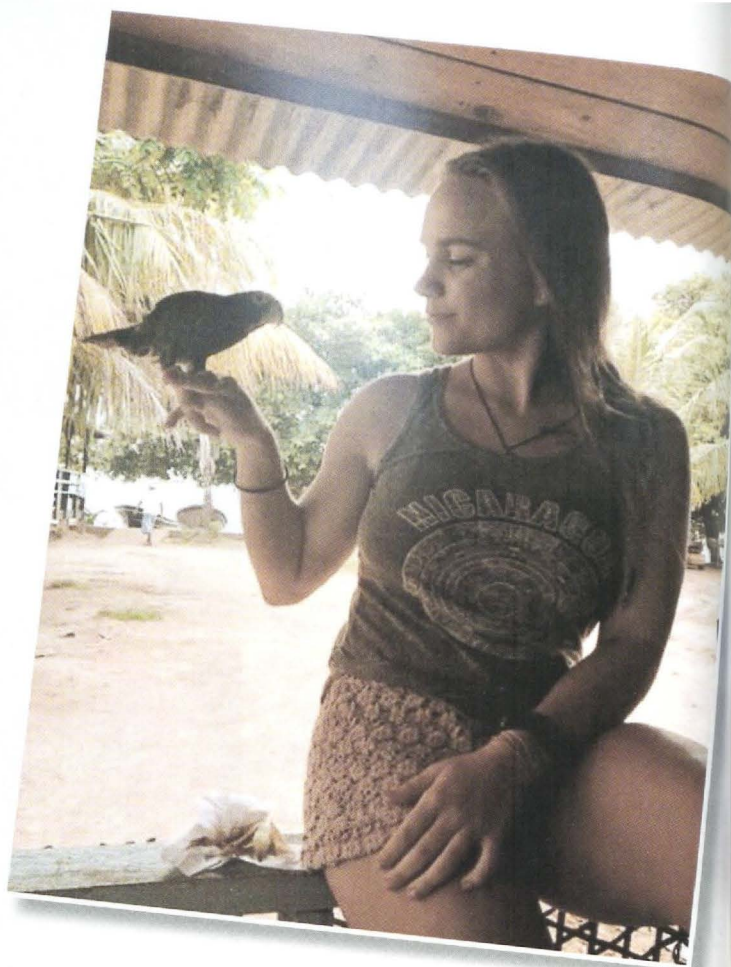


“*Humans are as one. I hope that people can see themselves as citizens without borders and understand that a simple call to Congress in support of a bill could help the lives of millions.*”

— **MICHAELA HOUSTON**, Omicron Gamma Chapter, Ohio University

Michaela worked with the Borgen Project, a non-profit organization that works with Congress to shorten the poverty gap and address hunger in developing countries. She spent the summer calling members of Congress, writing letters and informing people of the Project's cause. After her internship concluded, she traveled to Nicaragua to teach English and build houses in addition to other work.

As a political science major with a focus in sustainability and a minor in communications, Michaela hopes to use her degree to continue to help developing countries through governmental work in the United States.



“*Delta Zeta has further developed my confidence and my leadership skills to inspire me to achieve success.*”

— **ASHLEY HOGAN**, Omicron Epsilon Chapter
Arkansas State University

Ashley (top, in photo), a Star in Delta Zeta's Service Flag, serves in the ROTC (Reserved Officers Training Course), and completed her first year in the Army National Guard in May of 2016. "I plan to commission as an officer upon graduation and seek a career in psychology," she said. As a Cadet, Ashley is stationed in Arkansas, and her hometown is Paragould, Arkansas.

“One of the most incredible experiences for me was seeing the boys participate in activities they otherwise would not have been able to participate in because of their condition.”

— ANNIE NOWAK, Omicron Gamma Chapter, Ohio University

Annie, a sophomore, had the opportunity to volunteer at The Painted Turtle camp in June 2016 during Skeletal Dysplasia week.

As a cabin counselor for boys from eight to 10 years old, Annie and another Delta Zeta member from Kentucky, along with Painted Turtle staff members, took the campers to and from activities and made sure they had an unforgettable experience at camp. Annie is counting down the days until she can return to volunteer again in the near future.





TRANSFORMING THE CAMPUS

Delta Zeta is welcomed to the hillside campus of California State University/San Marcos in Southern California.

On a campus where the values of intellectual engagement, community, integrity, innovation and inclusiveness are core to the lives its students lead, Delta Zeta could not be more at home at California State University/San Marcos. The Pi Psi Chapter of Delta Zeta Sorority was installed there on April 10, 2016.

“*Delta Zeta Sorority is excited to join the California State University/San Marcos community,” said Diane M. Stecher, National President.*

“The university’s mission to be ‘a distinctive public university known for academic excellence, service to the community, and innovation in higher education’ is congruent with Delta Zeta’s values.”

Megan Curran, Coordinator of Fraternity and Sorority Life, Jason Schreiber, Director of Student Life and Leadership, Alexandra Serrano, Loyola-Marymount (CA)- EO, Resident Director, fraternity and sorority chapter presidents, the Greek Leadership Council President, family and friends were present for the installation.

HEART FOR HEARING

The Pi Psi Chapter has donated \$6,253 to date to Heart for Hearing.

The Greek community at California State University/San Marcos was established in the 1994-1995 academic year and is made up of fraternities and sororities from multiple umbrella organizations including National APIA (Asian Pacific Islander American) Panhellenic Association, National Association of Latino Fraternal Organizations, Inc., National Panhellenic Conference, National Pan-Hellenic Council, Inc., and the North-American Interfraternity Conference.

In the 2015-2016 academic school year, the fraternal community raised \$113,205 for philanthropy, completed more than 7,319 community service hours, and the fraternal GPA was higher than the all-men’s and all-women’s campus grade point average. The Greek community has experienced a 162 percent growth in five years. The Greek community works together under one council known as the Greek Leadership Council, of which the Pi Psi Chapter was proud to have one member elected to lead on the board.



DELTA ZETA IS NOW PART OF LONG ISLAND'S BEAUTIFUL GOLD COAST.

Just as Delta Zeta empowers women to become global citizens who make a difference, Long Island University Post's mission is congruent with the Sorority's mission, in that the institution provides "excellence and access in private higher education to people from all backgrounds who seek to expand their knowledge and prepare themselves for meaningful, educated lives and for service to their communities and the world."

On April 24, 2016, the Pi Upsilon Chapter was installed on the campus located 27 miles from New York City on Long Island's beautiful Gold Coast. Present were Greek members of the LIU Post community, friends and family, Katherine Mazzaro, Greek Life & Student Involvement Director, and Michael Berthel, Director of Campus Life, both of the university.

Diane M. Stecher, National President, welcomed them along with Delta Zeta volunteers and alumnae as she said, "We are honored to be a proud part of the heart of campus life experience at Long Island University Post. Fraternities and sororities promote scholarship, leadership and service on this campus, and their members forge lifelong friendships. Delta Zeta will provide the women of LIU Post with truly inspirational opportunities for personal and leadership development."

As the chapter was installed that spring day in April, they became an important part of the Long Island University Post fraternity community, one of the fastest growing Greek communities in the region. The university is home to many of the nation's largest fraternities and sororities, and is now a place that Delta Zeta can call home.

UPCOMING COLONIZATIONS

Bucknell University
Lewisburg, Pennsylvania

Murray State University
Murray, Kentucky

University of Texas/Arlington

University of Akron
Akron, Ohio

University of Oregon
Eugene, Oregon

University of Connecticut
Storrs, Connecticut

Johnson & Wales University, with approximately 16,000 graduate, undergraduate and online students at four campuses, was founded in 1914. The university's mission is to provide students with "an exceptional education that inspires professional success and lifelong personal and intellectual growth."

This mission and Johnson & Wales' commitment to global and community citizenship, consistent with the values-based experience Delta Zeta Sorority brings to our members, made the university a fitting home for the Pi Omega Chapter, installed on May 1, 2016. Seventy women became members of Delta Zeta on that date.

Delta Zeta was honored to welcome the Johnson & Wales fraternal community, Casey Spillane, 2015-2016 Panhellenic President, Scott Lyons, Director of Student Involvement & Leadership at Johnson & Wales University, and family and friends to the installation ceremony.

In addition to raising money for Delta Zeta's national philanthropy, speech and hearing, through Heart for Hearing, the Pi Omega Chapter volunteers at the Providence Children's Museum, supports the Girl Scouts, and participates in the Day One 5k to end sexual violence. Lexy Parsons, Vice President of Membership, is President of the Student Government Association.

An innovative educational leader, the university offers degree programs in arts and sciences, business, culinary arts, education, nutrition, hospitality, physician assistant studies, engineering and design. The university "integrates arts and sciences and industry-focused education with work experience and leadership opportunities, inspiring students to achieve professional success and lifelong personal growth."

DELTA ZETA COMES TO JOHNSON & WALES UNIVERSITY IN PROVIDENCE, RHODE ISLAND.



Meet the Educational Leadership Consultants!



Dayna Wolfe, Washington – **K** (second year), Rebecca Clark, Florida – **IIA**, Allison Armstrong, Minnesota State/Moorhead – **ΘN** (second year), Rachel Houston, Illinois State – **ΛP**, Taylor Cecil, Eastern Kentucky – **ΞB**, Megan Marabella, San Francisco (CA) – **ΞΛ**, Mary Waterman, Associate Director of Chapter Services, Mandi Wise Evans, Associate Executive Director, Adrienne Maxwell, Ball State (IN) – **ΓX** (second year), Rachel Sipe, Texas State – **IA**, Taylor Winter, Kent State (OH) – **ΓK** (second year), Sara Sabulsky, Missouri State – **EN** (second year), Danielle Wade, Eastern Kentucky – **ΞB** and Madison Norwich, Hartford (CT) – **ΠB**.

The Educational Leadership Consultants (ELCs) are visiting our collegiate chapters in the 2016-2017 school year.

- Allison Armstrong, Minnesota State/Moorhead – **ΘN** (second year)
- Taylor Cecil, Eastern Kentucky – **ΞB**
- Rebecca Clark, Florida – **IIA**
- Rachel Houston, Illinois State – **ΛP**
- Megan Marabella, San Francisco (CA) – **ΞΛ**
- Adrienne Maxwell, Ball State (IN) – **ΓX** (second year)
- Madison Norwich, Hartford (CT) – **ΠB**
- Sara Sabulsky, Missouri State – **EN** (second year)
- Rachel Sipe, Texas State – **IA**
- Danielle Wade, Eastern Kentucky – **ΞB**
- Taylor Winter, Kent State (OH) – **ΓK** (second year)
- Dayna Wolfe, Washington – **K** (second year)

ELCs enrich the collegiate experience with their knowledge and cultivate leadership. They visit Delta Zeta's collegiate chapters around the country to advise chapter executive boards and chairmen, assist in the planning and implementation of membership recruitment activities, and deliver leadership development and educational programs throughout the academic year.

Mandi Wise Evans, Ball State (IN) – **ΓX**, Associate Executive Director, with Mary Waterman, San Diego State (CA) – **ΓO**, Associate Director of Chapter Services, oversee the program, in addition to managing the department's resources that are provided to support educational, leadership and reporting needs of the volunteers and committees who work with collegiate chapters.

ON CAMPUS

National Convention Awards

Our collegiate chapters are truly amazing! They describe the love and hard work that went into making a chapter that won a National Convention award in Orlando, Florida on July 6-10, 2016. Congratulations!

Council Award

This award shall be presented to a chapter or chapters for six years of high consistent achievement.

"We were honored to receive the Council Award for excellence in all areas of chapter development, programming and operations."

We last won this award in 2010. We send a special thank you to our alumnae, advisors and Jeanine Petersen Triplet, Past National President, Louisville - BG, for all the guidance, support and love."

BETA GAMMA CHAPTER, University of Louisville

— Beta Gamma Chapter



Crest Award

This award shall be presented to outstanding college chapters that have excelled consistently in all areas of college programming.

BETA GAMMA CHAPTER, University of Louisville



DELTA DELTA CHAPTER, Georgia State University

"Over the past few years, our chapter has continuously flourished due to our implementation of several programs, including training future leaders of the chapter to the best of their ability. We have a strong bond with the Atlanta Alumnae Chapter, holding our annual Founders Day event with them, and network with alumnae in the professions we plan to pursue. We have continued to improve in formal recruitment, and believe that this improvement occurred because we put a stronger focus on sisterhood."

—Alyzza Ukani, LAMP Editor



DELTA TAU CHAPTER, Temple University



EPSILON SIGMA CHAPTER,
Wayne State University





"We believe that the decisions we make now will determine the future of our chapter, the lives of our sisters for years to come, and Delta Zeta as a whole. We have worked both alone and alongside our campus to train and educate our members on risk reduction topics."

Our sisterhood has grown stronger through the planning of more sisterhood events that inspire positive morale. We have taken every step necessary and available to educate, support and help our members grow."

"We love Delta Zeta. We love our chapter. We cannot wait to see what the future holds for this amazing organization."

—Madison Thompson,
President

OMICRON BETA CHAPTER, Stockton University



OMICRON PI CHAPTER, Frostburg State University



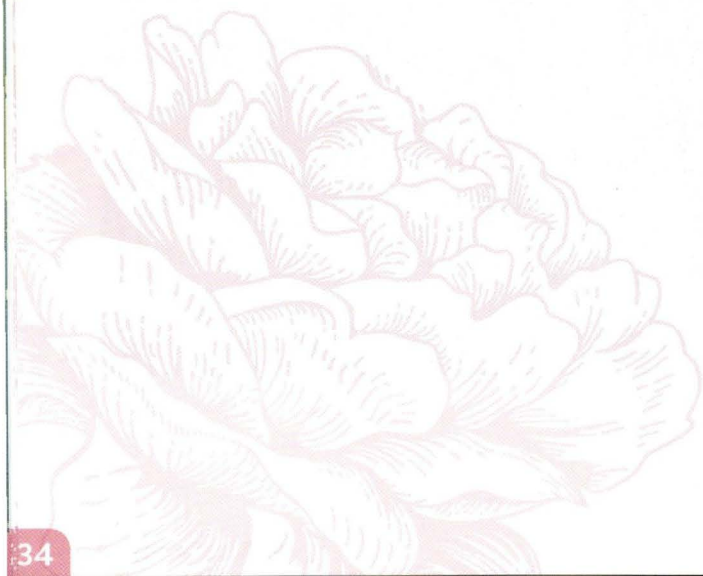
OMICRON ZETA CHAPTER,
Randolph-Macon College

"This chapter has grown so much because of the constant dedication of each sister to become better versions of themselves. Every year we have challenged each other to grow and surpass all of our goals. I am so proud to be a part of this amazing chapter!"

—Melissa Tomlin, President



THETA THETA CHAPTER, DePaul University



XI LAMBDA CHAPTER,
University of San Francisco

"I ultimately believe that we received the Crest Award because of our sisterhood. A quote that we believe as a chapter is, 'Lucky to be a Delta Zeta, blessed to be a Xi Lambda.' We wish to be the best we can be, and this is accomplished through the support of one another and striving to see what Xi Lambda can do for both our sisters and our community."

"A chapter's growth starts internally. We made changes in our programming for the betterment of the chapter. Within our community, we strive to be change agents. We do this by addressing topics that are not comfortable to hear, but need to be discussed. We strive to have fun, be vulnerable and provide time for personal reflection and generate leadership skills for members of the chapter. We empower women to change the world."

—Kelsey Duff, President



XI NU CHAPTER, Tarleton State University



ZETA PHI CHAPTER, Slippery Rock University



ZETA RHO CHAPTER, William Jewell College

"I joined Delta Zeta in my first year because of the respect and admiration I had for the women in the Zeta Rho Chapter. They shared important values of mine and clearly represented themselves in these regards as a part of our college community. I am thankful for the opportunity to be mentored by these women and carry on their legacy as determined, caring women. I hope that each new woman who joins our chapter is inspired in this same way. Without the women who have come before me, who have laid the foundation and challenged me to be the best version of myself, I would not be the woman and leader that I am today. To my pleasure, members of our chapter have consistently taken on the initiative to be a premier women's organization for ourselves and one another."

—Bailey Breeding, President



Caryatides Award

Caryatides Award consists of six statues presented to those chapters which have best envisioned and fulfilled a New Member Education Program that has brought enrichment to the new members.



DELTA DELTA CHAPTER, Georgia State University

"To enhance our new member period, the past Vice Presidents of New Member Education implemented a program called Turtle Tribes. The new members felt comfortable participating in this program because it gave them a sense of security while allowing them to express themselves in the chapter. Through the program, they created new bonds with older sisters in the chapter. Sarah Saldana, Vice President of New Member Education, said, 'Overall it truly benefitted both our chapter and our new members because of the honest, down-to-earth relationships that everyone experienced.'"

—Alyzza Ukani, LAMP Editor

EPSILON SIGMA CHAPTER, Wayne State University

OMICRON ALPHA CHAPTER, St. Mary's University

"We work to give our new members the best Delta Zeta experience possible. We have structured programming to help our new members become the best versions of themselves. We have high expectations of these young women. However, we also help them reach their goals both in and out of Delta Zeta, especially within their studies. The chapter also gives the new members the opportunity to have an officer position within their new member class."

"We are extremely proud of our 100 percent initiation rate for the past three years. Samantha Garza, Vice President of New Member Education, credits this award not only to herself, but also to the past Vice Presidents of New Member Education who have built the program into what it is today. After these young women are initiated, we truly see their passion and love for Delta Zeta, along with seeing them flourish within our chapter and in our community."

—Natalie Barajas, LAMP Editor

PI EPSILON CHAPTER, Clemson University

"We were so honored to win our second Caryatides Award at National Convention! One thing that we believe sets our new member program apart is our use of Diamond Leaders. Diamond Leaders are initiated members of our chapter, usually juniors or seniors, who act as mentors to groups of our new members during their new member period. These women are carefully selected so that our new members have the best mentors who will be available to help with anything and everything Delta Zeta. This helps our Vice President of New Member Education and gives our new members someone to contact when they have questions about anything."

—Bronwyn Bigger, President

XI UPSILON CHAPTER, Northeastern University

"The Xi Upsilon Chapter was truly humbled to have been presented with the Caryatides Award for our new member education program. Within the past year, we completely revamped our program, and to have our hard work recognized is incredible. Not only were our chairmen motivated to change our program, the chapter as a whole supported the decisions and changes because we knew it would be the best for our chapter and future generations of Delta Zeta. Our goals were to have all new members initiated, have no new members on academic probation and bond sisters with a sisterhood-promoting retreat. All of this would not have been possible without the entire chapter on board supporting our new members and being the best role models they could be. Instrumental players in this change was Helen Rotondi, Vice President of New Member Education, and her amazing assistants. Between new member meetings and fun programming events, our new members learned about the foundation of Delta Zeta while also growing as women. Though this year's program differed from the past, we were determined to focus on the positives and enable our new members to become the incredible sisters that they are today."

—Rachel Rudolph, President

ZETA RHO CHAPTER, William Jewell College



When it comes to jewelry, Don't sacrifice quality. Check out our full ΔΖ line. WWW.COLLEGEJEWELRY.COM

OFFICIAL LICENSED PRODUCT

COLLEGE JEWELRY
248-688-9563

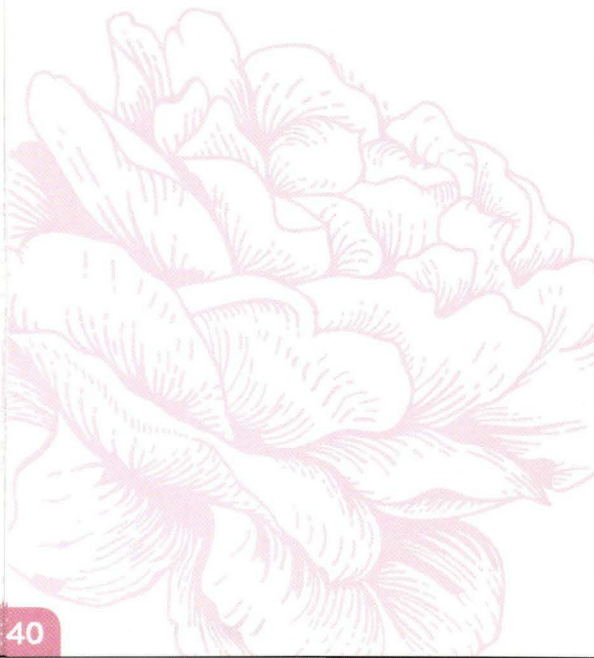
Betty Heusch Agler President's Award

Betty Heusch Agler President's Award shall be an outstanding achievement award to be given at each Convention to a chapter which has shown special achievement or has handled an unusual/critical situation in an exemplary manner, bringing credit to Delta Zeta Sorority in general and its chapter members individually.

XI OMEGA CHAPTER, Purdue University

"The Xi Omega Chapter has truly dedicated our time to uphold the national vision to become a premier women's organization. We were recognized for achieving the top philanthropic donation of \$32,866 and community service hours of 66,335 this school year. This is the second consecutive year of being noted as the top Greek organization on campus for fundraising for not only the Purdue University Dance Marathon but also for Relay for Life. We are also recipients of the Excellence in Leadership Development Award. Out of 94 chapters at Purdue, we were ranked 11th overall for academics."

— Krista Tobin, President



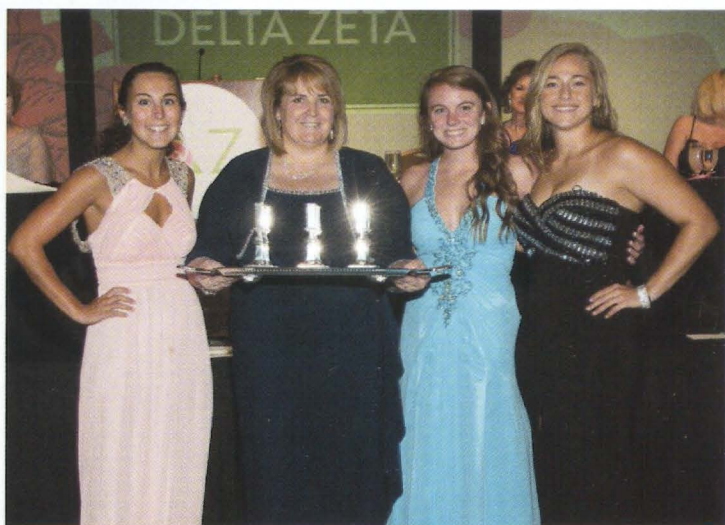
Founders Award

Six candlesticks commemorating our six Founders shall be given to the chapter or chapters with a high record of achievement over the previous two-year period. Eligible chapters shall be judged on membership, financial standing, cooperation, college programs, philanthropies and standing on campus.

EPSILON SIGMA CHAPTER,
Wayne State University



OMICRON ZETA CHAPTER,
Randolph-Macon College



"We have women who care not only about the organization, but for each other. These women held each other accountable for their actions and were each other's biggest fans. When there were obstacles in the chapter's way, the Executive Board held an open communication policy which allowed sisters to clearly understand the reasoning behind the motives, and also allowed for the chapter to hear new ideas. This communication was largely successful in our chapter, because when everyone believes they have a voice, more people are willing to speak because they know they are being heard. There is a mutual line of respect that allowed the chapter to continue to push forward and become a better version of itself."

—Allison Carpenter, member

Genevieve Schmitt Memorial Plaque

Genevieve Schmitt Memorial Plaque shall be given to the college chapter with the highest academic rating.

ALPHA ALPHA CHAPTER, Northwestern University

"Our chapter has worked to instill a culture that deeply values academic success. Our home institution, Northwestern University, challenges the women in our chapter and provides incredible opportunities for learning in the classroom and beyond. To help support our members through difficult coursework, we hold biweekly study munchies to provide stress relief and a place to get help from other women. We make sure to celebrate the incredible successes of our sisters. Our Academics Chairman ensures that women are aware of the resources available to them and hosts occasional workshops geared toward building skills that will aid our sisters in their studies. We hold regular sisterhood events and wellness programming to create balance in difficult schedules and to encourage good self-care practices that keep us healthy while we're working hard!"

—Karalyn Berman, President



Gertrude Houk Fariss Award

shall be presented jointly to recognize outstanding alumnae-collegiate chapter programming and activity.

PHOENIX VALLEY ALUMNAE
CHAPTER

and the
PI ZETA CHAPTER,
Arizona State University



Heritage Cup

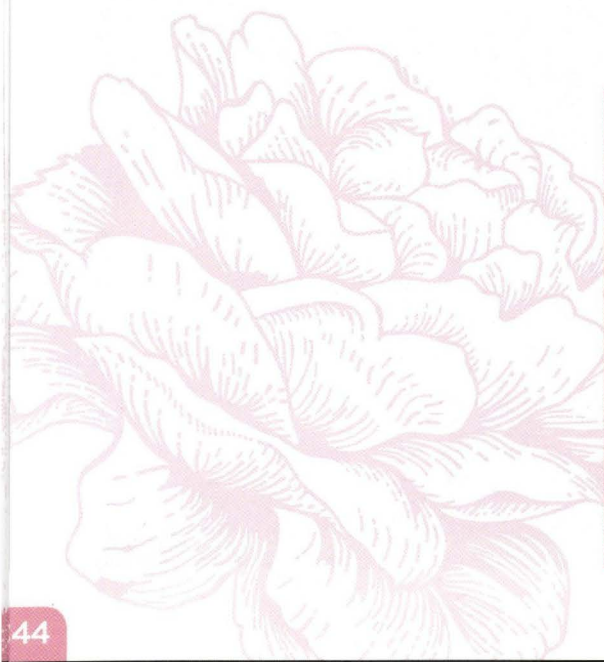
Heritage Cup shall be presented to the college and/or alumnae chapter which has contributed significantly and most effectively to the Delta Zeta National Historical Museum in Oxford, Ohio.

GAMMA KAPPA CHAPTER, Kent State University



Gamma Kappa Chapter Top 10 in Philanthropy – Total Dollars Donated to All Philanthropic and Charitable Causes

At the time the Spring/Summer 2016 issue of The LAMP went to press, the Gamma Kappa Chapter's (Kent State University) outstanding late spring event had not yet concluded, and thus wasn't included. Gamma Kappa raised a total of \$54,000 for philanthropic and charitable causes.



Adelaide See Loving Cup

shall be given to the chapter which has shown unusual improvement since the last National Convention. This improvement may be in any specific area or a combination of areas.

DELTA XI CHAPTER, University of Northern Colorado

"Our failures are truly what helped us receive the Adelaide See Loving Cup award. There were problems in our chapter and the failure to remain true to Delta Zeta values. As a new Executive Board, we started rebuilding during the spring semester. We were blessed to have our College Chapter Director, Deborah Nohstadt Clayton, Western Illinois - EO, who guided us. We gained members who wanted to be here and wanted to be global citizens. Since all of this has happened, we have been number one on campus for GPA and have increased the time and money we are giving by over 200 percent. We will not accept anything less than the best, and the members have given us more than we could ever imagine. We worked hard, and the recognition is the greatest honor Delta Xi has yet received. Thank you!"

—Angie Hettinger, President



Truly PURPOSEFUL ALUMNAE NEWS

We are the alumnae of Delta Zeta, truly connected to the Sorority and inspired by the Delta Zeta's purpose.

"I've built my entire career on supporting and developing women. I can honestly say that it all started when I became a part of Delta Zeta."

MARY ANN LUCIANO, ST. JOHN'S (PA) - I Z

Now a top executive at one of the largest direct marketing companies in the world, Mary Ann says Delta Zeta was undoubtedly the springboard into her successful career.

"Delta Zeta is very much responsible for the person I am today," said Mary Ann, Vice President of Ambassador Education at Plexus Worldwide. In addition to the wonderful bonds of sisterhood, she said Delta Zeta gave her many of the professional skills she still uses today. She also learned the value of giving back. "Becoming philanthropic was a big part of our sorority experience, and ever since then, I've always tried to volunteer as much as I can. I just feel like giving back is so important. We're so blessed in this country," she said.

Plexus Worldwide is an Arizona-based company which has been helping people transform their lives with science-based health and wellness products and an exciting home-based entrepreneurial opportunity. Learn more about Plexus at <http://www.plexusworldwide.com/index>.

Mary Ann has also held leadership roles at Mary Kay Cosmetics, Avon, Estee Lauder, and Avnet. She has traveled to many countries over the years, and although times and cultures have changed significantly since her college days, she believes the definition of sisterhood has not.



"Delta Zeta had a tremendous impact on my growth as a leader."

KIM BUCKNER LAND, SOUTH CAROLINA

- BA

Kim, an instructor of Marketing at Johnson College of Business and Economics at University of South Carolina/Upstate, was honored with the Distinguished Young Alumna Award, one of the highest honors that the Darla Moore School of Business bestows. She is an accomplished marketing professional with a unique skill set and proven track record in leading people and organizations through process change, branding initiatives, new product launches, research projects and successful multi-media sales efforts.

Kim said, "I was President of the Beta Delta Chapter, and Melissa Baber Harvey, South Carolina - BA, College Chapter Director, was a wonderful mentor. There are many things I learned through these experiences that I was able to use in my professional career in directing and leading teams."

She is dedicated to serving the community where she was born and raised, volunteering for the Junior League of Spartanburg, Goodfellows and Healthy Smiles of Spartanburg, and serving as the Board Chair for SAFE Homes/Rape Crisis Coalition as well as chairing a United Way Investment Council committee.



Rho Chapter's Centennial Celebration

April 28-30, 2017

University of Denver
Denver, Colorado

Contact **dzrho100@gmail.com** with
questions and to RSVP.



2016 National Convention Alumnae Awards

The National Council extends congratulations to these alumnae members and chapters for receiving the following awards at the 2016 National Convention, held at the Orlando World Center Marriott in Orlando, Florida on July 6-10, 2016. They are truly amazing!

ACHOTH AWARD shall be given to specially selected alumnae who have demonstrated, by long and faithful service, their continued loyalty to Delta Zeta particularly in their local communities.

JAMIE BERO, Clarion (PA) - EΘ, College Chapter Director for the Delta Upsilon Chapter (Marshall University)

KELLY WRIGHT-GONOS, Kent State (OH) - ΓΚ, College Chapter Director for the Gamma Kappa Chapter (Kent State University)

JILL MARILLEY, Washington - K

KARI OLSON, Washington - K

KATHY SWANGER ORCHARD, Florida State - ΑΣ

MARY PETERSON, Parsons College (IA) - ΔΝ

STACEY WHEELER SLAUGHTER, Washington - K, National Vice President of Finance

CHRISTINE SCHLEGEL WHIPP, California State/Long Beach - ΔΑ



Achoth Award winners at the 2016 National Convention included Kelly Wright-Gonos, Kent State (OH) - ΓΚ, College Chapter Director for the Gamma Kappa Chapter (Kent State University); Stacey Wheeler Slaughter, Washington - K, National Vice President of Finance; Diane Stecher, National President, who presented the awards; and Jamie Bero, Clarion (PA) - EΘ, College Chapter Director for the Delta Upsilon Chapter (Marshall University)

MYRTLE GRAETER HINKLY COUNCIL AWARD shall be given to a large alumnae chapter which has excelled in all areas of alumnae work.

AUSTIN Alumnae Chapter, Austin, Texas, Southwest Area

Amanda Osuna, St. Mary's (TX) - OA, Austin Alumnae Chapter President; Diane Stecher, National President, presents the award; and Kasey Bell Long, West Texas A&M - ΖΖ, Area Alumnae Director - Southwest Area



MARGARET HUENEFELD PEASE COUNCIL AWARD shall be given to a small alumnae chapter which has excelled in all areas of alumnae work.

LONG BEACH Alumnae Chapter, Long Beach, California, Great Western Area

ALICE C. HUENEFELD AWARD shall be presented at Convention to an outstanding College Chapter Director who has given long and dedicated service to her chapter.

KELLY WRIGHT-GONOS, Kent State (OH) - ΓK , College Chapter Director for Gamma Kappa Chapter at Kent State University



Gwen McHugh Shick, Ferris State (MI) - ΣN , College Chapter Director for the Xi Psi Chapter at Grand Valley State University (MI); Diane Stecher, National President, presents the award; Kelly Wright-Gonos, Kent State (OH) - ΓK , College Chapter Director for the Gamma Kappa Chapter (Kent State University)

ALUMNAE CHAPTER EXCELLENCE AWARDS

Austin Alumnae Chapter, Austin, Texas, Southwest Area

Columbus Alumnae Chapter, Columbus, Ohio, Great Lakes Area

Denver Alumnae Chapter, Denver, Colorado, Central Plains Area

Greater Seattle Alumnae Chapter, Seattle, Washington, Great Western Area

Long Beach Alumnae Chapter, Long Beach, California, Great Western Area

San Antonio Alumnae Chapter, San Antonio, Texas, Southwest Area

Twin Cities Alumnae Chapter, Brooklyn Park, Minnesota, Central Plains Area



Diane Stecher, National President, presents the Order of the Pearl to Lois Absher Porter, Florida State - $\Delta \Sigma$ for 65 years of membership.



Honored for 60 years of membership in Delta Zeta at National Convention were Jean Swanson Reed, Wittenberg (OH) - ΔZ ; Cynthia Brenner Fitzpatrick, Wittenberg (OH) - ΔZ , Findlay Alumnae Chapter President; Marvona Easley Tavlin, Southwestern Oklahoma State - ΔZ , Past National President; and Ellyn Hartung Sewell, Washington - ΔZ , Greater Seattle Alumnae Chapter President.

FLAME ETERNAL

Honor your sisters, friends and loved ones with a memorial gift to the Delta Zeta Foundation (deltazeta.org). Obituaries reported from February 19, 2016 through August 22, 2016. Year of initiation is shown after name.

ALPHA

Marie Behrens Poppy - 1941
Catherine Gorey Peaslee - 1943
Ardath Orians McEathron - 1957
Dorothy Hauselman Day - 1962
Gary Devault Gold - 1965
Barbara Nicholson Jemison - 1966
Gale McDonough Phelps - 1969

GAMMA

Anita Tainco Olson - 1955
Hope Manske Lund - 1956
Shiela Young Erickson - 1959

DELTA

Kathleen Kelsey Humphrey - 1949
Virginia Clark Hooper - 1950
Janet Wolfe Pfaff - 1969
Jeanne Slater Huelsen - 1971
Jennifer Wagonseller Mathys - 1994

EPSILON

Dianna Withers Heagy - 1970

THETA

Dorothy Shannon May - 1939
Carolyn Davis Rogers - 1939
Virgene Smith Heckman - 1945
Donna May Harmount - 1949

KAPPA

Shirley Gresham Stack - 1940
Ruth Phillips English - 1945
Louise Davis Lusk - 1947
Carol Berg Charvat - 1949
Florence Straw Lindstrom - 1951
Pauline Collins Porter - 1951
Roberta Jensen Preston - 1951
Patricia Moss Peterson - 1957

MU

Kathryn Elder Wall - 1941
Gertrude Goebel Young - 1941
Joan Judd VanReeth - 1947
Shirley Keefer Hicks - 1948
Gladys Tolhurst Roehner - 1951

NU

Betty Barrows LaFrance - 1946
Gretchen Lueschen Wurtzler - 1957
Mary Cliver Pierce - 1958

XI

Mildred Willis Todd - 1931
Alene Verran Hale - 1951
Patricia Whitney Gronceski - 1959
Claire Reed Hilker - 1965

OMICRON

Selma Ries Burns - 1941
Velva Seyler Idzkowsky - 1942
Elizabeth Pickering VanKirk - 1950
Joanne Spanitz McEntire - 1968

PI

Helen Johnson Taraboletti - 1944

RHO

Mildred Sprunck Peters - 1948
Frances Frerichs Werner - 1949

SIGMA

Joy Christian Lain - 1942
Ruth Robertson McCusker - 1942
Phyllis Walden Gernand - 1943
Linda Renfroe Kimball - 1955
Katherine Williamson Mayer - 1963

UPSILON

Darlyne Hamilton Hariman - 1945
June A. Osterberg - 1948
Evelyn Hanstad Tredwell - 1951
Marjorie Skaken Cooper - 1955
Kayleen Hagen Pauley - 1962

CHI

Maxine Jenks Terhune - 1930
Marian Fitzpatrick Thomas - 1933
Jean Noel - 1939
Eileen Shirley Price - 1940
Billie Snyder Majnarich - 1947
Marian Wharton Rohde - 1951

PSI

Virginia Voss Craft - 1956
Kathleen Lynch Pendleton

ALPHA ALPHA

Gloria Baxter Gallop - 1952
Elaine Tylenda Connelly - 1964

ALPHA BETA

Irene Wach Sears - 1941
Mona Dean Robinson - 1948
Nellie Louise Kirby Skillman - 1956
Carole Green Strong - 1957
Angela Michelle Davis - 1988

ALPHA GAMMA

Ann Degrodt Conley - 1935
Carmen Moran Simon - 1938
Mary Anne Barnett Johnson - 1948
Norma Smith Martin - 1949
Barbara Hunt Martin - 1952
Lois Foshee Hall - 1976

ALPHA DELTA

Elizabeth Anne Buser - 1946
Marianne Louise Cook - 1946
Joyce Parkinson Bryce - 1950

ALPHA EPSILON

Mildred Norris Witherspoon - 1945
Janell Costner Clarke - 1946

ALPHA ZETA

Jeanne Smith Schmitt - 1941

ALPHA ETA

Grace Seavoy Mirrielees - 1951

ALPHA THETA

Pauline Fitzpatrick Russell - 1930
Deborah Schwarz Simpson - 1952

Janet Kohl Roberts - 1953
Jackie Elswick Kirn - 1956
Carol Johnson Sebree - 1959
Brenda Blackburn Talbott - 1965

ALPHA KAPPA

Ruth Bennett Turner - 1935
Nancy Knapp McCarty - 1952

ALPHA OMICRON

Helen Philpott Palmour - 1947

ALPHA PI

Dorothy Gray Kratz - 1947
Margaret Lynn Shewmaker
Strickland - 1976

ALPHA SIGMA

Frances Sauls Jarrett - 1949
Jean Beasley Meyers - 1951

ALPHA TAU

Flora Williams Campbell - 1925
Celia Prewitt Hall - 1926
Marian McDowell Stewart - 1926
Ruth Brown Straight - 1928
Nadine Walton Hill - 1929
Mildred Disch Lawrence - 1929
Blanche Davilla Weaver - 1929
Margaret Ford Gladney - 1939
Marjorie Orrill Kennedy - 1940
Elsie Fay Pechal - 1940
Betty Heard Hudson - 1941
Margaret Clewell Montgomery - 1942
Werdna Foster Cochran - 1943
Mary Walker Devore - 1943
Frances Eaves Patterson - 1943
Virginia McAnelly Browne - 1944
Florence Rugel Long - 1944
Priscilla Mackey Lowe - 1944
Gloria Hitt Sharaf - 1944
Florence Kopycinski Slover - 1944
Betty Harris Cox - 1945
Mary Schramm Hilder - 1945
Virginia Nelson Hollingworth - 1945
Doris Clydene Carr Neal - 1945
Pauline Majors Waldron - 1945
Nancie Foster Geiss - 1946
Una Rosemond Hockaday Hicks - 1947
Nell Blomquist Bentley - 1948
June Mounts McDonald - 1948
Wanda McGrath Parman - 1948
Patricia Herbert Howard - 1949
Rose Marie Sautter Steeg - 1950
Valeria Venable Tom - 1951
Vira Winship Tuley - 1951

ALPHA UPSILON

Gwenita Eileen Knowlton - 1953

ALPHA CHI

Margaret Murray Orton - 1934
Christophe Wilber Omaley - 1961

BETA ALPHA

Irene Bains Sieczkiewicz - 1939
Anne York Chase - 1954
Judith Henry Kohlsaat - 1954

BETA BETA

Walterrene Price Roderick - 1940
Tressa King Love - 1947

BETA GAMMA

Doris Vormbrock Tarpley - 1944

BETA DELTA

Harriett Agnes Robinson - 1944
Flora Mae Jefferies Leonard - 1953
Betty Hood Todd - 1953
Karen Kresslov Morris - 1968

BETA THETA

Betty Middlesworth Moore - 1942
Carol Bigler Okeson - 1945
Constance Comba Osborne - 1947
Martha Roberts Hill - 1952

BETA IOTA

Marcia Satterlee Kirmse - 1966

BETA KAPPA

Joan Kanak Baird - 1945
Colleen Burns Jensen - 1954

BETA LAMBDA

Peggy Staniforth Pratt - 1955

BETA MU

Mary Shuler Harden - 1936
Emogene Conrad Strickland - 1944
Barbara Jean Linville Clary - 1951
Ann Sherwood Cruse - 1952

BETA NU

Aline Dellling Manzi - 1945
Georgia Bryde Lumpkin - 1946
Jean Nobles Pfluke - 1952

BETA XI

Julianne Thompson Barlow - 1954
Ann Marie Powell Hannum - 1954
Nettys Rice Turnham - 1968

BETA PI

Joann Thompson Athey - 1941
Virginia Lewis Schmid - 1948

BETA RHO

Dorothy Wuelfel Lossing - 1941
Loretta Majewski Gilewicz - 1948
Mary Dibble Steigleder - 1948
Rose Marie McFadden Townsend - 1954

BETA SIGMA

Grace Durham Hittle - 1943
Patricia Canning Rupert - 1949
Patricia Metcalf Stratton - 1949

BETA TAU

Louise Spriggle Hazard - 1941

Eloise Escue Bradsby - 1948
Mary Johnson Hayden - 1956
Patricia Wright Jablonski - 1991

BETA UPSILON

Loraine Bottger Dumestre - 1951
Gay Lynne Woods Nixon - 1955

BETA OMEGA

Leona Johnson Farrant - 1941

GAMMA ALPHA

Betty Clark Sutherland

GAMMA BETA

Barbara Oppelt - 1947
Joan Pully Goodyear - 1951

GAMMA GAMMA

Grace Emmerson Johnson - 1945
Mary Woods Mettler - 1960
Marcia Vorhis Owens - 1960

GAMMA DELTA

Jean Kunkle Rowland - 1956
Demaris Bartholm Archibal - 1959

GAMMA EPSILON

Barbara Keenan Abrams - 1946
Colette Moeller Orcutt - 1952

GAMMA THETA

Carol Meyer Seale - 1959

GAMMA IOTA

Laura Laehder Owens - 1983

GAMMA KAPPA

Ruth Fleming Tower - 1949
Evelyn Vaughan Day - 1950
Patricia Chadwick Wetmore - 1959
Carrie Ann Martin - 1968

GAMMA MU

Louise Dinon Safron - 1958

GAMMA NU

Doradene Diefenthaler Manuel - 1950
Janice Bateman Willenborg - 1960
Ann Newton Niccum - 1974

GAMMA XI

Joyce Schneider Pugliese - 1954
Mary Jeanee Close - 1969
Cathleen Harrell Kniprath - 1970

GAMMA OMICRON

Dale Blyth Swank - 1949

GAMMA PI

Sally Gordon Bowman - 1950
Marilyn Hagerty Fleming - 1950
Irene Whipple Kraushaar - 1950
Sally Schwab Lindsay - 1950
Mary Ann Petzke Skardina - 1950
Christine Magas Caris - 1951
Dolores Oszustowicz Chubka - 1951
Nancy Russell Daly - 1951
Janet Norton Nulf - 1951
Janet Felber Orwin - 1951
Doris Lower Briggs - 1952
Bonnie Houswerth Merrifield - 1952
Sue Balgooyen Mitchell - 1952
Patricia Kelly Montgomery - 1953
Carlene Marker Samczyk - 1953
Margaret Briney Paquin - 1954
Myrna Cook Bos - 1956
Mary Miller Betts - 1957
Mary Lynne Dulude Crampton - 1958

Martha Baker Smith - 1959
Kathleen Morrison Corstange - 1962
Jean Zuschnitt Davis - 1962
Sandra Phillips Heywood - 1963
Catherine Mae Briggs - 1965
Penny Larsen Bumstead - 1965
Diana Lynn Blodgett - 1966
Janet Gaylor Algood

GAMMA RHO

Lois Scharsich Lindberg - 1951
Mary Hendricksen Squirell - 1958

GAMMA SIGMA

Rose Chowen Meneghel - 1956
Mary Raymond Quade - 1963

GAMMA TAU

Joanne Dunn LaRue - 1950
Rose Majeau Butcher - 1953
Marilyn Blough Pittman - 1962

GAMMA PHI

Nancy Crawford Hebrank - 1956

GAMMA CHI

Anna Lou Lawson Pickett - 1955
Connie Martin Wells - 1962

GAMMA PSI

Shirley Vernon Hirschenberger - 1957

GAMMA OMEGA

Norma McPeak Brehm - 1954
Bernice Barbee Kamm - 1956
Jane Pickering Knight - 1959

DELTA ALPHA

Janice Brown Sterling - 1954
Katherine Bradley Price - 1962
Barbara Brown Warner - 1967
Rochelle Lieberman Bryan - 1981

DELTA DELTA

Gaynelle McDonald Stockton - 1955

DELTA ETA

Constance Mynatt Axiemethy - 1958

DELTA THETA

Abbie Dishroon Morgan

DELTA NU

Elizabeth Crawford Walls - 1958

DELTA XI

Catherine Donohoe Tinsley - 1949

DELTA OMICRON

Margaret Elizabeth Solorio - 1972

DELTA PI

Muriel Sutton Morgan - 1956
Lois Patterson Obley - 1956

DELTA SIGMA

Mary Lou Melson Lapp - 1957
Kay Lynne Mekemson Myers - 1960

DELTA TAU

Mary Ellen Warren Taylor - 1962

DELTA UPSILON

Nina Cook Richardson - 1967

DELTA PHI

Mary Nickle Stacy - 1957
Sue Ann Howard Moore - 1958

DELTA CHI

Rosanne Tortosa Nichols - 1957
Dorothy Marshall Peterson - 1958
Ruth Phillip Scott - 1966

DELTA PSI

Mariquita Spicer Davis - 1957

DELTA OMEGA

A. Corinne Miller Wilson - 1957
Karen Heiman Metzger - 1975

EPSILON ALPHA

Betty Steele Wallace - 1957

EPSILON BETA

Linda May Scoggins - 1959

EPSILON GAMMA

Jeanne Batchelor Ackermann - 1959
Nancy Pace Wright - 1960

EPSILON EPSILON

Claudette Jane Davis Tripp - 1956
Louise Madsen Redden - 1957
Carole Ogburn DeWing - 1958

EPSILON ZETA

Ellen Naughton Hamilton - 1960

EPSILON ETA

Anna Powers Wingbermuehle - 1957

EPSILON THETA

Eileen Bleil Nusser - 1962
Lee Ann Schultz Negley - 1993
Jenny Ebersole Foster - 1994

EPSILON KAPPA

Mary Lou Rusch Koepp - 1956

EPSILON NU

Barbara Joyce Oberlander - 1957
Aubree Victoria Schmid - 2014

EPSILON TAU

Elizabeth W. Purcell - 1960

EPSILON UPSILON

Muriel Agnes Herbrand - 1957

EPSILON PHI

Kathleen Bowman Norton - 1957

ZETA ZETA

Joanne Christal Word - 1967
Betty Sue Patterson - 1971
Judy Gossett Sharp - 1971

ZETA THETA

Susan Bergfeld Selman - 1962

ZETA KAPPA

Eloise Crawford Knoop - 1959

ZETA LAMBDA

Martha Lyon Stamper - 1960
Wanda Wentz Dyer - 1970

ZETA PI

Paige Elizabeth Cook - 2000

ZETA RHO

Judy Sherwin - 1961
Holly Wendt Combs - 1996

ZETA PSI

Pamela Fletcher Chaney - 1966

THETA ALPHA

Lonne Rae Paup - 1962
Barbara Furrer Johnstone - 1965

THETA EPSILON

Billie Knight Yancey - 1962

THETA ZETA

Janet Skilton Stein - 1962

THETA ETA

Teresa Sue Linehan - 1966

THETA IOTA

Lauren Miller Dobbins - 2000

THETA NU

Myrna Kay Ness - 1966
Bonnie Agerlie Flaagan - 1975

THETA OMICRON

Mary Pool Massey - 1965

THETA PHI

Elizabeth Carla Mitchell - 1983

THETA CHI

Candace Probst Wagner - 1966

IOTA ALPHA

Ann Gossett Kirk - 1967
Geraldine Connor Quick - 1995
Kendall Susan McDonald - 2014

IOTA DELTA

Betty McCray Mohnkern - 1967
Sandra Birnesser Shepherd - 1967
Sherree Sinopoli Kay - 1973

IOTA THETA

Kathy Fix Riggs - 1966
Kay Dry Schwab - 1966
Genevieve Hager Sherman - 1966
Jean Ann Hochstetler Shields - 1966

IOTA KAPPA

Valeria Doxie Jurrens - 1970

IOTA SIGMA

Carole Ann Pikulski - 1968

IOTA TAU

Carol Mozena Sweeney - 1966

IOTA PHI

Joan Essex Roman - 1970

KAPPA ALPHA

Peggy Matherne Huval - 1975

KAPPA NU

Kathi Belle Roberts - 1973

LAMBDA DELTA

Dana Brand Moody - 1984

LAMBDA OMICRON

Gaye Preston Johnson - 1988

LAMBDA PI

Krystal Brantley Everett - 1982

LAMBDA SIGMA

Jennifer Michelle Sullivan - 2004

XI OMEGA

Mary Ann Manley McCarthy

Send all notices of address changes and
member deaths to:
Delta Zeta National Headquarters
202 East Church Street
Oxford, OH 45056
Phone: (513) 523-7597

NON-PROFIT
ORG.
U.S. POSTAGE
PAID
FLORENCE KY
PERMIT NO. 313



BELIEVE

Sometimes, all we need is to know that someone believes in us. Your belief in her provided a merit-scholarship that encouraged her studies. It created a life skills program where she found her leadership voice, and it established the partnerships that sent her heart for others halfway around the world. It's a powerful thing when we live what we believe. And it's just the sort of thing that empowers a woman.



DELTA ZETA
FOUNDATION
empower the woman