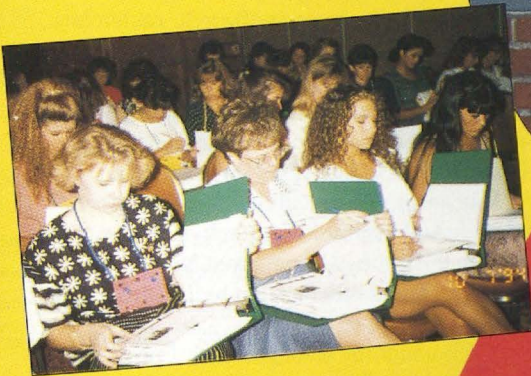


THE LAMP OF DELTA ZETA

FALL 1994

THE SHAPE OF THINGS TO COME



Founders Day Proclamation



Each year at this time Delta Zetas everywhere pause to pay tribute to our Founders. Alfa Loyd, Mary Collins, Anna Keen, Julia Bishop, Mabelle Minton and Anne Simmons had a dream to establish a national sorority that would foster high ideals, make a commitment to scholastic achievement, be dedicated to philanthropic efforts and offer friendship, love and support to its members. Because of their courage, determination and perseverance we are able to enjoy the privilege of our Delta Zeta membership.

Today our world is vastly different than the one our Founders knew, with change being constant all around us. However, the ideals and principles upon which we were founded have not changed, and are just as pertinent today as they were in 1902. On this Founders Day let us celebrate that constant — the bonds of our sisterhood.

To all of the volunteers who work for Delta Zeta today to continue the dream — the collegiate chapter officers and chairmen, the collegiate advisors, the province officers, the foundation trustees and chairmen, the council officers and chairmen and all of the other women, past and present, who give of their time, their talent, their monetary gifts — a heartfelt THANK YOU.

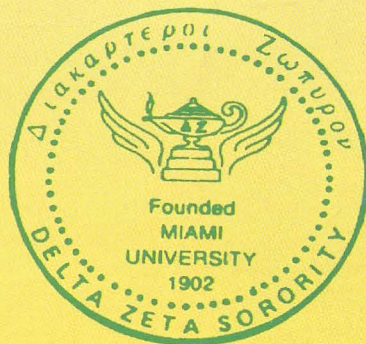
As we complete 91 years of friendship and support, I challenge each of you to remember the fun, laughter, tears and friendships of your college years; acknowledge the opportunities of service offered through your alumnae activities, and renew your commitment to Delta Zeta — a Sisterhood for a Lifetime.

May our heritage continue to be a source of pride and inspiration to each of us as we look to the future with renewed faith in our Founders and a rededication to the ideals and values they gave to us.

Given under my hand and seal, I proclaim the twenty fourth day of October, in the year of our Lord, nineteen hundred and ninety four, as Founders Day.

Sandra M. Nesbitt

Sandra M. Nesbitt
International President



Published since December, 1910 by
DELTA ZETA SORORITY
Founded at Miami University, Oxford, Ohio
October 24, 1902



FOUNDERS

Alfa Lloyd Hayes, 1880-1962
Mary Collins Galbraith, 1879-1963
Anna Keen Davis, 1884-1949
Julia Bishop Coleman, 1881-1959
Mabelle Minton Hageman, 1880-1929
Anne Simmons Friedline, 1879-1932

THE ORDER OF THE LAUREL

Irene Caroline Boughton, 1904-1988
Grace Mason Lundy, 1893-1993
Elizabeth Coulter Stephenson, 1881-1939
Myrtle Graeter Hinkly, 1893-1987

EDITOR

Gwen Moss McKeeman
5517 South 74th East Avenue
Tulsa, Oklahoma 74145

CHAPTER EDITOR

Diane Jones Skelton

THE LAMP

The LAMP of Delta Zeta, (ISSN #0887-2554) official magazine of the sorority, is published quarterly by the Delta Zeta Sorority, 202 East Church Street, Oxford, OH 45056. Second class postage paid at Oxford, OH and additional mailing offices. POSTMASTER: Send address changes to Delta Zeta Sorority, 202 E. Church Street, Oxford, OH 45056. Subscriptions: \$3.00 per year; single copy \$1.00. Address correction requested. Printed in USA.

Send all editorial material to the Editor, Gwen Moss McKeeman, 5517 S. 74th E. Ave., Tulsa, OK 74145. Send all matters of a business nature to Delta Zeta National Headquarters, Oxford, OH.

Send all contributions for Gallaudet University, House Ear Institute, the National Historical Museum, Andriskek Education Scholarships, and other philanthropies through the Delta Zeta Foundation, in care of National Headquarters, 202 East Church St., Oxford, OH 45056.

MEMBER

National Panhellenic Conference



College Fraternity Editors Association



THE LAMP OF DELTA ZETA

Volume 83 Number 3

FALL 1994

CONTENTS

Delta Zeta can surely brag about the academic achievements of the chapters listed **on page 7**.

On page 8 you will find that Delta Zeta has returned to Columbus.

Don't miss the recap of the Alfred University installation **on page 10**.

Two members of Kappa Alpha chapter play an important role in the College of Business Administration on their campus. Read about it **on page 12**.

Barb Robel receives one of the highest honors that Lambda Chi Alpha bestows on a fellow Greek member. Read about her outstanding contributions to Greek organizations **on page 13**.

A Delta Zeta from Alaska races her sled dogs 800 miles across the frozen outdoors **on page 14**.

Read about a man who wore the pin of Delta Zeta **on page 15**.

In *Voices from the Prairie*, three Delta Zetas shed some insight on today's collegian. Find it **on page 16**.

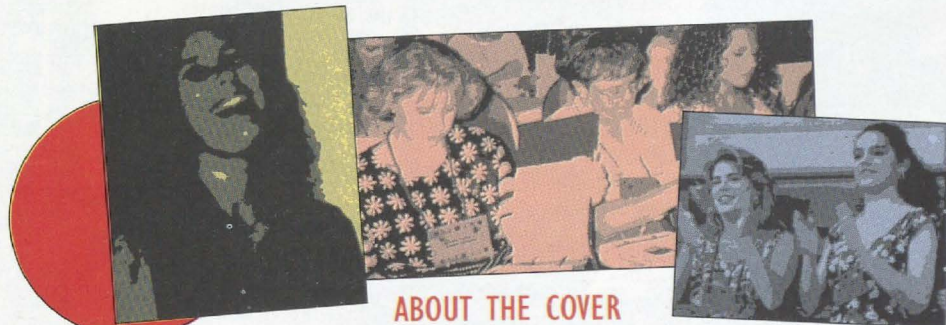
Women and Fatigue is our *Focus on Health and Fitness*. See it **on page 19**.

On page 22 you'll read how one Delta Zeta prepared dinner for a very special guest.

What Happened After College can be found **on page 28**.

Delta Zeta On Campus begins **on page 30**.

Flame Eternal can be found **on page 42**.



ABOUT THE COVER

The 1994 Norma Minch Andriskek Leadership conferences were held at eight sites across the country this summer. "The Shape of Things to Come" was the theme of these conferences. See how they will shape our future **on page 4**.

DELTA ZETA Δ FALL 1994

THE SHAPE OF *things*

"The Shape of Things To Come" was certainly an appropriate theme for the 1994 Norma Minch Andrisek Leadership Conferences. The 1994 conferences were designed to help develop leadership skills for our collegiate members — skills which can not only be used now but will be essential ingredients of their success in the coming years. Another important facet of this summer's conferences was the introduction of our New Member Education program which will go into effect for all chapters in August, 1994.

The conferences were held in June and July at eight regional sites including DePauw University, Purdue University, University of North Carolina/Chapel Hill (June 17-19), California State University/Fresno, Texas A & M (June 24-26), Adams Mark Hotel/Kansas City, Lehigh University (July 8-10) and at the University of Alabama (July 22-24). Over 150 of our chapters were represented at the conferences.

Conference workshops included sessions on the change process and how we react to change, the process of problem solving and decision making, identifying our own leadership style and working with differing styles and exploring nontraditional thinking patterns. Small groups selected challenge activities and made presentations to the entire conference body. The Delta Zeta Foundation shared much information with us so all of us have more knowledge of our philanthropic endeavors and many accomplishments in this area.

In order to assure the success of the New Member Education program, all Vice-Presidents of New Member Education were invited to attend the conference of their choice as guests of Delta Zeta. Also, our College Chapter Directors were encouraged to attend a nearby conference. We felt strongly that by training

our College Chapter Directors in the New Member Education program and combining that education with their ever-present wisdom and love that our chapter advisors will continue to be a constant source of strength to our collegiate chapters.

Our Leadership Conferences were named in honor of Past President Norma Minch Andrisek at the 1983 National Convention. Norma has given generously of her many talents to a variety of Delta Zeta projects but always paramount has been her consistent goal of continuing education for our collegians. These off-convention year conferences strive to attain this goal for our sisterhood.

The conferences were conducted by teams consisting of members of the International Council, Regional Collegiate Coordinators, International Committee Chairmen, Province Directors, College Chapter Directors and Chapter Consultants. It is the hope of Council that the conferences provide our members with the educational tools necessary to be strong leaders on their campuses and to meet the continued challenge of making each Delta Zeta chapter the best it can be.

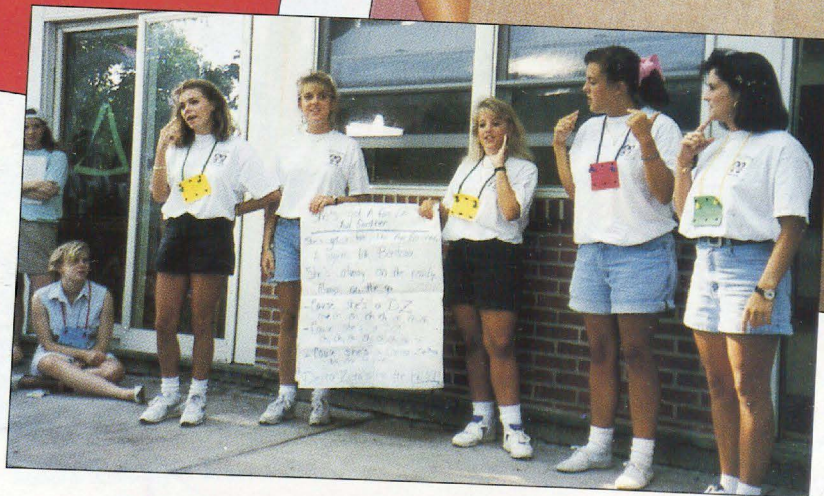
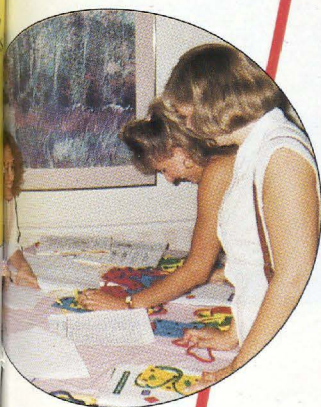
We want to thank many, many Delta Zetas for the outstanding success of the 1994 Leadership Conferences. Our local site coordinators and House Corporations, our workshop preparers, our program and site chairmen, our fantastic Headquarters staff, the leadership teams and, of course, our conference participants all contributed immense talents and abilities to the excellence of this endeavor. Obviously, EXCELLENCE in Delta Zeta is "The Shape of Things To Come."

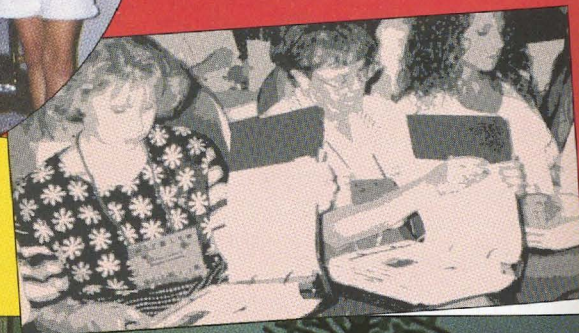
Karly Klemp Burns,
Leadership Conference Chairman





to come





Academics

PHI ON CAMPUS

Plymouth State College-Kappa Epsilon
 Stockton State College-Omicron Beta
 Mansfield University-Iota Theta
 Mount Union College-Omicron Iota
 Youngstown State University-Kappa Chi
 Wittenberg University-Kappa Iota
 University of Wisconsin/Eau Claire-Epsilon Omega
 Eureka College-Pi
 Nebraska Wesleyan University-Beta Tau
 Lindenwood College-Omicron Omicron
 Northeast Missouri State University-Delta Sigma
 Moorhead State University-Theta Nu
 St. Cloud State University-Theta Mu
 University of Northern Colorado-Delta Xi
 Angelo State University-Lambda Omicron
 Northern Kentucky University-Kappa Beta
 North Georgia College-Xi Xi
 University of Alabama/Huntsville-Lambda Kappa
 University of Tampa-Delta Beta
 Radford University-Xi Delta
 University of Central Arkansas-Epsilon Xi
 Henderson State University-Epsilon Pi

ABOVE ALL-WOMEN'S AVERAGE

Plymouth State College-Kappa Epsilon
 Lehigh University-Xi Pi
 Muhlenberg College-Xi Iota
 Indiana University Pennsylvania-Gamma Phi
 Mansfield University-Iota Theta

Millersville University-Xi Tau
 Shippensburg University-Kappa Psi
 University of Pittsburgh/Johnstown-Lambda Epsilon
 Frostburg State University-Omicron Pi
 Mount Union College-Omicron Iota
 Baldwin Wallace-Gamma Alpha
 Ohio Wesleyan University-Alpha Rho
 Wittenberg University-Kappa Iota
 Northwood Institute-Xi Eta
 University of Southern Indiana-Lambda Beta
 Indiana University-Epsilon
 University of Wisconsin/Eau Claire-Epsilon Omega
 Eastern Illinois University-Gamma Nu
 Eureka College-Pi
 University of Illinois-Alpha Beta
 Creighton University-Theta Eta
 Nebraska Wesleyan-Beta Tau
 William Jewell College-Zeta Rho
 St. Cloud State University-Theta Mu
 California State University/Fullerton-Iota Upsilon
 Stephen F. Austin State University-Zeta Psi
 Middle Tennessee State University-Iota Iota
 University of Tennessee/Knoxville-Beta Lambda
 University of Kentucky-Alpha Theta
 Northern Kentucky University-Kappa Beta
 University of North Carolina/Chapel Hill-Xi Sigma
 University of South Carolina-Beta Delta
 University of Georgia-Zeta Pi
 University of Alabama-Alpha Gamma
 University of Alabama /Huntsville-Lambda Kappa
 University of Tampa-Delta Beta
 Old Dominion University-Theta Phi
 Radford University-Xi Delta

University of Central Arkansas-Epsilon Xi

ABOVE ALL-SORORITY AVERAGE

Plymouth State College-Kappa Epsilon
 Stockton State College-Omicron Beta
 Temple University-Delta Tau
 Mansfield University-Iota Theta
 Millersville University-Xi Tau
 University of Pittsburgh/Johnstown-Lambda Epsilon
 Duquesne University-Kappa Xi
 Slippery Rock University-Zeta Phi
 Frostburg State University-Omicron Pi
 Baldwin Wallace College-Gamma Alpha
 Mount Union College-Omicron Iota
 Youngstown State University-Kappa Chi
 Ohio Northern University-Zeta Kappa
 Ohio Wesleyan University-Alpha Rho
 Wittenberg University-Kappa Iota
 Northwood Institute-Xi Eta
 Grand Valley State University-Xi Psi
 University of Southern Indiana-Lambda Beta
 University of Wisconsin/Eau Claire-Epsilon Omega
 Northern Illinois University-Gamma Rho
 Eastern Illinois University-Gamma Nu
 Illinois State University-Lambda Rho
 Nebraska Wesleyan University-Beta Tau
 Central Missouri State University-Epsilon Gamma
 Northeast Missouri State University-Delta Sigma
 William Jewell College-Zeta Rho
 Moorhead State University-Theta Nu
 St. Cloud State University-Theta Mu

University of Northern Colorado-Delta Xi
 California State University/Fullerton-Iota Upsilon
 California State University/Long Beach-Delta Alpha
 San Diego State University-Gamma Omicron
 San Jose State University-Gamma Lambda
 Angelo State University-Lambda Omicron
 Tarleton State University-Xi Nu
 Nicholls State University-Kappa Alpha
 Middle Tennessee State University-Iota Iota
 Eastern Kentucky University-Xi Beta
 University of Louisville-Beta Gamma
 Northern Kentucky University-Kappa Beta
 Barton College-Theta Omega
 University of South Carolina/Spartanburg-Omicron Mu
 North Georgia College-Xi Xi
 University of Alabama /Huntsville-Lambda Kappa
 University of Tampa-Delta Beta
 Longwood College-Epsilon Tau
 Radford University-Xi Delta
 University of Central Arkansas-Epsilon Xi

Delta Zeta Returns to Columbus

BY HEATHER M. ANGOVE, CHAPTER CONSULTANT

Delta Zeta's newest chapter was installed Saturday May 14, 1994, at the Sheraton Hotel in Columbus, Georgia. The Lambda Psi chapter was re-colonized at Columbus College, a part of the University of Georgia statewide system. Five young women began the process, forming a local sorority named Delta Zeta Delta. They worked with a Delta Zeta alumna, Karen Lightfoot Tymniak, to form their chapter similar to a Delta Zeta one.

Sandra Sebrell Bailey, then Director of Extension, talked with Delta Zeta Delta in the Fall of 1992 and advised them to rush and promote Greek life at Columbus College. The local sorority held a formal rush each fall, winter, and spring quarter with a beach theme, formal preference, and other creative ideas. They had an executive board, weekly meetings, and developed their own initiation ceremony.

As Delta Zeta Delta's membership increased they became even more determined to become a national Greek organization. Since their advisor was a Delta Zeta alumna, and since Delta Zeta had previously been at Columbus College they decided to pursue Delta Zeta as their number one choice. In the summer of 1993, the chapter met with International President Sandra McAlister Nesbitt and made a presentation to her. They had scrapbooks from rush parties, activities, formals, etc. The fall rush of 1993 would bring their membership to approximately 30 women.

The night before fall rush, the chapter was given colony status by Delta Zeta. The women were excited and ran all over campus to change their rush signs to read



Sharing the excitement of the Lambda Psi installation are official family members Karen Tymniak, Jamie Pyne, Sandra Nesbitt, Heather Angove and Stephanie Bloomfield.

"Delta Zeta" instead of "Delta Zeta Delta." The rush was a success, doubling the chapter's membership. Bid Day consisted of a trip to nearby Auburn, Alabama, to purchase lavaliers, T-shirts, and other Delta Zeta items.

In late October, Chapter Consultant

Heather Angove arrived to begin working with the colony. The first meeting was on October 24, which seemed an appropriate date to begin. They invited local Delta Zeta alumnae to share in a Founders Day Ceremony. The colony was pledged on November 7 by members of Delta Delta chapter at Georgia State and Xi Xi chapter at North Georgia College. The following weeks the chapter was busy with rush parties and elections. They did have time to celebrate with a Fall Candlelight Formal with the theme "To a New Beginning."

Winter quarter of 1994 was a challenging time for the

Lambda Psi Colony. Rush, rush, and more rush was starting to burn everyone out. Could this small campus really support a chapter of fifty women? Then the chapter's spirits perked up with a Super Bowl party, chapter overnight retreat in



Lambda Psi chapter at Columbus College, Columbus, Georgia.

February and other activities such as weekly dinners, basketball games and a Valentine's party. Consultant Heather Angove left at the end of February to travel.

Province Day XXII, March 5 in Athens, Georgia, was an exciting time for the colony to meet with other chapters and get ideas for the future. Chapter Consultant Stephanie Bloomfield helped the colony with rush during the first week of March. After a lot of hard work and determination, the final rush party was held April 9 and brought the chapter to forty-five members. Campus total had been set at forty-five during the past year with the colony and another local sorority.

Finally, seven months later, installation took place on Saturday, May 14, 1994. The initiation and Installation Banquet were held at the Columbus Sheraton Hotel. Delta Delta Chapter at



Lambda Psi President Kathy Meltzer with International President Sandra Nesbitt.

Georgia State and Xi Xi Chapter at North Georgia College initiated Lambda Psi members. Members of Beta Xi Chapter at Auburn University also attended the initiation. The Installation Banquet was held that evening with Director of Extension Jamie Hammill Pyne presiding as toastmistress and International President Sandra McAlister Nesbitt as the

installing officer. Chapter Consultants Heather Angove and Stephanie Bloomfield assisted throughout the banquet.

As Lambda Psi members were called forward to sign the charter, they were presented with their certificates of membership. Sandra Nesbitt presented the chapter to J. Larry Kees, Assistant Dean of Students at Columbus College. Alumna initiate and Lambda Psi Campus Advisor Shannon Wilder and Coordinator of Student Activities Cecelia Buffkin served as special guest speakers. PAD-XXII Katie Mitchell welcomed Lambda Psi to the Province and presented a gift of a silver tea and coffee service. Also in attendance were Alumnae Recruitment Chairman Sara Rozier Bush, alumna initiate Sabrina Gano Wooten, who will serve as rush advisor, and representatives from other Greek organizations on campus. Karen Tymniak will serve as the Chapter Collegiate Director.

The women of Lambda Psi learned that sisterhood is an intangible gift. Their hard work and dedication made their dream come true. Delta Zeta International Sorority has returned to Columbus as the first and largest sorority on campus. One quote that sums up Lambda Psi is "Behold the turtle, he only makes progress when he sticks his neck out."

Lambda Psi Charter Members

Kiersten Clare Adams
Amber Rene Bush
Angela Lynn Bustamante
Bernardette Leigh Cail
Leslie Elaine Clack
Aimee Melissa Corely
Marlise Ann Curelee-Hintz
Heather Len Duncan
Alyssa Brianna Farmer
Allison Marie Flanagan
Kristi Lynn Gallops
Tina Renae Gann
Kimberly Ann Gibson
Rebecca Lynn Goodnow
Bobbie Michelle Hallford
Aimee Melissa Harbert
Sharon Dee Hardigree
Meridith Mosely Hemmings
Nobia Fay Hightower
Kami Celeste Horne
Theresa Elaine Jones
Rebecca Ruth Johnston
Rebecca Kelly Jordon
Kelly Anne Kennedy
Kelly Ann Arwen Lambert
Jessica Jeanne Lynch
Shannon Alysia McGee
Elizabeth Chatwin McInnis
Nicole Marie McNease
Kathy Lynn Meltzer
Kimberly Deann Messer
Monica Marie Mion
Michelle Lea Mitchell
Stephanie Dawn Owen
Jeanne Annmarle Pajka
Destiny Lynn Parkman
Lori Lynn Porter
Angela Denise Roberts
Jennifer Anne Sanders
Leslie Dawn Skinner
Sunday Michelle Spano
Mandy Syree Stubbs
Marci Renee Talbot
Heather Kay Taylor
Deena Christine Whatley
Holli Paige Wooten

Student at University of Georgia:
Tonia Ruthann Smith

Alumnae: Shannon Paige Wilder, Sybrina Gano Wooten



Omicron Phi Installed at Alfred

BY KAREN LEE JOHNSON, CHAPTER CONSULTANT

It began, as many great things do, as a young girl's dream - the dream as she went away to college of belonging to a sorority, spending late nights with sisters, giggling together, sharing each other's dreams, triumphs, disappointments, and even sorrow. The dream of matching letter shirts, sing-a-long songs, and formal dances. The dream of close, lasting friendships that sorority sisters share.

When Jodi Cszasz went to Alfred University in the fall of 1993, she didn't find this experience. So Jodi dreamed the dream of a national sorority coming to Alfred. She began to gather together women who shared her dream and who wanted to see a new age of Greek life at Alfred.

Jodi began contacts with the Inter-Greek Council, who gave the NPC Interest Group permission to begin the extension process. As the packets of information from NPC sororities began to flood the mailbox, the Interest Group swelled in size to almost 30 members.

In the Fall of 1994, one of the three local sororities on campus also decided to explore the prospect of a national sorority. Thus, three NPC sororities came to present to both the Interest Group and the local sorority. Although three NPC sororities were scheduled to present, the women in the Interest Group had already decided, sight unseen, that Delta Zeta was their choice.

After the extension presentation, given by Jamie Hammill Pyne, Delta Zeta's Director of Extension, the interest group mixed with Delta Zeta sisters from SUNY Oswego. Jamie remarked that it looked like a rush party from the enthusiasm level generated by the Delta Zeta sisters and the members of the interest group. Days later, Delta Zeta received the call that the interest group had voted to go Delta Zeta, and in no time, the word came from International Council that the group at Alfred was to be Omicron Phi of Delta Zeta.

Chapter Consultant Karen Lee Johnson was then sent to Alfred, New York, to meet

with the colony and set the course for the colonization. She was received warmly in spite of the cold, cold temperatures by both the colony members and university officials. Alfred University is home to five national fraternities, two local fraternities, and three local sororities, the most recent being founded in 1942. Obviously, Delta Zeta, the first national sorority to come to Alfred, was big news — a dream coming true.

In December, the colony elected an executive council and other supporting officers, as well as hosted a cookie decorating exam break/informal rush function for freshmen and upperclass women. Twelve new women were pledged to Delta Zeta that fall, with the colony ending the semester with a membership of 44.

Spring semester brought formal rush with Delta Zeta the only sorority to meet quota — 11. Additionally, Delta Zeta pledged two more women through snap bidding, bringing membership to 57, above campus total of 55 and causing Delta Zeta to become the largest Greek organization on campus.

With the business (or busy-ness) of a first class rush behind them, Omicron Phi set about the double duty of being new members while also laying the foundations of a new chapter. Joining the colony team at this time was Carolyn Stuby Fugate, an Iota Theta alumna of Mansfield University of Pennsylvania, whose husband is a professor on staff at Alfred University. Carolyn

Fugate had been involved with the extension process and lent much support for Delta Zeta's bid to come to Alfred University. She was a phenomenal source of support during rush, and continued throughout the colonization to become the CCD for the chapter.

Sisterhood activities included a chapter retreat held overnight at a nearby church. Sisters bonded over a potluck ethnic dinner, brushed up on local and international trivia through a game of Delta Zeta Jeopardy, learned about each other through small groups and good old-fashioned gossip. Sisters also got together once a week for dinner in the cafeteria and again every Wednesday night for "90210," "Melrose Place" and fun activities, such as tie-dyeing, bead making, letter shirt making and song learning.

Big/Little Sis week was an adventure for all of the sisters. After a fun-filled week of goodies, gifts, and secrecy, the sisters gathered for the revealing ceremony which confirmed some suspicions, and delighted some sisters still in the dark.

The fraternities on campus were, of course, eager to mix with the women of Omicron Phi. The sisters found themselves mixing with a fraternity from the state university campus, as well as Alfred's Kappa Sigma, Sigma Alpha Mu, and co-sponsoring a Greek Week Bar-B-Que with Delta Sigma Phi. Delta Zeta led the way for responsible risk management policies being used successfully on campus.



Joining in the festivities at the Omicron Phi installation: Jamie Pyne, Karen Lee Johnson, Lea R. Powell, Arthur Powell, Sandra Nesbitt, Carolyn Fugate.

The women were busy with philanthropic activities, too. Delta Zeta provided Sigma Alpha Mu with tremendous support for a Dance-A-Thon for the Pediatric AIDS Foundation. To raise money, the sisters held a profitable "green" bake sale on St. Patrick's Day, featuring an assortment of green goodies.

As installation drew closer, Andrea Marsala, Chapter Consultant, joined Karen Lee for Lamplighting and Initiation. Lamplighting, under Andrea's direction, was an emotional, fun-filled time for the 57 new members. Sisters enjoyed time to reflect upon the relationships they had formed, what Delta Zeta had given to them and how they felt about being a part of something so new, so big, and so wonderful. The women were challenged to reflect upon the meaning of the badge, and speculate about what the pieces of the crest might mean. A fun night was held for pillow/paddle exchange, as well as to provide an opportunity for members to show their talent. Families had paired up to present skits and songs about the Delta Zeta experience that often had the women screaming with laughter.

Following a moving sunset ceremony Friday night, the women arose Saturday morning, the day of initiation, to come together for a sunrise ceremony and a candle pass, during which time each woman had a chance to share what being



Omicron Phi chapter at Alfred University, Alfred, New York.

a Delta Zeta meant to her.

Saturday evening was time for initiation. Under the direction of Sandra McAlister Nesbitt, Jamie Pyne, and Karen Jacobsen, PCD III, teams of women from Epsilon Theta, Clarion University of Pennsylvania and Iota Theta, Mansfield University of Pennsylvania initiated the women of the colony as well as an alumna, Lea R. Powell.

Mrs. Powell is the wife of the Chairman of the Board of Trustees of Alfred University and an honorary alumna of the university. She has contributed greatly to the university and done much personally to contribute to the quality of student life at Alfred University. It was a great honor to the women of Omicron Phi, as well as Delta Zetas everywhere, to have such a prominent woman join our sisterhood.

Sunday afternoon brought the Installation banquet, held in the Arthur and Lea R. Powell Campus Center. The banquet was attended by the chapter members, members of the faculty and staff of the University, parents, members of the Greek community, and members of the Delta Zeta family. Distinguished guests included W. Richard Ott, Provost; Mr. Arthur Powell, Chairman of the Board of Trustees of Alfred University; Lea R. Powell, alumna initiate; Susan Strong, Associate Provost; Gerald Brody, Dean of Students; Paul Kingsbury, Director of Greek Affairs, as well as Sandra Nesbitt, Jamie Pyne, Karen Jacobsen, Carolyn Fugate, Karen Lee Johnson, and Andrea Marsala.

Jamie Pyne gave the opening remarks, and Carolyn Fugate led the invocation. After lunch, Karen Lee Johnson greeted the guests, and invited Sandra Nesbitt to acknowledge Lea R. Powell, the alumna initiate. Mrs. Powell spoke briefly and thanked the women for making her "feel 50 years younger." Karen Lee then invited Jodi Csaszar, Omicron Phi chapter president, to speak. Jodi reflected on the journey to becoming a chapter, joking that the most effective rush line they'd used was, "Will you be my friend?"

Jodi then made a presentation of the first chapter award, named the Karen Lee Johnson Outstanding Sister award, which is to be presented annually to the Delta Zeta who "has shown extraordinary dedication and enthusiasm to the sisterhood of the Omicron Phi chapter at Alfred University." Following the presentation, Karen Lee gave remarks about the experience of being involved with the colony and the privilege of being a companion on their journey.

Paul Kingsbury and Provost W. Richard

(Continued on page 13)

Omicron Phi Charter Members

Laura Bishop
Shelley L. Back
Christel L. Bivens
Samantha L. Brooks
Daisy Cadena
Isabel M. Canizares
Alethea D. Cariddi
Jodi L. Csaszar
Maria L. Dandino
Amy L. Diller
Teresa L. Doane
Stacey M. Duarte
Gretchen K. Ewing
Laura J. Faller
Susan J. Flynn
Laura M. Foster
Jennifer M. Garefino
Karyn D. Gluck
Nichole L. Gunn
Elizabeth A. Hall

Lisa B. Hartmann
Jennifer R. Head
Natalie M. Hill
Jennison L. Huebner
Jill A. Irland
Sharon L. Jankowski
Randi E. Jermansen
Cynthia A. Johnson
Diana L. Johnson
Kerin J. Kolonoskie
Nancy Lantigua
Faith A. Laubenheimer
Heidi B. Liebi
Christine Mallozzi
Hannah S. Merle
Janis L. Morgante
Jennifer Noonan
Kristin O'Brien
Kristen M. Peterson
Debra L. Pomerantz

Erin M. Randall
Dorothea S. Richardson
Stacey L. Sabo
Deborah A. Schaffer
Kristie Siroonian
Jami J. Smith
Tamara J. Soltesz
Phetdara Srikoulabout
Maria J. Vaccarello
Brigitta C. Wagner
Jennifer M. Ward
Kristen M. Welcher
Cheryl A. Wilczynski
Alison Wolfe
Laurie A. Wurtz
Aimee D. Youngers
Denise M. Zona
Lea R. Powell

Kappa Alphas Mean Business

Members of the Kappa Alpha chapter play an integral role in the College of Business Administration at Nicholls State University (NSU). The spring 1994 edition of "Inside the College of Business Administration" features two Delta Zetas.

Jennifer Kelly ('89) currently serves as MBA Association President, District Director for Delta Sigma Pi, and is on the College of Business Administration Student



Jennifer Kelly

secretary, Rho Chi (three years), and Order of Omega.

Some of her Delta Zeta collegiate offices included corresponding secretary, Panhellenic delegate, *LAMP* editor, and chairman of academics, philanthropy, and courtesy. In addition to Delta Zeta and business activities, she serves on the United Way for South Louisiana and on the board of directors for the Thibodaux Kiwanis Club; holds memberships in Pro-NSU, Business Administration Alumni Association, and NSU Alumni Association. She was also named to the NSU Hall of Fame (top one percent of graduating class for that academic year) and to *Who's Who* for two years.

Jennifer is proud to be enrolled in an accredited program (by American Assembly of Collegiate Schools of Business). Less than 20 percent of the colleges and universities have both the undergraduate and graduate programs accredited; this says a deal about the quality of the faculty, the dean and the University. In the graduate program, she co-authored (lead) two publications entitled "The Ethics of Sentencing White Collar Criminals" and "A Review of Total Quality Management." She maintains a 3.56 GPA and will graduate with her MBA in December of 1994.

Jennifer Shaddock ('90), president of Delta Sigma Pi professional business

fraternity, has played an important part in rebuilding the fraternity membership and structure. She has provided the strength and the stability that is needed for continued progress.

Other activities include Delta Zeta treasurer, Beta Gamma Sigma, NSU Hall of Fame, College of Business Administration Student Advisory Board, and Rotaract.

As an honor graduate, Jennifer has been presented with the Delta Sigma Pi Academics Award and numerous other scholarships. She has also been awarded a scholarship and an internship through the Louisiana Center for Women and Government at Nicholls State University to work under the Director for Planning and Development at the Louisiana Board of Trustees for State Colleges and Universities. After graduation, she intends to work on her MBA and later pursue a career in government.

Other Delta Zeta-Business links include Kelly Badeaux, editor of "Inside the College of Business Administration" and Dr. Ridley Gros, Dean of the College of Business. Kelly ('88) is a graduate student who will be completing her MBA in the summer of 1994. She has been honored as a recipient of the Grace Mason Lundy award, Kappa Alpha of the Year, NSU Hall of Fame, and *Who's Who*. Dr. Ridley Gros has several ties to our sorority; his wife and all of his daughters are Delta Zetas (Sigma chapter). Dr. Gros' house is even painted pink and green!!!

In addition to Delta Zetas serving as Delta Sigma Pi's President (Jennifer Shaddock) and District Director (Jennifer Kelly), Kappa Alphas hold five additional offices in this professional business fraternity. They are: Vice President for Professional Activities and Incoming President (Christy Alley), Secretary and Historian (Leslie Lejaunie), Scholarship Chairman (Allyson Ledet), and Activities Committee (Marisa Schmitt).



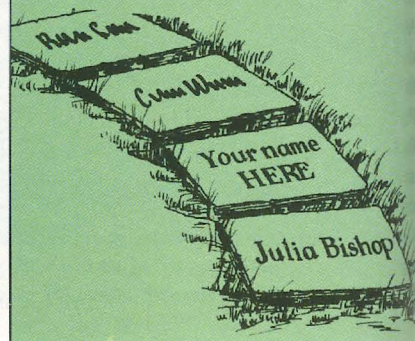
Jennifer Shaddock

Grauman's Chinese Theatre it isn't . . .

. . . but Delta Zeta's Centennial Walk has its own claim to fame: namely, the artfully engraved names of so many of our Sorority's loyal alumnae!

It's not too late for YOU to step forth and be counted among our generous supporters. Simply call our Foundation's Development Office at (513) 523-7597 and tell them you want to become a permanent part of Centennial Walk by having your name inscribed on a brick for just \$90.

Forget Hollywood — find out just how glamorous it can be to "star" at our own beautiful headquarters and museum in Oxford, Ohio. You'll be glad you did!



Barb Robel Receives Interfraternal Honor



Executive Vice President Emeritus George Spasyk presents the Lambda Chi Alpha Order of Interfraternity Service to Delta Zeta's Barb Robel.

Barbara Robel has been named to the Order of Interfraternity Service by the international board of directors of Lambda Chi Alpha Fraternity. The Order of Interfraternity Service was established in 1960 to recognize persons who have contributed outstanding service in the betterment of all college fraternal organizations.

As the advisor for Greek affairs at Kansas State University since 1979, Barb was the first woman to be responsible for both the men's and women's fraternities on a campus. Through her guidance and dedication, 10 of the 36 fraternities and sororities at Kansas State have received their parent organization's most outstanding chapter awards.

Barb also has been active in the entire fraternity movement. She has served as the Mid-American Panhellenic Council Association executive director and the Association of Fraternity Advisors president. Her professional activities extend to the National Association of Student Personnel Administrators, Order of Omega, the U.S. Department of Education, and numerous Kansas State University committees. She is a member of Lambda Chapter of Delta Zeta and has served as house corporation president and chapter advisor.

Magazine Funding

Every Delta Zeta can help fund a collegiate scholarship — and there's no better time than now because scholarship applications are up and scholarship funding is nearing a record low. Joyce Low London, Foundation Vice-President and Scholarship Coordinator, reports that more than 700 scholarship applications were received this year for the 18 Delta Zeta scholarships. The funding solution is simple and painless: if every Delta Zeta subscribed to one magazine through the Sisters in Scholarship program Delta Zeta could earn nearly half-a-million dollars!

The average American family spends \$100 a year on magazine subscriptions. If those magazines were purchased through Delta Zeta's magazine program, then 40% of that money would be returned to Delta Zeta, 20% to scholarship funds, 10% to Delta Zeta and 10% to the local chapter.

The magazine program, operated through Reader's Digest QSP program, provides magazines at regular and special subscription rates and honors all magazine coupons.

If your alumnae or collegiate chapter doesn't participate, you as an individual can. Just fill out a magazine subscription order, write the check to Delta Zeta, and

mail your order to International Headquarters. In four to six weeks, your order will be processed, and Delta Zeta will receive 40% of your total order. If you wish to order direct from QSP or see if a magazine is handled through the program, call QSP Customer Service 1-800-678-2673, 8-4:30, Monday-Friday.

As Joyce explains, "You can order all the magazines you want with one stamp and one check." If the magazine is not available through the program, you will receive a refund. The program also features children's movies and books, as well as home videos.

For collegiate and alumnae chapters to earn their 10%, a \$50 minimum order is necessary. In cases less than \$50, the percentage goes to Delta Zeta scholarships. Independent subscribers can also designate certain chapters to receive the 10% when the order is over \$50.

And, if you don't subscribe to magazines, individual contributions to the scholarship fund are welcome at anytime.

Writer's Note: Today I renewed a subscription through Delta Zeta and earned \$7.98 for Delta Zeta!

Omicron Phi Installation

(continued from page 11)

Ott spoke about what Delta Zeta has given to Alfred University. Sandra Nesbitt then conducted the installation ceremony, inviting each sister to receive her membership certificate and sign the charter. The full executive council then came forward to accept responsibility for the chapter, and Jodi Csaszar was presented with the president's gavel. Mrs. Nesbitt presented the chapter to Alfred University, with Provost Ott accepting the chapter on the University's behalf.

The sisters of Omicron Phi presented the University with a gift of the crest of Delta Zeta, done in oils by Elizabeth Hall, one of the sisters. The Delta Zeta crest will hang with the other fraternity and sorority crests

in the Powell Campus Center. The sisters shared with the guests the Creed of Delta Zeta in sign language and the banquet closed with the Rose Ceremony.

In the brief time that Delta Zeta has been at Alfred University, Omicron Phi has challenged all traditionally held notions of what constitutes a sorority. With Delta Zeta, the campus saw what positive, exciting things can happen when a commitment to anti-hazing and risk management is coupled with an international organization willing to open its arms to only the best and finest women on campus. With Omicron Phi's chartering, 57 women at a small private campus found out that dreams can come true, if you wish hard enough.

The Iditarod Trail

A challenge of a lifetime for alumna Sally Brook

BY SALLY AKERS BROOK AND JEANINE PETERSEN TRIPLETT

What does a retired Alaskan do to spice up the long winter days? Sign up to go on an 800 mile dog mushing adventure with Joe Redington, Sr., the father and preserver of dog mushing in the 49th state.

That's just what Delta Zeta's own Sally Akers Brook, Mu-University of California, Berkeley, and her husband Bill did.

In March of '94, following several months of physical training, Sally joined five other novice mushers, each with a team of nine dogs, and began a 21 day adventure to Nome on a trip known as the "Iditarod Challenge." The Iditarod Challenge team does not officially compete in the Iditarod race; instead they travel from Nenana to Nome, which is 200 miles shorter than the actual race.

The Iditarod Challenge group, in addition to Joe Reddington, Sr. and the six mushers, included a crew of seven snow machine trail breakers, a cook and helper, photographer and a "sweep" snow machine to make sure no one got lost.

Nights were spent in tents, schools, community buildings or private homes. Mushers were responsible for harnessing, feeding and staking out their dogs for the night.

Led by Joe Redington, Sr., who founded the Iditarod Race from Anchorage to Nome in 1973, the group of new mushers set out from Nenana (a town near Fairbanks in the middle of the state). Their route followed the serum trail which was used in 1925 to deliver diphtheria serum to Nome some 800 miles away. The modern day mushers took 21 days to complete the trip, including three "bad weather days" that allowed for extra visiting with villagers along the way. Sally particularly enjoyed visiting the village schools as she had spent 22 years teaching prior to retirement.

The route from Nenana followed the Tanana River to the Yukon River and down the Yukon to the village of Kaltag. After a



Early in the trip...the first three or four days. Sally is in front. Husband Bill is the second musher.

local potlatch celebration there, the group went overland to Unalakleet along the Norton Sound to Nome. The weather varied from 10 to minus 40 degrees; most days being near zero.

Sally's lead dog, Luna, was on his 10th and final trip to Nome. At 13 years of age, he still knew the way very well, almost too well as he led Sally and her team on the trails no longer used! One such escapade involved Luna using an old "shortcut trail" dumping Sally off her sled. Luckily two Eskimo ladies who happened to be out gathering wood and hunting caribou came by on snow machines and Sally hitched a ride back to her team, now some three miles ahead on the river and traveling merrily along without a musher.

Among the trip highlights was a visit with Edgar Hollner, who is the sole remaining relay musher from the 1925 serum run. Now in his 90s, Edgar reminisced at length about the serum run and the dog-mushing days of old.

The trip was challenging both physically and mentally and the experience was beyond expectations — beautiful scenery that never ended, wonderful loving dogs, and moments of quiet solitude to just enjoy the outdoors.

The arrival into Nome was exciting as many townspeople turned out to greet the mushers and welcome them under the famous Iditarod Arch. Sally and Bill's daughters, Cynthia and Alison, were there with chilled champagne in hand to congratulate their parents. "The adventure of a lifetime" was indeed just that!



Sally with Luna, her lead dog. He is 13 years old and this was his tenth trip to Nome.

Guy Potter Benton wore the pin of Delta Zeta

BY ROBERT J. MILLER

The fall, 1993, issue of *The Scroll* carried the unique story of George Banta's membership in Delta Gamma Fraternity. I use the word unique with the full knowledge that it refers to something that is without a like or equal. I stick by that usage and yet, there is another story to tell; one that is similar but different and causes one to regard it as another unique situation.

Dr. Guy Potter Benton, *Ohio Wesleyan '86*, served as president of Phi Delta Theta's General Council in 1913-1914 some thirty years after George Banta became the first person elected to the position. Incidentally, both men served in this position of leadership without the benefit of prior General Council experience.

During Brother Benton's presidency of the Fraternity, he also served as president of the University of Vermont. Prior to that presidency, however, he served as the twelfth president of the Miami University in Oxford, Ohio, from 1902-1911.

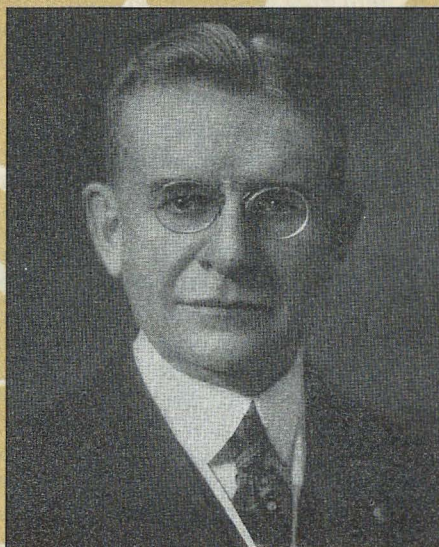
The year Guy Potter Benton became president of the Miami University, the total enrollment was 124 students, mostly male. (Women had only recently been admitted to the University.) It was not uncommon in those days for students to have ready access to the president's office. It is easy to understand, then, how several young ladies who set about to establish the first women's Greek-letter organization on campus called on the University president for his sage advice and wise counsel. Take, for example, the following inserts from the diary of Delta Zeta cofounder Julia Bishop:

October 2, 1902. *Anna Keen and I spent most of the afternoon discussing Delta Zeta plans with Dr. Benton. He is*

such a big help to us and generous with his timely suggestions.

January 19, 1903. *Keen and I have had long sessions with Dr. Benton on Delta Zeta matters. At last, have one project finished.*

January 20, 1903. *Anna K and I had two hour session with Dr. Benton. Rough draft completed. Anna had it snatched from her hand outside Old Main. Dr. Benton saved the day. "Senators" struck again!**



Guy Potter Benton

January 28, 1903. *Anna Keen and I met with Dr. Benton again. We finally have finished the Zeta business.*

Delta Zeta officers have verified that the quote "Zeta business" referred to in the diary note of January 28, 1903, refers to the sorority's ritual. So, like George Banta, Guy Potter Benton assisted with the founding of a women's Greek-letter organization, assisted that organization in the writing of its ritual, and also served as president of Phi Delta Theta. Unlike

Brother Banta, Brother Benton was not initiated by the women's organization. However, "for his great and continued interest in the sorority," Dr. Benton was made grand patron, a position he held for the remainder of his life. He was the only man ever permitted to wear the Delta Zeta pin. By the time Brother Benton resigned the presidency of Miami University in 1911, the student body had grown ten fold to a total of 1,200. Prior to his arrival in Oxford, he served as president of Upper Iowa University. Following his eight-year tour as president of the University of Vermont, he became president of the University of the Philippines, 1921-1924. In the intervening war years, he was located in Europe, where he served as general secretary of the YMCA for the city of Paris for a few months before being named chief educational director of the American Army of Occupation with headquarters at Coblenz, Germany.

His "dream to retire in Oxford and have a home at the edge of the campus" was not fulfilled. He died of sleeping sickness in Minneapolis in 1927, and his body was returned to Oxford for burial. Two buildings on the Miami campus have been designated "Benton Hall." The first was an auditorium building which housed the administrative offices (built in 1908) and the second, which bears his name to this day, is a psychology building dedicated in 1969.

"In an institution of the size Miami was then, no such undertaking could go unnoticed by the other members of the student body. The activities of these six girls came to the notice of the "Senators" an organization of men from the various fraternities, and a sort of self-constituted Board of Regulators. They took it upon themselves to discipline these presumptuous young women, who would fain assume for themselves the honor of emulating the men's fraternities, and many were the tricks they played on the harassed girls. One stole the constitution from the very hand of the secretary of the newly formed organization as she walked out of the president's office. It is with much delight that the Founders tell of the pursuit of the villain by Dr. Benton himself and his winning back the precious document, not because of his sprinting ability, but by virtue of his official position.

This article appeared in the winter issue of *The Scroll* of Phi Delta Theta. It is reprinted here with the permission of Robert J. Miller, executive vice president emeritus of Phi Delta Theta.

Voices From the Prairie

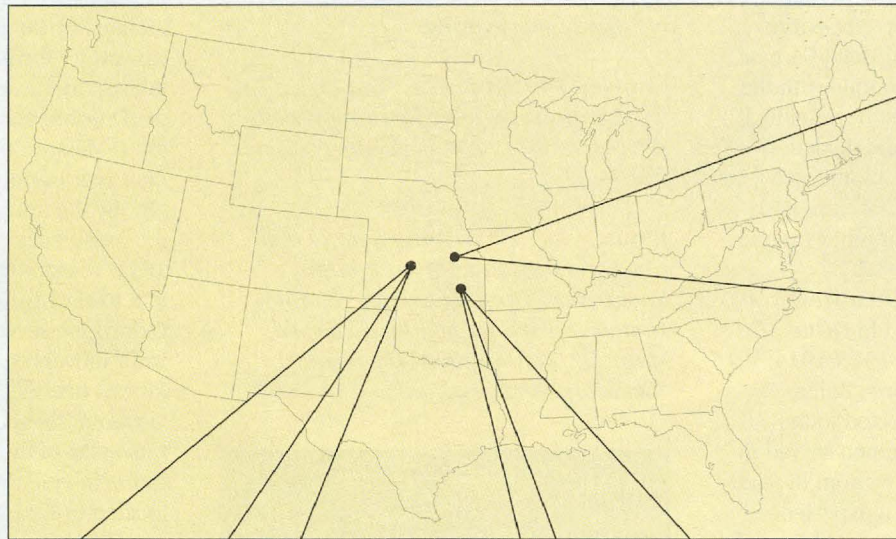
BY DIANE JONES SKELTON

Take the Kansas Turnpike (I-70) west 60 miles from Kansas City and enter the middle of America. In a triangle formed by Topeka, south to Wichita, north-west to Manhattan and east back to Topeka, you find yourself in the geographical breadbasket of the Great Midwest, popularly termed the Heartland of America. In each city, you'll find a Delta Zeta advising Greeks and registering the pulse of American collegians.

The three universities share little in common. Wichita State is a metropolitan commuter (non-traditional) campus; Kansas State is more traditional with ivy-covered stone buildings; Washburn is the country's last municipal university trapped between the urban and traditional. None currently has a Delta Zeta chapter.

The three Delta Zeta Greek advisors, however, have much more in common than Delta Zeta and their careers. They share similar backgrounds, similar problems, and speak candidly about Greek life in America. All three are mothers and former public school teachers who have discovered rewarding careers in the field of student personnel.

Karen Gill, Epsilon Upsilon-Central Oklahoma, Director of Student Involvement at Wichita State University,



**Diane Skelton,
Washburn
University**



**Barb Robel,
K-State**



works on a campus of 15,000, less than four percent Greek (560 students). The campus has a total of 21 NPC, NIC and NPHC chapters. Eighty-five to 90% of the students work, many full-time; most all are first-generation Greeks; sororities have lodges, but no houses. Freshmen are required to live on campus. Nineteen of the 21 Greek chapter presidents are employed.

Barb Robel, Lambda-Kansas State, Advisor for Greek Affairs at Kansas State University, has been the Greek advisor at K-State for more than 20 years. She works with 26 fraternities and 11 sororities representing more than 3200 Greeks. Most groups have houses, and 52% of her students work. K-State has an enrollment nearing 20,000.

Diane Skelton, Epsilon Mu-Southern Mississippi, has been Assistant Director of Student Activities and Panhellenic Advisor at Washburn University of Topeka for the past year. The 100-year-old university has 6500 students, more than 60% are nontraditional; the average student is a 28-year



**Karen Gill,
WSU**



old woman.

Diane works with 180 sorority women representing four NPC groups. All sororities have houses and almost every college woman works. Sorority and fraternity houses provide more living spaces than the limited campus housing.

Though the campuses differ, the Greeks and their advisors seem to share common problems and similar aspirations. Each reflects her own institution, but all are in touch with the pulse of America and speak from the heart on the issues

What do you consider the most challenging forces facing today's sorority woman on the collegiate level?

KAREN: "The way in which we rush . . . men's methods, meet a friend and bring him over . . . would work better on a campus like Wichita State." Women have so many rules and regulations that it "inhibits the way we make friends and bring them into the Greek experience." On commuter campuses, rules are binding and hurt the small situations. "Rules, sometimes that"

a national or even a province, are too binding for the small campus."

BARB: "We talk a lot about alcohol abuse and the need to educate — but we need to realize it's not just fraternities; women drink, too. All women's issues as eating disorders, date and acquaintance rape, and empowering of self are also issues. Women must empower themselves and take control and address the issues."

DIANE: "Finances, especially on the collegiate level . . . the rising cost of college and living, in general, affects the individuals and the chapters as a whole . . . Image is also a problem. All the 'good' sorority women do still gets little recognition. Another challenge is time-management — juggling a job with sorority and college and a social life and other activities."

What aspects, if any, of sorority membership could be changed to better suit today's women?

KAREN: "NPC should take a look at different kinds of Greek communities by type rather than by regional or geographic categories. A study of commuter campuses and a certification of Greek advisors by NPC would help the system. When certified advisors make recommendations for changes, NPC could help communicate these suggestions to the national groups."

BARB: We need to "re-evaluate programming requirements. We expect sorority members to be available for sorority activities 100% of the time." But, today's sorority women are working, performing internships, and planning careers . . . "they don't have time to sit around and discuss the color of sweatshirts."

DIANE: "Since we're based on tradition (and that's good) we seem too reluctant to adopt modern methods . . . for example, sorority headquarters need computers networked to all college chapters. A collegian who needs a current list of area alumnae ought to be able to request it by computer and have it, printed, in her hands within minutes. She shouldn't have to fill out a form or call a number and have to wait days for the list to arrive . . . maybe as sorority women we ought to take a few business risks."

What do you consider the future of Greek life by 2010?

KAREN: In this time of the dysfunctional family, sororities will become extended families. "Girls with children will join, preppy Greeks will be out the window and we [Greeks] will be the family."

BARB: "We used to predict to 2000!" We need to continually adapt to survive. Sororities need to "reflect student populations — diversity." We can't wait for minority groups to come to us. We need to create an environment that appeals to them and [we need to] address the type of students that we get. For example, residence halls are changing to private rooms, apartments. We have to adopt our physical structure, repair, renovate and use strategic planning.

DIANE: "Sororities will still be here because of the basic need for the security of friendship . . . the form in which we exist is up to us. We need to learn from the past. We seem to have forgotten the lessons of the forties and the sixties . . . and what it takes to recoup. We are committing many of the same mistakes over when we should be predicting and adapting to the future. We need to consider all women for membership, including part-time students."

About Delta Zeta's Greek Advisors

KAREN GILL is a graduate of Central Oklahoma with a degree in special education with an emphasis in learning disabilities. She holds a master's in education administration from Fort Hays State. Karen taught high school and coached cheerleading for six years before beginning her career in higher education. She worked as Assistant Director of Admissions and Activities Coordinator at Garden City Community College (Kansas) for three years before coming to Wichita State. At WSU, she worked in admissions for two and a half years and in financial aid before becoming interim Director of Student Involvement, a post she officially assumed this year in June.

She works year-round with Greek affairs, and advises both Panhellenic and IFC. She develops leadership programming for all student organizations, and works with the Student Involvement Advisors who

provide service programming. She also works with Order of Omega and BACCHUS. Her collegiate experience with Delta Zeta, she says, has helped a lot. Her experience as Epsilon Upsilon president and rush chairman on a similar campus makes her current position "fun and very natural." Karen is also WSU's representative to Wichita Alumnae Panhellenic. Karen is mom to son Scott, age six.

BARB SWINNEY ROBEL is one of Delta Zeta's best known Greek advisors. She is this year's recipient of the coveted Lambda Chi Alpha Interfraternity Service Award. She is serving her second term as executive director of MAPCA (Mid-American Panhellenic Council Association) the largest group of its kind in the U.S. She helped co-found MAPCA in 1980. Barb has served the Association of Fraternity Advisors as president, editor, conference chair and has edited a manual for Greek advisors. She has twice been honored by AFA with their Distinguished Service Award. She has also co-founded a National Association of House Directors, nearing 100 members in its first six months of existence. Barb is a welcomed speaker at national conventions, and for the past two years has been an advisor-in-residence for the Delta Upsilon national convention. She has also hosted a summer workshop for the Interfraternity Institute and does regional workshops for AFA and MIFCA/MAPCA.

With a degree in English, she taught high school for four years before beginning her career advising sororities at K-State in 1974; in 1979 she added advising fraternities. Her job is 100% Greek-related as she deals with 26 fraternities, 11 sororities, Interfraternity Council, Panhellenic and Order of Omega. Her primary responsibilities include leadership programming for officers of chapters, Panhellenic and IFC. She coordinates all Greek activities including rush, Greek leader retreat, house director's training, counseling on the issues, and the record-keeping that goes with the job such as grades and rush statistics. She also serves as the public relations liaison between Greeks, the rest of the campus, the Manhattan community, national officers and consultants, advisory boards and house corporations. For 20 years she's been doing this alone (without even a secretary), but she'll have her first graduate assistant this fall. Barb was a

charter member of the recolonization of Lambda Chapter and says her undergraduate experience opened doors for her and provided the opportunity to do her whole career, her associations and offices in the Greek world and to interact in the business of Greek advising. For this, she thanks Delta Zeta.

Barb and husband Raydon (who is director of Recreational Services at K-State) are the parents of twins Kevin (Theta Xi) and Kerry (Sigma Kappa), both fifth year seniors at K-State. Oldest daughter Kristi will wed October 1, according to Barb, who says "the most fun job of all is mother of the bride." When the work load gets tough, Barb "heads for the hills and lets the wind blow through her hair." Her avocation is horses, and she and Raydon train and show quarter horses.

DIANE JONES SKELTON, Panhellenic Advisor and Assistant Director of Student Activities at Washburn University for little over a year, says her years of work for Delta Zeta within the Greek community best qualified her for her position in student personnel. "The training, conventions, chapter visits, and LAMP writing for Delta Zeta kept me current in Greek affairs." Her duties include advising Panhellenic, developing campus programming for Greeks, working with GAMMA, coordinating Alcohol Awareness Week and programming, coordinating rush, and developing a Greek recruiting and marketing plan. In another university position, she serves as Publications Advisor for the weekly campus newspaper and the semesterly magazine.

Diane was honored by the Fraternity Editors for feature writing, writes college chapter news for THE LAMP, has been honored as outstanding alumna in Texas-New Mexico and Kansas, and helped found the Tyler, Texas, alumnae chapter. She has edited Delta Zeta's convention daily for five conventions, and served Delta Zeta as a college chapter director, on special collegiate assignments, as an assistant province director, and alumnae chapter president. Prior to moving to Kansas, Diane taught high school in Texas.

She and husband Danny have three sons: two in college and one in high school. She is the author of this article on Delta Zeta Greek advisors and writes "I am immensely impressed, honored and humbled by the caliber of Delta Zeta Greek

professionals I've met this past year. Delta Zeta needs to use the knowledge, wisdom and talents of our Delta Zeta Greek professionals to enable our sorority to become an even stronger force in the Panhellenic world and to lead us into the next century."

Other Greek Professionals

Other Delta Zeta professionals working as Greek advisors in the Midwest include JoAnn Arholt (Kappa Rho-Kutztown), Associate Director of Greek Life, Bowling Green State; Trisha Hurst (Epsilon Nu-SWMSU), graduate assistant at Southwest Missouri; Jennifer Fish (who was in Europe at the writing of this article), Assistant Dean of Students at Hanover College in Indiana; Katie Sermersheim (Lambda Beta-Indiana State), Greek Affairs Coordinator at Western Illinois; Anna Van Scoyoc (Gamma Nu-Eastern Illinois) (see accompanying article), graduate assistant at Ball State; Eileen Sullivan (Gamma Nu-Eastern Illinois) Eastern Illinois University Assistant Director of Student Activities (who was touring Ireland with her two Delta Zeta sisters at press time). University administrators directing Greek advisors include Ann Immasche Eversole (Delta Pi-Emporia) Associate Dean of Student Life, University of Kansas; and Kay Powell Bales (Kappa Beta-Northern Kentucky) Director of Student Activities, Ball State.

Young New Professional



An emerging career for professionals in higher education is student personnel — a graduate field for administrators who work on a daily basis with students to develop programming and activities on the college campus. The field often includes Union programming and entertainment, and advising student groups as Panhellenic and Interfraternity Councils. One of Delta Zeta's young new professionals is 22-year-old Anna Van Scoyoc, Gamma Nu-Eastern Illinois, who has been mentored by two Delta Zetas, Eileen Sullivan, Gamma Nu-Eastern Illinois, Assistant Director of Student Activities at Eastern Illinois, and

Kay Powell Bales, Kappa Beta-Northern Kentucky, Director of Student Activities, Ball State.

"Eileen has been the biggest influence in helping Anna choose her career. As a collegian, Anna served Eastern Illinois' Panhellenic as vice president of new membership and education, in which she worked with Jr. Panhellenic and advised new members. It was through this "amazing experience" that she realized even though she was earning a degree in human resources management, she would prefer to work with college students. Anna's Panhellenic advisor, Eileen Sullivan, pointed her in the right direction. Now, after a year of graduate work as Panhellenic Advisor at Ball State working with 1100 women from 14 NPC and 4 NPHC groups, Anna hopes for a career as a Greek advisor. And, her track record looks good: she was one of sixteen graduate students selected for the Association of Fraternity Advisors (AFA) graduate staff at the annual conference in San Diego.

Under the tutelage of Kay Bales at Ball State, she's worked with the Greek Week Steering Committee, advised Order of Omega and Panhellenic, and brought NIC's Adopt-a-School program to the campus. She feels strongly about the Greek system and challenges facing both women and Greeks. Sororities help women become happier and find a niche within their campus. Sororities also teach time management skills, keep them involved and identify them with the campus. She feels that NPC is going in the right direction, but that people not affiliated with the Greek system still have the Animal House stereotypes. It will be a big challenge for Greeks to prove themselves.

By 2010, she feels confident that Greek life will become stronger, if anything, even if the numbers do decline, because nationwide, women and men feel strongly about Greek membership, and alumni support is huge. However, women face particular challenges: women's issues, real work stereotypes, and motivation and empowerment to enable women to realize that they can succeed. "Women can succeed and stereotypes can be broken down."

Along with her Delta Zeta mentors, Anna mentions the positive influence of the Delta Zeta collegians at Ball State. "They're great women who always have time to stop and introduce themselves to Delta Zeta sister."



FOCUS ON HEALTH AND FITNESS

WOMEN AND FATIGUE

BY PATRICK LEARY, D.O.

"Doctor, I am so tired! I can't make it through the day without dragging!"

The loss of ambition, energy or pep are complaints that make most physicians wish they had more psychiatric training. A detailed and thorough review of patient symptoms by an aggressive listening physician is essential, along with an equally thorough physical examination. This, complemented by a basic battery of tests, reveals a physical diagnosis only twenty percent of the time. Fatigue does not have any specific physical findings.

Eighty percent of patients complaining of fatigue have some form of anxiety, anger, conflict or depression. Nervous exhaustion, chronic fatigue syndrome and fibromyalgia (the pain syndrome of the '90s) are terms that doctors often use to assign the appropriate group of symptoms to the appropriate medical sub-specialty. This can result in turf wars that doctors seldom win and patients always lose.

Although complex, the 80% fatigued with psychological origins are easier diagnosed than the 20% with physical origins. The most common cause of physical exhaustion is physical exertion. Infectious illness and the ensuing immune response generally result in fatigue or a strong desire to rest or sleep. Metabolic diseases including diabetes and thyroid disease invariably result in energy loss. Anemias and other blood disorders often leave patients with a loss of pep.

Fatigue is often the presenting complaint with those who suffer from acute and chronic kidney and liver disease. Cancers, heart disease and lung disorders which account for the most frequent loss of life many times start their course with the subtle findings of weakness and fatigue.

Any discussion of fatigue in the 1990s

should include the effects of drug abuse and alcoholism. Prescription drug interactions, common in our aging population, can also result in fatigue. Poor dietary habits, including high sodium, high fat, low caloric diets, combined with our 24-hour society, have made fatigue acceptable.

Although far more women than men complain of psychological fatigue, fatigue as a complaint is gender blind. It appears that regular exercise, proper diet, adequate rest and peace of mind are all great combatants.

Fatigue cannot and should not be underestimated as an important com-

plaint. Improved communication between doctor and patient can result in a more timely and less costly diagnosis. The complexity, variability and significance of fatigue as a symptom should not be a source of frustration, but an affirmation of what improved physician/patient communication can sustain.

Note: This column is presented as part of the health and fitness focus of alumnae programming in this biennium. Dr. Leary is a family physician in Kansas City, Missouri. His wife, Linda Mans Leary, is a former Delta Zeta Chapter Consultant.

Delta Zeta Alumnae

Continue the Experience... Experience...Delta Zeta

There is Delta Zeta after college.
Would you like more information on:

- ☐ Alumnae chapters in your area
- ☐ How to start an alumnae chapter
- ☐ Subscription to *The LAMP*
- ☐ How to help collegiate chapters
- ☐ Current Delta Zeta projects
- ☐ Other _____

Then use the Delta Zeta Alumnae Number. Call
1-800-6-ALUMNA
(1-800-625-8662)

From the Lampwriter

Did any of you happen to watch the ABC Sunday night movie on April 18? It was the documented story of Hazel Brannon Smith, the first woman to receive the Pulitzer Prize for editorial writing.

The movie was entitled *A Passion for Justice* and told the story of Hazel's stance against racism during Mississippi's turbulent civil rights era.

Hazel was one of the few white Southern editors to speak out against white extremists during the 1950s and early '60s. Her newspaper, *The Lexington (Mississippi) Advertiser*, was subjected to a ten-year economic boycott and another, *The Northside (Mississippi) Reporter*, was bombed during the state's "Freedom Summer" of 1964.

Hazel Brannon Smith received the Pulitzer Prize in 1964.

Well, I recognized this lady because I had received a newspaper clipping some years ago. Hazel Brannon was initiated into Alpha Gamma chapter at the University of Alabama in 1934.

While I was attempting to make contact (we had no current address at Headquarters), I received a letter from my long-time Sigma Delta Tau friend, Mimi Grant, who edits *Sigma Delta Tau Torch*. Mimi wrote that she too had seen the movie and that it brought back floods of memories. She and Hazel were both on the *Crimson-White* and *Corolla* staffs at the University of Alabama. In fact, they ran against each other in the first (and only) school-wide election for women's editor of the newspaper. Mimi said that "she won the election but that Hazel was the real winner - she got the Pulitzer!"

I was still trying to locate Hazel when Mimi wrote again, this time including an obituary notice from the May 17 issue of *The Miami Herald*. Hazel Brannon Smith had died in Cleveland, Tennessee, at age 80. I would have liked to have known her!

And speaking of the Pulitzer, Delta Zeta's Kathleen Shannon Vincent, University of Texas/Arlington-Iota Psi, was a member of the *Dallas Morning News* team which recently received the Pulitzer Prize for international reporting. The team's entry, *Violence Against Women: A Question of Human Rights*, was published as an occasional series of 14 stories



A page from the 1933 *Corolla* at the University of Alabama. Hazel is pictured top row, fourth from left.

from March to June, 1993. Kathleen is a graphic artist.

The mail bag brought some interesting perks. Susan J. Bryant, M.D., West Texas A&M-Zeta Zeta, chapter, wrote: "I would like to write in congratulations to Omicron Sigma chapter and their installation at Gallaudet University. As a hearing member of a deaf Protestant church, I shared the news with my friends and they were quite impressed. I have always hoped Delta Zeta could also support deaf culture and deaf heritage along with her many other noble pursuits. This is a great first step."

Sandra Askelson, North Dakota University-Upsilon, wrote from the Northwest: "Here's a belated note of appreciation for a beautiful spring issue of *The LAMP*. It's pleasant to see lovely women, happy faces and good news. Especially beautiful was the layout of the

story for the 1993 Woman of the Year luncheon. It reminded me of the refreshing pleasure I enjoy in reading the magazine *Victoria*."

As a rule, I read all the death and obituary material received at Headquarters. It's a sad job, but now and then something needs telling comes up. For instance, Evelyn Dueringer, Northwestern University Alpha Alpha, wrote to report the accidental death of her sister, Gladys Dueringer, also a member of Alpha Alpha. In the postscript, she wrote, "My nephew and I have sent a substantial part of Gladys' savings to the Delta Zeta Foundation for the hearing impaired. Gladys had been hearing impaired since an early childhood bout with scarlet fever." Now, another scholarship can be given!

Laura Jewell Evans, South Carolina-Beta Delta, wrote to say her grandmother Pearl Genevieve Cottrell Neal had died quietly

her sleep. Genevieve was 95 and a 75-year member of Delta chapter at DePauw. Laurie added: "She raised my mother, and then me, to believe that greatness need not be achieved through awards and honors, setting records or winning offices. It can also come through hard work, kindness and love that is ever steadfast. I believe Grandma took the Delta Zeta Creed as her own, for her whole life exemplified its meaning — 'To those whom my life may touch in slight measure, may I give graciously of what is mine.'"

And then a son wrote about his mother. He said that during her last days in the hospital, she entertained visiting family and hospital staff members by singing songs from her college days... "I want to be a Delta Zeta girl....ummm and a little bit more."

B

Better Hearing Speaker's Bureau Planned

Delta Zetas across the U.S. and Canada will team with the Better Hearing Institute to launch a Better Hearing Speaker's Bureau this fall, announces Joan Dondrea Lowry, Delta Zeta Foundation President.

Delta Zeta volunteers, coordinated through alumnae and collegiate chapters, will use Better Hearing Institute videos, audiovisual tools and other resources to promote better hearing to community groups. A major speaking tool will be "People Vs. Noise," a video featuring Emmy-winning actor Richard Dysart and others with noise-induced hearing loss. (Foundation President Joan Lowry appears in the video in a segment set in the Delta Zeta Room at Kent State University's hearing aid museum.)

Delta Zetas will, in effect, become "apostles of better hearing" — reaching

thousands of people at the grass roots level with information about hearing protection and available hearing help. The volunteers will measure the effectiveness of the new speaker's bureau by reporting when and where their presentations were made, attendance, composition of audience, and questions asked. Better Hearing Institute awards and publicity will, in turn, recognize outstanding efforts of individual Delta Zeta members, alumnae chapters and clubs, and undergraduate chapters.

Details on the speaker's bureau will be distributed in the fall alumnae and collegiate mailings. Members are encouraged to volunteer as the chapter's spokesperson. More information is available from Joan Lowry or the foundation/philanthropy coordinators for collegians or alumnae.

Grandmother, Granddaughter Initiated Together

Eleanora Ghering Sandblade grew up in the town of Edinboro, Pennsylvania. As a young lady of the times she dreamed of attending the then Teachers College in town and getting to know even better the girls who had formed a new club called Alpha Delta. Her dreams did come true as she went on to attend the college and become part of Alpha Delta in 1937. During that time Eleanora was an avid member of the group. In 1965, that local group, now 37 years old, became the Iota Delta chapter of Delta Zeta.

Now in 1994, Rachael Messmer, granddaughter of Eleanora Sandblade, came to Edinboro with those same dreams. Eleanora was thrilled when her granddaughter became a new member of the group to which she had belonged. It was



Sharing a special initiation: Back row, Iota Delta members Jen Reister and Kerry Nooks, president. Front row, CCD Diane DiOrio Raffle, Eleanora Ghering Sandblade, Rachael Messmer.

at that time that Eleanora and CCD Diane DiOrio Raffle made contact and started the process for initiation of Eleanora into the Iota Delta chapter of Delta Zeta Sorority. It was always a goal of Eleanora to become

an initiated member of the national organization in which her local roots were absorbed.

In May, 1994, Eleanora and Rachael were both initiated into Iota Delta chapter. It was a beautiful evening for all. It was a thrill to share such a special occasion with a woman of such stature. The entire chapter was very intrigued by the historical overview she shared with them. She was presented with her own DZ badge, sweatshirt and roses. Mrs. Sandblade then presented her granddaughter with her Alpha Delta pin made

into a pendant necklace. It was an evening to remember ... never does an initiation ceremony have more meaning than when the ties of the past and the present unite to set the stage for the future!

Guess Who's Coming to Dinner???

BY PATRICIA CANADY ROSSER, GEORGIA SOUTHERN-IOTA NU

Who of us has not had someone over for dinner? Or maybe we have had a dinner party of 8, 10, or 12 people. But how many of us have ever been responsible for an elegant, sit-down dinner of 1,000 people where the main guest is the former Prime Minister of a major world power?

That's just where Karen Mayer, Samford-Alpha Pi, found herself this spring when Lady Margaret Thatcher, the former British Prime Minister, came to speak in the Clearwater, Florida, area during her 14-day tour of the United States. The event in Clearwater served as a fund raising event for the Morton Plant Foundation to raise money for the Hospital's Cancer Center.

Karen has always been involved in social and political events. While at Samford University she was social chairman for her chapter and served in the Student Government Association. The experience she gained from this chairmanship, internships at public relations firms, and working on political campaigns, helped her in finding a paying position at Morton Plant Foundation when she returned home to Clearwater after college graduation. During her spare time she had some opportunities to work with White House advance teams for several presidential visits to Tampa made by George Bush and Dan Quayle. Being exposed to work with the advance teams and the United States Secret Service prepared her to work with Scotland Yard.

Karen has been with the Foundation for two years and serves as Program Associate/Special Events. She is responsible for all special events, and in the last six months has coordinated the Foundation's role in the JCPenney Golf Classic on the LPGA Tour, the Foundation's annual dinner, their VIP donor black tie dinner,



Lady Margaret Thatcher and Karen Mayer

a cancer center groundbreaking, and a dinner/silent auction featuring former Heavyweight Boxing Champion George Foreman.

When asked how does she do it all, including pulling 18-20 hour work days just prior to the events, she said, "I thrive on all the work and the details." In fact, the first thing Karen did for the Lady Thatcher dinner was to anticipate the gaps. She walked through the entire event in her mind, considering every detail in order to organize it and commit it into action.

Karen was responsible for coordinating the event which was sponsored by the Corporate Associates of the Foundation. This is a group of businesses that donate a minimum of \$1,000 annually to the Foundation. The event was planned by the Corporate Associates leaders and staff liaison. The money had been secured. Now, Karen had to step in and make sure everything happened and went off like clockwork. This was the first time a major world celebrity had ever come to any event

in Clearwater. It had to be perfect and set the stage for any future events.

The dinner was held at the Innisbrook Hilton Resort, a place Delta Zetas who have attended the last two conventions in Florida know well.

Karen made sure everything was in order—the main dinner, a VIP reception, table arrangements, seating, the sound system and general banquet duties with the hotel staff. It even came down to making sure the appropriate color of back-drop was chosen so it did not clash

with Lady Thatcher's dress suit. Sure enough it would have clashed, so Karen informed Lady Thatcher, who in turn changed her dress attire for the evening.

To help her with the seating, greeting, and parking, Karen relied heavily on 32 volunteers from the hospital and community, both students and professionals, who assisted under her leadership. After determining how many volunteers were needed and permitted, she sectioned them off, giving each specific duties in specific areas. One thing Delta Zeta taught her, she noted, was to be a leader and organize volunteers. With the volunteers controlling the seating and parking, crowd control and security was easier. The volunteers also helped maintain the restrictions of no cameras, books, autographing, or press.

Karen shared one of her secrets for success. "Remain calm. Throughout the entire time, you need to be in total control, keeping a smile on your face, and giving each person your entire attention whether they be a bellhop, the chief of security, or

the 'Lady' herself."

Karen was also the liaison between the Foundation, the "Lady," and her entourage; meeting her needs so that she had what she wanted, when needed, if not before. This included having a hair dresser on hand who had gone through Scotland Yard security clearances; having the hospital on alert for any medical emergency; tight security in place; car and motorcade ready at all times; airports on alert; police on alert; hotel staff briefed and all other aspects of the trip covered from the time of her arrival to the time of her departure.

Many of these aspects began just a few days prior to the event, when Karen first met with one of the security agents, a Detective Chief Inspector of Scotland Yard. After preparing a packet for security use, the two spent one full day meeting with the security staffs at the Hyatt Regency Westshore where Lady Thatcher would stay; Innsbrook; two airports, including Tampa International and a private hanger, and the local county sheriff's department.

Because Lady Thatcher is one of the world's greatest leaders, a low profile had to be maintained. The event couldn't be announced until just a few weeks prior to the date.

Naturally, with anyone of Lady Thatcher's stature, the press is going to be present. Organizing them fell to Karen. Since the press people were under certain constraints, a specific time was allotted for a photo opportunity prior to the dinner. It was a time for a few quick snapshots only, no questions.

Everything did go off like clockwork. The dinner was excellent. Lady Thatcher was introduced by a fellow countryman who now resides in Clearwater, British race driver Nigel Mansell. He is a celebrity in his own right as one of the most famous Grand Prix drivers in the world, now driving in the Indy 500. But it was the "Lady" the people came to see and hear. The evening lasted a little longer than anticipated because Lady Thatcher was enjoying herself and decided to extend both her speaking time and question and answer time. The audience loved it and her.

Karen found it a privilege to meet Lady Thatcher. She said, "She is a real person, with so much inside. When I think of what she has experienced and been involved in, it just puts me in awe. Lady Thatcher is definitely a lady. She should be a role model for any and every woman in leadership."

National Panhellenic Conference Partner in Breast Health Education Program

NEW YORK — The National Panhellenic Conference was one of seven organizations selected to be a partner of *Glamour/Hanes Hand in Hand* when the first on-going breast-health education program was launched in 1992. The goal of the five-year program is to reduce breast cancer mortality and incidence.

Free *Glamour/Hanes Hand in Hand* booklets and posters, which will be sent to every sorority chapter again in fall 1994, encourage young women to take control of their breast health at an early age rather than ignore it because of fear, misinformation, or passivity. The eight-page booklet reflects the program philosophy, "Good Looks Start With Good Health." It promotes simple lifestyle changes in diet, screening techniques, and interactions with health professionals. To reinforce the naturalness of breast self-examinations for healthy young women, the booklet and the poster illustrate a step-by-step breast self-exam with photographs instead of sketches. Four-color breast self-exam shower cards will also be sent to each chapter in the Fall.

Hand in Hand was created by *Glamour* magazine in conjunction with the National Cancer Institute (NCI), The American College of Obstetricians and Gynecologists (ACOG), and the American Health Foundation (AHF). The program is funded by Hanes Hosiery.

1.7 Million Booklets Distributed

During the first year more than 1.7 million booklets and thousands of posters were distributed by program partners on college campuses, in health clubs, fitness and exercise studios, doctors' offices and day care centers. The distribution partners — in addition to National Panhellenic Conference — include ACOG; the American College Health Association; Childtime Children's Centers; IDEA, The International Association of Fitness Professionals; IRSA — The Association of Quality Clubs; and National Pan-Hellenic Council, Inc.

Intervention Study

In April 1993, AHF released the results of a unique controlled intervention study designed to measure the effectiveness of *Glamour/Hanes Hand in Hand* materials. The data indicate the materials significantly increased (by 37%) the knowledge and desire to be proactive about risk factors affecting breast cancer incidence and mortality. This is believed to be the first time the effectiveness of nationally-distributed health materials has been scientifically evaluated.

Why Young Women?

Why is the program directed to young women? Former director of the National Institute of Health, Bemadine Healy, M.D., believes good health habits "must be started early in order to have staying power later in life. It's never too early to start a healthy diet. And postponing monthly breast self-exams, which take so little time, until the forties when the risk of breast cancer is higher and fear is greater, is foolish. It is important for women to become comfortable and familiar with their bodies early in life."

Though *Glamour/Hanes Hand in Hand* is targeted to women under 39, it also encourages a "trickle up" effect to those over 40. As young women become more involved in their own breast health, they will encourage their mothers and older family members to become more aware of pro-active breast-health behavior.

30 Million Package Inserts

Some 30 million additional women are being exposed to *Glamour/Hanes Hand and Hand* educational information printed on Hanes Hosiery package inserts that were put into distribution October 1993. The inserts are being included in eight separate Hanes brands.

ARLINGTON (Texas) alumnae chapter's Pat Brown Rizzotti, University of Texas/Arlington-Iota Psi, was named outstanding alumnae chapter president at Province XVII Weekend in Dallas-Fort Worth. In April, alumnae participated in the "Race for the Cure," a one mile fun run/walk in honor of Elsie Wheeler McTee and others who are survivors of breast cancer.

ATLANTA-COBB COUNTY (Georgia) alumnae chapter participated in Walk America and raised \$625 to benefit the March of Dimes. A birthday party celebrated the first anniversary of this young chapter.

ATLANTA-GWINNETT COUNTY (Georgia) alumnae chapter is proud of its 25 members....a far cry from the two who started the chapter. The chapter received "Best Alumnae Chapter" award at Province Day in February. They made floral wreaths for the women at the Plantation Nursing Home for Mother's Day and gifts for the men for Father's Day.

BARTLESVILLE (Oklahoma) alumnae chapter honored fifty-year members Doris Dillon Durham, OSU-Alpha Epsilon and Winona Maddox Schnitzer, Northwestern Oklahoma-Delta Omicron and held their 26th annual St. Patrick's Day party for residents of Heritage Manor Nursing Home.

Several **BAYOU (Louisiana)** alumnae attended Kappa Alpha's annual honors banquet in May. The Marie Louise Lepine alumnae award was presented to Bayou's secretary, Jennifer Kelly. The Bayou alumnae award, presented to a new collegiate member who shows great potential, went to Kappa Alpha's Monique Bourgeois.

Alumnae Chapters Write ...



The El Paso, Texas, alumnae chapter received the outstanding alumnae chapter award at Province XVII Weekend. L to r, PAD Melody McDonald Wilkinson, Angelo State-Lambda Omicron; Pat Bush White, Colorado State-Beta Sigma; President Nanette Proske Pollock, Harris Teachers-Epsilon Eta; Agnes Romero Reynolds, New Mexico State-Gamma Xi; and former PAD Elsie Wheeler McTee, Texas-Alpha Tau.



Celebrating the rechartering of the Miami, Florida, alumnae chapter are Beverly Brouer Hammel, Northwestern-Alpha Alpha; Rachel Peterson Roller, Brenau-Alpha Omicron; Sherry Ulsh, Indiana of Pennsylvania-Gamma Phi, President Suzanne Valliquette Yeager, Wittenberg-Beta Chi, and Eleanor (Dolly) Matteson, Miami-Beta Nu.

CHICAGO-NORTHWEST SUBURBAN (Illinois) alumnae attended an alumnae tea hosted by Alpha Alpha chapter at Northwestern. Chapter members also baked brownies for Alpha Alpha and Theta Theta during finals week. Fundraisers include a raffle of a cookie basket (Delta Zeta decorated, of course), selling Tupperware and Longaberger baskets and holding "shop and share" day at a local grocery chain where they received 5% of the cost of items purchased.

The **CLEVELAND EASTSIDE (Ohio)** alumnae chapter was named Outstanding Alumnae Chapter at Ohio State Day. They also received the Joan Dondre Lowry Philanthropy Award, Best Yearbook Award and certificate for excellence in programming philanthropy, newsletter and ways and means. An April meeting featured a workshop on self-defense.

COLUMBIA (South Carolina) alumnae chapter recently adopted as a local philanthropy the University of South Carolina Speech and Hearing Center for Children. The Center is headed by Dr. Judy Hiding Bishop, Northwestern-Alpha Alpha. They also have established an annual scholarship for the Center's camp for hearing impaired children.

EL PASO (Texas) alumnae chapter enjoyed a "Superwoman" social event which was highlighted by a discussion exploring the many aspects of life in the '90s; how many try to be "Superwomen" by filling their time with marriage, homemaking, child rearing, career, community work, church activities and other time-consuming interests. Tips were given on how to reduce self-imposed obligations and release feelings of guilt.

NORTH CENTRAL INDIANAPOLIS (Indiana) alumnae chapter's recent philanthropic efforts include working at the Indianapolis Speech and Hearing Booth at the Baby and Kids Fair and participation in both the March of Dimes and Multiple Sclerosis Walk-a-thons.

JACKSON (Mississippi) alumnae chapter purchased and planted spring flowers for the Magnolia Speech School and observed May's Better Speech and Hearing Month by setting up an information booth at a local mall. They provided goodie bags for members of Epsilon Mu chapter during finals.

CENTRAL JERSEY (New Jersey) alumnae chapter's Class of 1994 T-shirt fundraiser produced \$300 for philanthropy. Several members attended Lambda Lambda's senior tea at Trenton State to "pitch" alumnae chapter membership.

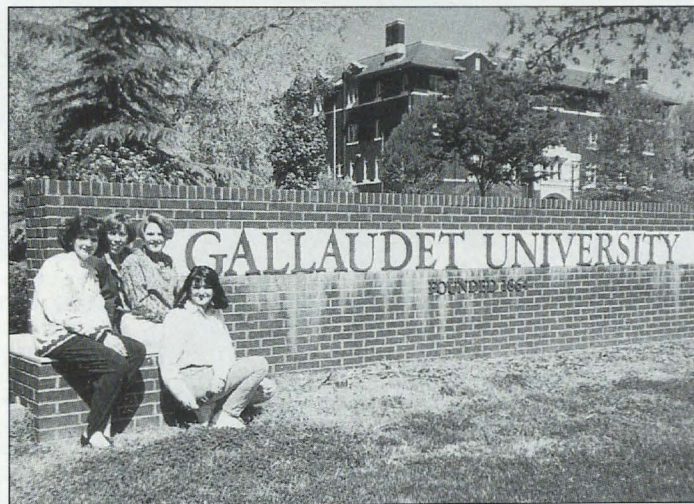
KENT (Ohio) alumnae helped Gamma Kappa chapter at Kent hostess Province V State Day in April and joined Gamma Kappa for a senior tea and chapter birthday party.

NORTHERN KENTUCKY alumnae chapter members schedule their summer meeting at a local outdoor grill where they can discuss important summer business over cool pitchers of iced tea. The chapter joined with members of the **GREATER CINCINNATI (Ohio)** chapter to work at an outdoor festival to support St. Rita's School for Deaf Children. They also assisted with Cincinnati's Speech and Hearing Association's annual gala. And . . . they continue to play volleyball on a weekly basis!

GREATER LAFAYETTE (Indiana) alumnae chapter has continued its emphasis on women's health. An interesting



Phoenix Alumnae President Lorna Enokian Green, Illinois-AB, presents the Diamond in the Flame certificate to Louise Kennedy Thompson, Pittsburgh-O, who was initiated on March 2, 1919.



Indianapolis North Central alumnae members visited Gallaudet. From the left, Michele Johnson Calderon, Indiana-E, Kelli Vernon Kirkham, Ellen Vandivier, Holly Cason Brown, all Ball State-Gamma Chi.



Atlanta-Cobb County alumnae chapter member Lisa Hatchett Spencer, Memphis State-Gamma Iota, was crowned Mrs. Kennesaw and participated in the Mrs. Georgia pageant in July. Her son Nicholas, age 2, was named Master Kennesaw in his division.

and informative program on eating disorders revealed that a little extra weight as one "matures" might not be too unhealthy! The chapter hosted a dinner for 20 seniors at Purdue-Xi Omega. Members honored at Province VII Day include Sonja Wise who received the Distinguished Service Award for her dedication and commitment in establishing and supporting Xi Omega chapter and Dr. Carolyn Jones who received the Outstanding Alumna Award for her success in pursuing her career and contributions to the community.

The newly reorganized **MIAMI (Florida)** alumnae chapter was installed in February.

GOLD COAST alumnae chapter members assisted at the service. Member Rachel Peterson Roller, Brenau-Alpha Omicron, hosted a meeting and spoke about writing and illustrating books and book binding. PAD Linda Ratkus Packham then presented Rachel with the Order of the Pearl for her 65 years of membership.

MUNCIE (Indiana) alumnae chapter celebrated "International Night" in April with members sharing information about their worldwide travels. They observed Speech and Hearing Month in May with a representative from the Muncie Community Schools talking about the TDD telephone system for the hearing impaired.

CENTRAL PHILADELPHIA (Pennsylvania) alumnae chapter members attended the Philadelphia Area Alumnae Panhellenic scholarship luncheon. Proceeds from the auction and raffle benefit an area sorority woman pursuing an advanced degree. CPAC members also hosted a high tea at the Ritz Carlton Hotel in Philadelphia for their mothers.

PHOENIX (Arizona) alumnae chapter hosted a continental breakfast and asked each member to bring her favorite sleep-ware in a plain brown bag. They then tried to match up the nighties with their owners. It was hilarious! "Delta Zeta Lamps are Burning" held a little more meaning for alumnae in May after they had presented Louise Kennedy Thompson, Pittsburgh-Omicron, with her Order of the Diamond certificate. Alumnae will present a \$300 scholarship to a graduating senior at the Phoenix Day School of the Deaf.

SAN FERNANDO VALLEY (California) alumnae chapter met at the National Center of Deafness at CSU/Northridge in April and presented an \$800 check to help deaf students who lost housing or had other problems as a result of the recent earthquake.

SEATTLE (Washington) alumnae chapter has found their dine-out meetings as well as local and regional tours have been popular options with members and will be continued as part of the alumnae program. Recently members boarded Amtrak for a day excursion to Centralia, touring a popular discount mall and the picturesque town center for "antiquing." The return to Seattle was by the new Spanish TALGO "bullet" train.



Central Jersey alumnae made money for philanthropy with their Class of 94 T-shirts. From the left, Marti Keyser, San Jose State-Gamma Lambda; Jennifer Vreeland and Ida West, both Trenton State-Lambda Lambda.



Delta Zetas participating in the Wichita Alumnae Panhellenic fashion show are Trish Rieland Kissick, Emporia-Delta Pi; Karyn Ray Chastain, Northeast Missouri-Delta Sigma; Anita Hendrickson Skelton, Missouri Valley-Gamma Gamma, who coordinated the entire benefit and is the newly elected Panhellenic President; and Phyllis Berens Ross, Fort Hays State-Delta Omega.



Left: Mella Cooks Davies, Miami-Alpha, receives the Olive McCune Loyalty Award from PAD Andrea Bloch Vederman at Ohio's 51st annual State Day.



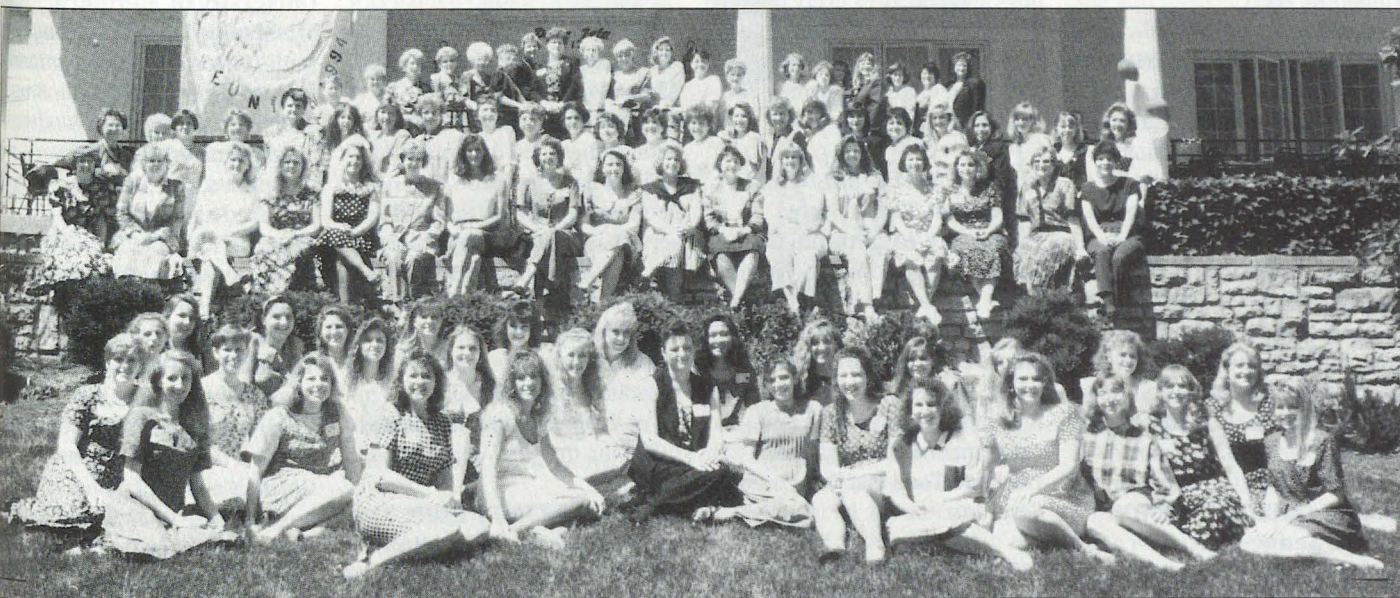
Alumnae of Delta Pi chapter meet annually at the Emporia State University Union. Joining them this spring is Vice President of Alumnae Phyllis Berens Ross. Back row, l to r, Joyce Shumate, Mary Dee Archer Brinkman, Sharon Helmer Stephens, Barbara Gimple, Marjorie Sauder Erickson, Sue Quick Schmidt. Front row, Barbara Redman Younger, Sally Price Mason, Eunice Severns Bradley, Phyllis Ross, Linda Thomas Van Gundy, Lois Hoffman Jones.



Members of Gamma Delta returned to Penn State for their 25th year reunion. Pictured are some of the 28 attending, along with Kelly Baldwin, Gamma Delta president (front row, left) who was their campus tour guide. Back row: Marilynn Peery Kroesser, Deborah Fortin Evans. Second row: Marjory Cleaveland Yeakel, Cheryl Bittner, Judy Haldy Neidhardt, Carlyn Sipes Crout, Jan Arculin Diehl. Front row: Kelly Baldwin, Jane Martindale Schafer, Barbara Davis Schultes, Susan Bradley Walker.



Those former field reps of the late '80s are still meeting when another one gets married. This occasion was the marriage of Wendy Myers to Joe Bulovas in Houston. From the left, Kathi Bray Heatherly, Central Oklahoma-Epsilon Upsilon; LeeAnn DeReus, ISU-Beta Kappa, with daughter Arianna; the bride Wendy Myers Bulovas, Central Michigan-Gamma Psi; Diane Rolnick Soma, Long Beach-Delta Alpha, with her daughter Nicole; Sharon Rothrock Gieselmann, Southern Indiana-Lambda Beta; Kim Saari Johnston, Washington-Kappa. (Not pictured: Michelle Albrecht, UCLA-Alpha Chi) Kathi Heatherly's 2-year-old legacy Taylor was home with Grandma!



Theta chapter held its first ever alumnae reunion with 92 alums attending the event. They hope to make this a biennial event.

What happened to you after college?

JENNIFER BERDELL KHOURY, Indiana University of Pennsylvania-Gamma Phi, works in sales support for Compulife in Richmond, Virginia. She backs up sales staff with insurance/financial plan information and meets with banks to update them on new products. Her husband is Michael and they enjoy skiing, travel, tennis and aerobics.



DEBRA BERRY DIXON, Memphis State University-Gamma Iota, recently left a successful career as a business consultant to pursue a fulltime writing career. Her first published novel, *Tall, Dark and Lonesome*, was published by Bantam Loveswept last fall and hit #6 on the Waldenbooks National Romance Bestseller list. Her second book hit the stands in March and three more are sold and scheduled through 1995. She's currently working on number six. She and husband Wayne have one son, William Richard.

KELLY STOCK DiPUCCHIO, University of Michigan-Alpha Eta, is a senior industrial engineer for General Motors Corporation in their North American Truck Platforms division. She is responsible for implementing lean manufacturing initiatives at the GM plants. The goal is to build the best product in the most cost-efficient manner. Kelly enjoys exercise of all kinds. Her husband is Joseph.

STACEY GRIFFIN GARMON, Middle Tennessee University-Iota Iota, is a senior compensation analyst and assistant vice president for

Third National Bank in LaVergne, Tennessee. She administers the salary program of the bank which includes merit and incentive pay. She is also a part-time aerobics instructor at three fitness centers and an Engineer Officer in the National Guard. She is married to Jeffrey.

KATHERINE JOHANNI MILLER, Ohio State University-Theta, retired at 29 from a fun career as a systems programmer to become a fulltime mom for two active boys and she loves every minute of it. Her husband is David and they live in Columbus, Ohio. Katherine enjoys gardening and ceramics.

ALICIA FULLER ARENDELL, Southwest Texas State University-Iota Alpha, is a legal clerk working for a Justice of the Peace, and handling civil suits and criminal suits. She enjoys working around the house and is a volunteer working with gang members trying to get them out of the gangs. Husband Todd is a Detective Sergeant.

LYNN WEBER SIGMUND, Henderston State College-Epsilon Pi, lives in Bend,

Oregon. She has been a teacher, has served in the Air Force and been a director of Christian Education. Two grown children are Elizabeth and Ian. She is looking forward to working with her church either as a Christian educator or as a volunteer in mission work. She enjoys travel and reading.

TRICIA DeCINQUE, Rowan College-Xi Kappa, is a paralegal working in a law office in Millville, New Jersey. She has applied to law schools for attendance this fall.

ANN BOLLWERK SIELATY, Oklahoma State University-Alpha Epsilon, lives in Springfield, Virginia, with husband Robert and daughters Melissa and Stephanie. She has been an elementary teacher, served as a park technician for the President's Park (White House) and is currently a contract specialist for the Department of the Army at Fort Belvoir, Virginia. The family loves the beach, mountains and following the girls' activities.

LINDA DENNISON TAPP, Drexel University-Epsilon Zeta, is a Safety Professional/Ergonomist for a leading pharmaceutical manufacturer. The

company employs 700 people and she is basically responsible for their safety through the development of programs and policies, training, etc. She recently completed all requirements for certification as a Certified Safety Professional and plans to establish her own safety consulting firm. She and husband Darren live in Cherry Hill, New Jersey, where Linda is active in the Central Philadelphia Alumnae Chapter and serves as PCD for Province III-East.

LUCINDA KIBSEY SOLTYS, Shippensburg-Kappa Psi, is associate director for Adelphi Village, one of the larger youth care agencies in Pennsylvania. She works with four supervisors of four youth care programs. She is married to Gary and they have one son, John-Tyler. Lucinda enjoys antiques, music and is a Red Cross volunteer as an HIV/AIDS educator.

MONITA PRINE McLEMORE, University of Southern Mississippi-Epsilon Mu, is semi-retired but teaches piano, voice and harp part-time. She also plays the harp for weddings, anniversary parties, receptions, etc. Husband Harry is retired and two grown children are Risa and Richard. Monita enjoys scuba diving, bridge, tennis and swimming.

TERRI ANN PERNA ROTH, Fresno State-Epsilon Epsilon, is a recreation therapist at a local rehab center in Goleta, California. She and her husband Jeffrey expected their first child in April. (Is it a boy or girl?) Terri enjoys crocheting, bicycling, working with the elderly, walking and gardening.

LY
W
is
Ca
ba
hi
Sal
so
cid
ore
var
cra
a s
Mi
gra
M
DA
hu
Flo
bar
The
fin
JAL
Ge
hu
mo
wh
JAN
JEL
TO
La
Bu
wh
er
she
a g
fur
pla
acc
Br
ing
rie
AN
Cl
hu
Per
ma
an
ne
Ka
Jae
live
me
Su
ser

LYNDA COLEMAN NEUROTH, Wayne State-Epsilon Sigma, is a reading recovery teacher in Canton, Michigan. She and husband Hans own and manage a highly successful cider mill in Salem. Their 30 acres have some 20 varieties of apples and cider is hand made on the premises, along with donuts, various Michigan products and craft items. Children are Heidi, a student at the University of Michigan, and Peter Hans, a 5th grader in Canton.

MANDY SAGRAVES HORNDAY, Purdue-Xi Omega, and husband Jim live in Tampa, Florida. Mandy assists her husband, who is a stock broker. They enjoy travel, sports and fine dining.

JAN MADDUX KIRBY, North Georgia College-Xi Xi, and husband Norman recently moved to Schweinfurt, Germany, where he serves in the military. Jan enjoys reading and crafts.

JENNIFER PURSLEY EDGERTON, Appalachian State-Lambda Phi, lives in Burlington, North Carolina, where she is an interior designer with the largest furniture showroom in North America. As a gallery designer Jennifer does furniture placement, space planning, gallery layout and accessorizing. Her husband is Brent and she enjoys snow skiing, reading, writing short stories and painting in water color.

ANDREA CEFARATTI KELLY, Clarion-Epsilon Theta, and husband Kevin live in Horsham, Pennsylvania, where Andrea is a marketing assistant. Pursuing an MBA, she enjoys aerobics, needlepoint and shopping.

KAREN KENNEDY DeMARIA, Jacksonville-Iota Omega, lives with husband Don, a commercial fisherman, on Summerland Key in Florida. A senior scientist with Post,

Buckley, Schuh and Jernigan, Inc. in Monroe County, Florida, Karen has long been involved in environmental conservation. Last year she participated as a marine biologist in a jointly funded research grant involving the collection of anecdotal information on changes to the Florida Keys marine ecosystem. She also enjoys scuba diving, fishing, nature walks and yard work.

PENELOPE BOYLAN JASTZAB, Ferris State-Zeta Nu, and husband Robert have recently moved to Shorewood, Minnesota, with their children, Andrea, Laura and Rebecca. Penelope is a consultant pharmacist who provides clinical review of each resident's pharmaceutical care in long-term care facilities. She enjoys the piano, travel and sports with their daughters.

ROSE MARY H. GRANT STAVROPOULOS, Eastern Illinois-Gamma Nu, lives in Deerfield, Illinois, with husband Stan. Grown daughters are Becky and Stephanie. Long active in volunteerism and civic activities, Rose Mary received Deerfield's Human Relations (Humanitarian) Award in 1984, was named Citizen of the Month on the North Shore (Chicago Metro area) and has been listed in *Who's Who of American Women* and *Who's Who in the Midwest*.

REBECCA KRAMER, North Texas-Kappa Zeta, recently married Brian Goldberg and they live in Atlanta, Georgia. Rebecca is an assistant manager for a children's specialty clothing chain. She enjoys reading, painting, shopping and watching movies.

AMY YOUNG KORING, Shepherd College-Kappa Mu, and husband Adam live in Lititz, Pennsylvania, and Amy is a product marketing specialist

for MHB Technology, Inc. She plans, directs and administers the marketing activity for their product line. Amy likes crafts, collecting sports cards and autographs and spending time with family and friends.

TAMARA IRWIN LAGIOVANE, Ohio University-Omicron Gamma, and husband Greg live in Pittsburgh, Pennsylvania. Tammie works for Bell of Pennsylvania yellow pages as an advertising sales representative. In her spare time she takes aerobic classes and travels with her husband.

DEBORAH THOMPSON SPRATT, New Hampshire-Theta Gamma, and husband Stephen live in Amherst, New Hampshire, with daughters Kristen and Stephanie. The Spratts are owners of a small business selling consumer electronics (personal attack alarms, home, car alarms and entertainment electronics). Debbie enjoys music, boating and skiing.



LAURA PARILLE POWERS, Auburn-Beta Xi, just received her master's degree in administration in higher education. As a graduate assistant she worked in the financial aid office at the University of Alabama, and served as president of the Graduate Student Association. Husband Eric is a law student.

KELLY MARIE BERLINER MORRIS, Missouri/St. Louis-Iota Xi, is a research analyst for the Federal Reserve Bank in St. Louis, working with international and monetary information in the research department. An avid hockey fan and romance fiction reader, Kelly is married to David Morris.

ANNE SCHMUDDE HUDNALL, East Tennessee State-Delta Eta, and husband Timothy live in Nashville, Tennessee, where he is in school training to be a Physician Assistant and she is a seventh grade science teacher. Anne likes Scottie dogs, science items and music.

JENNIFER KISER LLOYD, Florida State-Alpha Sigma, is currently enrolled as a law student at Cumberland Law School in Birmingham. Husband Eric is a sales representative. Jennifer likes reading, soccer and travel.

SANDY MITARNOWSKI LAING, Missouri/St. Louis-Iota Xi, is now teaching at an alternative high school for at-risk students in Bullitt County south of Louisville, Kentucky. She and husband Dan live in Louisville. Children are David and Katie. Sandy likes cross-stitch, reading and summer flower gardens.

LINDA GAMBER EWING, California University of Pennsylvania-Zeta Epsilon, is currently completing her Ph.D. in education at the University of Alabama under a NASA fellowship and teaching in the college of Aerospace Engineering. Of additional interest is the fact Linda has been serving as housemother for the Alpha Gamma chapter since February, 1993. Grown children are Heather and Kryston.

Delta Zeta On Campus

BY DIANE JONES SKELTON

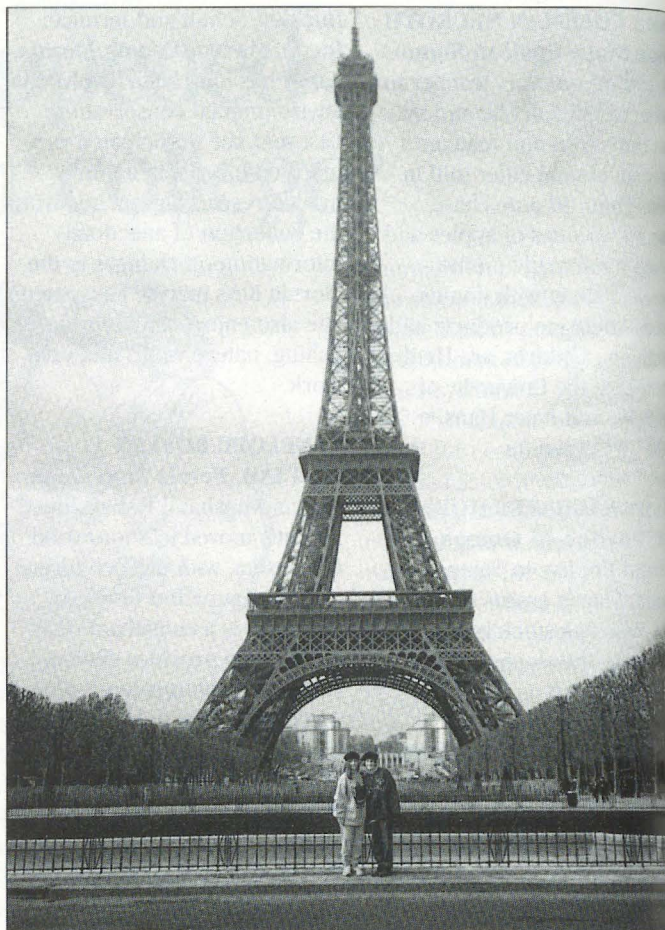
Today's collegians travel more and more as a part of the college experience. Textbooks are tucked away and backpacks are loaded with travel literature. In June, chapter editors sent reports describing delightful travel anecdotes . . . from New Zealand to Australia to France to the Bahamas . . . collegians are learning how small and yet how large this Delta Zeta world is.

It was a once in a lifetime experience for a new member (pledge), initiate and alumna when they shared a moment together in Paris that will remain in all their hearts forever. Iota Psi (University of Texas at Arlington) Chapter President Stefani Miller and new member Shannon Adair were in Paris, France, over spring break. While taking a boat trip on the Seine, a conversation began between Shannon, Stefani and an older gentleman. He said that he was from Ohio, and they shared their plans to visit their sorority's national headquarters in Ohio. At that moment, a woman, who had been sitting in front of the two collegians, turned around and asked *Delta Zeta*? The collegians shouted *Yes*. The three didn't see many sights on the boat trip, but had a wonderful conversation with an Oxford alumna (and mother of two Delta Zetas). Not only did Shannon and Stefani spend spring break seeing the wonderful city of Paris, but they also experienced another wonderful part of Delta Zeta.

Another Delta Zeta boating tale comes from a group of Omicron Lambdas (North Carolina State) who traveled to the Bahamas during spring

break. While there, Shannon Riley, Zera Slaa, Stephanie Hachtel, Wendy Howland, Heather Vahdat, Abby Burnette and Ashley Overton went on a sunset cruise that sailed off the coast of Grand Bahama Island to watch the sun set. Stephanie Hachtel writes, "When we first got on the boat we noticed a girl with a **Gallaudet University** shirt on. Heather Vahdat was wearing a Delta Zeta shirt as well. The girl's brother, Charles McGowan, and her friends all came up to us. Her brother also went to Gallaudet and came over to Heather with a pen and napkins. We wrote back and forth to each other and found out that his sister, Jennifer, is a Delta Zeta at Gallaudet. Heather and Charles wrote back and forth while Shannon Riley introduced us with sign language. "It is definitely a small world when you can leave the country and run into a sister you never knew you had."

Nancy Case, Christy Cooper, Kathy Fake and Diane Jendian—all from Epsilon Epsilon at **California-Fresno** spent last semester in the South Pacific. The four were part of a group of 20 who spent three months shared between New Zealand and Australia. They studied geographic landmarks such as glaciers and hot springs. Their academic classes included art and geography of the land that they were visiting. While in New Zealand they bungee jumped off a bridge. We suspect that if they had taken a boat, rather than a bungee, their odds for meeting other Delta Zetas would have been higher!



Spring break in Paris: Iota Psi members Shannon Adair and Stefani Miller. The Eiffel Tower is just a few miles from their campus at University of Texas/Arlington!

ALABAMA

Alabama-Huntsville, Lambda Kappa—Even though members decided to replace their spring formal with a "crush" party, they still wanted some type of "formal" event. The outcome was the Spring Banquet on campus. Parents were invited and enjoyed a program featuring sorority education capsules on Delta Zeta history and philanthropy and chapter awards, both serious and humorous. Lambda Kappas then moved the tables out of the way, and invited their parents to dance to the "oldies." Activities with alumnae included attending province weekend, a Sunday luncheon, and a joint bowl-a-thon. At Step Sing during Greek Week, Delta Zetas performed their song in sign language.

Other activities included a chapter retreat and a crush party, complete with barbecue and a deejay. Newly elected student government legislators are Janae Jobes, Paige Graves, Jennifer Whitman and Ann Kratzer. Tammy Wells and Paige Graves are members of Lancers, official UAH hostesses. Tammy Dunn won the Lancer Outstanding Freshman Leader Award at UAH's annual student leadership banquet and awards ceremony. Jennifer Whitman, Adrienne Floelich and Katherine Moorhead are listed in *Who's Who in American Colleges and Universities*.

Samford, Alpha Pi—Initiate welcomed new members with a spring pledge bash in the chapter room. In return, new mem-

bers honored initiates with a Delta Zeta picnic at the house. The hostesses had removed the furniture from the chapter room and spread large picnic blankets for a meal of subs, brownies and deviled eggs. New members had even built large paper ants for authentic atmosphere. Delta Zeta was honored for the Most Improved GPA at SU Greek Awards; Leslie Handzo was honored for the most improved gpa and Jackie Colavita was named best all-around sister at the event. Chapter activities included a semi-formal at the Pickwick Center, chapter convocations on health and current women's issues, and a 70th anniversary party with moms and alumnae.

ARKANSAS

Central Arkansas, Epsilon Xi—Delta Zeta won the 1994 sorority Greek Week championship after winning second place honors in song and skit competition in All-Greek productions. Delta Zeta also won the spirit night trophy for supporting the Bears in basketball, and the sorority division championship in spring intramurals. To raise chapter funds, members organized a chili supper

and sponsored an Express Yourself Talent Show. Order of Omega tapped Kelli Wood and Tara Everitt. Judy Rorie is a member of SOS freshman orientation team. Rho Chi rush counselors are Tammy Hight and Ginger Braswell.

CALIFORNIA

California State-Chico, Delta Chi—At province weekend, Delta Chi won awards for display, total membership, activities, social, sorority education, ways and means and new member programs, plus the distinction as outstanding chapter! Heather Pintner received the Outstanding Senior Award and Meg Daniels won the Outstanding Woman of Distinction for her work as chapter president. The chapter won third place honors in a fraternity softball tournament, and won fourth places in intramural softball and soccer. Delta Zeta initiated seven new members and bid farewell to 22 graduating seniors. Order of Omega tapped Heather Mayer, Dena Shapiro, Erin Carney, Nikki Jones and Karly Reed.

California State-Fresno,

Epsilon Epsilon—Nancy Case, Christy Cooper, Kathy Fake and

Diane Jendian have returned from a South Pacific semester which included three months shared between New Zealand and Australia. The four were part of a group which spent a semester exploring various geographic landmarks such as glaciers and hot springs. Activities included bungee jumping and swimming with dolphins, plus classes on art and the geography of the country they were visiting. For the second year, Mishell Bougou-kalos is Miss Clovis, and will travel to the Miss California pageant.

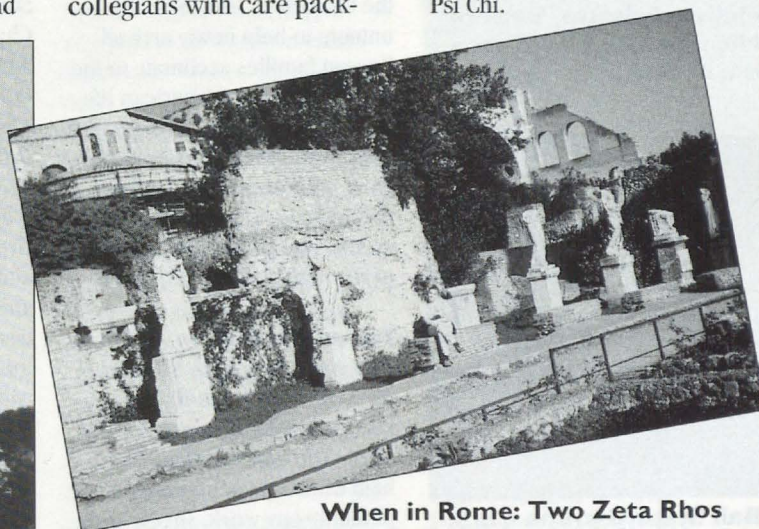
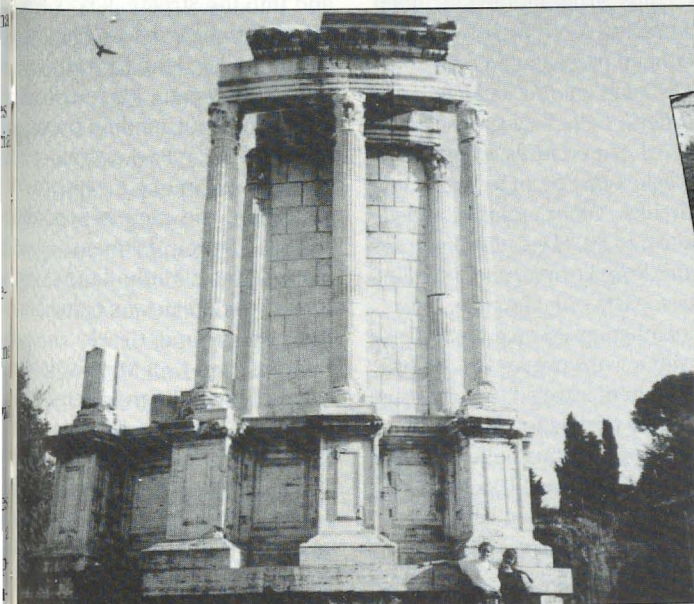
California State-Fullerton,

Iota Upsilon—Delta Zeta mothers, aunts and grandmothers were honored with a chapter dinner in early May. Each mother had her picture taken with her daughter and was presented with the framed photo as she left. The chapter's philanthropy fundraiser earned \$1200 in four days. Krista Collie was tapped for Order of Omega. Members welcomed alumnae to the house for an alumnae meeting and then joined them to hear guest speaker Olive Crest, a representative for the home for abused children. Alumnae presented collegians with care pack-

ages for finals. The packages contained cookies, pens, pencils and highlighters.

California State-Los

Angeles, Theta Rho—Delta Zeta celebrated 28 years on campus with a ceremony on May 1. At province day, Theta Rho won nine of the 11 awards, including best scrapbook and talent show. Carmen Garcia and Suzanne Gonzalez won province scholarships. The chapter's first-ever Parents Dinner included a fashion show, a bake sale, a Mexican dinner, and presentation of flowers to moms. Other chapter activities included placing second in Greek Week, celebrating winter initiation with an ice skating party, adding ten new members in spring rush, and honoring big sisters-little sisters with a Rosebud Barbecue at the house. During Sisterhood Weekend, members retreated to a beach house at Laguna. The retreat provided an opportunity for Theta Rhos to look at the chapter — what's working and what needs repair. Earning Dean's List honors were Claudia Medina and Carmen Garcia. Members of honoraries include Karyn Grewer, Eva Najera, Golden Key; and Yaeko Reed, Psi Chi.



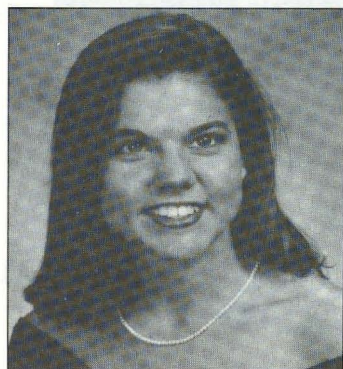
When in Rome: Two Zeta Rhos from William Jewell College visited the "Temple of Vesta" (left) Kyndall Van Eaton and Jennie Opincarne. Kyndall is pictured in the "House of Vestal."



Alpha Upsilon's Kerri Malinowski is Miss Maine USA 1995.



Melissa Falsetta, Eastern Michigan-Gamma Sigma is a fraternity sweetheart.



Ball State-Gamma Chi's Holly Woods is a fraternity sweetheart.

Loyola Marymount, Xi Omicron—For the fifth consecutive year, Delta Zeta won top honors in Greek Week. Student government senators are Molly Gaddy and Ann Goodman. Nancy Szeta is student manager for St. Robert's Auditorium. Juliette Acosta is vice president of finance for the Resident Housing Association, and Kathleen Coleman is a resident advisor.

San Francisco, Xi Lambda—Members are working on one goal—to strengthen sisterhood. They are achieving the goal through different offices and chairmanships. For example, the standards chair has organized culture outings, like a trip to the Museum of Modern Art. Members bid farewell to graduating seniors with a party and senior ceremony.

FLORIDA

Florida State, Alpha Sigma—Liza Park, former chapter president, is among the top seven finalists for Florida College Student of the Year Award, sponsored by the Florida Leader magazine. Liza is a four-year member of the Student Alumni Association, a former Ambassador, and a member of the Council of 100. She also volunteers to help newly arrived Korean families acclimate to the demands of daily American life. As president of the 150-member Lady Scalphunters, she coordinates volunteers who work at FSU athletic and community events. Liza is a senior in media performance with a 3.60 gpa.

Tampa, Delta Beta—Delta Zeta was honored as Sorority of the Year at the school's Leadership Awards night in April. The honor is based on high academic achievement, philanthropy work, Greek unity, and community involvement. Members enjoyed a chapter retreat which dealt extensively

with Delta Zeta history, chapter unity and philanthropy. Graduating seniors were honored with a banquet. Order of Omega tapped Ann Marie Tozzi, Megan Tercha, Jennifer Habermeyer, Donna Small and Michele Perrette.

GEORGIA

Columbus College, Lambda Psi—Chapter Editor Alyssa Farmer writes "how thankful we are for every card and letter that we received during this memorable time [installation] during the life of our new chapter." During Greek Week, Delta Zeta sponsored coed flag football and placed second in the banner contest. Lambda Psi also assisted with a campus-wide Greek cookout during homecoming. Chapter President Kathy Meltzer serves as president of the Student Union.

Georgia State, Delta Delta—At the Greek Community Awards Ceremony, Delta Zeta won the Sorority Dean's Cup for philanthropy and was honored as Greek Chapter of the Year, the highest award given to any sorority or fraternity on campus. College Chapter Director Cathy Herbert was honored as Sorority Alumna of the Year. Chapter programming included attending two United Sorority Council presentations: one on AIDS and another on eating disorders. Delta Zeta sponsored Greek Superlatives, a Greek Week voting event to honor top Greeks. Other events included a trip to Six Flags, the Diamond and Rose Formal, and a family-tree party with alumnae. New members presented the chapter with a word processor. Eight members traveled to Columbus for the installation of Lambda Psi at Columbus College. Order of Omega tapped Lisa Mahaffey, Jennifer Robertson and Shannon Corkum. Sherri Shiver is a member of Gamma

Sigma Alpha academic honorary. Donna Benson serves on the intramural council and Stacie Baker is USC public relations chairman.

Georgia College, Lambda Pi—Kim Rhodes, who served Delta Zeta as both intramurals chairman and academics chairman, is this year's Georgia College valedictorian. For the fifth consecutive year, Delta Zeta won the Overall Greek Week championship. The chapter also won the track and field trophy during Greek Week.

ILLINOIS

Eastern Illinois, Gamma Nu—The chapter earned \$800 with their second annual Dee Zee Tee-Off golf tournament at Knolls Golf Course in Oakland. Four-man teams participated with a Delta Zeta for a caddy. Parents helped the chapter raise \$1200 with a silent auction during Parent's Weekend. New members earned top academic honors with the highest overall grade point average; the chapter, as a whole, won second place academic honors. Gamma Nu took first place honors in Greek Sing, and teamed with other Greeks to participate in Sleep Out for the Homeless and Into the Streets. *Who's Who Among American College Students* lists Jennifer Lang and Rachel Gudeman. Mary LaRocca was named outstanding president and Paige Parker was named outstanding new member among the campus sorority women. Order of Omega tapped Tracie Mulholland. Rachel Gudeman was named first runner-up to Greek Goddess, and Erin Murphy is a fraternity sweetheart. Members of Pink Panther dance team are Kristi Bruce, co-captain, and Jackie Bernard. Amy Ragusa is a member of the cheer team. Susan St. Denis is president of the women's rugby team.

Illinois, Alpha Beta—At Province IX Weekend, AB won awards for Sisters in Scholarship magazine sales; chapter with highest initiation; quota; highest new member grade point average; top overall grade point average; and activity participation. Individuals honored included Jen Catour, Seema Chandarana, Special Sister Awards; and Aven MacEntee, Florence Hood Miner Province IX Scholarship. For Mom's Weekend, Delta Zetas honored their mothers with a Sunday brunch and a special mother's pinning ceremony. The weekend also included attending Atius-Sachem Mom's Day Sing and an auction. Earning Dean's List honors were Sandy Bierbauer, Nicole Bollek, Tonya Buhrman, Jenna Deysher, Pam Hartman, Jennifer McKiernan, Laura Meredith, Deb Meyer and Kim Wilson. Serving as officers of campus groups are Tonya Buhrman, president, Institute of Industrial Engineers; Seema Chandarana, vice president internal affairs, Golden Key and treasurer, Alpha Lambda Delta; Leslie Warden, Phi Fives secretary; Amanda Davis, treasurer, American Institute of Aero and Astro Engineers. Members of honoraries are Nicole Bollek, Pam Hartman, Golden Key; Allison Greenfield, Aven MacEntee, Kathy Olsen, Michelle Swanson, Order of Omega; Beth Hammers, Laura Ziech, Shi-Ai sophomore honorary; Pam Hartman, Bronze Tablet, Phi Beta Kappa; Lecia Imbery, Chi Epsilon civil engineering; Amy Kuergeleis, Gamma Sigma Delta agriculture; Lynn MacDonald, Bronze Tablet; Deb Meyer, Gamma Sigma Alpha, Greek academic; Aven MacEntee, Mortar Board; Emma MacLaren, Phi Kappa Phi; Seema Chandarana, Sigma Delta Pi Spanish; Kim Wilson, Knight of St. Pat engineering; and Karen Scheeler, Epsilon Delta education. Monica Soltesz is production editor of

Illio yearbook. Fraternity sweethearts include Holly Stang, Becky Kozdron and Jennifer Pinto. Leslie Warden is a Student Ambassador and Emma MacLaren serves on the Liberal Arts and Science Council. Recipients of scholarships are Laura Ziech, Applied Life Studies; Kim Wilson, Alcoa; Mary Beth Kauss, Chrysler. Pam Hartman and Sandy Bierbauer were graduated with departmental distinction; Pam is an Edmund J. James Scholar. Kristen Rakoski was named to the All-American Big 10 Academic Swim Team and is a U of I varsity record holder. Kim Wilson was honored as outstanding senior in industrial engineering. Karin Novothy served on the Panhellenic Greek Week committee and Christine Michonski was a cast member in a Champaign community theatre musical production. Keeley Chicos is a member of Illinettes and Nancy Clarkson is a baseball Diamond Girl. Jenna Deysher is a member of concert band.

Northwestern, Alpha

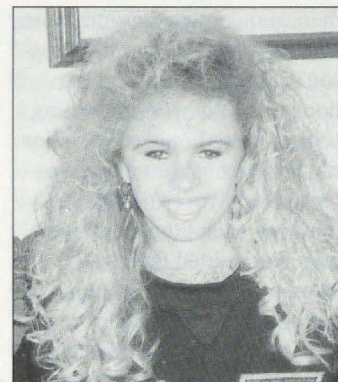
Alpha—Golden Key National Honor Society inducted Erica Galvin, Katherine Seelig, Jaime Sidell, Christina Verneuil and Amy Wagers. AA welcomed a new member class numbering 33 and bid farewell to seniors at a Memorial Day picnic.

INDIANA

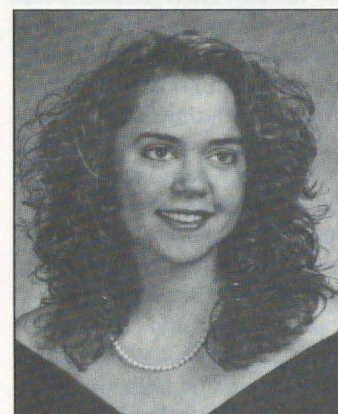
Ball State, Gamma Chi—At Province VII Day in Indianapolis, Gamma Chi won awards for both its social program and activities program, and was honored for attaining quota. Tina Prather and Lisa Bodey won the Leaders of Distinction Awards. Tina Prather and Missy Heare were named outstanding seniors in the province. Kim Bland, Kathy Ekroth and Nadine Conway won Significant Sisters of the

Province honors. Kathy Ekroth was named Junior of the Year at BSU. Tammy Modesto is a cheerleader. Red Squad leaders are Kathy Ekroth, Kim Bland, Becky Myers, Ann Meyer, Nadine Conway, Carey Sarno, Stephanie Furnas and Loren Allerdyce. Members of honoraries are Mira Colman, Mortar Board; Mira Colman, Jill Deppen, Amy Gaddis, Stacy Shirk, Golden Key; Jill Deppen, Debra Machinist, Cindy Knezevich, Phi Chi; Kathy Ekroth, Kim Bland, Cindy Knezevich, Alpha Lambda Delta; Mira Colman, Amy Gaddis, Blue Key; Sheri Hall, Phi Mu Upsilon; Stacy Shirk, Kappa Delta Pi. Fraternity sweethearts are Holly Woods and Kathy Ekroth. The chorus includes Loren Allerdyce and Nea Sullivan. Serving on Hall Council are Kristie Farrell, Carrie Price, Tonia Hampton, Jessica Rodenbeck and Kelly Penzato.

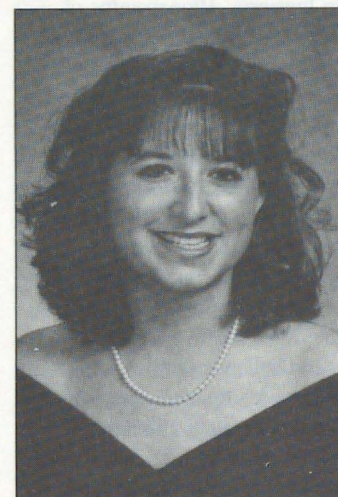
DePauw, Delta—Nearly the entire chapter was on hand for Indiana Province Day where Delta won the Irene Boughton Efficiency Award and top honors for outstanding academics. Academics had been emphasized all semester with both new programs and traditional awards. Besides awarding As with gift certificates to a local restaurant, women who earned Dean's List honors were treated with a scholarship dinner. Each honoree invited her favorite professor to the dinner and received recognition for her achievements. Among those recognized were Jennifer Dalenberg and Misti Presnell, new members of Phi Beta Kappa. In new programming, a revamped "study buddy" program encouraged women to study with their sisters. They first completed surveys in order to find others with compatible study habits. The chapter's Academic Advisor Professor Pamela Propsom presented time



Laura A. Patee of Central Michigan-Gamma Psi chapter is a fraternity sweetheart.



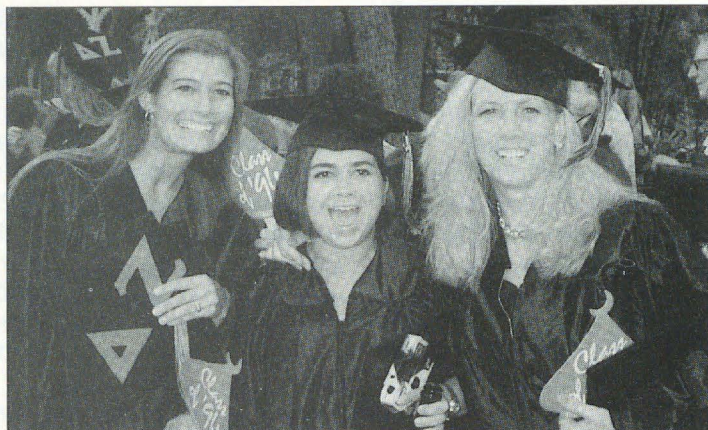
A fraternity sweetheart at Ball State is Gamma Chi's Kathy Ekroth. She is also outstanding junior of the year.



Gamma Chi's Tina Prather received the Leader of Distinction Award at Indiana's Province Day.

management tips for study time. Once a week a different professor is invited to lunch at the house. In other programming, seniors were honored at senior dinners throughout the semester. Usually two women were honored each time, and members entertained them with humorous songs recapping their college years. Two juniors served off-campus internships: Darci Oak worked on Capitol Hill and Robyn Snyder worked in Indianapolis with the Management Fellows Honor Program. Members welcomed 60 DePauw alumnae who toured the house and two alumnae who stayed overnight during the university's Alumni Reunion Weekend. During the week preceding Mother's Day, each class honored the house mother with little gifts. Delta women are involved in many campus activities including band, orchestra and chorus. Others work in campus media and perform science research and community service. Several Delta women helped organize the Union Board Mystery Dinner Theatre and the Ravinnia jazz concert.

Indiana, Epsilon—The chapter welcomed 50 new members in January. After months of practice and even a spring break of exercising, the Delta Zeta team finished a "phenomenal" 12th in the Little 500 Bike Race. Beth Miller was an Indy 500 Princess. Sisterhood events included a night at the roller rink and a trip to Ben and Jerry's ice cream parlor. Province honors included awards for outstanding achievement in standards, academics and philanthropy. Epsilon also won the Irene Boughton Efficiency Award and the Most Improved Chapter Award. Individuals honored were Erin Repp, Special Sister Award; Leslie Taylor, Trish Thompson, Inga Kleinrichert, Leaders of Distinction; and Inga Klein-



Robin Ponness, M. J. Danchak and Diane Borden were three of the 13 graduating seniors from the Delta Beta chapter at the University of Tampa.

richert, Outstanding Senior. Erin Repp is director for pledge relations for Panhellenic. Linda Opdyche was named outstanding IU new initiate of 1993. Rush counselors are Erin Repp, Kristin Anderson, Stephanie Mayzel, Isabella Young and Rachel Gildner.

Purdue, Xi Omega—When Xi Omegas walked away from last year's province day empty-handed, they were determined to "do better" this year! This year the chapter was named Pride of the Province and was honored for new member education, sorority education, philanthropy and rush! Individuals honored were Patty Byler, Erin Conard, Suzy Spears, Special Sister Awards; Charity Cripe, Pledge Educator Award; Lori Griffith, Christine Lenz, Missy Matzen, Ginger Steff, Sonja Wise, Leaders of Distinction; and KayAnne Johnson, Up and Coming Leader of the Province. The chapter initiated 36 new members in the spring and bid farewell to seniors. For Mother's Weekend, members and their families enjoyed a brunch; moms received commemorative mugs of the weekend. Carrie Manning won first runner-up honors to Grand Prix Queen.

Southern Indiana, Lambda Beta—Chapter honors include

overall participation award in Greek Week and second place in the annual Eagle Gran Prix. Dana Wilson reigned as Greek Goddess. Members bid farewell to seniors with a senior dinner and initiated 11 new members. Sisterhood activities included a cookout, sleepovers and a pizza party. Angie Cooper, who hosts the Super Kid Power local television show, reigns as Miss Freedom Festival. Ann Gurley is vice-president of rush for Panhellenic and head resident for Greek housing. Jena Knopfmeier is Activities Programming Board chairman. Jeri Smith is a presidential scholar and Anna Buchhorn won a Panhellenic scholarship.

KENTUCKY

Kentucky, Alpha Theta—The Second Annual Delta Zeta-Alfa Tau Omega Soap Box Derby provided a friendly competition among Greeks, emphasized teamwork and spirit, and raised money for philanthropy. Delta Zetas teamed to win second place overall in Greek Week competition. Graduating seniors were honored with a banquet.

Louisville, Beta Gamma—Members practiced countless hours for their presentation of Delta Zeta Friends Forever for

the 57th Annual Fryberger Sing. Their performance, which included signing the refrain, won first place honors. Melissa Wisemen won third place honors in Greek Goddess competition. Dawnisa Baker, former speech writer for President Bush, presented an interesting chapter standards program. Each senior received a secret pal who wrote her notes for a week prior to the evening honoring seniors. Lisa Clephas and Christy Ames were both Derby Princesses for the Kentucky Derby. Kelly Dutschke is U of student government vice president, academics. Heather Worland is new president of SOAR; her vice president is Salena Hale. Christy Wolford is vice president of College Republicans, and several members serve in both Student Council and Student Senate. Members enjoyed a summer picnic while they prepared for fall rush.

MAINE

Maine, Alpha Upsilon—*Unity With Pride* was the chapter motto that paved the way for a successful spring semester. The success began quickly when Karrie-Ann Malinowski was crowned Miss Maine. Alpha Upsilon then won the overall Greek Week championship, placed first in the blood drive, and won second in the Greek talent show. Chapter President Anne LeMay reinforced the theme with her "word of the week" — a motivational focus word. Chapter sisterhood events included ice skating at Alford Arena and a retreat to the oriental gardens on campus.

MICHIGAN

Eastern Michigan, Gamma Sigma—A busy chapter calendar included participating in drives for the Humane Society and the Salvation Army, and a

Sing Greek iron-on letter fundraiser. Buffy Walker earned the highest grade point average among Panhellenic women. The chapter honored alumnae with the first-ever alumnae dinner. Chapter President Melissa Falsetta is a fraternity sweetheart. Socials included a roller-skating party, a hayride and a trip to a Tigers baseball game.

Michigan, Alpha Eta—Kerri Moran and Aimee Schuman earned scholastic honors and Jennifer Duberstein earned a scholastic achievement award from the College of Literature, Science and the Arts. Marcy Morton was elected as a representative to the Michigan Student Assembly. Rho Chi rush counselors are Elyse Gould, Betsy Maller, Sue Wagner and Jenny Rifkin. Seniors were honored both at the spring formal and with a banquet.

Michigan Tech, Lambda Theta—Members earned first place overall honors in Greek Week activities. Many alumnae were on hand for the chapter's Mardi Gras formal dance. Earning varsity letters in track and field were Laura Reed, Debbie Deja, Jennifer Boetcher, Heather Mueller and Carrie Skotnicki; Molly Alberts earned a varsity letter in tennis. Jodi Sommerfeld won the Student Athlete Track and Field Academic Award. Camille Grant was tapped for Chi Epsilon civil engineering honorary. The six graduating seniors were honored with a potluck dinner. As a fundraiser, the chapter sponsored a rock-a-thon.

MINNESOTA

Moorhead, Theta Nu—At Province Weekend in Eau Claire, Theta Nu won awards for outstanding chapter reporting, outstanding social programming, and achieving total. Julie Sauer won the Promise of the

Province Award. Serving as student orientation counselors are Julie Sauer, Sherry Haaland, Melisa Dietz, Renee Bludorn, Deana Erdman, Cindy Hemmen, Wendy Oien, and Allison Golde. Michelle Bonk, Christina Kilbo and Heidi Scheusner are resident assistants. Susie Stetz is a student advisor; Kim Stelzig and Christina Kilbo are student senate delegates. Pi Sigma Alpha political science honorary tapped Melissa Swart. Serving as officers of the Pre-Law Club are Christina Kilbo, president; Rachel Iverson, vice president; and Wendy Oien, secretary-treasurer.

MISSISSIPPI

Southern Mississippi, Epsilon Mu—Delta Zeta teamed with another sorority and a fraternity to win best overall honors during Greek Games. The chapter again sponsored its popular VIP fundraiser where the student-winner switches places with USM Vice President of Student Affairs, Dr. Joe Paul. Earning National Dean's List distinction were Stacey Craft, Shana Harris,

Jennifer James and Lisa Stapleton. USM President's List honors went to Stacey Craft, Shana Harris, Melissa Schjerven and Lisa Stapleton. Dean's List honors went to Robyn Bogataj, Katie Fokakis, Jacqueline Hammond, Robyn Jenkins and Christine Roberts. Order of Omega tapped Stacey Craft, Shana Harris, Robyn Jenkins and Melissa Schjerven. Robyn Jenkins won the Senior Achievement Award for Interior Design and was tapped for Phi Delta Rho honorary. Gamma Beta Phi honorary society tapped Shana Harris, Jennifer James and Lisa Stapleton. Chapter fundraisers included a magazine sale, a car wash and a bake sale.

MISSOURI

Central Missouri, Epsilon Gamma—Of the 11 awards presented at CMSU Greek Awards, Delta Zeta won eight! Awards included highest grade point average-pledge class and outstanding achievement in philanthropy, campus involvement-intramurals, membership education, chapter participation

and additional programming. The chapter was also honored for outstanding advisor and, for the second consecutive year, won outstanding chapter honors. Recipients of scholarships were Buffi Follett, Patty Mallory, Carrie Oltmer, Regent's scholarships; Sarah Van Liere, accounting; and Carrie Oltmer, President's scholarship. Earning Dean's List honors were Megan Schumacker, Patty Mallory, Carrie Oltmer and Deborah Sicoli. Winners of academic awards were Deborah Sicoli, Accounting Department Award and Marketing Achievement Award; and Robin Drummond, Accounting Achievement Award. Deborah Sicoli is serving as treasurer of Mortar Board and vice-president of American Marketing Association. Amy Knight is secretary of the Political Science Club, and Patty Mallory is a member of Lambda Sigma honorary.

Northeast Missouri, Delta Sigma—During Greek Week, Delta Zeta won two third places and three first places in activity events, plus a second place in skit competition. At the awards banquet, the Delta Zeta team won the Spirit Award. Stefani Cain was honored as Greek Woman of the Year, and Jane Gerst was tapped for Order of Omega. For the third consecutive year, Delta Sigma won the President's Cup for earning the highest gpa on campus for both fall and spring semesters. During the Parent's Day dinner, new members presented the chapter with a much-needed vacuum cleaner. The dinner also included a review of the year and a presentation on the chapter's academic success. Following a slide show, members and parents enjoyed a dance. Seniors were honored with a senior ceremony where they read their wills and prophecies.



Alpha Upsilon members Nicole Legassie and Elaine Worster were at the California earthquake site as Red Cross disaster relief workers.

Northwest Missouri, Epsilon Rho—During Greek Week, Delta Zeta was honored for the Most Greek Participation and as Most Improved Chapter. In intramural competition, the chapter won first and second in wiffleball, first and third in walleball, second in softball, and third and fourth in volleyball. EP was also honored for donating the most blood during the annual blood drive. Members are excited about hosting next year's province day festivities and signing up for residence in the newly renovated sorority hall. For a fundraiser, the chapter is selling a Man of the Year calendar. Heather Houseworth was awarded the Tower Service Award by the Student Senate. New members of Order of Omega are Brenda Cook and Francie Miller. Alyssa Schnack is president of Cardinal Key and Karissa Boney is editor-in-chief of the *Tower* yearbook.

William Jewell, Zeta Rho—Parents were on hand to help chapter members with painting prior to the redecorating of the chapter room. Moms were able to view the finished chapter room when they arrived for Mom's Weekend. Other week-

end events included a pizza party, a trip to a movie, a catered lunch, afternoon shopping and church services. Graduating seniors were honored at the Killarney Ball formal and presented their wills at a senior picnic. Members raised chapter funds with a car wash. Moms of two members prepared a chapter dinner for finals week. Officers of Mortar Board are Michelle Tweedie, president, and Kristin Lindsey, vice president. Laura Bollenbach is a fraternity sweetheart.

NEW JERSEY

Stockton College, Omicron Beta—The chapter welcomed 11 new initiates and bid farewell to 12 graduating seniors. Delta Zeta won overall honors in Greek Week and first place in the banner contest. Members raised chapter funds with a raffle of a gift certificate to a local mall.

NEW YORK

Clarkson, Xi Rho—At province weekend, the chapter won awards for academics and as most improved chapter.

Carlene Breed was named outstanding president and Jennifer Wu was honored as Pride of the Province. Members welcomed back the largest number of alumnae ever for Alumnae Weekend. Xi Rhos were especially pleased to welcome back some founding members. The weekend also included an alumnae brunch.

SUNY-Albany, Omicron Kappa

—Members traveled to Province Weekend in Rochester and presented their version of The Addams Family skit. Chapter Consultant Karen Lee Johnson was on hand to help members coordinate their spring formal at the Omni. During Greek Week, Delta Zeta won a close second place overall, finished first in creative skit, and was honored for providing the most support to philanthropy. Omicron Kappas bid farewell to graduating seniors with a potluck dinner.

NORTH CAROLINA

North Carolina-Chapel Hill, Xi Sigma—For Parent's Day, members treated parents to a buffet at the house. Seniors were honored with a special Senior Week, which included a movie night, a candle pass and other activities. Members learned more about the orchestration of rush at a sister retreat. For House Appreciation Week, members honored the house staff and housemother with thanks and gifts of appreciation. Cindy Craig was named Senior Marshall. Cindy and Dawn Owen were both tapped for Pi Beta Kappa honorary. Carrie McKee played on the NCAA women's basketball championship team.

North Carolina-Charlotte, Kappa Phi—Members presented three different songs and won second place honors in air band competition during Greek

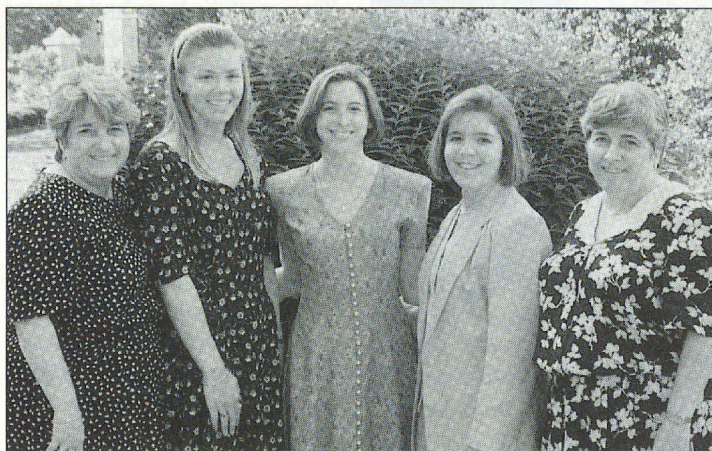
Week. Kappa Phi placed third overall in Greek Week, and third in Greek goddess competition. Breta Martin earned a perfect 4.0! Rho Chi rush counselors are Becky Pollack, Krissie Ungaro, Diane Richmond, Janee Peters and Julie Ferns.

North Carolina-Wilmington

Xi Theta—Spring activities included numerous philanthropy fundraisers, participating in Greek Week, rush workshop and a rush barbecue.

North Carolina State,

Omicron Lambda—Members bid farewell to the seniors with a Senior Send-Off luncheon. Of the 23 seniors, 20 were founding members of the chapter. Editor Stephanie Hachtel writes "The loss of these sisters will definitely be felt because they are the reason Omicron Lambda exists. They gave our chapter life and battled the problems all new chapters have when we said goodbye because Omicron Lambda knows that these sisters are off to start a new chapter in their lives..." Sisterhood activities included bowling, late night dining at International House of Pancakes, a sleepless night of movies and games at a member's house, and attending a Durham Bulls game. After participating in softball, track and badminton, Delta Zeta won second overall honors in the women's intramural division. Delta Zetas won a second place in the lip-sync contest and third place overall honors in Greek Week. When several members took a sunset cruise in the Bahamas during spring break they saw a young man wearing a Gallaudet t-shirt. He spied Heather Vahdat, who was wearing a Delta Zeta t-shirt. He and his group greeted them, a pen and paper conversation began and the Omicron Lambdas me



It's a Delta Zeta Family Tradition: Sisters Janet Reeder Hochstein (left) and Joan Reeder Hoffmann (right), both Harris Teachers College-Epsilon Eta '63 and their daughters, Anne Hochstein, SIU-Gamma Omega '94, Katie Hoffmann, SIU-Gamma Omega '94 and Jill Hoffman, NEMSU-Delta Sigma '90.



Another Greek Week trophy: This is Lambda Epsilon chapter at Pittsburgh/Johnstown.

his sister, a Delta Zeta from Gallaudet! Renee Morris earned a 4.0, Dean's List honors and was graduated cum laude. Dean's List honors also went to Heather Palmer, Karen Chipman and Jessica Lackey. Members of honoraries are Jennifer Bryant, Phi Sigma Alpha, Gamma Beta Phi; Shannon Riley, Valerie Group, Dana Timar, Gamma Beta Phi; Renee Morris, Kappa Delta Pi; Jessica Lackey, Phi Eta Sigma. Scholarship recipients include Dana Timar, R.J. Reynolds; Mendy Grantham, Blue Bell; and Karen Chipman, Paper and Pulp Foundation. Shannon Werndl was an Air Force ROTC distinguished graduate.

Western Carolina, Theta Iota—For two consecutive weekends, collegians honored their parents. On the first weekend, mothers stayed on the Delta Zeta hall, were special guests at the scholarship banquet, and were entertained with a roaring twenties theme party at lunch. The next weekend, fathers were honored at the first-ever Father-Daughter Day. Dads were treated to a picnic and a WCU baseball game. Delta Zeta was honored for chapter management and risk management at the Greek Awards banquet. The chapter also placed second in Greek games and manned a sorority information booth on campus. Rho Chi fall rush are Monica Shelley and Jenny Lyda. Ginny Luaces won honorable mention for outstanding resident assistant honors and Nichole Broadway was tapped for Order of Omega. Christy Phillips was named campus newscaster of the year and will be news director for 1994-95.

Ohio Ashland, Theta Psi—Rho Lambda Greek honorary tapped Sam Karafa, Christine Abrams,

Michelle Jenny and Steph Bailey. Other members of honoraries are Melissa Berthoff, Psi Chi; Tina Roberts, Kalon Senior Honorary; Jen Miskell, Kalon, Pi Sigma Alpha, Sigma Delta Pi; Steph Bailey, Order of Omega; Jodi Wolfe, KON. Honored as Teacher Education Scholars were Heather Overs, Steph Bailey and Tina Roberts. Tracy Arnold won the Ann E. Hudson Memorial Scholarship; Jen Miskell won Province V's Mary Lou Barth Scholarship. Vicki Howard won scholarships from both the Northern Ohio Quarter Horse Association and the Ohio Quarter Horse Association. Charity Elders won a swimming scholarship. Cindy Fraley was named resident assistant of the year and serves as assistant resident director. Katherine Beehler won All-Great Lakes Valley Conference volleyball honors. Shannon Doherty is a three-time conference champion swimmer for 100, 200 back and 500 freestyle. The chapter honored graduating seniors with Senior Week, which concluded with a banquet for seniors and their parents. Seniors received gold medallions from the chapter. Theta Psi placed first in lip sync competition during Greek Week.

Bowling Green, Gamma

Tau—At Province Day, Gamma Tau received first in activities for the third consecutive year, and second for sorority education. Candy Bonnett won a Golden Heart Award and Kim Mennega won the Golden Crest Award. Cathy Bressert received the Order of Omega Award at Greek Spring Awards and was tapped for Mortar Board. Other members of honoraries are Kim Mennega, Omicron Delta Kappa, and Jacey Rearic, Kappa Delta Pi. Julie Gumban has been named assistant marketing director for fall rush.

Kent State, Gamma Kappa—In a competition among more

than 200 campus organizations, the university honored Delta Zeta with a second place award as Most Admired Student Organization on Campus. Gamma Kappa co-hosted Province Day at Kent State and placed first in Spirit Week competition. *Who's Who in American Colleges and Universities* lists Niki Baringer and Patricia Stanfel. Robin Schneir is chairman for Rho Chi rush counselors. Janene Zakrajsek is a member of KSU flashdance team. Order of Omega includes Darcie Vota, president, and Leslie Davis. Debbie Banik is a member of Mortar Board.

Mount Union, Omicron

Iota—Members assisted with preparations weeks in advance, and then arrived at Kent State at 6:15 a.m. to help host Province V Day. The chapter won awards for best chapter programming, most improved gpa, and highest gpa at Mount Union's Greek Awards Ceremony. Delta Zeta also won the all-Greek banner contest in a competition to promote a safe spring break. During Parent's Day, members entertained and educated their parents about sorority life. The day included talks from officers, a slide show and a mock formal dessert ceremony. Seniors were honored with special awards and a dinner at Dawson's Restaurant. Members

celebrated the chapter's third birthday with a birthday party featuring games, gifts for the house, cake and ice cream. Members also enjoyed a mid-night moonlight bowling party. The evening began at 9 p.m. with food and a deejay at the house, then off to bowl at a nearby alley. Members attended a Schjooler Lecture by former hostage Terry Anderson when he came to campus. New members of honoraries are Heather Durbin, Erika Pribanic, Kelly Webb, Alpha Lambda Delta; Keri Lesiacsek, sophomore service; and Heather Durban, Jennifer Labay, Nancy Rhodes, Blue Key. Recipients of scholarships are Amy Heestand, Erika Pribanic, National Cabinet of Mount Union Women, and Chaundra Henricksen, Mary Evelyn Weber.

Ohio Northern, Zeta

Kappa—Daughters honored their mothers with a Mother's Day banquet at the MacIntosh Ballroom on the ONU campus. The banquet included a slide show, games to test how well mothers and daughters knew each other, and a tribute of poetry and songs for moms. The chapter won second place overall honors in Greek Week. Johnna Young won a scholarship from the Public Relations Society of America, Central Ohio chapter.



Tiffany Forsythe helps a youngster shoot an arrow through the Theta chapter game booth at an Ohio State carnival.

Ohio State, Theta—The chapter was named Most Improved Chapter in the province at Ohio Province Day. Winning individual recognition were Heather Trepal, Tiffany Forsythe, Golden Crests; and Laura Leppert, Jennifer Matthews, Golden Hearts. Members honored Theta alumnae with a reunion. The event included food, games, an alumnae video, and a special alumnae ceremony. Standards programs topics included personal safety, rape, and professional makeup makeovers. Jill Brandewie and Shelley Haffner won intramural softball championship honors. Rho Chi rush counselors are Robyn Posner and Jennifer Reynolds.

Wittenberg, Beta Chi—At Province V Day, BX won the Mary Collins Galbraith Award for top scholarship for the second consecutive year. In fact, 44% of the chapter earned Dean's List honors. Mylinda Mitchell was named outstanding new member in the province. Panhellenic and the Interfraternity Council honored Heather Logan as Greek Woman of the Year. New members of Order of Omega are Stephanie Bisko, Mylinda Mitchell and Cheryl Doub. Phi Beta Kappa

tapped Heather Logan, Robyn Gramlich and Laura Sponseller. Omicron Delta Kappa tapped Kathleen Hickey, Trish Stegman and Emily Simenson. New members of Mortar Board are Mylinda Mitchell, Kathleen Hickey and Stephanie Bisko. Orientation assistants are Lindsey Clarke, Stefanie Atwater, and Leigh Drew, head orientation assistant. Rho Chi rush counselors are Angie Fraifogel and Becca Spore.

PENNSYLVANIA

Drexel, Epsilon Zeta—At the chapter's alumnae luncheon, 40 Delta Zetas were on hand for the ceremony, Chinese auction and presentation of gifts to distinguished alumnae and collegians. A busy chapter calendar included a spaghetti dinner fundraiser, weekly 90210 nights and game nights, alumnae weekend open house, and attending a date rape seminar. Sisterhood events included a senior farewell barbecue, a day at the beach, a sisterhood brunch, a cookie swap with new members, and a big sister-little sister dinner at Chili's. Tina Atland and Shanna Weaver were elected to student government, and Heather Magann was named a fraternity sweetheart.

Edinboro, Iota Delta—Members placed third in Greek singing and won first place overall honors for Greek Week. The chapter welcomed 13 new initiates.

Lehigh, Xi Pi—For the second consecutive year, Delta Zeta defeated all other campus sororities to win the Pride of the Campus award. Members gathered at a nearby park to plan fall open rush and spring formal rush at a chapter retreat. After completing their rush work and dining on hero sandwiches while relaxing by a running stream, members relieved stress on the playground swings, teeter-totter and jungle gym. Other events included a blind date bowling party, a formal, and a senior send-off. Maura Kugelman won the Arthur Levy Leadership Award, and Jessica Feigley played on the Patriot League Championship softball team. Order of Omega tapped Sharon Barber, Kristin Davis, Naila Francis, Christine Massey and Tara Rogers.

Millersville, Xi Tau—Members honored seniors with a party, enjoyed a turtle dance, and participated in Greek Week events.

Pittsburgh-Johnstown, Lambda Epsilon—After winning third place in Greek Sing, second place in Win, Lose or Draw, and first place in five other events, Delta Zeta captured the Greek Week championship for the fifth consecutive year in a highly competitive Greek Week. At Province III-East and Central Day at Valley Forge, Lambda Epsilon won ten collegiate awards including highest initiate average, activities, attendance, philanthropy service, and excellence in new member education. Jennifer Kocher won a Golden Heart and Stacy Adametz won a Golden

Crest. Jennifer Christian was named outstanding rush chairman. Transferring members and graduating seniors were bid farewell with a senior send-off. Summer plans included a picnic at an amusement park.

Shippensburg, Kappa Psi—The chapter welcomed 14 new members and honored 17 graduating seniors at a senior send-off. The chapter turned out en masse when members Tifani Wetherhold and Kim Gerber performed with a dance troupe. Meghan Smith is a fraternity sweetheart.

Temple, Delta Tau—The chapter added 16 new members in spring rush. Delta Tau sponsored the Greek God and Goddess Contest during Greek Week and Delta Tau treasurer Jenna Kelly won the Greek Goddess title. Collegians honored their moms at the Mother's Daughter Dessert. Earning Dean's List honors were Dorothy Boyle, Adrienne Kemp, Jennifer Moyer, Carolyn Dimalanta and Corrin Johnson. Michele Ondrick and Dianne Seifert studied in England over the summer.

SOUTH CAROLINA

South Carolina, Beta Delta—Members had an opportunity to become better acquainted with other Greeks when they participated in Greek Week activities including a parade of Greeks, softball, basketball, Greek Olympics and a blood drive. Each senior was presented with a rose at the chapter Rose Ball at the Holiday Inn.

TEXAS

Houston, Delta Theta—Delta Zetas swam their way to victory at Delta Gamma Anchor Splash as they captured the swim trophy for the second consecutive year and won the most spirit

ward. Delta Zeta swimmers were Marci Collard, Julie Long, Keele Jenschke and Candy Baumgarten. Worried about lagging school spirit, Delta Zeta has created a formal rush theme entitled Delta Zeta U of H Party to promote school spirit and the sorority. Members enjoyed a majestic formal amidst the sparkling city lights from the 71st floor of downtown Houston's tallest building. Members enjoyed a "mixer" with NPHC sorority, Alpha Kappa Alpha. By the end of the night, the AKAs had learned to do a country line dance and the Delta Thetas had mastered the part of a step routine. Caren Ulrich is a fraternity sweetheart. Renee Bosarge won a scholarship to study in France during the summer. Julie Baumgarten is chairman for Frontier Fiesta, and Heather Cook is second-in-command for the Metropolitan Volunteer Program.

North Texas, Kappa Zeta—Earning Dean's List honors were Laura Baily, Laura Barth, Dana Bernstein, Joon Briley, Tracy Casstevens, Celeste Golg, Amy Hupp, Melissa Madsen, Kristen Notch, Amy Re and Kimberly Rowe. KZ earned \$1700 for Gallaudet with its annual Hoop It Up. Outstanding chapter members were recognized at the spring formal.

Delta Zeta teamed with two fraternities for Greek Week competition, and won third places in Stepshow, pyramid, and tug-of-war, and first place in volleyball.

St. Mary's, Omicron

Alpha—Initiates surprised new members by the traditional ringing of the bells for a celebration halfway through their pledgeship. New members returned the favor with a Hollywood theme chapter dinner. The twelve seniors were secretly "adopted" to relive their Big Sister and Rosebud

weeks in anticipation for the Senior Banquet where the seniors read their last wills and learned the identities of their senior buddies. Three seniors, Katrina Vanleeuwen, Adriana Lopez and Aletha Hilton, were graduated with honors. Earning Dean's List honors were Francisca Aguirre, Norma Bustamante, Anna-Melissa Cavasos, Vadira Garcia, Alisa Hernandez, Adriana Lopez and Laura Oosterveen. Scholarship recipients include Stephanie Lopez, Christine Miller, Andrea Ortegon, Tricia Owen, Lindy Tober, Marcy Villanueva, Nancy Vera, Joanna Acosta, Francisca Aguirre, Yadira Garcia and Alisa Hernandez. Staff members of *The Rattler* campus newspaper include Norma Bustamante; Christina Gonzales, assistant advertising manager; and Dinorah Gonzalez, assistant features editor. Dinorah is also a D. D. Hacher Charitable Trust Scholar. Playing varsity soccer are Lauri Malone, Monica Gonzalez and Jessica Prokop; Jessica earned all district honors. Resident assistants are Francisca Aguirre and Mary Shrader. Mary is also a member of the national residence hall honorary. Active in student government are Monica Rodriguez, vice president of internal affairs; Christine Serrano; Anna-Melissa Cavasos; and Norma Bustamante. Student orientation assistants are Valerie Garcia and Laura Oosterveen, assistant director. Katrina Vanleeuwen won the Achievement Award from the Knights of Columbus and Tricia Owen won the George Washington Youth Award. Stephanie Lopez is an Emerging Leaders Mentor and Lauri Malone is a member of Delta Mu Delta honorary. Kari Chodorowski serves as president of Alpha Phi Omega service group, and Anna-Melissa Cavasos is a summer conference host and a President's Ambassador.

Southwest Texas, Iota

Alpha—More than 100 Iota Alphas traveled to Dallas for Province XVII Weekend to gather with 800 other collegians and alumnae from Texas and New Mexico. Several alumnae were on hand to share memories at the chapter's rush retreat. Editor Jennifer Bosl writes, "Learning about how girls much like ourselves worked together years ago so we could have a house filled with a new sense of pride about our beloved house... Hearing firsthand how the girls collaborated to purchase the house and how important it was to them was an inspiration to our chapter." New members of Strutters drill team are Dawne Kopcky, Becky Hudson, Traci Fenner, Shanna Brunner, Mindy Fricke, Yvette La Marche, Christy Matthews and Brenda Collins. Dawn Miller is a cheerleader. Order of Omega tapped Katie Cowser and Brittany Hughes.



Christi Stroud and Stacey Dumain are members of the Old Dominion University varsity sailing team. They placed second in the Mid-Atlantic district and fourth in the New England district.

Stephen F. Austin, Zeta

Psi—Prior to the beginning of Greek Week, members gathered for a Sunday sisterhood where they cooked hot dogs, practiced talent show dances, and built props. During Greek Week, Delta Zeta won first place in talent, second in football, and third in soccer. Other sisterhoods during the semester included a dinner at Nacho Mama's, a hot dog cookout, and trips to the bowling alley and Wendy's. Members raised funds for the chapter with a Fiesta Dinner. Named as top officers in Province XVII were Donna Shannon, Jayme Wolaver, Danielle Long, Amy Ingraham, Blyth Speckman, Danette Delany, Allison Leach, Leslie Hess and Piper Wright. Pom squad members are Andrea Nabors, Dana Haire and Tiffany Cook. Nancy Flint is president of the SFASU Rehabilitation Association.

Texas A&M, Lambda Xi—

Members traveled to Del Lago Resort at Lake Conroe for a weekend of relaxing and beginning preparations for formal rush. Rush counselors are Kimberly Berry, Becky Berry and Cari Clauder. Fish Camp counselors are Danielle Moritz and Jill Jackson. Freshman orientation leaders are Gretchen Crumpton and Lori Bedre.

Texas-Arlington, Iota Psi—

Delta Zeta teamed with two fraternities to place first or second in every Greek Week event and to capture the overall championship for the second consecutive year. The team even collected 1500 cans of food during the week. Chapter fundraisers included working at Ranger games and selling magazines and candy. Members honored their own at the Roseball Formal on the Texas Queen Riverboat. Amy Kilborn was tapped to Order of Omega, and Jennifer Hudson and Kristina Brown Omega Kappa honors from Order of Omega. Kristina and Stefani Miller were honored as Distinguished Greeks. Stefani was also honored as Panhellenic Delegate of the Year and won a 4.0 award along with April Wheat. Stefani also won the Velma McKee Province XVII Scholarship.

VIRGINIA**Longwood, Epsilon Tau—**

When Province Day was cancelled, ET seized the opportunity to bring their parents to campus for a parent picnic. Most chapter members returned to campus after finals to honor the 11 graduating seniors and their families at a graduation reception in the chapter room. Other events included selling nachos at a chili cook-off to raise chapter funds, assisting with a Panhellenic yard sale, sponsoring two car washes, spending a day at King's Dominion Park,

and hosting an open house. Studying or teaching abroad are Heather Moulin, Carol Phillippi and Rendy Whitley. Cindy Butler won a Longwood Leadership Award, and Hope Jones was elected secretary of Order of Omega. Heather Moulin is a member of both Order of Omega and Phi Kappa Phi, and captured a role in *Mother Courage and Her Children*. Lambda Iota Tau English honorary tapped Sara Wegman. Alpha Lambda Delta tapped Becky Martin and Karla Town.



Beta Lambda seniors enjoy their last year of school at a Delta Zeta picnic in Tennessee.

Mandi Robinson is an orientation leader and a Longwood Ambassador. The Judicial Board includes Mandi Robinson and Blair Williams, co-chairman. Blair is also a resident assistant.

Old Dominion, Theta Phi—

The chapter won the overall sorority championship during Greek Spring Fest and the university championship in recreational volleyball. The chapter initiated ten new members and bid farewell to seniors at a ceremony hosted by the Tidewater area alumnae. Leaders of campus organizations are Debbie Brown, vice president, Beta Alpha Psi; Christy Chan, assistant vice president of public relations, Panhellenic; Heather Ellis, treasurer, DECA; Christina

Emrick, secretary, Panhellenic; and Karla Harrell, vice president, Order of Omega. Other members of honoraries are Heather Ellis, Megan Fraser, Nancy Kuhl, Order of Omega; Karla Harrell, Phi Kappa Phi; Heather Jewett, Patti Lienemann, Omicron Delta Kappa; Nancy Kuhl, English Honor Society. Nancy Kuhl edits the *xominion Review*. Fraternity sweethearts are Jonie McGrath and Lisa Buterbaugh. Under-secretaries general for the Model United Nations program at ODU are

Patti Lienemann, 1994 college conference, and Jonie McGrath, 1995 high school conference.

Randolph-Macon, Omicron Zeta—

The chapter added a quota pledge class numbering 23 and initiated 23! For the third time, Omicron Zetas won Greek Games. Seniors were honored with a banquet where they were recognized with a personal video, letters from their parents, and senior wills and prophecies. Following Winter Ball, members spent a day painting, cleaning and decorating their new house at 208 Patrick Street. They celebrated the day's end by hanging the latest composite. Traci Hinton is reigning Miss Southside Virginia. Phi Beta Kappa tapped

Carrie Starrett, Nancy Bickel, Kim Hopkins and Sandy Debu

Virginia, Lambda Delta—

Following a successful January rush, the chapter initiated 31 new members. The intramural basketball team placed second in the women's all-university five-on-five team. New members of Order of Omega are Kristen Scafidi and Julie Gabriel. Members of the nationally ranked University of Virginia women's lacrosse team are Heather Patton and Heather Hotchkiss. Kate Tessieri is a fraternity sweetheart. Victoria Tiase was elected president of the School of Nursing and selected as a class trustee.

Virginia Tech, Kappa Theta—

Under the direction of the newly elected sorority education officer, members made great efforts to conduct the initiation ceremony precisely according to tradition. Members participated in a practice initiation to ensure the 31 new members a beautiful and memorable initiation. Spring events included potluck dinners, movie nights, a Senior Wills Ceremony, a Greek Week progressive dinner and sports activities. Hope Parker was honored as President of the Year among all Greek organizations.

WEST VIRGINIA**Concord College, Epsilon**

Delta—For Province Week activities, members donned their college-logo attire for Saturday's fun night and won third place in the quiz bowl. Sunday morning's award brunch, Epsilon Delta won awards for formal rush, crisis management program and the highest grade point average. College Chapter Director Lisa Blankenship was honored with the Province Best Alumna Award. Though

bad weather forced the cancellation of many Greek Week activities, Delta Zeta managed to win a second in mini-events and a third in tricycle races.

Sisterhood events included a wooden craft exchange and a jar exchange, where members exchanged jars containing notes of encouragement. The Mother-Daughter Banquet at Roma's featured a lasagna dinner. The chapter's two seniors were honored with a senior dinner at Pizza Hut. Debra Thomas is a resident assistant.

Marshall, Delta Upsilon—During Greek Awards, Delta Zeta was honored for best membership recruitment program and was most involved on campus. Robin Taylor was named outstanding adviser. Awards at province weekend included a quota award and the most improved chapter award. Individuals winning province honors were Erin Doherty, outstanding senior and outstanding president; Kim Nichols, outstanding vice president of membership; Cindy Cruz, outstanding junior; Amy Baker, highest sophomore gpa and Elizabeth Devereaux Scholarship; and Debbie Boyd, model pledge. Seniors read their wills at the chapter's senior ceremony. The entire chapter was in attendance for Cindy Cruz's senior flute recital.

WISCONSIN

Wisconsin-Eau Claire, Epsilon Omega—The chapter hosted Province Weekend at the Gateway Hotel. Friday night included fun activities such as dancing and a deejay, president's reports and skits. Epsilon Omega won a banner for their skit, *Take Me Out to the Ballgame*. The rendition featured a lineup of baseball players describing what they do within the sorority. Saturday activities included workshops,

speakers and a risk management video. The chapter won awards for total, quota, social programming, standards, highest gpa and outstanding chapter. Individual awards went to Brenda Wenzel, Golden Crest; Kirsten Hagen, Pride of the Province; and Kirsten Hagen, Shay Lukes, Bridget Carey, Molly Myers, 3.5 or above awards. At the "Set Up Your Sister" party, members and guests looked at their assigned wristbands to determine the identity of their surprise dates. The evening's "set up" activity began with bowling at Hilltop Recreational Center and ended with a cook-out. A house retreat included games for new members to get to know other members better and a time to make picture frames to sell at Province Day. Members also enjoyed a quad mixer with Delta Zetas from Wisconsin-Stout and two fraternities. Joy Harris and her father, Gary, compiled a chapter video, complete with music, for presentation at the formal. The video featured graduating seniors.

Wisconsin-Whitewater, Epsilon Kappa—The chapter welcomed 19 new members in spring rush bringing chapter membership to 84! Instead of the traditional mother-father-daughter banquet, collegians invited family members to play volleyball and baseball and dine picnic-style. The 23 new initiates were so excited about Delta Zeta that they planned an informational rush party! Pamela Zorko is the new Miss West Allis and, at presstime, was heading for the Miss Wisconsin pageant. She was presented the key to Milwaukee by Olympian Dan Jansen. Lindy Hayashi, Miss Burlington Chocolate Fest, will travel to the Miss Wisconsin pageant next June. Scholarship recipients are Beth Yarnold, Phi Eta Sigma, and Traci Kelnhofer, Student Foundation Leadership.



Happy new members after initiation at Omicron Beta, Stockton State in New Jersey.



Kappa Phi sisters gather for a group shot at Greek Games in UNC/Charlotte.



Winners of Greek Week at the University of Maine are these happy members of Alpha Upsilon.

Flame Eternal

ALPHA

Lillian Shortbridge Albert '20
Lois Anne Akerstrom Binkley '40
Marie Cropper Kalb '14
Lillian Redkey Keeler '22
Edna Harding Sherck '29

DELTA

Doryce Jaeger Black '43
Jane Ann Washburn Garrett '40

ETA

Marion Burns Deuser '19
Hazel Mae Harris Tarpley '23

THETA

Nellie Brown Roenker '62

IOTA

Viola Naibert Elsenbast '25

KAPPA

Elsie Peterson Cunningham '31

LAMBDA

Grace Baker DeClaspel '21

MU

Hilda Smith Weidman '30

OMICRON

Esther Howe Ritts '43

RHO

Lucille Sperry Beall '33
Velma J. Anderson Boal '35

SIGMA

Michaelle Pitard Wynne '64

ALPHA BETA

Lillie Buckley Tinkey '41
Ruth Hackley Cox '62

ALPHA GAMMA

Hazel Brannon Smith '34

ALPHA NU

Carrie Benham Boggs '24

ALPHA XI

Coy Beresford Faires '24
Martha Rose Shrewbury Gates '36

Another founding member of Delta Sigma Epsilon has died in Cincinnati, Ohio. Marie Cropper Kalb was in the original chapter at Miami of Ohio when the sorority was formed in 1914. She became a member of Alpha in 1956 when the Delta Zeta-Delta Sigma Epsilon merger occurred.

ALPHA RHO

Katherine Ribble Menke '25

ALPHA SIGMA

Jeanne Marie Hogan Johnson '94
Lydia F. Hickey Rice '29

ALPHA PHI

Mary Eleanor Filkin Spencer '25

ALPHA CHI

Peggy Jean Packer Bagnall '45
Gertrude Pew Doran '29

BETA GAMMA

Kimberly Jane Williams Graham '81

BETA EPSILON

Mary Mooney Connelly '29

BETA KAPPA

Eunice Homuth Hinkley '43
Marilyn Olson Klute '52

BETA TAU

Florence Wing Wilson '43

GAMMA THETA

Alice Hauser Wivell Gemmill '48

GAMMA TAU

Ellen E. Szabo Fager '73

GAMMA PHI

Martha Jane Grigsby Davis '41

DELTA XI

Dorothy Shanton Smith '57

DELTA OMICRON

Ruth Boyce '58

DELTA PI

Patrena (Pat) Petersen Denzler '44

DELTA CHI

Ruby Pitt Barham '56
Norma Louise Shepard Carter '56

EPSILON BETA

Mary Ethelyn Cloutier '56

EPSILON ZETA

Florence Allen Harper '57

THETA DELTA

Jeanette Hugh '63

IOTA ALPHA

Beverly Brock Semington '65

KAPPA XI

Christen Thompson '93

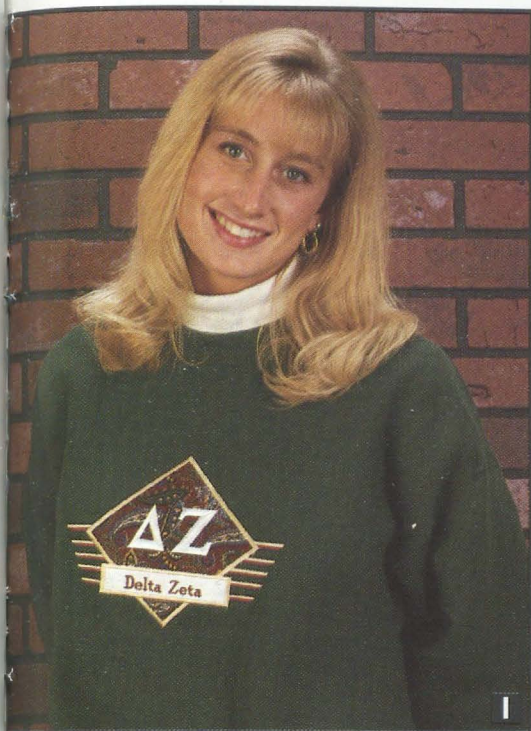
OMICRON GAMMA

Anna Geneva Brunton Beal '62

PHI BETA

Priscilla Desormo Farrell '57
Ruth Spurlock Lautaret '47





DEZIGNS

202 EAST CHURCH STREET • OXFORD, OH 45056

Call in your order or ask for the Delta Zeta Designs catalogue

1-800-886-PINK



1. Dark green sweat/paisley square, L, XL, **BSGS**.....\$51.99
2. Crest design, screen printed, L, XL
Gray with green, **AS17B**\$29.99
Navy with white, **AS17A**\$29.99
3. Screen printed design, L, XL
Navy **RCS1**\$24.99
Green **RCS2**\$24.99
Burgundy **RCS3**.....\$24.99
4. Alumnae key chain **WKC2**\$5.00
Green Marble Look Pen **EP2**\$13.00

Cross Stitch
Bottom Row
Christmas sock **YCS**.....\$6.00
Pillow **YP**.....\$10.00
DZ and lamp in frame **YL**\$8.00

Simply charming/ gold mat **YS**.....\$10.50
Top Row
Initiation plaque **YIC**\$8.50
Wall hanging **YW**.....\$11.00
Heart Plaque **YH**\$6.00

Plaid DZ in frame **YDZ**.....\$8.50
Crest **YYA**\$12.00
(frame not included)
Key chain **YK**.....\$5.50

Delta Zeta Pride Looks Good on You!

The Delta Zeta Visa®

So you think the Delta Zeta Visa Card is a wonderful idea—as long as the terms are wonderful, too. Well, we have some good news for you: the **Delta Zeta Visa offers a low, fixed 15.9% APR with no annual fee during the first year (a savings of \$25)!**

What's more, your Delta Zeta Visa entitles you to special privileges wherever you go. Here are just a few of the benefits: 24-hour cash access and emergency phone assistance. 5% cash bonus on domestic travel. \$100,000 in travel accident insurance. Reimbursement, repair or replacement of Delta Zeta Visa purchases stolen or damaged within 90 days of purchase date.

Now is the best time to carry the Delta Zeta Visa! Remember, it's a great way to **show your Delta Zeta pride while you help support programs that further the mission of our sisterhood.**

Call 1-800-395-0010
to get your own
Delta Zeta Visa.
It's a card you can be
proud to carry.



Subject to credit approval.

The Delta Zeta Visa card is also available to students with a fixed annual percentage rate of 18.5%, which may be lowered to the alumnae rate upon achieving alumna status by calling 1-800-945-2006.

An Open Letter to Delta Zeta Alumnae

Name: _____
 She is a _____ collegian
 _____ alumna

REFERRAL OF POTENTIAL DZ VOLUNTEER/LEADER

Name _____
 (First) (Maiden) (Last)

Permanent Address _____
 (City) (State) (Zip)

Phone: _____ (H) _____ (_____) _____ (W) _____ (_____)

College Chapter _____ Init. Date _____ School _____

PREVIOUS Delta Zeta Leadership/Service _____

Leadership Qualities _____

Special Interests _____

Delta Zeta Making Recommendation _____

 Address _____
 Phone _____

Int'l Hdqtrs. Notes:

Career demands, homelife and other personal responsibilities are continuing to increase for the typical Delta Zeta member in the '90s and one direct effect of that trend is a shrinking volunteer base for our sorority. YOU can help in reversing this direction by suggesting/recommending for us a potential leader or volunteer in your chapter, area or province.

A Delta Zeta sister you know could be the next CCD, alumnae chapter president, PCD, PAD, committee chairman or Council member!

Thank you for helping continue Delta Zeta's sisterhood and development by completing the attached form below and returning it to:

VOLUNTEER MASTER FILE
 Delta Zeta International Hdqtrs.
 202 E. Church St.
 Oxford, OH 45056

INTERNATIONAL COUNCIL

PRESIDENT: Sandra McAlister Nesbitt (Mrs. Milton), 44 Tecumseh Drive, Montgomery, AL 36117

VICE PRESIDENT OF MEMBERSHIP: Lynnda Wolf Hoefler (Mrs. Robert), 2981 Telber Court, Stow, OH 44224

VICE PRESIDENT OF ALUMNAE: Phyllis Berens Ross (Mrs. Norman), 25 Scottsdale, Wichita, KS 67230

VICE PRESIDENT OF COLLEGIANS: Merry Westbrook Adamcik (Mrs. Roy), 614 Rozelle Avenue, Sugar Land, TX 77478

SECRETARY: Charlotte Davis, Dr., P.O. Box 2, Troy State University, Troy, AL 36082

TREASURER: Pamela McClure Cronenwett (Mrs. William), 25720 West Hills Drive, Dearborn Heights, MI 48125

DIRECTOR OF CHAPTER FINANCES: Ruth Weider Patterson (Mrs. Robert), 3623 Devereaux Road, Columbia, SC 29205

DIRECTOR OF MEMBERSHIP SERVICES: Karly Klemp Burns (Mrs. Lawrence), P.O. Box 58050, Tierra Verde, FL 33715

DIRECTOR OF NEW MEMBER EDUCATION: Jeanine Petersen Triplett (Mrs. Brian), 9642 Reliance Drive, Anchorage, AK 99507

PAST PRESIDENT: Marvona Easley Tavlin (Mrs. Michael J.), 6320 Rogers Circle, Lincoln, NE 68506

NATIONAL PANHELLENIC CONFERENCE DELEGATE: Sandra Sebrell Bailey (Mrs. Bruce), OH-639 N. Portage Path, Akron, OH 44303 or WV-The Saint James, 401 10th Street, Box 1105, Huntington, WV 25701-2330

NATIONAL PANHELLENIC CONFERENCE ALTERNATES: Sandra McAlister Nesbitt (Mrs. Milton), Lynnda Wolf Hoefler (Mrs. Robert), Karly Klemp Burns (Mrs. Lawrence)

INTERNATIONAL HEADQUARTERS

INTERNATIONAL HEADQUARTERS: 202 East Church Street, Oxford, OH 45056 513/523-7597 FAX: 513/523-1921

EXECUTIVE DIRECTOR: Cynthia Winslow Menges

CHAPTER CONSULTANT COORDINATORS: Sandra Sebrell Bailey (Mrs. Bruce), OH-639 N. Portage Path, Akron, OH 44303 or WV-The Saint James, 401 10th Street, Box 1105, Huntington, WV 25701-2330

Ruth Weider Patterson (Mrs. Robert), 3623 Devereaux Road, Columbia, SC 29205

CHAPTER CONSULTANTS: Heather Angove, Christi Ostendorf, Shannon Rowan, Aimee Chadwick, Erin Doherty, Heather Trepal, Dana Wulff, Yvonne Nunez, Stacey Wheeler, Spring Kreeger, Jennifer Dunlap, Nicole Mauritz.

GRADUATE COUNSELOR: Cynthia Cruz

MAGAZINE PROGRAM: International Headquarters, 202 East Church Street, Oxford, OH 45056

INSURANCE: International Headquarters, 202 East Church Street, Oxford, OH 45056

THE LAMP: Gwen Moss McKeeman (Mrs. Robert), 5517 S. 74th E. Avenue, Tulsa, OK 74145

PARLIAMENTARIAN: Charlotte Davis (Dr.), P.O. Box 2, Troy State University, Troy, AL 36082

EXTENSION: Jamie Hammill Pyne, 10185 Collins Avenue, The Plaza of Bal Harbour, Unit 1415, Bal Harbour, FL 33154

STANDING COMMITTEES

AWARDS (ALUMNAE AND COLLEGIATE): Mary Malone (Ms.), 2120 Columbus, Muskogee, OK 74401

COLONNADE CLUBS: Kristi Brown Stokes (Mrs. Edward), 11040 Crosswinds Drive, Knoxville, TN 37922

CONSTITUTION AND CODE OF REGULATIONS AND BYLAWS: Anne Marie Jones Gavin (Mrs. William), 3264 Swan Drive, Vineland, NJ 08360

FIELD ACTIVITIES: Lynnda Wolf Hoefler (Mrs. Robert), 2981 Telber Court, Stow, OH 44224

FINANCE: Pamela McClure Cronenwett (Mrs. William), 25720 West Hills Drive, Dearborn Heights, MI 48125

HISTORY: Florence Hood Miner (Mrs. Arthur), 1040 Avenue, Nevada, IA 50201

JUDICIARY: Kathryn Clark Mitchell (Mrs.), 3837 Cedar Avenue, Montgomery, AL 36109

MUSIC: Julie Stewart Pride (Mrs. Charles), 2122 B Stonebrook Court, Bowling Green, KY 42101

PHILANTHROPY: See Alumnae and Collegiate committees

NEW MEMBER EDUCATION: Jeanine Petersen Triplett (Mrs. Brian), 9642 Reliance Drive, Anchorage, AK 99507

RITUAL: Karen Kind Veitch (Mrs. Andrew), 44 Bob Hill Lane, New Canaan, CT 06840

SPECIAL COMMITTEES

ALUMNAE:

ALUMNAE COMMITTEE COORDINATOR: Elsie Wheeler McTee (Mrs. Clifford), 4322 St. George, Corpus Christi, TX 78413

ALUMNAE-COLLEGIATE RELATIONS: Linda Brueggeman Seymour (Mrs.), 695 So. Pathfinder Trail, Anaheim, CA 92807

ALUMNAE RECRUITMENT: Sara Rosier Bush (Mrs. Peter), 3523 Ashwood Lane, Atlanta, GA 30341

MEMBERSHIP: Janice Jelks Cox (Mrs. Stanford), 201 Muir Woods, Cary, NC 27513

PROGRAMS: Meryl Lin McKean (Ms.), 8301 Sagamore Road, Leawood, KS 66206

SPECTRUM: Patricia Menendez Tector (Mrs. John), 907 Winslow Court, Cary, NC 27513

COLLEGIATE:

ACADEMICS: Cheryl Stanley Jones (Mrs. Russell), 4012 El Capitan Drive, Temple, TX 76502

ACTIVITIES: Margaret Allegro Sorrells (Mrs. Rick), 6158 Chesley, Dallas, TX 75214

RISK MANAGEMENT: Pamela Siders Grizzle (Mrs. John), 1007 Smartt Lane, Leesburg, VA 22075

SOCIAL: Sara Carruthers (Ms.), 601 Glenway Drive, Hamilton, OH 45013

SORORITY EDUCATION: Ellen Kroll Jenkins (Mrs. Paul), 390 Smock Drive, Greenwood, IN 46143

STANDARDS: Penny Payne Fioravante (Mrs. Michael), HC63 Box 91, Tiny Ridge Farm, Sumerco, WV 25567

CONVENTION CHAIRMAN: Anne Marie Jones Gavin (Mrs. William), 3264 Swan Drive, Vineland, NJ 08360

HOUSING ADMINISTRATOR: Norma Minch Andrisek (Mrs. John R.), 319 Janice Drive, Berea, OH 44017

REGIONAL HOUSING CHAIRMEN:

Mary Beth Hibler Allen (Mrs. Eugene), 8 Summit Cedar Drive, Littleton, CO 80127

Louise Parker Bingham (Mrs. Drake), 4243 Old Tyler Road, Nacogdoches, TX 75961

Dawn Leveau (Miss), 4506 Belmont Road, Apt. #3, Downers Grove, IL 60515

Kathleen Johnson Sledge (Mrs. Joe W. Jr.), 1700 Dearing Place, Tuscaloosa, AL 35401

NETWORKING: International Headquarters, 202 E. Church Street, Oxford, OH 45056

NEWSLETTER: Diane Jones Skelton (Mrs. Danny), 100 SW Meadow Lane, Topeka, KS 66606

REFERENCES: Alberta Doran Curran (Mrs. Tom), 116 Dublin Woods Drive, Cary, NC 27513

REGIONAL COLLEGIATE COORDINATORS: Northeast and Midwest: Provinces I-E, I-W, II, III-E,

III-C, III-W, IV, VII, XX Linda Regner (Ms.), 15719 Mahogany Circle, Apt 305, Gaithersburg, MD 20878

West and Midwest: V-N, V-S, VI-E, VI-W, IX-N, IX-S, XV-S, XV-C, XV-N Beth Petruccie (Ms.), 5527 N. Haverford Ave., Indianapolis, IN 46220

South and Southeast: XVIII, XIX, XXI-E, XXI-W, XXII, XXIII, XXIV, XXV, XXVI Sharon Moncrief Slovinski (Mrs. Harry), 7740 Westminster Dr., Byron Center, 49315

Midwest and Southwest: VIII, X, XI, XII, XIV, XVI, XVII-N, XVII-S Linda Lesniak Szymanski (Mrs. Robert), 931 Notre Dame Ave., Concord, CA 94518

WAYS AND MEANS: Julie Hauser (Ms.), 14124 Heywood Path, Apple Valley, MN 55124

DELTA ZETA FOUNDATION

PRESIDENT: Joan Dondrea Lowry (Mrs. Bob-Bill), 578 Yarmouth Lane, Bay Village, OH 44140

VICE PRESIDENT: Joyce Low London (Mrs. John), 13326 Glen Taylor Lane, Herndon, VA 22071

VICE PRESIDENT-MUSEUM: Norma Minch Andrisek (Mrs. John R.), 319 Janice Drive, Berea, OH 44017

SECRETARY: Carol Selway Bertz (Mrs. Michael), 6544 S. Heritage Place East, Englewood, CO 80111

TREASURER: Marjorie Klingensmith Lovewell (Mrs.), 96 The Prado NE, Atlanta, GA 30309

MEMBERS: Ann Butler Booth (Mrs. W. Ray), 14735 Oak Bend Dr., Houston, TX 77079

Deanna Allemen Pendleton (Mrs. Larry A.), 1818 Westminster Place, Oklahoma City, OK 73120

Sandra McAlister Nesbitt (Mrs. Milton), 44 Tecumseh Drive, Montgomery, AL 36117

COMMITTEES:

COUNCIL FOR BETTER HEARING: Joan Dondrea Lowry (Mrs. Bob-Bill), 578 Yarmouth Lane, Bay Village, OH 44140

ELIZABETH COULTER STEPHENSON SCHOLARSHIPS: Joyce Low London (Mrs. John), 13326 Glen Taylor Lane, Herndon, VA 22071

FINANCE/INVESTMENTS: Marjorie Klingensmith Lovewell (Mrs.), 96 The Prado NE, Atlanta, GA 30309

GRADUATE SCHOLARSHIPS: Priscilla "Pat" Beam 3691 NW 95th Terrace #1202, Ft. Lauderdale, FL 33321

GALLAUDET UNIVERSITY: Lucille Bolstad May (Mrs. Leland B.), 5100 Dorset Avenue, #406, Chevy Chase, MD 20815

GOLDEN CIRCLE SCHOLARSHIPS: Lacey Goodwin (Miss), 155 Sylvest Drive, #605, Montgomery, AL 36117

HEGHINIAN SCHOLARSHIPS: Marion Angarola Shapley (Mrs.), 109 Via Los Miradores, Redondo Beach, CA 90277

HOUSE EAR INSTITUTE: Betty Paul DeWitt (Mrs. Norman), 23630 Oak Rest Lane, Harbor City, CA 90710

PHILANTHROPY CHAIRMAN: Joan Dondrea Lowry (Mrs. Bob-Bill), 578 Yarmouth Lane, Bay Village, OH 44140

ALUMNAE: Ann Butler Booth (Mrs. W. Ray), 14735 Oak Bend Dr., Houston, TX 77079

COLLEGIATE: Louise Gilbert Warner (Mrs.), 3472 Sherbrook Park Drive, Solon, OH 44139

PUBLIC RELATIONS/BETTER HEARING INSTITUTE: Joan Dondrea Lowry (Mrs. Bob-Bill), 578 Yarmouth Lane, Bay Village, OH 44140

PUBLICATIONS: Diane Jones Skelton (Mrs. Danny), 100 SW Meadow Lane, Topeka, KS 66606

SCHOLARSHIP COORDINATOR: Joyce Low London (Mrs. John), 13326 Glen Taylor Lane, Herndon, VA 22071

UNDERGRADUATE SCHOLARSHIPS: Donna Edwards Happ (Mrs. William), 39968 Pearl Drive, Murietta, CA 92362

NATIONAL HISTORICAL MUSEUM

PRESIDENT EMERITA: Lucile Crowell Cooks (Mrs.), 7400 Sun Island Drive S., Apt. #404, South Pasadena, CA 91066
TEL 33707 SUMMER: 1890 E. 107th Street, Judson Manor, Apt. #511, Cleveland, OH 44106

EDITOR EMERITA: Betsy Bradley Leach (Mrs.), 325 Valley View Road, #304, Glendale, CA 91202

DIRECTOR EMERITA: Grace Pritchard Gorham (Mrs.), 1510 East 31st Street, Tulsa, OK 74105

EDITOR/ARCHIVIST: Betty G. Johnson
Cromblinson, National Historical Museum, 202 E. Church St., Oxford, OH 45046

PROVINCE COLLEGIATE AND ALUMNAE DIRECTORS

Maine, Massachusetts, New York, Vermont, New Hampshire, Connecticut, Rhode Island and New York

PCD I-E: Cindy Tinney Kozil, 6 Autumn Rd., Medway, MA 02053-2154

PCD I-W: Diana Hutchinson, 1001 Woodhill, Newark, NY 14513-2040

PCD I-E: Fran Robinson Carnes (Mrs. Michael), 252 Washington, Arlington, MA 02174

PCD I-W: Teresa J. Sears Scanlon (Mrs.), 6 Daley Road, Poughkeepsie, NY 12603

II. New Jersey and Delaware

PCD: Anita Mangano-Reese (Miss), 619 Grenville Drive, Turnersville, NJ 08012

PCD: Cynthia Schaffer Plucinski (Mrs. Donald), 633 South Edge Park Dr., Haddonfield, NJ 08033

III. Pennsylvania

PCD III-C: Karen Starnier Jacobson (Mrs. Charles), RD 1, Box 157, Covington, PA 16917

PCD III-W: Jamie Lynn Bero-Johnson, 228 Egbert Hall, Clarion, PA 16214

PCD III-W and -C: Jane Simmons Riccardi (Mrs. Robert), 150 Par Dr., Pittsburgh, PA 15236

PCD III-E: Linda Dennison Tapp (Mrs.), 21 Cobblestone Road, Cherry Hill, NJ 08003

PCD III-E: Cynthia Schaffer Plucinski (Mrs. Donald), 633 South Edge Park Dr., Haddonfield, NJ 08033

IV. West Virginia

PCD: Kara Barker Price (Mrs.), 124 Ruthlawn Drive, South Charleston, WV 25309

PCD: Doretta Pugh Osburn (Mrs. Thomas), 1 Valley View Estates, Hurricane, WV 25526

V. Ohio

PCD-N: Kim Bannerman Hayes (Mrs.), 374 East Bergey, Wadsworth, OH 44281

PCD-S: Susan Steggeman, 3136 Hayden Road, Columbus, OH 43235

PCD-N: Jo Ann Arnholt (Mrs. Edward Carnien), #425 Student Services, Bowling Green University, Bowling Green, OH 43403.

PCD-S: Connie Teaford Wilt (Mrs.), 5437 Rockwood Road, Columbus, OH 43229

VI. Michigan

PCD-W: Marlene Thompson Gilpin (Mrs. Michael), 12 W. Douglas, Houghton, MI 49931

PCD-E: Cheryl Franks Denman (Mrs. Scott), 1038 Nottingham, Grosse Pointe Park, MI 48230

PCD: Judith D. Christian (Mrs. Edward), 21 Newberry Place, Grosse Pointe Farms, MI 48236

VII. Indiana

PCD: Anne Moser Ikenberry (Mrs.), 5332 Ochs Avenue, Indianapolis, IN 46254

PCD: Nancy Ferrone Daughters (Mrs. Michael), 7658 Mayhill Drive, Indianapolis, IN 46236

VIII. Wisconsin

PCD: Grace Dollohan Bartholet (Mrs. Dave), 6445 Olson Memorial Hwy. Golden Valley, MN 55427-4947

PAD: Susan Hein Feuerherm (Mrs.), 3849 Conroy Trail, Inver Grove Heights, MN 55076

IX. Illinois

PCD-S: Shari Lauer, RR#3, Box 4, Blomington, IL 61704

PCD-N: Katherine Sermersheim, 378-1 Eggers Drive, Macomb, IL 61455

PAD-S: Terri Sullivan Choules (Mrs.), 203 East Fawn, Mahomet, IL 61853

PAD-N: Marcia Campbell Harrison (Mrs. Charles), 1 South 761 Ott Avenue, Glen Ellyn, IL 60137

X. Iowa and Nebraska

PCD: Carolyn Zabel Hoffmann (Mrs.), P.O. Box 910, Guttenberg, IA 52052

PAD: Ann Langel (Miss), 910 Black Hawk Rd., #9, Waterloo, IA 50701

XI. Missouri

PCD: Dana McMillan (Miss), 8183 Monrovia, Lenexa, KS 66215

PAD: Sidney Tomb Kendall (Mrs.), 12662 Broadridge, Florissant, MO 63033

XII. Minnesota, North Dakota and South Dakota

PCD: Grace Dollohan Bartholet (Mrs. Dave), 6445 Olson Memorial Hwy., Golden Valley, MN 55427-4947

PAD: Susan Hein Feuerherm (Mrs.), 3849 Conroy Trail, Inver Grove Heights, MN 55076

XIV. Colorado and Kansas

PCD: Heather Brennan Dillon (Mrs.), 3414 S. Locust Street, Unit D, Denver, CO 80222

XIV-E. Kansas Alumnae Chapters

PAD-E: Carolyn McCandless Woodling (Mrs. Charles), 713 Prescott Court, Lawrence, KS 66049

XIV-W. Arizona, Colorado, New Mexico, Utah, and Wyoming Alumnae Chapters, except Las Cruces, NM

PAD-W: Nancy Kishiyama Yokomizo (Mrs. Gene), 9747 W. 76th Place, Arvada, CO 80005

XV-S. Southern California, Southern Nevada and Hawaii

PCD: Karen Severloh Moffitt (Mrs. John), 2075 Los Robles Ave, San Marina, CA 91108

PAD XV-SE: Hannah Nicholas Gough (Mrs.), 262 Argonne Avenue, Long Beach, CA 90803

PAD XV-SW: Terri Knapp DeSales (Mrs.), 4537 Clark Avenue, Burbank, CA 91905

XV-C: Northern California and Northern Nevada

PCD: Jennifer Edwards, 1065 Lincoln Court, San Jose, CA 95125

PAD: Shaen Hosie Mack (Mrs.), 2445 Rollingwood, San Bruno, CA 94066

XV-N. Oregon, Washington, Montana, Idaho and Alaska

PCD: Jennifer Edwards, 1065 Lincoln Ct., San Jose, CA 95125

PAD: Carin Brown Steckler (Mrs.), 5208 36th Ave., N.E., Seattle, WA 98105

XVI. Oklahoma

PCD: Jane McCaslin (Ms.), 418 S. 106th E. Avenue, Tulsa, OK 74128-1428

PAD: Pattie Cantrell Hulsey (Mrs. Stephen), 15708 E. 80th St. North, Owasso, OK 74055

XVII-N. Texas, New Mexico Collegiate Chapters, Texas, Las Cruces Alumnae Chapter

PCD-N: Tracy Wilson LeSieur (Mrs. Larry), 1621 Lake Side Lane, Plano, TX 75023

PAD-N: Pat Brown Rizotti (Mrs.), 6103 Millwood Drive, Arlington, TX 76016

XVII-S. Texas

PCD-S: Cathy Irvin Painter (Mrs. Tom), 10204 Pantera Ridge, Austin, TX 78759

PAD-S: Diane Larson Leaverton (Mrs.), 2310 Buckholt Road, Pearland, TX 77581

XVIII. Louisiana and Mississippi

PCD: Debbie Raziano (Miss), 117 Ashton Street, Ruling, LA 70070

PAD: Phyllis Sundberg Davis, 137 Redbud Trail, Brandon, MS 39042

XIX. Tennessee

PCD: Beth Anderson Hudson (Mrs. Tom), 318 Hamilton Rd., Knoxville, TX 37020

PAD: Patty Drewry (Miss), 209 Turtle Rock Court, Murfreesboro, TN 37129

XX. Kentucky

PCD: Anne Leitsch (Ms.), 5412 Carol Way, Louisville, KY 40214

PAD: Ann Walls (Ms.), 1035 Sarah Drive, Louisville, KY 40219

XXI. South Carolina and North Carolina

PCD-E: Lienne Federico Medford (Mrs.), 5631 Woodridge Road, Wilmington, NC 28409

PCD-W: Debra Wood Pressley (Mrs. Chuck), 630 Macedonia Road, Asheville, NC 28804

PAD: Kathy Karbel Phillips (Mrs. Brian), 106 Khalsa Court, Durham, NC 27713

XXII. Georgia

PCD: Elizabeth Ann Grant Wadsworth (Mrs.), 2105 Liberty Bell Place, Lawrenceville, GA 30243

PAD: Linda Myers Backelant (Mrs. Gustave), 1281 Howard Way, Lawrenceville, GA 30243

XXIII. Alabama

PCD: Denise Williams McCullars (Mrs. Michael), 827 West 53rd Street, Anniston, AL

PAD: Kimberly Harris Bath (Mrs. Chris), 1071 Rosedale Drive, Montgomery, AL 36107

XXIV. Florida

PCD: Diana Spivey Bishop (Mrs. Harry), 40 Ridgeview Court, Pensacola, FL 32514

PAD S: Linda Ratkus Packham (Mrs.), 201 NW 52 Court, Fort Lauderdale, FL 33309

PAD N & C: Robin Griehs Donoho (Mrs.), 1107 Wood Duck Hollow, Jacksonville, FL 32259

XXV. Virginia, Maryland, Washington, D.C.

PCD: Rachel Platt (Ms.), One Canterbury Square #101, Alexandria, VA 22304

PAD: Tammy Comer Stafford (Mrs.), 1 C Cedar Haven Court, Forest, VA 24551

XXVI. Arkansas

PCD: Jane Tiefel (Ms.), 11800 Pleasant Ridge Road #324, Little Rock, AR 72212

PAD: REFER TO VICE PRESIDENT OF ALUMNAE

