

Delta Zeta National Convention Williamsburg Virginia 1989

THE
LAMP
OF
DELTA
ZETA
FALL 1989

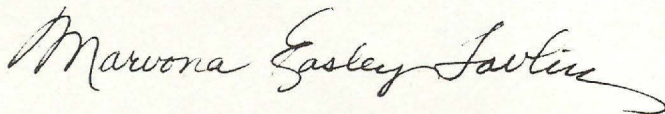
Founders Day Proclamation

"Heritage and Horizons" was the theme for the 1989 National Convention held in colonial Williamsburg, Virginia. The site of the event, at the foundation of America's first Greek letter society, reminds us that we are on the horizon of Delta Zeta. We look back and see our heritage. We look forward and see our future.

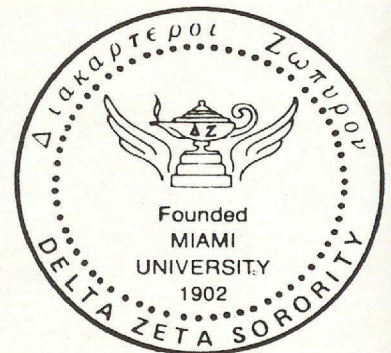
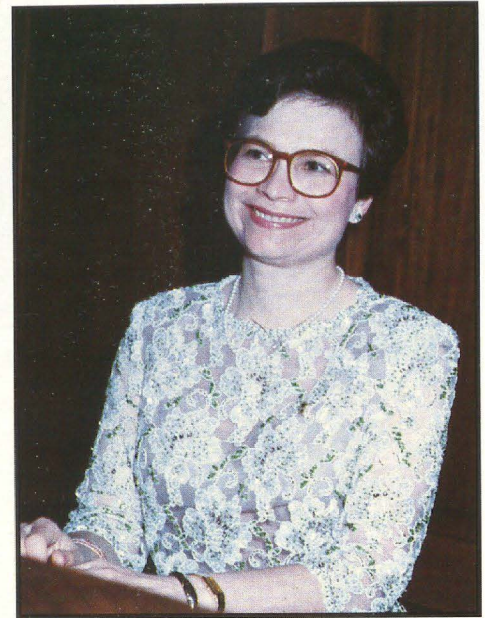
In 1902, six progressive-minded collegians had a dream of founding a national sorority. The dream has become a dynamic reality through love, imagination, courage and vision. And poised between our heritage and our horizons, we more clearly than ever must appreciate our obligation to gratefully return to Delta Zeta at least as much as Delta Zeta has graciously given to us. It is the responsibility of each of us to continually prepare the blueprint for the direction of Delta Zeta, based on the ideals, principles, and values of our beloved Founders. Let us rejoice in the opportunities the future holds for us.

I hereby proclaim the twenty-fourth day of October to be observed as Founders Day by our entire membership and request the colors of rose and green be worn this day to signify our determination, confidence, and love in each other and our Delta Zeta.

Given under my hand and seal in this year of our Lord, nineteen hundred and eighty-nine and of the Sorority, the eighty-seventh.



*Marvona Easley Tavlin
National President*



FOUNDERS OF THE SORORITY



Miami University
Oxford, Ohio 1902

Alfa Lloyd Hayes, 1880-1962
Mary Collins Galbraith, 1879-1963
Anna Keen Davis, 1884-1949
Julie Bishop Coleman, 1881-1959
Mabelle Minton Hageman, 1880-1929
Anne Simmons Friedline, 1879-1932

THE ORDER OF THE LAUREL

Irene Caroline Boughton, 1904-1988
Grace Mason Lundy
Elizabeth Coulter Stephenson, 1881-1939
Myrtle Graeter Hinkly, 1893-1987

THE LAMP

The *LAMP* of Delta Zeta, official magazine of the sorority, is published quarterly by the Delta Zeta Sorority, 202 East Church St., Oxford, OH 45056.

Send all editorial material to the Editor, Mrs. Robert L. McKeeman, 5517 S. 74th E. Avenue, Tulsa, OK 74145. Send all matters of a business nature to Delta Zeta National Headquarters, Oxford, OH.

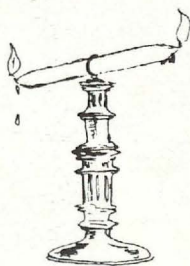
Send all contributions for Gallaudet University House Ear Institute and other philanthropies through the Delta Zeta Foundation and all contributions to the National Historical Museum to Delta Zeta National Headquarters, 202 E. Church St., Oxford, OH 45056.

EDITOR

Gwen Moss McKeeman
5517 S. 74th E. Avenue
Tulsa, Oklahoma 74145

CHAPTER EDITOR

Diane Jones Skelton



MEMBER
NATIONAL PANHELLENIC EDITORS
CONFERENCE



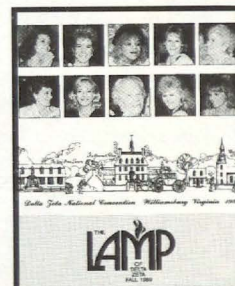
MEMBER
COLLEGE FRATERNITY EDITORS ASSOCIATION

THE LAMP OF DELTA ZETA

Volume 78 Number 3 FALL 1989

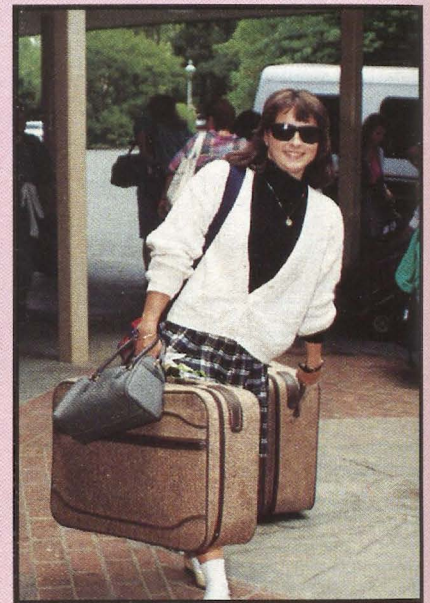
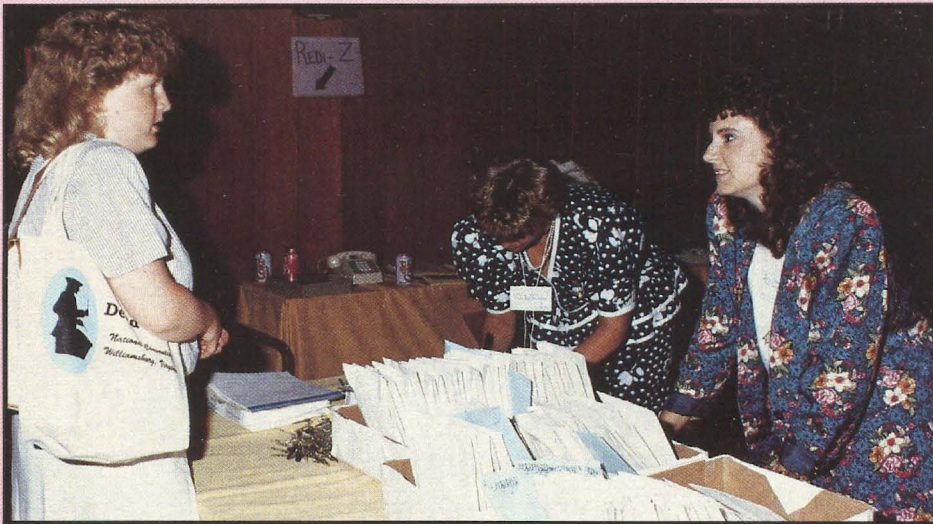
Contents

- 5 Heritage and Horizons
- 18 Academics
- 19 Charitable Life Insurance
- 20 GML Awards
- 22 Gallaudet Fundraiser
- 24 Delta Zeta On Campus
- 36 Flame Eternal
- 37 FHM Awards
- 38 From the Lampwriter
- 40 This was Pups and Hounds
- 42 ΔZ Initiates Gallaudet's First Lady
- 43 Directory
- 45 Museum Display at Convention
- 46 Colonial Williamsburg
- 47 Stepping Out with Delta Zeta
- 48 New Chapters for Delta Zeta

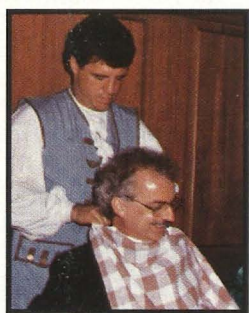


ABOUT THE COVER

These are some of the faces from the 1989 convention at Williamsburg, Virginia, June 30 - July 5. The story starts on page 5.



Heritage and Horizons



More than 500 Delta Zetas arrived in Williamsburg, Virginia, on June 29 and 30 for the 39th National Convention at the Williamsburg Lodge. From as far away as Washington State, delegates arrived by cars and planes (at three different airports) to convene for Delta Zeta's first convention in historic Virginia.

Madrigal singers, a magician, a fife and drum corps and a mammoth "groaning board" meal set the stage for the official opening banquet.

Following the viewing of the film, *The Story of a Patriot*, and the processional of National Council, Past National Officers and other Delta Zeta dignitaries, convention-goers began an authentic Virginia meal featuring peanut soup, fish and rice, roast beef, chicken, green beans, pumpkin fritters, corn pudding and salad, accompanied by Virginia cider and sour cherry trifle.

Parading waiters, dressed in colonial attire, criss-crossed the ballroom with the proclamation "announcing the roast beef." Delta Zetas, with checkered napkins around their necks, then cheered the award winners and listened to

the keynote address by Dr. Patrick Brown, Alpha Tau Omega, President of the National Interfraternity Conference.

National Treasurer Anne Marie Jones Gavin presided at the banquet and National President Norma Minch Andrisek introduced Dr. Brown. Pat Brown spoke of the importance of Greek-letter organizations and emphasized how they had all started at Williamsburg when Phi Beta Kappa was founded at William and Mary College in 1776. He stressed the importance of being proud of being Delta Zetas, but also being proud of being Greeks.

The first award presented was the Alice Huenefeld CCD Award which is presented biennially to the most outstanding College Chapter Director. This year the recipient is Denise Williams McCullars, Auburn-BE, CCD for Lambda Gamma chapter at Jacksonville State University in Alabama.

National Historian Florence Hood Miner introduced the seven 1989 FHM Award winners and presented the diamond shaped gold pendant to the lone recipient attending convention, Kathryn Kendo of West Virginia Tech-III chapter.

Following the banquet an informal reception for National Council and Past National Officers was held in the North Gallery.

26 New Chapters

Undoubtedly one of the best of

times for Delta Zeta, 26 college and alumnae chapters installed since last convention were introduced and seated during the first business meeting on Saturday morning.

The 16 college chapters are Northeastern University- ΞY , Boston Massachusetts; Lehigh University- $\Xi \Pi$, Bethlehem, Pennsylvania; Pennsylvania State University- $\Gamma \Delta$, State College, Pennsylvania; Ohio Wesleyan University- ΛP , Delaware, Ohio; Eastern Michigan University- $\Gamma \Sigma$, Ypsilanti, Michigan.

And Depauw University- Δ , Greencastle, Indiana; Purdue University- $\Xi \Omega$, West Lafayette, Indiana; San Diego State University- $\Gamma \Theta$, San Diego, California; Duquesne University- $K \Xi$, Pittsburgh, Pennsylvania; Millersville University- ΞT , Millersville, Pennsylvania.

And University of Missouri/Kansas City- $\Xi \Phi$, Kansas City, Missouri; St. Mary's University-OA, San Antonio, Texas; North Georgia College- $\Xi \Xi$, Dahlonega, Georgia; Oklahoma State University-AE, Stillwater, Oklahoma; University of North Carolina- $\Xi \Sigma$, Chapel Hill, North Carolina.

Grand Valley State College- $\Xi \Psi$ in

A Message from the Governor

I would like to take this opportunity to welcome the convention delegates and their guests to the Commonwealth of Virginia.

Virginia is proud to be hosting the 39th National Convention of Delta Zeta Sorority, which brings together women committed to lasting friendships, the pursuit of knowledge and the promotion of moral and social culture.

You have my best wishes for an enjoyable and memorable National Convention.

Gerald L. Baliles
Governor

Allendale, Michigan, will be installed in the fall.

Alumnae chapters are Lansing-East Lansing, Michigan; Fox Valley, Illinois; Hinsdale Area, Illinois; Old Fort, Arkansas; Chicago Farwest, Illinois; New Haven County, Connecticut; Winston-Salem, North Carolina; Fresno Area, California; Concho Valley, Texas, and Greater Kanawha Valley Area, West Virginia.



Collegiate Awards

National Vice President of Membership Marvona Easley Tavlin presided at the "Star Spangled Delta Zeta" collegiate awards luncheon at noon on Saturday. Bursts of red, white and blue, with silver dazzled convention-goers as they filed into the luncheon to the cadence of patriotic tunes.

Silver dominated the color scheme when National Chairmen and National Council representa-

tives began handing out silver awards for activities, newsletter, sorority education, enrichment, social and "Choices," academics and membership. The firecracker of a countdown for quota ended with a rousing hurrah for LSU-Σ for 29 consecutive years of quota. A special salute also went to those 22 chapters who had maintained both quota and total for the past biennium.

Afternoon workshops included past Chapter President Jenny Grogan's narrative of The Alpha Story, Legal Counsel R. Dean Jollay's program on risk management, including the legal aspects of hazing, and Craig Peterson's upbeat program on pledging, involving areas of time management and study skills in addition to education and responsibility.

Alumnae workshops were geared to giving, computer printouts and how to organize new alumnae chapters.



Initiation Banquet

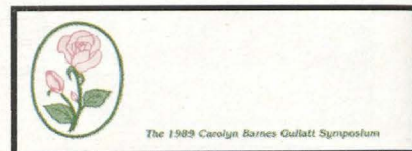
On Saturday night Delta Zetas focused on believing and cherishing sisterhood. Hundreds dressed in white filled the Virginia Room to greet the initiation candidate, Gallaudet's First Lady Linda Kephart Jordan.

National Secretary Sandra McAlister Nesbitt presided over the evening's events. Special guests included Maureen Syring, president of Delta Gamma; Dr. I. King Jordan, president of Gallaudet University and husband of the convention initiate and Craig Peterson, convention workshop presenter and speaker for the evening.

The 1989 Grace Mason Lundy Awards to outstanding seniors were presented by former GML winners, National Directors Merry Westbrook Adamcik and Lynnda Wolf Hoefler. Caryatides for chapter pledge programs were presented by Sandra

Nesbitt as Director of Pledge Education.

Special music was provided by the Delta Zeta Singers, directed by Music Chairman Carol Carson Konet. Following the banquet, the initiation service was conducted by Province XXV (Virginia) collegians under the supervision of Ritual Chairman Karen Kind Veitch.



Symposium

The second Carolyn Barnes Gullatt Symposium featured National President of Delta Gamma Maureen Syring who addressed the convention about positive PR for the Greek system. Mrs. Syring spurred interest in finding out more about improving public relations.

By informing her audience that less than two percent of the population of the United States and Canada are Greeks, she noted that three percent think the Greek system should be abolished. That leaves 95% of the population undecided about the Greek system. To improve relations with this 95%, sororities and fraternities need to build up a "savings account" of good PR.

Delta Zetas were reminded that the First Amendment to the Constitution gives Greeks the right to exist; the Fourth Amendment allows Greeks to keep private papers such as rituals, private; the 14th Amendment prohibits states from infringing upon the First and Fourth Amendments, the Title IX exempts fraternities and sororities from having to admit the opposite sex to membership.

She stressed that action is equally important in positive public relations. In the Greek world, every positive or negative action by any one group reflects positively or negatively on all others. To the public, Greek is Greek; they make no differentiation between fraternities and sororities.



Denise Williams McCullars, Auburn-BE, CCD at Jacksonville State, accepted the Alice Huenefeld CCD bracelet from National Director Linda Hoefer.



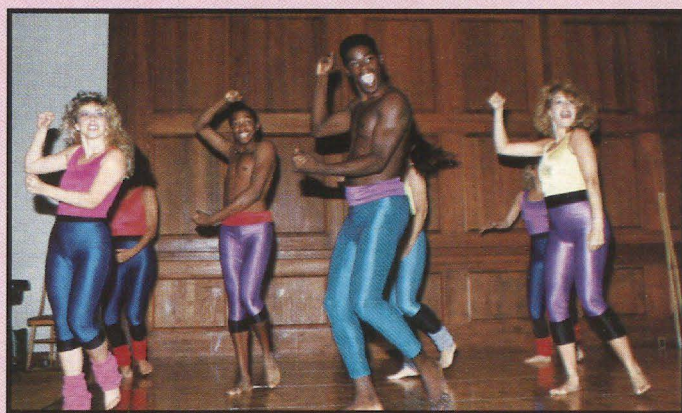
Toastmistress Carolyn Gullatt and National President Norma Andrisek with LAMP Editor Gwen McKeeman (center).



Dr. I. King Jordan, President of Gallaudet, thrilled his audience with his lively narrative about the deaf and deaf education.



"They Say I'm Deaf"



Gallaudet dancers entertained Delta Zetas and their Panhellenic guests.



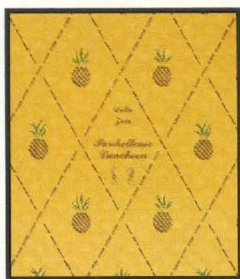
National President of Delta Gamma Maureen Syring



President Norma Andrisek presented Anne Marie Gavin with a plaque recognizing 12 years of service on the National Council.



Craig Peterson spoke at the Initiation Banquet.



Panhellenic Luncheon

"The pineapple is speared on the Delta Zeta door and we welcome our Panhellenic friends."

National Panhellenic Conference Delegate Carolyn Gullatt opened the Panhellenic luncheon with this greeting taken from the colonial custom of using the pineapple as a symbol of hospitality. Tables were decorated with pineapples in baskets. National Vice Presidents Marvona Tavlin and Deanna McKinnon introduced the flags of the 26 NPC member groups.

Carolyn announced that Delta Zeta, in conjunction with NPC as a part of the Projects Future program for National Panhellenic, is initiating a public relations grant to be used to recognize outstanding faculty members throughout the United States. College Panhellenics will recognize outstanding faculty locally and submit nominees for national recognition. A generous monetary grant has been established by Delta Zeta to provide a cash honorarium for this recognition.

National President Norma Andriek then presented a special award to *LAMP* Editor Gwen McKeeman. A walnut plaque with photographs from various *LAMP* issues on it, the inscription said, "Neither deadlines posed, nor printing woes, keep this lady from the swift completion of her appointed task."

Carolyn then introduced the Gallaudet Dancers, a company first formed in 1955, and gave the audience a new way to applaud them — open palm hands waved side to side.

The seven dancers, two men and five women, enchanted the audience with their renditions of popular songs and humorous mime. "They Say I'm Deaf," written by a former

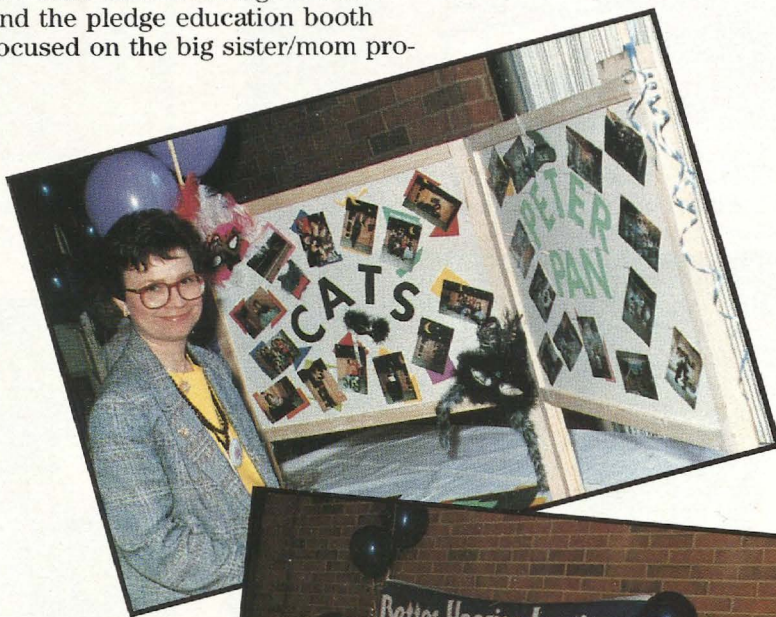
student at Gallaudet, was interpreted by the group. As Delta Zetas and their Panhellenic guests applauded silently, the dancers signed "I Love You," to end the program.

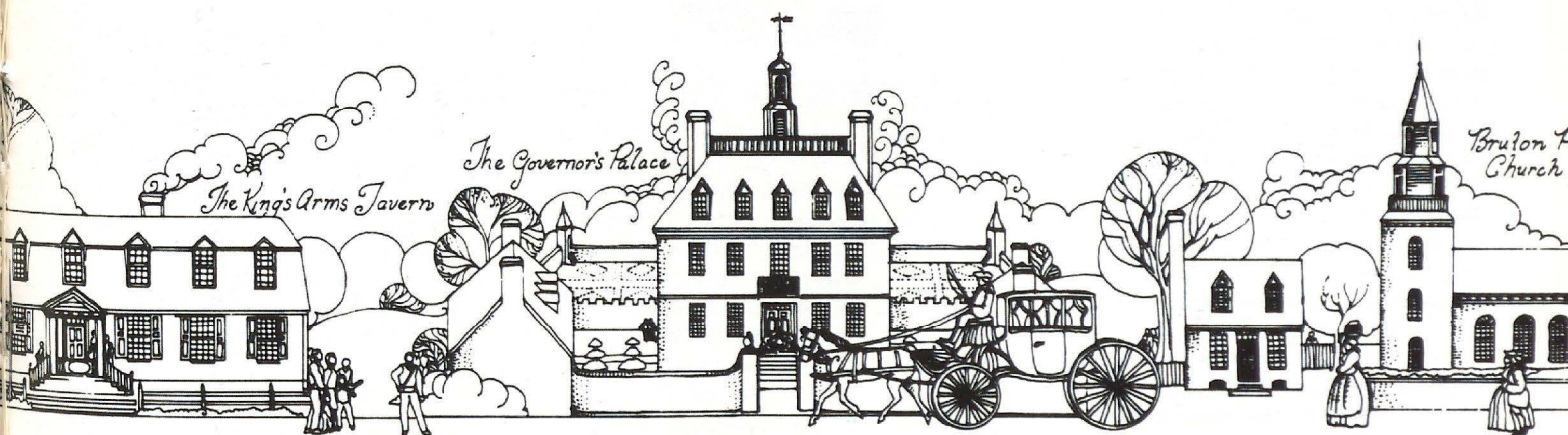
Delta Zeta Fair

The Delta Zeta Fair, promoting every aspect of the sorority was presented on Saturday afternoon, alternating with workshops. This first-time convention fair featured two rush skits showing on video and the pledge education booth focused on the big sister/mom pro-

gram with lots of material to gain ideas.

The Historical Museum featured a model of the museum and never-before-seen pictures. *The LAMP* booth displayed a copy of Volume 1, Number 1 of *The LAMP* with magazines through the years and helpful suggestions on Do's and Don'ts in pictures submitted for publication. New ideas for newsletters and new clip art supplies vanished rapidly.

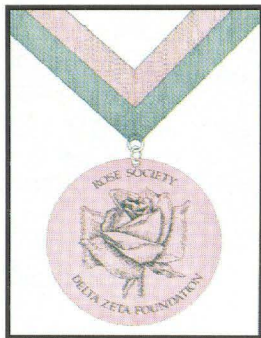




Delta Zeta National Convention Williamsburg Virginia 1989

Gallaudet University, House Ear Institute and the Better Hearing Institute were all represented, as were other Delta Zeta programs.

Afternoon workshops included Professional Development with published author Mary Wilkes sharing with the group what members have to offer the professional world as women.



Medallion Dinner

The Foundation's first Medallion Dinner honored Delta Zetas both collectively and individually for "giving graciously of what is mine." Toastmistress Patricia Canady Rosser introduced Gallaudet University President Dr. I. King Jordan who delivered a lively address recapping the "Gallaudet Protest," the history of ΔΖ and Gallaudet, the demographics of the deaf and ways in which people can advocate for the deaf.

In sharing his impressions of the March 1988 protest, he stressed that the protest became a vehicle in the nation's struggle for civil liberties for the handicapped. By citing a campus student leader, Jordan explained "what" he had to say was more important than "how" he had to say it. Dr. Jordan predicted the increase in deaf persons to reach one in seven by 2020; encouraged listeners to think "a deaf person can do that" when hiring, and urged help in communities to change attitudes on what the deaf can do, not on what they cannot do.

Philanthropic awards and scholarships were announced and will be featured fully in the winter issue of *The LAMP*.

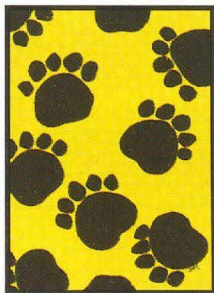
A memorial to Dick Andrisek, husband of National President Norma Andrisek, was announced.

The National Council has established the John Richard Andrisek Education Fund "in memory of John Richard Andrisek, leader, teacher, educator and administrator." The fund will serve many objectives — it could fund a special manual, a series of articles on relevant issues or a scholarship. Dick's sharing and commitment to excellence inspired many programs and projects for Delta Zeta, such as the Values program introduced at this convention. Through this educational fund, Dick's goals and missions will live on.

Workshops

Monday morning workshops featured for collegians, college chapter directors and province collegiate directors a most timely discussion on sexually transmitted diseases, including AIDS. The workshop was conducted by Robin J. Sawyer, professor at the University of Maryland. A very poignant video on AIDS which Mr. Sawyer wrote and produced was shown. This video dealt with a young college freshman who contracted the virus after her first serious relationship.

Alumnae workshops included ways and means and brainstorming.



Pups and Hounds

National Vice President of College Programs Phyllis Snape Favorite presided over the traditional *Dog-gone! Delta Zeta!* luncheon. Before the parade of pups and hounds, special presentations were made by Sandra Nesbitt for the Sisters in Scholarship magazine program. The winner is St. Louis alumnae chapter. Winning the magazine raffle were Whittier-Covina (California) alumnae chapter, a \$500 check, and Franklin College-Ψ chapter, receiving a \$1,000 check. The magazine program presented a \$14,021.12

check to the Delta Zeta Education Fund.

(Pups and Hounds is difficult to describe in a paragraph or two in a convention story and thus your editor has opted to present a feature story elsewhere in this issue!)

Monday afternoon was a "free afternoon" and conventioners took the opportunity to visit Colonial Williamsburg, taking the convention photographer and the video photogs along . . . thus you have a picture story on how the afternoon went!

Stepping Out with ΔΖ

This year's lively fun night, planned by National Directors Merry Adamcik and Lynnda Hoefler, featured Delta Zetas kicking up their heels in their favorite regional fashion.

Pizza, tacos, salads, hamburgers and sundaes provided a sumptuous spread for a fix-it-yourself feast. Doc Holiday and the Sole Survivors band provided "the beat" from the first note until the last. Delta Zetas filled the entire Virginia room to dance, clap and cheer non-stop to the rhythms of their favorite songs.

Occasional short breaks were a signal for time to announce door prize winners. Then Delta Zetas from Virginia danced and taught everyone the Virginia Reel, the dance early Williamsburg revelers would have enjoyed. Province XXI (the Carolinas) danced the Shag, a soft jitterbug revival of the 80's. Southwest ΔΖs entertained as Reggae Cowboys.

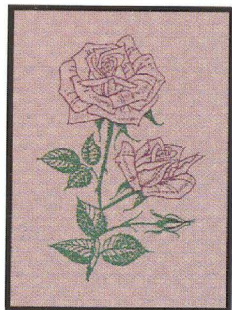
Everyone was asked to commit to memory a new rush skit, *Delta Zeta Cruise*, which focused on remembering names and a warm invitation to the rushee emphasizing the special qualities that would make her the person who should choose to be a Delta Zeta.

And the whole room rocked when Field Representatives and the National Council "shook it out" on stage. Indeed, stepping out at Delta Zeta fun night provided three special hours for every Delta Zeta to shine!

Happy Birthday, America

Tuesday, July 4, 1989, Delta Zeta's

Convention Singers wished a rousing "Happy Birthday" to America with their production, *Salute to America*. The razzle-dazzle performance began with *Fifty Nifty United States*. As the roll call of states began, a Delta Zeta from each state stepped forward to salute. The singers then performed *Freedom; Give Me Your Tired, Your Poor* and *Which Way America?* Dressed in red, white and blue, they performed a lively "step sing" number, up and down the stairs in the auditorium. The audience then joined in the *Pledge of Allegiance* and the singing of *America the Beautiful* and *This is My Country*.



Rose Luncheon

A rose by any other name would be as sweet, but at this luncheon some of the roses were golden as alumnae were honored at the third Rose Luncheon, Vice President of Alumnae Deanna Alleman McKinnon presiding. Awards were presented to alumnae chapters for province and national cooperation, programs, alumnae-collegiate relations, public relations, ways and means, newsletter, alumnae chapter achievement, outstanding chapter excellence and alumnae chapter excellence.

National President Norma Andrišek made a special presentation to National Treasurer Anne Marie Gavin, retiring from Council after twelve years of elected tenure.

Achoth Awards went to 16 alumnae for long and dedicated service at the local level, and special Diamond in the Flame recognition for 75 years of membership went to three — Lena McNeel Anderson, Δ Ethel Skerriitt Hall, BT and Mareta Havens, K.

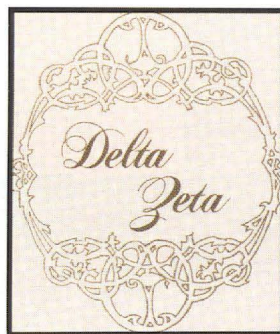
Six Golden Rose members were
Delta Zeta • Fall 1989

present to receive their 50-year membership certificates and Golden Roses.

Afternoon workshops featured the presentation of the new Values program which encompasses academics, enrichment and philanthropies, but focuses primarily on the intangible spirit of Delta Zeta.

The program emerged when numerous requests from college chapters brought to the surface the need to update manuals. This, in turn, led to a recognition of a need to disseminate the "intangibles," the values Delta Zeta seeks to instill in her members.

The program provides redesigned manuals for an officer training guide with a self-evaluation for the chapter. A facilitator will implement the program for each chapter. Videos will help convey the essence of the intangibles so all will believe and understand these values that Delta Zetas profess in the Creed and Constitution.



Installation Banquet

National President Norma Andrišek presided at the installation banquet. Glowing faces of Delta Zetas, many of whom had never met each other before last week, reflected clearly what Delta Zeta sisterhood is all about.

Tiered lucite centerpieces with white votive candles softly illuminated the tables. Silk flowers of pastel pinks and burgundy accented the pedestals.

Following a formal procession of Past National Officers, National Council members and newly-elected Council members, the Convention Singers performed a final time with a collection of Delta Zeta songs including *One Moment in Time*,

The Wind Beneath My Feet and *Until We Meet Again*.

Prestigious awards were presented for outstanding college and alumnae chapter achievement, concluding with the Council Award. This year this award went to Northeast Missouri State University-ΔΣ chapter at Kirksville, Missouri.

National Council

The National Convention has elected Marvona Easley Tavlin, Southwestern Oklahoma State-EA, as National President.

Elected to serve as national vice presidents are Sandra McAlister Nesbitt, Auburn-BE, membership; Deanna Alleman McKinnon, Texas-AT, alumnae affairs, and Phyllis Snape Favorite, Cincinnati-E, collegiate affairs. Merry Westbrook Adamcik, Houston-ΔΘ, is secretary and Lynnda Wolf Hoefler, Kent-State-ΓK will serve as treasurer. Patricia Canady Rosser, Georgia Southern-IN is a director and joining National Council as directors for the first time are Carol Selway Bertz, Ohio State-Θ and Jennifer Plenge, University of Kentucky-AΘ.

The installation of the new Council was conducted by retiring President Norma Andrišek. Joining the elected Council will be appointed officers Norma Andrišek as Past National President and Carolyn Gullatt as NPC Delegate.

Special entertainment concluding the evening was a video highlight of the week's activities. The convention favor for all attendees was a Delta Zeta lucite clock to remind them of the "wonderful time" they had at the 39th National Convention. It was then announced that Delta Zeta will return to Innisbrook at Tarpon Springs, Florida, for the 1991 convention.

With the singing of *Convention Lights*, National President Marvona Tavlin formally adjourned the Heritage and Horizons convention of 1989.

Editors Note: Much of the foregoing material was contributed by the LAMPKIN, Diane Jones Skelton, editor.



The 1989-1991 National Council: Back row, l to r, Lynnda Wolf Hoefler, Carol Selway Bertz, Phyllis Snape Favorite, Merry Westbrook Adamcik, Jennifer Penge, Patricia Canady Rosser, Deanna Alleman McKinnon. Seated, l to r, Carolyn Barnes Gullatt, Marvona Easley Tavlin, Norma Minch Andrisek, Sandra McAlister Nesbitt.



National President Norma Andrisek is escorted by National Music Chairman Carol Carson Konet.



Norma Andrisek pins the National President's badge on Marvona Tavlin.



Province Alumnae Directors with NVP-Alumnae Deanna McKinnon.



Province Collegiate Directors with PCD Coordinator Merry Adamcik.

4 Years

Fairmont State-EI
Ashland-ΘΨ
Southern Illinois-ΓΩ
Iowa-I
Tarleton State-ΕΝ
Tennessee-AB
Cal State/L.A.-ΘΡ

5 Years

Muhlenberg-ΞΙ
Central Missouri State-ΕΓ
Alabama/Huntsville-ΑΚ

6 Years

Marshall-ΔΥ
Washington-K
Texas/Arlington-ΙΨ

7 Years

Robert Morris-ΕΧ
Northeast Missouri State-ΔΣ

8 Years

Baldwin Wallace-ΓΑ
Virginia Polytechnic-KΘ

10 Years

Southern Indiana-AB
Louisville-ΓΒ

11 Years

Bowling Green-ΓΤ
Georgia State-ΔΔ
Auburn-ΒΞ

12 Years

Rhode Island-ΓΑ
Indiana-E
Cal State/Long Beach-ΔΑ
Virginia-ΛΔ

14 Years

Iowa State-BK
Stephen F. Austin-ZΨ
Texas A & M-ΑΞ
North Carolina/Charlotte-KΦ

21 Years

Nicholls State-KA

23 Years

Nebraska Wesleyan-BΓ

25 Years

Houston-ΔΘ

29 Years

LSU-Σ

TOTAL CERTIFICATES

Clarkson-ΞΡ
Connecticut-ΓΒ
Massachusetts-ΕΑ
New Hampshire-ΘΓ
Rhode Island-BA
Drexel-EZ
Kutztown-KP
Muhlenberg-ΞΙ
Millersville-ΞΤ
Shippensburg-KΨ
Clarion-EΘ
Robert Morris-ΕΧ
Fairmont-EI
Shepherd-KM
Ashland-ΘΨ
Baldwin Wallace-ΓΑ
Bowling Green-ΓΤ
Kent State-ΓΚ
Wright State-KI
Youngstown State-KX
Central Michigan-ΓΨ
Southern Indiana-AB
Indiana-E
Northern Illinois-ΓΡ
Northwestern-AA

Western Illinois-EO

Eastern Illinois-ΓΝ
Eureka-Π
Illinois State-AP
Southern Illinois-ΓΩ
Creighton-ΘΗ
Iowa State-BK
Nebraska Wesleyan-BΓ
Central Missouri State-ΕΓ
Missouri/Kansas City-ΞΦ
Northeast Missouri State-ΔΣ
Northwest Missouri State-ΕΡ
William Jewell-ZP
Denver-P
Cal State/Long Beach-ΔΑ
Cal State/L.A.-ΘΡ
Nevada/Las Vegas-ΙΦ
Cal State/Chico.-ΔΧ
Washington-K
New Mexico State-ΓΞ
North Texas-KZ
Tarleton State-ΕΝ
Texas/Arlington-ΙΨ
West Texas State-ZZ
Houston-ΔΘ
Southwest Texas State-ΙΑ
Stephen F. Austin-ZΨ
Texas A & M-ΑΞ
Louisiana State-Σ
Nicholls State-KA
Middle Tennessee State-Π
Tennessee-AB
Kentucky-ΑΘ
Louisville-ΓΒ
Morehead State-KT
Northern Kentucky-KB
East Carolina-ZA
Lenoir-Rhyne-ZΞ
North Carolina/Charlotte-KΦ
North Carolina/Wilmington-ΞΘ
Western Carolina-ΘΙ
Georgia College-ΑΠ
Georgia-ZΠ
Georgia State-ΔΔ
Alabama-ΑΓ
Alabama/Huntsville-ΑΚ
Auburn-ΒΞ
Samford-ΑΙΙ
Florida State-ΑΣ
Tampa-ΔΒ
Radford-ΞΔ
Virginia Polytechnic-KΘ
Central Arkansas-ΕΕ

QUOTA AND TOTAL FOR 2 YEARS

Rhode Island-BA
Muhlenberg-ΞΙ
Indiana-E
Illinois State-AP
Creighton-ΘΗ
Iowa State-BK
Nebraska Wesleyan-BΓ
Northeast Missouri State-ΔΣ
William Jewell-ZP
Cal State/Long Beach-ΔΑ
Cal State/L.A.-ΘΡ
Washington-K
Southwest Texas State-ΙΑ
Stephen F. Austin-ZΨ
Texas A & M-ΑΞ
Nicholls State-KA
Louisville-ΒΓ
North Carolina/Charlotte-KΦ
Georgia-ZΠ
Alabama-ΑΓ
Auburn-ΒΞ
Virginia Polytechnic-KΘ



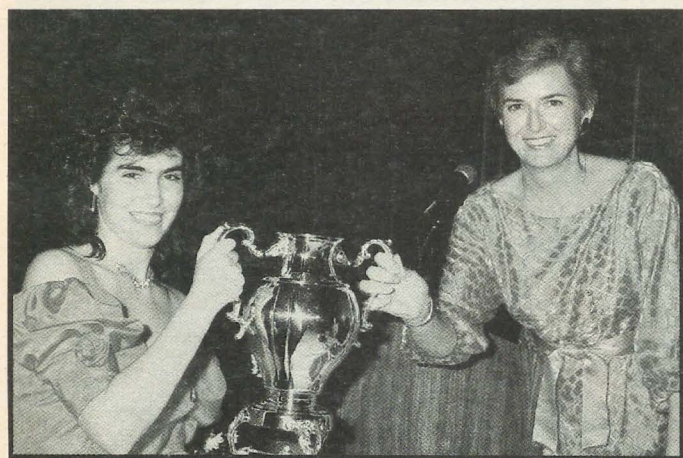
Anne Marie Gavin presented the See Loving Cup to North Texas State-KZ and to Kent State-ΓΚ. Above, l to r, PCD Diane Krause, CCD Dawn Baldwin, President Susan Brauer of Kappa Zeta. Below, PCD Sandra Sebrill Bailey, President Heather Hoffman and Kent Alumnae President Jane Evans Auld.



Sigma at Louisiana State has made quota for 29 consecutive years. L to r, PCD Ginger Bryant, CCD Debbie Musso, Vice President of Membership Marvona Tavlin and President Jamie Seeber.



The Myrtle Graeter Hinkly award for outstanding large alumnae chapter was presented to Orange County, California, by Deanna McKinnon. L to r, PAD Barbara Phillippi Lancaster and President Linda Brueggeman Seymour.



Susan Mease presented the Margaret Huenefeld Pease Award for outstanding small alumnae chapter to Arlington Texas. The award was accepted by PAD Colette Thomas Bennett.

Alumnae Awards

ALICE HUENEFELD OUTSTANDING CCD AWARD

Denise Williams McCullars, BE

MARGARET HUENEFELD PEASE COUNCIL AWARD

Arlington, TX

MYRTLE GRAETER HINKLY COUNCIL AWARD

Orange County, CA

ACHOTH AWARDS

Karen Starner Jacobson, IO
Marjorie Kanouse Fink, ΔΣ
Dr. Mary Broadbent Platz, E
Diane Calongne Veith, BY
Doris Jansen Gillespie, K
Grace Hester McKnight, AX
Blanche Sizelove Wilking, Ψ
Lorraine Yotka Teyssier, ΓΔ
Phyllis Howell, ΓΙ

Karen Severloh Moffitt, IO
Lois Absher Porter, ΔΣ
Shirley Christopher Hebert, Σ
Sandra Menn Miller, IA
Louise Parker Bingham, ΔO
Barbara Garman, ZZ
Martha Henry Burde, A

ORDER OF THE GOLDEN ROSE

Alice Jordan Matthews-Craig, Σ
Rozella Fuguitt Eure, ΔΣ
Ida Marie Carter Nelson, OE
Jean Nelson Stockham, II
Rena Charnley Thomson, Γ
Lauan Boynton Garnjost, M

ORDER OF THE DIAMOND IN THE FLAME

Lena McNeel Anderson, Δ
Ethel Skerritt Hall, BT
Mareta Havens, K

CHAPTER EXCELLENCE

Pasadena Foothill, CA
Berea, OH
Orange County, CA
San Fernando Valley, CA
Shreveport, LA
Arlington, TX

OUTSTANDING CHAPTER ACHIEVEMENT

Stephenville, TX
Denver, CO
Fairfield County, CT
San Francisco Bay Cities, CA
Twin Cities, MN
Bayou (Thibodaux), LA

CHAPTER ACHIEVEMENT

Cleveland Eastside, OH
Huntsville, AL
Houston, TX
Greater Seattle, WA
Baton Rouge, LA
Columbus, OH

PROVINCE AND NATIONAL COOPERATION

Fairfield County, CT
Twin Cities, MN
San Francisco Bay Cities, CA
San Fernando Valley, CA
Cypress Creek, TX
Shreveport, LA

Certificates

Arlington, TX
Omaha, NE
Orange County, CA
Stephenville, TX
Baton Rouge, LA
Huntsville, AL

PROGRAMS

Berea, OH
Grand Rapids, MI
Greencastle, IN
Lawrence, KS
San Fernando Valley, CA
Ft. Walton Beach, FL

Certificates

Fairfield County, CT
Twin Cities, MN
Denver, CO
Portland, OR
San Francisco Bay Cities, CA
Shreveport, LA

WAYS AND MEANS

Arlington, TX
Pasadena Foothill, CA
Orange County, CA
Oklahoma City, OK
Greater Seattle, WA
Fairfield County, CT

Certificates

Twin Cities, MN
Indianapolis-South Suburban, IN
Canton-Massillon, OH
Cleveland-Eastside, OH
Honolulu, HI
Los Angeles, CA

NEWSLETTERS

Superior

Cleveland Eastside, OH
Fort Collins, CO
San Antonio, TX
Pasadena Foothill, CA
Phoenix, AZ
Berea, OH

Excellent

Greater Kansas City, MO
Orange County, CA
Metro Boston, MA
Greater Seattle, WA
Stephenville, TX
Ft. Walton Beach, FL

ALUMNAE-COLLEGIATE RELATIONS

Berea, OH
Denver, CO
Pasadena Foothill, CA
Baton Rouge, LA
Bayou (Thibodaux), LA
Arlington, TX

Certificates

Kent, OH
Houston, TX
Columbus, OH
Palm Beach, FL
Stillwater, OK
Wichita, KS

PUBLIC RELATIONS

Columbus, OH
Orange County, CA
Stephenville, TX
Houston, TX
Bayou (Thibodaux), LA
Shreveport, LA

Certificates

Ft. Collins, CO
San Francisco Bay Cities, CA
San Fernando Valley, CA
Pasadena Foothill, CA
Pensacola, FL
Stillwater, OK

PHILANTHROPY

Huntsville, AL
Dallas, TX
Orange County, CA
San Fernando Valley, CA
Ruston, LA
Los Angeles, CA

Certificates

South Bay, CA
Arlington, TX
Pasadena Foothill, CA
Whittier-West Covina, CA
Long Beach, CA
Santa Monica, CA

SISTERS IN SCHOLARSHIP

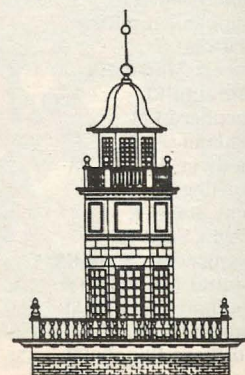
St. Louis, MO

Certificate

Detroit Metro, MI
Shreveport, LA

\$500 Drawing

Whittier-West Covina, CA





Achoth Award winners present at Convention are shown with Norma Andrisek and Deanna McKinnon. L to r, Louise Parker Bingham, Barbara Garman, Doris Jansen Gillespie, Karen Severloh Moffitt and Dianne Calogne Veith.

Convention Pictures

Pictures taken at convention but not displayed may be ordered from Jim Aquino, Advanced Photographic Concepts, Inc., 1102 Old Mill Pond Road, Palm Harbor, FL 34683. Prices: 4x6-\$3.50, 5x7-\$6.50, 8x10-\$9.50. Add \$3.75 for postage and handling.

- 36-1)
- 36-2) Agler Presidents Award — UMass
- 41-32)
- 36-3 Fariss Award — Cal State/Los Angeles, Pasadena Foothill Alumnae

- 36-5)
- 36-6) Crest Awards
- 36-8 Schmitt Award — Nebraska Wesleyan

- 36-15)
- 36-16) Council Award — NE Missouri State

Installation Pictures

- 36-17 Plenge, Rosser, Bertz
- 36-18 Council
- 36-19 McKinnon, Nesbitt, Andrisek
- 36-20 Hoefer, Favorite, Andrisek
- 36-28)
- 36-29) Tavlin, Andrisek
- 36-30)
- 36-21 Plenge, Rosser, Bertz, Hoefer, Andrisek
- 36-27 Plenge, Rosser
- 36-32)
- 36-33) Tavlin
- 36-9 See Loving Cup — North Texas
- 36-10 See Loving Cup — Kent State
- 36-11)
- 36-12) Founders — Louisville
- 36-13)
- 36-14) Founders — Cal State/Long Beach
- 37-6)
- 37-8) Achoth Awards
- 37-10 "Funny" Convention Committee
- 37-14 Convention Committee

- 37-15)
- 37-16)
- 37-17) PADs and McKinnon
- 37-18)
- 37-23)
- 37-24) Province XIV
- 37-26)
- 37-28 Havener, Beets, Bertz, Wills, Cravens
- 37-30)
- 37-33) Province XX
- 37-19)
- 37-20) Province II
- 37-37)
- 38-3) Province IX
- 38-5)
- 38-8)
- 38-9) Fielders and Former Field Reps
- 38-10)
- 38-11 "Funny" Field Reps
- 38-13)
- 38-14) Field Reps
- 38-15)
- 38-18)
- 38-20) Ciervo, O'Halloran, Jewhurst
- 38-21)
- 38-22) P.E.O.
- 38-25)
- 38-26)
- 38-27) Province IV
- 38-28)
- 38-31)
- 38-32) Province XXV
- 39-10 Patterson, Guild — Fun Night
- 39-12 Fielders — Fun Night Skit
- 39-14 Albrecht, Throgmorton — Fun Night Skit
- 39-18 Kathryn Kendo and friend — Fun Night

- 39-19 Cravens, Jewhurst, O'Halloran — Fun Night
- 39-21 Gullatt, Fioravante, Fun Night
- 40-1)
- 40-2) 1989-91 National Council
- 40-3)
- 40-4)
- 40-5) The Tavlins
- 40-6)
- 40-7)
- 40-8) The Guilds
- 40-9)
- 40-10)
- 40-11) Lois Coats
- 40-13 Jewhurst and friend
- 40-12 O'Halloran and friend

Installation Banquet Processional

- 41-2 Fenton
- 41-3 Barth
- 41-4 Guild
- 41-5 Miner
- 41-6 Devereaux
- 41-7 McKeeman
- 41-8 Bass
- 41-9 Horton
- 41-10 Silversteen
- 41-11 Wilt
- 41-12 Menges
- 41-13 Bertz
- 41-14 Plenge
- 41-15 Mease
- 41-16 Rosser
- 41-17 Hoefer
- 41-18 Adamcik
- 41-19 Gavin
- 41-20 Nesbitt
- 41-21 Favorite
- 41-22 McKinnon
- 41-24 Gullatt
- 41-25 Tavlin
- 41-26 Andrisek
- 41-27 Garnjost, Golden Rose
- 41-30 Pease Award — Arlington, TX
- 41-31 Hinkly Award — Orange County, CA
- 42-2 Past President's Plaque, Tavlin, Gullatt, Andrisek
- 42-3)
- 42-4)
- 42-5) Province XII
- 42-6)
- 36-35)
- 36-36) Convention Singers
- 36-37 Past President's Plaque, Gullatt, Andrisek
- 37-3 Jean Stockham
- 37-4 Stockham, Miner
- 37-5 Quin, Nelson



#1 GPA ON CAMPUS AMONG SORORITIES

FALL TERM 1988

Clarkson-EP
Massachusetts-EA
Trenton State-AA
Kutztown-KP
Muhlenberg-EI
Indiana of PA-IF
Millersville-ET
Robert Morris-EX
Fairmont State-EI

Glenville State-ΘΞ
Findlay-ΘT
Youngstown State-KX
Southern Indiana-AB
Carroll-ΓΘ
Wisconsin/Whitewater-EK
Western Illinois-EO
Eureka-Π
Nebraska Wesleyan-BT

N.W. Missouri State-EP
William Jewell-ZP
Ft. Hays State-ΔΩ
West Texas State-ZZ
Pan American-ΘΘ
Nicholls State-KA
Northern Kentucky-KB
Atlantic Christian-ΘΩ

CHAPTERS ABOVE ALL WOMEN'S AVERAGE

Clarkson-EP
Maine-AY
Massachusetts-EA
Lehigh-ΞΠ
Indiana of PA-ΓΦ
Millersville-ET
Shippensburg-KΨ
Robert Morris-EX
Marshall-ΔΥ
Bowling Green-ΓT
Findlay-ΘT
Southern Indiana-AB

Indiana-E
Western Illinois-EO
Eureka-Π
Creighton-ΘH
Nebraska Wesleyan-BT
Central Missouri State-ET
N.E. Missouri State-ΔΣ
N.W. Missouri State-EP
William Jewell-ZP
Denver-P
Ft. Hays State-ΔΩ
Stephen F. Austin-ZΨ

New Orleans-ΘK
Nicholls State-KA
Memphis State-ΓI
Northern Kentucky-KB
Appalachian State-ΛΦ
Lenoir-Rhyne-ZΞ
UNC/Chapel Hill-ΞΣ
South Carolina-BA
Georgia-ZII
Florida State-ΑΣ
Tampa-AB
Longwood-ET

CHAPTERS ABOVE ALL SORORITY AVERAGE

Clarkson-EP
Massachusetts-EA
Muhlenberg-EI
Indiana of PA-ΓΦ
Millersville-ET
Pittsburgh/Johnstown-AE
Duquesne-KΞ
Pittsburgh-O
Robert Morris-EX
Fairmont State-EI
Glenville State-ΘΞ
Bowling Green State-ΓT
Findlay-ΘT
Ferris State-ZN
Western Michigan-ΓII

Grand Valley State colony-ΞΨ
Southern Indiana-AB
Western Illinois-EO
Illinois State-ΔP
Southern Illinois-ΓΩ
Creighton-ΘH
Nebraska Wesleyan-BT
Central Missouri State-ET
Missouri/Kansas City-ΞΦ
N.E. Missouri State-ΔΣ
N.W. Missouri State-EP
Denver-P
Ft. Hays State-ΔΩ
Northern Colorado-ΔΞ
Nevada/Las Vegas-IF

New Mexico State-ΓΞ
Texas/Arlington-IV
Nicholls State-KA
Northern Kentucky-KB
Appalachian State-ΛΦ
Atlantic Christian-ΘΩ
East Carolina-ZΛ
Lenoir-Rhyne-ZΞ
Winthrop-ΔΣ
Georgia-ZII
Alabama/Huntsville-AK
Florida State-ΑΣ
Tampa-AB
Longwood-ET
Henderson State-EΠ

WINTER QUARTER 1989

#1 GPA ON CAMPUS AMONG SORORITIES
Moorhead-ΘN
Denver-P
Georgia College-ΑΠ

CHAPTERS ABOVE ALL WOMEN'S AVERAGE
Wittenberg-BX
Denver-P
Georgia-ZII

CHAPTERS ABOVE ALL SORORITY AVERAGE

Whittenberg-BX
Ferris State-ZN
Northwood-ΞH
Moorhead-ΘN
Denver-P
Georgia-ZII

A Special Way to Give

Focus: Charitable Life Insurance

by Pat Rosser
National Director

"If you never have a dream, how you gonna have a dream come true?" is a line from a song in *South Pacific*.

Have you ever dreamed of what you would do if you could give a large gift to Delta Zeta? Have you ever dreamed of giving a large donation, but just didn't have the cash?

If so, your dream may be closer to coming true than you think.

An innovative giving plan, called the "Cornerstone Fund," has been created to establish a major endowment for the Delta Zeta Foundation.

This program is being established due to a major financial factor within the Sorority: the annual dues of the collegians and alumnae can no longer provide all of the support necessary to ensure the quality and quantity of programs needed to keep Delta Zeta a top national sorority.

To help offset these factors, charitable contributions must be encouraged from individuals, businesses, organizations and foundations.

Delta Zeta Foundation is a public non-profit corporation. Its mission is to advance the Sorority's purpose through the development of financial and human resources in support of the Sorority's leadership, scholarship and philanthropic programs.

The Cornerstone Fund features the use of life insurance and other charitable agreements to provide new giving opportunities and significant future gifts. Today, we will discuss life insurance. Future articles will feature other charitable gifts.

By using life insurance, you can make a financial commitment to Delta Zeta earlier in life . . . one that you might not expect to make until the conclusion of a successful career.

The life insurance portion of the Cornerstone Fund is built on two factors:

- under current law, charitable contributions of cash up to 50% of a donor's adjusted gross income are tax deductible; and
- because of improved health care, longer life and astute financial management by the industry, life insurance is one of the very few items declining in cost in today's economy.

To participate, friends of Delta Zeta select either a single life or special joint life policy ranging in value from \$25,000 for a single life and from \$100,000 for a joint life to more than \$1 million.

Donors make tax-deductible contributions to the Foundation at least equal to the amounts of their policy premiums. These contributions can be paid at one time

or over a period of years. Because the Foundation is the *owner* and *beneficiary* of the policies, all premiums are paid by the Foundation. At the time of death on all named, even if it is before all premiums are paid, the insurance company will pay the Foundation the policy's face value.

Your gift of life insurance can be received by the Foundation free of federal income taxes, administrative and probate costs and delays, brokerage fees or other transfers. Thus, the Foundation receives one hundred percent (100%) of the proceeds.

At the same time, while you are alive, your gift of life insurance is building an endowment for the Foundation. Cash values are growing constantly on an annual basis. These cash values can be used as an emergency fund or as a line of credit.

Which policy is best for you?

This will depend on your situation and age. Premiums are less the younger you are. For some, a single policy of \$25,000 is within their budget. For others, a joint policy on two lives is more cost effective. On a joint policy, two lives are insured and the premiums are usually less than on the same amount in a single policy. However, there are two stipulations. First, both people must be over 20. If one is under 20, he/she will be treated as a 20 year old. I will be happy to talk the options over with you . . . or you may discuss them with your life insurance representative.

Specific examples of gifts:

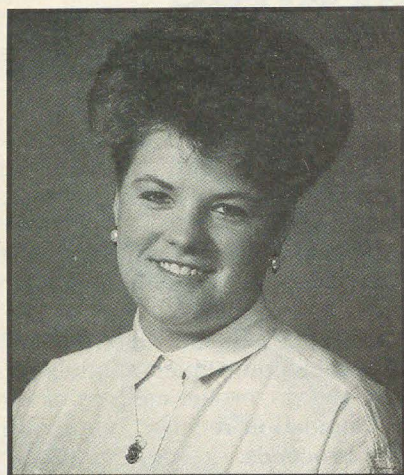
The following examples of endowments are provided to demonstrate the cost-effectiveness of the Cornerstone Program:

Donor	Gift Amount	Annual Premium/# Yrs
Husband & wife (ages 54 & 41)	\$100,000	\$ 815/5 yrs.
Husband & wife (ages 32 & 29)	\$100,000	\$ 600/5 yrs.
Mother & daughter (ages 51 & 29)	\$100,000	\$ 744/5 yrs.
Woman (age 45)	\$ 50,000	\$ 912/5 yrs.
Woman (age 22)	\$ 25,000	\$1,772/1 yr.

During the past several months, commitments to the Cornerstone Fund have been made by National Council members and Foundation Trustees. \$200,000 has already been raised and \$300,000 is in the process of being accepted.

(continued on page 21)

Nine Receive GML Awards



Katherine Sermersheim

Nine senior Delta Zetas have been chosen to receive this year's Grace Mason Lundy awards for service and dedication to their chapters and to Delta Zeta. Joining the evergrowing list of "GML Girls" are

Katherine Sermersheim Southern Indiana-AB

Katie exemplifies energy, excitement, leadership and friendship, say her Lambda Beta sisters. Vice president of membership for her chapter last year, Katie steered the most successful rush the chapter has had. Besides Delta Zeta involvement, she served as president of the Activities Programming Board and was named Outstanding Female Student Achiever at USI. She is listed in *Who's Who Among Students in American Colleges and Universities* and was tapped for Order of Omega.

Amy Lynne Abdouch Florida State-AΣ

Amy was chosen Pledge of the Year among all FSU sororities the year she chose Delta Zeta. Since that time she has continued service to Delta Zeta, concluding as president. She worked with Golden Key in their "Say No to Drugs" program, served as a Rho Chi counselor and is a member of Rho Lambda. The Dean's List and *Outstanding College Students of America* are among other accomplishments.



Amy Abdouch

Leann Danner Central Missouri-ET

Leann served as president of Epsilon Gamma and was named Miss Province XI before assuming a position as Field Representative in December 1988. A member of Order of Omega, Alpha Phi Delta honorary, cheerleader, Leann was also active in Student Government. Her CCD said if she had to choose one word to describe Leann it would be "dedicated."

Shana Goulas Nicholls State-KA

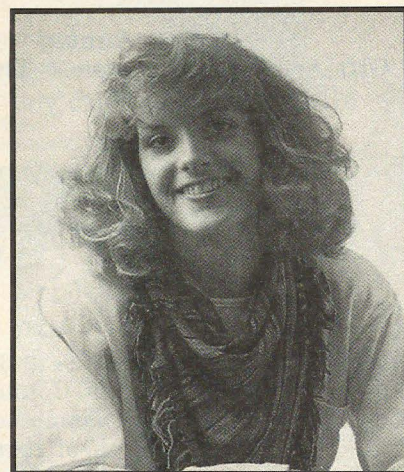
Active in many campus organizations, Shana also served as vice president of membership and presi-



Shana Goulas



Marla Hilburn



Leann Danner



Jennifer Packard

dent of Kappa Alpha. Listed in *Who's Who*, she has been involved in Panhellenic and Roteract and more recently has worked with local alumnae developing rush skirts for the chapter. Her CCD wrote, "Shana is a faithful friend, a born leader and represents ΔZ well in many different organizations on Nicholls' campus."

Marla Hilburn
LSU-Σ

Marla remained active for her full five years at LSU, serving as president of Sigma her last year. Active in the LSU Panhellenic and other campus organizations, Marla's pretty face graced the cover of the spring 1989 *LAMP* when she reigned as Homecoming Queen. When asked for a short summary of what ΔZ means to her, she summarized it in these words: "It has become my support system; my standard of living and my way of life . . . that's what ΔZ means to me."

Jennifer Packard
Baldwin-Wallace-ΓΑ

Jennifer was active in the Baldwin-

Wallace Panhellenic, serving as president. She worked on the Big Brother/Big Sister Program in the Greater Cleveland area, belonged to Alpha Lambda honors society and received numerous honors and scholarships. As a freshman she was voted the most outstanding pledge on campus by Panhellenic. Her CCD said she is a born leader, but also supports her sisters and the offices they hold. "She is one of a kind."

Anne Marie Jablonski
Nebraska Wesleyan-BT

President of her chapter, Anne also belonged to Cardinal Key, Alpha Mu Gamma, Ionians, Ambassadors to name a few. Anne herself wrote, "Delta Zeta — A Girl's Best Friend." Her CCD said she strives for excellence and sets high goals for herself and the organizations to which she belongs. A campus advisor wrote, "I recommend Anne without reservation because she most ably represents the best in all aspects of female leadership."

Karen Kerwin
Wright State-KI

Chapter president, Panhellenic President, Ambassador to Japan, Dean's List high honors are a few of her college activities. Her many contributions to her chapter prompted her CCD to write, "Her hard work and dedication have been a godsend to Kappa Iota. Even though she's been very involved with ΔZ, she has become a reputable and well-respected campus leader as well."

Elizabeth Ridgill
Tennessee-BA

Beth might have been a Field Representative except for a conflict with her summer internship. She was one of 12 women chosen for a special program at Walt Disney World in Orlando. President of Beta Lambda, Beth has been heavily involved with the chapter since its founding in 1984. A yearbook staff member, she put together a Greek leadership conference for Panhellenic and IFC.



Anne Jablonski



Karen Kerwin



Elizabeth Ridgill

Charitable Life Insurance (con't)

What begins as an affordable, deductible gift ultimately provides a significant endowment to sustain the future quality educational and scholastic programs of Delta Zeta.

Of course, participants in the Cornerstone Program will be recognized at the giving level appropriate with their annual donations until the policy is paid. At that time, usually within 5 years, the donor will be recognized at the level of the insurance policy.

As a participant myself, I can also tell you of the other benefit: the personal satisfaction of having a dream come true.

If having a dream come true interests you, please contact me through the Foundation or at my home:

- 1609 Indian Rocks Road
Belleair, FL 34616
(813) 585-2857

Gallaudet Fundraiser a Great Success



Helping to celebrate the Gallaudet fundraiser in Florida are Ellen Stavros, Mary Lou Ragel Vineyard, Dr. I. King Jordan and Patricia Rosser.

The idea was born at the 1985 Delta Zeta National Convention the first time National Director Pat Rosser saw the Gallaudet University Dancers perform. She wanted her friends back home to see these students dance and see what people can do when they say, "I can" rather than "I can't."

The idea became a dream in October, 1987 when Pat shared it with Ellen Stavros, South Florida-IA, PAD XXIV-C, while attending a performance by Delta Zeta Nanette Fabray. Ellen said, "Let's do it."

The dream became a reality on May 17, 1989 at Ruth Eckerd Hall in Clearwater, Florida. In the four years since the idea's conception, a lot of hard work, time and energy went into transforming the idea into a dream into a reality.

Ellen and Pat didn't know the scope of what they were getting into. They called Gallaudet's Director of University Relations, Lou Markwith. He met with them while on a trip in Florida. The three outlined the program, responsibilities, and the cost. It was also decided to involve the two local accredited speech and hearing centers in the dream and in the proceeds.

Since Ellen and Pat are members of

two different Pinellas County alumnae chapters, each took the dream back to her chapter for support. Each got the support they needed and soon a steering committee of four then six Delta Zetas was formed. Later, a Sigma Chi was made part of the committee . . . when he volunteered his time and talent for publicity, his vocation.

Meetings began in May, 1988 and continued through the final closing event. Sometimes Ellen and Pat, serving as co-chairmen, thought they were permanently attached by telephone. But things really began to happen.

In January, Lou Markwith returned. For three days he, Ellen and Pat visited major corporations to seek their support for the function. Local companies donated \$900 to \$2,000. The major breakthrough in support came when GTE caught the excitement of the event and offered their support as a sponsor with a major gift of \$20,000. Ellen and Pat knew the dream was going to work! In the next few months, support was received from individual donors ranging from \$100 to \$1000 each. Included were Delta Zetas Mary Lou Ragel Vineyard, Northwestern-AA; Karly Klemp

Burns, Eastern Carolina-ZA; Ellen Stavros; Pat and David Rosser, and Eleanore Wycoff McKinley, Oklahoma State-AE.

The date was chosen; the hall in the performing arts center rented . . . all 2,000 seats. Then a problem . . . they couldn't get the schools to come to the theater; so they took the performers to the schools.

Then the decision was made to make this into a full week event. Letters were sent to every Delta Zeta in the Tampa Bay area. The Delta Beta chapter at University of Tampa distributed posters everywhere. Tickets were sold under the able direction of Karly Burns and Camilla Kilgroe, Florida State-AΣ.

A decision was made to house the students in private homes. Roberta Eads McIntosh, Bucknell-BΘ, found Delta Zetas and friends who opened their homes and hearts to these great students. Beth Ridgill, Tennessee-BA, used her past rush chairman skills and successfully organized a Patron's Party before the performance and a desert party for the hostess and cast following the performance. Paul Sotrop, the "lone non-DZ," secured more publicity for the event than President Bush received on a recent Clearwater visit.

In February, a new twist was added to the plans. News was received that Dr. I. King Jordan, Gallaudet's first deaf president and international spokesman for the deaf community would attend the performance. More contacts, more arrangements were to be made.

Finally, the week's events took shape. The dream was realized. The goals were met.

"We organized the event and the outreach for two reasons," Pat Rosser stated. "First, we wanted the community to better understand the problems of the deaf and hearing-impaired. Second, we wanted to raise money for Gallaudet University and the hearing services in our community."

Ellen Stavros was greatly pleased. "We had over 1,800 people at Ruth Eckerd Hall for the performance. It

was the most enthusiastic crowd I've seen in the hall," she said. "They really enjoyed the performance and they shared the world of the hearing-impaired, many for the first time."

The first half of the performance featured the Gallaudet Dancers in upbeat dance numbers, from modern to traditional. In the second half, the Gallaudet actors performed the award-winning play "Telling Stories." Through 13 acts, the play explored problems the deaf and hearing-impaired encounter in communicating in a "hearing" world. An added treat was the presence of William Moses, Ph.D., chairman of the theater arts department at Gallaudet who wrote and directed the play.

"We believe our community outreach efforts were successful," Ellen Stavros said. "With the help of the

Pinellas Arts Council, workshops and performances were held in four local schools and at the St. Petersburg Art-works Festival. For the first time ever deaf interpreters for the hearing-impaired gave life to an outdoor performance of Shakespeare's "The Comedy of Errors." Gallaudet students worked directly with children in our community, both deaf and hearing. It was great!"

During Dr. Jordan's short, intensive 20-hour stay in Clearwater, he introduced the performance at Ruth Eckerd Hall, attended the performance parties, had a breakfast meeting with influential leaders and donors followed by a 40-minute speech at the local Deaf Services Center, and shared with the media his message, "The only thing deaf people can't do is hear."

The Gallaudet students enjoyed their visit. Yes, there was work. Yes, there was fun. GTE gave each student a tote bag with a special event T-shirt and other goodies from GTE and ΔZ. On the last night, they celebrated at a beach party dinner at the home of Ellen's parents, Gus and Frances Stavros, also patrons of the event. Then on to Disneyland and Epcot for a one day visit.

Money from the fund-raiser will support the fine arts endowment at Gallaudet University, hearing-loss education programs at Morton Plant Hospital's Department of Speech, Hearing and Learning Services, and All Children's Hospital's Speech-Language-Hearing Center.

When the event was over, someone asked Pat how she got involved. She replied, "It seemed like a good idea at the time."

Whereas Delta Zeta Sorority supports aid to the speech and hearing impaired as its national philanthropy and encourages all local chapters to do so

And whereas Gallaudet University is an important recipient of that support

And whereas Dr. I King Jordan, the Gallaudet Dance Company and Theater Arts Department represent to the general public the finest traditions of the University

And whereas the Pinellas County Chapters of Delta Zeta sponsored, planned and promoted a special performance and series of community events by Gallaudet University in the Tampa Bay area during Better Hearing and Speech Month

And whereas Delta Zeta received outstanding publicity and recognition for their sponsorship

Be it resolved that the National Council of Delta Zeta recognizes and applauds the Pinellas County Chapters and chairpersons Ellen Stavros and Patricia Rosser for their sponsorship of these events which resulted in national recognition for the Sorority and an increased awareness of the hearing impaired by the general public.



Golden Rose members Rena Charnley Thomson, Wisconsin-T; Jean Nelson Stockham, Eureka-II; Ida Marie Carter Nelson, Louisiana Tech-ΘE; Rozella Fuguitt Eure, FSU-ΑΣ and Alice Jordan Matthews-Craig, LSU-Σ.



Golden Rose recipient Lauan Garnjost, California-M

Delta Zeta on Campus



Delta Xi is named University of Northern Colorado's Most Outstanding Sorority for 1989.

by **Diane Jones Skelton**

ALABAMA

Auburn-Montgomery, Lambda Nu — Delta Zeta celebrated its twelfth year on campus with alumnae, families and friends at a banquet marking the chapter's anniversary. Other spring activities included a workshop and retreat at Panama City Beach, and participating in the annual Student Government Association Easter Egg Hunt where members sold baked goods and frozen yogurt. To benefit the Montgomery Speech and Hearing Center, members sponsored "Dine with ΔZ." At the event, members waited tables at Darryl's Restaurant with tips and donations benefitting speech and hearing. Members also learned sign language at Frazier Methodist Church.

Jacksonville State, Lambda Gamma — Chapter Editor Laurie Norton reports that Lambda Gammas said good-bye to a special group of seniors this spring. The seniors, Pam Payne, Carla Byrum, Jan Fowler, Lisa Blanton, Lisa Vest and Andreia Smith, had served the chapter in offices ranging from courtesy, philanthropy, press, social and philanthropy, and included two past presidents and Panhellenic president. Laurie says Delta Zetas counted on these seniors daily to guide them in both sorority affairs and college life. The chapter's social calendar included three fraternity mixers and the Killarney Rose Ball.

Samford, Alpha Pi — Members traveled to Huntsville for Province Day and brought home the 100% Initiation Award, the Sorority Education Award, and third place in scrapbook. Kristen Lucas was honored for achieving the highest grade point average in the province. Delta Zetas gave their time to babysit faculty children when the chapter sponsored a Faculty Night Out. Receiving high honors at Honors Day were Kim Furlow, Debra Croft and Cindy Higbe. Hope Haslam is Miss Samford.

Auburn, Beta Xi — At Province Weekend in Huntsville, Beta Xi won the Scholastic Achievement Award, the Delta Zeta Loving Cup, the Flame Award, and the Grimes-Sturkie Award. Beta Xi also won four silver plate awards: sorority education, enrichment, academics, and social. Lacey Goodwin received Miss Province Day honor, while Renee' Lapierre won the Angie Youngson Award. Chapter activities for the semester included a cosmetics demonstration, weekly Bible studies, the spring formal, Greek Week, Tahiti Sweetie and sponsoring babysitting services for a Professor's Night Out. Alumnae honored graduating members with a Senior Tea. *Glomerata* yearbook staff includes Laura Parille and Gythyn Giordano. Lori Dunn is an orientation leader, while Lynne Dodd and Jennifer

Democko are student recruiters. Anna Morgan a fraternity sweetheart; Cathy O'Brien is assistant sports editor for Auburn Plainsman.

ARKANSAS

Henderson State, Epsilon Pi — In a successful spring rush, Delta Zeta was the only sorority to pledge quota. Gina Bratton served as Panhellenic rush counselor. [The chapter editor, Gina House, managed to get her report in on time, though it was untyped. She tactfully explained that no typewriters are available at Advanced Army Camp, and couriers only drop by every now and then to pick up the mail. iThanks for reporting, Gina! We like to hear from every chapter and appreciate chapter editors like you.]

CALIFORNIA

California-Fresno, Epsilon Epsilon — Seniors read their wills and were treated to the movies and ice cream at the chapter's annual Senior Roast. Moms joined their daughters for a mother-daughter luncheon at the chapter house. Delta Zeta placed second in wall painting competition and won the university's Benchmark Award at the annual Greek picnic.



*Auburn-BE's
Lacey Goodwin
is Miss
Province Day
at Province
XXIII Day in
Alabama.*



*Greek Week
Goddess at
UNCC is
Kappa Phi's
Melanie
Lawless.*

The social calendar included exchanges with four fraternities.

California-Fullerton, Iota Upsilon — Province XV South alumnae and collegians enjoyed refreshments, house tours and Delta Zeta trivia contests when Iota Upsilon hosted Province Day. Iota Upsilon and alumnae also decorated the Embassy Suites workshops rooms to capture the theme of province weekend, "Flying High With Delta Zeta." As hostess chapter, Iota Upsilon was especially proud to receive the Chapter Excellence Award. The prize winning trio of Delta Zeta, Phi Kappa Tau and Sigma Alpha Mu won the Committee Award for their presentation of *Seven Brides for Seven Brothers* in Greek Songfest, which benefits Children's Hospital of Orange County. Members sold raffle tickets to benefit the San Clemente Animal Shelter and for the Leukemia Society. Pledges sold World's Finest Chocolate and attended a TV show taping. The social calendar included a Roaring Twenties exchange. Members dressed in black and dined on lasagne at the Mourners' Dinner, a chapter event to bid seniors good-bye and mourn the end of members' social lives.

San Francisco, Xi Lambda — The entire chapter donned their Delta Zeta letters and participated in Student Orientation Day, a great opportunity to meet incoming freshmen. Mothers joined their daughters for a Mother-Daughter Luncheon at the Charter House Restaurant. Social Chairman Christine Yurchak chose "masquerade" as the theme for the Rose Formal at the Sir Francis Drake Hotel.

San Jose State, Gamma Lambda — Gamma Lambda celebrated its 10th anniversary with a formal dinner dance at the Marriott. Collegians, alumnae, PCD Lynda Szymanski and past CCD Jodi Picard learned of IΛ then and now through a slide show, pictorial display and presentation by charter member Elaine Chang. Tracey Nakano and Cami Pogue were initiated into Order of Omega and Megan Mulholland received the Pat Dunn Scholarship. Kelly Gregg received the Dean's Award at Greek Week.

COLORADO

Northern Colorado, Delta Xi — Delta Zeta was named 1989's Most Outstanding Sorority

on campus by the faculty and administration. The newly established traveling award is based on campus and community involvement, service or philanthropy projects, Panhellenic cooperation and each chapter's own national organization. Delta Zeta also earned second place honors in Derby Days and Greek Week and a first place in songfest. Delta Xi again sponsored the chapter's annual bowl-a-thon philanthropy. Heather Brennan, new Panhellenic president, was elected Western Area vice president of the Mid-American Panhellenic Council Association at a spring conference. At Province Day, Shanna Jones was honored for her 4.0 academic standing.

FLORIDA

Florida State, Alpha Sigma — Tapped for honoraries are Angie Hotcaveg, Kristen Comet, Mortar Board; Amy Abdouch, Omicron Delta Kappa; Heather Droege, Angel Drummond, Phi Eta Sigma; Julie Stewart, Gold Key; Nancy Joba, vice president, Kendall Burke, membership chairman, Beta Kappa Alpha Greek honorary; Karen Scalf, Psi Chi; and Kendra Kermeen, Lady Scalphunter. Kim Rose is a Gold Key and Dean's List honoree. National Student Speech-Language Hearing Association elected Stephanie Alman as historian. *Outstanding College Students of America* lists Kim Rose and Heather Droege. The chapter's concentrated academic efforts have raised the Alpha Sigma's scholastic standing to third among sororities. Alpha Sigma collected cans for ways and means, created a banner for Phi Kappa Psi 500 Race, participated in Pi Beta Phi's Campus Cleanup, and served as volunteers for the Tallahassee Deaf Center Fair. Members teamed with KA to earn fourth place overall in Greek Week. In Panhellenic spirit, Delta Zeta teamed with Delta Delta Delta and Delta Gamma to sponsor a "Delta Date Rush" semi-formal. For the event, every girl had only a few hours to find a date since the event was not announced until dinner the evening of the dance. The social calendar also included a luau at the park.

GEORGIA

Georgia College, Lambda Pi — Delta Zeta proudly announces the leasing of a beautiful brick home located across the street from the campus in the historical district of Milledgeville. With a spirited determination, Delta Zeta placed third overall in Greek Week sorority competition.

INDIANA

Ball State, Gamma Chi — Delta Zetas colored Easter eggs for the Muncie Children's Museum, participated in the Interfraternity-Panhellenic Blood Drive, and teamed with Sigma Phi Epsilon in the first annual Louie, Louie Parade benefitting the Leukemia Society. A field representative was on hand for the chapter's sisterhood retreat in the suite. Fraternity sweethearts include Carrie Cole, Beth Anne Koke and Jane Zell. The Delta Zeta team of Jill Gardiner, Heather Geyer, Carla Burgher, and Marnie Fowler captured first place in the Kappa Delta Rho-Beta Phi Golf Tourney.

DePauw, Delta — Delta Zeta chapter programs included unique events for both campus

and community involvement. Academic Chairman Christina Glynn organized an Academic Luncheon where members invited favorite professors for a chicken-salad on croissant luncheon. Philanthropy Chairman Kim Cowgill organized a community hearing testing at the Student Union Building. Delta Zetas were on hand to accurately test the hearing of those attending. In conjunction with other sororities, Delta Zeta hosted two teams competing in the 1989 Indiana State Women's Special Olympics Basketball Championships at DePauw. Delta Zetas treated their visiting athletes to a dinner in their honor; a movie, pizza and popcorn party, and lodging in the house. Delta Zetas were also in the stands cheering on their teams the days of the events. Chapter Editor Cindy Losure reports "according to both groups, the weekend was an opportunity for them to gain an appreciation of a different kind of living. The women of Delta Zeta respected the athletes they met because, despite any handicap they had, the athletes lived and loved life to the fullest." Housemother Betty Tryon was honored with the chapter's first annual "Mom's Week." Each day of the week, Mom Tryon received entertainment at dinner, and notes and presents in her mailbox. To conclude the week, Mom Tryon was surprised with a luncheon with other DePauw housemothers invited. Members honored new initiates with a Killarney Rose Ball. Cindy Losure won the Eugene A. Pulliam Memorial Award for Success in Journalism, a \$1500 a year award. Features editor for *The DePauw* newspaper is Amy Mae Miller.

Indiana, Epsilon — As finals week approached, underclassmen said farewell to seniors with special notes and candy. House Mom Gretchen Berry provided a wonderful brunch at the house for graduating seniors and their parents on graduation day. Epsilons will also miss Danna Wylie, retiring college chapter director. Delta Zeta teamed with Sigma Alpha Epsilon and Phi Delta Theta for a volleyball tournament, and treated moms to a brunch, slide show and dinner for Mothers' Day Weekend. Leslie Carter and Julie Morgan were runners-up in the final round of Intramural Tennis Doubles. The chapter will welcome back Jen-



Kappa Iota's Jennifer Mann serves in the model UN at Wright State.

nifer Breese, Debbie Hudler, and Becky Winder, who have been studying abroad.

Purdue, Xi Omega — A highlight of the spring semester was a afternoon tea hosted by Jane Pickering Berring, Omicron, wife of University President Dr. Steven Berring. Mrs. Berring invited the 27 pledges and their pledge moms to spend the afternoon in her home. Other highlights were the Diamond Ball and initiation of the 27 pledges. Delta Zeta teamed with Delta Tau Delta to participate in University Sing. Philanthropy events included a Delta Zeta-Sigma Chi Easter egg hunt for the underprivileged children of Lafayette, and teaming with Phi Kappa Tau to compete in a volleyball marathon. The team raised \$900 to benefit the speech and hearing impaired. Finally, Delta Zeta helped raise funds for the Big Brothers and Big Sisters Program by participating in Spring Rally, a week long competition of games and talent between sororities.

ILLINOIS

DePaul, Theta Theta — Delta Zeta added five pledges in spring formal rush which featured the theme "Find Your Future." The chapter placed second in a softball tournament; the social calendar included a chapter formal and Greek of the Year dance. Profitable fund raisers included bake sales, and assisting Greek Council with a booth at the annual Bluesfest. Kelly L. Moore is Greek Council President, a resident advisor, and recipient of the Outstanding Senior Leader Award. Lisa Kutsenda was named to the Dean's List, and Janette Smaligo was tapped for Golden Key.

Eastern Illinois, Gamma Nu — The chapter proudly welcomed Delta Zetas and national officers for Province Day in early April. In Greek Week, the Delta Zeta rendition of *Little Shop of Horrors* won a second place trophy. The tug-of-war team placed first for the second consecutive year. At a chapter "Beach Party Informal," members enjoyed games, mock awards and a goal setting session.

Eureka College, Pi — At Province Day, Pi received awards for pledge scholarship and activities programming. Chapter activities

included a Mother-Daughter Weekend, two fraternity exchanges, a garage sale fund raiser, and the annual Rose Ball Formal. Delta Zetas lent their house to the college for a "Jamaican Me Crazy" campus dance. JaCara Kelley captured the lead, and was joined by seven other Delta Zeta cast members in the campus production of *Sweet Charity*. The chapter initiated 12 pledges in the spring. Pam Feterl, Jen Bode and Judi Gaddy designed the Eureka Greek Week t-shirts. Kimberly Whitler was honored as Eureka's valedictorian and named Eureka's Woman of the Year. Tina Blisset and Pamela Feterl were graduated magna cum laude. Billie Jo Dean and Jeanette Malafa are junior scholars; Lori Marhsall is a second year scholar.

Northwestern, Alpha Alpha — An activity-packed spring quarter was filled with philanthropic and social events. Members sold "Crush Grams" to raise money for Gallaudet. Caseloads of orange, grape and diet crush sodas were sold to students who wanted to send messages to favorite "crushes." Meg Kirschner was named Sigma Chi Derby Darling; Delta Zeta teamed with Chi Psi Fraternity for their rendition of "Little Rush of Horrors" for Maysing. Delta Zeta won first runner-up honors in Greek Week volleyball. Members learned of the Delta Zeta Date Dash via the *Daily Northwestern*. They had until 8 P.M. to find a date for the evening. Members also enjoyed a spring formal. AAs welcomed Field Representative Devra Dimpfl for spring rush training. During the event, members prepared for fall rush, which will include *Anything Goes* and *Fiddler on the Roof*. Campus leaders include Sue Thompson, Sigma Alpha Iota president; Allison Barnes, Student Government Association executive vice president; Marcy Norwood, special events coordinator for Wildcat Zoo Review; Ashley Jerath, Panhellenic treasurer, and Christy Lilley, Residence Hall Association secretary. Resident assistants include Amy Poole, Lauri Hamilton, Maggie Moss, Jen Hyland and Virna Evangelista.

Southern Illinois, Gamma Omega — Delta Zeta turned this year's Theta Xi Variety Show into a festive occasion. Members teamed with new fraternity Pi Kappa Alpha to costume as gangsters and flappers to win first runner-up

honors in the event. The weekend was also set aside to honor members' parents with a brunch catered by the girls themselves. As a part of fundraising efforts for the redecoration of the kitchen, members designed and marketed t-shirts. Delta Zeta pledged a quota pledge class of 23 in formal rush, assisted with the Mothers March of Dimes, won three first places in Greek Week and enjoyed an exchange. Delta Zeta received a trophy for Greek Week participation at Greek Awards Banquet. Lisa Kay Wiemken received a Panhellenic Council philanthropic service certificate, and Kris Lantz, Connie Brown, Karol Howes and Heidi Deidrich were named to Order of Isis Greek honorary. Kris serves as Inter-Greek Council vice president. Student government leaders include Lisa Sproule, USG vice president, and Lissa Kuethe, Missy Schrupf, and Michelle Harry, senators. The Blood Drive Council named Cindy Harvey their Volunteer of the Year. Laura Lange serves as secretary-treasurer for Photography Club. Chapter advisor Judy Harwood was honored by the Inter-Fraternity Council as outstanding chapter advisor. Suzette Baeklandt starred in the campus musical *Bound for Broadway*. Fraternity sweethearts include Karol Howes and Pamela Vitale.

KENTUCKY

Eastern Kentucky, Xi Beta — Outstanding College Students of America lists Lisa Atwood and Felicia Ross. Fraternity sweethearts include Kim Doolin, Daina Dennis and Gina Giambri. Lambda Sigma sophomore honorary tapped Shelly Hepke. Christy Hendricks won the ECU Women's Scholarship for 1989-90. End of the year activities included a spring formal and a Parents' Day dinner, followed by a reception on the Delta Zeta floor. The chapter won first place in the fund raising portion in Sigma Alpha County Fair with a dunking booth.

Kentucky, Alpha Theta — At the University Greek Banquet, Delta Zeta was honored with the Dean's Cup as the most improved chapter on campus. Other honors included first places in campus activities, alumnae relations, chapter programming, individual campus leadership and Greek activities steering committee points. Delta Zeta also won Farmhouse's Com-



Lambda Thetas at Michigan Tech break after a game of snow volleyball. L to r, Deanna Prince, Wendy Russell, Sunny Diehl.



Three generations of Delta Zetas: l to r, Constance Polise, Ball State-IX '88; Lois L. Houlne, Northwestern-AA '30, and Yvonne Houlne Polise, St. Louis University-EY '64.

munity Service Award and Greek Sing. Province Collegiate Director Jennifer Plenge made a surprise visit to the chapter as members said good-bye to graduates at Senior Sendoff. Seniors were also honored with a banquet at Cliff Haggins Steak House; alumnae honored graduates with a senior dessert party. Delta Zeta participated in a bowl-a-thon for speech and hearing impaired. Mary Jean Gleeson and Jill Buchanan were elected to Greek Activities Steering Committee. Mary Jean and Beth Tong were selected for Order of Corinthians, which honors outstanding philanthropy and service contributions.

Northern Kentucky, Kappa Beta — The highlight of the semester was the annual Killarney Rose Ball, a continuing tradition for the chapter. Philanthropy efforts included joining with Alpha Gamma Deltas to distribute candy and visit children in the hospital at Easter. After hearing a guest speaker from St. Rita's School for the Deaf, chapter members decided to be a part of the school's annual Summer Fair. Delta Zeta operated a booth at the special olympics meet. For a fabulous sisters' night out, members met for dinner, then boarded the B & B Riverboat for a midnight cruise down the Ohio River. Members assisted with a Panhellenic bake sale and enjoyed two fraternity mixers. Meredith Simkonis walked in her mother's steps when she won KB's pledge of the year award. Her mom had received it in 1967. *Outstanding College Students of America* lists Kelley Bowman, while *Who's Who in American Colleges and Universities* lists Shelley Jarman. Both are also on the Dean's List. Alicia Lazelle was named Coach of the Year for her efforts in coaching youth select soccer. New initiate Cathy Schansberg has a unique profession: she's a professional flutist and flute instructor. Susan Reed is president of the Physics Club; Stephanie Thomas placed in the top ten in a Scottsdale, Arizona national horse competition.

MAINE

Maine, Alpha Upsilon — Chapter activities included participating in Greek Week Gong Show, Greek games, volunteering to assist with the blood drive, and joining other Greeks in a community service day where Greeks volunteered to assist community school and service agencies. Delta Zetas also participated in Maine Day, a day on which classes are cancelled and students assist with repairs and cleaning around the campus. Delta Zetas helped tackle the gym. Alpha Upsilons welcomed a visit from Field Representative Lisa Moses. Becky Cronin was honored for the highest grade point average among Greeks. She earned a perfect 4.0!

MASSACHUSETTS

Northeastern, Xi Upsilon — Delta Zeta has quickly claimed its place on campus. The new chapter was honored as Sorority of the Year at the Greek Ball and Chapter President Carol Nebe was named Sorority Girl of the Year. A busy semester included March 18 installation at the Royal Sonesta, sponsoring an event for Greek Carnival Day, and participating in Greek Week and a benefit volleyball tournament. Profitable, fun and unique fund raisers included



It's groundbreaking time for the new house at Virginia Polytechnic Institute. Chapter President Sue Detmer, Kappa Theta, tests the soil!

"taking a cut" of the profits when Safar Haircutting Company came to campus. With an entreprenuring spirit, Delta Zeta somehow earned 100% of the haircut profits! For Fenfest at Fenway Park, Delta Zeta baked brownies.

MICHIGAN

Michigan Tech, Lambda Theta — Members, advisors and alumnae are hard at work to iron out any predictable difficulties in managing the official Delta Zeta residence, a long time chapter dream come true. Lambda Theta now has a house corporation, complete with officers, articles of incorporation and bylaws, and policies for filling the house and a parlor fee. Community involvement included planting flowers along the main strip of Houghton to help beautify the city for spring. Delta Zeta assisted in setting up for a police program on drug and alcohol awareness held on campus. Members made and delivered tray favors for patients at Cyprus Manor Nursing Home, collected clothing for the Salvation Army and sold green carnations on St. Patrick's Day to benefit speech and hearing. To raise money for the chapter formal, members sold and delivered "Coke and a Smile," soft drinks tied with special messages. For the third year in a row, the softball team took the undefeated route to a first place. Delta Zeta also won the president's race for the second consecutive year, and placed third overall among sororities in Greek Week. Delta Zeta teamed with Delta Upsilon to play coed waterpolo in the intramural league. Michele Converse is Greek Woman of the Year, while Maryanne Buchnoff is president of the American Institute for Chemical Engineers. Kimberly Zak serves as vice president for the Student Entertainment Board. Omicron Delta Kappa tapped Julie Brown. Linda Kennedy edits *Winter Carnival Pictorial*.

Northwood Institute, Xi Eta — Members loaded into cars to drive an hour and a half to **Michigan State** for Province Day. There Delta Zetas joined members from six other chapters,

including the newly installed chapter at **Eastern Michigan**. Delta Zeta was again asked by college officials to host Blue Carpet Day, an opportunity for incoming freshman to visit the campus. Delta Zeta also hosted an awards night on campus, won first place in Greek Week, bid goodbye to seniors with a breakfast and helped clean the community in Project Nice. Field Representative Leann Danner brought advice on "staying the best" for her visit. Pledges treated members to a great breakfast of pancakes and bacon. At sorority scholarship night, Delta Zeta President Beth Watts was honored with the Cheryl Fletcher Scholarship as the most spirited, bright and involved Greek woman on campus.

Wayne State, Epsilon Sigma — Members had the honor of being part of the initiation for the colony at **Eastern Michigan**. Epsilon Sigma honored its own at the chapter annual spring formal, the Rosebud Dinner Dance. Members showed off their rushing talents when they performed their ΔZ 50s rush skit at province day. Spirit, enthusiasm and sisterhood were in full force when Emmylou Tiu was crowned Greek Week Queen. Patients at the Children's Hospital in Detroit received toys and baskets from Delta Zetas. Members enjoyed an afternoon of washing cars to raise funds so much that they did it again! Other exciting sisterhood activities included a day of being kids again at the Cedar Point Amusement Park. To bring the school year to an end, members shared ice cream and friendship at an ice cream social at the student center.

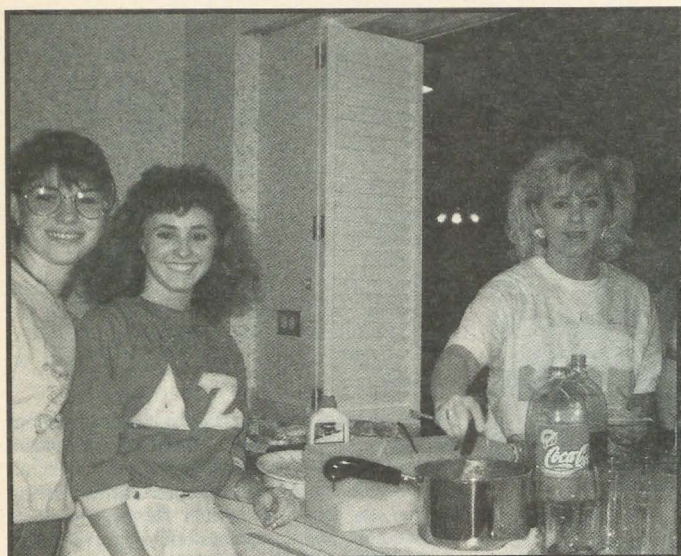
Western Michigan, Gamma Pi — Members traveled to East Lansing for Province VI Day for the installation of the **Eastern Michigan** colony and to present a program on hazing. Other spring activities included Greek Week, delivering Easter baskets to the mentally retarded children of Kalamazoo, and a Parents' Day. Members treated parents to house tours, a skit, dinner and games. Oakland County Alumnae honored Kelly Cunningham with a scholarship for her top grade point average, a 3.8!

MINNESOTA

Moorhead State, Theta Nu — The formal Killarney Ball began with a banquet and was followed by alumna guest speaker Sue Williamson, chapter awards and dancing to the music of Q-98. At province day, Denae Mayer won the Behind the Scenes Award and Kira Kimball was named best pledge in the province. Sara Stetz was honored as Miss Province XII. Delta Zeta set a new record for fundraising when the chapter raised \$2532 in pledges from 377 supporters in the March of Dimes Phone-a-thon. Members joined with Gamma Phi Beta, Phi Sigma Kappa and Old Order of the Owls for a spring fling.

MISSISSIPPI

Southern Mississippi, Epsilon Mu — Members traveled to Thibodaux, Louisiana, for Province XVIII Weekend. Epsilon Mu members honored include Mona Hudson, outstanding junior; Amy Lee, spirit award, and Laura Canada, outstanding pledge scholarship. EM won an award for pledging quota. Members helped other sororities host incoming freshmen and transfer students for Spring Round Up. Delta



Beta Lambdas had a spaghetti dinner in the suite. Pictured in the kitchen are l to r, Joanne Fellers, Sarah Davis and Jill Brewer.

Zeta entertained girls with a cookout and dance. Alumna Mary Virginia Terry Fokakis, a member of the Hattiesburg alumnae chapter, was guest speaker at the chapter's Parent-Alumnae Appreciation Banquet. In a chapter fund raiser, members earned \$450 in one evening by taking inventory at McRae's Department Store. EM named its Rose Court at the spring formal. Linda Jones, vice president of Union Entertainment Board, and member of Rho Eta Alpha, Omicron Delta Kappa, and Order of Omega, has been named to USM *Who's Who*. Paula Shows, a Golden Girl football recruiter, is listed in *Outstanding College Students of America*. Dixie Shephard and Mona Hudson are also Golden Girls. Laura Canada is Alpha Lambda Delta treasurer, Angel Flight operations officer, Honors Student Association delegate and recipient of Junior Panhellenic pledge scholarship. Lee Farrow is variety chairman for University Activities Council. Barbie Snow, a member of Phi Eta Sigma, won the Academic Excellence Award Scholarship and the Honors College Scholarship. Mona Hudson is vice president of the Student Alumni Association and a member of Rho Lambda. Tracy Harris, a member of Phi Theta Kappa, is a national officer for Alpha Beta Gamma and missions study chairman for Baptist Student Union Council. Paige Bowron is a member of Signing Eagles, a campus organization that performs campus concerts in sign language.

MISSOURI

Missouri-Kansas City, Xi Phi — Delta Zeta earned third place overall in Greek Week after winning two first place trophies — one in games and one in individual talent. Paula Barker won a \$2000 scholarship from her church. Heather Fisher is learning sign language to enable her to teach a deaf boy how to swim.

Northeast Missouri, Delta Sigma — Members traveled to the beautiful Adams Mark Hotel across from Royals Stadium for Province XI Day. Delta Sigma won the Most Outstanding

Chapter Award and was recognized for membership, activities, social program and philanthropy. Michelle Beck was named outstanding treasurer in the province. For the third consecutive year, Delta Sigma won best rush display, thanks to the hard work of Cheri Laaker. Members hosted their families at the chapter's annual Parents' Day. A luncheon at the newly redecorated Georgian Room on campus featured a program including an address by past College Chapter Director Dr. Ruth Towne, now university sponsor. Randi Nevins, CCD, also addressed the families and presented her own awards to members. The chapter, in turn, honored Randi, who will be leaving to continue her studies. Incoming CCD is Bridget Morton. Pledges presented the chapter with their gift, neon pink and green Greek letters sign to hang in the chapter room window. At the same event, Dr. Ken McGuire, head of the Division of Communication Disorders at NMSU, was named Delta Zeta Dad for his interest in his students and support of Delta Zeta speech pathology majors. Michelle Beck chaired the Greek Torchwalk and Balloon Ascension which kicked off Greek Week events. Members paid tribute to seniors at the spring formal at the Holidome in Kirksville. Delta Zeta caught media attention when they participated in the World's Shortest Parade on St. Patrick's Day. The parade measured half-a-block. To help prepare for finals, Delta Zeta sponsored a ΔZ Cram for Exams Week. The events included study halls and prizes for diligence in studying. NMSU Showgirls, basketball dance group, includes Shannon Donaldson and Lisa Hampson. Football spirit group, Purple Pride, includes DeDe Willis and Nancy Ravenscraft. Student Senate includes Nicky Neshiem, secretary, and Pam Witte, sophomore representative. Amy Bocklage serves as Panhellenic president, while Lisa Herron won Panhellenic's Greek Spirit Award. Order of Omega tapped Michelle Beck. Kim Elsbernd is a fraternity sweetheart. Kim Castello is a director for KTVO Television, while Shelly Wilson edits the *Index* student newspaper. Sharon Roettger directed the cam-



President Mary Ilko (right) and Treasurer Laura Dedo with Kappa Chi's first place award for Greek Sing formal class at Youngstown.

pus production of *Almost the Bride of Dracula*. Beth Selby chaired NMSU homecoming. Helping raise the chapter above the all women's average and earning perfect 4.0s were Bridget Utsler, Beth Buczynski, DeDe Willis and Beth Boehner.

NEBRASKA

Nebraska Wesleyan, Beta Tau — "Look at all those students on stage being academically honored. It's impressive how many are Delta Zetas," floated through the audience at Honors Convocation. Members and honoraries include Jill Adams, Mavis Fletcher, Kim Cleveland, Kathy Kneale, Phi Kappa Phi, scholarship. Christ Hancock, Laura Pieratt, Jodi Washburn, Mu Phi Epsilon, music. Sorel Haruf, Chris Hancock, Jenny Tricker, Alpha Mu Gamma, foreign language. Stephanie Dietz, Chris Hall, Omicron Delta Epsilon, economics. Melissa Kennedy, Julie Ott, Janna Peterson, Fran Schutte, Stacy Vondracek, Kappa Delta Pi, education. Angie Noecker, Joni Travis, Kappa Mu Epsilon, math. Jenny Young, Art Honorary. Lisa Yost, Beta Beta Beta, biology. Stephanie Dietz, Pi Gamma Mu, social science. Ann Maly, Pi Kappa Delta, speech. Cathy Wengert, Dawn Miller, Amy Phares, Psi Chi, psychology. Carol Garcia, Sundee Pyles, Delta Lambda, speech communications. Cardinal Key lists Stephanie Dietz, Carol Garcia, Kerry Leslie, Sara Rathjen, Lisa Scharp and Cathy Wengert.

NEW JERSEY

Trenton State, Lambda Lambda — The chapter's first alumnae luncheon featuring the theme "The Flame Burns Forever in Delta Zeta" welcomed alumnae, including some charter members of the chapter. Lambda Lambda hosted Province II Day in mid-March. Lambda Lambdas joined with *Glassboro* sisters to initiate the colony at *Stockton State College*. Delta Zeta is helping organize a Panhellenic on campus. Sororities hope to have Panhellenic in

operation by spring of 1990. Seniors received a tearful farewell with a special ceremony. The spring semi-formal was held at Mastoris Restaurant. Blue Key National Honor Society tapped Randi Shugar and Kimberly Curry.

NEW MEXICO

New Mexico State, Gamma Xi — Delta Zeta emerged shining from Greek Week activities. The chapter placed second in Greek Sing, third in spirit, third in Greek games, and third overall for the week. Other events included water volleyball and a program to help beautify the city of Las Cruces via tree planting and pole painting. Awards were announced at Greek Banquet. With the semester coming to a close, members enjoyed a social, an enrichment seminar and a chapter birthday party with alumnae. Delta Zeta honored its own with both humorous and serious awards at the Rose Ball. Order of Omega Greek honorary tapped M. J. Manzanares, Lucy Jacobs and Marie McCulloch. Rho Chi rush counselors are Kriss Jackson, Robin Podmenik and Marie McCulloch. Greek Week chairmen included Carrie Bacon, fun day, and Karin Cano, Greek sing.

NEW YORK

Rochester, Lambda Iota — Delta Zeta has long been striving to attain greater recognition for the chapter's efforts on campus. This year, at the end of Greek Week, Delta Zeta was awarded the prestigious Cornelius deKewiet Cup, a special award to the group that excels in all aspects of Greek life. The cup is presented on the basis of lengthy and thorough applications. Delta Zeta raised over \$2000, three times as much as last year, with their successful Greek God contest. Members won first place in Greek Week lip sync with their rendition of School House Rock's *Interjection!* For Dandelion Day Spring Carnival, Delta Zeta co-sponsored a booth with ZBT to benefit the Ronald McDonald House. To end the semester, members again sponsored Senior Sendoff Weekend. Following the seniors' installation as alumnae, they were treated to a reception and barbecue, where both old and new alumnae celebrated. Vickie Fishman, Panhellenic philanthropy chairman, helped organize a spare change drive for a campus book fund. Gail Garnish was tapped for the new

chapter of Order of Omega, and Laurie Nadler was named to Phi Beta Kappa.

NORTH CAROLINA

Appalachian State, Lambda Phi — Delta Zeta spent a busy semester participating in community, social and individual activities. During Greek Week, Delta Zeta won the Scholarship Award, and placed first in the medley relay. Top medley swimmers were Denise Had, Jacquie Sessa, Kelly Siegle and Louri Lynn Throgmorton. Greek honor society Order of Omega tapped Layne Straka and Lysa Lucas. Throughout the semester, Lambda Phis provided volunteer hours for non-profit organizations as the children's art show and the Red Cross. Proceeds from a chapter sponsored tuition raffle went to Gallaudet. Beth Perry was honored as the top marketing student in the College of Business. Beth was also recognized as the top graduating senior at ASU. She and Kim Shell were both graduated summa cum laude. Kiki Koufalotious will be the resident hall assistant for the Delta Zeta Hall.

Atlantic Christian, Theta Omega — Members set aside a special day in March to show their parents just how appreciated they are. On Parents' Day, 100% of the chapter members were in attendance to entertain parents with skits, good conversation and a cook out. The event was so successful that parents are already talking about next year's Parents' Day. The most successful chapter fund raiser was a donut sale on campus and in the community. Delta Zeta treated their special student, Darryl, and his classmates to a birthday party at the North Carolina School for the Deaf. Members played games with the children. After the teacher had escorted the other students to the room, Delta Zetas presented Darryl with his gifts. Amy Jones and Lisa Christman are both cheerleaders. Lisa joins Donica Murphrey in the student senate. Vicki Brothers and Cathy Miles are members of Art Student League. Tracy Varner is sophomore class vice president and Katrina Pawvlok plays ACC softball.

Lenoir-Rhyne, Zeta Xi — A busy chapter calendar included social, philanthropy, and enrichment activities, along with the initiation of 22 pledges. Members incorporated a "gartering ceremony" idea from Province Day into

their successful Saint Patrick's Day Social. For a sisterhood project, members decorated their own social t-shirts and pajamas. An informative self-defense course sponsored by Panhellenic Council was taught by the Hickory Police Department. As a philanthropy project, members celebrated Deaf Awareness Week in late April. During the week, members Michelle Shellfo and Kathy Manlapas taught daily sign language classes. Greek Awards Night was a touching evening for all as Dr. Ellis Boatmon, founder of Greek awards and Zeta Xi patron, announced his resignation as Greek adviser. Tracy Wilson Hannon was named Senior Woman of the Year; Kristen Zimmerman won the Gavel Award and Jennifer Hildreth received a special award at Greek Awards Night. At Honors Convocation, Delta Zeta's intramural football team, the Doozies, once again won the President's Cup as intramural champion. Individuals recognized at the event included Angela LaVigne and Amy Owens, Broyhill Mentors and Jennifer Estes, recipient of the Student Government Association Award. Marga Torrence, Joyce Prevatt and Kristen Zimmerman won foreign study scholarships, and Lynn Woodard won the C. W. Sutton, Jr. Phi Beta Lambda Gold Key. Tracy Wilson Hannon, past chapter president, was named to *Who's Who in American Colleges and Universities*.

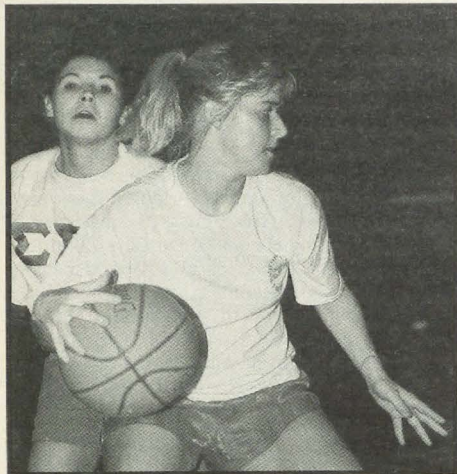
North Carolina-Chapel Hill, Xi Sigma — Philanthropy Chairman Ashley Armstrong organized Xi Sigmas for their second annual See-saw-athon, a high succesful philanthropy marathon. Members secured sponsorships and then took one-hour shifts see-sawing at the campus' most popular spot, raising even more donations. At presstime, proceeds had already purchased a hearing aid for a local preschooler and paid all advertising expenses. Now the chapter is in the process of determining where the remainder of the proceeds will go. Ashley also spent spring semester teaching her Xi Sigma sisters to sign the Delta Zeta Creed. Delta Zetas raised \$1500 for a chapter retreat with a tuition raffle. Neva Edens and Barb Linn were tapped for Phi Beta Kappa. They join Kim Jordan, Karen Miller and Susie Wall on the list of 4.0 scholars. Junior Lisa Madry is co-founder of the campus Y's Project Literacy, a program "dedicated to educating UNC employees and stamping out illiteracy in the community." For her efforts she received the university's oldest



Epsilon Zeta at Drexel receive the Dean's Cup Award. L to r, Nancy Kavchok, Gina Furia, Leanne Litwin (CCD), Celly Waitkis and Heather Eby.



All-Sing winners for the second straight year are Middle Tennessee-II members. Joining them are left CCD Christina Oakley and right, PCD Clara Smith.



Xi Delta at Radford University won the Greek girls basketball intramurals led by Intramurals Coach Molly Crampton.

and highest honorary, the Golden Fleece Award, which recognizes students making a distinguished and lasting contribution to the university. Her other honoraries include membership in The Old Well, Order of Grail Valkyries, Robert B. House Distinguished Service Award, and co-recipient of the Chancellor's Award.

North Carolina-Wilmington, Xi Theta — Members were delighted to meet and visit with Delta Zeta Woman of the Year Kay Yow when she visited UNCW for a speaking engagement. Thirteen Delta Zeta graduates were "visibly" Delta Zeta as their mortar boards were topped with monogrammed Delta Zeta's Greek letters. The graduates included Laura Wright, cum laude, and Sherry Brisson, a senior leadership award finalist. In the annual Greek Week festivities, Delta Zeta claimed first place in the scavenger hunt and second place in float competition. Members helped raise over \$500 for the benefit of the Hospitality House of Wilmington in an all-Greek car wash. Xi Theta has signed a year's contract with the North Carolina Department of Transportation in the Adopt-a-Highway project. Members are responsible for clearing litter from a three mile stretch of the highway in New Hanover County. Members enjoyed a Rose Cotillion Formal afloat on a cruise.

OHIO

Ashland College, Theta Psi — Members traveled to **Baldwin Wallace** for a 'Walk on the Wild Side' Province Day. Theta Psi won the Norma Minch Andrišek Award, the Province V Philanthropy Award, Best Chapter Award, Certificate of Recognition for Enrichment, the Membership Award, and awards for pressbook and scrapbook. Graduating seniors were honored with a special week which included a mother-daughter banquet where seniors received gold charms from the Mothers' Club. At the banquet, each of the seniors' mothers spoke of her daughter's special moments. Other events included a game to test little sisters' knowledge of their big sisters. Theta Psi's

engaged members were honored with a chapter wedding shower where each soon-to-be bride told of her wedding plans. Delta Zeta ended the year with a car wash which earned \$200 for the chapter treasury. Tracy Duchoslav and Rachel Krisher were honored for their perfect 4.0's at the Academics Awards Banquet.

Baldwin Wallace, Gamma Alpha — The 50 Gamma Alphas dressed alike in pink t-shirt dresses and safari necklaces to welcome Ohio Delta Zetas to Province V Day. Along with the honor of hosting the event, Gamma Alpha was honored to receive the province improvement award and outstanding alumnae relations award. Individuals honored were Jenny Packard, Pride of the Province; Nicki Francis, Sharon Mack, Golden Crest Awards; Nadine Hernandez, Golden Heart Award; and Nicki Francis, Outstanding Greek Woman. Members participated in the annual Teeter-Totter-athon for philanthropy, and as a fund raiser, members sold parking tickets in the college parking lot for Memorial Day weekend activities. Seniors were honored at the Dedication Luncheon Rose Banquet and with a picnic.

Bowling Green, Gamma Tau — Forty-five Gamma Taus traveled to **Baldwin Wallace** for Province Day activities. Historian Christi Roby and Pictorian Shannon Alkire created a first place winning chapter display. Other honors for Gamma Tau were quota for the 11th year, first place rush award, and second places in academics and activities. Mary Beck won an academic scholarship, while Amy Landfield, Julie Miller, and Chris Majanrich won Crest Awards. Denise Byerly won the Golden Heart Award. Fraternity presidents joined Delta Zetas by special request for a philanthropy dinner. Men were charged ten cents a pound in the philanthropy project. Colonnade Club members met at the chapter's Parents' Day, while members joined with Kappa Delta Sorority for a mock rush workshop. Omicron Delta Kappa tapped Norina Columbaro and Christi Roby. Mary Beck is a member of Mortar Board.

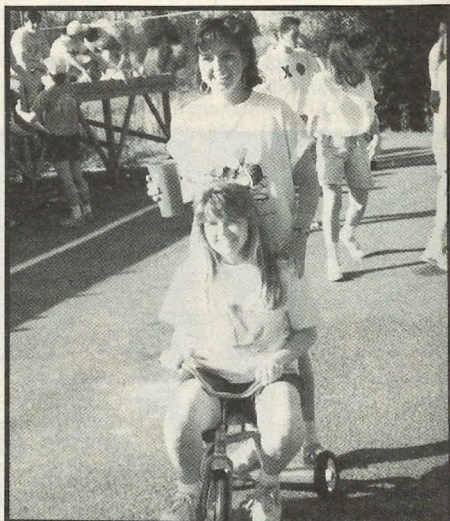
Findlay, Theta Tau — The chapter is proud to announce the following honors won at Province V Day: certificate for most polished Province Day song, trophy for most improved grade point average, certificate for reaching quota, and the Mary Collins Galbraith traveling trophy for highest academic average for the second consecutive year. Individuals receiving recognition were Bette Vecchione, Anne Harinton, Golden Crest Awards, and Lisa Mertz, Golden Heart Award. Members honored graduating seniors and retiring College Chapter Director Jill Schwerer at the spring formal. Jill, resigning after five years, is expecting a baby soon. Jennifer Kettler, a senior scholar, was graduated summa cum laude. Stephanie Salvesson received best of show honors in a spring student art show. Beth Barchent was recognized as a member of the award winning Students in Free Enterprise team. Beth Westenhaver was voted most outstanding sophomore by the students and faculty. Lisa Mertz, a senior scholar, was elected president of Aristos Eklektos and secretary of Tau Omega Pi. Cynthia Daniels received the outstanding membership award from the wind ensemble.

Kent State, Gamma Kappa — In a fitting finale to first semester, Gamma Kappa dedi-

cated its new home. Alumnae, families and several national officers attended the event. Guests enjoyed house tours, refreshments and entertainment. After the Spirit Week planned by Activities Chairman Roberta Grossman, members enjoyed an all-too-brief spring break. A high point of the week was the MDA Superdance, a philanthropy competition where Gamma Kappas won first place by earning more money for Muscular Dystrophy Association than any other sorority. At the campus Greek Award Ceremony, Delta Zeta won awards for individual academic achievement and highest pledge retention among sororities — 94%! At Province Day, Gamma Kappa was recognized for getting and maintaining the largest pledge class in the state. Several chapter members attended the installation of the new Delta Zeta chapter at **Ohio Wesleyan**. Members of honoraries are Kristen Pettibone, Dara Dunlap, Meredyth Santangelo, Golden Key; Natalie Huner, Order of Omega; Diana Hutchinson, Alpha Lambda Delta; Jeannette Latimer, Sigma Tau Delta. Amanda Barber is president of Rho Lambda Panhellenic honorary, while Natalie Huner is secretary for Public Relations Student Society of America honorary. New members of Flasherettes Drill Team are Karen Filina and Diane Szabo.

Miami, Alpha — Members spent a fun-filled second semester centered around sisterhood events. One especially unique program was a food enrichment workshop. Kate Wilson won a trophy and \$200 for the chapter in a Kroger hot dog contest.

Ohio Northern, Zeta Kappa — A new chapter fundraiser proved quite successful. ZKs organized a Mr. and Mrs. ONU Contest. Contestants were sponsored by organizations and judged by faculty. Greek Week activities included a speaker on success, a bike race, a dating game, Greek sing, Sig Olympics and a chapel service. Heather Buhi was named Greek Woman of the Year and Shelley Hlad was honored as Panhellenic Delegate of the Year. Members remembered Taffy Howard, who was killed last May in a car accident, with a memorial service. Family



Kappa Phis Ginger Weir and Dana Fruqua participated in Greek Week games at UNC/Charlotte.



Oregon-Ω members L to r (back) Stacy Baker, Lynn Purdy, Midge Ofdenkamp, Leanne Bullard, Kim Olsen. (front) Eileen Shannon, Carolyn Netzer, Kim Chapman, Christine Dalrymple.

members, and many students and faculty members joined Delta Zetas at the service.

Wright State, Kappa Iota — For the second consecutive year, Delta Zeta had the largest participation in Greek Week events and won the Loving Cup at the Greek Banquet. In a unique pizza fund raiser, KIs took pizza orders for two weeks, then gathered to cook pizzas from a pizza kit. Profit from one day of cooking was almost \$1000! Junior Jennifer Mann was one of 21 delegates to the National Collegiate Model United Nations Conference. As a member of the Wright State delegation, she belonged to one of the seven of 150 college teams to win the top rating of "outstanding delegation." Jennifer spent five months preparing for the conference, but managed to maintain her 3.5 grade point average and serve Delta Zeta as vice president of membership.

Youngstown, Kappa Chi — Delta Zeta scholars earned the highest grade point average of any sorority or fraternity at Youngstown for the past ten years. KX was honored for this achievement at Greek Sing with the chapter scholarship award. Other campus awards included first in formal singing competition. Madonna Barwick was named Sorority Woman of the Year, and Vivian Axiotis won the individual academic award for the highest grade point average among sorority women. At Province Day, KX was honored with the scholastic award, a philanthropy certificate, and a rush award for meeting quota for two consecutive years. Members sold t-shirts featuring a turtle logo and the province day theme "Take a Walk on the Wild Side." Members presented a rendition of *The Lion Sleeps Tonight* in song competition. Delta Zeta also participated Mayfest and a community event similar to Hands Across America. Jeannie Sattler was crowned Mayfest Queen, while Jill Gregory was queen of Springfest. Gretchen Bruce co-chaired the Greek Activities Council, while Jennifer Burbick won a scholarship from the Colonnade Club.

OKLAHOMA

Northeastern State, Delta Phi — Delta Zeta was named Outstanding Sorority on campus

and won the Greek Week championship after winning every single event in Greek Week competition. Philanthropy projects included selling newspaper subscriptions by phone with a percentage of the proceeds benefitting Quarters for Kids, a summer camp for exceptional children. Members also cleaned two miles of road for the Adopt-a-Highway program, helped with a picnic for the NSU Women's Auxiliary Association, and conducted a hearing aid clinic for the elderly. To raise chapter funds, members conducted a "topless carwash" where they washed only the body of the car for \$1 — the top was an additional \$1! In a tuition raffle, the prize was 12 hours of paid tuition at NSU. Members sold baked goods at Kaleidoscope Carnival. Mothers learned more about Delta Zeta at the chapter's Mother-Daughter Tea; members celebrated pledge test grades with a pool party. At Province Weekend, Rhonda Rider won the Gwen Moss McKeeman Service to a Collegiate Chapter Award, while Tina Pierce and Sue Ann Adams won 4.0 Awards. Sue Ann also won the Cleo Arterburn Award, while Martha Card won the Hazel Rose Norton Award. Emily Lim is Miss NSU, while Lisa McKinney is Miss Greek. Jane McCaslin won Tulsa Panhellenic's scholarship. Tina Pierce, Jane McCaslin and Lisa McKinney are three of the top five Greek women at NSU. Holly Todd was tapped for the tourism honor society.

Oklahoma State, Alpha Epsilon — At Province XVI Weekend at the Western Hills Lodge in Sequoyah State Park, AE beamed with pride as they were honored for reaching quota and total, philanthropy, activities, enrichment and sorority education programs. Rexann Helms was named outstanding president in the province, while Kathleen Gammill was named outstanding pledge. Each week the chapter hosted a formal dinner for an elderly guest from a local resthome. Cowboy Coeds includes Lori Johnson, historian, Marsha Hiatt and Tawnia Williams. Kathleen Gammill is treasurer of the OSU Society of Women Engineers and was also honored as their outstanding member. Susan Cole was listed on the President's Honor Roll and Nicolle Rogers was listed on the Dean's Honor Roll.



Proud: Anne Howard, Sue Ellen Mears, Esther Goldberg and Branwyn Wilson are all smiles after new sister Esther was initiated and named Xi Delta's Pledge of the Year at Radford. Esther is the granddaughter of former Supreme Court Justice Arthur Goldberg.

PENNSYLVANIA

Clarion, Epsilon Theta — Delta Zetas honored their parents with poems, songs and presentations at a luncheon in conjunction with the chapter's special Parents' Tea. Graduating seniors and top scholars were also recognized. At Senior Willing Ceremony, graduating members willed special objects of sentimental value to other members. Perhaps the most unique gifts, though, were hope-filled wishes and tear-filled memories. At Province Day in Carlisle, Sharon Hixson was named outstanding senior in the province. Cherie Rogers won a Golden Crest Award, and Yvonne Keyes won a Golden Heart. Members practiced for weeks for their presentation of two Broadway numbers, *Memory* and *It's the Hard-Knock Life* in Greek Sing. Delta Zeta initiated 12 pledges in the spring. Joanne Judy won an honorable mention for fiber art at the Clarion Art Exhibit.

Drexel, Epsilon Zeta — Delta Zeta proudly announces the retirement of the Dean's Cup Award that goes to the sorority which excels in fostering the traditional values of Greek life and makes a significant contribution to the betterment of the university. It's the fifth consecutive win for Delta Zeta, the retirement criteria! Delta Zeta also won campus awards for academics, alumnae programming, chapter advisory, chapter management and operations, membership education, parental programming, pledge education and rush. EZ returned from province day with five awards. Heather Eby won a Golden Heart, and Ursula Krackow won a Golden Crest. EZ initiated 23 pledges and welcomed new College Chapter Director Leanne Litwin. Delta Zeta honored graduating seniors with a chapter dinner, and honored these new alumnae with a luncheon at Penn Tower Hotel. Members participated in a Pi Kappa Phi Operation PUSH benefit variety show, and served as "huggers" at the annual special olympics at Villanova. Delta Zeta teamed with Sigma Pi to sponsor a balloon liftoff benefitting Gallaudet and Muscular Dystrophy Foundation. Heather Eby serves as secretary of the City Town Watch Program; Abby Siegel was named Panhellenic Undergraduate Woman of the Year.

Edinboro, Iota Delta — Faculty judges selected Chapter President Julie Robison as Greek Woman of the Year. Delta Zeta was honored as the group raising the most dance marathon money for the Edinboro Lake Restoration and Conservation Foundation Fund. Members cleaned out closets for Erie's St. Martin's Center and again sponsored the Greek president food drive, which benefitted the Horizon Halfway House for abused wives and mothers in rural areas. Fund raisers included sub sales and flower sales. Enrichment programs included listening to Arthur Schumann, Jr., a recognized authority on alcohol abuse and legislation; hearing Helen Thomas of the White House Press Corps; learning about renters' rights and responsibilities; and viewing the Alvin Ailey Dancers. Even though over 45% of the members are employed over 43 hours a week in communities up to 85 miles from campus, Delta Zetas manage their time for academics, sorority, and campus involvement. Receiving Dean's List honors for academic excellence were Kay Lynn Anderson, Leah Brock, Deborah Campbell, Laura Green, Becky Hall, Chris Hayes, Kim Koeller, Julie Robison, Brenda Slagle, Laura Steadman and Ellen Damon (who had a 4.0). Laura Green was appointed to the Affirmative Action Subcommittee Commission on the Status of Women at Edinboro. Kim Koeller is president of the Elementary Education Club, while Kellie Meyers is a delegate to the PA Social Worker's Convention. Jennifer Jacquillard is publicity officer for the Social Work Club. Dawn Pressimore is a dorm council representative. Leah Brock is president of the medical technology club. Members of honoraries are Laura Green, Psi Chi, and Ellen Damon, BBB.

Kutztown, Kappa Rho — Philanthropies took top priority for the chapter as members found time to work together and restore the kiddie section of the Kutztown Community Park; collect donations for Friend Inc., a homeless food center; co-sponsor a blood drive; buy hearing aid batteries for the hearing impaired; and create summer door decorations for the senior citizens of Kutztown Manor. Parents attended the chapter awards banquet following initiation

and formed a Colonnade Club. Representatives travelled to the installation of the new chapter at **Lehigh** and presented the group with a silver tray. The nine graduating seniors were honored with a rose ceremony. Terri Decker is parliamentarian of the Greek Council. Lesa Smitreska is president of the University Speaker Association and Melissa Stech is secretary for the Med Tech Club.

Muhlenberg, Xi Iota — Delta Zeta initiated 41 pledges, placed top in campus scholarship, earned second place honors in Greek Day and presented a memorable Rose Formal at the Days Inn. The new executive board was honored with flowers that evening. Pledges sculpted the Delta Zeta letters in snow one evening, and the campus awakened the next morning to a huge sculpture on the front lawn. Enrichment activities included programs on weight control and dangerous relationships. Philanthropies included Jingles and Jellybeans and a trip to a nursing home at Easter. Fund raisers included raffles in each dorm for a gift certificate to Macy's, a car wash, pizza raffles, and "Kiss a Senior Goodbye" where members sold Hershey kisses with messages for the class of 1989. Alyssa Korotkin also organized care packages from parents that included Delta Zeta clipboards wishing ΔZs good luck on finals. Receiving awards at the Honors Convocation were Lynn Bellet, Julia Cromer, Lori Foerster, Cathy Guinan, Laura Kavalek, Tracy Kleppinger, Karen Klimek, Alison Lehmann, Paula Park, Kristen Pfeiffer, Michelle Simmons and Barbara Suess. Tracy Kleppinger was named Best Greek on Campus by Order of Omega. Receiving awards at province day were Suzie Rosenblith, Golden Heart, and Charlotte Bissell, Golden Crest.

Pittsburgh, Omicron — Members honored seniors with roses and bid farewell to College Chapter Director Robin Bedwell, who is moving to Illinois, at a chapter awards ceremony. National Vice President Phyllis Favorite was also on hand for the event. Chapter representatives traveled to Province Weekend and to the installation of the new chapter at **Penn State**. Unfortunately, all the Omicrons were unable to attend since Greek Week coincided with the event.

SOUTH CAROLINA

South Carolina, Beta Delta — "It's only the beginning" became the silent motto for Beta Delta after winning Greek Week '89 and upsetting a five year winning streak of Chi Omega. Beth Shull had appropriately opened the week when she carried the torch for Delta Zeta at the beginning of Greek games. Beth went on to place in every event she entered. President Karen Dillard accepted numerous other chapter awards at the Order of Omega awards ceremony. Included were honors for philanthropy blood drive, third place in Greek games, an award for increased membership, and second place in shield and crest drawings. At the time, Order of Omega tapped Tina Ferro, Karen Dillard, Kelly Steward, Michelle Tucker and Melissa Baber for membership. Members continued to celebrate their victories the following week at their Roseball. Now they're looking forward to Rush 1990! Suzanne Pagano won a Gamma Beta Phi scholarship for service and academics. Dawn Jordan is listed in *Outstanding College Students of America*. Lisa Maynard won the outstanding collegian in the province. Traci Blum and Margaret Payne made the USC culinary team and went on to regional competition where Traci won an honorable mention. Kim Mehaffey is a volunteer for the children's program at Marshall I. Pickens Psychiatric Hospital.

Winthrop, Lambda Sigma — Winthrop's Alumni Weekend set the stage for a Delta Zeta alumnae reunion, to which more than half the founding sisters returned. At the tea, collegians were able to place faces with names on the charter. And now all agree that though the names may change, the Delta Zeta sisterhood stories remain the same. The semester also provided an opportunity for Delta Zetas to get to know other Greek sisters through the Panhellenic Secret Greek Sister program. Lambda Sigma assisted the men of Sigma Nu in their attempt to break the world record in volleyball. For five long days of play, Delta Zetas were on hand making banners and brownies, supplying drinks, and spending long hours in the gym providing moral support. The hard work paid



Rochester-MI members Patty Amico and Stacy Snelson display their latest award, the Cornelius deKewiet cup.



Delta Taus at Temple take Province III Honors: l to r, Nancy Pettit, Devotional Award; CCD Lynne Cierro, Outstanding Young Alumna, and Kim Anspach, Outstanding Rush Chairman.

off as the men broke the world record and raised thousands of dollars for their philanthropy, Hospice. The chapter sponsored their annual Family Picnic at Cherry Park to enable families to meet each other. Families also had the opportunity to visit the new chapter house located at 926 Oakland Avenue in Rock Hill. After a semester of juggling two houses, each only half-furnished, the girls have merged into one. Lambda Sigmas welcome new college chapter director Elizabeth Paine Weaver.

TENNESSEE

Middle Tennessee, Iota Iota — Members arrived at province weekend with high hopes and great expectations. They enjoyed meeting Delta Zetas from across Tennessee and were excited to receive so many awards and so much recognition. Delta Zeta again placed first in fraternity-sorority All Sing. It also won the volleyball contest in Greek Week. Fundraisers included yard sales and a bake sale. Panhellenic Rho Chis are Suzanne Borah, Susan Caldwell, Amy Hall and Glenna Martin. Jan Key serves Panhellenic as president.

Tennessee, Beta Lambda — Members welcomed parents for the chapter's first Parents' Day in April. The successful event included an open house in the suite featuring orange juice, coffee, informative posters and an opportunity for parents and members to mix and mingle. Other events included a luncheon, slide presentation of the year's activities, awards presentation and senior ceremony. Following the end of Delta Zeta events, many parents stayed to view the Volunteers annual orange and white game. At province day activities in Memphis, Beta Lambda won the spirit award, membership award, most improved chapter award, and philanthropy award. Camilla Malcolm was named best collegian in the province. Members enjoyed a sit-down dinner and humorous award presentations prior to the Diamond Accolade Ball. Delta Zetas modeled swimwear to formals in a charity fashion show benefitting Tennessee School for the Deaf. Members teamed with Pi Beta Phi to win second place in Carnicus musical skit competition. Members enjoyed a mixer with Phi Kappa Psi to color Easter eggs. The groups then hid the eggs and supervised an Easter egg hunt for the children from Tennessee School for the Deaf. Noelle Bales is KA Rose Court Queen. Stephanie Quin was tapped for Omicron Delta Kappa.

TEXAS

North Texas, Kappa Zeta — The social calendar was lively second semester as members enjoyed a formal, a date party and a mixer. Philanthropies included making Easter baskets for a local children's home and participating in a blood drive. Delta Zeta earned \$300 with its Bachelor-Bachelorette Contest. To promote safety, KZs are setting an example by taking buses to some of the chapter functions. Becky Clem earned a perfect 4.0 spring semester.

Southwestern, Gamma Zeta — Pledges surprised members with a 6:45 A.M. breakfast at McDonald's. The lively eight pledges, who loved to pull pranks like hiding alarm clocks in the chapter room, were all initiated. Members later



Alpha Epsilon chapter at Oklahoma State and Stillwater alumnae took some top honors during Province XVI weekend. From left are Kathleen Gammill, outstanding pledge; Carolyn Gang, recipient of the distinguished alumna award; Rexann Helms, named outstanding chapter president; Dee Finch Porter, recognized for 25 years of service to Delta Zeta, and Stephanie Lorenz, AE president, who accepted awards for philanthropy, sorority education, enrichment, activities and pledging quota. The alumnae chapter also received recognition for pressbook, newsletter, chapter roster and public relations.

awakened all Delta Zetas "in the listening area" with cheers and songs early one morning on radio station B93. Fall and spring pledges received roses at the chapter Rose Ball. Members sold cokes at a fraternity car wash to raise money for the Texas School for the Deaf. Though originally earmarked for a dance, Delta Zetas found a new use for the money when the event was cancelled. Members created candy-filled cups for the school's drama group when they presented *Cyrano de Bergerac*. Campus leaders include Cynthia Brink, Student Foundation; Vanessa Davis, Cardinal Key; Sharon Graham, vice president of both Alpha Chi and Sigma Delta Pi, and Maria Gelabert, recipient of a physics academic award.

Texas-Arlington, Iota Psi — Members packed their bags and headed for Lewisville for a rewarding rush retreat. At the Greek Week Awards Banquet, Delta Zeta was honored with the All Sports Trophy and the most improved chapter award. Collegians prepared the spaghetti and supplied the soft drinks, while alumnae provided the sauce and bread for the annual alumnae spaghetti dinner. Graduating seniors were honored at the Annual Rose Ball Formal. Fund raisers included a community garage sale and a sucker sale. Iota Psi pledges washed cars to raise funds for philanthropy.

VIRGINIA

Old Dominion, Theta Phi — Members traveled to Williamsburg for Province Day where T. J. Thomas was honored as best treasurer in the province. Members sold Greek Week cups during the events with profits benefitting their local philanthropy, University Child Study Center. After defeating other Greek and student

teams, Delta Zeta won the intramural volleyball championship.

Radford, Xi Delta — At province festivities in Williamsburg, Xi Delta won awards for philanthropy, filling quota and as most improved chapter. Kim Urban was named outstanding treasurer. With a goal of stressing importance of good relations between students and faculty, members supported the Ebony and Ivory student dances, and joined Panhellenic and Interfraternity Council to sponsor a faculty-student relations brunch. Members teamed with AKAs for a first place winning step-dance entry in Greek Week follies. Delta Zeta also won women's Greek intramurals, and won the Panhellenic Excellence Award, Efficiency Award, Sports Cup and Sportsmanship Cup. Elizabeth Tierney was named most studious Greek, while Gela Kretzchmer won an unsung heroine award for sorority contributions. Members support community residents by participating in Meals on Wheels. A section of the highway near the Radford campus has been adopted by Delta Zeta. They're in charge of litter control. Top students include Tina Washburn, Elizabeth Tierney, Christi Pence, and Leslee Ford, Dean's List Scholars. *Who's Who Among American College Students* lists Elizabeth Tierney, Laura Hudak, Christi Pence and Michelle Marchant. Shelly Plank was a princess in the Virginia Apple Blossom Festival. Heather Peyton is Greek editor for the campus yearbook. Orientation week guides include Molly Crampton, Jennifer Johnson, Roberta Keyser, Lyn Odom and Tina Washburn. Keri Kenison is a member of Kappa Delta Pi education honorary. Instrumental in helping Panhellenic operate efficiently are Karen Hannon, all campus rush chairman; Karyn Male, treasurer; Lyn Odom, executive assistant in charge of extension; Heather

Peyton, executive assistant in charge of public relations, and Sandy Canadas, executive assistant to the secretary.

Virginia, Lambda Delta — A busy spring included initiating 31 pledges, preparing a skit for Amphitheatre Day and graduating 24 members. Delta Zetas joined with the men of Pi Kappa Alpha to volunteer at a local elementary school carnival. The group painted faces, handed out prizes, and worked game booths in order to promote Greek-community relations within the Charlottesville area. Following the carnival, the two groups celebrated with a St. Patrick's Day mixer. Phi Beta Kappa tapped Jen Olsen, Jessica Brown and Cynthia Shepard. Maureen Ahearn is chairman of ISC Development and Expansion. She is listed on the Dean's List with Carolyn Jacobs and Jody Harper. Mary Zois and Melissa Mossinghoff were tapped for Order of Omega. Staff members of the *Cavalier Daily* are Alessandra Griffiths, news editor, and Sheri Miltenburger, advertising page editor. Julia Minn serves as treasurer for Inter-Sorority Council.

Virginia Tech, Kappa Theta — In mid-April Delta Zeta, along with five other sororities and one fraternity, launched a new project for on-campus housing for Greeks. In an hour long groundbreaking ceremony, groups listened to an address representative of many supporting faculty, picked out lots, and received honorary shovels. The entire chapter was present to show Delta Zeta enthusiasm and spirit for the new project. The actual move-in will occur in the fall of 1990. In a busy spring semester, Delta Zeta initiated 47 pledges, bid farewell to 40 seniors, adopted a deaf student, and raised over \$100 for philanthropy with a see-saw-athon. Proceeds benefitted Gallaudet. Members also participated in Derby Days and traveled to Williamsburg for Province Day. Chapter honors included the second consecutive win of the Pride of the Province honor. Holly Tennant received the Spirit Award. Campus sweethearts include Charlotte Collier and Susan Coffey. Kristina Turfle is director of Hokie Camp Continuation, and Wendy Pember is head counselor. Members of Order of Omega are Jennifer Stitt and Shelloy Kiger, Panhellenic president and Omicron Delta Kappa vice president. Wendy Pember serves on the RSVP Committee that recruits merit scholars for the university. Anne Lews was re-elected to the student senate. She also acts as vice president for the Virginia Tech Alliance, serves on the Student Health Advisory Committee, and is a Rho Chi rush counselor. Maureen Barney also serves in the student senate.

WEST VIRGINIA

Concord College, Epsilon Delta — The chapter's Diamond Ball honored the only graduating senior, Karen Henthorn, past president. The chapter presented her with a president's dangle at the event. Epsilon Delta placed third in Greek Week after competing in activities as air band contest, Greek games, banner contest, and the All Greek Dance. Initiates tie-dyed t-shirts as a surprise for pledges. Panhellenic honored Julie Tessitore as best initiate and Melena Bragg as best athlete.

Marshall, Delta Upsilon — Members traveled to Cedar Lakes in Ripley for Province Day

activities and brought home awards for most improved chapter and Pride of the Province. Individuals honored included Kendra Marcum, most outstanding corresponding secretary; Amy Smith, most outstanding rush chairman; and Kathy Fisher, most outstanding pledge educator. College Chapter Director Linda Templeton was awarded the Ruth Helen Horton Alumna Award. Though Delta Zeta walked away with most of the honors in Greek Week, Chapter Editor Wendy Kelley reports "most important was the bond of friendship that we built within our Greek community." Along with the Overall Greek Week honor, Delta Zeta won awards for philanthropy, spirit, Greek sing, biathalon, chariot race, tricycle race relay, and foosball. Delta Zeta won Panhellenic Council's awards for alumnae relations, sorority relations, chapter education, outstanding rush, and most improved chapter. Melissa Roush and Lisa Whitt were tapped for Order of Omega.

Shepherd, Kappa Mu — West Virginians enjoyed a different type of Province Day as they traveled to a 4-H Campground in Ripley. After traveling six hours, KMs enjoyed the sisterhood of staying 14 to cabin. The outdoor atmosphere provided a perfect location for practicing chapter songs, hearing historian's reports on each chapter, and ending the day with a luau and spirit song competition. KMs placed second in the evening's Delta Zeta quiz bowl, and won the

serious song competition at breakfast. Other awards included outstanding enrichment programming, the Loving Cup, and outstanding social programming. Juli Berradeli was named outstanding recording secretary and Sheri Judy was named outstanding treasurer. Philanthropies included collecting aluminum cans to assist local children in a fund raiser for a trip to Washington. Members also donated cash to the Big Sister-Big Brother program and raffled a microwave. Members volunteered their time to hang advertisements for a Christian Fellowship campus presentation, and advertised for the annual Town College Day. KMs prepared a Delta Zeta commercial for the Shepherd campus radio station. Seniors knew they were appreciated and would be missed when underclassmen created signs and hung them around campus for Senior Appreciation Week. Members Marleene Martin and Kim Woodson were featured in an article in the community newspaper for their efforts in teaching French to students at a local elementary school. Michelle Besaw was first runner-up to Miss Shepherd, and Andrea Martin was named Miss Congeniality in the pageant. Julie Kugler was named outstanding senior in the social work field. Tammy Thompson was honored as Panhellenic's outstanding member, and Lisa Mihalik was named outstanding member of Delta Sigma Pi business fraternity.

New Foundation Scholarship

Throughout the 1986-87 school year, Province V collegians and alumnae worked diligently to raise the funds necessary to establish a local Ohio scholarship administered through the Delta Zeta Foundation which would initially provide one \$200 scholarship each spring to a worthy Province V applicant.

On April 11, 1987, at Ohio State Day held at Findlay College, the new "Ohio" scholarship was formally named the *Mary Lou McConnaughey Barth Province V Scholarship* in honor of Mary Lou, a past province and national officer, and one of Province V's outstanding alumnae. The check for \$2500 was presented to the Delta Zeta Foundation at the 1987 National Convention held that summer at Innisbrook in Tarpon Springs, Florida.



In the spring of 1988 at Ohio State Day at Wright State University, the first \$200 scholarship was presented to Lynn Krebs, from Theta Psi chapter at Ashland College. Province V is proud to announce that the Barth Scholarship Fund has grown since its inception in 1987 thanks to the continued support of many Delta Zeta collegians and alumnae. Because of this growth, at Ohio State Day held this past spring at Baldwin Wallace College, the province was pleased to be able to present two \$250 scholarships. The 1989 winners were Misti Riggerbach, from Zeta Kappa chapter at Ohio Northern University and Mary Beck from Gamma Tau chapter at Bowling Green State University.

"CONVENTION '89 FAVORITES"



- A. Dee Zee. Madras plaid letters appliqued on white t-shirt, \$18.00. White sweatshirt, \$23.00. On white only crossgrain sweatshirt, \$36.00.
- B. Applique Turtle. Paisley shell on a white sweatshirt, \$28.00.
- C. Rugby, short-sleeved, rubber buttons. Pink and white striped with embroidered Delta Zeta on 50% Cotton/50% Polyester, \$22.00.
- D. ΔZeta/Handpaint. Appliqued letters with handpainted turtles and balloons. T-shirt \$20.00. Sweatshirt, \$25.00.
- E. Delta Zeta Sorority. Four color design screenprinted on white t-shirt, \$12.00. On white sweatshirt, \$18.00.
- F. Oversized appliqued letters on white t-shirt, \$14.00. Grey only crossgrain sweatshirt, \$36.00.
- G. The "Crest". Full color design screenprinted on white t-shirt, \$12.00. White Sweatshirt, \$18.00.
- H. Embroidered Delta Zeta. "Look out Benetton" available on Hot Pink, Black, Kelly or White t-shirts, \$18.00. White sweatshirt only, \$23.00.
- I. Delta Zeta "Arch" Crest on a medium weight, Kelly or White sweatshirt, \$18.00. Grey only crossgrain sweatshirt, \$32.00. All styles screenprinted in puffed pink.
- J. Applique Argyle sweatshirt. White with pink and green corduroy accent, \$26.00.

All sportswear available in sizes M, L, XL.

CREATIVE BUSINESS EVENTS, INC. 4159 CLEVELAND HIGHWAY, GAINESVILLE, GA 30506 (404) 983-3778									
Name:	ITEM NO.	SIZE	COLOR	Qty.	DESCRIPTION	PRICE			
Address:									
Phone:									
WE HONOR: MasterCard () Visa () ◀◀◀ Check One									
EXP. DATE	Credit Card Signature Required								
▼ CREDIT CARD NUMBER ▼									
PLEASE ALLOW 4-6 WEEKS FOR DELIVERY AS UNPREDICTABLE DEMAND FOR CERTAIN ITEMS COULD CREATE A DELIVERY DELAY. WE WILL MAKE EVERY EFFORT TO SEND YOUR MERCHANDISE PROMPTLY AND YOU WILL BE NOTIFIED OF ANY DELAYS OVER 30 DAYS. ALL CHECKS AND CREDIT CARDS ARE CASHED UPON RECEIPT. PLEASE DO NOT SEND CASH OR MONEY ORDERS. MAKE CHECKS PAYABLE FOR THE TOTAL AMOUNT OF THE ORDER (INC. SHIPPING AND HANDLING) PAYABLE TO CREATIVE BUSINESS EVENTS — DELTA ZETA.									
ALL RETURNED CHECKS ARE SUBJECT TO A \$10.00 SERVICE CHARGE. ALL RETURNED CARTONS ARE SUBJECT TO A \$5.00 SERVICE CHARGE.									
					SHIPPING, INSURANCE & HANDLING Order Total Via Surface Via Air 25.00 & Under \$3.95 \$5.25 \$25.01-50.00 \$4.95 \$6.50 \$50.01-75.00 \$5.95 \$8.50 \$75.01-100.00 \$7.95 \$10.50 \$100.01-200.00 \$9.95 \$12.50 \$200.01-300.00 \$11.95 \$15.50 \$300.01-400.00 \$14.95 \$18.50 ADD \$2.50 for each additional \$50.00 for surface. ADD \$5.00 for each additional \$50.00 for air.		ITEM TOTAL SHIP. & HANDL. (See Chart) ADD 6-12% SALES TAX IF SHIPPED TO CALIFORNIA ADD 4% SALES TAX IF SHIPPED TO GEORGIA GRAND TOTAL PRICES SUBJECT TO CHANGE		
A PORTION OF EACH SALE WILL GO TO YOUR SORORITY NATIONAL OFFICE.									

The National Council is saddened to announce the death of Frances E. Westcott, National President 1946-1948 on August 11, 1989. Story will follow in the next *LAMP*.

GAMMA

Mary Roemer Pofahl '40

DELTA

Elsie Browning Irwin '18

EPSILON

Clara Heaton Porter '24

ZETA

Floreen Glover Eastman '23

THETA

Ardella Tussing Bohnslav '26

IOTA

Margaret McPherson Brown '25

KAPPA

Dorothy Stewart Cassidy '00

MU

Barbara Chase Bruce '55
Blanche Bonteiller Kaiser '18
Mildred Slater Stein '25

NU

Hazel Egan Henry '26
Marjorie Mercer Miller '35

PI

Veda Vose Norris '17

RHO

Minnie Ellison Gray '17

SIGMA

Thelma Wilson Gremillion '19
Hazel Barman Hearin '29
Sarah Powers Thielbar '23
Kaye M. DeVillier Person '90

TAU

Gwendolyn Drake Herron '26
Emma Batchelder Sartwell '23

CHI

Francetta B. Carroll '41

OMEGA

Kathryn Fry Wise '30

ALPHA ALPHA

Lois Berry Larson '27
Grace Lynch Miller '25

ALPHA BETA

Frances Davison Gadsin '32
Mary Hanning '50

ALPHA DELTA

Margaret Long Switzer '46

ALPHA EPSILON

Clara Brown Chiles '25
Rachel Marrs Smith '66

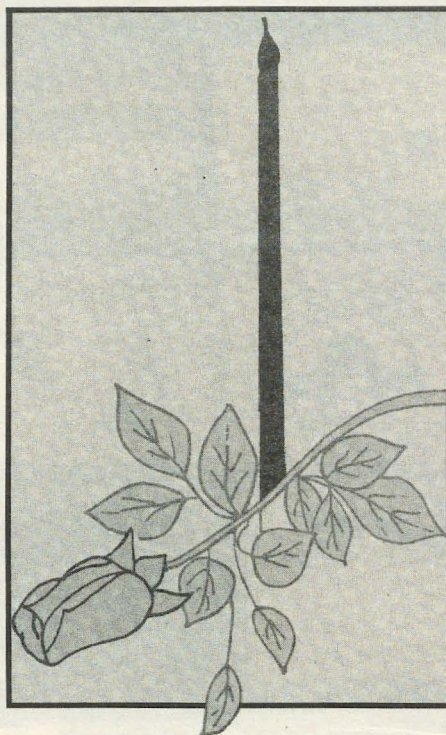
ALPHA ETA

Florence Augusta Harnau '26

ALPHA IOTA

Margaret McKerral Bivens '42
Patricia Ellis Kneff '42
Frances Reed Simons '35

Flame Eternal



ALPHA KAPPA

Louise Zinns Holbrook '36

ALPHA LAMBDA

Lois Ritchie Spencer '32

ALPHA NU

Pearl Bartley '29

ALPHA CHI

Leela Stevens Craig '28
Emilie Collins Heyler '28
Mildred Singleton Stucky '24

BETA GAMMA

Katharine Wendell Lewis '27

BETA KAPPA

Charlotte Swegle Evans '27

BETA LAMBDA

Helen Chambers Hopper '46

BETA NU

Josephine Lawless Reed '39

BETA CHI

Gladys Igou '27

GAMMA KAPPA

Linda G. Burch '66

GAMMA RHO

Lavonne Sparrow Stout '53

GAMMA UPSILON

Jane Pegel Olson '43
Elaine Smith Scott '51

DELTA OMICRON

Mildred Kincaid Sims '36
Sharey Lynn Stricklin '68

DELTA SIGMA

Freda Grabenstein McGlashon '26

DELTA PSI

Marinell Ash '63

EPSILON BETA
Ruth Gump Thomas '31

EPSILON GAMMA
Alyce Priefert Hanson '60

EPSILON DELTA
Andrean Marie Everding Wells '80

EPSILON KAPPA
Jean Godfrey Wentworth '43

EPSILON XI
Alma Evans Hall '79

Cynthia McCarty



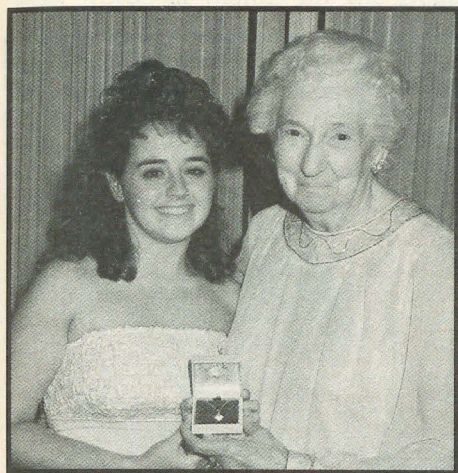
The unexpected death of Cynthia Lundy McCarty on June 23 saddened those of us who knew her well. Soft spoken, but with a mind brimming over with splendid ideas, she served on National Council as Director for Area West in 1968 and then as Vice-President of Alumnae Affairs from 1970 to 1973.

Cynthia attended Arizona State University where she joined a local sorority. When the group decided to go national, she resigned as she couldn't imagine being anything other than Delta Zeta. At the 1950 convention at Mackinac Island, Cynthia and Nancy Gale, both daughters of former National Presidents, were the initiates.

Cynthia went on to become a member of Epsilon chapter and received a degree from Indiana University. But Arizona called, and she lived most of her life in Phoenix.

She leaves a daughter Melinda and her mother, Grace Mason Lundy.

FHM Awards Announced



Kathryn Kendo was present to receive the Florence Hood Miner award for outstanding junior Delta Zeta from FHM herself!

Seven junior women were awarded the Florence Hood Miner award for outstanding leadership on their respective campuses.

Present at convention to receive her gold insignia at the opening banquet was **Kathryn Kendo** of Iota Pi chapter at West Virginia Institute of Technology. The outstanding junior in Province IV, Kathryn was Homecoming Queen, Alpha Phi Omega, Student Government, Vice President of E & E Engineers, Panhellenic President.

In describing the campus activities of these chosen juniors, only a few highlights of their accomplishments have been noted. In all cases, the list of achievements runs long, as well as the many recommendations by faculty and deans. Special presentations will be made to the other six women by their province directors.



Amy Carley, Xi Chi, on the campus at Robert Morris College in Corapolis, Pennsylvania, is vice president of the Student Government Association, *Who's Who*, Dean's List, President of Order of Omega, Snowball

Queen, Kappa Delta Rho honorary and was the featured speaker at a recent college alumni luncheon.

Kimberly Curry of Lambda Lambda chapter at Trenton State College in New Jersey is Panhellenic president and an accounting major on the Dean's List. She received the Silver Congressional award which is one of two given by Congress to 17-19 year-olds who show extensive personal development, physical fitness and voluntary public service.



Theresa Duncan, Lambda Alpha chapter, is Panhellenic President at Arkansas Tech University and also president of Bacchus society, whose purpose is in its name, Boost Alcohol Consciousness Concerning the

Health of University Students. She was honored by the Student Government Association for her outstanding work on their activities and lecture committees. A member of the campus ROTC, she wants to pursue a career in Criminal Justice.

Frances Maynard, Beta Delta chapter at the University of South Carolina, is a top student and artist. The t-shirts worn by the Carolina province members at convention were designed by Frances. On both Dean's and President's lists, plus other academic awards, she will graduate with a degree in advertising and graphic design. Gamma Beta Phi, Phi Eta Sigma, Alpha Lambda Delta chapter founder, Order of Omega and Golden Key all claim her. Campus committees are numerous.

The last two women have the same

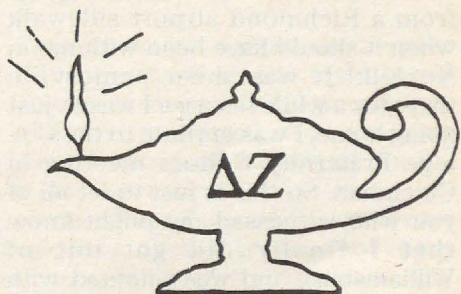
last name, a never before coincidence in the history of the FHM award, but they live miles apart geographically.



DeAnne McCulloh is a popular member of Beta Kappa chapter at Iowa State University in Ames, and whenever a creative committee is appointed she is usually chairman. Student Alumni Association Ambassador

and Tour Guide, she will be one of the famous Veishea control committee for next year. Last year she was voted Iowa State Beef Queen and traveled across the state representing the industry.

Marie McCulloch belongs to Gamma Xi chapter at New Mexico State University in Las Cruces which covers more land than any campus in the country. Blue Key, Spurs, Alpha Chi, Crimson Scholar, Student Ambassador, IEEE Engineering, University Scholarship, Honors program are some of the accomplishments listed on her nomination form. She is currently working in the Admissions office of the university giving tours and assisting the guidance counselors in stimulating the interest of incoming freshmen.



From the Lampwriter



It seems to me the convention story tells it all, but there are always a few highlights left unmentioned.

For the first time at a Delta Zeta convention, gifts of love could be seen blooming on the ΔZ Rose Trees in the East Gallery. Manned by Foundation board members, the trees blossomed rapidly as Delta Zeta names were added.

The trees offered a special way to "remember someone or to say thank you" to a Delta Zeta sister. One purchased a ribbon for the tree and the name of the one you wished to thank or remember was added to the tree. Each person so honored received a special note prior to the end of convention, revealing the name of the donor.

More than \$4,000 had been received by the Foundation by the end of the week.

My special thanks to Diane Skelton and *The LAMPKIN* staff of Ginger Bryan, Jane Maxwell, Susan Smith, Barb Bodell, Dianne Veith, Karyn Laurenzello, Susan Mease, Carol Bertz, Vivian Mackay, Shelley Stepp, Sharon Graham, Chloe Forrest, Lauan Garnjost, Jody Lamke, Vicki Peters, Phyllis Seal and Ida Marie Nelson. Did I miss anyone? Their 24-hour-a-day work made putting together the convention story for *The LAMP* a snap!

The convention committee was fabulous. No one would realize how much back-stage stress occurred in making 500 of us happy. Your editor extends grateful thanks to Barbara Hunt Martin who rescued my luggage from a Richmond airport sidewalk when it should have been with me in Norfolk! It was sheer panicsville there for a while because I wasn't just going home, I was enroute to the College Fraternity Editors meeting in Cincinnati. So this is just to let all of you who witnessed my plight know that I finally did get out of Williamsburg and was reunited with my luggage in good time to change hats and brief cases for the editors' meeting.



Doris Soderstrom, Katey Sandy and Helga Clark manned the Rose Trees.

This was also a convention of change. Old friend Taylor Reese had retired from being Delta Zeta's stenotypist after 11 conventions but he left us in good hands. Nephew Frank Taylor who lives in Virginia Beach has taken Taylor's job. Frank commented that he'd never before seen a group work as hard as Delta Zeta and that he really hadn't expected to be kept so busy. He didn't seem to mind the work though and he is fast learning why Taylor is so fond of the Delta Zetas.

It was a pleasure to work with new photographer Jim Aquino of Advanced Photographic Concepts, Inc. out of Palm Harbor, Florida. Afterwards Jim admitted he had not anticipated working such long hours (he'd never done a sorority convention before) but he did stress several times how much he admired the Delta Zetas, how organized and hard working we are, and how ladylike, even when having fun.

This was also more a family convention than ever. Teenagers Lisa Horton and Leanne Bass joined their ΔZ moms and six-months old Adrienne Skambis came to convention, complete with mom and babysitting

grandmom. The men were there, too numerous to mention. And there were parents and friends. It was great!

A special group of Delta Zetas was honored at the first Special Friends of the Foundation Breakfast.

Approximately 70 Delta Zetas were honored for their donations on the Heritage and Rose levels of giving. Guests included Joe Rizzo, Better Speech and Hearing Institute, new



The Bass daughters had left convention before the legacy picture was taken but they're pictured here at the Friday evening banquet. L to r, Leanne Bass, Mother Sondra Golden Bass, Susan Bass.

Delta Zeta Linda Jordan and husband King of Gallaudet and Delta Zeta Janet Doak of the House Ear Institute.

Pat Rosser opened the breakfast with words of thanks for the Delta Zeta givers for "blazing a new trail, and being leaders in sharing." She emphasized the ways in which funds may benefit the varied areas of programs, from scholarships to museum to help for the hearing impaired. The breakfast concluded with presentation of a newly released video featuring Delta Zeta's giving programs from the earliest days of conception at the Little Lamp and Big Lamp schools in Kentucky. The video depicts the full philanthropic tapestry of Delta Zeta.

And this brings us to another press deadline, so best this editor get with it!

S



Present for the mother-daughter picture at Williamsburg: Standing, l to r, are Sandra Hart Horton, Gwen Moss McKeeman, Ruth Weider Patterson, Sue Adrianson Skambis with young Adrienne, Charmion Lackey Baugher and Catherine Coker Goodwin. Seated, Lisa Horton, Marianne McKeeman Cravens, Betsy Patterson, Nancy G. Lackey, Lacey Goodwin.

New Program Assists Seniors

The Senior Program, a coordinated program using professional consultants, is aimed at assisting seniors in the transition from college to the business world. It was introduced to collegians at convention in a workshop by Cindy Winslow Menges, National Headquarters Administrator.

The program, consisting of five stages, begins early in the senior year. "The Senior Challenge" will help seniors understand the pressures of the senior year in order to analyze their needs and to establish priorities.

The second stage, "Job Campaign" will assist in focusing skills seniors already possess (i.e. rush skills) toward their upcoming careers.

"Projecting Your Image," stage three, examines the importance of "visual packaging," assisted by a live or video presentation by Casual Corner.

"Personal Finances," the fourth stage, importance of goal setting, financial planning and time management, uses a video presentation from BancOhio National Bank.

The final stage, "The Volunteer" explains the benefits of volunteerism. Seniors need to be sold on volunteering rather than being pressured into joining any organizations. A video presentation produced in cooperation with the Association of Junior Leagues will be shown.

Seniors will also be introduced to "Directions — Delta Zeta Career Networking Program," a computer data base of 50,000 alumnae already in place and ready to help its members establish career contacts.

The program is aimed to help seniors realize that Delta Zeta is an important support group which can remain a vital factor in their lives.



Convention Committee: Back row, Louri Throgmorton, Susan Mease, Merry Adamcik. Next row, Lisa Moses, Eileen Woolering, Kim Ward, Aimee Scharer. Second row, Michelle Albrecht, Barbara Martin, Carolyn Gullatt, Front row, Linda Hoefler, Beth Richkin, Leann Danner, Cindy Menges, Lacey Goodwin, Kathy Hovde.

This was Pups and Hounds!

If you've never attended a Delta Zeta convention, then this story probably will not interest you. In fact, you may wonder if *The LAMP* staff has gone to the dogs. A tradition from the early 1930's . . . this is a time to celebrate the number of years you've been a conventioneer. Groups sometimes change, as a person might miss one year, but for the last several the "top" — not necessarily "older" — hound groups have remained constant.

Vice President Phyllis Favorite, soon called the Duchess of Favorite by her audience, began her parade of hounds by showing off the pride of the kennel, the new litter. The well-groomed pups stood for a resounding "yip." Two-time convention pups then yipped a healthy two barks. Three convention pups, not yet paper trained, had to remain at their tables for their barks.

Four convention hounds took the

stage to woof and howl, while the PCDs (self-appointed judges) gave a good rating to the five convention dogs who began woofing on all fours, but ended with a paws up.

Well-trained six convention barkers huddled before giving their "circus" paw tricks. A patriotic group of seven convention barkers were led in kennel tricks by Coopers & Lybrand's Dave Gaston, who wore a tricorn hat and waved a British flag.

Eight convention barkers did a medley of *Do Your Ears Hang Low*, complete with barking and tail wagging. Dick Fenton begged on the steps (with camera in hand) while wife Betty and the other nine convention year hounds spelled out "Delta Zeta."

The ten convention mutts rowed merrily along led by the new Commander-in-Chief Marvona.

Anne Marie Gavin, Shirlyn Chaffin and Connie Wilt at 11 conventions ran



Taylor Reese returned to convention just to join the pups and hounds!

out of time according to the PCD judges. Refusing to leave the stage, they howled on, but leader and past treasurer Anne Marie was the only one to keep an accurate bark tally.



A likely group of PCDs.



Collegians couldn't believe these were their PCDs.



They had so much fun laughing they couldn't count the barks!



PNOs (that stands for Past National Officer) finally make it to 14, but not without a struggle.

Former Stenotypist Taylor Reese jumped the retirement fence to howl at his litter reunion. Fielders bowed to him and the 12 convention barkers proved "Delta Zeta is the best you can be."

The trio of 13 conventions, Dianne Guild, Sandy Horton and Sandy Bass tired easily, so Sandy Bass fanned them while the other two panted through the barks.

With a vacancy at 14 conventions, 15 conventioners took the stage with Pack Leader Rin Tin Tin Andrisek, who called for Ohio to handle the barking. The pups ended with a patriotic salute to the pack leader.

Mary Lou Barth almost barked a solo 17 until faithful friends Carol Harper and Gwen McKeeman came to the rescue, finishing up 18 barks for a howling finale.

Then Grand Dame Florence Miner, seated in her Williamsburg rocker, rocked while "The Committee" rapped. The Grand Dame, needing cue cards to keep count, thrilled the pups and hounds as she tossed kisses to the litter before leaving in her limo (Williamsburg Lodge's emergency wheel chair.)



Rappin With Flo

*We're the Committee,
And we want you to know
Of our fearless leader,
Her name is Flo.
Yip-Yip-Yip-Yip-Yip.*

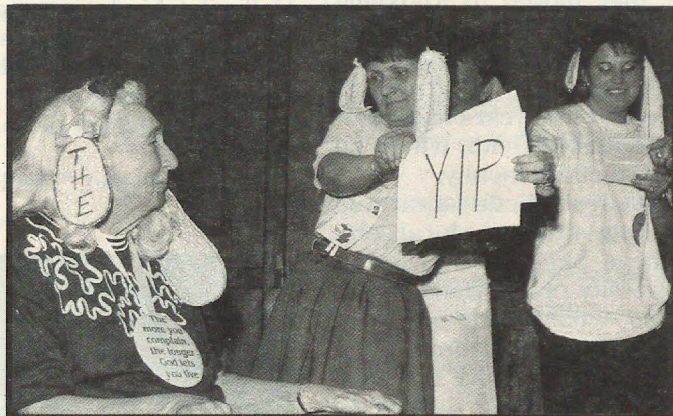
*In '28 she began it all
Her sleepless trips to Convention halls,
She started off with Lake of Bay
Skipped one, and was on her way.
Bark, Bark, Bark, Bark, Bark.*

*She's a legend in Delta Zee
An expert in our history
A former member of our exec
She's the best! Golly by heck!
Woof, Woof, Woof, Woof, Woof.*

*In '64, Cincinnati was the place,
And Flo was there to show her face.
Arf, Arf, Arf, Arf, Arf.*

*Flo's a hero in our eyes
This is really no surprise
For 61 years she attended convention
We would say she's earned her pension.
Ruff, Ruff, Ruff, Ruff, Ruff.*

*If you've been counting all her barks,
If you've tallied all her marks.
You will know she's really great
'Cause this is number 28!
Woof, Woof, Hoooww!*



The Committee: L to r, Carol Bertz, Pam Cronenwett, Jackie Gardner, Catherine Clay, Marianne Cravens. Front row, Stacey McMurrey, FHM and Kathryn Hunter.

ΔZ Initiates Gallaudet's First Lady

Teacher, wife, first lady, mother — all describe Delta Zeta's convention initiate, Linda Kephart Jordan.

She is an elementary teacher, the wife of I. King Jordan, Jr., who is president of Gallaudet University, and the mother of a teenage son and daughter.

Linda was the third of three daughters and a self-described poor student who went to work instead of attending college when she finished high school.

In 1967, she met King Jordan, a co-worker in a Washington, D.C. mail business and a sophomore at Gallaudet. Although he had become deaf two years earlier in a motorcycle accident, they had no trouble communicating with each other. (Linda now signs fluently.) They were married a year later. After King graduated from Gallaudet, they moved to Knoxville where he earned master's and doctoral degrees at the University of Tennessee. The Jordans returned to Maryland, with three-year-old King III and nine-month-old Heidi, where he joined the Gallaudet faculty.

Linda's interest in education was aroused and she attended a local community college. She then transferred to the University of Maryland where she received a bachelor's degree in early childhood education, magna cum laude, in May 1978. By 1984, she had earned a master's degree in human development from the university. Linda successfully combined school with marriage, teaching and raising two children. She has taught for 10 years, seven of them at Takona Park Elementary School.

The Jordans' life changed dramatically when he was named eighth president of Gallaudet following a period of campus unrest where students demanded a deaf president for the university.

"Linda has always been my most trusted advisor," says King. "And during the entire interview and selection process she was a real help. But during 'the week' she was my strength and wisdom. I would not be president without her, and I will be successful because of her continued support," King said in an article about Linda in *Gallaudet Today* magazine.



National Director Patricia Rosser, Linda Kephart Jordan and National President Norma Andrisek are pictured following initiation.

Their new home is in House One at Gallaudet. Linda is quoted in the article mentioned above as saying, "It's an honor to live here. The history of the house has significance for deaf and hearing impaired people the world over."

Linda also said, "I feel that I should

be highly visible on campus. People should see me as much as they see King."

This once "poor student" who has become successful in many ways now becomes a part of both Gallaudet and Delta Zeta history.

— *The Lampkin Staff*



Past National Officers at convention: Standing, l to r, Sandra Hart Horton, Dianne Fellows Guild, Betty Schneider Fenton, Connie Teaford Wilt, Charlotte Fields Silversteen, Sondra Golden Bass. Seated, Gwen Moss McKeeman, Elizabeth Baker Devereaux, Mary Lou McConnaghey Barth, Florence Hood Miner, Carolyn McCandless Woodling.

Directory

NATIONAL COUNCIL

PRESIDENT: Marvona Easley Tavlin (Mrs. Michael J.), 2710 Devonshire Drive, Lincoln, NE 68506

VICE PRESIDENT OF MEMBERSHIP: Sandra McAlister Nesbitt (Mrs. Milton), 3519 Castle Ridge Road, Montgomery, AL 36116

VICE PRESIDENT OF ALUMNAE AFFAIRS: Deanna Alleman McKinnon (Mrs. Mike), 12109 Victoria Place, Oklahoma City, OK 73120

VICE PRESIDENT OF COLLEGIATE AFFAIRS: Phyllis Snape Favorite (Mrs. Robert D.), 522 Melissa Lane, State College, PA 16803

SECRETARY: Merry Westbrook Adamcik (Mrs. Roy), 614 Rozelle Avenue, Sugar Land, TX 77478

TREASURER: Lynnda Wolf Hoefler (Mrs. Robert), 1287 Denise Drive, Kent, OH 44240

DIRECTOR OF FINANCIAL RESOURCES: Patricia Canady Rosser (Mrs. David), 1609 Indian Rocks Road, Clearwater, FL 34616

DIRECTOR OF NEW CHAPTERS: Jennifer Plenge (Ms.), 904 Dana Marie Drive, Louisville, KY 40223

DIRECTOR OF ALUMNAE DEVELOPMENT: Carol Selway Bertz (Mrs. Michael), 6544 South Heritage Place East, Englewood, CO 80111

PAST NATIONAL PRESIDENT: Norma Minch Andrisek (Mrs. John R.), 319 Janice Drive, Berea, OH 44017

NATIONAL PANHELLENIC CONFERENCE DELEGATE: Carolyn Barnes Gullatt (Mrs. John H.), 4008 Hyridge, Austin, TX 78759

NATIONAL PANHELLENIC CONFERENCE ALTERNATES: Sandra McAlister Nesbitt (Mrs. Milton), Deanna Alleman McKinnon (Mrs. Mike), Norma Minch Andrisek (Mrs. John R.)

NATIONAL HEADQUARTERS

NATIONAL HEADQUARTERS: 202 East Church Street at Campus Avenue, Oxford, OH 45056. (513) 523-7597

NATIONAL HEADQUARTERS ADMINISTRATOR: Cindy Winslow Menges

FIELD REPRESENTATIVES: Michelle Albrecht, Leann Danner, Devra D. Dimpfl, Lacey Goodwin, Kathleen Hovde, Sarah Alice Leigh, Lisa Moses, Beth Sara Richkin, Aimee Scharer, Louri Lynn Throgmorton, Kimberly Ward.

THE LAMP

Editor: Gwen Moss McKeeman (Mrs. Robert), 5517 S. 74th E. Avenue, Tulsa, OK 74145

EXTENSION

DIRECTOR OF EXTENSION: Carolyn Barnes Gullatt (Mrs. John H.), 4008 Hyridge, Austin, TX 78759

DELTA ZETA SUBSCRIPTIONS

Norma Swepston McIntyre, Box 24145, Columbus, OH 43224

DELTA ZETA FOUNDATION

PRESIDENT: Joan Dondrea Lowry (Mrs. Bob-Bill), 578 Yarmouth Lane, Bay Village, OH 44140

SECRETARY: Marjorie Klingensmith Lovewell (Mrs.), 96 Prado N.E., Atlanta, GA 30309

TREASURER: Patricia Canady Rosser (Mrs. David), 1609 Indian Rocks Road, Clearwater, FL 34616

MEMBERS: Joyce Low London (Mrs. John), PO Box 6458, Las Cruces, NM 88006

Susan Mease (Ms.), 31 Coventry Ct., Blue Bell, PA 19422

Katey Bosworth Sandy (Mrs. Jonathan), 18630 NW Tolovana, Portland, OR 97229

COMMITTEES:

ELIZABETH COULTER STEPHENSON SCHOLARSHIPS: Joyce Low London (Mrs. John) PO. Box 6458, Las Cruces, NM 88006

GRADUATE SCHOLARSHIPS: Priscilla "Pat" Beatty (Miss), 3691 NW 95th Terrace #1202, Ft. Lauderdale, FL 33321

GALLAUDET UNIVERSITY: Lucille Bolstad May (Mrs. Leland B.), 5100 Dorset Avenue, #406, Chevy Chase, MD 20815

HOUSE EAR INSTITUTE: Betty Paul DeWitt (Mrs. Norman), 23630 Oak Rest Lane, Harbor City, CA 90710

UNDERGRADUATE SCHOLARSHIPS: Donna Edwards Happ (Mrs. William V.), 39968 Pearl Drive, Murietta, CA 92362

PROVINCE COLLEGIATE AND ALUMNAE DIRECTORS

I. Maine, Massachusetts, Vermont, New Hampshire, Connecticut, and Rhode Island

PCD: Francis Robinson Carnes (Mrs. Michael), 252 Washington Street, Arlington, MA 02174

PAD: Janice Jelks Cox (Mrs. Stanford), 313 Elm Street, Framingham, MA 01701

II. New York, New Jersey and Delaware

PCD: Linda Dennison, 3000 Ford Rd. Apt. L-8, Bristol, PA 19007

PAD: Cynthia Schafer Plucinski (Mrs. Donald), 633 South Edge Park Dr., Haddonfield, NJ 08033

III. Pennsylvania and Western New York

PCD III-C: Judy Kline, 312 O'Toole Dr., Hagerstown, MD 21740

PCD: III-W: Carol Johnson Miskell (Mrs. C. F.), 176 Seminole Ave., Pittsburgh, PA 15237

PAD III-W and -C: Jane Simmons Riccardi (Mrs. Robert), 150 Par Dr., Pittsburgh, PA 15236

PCD III-E: Kathy Karbel, 518 March St., Reading, PA 19607

PAD III-E: Cynthia Schafer Plucinski (Mrs. Donald), 633 So. Edge Park Dr., Haddonfield, NJ 08033

Delta Zeta • Fall 1989

PRESIDENT EMERITUS OF HISTORICAL MUSEUM

Lucile Crowell Cooks (Mrs.), 7400 Sun Island Drive S., Apt. #404, South Pasadena, FL 33707

DIRECTOR EMERITUS OF HISTORICAL MUSEUM

Grace Pritchard Gorham (Mrs.), 1510 East 31st Street, Tulsa, OK 74105

Mary Lou Vineyard (Mrs. Phillip W.), 4998 62nd Ave. S., St. Petersburg, FL 33715

HISTORIAN EMERITUS

Grace Mason Lundy (Mrs. H. M.), 3207 N. 25th St., Phoenix AZ 85016

STANDING COMMITTEES

AWARDS (ALUMNAE AND COLLEGIATE): Beth Anderson Hudson (Mrs. Tom), 5135 Marita Ln.E. #F Anaheim, CA 92807

COLONNADE CLUBS: Mary Ann Gallatin French (Mrs. John), 2322 N.W. 58th Circle, Oklahoma City, OK 73112

CONSTITUTION AND BYLAWS: Anne Marie Jones Gavin (Mrs. William), 3264 Swan Drive, Vineland, NJ 08360

FIELD ACTIVITIES: Phyllis Snape Favorite (Mrs. Robert D.), 522 Melissa Lane, State College, PA 16803

FINANCE: Lynnda Wolf Hoefler (Mrs. Robert), 1287 Denise Drive, Kent, OH 44240

HOUSING ADMINISTRATIVE: Norma Minch Andrisek (Mrs. John R.)

REGIONAL HOUSING CHAIRMEN:

Mary Beth Hibler Allen (Mrs. Eugene), 2704 S. Tennyson Way, Denver, CO 80236

Teresa Grimm (Mrs.), 286 Oakland Ave., Arlington, MA 02174

Kathleen Johnson Sledge (Mrs. Joe W. Jr.), 1700 Dearing Place, Tuscaloosa, AL 35401

Donna Donnelly Wylie (Mrs. William), P.O. Box 1265, Bloomington, IN 47401

INSURANCE: National Headquarters, 202 E. Church Street, Oxford, OH 45056

WAYS AND MEANS: Jamie Hammill, 2100 Walnut St. #12-C, Philadelphia, PA 19103

HISTORY: Florence Hood Miner (Mrs. Arthur), 1040 H Avenue, Nevada, IA 50201

JUDICIARY: Dianne Fellows Guild (Mrs. Douglas), 16 Andrews Drive, South Burlington, VT 05401

PLEDGE EDUCATION: Merry Westbrook Adamcik (Mrs. Roy), 614 Rozelle Avenue, Sugar Land, TX 77478

PHILANTHROPY: Patricia Canady Rosser (Mrs. David), 1609 Indian Rocks Road, Clearwater, FL 34616

ALUMNAE COORDINATOR: Donna Braziel Merritt (Mrs. Jesse), 1921 Greenwood Dr., Tallahassee, FL 32303

COLLEGIATE COORDINATOR: Laurie Montgomery McKeating (Mrs. Jim), 12346 Westella, Houston, TX 77077

RITUAL: Karen Kind Veitch (Mrs. Andrew), 36 Rilling Ridge Road, New Canaan, CT 06840

COMMITTEES

NETWORKING: National Headquarters, 202 E. Church Street, Oxford, OH 45056

NEWSLETTER: Diane Jones Skelton (Mrs. Danny), 1725 Chipco, Tyler, TX 75703

PUBLIC RELATIONS: Barbara Poremba (Miss), 49 Benedict Street, Norwalk, CT 06850

REFERENCES: Alberta Doran Curran (Mrs. Tom), 116 Dublin Woods Drive, Cary, NC 27513

ALUMNAE:

MEMBERSHIP: Ann Butler Booth (Mrs. W. Ray), 14735 Oak Bend Drive, Houston, TX 77079

COLLEGIATE:

ACADEMICS: Sue Adrianson Skambis (Mrs. Christopher), 836 South Lake Adair Blvd., Orlando, FL 32804

ACTIVITIES: Margaret Allegro Sorrells (Mrs. Rick), 6158 Chesley, Dallas, TX 75214

SOCIAL: Sara Carruthers (Miss), 601 Glenway Drive, Hamilton, OH 45013

SORORITY EDUCATION: Ellen Kroll Jenkins (Mrs. Paul), 1101 Ramblin Court, Greenwood, IN 46142

STANDARDS: Katherine Day Hager, (Mrs. Alan), 645 School Street, Indiana, PA 15701

IV. West Virginia

PCD: Penny Payne Fioravante (Mrs.), HC 63 Box 91, Tiny Ridge Farm, Sumerco, WV 25567

PAD: Doretta Pugh Osburn (Mrs. Thomas), 314 Roxalana Hills Dr., Dunbar, WV 25064

V. Ohio

PCD-N: Sandy Sebrell Bailey (Mrs. Bruce), 639 N. Portage Path, Akron, OH 44303

PCD-S: Laura Vradelis (Miss), 12117 Sycamore Terrace Apt. E, Cincinnati, OH 45249

PAD-N: LeeAnn Vogelberger August (Mrs. Donald), 3235 Bloomsbury Circle NW, Canton, OH 44708

PAD-S: Elaine McManus Freed (Mrs. William), 721 Donald Ave., Dayton, OH 45420

VI. Michigan

PCD: Sharon Moncrief Slovinski (Mrs. Harry), 3270 Westminster Dr., Kentwood, MI 49508

PAD: Pamela McClure Cronenwett (Mrs. William), 25720 West Hills Drive, Dearborn Heights, MI 48125

VII. Indiana

PCD: Elisabeth Petrucce (Miss), 5527 N. Haverford Ave., Indianapolis, IN 46220

PAD: Karen Baurle Brammer (Mrs. Phillip), 1700 North Thorn Tree, Muncie, IN 47304

VIII. Wisconsin

PCD: Geri L. Palmer (Miss), 312 N. 50th St., W. Milwaukee, WI 53208
PAD: Julie Hauser (Miss), 2130 Old Shakopee Rd., #318, Bloomington MN 55425

IX. Illinois

PCD-N: Refer to Merry Adamick, PDC Coordinator
PCD-S: Robin Furtney Bedwell (Mrs. Kirk), PO Box 20025, Belleville, IL 62221
PAD-N: Marcia Campbell Harrison (Mrs. Charles), 1 South 761 Ott Avenue, Glen Ellyn, IL 60137
PAD-S: Gail Easley McKee (Mrs. Donald), 776 10th St., Charleston, IL 61920

X. Iowa and Nebraska

PCD: Barbara Tweed Holland (Mrs. George), 287 Village Dr., Ames, IA 50010
PAD: Christina Wifvat Gammell (Mrs. Jim), PO Box 65, Granger, IA 50109

XI. Missouri

PCD: Dana McMillan (Miss), 541 W. 11th #101, Kansas City, MO 64105
PAD: Phyllis Berens Ross (Mrs. Norman), 12713 Sherwood, Leawood, KS 66209

XII. Minnesota, North Dakota and South Dakota

PCD: Jeri Seals Weigand (Mrs. Gregg), 6185 Boyer Path, Invergrove Heights, MN 55075
PAD: Julie Hauser (Miss), 2130 Old Shakopee Rd., #318 Bloomington, MN 55425

XIV. Colorado and Kansas

PCD: Gail Persak Beets (Mrs. Kenneth), 5963 W. Indore Place, Littleton, CO 80123

XIV-E. Kansas Alumnae Chapters

PAD-E: Carolyn McCandless Woodling (Mrs. Charles), 3112 Creekwood, Lawrence, KS 66044

XIV-W: Arizona, Colorado, New Mexico, Utah, and Wyoming Alumnae Chapters, except Las Cruces, NM

PAD-W: Janet Eisler Havener (Mrs. Gary), 2844 Kiowa Dr, Loveland, CO 80538

XV-S. Southern California, Southern Nevada and Hawaii

PCD: Karen Severloh Moffitt (Mrs. John), 2075 Los Robles Ave., San Marino, CA 91108
PAD: Barbara Philippi Lancaster (Mrs. Richard), 4923 Libbet Avenue, Van Nuys, CA 91436

XV-C: Northern California and Northern Nevada

PCD: Linda Lesniak Szymanski (Mrs. Robert), 931 Notre Dame Avenue, Concord, CA 94518
PAD: Wendy Wood LaBounty (Mrs. William), 2099 Janice Drive, Pleasant Hill, CA 94523

XV-N. Oregon, Washington, Montana, Idaho and Alaska

PCD: Carin Brown Steckler (Mrs.), 5208 36th Ave. NE, Seattle, WA 98105
PAD: Helga Kohlenberg Clark (Mrs. William), 4866 123rd Place, S.E., Bellevue, WA 98006

XVI. Oklahoma

PCD: Angela Askew (Miss), 2400 NW 30th #607, Oklahoma City, OK 73112
PAD: Pattie Cantrell Hulsey (Mrs. Stephen), 15708 E. 80th St. North, Owasso, OK 74055

XVII-N. Texas, New Mexico Collegiate Chapters, Texas and Las Cruces Alumnae Chapters

PCD-N: Diane Krause (Miss), 2521 Ruger #180, Arlington, TX 76006
PAD-N: Colette Thomas Bennett (Mrs. Jess), 4402 Meadow Creek Trail, Apt. E-15, San Angelo, TX 76904

XVII-S. Texas

PCD-S: Tracy Harnage Kirkland (Mrs. J. Corey), 10526 Sageyork, Houston, TX 77089
PAD-S: Elsie Wheeler McTee (Mrs. Clifford), 4322 St. George, Corpus Christi, TX 78413

XVIII. Louisiana and Mississippi

PCD: Virginia Schattner Bryan (Mrs. Larry), 2404 Brownlee Road, Bossier City, LA 71111
PAD: Ida Marie Carter Nelson (Mrs. John), 126 Fremont Avenue, Shreveport, LA 71105

XIX. Tennessee

PCD: Clara Smith (Ms.), 502 Belle Pointe Ct., Nashville, TN 37221
PAD: Jean Cox Garibaldi (Mrs.), 6616 London Dr., Memphis, TN 38119.

XX. Kentucky

PCD: Jeanine Petersen Triplett (Mrs Brian) 1920 Roanoke, Louisville, KY 40205
PAD: Carol Sharpe Harper (Mrs. Spencer E. Jr.), 3309 Green Hill Lane, Louisville, KY 40207

XXI. South Carolina and North Carolina

PCD-E: Ruth Weider Patterson (Mrs. Robert), 3623 Devereaux Road, Columbia, SC 29205
PCD-W: Patricia Blackwell, 7492 Quail Meadow Lane, Charlotte, NC 28210
PAD: Patricia Menendez Tector (Mrs. John), 907 Winslow Court, Cary, NC 27513

XXII. Georgia

PCD: Cathy Kramer Leake (Mrs. Charles), 4458 Glengary Dr., Atlanta, GA 30342
PAD: Refer to Deanna McKinnon, National Vice President of Alumnae Affairs

XXIII. Alabama

PCD: Kathy Clark (Miss), 500 Snows Mill Ave. #1020, Tuscaloosa, AL 35406
PAD: Elizabeth (Lisa) Williams Terry (Mrs. Rick), 2252 Westmead Drive, Decatur, AL 35603

XXIV. Florida

PCD: Karly Klemp Burns (Mrs. Lawrence), P.O. Box 58050, Tierra Verde, FL 33715
PAD XXIV-S: LeeAnn Williford (Miss), 4200 Community Ave. #1015, West Palm Beach, FL 33409
PAD XXIV-C: Ellen Stavros (Ms.), 8673 Longwood Dr., Largo, FL 33543,
PAD XXIV-N: Diana Spivey Bishop (Mrs. Harry), 197 Burgess Rd., Pensacola, FL 32503

XXV. Virginia, Maryland, Washington, D.C.

PCD: Miss Linda Regner, 5576 Burnside Drive, #8, Rockville, MD 20853
PAD: Shelley Belson Stepp (Mrs. Larry), 2328 Wistar Street, Richmond, VA 23294

XXVI. Arkansas

PCD: Jacqueline Fabbri Gardner (Mrs. Richard Jr.), P.O. Box 2034, Russellville, AR 72801
PAD: Dauna Jackson Jones (Mrs. Thomas S.), Route 1, Box 75, Pottsville, AR 72858

STATE REFERENCE CHAIRMAN

ALABAMA: June L. Thigpen (Miss), 910 Shoal Run Trail, Birmingham, AL 35242 **ALASKA:** Kathryn Miller Mosley (Mrs. Larry), PO Box 61642, Fairbanks, AK 99706
ARIZONA: Debra Will Welch (Mrs. Wm), Box 9614, Scottsdale, AZ 85252-9614 **ARKANSAS:** Jeania Standridge Evans (Mrs. Jerry), Rt. 2, Box 530, Russellville, AR 72801
CALIFORNIA (North): Joyce Rogers Stoffey, 1240 Nob Hill Ave., Pinole, CA 94564 **CALIFORNIA (South):** Janet Breitweiss Savage (Mrs. Tom), 5102 Woodwind Lane, Anaheim, CA 92807 **COLORADO:** Diane Vyhnaelek (Miss), 13625-B E. Yale Ave, Aurora, CO 80014 **CONNECTICUT:** Ann Collins Gill (Mrs. Edward), 53 High Point Road, Westport, CT 06880 **DELAWARE:** Debra Bass (Miss), 357 Shea Drive, New Milford, NJ 07646 **DISTRICT OF COLUMBIA:** Pamela Siders Grizzle (Mrs. John), 120 36 Grey Wing Sq. #83 Reston, VA 22091 **FLORIDA:** Cindy Brown Helton (Mrs. Charles), 1601 Berkshire Avenue, Winter Park, FL 32789 **GEORGIA:** Linda Angel Leadham (Mrs. Gary), 550 Flying Scot Way, Alpharetta, GA 30201 **HAWAII:** Dorothea Bettencourt Ovio (Mrs.), 45-109 Kokokahi Place, Kaneohe, HI 96744 **IDAHO:** Rilla Soderstrom Perala (Mrs. George), 8800 Craydon Drive, Boise, ID 83704 **ILLINOIS:** Jerrie Merridith Fisher (Mrs. James), 915 Foxcrest Dr., Charleston, IL 61920 **INDIANA:** Jane Gustafson Thompson (Mrs. Mark), Route 1, Box 162, Pendleton, IN 46064 **IOWA:** Nancy Northey Pringnitz (Mrs. Douglas), R.R. Box 8158, Spirit Lake, IA 51360 **KANSAS:** Kayla Kerns Eddy (Mrs. Stephen), 2124 S. Lennox, Olathe, KS 66062 **KENTUCKY:** Joy Morton Coleman (Mrs. Kenny), 1728 Hawthorne Lane, Lexington, KY 40505 **LOUISIANA:** Jane Weaver Mathes (Mrs. Jimmy), 12538 Sherbrook Drive, Baton Rouge, LA 70815 **MAINE:** Denise A. Pitt (Miss), 23 Lindale Avenue, Biddeford, ME 04005 **MARYLAND:** Pamela Siders Grizzle (Mrs. John), 120 36 Grey Wing Sq. #83 Reston, VA 22091 **MASSACHUSETTS:** Abbye Klayman Warren (Mrs. Stephen), 80 Bailey St., Stoughton, MA 02072 **MICHIGAN:** Cathy Lynn Miner (Miss), 4116-27 Crooked Tree SW, Wyoming, MI 49509 **MINNESOTA:** Kelly O'Brien Elliott (Mrs. Todd), 8299 131st Street West, Apple Valley, MN 55124 **MISSISSIPPI:** Mary Halley Huch (Mrs. Donald), 317 Lamar Ave., Hattiesburg, MS 39401 **MISSOURI:** Kayla Kerns Eddy (Mrs. Stephen), 2124 So. Lennox Dr., Olathe, KS 66062 **MONTANA:** Barbara Kirsch Hamilton (Mrs. W.B.), 16400 SE 135th Sp. 26, Clackamas, OR 97015 **NEBRASKA:** Carole Sorensen (Miss), 828 Judge Ave., Broken Bow, NE 68822 **NEVADA:** Lori Figgins (Miss), 647 Peppertree Circle, Henderson, NV 89015 **NEW HAMPSHIRE:** Angela Piper Shipman (Mrs. John), 8 Bayberry Lane, Exeter, NH 03833 **NEW JERSEY:** Debra Bass (Miss), 357 Shea Dr., New Milford, NJ 07646 **NEW MEXICO:** Diane Vyhnaelek (Miss), 13625-B East Yale Ave., Aurora, CO 80014 **NEW YORK:** Mary Frances Sims (Miss), 95 B Ball Road, Syracuse, NY 13215 **NORTH CAROLINA:** Debra Wood Pressley (Mrs. Chuck), Route 1, Box 1516, Asheville, NC 28804 **NORTH DAKOTA:** Kelly O'Brien Elliott (Mrs. Todd), 8299 131st Street West, Apple Valley, MN 55124 **OHIO:** Susan Wisheart Little (Mrs. Donald), 5151 E Boulevard NW, Canton, OH 44718 **OKLAHOMA:** Ruby Gray Purdum, (Mrs. C.B.), Route 1, Box 147, Dewey, OK 74029 **OREGON:** Barbara Kirsch Hamilton (Mrs. W. B.), 16400 SE 135th Sp. #26, Clackamas River Village, Clackamas, OR 97015 **PENNSYLVANIA:** Debbie Fries (Miss), 1060 Oldstone Road, Allentown, PA 18103 **RHODE ISLAND:** Jill Morris Marshall (Mrs. Robert), 109 Pinecrest Dr., Pawtucket, RI 02861 **SOUTH CAROLINA:** Anne Marie VanBesien Cooley, 5102 Presbyterian Drive, Conway, SC 29526-9244 **SOUTH DAKOTA:** Doris Dalin Huffman (Mrs. Richard Jr.), 1535 S. State Street, Aberdeen, SD 57401 **TENNESSEE:** Joyce Lockhart Gary (Mrs. Wallace), 1347 Greendale Ave., Memphis, TN 38127 **TEXAS:** Ann Elkins Hawkins (Mrs. Jerry), 103 Live Oak Lane, Lake Jackson, TX 77566 **UTAH:** Jean Peters Christensen (Mrs. William), 1669 Yalecrest Ave., Salt Lake City, UT 84105 **VERMONT:** Angela Piper Shipman (Mrs. John), 8 Bayberry Lane, Exeter, NH 03833 **VIRGINIA:** Shelley Belson Stepp (Mrs. Larry), 2328 Wistar St., Richmond, VA 23294 **WASHINGTON:** Karen Fellows Soyk (Mrs. Lon), 31033 38th Ave. South, Auburn, WA 98001 **WEST VIRGINIA:** Lisa Bergeria Blankenship (Mrs. Glen), 208 N. State Street, Athens, WV 24712 **WISCONSIN:** Leila Yancy Wells (Mrs. William), 5302 Namekagon Lane, Madison, WI 53704 **WYOMING:** Diane Vyhnaelek (Miss), 13625-B East Yale Ave, Aurora, CO 80014

Museum Display Delights All



The miniature of the National Historical Museum and National Headquarters in Oxford, Ohio.

**by Florence Hood Miner
National Historian**

The museum display at the Convention Fair attracted both old and young visitors. A replica of the museum building in Oxford was authentic down to the last detail, although in miniature. Mementos and photographs of the rose doors and crested stained glass windows gave a feeling of the museum's many colorful treasures.

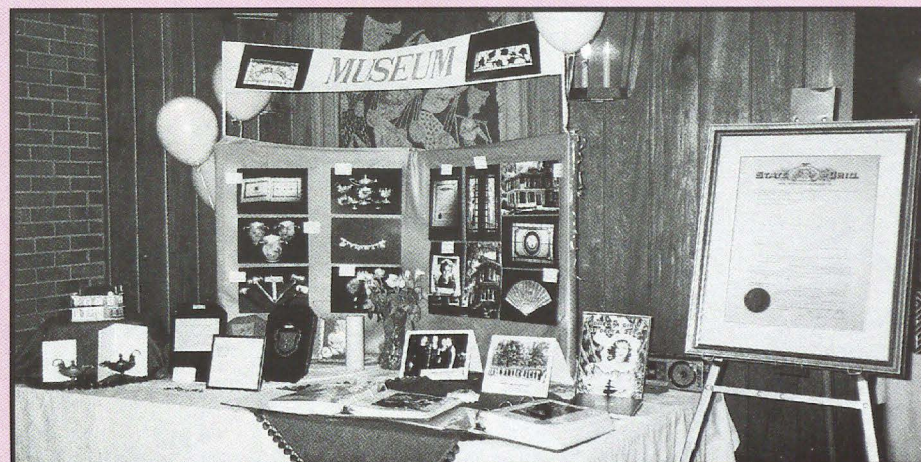
Trustees Elizabeth Devereaux, Susan Mease and Florence Miner shared some of their personal mementos. One of the albums brought from Oxford contained pictures of all of the Women of the Year. Another held pictures of National Council members from early to the present day. Particularly fun for the delegates was finding very young photographs of their older sisters.

Membership certificates have changed over the years and have come full circle. Displayed was a framed certificate for Lena McNeel, later Mrs. Ben Anderson, with a 1914 date and signed by Elizabeth Coulter Stephenson and Nettie Wills Shugart, then National President and Secretary. It was also signed by the president and secretary of her Delta chapter at DePauw.

Florence Hood's (Miner) certificate was in the form of a green leather plaque with the crest raised in color. Elizabeth Baker (Devereaux) received a wooden shield with the crest in bronze. Back to the paper certificate Susar Mease received brought the circle to the present day.



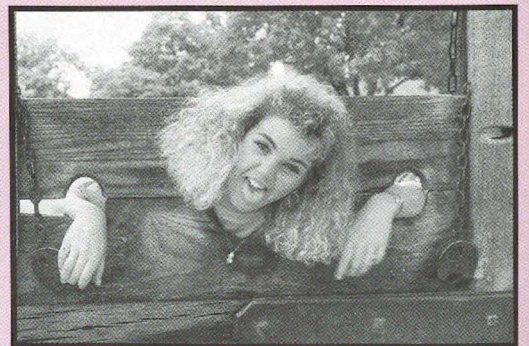
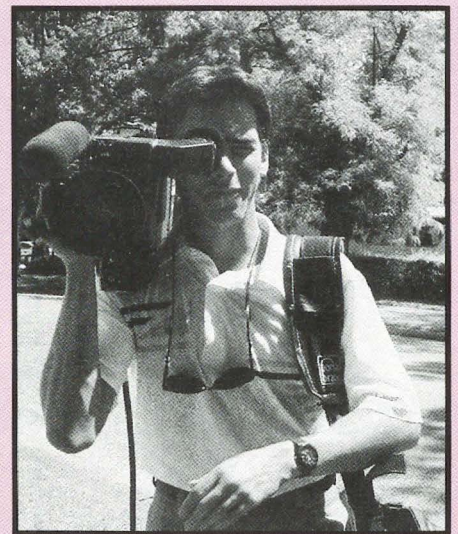
A copy of the original taping of Dream Girl of Delta Zeta played in the background of the Museum display. In the foreground are albums of Women of the Year and National Officers through the years.

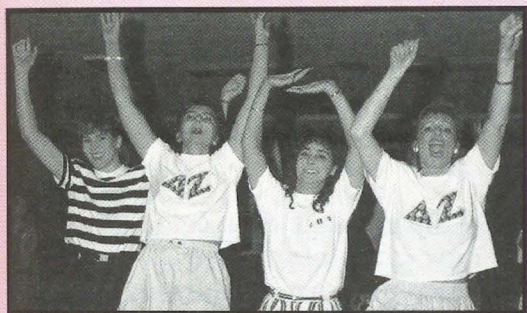
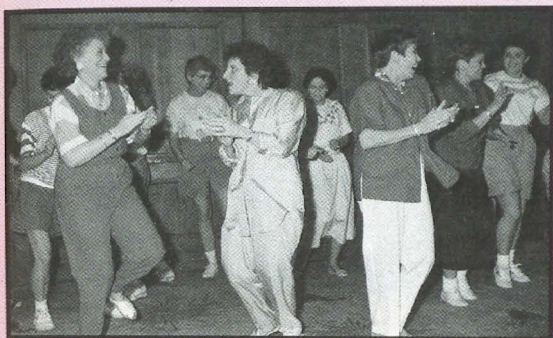


Various membership certificates, a collection of Lamps, museum pictures added to the display.

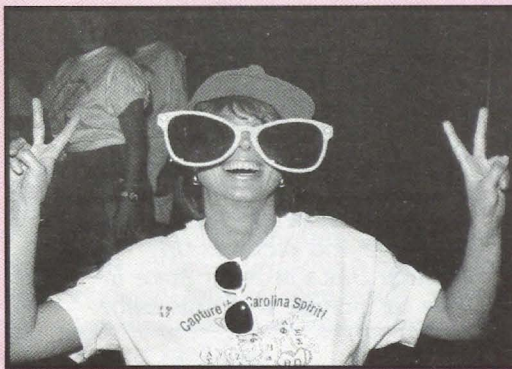
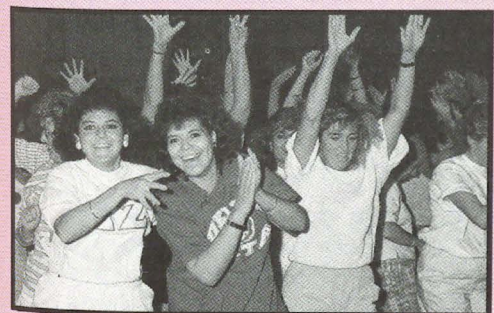


Colonial Williamsburg

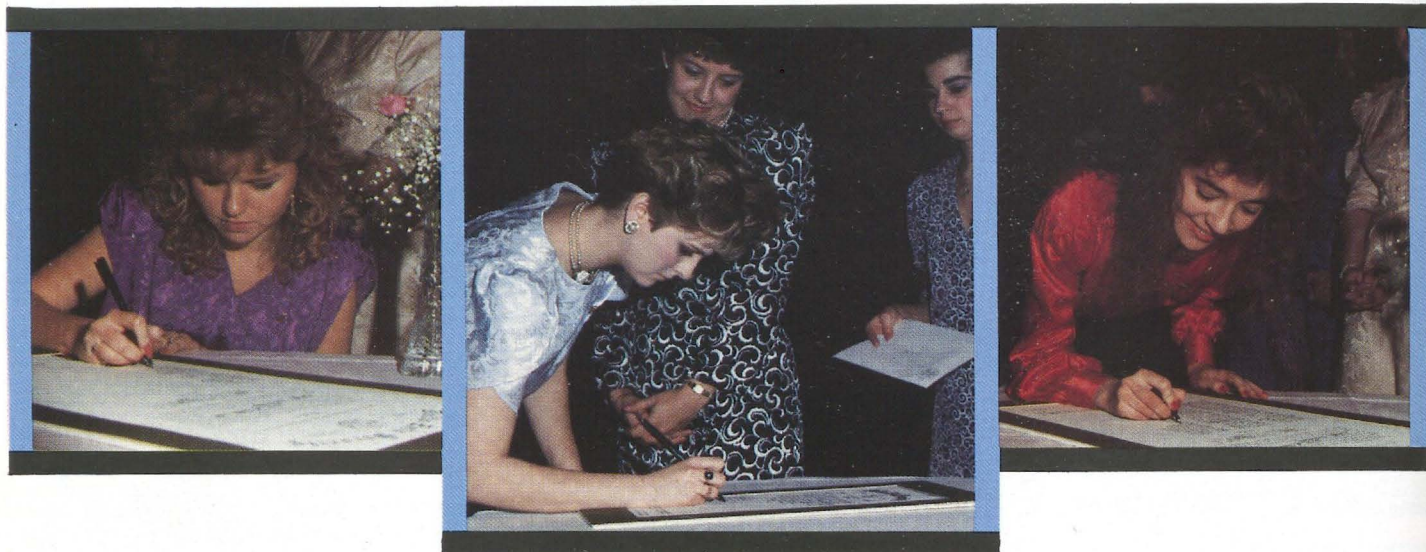




Stepping Out with Delta Zeta



New Chapters for Delta Zeta



It has been a busy spring as Delta Zeta welcomes eight new chapters to our sisterhood. The first, a return of Gamma Omicron to the San Diego State University campus, was featured in the summer issue. Today we introduce you to the other seven.

Four of these mark a return to campuses where once we were. Three are on campuses new to Delta Zeta. Each is different, each an individual cohesive group pledged to bring strength and honor to Delta Zeta.

We proudly introduce you to Xi Pi at Lehigh University; Xi Upsilon at Northeastern University; Gamma Sigma at Eastern Michigan University; Gamma Delta at Pennsylvania State University; Alpha Rho at Ohio Wesleyan University; Xi Xi at North Georgia College and Omicron Alpha at St. Mary's University.

We regret we did not receive the story and pictures on Gamma Delta at Penn State in time to include with this issue.

Xi Pi is Pennsylvania's 19th Chapter

by Meghan Rowe
Lehigh-ΞΠ

Delta Zeta became a proud new member of Lehigh University's Greek system last fall. Lehigh is a private university located on the side of South Mountain in Bethlehem, Pennsylvania. The university has 4500 undergraduates and a strong Greek system consisting of eight sororities and 33 fraternities. Lehigh's Xi Pi colony of Delta Zeta and a colony of Alpha Chi Omega are the two newest sororities, and both conducted rush in the fall.

The women of Xi Pi had a terrific start. Eighty women came together to create a strong and united colony. The colony members pledged on September 17, 1988, and worked hard throughout the semester to make their presence known on campus. They joined with a fraternity to run a football-throwing booth at the first annual Southside Alive Carnival in September. The carnival was a great success in helping unite the Lehigh and Bethlehem communities — and introducing Delta Zeta to both.

The fall was filled with sisterhood activities including a retreat and the establishment of various "buddies" to strengthen the growing bonds of friendship. They took advantage of the social possibilities provided by the numerous fraternities on campus and held a semi-formal at the dining room of Lehigh's mountaintop campus in November.

The pledging period came to an end with Lamplighting Week, and initiation was held under the direction of Delta Zetas from Muhlenberg-ΞΙ and Temple-ΔΤ and Field Representatives Sheila McCarthy and Michelle Albrecht on December 3, 1988.

Spring semester brought determination and excitement for Panhellenic rush in January. Rush was fun at times and trying at other times, but overall it was a terrific success. 25 pledges exhibited enthusiasm and worked hard to become part of the Xi Pi colony.

In February hard work put forth since September paid off as they celebrated the signing of the Xi Pi charter at the installation banquet on the 25th.



Pictured with the Xi Pi charter are l to r, Associate Dean of Students Mark Erikson, Norma Andrisek, Xi Pi President Dierdre Rafferty, Panhellenic Advisor Lisa Hansen and Assistant Dean of Students Mike Boyd.

The banquet was held in the mountaintop campus dining room which proved to be a beautiful setting. Floor to ceiling windows overlooked the stars and lights of Bethlehem. Toastmistress Carolyn Gullatt introduced the program, and the colony was honored by other National visitors: National President Norma Minch Andrisek; Vice President of Collegiate Affairs Phyllis Snape Favorite and National Field Representatives Sheila McCarthy and Michelle Albrecht. Other Delta Zetas included: Lehigh County Alumnae President Susan Fellows Miller; Xi Pi CCD Deb Fries; Temple-ΔΤ CCD Lynne Ciervo; PCD of Province II Linda Dennison; Golden Rose Margaret Ellis Tarbell; PAD III-East Cynthia Schafer Plucinski, and chapter representatives from Drexel University (Epsilon Zeta), Trenton State (Lambda Lambda), and Temple University (Delta Tau).

University officials in attendance included: Associate Dean of Students Mark Erickson; Assistant Dean of Students Mike Boyd; Residence Life representative Walt Keiper; Assistant to the President Lori Gostley; Panhellenic Advisor Lisa Hanson; Pan-



Golden Rose Margaret Ellis Tarbell with new initiate Laura Kupfrian.

hellenic Vice President '88 Stephanie Phillips; Panhellenic President '88 Danielle LaTourette and Kappa Alpha Theta President '88 Karen Forture.

Norma Andrisek served as installing officer and presented the signed charter to the Xi Pi officers. The Alpha pledge class became Xi Pi's newest sisters after their initiation on April 29, 1989.

Next year looks promising for the sisters of Xi Pi. The house is in Lehigh's Saucon Village apartment complexes, and the members are looking forward to living together for the first year in the new house. Sisters will share individual apartments housing four women each, and the building has a common lounge and dining facilities.

ΕΠ COLONY MEMBERS

Alicia Adiutori
Jen Allen
Alyssa Ashley
Julian Balaskas
Debbie Bard
Patti Best
Regina Bott
Teresa Bzdek
Allison Camp
Megan Capuano
Kimberly Cashion
Christina Cipriano
Dawn Cook

Cailin Cordon
Carolyn Cuniff
Alicia Dietsch
Jackie D'Aquinop
Jackie Doherty
Patricia Doyle
Deborah Dreger
Elizabeth Duncan
Carol Ehlenberger
Deborah Ernst
Michelle Finder
Jennifer Franscona

Laura Gaffoglio
Nancy Gagne
Cheryl Galante
Maria Gesualdo
Karen Hancock
Diane Hanczyc
Helen Hansen
Jeanne Hein
Julia Hensel
Jenny Hoover
Nancy Howard
Kim Jessum
Debby Klinek

Gretchen Kohler
Janette Knittel
Alanna Kramer
Kristine Kruczynski
Sharon Kubicko
Laura Kupfrian
Christine Manko
Jennifer Marino
Joanne Montgomery
Maria Moreyra
Beth Morris
Theresa Mullen

Heather Murray
Tia Narisco
Jennifer Noll
Deidre Rafferty
Liz Rich
Adrienne Roland
Meghan Rowe
Peggy Ryan
Michele Scaringella
Wendy Shapps
Jean Sheekan
Laura Schmieder

Leslie Snyder
Claire Steppan
Robyn Suriano
Wendy Suter
Beth Tatem
Amy Tilton
Christie Tomaszewski
Susan Walsh
Jamie Wallace
Amy Wilkove
Jayme Wiseman
Lisa Yoder

ALPHA PLEDGE CLASS

Danielle Agnoli
Mari Arroyo
Sue Aschenbach
Christine Beaver
Erin Brown
Kim Christian

Kim Costas
Erin Cummings
Elizabeth Davis
Colleen Doherty
Laura Frikert
Sharon Gold

Ann Hickey
Dora Hoag
Eileen Kim
Jen Klass
Jeanie Linsley
Jenn Mann

Michelle Minnick
Wendy Pearl
Heather Racki
Kimberly Rose
Maria Stabile
Marilyn Vricella
Caroline Woynicki

Boston's Northeastern Welcomes ΔΖ



The Xi Upsilon charter: Norma Andrisek, President Carol Nebe and Greek Advisor Ken Foster.

Delta Zeta became the second sorority at Northeastern University in Boston, Massachusetts on March 18, 1989 with the installation of Xi Upsilon colony. The country's largest privately endowed university, Northeastern, which was established in

1898, has a large cooperative plan of education.

The colony was pledged last October by Field Representative Christina Mullin and the Executive Board from University of Connecticut-IB. It had been a local group, Gamma Phi Delta. Although there are 15 fraternities, Delta Phi Epsilon had been the lone national sorority for 20 years. The campus is just beginning to recognize the Greek system and this is the first year for a Greek Advisor.

The colony and Christina had been assisted during the pledge period by Shay Adatia, a transfer student at Northeastern from Gamma Zeta chapter at Southwestern in Texas. Shay had been a student at NU for a year when she saw a rush information poster advertising Delta Zeta.

Initiation was conducted by officers from four area chapters: University of New Hampshire-ΘΓ, University of Connecticut-IB, University of Rhode Island-BA and University of Massachusetts-ΞΑ.

The installation banquet was held at the Royal Sonesta Hotel in Cambridge, Massachusetts, with Past

National President Carolyn Barnes Gullatt presiding. PCD Fran Robinson Karnes and PAD Janice Jelks Cox extended the welcome and the response was by Xi Upsilon President Carol Nebe and Field Representative Christina Mullin.

Field Representative Lisa Moses read greetings from Delta Zetas and chapters throughout the country and Greek Advisor Ken Foster welcomed the new group to campus and to the growing Greek system at Northeastern.

Other guests included Kari M. Larson, Maine-AY, who has been named College Chapter Director, and Sandra Sutton Bristol, Quinnipiac-KY, president of the Metro Boston alumnae chapter.

National President Norma Minch Andrisek conducted the installation service and after the signing of the charter, the Rose ceremony was led by Lisa Moses and Christina Mullin. The Friendship Circle concluded the banquet.

Charter members include Terp-sichore Antonio Alexander, Lynn Ann Amato, Janis Elizabeth Bacon, Brittan

Kievenaar Bates, Jodi Lee Beerbower, Robin Lynn Bernard, Erin Elizabeth Brown, Colleen Marie Brush, Kelley Anne Canavan, Laurie Sue Conrad, Linda Sue Dormuth and Harriett Marla Garber.

Suzanne Ellen George, Lynn Marie Graff, Rhonda Marie Greenhill, Tracy Lynn Gunrud, Jennifer Ellen Kaufman, Mary Alice Klein, Karin Marie Lampson, Jeanine Marie LaChance, Lillian LaRosa, Marlo LeVangie, Janet Beth Martinez and Trisha Marie Morris.

Colleen Ann McGrath, Kelli Denise McNamara, Elizabeth Carol Nebe, Elizabeth Anne Nurczynski, Alexia Geoconda Pico, Cara Jean Polonsky, Elizabeth Ann Reyes, Catherine Grace Ricupero, Donalee Michelle Rising, Elizabeth M. Royston, Tricia Lynn Ruggiero, Stefanie Ann Schwartz, Michelle Heather Swartz, Bobbi Sue Walter and Ellen Marie Zdyb.



Xi Upsilon chapter at Northeastern University.

Gamma Sigma is at Eastern Michigan

After an absence of 15 years, Gamma Sigma chapter has returned to Eastern Michigan University in Ypsilanti. Surrounded by their Michigan collegiate and alumnae sisters, the colony was formally installed during Province Day activities on April 1 at the Kellogg Center on the campus of Michigan State University.

The new Gamma Sigmas were formed as a local sorority, Zeta Tau Omega, in 1986 and were formally pledged to Delta Zeta last December. Working with the colony during this

period were Field Representatives Jody Shultz and Leann Danner. Members of Epsilon Sigma chapter at Wayne State University conducted initiation services on March 30.

The Province Day luncheon provided the setting for the chapter installation with PAD Pamela McClure Cronenwett and PCD Olive McLauchlan Neelands serving as toastmistresses. National President Norma Minch Andrisek was the

installing officer and the university was represented by Special Events Coordinator Penny J. Leighner Moffett, Bowling Green-IT, who is also CCD for Gamma Sigma.

Charter members of the chapter are Michelle Abbott, Cindy Bondy, Laura Billbrey, Kim Brandt, Jennifer Cook, Sarah Costanzo, Lynn Crozier, Linda Drzewiecki, Greta Helf, Cheri Hennig, Nancy Herndon, Melissa Hendrick.

And Mary Lapinski, Rachele Manko, Petti Massey, Linda Mazurkiewicz, Julie McDonald, Lisa Miller, Traci Minier, Laura Mitchell, Virginia Noga, Michele Ouellette, Mary Prang, Caryn Benauer and Trish Shewchuck.

Other pledges initiated on March 30 include Susie Brooks, Becky Bunsheeh, Beth Grindle, Kristen Isaacson, Natasha Lovejoy, Shannon McKenzie, Suzanne Miller, Lisa Ottinger, Marnie Pobanz, Kelly Ripley, Jessalyn VanderMey, Annette Whalen and Tracy Wright.

Alumnae initiates include Kelley Bigwood, Lisa Ann Duda, Darlene Ann Hogan, Sharon Lynn Mack and Theresa Elizabeth Nugent.

Gamma Sigma was originally in-



stalled at the then Michigan State Normal College on April 30, 1955. It now returns to join Alpha Sigma Tau, Alpha Gamma Delta, Alpha Xi Delta, Sigma Kappa, Sigma Sigma Sigma and Sigma Nu Phi in the Greek system.



Alpha Rho Returns to Ohio Wesleyan

Ohio Wesleyan University at Delaware, Ohio, was founded in 1842. A liberal arts college, students are recruited from all over the United States. Delta Zeta's Alpha Rho chapter was first installed in 1924 but was forced to close in 1936. As of April 23, 1989, however, Alpha Rho is alive and well again at OWU.

The Alpha Rho colony was officially pledged on October 5, 1988 and immediately charted a program to earn recognition from other campus groups. They received the Red Cross outstanding participation plaque for both fall and spring. They won first place at the Panhellenic All Pledge Bash and donated their \$30 prize to the Delta Zeta Foundation. In campus-wide athletic competition they placed first in volleyball.

Activities include fall and spring sisterhood retreats, a Christmas semi-formal, a spring formal with ΔΔΔ and ΠΒΦ and a ΔΖ snapshot party. The colony placed first and second in two fraternity philanthropic events and received an Award of Merit from Panhellenic. They also participated in a Panhellenic-IFC sponsored staining of the Social Service Building and donated cans of food to People in Need and toys for Toys for Tots.

The long-awaited initiation was performed by Gamma Kappa chapter members from Kent State University and was followed by an installation luncheon at Sheraton Inn North in Columbus.

National Director Lynnda Wolf Hoeft served as toastmistress for the luncheon and the installation service was conducted by National Presi-

dent Norma Minch Andrisek. Others sharing in activities include Past National Officer Connie Teaford Wilt; PCD Sandra Sebrell Bailey and Field Representatives Wendy Myers, Deanna Bardsley and Leann Danner.

University officials included Provost Dr. William Benz and Mrs. Benz; Mrs. David Warren, wife of the president of the university; Nancy Ruthowski, Coordinator of Greek Affairs, and Judy Macky, Professor of Nursing.

Also present were Alpha Rho Golden Rose member Margaret Mon-



Pictured with the Alpha Rho charter at OWU are Norma Andrisek, Coordinator of Greek Affairs Nancy Rutkowski, AP President Christy Hurless and Provost Dr. William Benz.

nett Barrett, alumnae from Cleveland Eastside and Columbus chapters and collegiate members from Ohio State-Θ chapter.

Alpha Rho of Delta Zeta joins Delta Delta, Delta Gamma, Kappa Alpha Theta, Kappa Kappa Gamma and Pi Beta Phi on the Ohio Wesleyan campus. In appreciation of their Panhellenic support and interest, Delta Zeta presented a new award, ΔΖ/Panhellenic Outstanding Pledge Program, to the OWU Panhellenic Association.



Alpha Rho chapter at Ohio Wesleyan University.

Alpha Rho Charter Members

Kristen Lee Adamo
Michele Tara Alkon
Kimberly Kay Bannerman
Michelle Lee Bleamer
Melissa Ann Brundjar
Sarah Norton Camp
Deborah Elizabeth Carpenter
Julie Anne Clemo
Cristin Dee Cooley
Christia Lenae Detwiler
Kimberly Sue Evans
Elisabeth Allison Ewald
Karen Christine Ferrall
Laura Jeanne Geis
Karyn Dove Hardy
Lindley Elizabeth Higgins
Lauren Elizabeth Hoke
Christy René Hurless
Pamela Louise Jones
Yvonne Ann Keenan
Catherine Allerton Kniffin
Debora Marie Mischler
Leanne Pease
Kimberly Jo Pfahler
Darcy Stiles Pennoyer
Luci Lynn Regrut
Jenni Lynn Riedlinger
Christina Margaret Scalish
Tara Lynn Shepherd
Karen Ann Smith
Frances Ann Thompson
Rebecca Leigh Wagner
Deirdre Anne Warren
Sarah Ann Yukevich
Pledge
Karen Crossman

Xi Xi Installed at North Georgia

by Colleen McKenna
North Georgia College-ΞΞ

Saturday, April 29, 1989 is a day that will be long remembered by the charter members of Delta Zeta's newest Georgia chapter. Colonized with a local sorority, Zeta Delta Alpha, Xi Xi joins Alpha Gamma Delta, Kappa Delta and Phi Mu at North Georgia College in Dahlonega. A liberal arts college, North Georgia was established in 1873 as an agricultural college.

The best memories of college will be those of Inspiration Week which preceded initiation and installation. "I" Week began on Tuesday, April 25, and the members learned more about themselves and each other. With the help of Field Representative Lisa Albright and CCD Cynthia Jackson Pike, Georgia College-ΔΠ, and Zeta Pi

Holding the Xi Xi charter are, l to r, Field Representative Lisa Albright, Chapter President Belinda Conrad, Colony President Teresa DePew and CCD Cindy Pike.



members from the University of Georgia, Saturday's initiation service will remain a solemn and cherished memory.

The chapter celebrated their accomplishment with family, friends and guests at the installation banquet where Past National President Carolyn Barnes Gullatt presided as toastmistress. Speakers during the evening included Mrs. Gullatt, Lisa Albright, Colony President Teresa DePew and Chapter President Belinda Conrad. Francis Saus, Associate Dean of Students at North Georgia College welcomed Delta Zeta to campus and accepted the chapter on behalf of the college.

Charter members of Xi Xi chapter are Christine Sue Babcock, Mary Margaret Bates, Effie Joyce Bruce, Belinda Christine Conrad, Lora June Corbin, Stacey Lynn Crispens, Deborah Lynn Dehart, Teresa Lyn DePew, Dena Elizabeth Dryden, Barbara Renee Furtick, Leigh Ann Hall, Georgia Christine Hunter, Melinda Suzanne Kay and Sharon Renee Lyle.

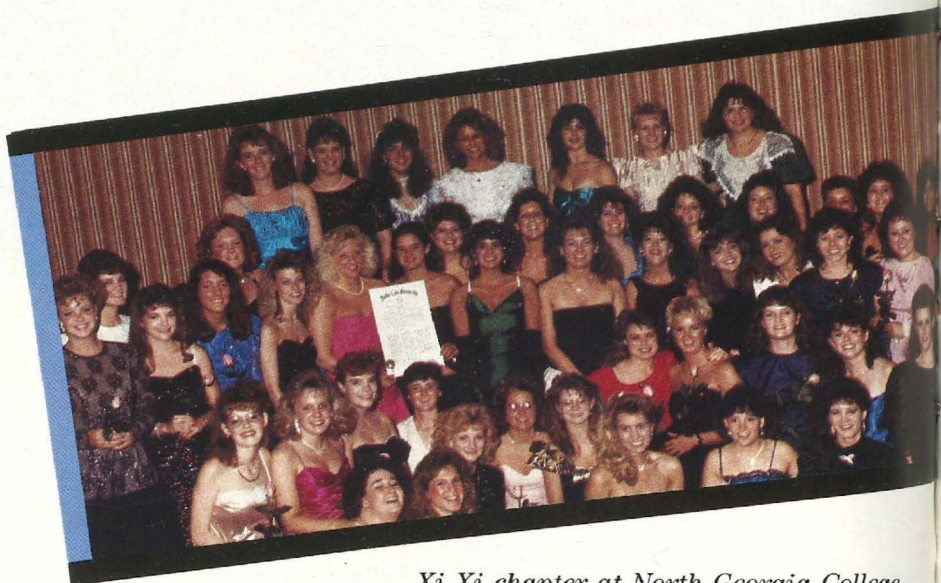
Kelly Lorraine Meredith, Kimberly Rennee Milford, Anita Beth Miller,

Cecila Ann Moore, Colleen Marguerite McKenna, Kathy Anne McWilliams, Ingrid Ruth Newman, Christina Fant Olds, Emily Alice Peterson, Diane Josie Prins, Jennifer Elaine Rainey, Helen Marie Reyes and Tonya Leanne Rogers.

Gina Denise Sanderson, Karen Louise Shea, Barbara Michelle Singleton, Jacqueline Suzanne Snead, Stephanie Daneen Steel, Laura Anna Steward, Miriam Delina Stogner,

Catherine Michelle Strickland, Kimberly Annell Stowe, Jennifer Lee Thacker, Melissa Kaye Thacker, Melisa Ann Tucker, Kellie Yvonne Turner, Kelly Sue Wharton, Kristi M. Wilson and Heidi Leigh Wright.

And Esther Joy Bruce, Moira Yvonne Bryan, Jerilyn Denise Davis, Lea Lange London, Anne Marie Palastra, Dorothy Ann Stahlman and Virginia Greenway Mullis, alumna initiate.



Xi Xi chapter at North Georgia College.

St. Mary's University Welcomes ΔZ

by Michelle Marie Castillo
St. Mary's University-OA

Present to celebrate Omicron Alpha's installation at St. Mary's were XVII-S PCD Tracy Harnage Kirkpatrick, Norma Andrisek, XVII-S PAD Elsie Wheeler McTee, Merry Adamcik and Carolyn Gullatt.



Three years ago a new group was formed on the campus of St. Mary's University in San Antonio, Texas. Last October this group called NUVO (New United Vital Organization) listened to a presentation by Delta Zeta and promptly petitioned and was accepted as Omicron Alpha colony.

Spring semester brought excitement and joy to the colony as they eagerly awaited installation. The busy calendar started with a retreat to Garner State Park and was a weekend filled with bonfires, an emotional candlepass and countless sing-alongs. On the ride down to camp they had speculated on whether they could pitch tents and survive without comfort-

able mattresses, but much to their surprise they discovered an experienced camper in pledge Phoebe Farrell. (They later named her Miss Garner State Park.)

Guided by Field Representative Jody Shultz, Omicron Alpha organized various activities with little sisters, including a surprise door decoration, roller skating and spaghetti dinner and members enjoyed social activities with fraternities. They participated in intramurals, including basketball and floor hockey.

Omicron Alpha was soon recognized as an enterprising Greek organization, with fundraisers that included a car wash, BBQ dinner, sweepstakes and a pledge fundraiser of "crush-grams." The biggest fundraiser took place during St. Mary's Fiesta Oyster Bake where they sold mini tacos and earned almost \$2,100.

Community services included painting houses, polling for student government, hostessing a Texas Against Drunk Driving party and cheering on the mentally handicapped soccer team. But their dreams came into sharp focus as they participated in Lamplighting Week.

Activities included a pizza party, a

pillow/paddle exchange, a family lip-sync and a rose ceremony. And then, finally, with the help of Iota Alpha chapter from South West Texas State, 47 pledges were initiated.

The Lamp of Delta Zeta burned at St. Mary's University as the Omicron Alpha colony received its charter on May 6, 1989. The installation banquet was held in downtown San Antonio's Valero Building. Past National President Carolyn Barnes Gullatt was the toastmistress. The invocation was given by Anna Stewart and guests were welcomed by Province Collegiate Director Tracy Harnage Kirkland and Province Alumnae Director Elsie Wheeler McTee. National Director Merry Westbrook Adamcik shared with the guests memories of her Delta Zeta career. Remarks were given by Vice President of Student Affairs Daniel J. Carey, who spoke on behalf of Greek organizations and their enthusiasm for the newly chartered sorority.

The installation service was conducted by National President Norma Minch Andrisek and Field Representative Jody Shultz presented each new member with a pink rose. The banquet ended with the traditional Friendship Circle.

Charter members of the Omicron Alpha chapter are Shirley Marie Alvarado, Catherine Margaret Anaya, Sandra Kim Avila, Amy Leticia Carreon, Ana Marie Cardenas, Michelle Marie Castillo, Norma R. Chavez, Claire Ellen Chism, Dian Rae Costanza, Cynthia Marie DeLeon, Marquerite Anne DeMare, Shawn Marie Dinneen, Michaela Ann Ecker, Cecilia Renee Estrello and Angela Jean Farrell.

Phoebe Marie Farrell, Rosella Carolina Garcia, Rose Lorraine Gomez, Cynthia Marie Gonzalez, Jeannette Gonzales, Julie Elizabeth Groesch, Velma Lisa Guerra, Maricela Hernandez, Chang Hue Jang, Patricia Jimenez, Valerie Jean Maldonado, Marinela Martinez, Janet Ann O'Donnell, Damaris Itzel Ortega and Navella Marie Pedraza.

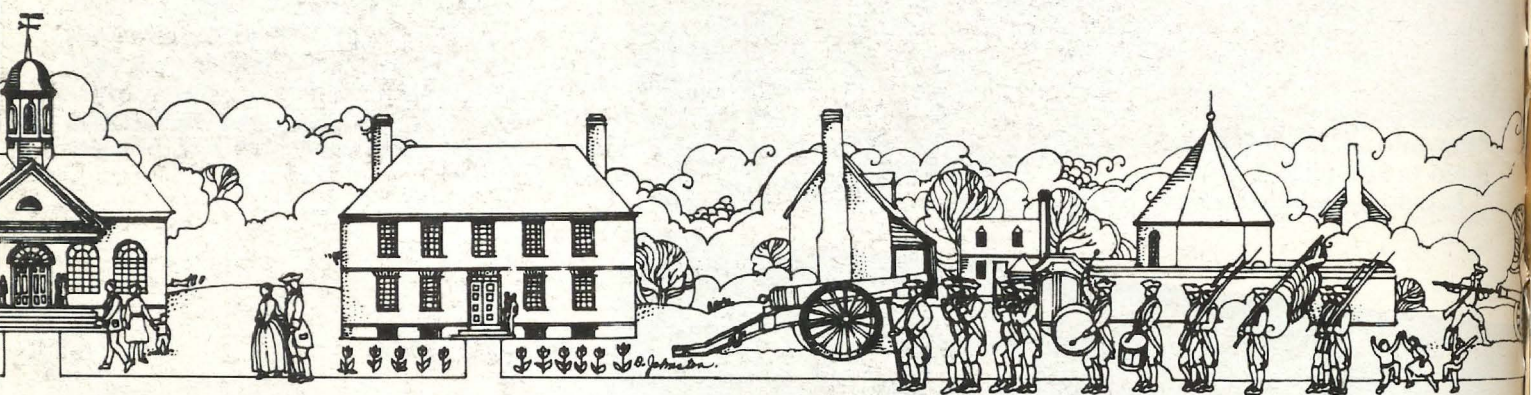
Angela Marie Peterson, Barbara Jean Quillin, Myra Elaine Quintana, Julie Robles, Carol Ann Rubio, Lea Lynn Schmidt, Laura Ann Silva, Anna Christina Stewart, Kelly Ann Sullivan, Jodi Marie Thesing, Linda Ann Trevino, Rachel Valadez, Norma R. Villa, Sandra Cantu Villarreal, Lori Michelle Young and Karen Ann Ditzler (alumna initiate)



Omicron Alpha chapter at St. Mary's University.

*The National Council
of Delta Zeta
is pleased to announce
colonization at
Stockton State College
New Jersey*

*and invitations to colonize
in
the fall at
Ohio University
and
Southwest Missouri State
University*



POSTMASTER: Send 3579 immediately to Delta Zeta Sorority, 202 E. Church St., Oxford, OH 45056

Delta Zeta Sorority
Corner of Campus Ave. and Church St.
202 E. Church St.
Oxford, OH 45056

Address Correction requested

Non-Profit Org.
U.S. Postage
PAID
Permit No. 131
Tulsa, OK