

THE
LAMP
OF
DELTA
ZETA

FALL, 1985



Founders Day Proclamation



In constant remembrance of the gratitude we owe to those six young women who established our sorority, setting forth high standards of morality and noble principles, let us this twenty-fourth day of October celebrate our joy by wearing under our badges the colors of rose and green.

Given under my hand and seal of this first day of August in the year of our Lord, one thousand nine hundred and eighty-five and of the sorority, the eighty-third.



A handwritten signature in cursive script that reads "Mary Margaret Fore".

Mary Margaret Fore
National President

THE LAMP of Delta Zeta

Volume 74 Number 3 Fall 1985

FOUNDERS OF THE SORORITY



Miami University
Oxford, Ohio 1902

Alfa Lloyd Hayes, 1880-1962
Mary Collins Galbraith, 1879-1963
Anna Keen Davis, 1884-1949
Julia Bishop Coleman, 1881-1959
Mabelle Minton Hageman, 1880-1929
Anne Simmons Friedline, 1879-1932

THE ORDER OF THE LAUREL

Irene Caroline Boughton
Grace Mason Lundy
Elizabeth Coulter Stephenson

THE LAMP

The Lamp of Delta Zeta, official magazine of the sorority, is published quarterly by the Delta Zeta Sorority, 202 East Church St., Oxford, OH 45056. Second Class Postage Pending at Oxford, OH and additional mailing offices.

Send all editorial material to the Editor, Mrs. Robert L. McKeeman, 5517 S. 74th E. Avenue, Tulsa, OK 74145. Send all matters of a business nature to Delta Zeta National Headquarters, Oxford, OH.

Send all contributions for Gallaudet College, House Ear Institute and other Founders Memorial Foundation philanthropies through the Delta Zeta Founders Memorial Foundation, and all contributions to the National Historical Museum to Delta Zeta National Headquarters, 202 E. Church St., Oxford, OH 45056.

EDITOR

Gwen Moss McKeeman
5517 S. 74th E. Avenue
Tulsa, Oklahoma 74145

CHAPTER EDITOR

Diane Jones Skelton



MEMBER
COLLEGE FRATERNITY EDITORS ASSOCIATION

Contents

- 4 Convention in Arizona
- 11 Convention Awards
- 16 Museum Breakfast
- 18 Pups and Hounds
- 20 ΔZ Goes Western
- 21 Convention Initiates
- 22 GML Winners
- 23 Florence Hood Miner Awards
- 24 ΞN Installed at Tarleton
- 26 Convention Picture
- 28 Field Representatives to Travel
- 30 A Very Special Woman
- 31 Magazine Sweepstakes Winners
- 32 Delta Zeta On Campus
- 42 Alumnae Profiles
- 43 Alumnae Chapter Notes
- 44 The ΔZ "Link"
- 45 Flame Eternal
- 46 From the Lampwriter
- 48 Senior Advisory Board
- 52 Directory

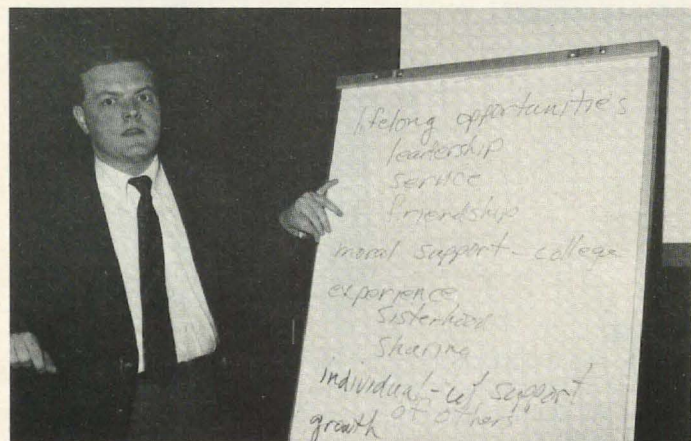


ABOUT THE COVER

It may seem unusual to see a portrait of six lovely ladies in a desert setting, but this was one of the nice surprises of Convention. The portrait is now at the Historical Museum in Oxford. Read the story of our 1985 Convention starting on page 4.



1985 National Convention

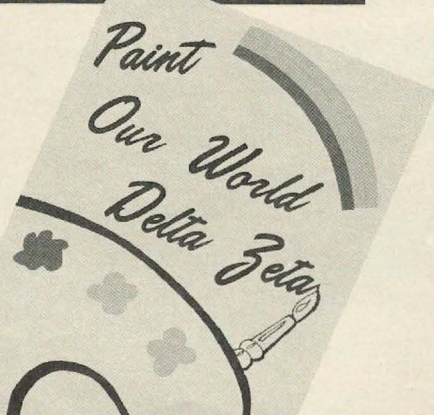
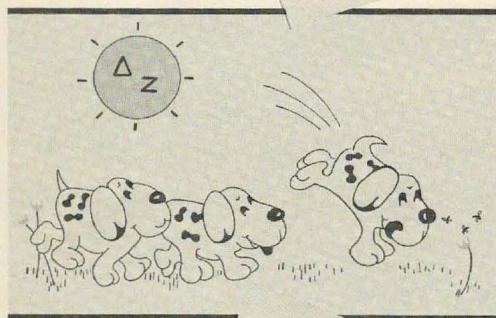
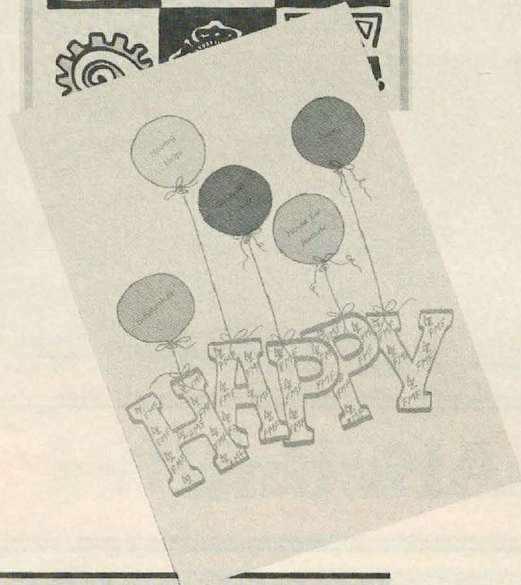




Scottsdale, Arizona



Convention in Arizona



CONVENTION THEME: The Creed of Delta Zeta

Nestled in the Valley of the Sun in picturesque Scottsdale, Arizona, The Registry Resort provided the setting for the 37th National Convention of Delta Zeta from June 19 to June 24. The Registry, with its 323 guest rooms, 14,000 square foot Crystal Ballroom and three swimming pools, rests amidst lavish landscaped floral gardens.

Excitement began to build on Tuesday, June 18, when early arrivers met at transfer airports and frequently rearranged airline seating on the final flight into Phoenix. The limousine service, appropriately entitled "Carefree," made transportation to Scottsdale delightful as Delta Zetas recognized old friends, met new ones and chatted non-stop until delivery at The Registry entrance.

Phoenix alumnae, with their hostess turtle and cactus ID badges, were ready with a warm southwest welcome for delegates and visitors alike. Their hospitality room was a welcome stop while awaiting rooms and baggage.

By late Wednesday afternoon almost all delegates had arrived and were registered. Many had already enjoyed a dip in Arizona's largest swimming pool. The golf course enticed some very early morning golfers and everyone was thrilled with their first breathtaking desert sunset.

DAY ONE

...To my friends understanding and appreciation

The Convention banquet opened with the processional of members of National Council and former National officers, and their escorts. National Vice President of Membership Teresa Severy presided at the banquet which featured an Indian theme. Kachina dolls centered the tables and the programs bore colorful Indian symbols.

Keynote speaker Mary Jo West, Florida State-AΣ, the only anchor person in Arizona's Valley of the Sun with network experience, is anchor and managing editor of KTVK, Channel 3. Mary Jo's exuberance and her vibrant personality came across vividly as she talked of taking risks and believing in one's self.

Entertainment was provided by a colorfully costumed troupe of Hopi Indians who entertained with Hopi social dances. Their four year old dancer stole the show!

Opening banquet awards were two: the Alice Huenefeld traveling bracelet which is presented to the most outstanding college chapter director, and the Genevieve Schmitt scholarship plaque which is given to Delta Zeta's smartest chapter. Barbara Tweed Holland, North Dakota-Y, CCD at Iowa State-BK, received the Huenefeld award from last Convention's winner, Betty Schneider Fenton, LSU-Σ.

Nebraska Wesleyan-BT received the Schmitt plaque

with a 3.2675 grade point average. Because this is the third consecutive Convention Beta Tau has received this award, the plaque is retired with them and a new one will be presented in 1987.

The evening closed with the National Council and Past National Officers reception.

DAY TWO

... May I give graciously of what is mine ...

National President Carolyn Barnes Gullatt called the opening business meeting to order with the seating of delegates from new college and alumnae chapters.

New collegiate chapters were Northwood Institute-ΞΗ, Midland, Michigan; Muhlenberg College-ΞΙ, Allentown, Pennsylvania; Tarleton State University-ΞΝ, Stephenville, Texas. Recolonizations, new chapters where Delta Zeta has been absent for some time, were University of Tennessee-ΒΑ, Knoxville, Tennessee and University of California/Los Angeles-ΑΧ, Los Angeles, California. Reorganizations, chapters closed but immediately returned through a reorganization process, were University of Southern Mississippi-ΕΜ, Hattiesburg, Mississippi; University of Wisconsin/LaCrosse-ZΟ, LaCrosse, Wisconsin; Ball State University-ΓΧ, Muncie, Indiana; University of Maine-ΑΥ, Orono, Maine, and University of Iowa-I, Iowa City, Iowa.

Newly chartered alumnae chapters recognized were Naperville, Illinois and Murfreesboro, Tennessee. Also granted charters during the biennium were Anne Arundel County, Maryland; Hattiesburg, Mississippi; Knoxville, Tennessee; Memphis, Tennessee; Greater Huntington, West Virginia, and Greater Longview, Texas.

Carolyn Gullatt's "State of the Sorority" address received a standing ovation.

The Founders Memorial Foundation celebrated its 25th birthday a little early this year at the first luncheon-program of National Convention.

Festively decorated with pink helium filled birthday balloons, the room was accented with yellow and hot pink table covers. Arlene Newman Marshall, president of the FMF, recapped the biennial report and urged more collegians to apply for scholarships.

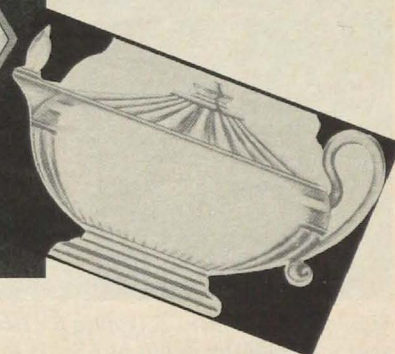
Delegates and visitors viewed films on the House Ear Institute presented by June House and Janet Doak of the HEI. A special guest, five year old Bonnie and her mother, delighted everyone with a live image of what marvels in hearing the Institute can now do.

Past National President Helen Woodruff Nolop reminisced on the establishment of the Foundation, explaining that she and Mary Collins Galbraith visited in the Galbraith family home following the signing of the charter. She chuckled over "diving into the principal" for the first time to award a scholarship. And proudly added, "that was the last time the principal was touched."

A surprise \$5,000 educational grant was awarded to



ΣΚ	ΑΔΠ	ΑΕΦ	
ΑΦ	ΠΒΦ	ΔΖ	ΚΑΘ
ΑΞΔ			ΓΦΒ
ΔΓ			ΦΜ
ΔΦΕ			ΑΔΑ
ΦΣΣ	ΚΚΓ	ΑΟΠ	ΣΔΤ
ΘΦΑ	ΑΧΩ	ΑΥ	





Mary Jo West, anchor woman and managing editor of Phoenix's KTVK-Channel 3, delighted the opening banquet audience with her thoughts on taking risks and meeting challenges.



Marvona Tavlin presents the Genevieve Schmitt plaque for scholarship to Beta Tau's Jody Wysong and CCD Chris Martin. Since it is the third biennium Beta Tau has received the plaque, they keep this one (first time it has ever been retired) and a new plaque will be given next biennium.



Sigma did it again! A trophy for twenty five consecutive years of pledging quota at LSU is presented by Vice President of Membership Teresa Severy to Holly Clause, Sigma president, CCD Betty Fenton and PCD Ginger Bryan.

Delta Zeta from the Foundation for the publication of new manuals and educational materials.

A complete list of Foundation awards and grants will be carried in the winter issue of *The LAMP*.

Afternoon workshops for collegians included a session on Speech and Hearing by Joseph Rizzo of the Better Hearing Institute, followed by sessions on house corporations and philanthropy. College Chapter Directors were divided into two groups: A "How To" section for new CCDs, and an advanced course for the "experienced" CCDs. Province Collegiate Directors learned about audits and budgets and judiciary procedures. Alumnae workshops included Speech and Hearing by Joseph Rizzo, followed by motivation/leadership, awards presentation and music.

National officers and chairmen donned their artists' smocks and berets for Thursday night's Awards Banquet. Following the theme, "Paint Our World Delta Zeta," Oklahoma collegiate presidents artistically sketched Delta Zeta roses as chapters awaited award presentations. National Vice President of Collegiate Affairs Marvona Tavlin presided. Squeals of delight and tears of joy followed many of the presentations. A full listing follows in another section of *The LAMP*.

Delta Zeta's traditional "Firesides" became more like "Poolsides" as they followed the close of two evening banquets. Delegates could pick and choose from subjects such as bid matching, history, music, ritual and ways and means. There was no doubt at all about the popularity of the history fireside. "Living Legend" Florence Hood Miner, National Historian, entertained to standing room only crowds both evenings.

DAY THREE

... To those closer ones, love that is ever steadfast ...

Lucile Crowell Cooks, National Director and President of the Historical Museum Trustees, presided at the Friday morning National Historical Museum breakfast. As usual, it was jam-packed with surprises. We have asked Museum Trustee Florence Miner to write this story for you.

The morning business meeting included the report of the Constitution and Code Committee and the Nominating Committee. The names presented for vote of the Convention are as follows: President, Mary Margaret Calhoun Fore, SMU-AΨ; Vice President of Membership, Teresa Johnson Severy, Maine-AY; Vice President of Alumnae Affairs, Charlotte Fields Silverstein, Temple-ΔT; Vice President of Collegiate Affairs, Marvona Easley Tavlin, Southwestern Oklahoma-EA; Secretary, Phyllis Snape Favorite, Cincinnati-Ξ; Treasurer, Patricia Canady Rosser, Georgia Southern-IN; Directors Elizabeth Barbieri Bragg, Penn State-ΓΔ; Anne Marie Jones Gavin, Tufts-ΔI; Deanna Alleman McKinnon, Texas-AT, and Sandra McAlister Nesbitt, Auburn-BΞ.

Afternoon workshops for collegians, CCDs and PCDs included pledge programming and pre-initiation activity seminars presented by Indiana State Senator Edward Pease, followed by sessions on Colonnade Clubs and scholarship. Alumnae and PADs listened to alumnae rush/alumnae collegiate relations, ways and means and alumnae participation in the pledge program.

The beautiful Initiation Banquet was arranged and

presided over by Phyllis Favorite. Remarks on the meaning of sisterhood by Senator Edward Pease accompanied by the glow of candlelight set the mood for the Initiation Banquet and Ceremony. Convention initiates Nancy Fitzer Gaston, Columbus, Ohio, and June Stendahl House, Whittier, California, were introduced by Carolyn Gullatt.

Phyllis presented the Pledge Education awards, the Caryatides, to Miami-A; Indiana-E (the fifth consecutive win for Epsilon); Nebraska Wesleyan-BT; Indiana of Pennsylvania-IΦ; Nicholls State-KA, and Virginia-ΛΔ.

The initiation ceremony was performed by Karen Kind Manuel, National Ritual Chairman, with Province Collegiate Directors Merry Westbrook Adamcik, Jacqueline Miner Gardner, Janet Eisler Havener, Lynnnda Wolf Hoefler, Sandra McAlister Nesbitt, Susan Adrian-son Skambis and Jeri Seals Weigand.

DAY FOUR

... To the world, I promise temperance and insight and courage, To crusade for justice, to seek the truth and defend it always ...

No one oversleeps on the morning of the Pups and Hounds breakfast! "We love the pups and hounds" sung by the Field Representatives was just a prelude to some of the best singing and howling ever at a National Convention. The Mistress of Hounds, Patricia Rosser, kept the dogs on leash as she walked them through the awards.

Special awards were presented, but it was quite noticeable that the Obedience Award was not given ... lack of qualifications?

Province Collegiate Directors entertained with selections entitled, "You, You're the One," "We Deserve a Break Today," "It's Pat's Party," and concluded with the "Hound Dog Hopi" while wearing stunning ears fashioned from the latest in hosiery.

After the PCD entertainment (?) the kennel yapping was heard. First year Convention participants began the festivities with one loud bark in unison. They were soon taught the finer art of barking from old hounds who demonstrated friskiness and creativity which only comes from experience.

Memorable barkers included Norma Andrisek and her "litter" as well as the "Andrews Sisters" who entertained with 16 woofffs. Not to be outdone by any of the previous hounds, the old philosopher Gertrude Fariss interspersed her delivery of 22 barks with a dissertation on the stages of man. Frances Westcott demonstrated how a Scottie dog begs as she barked 23 times. The most barks were heard from the Iowa Kennel led by Florence Miner and her pack of purebreds which included daughter Juliet. Their rendition of 26 woofs, barks and howls tied Florence with Grace Mason Lundy for the Convention record.

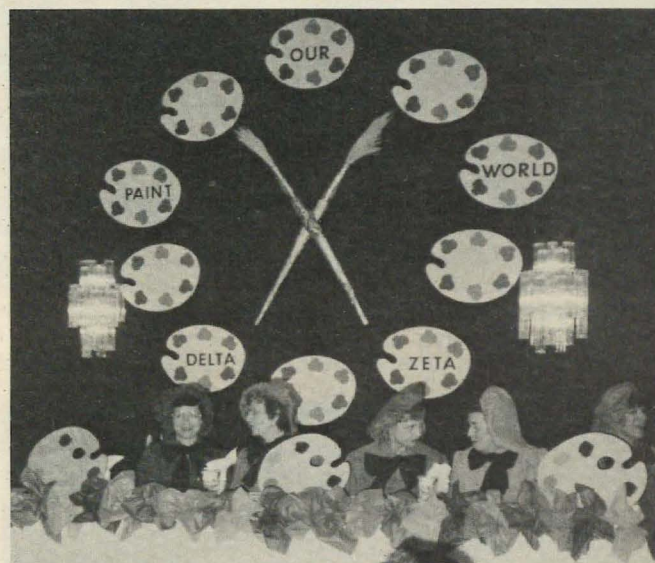
PCDs continued their rating system, begun by former PCD Phyllis Favorite, but official results are unknown since there was no computer to tabulate the total.

No bones about it, Delta Zetas had a howling good time!

Then it was back to workshops which included Panhellenic, social/alcohol and rush conversation for the collegians, CCDs and PCDs. Alumnae and PADs had sessions on programs, philanthropy, newsletters



Barbara Tweed Holland, North Dakota-Y and CCD for Iowa State-BK chapter (right) is the 1985 recipient of the Alice Huenefeld award for outstanding college chapter director. Betty Schneider Fenton, LSU-Σ, the 1983 winner, presented the traveling bracelet to Barb.



Artists' palettes formed the backdrop for the colorful Awards Banquet.

and alumnae participation in Panhellenic.

The Panhellenic luncheon opened with a most impressive parade of NPC sorority flags ... each in sorority colors and bearing the Greek letters of the various groups. Table decorations were miniature flags and representatives from 21 NPC sororities were given counted cross-stitch book marks with the flower and colors of each sorority. They were inscribed, "From ΔΖ 1985."

Mary Margaret Fore, NPC Delegate, presided at the



Joseph Rizzo of the Better Hearing Institute and State Senator Edward Pease of Indiana join First Lady Carolyn Gullatt at the Initiation Banquet.



Mary Barbee of Sigma Sigma Sigma was the keynote speaker at the Panhellenic Luncheon. In the background are the flags of the NPC member groups.



Phyllis Favorite, Director of Pledge Education presents the Caryatides.

luncheon and introduced the guest speaker, Mary Keenum Barbee, NPC Delegate for Sigma Sigma Sigma and a past NPC Chairman. "It All Started with Eve" was the topic of Mary's delightful dissertation. The luncheon was further enhanced with a duo piano recital by Ethel Mae Bishop Gullette, 1982 Woman of the Year and her partner, Carmela Sharples.

Saturday afternoon was a free afternoon and delegates did everything from taking a flying trip through the Grand Canyon to visiting the many attractions of Scottsdale. There was everything from cosmopolitan shopping to picturesque Italian fountains, Indian art and the West's "Most Western Town." Those who chose to stay at The Registry enjoyed golf, tennis, racquetball, the health spa, volleyball, badminton, jogging, bike hikes, horseback riding or a dip in one of the swimming pools. Of course there was always the backdrop of Mummy and Camelback Mountains for those who chose to "sit and relax." Then there were the few smart ones who simply napped!

Saturday evening's dinner was Western style in the area The Registry calls the steak fry area. Picnic tables with checkered cloths surrounded a mini dance floor and stage where a great country western band entertained and lured dancers. Ever see hundreds doing the "Cotton Eyed Joe" in cramped quarters? A miniature Western town, including a jail, bank and saloon made a good area for picture taking and a covered wagon and several Indian teepees completed the setting.

DAY FIVE

... Faith that I may walk truly in the light of the Flame.

The Sunday morning business meeting completed Convention business, including the adoption of the biennial budget and election of the 1987 nominating committee.

Charlotte Silversteen, Vice President of Alumnae Affairs presided at the noon Rose Luncheon which was in appreciation of all alumnae members.

The Golden Rose ceremony, honoring Delta Zetas for fifty years of membership, was performed by Mary Margaret Fore, Florence Miner and Lucile Cooks. Inducted into the Order of the Golden Rose were Hannah-Nell Harz Quin, LSU-Σ; Elaine Smith Scott, Oklahoma City-ΓΥ; Mary Irene Srill, DePauw-Δ, and Caroline P. Lauer, Eureka-II.

The Diamond in the Flame ceremony honoring Delta Zetas for 75 years of membership was presented by Charlotte for the first time. Although none were able to be present, the honorees were Ruth Gaddis Jeffries, Miami-A (initiated 1908), who was the first editor of *The LAMP*; Mabelle Dacotah Hall, DePauw-Δ (initiated May 21, 1908), the only living charter member of Delta chapter, and Vada Perkins Williams, DePauw-Δ (initiated October 16, 1909), member of Delta's first pledge class.

Incidentally, more Golden Rose members attended this luncheon than ever before. Twenty-one from the Sun City area arrived to add to those attending Convention.

It was announced that the \$2,500 Province XVII scholarship presented to the Founders Memorial Foundation has been named in honor of Carolyn Barnes Gullatt.

Mrs. Ruth Gaddis Jeffries
7112 Chorro Circle
Tucson, Arizona 85715

April 1, 1985

Dear Charlotte,

Thank you so greatly for your lovely and generous invitation for me to be one of the guests of honor at the Rose Luncheon at the National Convention of Delta Zeta Sorority in Scottsdale on June 23rd. It is an honor and a pleasure which I am afraid I will have to forego because of limited strength and eyesight. However, I have marked the date and my thoughts and good wishes will be with all of you in absentia. I count being the first editor of *The LAMP* as one of the highlights of my long and most interesting career.

You might like to know that in June 1909 with Alfa Lloyd, our National Organizer and President, we initiated the chapters of Delta Zeta in the DePauw University and the University of Indiana, thus starting on the road to becoming national.

Alfa's lovely sister, Lillian, was a dear friend and Julia Bishop's family was friends with my family in Milford, Ohio.

Honor should also be given to Dr. Guy Potter Benton, then President of Miami University, for sponsoring and encouraging the establishment of Delta Zeta. Dr. Benton was also a personal friend of my family.

Thank you again for the loving and cordial invitation to be a guest at the Rose Luncheon and, if by chance you may be coming to Tucson, please let me know and come to see me.

Every good wish for a fine convention and for many inspiring years ahead.

Yours in the bond of Delta Zeta,

Ruth Gaddis Jeffries



Past National Presidents: (l to r) Carolyn Barnes Gullatt, Norma Minch Andrisek, Helen Woodruff Nolop, Frances Westcott, Gertrude Houk Fariss, Lisbeth Innis Francis and Elizabeth Baker Devereaux.



Past National Officers at Convention: (standing, back row, l to r) Betsy Bradley Leach, Lucile Crowell Cooks, Mary Lou McConnaughey Barth, Florence Hood Miner, Betty Schneider Fenton, (second row) Carolyn McCandless Woodling, Jane Gale Prall, Eleanor Strickler Fariss, Sarah Jane Shank Houston, Grace Pritchard Gorham, (front row) Gwen Moss McKeeman, Arlene Newman Marshall and Mary Lou Ragel Vineyard. Not pictured but present later in the Convention, Dorothy Varley Breitweiser.



A record number of Golden Rose members attended the Rose Luncheon.

Achoth Awards, presented for long and devoted service on the local chapter level were presented to Lois Walker Coates, Alabama-ΑΓ; Lauan Boynton Garnjost, California-M; Olive McLauchlan Neelands, Wayne State-EΣ; Helen Woodruff Nolop, Minnesota-F; Doris Wright Sandoz, Oklahoma City-ΓΥ, and Patricia Coleman Spatz, Emporia State-ΔΠ, all of whom were present. Others who received the award were Belle Calvert Brooks, FSU-AΣ; Ann Hatchett Cheney, Auburn-BΞ; Lillian Mager Eggers, Miami-A; Barbara Bankson Gates, USC-AI; Norine Richard Hamilton, Colorado State-BΣ; Lucille Bolstad May, ND State-ΦΒ; Laura Jane Biederman Smith, Alabama-ΑΓ, and Genevieve Roccas Walter, Wayne State-EΣ.

Dianne Fellows Guild was presented a special plaque for concluding twelve years of service on the National Council.

A special treat was a performance by the Gallaudet Dancers from Gallaudet College for the Deaf in Washington, D.C.

Workshops continued throughout the afternoon on such subjects as networking, enrichment, sorority education, activities and references. CCDs learned about officer training, judicial procedures and audits and budgets. Province Collegiate Directors and Province Alumnae Directors attended separate goal setting sessions with Dr. J. R. Andrisek. Alumnae listened intently to sessions on extension procedures, networking, references, Headquarters' services to chapters and house corporations.

House Corporation officers also had a separate session on the new program of regional house corporation directors being instituted under the direction of National Housing and Housing Projects Chairman, Sue Jones-Allen.



Terrific Teams: Left, the Province Collegiate Directors with PCD Coordinator Teresa Severy (seated, center) and right, Province Alumnae Directors with their leader, Vice President of Alumnae Affairs Charlotte Silversteen.

The Grand Finale in the late afternoon was just that ... a slide presentation by Convention Photographer Lennie Sirmopoulos which depicted this 37th National Convention from beginning to almost the end.

And the end came with the final Installation Banquet, Carolyn Barnes Gullatt presiding. It was a time of laughter and tears, excitement building as the awards were presented.

Delta Zeta's two top alumnae chapters named were Twin Cities, Minnesota (Myrtle Graeter Hinkly Council Award) and Arlington, Texas (Margaret Huenefeld Pease Council Award). The Betty Heusch Agler President's Award was presented to Indiana of Pennsylvania-ΓΦ. Northwestern-AA received the See Loving Cup.

Florence Hood Miner Awards for the most outstanding junior collegians were presented to Kathi Bray, Central State (OK)-EY, and Janeen Chamberlain, Iowa State-BK.

Grace Mason Lundy Awards for outstanding seniors went to Anne Moser, Bowling Green-ΓΤ; Laura Gausepohl, Northern Kentucky-KB; Shawn O'Halloran, Oklahoma State-AE; Bonnie McMurray, Texas/Arlington-ΙΨ, and Wendy Pekich, Pittsburgh-O.

Gertrude Fariss presented the award named for her to Bayou Area, LA alumnae chapter and Nicholls State-KA chapter.

The reinstitution of the Order of the Laurel was announced and a member to be added posthumously to the two already listed is Elizabeth Coulter Stephenson, Delta Zeta's first pledge and second National President.

Convention singers, directed by National Music Chairman Carol Konet presented special Delta Zeta selections.

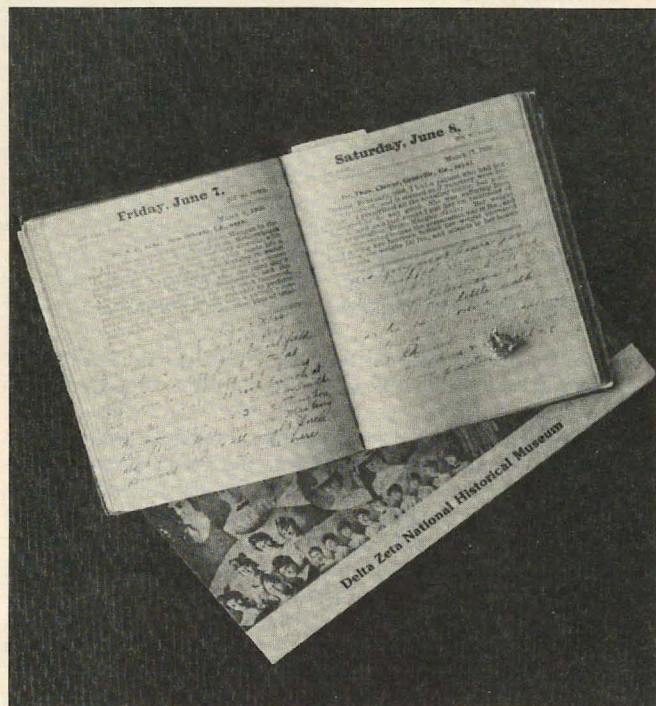
Crest Awards were given for the first time to Delta Zeta's top collegiate chapters. Recognized were Nebraska Wesleyan-BT; Virginia-ΔΔ; Miami-A; Nicholls State-KA; Bowling Green-ΓΤ; Creighton-ΘH; Youngstown-KX; UNC/Charlotte-KΦ; Texas/Arlington-ΙΨ; VPI-KΘ; Northeast Missouri-ΔΣ, and Auburn-BΞ.

The Founders Awards were presented to Auburn-BΞ and Nicholls State-KA and the Council Award went to Nebraska Wesleyan-BT.

Carolyn Gullatt conducted the beautiful and moving candlelight installation service for the 1985-1987 Na-

tional Council and presented new National President Mary Margaret Fore with the president's badge and the sorority's gavels. Norma Andrisek, acting for the Council, then presented Carolyn with her own National President's diamond badge, a personal gift from them. The presentation of the National President's Medallion completed the evening.

Convention was over. It had been a wonderful week of fun and sharing and teaching and learning ... of a lot of laughter and a few happy tears. It was Delta Zeta at her best! It was a **GOOD** convention and we were all glad we came.



Convention Awards



Carolyn Gullatt presents the Council Award to Beta Tau at Nebraska Wesleyan. Left to right, Carolyn, BT president Jody Wysong, CCD Chris Martin, and PCD Jan Havener.



Norma Andrisek (center) presents the Founders Awards to Beta Xi at Auburn - PCD Sandra Nesbitt, president Tracy Ganem, CCD Catherine Coker Goodwin, and to Nicholls State-KA - KA president Julie Burns, CCD Michelle Taylor Benois, and PCD Ginger Shattner Banks.

COUNCIL AWARD (silver tray)

Nebraska Wesleyan-BT

FOUNDERS AWARD (silver candlesticks)

Auburn University-BΞ

Nicholls State-KA

CREST AWARDS (lucite plaque)

Nebraska Wesleyan-BT

Virginia-ΛΔ

Miami-A

Nicholls State-KA

Bowling Green-ΓΤ

Creighton-ΘΗ

Youngstown-KX

UNC/Charlotte-KΦ

Texas/Arlington-ΙΨ

VPI-KΘ

NE Missouri-ΔΣ

Auburn-BΞ

BETTY HEUSCH AGLER PRESIDENT'S

AWARD (traveling plaque with raised crest)

Indiana of Pennsylvania-ΓΦ

SEE LOVING CUP (traveling silver loving cup)

Northwestern-AA

GERTRUDE HOUK FARISS AWARD (traveling silver punch bowl and tray)

Bayou Area (LA) Alumnae Chapter and Nicholls State-KA Chapter

MYRTLE GRAETER HINKLY COUNCIL

AWARD (traveling silver coffee urn)

Twin Cities, MN Alumnae Chapter

MARGARET HUENEFELD PEASE COUNCIL

AWARD (traveling silver coffee urn) Arlington, TX Alumnae Chapter

GENEVIEVE SCHMITT MEMORIAL

PLAQUE (traveling scholarship plaque)

Nebraska Wesleyan-BT

GRACE MASON LUNDY AWARDS (gold symbol charm)

Anne M. Moser, Bowling Green-ΓΤ

Laura A. Gausepohl, Northern Kentucky-KB

Shawn O'Halloran, Oklahoma State-AE

Bonnie E. McMurray, Texas/Arlington-ΙΨ

Wendy R. Pekich, Pittsburgh-O

FLORENCE HOOD MINER AWARDS (gold symbol pendant)

Kathi Bray, Central State (OK)-EY

Janeen Chamberlain, Iowa State-BK

ALICE HUENEFELD CCD BRACELET

(gold traveling bracelet)

Barbara Tweed Holland, ND-Y

CCD, Iowa State-BK

ACHOTH AWARDS (gold symbol bracelet)

Belle Calvert Brooks, FSU-AΣ

Ann Hatchett Cheney, Auburn-BΞ

Lois Walker Coates, Alabama-AΓ

Lillian Mager Eggers, Miami-A

Lauan Boynton Garnjost, California-M

Barbara Bankson Gates, USC-AI

Norine Richard Hamilton, Colorado State-BΣ

Lucille Bolstad May, ND State-ΦΒ

Olive McLauchlan Neelands, Wayne State-EΣ

Helen Woodruff Nolop, Minnesota-Γ

Doris Wright Sandoz, OCU-ΓΥ

Laura Jane Biederman Smith, Alabama-AΓ

Patricia Coleman Spatz, Emporia State-ΔΠ

Genevieve Roccas Walter, Wayne State-EΣ

ORDER OF THE LAUREL (gold symbol charm)

Elizabeth Coulter Stephenson (posthumously)

HERITAGE CUP (silver cup)

Texas A&M-AΞ

Collegiate Chapter Awards

ACTIVITIES (trophy)

Bowling Green-ΓΤ

LSU-Σ

VPI-KΘ

Indiana-E

Ohio State-Θ

Western Michigan-ΓΠ

(certificates)

North Texas State-KZ

Virginia-ΛΔ

FSU-AΣ

Iowa-I

Miami-A

Youngstown State-KX

STANDARDS (trophy)

San Jose State-ΓΑ

Youngstown State-KX

Bowling Green-ΓΤ

LSU-Σ

Concord-EΔ

Wisconsin/Whitewater-EK

(certificates)

UNC/Charlotte-KΨ

South West Texas-IA

Shepherd-KM

East Carolina-ZA

Alabama-AΓ

Henderson State-EΠ

PHILANTHROPY (trophy)

Texas A&M-AΞ

Georgia State-ΔΔ



Sue Allan of Northwestern-AA accepts the See Loving Cup from National Secretary Dianne Guild.

Bowling Green-ΓΤ
CSU/Fullerton-ΙΥ
Nicholls State-KA
Texas/Arlington-ΙΨ
(certificates)
San Jose State-ΓΑ
Miami-A
Youngstown State-KX
Indiana-E
Auburn/Montgomery-AN
LSU-Σ

SCHOLARSHIP (trophy)

Nebraska Wesleyan-BT
Northwestern (OK)-ΔΟ
Findlay-ΘΤ
William Jewell-ZP
Virginia-ΔΔ
Northwestern-AA
(certificates)
OCU-ΓΥ
Trenton State-AA
San Francisco-ΞΑ
Rochester-ΑΙ
Wittenberg-BX
Ashland-ΘΨ

PLEDGE EDUCATION - CARYATIDES

Miami-A
Indiana-E
Nebraska Wesleyan-BT
Indiana of Pennsylvania-ΓΦ
Nicholls State-KA
Virginia-ΔΔ

(certificates)

Lenoir Rhyne-ΞΞ
Glenville-ΘΞ
Northern Kentucky-KB
VPI-KΘ

SORORITY EDUCATION (trophy)

East Carolina-ZA
Findlay-ΘΤ
Wayne State-EΣ
Creighton-ΘΗ
Wisconsin/Whitewater-EK
Northern Kentucky-KB

(certificates)

Auburn/Montgomery-AN
Missouri/St. Louis-ΙΞ
Illinois State-AP
Wisconsin/Eau Claire-EΩ

Eastern Kentucky-ΞΒ
Nebraska Wesleyan-BT

SOCIAL (trophy)

LSU-Σ
FSU-AΣ
Northern Kentucky-KB
Nebraska Wesleyan-BT
South West Texas-ΙΑ
CSU/Fullerton-ΙΥ

(certificates)

Concord-EΔ
Pittsburgh-O
Bowling Green-ΓΤ
William Jewell-ZP
Iowa State-BK
Eastern Illinois-ΓΝ

EXCELLENCE IN NEWSLETTERS

VPI-KΘ
Alabama-ΑΓ
Edinboro-ΙΔ
Northeast Missouri-ΔΣ
Central Michigan-ΓΨ
East Carolina-ZA

MEMBERSHIP (trophy)

(consecutive years of filling quota in formal rush)

25 Years
LSU-Σ
23 Years
Miami-A
21 Years
Houston-ΔΘ
19 Years
Nebraska Wesleyan-BT

17 Years
Nicholls State-KA

12 Years
Illinois State-AP

10 Years
Iowa State-BK
Stephen F. Austin-ZΨ
Texas A&M-ΛΞ
UNC/Charlotte-KΦ

8 Years
Rhode Island-BA
Indiana-E
CSU/Long Beach-ΔA
Virginia-ΔΔ
Shippensburg-KΨ

7 Years
Bowling Green-ΓΤ
Creighton-ΘΗ
Missouri/St. Louis-ΙΞ
Georgia State-ΔΔ
Auburn-BΞ

6 Years
ISU/Evansville-AB
Louisville-BΓ

5 Years
Pittsburgh-O
Fort Hays State-ΔΩ
Northern Kentucky-KB

4 Years
Baldwin-Wallace-ΓA
Wright State-KI
Western Carolina-ΘΙ
Old Dominion-ΘΦ
VPI-KΘ

3 Years
Robert Morris-ΞΧ
Northeast Missouri-ΔΣ
Northern Colorado-ΔΞ
Eastern Kentucky-ΞΒ
Lenoir Rhyne-ΞΞ
Alabama-ΑΓ
Western Illinois-EO

2 Years

Indiana of Pennsylvania-ΓΦ
Marshall-ΔΥ
West Virginia Tech-III
Central Michigan-ΙΨ
Northwestern-AA
San Jose State-ΓΑ
Washington-K
Central State (OK)-EY
South West Texas-ΙΑ
Texas/Arlington-ΙΨ
Morehead State-KT
UNC/Wilmington-ΞΘ
Tampa-ΔΒ

(certificates - chapters at total or largest on campus 1983-1985 biennium at least once)

Connecticut-ΓΒ
New Hampshire-ΘΓ
Plymouth-KE
Rhode Island-BA
Trenton State-AA
Kutztown-KP
Shippensburg-KΨ
Ashland-ΘΨ
Bowling Green-ΓΤ
Miami-A
Wright State-KI
Youngstown-KX
Central Michigan-ΓΨ
ISU/Evansville-AB
Indiana-E
Eastern Illinois-ΓΝ
Illinois State-AP
Northern Illinois-ΓΡ
Northwestern-AA
Creighton-ΘΗ
Iowa State-BK
Nebraska Wesleyan-BT
Missouri/St. Louis-ΙΞ
Northeast Missouri-ΔΣ
Northwest Missouri-EP
William Jewell-ZP
St. Cloud-ΘΜ
CSU/Long Beach-ΔA
CSU/Los Angeles-ΘΡ
CSU/Fresno-EE
San Francisco-ΞΑ
San Jose State-ΓΑ
Northwestern State (OK)-ΔΟ
Houston-ΔΘ
North Texas State-KZ
Stephen F. Austin-ZΨ
Texas A&M-ΛΞ
Texas/Arlington-ΙΨ
LSU-Σ
Nicholls State-KA
Middle Tennessee-II



Three Delta Zeta Women of the Year at Convention: (l to r) Lucile Crowell Cooks, 1973, Elizabeth Baker Devereaux, 1984 and Ethel Mae Bishop Gullette, 1982.



Gertrude Houk Fariss (center) presents her award to Bayou Area (LA) alumnae chapter and Nicholls State-KA chapter. Left to right, Kappa Alpha president Julie Burns; CCD Michelle Taylor Benois; Gertrude; PCD Ginger Schattner Bryan, and PAD Ida Marie Carter Nelson.



National Chairmen: (standing, l to r), Ellen Jenkins, Marvona Tavlin, Joan Lowry, Kay Wright, Sue Allen, Pat Beatty, Florence Miner, Gwen McKeeman, Mary Ann French, Lisbeth Francis and Susan Mease. Seated, Tina Vernacchia, Beth Ballreich, Karen Manuel and Carol Konet. Not present for the picture: Joyce London and Ruby Purdum.

Louisville-BI
Appalachian-ΛΦ
East Carolina-ZΛ
Lenoir Rhyne-ZΞ
UNC/Charlotte-KΨ
South Carolina-BΔ
Western Carolina-ΘI
Winthrop-ΛΣ
Georgia State-ΔΔ
Georgia College-ΔΠ
Alabama-ΑΓ
Auburn-BΞ
FSU-AΣ
Tampa-ΔB
Radford-ΞΔ
Virginia-ΔΔ
VPI-KΘ
Central Arkansas-EΞ

Alumnae Chapter Awards

ALUMNAE CHAPTER EXCELLENCE

Arlington, TX
Berea, OH
Huntsville, AL
Orange County, CA
Pasadena/Foothill, CA
Twin Cities, MN

OUTSTANDING CHAPTER ACHIEVEMENT

Central San Fernando Valley, CA
Cleveland Eastside, OH
Fairfield County, CT
Gold Coast Area, FL
Oklahoma City, OK
Shreveport, LA

ALUMNAE CHAPTER ACHIEVEMENT

Bartlesville, OK
Corpus Christi, TX
Greater Kansas City, MO
Greater Orlando Area, FL
Honolulu, HI
Johnson-Wyandotte, KS
Knoxville, TN
Las Vegas, NV
North San Diego County, CA
Phoenix, AZ
Pittsburgh South Hills, PA
Tucson, AZ

MEMBERSHIP

Excellence

Chapters Attaining 50 + % potential
Chico, CA (56%, 66%)
Lawrence, KS (57%, 53%)
Stillwater, OK (64%, 60%)

Chapters increasing membership by 100% or more during biennium
Arlington, TX (104%)
Las Vegas, NV (100%)
North San Diego County, CA (116%)
Stillwater, OK (114%)

Chapters attaining over 40% both years

Aurora, IL
Bartlesville, OK
Franklin, IN
Greencastle, IN
Murfreesboro, TN (60% for one year of chartering)

Chapters increasing membership by 30% or more

Canton-Massillon, OH 43%
Greater Kansas City, MO 31%
Lewisville/Lake Cities, TX 40%
Montgomery, AL 71%
Pasadena/Foothill, CA 60%
Phoenix, AZ 98%
Twin Cities, MN 30%

PROVINCE AND NATIONAL COOPERATION

Fairfield County, CT
Southern NJ
Harrisburg, PA
Lehigh County, PA
State College, PA
Berea, OH
Columbus, OH
Dayton, OH

Findlay, OH
Wooster, OH
Flint, MI
Grand Rapids, MI
Metro Detroit, MI
Oakland County, MI
Anderson, IN
Bloomington, IN
Franklin, IN
Indianapolis, IN
Indianapolis South Suburban, IN
Naperville, IL
St. Louis, MO
Greater Kansas City, MO
Clay-Platte, MO
Twin Cities, MN
Lawrence, KS
Johnson-Wyandotte, KS
Topeka, KS
Phoenix, AZ
North San Diego County, CA
Santa Monica, CA
Sacramento, CA
San Francisco Bay Cities, CA
Mt. Diablo, CA
Monterey Peninsula, CA
Spokane, WA
Bartlesville, OK
Edmond, OK
Enid, OK
Oklahoma City, OK
Tulsa, OK
Arlington, TX
Dallas, TX
El Paso, TX
Lewisville/Lake Cities, TX
Greater Longview Area, TX
Midland, TX
Texas Panhandle, TX
Austin, TX
Shreveport, LA
Hattiesburg, MS
Nashville, TN
Knoxville, TN
Murfreesboro, TN
Charlotte, NC
Raleigh, NC
Huntsville, AL
Clearwater, FL
Fort Walton Beach, FL
Gold Coast Area, FL
Greater Orlando Area, FL
Sun Coast, FL



Charlotte Silversteen presents the Margaret Huenefeld Pease Council Award to Arlington (Texas) alumnae chapter, PAD Donna Dunn and president Connie Moorhead Dempsey.



Sylvia Kaskas, PAD and Twin Cities (Minnesota) alumnae president Terry Tonkin Punswick accept the Myrtle Graeter Hinkly Council Award from Mary Margaret Fore.

St. Petersburg, FL
Tallahassee, FL
Tampa, FL
Anne Arundel County, MD

PROGRAMS

Harrisburg, PA
Pittsburgh South Hills, PA
Cleveland Eastside, OH
Canton-Massillon, OH
Cleveland Westside, OH
Berea, OH
Columbus, OH
Dayton, OH
Findlay, OH
Wooster, OH
Flint, MI
Indianapolis, IN
Naperville, IL
Lincoln, NE
Twin Cities, MN
Johnson-Wyandotte, KS
Topeka, KS
Wichita, KS
Colorado Springs, CO
Denver, CO
Orange County, CA
South Bay, CA
Humboldt, CA
Monterey Peninsula, CA
Portland, OR
Spokane, WA
Alva, OK
Bartlesville, OK
Edmond, OK
Oklahoma City, OK
Tulsa, OK
Arlington, TX
Dallas, TX
El Paso, TX
Lewisville-Lake Cities, TX
Greater Longview Area, TX
Texas Panhandle, TX
Corpus Christi, TX
Austin, TX
Nashville, TN
Murfreesboro, TN
Huntsville, AL
Fort Walton Beach, FL
Gold Coast Area, FL

Greater Orlando Area, FL
Southwest, FL
Tallahassee, FL
Tampa, FL

WAYS AND MEANS

Fairfield County, CT
Cleveland Eastside, OH
Berea, OH
Findlay, OH
Anderson, IN
Bloomington, IN
Franklin, IN
Greencastle, IN
Indianapolis, IN
Indianapolis South Suburban, IN
Muncie, IN
St. Louis, MO
Greater Kansas City, MO
Clay-Platte, MO
Twin Cities, MN
Central San Fernando Valley, CA
Pasadena-Foothill, CA
Orange County, CA
Los Angeles, CA
South Bay, CA
Honolulu, HI
Las Vegas, NV
Whittier-West Covina, CA
San Francisco Peninsula, CA
Bartlesville, OK
Oklahoma City, OK
Arlington, TX
Dallas, TX
Lewisville/Lake Cities, TX
Greater Longview Area, TX
Corpus Christi, TX
Shreveport, LA
Nashville, TN
Charlotte, NC
Raleigh, NC
Huntsville, AL
St. Petersburg, FL
Gold Coast Area, FL
Greater Orlando Area, FL

NEWSLETTERS

Distinguished
Pasadena-Foothill, CA
Denver, CO

Metro Detroit, MI
Cleveland Eastside, OH
Oklahoma City, OK
Dallas, TX

Sustained Excellence

Orange County, CA
Gold Coast Area, FL
Indianapolis, IN
Shreveport, LA
Oakland County, MI
Northeastern New Jersey
Findlay, OH
Tulsa, OK

Excellence

Phoenix, AZ
Twin Cities, MN
Hattiesburg, MS
Cleveland Westside, OH

Outstanding

Los Angeles, CA
Lewisville/Lake Cities, TX
San Fernando Valley, CA
Long Beach, CA
Fort Collins, CO
Fort Walton Beach, FL
Greater Orlando Area, FL
Sacramento, CA
St. Louis, MO

Province XXI (for alumnae and collegians)

YEARBOOKS

Huntsville, AL
Central San Fernando Valley, CA
Orange County, CA
Long Beach, CA
Fort Collins, CO
Gold Coast Area, FL
Greater Orlando Area, FL
Anderson, IN
Des Moines, IA
Greater Kansas City, MO
Charlotte, NC
Cleveland Eastside, OH
Bartlesville, OK
Portland, OR
Lehigh County, PA
Corpus Christi, TX
El Paso, TX

COLLEGIATE RELATIONS

Fairfield County, CT
Berea, OH
Columbus, OH
Findlay, OH
Bloomington, IN
Franklin, IN
Greencastle, IN
Indianapolis South Suburban, IN
Lincoln, NE
Twin Cities, MN
Orange County, CA
Long Beach, CA
San Francisco Bay Cities, CA
Sacramento, CA
Chico, CA
Greater Seattle, WA
Alva, OK
Edmond, OK
Enid, OK
Oklahoma City, OK
Stillwater, OK
Tulsa, OK
Arlington, TX
Dallas, TX
Lewisville/Lake Cities, TX
Texas Panhandle, TX
Cypress Creek, TX
Austin, TX
Brazos Valley, TX
Shreveport, LA
Bayou Area, LA
Hattiesburg, MS
Baton Rouge, LA
New Orleans, LA
Nashville, TN
Knoxville, TN
Memphis, TN
Charlotte, NC
Huntsville, AL
Gold Coast Area, FL
St. Petersburg, FL
Tallahassee, FL
Tampa, FL

REFERENCES
Fairfield County, CT
Harrisburg, PA
Lehigh County, PA
Pittsburgh South Hills, PA
State College, PA
Bartlesville, OK
Oklahoma City, OK
Tulsa, OK
Arlington, TX
Dallas, TX
El Paso, TX
Lewisville/Lake Cities, TX
Greater Longview Area, TX
Midland, TX
Texas Panhandle, TX
Corpus Christi, TX

Houston, TX
Austin, TX
Charlotte, NC
Huntsville, AL

PHILANTHROPY - (Outstanding)

Berea, OH
Cleveland Eastside, OH
Midland, TX
Northeastern NJ
Lamplighters of Southern California
Central San Fernando Valley
Long Beach
Los Angeles
Orange County
Pasadena-Foothill
Santa Monica
South Bay
Whittier-West Covina

PHILANTHROPY - (Recognition)

Fairfield County, CT
San Antonio, TX

MAGAZINES

Greater Seattle, WA
Whittier-West Covina, CA
Columbus, OH
Pasadena/Foothill, CA
Metro Detroit, MI
Santa Monica, CA
Huntsville, AL
Muncie, IN

ATTENDANCE - (50% or more during both years of biennium)

Rochester, NY
Southern NJ
Bucks County, PA
Chester County, Pa
Wilmington, DE
Canton-Massillon, OH
Cleveland Westside, OH
Berea, OH
Findlay, OH
Wooster, OH
Flint, MI
Grand Rapids, MI
Metro Detroit, MI
Oakland County, MI
Saginaw, MI
Anderson, IN
Bloomington, IN

Franklin, IN
Greencastle, IN
Indianapolis South Suburban, IN
Lafayette, IN
Muncie, IN
Aurora, IL
Bloomington/Normal, IL
Naperville, IL
Des Moines, IA
Lincoln, NE
Clay-Platte, MO
Lawrence, KS
Johnson-Wyandotte, KS
Topeka, KS
Humboldt, CA
Monterey Peninsula, CA
Mt. Diablo, CA
Spokane, WA
Bartlesville, OK
Reno, NV
Edmond, OK
Enid, OK
El Paso, TX
Greater Longview Area, TX
Las Cruces, NM
Corpus Christi, TX
Huntsville, AL
Clearwater, FL

Are you a National Registered Parliamentarian? If so, please contact Lucile Crowell Cooks, 7400 Sun Island Drive, S., South Pasadena, FL 33707. A list of Delta Zeta's Professional Registered Parliamentarians is being compiled.



Charlotte Silversteen presents Achoth Awards to Helen Nolop, Lois Coates, Luan Garnjost, Olive Neelands, Doris Sandoz and Patricia Spatz.



Phoenix alumnae working at Convention include (back row, l to r) Colleen Quinley-Lee, courtesy; Vicki Rhoades Cooper, Reba Adkins Eldredge, courtesy; Marjorie Mercer Miller, Susan Norman, Scottsdale convention coordinator; Debbie Will Welch, Phoenix alumnae president; Kay Morrow, Convention graphics; Jane Gale Prall, Ann Pearson Sunderlin, publicity; and seated, Dorothy Pergande, Helen Woodruff Nolop, Pat Knowles Wells, hospitality chairman and Martha Kerlin Poe. Two committee members not pictured are Ava Frick and Cynthia McPartland.

Museum Breakfast One of Surprises



Jean Lisle in "Mama's pink dancing dress" unveiled the protrait of our Founders at the Historical Museum breakfast.

**by Florence Hood Miner,
National Historian**

One of the truly important pictures missing from our Delta Zeta Historical Museum in Oxford has been a picture of our six Founders, without whom we would never have come into being.

The spot was there, over the fireplace in the front parlor, but the debate went on among the trustees as to the what and how a portrait could be done as the only picture extant was the small familiar oval.

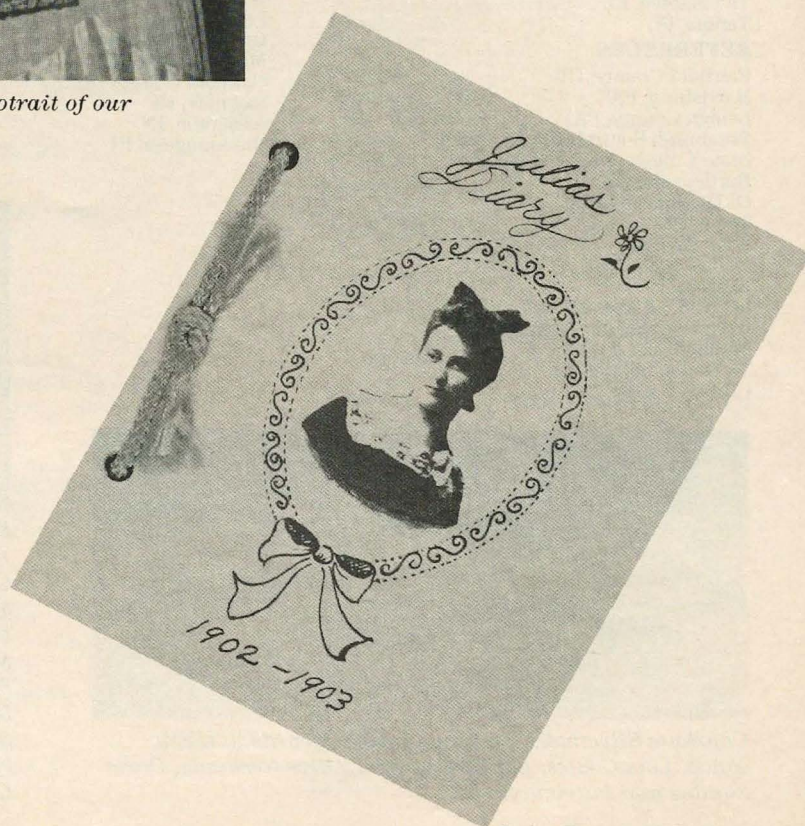
We now have a lovely portrait, the gift of Myrtle Graeter Hinkly, Δ, and Jean Coleman Lisle, A. After they had visited the museum, they both had the same reaction. It was lovely, but WHERE was a picture of the

Founders? And to those who know the dynamic Myrtle and the determined Jean, SOMETHING was done and ready for Convention.

The gold framed oval of those six young ladies back in 1902 has found its proper niche over the fireplace in the front parlor, where it is almost the first thing you see as you step into the entry hall.

The Museum breakfast was full of wonderful surprises. Star of the morning was again petite Julia Jean Coleman Lisle, younger daughter of Julia Bishop Coleman. In her Mama's pink dance dress she entranced the conventioners with her quotes from Julia's diary and letters to her Mama from Oxford. (When you visit the Oxford museum, look for Jean's picture in the pink dress in the wicker bedroom.)

Surprise number two was the reproduction of this diary of Julia's, lovingly assembled by her daughter.



Copies were given to all of the delegates and visitors and hopefully more copies will be available later for those who wish to read of the amusing happy days our Founders shared at Miami where women were in short supply.

And then there was surprise number three. Jean presented her mother's Delta Zeta pin to the museum. The original pins were, of course, real gold and hand made. There were no pearls in the base, but the diamond was rose cut, which makes it rare and valuable indeed.

Programs for the breakfast were in sepia with a montage of early pictures taken from the History.

Norma Andrisek presented the Heritage Cup to Lambda Xi chapter at Texas A&M University. Angels were given to those top chapter contributors to the museum since its founding.

Collegiate chapters recognized as the top contributors were Texas A&M-ΛΞ; Central State (OK)-EY; Miami-A; LSU-Σ; Bowling Green-ΓΤ; Georgia State-ΔΔ; South Carolina-BΔ; Shippensburg-KΨ; South West Texas-IA and Slippery Rock-ZΦ.

Alumnae chapter top ten were Huntsville, AL; Oklahoma City; St. Petersburg; Cleveland Eastside; Pasadena Foothill; Ames, IA; Corpus Christi, Tulsa, Northeastern New Jersey and Miami, FL.



Alumnae chapter top ten donors to the Historical Museum receive gold foil angels.



Collegiate chapter top ten donors to the Historical Museum.



The Heritage Cup is presented by Norma Andrisek to Texas A&M-ΛΞ, PCD Merry Adamcik, CCD Beverly Malazzo and chapter president Lisa Rouse.



Huntsville, Alabama alumnae chapter's name will be inscribed on the Heritage Cup as top alumnae chapter contributor. Accepting a certificate from Norma Andrisek are Lois Walker Coates and Jeanne Coleman Livingston.

Pups and Hounds Breakfast



Field Representatives meet their first challenge in high style. This must have been "We love the pups and hounds" which introduced the program.



This group has now advanced to ten Conventions. Taylor Reese's custom designed ears had applique "typewriter" symbols ... courtesy of PCD Sue Skambis and designed by Carolyn Gullatt and Pat Rosser.



Gertrude Fariss' 22 barks are interspersed with a dissertation on the stages of man.



Perky Frances Westcott displays her "how my Scottie begs" for 23 Conventions.



Would that we had color to show the rose and silver lamé ears of this tip-top hound. Twenty six Conventions for Florence Miner this year, which ties Grace Mason Lundy's Convention record.



Betsy Leach is another single. Note the ribbons and pearled ΔZ letters on her color coordinated ears!



These remain nameless ... but you can always recognize a sister you know ... even if you can't believe what you are seeing!



What our gentlemen won't endure! Dave Gaston and Dean Jollay also have custom designed "ears" ... Dave's with the dollar sign and Dean's with the scales of justice.



ΔZ Goes Western



Mother-daughter-sister pairs gathered on Main Street for their biennial photo: By pairs, left to right, Gwen Moss McKeeman and Marianne McKeeman Cravens; Florence Hood Miner and Juliet Miner; Susan Bass and Sondra Golden Bass; Eleanor Strickler Fariss and Lani Fariss Hassenstab; Dorothy Varley Breitweiser and Janet Breitweiser Savage; Barbara Ray and Katherine Theiss Ray; Karen Fellows Soyk and Dianne Fellows Guild; and the McCarl sisters, Dawn, president of Ohio Northern-ZK, and Deneen, president of Northeastern State (OK)-ΔΦ.



Janet thinks this is fun, but others of the group are really concentrating!



Clowning around are Carol Konet and Cindy Winslow ... quite a change from dignified National Chairman and Director of Chapter Services. Versatility! They can always go on the road!



We're not sure what this number is called ...



"Rushbusters" ... another prize winning skit from Texas. This is Houston-ΔΘ chapter's skit, but Texas in action.

Convention Initiates Delight All



Convention Initiates June House and Nancy Gaston.

Two outstanding community leaders were initiated at this 37th National Convention of Delta Zeta.

June Stendahl House, grew up in San Francisco, earned her B.S. in Nursing through the University of San Francisco and California at Berkeley. A former public health nurse, she is married to Dr. William House, president of the House Ear Institute.

June serves as president of the Associates of the House Ear Institute which organizes the annual gala fund raiser for the Institute. She is also a member of Sonance, a group of former models who donate their time and energies for the benefit of the Institute. They model in the annual Flame Fantasy given by the Lamplighters of Southern California.

Though active in community and civic groups in the past, June likes to "think in the present and the fu-

ture." And the present and future are the years devoted to working with "Dr. Bill" as she lovingly calls him, and the House Ear Institute.

The Houses reside in Whittier, California, and are the parents of Karen (who produced the films shown at the Founders Memorial Foundation luncheon) and David, who does computer consultant work. June and Bill have three grandchildren, Rebecca and twins, Sam and Mike.

Nancy Fitzer Gaston is the wife of one of Delta Zeta's favorite men, Dave Gaston, partner of Coopers Lybrand International Accounting Firm, and is a well known civic leader in the Columbus, Ohio area.

After finishing Columbus North High School where she was president of her high school sorority, Nancy attended Ohio State. She married Dave, her high school sweet-

heart and soon became busy raising three daughters, Susie, now 28, Sandy, 23, and Sherri, 18.

Nancy is president of the fund raising group for Columbus Children's Hospital, member of the assistance league for the Beaux Art Gallery, active in numerous civic associations and a past president of the Tri Delta Mothers Club. Daughters Susie and Sandy are members of Delta Delta Delta sorority.

Nancy works with Dave in the United Cerebral Palsy Fund drive in Columbus and together they planned their 30th high school reunion this summer. Nancy is an avid golfer, but lately has added a new love in her life. She's a new grandmother to David Nathan Owen, her six months old first grandchild who lives within walking distance of her Columbus home.

Introducing 1985 GML Winners



Anne Moser,
Bowling
Green-IT



Laura
Gausepohl,
Northern
Kentucky-KB



Shawn
O'Halloran,
Oklahoma
State-AE



Bonnie
McMurray,
Texas/Arlington-IV



Wendy Pekich,
Pittsburgh-O

The 1985 recipients of the Grace Mason Lundy awards were announced at the Convention Installation Banquet by past GML winners National Council members Marvona Easley Tavlin and Anne Marie Jones Gavin.

This award, presented annually, is given to those senior Delta Zetas who fulfill requirements for loyalty, devotion and service to their chapters and to Delta Zeta.

Anne Melinda Moser
Bowling Green State University
Gamma Tau Chapter

"I feel Anne Moser represents the essence of Delta Zeta sisterhood. She is a leader, a listener, a sister, a confidant, but most of all, a friend," wrote Anne's CCD Shelley Boehk Dinkens. Anne served as chapter president, appeared on the Dean's List, belonged to Order of Omega and was awards chairman for the Miss BGSU scholarship pageant.

Active as a peer advisor for the College of Health and Community Services, she also was a residence hall council member and a student teacher at the Child Development Center. Anne will travel for Delta Zeta in 1985-86 as a Field Representative.

Laura Alison Gausepohl
Northern Kentucky University
Kappa Beta Chapter

"Kappa Beta is a much better, stronger and more rounded chapter - with better prospects for sound

leadership in the future - because of Laura's efforts and her determination to be the best Delta Zeta manager (president) ever. She has helped insure that her chapter will be strong for years to come, and no Delta Zeta can give more, than to make tomorrow better," said Kappa Beta CCD Linda Allen about Laura Gausepohl.

Laura, a Marketing major, served as a NKU freshman advisor and was active in all university intramurals. Listed in *Who's Who Among College Students* and appearing on the Dean's List, Laura worked at two jobs, but still found time to be a successful leader and to guide her chapter in some tough decisions. Laura wants to continue with Delta Zeta activities after her four years of college. Some day, she would "love to be a CCD."

Leslie Shawn O'Halloran
Oklahoma State University
Alpha Epsilon Chapter

"THIS IS THE ONE!" ... and this comment from PCD Mary Snider was only emphasized by the number of supporting letters written about Shawn O'Halloran and her "maturity, warmth, intelligence, humor, common sense and leadership", all evident in her years at Oklahoma State.

Shawn served Alpha Epsilon as a young president, but her love and devotion and work for the chapter didn't end with that year. Almost al-

ways in the background, but always ready to serve ... whether it was the last one to bed during rush week and the first one up the next morning, or quietly but smilingly accepting Oklahoma's outstanding collegian award. Shawn is known to have said, "I have never said no to my sorority." She recently was selected to travel for Delta Zeta as a Field Representative.

Bonnie Elizabeth McMurray
University of Texas at Arlington
Iota Psi Chapter

"Bonnie has been an outstanding president. If I could order the perfect president, I couldn't get closer than Bonnie." These words from CCD Jan Tyler reflect sentiments of those who know Bonnie McMurray. First a Panhellenic president, then chapter treasurer, then chapter president, Bonnie was instrumental in Iota Psi's acceptance of the responsibility of a large new chapter house, working closely with the House Corporation and the Housing Projects chairman.

Named Greek Woman of the Year at UTA, Bonnie is also a member of Order of Omega, and served on the Homecoming Committee for two years.

Wendy R. Pekich
University of Pittsburgh
Omicron Chapter

"... Wendy's greatest asset is her ability to understand and to help."
(continued on next page)

Florence Hood Miner Awards



Florence Hood Miner presents her awards to Janeen Chamberlain, Iowa State-BK (left) and Kathi Bray, Central State (OK)-EY.

Two winners of the Florence Hood Miner award were named, and both women were at Convention to receive the newly designed pendant.

Kathi Bray, Central State (OK)-EY, and Janeen Chamberlain, Iowa State-BK, had received national as well as campus honors. Both were chosen for Mortar Board and were on the dean's list.

Kathi is majoring in Marketing/Distributive Education, with a minor in Political Science. She was president and now is junior advisor for Alpha Lambda Delta, a member of Tiaras Honor Society, Kappa Delta Pi, Student Senate, Panhellenic delegate, and presently president of Epsilon Upsilon chapter.

Her involvement as an officer of the collegiate DECA chapter led to her being chosen National President of that organization. As a freshman she was named in the top ten. Her committee assignments on the campus are numerous.

Janeen Chamberlain is majoring in Ag Journalism and is much in de-

mand as a vocal soloist at campus functions. Her charm and speaking ability won her the honor of being chosen National Pork Industry Queen where she traveled to many states and appeared often on national television.

As a freshman at Iowa State she was chosen Gamma Gamma's outstanding student. Veishea media coordinator, Cyclone Aide, Sigma Delta Chi, Alpha Zeta, Cardinal Key and Student Ambassador are just some of her activities. She will be her chapter's rush chairman this fall.

With the Convention approving the change in this award so that it could be given to more than one junior collegian, each recipient will receive the new diamond shaped pendant with the letters Delta and Zeta and a diamond in the flame connecting the letters.

This year two honorary members were named. Norma Minch Andrisek and Carolyn Barnes Gullatt were cited as having spread the flame of Delta Zeta to more women than ever

before. Their leadership has been outstanding. Only once before has this been given to an honoree. In 1958 Evelyn Adams Costello was named at the Chicago convention.

GML Winners (continued)

Her door is always open to sisters and pledges. The compassion and genuine love that Wendy has for Delta Zeta and her sisters shines through continually and is shown to all who come into contact with her." Jane Riccardi, CCD at Omicron expressed the thought that Wendy Pekich has "expanded the position and gone beyond bounds to fulfill the responsibilities."

A University of Pittsburgh Chancellor's Scholar for four years, Wendy received numerous university and scholastic honors, belonged to Mortar Board and ODK. She plans to go to graduate school and hopes to continue with Delta Zeta activities, perhaps as an alumna advisor.

The National Council
is pleased to announce an
invitation to recolonize
Omega Chapter
at the
University of Oregon
Eugene, Oregon
Fall, 1985

Lucky #13 for Texas

Xi Nu Installed at Tarleton



Xi Nu chapter of Delta Zeta at Tarleton State University, Stephenville, Texas.

**by Janet Bailey,
Field Representative**

The sun had set and dusk was approaching the central Texas community of Stephenville on April 19 when the Xi Nu colony of Delta Zeta was officially installed.

Tarleton State University at Stephenville is a part of the Texas A&M system. The basis for the Xi Nu chapter started with the Zeta social club. Organized by Colleen Lonergan and twelve other Tarleton State students, this social club had established a "sisterhood where the needs of friendship, loyalty and a sense of belonging could be met." Early in the fall of 1984 the Zetas had written to Delta Zeta, asking for a presentation. Director of Extension Norma Andrisek sent Field Representative Lisa Straub to visit the campus.

Lisa found the Zetas to be an outstanding group of young women and after an informal rush, the group was pledged as a colony on October 30, 1984. In January, Field Representative Janet Bailey was sent to Tarleton to prepare the colony for initiation and formal rush. Initiation was held on January 26 and was conducted by officers from the University of Texas/Arlington-IΨ chapter. Also attending were National President Carolyn Gullatt, Province Collegiate Director Merry Adamcik, UTA-IΨ CCD Jan Tyler, and Province Alumnae Directors Ann Booth and Donna Dunn.

Formal rush was two days later with rushees choosing between Delta Zeta and Alpha Gamma Delta, Tarleton State's first national sorority. After much work and fun, Xi Nu colony established itself as a top



The "Official Family" at the Tarleton installation: left to right, Ann Butler Booth, PAD-S; Phyllis Snape Favorite, National Director/Pledge Education; Merry Westbrook Adamcik, PCD-S; Janet Bailey, Field Representative; Mary Margaret Calhoun Fore, NPC Delegate; Alice Jordan Matthews-LSU-Σ, Dean of Students at TSU; Carolyn Barnes Gullatt, National President, and Donna Hudson Dunn, PAD-N.



Xi Nu's Executive Board: Jennifer Gardner, recording secretary; Natalie Atkinson, corresponding secretary; Becky Tankersley, vice president of membership; Wendy Lewis, president; LaNae Criswell, vice president of pledge education, and Teresa Kostroun, treasurer.

campus organization. They attended Province Weekend in Houston and were welcomed as Province XVII's newest chapter.

The installation of the chapter on April 19 was a culmination of all their dreams. Initiation was again conducted by officers from Texas/Arlington-ΙΨ. Presiding at the Installation banquet was Mary Margaret Calhoun Fore, NPC Delegate. Greetings were read by National Director Phyllis Favorite and responses and welcomes given by Province Collegiate Director Merry Adamcik and Province Alumnae Directors Ann Booth and Donna Dunn. Dean Mike Leese, Vice President of Student Affairs, was banquet speaker and he spoke of the history and purpose of Xi Nu chapter on the Tarleton State campus. A very special guest was Dean Alice Jordan Matthews, Dean of Students at Tarleton State. Dean Matthews, LSU-Σ said one of her dreams came true when Delta Zeta arrived at Tarleton State.

National President Carolyn Gullatt conducted the installation service and presented the charter to the chapter.

A reception to introduce Xi Nu chapter to the university and community followed on Sunday afternoon. Campus officials, parents and friends were invited to share this special occasion.

The 48 sisters of the Xi Nu chapter are overjoyed to be officially installed and are eager to carry on the traditions of Delta Zeta as they begin to "walk truly in the light of the flame."



Dean Mike Leese, Dean Alice Matthews, Wendy Lewis and Carolyn Gullatt display the chapter charter.





1985 National Convention



Scottsdale, Arizona

Nine Field Representatives to Travel



Field Representatives who will be touring ΔZ-land this year are (standing, l to r) Laura Vradelis, Vivian Cole, Paige Hill, (seated) Janet Bailey, Lauralee Meyer, Lynn Ciervo, Anne Moser, Shawn O'Halloran and Pam Summerlin.

Traveling for Delta Zeta in 1985-86 is a diverse group of young women with more in common than they first thought. And their first experience came at National Convention as they "lifted and toted" boxes from office to reception desk to banquet room; as they ran errands, carried pictures, lost sleep and did a multitude of duties. Despite the sometimes menial tasks, all came home thrilled to be chosen Field Representatives and eager for August and training and then TRAVEL.

Anne Moser, deep down a quiet person, learned so much about herself through Delta Zeta that she wants to share it with others. She enjoyed developing her leadership

potential in Delta Zeta and knows the special feeling that ΔZ is more than giggling and parties. She grew up reading *The LAMP* as the daughter of Lynda Smith Moser, Ball State-IX, but she went to rush at Bowling Green as a free thinker ... until she fell in love with Delta Zeta. Though president of a chapter of 105 was a full time job, she found time for Order of Omega, *Who's Who* and was awards chairman and hostess for the Miss BGSU Pageant.

Anne spent the summer as a play-school teacher for 35 children and hopes one day to work with terminally ill children and their families, using her degree in Child Life Specialty.

If Shawn O'Halloran of Oklahoma State-AE looks familiar, it is because she's been pictured in the last few issues of *The LAMP*. The summer issue cover showed her in front of her chapter house at OSU. She served her chapter as president and social, sports and standards chairman. She also brings vast Panhellenic experience to her job as she served her campus Panhellenic as vice president, the only elected post in the group. Shawn wants to see how Delta Zeta works and while she realizes that every chapter works differently, she feels she can work differently with every chapter.

She's an avid golfer and has won state and local charity tournaments with her mom and partner, Barbara Hopper O'Halloran, OSU-AE. However, Shawn admits she may have a tough time trying to pack golf clubs while traveling for Delta Zeta. With a degree in microbiology, she hopes one day to be a pharmaceutical representative for a large corporation.

Both Anne and Shawn received Grace Mason Lundy awards at this Convention.



Laura Vradelis comes from a Greek family in more ways than one. Her grandparents came from Greece and her mom's a KAΘ. Laura, also from Bowling Green-IT is excited about meeting people and especially wants to promote Delta Zeta and help Delta Zeta be the best it can be. She says Delta Zeta brought out the leadership which she used in producing the intern project for her Sports Management major. Interning at a high school of 2,200 she produced a much needed student handbook for the Athletic Department outlining rules, requirements and policies. She worked as one of 12 on the Student Intramurals Advisory Board, on the Greek newspaper and was the first in her chapter to hold the office of reference and efficiency chairman.

Laura spent the summer learning to be a good cook but can already bake a great baklava and offered the

recipe to Delta Zetas. Proud of her Greek heritage, she dreams of visiting Greece and marrying in the Greek church, a family tradition. She also hopes to work for a professional sports team (the Cincinnati Reds are her favorite).



Pam Summerlin spent the summer recruiting for her alma mater, the University of Alabama. As one of twenty U of A women recruiters, she attended a New Orleans orientation staff convention just before Delta Zeta Convention. She's a good idea person who likes to gain and share ideas, and really enjoys rush and recruiting. She coordinated AI's Tahiti Sweetie spring party for 200 prospective rushees who spent the weekend at the chapter house. She also recruited as a basketball hostess.

With a Communications/Journalism major, Pam helped instruct at a high school journalism workshop. And, with her Fashion Merchandising minor, she coordinated the campus Panhellenic fashion show. She's looking forward to meeting different people, seeing the country and gaining Delta Zeta experience. Along with the Delta Zeta message to the world, she will spread Alabama's football message ... Roll Tide!



According to her CCD, Lynne Ciervo helped her chapter grow from 13 to 38 members and pledge "double" quota. As with most other new Field Representatives, she had met a Field Representative and realized the feeling that Delta Zeta is forever. She brings vast experience to her new position as she served her West Chester-IP chapter as president, rush chairman and temporary treasurer all at the same time ... while she managed to do her student teaching. Her first job as a vivacious pledge was reporting for *The LAMP*. Lynn says her froggie, loud voice qualified her for song leader and she was also campus cheerleader captain, member of the ski team and *Who's Who* and scorekeeper for men's baseball and lacrosse.

Lynne enjoys dancing and captured a starring role in the Dance Production Workshop. She hopes to

enter the new field of dance therapy with a sports medicine center. And, she wants to do graduate work, perhaps as a Delta Zeta graduate counselor.

Vivian Cole, CSU/Long Beach-ΔA comes from a casual California commuter campus of 35,000 that is only 1% Greek. So Vivian is looking forward to seeing Delta Zeta in a more traditional setting. Her decision to apply for a Field Representative's position came only after careful consideration. But when she decided to apply it was so firmly, she mailed her application via Federal Express ... just to make sure it got there safely and on time!

Vivian served her chapter as executive assistant to the president, house manager and corresponding secretary. In fact, she enjoyed Delta Zeta so much she "pulled out" school just a little longer. She was one of the initiating officers for the UCLA-AX installation and also served as vice president of the Student Home Economics Business group on campus. She also was a member of Omicron Nu and Rho Lambda. Her degree is in dietetics and she hopes one day to go into research and development as a sales representative. Her future goals include earning her MBA.



Three Field Representatives will travel for their second year with Delta Zeta.

Lauralee Meyer, Texas A&M-ΔΞ started 1985 out in rose and green. She learned of her possible employment as a Field Representative on New Year's Eve. Within a week she was traveling. She delighted in the installation of a new chapter and in the reorganization of another one. She and her younger sister both chose Delta Zeta during the same formal rush at A&M. Lauralee had already been on campus for two years, busy in the Student Senate and with Judicial Board work.

After two years in Delta Zeta, one term as president, Lauralee knew she wanted to do more. She visited with many Delta Zetas at Convention that she had met over the previous months. One day she hopes to earn a master's degree in speech therapy.

Returning Field Representative Janet Bailey was Lauralee's pledge educator at Texas A&M. While serving as president of her chapter, Janet was encouraged by national visitors to apply for the position as Field Representative and thus has the honor to be the first representative from her chapter. She worked mostly in the south last year and she's anxious to renew old friendships and return to previously visited chapters. She kept busy this summer reading Charles Dickens.

Janet does aerobic exercises to keep in shape for Delta Zeta. And all the chapters she visits remember her. She's the FR who loves animal crackers! Too, she really enjoys the Aggie jokes with which she is greeted. She represented her hometown, Anthony, in the Miss USA-Texas pageant and for Sun Princess in the Sun Bowl.



Paige Hill is returning for her second year as a Field Representative and while she lists CSU-ΔX as her home chapter, she's been officially adopted by the Oklahoma chapters she spent time with this last year. Paige enjoys digging into problems, motivating Delta Zetas and training officers. This past year, she said, "has been a wonderful one, with guiding Council Members always there to help the rough spots become easy."

Paige grew up in the Santa Barbara area of California, has an avid interest in farming, and even sold 70 head of sheep to help finance her education at CSU. She hopes to work in the farming industry in the areas of credit, education and public relations. She's most anxious to travel again but this time she will be prepared for those cold Midwestern winters she got a taste of last year!



A Very Special Woman



Those special ΔZ Women, our College Chapter Directors.

She is ...

- a Delta Zeta alumna
- Somewhere between the early 20's and late 70's in age
- a professional in her community ... executive, homemaker, lawyer, mother, physician, professor
- One of a special group of 150+ women

and to one of 150+ chapters, she is

- a role model
- a friend
- a resource person
- a motivator.

Who is she? She is a very special woman ...

A ΔZ College Chapter Director

"The CCD demonstrates the love she must surely possess by her willingness to serve in one of the most important positions in all Delta Zeta ... as a College Chapter Director." This is Phyllis Favorite's description of a CCD which serves as a dedication in the new CCD Manual presented at Convention.

The College Chapter Director is appointed yearly by the Province Collegiate Director with the approval of National Council. She is responsible for the chapter attaining and maintaining a position of excellence. Thus, her responsibilities are legion.

Not only is she responsible for the

progress and welfare of her collegiate chapter, but she works closely with the PCD to achieve that end. She is responsible for establishing an Advisory Board to assist in the supervision of the various facets of the collegiate programs. She is also responsible for the chapter filling quota and keeping membership at total at all times. She makes sure that a high percentage of pledges are initiated as the result of an effective pledge education program.

She holds individual conferences with the initiates and pledges and enforces the fulfillment of all scholastic, financial and social obligations of the chapter and individual members.

The CCD encourages strong enrichment and social programs and shall expect the collegians to demonstrate social graces and good moral behavior. She attends all nominating committee meetings for the chapter officers. She must approve the slate of officers presented to the chapter. She is also responsible

(continued on next page)

Magazine Sweepstakes Winners



Magazine Programs Awards presented at the Pups and Hounds Breakfast went to two Sweepstakes winners. CCD Betty Fenton and chapter president Holly Clause of Louisiana State-Σ accepted a \$700 check from Mistress of Hounds (Ways and Means Chairman) Patricia Canady Rosser (right) who was assisted by Jean McClurg Southworth (left). The top alumnae chapter winner is St. Louis with president Marilyn Martin Smith accepting the \$300 check. Sister awards were given to San Jose State-ΓΑ and St. Louis alumnae. National Treasurer Anne Marie Gavin and National President Carolyn Gullatt accepted a check to the sorority in the amount of \$6,253.11.



A Special Woman (continued)

ble, along with the outgoing president, for officer training.

The CCD ascertains that all officer reports are completed properly and submitted on time. She also reads, approves and signs all officer reports. Of course she is present at all Executive Board meetings, chapter meetings, ritual and special meetings.

The CCD is empowered to remove any chapter officer or committee

chairman, with the approval of the PCD, for failure to perform her duties satisfactorily. She shall discipline, when necessary, and date and sign chapter bylaws and standing rules. She is directly responsible for good public relations through reports to the PCD, National Council, mailings to parents, telephone contacts and notes of congratulations. She or a member of her Advisory Board shall attend all ritualistic

ceremonies and be certain the chapter performs all rituals according to the Ritual Book. She reports to the PCD on all activities and functions of the chapter.

A busy person? Yes indeed, but her story is one of love, support and commitment - it is the story of our College Chapter Directors ... all volunteers ... all Delta Zeta sisters.

Delta Zeta On Campus



Two Corpus Christi Delta Zetas, Sarah Elizabeth Richter, North Texas State-KZ (left) and Kimberly Kay Smith, Texas A&M-ΔΞ (right) reigned as duchesses in the city's 32nd annual Buccaneer Days celebration. Gowns worn by duchesses depicted the Coronation theme by illustrating the beauty and art of Masters in painting, sculpture, architecture, mosaics, tapestries and metal works. This celebration has become a Texas institution. It begins with the landing of pirates, in the Jean Lafitte manner, who capture and take over the city for a week of frivolity. The celebration's theme is rooted in the salty legends of the sea, particularly as they pertain to the swashbuckling Buccaneers who infested the Gulf Coast over a century ago. Jean Lafitte is the celebration's "patron saint" and, before he made his peace with the Federal government, is thought to have used the numerous inlets and lagoons along this section of the Coast as a hide-away after his depredations on vessels plying the Gulf.

by DIANE JONES SKELTON

ALABAMA

Auburn, Beta Xi — Delta Zeta was honored as the sorority with the most improved scholarship at Greek Convocation and won the softball league championship. Beta Xi won several Greek Week events and initiated 17 girls in the spring. Karen Moore was named Miss A-Day.

ARKANSAS

Henderson, Epsilon Pi — Delta Zeta welcomed a visit from Field Representative Janet Bailey in May. She taught Epsilon Pis new songs, provided some great rush ideas, and

gave the chapter a big "morale" boost! Delta Zeta sponsored a dance for Group Living, a home for mentally retarded teen-agers and adults. Each participant received one of the prizes donated by area merchants.

CALIFORNIA

California-Chico, Delta Chi — The chapter chose Laura Ingalls Wilder as their historical character to portray in Pioneer Days. Delta Zetas donned prairie dresses and chose Lisa Tileston as their Little Nell candidate. In Quad competition, Delta Chi built "the little house on the prairie." Lisa placed second, while the chapter won first in rodeo and sec-

ond overall in sports roundup. Following the parade, Delta Zetas honored parents and alumnae with a picnic at the house. Members sold See's suckers as a fundraiser. When College Chapter Director Janice Martell welcomed twin Delta Zeta legacies, Claire Simpson assumed the duties as CCD.

California-Fullerton, Iota Upsilon — Members traveled to Hollywood for Province Day and brought home awards for activities and philanthropies. Sandra Bernabe was honored as the junior with the highest grade point average, while Valerie Ogradski tied for honors as the senior with the highest GPA. Panhellenic activities included a candy sale which raised \$3000 and a picnic at Greenbelt Park. Parents joined chapter members for a picnic and potluck at Carbon Canyon Park. Scholarship chairman Lori Boatright organized a mourner's dinner for the last meeting in May. Members donned black to mark the end of free time and relaxation and the arrival of finals. Pledges surprised the chapter with a brand new stereo. Sharon Bowman is Tuffy Titan, the school mascot. Sarita Bhatt and Twila Kelly are student orientation leaders. Dean's List includes Aster Solonga, Sandi Patton, Valerie Ogradski and Sandra Bernabe. Janine Skonberg won \$3000 in prizes when Delta Zetas went to the taping of "The Price is Right." Show will be aired September 18.

California-Long Beach, Delta Alpha — More than 200 participants turned out to run in Delta Zeta's first 5k-10k run to benefit the hearing impaired. Local businesses donated trophy money and prizes for the race. The successful race benefitted the House Ear Institute and John Tracy Clinic. For the fifth year in a row, Delta Zeta won Derby Days. The chapter also sold the most raffle tickets for ΣΧ's philanthropy. Members enjoyed an informative standards program on drugs and alcohol. At Province Day, Delta Alpha won awards for most initiates, best activities and outstanding alumnae-collegiate relations. Members enjoyed a beach volleyball game with Sigma Alpha Epsilon and invited alumnae for an alumnae dessert. Members of honoraries are Vivian Cole and Roxana Gallego, Omicron Nu, and Cheri Hanan, national freshman honor society and Phi Eta Sigma. Vivian Cole is a new ΔΖ Field Representative.

California-Los Angeles, Theta Rho — Delta Zeta boasted the largest spring pledge class on campus and ΘΡ's largest spring pledge class in five years! The pledge class numbers six. Members enjoyed learning to ski and learning new rush conversation at a sisterhood weekend at Mammoth Mountain. In Greek week, *I Wanna Be a College Girl* earned first place honors in the song contest, while the banner won third place honors. Members donned their Delta Zeta sweatshirts for college night at Disneyland in hopes of finding Delta Zeta sisters from other colleges. A new chapter tradition is a monthly chapter dinner. An all-you-can-eat Mexican dinner proved a profitable fund raiser. Theta Rho finished the spring quarter by sweeping the swim competition in intramural sports. Lili Yanagisawa and Jo Ann Zovak both won Gail Patrick Velde Awards from the Pasadena-

Foothill alumnae. Lili also won a standards award at Province Day. Marlene Camacho won a \$500 scholarship from Beta Alpha Psi accounting fraternity. Diane Zeni won the chapter's dreaded Klutz Award when she missed her turn driving to Mammoth Mountain for sisterhood weekend. She missed the turn at Mojave, realized it at Bakersfield, and completed her trip in a total of ten hours!

San Francisco, Xi Lambda — Pledges treated initiates to a "Fun in the Sun" ice cream social one Sunday afternoon. The room was decorated with beach towels and the walls were adorned with sunglasses and bathing suits. Members enjoyed a dinner dance for their Rose Formal at the Mark Hopkins Hotel. Both Debbie Weisinger and Rose Reglos were graduated Cum Laude. Debbie is a member of Alpha Sigma Nu Honor Society and Rose was listed on the Dean's Honor Roll. Donna Kitt and Carrie Minucciani were named as Davies Scholars at graduation. Sheryl Molinari is new president of Phi Chi Theta. Cheerleaders for 1985-86 include Carol Meshinsky, Stacy Highsmith and Kristina Wright.

San Jose, Gamma Lambda — Delta Zeta won the coveted President's Service Award for the second consecutive year during Greek Week. Delta Zeta also won first places in philanthropy competition, college bowl competition and video competition. Second places came in carnival day, watermelon eating and second overall in Greek Week. Delta Zeta won third with their carnival booth and in yell fest and banner competition. Individuals honored during Greek Week included Terri Shiozaki, Panhellenic leadership award, and Shannon Rasmussen, Order of Omega. Pledges sponsored a canned food drive benefiting Santa Clara Battered Women's Shelter. The chapter sponsored a community project day and painted benches at Happy Hollow Park and Petting Zoo. Now, the park has one extra-special rose and green Delta Zeta bench amidst the others! Parents enjoyed a slide show and talks from executive officers at "presents." Delta Zeta's president wed Kappa Sigma's president in a mock wedding exchange. Executive officers of both groups served in the wedding party. The mock wedding was held on the Delta Zeta porch, with a reception following at the Kappa Sigma house. Honored by Panhellenic for maintaining 3.5 or higher grade points were Shannon Rasmussen, Beth Tirapelli and Mary Schnabel. The pledge class won top academic honors among sororities on campus.

COLORADO

Denver, Rho — Delta Zeta placed third in Sigma Chi Derby Days and participated in intramural softball. Seniors were honored with a senior dinner.

CONNECTICUT

Connecticut, Gamma Beta — Chapter president Barb Poremba is new vice-president of communications for the Student Union Board of Governors. Diane Lynn serves as a senior vice-president for Delta Sigma Pi business fraternity. Su Peck and Tara Aylward are rush counselors, while Lisa Blassberg and Debbie Coe are serving on the Panhellenic rush committee. Sue Pearson was elected runner-up in Delta Chi Derby Week Queen competition. Delta Zetas joined with other Greeks in a giant Twister Game during Greek week to

benefit UConn Children's Cancer Fund. Delta Zeta placed fourth overall in Greek week with its best showings in Greek Sing and the talent show. Graduating seniors were honored with a senior roast. Holly Musikas will be studying international business in the Netherlands fall semester.

FLORIDA

Florida State, Alpha Sigma — Fifteen sororities and nineteen fraternities joined together to raise over \$67,000 for Muscular Dystrophy Association at FSU Greek Week. Delta Zeta won second in contributions by raising nearly \$8000 or approximately \$95 per member. The chapter won first overall in Greek Week after winning first in banner competition, third in social and fourth in skits. Alpha Sigmas sponsored a 72-hour non-stop car washing marathon to raise over \$1500 in one Greek Week fund raising project. Delta Zeta placed second overall in sorority intramurals, ranking high in badminton, track and field, and softball. Due to a mistake during fall rush, quota was expanded by one and Delta Zeta added a 46th pledge!

GEORGIA

Georgia Southern, Iota Nu — A unifying Greek Week provided many activities for fraternities and sororities. Delta Zetas participated in putt putt, racquetball, a pizza eating contest, tennis and a bike race. Long and hard hours of practicing paid off for Delta Zetas when they won first place in Greek Sing. A busy chapter calendar included nacho parties, a yogurt social, a Parents' Weekend with picnic and banquet, a spring dance and rush workshops. Members also found time for a social with Pi Kappa Phi, a standards day, and enjoyed the sun in Daytona, Florida. Members distributed flyers and collected money for speech and hearing in mid-May. Other community activities included participating in the



CSU/Fullerton-IY member Patrice Godinex won the chapter fundraiser, "DZ Open Tennis Tournament" which raises funds for philanthropy.

blood drive and selling magazines for the national scholarship fund. *Who's Who Among International Fraternities and Sororities* list Lisa Coleman, recipient of the Service and Leadership Award and a Dean's List scholar. Members of campus honoraries are Jody Morrison, Pi Sigma Epsilon, and Marie Castagna, Phi Upsilon Omicron. Jody is also Delta Tau Delta's Sweetheart. Anne Marie Minor was named outstanding member and outstanding senior in Public Relations Student Society of America. Sharon Puckett, a member of Gamma Beta Phi, won the Kiwanis Club Nursing Scholarship. Melissa Myers played on the state championship softball team. Stephanie Wells is a member of the flag corps. Meg Daly, listed on the Dean's List, and Sandy Evans both won Georgia Southern Certificates of Honor. Lissa Edwards is participating in the Governor's Internship Program. Clare Mueller is a charter member of the Association of Computing Machinery.

Georgia State, Delta Delta — Delta Zeta pledged quota in winter and earned first place honors in basketball. The chapter also placed second in soccer and softball, and proudly won the second overall honors in Pike Bike Race. Delta Delta won first place for the second consecutive year in Greek Week. And, Delta Zeta won the coveted Dean Nell Trotter Award for outstanding sisterhood. Academically, the chapter made great progress and won a certificate for most improved sorority scholarship. Graduating seniors were bid farewell at the rose and diamond spring formal. Members of TKE Sweetheart Court are Kelly Babb, Kristi Barclay and Trina Lanier.

ILLINOIS

Bradley, Zeta Alpha — Not many chapters initiate their college chapter directors, but Zeta Alpha had the pleasure of initiating Peggy Sassorosi along with their pledge class! Peggy became involved with Delta Zeta while at Western Illinois as a graduate student. Upon becoming Director of Student Activities at Bradley, she continued her involvement with Delta Zeta and is now ZA's college chapter director. Chapter activities included participating in sorority volleyball and basketball tournaments, pulling together for Sigma Chi Derby Days, and attending State Day. Zeta Alpha celebrated its one year birthday and enjoyed a spring formal themed "Romance and Roses Affair." Pi Kappa Phi's treated Delta Zetas to breakfast. Members enjoyed a dinner at the home of their faculty adviser and later a banquet with the faculty. 1984 graduate Margie Fuggi, ZA, returned to her chapter for Lamplighting Week. She traveled quite a distance for that week — her home is Tokyo! Jill Unger and Beth Exton both won report writing awards at Province IX Day. Karen Nekolny won third place in Sigma Chi's Derby Day Darling Contest.

Eastern Illinois, Gamma Nu — This year Delta Zeta's key word was unity, and members exhibited togetherness in many ways. Greek week was exciting as Cathy Gravitt directed Gamma Nu to the first place trophy in Greek Sing. During Greek games, Delta Zeta jammed its way to first place in airband competition, and second in obstacles and relays. Past president Theresa Ann Boll was named outstanding collegian in Illinois and Gamma Nu won social, quota and activity awards at State Day. When the University



CSU/Fullerton-IY's Mary Doyle, Anne Cambio, Sandie Kwon and Sandi Patton cheer their team at Greek Week swimming events.



Sigmas from LSU socialize as they await barbecued burgers and the reading of senior wills at their last spring outing.

Board decided to stop sponsoring the Mr. EIU Body Building Contest, Delta Zeta took control. Not only did the event provide great publicity and fun, but proved quite profitable and will now be an annual fundraiser. Jennifer Engels and Cathy Gravitt traveled to the Miss Illinois pageant in the summer. Jennifer is a member of the Pink Panther Pom Pon Squad. Maurene Hearne was re-elected as Phi Sigma Epsilon's Sweetheart. Angelyn Richardson, former president of the student senate, was named a Panhellenic Woman of the Month. Lisa Bero, Allison Ekstrom, Kerri Robbins and Kim Robbins were selected for Pi Kappa Alpha's Women of EIU Calendar. With the two Jacob sisters (Chris as president and Cathy as vice-president of rush), Gamma Nu is looking forward to an "awesome" rush and another fun-filled, action packed school year.

Illinois, Alpha Beta — Spirit chairman Annemarie Masacek is revitalizing chapter morale. For St. Patrick's Day, the dining room was decorated in white and green, and Annemarie provided Irish music. At Easter, she donned her bunny costume and led members on an Easter egg hunt. But, the most exciting spirit boost is her weekly spirit report. She enacts the week's most embarrassing episode. Jane Eberhert was a contestant in Phi Gamma Delta's Miss Hawaiian Tropic competition. At State Day, AB won awards for best chapter song, activities, philanthropy, social programs, scholarship program and sorority education. The AB senior class placed second out of 26 sororities for outstanding senior class at the Burelli Awards. Members enjoyed a backyard cook out with Alpha Delta Pi, and dinner exchanges with Sigma Delta Tau and Theta Delta Chi.

Western Illinois, Epsilon Omicron — After attending State Day in Naperville, Delta Zeta returned to campus for a busy Greek Week. The chapter won the spirit award for excellence and raised the highest amount of cash pledges to win a microwave for the chapter house. Bobbie Rosinski was crowned Greek Goddess. Delta Zeta also won a third place in the decjay contest. EO hosted an alumnae weekend including a brunch, meeting and dance at the Eagles Club to show alumnae how much they are appreciated. Members participated in Phi Kappa Theta's Volleyball Tournament benefitting the American Cancer Society. Delta Zeta initiated 17 in the spring.

Delta Zeta provided the most Greek members in the Student Government Association. Recognized for their individual leadership were Bobbie Rosinski, Mary O'Brien, Theresa Strayer, Linda Lynd, Monica Thomas and Gail Gonski.



Teri Partch and Janine Skonberg of CSU/Fullerton-IY enjoy The Colonel at the Panhellenic picnic.

IOWA

Iowa State, Beta Kappa — Delta Zeta's float earned third place honors in the medium division in the Veishea parade. Delta Zeta teamed with Sigma Nu to take first place honors in Greek Olympics and earn a third place overall in Greek Week. Delta Zetas defeated the Men of Farmhouse to win a first place finish in Greek Sing. Mary Sheka and

Linda Harold are the new directors of Varieties. Housemother Florence Fellner was honored with a party upon her retirement.

KANSAS

Fort Hays, Delta Omega — New members of Mortar Board are Shelia Beer, Gia Garey, Melanie Currier and Tammy Walsh. Fraternities and sororities enjoyed Fort Hays' first Greek Week. Events included Greek Sing, t-shirt day, games, and banquet. The week promoted Greek life and unity. Delta Zeta placed second overall in Derby Days and first in can collection. Fund raisers included a rummage sale and raffle ticket sales.

KENTUCKY

Kentucky, Alpha Theta — Lexington's Business and Professional Women's Club asked Alpha Thetas to model in their fashion show. By modeling and selling tickets, Alpha Theta earned \$550 for the chapter's philanthropy. Delta Zeta was also asked to hostess a Night At the Races for the National Wheelchair Basketball Association's final four. At Greek banquet, Delta Zeta received third place for individual campus leadership, second for campus participation and second for Greek banner contest. Michelle Fackler is newly appointed publicity chairman for the Greek Activities Steering Committee. Delta Zeta also won intramural football. The chapter used its annual alumnae fashion show as a rush function, too. Delta Zeta alumnae were honored with a reception following. Graduating seniors were honored with a banquet, and Delta Zetas participated in the Little Kentucky Derby Festival. Members enjoyed socials with ΣN, IΠKA, ΦKT, KA, and ΛXA.

Northern Kentucky, Kappa Beta — Under the sponsorship of Delta Zeta and the student government, students enjoyed a successful dance featuring Rubber Soul and *non-alcoholic* refreshments. The entire Greek community joined together to make the dance successful, a commendable accomplishment on any campus. KB celebrated the chapter's 13th anniversary with a luncheon and special ceremony in the executive dining room. In Rites of Spring, Delta Zeta sponsored its an-

nual spaghetti eating contest. The winner received a stuffed pig! Other events included boat races across Lake Inferior, tug-of-war and Simon Sez. Residents of a retirement home enjoyed Easter baskets filled with fruit and cards from Delta Zetas. Delta Zeta and Pi Kappa Alpha attended a Cincinnati Reds game and then enjoyed a cook-out at Theresa Malecki's. Members enjoyed a punk party and Derby Day Grill with the ATO's and generic party with "no name" apparel and refreshments with Sigma Phi Epsilon. A first in chapter history was a social with ROTC. Theresa Malecki, an *Outstanding Young Woman of America*, was on Pi Kappa Alpha's Dream Girl Court. Honors List includes Mary Carroll, Laura Gausepohl and Theresa Ruschell.

LOUISIANA

LSU, Sigma — The spirited Kappa Alpha Delta Zeta team was a popular favorite at this year's LSU festival, Jambalaya Jamboree, celebrating cajun heritage. In their seven-minute skit, the team poked fun at Louisiana's governor and his recent indictment. Their twenty-minute skit, *"Leave it to Boudreux,"* was patterned after the television series *Leave it to Beaver*. A *Daily News* reporter billed the skit as the most original and his personal favorite. Spectators and judges dined on cajun food during the presentation of the skit. The ΔZ-KA team also competed in cajun games as alligator egg toss, crawfish relay and pirogue races. Members entertained children at Louisiana School for the Deaf with an Easter egg hunt culminating the afternoon with a picnic. Spring Grub Party was held at the Player's Gate. Delta Zetas and dates climbed aboard Baton Rouge's *Samuel Clements* riverboat to sail the Mississippi for their annual Tahiti Sweetie party. The fifty residents of the house trusted their roommates to arrange mystery dates for the Mystery Day Crayfish Boil at the house. Members, who had raised money with a raffle and slave day, treated initiates to a mystery date party at Fred's. Pledges arranged the mystery dates after initiates listed their three "crushes". Sigmas are busily planning rush and have chosen white satin Gre-

cian gowns for this year's preference party. Members will even don white ballet shoes for that special rush party. Seniors read their wills and were installed as alumnae at the senior barbeque. To strengthen sorority ties and boost spirit, Delta Zetas are honoring their own at Sigma. Under the direction of alumna Debbie Stanton Musso, Sigmas enjoyed their first annual Golden Lamp Awards Banquet to recognize seniors and members with both serious and humorous awards. When Bridget Landry took over duties as spirit chairman, Sigma joined the craze of certificate mania. Members received certificates of appreciation for participation in certain chapter activities. Certificates of participation went to Delta Zetas active in other groups on campus. Outstanding accomplishments as Mortar Board, Dean's List, were recognized with certificates of merit. Sigmas answering all four roll calls at Province XVIII Day in Baton Rouge were treated to an all-expense paid trip to Pensacola, Florida. All shared a condominium and fun in the sun. The 12 Sigmas listed on the Dean's List are Cathy Bodet, Tammy Falgout, Felicia Gros, Christine Guillory, Joy Harvey, Sharon Hipp, Allyson Kessler, Bridget Landry, Sheryl Lyons, Kym Richard, Therese Ritter and Kelly Varnado. Holly Clause is a member of Mortar Board and Debbie Hollenbach is Delta Tau Delta sweetheart. Members of Rho Lambda honorary are Bridget Landry and Allyson Kessler, treasurer. The Muscular Dystrophy Committee included Stacie Gonzales, Sharon Hipp and Margaux Finn.

Louisiana Tech, Theta Epsilon — Delta Zeta split its \$1095 profit from its dance at the Ruston Fairgrounds between the chapter treasury and philanthropy. Nearly 400 students attended the dance. Delta Zetas danced again at their spring party at Folly Beach in Ruston. Members began the day with a noon barbeque followed by the 7 pm dance. Delta Zetas participated in Greek Week, while several members and the executive committee joined Shreveport Alumnae for a dinner honoring nearby collegiate chapters. Gamma Beta Phi honorary includes Cheryl Cowen, Kandy Knox, Camilla Mitchell, Hilary Cartmill, Sonja Forrest, Jill Reber and Mary

Katherine Henry. Jill Reber is also a member of Omega Chi Epsilon, Tau Beta Pi and treasurer for American Institute for Chemical Engineers. Tina Veil is a Union Board printer and Sonja Forrest is the pledge class president for Delta Sigma Pi business fraternity. Margaret Vanderlick was named outstanding senior in home economics and won a Quilter's Guild scholarship. Kandy Knox was named one of the outstanding Greek women and is an orientation leader. Camilla Mitchell was tapped for Beta Alpha Psi accounting honorary.

MASSACHUSETTS

Massachusetts, Xi Alpha — The chapter won the scholarship award at Province Week-end and sold Easter grams for philanthropy as they sent bags of candy and personalized messages throughout the campus. Delta Zeta wrote lively words for the Beach Boys' *California Girls* for their entry in Greek Sing. Allison Uzzo is captain of the swimming and diving team.

MICHIGAN

Central Michigan, Gamma Psi — Delta Zetas collected canned goods for the Women's Aid Service and presented lively music from *Mary Poppins* in Greek Week Sing. In Greek Week, Delta Zeta placed first in Warriner Relays and second in bowling. College Chapter Director Susan Day was named outstanding student organization advisor at the second annual Student Leadership Banquet. Chapter president Traci Mann participated in Panhellenic's Operation Special People. Marlene Sannau is a member of Sigma Iota Epsilon and ΔΦΑ. Other members of honoraries are Chris Spiz, Sigma Iota Epsilon; Heather Nowack, Kappa Omicron Phi; and Cindy Bynum, Sigma Tau Delta. Kim Eichstadt is chairman of the Homecoming steering committee and was honored as an outstanding student leader for Student Affairs.

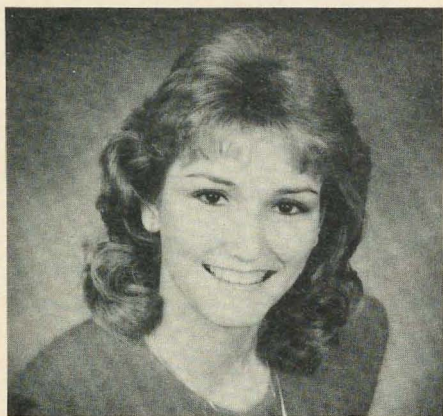
Northwood, Xi Eta — The 43 members of Xi



Karen Musso shares her free hands to help carry candy of one of the students at the LSU-Σ Easter Egg Hunt for the Louisiana School for the Deaf.



Kappa Alpha fraternity's Old South Ball and Parade is a major event at LSU. Delta Zetas from Sigma chapter awaiting the parade are LeAnn Sumrall, Djuana Duhon, Liz Cruz, Becky Dentin, Christine Guillory, Vicky Gardner, Nancy Buchler and Connie Lanoue.



Kandy Knox, Louisiana Tech-ΘE was selected Outstanding Greek Woman of '85 by the LTU Panhellenic.

Eta welcomed Carolyn Haber as chapter advisor and Northwood Librarian Connie Weaver as faculty advisor. Delta Zeta placed second in Greek Week and second in Province Day display competition. At Province VI Day, Valerie George was named outstanding senior. Val, a charter member of Xi Eta, is also an outstanding Greek senior at Northwood.

MINNESOTA

St. Cloud, Theta Mu — The chapter hosted Province Day at St. Cloud and welcomed special guest National Historian Florence Hood Miner. Members volunteered telephone time for the American Heart Association and sold trips to Daytona Beach and South Padre as a fund raiser. Delta Zeta aided other Greeks to sponsor a fund raising dance to benefit Africa. And Delta Zeta sold bratwurst daily to benefit the same cause. Delta Zeta placed first in sorority competition in the Greek canoe race. Theta Mu Penny Schutz and her TKE partner won first place in the coed competition. Delta Zeta also won first place in the sorority competition for chariot racing. Gail Fokken is secretary of the Honors Club and Jane Munson is secretary for University Program Board. Melanie Matthiowetz is a resident advisor and Julie Beckjorden is a member of the Communications Club. Su Newton is a member of the University Program Board. Penny Schutz is Theta Chi's Dream Girl. Cheryl Stolp volunteers her time at the shelter for battered women.

MISSISSIPPI

Southern Mississippi, Epsilon Mu — Dana Delk was named most outstanding pledge of the province at Province XVIII Weekend in Baton Rouge. Tammy Boone won a Province Director's Award. Epsilon Mu participated in Anchor Splash and pledge Lisa Davis won the Craziest Dive competition. Melissa Riley is a member of Gamma Beta Phi honorary. Sherry Dick was first runner-up in Pi Kappa Alpha's Miss Panama Jack Contest and won Sigma Alpha Epsilon's Hawaiian Tropic Contest.

MISSOURI

Central Missouri, Epsilon Gamma — Of

the ten CMSU cheerleaders, eight are Delta Zetas. Leading the cheers are Tammy Fredricks, Tracy Horn, Rene Murray, Kim Stevens, Kelly Stoll, Kelly Thompson, Ramona Underwood, and Lisa Winter, captain. Diamond Dolls are Rhonda Hernandez, Janet Renz, Kim Metzler and Julie Jackson. Panhellenic representatives are Carol Kirgan, Patricia Langkop and Tracy Epperson. Rhonda Hernandez and Kelly Thompson are both Bat Girls. Student Ambassadors are Laura Allin, Susan Powers, Suzy Tierney and Mary Stessman. Mary is also a member of the Political Science Club, College Democrats, Chinese Student Foundation and had her term paper published in CMSU's *Journal of Political Studies*. Included on the Dean's List were Wendy Lindeman, Martha Kirgan, and Leann Danner, a Regent's Scholarship recipient. Joni Dunn serves as Student Secretary for Photographic Services and Karen Yeager is an office assistant at Panhellenic Hall. Terri Lusby serves as president for Kappa Delta Pi, and is a member of Student Missouri State Teachers Association and ACEI childhood education program. Ramona Underwood is also a member of ACEI. Suzy Tierney is a resident assistant and Lisa Winter is a member of BACCHUS. Diana Atwood is a member of Order of Omega honorary. In February, EI initiated 21 pledges, added 8 more pledges and enjoyed an inspirational sister retreat at Pertle Springs Lodge. The chapter has adopted a grandmother at Crest Ridge Rest Home.

Northwest Missouri, Epsilon Rho — Parents and Delta Zeta daughters enjoyed a fun filled day with a picnic, dinner and Colonnade meeting at Beal Park. At Province XI Day, Epsilon Rho won awards for fall rush, social and philanthropy programs. Karen Davis was named first runner-up in the Miss Ten Contest. Donna Southwick and Anne Carroll will be featured in Delta Chi's calendar. Anne was also a finalist in the Tower Queen competition. Delta Zeta helped the handicapped in Northwest's Annual Special Olympics. Members enjoyed mixers with AKA, TKE, ΔΣΦ, and ΦΣΕ. In Greek week, EP placed first in the tug-of-war contest.

William Jewell, Zeta Rho — At an inspirational Province Weekend, Zeta Rho won awards for standards, philanthropy and scholarship. Zeta Rhos leading workshops were Karen Farmer, house management; Stephanie Arner, Panhellenic; and Susie Blaylock, rush. Daughters honored mothers on Moms' Day with lunch at the Golden Buffet. Angie Adair and her mom sang *The Rose*, followed by a chapter serenade of *Friends* to seniors. Members also enjoyed the spring formal at the Hyatt Regency and a Beach Bash mixer with Lambda Chi Alpha. Alumnae prepared hot dogs and desserts for the senior picnic, where members bid farewell to seniors and College Chapter Director Becky Goehring. Krisha Bonville, Barb Bolick and Cindy Clark received academic awards at the Awards Ceremony. Pat Johnsten, Deanna McCrossen and Sarah Spencer are Cardinelle hostesses for the college. Sara Landers is Christian Student Ministries Activities Chairman, and Panhellenic president. Barb Bolick won Phi Gamma Delta's Krisha Bonville Award for fraternity service. Bridget McAtee is Homecoming chairman and Tatler co-chairman with Barb Bolick.

NEBRASKA

Creighton, Theta Eta — Members cele-

brated the initiation of 26 pledges with a Chinese meal at the Great Wall. Theta Etas dined on prime rib at the rose formal dinner dance at the Marriott. They also enjoyed an end of the year Bahamas beach party. Philanthropy chairman Theresa O'Keefe organized a successful dance-a-thon to raise money for the Boys Town Institute. A deejay spun records from 9 pm to 9 am as dancers won door prizes and devoured food donated by area merchants. At the last chapter business meeting, the ΘH honored its seniors. Michelle Albi was named by Panhellenic as best pledge on campus.

NEW JERSEY

Rider, Iota Kappa — Field Representative Laurelee Meyer was a big help and special friend when she visited Iota Kappa. Delta Zeta teamed with Phi Kappa Psi to win third place in Greek Week. Panhellenic named Patricia Yorke as Sorority Woman of the Year. Kelly Hall won the Claire B. Award for varsity sports and was named most valuable player in East Coast Conference softball.

Trenton, Lambda Lambda — Eleven ΛΛ's traveled to Province II Weekend in Scranton, Pa. to attend workshops, present skits and share chapter songs with Delta Zetas from Glassboro and Rochester. ΛΛ won a stuffed turtle as the most spirited chapter at Province II Weekend and brought home awards for most improved chapter and highest grade point average. Terri Munyon was named best chapter president. Ellen Barr, Colleen Haron and Terri Munyon were recognized for having perfect 4.0s for the previous semester. Ellen Barr and Lisa Capaldi were recognized as graduating seniors. Members entertained graduating seniors with a skit portraying what the nine seniors would be like five years from now. Each senior received a plaque commemorating her years in Delta Zeta as they all enjoyed the chapter's farewell barbecue. The spring pledge class, numbering seven, planned a wonderful sister appreciation week as they distributed favors, planned an ice cream party, and sponsored a home cooked spaghetti dinner for all chapter members. Following dinner, they presented scrolls of appreciation to their rose buddies, the Delta Zetas who had taken them under their wings at preference night. Lambda Lambda enjoyed a spring semi-formal at Yardley Inn. Bernadette Weber was named Most Outstanding Greek on Campus and Shelly Huffman serves as Inner Greek Council president.

NEVADA

Nevada-Las Vegas, Iota Phi — At March pledge "presents", Iota Phi presented the largest spring pledge class ever. Nine new Delta Zetas were initiated in March. The chapter placed third overall in Greek Week, and first in Greek Sing. To end Greek Week, Delta Zetas enjoyed a Hawaiian Exchange with ΣAE. Iota Phis traveled to California for Province Day and enjoyed staying at the Fullerton and Long Beach chapter houses and viewing the installation of Alpha Chi at UCLA. Catherine Clay was named Miss Province and Iota Phi won most improved chapter and scrapbook awards. Members raised money by selling raffle tickets for different Las Vegas shows. Alumnae, parents and members all enjoyed the Rose Ball at Caesar's Palace. Spring pledge class sponsored a car

wash and bake sales as fund raisers. Giovanna Sardelli and Jodi Herman showed their acting skills in a Cabaret Show. Big sisters helped prepare their little sisters for final exams by creating finals goodie boxes. The boxes contained useful items and munchies, such as coffee for late night studies and magnifying glasses to examine grades. Giovanna Sardelli won the alumnae scholarship and Catherine Clay was cited in the *Las Vegas Journal Review* newspaper as one of the most outstanding women in Las Vegas.

NEW MEXICO

New Mexico, Gamma Xi — Delta Zeta established a fall formal rush record when 35 girls returned to the Delta Zeta preference party. Delta Zeta teamed with Theta Chi to win a first place in house display competition at Homecoming. A successful team then went on to win the Greek games competition. The chapter celebrated its 25th anniversary in conjunction with Founders Day and Parents' Weekend. Fund raisers included enchillada dinner sales, tostado dinner sales and balloon-o-gram sales. Twelve hearing impaired children delighted in finding Easter eggs and devouring chocolate candy when Delta Zeta sponsored an Easter egg hunt on campus. Members also collected for the American Cancer Society. The entry, living room and dining room were redecorated last summer. Gamma Xi had the honor of hosting two members of *Up With People* in the spring. Members of Spurs are Pam Henry, Becky Yeager, Angela English, Sonya Chavez and Belinda Anaya. Yvette Gonzales is a member of Sundancers. Julie Ivey was named outstanding sophomore by the Greek Council and Tina Candelaria is a NMSU cheerleader. Cheryl Douds reigns as Miss Teen New Mexico.

NEW YORK

Rochester, Lambda Iota — Delta Zeta celebrated in more ways than one when the Interfraternity and Panhellenic Council organized the first Greek Awards Banquet to celebrate the success of the UR Greek system and Greek Week. Delta Zeta's awards included an award for the highest grade point average among Greeks, the best pledge education program, and sportsmanship award for Greek Olympics. A special award went to Diane Rooney for her outstanding contributions for strengthening the Greek community. Diane also received one of two UR Student Life Awards for significant contributions to student life. Lambda Iotas then won an award for the highest GPA from the Rochester Area Panhellenic Council. Seniors presented the chapter with a lovely framed collage of their memories of their college years in Delta Zeta at a special senior brunch at Truffles. AI won a \$50 special creative programming award for their standards programs on resume writing and fashion coordinating. As a philanthropy, Delta Zetas created Easter baskets for the hearing impaired children of Rochester.

NORTH CAROLINA

East Carolina, Zeta Lambda — Honors galore for Delta Zeta include first place in Alpha Xi Delta's All Sing; second place in Sigma Tau Gamma's Tug of War; and first place in Pi Kappa Phi Field Day. Zeta Lambdas also participated in Kappa Sig's Funky Nassau, Phi

Kappa Tau Spring Fling and won the championship in the intramural softball sorority division. Graduating seniors were honored at a senior banquet and were presented crest medallions from the chapter. Delta Zeta helped sponsor an Easter egg hunt for the children of the ECU faculty and participated in a Greek rock-a-thon to benefit the ECU Scholarship Fund. Delta Zeta also participated in Greek Week, enjoyed a Dream Girl formal, collected for Muscular Dystrophy and washed cars to benefit Gallaudet. Members enjoyed socials with TKE, Sigma Nu and Pi Kappa Phi. Kim Wall is serving as president for Rho Lambda and Nancy Croft was named an outstanding ECU senior.

North Carolina-Charlotte, Kappa Phi — Highlights of the annual Parents' Day included a slide show presentation, special dinner and talk by Province Collegiate Director Sondra Bass. Parents eagerly listened to news of a Colonnade Club and congratulated Mrs. Bobbie Ann Roberts, recipient of the first Mother of the Year Award. Delta Zeta participated in Greek Week and continued its sponsoring of a spirit award for the week's activities. Kappa Phi athletes prevailed in intramural competition as they swept the sorority league and successfully defended their unbeaten softball record. Delta Zeta also participated in a campus-wide track and swim meet to win second place. Partners Beckie Jarrett and Virginia Hine, followed by Robin Wight and Donna Settle were champions and runners-up. Members enjoyed a Diamond Jubilee formal at the Marriott City Center. Philanthropy projects included assisting in the blood drive, and sponsoring an Easter egg hunt and party for hearing impaired children. The chapter is planning a charity ball for next year. At the annual University Honors and Awards Banquet, several Delta Zetas were honored for contributions to Greek life. Kim Ward was named Greek freshman of the year; Beckie Jarrett, Greek junior of the year; and Donna Gunter, Greek senior of the year. Chancellor's List includes Natalie DeCapite, Ann Morrison, and Virginia Hine, senior class president. Robin Wight is a conference assistant for Cone University Center. Reigning Miss Forty-Niner Robin Summerville traveled to the Miss North Carolina pageant in June. Chancellor's list includes Jackie Mincey, Leslie Potts, Penny Thomas and Virginia Hine.

Western Carolina, Theta Iota — Almost every OI traveled the four hours to Province Day in High Point. They brought home chapter awards for quota and total. Georgia Durshimer won the coveted Golden Crest Award and Lynn Brackett received both outstanding collegian and scholarship awards. Lynn, with a 3.96 grade point average, was also named outstanding Greek Woman of the Year by the WCU Panhellenic. In sports, Delta Zeta won the sorority league volleyball competition and Pi Kappa Alpha athletic competition. The fall pledge class raised \$80 for the speech and hearing department on campus. Theta Iotas volunteered to assist the university with the alumni phonathon and raised \$3200 for the university in one night. The spring pledge class assisted with the Special Olympics. Theta Iota honored its graduating seniors with a senior bash and picnic in the country. Delta Zeta won 13 ribbons in sorority league field and track competition ... four first place, seven second place, and two third place. Delta Zeta athletes were Dianne Knufke, Page Colby, Tracey Altaffer, Pam Terlingen, Renee Balew, Tammy Hord and Lynn

Chiger. Delta Zeta sponsored a homemade lemonade booth during the concert in Spring Fling '85, supported the non-alcoholic day on campus and assisted the bloodmobile. Delta Zetas have taken their sponsor child, Deanna, into their hearts and helped some of her wishes come true — like a party at Pizza Hut.

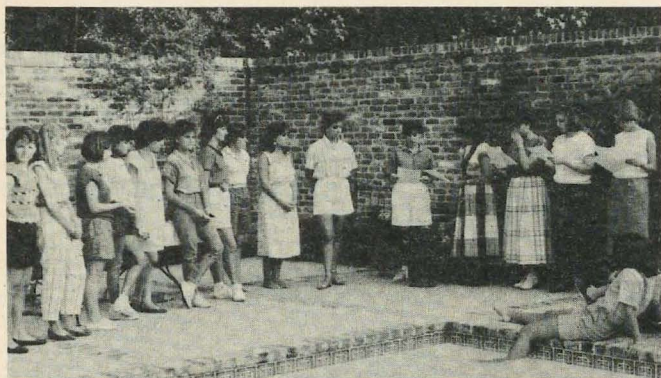
OHIO

Ashland, Theta Psi — The chapter decorated the campus with more than 2000 rose and green balloons as they welcomed Ohio sisters to State Day. State Day chairman Shelly Ondrus spent many long and hard hours preparing for the event, which included a delightful luncheon and informative workshops. The chapter enjoyed helping the community as they participated in the American Cancer Society Daffodil Sale. Theta Psis reigned victorious in Kappa Sigma's Greek Women's Olympics, and won the spirit award at Greek Awards Banquet. Delta Zeta presented their \$50 first place prize from the Airband contest to USA for Africa. Their presentation was *We Are The World*. Winners of Golden Crests at State Day are Shelly Ondrus and Leslie Gross. Jean Baker won a Golden Heart Award. Jenny Havlin was tapped for Order of Omega and Penny Wyrick won a Panhellenic Service Award.

Baldwin-Wallace, Gamma Alpha — The Gamma Alphas had an outstanding Greek Week as they captured second overall in the May Day Games. Hilary Gabel was crowned May Day Queen, Louise Italiano reigned as Greek Empress and Robyn Churko and Lisa Knosh served as May pole dancers. Lisa Moses organized the fourth bike-a-thon held during the week to raise money for philanthropy. At Province V State Day, ΓΑ received a membership award and an excellence in pledge education award. Meg Friedlander received a Golden Heart; Patti Foley and Kelli Leydon received Golden Crests. Patti Foley, Kelli Leydon, Kim Deacon, Terri Russell, Cathy Cranna, Stacie Pritchett, Lisa Knosh and the **Gamma Kappas of Kent State** helped Carol Konet, National Music Chair-



Bobbie Rosinski, Western Illinois-E.O. was named Greek Goddess of the Year during Greek Week 1985 festivities.



Baton Rouge alumnae (right) are officially inducting seniors at LSU-Σ into the alumnae chapter.



Central Michigan-ΓΨ practices their "Mary Poppins" routine before Greek Week Sing.

man, make a tape of Delta Zeta songs for distribution at National Convention. Shelly Ross was chosen as a student senator. Suzanne Shively will serve as sophomore class treasurer. Stacie Pritchett and Kim Deacon serve as officers of Panhellenic Council. Kim Schrader danced in the Spring Dance Concert, and Hilary Gabel was chosen outstanding pledge from the entire campus by Panhellenic Council. DeeJay "Lambert", number one Delta Zeta fan, rewrote the words to *Friends* with special lines as "Here's the Delta Zetas, of course, let me tell you about the ones I endorse ... They never forget their responsibility to the school and abiding all the rules ..." He deejayed the spring formal and sang his special version to the graduating seniors.

Bowling Green, Gamma Tau — At Ohio State Day at Ashland, the chapter won the rush trophy for the seventh year, the philanthropy trophy for the sixth year, and the standards trophy for the second year. They also won the activities trophy, the Betty Agler Award, and the pressbook award. Debbie Knauf and Anne Moser won Golden Heart Awards and Susan Steggeman won a Golden Crest Award. Gamma Tau missed first place honors in Beta Theta Pi's annual Beta 500 due to a line fault, but gladly accepted second place. In their attempts to win the spirit award for the week, they treated the Betas to pizza delivered to the house, Easter eggs in their mailboxes, homemade cookies, spirit phone calls, banners and house decorations. Members living in the house enjoyed a dinner date party which consisted of a cook-out, volleyball, frisbee and good old-fashioned fun. All enjoyed a dessert dinner in May. Delta Zeta earned \$200 for the national philanthropy with a Presidents' Acquisition and treated families to a Parents' Day brunch. An educational and interesting alcohol education program provided a good standards presentation. Leslie James and Michelle Turocy are Rho Chi rush counselors. Anne Moser and Laura Vradelis are new Field Representatives for Delta Zeta.

Miami, Alpha — At State Day, Alpha received the quota award for the 23rd consecutive year, and awards for outstanding pledge education, philanthropy and activity programs. Karen Baker, Janus Knudson and Mary Beth Miles received Golden Crests, while Cheryl McCormick won a Golden Heart and the Pride of the Province Award. Members hopped aboard a bus to travel to Cincinnati to see a production of *Cinderella* by St. Rita's School for the Blind, Alpha's local philan-

thropy. The chapter also raised money for philanthropy with spring cleaning of fraternity rooms. Delta Zeta teamed with Theta Chi to present "A Burst of Rock" to win second place for choreography and third place overall in Greek Song Fest. Delta Zetas and Kappa Kappa Gammas shared an informative standards program on anorexia and bulimia. Delta Zetas and friends enjoyed "ΔZ Fun in the Sun", an afternoon filled with fun and games. Rush Guides are Terri Morris, Linda Simonds, Chrissy Miles and Tiffany Boyd. Kelly Troyan is a member of Shakerettes Drill Team and Kelly Kilday dances with Dance Theatre. Constance Preslock handles public relations for the Economics Club, while Lisa Janda handles public relations for Panhellenic. Laura Sabiers is a member of Concert Board.

Ohio State, Theta — Paired with Phi Kappa Psi, Delta Zeta participated in Greek Week, with its theme of "Reaching New Heights." Both Delta Zeta's housemother and cook won awards! Though the weather made the day rainy and cold, Delta Zetas and parents still enjoyed a Parents' Day picnic. Delta Zetas enjoyed barnyard relays and mystery races in Sigma Chi Derby Days. Delta Zeta won both sorority and non-sorority basketball competition. Theta placed second in ΣAM's Heart Association Bounce for the Beats. Lori Richards is sweetheart of Alpha Sigma Phi and Carla Ricketts is a member of senior honorary.

Wittenberg, Beta Chi — Chaplain Anne Dolphin began the term with Unity Week and each night provided a little time for thoughts, poems and stories for Delta Zeta sisters. Beta Chi added 10 new pledges in a successful spring rush and initiated 14 from the previous pledge class. Social Chairman Barb Todd organized a Tie One On Party. Each Delta Zeta anonymously invited one date to the party, but he didn't discover who had invited him until he located the Delta Zeta wearing his tie. Delta Zetas went camping at Hueston Woods and also enjoyed a spring formal. Earning a perfect 4.0 for winter term and Dean's List ranking were Elizabeth Bonfield, Dale Byard, Cheri Exley, Amy Garrett, Alice Lawrence, Leslie Muehlhauser, Jody Lonsdorf, Benita Petri, Kim Simon, Debbie Singer, Karen Speicher and Barb Todd. Also on the Dean's List were Lynn Bowman, Laura Allison, Dana Maybee, Betsy Rendlesham, Kristin Swanson and Lisa Starzynski. Delta Zeta teamed with Alpha Tau Omega during Greek Week and captured first place. Team work and enthusiasm helped the team through the gong show, push and pack race, air band competition,

and wacky swimming races. Delta Zeta provided a great way for students to say thank you, goodbye or good luck. All students needed to do was purchase a Delta Zeta carnation! Proceeds benefitted Gallaudet. Dana Maybee landed a lead role and Anne Dolphin was student director for *The Importance of Being Earnest*. Lisa Starzynski and Martha Durham helped out behind the scenes. Helping the Women's Track Team to their best season ever were Amy Garrett, co-captain, Kathy Mizack, Sarah Huber and Karen Speicher. The team placed second in OAC championships. Gayle Morton plays the flute in the Springfield Opera. New members of Pick 'n Pen junior honorary are Elizabeth Bonfield, and Benita Petri, vice president. Mortar Board taped Amy Garrett and Debbie Singer, treasurer. Other members of honoraries include Tracey Behrend, Lynn Bowman, Beth Finerty, Alpha Lambda Delta; Laura Allison, Debbie Singer, Tau Pi Phi; Mary Bland, psychology honorary; and Kim Simon, education honorary vice president. Mary Bland is president of the Panhellenic Council and Amy Garrett is a presidential scholar. Alice Lawrence was named most valuable player for the Wittenberg Softball Team and Amy Garrett is co-captain of the Women's Track Team.

Wright State, Kappa Iota — Members traveled to Ashland for State Day and brought home awards for most improved scholarship and reaching quota. Members raffled off tickets for 25¢ a chance for free tanning lessons at the May Daze Festival. As a long term philanthropy project, Delta Zetas weighed themselves at the end of spring quarter. Weights were recorded and members will pay 25¢ a pound for each pound over their ideal weights. During Greek Week, Kappa Iota sponsored a "Derby Days" dance.

Youngstown, Kappa Chi — Top honors for Kappa Chi include outstanding chapter in Province V, province activities award, province philanthropy awards, Youngstown Sorority of the Year Award, and scholarship award. Chapter president Susan Turek was named most outstanding president in the province. Kappa Chi won second place in Greek Sing and Denise Grace reigned as May Fest Queen. In homecoming, the Kappa Chi interpretation of a riverboat in New Orleans (with the Mardi Gras theme) won second place honors in house decorations. Other chapter activities included winter and spring dances; participating in Greek week picnic, races, contests and awards; a big and little sister dinner; a

Mothers' Day breakfast; and participating in Derby Days. Fund raisers included helping a local department store gain credit customers, a cake and pie sale, and an Easter candy sale. Members had an especially exciting time at a chapter family fun night. Initiates and pledges got together on a Friday night and showed slides and movies of their childhood days. Graduating seniors were honored with a swimming party. KX has developed a Delta Zeta *Trivial Pursuit* game which includes questions on the *Constitution*, *Code of Regulations*, general knowledge, and "guess that sister." KX participated in an MDA bed race, and starred in an MTV commercial for the event. Denis Grace is a cheerleader and Linda Myers reigned as homecoming queen. Susan Turek chaired the homecoming committee. Panhellenic officers are Lisa Hernan, president, and Terri Ruschman, vice-president.

OKLAHOMA

Oklahoma State, Alpha Epsilon — At State Day, AE won the philanthropy award and alumnae attendance award. Megan Matthews received an award for outstanding service to a collegiate chapter, while Patricia Ware was named outstanding pledge. Julie Hankins was recognized for her 4.0 grade point average. In the Greek Week dance marathon, Lauri Russell won first place in the costume contest. Jane Frank and Meg Clark are busily filming a house video for formal rush. AEs collected 750 pounds of food for the Salvation Army in a Lambda Chi Alpha canned food drive. Delta Zeta placed second overall in participation and won first place honors at Greek Week games day. Shawn O'Halloran is a new Field Representative for Delta Zeta.

PENNSYLVANIA

Drexel, Epsilon Zeta — At Honors Day, Delta Zeta won the coveted Dean's Cup which is annually presented to the Greek organization fostering the traditional values of Greek life and making a significant contribution to the betterment of Drexel. ΔZ also received recognition awards for rush programs, scholastic programs, alumnae programs, campus leadership and sorority commitment. Michelle Walden and Dale Rodgers managed to dance the whole 20 hours in Phi Mu's dance marathon for Project Hope. Delta Zeta sisters stood by encouraging them, boosting their morale, and were on hand to see Michelle win third place and Dale win fourth place. Alumnae returned to reminisce about old times at the annual alumnae luncheon. Standards programs included a skin care class and glamour make-up techniques by EZ Dale Rodgers, a professional skin care consultant. Another standards program featured a self-defense instructor. Pledges planned a Hawaiian luau for the chapter. Sisters invited their crushes anonymously to the annual crush party. Crushes attended, curiously, to find out their secret admirers. Members enjoyed a Panhellenic Ball at Cavanaugh's and the Annual Rose Ball at the Four Chefs Inn in northeast Philadelphia. Epsilon Zetas are beginning research for a book on the chapter's history. They're asking alumnae to contribute memories from their ΔZ days at Drexel. Sheriann Anela and Barbara Crane are listed in *Who's Who in American Colleges and Universities*. Alexander Van Rensselaer Awards of Service went to Jeanette Reuter and Donna Benner, vice president of financial affairs of the stu-

dent body. Student Deans are Jennifer Schwartz and Sharon Maloney. Jackie Taylor is Conference Chairman for the Northeast Panhellenic Area III, and president of the Panhellenic Association. Allison Bothwell was tapped for ΣΤΔ English honorary. On the Dean's List are Allison Bothwell, Janet Woods, Debbie Wolfman, Lisa Conrads, Annette Miele, Sherryl Siverstein, Barb Gelak and Mary Spielberger.

Indiana of Pennsylvania, Gamma Phi — Alumnae treated big sisters and pledges to a Sunday sundae party, where alumnae explained the meaning of Delta Zeta in their lives. They all made sundaes and the 14 pledges presented their rendition of *California Girls*. Gamma Phis stretched their legs in the March of Dimes 25k Walk, and joined Phi Sigma Kappas to sing and dance in Greek Sing. Officers in Panhellenic are Sharon White, vice president, and Susan Michael, treasurer. Susan is also president of Order of Omega. Anne Delaney is president of American Society for Personnel Management and Becky Conlon is ASPA secretary. Penny Grant is historian for Student Dietetics Association. Lisa Slagle is Sigma Tau Gamma Sweetheart. Stacy Tannehill, Marybeth Kozar and Michele Ferris are all IUP cheerleaders. New members of Order of Omega are Becky Conlon, Anne Kozar, Jill Nicastro, Carla Piatti and Stacy Tannehill.

Mansfield, Iota Theta — Delta Zeta won second place in Greek Week competition, and another second place in the volleyball tournament. Members fattened up the chapter treasury by raffling off a Suzuki shuttle. Gallaudet earned proceeds from a car wash. Kelly Quatrini is Panhellenic president, and Kris Bowers is a state representative for Pennsylvania Home Economics Association. Laura McAndrews, ROTC commanding officer at Mansfield, received a Department of the Army Superior Cadet Decoration for outstanding senior in the Bucknell Instruction group. She also won the Thomas Evans Memorial Award for outstanding senior cadet at Mansfield and an American Legion Award for excellence in scholastics. Linda Main was named Social Work Student of the Year.



Dana Delk, Southern Mississippi-EM, was named Province XVIII pledge of the year.

Slippery Rock, Zeta Phi — At presstime, Zeta Phis were planning to initiate 15 Delta Zeta pledges in the fall. After winning first places in murderball and dizzybat, Zeta Phis placed third overall in Greek Week. Laura Kewitt was tapped for Order of Omega.

SOUTH CAROLINA

South Carolina, Beta Delta — Chapter members chartered two buses and traveled to High Point for Province Day, where the chapter received awards for pledge education, philanthropy, scholarship, quota, total, chapter activities, and continued excellence. Both the chapter and the pledge class received awards for top scholastic averages. Michelle Kelly was honored as the pledge with the highest average in the province with a 3.875. Karen Carter was named outstanding collegian. Members practiced for Greek Week games, and enjoyed grilled hot dogs and hamburgers at the first sisters' day at Bell Camp, USC's off campus camp area. The following week the 25th Greek Week began with proceeds going to the Council on Child Abuse and Neglect. Beta Deltas participated in a rally, cook out, blood drive, band party, follies, banquet run, and Greek games. At the Greek Banquet, Delta Zeta was awarded the Panhellenic Chapter Excellence Award for the third year. Diane Kollar, chapter president, was tapped for Order of Omega. Chapter philanthropies included playing "Easter Bunny" for the hearing impaired students at Project Scooter. And, in the real Panhellenic spirit, Delta Zeta has adopted little sisters in the new Delta Gamma colony on campus. Marla McCutchen served as a "round girl" in Lambda Chi Alpha's Boxing Classic.

TENNESSEE

Memphis State, Gamma Iota — Members traveled to East Tennessee State for Province Weekend and brought home awards for spirit, most improved pledge education program, parents of the province, most improved chapter, standards programs and attendance. Order of Omega Greek honorary tapped Beth Bready, Julia Stoffle and Kathy Montgomery. Kathy also reigned as Greek Goddess during Greek week.

TEXAS

Houston, Delta Theta — Delta Zeta kicked off spring by winning first place overall in Sigma Chi Derby Days. They made a handsome profit with their Dunka ΔZ Booth at the UH Spring Fair and collected over 100 cans of food for the needy. Chapter president Tracy Harnage was named Sigma Chi Sweetheart at the formal in New Orleans.

North Texas, Kappa Zeta — Delta Zeta Cinderellas and their Prince Charmings traveled to the Plaza of the Americas in Dallas for 1985's Rose Ball. And, the candle passing made the whole evening magical. As the candle passed Sharon Ronnette, her boyfriend grabbed the candle, blew it out, and slipped an exquisite diamond ring on her finger as he asked "Sharon, will you marry me?" For a more casual evening, KZs donned jams, tropical shirts, sunglasses, and flip-flops to dance to the music of the Beach Boys at a Beach Date Party. When Phi Kappa Sigmas from



Tracy Harnage, Houston- $\Delta\Theta$ president, is 1985-1986 Sigma Chi Sweetheart.

Texas, New Mexico and Louisiana showed up in Denton for a fraternity softball tournament, Delta Zeta was the only sorority asked to participate and assist with the activity.

South West Texas, Iota Alpha — Lisa Stone reigned over Homecoming festivities and Leslie Foltin reigned as Cancer Bowl Queen. Cathleen Looney and Michelle Mousa are two of the Best Dressed Coeds on campus. Leah O'Keefe serves the Fashion Merchandising Association as president. Members of the Student Foundation are Tricia Holloway, Lori Brown, Darlene Smith, Melanie Brunner and Cinde Sherer. Kimberly Hanna and Julie Kennedy both earned 4.0s. Tina Ricks and Nugget Gold are drill team officers. A picture of Delta Zetas singing their version of *Bless the Children* in All Campus Review appeared on the front page of the *University Star*. Daughters dedicated the weekend strictly to parents as they enjoyed a Parents Weekend featuring a father-daughter bowling match, banquet, presentation of "the true meaning of Delta Zeta", a house tour, and mother-daughter brunch. Delta Zeta is sponsoring two underprivileged children and sponsored an "orange crush" relay in Greek Week.

Stephen F. Austin, Zeta Psi — Parents and Delta Zeta daughters participated in zany sports events, a dinner, dance, and picnic at Parents' Weekend. Zeta Psi placed second in two important Greek events on campus — talent night and spirit night. Delta Zetas enjoyed a sisterhood at the skating rink, polished their swim skills by forming a water polo team, and participated in a Nacogdoches clean-up. They placed third in the pillow fight at KA Fight Night and surprised Gina Reinsch with a record turnout for cheerleader tryouts. She is now one of six SFA cheerleaders. Thirty-five pledges treated initiates to a super skit party to end the semester. Lori Nethers is Mission Viejo, California's Miss St. Patrick's Day. Stacey Bell is a member of Kappa Delta Pi and vice president of Order of Omega. Jennifer Franklin is Sigma Chi Sweetheart. Sarah Pugh is a representative for the School of Secondary Education. Kelly Curtis is a yearbook staff member, and Cindy Smith is a member of the *Pine Log* advertising staff. Karen Wood is director of stage and production and models with the Mamselles. Kim Abshire

broke both the two and three mile women's track records at SFA.

Texas A&M, Lambda Xi — At a summer workshop in late June, Lambda Xis busily prepared for fall rush, August 27-September 1.

Texas-Arlington, Iota Psi — Virginia Aguilar takes a different approach to chapter reporting as she sends her diary entry ...

Dear Diary ... It's summertime now and I love water skiing and swimming, but I still think of what a great spring I had in Delta Zeta. It all started out when rush came along and I met this one girl whom I knew I just had to have for a little sis. She was cute, had a sense of humor and we had a lot in common. The sorority extended her a bid and she accepted. I was so anxious to tell her all about ΔZ and hopefully become her big sis. Finally the day did come and my wish came true. We knew we wanted each other for that special sis, but I didn't want her to know until I blew out the candle, so I had to conspire with my fellow ΔZ s in order to surprise her. On that day, I hid my car down the street and I even hid 'til ceremony time and I blew out the candle.

From that day on we were inseparable. We had long discussions, wrote term papers together and I even baked lasagna for her. ΔZ gave us even more stuff to do together. First there were mixers where we fraternized, and danced our little hearts out, then there was Greek Week where the whole chapter participated and showed that we are very visible on campus and then there was Roseball. We planned for weeks and discussed who our dates were going to be, what our dresses were going to look like, and which limo would pick us up. Well, we might have planned it, but that day was frantic ... zooming here and there. But, that night we danced, mingled and everyone could tell we were ΔZ s. (Only the finest ladies in the hemisphere!). About a week later it was time for our paddle party and I was glad because now I would have something to always remember my little sister by. But wait, there's more ... not only did I get to know spring pledges, but I also met and had fun with their families. The Iota Psi chapter had a family picnic at the house and it turned out to be a smashing success. There were parents left and right and they were crazier than we are!

When all the other Greeks started to say their farewells 'til fall, we ΔZ s planned summer camping trips, sisterhoods, and events to make sure that we would all see each other all summer long. After all, there's rush retreat and then there's initiation. So, you see dear diary, this is no ordinary summer. This is a ΔZ summer.

West Texas, Zeta Zeta — Chapter newswomen include Buni Browning and Holly Vaughn who broadcast a two hour Bunny Holly radio show on campus station KWTS. Holly is news director for the station and Buni placed sixth nationally in Pi Kappa Delta's national speech tournament. Pam Brorman is president of Leadership Board and Susan Bryant is a member of Scribes, and honorary Alpha Chi. Gina Gist is a performer in Palo Duro Canyon's musicale *Texas* and Nancy Gough dances in *Jesus Christ Super Star*. A busy spring included sponsoring a jail to benefit philanthropy, sponsoring in a Panhellenic bake sale, attending a chapter church, and meeting Canyon High School girls at a Panhellenic Tea. ZZ sponsored an Easter egg hunt and party for the students at Amarillo Speech and Hearing Center. Each

child received a personalized, decorated Easter bucket.

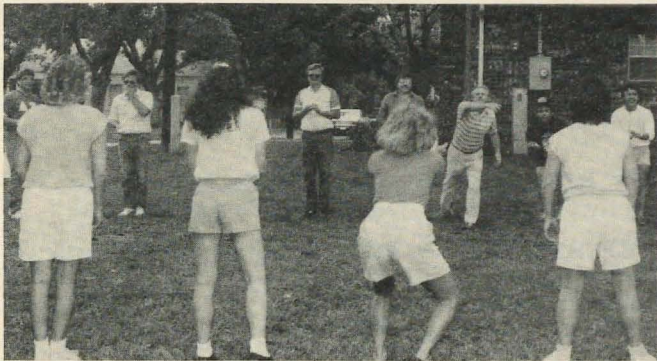
VIRGINIA

Radford, Xi Delta — Members bid a sad farewell to 31 graduating seniors, most of whom were charter members, and College Chapter Director Dr. Christine Sleight. But, members celebrated the conclusion of the long awaited sorority room, in a dorm basement near the sorority rooms. Fortunately, the seniors were able to enjoy it for one week before leaving Radford. Delta Zeta placed first in softball and volleyball and second in football. Members celebrated the chapter's second birthday with a study break party. Children at the speech and hearing clinic on campus enjoyed an Easter party sponsored by Delta Zeta. Fund raisers included donut sales, car washes and coat-check-ins. Pam Keane was tapped for Rho Lambda and Mary Beth Lavery was elected vice president of Panhellenic.

Old Dominion, Theta Phi — Theta Phi participated in a successful Greek Week which was coordinated by ΔZ Susan Spavlik, Greek Week chairman. During events, Delta Zeta placed second in the dance contest and first in arm wrestling and the five-legged race. Delta Zeta won the first round of the rope pull but was unsuccessful in the second round. ΔZ placed second in the scavenger hunt, after being the only sorority to locate at least one member of the Lady Monarch NCAA championship basketball team. Delta Zeta not only found one, but three Lady Monarchs and had so much fun getting to know them that they made them "honorary sisters." Following Greek week, Delta Zeta hosted a picnic with the three Lady Monarchs as guests of honor. Tracey Arehart and Susan Spavlik were among the Top Ten Greeks with Susan honored as Greek Woman of the Year. Social events included a spring formal and mixers with ATO and IKA.



Lori Nethers, Stephen F. Austin-Z Ψ reigned as Miss St. Patrick's Day '85 in Mission Viejo, CA.



Fathers of Texas/Arlington-Ψ members join their daughters in a friendly game of ball at the ΔZ family picnic.



All of the majorettes at West Virginia Tech-III are ΔZs. L to r, Deanna Parsons, Tammy Comer, Kara Barker, Lisa Napier and Barbara Pinnell.

WEST VIRGINIA

West Virginia Tech, Iota Pi — The chapter finally reached total. Sound simple enough? Actually, Iota Pi needed 13 to replace graduates and temporary alumnae and rushed the entire semester. By April and State Day, Iota Pi was minus two. Finally, one week before the end of school Iota Pi added the final pledge! Delta Zeta won the scholarship award for the second year in a row and traveled to Huntington (Marshall) for State Day where the chapter won six awards. They won awards for rush (five years of quota!), the attendance award, quiz bowl for the second year and the Virginia P. Gray Activities Award (named after their CCD) for the first time since 1969! They also won the See Loving Cup for significant improvement. Iota Pi placed second in song competition. The song competition was emceed by Penny Payne, CCD at Charleston, and Pamela Faye, CCD at West Liberty, both Iota Pi alumnae. The chapter ushered for Tech Player's production of *Blithe Spirit*, joined with the University of Charleston to co-sponsor a Rose Formal and participated in the Grocer's Day for Cancer. Grocer's Day is a statewide campaign to raise funds for cancer research and began when a Huntington grocer donated his profits for one day to commemorate the death of his son who died from cancer. Officers in Alpha Psi Omega dramatics honorary are Lisa Napier, president, and Karen Mann, vice president. Lisa starred in *Blithe Spirit*. The entire majorette corps consists of Delta Zetas. Deanna Parsons is head majorette joined by Kara Barker, Lisa Napier, Barbara Pinnell and Tammy Comer. Alpha Chi scholastic honorary includes Amy Brill and Angla Dee Anderson.

West Liberty, Iota Tau — Members enjoyed staying overnight with Delta Upsilon at Marshall for the annual State Day. At State Day, Iota Tau received recognition for pledging quota and Julie Sullivan won the Spark Plug Award. Delta Zeta placed second in KΔK Waterfollies and tied for first place in Greek Week. Rhonda Naves reigned as Greek Goddess.

WISCONSIN

Carroll, Gamma Theta — Following a pre-gathering at Michelle Balsom's home, members enjoyed a spring formal at the Merrill Hills Country Club. Other activities included an end of the year picnic to honor seniors

and participation in Greek Week. Greek Week activities included a food drive, Greek dinner, faculty coffee and three-legged race. Both Carol Boldt and Linda Heck were named in the top ten of their class after three semesters. They were cited by the American Association of University Professors. Lisa Morris Miller has donated a \$50 scholarship award to the pledge with the highest grade point average.

Wisconsin-Whitewater, Epsilon Kappa — After the chapter house was declared a historical landmark in 1983, members decided a fund raiser was needed to help give the chapter house a facelift. An excited chapter can hardly wait to see the results. The outside porch is being rebuilt with all new woodwork

and there's hope for new furniture, too. In Greek week, members participated in Letters Day, Games Day and Round Robin. At the scholarship banquet, Delta Zeta was recognized for earning the second highest grade point average. Members bid farewell to graduating seniors with a spaghetti dinner, as seniors "willed" their most prized possessions to sister Delta Zetas. Members donated a Saturday afternoon to play bingo and enjoy ice cream sundaes with residents of a White-water nursing home. Members of the Homecoming steering committee are Kristy Doner, treasure hunt chairman, Diane Sterr, vice chairman, and Christy Bradley, Klumb Girl chairman. Christy Bradley is also a summer orientation leader. Kathy Kussard is 1985 Love's Baby Soft Girl.

IOWA STATE PANHELLENIC RAISES FUNDS FOR LUNG ASSOCIATION

The women of the Panhellenic Association of Iowa State University have raised in excess of \$7,500 to help fund scholarships for CAMP SUPERKIDS - the camp for kids with lung disease sponsored each summer by the American Lung Association of Iowa.

Panhellenic Council consists of representatives from the 16 sororities at Iowa State. Each sorority member invited friends and relatives to join them for a "make-believe tea." Each guest received an invitation, complete with a tea bag, and a poem explaining that instead of spending money to purchase a new outfit or pay a babysitter, a "non-event" was being held and the unspent money could be donated to the camp.

Over one thousand guests didn't dress-up, find time on their calendars or R.S.V.P. They, along with the Panhellenic Association, did however, demonstrate concern for Iowa kids with lung disease. The sororities involved with this project include Alpha Chi Omega, Alpha Delta Pi, Alpha Gamma Delta, Alpha Omicron Pi, Alpha Phi, Alpha Xi Delta, Chi Omega, Delta Delta Delta, **DELTA ZETA**, Gamma Phi Beta, Kappa Alpha Theta, Kappa Delta, Kappa Kappa Gamma, Pi Beta Phi, Sigma Kappa and Zeta Tau Alpha.

Alumnae Profiles



Southern California Women of Achievement: Back row (l to r) Marcia Wallace, Norma McKeegan Ehrlich. Second row, Sue Hastings Bohle, Elizabeth Harler Van Steenwyk, Dr. Hildegard Wilkinson and Joan Metcalf Schaefer. Front row, Frances Taylor Williams, Thalia Wilson Larson and Peggy Constance Stevenson.

Nine Southern California women were honored at a reception for Women of Achievement held recently at the Alpha Chi house at UCLA. The Lamplighters of Southern California, composed of nine Southern California alumnae chapters, hosted the event.

NORMA McKEEGAN EHRLICH, Oregon-Ω, is Executive Director and founder of the Women's Valley Center and Family Recovery Center in Woodland Hills, California. She is a member of the San Fernando Valley alumnae chapter.

SUE HASTINGS BOHLE, Northwestern-AA, is president of the Bohle Company, a public relations firm located in Century City. She lives in Sherman Oaks.

THALIA WILSON LARSEN, UCLA-AX, is a speech pathologist and has authored several text books on speech pathology.

JOAN METCALF SCHAEFER, Miami-A, is Dean of Women at USC.

PEGGY CONSTANCE STEVENSON, UCLA-AX, is a councilwoman on the Los Angeles City Council.

ELIZABETH HARLER VAN STEENWYK, Eureka-II, is the writer of children's books, several of which have been made into films.

MARCIA WALLACE, Parsons-ΔN, is an actress of stage and television. She is remembered for her role on the Bob Newhart show.

FRANCIS TAYLOR WILLIAMS, UCLA-AX, is a sculpturist. The "Melissa" plate series is among her creations.

DR. HILDEGARDE WILKINSON, USC-AI, was formerly Chief of Staff, Glendale Memorial Hospital.

VEE SHAKERIAN TONER, Pittsburgh-O, was recently named the first woman Trustee on the Board of the Swimming Hall of Fame in Fort Lauderdale, FL. Vee was Delta Zeta's 1969 Woman of the Year. She is a former manager of the United States Olympic women's swimming and diving team. She also managed the U.S. swimming team for international competition at Bremen, Germany in 1975 and in Holland and France in 1981. She is the only woman president of the Allegheny Mountain Association of the Amateur Athletic Union and has been named Woman of the Year by the National Amateur Athletic Union.

SUSAN INGRAHAM GENDRICH, Carroll-ΓΘ, who was featured in Alumnae Profiles in the Winter 1984-85 issue as Tennessee Teacher of the Year, was one of the four finalists for the United States Teacher of the Year award.

SUSAN F. BEHRENS, M.D., Wisconsin-T, was elected chairman of the Wisconsin Medical Examining Board in January of 1984. Her four year appointment to the board began in 1982. She serves on the hospital staff at Beloit Memorial Hospital and was the first woman to become a member of the Wisconsin Surgical Society. Certified by the American Board of Surgery and the American Board of Colon and Rectal Surgery, she is active in a number of professional societies.

VELMA BORSHELL BUDIN, Colorado State-BΣ, daughter of Grand Junction Colorado pioneers, has made a career of helping others. A fall prevented her attendance at a White House ceremony during National Volunteer Week, but at 82 she still puts in 60 to 90 hours a month with the Retired Senior Volunteer Program. Although she is involved in many activities, she wanted to do more. Working with the Colorado State University Foundation, she set up a permanent endowment to continue after her death in a Home Economics related field. Female seniors or graduate students are eligible for \$800 to \$1,000 based on good grades, need, service contributions and other factors. As Velma wrote, "My father passed away when I was a junior in college. I always remembered what a scholarship would have meant to me."

HAZEL DUVAL BUFFMIRE, Northwestern-AA, and her husband Wallace, both retired Illinois teachers, are with the first group of 20 senior Americans taking a 1,500 mile trek along the back roads of China. Traveling in trailers, the visitors will tow their trailers from Xiamen on the south China coast to Nanjing (formerly Nanking) in the north, through areas long closed to Westerners. The trailers were taken to China by ship. Hazel is a Past National Treasurer.

DANA McMILLAN, Northeast Missouri-ΔΣ, has had three books published and is currently working on the fourth and fifth books also to be published. As the coordinator of The Learning Exchange's Resource Center, she has put a collection of teacher-tested early

childhood learning activities into book form. She is a former elementary school teacher, past president of Clay-Platte alumnae chapter and is currently PCD for Missouri, Province XI.

Alumnae Chapter Notes



The Stillwater, Oklahoma alumnae chapter is the first sorority alumnae group to make a commitment to the Stillwater Women's \$1,000 Scholarship annual fund. In its second year, the scholarship is a result of combined efforts of womens and educational groups who raise funding and select a community resident as recipient. Jacki Hawkins Nelson-Indiana-E (standing, second left) represents Delta Zeta on the Scholarship Board of Directors. Other Delta Zetas on the Board are Janice Smith Burnett, OSU-AE (seated, second left), who serves as the Chair-Elect, and Carolyn Gang, OSU-AE, the originator and Chairman of the Board. Carolyn represents American Association of University Women and Janice represents Jaycees.

ALVA, OK alumnae celebrated Delta Omicron chapter's 69th birthday with a party honoring the collegiate members of the chapter at Northwestern (OK) State. Earlier alumnae had collected items for the Northwest Family Services Center and donated box ear plugs to the Speech and Hearing Division of the Northwest Educational Co-operative located in Alva. Alumnae were hostesses, along with Enid alumnae, for Province XVI Weekend.

SAGINAW, MI alumnae, with an active membership under 20 have expanded their community involvement into hearing education. For 14 years alumnae have raised philanthropy monies through their annual

November pecan sale. Proceeds, in the amount of \$2,300 have funded the following: Many hands-on projects for local hard of hearing and speech impaired classrooms such as hearing aid harnesses, supplies and classroom aids, book bags, etc.; college and special education scholarships for the hearing impaired and the purchase of hearing aids, TV captioners and phone monitors. This year a public lecture on hearing was coordinated and presented by the alumnae. Chaired by Mari Sperry Zimmerman, Michigan State-BP and Mary Lynch Bommarite, Wayne State-EΣ, Dr. James A. Letson, Jr. an ear specialist and faculty member at MSU, dedicated his lecture to the hearing problems of the young child in "Maybe Johnny can't read because Johnny can't hear."

Alumnae in FORT COLLINS, CO have announced the start of a large-scale ongoing philanthropy project: raising money to set up an Assistive Device Center at Colorado State University. CSU's Speech and Hearing Clinic will be the beneficiary of this project since it receives no state funds and relies on outside support. Assistive devices that the funds will provide include alarm clocks with bright flashing lights; clocks that awaken the sleeper by vibrating the bed; devices to alert mothers that their children are crying; vibrating bracelets that tell the wearer the phone or doorbell is ringing; speech synthesizers for the telephone; devices that screen distracting room or car noises so the impaired person can watch TV, listen to the radio or hear other people in the car.

Because such devices are extremely expensive, the alumnae's fundraising goal is ambitious: \$5,000. They have applied for the Delta Zeta Founders Memorial Foundation Hearing Help Grant for seed money and have sent letters to all local service organizations, major businesses and churches to enlist their support as well. The Speech and Hearing Clinic's Assistive Device Center will demonstrate and sell the devices, and money raised by such sales will go back to the Center to purchase equipment and train audiology students in the equipment's use.

Jean Coleman Lisle, Miami-A, daughter of Founder Julia Bishop Coleman, was the gracious hostess to members of the OMAHA, NE alumnae chapter when she entertained in her beautiful home in Clarinda, IA. Many of the antique furnishings were brought from Southern Ohio where her family had lived for five generations. The fifty-six year old house is of Cape Cod

design with dormer windows and flower-filled window boxes.

TULSA'S best attended alumnae chapter meeting this past year was the celebration of the 30th anniversary of the chapter. Held in April in the home of the 4th president, Gwen Moss McKeeman, Northeastern-ΔΦ, other past presidents attending include Helen Baird Danne, OSU-AE, first president; Martha Barker Bachelor, Texas-AT; Elaine Smith Scott, OCU-ΓΥ; Genie Hall Tumilty, OCU-ΓΥ; Judith Ballew Hawkins, NSU-ΔΦ; Mary Elizabeth Porter Crichton, OSU-AE; Grace Pritchard Gorham, Northwestern-ΔO; Sydney Arnoult Snyder, LSU-Σ; Carol Ann Barton Michno, OSU-AE; Vera Helberg Williams, OSU-AE; Pattie Cantrell Hulsey, NSU-ΔΦ; Peggy Feist Caudle NSU-ΔO; Toni Garner Dobbins, NSU-ΔΦ, and Shara Kern Mattern, Illinois Tech-ΓM. Of the eleven charter members, four were present, Helen, Martha, Elaine and Genie. Active members range in age from early twenties to early eighties ... a wide range of sisterhood.

Orders Adopted

The delegates at the 37th National Convention voted unanimously to adopt three national awards of special recognition: The Order of the Laurel, the Order of the Golden Rose, and the Order of the Diamond in the Flame.

First announced at the 1966 Convention, the Order of the Laurel is to be given only in special circumstances. It has been awarded by National Council only to Grace Mason Lundy and Irene Caroline Boughton. The names of the recipients shall appear immediately beneath the names of the Founders in *The LAMP* and all other official publications.

In 1952 at the Golden Jubilee Convention, the three living Founders, Alfa Lloyd Hayes, Julia Bishop Coleman and Mary Collins Galbraith were initiated and inducted into the Order of the Golden Rose. Subsequently all Delta Zeta alumnae in good standing have been eligible for this award fifty years after initiation, and entitled to wear the Golden Rose pin. Any member who came into Delta Zeta through a merged national or local group will be eligible for these awards based on her original initiation date.

Introduced at this Convention, the Order of the Diamond in the Flame will be conferred on Delta Zetas who have been members for seventy-five years. No symbol has yet been chosen.

The National Council
is pleased to announce the
recolonization of
Pi Chapter
Eureka College
Eureka, Illinois

The ΔZ "Link"

Delta Zeta's new national networking program was announced at Convention in Phoenix - the official name is the Delta Zeta "Link." Among the definitions for the word link, there is a reference to a passing of a torch. This reminds us of the passing of the flame of our Delta Zeta Lamp. Thus the Delta Zeta "Link" is to be the passing of help, support, information, and sisterhood from one Delta Zeta sister to another sister.

The term "networking" has been around at least ten years for women who have used it in the sense of making business contacts. There are different types of network organizations that function around particular business interest groups or general ones organized in cities to give support to a variety of women. We have had sisters helping sisters for over eighty years. We are now bringing this concept of sisters helping sisters to a national level for Delta Zetas.

There are three categories of contacts being organized. "Professional" lists of Delta Zeta contacts for local services such as a real estate agent, doctor, florist, lawyer, or day care center contacts. "Employment" information lists for people who are willing to provide information about careers, or about starting a new business. "Advisory Support" contact lists are people with special interests, whether it be mothers of preschoolers, bed and breakfast contacts, or a person who will help newcomers in town.

This program is just now beginning. Our greatest need at this time is for alumnae who are willing to be a resource in any area to complete the form on this page and mail it to National Headquarters. You will then be sent a more detailed form to complete indicating the areas in which you can help. Once we have gathered the information, we can then help alumnae and collegians by processing their requests for assistance.

Every Delta Zeta has something to offer the "Link" and should "share the flame."

Yes, I want to participate in the new Delta Zeta networking program!

_____ I agree to have my name sent to a Delta Zeta that I may help in some way.

_____ I agree to contact any Delta Zeta who may need information from me.

NAME _____

STREET ADDRESS _____

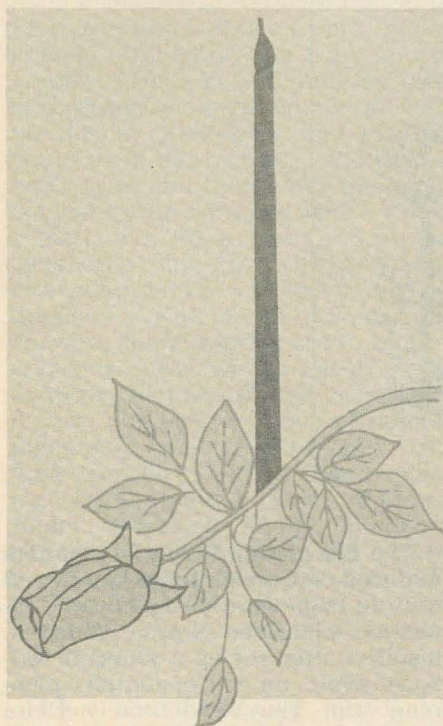
CITY, STATE, ZIP _____

INDUSTRY _____
(such as Banking, Health Care, Teaching)

POSITION OR TITLE _____

Mail to Delta Zeta Sorority, 202 East Church Street
at Campus Avenue, Oxford, Ohio 45056

Flame Eternal



ALPHA

Mildred Jackson DeLaCroix '57
Florence Wickerham Nuhfer '57

GAMMA

Hazel Marking Brunet '41

DELTA

Dorothy House Ray '25
Ruth Mae Armstrong '13

EPSILON

Mabel Brooks '19
Ada M. Bing

ZETA

Harriet Graves Schrag
Ruth Fickes McCarthy '19

ETA

Frances McLeod Chatelain
Blanche Robinson Gibson '20
Florence Hall Pettis '23

THETA

Verna Thomas Livesay '31

KAPPA

Eileen McHugh '62
Arlene Mahnken Betts '62
Ferne Thomas Keeling '41
Gladys Koehne '47

MU

Constance Campbell Morrison '46
Patricia Gale Thompson '43
Noreen Barton Karr '34
Zelina Fultz Maris

NU

Martha Schroeder Catlin '24
Rosellyn Kelly Missis '27
Su Elly Goodlet '21
Zelan Fultz Maris
Helen Ione Taylor '19
Edith Taylor Smith '15
Ethelyn Kelly Burcky '26

OMICRON

Nancy Keller Christianson '48

PI

Lerose Hedja Spangler '42
Robertta Burkey Borbin '31
Esther Simmons McKinney '21

RHO

Marion Reid Robinson '36
Helen Fry Cross
Esther Simmons McKinney '21

SIGMA

Margaret Nell Wallace Thompson '46
Camille Curry Flye '20
Anna (Fern) Moore Wells '37
Sibyl Crawford '21
Helen Brock Purser '31

TAU

Octavia Simmons DeMonte '44
Elise Roberts Rogers '25
Katherine Fisher Coffman '34
Trent Alexander Gladden '19
Sarah Phyllis Maxwell Beall '51

PHI

Elizabeth Wilde Morton '27

CHI

Lillian Anderson Rhiel '32
Wilma Miller Rondeau '20
Alice Gilstrap Whilser '74

OMEGA

Jessie Judd Chapman '30
Eldress Judd Delly '27
Vivian Merrifield '22

ALPHA ALPHA

Karen Hostrup Newman '63

ALPHA BETA

Esther A. Sypel '34
Janet Cromwell Holmes '31
Mary Kabbes Eleman '31
Inez McCusker Finfgeld '62

ALPHA GAMMA

Margaret Davidson Eldridge '41

ALPHA DELTA

Harriet Staples Hachten
Virginia Teeter Levendecker

ALPHA EPSILON

Glenna "Robyn" Ross Bragg '57

ALPHA ETA

Mary Ann Thompson Geyer '51

ALPHA IOTA

Mary Cristiani Sbicca '43

ALPHA OMICRON

Sandra Jo Varcoe '70

ALPHA PI

Elizabeth Delaunay White '29
Mabel Turnipseed McCutchen '27
Phyllis Lee Limbaugh '50

ALPHA TAU

Helen Johnson Pratt '43
Sarah Phyllis Maxwell Beale '51

ALPHA CHI

Kay Shepare Becker '47
Matilda Adams Gast '62

ALPHA PSI

Laverne Pickens Rush '44

BETA ALPHA

Mary James McMahon '36
Manel Barhamian Goshdigian '42

BETA GAMMA

Verna Gardner McElfresh '41

BETA ZETA

Leona Holt Facer '28

BETA IOTA

Katherine McKinley McMurray '32

BETA NU

Verginia Wilburn

BETA CHI

Marianna Garman '41
Alice Lentz Calebaugh '48

BETA OMEGA

Beatrice Scally '62

GAMMA ZETA

Galynn Gardner Compton '51

GAMMA MU

Marie Wilkinson Spencer

GAMMA SIGMA

Floss Harris Whyte '57

GAMMA UPSILON

Mary Joyce Womack Thompson '51

GAMMA CHI

Grace Marie Arogast '53

DELTA XI

Dorothy Moeller Ramsey '57

DELTA OMICRON

Maxie Allin Graham '18
Ethel Dyer Gish '20

DELTA TAU

Jeanne Faust Fox '65

DELTA UPSILON

Marcia McGraw
Shirley Mitchell Moreland '56
Mary Tipton Ingersoll '57
Shirley Smith Casello '44
Kathleen Koontz Sayre '57

DELTA PHI

Daisy Albright Daily '28

ZETA ALPHA

Eleanor Lindgren Buzbee '61

ZETA ZETA

Billie King Morris '58

ZETA LAMBDA

Lillian McElveen Shotwell '60

IOTA ALPHA

Henriette Kessels Richan '64

From the Lampwriter

The LAMP of Delta Zeta took another first place award in the College Fraternity Editors Association awards competition recently. The award, for "feature article content" was for the article, "Chapter LAMP Editors ... Just for You" which appeared in the fall, 1984 issue. It is a tongue in cheek explanation of editing college chapter reports. Needless to say we were delighted that our light-hearted piece won among serious competition in fraternity and sorority publications.

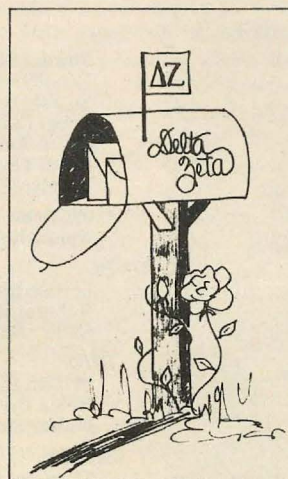
The LAMP wishes to recognize the two college chapters who have maintained 100% chapter reporting records for four years. Not to be outdone by Oscars and Emmys and Tonys ... The LAMP presents its LAMMY Award to Epsilon Xi chapter at the University of Central Arkansas and to Zeta Rho chapter at William Jewell College. Honorable mention goes to the University of San Francisco-ΞΑ chapter for 100% reporting since its installation in 1983.

An Editor's Apology: We have been informed that Thelma Peterson Peters who wrote that most interesting article on her book, **Miami 1909** (summer, 1985 issue) is a member of our Brenau-ΑΟ chapter rather than the Millsaps-ΑΩ chapter. We're sorry for the mistake. Our American selectric just doesn't translate Greek letters too well!

Some sights and sounds from Convention ...

Kajay Kathleen Rainey, only 10 weeks old, was the youngest legacy in attendance. Red-haired Kajay obligingly arrived three weeks early to allow mom Kim Beloate Rainey, Houston-ΔΘ, Houston alumnae chapter president, to attend Convention. Kajay came too, accompanied by an attentive grandmother who rocked while mom attended meetings.

(This reminds us of Juliet Miner's first Convention at the Grand Hotel on Mackinac Island. She was just six weeks old, also accompanied by mom and grandmother.)

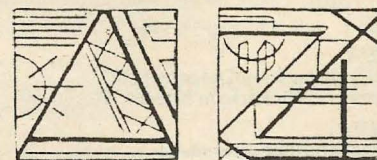


And then there was Mary Ann Gallatin French, Oklahoma State-AE, National Colonnade Clubs Chairman, who became a grandmom on Convention eve and had pictures to show before Convention was over. Kari Lynn was born to Cathy Burrows (OSU-AE) and Scott French ... so has both a ΔΖ mom and grandmother.



Kari Lynn's grandmother bought her a ΔΖ t-shirt at Convention. Pictured are Mary Ann Gallatin French, OSU-AE, daughter-in-law Cathy Burrows French, OSU-AE and young Kari Lynn, 1½ weeks at the time the picture was taken!

The fascinating Indian geometrics featured on Convention material and on tote bags were designed by Convention Chairman Norma Andrisek, inspired after seeing a mural in Arizona while on a Convention planning trip. They're definitely Delta Zeta designs. Look closely.



A group frequently overlooked when it comes to saying "thank you" to is that 24-hour-a-day group of dedicated journalists and writers who devote their time and talent to putting out five daily issues of *The Lampkin* in five days of Convention. Perhaps it is because they are seldom around ... they're either on the way to the printer or chasing down hot leads for new stories. The 1985 *Lampkin* staff, headed by Diane Jones Skelton-Southern Mississippi-EM is to be commended for their delightful, newsy issues. Others who contributed from issue to issue are Susan Mease, Dianne Veith, Carol Harper, Holly McCall, Carol Bertz, Lis Cloys, Fran Antolina, Tina Vernachia, Jean Persons, Ann Swaziek, Patricia Tector, Jane Maxwell, Diane

Rolnick, Lauan Garnjost, Angie Shipman, Debra Behler, Barbara Bodell, Diane Kreider, Vicki Cooper, Eileen McGuinness and Dana McMillan.

Convention goers met the ultimate challenge in National Historian Florence Hood Miner's baby photo contest. Childhood and baby photographs of Delta Zeta dignitaries, past and present Council members, were on display. Delegates and visitors could view the pictures, fill out the entry form and then enter the lively contest by guessing just who's who.

Marianne McKeeman Cravens, Oklahoma State-AE, CCD for Northern Colorado-ΔΞ won top honors in the contest with 25 out of 26 correct answers. Some were heard to hint of collusion ... but we have it on good authority that she traded her mom's picture number for those of others. Ingenius ... and certainly not contrary to 1985 rules???? Others placing close behind were Barbara Bodell, Oakland County, Michigan alumnae chapter president; Carol Sharpe Harper, Louisville-BΓ, PAD for Province XX (Kentucky), and Catherine Clay, president of Nevada/Las Vegas-IΦ.

After the impressive parade of flags at the Panhellenic luncheon, guest speaker Mary Keenum Barbee of Sigma Sigma Sigma just had to tell about an incident during the Bicentennial Celebration in Williamsburg in 1976. More than 150 sorority and fraternity flags had been shipped to Williamsburg for the gala event. It was late, late at night and only the Executive Committee of NPC and several of the Bicentennial Committee members were in evidence, trying to sort through the maze of flags, some identifiable only by crest, in an attempt to hang them properly. Delta Zeta's then-editor, Florence Miner was there, helping this editor who was then Chairman of NPC. Florence picked up a purple and white flag, looked at the three Greek letters and said, "Who is Mu Mu Mu?" Mary Barbee immediately turned the flag around for the correct reading ... and she hasn't forgotten Florence, ΔΖ or the Bicentennial since!

If any of you are interested in purchasing official Convention t-shirts, you may write the Phoenix alumnae chapter. The logo was de-

signed by Kay Morrow, Nebraska-Z, a graphic artist, whose photography graced the front and back covers of the spring 1985 issue of *The LAMP*.

T-shirts are available in medium, large and extra large and are \$6.50 each. Orders should be sent to Phoenix Alumnae of Delta Zeta, % Ann Sunderlin, 4027 W. Sweetwater, Phoenix, AZ 85029.



In conjunction with National Hearing and Speech month in May, Lincoln, Nebraska alumnae presented a check to Agnes Van Ackeren, who owns one of three trained hearing dogs in Nebraska. She then forwarded the check to International Hearing Dogs, Inc. in Colorado. Presenting the check to Miss Van Ackeren is Jeanne Uhlmann Johnson, Nebraska-Wesleyan-BT (right).

HAVE YOU CHANGED YOUR NAME OR ADDRESS?

Please print or type and mail to Delta Zeta Sorority, 202 East Church Street at Campus Avenue, Oxford, OH 45056. Members should use parents' address while in college.

IMPORTANT. You must cut out the mailing label from this issue and paste it here. We cannot process changes without your label. Thank You.

I am currently a Delta Zeta Officer. Title _____

My new address will be _____
street/apt. #

city/state/ZIP _____ effective date

If mailing label does not show your married name, please include the following information for our membership files.

Married name _____ Husband's first name _____ Date of marriage _____

Senior Advisory Board

by Pamela S. Schrimpf, EKV-ΞB

When the Xi Beta chapter returned to Eastern Kentucky University for the spring semester, spirits seemed low and apathy was on the rise. The low spirits resulted from a rough fall semester of grades lower than the chapter's standard and a few financial problems that could have grown if not acted on immediately.

The agenda for spring semester now included finances and grades ... not the favorite activities of most chapters. However, Xi Beta needed complete cooperation from all 68 members because a semester of planning and restructuring was in store.

There were inklings of the usual "senioritis." With six graduating seniors the problem with "senioritis" could have been a serious one. When senior members begin to pull away, it is rough on the chapter as a whole as it causes hurt feelings and creates frustrations for the officers trying to build the bond of sisterhood.

To combat the problem of "senioritis" the executive board of the chapter decided to form a senior advisory board to act as advisors to the chapter based on their knowledge and experience.

Gayle Denney, a senior business major, said, "I remember when I was a pledge I looked up to the seniors and thought they were great until they stopped participating and became apathetic. Then I sort of lost respect for them and thought they were just dead weight. I think that this board keeps the interaction between seniors and undergraduate members strong."

Sue Musstar, a newly initiated member said, "I think the idea is great and it gives us a chance to show the seniors how valuable they really are to the sorority. Everyone respects them for the experience and knowledge they are passing down. This is also a good way to honor them for their hard work and accomplishments."

The chapter honors the seniors at chapter meetings and dances and

also has a senior banquet in honor of them. The chapter also tries to encourage the senior in job search activities for careers after college.

Besides passing on information and advice the board also plans informationals designed to stimulate conversation, questions and participation. They often go to pledge meetings and present programs on time management, alcohol awareness, study habits and morals.

One semester has passed and the advisory board is a big success. It made a long semester of study hours and financial planning seem a little brighter through their positiveness and good spirits. Grades are up to the chapter's standards through many hours of enforced study hours and the small financial problems were overcome by replanning and quick acting by the executive board.



Pensacola alumnae members Linda LaPierre Fleming, USF-IA and Connie Upshaw Mapes, Middle Tennessee-II try color swatches at the "Total Fashion Look" program sponsored by the chapter as Color 1 Associate, Linda Pate looks on.

Directory Telephone Phase

Within the next few weeks the Harris Publishing Company will conduct telephone follow-ups to alumnae for verification of the information to be printed in the directory tentatively slated for release early in 1986. At the same time, the telephone representatives will be inviting alumnae to order personal copies of the volume.

The telephone call is a follow-up to the two questionnaire card mailings sent to all alumnae with verified addresses. If you have not received your questionnaire, please let us know immediately.

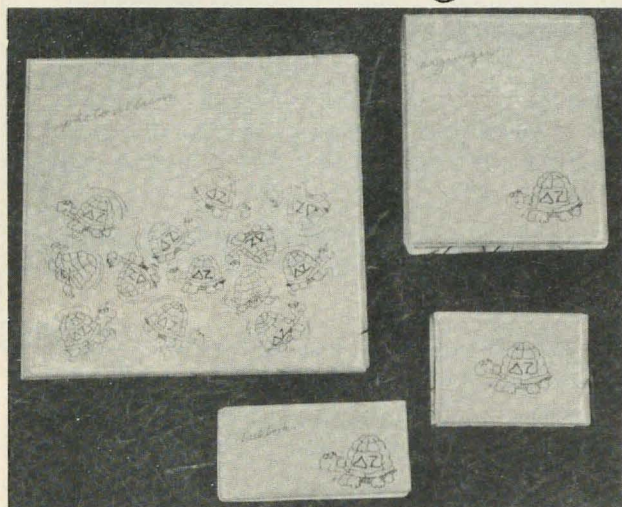
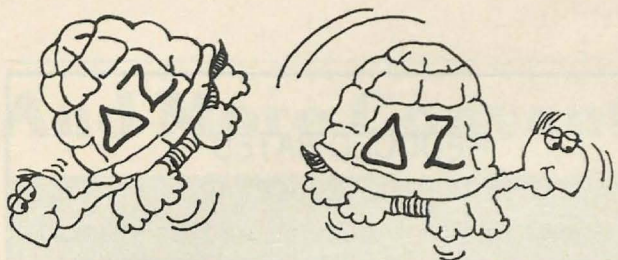
Since the cost of the directory is self-liquidating through directory sales, these requests are made on

the part of the Harris Company with National Council approval.

The directory will provide a complete listing of all living alumnae with current addresses including a biographical sketch on each alumna with name, class, chapter, residence address and phone number, and business or professional information where available.



Tumbling Turtles



Pink Wetlook Accessories With Kelly Tumbling Turtles

960ORG -Organizer (7 1/2 X 9") - \$18.00

95BSP Box Scratch Pad - \$6.00

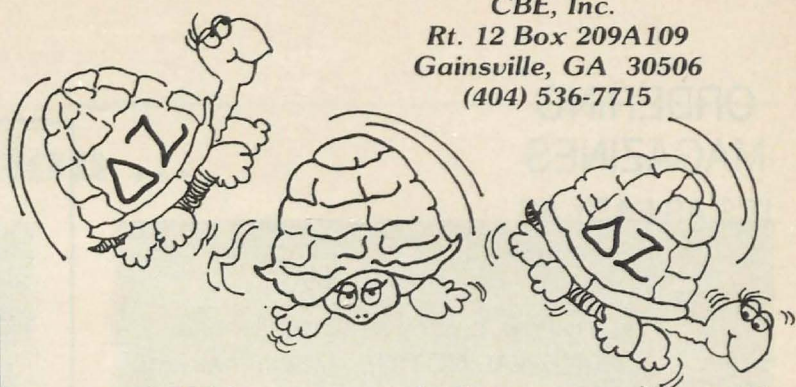
96CB Checkbook Cover - \$3.50

9CPB Large Photo Album - \$10.00

Refills -\$2.00

9PF Large Portfolio (holds 8 1/2 X 11" pad)

NOT PICTURED - \$9.00



CBE, Inc.
Rt. 12 Box 209A109
Gainesville, GA 30506
(404) 536-7715

916A White crew neck, fleece sweat top with
kelly turtles and pink **ΔΖ**

S/M/L/XL _____ \$13.00

916 White Hanes Beefy T-shirt. 100% pre-
shrunk cotton.

S/M/L/XL _____ \$6.00



A royalty from each purchase will go to your National Office.

Creative Business Events, Inc. Rt. 12 Box 209A109 -Gainesville, GA 30506 - (404) 536-7715

Name:	ITEM NO.	SIZE	COLOR	QUANT.	DESCRIPTION	PRICE
Address:						
Phone:						
We honor: PLEASE CIRCLE ONE MasterCard/Visa _____ <small>Credit Card Signature Required</small>					SHIPPING, INSURANCE & HANDLING CHART Order Total Via Surface .. Via Air \$25.00 & under \$3.95 \$5.25 \$25.01-\$50.00 \$4.95 \$6.50 \$50.01-75.00 \$5.95 \$7.25 \$75.01-100.00 \$7.50 \$8.95 \$100.01-200.00 \$8.95 \$10.25 \$200.01-300.00 \$9.95 \$11.25 Add \$2.50 for each additional \$50.00 for surface. Add \$5.00 for each additional \$50.00 for air.	
EXPIRATION DATE: _____ _____ CREDIT CARD NUMBER					ITEM TOTAL	
MAKE CHECKS PAYABLE FOR THE TOTAL AMOUNT OF THE ORDER (INC. SHIPPING AND HANDLING) PAYABLE TO CREATIVE BUSINESS EVENTS—DELTA ZETA. PLEASE DO NOT SEND CASH OR MONEY ORDERS. ALL CHECKS AND CREDIT CARDS ARE CASHED UPON RECEIPT.					SHIP. & HAND. (SEE CHART)	
					ADD 6 1/2% SALES TAX IF SHIPPED TO CALIFORNIA	
					ADD 4% SALES TAX IF SHIPPED TO GEORGIA	
					GRAND TOTAL	

ORDERING MAGAZINES

IT'S AS EASY AS

1 ... 2 ... 3

1

To renew, please send publisher's RENEWAL NOTICE. Attach mail label from magazine. Publishers require it for NEWSWEEK and TV GUIDE. Not required by other magazines, but helpful.

2

Complete Delta Zeta order form, and

3

Include payment with all orders. Make checks or Money Orders payable to DELTA ZETA SUBSCRIPTIONS. On renewals, pay amount indicated on RENEWAL NOTICE. On new subscriptions, pay amount shown in magazine. *Special discount coupons honored on new subscriptions, providing the subscription is for a full year. Include coupon with Delta Zeta order form.*

ORDER FORM

Magazine _____

Subscriber _____

(person to receive magazine)

Address _____

City-State-Zip _____

____ Renewal ____ New Sub. ____ Yrs. \$ _____

Gift card to arrive by _____ Amt. Enclosed _____

Signed _____

Purchaser _____

Address _____

City-State-Zip _____

STUDENT-EDUCATOR RATE. Complete this section to pay lower rate if offered by publisher *For subscriber only.*

x _____

School in which subscriber (person to Receive Magazine) teaches or attends as a student.

____ Educator

____ Graduate. Year studies end _____

____ Undergraduate. Studies end _____

PAY 10% COMMISSION TO:

() Delta Zeta college chapter
Name _____

x _____

Member to receive CONTEST POINT (optional)

() Delta Zeta alumnae chapter or club
Name _____

() Delta Zeta House Corporation
Chapter _____

() Delta Zeta Educational Fund (scholarships for Delta Zeta members)

----- detach for your records -----

Mail to:

DELTA ZETA SUBSCRIPTIONS

P.O. Box 24145

Columbus, Ohio 43224

Date _____ Check or M.O. _____

Magazine _____

Reminder: The average time for a new or renewed subscription to be processed by the publisher is 90-120 days. You may receive your cancelled check weeks before the order is activated in the magazine computers.

REDUCED RATES Students - Educators

Reduced rates for students and educators are available on several hundred magazines. To qualify, include all info requested on the Delta Zeta order form. Pay rate shown in magazine, or on Renewal Notice. If a lower rate is available, a check for the overpayment is issued when the order is placed with the publisher.

Seasonal gift rates available on many magazines for all subscribers.

And More Convention ...



Delta Zeta Directory

NATIONAL COUNCIL

PRESIDENT: Mary Margaret Calhoun Fore (Mrs. Sam L.),
459 Summit Circle, Fredericksburg, TX 78624
VICE PRESIDENT of MEMBERSHIP: Teresa Johnson Severy (Mrs. Raymond),
2127 Northampton Way, Lansing, MI 48912
VICE PRESIDENT of ALUMNAE AFFAIRS: Charlotte Fields Silversteen (Mrs. Allan),
513 Toll Road, Orelana, PA 19075
VICE PRESIDENT of COLLEGIATE AFFAIRS: Marvona Easley Tavlin (Mrs.
Michael), 10518 South Urbana, Tulsa, OK 74137
SECRETARY: Phyllis Snape Favorite (Mrs. Robert),
570 Lancashire Lane, State College, PA 16803
TREASURER: Patricia Canady Rosser (Mrs. David),
1609 Indian Rocks Road, Clearwater, FL 33516
DIRECTOR: Norma Minch Andrisek (Mrs. J.R.), 319 Janice Drive, Berea, OH 44017
DIRECTOR: Elizabeth Barbieri Bragg (Mrs. Lawrence),
2962 Leopold Ave., Hacienda Heights, CA 91745
DIRECTOR: Anne Marie Jones Gavin (Mrs. William),
3624 Swan Drive, Vineland, NJ 08360
DIRECTOR: Deanna Alleman McKinnon (Mrs. M. L.),
12109 Victoria Pl., Oklahoma City, OK 73102
DIRECTOR: Sandra McAlister Nesbitt (Mrs. Milton),
241 Landmark Drive, Montgomery, AL 36117
PAST NATIONAL PRESIDENT/NATIONAL PANHELLENIC CONFERENCE
DELEGATE: Carolyn Barnes Gullatt (Mrs. John), 4008 Hyridge, Austin, TX 78624
NATIONAL PANHELLENIC CONFERENCE ALTERNATES:
Mary Margaret Calhoun Fore (Mrs. Sam)
Teresa Johnson Severy (Mrs. Raymond)
Norma Minch Andrisek (Mrs. J. R.)
PARLIAMENTARIAN: Lucile Crowell Cooks (Mrs.),
7400 Sun Island Drive S., Apt 404, South Pasadena, FL 33707

NATIONAL HEADQUARTERS

DELTA ZETA NATIONAL HEADQUARTERS: 202 E. Church Street at Campus
Avenue, Oxford, OH 45056. Cindy Winslow.
FIELD REPRESENTATIVES: Janet Bailey, Lynn Ciervo, Vivian Cole, Paige Hill,
Lauree Meyer, Anne Moser, Shawn O'Halloran, Pam Summerlin, Laura Vradelis.

THE LAMP

Gwen Moss McKeeman (Mrs. Robert L.), 5517 S. 74th E. Avenue, Tulsa, OK 74145

EXTENSION

Norma Minch Andrisek (Mrs. J. R.), 319 Janice Drive, Berea, OH 44017

DELTA ZETA SUBSCRIPTIONS

Box 24145, Columbus, OH 43224

FOUNDERS MEMORIAL FOUNDATION

PRESIDENT: Arlene Newman Marshall (Mrs. Norman L.),
Rt. 2, Box 78, Port Lavaca, TX 77979
SECRETARY: Betty Paul DeWitt (Mrs. Norman),
23630 Oakrest Lane, Harbor City, CA 90710
TREASURER: Katey Bosworth Sandy (Mrs. Jonathan),
18630 NW Tolovano, Portland, OR 97229
MEMBERS:
Joan Dondrea Lowry (Mrs. Bob-Bill), 578 Yarmouth Lane, Bay Village, OH 44140
Elizabeth Barbieri Bragg (Mrs. Lawrence),
2962 Leopold Ave., Hacienda Heights, CA 91745
COMMITTEES:
ELIZABETH COULTER STEPHENSON SCHOLARSHIPS: Sarah Jane Shank
Houston (Mrs. Harold), 3358 Randlewood Place, Sarasota, FL 33577
UNDERGRADUATE SCHOLARSHIPS: Donna Edwards Happ (Mrs. William V.),
135 Andora Way, San Diego, CA 92129
GRADUATE SCHOLARSHIPS: Glenna VanderMeer Paukstis (Mrs. Charles),
1304 Lake Park, Birmingham, MI 48009
GALLAUDET COLLEGE: Lucille Bolstead May (Mrs. Leland B.),
5100 Doreset Avenue #406, Chevy Chase, MD 20815
HOUSE EAR INSTITUTE: Betty Paul DeWitt (Mrs. Norman),
23630 Oakrest Lane, Harbor City, CA 90710

NATIONAL HISTORICAL MUSEUM BOARD OF TRUSTEES

PRESIDENT: Lucile Crowell Cooks,
7400 Sun Island Drive S. Apt 404, South Pasadena, FL 33707
TRUSTEES:
Norma Minch Andrisek (Mrs. J. R.), 319 Janice Drive, Berea, OH 44017, Secretary

PROVINCE COLLEGIATE AND ALUMNAE DIRECTORS

I. Maine, Massachusetts, Vermont, New Hampshire, Connecticut and Rhode Island

PCD:

PAD: Sandra Riddervoid (Miss), 140 Silver Street, Greensfield, MA 01301

II. New York and New Jersey

PCD: Sylvia Lounsberry Fix (Mrs. Wayne),
36 Crystal Springs Lane, Fairport, NY 14450

PAD: Cynthia Schafer Plucinski (Mrs.),
34 Tinker Dr., Mount Holly, NJ 08060

III. Pennsylvania and Delaware

PCD: Judith Sherin Kline (Mrs. Patrick E.),
312 O'Toole Dr., Hagerstown, MD 21740

PAD: Diane Dershem Kreider (Mrs. Edward),
6204 Elmer Avenue, Harrisburg, PA 17112

Elizabeth Baker Devereaux (Mrs.), 18 Pembroke Lane, Huntington, WV 25705
Grace Pritchard Gorham (Mrs.), 1510 E. 31st Street, Tulsa, OK 74105, Treasurer
Carolyn Barnes Gullatt (Mrs. John), 4008 Hyridge, Austin, TX 78759, Vice President
Betsy Bradley Leach (Mrs.), 1244 Valley View Rd. #116, Glendale, CA 91202
Florence Hood Miner (Mrs. Arthur), 1040 H Ave., Nevada, IA 50201
Doris Ellingson Riede (Mrs. Robert), Box 108 107 E. Moore St., Caledonia, MN 55921
Mary Lou Ragel Vineyard (Mrs. Phillip W.),
4998 62nd Ave. S., St. Petersburg, FL 33715

HISTORIAN EMERITUS

Grace Mason Lundy (Mrs. H. M.), 3207 N. 25th St., Phoenix, AZ 85016

STANDING COMMITTEES

AWARDS (ALUMNAE AND COLLEGIATE): Marcia Earl Humpal (Mrs. David),
26798 Mangrove Lane, Olmsted Falls, OH 44138
COLONNADE CLUBS: Mary Ann Gallatin French (Mrs. John),
2322 N.W. 58th Circle, Oklahoma City, OK 73112
CONSTITUTION and BYLAWS: Elizabeth Baker Devereaux (Mrs.),
18 Pembroke Lane, Huntington, WV 25705
FIELD ACTIVITIES: Teresa Johnson Severy (Mrs. Raymond),
2127 Northampton Way, Lansing, MI 48912
FINANCE: Patricia Canady Rosser (Mrs. David), Chairman, Carolyn Barnes Gullatt,
Norma Minch Andrisek, Phyllis Snape Favorite, Anne Marie Jones Gavin
HOUSING PROJECTS: Sue Jones Allen (Mrs. Tom),
2415 Custer Cove, Richardson, TX 75080
REGIONAL HOUSING DIRECTORS:
Anne Corson Hathaway (Mrs. W.), 4 N. Main St., Orono, ME 04473
Sandra Sebrrell Bailey (Mrs. Bruce), 639 N. Portage Path, Akron, OH 44303
LaDonna Johnson (Miss), 9511 N.E. 120th St., Kirkland, WA 98034
Connie Burns Baird (Mrs. James), 9039 Gunnison Dr., Dallas, TX 75231
Kathleen Johnson Sledge (Mrs.), 17 The Downs, Tuscaloosa, AL 35404
INSURANCE: Anne Marie Jones Gavin (Mrs. William),
3264 Swan Drive, Vineland, NJ 08360
WAYS and MEANS: Sandra McAlister Nesbitt (Mrs. Milton),
241 Landmark Drive, Montgomery, AL 36117
BED and BREAKFAST: Diane Gabbart Harris (Mrs. George),
6316 Marina Pacifica Drive, Long Beach, CA 90803
HISTORY: Florence Hood Miner (Mrs. Arthur), 1040 H Avenue, Nevada, IA 50201
JUDICIARY: Dianne Fellows Guild (Mrs. Douglas),
16 Andrews Drive, South Burlington, VT 05401
MEMBERSHIP EDUCATION/PLEDGE EDUCATION: Phyllis Snape Favorite (Mrs.
Robert), 570 Lancashire Lane, State College, PA 16803
SORORITY EDUCATION: Ellen Kroll Jenkins (Mrs. Paul),
1101 Ramblin Court, Greenwood, IN 46142
PHILANTHROPY: Joan Dondrea Lowry (Mrs. Bob-Bill),
578 Yarmouth Lane, Bay Village, OH 44140
ALUMNAE COORDINATOR: Priscilla (Pat) Beatty (Miss), 3691 N.W. 95th
Terrace, Apt. 1202, Sunrise, FL 33321
COLLEGIATE COORDINATOR: Linda Regner,
13702 Dowlais Drive, Rockville, MD 20853
RITUAL: Karen Kind Manuel,
36 Rilling Ridge Road, New Canaan, CT 06840

COMMITTEES

ALUMNAE:
ALUMNAE RELATIONS: Deanna Alleman McKinnon (Mrs. M. L.),
12109 Victoria Pl., Oklahoma City, OK 73102
PROGRAMS: Joyce Low London (Mrs. John),
P.O. Box 6458, Las Cruces, NM 88006
NETWORKING: Kay Morrow Wright (Mrs. Terry),
10477 Juan Calle, Des Moines, IA 50322
COLLEGIATE:
ACADEMICS: Marvona Easley Tavlin (Mrs. Mike),
10518 South Urbana, Tulsa, OK 74137
ACTIVITIES: Tina Vernacchia,
5452 Bradford Ct. #232, Alexandria, VA 22311
ENRICHMENT: Jane Daily Snyder (Mrs. Eric),
13127 Gascogne Court, Creve Couer, MO 63141
SOCIAL: Beth Ballreich Wexler (Mrs. Wm. C.),
313 S. Lynn St., Bryan, OH 43506
NEWSLETTER: Susan Mease, 1413 Cumbie Avenue, Orlando, FL 32804
PUBLIC RELATIONS: Elizabeth Barbieri Bragg (Mrs. Lawrence),
2962 Leopold Ave., Hacienda Heights, CA 91745
REFERENCES: Alberta Doran Curran (Mrs. Tom),
116 Dublin Woods Dr., Cary, NC 27511

IV. West Virginia

PCD: Lisa Bergeria Blankenship (Mrs. Glen),
208 N. State St., Athens, WV 23712

PAD: Linda Broughman Templeton (Mrs. Robert),
20 Kings Highway, Huntington, WV 25705

V. Ohio

PCD: Lynnda Wolf Hoefler (Mrs. Robert),
1287 Denise Drive, Kent, OH 44240

PAD: Lois Randolph Nesgoda (Mrs. Leonard),
5652 Alberta Dr., Lyndhurst, OH 44124

VI. Michigan

PCD: Kim Petrella (Miss), 406 Fisher Ct., Clawson, MI 48017

PAD: Pamela McClure Cronenwett (Mrs. William),
25720 West Hills Drive, Dearborn Heights, MI 48125

VII. Indiana

PCD: Elizabeth Petruce (Miss),
4502 Candletree Circle #2, Indianapolis, IN 46254

PAD: Gelaine Listenberger Smock (Mrs. Steven),
9561 E. Southport Road, Indianapolis, IN 46259

VIII. Wisconsin

PCD: Donna Skotnicki Agnelly (Mrs. Edward),
P.O. Box 135, Waterford, WI 53185

PAD: Rochelle Lebahn Andress (Mrs. Brad),
1533 Camelot Blvd., Sheboygan, WI 53081

IX. Illinois

PCD: Valerie Trigg Craig (Mrs. Robert),
344 Indianwood Blvd, Park Forest, IL 60466

PAD: Gail Easley McKee (Mrs. Don), 776 10th Street, Charleston, IL 61920

X. Iowa and Nebraska

PCD: Barbara Tweed Holland (Mrs. George),
287 Village Dr., Ames, IA 50010

PAD: Roberta Popinger Buhl (Mrs. Dale),
1711 NW 99th Court, Clive, IA 50322

XI. Missouri

PCD: Dana McMillan (Miss), 3543 Central #2, Kansas City, MO 64111

PAD: Eileen Hoffman Doe (Mrs. Larry),
2 Locust Drive, Florissant, MO 63031

XII. Minnesota, North Dakota and South Dakota

PCD: Jeri Seals Weigand (Mrs. Gregg),
6185 Boyer Path, Invergrove Heights, MN 55075

PAD: Sylvia Lee Kafkas (Mrs. John),
3505 Humboldt Ave., South, Minneapolis, MN 55408

XIV. Colorado and Kansas

PCD: Janet Eisler Havener (Mrs. Gary),
4343 N. Sheridan Avenue, Loveland, CO 80537

XIV-E. Kansas Alumnae Chapters

PAD-E: Carolyn McCandless Woodling (Mrs. Charles),
3112 Creekwood, Lawrence, KS 66044

XIV-W. Arizona, Colorado, New Mexico, Utah, and Wyoming Alumnae Chapters, except Las Cruces, NM.

PAD-W: Mary Jo Harriss Messlin (Mrs. Carl),
2998 S. Akron Court, Denver, CO 80231

XV-S. Southern California, Southern Nevada and Hawaii

PCD: Karen Martin Dessel (Mrs. Tom),
2015 Studebaker Road, Long Beach, CA 90815

PAD: Barbara Philippin Lancaster (Mrs. Richard),
4923 Libbet Avenue, Van Nuys, CA 91436

XV-C. Northern California and Northern Nevada

PCD: Susan Kelly Warren (Mrs. Robert),
212 Farm Lane, Martinez, CA 94553

PAD: Wendy Wood LaBounty (Mrs. William),
2099 Janice Drive, Pleasant Hill, CA 94523

XV-N. Oregon, Washington, Montana, Idaho and Alaska

PCD: Susan Kelly Warren (Mrs. Robert),
212 Farm Lane, Martinez, CA 94553

PAD: Helga Kohlenberg Clark (Mrs. William),
4866 123rd Place S.E., Bellevue, WA 98006

XVI. Oklahoma

PCD: Mary Malone Snider (Mrs. Charles),
2120 Columbus, Muskogee, OK 74401

PAD: Deanna Alleman McKinnon (Mrs. M. L.),
12109 Victoria Place, Oklahoma City, OK 73120

XVII-S. South Texas

PCD: Merry Westbrook Adamcik (Mrs. Roy),
614 Rozelle Avenue, Sugarland, TX 77478

PAD-S: Ann Butler Booth (Mrs. W. Ray),
14735 Oak Bend, Houston, TX 77079

XVII-N. North Texas and New Mexico Collegiate chapters, Las Cruces, NM Alumnae Chapter

PCD: Jan DeBrecht Tyler (Mrs. Patrick), 3905 Pimlico, Arlington, TX 76017

PAD: Donna Hudson Dunn (Mrs. Jeffrey),
3207 Quail Lane, Arlington, TX 76016

XVIII. Louisiana and Mississippi

PCD: Virginia Schattner Bryan (Mrs. Larry),
2404 Brownlee Dr., Bossier City, LA 71111

PAD: Ida Marie Carter Nelson (Mrs. John),
126 Fremont Avenue, Shreveport, LA 71105

XIX. Tennessee

PCD: Clara Schnakenberg Smith (Mrs. Dale),
310 Cotton Road, Franklin, TN 37064

PAD: Violet Henson Anderson (Mrs. Charles A.),
102 Blue Hills Ct., Nashville, TN 37214

XX. Kentucky

PCD: Jennifer Plenge (Ms.), 904 Dana Marie Drive, Louisville, KY 40223

PAD: Dana Sharpe Harper (Mrs. Spencer E., Jr.),
3309 Green Hill Lane, Louisville, KY 40207

XXI. South Carolina and North Carolina

PCD: Sondra Golden Bass (Mrs. J. Albert, Jr.),
6425 Chapman Court, Raleigh, NC 27612

PAD: Patricia Menendez Tector (Mrs. John),
907 Winslow Court, Cary, NC 27511

XXII. Georgia

PCD: Sue Adrianson Skambis (Mrs. Christopher),
836 Lake Adair Blvd., Orlando, FL 32804

PAD: Marge Klingensmith Lovewell (Mrs.),
96 The Prado NE, Atlanta, GA 30309

XXIII. Alabama

PCD: Sandra McAlister Nesbitt (Mrs. Milton),
241 Landmark Dr., Montgomery, AL 36117

PAD: Lassie Jo Rounds Simms (Mrs. Jack),
208 Willow Creek Road, Auburn, AL 36830

XXIV. Florida

PCD: Sue Adrianson Skambis (Mrs. Christopher),
836 Lake Adair Blvd., Orlando, FL 32804

PAD: Barbara Bohringer Turner (Mrs. James),
6543 Blvd. of Champions, North Lauderdale, FL 33068

XXV. Virginia, Maryland, Washington, D.C.

PCD: Gail Lutz Verley (Mrs. William),
4727 North Arlington Blvd., Arlington, VA 22203

PAD: Linda Wright (Miss), 12735-R Ben Fry Drive, Chester, VA 23831

XXVI. Arkansas

PCD: Jacqueline Miner Gardner (Mrs. Richard, Jr.),
P. O. Box 2034, Russellville, AR 72801

PAD: Debbie Jolley Hughes (Mrs. Michael),
21 Wingate, Little Rock, AR 72205

STATE REFERENCE CHAIRMEN

ALABAMA: Lottie Ricker Nunnally (Mrs. Mark), 1365 Dearing Down Circle, Helena, AL 35080 **ALASKA:** Deborah Welch Jackson (Mrs. Randy), 435 E. Dyea Avenue, Fort Richardson, AK 99505 **ARIZONA:** Judy Hurley Gustafson (Mrs. Terry), 8431 E. Belgian Trail, Scottsdale, AZ 85258 **ARKANSAS:** Jeania Standridge Evans (Mrs. Jerry), Rt. #2, Box 530, Russellville, AR 72801 **CALIFORNIA (North):** Martha Henry Burde (Mrs. Walter), 24685 Camino del Monte, Carmel, CA 93923 **CALIFORNIA (South):** Janet Breitweiser Savage (Mrs. Tom), 5102 Woodwind Lane, Anaheim, CA 92807 **COLORADO:** Diane Vyhnaek (Miss), 13625-B E. Yale Ave., Aurora, CO 80014 **CONNECTICUT:** Ann Collins Gill (Mrs. Edward), 53 High Point Rd., Westport, CT 06880 **DELAWARE:** Charlotte Day Fehnel (Mrs. Richard), 3209 Kammerer Dr., Wilmington, DE 19803 **DISTRICT OF COLUMBIA:** Pat Dansbury (Miss), 1722 19th St. NW #501, Washington, D.C. 20009 **FLORIDA:** Cindy Brown Helton (Mrs. Charles), 1601 Berkshire Ave., Winter Park, FL 32789 **GEORGIA:** Lynn Williams (Miss), 1209 Shadowood Parkway, Atlanta, GA 30339 **HAWAII:** Dorothea Bettencourt Ovio (Mrs.), 45-109 Kokokahi Place, Kaneohe, HI 96744 **IDAHO:** Rilla Soderstrom Perala (Mrs. George), 8800 Craydon Dr., Boise, ID 83704 **ILLINOIS:** April Giles Giesking (Mrs. William), Box 48, Altomont, IL 62411 **INDIANA:** Karen Manley Davies (Mrs. Roger L.), 869 Ridge Dr., Terre Haute, IN 47803 **IOWA:** Alaire Swedlund Bornholtz (Mrs. Tim), 4534 Perry Way, Sioux City, IA 51104 **KANSAS:** Kay Koger Lauer (Mrs. William), 120 Mulberry, Cottonwood Falls, KS 66845 **KENTUCKY:** Lisa Rullman McAfee (Mrs. Jay E.), 3544 Creekwood Drive, #20, Lexington, KY 40502 **LOUISIANA:** Jane Weaver Mathes (Mrs. Jimmy), 12538 Sherbrook Drive, Baton Rouge, LA 70815 **MAINE:** Denise A. Pitt (Miss), 23 Lindale Avenue, Biddeford, ME 04005 **MARYLAND:** Pat Dansbury (Miss), 1722 19th St. NW #501, Washington, D.C. 20009 **MASSACHUSETTS:** Mary Catherine Davis (Miss), 25 Bayberry Circle, Millis, MA 02054 **MICHIGAN:** Janelle Kiszka, 2417 Altoona, Flint, MI 48504 **MINNESOTA:** Grace Dollohan Bartholet (Mrs.), 435 E. Arion, Apt. 202, West St. Paul, MN 55118 **MISSISSIPPI:** Lanelle Long McLeod (Mrs. James), 290 Fannin Landing Circle, Brandon, MS 39042 **MISSOURI:** Michaela K. Kerns (Miss), 10540 Washington #304, Kansas City, MO 64114 **MONTANA:** Jackley Meyers (Miss), 212 N. Ewing, #4, Helena, MT 59601 **NEBRASKA:** Carole Sorensen (Miss), 3027 W. Capital Ave., #26, Grand Island, NE 68801 **NEVADA:** Lori Figgins (Miss), 647 Peppertree Circle, Henderson NV 89015 **NEW HAMPSHIRE:** Sandy Riddervold (Miss), 140 Silver St., Greenfield, MA 01301 **NEW JERSEY:** Debra Bass (Miss), 357 Shea Dr., New Milford, NJ 07646 **NEW MEXICO:** Cheeta Northrip McMurry (Mrs.), 2507 Baylor Ave., Alamogordo, NM 88310 **NEW YORK:** Mary Frances Sims (Miss), 95B Ball Road, Syracuse, NY 13215 **NORTH CAROLINA:** Beth Cardo Harris (Mrs. Jeff), 3301 Johnnycake Ln., Charlotte, NC 28211 **NORTH DAKOTA:** Karen Clark Davis (Mrs. Leigh), 1222 Glenbrook Avenue, North, #102, St. Paul, MN 55119 **OHIO:** Sandra Sebrell Bailey (Mrs. Bruce), 639 N. Portage Park, Akron, OH 44303 **OKLAHOMA:** Pattie Cantrell Hulsey (Mrs. Stephen), 3912 S. Union, Tulsa, OK 74107 **OREGON:** Barbara Kersch Hamilton (Mrs. W. B.), 12601 S.E. Market, Portland, OR 97233 **PENNSYLVANIA:** Debbie Fries (Miss), 1060 Oldstone Road, Allentown, PA 18103 **RHODE ISLAND:** Mary Penrod (Miss), P.O. Box 1415, Kingston, RI 02881 **SOUTH CAROLINA:** Susan L. James (Miss), Rt. 8, Box 280F, Rock Hill, SC 29730 **SOUTH DAKOTA:** Doris Dalin Huffman (Mrs. Richard, Jr.), 1535 S. State Street, Aberdeen, SD 57401 **TENNESSEE:** Joyce Lockhart Gary (Mrs. Wallace), 1347 Greendale Ave., Memphis, TN 38127 **TEXAS:** Ann Clay Hawkins (Mrs. Jerry), 103 Live Oak Lane, Lake Jackson, TX 77566 **UTAH:** Jean Peters Christensen (Mrs. William), 1669 Yalecrest Ave., Salt Lake City, UT 84105 **VERMONT:** Pat Perreboom Hofer (Mrs. David), 22 Hillwinds, Brattleboro, VT 05301 **VIRGINIA:** Ann Campbell Pardue (Mrs. Mark), 5844 Beachwalk, Virginia Beach, VA 23464 **WASHINGTON:** Karen Fellows Soyk (Mrs. Lon), 31033 38th Avenue South, Auburn, WA 98002 **WEST VIRGINIA:** Cheryl Snodgrass (Miss), 1 St. Charles Place, Charleston, WV 25314 **WISCONSIN:** Lynn Brockmeyer Grosskreutz (Mrs.), 412 S. Summit St., Whitewater, WI 53190 **WYOMING:** Donna McElroy Frerichs (Mrs. William), 3301 Alta Vista Drive, Laramie, WY 82070



The 1985-87 National Council: Standing (l to r) Sandra McAlister Nesbitt, Deanna Alleman McKinnon, Elizabeth Barbieri Bragg, Anne Marie Jones Gavin and Norma Minch Andrisek. Seated are Patricia Canady Rosser, Marvona Easley Tavlin, Charlotte Fields Silversteen, Mary Margaret Calhoun Fore, Teresa Johnson Severy, Phyllis Snape Favorite and Carolyn Barnes Gullatt.

POSTMASTER: Send 3579 immediately to Delta Zeta Sorority, 202 E. Church St., Oxford, OH 45056

DELTA ZETA SORORITY
202 East Church Street at Campus Avenue
Oxford, OH 45056

Address Correction Requested

Non-Profit Org.
U.S. Postage
PAID
Permit No. 131
Tulsa, OK

1920002 IOTA GAMMA 66
CELESTE MICKIEWICZ MOORE
RT #4 BOX 719
SILVER SPRINGS FL 32688