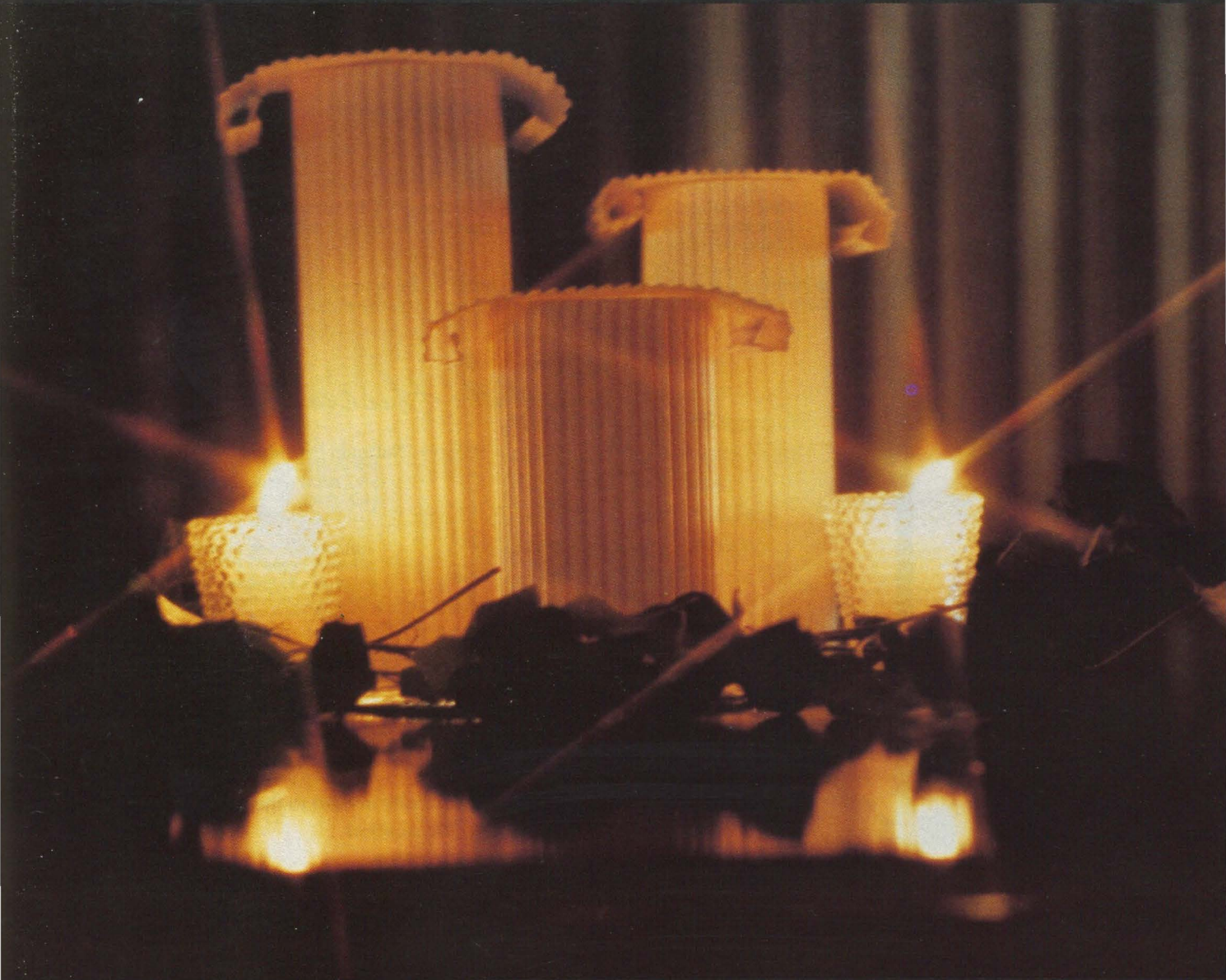


THE
LAMP
OF
DELTA
ZETA
FALL, 1983



Founders Day

"These things I believe in . . ."

"Delta Zeta was founded by a group of girls with high principles and determination. These high principles included:

Staunch friendship for each other, a friendship made stronger by working together toward a certain goal.

Obedience, a willingness to obey bylaws and terms set out by a constitution.

Religion, which is devotion, fidelity and faith in each other.

Obligation, through which each girl is bound by a willing promise to one another.

Readiness to cooperate in everything, to better oneself in order to get along with others.

Indebtedness, which grows with each contact, for the many benefits received.

Tolerance, also for others who have different beliefs and practices - but still maintaining your own individuality.

And finally, to yield, which means to give your time, your individual accomplishments, for a better sorority, which returns to you a hundredfold during the years of your association and membership in Delta Zeta . . ."

These words by Alfa Lloyd Hayes, Founder and Past National President, are as true today as when they were written for the 1957 LAMP.

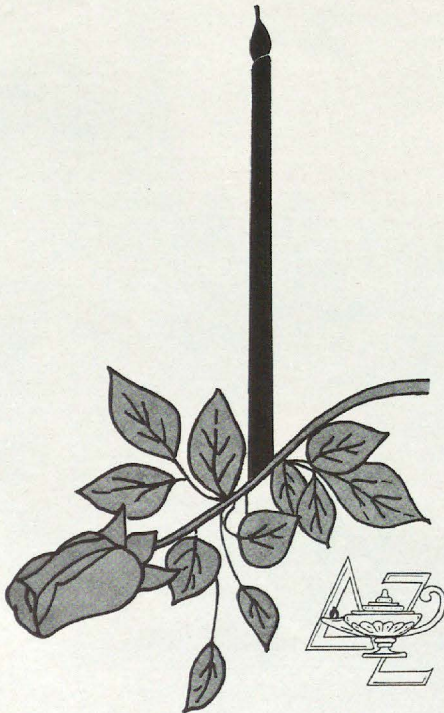
These things we believe in, and always will.

I hereby proclaim this October 24 to be observed as Founders Day by our entire membership and request that our colors of rose and green be worn in evidence of our dedication and faith in Delta Zeta.

Given under my hand and seal this first day of September in the year of our Lord, one thousand nine hundred and eighty three and of the sorority, the eighty-first.

Carolyn A. Hullatt

National President



You are cordially invited to the
Dedication
of the
National Historical Museum and National Headquarters
Corner of Campus Avenue and Church Street
202 East Church Street
Oxford, Ohio
Sunday, October 23, 1983

THE LAMP of Delta Zeta

Volume 72 Number 3 Fall 1983

Founders of the Sorority



Miami University
Oxford, Ohio 1902

Alfa Lloyd Hayes, 1880-1962
Mary Collins Galbraith, 1879-1963
Anna Keen Davis, 1884-1949
Julia Bishop Coleman, 1881-1959
Mabelle Minton Hageman, 1880-1929
Anne Simmons Friedline, 1879-1932

THE LAMP

(USPS 585-640)

The Lamp of Delta Zeta, official magazine of the sorority, is published quarterly by the Delta Zeta Sorority, 202 East Church St., Oxford, OH 45056.

Send all editorial material to the Editor, Mrs. Robert L. McKeeman, 5517 S. 74th E. Avenue, Tulsa, OK 74145. Send all matters of a business nature to Delta Zeta National Headquarters, Oxford, OH.

Send all contributions for Gallaudet College, House Ear Institute and other Founders Memorial Foundation philanthropies through the Delta Zeta Founders Memorial Foundation, c/o Miss Shirlyn Chaffin, Treasurer, 6561 Santa Cruz Place, Reynoldsburg, OH 43068.

EDITOR

Gwen Moss McKeeman
5517 S. 74th E. Avenue
Tulsa, Oklahoma 74145

STAFF

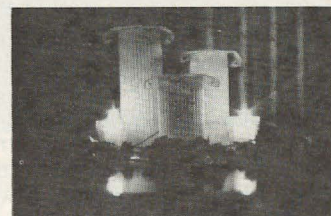
Diane Jones Skelton
Sheila Hillis Nixon
Meryl Lin McKean

CFEA
1883-1983
CENTENNIAL

MEMBER
COLLEGE FRATERNITY EDITORS ASSOCIATION

Contents

- 2 Building on Yesterday
- 7 Convention Awards
- 17 Florence Miner Award Winners
- 18 GML Award Winners
- 20 Kappa Returns to Washington
- 22 Radford Welcomes Delta Zeta
- 24 Convention Picture
- 26 Jean Coleman Lisle
- 27 An Afternoon at Rosecourt
- 28 Introducing the Field Reps
- 30 Marilyn Gross, Artist
- 32 75 Years With Beta Tau
- 34 Delta Zeta on Campus
- 43 A Family Affair
- 44 Pioneer Days in Chico
- 45 Flame Eternal
- 46 Alumnae Profiles
- 48 Directory



ABOUT THE COVER

Three ionic columns resting on mirrors, green ivy and votive candles formed elegantly simple and beautiful table arrangements for the Initiation Banquet at Convention. Read the Convention story starting on page 2.

Convention in Dallas

Building on Yesterday, Reaching for Tomorrow



The Ohio version of a Texas welcome: l to r, Marcia Humpal, Lynnda Hoefler, Randi Nevins, Nancy Sharbaugh and Carol Konet.



According to Florence Miner, this Convention was the "standing-est, clapping-est and loving-est" Convention she could remember.

It was the "loving-est, clapping-est and the standing-est" Convention of all times, this 36th National Convention of the Delta Zeta Sorority held in Dallas, Texas, from June 17 to June 21. This will be one Convention to stand out in the hearts and memories of the almost 600 Delta Zetas who gathered at the Fairmont Hotel.

From the warm greetings at the Fairmont lobby entrance to the tearful goodbyes at the same place some days later, it was a fun-filled, jam-packed, exciting, educational, stimulating and thoroughly enjoyable time of true Delta Zeta sisterhood.

The mezzanine level of the Fairmont was the backdrop for peals of laughter and joyous sounds of renewed friendships as Delta Zetas were registered by the Convention committee. As old friends greeted each other and new acquaintances were made, official delegates picked up voting credentials and Convention packets and made preliminary selections from the Rose Shop and official jewelry and browsed through the History display.

"Fiesta" was the theme of National President Carolyn Barnes Gullatt's opening banquet, and fiesta it was from the gala decorations of colorful Mexican flowers to the band which serenaded from time to time.

Preceding the opening of the banquet, all National Council and Past National Council members and their escorts were introduced and then seated at the two tiered head table. An all-time record of 21 past national officers were in attendance at this Convention and "loving" every minute of it.

Entertainment, Texas style, was performed by a well-rehearsed group from Ohio: Song Chairman Carol Carson Konet, PCD Lynnda Wolf Hoefler, Awards Chairman Marcia Earl Humpal, IΑ President Randi Nevins and IΑ CCD Nancy McNamee Sharbaugh.

BUILDING ON YESTERDAY, REACHING FOR TOMORROW

"Building on Yesterday, Reaching for Tomorrow," a line from our new history selected by Carolyn for the Convention theme, was the title of Past National President Gertrude Houk Fariss' thought provoking and challenging keynote address. This set the pace for the events to come.

The first copy of our new history, *Delta Zeta Sorority: 1902-1982*, a hardbound emerald green volume with gold lettering, was presented to President Carolyn by author Florence Hood Miner, National Historian.

The Alice Huenefeld award, given biennially to the

most outstanding college chapter director was presented to Betty Schneider Fenton, CCD of Sigma chapter at Louisiana State University.

National Director Teresa Severy presented the Genevieve Schmitt Memorial Plaque for top scholarship to Nebraska Wesleyan-BT.

Carolyn Gullatt presented the Achoth Awards. Given to those Delta Zeta women for "long and faithful service at the local level," the gold symbol bracelets were awarded to 17 this year, and in the Convention audience to receive their awards were Elsie Kuck Bailey, Brenau-AO, of Pompano Beach, FL and Jean Nelson Stockham, Eureka-II, of the Oklahoma City alumnae chapter.

It was a touching moment when Past National President Evelyn Adams Costello presented the National President's Pendant (a miniature of the National President's Plaque) to Past Presidents Lisbeth Innis Francis and Norma Minch Andrisek and President Carolyn Gullatt - a Delta Zeta tradition which had been lost but which has now been restored.

A reception for National Council and Past National Officers capped the evening's activities.

Carolyn Gullatt called the Saturday morning business meeting to order with the seating of new college and alumnae chapter delegates present at Convention for the first time. New college chapters are University of Tampa-ΔB, West Virginia Tech-III, University of Denver-P, all recolonized; Massachusetts-ΞA, Eastern Kentucky University-ΞB, University of Washington-K, recolonized, Radford University-ΞΔ, and University of San Francisco-ΞA. Lewisville-Lake Cities, Texas, alumnae chapter received its charter.

THE GREEK TRADITION - A PROUD HERITAGE

The Panhellenic luncheon, with NPC Delegate Dwayla Finch Porter presiding, welcomed 24 guests from NPC member groups. Table decorations of silk flowers on trellises were of the official flowers of the 26 member groups of National Panhellenic Conference.



Betty Schneider Fenton, LSU-Σ receives the Outstanding CCD Bracelet from former winner Mary Lou Barth. The bracelet is in memory of Alice Huenefeld.



The Schmitt Memorial Plaque for top scholarship is presented to a proud Beta Tau at Nebraska Wesleyan. (l to r) CCD Marvona Tavlin, chapter president Donna Larsen with presenter Teresa Severy.



The President's Pendant is back! Evelyn Adams Costello, third from left, National President from 1954 to 1958 and in whose honor the miniature was created, presented the handsome pendants to Norma Andrisek, Carolyn Gullatt and Lisbeth Francis.



The long awaited history is presented to President Carolyn by Historian Florence Miner.



Achoth winners present to receive their gold symbol bracelets from National President Carolyn Gullatt are Elsie Kuck Bailey, Brenau-AO and Jean Nelson Stockham, Eureka-II. Not pictured is Evalae Miles Pressly, UT-AT, who arrived at Convention later in the week.



Past National Presidents at Convention: Gertrude Houk Fariss, Lisbeth Innis Francis, Norma Minch Andrisek and (foreground) Evelyn Adams Costello. Not present when the picture was taken was Betty Heusch Agler.

Guest speaker was Delta Zeta's own, Gwen Moss McKeeman, Chairman of National Panhellenic Conference from 1975 to 1977. Gwen's own cheering squad, husband Bob, pretty daughter-in-law Ellen and of course ΔΖ daughter Marianne, National Reference Chairman, were among the special guests. Special music was provided by 1982 Woman of the Year Ethel Mae Bishop Gullette and her partner, Carmela Sharples, in a duo piano concert.

Afternoon workshops included a program on alcohol awareness presented by Thomas G. Goodale, Vice Chancellor for Student Affairs at the University of Denver and a financial seminar conducted by David Gaston and Michael Townsley of Coopers & Lybrand.

The theme of the Awards banquet was "ΔΖ - The Best Brand." Table decorations were large ΔΖ brands with colorful bandanas and miniature rubber stamp ΔΖ brands as favors. Deborah McWhirter Bruce, National Vice President of Membership presided. Presenting alumnae chapter awards were Mary Margaret Calhoun Fore, National Vice President Alumnae Affairs; Charlotte Fields Silversteen, National Director, and National Committee Chairmen Pat Beatty and Patricia Heneghan Pelkofer.

College chapter awards were presented by Debbie, Dwayla Porter, National Vice President Collegiate Affairs, and National Committee Chairmen Marcia Earl Humpal, Marianne McKeeman Cravens, Lee McFalls Rodekohr, Joan Dondrea Lowry and Margaret Stone Grosse.

Tears of joy and squeals of delight followed each announcement.

The late-night Western Roundup following the banquet consisted of songs and rush skits. Stephen F. Austin-ZΨ's *Ride, Sally, Ride* was the show-stopper!

PHILANTHROPY AND MUSEUM

Lucile Crowell Cooks, National Director and President of the National Historical Museum Board of Trustees was toastmistress for Sunday morning's Two Foundations breakfast. Sarah Jane Shank Houston, National Director and Secretary of the Founders Memorial Foundation was to have shared the podium with Lucile, but her husband's serious illness kept her from Convention.

A complete list of Foundation awards, grants and scholarships with pictures will follow in detail in the Winter issue of *The LAMP*.

A commemorative service to honor our Flame Eternal chapter was directed by Marvona Easley Tavlin, CCD for Nebraska Wesleyan-BT.

Noontime found three lines of Delta Zetas. One was for the delightful Texas buffet, another was at the polls for election of National Council officers, and the third and longest was to secure the autograph of our history author!

All available copies of our new history were sold as everyone sought the signature of its author, our National Historian Florence Miner. And the announced autograph party eventually turned into a "you sign my book, I'll sign yours" which reminded everyone of those days of high school yearbooks. (This Editor was Convention roommate of our most popular author, and yet here I am, days after Convention, with two copies of the history - and no autograph. How did that happen?)

Edward Moore King, Dean of Men and Fraternity/Sorority Advisor at Bradley University, spoke on the values of ritual at a Sunday afternoon meeting. "Ritual is a system of values and self-evaluation," he said. "This, along with the four characteristics of love—knowledge, care, respect and responsibility—will enhance sisterhood." Mr. King's presentation ended with the Convention delegates dividing into small groups to discuss feelings about ritual.



Mothers and daughters are always a special group at Convention. Standing are (l to r) Mary Skalyo Huch, Donna Huch, Shirlyn Chaffin, Susan Bass, Sondra Golden Bass, Mella Cooks Davies, Muriel Miller Albright, Marianne McKeeman Cravens, Susan Purdum Wahid, Ruby Gray Purdum, Kathy Schill and Elizabeth Mestas Schill. Seated are Alice Kualek Chaffin, Lucile Crowell Cooks, Willie Hooks Miller and Gwen Moss McKeeman.



Past National Officers "sat for their portrait" after the opening banquet. Back row (l to r) Arlene Newman, Jo Moore, Lucile Crowell Cooks, Sondra Golden Bass, Florence Hood Miner, Mary Lou McConnaughey Barth, Doris Ellingson Riede, Betty Schneider Fenton and Gwen Moss McKeeman. Seated are Constance Teaford Wilt, Mary Lou Ragel Vineyard, Carolyn McCandless Woodling, Grace Pritchard Gorham, National President Carolyn Gullatt and Betsy Bradley Leach.



Past National Officers (l to r) Louise Wadley Bianchi, Augusta Piatt Kelleway and Velma Lockridge McKee.

LAMPLIGHTING

Sunday night's Initiation banquet and service provided participants a time of reflection and renewal of vows of sisterhood. Toastmistress Mary Margaret Fore introduced the evening's program amidst a beautiful setting of white columns and soft candlelight.

Mary Ann Gallatin French, National Colonnade Chairman, introduced the members of the Order of the Golden Rose.

Dwayla Porter presented the six Caryatides statues to those chapters with pledge programs which best exemplify the ideals of Delta Zeta. This year's awards were presented to Virginia- $\Lambda\Delta$, Glenville State- $\Theta\Xi$, Virginia Tech-K Θ , Indiana-E, Lenoir Rhyne-Z Ξ and Nebraska Wesleyan-BT.

The long-awaited announcement of the name of the Convention initiate proved worth the wait. Carolyn Gullatt presented the 1983 candidate, Leda Marie Cooks, daughter of Richard Crowell Cooks and granddaughter of our Lucile.

"No precious heirloom handed down from grandmother to granddaughter could be more cherished than the gift of Delta Zeta. Like a piece of treasured lace, fragile and lovely, Delta Zeta is a blending of past and present, to be savored today and treasured for tomorrow.

"Leda Marie received such a gift Sunday evening."

She was born August 15, 1965 and has one brother, age 16. Other Delta Zetas in the family are aunts Mella Cooks Davies and Connie Cooks Roberts, and cousins Kim and Cathy Davies. All are members of Alpha chapter. Leda was an A student in high school and took her senior year at Florida Southern College through an early admissions program. She will transfer to Miami (Alpha) in the fall to pursue a major in engineering.

Preceding the processional to the initiation service, National Field Representative Judy Markel gave the legend of the Loving Cup. The beautiful and meaningful initiation service was conducted by members of Kappa Zeta chapter at North Texas State University under the

direction of CCD Mary Craver Denny and National Ritual Chairman Karen Kind Manuel.

WITH A YIP, A BARK AND A HOWL

Monday morning's Pups and Hounds breakfast proved once again that more than 500 people can arrive at a 7 a.m. breakfast if they anticipate fun activities. Mistress of Hounds Teresa Johnson Severy, National Director, kept the program moving as the various stages of "membership" in this organization were reached. The pups got to yip for one convention attendance, and so on through the counting.

The fifteen-year trio changed from the Andrews Sisters to the Four Freshman with the return of a Past National Officer. The climax was reached as our Great Dame Florence Miner (who *had* admitted to Golden Rose membership just the previous evening) received her bone award for 25 National Conventions. Later her province presented her with "silver ears" for her silver anniversary celebration barks.

Monday morning's business meeting included approving the 1983-1985 budget and the adoption of several amendments to the Constitution and Code of Regulations. The meeting lasted well past the noon hour, but with the promise of a "free" afternoon, delegates were attentive and businesslike.

THAT I MAY WALK TRULY IN THE LIGHT OF THE FLAME

At the close of Convention came the Installation banquet and with it was a reaffirmation of each Delta Zeta's commitment to promises made. The banquet theme "That I May Walk Truly in the Light of the Flame" was emphasized by table centerpieces of three tiered candle sets reflecting on mirrors. Past President Norma Andrisek presided over the presentation of awards by National Council and Past National Council members, and conducted the installation of the 1983-1985 National Council.

The Margaret Huenefeld Pease Council award, for



The coveted Council Tray is presented by Carolyn Gullatt to University of Virginia- $\Delta\Delta$ chapter. The CCD is Lou Williams and the president is Elizabeth Park.



Norma Andrisek presents the Founders Award to Delta Sigma chapter at Northeast Missouri State. (l to r) Norma, chapter president Lisa Heath and PCD Mary Tripodi.



The initiation team from North Texas State-KZ with CCD Mary Craver Denny.

the outstanding small alumnae chapter, was given to Orange County, California and the Myrtle Graeter Hinkly Council award, for the most outstanding large alumnae chapter, went to Greater Seattle alumnae chapter.

Florence Miner presented her award for the most outstanding junior collegian to Cathy Nott, Illinois-AB. Her court of honor included Rhonda Barry, William Jewell-ZP, and Randi Nevins, Baldwin-Wallace- $\Gamma\Lambda$. All three were elected chapter presidents so were there to receive the awards in person.

Anne Marie Gavin and Debbie Bruce, former winners of the Grace Mason Lundy award, announced the seven winners of this year's awards.

Past National President Betty Heusch Agler presented the award named for her to Nebraska Wesleyan-BT. Past National President Gertrude Houk Fariss presented the award bearing her name to Alabama at Huntsville-AK and the Huntsville alumnae chapter.

Beta Delta chapter at the University of South Carolina was the proud recipient of the See Loving Cup.

Norma Andrisek presented the Founders award, six silver candlesticks, to Northeast Missouri State- $\Delta\Sigma$ and to Auburn at Montgomery-AN. Carolyn Gullatt presented the Council award to the University of Virginia- $\Delta\Delta$.

A new award, called the Heritage Cup, will be given for the first time at the dedication of the Historical Museum and National Headquarters. It will be presented to the chapter which has made the most meaningful contributions to the Historical Museum.

The newly elected National Council was installed by Norma Andrisek and re-elected National President Carolyn Gullatt received the sorority gavels and the President's badge. Others who will serve for the next biennium are Teresa Johnson Severy, Charlotte Fields Silversteen, Marvona Easley Tavlin, Dianne Fellows Guild, Anne Marie Jones Gavin, Elizabeth Barbieri Bragg, Lucile Crowell Cooks, Phyllis Snape Favorite, Mary Margaret Calhoun Fore and Patricia Canady Rosser.

And thus was concluded the "loving-est, clapping-est and the standing-est" Convention ever held by Delta Zeta.



Twenty three members of the Order of the Golden Rose were introduced at the Initiation Banquet.

Convention Awards



The Gertrude Houk Fariss award for collegiate-alumnae chapter relations is presented by Gertrude to the Huntsville, AL alumnae chapter and the University of Alabama-Huntsville-AK chapter.



Norma Andrisek presents the Founders Award to Auburn University at Montgomery-AN. CCD is Ann Cheney and president is Renee Payne.

COUNCIL AWARD (silver tray)
University of Virginia-AA

FOUNDERS AWARD (silver candlesticks)
Northeast Missouri State University-ΔΣ
Auburn University at Montgomery-AN

BETTY HEUSCH AGLER AWARD
(traveling plaque with raised crest)
Nebraska Wesleyan University-BT

SEE LOVING CUP (traveling silver loving cup)
University of South Carolina-BΔ

GERTRUDE HOUK FARISS AWARD
(traveling silver punch bowl and tray)
Alabama at Huntsville-AK and
Huntsville Alumnae Chapter

MYRTLE GRAETER HINKLY COUNCIL AWARD (traveling silver coffee urn)
Greater Seattle Alumnae Chapter

MARGARET HUENEFELD PEASE COUNCIL AWARD (traveling silver coffee urn)
Orange County (CA) Alumnae Chapter

GENEVIEVE SCHMITT MEMORIAL PLAQUE (traveling scholarship award)
Nebraska Wesleyan University-BT

GRACE MASON LUNDY AWARDS
(gold symbol charm)
Julie House, Wisconsin-LaCrosse-ZO
Nancy Northey, Iowa State-BK

Carolyn Carter, Florida State-AΣ
Lori Montgomery, Houston-ΔΘ
Shelley Slaughter, Nebraska
Wesleyan-BT
Vickie Page, Jacksonville (AL)-AT
Sheila Martin, Glenville State-ΘΞ

FLORENCE HOOD MINER AWARD
(gold charm and cash award)
Cathy Nott, Illinois-AB

COURT (gold charm)
Rhonda Barry, William Jewell-ZP
Randi Nevins, Baldwin-Wallace-IA

ALICE HUENEFELD CCD BRACELET
(gold traveling bracelet)
Betty Schneider Fenton, LSU-Σ

ACHOTH AWARD (gold symbol bracelet)
Marylouise Leimgruber Appleton, AA
Tampa, FL

Elsie Kuck Bailey, AO
Pompano Beach, FL
Stella Cash Bell, Univ. of Okla.
Dallas, TX
(posthumously)
Dorothy Varley Breitweiser, AX
Fullerton, CA

Marylois Moran Dreiling, ΓY
Oklahoma City, OK
Fern Ebbert Gipe, EO
Reseda, CA
Sophia Prisner Griffith, P
Denver, CO

Drusilla Raber Krockenberger, ET
Warrensburg, MO
Dorothy Krebs Maledon, BP
St. Clair Shores, MI
Frances Morrow McFarland, AT
Tuscaloosa, AL



A proud Beta Delta at South Carolina and the See Loving Cup presented by Dianne Guild, left. CCD is Ruth Patterson and president is Jamie Hammill.



A beautiful new Delta Zeta: Convention initiate Leda Marie Cooks.



This trio at Convention noticed their good taste in dress so had their picture snapped for The LAMP. Left to right, Terri Perna, Fresno State-EE (who bought her dress at a large department store in California), National Secretary Dianne Guild (who purchased her dress in a small Ohio store) and Nan Brantley, Louisiana Tech-EE (whose dress came from a small Arkansas shop.)



National Vice President of Membership Debbie Bruce presides at the Awards Banquet.

Althea Aleka Miller, AI
Los Alamitos, CA
Frances Grimes Nicol, M
Berkeley, CA
EvaLee Miles Pressly, AT
San Antonio, TX
Dorothy Swanson Riehle, AB
Champaign, IL
Jean Nelson Stockham, II
Oklahoma City, OK
Daphne Stout Turk, AΣ
Long Beach, CA
Jean Hoeft Unruh, AB
Houston, TX

Nebraska Wesleyan-BT
Northwestern-AA
Shepherd College-KM

MEMBERSHIP (silver for filling quota/total)

23 Years
Louisiana State-Σ
21 Years
Miami-A
19 Years
Houston-ΔΘ
17 Years
Nebraska Wesleyan-BT
15 Years
Nicholls State-KA
10 Years
Illinois State-AP
8 Years
Iowa State-BK
William Jewell-ΘP
Stephen F. Austin-ZΨ
Texas A & M-ΛΞ
UNC-Charlotte-KΦ
Central Arkansas-EΞ

6 Years
Rhode Island-BA
Shippensburg-KΨ
Indiana-E
Northwestern (OK)-ΔO
Virginia-ΛΔ
Cal-Long Beach-ΔA

5 Years
Missouri-St. Louis-IΞ
Creighton-ΘH
Auburn-BΞ
Georgia State-ΔΔ
Bowling Green-I'T

4 Years
Indiana-Evansville-AB
Northeastern (OK)-ΔΦ
Louisville-BT

3 Years
Glassboro-ΞK
Pittsburgh-O
Shepherd-KM
Youngstown-KX
Wisconsin-Stout-ZB
Wisconsin-Whitewater-EK
Fort Hays-ΔΩ
Northern Kentucky-KB
Auburn at Montgomery-AN
Arkansas Tech-AA

2 Years
Connecticut-I'B
Baldwin-Wallace-ΓA
Ohio State-Θ
Wright State-KI
Ferris-ZN
Eastern Illinois-ΓN
East Carolina-ZA
Western Carolina-ΘI
Old Dominion-ΘΦ
Virginia Tech-KΘ

MEMBERSHIP (silver certificates)
Rhode Island-BA
Connecticut-I'B

Collegiate Chapter Awards

ACTIVITIES AWARDS (silver)

Bowling Green-I'T
Alabama-AΓ
UNC-Charlotte-KΦ
Iowa State-BK
Virginia Tech-KΘ
Georgia State-ΔΔ
(certificates)
Stephen F. Austin-ZΨ
Ashland-ΘΨ
Fort Hays State-ΔΩ
Nebraska Wesleyan-BT
Wisconsin-Whitewater-EK
Findlay-ΘT

PHILANTHROPY (silver)

Texas A & M-ΛΞ
Bowling Green-I'T
Georgia State-ΔΔ
Miami-A
Youngstown-KX
Northwestern-AA
Nicholls-KA

SCHOLARSHIP (silver)

Nebraska Wesleyan-BT
Virginia-ΛΔ
Ashland-ΘΨ
Wisconsin-Stout-ZB
Indiana-E
Winthrop-ΛΣ
(certificates)
Auburn at Montgomery-AN
Cal State-LA-ΘP

STANDARDS (silver)

Concord-EΔ
Youngstown-KX
Bowling Green-I'T
Wisconsin-Whitewater-EK
Louisiana Tech-ΞE
(certificates)
Virginia-ΛΔ
San Jose State-I'Λ



Delta Zeta Subscriptions
P. O. Box 24145
Columbus, Ohio 44017



Being recognized for her contribution to the Delta Zeta chapter at Nebraska Wesleyan-BT chapter. Left is Donna Larsen, president, and right is Marvona Tavlin, CCD.



Caraytides awards for outstanding pledge training are presented by Dwayla Porter. Back row (l to r) Lou Williams, CCD and president Elizabeth Park of Virginia-ΔΔ; Dwayla Porter; Melanie Smith, president and Sondra Bass, PCD, Lenoir Rhyne-ZΞ, and Nebraska Wesleyan-BT's Marvona Tavlin, CCD and president Donna Larsen. Front row, Gail Verley, PAD and Linda Mitchell, Virginia Tech-KΘ, Catherine Lynch, CCD and president Carol Sullivan, Indiana-E, and Ann Cheney, CCD and president Renee Payne, Auburn at Montgomery-AN.

New Hampshire-ΘΓ
Rider-ΙΚ
Shippensburg-KΨ
Ashland-ΘΨ
Baldwin-Wallace-ΓΑ
Bowling Green-ΙΤ
Miami-A
Ohio State-Θ
Central Michigan-ΓΨ
Indiana-E
Indiana-Evansville-ΔΒ
Wisconsin-Stout-ZΒ
Eastern Illinois-ΓΝ
Northern Illinois-ΓΡ
Iowa State-BK
Central Missouri-EΓ
Missouri-St. Louis-ΙΞ
Northeast Missouri-ΔΣ
Northwest Missouri-ΕΡ
William Jewell-ZΡ
Creighton-ΘΗ
Nebraska Wesleyan-BT
Northern Colorado-ΔΞ
Cal-Fullerton-ΙΥ
Cal-Long Beach-ΔΑ
Cal-Chico-ΔΧ
San Jose State-ΓΑ
Central State (OK)-ΕΥ
Northeastern (OK)-ΔΦ
Houston-ΔΘ
Angelo State-ΑΟ
North Texas State-KZ
Southwest Texas-ΙΔ
Stephen F. Austin-ZΨ
Texas-Arlington-ΙΨ
Texas A & M-ΑΞ
West Texas State-ZZ
LSU-Σ
Nicholls State-KΑ
Louisville-ΙΒ
Northern Kentucky-KΒ
Appalachian-ΑΦ

East Carolina-ZΑ
Lenoir Rhyne-ZΞ
UNC-Charlotte-KΦ
South Carolina-BΔ
Western Carolina-ΙΘ
Winthrop-ΑΣ
Georgia College-ΑΠ
Georgia State-ΔΔ
Alabama-ΑΓ
Alabama-Huntsville-ΑΚ
Auburn-BΞ
Auburn-Montgomery-ΑΝ
Jacksonville (AL)-ΑΓ
Florida State-ΑΣ
Tampa-ΔΒ
Virginia-ΑΔ
Virginia Tech-KΘ
Arkansas Tech-ΔΑ
Central Arkansas-EΞ

SORORITY EDUCATION (certificates for excellence)
Pittsburgh-O
Mansfield-ΙΘ
Southern Maine-ΔΖ
Fairmont-EΙ
Missouri-St. Louis-ΙΞ
Drexel-EΖ
Nebraska Wesleyan-BT
DePaul-ΘΘ

PLEDGE TRAINING
(Caraytides)
Virginia-ΑΔ
Glennville-ΘΞ
Virginia Tech-KΘ
Indiana-E
Lenoir Rhyne-ZΞ
Nebraska Wesleyan-BT
(certificates)
Slippery Rock-ZΦ
Central Michigan-ΓΨ

Ferris-ZN
Iowa State-BK
Concord-EΔ
Alabama at Huntsville-ΑΚ
Bowling Green-ΙΤ

FOR EXCELLENCE IN NEWSLETTERS
(certificates)
Associations
Pittsburgh-O
North East Missouri-ΔΣ



The President's Plaque will hang in the home of the National President's chapter at Louisiana Tech this biennium. National President Carolyn Gullatt and chapter president Nancy Carwile.



A beautiful new Delta Zeta: Convention initiate Leda Marie Cooks.



This trio at Convention noticed their good taste in dress so had their picture snapped for *The LAMP*. Left to right, Terri Perna, Fresno State-EE (who bought her dress at a large department store in California), National Secretary Dianne Guild (who purchased her dress in a small Ohio store) and Nan Brantley, Louisiana Tech-EE (whose dress came from a small Arkansas shop.)



National Vice President of Membership Debbie Bruce presides at the Awards Banquet.

Althea Aleka Miller, AI
Los Alamitos, CA
Frances Grimes Nicol, M
Berkeley, CA
Evalee Miles Pressly, AT
San Antonio, TX
Dorothy Swanson Riehle, AB
Champaign, IL
Jean Nelson Stockham, II
Oklahoma City, OK
Daphne Stout Turk, AS
Long Beach, CA
Jean Hoeft Unruh, AB
Houston, TX

Collegiate Chapter Awards

ACTIVITIES AWARDS (silver)

Bowling Green-IT
Alabama-AT
UNC-Charlotte-KΦ
Iowa State-BK
Virginia Tech-KΘ
Georgia State-ΔΔ
(certificates)
Stephen F. Austin-ZΨ
Ashland-ΘΨ
Fort Hays State-ΔΩ
Nebraska Wesleyan-BT
Wisconsin-Whitewater-EK
Findlay-ΘT

PHILANTHROPY (silver)

Texas A & M-ΛΞ
Bowling Green-IT
Georgia State-ΔΔ
Miami-A
Youngstown-KX
Northwestern-AA
Nicholls-KA

SCHOLARSHIP (silver)

Nebraska Wesleyan-BT
Virginia-ΛΔ
Ashland-ΘΨ
Wisconsin-Stout-ZB
Indiana-E
Winthrop-ΛΣ
(certificates)
Auburn at Montgomery-AN
Cal State-LA-ΘP

STANDARDS (silver)

Concord-EΔ
Youngstown-KX
Bowling Green-IT
Wisconsin-Whitewater-EK
Louisiana Tech-ΞE
(certificates)
Virginia-ΛΔ
San Jose State-ΓΛ

Moving?

A change of address card is inserted in this magazine for your convenience. If you are prompt to send Delta Zeta your new address, it can be entered in the LAMP magazine file before the next issue is mailed.

William Jewell-OT
Stephen F. Austin-ZΨ
Texas A & M-ΛΞ
UNC-Charlotte-KΦ
Central Arkansas-ΞE

6 Years
Rhode Island-BA
Shippensburg-KΨ
Indiana-E
Northwestern (OK)-ΔO
Virginia-ΛΔ
Cal-Long Beach-ΔA

5 Years
Missouri-St. Louis-IE
Creighton-ΘH
Auburn-BΞ
Georgia State-ΔΔ
Bowling Green-IT

4 Years
Indiana-Evansville-AB
Northeastern (OK)-ΔΦ
Louisville-BT

3 Years
Glassboro-ΞK
Pittsburgh-O
Shepherd-KM
Youngstown-KX
Wisconsin-Stout-ZB
Wisconsin-Whitewater-EK
Fort Hays-ΔΩ
Northern Kentucky-KB
Auburn at Montgomery-AN
Arkansas Tech-ΛA

2 Years
Connecticut-ΓB
Baldwin-Wallace-ΓA
Ohio State-Θ
Wright State-KI
Ferris-ZN
Eastern Illinois-ΓN
East Carolina-ZΛ
Western Carolina-ΘI
Old Dominion-ΘΦ
Virginia Tech-KΘ

MEMBERSHIP (silver certificates)

Rhode Island-BA
Connecticut-ΓB



Betty Heusch Agler presents the award named for her to Nebraska Wesleyan-BT chapter. Left is Donna Larsen, president, and right is Marvona Tavlin, CCD.



Caraytides awards for outstanding pledge training are presented by Dwayla Porter. Back row (l to r) Lou Williams, CCD and president Elizabeth Park of Virginia-ΛΔ; Dwayla Porter; Melanie Smith, president and Sondra Bass, PCD, Lenoir Rhyne-ZΞ, and Nebraska Wesleyan-BT's Marvona Tavlin, CCD and president Donna Larsen. Front row, Gail Verley, PAD and Linda Mitchell, Virginia Tech-KΘ, Catherine Lynch, CCD and president Carol Sullivan, Indiana-E, and Ann Cheney, CCD and president Renee Payne, Auburn at Montgomery-AN.

New Hampshire-ΘΓ
Rider-ΙΚ
Shippensburg-KΨ
Ashland-ΘΨ
Baldwin-Wallace-ΓΑ
Bowling Green-ΓΤ
Miami-A
Ohio State-Θ
Central Michigan-ΓΨ
Indiana-E
Indiana-Evansville-ΛB
Wisconsin-Stout-ZB
Eastern Illinois-ΓΝ
Northern Illinois-ΓΡ
Iowa State-BK
Central Missouri-EΓ
Missouri-St. Louis-ΙΞ
Northeast Missouri-ΔΣ
Northwest Missouri-EP
William Jewell-ZP
Creighton-ΘH
Nebraska Wesleyan-BT
Northern Colorado-ΔΞ
Cal-Fullerton-ΙΥ
Cal-Long Beach-ΔΑ
Cal-Chico-ΔΧ
San Jose State-ΓΑ
Central State (OK)-EY
Northeastern (OK)-ΔΦ
Houston-ΔΘ
Angelo State-ΛO
North Texas State-KZ
Southwest Texas-ΙΔ
Stephen F. Austin-ZΨ
Texas-Arlington-ΙΨ
Texas A & M-ΛΞ
West Texas State-ZZ
LSU-Σ
Nicholls State-KA
Louisville-ΓB
Northern Kentucky-KB
Appalachian-ΛΦ

East Carolina-ZΛ
Lenoir Rhyne-ZΞ
UNC-Charlotte-KΦ
South Carolina-BΔ
Western Carolina-ΙΘ
Winthrop-ΛΣ
Georgia College-ΑΠ
Georgia State-ΔΔ
Alabama-ΑΓ
Alabama-Huntsville-ΛK
Auburn-BΞ
Auburn-Montgomery-AN
Jacksonville (AL)-ΑΓ
Florida State-ΑΣ
Tampa-ΔB
Virginia-ΛΔ
Virginia Tech-KΘ
Arkansas Tech-ΔΑ
Central Arkansas-EΞ

SORORITY EDUCATION (certificates for excellence)

Pittsburgh-O
Mansfield-ΙΘ
Southern Maine-ΛZ
Fairmont-EΙ
Missouri-St. Louis-ΙΞ
Drexel-EZ
Nebraska Wesleyan-BT
DePaul-ΘΘ

PLEDGE TRAINING

(Caraytides)
Virginia-ΛΔ
Glenville-ΘΞ
Virginia Tech-KΘ
Indiana-E
Lenoir Rhyne-ZΞ
Nebraska Wesleyan-BT (certificates)
Slippery Rock-ZΦ
Central Michigan-ΓΨ

Ferris-ZN
Iowa State-BK
Concord-EΔ
Alabama at Huntsville-ΛK
Bowling Green-ΓΤ

FOR EXCELLENCE IN NEWSLETTERS

(certificates)
Associations
Pittsburgh-O
North East Missouri-ΔΣ



The President's Plaque will hang in the home of the National President's chapter at Louisiana Tech this biennium. National President Carolyn Gullatt and chapter president Nancy Carwile.

Chapters

Central Michigan-IΨ
Wisconsin-Whitewater-EK
Edinboro-IA
UNC-Charlotte-KΦ
Michigan Tech-ΛΘ

Outstanding Newsletters

South Carolina-BΔ
Fort Hays State-ΔΩ
Louisiana Tech-ΞE
Shippensburg-KΨ
Eastern Kentucky-ΞB

Alumnae Chapter Awards

ALUMNAE CHAPTER EXCELLENCE

(crested portfolios)
Cleveland Eastside, OH
Dallas, TX
Denver, CO
Fairfield County, CT
Gold Coast Area, FL
Greater Seattle, WA
Harrisburg, PA
Long Beach, CA
Oklahoma City, OK
Orange County, CA
Portland, OR
Sacramento, CA

OUTSTANDING CHAPTER

ACHIEVEMENT (crested notebooks)

Arlington, TX
Austin, TX
Clay-Platte, MO
Los Angeles, CA
Omaha, NE
Raleigh, NC
Shreveport, LA
Tulsa, OK

CHAPTER ACHIEVEMENT

(certificates)

Alva, OK
Bloomington, IN
Chester County, PA
El Paso, TX
Franklin, IN
Indianapolis, IN
Indianapolis South Suburban, IN
Johnson-Wyandotte Counties, KS
Lawrence, KS
Lehigh County, PA
St. Louis, MO
San Antonio, TX
South Bay, CA
Texas Panhandle, TX
Warrensburg, MO
Whittier-West Covina, CA



The Myrtle Graeter Hinkly Council award to the most outstanding large alumnae chapter is presented by Mary Margaret Fore to Greater Seattle's president Carin Steckler.

MEMBERSHIP

(Silver, small revere bowl)

Baton Rouge, LA

(certificates)

Alva, OK
Ames, IA
Arlington, TX
Aurora, IL
Bloomington, IN
Bloomington-Normal, IL
Cleveland-Westside, OH
Fort Collins, CO
Franklin, IN
Greencastle, IN
Humboldt County, CA
Kent, OH
Lawrence, KS
Manhattan, KS
Monterey Peninsula, CA
San Francisco-Bay Cities, CA
Texas Panhandle, TX
Warrensburg, MO

ATTENDANCE (certificates)

Alva, OK
Ames, IA
Anderson, IN
Arlington, TX
Auburn, AL
Aurora, IL
Bartlesville, OK
Berea, OH
Bloomington, IN
Bloomington-Normal, IL
Canton-Massillon, OH
Carbondale, IL
Central San Fernando Valley, CA
Champaign-Urbana, IL
Charleston, WV
Chester County, PA

Clay-Platte, MO
Clearwater, FL
Cleveland-Westside, OH
Des Moines, IA
Edmond, OK
El Paso, TX
Enid, OK
Evansville, IN
Fairfield County, CT
Fairmont, WV
Findlay, OH
Fort Walton Beach Area, FL
Franklin, IN
Grand Rapids, MI
Greencastle, IN
Harrisburg, PA
Houston, TX
Humboldt County, CA
Huntsville, AL
Indianapolis South Suburban, IN
Iowa City, IA
Jacksonville, FL
Johnson-Wyandotte Counties, KS
Kent, OH
Lafayette, IN
Las Cruces, NM
Lawrence, KS
Los Angeles, CA
Metropolitan Detroit, MI
Monterey Peninsula, CA
Montgomery, AL
Mount Diablo, CA
Muncie, IN
Oakland County, MI
Oklahoma City, OK
Omaha, NE
Orange County, CA
Pasadena Foothill, CA



The Margaret Huenefeld Pease award to the most outstanding small alumnae chapter is presented by Charlotte Silversteen to Orange County, California's president, Mary Lou Markling.



Suede portfolios were presented by Mary Margaret Fore to alumnae chapters maintaining Chapter Excellence.



Charlotte Silversteen (center) presented crested notebooks to alumnae chapters for Outstanding Chapter Achievement.

Philadelphia North Suburban, PA
Phoenix, AZ
Raleigh, NC
Saginaw, MI
San Francisco Peninsula, CA
San Francisco-Bay Cities, CA
Santa Monica, CA
State College, PA
South Bay, CA
Twin Cities, MN
Warrensburg, MO
Whittier-West Covina, CA
Wichita, KS
Wilmington, DE
Wooster, OH

PROVINCE AND NATIONAL COOPERATION

(certificates)

Alva, OK
Arlington, TX
Atlanta, GA
Austin, TX
Bartlesville, OK
Berea, OH
Birmingham, AL
Central San Fernando Valley, CA
Charleston, WV
Charlotte, NC
Chester County, PA
Cleveland-Eastside, OH
Colorado Springs, CO
Columbus, OH
Corpus Christi, TX
Dallas, TX
Dayton, OH
Denver, CO
Edmond, OK
El Paso, TX
Enid, OK
Fairfield County, CT
Fairmont, WV
Fort Walton Beach Area, FL
Gold Coast Area, FL
Greater Seattle, WA
Harrisburg, PA
Houston, TX
Humboldt County, CA
Huntsville, AL
Indianapolis, IN

Indianapolis South Suburban, IN
Johnson-Wyandotte Counties, KS
Kent, OH
Las Cruces, NM
Lehigh County, PA
Lincoln, NE
Long Beach, CA
Los Angeles, CA
Monterey Peninsula, CA
Montgomery, AL
Mount Diablo, CA
Nashville, TN
Oklahoma City, OK
Omaha, NE
Orange County, CA
Orlando-Winter Park, FL
Pasadena-Foothill, CA
Philadelphia North Suburban, PA
Portland, OR
Raleigh, NC
Sacramento, CA
St. Petersburg, FL
San Antonio, TX
San Francisco-Bay Cities, CA
San Francisco Peninsula, CA
Santa Monica, CA
Sarasota-Bradenton, FL
Shreveport, LA
South Bay, CA
State College, PA
Texas Panhandle, TX
Tulsa, OK
Twin Cities, MN
Warrensburg, MO
Whittier-West Covina, CA

PROGRAMS *(Certificates)*

Alva, OK
Arlington, TX
Austin, TX
Bartlesville, OK
Berea, OH
Birmingham, AL
Central San Fernando Valley, CA
Charleston, WV
Charlotte, NC
Chester County, PA
Cleveland-Eastside, OH
Columbus, OH
Corpus Christi, TX

Dallas, TX
Denver, CO
Edmond, OK
El Paso, TX
Enid, OK
Fairfield County, CT
Flint, MI
Grand Rapids, MI
Greater Kansas City, MO
Greater Seattle, WA
Gold Coast Area, FL
Harrisburg, PA
Houston, TX
Humboldt County, CA
Huntsville, AL
Indianapolis, IN
Indianapolis South Suburban, IN
Johnson-Wyandotte County, KS
Kent, OH
Las Cruces, NM
Lawrence, KS
Long Beach, CA
Los Angeles, CA
Metropolitan Detroit, MI
Monterey Peninsula, CA
Montgomery, AL
Mt. Diablo, CA
Muncie, IN
Nashville, TN
New Orleans, LA
Oakland County, MI
Oklahoma City, OK
Omaha, NE
Orange County, CA
Pasadena-Foothill, CA
Philadelphia North Suburban, PA
Portland, OR
Raleigh, NC
Sacramento, CA
San Antonio, TX
San Francisco Bay Cities, CA
San Francisco Peninsula, CA
Santa Monica, CA
Shreveport, LA
South Bay, CA
Spokane, WA
State College, PA
Texas Panhandle, TX
Toledo, OH



National Committee Chairmen: Standing (l to r) Karen Soyk Fellows, Patricia Heneghan Pelkofer, Lisbeth Innis Francis, Lee McFalls Rodekohr, Christa Creason Chausee, Marcia Earl Humpal and Mary Ann Gallatin French. Seated are Priscilla Beatty, Sherrie Campbell Loader, Margaret Stone Grosse, Florence Hood Miner, Ruth Heller Horton, Karen Kind Manuel, Joan Dondrea Lowry and Marianne McKeeman Cravens.



Convention coordinators - Anne Marie's Troops - are (l to r) Cindy Winslow, Carol Carson Konet, chairman Anne Marie Jones Gavin, Karen Kind Manuel, Marcia Earl Humpal and Lee Ann Martin.

Tulsa, OK
Twin Cities, MN
Warrensburg, MO
Whittier-West Covina, CA
Wichita, KS

COLLEGIATE RELATIONS

(Certificates)

Alva, OK
Arlington, TX
Auburn, AL
Austin, TX
Bayou Area, LA
Beaumont, TX
Berea, OH
Birmingham, AL
Bloomington, IN
Bloomington-Normal, IL
Brazo Valley, TX
Central San Fernando Valley, CA
Charleston, WV
Charlotte, NC
Clay-Platte, MO
Columbus, OH
Dallas, TX
Denver, CO
Edmond, OK
El Paso, TX
Fairfield County, CT
Fairmont, WV
Findlay, OH
Franklin, IN
Greater Seattle, WA
Greencastle, IN
Houston, TX
Huntsville, AL
Indianapolis South Suburban, IN
Iowa City, IA
Las Cruces, NM
Lehigh County, PA
Lincoln, NE
Long Beach, CA
Los Angeles, CA
Milledgeville, GA
Montgomery, AL
Monterey Peninsula, CA

Muncie, IN
Nashville, TN
Oklahoma City, OK
Omaha, NE
Orange County, CA
Pasadena-Foothill, CA
Portland, OR
Raleigh, NC
Sacramento, CA
St. Louis, MO
San Antonio, TX
San Francisco Bay Cities, CA
Santa Monica, CA
Shreveport, LA
South Bay, CA
Tampa, FL
Texas Panhandle, TX
Twin Cities, MN
Warrensburg, MO
Whittier-West Covina, CA

WAYS & MEANS (Certificates)

Alva, OK
Central San Fernando Valley, CA
Cleveland Eastside, OH
Columbus, OH
Corpus Christi, TX
Dallas, TX
Denver, CO
Des Moines, IA
Enid, OK
Findlay, OH
Franklin, IN
Gold Coast Area, FL
Greater Seattle, WA
Houston, TX
Humboldt County, CA
Huntsville, AL
Johnson-Wyandotte, KS
Lawrence, KS
Lehigh County, PA
Lincoln, NE
Long Beach, CA
Los Angeles, CA
Monterey Peninsula, CA
Northeastern NJ

Oklahoma City, OK
Omaha, NE
Orange County, CA
Pasadena-Foothill, CA
Raleigh, NC
Sacramento, CA
San Francisco Bay Cities, CA
Santa Monica, CA
Shreveport, LA
South Bay, CA
Tulsa, OK
Twin Cities, MN
Whittier-West Covina, CA

PHILANTHROPY

SUSTAINED EXCELLENCE

(Certificate)
Huntsville, AL

Large Chapter Excellence (Crystal and pewter bud vase)
Dallas, TX

Small Chapter Excellence (Crystal and pewter bud vase)
Saginaw, MI

(Certificates)

Central San Fernando Valley, CA
Clay-Platte, MO
Cleveland Eastside, OH
Columbus, OH
Corpus Christi, TX
Dallas, TX
Denver, CO
Findlay, OH
Gold Coast Area, FL
Huntsville, AL
Johnson-Wyandotte Counties, KS
Lawrence, KS
Long Beach, CA
Los Angeles, CA
Oklahoma City, OK
Omaha, NE

Pasadena-Foothill, CA
 Portland, OR
 Saginaw, MI
 Santa Monica, CA
 Whittier-West Covina, CA

NEWSLETTERS (Certificates)

Sustained Excellence

Charleston, WV
 Chicago, IL
 Cleveland Eastside, OH
 Corpus Christi, TX
 Gold Coast Area, FL
 Dallas, TX
 Denver, CO
 Findlay, OH
 Indianapolis, IN
 Lincoln, NE
 Long Beach, CA
 Metropolitan Detroit, MI
 New Orleans, LA
 Northeastern, NJ
 Oakland County, MI
 Oklahoma City, OK
 Orange County, CA
 Pasadena-Foothill, CA
 Portland, OR
 Saginaw, MI
 San Antonio, TX
 Shreveport, LA
 Southern, NJ
 Tulsa, OK

Excellence

Berea, OH
 Charlotte, NC
 Colorado Springs, CO
 Dayton, OH

Houston, TX
 Jacksonville, FL
 Los Angeles, CA
 Twin Cities, MN
 Sacramento, CA
 Texas Panhandle, TX

Outstanding

Akron, OH
 Austin, TX
 Cleveland Westside, OH
 Columbus, OH
 Fairfield County, CT
 Grand Rapids, MI
 Huntsville, AL
 Miami, FL
 Phoenix, AZ
 Raleigh, NC
 St. Louis, MO
 Central San Fernando Valley, CA
 South Bay, CA
 Toledo, OH

PRESSBOOK

Excellence

Tulsa, OK

Outstanding

Oklahoma City, OK
 Clay-Platte, MO

YEARBOOK

Alva, OK
 Arlington, TX
 Bartlesville, OK
 Berea, OH
 Central San Fernando Valley, CA
 Charleston, WV
 Charlotte, NC

Cleveland Eastside, OH
 Colorado Springs, CO
 Columbus, OH
 Corpus Christi, TX
 Dallas, TX
 Denver, CO
 El Paso, TX
 Findlay, OH
 Flint, MI

Ft. Collins, CO
 Gold Coast Area, FL
 Greater Kansas City, MO
 Greater Seattle, WA
 Harrisburg, PA
 Houston, TX
 Huntsville, AL
 Indianapolis, IN
 Jacksonville, FL
 Lehigh County, PA
 Lincoln, NE
 Long Beach, CA
 Muncie, IN
 Oakland County, MI
 Oklahoma City, OK
 Omaha, NE
 Orange County, CA
 Orlando-Winter Park, FL
 Portland, OR
 Raleigh, NC
 St. Louis, MO
 San Antonio, TX
 San Francisco Bay Cities, CA
 Shreveport, LA
 Southwest FL
 Spokane, WA
 Texas Panhandle, TX
 Tulsa, OK
 Twin Cities, MN
 *Cedar Rapids, IA
 (Fee Paid Club)

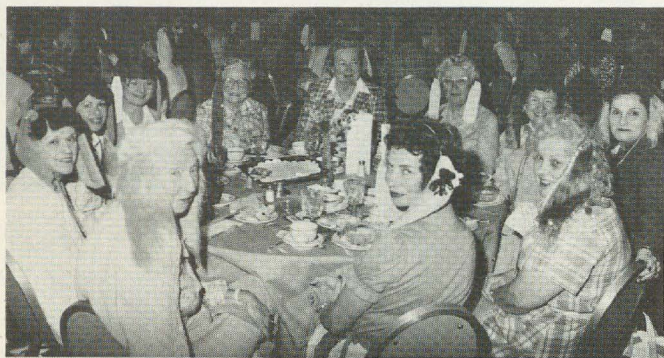


A sampling of the history display in the Rose Shop.



One of the busiest rooms at Convention was the LAMPKIN office. Taking time out to smile - and not even looking sleepy - are Susan Mease (left) and Jo Moore (right), reporters, with LAMPKIN Editor Diane Jones Skelton.

Pups and Hounds Breakfast



There's always one table of strictly hounds. Clockwise, from 7 o'clock, Florence Miner, Norma Andrisek, Carolyn Woodling, Jo Moore, Evelyn Costello, Doris Riede, Grace Gorham, Gwen McKeeman, Carolyn Gullatt, Lisbeth Francis and Sandra Horton.



Would that we had color to show you how well President Carolyn's vivid yellow fluffy ears compliment that gorgeous hot pink silk dress.



The Cooks family act: Daughter Mella Davies, Grandmother Lucile and Convention initiate Leda Marie.



Is it 9? A good group! Shirlyn Chaffin, Elaine Scott, Mary Ann French, Carolyn Gullatt, Stenotypist Taylor Reese, Lisbeth Francis and Gail McKee.



The "hunting dawgs" did their own thing!



The Four Freshmen of 15 Conventions: Gus Kelleway, Mary Lou Barth, Carol Harper and Gwen McKeeman.



These two couldn't decide whether to yip or howl for 18. Do note the color coordinated ears, complete with sequins. They will probably scalp us for this one . . . Mary Lou Vineyard and Evelyn Costello.

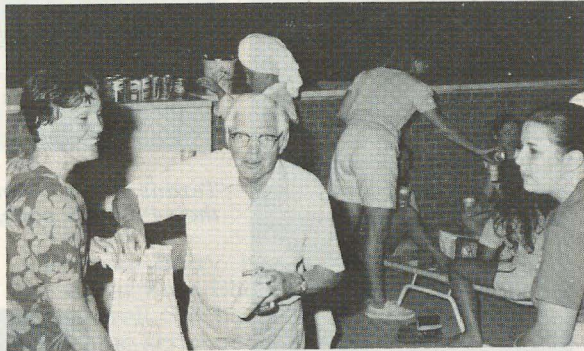


This group has a leader: Sondra Bass, Anne Marie Gavin, Elizabeth Schill, Mary Margaret Fore and Barbara Shelton.

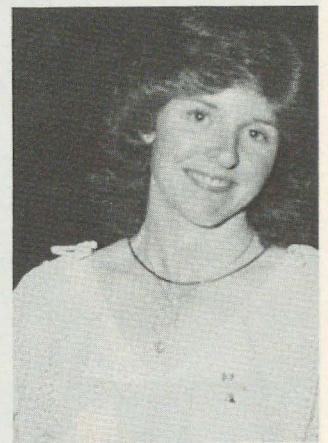
and . . . Here and There



All alone, but needing no help, is Gertrude Fariss with 19.



Province I: Bill Gullette, husband of 1982 Woman of the Year Ethel Mae, offers chips and coke to the roving photographer.



The only reason for this is she's such a delightful daughter!



"Great Dame" Florence, Top Dog! Her escort is Mistress of Hounds Terri Severy.



Mothers of sons rush HARDER! Scott Thompson Douget and Diane Skelton are at the Awards banquet with Diane's niece Julia, a visitor from Dallas.



Lisa Carren Malka, North Texas State-KZ and daughter Jocelyn were part of Dallas' hospitality team. Two year old Jocelyn is wearing her "I Love ΔZ" button.



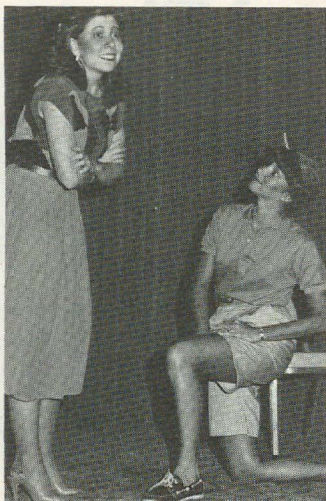
A beautiful moment in time. President Carolyn and daughter, Julie.



Four lovely ladies from Oklahoma: Debbie Berman, CCD at Central State-EY; Vice President Debbie; Shawn O'Halloran, OSU-AE president and Vice President Dee.



Famous "Sherry" in costume for her role in Stephen F. Austin-ZΨ's show-stopper, Ride, Sally, Ride.



Lambda Xis at Texas A & M present "Olivia" to the Western Roundup audience.



Texans were so numerous they rented a banquet room for their Province party. Here are some of the hostesses.



It happens to everyone sooner or later!



State Reference Chairmen Ruby Gray Purdum (Oklahoma), Sandra Sebrell Bailey (Ohio), Ann Clay Elkins Hawkins (Texas), and Martha Henry Burde (Northern California) with National Reference Chairman Marianne McKeeman Cravens (center). Not pictured is Karen Fellows Soyk (Washington).

**And that was
Convention,
1983.**

Florence Miner Award Winner and Court of Honor



It was exciting that the Florence Hood Miner award winner and her court were at Convention to receive their awards in person. With the donor (second left) are, left, Cathy Nott, Illinois-AB, the recipient, and Randi Nevins, Baldwin-Wallace-ΓA, and Rhonda Berry, William Jewell-ZP, Court of Honor.

**by Florence Hood Miner,
Illinois-AB**

All of the collegians honored with the Florence Hood Miner award were present at the Dallas Convention, which added to the presentation.

The winner was Cathy Nott, president of Alpha Beta chapter at the University of Illinois. Cathy's room in the Delta Zeta chapter house in Urbana is covered with certificates from the many honoraries of which she is a member. Among them the scholastic organizations of Alpha Lambda Delta, Phi Eta Sigma, James Scholars, and Phi Mu Epsilon vied with her Deans List and Phi Kappa Phi honors. On the activity side she was chosen for Mortar Board, Torch, and Golden Key. She will graduate next May with a strong background in mathematics and computer science, as well as a teaching certificate.

On the Court were two other chapter presidents and Convention delegates.

Rhonda Barry has distinguished herself at Zeta Rho chapter at William Jewell. She has a William Jewell Academic scholarship, Arnote Foundation scholarship, Rotary Club award, and a DAR award for studies in history. Listed on the Dean's list, she is a member of Alpha Lambda Delta, on the yearbook and Panhellenic Council. The Student body voted her First Princess during Homecoming, and she was this Spring tapped for Mortar Board and Delta Mu Delta. An accounting major, she will work for a CPA certificate.

Randi Nevins is president of Gamma Alpha chapter at Baldwin-Wallace college. The outstanding Ohio province member, her original song won the prize at Province Day. A member of Kappa Delta Pi, she has a 4 point grade average in Education. She was also chosen for Pi Kappa Delta, Omicron Delta Kappa, and received the Presidential Honorary

Scholarship last year.

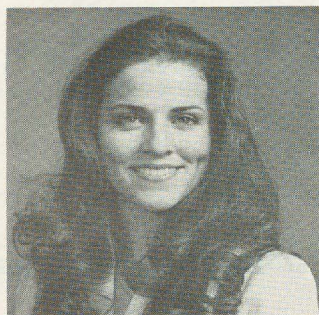
Randi has a major in Speech/Communications and Musical Theatre, with a minor in psychology. A talented woman herself, she had led her chapter to win the interfraternity sing, and the song contest at Ohio State Day.

AT Reunion Planned

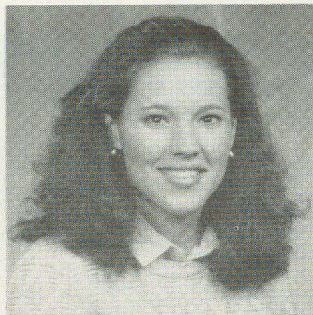
The University of Texas at Austin is celebrating its 100th year as a major national university. A highlight of the university's centennial year will occur on Saturday, October 1, 1983. The entire UT-Austin campus community will participate in a program designed to assist visitors as they learn about the 100th year activities and priorities of the institution.

Alumnae of Alpha Tau chapter of Delta Zeta are planning a nationwide reunion to be held on this day. A lavish brunch will be held from 11:30 a.m. until 1:30 p.m. at the elegant Caswell House, an historic, restored mansion at West Avenue and Fifteenth Street, near the campus. During the brunch, a presentation and discussion concerning the proposed recolonization of Alpha Tau chapter at the University of Texas will be conducted. For further information, contact Austin alumnae chapter president Melissa Stallones Knippa, 3604 Piute Trail, Austin, Texas, 78749. Telephone: 512/282-0234.

GML Award Winners



Vickie Page, Jacksonville State-ΔΓ



Shelly Slaughter, Nebraska Wesleyan-BT



Sheila Ann Martin, Glenville State-ΘΞ

The 1983 recipients of the Grace Mason Lundy award were announced at the Convention Installation Banquet by past award winners and National Council members Deborah McWhirter Bruce and Anne Marie Jones Gavin.

This award, presented annually, is given to those senior Delta Zetas who fulfill requirements for loyalty, devotion and service to their chapters and to Delta Zeta.

Vickie Wylene Page Jacksonville State University-ΔΓ

"As a collegian, Delta Zeta has been my life," wrote Vickie Page. "Delta Zeta has touched my life, my heart and my soul. Our chapter has grown from a chapter with only 25 members to one with 80 members. As an older member, I have seen the warmth, love and friendship touch each of our new members. Delta Zeta means receiving this special love and friendship in your heart."

Those who know Vickie credit her personally for a tremendous part of this success story of a relatively new chapter. Vickie served as chapter president after other ΔZ offices, was named a junior class beauty and junior class favorite, was Miss Congeniality in the Miss Mimosa pageant, a top ten Homecoming finalist, in the Homecoming court and was named to *Outstanding Young Women of America*. Within Delta Zeta she

received the Province Spirit award and was named to the Miss Province Day court. Vickie is now teaching in Georgia.

Shelly Renea Slaughter Nebraska Wesleyan University-BT

Shelly Slaughter served her chapter as vice president of membership for two years. Donna Frerichs, rush advisor, wrote:

"One of Shelly's greatest assets as a leader is her ability to communicate effectively. She can tactfully soothe the feelings of a temperamental skit star. She can get her point across without yelling, and can inspire a group of tired rushers to give their all for just one more day. Many people emerge from a crisis or conflict with a new enemy. Due to her interpersonal communication expertise, Shelly generally emerges from a conflict with a new friend." Shelly, very involved in campus activities, was a member of Circle K, Panhellenic Council and president of Ionians (Greek honorary.) She was also involved in clubs in her chosen field of education. On the Dean's list, she belonged to Cardinal Key and Student Affairs Senate and served as president of Kappa Delta Pi (education honorary).

In a Tri-State contest for Queen of the Missouri River based on personality, congeniality, poise, availability

and appearance, she was a top finalist.

Shelly wants to involve inactive young alumnae in the local alumnae chapter.

Sheila Ann Martin Glenville State College-ΘΞ

"It's a wonderful feeling to know that I'll always be a part of Delta Zeta. It's a forever thing. Even though I'll be graduating soon, I hope to remain an active part through an alumnae chapter or with my college chapter." Those are words of Sheila Ann Martin.

Sheila was a transfer student, so did not join Delta Zeta as a freshman, but once she became a part of Delta Zeta, she became a dedicated one and a leader. She was on the Dean's list each semester in college, maintaining a 3.85 grade average. Serving as president of Theta Xi, she was listed in *Who's Who* for two years, was a member of Phi Theta Kappa (honorary) and Alpha Beta Gamma (business honorary). A recipient of many scholarships, she also received many first and second place awards at the County Fair in areas of Home Economics.

Sheila planned to be married in the summer and to continue her education in the business field, working toward a master in Business Administration.

Carolyn Grace Carter
Florida State University-AΣ

This is the third consecutive year that a member of Alpha Sigma chapter has been named a recipient of the GML Award . . . and Carolyn Carter is equally qualified! With an accumulative grade point of 3.97 in a 4 point system, she not only served on her chapter's executive board for 3 years, but concluded her senior year as president. Campus organizations are too numerous to list but include Gold Key and Mortar Board.

Carolyn wrote that "Delta Zeta opened the door to a new horizon with so many opportunities." And further, "I am looking forward to the years to come, because I plan on being an active alum. Delta Zeta is very special to me." Jill Banks, Field Representative and 1982 GML, said of Carolyn: "She is both a leader and friend. She takes time out for every concern and puts her heart into everything she does. She is firm yet loving, follows procedures yet is understanding, and always manages to keep a sense of humor. She exemplifies Delta Zeta's ideals by her gentle and tactful approach in every situation."

Julie Ann House
Wisconsin-LaCrosse-ZO

From president of her pledge class to chapter president, Julie House brought new life and vitality to Zeta Omicron chapter. Her former CCD wrote: "Julie is not afraid to make decisions. Sometimes these are unpopular but she is not afraid to be unpopular for a while if those decisions are good for Delta Zeta."

Julie is well known on campus for her activities, which include student

senate and Ambassador's club, a campus organization to help incoming freshmen. She served as president of the American Field Service and was historian of the American Marketing Association. Last Fall at Province weekend she was named Miss Province Eight.

Maureen Sigler, Greek and Student Program Advisor at WI-L wrote: "In summarizing some of Julie's strengths, the adjectives that first come to mind are: organized, warm, friendly, dependable, determined, well-rounded and DYNAMIC! She is truly a good role-model for other young women."

Julie graduated in December, 1982, but hopes to return to graduate school for her MBA.

Lori Elizabeth Montgomery
University of Houston-ΔΘ

Following in the footsteps of a GML winner in any chapter is very difficult, but not impossible. Lori Montgomery of Delta Theta did just that. Serving as president this past year, she guided her chapter to fill membership to total, the first time in several years. Merry Adamcik, her PCD, wrote: "She is an organizer and a motivator. The chapter had rather difficult times in the past with Panhellenic, but with Lori at the helm the relations have greatly improved."

Lori consistently appeared on the Dean's list with a 3.36 grade point, was a member of Golden Key, Beta Alpha Psi (accounting honorary) and Ms. University of Houston. Named Homecoming queen last Fall, she also was the University of Houston's representative to Cotton Bowl activities on January 1.

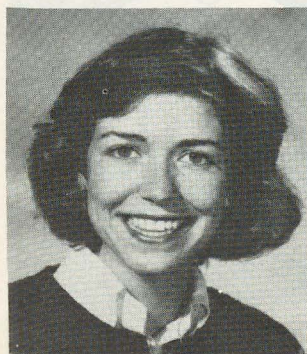
Lori planned a Summer wedding to James V. McKeating following her graduation in May. She also planned to sit for her CPA exam. She will reside in Houston and plans to continue working with the chapter and to become an active member of the Houston alumnae chapter.

Nancy Ann Northey
Iowa State University-BK

"I reflect back upon my experiences and realize how much I have grown in three short years. I would say that my experiences as pledge trainer, president, 1981 convention delegate (sophomore) and co-chairman of our 50th Anniversary Celebration all contributed so much to my feelings that it is hard to pinpoint exactly how I came to love and respect Delta Zeta as I do." Nancy's statement is much too modest to reveal her true achievements.

BK selects a sophomore representative to National Convention to attend with the chapter president. So, Nancy's experience began in 1981 in New Orleans. She has been active in Greek Sing, Varieties skits, Veishea and served as BK's 1981 scholarship chairman. She is a member of Alpha Zeta (agricultural honorary), is a State of Iowa scholar and received a National Honor Society national scholarship. Consistently on the Dean's list, she was a member of the ISU Oratorio choir and was 1980 Iowa Beef Princess.

CCD Barbara Holland wrote, "We are so proud of Nancy Northey here at ISU and Beta Kappa chapter. We wish you could all share her - she really is a Delta Zeta diamond shining very, very brightly."



Carolyn Carter, Florida State-AΣ



Julie House, Wisconsin-Whitewater-ZO



Lori Montgomery, Houston-ΔΘ



Nancy Northey, Iowa State-BK

Kappa Chapter Returns to Washington



Recently installed Kappa chapter members.

by Jeanine Petersen, Field Representative

It was a dream come true when on March 12, the Kappa colony became the Kappa chapter again. Originally installed in 1914, Kappa had been declared dormant in the 1970's. A landmark near the University, the Kappa chapter house was not sold, but remained open during this period housing boarders, and maintained by the local House Corporation Board of alumnae.

The successful recolonization began during Fall rush week 1982. The new pledges moved into the newly remodeled house on pledge day like all of the other 19 pledge classes at the university. Their year as a colony though was to be very different.

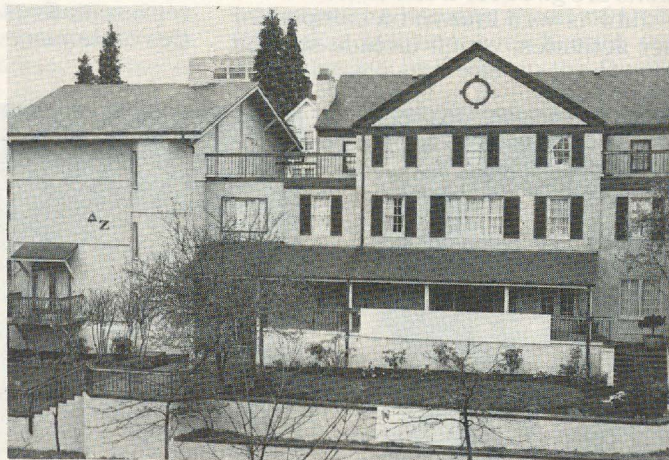
The colony definitely made its mark on campus. They placed second in Homecoming house decorations and won the blood drive, which tied them with Pi Beta Phi for overall winner of Homecoming week activities.

The colony participated in its first philanthropy project by selling over 500 raffle tickets for the Seattle Speech and Hearing Center's benefit, "Children of a Lesser God," more tickets than any other organization. The colony also placed first in the skit and spirit contests for Sigma Chi Derby Days. Delta Zeta brought home two of the four trophies offered, more than any other sorority.

Working closely with the colony during this period were Field Representatives Jeanine Petersen, who lived with the colony for the Fall quarter, and Nancy Walker; Susan Christmas, CCD; Ernestine Collins, Panhellenic Advisor; Norma Andrisek, Extension Director; the Kappa House Corporation and an endless

list of alumnae who helped make the recolonization a success.

The long awaited initiation took place at the Delta Zeta house with an initiation team of Carolyn Gullatt, Norma Andrisek, Louise Inlow, Carin Steckler, Judy Harris, Nancy Walker, Jeanine Peterson and Suzanne Jewhurst.



Kappa chapter house at the University of Washington.

The installation banquet was held in downtown Seattle with more than 250 friends, family and alumnae in attendance. The charter was presented to Elizabeth Harvey, chapter president, by National President Carolyn Gullatt.

Toastmistress for the banquet was Norma Andrisek, Past National President and Extension Director. Also in attendance were Eleanor Fariss, Past National Treasurer; Karen Soyk, National Rose Shop Chairman and Washington SRC; Helga Clark, PAD; Carin Steckler, Seattle alumnae president; Bette Crawford, House Corporation treasurer; Susan Christmas, CCD; Suzanne Jewhurst, past president of Gamma Lambda chapter at San Jose State, and Field Representatives Jeanine Petersen and Nancy Walker.

Ernestine Collins, Panhellenic advisor and Past National President of Sigma Kappa sorority accepted and welcomed the chapter to the Washington campus.

The banquet was closed with the rose ceremony conducted by Suzanne Jewhurst, Jeanine Peterson and Nancy Walker, and accompanied by Kappa initiate, Chris Johnson.

On Sunday a tea at the house introduced the chapter to visiting sorority and fraternity presidents, Panhellenic friends, alumnae and family.

The tea was not only an opportunity to honor the new Kappa chapter but to display the elegantly remodeled chapter house. Five new stained glass windows were proudly shown, but this is a story in itself and will appear in the next issue of The LAMP.

New initiates of the chapter are Desi Allinger, Megan Arrivey, Becky Billingsley, Mary Bagg, Sharlene Bufington, Terry Campbell, Sonya Carlson, Cari Coyer, Daphne Cuizon, Marizol Curry, Laura Davis, Anne Donaldson, Lynne Durrell, Laura Fisher, Darla Foster, Valerie Frazier, Diana Friedman.

And Shelly Grimm, Belinda Gustafson, Ellen Hardy, Elizabeth Harvey, Janis Haynes, Anne Hedstrom, Christine Johnson, LaDonna Johnson, Laurie Johnson, Patti Jo Kelly, Karen Linde, Jean Mernaugh, Monica Meya, Tori McGee, Alison Nagy, Liz O'Brien, Kathy Oxarant, Julie Peluso.

(continued on page 47)



Ernestine Collins, Panhellenic Advisor at Washington (second from left) accepted the charter on behalf of the university. (L to r) Norma Andrisek, Ernestine, Carolyn Gullatt and Elizabeth Harvey, Kappa chapter president.



Officials help Kappa celebrate. Standing (l to r) Susan Christmas, CCD, Nancy Walker and Jeanine Petersen, Field Representatives; Elizabeth Harvey, chapter president, and Karen Soyk, Washington Reference Chairman. Seated (l to r) are Eleanor Fariss, Past National Secretary; Carolyn Gullatt, Norma Andrisek and Helga Clark, PAD for Province XV-N.



A portion of one of the living areas.



Kappa members and guests at the reception.

Radford Welcomes Delta Zeta



Xi Delta chapter at Radford University, Radford, Virginia

**by Jill Banks, FSU-AΣ
Field Representative**

The members of Xi Delta chapter at Radford University, Radford, Virginia made history by being the only Delta Zetas whose badges have two dates on them - one, the time first scheduled for the installation and the other, the actual installation date.

Scheduled for February 12, the installation had to be cancelled when the worst snowstorm in several decades hit the entire eastern part of the United States. National and province officers, field representatives and the initiating team were stranded as airports, roads and schools were closed. All arrangements were cancelled and the installation activities rescheduled for the weekend of March 19.

In the Spring of 1982, after a presentation to the Panhellenic, faculty and students, Delta Zeta was selected to colonize at Radford. With signs around the campus saying "Delta Zeta's Here!," Field representatives Jill Banks and Terry McNeer began

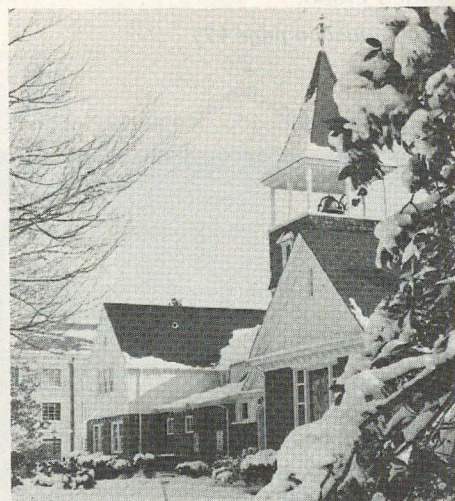
the colonization by interviewing interested young women. The task was difficult simply because of the tremendous response. Campus total of fifty was reached within one week and, because interest remained high, the Panhellenic agreed to the pledging of ten more girls.

The lengthy task required to become a recognized student organization followed with other Greek organizations generously providing space and hosting events in Delta Zeta's honor until final university approval was received. The colony members also participated in several service projects and planned for future activities at the university's speech and hearing clinic during the pre-installation period.

The weekend of March 19 brought bright and sunny skies to the beautiful Virginia area where Radford is located. The long awaited initiation took place at the university chapel as a team from Kappa Theta chapter at

Virginia Polytechnic Institute performed the lovely ceremony. The rescheduling of the installation weekend had been especially difficult for Kappa Theta as the new date was the beginning of their Spring break. Several members of the initiation team graciously postponed an early departure for Florida in order to be a part of the ritual service. The VPI chapter members had been particularly supportive of the colony as they volunteered to be big sisters and hosted numerous events on their own campus to which the colony members were invited.

The installation banquet was held at the Sheraton Red Lion Inn in Blacksburg, Virginia with Past National President Norma Andrisek presiding. A warm welcome was extended to the new chapter from Province Collegiate Director Mary Ellen McAuliffe and Province Alumnae Director Gail Verley along with field representatives Terry McNeer and Jill Banks. Representing the university were Bonnie Hurlburt, Dean of Students; Dr. Pamela Garn-Nunn, Panhellenic Advisor; Dr. Christine Sleight, faculty advisor and the soon to be College Chapter Director, and the past president of the Panhellenic, Anne Copeland.



Initiation for Xi Delta chapter was in the campus chapel.



Delta Zeta officials at the installation weekend are Extension Director Norma Andrisek; Jill Banks, Field Representative; Allison Merkle, chapter president, Gail Verley, PAD; Dr. Christine Sleight, CCD; Mary Ellen McAuliffe, PCD; Terry McNeer, Field Representative and President Carolyn Gullatt.



Pictured with the Xi Delta charter are chapter president Allison Merkle, Dr. Pamela Garn-Nunn, Panhellenic advisor, Bonnie Hurlburt, Dean of Students and National President Carolyn Gullatt.



Muse Hall and Norwood Hall are residence halls at Radford.

Colony president, Allison Merkle responded with the entire chapter joining in with two special Delta Zeta songs. The long awaited moment came when National President Carolyn Gullatt officially installed Xi Delta. Gifts were presented and notes of congratulations read. The evening ended in a special way as Jill Banks conducted the traditional rose ceremony with Terry McNeer singing songs of Delta Zeta. All those present joined in a friendship circle.

A reception was held on Sunday in honor of the new chapter where guests greeted members of the campus community. Especially welcome were those from the other four NPC sororities who had been so helpful and supportive of the new chapter

(continued on page 26)

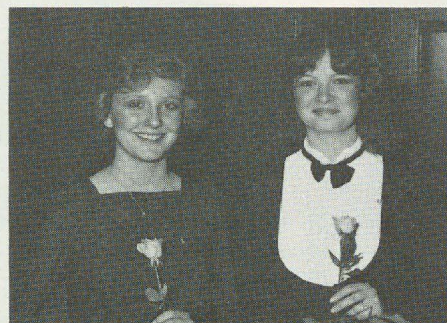




1983 National Convention



Dallas, Texas



A sampling of Xi Delta smiling faces: Kathy Durrett and Joanne Beerman. Kirsten Butler, Jan Braswell and Debbie Vorel. Denise Smith and Kellie Mathews. Left, Pam Keane, Kathy Rumo, Julie Moore and Susan Wyland.

Radford University (continued)

now joining them in Panhellenic at Radford.

Charter members of Xi Delta are Nancy Adams, Jamie Albano, Mary Arbrister, JoAnne Beerman, Vaile Bliss, Jan Braswell, Kirsten Butler, Gina Caputo, Cheryl Cecchini, Janine Clarke, Kathleen Crennan, Dona DiNardo, Kathy Durret, Carolyn Eshelman, Robin Fehrs, Rebecca Fetterman, Tracey Grant, Elayne Heck, Valerie Heflin, Sheryl Herrin, Stephani Hewitt, Jayne Johnson, Kim Johnson, Patricia Johnson, Pam Keane, Rhonda Kellenberger, Susan Lavin, Debra Long, Sandra Lutkenhouse, Kellie Matthews, Koreen McKay, Diane McMahon, Allison Merkle, Kim Milnes, Michele Mion, Robin Montgomery, Julie Moore, Lorie Nowicki, Debbie Pawlowski, JoAnne Reese, Mary Kay Reese, Amy Roark, Kristen Ringle, Kathy Rump, Blair Simmons, Debbie Smith, Denise Smith, Lisa Smith, Virginia Stengel, Cindy VanDeVeer, Debbie Vorel, Cheryl Weber, and Susan Wyland.

Jean Coleman Lisle

Jean Coleman Lisle, daughter of Founder Julia and our 1936 Convention initiate, charmed her captivated audience at Sunday morning's Two Foundations breakfast as she read excerpts from her mother's letters, told stories of her loving father, Jacky, and stressed the similarities between Julia and the young women of today.

Jean, who called herself the "last leaf of the tree," brought smiles to the faces of all as she stood atop a chair modeling her mother's famous pink dress (so often mentioned in the letters).

Julia Bishop Coleman's beautiful dancing dress is over 81 years old. It is pink of course, Julia's favorite color which, according to daughter Jean, enhanced her mother's dark hair, fair skin and "her most striking feature - huge luminous eyes."

"As Julia would prepare for an evening of dancing," Jean said, "she used a dressing sack, which was a hood that covered her hair to prevent stray hairs from falling onto her dress." Julia specially requested a pink dressing sack. Her one concern about her dress was that the flounce was not wide enough to swirl out as she danced!

After holding her audience spellbound, Jean presented to the National Historical Museum, on behalf of herself, her late sister Mary and the Coleman heirs, the treasured

diaries of her mother and some cherished family furnishings from the Coleman home, leaving hundreds of teary eyed Delta Zetas "in love with Jeanie."



"Mama's pretty pink dress," modeled by Jean Coleman Lisle, daughter of our Founder, Julia Bishop Coleman.

An Afternoon at Rosecourt



Beverly Menend Sebanc, California-M, and her daughter Stacey are pictured in the music room at Rosecourt. Stacey's harp is antique French Gothic made by the Erard Company in France about 1870. Beverly's is a new Concert Grand from the Lyon and Healy Company. (Picture courtesy of the San Mateo Times, R. Zirkel, photographer.)

by Zelta Wieman Adams, Oregon State-X

After the rainiest winter in the history of the San Francisco Bay area, Spring arrived on May 7th, the day of our Delta Zeta *Afternoon at Rosecourt!*

We couldn't have been happier! Our alumnae group in San Mateo (the San Francisco Peninsula alumnae chapter) had worked nearly 6 months in preparation for our 1983 philanthropy endeavor ... a tea and musical held in Hillsborough, California at Rosecourt, an old French mansion and the present home of Delta Zeta Beverly Menend Sebanc, California-M, and her husband Allan.

From a large, circular, cobble stone courtyard, on this warm, sunny day we entered the house which was

built in 1913 for Mr. and Mrs. George Cameron by the eminent architect Lewis P. Hobart. We moved through the spacious entry hall and parlor after being greeted by our gracious hostess, her daughter, Stacey, and our alumnae chapter president, Dorothy Elston Baker, Denver-P to an expansive patio overlooking a swimming pool and rose garden. Wine and fruit were served on the patio as guests arrived, and then we strolled into the loggia where coffee, tea, and silver trays of finger sandwiches added to our gastronomic and aesthetic pleasure.

From the loggia we proceeded into a large Music Room, which was added in 1925 by another architect, and seated ourselves at one of the large round tables to visit and await the harp program and historical lecture. This room was designed to be acoustically perfect for musical performances. It features a 24 foot vaulted, ornamented ceiling from the 15th Century, a 17 foot leaded glass window above a raised stage, wrought iron chandeliers and a dramatic wrought iron spiral staircase that leads to a balcony which was imported from a 17th century castle near Seville, Spain. The balcony houses a pipe organ.

In this setting, Beverly and her daughter, Stacey, entertained us with several harp solos and duets. Stacey played on her antique French Gothic harp and Beverly on her new Concert Grand. Included in the program was a Troubadour harp which Stacey showed and demonstrated.

Last fall 10 year old Stacey, an accomplished harpist, was invited to London to be the demonstration student at a harp seminar given by her harp teacher and sponsored by the Inner London Educational Authority. Each year a student recital is held in the Music Room at Rosecourt, the last recital featuring 18 harps in ensemble.

Following the music, Mrs. Sebanc related some fascinating accounts of the early life of Mrs. Cameron taken from her old diary found recently at

Rosecourt. Mrs. Cameron's father, Mr. DeYoung, founded the famous DeYoung Museum in Golden Gate Park, San Francisco. Mrs. DeYoung Cameron's diary included a vivid picture of life before, during, and after the big San Francisco earthquake.

In keeping with the Delta Zeta national philanthropy to assist the deaf and hard of hearing, we felt it appropriate that our lovely day of musical sound should benefit those who cannot enjoy sound. Therefore we chose the San Francisco SPCA Hearing Dog Program to benefit from our *Afternoon at Rosecourt*.

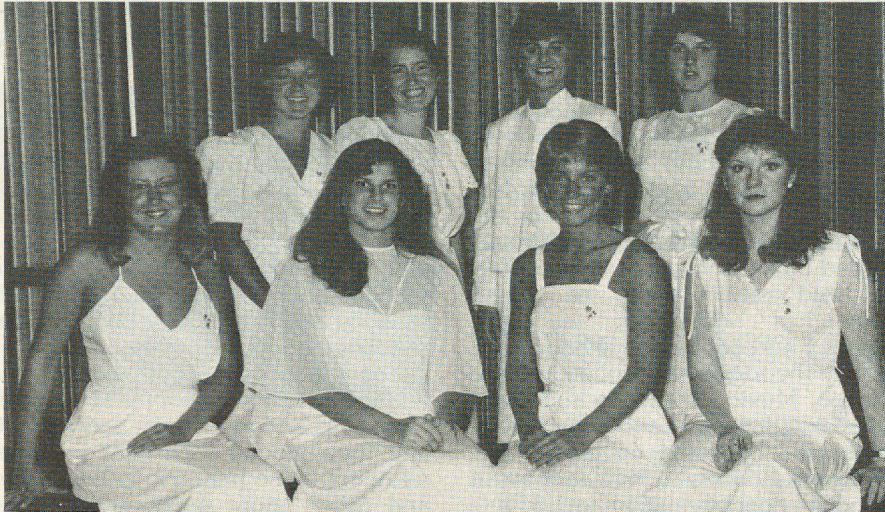
This Hearing Dog Program was started in 1978 and serves all of California. Abandoned dogs are trained and then placed with deaf persons, allowing these persons to lead safer and fuller, more independent lives. Currently the organization places 35 to 40 dogs each year. Each dog is trained to respond to important environmental sounds such as the doorbell, telephone, or alarm clock. Each dog also receives obedience training, and if needed, the dog is trained to respond to all obedience commands by signal as well as voice. The average training time for each dog is 3 to 4 months before the training is transferred to the new owner. The actual placement of the dog with the recipient involves a trainer delivering the dog to the new home. The trainer conducts training sessions several times each day for three or four days. Human and canine partners must be carefully matched to foster long term, meaningful, working relationships.

Delta Zeta's name will join the Sponsor list of Hearing Dogs at the San Francisco SPCA and will be permanently engraved on a bronze plaque.

An added bonus following our *Afternoon at Rosecourt* has been the good feeling within our alumnae group ... a feeling of success because of the cooperative effort of the entire membership under the capable chairmanship of Carole Michelsen Way, Miami-A.

Introducing the Field Representatives

Quotes and Notes from the Field Staff



Field Representatives: Standing (l to r) Lisa Straub, Vickie Adcock, Karen Giles and Judy Markel. Seated are Suzanne Jewhurst, Linda Regner, Diane Sorensen and Jeanine Petersen.

by Norma Minch Andrisek

The staff of field representatives for the 1983-1984 school year is made up of eight young Delta Zetas from varied backgrounds and chapter experience. Two will be traveling for a second year and are joined by six newcomers. All have held major offices in their own chapters and have had experience with their local Panhellenics. Three come from "house" chapters, the others from suite or dormitory facilities. Two come from campuses where there is a very large Greek population. Several are acquainted with commuter campuses.

Each of these traveling Delta Zetas brings something unique to her position through her own personality. All share an enthusiasm and a common desire to serve the sorority and to

share with others their faith and commitment to make Delta Zeta the best it can be.

VICKIE ADCOCK - "... to encourage our chapters to attain those high standards upon which sisterhood is founded."

Vickie Adcock of Middle Tennessee State University brings to her position as a field representative both extensive chapter and Panhellenic experience. She served Iota Iota chapter as president, pledge trainer and corresponding secretary. During her four years as a member of the MTSU Panhellenic Council she held offices as 2nd vice president, rush chairman and secretary.

Additional collegiate activities and honors for Vickie include member-

ship on the President's Cabinet, student orientation, MTSU Student Ambassadors and Rho Lambda Honor Society. Vickie's recommendations praise her spirit of cooperation, broad knowledge and understanding of Panhellenic and the sorority system and her unselfish giving of her time and talents. A major in business administration, Delta Zeta chapters will find diminutive, bright-eyed and smiling Vickie a capable and caring visitor.

KAREN GILES - "... she can share with other young women what she has learned while, at the same time, learning from them. An open mind and a receptive heart are musts."

A list of awards and honoraries are included in Karen Giles' activities while a student at Winthrop College in Rock Hill, South Carolina. Dean's List, President's List, Sigma Tau Delta, Phi Kappa Phi, Omicron Delta Kappa, Kappa Delta Pi and Book and Key are testimony to her outstanding academic record as an English major. Literature, writing, psychology and family development are among her interests.

Karen worked as a resident assistant during her junior and senior years and served Lambda Sigma chapter as president and treasurer, receiving recognition at Province Day for her work in that position. Tall and slender with a winning smile, Karen recognizes the hard work, patience and demands of her new position but looks forward to learning and sharing Delta Zeta as she travels this year.

SUZANNE JEWURST - "with colonies, it's important that they know there is such a thing as sisterhood and sisterly love ... when you're just beginning you don't really understand these words ... I want to help them understand these concepts better."

Suzanne Jewhurst is unique among the new field representatives this year for she began her Delta Zeta

experience as a colony member. As part of the initial group of Gamma Lambda chapter, San Jose State College, Suzanne has served in many capacities - vice president of membership, vice president pledge training and chapter president. She has watched her chapter grow and mature. Suzanne's interest in pioneering has been extended through her involvement with rush at the recolonization of Fresno State and the new San Francisco chapter. She is most anxious to make new colonies a part of her field work.

Suzanne's outgoing personality makes her major in communication a natural and her involvement in many campus activities, while holding a job, is just what one would expect. Chapters who welcome Suzanne this year will find a Delta Zeta who relates to their needs and understands them. She will help to translate ideas into action and when she leaves they will know that they have found a Delta Zeta friend.

JUDY MARKEL - "... asked to name the one thing of which I was most proud ... My reply was my career with Delta Zeta Sorority ... provided me the opportunity to share the varied facets of my life with many wonderful people ..."

Judy Markel is an energetic and capable young woman who brings to her position as a field representative a fine scholastic record as well as superior organizational skills and a real desire to return to Delta Zetas everywhere "all that has been given to me." Judy is a 1983 graduate of Bowling Green State University, Bowling Green, Ohio, where she majored in speech communication and English literature. She served Gamma Tau chapter as vice president of membership and as the junior and senior Panhellenic representative, holding cabinet positions in this fine College Panhellenic. Extensively involved in campus activities, she was the first woman president of Omicron Delta Kappa, a Student Government representative, member of Sigma Tau Delta, Order of Omega, Golden Torch, Antaeus Society and named the outstanding junior Greek woman on the campus.

Judy leaves her home in Lyndhurst, Ohio to travel for Delta Zeta. Those chapters on her schedule can look forward to meeting this enthusiastic and confident Delta Zeta representative.

DIANE SORENSEN - "to help a specific chapter meet its needs and goals ... to create new energy and enthusiasm among the individual members."

Named the Outstanding Collegian in Province XXI in 1982, Diane Sorensen was just beginning her second term as president of Kappa Phi chapter, University of North Carolina, Charlotte. Her college career was marked by her involvement with Delta Zeta and the university as well.

Her campus involvement was extensive and somewhat unique as it included a major contribution to philanthropic activities through volunteer work at the Charlotte Childrens Home, Hospital, Muscular Dystrophy, Red Cross, diabetes, Special Olympics and United Way.

Diane majored in business administration and received the Chancellors Commendation for scholastic achievement. She was named UNCC Woman of the Year in her freshman, sophomore and junior years. A member of the UNCC Homecoming Court, she was selected as the Pi Kappa Phi Rose Queen.

Having traveled extensively, Diane is looking forward to meeting Delta Zetas throughout the country and to working and giving to others.

LISA STRAUB - "... her role would be to encourage each chapter she visits to be the best they can be, to use their resources wisely ... no matter how large or small a chapter ... they are Delta Zetas with a common bond of sisterhood."

As the president of Alpha chapter, Lisa Straub has guided the activities and programs of a large collegiate chapter. She brings to her position as a field representative the desire and ability to work with groups both small and large. Lisa and two other sorority presidents on the Miami campus introduced a presidential meeting for all sorority presidents which has become an important part of the total Panhellenic program. She has been instrumental in identifying the characteristics necessary to function as an effective group on the campus.

Lisa's major is in Physical Education with a concentrated interest in swimming and volunteer work teaching swimming to area youths.

Chapters greeting Lisa will find a young woman who is creative with good ideas and a motivator who is lots of fun.

JEANINE PETERSEN - "... "Delta Zeta is much more than a sorority, it is a way of life ..."

Jeanine Petersen returns for her second year of service as a field representative. A graduate of the University of Louisville she served Beta Gamma chapter as president and Panhellenic rush chairman. A major portion of Jeanine's time last year was spent in the recolonization of Kappa chapter at the University of Washington where she was "in residence" for about six months. She also worked with the colony at the University of San Francisco as well as making several other chapter visits.

An advertising major, her interests lie in that field and in political science. Evidence of her political activity is apparent through her involvement in a gubernatorial and a mayoral campaign. Her advertising skills have been sharpened through her work with WLCV radio station.

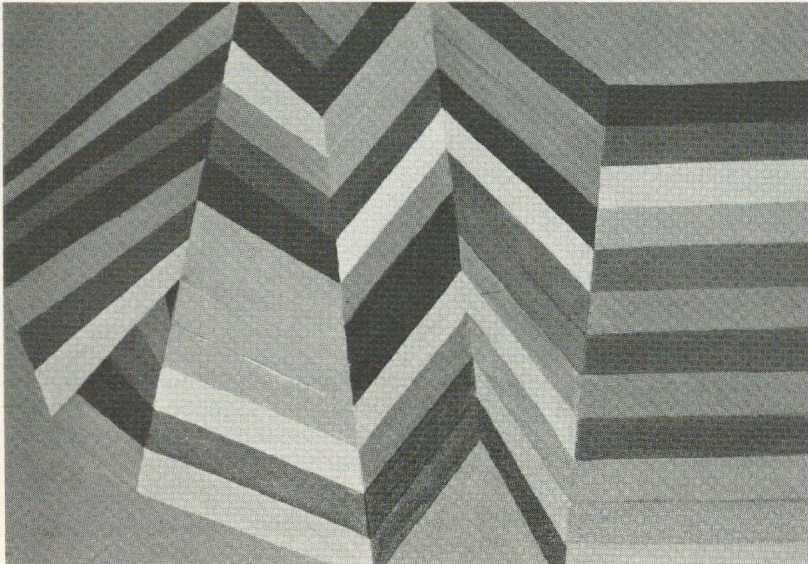
Jeanine is looking forward to another year of travel and to visiting a wide variety of chapters.

LINDA REGNER - "... "I would like to spread to all chapters my feelings for Delta Zeta and the people it surrounds."

Linda Regner, Kappa Mu chapter, Shepherd College, Shepherdstown, West Virginia also returns for her second year. Linda expects to pursue a career in social work when her traveling days are over. A people oriented person, Linda's outgoing personality and warmth make her a natural to work with Delta Zetas everywhere. Her background includes experience as a rush chairman and a chapter president, as well as a variety of campus activities. Linda made numerous chapter visits in her first year and has had many varied experiences, all of which will add to her talents and abilities to served Delta Zeta as a field representative.



Marilyn Gross, Artist



CHROMATIC INTRIGUE, copyright date 1981

In creating this oil, Marilyn wanted to design one that could be pleasingly segmented without losing its whole figure concept. The basic format is divided into 62 segments of varying sizes and shapes superimposed upon a background. For the background she used a Value 5 color in order to achieve an optimally balanced contrast with the values on either side of Value 5 which would be selected for the foreground image.

Thirty-three colors and values are used in the segmented foreground of the painting. Twenty-eight colors have been used twice. No color-value combination is used next to the same color-value combination the second time it is used. Each major color division has been used in the painting.

This painting was selected as a fourth place winner in nationwide competition.

Marilyn Robertson Gross was attracted to color and to nature long before she enrolled at St. Louis University and became a member of Epsilon Psi chapter.

As a child she loved collecting scraps of brightly colored paper and fabric and insisted upon wearing only those dresses whose color she liked. She loved walking in the woods with her mother in search of wild flowers; picnics beside a small stream with her grandmother, and trips to the mountains with her family.

Marilyn has studied art at the Washington School of Art, Northern Illinois University, the Oxbow in Saugatuck, Michigan and privately with various artists across the country. She loves to travel and stores in her creative reservoir ideas that may well spark a future painting.

She prefers to paint in her studio but preparation is done on location where she does numerous sketches,

takes elaborate color notations and pertinent photographs. Marilyn does both representational and non-objective painting in watercolor and oil. Alas ... our black and white photographs of a sampling of her work do not do justice to her rich palette.

Marilyn said, "I enjoy creating optical color effects in which the colors of my paintings appear to change in different lights, when viewed from a new angle, or when seen from a new inner perspective."

She added: "I am intensely interested that my paintings create for the viewer a unique visual resting place — a place where the viewer can escape the discord of today to be refreshed and renewed in spirit. In some paintings this renewal is created through visual excitement generated by beautifully intense colors juxtapositioned in rich chromatic history. In other paintings this visual resting place is one of the quiet meditation calling out to the viewer to

enter into the painting's serene environment or to be soothed by the painting's subtle symphony of delicate colors."

Marilyn has been recognized with four solo-exhibitions of her work. She recently received national recognition in a contest sponsored by Binney & Smith Corporation in New York.

She is a charter member of the International Society of Artists, Midwest Water Color Society, Kentucky Watercolor Society, Illinois Watercolor Society, Illinois Art League, Chicago Artists Coalition, Pictorialists Club and Ottawa Art League.

Marilyn is married to James Dehnert Gross, M.D. Their children are Kathleen Ann, Terrence Michael, Brian Andrew and Kevin Matthew. The Gross family lives in Streator, Illinois where Marilyn serves Delta Zeta as local reference chairman.

ILLINOIS LANDSCAPE, copyright 1980

This oil painting was taken from a familiar scene near Toluca, Illinois, and is in a private collection.

ROKEY'S CORNER . . . THE END OF AN ERA, copyright 1979

The subject of this 24 × 30 inch oil was the remaining south and west walls of a building which once stood on the southwest corner of Main and Bloomington Streets in Streator, Illinois.

The building was destroyed by fire in January, 1979. It is interesting to know that it was the oldest commercial building in Streator, erected originally as the Streator House Hotel in 1872. During its 107 year history it had been renovated many times. The lower floors housed at various times the William Reinhart grocery, the William Matheiu tavern, a nightclub, and finally, Rokey's Flame Room and Steak House. The upper floors were used for apartments in the later years.

Marilyn Gross wrote of this work: "I have tried to portray some of the drama, the excitement, the intrigue and the mystery which I saw written in the remaining walls of this old building. Each of its patches of brightly colored paint, its shredded bits of wallpaper, its old staircase patterns and its grafetti tell a story. A story about its past and the people who lived and worked there — all leaving a mark of their passage.

"On the west wall can just barely be discerned bits of old advertising which must have been painted on the outside of the building next door long before 1872. To me, these too add their charm."

This painting was awarded a first place blue ribbon and was selected as a finalist for Best of Show at the 22nd Annual Town and Country Art Exhibition held at Peru Mall, Peru, Illinois in 1980.



Marilyn Gross

75 Years with Beta Tau

To Build Upon a Dream . . .



Edna Zamzow cuts the ribbon to Beta Tau's new chapter room, Aelio Hall, which is dedicated to her.

**by Marvona Easley Tavlin,
SSU-EA, College Chapter Director
for BT**

Anniversaries come but once a year and those of the diamond variety are indeed rare and noteworthy. Beta Tau chapter celebrated a momentous event, seventy-five years at Nebraska Wesleyan University, on May 7, 1983. This coincided with graduation weekend.

To commemorate such an auspicious occasion the day's activities began with a celebration luncheon in downtown Lincoln attended by over 175 people. Twelve states were represented. The love, the warmth of friendship displayed by old and new acquaintances, the reflections of the past and the opportunities of the future will be long-remembered and cherished moments.

Marvona Easley Tavlin, College Chapter Director, served as mistress of ceremonies. The Delta Zeta Creed was led by Edna Zamzow and the invocation was given by chapter

president, Donna Larsen. A medley of Delta Zeta songs was presented by Beta Tau collegians Judy Evnen, Deb Long, Julie Clopper, Lori Hand, Susan Werth, Sherri Swanson, Lori Hampton and Meg Johnson.

Special guests included Janet Eisler Havener, Province Collegiate Director; Carolyn McCandless Woodling, Province Alumnae Director; Ethel Skeritt Hall, Past National Vice President of Beta Phi Alpha; Virginia Cotton Stolz, 1965 Delta Zeta Woman of the Year, a Beta Tau; Cindy Nosky, former traveling secretary from Beta Tau chapter; Trena Olson Widger from Lambda chapter who assisted with Beta Tau's initiation in 1941; Laura King Herse, Beta Tau housemother for eleven years and a 1978 alumna initiate; and Marcile Kolterman, current housemother.

Shirley Hess, a member of the first Delta Zeta pledge class and House



Past Beta Tau Presidents: Standing (l to r) Susan Andersen Anderson, Carolyn Zabel Hoffmann, Alice Gentry Kenitz, Virginia Davis Stockton, Juanita Hill, Claudia Young Neary, Judy Weinmeister Benson and Virginia Barton Gabelhaus. Seated are Wilma Vodehnal Boles, Carole Sorensen, Viola Springer Vorhees, Lynne Robertson Ross and Jackie Harrison Akert.



These members of the Class of 1928 were present at the Beta Tau celebration. (l to r) Viola Springer Vorhees, Edna Zamzow, Marie Danielson Amren and Luella Linson Holthaus.



Beta Tau's diamond celebration committee with honoree, Edna Zamzow. (l to r) Judy Evnen, Marvona Easley Tavlin, Marsha Goff, Edna Zamzow, Chris Martin and Judy Weinmeister Benson.



This is a Delta Zeta family that has given leadership throughout all phases of BT development. (l to r) Marilyn Hunkins Gentry, Emily Nystrom Gentry, Alice Nystrom Wiberg, Esther Nystrom Gentry and Alice Gentry Kenitz.

Corporation treasurer for twenty years, gave a heart-warming response about the progress of the past and the fine support of alumnae.

"To Build Upon a Dream" was the central theme for the affair and multi-purpose in reason. Besides commemorating seventy-five years, a special lady dear to all Beta Taus, Edna Zamzow, was honored for her years of devoted service to the sorority. A 1928 graduate of Nebraska Wesleyan University, Edna has served in numerous capacities which have included Province Director, Lincoln alumnae president, Nebraska State alumnae association president, and for many years, BT House Corporation chairman. Under her direction, the dream of a new chapter house was fulfilled in 1963. Surprises are always kept for the best and several were in store for Edna during the day's festivities. The first came from Carolyn Woodling with the presentation of the 1983 Province XII Outstanding Woman Award.

Helen Woodruff Nolop, our very special guest and Past National President, delighted the audience reminiscing about her years associated with the chapter and Edna Zamzow. Mrs. Nolop was Province Director during Beta Tau's first years as a Delta Zeta chapter. She and Edna worked closely together during that time.

In keeping with the anniversary theme, Chris Martin, House Corporation president, included in her remarks that the challenges and dreams of Edna Zamzow have inspired and enriched our lives. She

had the pleasure of announcing the fulfillment of another dream plus a very well-kept secret that a new chapter room "Aelio Hall" in memory of chapter founders would be unveiled and dedicated to Edna Zamzow that afternoon. In honor of the occasion a memory book compiled by Delta Zetas throughout the country was presented to Edna.

Plans were shared for more dream building in the Summer of 1983 to the excitement of both collegians and alumnae. Discussions are underway with building contractors to finish the basement. Cindy Dixon Mallatt, interior designer and House Corporation vice president, unveiled plans for totally redecorating the living room and dining room.

A ribbon cutting and dedication ceremony followed at the house. Claudia Young Neary, Judy Weinmeister Benson, Ilah Cline Anderson, Penny Weaver Beave, Cindy Dixon Mallatt, Betty Sawyer Ohs, Marsha Goff, Marsha Schone and Tera Beermann representing the House Corporation, Beta Tau chapter, and Lincoln alumnae chapter performed the impressive, candlelight dedication of "Aelio Hall." After the singing of *Delta Zeta Lamps are Burning*, the lights were turned on to reveal a chapter room in shades of mauve complete with trophy case and storage areas for ritualistic equipment. The room will also serve as a museum for historic memorabilia.

A reception and open house for parents, campus and all Delta Zeta friends concluded a most memorable day in Beta Tau's historic, rewarding

life.

The Diamond Celebration committee in charge of arrangements included Chris Martin, Marvona Easley Tavlin, Judy Weinmeister Benson, Marsha Goff and Judy Evnen.

Nebraska Wesleyan University opened its doors to higher education in 1888. Strict rules forbade Greek organizations; however, literary societies were allowed. The Aelioian Literary Society, patterned after its "sister society" at Baker University came to Wesleyan in January, 1908 with thirteen founders and eleven first initiates. The ban on Greek organizations was removed in 1915. The society took the first two letters of their name and rechristened their sisterhood as Alpha Epsilon, a local sorority. Rumblings about nationalizing came true in May, 1927 when Alpha Epsilon became the first sorority on campus to have a charter granted by a national sorority, Beta Phi Alpha. The fourth phase in the chapter's life was completed with the merger of Beta Phi Alpha and Delta Zeta. On September 6 and 7, 1941 Beta Tau of Delta Zeta was installed.

Throughout our rich heritage there have been significant points to ponder. The rose has been with us through these eras. In Aelio, the harp was the center of ritual; in Beta Phi Alpha, the star Aldebaran; in Delta Zeta, the Lamp. Light has had a major emphasis in our history. In Aelio, the motto was "Licht, Mere Licht" - German for "Light, More Light." These are the ingredients upon which histories and dreams are built . . .

Delta Zeta On Campus



Delta Eta chapter members Ami Wright and Charlotte Patterson chat with Dr. Edward C. "Pete" Merrill, President of Gallaudet College. The chapter hosted a reception for Dr. Merrill when he visited East Tennessee State University.

by Diane Jones Skelton

ALABAMA

Alabama, Alpha Gamma — At Province Day in Birmingham, $\Delta\Gamma$ won the spirit award and the formal rush award. Other Spring activities included the River Boat Formal, Tahiti Sweetie Rush Weekend, a faculty dinner, a Colonnade Club spaghetti supper and an Easter egg hunt for faculty children.

Alabama-Huntsville, Lambda Kappa

— Geri Royer won the Greek leadership award and Cheryl Hart won the Wall Street Journal award and departmental honor. Members of honoraries are $\Delta\Delta\Delta$ Angela Evans, Valerie Hannum, Teresa Hinkle and Paula Putnam; $\Delta\Delta K$ Marie Keiswetter, Felicia Francis; $\Phi K\Phi$ Marie Keiswetter, Cheryl Hart. Newly elected student government legislators are Jennifer Bagley and Marie Keiswetter. Cynthia Coakley is a member of Society for Advancement of Management. Marie Keiswetter serves on the UAH Board of Trustees. Lancers Hostess Group includes Marie Keiswetter, Donna Andreoli and Felicia Francis. ΔK won the May award for attendance at Province Day. Cheryl Hart won an individual scholarship award and outstanding senior honors. Donna Andreoli was named outstanding junior, Mary Beck, outstanding sophomore, and Chris Taylor, outstanding freshman. College Chap-

ter Director Jane Ondocsin was recognized for her outstanding service. Panhellenic groups raised \$2000 for the American Lung Association with ΔK collecting over half the amount. Lambda Kappa informed the campus about Greeks via a Delta Zeta display in the Union Building during Greek Week.

Auburn, Beta Xi — Order of Omega Greek honorary includes Allison Watkins, secretary-treasurer, and Julia Bridges. Anne Stroud is a member of $K\Delta\Pi$ education honorary, and Marybeth Wingo is a member of the French honorary. Auburn Dance Theatre includes Kim Reed, Jan Kucera and Tracy Ganem.

Auburn-Montgomery, Lambda Nu — The School of Education named Lisa Parma outstanding major, while School of Business honored Regina Garrett as its outstanding major. Priscilla Naron was first runner-up to Homecoming Queen and TKE crowned Tracy Allen as their sweetheart. Dayna Duncan won the talent competition in the Miss AUM Pageant. Smiles from children and celebrities were the priceless rewards for hard-working ANs at the George Lindsay Celebrity Weekend. Delta Zetas helped in the Special Olympics competition and at the golf tournament that weekend. Twenty seven pledges were initiated in

the Spring.

Jacksonville, Lambda Gamma — The chapter was honored for its involvement and assistance in recolonizing Alpha Pi with the Loving Cup Award at Province Day. $\Delta\Gamma$ also won the spirit award. Natalie Duke earned the highest grade point average in the Province. The chapter celebrated its fifth year at JSU, aided Special Olympics and placed third in club competition. Pamela Champion reigned as Military Ball Queen.

ARKANSAS

Arkansas Tech, Lambda Alpha — Leading Tech Student Government are Senators Lisa Yerby, Mary Bane, Karen Ramsey, Lynette Gooch, Karen Goodner and Cathi McMahan. $\Sigma\Gamma\Lambda$ has Julie Browning as its treasurer and Cathy Busken as secretary. Cardinal Key tapped Julie Browning, treasurer; Lisa Yerby, vice-president; Amy Keener, Karen Ramsey, Dixie Clark, Cathy Busken and Linette Gooch. Panhellenic Council named Lisa Yerby Outstanding Panhellenic Woman. $\Gamma\Phi\Psi$ had already honored her as Greek Goddess. The School of Education bestowed an honor award on Amy Keener. *Who's Who in American Colleges and Universities* includes Gerry Layrock and Mary Bane. Province Day awards for high grade point averages went to Karen Ramsey and Sheila Kaufman. Vicki Robertson will travel to the Miss Arkansas Pageant. Delta Zeta won the sisterhood award at Greek Week Banquet.

Central Arkansas, Epsilon Xi — A busy chapter brought home many awards for Delta Zeta this Spring. Tamara Morris, reigning Miss UCA, will travel to the Miss Arkansas Pageant. June Moreland is second runner-up to Miss UCA. Cindy Calvert chaired the Miss UCA Pageant Committee and was assisted by Stacia Chester, Mary Beth Tiefel and Jane Tiefel. Cindy Calvert, along with her partner, provided entertainment for the pageant. Terri Conder is the first UCA basketball player to be included on the All American Team. Delta Zeta won first place and a \$500 cash prize in the All University Sing Competition. $E\Xi$ won second place in IKA Fraternity Follies, second place in Greek Games and the intramural softball championship. Becky Taylor is Best Dressed Coed, with Teresa McFadden as first runner-up. $E\Xi$ tied with $\Sigma\Sigma\Sigma$ in Spirit competition. At Province Day, $E\Xi$ was honored as the chapter with the highest grade point average, while Jane Phillips and Marty Berke-

meyer, Kimberly Staha, Pam Brewer, Lela Vaught and Lynn Littrell. UCA Ambassadors are Kay Bright, Jane Tiefel, Andrea Sharp, Leslie Falls, Kim Graves and Shari Coble.

COLORADO

Denver, Rho — Delta Zeta ended its first year on campus with a long list of chapter and individual honors. Rho is especially proud to report that, with the help of alumnae, the chapter owns a house. Members of honoraries are Doreen Claveria, Kristi Hughes, Marylou Cianciolo, ΨΧ; Susan Fisch, Mortar Board; and Kristi Hughes and Mary Alice Laflin, Talarians junior honorary. Beta Gamma Sigma honored Stephanie Dolan for being on the Honor Roll. *Who's Who* lists Susan Fisch. Student Senate includes Nicole Johnson, while Susan Fisch is active in College Democrats. Karen Micek, the first initiate to Order of Omega honorary on campus, reigned over Homecoming '82. She interns at Channel 9 as an associate producer of the news and was honored by the Speech Communications Department for outstanding involvement and campus leadership.

Northern Colorado, Delta Xi — Delta Zeta teamed with TKE to place second in Greek Song Fest. In other Greek activities, they joined with ΑΔΠ to sponsor a picnic promoting Greek unison. Delta Zeta's *Men of UNC Calendar* was a popular fund raiser. Sallie Scott is president of Greek Images Council and Linda Pifer is assistant Panhellenic rush chairman. Suzy Lane and Pam Tesone are rush counselors. Stephanie Schall and Kathy Monohan ranked in the top ten in National Tennis Tournament. Anna Osborne, reigning Miss Adams County East, traveled to the Miss Colorado Pageant.

FLORIDA

Florida State, Alpha Sigma — Chapter editor Christine Hopple reports the highlight of the semester — and the year — was winning of the coveted '83 Greek Week Trophy. The chapter also placed first in social and spirit, fifth in skit and second in philanthropic collections. ΔΖ finished third in overall intramural rankings. The putt-putt team had finished first for the second year in a row. First and second place finishes also came in field events. Recipients of end of the year honors are Carolyn Carter, outstanding senior in home economics, Sharon Kneiberg, leadership award, and Celia

Vergamini, one of three outstanding freshmen in academics. Tapped for campus honoraries are Sally Graeff, ΦΚΦ; Donna Phillips, Donna Stewart, Lisa Leininger, Doreen Terkmanny, Kathy Moon, PX. Kathy serves as secretary for Mortar Board. Sharon Kneiberg is also a member of Mortar Board. Rho Lambda Panhellenic honorary tapped Kathy Moon, Laurie James, Sally Graeff, Lou Ellen Combs, Susan Modlin, Doreen Terkmanny and Sharon Kneiberg, president-elect. Doreen Terkmanny is vice-president of Southeastern Panhellenic Council and chaired the 24-hour dance-a-thon on campus. On the Student Foundation Roster are Sharon Kneiberg, vice-president, Doreen Terkmanny, publicity promotion chairman, Leigh Kokes, Laura Bartlett and Louise Lonnemon. Orientation leaders are Donna Stewart, Christine Hopple and Doreen Terkmanny.

Jacksonville, Iota Omega — Karen Kennedy and Susan Pearson starred in a television commercial promoting the Ugly Bartender Contest. The contest benefitted Multiple Sclerosis. Karen Kennedy placed in the semi-finals for Miss Jacksonville University and is newly elected vice-president of PA honorary. The chapter's three graduating seniors were honored with the first annual senior "roast." The chapter softball team advanced to the semi-finals in intramural competition.

GEORGIA

Georgia College, Lambda Pi — The chapter placed second in football and pool, third in volleyball, fourth in basketball and captured both third and fourth in ping pong to rate second overall in intramurals. The chapter regularly visits the Central State Hospital elderly patients. ΑΠ raised \$700 with a chili dinner, again sponsored their popular Dating Game for Greeks, and initiated ten pledges. Pledges and members alike look forward to their regular visits to Golden Rose Faye Martin. The chapter describes her love and companionship as "good as gold."

Georgia State, Delta Delta — A banner year for Delta Zeta compiles a long list of honors - KΣ Best Sorority of the Year, top campus scholarship, intramural firsts in badminton, softball, swimming, and diving, and the coveted Dean's Cup as Outstanding Sorority on Campus. In Pike Bike Race, ΔΔ won first in field events, first in attendance, and third in philanthropy fund raising. ΔΔ placed first overall in Greek Week, which included firsts in bulletin board contest, banner contest, and philanthropy display. Sec-

ond place honors came in variety show and field events. Rosie Gomez was a finalist for Greek Woman of the Year and later won the Eva Whetstone Award as Outstanding Greek Woman for 1983. Dara Colter was honored by Panhellenic for her top grade point average. IKA Calendar features Teri Hudson, Dania Tarquinio and Indy Bradley. University Senate includes Nancy Lindberg, Lilly Garcia and Lisa Coley. Lisa, director of student services, won the ΑΞΔ Cup and serves on the Student Fee Committee for ΣΓΑ. Rosie Gomez and Liz Langgood won awards as outstanding seniors on campus. Laurie Barker was named most outstanding freshman by ΦΗΓ honorary. Juli Brown is KΣ Sweetheart.

ILLINOIS

Eastern Illinois, Gamma Nu — The chapter brought home the coveted Pride of the Province Award from Province Day in Champaign. Jaylee O'Neill was named outstanding treasurer while Maura Sullivan was named outstanding recording secretary. Molly Lesh won the Cinderella Award. ΓΝ placed second in 880 medley race in Greek Week and won first place with a medley of songs from *The Wiz* in Greek Week sing competition. The chapter initiated 30 pledges, then pledged 16 more enthusiastic girls. Amy Michel was runner-up for Greek Queen and Kristi Guerra is a senator. Pink Panther pom pon squad includes Marci Murphy and Kelly Fisher. Nancy Slusser, member of ΦΑΗ and American College Theatre Festival, performed in *Seduced* which played the Kennedy Center in



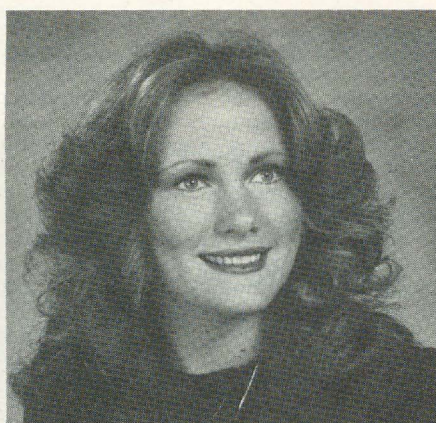
Indiana State/Evansville-AB members tugged hard at Greek Week games. It looks like a losing battle?

Washington last year and is currently traveling with *The Dr. In Spite of Himself* to regional college competition. Members of honoraries are Brenda Melzer, ΨΧ, Pam Knorr, Ω; Maura Sullivan, ΦΑΗ, ΔΜΔ; Melissa Overath, vice president of ΗΣΓ; and Karin Kraii, ΦΑΗ and Omega. Karin is also second vice president of Panhellenic. Shari Sullivan presides over Omega honorary organization and co-chaired Greek Week. Julie Duncan is a member of PX and Molly Lesh is a senator.

Illinois, Alpha Beta — The chapter hosted State Day and co-sponsored both a Pac Man Tournament and Wheel Chair-a-thon. Cathy Nott, winner of the Florence Hood Award at National Convention, was also named "most devoted" to Delta Zeta in Province IX. She is also secretary of Pi Mu Epsilon and vice-president of Golden Key honorary. Valerie Bauer is vice-president of the Student Senate and member of Ma Wan Da. Lynn Farley, member of Senior 100 honorary, is listed in *Who's Who in International Fraternities and Sororities*. HKN named her as outstanding senior. Kathy Wright is a member of Senior 100 and Tracy Cagle is a member of Shi-Ai sophomore Greek honorary.

Northwestern, Alpha Alpha — For the third consecutive year, AA won the coveted overall championship at ΣΧ Derby Days. AA defeated ten other sororities to win banner, party attendance and philanthropic contribution competitions. Heidi Rosenbaum, president-elect, was named Derby Darling. Delta Zeta teamed with ΧΨ Fraternity to place second in Greek Olympics. Individual honors came to Vallerie Valentini, Christy Jurish, Panhellenic citations; Joanne Fogarty, ROTC Award for close order drill proficiency; and Anne Zidonis, Margaret Daniel, Junior Panhellenic scholarship. The faculty and administration honored Katherine Carlis as the Outstanding Greek Woman of the Year. She was also elected to 1983 May Court. Members of honoraries are Jeanne-Marie Bonnderant, ΣΑ; Lelia Onbargi, Mortar Board; Janel Guchler, ΦΗΣ; Vallerie Valentini, Christy Jurish, ΑΑΔ. Christy also chaired the campus picnic. Order of Omega tapped Vallerie Valentini, secretary, Alexandra Cowen and Jane Camplejohn.

Southern Illinois, Gamma Omega — Delta Zeta walked away with six of the seven awards at Theta Xi Variety Show. ΓΩ won awards for direction, choreography, best sets, first female vocalist, first male vocalist and second place overall. During Greek Week the chapter also won first place in ΑΕΦ ice cream eating contest and ΑΦΑ Casket Race. Naomi Nimrod reigned over Greek Banquet festivities as Greek Week Queen. Kathy Schill, president of the Order of Isis sorority honorary, welcomed Delta Zeta



Pamela J. Champion, Jacksonville State-ΑΓ, reigns as Military Ball Queen.

sisters Connie Sue Carnes, Theresa Lucessi and Maoni Nimrod as members. At Province IX State Day, Kathy won the outstanding collegiate award and celebrated with other ΓΩs as the chapter was cited as Most Improved Chapter and won a membership quota award.

INDIANA

Ball State, Gamma Chi — The chapter earned \$400 for philanthropy with their annual Bridal Fashion Show, honored seniors with a banquet, and bade farewell to CCD Karen Courtney, who after five years as CCD, is furthering her education. Members participated in ΑΧΑ's Bike-a-thon and joined ΣΤΓ for a party. Studying abroad for the Summer were Sandy Adrian, Jill Lodde, Natalie Pearce and Beth Ann Schumm.

DePauw, Delta — Recipients of specific scholarships in selected areas of study are Lisa Blyshak, chemistry, Erin Duffey, Greek, Kimberly Wheat, graduate studies in library science. Kimberly won the Sigma Xi Honor Student Award from the Earth Sciences Department. Donna Heckler was named to the Student Faculty Committee in Management Academic Operations. Jennifer Yoakum is vice-president of ΚΔΠ education honorary and member of ΑΑ anthropology honorary. Susan Zachritz is co-captain of the pom pon squad. Delta honored parents with a Parents Weekend, sponsored a plant sale benefitting Gallaudet, and planned two fun Summer week-ends.

Indiana-Evansville, Lambda Beta — Delta Zeta won trophies in both Greek Week festivities and the Eagle Grand Prix Bike Race.

KANSAS

Fort Hays, Delta Omega — Delta Zetas

raised their scholastic standing from third to second place and then captured third place in Sigma Chi Derby Days. During Derby Days, ΔΩ placed first in the can collection contest which benefitted ΣΧ's philanthropy. Lisa Lessman was named Miss Province and Outstanding Greek Woman on campus. New members of ΦΚΦ and Mortar Board are Shari Leitner and Kara Woodham. With the help of two fraternities, Delta Zeta spent the last two weeks of school digging and shoveling. The hard work paid off with a plush lawn ready for rush.

LOUISIANA

LSU, Sigma — Holly Clause and her ΣΝ dance partner captured third place honors in Jam Jam's Cajun Dance Contest. The chapter honored seniors with a banquet, and is quite excited about writing a new rush skit to the theme of *South Pacific*.

Nicholls, Kappa Alpha — A busy Spring for Delta Zeta included many activities, but the highlight was the third consecutive win of the Greek Week championship. Other activities included working the polls for student government elections, selling po-boys at the Fireman's Fair, washing cars with alumnae to benefit the National Historical Museum, and joining other Greeks to collect for cancer. Mr. and Mrs. Roy Burns, parents of

KENTUCKY

Eastern Kentucky, Xi Beta — Delta Zeta won KA's Old South Olympics this Spring, and pledge Suzanne Arnold was crowned Share Cropper's Queen. At the Pike Bowling Tournament, ΕΒ won first and third places. Susan Webb bowled the highest score. Delta Zeta won an award for the most participants in a Lexington Walk-a-thon.

Morehead, Kappa Tau — Kappa Tau became the third chapter in the state to host an annual "Frat Man's Classic" with help from the Delta Zeta chapters at University of Kentucky and Eastern Kentucky, KT put on a successful benefit classic. KT scored a first in Delta Zeta history at Morehead by winning the overall sorority championship in intramurals. KT also won individual championships in volleyball, physical fitness and softball. Senior Mary Charles Crockett was named women's intramural champion. Sophomore Karen Parks is reigning Miss Morehead State University. Laura Fannin won outstanding sophomore honors from ROTC. Sherry Sweet is a cheerleader for the second year and Jennifer Gilbert again serves as a majorette. Donna Reeder and Marcia Phillips are ΣΑΕ Calendar Girls. Brenda Bersch is ΣΙΙ sweetheart.

Donna and Julie, presented a standards meeting on love and marriage to the chapter. Head Cheerleader Sandy Kane is joined on the squad by Heidi Tomeny. Greek Court included Liz Boudreaux, first maid, and Denise Haydel, third maid. Nina Nobile was named Outstanding Greek Athlete by Panhellenic. Frances Henry is a student government representative. She joins Mary Babin and Julie Burns in NSU Red & Gray. Celeste Callahan was a member of Queen Renee Aucoin's Pirogue Court. Named as outstanding students were Mary LeJeune, Robbin Gibbens and Lesli Wilson.

MAINE

Maine-Orono, Alpha Upsilon — Delta Zeta teamed with ΣN and ΑΧΑ fraternities to clean out a newly established Ronald McDonald House in order for renovation to begin. Pledges and members created a turtle-mobile for the Greek Week parade and participated in Greek Week games. The sale of nearly 250 roses tallied up a nice profit to underwrite the chapter's formal. Deb Wintle, Chris Probert, Sherry Ferrante, Verna Dawley, Holly Anderson and Pam Whiteside teamed at the UMO Winter Carnival to win a third place trophy in the Centipede Race. ΑΥ was honored by the City of Orono at a picnic for their participation in community affairs.

MICHIGAN

Central Michigan, Gamma Psi — The chapter won the coveted Pride of the Province VI for the second consecutive year. Other province awards included best display, sisterhood award and outstanding treasurer, Kris Schmidt. ΓΨ's representative Cheri Cork and her ΣΦΕ partner won top honors in the Greek Week dance contest. ΓΨ's volleyball team defeated all other sorority teams, and the chapter, as a whole, received Panhellenic's Sportsmanship Award. Narda Levitt is newly elected Panhellenic rush chairman. Peggy Carr is ΣΧ Sweetheart. The chapter celebrated its 30th year on campus with an open house.

Michigan Tech, Lambda Beta — The chapter traveled to Ferris State in Big Rapids for Province Day and brought home the Big Horn for earning the most money for philanthropy. In Greek Week, ΑΒ took third place in crest drawing competition and first place in board walk competition. The entire chapter enjoyed its Spring formal at the Calumet Theatre. At the cherished event, graduating seniors received gifts from the chapter and, in turn, presented a gift to the chapter. Delta Zeta kept a bowling date with Sigma Rho Fraternity, which consisted of two hours of non-stop team bowling competition. Ann Hoppe was first run-

ner-up to Military Ball Queen. Earning varsity letters in tennis were Brenda Trietch and Debra Kunzelman.

Wayne State, Epsilon Sigma — The chapter traveled to Brighton for their annual Winter retreat, worked in a Detroit Soup Kitchen as a philanthropy project, and baked Valentine cakes for fraternities. The major fund raiser, sponsoring of the campus play *Ring Around the Moon*, was quite successful.

Western Michigan, Gamma Pi — At the Panhellenic-IFC recognition dessert, Delta Zeta received awards for most increased membership and outstanding philanthropic involvement. Individuals recognized included Renee Slavin, outstanding rush chairman, Tracy Smith, Go Greek Team, Terri Badour, outstanding senior, Darleen Boucek, Mortar Board and Order of Omega, and Holly Underwood, Greek Woman of the Year. The initiation of the Winter pledge class, ΓΠ's largest in five years, marked the initiation of the largest pledge class on campus. Following initiation, members traveled to Ferris State where ΓΠ was recognized for outstanding performance. Lori Garlanger will be traveling throughout the US with the singing group *Up With People*. Members of the executive board at WMU are Terri Badour, Holly Underwood, Dawn Underwood, Tracy Smith, Lisa Sherrod, Karen Orsini and Terri Bevelacqua. *Who's Who Among College Students* includes Terri Badour. She is also a member of Order of Omega and Mortar Board. Holly Underwood co-chaired Greek Week and served on the Homecoming Committee.

MINNESOTA

Winona, Zeta Upsilon — Members traveled to St. Cloud for Province XIII Weekend. ΖΥ brought home the chapter excellence award and a merit certificate for reporting. Delta Zeta and ΣΤΓ shared a \$500 check as the fifth place winners in the Miller Pick Up Contest. ΔΖ's Muscular Dystrophy Super Dance raised \$2500 for philanthropy. Members waltzed on the main deck of the Steamboat *Julius C. Wilke* at the chapter's Spring dinner-dance. Leading Union Program Council is vice president Sue Torney and committee chairmen Carol Ann Miller, Robin Schloesser and Kristi Adolphson. Carol Ann Miller is also a senator.

MISSOURI

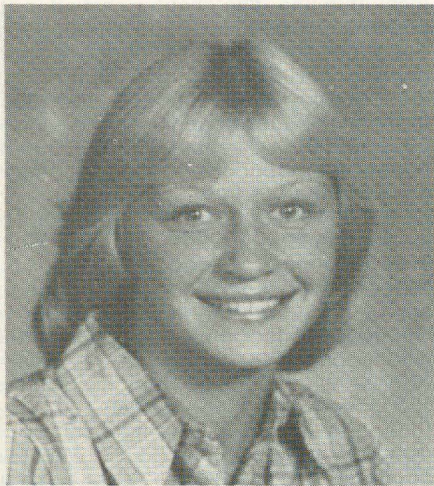
Central Missouri, Epsilon Gamma — Members are especially proud of their Warrensburg alumnae who won a collegiate rapport award for Province XI. Drusilla Krockenberger of Warrensburg alumnae was later honored by ΕΓ for her 54 years of support to the chapter and

local alumnae. The chapter cashed in its prize of 25 free pizzas with a rush party. The prize came from a Panhellenic competition. Lori Freeman, president of Student Ambassadors, captured first place in the bathing beauty contest and second place in ΣΦΕ's Calendar Queen competition. Gail Spotts is Greek Goddess. Campus leaders include Jackie Johnson, Order of Omega president and Student Ambassadors member, Diane Gish, Troupe member, Becky Bailey and Lisa Winter, cheerleaders. Sue Jolly is a member of honoraries Tassels and Order of Omega. Julie Jackson is a member of the dance company. Gail Spotts is treasurer of Public Relations Student Association and secretary-treasurer of National Press Photographer's Association. Members of campus organizations are Michelle Munkirs, ΦΚΦ, Lynda Neill, Student Ambassadors, Donya Sieckman, ΚΔΦ, and Janet Renz sophomore honor society. The chapter placed second in ΣΤΓ's aluminum can competition for calendar queen. Lori Freeman will represent Delta Zeta in the calendar.

Missouri-St. Louis, Iota Xi — At the Greek Week banquet climaxing a week of hectic activity, Delta Zeta won the overall Greek games trophy, the overall Greek Week trophy-sorority division, and the chapter scholarship award. Janet Neuner was named Woman of the Year and Valerie Langford was crowned Princess Athena. Sharon Sehrt earned the plaque for outstanding scholarship. Members aided St. Louis alumnae in setting up the annual fashion show, raffled potted plants to benefit the scholarship fund, and sponsored a Tic Tac Toe Booth at Creve Coeur Day.



Drusilla Raber Krockenberger CMSU-ET, was honored for "outstanding service" at province XI Weekend. Presenting the award is Sue Jolly, president of Epsilon Gamma. Photo by Gail Spotts, ET



Karen Wehmeirer-AB is 1983 Spring Homecoming Queen at Indiana State at Evansville.

Northeast Missouri, Delta Sigma — Second places came in overall Greek Week competition and Variety Night. At State Day in Maryville, ΔΣ won awards for reaching total, pledging quota, philanthropies and pledge training programs. Chapter Colonnade Club chairman Debra Stewart is organizing a Parent's Club. Parents receive newsletters concerning chapter activities. Student senators are Annette Carron, Michele Eckert, and Sheryl McClanahan. Tracy Bryan was named to the Division Head Recognition List for academic excellence in nursing. NMSU Show girls are Cindy Golic, Sue Hajek, Sherrie White and Andrea Wall. Sherrie is also a resident assistant. Student Activities Board includes Marzale Adams and Diana Wilson. Tracy Bryan is business manager of the yearbook. Tracy recently won the four year Laughlin scholarship, while Jana Holzmeier placed third in St. Louis area vocal scholarship competition.

Northwest Missouri, Epsilon Rho — Delta Zeta was honored as Best Greek Organization on campus for the second year in a row. But, perhaps the most coveted honor of all was winning the congeniality award at State Day. The other chapters in the Province voted EP as the most sisterly chapter at Province Day. Lisa Neal, Outstanding Greek Woman, was honored as Miss Province XI. Robert Brown, Delta Zeta faculty sponsor and a city councilman, was honored as outstanding Greek sponsor during Greek Week. The chapter sold candy to subsidize travel expenses for the chapter president and CCD to National Convention in Dallas. Members collect for the March of Dimes.

William Jewell, Zeta Rho — The chapter earned seven Province Day awards — best skit, scholarship program, standards

program, quota, total and "best all around chapter" in Missouri. Susan Koch was named most outstanding treasurer in Province XI. Over 70 moms, dads and daughters gathered at the campus to enjoy terrific food, fun and fellowship at the annual Moms Day luncheon. Zeta Rho helped raise some \$15,000 in pledges in the Browning Building Phon-a-thon. Members took time out from busy schedules to phone college alumni nightly for a week to acquire the pledges. ZP earned \$250 for the chapter for participating in the phon-a-thon. Patti O'Dell passed her crown and trophy as AXA Crescent Queen to Rhonda Barry. Rhonda is the fourth consecutive Delta Zeta to reign. Shelly Hamilton was second princess on the Crescent Court. Susie Blaylock, Kelly Armitage, Shelly Hayes, Joyce Meyer and Bridgette McAtee will serve on next year's Homecoming committee. Carol Cokeman and Terri Bill played on the girl's varsity softball team. Julia Farrell and Kelly Armitage finished their second year with the varsity tennis team. On Panhellenic are Robin Ritter, secretary, and Beth Dryer. Jennifer Lusk is a resident assistant. Rhonda Barry won the Greater Kansas City Panhellenic scholarship funded by the Delta Zeta alumnae. Cardinelles campus hostess group includes Lori Greenfield, Beth Dryer is vice-president for the program. Julia Farrell is a cheerleader and Debbie Viani is a senator. Julie Adams is public relations chairman for College Union Activities Board. Delta Mu Delta includes Rhonda Barry, treasurer, Kitty Raynor, Dana Mershon and Patti O'Dell. Rhonda also serves as historian for Mortar Board.

NEBRASKA

Creighton, Theta Eta — Kelly McQueen is Panhellenic Council's Woman of the Year and Kim Erftmeir is All University Pledge. Delta Zetas teamed with Pi Kappa Alpha pledges to sponsor a spaghetti dinner raising \$200 for Gallaudet. Members aided Sigma Nu in a fund raiser for Easter Seals.

Nebraska Wesleyan, Beta Tau — Members traveled to Estes Park, Colorado for Province XII Weekend and brought home honors for their pledge program, scholarship, pledge scholarship, achieving quota and reaching total. Jody Wysong was named Model Pledge and Edna Zamzow was honored as Province XII's Outstanding Alumna. Liz Osborne had the second highest grade point average among seniors in the Province. Cynthia Knight won the behind-the-scenes award and Meg Johnson won a Sparkplug Award. Mary Wright is ΦKT's Sweetheart and Benne Jo Speck is TKE Sweetheart. One of the "sister sharing" activities was attending a performance of *Night of the Iguana*. Many Delta Zetas were in the cast.

NEVADA

Nevada-Las Vegas, Iota Phi — With the motto "We Are Awesome," Iota Phi was firmly determined to win Greek Week. After three days of competition and a second place in Greek Sing, Delta Zeta was so far ahead, no group could catch them. And, with no problem, Delta Zeta won Greek Week. Pledges collected for Muscular Dystrophy, while chapter members answered phones during a Blood Drive. Tracy Beaton took second place in the Las Vegas Mini-Marathon. Cathy Clay, president pro tempore, was named outstanding senator. Delane Fitzpatrick is a member of the Election Board. Lisa Grif-fith edits the cultural arts magazine, is managing editor of the campus newspaper, chairs the Publications Board and provided the "best judges interview" in the Miss America preliminary. Maria Jones is a member of the dance company and Tammy Shipp is Greek Week chairman and a gymnastics judge. Sheri Wolodko serves on the Curriculum Committee.

NEW JERSEY

Glassboro, Xi Kappa — In a busy Spring, Delta Zeta participated in Arts Week, cleaned up the campus, and created posters to encourage others to do the same. Delta Zeta also participated in Spring Weekend, Greek Weekend and, in a true Panhellenic spirit, helped other Greeks raise funds for the Glassboro Police Department. The soccer team advanced to the semi-finals. Katie Teevan is a member of the Glassboro radio station staff, while Cindy Schisler is a member of Hillel. Elementary Education Club includes Kathy Leahy and Sandy Irving, treasurer. In Glassboro Home Economics Association are Susan Wiman, secretary, and Sally Stratton.



Terry Munyon and Bernadette Weber share a birthday cake with their sisters at Trenton State-AA.

NEW YORK

Rochester, Lambda Iota — Janet McLain, Wendy Hauler and Nancy Prescott put on their dancing shoes for the school's annual dance marathon. Wendy and her partner raised over \$200 for leukemia, the fourth highest amount raised by dancing couples. Beth Sprunger, Michaela Jackson and Maryann Collieran devoted many hours as student emergency squad members providing first aid and giving dancers well deserved foot massages.

NORTH CAROLINA

UNC-Charlotte, Kappa Phi — Members traveled to Columbia, South Carolina for Province XXI Day. Kappa Phi won certificates for pledge training, best scrapbook, activities, membership, quota and the traveling plaque for outstanding pledge training. Kappa Phi and the Charlotte alumnae won the alumnae-collegiate support certificate. Outstanding collegians were Ronda Turner, Golden Crest Award, and Kelly Miller, outstanding collegian award. Kappa Phi won the intramural softball championship and then sponsored an inner-sorority softball game for the entire campus. Tina Williams was named Jr. Greek Woman of the Year. Robin Rutledge is ΣN Sweetheart and Natalie DeCapite is a member of freshman honorary Phi Eta Sigma.

NORTH DAKOTA

North Dakota, Upsilon — The chapter has a new tradition of the "old boot" award. The prize goes weekly to the member with the funniest goof during the week. Upsilon welcomed their new housemother Tara Mulhauser, enjoyed a Valentine dinner with alumnae, and organized a scholarship dinner.

OHIO

Baldwin-Wallace, Gamma Alpha — Delta Zetas are certainly leading the seniors, as three of the senior class officers are Delta Zetas. Sheila Khosh is vice president, Melissa Erzetic is secretary, and Shelley Spencer is treasurer. Patti Foley is junior class secretary, while Debbie Schultz is sophomore vice president. The Student Senate includes Ann Holman, Sheila Khosh, Melissa Erzetic and Terri Nass. At B-W Honors Assembly, Kim Rifici was named Outstanding Greek Woman, Shelley Spencer won the Crossman Leadership Prize and Gibbler Scholarship, and Randi Nevins received the McKelvey Scholarship. Patti Foley and Wendy Johnston are football cheerleaders. Wendy is also part of the NCA Cheerleading Squad for summer '83. Terri Nass is a new member of Laurels

honorary. Shelley Spencer was named Outstanding Resident Assistant on the South Campus. Sherri Cox and Marge Kennedy will begin their positions as resident assistants this fall. Orientation leaders for fall are Wendy Johnston, Terri Nass, Randi Nevins and Debbie Schultz. Lorie Frame and Louise Italiano are advisory committee (student court) alternates. Melissa Erzetic is a Judicial Assistant for Dean of Academic Affairs. Jane Mowery reigned over May Day Activities, with Shelley Spencer as first runner-up. ΓAs again sponsored their annual Bike-a-thon benefitting philanthropy. At Province Day at Wittenburg, ΓAs won a membership award, outstanding pledge program honors, and first place in song competition. Individual honors went to Marge Kennedy, Golden Heart, Jane Mowery, Sandy Pearson, Randi Nevins, Golden Crests, and Jane Mowery, outstanding chapter president.

Bowling Green, Gamma Tau — Bonnie Zahn, Teresa Stellin, Karen Brikle and Mary Amatore, pedaled themselves to a second place victory in the Beta 500. This year, ΓT surprised viewers by releasing 100 rose and green balloons prior to the ΒΘΠ event. Delta Zeta captured first place and the spirit trophy in Delta Upsilon's Tricycle Race. At State Day, ΓT won top honors in philanthropy and activities, a five year membership plaque and was named outstanding chapter in the Province V.

Kent State, Gamma Kappa — If tradition holds true, there will be at least two legacies born to this year's graduating class. It seems the chapter tradition at the Senior Tea is to let graduating Delta

Zetas choose a box which holds either a baby spoon or baby fork. If, when opened, the box holds a spoon there will be a legacy ... if the box holds a fork there will be no legacy. At Ohio State Day, the chapter placed second in College Bowl. Individual awards went to Mary Ellen Wepler, standards programs, Theresa Dolan and Catherine Kappele, Golden Crest, Lee Ann Haynes, Golden Heart. National Historical Museum Fund Raising Chairman for the chapter, Theresa Dolan, organized a Daisy of the Day Sale to benefit the new headquarters-museum. Gretchen Alferink and Lorie Preuss will be landscaping the yard of the house, readying it for fall rush. Lorie is also refinishing the dining room table. Cheryl Curtis is a member of ΦΕΚ honorary and ΠΓ tapped Gretchen Alferink and Lee Ann Haynes. ΓK placed second in song fest and swimming during Greek Week. Carolyn Fray and Peggy Mackey worked in Washington for Senator John Glenn.

Miami, Alpha — Delta Zetas participated in the annual ΒΘΠ softball tournament and enjoyed a Spring Fling semi-formal in Sharonville. Members traveled to Wittenburg for the annual State Day where Alpha received many individual and chapter awards.

Ohio Northern, Zeta Kappa — Sixteen lucky ZKs will be moving into the Delta Zeta House in September. The newly remodeled house is a dream come true and the chapter LAMP editor sends great appreciation from all the members to Past National President Norma Andrisek, Province Director Lynda Hoeffler, College Chapter Director Elizabeth Smith and House Corporation president Barb Alesch. ZK placed third in car rally, third in talent show, first in musical chairs, first in Greek Sing, and second in Sig Olympics to again win Greek Week. Susan Recker, who won the Greek Week Queen title, had added just enough points for the all-around first place to go to Delta Zeta. Members held a raffle benefiting the National Historical Museum at Miami. Past chapter president Jenny Reed was named outstanding greek woman and was among the top eight outstanding women at ONU. Shari Birt, ΣΦΕ Sweetheart, was tapped for Mortar Board.

Ohio State, Theta — Chapter Activities included Moms weekend, Winter formal, participation in ΣX Derby Days and Greek Week, and traveling to Wittenburg for State Day.

Wittenburg, Theta Pi — The chapter hosted State Day in mid-April and was delighted when 500 Delta Zetas from across Ohio arrived at the new Health and Physical Education Center on campus for seminars, exhibits and a banquet. Theta Pi won second place in sorority-fraternity Greek games. Alumnae were



Greek Week Queen at Ohio Northern is Susan Recker, ZK.

honored with a fruit and quiche brunch and seniors were bid farewell at a picnic.

OKLAHOMA

Central State, Epsilon Upsilon — After 18 years of dedicated service as house cook and food supervisor, Lorene Craig has assumed the additional role of Delta Zeta housemother. She and her husband, Henry, become the first mom and dad team to supervise residents of the house. A busy philanthropic year included earning second place in the All Campus Blood Drive, winning the Queen of Hearts honor for fund raising from the American Heart Association, and sponsoring an under-privileged child at the President's Club Christmas party. *Who's Who in American Colleges and Universities* lists Sherri Andrews, Sheryl Kudy and Lynda Cearfoss. Mortar Board lists Sherri, Lynda and Tracy Knutson. Student senators are Polly Pitezel, Linda Long, Sherry Andrews, Kathi Bray and Lynda Cearfoss. Campus crowns go to Kelli Beemer, freshman queen, Karen Jeannot, Miss Calendar Girl, and Keven Holbert, Queen of Hearts. Joni Billinger is second runner-up to Miss CSU. Cheryl Kimbough and Kathi Bray were among the top seven freshmen. Kathi is listed on the Dean's Honor Roll and Cheryl is a baseball Diamond Girl. Terry Russel was listed on the President's Honor Roll while Tracy Knutson was listed on the Dean's Honor Roll.

Oklahoma City, Gamma Upsilon — At State Day, Gamma Upsilon presented a special number written by new initiate Leigh Ann Plummer to win the song contest again. The chapter also won awards for spirit and most improved rush. Members worked the concession stands at the Myriad Convention Center for a fund raiser. A summer sisterhood and rush retreat was planned for a Missouri lake cabin.

Oklahoma State, Alpha Epsilon — Alpha Lambda Delta freshman honorary tapped Sheila Bryant, Karen Wakefield and Esperanza Lasagabaster. Sharolyn Wallace is a member of Cowboy Coeds, OSU Ambassadors and reigned over the IRA-Cushing Rodeo. Shawn O'Halloran was named to All Greek tennis, golf and football teams. At State Day, AE won the Mary Ann French Pledge Training Award and the Province Progress Award. Esperanza Lasagabaster received an award for her perfect 4.0 average. Kim Maloy led Delta Zeta to collect 654 pounds of canned goods in the AXA canned food drive. AE also participated in SX Derby Days, Greek Week and Spring Sing.

PENNSYLVANIA

California-PA, Zeta Epsilon — Serving



Vaune Pelletier, Edinboro-1Δ, is Greek Goddess, Panhellenic Woman of the Year and received the George C. Marshall ROTC award.

on the Student Congress are Kim Jordan, Karen Schwenning and Leslie Rhodes. Patti Wallace portrayed the wicked old stepmother in a Drama Club production of *Cinderella*. Terri Ozegovich is a football and basketball cheerleader, while her real life sister Tammy is a bat girl for the baseball team. Kelly Conner serves Panhellenic as secretary.

Drexel, Epsilon Zeta — At Drexel's annual block party, Delta Zeta sold fruit drinks, while pledges sponsored a Mr. Sexy Legs Contest. A vivacious pledge class showed their enthusiasm during their fund raising projects. While selling baked goods and raffle tickets, they donned ΔZ headbands and rose and green sashes. The romantic gazebo and wooden foot bridge by four misty water falls provided a memorable setting for the Spring rose ball at the Inn of Four Falls. Ann Golberg won a Province III Golden Heart Award.

Edinboro, Iota Delta — At Province Day, 1Δ was recognized for 100% initiation of its fall pledge class and received the chapter activities award. Julie Gruber won a Golden Heart award, while Cathy Turner and Lynn Friend won Golden Crest awards. Vaune Pelletier was named Greek Goddess, and Jacklyn Arnold placed third in Greek Week's go-go dance competition. 1Δ placed first in Greek Sing and provided a Delta Zeta display table (a good rush tactic!) at freshman orientation.

Indiana-PA, Gamma Phi — Helping steer the Student Government Association are Sue Michael and Laurieann Potts, members of the Student Body. Nancy Sebastian is activities chairman for the Marketing Club and Lisa Lipinsky is secretary of the Student Accounting Association. Cindy Brown was tapped for Order of Omega. Nancy Novotnack is ATΩ's new sweetheart. More than 70% of

the chapter attended Province III Day, the largest representation there. Maria Blair and Carla Piatti won Golden Crest Awards, and Nancy Sebastian won a Golden Heart Award. Seniors were honored with a farewell rose banquet.

Pittsburgh, Omicron — Under the direction of Angela Mioff and Jo Ann Wagner, Omicron's Greek Singers received a perfect score from one of the esteemed judges and the top award in Greek Sing. Their performance to the songs *On Broadway*, *Theme from Mahogany* and *Applause*, *Applause* was flawless. Other Greek week honors included first places in banner contest, cake decorating and talent night. A second place came in the chariot race. Omicron boasted 100% participation in the blood drive and Mary Helen Teeter added participation points in the dance marathon. Omicron's overall performance earned a third place among sororities. Winter pledges, with vice-president of pledge training Marcy Roscosky, traveled to **Pitt-Johnstown** for a weekend visit with pledges there. Omicron hosted Province III Day with the theme, *Province Pride, Province Wide*. The chapter won an award as most improved chapter, most outstanding pledge program and Laurie Raneger won the new award for outstanding chapter president. Omicron won certificates for scholarship, formal rush, pledging quota, pledge scrapbook, philanthropies and activities. Laura Vaglia won a Golden Crest; Angela Mioff and JoLyn Del Balso won Golden Heart Awards. Linda Huebner is a varsity cheerleader for the third straight year. Debbie Leff served as director of refrigerator rentals for the Resident Student Association and will be Photo Coordinator for the RSA next year. Joann Rawa is Greek Week executive secretary. New members of honoraries are Ronna Forkosh, Mary Helen Teeter, ΑΣ; Wendy Pekich, Druids.

SOUTH CAROLINA

South Carolina, Beta Delta — For the third consecutive year, Delta Zeta won Sigma Chi Derby Days. The chapter placed third overall in Greek Week and awarded \$300 to a child at Project Scooter. The scholarship is designated for a hearing aid purchase. Beta Delta won the Panhellenic chapter excellence award. Vicki Jinnette is an outstanding senior and was named to *Who's Who*. Karen Carter is Greek Week Delegate of the Year.

TENNESSEE

Eastern Tennessee, Delta Eta — The chapter honored Gallaudet President Dr. Edward "Pete" Merrill with a tea. On hand to honor Dr. Merrill, along with ΔH

CHANGE OF ADDRESS CARD. Please advise Delta Zeta promptly if there is a change or correction in your name or address as shown on the back cover. It is not necessary to return this card if the mailing label is correct. Members should use parents' home address while in college.

IMPORTANT. You must cut out the mailing label from this issue and paste it here. We cannot process changes without your label. Thank You.

I am currently a Delta Zeta Officer. Title _____

My new address will be _____
street/apt. # _____

city/state/ZIP _____ effective date _____

If mailing label does not show your married name, please include the following information for our membership files.

Married name _____ Husband's first name _____ Date of marriage _____

Angelo, Lambda Omicron — Delta Zetas earned \$1000 for the chapter in just three days! Members advertised a convenience store by helping the owner sell gas. Gasoline — priced at 89.9 — was selling like hot cakes and Delta Zetas were on hand from 7 am to midnight to write tickets for gas purchases. During Greek Games, AOs won first in softball and track. Greek Week was a fun time for all on campus — members helped push a six foot ball across the football field, joined fraternities at parties, sponsored a run-a-thon and listened to Dr. Lloyd Vincent, president of Angelo, speak on the future of the university. New Panhellenic officers include Sara Stone, vice-president, and Melody McDonald, treasurer. Melody participated in the Miss Tom Green County, USA Pageant televised live from San Antonio. Spring pledge Kiomi Shintoni developed a Delta Zeta family tree tracing big sister - little sister relationships back to the 1975 founding of the chapter.

Houston, Delta Theta — Delta Zeta took first place in two fraternity competitions this Spring. Tricia Knoblauch, Julia Hauck, Nancy Jo Piersol and Stacie Collier won the best punch award, most spirited award and pedaled Delta Zeta to the first place award in Sigma Nu Bike Race Day. With the theme *Rain*, Delta Zeta won another first place in SAE Sing Song Competition. Jeanne Wriggins is SX Sweetheart and Pam Reese is SN Bike Race Queen.

North Texas, Kappa Zeta — Members were honored and excited to perform their original *Fame* rush skit and provide the initiation ceremony for the 36th National Convention of Delta Zeta in Dallas. A highlight of Spring activities was the annual Parents Day which included a picnic at Lake Dallas and banquet at the Silver Eagle Suite in the Union Building. Members participated in a canned food drive and blood drive for the Denton

participants with shirts and several winners' prizes. Delta Zeta won first place overall in Greek Week after winning firsts in bowling and softball throw. Fraternity sweethearts are Sara Newell, ATΩ, Sherry Coleman, ΣΤΓ, and Shelia Brown, ΣΧ. Zeta Psi bid farewell to 23 graduating seniors.

VIRGINIA

Radford, Xi Delta — Chapter president Allison Merkle was named outstanding junior student and best all around Greek at Radford. College Chapter Director Christine C. Sleight was awarded two research grants to study language and communication disorders.

Virginia, Lambda Delta — At Province XXV Day, ΛΔ was named outstanding chapter in the Province, Katie Dutro was chosen Pride of the Province, and CCD Lou Williams was honored as outstanding college chapter director. Delta Zeta participated in Virginia's first Greek Week festival. Cayley Shaffer is vice-president of the Marketing Association.

WASHINGTON

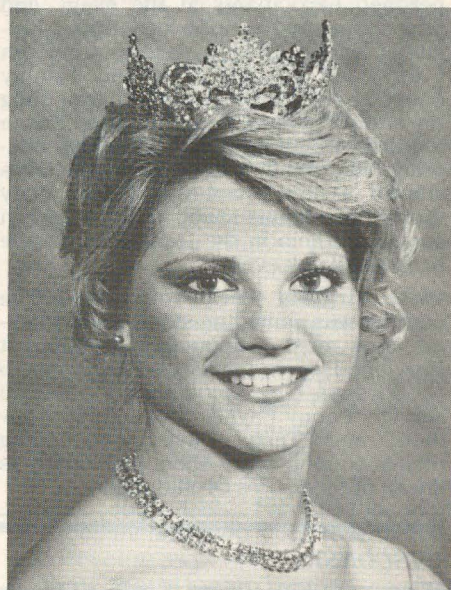
Washington, Kappa — Delta Zeta was the only sorority to walk away with two trophies at SX Derby days. Prior to the games week, Kappas had practiced pyramid building, egg tossing, and various activities. The house boasted 90% participation in the competition — and 100% participation — in the cheering. Kappas won the first place trophy in skit competition, third place in the amoeba race, and the spirit trophy for sportsmanship. Kappa raised \$618.40 for Sigma Chi and the Variety Club to distribute to charity, with most of the money coming from pledges to Kathy Oxarart, who danced for 42 hours in the dance marathon. In its first year at University of Washington, Delta Zeta has recruited over 60 mem-

bers, tied for first place in university's Homecoming competition, and has the honor of having the reigning Miss Des Moines, Washington, Julie Dawn Peluso as a member. She travels to Miss Washington this summer. Julie is an accomplished equestrian, vice president of Kappa Chi and former member of the university gymnastics team.

WEST VIRGINIA

Glenville, Theta Xi — Delta Zeta pledged quota, jumped rope and collected cash for the Heart Fund, and hosted Province IV Day. Theta Xi won the Loving Cup Award that weekend. Shelia Martin was named outstanding senior in the state with her 3.87 grade point average. Shelia, who was graduated magna cum laude, was also named outstanding senior in her 1983 Glenville class. Theta Xi sponsored its second annual softball tournament.

Shepherd, Kappa Mu — At the annual Student Recognition Day, KM won three awards. Dee Hoffman received the Delta Zeta Spirit Award, while the chapter won the Panhellenic Award and the Greek Trophy Award. The chapter's annual banquet marked the first presentation of the new Cara Rohrer Memorial Scholarship Award. Sue Fowler was the first recipient. At Province IV Day, KM won the activity award, chapter scrapbook



Julie Pelusa, Washington-K, is Miss Des Moines in the Washington State Miss America pageant.

honored with a fruit and quiche brunch and seniors were bid farewell at a picnic.

OKLAHOMA

Central State, Epsilon Upsilon — After 18 years of dedicated service as house cook and food supervisor, Lorene Craig has assumed the additional role of Delta Zeta housemother. She and her husband, Henry, become the first mom and dad team to supervise residents of the house. A busy philanthropic year included earning second place in the All Campus Blood Drive, winning the Queen of Hearts honor for fund raising from the American Heart Association, and sponsoring an under-privileged child at the President's Club Christmas party. *Who's Who in American Colleges and Universities* lists Sherri Andrews, Sheryl Kudy and Lynda Cearfoss. Mortar Board lists Sherri, Lynda and Tracy Knutson. Student senators are Polly Pitezal, Linda Long, Sherry Andrews, Kathi Bray and Lynda Cearfoss. Campus crowns go to Kelli Beemer, freshman queen, Karen Jeannot, Miss Calendar Girl, and Keven Holbert, Queen of Hearts. Joni Billinger is second runner-up to Miss CSU. Cheryl Kimbough and Kathi Bray were among the top seven freshmen. Kathi is listed on the Dean's Honor Roll and Cheryl is a baseball Diamond Girl. Terry Russel was listed on the President's Honor Roll while Tracy Knutson was listed on the Dean's Honor Roll.

Oklahoma City, Gamma Upsilon — At State Day, Gamma Upsilon presented a special number written by new initiate Leigh Ann Plummer to win the song contest again. The chapter also won awards for spirit and most improved rush. Members worked the concession stands at the Myriad Convention Center for a fund raiser. A summer sisterhood and rush retreat was planned for a Missouri lake cabin.

Oklahoma State, Alpha Epsilon — Alpha Lambda Delta freshman honorary tapped Sheila Bryant, Karen Wakefield and Esperanza Lasagabaster. Sharolyn Wallace is a member of Cowboy Coeds, OSU Ambassadors and reigned over the IRA-Cushing Rodeo. Shawn O'Halloran was named to All Greek tennis, golf and football teams. At State Day, AE won the Mary Ann French Pledge Training Award and the Province Progress Award. Esperanza Lasagabaster received an award for her perfect 4.0 average. Kim Maloy led Delta Zeta to collect 654 pounds of canned goods in the AXA canned food drive. AE also participated in ΣX Derby Days, Greek Week and Spring Sing.

PENNSYLVANIA

California-PA, Zeta Epsilon — Serving

DELTA ZETA SORORITY

Corner of Campus Ave. and Church St.
202 East Church Street
Oxford, OH 45056

on the Student Congress are Kim Jordan, Karen Schwenning and Leslie Rhodes. Patti Wallace portrayed the wicked old stepmother in a Drama Club production of *Cinderella*. Terri Ozegovich is a football and basketball cheerleader, while her real life sister Tammy is a bat girl for the baseball team. Kelly Conner serves Panhellenic as secretary.

Drexel, Epsilon Zeta — At Drexel's annual block party, Delta Zeta sold fruit drinks, while pledges sponsored a Mr. Sexy Legs Contest. A vivacious pledge class showed their enthusiasm during their fund raising projects. While selling baked goods and raffle tickets, they donned ΔZ headbands and rose and green sashes. The romantic gazebo and wooden foot bridge by four misty water falls provided a memorable setting for the Spring rose ball at the Inn of Four Falls. Ann Golberg won a Province III Golden Heart Award.

Edinboro, Iota Delta — At Province Day, ΙΔ was recognized for 100% initiation of its fall pledge class and received the chapter activities award. Julie Gruber won a Golden Heart award, while Cathy Turner and Lynn Friend won Golden Crest awards. Vaune Pelletier was named Greek Goddess, and Jacklyn Arnold placed third in Greek Week's go-go dance competition. ΙΔ placed first in Greek Sing and provided a Delta Zeta display table (a good rush tactic!) at freshman orientation.

Indiana-PA, Gamma Phi — Helping steer the Student Government Association are Sue Michael and Laurieann Potts, members of the Student Body. Nancy Sebastian is activities chairman for the Marketing Club and Lisa Lipinsky is secretary of the Student Accounting Association. Cindy Brown was tapped for Order of Omega. Nancy Novotnick is ATΩ's new sweetheart. More than 70% of

placed third among sororities. Winter pledges, with vice-president of pledge training Marcy Roscosky, traveled to **Pitt-Johnstown** for a weekend visit with pledges there. Omicron hosted Province III Day with the theme, *Province Pride, Province Wide*. The chapter won an award as most improved chapter, most outstanding pledge program and Laurie Raneger won the new award for outstanding chapter president. Omicron won certificates for scholarship, formal rush, pledging quota, pledge scrapbook, philanthropies and activities. Laura Vaglia won a Golden Crest; Angela Mioff and JoLyn Del Balso won Golden Heart Awards. Linda Huebner is a varsity cheerleader for the third straight year. Debbie Leff served as director of refrigerator rentals for the Resident Student Association and will be Photo Coordinator for the RSA next year. Joann Rawa is Greek Week executive secretary. New members of honoraries are Ronna Forkosh, Mary Helen Teeter, ΛΣ; Wendy Pekich, Druids.

SOUTH CAROLINA

South Carolina, Beta Delta — For the third consecutive year, Delta Zeta won Sigma Chi Derby Days. The chapter placed third overall in Greek Week and awarded \$300 to a child at Project Scooter. The scholarship is designated for a hearing aid purchase. Beta Delta won the Panhellenic chapter excellence award. Vicki Jinnette is an outstanding senior and was named to *Who's Who*. Karen Carter is Greek Week Delegate of the Year.

TENNESSEE

Eastern Tennessee, Delta Eta — The chapter honored Gallaudet President Dr. Edward "Pete" Merrill with a tea. On hand to honor Dr. Merrill, along with ΔH

were representatives from the Johnson City Speech and Hearing Clinic, their patients, and campus sorority presidents. Films on Gallaudet and a question-answer session followed the tea. Delta Zeta placed second for the second year in ΣN Snake Day. A first place came in KA's Old South Day. Both events benefit fraternity philanthropies. At Greek Awards Banquet, ΔH 's pledge class won the Jr. Panhellenic Award and the chapter won the activities award. At Province XIX Weekend in Nashville, Delta Eta won awards for scholarship, activities, attendance and the Betty Heusch Agler Award as most improved chapter. Charlotte Patterson is ΣAE Sweetheart. Becky Brien is a Panhellenic rush counselor. Alpha Lambda Delta freshman honorary tapped Charlotte Patterson and Terry Carroll.

TEXAS

Angelo, Lambda Omicron — Delta Zetas earned \$1000 for the chapter in just three days! Members advertised a convenience store by helping the owner sell gas. Gasoline — priced at 89.9 — was selling like hot cakes and Delta Zetas were on hand from 7 am to midnight to write tickets for gas purchases. During Greek Games, ΛOs won first in softball and track. Greek Week was a fun time for all on campus — members helped push a six foot ball across the football field, joined fraternities at parties, sponsored a run-a-thon and listened to Dr. Lloyd Vincent, president of Angelo, speak on the future of the university. New Panhellenic officers include Sara Stone, vice-president, and Melody McDonald, treasurer. Melody participated in the Miss Tom Green County, USA Pageant televised live from San Antonio. Spring pledge Kiomi Shintoni developed a Delta Zeta family tree tracing big sister - little sister relationships back to the 1975 founding of the chapter.

Houston, Delta Theta — Delta Zeta took first place in two fraternity competitions this Spring. Tricia Knoblauch, Julia Hauck, Nancy Jo Piersol and Stacie Collier won the best punch award, most spirited award and pedaled Delta Zeta to the first place award in Sigma Nu Bike Race Day. With the theme *Rain*, Delta Zeta won another first place in ΣAE Sing Song Competition. Jeanne Wriggins is ΣX Sweetheart and Pam Reese is ΣN Bike Race Queen.

North Texas, Kappa Zeta — Members were honored and excited to perform their original *Fame* rush skit and provide the initiation ceremony for the 36th National Convention of Delta Zeta in Dallas. A highlight of Spring activities was the annual Parents Day which included a picnic at Lake Dallas and banquet at the Silver Eagle Suite in the Union Building. Members participated in a canned food drive and blood drive for the Denton

community. Greek Day took a new twist this year, as Greeks went to White Water, a water sports complex. Leann Berry won the $\Pi B \Phi$ Air Band competition with her impression of Joan Jett. Corrine Cesario is a freshman orientation counselor for the summer. She helps freshman become familiar with the campus and arrange their schedules. Mortar Board tapped Susan Resley. Sharon Bonnett is an Eaglette, football recruiter.

Stephen F. Austin, Zeta Psi — With hands joined in a circle encompassing the whole banquet room, collegians and alumnae celebrated the 20th year of Zeta Psi. National President Carolyn Gullatt and Province Collegiate Director Merry Adamcik and Past National Secretary Arlene Newman were on hand to share the past and the present at the reunion, banquet and dance. Delta Zeta kicked off its first annual 10-kilometer Fun Run this year. The successful race provided all participants with shirts and several winners' prizes. Delta Zeta won first place overall in Greek Week after winning firsts in bowling and softball throw. Fraternity sweethearts are Sara Newell, $AT\Omega$, Sherry Coleman, ΣTT , and Shelia Brown, ΣX . Zeta Psi bid farewell to 23 graduating seniors.

VIRGINIA

Radford, Xi Delta — Chapter president Allison Merkle was named outstanding junior student and best all around Greek at Radford. College Chapter Director Christine C. Sleight was awarded two research grants to study language and communication disorders.

Virginia, Lambda Delta — At Province XXV Day, $\Lambda \Delta$ was named outstanding chapter in the Province, Katie Dutro was chosen Pride of the Province, and CCD Lou Williams was honored as outstanding college chapter director. Delta Zeta participated in Virginia's first Greek Week festival. Cayley Shaffer is vice-president of the Marketing Association.

WASHINGTON

Washington, Kappa — Delta Zeta was the only sorority to walk away with two trophies at ΣX Derby days. Prior to the games week, Kappas had practiced pyramid building, egg tossing, and various activities. The house boasted 90% participation in the competition — and 100% participation — in the cheering. Kappas won the first place trophy in skit competition, third place in the amoeba race, and the spirit trophy for sportsmanship. Kappa raised \$618.40 for Sigma Chi and the Variety Club to distribute to charity, with most of the money coming from pledges to Kathy Oxarart, who danced for 42 hours in the dance marathon. In its first year at University of Washington, Delta Zeta has recruited over 60 mem-

bers, tied for first place in university's Homecoming competition, and has the honor of having the reigning Miss Des Moines, Washington, Julie Dawn Peluso as a member. She travels to Miss Washington this summer. Julie is an accomplished equestrian, vice president of Kappa Chi and former member of the university gymnastics team.

WEST VIRGINIA

Glenville, Theta Xi — Delta Zeta pledged quota, jumped rope and collected cash for the Heart Fund, and hosted Province IV Day. Theta Xi won the Loving Cup Award that weekend. Shelia Martin was named outstanding senior in the state with her 3.87 grade point average. Shelia, who was graduated magna cum laude, was also named outstanding senior in her 1983 Glenville class. Theta Xi sponsored its second annual softball tournament.

Shepherd, Kappa Mu — At the annual Student Recognition Day, KM won three awards. Dee Hoffman received the Delta Zeta Spirit Award, while the chapter won the Panhellenic Award and the Greek Trophy Award. The chapter's annual banquet marked the first presentation of the new Cara Rohrer Memorial Scholarship Award. Sue Fowler was the first recipient. At Province IV Day, KM won the activity award, chapter scrapbook



Julie Pelusa, Washington-K, is Miss Des Moines in the Washington State Miss America pageant.



Pittsburgh-O Delta Zetas are elated with their first place Greek Week Sing win.

award and quiz bowl award. Sally Startzman was named model pledge, and Debbie Ramey won outstanding alumna award. Sally was among the top five finalists in the Miss Shepherd Pageant.

West Liberty, Iota Tau — With an overall grade point average of 3.0, Iota Tau won the scholastic award at Province Day. College Chapter Director Sally Twigg received recognition for alumnae philanthropic support. The chapter finished in second place overall in Greek Week activities. In the area of philanthropies, IT designed a banner welcoming participants to Special Olympics, chaperoned participants at the event, and later sponsored a raffle benefitting Galaudet. Varsity cheerleaders are Charleen Carey and Stephanie Miller. Tammy Maier is vice president of programming for student government elections. Susan Smith is a member of ΣΤΔ English honorary. The vivacious Spring pledge class started a new chapter tradition. They dyed white tennis shoes pink and green and wore them in the Delta Zeta parade to Greek Week events.

West Virginia Tech, Iota Pi — The chapter was named most improved chapter and most outstanding chapter at Province Day. Individual honors went to Dr. Virginia Gray, outstanding alumnae service; Penny Payne, outstanding president; and Terry Davis, outstanding pledge trainer. Mary Ellen McConahy is queen of Sigma Pi's Orchid Ball.

WISCONSIN

Wisconsin-Eau Claire, Epsilon Omega — Standards chairman Tami Getchel got every one in shape for the Killarney Rose ball with a jazzercise program. Other sti-

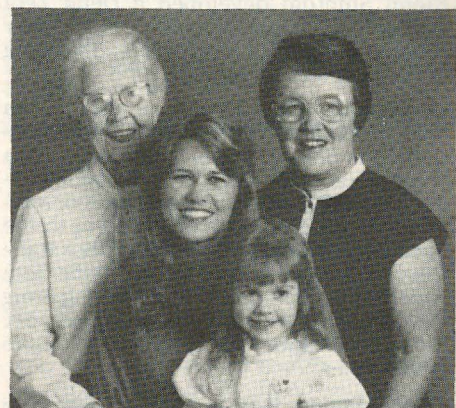
mulating standards programs included attending an art showing on campus and learning more about child abuse. Delta Zeta teamed with three fraternities to provide a Cub Scout fun night. While the Greeks kept the scouts entertained for two hours, the Cubmaster had an opportunity to "recruit" parents. Members planned a summer retreat to a lake cabin in Northern Michigan.

Wisconsin-Whitewater, Epsilon Kappa — As Greek Week rolled into action with a bowling tourney, EK spared no feelings as they won the first trophy of the week. The next night, EK won the scholarship award for most improved grade point average and the philanthropic award for community and campus contributions. On the third day, Delta Zeta won Derby Days and on the final day, at Greek games, EK won the pyramid build, three-legged race and wheelbarrel race. Delta Zeta invited those attending the outdoor Panhellenic picnic and workshop "in out of the rain" to continue the program under the Delta Zeta porch. The traditional mother-father-daughter banquet this year took a new twist to become Family Fest. EK prepared seminars on chapter college programs and set up displays to orient parents to Delta Zeta. Representatives of the Whitewater Historical Society intrigued the chapter at another program about the Delta Zeta house and its previous owners. Members are anxiously awaiting the word to see if the house qualifies as a historical landmark. Serving on the Homecoming steering committee are Jamie Linden, vice president Heidi Schmeisser, secretary, Jenny Honan, publicity-promotion, Bonnie Zienkiewicz, parade chairman, and Christy Bradley, king and queen chair-

man. Pat Bladow is special events chairman for University Center Board. Dawn Walers is a member of Hawkettes service organization and Greek editor of the yearbook. Heidi Schmeisser is treasurer of IGC. Dean's List includes Mary Goebel, Jill Kerr and Leila Yandy.



Senior Jenny Reed of Ohio Northern-ZK is Outstanding Greek Woman at ONU.



A three-generation Delta Zeta family from Auburn-BE: Lottie Busey Grimes a charter member; daughter Betty Grimes Williams was chapter president in 1945-46, and granddaughter Janette Williams Woods, 1970 initiate. The charming Miss with them is Heather Woods. Note her "I love ΔΖ" button!

A Family Affair

by Robyn Jackson, Southern
Mississippi-EM

Delta Zeta is a family affair for many mothers and daughters, but how often does the daughter bring her mother in to the sorority?

Epsilon Mu, at the University of Southern Mississippi in Hattiesburg, is in the hands of a unique mother-daughter team - Dr. Mary Skalyo Huch, CCD, and Donna Huch, chapter president.

Dr. Huch was initiated into Delta Zeta March 21, 1983 as an alumna member. Previously, she had acted as a faculty advisor for the chapter.

Initiating her mother into the sorority "felt natural because she'd been helping us so long with the little things," Donna said. "It was just a matter of course that she should be initiated so she could help officially."

Dr. Huch, associate professor of nursing at USM and a nominee this year for the Distinguished Professor award, remembers having "a very strange kind of feeling. For many years I was leading the way for her, and now she was leading the way for me."

Chapter members call her "Mama Huch" affectionately, and in many ways she has become a second mother to them.

"They see her as a mother figure," chapter financial advisor Mary Ann Matkin concurred. "When she says something, they take it as authority. I think she's very much an asset to the sorority."

Becoming so involved in Delta Zeta was all her mother's idea, Donna said.

"It wasn't like I was always asking her to do stuff," she recalled. "We'd ask her and she'd do it."

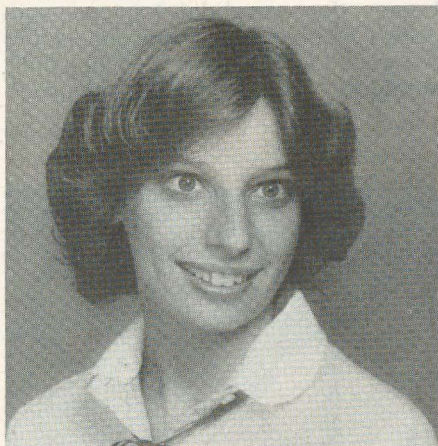
Dr. Huch has been helping the chapter in various ways since Donna pledged in 1980. She has served refreshments at rush, chaperoned parties, listened to problems and has just been there with a hug or word of encouragement.

When the chapter redecorated their quarters in Panhellenic dormi-

tory last year, the National Council asked Dr. Huch to advise the chapter in choosing colors and new furniture. When a choice had to be made about wallpaper for the foyer, Dr. Huch was called in to settle the dispute.



Dr. Mary Huch



Donna Huch

Donna doesn't feel being mother and daughter interferes with the chapter president-CCD relationship. "It helps," she said, "because we can talk to each other. I'm not scared of her. I know kind of what she's thinking already so we can talk it out."

A native of Pittsburgh, PA, Dr. Huch graduated from Duquesne University and received her master's from the University of Pittsburgh. She received her doctorate in 1981 from the University of Mississippi. She was named the Outstanding Nurse Educator of the Year (1982) by the Mississippi Nurses Association and has been listed in *Who's Who of American Women* and in *Outstanding Community Leaders of America*. Husband Donald Huch is employed by the Southern Center for Research and Innovation, and son Alan is employed by Texas Instruments in Dallas. Donna will be a senior at USM, majoring in French and mathematics.

"My original involvement was just care and concern for the people involved," Dr. Huch recalled, adding that she was "surprised when Terry McNeer (field representative) indicated an interest in my being CCD."

During her own undergraduate days, Dr. Huch had been interested in being in a sorority, but she didn't feel she could ask her parents for the extra money. She countered by joining the Student Nurses Association, which she served as president.

Goals set by Dr. Huch and the chapter are already being met. Epsilon Mu has strengthened its financial base, and Delta Zeta had the third highest GPA of the nine USM sororities for the Spring semester.

Dr. Huch said her own goals are "for each member to develop to her fullest potential. Essentially, for them to be satisfied with themselves and develop as people."

Now that Donna, in her second year as president, and "Mama Huch" are in charge, things are definitely looking up!

Pioneer Days in Chico



Naidene Lybecker Evans, CSUC-ΔX, and her husband Tom, grand marshalls for the 1983 Pioneer Days parade, met as students at Chico State and were married in 1937, a year following their graduation.

Their ride in 1983 is far different from Naidene's sidesaddle horseback ride as *Li'l Nell* in 1936, the climax to a campaign successfully managed by Tom. They ride now in style in a red Wells Fargo State Coach. *Li'l Nell* no longer rides horseback because one year a *Li'l Nell* fell off her mount just before the parade. She spent the day in the hospital and missed all the fun.

Delta Zeta women were well represented in the week-long Pioneer Days celebration at California State University-Chico, during the last week of April.

Heading the committee of 23 members was Shana Fain, ΔX senior. Jan McIntire and Mary Mills served on the committee. Delta Chi alumna, Naidene Lybecker Evans and her husband, Tom, were invited to be Grand Marshalls for the parade which culminated the week's festivities.

The responsibility of the chairman is so great that college credit is now given to that person. A full year is involved in planning, with at least two retreats and many meetings to plan and execute to a successful culmination.

The week starts with "Presents" when living groups "present" their candidates for *Li'l Nell* and the *Sheriff* in original four-minute floor show numbers. Shana was the chairman of this event in 1982. Her organizational ability, poise, and friendliness won her election to this year's general chairmanship.

Campus organizations construct a quad project off campus to be erected on campus between 3 p.m. Tuesday afternoon and 8 a.m. Wednesday morning. Detailed research is done on the historical theme the candidates represent. Delta Chi chose *General Mills Research Laboratories* with their candidate, Katy Venarde, represent-

ing Betty Crocker.

Campus organizations also build floats for the parade and those groups sponsoring candidates carry out the same theme in the floats.

Other events of the week include a Hangtown dance, a concert by a popular music group, a sports spectacular and a rodeo. At the rodeo the winners of the *Li'l Nell* and *Sheriff* contests are announced. They head up the Saturday morning parade, along with the Grand Marshalls.

From Wednesday through Saturday of this eventful week, the annual campus musical is performed. This year "Brigadoon" combined the talents of CSUC's music and speech departments. A full orchestra accompanied the musical.

Naidene and Tom Evans have been contributors to CSUC alumni and university activities over a period of 46 years. It was no surprise that they were invited to serve as Grand Marshalls. They rode in style in a red Wells Fargo Stage Coach.

This is an exciting week each Spring for the Chico community as well as the university!



Delta Chi collegians Tammy Pollack and Laura Brink are shown inside the quad kitchen.

Flame Eternal

ALPHA

Shirley Kenney Baker '48
Vera Anderson Garland '24
Mildred Long Nicklas '29

DELTA

Tressie Jeffries Hutchins '20

EPSILON

Delilah (Alyce) Easter Davidge '48
Katherine Stoessel Yelverton '18

ZETA

Dagmar Andersen Hosman '18
Hester Wyman Zacek '16

THETA

Ethel Mary Boros '45
Isabel Sweeney Hill '33
Esther Wallace McGill
Hortense Gillespie Scofield '25

KAPPA

Margaret Burpee Clarke '26
Kay Coulon '33
Ida Deppman '23
Helen Moulton Geisness '27

LAMBDA

Elma Stewart Ibsen '21
Bonnidelle Nicholson Justice '32

MU

Marie Goethals Leibert '14

OMICRON

Mae Banker Dickinson '35

RHO

Doris Eastman Hartmann '48

SIGMA

Ann Whittington Graham '42

PI

Doris Fowler Weillepp '28

UPSILON

Ingeborg Johnson McDonald '22

PHI

Florence Ness Dahl '36

ALPHA BETA

Bonita Easton Robinson '25

ALPHA GAMMA

Nell Davis Duke '24
Mary Eiland Steed '24

ALPHA DELTA

Dorothy Ladd Clapp '24

ALPHA ZETA

Eleanore Cameron Stoffel '35

ALPHA ETA

Lillian Adams Amerman '46

ALPHA NU

Margaret M. Fitzgerald '43

ALPHA OMICRON

Pearl Jones Whisnant '26

ALPHA PI

Mabel Hodges Bradley '23
Anne Johnston Howle '24

ALPHA RHO

Lousia Worley Flood '30

ALPHA SIGMA

Margaret Bruce Highleyman '34
Edith Bregger Strong '50
Alethea Williams Youmans '33

ALPHA TAU

Helen Phelps Leach '44

ALPHA PHI

Martha Benson Mock '29

ALPHA CHI

Janice Lillywhite Davis '26

ALPHA PSI

Janet Hosetter Carter '45

BETA ALPHA

Bernice Callaghan Gill '32

BETA GAMMA

Edith Wedekind Klotz '26
Jo Ann Kluth '49

BETA THETA

Marilynn Kappel Sandin '47

BETA KAPPA

Donna Reed '60

BETA SIGMA

Esther Boone Irvin '23

BETA CHI

Gloria Dorothea Franke '46
Dorothy Hill Gersack '32

GAMMA ZETA

Janice Robinson Howard '74

GAMMA KAPPA

Kathryn Lynn Volk '78

GAMMA UPSILON

Era Wells Christian

DELTA MU

Sarah Kolp Gingles '19

DELTA SIGMA

Dorothy Braden Neal '25

DELTA CHI

Jean Shepard Dumas '48

EPSILON XI

Julia Lee Crum '46

ZETA THETA

Sandra Montgomery Waren '62

ZETA KAPPA

Erika Pudis Abele '29
Dorothy Gage Champlin '31

ZETA PI

Jane Curry Henry '55

THETA ZETA

Mary Mougey Werner '34

LAMBDA EPSILON

Donna Gregorchik Stein '75

PHI BETA

Ruth Brandt '32
Anna I. Collins '25
Doris Gayle Daugherty '41
Sarah Henderson Dengenkolb '32
Anne Burkhardt Stewart '21
Edna Burch Stigler '28

MAE BANKER DICKINSON

Mae Dickinson, Pittsburgh-O '35, served Delta Zeta for a number of years, first as a College Chapter Director; later as a Province Collegiate Director for Pennsylvania.

In 1968 she was elected to the National Council as Director of House Corporations. In 1970 she was elected National Treasurer and served until 1973. During this period she served as Chairman of the Finance Committee.

Mae passed away in Florida where she had lived for several years. She is survived by her husband, C. A. Dickinson and three sons.

WANTED: ΔZS IN WEST GERMANY

Three Delta Zetas living in Germany are interested in forming an alumnae chapter in their area. Contact: Mrs. Rick (Nancy) Dills, Samford-All, European Baptist Convention, WHEINSTR #80, 62 Viesbaden, West Germany; Rosie Finical, NWL-EB, #61 Hamptstrasse, 6751 Geiselberg, West Germany, telephone 06307-1842 (APO NY 09138) and Bonnie Blue Williams, NWL-EB, 12 Amkrevweg, 6752 Winnweiler, West Germany, telephone 6302-3430 (APO NY 09130).

Alumnae Profiles

PEGGY HASKELL BENJAMIN, Nebraska-Z, who served as a volunteer (mainly hospitals) for many years, now writes and paints. She's had many juveniles, historical articles and adult fiction published and has won some awards. Her main media in painting is watercolor. Her watercolors have gone to collectors from California to the East Coast. "A Channel of the Platte River" hangs in the Lane Memorial Library in Oxford, Ohio. Peg recently spent time in Oxford when the city paid tribute to her grandfather, Enoch Haskell who moved to Oxford in 1835. Elizabeth Coulter Stephenson was a member of her family. Peg lives in Grand Island, NE. Her husband was the late Dr. James Benjamin and their son is James Haskell Benjamin.

JULIE MAGNUSON ROBINSON, Northern Michigan-Z, lives in Green Bay, Wisconsin where she is a high school speech, drama and English teacher. She coaches their school's one act play and forensics programs. She's interested in ventriloquism, sports, reading, trap shooting, camping and baking. Her husband Alvin is a high school teacher and their son is Bradley, age 2.

LYNDA ESSELSTYN DREWS, Wisconsin-LaCrosse-ZO, also lives in Green Bay where she is an advisory systems engineer at IBM. She helps market small to medium size computers. Her accounts have ranged from very small hospitals to large companies like Kimberly Clark. Lynda's husband Jim is an elementary physical education teacher and their son is Collin, age 1. Interests are running, cross-stitch, knitting, traveling and taking a children's literature writing course.

JANIS E. BRETT, Arizona-BI, now lives in Los Angeles where she is public relations specialist for one of the top ranked software and services company in the United States. Primary responsibilities involve traveling to the company's 15 divisions across the country to counsel marketing personnel on the value of PR. She also does free-lance writing and a monthly column. Interests include the arts, traveling, shopping, photography, skiing, swimming and going to the beach.

BONNIE KING FRENCH, Emporia State-ΔI, now lives in Tampa where she is a million dollar a year sales person in real estate. Her activities involve public relations and she enjoys traveling, reading, sewing and music. While still a resident of Kansas, she was president of the Johnson-Wyandotte alumnae chapter. Her husband Robert is a technical analyst and their children are Dana, Rhonda and Cayce.

JO FILLWALK FRYER, DePaul-ΘΘ, lives in Niles, Illinois where she has been a first grade teacher for 10 years and loves it! She has done graduate work in learning disabilities. Husband Thomas is an assistant corporate controller and their new little daughter is

Beth Noel, who was born last Christmas Eve. Jo reported that when they moved into their new house five years ago it was delightful surprise to find a ΔZ sister next door... ΘΘ-chapter!

VIRGINIA BRABSTON SHAW, Central Arkansas-EΞ, lives in Fayetteville where she is a physical therapist at Washington Regional Medical Center. She enjoys cross-stitch, needle point and playing softball. Husband Jeff is a field representative for GMAC and their labrador retriever puppy is named Zachary!

PAULA HILLIARD BEEM, Miami-A, is owner/operator of R & M Answering service which provides a 24 hour telephone answering service to businesses. This also includes accounting and related services. She supervises employees and co-ordinates and directs advertising, public relations of the business as well as maintaining daily office functions. Husband is Steve, a field service specialist and children are Nikki and Michael. Active in AAUW, she also is busy with Hospice of Clinton County, the Clinton County Cancer Society and is Elk Auxiliary President. The Beems reside in Wilmington, Ohio.



Pasadena Foothill's Karen Severloh Moffitt, San Diego State-ΓO, held the reins of Southern California's 27th successful annual Flame Fantasy benefit. With her on the dais drawing for door prizes is Dr. John House, Director of Research for the House Ear Institute which received more than \$7,000 of the funds raised (over \$10,000). Nearly 1,000 Delta Zeta alumnae, collegians and friends supported the glamorous event.

Alumnae Profiles

SHARON REDDICK ELLSBERRY, Houston-ΔΘ, is part owner of a gift shop in Plano, Texas, called "New England Gifts." She does all the buying, advertising, interior design and display of merchandise. Her husband is Michael and they enjoy tennis, snow skiing, antiques and country art.

BEVERLY FOUSHEE GUNTER, East Carolina-ΖΑ, is a special reading teacher working in the Chapter I reading program (federally funded) with sixth graders having reading difficulties. Her husband, Dr. Edward M. Gunter is a Methodist minister and their children are Josh, Jeremy and Jason. She enjoys sewing and makes purses and belts for "extra money." Beverly reads a great deal and enjoys aerobics and fitness programs. They live in Clinton, NC.

ANN COCHENSPRAGER ENGLISH, Bowling Green-ΓΤ, now lives in Murray, Kentucky where she has developed a Dancaerobics program which has turned into a more than full time business! She presently trains and certifies over 100 instructors each session and they teach this exciting total fitness program at Y's, universities, recreational centers, medical centers and churches. Husband Jerry is a teacher and football coach and their children are Teresa, 10, and Brett, 7. Her hobbies include jogging (which she has done for ten years, even before it was in vogue!), camping and snow skiing.

ALICE DEREZINSKI DONAHUE, Western Michigan-ΠΙ, was recently named "Educator of the Year" in the field of Special Education in Kent County, Michigan. She was nominated by the Parent Association of the Preprimary Impaired Program in the Grand Rapids Public Schools where she has been the Occupational Therapist for the past two years. Prior to that she had been the lead therapist for the physically handicapped program in the Grand Rapids Public Schools.

MARGO PHEAGIN WHITFIELD, UNC-Charlotte-KΦ, is vice president and part owner of Action Personnel Services of Charlotte, a permanent and temporary placement service. They specialize in secretarial, technical, management, sales and engineering placement and although they've only been in business since early 1982, Margo reports they've placed a lot of ΔΖs. Her husband Lee is in sales.

DOLORES MOREY, PH D., Pittsburgh-O, lives in Connellsville, PA. After 20 years as a teacher and counselor in public schools, she undertook the challenge of working in a correctional institution. Since 1977 she has been vocational counselor in a state prison for men in Greensburg, PA. There are 350 inmates, a co-ed staff, and plenty of challenges. She does career assessment and counseling with both groups and individuals. She likes golf, gardening and other assorted activities.



Metro Detroit area alumnae held their 13th annual Flame Fantasy luncheon-fashion show and raised \$1,700 for the Detroit Hearing and Speech Center. With a "Hats Off to Spring" theme, luncheon tables were centered with Gibson Girl hats, made and designed by local alumnae. The hats, of colored posterboard, were decorated with lace, netting, tissue paper flowers and ribbon. The idea came from Sharon Lang who said, "I stole the idea from my son's third-grade teacher. I watched her make one at the last minute when one of the children in a play the class was giving showed up without his hat." (l to r) Peggy Tsoucaris-Butler; Linda Shaeffer Clark, California (PA)-ZE; Sharon Kowalski Lang CMU-ΓΨ, and Marianne Sinclair, MSU-BP. (Picture by Northville, MI, Record.)

Kappa

(continued)

And Sarah Powell, Pam Robbins, Linda Sellers, Kerri Shank, Suzan Shayler, Alicia Slater, Barbara Thompson, Kathy Tripp, Roxanne Tsuboi, Debbie Wakefield, Sophie Winkleman and Cheryl Younkin.

The Kappa chapter is proud to be back at the University of Washington. The recolonization is a success because of the love, hard work and dedication of those who persisted in making the Kappa chapter once again a reality.

Delta Zeta Directory

NATIONAL COUNCIL

President: Carolyn Barnes Gullatt (Mrs. John), 4008 Hyridge, Austin, TX 78759
Vice President of Membership: Teresa Johnson Severy (Mrs. Raymond), 2127 Northampton Way, Lansing, MI 48912
Vice President Alumnae Affairs: Charlotte Fields Silversteen (Mrs. Allan), 513 Toll Road, Oreland, PA 19075
Vice President Collegiate Affairs: Marvona Easley Tavlin (Mrs. Michael), 7411 Briarhurst Circle, Lincoln, NE 68506
Secretary: Dianne Fellows Guild (Mrs. Douglas), 16 Andrews Drive, South Burlington, VT 05401
Treasurer: Anne Marie Jones Gavin (Mrs. William), 3264 Swan Drive, Vineland, NJ 08360
Director: Elizabeth Barbieri Bragg (Mrs. Lawrence), 2972 Leopold Avenue, Hacienda Heights, CA 91745
Director: Lucile Crowell Cooks (Mrs. Rudolf), The Ambassador #404, 7400 Sun Island Drive South, South Pasadena, FL 33707
Director (Pledge Programs): Phyllis Snape Favorite (Mrs. Robert), 570 Lancashire Lane, State College, PA 16801
Director: Mary Margaret Calhoun Fore (Mrs. Sam), 459 Summit Circle, Fredericksburg, TX 78624
Director: Patricia Canady Rosser (Mrs. David), 1609 Indian Rks. Road, Clearwater, FL 33516
Past National President: Norma Minch Andrisek (Mrs. J. R.), 319 Janice Drive, Berea, OH 44017
National Panhellenic Conference Delegate: Mary Margaret Calhoun Fore (Mrs. Sam). Alternates: Carolyn Barnes Gullatt (Mrs. John), Norma Minch Andrisek (Mrs. J.R.), Teresa Johnson Severy (Mrs. Raymond)

NATIONAL HEADQUARTERS

Delta Zeta National Headquarters: Corner of Campus and Church Streets, 202 East Church Street, Oxford, OH 45056
Delta Zeta Subscriptions (Collegiate & Alumnae): Box 24145, Columbus, OH 43224
National Field Representatives: Karen Giles, Judy Markel, Jeanine Petersen, Linda Regner, Vickie Adcock, Diane Sorensen, Suzanne Jewhurst, Lisa Straub

THE LAMP

Gwen Moss McKeeman (Mrs. Robert L.), 5517 S. 74th E. Avenue, Tulsa, OK 74145

EXTENSION

Norma Minch Andrisek (Mrs. J. R.), 319 Janice Drive, Berea, OH 44017

FOUNDERS MEMORIAL FOUNDATION BOARD OF TRUSTEES

President: Arlene Newman (Miss), 160 Birdsall #10, Houston, TX 77007
Secretary: Betty Paul DeWitt (Mrs. Norman), 23630 Oakrest Lane, Harbor City, CA 90710
Treasurer: Shirlyn Chaffin (Miss), 6561 Santa Cruz Place, Reynoldsburg, OH 43068
Members: Mary Lou McConaughy Barth (Mrs. William), 1662 Villa South Drive, West Carrollton, OH 45449
Mary Margaret Calhoun Fore (Mrs. Sam), 459 Summit Circle, Fredericksburg, TX 78624

NATIONAL HISTORICAL MUSEUM BOARD OF TRUSTEES

President: Lucile Crowell Cooks (Mrs. Rudolf), The Ambassador #404, 7400 Sun Island Drive South, South Pasadena, FL 33707
Trustees: Norma Minch Andrisek, 319 Janice Drive, Berea, OH 44017 (secretary); Carolyn Barnes Gullatt, 4008 Hyridge, Austin, TX 78759 (vice president); Florence Hood Miner, 1040 H Avenue, Nevada, Iowa 50201; Aurel Fowler Ostendorf, Rt. 1, Box 262

A1, Kapwaa Kauai, HI 96746; Mary Lou Ragel Vineyard, 4998 62 Avenue South, S. Petersburg, FL 33715; Doris Ellingson Riede, 4661 Lake Avenue, White Bear Lake, MN 55110; Dr. Elizabeth Rogers, 302 W. Vine Street, Oxford, OH 45056 (treasurer); Betsy Bradley Leach, 1244 Valley View Road, Glendale, CA 91202.

HISTORIAN EMERITUS

Grace Mason Lundy (Mrs. H.M.), 3207 N. 25th Street, Phoenix, AZ 85016

STANDING COMMITTEES

Colonnade Club: Mary Ann Gallatin French (Mrs. John), 2322 N.W. 58th Cir., Oklahoma City, OK 73112
Constitution and Procedure: Lisbeth Innis Francis (Mrs. Robert), 2508 Belle Terre Drive, Birmingham, AL 35226
Finance: Anne Marie Jones Gavin, Chairman, Lucile Crowell Cooks, Mary Margaret Calhoun Fore, Norma Minch Andrisek, Patricia Canady Rosser, and Carolyn Barnes Gullatt, ex officio.
History: Florence Hood Miner (Mrs. Arthur), 1040 H Avenue, Nevada, IA 50201
Judiciary: Dianne Fellows Guild (Mrs. Douglas), 16 Andrews Drive, South Burlington, VT 05401
Ritual: Karen Kind Manuel (Mrs.), 36 Rilling Ridge Road, New Canaan, CT 06840

COMMITTEES

Activities: Margaret Stone Grosse (Mrs. Robert), 21 Terrace-Walk, Berkeley, CA 94707
Alumnae Relations: Christa Creason Chaussee (Ms.), 211 S. Pleasant Ave., Ridgewood, NJ 07450
Awards (Collegiate & Alumnae): Marcia Earl Humpal (Mrs. David), 26798 Mangrove Lane, Olmsted Falls, OH 44138
Bylaws and Standing Rules: Lisbeth Innis Francis (Mrs. Robert), 2508 Belle Terre Drive, Birmingham, AL 35226
Housing: Ruth Heller Horton (Mrs. Frank C.), 2742 Washington Blvd., Huntington, WI 53035
Housing Projects Consultant: Sue Jones Allen (Mrs. Tom), 2415 Custer Cave, Richardson, TX 75080
Newsletter (Collegiate & Alumnae): Patricia Heneghan Pelkofer (Mrs. C.G.), 252 South Winebiddle St., Pittsburgh, PA 15224
Philanthropy (Collegiate): Joan Dondrea Lowry (Mrs. Bob-Bill), 578 Yarmouth Lane, Bay Village, OH 44140
Philanthropy (Alumnae): Priscilla (Pat) Beatty (Miss), 3691 NW 95th Terrace, Apt. 1202, Sunrise, FL 33321
Programs/Ways and Means (Alumnae): Sherrie Campbell Loader (Mrs. Charles), 565 Church, Portland, MI 48875
Programs (Collegiate): Marvona Easley Tavlin (Mrs. Michael), 7411 Briarhurst Circle, Lincoln, NE 68506
References: Ruby Gray Purdum (Mrs. C.B.), Rt. 1, Box 147, Dewey, OK 74029
Scholarship (Collegiate): Sharon Strassler Kryger (Mrs. Steve), Box 2, Neligh, NE 68756
Social (Collegiate): Mary Thoreen (Miss), P.O. Box 794, Mars Hills, NC 28754
Elizabeth Coulter Stephenson Scholarship (Collegiate): Sarah Jane Shank Houston (Mrs. Harold), 3358 Ramblewood Place, Sarasota, FL 33577
Sorority Education: Ellen Kroll Jenkins (Mrs. Paul L.), 1101 Ramblin Court, Greenwood, IN 46142
Standards: Lee McFalls Rodekohr (Mrs. Larry), 901 Platte Avenue, Cheyenne, WY 82001
Ways and Means Projects: Patricia Canady Rosser (Mrs. David), 1609 Indian Rks. Road, Clearwater, FL 33516

PROVINCE COLLEGIATE AND ALUMNAE DIRECTORS

I. Maine, Massachusetts, Vermont, New Hampshire, Connecticut and Rhode Island

PCD: Angela Piper Shipman (Mrs. John), 8 Bayberry Lane, Exeter, NH 03833
PAD: Gay Thorro Rose (Mrs. Jack), 124 Roxbury Road, Niantic, CT 06357

II. New York and New Jersey

PCD: Sylvia Lounsberry Fix (Mrs. Robert), 36 Crystal Springs Lane, Fairport, NY 14450
PAD: Amy Furesz Curry (Mrs. James), 338 Marvin Ave., Hackensack, NJ 07601

III. Pennsylvania and Delaware

PCD: Judith Sherin Kline (Mrs. Patrick E.), 207 Robinwood Dr., Hagerstown, MD 21740
PAD: Diane Dershem Kreider (Mrs. Edward), 6204 Elmer Avenue, Harrisburg, PA 17112

IV. West Virginia

PCD: Lisa Bergeria Blankenship (Mrs. Glen), P.O. Box 779, Athens, WV 24712
PAD: Mary Barnette Semder (Mrs. Robert), 140 Meadow Drive, Scott Depot, WV 25560

V. Ohio

PCD: Lynnda Wolf Hoefler (Mrs. Robert), 1287 Denise Drive, Kent, OH 44240
PAD: Lois Randolph Nesgoda (Mrs. Leonard), 5652 Alberta Dr., Lyndhurst, OH 44124

VI. Michigan

PCD: Janelle Kiszka (Miss), 550 Chamberlain St., Apt. 1008, Flushing, MI 48433
PAD: Pamela McClure Cronenwett (Mrs. William), 25720 West Hills Drive, Dearborn Heights, MI 48125

VII. Indiana

PCD: Elizabeth Petruce (Miss), 4508 Candletree Circle #11, Indianapolis, IN 46254
PAD: Elaine Listenberger Smock (Mrs. Steven), 9561 E. Southport Road, Indianapolis, IN 46259

VIII. Wisconsin

PCD: Danice Whalen (Miss), 913 1/2 S. Roosevelt, Green Bay, WI 54301
PAD: Lynn Marie Shebesta (Miss), 2350 S. 23rd St., Lot 1015, Manitowoc, WI 54220

IX. Illinois

PCD: Linda Harbaugh Sundlof (Mrs. Robert), 2511 W. Downer Place, Aurora, IL 60506
PAD: Gail Easley McKee (Mrs. Don), 776 10th Street, Charleston, IL 61920

X. Iowa

PCD: Janet Eisler Havener (Mrs. Gary), 4343 N. Sheridan Ave., Loveland, CO 80537
PAD: Kay Morrow Wright (Mrs. Terry), 10477 Juan Calle, Des Moines, IA 50322

XI. Missouri

PCD: Mary Tripodi (Miss), 2123 Lilly Avenue, St. Louis, MO 63110

PAD: Eileen Hoffman Doe (Mrs. Larry), 2 Locust Drive, Florissant, MO 63031

XII. Kansas, Nebraska and the collegiate chapters of Colorado

PCD: Janet Eisler Havener (Mrs. Gary), 4343 N. Sheridan Ave., Loveland, CO 80537

PAD: Carolyn McCandless Woodling (Mrs. Charles), 3112 Creekwood, Lawrence, KS 66044

XIII. Minnesota, North Dakota and South Dakota

PCD: Jeri Seals Weigand (Mrs. Gregg), 549 19th Avenue, North, South St. Paul, MN 55075

PAD: Sylvia Lee Kafkas (Mrs. John), 3505 Humboldt Ave., South, Minneapolis, MN 55408

XIV. Colorado, Wyoming, Utah, Arizona and New Mexico (See Province XVII)

PAD: Mary Jo Harriss Messlin (Mrs. Carl), 2998 S. Akron Court, Denver, CO 80231

XV SOUTH. Southern California, Southern Nevada and Hawaii

PCD: Karen Martin Dessel (Mrs. Tom), 2015 Studebaker Road, Long Beach, CA 90815

PAD: Barbara Phillippi Lancaster (Mrs. Richard), 4923 Libbit Ave., Encino, CA 91436

XV CENTRAL. Northern California and Northern Nevada

PCD: Susan Kelly Warren (Mrs. Robert), 212 Farm Lane, Martinez, CA 94553

PAD: Ruth Rue Behnke (Mrs. Albert), 2241 Sacramento St., San Francisco, CA 94115

XV NORTH. Oregon, Washington, Montana, Idaho and Alaska

PCD: Susan Kelly Warren (Mrs. Robert), 3212 Farm Lane, Martinez, CA 94553

PAD: Helga Kohlenberg Clark (Mrs. William), 4866 123rd Place S.E., Bellevue, WA 98006

XVI. Oklahoma

PCD: Mary Malone Snider (Mrs. Charles), 2120 Columbus, Muskogee, OK 74401

PAD: Deanna Alleman McKinnon (Mrs. M.L.), 12109 Victoria Place, Oklahoma City, OK 73120

XVII. Texas, New Mexico Collegiate Chapters and Las Cruces Alumnae Chapter

PCD: Merry Westbrook Adamcik (Mrs. Roy), 614 Rozelle Avenue, Sugarland, TX 77478

PAD: N. Annette Fowler Nall (Mrs. Garry), Box 136, WT Station, Canyon, TX 79015

PAD: S. Ann Butler Booth (Mrs. Ray), 14735 Oak Bend, Houston, TX 77079

XVIII. Louisiana and Mississippi

PCD: Jean Funck Person (Mrs. John D.), 4808 Craig Ave., Kenner, LA 70062

PAD: Lizetta M. Frederick (Ms.), 1721 Victor II Blvd., Morgan City, LA 70380

XIX. Tennessee

PCD: Clara Schnakenberg Smith (Mrs. Dale), 605 Netherland Dr., Hermitage, TN 37076

PAD: Violet Henson Anderson (Mrs. Charles A.), 102 Blue Hills Ct., Nashville, TN 37214

XX. Kentucky

PCD: Jennifer Plenge (Ms.), 904 Dana Marie Drive, Louisville, KY 40223

PAD: Carol Sharpe Harper (Mrs. Spencer E., Jr.), 3309 Green Hill Lane, Louisville, KY 40207

XXI. South Carolina and North Carolina

PCD: Sondra Golden Bass (Mrs. J. Albert, Jr.), 6425 Chapman Court, Raleigh, NC 27612

PAD: Patricia Menendez Tector (Mrs. John), 907 Winslow Court, Cary, NC 27511

XXII. Georgia

PCD: Susan Adrianson Skambis (Mrs. Christopher), 230 West Lake Sue Ave., Winter Park, FL 32789

PAD: Marge Klingensmith Lovewell (Mrs.), 96 The Prado NE, Atlanta, GA 30309

XXIII. Alabama

PCD: Sandra McAlister Nesbitt (Mrs. Milton), 241 Landmark Dr., Montgomery, AL 36117

PAD: Lassie Jo Rounds Simms (Mrs. Jack), 208 Willow Creek Rd., Auburn, AL 36830

XXIV. Florida

PCD: Susan Adrianson Skambis (Mrs. Christopher), 230 West Lake Sue Ave., Winter Park, FL 32789

PAD: Susan Mease (Miss), 2095 Sunset Point Road, #2405, Clearwater, FL 33575

XXV. Virginia, Maryland and Washington, D.C.

PCD: Sharon Lamb (Miss), 4600 John Hancock Ct., #301, Annadale, VA 22003

PAD: Gail Lutz Verley (Mrs. William), 1735 North Troy Apt. 413, Arlington, VA 22206

XXVI. Arkansas

PCD: Jacqueline Miner Gardner (Mrs. Richard, Jr.), P. O. Box 2034, Russellville, AR 72801

PAD: c/o National Vice President Alumnae Affairs

State Reference Chairmen

ALABAMA: Madge Vinton Sorrell (Miss), Route 1, Pike Road, AL 36064 **ALASKA:** Caroline Dunbar Valentine (Mrs. Craig), 3838 Westminster Way, Anchorage, AK 99504 **ARIZONA:** Margaret Ann Poe (Miss), 4720 West Rose Lane, Glendale, AZ 85301 **ARKANSAS:** Jeania Standridge Evans (Mrs. Jerry), Rt. #2, Box 370, Russellville, AR 72801 **CALIFORNIA (North):** Martha Henry Burde (Mrs. Walter), 24685 Camino del Monte, Carmel, CA 93923 **CALIFORNIA (South):** Janet Breitweiser Savage (Mrs. Tom), 5102 Woodwind Lane, Anaheim, CA 92807 **COLORADO:** Tressa Moor Brase (Mrs. Lawrence), Box 146, Calhan, CO 80808 **CONNECTICUT:** Ann Collins Gill (Mrs. Edward), 53 High Point Rd., Westport, CT 06880 **DELAWARE:** Cindy Andrew (Miss), 5068 W. Brigantine Ct. Mermaid Run, Wilmington, DE 19808 **DISTRICT OF COLUMBIA:** Pat Dansbury (Miss), 1722 19th St. NW #501, Washington, D.C. 20009 **FLORIDA:** Cindy Brown Helton (Mrs. Charles), 1601 Berkshire Ave., Winter Park, FL 32789 **GEORGIA:** Nancy Winslow Carroll (Mrs. William), 1518 1/2 Heath Street, Augusta, GA 30904 **HAWAII:** June Burnell Solomon (Mrs. Albert K.), 208 Seaside Towers, 435 Seaside Ave., Honolulu, HI 96815 **IDAHO:** Rilla K. Soderstrom Perola (Mrs.), 8800 Carydon Dr., Boise City, ID 83704 **ILLINOIS:** Terry Mellen (Miss), RR #1, Coal City, IL 60416 **INDIANA:** Karen Manley Davies (Mrs. Roger L.), 812 S. 5th St., Terre Haute, IN 47807 **IOWA:** Alaire Swedlund Bornholtz (Mrs. Tim), 3601 Lafayette, Sioux City, IA 51104 **KANSAS:** Kay Kroger (Miss), 120 Mulberry, Cottonwood Falls, KS 66845 **KENTUCKY:** Mary Penrod (Miss), 67 Gaddis Dr., Ft. Thomas, KY 41075 **LOUISIANA:** Jane Weaver Mathes (Mrs. Jimmy), 12538 Sherbrook Dr., Baton Rouge, LA 70815 **MAINE:** Candace Hilton Smith (Mrs. Nelson L.), R.R. 2, Box 505A, Yarmouth, ME 04096 **MARYLAND:** Pat Dansbury (Miss), 1722 19th St. NW #501, Washington, D.C. 20009 **MASSACHUSETTS:** Mary Catherine Davis, 25 Bayberry Circle, Millis, MA 02054 **MICHIGAN:** Terri Anderson Miller (Mrs. Bruce), 2476 Sharma Lane, Howell, MI 48843 **MINNESOTA:** Grace Dollohan (Miss), 4040 15th Ave. South Apt. 1, Minneapolis, MN 55407 **MISSISSIPPI:** Lanelle Long McLeod (Mrs. James), Rt. 3, Box 433, Brandon, MS 39042 **MISSOURI:** Michaela K. Kerns (Miss), 10540 Washington #304, Kansas City, MO 64114 **MONTANA:** Jackley Meyers (Miss), 343 W. Lawrence, #4, Helena, MT 59601 **NEBRASKA:** Carole Sorensen (Miss), 3027 W. Capital Ave., #26, Grand Island, NE 68801 **NEVADA:** Lori Figgins (Miss), 647 Peppertree Circle, Henderson NV 89015 **NEW HAMPSHIRE:** Karen Macrigan (Miss), Box 296, Laconia, NH 03246 **NEW JERSEY:** Debra Bass (Miss), 357 Shea Dr., New Milford, NJ 07646 **NEW MEXICO:** Louise Seitzinger Longenecker (Mrs. Donald), 1417 W. 8th Street, Silver City, NM 88061 **NEW YORK:** Mary Frances Sims (Miss), 95 Ball Road-High Acres, Syracuse, NY 13215 **NORTH CAROLINA:** Linda Angel Leedham (Mrs. Gary), 4414 Woods End Lane, Matthews, NC 28105 **NORTH DAKOTA:** Kathie Ryckman Anderson (Mrs. Owen), 816 N. 39th St., Grand Forks, ND 58201 **OHIO:** Sandra Sebrill Bailey (Mrs. Bruce), 541 Willard Rd., Aurora, OH 44202 **OKLAHOMA:** Ruby Gray Purdum (Mrs. C. B.), Rt. #1, Box 147, Dewey, OK 74029 **OREGON:** Barbara Kersch Hamilton (Mrs. W. B.), 12601 S.E. Market, Portland, OR 97233 **PENNSYLVANIA:** Debbie Fries (Miss), 1060 Oldstone Road, Allentown, PA 18103 **RHODE ISLAND:** Patricia Webster Boynton (Mrs. William), 63 Benefit Street, Warwick, RI 02886 **SOUTH CAROLINA:** Sharon Youngblood Parsell (Mrs. David), 2 Kingsbury Rd, Rt. 9, Greenville, SC 29609 **SOUTH DAKOTA:** Doris Dalin Huffman (Mrs. Richard, Jr.), 1535 S. State St., Aberdeen, SD 57401 **TENNESSEE:** Joyce Lockhart Gary (Mrs. Wallace), 1347 Greendale Ave., Memphis, TN 38127 **TEXAS:** Ann Clay Elkins Hawkins (Mrs. Jerry), 324 Pine St., Lake Jackson, TX 77566 **UTAH:** Jean Peters Christensen (Mrs. William), 1669 Yalecrest Ave., Salt Lake City, UT 84105 **VERMONT:** Pat Perreboom Hoefler (Mrs. David), 22 Hillwinds, Brattleboro, VT 05301 **VIRGINIA:** Sue Kuether Sippel (Mrs. Leonard), 1109 Five Points Rd., Virginia Beach, VA 23454 **WASHINGTON:** Karen Fellows Soyk (Mrs. Lon), 31033 38th Avenue South, Auburn, WA 98002 **WEST VIRGINIA:** Sherry Hornsby Miller (Mrs. William), 2609 Jefferson, Point Pleasant, WV 25550 **WISCONSIN:** Mary Ann Myhrvold Janssen (Mrs. Paul), 9330 W. Dixon Street, Milwaukee, WI 53214 **WYOMING:** Donna McElroy Frerichs (Mrs. William), 3301 Alta Vista Drive, Laramie, WY 82070



The 1983-1985 National Council: Standing (l to r) Marvona Easley Tavlin, Elizabeth Barbieri Bragg, Patricia Canady Rosser, Lucile Crowell Cooks, Phyllis Snape Favorite and Mary Margaret Calhoun Fore. Seated are Charlotte Fields Silversteen, Dianne Fellows Guild, Carolyn Barnes Gullatt, Norma Minch Andrisek, Anne Marie Jones Gavin and Teresa Johnson Severy.

The Charter Circle

What is the Charter Circle of the National Historic Museum? Any Delta Zeta who has made a contribution to the National Headquarters Building Fund during 1979 to 1981 and now to the National Historical Museum will be a member of the Charter Circle. The Charter Circle will close with the dedication of the Museum on October 23, and the names of all donors will be inscribed in a beautifully bound book.

Although you may have made a contribution to the National Historical Museum through your chapter or province, we encourage you to at least contribute a dollar or more personally to insure inclusion of your name in the Charter Circle Remembrance Book to be displayed in the Museum. Do sit down now, write your check and mail it to Dr. Betty Rogers, P.O. Box 207, Oxford, Ohio 45056. Our goal is for each Delta Zeta to be a Charter Circle member - 100% participation.

POSTMASTER: Send 3579 immediately to Delta Zeta Sorority, 202 E. Church St., Oxford, OH 45056

Delta Zeta Sorority
Corner of Campus Ave. and Church St.
202 E. Church St.
Oxford, OH 45056

Address Correction Requested

Non-Profit Org.
U.S. Postage
PAID
Permit No. 131
Tulsa, OK