

LAMP

OF
DELTA
ZETA
FALL 1982





Founders Day

From the *Miami Student* of October, 1902 we find the following announcement in the social department:

"On September 19, six of our progressive co-eds organized a sorority. It is a local organization at present but the girls hope to have sufficient success to warrant them in putting chapters in the other schools.

"The society is known as Alpha Delta Zeta and their colors are Nile green and old rose.

"The members of the society are at present Misses Collins, Lloyd, Minton, Keen, Simmons and Bishop."

(Delta Zeta LAMP, Vol. 13, No. 2, 1923 History)

From this beginning we have changed from a local chapter to a National Panhellenic Conference sorority; from one chapter to 157, and from six young women to more than 105,000 members through our eightieth year.

"The purpose of this sorority shall be to unite its members in the bonds of sincere and lasting friendship, to stimulate one another in the pursuit of knowledge, to promote the moral and social culture of its members, to develop plans for guidance and unity in action, objects worthy of the highest aim and purpose of associated effort."

(Constitution of Delta Zeta, Article II, Section 1)

May this purpose never change.

I hereby proclaim this October 24 to be observed as Founders Day by our entire membership and request that our colors of rose and green be worn this day in evidence of our dedication and faith in Delta Zeta.

Given under my hand and seal this first day of September in the year of Our Lord, one thousand nine hundred and eighty-two and of the sorority, the eightieth.

Carolyn S. Sullatto

National President

LAMP

Volume 71 Number 3 Fall 1982

Founders of the Sorority



Miami University
Oxford, Ohio 1902

Alfa Lloyd Hayes, 1880-1962
Mary Collins Galbraith, 1879-1963
Anna Keen Davis, 1884-1949
Julia Bishop Coleman, 1881-1959
Mabelle Minton Hageman, 1880-1929
Anne Simmons Friedline, 1879-1932

THE LAMP

(USPS 585-640)

The Lamp of Delta Zeta, official magazine of the sorority, is published quarterly by the Delta Zeta Sorority, 21 East State Street, Columbus, Ohio 43215.

Send all editorial material to the Editor, Mrs. Robert L. McKeeman, 5517 S. 74th E. Avenue, Tulsa, OK 74145. Send all matters of a business nature to Delta Zeta National Headquarters, Columbus, OH.

Send all contributions for Delta Zeta Founders Memorial Foundation and Gallaudet College to Mrs. William Barth, 1662 Villa South Drive, West Carrollton, OH 45449.

EDITOR

Gwen Moss McKeeman
5517 S. 74th E. Avenue
Tulsa, Oklahoma 74145

STAFF

Diane Jones Skelton
Virginia Gilbert
Sheila Hillis Nixon
Meryl Lin McKean



Contents

- 2 Rho Returns to Denver
- 5 Reflections
- 6 Field Representatives
- 8 Delta Zeta from Coast to Coast
- 12 Province Collegiate Directors
- 14 Pledge Page
- 15 Little Sister Organizations
- 16 Delta Zeta on Campus
- 28 Gail Patrick Velde Award
- 29 Barb Robel at MAPCA
- 30 Omaha's Eligible Women
- 31 New Alumna
- 32 Alumnae Chapters Write . . .
- 34 Alumnae Profiles
- 36 Alumnae in Ohio
- 37 Pledge Profile: $\Lambda\Lambda$
- 38 Flame Eternal
- 39 Directory
- 41 from the lampwriter

ABOUT THE COVER

Meet the Delta Zeta travelers for 1982-1983. Clockwise, from the top are Diane Krause, North Texas-KZ, field representative; Nancy Walker, Iowa State-BK, field representative; Jeanine Peterson, Louisville-BT, field representative; Linda Regner, Shepherd-KM, field representative; Katherine Day, Baldwin-Wallace, TA, graduate counselor at Kentucky; Jill Banks, Florida State-A Σ , field representative; Ann Leine, Northwestern-AA, field representative; Cindy Winslow, Miami-A, management trainee-National office with special field assignments, and Terry McNeer, Marshall- ΔY , field representative. For a related story, see page 6.

Rho Returns to Denver Campus



Rho chapter at the University of Denver

The day dawned with sunshine, blue skies, fleecy white clouds and a panoramic view of the snow-capped Rockies. It was a perfect setting for the return of Rho chapter to the campus at the University of Denver. It has been a long wait since Rho was declared dormant in 1951, but a wait well worth it to see the excitement and enthusiasm of the new Rho!

This new Rho is a result of a petition from a small but aggressive local group, Upsilon Sigma—the petition and acceptance by the DU Panhellenic coming “just at the right time” - when Delta Zeta officials were attending the National Panhellenic Conference in Denver last November. The pledging ceremony on November 4 was a special delight for the visiting Delta Zetas as what could be more meaningful than a midnight ceremony?

Hard work throughout the Winter and Spring brought the awaited announcement that the chapter would be installed on the weekend of May 22 and 23.

Activities began on Saturday morning in the Student Union Ballroom with the especially moving and beautiful initiation conducted by members of Delta Xi chapter at the University of Northern Colorado, led by

chapter president Kelly Davis.

The installation banquet that evening, attended by newly initiated Rho members, their families, friends, administrators and local alumnae was in the Granada Royale Hotel with Norma Andrisek, Past National President, presiding.

The new chapter was welcomed by Janet Havener, PCD; Jo Messlin, PAD; Marianne Cravens, National Reference Chairman; Colleen Quinley and Nancy Walker, Field Representatives, and Ann Norton, Program Advisor for the University of Denver and an alumna of Delta Xi chapter at UNC.

The response to these warm welcomes came from Rho chapter president Karen Micek and college chapter director Janet Fiske.

Dwayla Porter, National Vice President of Collegiate Affairs, and Gwen McKeeman, Editor of the LAMP, extended greetings and shared many of the notes of congratulations sent to the new chapter from Delta Zetas all over the country.

Dr. Thomas Goodale, Vice Chancellor of Student Affairs at the university delighted his audience with tales of his early college days romance at the Delta Zeta house in Ames, IA, where he met and married his Delta Zeta wife, Susan Tyner.

It seems Dr. Goodale was a waiter in the Beta Kappa house at Iowa State back when an unlocked kitchen was the rule and not the exception. The chapter members took advantage of this ... and so did Dr. Goodale. The main ingredient for their between meals snacks consisted of peanut butter. In fact, when he graduated and could no longer eat in the Delta Zeta kitchen, the chapter lovingly presented him with the largest container of - you guessed it - peanut butter available ... to remember them by. On a more serious note he indicated the University's pleasure in again having Delta Zeta on campus and highlighted future University plans and growth programs.

National President Carolyn Gullatt presided at the installation service and presented the gavel to Karen Micek, chapter president, and the charter to the chapter officers. Dr. Goodale accepted the chapter on behalf of the University.

The chapter received many gifts including a lovely silver punch bowl



Dr. Tom Goodale, Vice Chancellor of Student Affairs at the University of Denver with Karen Micek, chapter president, and Carolyn Gullatt, National President.

from the National Council, silver trays from Province XIV and the Colorado Springs alumnae, a silver and crystal coffee server from Delta Xi chapter and a most welcome monetary gift from the Denver Alumnae chapter.

The installation banquet closed with the Rose Ceremony presented by Colleen Quinley and Nancy Walker, the Field Representatives who had prepared the chapter for installation. This was followed by Delta Zeta's friendship circle.

The weekend came to a close on Sunday afternoon when the Denver alumnae chapter hosted a reception at the Bradford House near campus. Greeting guests were the national officers and Denver alumnae president, Gail Beets.

New initiates are Evelyn Axinn, Nancy Axup, Laura Backes, Tamara Barkdoll, Cynthia Bates, Sue Bauer, Deborah Bisson, Julie Briggs, Jean Cheek, MaryLu Cianciolo, Doreen Claveria, Renata Czaki, Tamara Disko, Stephanie Dolan, Susan Fisch, Carol Giles, Cheryl Gillespie, Shelley Goldstein, Margot Hamstra, Lori Holland, Elizabeth Hollander, Kristine Hughes, Kathy Kalbin, Constance Kopp, Mary Alice Laflin, Janet Meloy, Karen Micek, Kay Moldenhauer, Gail Nussbaum, Jana Postma, Donna Ro-

well, Melissa Schachte, Christine Verhoeff, Mary Wagner and Jayne Starkowski, Kathleen Stewart, Kim Womick.



Province and National Officers present at the Rho installation included (standing, l to r), Marianne Cravens, National Reference Chairman; Karen Micek, Rho chapter president; Janet Havener, PCD; Gwen McKeeman, Editor of The LAMP; Jo Meslin, PAD, and Nancy Walker and Colleen Quinley, Field Representatives. Seated are Dwayla Porter, National Vice President of Collegiate Affairs; Carolyn Gullatt, National President; Norma Andrisek, Past National President, and Janet Fiske, Rho chapter CCD.



Members of the University of Northern Colorado-ΔΞ initiation team.



One happy quartet - l to r, Karen Micek, chapter president; Janet Fiske, CCD, and Field Representatives Nancy Walker and Colleen Quinley.



It was such a nice day in Colorado. The fraternities brought flowers!



Smiling Province officers Jo Messlin and Jan Havener presented the gift from the province.



Janet Fiske, CCD and Karen Micek, chapter president, admired the National Council's gift of a silver punch bowl and tray.



No doubt this is the "peanut butter" story!

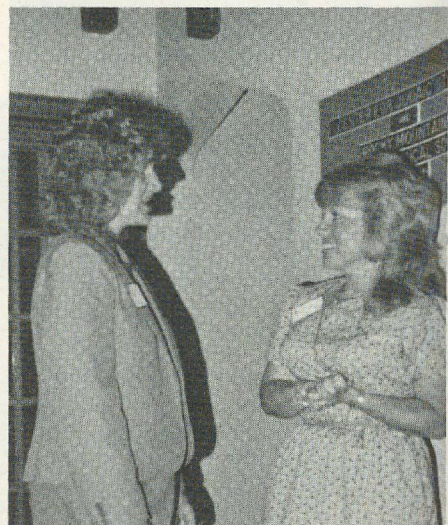
Rho Reception



Our National President visited with Marilyn Keating, AΓΔ, President of the Denver Area Alumnae Panhellenic and one of many sorority visitors.



New Rho initiates met delighted Rho alumnae.



Denver alumnae vice president Linda Wolz chatted with Jennifer Cels, chapter secretary.

Reflections

It is our pleasure to introduce to you in this issue of The LAMP a new series that we have entitled "Reflections." Developed from an idea conceived by Carolyn Gullatt, National President, this column is intended to bring to you a little more Delta Zeta personal history and stories than would ever be possible in formal printed histories.

Our first guest writer is Gertrude Houk Fariss, Oregon-Ω, who served as National President from 1948 to 1952. She was a very forceful and dynamic leader in NPC circles while she served as Delta Zeta's NPC Delegate. She has also been Editor of the LAMP. This Editor remembers Gertrude Fariss as one of the most outstanding and dynamic speakers of all time - bar none. We think you will enjoy "Reflections."

Reflections and memories are often thought of as almost synonymous, and it is frequently said that "memories are golden." But they aren't. Gold is heavy and opaque. Memories - and reflections upon them - are airy and crystal-clear. And they aren't necessarily a hundred per cent golden. If they were, they could not be altogether true. Life is not always golden. Would we want it to be? Nothing has ever been more destructive than the "Midas Touch!" Likewise, nothing has ever been so constructive and progressive as life - **real** life.

And so today I look into my crystal-clear reflections - this time those that are inherently a part of Delta Zeta. The first one is of a badly frightened and totally unsure sixteen-year-old, going away from home all by herself for the first time. She was on her way to college at the University of Oregon - an exciting, challenging prospect. But sixteen is a little young, especially for one who is only two or three years away from climbing trees and going on adventurous hikes with the Campfire Girls - and who, during those two or three years had grown from "five-feet-two, eyes-of-blue" to a tall, skinny (not "slender!"), self-

conscious young lady of sixteen years - a bit on the "gawky" side. She was already homesick, fearful, and thoroughly miserable as the train rolled on.

At the old "Oregon Electric" station in Eugene she was "met" by representatives of three sororities, with whom she vaguely knew she had "dates." Mostly, they scared her to death. They were so self-confident, so "sophisticated," so grown-up! But there were two or three of those girls that were the members of the sorority she pledged. (Or should I say with whom she took refuge? After all, she had a room reserved only during "Rush Week"! Why they or any of the others wanted her, she'll never know. It must have been because her only assets were a high scholastic average in high school - and her parents had many friends!

The reflections come thick and fast for the next four or five years - so I'll have to change to the first person. (Carolyn Gullatt failed to tell me the "length-limits" of my reflections!) The first break-through in my shyness and self-consciousness came just after initiation, when my sorority sisters told me that I was to give the speech for the new initiates at the initiation banquet. (They didn't ask me; they told me! "Mine not to reason why; mine but to do or die.") It later developed that it was because I had been awarded what in those days at Omega chapter was known as the "Best Freshman Girl Cup." It was just a little cup, with a couple of dents in it - no doubt the result of careless dusting by us pledges! But I could not have been prouder if I had been being crowned as Queen of England! And my pride - my wonderfully increased self-confidence - and the love I felt for Delta Zeta, especially following our initiation - must have been reflected in the little speech I gave - the very first speech I had given in my whole life - despite the fact that my knees were knocking together all the time.

Well, the reflections crowd too closely after that. The things I made myself do - always in response to that

final argument, "But Gertrude, you've got to do it for the House!" In the end the challenges which I accepted - the things I made myself "do for the House" - went a long way toward making my life the fulfilling one it has been. Perhaps one of the most crucial turning points was just after graduation, when Julia Bishop Coleman, who was speaker at a Delta Zeta banquet in Portland, given by the alumnae in her honor, asked me to go back to Cornell University as what we would nowadays call a "field representative" at Beta chapter. Not only did I have another wonderful sorority experience during that year, but I also made lasting Delta Zeta friends across the country, whom I still cherish. In addition, of course, I earned a Master's degree at Cornell University which helped launch me on a long and rewarding career in education.

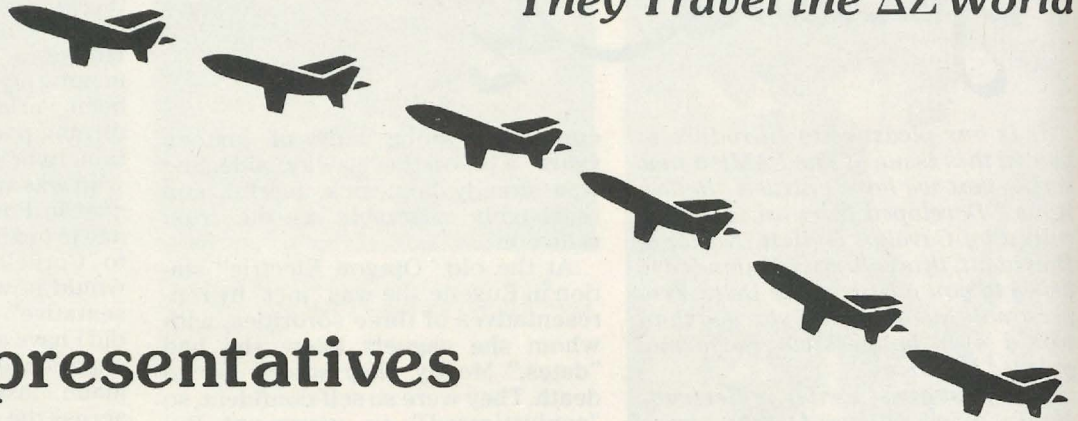
The reflections **must** break off. They include years of wonderful experiences in many local, state, and national organizations and on countless boards, commissions, and councils. Of all of those experiences in leadership, the ones which have meant most to me personally are those of having been privileged to be one of the leaders of Delta Zeta in many sorority and Panhellenic offices and finally as its National President. But at the beginning of hundreds of speeches and calls for leadership my thoughts have always gone back to that first speech at my initiation banquet. They still do so. Those are reflections that have sustained me and given me confidence through countless times of stress and test.

But don't let it be said that there have never been times of complete disagreement and frustration and discouragement. There **have** been! Remember, though, that these are not "golden memories" but "crystal-clear reflections." The most wonderful gift in my life has been that of a long and completely happy marriage. However, again don't let it ever be said that my husband and I never experienced disagreement, frustration, or discouragement. But through it all we loved each other more and more, as we always will. And through it all, I have loved Delta Zeta more and more, as I always will.

That's life; that's living; that's loving.

Gertrude Houk Fariss

They Travel the ΔZ World



Field Representatives

"She flies through the air with the greatest of ease . . ." and four pieces of luggage! Who is she? She is one of the Delta Zeta National Field Representatives who will be visiting collegiate chapters this year.

by Ann Leine and Lee Ann Martin

The line-up for the 1982-83 Delta Zeta National Field Representatives includes Ann Leine, of Middleburg Heights, Ohio; Terry McNeer, Charleston, West Virginia, and Nancy Walker, Zeoring, Iowa, all of whom have chalked up one year of travel for Delta Zeta. Rookies Jill Banks, of Maitland, Florida; Diana Krause, Houston, Texas; Jeanine Peterson, Louisville, Kentucky, and Linda Regner, Rockville, Maryland, will be experiencing their first year on the road. Look out! It's going to be an eventful, exciting and extra-busy Delta Zeta year.

Exclusive of the office staff at National Headquarters, the field representatives comprise the only paid "employees" of the sorority. But don't believe that they do it only for the money. As a matter of fact, one field rep calculated that for the many hours logged on the job, she received about 65 cents an hour!

Given the long hours, transient living situations and not-too-lucrative pay, what keeps them going? These women undoubtedly possess a strong allegiance to Delta Zeta and a deep desire and affinity to perform this job

well. A job description and application are included in both the Fall and Winter mailings from National Headquarters to collegiate chapters. Applicants, usually in their last year of college, are selected for interview by the National Council Field Activities Committee. This committee, composed of Carolyn Gullatt, National President; Debbie Bruce, National Vice-President-Membership; Dee Porter, National Vice-President, Collegiate Affairs, and Norma Andrisek, Past National President, is responsible for the execution of the field personnel program.

The interview necessary for consideration to appointment closely resembles that of a normal job interview. (And, no, questions asked of a field rep-hopeful do not entail a thorough study of the Delta Zeta pledge book the night before!) The members of the Field Activities Committee explain the many duties the job encompasses, the infamous salary, where vacations fall and the like. Then the spotlight swivels to the field rep applicant with questions such as the inevitable, "Why do you want to become a field representative?"

Decisions regarding appointment are based on many factors. Among these factors lie collegiate leadership experience, poise, intelligence, objectivity and congeniality. "The National Field Activities Committee looks at sharp young women who will represent the national organization, relate well to people and who can be readily adaptable to changing situations," remarks Carolyn Gullatt, National President.

Training for the field staff is conducted by various members of National Council, National Chairmen and members of the staff at National Headquarters. The field reps review everything from policies and procedures to new collegiate program ideas. In addition, this is the first time when all of the field reps meet together and friendships grow with colleagues.

After a fast stop home, the field reps fly off to their first assignment — formal rush! How these two words wreak havoc in the mind of any sorority woman. Field reps assist chapters during this period through completion of many tasks — perching on ladders putting up party decorations, re-

hearsing skits ("Smile, you guys!"), directing rush conversation reviews, addressing invitations, bid-matching — everything rush from alpha to omega.

Whereas collegians are accustomed to a rush period of one, or possibly two weeks, these women participate in six to nine consecutive formal rushes for a period of two months. "It is an exhausting time but it's also very exciting. After a week of hard work, fingernails bitten to the quick and little sleep, it's the best feeling to be in the middle of a pledging about which everybody is thrilled," explains 1981-83 Field Representative Ann Leine. "But it can be scary, too. It is always a relief to arrive at a chapter to find the rush chairman waiting for me with her plans. If she has the formal rush party planners all filled out, copies of skits, Panhellenic rush rules and practice and party schedules ready, then I can sit down and review these while I'm waiting to get used to walking on solid ground again. Then, after a meeting with the rush chairman we can decide where we need to concentrate and where I can be the most help. Since sometimes I may arrive at a chapter just hours before a rush party, this preparation makes everybody feel a lot more secure. And I know it's supposed to be 'professional' not to get personally involved with one's work, but particularly with rush, it's almost impossible for me not to. If the chapter I'm working with does better than ever before, there's nobody happier than I am. I love it!"

Toward the middle of October, the field staff begins what are called "chapter visits." At this time, a field rep will visit a chapter for a period of four to six days to meet with officers and members to review plans, goals and orientations for the coming year. If the collegiate chapter is expecting a visit, they have probably cleaned house or suite, pitched all questionable evidence of college life, alerted the housemother or R.A. and Panhellenic, prepared all reports to an up-to-date standard, warned all the fraternities and are now wondering, "What have we done to deserve a visit from 'National'?"

The field reps like to think they are

coming to help in whatever way they can. They understand that new officers do not know everything or the chapter is unaware of certain policies. Relax! Many chapters assume that since it has "always" been done this way that it is the correct way. The field reps are simply there to help train officers, suggest improvements and answer questions members may have so the chapter may run more efficiently and harmoniously in the future. They also bring with them great ideas from all over the country which may add some spice to typical, musty chapter programs.

"Chapter visits are the best because we get to know just about everyone on a more personal, relaxed basis," relates 1981-82 Field Representative Lee Ann Martin. "For both the chapter and myself to get the most benefit of a visit, it's most helpful when officers bring all their manuals, notebooks, materials and ideas to a conference so we can go through them together. This way we can review everything and kick around new ideas and insights into their jobs."

Now, what is the "typical" day in the life of a Delta Zeta field rep? Actually, there is no typical day. At the beginning of every day at each chapter, the schedule differs radically from one day to the next. Tuesday, it may be an appointment with the campus Panhellenic advisor at 9 a.m. with free time to catch up on correspondence until a chapter meeting at 7 p.m. Wednesday, it may be officer and member meetings from 8 a.m. until 10 p.m. with half-hour breaks for lunch and dinner. Thursday, it may be aboard "The Friendly Skies" enroute to her next assignment.

But not every day is spent in a collegiate chapter. Ah, the blessed weekend off! Each month, the field reps are scheduled for a vacation weekend. They visit family, friends or maybe just catch up on sleep and evaluations.

Then there are days when nothing seems to go right. At these times a field rep learns to work her sense of humor and patience overtime. "There are two things which make this job frustrating at times. The first is delayed airplane flights and lost lug-

gage. And frustration is trying to reach a chapter I will be visiting using an incorrect list of officers who have already graduated," says 1981-83 Field Representative Nancy Walker. "What's a field rep to do?!" And being ignored or forgotten for meals or chapter events is nobody's ideas of fun and field reps are no different from anybody else. Some days it just seems like it's better to just sit and ignore the grey cloud hanging overhead and maybe it will go away.

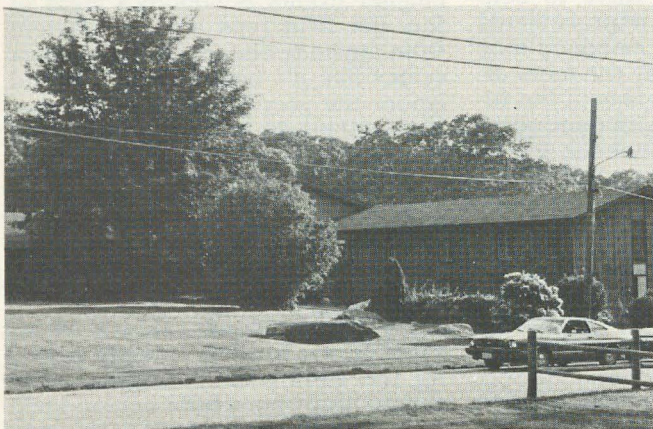
While the position of field representative is a strenuous and sometimes lonely and frustrating one, it certainly has its fringe benefits. 1981-83 Field Representative Terry McNeer says, "It's great to be able to meet so many people and share ideas in such a short period of time. It really makes me feel good when a chapter I have visited drops me a little note to keep me informed about what's going on in the chapter. I care what happens and I'm pleased they don't forget me two or three days after I leave."

Another fringe benefit is meeting field reps from other sororities and fraternities. "I enjoyed trading success and, sometimes, terror stories with other fielders," says Colleen Quinley, 1981-82 Field Representative. "It sets things in a whole different light. It's good to realize there are lots of fun people doing the same job I am, experiencing the same 'ups' and 'downs' I am," she concluded.

Probably the most remarkable aspect about this job is its unlimited opportunity for making new friends. Each chapter, in its own way, reminds the field rep of home just when she needs it most. In each chapter there is a little bit of the sisters with whom she went to school. There are the giggles and, also the tears. It's the feeling she never wants to leave and the feeling this is better than "just a job." It's sisters the country over who will welcome her, work with her and miss her when she's gone. Whether it's a National Council member or a new pledge, the feeling is there. As one field rep mused, "I wish every Delta Zeta could be a field rep for just one day. It adds a totally new, worthwhile dimension to being a Delta Zeta."

Delta Zeta from Coast to Coast

Meet Beta Alpha, Rhode Island



The Beta Alpha chapter house is at 18 Fraternity Circle.

by Molly Alexander, URI—BA

Although Rhode Island is the smallest state in the country, there is no end to what we have to offer. In the summer months R.I. is flocked with tourists heading for the beaches, the ocean, and Newport. They come for a quiet relaxing vacation by the sea or an action packed time in Newport, our biggest tourist attraction. There are mansions left from the wealth of the railroad industry rivaling the chateaux of medieval France, also beaches, restaurants, and night clubs galore. Finally, there are some of the most beautiful yachts in the country, as well as the thousands of international yachts which cruise in and out of Newport annually. It is the home of the America's Cup 12 meter sailing races, which invites 12 meter yachts from many other countries to come to the United States to compete in one of the most prestigious regattas in the world. It is also one of the main stops of the famed Tall Ships, which in fact, were here again this summer.

Rhode Island is also the home of several colleges and universities, the largest being Brown University and the University of Rhode Island.

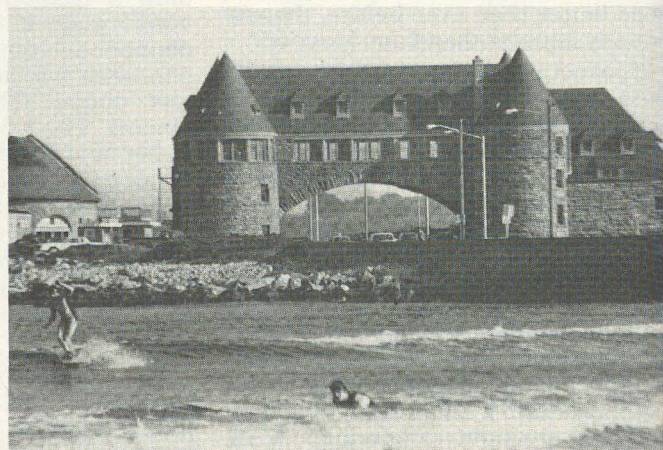
The University of Rhode Island has about 12,000 undergraduate and graduate students at its main campus and its Graduate School of Oceanography. It is located in Kingston, Rhode Island, about 30 miles from Providence, our state capital. It is also just six miles from the ocean and fifteen miles from Newport.

Because we are situated so close to the ocean, and in such a vacation atmosphere there are plenty of summer homes which can be rented by the students during the school year. It is estimated that there are 2,000 students living in summer homes "down the line" during the academic year.

While a good percentage of URI's students live off-campus, the Greek system is equally as strong. There are sixteen fraternities and eight sororities on campus. All are nationally affiliated and have houses for some 1500 members.

Delta Zeta at URI was established as the local group Theta Delta Omicron in 1924. In 1930 we were loaned money to build our first chapter house, which is now the Career Planning Office. Soon after 1968, our present house was completed at 18 Fraternity and Sorority Circle which houses approximately 60 of our 100 members.

The 1981-82 school year was exciting. In December 1981 Beta Alpha was invited to initiate the girls of Xi Alpha Chapter at the University of Massachusetts. We



The ocean is just six miles away from the URI campus. Pictured in the background is one of the historic castles lining the beaches.



Beta Alpha heads for Bedford, NH bright and early! It's 1982 Province Weekend.

felt this was indeed a great honor to be chosen to initiate a new chapter in the presence of National President Carolyn Gullatt; Past National President, Norma Andrišek; National Secretary, Dianne Guild; as well as Province I PCD, Karen Manuel; PAD, Gay Rose; and CCDs from UMass and URI, Kathy Vlerebome and Colleen O'Connell.

Also in December 1981 our sister Ellen Greenwood was elected President of the Panhellenic Council at URI. She is the first Panhellenic president our chapter has had and thus far she has initiated strong new ideas among the sororities on campus and worked closely with our Inter-Fraternity Council.

The Spring semester at Beta Alpha was very exciting. In March 40 of our girls attended the Province I Weekend 1982 in Bedford, New Hampshire along with girls from the six other chapters in Province I. At the Sheridan Wayfarer Inn we attended workshops all afternoon before an awards banquet that evening. At the awards banquet our chapter received several awards: Best Pledge Scrapbook, Best Chapter Display, the Velma K. Oliver Activities Award and the Pride of the Province Award. We were very pleased and proud to receive these awards, and then we learned that two individuals from our chapter had also won awards. Beth Anne Steinman won the Golden Crest Award and Ilene Lewis was named Alumna of the Year.

After the banquet all seven chapters donned costumes and demonstrated skits from their rush programs. The night and the weekend were full of fun as we made new friends from other chapters as well as with our CCDs, our PCD Karen, our PAD Gay, National Fielder Terry McNeer, and National Council Members Dianne Guild and Terri Severy.

In April Beta Alpha competed in the annual URI Greek Week. This involves a week of events in tough competition with all the other sororities and fraternities which are paired in a 1:2 ratio. This year we were paired with



Members of ΔZ and ΣX await judging in the Greek Chariot competition in Greek Week 1982.



ΔZs impatiently await their turn to sing in Greek Sing. This year they sang a medley of songs from "My Fair Lady."

Sigma Chi and Zeta Beta Tau fraternities and together we clinched the 1st Place Combined Trophies. Competing in such events as the Tug 'o War, Dance Contest, various relay and road races, Greek Sing, and an authentic greek chariot competition, we finished 1st place for the combined events and 4th place for the individual sorority events. We were also lucky enough to have a bit of extra encouragement from our spirited National Fielder Terry McNeer during Greek Week 1982.

Finally in May, just before final exams Beta Alpha embarked on our first annual moonlight cruise. Each sister or pledge fixed her roommate up with a date or her boyfriend for a moonlight cruise around Newport Harbor and Narragansett Bay. A disc jockey provided the music and we danced the night away while cruising a scenic route along the coastline.

At this point our highly active and spirited chapter settled down for a week of exams, finishing up all club activities and classes before moving on to the summer activities which abound in our area.

Delta Zeta from Coast to Coast



Delta Xi chapter at the University of Northern Colorado gathered for this picture on the porch of the chapter house in Greeley.

Meet Delta Xi, Northern Colorado

by Anna Osborn, UNC—ΔΞ

"We'll stick together through the thick and the thin, because ΔZsisterhood never will end!"

That's a favorite saying of Delta Xi chapter at the University of Northern Colorado.

Especially during the last week of June, when the girls exchange tears, hugs and summer addresses. They know their special bonds of sisterhood will last forever, regardless of summer separations, transfers or graduations.

The Greeley girls have had their busiest and most successful year ever.

Formal Fall rush got rave reviews with "ΔZs Go Hollywood" and informal Spring rush hit the jackpot with

"Las Vegas Night" and a ΔZ fashion show.

The Fall pledge class, "13 Golden Treasures," brought lots of Christmas cheer to residents of the Bonnell Nursing Home when they caroled there with the Sigma Kappa pledges.

"Heaven's 11," the Spring pledge class, attempted a car wash with the ΣAE fraternity pledges, but an uncooperative Mother Nature spoiled their plans.

All the pledges enjoyed pulling pranks on the house and activities with their big sisters, like kidnap breakfasts, a Christmas stocking exchange, and a spaghetti dinner eaten with everything from chopsticks to tea strainers.

For the second year in a row, the

ΔZs combined their float building talents with the ΔΣΦ's for the Homecoming Parade. A 1980 "Grand Prize" award was followed by a 1981 "Best Use of Theme" award.

UNC's first annual Greek songfest found the ΔZs and the ΣXs singing and dancing their way to third place with their rendition of "Super Greek."

Delta Zeta won the croquet tournament and trivia bowl to capture second place overall in the 1982 Sigma Chi Derby Days.

Two van-loads of Delta Xis spent 24 hours on the road travelling to and from Emporia, KS for the 1982 Province Day. What a trip! The Delta Xi chapter is really looking forward to hosting next year's Province Day.

Even with all of their other activi-



Big sis Melinda Scott and little Sis Debbie Harper exchange pillow and paddle.

ties, the ΔZs still found time for several campus and community philanthropy projects. They baked eight dozen Christmas cookies that were auctioned off to raise scholarship money in UNC's annual KFKA Radio Rally. Every chapter member made an Easter basket for a child at the La-Salle Parent-Child Center. For the 1982 Special Olympics, ΔZs made 600 peanut butter and jelly sandwiches and worked as starters, timers and "huggers."

The highlight of the year was introducing Delta Zeta to a local sorority at the University of Denver and later initiating them and installing them as the Rho chapter of Delta Zeta. The

Greeley women are excited to have other college sisters in the state of Colorado.

Many ΔZs are very involved in Greek life outside of Delta Zeta. Georgie Arellano served as '81-'82 Panhellenic president and Julie Hatchell is '82-'83 Panhellenic rush chairman.

Lisa Summers was the 1980 ΣAE Sweetheart; MaryLou Canny was the 1980 ΔΣΦ Sweetheart; Denai Marshall was the 1981 ΔΣΦ Sweetheart; and Kim Konrad is the 1982 ΣX Sweetheart.

"Individuality" is one of the characteristics displayed by Delta Xi Chapter in the many campus activities involving members.

Delta Zeta was represented in all three scholastic honor societies on campus this year. Diane Norblom was a member of Spurs, Sophomore Honor Society; Coleen Downs was a member of Junior Honor Society, and Anna Osborn was a member of Mortar Board, Senior Honor Society. Melinda Scott is a member of the 1982-83 Junior Honor Society, and Kelly Herzog and Coleen Downs are member of the 1982-83 chapter of Mortar Board.

Marysz Palczewski, a March graduate, was a vice-president on UNC's Student Representative Council. Anna Osborn was director of the National Student Exchange Program, which allowed ΔZ's Donna Monger to study at the University of Hawaii and Suzanne Tugman to study at Sonoma (CA) State University this year. Next



Big sis Cathy Flynn and little sis Audy Cole exchange Christmas stockings.

year Diane Norblom will study at Chico (CA) State University. Suzy Lane was recently appointed director of the In-touch Helpline, a student government service.

Coleen Downs has worked in the Visitor's Center for two years, giving prospective students tours and information about UNC. This summer Melinda Scott also worked there.

Three ΔZs are on varsity athletic teams at UNC. Both Stephanie Schall and vice president for membership Kathy Monahan participated in the Division II AIAW National Tennis Championships and historian Julie Smith qualified for the Division II

(Continued on page 13)

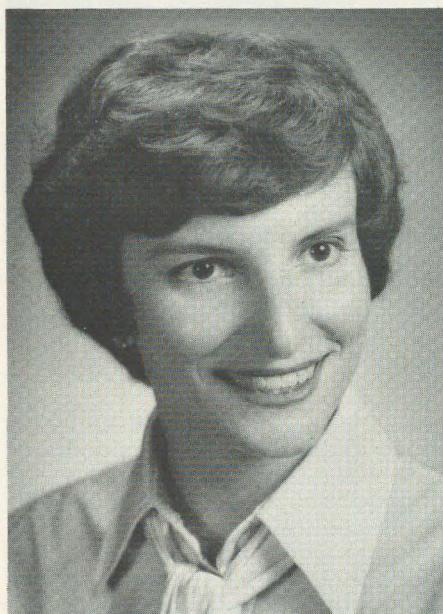


Seen at the Spring formal in Greeley are l to r, Kathy Monahan, Coleen Downs, Julie Malson and Stephanie Schall.



Delta Xis had a country western dance in honor of their Spring pledge class.

Province Collegiate Directors



Patricia Canady Rosser, Provinces XX and XXII

by Virginia Gilbert

We would like for you to meet six of our Province Collegiate Directors. Their areas of responsibility range from eight to thirteen chapters each, with sometimes a combination of two provinces, depending upon geographic feasibility. They are some of those "oh, so very important volunteers" who supervise the collegiate chapter activities within their areas.

Patricia Rosser Georgia and Florida

Patricia Canady Rosser was chairman, during its organizational stage, of the group that became Iota Nu at Georgia Southern. She currently serves as PCD for provinces XXII and XXIV and lives with her husband David in Clearwater, FL.

"David and I have been married for five years and since then I have acquired three teenage step-children," Pat said. "David and I met while he was conducting a fundraising capital

campaign for an Atlanta hospital and although I taught school for five years, I have been associated with fundraising since we married.

"I've worked with hospital fundraisers across the country establishing a computer information and solicitation system, and most recently I've begun working with a national company based here in Clearwater involved in financial planning, a subject which has long held my interest.

"My spare time, after work and Delta Zeta responsibilities, is spent reading, volunteering as a YWCA board member, gourmet cooking with my husband and enjoying the beach. We also share Sunday School teaching responsibilities for our high school class."

Phyllis Favorite Pennsylvania and Delaware

Phyllis Snape Favorite is a magna cum laude graduate of the University of Cincinnati where she was president, assistant pledge trainer and social chairman of Xi chapter. While in college, she was vice president of the women's glee club, secretary of the Student Education Association, a member of *Who's Who in American Colleges and Universities* and received the Beecher Award for the most outstanding senior in the School of Home Economics.

Since college she has served as PCD for Provinces XXI and V and as National Ritual Chairman. She has been active in the Washington, DC alumnae group and is currently a member of the State College, PA alumnae chapter. Phyllis was named to *Outstanding Young Women of America* in 1981.

"I have been very involved with Delta Zeta since my college days and it continues to be my number one hobby," Phyllis said. "My husband Bob is a senior engineer for HRB Singer and is an outstanding ΔZ husband. Our daughters Jennifer (4) and Adrienne (2) are being groomed to be future Delta Zetas.

"I have taught nursery school and high school home economics and I keep these skills honed by volun-

teering in Jennifer's nursery school, teaching the nursery class in our church and dealing with my own pre-schoolers.

"When I'm not doing ΔZ work, I enjoy reading, sewing, crocheting and furniture refinishing. Other activities in which I am involved include State College Junior Women's Club, HRB Singer Women's Club and church activities."

Sondra Bass North Carolina and South Carolina

Sondra Golden Bass was initiated into Beta Lambda chapter at Tennessee but transferred to Alpha Sigma at Florida State for her degree. She has served as Province Alumnae Director for North Carolina and Virginia and was a National Director for four years. The Bass family lives in Raleigh.

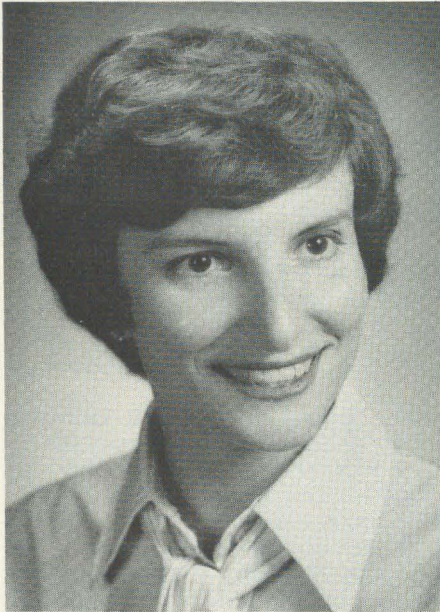
"My husband Al is a professional heat and air conditioning engineer and we have two daughters," Sandy said. "Susan just graduated from high school and Lee Ann is six.

"I have a shop that is 45 percent gifts, 45 percent counted thread cross stitch and 10 percent antiques," she added. "I have a partner, and we carry



Phyllis Snape Favorite, Province III

Province Collegiate Direc



Patricia Canady Rosser, Provinces XX and XXII

by Virginia Gilbert

We would like for you to meet six of our Province Collegiate Directors. Their areas of responsibility range from eight to thirteen chapters each, with sometimes a combination of two provinces, depending upon geographic feasibility. They are some of those "oh, so very important volunteers" who supervise the collegiate chapter activities within their areas.

Patricia Rosser Georgia and Florida

Patricia Canady Rosser was chairman, during its organizational stage, of the group that became Iota Nu at Georgia Southern. She currently serves as PCD for provinces XXII and XXIV and lives with her husband David in Clearwater, FL.

"David and I have been married for five years and since then I have acquired three teenage step-children," Pat said. "David and I met while he was conducting a fundraising capital

campaign for an Atlanta hospital and although I taught school for five years, I have been associated with fundraising since we married.

"I've worked with hospital fundraisers across the country establishing a computer information and solicitation system, and most recently I've begun working with a national company based here in Clearwater involved in financial planning, a subject which has long held my interest.

"My spare time, after work and Delta Zeta responsibilities, is spent reading, volunteering as a YWCA board member, gourmet cooking with my husband and enjoying the beach. We also share Sunday School teaching responsibilities for our high school class."

Phyllis Favorite Pennsylvania and Delaware

Phyllis Snape Favorite is a magna cum laude graduate of the University of Cincinnati where she was president, assistant pledge trainer and social chairman of Xi chapter. While in college, she was vice president of the women's glee club, secretary of the Student Education Association, a member of *Who's Who in American Colleges and Universities* and received the Beecher Award for the most outstanding senior in the School of Home Economics.

Since college she has served as PCD for Provinces XXI and V and as National Ritual Chairman. She has been active in the Washington, DC alumnae group and is currently a member of the State College, PA alumnae chapter. Phyllis was named to *Outstanding Young Women of America* in 1981.

"I have been very involved with Delta Zeta since my college days and it continues to be my number one hobby," Phyllis said. "My husband Bob is a senior engineer for HRB Singer and is an outstanding ΔZ husband. Our daughters Jennifer (4) and Adrienne (2) are being groomed to be future Delta Zetas.

"I have taught nursery school and high school home economics and I keep these skills honed by volun-

Moving?

A change of address card is inserted in this magazine for your convenience. If you are prompt to send Delta Zeta your new address, it can be entered in the LAMP magazine file before the next issue is mailed.

Sondra Golden Bass was initiated into Beta Lambda chapter at Tennessee but transferred to Alpha Sigma at Florida State for her degree. She has served as Province Alumnae Director for North Carolina and Virginia and was a National Director for four years. The Bass family lives in Raleigh.

"My husband Al is a professional heat and air conditioning engineer and we have two daughters," Sandy said. "Susan just graduated from high school and Lee Ann is six.

"I have a shop that is 45 percent gifts, 45 percent counted thread cross stitch and 10 percent antiques," she added. "I have a partner, and we carry



Phyllis Snape Favorite, Province III

Magazines . . . a practical gift for all occasions

Delta Zeta Subscriptions
P. O. Box 24145
Columbus, Ohio 44017



Sondra Golden Bass, Province XXI

a lot of 'primatives' which are the new decorating craze in our area. We also enjoy looking for new handcrafted items to buy for the shop. I like to cook, but with work, family and Delta Zeta, there's not much time for that!"

Lynnda Hoefler Ohio

Lynnda Wolf Hoefler is a graduate of Kent State University where she was president and rush chairman of Gamma Kappa chapter. She was a Grace Mason Lundy award recipient in 1976 and was tapped into Omicron Sigma Rho (Panhellenic honorary) and Omicron Delta Kappa.

Lynnda traveled as a field representative after graduation and served as Gamma Kappa's CCD for three years. She was National Philanthropy Chairman for two years and is an active member of the Kent alumnae chapter.

"I am currently employed full time doing secretarial work for an insurance agent," Lynnda said. "My husband Robert is the director of instrumental music at an area high school and is the leader of a dance band. I am kept very busy attending concerts, football games, contests, wedding receptions and class reunions — I'm his biggest fan.

"My interests include sewing, collecting recipes and music of all kinds. Delta Zeta is a major part of my life and I can't imagine not being active."

Janet Havener Iowa, Kansas, Nebraska and Colorado

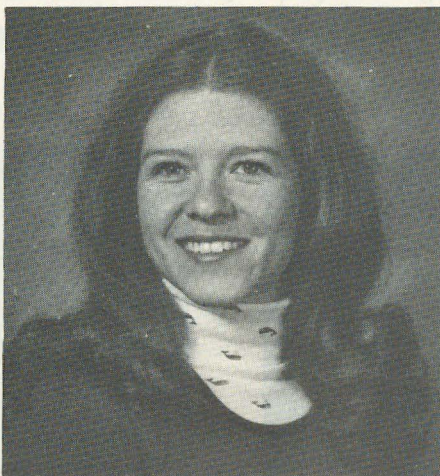
Janet Eisler Havener is a graduate of Epsilon Gamma chapter at Central Missouri State University where she was president, social chairman and activities chairman. She was a member of Alpha Psi Delta and the College Union Committee while in college and was a Dean's List student.

Since college she has served as CCD for Iota Xi chapter at the University of Missouri - St. Louis and was Province Alumnae Director of Province XIV which included Colorado, Wyoming, Utah, Arizona and New Mexico.

"I hold a B. S. Degree in Recreation Administration," Jan said. "But I am presently working in the home raising our daughter, Katherine." Jan's husband Gary is Director of Parks and Recreation for the City of Loveland, CO.



Janet Eisler Havener, Provinces X and XII



Lynnda Wolfe Hoefler, Province V

Meet ΔΞ (continued)

AIAW National Golf Championships.

Anna Osborn, a featured twirler at UNC for three years, represented Colorado at the United States Twirling Association Nationals in San Antonio, TX this summer.

Dana Boles spent the summer teaching at cheerleading camps throughout the Western United States.

These are just a few of the achievements of the members of Delta Xi chapter and a few of the chapter's many activities.

The Delta Xis had a fantastic year and will treasure the memories of it forever. But they're already making plans and getting psyched for next year, because, like the saying goes, "DZ sisterhood never will end!"



Sondra Golden Bass, Province XXI

a lot of 'primatives' which are the new decorating craze in our area. We also enjoy looking for new handcrafted items to buy for the shop. I like to cook, but with work, family and Delta Zeta, there's not much time for that!"

Lynnda Hoefler **Ohio**

Lynnda Wolf Hoefler is a graduate of Kent State University where she was president and rush chairman of Gamma Kappa chapter. She was a Grace Mason Lundy award recipient in 1976 and was tapped into Omicron Sigma Rho (Panhellenic honorary) and Omicron Delta Kappa.

Lynnda traveled as a field representative after graduation and served as Gamma Kappa's CCD for three years. She was National Philanthropy Chairman for two years and is an active member of the Kent alumnae chapter.

"I am currently employed full time doing secretarial work for an insurance agent," Lynnda said. "My husband Robert is the director of instrumental music at an area high school and is the leader of a dance band. I am kept very busy attending concerts, football games, contests, wedding receptions and class reunions — I'm his biggest fan.

"My interests include sewing, collecting recipes and music of all kinds. Delta Zeta is a major part of my life and I can't imagine not being active."

Janet Havener **Iowa, Kansas, Nebraska and Colorado**

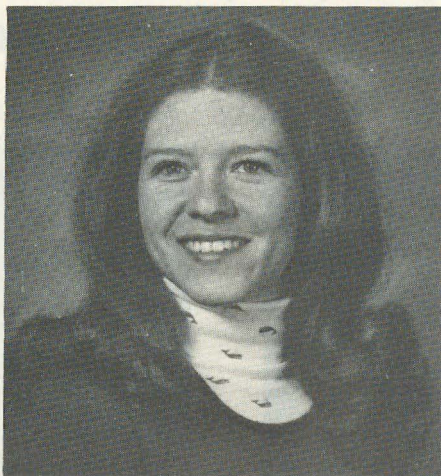
Janet Eisler Havener is a graduate of Epsilon Gamma chapter at Central Missouri State University where she was president, social chairman and activities chairman. She was a member of Alpha Psi Delta and the College Union Committee while in college and was a Dean's List student.

Since college she has served as CCD for Iota Xi chapter at the University of Missouri - St. Louis and was Province Alumnae Director of Province XIV which included Colorado, Wyoming, Utah, Arizona and New Mexico.

"I hold a B. S. Degree in Recreation Administration," Jan said. "But I am presently working in the home raising our daughter, Katherine." Jan's husband Gary is Director of Parks and Recreation for the City of Loveland, CO.



Janet Eisler Havener, Provinces X and XII



Lynnda Wolfe Hoefler, Province V

Meet ΔΞ (continued)

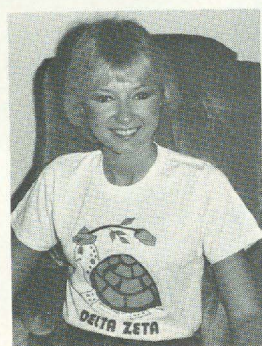
AIAW National Golf Championships.

Anna Osborn, a featured twirler at UNC for three years, represented Colorado at the United States Twirling Association Nationals in San Antonio, TX this summer.

Dana Boles spent the summer teaching at cheerleading camps throughout the Western United States.

These are just a few of the achievements of the members of Delta Xi chapter and a few of the chapter's many activities.

The Delta Xis had a fantastic year and will treasure the memories of it forever. But they're already making plans and getting psyched for next year, because, like the saying goes, "DZ sisterhood never will end!"



I am a new pledge. I am a Delta Zeta pledge.
 I don't know Delta Zeta very well, but I want to.
 I don't know you very well, but I want to.
 I am here because of you.
 I am here because of something you said, because of
 something I felt.
 I am here because of a promise, unspoken, but a
 promise that there is something special here.
 I want to learn. I want to know about Delta Zeta and
 about you.
 I want to learn from you.
 I want to know what I am expected to do. I want my
 being here to make a difference.
 I want to share Delta Zeta with you.
 I want to feel what you feel.
 I want to be a part of the joy you've found in it.
 I want it to be a happy place.
 I want to help.
 I want to do what I can to make it special, to be proud.
 I want to give.
 I want to give of myself to you and to Delta Zeta.
 It is important to me—even now.



A Close Look at Little Sister Organizations

The following article appeared in the Winter issue of the *Adelphian*, official publication of Alpha Delta Pi. It is reprinted here by permission of the *Adelphian* and Alpha Delta Pi.

HELP WANTED: Need attractive young woman to clean house, cook meals, wash cars, polish silver, entertain guests, and perform other odd jobs as instructed. No experience necessary. Long hours. No pay.

Would you answer this ad? Probably not. Yet our members continue to join fraternity little sister organizations and fulfill these job requirements. The catchy names of the groups do little to reveal that all too often they simply provide free domestic help.

Granted, the practices of the organizations vary greatly from campus to campus. But, are they truly constructive forces anywhere? Do they serve any positive purpose unavailable through traditional fraternity and sorority membership?

Alpha Delta Pi and other members of National Panhellenic Conference agree they do not. And many fraternity men concur. Little sister groups are causing serious problems for both men's and women's fraternal organizations.

Perhaps the greatest problem stems from the amount of time the organizations require from the fraternity men, as well as the women in the group. Participants should examine the hours they spend working with the organization. Would it be better used with their respective fraternity and sorority activities, or in campus and community organizations?

A little sister organization often causes conflicts in the fraternity—conflicts that sometimes are serious

enough to divide a chapter. The problem may be the result of a disagreement over pledging a particular woman, or the end of a dating relationship between a brother and little sister.

The involvement of little sisters in fraternity rush is another concern for fraternities. At the rush parties brothers and rushees are often too busy talking to little sisters to get down to the brass tacks of joint selection process of fraternity membership.

Fraternity men should be responsible for the upkeep and running of their own chapter house and organization. If they choose not to perform their own domestic and social duties, then they should be responsible for hiring and paying for the services.

Defenders of the little sisters organizations will list friendship and social interaction as the benefits. And noble ideas they are. But, are the little sister groups the best vehicle for attaining these goals?

Sororities and fraternities are involved in many joint projects that provide the opportunity for the members of the groups to meet and work together. Service projects, joint homecoming participation, and social mixers should serve the same purposes without the problems of the little sister organizations.

If individual fraternities and sororities are not fulfilling the needs and goals of their respective members, then it's time to examine the programs and make the necessary changes. Advisors and national officers should work with the chapters to make the programming effective and productive.

Let us not forget the principles our founders set for the sorority, as well as the development of each member.

A Resolution Concerning "Little Sisters"

The following resolution was adopted by the Fraternity Executives Association on June 2, 1982.

WHEREAS the Fraternity Executives Association believes sororities offer excellent opportunities for women to share a fraternal experience, and

WHEREAS groups organized by men's fraternity chapters, commonly referred to as "little sisters," are inconsistent with the concept and philosophy of separate and equal women's fraternities, and

WHEREAS these groups detract, in numerous ways, from men's fraternity chapters, therefore be it

RESOLVED: That the Fraternity Executives Association believes that "little sister" groups are not desirable adjuncts to the collegiate chapters of men's fraternities; and be it

FURTHER RESOLVED: That the Fraternity Executives Association believes that these groups inhibit the

accomplishment of chapter goals by:

- DIVERTING resources of time, effort, and money, which are needed for chapter operations and programming;
- DISTRACTING chapter members in the performance of essential duties ... e.g., membership recruitment and membership education;
- INVITING disharmony within the chapter by usurping the roles and responsibilities of initiated members;
- WEAKENING the bonds of brotherhood by adversely affecting interpersonal relationships within the chapter;
- BLURRING the identity of all Greek letter organizations and undermining the entire Greek system.

Delta Zeta on Campus



It was Spring Break, 1982 at Daytona! The idea was to capitalize on the hordes of visitors packing the white sands of the World's most famous beach, while at the same time breaking photo history. For the old record, 8,500 people had assembled so a national camera company aimed for 10,000 people for the World's largest staged photo, "The Daytona Class of 1982 Picture." The challenge wasn't met, however, because only about 3,200 visitors recruited by word of mouth showed up to smile and wave for the photographer. Picture courtesy of Ed Baggett, Daytona Beach Evening News. Anyone recognize the ΔΖ on the front row?

by Diane Jones Skelton

ALABAMA

Alabama, Alpha Gamma—One hundred plus junior and senior high school coeds attended Delta Zeta's first Tahiti Sweetie Weekend. The festive weekend included a quad jamboree, house pizza party, Cinderella Revisited skit and a busy Saturday at Lake Tuscaloosa with Tahiti attire, badminton, volleyball, sailing and a campus band party that night. Guests bid farewell to Delta Zeta at a formal dinner on Sunday. Alpha Gammas are planning to make Tahiti Sweetie an annual event. The Colonnade Club's annual fund raiser, this year a spaghetti dinner, netted enough cash to furnish the house with an intercom system. Past Colonnade gifts included a microwave and jukebox.

Alabama-Huntsville, Lambda Kappa—The Dee Foster Sims Award and the Achievement Award both went to ΔΚ at Province XXIII Day. Members performed their Lamplighting ceremony for other

chapters at the event. Twenty-five children from Huntsville City School preschool and hearing impaired classes attended the second annual Delta Zeta Easter Egg Hunt. Cheryl Hart, philanthropy chairman, coordinated the event with help from Laura Pattillo, ΑΓ, philanthropy advisor and preschool instructor. Delta Zeta placed third in intramural football and basketball, and second in the softball tournament. Members enjoyed visits from Province Collegiate Director Sandi Nesbitt, National Field Representative Ann Leine, and Sign Painters, a sign language group. Spring was a busy time with the annual bridal shower and pasta party honoring seniors, a cookout with Alpha Tau Omega, and the fifth annual Rose Formal. This year's formal, *Forever Like a Rose*, was held at Valley Hill Country Club. Members served as hostesses for the UAH Job Fair and participated in the step-a-thon for Cystic Fibrosis. Active in Student Government are Cheryl Hart, vice presi-

dent, and Suzy Smith, executive secretary. Lancers, official UAH host committee, includes Donna Andreoli, Cindy Coakley, Felecia Francis, Betsy Mosgrove and Peggy Tiernan.

Auburn-Montgomery, Lambda Nu—The chapter's biggest fund raiser to date was a joint rummage sale and car wash which netted over \$450. Some of the proceeds went to a rehabilitation center. Delta Zeta also aided the community by working at the Special Olympics, where ΔNs handed out ribbons and acted as "huggers" by praising participants and giving big hugs. Lambda Nu co-sponsored an AUM Easter Egg Hunt supporting the AUM Scholarship Fund. Members spent Saturday dying thousands of eggs and Sunday hiding them. Members participated in the Jubilee River Run by pouring drinks for thirsty runners. Darla Deason and Robin Gosdin were tapped for Phi Eta Sigma honorary, while Omicron Delta

Kappa chose Nancy Steger and Dottie Cooley. Nancy is OAK president. Active in Student Government are Teresa Harris, Court Justice, and Diane Steger, junior senator. Pam Ward served as a summer missionary in Arkansas. Elena Bass won fourth runner-up honors in the first Miss AUM Pageant.

Jacksonville, Lambda Gamma—As the fire alarm went off that rainy Saturday morning, Delta Zetas realized it was not a drill. The members living on the sixth floor emerged sleepy and bewildered to find the hall on fire. Jeanean Smith, floor counselor, had pulled the alarm when she smelled smoke and the Anniston and Jacksonville Fire Departments arrived quickly to extinguish the trash fire. However, many rooms, including the chapter room, suffered smoke damage. But, some good came from the ordeal, as the hall received a face lift, and members realized the value of friends in other sororities. AT traveled to Atlanta's Marriott for Spring Formal Weekend. Lambda Gammas ranked in fourth place at Greek Week. Standards Chairman Regina Norris arranged an enjoyable program where members learned two songs in sign language. Another standards program featured tips on relaxing. ROTC sponsors are Ellen Smith, Ann Holder, Regina Norris and Lynne Lowe. Ellen is also a Kappa Sigma Calendar Girl.

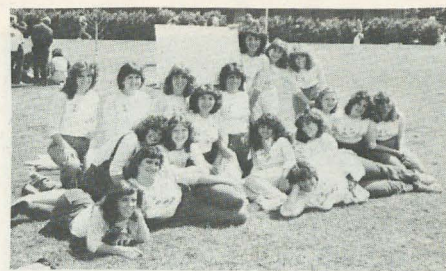
Livingston, Kappa Lambda—As Miss Livingston, Donna Haley traveled to the Miss Alabama Pageant in June. Donna and Debbie Holladay are new LU cheerleaders. At Livingston Awards Day, Roxie Luker received a plaque from the Student Body to honor her as Miss LU. Philanthropies included rocking chair rock-a-thon and a collection for Sumter County Charity fund. Member served as hostesses for Livingston Book Club's Fashion Show.

ARKANSAS

Arkansas Tech, Lambda Alpha—Cheerleaders are Cheryl Tolbert, Sonya Patterson, Tena Payne and Karen Ramsey, captain. Kathy Miller is Phi Lambda Chi Sweetheart and Vicky Robertson is a majorette. Joyce Minnick is Greek Goddess and Gerri Bregard Layrock serves Panhellenic as secretary. Vicky Robertson is first runner-up to Miss Tech. Student government leaders include Julie Browning, Student Senate treasurer, and Cathy Busken, Sophomore Class vice president. Cardinal Key honorary tapped Mary Bane, Sheila Kauffman, Judith Conway and Lisa Yerby. Toni Robertson and Mary Jo Allen are ATU Goldiggers, athletic hostesses, and Christie Montgomery managed ATU's Track Team. Members and pledges enjoyed a weekend campout featuring work projects, a party, picnic and "boundary breaking." Boundary breaking is the chapter's annual talk session to foster individual relationships and unite the chapter. The chapter placed first in songfest,

swim meet, tug-of-war and track at Greek Weekend. Members planned an Easter egg hunt for an orphanage and now send birthday cards to its residents. Chapter members also aided the American Cancer Society Drive.

Central Arkansas, Epsilon Xi—The chapter hosted Province Day festivities on the UCA campus with workshops in the Fine Arts Center and a luncheon in the campus cafeteria. Delta Zetas enjoyed an EΞ style show and presented chapter skits. Awards for Epsilon Xi were Most Outstanding Chapter and Pride of the Province. Sorority and fraternity models dressed in cruise wear at Delta Zeta's annual style show following this year's theme of *Ship to Shore*. Entertainment included Tamara Morris, Miss Conway, and June Moreland, Miss Sorority Pledge Queen. Delta Zeta presented a musical excerpt from *South Pacific*. At high school rush, members presented their musical skit *Annie* and entertained visitors with a pizza party and skating party. Girls also enjoyed an early Sunday breakfast and group attendance at church services. Chairman Rhonda Murphree planned a spaghetti supper which earned over \$600. Donut sales in dorms proved another popular fund raiser. Chairman Lynell Anderson planned the dorm sales for hungry residents every Thursday at 10 p.m. Greek Week was a busy collage of softball games, Greek t-shirts, dress up day and



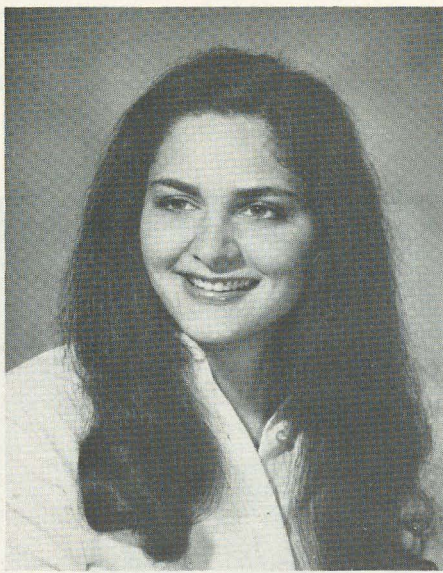
It was Greek Week at California State University-Fullerton when these members of Iota Upsilon Phi got together.

displays in the Student Center. Losing by one run in the final game, the ΔZ-ΦΛΧ softball team placed second in Greek Week. Members traveled to Memphis' Ramada Inn for Rose Ball. As Miss Cross County, Holly Baker traveled to the Miss Arkansas pageant in July. June Moreland is second runner-up to Miss UCA in the ΔZ sponsored pageant. June is also feature twirler for the Marching Bears. Shari Coble and Angela Lilley are new cheerleaders. Royal Rooters spirit organization includes Leisha Woodcock, Charla Weaver, Kay Bright, June Moreland, Diana Reynolds and Mary Beth Tiefel. Student Orientation staff includes Tamara Morris, Kay Bright, India Brown and Mary Beth Tiefel. Alternates are Janice Bossier and Lynell Anderson. Cathy Woodard is featured in Sigma Tau Gamma's calendar.

CALIFORNIA

California State-Fullerton, Iota Upsilon—At Province XV-South festivities aboard the *Queen Mary* in Long Beach, IY received awards for attendance and entertainment. Lisa Miranda's scrapbook won top honors and Linda McDonald was named Miss Province Day. Delta Alpha, Cal State-Long Beach, and the Long Beach Alumnae chapter hosted the event. In Greek Week activities, members displayed pride, spirit and enthusiasm to win overall second place honors. And, the tug-of-war team went undefeated for the second year.

San Jose, Gamma Lambda—More than 50 members rocked for ten hours to earn \$1,500 in their Rock-a-thon. At Province XV-C Day, the chapter won best skit award for their presentation of *Grease*, while Nancy Webster won scrapbook honors. Shelley Berger was named the member most representative of the creed. Gamma Lambda placed third in Greek Week and second in Sigma Chi Derby Days. Order of Omega Greek honorary tapped Suzanne Jewhurst and Elaine Chang. Laura Burnell is a member of Tau Delta Phi scholastic honor society. Rena



Sharon Knieberg, Florida State-AΣ, is the first ΔZ to be named to FSU Lady Scalphunters (spirit honorary.) She also received scholarships from the Jacksonville Alumnae Panhellenic and the American Businesswomen's Association.



Patti Thurmon, Georgia Southern-IN, has been named to Gamma Beta Phi honorary with a 3.67 gpa. She's past vice president of the Student Georgia Association of Educators and is local president of SGAE. She was a delegate to the recent Student National Education Association convention in Washington, DC.

Clarks, a Spring pledge, boasts an unusual title. She holds the world record for ferris wheel riding. Rena rode the Frontier Village Ferris Wheel for 37 days at age 17.

FLORIDA

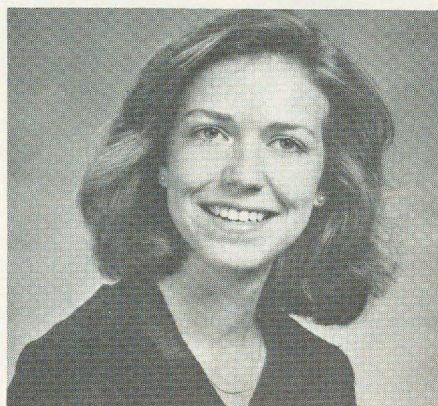
Florida State, Alpha Sigma—The Alpha Sigmas have been proudly "boasting" of their second place overall finish at Greek Week. For the third consecutive year they are proud of winning first place social in what the chairman of Greek Week described as the most awesome social he'd ever seen! Chapter president Carolyn Carter recently received a Junior Achievement scholarship and was inducted into Mortar Board and Phi Kappa Phi. Jan Kenney also belongs to Mortar Board and is the newly elected secretary of Rho Lambda and is treasurer of Student Foundation Honorary. Suzy Bean was chosen vice president of Pi Gamma Mu and received a large scholarship to the FSU graduate school. Candy Whitaker was elected treasurer of Pi Gamma Mu and received an internship. Sharon Knieberg became the first ΔZ to become a member of the Lady Scalphunters, spirit honorary. She also received scholarships from the Jacksonville Alumnae Panhellenic and the American Businesswomen's Association. Sheryl Pruett also received an ABWA scholarship. Kathy Moon is vice president of Psi Chi, Colette Thomas is treasurer of Rho Lambda and Vicky Scherer is a member of Phi Beta Kappa. Layne Salvador is a member of the national champion softball team, Roxanne Fay has been seen in several theatre productions around Tallahas-

see, and Marilyn McIntyre and Joni Yaffe recently attended the Southeastern Panhellenic Conference held in Mississippi.

GEORGIA

Georgia Southern, Iota Nu—Delta Zeta teamed with Sigma Phi Epsilon to win first place in the double entry float category at Homecoming, while Michelle Almand took third place in the animated character's category. Province Director Pat Rosser visited the chapter for officer workshops. Patti Thurmon, a junior and special education major, is a member of Gamma Beta Phi honorary, carries a 3.67 average, is past vice president of Student Georgia Association of Educators and president of the local group of SGAE. She is one of five selected as an associate member to Georgia Teacher Education Council and was a delegate to the Student National Education Association convention in Washington, DC. She also finds time to aid the High Hope Center. Donna Sims is sweetheart for Delta Tau Delta.

Georgia State, Delta Delta—For the second consecutive year, Delta Zeta sponsored a Greek Superlative Awards Banquet to honor Greeks voted to hold titles as Most Likely to Succeed. All Greeks were eligible to vote for the awards. Delta Delta placed second overall in Greek Week and earned runner-up honors in IKA's Pike Bike Race. The event raised \$1500 for leukemia. Delta Zetas were intramural champions in volleyball and swimming (for the fourth consecutive year) and earned seconds and thirds in softball, tennis, badminton, basketball, flag football and soccer. Delta Zeta won the banner contest during the basketball



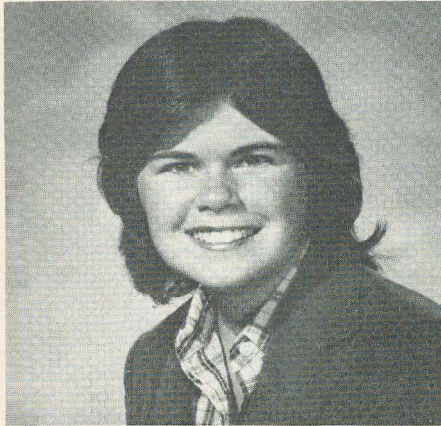
Carolyn Carter, FSU-AΣ's president, was recently inducted into Mortar board and Phi Kappa Phi. She also received a Junior Achievement scholarship.

season and placed second in tug-of-war. Indy Bradley was named Miss AXA Derby Day, while Delta Zeta raised \$500 for philanthropy at Derby days. Delta Delta missed the overall Greek Week title by one point, but did place second overall after a first place win banner contest and two third places. Greek Week benefitted the Scottish Rite Children's Hospital. Delta Zeta collected \$900 for Sigma Nu Sweepstakes, which went to American Heart Association. Georgia State cheerleaders are Melonie Brannon and Michele Johnson. Rosie Gomez won the Alpha Phi Scholarship Award. Andrea Hilsman is secretary for College Republicans. Genie Lupo captured the lead in a GSU player production, and Ann New was named Kappa Sigma Sweetheart. Sandi Graves is captain of Pantherette Drill Team. Dania Morales is newly elected vice president of Student Government Association, chairman of the SGA's Spirit Committee and involved in GSU's orientation program as an Inceptor. Tonya Harris is on the Board of governors of Incept. Nancy Lindberg is also an Inceptor. Rosie Gomez is president of Panhellenic and Kathy Landon is a new senator for College of Education. Order of Omega tapped Barbara Lindberg and Eva DiNapoli. Dara Colter is vice president of Phi Chi Theta business honorary and a member of Mortar Board. Lisa Coley, Sandy McNeil, Carla Ramirez and Sandi Graves are bat girls for the GSU baseball team.

ILLINOIS

Eastern Illinois, Gamma Nu—Chapter members bid farewell and seniors read their wills at Senior Send-Off, held at the house. Members washed cars for philanthropy funds and enjoyed a Spring formal at Charleston's Holiday Inn. For the second year, Lambda Chi Alphas chose Robin Furtney as sweetheart. Debbie Weller will be featured in Pi Kappa Alpha's calendar. Kelly Fisher was first runner-up to Greek Queen. At Greek Sing, Kim Mitchell received a scholarship award from Panhellenic as the junior woman with the highest grade point average. She carries a 3.87 average. Vicki Lamendola and Kim Mitchell are again cheerleaders. Kim is captain of the squad. Pink Panthers pom pon squad includes Kelly Fisher, Marci Murphy and Laura Knapp. Nancy Slusser traveled to Washington, DC as a cast member in Eastern Theatre Department's production of *Seduced*.

Illinois, Alpha Beta—Delta Zeta moms and dads celebrated UI Mom's Day at the first meeting of the Parents' Club and a luncheon featuring entertainment from Delta Zeta daughters and Sigma Tau Gamma. The fraternity men serenaded Alpha Beta parents with their popular barbershop quartet. Later at the house, parents enjoyed a skit focusing on daughter-mother relationships. The morning of the Rose Formal was busy as mem-



Kathy Moon of FSU-AΣ chapter is Panhellenic rush statistician and vice president of Psi Chi (psychology honors).

bers hid Easter eggs at the house and delighted Urbana children with a visit from Peter Cottontail. Alumnae joined collegians for a cookout, and the 85.5 pledge class treated the chapter to a Spring bash the day after classes ended. Kathy Wright, Mortar Board member and secretary of Student Senate Association, is a nominee for Sigma Tau Gamma National White Rose Queen. Lynn Farley serves as president of Society of Women Engineers and is a member of Shorter Board. Gillian Meenees is senior editor for *Illio* yearbook and Cathy Nott is a member of Torch.

INDIANA

Ball State, Gamma Chi—An elite group within the chapter, Sigma Rho, has solved the problem of senior blues. The morale building group busies themselves by surprising the chapter with skits, songs, special dinners and suite decorations. And the membership of the elite group is — seniors only! Gamma Chis concentrated Spring efforts on the annual Bridal Fashion Show, chaired by Tanya Wahl. Sorority and fraternity models donned wedding and trousseau wear at the 21st year of the show. Proceeds go to Ball State Speech and Hearing Clinic. The Dee Zee softball team was awesome with its 5-0 winning season. Delta Zetas pedaled their way to fourth place in AXA's Trike-a-thon and enjoyed a formal at Whispering Oak Country Club with WNAF's Dave Dugan spinning the tunes. A retreat in Northern Indiana was planned for July. Members of Campus Chest committee to raise scholarship funds are Diane Sawa, Wanda Marsh, Judy Perkins, Debbie Mercer, Laura Wilson. Mortar Board tapped Julie Oberlies. Admissions Coordinating Team chose Lyn Henderson as president. Holly Hardsaw is president of the local chapter of Phi Beta Lambda and vice president on

the national level. Wanda Marsh aided incoming freshman during summer orientation as a leader in Student Orientation.

DePauw, Delta—Members hosted Province Day in mid March and welcomed guest speaker Mrs. Terri J. Severy, National Director. Delta received the Alpha Lloyd Hayes scholarship honor at the award ceremonies. Alison Herrold, Kerri Arndt, Lynn Sanders and Susan Haney finished fourth for Delta Zeta in the Little 500 Bike Race, with Alison and Kerri named to All Star status. Susan took fastest lap honors. Delta won the Putnam County Blood Donor Award for donating more blood than any of the 29 other living units on campus. Janet Wayman won the Edith Head Scholarship, while Mary Delano was named outstanding political science student at DePauw. Kim Wheat won the Condet Science Award. Sigma Theta Tau nursing honorary tapped Emily Lindsteadt. Linda Noonan is a resident assistant. Activities Chairman Jennifer Yoakum organized a finals friend program to exemplify sisterhood and maintain Delta's high scholastic record. Finals friends left encouraging notes, rhymes, candy and small gifts as studying incentives.

Indiana, Epsilon—Beth Petrucce and her committee directed their efforts to form an alumnae board from the Bloomington area Delta Zetas. Each Wednesday night alumnae were invited to dine at the house. The new Board hosted a Panhellenic alumnae tea in April with Epsilon as hostesses. Delta Zetas and Sigma

Alpha Mus paired to bounce a basketball for Bounce for Beats for American Heart Association. After a rugged Spring training session, the Epsilon team of Lisa Goodnight, Susan Roberts, Michele Johnson and Jan Carteaux finished third among the 33 qualifiers in the Mini 500.

KANSAS

Fort Hays, Delta Omega—Designing posters, chasing Sigma Chis donned in black derbys, and collecting pennies were a few of the activities included in this year's Sigma Chi Derby Days, benefitting Wallace Village in Colorado. Of the \$1800 raised for the children's center, \$423 came from Delta Zeta. And, the overall trophy went to Delta Omega after winning first in the dance contest, smile day, can collecting drive and games day. Delta Zetas from Kansas, Colorado and Nebraska celebrated Province Day in Emporia. Shelley Deines was named Province XII Model Pledge and Rosie Crofts received a senior scholarship trophy at the event. Delta Omegas brought home chapter awards for quota, displays, philanthropy and congeniality.

KENTUCKY

Louisville, Beta Gamma—At the annual Fryberger Sing, where Delta Zeta presented music with a *Southern Comfort* theme, Therese Keeling was tapped for Lambda Sigma honorary and named recipient of the Delta Upsilon Outstanding Freshman Award. Jeanne Peterson was



Susan Jane Roberts, Indiana-E, will hold the Hurst-Schlafer Scholarship in 1982-1983. With Susan are David H. Clarke, chairman of physical education; Dean Tony Mobley of the School of Health, Physical Education and Recreation; and William S. Armstrong, president of the Indiana University Foundation which administers the grant. The award recognizes academic achievement and leadership in recreational sports.



Part of the Sorority Education program at DePauw-Δ was a quiz bowl between classes.



Fort Hays State-ΔΩ's fall pledge class modeled white dresses made for initiation by the chapter as an all-sorority project.

named Outstanding Collegian at Province XX Day, where Beta Gamma received honors for outstanding chapter and membership. Sherrill Adwell and Anita Sparrow were admitted to Order of Omega. Kim Williams and Alison Land received Student of the Month awards. At Killarney Rose Formal, Kim Shyrock was named Dream Girl and Cheryl Marshall was honored as best pledge. Katie Herde is Phi Kappa Tau Dream Girl. Beta Gammas took second place in a basketball intramural tournament.

Morehead, Kappa Tau—What initiates thought would be an ordinary skating party, pledges transformed into a major chapter event. The Spring '82 class presented routine projects and songs, and then surprised the initiates with the original chapter charter, which had been stored for years in the attic of an alumna. Members traveled to UK for State Day, won second place overall in sorority intramurals and raised cash with bake sales and a rummage sale. At an alumnae sponsored scholarship dinner, members with a 3.4 and over ate steak on china, crystal and silver, while those with a 2.2 through a 3.3 ate meatloaf. A 2.2 and below meant hot dogs on paper plates. Jackie Chouinard and Barb Fleming won awards for high averages. Alumnae also sponsor the Mabel Barber Scholarship at the University for academic excellence. Ja'na Sturgill won this year's scholarship at the annual MSU awards breakfast. Toni Collinsworth received a special education scholarship at the same event. Named to President's List were Ja'na Sturgill and Sherry Sweet. Ja'na is also a semi-finalist for the National Dean's List Scholarship. Named to National Dean's List and MSU Dean's List were Jackie Chouinard, Becky Hayden, Jade Adams, Michele Harrod, Ja'na Sturgill, Toni Collinsworth, Janeen Rogers, Sherry Sweet and Francis Goodman. Becky Hayden was named to MSU

History Honor Society and senior Jade Adams received an award for four year perfect attendance at the University. Junior Tina Carpenter was voted most outstanding collegian in Kappa Tau.

Northern Kentucky, Kappa Beta—Members celebrated the chapter's tenth anniversary with a dinner dance at the Summitt Hills Country Club in Edgewood. Denise Cochrane presented the invocation and a candle burned for the Founders of Delta Zeta and Kappa Beta. The chapter hosted Province XX Day at the University Center and cheered as KB received the membership award for attaining quota and total. Pat Seiter was named outstanding treasurer, and Mary Penrod, outstanding officer. Jennifer Bush was recognized for her 4.0 average. Gretchen Freihofer reigned as Greek Goddess at Northern Kentucky's Greek Formal and Mary Penrod was on the Homecoming Court. Kappa Beta won the award for most games won during Greek Week after winning the bicycle race, volleyball, tug-of-war and swimming. Pledges have challenged initiates to a sing-off with alumnae as judges.

LOUISIANA

LSU, Sigma—Delta Zeta, teamed with Delta Tau Delta, finished third in Jam-Jam, the campus Jambalaya Jamboree. The cajun festival features cajun food and entertainment. Sigma finished second in concessions and entertainment and third in cajun dancing. Sigma hosted Province XVIII Day and was the first group on campus to have a Big Band Party with music and dress of the forties. Sigma placed second in money raised for Muscular Dystrophy Week. Donna Duvigneaud served as Women's Symposium Chairman and Kathleen Alley was Campus Song Fest Chairman. Susan Adolph is Lambda Chi Alpha Sweetheart and Dede Kachler is honorary Sigma Nu Sweetheart.

MAINE

Southern Maine, Lambda Zeta—At Province I Weekend, Lambda Zeta received the Merit Award as the chapter improving the most through the year. Delta Zeta co-sponsored a Red Cross Blood Drive, participated in Special Olympics Shoot-a-thon and donated money to Pine Tree Campus for crippled children and adults. At the Spring formal, Lambda Zeta honored its own scholars. Mary Beth Mann received the all-around scholarship achievement award for her 3.54 cumulative average. Holley Hersey, Nancy Jo Ross, and Mary Beth Mann earned Dean's List honors.

MICHIGAN

Ferris, Zeta Nu—Delta Zeta has pledged quota for the last eight terms at Ferris, and part of the credit goes to Rush Chairman Kim Jensen. Kim, a recipient of the Grace Mason Lundy Award, feels her biggest contribution is revision of the chapter rush program and helping the chapter realize the importance of rush. Kim, past chapter president, also served as corresponding secretary and Panhellenic president. She won the sisterhood bracelet, sister of the year award from the CCD, and participated in Society of Advancement of Management, intramural volleyball, Greek Week activities and Dorm Council. She chaired Zeta Nu's Parents' Day in 1980 and won the chapter's most improved grade point award in 1979. Kim, who received the GML Award at Province Day, was especially thankful her sisters from Ferris were on hand to share her moment of recognition. Zeta Nus, at presstime, were hoping to win the coveted McClelland Tray for the second year in a row. The tray goes to the outstanding sorority on campus. Delta Zeta took first place in women's events at Greek Week and the chapter's Muscular Dystrophy Dance-a-thon raised \$1500. Karen Lesniak is new

Panhellenic president. The winter pledge class sold singing telegrams. While ZN is sponsoring an Adopt a Grandparent program, three grandmothers at a local nursing home are visited once a week by Delta Zetas.

Michigan Tech, Lambda Theta—At State Day in Kalamazoo, Lambda Theta won the coveted Province VI Award, a silver bowl for sisterhood. At the weekend event, individual awards went to Lisa Zetye, Mary Carver and Marie Popa for scholarship. Each chapter had two special awards for individuals, one for outstanding senior and one for most spirited. Winners from $\Lambda\Theta$ were Kathy Taylor and Jennifer Kuchta. Barb Quigley was named best treasurer in the province. Marie Popa won the sisterhood award from $\Lambda\Theta$ as the girl showing the most sisterhood during the term. Deb Taylor was first runner-up to ROTC Military Ball Queen. One unusual contest in Greek week was a crest drawing contest, where representatives chalked in Greek crests on the front sidewalks of the Union. Delta Zeta placed third overall in Greek Week. This year's pledge class project was a wedding album for the chapter. The lovely cover of the grey satin album featured a quilted dove and painted rose and wedding bands. Delta Zeta helped raise \$15,000 at the Muscular Dystrophy marathon, participated in Women's Heritage Week and joined Sigma Phi Epsilon for a lively South Seas Dance complete with sand, waterfall, thatched huts and palm trees. The seventh spring formal, held at Calumet Theatre, featured a Mardi Gras theme.



Doreen Terkmany, FSU- $\Lambda\Sigma$, is Fall rush handbook editor.

Northern Michigan, Zeta Omega—At Diamond Jubilee Spring Dinner Dance, Zeta Omega honored Tamara Bender and Jennifer Card, as big and little sis team with the highest grade point average. Tamara also won the highest grade point honors. Carrie Adams was named outstanding initiate and Shirley Gedvillas won the Unsung Hero Award. Chere Strogny's pledge scrapbook took top honors. Karen Banacki was named to All Student Judiciary. Members voted for a campus movie presentation and surprised Rhonda Fredericks with a 21st birthday party.

Wayne State, Epsilon Sigma—Wearing their Delta Zeta jackets while sitting in the front row, Epsilon Sigmas were part of the TV audience on the Detroit talk show *Kelly and Company*. At the conclusion of the show, President Lynne O'Brien presented the host with a Delta Zeta t-shirt and the hostess with a rose. In Greek Week activities, members participated in balloon tosses, tug-of-wars and the Panhellenic-IFC Sing. Sue Gentile is sweetheart emeritus of Sigma Pi Fraternity.

MINNESOTA

St. Cloud, Theta Mu—Greek Week's activities included braut sales, chariot and canoe races, a Greek picnic and an Air Band competition where Delta Zeta presented a creative version of the Lawrence Welk Band. Proceeds from the Air Band competition went to Minnesota Special Olympics. During Greek picnic, Theta Mus won the eating relay contest by a large margin for the second year in a row. Grace Dollahon won Greek Woman of the Year honors for her outstanding contributions to the Greek system at St. Cloud. Later, she was named Miss Province XIII for her service to Delta Zeta and personal achievements. At Province Day, ΘM was named most spirited chapter. Lisa Anderson is executive treasurer of University Program Board and earned a straight A grade point for winter quarter. Mary Jo Dillenburg is serving as president of Campus Republicans. Sally Stanis and Cindy King spent six weeks touring Europe on a special Fine Arts program to earn college credit. The chapter earned \$1,000 for March of Dimes with a 24 hour dance marathon. Julie Seabert chaired the project.

MISSISSIPPI

Southern Mississippi, Epsilon Mu—The Spring Pledge Class earned the highest combined grade point average among the nine sorority pledge classes. Alison Estrada's 4.0 and Lori Ehler's 3.60 were among the top grades. The chapter room and foyer are ready for rush with new carpeting, couches, and foyer wallpaper in blues, beiges and predominant browns. And, chapter editor Robyn Jackson re-



Seniors of Zeta Rho (William Jewell) met in the chapter room after the senior picnic . . . one last time together!

ports that everyone is very pleased after all the time and trouble to make improvements, so "the chapter is taking pains to make sure it lasts a long time." Mobile was the site of the Rose Petal Ball where Tracey Guy was honored as Rose Queen. Class representatives were Donna Huch, junior; Kathy Ware, senior; Nikki Nix, sophomore; and Renee Dunlap, freshman. Donna was also named Pearl Girl. Clever costumes highlighted a Famous Couples Party. Attending were Harpo and Groucho Marx, Prince Charles and Lady Di, Bonnie and Clyde, and Kermit the Frog and Miss Piggy, among others.

MISSOURI

Missouri-St. Louis, Iota Xi—For the second consecutive year, Iota Xi swept Greek Week honors. The week began with Greek Sing and talent, with Iota Xi's presenting segments from *The Sound of Music*. Ruth Weber played the theme song from *Ice Castles*, while Chris Gores recited a poem *Don't Quit* in chapter talent competition. Iota Xi participated in every event and earned both overall games and Greek Week trophies. Janet Gern was named 1982 Woman of the Year. At the St. Louis Alumnae Panhellenic Association Scholarship Luncheon, Delta Zeta's Candy Hudson accepted her \$300 scholarship with a heart warming speech on what Delta Zeta means to her. Alumnae honored graduates with a tea and welcomed them into the alumnae association with a ceremony. Iota Xi sponsored an All Campus Party for nearly 300 people, providing \$100 profit and a great time for all attending. Members enjoyed a retreat at the Newman House with Father Lyons of the Speech Department coordinating. Initiates received silk roses and bread dough turtles at the spring social hosted by the pledges. During the social, the rush committee presented the new rush skit adapted from the TV series *M.A.S.H.* The pledge class also escorted members on a tour of the Ronald McDonald House. The terminally ill children accepted the Delta Zeta gifts of brownies and coloring books with open arms.

Northwest Missouri, Epsilon Rho—During Greek Week festivities, EP was named outstanding sorority on campus. Melanie Tomc was given special recognition as outstanding Delta Zeta and Lisa Volkens, rush chairman, was crowned Greek Goddess. Panhellenic President, Delta Zeta's Sue Barie, coordinated the week's activities, including song fest, dance and Greek games. Epsilon Rho boasts the most participants in Greek games. Diane Nelson was one of six finalists for Tower Queen. Some chapter members have adopted grandparents in cooperation with a local health care facility. Laura McCarty, chairman of the project, also directed a chapter aluminum can drive benefitting the Nodaway County Sheltered Workshop. Mary Jo Anderson is busily putting the finishing touches on Delta Zeta's calendar so it'll be ready for fall distribution. The calendar features men from all seven fraternities and advertising from local businesses. Dressed as cowboys and cowgirls, members canvassed shopping centers collecting for Gallaudet. In the Fall of 1978 three women, Michaela Neal, Diana Bishop and Debbie Beemer were among pledges at NMSU. All have since distinguished themselves as a special pledge trio. Today each has served as president of a collegiate chapter. Diana and Michaela served Epsilon Rho and Debbie transferred to Oklahoma where she became president of her new chapter, EY. Debbie had previously served EP as pledge class president.

Northeast Missouri, Delta Sigma—Greek Week was busy as Delta Zeta took first place for the fifth consecutive year in Variety Night, won the Greek Olympics, raised money at Carnival Night, and ended

the week with the first place all-around trophy. Student Senate includes Olivia Chavez, Terri Johnson and Geri Funke. Jane Barry is cheerleader captain, with Vanessa Howe on the squad. Kim Drury is a Rhythmette. Lynn Schafer and Julie Moore serve on the Student Ambassadors Board. Peggy Schoen was graduated as valedictorian of the senior class with a 4.0.

William Jewell, Zeta Rho—Members issued invitations to their dates to Killarney Ball (formerly Spring formal) by serenading men's dorms and delivering invitations in person. The Ball was held at the Sheraton Royal in Kansas City. Julie Adams, philanthropy chairman, organized a "free" car wash to raise cash for philanthropies. Members raised money from sponsors for the number of cars washed. The \$176.86 benefitted Association for Retarded Citizens. Intramurals included Delta Zeta teams in bowling, racquetball, tennis and softball. Delta Zeta also aided Red Rage Telethon and the Special Olympics. Graduating seniors were honored with a picnic, while alumnae honored the chapter with a picnic. Angie White is head Cardinelle for the campus hostess group. Other Cardinelles are Julie Adams, Rhonda Barry, Patti O'Dell and Melissa Scott. Cardette pom pon squad includes Julie Calderella and Julia Farrell. Jeannie Hirsch won the outstanding senior faculty award and Julie Adams placed second in Communication 100 Speech Contest. Julia Farrell and Kelly Armitage earned women's track letters as members of the first women's track team in Jewell history.

NEVADA

Nevada-Las Vegas, Iota Phi—Delta Zeta honored its own at the Rose Ball at

the Frontier Hotel. Iota Phis enjoyed Province XV-South activities on the *Queen Mary* in Long Beach and were honored to see the Las Vegas Alumnae Chapter receive its charter at the event. Delta Zeta joined other sororities to decorate the second floor of the student union for the annual campus event, Carni Gras. Panhellenic earned \$300 from the event. Delta Zeta ended two points behind the first place winner in Greek Week after singing *Dream Girl*, a medley from *Annie* and a rowdy chapter song in the competition. Members helped raise over \$25,000 in the annual Jump Rope for Heart and \$84 for the Founders Memorial Fund with a bake sale. All enjoyed a party at Lake Mead and fraternity exchanges with Sigma Nu and TKE. CSUN, campus student government, honored its members with "done good awards" for campus participation. Lisa Griffith, who serves as chairman of the Publications Board, won two "done good awards." She also won the Interview Award in Miss America preliminaries. Catherine Clay was named outstanding senior of the year and serves as senate president pro tem. Deland Fitzpatrick is a member of Elections Board and Student Services Committee. Tammy Shipp is UNLV Song Leader and Academic Advisement Senator.

NEW MEXICO

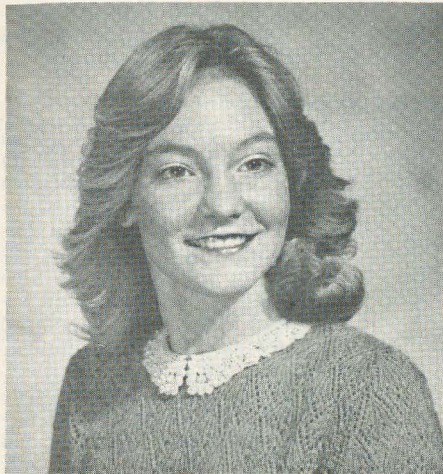
New Mexico State, Gamma Xi—For years the Delta Zetas have placed a close second to the winning sorority, but this year the ΓΞs would settle for no less than the Greek Week championship. In less than two months, Gamma Xis earned more than \$1,000 for the chapter treasury. Fund raising chairman, Evelyn Rodriguez



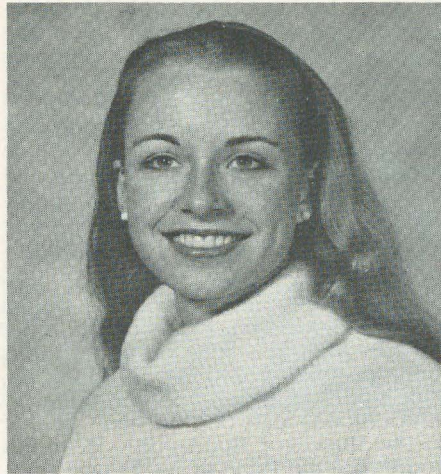
William Jewell-ZP Delta Zetas had a car wash to raise money for the Association for Retarded Citizens. Pictured are Kim Ketchum, Becky Martin and Julie Adams.



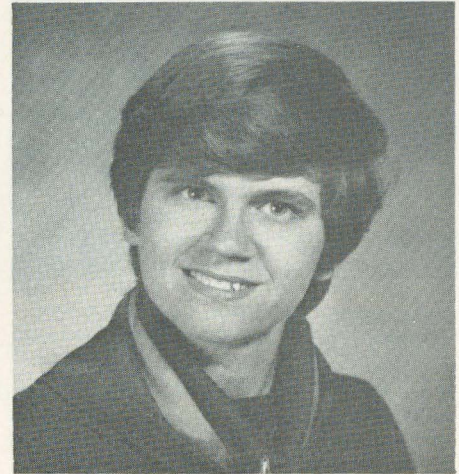
Members of Delta Zeta and Alpha Gamma Sigma display their Greek Week sign in front of the Θ chapter house at Ohio State University.



Ohio State-Θ chapter member Sue Sundvall has a 3.67 gpa in the School of Music, holding membership in Phi Kappa Phi and Pi Kappa Lambda.



Janet Wayman, DePauw-Δ, received the Edith Head Scholarship Award from the Founders Memorial Foundation.



Mary Delano, DePauw-Δ, was named the most outstanding political science student.

steered the three major projects—cherry dessert sales for George Washington's birthday, filling Easter baskets for Skaggs, and an enchillada dinner. The Mexican dinner alone raised \$900 and the campus is still raving about the delicious food. Gamma Xi relays special thanks to Evelyn's parents, Mr. and Mrs. Freddie Rodriguez who traveled from Deming to help make the dinner a success. Philanthropy efforts included Easter baskets for hospital patients, a bake-a-thon and adopting an overseas child. Panhellenic leaders are Carla Muniz, president, and Bernadette Barela, rush. Panhellenic named Jo Beth Griffen as outstanding sophomore. Cary McDonald was named Province XVII's best Panhellenic representative and Heidi Staub best recording secretary. Cary McDonald is a member of Phi Kappa Phi and Beta Gamma Sigma honoraries.

NORTH DAKOTA

North Dakota, Upsilon—One of the highlights of the year was Province Day, where Upsilon was surprised with a scholarship award. Judy Ross received the Arlene Davis Award from Delta Zeta and Tammy Johannes was elected Lt. Governor for Circle K. Alison Johnson earned President's List honors, while Arlette Nelson won Dean's List honors. Denise Demers serves as Panhellenic president.

OHIO

Bowling Green, Gamma Tau—Members traveled to Kent State for Province Day to win the Betty Agler Award and activity, philanthropy and standards honors. Past president Butchie Sferra was honored as Pride of the Province. Gamma Tau won the Panhellenic award for the highest chapter average for winter quarter, and in Greek Week won the competi-

tion and the spirit award. Butchie also won the Greek Goddess title as the outstanding Greek woman. The Delta Zeta softball team finished with a 3-3 record. Campus presidents are Judy Markel, Omicron Delta Kappa; Meg Pokorny, Criminal Justice Organization, and Penny Jo Leighner, Alpha Lambda Omega honorary. Dolly Luxon is secretary for University Student government. Laura Vradelis is a member of Intramural Board, and Denise Stefanic and Judy Markel are members of Anataean Society.

Miami, Alpha—The biggest thrill for Alpha came at Province V Day when they received the first Norma Andrisek Award for outstanding chapter. Awards also came for pledge program and outstanding chapter president. Delta Zeta participated in the annual Beta softball tourney, volleyball, basketball and inner-tube water polo. Spring formal was held at Beckett Ridge Country Club. Alphas honored seniors with a short ceremony patterned after Alpha's final rush party including a slide show, cake and punch...thus the name of Senior Rush honoring graduating seniors. Jennifer Arledge planned the tribute. Patty Schaeffer is president of Panhellenic and Sherri Hopson is a member of Program Board. Kim Davies will study in Germany for a year as recipient of a German scholarship and Cathy Filar has been accepted to study for a semester at sea.

Ohio State, Theta—Members are anxiously awaiting the redecoration of the house, planned for the summer. Theta won top sorority honors in intramurals and has been busy with TGIF parties and cookouts with fraternities. Delta Zeta teamed with Alpha Gamma Sigma for Greek Week. Panhellenic officers are Carolyn King, secretary; Jenny Bogen,

treasurer, and Ann White, rush counselor. Molly Biltz is a member of Jr. Panhellenic. Julie Hall will help plan Homecoming as a member of the steering committee. Sue Sundvall won an Arts & Science Scholarship and is a member of Archons.

Wittenberg, Beta Chi—Members bopped into winter term with a formal rush theme of *Grease* and help from Field Representative Lee Ann Martin to claim one of the most successful rushes ever. Ponytails, bobby sox and saddle shoes welcomed the biggest pledge class in years. Spring term brought honors at Province Day as Most Improved Chapter, Most Improved Activity Program, Most Spirited Song and Best Chapter Display. Beta Chi are eagerly awaiting next year's Province Day, which they'll host. Fraternity mixers included a late night study break with Lambda Chi Alpha, a TGIF party with Delta Sigma Phi, and a picnic with Lambda Chi Alpha, Phi Kappa Phi and Chi Omega Sorority. Other activities included the annual senior picnic, parents' weekend reception, participation in Greek Week games, slumber party with new pledges, and Killarney Rose Formal. Intramural activities included basketball and bowling, while pledges stormed the pledge mini olympics. Philanthropies included selling subs to raise money for Galaudet. Barbara Bickart is a member of Wittenberg Honor Society and Sandra Aten is rush chairman for Panhellenic.

Youngstown, Kappa Chi—The 30th annual Greek Sing culminated four months of practice for Delta Zeta, and though Kappa Chi didn't win an award for song competition, the chapter copped every other award announced at the event. Kappa Chi won the outstanding chapter award and the Panhellenic Scholarship



Pam Neville, OCU-ΓΥ's CCD and exuberant pledge Jennifer Webb, composer of the winning song, collect the Song contest trophy at Oklahoma State Day.

Cup, while Judy Kuhn, past president, received the individual Panhellenic scholarship award. Shari Duda won Sorority Woman of the Year honors, and Tammy Weber, Leslie Myers and Lisa Yelic were honored for their contributions to Panhellenic. This year marked the second year for KX to win the outstanding chapter award and fifth year to win the scholarship cup. Delta Zeta placed third in YSU softball intramurals and participated in Spring Fling and Derby Days. Kappa Chi held a seminar on chapter publicity, while TKE sponsored one on rush. *Who's Who in American Colleges and Universities* tapped Tammy Mapes, Lisa Yelic and Judy Kuhn. YSU service award pins go to six graduating seniors, and Shari Duda and Judy Kuhn were two of the winners. Judy also won Alpha Delta Sigma's scholarship, while Shari won the Student Government award. Leslie Myers won a service award.

OKLAHOMA

Central State, Epsilon Upsilon—*Who's Who in American Colleges and Universities* lists Sheryl Kudy, Marie Hutton, Lori McVay, Karen Gill and Ipek Ucucu. American Women's Society named Ipek Ucucu as Outstanding Upper Classman and Lori Holman as Outstanding Freshman Woman. Debbie Beemer is secretary of the President's Club and Kelly Gordon presides over the High School College Relations Board. Sheryl Kudy is chief editor of the *Bronze Book* and member of Mortar Board. Kris Miller is president of American Women's Society. Sigma Delta Chi chose Karen Jeannot and Susan Stangle as calendar girls, while Nina Pitezal is Sigma Tau Gamma's Frontier Follies Queen. Following the initiation of 18 pledges, Susan Stangle was named outstanding pledge. The chapter placed first in tug-of-war, third in softball, and raised \$600 by selling M & Ms.

Northwestern, Delta Omicron—A swing laced in greenery and entwined with pink roses, a fountain surrounded by

plants, and a rose bush provided the backdrop for Delta Zeta's Garden Party, the biggest social event of the year. Members and guests enjoyed fresh fruit and pink punch as refreshments. ΔOs celebrated the chapter's birthday at the home of Mrs. Frank Marcum (Avis Morehart). Wilma Reeg was named outstanding pledge and Vicki Hoffman outstanding initiate. All enjoyed birthday cake and ice cream following an alumnae auction to raise funds.

Northeastern, Delta Phi—Muskogee alumnae, Delta Phis and all Oklahoma ΔZs beamed with pride when Governor George Nigh proclaimed State Day as Delta Zeta Day across the State of Oklahoma. Former National President Norma Andrisek was State Day luncheon speaker at the Muskogee Holiday Inn. Delta Phi retired the old Pride of the Province trophy, and brought home the newly purchased one, too. The chapter took outstanding pledge program honors and tied for first place in scrapbook competition, as well as winning the efficiency award and attendance trophy. They also won second place in song contest. Former president Donna Baker won the Cleo Arterburn Award for best representing Delta Zeta on her campus. Fraternity favorites are Doreen Curry, Phi Sigma Epsilon Sweetheart and Joyce Golding Holly, Acacia Sweetheart. Donna Baker was named NSU Alumni Association's Outstanding Senior Female. She served Delta Zeta as president, vice president, standards chairman, press and publicity chairman, and Panhellenic as treasurer. Donna edited the college newspaper and served Society for Collegiate Journalists as president, vice president and secretary. She was chairman of the Insurance Committee in the Student Senate, named to *Who's Who in American Colleges and Universities*, listed in NSU Campus Leaders and won the Miss Greek 1981 title. Suzanne Myers is serving Northeastern's Activity Board as president.

Oklahoma City, Gamma Upsilon—Claire Collingsworth Jones, ΓΥ alumna and professor in the Theatre Department, directed *The Tortoise and the Hare*, one of her many successful children's plays with chapter president Lee Ann Arbuckle in the cast. Lee Ann is a theatre major, produced *Alice's Adventures Underground Through the Looking Glass*, *Skip and Go Lightly*, ran sound for *Bus Stop*, and is a member of Alpha Psi Omega dramatics honorary. The chapter ushered for the performance of *The Tortoise and The Hare*. Gamma Upsilon won the first place trophy at State Day song contest, and College Chapter Director Pam Neville won the Gwen McKeeman Award for service to a collegiate chapter. New initiate Lisa Hampton received outstanding pledge honors. The chapter placed third in intramural basketball tournament and raised nearly \$100 for the Athletic Department in

the OCU jog-a-thon. Darla Fent is a member of Blue Key and Ives Ochoa was tapped for Phi Theta Sigma honorary.

PENNSYLVANIA

Edinboro, Iota Delta—Delta Zeta Shines, ΙΔ's display illustrating how Delta Zeta shines for the community through philanthropy projects, earned the best display award at the Province III Day in Harrisburg. The chapter also won most improved scholarship honors. Barb Sipe received a Golden Heart Award and Suzanne Easler and Maria DiOrio received Golden Crest Awards. Chapter "shining" philanthropies for the year included collecting canned goods for a battered wife and mother shelter, treating Edinboro faculty children to an Easter egg hunt, and joining Alpha Psi Omega to raise over \$400 in the annual dance marathon for Curly Helmi Memorial Scholarship Fund. Maria DiOrio just completed her term as Panhellenic president, and Susan Garzon has been installed as new Panhellenic treasurer. Vaune Pelletier received an Association of the United States Army Award signifying her among the top 10% of ROTC grade, top 25% academically, and having contributed through leadership to advance the standing of the Military Science Department. She will be attending her last two years of college on a full



Jane Mowery, Baldwin-Wallace-ΓΑ, was chosen 1982 May Queen. Her attendants are Becky Sharbaugh, flower girl, and Greg Humpal, crown bearer. Greg's mom is Marcia Humpal, National Awards Chairman.

ROTC scholarship. Suzanne Easler and Vaune Pelletier earned Dean's List honors.

Indiana of Pennsylvania, Gamma Phi—Members are aiding Sigma Nu Fraternity in an effort to raise \$25,000 for a small girl's need for medical attention. Missy Kuegler was seriously injured and her father killed when the motorcycle they were on was struck by another motorist. Last year, ten ΣNs broke the world's record for playing continuous basketball, set a new record of 100 hours and raised over \$10,000. This year, ten brothers plan to play for 101 hours in their goal to raise \$25,000 for Missy. Delta Zetas are helping secure sponsors and are working on publicity. Theresa Sciuolo directed Gamma Phi in a song and skit routine from *Free to Be, You and Me* at Greek Entertainment Night to win the Most Sincere Performance Award. Beth Frey, Trisha Balochko and Beth Blackwood helped to raise \$5,682 in a 24 hour dance marathon benefitting Muscular Dystrophy.

Pittsburgh at Johnstown, Lambda Epsilon—Philanthropy chairman Tess Parrish kept the chapter busy helping others as philanthropies were a central effort last term. Delta Zeta sponsored a Mr. Legs Contest, and raised money for Easter Seals. Members snatched the UPJ mascot at a basketball game and reserved a place in Richland Mall for ransom contributions to be deposited. Local newspaper and television coverage of the event, helped earn over \$400 for the American Cancer Society. Alumna Donna Stein's house burned in a tragic fire, and sisters collected \$106 to help her through her hardship. Members participated in Kappa Delta Phi's Wally Ball event for Easter Seals and gave blood to American Red Cross. Late students paid a dollar a cup in Buck-a-Cup Coffee event to raise money for Easter Seals. Members established a philanthropy fund for deceased Trooper Wirfel's family and modeled in a fashion show benefitting the nursing program. Chapter editor Jeanne Moore reports "all the hard work invested into philanthropies was worth the satisfaction received in helping the needy and handicapped." In other activities, members enjoyed the Rose Ball Formal at Hidden Valley Ski Resort and a mixer with Phi Sigma Epsilons at Slippery Rock. Beverly Williams Hunter is president of the Delta Zeta alumnae club in Johnstown and Gail Lands, a charter member of AE, is president of the University of Pittsburgh at Johnstown Alumni Association.

SOUTH CAROLINA

South Carolina, Beta Delta—At Province XXI Day, Beta Delta received awards for Most Improved Chapter, Best Pledge Training Program and membership. Lisa Jones received a Golden Crest Award. The chapter is excited about hosting 1983



The shirts say Gallaudet, but they are actually members of the Bowling Green-IT chapter's softball team. Clock-wise, from top left, are Kim Sherod, Laura Vradelis, Darden Delph and Cheryl Vespoli.

Province XXI Day at USC. Delta Zeta was overall winner in Sigma Chi Derby Days and pledge Cathy Thirkell was voted 1982 Derby Darling. This is the second year in a row Delta Zeta has placed first among the nine sororities on campus. Lisa Jones is Sigma Chi Sweetheart. Proceeds from Derby Days benefit the Ronald McDonald House. At University Awards Day, Delta Zeta won the Chaplain's Volunteer of the Year Award for work on Project Scooter. This is the first year for a group to win the honor—a check for \$100. Delta Zeta continued its work with Project Scooter by holding an Easter egg hunt for the children. Seven members participated in the Kiwanis March of Dimes Walk-a-thon. Beta Delta won the Greek Games in USC's Greek Week, the largest nationwide. President Vicki Jinnette was tapped for Magna Kappa, Greek leadership honorary. Senior Paige Lackland is serving an internship with Creative Media Productions and Julie Rabon is producer of WIS (NBC) *Carolina Today*.

TENNESSEE

East Tennessee State, Delta Eta—The Delta Eta team of Elaine Buchanan, Becky Brien, Stacy Moore, Becky Giner, Suzie Smith and Judith Williams won first place in small group competition in the AXA All-Sing. A few weeks later the chapter participated in the ΣN Snake Day and took home a second place trophy, with the scavenger hunt team coming in first. At the Greek Awards Banquet, the chapter's fall pledge class was awarded the Junior Panhellenic Cup. The chapter also received the Greek's highest honor, the Sis-

terhood Award. Elaine Buchanan and Susan Bilbrey were Greek Women of the year nominees. Suzie Smith was sweetheart of ΣAE and Becky Elliott was chosen editor of the *Buccaneer*, the ETSU yearbook.

TEXAS

Angelo State, Lambda Omicron—Spring pledges prepared breakfast for initiates and in turn initiates prepared breakfast for pledges. At both breakfasts, all enjoyed games and getting to know one another better. Janice Boone was named Dream Girl at the Rose Ball, and Renee Ricks was first runner-up to Miss Greek.

Southwestern, Gamma Zeta—During Spring break, the Delta Zeta chapter room was flooded when bath facilities in a student's room above overflowed. A maintenance crew discovered the standing water two days after the flooding. Consequently, the carpet needed a good airing and cleaning. Walls have been repainted, but most of the furniture still needs repair or replacement. The University has agreed to pay for some of the damages, and chapter bonds strengthened during the hard times. At Province XVII Weekend in Fort Worth, several IZs won top officers awards. Winners were Chatty Chapman, pledge trainer; Jeanne Clifford, treasurer; Annette Austin, corresponding secretary; and Mary Ballou, social chairman. Gamma Zeta won a Carolyn Gullatt Formal Rush award for pledging quota in rush, The Adventures in Friendship Award for philanthropy, and the Vera Tuggey Scholarship Award. Second place honors came in press book competition. Cited at Province Weekend for scholastic achievement were Lisa Amos, Annette Austin, Beth Biar, Karen Ryan, Kay King, Rachel Edwards, Martha Isbell and Jeanne Clifford. Next year's Province Weekend will be in Austin with Gamma Zeta co-hosting with the Austin alumnae chapter. At pledge banquet, Kim Dykes was named best pledge and C. J. Forbess best initiate. Rose Ball was held at Point Venture Resort on Lake Travis. At the annual pledge picnic, initiates searched for eggs containing candy and notes from pledges promising various favors to the finders.

Stephen F. Austin, Zeta Psi—Delta Zeta walked away with top honors in sorority competition in Greek Week. Activities included softball and volleyball tournaments, a swim meet, games day, talent night and a torchlight parade. Zeta Psi also captured top honors at Sigma Chi Derby Week. Whether the event was innertube stuffing, spirit night or Derby Doll, Delta Zeta consistently showed which sorority exhibited that ΔZ Spirit! Zeta Psi won the spirit award, and second place overall. Money collected benefitted Wallaceville, national ΣX philanthropy. At the 13th annual East Texas Country Fair, Delta Zetas

again sponsored their popular hamburger booth. Following the theme of Frontier Days, the food booth was jokingly entitled Delta Zeta Cow Patties. Sarah Pugh, East Texas Country Fair Queen, and Chris Loeffler, a fair princess, cut the ribbons to open the fair and welcomed top name entertainers, the Oak Ridge Boys. And, what a delight to see the Oak Ridge bass singer performing in a Delta Zeta t-shirt! Denise Dryer is vice president of student affairs for SGA and Jan Lanik is a senator for the School of Business.

Texas-Arlington, Iota Psi—Spring campus elections were rewarding for Delta Zetas as Kathy Vastine was elected Miss UTA and Tracy Sims won a business representative office in Student Congress.



Sarah Pugh (left) was named Queen and Chris Loeffler was named Princess at the East Texas County Fair. They're Zeta Psis from Stephen F. Austin College.

IFC tapped Karen Driggers and Delta Zeta Dream Girl Connie Moorhead to Order of Omega. During Greek Week and the Delta Upsilon spring Festival, Iota Psis, along with appointed fraternity teammates, participated in games and activities to place first overall and win a huge trophy. The softball team placed second in sorority competition. Members created Easter baskets for residents of Fort Worth's Mental Retardation State School and enjoyed a rush retreat at Lake Whitney Redwood Lodge.

West Texas, Zeta Zeta—Second semester was a productive one for ZZ who, for the first time in years, entered all University Sing and walked away with third place for their song and dance selections from *Mary Poppins*. Immediately following Sing, members were off to Fort Worth for Province Weekend to receive the Province Achievement Award. ZZ placed third in bicycle race and managed to cram 15 girls into the cab of a pick up to tie for first in Car Stuff. Even with additional victories in tug-of-war and balloon race, Delta Zeta managed only a third place Greek Week honor. However, spirits were boosted remarkably when ZZ Shari Kester was crowned as Greek Woman of the Year. Alumnae and members enjoyed a luau and dance, featuring awards and slide presentation. Pledges received roses and Sharon Epps was named outstanding pledge. Delta Zeta teamed with Sigma Phi Epsilon to take first place in the Co-Rec Volleyball competition. In Round Robin play, the Delta Zeta team only suffered one loss. At the final tourney, the team breezed into the finals and won the championship. Patty Scott, Jaquita Hughes, Brene Belew and Sharon Epps are senators. Shari Kester is a cheerleader and Sharon Epps is a song girl.

VIRGINIA

Old Dominion, Theta Phi—ΘΦ hostesses dressed in nautical attire complete with sailor hats to carry out the *Delta Zeta — Sail On!* theme at Province XX Weekend. Centerpieces consisted of large conch shells with silk flowers and decorations included pink and green fish nets, pilings and paper fish. To start off the day, Diane Shiley compiled a slide show of sunsets, beaches, boats and chapter activities. Awards to Theta Phi at the event included philanthropy and Cindy Sparks, Best College Chapter Director. Anna Stacy was named Pride of the Province and Kim Shiley, Province Day chairman, won Outstanding Delta Zeta honors. Theta Phi placed third in Greek Week, after winning first place at skit night. Other activities included a stationary sale for philanthropy, a Parents' Day luncheon and slide show, and beach and picnic parties. Theta Phi seniors honored were Karen Adkins, scholarship; Diane Shiley service, and Anna Stacy, activities. *Who in American Colleges and Universi-*

ties tapped Diane Shiley. Karen Adkins was honored as graduating Greek woman with the highest scholastic average. Order of Omega tapped Karen Buchanan and Nicole Mistele. Nicole is also new Panhellenic president. Pi Kappa Alphas chose Karen Mullaney as their sweetheart, and Sophia Bassil traveled to the Miss Virginia pageant as the reigning Miss Tidewater. On ODU varsity teams are Suzanne Cox, swim; Lisa Thearle, tennis; and Pat Olsen, volleyball. Ann Robinson, Leanne Shoemaker and Cathy Link, alternates for the ODU cheering squad, participated in summer camp at Virginia Tech.

Virginia, Lambda Delta—Delta Zeta finished the year with an impressive formal dinner dance in the Dome Room of the Rotunda. Sisters searched for hidden derby hats during ΣΧ Derby Days, attended a Cage Dance to benefit Charlottesville Albemarle Rescue Squad, and enjoyed a big sister-little sister brunch. Delta Zeta captured the sorority bowling championship. Trish Dodge and Kate Lipscomb received Cadet of the Month Awards. Kate also won the General Military Course Award, while Trish won the Professional Officer Candidate Award. Both awards were given by Air Force ROTC. Lisa Genova was accepted into the University's law school.

Virginia Tech, Kappa Theta—Following a chapter meeting, a salesman claiming to represent an Atlanta based firm, displayed a beautiful array of sportswear available at extremely low prices. Several members ordered items, and were to meet the man at a specified time to pay for the merchandise. However, after interaction with sororities at other schools, Delta Zetas, led by member Beth Moss, began to suspect fraud and contacted local police. With undercover agents posted, sorority women arrived to pay the man, who was arrested and consequently confessed to fraud. Fortunately, Delta Zetas lost no money, though other sorority women did. In the frenzy of athletic and social functions, members found time to bid farewell to graduating seniors at a brunch. Seniors read their last wills and testaments leaving inheritances for returning members and received keepsake gifts from the chapter. Member Carin Parker, accompanied by Robin Kane, sang *What I Did for Love* at the brunch. Delta Zeta went undefeated in softball until the playoffs, and participated in handball, badminton, darts and horseshoes. Sally Evans and Lisa Bourne won the Panhellenic tennis doubles and were runners-up for the University championship. KT placed third in Greek bike race, and Susie Glaspey won the keg throw and softball throw. In the Greek Variety Show, Kathy Rettew, Julie Milligan and Linda Michael portrayed Diana Boss and the Extremes with 20 other KTs as a chorus line. They choreographed and performed a routine to a medley including *Stop in the Name of*

Love and Baby Love. Members also showed their enthusiasm by participating in Derby Day, winning second in both fund raising and skits, and first in Derby Chase. Members enjoyed a demonstration in martial arts by Black Belt Richard Shin and the Karate Club. Several members traveled to nearby Radford University to help Delta Zeta make a colonization presentation. Radford listened to presentations from several national sororities and selected Delta Zeta as the sorority to form at Radford in the fall. Spring Formal week-end included a Saturday night banquet followed by a slide show and dance. Kathy Rettew was tapped for Order of Omega. New officers for Panhellenic include Kathy Rettew, rush chairman, Julie Milligan, historian, and Carla Malcolm, publicity. Kappa Theta was the Spirit Award at Province XXV Day and Tracy Shanahan won the best president award.

WEST VIRGINIA

Concord, Epsilon Delta—Members welcomed Delta Zetas from around the state to Province IV Day at the Ramada Inn in Beckley. Delegates received hand-cut Greek letters painted with rose vines and wore nametags of waxed paper roses. Epsilon Delta sang *The Rose* while seniors received silk roses from Province Collegiate Director Sherry Miller. Music concluded with a song composed and arranged by alumnae Kathy Gentry and Janet Smead. National President Carolyn Gullatt was on hand to see the chapter win the song competition and standards award. Dorothy Dunlap Dyke, EΔ, received the alumna award, while Sara Pate received the pledge scholarship award. Patricia Riffle received both the scholarship and treasurer's awards.

Shepherd, Kappa Mu—*Who's Who in American Colleges and Universities* lists Linda Regner, Pam Ankeney and Cheryl Belknap. Linda and Pam are active in student government, and Cheryl is a Joseph McMurren scholar. Sue LaVigne won the Outstanding Psychology Senior Award, and Luann Bedell won the Kappa Omicron Phi Outstanding Senior Award. Patty Reynolds was honored as the Spirit of Delta Zeta. Kappa Mu was named Outstanding Sorority on Campus, and also won the outstanding chapter award at State Day. Past chapter president Linda Regner is now a Delta Zeta field representative. Members enjoyed washing cars and selling donuts as fund raisers. Big and little sisters enjoyed a joint dinner, where big sisters told what being a big sis means.

West Liberty, Iota Tau—Delta Zeta placed first in the annual Greek Week events for the third consecutive year, after placing first in relay, sack race, ball toss, arm wrestling and bat-in-hand. Second places came in roller skate relay, tug-of-war, obstacle course, while third places came in marathon, 880 relay and keg roll. For the second consecutive year, Iota Tau won the Victoria Gray Award for activities

at Province IV Day in Beckley. Delta Zeta placed first in swim competition at Kappa Delta Kappa Waterfollies. Teams from various women's dorms and sororities compete in events as ping-pong relay, innertube relay, sweat shirt relay, paddle board relay, team spirit relay, and bathing beauty competition. Delta Zeta team members were Beth Patterson, Debi McClay, Moria McKenna, Sue Steffen, Lisa McClay, Shelly Smith, Therese Howe, Steffi Miller, Laurie Frye and Cindi White. Vicki Ulevich was team captain.

West Virginia Tech, Iota Pi—The new sisters of Iota Pi spent a busy year getting organized and becoming active on campus. Lisa Wu, Delta Zeta representative in Run for the Children, won trophies as first Tech student to finish and first woman to cross the finish line. Eighteen chapter members earned Dean's List honors. Paula Yurkovich and Cathy Pack are in Student Government, where Cathy serves as treasurer. Chapter president Penny Payne is a resident assistant, along with Marjory Paxton. Natalie Konicki and Jan Bayley are Pi Alpha Psi members, while Mala Lee is a member of Phi Theta Kappa honorary. Mala also captured leads in two Tech Players productions this year and is a member of Alpha Psi Omega dramatic honorary. Crystal Nester and Kathy Nuttal are cheerleaders. At West Virginia State Day in Beckley, Iota Pi was surprised to receive the State Loving Cup, for they thought they were ineligible in award competition.

WISCONSIN

Wisconsin-Eau Claire, Epsilon Omega—At the annual Killarney Rose Ball at Eau Claire Civic Center, chapter awards went to Michelle Roach, most improved grade point; Jill DeSmith, scholarship; Sue Groepper, most outstanding pledge; Tami Getchel, most outstanding initiate; Karen Anderson, most helpful initiate; and Chris Suenkel, Dream Girl. Members ended the social calendar with a senior farewell picnic. EΩ's participated in collections for the American Cancer Society and assisted the Eau Claire Area Humane Society with a rabies vaccination clinic. Members also sold tickets on an antique car raffled by the Humane Society. Chapter fund raiser was the traditional carnation sale following the graduation ceremony.

Wisconsin-LaCrosse, Zeta Omicron—Tracy Quinn is Miss Province VIII and Nancy Everding and Barb Roach are calendar girls. Barb is also captain of the varsity cheerleaders. Julie Kummer won a \$100 scholarship from Panhellenic and Karen Olson won a \$300 scholarship when she was crowned Shamrock Queen in her hometown talent contest.

Wisconsin-Whitewater, Epsilon Kappa—Jill Kerr was named Sorority Woman of the Year at UWW. Cindy Showers was named to Community Leaders of America,



Senior Barb Kuzio of the Iota Tau chapter prepares for the roller skate relay during Greek Week at West Liberty State College. Photo by Janie Kaiser.

and is a member of International Youth in Achievement and Phi Beta Lambda. Silver Scroll honorary lists Cathy Johnson and Lori Scheibe. Cathy is also a member of Phi Beta Lambda. Betts Riggs is a member of Hawkettes service organization. Mary Goebel is a member of national residence hall honorary and Phi Eta Sigma sophomore honorary. Members of Homecoming Selection Steering Committee are Jill Kerr, publicity and promotion; Connie Gretzinger, parade chairman; Lori Scheibe, bed rally, treasure hunt chairman; and Jamie Linden, secretary. Mary Ann Spence was graduated Magna Cum Laude. At the chapter Mother-Father-Daughter Banquet in Sterlingworth, Cindy Showers received the chapter's Dorothy Dow Award for contributing to the chapter in a quiet way. Members collected stamps for St. John's School for the Deaf in Milwaukee, participated in a Monopoly tournament for Cystic Fibrosis, and served as waitresses for Phi Mu Alpha's first annual music celebration. ΔZ Jill Kerr's song, *Greek Is It!*, was featured at Panhellenic's brunch honoring 81-82 pledges. Province Director Sandi Betz visited the chapter in the Spring and was honored with a dinner at the house. Members and dates dressed in green and sipped lime punch at the chapter's St. Patrick's Day celebration. The Spring Formal at the Fireside in Fort Atkinson symbolized the end of pledgship. Rose Court announced at the dance consisted of Leila Yancy, freshman; Connie Gretzinger, sophomore; Jill Kerr, junior; Cathy Bathke, senior.

Gail Patrick Velde Award Given in California

by Elizabeth Mueller Stevenson,
UCLA—AX, Los Angeles Alumnae
Chapter



Gail Patrick Velde, Samford—AII

There was a beautiful southern girl named Margaret Fitzpatrick. She attended Samford University in Birmingham, AL where she earned

her Bachelor of Arts degree with honors, while studying law in extension classes at night.

Her Delta Zeta Sorority sisters were doubly proud of her when she won a beauty contest which brought her to Hollywood. There the studio bosses insisted she lose her southern accent and change her name to Gail Patrick. She proved to be a capable actress, appearing in more than fifty films. Then she retired to devote time to her family.

When the famous Perry Mason stories were brought to television as a series, the author, Earl Stanley Gardner requested that Gail be named Executive Producer. She filled the position for nine very successful years, and was among the first women to hold such a post. Her activities resulted in an unbelievable total of accomplishments. She was especially gratified by her services as Chairman of the American Diabetes Association, and her Delta Zeta Woman of the Year Award. That her personal and professional awards cover such diverse fields is a true indication of her wide interests and generosity.

When Phi Omega Pi Sorority merged with Delta Zeta in 1946, they gave more than a thousand dollars as a gift to the Los Angeles alumnae chapter. This was to be used as a Scholarship Loan Fund. For some years several loans were made.

When Delta Zeta's beloved Gail Patrick Velde passed away, it was suggested that the Loan Fund which was still intact and had been wisely invested, be used as a base for a Memorial Scholarship established in her name. By this time there was enough in the fund with which to start a new program.

The alumnae chapter decided to offer outright grants to junior and senior college members of Delta Zeta chapters in Southern California. Each year the Scholarship Committee of the Los Angeles Delta Ze-

tas would select a recipient. If enough earnings were available, perhaps the runner-up would be given a Book Award. Only that amount which the Fund had earned would be disbursed, thus always keeping the initial amount intact.

The Fund grows annually by the earned interest on the invested money plus contributions made by individual members and percentages from receipts on chapter luncheons. Additionally, two members of Alpha Iota Chapter, Constance Hugg Berg and Betsy Bradley Leach, started an interesting fund raising program by contributing a piece of Hadeland crystal for which "opportunity tickets" are sold. Connie Berg's husband, Jens, has been Director of Hadeland Glassverks, Jevnsker, Norway. This has been a most prestigious glass factory for over two hundred years. From Connie's and Betsy's friendship, beautiful crystal items are available.

So it is in affection to the memory and with grateful appreciation, the Los Angeles alumnae chapter established the Gail Patrick Velde Memorial Scholarship Award to stand as a continuing tribute to a beautiful lady and a dear friend.

This scholarship was first awarded in September, 1981, and will be awarded annually to a collegiate Delta Zeta member.

The National Council of
Delta Zeta
is pleased to announce a colony
at
Aurora College
Aurora, Illinois
Xi Gamma Colony

Gail Patrick Given in Cal

by Elizabeth Mueller Stevenson,
UCLA—AX, Los Angeles Alumnae
Chapter



Attn: Addressograph

than fifty films. Then she retired to devote time to her family.

When the famous Perry Mason stories were brought to television as a series, the author, Earl Stanley Gardner requested that Gail be named Executive Producer. She filled the position for nine very successful years, and was among the first women to hold such a post. Her activities resulted in an unbelievable total of accomplishments. She was especially gratified by her services as Chairman of the American Diabetes Association, and her Delta Zeta Woman of the Year Award. That her personal and professional awards cover such diverse fields is a true indication of her wide interests and generosity.

When Phi Omega Pi Sorority merged with Delta Zeta in 1946, they gave more than a thousand dollars as a gift to the Los Angeles alumnae chapter. This was to be used as a Scholarship Loan Fund. For some years several loans were made.

When Delta Zeta's beloved Gail Patrick Velde passed away, it was suggested that the Loan Fund which was still intact and had been wisely invested, be used as a base for a Memorial Scholarship established in her name. By this time there was enough in the fund with which to start a new program.

The alumnae chapter decided to offer outright grants to junior and senior college members of Delta Zeta chapters in Southern California. Each year the Scholarship Committee of the Los Angeles Delta Ze-

ges from receipts on chapter luncheons. Additionally, two members of Alpha Iota Chapter, Constance Hugg Berg and Betsy Bradley Leach, started an interesting fund raising program by contributing a piece of Hadeland crystal for which "opportunity tickets" are sold. Connie Berg's husband, Jens, has been Director of Hadeland Glassverks, Jevnsker, Norway. This has been a most prestigious glass factory for over two hundred years. From Connie's and Betsy's friendship, beautiful crystal items are available.

So it is in affection to the memory and with grateful appreciation, the Los Angeles alumnae chapter established the Gail Patrick Velde Memorial Scholarship Award to stand as a continuing tribute to a beautiful lady and a dear friend.

This scholarship was first awarded in September, 1981, and will be awarded annually to a collegiate Delta Zeta member.

Gail Patrick Velde, Samford-AII

There was a beautiful southern girl named Margaret Fitzpatrick. She attended Samford University in Birmingham, AL where she earned

The National Council of
Delta Zeta
is pleased to announce a colony
at
Aurora College
Aurora, Illinois
Xi Gamma Colony

CHANGE OF ADDRESS CARD. Please advise Delta Zeta promptly if there is a change or correction in your name or address as shown on the back cover. It is not necessary to return this card if the mailing label is correct. Members should use parents' home address while in college.

IMPORTANT. You must cut out the mailing label from this issue and paste it here. We cannot process changes without your label. Thank You.

I am currently a Delta Zeta Officer. Title _____

My new address will be _____
street/apt. # _____

city/state/ZIP _____ effective date _____

If mailing label does not show your married name, please include the following information for our membership files.

Married name _____ Husband's first name _____ Date of marriage _____

association. MIFCA/MAPCA is the largest of the regional organizations for college Panhellenics and Interfraternity Councils.

Barb served her first year as a ΔZ as house manager, becoming intimately acquainted with the inner workings of the dishwasher and the ice machine as well as her 50 new sisters. She left the chapter to get married, received her degree with a B. A. in English and proceeded to spend the next four years teaching high school in the rural community of Burr Oak, KS. She taught all four classes of English, one class of speech, directed the school plays and sponsored the Pep Club!

When husband Raydon decided to return to K-State for his master's degree, Barb's involvement with Delta Zeta began again. Having just "retired" from teaching and with a new daughter, Kristi, she was ready to accept when asked to serve as rush advisor. Two years and a set of twins later — Kevin and Kerry are now 10 — Barb became college chapter director. She declares that position was one of the most rewarding, despite the frustrations.

She then served as president of the House Corporation, and freely admits she has great admiration for any woman serving in that capacity. The headaches are innumerable. (Baby-sitting a boiler during Christmas vacation is no fun!) One of the highlights of those years, however, was her selection as the Outstanding Alumna of Province XII. Since then she has held several offices in the



Barb Robel and Chamaco Dear

Manhattan alumnae chapter.

Barb says Delta Zeta is also responsible for her "second career." In 1974 the KSU Panhellenic Council decided to raise chapter dues and hire their own half-time advisor. Her Greek background qualified her for applying for the job — she was selected. In 1979 the KSU Panhellenic and Interfraternity Councils agreed to share the expense of an advisor's salary, operating under the Greek Affairs concept with one advisor and one office.

"My appointment to that position has really been a joy—the opportunity to work with so many outstanding undergraduates and with such a wide variety of tasks. Because I am the only professional staff member responsible for Greeks, the IFC and PHC officers have had to assume a great deal of the burden for day-to-day operations and programming." Evidently that involvement has paid off, for at the 1982 Mid-American Interfraternity and Panhellenic Council Association meeting, both the K-State men and women were recognized as the outstanding groups in the Midwest. In addition, the K-State

Panhellenic tied for the first place NPC Award presented at the National Panhellenic Conference in Denver last Fall. Barb has served as Executive Director of MAPCA since 1980 when the association was begun.

Barb is a member of the Association of Fraternity Advisors, the National Association of Student Personnel Administrators, the Kansas Association of Student Personnel Administrators, the National Association for Women Deans, Administrators and Counselors and the Order of Omega. She has also been selected for listing in *Outstanding Young Women of America*.

Barb is completing her work on her master's degree and writes for various publications. Since 1979 she has been editor/author of *The Professional Assistant*, a semi-monthly publication for health care assistants. She has just finished a series of articles on chapter advising for the College Fraternity Editors Association.

Beyond the Greek system and family, Barb has a consuming passion for horses and riding. They have quarter horses. Barb and her seven-year-old buckskin mare, *Chamaco Dear*, have been on competitive trail rides in Kansas, Missouri, and Oklahoma. Most competition is sponsored by the North American Trail Ride Conference and involves a 20-mile ride on two consecutive days during which both horse and rider are judged. To this date, they have managed to place on nearly every ride. She also serves as horse project leader for their 4-H Club. When the Robels are not at trail rides, shows or at horse sales, they're doctoring horses or "bucking" bales of hay. In addition to being an expert handyman on the farm, husband Raydon is Director of Recreational Services at K-State. This year they're serving together as chairmen of the Marlatt School PTA.

As Barb Robel said, "Delta Zeta has been a treasured part of my life — I can hardly wait to see what adventure it will bring me next."

Barb Robel is Executive Director, Mid-American Panhellenic Council

"Delta Zeta has been part of my life since 1963 when I pledged at Kansas State University during the recolonization of Lambda chapter. I knew then that it was a special event, and still, nearly 20 years later, the rewards continue to appear."

Those are the words of Barbara Swinney Robel, Advisor for Greek Affairs at Kansas State University and Executive Director of the Mid-American Panhellenic Council Association. MIFCA/MAPCA is the largest of the regional organizations for college Panhellenics and Interfraternity Councils.

Barb served her first year as a ΔZ as house manager, becoming intimately acquainted with the inner workings of the dishwasher and the ice machine as well as her 50 new sisters. She left the chapter to get married, received her degree with a B. A. in English and proceeded to spend the next four years teaching high school in the rural community of Burr Oak, KS. She taught all four classes of English, one class of speech, directed the school plays and sponsored the Pep Club!

When husband Raydon decided to return to K-State for his master's degree, Barb's involvement with Delta Zeta began again. Having just "retired" from teaching and with a new daughter, Kristi, she was ready to accept when asked to serve as rush advisor. Two years and a set of twins later — Kevin and Kerry are now 10 — Barb became college chapter director. She declares that position was one of the most rewarding, despite the frustrations.

She then served as president of the House Corporation, and freely admits she has great admiration for any woman serving in that capacity. The headaches are innumerable. (Baby-sitting a boiler during Christmas vacation is no fun!) One of the highlights of those years, however, was her selection as the Outstanding Alumna of Province XII. Since then she has held several offices in the



Barb Robel and Chamaco Dear

Manhattan alumnae chapter.

Barb says Delta Zeta is also responsible for her "second career." In 1974 the KSU Panhellenic Council decided to raise chapter dues and hire their own half-time advisor. Her Greek background qualified her for applying for the job — she was selected. In 1979 the KSU Panhellenic and Interfraternity Councils agreed to share the expense of an advisor's salary, operating under the Greek Affairs concept with one advisor and one office.

"My appointment to that position has really been a joy—the opportunity to work with so many outstanding undergraduates and with such a wide variety of tasks. Because I am the only professional staff member responsible for Greeks, the IFC and PHC officers have had to assume a great deal of the burden for day-to-day operations and programming." Evidently that involvement has paid off, for at the 1982 Mid-American Interfraternity and Panhellenic Council Association meeting, both the K-State men and women were recognized as the outstanding groups in the Midwest. In addition, the K-State

Panhellenic tied for the first place NPC Award presented at the National Panhellenic Conference in Denver last Fall. Barb has served as Executive Director of MAPCA since 1980 when the association was begun.

Barb is a member of the Association of Fraternity Advisors, the National Association of Student Personnel Administrators, the Kansas Association of Student Personnel Administrators, the National Association for Women Deans, Administrators and Counselors and the Order of Omega. She has also been selected for listing in *Outstanding Young Women of America*.

Barb is completing her work on her master's degree and writes for various publications. Since 1979 she has been editor/author of *The Professional Assistant*, a semi-monthly publication for health care assistants. She has just finished a series of articles on chapter advising for the College Fraternity Editors Association.

Beyond the Greek system and family, Barb has a consuming passion for horses and riding. They have quarter horses. Barb and her seven-year-old buckskin mare, *Chamaco Dear*, have been on competitive trail rides in Kansas, Missouri, and Oklahoma. Most competition is sponsored by the North American Trail Ride Conference and involves a 20-mile ride on two consecutive days during which both horse and rider are judged. To this date, they have managed to place on nearly every ride. She also serves as horse project leader for their 4-H Club. When the Robels are not at trail rides, shows or at horse sales, they're doctoring horses or "bucking" bales of hay. In addition to being an expert handyman on the farm, husband Raydon is Director of Recreational Services at K-State. This year they're serving together as chairmen of the Marlatt School PTA.

As Barb Robel said, "Delta Zeta has been a treasured part of my life — I can hardly wait to see what adventure it will bring me next."

Cindy Nosky, One of Omaha's Most Eligible Women



Cindy Nosky, Nebraska Wesleyan-BT

Omaha, Nebraska's most eligible women for 1982 included Cindy Nosky, Nebraska Wesleyan-BT. The following is an excerpt from the *Omaha Magazine* which made the selection.

"Cindy Nosky, Personnel Director for Nebraska Methodist and Childrens Memorial Hospitals, may be the only person in that position in the country who oversees two hospital personnel departments.

"She started as Personnel Director for Childrens Hospital in 1974 and began managing the departments for both hospitals in 1979. "The hospitals are two autonomous organizations but the personnel department is shared," she explains. "It's a unique situation in that I am responsible for meeting the needs of both."

"Miss Nosky moved to Omaha in 1971, and was personnel assistant for the *Omaha World Herald*. Prior to that she worked two years for the National office of Delta Zeta Sorority, of which she was a member at Nebraska Wesleyan University, where she

earned a degree in education. 'As a Field Representative, I traveled all over the country and it was like going to college without studying,' she remembers. She also had an opportunity to take a summer tour through Europe.

"Five years ago Cindy became a member of the American Society for Hospital Personnel Administration - an affiliated society of the American Hospital Association. In 1980 she was elected to the board of Directors of that society to serve a two year term. As the only woman on the board she represents nine Midwestern chapters. She just won a second term.

"She works about fifty hours a week, but finds time for racquetball three or four times each week, loves spectator sports, and she adds 'words can not describe how much I love skiing in the Rockies.'

"In addition, she enjoys the theater, likes to cook for friends, plays bridge three times a month and her pipe dream is to sing torch songs from the 1930s and 40s.

"When asked about marriage she replied, 'I would like to spend my life with someone special but I'm not sure I would give up working for I believe there can be a balance of home and career.'"

It is with Regret . . .

It is with much regret that the National Council has declared the Zeta Omega Chapter at Northern Michigan University dormant.

Province Days

Province XIV
Colorado State Day
Falcon Inn
Monument, Colorado
October 16, 1982

Contact: Jo Messlin, PAD

Provinces XXII and XXIV
Georgia and Florida
Jacksonville, Florida
October 23, 1982

Contact: Susan Mease, PAD
or Pat Rosser, PCD

Province VIII
Wisconsin Province Day
University of Wisconsin (Eau Claire)
November 16, 1982

Contact: Kay Wright, PAD



Carol Sharpe Harper, Louisville-BT, received the outstanding alumna award at Province XX Day in Kentucky. Making the presentation to Carol, left is Debbie Bruce, National Vice President of Membership.

New Alumna Joins Tampa Delta Zetas

by Nancy Caperton Thullbery,
Florida Southern—BM,
Tampa Alumnae Chapter



Kimi Springsteen, Tampa Alumnae Chapter

Would you rather have a silver mine in Korea or the gold in a Delta Zeta badge?

Kimi (Mrs. James) Springsteen has both. As a new member of the Tampa, Florida alumnae chapter, she's found much more of value in the latter.

Her businessman-investor father gave her the deed to the family's seized silver mine near the capitol of North Korea in hopes that she may one day be able to claim it.

Her Delta Zeta status took 20 years to claim. She was initiated as an alumna this past spring during a University of Tampa-ΔB initiation.

Kimi is now a Tampa businesswoman and wife of an Air Force Lieutenant Colonel stationed at MacDill Air Force Base in Tampa. Twenty years ago she was Miss Jong Soon Kim of Seoul, South Korea, far from home and working on her master's degree in English literature at Southwestern University, Georgetown, TX.

Later, she received her master's in English literature from Stephen F. Austin State University, Nacogdoches, TX. Then she returned to Seoul as an associate professor at her alma mater, Duk-Sung University. Two months after her return Lt. James Springsteen was sent to Seoul by the U.S. Air Force. They were introduced by mutual friends, married a year later, and moved to Washington, D.C.

Son Joe, now 17, was born in San Antonio, TX and son John, 13, was born in Seoul after the Air Force sent them back to Korea for 4 1/2 years. Joe is the president of his high school senior class and attended a special summer session at Harvard. He also serves on the teen board for a local department store. John, in the top 1 per cent of a recent National Achievement Test, is in the county's gifted children's program.

Always busy, Kimi worked in the bi-lingual department of the Hillsborough County School system after the move to Tampa. Then she taught sixth grade until she opened an elegant new shop in November, 1981.

Her shop, Carrollwood Oriental Collections, is a unique combination

of Oriental antiques and art. Featured are rare handcarved chests, hand-painted screens, brassware, antiques and reproductions.

Kimi also finds time to act as chairman of the International Asian Pacific-American Heritage Council of West Florida, a national, non-political group promoting Asian culture.

Her many interests and hobbies include traveling, reading, golf, cooking — and Delta Zeta. She travels to Hong Kong and Korea to purchase the lovely items she carries in her shop. She's become a lively and valued member of the Tampa alumnae chapter and members can vouch for her good cooking. She recently entertained the group with a full Korean dinner — and it was really delicious.

Vicky Scherer is Phi Beta Kappa

Vicky Scherer, FSU - Alpha Sigma, has been selected for membership in Phi Beta Kappa. Vicky is a December 1981 magna cum laude graduate in biology. She is currently in her first year of medical school at FSU, in conjunction with the University of Florida College of Medicine and the Florida State Program in Medical Sciences.

Next year she will transfer to the University of Florida to complete the last three years of work on her MD degree.

At FSU she was a member of Phi Sigma biology honorary, Garnet and Gold Girls and was employed by the FSU football office as assistant academic advisor for athletics and recruiting while also assisting with the Sports Information Office.



Vicky Scherer, FSU-AΣ

Alumnae Chapters Write . . .



Here are the leaders of Province I weekend. L to r are Dianne Guild, National Secretary; Gay Rose, PAD; Terri Severy, National Director and guest speaker; Terry McNeer, Field Representative and Karen Manuel, PCD. Province I includes seven collegiate chapters from Maine to Connecticut.

WARRENSBURG, MO . . . Mary Hopkins Volentine, Central Missouri State-EF was honored at a Meals on Wheels appreciation coffee at Johnson County Memorial Hospital. Meals on Wheels is a program that enables older or incapacitated adults to stay in their homes and receive daily meals. This daily visit prevents many older adults from having to move into a care center or hospital. Mary had been active in the program since its inception ten years ago, serving as program coordinator for nine years. She will now serve as a consultant. She has been active in the Warrensburg alumnae chapter for many years.

CLEVELAND EASTSIDE, OH . . . Mella Cooks Davies, Miami-A, opened her home for an alumnae-collegiate get together which was the chapter's way of letting the 50 Cleveland area collegians know there is an active and interested alumnae group in their hometown.

PHOENIX, AZ . . . The Phoenix alumnae chapter held an "Easter Bonnet Party" with each member bringing several non-perishable food items to the meeting. These were donated to the WEST SIDE POOL BANK for an Easter dinner. A prize was given for the four best "Easter Bonnets."

FRANKLIN, IN . . . Psi chapter and Franklin alumnae are very proud of member Helen Jean McClelland Nugent. She is currently working on her dissertation, which when completed will finish requirements for one of the first academic Ph.D. degrees in Canadian Studies to be awarded by an institution in the United States. Helen is doing work in New Brunswick and Nova Scotia which will apply to her degree which is underway at Michigan State University. In April she received one of eight State Scholarships awarded by the Delta Kappa Gamma Society International. Helen Jean is married to Dr. Paul Nu-

gent, has three children and has been in the teaching profession for 26 years. Her degrees are from Franklin College, University of Illinois, Indiana University, Bloomington campus, and the PhD now in progress at Michigan State.

Franklin alumnae have a unique way of earning money each year . . . they sell Midway Ride tickets at the Johnson County 4-H Fair. They work for the local Fair Board and are paid by them for a contracted amount. They don't have to go into debt, are never rained out or have to beg friends to purchase something. They've been doing this for about 15 years!

LEHIGH COUNTY, PA . . . The alumnae chapter received five awards at Province III State Day in Harrisburg. These were for outstanding excellence in programs, excellence in ways and means, overall excellence and the Marion West Award for increased membership. Susan Miller, president, received the Delta Zeta devotion award for helping and becoming Kutztown State-KP's college chapter director.

TULSA, OK . . . In April Tulsa alumnae held a one-day arts and crafts show and plant sale to benefit local philanthropies. Ways & Means chairman Mary Kay Spiva Teeters, Northeastern State-ΔΦ, who has participated in many craft shows, served as general chairman. Plants were provided from the private greenhouse of Carol Ann Barton Michno, OSU-AE, who along with her husband, Joe, planted thousands of seeds in preparation for this sale and to accommodate their regular customers.

Booth space, under the supervision of Sandra Mayfield Logsdon and Dixie Butcher Carter, NSU-ΔΦ, was sold to fifty craft exhibitors who shared their profits with Delta Zeta.

For their own booth, members helped make candy jars, soft boxes and kleenex box covers at a monthly meeting. Final assembly was left to the craft committee headed by Barbara Johnson Katapodis, Southwestern State-EA.

Food was available for everyone. Kitchen chairman Marsha Carrico Bates, CSU-EY, and her workers sold breakfast rolls, sloppy joes, nachoes, pie and beverages throughout the day. Treasurer Dianna Grattopp Buck, NSU-ΔΦ, reported high profits since much of the food was donated.

The day preceding the sale, Carol Ann and Vera Helberg Williams, OSU-AE, supervised removal and sorting of pre-paid plant orders. Plants were picked up at the craft sale so "gardeners" could also view the exhibits.

An additional plant booth was manned by Beth Spence Conley, NSU-ΔΦ. Included were bedding and vegetable plants, geraniums and magnificent hanging baskets. Public demand was so great that the booth was restocked twice.

Delta Zetas working the show were highly visible in

Alumnae Chapters Write . . .

their green and white ruffled gingham aprons and ribbon rose nametages made by Toni Garner, NSU-ΔΦ.

Publicity was handled by Elaine Smith Scott, OCU-ΓΥ, along with Meryl Lin McKean, Central Missouri State-ΕΓ, local television reporter who managed electronic media coverage, and Peggy Caudle, Northwestern Oklahoma-ΔΟ, Tulsa Alumnae Panhellenic representative who spread the word at TAP meetings and in the TAP newsletter.

President Pattie Cantrell Hulsey, NSU-ΔΦ, and philanthropy co-chairmen, Mary Kay Teeters and Micky Beckman Flasch, Northwestern State (LA)-EB, presented checks to Tulsa Speech and Hearing Association and the Little Lighthouse, Inc.

SHREVEPORT, LA . . . Collegians from LSU, Northwestern State and Louisiana Tech were treated to a patio party in the home of alumna Rosemary Morrison. Besides lots of good ΔΖ talk and plans for even better collegiate-alumnae cooperation, everyone was delighted with the great food provided by the alumnae. The Shreveport alumnae are looking forward to hosting Province XVIII Conference at Centenary College next February. Carol Hamilton Brill, Louisiana Tech-ΞΕ, is general chairman.

GOLD COAST, FL . . . The Flame Fantasy fundraiser this year was a spring brunch fashion show and another fundraiser was selling Christmas bazaar items at a local shopping mall . . . both events netting some \$1,250.

FAIRFIELD COUNTY, CT . . . Alumnae started off the Spring season with a house shower for the new chapter at Connecticut-ΓΒ. February and March were spent preparing for the annual State Day for the Delta Zetas of Connecticut. This year 40 alumnae, representing 16 chapters, attended.

ENID, OK . . . Alumnae were involved in a community club awards program sponsored by a local radio station. Members earned points by signing the guest register and making purchases from local merchants participating in the program. The program lasted for three months and alumnae received two first place, a fourth and a fifth place award, gaining \$385 for the treasury.

TOPEKA, KS . . . Huck weaving, kahlua, brownies, green tomato relish and a plant were part of the homemade items donated by Topeka alumnae and auctioned by President Vicki Paulin Golden, Emporia State-ΔΠ. Topeka alumnae recently donated to the Kansas State School for the Deaf in Olathe. The money was designated for a filmstrip projector and filmstrips.

ORANGE COUNTY, CA . . . The death of Dallas Shenk, UCLA-AX, who was such a bulwark to the chapter, reminded everyone that they are in no way immortal, so the chapter has voted to start a scholarship for CSUF-ΙΥ collegians in memory of an alumna or alumnae who have passed away during the year. The collegian receiving the scholarship this year is Susan Marie Tra-

pletti, a 3.7 gpa student from Whittier. She works 20 hours a week and is carrying 15 units. Her goal is executive management in personnel in the College of Business Administration. She was voted most outstanding pledge in 1979 and has received the President's scholarship since 1979. Susan was also presented a silver tray for Iota Upsilon from alumnae chapter president Janet Taulius Kozlowski (CA—M). It had been awarded to Dallas Shenk in 1965 as Lamplighter Woman of the Year and is a gift to the chapter from the Shenk estate.

CHICAGO, IL . . . Alumnae entertained at their annual card party at the Alpha Alpha House at Northwestern and again earned money to support the partial scholarship given every year in the School of Speech to a graduate student in the field of audiology. This scholarship, with some changes over the years, has been given annually since 1950.

SANTA MONICA, CA . . . How to see the wild animals of West Bengal, India from the back of an elephant without falling off into the jaws of a tiger, was the highlight of alumna Marjorie Buck Johansen's travel story at a recent meeting of Santa Monica alumnae members. Other highlights of the journey were a visit to the Taj Mahal at Agra and traveling many miles by bus through clouds and fog to see an "unforgettable" sunrise over the Himalayas. Marjorie, UCLA-AX, is on the staff of UCLA Extension.



Micky Beckman Flasch, NSU-EB, of the Tulsa alumnae chapter (right) presented a check to Karen Hargrove, student in special education classes at Tulsa Edison Junior High, for a closed circuit TV to help with her studies.

Alumnae Profiles

MARILYN GONDING ROCHA, California State-Chico-ΔX, is a clinical psychologist residing in San Diego. She is a clinical supervisor and workshop coordinator at the Naval Drug Rehabilitation Center at the Naval Air Station at Miramar - the only such military rehabilitation center in the world for active duty military personnel. She enjoys working with young adults, writing, reading, tennis, making new friends and enjoying her family which consists of four children and four grandchildren.

MARTHA TARKINGTON HOEFLE, Cincinnati-Ξ, believes in active involvement with her community. She is currently serving as a member of the Kenston School District Community Advisory Committee and has been singing in the church choir for 20 years. She taught water safety for 31 years and was a National Women's Basketball official for 27 years. She and her husband Erland have been married for 27 years and reside in Cleveland, although they hope to make their new residence at Seabrook Island in South Carolina. Their daughter is Tracey and their son is Jeffery.

NANCY SHELTON CLOUTIER, Alabama-ΑΓ, resides in Ventura, CA where she is owner/publisher/editor of the Ventura County and Coast *Reporter*, which is Ventura County's weekly adjudicated newspaper with a circulation of 25,000 copies weekly. Area Delta Zetas should get in touch for some special p-r type publicity! Her children are Jeff, Kelly, Jill, Suzanne and Paul. Interests include boating, skiing and antiques.

BETTY MARTIN HIGGINBOTHAM, Northwest Louisiana-EB, majored in student personnel services, counseling and guidance so became a Dean of Women at Louisiana College. A year later she moved to Marion, AL, assuming duties as Dean of Students at Judson College, a private liberal arts college for women. She worked in George McMillan's successful campaign for Lt. Governor. As a result, she met her husband to be, G. J., who is a State Senator. She's now a housewife in Opelika, AL, who enjoys smocking, French hand sewing and art.

LOIS CALDWELL TOMPKINS, Nebraska Wesleyan-BT, graduated from NWU and was married the next fall. For the past 41 years she and her husband Harvey have lived on a ranch in Northeast Nebraska where they reared their four children. During the years she taught in high schools in O'Neill and Orchard, teaching French, English, and journalism. She retired in 1975 and since then has been active in local organizations. Other interests are their family, the grandchildren, music, reading, and handwork - and photo albums. The ranch is a very active one, with the care of dairy and beef cattle, haying the meadows and all the extras for meals that the season brings.

CLAUDIA ALEXANDER SCOTT, Morehead-KT, lives in Germany where she works as a counselor for the army's drug and alcohol rehabilitation out-patient clinic. She does both individual and group counseling and makes decisions along with the service man's commander as to his retainability in the army. Her husband is Captain Stephen Scott and their son is Christopher. She's visited London, Paris, Switzerland, Italy and Holland since their tour began in Germany.

AIDA KOUYOUMJIAN LUDWIG, Washington-K, is a district coordinator, English as a second language program. Living in Mercer Island, WA with her husband Emmett (a school administrator) she develops and evaluates the ESL program in compliance with State and Federal guidelines. She selects and administers diagnostic and teaching materials and develops special programs and techniques to meet the unique needs of non-English speaking students. She has written a textbook on ESL and has now been assigned to teach Arabic to 4th grade students as part of a pilot program to teach foreign languages at the elementary level. She loves to write and is working on a historical novel based on facts in the Middle East during WWI. The Ludwig children are Armen, Brian and Roger.

GLORIA WOEST ANDERSON, Wisconsin, Eau Claire-ΕΩ, taught high school English and speech in Wisconsin, New Jersey and California but since 1970 has been involved in volunteer activities - too numerous to mention. Her husband is Gordon, a water quality planner and their son Scott is 10. She likes local history, needle-arts, especially crewel embroidery, huck weaving, cross stitch, photography and cooking. They live in Crestline, CA where they enjoy a beautiful mountain setting and pursue their various hobbies.

LORI SANDS TIMMERMAN, Westminister-ΘΔ, lives in Sharon, PA with husband Rick, who is a diesel mechanic. She says she is "unemployed" but says her new occupation of "domestic engineer" takes more of her time than any previous job... but she loves it! She's an avid racquetball enthusiast, and also is into weight training. She's studied piano since age 5 and she loves to cook, especially natural foods.



Pat Slowin Emmenecker, Michigan State—BP, Pecan Chairman for the Saginaw (MI) alumnae chapter helps hearing-impaired children bake cookies with pecans donated by the alumnae.

Alumnae Profiles

SANDRA K. SALCHAK, Louisville-BT, lives in Baldwinsville, NY where she is the head designer for her interior design studio. She works with residential and contract designs and is also a design consultant for contractors/architects and contract furniture sales. She's involved with the Syracuse chapter of "Women in Design." She likes horseback riding, roller skating, knitting and crocheting, crewel and embroidery, outdoor sports, painting, photography and buying and refinishing antiques.

ANNETTE KUSZYNSKI VANCE, Wisconsin-Stevens Point-ZX, is assistant professor in Home Economics Education at the University of New Brunswick in Canada. Besides the full range of professional duties and responsibilities within the university and service to the community, she teaches all program offerings in Human Development and Family Studies as well as some courses in teaching methods and curriculum development, particularly with developmentally disabled persons.

SUSAN TABAR MANDICH, Baldwin-Wallace-FA, lives in Cleburne, TX where she is a special education teacher for the Joshua Independent School District. Presently she is teaching a self-contained unit at the high school level for emotionally disturbed and learning disabled students. Her husband Ken is a diesel electrician for the Santa Fe Railroad. Her interests lie in stained glass and calligraphy.

LAURA ANN JOHNSON, Eastern Illinois-EN, graduated with a BS in Printing Management from Rochester Institute of Technology and is employed by Western Publishing Co. as a commercial printing sales representative. Her duties include opening new accounts and selling creative and editorial services with the main concentration on manufacturing. She likes swimming, reading, dancing, theatre and interior design.

WILMA SALMON ROBINSON, Longwood-ET, is a professor of secretarial science at Tidewater Community College, Frederich campus in Portsmouth, VA. She's currently president of the Frederich Campus Faculty Association. Her husband Thomas is associate professor and wrestling coach at Old Dominion University. Their children are Evelyn, T. M., Jr. and Ann. Ann is a member of Theta Phi chapter at Old Dominion. She's active in civic and community organizations, AAUW, Alpha Delta Kappa, Tidewater Panhellenic, Town 'n Gown, and likes ceramics and singing in a women's chorus.

ANNE HERRON BOOTHE, New Mexico Highlands-AP, married her Navy man, now Rear Admiral Glendon Boothe, retired, and proceeded to live in Hawaii, the Philippines, Alaska, various cities on the East and West Coasts and traveled in Japan, old China in the 1930's, all over Europe in the '60s and 70's and ultimately retired to Florida. She likes history, reading, traveling, ceramics, antiques, bridge, cooking, gardening, but most of all, enjoys her husband, their son and his wife and one grandson who is now in college in California.

CONNIE BURNS BAIRD, Stephen F. Austin-ZV, is manager of office administration and personnel for Soltex Oil and Gas, Inc., an independent oil and gas company in Dallas. She maintains day to day operations of the office, interviews and hires professional and administrative staff and is responsible for all benefits and administration of such. In addition, she



Pictured are members of the Phoenix alumnae chapter at their recent Easter Bonnet Party.

owns and operates Classic Contemporaries, an interior design and window treatment company, with her husband. She's active in the Dallas alumnae chapter and likes antiques, tennis and snow skiing. She's also busy with church and professional organizations. Husband James is a real estate agent and FAA controller and their son is Joshua Vernon born in February.

AUDREY SCHUMACHER, Oklahoma State-AE, is a missionary with Wycliffe Bible Translators and Summer Institute of Linguistics in the Philippines. Living in Manila, she is head librarian in charge of the administrative work of their three technical libraries. She is in the process of changing her emphasis to finance by studying for an accounting degree. She likes reading, cooking and traveling and will return to her home town of Tulsa sometime around the first of the year.

MARY S. TYSON DUGAN, Illinois-AB, is retired after 30 years as dietitian with the Veterans Administration. Previous to that she was in the Navy. She is married to William R. Dugan, retired and their sons are William Sterling and John Alcorn. She likes gardening, fixing up homes, travel, ballroom dancing, sewing and upholstery, hiking and nature study and making exotic jams.

MAURINE CILLEY SINCLAIR, Eastern Michigan-ES, lived for many years in Michigan before retiring in 1960 and moving to Luzern, Switzerland with her husband, Paul, now deceased. It was a spot that had taken their fancy while traveling. She enjoys making hospital calls, traveling in pursuit of art, architecture and music ... and her innumerable friends who fill her time. She likes books, travel, nature, walking mountain paths, theatre and music. Her correspondence with nearly 300 people helps her keep the American eagle soaring high aloft!

Kent State Alumnae Reunited in Ohio



Dinner's on the way! Cathy Furst is assisted in cooking chores by daughter Stephanie. Picture courtesy of the Akron Beacon Journal.

taining facts on foods and babies and over 100 recipe ideas, her booklet became an overnight success, selling through the mail for \$3.00. Cathy and Stephanie appeared on the front page of "Living" section of the *Akron Beacon Journal* where it was noted that the duo could be seen on that evening's edition of television's "PM Magazine" show. This is where the unexpected reunion begins.

Former GK president, Lynnda Wolfe Hoefler (presently Ohio PCD) sat down to read the newspaper that evening and Cathy's picture caught her eye. The article revealed that Cathy had indeed attended Kent State, as Lynnda suspected. She showed her husband a photo of Cathy taken at Kent and the current one in the newspaper and he admitted that they looked like the same girl. She finished the article just in time to snap on the television and catch the end of the "PM Magazine" segment.

"As soon as I heard that voice I knew it was you!" Lynnda laughed after contacting Cathy over the phone. The sisters were surprised to learn that after a seven year separation they were living less than 15 minutes away from each other! They made plans to go out for lunch and catch up on the past.

The next day, Cathy was filling orders for her booklet when she came upon another surprise. A letter that accompanied one of the orders stated, "I'd like to get your booklet, as I have a 7-month-old baby girl. But more importantly, I'd like to know if you went to Kent in 1974 and if you are a ΔZ?" Without a moment's hesitation, Cathy telephoned the former Diane Hudak at the enclosed number and was reunited with her little sis, who also lived a mere 15 minutes away!

So that is how three ΔZ's and their two legacies were reunited by fate!

It just goes to show what a small world we live in! Since graduating with a degree in home economics from Kent State University in 1974, GK alumna Catherine Nyerger Furst has had little contact with her ΔZ sisters until a recent endeavor in her life unexpectedly reunited her with her chapter's former president and her little sis!

"I'd had a lot of fun with ΔZ at Kent, but after I graduated I left the care-free college life behind me to work in a variety of fields including accounting, purchasing, personnel and communications/media/PR. I married engineer Daniel Furst (who had been my first boss after college) and in February of 1980 I left my position as Communications Specialist for Stouffer Food Corp. to become a full-time mother."

Full-time motherhood is the greatest challenge of all, according to Cathy. Anxious not to let her talents get rusty but not wanting to return to a career away from Stephanie, her daughter, Cathy combined the best of both worlds by writing, printing and promoting the *Babyfood Recipe Booklet*. A simple publication con-

National Historical Museum Update

National Council has appointed Mrs. Garold A. Leach (Betsy Bradley), USC-AI, as a member of the Board of Trustees of the National Historical Museum. The Oxford (Ohio) City Council has designated our home as a historic site with a recent ordinance adopted unanimously. The next step will be to apply for the National Register.

Final drawings for the restoration, prepared by Mr. C. H. Barcus of Barcus and Swift, Associated, Architects and Engineers, were presented to the Board of Trustees and to the National Council at a July meeting at Climer Lodge in the Miami University Alumni Center.

Attention: Three Generation ΔZs

A new history of Delta Zeta is in the writing and we are interested in a section on three generation Delta Zetas. So, get out the camera and get some good, clear pictures of you, your mother and your daughter, or grandmother, get your daughter and her daughter... or #3 Delta Zeta, we need a picture of you, your mother and your grandmother! Send the pictures, fully identified as to names and chapters, to History Editor, Mrs. Arthur Miner, 1040 H Avenue, Nevada, Iowa 50201. Do it NOW and your Editor will be eternally grateful!

Pledge Profile: Lambda Delta

by Nancy Richards, UVA-ΛΔ

This year, as in the past years, the Lambda Delta chapter of the University of Virginia has filled its pledge quota. Anne Marie Parks, Pledge Trainer for the new class, feels that "This year's pledge class is a group of really enthusiastic women ready for the sisterhood of Delta Zeta."

The 1982 pledges, although a diverse group, share many common interests. Athletics is an important aspect. The majority of pledges are involved in dormitory intermurals and others enjoy swimming or biking. Lambda Delta boasts two members of the University's Crew Team and also a member of the Charlottesville United Soccer League who represents Delta Zeta in the surrounding communities.

Volunteer work attracts many

pledges. Madison House, the University's base for contributing to the community on a volunteer basis, serves to orient many of the pledges within the University's hospital where they donate their time helping patients and assisting the hospital staff.

Working to further the student body's knowledge of politics is also of interest to our pledges, one of whom is involved in the Young Democrats. Another is a Young Republican. Not only are our pledges members of political organizations to alert the University of current political problems and events, but also to promote student awareness through the media. Several pledges write for the only daily newspaper at Virginia, the

Cavalier Daily and a rival, *The Declaration*.

While athletics, student information and helping others are integral in many pledges' lives, personal expression through music and religion are important. Talent in playing the guitar and piano is possessed by many. Singing in both University and church groups and membership in the Campus Crusade, as well as commitment to Lambda Delta's weekly Bible Study serve to bring all religious denominations together in our chapter.

The sisters of Lambda Delta are extremely proud of our new pledges who have each added many new dimensions to our chapter. To them we offer our friendship and sisterhood in Delta Zeta.

Delta Zetas Serve as Panhellenic Presidents

There are 30 Delta Zetas serving as presidents of their college Panhellenics in 1982 and two are listed so far in 1983. They are as follows:

Tena Gardner - Middle Tennessee State University-II
Lisa Jenkins - Indiana State at Evansville-AB
Denise Pitt - University of Southern Maine-AZ
Ellen Greenwood - University of Rhode Island-BA
Maria D'Orio - Edinboro State College-IA
Sheila Martin - Glenville State College-ΘΞ
Jaccee Nosenchuk - University of Charleston-ZT
Wendy Perkins - West Liberty State College-IT
Margaret Nagle - Michigan Tech University-AΘ
Robyn Badali - University of Wisconsin (Stout)-ZB
Sarah Hohensee - University of Wisconsin (Whitewater)-EK
Jane Cummisford - Carroll College-ΓΘ

Deanna Steinbeck - William Jewell College-ZP
Janet Neuner - University of Missouri-St. Louis-IΞ
Karen Kay Thill - Emporia State University-ΔΠ
Tracey Wickman - Minot State-ΘΠ
Delane Fitzpatrick - Nevada at Las Vegas-IΦ
Sherri Andrews - Central State (Oklahoma)-EY
Suzanne Myers - Northeastern State (Oklahoma)-ΔΦ
Cara Muniz - New Mexico State University-ΓΞ
Gretchen Freihofer - Northern Kentucky University-KB
Nancy Kennedy - North Carolina at Charlotte-KΦ
Sandy Krajak - Lenoir Rhyne College-ZΞ
Tammy Hamilton - Western Carolina University-ΘI
Rosie Gomez - Georgia State University-ΔΔ
Sharon Hould - Oglethorpe University-BΘ
Debbie Butcher - Georgia Southern University-IN

Peggy Tiernan - Alabama at Huntsville-AK
1983 Presidents are
Bonnie Poplin - Appalachian State College-AΘ
Tina Trice - Longwood College-ET



Kim Wheat, DePauw-Δ, received the Condit Science (earth science) Scholarship Award.

Flame Eternal

ALPHA

Marjorie Miller King '22
Lucille Post Rogers '26

BETA

Doryce Scudder Nesbitt '32

GAMMA

Katherine Nelson Mick '30

EPSILON

Julia Butt Newcomb '42

ZETA

Clara Melissa Legg '29

ETA

Florence Hall Pettis '24
Minnie Stockebrand '21
Dorothy Painter Truesdail '23

THETA

Dorothy Bardo Matheny '27
Marguerite Hanna Pote '22

IOTA

Helen Papes Bergin '30

KAPPA

Margaret Ryno Broughton '45
Edith Cochrane Goehring
Elsa Elizabeth Nordquist

MU

Phyllis Carlson Clark '30
Nancy Larsen Cowan '46
Barbara McMillan Garcia
Kathleen Bowie Lane '29
Vera Symon Long '23
Helen Lester Marquess '21
Donna Erbes Newman '35
Dorothy Cowell Oliver '28
Barbara Rosseter Saunders '35
Lottie Verzie Smith '45

OMICRON

Lois Turbett Snyder '28

UPSILON

Lola Kinser McLean '24

PHI

Madeline Clay Cassel '27
Evangeline Buckmaster Kennedy '27

PSI

Ruth Kerlin Hibbs

OMEGA

Helen Ready Barzee '30
Jessie Judd Chapman '33

ALPHA BETA

Lucia Miller DeWind '24
Ann Tice Patton '60

ALPHA DELTA

Marianna Schwalb Vogel '51

ALPHA EPSILON

Wilma Johnson Case '27
Gladys Shirley Cogburn '23
Lucille Hunt Pendell '25
Zelma Hammond Vickery '28

ALPHA KAPPA

Lorraine Vallencourt Capron '32
Edith Pierce Kimball '29
Gertrude Winsor Rounds '34

ALPHA LAMBDA

Lorene Hodges Claassen

ALPHA OMICRON

Hester Higginbotham Hall '45

ALPHA SIGMA

Charlotte Chase '32

ALPHA TAU

Alma Wood Rust '27
Catherine Voigtman Fiorenza '57

ALPHA CHI

Helen Speck '20

BETA KAPPA

Ruth Seats Hansen '52

BETA MU

Thelma Deal Akers '48
Barbara Zoe Schnedler '56

BETA SIGMA

Cloe Hamm Tisdale '58

BETA OMEGA

Antoinette Cerrato Rothman '47

GAMMA EPSILON

Mabel Abraham Graves '30
Frances Roberts O'Brien

GAMMA IOTA

Frances McDaniel Tillotson '36

GAMMA KAPPA

Nellie Raywood Dixon

DELTA MU

Rae Wetmore '04

DELTA OMICRON

Ethel Dyer Gish '21
Vallery Gigoux Jackson '73

DELTA PI

Verda Melbourne South '17

DELTA CHI

Barbara Nason Davis '37
Lynnette Hoch Fairchild '65

EPSILON OMICRON

Linda Sue McMillan '69

THETA ALPHA

Helen Bell Peterson '30
Orpha Swank Anderson - Purdue '29

Straight-A Collegians

The following sisters have attained a cumulative grade point average of 4.0 for the year of 1981. Let us congratulate them.

Province III - Robert Morris College-EX
- Lisa Ciaccia
- Paula Sarnelli

Province V - Wittenberg University-BX
- Ann Tiemeyer

Province IX - Northwestern University-AA
- Alexandra Cowen

Province XI - Northeast Missouri State University-ΔΣ
- Peggy Schoen

Province XII - Nebraska Wesleyan-BT
- Sarah Gross
- Denna Larsen
- Ft. Hayes State University-ΔΩ
- Lisa Lessman

Province XIII - University of North Dakota-Ω
- Alison Johnson

Province XV (Central) - California State University at Fresno-EE
- Robin Capelli

Province XXIII - University of Auburn at Montgomery-AN
- Darla Deason
- Danielle Rowe

One hundred and seventy-two Delta Zetas received a semester grade point average of 4.0.

Delta Zeta Directory

NATIONAL COUNCIL

President: Carolyn B. Gullatt (Mrs. John), 4008 Hyridge, Austin, TX 78759
Vice President of Membership: Debbie M. Bruce (Mrs. Bill), 5008 NW 62nd Street, Oklahoma City, OK 73122
Vice President Alumnae Affairs: Mary Margaret C. Fore (Mrs. Sam), 459 Summit Circle, Fredericksburg, TX 78624
Vice President Collegiate Affairs: Dwayla Dean F. Porter (Mrs. Arthur), 1121 Osage Drive, Stillwater, OK 74074
Secretary: Dianne F. Guild (Mrs. Douglas), 16 Andrews Drive South, Burlington, VT 05401
Treasurer: Anne Marie J. Gavin (Mrs. William), 3264 Swan Drive, Vineland, NJ 08360
Director: Isabel (Terri) Severy (Mrs. Raymond), 2127 Northampton Way, Lansing, MI 48912
Director: Lucile C. Cooks (Mrs. Rudolf), 1936 Dolphin Blvd., South, St. Petersburg, FL 33707
Director: Charlotte F. Silversteen (Mrs. Allan), 513 Toll Road, Oreland, PA 19075
Director: Sarah Jane S. Houston (Mrs. Harold), 3358 Ramblewood Place, Sarasota, FL 33577
Past National President: Norma M. Andrisek (Mrs. J. R.), 319 Janice Drive, Berea, OH 44017
National Panhellenic Conference Delegate: Dwayla Dean F. Porter (Mrs. Arthur). *Alternates:* Carolyn B. Gullatt (Mrs. John), Norma M. Andrisek (Mrs. J. R.)

NATIONAL HEADQUARTERS

Delta Zeta National Headquarters: Suite 600, 21 E. State Street, Columbus, OH 43215
Delta Zeta Subscriptions (Collegiate & Alumnae): Box 24145, Columbus, OH 43224
National Field Representatives: Ann Leine, Terry McNeer, Nancy Walker, Jill Banks, Diane Krause, Linda Regner, Jeanine Petersen

THE LAMP

Gwen M. McKeeman (Mrs. Robert L.), 5517 S. 74th E. Avenue, Tulsa, OK 74145

EXTENSION

Norma M. Andrisek (Mrs. J. R.), 319 Janice Drive, Berea, OH 44017

DELTA ZETA FOUNDERS MEMORIAL FOUNDATION

President: Mary Lou M. Barth (Mrs. William), 1662 Villa South Drive, West Carrollton, OH 45449
Secretary: Sarah Jane S. Houston (Mrs. Harold), 3358 Ramblewood Place, Sarasota, FL 33577
Treasurer: Shirlyn Chaffin (Miss), 6561 Santa Cruz Place, Reynoldsburg, OH 43068
Atlarge: Arlene Newman (Miss), 2200 Post Oak Blvd., Suite 310, Houston, TX 77056
Betty Paul Dewitt (Mrs. Norman), 23630 Oakrest Lane, Harbor City, CA 90710

PROVINCE COLLEGIATE AND ALUMNAE DIRECTORS

I. Maine, Vermont, New Hampshire, Massachusetts, Connecticut and Rhode Island

PCD: Angela P. Shipman (Mrs. John), 8 Bayberry Lane, Exeter, NH 03833

PAD: Gay T. Rose (Mrs. Jack), 124 Roxbury Road, Niantic, CT 06357

II. New York and New Jersey

PCD: Donna S. Stipek (Mrs. John), 752 Forest Edge Drive, East Amherst, NY 14051

PAD: Amy F. Curry (Mrs. James), 338 Marvin Ave., Hackensack, NJ 07601

III. Pennsylvania and Delaware

PCD: Phyllis S. Favorite (Mrs. Robert), 570 Lancashire Lane, State College, PA 16801

Acting PAD: Charlotte F. Silversteen (Mrs. Allan), 513 Toll Rd., Oreland, PA 19075

IV. West Virginia

PCD: Sherry H. Miller (Mrs. William), 2609 Jefferson, Pt. Pleasant, WV 25550

Acting PAD: Charlotte F. Silversteen (Mrs. Allan), 513 Toll Road, Oreland, PA 19075

V. Ohio

PCD: Lynnda W. Hoeftler (Mrs. Robert), 1287 Denise Drive, Kent, OH 44240

PAD: Lois R. Nesgoda (Mrs. Leonard), 5652 Alberta Dr., Lyndhurst, OH 44124

DELTA ZETA NATIONAL HISTORICAL MUSEUM BOARD OF TRUSTEES

President: Lucile C. Cooks (Mrs. Rudolf), 1936 Dolphin Blvd. South, St. Petersburg, FL 33707
Trustees: Norma M. Andrisek, Carolyn B. Gullatt, Florence Hood Miner, Aurel F. Ostendorf, Doris E. Riede, Dr. Elizabeth Rogers, Mary Lou R. Vineyard, Betsy B. Leach

STANDING COMMITTEES

Colonnade Club: Florence H. Miner (Mrs. Arthur), 1040 H. Avenue, Nevada, IA 50201
Constitution and Procedure: Lisbeth I. Francis (Mrs. Robert), 2508 Belle Terre Drive, Birmingham, AL 35226
History: Grace M. Lundy (Mrs. H. M.), 3207 N. 25th St., Phoenix, AZ 85016
Ritual: Karen Kind Manuel (Mrs.), 36 Rilling Ridge Road, New Canaan, CT 06840

COMMITTEES

Activities/Social (Collegiate): Malissa W. Hawkins (Mrs. William), 409 Camperdown Way, Greenville, SC 29601
Alumnae Relations: Christa Chaussee (Ms.), 211 S. Pleasant Ave., Ridgewood, NJ 07450
Awards (Collegiate & Alumnae): Marcia E. Humpal (Mrs. David), 26798 Mangrove Lane, Olmsted Falls, OH 44138
Housing: Norma M. Andrisek (Mrs. J. R.), 319 Janice Drive, Berea, OH 44017
Newsletter (Collegiate & Alumnae): Patricia H. Pelkofer (Mrs. C.G.), 252 South Winebiddle St., Pittsburgh, PA 15224
Philanthropy (Collegiate): Joan D. Lowry (Mrs. Bob-Bill), 578 Yarmouth Lane, Bay Village, OH 44140
Philanthropy (Alumnae): Priscilla (Pat) Beatty (Miss), 3691 NW 95th Terrace, Apt. 1202, Sunrise, FL 33321
Programs (Alumnae): Sherrie C. Loader (Mrs. Charles), 565 Church, Portland, MI 48875
References: Marianne M. Cravens (Mrs. Scott), 4455 Hollyhock Street, Ft. Collins, CO 80526
Rose Shop Chairwoman: Karen Soyk (Mrs. Lon), 31033 38th Ave., South, Auburn, WA 98002
Scholarship (Collegiate): Margaret S. Grosse (Mrs. Robert), 21 Terrace-Walk, Berkeley, CA 94707
Elizabeth Coulter Stephenson Scholarships (Collegiate): Sarah Jane S. Houston (Mrs. Harold), 3358 Ramblewood Place, Sarasota, FL 33577
Standards: Lee M. Rodekohr (Mrs. Larry), 901 Platte Avenue, Cheyenne, WY 82001
National Rush Committee Members: Marvona E. Tavlin (Mrs. Michael), 5424 Pawnee, Lincoln, NE 68506
Susan A. Skambis (Mrs. Christopher), 230 W. Lake Sue Ave., Winter Park, FL 32789

VI. Michigan

PCD: Isabel (Terri) Severy (Mrs. Raymond), 2127 Northampton Way, Lansing, MI 48912

PAD: Pamela M. Cronenwett (Mrs. William), 25720 W. Hills Dr., Dearborn Heights, MI 48125

VII. Indiana

PCD: Isabel (Terri) Severy (Mrs. Raymond), 2127 Northampton Way, Lansing, MI 48912

PAD: Gelaine L. Smock (Mrs. Steven), 9561 E. Southport Road, Indianapolis, IN 46259

VIII. Wisconsin

PCD: Sandi Betz (Miss), 3011 Agnes St., Eau Claire, WI 54701

PAD: Kay M. Wright (Mrs. Terry), 10477 Juan Calle, Des Moines, IA 50322

IX. Illinois

PCD: Gail E. McKee (Mrs. Don), 776 10th Street, Charleston, IL 61920

PAD: Elaine M. Whitesel (Mrs. John), 225 W. Center Ave., Lake Bluff, IL 60044

X. Iowa

PCD: Janet E. Havener (Mrs. Gary), 4343 N. Sheridan Ave., Loveland, CO 80537

PAD: Kay M. Wright (Mrs. Terry), 10477 Juan Calle, Des Moines, IA 50322

XI. Missouri

PCD: Cherine Heckman (Miss), Box 12, Gower, MO 64454

PAD: Eileen H. Doe (Mrs. Larry), 2 Locust, St. Louis, MO 63031

XII. Kansas, Nebraska and the collegiate chapters of Colorado

PCD: Janet E. Havener (Mrs. Gary), 4343 N. Sheridan Ave., Loveland, CO 80537

PAD: Carolyn M. Woodling (Mrs. Charles), 3112 Creekwood, Lawrence, KS 66044

XIII. Minnesota, North Dakota and South Dakota

PCD: Jeri S. Weigand (Mrs. Gregg), 549 19th Avenue, North, South St. Paul, MN 55075

PAD: Sylvia L. Kafkas (Mrs. John), 3505 Humboldt Ave., South, Minneapolis, MN 55408

XIV. Colorado, Wyoming, Utah, Arizona and New Mexico (ALUMNAE CHAPTERS ONLY)

PAD: Mary Jo H. Messlin (Mrs. Carl), 2998 S. Akron Court, Denver, CO 80231

XV. SOUTH Southern California, Southern Nevada and Hawaii

PCD: Karen M. Dessel (Mrs. Tom), 2015 Studebaker Road, Long Beach, CA 90815

PAD: Elizabeth B. Bragg (Mrs. Lawrence), 2972 Leopold Ave., Hacienda Heights, CA 91745

XV. CENTRAL Northern California and Northern Nevada

PCD: Janet K. Tener (Mrs. Ralph), 30 A Heather, San Francisco, CA 94114

PAD: Ruth R. Behnke (Mrs. Albert), 2241 Sacramento St., San Francisco, CA 94115

XV. NORTH Oregon, Washington, Montana, Idaho and Alaska

PAD: Helga K. Clark (Mrs. William), 4866 123rd Place S.E., Bellevue, WA 98006

XVI. Oklahoma

PCD: Donna S. Brooks (Mrs. Mike), 241 West Durham Street, Broken Arrow, OK 74102

PAD: Doris W. Sandoz (Mrs. N. O.), 624 SW 51st St., Oklahoma City, OK 73109

XVII. Texas and the collegiate chapters of New Mexico

PCD: Merry W. Adamcik (Mrs. Roy), 6222 Ariel, Houston, TX 77074

PAD: Annette F. Nall (Mrs. Garry), Box 136, WT Station, Canyon, TX 79015

XVIII. Louisiana and Mississippi

PCD: Marlene M. Allen (Mrs. Arthur), Rt. 1, Box 296, Natchitoches, LA 71457

PAD: Jean F. Person (Mrs. John D.), 4808 Craig Ave., Kenner, LA 70062

State Reference Chairmen

ALABAMA: Miss Madge Sorrell, Route 1, Pike Road, AL 36064 **ALASKA:** Mrs. Craig Valentine, 3838 W. Minster Way, Anchorage, AK 99504 **ARIZONA:** Miss Margaret Poe, 4720 West Rose Lane, Glendale, AZ 85301 **ARKANSAS:** Mrs. Jerry Evans, Rt. #2, Box 370, Russellville, AR 72801 **CALIFORNIA (N):** Mrs. Walter Burde, 24685 Camino del Monte, Carmel, CA 93923 **CALIFORNIA (S):** Mrs. Tom Savage, 5102 Woodwind Lane, Anaheim, CA 92807 **COLORADO:** Mrs. Lawrence Brase, Box 146, Calhan, CO 80808 **CONNECTICUT:** Mrs. Edward Gill, 53 High Point Rd., Westport, CT 06880 **DELAWARE:** Miss Candy Guyther, Leonard Hall, Junior Naval Academy, P.O. Box 357, Leonardtown, MD 23454 **DISTRICT OF COLUMBIA:** Miss Pat Dansbury, 1773 Lanier Place, NW, Apt 18, Washington, D.C. 20009 **FLORIDA:** Mrs. Charles E. Helton, 1601 Berkshire Ave., Winter Park, FL 32789 **GEORGIA:** Mrs. William Carroll, Street # 1518 1/2 Heath Street, Augusta, GA 30904 **HAWAII:** Mrs. Albert Solomon, Jr., Apt. 401, Fairway Manor, 2465 Ala Wai Boulevard, Honolulu, HI 96815 **IDAHO:** Mrs. W. L. Lundquist, 1004 S. Logan, Moscow, ID 83843 **ILLINOIS:** Miss Terry Mellen, RR 1, Coal City, IL 60416 **INDIANA:** Mrs. Roger L. Davies, 812 S. 5th St., Terre Haute, IN 47807 **IOWA:** Mrs. Tim Bornholtz, 3601 Lafayette, Sioux City, IA 51104 **KANSAS:** Mrs. Richard Furman, 4017 W. 68th Terrace, Prairie Village, KS 66208 **KENTUCKY:** Mrs. Stephen Plenge, Rt. 5, Cedar Grove Rd., Shepherdsville, KY 40165 **LOUISIANA:** Mrs. Jimmy Mathes, 12538 Sherbrook Dr., Baton Rouge, LA 70815 **MAINE:** Mrs. Nelson L. Smith, R.R. 2, Box 505A, Yarmouth, ME 04096 **MARYLAND:** Miss Pat Dansbury, 1773 Lanier Place, NW, Apt. 18, Washington, D.C. 20009 **MASSACHUSETTS:** Miss Mary Davis, 25 Bayberry Circle, Millis, MA 02054 **MICHIGAN:** Miss Kim Bunker, 5405 Wild Oak Lane, E. Lansing, MI 48823 **MINNESOTA:** Mrs. James Goke, 1022 N. 31st Avenue, St. Cloud, MN 56301 **MISSISSIPPI:** Mrs. James McLeod, Rt. 3, Box 433, Brandon, MS 39042 **MISSOURI:** Mrs. P. A. Smith, 5220 N. Cypress, Kansas City, MO 64119 **MONTANA:** Miss Jackley Meyers, 343 W. Lawrence, #4, Helena, MT 59601 **NEBRASKA:** Miss Carole Sorensen, 3027 W. Capital Ave., #26, Grand Island, NE 68801 **NEVADA:** Miss Lori Figgins, 647 Peppertree Circle, Henderson NV 89015 **NEW HAMPSHIRE:** Miss Karen Macriganis, Box 296, Laconia, NH 03246 **NEW JERSEY:** Miss Debra Bass, 357 Shea Dr., New Milford, NJ 07646 **NEW MEXICO:** Mrs. Donald Longenecker, 1417 W. 8th Street, Silver City, NM 88061 **NEW YORK:** Miss Mary Sims, 95 Ball Road-High Acres, Syracuse, NY 13215 **NORTH CAROLINA:** Mrs. Gary Leedham, 4414 Woods End Lane, Matthews, NC 28105 **NORTH DAKOTA:** Mrs. Owen Anderson, 816 N. 39th St., Grand Forks, ND 58201 **OHIO:** Mrs. Bruce Bailey, 541 Willard R., Aurora, OH 44202 **OKLAHOMA:** Mrs. C. B. Purdum, Rt. #1, Box 147, Dewey, OK 74029 **OREGON:** Mrs. W. B. Hamilton, 12601 S.E. Market, Portland, OR 97233 **PENNSYLVANIA:** Miss Debbie Fries, 904 N. 20th St., Apt. C, Allentown, PA 18104 **RHODE ISLAND:** Mrs. William Boynton, 63 Benefit Street, Warwick, RI 02886 **SOUTH CAROLINA:** Mrs. David Parsell, 2 Kingsbury Rd, Rt. 9, Greenville, SC 29609 **SOUTH DAKOTA:** Mrs. Richard Huffman, Jr., 1535 S. State St., Aberdeen, SD 57401 **TENNESSEE:** Mrs. Wallace Gary, 1347 Greendale Ave., Memphis, TN 38127 **TEXAS:** Mrs. Jerry Hawkins, 324 Pine St., Lake Jackson, TX 77566 **UTAH:** Mrs. William Christensen, 1669 Yalecrest Ave., Salt Lake City, UT 84105 **VERMONT:** Mrs. David Hoefer, 22 Hillwinds, Brattleboro, VT 05301 **VIRGINIA:** Mrs. Leonard Sipple, 1109 Five Points Rd., Virginia Beach, VA 23454 **WASHINGTON:** Mrs. Lon Soyk, 31033 38th Avenue, South, Auburn, WA 98002 **WEST VIRGINIA:** Mrs. Robert Semder, 140 Meadow Dr., Scott Depot, WV 25560 **WISCONSIN:** Mrs. Paul Janssen, 3416 N. 86th St., Milwaukee, WI 53222 **WYOMING:** Mrs. William Frerichs, 3301 Alta Vista Drive, Laramie, WY 82070

XIX. Tennessee

PCD: Clara S. Smith (Mrs. Dale), 605 Netherland Dr., Hermitage, TN 37076

PAD: Violet H. Anderson (Mrs. Charles A.), 102 Blue Hills Ct., Nashville, TN 37214

XX. Kentucky

PCD: Jennifer Plenge (Ms.), 904 Dana Marie Drive, Louisville, KY 40223

PAD: Carol S. Harper (Mrs. Spencer E., Jr.), 3309 Green Hill Lane, Louisville, KY 40207

XXI. North Carolina and South Carolina

PCD: Sondra G. Bass (Mrs. J. Albert, Jr.), 6425 Chapman Court, Raleigh, NC 27612

PAD: Patricia M. Tector (Mrs. John), 907 Winslow Court, Cary, NC 27511

XXII. Georgia

PCD: Patricia C. Rosser (Mrs. David), 1609 Indian Rks. Road, Clearwater, FL 33516

PAD: In care of National Vice President Alumnae Affairs

XXIII. Alabama

PCD: Sandra Nesbitt (Mrs. Milton), 241 Landmark Dr., Montgomery, AL 36117

PAD: Lassie Jo R. Simms (Mrs. Jack), 208 Willow Creek Rd., Auburn, AL 36830

XXIV. Florida

PCD: Patricia C. Rosser (Mrs. David), 1609 Indian Rks. Rd., Clearwater, FL 33516

PAD: Susan Mease (Miss), 2095 Sunset Point Road, #2405, Clearwater, FL 33515

XXV. Virginia, Maryland and Washington, D.C.

PCD: Mary E. McAuliffe (Miss), 11462 Orchard Lane, Reston, VA 22090

PAD: Gail L. Verley (Mrs. William), 3079 South Buchanan St., Apt. 2C, Arlington, VA 22206

XXVI. Arkansas

PCD: Jacqueline M. Gardner (Mrs. Richard, Jr.), P. O. Box 2034, Russellville, AR 72801

PAD: In care of National Vice President Alumnae Affairs

from the lampwriter

It is my pleasure to introduce to you recent additions to The LAMP staff... Sheila Hillis Nixon and Meryl Lin McKean. Now, a bit about each of them.

Sheila, a member of Epsilon Xi chapter at the University of Central Arkansas, graduated in 1976 with a degree in art, music and political science. She received a ΔZ Golden Circle Scholarship and was listed in *Who's Who Among Students in American Universities and Colleges*. While at UCA she was a member of University Singers, Bel Cantos Singers, Alpha Chi (scholastic) and Kappa Pi (art).

A member also of Royal Rooters, she was first runner-up to Miss UCA and was a participant in the Miss Arkansas pageant as Miss Morrilton. (This background furnished experience for a current activity... judging preliminaries of the Miss America pageant.)

Sheila married Tom Nixon, a high school beau who attended the United States Naval Academy and the University of Arkansas and who is now with Southwestern Bell. We have Ma Bell to thank for transferring the Nixons to Tulsa and to the attention of your Editor!

Sheila worked for a while as a commercial artist and then taught art in the public schools for three years before retiring last Winter to devote full time to daughter, Barrett, who was born in November. She continues to give private art lessons, does some layout work and hopes to have a private art exhibit this Fall. Sheila is a member of the First Baptist Church and belongs to the National Opera Society, working also with the Rotary Anns and the March of Dimes. A busy lady - and a Staff Artist we welcome!

Meryl Lin McKean comes to us from Central Missouri State University—EF, graduating magna cum laude in 1980 with a degree in broadcasting and film and a minor in journalism.

She served her chapter as reference chairman, Panhellenic council representative and Panhellenic rush chairman.

Meryl Lin was also awarded her chapter's highest grade point average award and she represented Delta Zeta as Homecoming princess and as run-

ner-up in CMSU's outstanding co-ed competition.

Following graduation, she worked as a general assignment news reporter and part-time anchor at WOC-TV in Davenport, IA where she was a member of the Quint Cities alumnae chapter.

Meryl Lin's voice and face are familiar to a lot of people in the Tulsa area now as she is currently a general assignment reporter for KTUL-TV, the ABC affiliate. Meryl Lin serves as publicity chairman for the Tulsa alumnae chapter. You may look for her feature stories.

Now isn't it nice that I found two neat people in my own backyard, or on the front door step... or at least no more than a couple of miles away!

An item received from the Knox-Lombard Fifty Year Club, Galesburg, IL crossed my desk and I know it will be of interest to many of you. For "lifetime achievements of personal worth and service to others," Evelyn Adams Costello of 2573 Bristol Terrace, St. Joseph, MI was named to the Scroll of Honor of her alma mater at the commencement meeting of the Fifty Year Club of Knox and Lombard Colleges in Galesburg on June 5.



Meryl Lin McKean

"The classes of Lombard and Knox Colleges, which graduated in Galesburg a half-century or more ago, annually elect to their special alumni 'Hall of Fame' roster a limited number of their members who exemplify 'the fine art of living and serving.' Mrs. Costello has two Illinois degrees - Bachelor of Arts from Lombard College in 1924 and Master of Arts, University of Illinois in 1925. She has been a high school teacher, a psychiatric social worker in Detroit criminal courts and a therapist in child guidance in Birmingham. She has been a national leader and president of Delta Zeta sorority."

Indeed, Evelyn Costello has been a national leader in Delta Zeta. Elected to National Council in 1942, she served as Extension Officer and NPC Delegate among other jobs, and was National President from 1954 to 1958. Our congratulations to her for this very deserving recognition.

We learned just this week that Penny Caldwell of our Theta Iota chapter at Western Carolina has been selected as Lambda Chi Alpha Fraternity's International Sweetheart of 1982. As a result, Penny was invited to attend the fraternity's 39th General Assembly (international convention) at the Opryland Hotel in Nashville. We'll plan a full story in the next issue of The LAMP!



Sheila Hillis Nixon

OFFICIAL DELTA ZETA INSIGNIA AVAILABLE ONLY FROM NATIONAL HEADQUARTERS

Official badges

1. Tiffany-set zircon 25.50
2. Flush-set zircon 25.50
3. Pledge pin 2.50

Guard pins

4. Plain, 1 letter 9.50
5. Plain, 2 letters 10.50
6. Engraved, 1 letter 11.50
7. Engraved, 2 letters 12.50
8. Crown-set pearls, 1 letter 26.50
9. Crown-set pearls, 2 letters 39.50
10. Close-set pearls, 1 letter 24.50
11. Close-set pearls, 2 letters 35.50
12. Crown-set opals, 1 letter 35.00
13. Crown-set opals, 2 letters 56.50

Dangles. For college chapter officers.

Each is available in 10K gold or gold klad.
 10K gold dangle 11.00
 Gold klad dangle 6.50

9. President
10. Vice president-rush
11. Vice president-pledge training
12. Treasurer
13. Corresponding secretary
14. Guard
15. Recording secretary
16. LAMP editor
17. Philanthropy chairman
18. Standards chairman
19. Historian
20. Social chairman

21. Scholarship chairman
22. Song chairman
23. Activities chairman
24. Parliamentarian
25. Big sister

Alumnae dangles

26. Alumnae chapter president
 Gold klad, 1 pearl 8.50
27. CCD, 10K gold 22.50
28. PCD, 10K gold 24.50
29. National committee
 chairman, 10K gold 24.50
30. PAD, 10K gold 24.50

All jewelry orders and inquiries about jewelry should be directed to Delta Zeta National Headquarters, 21 E. State St., Columbus, OH 43215. Prices include all taxes, postage and handling. An order processing charge of \$1 must be added to orders of less than \$10. Please allow three to four weeks for delivery.

Official approval is necessary for all badges, and Golden Rose pins. When ordering badges, use the official order form and forward to National Headquarters.



POSTMASTER: Send 3579 immediately to Delta Zeta Sorority, Suite 600, 21 E. State St., Columbus, OH 43215

Delta Zeta Sorority
 21 E. State St. Suite 600
 Columbus, OH 43215

Address Correction Requested

Non-Profit Org.
 U. S. Postage
PAID
 Permit No. 131
 Tulsa, OK