

the lamp of
**DELTA
ZETA**
fall 1979





Convention Committee shown with the National President. Left to right are Janis Rose, Jean Southworth, Jane Nelson, Debbie Raziano, National President Norma Andrisek, Past National President and Convention Chairman, Betty Agler, Linda Hobbs and Cathy Lieurance.



Past National President Betty Agler and daughter Linda Hobbs



National President Norma Andrisek and daughter Susie



Past National President Grace Lundy and National Field Consultant Debbie Raziano

FOUNDERS OF THE SORORITY



Miami University, Oxford, Ohio, 1902

Alfa Lloyd Hayes, 1880-1962
Mary Collins Galbraith, 1879-1963
Anna Keen Davis, 1884-1949

Julia Bishop Coleman, 1881-1959
Mabelle Minton Hageman, 1880-1929
Anne Simmons Friedline, 1879-1932

Editor

Florence Hood Miner

Staff

Grace Mason Lundy
Norma Sweptston McIntyre

The Lamp

(USPS 585-640)

The LAMP of Delta Zeta, official magazine of the sorority, is published quarterly by the Delta Zeta Sorority, 21 East State Street Columbus, Ohio, 43215. Second class postage paid at Columbus, Ohio.

About the Cover

National Council installed at June convention: Front row: Patricia Dunn, Vice President Collegiate Affairs, Eleanor Fariss, Secretary, Norma Andrisek, President, Carolyn Gullatt, Vice President Membership, Mary Margaret Fore, Vice President Alumnae Affairs. Back row: Directors Anne Marie Gavin, Dwayla Porter, Dianne Guild, Deborah Bruce, Sarah Jane Houston.

Send change of address and all correspondence of an editorial or business nature to Delta Zeta National Headquarters, 21 East State Street, Columbus, Ohio 43215.

Contents

- 3 State of the Sorority
- 5 Delta Zeta in the Sunshine in Miami
- 10 1979 GML Award Winners
- 12 Nancy Winslow Chosen for FHM Award
- 12 Convention Awards
- 16 Fielders to Travel ΔZ Country
- 17 Founders Scholarships
- 17 Golden Circle Scholarships
- 18 Miami Honors Lucile Cooks
- 19 Lampost
- 20 Careers in Health Care
- 23 Ann Holloway—Artist Extraordinaire
- 24 Helen Lodge: Leader in Dietetics
- 26 Alumnae Profiles
- 28 Flame Eternal
- 30 Directory
- 32 Letters

Send all Gallaudet College contributions to:
Mrs. Frances Merrill
Gallaudet College, Kendall Green
Washington, DC 20002

Send all Founders Memorial Fund contributions to:
Mrs. William Barth, Chairman
1662 Villa South Drive
West Carrollton, OH 45449

POSTMASTER: Please send notice of undeliverable copies to
Delta Zeta, 21 East State Street, Columbus, Ohio 43215

The Original Articles of Incorporation
(Alpha Chapter Archives)
THESE ARTICLES OF INCORPORATION
— of —

The Sorority

Witnesseth, That we, the undersigned, All of whom are citizens of the State of Ohio, desiring to form a corporation, not for profit, under the general corporation laws of said State, do hereby certify:

FIRST. The name of said corporation shall be Delta Zeta Sorority.

SECOND. Said corporation shall be located, and its principal business transacted at Miami University, Oxford in Butler County, Ohio.

THIRD. The purpose for which said corporation is formed is as follows:

To build up the character and cultivate the truest and deepest friendship among its members. To stimulate one another in the pursuit of knowledge and the attainment of a high standard of morality; to inculcate elevated sentiments and noble principles and to afford each other every possible assistance and to incite all to the attainment of a memorable fame. Grateful to God for His bountiful gifts, rich blessings and tender mercies — do hereby associate ourselves together, under the laws of Ohio—for the incorporation of secret societies.

In Witness Whereof, We have hereunto set our hands, this twenty-fourth day of October, A.D. 1902.

ALFA LLOYD

MARY COLLINS

ANNA LOUISE KEEN

JULIA LAWRENCE BISHOP

MABELLE M. MINTON

ANNA DIAL SIMMONS

Founders Day, 1979

On this day we remember our Founders — the generosity of their spirit, the beauty of their service, and the rewards of their thoughtful action. Let us honor them by pledging again our loyalty, devotion and ability to Delta Zeta.

I hereby proclaim this October 24 to be observed as Founders Day by our entire membership and request that our colors of rose and green be worn this day in evidence of our dedication and faith in Delta Zeta.

Given under my hand and seal this first day of September in the year of our Lord, one thousand nine hundred and seventy-nine, and of the sorority, the seventy-seventh.

Norma Andrusik

National President

State of the Sorority

*Convention address by
National President Norma Andrisek*



In reporting on the state of the sorority, I want to bring you a general overview of Delta Zeta today. Delta Zeta changes and yet it remains the same. That is as it should be, for as we preserve our heritage we also adapt to the new. During this biennium we have met some challenges and taken some steps forward. I would like to tell you about what we've done, what we would like to have done, and what we need to do.

This report will not dwell on either the accomplishments on one hand or the problems on the other, but, because we all share in the sorority's future and it is vital that we all know what is happening in our Delta Zeta world, this report will deal with important issues and concerns.

Delta Zeta is an organization with a proud heritage, strong principles and great vitality. She needs to be supported by our loving care, protected from the assaults felt by fraternal groups, and nourished by our attention and action on her behalf.

To be specific, I would identify some special areas that make up the whole of Delta Zeta and talk about these.

Delta Zeta is, first of all, its members so let us address the matter of membership. This includes rush, pledge training and initiation on the collegiate level, and the participation in Delta Zeta by our alumnae. Delta Zeta membership has remained fairly constant over the past eight years although there has been a slight drop in the alumnae chapter rolls this past year.

In the college chapters much attention has been given by the National Council, the National Office and Province Officers to rush and pledge training. Many of our chapters have responded and have built excellent programs. We recognize that much of the responsibility for top collegiate membership rests with the local chapter. While nationally we must continue to emphasize the importance of the rush program, experience shows that it is only effective when the collegiate chapters makes it their responsibility. There is a need to implement more aggressive rush programs that will build numbers with quality individuals. Only when there is a maximum effort on the local level will we begin to see the kind of results that we want.

A particularly troublesome area in membership has been the number of pledges lost each year. While this is not a problem peculiar to Delta Zeta and is shared by the other Greek groups, it nevertheless is one of great concern. If Delta Zeta could bring to initiation all those

who are pledged, our membership figures would soar and the attendant problems of lost pledges would disappear. During this biennium great emphasis has been placed on the pledge program on the national level. A new pledge book has been published and a wealth of material distributed to our chapters. We hope that this material will be put to better use and greater attention given on the part of our local chapters to pledge education so that the time and effort spent in rush can be rewarded by well informed, enthusiastic, initiated members.

Two other aspects of membership are also important to note. One is the continual problem of hazing. While any hazing is a violation of national policy, this destructive activity still continues. The barrage of negative publicity that hazing has received from the media this year should be enough to wipe it out completely and yet it has not. There is simply no place in Delta Zeta for hazing and none can be tolerated.

One thing that we would like to see happen in our collegiate chapters is greater emphasis on Delta Zeta as a lifetime venture. Too often sorority membership is presented as a four-year experience leaving our members with an "It's all over feeling" upon graduation. Education about the continued value of Delta Zeta will help the sorority immeasurably by making available strong, dedicated responsive alumnae. All of us need to work on this area and on the national level considerable effort should be spent in developing this part of sorority education.

Delta Zeta membership has been affected greatly by our extension program, which we believe to be one of the finest in the fraternity world. During this biennium six chapters have been added. In selecting the sites for expansion much attention is given to the health and stability of the college itself to make sure that Delta Zeta is establishing a chapter on a campus whose enrollment will remain stable. Some emphasis during the past two years has been in re-establishing old chapters and three such installations have taken place. Delta Zeta has always participated in an aggressive extension program. Delta Zeta's strength lies in building chapters where we can lead the way and where we can be in a good competitive position. We will continue to promote extension, always keeping in mind the importance of establishing chapters only when we have sufficient numbers, supportive alumnae and good advisory personnel available.

Much attention has been given during this biennium by the Council to the matter of standards. Programs have been developed to reflect the combined concerns of the membership. Many voices have been heard speaking out in behalf of the need for a more gracious society. That need has been addressed through the standards program. These programs have been developed in an effort to provide the most acceptable climate in which our chapters may function. Without exception all chapters are expected to respect those principles and ideals developed for Delta Zeta's benefit and to abide by them.

State of the Sorority— continued

There are three outside conditions that are having a tremendous effect on the sorority, as they are on most segments of society. It is important that we realize what they are and be prepared for their effect on Delta Zeta.

The first of these is the declining enrollment in our colleges and universities. U.S. NEWS reports that between 1979 and 1992, the number of 18 year olds in the United States will fall from 4.3 million to 3.2 million, a 26 percent decline in the age group that comprises the bulk of entering college freshmen. In the school system of which my family is a part, the number of children entering kindergarten is about one half of the number of those in this year's graduating class. The situation will be with us for a considerable period of time, almost to the end of this century when it is expected that higher education will grow again.

Delta Zeta has a number of chapters at small, private colleges and these schools will be particularly hard hit. Some of these institutions have high costs and limited endowments. The effects of inflation have drastically increased their operating expenses, forcing tremendous raises in tuition and other student fees. Because of these high costs, more and more students will choose state supported schools or community colleges. Some of these small colleges will simply have to close their doors.

Since the number of students available will most certainly be less, there will be increased competition to attract those students available to sorority membership. It is therefore of great importance to both Delta Zeta's immediate and long-range future that we build and strengthen our chapters now. As the enrollment decline continues it will be only those that are strong in number and programs who will survive. Weak chapters will be lost. We can make sure that Delta Zeta chapters are not among those by aggressive rush programs now. It is a job Delta Zeta can do if we are prepared.

The second of the conditions affecting Delta Zeta concerns personnel. With more and more women working and returning to the job market, the competent, able volunteer becomes increasingly scarce. Delta Zeta has long relied on those who willingly give their service. The demands on volunteers are great. The situation on the campus is not usually an easy one, and it is difficult to advise today. Many who are able to serve in this way are simply not willing to take on the anxieties and frustrations that sometime accompany such efforts. The time available to the volunteer is precious and she can make a choice as to its use. That choice must be a rewarding one in terms of a sense of accomplishment, pride and acceptance or she will turn her attention elsewhere. It is up to our college chapters to work at providing the kind of climate that is accepting of those Delta Zetas who serve voluntarily. Likewise, it is up to our alumnae chapters to

develop programs that make the volunteer support a productive and worthwhile activity. Only in this way will Delta Zeta be able to continue to rely on her able volunteer members.

The third condition to have an effect on us at this time is inflation. Its ravages affect every segment of our society. For Delta Zeta, the double digit inflation takes its toll too. Our heat and light bills have gone up, like yours. Our fielders and other personnel must rely on the airlines to provide the "on the spot" assistance necessary for our chapters, and yet airline fares have increased dramatically. Paper products, repair costs, gasoline, postage, telephone rates have all risen rapidly. The salaries of our personnel, already below the accepted and fair standard, will be even further out of line as costs increase. This is a problem that will not go away.

Only through continued chapter assistance, an adequately staffed office and the ability to communicate to all of our members, can Delta Zeta deal effectively with the challenges that we already have and those that are sure to come.

The budget information prepared for the convention deals with this problem and some solutions. It will be up to the convention body to determine what steps and what effort each of us will make toward assuring Delta Zeta's future strength financially.**

We know from experience that good leaders make the difference in any chapter — alumnae or collegiate. It is a key to top performance.

It is my opinion that one of Delta Zeta's needs is in the area of leadership training. Only with effective leadership by knowledgeable, informed officers, will Delta Zeta's progress continue. It is the one thing that we can do now to insure the future. Many other organizations have recognized the need for this kind of training and have committed themselves to aggressive leadership programs.

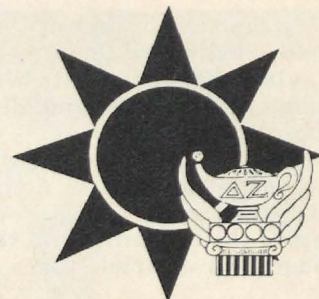
In Delta Zeta, such training is needed for our college chapter officers, especially in the non-convention year. It is needed for province collegiate and province alumnae directors on a regular basis. It would benefit special groups and committees set up to deal with specific problem areas. Effective, Delta Zeta oriented leadership schools would be a positive, productive way to provide chapter assistance. I have asked that a specified amount be included in the budget for this purpose. It will be up to this convention whether such a program is possible and I am sure that you will consider it carefully.***

Delta Zeta has a proud record in the fraternity-sorority world. It has risen dramatically in strength to be among the leaders. Let us be proud of what we've done, but let us do more. The theme of this convention is "DEEDS FOR TODAY, DREAMS FOR TOMORROW." Let us realize that the deeds we do today will make the dreams of tomorrow possible.

*** Delta Zeta delegates to the National Convention approved a budget that addressed the needs as presented.*

**** Delta Zeta delegates approved a budget providing the funds for use in leadership training.*

Miami Convention: Delta Zeta in the Sunshine



Delta Zeta in the Sunshine was the theme of this convention's opening banquet. And sunshine indeed it was at the 34th National Convention of Delta Zeta sorority from the hospitality of the Florida hostesses, to the inspiring as well as fun filled days and nights, to the sunshine abundant in the delegates and visitors.

Everyone enjoyed this Delta Zeta and Miami sunshine June 17 to 22 in the spacious beauty of the Doral Country Club. Delegates and visitors were greeted on arrival by the Miami hospitality group, with the Convention Committee of Linda Hobbs, Cathy Lieurance, Jane Nelson, Debbie Raziano, Janis Rose and Jean Southworth ready to untangle any knots, and with Convention Chairman Betty Agler overseeing the scene.

Opening Banquet

Sunday evening's formal banquet had National President Norma Andrisek presiding. Palm leaf fans covered with flowers and programs with the Delta Zeta Lamp in the sun decorated the tables.

Lucile Cooks gave the opening invocation and Delta Zetas and guests were welcomed by Convention Chairman Betty Agler. The Florida province directors, Elsie Bailey and Patricia Rosser greeted everyone for their Florida sisters.

Norma Andrisek introduced the members of National Council, Carolyn Gullatt, Dianne Guild, Marilou Gary, Eleanor Fariss, Betty Fenton, Patricia Dunn, Anne Marie Gavin, Mary Lou Barth, Amaryllis Barnes and Betty Agler. Florence Harvey, National Treasurer and Past National President, was not in attendance because of serious illness in the family.

Introductions were also made of Former National Officers Grace Lundy, Lucile Cooks, Sandra Horton, Gwen McKeeman, Constance Wilt, and Florence Miner, Dr. Richard Andrisek and daughter Susan, and Mr. and Mrs. Charles McCabe.

Guests speaker of the evening was Barry Segal, whose rousing talk on "The Modern Fraternity" challenged his listeners to progress with the times.

Carol Konet, Baldwin Wallace — ΓΑ and Linda Johnson, Alabama — ΑΓ, provided a musical interlude.

Past National President Grace Mason Lundy presented the Alice Huenefeld CCD bracelet to Bernice Kellogg, a member of Georgia State — ΔΔ and adviser to Iota Nu chapter at Georgia Southern. The six Founders Memorial Scholarships were announced by Mary Lou Barth, with Sharon Jo Welter present to receive hers in person.

Norma Andrisek described the recipients of the twelve alumnae Achoth awards, four of whom were present, Linda Hobbs, Grace Lundy, Ann Morrow and Elizabeth Schill.

A surprise presentation by Caryol Fitzpatrick from the Indiana province was the gift to Delta Zeta of a portrait of Grace Lundy for National Headquarters.

After the recessional, a formal reception for the National Council was held in the spacious lobby lounge.

Business Sessions

On Monday morning, President Norma Andrisek called the 34th convention to official order, and delegates from the new college and alumnae chapters were seated. The collegiate chapters were Gamma Lambda at San Jose State College, Lambda Gamma at Jacksonville State University, Lambda Delta at University of Virginia, Xi Epsilon at Louisiana Tech, Xi Theta at University of North Carolina at Wilmington, and Glassboro State College, Xi Kappa.



Bernice Kellogg received the Alice Huenefeld bracelet award from Linda Hobbs, who was given a plaque after passing the bracelet on.

Newly chartered alumnae chapters were Carbondale, Illinois, Casco Bay, Maine, Chester County, Pennsylvania, Fairmont, West Virginia, Greater Huntington, West Virginia, Midland, Texas, and Murfreesboro, Tennessee.

After the meditation by Betty Fenton, the giving of the pledge of allegiance and the Delta Zeta creed which opened every business session, Norma Andrisek addressed the convention on the State of the Sorority (see page 3 for complete text)



Four of the Achoth Award Winners were present: Grace Lundy, Linda Hobbs, Ann Morrow and Elizabeth Schill.



Elvena Rogers, president of Charlotte Alumnae, and Robyn Faircloth, Kappa Phi president, were presented the Gertrude Fariss Award for alumnae-collegiate cooperation by Marilou Gary.

Introductions of the Convention Committees, Field Consultant, and new Field Representatives for the coming year were made. The morning session ended with the report of the Nominating committee by Chairman Grace Lundy.

The convention picture (see back cover) was taken on the Flamingo Lawn of the hotel in extremely bright sunshine.

Afternoons during convention were filled with workshops with the intriguing titles of Sunshine Follows You, We Sing in the Sunshine, You are my Sunshine, and Sunshine and Shadows. These covered rush and rush conversation, pledge training, college programs, and collegiate education. The alumnae, college chapter directors and province directors met for their own information workshops.

Special convention committees were headed by Terry Severy, Courtesy Resolutions; Betty Agler, Credentials; Sarah Jane Houston, Election and Tellers; Sandi Betz, Guards; Lillian Truesdale, Pages; Barbara Turner, Publicity; Jean Southworth, Registration; Dee Porter, Resolutions, and Carol Konet, Singing.

Between sessions, Lisa Mastrangelo displayed items new and old for sale in the Rose Shop. Lisa is a past president of Ohio State University-Θ Chapter and a former winner of the Florence Hood Miner Award. Chuck McCabe who handles all of our Delta Zeta jewelry was kept equally busy with his display and sale of Delta Zeta jewelry items.

Awards banquet

Carolyn Gullatt chose the symbols of Delta Zeta as her theme for the Awards banquet on Monday evening. Pink roses and candlelight illuminated the tables, and the theme was carried out in the rose and green programs.

Grace Lundy gave the invocation, and the many silver awards for chapter excellence in specific collegiate and alumnae chapter areas were presented by Marilou Gary, Dianne Guild, Carolyn Gullatt, Patricia Beatty, Judy Ridgway, Amy Glasgow and Lynnda Hoefler. (see complete Awards list in this issue.)

Nancy Winslow of Beta Xi chapter, Auburn, was honored with the Florence Hood Miner award presented by Florence Miner.

Caribbean Festival

Delegates and visitors had been alerted with their registration receipt to a tee shirt exchange. "Wear one and bring one to exchange" were the instructions. The unbelievable array of tee shirt colors and messages displayed and modelled poolside on Tuesday evening was a prelude to the evening's fun.

After a Caribbean Festival buffet supper, the Convention Committee masterminded an exciting Parade of Stars. Provinces appeared in song, but the PCDs were the biggest hit with their Christmas in June skit, complete with rose and green Santa Claus caps. Before the evening was over, EVERYONE was a star with various categories called to the stage and receiving Delta Zeta visors as prizes.

To end the fun an auction was held, profits to go to the Founders Memorial Fund. The decoration for auction was a large inflatable turtle raft. Enthusiasm and bidding ran very high and the final "going, going, gone" announced that the winner of the raft was Province XV, the highest bidder. The exuberant and absolutely indefatigable Convention Committee was to be congratulated for a truly fun filled evening where everyone performed and everyone laughed continuously.

Pups and Hounds

Wednesday was the traditional Pups and Hounds with Florence Miner presiding, assisted by Sandra Horton and Barbara Holland. Trainer hostesses directed pups and old hounds to their respective tables. Displayed on the red table cloths were programs with glorified dog houses in blue, and favors of ΔZ dog collars in various hues.

The shaggy eared judges for the Parade of Champions were Nifty Norma, Gorgeous Gracie, Beauteous Betty, and Luscious Lucile.

Singing a lament for the pups were Susan Andrisek, Susan Brown, Mary Flanagan, Kim Jacobson, and Mary Jean Noble in green check ΔZ pinafores.

Special blue ribbons were awarded to those old hounds who had attended seven or more conventions, with the Golden Goodie Award going to Grace Lundy for having attended 26 conventions.

Initiation banquet

Patricia Dunn presided at the Initiation banquet Wednesday evening, and the convention initiate Loree McCabe was introduced.

Caryatides statuettes were given by Marilou Gary to Kappa Psi-Shippensburg, Epsilon-Indiana, Beta Tau-Nebraska Wesleyan, Zeta Rho-William Jewell, Kappa Alpha-Nicholls, and Kappa Phi-North Carolina at Charlotte.

Grace Lundy announced this year's winners of the GML award named in her honor: Leslie Pearson, Marion Groves, Deborah Kirby with Shirley Weichmann and Robin Dickey there to receive them personally.

On behalf of Debbie Bull McRae, whose mother Joyce Edgar Bull, BK- Iowa State, was the first recipient of the GML award, Sandra Horton gave the original gold and diamond bracelet to Norma and Grace to be placed in the Delta Zeta archives.

Immediately following the banquet, all initiated members dressed in white, participated in the impressive initiation service. College Chapter Presidents were the officers in the ceremony. Those participating were: Caron Wilcox, Univ. of Alabama; DeAnn Turpen, Univ. of Nevada, Las Vegas; Karen McBride, Indiana Univ.; Robyn Faircloth, Univ. of N. Carolina-Charlotte; Allison Newell, Stephen F. Austin Univ.; Cathy McKendree, Georgia Southern Univ.; Susan Szabo, Ohio State Univ.; Janet Cain, Louisiana Tech Univ. The Initiation Ritual was directed by National Ritual Chairman Linda Hobbs with music provided by Past National President Grace Mason Lundy.



Convention initiate Loree McCabe with proud husband Chuck McCabe.



Amaryllis Barnes presented the Schmitt Scholarship plaque to Phyllis Ross, CCD for Zeta Rho chapter at William Jewell.



Golden Rose members were honored at a luncheon at which each was presented a long-stemmed rose.

Golden Rose Luncheon

Thursday's luncheon honored those Golden Rose members in attendance. Planned by Florence Harvey, Betty Agler presided in her absence. After the ceremony Norma Andrisek presented certificates to the new Golden Roses, Ruth Dick Meierdierks, Lucille Smiley Hardin, Wilma Snider Swisher, Dorothy Callender Teegarden, Harriet Stone Calkins, and Ruth McDonald Whitson.

Krista Wilt, a pledge of Theta chapter, whose mother Connie Teaford Wilt and grandmother Madonna Baker Teaford were also members of the Ohio State chapter, made the presentation of roses to those Golden Rose ladies present.

Virginia Conciatori concluded the program with a visual presentation of the many parts of the rose, "From Green to Rose, and then Gold."

Installation Banquet

In the flickering of hundreds of candles, the members of National Council were escorted to the Speaker's Table at the end of a rainbow. Indeed "Delta Zeta is Something Special" as the programs around the colors of the rainbow proclaimed. Toastmistress Betty Agler chose one of her favorite songs to be sung by the North and South Carolina province members, "At the End of the Rainbow."

Everywhere the many colors were reflected in the individual candles at each place. Favors for the convention were crested gold stick pins.

The invocation was given by Amaryllis Barnes. The major chapter awards were indeed the pot of gold at the end of the rainbow for the achieving chapters.

The Margaret Huenefeld Pease silver urn for outstanding alumnae achievement was presented by Eleanor Fariss to the Findlay Ohio chapter.

Dianne Guild announced the Gold Coast Area, Florida, chapter as the winner of the Myrtle Graeter Hinkly silver urn for an outstanding large alumnae chapter.

The silver punch bowl honoring Gertrude Houk Fariss was given jointly to Kappa Phi chapter at the University of North Carolina and the Charlotte Alumnae. Marilou Gary described the cooperation of these two chapters.

Theta Eta chapter at Creighton University won the See Loving Cup for chapter improvement, presented by Carolyn Gullatt.

The Genevieve Schmitt Scholarship plaque went to Zeta Rho chapter at William Jewell for the highest overall chapter average.

Betty Agler presented the bronze Betty Heusch Agler award plaque named in her honor to Alpha Gamma chapter at the University of Alabama.

Recalling the Founders, Grace Lundy presented the six silver candlesticks engraved with the names of the Founders to Zeta Rho chapter at William Jewell for collegiate chapter achievement in the last biennium.

For sustained excellence over the last six years, Norma Andrisek presented the National Council award to Beta Tau chapter at Nebraska Wesleyan.

Past National President Betty Heusch Agler conducted the moving installation service for the newly elected National Council members. Repeating their vows were: Norma Minch Andrisek, President; Carolyn Barnes Gullatt, Vice President Membership; Mary Margaret Calhoun Fore, Vice President Alumnae Affairs; Patricia Scannell Dunn, Vice President Collegiate Affairs; Eleanor Strickler Fariss, Secretary; Deborah McWhirter Bruce, Anne Marie Jones Gavin, Dianne Fellows Guild, Sarah Jane Shank Houston, Dwayla Dean Finch Porter, Directors.

Norma closed with the hope for Delta Zeta and those assembled "Deeds for today — Dreams for tomorrow."



Carolyn Gullatt with the winner of the See Loving Cup, Tricia Trausch, president of Theta Eta chapter at Creighton University.



Betty Agler with the winner of the award named in her honor, Caron Wilcox, president of Alpha Gamma chapter at the University of Alabama.



The Council silver tray for sustained excellence was presented by Norma Andrisek to Vicki Laue, president of Beta Tau at Nebraska Wesleyan.



Pictured with Grace Lundy and the convention initiate Loree McCabe are the collegiate delegates who conducted the ceremony: Allison Newell, Stephen F. Austin, Susie Szabo, Ohio State, Cathy McKendree, Georgia Southern, Janet Cain, Louisiana Tech, Dee Ann Turpen, Nevada, Karen McBride, Indiana, Robyn Faircloth, North Carolina, Caron Wilcox, Alabama, and Ritual Chairman Linda Hobbs. Loree will be an alumna of Theta chapter at Ohio State.



Grace Lundy gathered the GML's for a picture. Front row: Marvona Tavlin, Linda Hoeffler, Shirley Ann Weichman, Robin Dickey, Patty DeWitt, Linda Hobbs. Back row: Linda Heiser, Merry Adamcik, Debbie Bruce, Anne Marie Gavin, Cathy Lieurance, Karen Manuel, Debbie Raziano.

1979 GML Award Winners

by Cathy Lieurance, GML '76

The GML Award was established to honor Grace Mason Lundy's many years of loyal service as a National President and in many other capacities. This award, which is presented annually, is given for loyalty, devotion and service of a senior college chapter member.

This year we congratulate Robin Lea Dickey, Marian Patricia Groves, Deborah Lea Kirby, Leslie Buchanan Pearson and Shirley Ann Weichmann. These young women certainly have reason to feel proud of their accomplishments and of the honor as a GML girl!

Robin Lea Dickey

Western Carolina U., ΘΙ

Robin served as Pledge Class Treasurer and was honored also to receive the "Best Scholarship Award". As a new initiate, she was appointed Standards Chairman and later elected as Chapter President. A great experience for Robin was to at-

tend the 1977 Diamond Jubilee National Convention and to be able to personally meet Grace Mason Lundy. She also attended our most recent National Convention to receive her GML Award in person. Robin also served her chapter as Social Chairman, Guard and Ritual Chairman. On campus she was Kappa Alpha Fraternity Sweetheart and a Homecoming Queen nominee. She was on the Dean's List all four years, nominated for "Who's Who Among American Colleges and Universities" and selected as a member of the Cap and Gown Honor Society. After graduation Robin moved to Dallas, Texas, where she will be married. We know she will become an active alumna there.

Marian Patricia Groves

Glenville State College, ΘΞ

Marian also began as Pledge Class Treasurer and then went on to become Chapter Treasurer and Presi-

dent. She was a Panhellenic Representative for three years, Assistant Editor and Advertising Manager for the yearbook, House Manager for the drama committee and served on the Faculty Administrative Organization Committee. More honors include being chosen as cheerleader, Miss Glenville State College and Alpine Festival Queen. Marian also received the John C. Shaw Scholarship for three years and, with a degree in Business Administration, she hopes to be near a Delta Zeta chapter so she can share her knowledge!

Deborah Lea Kirby

U. of Central Arkansas, ΕΞ

Debi was Vice President of her pledge class and then appointed Philanthropy Chairman as a new initiate. She was also Vice President, Membership and Chapter President. Active on campus, too, Debi was a member of the Royal Rooters, an honorary service organization; cho-

sen for Gamma Beta Phi, scholastic honorary; Phi Alpha Theta, History honorary; Alpha Chi honorary; "Who's Who Among American Colleges and Universities" and "America's Outstanding Names and Faces", which is a biographical collection of the attainments of outstanding college students. With a desire to teach English in Conway, Arkansas, Debi will be close to her collegiate chapter and able to be active as an alumna too.

Leslie Buchanan Pearson
University of Virginia, ΔΔ

Leslie had the opportunity to be a part of the organization of her chapter from its beginning. She pledged Zeta Delta local which then became a National chapter of Delta Zeta. As an Inter Sorority Representative, she was directly involved in working with the university to meet all requirements to affiliate with Delta Zeta National as well as making sure her local chapter met all requirements to become Delta Zeta. Leslie has served her chapter as Assistant Rush Chairman and also as President. Within her chapter she received the "Outstanding Sister Award" and on campus, she was involved with intramurals and was a school director for the tutoring program advising other university students who tutored high school students. Leslie plans to teach mathematics, and she will keep active as an alumna and a member of her chapter's house corporation.

Shirley Ann Weichman

U. of Wisconsin - Whitewater, EK

Shirley is another GML who was visibly active as a pledge by serving as House Project Chairman for her pledge class. Though Shirley left school for some time to travel and work in Europe, upon her return to school she fit right back into the chapter serving as Guard, Philanthropy Chairman, Junior and Senior Panhellenic Representative, Recording Secretary, Corresponding Secretary, Vice President, Pledge Training and President! Somehow able to find time for other activities, too, Shirley was a member of the Association of Women Students, served



Robin Dickey
Western Carolina



Deborah Kirby
Central Arkansas



Marian Groves
Glenville



Shirley Weichman
Wisconsin-Whitewater

as Vice President and President of Panhellenic, taught Sunday School and was a student volunteer for the University Center Board. She also received first and second honors, was nominated for "Who's Who Among American Colleges and Universities" and chosen "Miss Province VIII". Shirley has already been asked to serve on her chapter's house corporation so her involvement continues on.

Obviously, these new GML girls were very active in every phase of college life yet always kept Delta Zeta #1 and never lost sight of their educational goals, either. All are fine examples of Delta Zeta and will continue to keep Delta Zeta an important part of their life.



Leslie Pearson,
Virginia

Convention Awards



Nancy Winslow Chosen for FHM Award

Nancy Winslow, president of Beta Xi chapter at Auburn University in Alabama was chosen the outstanding junior collegian to win the Florence Hood Miner Award.

The DeKalb County Auburn Award Club selected her as one of the top three women at Auburn University, and she was included in the top list for Miss Auburn and Homecoming Queen. Executive Vice President of Angel Flight, she was a Tigerette and one of the official hostesses for the Auburn football team. A member of Omicron Delta Kappa, national leadership honorary, Alpha Epsilon Rho, speech honorary, she was secretary of the Public Relations Club for two years.

She was selected to represent the junior class to work with Auburn civic leaders and student body to form a Founders Day. Active in Student Government Association, she served as a counselor for incoming freshmen.

Nancy was an Atlanta Falconette and a WSB Great Young American. She has been on the Deans List six times for high scholarship. An enthusiastic Rush Chairman for her chapter last year, Beta Xi pledged top quota, both in numbers and quality, and she conducted a Rush workshop at Province Day.

This summer she worked in the public relations department of the University, and hopes to make that field her career.

COUNCIL AWARD (silver tray)
Nebraska Wesleyan University,
Beta Tau

FOUNDERS AWARD (silver candle holders)

William Jewell College, Zeta Rho

BETTY HEUSCH AGLER AWARD
(traveling plaque with raised crest)

University of Alabama, Alpha Gamma

SEE LOVING CUP (traveling silver loving cup)

Creighton University, Theta Eta

GERTRUDE HOUK FARISS AWARD (traveling punch bowl with ladle and tray)

University of North Carolina, Charlotte, Kappa Phi, and Charlotte Alumnae Chapter

MYRTLE GRAETER HINKLY COUNCIL AWARD (traveling silver coffee urn)

Gold Coast Alumnae Chapter

MARGARET HUENEFELD PEASE COUNCIL AWARD
(traveling silver coffee urn)

Findlay Alumnae Chapter

GENEVIEVE SCHMITT MEMORIAL PLAQUE (traveling)

William Jewell College, Zeta Rho

GRACE MASON LUNDY AWARDS
(gold symbol charm)

Leslie Buchanan Pearson, Lambda Delta

Marion Patricia Groves, Theta Xi
Shirley Ann Weichmann, Epsilon Kappa

Deborah Lee Kirby, Epsilon Xi

Robin Lea Dickey, Theta Iota

FLORENCE HOOD MINER AWARD

Beta Xi, Nancy Ann Winslow

ALICE HUENEFELD CCD AWARD (gold traveling bracelet)

Bernice Forrest Kellogg, CCD of Iota Nu

ACHOTH AWARDS (gold charm)

Grace Mason Lundy, Epsilon

Ann Zimmerman Morrow, Gamma Epsilon

Betty Sutherlin, Theta Beta

Barbara Jones Behrens, Gamma Zeta

Clarice Donly Gardner, Iota

Linda Agler Hobbs, Theta
Helen Hassel Schaller, Delta Chi
Peg Spooner Anderson, Beta Tau
Jane Smith Furman, Delta Pi
Claire Sanders, Alpha Upsilon
Suzanne Webster Zanes, Theta
Elizabeth Mestas Schill, Delta Rho

FOUNDERS MEMORIAL SCHOLARSHIP AWARDS

Gaynell Gallagher, Zeta Rho
Terri Lee Anderson, Gamma Psi
Traci Jo Hevelone, Beta Tau
Sharon Jo Welter, Zeta Alpha
Eleanor Marie Krautmann, Delta Sigma
Donna Elaine Snyder, Delta Upsilon

1979 GOLDEN CIRCLE SCHOLARSHIP AWARDS

Denise D. Chism, Epsilon Rho
Michelle D. Koth, Epsilon Kappa
Laura L. Roach, Lambda Kappa

ACTIVITIES

Silver

Auburn University, Beta Xi
Baldwin Wallace, Gamma Alpha
Eastern Illinois, Gamma Nu
University of N. Carolina (Charlotte), Kappa Phi
Oklahoma State University, Alpha Epsilon
Georgia State University, Delta Delta

Certificates

Louisiana State, Sigma
Nebraska Wesleyan, Beta Tau
Northeast Missouri, Delta Sigma
Northwestern University, Alpha Alpha
Ohio State University, Theta
Nicholls State, Kappa Alpha

MAGAZINE SUBSCRIPTIONS

Carroll College, Gamma Theta
Nebraska Wesleyan, Beta Tau
Indiana Univ. of Pa., Gamma Phi
Moorhead State, Theta Nu
Ohio State University, Theta

MEMBERSHIP FOR FILLING QUOTA-TOTAL

(Silver)

19 years

Louisiana State University, Sigma

17 years

Miami University, Alpha

15 years

University of Houston, Delta Theta

13 years
Slippery Rock State College, Zeta
Phi
Nebraska Wesleyan University,
Beta Tau
Southwest Texas State Univ., Iota
Alpha

11 years
Nicholls State University, Kappa
Alpha

7 years
Wright State University, Kappa
Iota

6 years
Illinois State University, Lambda
Rho

5 years
Baldwin Wallace College, Gamma
Alpha
Central State (OK) Univ., Epsilon
Upsilon
West Texas State University, Zeta
Zeta
University of Alabama, Alpha
Gamma

4 years
Ohio Northern, Zeta Kappa
Iowa State, Beta Kappa
William Jewell, Zeta Rho
Stephen F. Austin State, Zeta Psi
Texas A & M., Lambda Xi
University of Texas, Arlington,
Iota Psi
Angelo State, Lambda Omicron
Morehead State, Kappa Tau
Univ. of North Carolina (Char-
lotte), Kappa Phi
Livingston, Kappa Lambda
Univ. of Central Arkansas, Epsilon
Xi

3 years
Northwestern Louisiana St., Ep-
silon Beta
Pan American, Theta Omicron
2 years
Univ. of Rhode Island, Beta Alpha
Trenton State College, Lambda
Lambda
Clarion State College, Epsilon
Theta
Edinboro State College, Iota Delta
Kutztown State College, Kappa
Rho
Shippensburg State College,
Kappa Psi
Youngstown State, Kappa Chi
Franklin College, Psi
Indiana University, Epsilon
Northeast Missouri State, Delta
Sigma
University of Northern Colorado,



Zeta Rho Chapter President Robin Rollins admires the six silver candlesticks her chapter at William Jewell received for the Founders Award.

Delta Xi
Northwestern State (OK), Delta
Omicron
University of Virginia, Lambda
Delta
California State, Long Beach,
Delta Alpha

PHILANTHROPY

Silver

Ohio State University, Theta
Iowa State University, Beta
Kappa
Nicholls State University, Kappa
Alpha
Louisiana State University, Sigma
Univ. of Wisconsin, Whitewater,
Epsilon Kappa
Shippensburg State, Kappa Psi

Certificates

Univ. of North Carolina, Charlotte,
Kappa Phi
University of Houston, Delta
Theta
Oklahoma State, Alpha Epsilon
Texas A & M., Lambda Xi
Auburn University, Beta Xi
Youngstown State, Kappa Chi
Ball State, Gamma Chi
Virginia Polytechnic Inst., Kappa
Theta

PLEDGE TRAINING AWARDS (Caryatides)

Shippensburg State, Kappa Psi
Indiana University, Epsilon

Nebraska Wesleyan, Beta Tau
William Jewell College, Zeta Rho
Univ. of North Carolina, Charlotte,
Kappa Phi
Nicholls State, Kappa Alpha

Certificates

Univ. of Wisconsin, Whitewater,
Epsilon Kappa
Central Missouri, Epsilon Gamma
Lenoir Rhyne College, Zeta Xi
Georgia State, Delta Delta
Bowling Green State, Gamma Tau
University of Texas, Arlington,
Iota Psi
Franklin College, Psi

SCHOLARSHIP AWARDS

Silver

Nebraska Wesleyan, Beta Tau
Northwestern University, Alpha
Alpha
Northeast Missouri, Delta Sigma
Nicholls State, Kappa Alpha
Indiana State University (Evans-
ville), Lambda Beta
William Jewell College, Zeta Rho
University of Virginia, Lambda
Delta

Certificates

Oklahoma City University,
Gamma Upsilon
Ohio Northern, Zeta Kappa
Mansfield State, Iota Theta

STANDARDS

Silver

Bowling Green State Univ.,
Gamma Tau
Louisiana State Univ., Sigma
Central Missouri State Univ., Ep-
silon Gamma
California State University, Long
Beach, Delta Alpha
Ohio State University, Theta
University of North Carolina,
Charlotte, Kappa Phi

Certificates

Iowa State, Beta Kappa
Moorhead State, Theta Nu
University of Wisconsin, Whitewa-
ter, Epsilon Kappa
Old Dominion, Theta Phi
Oklahoma City University,
Gamma Upsilon
University of Texas, Arlington,
Iota Psi

ALUMNAE CHAPTER AWARDS

OUTSTANDING ACHIEVEMENT (notebooks)

Pasadena-Foothills
Orange County
San Francisco Bay Cities
Denver
Twin Cities
Greater Kansas City
Greensboro, NC
Charleston, WV
Reno, NV
Cleveland Eastside

ACHIEVEMENT (Certificates)

Sacramento, CA
Harrisburg, PA
Warrensburg, MO
Texas Panhandle
Lawrence, KS
Raleigh, NC
Rochester, NY

CHAPTER EXCELLENCE - PROGRAMMING (portfolios)

Findlay
Lincoln
Huntsville, AL
Gold Coast
Clay Platte
Charlotte
Saginaw
Salt Lake City
Southern New Jersey
Oklahoma City
New Orleans

CHAPTER PROGRAMMING (Certificates)

Mt. Diablo
Cleveland Eastside

Colorado Springs
Corpus Christi
Dallas
Harrisburg
Honolulu
Indianapolis
Greater Kansas City
Oklahoma City
Pasadena-Foothills
Saginaw
Lafayette, IN
St. Petersburg

COLLEGE CHAPTER SUPPORT (Certificates)

Kirksville
Arlington
Dallas
Omaha
Fort Worth
Montgomery
Tuscaloosa
Alva
Berea
Findlay

MAGAZINE SUBSCRIPTIONS (Certificates)

Greater Seattle
Auburn
Metro-Detroit
Pasadena-Foothills
St. Louis
Orange County

MEMBERSHIP

Salt Lake City
Lawrence, KS

Certificates

Tuscaloosa
St. Petersburg

PHILANTHROPY

Excellence (Bud Vase)

Houston
Huntsville, AL

Certificates

Gold Coast
Corpus Christi
Findlay
Saginaw

NEWSLETTER

Excellence for Alumnae Chapter (ribbons)

Colorado Springs
Denver
Miami
Chicago
Anderson, IN
Shreveport, LA
Saginaw, MI
Lincoln, NE
Southern New Jersey
Charlotte, NC
Berea, OH

Cleveland Eastside
Portland, OR
Salt Lake City, UT
Beaumont, TX
Corpus Christi, TX
Fort Worth, TX
Houston, TX
Washington, D.C.
Charleston, WV
Epsilon Etching Alumnae Associa-
tion
Gammaphone Alumnae Associa-
tion

Sustained Excellence

Dallas, TX
Findlay, OH
Epsilon Kappa Alumnae Associa-
tion

Certificates

Montgomery
Long Beach
Orange County
Pasadena-Foothills
Sacramento
San Francisco Bay Cities
San Jose
Gold Coast
Twin Cities
Greater Kansas City
Enid
Oklahoma City
Arlington

PRESSBOOK

Oklahoma City
Gold Coast (FL)

WAYS AND MEANS

Findlay
Shreveport
Dallas

Certificates

Lake County
Greenville
Iowa City
Lawrence
Clay-Platte
Charlotte
Fort Wayne
Auburn
Albuquerque
Canton-Massillon
Chico
Gold Coast
New Orleans
Sacramento
Akron

YEARBOOK (Certificates)

Corpus Christi
Dallas
San Antonio
Anderson
Lafayette, IN

Table Tennis Tournament Loudly Cheered



President Norma Andrisek serves a mean one in the National Council table tennis tournament. Scorekeeper Jane Nelson and referees Linda Hobbs and Jean Southworth oversee the play.

Members of the National Council were loudly and enthusiastically cheered as they competed in the first National Council Table Tennis Tournament Monday afternoon and Tuesday evening. Led by cheerleader squads of Fielders and some National Council members, conventioners shouted encouragement to the ten participants, who had donned green or rose tie-on aprons for the competition. As the matches progressed so many flash bulbs were going off as the on-lookers tried to capture the fun on film that the tournament officials (the convention committee) requested a cessation of photography for the final match in order to accurately referee the action. When it was all over, Dianne Guild was declared the winner, and the conventioners were calling for another match at the next convention.



Early convention arrivals await transportation to their rooms.



Dianne Guild presented silver urns to Barbara Goodlow (left), president of the Gold Coast Alumnae, winner of the Myrtle Graeter Hinkly Award; and Cynthia Fitzpatrick (right), president of the Findlay Alumnae winner of the Margaret Huenefeld Pease Award.

Fielders to Travel ΔZ Country

There may be a fuel shortage, but our Field Representatives will make it to your chapter. Our travelling staff is made up of five dedicated Delta Zetas who look forward to helping you in whatever way they can.

We have three new Fielders joining us this year, and all who attended our National Convention will remember their enthusiasm and Delta Zeta spirit.

You may also remember Terry Heath, who is returning for her second year of travel, and of course, there is Debbie Raziano, National Field Consultant, who is travelling for her sixth consecutive year!

Our first new Fielder, Susan Griffin, is from the University of Texas at Arlington-IV. Susan was active in her chapter working with philanthropy and acting as *Lamp* editor, ritual chairman and Vice President-Membership for two years, and was involved in campus activities. When it comes to rush, Susan never gives up, so look for her to be a great help to chapters.

Bunny Nash, Franklin College-Ψ, is another new Fielder who was also a Rush Chairman as well as songleader for her chapter for two years. She was selected for *Who's Who Among Students in American Universities and Colleges* and served on the Resident Hall Activities Council and the Senior Advisory Board. With her rush, song and leadership abilities, she will lead your chapter through a successful



Terry Heath, Susan Griffin, Bunny Nash, Trudy Wheeler, Debbie Raziano.

rush.

Another newcomer, Trudy Wheeler, is a communications major from Northwestern Oklahoma State University-ΔO, where she was Recording Secretary, Panhellenic Representative and Rush Chairman. Trudy was involved in Student Government and was also crowned "Miss Northwestern 1977". A varied background of experience will make her especially valuable during chapter visits.

Terry Heath, Northwest Missouri State University-EP, is well acquainted with Delta Zeta travel as she begins her second year as a Fielder. While in college she also traveled, but to Europe as a Student Ambassador. Terry has been Pledge Class President, Corresponding Secretary and Chapter President. Her knowledge and experience surely add to this team of Fielders.

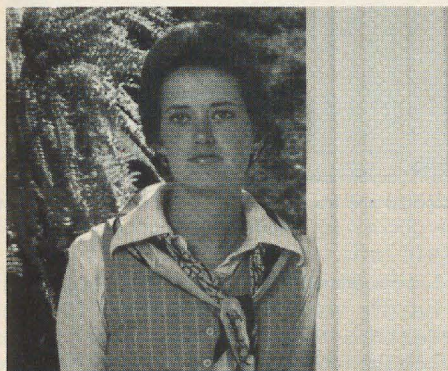
Then to complement our great team, we are fortunate to have again our National Field Consultant, "Raz", who is from Nicholls State University-KA. She was Pledge Trainer for her chapter while involved in various other sorority and campus activities. She is honored to be a Grace Mason Lundy Award winner and is still receiving honors after graduation, as evidenced by her recently being named an *Outstanding Young Business Woman of America*. Raz has a wide range of Delta Zeta experience and knowledge and we feel privileged to have her with us again.

Welcome these Fielders and our National Consultant who want to share their Delta Zeta knowledge and loyalty with you. They are vivacious and ready to meet the many Delta Zetas across the United States.

Founders Memorial Scholarships



Terri Lee Anderson, ΓΨ- Central Michigan, Mortar Board, Sigma Iota Epsilon, Psi Chi, Phi Kappa Phi, House Manager, Panhellenic Council, Ass't Rush Chairman.



Gigi Gallagher, ZP- William Jewell, Mortar Board, Alpha Lambda Delta, Deans List, Year Book Editor, Student Newspaper Editor, Panhellenic Delegate, Student Senate, Historian and Parliamentarian.



Traci Jo Hevelone, BT- Nebraska Wesleyan, Vice President Student Recruitment, University Band Council, Summer Rush Chairman, Junior Panhellenic.



Jeanne Marie Krautmann, ΔΣ- Northeast Missouri, Student Senate Representative, Student Activities Board, Vice President Rush.



Donna Elaine Snyder, ΔY- Marshall, Chapter President, Greek Week committee, Deans List, 1978 ΔZ Woman of the Year for her Chapter.



Sharon Jo Welter, ZA- Bradley, Chapter President, Panhellenic Delegate, Greek Senator to Student Senate, Bradley Arbitration Board, Dean's Advisory Committee.

Golden Circle Scholarships

*Michelle Koth, University of Wisconsin, Whitewater- EK, senior, A average, corresponding secretary, house manager, judiciary committee, dorm council representative, intramurals, Sigma Iota Epsilon honorary.
(Photo not available)*



Denise Chism, Northwest Missouri State University- EP, senior, B average, Kappa Delta Pi honorary, dorm council representative, cheerleader, Special Olympics volunteer.



Laura Roach, University of Alabama, Huntsville- AK, senior, B average, chapter president, attended 1979 National Convention, social chairman, outstanding pledge, student government, intramurals, church activities.

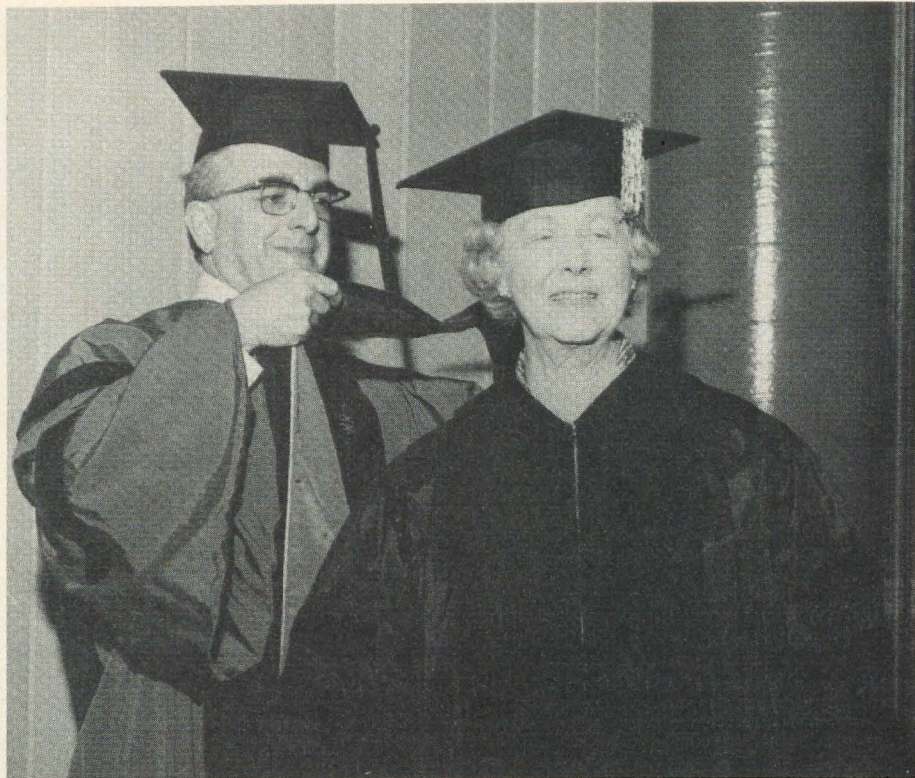
Miami Honors Lucile

Lucile Crowell Cooks, petite and gracious daughter of this University, you have given your alma mater the very best of an astute mind and a full heart. Upon you then, I have the pleasure to confer by action of the University Seante, with the approval of the Board of Trustees, and under authority granted by the State of Ohio, the honorary degree, Doctor of Public Service, in token whereof I hand you this diploma and request that you be invested with the hood appropriate to your rank.

With these words Mrs. Rudolf Cooks became Dr. Cooks at the June commencement exercises of Miami University, in Oxford, Ohio.

She was in good company as honorary degrees were also conferred on the president of Proctor and Gamble, John Gray Smale, a 1949 Miami graduate, and His Royal Highness Jean, Grand Duke of Luxembourg.

Delta Zetas have long been aware of Lucile's accomplishments and named her Woman of the Year in 1973. We quote from the Miami Commencement program in part for a different slant on our Lucile.



Dean Spiro Peterson places doctorate hood on Lucile Cooks at Miami University commencement.

"One of the most devoted and active members of the Miami alumni body for more than half a century, Lucile Crowell Cooks has been identified throughout those same years with vigorous public service in safety, school improvement, church activity, communication and women's interests."

"Miamians perhaps have known her best as member of the University's Board of Trustees, 1952-75, and as chairman of that board 1973-75. She was the first woman to chair the Miami board. She had been among the first women members of any of the state university boards in Ohio; for at least ten years, she was the only woman trustee of any of Ohio's state universities. She continues to chair the University's advisory committee on the naming of buildings and special facilities.

"Mrs. Cooks came to campus often through those years. She came with her homework done. She came early enough and stayed long enough to permit conversations with student groups and staff representatives, to

learn what they were thinking. So it hardly was surprising that her last session of chairing the board brought a bouquet of roses from the president of Student Government — or that she was greeted warmly by the graduating class and others as speaker for the 1975 winter commencement.

"In a broader sense, the public service for which she is honored today has included decades of leadership in an amazing range of concerns. Much of her activity in the Cleveland area extended to state and national levels.

"Delta Zeta was founded at Miami in 1902. For its Diamond Anniversary in 1977, in a pilgrimage to the founding site, the sorority gave the University a portrait of Lucile Cooks. It hangs in the Delta Zeta suite in Richard Hall."

Lucile was at convention last June in Miami giving her services as Parliamentarian to the business sessions. She also has been a longtime national chairman of Delta Zeta's Constitution committee.



With the sunshine convention in Miami still crowding out other thoughts, it is pleasant to think of some of the little incidents that stay with you and yet are not on any of the printed programs.

We remember the joy and then the happy tears and hugs that greeted the announcement of the awards — the many courtesies of the collegiate delegates to us “older” sisters — the light in their eyes when they realized they were sitting next to someone they had read and heard about, now real, breathing, and eating breakfast.

If we had a dollar for every picture taken, this editor could go round the world on the Queen Elizabeth, even though some of these candid shots may come back to haunt.

This was a convention when even the business sessions had their moments of fun. Everyone smiled when diminutive Lucile Cooks was introduced as Dr. Cooks, after her honorary degree this last June from Miami University.

To facilitate proper business procedure, each delegate received a Basic Parliamentary Information sheet which should keep all of us in line at our winter meetings. To quote

Dr. Cooks, “Proper procedure saves time and arguments.”

Credential cards were held high during business sessions whenever a vote was taken, and in introducing her efficient teller committee Sarah Jane Houston announced that they had a calculator, and the tellers were wearing open toe shoes.

ΔΖ

When present and past alumnae presidents were called to the stage during Fun night, almost every alumna present stood up. Seems every volunteer in Delta Zeta serves there, and sometimes moves around to repeat the office in several cities.

Probably the most exuberant delegates were the province directors who shared in the excitement of their chapters being named for an award. Several of them would have been great on any television game show, especially Lillian Truesdale of Missouri whose Zeta Rho chapter won two big awards at the final banquet.

ΔΖ

One of our nicest souvenirs came from the tee shirt exchange. Very appropriately for this Old Hound, it said “Delta Zeta improves with Age” and was the artistic work of the Findlay, Ohio, contingent.

Taylor Reese got to bark seven times at the Pups and Hounds luncheon as he has stenotyped the minutes for seven of our Delta Zeta conventions, and averred it was about time HE got initiated.

Lucille Smiley Hardin, Illinois AB, came from Roswell, New Mexico, to receive her Golden Rose certificate and recalled the 1933 convention when she was its peppy song leader.

Faye Funk Awbrey of Chi chapter at Oregon travelled all the way from her home in Hawaii to be a convention Golden Rose.

ΔΖ

Diminutive Jean Haley, North Dakota - Y, in her chic United Airlines pilot uniform flew in for a day of convention, and brightened our lunch with tales of her flying career.

When Debbie Bull McRae gave her mother's GML bracelet to the Delta Zeta archives, it was with the stipulation that if she ever had a ΔΖ daughter who was a GML, it was to

be returned. And there is a strong possibility since Debbie had not only herself and her GML mother Joyce Edgar Bull in Beta Kappa chapter, but an Aunt Margaret also. Debbie's husband has a ΔΖ mother Betty Jo Ward McRae, and a sister Cathy, all Iowa State graduates and Delta Zetas.

ΔΖ

Talented Songleader and pianist Carol Carson Konet from Baldwin Wallace taught the conventioners a new Sunshine song.

"STEP INTO THE SUNSHINE" C. KONET (LYRICS)

INTRO: CHORUS:

STEP INTO THE SUNSHINE, — GET OUT OF THE SHADE,
THIS IS THE ONE TIME THAT YOUR GET IT MADE AND YOU CAN
FEEL YOURSELF SMIL-ING, — WAT DOWN TO YOUR KNEES,
STEP INTO THE SUNSHINE FIND ONE GREAT-O-LE Y

VERSE:

LEED HAVE BEEN IN THE HEAV ENGLER WHO WANTS TO BE A PRINCE, BUT IN HERE
MIND CAN'T SEE — LOOKIN' ALL AROUND FOR A
WANT TO BE-GID — OPEN YOUR EYES AND LET OUR LIGHT POKE
IN — I SAID — OPEN UP YOUR EYES AND LET OUR
LIGHT POKE IN — SS-TEC, — REPEAT CHORUS //

We escaped the early prophesied hurricane, but did get a tropical downpour which held up Carolyn Gullatt's beautiful Awards banquet. The only other mishap concerned the province which was stuck in an elevator which wouldn't move. All of the scenes on television came to mind, but after fifteen minutes of claustrophobia, a passing sister heard the call and came to the rescue. Delta Zetas are up to any and all emergencies.

Last convention's Florence Hood Miner award winner, Lisa Mas-trangelo, proved a real saleswoman for the Rose Shop displayed in the lobby. Two of the attractive new items were a postcard reduced from the beautiful Spring Lamp cover, and a bumper sticker that proclaimed “Delta Zeta, A Touch of Class”.

All in all, it was a wonderful convention and to amend an old Greek proverb, we say “The heart that has Delta Zeta love is always young”.

florencehoodminer

Careers in Health Care

Part I

by Lee Williams

Historically, one of the primary employers of women has been the health care field — a field that naturally draws upon the humane qualities and nurturing skills of its practitioners. Some of history's most renowned heroines, such as Marie Curie, Florence Nightingale, Margaret Sanger, Jane Addams and others, were engaged in health care or closely related services.

Today the health care industry — which is the nation's largest, employing almost six million people — is an area of considerable opportunity for women. Expansion of services resulting from advances in technology, increased medical coverage, and the growing percentage of citizens over 65 has resulted in a shortage of workers at all levels. As a result, trained health care professionals have no trouble finding jobs. The 24-hours-a-day nature of health care creates opportunities for afternoon, night, and part-time employment, frequently ideal for women attempting to balance employment with family responsibilities.

Three of the areas with the most flexible working hours are medical technology, medical records administration, and pharmacy.

The Medical Technologist: Skills in the Clinical Laboratory

Medical technologists perform the vital chemical, microscopic, electronic, and bacteriological laboratory tests used by physicians to diagnose and treat diseases. Accuracy and reliability are essential in the work, as is occasionally the ability to work under pressure in emergency situations.

Deborah Oman, Kearney State College — ZΣ, is one of the science-



Deborah Oman—Troubleshooting and solving problems in Nebraska's Laboratories.

oriented people who have found satisfying careers as medical technologists. Following three years of undergraduate study emphasizing biology and chemistry, Debbie completed a 12-month internship at Lincoln General Hospital in Lincoln, Nebraska, in her senior year to earn her Bachelor of Science degree in Medical Technology. She then passed the national examination of the Board of Registry of the American Society of Clinical Pathologists to earn the initials MT (ASCP) after her name. Most laboratory employers prefer workers with this certification.

"After training I worked for a year in a private lab in Lincoln operating automated chemistry instruments," says Debbie. "Then I moved to Fort Collins, Colorado, to work in the Student Health Center laboratory at Colorado State University. I later moved back to Lincoln to become Area Supervisor of Hematology and Coagulation at Bryan Memorial Hospital. I did some advanced study, and after five years of work in hematology, I took a specialty board exam through the ASCP to become a medical technologist specialized in hematology, SH(ASCP)."

Hematology involves the counting and identifying of cells in the blood, the bone marrow where they are produced, and in other body fluids. The other specialty areas available are chemistry and microbiology. To

be a specialized technologist in any of these areas, a medical technologist must have a masters degree and four years experience, a doctorate and two years experience, or MT(ASCP) certification with five years experience and pass a Board of Registry examination.

For Debbie Oman, her specialty has led to job advancement.

"I am the Section Supervisor in Hematology and Coagulation for Pathological Medical Services, Professional Consultants, in addition to supervising that area at the Bryan Memorial Hospital lab. My job involves coordinating the operations in hematology and coagulation for all twenty PMS laboratories in Nebraska and serving as consultant to several others outside the state. I act as a resource person to troubleshoot and solve problems, use quality control and perform testing procedures properly, and help with teaching and continuing education. If I am needed at a lab outside Lincoln, I can fly in the company helicopter to work on site with the staff in each lab.

"Medical technology has changed a lot in the past ten years. The newest area for medical technologists is in laboratory management. Government regulations are creating a need for good administrative and supervisory personnel."

Full-time salaries for medical technologists average about \$11,900 for beginners, and between \$12,900 and \$15,700 for experienced workers. Supervisors' salaries average \$16,600, while administrative technologists average \$19,300 per year.

The Medical Records Administrator: Accuracy and Precision

An increasingly important member of the health care delivery team is the medical records administrator. At one time administered by a medical records librarian who learned her craft through apprenticeship, medical records have assumed such importance today, in legal actions and insurance claims as well as evaluation of treatment and medications, that they are now managed by highly-skilled professionals. Forty-four colleges and universities currently offer baccalaureate degrees in Medical Records Administration, though college graduates who have



Marcia Stainbrook Rice—A desire to work with dedicated and caring people.

taken the required courses in liberal arts and biological sciences may enter a twelve-month certificate program. Some of the areas studied are anatomy and physiology, medical terminology, medical law, data processing, and fundamentals of medical science. Students are also given supervised practice in a hospital. Graduates may take the national registration exam given by the American Medical Records Association. Successful completion of the exam earns the letters (RRA) after one's name, and preference in employment.

In the daily work of the medical records administrator, accuracy and precision are the keys to success. She must insure accuracy in records by requiring that all entries are made in uniform medical terminology. She establishes and supervises the filing system, and controls the release of information to authorized personnel. She analyzes the contents of records and prepares medical and statistical reports upon request.

For individuals who do not feel suited to some of the other health care careers, medical records administration can be a satisfying alternative.

"My mother, who is an R.N., would have liked me to follow her into nursing, but my weak stomach told me different," says Marcia Stainbrook Rice, Emporia State University - AII. "I am grateful to a family friend, a superintendent of a

hospital, for arousing my interest in medical records."

Today Marcia is the Assistant Director of Medical Records at the Shawnee Mission Medical Center in Shawnee Mission, Kansas.

"Medical records people are very dedicated to their work. They enjoy doing detailed work, which must be accurate at all times. Anyone with a desire to work with the dedicated and caring people in a hospital should consider medical records."

The pressures in a hospital can be great, according to Marcia.

"Perhaps a physician yells at you one day, which you take in stride because you never know where he came from, a critical patient or complicated surgery, and the very next day he brings you a rose.

"You know your hard work has been successful when new physicians on the staff tell you your department is the best in the Kansas City area and your transcription department is excellent."

Salaries for beginning medical records administrators average about \$14,000; for experienced workers, about \$17,500. Some medical records administrators in large urban hospitals earn as much as \$33,000 per year.

Pharmacy: The Gateway Profession

Pharmacy is one of the oldest of the health care services, existing since the 13th century in Western society as a profession distinct from that of the physician. For today's pharmacist, professional roles can take many different forms — community pharmacist, hospital pharmacist, medical service representative (introducing new drugs to physicians, dentists, veterinarians, and other pharmacists), teacher, researcher, and pharmacist for a drug manufacturer (in purchasing, production, quality control, and management). Because of the possibility of entry into so many areas, and because many pharmacy graduates later go into medicine, dentistry, business, and law, pharmacy is called "the gateway profession."

The educational requirement for work as a practicing pharmacist is a Bachelor of Science degree in pharmacy, which takes five years. The curriculum is actually composed of a



Susan Zahrdt Lutz—Trying to be the kind of pharmacist her professors lectured about.

triple major — chemistry, biology, and pharmacy — with emphasis also on physics and mathematics. The Doctor of Pharmacy (Pharm.D.), when offered as the first professional degree, takes six years. Graduate study in one of the specialties, such as nuclear pharmacy, intravenous therapy, toxicology, pharmacy administration, and others can qualify a student for a M.S. or Ph.D., though these are research degrees and do not by themselves qualify a student to be a practicing pharmacist. A B.S. Pharmacy or Pharm.D. degree, internship, and passing a State board examination is required for a license to practice.

Of the nation's 140,000 pharmacists, 60% work in community pharmacies. The goal of many community pharmacists is pharmacy ownership.

"How did I become involved in pharmacy? You might say I was born into it," says Susan Zahrdt Lutz, Drake University — IE. "I had a pharmacist father who owned a drugstore." Today Susan and her pharmacist husband, Eugene, own their own small, service-oriented pharmacy in Altoona, Iowa.

"In the four years we have had our own pharmacy, we have tried to be the kind of pharmacists our professors always lectured about — pharmacists who counsel their patients on medicine, to make sure they understand the drugs they are taking.

(Continued on next page)

Birds of a Feather



Bess Hughes Dickinson, an enthusiastic bird watcher, describes her Trinidad adventure as "a dream come true."

Three enthusiastic bird watchers discovered they were "birds of a feather" recently in more ways than one. Bess Hughes Dickinson, Transylvania College, ΔΓ, '27, was chatting with Linda Shepherd, A '70, during an Audubon meeting this summer when she learned that Linda had

done her undergraduate work at Miami. Bess was delighted to learn that Linda was a Delta Zeta, only to be doubly surprised when a third companion-birder, Lois Loughran, AX '47, spoke up with, "Why, Bess, I didn't know you were a Delta Zeta!" "So there we were," Bess writes, "three Delta Zetas from Ohio, Kentucky and California, all actively engaged in one of the most exciting new sports, *birding*."

In April this year, Bess toured with other members of the Audubon Society to the islands of Trinidad and Tobago off the coast of Venezuela in the Caribbean. She tells us when at last she saw the indescribable beauty of unspoiled tropical regions she had previously enjoyed only in the color pages of nature magazines, "it was a dream come true."

A Delta Zeta Golden Rose recipient, Bess claims one of her greatest achievements is to have earned membership in the Audubon 600 Club. This signifies she has sighted and identified 600 or more of the 800 species of birds in North America. To realize this objective, she has birded from Alaska to the Mexican border and from the Gaspé Peninsula to the Dry Portugas.

Tough Test

After reading the questions on a "PreQualifying Examination" given to pledges at Epsilon Upsilon chapter at Central State University in Edmond, OK, we think you'll agree the demands on this group were particularly stringent.

Some of the questions devised by then-pledge trainer Sherry Shoftner follow:

MUSIC. Write a piano concerto. Orchestrate and perform it with flute and drum. You will find a piano under your seat.

SOCIOLOGY. Estimate the sociological problems which might accompany the end of the world. Construct an experiment to test your theory.

PHYSICS. Explain the nature of matter. Include in your answer an evaluation of the impact of the development of mathematics on science.

PUBLIC SPEAKING. 2,500 riot-crazed aborigines are storming the classroom. Calm them. You may use any ancient language except Latin or Greek.

EPISTEMOLOGY. Take a position for or against truth. Prove the validity of your position.

There were 15 such questions, including a chance to objectively and specifically describe in detail one's "General Knowledge." Time was limited to four hours, but if the test takers had extra time, they could define the Universe, giving three examples, for extra credit.

Sherry didn't report how well the pledges scored on the test, but she did quite well herself. She was elected chapter president for this year.

Careers In Health Care—continued

We have had various screening programs in the pharmacy also, including hypertension screening, and have a diabetes screening scheduled for the fall."

Having lived in Altoona only four years, Susan has become very active in community affairs. "I am involved in a great many local organizations, and have the opportunity to 'talk pharmacy' with lots of people. Each year during National Poison Prevention Week, in March, I visit all the local kindergarten classes in the school district and also some area pre-schools to tell the children about poison prevention."

Susan's dedication to her profession has not gone unnoticed. Recently the governor appointed her to her second term on the Iowa Board of Pharmacy.

"For too long," says Susan, "the image of the pharmacist has been that of a count-and-pour, lick-and-stick robot. The public had a difficult time believing that it takes five years of intensive education to put pills in a bottle. All this is changing now, as more and more clinically-oriented pharmacists are taking the time to talk to their patients, answer their questions, and convey the knowledge they have had all along."

Beginning salaries for community pharmacists range between \$15,000 and \$19,000 per year. Starting salaries for hospital pharmacists average about \$17,000. Experienced pharmacists earn about \$21,000, with some earning annual salaries in excess of \$30,000.

Province Days

IV October 27, 1979
Morris Harvey College
Elk View, West Virginia

XIII November 3, 1979
Carroll College
Waukesha, Wisconsin

Ann Holloway Artist Extraordinaire

by Beverly J. Ruff, Θ

A bright star in the Delta Zeta alumnae scene is outstanding artist, Ann Holloway of San Antonio, Texas. Ann began her artistic career in college at Mary Hardin and later at Southern Methodist University-AΨ, and has since studied with many established artists, at home and abroad.

Early in her career in Dallas she studied figure drawing with John Knott, famous political cartoonist for the *Dallas Morning News*. Later, when she and her husband, Col. H. K. Holloway (Ret.), were stationed in Europe, her studies were continued under guidance of outstanding teachers in Austria and Germany. In 1957, Ann studied at the Academy of Design in Paris.

She returned to the San Antonio area and set up her own design shop, The Ann Holloway School of Millinery and Custom Design. Ann began designing accessories for the San Antonio Fiesta Carnival royalty, and has continued this job for the past 21 years. Ann's intricately designed head and hand pieces complement the carefully designed gowns for the Fiesta queen and her court.

Besides her custom designing, Ann began painting, originally with oils. She used only this medium until 1970, when she discovered the joys of watercolor. She has developed her reputation as a specialist in realistic watercolor paintings, showing emotional involvement and often portraying nostalgic themes. Her florals sparkle with color and freshness, and her architectural pieces portray old Texas landscapes and Victorian houses with gingerbread trim. Her landscapes range from Louisiana through the Texas hills to West Texas and New Mexico.

As her reputation as a watercolor artist grew, she began exhibiting her art in solo and juried events. Her first show was at St. Paul's Episcopal Church in San Antonio, where she is an active member of the con-



Ann Holloway - Her florals sparkle with color and freshness, and her architectural pieces portray old Texas landscapes and Victorian houses with gingerbread trim.

gregation. She went on to exhibit her paintings in other shows in the San Antonio area, and then was chosen to exhibit with a select group of artists in Longboat Key Art Center in Sarasota, Florida. She has since been a featured artist in galleries in Louisiana and Texas. Her paintings are greatly prized by many private collectors. A collection of her paintings is presently on display in the Live Oak Gallery, Lafayette, Louisiana, and in Northern Hills Art Gallery, San Antonio.

Always striving for perfection, Ann has continued her artistic studies with many famous and nationally known artists. She has studied with Tony Van Hasselt on location at the Ghost Ranch in New Mexico, home of Georgia O'Keefe, and on location with Van Hasselt in the Ozarks. Because of her influence, Van Hasselt later established one of his nationally known Painting Workshops in the Kerrville, Texas, area. This workshop is attended annually by artists from all over the United States.

Ann has also had workshop instruction at the Hill Country Arts Foundation under artists Clay McGaughy, Michael Frary and Fred Samuelson. Other instructors include nationally known artists such as John Pike, Robert Wood, Ed Whitney, Millard Sheetz, Zoltan

Szako, Morris Schukin, Gerald Brommer and Claude Croney.

Ann is associated with many local, area, and state art groups. She is a member of the Coppini Academy of San Antonio, the Texas Fine Arts Association, San Antonio Art League, Hill Country Arts Foundation and the Southwestern Watercolor Society. She was one of the original founders of the San Antonio Watercolor Group, and is a charter member of the International Society of Artists.

Support for her artistic career came naturally from a family brimming over with artistic talent. Ann's husband, Ken, is a highly acclaimed photographer. Their two sons are involved in artistic careers, also. Ken, Jr. is a free lance photographer, and Bill is a free lance artist.

In addition to her artistic affiliation, Ann is active in Zonta in San Antonio, and has held many offices and served on many of the club's committees. She has been a three time delegate to Zonta International Conventions. She is also a busy volunteer worker for her church, teaching Sunday school, serving on the governing board of the church, and singing in the choir for over 30 years.

Is it any wonder that Delta Zeta, Province XVII, chose Ann Holloway as the Outstanding Alumna for 1979?

Helen Lodge: Leader in Dietetics

by Beverly J. Ruff, Θ

Helen Fitzwater Lodge, I Π, has made an impressive mark in the field of nutrition and food services and continues to contribute her very able talents as Director of Dietetics and Food Services for the Charleston, West Virginia, Area Medical Center.

She is a multi-talented Delta Zeta alumna with boundless energy. She is especially devoted to her profession, with an almost endless list of accomplishments and honors, but symphony music, fashion sewing, writing and speaking are all a part of her very busy life, too.

Helen has done considerable work in the field of diabetes. "Other people might consider diabetes my specialty," she said, although she feels her work in this area is a part of her overall job as a nutrition specialist.

Her diabetic cooking schools, conducted in various area cities, have influenced the formation of local diabetic associations to distribute information and answer questions about diabetes on a personal level. Helen has published several diabetic cookbooks and numerous booklets with diets and recipes for the diabetic patient.

For the past eleven summers she has directed the food services for the campers and staff at Camp Kno-Koma, a diabetic camp for about 60 children located in Glen, West Virginia. She also supervises dietary trainees who work at the camp. As director of the dietary traineeship program with which the Charleston



Helen Lodge is well known at the Charleston Area Medical Center for making therapeutic nutrition appealing by her many creative touches. She is shown here with a special character created for the children's ward at the hospital.

Hospital is affiliated, Helen works with the trainees as part of their general training requirements. She also travels with the trainees to visit and learn about the advanced food service methods used in hospitals in Cleveland, Columbus and Cincinnati, Ohio. Helen finds the trainee program especially worthwhile, and enjoys a close rapport with the young women in the program.

Helen also enjoys public speaking and is often asked to talk about the field of diabetes. She continually attends seminars and workshops to update her own training and knowledge. More often than not, she has a spot of her own on the program.

"In the field of nutrition, you have to keep up on the latest developments," she said. "If you don't go forward in this field, you go backwards," she added.

Helen doesn't lament her busy schedule. She said she loves her work and can't think of anything else she would rather be doing. "And I get paid for having fun," she said.

Working with the medical staff to develop specific diets for individual patients with various ailments is her most satisfying task. Many patients are confused and afraid when dietary restrictions become part of their therapy and recovery program. Helen works with the medical staff to develop the individual diets, and then works with the patients and their families to insure confidence and skill as they deal with the new diet on their own.

Her ability to make therapeutic nutrition pleasurable has been praised by doctors with whom she works. Being in the hospital is never fun, but on holidays it is especially difficult. Helen and her dietetic staff are especially creative when planning holiday meals for patients and their families.

Nutrition isn't Helen Lodge's only interest or her only job. "My role at the hospital has a great deal to do with management, also," she said. She has a two million dollar budget to administer, and good management is her key to success in this area.

She also enjoys music and is active in the Community Music Association and is a member of the Women's Committee of the Charleston Symphony. She likes to sew, for herself and for others, and a recent project was an outfit for a special niece, and one Christmas she made over 200 men's ties for family, friends and hospital employees. Her custom designed outfits are often described in the society pages of the local newspaper.

Helen pledged and was initiated into Delta Zeta as an undergraduate at West Virginia Institute of Technology. Her two sisters are also Delta Zeta sisters.

There is room in this short article to list only the highlights of Helen Lodge's many accomplishments. To quote a colleague at the Charleston Area Medical Center, "Mrs. Lodge is a respected and admired woman ... competent ... qualified ... and superbly dedicated."

Founders Memorial Fund

Listed are those who have made contributions to the Founders' Memorial Fund during April, May, June, 1979.

PADs and National Alumnae Chairmen in honor of Dianne Fellows Guild

PCDs in honor of Betty H. Agler

PROVINCE I

Paulene M. Dunn, Ethne Wooster Farmham, Ethelyn Percival Howard, Mildred Willard Lane, Drusilla Roderick Noyes, Velma K. Oliver, Emily Pendleton, Beatrice Farwell Robbins, Claire S. Sanders, Candace Hilton Smith, Dorothy M. Somers, Katherine A. Veazie, Muriel Covell Wilson, all of Alpha Upsilon chapter (*in memory of Annette S. Matthews and Ernestine Moore Dow, Alpha Upsilon*)

PROVINCE II

Northern New Jersey Alumnae

PROVINCE III

Zeta Phi, Slippery Rock State College, Chester County, Pennsylvania Alumnae Association

PROVINCE IV

Kappa Mu, Shepherd College
Theta Xi, Glenville State College
Zeta Tau, Morris Harvey College

PROVINCE V

PCD, PAD, Collegiate and Alumnae Convention Delegates in honor of Mary Lou Barth

Kathleen Wachsmuth, Theta (*in memory of Flora Baker, Ohio Wesleyan*)

PROVINCE VI

Theodosia Beesley Douglas, Psi

PROVINCE IX

Elvira A. Rau, Alpha Beta (*in memory of Elizabeth Baumgarten Andrews, Alpha Alpha*)

PROVINCE X

1979 Iowa State Day
Gwen Thompson, Zeta, (*in memory of mother Sophie Thompson and brother Ronald.*)
Mrs. Racel K. Huser

PROVINCE XI

Clay-Platte, Missouri Alumnae (*in memory of 2 year old daughter of Donna Eggers Bogle, Epsilon Lambda*)

PROVINCE XII

Theta Eta, Creighton

PROVINCE XIV

Salt Lake City, Utah Alumnae
Denver, Colorado, Alumnae

PROVINCE XV

Collegiate Delegates and Alumnae in National Convention Turtle Auction Santa Monica, California Alumnae (*in memory of Katherine Dutt and Evelyn Grant*)

Sacramento, California Alumnae (*in memory of Carol Selberg Martin, Delta Chi*)

Honolulu, Hawaii Alumnae

Marjorie Lee Houser

Mrs. L. F. Sugnet

Elizabeth Harrington Smith, Kappa (*in memory of sister, Sarah Harrington Flower, Kappa*)

PROVINCE XVI

Alpha Epsilon, Oklahoma State

PROVINCE XVII

Houston Alumnae

Houston Alumnae (*in memory of Rhea Freidell Schultz*)

San Antonio Alumnae

Jean Hoeft Unruh (*in memory of Rhea Freidell Schultz*)

Carolyn B. Gullatt

PROVINCE XXI

Kappa Phi, North Carolina, Charlotte

Zeta Xi, Lenoir-Rhyne

PROVINCE XXII

Delta Delta, Georgia State

Delta Delta, Georgia State (*in memory of Amaryllis Barnes' aunt, Jane F. Echols*)

Amaryllis Barnes (*in memory of Lonnei Loudermilk*)

PROVINCE XXIII

1979 Province Day Fund (*in honor of Grace Mason Lundy, Epsilon*)

Huntsville, Alabama, Alumnae (*Province Day corsage for Norma Andrisek*)

PROVINCE XXIV

Gold Coast Area Alumnae
Tampa, Florida Alumnae

Wharton School Honors Therese Vaughan



Therese Vaughan

"U of I student captures blue-chip fellowship to Wharton business school" read the headline in the *Des Moines Register*. Therese Vaughan, Iota chapter at the University of Iowa, has just won one of the most prestigious awards offered to college seniors—a Huebner Doctoral Fellowship to the Wharton School of Business at the University of Pennsylvania.

The \$12,000-per-academic-year fellowship can be renewed for two additional years, assuming the recipient's grades are satisfactory, so Terri could receive three years' graduate study under the grant.

Terri graduated last May with a bachelor's degree in insurance and economics. She was nominated last December for the award by Prof. Michael Murray, with whom she had studied, and was invited to Philadelphia for an interview in March. The fellowships were set up to increase the number of qualified teachers of risk and insurance at the college level. Terri is interested now in property and liability insurance, but isn't sure what area will be her specialty.

This isn't the first award for Terri, the eldest of six children. Two \$1000 educational scholarships granted by the Association of Independent Insurance Agents of Iowa helped finance her undergraduate education.

Alumnae Profiles



FLORENCE GALENTINE BOLLER '28

Un. of So. Ca., AI
Vocation: Member of State Bar of CA from '33 through '77.

Graduate Studies: Law at U.S.C.

Degrees: AB

JD degree (honorary professional based on grades and law review work)

Family Update: Retired from law upon moving to Oregon after death of husband, Judge Arden Boller. Children: Pamela, Donovan

Interests and Hobbies: Travel, clubs, civic activities, sewing, gardening, needlepoint, grandchildren.

ΔZ

MARGARET SNIDER BORTFELD '35

Un. of Illinois, AB
Vocation: Taught school 18 years in Illinois. Presently Real Estate Agent in Pacific Bay area.

Graduate Studies: Research Fellowship in Microbiology at Un. of Il and Cornell Un.

Degrees: Science Degree: Chemistry (major), English (minor), Microbiology (major), Masters in Microbiology.

Family Update: Husband, David, retired president of Engineering Worldwide Corp. Children: Mary Margaret, William.

Interests and Hobbies: Travel, music, theater, homemaking.

ΔZ

CAROLYN ARCHER CLARK '62

Sam Houston St. Un., ZΘ

Vocation: Research Associate, Remote Sensing Center. Do ground truth. Go into the field to identify dominant plant communities that give distinctive returns on aerial infrared photography, Landsat satellite imagery and seas at satellite imagery. Also do aquatic plant monitoring, land-use and vegetation mapping.

Graduate Studies: Botany, Range Science, Plant Taxonomy, Grass Systematics

Degrees: B.A. English; M.S. Botany; Ph.D., Range Science

Family Update: Husband, Frank, C.P.A. Children: Frank, Jr., Valerie, Bruce

Interests and Hobbies: Plant collecting, travel, people.

ΔZ

JEAN LENT FOUTZ '69

Mansfield State College, IΘ

Vocation: Mother; substitute Teacher

Graduate Studies: 1972 M.Ed at Trenton State Col., NJ

Family Update: Husband, James, owner of Pet Shop. Children: Christopher, Andrew

Interests and Hobbies: Upholstery, aquaria, gardening.

ΔZ

AVA LEE FRICK '77

Missouri Valley College, IT

Vocation: 3rd year UMC Veterinary Medicine

Interests and Hobbies: Aside from the many hours spent in classes, labs and studying, I fill extra minutes of free time with active involvement in the Student Chapter of the American Veterinary Medical Association. Served as Treasurer of the chapter in '78 and recently elected to be first female Veterinary Student President of S.C.A.V.M.A.

ΔZ

NIKKI MIGAS GYLLANDER '67

Un. of Wisconsin at Whitewater, EK

Vocation: Program Coordinator, Florence County Combined Services Board. I do contracting and administration of the county's services in mental health, alcohol and other drug abuse and developmental disabilities. Also do prevention programs in these areas to students and community groups.

Graduate Studies: Currently enrolled in Master of Public Service Administration program, Un. of Wis. - Oshkosh

Degrees: B.S., SW Northern Michigan U.

Family Update: Husband, Walter, State Forest Ranger. Children: Grant, Greg.

Interests and Hobbies: Active in State Human Services Assoc., do ad hoc teaching for Un. of Wisconsin - Extension, enjoy traveling, cross-country and water skiing. Went to Russia (Ukraine) with my family in 1975. Am going to Finland with my husband's family this year.

ΔZ

PHOEBE GAUMER HARRIS '27

Colorado State U., AA

Vocation: Homemaker

Graduate Studies: Dietetics, Intern at General Hospital in Cincinnati

Degrees: B.S.

Family Update: Rafael, M.D. Children: Penelope.

Interests and Hobbies: Raising show dogs. Bred the "top-winning show dog - all time - all breeds in the world" a Boxer Ch. Bang Away of Serrah Crest. My husband and I are now retired. We have lived in Mexico for 14 years. I enjoy needlework.

ΔZ

LOUISE McCUMBER HAWTHORNE '49

Eastern Il. Un., FN

Vocation: Learning Disabilities Resource Teacher in the Ottawa Elementary School District #141 at Central School, grades 1-6.

Graduate Studies: 36 hours above my Bachelor's Degree

Degrees: Have permission from state to teach L.D.

Family Update: Husband, George, Carpenter. Children: Kent, Kirk, Kim

Interests and Hobbies: Collecting early American antiques, reading

ΔZ



KATHRYN BIEHN LANDIS '49

Temple Un., ΔT

Vocation: Librarian of 3 elementary schools for 700 students, Kindergarten - 6th grade. I review and order books and A-V materials, plan the budget, teach, oversee the research in the library, train mother-volunteers and student-volunteer help.

Graduate Studies: Certified to teach English, French, Social Studies - Sec. Ed., Library Science, K-12

Degrees: B.S. in Ed., Temple Un. Studied: Lehigh U., Kutztown State Col.

Family Update: Husband, Elbert, Real Estate Broker. Children: Steven.

Interests and Hobbies: Genealogy, Oil painting.

ΔZ

JANE BODENWEISER

McELDOWNEY '62

Un. of Oregon, Ω

Vocation: Homemaker for healthy, loving Christian family, Registered Nurse (prefer Public Health, but enjoy most areas), Diplomat (my husband is in foreign service and we usually live abroad on assignment for U.S. Dept. of State.)

Graduate Studies: Refresher Course in Nursing 1975.

Degrees: B.S. in Nursing Ed.

Family Update: Husband, Arthur, Foreign Service. Children: Tara (born in Teheran, Iran), Eric (born in Banbury, Eng.)

Interests and Hobbies: International cooking, travel, church, Scouts, Boy and Girl, currently we are remodeling an old house.

ΔZ

SANDRA COOMBS NEWELL '68

CA. State Un. at Chico, ΔX

Vocation: Agriculture Inspector II. The only and first woman Grain Inspector in CA. I grade and inspect grain and commodities for the state of CA., Department of Food and Agriculture.

Graduate Studies: Physical Ed.

Family Update: Husband, William, Agriculture Biologist.

Interests and Hobbies: Member of National Ski Patrol (I do rescue work on weekends at ski slopes). Love all sports.

ΔZ

SUNNI JANDA OVERKAMP '65

Un. of Houston, ΔΘ

Vocation: Recently appointed as the Director of Communications for United Way of the Texas Gulf Coast. I will organize and direct a year-round communications program for the United Way which last year raised \$20.8 million for 54 social service agencies in Harris and Fort Bend Counties.

Previously Director of Public Relations at the University of St. Thomas. Founder of UST's journalism program.

Graduate Studies: Course work for an M.B.A. from Pepperdine Un.

Degrees: B.A. in Communication Arts, Michigan State U's School of Journalism. Listed in *Who's Who in American Women*, officer of the International Assoc. of Business Communicators and a member of Public Relations Society of America, Texas Public Relations Assoc., American Assoc. of University Professors and the Houston Press Club.

Family Update: Husband, Richard, Continental Group, Inc., Plastic Container Div., three children.

ΔZ

GAIL HASLETT RAGSDALE '73

CA. State Un. at Long Beach, ΔA

Vocation: Horse trainer. My husband and I have a farm in Kentucky and we train American saddlebreds for ourselves and for customers to show and sell.

Family Update: Husband, Carter, horse trainer.

Interests and Hobbies: Needlepoint, painting/drawing, reading, photography.

ΔZ

JANET RINGHAM ZELLER '58

UN. of CA at Berkeley, M

Vocation: Teacher, South Tahoe High School. Camp Director, Youth Conservation Corp., Lake Tahoe Basin Management Unit, United States Forest Service.

Graduate Studies: Exercise Physiology

Degrees: '72 MPE.-Un. British Columbia

'58 B.A. — U.C. Berkeley

Family Update: Children: Earl, Gretchen.

Interests and Hobbies: National Ski Patrol, Proficiency Inst., First Aid Instructor, Far West Divisional Secy.

ΔZ

ELAINE POPPE YORK '67

Un. of Cincinnati, Ξ

Vocation: Vice-President, The Mad Sculptor, Inc. My husband and I own the northern California wholesale/retail plastercrafts business in San Jose. I do all the accounting as well as work in the store. Teach classes at the store and for adult education.

Graduate Studies: San Jose State Un., Anthony Real Estate Schools.

Degrees: M.A. in Bus. Ed., CA. Salesperson License.

Family Update: Husband, Ray, President, the Mad Sculptor. Children: Steven, Marilyn.

Interests and Hobbies: Panhellenic Rep., rug hooking. Until May we owned a flying school at San Jose Municipal Airport. Presbyterian Church, Deacon/Evangelism Explosion trainee.

Support Your
Delta Zeta
Rose Shop

Lillian Lloyd Billings

Lillian Lloyd Billings, sister to Founder Alfa Lloyd Hayes, passed away on July 29th. Lucile Cooks had visited with her often in her St.

Petersburg home, and she was a delightful little lady. "She was so thrilled that I made the tape and then to have it in *The Lamp* with her picture brought her great satisfaction and happiness. She had a picture of her home in Oxford where so

many of the early meetings of Delta Zeta were held, and she had it wrapped carefully with my name on it, for I told her I would see that it was placed in our archives." Lucile's taped conversation with Lillian appeared in the Summer issue.

Mary Michael Brace

The Pennsylvania delegates proposed a resolution during convention: "For many of us, there is one person who leaves an indelible stamp of love and devotion on those she meets. Such a person is Dr. Mary Michael Brace. She was the

founding CCD for Iota Theta chapter and Pennsylvania PCD for seven years. She attended six National Conventions. Because of a serious illness, Dr. Brace is not able to attend this convention as planned.

"Therefore be it resolved that because of her continuing interest, love, and devotion to Delta Zeta and her many years of service; and that

because she represents and exemplifies to all who are fortunate enough to know her the finest and best of Delta Zeta standards and traditions that this 1979 convention does extend in appreciation its warm greeting and Delta Zeta love to Mary Michael Brace."

Word was received later that Mary had succumbed to her illness.

Flame Eternal

Alpha

Trudi Bice Brandenburg '24
Lillian Lloyd Billings '12

Gamma

Grace Zimmerman Emmett '30
Viola S. Sommermeyer '28

Zeta

Iona Barker Cummings '27
Irma I. Calhoun '11

Theta

Sadybelle Scott Walsh '32

Iota

Florence Overholt Kennedy
Janet Redfield Payne '34

Kappa

Sarah Harrington Flower '30
Mildred Bayley Graham '26
Elizabeth Sutton Gustison '26
Irene Taylor Oldham '25
Lillian Mares Sears
Maxine Ehlen Stanley '29

Mu

Lillian E. Knipper '31
Marjorie Lewin Overmire '26
Martha Cannon Zieman '32

Pi

Ruth Fuller Burcham '33

Sigma

Suzanne Nelson Cressey '41
Gretchen Broussard Field '56
Emma Barton Swain '55

Upsilon

Mary Nicholson Anderson '48
Dorothy Torkelson Caldwell '24

Chi

Jane Coffin Gordenker '47
Marcia J. Mink '70

Alpha Alpha

Marion Edgren DeRuiter '32
Alma Lewis James '23

Alpha Beta

Clara Rush Barngrover '21
Lillian O'Neal King '33
Louise Baker Land '21
Mildred Christoffer Vogel '26

Alpha Gamma

Sarah Daniel '26

Alpha Epsilon

Vera Vandenberg McLaury '25
Vera Cheathman Stanford '23

Alpha Eta

Dorothy Boehm Hoffman '28

Alpha Lambda

Bernice Hortstine Flatt '26

Alpha Pi

Edna Pate Mitchell '22

Alpha Rho

Flora E. Baker '34
Pauline Horine Druley '30

Alpha Sigma

Barbara Nolen Cline '49

Alpha Tau

Dorothy Fields Dyke '43

Beta Alpha

Lillian Biltcliffe Morrison '26

Beta Tau

Frances Day Callen '23
Nettie M. Clark '25

Beta Chi

Lois Klar Hanmer '50

Gamma Chi

Leona Davis Shipley '57

Delta Xi

Alma Carson Smith '18

Delta Upsilon

Geneva Lewis Agee '38

Delta Chi

Coral Selberg Martin '53

Epsilon Gamma

Bonnie Brummitt Drummond '24

Epsilon Epsilon

Miriam Holmes Taylor '40

Zeta Kappa

Maude Smith McElroy '04

Iota Theta

Mary Michael Brace '40

What happened to you after college?

Completed questionnaires provide information for our Alumnae Profile section and are also used as a guide to finding Delta Zetas to interview for other stories in the LAMP.



ADDRESS INFORMATION

Name _____
First _____ Maiden _____ Married _____
Street Address _____
City _____ State _____ Zip _____

Your College Chapter _____

Phone: _____
Area Code () _____

CAREER INFORMATION

Occupation: (Please give title and describe your duties as fully as possible)

(If more space is needed, please use an additional sheet)

FAMILY UPDATE

Date of Marriage: _____

Husband's First Name and Occupation: _____

Names and birthdays of children: _____

GRADUATE STUDIES

Degrees: _____

(If more space is needed, please use an additional sheet)

INTERESTS AND HOBBIES

Mail to: Delta Zeta National Headquarters
21 East State St., Suite 600
Columbus, OH 43215

DELTA ZETA DIRECTORY

NATIONAL COUNCIL

President: Norma M. Andrisek (Mrs. J. R.), 319 Janice Drive, Berea, OH 44017
Vice President of Membership: Carolyn B. Gullatt (Mrs. John), 4008 Hyridge, Austin, TX 78759
Vice President Alumnae Affairs: Mary Margaret C. Fore (Mrs. Sam), 73 Townhouse Lane, Corpus Christi, TX 78412
Vice President Collegiate Affairs: Patricia S. Dunn (Mrs. Stephen), 18470 Sobey Road, Saratoga, CA 95070
Secretary: Eleanor S. Fariss (Mrs. James), 17721 Bothell Way, NE, Seattle, WA 98155
Treasurer: Florence H. Harvey (Mrs. Stephen), P.O. Box 456, Westfield, NJ 07091
Director (Sorority Education): Debbie M. Bruce (Mrs. Bill), 5008 NW 62nd, Oklahoma City, OK 73122
Director (References): Anne Marie J. Gavin (Mrs. William), 3264 Swan Drive, Vineland, NJ 08360
Director: Dianne F. Guild (Mrs. Douglas), 16 Andrews Drive, South, Burlington, VT 05401
Director (ECS Scholarship): Sarah Jane S. Houston (Mrs. Harold), 3358 Ramblewood Place, Sarasota, FL 33577
Director (Pledge Training): Dwayla Dean F. Porter (Mrs. Arthur), 1121 Osage Drive, Stillwater, OK 74074
Past National President: Betty H. Agler (Mrs. B.H.), Suite 600, 21 E. State Street, Columbus, OH 43215

NATIONAL HEADQUARTERS

Executive Secretary: Betty H. Agler (Mrs. B.H.), Suite 600, 21 E. State St., Columbus, OH 43215
National Field Consultant: Debbie Raziano, Suite 600, 21 E. State St., Columbus, OH 43215
National Field Representatives: Susan Griffin, Terry Heath, Bunny Nash, Trudy Wheeler, Suite 600, 21 E. State St., Columbus, OH 43215
Extension: Betty H. Agler (Mrs. B.H.), Suite 600, 21 E. State St., Columbus, OH 43215

THE LAMP

Editor: Florence H. Miner (Mrs. Arthur), Suite 600, 21 E. State St., Columbus, OH 43215

STANDING COMMITTEES

Colonnade Club: Doris O. Berkey (Mrs. Fred), 296 W. Bridge Drive, Berea, OH 44017
Constitution and Procedure: Lucile C. Cooks (Mrs. Rudolf). Refer all correspondence in care of National Headquarters.
History: Grace M. Lundy (Mrs. H.M.). Refer all correspondence in care of National Headquarters
Ritual: Linda A. Hobbs (Mrs. Phillip), 1772 Coventry Rd., Columbus, OH 43212

COMMITTEES

Activities/Social (Collegiate): Linda G. Fisk (Mrs. Conrad), Old Walpole Road, RFD 3, Keene, NH 03431
Alumnae Relations: Carol S. Bertz (Mrs. Michael), 6544 S. Heritage Place, E., Englewood, CO 80110
Awards (Collegiate & Alumnae): Janis L. Rose (Mrs. R. Michael), 118 Shihmen Ct., Antioch, TN 37013
Bylaws & Standing Rules: Lucile C. Cooks (Mrs. Rudolf). Refer all correspondence in care of National Headquarters.
Delta Zeta Subscriptions (Collegiate & Alumnae): Box 24145, Columbus, OH 43224
Housing (Collegiate & Alumnae): Suzanne W. Zanes (Mrs. Robert), 3716 Stoney Creek Road, Ft. Worth, TX 76116
Newsletter (Collegiate & Alumnae): Amy R. Glasgow (Mrs. Thurman), 502 Tammy Drive, San Antonio, TX 78216
Philanthropy (Collegiate): Joan D. Lowry (Mrs. Bob-Bill), 578 Yarmouth Lane, Bay Village, OH 44140
Philanthropy (Alumnae): Priscilla (Pat) Beatty (Miss), 3691 NW 95th Terrace, Apt. 1202, Sunrise, FL 33321
Programs (Alumnae): Judy W. Ridgway (Mrs. Wayne), 1807 Atascosa, Portland, TX 78374
References: Anne Marie J. Gavin (Mrs. William), 3264 Swan Drive, Vineland, NJ 08360
Scholarship (Collegiate): Margaret S. Grosse (Mrs. Robert), 21 Terrace-Walk, Berkeley, CA 94707
Elizabeth Coulter Stephenson Scholarships (Collegiate): Sarah Jane S. Houston (Mrs. Harold), 3358 Ramblewood Place, Sarasota, FL 33577
Standards: Allyson K. Mayse (Mrs. Bert), 11807 Carvel, Houston, TX 77072

COLLEGIATE AND PROVINCE ALUMNAE DIRECTORS

- I. Maine, Vermont, New Hampshire, Massachusetts, Connecticut and Rhode Island
PCD: Karen K. Manuel (Mrs. Thomas), 36 Rilling Ridge Rd., New Canaan, CT 06840
PAD: Care of National V-P Alumnae Affairs
- II. New York and New Jersey
PCD: Maureen Lewis (Miss), 15 Ash Street, Westwood, NJ 07675
PAD: Sue Ward (Miss), 27A Great Wood Ct., Apt. 3, Fairport, NY 14450
- III. Pennsylvania and Delaware
PCD: Carol J. Miskell (Mrs. Richard), 176 Seminole Ave., Pittsburgh, PA 15237
PAD: Charlotte F. Silversteen (Mrs. Allan), 513 Toll Rd., Orelan, PA 19075
- IV. West Virginia
PCD: Anna Lou H. Jones (Mrs. John), 935 Elmhurst Ave., St. Albans, WV 25177
PAD: Mary B. Semder (Mrs. Robert), 969 Zerkle St., St. Albans, WV 25177
- V. Ohio
PCD: Phyllis S. Favorite (Mrs. Robert), 903 Woodland Ave., Van Wert, OH 45891

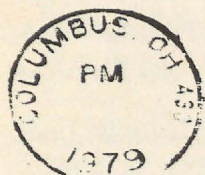
- PAD:* Barbara E. Shelton (Mrs. Glen), 727 Carnahan, Findlay, OH 45840
- VI. Michigan
PCD: Isabel J. Severy (Mrs. Raymond), 2127 Northampton Way, Lansing, MI 48912
PAD: Care of National V-P Alumnae Affairs
- VII. Indiana
PCD: Caryl M. Fitzpatrick (Mrs. Max), Rt. #1, Box 182, Whiteland, IN 46184
PAD: Gelaine L. Smock (Mrs. Steven), 9561 E. Southport Road, Indianapolis, IN 46259
- VIII. Wisconsin
PCD: Sandi Betz (Miss), 3011 Agnes St., Eau Claire, WI 54701
PAD: Care of National V-P Alumnae Affairs
- IX. Illinois
PCD: Gail E. McKee (Mrs. Don), 776 Tenth Street, Charleston, IL 61920
PAD: Care of National V-P Alumnae Affairs
- X. Iowa
PCD: Alaire S. Bornholtz (Mrs. Tim), 3601 Lafayette, Sioux City, IA 51104
PAD: Care of National V-P Alumnae Affairs

- XI. Missouri
PCD: Lillian K. Truesdale (Mrs. James), 4823 N. College, Kansas City, MO 64119
PAD: Elvera R. Bartels (Mrs. Henry), 6924 N. Cosby, Kansas City, MO 64151
- XII. Kansas, Nebraska and the collegiate chapters of Colorado
PCD: Laree Mugler (Miss), 8202 Monrovia, Lenexa, KS 66215
PAD: Susan R. Wilkerson (Mrs. Monty), 3131 Burton, Topeka, KS 66605
- XIII. Minnesota, North Dakota and South Dakota
PCD: Dale H. Leaf (Mrs. Donovan), 319 W. Wabasha, Winona, MN 55987
PAD: Care of National V-P Alumnae Affairs
- XIV. Colorado, Wyoming, Utah, Arizona and New Mexico (*alumnae chapters only*)
PAD: Janet E. Havener (Mrs. Gary), 4343 N. Sheridan Avenue, Loveland, CO 80537
- XV. California, Washington, Oregon, Nevada, Idaho, Montana, Alaska and Hawaii
PCD: Carolyn O. Wilke (Mrs. Walter), 108 Via Florence, Newport Beach, CA 92663
Alumnae Coordinating Team: Mary Margaret C. Fore (Mrs. Sam), Chairman, National V-P Alumnae Affairs
 Cherie P. Burke (Mrs. William), 46 E. Highland, #D, Sierra Madre, CA 91024
 Joanne M. Tracy (Mrs. Joseph), 26 Hartwood Ct., Lafayette, CA 94549
- XVI. Oklahoma
PCD: Mary G. French (Mrs. John), 2322 NW, 58th Circle, Oklahoma City, OK 73112
PAD: Doris W. Sandoz (Mrs. N.O.), 624 SW, 51st St., Oklahoma City, OK 73109
- XVII. Texas and the collegiate chapters of New Mexico
PCD: Jane G. Nelson (Mrs. J. Michael), 1933 Maxwell Drive, Lewisville, TX 75067
PAD: Annette F. Nall (Mrs. Garry), Box 136, WT Station, Canyon, TX 79015
- XVIII. Louisiana and Mississippi
PCD: Marlene M. Allen (Mrs. Arthur), Rt. 1, Box 296, Natchitoches, LA 71457
PAD: Gloria M. Traylor (Mrs. Richard), Rt. 1, Gunter Rd., Box 148-A, Florence, MS 39073
- XIX. Tennessee
PCD: Diane D. White (Mrs. James), 6939 Highland Park Dr., Nashville, TN 37205
PAD: Care of National V-P Alumnae Affairs
- XX. Kentucky
PCD: Pam Cupp (Ms.), 1321 Alexander Pike, Apt. 305-A, Ft. Thomas, KY 41075
PAD: Diana L. Hohman (Mrs. Howard), 4604 Deepwood Drive, Louisville, KY 40222
- XXI. North Carolina and South Carolina
PCD: Malissa W. Hawkins (Mrs. Bill), 403A W. Croft Street, Greenville, SC 29609
PAD: Margaret M. McIntire (Mrs. Jack), 2523 Cherbonne, Greensboro, NC 27407
- XXII. Georgia
PCD: Rita S. Robb (Mrs. Robert), 600 Spring Creek Court, Marietta, GA 30067
PAD: Care of National V-P Alumnae Affairs
- XXIII. Alabama
PCD: Ginger B. Cowley (Mrs. Stephen), 12 Maury Drive, Mobile, AL 36606
PAD: Carolyn L. Followill (Mrs. Richard), 2123 48th Street, E., 19 B. Timberlane, Tuscaloosa, AL 35401
- XXIV. Florida
PCD: Patricia C. Rosser (Mrs. David), 1609 Indian Rks. Road, Clearwater, FL 33516
PAD: Elsie K. Bailey (Mrs. W. Knapp), 801 S. Federal Hwy, Apt. 717, Pompano Beach, FL 33062
- XXV. Virginia, Maryland and Washington, D.C.
PCD: Barbara H. Martin (Mrs. Willis), 1404 Aquia Drive, Stafford, VA 22554
PAD: Care of National V-P Alumnae Affairs
- XXVI. Arkansas
PCD: Marsha S. O'Daniel (Mrs. Keith), 321 W. Maxwell, DeWitt, AR 72042
PAD: Care of National V-P Alumnae Affairs

STATE REFERENCE CHAIRMEN

ALABAMA: Mrs. Wesley Thigpen, 4005 Pickfair Street, Montgomery, AL 36116 ALASKA: Mrs. Terry J. Gustafson, 2604 Glenkerky Dr., Anchorage, AK 99504 ARIZONA: Miss Margaret Ann Poe, 4720 West Rose Lane, Glendale, AZ 85301 ARKANSAS: Mrs. Jefferson Farris, 140 Donaghey Ave., Conway, AR 72032 CALIFORNIA (N): Mrs. Walter Burde, 24685 Camino del Monte, Carmel, CA 93923 CALIFORNIA (S): Mrs. Randall Moore, 4355 Cannington Dr., San Diego, CA 92117 COLORADO: Mrs. Lawrence Brase, 1023 Denver Ave., Box 146, Calhan, CO 80808 CONNECTICUT: Mrs. Edward Gill, 53 High Point Rd., Westport, CT 06880 DELAWARE: Mrs. Edwin Willing, 110 Canterbury Dr., Windsor Hills, Wilmington, DE 19803 DISTRICT OF COLUMBIA: In care of Mrs. William Gavin, 3264 Swan Drive, Vineland, NJ 08360 FLORIDA: Mrs. Donald E. Nelson, 4503 LaVilla Lane, Tampa, FL 33611 GEORGIA: Mrs. John Henry, General Delivery, Mineral Bluffs, GA 30559 HAWAII: Mrs. Albert Solomon Jr., Apt. 802, The Hawaii Kai Plaza, 6770 Hawaii Kai Dr., Honolulu, HI 96825 IDAHO: Mrs. W. L. Lundquist, 1004 S. Logan, Moscow, ID 83843 ILLINOIS: Mrs. John L. DeLaurenti, Indian Trail Farm RR 2, Pocahtontas, IL 62275 INDIANA: Mrs. Roger L. Davies, 812 S. 5th St., Terre Haute, IN 47807 IOWA: Mrs. Michael Hanna, 3028 Cheyenne Blvd., Sioux City, IA 51704 KANSAS: Mrs. Richard Furman, 4017 W. 68th Terrace, Prairie Village, KS 66208 KENTUCKY: Mrs. Larry Oney, 709 Terry Street, Winchester, KY 40391 LOUISIANA: Mrs. Jimmy Mathes, 14363 Firethorn St., Baton Rouge, LA 70815 MAINE: Mrs. Nelson L. Smith, Box 189, RFD 2, Cumberland Center, ME 04021 MARYLAND: Mary Schwarz (Miss), 660 Thurber Drive, W. Apt. C6, Columbus, OH 43215 MASSACHUSETTS: In care of Mrs. William Gavin, 3264 Swan Drive, Vineland, NJ 08360 MICHIGAN: Mrs. Edward Wirth, 730 Wattles Rd., Bloomfield Hills, MI 48013 MINNESOTA: Miss Lyn Swiderski, 904 Pearl Dr., Apt. 103, Marshall, MN 56258 MISSISSIPPI: Mrs. James McLeod, Rt. 3, Box 433, Brandon, MS 39042 MISSOURI: Miss Jeanne Nowacki, 5839 J. Cedar View Place, St. Louis, MO 63128 MONTANA: In care of Mrs. William Gavin, 3264 Swan Drive, Vineland, NJ 08360 NEBRASKA: Mrs. Greg Volkmer, Box 110 Eagle, NE 68347 NEVADA: In care of Mrs. William Gavin, 3264 Swan Drive, Vineland, NJ 08360 NEW JERSEY: Miss Debra Bass, 357 Shea Dr., New Milford, NJ 07646 NEW HAMPSHIRE: Mrs. Arthur Drewes III, #2 Vista Drive, Hooksett, NJ 03106 NEW YORK: Miss Mary Frances Sims, 95 Ball Road, High Acres, Syracuse, NY 13215 NEW MEXICO: In care of Mrs. William Gavin, 3264 Swan Drive, Vineland, NJ 08360 NORTH CAROLINA: Ashley Angel (Miss), 4622 H., Mercury Drive, Greensboro, NC 27410 NORTH DAKOTA: Mrs. Owen Anderson, 1261 Parkview Dr., Bismarck, ND 58501 OHIO: Miss Beth Phillips, 4643 17th St., NW, Canton, OH 44708 OKLAHOMA: Mrs. C. B. Purdum, Rt. #1, Box 147, Dewey, OK 74029 OREGON: Mrs. Fredrick Ivers, 5154 N.E. Willamette, Corvallis, OR 97330 PENNSYLVANIA: Mrs. George West, Rt. 2 Hemlock Acres, Punxsutawney, PA 15767 RHODE ISLAND: Miss Patricia Webster, 22 Reservoir, Rumford, RI 02916 SOUTH CAROLINA: Mrs. Eileen Garrison, 29 Selwyn Drive, Greenville, SC 29615 SOUTH DAKOTA: Mrs. Richard Huffman, Jr., 1535 S. State St., Aberdeen, SD 57401 TENNESSEE: Mrs. Phillip Dalton, Box 163, Lewisburg, TN 37091 TEXAS: Mrs. Jerry Hawkins, 324 Pine St., Lake Jackson, TX 77566 UTAH: Mrs. William Christensen, 1669 Yalecrest Avenue, Salt Lake City, UT 84105 VERMONT: Mrs. David Hoefler, 22 Hillwinds, Brattleboro, VT 05301 VIRGINIA: Mrs. Thomas Wiegand, 100 Jolly Roger Cove, Aquia Harbour, Stafford, VA 22554 WASHINGTON: Mrs. Lon Soyk, 31033 38th Avenue, South, Auburn, WA 98002 WEST VIRGINIA: In care of Mrs. William Gavin, 3264 Swan Drive, Vineland, NJ 08360 WISCONSIN: Miss Danice Whalen, 2018 Colony Court, Apt 15, Beloit, WI 53511 WYOMING: In care of Mrs. William Gavin, 3264 Swan Drive, Vineland, NJ 08360

LETTERS



What an excellent letter our National President wrote for this spring issue. When I think of all we do, and without fanfare, in the realm of helping the hard of hearing my cup runneth over. My two darling granddaughters, Amy 9 and Lori 5, were born with genetic hearing defects, each with a more-or-less degree of profound deafness.

Amy and Lori are blessed with two wonderful parents who believe in giving them every help available so that they will use what hearing they have to its greatest potential, and learn to speak so that they can be in the mainstream of a hearing world. God bless all my Delta Zeta sisters for helping a big handicap that is silent in more ways than one.

*Marie Klapperich Jackson '35
Illinois, Alpha Beta*

AZ

Please share with Norma Andrisek the following thoughts in response to her editorial in the spring issue. Yes, we do need standards and goals, but my experience as a teacher also teaches me that differing people have differing capabilities and potentials. A truly successful collegiate chapter must realistically assess its talents just as an individual must, and then function with realistically high goals.

Continued striving toward impossible goals only yields increasing frustration. Perhaps a scale of sliding expectations could be used based on chapter size. As with children, praise and a feeling of success at achieving yield growth. I am in total agreement with high standards of excellence, coupled with realistic compassion and assessment of potential. Striving upward toward the possible is better than striving toward the impossible.

*Sandra Askelson '65
North Dakota-Upsilon*

I live in a community that does not have an alumnae chapter. Therefore, I always look forward to reading the LAMP which is my only contact with the sorority that has always been so important to me.

My husband died suddenly in January of this year. Now I have three children to raise and a household to run, besides my duties as a kindergarten teacher. The closeness of a sisterhood taught me that we find our strength in friends. This strength aids us in picking ourselves up by the boot straps and going on with our lives.

Because of my upbringing, close friends and life experiences, including the wonderful sisterhood that I found at the University of South Florida, I feel confident as I look toward the future and strive to achieve the goals I set for myself.

*Crill Harden '70
USF-Iota Lambda*



Col. and Mrs. Harold Booth (U.S.A. Ret'd)

We enjoyed "Reminiscences of Delta Zeta Founders and Sister Alfa" in the summer '79 LAMP. I am writing to you on my 85th birthday (July 11) and we will celebrate our 62nd wedding anniversary on August 11.

My husband retired in 1954 after 36 years service during the Mexican Border trouble, WW I and II and Korea. We have been in most of the military installations in the United States and its possessions, and in many foreign countries, including Germany during the Berlin Air Lift.

With all good wishes to you and the staff. You are doing an excellent job in turning out an interesting and readable magazine.

*Mildred Young Booth '18
Northern Colorado-Delta Xi*

Lamp will forward letters

If you'd like to write to any of the Delta Zetas we've featured in this issue of the LAMP, we will forward your letter if you enclose it in a stamped envelope showing your return address

Your name
and address

15¢
stamp

Name of Delta Zeta

Mail your requests to:
The LAMP of Delta Zeta
21 E. State Street
Columbus, OH 43215

Att: Addressograph Dept.

Place Your Christmas Gift Subscriptions now!

Do yourself and your Delta Zeta chapter a favor and send magazine subscriptions as Christmas gifts this year. Our magazine subscription is the perfect solution for those "hard to buy for" people on your gift list as well as an easy fund-raising project for your chapter.

Most leading magazines are available, and both new and renewal subscriptions are welcome. We'll make sure any discounts that apply are passed on to you, and we'll even send an attractive gift card if you ask us.

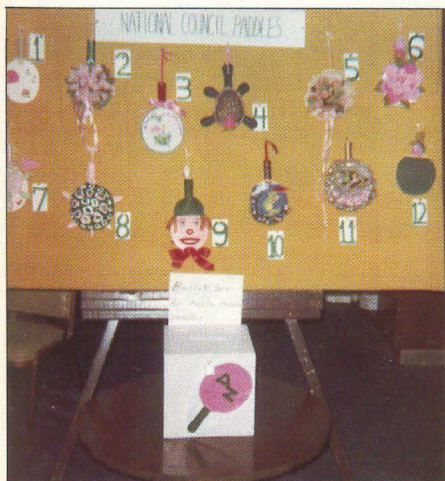
Now is the time to act if your gift is to arrive for Christmas. For complete details and an order form, please see page 30 of the summer LAMP. Or write to: Delta Zeta Subscriptions, P.O. Box 24145, Columbus, Ohio 43224



Enjoying the beautiful surroundings of the Doral Hotel is Cathy Lieurance during a rare moment of relaxation.



Joining in the fun of the Caribbean Festival is Chuck McCabe shown with Linda Hobbs. Chuck is not only the proud husband of Convention Initiate, Loree McCabe, but spent many hours at his "Delta Zeta Jewelry Table" selling jewelry to those attending Convention.



Shown here is the display of table tennis paddles that were entered in the National Council Paddle Decorating Contest. Winning paddle was #3, entered by National President, Norma Andrisek



Convention Committee Chairman Betty Agler is shown here in all her Caribbean Festival finery, surrounded by her hard-working but fun-loving committee Jean Southworth, Jane Nelson, Cathy Lieurance, Debbie Raziano, Linda Hobbs and Janis Rose.



Convention picture - Delta Zeta National Convention at the Doral Country Club, Miami, Florida

CHANGE OF ADDRESS OR NAME

Clip and mail to Delta Zeta National Headquarters, 21 East State Street, Columbus, Ohio 43215

Miss
Mrs.
Ms.

Given Name

Maiden Name

Husband's last name,
if married

Collegiate Chapter

Year of Graduation

Date Change is Effective

New Address

(City)

(State)

(Zip Code)

If you wish to have the LAMP mailings discontinued, Please indicate _____

If you are currently a national, province, or chapter
officer for Delta Zeta, please indicate office held _____

Optional Information:

Husband's first name

Date of Marriage

Delta Zeta Sorority
Suite Six Hundred
Twenty-one East State Street
Columbus, Ohio 43215

Send 3579 Immediately to Delta Zeta Sorority

Second class postage
paid at Columbus,
Ohio and at additional
mailing offices.