

the lamp of
**DELTA
ZETA**
fall 1978



Founders Day 1978



*Reach high, for stars lie hidden in your soul.
Dream deep, for every dream precedes the goal.*
Pamela Vaull Starr

If our Founders were with us now they would probably reflect that the scope of Delta Zeta far exceeds their fondest dreams. A sense of purpose accompanied the dreams of those six young women, however, and because of that, Delta Zeta has grown and flourished since the time of its Founding some seventy-six years ago. Today, we can take great pride in what we are.

No elusive, impossible dreams were theirs, for the Founders combined their dreams with dedication, loyalty and devotion. There was strength in their purpose and determination in their effort.

Let us emulate our Founders by rededicating ourselves to their purpose and ours. Let us not be content to remain only as we are. Let us dream too and reach ever higher to continue what they so lovingly began.

As we participate in the familiar ceremonies and remembrances of this day, may we be mindful of the promise of our golden Lamp, the faith of our sisterhood and our individual pledge to Delta Zeta.

I hereby proclaim this October 24 to be observed as Founders' Day by our entire membership and request that our colors of rose and green be worn this day in evidence of our dedication and faith in Delta Zeta.

Given under my hand and seal this first day of September in the year of our Lord, one thousand nine-hundred and seventy-eight and of the sorority, the seventy-sixth.

Norma Andrisek
National President

FOUNDERS OF THE SORORITY



Founded 1902

Alfa Lloyd Hayes, 1880-1962
Mary Collins Galbraith, 1879-1963
Anna Keen Davis, 1884-1949

Julia Bishop Coleman, 1881-1959
Mabelle Minton Hageman, 1880-1929
Anne Simmons Friedline, 1879-1932

Editor

Florence Hood Miner

Staff

Scott Thompson Douget
Grace Mason Lundy
Norma Swebston McIntyre
Beth Kennard Moore
Diane Jones Skelton

The Lamp

The LAMP of Delta Zeta, official magazine of the sorority, is published quarterly by the Delta Zeta Sorority, 21 East State Street Columbus, Ohio, 43215. Second class postage paid at Columbus, Ohio. We hope you will agree that the appropriate place to list the Founders is at the beginning of each issue of the LAMP.

About The Cover

RUSH is the season and RUSH is the reason. The cover girls represent all Delta Zeta collegians at this special time of year who are welcoming rushees to their traditional preference party.

Send change of address and all correspondence of an editorial or business nature to Delta Zeta National Headquarters, 21 East State Street, Columbus, Ohio 43215.

Contents

Founders Day Message (Inside Front Cover)

- 2 A Picture Story of Delta Zeta Rush
- 4 The Alumnae Role in Rush Today
- 6 Convention, 1979
- 7 Field Representatives Assist Chapters
- 8 Grace Mason Lundy Award Winner Seniors
- 10 Delta Zeta Scholarship at Gallaudet
- 11 Florence Hood Miner Award
- 12 Founders Memorial Fund
- 14 Do You Know Engie?
- 15 Colonnade Scholarships
- 18 With the Alumnae
- 22 On Campus
- 32 Delta Zeta Directory

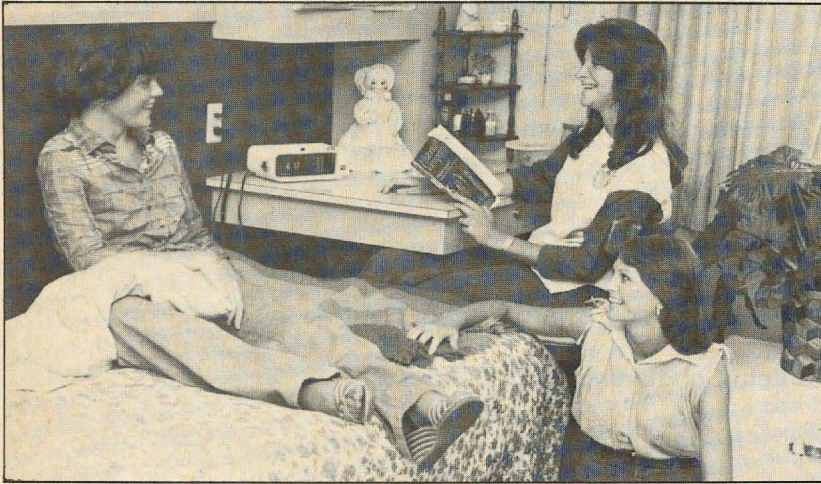
Send all Gallaudet College contributions to:
Mrs. Francis Merrill
Gallaudet College, Kendall Green
Washington, DC 20002

Send all Founders Memorial Fund contributions to:
Mrs. William Barth, Chairman
1662 Villa South Drive
West Carrollton, OH 45449

POSTMASTER: Please send notice of undeliverable copies to
Delta Zeta, 21 East State Street, Columbus, Ohio 43215

A picture story of Delta Zeta Rush

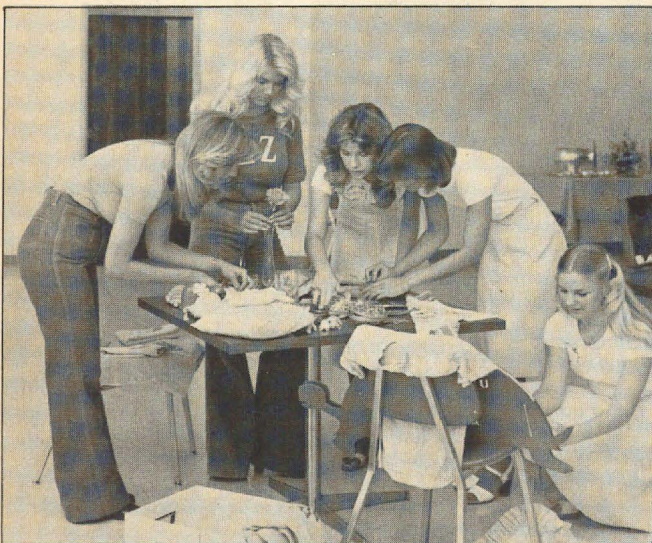
Rush is ...



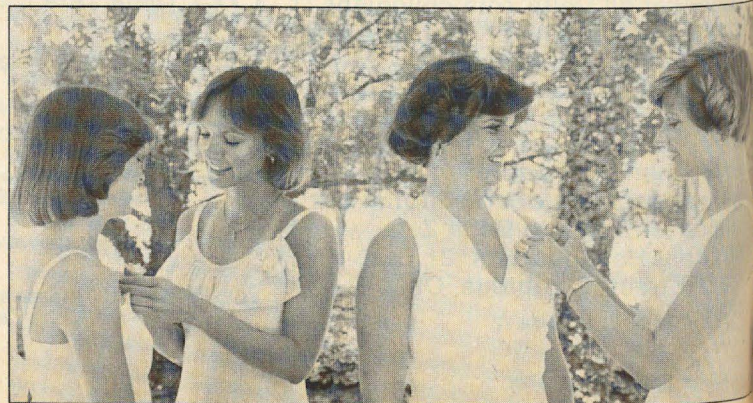
1. planning



3. getting ready



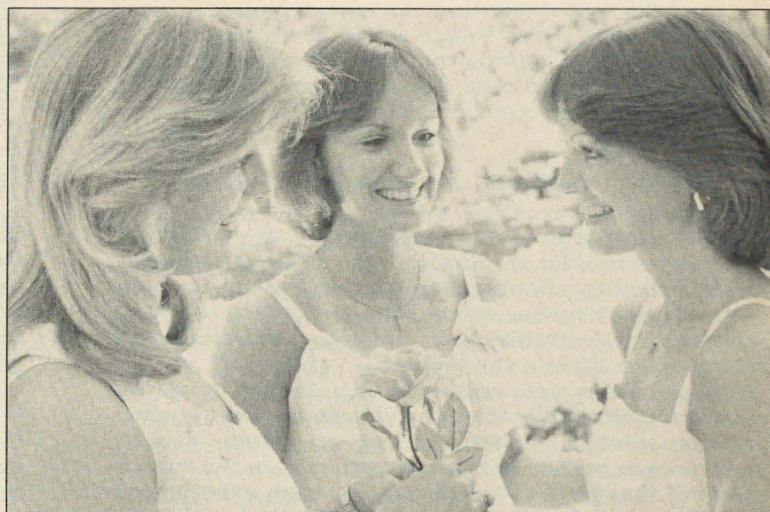
2. working together



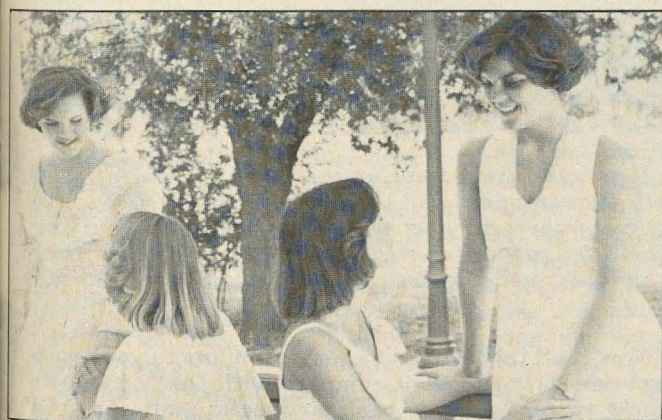
4. name tags



entertaining



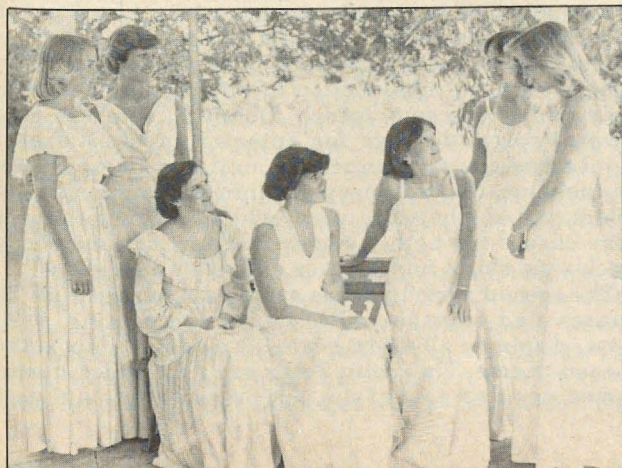
8. a lovely ceremony



6. getting acquainted



9. saying . . . we made it!



7. conversation



The Alumnae Role in Rush Today

by Carolyn Barnes Gullatt,
National Vice President of Membership

Rush... what does the word convey to you? From the viewpoint of an alumna, how do we see it? Many of us are called by chapter members and asked for help on the various rushes around the Delta Zeta country. What is our role in this most vital aspect of Delta Zeta? Where do we fit into the picture... or do we?

Many articles are written in the sorority world on rush, but it is usually from the viewpoint of the rushee or the rusher. This is written from an alumna aspect, one who was rushed and in turn, rushed, in the "olden days" of the '50s. Let's compare our rush experiences with those of the present day to see that although changes have occurred in the mechanics, the spirit of rush is as familiar as ever. And it is important as ever for alumnae to participate in this program.

Rush In the '50s

As a rushee, I was extended an invitation through Panhellenic to a series of teas, two or three a day, beginning in late afternoon and continuing until all sororities had been visited. All these teas were formal, and we very much dressed the part... hats, white gloves, full-skirted "tea" dresses. The sorority sisters dressed in afternoon frocks or "after five" dresses, as they were called then. The party consisted of a receiving line, a lovely formal tea table with fruit punch, and various cakes and nuts. Everyone in the receiving line wore corsages, the chapter advisor, the President, and alumnae, and several officers. There were fresh flowers on the service table and usually some were scattered around the room where the party was given... typically a lounge in the dormitory or a home of an alumna.

This was our first "set" of parties and all rushees were invited. Usually the President made a welcoming speech and introduced the other officers and advisor. Mostly, the activity consisted of simply visiting between rushees and members, with group singing of sorority songs. Sorority colors and symbols were scattered about and much in evidence.

The next set of parties were invitational, and you hoped you would get "the" invitations you desired. You were allowed to go to as many parties as you received invitations, however. Second parties consisted of a theme with elaborate decorations, skits, costumes and even favors. These were more informal parties held in school facilities once again, but hardly recognizable as such with the rooms converted to an Indian village, or decorated as an Arabian Nights, or a nursery rhyme theme. A skit I particularly remember was one using nursery rhymes as the songs with the words changed to show how that sorority had the most

talented, beautiful, and popular girls on the campus. Favors were handmade but were usually something usable, such as a pencil box, a stenciled handkerchief or scarf, of course decorated with that particular sorority's name or flower, (Definitely *not* usable unless you pledged that particular group!)

The third or last set of parties were ceremonies with much emotional appeal... long evening dresses worn by sorority members, in a candlelight setting, and again, fresh flowers decorating the room. A lovely ceremony was perfectly performed, using sentimental songs and a wishing well where you made a "secret" wish with some prompting from the Rush Chairman.

Between the three sets of parties we also had informal rush dates with various members of the group you were rushing. A favorite "date" had a sorority member pick you up at the dorm and take you for a coke or a piece of pie and coffee at the Student Union or a nearby cafe. While this third set of parties could be invitational, most of the sororities invited most of the rushees, so many rushees went to three sets of parties with all groups.

Bids were handed out by the Dean of Women in the college auditorium and you then went to YOUR sorority room where all your new sisters waited for you, usually with a rose or token gift... and of course, there was a lovely ceremony to welcome you into the sisterhood.

Rush In the '70s

Now if all this sounds vaguely familiar to your rush experience, how does it compare with that of today's young rushee? Having been a collegiate advisor for a number of years and having attended a number of rushes around the country, let me describe rush in 1978. The first parties are usually round robins or ice water teas where all rushees are invited. The parties are usually held in sorority rooms or school facilities or in sorority houses if the campus allows them. The parties consist of the sorority members visiting with the guests, with an introduction of officers by the President and a welcome speech. Chapter members sing several sorority songs for entertainment. Refreshments are usually punch, sometimes provided by Panhellenic. Decorations are minimal though sorority colors and symbols are very evident. The clothing is very casual for both rushees and sorority members, slack sets, skirts and blouses and even nice jeans.

The second period parties are theme parties with all phases tied together with clever decorations, food, skits, displays, all adding to and enlarging upon the chosen theme. The Delta Zetas are all dressed in costumes, some as part of the skit presentation but most



Carolyn Barnes Gullatt

of the campuses have the entire chapter dressed either in look-alike costumes or outfits pertinent to the theme. The skits are many times like Broadway productions, with much talent exhibited and lighting and scenery beautifully done. Music is usually from Broadway shows, currently popular movies or original words to the top 40 tunes. These parties are invitational. Nice slacks and dresses are the mode of dress. Food is simple, punch and snacks.

The third period is usually a Preferential party. This is a formal party with lots of candlelight, a lovely ceremony, sentimental songs, roses, a wishing well ... does it ring a bell?

With this brief review of rush, then and now, some superficial contrasts are immediately evident. But there are more subtle differences. Obviously rush has become more informal in dress and manner but it has also become much more organized and detailed in every other aspect. The Delta Zetas and other Greeks still work to perfect every display, skit, every ceremony. This was always true. But the mechanics behind the scenes are much more controlled. Detailed rushee information sheets are carefully prepared and memorized so the sorority members know much about each girl before she arrives.

The logistics of the rush invitations and bid lists are decided long before rush begins. The chapter holds rush workshops during the previous semester and all the basics are attended to before the term ends. Pre-rush workshops are held to provide a review of actual rush with all the parties timed and polished until they

become second nature to the rusher. The whole point of all the work is to make the Delta Zeta rusher so self-confident in her role of rushing, that she can relax and get to know the rushee on a one-to-one basis. In short, rush in 1978 has become a well organized science.

Where Do Alumnae Fit Into This Picture?

First, and foremost, is the very real rushing we do in our everyday contact with young prospective Delta Zeta members. Look around you and be aware of girls who would be good Delta Zetas. You can pick them probably long before they have even settled on the college they will attend, but certainly long before they are seniors in high school. Talk to them, make them aware of sororities, and the fact that you are a Delta Zeta and what it means to you. You could be their first Delta Zeta contact but it does no good if they are not made aware of it. This is rushing at its grass roots—and the importance of it cannot be overstated. Finally, follow up each prospective member you have encountered with a letter of recommendation to the Delta Zeta chapter at her chosen college.

But, what are some ways we can help a chapter during the actual rush? The same ways our alumnae helped us when we were in school ... serve at a rush party, drive rushees to parties, prepare food for the parties, help decorate, loan them chairs or whatever is needed, work to get references, let the chapter use your home for a party, make costumes, help direct the skit, give them money ... the same things we do for our children. Serve on an advisory board, be an active alumna, be a CCD.

CCD Is Link Between Chapter And Alumnae

At this point may I make an aside comment that is so important. In all contacts with the chapter, it is important to go through the College Chapter Director. She is the direct link between the chapter and the alumnae. She can help coordinate what is needed and make sure you know what time, where, when and how many dozen brownies. The chapter needs to go through the same procedure to make their wants known. We need a lot of help and a lot of workers but it saves a lot of confusion and misunderstanding if one person manages the entire situation.

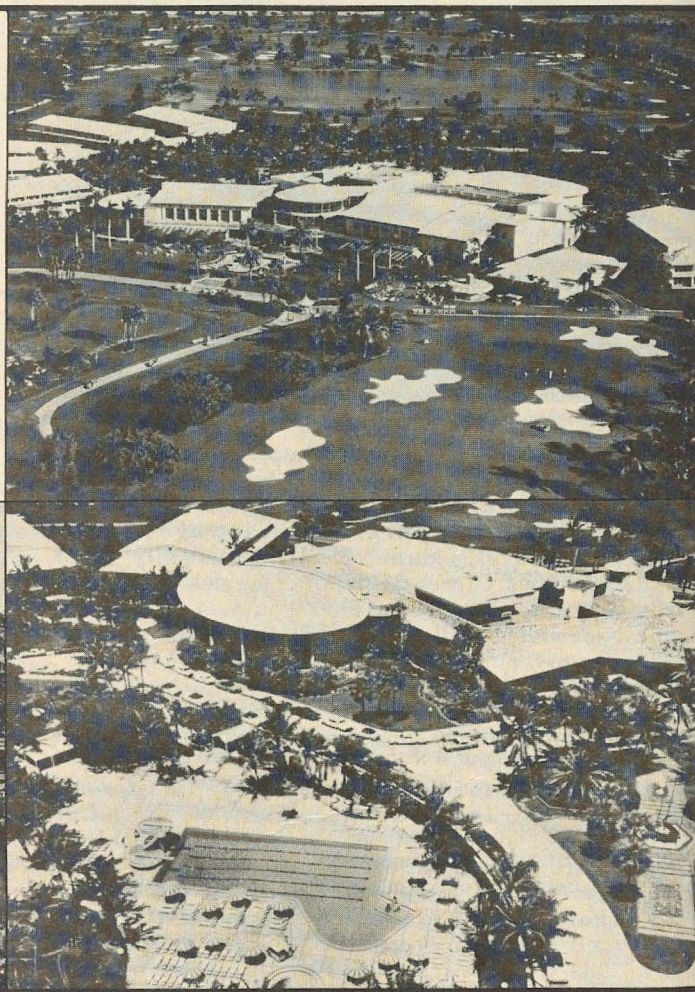
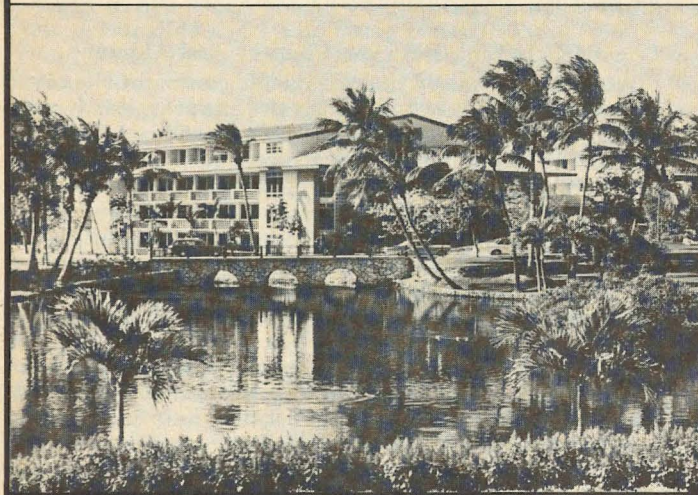
Our role as alumnae during rush, while perhaps not as tangible as the collegian, is at least as important. They need our thoughts, suggestions, help in the planning and carrying out of rush. They need our understanding and maturity in our realization that they won't, can't and shouldn't rush in exactly the same way we did. They need to know we understand that they, as much as we, want the best (and only that) for Delta Zeta. The way it is achieved, the way they go about rush is right for them and for Delta Zeta. Our role is that of tradition and maturity ... theirs is of growth and new ideas. The combination and melding of the two will mean the continued success of Delta Zeta.

DZ

1979 DELTA ZETA SORORITY NATIONAL CONVENTION

JUNE 17-21, 1979

DORAL
COUNTRY
CLUB



4400 NORTHWEST 87TH AVENUE
MIAMI, FLORIDA

Delta Zeta Field Representatives Assist Chapters

*by Cathy Lieurance,
National Consultant*

This year we have three new women who will be travelling for Delta Zeta in the role of Field Representative. Our "Fielders" travel throughout the United States visiting our chapters and spending time on rush and officer training and keeping all of our chapters in that #1 position!

These three Fielders are all recent graduates and have much knowledge and enthusiasm to share with the chapters. Their purpose is to help you, so welcome them to your chapter.

Cyndi Clark, Delta Delta, Georgia State University, was a Florence Hood Miner and a Grace Mason Lundy nominee. She hopes to later teach Elementary Education and she was listed on the Dean's List as well as being included in *Who's Who in American Universities and Colleges*. Cyndi has been enthusiastic about Delta Zeta since she was a rushee when it was evident that Delta Zeta would be an important part of her college life. She began as

the Pledge Class President and went on to become the Chapter President for two years. In between, she was an assistant Pledge Trainer and actively involved on campus in Student Government. Whenever the University needed a student representative, Cyndi would be called upon to help.

Our next new Fielder is Terry Heath from Epsilon Rho chapter at Northwest Missouri State University. Terry also began as a Pledge Class President, then Corresponding Secretary and on to Chapter President. As an English major, she was a member of the English Honor Society and listed on the Dean's List. She was also interested in Spanish and was a Student Ambassador in Europe. On campus, she was active on the Homecoming Committee and helped develop a campus innovation for a system of Panhellenic rush counselors. With this background, Terry will have much good information to share with Delta Zeta chapters.

Mary Ellen McAuliffe, better known as "Mel", is our third new Field Representative. Mel is from Youngstown State University, Kappa Chi chapter, where she received several scholarships to pursue her Law major. Also on the Dean's List, she hopes to later attend Law School. Like the others, she was Pledge Class and Chapter President and Philanthropy Chairman and Panhellenic Delegate. Her varied interests of Student Government, Editor of the University's Orientation Booklet and a speech coach will give her a useful background to your chapter's activities.

All three of these Field Representatives definitely have strong leadership qualities shown while being Chapter Presidents, yet they were equally involved in other campus activities while maintaining high scholarship. They obviously have a lot to offer Delta Zeta and they are looking forward to meeting YOU!

AZ



Leaving National Headquarters to begin their Fall chapter visits are Mel McAuliffe, Cyndi Clark and Terry Heath.

Grace Mason Lundy Award Winner Seniors



Mary Beth Bailey, Π
Memphis State

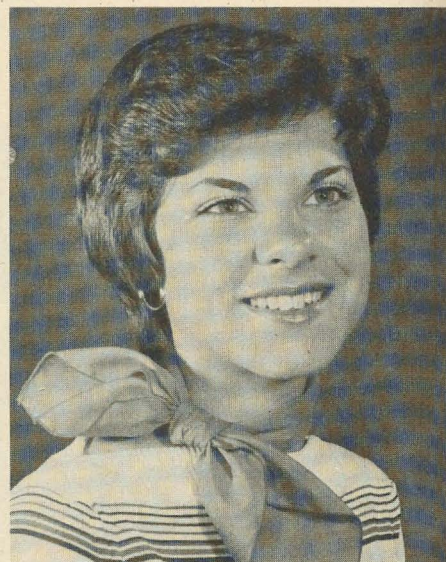
There are many honors that Delta Zeta bestows upon deserving seniors each year, but none that mirrors so much the spirit of a young woman as the Grace Mason Lundy Award. The intrinsic qualities that make Grace both a leader and a personal friend are traits worthy of sincere imitation, for that which is good, we emulate; that which is lovely, we treasure; and that which is wise, we trust. The spirit of Grace Mason Lundy sets her apart. By example, she teaches the young women of Delta Zeta that "there is nothing so strong as gentleness, and nothing so gentle as real strength."

Congratulations to Mary Beth Bailey, Linda Mae Heiser, Terri Jeanne Manhart and Deborah Lee Sanders. You make us so proud! You do honor to yourselves, to your families and to Delta Zetas everywhere.

MARY BETH BAILEY (Gamma Iota Chapter at Memphis State University). Mary deserves to begin our list of accomplishments with her many activities and honors. Mary Beth went straight to the top as Pledge Class President and then went on to be a Chapter Guard, Standards Board member, Panhellenic Council member, Chapter Treasurer and then President during our Diamond Jubilee year. She

was also President when her chapter acted as the installing team during the installation of our new Lambda Alpha Chapter at Arkansas Tech University. Mary Beth's achievements also involve her mind as she has been the recipient of the Elizabeth Coulter Stephenson Scholarship and a Memphis State University scholarship. She was tapped for Mortar Board and selected for Alpha Lambda Delta, Kappa Delta Pi, and Omicron Delta Kappa, not to forget the Dean's List and *Who's Who Among American Colleges and Universities*. Mary Beth plans to attend Law School at Memphis State University, and will continue to be an active Delta Zeta by participating in the Memphis Alumnae Chapter of Delta Zeta.

LINDA MAE HEISER (Kappa Rho Chapter at Kutztown State College). Linda is another Delta Zeta of diverse involvements. Her chapter offices included Guard, Corresponding Secretary and President of her chapter for nearly two years. She was also on the Dean's List, a member of Kappa Delta Pi Honorary, and a nominee for *Who's Who Among American Colleges and Universities*. If that's not enough, you might remember the article, "Linda Heiser, World Champion Equestrian," which appeared in our June 1977 issue of *The LAMP*. Linda has been interested in horses since she was two years old when her parents gave her a pony. She has progressed far since that first pony receiving over 400 trophies and 1000 ribbons! She has been Corresponding Secretary and President of 4-H, represented Pennsylvania at the All-American Quarter Horse Congress, Director and President of the Pennsylvania Junior Quarter Horse Association, placed third in amateur bridle path hack at the 1976 World Show, placed in the top ten in the na-

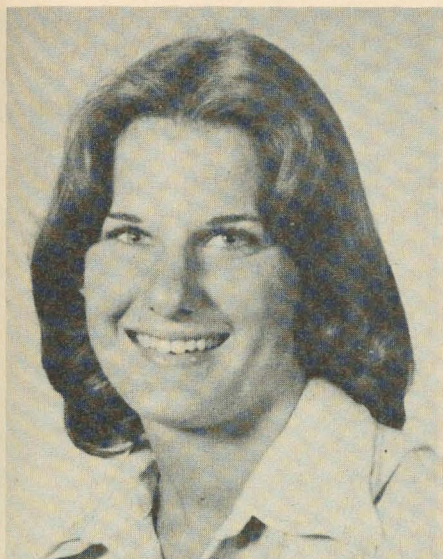


Linda Heiser, KP
Kutztown State

tion in amateur English pleasure and amateur western pleasure, and was honored as the first runner-up in her community's 225th Anniversary Celebration Queen Contest. Her riding and showing has taken her all over the United States as well as Canada, Germany and Italy. We wish Linda the best in her world of horses, and we know she will continue to be involved in Delta Zeta wherever she may go.

Be sure to look at the back cover display on official Delta Zeta jewelry. Each issue will illustrate different jewelry items . . . so save this copy and watch for other gift ideas in coming issues.

Coming in the next issue of *The LAMP* . . . First in a series of articles outlining career opportunities.

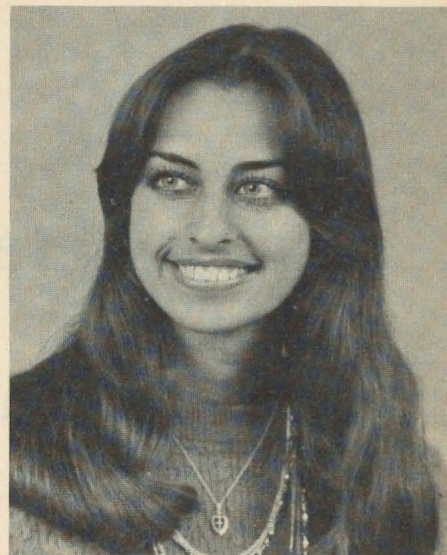


*Terri Manhart - IY
California State*

TERRI JEANNE MANHART (Iota Upsilon at California State University at Fullerton). Terri participates equally well in three areas of Delta Zeta . . . chapter, scholarship and community. In her chapter, she served as Vice President of her pledge class, was chosen Most Outstanding Pledge, Miss Flame Fantasy, was Sorority Education Chairman and President, as well as Vice President of Panhellenic. She, too, has been listed on the Honor Roll and a member of Kappa Alpha Sociology honorary. In her community, she is a YMCA Club Leader and

is active in her church youth group. Terri, like Mary Beth and Linda, served as her chapter's delegate to our 1977 Diamond Jubilee National Convention. Terri, however, was not the only member of her chapter to attend the convention as her enthusiasm brought five additional chapter members with her. Terri's inspiration will continue to influence others as she becomes a Delta Zeta alumna and continues to be involved.

DEBORAH LEE SANDERS (Epsilon Upsilon Chapter at Central State University). Debbie has been very active in all phases of campus life. She's had recognition as a pledge with the Best Pledge Scholarship award. She has served her chapter as Corresponding Secretary, Treasurer and Vice President in charge of Membership. Her honors are many, involving both scholastics and activities. She has been a member of the freshman and sophomore honorary, Alpha Lambda Delta, the junior honorary, Tiara's and the senior honorary, Bronze Key, and she has served as an officer in all three honoraries! She has been a member of the Central State University's Marketing Association and chosen as its Outstanding Member. She and two other CSU students won a trip to Amarillo for their advertising campaign to promote tourism in that city. She was selected to attend the 10th District American Advertising Federation Convention as the University's representative. Other



*Deborah Sanders, EY
Central State*

campus activities include serving as a Panhellenic Delegate, Treasurer of the University Center's Board, Senate representative and Flag Corps which all added to her accomplishments as selection as CSU's Outstanding Upperclass Woman and Province XVI's Outstanding Collegian.

All four newly selected GML's have had very active college years serving well their campus, their community and Delta Zeta while also maintaining the highest scholarship.

WHY A GML AWARD?

by

Cathy Lieurance, National Consultant

This year, we are happy to add four Delta Zeta seniors to our honored list of GML Girls. We now take pride in 131 winners since the first awards were presented in 1948.

As stated in our Collegiate Education Manual, "the GML Award is presented annually to senior college chapter members. The GML Award was established to honor Grace Mason Lundy for her many years of loyal and devoted service, and presented in her name to pay respect to the loyalty, devotion and service of a college chapter member.

"While evidence of a good scholastic record and participation in campus and chapter activities do

play an important part in the selection of GML candidates, the Awards Committee selects girls who exemplify those ideals and standards, and that spirit which reflects genuine comprehension of fine womanhood and a true sense of the meaning of sorority membership."

Also important is a GML girl's "intent to be active in her alumna years." This, of course, is what Delta Zeta is all about . . . for always, not just for four years of college. This year's GML winners have all contributed greatly to their Delta Zeta Chapter and college during their time as an undergraduate.

Delta Zeta Scholarship at Gallaudet College

Gallaudet College was established by an Act of Congress signed into law by President Abraham Lincoln in 1864. Today it is still the only liberal arts college in the world which is exclusively for deaf students. Within the past 10 years, a number of other colleges and universities and community colleges across the United States (from Northeastern University in Boston to the California State University at Northridge) have added programs for deaf students, but Gallaudet is the only college which is geared to deaf students both in and out of the classroom.

Communication at Gallaudet is easy. Faculty, staff, and students all use "total communication" — that is, they use sign language, finger-spelling, lip reading, and speech simultaneously. Gallaudet students are as at home participating in Student Body Government, a fraternity or sorority, or taking a part in the fall production of the Drama Department as they are in a class in Shakespeare or chemistry.

In many ways, from its academic program to its extracurricular activities, Gallaudet is like any other small college. Yet, Gallaudet is very different. Gallaudet College communicates!

Delta Zeta has recognized Gallaudet College's uniqueness and has a long history of interest in and involvement with Gallaudet College. For over 20 years Delta Zetas have provided financial support to the college and its students. It was in the 1950's that Delta Zeta provided funds to help furnish the reading room of the then new Edward Miner

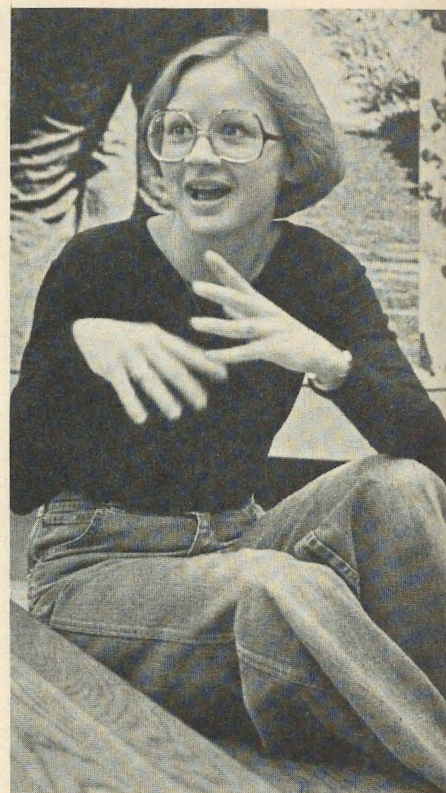
Gallaudet Memorial Library. College and alumnae chapters, and individual Delta Zeta members, have provided scholarship assistance to Gallaudet students and have taken a special interest in the Gallaudet College Modern Dance Group.

In July 1975 the Board of Directors of Delta Zeta approved the establishment of the Delta Zeta Scholarship Fund at Gallaudet College. Interest from this unrestricted endowment will provide educational assistance to Gallaudet College through scholarships and/or through improvement of facilities of the Gallaudet College Library.

This year, Delta Zetas provided scholarship assistance to Pamela Kovash who, in the fall of 1978, will be a senior at Gallaudet College. Pamela is the daughter of Mr. and Mrs. Victor Kovash of Great Falls, Montana. She has been deaf since about the age of three months and is the only deaf member of her family. She attended the Montana School for the Deaf, graduating in 1973.

While she has friends who went to the National Technical School for the Deaf in Rochester, New York, to the Technical-Vocational School in St. Paul, Minnesota, and to community college programs with interpreter support for deaf students, Pamela decided to come east to Gallaudet.

At Gallaudet, Pamela is a home economics major. She may teach home economics in the future, but at this time her plans for after graduation are tentative. She is considering graduate school but is undecided as to what school to attend or what field



Gallaudet College Photo

*Pamela Kovash
Gallaudet Student*

of study to pursue.

How does Pam feel about her college experience? She feels strongly that coming to Gallaudet was the right decision for her. "I like having teachers who sign for themselves," she remarked, "that's much better than having to rely on an interpreter." Pam also commented that having been in Washington, D.C., has itself provided opportunities for learning beyond the classroom, as well as opportunity to meet and get to know a wide variety of deaf adults.

She also mentioned that being at Gallaudet had itself provided an opportunity to get to know other deaf students from most of the 50 states and from many foreign countries.

To the members of Delta Zeta she sends thanks for their support. "I really appreciate the help Delta Zeta has given me," Pam concluded. "You have provided me with the financial assistance I needed to continue my education."

ΔΖ

Susan Blair Winner of Florence Hood Miner Award

The 1978 choice for the Florence Hood Miner award is Susan Rebecca Blair, a member of Kappa Phi chapter at the University of North Carolina at Charlotte.

Susan as a sophomore was chosen as Delta Zeta's Panhellenic Delegate and became treasurer and then secretary. She planned and organized a Disco on the UNCC campus to promote good Greek-independent relationships and did just that. Then she organized the Greek Rush convocation. Meanwhile her writing talents were put to good use as she started a newsletter to keep alumnae and parents in touch with the chapter. Her junior year she brought Southern charm to the rush parties, and continued with her charming as Standards Chairman. As a result Kappa Phi won one of the six National Standards awards at the Diamond Jubilee convention. This year she was elected to the presidency of the chapter.

On campus she designed the winning Homecoming banner and the winning car decoration for Kappa Phi's Homecoming entry. She was part of the chapter's winning intramural athletic and Greek Week team.

The Charlotte Alumnae Chapter selected her to receive their first Diamond Jubilee scholarship on the basis of her academic achievement and extra-curricular activities.

Financing her education herself, Susan taught clogging which is a mountain dance performed to bluegrass music. As a result of her dance classes, she was asked to choreograph the dances for the musical, "Li'l Abner."

Her field is architecture and business administration and she has

served as an orientation counselor. Last summer she spent five weeks in Europe as one of the nineteen architecture students, each from a different college sponsored by the National Association of Collegiate Schools of Architecture and the American Institute of Architects.

As the student AIA Vice President, she organized trips to various cities rich in architecture to study urban design. After returning the students produced a three screen multi-media production.

A Dean's list student, she was named to UNCC's *Society of 49*, which is its own honor society. The Spring Lamp cover featured the Athletic Foundation hostesses of the University, and Susan was the center figure. This committee is selected each spring through personal interviews and chosen for enthusiasm and willingness to accept responsibility and service to others.

Susan was also asked to be a Resident Advisor for the dormitory without going through the usual rigorous screening of interviews. She was later elected to both student superior court justice and business administration representative to the Senate.

To quote from one of her university recommendations: "College students, those who simply attend class and return home, are a dime a dozen. Those who choose to share their talents with the university community, however, set themselves apart from the maddening throng. Susan Blair is such a person. We are all richer for her having chosen to attend UNCC."

And Kappa Phi chapter and Delta Zeta are richer because of her.

ΔΖ



Susan Blair, KΦ
North Carolina at Charlotte
Outstanding Junior Collegian

DO YOU SOMETIMES HAVE THAT "LOST FEELING"?

We ask your help so that you will not be a lost Delta Zeta. Unless you keep our Addressograph Department informed of your current address, they will not be able to send your copy of the LAMP. Remember to send all changes of name and address, and notices of death direct to National Headquarters in Columbus, Ohio. Be sure to include the address label from the back cover of the magazine when sending information.

HAVE YOU LOOKED IN YOUR ATTIC LATELY?

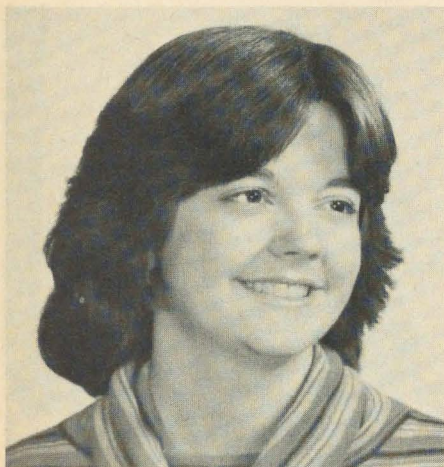
National Headquarters is still searching for some missing copies of THE LAMP in order to have a complete file of all back issues. We need at least one of each of the following:

Vol. 13, No. 3 . . . published sometime between January and April, 1924

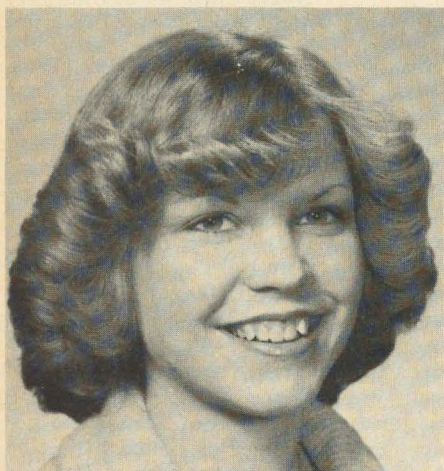
Vol. 13, No. 4 . . . published sometime between May and July, 1924

If you have a copy of either of the above issues, please consider donating it to your National office. Postage or shipping charges will be reimbursed.

Founders Memorial Fund



Elizabeth Hacker, ZY
Winona State



Laura Marlowe, ΓA
Baldwin-Wallace



Robin Morse, ΑΣ
Florida State

The story really begins in 1976 when a wave of fund raising to offer financial assistance to Delta Zeta collegians across the country gained the supportive nod from the alumnae. A commemorative tribute to the six Delta Zeta Founders, the newly established FOUNDERS MEMORIAL FUND was created exclusively for charitable purposes. Each year, scholarships are offered to six scholastically earnest students who also take an active role in chapter and campus activities.

The first scholarships were awarded at Miami University during the 1977 National Convention to Delta Zeta collegians from six different schools. Described as a visible sign of support to young Delta Zetas throughout the U.S.A., Mary Lou Barth, FMF Chairman, asks the alumnae to keep sending contributions to this *continuing fund* which assists deserving students who need help to meet increasing tuition costs.

Congratulations to the 1978 winners:

ELIZABETH ANNE HACKER (Zeta Upsilon Chapter at Winona State University). Elizabeth has served her chapter as Pledge Trainer, Rush Chairman and President. She has been Panhellenic President, too! Elizabeth was a 1977 Queen Candidate and has previously received a Delta Zeta Alumnae Scholarship for her rush contacts. Liz is a B average junior majoring in Nursing.

LAURA N. MARLOWE (Gamma Alpha Chapter at Baldwin-Wallace College). Laura has been chapter Guard, Recording Secretary and President. She has a 3.3 GPA, is on the Dean's List. Laura will be a senior majoring in Music Education this fall.

ROBIN KATHLEEN MORSE (Alpha Sigma Chapter at Florida State University). Robin is a senior

majoring in Biology with a 3.2 GPA who's been tapped by Mortar Board. She has served Delta Zeta as Rush Chairman, Chaplain, Sorority Education and Historian. She is the Vice-President of the Environmental Action Group and is the Southern Regional Representative for Cooperative Education. Robin enjoys involvement in intramurals.

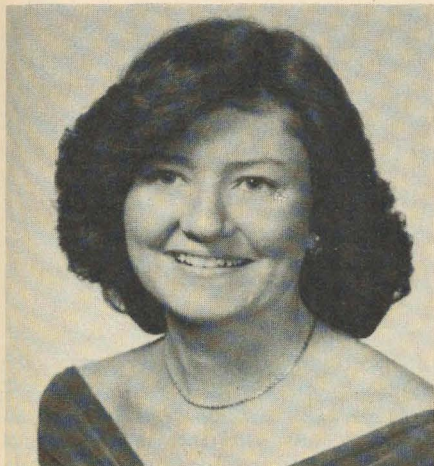
LAEL MARY MOYNIHAN (Theta Gamma Chapter at the University of New Hampshire). Lael is Rush Chairman and has been a Floor Representative as part of the Dorm Government. She has a 3.2 GPA and will be a senior this fall majoring in Home Economics. She's been on the Dean's List and is a member of Phi Upsilon Omicron Home Economics honorary.

KAREN JOAN SAUCIER (Theta Phi Chapter at Old Dominion University). Karen is a junior majoring in Psychology with a 3.2 GPA. She's served her chapter as Scholarship Chairman, Rush Chairman and President while also serving as a Panhellenic representative.

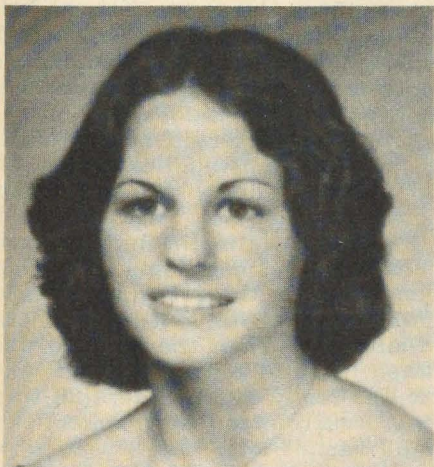
LYNE SUSANNE TUMLINSON (Delta Xi Chapter at the University of Northern Colorado). Lyne has an A average as a senior majoring in Psychology. She has been on the List of Academic Achievement and her Delta Zeta offices include Panhellenic Rush Chairman, Historian, Songleader and Treasurer.

All Delta Zeta collegians are eligible to apply for FOUNDERS MEMORIAL FUND scholarships. Applications are sent to all chapters in the winter mailing, and additional forms may be requested from National Headquarters. Contributions to the Fund may be mailed to:

Mrs. William Barth, Chairman
FOUNDERS MEMORIAL FUND
1662 Villa South Drive
West Carrollton, OH 45449



Lael Moynihan, ΘΓ
New Hampshire



Karen Saucier, ΘΦ
Old Dominion



Lyne Tumlinson, ΔΕ
Northern Colorado

As of June 27, 1978, a total of \$73,986.73 has been contributed to the FOUNDERS MEMORIAL FUND. Many thanks to the following people who sent in contributions during April, May and June of 1978:

PROVINCE II

Anne Marie Jones Gavin, Delta Iota
Marion Wescott Dorfler, Alpha Kappa in
memory of Vera Powers Roesch, Alpha
Kappa

PROVINCE IV

Epsilon Delta, Concord
Epsilon Iota, Fairmont

PROVINCE V

Alpha, Miami
Lisa Mastrangelo, Theta, Ohio State and
Mr. and Mrs. E. W. Mastrangelo
Zeta Kappa, Ohio Northern
Akron Alumnae
Cincinnati Alumnae
Cleveland Westside Alumnae
Cleveland Westside Alumnae in memory
of Katie Kishel
Findlay Alumnae

PROVINCE VI

Saginaw Alumnae
Karen Corey Zwergel, Gamma Pi

PROVINCE VII

Lambda Beta, Indiana State, Evansville
Franklin Alumnae Club
Susan Moffett Szabo, Epsilon

PROVINCE VIII

Gamma Theta, Carroll

PROVINCE IX

Alpha Alpha, Northwestern
Rockford Alumnae
Natalie Jenks Hultman, Alpha Beta
Ruth Nielander, Gamma
Phyllis Longstaff Royce, Zeta

PROVINCE X

Iowa 1978 State Day

PROVINCE XI

Delta Sigma, Northeast Missouri
Epsilon Gamma, Central Missouri
Iota Xi, Missouri, St. Louis
Zeta Rho, William Jewell College
Betty Goad Gregory, Delta Sigma

PROVINCE XII

Beta Tau, Nebraska Wesleyan
Johnson-Wydotte Alumnae
Lincoln Alumnae

PROVINCE XIII

Iota Beta, Dickinson

PROVINCE XIV

Salt Lake City Alumnae
Velma Anderson Boal, Rho
Margaret Eagan Anderson, Rho
Dorothy Elston Baker, Rho
Ruth Kearns Discoe, Rho
Sophie B. Griffith, Rho
Marjorie G. Havner, Rho
Marian Ferril Hays, Rho
Clyda M. Jensen, Rho
Elaine Donovan Langford, Rho
Anne O'Kane, Rho
Maxine Hyland Patton, Rho

Lucille Santarelli Rollins, Rho
Mary Jo Skeels, Rho
Eleanor Wood Wadsworth, Rho
Pauline Thunneman Weaver, Rho
Emily Radford Wright, Rho
all in memory of Hellen Gittings Johnson,
Rho

PROVINCE XV

California 1978 State Day
Theta Rho, California State Los Angeles
Central San Fernando Valley Alumnae
Glendale-Burbank Alumnae
Los Angeles Alumnae in memory of Susan
Speidel
Lucile Fisher Lundstrom, Tau
Leota M. Smith, Epsilon Alpha in memory
of Susan Speidel
Carolyn Oliver Wilke, Epsilon Tau
Mary Kay Wintheiser, Delta Alpha
Paula Linke McCracken, Zeta Mu in memory
of Birt F. Read
Mareta Havens, Kappa

PROVINCE XVI

Alpha Epsilon, Oklahoma State
Alva Alumnae
Tulsa Alumnae

PROVINCE XVII

Gamma Zeta, Southwestern, Georgetown
Barbara Binford, Becky Burkhardt, Barbara
Galloway, Dianne Holley, Michele Matke
Beaumont Alumnae
Canyon Alumnae
Dallas Alumnae in memory of Claude Bell and
Richard McCauley
Houston Alumnae
Cheryl Morrison Babb, Alpha Psi

PROVINCE XVIII

Epsilon Beta, Northwestern State
Marie Louise Gross Lepine, Sigma
in memory of Goldie Zermigue

PROVINCE XIX

Beta Lambda, Tennessee
Anita Durham, Beta Lambda

PROVINCE XX

Beta Gamma, Louisville
Louisville Alumnae
Fannette Lindsay Schmitt, Beta Gamma

PROVINCE XXI

Kappa Phi, North Carolina, Charlotte

PROVINCE XXII

Lambda Pi, Georgia College
Faye Hutson Martin, Nu

PROVINCE XXIII

Lambda Kappa, Alabama, Huntsville
Alpha Pi, Samford
Huntsville Alumnae

PROVINCE XXV

Theta Phi, Old Dominion
Richmond Area Alumnae
Ann C. Dunnington, Alpha Delta
Lou Moore, Theta Phi
Cynthia W. Sparks, Theta Phi

Do You Know Engie?

*She's been selling Magazines for
Delta Zeta 22 years.*



*Engelyn Brown Tourtelot, M
California*

If you received a Delta Zeta scholarship while you were in college, there are many people you could thank. There's one lady in particular we'd like to thank now. For nearly a quarter of a century, Engelyn Brown Tourtelot, M-California, has quietly and efficiently handled thousands of magazine subscriptions in her California home which have channeled over \$64,000 to the Delta Zeta Education Fund and to the collegiate and alumnae chapters in earned profits.

As National Magazine Chairman for the past 22 years, Engie has spent approximately 25-30 hours each week handling subscriptions and renewals to all nationally popular magazines. She managed to fill, or kept it confined (we're not sure which) to two rooms and a garage for her records and supplies. She was responsible for banking the subscription checks and keeping the books. She sent out renewal notices and included a gift card service to the subscribers. She traveled to State Days and other meetings to present the program to the members, and she kept the subscribers' interest up with promotional pages and publishers' special offers. Now she's retiring and we're wondering how we could ever really thank her for the 34,320 plus hours of work that went into all this. We think it's generally true, and certainly in Engie's case, that the highest reward for a woman's toil is not what she gets for it, but rather what she becomes by it.

Engie is content with the results of

her many years of devoted duty to this particular task. She knows that many young Delta Zetas have received and will continue to receive scholarships through the Education Fund because of her efforts. She believes in young people and "wants them to prepare for some specific trade, something for which there is a current demand." There's no doubt that Engie strongly advocates sorority membership for college girls. "For one thing," she says, "sorority life brings to the attention of the girls that there is a fast-moving and changing world out there. Being a member of a sorority offers additional contacts and friendships which help build confidence and self esteem."

Engie enjoyed her own college years at the University of California in Berkeley where she majored in English Literature. "One of the most vivid memories of that period in my life was my participation in sorority life, along with the many friends I made in Delta Zeta at that time."

After college, Engie joined the Women's Army Corps. When she was mustered out in 1945, she received a Commendation from the Governor of Illinois. In 1966, Engie was to be honored again. This time, it was Delta Zeta's Achoth Award. "The Achoth Award is an honor given to specially selected alumnae who have demonstrated by long and faithful service, their continued loyalty to Delta Zeta, particularly, in their local communities." For many years, Engie was active in the Mt. Diablo

Alumnae chapter in California, and there she made many friends. "Although I have never met them, I know hundreds of Delta Zetas through correspondence regarding magazine subscriptions."

Engie calls herself "a proverbial American who would rather live in this great country than any other place in the world." With husband, Charlie, who's in the lumber business, and pet dog, Ming, the Tourtelots live in the suburban community of Pleasant Hill in northern California. When they moved into their home 24 years ago, Engie said it was really countryside, that they were surrounded by tomato fields and vacant lots. "Now," she says, "we're surrounded by super shopping centers and hills full of apartment developments. I guess this is progress." Engie and Charlie enjoy traveling around the United States and have visited many lovely places, but California is HOME to them!

Engie is one of life's Real People who's grateful for every opportunity that has come her way. She feels she has always been a liberated woman and realizes not all women have had equal privileges. Engie is an enthusiastic American who believes "our country will work hard on the problems we have to solve." As for all the changes that remold our society in a fast-moving world, to her the bottom line of freedom is human dignity. . . "I hope we will never lose our basic rights as individuals."

Happy retirement, Engie Tourtelot. You've truly earned it!

AZ

Colonnade Scholarships

Today we know it as the Colonnade Club, but originally it was called "Mothers' Club." It was organized spontaneously in the early days of the sorority for the purpose of assisting Delta Zeta college chapters with rush, house furnishings or altruistic projects.

The club took on a new and important dimension during Convention in 1956 when the Golden Circle Scholarships were introduced. Made possible only by contributions, the scholarships are awarded annually to outstanding junior or senior Delta Zetas in need of funds to finish the school year.

Factors considered in choosing nominees for this award are earnest scholastic endeavor, activities or campus honors, and commendable personality traits such as leadership, character and pleasing personality. Of course, *the need for financial assistance to finish the school year is the only reason a student may apply.* Applications are sent to each Delta Zeta Chapter in the winter mailing from National Headquarters. Completed applications returned before February 1 each year are carefully considered.

With every good wish for the successful completion of the worthwhile careers they have chosen, we extend congratulations to the 1978 recipients:

DANA SELENE DRAGSTEDT (Zeta Lambda Chapter at East Carolina University). Dana is a

senior majoring in Occupational Therapy. She serves as a University Marshall and has been chosen a member of Rho Lambda and Gamma Beta Phi Honoraries and *Who's Who Among American Colleges and Universities*. Dana has served as Parliamentarian, Recording Secretary and President of her chapter. She received the Elizabeth Coulter Stephenson Scholarship and the Highest Overall Collegiate Average Award in her chapter and Panhellenic. She has also received Best Pledge, Spirit, Outstanding Junior and Golden Crest Awards.

SHARON SUE POLK (Lambda Kappa Chapter at the University of Alabama in Huntsville). Sharon is a senior majoring in Nursing. She has served her young chapter as its first Pledge Trainer and as Standards Chairman. She's also been active on the social and rush committees of her chapter and is an Alpha Tau Omega Little Sister.

SUSAN L. TADMAN (Gamma Pi Chapter at Western Michigan University). Susan is a senior majoring in Special Education. She's on the Council for Exceptional Children, a University Judiciary Board representative, Pegasus Tutor and serves on the Panhellenic Council Executive Board. She has also served as her chapter's Junior and Senior Panhellenic Representative, Rush Counselor and President. Susan was chosen as Dream Girl for Pi Kappa Alpha fraternity.

Membership applications, as well as the location and names of Colonnade Club officers in your area may be obtained upon request from National Headquarters. Contributions may be sent to the GOLDEN CIRCLE SCHOLARSHIP FUND in care of:

*Delta Zeta National Headquarters
21 East State Street
Columbus, OH 43215*

Franklin College Graduate Honored

Jo Ann Bingham, Psi chapter, Franklin College, Franklin, Indiana, was the 1978 winner of the \$1,000 Helen Miller Malloch scholarship awarded June 23, at the National Federation of Press Women's convention in San Antonio, Texas.

She was a 1978 graduate in journalism at Franklin and will study at the United Nations during the 1978-79 school year and live in Long Island, New York.

Rita Winters, IX-Ball State, Womens Editor of the *Muncie Star*, and an active member of the National Federation Press Women, was present at the convention in San Antonio, and reported Jo Ann's achievement.

YOUR SUPPORT OF THE MAGAZINE PROGRAM . . . will result in increased revenue for the Educational Fund and for YOUR chapter. It costs no more to order magazine subscriptions through Delta Zeta and we receive a commission on every order that is placed through our office.

Remember to think **DELTA ZETA** when thinking of magazine subscriptions. Send all subscriptions (or inquiries) to:

Mrs. John C. McIntyre
National Magazine Chairman
P.O. Box 24145
Columbus, OH 43224

Magazine subscriptions make excellent gifts for all occasions, and there is a magazine exactly suitable for everyone on your shopping list.



Alice Shelly, ΓA
Honolulu Alumna

CSI Fellow

Alice Shelly, ΓA-Baldwin Wallace, received the honor of Fellow for her Achievement in Construction Specifications during ceremonies June 21 at the CSI convention in San Antonio. Alice is the first woman to be named a Fellow of CSI and also the first person from the state of Hawaii to be so named. She is a professional member of the Honolulu chapter and a self employed architectural specifications writer.

A CSI member since 1967, Alice was a charter member and first treasurer of the Honolulu chapter. She has also served that chapter as secretary, first vice-president, and president. Since 1972, she has served as chairman of the education committee, continuing her work on "Hawaii Construction Standards".

Her awards include a technical excellence award from the Institute for her chapter. In addition she has received the Region Certificate of Appreciation and the Region Director's Certificate of Appreciation. Her chapter awards include the President's Award, Certificate of Appreciation and two Education Awards.

CSI is a national technical society with 132 chapters across the nation. Located in Washington, D.C., the Institute serves as a national clearinghouse for architects, engineers, and other members of the construction team whose primary concerns are specifications and communications.

Delta Zeta . . . moments to remember



Beta Alpha chapter at the University of Rhode Island marked its golden anniversary with a celebration in the chapter house. An afternoon ceremony honored the chapter members, seven of whom were present. Pictured are Anne Marie Jones Gavin, National Director, Marilyn Zartarian, CCD, Doris Dyson, First President, Dianne Buteau, Current President, and Karen Kind Manuel, Province Collegiate Director.



Pictured are Past National President Helen Woodruff Nolop, Lamp Editor Florence Hood Miner, former Beta Tau corporation members, Chloe Stairs Forrest, Shirley Hess, Edna Zamzow, Kathryn Garrett Braasch, Barbara Hall Peck, and Susan Norman, chairman of the festivities.

Roberta Kindle Imes

Roberta Kindle Imes, A-Miami, who is a teacher of handicapped children in Dayton, has been selected to receive an award from the Martha Holden Jennings Foundation. This Foundation recognizes outstanding teachers, inviting them to a special lecture series.

Roberta is also involved with a statewide project as a Task Force person on the Improvement of Instruction for Handicapped Children in Ohio. The Task Force meets regularly in Columbus, the state capitol. She supervises the implementation of the methods and the use of materials to each of the demonstration teachers for field testing and records on an on-going needs assessment. Fifty programs throughout Ohio are participating in their own handicap area, which will identify needs for material at both teacher competency level and/or child competency level.

Ruth Marie Griggs

Ruth Marie Price Griggs, AN-Butler, was recently honored with the Kleinhenz Award for long, meritorious and dedicated service to Women in Communications by the Indianapolis chapter of WICI.

Ruth Marie was National Journalism Teacher of the Year in 1968 and retired last June as Director of Publications at the Broad Ripple high school. She is currently a year-book judge for the National Scholastic Press Association. She is the past national president of the Journalism Education Association.

Support Your Province Day

Wisconsin State Day to be held at Stevens Point Wisconsin on October 28, 1978

West Virginia State Day
Nov. 4, 1978
Fairmont State College.

Dr. Carol Fisher Directs Minnetrista Center



Maurice Mann, Director of Campus Planning and Dr. Carol Fisher, study plans for the Minnetrista Center at Ball State University in Muncie.

Dr. Carol M. Fisher, IX-Ball State, is director of the Minnetrista Center and the Continuing Education Programs for Women in the School of Continuing Education, Ball State University.

She joined the faculty in 1959 as a junior high school English teacher at Burris Laboratory School. Nine years later she had earned her M.A. degree in core education at Ball State, her Ph.D. degree at Ohio University, and was assistant director of Extended Services, now the School of Continuing Education.

In 1972 with an initial grant from retiring Burris kindergarten teacher, Miss Laura Schroeder, Dr. Fisher developed the Independent Study Scholarship Program for Women, aimed at encouraging mature women to begin or resume their college educations. This program is

now financed by gifts from several organizations and individuals.

She instigated and developed skills and enrichment non-credit night class offerings at Ball State and was among those responsible for establishing the annual Midwest Writers Workshop held at the university.

Dr. Fisher is on the board of the Community Services Council, an affiliate of the United Way and on the council's Ad Hoc Committee for Title XX. She is a member of the personnel committee of the Wapehani Girl Scout Council, the selection committee for the Indiana Arts Commission, and is on the board of directors of Altrusa, International, Muncie chapter.

She is the regional chairman of the Women's Division of the National University Extension Association — and a prize-winning poet. ΔZ



With the Alumnae



In 1949 members of the Chicago and North Suburban alumnae formed a bridge marathon to raise money for the chapters' philanthropic projects and have a sociable evening of bridge. Since then sixteen members have met for eight sessions each year. The roster has changed but four of the original members are still playing. Each participant pays an entrance fee, and prizes are awarded at a potluck supper. The first place winner is designated the chairman for the next year. They estimate \$1,831 raised for philanthropies. Standing are Dorothy Moore, AA-Northwestern, Antoinette Pantellis Hewes, N-Knox, Margaret Donica, I-Iowa, Elvira Rau, AB-Illinois and Melita Otte, AA. Middle, June Hanselman, AB, Helen Linde, AA, Camille Branham Gibbs and Dorothy Temte, AB.

Akron, Ohio — Members hosted an eleven course gourmet dinner prepared and served by the food service student at the University of Akron, for a fund raising project. Cheryl Ober presented a program on recent advances in hearing research. The young Alumnae Project Committee honored the graduating collegians of ΘZ with heart shaped stick pin pillows.

Arlington, Texas — The chapter participated in Arlington's Festival, a fund-raising fair for organizations from throughout the city.

Auburn-Opelika, Alabama — Alumnae placed signs by a water fountain in a local shopping center stating "all coins thrown in during a certain period will be used for the chapter's philanthropy." With the proceeds from a craft sale and the coin toss, two sets of the "Golden-Fristoe Woodcock Auditory Test" were purchased for speech therapists to use in the area. The program schedule varied

from a lunch and tea to a slide show on how to control your electric bill. Members hosted a smorgasbord salad supper for pledges of $B\Xi$ and honored the collegian seniors later in the year with a swim party.

Bartlesville, Oklahoma — "Bee Talk" was a witty program given by George Durham, husband of Doris Dillon Durham, AE-Okla. State, during the St. Patrick's dinner honoring the husbands. Former member, Florence Anderson Brous, AZ-Adelphi, of Hawaii was honored at a salad bar luncheon during the spring.

Canton-Massillon Area, Ohio — A check was presented to the parents of the Hearing Impaired Club of Stark County to purchase a typewriter for the total communication class at Timken High School. The Goodwill Speech and Hearing Therapy Department received toys from the group.

Champaign, Illinois — Successful programs included a dinner honoring AB graduating seniors and a brunch for the new initiates, a speech on sudden infant death, a benefit bridge party to assist with the expenses of a local summer school for deaf children.

Charleston, West Virginia — Members held the annual Birthday Party and invited the seniors from ZT.

Chicago, Illinois — Proceeds from a card party at the AA house enabled the chapter to award a partial scholarship to a junior majoring in audiology from Northwestern University.

Chicago West Suburban, Illinois — Throughout the year, alumnae helped the Cancer Society make dressings for their patients. Alumnae enjoyed a trip to the Chicago Historical Society and a Broadway show.

Chico, California — Proceeds from benefit luncheon were donated to the Butte County children's classes for the deaf and hard of hearing to help with the expenses for an excursion to Marriott's Greater America near Santa Cruz, Ca.

Cleveland Westside, Ohio — Programs included a tour of Ohio City and Justice Center, a Patchwork workshop, Craft Auction netting \$400.00, an instruction on hair styling and analysis, and the methods of teaching in Lambia, Africa. The Harrison School for Hearing Impaired continues to be the group's philanthropy project.

Detroit Metro, Michigan — Area alumnae honored Golden Roses during a Dubbs Bridge Party. Members receiving Golden Rose Certificates were: Marion Strong Beckett, $\Gamma\Sigma$ - Eastern Michigan; Helen Papes Bergin, I-Iowa; Helen Cudworth Drake, T-Wisconsin; Hilda Horny Eastwood, AH-Michigan; Ruth Vial Flom, AH-Michigan; Bernice Endlich Groehn, AH-Michigan; Constance Lake Hahn, AH-Michigan; Ruth Dow Harrington, AH-Michigan; Anne Mersereau Holmberg, AB-Illinois; Dorothy Hackendorn Hyne, $\Gamma\Sigma$ -Eastern Michigan; Eleanor Horny Lasca, AH-Michigan; Agatha Fouts Longyear, $\Gamma\Sigma$ -Eastern Michigan; Delma Mae Loyer, AH-Michigan; Emilie Alden Newcomb, E-Wayne State; Amy Stowell Nowka, BK-Iowa State; Nena Phil Parker, AH-Michigan; Mignon Synder Ramsdell, $\Gamma\Sigma$ -Eastern Michigan; Melanie Adamec Tozer, $\Gamma\Sigma$ -Eastern Michigan; and Luayne Budge Washburne, AH-Michigan. The east side group sponsored a benefit card party and fashion show.

Enid, Oklahoma — A benefit fashion show, a bake sale at the annual Tri-State parade and a pie sale enabled the chapter to contribute its proceeds to a philanthropy. During Native American Awareness Week, the group donated a ham to the Tay-Sah Indian organization for sandwiches to be served during a style show and dinner.

Fort Lauderdale, Gold Coast, Florida — The annual Flame Fantasy Luncheon, Bazaar, and Fashion Show netted \$2,200. Other chapter activities included a slide show on the Delta Zeta National Convention, a program on Camp Endeavor's work with deaf children, a demonstration on growing plants in rocks, and a lecture from the Broward County Women's Caucus on "Women and the Law." A donation of dog wreaths filled with dog biscuits left from the bazaar was given to the Humane Society.

Greensboro, North Carolina — Alumnae gathered for a picnic with the primary children at the Central North Carolina School for the Deaf. Interesting programs scheduled were a cake decorating demonstration, a crime prevention program and a lecture on communication with the deaf.

Greenville, South Carolina — The Cork 'n Cleaver dinner raffle netted \$88.50 for Operation Warmth, the chapter's philanthropy. Alumnae invited friends and family to a plant benefit party, a donations was made to the United Speech and Hearing Clinic with the proceeds.

Iowa City, Iowa — Chapter efforts this year were on new members, completion of a cookbook, a tasting party, a look into the future on careers, and activities with collegians from Iota. Alumnae and collegians met for a program on audiology. Dr. Julia Davis, Associate Professor, Wendell Johnson Speech and Hearing Clinic, University Hospitals, addressed the group about the work at the clinic which impressed to the group the importance of Delta Zeta's work at Gaullaudet College.

Huntsville, Alabama — Alumnae presented a check of for \$3,000.00 to the Huntsville Hospital. The donation will go towards the purchase of a subcutaneous gas analyzer for the intensive care nursery. During the past four years the chapter has donated more than \$13,000.00 to the newborn unit.



Murfreesboro, Tennessee, alumnae received their official charter in May. Although the chapter has been active as a group of alumnae assisting Iota chapter at Middle Tennessee with plant sales, Rush and chapter room for several years, they have just achieved official status. The presentation was made during a supper held for the collegiate chapter. Pictured are Sandra Cole, Iota Iota President, Judy Ace, BM-Florida Southern, Mary Armaganian Pockat, II, Kathy Theiss Ray, O-Pitt, Alumnae President, and Cheryl Hitchcock, graduating senior.

Jackson, Mississippi — Profits from a raffle purchased a hearing aid for a needy deaf student in the area. Alums and spouses gathered for tennis, swimming, and a picnic to highlight the spring program.

Johnson-Wyandotte, Kansas — The Kansas School for the Deaf in Olathe has been selected as the chapter's philanthropy project. Alums are working on a program for the math learning centers.

Lansing, Michigan — Alumnae attended a plant party, and a meeting to make pom-pom rabbits and chicks for tray favors for newly adopted grandparents to highlight the spring schedule.

Lincoln, Nebraska — Spring programs included a presentation on types of cheeses and wine, a dessert party to honor the BT seniors, and a history quiz of sorority facts. Summer plans are under way for philanthropy project with the help of college girls to make a tabernacle and visual aid board for use in a Sunday school class.

Long Beach, California — The sound of pounding hooves, a satisfying meal and good friends were the result of Delta Zeta Night at the Races. Proceeds from the annual event benefitted the John Tracy Clinic for the Hearing, Long Beach Branch, and the Long Beach Rescue Mission. Members also contributed food staples for the mission.

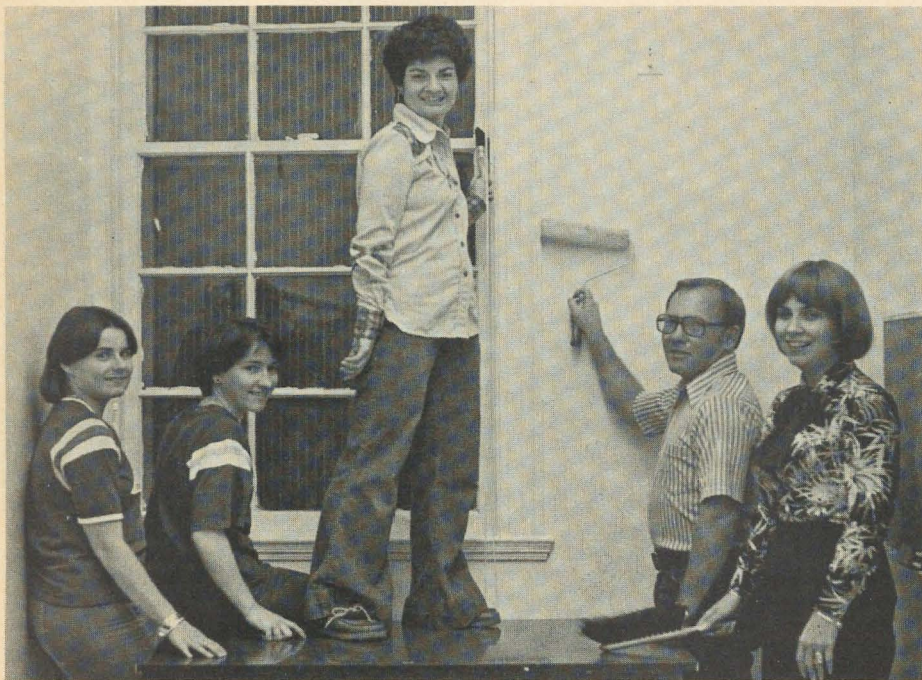
Memphis, Tennessee — The entry fee to the alumnae potluck supper and card party was items to be sold later at a carport sale.

Miami, Florida — The Craft Day and Luncheon featured lessons in bargello, knitting, needlepoint and crewell. Two members, Diana Larson Hohman, ZYT-N. Mich., and Dorothy Frink Phelps-AΣ Florida State are serving on the Panhellenic Executive Board. Two Golden Rose certificates were presented to Bo Prather, and Roma Story O'Brien, AO-Brenau.

Mt. Diablo, California — Members made stuffed dolls for the County Hospital, sold stationery in order to send a child from the local school deaf program to summer camp.

New Orleans, Louisiana — Philanthropic contributions were made to the Founders Memorial Fund and the New Orleans Speech and Hearing Center with the proceeds earned at a tasting party and bazaar. Alumnae hosted a scholarship dinner for members of OK and invited the spouses to a crayfish boil.

Northeastern, Bergen County, New Jersey — Members participated in a silent book auction during a "Boost the Treasury" meeting. This was found to be an excellent way to share literary pleasures, increase personal libraries and add to the chapter's finances.



The Lafayette Area Alumnae painted the Speech and Hearing Clinic at the University of Southwestern Louisiana. Linda Corkern, ΔK, Kathy Schwing, ΔK, Jayne Hartley Carl, ZΘ and husband Don show Kathryn Dreher, Director of Clinical Activities, how it is done.



Carol Frese, President of Harrisburg Alumnae, Marilou Lynch Gary, National Vice President, Gail Ott Bonanno, National Scholarship Chairman, and Gail Lutz, Kappa Psi College Chapter Director, planned Pennsylvania's Province meeting last spring.

Northern New Jersey — The chapter participated in the installation of the three new province chapters. Florence Harvey, Past National President, presented Golden Rose certificates to Lillian Lampe Deisher and Ruth Waterman Ruppel, AZ-Adelphi.

Oklahoma City, Oklahoma — Alumnae participated in a local radio station campaign to collect trash which was redeemed for cash. Trash was termed as bread wrappers, grocery store receipts, pop cans, and grocery sacks.

Portland, Oregon — Through continual chapter donations, the Tucker Maraon Oral School is now considered one of the largest libraries of hearing-impaired technical books in the area. Profits from a garage sale, an "old-time" theatre party, individual contributions and proceeds from a local radio station sponsored community club awards program total \$500.00 for the school's library.

Seattle, Washington — The 15th annual Flame Fantasy benefit luncheon and fashion show attracted more than 200 members and guests. A contribution was made to the chapter's speech and hearing philanthropy from the benefit's proceeds.

Thibodaux, Louisiana — Alumnae presented the KA chapter with six silver candlesticks in recognition of receiving the National Council Award. An audiometer was purchased for the Terrebonne Parish Health Clinic with the money netted from a rummage sale.

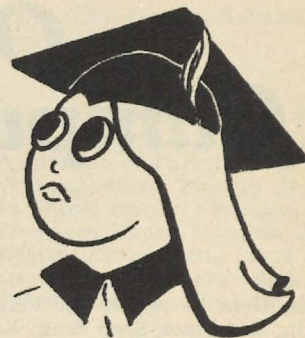
Tucson, Arizona — Tucson Alumnae were guests of the alumnae of Green Valley for a get acquainted luncheon. The cards flashed, the dice crackled and the big wheel whirled during the chapter's casino party. Guests shared an evening of fun while benefitting the children at Arizona School for the Deaf and Blind. A check was presented to the school for the outdoor lab under construction.

Greater Wheeling, West Virginia — Members volunteered to assist the community with the Easter Seal Telethon. Another project was preparing booklets for a speech therapy program at the Wheeling Society for Crippled Children.

Wooster, Ohio — A microwave oven demonstration was presented during Friendship Night. Alumnae cut out easily identified objects from old magazines and mounted them on cardboard to be used for speech therapy classes.

What happened to you after college?

Delta Zeta's interest in its members doesn't end with graduation, yet, through the years we lose touch with many of our alumnae. We'd like to hear from you again, and hope you'll complete the following Questionnaire. Many thanks!



ADDRESS INFORMATION

Name _____
First _____ Maiden _____ Married _____
Street Address _____
City _____ State _____ Zip _____

Your College Chapter _____

Husband's First Name _____

CAREER INFORMATION

Occupation: (Please give title and describe your duties as fully as possible)

(If more space is needed, please use an additional sheet)

Look for the first in a series of articles, "CAREER PLANNING" in the winter issue. Read about new and interesting job opportunities open to women today . . . the specialized training they require, and statistically, the growing need for career women to fill them. Many Delta Zetas will be personally interviewed for these articles when QUESTIONNAIRES are completed and returned to National Headquarters.

FAMILY UPDATE

Date of Marriage: _____

Husband's Occupation: _____

Names and birthdays of children: _____

GRADUATE STUDIES

Degrees: _____

(If more space is needed, please use an additional sheet)

INTERESTS AND HOBBIES

Mail to: Delta Zeta National Headquarters
21 East State St., Suite 600
Columbus, OH 43215



On Campus

ALABAMA

Auburn, Beta Xi—\$1000 1st Place Can Pick-Up, 3rd Place Step Sing, Runner-up, Spirit Award. AAA Sharon Street, Carol Peters; BAY, Debra Michalik; ΦXΘ, Kim Walker; ΣΤΔ, Polly McIntyre; ΔO, Donna Carter. Angel Flight, Debbie Vogel, Sylvia Walter, Operation Commander. Mariners, Jessica Brown, Cynthia Thye, treasurer. Scabbard and Blade, Teri Nave, rush chairman. German Club, Michelle Stinson, treasurer. Spikettes track hostesses, Carol Brelsford, Sgt. at Arms. Togerette football hostesses, Teresa Robinson, rush chairman. Pi Kappa Phi Rose, Cynthia Thye.

Auburn-Montgomery, Lambda Nu — Student Government Association, Mandy Rowell, Rhonda Rogers, Pam Berher, Ann Owens, Ann Patterson, Betsy Walker. Newspaper, Kim Greer; Student Handbook, Ann Owens. First woman on soccer team, Mandy Rowell. Civitan officer, Ann Owens. Basketball Homecoming Court, Tammy Sullivan.

Samford, Alpha Pi — Hosted Province Day in April. Omicron Delta Kappa, Leslie Lockman, Kris Mihelick, Jane Wright, Nancy Reed, secretary. ΣΤΔ, Leslie Lockman, president, Melissa Heard. IIME, Nancy Reed. IIFM, Kathy Knight, secretary, Diane Alderman, secretary, Jean Ostrander, Carol Sigler, Judy Smith. Hypatia, Leslie Lockman, Kris Mihelick, Mary Keown, Nancy Reed, Debbie Pinson. KII, Jane Espy, president, Sandra Turner, treasurer. Senior Class treasurer, Leslie Lockman. Math Club, Nancy Reed, vice-president. P.E. Club, Jane Bishop, vice-president. Angel Flight, Mary Keown. 1st runner-up Miss Dekalb County, Michelle French. BSU Choir, Nancy Reed, vice-president, Kathy Windom.

ARKANSAS

CENTRAL ARKANSAS, Epsilon Xi — Raised \$300 for Speech and Hearing Department. Cheerleaders, Judy Simmons, Virginia Garrett, Kim Wright, captain. Majorettes, Cindy Stranlund, Sheri Rea. Royal Rooters, Dana Fox, president, Nancy Morton, secretary of treasury,



*Keri Borgaard, ΔΞ
Northern Colorado
Sigma Chi Derby Days Queen*

Mickey Maxwell, Susan King, Janet Gibson. ΓBΦ, Dalana Byers, Susan King, Debbie Kirby, Zanette Matthews, Nancy Morton, Karen Vaughn. Who's Who, Lynn Burton, Dana Fox, Terri Griffith, Ann Hanners, Debbie Kirby, Zanette Matthews, Celeste Muse. ΣΤΓ Calendar Girls, Colleen O'Brien, Debbie Kirby, Ann Hanners.

CALIFORNIA

UCLA, Alpha Chi — Hosted Province Day at the chapter house. Panhellenic treasurer, Liz Ying.

California State-Fullerton, Iota Upsilon — Boasts a new address-2652 Balfour. Miss La Palma, Lisa Torbert. Cheerleader, Lisa Sweazy. ΦKΨ, Nancy Brick. Student Advisory Council for Music, Fran Kruegar. Graduated with honors, Terri Manhar, Nancy Brick.

California State-Long Beach, Delta Alpha — Won overall ΣX Derby Days. Associate Justice, Susan Barkeley. Senator, Kim Dubois. Orientation Staff for freshman, Cindy Johnson.

California State-Los Angeles, Theta Rho — Honors at Entrance, Audrey Harrer, Suzie Cline, Bonnie Leweck. Board of Directors, Wendy Holmes.

COLORADO

Northern Colorado, Delta Xi — 100% pledge class initiation. Mortar Board, Outstanding Greek Award, Outstanding Junior at UNC, Lynn Tumlinson. ΦKΔ, honors program, Julie Peterson. Honors Program, Julie Peterson, Keri Borgard. Outstanding Greek on Campus, Laurie Moore. Miss Congeniality, Miss Wyoming Universe, Audrey Arleanno. Pep Council, Jeannie Relford, Panhellenic Rush Chairman, Lynn Tumlinson.

FLORIDA

Florida Southern, Beta Mu — Delta Sigma Pi, Diana Stevens.

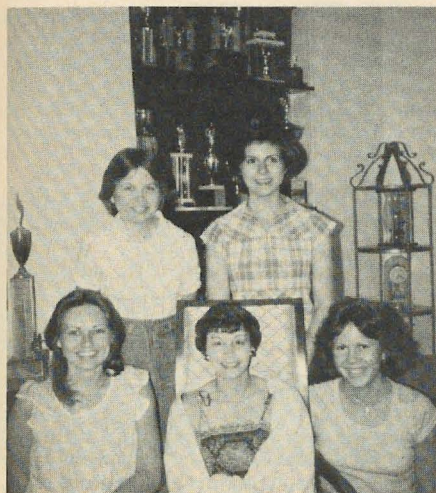
Florida State, Alpha Sigma — Mortar Board vice-president, Robin Morse. Panhellenic Academic Affairs, Michelle Youngman.

GEORGIA

Georgia College, Lambda Pi — Homecoming float grand prize for fourth year. Who's Who, Betsy Zellner, Denise Fields, Becky Houston, Lynn Dunahoo. ΦΣ, Susan Shepherd, Bunnie Hooks, Donna Dunn, Denise Fields, Becky Houston, Lynn Dunahoo. ΔΣΠ, Nancy Parker. Georgia College Leadership Team, Donna Campbell. Miss Congeniality, Miss Georgia College pageant, Jan Greeson. IKA Dream Girl, Pam Williams. Junior Homecoming representative, Betsy Zellner. Cheerleader, Sherri Atkins. IKA Valentine Sweetheart, Donna Dunn.

Georgia Southern, Iota Nu — Six individual trophies in Greek Week sports. Greek Goddess finalists, Harriet Hexley, Carla Berry. Sweetheart, Carla Berry. Who's Who, Helen Gibson, Sally Collins, Carla Berry. ΦKΦ, Carla Berry. Constructive Leadership Award, Beth Candler. ATA Sweetheart, Renee Lowry.

Georgia State, Delta Delta — Winner, for 4th consecutive year, ΣN Sweepstakes. Spirit Award, ΣN Sweepstakes. First sorority in history of event to win both. Inceptors, Stacey Rouse, Valeri Marshall, Cheryl Newson, Mary Kelley, Robin Young. Incept's Board of Governors, Vickie Giddens. Mortar Board, Cindy Berger. OAK, Valeri Marshall. CCTV news director and anchor woman, Alicia Ames. ΦHΞ, Lisa Messer. 1st runner-up Miss GSU, Valeri Marshall. Greek Woman of the Year, Cyndi Clark. Miss Rampway semi-finalist, Alicia Ames. Homecoming Queen finalists, Beth Joyner. Inter-Sorority Council treasurer, Pam Howington.



Inceptors at Georgia State are Delta Delta chapter members Mary Kelley, Cheryl Newsome, rear, and Stacey Rouse, Valeri Marshall, and Robin Young, front row.

ILLINOIS

Bradley, Zeta Alpha — First prize, best combined Greek booth, Campus Carnival. All University Bowling Champs. Senators, Helen Young, Sharon Jo Welter. Activities Council, Julie Lawson, Clare Ann Locassio. ΦΚΦ, Cheri Benjamin, Linda Dickeson, Becky Braman, Barb Bardash.

DePaul, Theta Theta — Inter Sorority Council, Mary Therese Murray, president, Maria Enright, secretary, Julie Potratz, Michelle Sierocinski. DEUCES president, Mary Therese Murray, president, Karen Murphy, Dana Degmon, Patty Graziano. Who's Who, Cathy Scalize, Maria Enright. Junior with Highest GPA honors, Dana Degmon, junior, Marlene Veit, freshman. Homecoming queen, Cathy Scaalze. AX Playmate of the Year, Diane Sandoval. Adjuvantes, Carla Olsen, president, JoAnne Nickels, Diane Sandoval, Laura Skimkus, Char Valenza. ΦΚΑ Queen, Julie Potratz. TΘE sweetheart, JoAnne Nickels.

Illinois, Alpha Beta — All University Bronze Tablet graduating honors, Jan Beinke. High honors graduates, Ruth Berne, Patti Giba. Rush counselors, Nancy Dickson, Nancy Fitzgerald, Cindy Stark. UGSA, Campus Affairs Committee, Martha Seger. Junior Panhellenic News staff, Mary Griffith. Junior Panhellenic treasurer, Desi Kotis. UI Bowling Team, Margo Baranowski. Spring musical *Kismet*, Jan Beinke.

Eastern Illinois, Gamma Nu — Feature twirler, Janean Mitchell. Greek Week Co-Chairman, pom pon squad, Pam Barr. Senate, ΣΑΙ, ΦΑΣ, ΠΣΑ, Missy Rodgers. EIU representative to Symposium on Presidency in Washington, DC, Gale Gough. Panhellenic veep, Greek Week Sing Committee, Elise Humphrey. ΦΑΗ, Karen Anderson, Laura Koeneman. ΦΓΝ, Barb Turner, Ann Nowacki. Pink Panther pom pon squad, Teresa Tapp. University Elections Committee, Laura Koeneman. Greek Week secretary, Karen Anderson. ΚΑΤ, Lynn Yost. SHEA, AHEH, Laurie Najim. University Board, Vickie Soda. Eastern News, Kathy Bland.

Illinois State, Lambda Rho — First place, Greek Week. Runner-up Greek Week Queen, Jonalee Lavis. Outstanding senior marketing student, Marsha Geisler. Who's Who, Marsha Geisler, Luanne Schwaninger. PA, Lynn Gonio, Kim Klika, Marsha Geisler. ISU Honors Council, Laurie Wieser. ΚΔΕ, Jonalee Lavis. Speech & Hearing Association veep, Lynn Gonio. Society for Advancement of Management treasurer, Kim Klika. Panhellenic treasurer, Barb Schneider. Senate, Liz Croxville. Curriculum Committee for College of Business, Laurie Wieser. Homecoming Board, Barb Schneider, Sylvia LaRose. Student Elementary Education Board, Jonalee Lewis.

Northern Illinois, Gamma Rho — First place, Greek Week. Greek Week Queen, Dianne Carpenter. Top 15, Miss Illinois pageant, Mary Kay Kriese. Sigma Pi Calendar girls, Donna Vucinic, Mary

Kay Kriese. Chicago. Panhellenic rush chairman, Kathy Caskill.

Northwestern, Alpha Alpha — Editor Panhellenic rush booklet, Linda Lesniak. Assistant circulation manager student magazine, Phyllis Grimm. Waa-Mu show, Kathy Ferguson, Jennifer Troutner, Laura Mangun. Director, Collegiate Athletes Big/Little Sister program, Barbara Roche. Assistant Central rush chairman, Caryn Katz.

Southern Illinois, Gamma Omega — First place ΘΞ Variety Show for third consecutive year. ΣΤΓ Sweetheart, Marcia Jensen. Outstanding Junior in Geography, Jody Brokway. Isis, Vivian Wetzstien, Letha Dugas, Mary Leshner, Elizabeth Jusits. Panhellenic, Chris Van Loon, president, Liz Jusits, treasurer, Marcia Jensen, co-rush chairman. Inter Greek Council president, Vivian Wetzstien. Panhellenic Woman of the Year, Marcia Jensen.

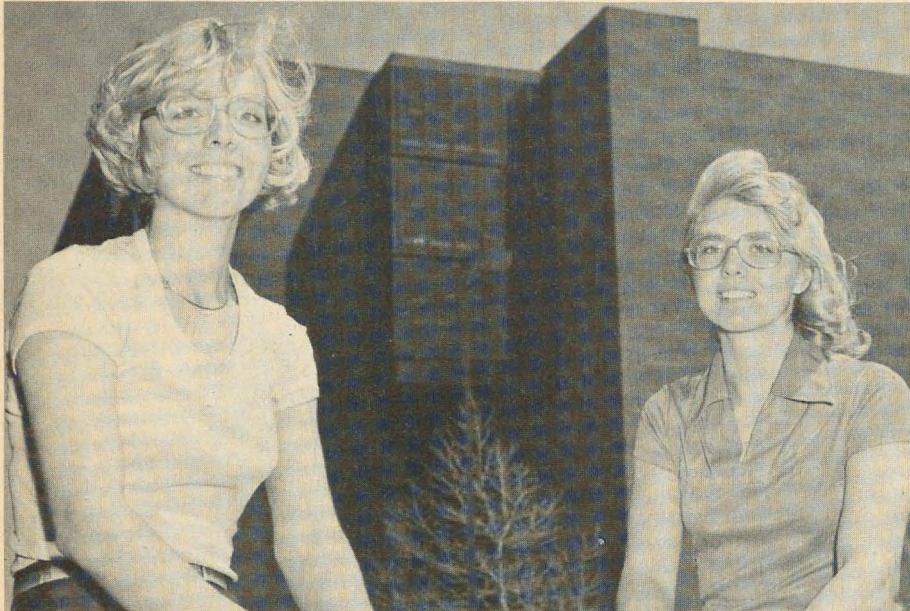
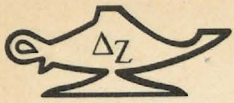
Western Illinois, Epsilon Omicron — Second place, Greek Variety Night, ΑΧΑ and ΠΣΕ basketball tournaments. Panhellenic Woman of the Year, Rhonda Page. Panhellenic, Patti Riley, secretary, Gina Liberatore, publicity chairman. Dormitory president, Mary Pilitic. Chairman Fashion Merchandising Seminar, Mary Ann Aichenger. ΗΣΓ secretary, Janet Dittmer. Student Orientation Board, Mary Ann Aichenger, Sue Davies, Liz Frank, Nancy Hunsberger, Gina Liberatore, Julie Martin, Mary Lou Maslankowski, Patti Riley, Donna Schuette, Carol Swanson.



Laurie Moore, ΔΞ, was chosen the Outstanding Greek at Northern Colorado.



Barbara Rempala, ΖΑ, was the choice of Bradley chapter of Sigma Chi as Derby Day Darling.



Karen and Denarie Kane of Gamma Chi chapter set several firsts at Ball State. They are the first twins to earn degrees from the College of Architecture and Planning, and they are the first women to be named outstanding students in their respective fields. Both are members of Mortar Board and Blue Key and both have studied on the University's Honors program.

INDIANA

Ball State, Gamma Chi — *Who's Who*, Blue Key, Karen Kane. AA, April Thomas, Tracu Varner. PA, Cathy Reynolds. Mortar Board, Donna Hodges, Patty Kramer, Denarie Kane. ΣAI, Diane Barton, publicity chairman. Out of State Student Association vice-president, Pam Rohner. ΠΩΠ historian, Debbie Evans. Panhellenic, Marla Pittman, secretary, Jennifer Guy, treasurer.

DePauw, Delta — Junior Board president, Laura Murdoch. Senate, Kris Brant. AWS treasurer, Holly Barce. Student Union Committee chairman, Jerilyn Jeuss ΦBK, Gretchen Warner. AΔΔ, Ligeia Ivy, Anne Leonhart, Jessica Reid, Karen Van Cader. ΦΗΣ, Lynn Anderson. ΣΔΧ, Debbie Schwieder, KII, Teri List, Gretchen Warner, Alice DeHart, Cathy Madigan, Karen Miller. Christian Living Unit Council president, Diane Lippincott.

Franklin, Psi — First place All Campus May Sing. May Sing Queen, Patty Fleener. Student Congress, Arnita Petre, Nadine Poland. Women in Communications, Karen Melvin. Literary magazine assistant editor, Rhonda McKittrick. ΔMA vice-president, Brenda Brennan. Blue Key, Gold Quill, Jane Paradiack. Laurel and Lancer, Nadine Poland, Colleen Sexton.

Indiana-Evansville, Lambda Beta — City Panhellenic Academic Award, Academic Achievement Award. *Who's Who*, Sherry Hajek, JoAnne Wilot. Outstanding Greek Woman, Nora Kittridge. KΔII, Connie Milling. American Dental Hygienist president, Sherry Hajek. Panhellenic vice-president, Jan Besing. Academic Achievement Awards, Nora Kittridge, Cathy Surheinerich. Basketball maid-of-honor, Sherry Hajek. Inter-Fraternal Sorority Council president, Becky Dyer.

IOWA

Iowa, Iota — Winner of Panhellenic Membership Involvement Award for second year. Mortar Board, Kim Kindt, Yvonne Andejaske. Military Ball Queen, Jean Marie Barnes. OΔE, Theresa Vaughan. ΣOT, Margaret Meiner. PX, Sue Thomas. OΔK, Shirley Hettrich. Association of Nursing Students secretary, Sharon Priester. Iowa Union Program, Debra Graham. Panhellenic Executive Committee, Amy Cook, Gwen McNatt.

Iowa State, Beta Kappa — Large Division Winner, All-Greek Sing. Judges Special Award for costumes and make-up, Varieties. Pep Council, Connie Guenther, Cindy Young, Laura Doak, Leigh Ann George. ΦBK, Paula Norby. ΦΣI, Becca Scott. All University Election Commit-

tee chairman, Diann Graham. Varieties Central Committee, Marguerite Penick. Orchesis president, Janette Oppenheimer. Holder school record, high jump, Becky Deetz. Student Committee investigating student health services, Julie Nelson.

Morningside, Delta Mu — CLASS honorary, Kim Schulze. Greek Woman of the Year, Lynne Stoeber.

KANSAS

Emporia, Delta Pi — Alpha Phi Omega, Ardyth Dudrey, president, Linda Shanahan, vice-president, Julie Booe, secretary, Kim Krueger, rush chairman, Karen Ernst, treasurer. Cardinal Key, Susan Scherling. ΞΦ, Ardyth Dudrey. AB secretary, Spurs Junior Advisor, Susan Scherling. ΞΦ secretary, Kay Riedessel. ΦΔΘ sweetheart, Jane Moore.

Fort Hays, Delta Omega — Mortar Board, Donna Balls. ΦKΦ, Sally Smith, Donna Balls. Order of Omega, Connie Melkus.

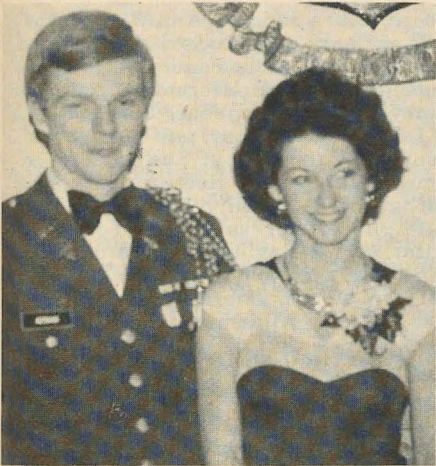
KENTUCKY

Louisville, Beta Gamma — Second place campus intramurals and Greek Games. Only UL delegates to State Panhellenic Day, Sherie Lynch, Cissie Effinger, Peggy Thorp. Mortar Board, Karen Shacklette. ΠΣE, Vickie Shryock. Newspaper staff, Joanna Palmer. ΔY sweetheart court, Beth Kleier, Paula Bayens. TKE sweetheart court, Sheila Sheeren.

Morehead, Kappa Tau — Winner AXA Decadron, Scholarship Trophy. Outstanding Interior Design Student, Marianne Kapnas.

LOUISIANA

New Orleans, Theta Kappa — *Who's Who*, OΔK, IST, Eileen Kenny. AΔΔ, Karen Knott, Eileen Kenny, Darlene McCoy. AOE, Suyapa Agurcia, Eileen Kenny, Karen Knott, Michelle Mackin, Darlene McCoy, Eileen Miller, Karen Rodrigues, Sherry Sewell, Connie St. Pierre. OΔK, Eileen Miller. SGA representatives, Lisa Hebert, Suyapa Agurcia. Vice-President College of Business, treasurer Hotel, Restaurant & Tourism Association, Eileen Miller. TKE Sweetheart, Laurie Horst. AXA Sweetheart Queen, Jean Funck.



Jean Barnes, Iota, was chosen Military Ball Queen at the University of Iowa.

Nicholls, Kappa Alpha — Greek Goddess, Ms Nicholls, Beth Bush. KA Sweetheart Court, Ginger Barker, Cindy Bollinger. ΔΣΦ Sweetheart Court, Kayla Caballero. ΦΚΘ Sweetheart, Brigid Grace, ΦΚΘ court, Alice Landry. Rotaract, Beth Bush, Beth Fakier, Bonnie Coyne, Allison Ayo, Karen Calecas, Alice Landry, Michelle Taylor, Debra Martinez, Brigid Grace.

Northwestern, Epsilon Beta — Phi Kappa Phi, sophomore scholastic awards, Jan Bateman, Faith Honold, Helen Hubley, Julie Renken. ΣΔΧ, Helen Hubley, treasurer, Debbie Page. Purple Jackets, Helen Hubley, Dana Roth. Current Sauce newspaper, Sharon Miller, photographer, Debbie Page, editor. Cheerleader, Dana Roth. ΑΑΔ, June Sellers, president, Mary Kay Slusher, vice-president, Kelly Haddon. Student Union Governing Board, Melinda Palmore, representative, Dana Roth, treasurer. SGA-Warrington campus, Donna Brey, president. Miss Bossier City, Lee Ann Blaufuss. ΠΚΦ Rose, Donna Johnson. ΚΣ Dream Court, Donna Brey.

MAINE

Maine, Alpha Upsilon — Campus Sorority Award for highest GPA, Panhellenic Most Improved Scholarship Award. All Maine Women, Cathy Brown, Barb Huff. Sophomore Eagles, Barb Brown, president, Vicki Sirois, Rhonda Wiles. Panhellenic second veep, Cheryl Niles. Sole woman graduate of Chemical Engineering Program, Ann Fetzer.

Maine-Portland-Gorham, Lambda Zeta — Winner Greek Games. Resident Student Government, Beth Vasiliauskas. Yearbook, Joanne Schwalbenberg. Newspaper, Maureen Sorel. Miss UMPG, Catherine Foster. Graduated Summa Cum Laude, Paula Quintal. State Champion Volleyball Team, Catherine Coleman, Glenda Knights. Panhellenic vp, Denise Conroy. University Tourguides, Marguerite Berendes, Glenda Knights.

MICHIGAN

Ferris, Zeta Nu — Panhellenic honors for highest overall grade point average; second place, Greek Week. Panhellenic secretary, Penny Stacy. ΠΚΑ Calendar Girls, Melissa Monahan, Shelley Tinker, Teresa Avran, Rae Ann Everts.

Michigan State, Beta Rho — Top scholastic average, initiated members; winner, sorority league basketball. ΒΑΨ officer, Corinne Asher. ΣΑΙ, Lynn Erhenberg, ΦΚΓ officer, Laura Carleton.

Michigan Tech, Lambda Theta — Community Service Award, Shamrock Award for Muscular Dystrophy; Second Place, Homecoming and Winter Carnival. Military Ball Queen, Barb Schnotala, runner-up, Alice Neal.

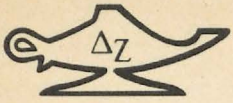


Alpha Upsilon chapter president Rhonda Northrup and Alpha Tau Omega chapter president Mike Dragoon accepted the campus Scholarship awards for fraternities and sororities at the University of Maine.

Northern Michigan, Zeta Omega — Panhellenic scholarship plaque for highest overall grade point. Panhellenic president, Susan Mabec.



The Spring pledge class of Kappa Tau chapter at Morehead State in Kentucky won the Lambda Chi Alpha Decadron, and helped the chapter to win the Scholarship trophy for the third semester in a row.



On the request of Kappa Alpha chapter at Nichols State, Mayor Harang proclaimed Speech and Hearing Week in Thibodaux, Louisiana. With Mayor Harang are Becky Himel, Debra Martinez, Mary Naquin, and Elizabeth Zeringue.

MISSOURI

Central Missouri, Epsilon Gamma — First Place, Greek Week Talent Show. SGA, Tina Frank, Becky Davis, Supreme Court; Debbie Bonner, Laura Salisbury, senators; Toni Braton, representative. Student Ambassadors, Cathy Carter, Sandy D'Angelo. *Who's Who*, Teresa Schackleford, Sandy D'Angelo. ΑΦΔ, Kathy McLean, Meryl Lin McKean, Sandy D'Angelo, Sally Thompson. ΑΑΔ, Kathy McLean, Sandy D'Angelo, Sally Thompson. ΚΔΠ, Cathy Carter, Sandy D'Angelo. ΘΗΣ, Cindi Owen. ΘΑΠ, Janet Ulrich. BBB, Sally Thompson. ΣΤΔ, Cathy Carter. ΠΚΔ, Sandy D'Angelo. ΚΚΚ, Judy Bonnot, Lienne Schaffner, Liz Stokes. Mulekickers, Sally Thompson, Karen Medina, Terri Hampton. Top 10 Outstanding Coed, Toni Braton.

Missouri-St. Louis, Iota Xi — Student Council, Jeanne Grossman, vice-president, Kelly Enderson, Donna Denner. IGC, Linda Paige, vice-president, Carole Vogel song. *Who's Who* American Colleges and Universities, Donna Borgmeyer. ΠΚΑ Dream Girl Court, Donna Denner. Cheerleaders, Michelle Schaber, Cathy Person.

Missouri Western, Kappa Nu — Panhellenic treasurer, Linda Ketchen. Inter Greek Council treasurer, Vicki Andrews.

Northeast Missouri, Delta Sigma — First place intramural basketball tourney, Top Sorority Scholarship. Outstanding Greek Woman, Laura Skubal. Miss Greek Congeniality, Gloria Still. *Who's Who*, Brenda Jenkins, Gayle Todsen. Senate, Laurie Myers, Nancy Putman, Maggie Burghoff, Debbie Allen. Student Activities Board, Cindy Musgrove, president, Karen Smith, Patti Barry, Jeanne Krautman, Joni Ravenscraft. Student Ambassadors, Cindi Gullet, Joy Shahan, Gayle Todsen, Diane Buresh, Laura Skubal. Cheerleaders, Patti Barry, Kim Wisdom, Barb Wroblewski, Karen Orscheln. Pershing Society, Debbie Allen. ΔΣ Rose Queen, Gayle Todsen. ΣΤΤ White Rose Queen, Mariann Timmerberg.

Northwest Missouri, Epsilon Rho — Overall Supremacy Award, Greek women's Homecoming competition. Cardinal Key, Leanne Deshong, Lore McManus, Debbie Spencer. ΠΒΑ, Leanne Deshong, Robin Roberts, Janie Eldridge, Pam Schlotthauer, Debbie Spencer, Cheryl Howerton. Student Senate, Debbie Spencer, secretary, Paula Barbieri, Myra Horner. Dorm Council, Wendy Taff, Rita Garth, Susie Brenner, Susan Jack.

William Jewell, Zeta Rho — Highest Panhellenic GPA. *Who's Who*, Susan Foreman, Karen Jones, Pat LaHay, Jane

Moore, Debra Sanders, Ann Wischmeier. Mortar Board, Debbie Clark, Pat LaHay, Jane Moore, Debbie Sanders, Ann Wischmeier. Women's Recreation Association Woman of the Year, Lisa Adkins. ΣΑΙ, Janet Van Hooser, president, Lindy Roach, Lynn McCoy, Shawn Buller. Senate, Janet Van Hooser, secretary, Kathy Merritt, Marilyn Hackmann, Gigi Gallagher, Theresa Viani. Yearbook editor, Gigi Gallagher. Miss Panhellenic Spirit, Shawn Buller. ΑΑΔ, Becky Bray, Carolyn Crews, Theresa Viani, Linda Weule, Kathy Williams.

NEBRASKA

Creighton, Theta Eta — Panhellenic president, Lynne Duren. Resident Advisors, Cindy Bruce, Jane McGrath, Leanne Weinhold.

Nebraska Wesleyan, Beta Tau — Panhellenic Scholarship Award. *Who's Who*, Susan Hansen, Deb Terhune, Judy Weinmeister. Ionians vice-president, Diane Spearow. BBB secretary, Jean Ogborn. Senior Class secretary, Marcia Fahlberg. Student Education Association, Sara Stevenson, president, Ann Mielke, secretary, Pam Tekolste, treasurer. ΦΚΘ, Deb Wetzel, AMT, Carol Miller, Amy Nelson. ΚΔΠ, Ann Mielke, Cindy Moore. Daisy Chain, Terry Connealy, Susan Liggett, Shari Peters. Ivy Chain, Nancy Liggett. May Fete, Susan Hansen, queen, Susan Liggett, Nancy Liggett, Mary Yardley, Terri Zingg, attendants. Cardinal Key, Marianne Brown, Karen Keebler, Ann Mielke, Cindy Moore, Jean Ogborn, Sara Stevenson, Debra Wetzel, Janelle Wisby, Mary Yardley, Betty Youngman Turner.

NEW HAMPSHIRE

New Hampshire, Theta Gamma — Winner Snow Sculpture, Winter Carnival. Winner, Intramural Swin Marathon. All Campus Intramural Champions. Panhellenic president, Debbie Tapscott. ΦΒΚ, Esther Campo, Jane Cox. ΑΕΔ, Pam Penny, Andrea Sachs, Ginny Maguire, vice-president, Maureen Carter, Linda Merriman, Kathy Nauss, Erlinde Meir, Pat Strout, Mary Coughlin. ΦΜΕ, Sharon Pigula, Jane Cox, Esther Camp. ΦΚΦ, Jane Cox. ΨΕ, ΠΤΝ, ΟΔ, Debbie Wessels. Mortar Board, Win Helfrich.

Plymouth, Kappa Epsilon — Second place, Campus Pitch-In Week. *Who's Who*, Martha Steiner. Governor's nominee for student trustee, NH University System Board of Trustees, Martha Steiner. Senate, Carol Welch, Beth Keyes, Martha Steiner. Miss Plymouth, Darby Jean Mahan.

NEW MEXICO

New Mexico, Gamma Xi — First place tie, Greek Games. Greek Goddess, Judy Cawiggia. Panhellenic Outstanding Sophomore Woman, Joyce Lavato. Cheerleader, Vicki Skillman.

NORTH CAROLINA

Appalachian, Lambda Phi — Second place, Greek Day games. Head cheerleader, Muffy Watson. Ambassadors Club, Bronwyn Poplin. May Court representatives, Tammy Winkler, Kay Otterbourg.

Atlantic Christian, Theta Omega — Winner, Greek Sing, Homecoming float, Greek Activity Day. Junior Class president, Nancy Gott. Panhellenic president, Wanda Lewis. *Who's Who*, Lynn Covington. Homecoming Queen, Cindy Hill, 1st runner-up, Donna Slaughter. Homecoming Court, Jeanie Boyd, Lorraine Cascioli, Marsha Andrews, Pam Jones. ΔΣΦ Sweetheart, Jean Daughtry. ΣΠ Sweetheart, Pam Jones. ΔΣΦ Sweetheart, Marsha Andrews.

East Carolina, Zeta Lambda — Second place, All Sing. *Who's Who*. Diane Kyker. ΦΣΙ, Robin Hammond. Panhellenic treasurer, Carol Perkins. ECU Chief Marshall, Robin Hammond. Greek woman with highest scholarship, Dana Dragstedt. Fraternity sweethearts, Carol Perkins, ΣΦΕ. Caren Bills, KA.

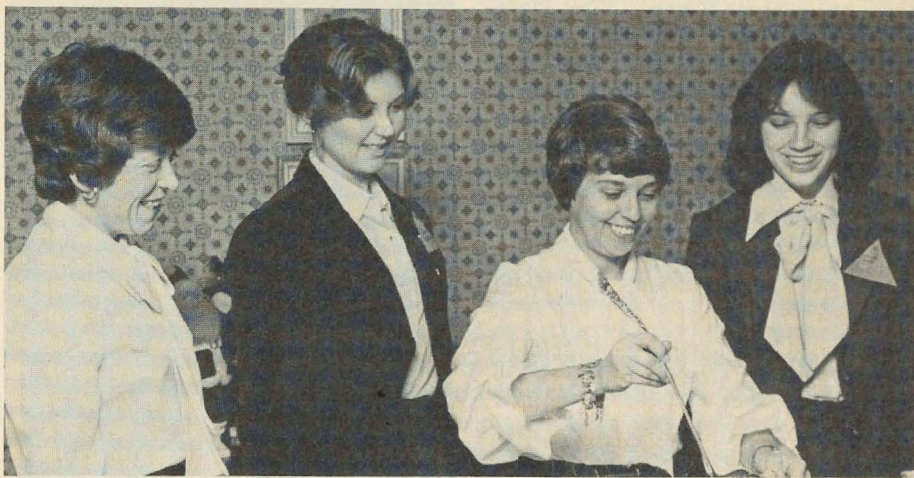
North Carolina-Charlotte, Kappa Phi — First place, Greek Week. Second place, basketball. Homecoming float competition, and overall Homecoming award. Outstanding Junior Greek Woman of the Year, Barbara Shaw. Society of 49, Linda Hinson, Alice Becky, Resi Sinclair, Anne Woodruff. Forty-niner hostesses, Cathy Hanner, chairman, Tricia Watts, Margo Pheagin, Barbara Shaw, Nancy Gesse, Linda Williams, Glenna Griffith. Homecoming Court, Linda Hinson, Anne Woodruff, Sheila Swygert, Cathy Hanner.

NORTH DAKOTA

Dickinson, Iota Beta — Second place, Snow Sculpture, Sure Beats Winter Tug-of-War. 3rd place, Olympiad. Board of Governors treasurer, Panhellenic treasurer, Tracey O'Neil. Panhellenic vp, Janette Paulson.

Minot, Theta Pi — Sorority Scholastic Award.

North Dakota, Upsilon — Second place, All Campus Intramurals and All-Greek Intramurals. Senate, Tara Muhlhauser, Liz Halliday. ΘΧ Dream Girl, Tammy Wiedler.



Clay Platte Alumnae entertained for members of the seven collegiate chapters in Missouri and borrowed the silver punch bowl of the Gertrude Houk Fariss Award which the alumnae and Zeta Rho chapter at William Jewell won at the National Convention in Columbus. Province Director Lillian Kendig Truesdale serves Sara Shipp Hoecker, EF, Debbie Clark and Frankie Lyle, ZP.

OHIO

Akron, Theta Zeta — First place, volleyball intramurals and Dance Marathon. Fall pledges, highest scholastic average. Scholarship Top Ten, Rosie Vitavec, pledges, Jan Jordan, seniors. Rho Lambda, Jan Jordan, Becky Slayman, Ruth Giacomoni. Senior Class secretary, Terri Vermie. A-Keys for campus service, Becky Slayman, Jan Jordan. Panhellenic treasurer, BAΨ, Becky Slayman.

Baldwin-Wallace, Gamma Alpha — Third place, Interfraternity Sing. Administrative Assistant to Student Body President, Becky Hawley. Laurels, Becky Hawley, Holly Havens, Jane McCandless. OAK, Becky Hawley. Spanish honorary, Vilma Bermude. 1st runner-up May Court, Holly Havens.

Bowling Green, Gamma Tau — Second place, Panhellenic initiate scholarship, Panhellenic chapter average, Greek Week. Senate, Cindy Breitholle. Design Club Co-President, Lynn Snodgrass. Golden Torch, Deb Bogart, Karen Riegelsberger, Nancy Schuler. AAA, Katie Croskery. ΣΔΠ, Mary Houck. ΦKT Basketball Marathon Queen, Carolyn Reid.

Findlay, Theta Tau — First place, intramural basket tourney. Largest sorority pledge class. Sophomore Class president, Kim Clemons. SGA class representative, Tina Jaco. Head Resident Girls' dormitories, Sue Gerhardt. Band and ΔO veep, Rosemay Kuzma. Campus Programming Board vp, Beth Stansberry.

Kent State Gamma Kappa Mortar Board, Susan Leaman. Panhellenic rush chairman, Lucy Ream.

Miami, Alpha — *Who's Who*, Mortar Board, AKΔ, Jennifer Junk. Shakerettes, Amy Ashyk, Cindy Patterson. SPURS, Amy Ashyk, Kathy Vlerebome, Kathy Leinenger. ΦΥΟ, Laurie Krisher, Gretchen Nielander. ΣAH, Terry Poenisch. ΠΣΕ, Mary Paskell, Kathy Vlerebome, Nancy Montgomery, Debbie Cassidy, Debbie Stanton. Angel Flight, Kathy Nordland. Miami Mariners, Julie Tunnaclyffe, Peggy Borgert, Patty Borgert, Betsy Allen.

Ohio Northern, Zeta Kappa — First place, Greek Sing, Derby Day, Sig Olympics. Greek Week Overall Campus Award, Best on Campus. Cheerleaders, Melanie Birt, Jill McFarlin, Janice Pilarczyk, Deb Allard. Mortar Board, Marybeth Choma, Roxie Besst, Ruth Howald, Shirley Rhinehart, Melanie Birt, Jill McFarlin. ΦMΔ Sweetheart, Ima Darling. PX, Virginia Wise, AZQ, Lee Anne Morgan, Stephanie Sauders, AAA, Becky Wilson, Shirley Rhinehart, Virginia Wise, Ruth Howard, Roxie Besst, Deb Moots, Elizabeth Smith, Deb Allard, Majorie Copes, Elizabeth Ford, Kathy Klein, Janice Pilarczyk.

Ohio State, Theta — First place, ΣΧ Derby Days. ΣΧ Derby Day Queen, Laurie Wilmont. Community Service Award, Athletic Award. Chimes, Brenda Wolcott, Sue Lennon. Panhellenic Judicial, Ellen Reeb. Ohio-Drake Union Activities Board vice-president, Brenda Wolcott.



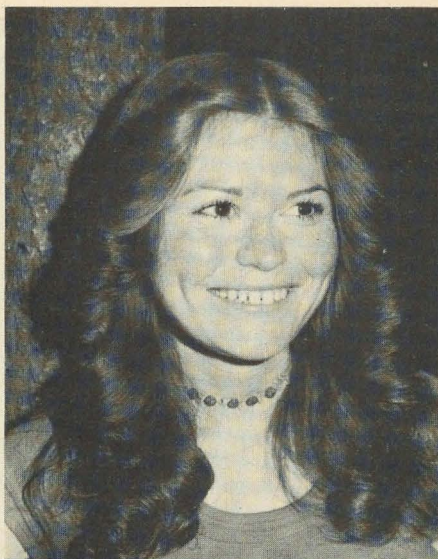
Steubenville, Theta Sigma — First Place, Intersorority basketball. Greek League Sports Trophy. Intersorority Council President, Leah Charnock. Cheerleaders, Linda Kane, Abby Albright, captain. Student Government Representative, Linda Kane. Executive Board Greek Council, Helen Limina, Annette DiPalma. *Who's Who*, Annette DiPalma, Laura Heben, Kathy Kelly, Patty Jones, Beth Jordan. AX, Lorie Bauschard. Fraternity sweethearts, Lorie Bauschard, TKE, Nadine Hlad, AXP, Helen Limina, AΦΔ.

Wright State, Kappa Iota — University Center Board Chairman, Linda Henry. BΓΣ, Phyllis Baker.

OKLAHOMA

Northeastern Oklahoma, Delta Phi — Campus presidents, Melanie Harreld, Panhellenic; Toni Garner, Student Home Economics Association; Monica Housley, Society for Collegiate Journalists. Legislature, Rene Mathis. Bobbie Points, Miss Muskogee State Fair.

Oklahoma City, Gamma Upsilon — Presidents, Kristy Kazemekas, Student Body; Renae Weber, Association of Women Students; Gail Bardin, Student National Education Association; Linda Bentley, AΨΩ. English Society secretary, Leslie Collum. SNEA secretary, Terry



*Carolyn Reid, ΓΤ
Bowling Green University
Phi Kappa Tau Basketball Marathon
Queen*

Wellman. Cardinal Key, Resa Rawson, secretary, Leslie Collum, Renae Weber, Gail Bardin. Finalist, Miss Oklahoma City pageant, Pat Nichols.

Oklahoma State, Alpha Epsilon — Most Improved Sorority Scholarship honors. Second place, city wide softball tourney. Orange and Black Quill, Kerry White,

Tracy Allison, Karen Campbell, Leigh Schindler, Kathy Rauner. AΛΔ, Mary Anne Dorland. ΦΒΑ, Dani Conover, Sharon Kloeppel, Debbie Calhoun, Tammy Carlson. ΜΚΤ, Kathie Pruser. ΑΚΨ, Dani Conover. ΟΝ, ΚΔΠ, ΦΘΚ, Charlotte Lever. ΜΚΤ, ΦΒΑ, Lyn Gillespie. O'Collegian reporter, Karen Eby. Angel Flight, Nancy Seikel, Mary Anne Dorland. Yearbook staff, Karen Campbell, Tracy Allison, Karla Miller. ΓΤ, Jane Gilliland.

PENNSYLVANIA

Alliance, Iota Gamma — *Who's Who*, Maria Rakowski. ΣΤΔ, Mary Anne Gozewski. Yearbook co-editors, Frannie Marchewka, Mary Anne Gozewski. Runners-up Campus Queen, Carol Oleasz, Janice Kornacki.

Clarion, Epsilon Theta — First place, Greek Swim. Yearbook Award for Most Creative Group Picture. Newspaper and yearbook staffs, Julie Zumpano. TKE Sweetheart, Cindee Lundeen. ΚΔΠ, Cindy Lombardo, Cindee Lundeen, Cindy Aspril, Debbie Murphy, Kerri Keiser. Presidents, Linda Bieloski, Marketing Association; Kim Rilling, Math Club. Cheerleader, Rosi Finlayson.

Drexel, Epsilon Zeta — Second place, Panhellenic volleyball games. Drexel honorary for junior and senior women, Mary Leporati, Judith Bugg, Kathleen Brochetti, Marianne Martin, Cynthia Lang, Andrea Levyn.



The members of Theta Gamma chapter at the University of New Hampshire in Durham had their picture taken during a Spring get-together.

Edinboro, Iota Delta — First place, Greek Sing. Overall Winners, Greek Week. Greek Goddess, Kathy Nelson. TKE Sweetheart, Michelle Parilla. *Who's Who*, Kathy Nelson, Pam Shumaker, Debbie Wilson.

Indiana of Pennsylvania, Gamma Phi — Student Government Association representatives, Terri Newell, Becky Schneider. KAP, Phyllis Carrera, Kathy Henry, Ann Smith Pentz. ΓΘΥ president, ΠΓM secretary, Jan Fetrow. Fraternity sweethearts, Stephanie Tepper, ΦΣK, Vicki Holmes, ΔΣΦ.

Pittsburg-Johnstown, Lambda Epsilon — Three First place trophies, Greek Week. *Who's Who*, Ann Reesman, Suzy Smedo. Outstanding woman Glee Club member, Suzy Smedo. President's Award for outstanding aid to university president, Linda Rhoads. Senate, Carol Camberis. Inter-Sorority Council president, Terri Miller.

Slippery Rock, Zeta Phi — First in Greek Skits. Second, Sorority Sing, basketball intramurals. Rocklettes, Linda Meidinger, Sue Moody, Mickey Scullion, Jeanne Joseph, Kriss Hackett, Donna Tallerico. Organization officers, Donna Tallerico, Dorm Council treasurer; Georgia Donnis, Psychology Club secretary; Barb Jackson, Student Association for Children with Learning Disabilities, vice-president; Cindy Maus, Phi Chi Theta Secretary; Ellen McGinty, Kappa Gamma treasurer. Disc Jockey, WNFT, Barbara Huarte. Honoraries, Cindy Brown, health; Anne Carlson, special education; Jackie Deaner, history; Georgia Donnis, psychology; Barbara Jackson, Karen Kerr, Susan Moody, education.

Shippensburg, Kappa Psi — First place, ST Bucket Brigade and ΦΣE 500 Rally. State Day hostesses. Drill Team co-captain, Penny Waltersdorf. Rifle Squad co-captains, Bonnie Schanely, Lorie Miller. KΨ awards, Kathy Andres, Ann Daubert. Newspaper associate editor, Jill Caravan. TK, Jane Champlain; ΠΣA, Sherry Marcellino; KAP, Bobbi Bortner. Jo Ann Semanche, ΦΣE Sweetheart.

Westminster, Theta Delta — Greek Olympics volleyball winner. Student Association, Marilyn Keller, Lori Lasher. KAP, Mary Lynn Minter, vice-president, Meg Hanek, Kathy Conley. MΦE, Stephanie Kosnac, AΣ, Chris Fontana, OAK, JoAnn Coslett.

RHODE ISLAND

Rhode Island, Beta Alpha — Winner individual competition, Greek Week. Mortar Board, Margret Greim, Karen Zerra.



Mary Leporati, EZ
Drexel
Panhellenic President

Senate, Diane Buteau. ΣΦE Sweetheart, Jane Cayer. ΣΘT, Stephanie Harper; ΦBK, Lisa Desista; ON, Adina Poporici. Honors Collquim, Lisa Leeds, Nancy Ndan.

SOUTH CAROLINA

South Carolina, Beta Delta — ΣX Derby Day Service Project winner. Mortar Board, Beth Barry.

Winthrop, Lambda Sigma — First in Blood Drive. Student Government Association vice president, Debbie Grimes. Senior Order Society, Denise Warren,

Debbie Grimes. Yearbook editor, Denise Holcombe.

TENNESSEE

East Tennessee, Delta Eta — ΣX Derby Week spirit competition winner. Sign competition, Miss Derby Day, Tricia Burke. Spirit Award, ΦΣK contest. Runner-up to Miss ETSU, Renee Gollehon. Panhellenic president, Frances Keezel. PA, Sharon Trembly, Martha Meyung. AΛΔ, Susan Barnett. ΓBΦ, Shari Ratliff.

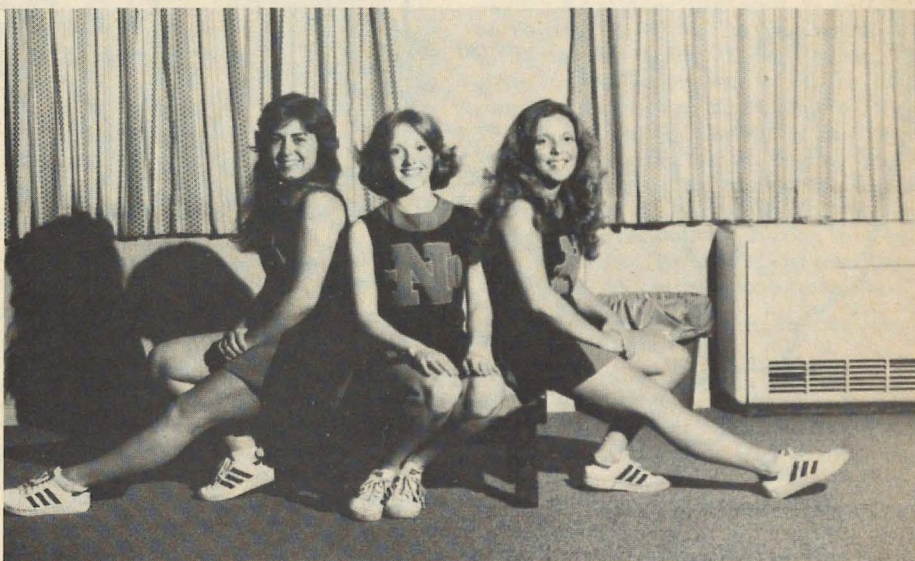
Memphis State, Gamma Iota — Most Improved Scholarship Award. Panhellenic president, Cathy McCuiston.

Tennessee, Beta Lambda — Winner ΣX Derby Week events. Volleyball league champions. Academic Council, Lynn Hollaran. ΓBΦ, Robin Walker.

TEXAS

Pan American, Theta Omicron — *Who's Who*, Edna Ornelas. Bronco Queen, Velma Menchaca. Miss Pan American Queen, Nelda Villegas. Greek Council, Karen Walker, Trecia Parrish. Cheerleaders, Jackie Drake, Nelda Villegas, Bonnie Gilday. Student Association veep, Judi Flores. Senate, Bobbie Stokes.

Sam Houston, Zeta Theta — Three wins, Greek Week. Panhellenic president, Anita Swayze. AΛΔ, Dana Duer. Orange Keys, Dana Windsor, Linda Bond.



Three of the varsity cheerleaders at Ohio Northern are members of Zeta Kappa chapter, Jill McFarlin, Amy Smith, and Melanie Birt.



Southwest Texas, Iota Alpha — Homecoming Queen, Amy Collins. Guallardian, Karen Perry. Bobkittens pom pon girls, Rhonda Weaver, president, Roxanne Chambers, DiAnne Dumas, Sharon Jennings, Cynthia Matous, Becky Salter.

Southwestern, Gamma Zeta — Winners new Women's Recreation Association Intramural Sports Trophy. Cardinal Key, Bobbie Fisher, Terri Flagg, Carla Hawkins, Elise Greene, Maralee Buttery, secretary. ITM, Maralee Buttery. AX, Becky Burkhardt, Marsha Raboine, Marsha Russell.

Texas A & M, Lambda Xi — First, ΣΧ Derby Day. Jan Gott was runner-up, Derby Day Queen. ΑΔΔ, Kara Die, Debbie Orsak.

Texas-Arlington, Iota Psi — Winner, Phi Delt Winter Olympics. ΣΦΕ trophy for Best Spirited Pledge Class. Sorority volleyball, basketball champions. University freethrow and football champions. Freshman Honor Society, Shedera Bates, Cindy Vaughn. Junior Honor Society, Suzanne Allen, Joan Bothner,



Linda Schlesinger, Chris Gottinger and Laurie Plummer, Epsilon Kappa members, were chosen for University of Wisconsin-Whitewater's Silver Scroll.

Melissa Simmons, Phyllis Rozzell. Helenas, Gina Forsythe, Carol Crutchfield, Drill Team, Kay Finch, Carre Smith, Bobbie Myrick, Stacey Harris-

burger. Freshman veep, Marerick Marauder, UTA Favorite, Melody Forbes. Student Congress, Didi Reese. Panhellenic Secretary, Melissa Simmons. Homecoming Court, Jan Pointer.

West Texas, Zeta Zeta — Intramural basketball winners. Song Girls, Kandy McCarty, DarLee McPherson, Stephanie Mehas. Scribes, Sabrina Little. MΦE, Gail Partridge. Bronc and Bridal Queen. Kim Helton, KA Sweetheart. Stephanie Mehas, ΑΤΩ pledge class sweetheart.

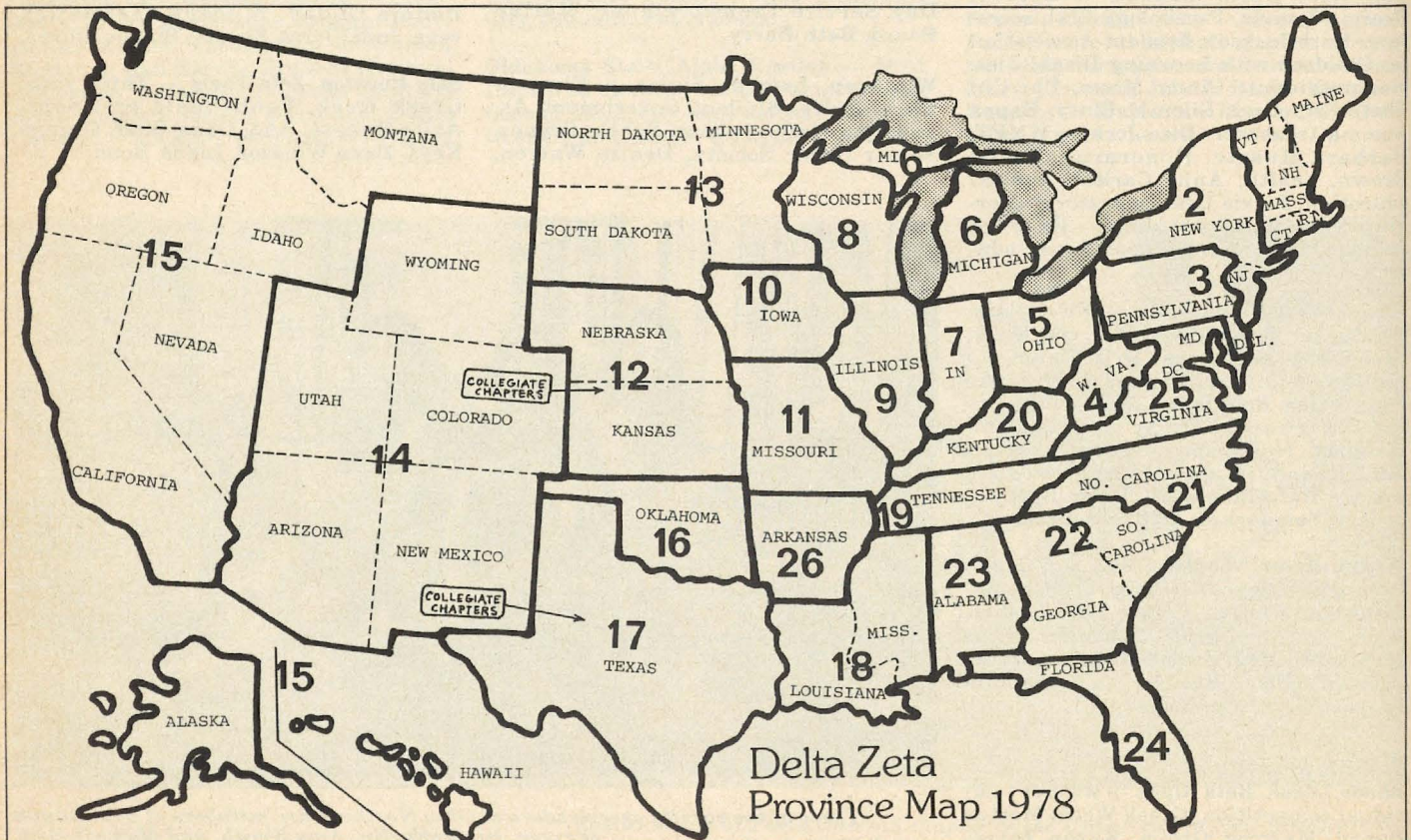
VIRGINIA

Longwood, Epsilon Tau — Members donate time working at local SPCA shelter.

VPI, Kappa Theta — Greek Woman of the Year, Julie Bridges. Garnet & Gold president, Pam Delancy. Honor Court, Jane Cady, Carolann Goldey. ΦΥΟ, Sara Moore, Sharon Quant. Garnet & Gold, Chris Sample. ΣΔΧ, Vicki Brown.

WEST VIRGINIA

Concord, Epsilon Delta — Volleyball intramurals winner. Greek Awards, Kaye Cunningham, Best Personality, Dorothy



Dunlap, Most Spirited Greek. Home Economics Club — Dorothy Dunlap, president, Kaye Cunningham, historian, Rita Elkins, vice-president. KOΦ Kathy LaDoucer, president, Rita Elkins, treasurer. SGA Board of Directors, Kathy LaDoucer. ΦΒΑ, Patty Clay. ΓΒΦ, Janet Gore. Panhellenic secretary, Debbie Adams. Physical Education Club treasurer, Debbie Gwinn.

Morris Harvey, Zeta Tau — SGA Key Awards, Eugenia Whittington, Colleen Jackson, Teresa Robertson. Alumni Key Award, Teresa Robertson. Publications Awards, Eugenia Whittington, Teresa Robertson. XBΦ Science Medal, Colleen Jackson. ΠΓΜ, Sherry Walker. KΔΠ, Debbie Baker, Lynn Thompson, Maggie Ginther, Jan Hannabass. ΑΛΔ, Stephanie Vaught, Sherry Walker, Elizabeth Kinder, Jennifer Trent, Beth Melone. XBΦ, Elizabeth Kinder, Colleen Jackson, Teresa Robertson, Jann Hannabass. SGA, Teresa Robertson, secretary, Jan Hannabass, April Legg, Sue Scollard, Judy Mowery. Panhellenic President, Jan Hannabass. Foreign Language Club president, Nikki Lawman.

West Liberty, Iota Tau — Winner, KΔK Water Follies. Student Government, Shaun Steffen, recording secretary, Sally Twigg, corresponding secretary, Cindi Baron, treasurer. Gahisti Onontio, Sally Twigg. ΔΨΚ, Mary Jo Bechtal. Sandi Thornton, Greek Goddess.

WISCONSIN

Wisconsin-Eau Claire, Epsilon Omega — One of 48 outstanding seniors, Janet Mette.

Wisconsin-Stevens Point, Zeta Chi — Board of Directors, Wildlife Society, Deanna Reilley. Major dance role in Spring Dance Theatre, Linda Jess.

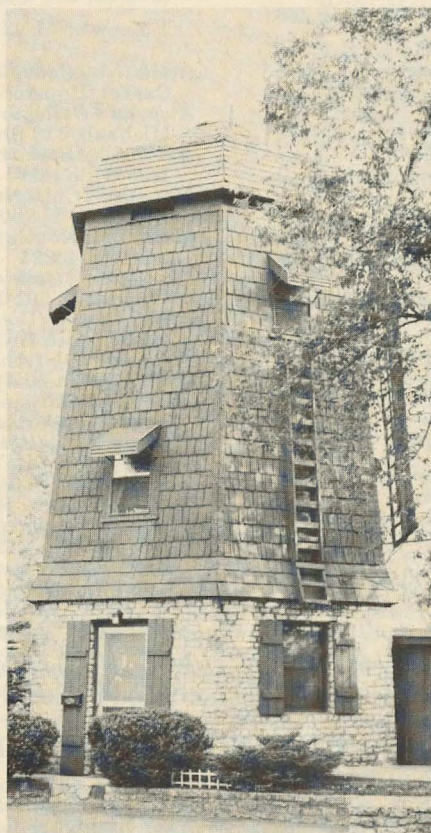
Wisconsin-Stout, Zeta Beta — Inter-Greek Council president, Kathy Love. Senate, Jan Sass. University Activities Board Assembly, Deb Fons. Home Economics Association membership chairman, Jo Ann Garity. Medallion Award, Vel Evison. ΣΤΓ Calendar Girl, Kathy Love.

Wisconsin-Whitewater, Epsilon Kappa — Panhellenic Scholarship Award. *Who's Who*, Carrie Poulos, Peggy Sauer. Silver Scroll, Karen Brooks, Chris Gottinger, Linda Schlesinger, Laurie Plummer. ΠΣΕ, Debra Rude. ΣΙΕ, Deborah Shaver, Geri Palmer. Outstanding Junior in Education, Laurie Plummer. American Marketing Association vp, Debra Rude.

Delta Zeta House By the Windmill

by Joan Czaroleta, IT-Bowling Green

"They say there's a house by the windmill, a house that can bring joy to you. Come along with me, be a Delta Z, and join in our sisterhood true..." So go the words of a song popular with the Delta Zetas of Bowling Green State University in Bowling Green, Ohio.



Campus Windmill at Bowling Green University in Ohio.

Windmills in Bowling Green? It just so happens that their chapter house is located next to a well known local landmark, which is a windmill. Because this building is so distinctive, the Gamma Tau chapter, being the only off-campus sorority house at BGSU, has adopted it as their local symbol. This has touched off a sort of windmill craze among the girls. They give each other gifts of small windmill statues, mugs, pillows, or anything else that can be found with the motif. The windmill is featured in many of the songs and traditions of the chapter. They even celebrate the end of the school year with a big date party in June, known as Windmill Wind-up.

The windmill is a forty foot, octagonal structure which is privately owned and rented as two small apartments to BGSU college students. It is done in a quaint red brick style of architecture that is related to that of the surrounding area, including the Delta Zeta house. In order to better know their off-campus neighbors, the Gamma Taus recently started a new tradition known as the Windmill Party. They invited all of their neighbors to an open house at the chapter house. This gave everyone a chance to meet the sisters, the residents of the windmill, and other close neighbors.

HELP!

The National Delta Zeta archives is still missing some Convention pictures to complete the display at National Headquarters. If you have any of the following pictures, please contact Delta Zeta National Headquarters about having a print made.

1907 - Dayton, Ohio, Algonquin Hotel
1908 - Oxford, Ohio
1910 - Indianapolis, Indiana,

Columbia Club

1912 - Winona Lake, Indiana, Westminster Hotel
1920 - Denver, Colorado, Shirley Hotel
1926 - San Francisco, California, Fairmont Hotel
1936 - Asheville, North Carolina, Grove Park Inn
1938 - Pasadena, California, Huntington Hotel
1968 - St. Louis, Missouri, Chase Park Plaza

DELTA ZETA DIRECTORY

NATIONAL COUNCIL

President: Norma M. Andrisek (Mrs. J.R.), 319 Janice Dr., Berea, OH 44017
Vice President of Membership: Carolyn B. Gullatt (Mrs. John), 4008 Hyridge, Austin, TX 78759
Vice President Alumnae Affairs: Dianne F. Guild (Mrs. Douglas), 16 Andrews Dr., S., Burlington, VT 05401
Vice President Collegiate Affairs: Marilou L. Gary (Mrs. Denys), Sagamore Hills, Lock Haven, PA 17745
Secretary: Eleanor S. Fariss (Mrs. James), 17721 Bothell Way, NE, Seattle, WA 98155
Treasurer: Florence H. Harvey (Mrs. Stephen), P.O. Box 456, Westfield, NJ 07091
National Panhellenic Conference Delegate: Florence H. Harvey (Mrs. Stephen), P.O. Box 456, Westfield, NJ 07091
Director: Amaryllis P. Barnes (Mrs. Ray), 2424 Glenwood Dr. NE, Atlanta, GA 30305
Director: Mary Lou M. Barth (Mrs. William), 1662 Villa S. Drive, West Carrollton, OH 45449
Director: Patricia S. Dunn (Mrs. Stephen), 18470 Sobey Road, Saratoga, CA 95070
Director: Betty S. Fenton (Mrs. Richard), 2151 E. Ramsey Dr., Baton Rouge, LA 70808
Director: Anne Marie J. Gavin (Mrs. William), 3264 Swan Dr., Vineland, NJ 08360
Past National President: Betty H. Agler (Mrs. B.H.), Suite 600, 21 E. State St., Columbus, OH 43215

NATIONAL HEADQUARTERS

Executive Secretary: Betty H. Agler (Mrs. B.H.), Suite 600, 21 E. State St., Columbus, OH 43215
National Field Consultant: Debbie Raziano, Suite 600, 21 E. State St., Columbus, OH 43215
National Consultants: Cathy Lieurance, Denise Somers, Suite 600, 21 E. State St., Columbus, OH 43215
National Field Representatives: Cynthia Clark, Terry Heath, Mary Ellen McAuliffe, Suite 600, 21 E. State St., Columbus, OH 43215
Extension: Betty H. Agler (Mrs. B.H.), Suite 600, 21 E. State St., Columbus, OH 43215

THE LAMP

Editor: Florence H. Miner (Mrs. Arthur), Suite 600, 21 E. State St., Columbus, OH 43215

COLLEGIATE AND PROVINCE ALUMNAE DIRECTORS

- I. Maine, Vermont, New Hampshire, Massachusetts, Connecticut and Rhode Island
PCD: Karen K. Manuel (Mrs. Thomas), 36 Rilling Ridge Rd., New Canaan, CT 06840
PAD: Carol B. Haskell (Mrs. J. Michael), Carding Machine Rd., Bowdoinham, ME 04008
- II. New York and New Jersey
PCD: Care of National Headquarters
PAD: Sue Ward (Miss), 27A Greatwood Ct., Apt. 3, Fairport, NY 14450
- III. Pennsylvania and Delaware
PCD: Carol J. Miskell (Mrs. Richard), 231 Delafield Road, Pittsburgh, PA 15215
PAD: Charlotte F. Silversteen (Mrs. Allan), 513 Toll Rd., Oreland, PA 19075
- IV. West Virginia
PCD: Anna Lou H. Jones (Mrs. John), 935 Elmhurst Ave., St. Albans, WV 25177
PAD: Mary B. Semder (Mrs. Robert), 969 Zerkle St., St. Albans, WV 25177
- V. Ohio
PCD: Phyllis S. Favorite (Mrs. Robert), 903 Woodland Ave., Van Wert, OH 45891

STANDING COMMITTEES

Colonnade Club: Refer all correspondence in care of National Headquarters.
Constitution and Procedure: Lucile C. Cooks (Mrs. Rudolf). Refer all correspondence in care of National Headquarters.
History: Grace M. Lundy (Mrs. H.M.). Refer all correspondence in care of National Headquarters.
Judiciary: Patricia S. Dunn (Mrs. Stephen). Refer all correspondence in care of National Headquarters.
Ritual: Linda A. Hobbs (Mrs. Phillip), 1772 Coventry Rd., Columbus, OH 43212

COMMITTEES

Activities (Collegiate): Allyson K. Mayse (Mrs. Bert), 11807 Carvel, Houston, TX 77072
Awards (Collegiate & Alumnae): Janis L. Rose (Mrs. R. Michael), 118 Shihmen Ct., Antioch, TN 37013
Bylaws & Standing Rules: Patricia O. Hogue (Mrs.), 1482 Woodville Pike, Loveland, OH 45140
Housing (Collegiate & Alumnae): Betty S. Fenton (Mrs. Richard), 2151 Ramsey Dr., Baton Rouge, LA 70808
Magazine: Norma S. McIntyre (Mrs. John), Box 24145, Columbus, OH 43224
Newsletter (Collegiate & Alumnae): Amy R. Glasgow (Mrs. Thurman), 502 Tammy Dr., San Antonio, TX 78216
Philanthropy (Collegiate): Lynnnda W. Hoefler (Mrs. Robert), 1287 Denise Dr., Kent, OH 44240
Philanthropy (Alumnae): Patricia Beatty (Miss), 3691 NW 95th Terrace, Apt. 1202, Sunrise, FL 33321
Programs (Alumnae): Judy W. Ridgway (Mrs. Wayne), 1807 Atascosa, Portland, TX 78374
Reference (Collegiate): Anne Marie J. Gavin (Mrs. William), 3264 Swan Dr., Vineland, NJ 08360
Scholarship (Collegiate): Gail O. Bonnanno (Mrs. John), 2915 Oakland Ave., Richmond, VA 23228
Elizabeth Coulter Stephenson Scholarships (Collegiate): Mary Lou M. Barth (Mrs. William), 1662 Villa South Drive, West Carrollton, OH 45449
Social (Collegiate): M. Catherine R. Ambridge (Mrs. Kevin), 2713 Peer Ln., C.B.-9, Delray Beach, FL 33445
Standards (Collegiate): Joan D. Lowry (Mrs. Bob-Bill), 578 Yarmouth Ln., Bay Village, OH 44140
Ways & Means (Alumnae): Susan K. Sippel (Mrs. Leonard), 1206 Manu-Mele, Kailua, HI 96734

- PAD:* Julie K. Foster (Mrs. Paul), 31316 Manchester Ln., Bay Village, OH 44140
- VI. Michigan
PCD: Isabel J. Severy (Mrs. Raymond), 2127 Northampton Way, Lansing, MI 48912
PAD: Care of National V-P Alumnae Affairs
- VII. Indiana
PCD: Caryol M. Fitzpatrick (Mrs. Max), Rt. #1, Box 182, Whiteland, IN 46184
PAD: Care of National V-P Alumnae Affairs
- VIII. Wisconsin
PCD: Sandi Betz (Miss), 3011 Agnes St., Eau Claire, WI 54701
PAD: Care of National V-P Alumnae Affairs
- IX. Illinois
PCD: Karen F. Soyk (Mrs. Lon), 3993 Whispering Trails Ct., Hoffman Estates, IL 60195
PAD: Becky Settle (Miss), 829 Seventh, Charleston, IL 61920
- X. Iowa
PCD: Alaire S. Bornholtz (Mrs. Tim), 3601 Lafayette, Sioux City, IA 51104
PAD: Care of National V-P Alumnae Affairs

- XI. Missouri
PCD: Lillian K. Truesdale (Mrs. James), 4823 N. College, Kansas City, MO 64119
PAD: Elvera R. Bartels (Mrs. Henry), 6924 N. Cosby, Kansas City, MO 64151
- XII. Kansas, Nebraska and the collegiate chapters of Colorado
PCD: Laree Mugler (Miss), 8202 Monrovia, Lenexa, KS 66215
PAD: Susan R. Wilkerson (Mrs. Monty), 3131 Burton, Topeka, KS 66605
- XIII. Minnesota, North Dakota and South Dakota
PCD: Care of National Headquarters
PAD: Cherie P. Burke (Mrs. William), 2019 Edgewood Ct., SW, Rochester, MN 55901
- XIV. Colorado, Wyoming, Utah, Arizona and New Mexico (alumnae chapters only)
PAD: Betty S. Jones (Mrs. John), 5620 Bentwood Tr., NE, Albuquerque, NM 87109
- XV. California, Washington, Oregon, Nevada, Idaho, Montana, Alaska and Hawaii
PCD: Carolyn O. Wilke (Mrs. Walter), 108 Via Florence, Newport Beach, CA 92663
Alumnae Coordinating Team: Patricia S. Dunn (Mrs. Stephen), Chairman, National Director
 Christie L. Accatino (Mrs. Thomas), 15448 Golden Star, Riverside, CA 92506
 Joanne M. Tracy (Mrs. Joseph), 26 Hartwood Ct., Lafayette, CA 94549
 Niki D. Fisher (Mrs. John), P.O. Box 307, Dayville, OR 97825
- XVI. Oklahoma
PCD: Mary G. French (Mrs. John), 2322 NW, 58th Circle, Oklahoma City, OK 73112
PAD: Doris W. Sandoz (Mrs. N.O.), 624 SW, 51st St., Oklahoma City, OK 73109
- XVII. Texas and the collegiate chapters of New Mexico
PCD: Jane G. Nelson (Mrs. J. Michael), 906 Bradbury Ct., Arlington, TX 76014
PAD: Mary Margaret Fore (Mrs. Sam), 73 Townhouse Ln., Corpus Christi, TX 78412
- XVIII. Louisiana and Mississippi
PCD: Marlene M. Allen (Mrs. Arthur), Rt. 1, Box 296, Natchitoches, LA 71457
PAD: Gloria M. Traylor (Mrs. Richard), Rt. 1, Gunter Rd., Box 148-A, Florence, MS 39073
- XIX. Tennessee
PCD: Diane D. White (Mrs. James), 6939 Highland Park Dr., Nashville, TN 37205
PAD: Jean C. Garibaldi (Mrs. Thomas), 6616 London Dr., Memphis, TN 38138
- XX. Kentucky
PCD: Martha McVey (Miss), 2664 Chant Ct., Lexington, KY 40509
PAD: Care of National V-P Alumnae Affairs
- XXI. North Carolina
PCD: Malissa W. Hawkins (Mrs. Bill), 27 La Vista Villa Apts., Hillandale Dr., Greenville, SC 29609
PAD: Care of National V-P Alumnae Affairs
- XXII. Georgia and South Carolina
PCD: Care of National Headquarters
PAD: Care of National V-P Alumnae Affairs
- XXIII. Alabama
PCD: Dwayla F. Porter (Mrs. Arthur), 1409 Preston St., Opelika, AL 36801
PAD: Lassie Jo R. Sims (Mrs. Jack), 208 Willow Creek Rd., Auburn, AL 36830
- XXIV. Florida
PCD: Janie Roche (Miss), 1638 Parkwood Rd., Jacksonville, FL 32207
PAD: Elsie K. Bailey (Mrs. W. Knapp), 801 S. Federal Hwy, Apt. 717, Pompano Beach, FL 33062
- XXV. Virginia, Maryland and Washington, D.C.
PCD: Care of National Headquarters
PAD: Care of National V-P Alumnae Affairs
- XXVI. Arkansas
PCD: Marsha S. O'Daniel (Mrs. Keith), 1305 San Miguel, Springdale, AR 72764
PAD: Jean C. Garibaldi (Mrs. Thomas), 6616 London Dr., Memphis, TN 38138

STATE REFERENCE CHAIRMEN

ALABAMA: Mrs. Ernest Lollar, 514 Mimosa Rd., Prattville, AL 36067 ALASKA: Mrs. Terry J. Gustafson, 2604 Glenkerry Dr., Anchorage, AK 99504 ARIZONA: Miss Margaret Ann Poe, 1719 W. Glendale Ave. #3030, Phoenix, AZ 85201 ARKANSAS: Mrs. Jefferson Farris, 140 Donaghey Ave., Conway, AR 72032 CALIFORNIA (N): Mrs. Walter Burde, 24685 Camino del Monte, Carmel, CA 93923 CALIFORNIA (S): Mrs. Randall Moore, 4355 Cannington Dr., San Diego, CA 92117 COLORADO: Mrs. Lawrence Brase, 1023 Denver Ave., Box 146, Calhan, CO 80808 CONNECTICUT: Mrs. Edward Gill, 53 High Point Rd., Westport, CT 06880 DELAWARE: Mrs. Edwin Willing, 110 Canterbury Dr., Windsor Hills, Wilmington, DE 19803 DISTRICT OF COLUMBIA: Mrs. Orville E. Maxfield, 2301 40th St., NW, Washington, DC 20007 FLORIDA: Mrs. Donald E. Nelson, 3511 Corona, Tampa, FL 33609 GEORGIA: Mrs. William Dawson, 1120 Union St., Brunswick, GA 31520 HAWAII: Mrs. Albert Solomon Jr., Apt. 802, The Hawaii Kai Plaza, 6770 Hawaii Kai Dr., Honolulu, HI 96825 IDAHO: Mrs. W. L. Lundquist, 1004 S. Logan, Moscow, ID 83843 ILLINOIS: Mrs. John L. DeLaurenti, Indian Trail Farm RR2, Pocahontas, IL 62275 INDIANA: Mrs. Roger L. Davies, 812 S. 5th St., Terre Haute, IN 47807 IOWA: Mrs. Jim Holst, 512 N. 18th St., Denison, IA 51442 KANSAS: Mrs. Richard Furman, 4017 W. 68th Terrace, Prairie Village, KS 66208 KENTUCKY: Mrs. Larry Oney, Chelsea Terrace #5D, 2640 Wilhite, Lexington, KY 40503 LOUISIANA: Mrs. Jimmy Mathes, 14363 Firethorn St., Baton Rouge, LA 70815 MAINE: Mrs. Nelson L. Smith, RFD #1, North Vassalboro, ME 04962 MARYLAND: Mrs. Edwin Willing, 110 Canterbury Dr., Windsor Hills, Wilmington, DE 19803 MASSACHUSETTS: Miss Irene Jutras, T.B.'s Grove — P.O. Box 224, Fremont, NH 03044 MICHIGAN: Mrs. Edward Wirth, 730 Wattles Rd., Bloomfield Hills, MI 48013 MINNESOTA: Miss Lyn Swiderski, 904 Pearl Dr., Apt. 103, Marshall, MN 56258 MISSISSIPPI: Mrs. James McLeod, Rt. 3, Box 433, Brandon, MS 39042 MISSOURI: Miss Jeanne Nowacki, 5839 J. Cedar View Place, St. Louis, MO 63128 MONTANA: Mrs. B. S. Everingham, 5620 Rattlesnake Rd., Missoula, MT 59801 NEBRASKA: Mrs. Greg Volkmer, Box 110, Eagle, NE 68347 NEVADA: Mrs. Thomas Stockstill, 4129 Meadowglen Way, Las Vegas, NV 89121 NEW JERSEY: Miss Debra Bass, 357 Shea Dr., New Milford, NJ 07646 NEW HAMPSHIRE: Miss Sharon Rae Paquett, Box 224, RFD #1, Lakeport, NH 03246 NEW YORK: Miss Mary Frances Sims, 1612 W. Onodaga St., Syracuse, NY 13204 NEW MEXICO: Mrs. Bert Everett, 10308 Chapala Dr., NE, Albuquerque, NM 87111 NORTH CAROLINA: Mrs. Ronald Baker, 611 Coronado Dr., Greensboro, NC 27410 NORTH DAKOTA: Mrs. Owen Anderson, 1261 North Parkview Dr., Bismark, ND 58501 OHIO: Mrs. James Creager, 1028 Swango Dr., Dayton, OH 45429 OKLAHOMA: Mrs. C. B. Purdum, Rt. #1, Box 81, Dewey, OK 74029 OREGON: Mrs. Fredrick Ivers, 5154 N.E. Willamette, Corvallis, OR 97330 PENNSYLVANIA: Mrs. George West, Rt. 2 Hemlock Acres, Punxsutawney, PA 15767 RHODE ISLAND: Miss Patricia Webster, 22 Reservoir, Rumford, RI 02916 SOUTH CAROLINA: Mrs. R. E. Thompson, 14 Archdale Rd., Columbia, SC 29209 SOUTH DAKOTA: Mrs. Richard Huffman, Jr., 1535 S. State St., Aberdeen, SD 57401 TENNESSEE: Mrs. Phillip Dalton, Box 163, Lewisburg, TN 37091 TEXAS: Mrs. Jerry Hawkins, 324 Pine St., Lake Jackson, TX 77566 UTAH: Mrs. Glen O. Lundberg, 1208 Fenway Ave., Salt Lake City, UT 84102 VERMONT: Mrs. David Hoefer, 22 Hillwinds, Brattleboro, VT 05301 VIRGINIA: Mrs. Leroy Pope, 7105 Crittenden Rd., Chuckatuck Station, Suffolk, VA 23432 WASHINGTON: Mrs. Wesley Smith, 3710 SW Donovan St., Seattle, WA 98126 WEST VIRGINIA: (In care of the PCD or National Headquarters) WISCONSIN: Miss Danice Whalen, 1986 Colony Court, Apt. 10, Beloit, WI 53511 WYOMING: Mrs. W. R. Boyd, 3810 Reed Ave., Cheyenne, WY 82001

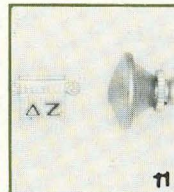
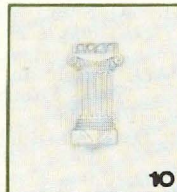
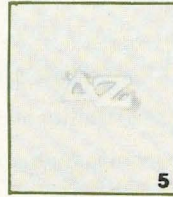
OFFICIAL DELTA ZETA INSIGNIA

AVAILABLE ONLY FROM NATIONAL HEADQUARTERS



1. BADGE, Pearls and One Zircon, Set Tiffany \$21.50
2. BADGE, Pearls and One Zircon, Set Flush 21.50
3. DAUGHTER-GRANDDAUGHTER PENDANT,
including neck chain
Yellow gold-filled with gold filled chain 11.00
10K Yellow Gold with gold-filled chain 16.25
4. GOLDEN ROSE PIN, for 50-year members 28.00

5. STAGGERED GREEK LETTERS, RECOGNITION PIN,
Yellow Gold Finish \$3.75
10K Yellow Gold 9.50
Crown Pearl, 10K Yellow Gold 35.00
6. OFFICIAL LAMP RECOGNITION PIN,
Yellow Gold Finish 4.00
10K Yellow Gold 10.00
7. PLEDGE PIN, safety catch 2.50



8. CREST RECOGNITION PIN, scarf size, plain \$4.00
9. MOTHER'S PIN,
Yellow Gold finish-plain 5.50
10K Yellow Gold -plain 12.00
10. MOTHER'S PIN,
Yellow Gold finish with four pearls 10.50
10K Yellow Gold with four pearls 13.95
11. TIE TACS AND LAPEL BUTTONS
(for Fathers or Husbands)
Tie Tacs, Yellow Gold finish 5.95
Tie Tacs, 10K Yellow Gold 10.50
Lapel Buttons, Yellow Gold finish 5.95
Lapel Buttons, 10K Yellow Gold 10.50

Official approval is necessary for all badges, Daughter Granddaughter Pendants and Golden Rose Pins. All jewelry orders must be sent to National Headquarters. Inquiries about availability and prices of other Delta Zeta items should be directed to National Headquarters.

When ordering badges (1 and 2), use the official order form and forward to National Headquarters, 21 E. State St. Suite 600, Columbus, OH 43215

An order Processing charge of \$2.00 must be added to all orders of less than \$10.00. Prices include gold surcharge where applicable.

State, County, and Municipal Taxes, wherever they are in effect, must be added to all prices quoted.

CHANGE OF ADDRESS OR NAME

Clip and mail to Delta Zeta National Headquarters, 21 East State Street, Columbus, Ohio 43215

Miss
Mrs.
Ms.

Given Name Maiden Name Husband's last name,
if married

Collegiate Chapter Year of Graduation Date Change is Effective

New Address

(City) (State) (Zip Code)

If you wish to have the LAMP mailings discontinued, Please indicate

If you are currently a national, province, or chapter officer for Delta Zeta, please indicate office held

Optional Information:

Husband's first name Date of Marriage

Delta Zeta Sorority
Suite Six Hundred
Twenty-one East State Street
Columbus, Ohio 43215

Send 3579 Immediately to Delta Zeta Sorority

Second class postage
paid at Columbus,
Ohio and at additional
mailing offices.