

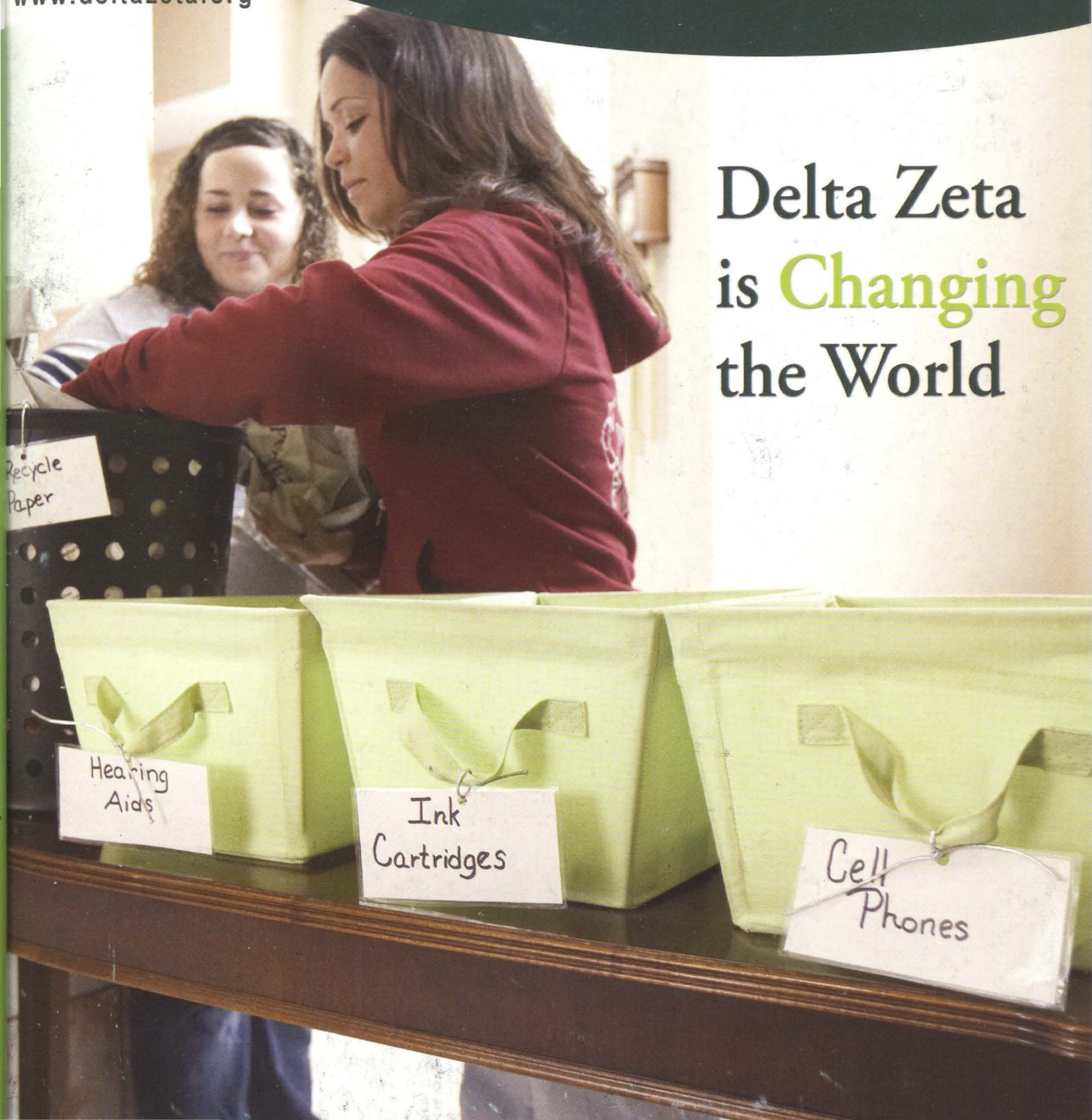
# THE LAMP

OF DELTA ZETA

DOUBLE ISSUE 2008

[www.deltazeta.org](http://www.deltazeta.org)

Delta Zeta  
is **Changing**  
the World





# contents



8

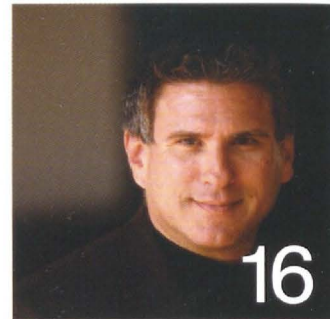


7



4

Volume 97, Number 1



16



18

## departments features

### On Campus..... 20 - 27

Delta Zeta collegiate chapters are enriching the world.

### Flame Eternal..... 30 - 31

### Directory..... 32 - 33

### DZ DeZigns..... 34 - 35

### Alumnae News..... 36 - 38

Alumnae are making news in their professions and through their service to others.

### Membership Recognition and Sisterhood..... 40 - 43

### Why Do I Give?..... 52

Susan Wallace Christmas ΔA '72 describes why Delta Zeta is for a lifetime.

### Delta Zeta is Changing the World..... 4 - 6

The world is changing... and Delta Zeta is changing the world.

### Delta Zeta Sorority's 2008 Woman of the Year.... 7

Hala Gaines Modellmog IN '75, President and CEO, Susan G. Komen for the Cure®

### Enriching ... The 2008 Delta Zeta National Convention..... 8 - 14

Held in Miami, Florida, the National Convention affirmed Delta Zeta's place in the world.

### Pursuing Extreme Leadership..... 16 - 17

*The LAMP* Interview with Steve Farber, author of *The Radical LEAP*.

### The Gamma Omicron Chapter Continues Tradition..... 18 - 19

The chapter is reinstalled at San Diego State University.

### Collegiate and Alumnae 2008 National Convention Awards..... 28 - 29

### Alumnae Spotlight..... 39

Meet two national award-winning alumnae.

### The 2007-2008 Grace Mason Lundy and Florence Hood Miner Award Winners..... 44 - 45

### An Education in Life — for a Lifetime..... 46 - 47

Delta Zeta adds value to a member's collegiate experience.

### Delta Zeta Educational Leadership Consultants..... 48 - 49

Changing the World of Delta Zeta... One Chapter at a Time.



# on the web

## FOUNDERS

Alfa Lloyd Hayes, 1880-1962  
Mary Collins Galbraith, 1879-1963  
Anna Keen Davis, 1884-1949  
Julia Bishop Coleman, 1881-1959  
Mabelle Minton Hageman, 1880-1929  
Anne Simmons Friedline, 1879-1932

## THE ORDER OF THE LAUREL

Irene Caroline Boughton, 1904-1988  
Grace Mason Lundy, 1893-1993  
Elizabeth Coulter Stephenson, 1881-1939  
Myrtle Graeter Hinkley, 1893-1987

Published since December 1910 by  
DELTA ZETA SORORITY  
Founded at Miami University -  
Oxford, Ohio October 24, 1902

*The LAMP of Delta Zeta* —  
Nancy E. Brewer A, Editor  
(ISSN #0887-2554), official magazine  
of the sorority, is published  
three times a year by the  
Delta Zeta Sorority,  
202 East Church Street, Oxford, OH 45056.

## CONTRIBUTORS

Mandi Wise TX, Chapter Services Director  
Michelle Gutierrez IIZ, Communications Intern  
Steven Dealph, Leadership Consultant

## POSTMASTER:

Send address changes to  
Delta Zeta Sorority,  
202 East Church St., Oxford, OH 45056.

Send all editorial material, including  
Stars in Our Service Flag submissions,  
to Delta Zeta National Headquarters  
Attn: Nancy Brewer, Editor, 202 East Church  
Street, Oxford, OH 45056  
513/523-7597

General e-mail: [dzs@dzshq.com](mailto:dzs@dzshq.com)  
LAMP e-mail: [LAMP@dzshq.com](mailto:LAMP@dzshq.com)  
Web site: [www.deltazeta.org](http://www.deltazeta.org)



Printed in USA.



National Panhellenic Conference



## The LAMP Goes Green!

*The LAMP* of Delta Zeta uses mixed source paper (meaning it is from well-managed forests, controlled sources and recycled wood or fiber) in its printing to support the Sorority's green efforts. In addition, the magazine is now available in an easy-to-use online format. Please visit <http://lamp.deltazeta.org> to read the latest issue, which contains the same features as the printed version and also offers some Web exclusives you will definitely want to check out!

If you would like to read *The LAMP* online to help the Sorority to go green, please e-mail us at [GreenLAMP@dzshq.com](mailto:GreenLAMP@dzshq.com). You will receive an e-mail alert when the next issue is online. If you want to continue to receive *The LAMP* in its hard copy format, mailed to you three times a year, you need not do anything. **Thank you!**

## Please Recycle This Magazine!

Delta Zeta Sorority participates in the Magazine Publishers of America's (MPA) industry-wide public education campaign to let our readers know that magazines can and should be recycled.



## HOW ARE YOU ENRICHING YOUR WORLD? WE WANT TO KNOW!

We're looking for members' stories of how they are enriching the world. Tell us what you're doing in your local community or in the world community to enrich the lives of others and change the world. Send submissions and photos to [LAMP@dzshq.com](mailto:LAMP@dzshq.com).

## Correction

In Issue #1 - 2008 of *The LAMP*, on page 28, Brandon Busted, CEO of Outside the Classroom, was incorrectly referred to as Brian. We apologize for this error.







# Delta Zeta is changing the world!

**The world is changing ... and  
Delta Zeta is changing the world.**

**The world is full of opportunities  
to enrich lives, and we have  
accepted the mission. Delta Zetas  
are keeping the promises we make  
every time we say our Creed to  
make a difference in the world in  
a variety of ways — individually  
and collectively.**

**That means living up to our  
individual promise to give  
graciously, live courageously  
and lead audaciously.**

**We reached new heights in  
keeping that promise during  
the 2006-2008 biennium.**

**(See the sidebar, “What We  
Have Achieved,” for information  
and statistics of the accomplish-  
ments during this time.)**

**N**ow the challenge, whether we are a longtime member of the Sorority, a new alumna or a recently initiated collegiate member, is to help move Delta Zeta forward. We must continue the momentum we have gained in building the Delta Zeta of today that can readily serve her members in the future.

All of us play an integral part in creating a Delta Zeta that is the preeminent sorority in the Greek world, advancing her standards with confidence, enriching her members' lives and the world community. This is both the legacy and the future of Delta Zeta Sorority.

Just as our brand carries the strong and meaningful tagline, “Enriching,” so Delta Zetas are enriched by the friendships, support and sisterhood we experience in the Sorority.

Through leadership opportunities and educational programming, Delta Zeta also enriches the lives of her members. And through giving graciously of what is ours, Delta Zeta enriches our campuses, our communities and the world.

Leadership extends into our lives as Delta Zetas. How our members lead their lives and influence and inspire others—those in their schools, communities and in the world arena, defines Delta Zeta as an organization.

Delta Zeta in 2008 is an organization of which we can be proud — enriching the lives of a network of women — empowering them to enrich the lives of others and to truly change the world. You will read those stories in this issue of *The LAMP*; from collegiate chapter and collegian successes to the impressive accomplishments of Delta Zeta alumnae in all walks of life.



## What We Have Achieved During the 2006-2008 Biennium

- Recruitment efforts resulted in a total of 10,743 collegiate members in the Sorority, the largest in our 106-year history.
- The Volunteer Recruitment, Retention and Recognition Initiative is in its second year as well as Delta Zeta's participation in the volunteer recognition program, National Volunteer Week, sponsored by the Points of Light & Hands On Network.
- During the biennium, we initiated 8,516 new members and our chapters achieved an impressive initiation rate of 91.6%.
- GreekLifeEdu, an online interactive program designed to help students make safer and healthier decisions, was introduced to our collegiate members during the 2008-2009 school year.
- In 2007, Delta Zeta Sorority was the first national sorority to provide MentalHealthEdu, an online educational program as a resource for Delta Zeta alumnae volunteers. This program provides resources and tools for alumnae advisors to work effectively with collegiate women and direct them to appropriate professional help if needed.
- Celebrate!, our membership anniversary recognition program, continues its second year as the Sorority recognizes our members celebrating their Golden Rose (50 years), the Order of the Pearl (65 years) and Order of the Diamond (75 years) milestones, as well as those celebrating 10- and 25-year anniversaries.
- Delta Zeta focused on Extreme Leadership, a concept put forth by Steve Farber in his book, *The Radical LEAP: A Personal Lesson in Extreme Leadership*. Copies of the book were given to Delta Zeta volunteers, made possible by a grant by the Delta Zeta Foundation. *The Radical LEAP* was an integral part of the first ever Alumnae Academy and the College Chapter Presidents Academy in the 2006-2008 biennium.
- The formation and subsequent work of the Strategic Planning Committee was another milestone for Delta Zeta. Focus studies with various segments of Delta Zeta membership provided critical feedback to the committee in its discussions and planning sessions. The result is a strategic plan that will mean ongoing commitment to the continued growth and strengthening of resources for the Sorority while enriching the membership experience.
- Pink Goes Green, an exciting and award-winning service initiative, was launched in 2008. Through Pink Goes Green, members, families and friends of Delta Zeta work within their communities, their homes, their work and their campuses to improve the environment, educate the public on what they can do and help them do it, and empower those they impact with the knowledge that just one person can make a difference and enrich our world. Delta Zeta is the first Greek organization to launch such an initiative.
- In the 2006-2008 biennium, the National Philanthropy Committee reported that our members and chapters donated \$1,591,269 to local and national causes. Our members donated 502,262 hours of service to their communities.

## How Does Delta Zeta Meet Today's Challenges?

Since the Sorority's founding, Delta Zeta has weathered the storms of the 1929 and 1987 stock market crashes, the Great Depression, world wars and recessions. What is Delta Zeta doing today to be a viable part of women's lives while also being mindful of the economic challenges all of us are facing in these trying times?

Innovative collegiate programming continues to add value to the college experience, providing leadership and life skills education to which students might not otherwise be exposed while in college. Delta Zeta members from all generations acknowledge the value of the skills and life lessons learned in the Sorority as key to their success both personally and professionally.

Alumnae are connecting through virtual alumnae chapters, the Internet and social networking. Today's technology works within their time constraints while allowing them to connect with sisters around the world without leaving their homes.

The national organization is also using the latest technology to contain costs and remain true to our "go green" philosophy to save paper and postage and help the environment while providing new services to our members:

- Member billing uses the Billhighway chapter accounting system, which utilizes web-based tools to invoice members and collect dues, making it easy to monitor funds for each individual chapter.
- A new membership database system is streamlining processes and creating a paperless system.
- Pink Goes Green, [www.dzpinkgoesgreen.org](http://www.dzpinkgoesgreen.org), our service philosophy personified, utilizes web-based technology and is completely paperless.
- National training sessions and meetings are held by webinar to save time and travel expenses.



# Delta Zeta Sorority's 2008 Woman of the Year

**Hala Gaines Modellmog** IN '75  
**President and CEO, Susan G. Komen for the Cure®**



**Hala Gaines Modellmog** IN '75, of Atlanta, Georgia, is Delta Zeta's Woman of the Year for 2008.

Hala is President and CEO of Susan G. Komen for the Cure® ([www.komen.org](http://www.komen.org)). She is responsible for all aspects of the organization's management, including strategic direction and financial stewardship. Today, Komen for the Cure is the world's largest grassroots network of breast cancer survivors and activists fighting to save lives, empower people, ensure quality care for all and energize science to find cures.

Her life experience as a breast cancer survivor provides a powerful platform for effecting change and redesigning the breast cancer advocacy landscape, with a focus on collaboration. Hala is guiding Susan G. Komen for the Cure in building strong alliances with leading cancer organizations, such as the American Society of Clinical Oncology (ASCO) and the American Association for Cancer Research (AACR). Under her leadership, the Susan G. Komen for the Cure Scientific Advisory Board was implemented, led by noted Dana-Farber Cancer Institute clinician and Harvard Medical School educator Dr. Eric P. Winer as Chief Scientific Advisor. Most importantly, she has pledged to build on Susan G. Komen for the Cure's investment of more than \$1.2 billion in breast cancer research and community health programs by investing another \$2 billion by 2017 to significantly reduce breast cancer incidence and mortality rates globally.

Internationally recognized for innovative leadership and strategic brand development, she brings a stellar record of accomplishments to the helm of Susan G. Komen for the Cure. Hala has dramatically strengthened the organization's international presence, from leading a delegation of U.S. breast cancer advocates to the inaugural Susan G. Komen for the Cure Global Advocate Summit in Budapest, Hungary, which connected representatives from 30 countries. Shortly after, Komen launched the Susan G. Komen for the Cure Global Initiative for Breast Cancer Awareness and the Breast Health Global Initiative, with an emphasis on developing countries where economic and cultural issues created barriers to breast cancer care.

Recently, Hala led delegations to Africa and the Bahamas to launch partnerships with local breast cancer organizations. Last year, Hala traveled with Mrs. Laura Bush to launch the Partnerships for Breast Cancer Awareness and Research in the Middle East and Mexico. Concomitantly, Hala established the Susan G. Komen for the Cure Global Promise Fund® in 2008, enlisting individual donors and corporations to invest in the organization's work in countries including Brazil, Costa Rica, Ghana, Jordan, Mexico, Romania, Saudi Arabia, Bosnia-Herzegovina, Russia, Hungary, Ukraine and the United Arab Emirates.

During her tenure at Church's Chicken from 1995-2004, Hala helped revitalize the brand, increased market share, realized record sales and profit and drove international expansion. Her efforts strengthened the reputation of Church's Chicken as an advocate of career opportunities and development, particularly for women and minorities. Spearheading the company's involvement in community organizations, she was instrumental in securing support for the United Negro College Fund (UNCF), Habitat for Humanity and the Hispanic Association of Colleges and Universities.

Hala serves on the Board of Directors for AMN Healthcare Services, Inc. (NYSE:AHS), the nation's largest healthcare staffing business. She is the recipient of numerous professional and civic honors, including the YWCA Prowess Award (Programs for Women's Empowerment Skills and Success), the Women Looking Ahead Racial Justice Award and the prestigious High Heels in High Places recognition from the Trumpet Awards Foundation.

Hala earned a Bachelor of Arts in English from Georgia Southern University (formerly Georgia Southern College), where she was initiated as a member of the Iota Nu Chapter. She also has a Master of Arts in journalism and mass communication from the University of Georgia. She has attended executive development programs at Harvard University, Northwestern University and the University of Georgia. Georgia Southern University granted her an honorary Doctorate of Humane Letters degree in 2007. She is married to Steve Modellmog and they have two children.

Look for coverage of the 2008 Woman of the Year event in the next issue of *The LAMP*.





*Enriching...*  
*Changing the World!*



# The 2008 Delta Zeta Convention

**The 2008 Delta Zeta National**

**Convention, held in Miami,**

**Florida at the beautiful**

**Doral Golf Resort and Spa,**

**began with a burst**

**of fireworks that lit up**

**the Opening Celebration.**

## *The Opening Celebration*

"The Opening Celebration set the tone of excitement for the rest of the Convention. It was amazing to walk in and see so many different women and know that we all had a common bond."

*Gentry Henry, President  
Delta Phi Chapter (Northeastern State University)*



"As President, I was inspired to help enrich the sisters of my chapter and nurture them as emerging leaders."

*Stephanie Havlik, President  
Xi Xi Chapter (North Georgia College and State University)*



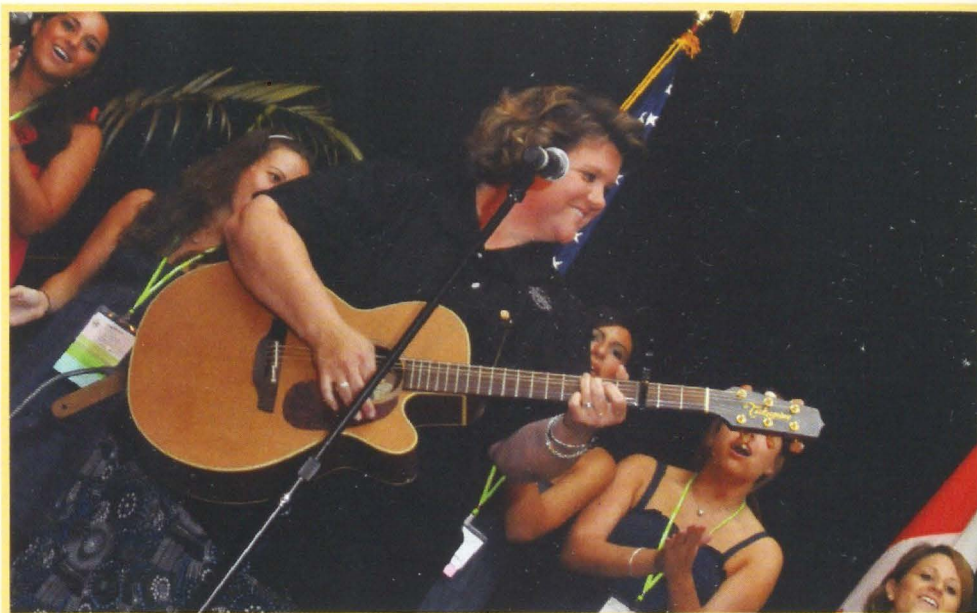




"I truly enjoyed the State of the Sorority Address. Michelle Smith, National President, said such inspiring words about Delta Zeta."

*Erika Carrizales, President  
Theta Omicron Chapter (University of Texas/Pan American)*

**Dr. Mari Ann Callais, National  
President of Theta Phi  
Alpha Fraternity, brought  
the convention together in  
sisterhood and song, exploring  
the ideals of Greek life.**



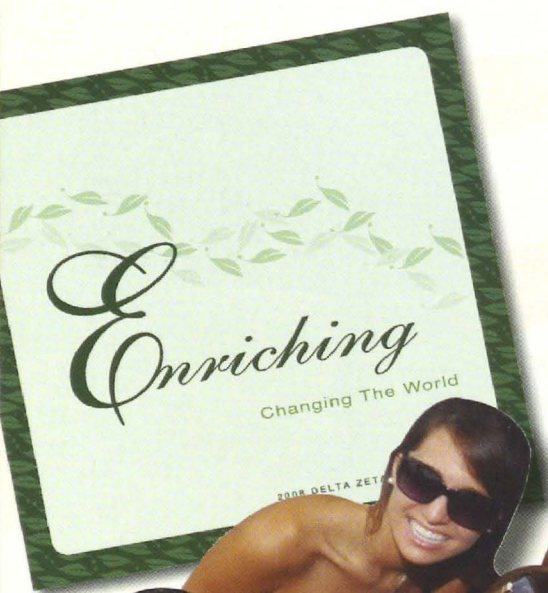
"Mari Ann's energy caught the audience's attention and her insight into sisterhood is one of a kind."

*Riane Minogue, President  
Beta Kappa Chapter (Iowa State University)*



"Many women shared their stories of why they consider Delta Zeta their family. These personal statements were extremely meaningful and came directly from the heart. Hearing the love and dedication of these women makes me appreciate the sisterhood I have within Delta Zeta."

*Priscilla Medina, Vice President of Membership  
Delta Alpha Chapter (California State University/Long Beach)*





## Recognizing Excellence

Delta Zeta collegiate and alumnae chapters were showcased in a glittering awards event. "Together we really can change the world as long as we remember to lead with love," said Paige Price, one of the banquet's keynote speakers and President of the Xi Theta Chapter at the University of North Carolina/Wilmington.

Susan Wallace Christmas ΔΑ '72, President of the Long Beach Alumnae Chapter, was the second keynote speaker and reminded the collegians of their lifetime commitment to the Sorority. "As a collegian, I experienced the love and support of the local active alumnae. Now it is my privilege and responsibility to pass this legacy on to our collegians of today. Will you continue the legacy to your successors in your chapter?"

"The Awards Banquet was a meaningful experience in which we shared the successes of our chapter with representatives from other chapters all over the nation."

*Tessa Alvarez, President  
Omicron Alpha Chapter (St. Mary's University)*



"My favorite part of the banquet was walking up to the stage to accept my chapter's award. It was a wonderful feeling knowing that we are continuing a tradition of excellence."

*Amanda Keeling, President  
Beta Gamma Chapter (University of Louisville)*

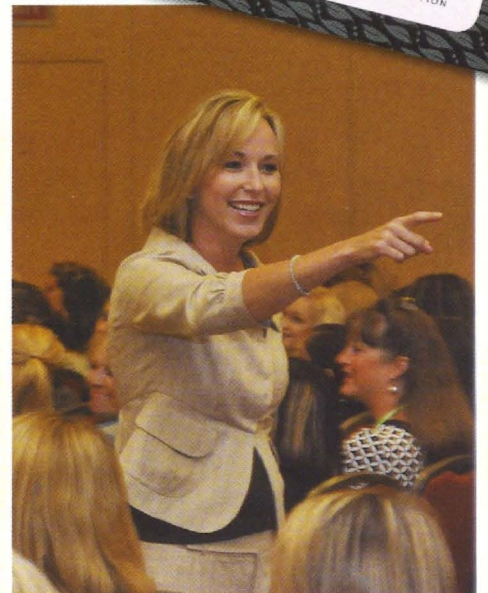
## Making Greek Life Great

The Carolyn Barnes Gullatt Symposium, which provides a forum for learning and discussion about the greater fraternity and sorority community and the issues surrounding it, presented Dr. Lori Hart Ebert, who challenged the audience to make Greek life great. The Harper Endowed Lecture Fund, established by Carol Sharpe Harper ΒΓ '53, Past Foundation Trustee, sponsored Dr. Ebert.

"Everyone is a potential leader," Dr. Ebert told the Convention. "When we treat our women as leaders and we treat our new members as leaders, you will start to change the world. What we can do is change who we are to better adapt to the organization and to meet the needs of our members."



The Omicron Pi Chapter (Frostburg University) won the Lisbeth Innis Francis Award.







"I enjoyed the Carolyn Barnes Gullatt Symposium featuring Dr. Lori Hart Ebert. She focused on what we, as a sisterhood and as individual chapters, say we represent compared to what we actually do. Her words are definitely some I will be taking back to my chapter."

*Niki Kraska, President  
Alpha Alpha Chapter (Northwestern University)*



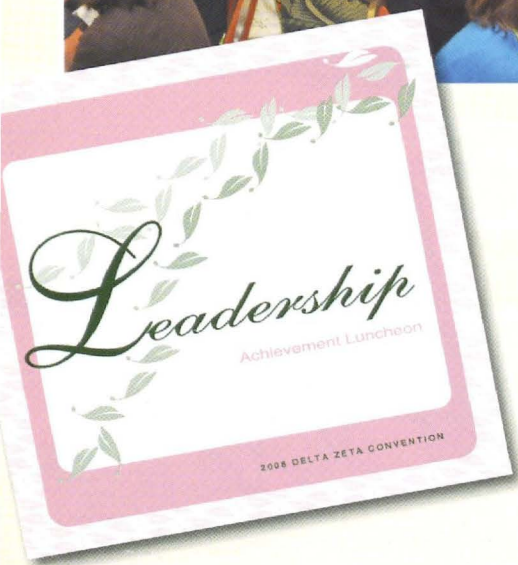
"One of the most beneficial presentations was Lori Ebert's talk. She stressed the importance of being responsible and accountable women to ourselves, our sisters, our Greek community and our college."

*Caitlin Shea, President  
Rho Chapter (University of Denver)*



"Dr. Ebert expressed to all attendees the importance of doing your best in order to become your best. By doing my personal best as Chapter President, I hope to inspire our women to do their best to help our organization grow."

*Michelle Doral, President  
Xi Lambda Chapter (University of San Francisco)*



## *Saluting Delta Zeta Leaders*

**The Leadership Achievement event saluted Delta Zeta's leaders as they inspire members to reach for individual and collective success. The Sorority was proud to honor these leaders who make a difference not only in Delta Zeta, but in the world.**

**Jane Carter Handly  $\Sigma\Xi$  '65, the 2007 Delta Zeta Woman of the Year, spoke to the audience about their place in Delta Zeta history. "This is the time to be brave, to take risks, to aim high and to reach for the stars," she encouraged.**

"One memorable moment was to be a part of the Flag Ceremony with other Presidents. I felt great honor and pride to be able to participate."

*Amanda Allegra, President  
Pi Gamma Chapter (California State University/Northridge)*



"As I bonded with women from across the country, I realized that Delta Zeta really is forever. It was inspiring to see the Golden Rose ceremony and the women who love Delta Zeta."

*Christine Cook, President  
Theta Phi Chapter (Old Dominion University)*





## Convention Initiation

### Delta Zeta proudly welcomed Dr. Linda Morrison Combs as the Convention initiate.

Dr. Linda Morrison Combs of Winston-Salem, North Carolina, was the Convention initiate at Delta Zeta Sorority's 48<sup>th</sup> National Convention.

Dr. Combs was initiated as a member of the Zeta Xi Chapter of Delta Zeta, which is located at Lenoir-Rhyne College in Hickory, North Carolina. Dr. Combs was the Controller of the Office of Management and Budget in the Executive Office of the President at the White House, overseeing all of Federal financial management, was the head of the office of Federal Financial management and chaired the U.S. Chief Financial Officers Council. Also, Dr. Combs oversaw Government wide financial management policies and requirements.

She has had five Presidential appointments, more than any woman in United States history, confirmed by the United States Senate unanimously each time, and has served under three Presidents: Presidents Ronald Reagan, George H.W. Bush, and George W. Bush.

Dr. Combs was appointed by President George W. Bush and confirmed by the United States Senate to the position of Assistant Secretary for Budget and Programs and Chief Financial Officer at the U.S. Department of Transportation. As Assistant Secretary, Dr. Combs oversaw all budgetary and management functions of the Department including budget development and budget execution. As Chief Financial Officer, she was responsible for oversight of the Department's \$57 billion appropriation, the Government Performance and Results Act, as well as general monitoring of programs.

Prior to her appointment at the Department of Transportation, Dr. Combs held a Presidential Appointment, confirmed by the Senate, at the United States Environmental Protection Agency, where she served as Chief Financial Officer.

During the previous Reagan and Bush Administrations, Dr. Combs served in various oversight roles and executive level management positions at the U.S. Department of Education, U.S. Department of Veterans Affairs and U.S. Department of the Treasury.

Prior to government service and following a successful career of over ten years in instructional and administrative positions in the Winston-Salem/Forsyth County School system, she was elected to the Board of Education in Winston-Salem/Forsyth County, North Carolina. She was appointed as Education Advisor to the Governor of North Carolina, James G. Martin.

Dr. Combs has also spent a number of years in the private sector. In her role of Operations Officer and manager of National Direct Student Loans for Wachovia Corporation, Dr. Combs was responsible for the general management of National Direct Student Loan Operations, with an expense budget that affected several million dollars of annual revenue.

For ten years, Dr. Combs and her husband founded and grew their own highly successful private record label and music catalog company to achieve worldwide distribution of CDs, DVDs, videos and music books.

She is also a published author on family care-giving and was a national spokesperson for Warner Lambert Pharmaceutical Company. After her mother's medical verdict of increasing memory loss was pronounced, Linda's familiarity with Alzheimer's disease prompted her to write two books, *A Long Goodbye* and *A Long Goodbye and Beyond*.

She was inducted into the Hall of Honor for Caldwell County Schools in North Carolina. She was also installed as a member of the prestigious Rhododendron Society by the Reich College of Education at Appalachian State University.



Dr. Linda Morrison Combs  $\Xi$  (center), the 2008 Convention initiate, with Jane Carter Handly  $\Xi$  '65, 2007 Delta Zeta Woman of the Year (left) and Patricia Menendez Tector  $\Xi\Phi$ , National Ritual Chairman (right).

"Initiation is so special, and to think that it has been done for 106 years!"

*Jessica Smith, President  
Beta Lambda Chapter  
(University of Tennessee/  
Knoxville)*



"It was amazing to reaffirm our promises to Delta Zeta."

*Rochelle Patrick, President  
Gamma Tau Chapter  
(Bowling Green State  
University)*



## *The Banquet of Celebration*

At the Banquet of Celebration, Delta Zeta excellence was unsurpassed. Michelle Albrecht Smith AX, National President, told the audience, "Thank you for being amazing women and for changing the world. Our Founders would be so very proud. I know that I am."



The Huntsville Alumnae Chapter received the Myrtle Graeter Hinkly Council Award.

"At Convention, our representatives understood the true meaning of Delta Zeta and its strong sisterhood."

*Casey Johnston, President  
Omicron Lambda Chapter (North Carolina State University)*



"It was impressive seeing Delta Zeta as the large national organization that it is, and moving to meet women who are still giving back to Delta Zeta in significant ways, especially after their college years."

*Madeleine Forrest, President  
Omicron Zeta Chapter (Randolph-Macon College)*



"I am thankful for the privilege I received from Delta Zeta to be able to attend the Convention and be part of such a great experience."

*Eren Ramirez, President  
Theta Rho Chapter (California State University/Los Angeles)*



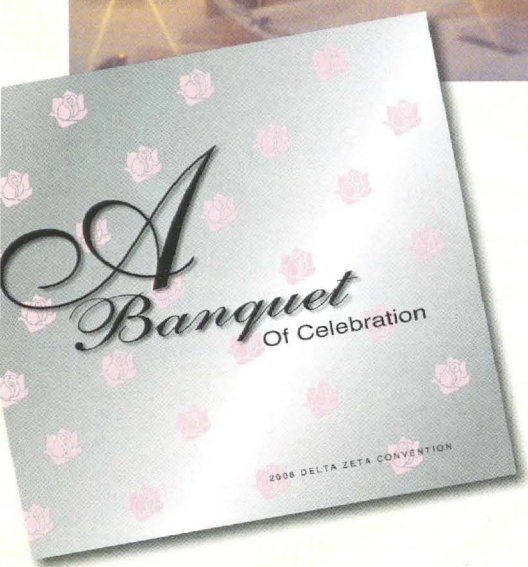
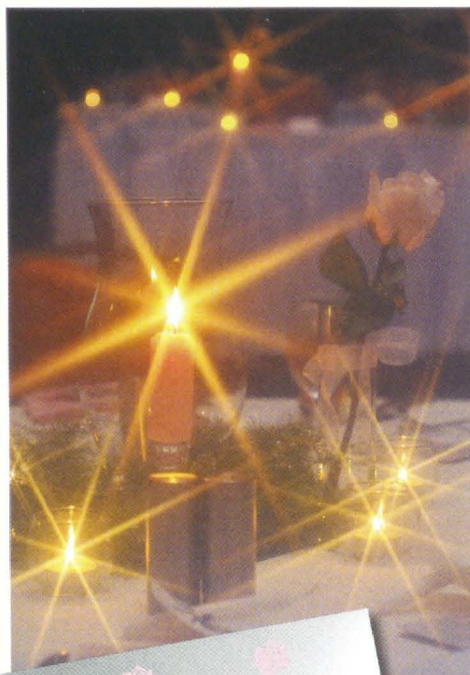
"To learn from other collegiate members and to be a voting delegate for the governing body was an honor!"

*Ashley Storm, Vice President of Membership  
Zeta Beta Chapter (University of Wisconsin/Stout)*



"It was such a great feeling to connect with hundreds of people you have never met before because you all love and cherish the same thing: Delta Zeta."

*Katie Whitney, President  
Zeta Kappa Chapter (Ohio Northern University)*



The Xi Omicron Chapter (Loyola-Marymount University) received the Founders Award.





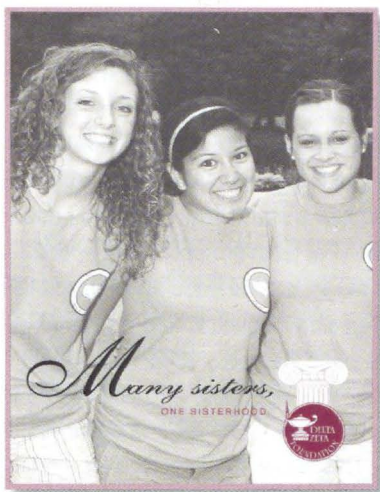
# Foundation News

## Foundation Wins National Awards

The Delta Zeta Foundation recently won top awards from the North-American Interfraternity Conference Foundation (NICF). The NICF 2008 Award of Distinction for Best Student Development Effort for the Foundation's text messaging style e-campaign recognized the outstanding response from over 1,900 collegiate

members who gave \$19.02 or more to the Foundation last year. Additionally, the NICF 2008 Award of Distinction for Best Donor E-Newsletter recognized the Foundation's *In Touch* quarterly electronic newsletter, which informs members as to how Foundation donations are used, features individual donors and so much more.

If you would like to receive the Foundation's *In Touch* e-newsletter, make sure we have your e-mail address. Update your information at [www.deltazeta.org](http://www.deltazeta.org) or call (513) 523-7597.



## Three Great Reasons to Remember the Delta Zeta Foundation in Your Will

Including a bequest in your will or trust to individual beneficiaries or a charitable organization like the Delta Zeta Foundation may be the best way to make a meaningful gift in the future.

1. **IT IS EASY.** Making a bequest is as simple as inserting a few sentences into your will, such as, "I give \$10,000 to the Delta Zeta Foundation."
2. **IT IS REVOCABLE.** With a bequest, you are not actually making a gift until your death. Until then, you are free to alter your plans.
3. **IT IS TAX-SMART.** Your estate is entitled to an unlimited estate tax charitable deduction for bequests to qualified charitable organizations like the Delta Zeta Foundation.

For more information on planned giving, visit [www.deltazeta.org](http://www.deltazeta.org) or contact Chris Kern, Director of Development, at (513) 523-7597 or [DZFoundation@dzshq.com](mailto:DZFoundation@dzshq.com).

The official bequest language for Delta Zeta is: "I, [name], of [city, state, zip], give, devise and bequeath to Delta Zeta Foundation of Oxford, Ohio [written amount or percentage of the estate or description of property] for its unrestricted use and purpose."

## Charitable IRA Legislation is Back!

The charitable IRA legislation is back for a repeat performance—do not miss this second-chance opportunity to make tax-free gifts from your IRA!

There is good news for individuals age 70½ or older with individual retirement accounts. Thanks to the extended charitable IRA legislation, you can once again make outright gifts using IRA funds without tax complications.

If you are required to receive minimum distributions from your IRA and you do not need the money for personal use, consider using those funds as a charitable gift. While you cannot claim a charitable deduction for the IRA gifts, you will not pay income tax on the amount.

### You may contribute funds this way if:

- You are 70½ or older.
- Your IRA gifts total less than \$100,000 each year in 2008 and 2009.
- Your transfer is funded directly from an IRA.
- You transfer the gifts outright to one or more public charities. (This excludes gifts made to charitable trusts, donor advised funds and supporting organizations.)

### The Benefits—Music to Your Ears

- In most cases, the transfer counts toward your minimum required distributions.
- The gift generates neither taxable income nor a tax deduction, so even those who do not itemize their tax returns receive the benefit.
- You may transfer up to \$100,000 directly from your IRA in 2008 and 2009.
- The distributions may be in addition to or fulfill any charitable giving you have already planned.

### The Next Step

Be sure to contact tax professionals and your IRA administrator if you are considering a gift under this law. Feel free to contact the Delta Zeta Foundation with any questions.

## Annual Campaign Supports Sorority's Core Values

In keeping with the Sorority's core values of education, leadership and service, the Delta Zeta Foundation provides academic merit and financial need based scholarships, supports leadership development through the Norma Minch Andrisek Leadership Conference, the Alumnae Academy and Presidents Academy, alcohol and substance abuse education and programs that help sisters apply the Sorority's founding values to their lives in today's complex world.

Your contribution to the Annual Campaign supports all of these programs and will help the Foundation as it continues to respond to the rapidly growing needs of our collegians and alumnae volunteers. In 2008-2009, the Foundation will provide support for:

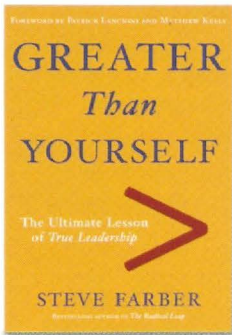
- Leadership training for more than 250 collegians, bringing them "home" to Miami University in July 2009 for the Norma Minch Andrisek Leadership Conference
- The February 2009 Presidents Academy
- Web-based educational programs that enable the connected lifestyles of our collegiate members and alumnae volunteers such as:
  - ◆ GreekLifeEdu ◆ MentalHealthEdu ◆ Webinar training sessions

### Make your gift today!

- Make monthly gifts through Electronic Funds Transfer or credit card charges.
- Make a once-a-year gift via a check, credit card or appreciated securities.
- Celebrate our rich 106 year history with a gift of \$106.
- Join the Guy Potter Benton Society with a gift of \$84 per month, \$250 quarterly or \$1,000 or more per year.
- For more information or to make your gift online, visit [www.deltazeta.org](http://www.deltazeta.org).



# Pursuing Extreme Leadership:

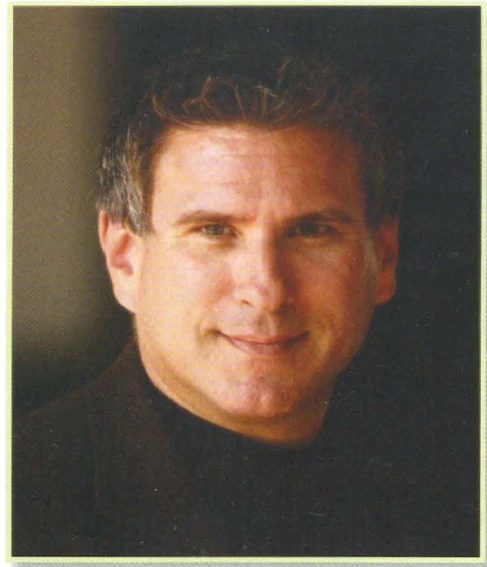


Steve Farber is the president of Extreme Leadership, Incorporated—an organization devoted to the cultivation and development of Extreme Leaders in the business community. His best-selling book, *The Radical Leap: A Personal Lesson in Extreme Leadership*, is a recipient of *Fast Company* magazine's Readers' Choice Award and was named one of the ten best business books of 2004 by the online resource, The CEO Refresher. His second book, *The Radical Edge: Stoke Your Business, Amp Your Life, and Change the World*, was hailed as "a playbook for harnessing the power of the human spirit." He is a contributor to the anthology, *Leading Authorities on Business: Winning Strategies From the Greatest Minds in Business Today*, and is the author of the audio series, "Extreme Leadership: In Pursuit of the OS!M."

A subject-matter expert in business leadership and a frequent guest on news-talk shows around the country, Steve is a senior-level leadership coach and consultant who speaks 90 to 100 times a year to a wide variety of public and private organizations in virtually every arena, from the tech sector to financial services, manufacturing, health care, hospitality, entertainment, retail and the U.S. government.

His books have also had a significant impact on Delta Zeta Sorority. Steve's model of Extreme Leadership served as the core for the curricula for both the Sorority's Alumnae Leadership Academy and Chapter Presidents Leadership Academy, held in November 2007 and January 2008 respectively. If you attended either of these events, or the Sorority's National Convention in June 2008, you are familiar with the concept of LEAP — Love, Energy, Audacity and Proof — and its ability to change the world for our members, chapters, the Sorority and the world.

Steve Dealph, who consults with Delta Zeta on leadership and programming initiatives, spoke with Steve Farber earlier this year to conduct this interview for *The LAMP*.



**STEVE DEALPH:** Steve, your model of Extreme Leadership has had a huge impact on Delta Zeta over the past year. Many of her members are curious to know more about you. Can you tell us a little bit about yourself? How did you get to where you are now?

**STEVE FARBER:** I came through the business world. My passion has always been with music and I actually started out as a musician. But I married young and had children very early and I need to support them, so I gave up music — at least professionally — at 23. I had a friend in commodities who taught me the trade and I was able to establish my own small brokerage firm in Iowa, where we were living at the time. I hated it! I felt like I was losing my spirit.

After a few years, we moved from Iowa to California. I had no idea what I was going to do. This was a stressful time for me and my wife, but also something I knew I had to pursue.

I had another friend who was providing training communications for companies and a light went off. I felt like this was an opportunity to focus on what I was meant to do.

Initially, I was hired by a small company to teach business writing. Eventually, I was hired on as a contractor for TMI, an international training consultancy, where I worked with several companies and focused on corporate culture issues. This gave me some great experience in understanding and learning the impact of leadership from top to bottom. In 1994, a colleague recruited me to the Tom Peters Group and I was promoted to Vice President after six months. I stayed there for six years working with top leaders such as Tom Peters (*In Search of Excellence*), Terry Pearce (*Leading Out Loud*) and Jim Kouzes (*The Leadership Challenge*).

In 2000, I started getting restless. I was really drawn to providing keynotes for organizations and wanted to pursue that full time. So I left the Tom Peters Group and established my own company, Extreme Leadership, Inc.



**STEVE DEALPH:** In 2004, your first book, *The Radical Leap: A Personal Lesson in Extreme Leadership*, was published. What inspired you to write a book?

**STEVE FARBER:** It was something I really took my time with; I started and stopped writing it over the years. I felt that, now that I have had these experiences — with leadership and with organizations that work and don't work — what do I think of this? I felt the need to express my own voice for what works and doesn't work. I had seen a lot of both.

**STEVE DEALPH:** Delta Zeta has made it a goal to be a leader in providing leadership development for her members. The Sorority has really embraced your model of Extreme Leadership. What advice might you offer a women's organization and its members as they pursue leadership development?

**STEVE FARBER:** Well, I believe that good leadership is good leadership — whether it comes from men or women. And I believe that people follow people. The truth is that historically, men have had more opportunities to hold "traditional" leadership positions, but women have been practicing leadership for generations — whether making household decisions or controlling the finances in their families. Women are having more and more opportunities to apply their leadership to all walks of life and that is good for everyone.

When it comes to embracing my model of Extreme Leadership, it may be easier for women to accept leadership as an act of love, at least initially. Sometimes men have a knee-jerk reaction to the concept of love as the main component of leadership. Both reactions are due to how males and females are conditioned when they grow up, but fortunately, that is changing for the better as well.

**"Act as if your every action has a direct impact on the world. In other words, perform every deed as if it will either improve or damage it."**

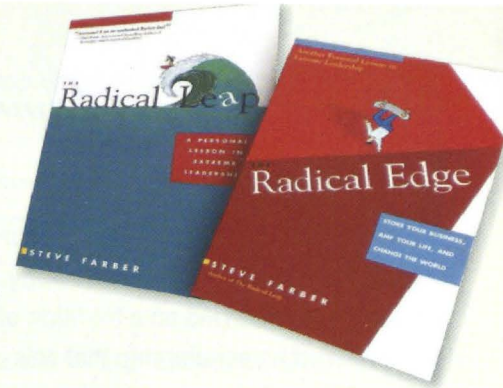
Steve Farber, *The Radical Edge*

**STEVE DEALPH:** Your concept of "Changing the World" particularly resonates with Delta Zeta. The Creed of Delta Zeta begins with, "To the World ..." and ends with, "To myself ...". It addresses the member's obligation to impact the world at all levels and, for many Delta Zetas who are familiar with your work, it's as if your concept was specifically conceived for Delta Zeta. What are your observations on how your concept can synergize Delta Zeta's efforts?

**STEVE FARBER:** Wow! That's great that the Creed provides that kind of understanding and expectation! The concept of changing the "Big W" world by changing the "little w" world is to help inspire Audacity. Often, we are intimidated by the thought of changing the Whole Wide World. But the reality is that that big world is made up of the fabric of humankind, and it can be changed one thread at a time.

Whether it's a Big "W" or a little "w," what's important is that we work to change the world for the better in some way. It's the attempt or intent

Author's Note: Steve Farber's next book, *Greater than Yourself*, is scheduled to be published in spring, 2009. For more information about Steve Farber, Extreme Leadership, and his books (including a YouTube video which highlights his new book), go to [www.SteveFarber.com](http://www.SteveFarber.com).



that is required of us in this day and age. We have to try. And when we only look at the Big "W," we can see it as a constraint to even trying ("I can't do that because I'm not Gandhi or Mother Teresa ..."). We use it as a way to absolve ourselves of responsibility.

Focusing on the little "w" helps us make an immediate difference and a sustainable difference from which to grow. The fact that Delta Zeta's Creed maps out the opportunities for members to positively impact the world at multiple levels is wonderful!

**STEVE DEALPH:** Steve, what can you tell us about your newest project?

**STEVE FARBER:** I'm working on my third book. The working title is *Greater than Yourself* and the focus is mentoring. There is so much talk about it right now and the real challenge with mentoring, as I see it, is to elevate someone to be greater than yourself. For parents, teachers, coaches, etc., this concept is embraced. But in many workplaces—particularly the business environment—it is not.

We need to move toward an understanding that giving of ourselves in regard to our knowledge and experience is not a zero sum game. We don't lose what we give away. In fact, we gain so much by giving it to others. We become the ones that others want to work with because they know they will be developed through their interaction with us.

**STEVE DEALPH:** Steve, thank you for your time and your vision. You truly are changing the world for so many by sharing your thoughts and insights.

**STEVE FARBER:** It's my pleasure. And it means so much to know that it is making a difference.

#### About the Author

Steve Dealph has over 20 years of experience in higher education and the interfraternal movement. He has served as a Greek Affairs professional at Longwood University, Northwestern University and Miami University. He also served as Director of Leadership Education for the North-American Interfraternity Conference.

Steve is currently employed as an Organizational Readiness Consultant for Warner Bros. Entertainment in Burbank, California, and provides Delta Zeta with consultation in the areas of leadership and development programming.



# *The Gamma Omicron Chapter Continues Tradition*

*by Michelle Gutierrez ΠΖ*

On November 19, 1949, the Gamma Omicron Chapter was installed at San Diego State University. From that moment on, the chapter carried on a tradition of campus participation and outstanding scholarship that was integral to the history of the chapter. This same tradition was carried forward during the recolonization of 1989, which saw 68 charter members installed on February 19, 1989.

On the evening of March 15, 2008, the Gamma Omicron installation ceremony welcomed over 300 attendees to celebrate in a night of sisterhood and friendship. The formal event was hosted by Sara Groom Boucek ΓN '95, National Extension Chairman, and the initiation ceremony was conducted by collegiate members from the chapters of Delta Alpha (California State University/Long Beach), Iota Upsilon (California State University/Fullerton) and Theta Rho (California State University/Los Angeles).

For over 100 years, Greek organizations have played an integral part of the campus life at San Diego State University (SDSU). With over 30,000 undergraduate students enrolled at the university, the campus's diverse faculty and variety of academic programs have greatly complimented Delta Zeta's values of scholarship and service. Speech and hearing, one of Delta Zeta's national philanthropies, is researched and advanced by the nationally-ranked School of Speech, Language, and Hearing Sciences, founded at San Diego State in 1968.

## *The Colonization*

After Delta Zeta received the invitation to recolonize at the university, alumnae were quick to offer their support and assistance. Sara Groom Boucek describes the leadership that the Extension Team and these dedicated alumnae provided. "The true credit goes to the Alumnae Advisory Board and Kristen Field, Educational Leadership Consultant. I want to thank all those chapters and alumnae who helped make this colonization so successful, and the charter and new members who continue to work hard for the chapter's success. Alumnae also continue to dedicate many hours to the chapter since the recolonization, and both Gamma Omicron and the national organization appreciate their commitment."

During the first week of October, colonization launched into full force, including an open house, three days of interviews and a preference night. Over 300 women completed the entire process, and 98 bids were given. On October 6, 2007, bid day was shared on the San Diego beach with the members of the Pi Zeta Chapter from Arizona State University.

Susan Wallace Christmas ΔA '72, Long Beach Alumnae Chapter President, described the excitement of the alumnae who worked with the chapter during the colonization. "Alumnae from the Long Beach Alumnae Chapter were very excited about the colonization," she said. "We met other alumnae from the area who were also thrilled about Gamma Omicron coming back to San Diego State University. For those of us from the Long Beach Chapter who had worked with Gamma Omicron during the recolonization in 1989 when we were collegians, coming back to support them now was especially meaningful."

Janelle Ortiz, Gamma Omicron Chapter President, was one of the 76 initiated colony members. "The women of Delta Zeta demonstrate that





being Greek isn't about just the social aspects, but is about the character that is built within each member and the effect that we have on our surrounding community for the better," Janelle said.

## Installation

At the installation ceremony on March 15, 2008, special guests included Michelle Albrecht Smith AX, National President; Kathi Bray Heatherly EY, National Vice President of College Chapter Operations; Karen Martin Campbell ΔA, National Vice President of Alumnae Affairs; Beth Luton ΣP '93, National Sorority Education Chairman; Sandra Shaddix Hall IY '75, Regional Collegiate Coordinator - Region X; Beckey Robinson Romenesko ZO '66, Great Western Area Alumnae Director; Teresa Leader-Anderson IO '89, San Diego Alumnae Chapter President; Susan Wallace Christmas ΔA '72, Long Beach Alumnae Chapter President; Doug Case, Director of Fraternity and Sorority Life; Kim Stokely, Assistant Director of Fraternity and Sorority Life; Tim Valesquez, campus Interfraternity Council President and Shawn Fore, campus Panhellenic President.

Doug Case shared the way in which Delta Zeta is "riding the waves" and making a mark on San Diego State's campus. He continued that he was honored to welcome such an incredible organization back to campus

and encouraged the chapter to win awards in the tradition of Delta Zeta's Standards of Excellence.

Gamma Omicron members wholeheartedly acted upon this statement as they entered their first formal recruitment in September 2008, accepting 50 women into their new member class, the largest of all Panhellenic sororities at San Diego State.

Within their first year on campus, Gamma Omicron received chapter awards from Fraternity and Sorority Life for the second highest GPA in the Panhellenic and first place for Greek Week. At Region X Weekend, Kristen Field ΓN '03, Educational Leadership Consultant, received an award for Alumna of the Year, and Nicole "Coco" Rosenthal received an award for New Member of the Year.

Alumnae provided assistance during the chapter's first official recruitment in the fall of 2008. They also volunteered to sew initiation robes for the chapter and visited the chapter during 2008 Homecoming activities on campus.

The alumnae of the San Diego and surrounding areas are excited to have Gamma Omicron at the university. Their support allows the chapter to continue to grow and fulfill its potential, while remaining true to the legacy that has been Gamma Omicron since 1949. These generations of Delta Zetas live on today through the charter members of 2008.

## Enjoy the rewards.

Get something back for your everyday purchases. Use your Delta Zeta Sorority Platinum Plus® MasterCard® credit card with WorldPoints® rewards from Bank of America, and you'll earn points you can redeem for cash, travel, merchandise, even unique adventures! Plus, an automatic contribution to Delta Zeta Sorority with every purchase—at no additional cost to you.

**To apply, call 1.866.438.6262**

Use Priority Code FACUI2

You can also visit [www.newcardonline.com](http://www.newcardonline.com) and enter Priority Code FACUI2



WorldPoints

For information about the rates, fees, and other costs and benefits associated with the use of this Rewards card, or to apply, call the toll free number above, visit the website listed above or write to P.O. Box 15020, Wilmington, DE 19850.

♦ Terms apply to program features and Credit Card account benefits. For more information about the program, visit [bankofamerica.com/worldpoints](http://bankofamerica.com/worldpoints). Details accompany new account materials.

This credit card program is issued and administered by FIA Card Services, N.A. Any account opened in response to this application shall be governed by the laws of the State of Delaware. The WorldPoints program is managed in part by independent third parties, including a travel agency registered to do business in California (Reg. No. 2036509-50); Ohio (Reg. No. 87890286); Washington (6011237430) and other states, as required. MasterCard is a registered trademark of MasterCard International Incorporated, and is used by the issuer pursuant to license. WorldPoints, the WorldPoints design, and Platinum Plus are registered trademarks of FIA Card Services, N.A. Bank of America and the Bank of America logo are registered trademarks of Bank of America Corporation. All other company product names and logos are the property of others and their use does not imply endorsement of, or an association with, the WorldPoints program. WP.MCV.0308

©2008 Bank of America Corporation

T-709149-092107

AR46052-042508

BAD-08-08-11538



# on campus with delta zeta

## Alpha

### **Miami University**

enjoyed the Homecoming parade, bonfire and football game, and reunited with alumnae during the events.

## Epsilon

### **Indiana University**

held a Dad's Weekend which featured bowling and a brunch and participated in Safe Halloween with the Boys and Girls Club of Bloomington.

## Theta

### **Ohio State University**

celebrated Founders Day with alumnae from the Columbus Alumnae Chapter and won the Homecoming competition for the second year in a row. Theta also participated in a blood drive and an event to support awareness of domestic violence.

## Iota

### **University of Iowa**

partnered with Lambda Chi Alpha Fraternity in their second annual Teeter-Totter-a-thon to raise money for the Johnson County Crisis Center and The Painted Turtle camp. The "wall" of their float was donated to a family to be used in rebuilding their house, which was lost during recent flooding.

## Kappa

### **University of Washington**

won Greek Week 2008 with Alpha Sigma Phi and Alpha Tau Omega. Member Alaina Pearson was among the top five finalists for the 2008 Miss Greek Competition.

## Omicron

### **University of Pittsburgh**

member Sandra Abla was elected Homecoming Queen 2008.

## Pi

### **Eureka College**

participated in Up 'Til Dawn to support the work of St. Jude's Children's Hospital. The chapter also invited alumnae to Homecoming events such as the convocation, parade and pep rally.

## Rho

### **University of Denver**

joined hundreds of student volunteers at Project Homeless Connect, an event hosted by the University of Denver that helped homeless individuals connect with the medical, governmental, legal and employment services they needed.

## Sigma

### **Louisiana State University**

members volunteered to help in the recovery effort for evacuees from Hurricane Gustav. The chapter received the Most Outstanding Chapter Award from the university's Greek Affairs office.

## Alpha Alpha

### **Northwestern University**

partnered with Phi Delta Theta for their first Spring Olympics, with the proceeds benefiting The Painted Turtle camp and a scholarship in memory of Elizabeth Kobeszka A.A. '03. The chapter joined Theta Theta (DePaul University) for Founders Day and partnered with Phi Kappa Psi and Alpha Kappa Alpha Fraternities on their Homecoming float.

## Alpha Beta

### **University of Illinois**

committed 511.5 hours of community service over the summer and held an open house for alumnae during Homecoming. The chapter also collected food, clothing and games for less fortunate families in the area for Thanksgiving.

## Alpha Gamma

### **University of Alabama**

held its first annual Turtle Tug, a tug of war competition to raise money for a local speech and hearing center. The chapter placed first overall during the Homecoming activities. Alpha Gamma hosted its "Hamburgers for Hearing" cookout to raise money for speech and hearing initiatives.

## Alpha Theta

### **University of Kentucky**

hosted its annual Mr. UK Pageant that raised approximately \$8,000 to benefit speech and hearing. The chapter invited alumnae



Members of the Alpha Alpha Chapter (Northwestern University).

to a special presentation on Founders Day. Alpha Theta was recognized during Greek Week for their philanthropic work and started a tutoring program at a local middle school.

## Alpha Rho

### **Ohio Wesleyan University**

raised money for the Delaware Speech and Hearing Center by holding its annual philanthropic event, Jell-O Tug-of-War. During Homecoming, the chapter participated in a Greek event to welcome the new university president to campus.

## Alpha Sigma

### **Florida State University**

participated in the Relay For Life and a collection to benefit the Ronald McDonald House. The chapter hosted alumnae on Founders Day and during Homecoming and participated in Sigma Chi's Derby Days. Alpha Sigma raised \$2,000 for charity in the Dance Marathon.

## Alpha Upsilon

### **University of Maine**

planned its annual Day of Silence to benefit the Connelly Speech and Hearing Center on campus. The chapter cleaned up the Acadia National Park and on Founders Day held a raffle with alumnae to benefit The Painted Turtle camp.

## Beta Alpha

### **University of Rhode Island**

won an award from Panhellenic Council as the Most Improved Sorority of the Year.

## Beta Gamma

### **University of Louisville**

raised over \$13,500 for Delta Zeta's speech and hearing partners and the Delta Zeta Foundation by hosting its 2008 Delta Zeta Auction. The chapter also received 24 Greek Life awards from the university and won the intramural flag football and kickball championships.



## Beta Delta

**University of South Carolina** welcomed alumnae to a tea on Founders Day and worked with children who have speech and hearing challenges at a local elementary school.

## Beta Kappa

**Iowa State University** invited alumnae to their Founders Day event and joined the Greek community to participate in service projects leading up to Homecoming.

## Beta Lambda

**University of Tennessee/Knoxville** achieved above the All Women's Average and All Sorority Average, in addition to winning the Dean's Cup for 2008. The chapter invited alumnae to its Founders Day dinner and partnered with Pi Kappa Phi Fraternity on the Homecoming float, winning second place. Beta Lambda held its annual Clay Shoot to benefit the Knoxville Center of the Deaf.

## Beta Xi

**Auburn University** held its second annual Delta Zeta Walk in the Park and invited alumnae to join the collegians for Homecoming activities.

## Beta Tau

**Nebraska Wesleyan University** invited alumnae to the Founders Day celebration with solos sung by some of the collegiate members. During Homecoming, Beta Tau held a basket auction and participated in a sign designing competition. The chapter's Turtle Tug benefited The Painted Turtle camp.

## Gamma Alpha

**Baldwin-Wallace College** invited family to their Founders Day event and won the Homecoming tee shirt contest. The chapter enjoyed showing family members around campus on Parents/Community Day, and participated in the GAMMA (Greeks Advocating Mature Management of Alcohol) Four Square Tournament to benefit St. Jude's Children's Research Hospital.

## Gamma Beta

**University of Connecticut** celebrated its 65<sup>th</sup> year at the university with a special event on Founders Day to which alumnae were invited. The chapter's Homecoming float won first place, and Gamma Beta held its second annual Musical Chairs philanthropic event in which other Greek organizations on campus participated. The new member class raised money for HuskyTHON, a dance marathon to benefit Connecticut Children's Hospital and the Children's Miracle Network.

## Gamma Delta

**Pennsylvania State University** volunteered for Penn State's Homecoming Day of Service, a campus-wide effort to help communities around the school, and partnered with Sigma Phi Epsilon for Homecoming events. The chapter also participated in THON, the largest student-run philanthropy in the world, and raised money to help a friend with cystic fibrosis.

**At right: The Gamma Rho Chapter (Northern Illinois University).**

## Gamma Kappa

**Kent State University** started off the semester with its second annual golf outing fundraiser. The chapter also started a recycling initiative throughout the chapter house, and participated in the "Laugh for Wishes" event to raise money for the Make-a-Wish Foundation.

## Gamma Lambda

**San Jose State University** hosted Parents Day, which allowed new members' parents to learn more about Delta Zeta. The chapter hosted Turtle Bowl, a tag football tournament open to all fraternities on campus, to benefit The Painted Turtle camp and speech and hearing.

## Gamma Nu

**Eastern Illinois University** won Delta Chi's banner-making competition and received a \$250 donation in exchange for their achievement. The chapter welcomed alumnae to their Founders Day event and their open house during Homecoming, and hosted Turtle Tug, a Greek-wide philanthropy event.

**At right: Members of the Gamma Sigma Chapter (Eastern Michigan University).**

## Gamma Xi

**New Mexico State University** adopted the local Habitat for Humanity project to build houses and support the staff and volunteers. The chapter also contributed over 500 pounds of canned food items to the campus' Greek Community canned food drive. Gamma Xi partnered with Tau Kappa Epsilon during Homecoming and won third place overall.

## Gamma Pi

**Western Michigan University** invited other Greek groups on campus to share in their Founders Day event. The chapter hosted parents with a pancake breakfast before the football game during Parents Weekend, co-hosted the Haunted Forest event with Chi Omega and volunteered at the annual MI COPS Run in

Portage, Michigan, which raises money for the families of police officers who lost their lives in the line of duty. Gamma Pi also won first place in volleyball for intramural sports.

## Gamma Rho

**Northern Illinois University** won Pi Kappa Alpha's Women's Tugs for the second year in a row to benefit breast cancer research. Alumnae were invited to lunch during Homecoming and the chapter held its annual pancake breakfast to benefit speech and hearing.

## Gamma Sigma

**Eastern Michigan University** conducted a school supplies drive, volunteered for Meals on Wheels and raised money for the Joe Brighton Skills Center to support families with special needs. The chapter hosted family and alumnae during Homecoming.





## Gamma Tau

**Bowling Green State University**  
volunteered at a local animal shelter, participated in the local Adopt-a-Family program and served at a local soup kitchen.

## Gamma Phi

**Indiana University of Pennsylvania**

won first place in the Homecoming float competition and helped clean the streets after the parade. The chapter raised money for the American Cancer Society and collected canned goods for the Salvation Army's Treasures for Children program.

## Gamma Chi

**Ball State University**

hosted Mel's Walk, an event in memory of member Melissa Steckler. The one-mile walk and 5K run combined to raise money for Riley's Children Hospital where Mel stayed her final days.

## Gamma Omicron

**San Diego State University**

collected \$6,843 from its new member philanthropy project to donate to the Delta Zeta Foundation and the Painted Turtle camp. Gamma Omicron received first place in Greek Week.

## Delta Alpha

**California State University/Long Beach**

held a fundraiser to support a sister who lost her apartment to a fire. The chapter celebrated Founders Day with the alumnae chapters in the area, volunteered at the Long Beach Marathon and held its annual Turtle Bowl flag football tournament to raise money for philanthropic causes.

## Delta Beta

**University of Tampa**

joined alumnae for a Founders Day brunch. Amber Rehman was crowned Homecoming Queen. The chapter made care packages which went to troops overseas and decorated tumblers for children at a local hospital.

## Delta Delta

**Georgia State University**

invited alumnae to a Founders Day brunch and slideshow, held a cook out for parents and collected clothing for a homeless shelter.

## Delta Theta

**University of Houston**

created care packages for soldiers overseas, invited members' mothers to their Founders Day event and hosted a parent/alumnae event during Homecoming. Delta Theta made Halloween gift baskets for the Center for Hearing and Speech in Houston.

## Delta Xi

**University of Northern Colorado**

sent craft supplies to patients at the Denver Children's Hospital and celebrated Founders Day with the Rho Chapter (University of Denver). The chapter held a Dad and Daughter Day with a trip to a Denver Nuggets basketball game and hosted its DZ Hop pancake breakfast to benefit the Starkey Hearing Foundation.

Members of the  
Epsilon Zeta Chapter  
(Drexel University).

## Delta Omicron

**Northwestern Oklahoma State University**

donated locks of members' hair to raise funds for the chapter's service project, Locks of Love, won third place overall during Homecoming and raised money for The Painted Turtle camp with a Homecoming fundraiser.

## Delta Sigma

**Truman State University**

participated in Up 'Til Dawn to benefit St. Jude's Children's Hospital, Adopt-A-Soldier, a highway cleanup project and Locks of Love. The chapter baked cookies to welcome alumnae back during Homecoming and honored the late Dr. Ruth Warner Towne ΔΣ '56, Professor Emeritus of History and Dean Emeritus of Graduate Studies, who was also a long-time College Chapter Director.

## Delta Tau

**Temple University**

celebrated Founders Day with alumnae from the Southern New Jersey area. The chapter participated in the annual Philly Cares event to clean up a local park, held a blood drive and participated in Toys for Tots during the holiday season.

## Delta Upsilon

**Marshall University**

organized the first local Suicide Prevention Walk in Huntington, West Virginia. Alumnae were invited to a Homecoming brunch and the chapter helped to paint a local church and donated to Goodwill during the holiday season.

## Delta Phi

**Northeastern State University**

hosted a chili event and a garage sale to raise money for Delta Zeta philanthropies. The chapter partnered with Pi Kappa Alpha for Homecoming and won first place for their float. Delta Phi celebrated Founders Day with the Tulsa Alumnae Chapter.

## Epsilon Gamma

**University of Central Missouri State**

held a Homecoming brunch for alumnae and joined Sigma Phi Epsilon for the Spirit Run, a 5K walk/run to raise money for families at Children's Mercy Hospital.

## Epsilon Delta

**Concord University**

participated in Concord's blood drive, created sun visors for a local camp for neglected children and held a quilt raffle during Homecoming,

with the proceeds going to the House Ear Institute. The chapter welcomed alumnae at a Homecoming Tea and Becca Eerenberg was 2008 Homecoming Queen.

## Epsilon Epsilon

**Fresno State University**

participated in the Salvation Army's Christmas program to provide gifts for underprivileged children. The chapter played in Pi Kappa Alpha's annual Soccer Tournament and won first place.

## Epsilon Kappa

**University of Wisconsin/Whitewater**

held its "Turtle Jam" battle of the bands event to benefit The Painted Turtle camp. Epsilon Kappa welcomed parents to a cook out and football game during Parents Weekend and hosted alumnae for Homecoming. The chapter won second place in the Homecoming variety show.

## Epsilon Zeta

**Drexel University**

became 2008 Greek Week Champions and for the third year in a row, and was awarded the Dean's Cup from the Office of Fraternity and Sorority Life for the chapter's community





relations, philanthropic donations, membership development and programming efforts through 2007. The chapter won the Flag Football Championship for the Campus Panhellenic Division to become Drexel's Intramural female flag football champions.

## Epsilon Iota

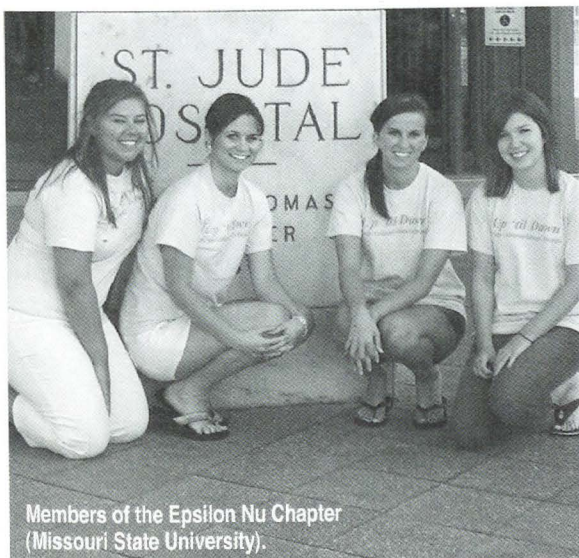
### Fairmont State College

organized a 5K run and walk called the Turtle Trot to support a local boy who suffers from speech and hearing impairments.

## Epsilon Nu

### Missouri State University

members served on the executive board of Missouri State University's Up 'Til Dawn to raise funds and awareness for St. Jude's Children's Hospital. The chapter hosted an alumnae brunch during Homecoming and held their 17th annual Big Man On Campus (BMOC) event to raise nearly \$5,000 for the Missouri State University's Department of Communication Sciences and Disorders.



Members of the Epsilon Nu Chapter (Missouri State University).

## Epsilon Xi

### University of Central Arkansas

won first place in the Homecoming banner competition and hosted alumnae at the football game. Members raised money at the Multiple Sclerosis Banquet, enjoyed a coffee social with residents of a local retirement home, participated in Highway Clean Up, and served guests at Toby's Pancake Breakfast to raise money for the Arkansas School for the Deaf.

## Epsilon Rho

### Northwest Missouri State University

hosted an alumnae tea during Homecoming and held a pumpkin carving contest at Halloween with the proceeds going to charity.

## Epsilon Sigma

### Wayne State University

congratulated Jenn Walker, President, who was on the Homecoming Court. The chapter hosted Parents Night and treated their families to dinner, participated in Passionately Pink for the Cure to raise money for breast cancer research and brought Randy Haveson,

counselor and professional speaker, to campus during National Collegiate Alcohol Awareness Week.

## Epsilon Tau

### Longwood University

held its annual Turtle Tug event to raise money for the Communication Disorders Center located in Farmville. The chapter also participated in Operation Christmas Child Shoebox to help less fortunate children.

## Epsilon Omega

### University of Wisconsin/Eau Claire

members combined their Parents Brunch with Founders Day ceremonies to share Delta Zeta's history with their families. The chapter is working with a local Girl Scout troop, tutoring children at a middle school and collecting clothing for a women's shelter.

## Zeta Beta

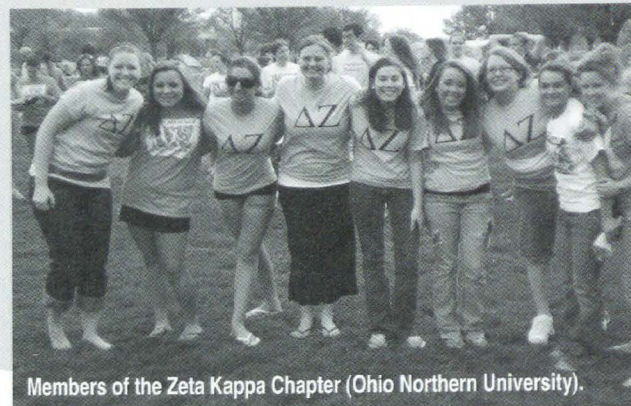
### University of Wisconsin/Stout

teamed with Phi Sigma Phi Fraternity and were the overall Homecoming winners. The chapter partnered with Alpha Phi Sorority to trick-or-treat for families in need over the holiday season.

## Zeta Epsilon

### California University of Pennsylvania

hosted a corn hole tournament with proceeds going to the speech and hearing impaired. Members also volunteered at the Health Fair for the university and the Christmas toy drive with Acacia Fraternity.



Members of the Zeta Kappa Chapter (Ohio Northern University).

## Zeta Kappa

### Ohio Northern University

raised \$2,043 for the American Cancer Society and walked at the 18-hour Relay for Life fundraiser on campus. At Homecoming, the chapter was the largest group represented to cheer on their float with a polar bear theme in the parade. Zeta Kappa sponsored a campus-wide food drive to help needy families during the holidays and had the highest GPA on campus among Greek organizations.

## Zeta Zeta

### West Texas A&M University

painted 30 pumpkins and donated books to the Northwest Texas Children's Hospital. During Homecoming, the chapter won the pep rally spirit contest and came in first in the Homecoming float contest. Zeta Zeta is celebrating its 50th year on the WTAMU campus.

## Zeta Nu

### Ferris State University

collected cans and donated money to the Jim Crow Museum Campaign in an initiative to educate the public on issues of race and ethnicity. The chapter joined the Gamma Psi Chapter (Central Michigan University) and the Xi Eta

Chapter (Northwood University) for Founders Day. Zeta Nu sent cards to soldiers overseas and volunteered for Habitat for Humanity.

## Zeta Pi

### University of Georgia

joined the Atlanta Area Alumnae Chapter for Founders Day. Alumnae toured the chapter house during Homecoming and enjoyed the football game with the collegians.

## Zeta Rho

### William Jewell College

partnered with Phi Gamma Delta Fraternity for Homecoming events. The fraternity also joined Zeta Rho to clean up a local highway. The chapter volunteered for Synergy to babysit the children of parents who have returned to school to obtain their degrees.

## Zeta Phi

### Slippery Rock University

won first place in Greek Sing for formal, informal and partner songs and placed second in Greek Week.



## Zeta Psi

### Stephen F. Austin State University

won the display board contest during Homecoming. The chapter hosted Parents Day after initiation, which included an event to raise money for The Painted Turtle camp. The chapter volunteered at an animal shelter and cleaned two miles of highway in their community.

## Theta Kappa

### University of New Orleans

volunteered in DZ Disco, Relay for Life, and at UNO's charter school during Greek Week. The chapter invited family members to attend a dinner after initiation. The chapter also took part in Boo at the Zoo, which ensures a safe Halloween for children.

## Theta Mu

St. Cloud State University teamed up with Volunteer Connection for the second year in a row to expand into the Streets, an annual day of community service. The chapter

celebrated Parents Day on the last afternoon of their annual Trampoline-a-Thon, which benefited The Painted Turtle camp. Theta Mu was recognized by *USA Today* for their work on the I Have a Choice alcohol awareness program as they worked with local landlords to institute alcohol-free housing for students in their community.

## Theta Nu

### Minnesota State University/Moorhead

won second place in the Spirit Point contest during Homecoming and the chapter hosted a reunion for alumnae. The chapter participated in the Greek Week Teeter-a-thon and Trick-or-Treating for Unique and raised money to support a local family in need.

## Theta Omicron

### University of Texas/Pan American

hosted alumnae and new members at a Founders Day dinner and participated in a canned food drive at Halloween.

Members of the Theta Nu Chapter (Minnesota State University/Moorhead).



## Theta Rho

### California State University/Los Angeles

co-hosted a Founders Day lunch with the Long Beach Alumnae Chapter. The chapter volunteered in the AIDS walk in North Hollywood and donated to a local homeless shelter. Collegians teamed with the Pasadena Foothill Alumnae Chapter on the "Killarney Rose" project to send toiletries to women in the armed forces.

## Theta Phi

Old Dominion University supported runners who participated in the Rock 'n Roll Half Marathon. The chapter participated in A.R.K. Week to remind students about the dangers of driving under the influence and teamed with Alpha Kappa Alpha Sorority for Pink and Green Week to raise money for their philanthropies.

## Theta Psi

Ashland University was inspired by a presentation from one of its members who attended The Painted Turtle camp over the summer. The chapter participated in Trick-or-Treat-Help-Someone-Eat by collecting canned goods, for which over 4,000 cans were donated to the Salvation Army.

## Theta Omega

Barton College welcomed alumnae to the Greek Games competition during Homecoming and volunteered at the Eastern North Carolina School for the Deaf.

## Iota Alpha

Texas State University raised over \$6,300 from their Turtle Tug event and participated in the 2008 Dodgeball Tournament benefiting St. Jude's, winning the Most Spirited Chapter award. Member Cassie Mast competed and won the Miss Texas State pageant.

## Iota Delta

Edinboro University took third place with their Homecoming float and raised money for philanthropy by hosting a tee shirt booth for children. The chapter participated in RAKE, a community service project which helps the citizens of Edinboro clean up their yards. Iota Delta also made Christmas cards for children at a local hospital.

## Iota Theta

Mansfield University participated in Operation Christmas Drop to help children in need in other countries and collected canned goods with Kappa Kappa Psi and Sigma Alpha Epsilon.

## Iota Rho

West Chester University helped participate in Rape, Abuse, and Incest National Network (RAINN), the largest anti-sexual assault organization in the U.S., to provide support to victims, raise awareness of sexual assault and aid legislators with forming laws to fight these crimes. The chapter won second place for their dance and banner during the "WCU Rocks" Homecoming.

## Iota Upsilon

### California State University/Fullerton

participated in another sorority's football event during Homecoming, which raised money for charity. They also hosted their Greek-wide Turtle Hoops basketball tournament.

## Kappa Alpha

### Nicholls State University

member Jennifer Smith was awarded Greek Woman of the Year during Greek Week. The chapter also won Penny Wars and accepted the Leadership Award. The chapter celebrated its 40th anniversary in which members and alumnae shared an evening of dinner and dancing sponsored by the Bayou Area Alumnae Chapter.

## Kappa Beta

### Northern Kentucky University

received newspaper recognition for its volunteer efforts and participation in the Extreme City Makeover. Chapter members also cleaned up for the Adopt-a-Highway project and held a Pink Goes Green auction to benefit Gallaudet University. Members also participated in St. Rita's School for the Deaf's Haunted House and learned the Delta Zeta Creed in sign language.

## Kappa Iota

### Wright State University

held Mr. WSU, the chapter's annual male scholarship pageant that raised approximately \$1,500. All of the money raised went toward Delta Zeta national and local philanthropies.



## Kappa Mu

### Shepherd University

led two workshops at the campus leadership conference to discuss the dangers of hazing, recruitment protocol and other important Greek-related issues. The chapter won first place during Homecoming and Thomasine Campbell was named Homecoming Queen.

## Kappa Phi

### University of North Carolina/Charlotte

invited alumnae and family to their Founders Day celebration. Kappa Phi co-hosted the Chi Phi Haunted House and ranked second out of all Greek organizations on campus for their GPA.

## Kappa Rho

### Kutztown University

members Elyse Giordano and Marisa Pelligrino won Greek Woman of the Year Awards. The chapter hosted a Thanksgiving dinner for their families and participated in the All Greek Clean Up to beautify the community. Members also wrote letters to soldiers stationed in Iraq.

## Kappa Chi

### Youngstown State University

held a raffle at their Founders Day event and invited other Greeks on campus to participate in their Turtle Tug to benefit the Youngstown Hearing and Speech Clinic.

## Kappa Psi

### Shippensburg University

held an alumnae tea during Homecoming and participated in a community service project, partnering with the campus newspaper.

## Lambda Alpha

### Arkansas Tech University

hosted alumnae for Founders Day and Homecoming events, participated in the Adopt-a-Highway and the Silent Sunday events, the latter of which raises money for the Arkansas School of the Deaf.

## Lambda Beta

### University of Southern Indiana

held their annual Camping for a Cause event to benefit the Easter Seals Foundation in Evansville, and sponsored a blood drive.

## Lambda Gamma

### Jacksonville State University

were the intramural softball champions and putt-putt golf champions on campus. The chapter held a brunch for alumnae and parents during Homecoming and a pageant to raise money for the Delta Zeta Foundation. Members also participated in Adopt-a-Highway and sent letters to troops overseas.

## Lambda Delta

### University of Virginia

reunited with alumnae during Homecoming, provided a video presentation about Delta Zeta to their families during Parents Weekend and held their annual Wingfest to benefit Gallaudet University.

## Lambda Theta

### Michigan Tech University

hosted its second annual Turtle Tuck-In with proceeds going to the American Cancer Society. The chapter won second place overall in Homecoming events and hosted a Christmas party for children in need.

**At right: Members of the Lambda Xi Chapter (Texas A&M University).**

## Lambda Kappa

### University of Alabama/Huntsville

spent time helping the students and teachers in the Chaffee Elementary speech and hearing impaired class and participated in the step show during Homecoming. The chapter presented \$7,000 to the Alabama Institute for Deaf and Blind, the proceeds raised from their golf tournament, and collected toys for children in Iraq.

## Lambda Lambda

### The College of New Jersey

helped run the athletic events for the Annual LollaNoBooza Festival organized by The College's Alcohol and Drug Education Program.

## Lambda Xi

### Texas A&M University

held their first Turtle Tug, which had 16 teams participate to raise money for The Painted Turtle camp.

## Lambda Omicron

### Angelo State University

placed third in the Homecoming events on campus and partnered with Sigma Kappa Sorority in the Toys for Tots program.

## Lambda Pi

### Georgia College and State University

hosted a DZ Fiesta at the chapter house that included games and entertainment, with proceeds supporting Atlanta's American Lung Society Walk.



The Kappa Alpha Chapter (Nicholls State University).



## Lambda Rho

### Illinois State University

placed third in ISU's Greek Week. The Delta Zeta Dream Man philanthropy event raised over \$1,000. The chapter hosted a pizza party with the Boys and Girls Club of Bloomington and invited the Dean of Students' staff over for the St. Nicholas Feast dinner.

## Lambda Sigma

### Winthrop University

took part in the Greek-sponsored reception for Parents Weekend and gave alumnae tours of the chapter house on Founders Day. The chapter also raised money for a local cancer patient through the DZ Wants Change program and participated in Trick-or-Canning at Halloween to collect canned goods.

## Lambda Phi

### Appalachian State University

held their second annual Turtle Trot and 5K and presented a \$5,000 check to the Charles E. and Geneva S. Scott Scottish Rite Communication Disorders Clinic from the proceeds. Homecoming events included volunteering at a local elementary school's fall festival. The chapter also participated in the Theta Chi flag football competition to raise money for philanthropy and took part in the Lip Sync Competition to benefit the Red Cross.

## Xi Beta

### Eastern Kentucky University

held an alumnae breakfast during Homecoming and saw two members elected to Homecoming Court. Chapter members received awards

during the Parents Day barbecue. The chapter visited Shriner's Children's Hospital in Lexington and supported the local Kiwanis club.

## Xi Theta

### University of North Carolina/Wilmington

planned its first annual Turtle Tug, a friendly competition between UNCW student organizations to fundraise for The Painted Turtle camp. The chapter hosted a Parents/Founders Day Weekend and one member was chosen Miss Greek 2008.

## Xi Lambda

### University of San Francisco

created a "Pink Goes Green" initiative by partnering with the Not for Sale campaign, which seeks to unite those of different faiths, skills and passions to fight

against human trafficking. The chapter fundraised for Green Houses for Peru and hosted an event to raise money for the Leukemia and Lymphoma Society in memory of member Ali Fecella.

## Xi Xi

### North Georgia College and State University

raised \$1,500 towards a scholarship given to alcohol rehabilitation patients. The chapter planned the Great Gatsby Non-Alcoholic Mixer, an event benefiting the Hope House of Dahlonega. They invited parents and alumnae to a mock recruitment event and participated in the university's Gold Rush Weekend, raising \$600 for the Susan G. Komen Foundation.

## Xi Omicron

### Loyola-Marymount University

celebrated Founders Day with the Westchester Alumnae Chapter, the Delta Alpha Chapter (California State University/Long Beach) and the Long Beach Alumnae Chapter. Dads Day included a fun swing dance lesson. The chapter's Turtle Tug raised \$7,000 for The Painted Turtle camp and speech and hearing. Members also informed voters about important issues on the ballot before the national election.

## Xi Tau

### Millersville University

was named Organization of the Year on campus and received the Community Service Project of the Year for the chapter's effort to support The Painted Turtle camp. Xi Tau attended the Millersville Community Day

Parade, hosted a barbecue for alumnae during Homecoming and raised money for UNICEF during Halloween. Members helped plan the Take Back the Night event on campus and participated in the Greek-sponsored Rock the Vote event.

## Xi Upsilon

### Northeastern University

members Jennifer Erb, Chapter President, Daisy Kelly and Laura Tirrell participated in a three-day Breast Cancer Walk. The chapter won first place for the Homecoming float and participated in Up 'Til Dawn to benefit St. Jude's Children's Hospital.

## Xi Phi

### University of Missouri/Kansas City

joined the Lawrence and Topeka Alumnae Chapters for Founders Day. The chapter participated in a community beautification event as part of Homecoming and their 16th Annual Big Man on Campus event raised over \$2,000 for Children's Mercy Hospital and The Painted Turtle camp.

## Xi Psi

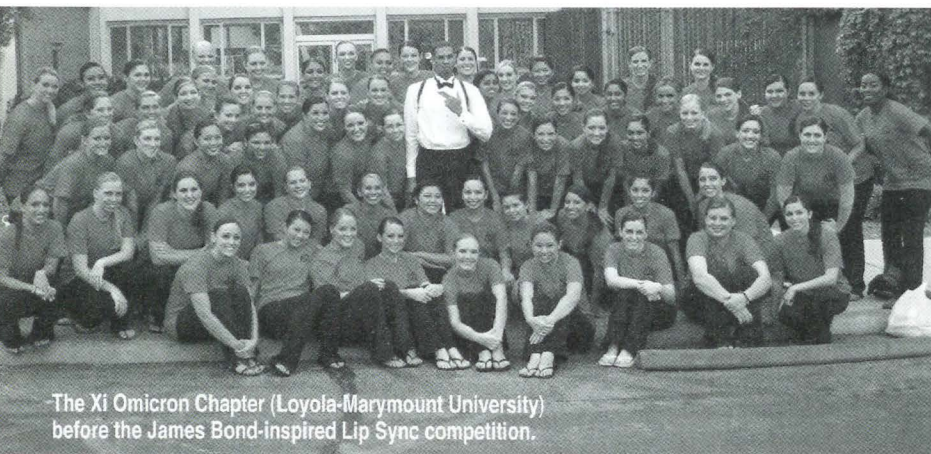
### Grand Valley State University

achieved the highest GPA in the GVSU Panhellenic and was the only sorority on campus to receive the Chapter of Excellence Award.

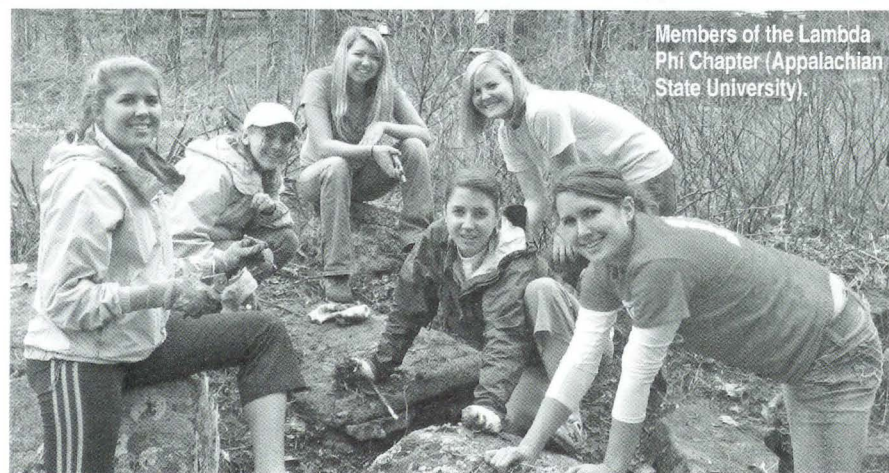
## Xi Omega

### Purdue University

provided alumnae who visited the chapter during Homecoming with brochures containing the latest chapter news. The chapter hosted a Dads Day cook out and helped local alumnae support



The Xi Omicron Chapter (Loyola-Marymount University) before the James Bond-inspired Lip Sync competition.



Members of the Lambda Phi Chapter (Appalachian State University).



the Tippecanoe Community Health Clinic. The annual Turtle Tug event raised \$1,200 for The Painted Turtle camp and the chapter also took part in the Diversity Step Challenge to promote diversity on campus.

## Omicron Alpha

### St. Mary's University

members attended the First Annual Tony and Eva Parker Celebrity Casino Night in support of Eva Longoria-Parker's charity, Eva's Heroes, which provides support for those with developmental challenges. The chapter held an alumnae barbecue during Homecoming and participated in a volunteer project at the San Antonio Children's Museum. Omicron Alpha also raised \$600 during the Alzheimer's Memory Walk.

## Omicron Beta

### Richard Stockton College of New Jersey

volunteered to help support participants in Light the Night Walk to raise funds for the Leukemia and Lymphoma Society. Members shared Founders Day with other chapters in Region II, donated needed items to the K9 Hearing Companions, donated mittens to the Pennsylvania School for the Deaf and participated in the Lake Fred Clean Up.

## Omicron Zeta

### Randolph-Macon College

welcomed alumnae to their Founders Day event and hosted a pot luck dinner for parents during Parents Weekend. The chapter's Big Man on Campus event raised \$300 for philanthropy.

## Omicron Lambda

### North Carolina State University

volunteered at Camp Woodbine, which is associated with the Carolina Ear and Hearing Clinic. The chapter held several philanthropic events in the week leading up to Founders Day.

## Omicron Mu

### University of South Carolina/Upstate

participated in the local March of Dimes chapter's walk in Spartanburg and invited parents to attend their Founders Day celebration. The chapter also participated in a university-sponsored Habitat for Humanity house building event.

## Omicron Nu

### University of Windsor

collected canned goods at Halloween for the Salvation Army and raised funds for Mothers Against Drunk Driving (MADD) and a local women's shelter.

## Omicron Omicron

### Lindenwood University

shared Founders Day with the St. Louis Alumnae Chapter and hosted a family breakfast during Homecoming festivities. The chapter's Homecoming float won third place. Omicron Omicron held their third annual Walk for Autism and participated in Up 'Til Dawn to benefit St. Jude's Children's Hospital.

## Omicron Pi

### Frostburg State University

participated in the student organization showcase on campus. The chapter raised \$4,000, the most money for the United Way, during



Members of the Omicron Sigma Chapter (Gallaudet University).

Homecoming and a member was chosen Homecoming Queen. They also participated in The Big Event, a campus clean up event.

## Omicron Sigma

### Gallaudet University

combined forces with seven other Greek organizations on campus to raise \$1,600 and help provide resources for a deaf camper at Lions Camp Kirby in Pennsylvania. The chapter also took part in a three-state community service, the Walk for Hope to support breast cancer research, the AIDS Walk over Washington and the Green Festival.

## Pi Alpha

### University of Florida

Caroline Wright, a new member, was named the 12<sup>th</sup> best sailor in the world in her division by the International Sailing Federation. The chapter participated in the Clay Classic to benefit the House Ear Institute and took part in a fall fair to benefit the organization Horses Helping People.

## Pi Beta

### University of Hartford

celebrated Founders Day with Gamma Beta (University of Connecticut). The chapter hosted a luncheon for alumnae during Homecoming and participated in the Relay for Life. Pi Beta also took part in a children's Halloween party called Hallopalooza and sent out over 6,000 letters to collect donations for St. Jude's Children's Research Hospital.

## Pi Delta

### Wake Forest University

hosted a dinner for alumnae for Founders Day. Parents were invited to dinner and a football game during Parents Weekend. The chapter ran a booth for Project Pumpkin, a Halloween event that provides a safe and fun experience for underprivileged children and came in first in the Wake the Library 5K and 1 Mile Fun Run to support library programs.

## Pi Gamma

### California State University/Northridge

celebrated Founders Day with alumnae and hosted its first Turtle Tug event to raise money for The Painted Turtle camp.

## Pi Epsilon

### Clemson University

planned its third annual charity Clay Classic Skeet Shoot.

## Pi Zeta

### Arizona State University

participated in the A.C.E. Project, hosted by the local Sigma Pi chapter, as a campus beautification event for ASU Greek Life. Pi Zeta helped ASU celebrate its 50<sup>th</sup> anniversary, donated to Locks for Love and participated in the Walk for Autism at Tempe Beach Park.



# collegiate awards convention 2008

**Betty Heusch Agler President's Award** shall be an outstanding achievement award given at each convention to a chapter which has shown special achievement or has handled an unusual/critical situation in an exemplary manner, bringing credit to Delta Zeta in general and its chapter members individually.

## **Epsilon Zeta Chapter (Drexel University)**

The **Caryatides Awards** consist of six statues (representing the six maidens on the Porch of the Maidens on the Acropolis in Athens, Greece) presented to those chapters which have best envisioned and fulfilled a New Member Education Program that has brought enrichment to the new members.

**Gamma Kappa Chapter (Kent State University)**  
**Theta Theta Chapter (DePaul University)**  
**Omicron Zeta Chapter (Randolph Macon College)**  
**Lambda Sigma Chapter (Winthrop University)**  
**Pi Alpha Chapter (University of Florida)**  
**Pi Epsilon Chapter (Clemson University)**

The **Crest Awards** are presented to outstanding college chapters that have excelled consistently in all areas of programming.

**Sigma Chapter (Louisiana State University)**  
**Delta Delta Chapter (Georgia State University)**  
**Zeta Pi Chapter (University of Georgia)**  
**Xi Omicron Chapter (Loyola-Marymount)**

The **Gertrude Houk Farris Award** was established in her name in recognition of her many years of service to Delta Zeta as National President and as a Panhellenic leader. This traveling trophy shall be presented jointly to recognize outstanding alumnae-collegiate chapter programming and activity.

**Pi Zeta Chapter (Arizona State University) and the Phoenix Valley Alumnae Chapter**

The **Founders Award** is given to the chapter or chapters with a high record of achievement over the previous two-year period.

**Delta Delta Chapter (Georgia State University)**  
**Xi Omicron Chapter (Loyola-Marymount)**

The **Heritage Cup** is presented to the college and/or alumnae chapter which has contributed significantly and most effectively to the Delta Zeta National Historical Museum in Oxford, Ohio.

**Zeta Lambda Chapter (East Carolina University)**

**Margaret Huenefeld Pease Foundation Award**, honoring Margaret Huenefeld Pease, National President, 1934-36, is for chapter excellence in local philanthropy.

## **Zeta Pi Chapter (University of Georgia)**

The **Adelaide See Loving Cup** is given to a chapter which has shown unusual improvement since the last National Convention. This improvement may be in any specific area or a combination of areas.

## **Zeta Psi Chapter (Stephen F. Austin University)**

The **Genevieve Schmitt Memorial Plaque** was established by her chapter in her honor as an outstanding member, and shall be given to the college chapter with the highest academic rating.

## **Alpha Rho Chapter (Ohio Wesleyan University)**

The **Lisbeth Innis Francis Award**, honoring Lisbeth Innis Francis, National President, 1971-73, is for chapter excellence in overall philanthropy.

## **Omicron Pi Chapter (Frostburg University)**

## **Silver Awards for Philanthropy Excellence**

**Epsilon Sigma Chapter (Wayne State University)**  
**Theta Phi Chapter (Old Dominion University)**  
**Xi Omicron Chapter (Loyola-Marymount University)**  
**Omicron Pi Chapter (Frostburg State University)**  
**Pi Alpha Chapter (University of Florida)**

## **Superior Membership Awards**

**Omicron Chapter (University of Pittsburgh)**  
**Kappa Xi Chapter (Duquesne University)**  
**Xi Iota Chapter (Muhlenberg College)**  
**Omicron Alpha Chapter (St. Mary's University)**

## **Silver Awards for Academic Excellence**

**Alpha Rho Chapter (Ohio Wesleyan University)**  
**Iota Rho Chapter (West Chester University)**  
**Xi Omicron Chapter (Loyola Marymount University)**  
**Pi Beta Chapter (University of Hartford)**



# alumnae awards convention 2008

The **Achoth Award** is given to specially selected alumnae who have demonstrated, by long and faithful service, their continued loyalty to Delta Zeta, particularly in their local communities.

Elizabeth Williams Abel AK '78  
Linda Schaefer Allen KB '75  
Ilah Cline Anderson BT '65  
Irene Leslie Bush AS '49  
Joanne Reilly Bushey K '63  
Suzanne Trimble Cloore K '56  
Pamela McClure Cronenwett AA '60  
Helene Johnson Cushenan BQ '47  
Susan Hein Feuerherm EK '67  
Marlene Thompson Gilpin AN '60  
Judy Harwell ZP '63  
Linda Singer Keefe EY '67  
Nancy Greene Lackey AG '53  
Patricia Mays Lins ZP '63  
Peggy Burnett Moore AG '56  
Susan Norman Z '70  
Mary Louise DeCasper Shannon AS '62  
Doris Wheeler Sisk FY '54  
Beverly Carlson Swanson BT '68  
Jane Harrison Telder PI '55  
Rita DiLucia Warfield KE '88  
Elizabeth Miller Wood O '62  
Kenna Howell Worthington M '63

**Mary Margaret Huenefeld Pease Council Award** was established in tribute to her service as National President, Editor of *The LAMP of Delta Zeta*, and other national offices. This traveling trophy shall be given to a small alumnae chapter which has excelled in all areas of alumnae work.

**Pasadena-Foothill Alumnae Chapter**

**Myrtle Graeter Hinkly Council Award**, a gift from the Texas Delta Zetas, was established in tribute to her years of service, two different periods as National President and two different periods as National Treasurer. This traveling trophy shall be given to a large alumnae chapter that has excelled in all areas of alumnae work.

**Huntsville Alumnae Chapter**

**Gertrude Houk Farris Award** was established in her name in recognition of her many years of service to Delta Zeta as National President and as a Panhellenic leader. This traveling trophy shall be presented jointly to recognize outstanding alumnae-collegiate chapter programming and activity.

**Pi Zeta Chapter (Arizona State University) and the Phoenix Valley Alumnae Chapter**

**Joan Dondrea Lowry Public Relations Award**, honoring Joan Dondrea Lowry, Foundation President for 1977 to 1985, is for collegiate or alumnae chapter excellence in overall public relations.

**Huntsville Alumnae Chapter**

**Arlene Marshall Tribute Awards** honors Arlene Newman Marshall, Foundation President, 1983-87, and is given to a collegiate or alumnae chapter with significant and commendable outreach to others in their community.

**Greater Seattle Alumnae Chapter  
Surfing Sisters Virtual Alumnae Chapter  
Epsilon Chapter (Indiana University)**

**Katie Blanche Masters Stallworth Awards** honoring Katie Blanche Masters Stallworth, who was Foundation President from 1970 to 1975, is for a large alumnae chapter (51 or more members) and a small alumnae chapter (one to 50 members) donating the largest amount per member to Delta Zeta's major philanthropies.

**Large Chapter - Long Beach Alumnae Chapter  
Small Chapter - Toledo Alumnae Chapter**

**Gail Patrick Award** honoring Gail Patrick AII, Foundation Trustee from 1961 to 1969 and Woman of the Year for 1962, actress, television producer and philanthropist, is for chapter excellence in overall philanthropy.

**Huntsville Alumnae Chapter**

**Myrtle Graeter Hinkly Foundation Award**, honoring Myrtle Graeter Hinkly, National President from 1928 to 1934, and again from 1938 to 1940, is for chapter excellence in a local philanthropy.

**Pasadena Foothills Alumnae Chapter**

**Silver Awards for Alumnae Excellence**

**Columbia South Carolina Alumnae Chapter  
Greater Seattle Alumnae Chapter  
Houston Alumnae Chapter  
Huntsville Alumnae Chapter  
Long Beach Alumnae Chapter  
Pasadena-Foothill Alumnae Chapter**

**Silver Awards for Philanthropy**

**Huntsville Alumnae Chapter  
Long Beach Alumnae Chapter  
North Central Texas Alumnae Chapter  
Pasadena-Foothill Alumnae Chapter  
Surfing Sisters Alumnae Chapter  
Westchester Alumnae Chapter**



# flame eternal

From 02/01/08 through 10/29/08

## ALPHA

Lydia Osborn Wiepking  
Ruth Ohler Carpenter '28  
Kay Ridenour Wilson '62

## BETA

Sarah Neel Page '43

## GAMMA

Maxine Mason Peterson '33  
Olive Bostrom '36  
Marian Bartholomew Lambert '41  
Margaret Wipperman '44

## DELTA

Lucille Washburn Brown '18  
Marjorie Lazure Fryback '30

## EPSILON

Roseann Ball Ison '46  
Karen Gwynn Briscoe-Smith '62  
Ingrid Caryn Bannec '77

## THETA

Dorothy Gray Neutzling '30  
Johanna Shetter Hyde '53

## IOTA

Helen Sheveland Schofield '27  
Gladys Elder Phelps '29  
Suzanne Dakin Kulo '51  
Karren Rodighier Junkunc '61

## KAPPA

Lelabell Anderson Amey '32  
Ruth Sutton Waters '34  
Flora Catterall Beggs '42  
Barbara Beach Sharp '42  
Jimmie McMackin Thelen '44  
Phyllis Frye Hansson '44  
Carol Ewart Braman '46  
B. Jean Kuist '48  
Barbara Bird '62  
Jeanne Torrey Brown '62  
Michelle Denise Willows '90  
Roberta Bowlby Aldrich

## MU

Laverne William Ludlow '21  
Ethel Sala Gaviati-Koons '32  
Janette Dennison Washburn '38  
Frances Jones Freitas '43  
Jean F. Bonner '47  
Susan Blackard Hatch '65  
Trudy Turner McCann '66

## NU

Maryann Miller Langley '36  
Irma Lorentz Brink '46

## OMICRON

Jane Holsinger Poynter '48

## PI

Eunice Felter Boyer '36  
Aldina Goetzinger Dunlap '40

## RHO

Alma Powell Ramsey '43

## SIGMA

Jane Fargason deLassus '38  
Thelma Fontenot Greenwald '43  
Betty Carlin McArthur '50

## TAU

H. Kathryn Bryngelson Reiss '46  
Diane Skyler McClure '62  
Marcia Randall Peterson '63

## PHI

Edythe Miller Boucher '31  
Dorothy Evans Swannack '34  
Edith Halverson White '56

## CHI

Margaret Brineman Ness '32  
Ida Gunter Burns '33  
Patricia Sexton Bissell '43  
Lydia Storli Paygr '43

## PSI

Charlotte Watkins Burch '28  
Ruth Morgan Tanner '35  
Ruth Barrows Yoder '43  
Helen Neese Jennings '60

## ALPHA ALPHA

Jeanne Richards McDonald '43  
Gail A. Gruver '65

## ALPHA BETA

Elizabeth McCarron Gruber '26  
Patricia Stem Horney '38  
Kathryn Zarub Kiestler '45  
Jacqueline Orth Curtright '55  
Natalie Ryan Marks '63  
Shirley Phillips Johnston '63

## ALPHA GAMMA

Katherine Walker Evans '30  
Lorraine Ingram Abrams '34  
Juarine Berrey Van Tassell '34  
Susan Caldwell Madden '40  
Charlotte Holliman Montgomery '61

## ALPHA DELTA

Mary Lee O'Neal Chatnuck '45  
Clotilda Mosesso Stahl '55

## ALPHA EPSILON

Ruth Dunn King '31  
Mary Howard Dickinson '48

## ALPHA ZETA

Doris Moynihan Barry '41  
Florentina Leipniker Shupack '41  
Florence Schoen Miller '49  
Margaret Petetin Mascharka '58

## ALPHA ETA

Virginia Ward Zehe '28  
Janet Brackett Koivunen '35

## ALPHA THETA

Carolyn Stewart Eustice '33  
Julia Pogue Reid '36  
Mary Phillips Reynolds '52

## ALPHA KAPPA

Barbara Van Alstyne Woldt '49

## ALPHA LAMBDA

Maybelle Ratliff Conrad '26  
Betty Aicher Weir '30

## ALPHA PI

Emogene Claytor Kelser '38  
Bettye Prince '41

## ALPHA RHO

Kathryn Schmid Kennedy '31

## ALPHA SIGMA

Betty Louise Linthicum '44  
Mary Peters Gilbert '47  
Norma Braddock Jackson '50

## ALPHA TAU

Jackie Merkley Flowers '49  
Linda Hunter Benavides '56  
Bernice Cowsar Beardsley '67  
Margaret Blackmon Barfield '67

## ALPHA UPSILON

Patricia Kenerson Stanley '54  
Joan Scarlott Lang '58

## ALPHA PHI

Enola Snodgrass Logan '25  
Stella Cutlip Kern Fly '33

## ALPHA CHI

Joyce Miers Margerum '27  
Ruth Taylor Buckwalter '33  
Melina Morley Sercombe '41  
Charlotte Hodges Peebles '44  
Doris Beaver Campbell '47  
Claudia Wood Grace '57  
Aileen Hayman Jewett '62

## BETA ALPHA

Marguerite McEnney Masterson '34  
Ruth MacDonald Fagan '41  
Elsie Anderson Drew '43  
Phyllis Stedman Whaley '43  
Barbara Abel Swanson '49

## BETA GAMMA

Fannie Arthur Harned '32  
Lois Davies Tyler '46  
Doris Lurding Eirk '53

## BETA DELTA

Willie Taylor Hendley '31

## BETA ZETA

Marjorie Wallace McConnell '37  
June Herrmann Fairbanks '38  
Norma Hamilton Lundberg '62

## BETA ETA

Esther Dudley Swern '30

## BETA THETA

Dorothy Yawner Connelly '46  
Christine Beagle Swavely '49  
Ruth Dobson Jensh '59

## BETA KAPPA

Virginia Harding Roth '40  
Barbara Taylor Wendell '41  
Sharon Weaver Swanson '59

## BETA LAMBDA

Virginia Bruce Nichols '34

## BETA NU

Janet Miller Martin '52

## BETA XI

Opal Deason Donahoo '43  
Betty Grady Bailey '45  
Bettsy Formby Edwards



**BETA PI**

Margery Boothroyd Starnes '46  
Christine Kramer Yuill '57

**BETA RHO**

Joanne Darcy McConkey '44  
Barbara Whittaker Gregor '46  
Susan Chapman Derridinger '66

**BETA SIGMA**

Margarete Emslie Busch '41  
Ferne Gardner Sparks '42

**BETA TAU**

Evelyn Cunningham Young '48  
Evelyn Smith Posvar '63  
Ann Crawford Alexander '01

**BETA PHI**

Claudine Gates Adams '41

**BETA CHI**

Alma Gluntz Ripper '41  
Marjorie Lutz Trout '41  
Mabel Sue Stirewalt Lane '43  
Helen Rorick Siefert '43  
Ruth Olsen Wickemeyer '49

**BETA PSI**

Helen Barbot Debrux

**BETA OMEGA**

Marjorie Lansing Huber '63  
Marjorie Ludeman Maxfield '64

**GAMMA ALPHA**

Audrey Singer Southwick '41  
Elizabeth Ellen Beach '44

**GAMMA BETA**

Elsie Milardo Malkin '49

**GAMMA DELTA**

Emily Frank Black '55  
Elizabeth Ann Kelley '61  
Janet Arculin Powell '67

**GAMMA EPSILON**

Romaine Purcell Peterson '53

**GAMMA ZETA**

Mary Grace Horrigan '46  
Leta Shine Combs '48  
Leslie Lepar Prothro '66  
Debra Webster Youngs '80

**GAMMA THETA**

Roberta Rabenhorst Litten '57

**GAMMA KAPPA**

Marilyn Doney '53  
Eleanor Bujalski McConnell '53  
Patricia Cerato Quarterson '60  
Barbara Kietlanski Slane '61

**GAMMA NU**

Dema Guyer Martin '56  
Ann Norris Reid '56  
Sarah Trulock Thompson '56

**GAMMA OMICRON**

Patricia Schroeder Lytton '57

**GAMMA RHO**

Sarah Richards Curtis '63

**GAMMA SIGMA**

Louise Murphy Bohl '57  
Mary Polzin Anderson '57

**GAMMA UPSILON**

Lillian Eckert Sloan '35  
Veronica Bauer Doyle '43  
Frances Higgins Wisler '45

**GAMMA PHI**

Ruth Lynn Thomson Vereb '57  
Kathryn Albion Martin '57  
Joyce Rehburg Abercrombie '58

**GAMMA CHI**

Shirley Skiles Hizer '57  
Barbara Vaughan Black '66

**GAMMA PSI**

Madonna Herrie Savich '76

**DELTA EPSILON**

Patricia Conklin Rhatigan '72  
Elizabeth Boyle Sutton '72

**DELTA KAPPA**

Jayne Brennan Vildibill '63

**DELTA MU**

Marilyn Menter Garred '56

**DELTA XI**

Jean C. Moore '60

**DELTA RHO**

Phyllis Ann Vanwinkle '70

**DELTA SIGMA**

Kathryn Johnson DeWitt '57

**DELTA TAU**

Phyllis Geil Gifford '57  
Marion DePater '62

**DELTA UPSILON**

Helen Berry Slicer '58

**DELTA PHI**

Phyllis Hatfield Crossland '58

**DELTA OMEGA**

Danielle Schmidt Poland '82

**EPSILON ALPHA**

Helen Jansen King '56

**EPSILON GAMMA**

Pamela J. Hankins '68  
Barbara Bruch Kerber '78

**EPSILON DELTA**

Thelma Sechrist Hull '57

**EPSILON EPSILON**

Beverly Brydon Marker '58

**EPSILON ZETA**

Mildred Chudy Thomas '57

**EPSILON ETA**

Kathryne Russell Sowinski '57  
June Hill Barnes '63

**EPSILON THETA**

Maureen Kennedy Collins '73

**EPSILON KAPPA**

Alice Edington Reck '56  
Phyllis Asplund Laper '57  
Judith Kehl Neinfeldt '57  
Stacy Lynn Brisky '00

**EPSILON OMICRON**

Gladys Clauser Keefner '58

**EPSILON UPSILON**

Billie Anderson Wilds '61

**EPSILON PSI**

Marie Loponte '60

**EPSILON OMEGA**

Shirley Hagen Radke '62

**ZETA BETA**

Deborah Werth Hammond '72

**ZETA GAMMA**

Sidonie Soulier Burns '58

**ZETA ZETA**

Evelyn Franklin Bowie '63

**ZETA KAPPA**

Mary Schmuck Kandel '60  
Deborah Grandstaff Record '72  
Angela Badertscher '99

**ZETA LAMBDA**

Mildred Sheffield Wells '60

**ZETA OMICRON**

Sidney Rissmann McDonald '72

**THETA ALPHA**

Carolyn Mortimer Braga '62

**THETA DELTA**

Phyllis Mitchell Maxwell '35  
Janet McConnell Lutz '62

**THETA ZETA**

Catharine Disney Gouldthread  
Cornelia Grant Payne '62

**THETA IOTA**

Lisa McAllister Smith '82

**THETA NU**

Deborah Ellingson Humi '69

**THETA SIGMA**

Jane Leary Janitz '66  
Judy Ann Kelly '70  
Cynthia Jan Armstrong '72

**IOTA IOTA**

Elizabeth Calahan Emerson '69

**IOTA LAMBDA**

Ara Louise Cauvel '67  
Karen O'Grady Harper '67

**IOTA NU**

Anne Marie Minor Spell '82

**IOTA UPSILON**

Nancy Jaeger Desmond '68

**KAPPA MU**

Rebecca Claffy Rogers '73

**KAPPA TAU**

Julianne Mattis '88

**LAMBDA BETA**

Linn Denise Aussenbaugh '89

**LAMBDA SIGMA**

Rachel Blose Sansbury '77  
Lisa Franchina Roberts '86

In Issue #1 - 2008 of *The LAMP*, it was erroneously reported in the "Flame Eternal" on page 29 that Dorothy Kretsch Funkhouser E '55 was deceased. We apologize for this error.



# directory

For a complete version of the directory, please call **1-800-6-ALUMNA**.  
To change your name or address, to order a DZ DeZigns catalog, for information on the magazine program or other Delta Zeta programs, contact:

## National Headquarters

202 East Church Street, Oxford, Ohio 45056

**Phone:** (513) 523-7597

**Fax:** (513) 523-1921

**Web site:** [www.deltazeta.org](http://www.deltazeta.org)

## National Council

### NATIONAL PRESIDENT

Michelle Albrecht Smith  
4319 Canehill Avenue, Lakewood, CA 90713

### NATIONAL VICE PRESIDENT OF MEMBERSHIP DEVELOPMENT

Phyllis Sundberg Davis  
124 Beatrice Lane, Brandon, MS 39047

### NATIONAL VICE PRESIDENT OF COLLEGE CHAPTER OPERATIONS

Marlo L. Dorsey  
400 West 58th St., #4F, New York, NY 10019

### NATIONAL VICE PRESIDENT OF ALUMNAE AFFAIRS

Karen Martin Campbell  
441-101 Cranston Ct, Long Beach, CA 90803

### NATIONAL SECRETARY

Ann Gurley Morrow  
7475 Clinton Road, Paducah, KY 42001

### NATIONAL TREASURER

Diane M. Stecher  
6003 Kensington Way, Imperial, MO 63052-2369

### NATIONAL DIRECTOR

Heather Jerden Anderson  
548 Edgeview Drive, Grand Prairie, TX 75052

### NATIONAL DIRECTOR

Cathy Irvin Painter  
4108 Mek Drive, Austin, TX 78731

### NATIONAL DIRECTOR

Jeanine Petersen Triplett  
7203 Limestone Court, Crestwood, KY 40014

### PAST NATIONAL PRESIDENT

Karly Klemp Burns  
331 7th Avenue North, Tierra Verde, FL 33715

### NATIONAL PANHELLENIC CONFERENCE DELEGATE

Lynnda Wolf Hoefler  
2981 Telber Court, Stow, OH 44224

## NATIONAL PANHELLENIC CONFERENCE ALTERNATES

1st Alternate - Phyllis Sundberg Davis  
124 Beatrice Lane, Brandon, MS 39047  
2nd Alternate - Karly Klemp Burns  
331 7th Avenue North, Tierra Verde, FL 33715  
3rd Alternate - Kathi Bray Heatherly  
528 Alexandria Drive, Naperville, IL 60565

## Delta Zeta Foundation

### PRESIDENT

Ruth Weider Patterson  
3623 Devereaux Road, Columbia, SC 29205

### VICE PRESIDENT

Marvona Easley Tavlin  
6320 Rogers Circle, Lincoln, NE 68506

### VICE PRESIDENT-MUSEUM

Norma Minch Andrisek  
319 Janice Drive, Berea, OH 44017

### SECRETARY/TREASURER

Paula McKean McQuillen  
1782 Woodstone Drive, Victoria, MN 55386

### TRUSTEE

Barbara Poremba  
135 Edge Hill Road, Fairfield, CT 06824

### TRUSTEE

Nancy Russell  
17877 Mariposa Avenue, Yorba Linda, CA 92886

### TRUSTEE

Jean Baughman Templeton  
612 Adams Street SE, Huntsville, AL 35801

### TRUSTEE

Sonja Nay Wise  
8439 Hunter Trace, Sellersburg, IN 47172

### MEMBER

Michelle Albrecht Smith  
4319 Canehill Avenue, Lakewood, CA 90713

### DIRECTOR OF DEVELOPMENT

Chris Kolodgie Kern  
202 E. Church Street, Oxford, OH 45056

## Committees

### FINANCE/INVESTMENTS

Marvona Easley Tavlin  
6320 Rogers Circle, Lincoln, NE 68506

### GRADUATE SCHOLARSHIPS

Elizabeth Chilton Gryder  
306 Lake Hills Lane, Spring City, TN 37381

### GALLAUDET UNIVERSITY

Joan Dondrea Lowry  
578 Yarmouth Drive, Bay Village, OH 44140

### HOUSE EAR INSTITUTE

Marilyn Fey Ghysels  
8442 Lindante Drive, Whittier, CA 90603

### UNDERGRADUATE SCHOLARSHIPS

Lynn Ehrenberg  
8 Country Mile Rd., Pomona, CA 91766-6614

### WEBSITE/COMMUNICATIONS

Jeanine Petersen Triplett  
7203 Limestone Court, Crestwood, KY 40014

## National Historical Museum and Headquarters

### NATIONAL HEADQUARTERS

202 East Church Street, Oxford, OH 45056  
(513) 523-7597 (FAX) (513) 523-1921

### EXECUTIVE DIRECTOR

Cynthia Winslow Menges

### DIRECTOR OF COMMUNICATIONS - EDITOR *The LAMP*

Nancy E. Brewer

### DIRECTOR OF EDUCATION TECHNOLOGIES

Allison Lynch St. Germain

### CHAPTER SERVICES DIRECTOR

Mandi Wise

### EDUCATIONAL LEADERSHIP CONSULTANTS

Jacquelyn Asman	Ellen Lassiter
Aubrey Cammack	Mary Leschper
Christina Edwards	Sarah Woodard

### HOUSING ADMINISTRATOR

Norma Minch Andrisek  
319 Janice Drive, Berea, OH 44017

## National Standing Committees

### ACADEMICS

Carolee Lewis Followill  
822 Oak Park Boulevard, Cedar Falls, IA 50613

### AWARDS (ALUMNAE AND COLLEGIATE)

Karen Severloh Moffitt  
2075 Los Robles Ave., San Marino, CA 91108

### CONSTITUTION

Anne Marie Jones Gavin  
3264 Swan Drive, Vineland, NJ 08361

### EXTENSION

Sara Groom Boucek  
1026 North Wilshire Lane, Arlington Heights, IL 60004

### FIELD ACTIVITIES

Marlo L. Dorsey  
400 West 58th St., #4F, New York, NY 10019

## FINANCE

Diane M. Stecher  
6003 Kensington Way, Imperial, MO 63052-2369

## HISTORY

Jean Gileno Lloyd  
5941 Haverford Avenue, Indianapolis, IN 46220

## JUDICIARY

Tracy Wilson LeSieur  
2805 Downing Circle, Birmingham, AL 35242-4618

## MUSIC

Laurie Tretter  
7357 Coronado Avenue, St. Louis, MO 63116

## NEW MEMBER EDUCATION

Jennifer Yeagley Anderson  
1014 Park Village Drive, Louisville, OH 44641

## PHILANTHROPY

Leslie Evans Williams  
6102 Queens River Dr., Mableton, GA 30126

## PROGRAM DEVELOPMENT

Chandra Annette Daffer  
404 Milner Street #A, Hays, KS 67601

## PUBLICATIONS

Marvona Easley Tavlin  
6320 Rogers Circle, Lincoln, NE 68506

## RECRUITMENT

Lauren Davis Campbell  
61270 South Vankal, Mattawan, MI 49071-8511

## RISK MANAGEMENT

Heather Angove  
279 Brooklyn Avenue, San Jose, CA 95128

## RITUAL

Patricia Menendez Tector  
4704 Cypress Ford Dr., Fuquay-Varina, NC 27526

## National Special Committees

### CONVENTION CHAIRMAN

Kimberly Harris Bath  
1048 Fawnview Road, Montgomery, AL 36117

### SORORITY EDUCATION

Lynne Ciervo  
11370 Boxford Place, Alpharetta, GA 30022

### STATUS

Judy Harwood  
211 Lathrop Ln., Manchester Center, VT 05255

### TECHNOLOGY DEVELOPMENT

Melissa Seaman Waldron  
2612 Monterey Drive, Pittsburgh, PA 15241

### TRAINING

JoAnn Arnholt  
29 Sterling Road, Princeton, NJ 08540

## Alumnae Committee

### CHAPTER ASSOCIATION CONSULTANT

Refer to Karen Martin Campbell,  
National Vice President of Alumnae Affairs



## Historian Emeritus

Florence Hood Miner  
1917 Five Iron Drive, Castle Rock, CO 80104

## Area Alumnae Directors

### BLUE RIDGE - Virginia, West Virginia, North Carolina, South Carolina, Washington, DC

AAD: Emily Myers  
5119A Dover Drive, Cross Lanes, WV 25313

Membership Chairman  
Amanda Ingram  
3 Spring Hope Circle, Apt. A, Spartanburg, SC 29307

Development Chairman  
Shenna Russell Alvis  
919 Diary Street, Asheboro, NC 27203

Public Relations Chairman  
Lauren Wicks  
306 Military Road, Suffolk, VA 23434

### CENTRAL PLAINS - North Dakota, South Dakota, Nebraska, Colorado, Kansas, Missouri, Iowa, Minnesota

AAD: Susan Hein Feuerherm  
3849 Conroy Trail, Inver Grove Heights, MN 55076

Membership Chairman  
Susan Mitchell Anderson  
3885 Timberwood Court, Colorado Springs, CO 80918

Development Chairman  
Rhonda Reifschneider Roe  
7998 Inland Lane N., Maple Grove, MN 55311

Public Relations Chairman  
Hope Jones Corizzo  
3716 Clayton Drive, Leavenworth, KS 66048

### GREAT LAKES - Michigan, Ohio, Canada, United Kingdom

AAD: Denise Sabo Brenner  
230 East Cooke Road, Columbus, OH 43214

Membership Chairman  
Christyle Tackett Broadworth  
7211 Spyglass Lane, Ypsilanti, MI 48197

Development Chairman  
Dr. Sandra Harding Alspach  
24 E. 14th Street, Holland, MI 49423

Public Relations Chairman  
Kelly Watts Gombert  
348 Lee Circle, Sagamore Hills, OH 44067

### GREAT WESTERN - Washington, Oregon, California, Arizona, Nevada, Utah, Wyoming, Idaho, Montana, Alaska, Hawaii

AAD: Beckey Robinson Romanesko,  
9303 Oakbourne, Santee, CA 92071

Membership Chairman  
Refer to AAD

Development Chairman  
Donna Sinclair  
814 Hacienda Drive, El Cajon, CA 92020

Public Relations Chairman  
Cindy Johnson Holmes  
1256 Old Hickory Road, Corona, CA 91720-5860

### MID-AMERICA - Wisconsin, Illinois, Indiana

AAD: Ann E. Langel  
6418 Toribrooke Lane, Madison, WI 53719

Membership Chairman  
Jo Ann Hempling Sparling  
2800 Woodbridge Drive, Muncie, IN 47304

Development Chairman  
Megan Farrell Skelly  
1217 Tower Drive, Ottawa, IL 61350

Public Relations Chairman  
Heidi Waltenbaugh Parker  
205 Calvin Street, Savoy, IL 61874

### MID-ATLANTIC - Pennsylvania, Delaware, New Jersey, Maryland

AAD: Diane DiOrio Rafle  
12884 Forrest Drive, Edinboro, PA 16412

Membership Chairman  
Michele Driscoll  
8202 Featherhill Road, Apt. 204, Perry Hall, MD 21128

Development Chairman  
Melissa Rennie Orlosky  
965 Margaretta Avenue, Pittsburgh, PA 15234

Public Relations Chairman  
Inez Wiatrowski Apgar  
10 Tumble Falls Road, Stockton, NJ 08559

### NORTHEAST - Maine, Vermont, New Hampshire, Massachusetts, Connecticut, Rhode Island, New York

AAD: Niki Rittenhouse  
159 Pinney Street #61, Ellington, CT 06029

Membership Chairman  
Melanie Koch  
2810 Fix Rd., Lower, Grand Island, NY 14072

Development Chairman  
Allison Mullen  
3406 N. Main Street Ext, Jamestown, NY 14701

Public Relations Chairman  
Katie Isaac Franklin  
993 John Leo Drive, Webster, NY 14580

### SOUTH CENTRAL - Kentucky, Tennessee, Louisiana, Mississippi, Arkansas, Oklahoma

AAD: Stancy Orr Bond  
714 N. Tyler Street, Little Rock, AR 72205

Membership Chairman  
Heather Brown  
261 Barfield Crescent Rd., Apt. 1603, Murfreesboro, TN 37128

Development Chairman  
Amy Harris-Chaumont  
503 Willow Bend, Youngsville, LA 70592-5133

Public Relations Chairman  
Alecia Soyk Manning  
8224 Preakness Drive, Florence, KY 41042

### SOUTHEAST - Georgia, Florida, Alabama, Puerto Rico, Virgin Islands

AAD: Christie Dale Harmon  
232 Olmstead Road, Owens Crossroads, AL 35763

Membership Chairman  
Stephanie Champion Porterfield  
3002 Shenandoah Valley Road, Atlanta, GA 30345

Development Chairman  
Josi Mandese  
1625 Pelican Drive, Merritt Island, FL 32952

Public Relations Chairman  
Rachel Watts Harchanko  
132 Cedar Lane, New Market, AL 35761

### SOUTHWEST - Texas, New Mexico

AAD: Andi Howard  
6212 Kenosha Drive, Lubbock, TX 79413

Membership Chairman  
Erin Kallus Hasbrouck  
207 Aurora Street, Houston, TX 77008

Development Chairman  
Cassie Smith Guthrie  
2837 Greenway Drive, Burleson, TX 76028

Public Relations Chairman  
Callie Schuehle Berger  
1426 Airfield Lane, Flatonia, TX 77941

## Regional Collegiate Coordinators

### REGION I - Maine, Vermont, New Hampshire, Massachusetts, Connecticut, Rhode Island, New York

RCC: Laura Baxter Hedenberg  
4 Wotton Lane, Burlington, CT 06013-2302

### REGION II - New Jersey, Eastern Pennsylvania

RCC: Meredith Horishny  
226 W. Lehigh Street, Bethlehem, PA 18018

### REGION III - Maryland, Western Pennsylvania

RCC: Gayle Evans Staub  
6542 Baywood Drive, Harrisburg, PA 17111

### REGION IV - West Virginia, Virginia, Washington, DC

RCC: Christi Schneeberger Mayer  
8867 Cherokee Rose Way, Lorton, VA 22079

### REGION V - Ohio

RCC: Pam Gehlhausen Asher  
400 Hillbrook Drive, Cuyahoga Falls, OH 44223

### REGION VI - Michigan, Canada

RCC: Andrea Kovacs Henderson  
42241 Sunnysdale Lane, Northville, MI 48168

### REGION VII - Indiana

Missy Colleen Lewis  
9318 Eden Woods Court, Indianapolis, IN 46260

### REGION VIII - Iowa, Nebraska, Wisconsin, Minnesota, South Dakota, North Dakota

RCC: Chris Martin  
2135 S. 14th, Lincoln, NE 68502

### REGION IX - Missouri, Colorado, Kansas

RCC: Stacey Wheeler Slaughter  
10184 Woodrose Lane, Highlands Ranch, CO 80129

### REGION X - California, Washington, Oregon, Montana, Idaho, Alaska, Hawaii, Nevada, Arizona, Utah, Wyoming

RCC: Sandra Shaddix Hall  
1610 East 20th Street, Santa Ana, CA 92705

### REGION XI - Oklahoma, Louisiana, Mississippi, Arkansas

RCC: Jill Jackson Swift  
4710 Harrisburg Road, Jonesboro, AR 72404

### REGION XII - Texas, New Mexico

RCC: Aileen Salinas Roel  
5426 Excello Path, San Antonio, TX 78247-5834

### REGION XIII - Tennessee, Kentucky

RCC: Julie Stewart Pride  
864 Nutwood Street, Bowling Green, KY 42103

### REGION XIV - North Carolina

RCC: Christy Phillips-Brown  
425 Lorna Street, Charlotte, NC 28205

### REGION XV - Alabama, Florida

RCC: Kathleen R. Hudson  
2039 N. Meridian Road #238, Tallahassee, FL 32302

### REGION XVI - Illinois

RCC: Stacey Smith Schmiedeknecht  
863 W. Lill Avenue, Apt. 2F, Chicago, IL 60614

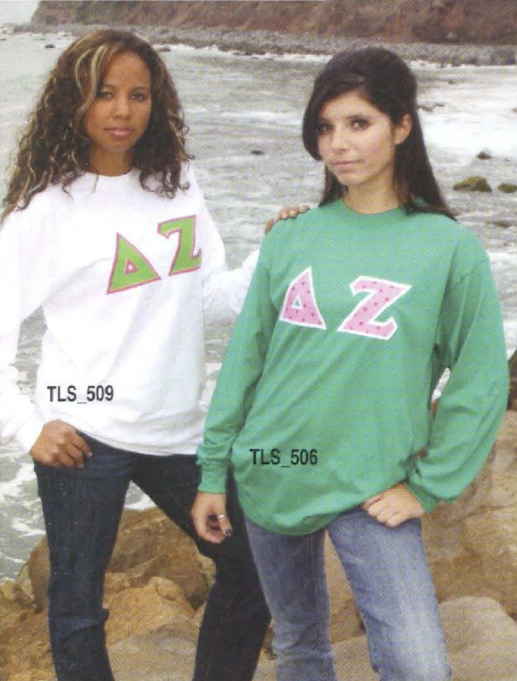
### REGION XVII - Georgia, South Carolina

RCC: Heather Busby Hanner  
359 Patrick Circle, Jenkinsburg, GA 30234-2016



## 34 Double Issue 2008





TLS\_509

TLS\_506

- TLS\_509** White long sleeve tee with applique ΔZ .....\$22
- TLS\_506** Kelly green long sleeve tee with sewn letters .....\$22

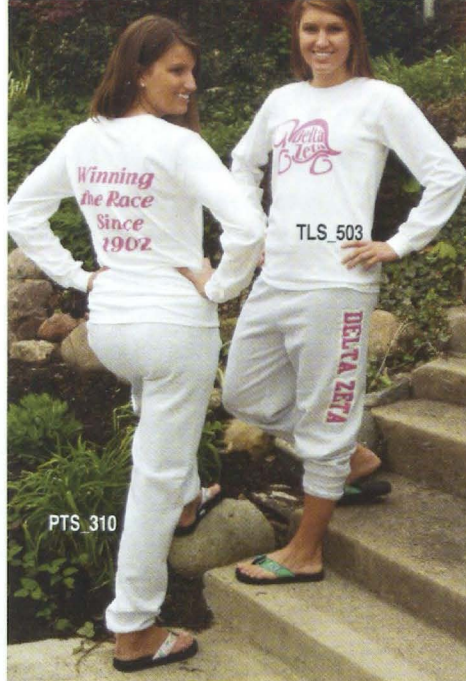


JJB\_2829

- JJB\_2829** Faux hand painted Limoges box with lamp painted inside .....\$25

JJB\_2826

- At Right**
- JJB\_2826** Silver heart box.....\$18



PTS\_310

- TLS\_503** Winning the race since 1902 pink print, graphic turtle tee .....\$16
- PTS\_310** Heather grey track pant, Delta Zeta leg print.....\$20
- sizes (S, M, L, X-L)

## Traditional ΔΖ

- At Right**
- TSS\_553** Delta Zeta Recycle heart printed on eco friendly tee .....\$18
- TTT\_582** Pink Goes Green tee printed on eco friendly tank .....\$18
- sizes (S, M, L, X-L)
- BCT\_815** Pink Goes Green eco-conscious everyday tote.....\$12

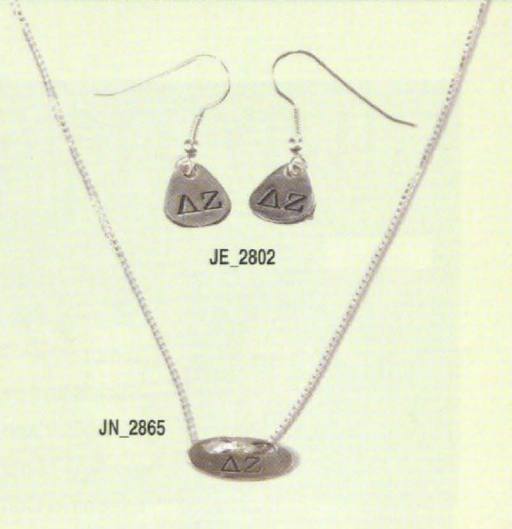


JB\_1825

- JB\_1825** Silver heart toggle bracelet.....\$49

JN\_2852

- JN\_2852** Silver heart toggle necklace .....\$98



JE\_2802

JN\_2865

- JE\_2802** Silver charm earrings .....\$20
- JN\_2865** Silver threader charm on chain....\$22



TSS\_553

TTT\_582

BCT\_815

### SHIPPING & HANDLING CHARGES:

If your order totals	Add
\$ .00 - 15.00 .....	\$ 6.50
\$15.01 - 25.00 .....	\$ 7.50
\$25.01 - 50.00 .....	\$ 8.50
\$50.01 - 75.00 .....	\$ 9.50
\$75.01 - 100.00 .....	\$10.50
Each additional \$50.00 .....	\$ 5.00

### ADDITIONAL CHARGES

Canadian Orders .....	\$ 5.00
-----------------------	---------

### SPECIAL DELIVERY COSTS (in addition to regular rate):

2-DAY .....	\$14.00
OVERNIGHT .....	\$25.00

All merchandise is unconditionally guaranteed. All prices in U.S. dollars. Prices are subject to change without notice.

**RETURNS** To return an item, send your invoice with the package. Please send information about the merchandise to be exchanged. Shipping and handling fees are not refundable.

Larger sizes can be ordered through Delta Zeta DeZigns.

### GIFT CERTIFICATES ARE AVAILABLE

ΔΖ DeZigns is owned and operated by Delta Zeta Sorority. All proceeds go to collegiate scholarships and educational programs.

For additional Delta Zeta merchandise, please visit our Web site at [www.deltazeta.org](http://www.deltazeta.org).



# alumnae news



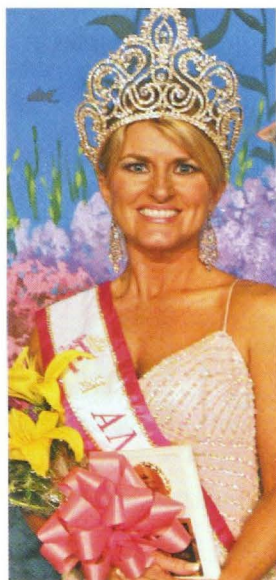
Elle Alexander ΔA '87

**Elle Alexander ΔA '87** (Elle Itkoff-Hamilton) was nominated for a Screen Actors Guild Award for Best Stunt Ensemble for the television series *Heroes*. She is a stuntwoman/actress and is also the Vice President of the Stuntwomen's Association of Motion Pictures. Her work can be viewed at [www.ellealexander.com](http://www.ellealexander.com).

**Lou Johnson Alonso BP '44** received the American Foundation for the Blind's (AFB) highest honor, the Migel Medal. Lou has devoted more than 50 years to both the blindness and deafblindness fields. Under her leadership, students at Michigan State University graduated with certifications resulting in their being better prepared to meet the unique needs of learners with visual impairments, thanks to her Teacher Preparation Program in Deafblindness and the Orientation and

Mobility (O&M) Training Program. She contributed to more than 30 scholarly articles and papers written during her service as a member of the National Executive Committee for AFB's Deafblind Project.

**Suzanne Anderson BE '88** won the Beauties of America title -- 40s Division. A communications manager for a large manufacturer in Georgetown, South Carolina, Suzanne recently completed "Leadership Georgetown County" and volunteers for the Mental Health Association, the United Way, Relay for Life and the March for Babies.



Suzanne Anderson BE '88

**Patricia Bladow EK '82**, sales and marketing director for *The Week* in Delavan, Wisconsin, has been chosen by her peers as the Lakeland Builders Association's (LBA) Associate Member of the Year, voted as the person who has given the most for LBA.



Pat Bladow EK '82

**Deborah McWhirter Bruce EY '64**, Past National Officer, was honored by the Greater Oklahoma City Alumnae Panhellenic Foundation as the Panhellenic's 2008 Women of the Year. Debbie serves as Executive Director for the Oklahoma Board of Osteopathic Examiners. The event was chaired by Deanna Alleman Pendleton AT '61, Past National Officer.

**CheVonne Burton EO '01** is a spokesmodel for Lexus Motors USA and has appeared on such shows as *Veronica Mars* and on ABC's *Jimmy*

*Kimmel Live*. She has also appeared in print campaigns for Love Fifi, Thinkfit, Schwarzkopf Got2B Magnetik hair care products and will be in the 2010 release of the Screen Gems feature film *Fired Up*.

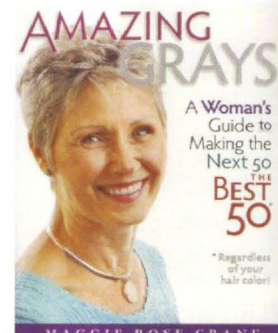


CheVonne Burton EO '01

**Jen Capstraw ET '93** was named Volunteer of the Month in November 2008 by Step Up Women's Network, a non-profit membership organization that provides professional networking and community volunteering opportunities for women. Read more at <http://www.suwn.org/spotlight.aspx#votm>.

**Maggie Rose Bartz Crane EX '67** published *Amazing Grays – A Woman's Guide to Making the Next 50 the BEST 50 (Regardless of your hair color!)*, and was featured as a guest editor on the Dove Digital Channel, which supports Dove's Real Women/Real Beauty Campaign and features an editorial board of experts and inspirational guest editors who discuss provocative and timely topics central to the real beauty debate around

relevant women's issues. Maggie says, "The wisdom of age brings about a deeper understanding of who you truly are and what really matters." Find out more about Maggie's book at [www.maggiocrane.com](http://www.maggiocrane.com).



Maggie Bartz Crane EX '67

**Robin Griehs Donoho IO '75**, Jacksonville Alumnae Chapter President, is also serving as President of the Jacksonville Alumnae Panhellenic Association (JAPA). One of her goals for the year in JAPA is to encourage environmental conservation among the organization's members through Greeks Go Green, inspired by Delta Zeta's environmental initiative, Pink Goes Green.

**Lizetta M. Frederick OK '74**, Assistant Dean of Students at the University of Houston, received the Outstanding Faculty/Staff Award which is given to the faculty/staff member who has done the most for the UH Greek community. She also received the Campus Leaders Award for Advisor of the Year, presented by the Department of Campus



Activities at the University of Houston.



Lizetta M. Frederick  $\Theta K$  '74

**Gina Furia Rubel**  $EZ$  '88 received a proclamation for business excellence from Bucks County, Pennsylvania Representative Marguerite Quinn. Rep. Quinn recognized Gina in response to her receiving the Best 50 Women in Business Award from Governor Rendell earlier this year. Gina is President and CEO of Furia Rubel Communications. Rep. Quinn recognized Rubel's recent accomplishments and their impact on the community.

Below, Bucks County, Pennsylvania Representative Marguerite Quinn (left) with Gina Furia Rubel  $EZ$  '88.



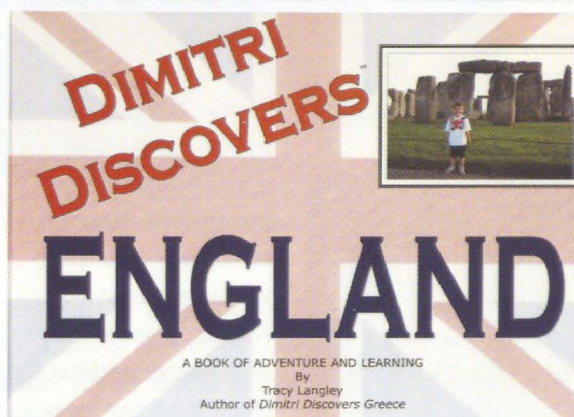
**Sara Thomas Jacoby**  $K\Psi$  '84 was named one of Maryland's Top 100 Women by The *Daily Record*. The award recognizes the outstanding achievement of female professionals who also give back to their professions and communities by mentoring others and serving in leadership roles. Sara is a financial consultant with The Legacy Group, serves on the Board of Directors for Carroll Hospital Center, Carroll Community College Foundation and Granite House, Inc.

**Carolyn T. Jones**  $\Delta$  '55, Associate Executive Vice President for Academic Affairs Emerita at Purdue University, received an honorary doctoral degree from DePauw University for her many contributions to academia over her 45-year career.

**Trish Reiland Kissick**  $\Delta\Pi$  '67 performed Disney's *High School Musical* for the Maize Recreation Commission, in Maize, Kansas. She is the director of the annual summer musical shows, which have casts of 100 or more and are open to participation by everyone in the community. She supervises many committees and oversees the orchestra and choreography directors and stage managers.

**Ann Langel**  $EQ$  '82, Mid-America Area Alumnae Director and Oscar Meyer executive administrator, brought Olympic athlete and *Keeping Up with the Kardashians* reality television star Bruce Jenner to Oscar Mayer in Madison, Wisconsin, where he spoke to 400 employees about "Finding the Champion Within," detailing his trials and tribulations leading up to his gold medal win in the decathlon in the 1976 Summer Olympics.

**Tracy Langley**  $OX$  '97 has written a children's learning and adventure book, the first in a series, entitled *Dimitri Discovers England*. Tracy is a teacher in San Jose, California and says her book "helps younger children expand their knowledge and understanding of the



Top: Joanne Fortune Pafume  $ZA$  '68, Wichita Alumnae Chapter President, with Trish Reiland Kissick  $\Delta\Pi$  '67 and Mary Jo Krueck Bond  $AA$  '60, Wichita Alumnae Chapter *LAMP* Editor and Philanthropy Chairman.

world and enhances their imaginations." Find out more about the book at [www.dimitridiscovers.com](http://www.dimitridiscovers.com).

**Lari Luckenbill**  $EI$  '03 appeared on the Food Network's *Semi-Homemade Cooking Show* as a featured guest after winning a recipe contest with her spinach and basil orzo. Her recipe is available at [http://www.foodnetwork.com/food/show\\_sh/episode/0,1976,FOOD\\_14521\\_59238,00.html](http://www.foodnetwork.com/food/show_sh/episode/0,1976,FOOD_14521_59238,00.html).

**Elizabeth McDonald Lyon**  $\Lambda\Psi$  '79 is a national ambassador with MS

LifeLines and started a grassroots runners and walkers club in Indianapolis, Indiana called Live Your Life ... Not Your MS. The club is composed of MS patients, from marathon runners to those using assistive devices. Diagnosed with multiple sclerosis in 2002, Elizabeth encourages the runners to celebrate ability, not disability.



Elizabeth McDonald Lyon  $\Lambda\Psi$  '79



**Kim Tucker Martin** ΔΠ '79 was been promoted to president of WE tv in New York. Kim previously held the position of executive vice president and general manager. She serves on the Georgia College & State University Foundation Board of Trustees, the board for Northshore Animal League and is involved with Breast Cancer Awareness, Girls Inc., Step Up for Women and We Vote '08.



**Kim Tucker Martin** ΔΠ '79

**Jane MacFarlane** ZN '90 and her service dog Ukon were featured in the Detroit *Hour* magazine. Jane served three terms to the Michigan Commission on Disability Concerns, doing advocacy and public policy work for the approximately 1.9 million disabled residents of Michigan. In addition, she works with the Xi Psi Chapter at Grand Valley State University on philanthropic projects.

**Jane MacFarlane** ZN '90 and Ukon.

**Jean Funck Person** ΘΚ '74 received the first Greek Woman of the Year award from the Greater New Orleans Alumnae Panhellenic.

**Amanda Phillips** ΕΘ '01 was recognized by *Cambridge Who's Who* for showing dedication, leadership and excellence in all aspects of script development. Amanda is Director of Development for LLP Productions, a production company that produces films and miniseries for multiple television networks. Amanda hopes to become an executive producer and produce her own projects.

**Nancy Russell** ΙΥ '76, Delta Zeta Foundation Trustee and Vice President and Regional Sales Manager at Comerica Bank in Costa Mesa, has been named Financial Services Champion of the Year by the Santa Ana District Office of the U.S. Small Business Administration. District Director J. Adalberto



Quijada said, "Nancy Russell's leadership and dedication to SBA lending and small business is a remarkable example of an advocate who uses her skills and talents to make a difference."

**Stacey Wheeler Slaughter** Κ '92 Regional Collegiate Coordinator for Region IX, was installed as the President of the Denver Area Panhellenic (DAP) as the organization celebrated its 100<sup>th</sup> anniversary. "I am humbled and honored to become the 101<sup>st</sup> president of the Panhellenic," Stacey said. There are currently 52 council members on DAP.



**Stacey Wheeler Slaughter** Κ '92, right, Denver Area Panhellenic President, with her mother, Samye Clouse.

**Diana Ray Stanley** ΔΒ '57 was chosen Senior Volunteer of the Year by the Polk County School Board for secondary schools.

**Galadriel Stineman** ΚΒ '03 is making her feature film debut in a soon-to-be-released movie in 2009, *Junk Yard Dogs*. She is also starring in Cartoon Network's live action film *Ben 10 Alien Force*, to be released in the fall of 2009. She graduated Magna Cum Laude with a Bachelor of Arts in Radio/Television from Northern Kentucky University and was named the university's Outstanding Senior of the Year.

**Barbara McKeand Stevenson** ΓΠ '65, an environmental activist and development consultant, spearheaded the Corktown Recycles project in Detroit. Barbara wants to see the recyclables as a basis for economic development in Detroit by establishing an ecologically friendly business incubator park that makes use of the materials recovered. She recently completed her tenure on the Cranbrook Peace Foundation (2006 to 2008) and has sat on the board of The Ecology Center, a nonprofit environmental organization based in Ann Arbor, Michigan, since 2005.

**Gayle McCracken Tuttle** ΖΑ '75, Director, Public Affairs & External Communications, Blue

Cross & Blue Shield of North Carolina, was honored as a leading citizen by Leadership North Carolina, which selects citizens who are current or emerging leaders in their organizations and/or communities, to explore critically important issues in five key areas: economic development, education, environment, government and politics, and health and human services.

**Faith Wixson Varney** ΑΥ '53 was named Falmouth Citizen of the Year for her many volunteer efforts in the Falmouth, Maine community. A retired music teacher, Faith serves as president of the Friends of Falmouth Memorial Library, is a member of the Falmouth Community Advisory Committee, coaches school bands and serves on the Falmouth Voter Registration Appeals Board.

**Jean Smith Young** ΑΚ '44 was inducted with her husband Frank into the Maryland Senior Citizens Hall of Fame for outstanding contributions to improve the lives of others in the community. Jean and Frank also received the GERI Award for extraordinary humanitarian community service.



# alumnae spotlight



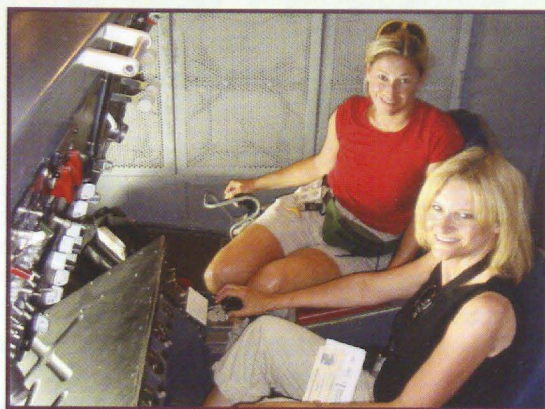
Hope Jones Corizzo ET '92

**Hope Jones Corizzo ET '92**, Central Plains Area Public Relations Chairman, received the Mary Margaret Fore Award for Outstanding Philanthropic Program at this year's National Convention for her creative efforts and fundraising diligence to make the Very Pink of Perfection campaign a success within Surfing Sisters Alumnae Chapter. The chapter raised about \$4,500 in cash and in-kind donations during 2007-2008.

Hope was invited to speak about her efforts at Delta Zeta's November 2007 Leadership Academy in Dallas, Texas. She wowed her sisters, said Andi Cooper Howard Ξ '89, Southwest Area Alumnae Director and Lubbock Alumnae Chapter President, who nominated Hope for the Fore award. "She came up with something exceptional and she needed to be recognized for it." Andi could not be more thrilled to honor her sister and friend. "Hope inspires me," Andi enthuses. "She's so creative and really interested in making things better for everyone."

Community is very important for Hope. Her husband, Chris, is a major in the U.S. Army and is serving a tour of duty in Iraq through the end of next March. The college sweethearts have two children, Nate, 11, and Sophia, 8. The family lives in Fort Leavenworth, Kansas, but will be relocating to Hawaii next year. Since they move around a lot with her husband's military career, Hope likes that she can take her alumnae chapter with her everywhere.

*Thank you to Kris Elvin O'Brien AΣ '87, Surfing Sisters Alumnae Chapter LAMP Editor, for this article.*



Jamie Bero EΘ '88 (back) with Doretta Pugh Osburn ΘΞ '82 (front) at the controls of a Southwestern Asia refueler.

**Jamie Bero EΘ '88**, College Chapter Director for the Epsilon Theta Chapter (Clarion University), received the Alice C. Huenefeld Award, presented to an outstanding College Chapter Director who has given long and dedicated service to her chapter.

Jamie, the Assistant Director of Campus Life at Clarion University, has served as the College Chapter Director for the Epsilon Theta Chapter from 1988 to 1995, then volunteered as the Province Collegiate Director for Region III (Delaware, Maryland, and Western Pennsylvania) from 1995-1997. She then continued to serve as a CCD from 1997 to the present. The chapter has always been one of the top chapters in Region III and is a consistent performer.

Jamie is also a firefighter with the Clarion Fire and Hose Company #1 in Pennsylvania and a third lieutenant for the Clarion County Emergency Response Team. She recently returned from a USO tour of the Middle East with lifelong friend, Doretta Pugh Osburn ΘΞ '82, Past National Officer, in support of our troops.

Doretta manages The Redding Brothers, an alternative rock band which made many stops in the Middle East entertaining the troops earlier this year as part of the Armed Forces Entertainment (AFE). AFE hosts over 1,200 shows around the world each year, reaching over 500,000 personnel at 270 military installations. "One general told us that this may be the last entertainment some of these troops see before going on to their missions," Jamie said. "I was honored to be a part of it."



# membership recognition & sisterhood

## National Convention

Alumnae recognized with the order of the Golden Rose for 50 years of membership at the **48<sup>th</sup> National Convention** in Miami, Florida included, from left, Janelle Walker Warden ΔH '57; Sonja Nay Wise Δ '57, Past National Officer; Marge Klingensmith Lovewell Γ '57, Past Foundation President; Betty Greene Byrne ΑΘ '58, Huntsville Alumnae Chapter President; Sandy Sebrell Bailey Θ '58, Past National Officer; and Alma Jo Moore ΖΖ '58, Past National Officer.



## Central Plains

The **Beta Tau Chapter** celebrated its 100th anniversary at Nebraska Wesleyan University. Alumnae from fourteen states attended the celebration. The chapter hosted a luncheon at the Sorority house for alumnae and friends, featuring historical displays of the past 100 designed by Wilma Vodehnal Boles BT '57. Over 200 attended the evening banquet held at the Country Club of Lincoln. Marvona Easley Tavlin EA '66, Past National President and Past Beta Tau College Chapter Director, recognized those in attendance who had received national awards. Chris Martin BT '74, Regional Collegiate Coordinator - Region VIII, recognized Marvona as an Honorary Beta Tau for her service to the chapter.



*Beta Tau Order of the Golden Rose members included, back: Amy Barber Gerber '45, Jean Kleinschmidt Ang '46, Chloe Stairs Forrest '55, Alice Gentry Kenitz '54, Idona Vodehnal Overton '54, Janet Voorhees Benton '55, Joyce Kousgard Ritchey '55, Wilma Vodehnal Boles '57 and Sandra Blank Sindt '57. Front, Jackie Harrison Akert '48, Hazel Edgerton Smith '49, Joan Johnson Chism '51, Lois Danielson Schulenberg '47, Nora Mae Brashear Vance '55, Jean Parks Rasmusson '45, Lois Knappe Birt '49, Trudy Harvey Greene '44, Rosalee Olsen Nagele '49 and Dolores Sugden Dunn '48.*

Alumnae from the **Colorado area**, including **Fort Collins, Denver and Boulder**, gathered at the home of Kathleen Cruse Jefferies ΓΧ '68. Collegians from the Delta Xi (University of Northern Colorado) and Rho (University of Denver) Chapters joined them. Nadine Caraglio Kline ΔΡ '57 received the Order of the Golden Rose for 50 years of membership.



Colorado Alumnae

Alumnae from the **Upsilon Chapter** (North Dakota University) reunited at Lesley Markusen Augustin's '71 home.



*Front: Marilyn Augustin Hall '71, Pam Brown Johnson '71, Deb Eider Meagher '73 and Maren Larsen Fagerland '73. Back: Becky Toman Sallander '74, Diane Thomte Clinton '71, Vicki Overland Olson '72, Lesley Markusen Augustin '71, Jean Haley Harper '74, 1998 Delta Zeta Woman of the Year, and Loretta Lauinger '71.*

## OUR ALUMNAE REMEMBER

Watch the next issue of *The LAMP* for reminiscences from our alumnae members who have been honored with special recognition. They tell us their Delta Zeta stories and experiences from 75, 65, and 50 years ago.



The **Greater Kansas City Alumnae Chapter** hosted their annual Mother-Daughter Picnic with five Golden Rose members present: Darlene Soiseth Reynolds ΓΕ '48, Mariann Hopson Tow ΓΕ '54, Ardith Gunter Edmiston ΑΕ '54, Janet McBurney Canterbury Χ '55 and Margaret Ann Corell Brown ΕΓ '57. A family of four generations were present: Betty Moix ΕΓ, Anita Moix Tienken ΕΓ '68, Shelley Tienken ΣΦ '93 and Lauren Wijeratne.



*Greater Kansas City Alumnae Four Generations*

The **Lawrence Alumnae Chapter** presented Margaret Wolf Elvig ΑΦ '33 with the Order of the Diamond for 75 years of membership at the Founders Day event that included members from the Greater Kansas City, Topeka and Lawrence Alumnae Chapters, as well as collegians from the Epsilon Gamma (University of Central Missouri), Zeta Rho (William Jewell College) and Xi Phi (University of Missouri/Kansas City) Chapters.

Margaret, born in 1909 in Leavenworth, Kansas, worked as a legal secretary in Kansas City to earn money to go to college during the Great Depression. When she came to Kansas University, she was initiated into the Alpha Phi Chapter in 1933. She continues to be active in the community and with her family, spending "lots of time on her computer" to stay in touch with her grandchildren.

## Great Lakes Area

Alumnae of the Gamma Alpha Chapter (Baldwin-Wallace College) met for a reunion near the college.



*Front: Betsy Dull Corfman '67, Carol Carson Konet '67, Marily Edel and Bonnie Pelander Mack '67. Middle: Lynn Cross Caldwell '67, Leslie Hayden Wilkinson '67 and Marcia Earl Humpal '67. Back: Diane Wicks Popper '67, Kathy Kearns Mulder '68, Sharon Kinney Henderson '67, Karen Stumpf Kolozvary '67, Tish Gist and Esther Briggs Neumann '67.*

The **Kent Alumnae Chapter** recognized Jane Evans Auld ΓΚ '58 and Geraldine Banovich Bittering ΓΚ '52 with the Order of the Golden Rose for 50 years of membership.



*Kent Alumnae Chapter Golden Rose Recipients*

The **Oakland County Alumnae Chapter** celebrated their 50th anniversary with a celebration tea at the home of Susan Garlinghouse Kuhn ΒΠ '65. Sisters shared pictures, clippings and scrapbooks which documented the chapter's activities throughout the years.

Alumnae of **Theta Psi Chapter** (Ashland University) gathered with their families for a reunion in Avon, Ohio.



*Theta Psi Chapter Alumnae*

A **Zeta Kappa Chapter** (Ohio Northern University) reunion was held in Columbus, Ohio with 18 members in attendance who had graduated from the university during the years 1961-1965.



*First row: Janice Petko '60, Mary Jane Limes Ousley '61, Sally Stoltz Evans '61 and Ann Melkerson Beal '59. Second row: Carol Moore Hudson '61, Marian Shuff Barger '61, Pam Purcell Koger, Gloria Miller Clouse '61, Rowena Middleton Baker '60 and Janet Adams Lee '61. Third row: Marlene Keller Karrick '59, Elinor Emery Rambo '60, the late Mary Schmuck Kandel '60, Ginny Rolla Massimo '59, Nancy Greenwood Richert '59, Louise Lauck Cashman '61, Nancy Farrel Spinning '60 and Esther Matz Avdakov '60.*



The **Wooster Alumnae Chapter** celebrated their 50th anniversary at Elizabeth Freeman McCoy's Θ '61 home. Mary Hannah Cornelius ΓΚ '57 and Janice Pritchard Huff ΓΚ '56 received the Order of the Golden Rose in recognition of their 50 years of Delta Zeta membership. The Wooster Alumnae Chapter was installed officially on April 18, 1958. Charter member Charlotte King Pierce ΓΩ '55 also attended the anniversary celebration.



*The Wooster Alumnae Chapter*

## Great Western Area

Local **Southern California alumnae** from the **Pasadena Foothill and Long Beach Alumnae Chapters** recognized alumnae at the Founders Day celebration in Long Beach. Susan Wallace Christmas ΔΑ '72, Long Beach Alumnae President, with Tania Vasquez Roney ΘΡ '95, Pasadena Foothill Alumnae President, presented Silver Awards (25 years) to Marlene Camacho Nowlin ΘΡ '83, Lily Yanagisawa Harada ΘΡ '83, Gloria Goldman Clement ΘΡ '83 and Diane Rolnick Soma ΔΑ '83.



*Michelle Albrecht Smith A.X., National President, (left) presented the Order of the Pearl to Mary Guillet Grunditz ΔΔ '42, (Long Beach Alumnae Chapter member) and Eleonore Wachholz Pipes Θ '43, (Pasadena Foothill Alumnae Chapter member) for 65 years of membership. Also pictured is Karen Martin Campbell ΔΑ, National Vice President of Alumnae Affairs, second from right.*

Three alumnae received the Order of the Golden Rose at the **Pi Zeta Chapter's** (Arizona State University) Founder's Day celebration: Pat Knowles Wells ΓΑ '58, Celia Kolarevic Tetak ΓΨ '58 and Jeanette Mitchell Andriano ΔΟ '58.



*Golden Rose recipients Pat Knowles Wells ΓΑ '58, Celia Kolarevic Tetak ΓΨ '58 and Jeanette Mitchell Andriano ΔΟ '58.*

The **South Bay Alumnae Chapter** presented the following alumnae (pictured below) with membership recognition: Mitzie Fisch Vasey ΕΨ '58, South Bay Alumnae Chapter President - the Order of the Golden Rose; Rowena Ingold Schaber ΑΙ '33 - the Order of the Diamond; and Marian Angarola Shapley ΑΙ '42 and Mona Hite Forrester Ν '42 - the Order of the Pearl.



*South Bay Alumnae Chapter*

Alumnae from the **Tucson and Phoenix Valley Alumnae Chapters** gathered recently to present the Order of the Diamond to Onnolee Diller Mosher ΑΚ '27. She is actively involved in providing care boxes for our troops in Iraq and celebrated her 100th birthday in November.



*Congratulating Onnolee Diller Mosher ΑΚ '27 are, front, Jennifer West ΓΕ '00 and Alicia Nowinsky ΙΙΖ '05; back, Jane Galitz Delaney ΒΚ '46, May Hoag Trees ΑΕ '64, Sherri Edwards Berry ΒΙ '74, Mary Pat Martin Pepping ΘΡ '66, Ann Pearson Santos ΖΧ '63, Phoenix Valley Alumnae Chapter President, Linda Hope Stiegler ΒΣ '64 and Barbara Else ΒΙ '75.*



## Mid-America Area

**Delta Chapter** members pictured, from left, Natalie Seibert '00, Kristi Spears '00, Jessica Blevins '00, Columbus Alumnae Chapter President and Elizabeth Morgan '00 met for their fifth reunion and attended the annual Delta Chapter Association meeting at DePauw University. Jean Gileno Lloyd Δ '91, National History Chairman, was also in attendance.



*Delta members at their reunion.*

The **Indianapolis** and the **North Central-Indianapolis Alumnae Chapters** celebrated Founders Day together and Barbara Strubbe Hunley E '56, Indianapolis Alumnae Chapter President, presented Maridee Smock Cutter ΓΧ '58 and Joyce Hayes Runyan Ψ '58 with the Order of the Golden Rose.

## Mid-America Area

Two 25-year initiates from the **Southern New Jersey Alumnae Chapter** were honored with Silver Certificate recognition: Jackie Taylor McClure EZ '83, Southern New Jersey Alumnae Chapter President, and Linda Cademartori Barba EK '83, Southern New Jersey Alumnae Chapter Newsletter Chairman.

## Southeast Area

The **Auburn-Opelika Alumnae Chapter** honored Dr. Louise Kreher Turner ΔK '56 with the Order of the Diamond recognition for 75 years of membership.



*Ann Grant Wadsworth BE '68, Auburn-Opelika Alumnae Chapter President, presents the Order of the Diamond to Dr. Louise Kreher Turner ΔK '56.*

At the **Suncoast Alumnae Chapter's** Founders Day luncheon, the Order of the Golden Rose was presented to five alumnae.



*The Order of the Golden Rose recipients Marilyn Ferkant Witt ΓΩ '57, Caryl McColley Ribble Ψ '57, Suncoast Alumnae Chapter President, Erlene Hacker Vokes ΓΥ '56 and Barbara Brown Martin Ψ '57. Not pictured: Jane House Cheatham AΘ '57.*

## Southwest Area

Alumnae from the **Alpha Psi** (Southern Methodist University) and the **Alpha Tau** (University of Texas) **Chapters** gathered for a reunion.



*Front: Elizabeth Pruner Witherow AΨ '53, Ann Larson Miller AΨ '53 and Shirley Burrigge Asel AΨ '54. Back: Joan Jackson Severin AΨ '52, Virginia Hurt Benke AΨ '52, Joan Tomkins Hallmark AT '53, Fredna Schroeder Stewart AT '54, Jerry Varney Pinnell AΨ '52, Ralette King Schinneman AΨ '53 and Jean Carlson Blomquist AT '55.*

## Virtual

**Surfing Sisters Alumnae Chapter** hosted a reunion with a tropical theme at National Convention organized by Michael Brianne Jacobus ΠA '03. Sharon Bowman Griffing ΙΥ '83 hosted a Surfing Sisters Southern reunion at her home, which 11 members and their families attended. Robin Bentley ΘΘ '74, Reunion Director, is thrilled that so many Surfing Sisters reunions are in the works and says, "The purpose is to nurture old friendships and develop new ones."



*Surfing Sisters reunion at the National Convention.*

Several **Surfing Sisters** attended a reunion in the **Newport, Kentucky/Cincinnati, Ohio area**. "It was awesome to be with people from other chapters who you know by talking to them online," said Julie Miller KX '94.



*Surfing Sisters meeting in Cincinnati, Ohio included, top: Kim Maust KX '03 and Kim Gutman KX '04. Bottom: Lee Ann Luxenberger Δ '96, Julie Miller KX '94, Sarah Vansuch Wilson KX '04, Alison Bates Δ '99, Anna Masi KX '95, Alecia Soyk Manning AΘ '93, South Central Area Public Relations Chairman. Not pictured: Carrye Jenkins, AΘ '94.*



# *The 2007-2008 Grace Mason Lundy Award Winners*

## **The Grace Mason Lundy Award**

**is given annually to members of**

**Delta Zeta who are college seniors,**

**and focuses on the devotion and**

**service that collegiate members**

**give to Delta Zeta. The award is**

**named after Grace Mason Lundy**

**E, Past National President.**

**These women exemplify the best**

**of Delta Zeta through their hard**

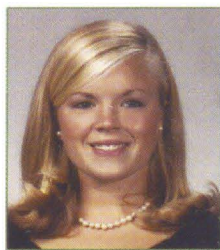
**work, dedication and talent,**

**ensuring that the Sorority has**

**strong leadership as they move into**

**the next phase of their lives**

**as Delta Zetas — alumnae.**



**Amy Klinner**, Beta Xi Chapter, Auburn University

**Major:** Animal and Dairy Science **Minor:** Business

"I have learned so much about myself as a Delta Zeta: my capabilities as a friend, mentor and leader ... I have truly learned what it means to 'give graciously of what is mine.'"



**Ingrid McCallister**, Gamma Nu Chapter, Eastern Illinois University

**Major:** Elementary Education

"My membership in Delta Zeta has been the most fulfilling experience I could have asked for throughout my collegiate years."



**Jennifer Rindge**, Xi Omicron Chapter, Loyola-Marymount University

**Major:** Accounting

"Delta Zeta helps me define my every belief in life. I am truly thankful for the experiences I have gained and the person I have become because of the Sorority."



**Dalene Scott**, Kappa Chi Chapter, Youngstown State University

**Major:** Business Management

"I have learned many things from my Delta Zeta sisters and received an abundance of love that is priceless."



**Kelly Stewart**, Epsilon Zeta Chapter, Drexel University

**Major:** Criminal Justice **Minor:** Sociology and Business Administration

"The vows I took when I became a member have become a cornerstone of my life, and I hope to provide an example of what it means to uphold the values of Delta Zeta."



**Emily Weese**, Kappa Mu Chapter, Shepherd University

**Major:** Elementary Education and Social Studies Elementary Education

"My chapter's accomplishment and honors I have received in the Sorority are the ones I am most proud of. I want to give back to Delta Zeta because of all that I have received through my membership."



# *The 2007-2008 Florence Hood Miner Award Winners*

**Natalie Brooks**, Beta Tau Chapter,  
Nebraska Wesleyan University

**Major:** Biology

Natalie plans to apply to medical school after graduation to become a pediatric physician.



**The Florence Hood Miner Award**

**was established in recognition**

**of Mrs. Miner's AB many years of**

**Rebecca Ensley**, Pi Zeta Chapter, Arizona State University

**Major:** Political Science

"I would like to serve as an ambassadorial scholar at the American University in Cairo and eventually become a political officer of the Foreign Service to pursue public diplomacy aimed at conquering human rights violations."



**service as National Vice President,**

**Editor of *The LAMP*, National**

**Historian Emeritus and other**

**Mary Ann Hollander**, Zeta Rho Chapter, William Jewell College

**Major:** Business with an emphasis in Marketing **Minor:** Art

"I plan to use the leadership skills I have learned in Delta Zeta to pursue a career in art or advertising. I would also like to complete a short-term mission trip to give back because I have been so blessed."



**national offices. These women,**

**who are juniors in college,**

**are exemplary representatives**

**Rebekah Stefanski**, Zeta Psi Chapter, Stephen F. Austin  
State University

**Major:** Interior Merchandising

"I want to work on the visuals team of a high-end department store. I believe that a person will succeed when she is most open to change."



**of Delta Zeta's standards**

**of excellence in leadership,**

**scholarship, community service**

**Jennifer Walker**, Epsilon Sigma Chapter, Wayne State University

**Major:** Nutrition and Food Science **Minor:** Biology

"Without Delta Zeta, I wouldn't be pursuing my honors degree. After graduation, I hope to attend medical school and become a physician, eventually establishing a women's clinic."



**and fostering the values**

**of sisterhood.**

**Kristine Westman**, Xi Eta Chapter, Northwood University

**Major:** Advertising/Marketing/Management

"I am dedicated to academics but also very involved in community service. After graduation, I plan to join a large marketing firm."





# An Education in Life— for a Lifetime

## DELTA ZETA BRINGS LIFE SKILLS EDUCATION TO GREEK LIFE

The road for today's college student is indeed challenging. Many students commute to campus, are ethnically and socio-economically diverse, and 41% are over 25 years old.\* According to the U.S. Department of Labor, the proportion of college students with a job or looking for work in October 2007 was 37.3% for full-time students and 72.7% for part-time students. In uncertain economic times, students facing financial pressure may not finish school or take longer to complete a degree due to work commitments. Families are examining the value of a college education from all aspects. For those who attend college, their higher education must provide more than a degree that may or may not be viable in today's workplace – they need to acquire life skills and discover a sense of self that will become the foundation for a life of purpose.

---

**"I see incredibly promising signs of success within and across Greek-letter organizations. These signs point to a new breed of student coming to college campuses. They point to a new vision – dare I say the original vision – of Greek-letter organizations."**

Brandon Busteed, CEO of Outside the Classroom and Honor Initiate of Alpha Tau Omega

---

How can institutions of higher learning provide all of this? By partnering with Greek-letter organizations already on their campuses, colleges and universities can offer not only the unique experience of fraternal life, but tap into the resources these organizations already provide in the areas of personal growth and empowerment, risk management, leadership development and life skills education.



Delta Zeta has been leading the way in providing this type of educational experience – one that goes beyond traditional learning and becomes part of the lives of today's students. Since 2004, the Sorority has required new members to take courses that build self esteem, reinforce confidence and educate them in making safer and healthier decisions about lifestyle choices.

Today Delta Zeta offers GreekLifeEdu, which uses an interactive program via the Internet which educates students about behaviors that compromise personal safety and challenges preconceived social norms. Its online format allows for easy access, providing a medium through which students learn to avoid potentially dangerous situations and are encouraged to engage in positive activities.

GreekLifeEdu also includes:

- Personalized pathways and feedback for a customized user experience
- Realistic simulations that allow students to evaluate their decisions
- Organization-specific resources, such as policies, procedures, and key staff contacts
- Leadership and student engagement opportunities available in the community

### What Do Delta Zeta Members Say About GreekLifeEdu?

"Every single component is something that every college student can relate to. It really opened up my mind and let me know all the right and wrong things that people should and shouldn't do."

"It was very helpful and interesting. A lot of the things I thought I knew turned out to be wrong. That shows that word of mouth isn't the facts."

"I liked the statistics; I believe that numbers can be very powerful in showing the true percentages of the effects of alcohol, hazing and drugs, as well as sexual activity."

\*National Center for Education Statistics





**THE MILLENNIAL GENERATION** – many have heard that catch phrase for today's generation of young people. The traits of this generation include being focused on grades and performance, remaining close with their parents and often sharing the same values, busy with extracurricular activities, active in community service and in issues related to helping the environment, ethnically diverse and respectful of social conventions and institutions.

While this generation is technologically savvy and knows the trendiest ways to obtain information or connect with someone virtually, they often lack basic negotiation, conflict resolution, survival and coping skills. "Because their parents have tended to make all safety-related decisions for them, the Millennials often lack basic safety skills when they arrive on campus, which can present challenges to campus administrators, [including] ... the impact of alcohol and prescription drugs, and special issues related to online social networks," says Darby Dickerson, Stetson University College of Law, in his paper, "Risk Management and the Millennial Generation."

This generation needs support in developing these skills, especially when away from home for the first time at college.

Nearly half of college-age adults struggle with a mental health disorder, from alcohol dependency to depression and anxiety. But only a quarter seek treatment, according to a Columbia University Medical Center study published in December 2008.

"This study gives a picture of the magnitude of the problem and the extent to which these disorders go untreated," said Dr. Mark Olfson, a professor of clinical psychiatry at Columbia and lead author of the study. "It really lays out the challenge of providing services to meet the need, particularly of alcohol use disorders."

Delta Zeta recognizes these challenges that students face. With GreekLifeEdu and other programs that focus on building self esteem and helping students develop the potential for leadership, the Sorority is responsive not only to the environment on today's college campuses, but to our collegiate members' needs. Membership in Delta Zeta, because of the important education and guidance the Sorority can provide at one of the most crucial times of a young woman's life, helps to shape her into the contributing adult she will become in today's world community.



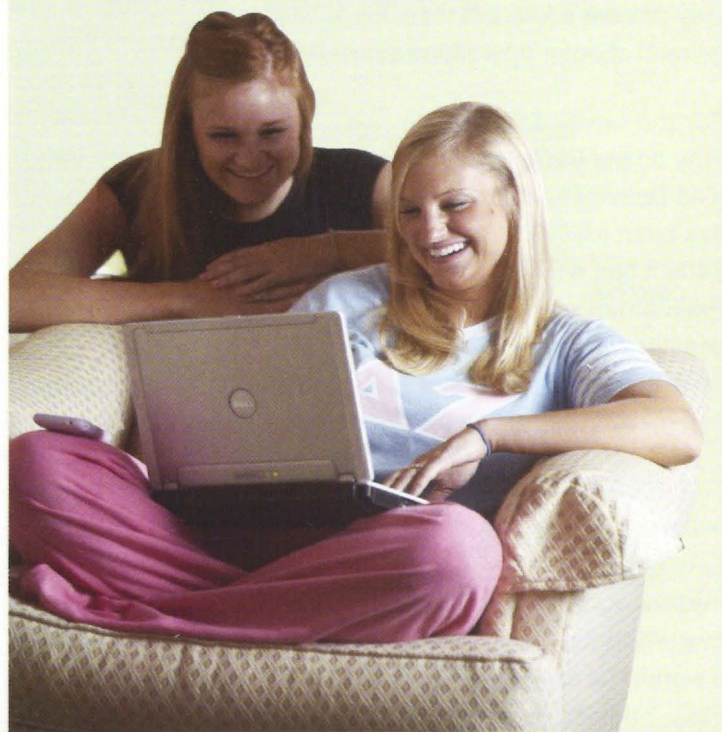
Delta Zeta collegiate chapters are presenting the "Tell Me Something I Don't Know" video and educational program to new members this school year. This program gives an opportunity to view a real-life college binge drinking incident and then discuss risky behaviors and how Delta Zeta's risk management policies ensure that our chapters hold safe, fun and responsible social events.

Delta Zeta is proud to be one of the initial groups that joined in the Greek Consortium, which has grown to include 27 Greek organizations as of today. The Greek Consortium has produced a new DVD and program entitled "RESPONSE ABILITY: Transforming Values into Action." This program is a "reality" style educational video package that helps viewers to understand how group dynamics can prevent people from taking action to stop dangerous and unhealthy behaviors." It also demonstrates the skills needed to successfully intervene when one witnesses high-risk or unhealthy behaviors such as hazing, drug/alcohol abuse, eating disorders, sexual abuse, etc. This DVD will be available to all of our chapters to use during the 2009 spring semester/quarter.

### Is GreekLifeEdu Effective?

Statistics provided by Outside the Classroom show:

- Since 2003, the Greek-letter organizations using GreekLifeEdu (formerly AlcoholEdu) with all their new members (which include some 2,300 chapters nationwide, or about 50% of all Greeks) have reduced binge drinking by a whopping 28.3%.
- Though the binge rate of Greeks is still higher than the average college student population, the respective rates are now very close – 48% vs. 44%, respectively. When the Harvard School of Public Health last ran their national drinking survey in 2001, the Greek rate was in the low to mid-60% range.
- Living in a fraternity or sorority house is more protective of a student's choice NOT to drink than living in regular dorms or substance-free halls.





# Delta Zeta Educational Leadership Consultants are Changing the World of Delta Zeta ... One Chapter at a Time

by Mandi Wise ΓΧ, Chapter Services Director

Changing the World is a big statement and that is exactly what the Delta Zeta Educational Leadership Consultants (ELCs) are doing today. The Consultants are part of the professional staff of National Headquarters, but live on and off of airplanes and in and out of their suitcases as they work with collegiate chapters to make Delta Zeta the best that she can be.

This year Delta Zeta has six Educational Leadership Consultants. They work with chapters on leadership development, officer training, recruitment and retention and general chapter operations. Three members of the ELC staff are second-year staff members. This additional experience is especially valuable to Delta Zeta chapters.

As of the conclusion of fall 2008, the ELC staff had visited over 90 Delta Zeta chapters. It is anticipated that the staff will visit another 65 chapters throughout the spring of 2009. All ELCs will attend the Presidents Academy in February and will serve as small group facilitators. Some chapters may receive additional visits for recruitment assistance or general chapter operations as needed.

## For the Love of Delta Zeta

Why do the ELCs do what they do? Jackie Asman ΘΦ '02 (Old Dominion University), second-year ELC says, "This job has been an excellent bridge to the alumnae world of Delta Zeta. It has shown me the big picture of Delta Zeta and I've learned so much about the organization outside of my chapter. It's inspiring to meet other Delta Zeta women which have been active alumnae for many years still volunteering and making Delta Zeta an everyday part of their life."

The Educational Leadership Consultant position is an excellent opportunity for recent college graduates. Delta Zeta members apply for this position for a multitude of reasons. Often, an ELC wants to give back to Delta Zeta for everything the organization has given her, or she remembers a wonderful experience she has had in her chapter with an ELC. "I'd been so impressed with and had tremendously



From left to right: Mary Leschper ZZ '04, Jacquelyn Asman ΘΦ '02, Sarah Woodard ΞΘ '05, Christina Edwards ΒΔ '04, Ellen Lassiter ΞΥ '02 and Aubrey Cammack ΛΑ '03.

enjoyed working with the ELCs assigned to my collegiate chapter," says Mary Leschper ZZ '04 (West Texas A & M University), a first-year ELC. "They encouraged me to apply for the job. Being an ELC is a wonderful opportunity and has been a dream come true for me."

## An Unparalleled Experience

The ELC position provides recent graduates with the opportunity to travel, meet and work with Delta Zeta women all over the country and truly prepares women to take on any responsibility. Christina Edwards ΒΔ '04 (University of South Carolina) and first-year ELC says, "Since becoming an ELC, I've learned to appreciate Delta Zeta even more. Having the chance to travel throughout the country representing our National Organization is an honor and an unforgettable experience at the same time. I've seen exactly what it means to be a Delta Zeta."

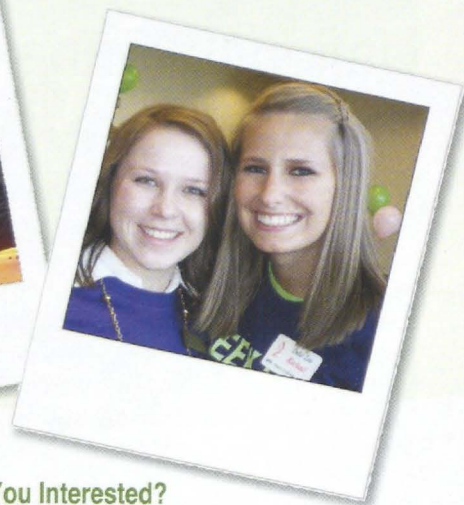
While on the road, the Educational Leadership Consultants observe how much students are involved with the world. Sarah Woodard ΞΘ '05 (University of North Carolina/Wilmington), first-year ELC, was impressed with the way the chapters became involved with the recent election.

"Columbus State University, where the Lambda Psi Chapter is



located, had a 'Delta Zeta Rock the Vote' event where they had representatives from the College Democrats and College Republicans Clubs inform students about each Presidential candidate. Many chapters are also supporting Delta Zeta's newest grassroots environmental initiative, Pink Goes Green, such as holding a Pink Goes Green Week to raise environmental awareness, taking green pledges, starting recycling programs on their campuses and in their houses and eliminating paper in chapter meetings," Sarah says.

"The women of Delta Zeta are amazing," says Mary Leschper. "I continue to be impressed by every chapter that I visit. The members are proactive and dedicated to bettering not only themselves and their chapters, but the schools they attend and their surrounding communities. Delta Zeta is changing the world, and I see that through every chapter member I meet."



### Are You Interested?

For more information on the Educational Leadership Consultant program please contact  
Mandi Wise, Chapter Services Director, at Delta Zeta National Headquarters, 202 East Church Street, Oxford, OH 45056,  
(513) 523-7597, [mmw@dzshq.com](mailto:mmw@dzshq.com).

## *A Tribute to Our Educational Leadership Consultants*

**Delta Zeta Educational Leadership Consultants (ELCs) convey the Sorority's mission and fundamental principles through on-site visits to our college chapters around the country. Consultants often keep a busy travel schedule as they become acquainted with campuses and collegiate and alumnae members.**

**We would like to thank the Educational Leadership Consultants who have served Delta Zeta during the 2007-2008 school year. Their efforts are greatly appreciated, and they have valuable experiences to take with them in future endeavors.**



**Kristen Field ΓN '03**

Kristen currently lives in Chicago where she attends DePaul University as a full-time graduate student studying Public Service Management. Kristen will be traveling to Kenya to experience how non-profits work in Africa and other developing countries. She will study in Ireland and is working on a certificate in fundraising and philanthropy.

"The most enjoyable part of being an Educational Leadership Consultant (ELC) was the people that I met. Traveling to over 30 colleges and universities, I had the opportunity to develop relationships with people from all walks of life," Kristen says. Kristen also worked on the Gamma Omicron reorganization at San Diego State University. That colony was installed as a chapter on March 15, 2008.

Her experience as an Educational Leadership Consultant inspired her to return to school. "The ELC position motivated me to further my education," she says. "Before starting the ELC position, I had no plans for what I would do afterwards. Working for a non-profit organization, I found a calling in public service. With the professional experience I gained as a consultant, I knew a Master's degree would help me to effect a positive change in the lives of others."



**Elizabeth Urso ΑΘ '02**

Liz is working for a large firm in Cincinnati, Ohio as an executive and personal assistant. She says, "Traveling as an ELC was truly a rewarding experience, both professionally and personally. As a professional, I developed my communication and interpersonal skills and learned the importance of flexibility. Personally, I came away with a unique experience that helped me grow as a person. The lessons I learned on the road were invaluable and will continue to impact my life decisions and way of thinking. I am thankful to all of the people whose paths I crossed and who I had the pleasure of working with."

We would also like to thank Jacquelyn Asman ΘΦ '02, Aubrey Cammack ΛΑ '03 and Ellen Lassiter ΞΥ '02 for their work during the 2007-08 school year. They are continuing their careers with Delta Zeta as Educational Leadership Consultants for the 2008-2009 school year.



# National Panhellenic Conference News

## Delta Zeta Goes Back to Washington, D.C.

Forty undergraduate leaders and 68 alumnae representatives of National Panhellenic Conference (NPC) groups joined collegiate and alumni representatives of the North-American Interfraternity Conference (NIC) in Washington, D.C., for 418 meetings with members of Congress and staff on April 15, 2008. This annual event brings together fraternity and sorority leaders to advocate for passage of the Collegiate Housing Infrastructure Act (H.R. 643/S. 638) and the College Fire Prevention Act (H.R. 642). Currently the Collegiate Housing and Infrastructure Bill has 187 co-sponsors in the House and 37 in the Senate.

"Being a part of the NIC/NPC advocacy team has been one of the most impactful experiences of my life," said Liz Simonhoff, a member of the Pi Zeta Chapter and president of the Undergraduate Student Government at Arizona State University. "It shows that a great deal can be accomplished when a community works together for a common goal."

At right: Lynnda Wolf Hoefler ΓΚ, National Panhellenic Conference Delegate; Lori Briggs, Omicron Gamma Chapter (Ohio University); Elizabeth Simonhoff, Pi Zeta Chapter (Arizona State University); the late Congresswoman Stephanie Tubbs Jones (D - OH), a member of Delta Sigma Theta Sorority; and Ruth Weider Patterson ΒΧ, Delta Zeta Foundation President.

## Through NPC and Merck Partnership, College and Alumnae Panhellenics Are Receiving HPV Information Kits

The National Panhellenic Conference (NPC) will continue its partnership with Merck & Co. to build disease awareness of the human papillomavirus (HPV) and its link to cervical cancer. The NPC is helping to promote the campaign through a series of television ads.

All NPC College Panhellenics, Alumnae Panhellenics and advisors are receiving packets with bead kits, HPV information for distribution and word magnets for a contest to share stories of overcoming adversity with the selected winner being featured in *Glamour* magazine. The instructions are to distribute these materials to the Panhellenic chapters on campus. For more information regarding HPV, please visit: [www.hpv.com](http://www.hpv.com).



*International Badge Day is  
March 2, 2009*

CELEBRATE NPC INTERNATIONAL BADGE DAY  
ON MARCH 2, 2009 BY  
WEARING YOUR BADGE WITH PRIDE!

Visit the Delta Zeta Web site  
at [www.deltazeta.org](http://www.deltazeta.org)  
in January 2009 for  
more information on how  
you can be a part of  
International Badge Day.





# All the trimmings...

Rose Sapphire Cushion Ring with crest,  
item# 0452  
10K 19KW \$287  
SS \$118

Silhouette Rose Earrings, item# ER141  
SS \$30

Silhouette Rose Necklace, 18",  
item# SLD141  
SS \$42

Silhouette Rose Ring, item# RD141  
(Whole sizes only, 6-8)  
SS \$30

Silhouette Rose Bracelet, 7.5", with  
engraved Mini Tag, item# BD141  
SS \$51

F. Tempo Bracelet with pink stones, 7.5",  
with square enhancer, item# BD16PK  
SS \$92

G. Tempo Bracelet with green stones, 7.5",  
with square enhancer, item# BD16G  
SS \$92



To order, visit  
**www.HJGreek.com**  
or call  
**1-800-422-4348**

**HERFF JONES**  
An employee owned company

**Mail to:** Herff Jones Greek Division, 226 Public Street, Providence, RI 02940

Name \_\_\_\_\_ Phone \_\_\_\_\_

Chapter \_\_\_\_\_ School Name \_\_\_\_\_

Address (UPS shipping address. No P.O. Box #s) \_\_\_\_\_

City \_\_\_\_\_ State \_\_\_\_\_ Zip \_\_\_\_\_

Method of Payment: VISA or MasterCard, or check (please circle one)

Expiration date \_\_\_\_\_ Card# \_\_\_\_\_

Name as it appears on card (please print) \_\_\_\_\_

Signature \_\_\_\_\_

Total price of ordered items.....\$ \_\_\_\_\_

8% Sales Tax .....\$ \_\_\_\_\_

Postage, handling and insurance .....\$ 9.00

Total.....\$ \_\_\_\_\_



Send all notices of address changes  
and member deaths to:  
Delta Zeta National Headquarters  
202 East Church Street  
Oxford, OH 45056  
Phone: 513/523-7597  
CHANGE SERVICE REQUESTED

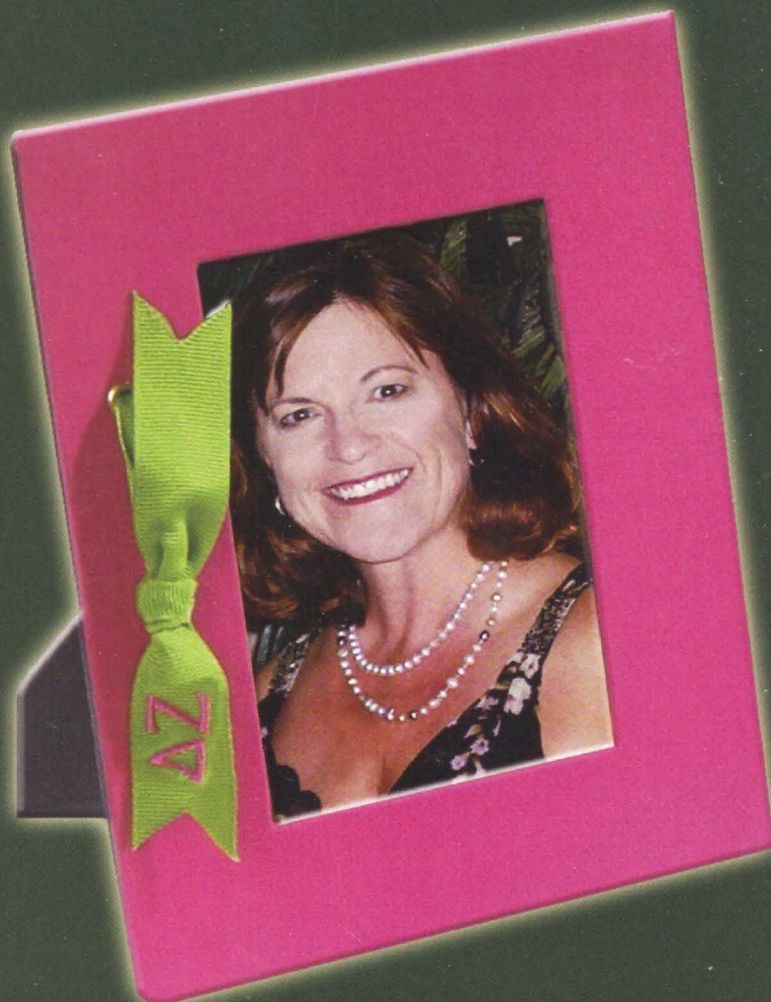
Non-Profit ORG.  
U.S. POSTAGE  
PAID  
Florence, KY  
Permit #313



## Why do I give?

*"You have the opportunity to continue the tradition to enrich and develop the future members and to contribute to the success of our Sorority."*

Susan Wallace Christmas ΔΑ '72



Susan Wallace Christmas ΔΑ '72 is President of the Long Beach Alumnae Chapter in California, a position she has held for the past eight years. The alumnae chapter actively supports the Delta Alpha Chapter at California State University/Long Beach through leadership, commitment and contributions, as well as enriches the Long Beach community through many philanthropic projects.

Susan is a speech and language pathologist for the Huntington Beach High School District supporting students with severe communication impairments who use alternate communication devices to speak. Last spring, Susan co-chaired the annual Lamplighters of Southern California Flame Fantasy event, which benefitted the House Ear Institute in Los Angeles and also raised money for collegiate scholarships.

Outside of her professional and volunteer work, Susan loves spending time with her husband and her son, David, who is a member of Theta Chi Fraternity at California State University/Long Beach. Her hobbies include sewing, jewelry making, investment club, church, activities, boating and gardening. Susan tells us why giving to the Delta Zeta Foundation is an important part of her life.

"Giving to the Foundation is a way of giving back to my Sorority that has given so much to me. In college, Delta Zeta gave me a connection to my university, a focus on scholarship and lasting friendships. As a young graduate student, it gave me the opportunity for leadership as a chapter advisor. As a young bride, my husband and I moved to Washington state where I had the privilege to serve as the College Chapter Director for the new colony at the University of Washington, now the Kappa Chapter. I received the benefit of immediate new friends as a member of the Greater Seattle Alumnae Chapter. As the new girl in town, my sisters helped me to find a job and locate my first house. Recently the Foundation assisted me in my pursuit of a Master of Science degree by granting me a generous scholarship.

"Delta Zeta has given so much to me throughout my life and it is now my turn to give back. By giving to the Foundation, I can assist in Delta Zeta's goal to enrich the lives of women. I hope you will join me and together we can provide future members with those same opportunities that we were given."

Visit the Delta Zeta Foundation at  
[www.deltazeta.org](http://www.deltazeta.org) to find out how you  
can enrich members' lives.