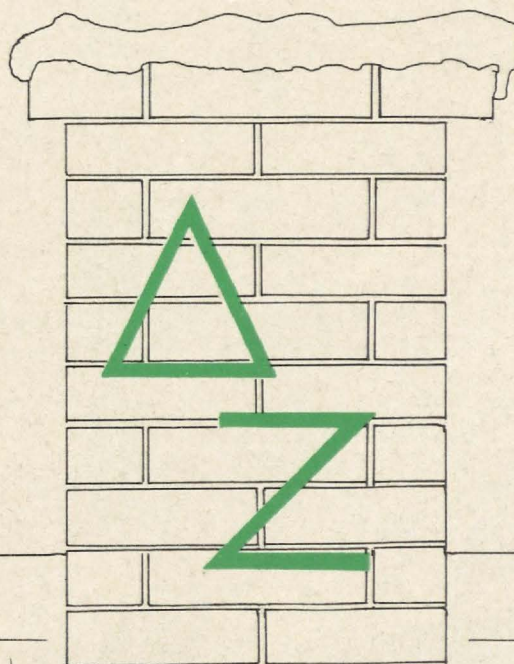


The

LAMP

of DELTA ZETA



More

December 1975



President's Message

From Westfield, N.J.

With another year, another milestone in the impressive history of Delta Zeta has now passed. Traveling cross-country and celebrating our Founders' Day with chapters in five different geographical locations, reaffirmed my constant thought that Delta Zeta is great! We are numerically large but our greatness lies not in our numbers but in the devotion of our members. These are exciting days—these days of transition to a new year—and not only are we looking forward to our Diamond Jubilee, but, each of us if we just look, can find personal inspiration through our individual commitment to Delta Zeta. We should press forward with renewed interest and determination to meet our own personal obligation to our sorority and share with our sisters the love and service Delta Zeta offers.

Commitment requires a rededication of ourselves to support the programs of our sorority. Our success depends on this commitment—the commitment of Delta Zeta to each of us, and the commitment of each of us members to Delta Zeta. In my experience, and yours too, any programs that have a high commitment and receive strong support, do succeed. There is an inexplicable joy in knowing that we sisters are able to work together and move forward as we put into practice what we say we believe when we recite our creed. Each of us should recognize our individual responsibility and live accordingly. We owe this to ourselves. If we are responsible to ourselves, then we are responsible to each other and in turn to our Delta Zeta. At no other time in our history has there been a more urgent need to renew our vows and then live by them. Let us be willing to show the world our loyalty to Delta Zeta.

In the past we have shown our faithfulness and dedication time and time again. Many sisters have given of their times and their talents, and we will always need dedicated sisters who enjoy the Delta Zeta experience so much that they remain loyal, sharing their happiness. Now it is time for these loyal sisters to seek out those Delta Zetas who in recent years for various reasons have not been involved in Delta Zeta. We must try reviving their interest and increasing their active participation in Delta Zeta. Our recent Convention gave us the opportunity to evaluate ourselves and then prepare and approach this current biennium with a strong faith in our future. It clearly indicated that each of us has her inescapable part in this no matter how large or small that part might be. In our lives, faith and love are not easily attained nor automatically sustained. Delta Zeta was founded on faith and love—a faith and love based upon individual personal responsibility and enduring involvement. We sisters are inextricably involved with each other in joint ventures which require the support of every member.

Support can take many forms and all of us should work to combine our efforts to help all our chapters, collegiate and alumnae, achieve stability and a higher level of performance as we strengthen Delta Zeta through friendship, understanding and mutual encouragement. There is so much pleasure and satisfaction to be received from involvement. Please do take full advantage of all that Delta Zeta has to offer to you in the lasting, lifetime value of membership in Delta Zeta sorority.

Florence Elizabeth Harvey

The

LAMP



Volume 65 Number 2

Editor

Florence Hood Miner
1040 H Avenue
Nevada, Iowa 50201

Staff

Jane Becksfort Brown
Grace Mason Lundy
Beth Kennard Moore
Diane Jones Skelton

THE LAMP of Delta Zeta, official magazine of the sorority, is published quarterly by the Delta Zeta Sorority, 21 East State Street, Columbus, Ohio 43215. Life subscriptions \$40.00. Printed in the United States of America by Compolith Typesetting, Indianapolis, Indiana, and United Color Press, Dayton, Ohio. Second class postage paid at Columbus, Ohio, and at additional mailing offices.

ATTENTION: Send all editorial material to the Editor, Mrs. Arthur J. Miner, 1040 H Avenue, Nevada, Iowa 50201. Send all changes of address, changes of name, and notices of death to Delta Zeta National Headquarters, Columbus, Ohio. Deadline for chapter editors: November 10, May 10.

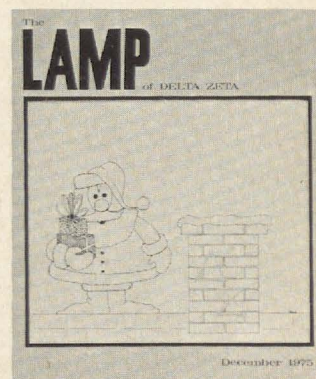
POSTMASTER: Please send notice of undeliverable copies to Delta Zeta, 21 East State Street, Columbus, Ohio 43215.

of DELTA ZETA December 1975

Contents	Page
Woman of the Year, 1975	4
Collegiate Programs: Purpose and Direction	6
Your Help Wanted	9
What Can ONE Alumna Do?	10
The Lamp: Its History and Origin	12
Speak to the Earth	18
Flame Eternal	19
Dr. Guy Potter Benton. A Vignette	20
Delta Zeta Directory	21
Transters Spin for Fun	29
Golden Circle Scholarships	30
Delta Zeta Scholarships and Grants	31
Alpha Chi Celebrates Fiftieth	32
Miami Alumnae and Edith Head	33
An Open Letter to Delta Zetas	34
Alumnae Profiles	35
Campus Sights and Sounds	38
On Campus	39
With the Alumnae	43
And Now a Word About Your Magazines	46

On the Cover

Santa Claus is coming down your chimney with gifts of love, friendship and joy for all good Delta Zetas. And from all of us to all of you, a Happy New Year for 1976.





Margaret Edsel Fitch, AE

Woman of Year 1975 Margaret Edsel Fitch

by Dianne Fellows Guild, Δ

"Home economists are not just a bunch of cooks and home sewers" says Margaret Edsel Fitch, AE, president of the American Home Economics Association and Delta Zeta's Woman of the Year for 1975.

Family is the most important word in her vocabulary, and today, in an age when people are questioning the need and worth of a family, that's where she feels the emphasis should be. One of her goals is to strengthen the Center for the Family, part of the national American Home Economics Association headquarters in Washington D.C.

At a time when nutrition and concern for the American consumer education is voiced daily in newspapers across the country, Margaret has traveled widely encouraging more accessibility and involvement of home economist at the grass roots level. One of her major concerns is the need for home economists to polish their image, "I hate to say it, but we have an identity problem. We need to let people know what home economists are doing" she stated in a recent interview.

Margaret has stated that high school home economics teachers are the ones who have to lay the groundwork for this involvement. "They are also the image makers for this profession," she said, "since the first brush many students have with formal home economics programs comes at the high school level."

Another major goal is to encourage high school home economists to teach more family-related subjects in addition to cooking and sewing and to broaden opportunities for home economists in business and industry. "None of us wants to see home economics remain static. It's a challenge to see what we can really come up with that's new and different," states Margaret.

The national AHEA president also stressed the need to lure more men into the field of home economics which is thought of as purely a profession composed of women. "Only one per cent of our organization is composed of men," she stated commenting on the perspective they could bring to the organization's program of work.

Margaret has encouraged more visibility and involvement of home economists in areas outside their profession and feels all must be involved in the process of selling home economics. Alluding to the current economic crunch which many are feeling in terms of curriculum and programming cutbacks, Margaret has challenged the home economics profession to use other resources besides money to provide quality programs for the people they serve.

Margaret is a natural for head of the American Home Economics Association. As a resident of Tucson, Arizona, since 1970, she is known throughout the state in her current capacity as the State Leader, Home Economics Extension at the University of Arizona. While living in Stillwater, Oklahoma, she served as an extension home economist in Canadian County for over 25 years. She holds B.S. and M.S. degrees in home economics education from Oklahoma State University and has held many offices in the Oklahoma Home Economics Association serving the dual capacity of president of the Oklahoma

H.E.A. and the Oklahoma Association of Extension Home Economist in 1968-69. In March of 1970, she was presented the Oklahoma Home Economics Association "Professional Award" which was only the second time in the history of the organization the award had been presented. She has served as public relations chairman of the AHEA national level as well as secretary of the Association of Administrators of Home Economics and is presently on the executive committee of the International Federation of Home Economics.

In reviewing her duties as president, Margaret has frequently discussed her participation at the International Federation of Home Economics meetings in Israel where she was elected the United States representative to the upcoming International Federation of Home Economists meeting in Ottawa, Canada in July, 1976, a session in Paris, France and a recent meeting with Vice-President Nelson Rockefeller at the White House in Washington, D.C. during which the effect of legislation on the American family was discussed.

Besides these responsibilities, she belongs to numerous professional and civic organizations. The honors and awards she has received are also numerous. Margaret is a member of Phi Upsilon Omicron home economics honorary which serves and advances the profession, helps members become effective leaders and stimulates participation in civic affairs. Other honors include Delta Kappa Gamma, Epsilon Sigma Phi and the Woman of Achievement Distinguished Service Award from the National Association of Extension Home Economists. Her contributions have earned her a place in biographical directories such as *Who's Who of American Women*, *Two Thousand Women of Achievement* 1970, *Who's Who of the South and Southwest* 1970 and is presently listed in *Who's Who in America*.

Margaret was an active member of Stillwater, Oklahoma Delta Zeta Alumnae Chapter and for many years served as recommendations chairman for the central and western sections of Oklahoma. In 1968, Margaret was the recipient of the Delta Zeta Distinguished Alumnae Woman of the Year in Oklahoma. Delta Zeta Sorority is indeed proud to have Margaret Edsel Fitch as the Woman of the Year for 1975.



With Margaret Edsel Fitch at the Stillwater presentation are Peggy Duane, Alpha Epsilon chapter president, Mary Ann French, Province Collegiate Director, and Arlene Newman, National Secretary.



At the October 23rd candlelight dinner in the Alpha Epsilon chapter house, Stillwater, Oklahoma, the Woman of the Year presentation was made to Margaret Fitch. Gathered for the banquet were classmates and alumnae from her college days at Oklahoma State. With Margaret are Thena Felts Gable, Lota Gill Jeffrey (a 1975 Achoth recipient) Vera Helberg Williams, Virginia Malazhan Lamb, and Jane Tucker Sturdivant.

Collegiate Programs:

"THE PURPOSE OF THIS SORORITY SHALL BE"

PLEDGING & INITIATION	to unite its members in the bonds of sincere and lasting friendship
SCHOLARSHIP	to stimulate one another in the pursuit of knowledge
SOCIAL & STANDARDS	to promote the moral and social culture of its members
ACTIVITIES & PHILANTHROPY	to develop plans for guidance and unity in actions

Delta Zeta Constitution Article II:Sec 1

Pledge Training

LOCKHAVEN, PENNSYLVANIA—Marilou Lynch Gary, AT, newly elected Vice-President for Collegiate Affairs, maintains a close touch with today's college students through her guidance work in the Special Services Project at Lock Haven State College. Working with college students and meeting with Delta Zetas in her province and national assignments has heightened her awareness of the needs and expectations of college students everywhere.

During the coming biennium, Marilou will work directly with Pledge Training and Collegiate Education. "Pledge Training is the very foundation of our sorority, and to secure our future we must bring into Delta Zeta women who are loyal, knowledgeable and dedicated. The purpose of this sorority can be accomplished through a positive, well-defined pledge program—one that meets the needs and expectations of today's college woman and in every way conforms to the high ideals and values upon which Delta Zeta is based."

Marilou will work indirectly with collegiate chapters through her five chairmen who are introduced to you on these pages. These chairmen are in many areas of the country, and have all served Delta Zeta previously in other capacities so that they bring experience and diversity to their programs.



Marilou Lynch Gary, AT
Pledge Training
Collegiate Education



Joan Dondrea Lowry, FA
Standards Chairman

Standards

BAY VILLAGE, OHIO—Joan Dondrea Lowry, FA, a graduate of Baldwin-Wallace College, will be working with chapter Standards chairmen "to strive toward producing better Delta Zetas."

As a professional model, substitute teacher and yoga instructor, Joan exemplifies the variety she hopes for in Delta Zeta Standards programs. In addition, she has served as narrator at convention programs for some of the country's biggest companies (Pepsi-Cola, Caterpillar, Honeywell.)

She thinks that the Standards program "offers the opportunity for comprehensive glimpses of the many phases of life, its problems, interests and challenges; it helps members acquire a greater ability to cope with these challenges."

Joan hopes that the standards program will promote individual growth among members by furnishing "the means of establishing standards of conduct and poise as well as giving a basic for making intelligent judgments in these and related matters."

Finally, Joan will "provide new ideas for effective, up-to-date programs which will stimulate members and pledges to think, ask questions to broaden their outlook on life, to quicken their ability to succeed and in general to improve themselves."

Purpose and Direction

by Marilou Gary, AT, National Vice President Collegiate Affairs

Philanthropy

PENDLETON, INDIANA—Jane Gustafson Thompson, BN, says that one of her major objectives as National Philanthropy chairman is to draw all Delta Zetas closer together through our "hearing help" program. "I'm looking forward," she says, "to working with our collegiate chapters in this area after listening to Frances Merrill, wife of the president of Galaudet College . . . challenge each of us to move forward in helping the deaf by learning the deaf sign alphabet."

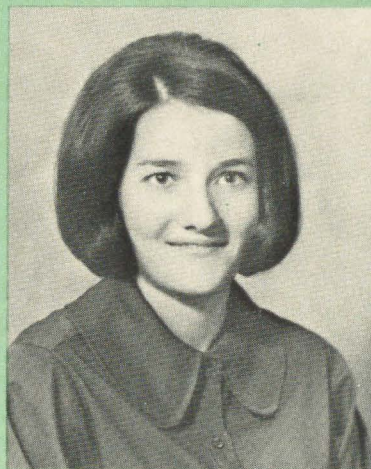
Among her various alumnae activities she served as chairman of the Indiana Flame Fantasy. Jane, a Grace Mason Lundy and Florence Hood Miner award winner, is interested in seeing our collegians work for excellence through dedicated service.

"There will always exist local philanthropic needs, and I would hope that every Delta Zeta would continue to give of herself from pledging through Golden Rose days to those in need."

"Reach out . . . you will find a needy hand waiting."



Jane Gustafson Thompson, BN
Philanthropy Chairman



Laree Mugler, A
Activities Chairman

Activities

SHAWNEE MISSION, KANSAS—Laree Mugler, A, is a natural for National Activities Chairman as she continues to be involved in Delta Zeta, her community and her profession. She graduated from Kansas State University with a BS in Mechanical Engineering, was the first female to hold membership in the three engineering honoraries at Kansas State and served Lambda chapter as secretary, pledge trainer, rush chairman and president. Laree is now the MSL Department Manager for Procter and Gamble at their Kansas City plant and actively involved in alumnae work in the Kansas City area.

Activities are an important part of the college experience and necessary for the growth of the individual and the chapter. Laree served as National Philanthropy Chairman and says "I am looking forward to learning about the activities of each Delta Zeta Collegiate chapter. I view chapter activities as another way to develop good campus and community relations."

Scholarship

RICHMOND, VIRGINIA—Gail Ott Bonanno, OX, graduated from Lock Haven State College in 1974. She was president of Theta Chi chapter for two terms and a Grace Mason Lundy award winner. Her scholarship and involvement in campus activities merited her inclusion in *Who's Who in American Colleges and Universities*, *Who's Who Among Student Leaders* and *Who's Who in Greek Fraternities and Sororities*. She and husband John moved to Richmond in May, where he is a Probation and Parole Officer for the Commonwealth of Virginia.

Gail hopes to work through chapter Scholarship chairmen to put Delta Zeta at the top of the grade point average list on each campus. She wants her local chairmen to review chapter strengths and weaknesses with chapter members, and evolve plans that will guarantee success in studies and high scholastic achievement. Gail feels that "more emphasis needs to be placed on a scholastic program for pledges—to stress individual attention toward academic discipline—always striving to initiate every pledge."



Gail Ott Bonanno, X
Scholarship Chairman

Collegiate Programs: Purpose and Direction

Social

CHESHIRE, CONNECTICUT—Tricia Simmons Hubbard, Π , only recently moved to Connecticut from Tennessee. She took her degree in mathematics from Memphis State University where she served as treasurer and vice-president of Gamma Iota Chapter. Before moving to Connecticut, she was a Nuclear Materials Information programmer at Oak Ridge. Tricia served as president of the Nashville Alumnae, and then as PCD for Arkansas and Tennessee.

An outgoing personality and a gracious manner characterize Tricia, and her enthusiasm and dedication to Delta Zeta will challenge our chapters to build worthwhile social programs. "The chapter social chairman is responsible for all the chapter's social functions—from an informal pizza party to the most formal dinner-dance; she must be organized, creative and eager to try something new and different."

Through an exchange of ideas with collegians, Tricia will provide the direction necessary in planning a well-balanced social program.



Tricia Simmons Hubbard, Π

Introducing Marilou

Marilou and her husband, Denys, are both on the professional staff at Lock Haven State College in Pennsylvania. Marilou is coordinator of the Special Services project which provides tutorial and/or counseling aid to students.

Her husband is professor of speech communications and theatre. He says that he always consults Marilou when he is directing a play. "She's my best critic," he says. "If it's good she tells me; if it's bad she also tells me."

Marilou comes by this critical knowledge through her course of study in radio, television and film at University of Texas and her work with high school and college students in speech, drama and English classes.

She and Denys have three students of their own: Debbie, sophomore at Lock Haven, Kim, a senior at Lock Haven high school and Brian, pre-kindergarten at the LHSC campus school.

"When Debbie became a Delta Zeta last year," Marilou says, "I was overjoyed . . . Delta Zeta has always been a family affair for us. Why even Brian wears a Delta Zeta tee-shirt and Kim remembers Delta Zetas first as sitters and then as her friends as she has gone through elementary and high school."

Family means a great deal to Marilou. Her happiest moments are when the family goes for an outing—a swim or picnic, and especially when they take off for the coast and the beaches on the Jersey Shore.

Marilou loves to sew and makes many of her own and her daughters' clothes. She is an antique buff and a golf enthusiast. "I love the mountains and can't think of anything more delightful than sitting near a fireplace with the family, friends or with a good book . . . and music, anything from Chopin to country-western".



Marilou Lynch Gary, AT

While living in Santa Fe, N.M., Marilou was president of the City Panhellenic Association and since her arrival in Pennsylvania has served Delta Zeta as CCD, PCD, State Day Chairman, Province III Treasurer and in 1973 was the editor of a History booklet for Province III. Before her election she was on the National Rush Committee and was a Daily Coordinator for the 1975 National Convention.

Marilou likes to travel. In her new office as Vice-President for Collegiate Affairs, she'll visit new places, meet new people and visit old friends—the three reasons she loves to travel. "Meeting Delta Zetas from all across the United States is both an exciting and rewarding experience . . . no matter where the chapter, there is instant warmth and friendship."

Some day she would like to return to the Texas hill country near San Antonio . . . and settle down. She keeps in close touch with her home state through occasional visits to relatives and by maintaining just a touch of her Texas accent. Her favorite word is "y'all" which she uses to reach out to people and bring them close to her.

This profile was written by Dr. Denys J. Gary, fond husband.

WANTED:

YOUR HELP TO MAKE DELTA ZETA HISTORY

HOW? Share your old souvenirs, pictures, scrapbooks, programs, to fill the display cases of our National Archives.

For our Diamond Jubilee History, we want as many pictures of historic interest as possible. Both pictures and printed items concerning college and alumnae chapters, alumnae, collegians, will help to make this record complete and vivid. If you will give, or even lend, some such helpful treasures, tell us.

Gifts having a monetary value are tax deductible gifts, remember.

In case you wonder if your keepsakes would be useful, please write to Betty Agler at National Headquarters and she will help you decide.

This is a great opportunity for any of us to make a valuable contribution to the book which is to help commemorate our Diamond Jubilee, so don't let it go unfulfilled. Thank you, and watch for more details in the next issue of the LAMP.

Grace Mason Lundy, Historian



The Golden Rose members held a luncheon during convention at which Dorothy Boyd Haskins was given her certificate by National President Florence Harvey. Grouped around the honored guest are Amanda Thomas, Margaret Huenefeld Pease, Grace Mason Lundy, Lucile Crowell Cooks, Florence Harvey, Charlotte Behnken Freygang, Margaret Richardson Buchanan, Emmajean Conklin Anderson, Charlotte Hayes Boyd, Olga Schmidt Davis, Marguerite Loos, Sarah Stoneham Muller, Marie Smith Murray, Ruth Murray, Marcia Sneed Neese, Lila Ready Pemberton, Dorothy Best Rich, Kathryn McClurg Siegrist.



by Dianne Fellows Guild, Δ
National Vice President, Alumnae Affairs

During and since national convention many questions and comments about Delta Zeta have come to me. One of the most frequent has been: "What can I—the individual Delta Zeta, possibly the only one in the area, do to help our sorority."

JUST WHAT CAN ONE DELTA ZETA DO?

Our collegiate chapters rush every season of the year—fall, winter and spring. Our collegiate chapters work hard to increase their chapter membership. However, they *do* need your assistance. It is vital that every Delta Zeta alumna across this wide country:

- Talk about Delta Zeta to young women who are entering colleges and universities where we have collegiate chapters.
- Encourage young women to join Delta Zeta.
- Inform them about the advantages of being a member of the Greek system not only during their undergraduate years but for their lifetime.
- Use the recommendation form included in THE LAMP for those young women you feel would be an asset to Delta Zeta. If a form is not available, the collegiate chapter would appreciate a personal letter.

WHAT CAN ONE DELTA ZETA ALUMNA DO?

Delta Zeta has always been first among all sororities in the field of extension. Be aware of all the college campuses in your city and state. Inform National Headquarters about the campuses where we do not have chapters. Send newspaper clippings about the university—its activities, programs and enrollment. Let Delta Zeta know of your interest in helping to establish a new collegiate chapter.

WHAT CAN ONE DELTA ZETA ALUMNA DO?

As a Delta Zeta alumna, our responsibility and privilege in providing the fine counseling, supervision, leadership and moral support to our collegiate members grows increasingly important—and more costly. To assure Delta Zeta's continued growth and improvement in her alumnae and collegiate programs, contribute to the Delta Zeta alumnae fund. Since Delta Zeta has no individual annual membership dues, our sorority depends upon voluntary contributions for those extras—extras that keep our collegiate chapters in top form. We need each alumna's support to help each collegiate chapter member reach her highest potential. The \$ amount given is not the most important factor—what is important is that YOU as an individual Delta Zeta alumna care about our sorority's future.

WHAT CAN ONE DELTA ZETA ALUMNA DO?

Let Delta Zeta know where you are, what you're doing, and what your opinions are! Communication is an art form—we need to know your thoughts if Delta Zeta is to build an effective alumnae program. Delta Zeta's total national strength depends on its very important and interesting alumnae whether alone in the community or as members of an alumnae chapter.

What Can One Alumna Do?

Introducing Dianne

Dianne Fellows Guild, the new Vice-President of Alumnae Affairs has worked for Delta Zeta in three areas of the country. Initiated into Delta chapter at De Pauw University, she was president of the Huntsville, Alabama, Alumnae chapter and was SRC and then Province Collegiate Director for that state, plus Mississippi. Moving to New England she was SRC for New Hampshire and Vermont, then Province Alumnae Director for that Eastern area. Her two years as a National Director prepared her well for assuming this important vice-presidency, supervising all of the PADs and the hundreds of alumnae chapters everywhere.

She has been to every convention since the 1964 one in Cincinnati, each in a different capacity. Husband Doug is a graduate of Case Institute of Technology, and has his master's degree from the University of Washington and presently working for another degree at University of Vermont. A mechanical engineer, he is a member of Sigma Alpha Epsilon. Son Dan is an avid sports fan, and between Dan and Doug GOLF is it!

While in Huntsville, she was president and secretary of the Service Guild which does work with the mentally retarded and brain damaged children. She served mostly at the Huntsville Achievement school which was founded by a Delta Zeta alumna, Dr. Jane Aycock. A charter member of the Heritage Junior Woman's club, she was also nominated for *Young Civic Leaders in America* and *Personalities in the South*.

Most of her activities other than Delta Zeta in Burlington have been centered around her profession of dietetics. She works at the Medical Center hospital of Vermont as a clinical dietitian in charge of therapeutic diets on surgical and respiratory units. Presently she has decided to experiment in private practice for two of the physicians in the Burlington area counselling their patients in weight reduction, diabetes, hypertension and cholesterol restrictions. She feels it is vital that the word nutrition and home



economics be taken out of their stereotyped images and the public realize the importance of the relationship of their diets to maintaining good health.

(Dianne told us all about this while we were stuffing ourselves with that terrific convention food.)

A member of several Dietetics organizations she was appointed on the Governor's Commission on food Task Force. Gardening is a new undertaking for her, and she has found out that birds like to eat strawberries and raspberries so the Guilds claim the best fed birds in town. In her spare moments, she is an avid needleworker and knitter. Her present project is hooking an Oriental rug since everyone in the family is well sweated.



Tri County, Long Island, alumnae invited everyone in this New York area to attend a champagne punch party. On hand to greet newcomers were Joanne Kroon, Dottie Holden Bedore, Eileen Cornell, and Madeleine Sewell.

Greater Kansas City alumnae honored Margaret Ann Correll Brown with a tea honoring her presidency of the Kansas City Panhellenic association. Peggy Cock Maggio was hostess and all area sororities were invited.

S O S

National Headquarters is still searching for some missing copies of the LAMP in order to complete the files of back issues. We need at least one copy of each of the following:

Vol. 13, No. 3 . . . published sometime between January and April, 1924

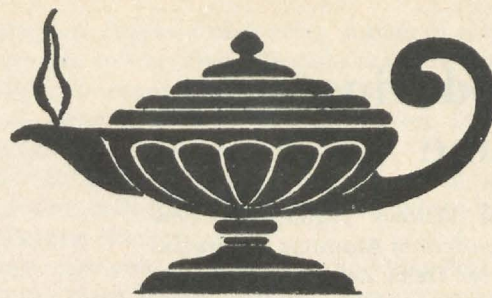
Vol. 13, No. 4 . . . published sometime between May and July, 1924

If you have a copy of either of the above issues, won't you please donate to the permanent files of Delta Zeta National Headquarters.

Your Editor is collecting old Lamps before the year 1930. Since several chapter libraries are filling in their collection, please let us know if you have issues you would like to donate. We will be happy to pay postage or shipping charges.

The Lamp

Its History and Origin



compiled by Florence Hood Miner, AB
The Lamp's seventeenth editor.

With expanding of *The Lamp's* size, we thought this might be the right time to do some reminiscing about the many changes the *Lamp* has seen since its inception back in 1910. Sixty five years of publishing is a long time, and in the changes that have occurred on campus and to the status of women, quite a change!

Whenever anything in Delta Zeta is changed, National Council has pangs of tradition. But when our *Lamp* printer suggested that by going to a larger size magazine, we would save all those miles of paper, which would save buckets of money, everyone listened. Council members were loath to discard the format which they thought had been Delta Zeta's forever, so this Editor did some research amongst the bound volumes and found that many times the size, the paper, the format, the pictures, the style, everything had undergone many changes.

A good editor, and a smart one, becomes a good editor by enticing others to contribute interesting words, sketches and ideas. And so, this editor wrote to each of the previous editors, those still living, and asked them such questions as—what changes did you make—do you remember how much an issue cost in your day, who helped, and a variety of questions designed to bring out the best in everyone so that this editor merely had to put the proper marks in the proper places to clue the compositor.

And the mail did become very interesting. Some did not reply, but those who did prove that once a talented Delta Zeta, always a talented woman. And so, here is our version of the history of *The Lamp*, with both thanks and apologies to our Historian Grace Mason Lundy, from whose previous histories we have unashamedly stolen much. And also thanks to her sister Rachel Mason Peden, a longtime columnist in the *Lamp*, who back in 1960 wrote her version of the history with her comments, which we find so fun we are quoting intact. So after you read this dignified account, see what Mrs. R. F. D. had to say about it.

Long, long ago, back in the year 1910, it was decided at the national convention, and voted by all five delegates, that now that Delta Zeta was so large the sorority needed a magazine. Ruth Gaddis Jeffries was elected the first editor, and this charming lady lives in Tucson, Arizona, and even now is doing research on the early politics of the state. Her reminiscences over the telephone and through letters are so precious and revealing of

those early days. Ruth transferred to Miami and was a close friend of Alfa Lloyd, and in fact a bridesmaid at her wedding to Orison Hayes. She assisted in the building of the young sorority and pioneering of the chapters at De Pauw and Indiana Universities.

Ruth Gaddis Jeffries

Finances being what they were, or rather what they were not, Ruth persuaded an uncle who was a De Pauw Sigma Chi and happily a printer to do the printing. We suspect the cost was very modest knowing Ruth and her persuasive ways. She says she wanted a green cover for the first issue, but brown paper was all he had in stock—thus the first *Lamps* had a brown cover.

Her college days at Miami must have been delightful (remember females in colleges were scarce in those days). "We had mostly walking dates, to and from chapel, better still afternoons or early evening in the spring and fall. Of course, if it was cold a large muff was good for holding hands. Jogging or fast walking was out.

"The University gave land for fraternity row with houses not to exceed six thousand dollars. The Phi Delt had the first house and they thought they would do something big like the men's schools in the East and import out of town girls. I was wearing a Phi Delt pin at the time and with the Dean's permission I packed my little suitcase and was off for the big weekend.

"If your date wanted to really splurge and impress you, he would get one of his fraternity brothers for a double date and they would rent a horse and surrey (only two were available)—and the four of us would watch the football games from such exalted position.

"Panty raids of today would be unthinkable, but at the opening of the school year the men put on a night shirt parade and went out serenading at midnight. When they came to President Benton's, he appeared on the upstairs porch in a nightshirt and gave them a pep talk on unity for the coming year. There were forty men and ten girls in my Liberal Arts graduating class. No wonder I loved Miami!"

After marriage and moving to Arizona, Ruth became very involved in Republican politics. During the Eisenhower days she was Regional Director for the Southwest and then Vice-President of the National Federation of

Republican Women. One of her nicest political stints was representing Arizona when Hawaii became a state. Ruth has kept in close contact with Delta Zeta through her friends and her granddaughter Pat, who was initiated at Beta Iota chapter at the University of Arizona. They attended the ΔZ convention in Phoenix together.

For the next three editors, now deceased, we are indebted to Historian Lundy.

The 1912 Convention found itself needing an editor to replace Ruth Gaddis, whose pioneering work had been so well done. The editorial mantle fell on a recent graduate of Epsilon chapter, Grace Alexander. Looking over her situation, the new editor decided that finances would be a major responsibility of her staff, and she began a campaign to bolster the treasury by asking all seven of the sorority's college chapters to solicit advertising from local merchants in each college town.

In her first issue she gave an enthusiastic account of the Convention just held at Winona Lake, an Indiana summer resort. Seventeen delegates from seven college chapters had attended, handled considerable important business, such as setting up a committee to organize alumnae chapters: designating October 24 as "Foundation Day"; printing the first Delta Zeta Songbook, and importantly, canvassing all alumnae members for LAMP subscriptions at \$1.50 a year. Incidentally, at this 1912 Convention, the sorority elected a "Grand Council" consisting of eighteen members.

Editor Alexander stressed chapter newsletters, began presenting NPC information immediately after Delta Zeta's admission to that body, and had the pleasure of reporting on the installation of Iota chapter, organized by Mabelle Minton at the University of Iowa, and of Kappa chapter, formed by Elizabeth Coulter Stephenson at the University of Washington. The organization of two alumnae chapters, called the Alpha and Beta Alumnae chapters, was done in time to report at the 1914 Convention held in Indianapolis and managed by Epsilon Chapter alumnae.

The 1916 Convention reluctantly accepted the resignation of the young editor, who had succumbed to Cupid's arrows, and became Mrs. Frank Duncan. Gallantly the Grand Council had edited one LAMP to allow the Duncans a carefree honeymoon, but thankful that the 1916 Convention was to allow them the choice of a third LAMP Editor.

Arema O'Brien, a recent graduate of Theta chapter, was chosen as third Editor, and her enthusiasm and special ability for this job kept her in the editorial chair for six busy and history-making years. In her first issue, she reported the installation of new college chapters, Lambda, Mu and Nu, and an alumnae chapter roll of five vigorous groups. The letter from Epsilon chapter which her first issue carried, reported two new pledges, Georgia Chandler and Grace Mason, and the chapter Editor was Flora Ruth, who later was to make history as the only woman for whom a gold star was placed in the Service Flag of Indiana University during World War I.

Arema had an efficient staff, and financing was improved during her editorship, so that the magazine, though still wearing the unpretentious brown covers with which it started, was filled with news of Delta Zeta and the sorority world in general. It was a compliment to Editor Kirven, (as Arema had married Frank



Miss Gaddis as Lucy in the Miami University's production of *Professor's Love Story*, 1910.



Ruth Gaddis Jeffries, A, in her Eisenhower political days.

Kirven during this term) that she was made Chairman of the NPC Editors' Conference.

In 1922 she requested that Council relieve her of this office, and they did so, but immediately made her chairman of the newly adopted Social Service project, support of the mountain school at Vest, in the hills of Kentucky. And of course, what would the report of this work be called, but "Vest Pocket News". Arema's winning personality made her a favorite at the numerous installations over which she presided later on, at Brenau, Florida State College for Women, and Howard College.

The 1922 Convention called Vera Brown Jones to succeed Arema Kirven as Editor, and she took up her position with vigor and skill. She had announced that the first principle of her editorship would be that material she received, and in turn handed to our publisher, would be absolutely ON TIME. She made good on this in her own position, and was able to inspire a fine degree of compliance for the chapters also.

It was a pleasant relief to have her produce a new cover. In light tan and green, it was a bit "dressy" but was welcomed after so long a time of dull and unrelieved brown. During the four years of her editorship, Vera brought a lively perspective on the chapter activities, introduced a coterie of new chapters to her readers and each other, and gave us a magazine that was informative, refreshing, and stimulating. The 1924 Convention, held in Evanston, was a highlight in the sorority's history, and was excellently portrayed in the LAMP, an effective unifying factor in the next biennium. She laid down her editorial pencil in 1926, after four years of effective presentation.

As you can see by the pictured cover, the Lamp with Grace Mason Lundy as editor was six by nine inches in size, and the cover was green on tan paper. Glancing through, we find a call for lost addresses for 26 members. (Our Norma McIntyre says her lost members are in the thousands!) This was the call also for the Bigwin Inn convention in Canada, and round trip on a special railroad train from Chicago was priced at \$41.45.

While Grace's formal editorship extended for not too many years, she has kept coming back, and her type-writer has never been silent. In fact at convention one little darling in a workshop asked this editor if she had followed Mrs. Lundy as Editor, proof that Grace's words are always there.

Grace - Mason Lundy

"When I became Editor of the LAMP it was with the advantage of having been for four years the Executive Secretary in our (then called) Central Office, so that I had already an acquaintance and a generous lot of information as to all the chapters, and officers. In the years just before me, the LAMP finances had been stabilized by the establishment of a Life LAMP subscription plan, so finances were not a worry to me, in fact I don't think I spent much time thinking about the money, being more interested in the news.

"My efforts were not particularly directed at any novel features or changes, just a good full magazine, and this I was happy to have. I retained the cover used by Vera, though looking forward to a time when it could be replaced, and used as much original material sent by members, as I could. I think the top offering was a page called "Wholly Smoke", and signed "The Lampadary". This was a page of humor, semi-spoofing or witty comment, which was the work of my sister Rachel. At this time only Delta Zeta and Alpha Phi had anything like a humorous feature, and both were popular not only with their own members, but enjoyed by other sorority people. When Wilma Leland of Alpha Omicron Pi wrote the Lampadary a complimentary letter, that appreciative pen-woman decided to change her signature as a compliment to Mrs. Leland, and henceforth became "Wholly S. Wholly". This feature as such continued through Margaret Pease's term, and Rachel did keep on contributing, being Alumnae Editor under Gertrude Fariss, and now and then offering her page "Don't Say I Said ANYTHING" for special requests.

"I had a second round as Editor from 1933 to 1936, with stalwart assistance from Margaret. And altho not as Editor, I have also contributed various issues of the LAMP as history: December 1923: May and September 1952: Summer 1934, and finally, summer 1967, making a total of four History offerings over the years. The Diamond Anniversary History remains to appear, whether in LAMP or otherwise."

Margaret Huenefeld Pease

In 1928 when Margaret Huenefeld Pease was elected Editor at the Bigwin Inn convention, she, like Grace, was called into action for Delta Zeta in many capacities other than editing. Despite her claim she edited it out of a suitcase, it was a magazine of great distinction.

"When I began my stint as editor (in 1928) I had a hard act to follow! Grace Mason Lundy had been editor just before me and you know what an excellent job she had done. Besides, she scared me then just as William Buckley scares me now with marvelous flow of expression and erudition, which, incidently, she still maintains. I was an innocent if there ever was one, completely unprepared, an innocent abroad in a field absolutely unknown to her, struggling desperately, trying to maintain the status quo. At the same time, as a new member of National Council, I was sent forth to install a few chapters, visit a few more, edit *Sidelights* as I recall, and do other chores.

"The next year I worked up a new format, completely new, new ivory colored rough paper with uncut edges, new soft green cover, a separate pictorial section, a few wood-blocks, new type, bold, and I thought beautiful. Fortunately the printer thought so too and worked it out with me in untold hours of pleasant planning. The final product probably didn't have too much substance but it was pretty! Unexpectedly (I may brag a little?) some others thought so too because the Department of Journalism at Northwestern University selected it as an outstanding publication and used it in class as such, or so I was told by probably biased Delta Zetas.

"As far as a staff was concerned, I didn't have any. If I needed a filler, I filled it. If I needed a drawing, I drew it. Jack of all trades, master of . . . you know. I also ran Pease Porridge", sort of a mishmash of editorial comment. If you want to see what *that* was like, look up "porridge" in the dictionary.

"My Lamp's chief claim to fame was the continuation of Rachel Mason Peden's column "Wholly Smoke" by Wholly S. Wholly, The Lampadary. This column was Rachel's first stint as a columnist, and later, as you all well know, she wrote a syndicated column under the nom de plume Mrs. R.F.D. or The Hoosier Farm Wife, for over thirty years. It is a source of pride to all of us that her first columns were for The Lamp. I wish, vain thought I suppose what with the high cost of everything, that we could have a gem or two from Wholly Smoke reprinted in each Lamp. They were so clever.

"Yes, it is true that I carried the Lamp copy around with me in a large suitcase. I was also the one chapter visitor, preparing for my bit as National President. The depression was on then, but although we had only fifty-six chapters it was difficult to visit all fifty-six while getting out The Lamp, writing the Blue Book for Pledges, and attending to routine Council business. But I survived, and can now look back on those happy days when I went on my merry way when, as Sam Levenson says, I didn't know enough not to be merry with my busy lot.

"So now, all retired, all I have to do is look forward to the next Lamp, the next meeting or mailing of the Delta

Don't Say I Said Anything...

Don't say I said anything, girls, but looking through 50 years of the *Lamp* to dig out a few good laugh nuggets is a little risky.

The laughs are there; indeed nothing can go on 50 years without producing some, but some other things are there, too. A little sadness, maybe? A great deal of proudness, certainly. Digging for laughs one could start out like a seasoned old prospector digging for gold, and wind up feeling more like his essential, fourlegged companion that carries back the gold.

How did the *Lamp* begin? Well, there were these Delta Zetas back in 1910, when the sorority was a few years old and just growing out of the gangling age, and the girls didn't have anything to read. It was before Delta Zeta started selling magazine subscriptions to earn its way through college. One of them suggested recklessly: "Let's start a magazine of our own." Another said, "OK, and let's keep it going."

It was a challenge but those were the golden days. Not golden as a 50th anniversary, but golden as youth, golden as the pot at the end of the rainbow, golden as opportunity, golden as that beautiful stuff now buried forever at Fort Knox. (Or is it?)

The first editor Jeffries of Alpha, was a non-professional, as most of them have been, but she liked *Lamp*-editing so well she later became a Republican bigshot writer.

Looking through the old *Lamps* for laugh nuggets you can find plenty in the clothes, hairdoes and hats. You wonder how any bunch of pretty girls had the nerve to come out of the closet in those clothes.

You see more than the change in styles; you see the people changing and developing, getting a little older, new faces appearing. You see the sorority grow. It gets bigger and stronger. Like some of the dear faces it gets older, but its ideals are the same, only wider in application and more realistic in approach.

The first issue must have been a humdinger. It was snatched up hot off the press. You can't find a copy of that issue now, or if you can you ought to notify National Headquarters because they can't.

In the beginning there was practically no money to buy paper, ink or black coffee. But, oh . . . those happy days when the editorial staff met on Thursday before publication to chew up leaves and old wood to get paper to print the magazine.

When Pease became editor she added a secret ingredient (not tobacco) to the chewing so that the paper came out so beautiful that Pease's book was really a work of art and won many awards.

Of course more new chapters and many new pledges kept coming on, and everybody wanted to be photographed and shown in the convention pictures, so the *Lamp* simply had to keep going on. If you keep going at anything eventually you arrive at a golden anniversary. You have to face it whether you want to or not.

What can we present the Lamp for a suitable golden anniversary gift? Youth is gold, but we can't spare any. Time is golden, but so hard to pack for mailing. The goldenest thing we know is silence. So we herewith tender three lively, silent asterisks signifying the price with which we note the golden anniversary.

—Mrs. R F D

Zeta Foundation, and the next convention where I hope to see all of you celebrating Delta Zeta's Seventy Five Years of Achievement.

The first issue under Gertrude Houk Fariss editorship after the Asheville convention was dedicated to Margaret Pease. It also contains an article by former Editor Lundy enthusiastically inviting everyone to contribute to Delta Zeta. Convention Highlights article was written by Kay Larson, future Editor, and your present editor contributed something called "Stressing the College Girl's Personality."

Gertrude went on also to being National President, and a distinguished career as head of St. Helen's Hall, member of President's Commission on Higher Education, and always a promoter of programs on the status of women. In fact Gertrude as a speaker was unbeatable. Even now, she is not retired but moved to Lake Oswego in

Oregon, where she promotes real estate, when she is not travelling all over the world.

Gertrude Houk Fariss

"The dates of my editorship were 1936 to 1940. It isn't too difficult to recall the innovations. I was not happy with a *Lamp* which carried nothing but sorority news. I did not in the least underestimate the importance of those. On the other hand, I felt that the *Lamp* went to innumerable alumnae and many college girls who might like other types of stimulation along with those that applied directly to sorority activities. Since it cost a sizeable amount to edit *The Lamp*, I felt strongly that its appeal should be a little more diversified and broadened. I felt that sorority members, as college women, ought to be contributing something considerably beyond that fundamental value of sorority membership.



The 1928 *Lamp* had a tan cover with dark green ink, 6x9 inches in size with Grace Lundy as editor.



In 1963 with Eddi Parker as editor the *Lamp* was printed in black with end panels in a gold color and had grown to 7¼ x 10½. The Memphis beauty on the cover was the current outstanding collegian from Gamma Iota chapter. She can now be found in the Directory as Jane O'Neil Letchworth, Mississippi Reference chairman.

"The innovations I remember best were: first a page devoted to discussion and highlighting of current national trends—economic, political and social. This was written by Esther Christensen Walker, Ω. She was a member of my graduating class at the University of Oregon and was truly a brilliant economist. She was living in New York and her columns were stimulating.

"A page on current theatrical performances in New York, with truly critical comment and interpretations was written by Carolyn Bowers Collett, K. She was taking her master's degree at Columbia University in the field of Literature, and on the side taking weekly lessons in drama and acting from Madame Marie Ouspenskaya, the leading exponent in the United States of the Russian Stanislavsky system of acting.

"In every issue there was also a book review section and one article written by a non-Delta Zeta, usually a college professor or other leading figure with special knowledge in a specific area. These were fun, because the college girls all over the country vied with each other in submitting such articles. They were very substantial in nature and reflected dozens of different special interests and fields of knowledge.

"My memory as to costs is very generalized. I would say that they ran between \$800 and \$900 an issue. When the "lodge" was running low on budget, we used to save money by getting out a somewhat smaller edition." (Hotel costs for the Asheville convention were \$40.00 for the room and meals!)

At the 1940 convention, it was voted to remove the office of Editor from National Council and that the magazine would be published from National Headquarters. Since Irene Boughton was then Executive Secretary, with a term also as National President, she became the Editor.

Irene Boughton

With Irene, the *Lamp* grew a half inch in both directions, and the dark green cover was replaced with a different color for each issue with the same format.

"Some of the first issues featured Rachel Peden, the superb writer in articles called 'Don't Say I Said Anything' and then a column which I called 'From the Editorial Inkwell. We had Metrical Moods for original poems by our members.

"These were war years and we carried Stars in Our Service Flag, which listed all of the Delta Zetas in service. They were Wacs, Waves, Spars, Marines, Army Nurses and Red Cross Overseas, Dietitians and Army Librarians. And it was sad when we had to list gold star members.

"There were many articles of Delta Zetas on the home front who were doing outstanding work in the war effort. Thousands of Delta Zetas helped. Each one was important."

Since these issues of *The Lamp* still were printed on parchment like paper, the pictures appeared in a center section on a glossy paper. But later Irene while keeping the same formal cover changed to a glossy paper so that pictures could now appear alongside the articles.

With the Armistice almost a reality, Council under President Grace Lundy had served long terms as conventions were impossible, but at their 1945 meeting, they decided the work of Headquarters was increasing and so another Epsilon editor was chosen, Charlotte Wheeler Verplank. Charlotte had been an active newspaper editor in Crown Point, and brought many professional touches

to her issues. She designed a new cover, an Ionic column on green stock, and her inside pages carried the green color in rules and sketches.

In 1950 Kay Butterfield Larson, AA, a graduate of Northwestern, coming from Oregon took over. Kay had and still follows a free lance writing career and does extensive work for many organizations and campaigns.

Kay Butterfield Larson

"In my years as *Lamp* editor I enjoyed the association with college and alumnae chapters and with the National Council. During that time it was my belief as editor that the more current and pertinent news printed in *The Lamp* from college and alumnae chapters the more readable and useful the magazine would be. I regularly asked for contributions from the chapters which would not only spotlight their own chapters but would be a means of sharing their achievements and challenges.

"During my editorship of *The Lamp*, I was fortunate in having the opportunity of handling and publishing several delightful features which enhanced Delta Zeta. And, of course, two highlights of those years, were the two volumes of Delta Zeta's history compiled so effectively and beautifully by our wonderful Historian, Grace Lundy.

"One regret! I had no choice as to covers for *The Lamp*. Previously, a new cover design—words "The Lamp of Delta Zeta" were produced in various colors in quantity. The only choice I had was to decide which color for the forthcoming issue. Frankly, I've cheered at the innovations and changes in *The Lamp* in the following years . . . and in the variety of attractive covers.

"Professionally I've been in editing, public relations, public information and publicity. At present I'm in free lance writing."

Another Indiana graduate, Ellen Kroll Jenkins, came next, and even now she is her alumnae chapter editor, so continues her excellent reporting.

Ellen Kroll Jenkins

"Kay Larson was the editor I succeeded. That first issue was May, 1953, the height of the *new look* in fashion, but the *Lamp* did not change cover design except for colors until the Autumn, 1955, issue. Then we went to a new design emphasizing the Greek lamp and colors of gold and brown in anticipation of the *Lamp's* fiftieth birthday.

"Travel articles and reports from members abroad were big news then, as well as the newsletters from college and alumnae chapters which were printed in full in alternating issues. Flo Beatty Rowe edited the college letters; the rest of my staff was Delta Zeta—the collegians and alumnae who sent in articles, pictures and letters in abundance. We used lots of pictures and biographies of national and province officers. There was even space in the *Lamp* then to print births, marriages, deaths, and lists of new initiates.

"Features which I inherited and continued for a time included What to Do When, a calendar of reports and activities and Aluminations by Gradabouts, a page of brief items about alumnae. One feature I started was the ΔZ Family Album, pictures and brief items about ΔZ mothers and daughters.

"When I began editing, NH was still in the Circle

Tower building, three of our Founders were still living, and there were only twelve provinces. The *Lamp* then reflected Delta Zeta in its own world of chapter houses and suites and busy alumnae. Philanthropy was just beginning to be stressed as a national program. We used few articles about the world outside ΔZ and Women's Lib hadn't occurred to most of us.

"In between ΔZ editing stints, I've managed to keep a husband reasonably happy and contented for 26 years, to raise a son, to survive three moves, to hold various offices in two alum chapters, to be a teacher-librarian, and a sometime bridge player. Your request brought back so many great memories, I could likely have written enough to fill an entire issue about the personal rewards I've received from working in Delta Zeta."

In 1958 Editor Jeanine Emminian Lewis from Texas, changed the heavy cover so that each issue had a different theme and sketch, and after a few issues, she passed the editorial flame to still another Northwestern graduate, Janet Smith Otwell.

Jan celebrated the *Lamp's* fiftieth birthday in one of her issues with contributions from previous editors, and the Mrs. RFD version reprinted on these pages.

Being a working journalist and having a husband in the same field, Jan brought many technical innovations to the *Lamp's* pages. Using a black and white glossy cover, each issue had a different picture of some happening in Delta Zeta. The Spring 1961 issue was an exciting one picturing Delta Zeta homes and National Headquarters. Jan had a staff artist in Toni McGlone, ΔΔ, and a chapter editor in Susan Burger Erion, AA. She lists writers Lu Burgess, M, Jane Ann Maxwell, AT, and Marilyn Moss, E.

Our next editor in 1963 was a young and petite graduate of Ohio State, Eddi Parker, who is very involved in her profession of journalism and scintillates as a toastmistress at Delta Zeta affairs in Akron.

Eddi Parker

"What I remember most was being editor, trying to hold down a fulltime newspaper job and being rush advisor at the Akron chapter, all the same time. I was svelte then. Gave it all up and gained weight.

"I think my editorship was born of the quiet fifties; we were pretty conservative in what we said and did. It was all rah, rah college and halls of ivy. Right after my tenure things started changing. Students became activists and I mean that more than just in the sense of anti-war activists. They were more concerned with everything, and more outspoken in how they expressed that concern. All that was reflected in the magazine as the magazine continues to reflect our changing campuses. I like the changes in the *Lamp* too!

"I did try some new layouts gleaned from my newspaper experience, using different styles and sizes of type, more art. Now that I have many more years of journalism behind me, I would do things much differently. But it is a demanding job that I enjoyed but was relieved to pass on to someone else.

"I recall the convention in Cincinnati where I had to put out the convention *Lampkin* and the frantic pace we set to do it. When my big moment to make my first report ever to a convention came, I had a gigantic case of laryngitis and even the hotel doctor couldn't get me talking again.

"The other day someone mentioned Slippery Rock with a chuckle. I looked up and said 'Yes, that's in Pennsylvania. That's one thing being editor taught me—names and places of colleges. I can still amaze my friends by reeling off some far out names and places from my little bank of knowledge, *i.e.* California State is in Pennsylvania too.

"I worked on the *Beacon Journal* as a writer and editor till 1969 when I quit and moved to Fairbanks, Alaska and worked on a master's in history and creative writing. Now I am a writer for the Sun newspapers in Berea, Ohio. I still do a little freelancing, am working on a book (historical fiction) and am president of a family owned company. Am getting ready to open a new restaurant and gift shop in Akron and am swamped."

Eddi was so busy being the newly elected third vice-president of the National Federation of Press Women that she had to spend her honeymoon with new husband Robert J. Crawford, Jr, at their convention in June in Sun Valley. All this and time for romance too. But she says "In case you can't tell, I'm a feminist".

This is reflected in her being a trustee of the Akron chapter of WEAL.

Busy Eddi passed her editorship over to Mary Kay Moon from Wisconsin who was brought up in the printing business through her father and contacts in Menasha. Unfortunately for Delta Zeta, Mary Kay succumbed to a fatal illness after she supervised four issues. Irene Boughton returned to the helm as Acting Editor until in 1968 Sue Hastings, also from Alpha Alpha chapter at Northwestern, was appointed. Sue designed a very modern cover using two colors with groupings of activity pictures. At this time *The Lamp* changed to offset, which is a process by which the printing is done from negatives rather than metal type. Offset allows both printer and editor to use many new layouts and materials.

And so we come to the end of our saga. In 1969 this editor and her staff took over. The staff is young and vigorous, although we did lose Marilyn Moss and Amy Glasgow to other jobs. But Beth Moore continues to dream up and execute our art brainstorm, Diane Skelton writes the On Campus news, and Jane Brown the alumnae news. Grace is there as always when needed.

Like Margaret Pease who was bold enough to change format, these past six years have given birth to several major changes, due of course to new printing and reproducing techniques. From a heavy cover printed in color to the now much used wrap-around eight pages that allows the use of color to the larger size page, we are always open to suggestions to improve *The Lamp*.

Costs have multiplied some twenty times since 1938, so that the life subscription rate is frowned on by advising auditors. Using the grade of paper found in those early issues would be prohibitive, but then have you bought a pound of butter lately! So the *Lamp* grows and changes with the times. We are no longer "girls"—that is until we reach the age of sixty. At college age we are WOMEN!





Rachel Mason Peden, E
Mrs. R F D, Woman of the Year

Speak to the Earth

by Margaret Huenefeld Pease, E

Have you ever read a book that you just hated to finish, savoring every word, trying to make it last? That is the way I read *Speak To The Earth*, Rachel Mason Peden's latest book. Come to think about it that is the way I felt about her two earlier books, *Rural Free*, her first for general distribution, published in 1961, followed by *The Land, The People* in 1966.

When I started to say "her first" I realized I had to qualify it "first for general distribution" because actually her "first" was for us, a wonderful cook book called *Delta Zeta Can Dish It Up*, a cook book that should have ended all cook books, but didn't. At the time of publication in 1942 I remember observing, in print of course, somewhere, that "That isn't a cook book, it is Literature, with a capital 'L'". Of course there are recipes in it and, if you want to take a chance on being mildly, wildly entertained while ladling out the vanilla, why all right, buy it. But if you die from too many chuckles under the knuckles (veal, beef, or whatever), or just plain laughter, don't say I didn't warn you".

It was, and still is, a gem. Any of you old enough or fortunate enough to have a copy can reread it and suffer pain, not only of hearty laughter but of nostalgia too, seeing the names and remembering all those friends of some thirty plus years ago. Thus, *Delta Zeta* prides herself on being the first to introduce this popular and gifted author to an eager reading public in this "first", just as *The Lamp* was the first vehicle for Rachel the columnist with "Wholly Smoke" beginning in 1926, and then, going on from us to over thirty years as Mrs. R.F.D., the Hoosier Farm wife, in her newspaper column.

Savoring the three other books, *Rural Free*, *The Land The People*, and the latest, *Speak To The Earth* the reader does indeed "reap a harvest of the spirit" which, Rachel said, was the best crop of a family farm.

She writes with love of her family, their home, and all that grows on their farm; her close observations of the animals and insects ("a snail is one and half swirls long"); birds and frogs ("some call them crawdads, a disillusioning thought"); of crops and weeds; the trees and the woods and their ever changing color cycle; the creek and the pond; of her friends and neighbors who could recall for her the history of her beloved Monroe County; and folks who just dropped in; and of the hundreds of children from the city and the inner-city who every year experienced their first exciting day on a farm, her farm, a visit made memorable by her patient, loving, presence. Her love was all encompassing.

There is a spiritual quality in Rachel's writing that is truly uplifting. She wrote she felt "that buoyant lifted feeling that rises like a swarm of autumn leaves. It is a feeling composed of many loves . . . love of people, love of the farm you have shared with them, love of the season, of night, of life, of the earth and being able to walk about in it, and think, and talk, and be still, a strong feeling of kinship with the earth knowing that the earth does not belong to man but rather he belongs to the earth. And this perhaps the real essence of it for man has known since long ago 'the earth is the Lord's and the fullness thereof; the world and they that dwell therein'. Man dwells therein, therefore he is part of the fullness, and like it, he is eternally changing, and imperishable."

Her joy in walking outdoors, around the farm, in her woods, her wilderness is apparant throughout her books, also her almost poetic observations of all she saw. The seasons are all appreciated for their own particular beauty. "The February day was ending in a cold sunset; no red clouds, no pinkness, no orange glory. Only a dazzling silver disk in a gray muslin sky But the day's meager thawing had sharpened the icicles that hung in a harp-string row from the henhouse roof, and when I brushed my hand across them they fell with a musical shattering". And in the spring "One afternoon, walking in the woods, I discovered trillium, squirrel corn, tight buds of fawn lily, bloodroot, fragile anemone, May apples holding their green-brown umbrellas just ready to open"

Of art and beauty found in the work of the farm she writes ". . . art exists from the beginning of land tilling. It is manifest in the lines of the tilled field. There is hardly anything more artistic than a well tilled, fertile, disciplined field at any time", then on to when ". . . the first green pointed sprouts make dotted lines across the fields, never quite meeting, but beckoning on; or later when the blossoming corn scents the sun-warmed air and the long warped green blades clash together in the rising wind, or gently in still summer air; or when the corn-picker rushes through a ripened field knocking the brown stalks about and some stalks fall and others stand waving their empty gloves aimlessly in the wind I think all these times are art and beauty and sometimes I wish I could reach out and put my arms around the cornfield".

Rachel's books are "very personal books" she once said to an interviewer for an English publication, "almost too personal for the author's comfort".

But not too personal for us, her readers, who can walk with her in her woods, see those artistic patterns in her well tilled furrows, meet her sincere and sometimes earthy neighbors, get to know and admire her husband and children, experience the joy, beauty, poetry, and hard realism of, and most of all, the importance of the family farm.

Do yourself a favor and read these books, and, read them slowly, savor, and cherish each word.

Editor's note

Rachel Mason Peden passed away last summer even as we were all quoting her. Someone like Rachel couldn't possibly be forgotten with all the wealth of delightful prose left to Delta Zeta. Her books, her columns, her letters, will continue to bring her joy of living to Delta Zetas everywhere. Our Woman-of the Year in 1973, one of Indiana University's Distinguished Alumnae, sister to Grace and Miriam, mother to Carol, aunt to Cynthia, and *The Lamp's* very special correspondent, she can never be replaced.

Flame Eternal

Alpha

Dorothy Sloane Gee '13

Delta

Edna McKeever '17

Epsilon

Rachel Mason Peden '23

Theta

Arema O'Brien Kirven '15

Carrie Clifton Pontius '16

Kappa

Fanny Berglund Forsman '15

Lambda

Mary Hazel Phinney Ehrlich '18

Nu

Pauline Malcolm Batterton '31

Dorothy Margo Galles Callaghan '47

Sigma

Mabel Miller Himler '14

Tau

Dorothy Davis Dow '31

Margaret Wiesner Neveling '42

Kathleen O'Neill McMurry '67

Alpha Alpha

Elinor Benneke Wallar '29

Alpha Beta

Gladys Pickett Innes '25

Alpha Iota

Verna Stickney McConnell '36

Alpha Xi

Maude Wells Woods '30

Alpha Omicron

Elizabeth Burt Joyner '25

Alpha Pi

Theo Bozeman Moore '35

Alpha Chi

Edwina MacDonald Knight '26

Kathryn Smith '28

Beta Kappa

Edith Reed '24

Gamma Nu

Linda Lyons Miller '59

Gamma Chi

Mary Maxine Hall Eastman '38

Kathryn Stute Oliger '41

Delta Kappa

Eve Tate '71

Delta Chi

Adelyn Honodel Clement '27

Epsilon Xi

Virginia Jones Watson '56

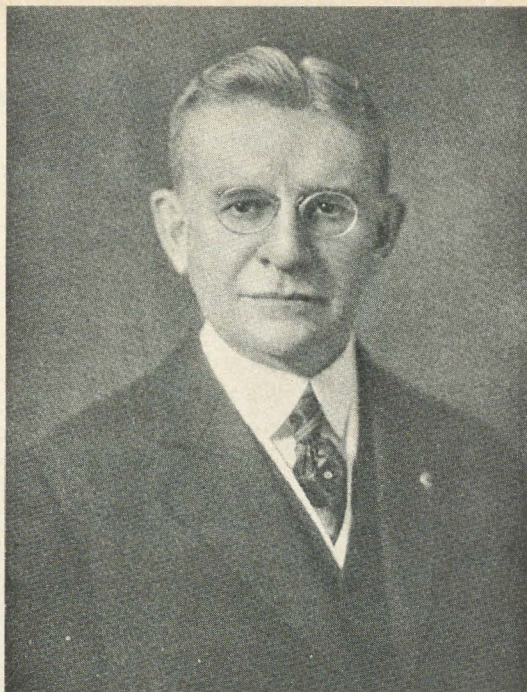
Lou Ann Brady '78

Epsilon Sigma

Priscilla Masonis Joerin '62

Iowa State Teachers College

Kathleen Oldham '30



**Dr. Guy Potter Benton, ΦΔΘ
Grand Patron
President, Miami University, 1902**

DR. GUY POTTER BENTON

A Vignette

by Ruth Gaddis Jeffries, A

Wishes! How much of life is made up of wishes! Just now I am wishing that every Delta Zeta could have had the privilege of knowing Dr. Benton as I knew him.

It was autumn of 1907 and I was home for the week-end from Ohio Wesleyan where I had a scholarship from Steele High School in Dayton. My father was minister of a church near Dayton and we had as our house guest, Dr. Benton, president of Miami university, who was to have the services on Sunday. I was impressed with his line of thought and great sincerity and magnetism.

When, at the dinner table he said, "Ruth, I would like to have you at my University", I knew that was where I wished to be. Besides I could take a degree in the School of Education, plus my Liberal Arts degree. Although Miami was one of the oldest institutions in the country, the grant having been given under Washington's administration, and altho it had many outstanding educators, it had not really taken a big leap forward academically until this young energetic president was inaugurated in 1902. He added departments and a faculty so outstanding that two of its members later became president of the university.

His presidency marked the New Miami and laid the foundation for

the beginning of the great university it is today. Although the new president brought a sense of tradition and ceremony to the university, at the same time there was a relaxed informal atmosphere. You might be called Miss or Mister in the class room, but our president had the great capacity of knowing every one of his students and calling them by their first names. So it was that rare but happy combination that made you feel individually that you were responsible for upholding the high standard set by the president.

In 1830 Miami was the fourth largest college in the nation and later was to become known as the Mother of Fraternities. Desiring closer bonds of friendship Beta Theta Pi was founded in 1839 and in 1848 came Phi Delta Theta, followed by Sigma Chi in 1855.

After all these years, Miami opened its doors to women, shortly after Dr. Benton became president. He was also national president of Phi Delta Theta, and being fraternity oriented, it was his desire that Miami become the home of a sorority with its aim to become national. To this end, in 1902, when our six courageous founders came to him, he gave them every possible help and guidance.

In 1911 after a year abroad, Dr. Benton became president of the University of Vermont. When World

War I broke out a year later, he was made head of Wartime YMCA and Education Director of the American forces in Europe. After the war ended, he accepted the presidency of the University of the Phillipines. I had a letter from him from Manila in which he told me it was his dream to retire in Oxford and have a home at the edge of the campus so his former students could come with their children to see him. This wish was not fulfilled because while in Manila, being worn from his war experiences, he contacted a fatal oriental disease. There is a little shrine on University ground made sacred to his memory.

When you visit Miami campus today, you will hear the Beta Campanile, Beta bells, with their chimes marking every quarter of an hour from morning until ten p.m. when they say Goodnight, and you may hear the softer notes from the Delta Zeta chimes in the beautiful little chapel given by the alumni of the university.

I like to remember Dr. Benton as he stood before us in daily chapel and imbued us with "the spirit of the Institution," and "that education is for character and honor", and I shall be hearing him announcing and leading in his favorite hymn, "A Charge to Keep I Have, A God to Glorify."

Delta Zeta Directory

FOUNDERS

Alfa Lloyd Hayes, 1880-1962
 Mary Collins Galbraith, 1879-1963
 Anna Keen Davis, 1884-1949
 Julia Bishop Coleman, 1881-1959
 Mabelle Minton Hageman, 1880-1929
 Anne Simmons Friedline, 1879-1932

NATIONAL COUNCIL

President: Florence Hohnbaum Harvey (Mrs. Stephen), P. O. Box 456, Westfield, NJ 07091
Vice President: Norma Minch Andrisek (Mrs. J. R.) 319 Janice Dr., Berea, OH 44017
Vice President Alumnae Affairs: Dianne Fellows Guild (Mrs. Douglas) 16 Andrews Drive, S., Burlington, VT 05401
Vice President Collegiate Affairs: Marilou Lynch Gary (Mrs. Denys) 236 N. Fairview, Lock Haven, PA 17745
Secretary: Arlene Newman (Miss) 40 Crestwood, Houston, TX 77007
Treasurer: Eleanor Strickler Fariss (Mrs. James F.) 17721 Bothell Way NE, Seattle, WA 98155
National Panhellenic Conference Delegate: Gwen Moss McKeeman (Mrs. Robert) 5517 S. 74th East Ave., Tulsa, OK 74145
Director: Amaryllis Pickett Barnes (Mrs. Ray) 2424 Glenwood Dr. NE, Atlanta, GA 30305
Director: Mary Lou McConnaughey Barth (Mrs. William) 1662 Villa South Drive, W. Carrollton, OH 45449
Director: Sondra Golden Bass (Mrs. Albert Jr.) 5105 Liles Road, Raleigh, NC 27606
Director: Betty Schneider Fenton (Mrs. Richard) 2151 E. Ramsey Drive, Baton Rouge, LA 70808
Director: Carolyn Barnes Gullatt (Mrs. John) 4008 Hyridge, Austin, TX 78759
Past National President: Betty Heusch Agler (Mrs. B. H.) Suite 200, 21 E. State St., Columbus, OH 43215

NATIONAL HEADQUARTERS

Executive Secretary: Betty Heusch Agler (Mrs. B. H.) Suite 600, 21 E. State St., Columbus, OH 43215
 Refer all Extension inquiries to National Headquarters

THE LAMP

Editor: Florence Hood Miner (Mrs. Arthur) 1040 H Avenue, Nevada, IA 50201

FIELD REPRESENTATIVES

Vicky Brown, Lee McFalls, Sheri Putnam, Debbie Raziano, Denise Somers

STANDING COMMITTEES

Colonnade Club: Dorothy Best Rich (Mrs. Earl), 773 Michigan St., Eaton Rapids, MI 48827
Constitution and Procedure: Lucile Crowell Cooks (Mrs. Rudolf) Refer all correspondence in care of National Headquarters.
History and Ritual: Grace Mason Lundy (Mrs. H. M.) Refer all correspondence in care of National Headquarters.
Judiciary: Betty Schneider Fenton (Mrs. Richard) Refer all correspondence in care of National Headquarters.

COMMITTEES

Activities: Laree Mugler (Miss), 9121 West 73rd Apt. 205, Shawnee Mission, KS 66204
Awards: Karen Kind Manuel (Mrs. Thomas) 183 Brompton Rd., Garden City, N.Y. 11530
Housing and Meeting Facilities: Eleanor Strickler Fariss, (Mrs. James F.) 17721 Bothell Way NE, Seattle, WA 98155
Magazine: Engelyn Brown Tourtelot (Mrs. Charles H.) PO Box 725, Concord, CA 94522
Newsletters: Paulette Montesi Mitchell (Mrs. Forrest), 19 Gravel St., Mystic, CONN 06355
Philanthropy: Jane Gustafson Thompson (Mrs. Mark) 555 S. Pendleton Ave., Pendleton, IN 46064
References: Hannah-Nell Harz Quin (Mrs. Frank W., Jr.) 6017 River Rd., Shreveport, LA 71105
Rose Shop: Refer all enquiries and orders to National Headquarters.
Scholarship: Gail Ott Bonanno (Mrs. John) 9123 Fargo Dr. Apt. B, Richmond, VA 23229
Scholarships and Loans: Mary Lou McConnaughey Barth (Mrs. William), 1662 Villa South Drive, West, Carrollton, OH 45449
Social: Tricia Simmons Hubbard (Mrs. Scott) 255 Oak Ave., Cheshire, CONN 06410
Standards: Joan Dondrea Lowry (Mrs. Bob-Bill), 24331 E. Oakland Rd., Bay Village, OH 44140

PROVINCES

*(Alumnae chapters not chartered)

PROVINCE I—Maine, Vermont, New Hampshire, Massachusetts, Connecticut, and Rhode Island

Chapter/School		Province Collegiate Director: Care of National Headquarters	
		Chapter Address	College Chapter Director/Address
AY—Univ. of Maine—Orono	Phyllis Fortin	375 College Ave., Orono, ME 04473	Lauri-Sue Sirabella (Miss), 11 Washington St., Brewer, ME 04412
BA—Univ. of Rhode Island	Jill Biolos	18 Fraternity Circle, Kingston, RI 02881	Marilyn Conti Zartarian (Mrs. Alan), 80 Oakdale St., Warwick, RI 02888
GF—Univ. of New Hampshire	Linda Cavaoli	25 Madbury Rd., DZ House, Durham, NH 03824	Angela Piper Shipman (Mrs. John), 99 Washington Street, Exeter, NH 03833
KE—Plymouth State College	Sharon Jeffe	3 High Street, Plymouth, NH 03264	Cynthia Wiswall Litchfield (Mrs. Bryan), 38 Pleasant St., Plymouth, NH 03264
KJ—Keene State College			
KY—Quinnipiac College	Laurie Campbell	Box 687, Quinnipiac College, Hamden, CT 06518	
AZ—Univ. of Maine—Portland-Gorham	Margie Castergine	418 Upton Hall UMPG, Gorham, ME 04038	Linda Dicks, P.O. Box 171, South Windham, ME 04082

Province Alumnae Director: SANDRA JONGSMA MADDEN (MRS. THOMAS), 98 Skyview Lane, New Canaan, CT 06840

Chapter		President/Address
*Bangor, ME—Lauri-Sue Sirabella (Miss), 11 Washington, Brewer, ME 04412		
Fairfield County, CT—Joan Tema Weaver (Mrs. John P.), 435 Old Stamford Rd., New Canaan, CT 06840		
Greater Hartford, CT—Mercedes Lang Hawley (Mrs. Clifford), 40 Reed St., Rockville, CT 06066		
State Reference Chairmen:		
Connecticut—Ann Collins Gill (Mrs. Edward), 53 High Point Rd., Westport, CT 06880		
Maine—Candace Hilton Smith (Mrs. Nelson L.), RFD #1, North Vassalboro, ME 04962		

State Reference Chairman:

Massachusetts—Irene Jutras, Middle Road, Amesbury, MA 01913
 New Hampshire—Christine Dalphin Wilson (Mrs. Donald), RFD, Box 110, Center Ossipee, NH 03814
 Rhode Island—Mary Ellen Fagnoli (Miss), 24 Leslie Drive, Providence, RI 02908
 Vermont—Pat Perreboom Hoefer (Mrs. David), 9 Chapin St., Brattleboro, VT 05301

PROVINCE II—New York and New Jersey

Chapter/School		Province Collegiate Director: DOROTHY YAWNER CONNELLY (MRS. WILLIAM), 313 Monmouth Drive, Cherry Hill, NJ 08034	
		President	Chapter Address
AZ—Adelphi Univ.			
AE—Queens College			
IZ—St. John's Univ.			
		Diane Esernio	82 Orange Dr., Jericho, NY 11753
IK—Rider College		Mary Benway	2083 Lawrenceville Rd., Box 6400, Lawrenceville, NJ 08648
AL—William Paterson State Col.		Gail Flinta	40 Highland Ave., Garfield, NJ 07026
		College Chapter Director/Address	
		Karen Kind Manuel (Mrs. Thomas), 183 Brompton Rd., Garden City, NY 11530	
		Sue Bogdan Switlik (Mrs. Gregory), 88 Main St., Allentown, NJ 08501	
		Mary Evangelisti Riepe (Mrs. Richard), 107 N. Sussex St., Dover, NJ 07801	



Province Alumnae Director: ANNE MARIE JONES GAVIN (MRS. WILLIAM), 3264 Swan Drive, Vineland, NJ 08360

Chapter
Buffalo, NY—
*Long Island, NY—Josephine Russo (Miss), 146-27 59 Ave., Flushing, NY 11355
Northeastern New Jersey, NJ—Mildred L. Giesecke (Miss), 414 Wastena Terrace, Ridgewood, NJ 07450
Northern New Jersey, NJ—Mary Evangelisti Riepe (Mrs. Richard), 107 N. Sussex St., Dover, NJ 07801
Rochester, NY—Mary Emig Ackerman (Mrs. Robert), 762 Oakridge Dr., Rochester, NY 14617
Southern New Jersey, NJ—Marilu Giallombardo Jones (Mrs. J. Raymond), 245 Heritage Rd., Cherry Hill, NJ 08034

Chapter
Tri-County, NY—Dorothy Holden Bedore (Mrs. Larry R.), 210 Benson Ave., Elmont, NY 11003
*Westchester County, NY—Mary Kathryn Swigert McNamee (Mrs. Donald), 260 California Rd., Yorktown, NY 10589

State Reference Chairmen: New Jersey—Diana Haskinson Coalter (Mrs. Richard G.), 347 Clarksville Rd., Princeton Junction, NJ 08550
New York—Mary Frances Sims (Miss), 1612 W. Onondaga St., Syracuse, NY 13204

PROVINCE III—Pennsylvania and Delaware

Province Collegiate Director: MARY MICHAEL BRACE (MRS. KENNETH), 50 Mann St., Mansfield, PA 16933

<i>Chapter/School</i>	<i>President</i>	<i>Chapter Address</i>
O—Univ. of Pittsburgh	Ruth Forsyth	Box 3590 Fifth Ave., Pittsburgh, PA 15213
BΘ—Bucknell Univ.	Brenda Roepcke	Box C-561, Bucknell Univ., Lewisburg, PA 17837
ΓΔ—Pennsylvania State Univ.	Nancy Keusch	15 Hiester Hall, University Park, PA 16802
ΓΦ—Indiana Univ. of Pennsylvania	Renee Tambellini	140 South 5th Street, Indiana, PA 15701
EZ—Drexel University	Barbara Bunn	212 N. 34th St., Philadelphia, PA 19104
EΘ—Clarion State College	Yvonne Sheldone	185 South Fifth Avenue, Clarion State Col., Clarion, PA 16214
ZE—California State College Pennsylvania	Marian Dulovich	631 Second St., California, PA 15419
ZΦ—Slippery Rock State Col.	Patricia Bacco	345 Towers, SRSC, Slippery Rock, PA 16057
ΘΔ—Westminster College	Robin Stephenson	301 Galbreath Hall, New Wilmington, PA 16142
ΘX—Lock Haven State Col.	Esther Loeey	Box 161 Woolridge Hall LHSC, Lock Haven, PA 17745
IT—Alliance College	Barbara Odziemski	Alliance College, Box 398, Cambridge Springs, PA 16403
ΙΔ—Edinboro State College	Kelly Kircher	CUB D-3 ESC, Edinboro, PA 16444
ΙΘ—Mansfield State Col.	Ann Scicchitano	Box 136, Laurel Manor B., M.S.C., Mansfield, PA 16933
IP—West Chester State Col.	Deborah C. Hemphill	403 Seven Oaks East, West Chester, PA 19380
KΞ—Duquesne Univ.		
KP—Kutztown State College	Debbie Burgess	31 S. Whiteoak St., Kutztown, PA 19530
KΨ—Shippensburg State Col.	Deborah J. Friez	Apt. #409, Chateau Terrace, Fayette Street, Shippensburg, PA 17257
AE—Univ. of Pittsburgh at Johnstown	Beverly Williams	RD#4, Box 61, Johnstown, PA 15905

College Chapter Director/Address
Colleen Maloney Williams (Mrs.), 5507 Bryant Street, Pittsburgh, PA 15206
Jean McCloskey Maier (Mrs. John D.), 128 North 3rd St., Lewisburg, PA 17837
Colleen Moeller Bastuscheck (Mrs. Jeffrey), 445 Waupelani Dr., Apt. B-5, State College, PA 16802
Thelma Rhode Smith (Mrs. William R.), 1079 Meadowlark St., Indiana, PA 15701
Barbara Sulpezio, Advisor, 208 Second Avenue, Brommal, PA 19008

Susan Eiss Pariseau (Mrs.), 140 Normal Ave., Slippery Rock, PA 16057
Jamie Maddy Mackey (Mrs. Richard), 307 N. Market St., New Wilmington, PA 16142

Elizabeth Purcell Jenkins (Mrs. Charles), 317 South Main St., Cambridge Springs, PA 16403
Emma Mae Rossbacher Williams (Mrs. Jack), 121 Terrace Dr., Edinboro, PA 16412
Karen Starner Jacobson (Mrs. Charles, Jr.), RD #1, Box 157, Covington, PA 16917
Helen Harney Schmude (Mrs. Keith), 131 School Road Alapocas, Wilmington, DE 19803

Robin Musselman (Miss), Advisor, 1195 Mickley Rd., Whitehall, PA 18052

Opal Page Regan (Mrs. Donald), 209 Leon St., Johnstown, PA 15905

Province Alumnae Director: Care of National Vice President Alumnae Affairs

Chapter
*California, PA—Janet Bristor (Miss), 1251 Park, Washington, PA 15301
Harrisburg, PA—Carol Frese, 4251—J. Catalina Lane, Harrisburg PA 17109
Indiana, PA—Janet Ehlman Anderson (Mrs. Leonard), Saltsburg Rd., Indiana, PA 15701
Philadelphia North, PA—Charlotte Fields Silverstein (Mrs. Allan), 513 Toll Road, Oreland, PA 19075
West Philadelphia, PA—Diane Pisanelli Pompei (Mrs. Eugene), 226 Rockglen Rd., Philadelphia, PA 19151
Pittsburgh East, PA—Jane Schofield Brandenstein (Mrs. Robert), 110 Autumn Dr., Trafford, PA 15085

Chapter
Pittsburgh South, PA—Sue Paul Miller (Mrs. Kent), 95 Seneca Dr., Pittsburgh, PA 15228
State College, PA—Emily Frank Black (Mrs. Herbert), 954 Oak Ridge Avenue, State College, PA 16801
Wilmington, DE—Donna Lee Williams Stiles (Mrs. William), 46 Princeton Rd., Pennsville, NJ 08070

State Reference Chairmen: Delaware—Marianne Virginia Belding Willing (Mrs. Edwin), 110 Canterbury Dr., Windsor Hills, Wilmington, DE 19803
Pennsylvania—Marion Hohnke West (Mrs. George), Rt. 2 Hemlock Acres, Punxsutawney, PA 15767

Province IV—West Virginia

Province Collegiate Director: EMMAJO REESE SHEARER (MRS. K. D.), 2204 Hess Ave., Wheeling, WV 26003

<i>Chapter/School</i>	<i>President</i>	<i>Chapter Address</i>
ΔY—Marshall University	Ann Long	1695 6th Ave., Huntington, WV 25701
EΔ—Concord College	Dorothy Taylor	506B Twin Towers, Athens, WV 24712
EΙ—Fairmont State College	Connie Carroll	1000 Locust Ave., Fairmont, WV 26554
ZT—Morris Harvey College	Mary Barnette	70 Brookwood Blvd., Charleston, WV 25302
ΘΞ—Glenville State College	Patti Sparks	305 E. Main St., Glenville, WV 26351
III—West Va. Inst. of Tech.	Kathy Rhodes	Box 16 Ratliff, WVIT, Montgomery, WV 25136
IT—West Liberty State Col.	Patty Brown	301 Boyd Hall, WLSC, West Liberty, WV 26074
KM—Shepherd College	Alice Herman	305 Shaw Hall, Shepherdstown, WV 25443

College Chapter Director/Address
Annette Williams Sovine (Mrs. Thomas), P.O. Box 218, Milton, WV 25541
Barbara Landers Miller (Mrs. Craig), Box C-513, Concord College, Athens, WV 24712

Anna Lou Hall Jones (Mrs. John), 935 Elmhurst Ave., St. Albans, WV 25177
Paulette Jackson, McPherson Apts. 5 T Glenville, WV 26351

Margie Ernst Baumgardner (Mrs. Robert), 904 Burley Ave., Glendale, WV 26038
Kathryn Beckner Venables (Mrs. Eugene), 217 S. Georgia, Martinsburg, WV 25401

Province Alumnae Director: PAULA KOHLS WEDIG (MRS. DANIEL), Rt. 2, Marietta, OH 45750

Chapter
Charleston—Patricia Schillings (Miss), 4110 Venable Ave., Apt. 2, Charleston, WV 25304
Fairmont—Mrs. Glenna Sheffield Martin, 1634 Beverly Road, Fairmont, WV 26554
Greater Wheeling—Donna Grub Skrtich (Mrs. George), RD#1 Box 192 C, Wheeling, WV 26003

Chapter
Huntington—Roberta Jean Asbury, 903 Main St., Apt. #1, Pt. Pleasant, WV 25550
Parkersburg—Penny Sue Atkinson (Miss), 2525 16th Ave., Parkersburg, WV 26101

State Reference Chairman: Maureen Worth, 1629-A McClung Street, Charleston, WV 25311

PROVINCE V—Ohio

Province Collegiate Director: Care of National Headquarters

<i>Chapter/School</i>	<i>President</i>	<i>Chapter Address</i>
A—Miami University	Stephanie Thrush	304 Richard Hall, MU, Oxford, OH 45056
Θ—Ohio State Univ.	Beth Phillips	212 E. 15th Ave., Columbus, OH 43201
Ξ—Univ. of Cincinnati	Laurie Devany	2811 Swiss Chalet Ct., Cincinnati, OH 45220
BX—Wittenberg Univ.	Cindy Smith	923 N. Fountain, Springfield, OH 45504
ΓA—Baldwin-Wallace Col.	Barbara Yaekel	Klein 309 Baldwin Wallace College, Berea, OH 44017
ΓK—Kent State Univ.	Lynnda Wolfe	212 University Dr., Kent, OH 44240

College Chapter Director/Address
Linda Jackson Straus (Mrs. Allan), 6066 Joseph Dr., Oxford, OH 45056
Linda Agler Hobbs (Mrs. Philip), 1772 Coventry Rd., Columbus, OH 43212
Sandy Warther Kiphart (Mrs. Michael), 3334 Glenhurst Pl., Cincinnati, OH 45209
Cindy Fisher (Miss), 362 E. Madison, Springfield, OH 45503
Marcia Earl Humpal (Mrs. David), 225 Jananna Dr., Berea, OH 44017
Sanni Tenkku Kearns (Mrs. J. Patrick), 411 Solon Road Apt. 7A, Chagrin Falls, OH 44022

IT—Bowling Green State Univ.	Sue Stoll	101 Delta Zeta House, BGSU, Bowling Green, OH 43403
ZK—Ohio Northern Univ.	Kitty Neely	214 B Lima Hall, Ada, OH 45810
QZ—Akron Univ.	Deborah Brooks	1152 Onondago Ave., Akron, OH 44305
QΣ—Col. of Steubenville QT—Findlay College	Kathleen Corrigan Carol Borgelt	Box 793, Col. of Steubenville, Steubenville, OH 43952 323 Frazer St., Findlay, OH 45840
QΨ—Ashland College	Judy Cole	Delta Zeta House, 508 Samaritan Ave., Ashland, OH 44805
KI—Wright State Univ.	Thecla Schneble	4541 Acreview Lane, Kettering, OH 45429
KX—Youngstown State Univ.	Leslie Horvath	85 Schenley Avenue, Struthers, OH 44471

Ann Zimmerman Morrow (Mrs.), 5703 Bernath Court, Toledo, OH 43615
 Cynthia Brenner Fitzpatrick (Mrs. Tom), 208 Laquino St., Findlay, OH 45840
 Karleen Klemp Burns (Mrs. Lawrence), 2126 Kemery Rd., Akron, OH 44313
 Barbara Eakin Shelton (Mrs. Glen), 2200 Jennifer Lane, Apt. 7, Findlay, OH 45840
 Gail Wiepking Cadley (Mrs. Donald), 925 Center St., Ashland, OH 44805
 Mary Lou McConnaughey Barth (Mrs. William), 1662 Villa South Dr., West Carrollton, OH 45449
 Esther Briggs Neumann (Mrs. J. R.), 3965 Chaucer Lane, Youngstown, OH 44511

Province Alumnae Director: JULIE KISHEL FOSTER (Mrs. PAUL), 31316 Manchester Lane, Bay Village, OH 44140

Chapter
 Akron—Mary Margaret Scott Green (Mrs. Robert), 25 So. River Rd., Munroe Falls, OH 44262
 Berea—Frances Miller Vozar (Mrs. Stan), 356 Wyleswood Dr., Berea, OH 44017
 Canton Area—Janice Bienias Frink (Mrs. James), 4215 Parkdale Ave. NW, Canton, OH 44718
 Cincinnati—Merrie-Helen Berwick Wilson (Mrs. Kevin), 3230 Bishop Street, Cincinnati, OH 45220
 Cleveland Eastside—Margaret Post Huetter (Mrs. Terry), 5157 Graham Rd., Cleveland, OH 44124
 Cleveland Westside—Jean Sherrer Heran (Mrs. Robert), 1842 Donna Dr., Westlake, OH 44145
 Columbus—Joyce Fisher Shoemaker (Mrs. Richard), 1440 Inglis, Columbus, OH 43212
 Dayton—Patricia Mays Lins (Mrs. John), 789 Westledge Dr., Trotwood, OH 45426
 Findlay—Cam Roberts Taylor (Mrs. Gary), Rt. 5 Box 151, 7780 Liberty Twp. 89, Findlay, OH 45840

Chapter
 Hamilton—Mary Conroy Spoerl (Mrs. Sam), 802 Gray Ave., Hamilton, OH 45013
 Kent—Margaret Nelson Otterson (Mrs. Peder), 3612 Sandy Lake Road, Ravenna, OH 44266
 Lake County—Melody Arnold Ross (Mrs. Thomas), 8435 Hallnorth Dr., Mentor, OH 44060
 *Middletown—Mildred Long Nicklas (Mrs. Carl S.), 112 Orchard St., Middletown, OH 45042
 *Oxford—Nancy Fry Sturgeon (Mrs. James), 417 Pamela Dr., Oxford, OH 45056
 Springfield—Lucie Parker Osborn (Mrs. Harry), 2933 Sun Valley Dr., Springfield, OH 45505
 Toledo—Gail Hoefer Haga (Mrs. Alfred), 4030 Kingsbury, Toledo, OH 43612
 Wooster—Ruth Abbott Remy (Mrs. Keith), 240 E. Beverly Rd., Wooster, OH 44691
 Youngstown—Janet Gorman Schrum (Mrs. David), 5508 Southern Blvd., Youngstown, OH 44512

State Reference Chairman: Gladys Shewring Creager (Mrs. James), 1028 Swango Drive, Dayton, OH 45429

PROVINCE VI—Michigan

Province Collegiate Director: SUE ADAMS TREVARROW (Mrs. LAWRENCE), 3963 Far Hill Dr., Bloomfield Hills, MI 48013

Chapter/School	President	Chapter Address
BP—Michigan State Univ.	Elaine Lindquist	110 Oakhill, E. Lansing, MI 48823
ITL—Western Michigan Univ.	Cheri Moore	1305 California #308 Mt. Rainier, Kalamazoo, MI 49007
ITΨ—Central Michigan Univ.	Cheryl James	1819 Deming Dr. Apt. 9, Mt. Pleasant, MI 48858
EE—Wayne State Univ.	Colleen Kennedy	1807 Kenmore, Grosse Pointe Woods, MI 48236
ZN—Ferris State College	Linda Jean Ballard	Box 22 Rankin Center, Big Rapids, MI 49307
ZQ—Northern Michigan Univ.	Sidnye Fisher	209 Spalding, Marquette, MI 49855
AO—Michigan Tech Univ.	Nancy Leeman	266 Hubbell, Houghton, MI 49931

College Chapter Director/Address

Kathleen Murray Weber (Mrs. James), 10031 Mozart, Kalamazoo, MI 49002
 Jane McNamara (Miss), Rt. 7, Mt. Pleasant, MI 48858
 Sally Mabel Krumins (Mrs. Maris), 17565 McKinley Rd., Big Rapids, MI 49307
 Deborah Hodge (Miss), 533 W. Washington St., Apt. 5, Marquette, MI 49855
 Patricia Hodes Wettack (Mrs. John), 204 Prospect, Houghton, MI 49931

Province Alumnae Director: GENEVIEVE ROCCOS WALTER (Mrs. WILLIAM), 2709 Geert Court, Lansing, MI 48910

Chapter
 Detroit—Olive McLauchlan Neelands (Mrs. James), 1699 Littlestone, Grosse Pointe Woods, MI 48236
 Flint—Julie Boutgeois Ganfield (Mrs. Richard), 3501 Longview, Flushing, MI 48433
 Grand Rapids—Yvonne Hoekstra Van Ee (Mrs. William D.), 641 Broadview SE, Grand Rapids, MI 49507
 Kalamazoo—Barbara Shaw Kreis (Mrs. Russell), 1524 Dogwood, Kalamazoo, MI 49002
 Lansing-East Lansing—Isabel Johnson Severy (Mrs. Raymond), 2127 Northampton Way, Lansing, MI 48912
 *Marquette—Cynthia Apelgren Cowan (Mrs. Stephen), Stonegate Heights #14, Marquette, MI 48912

Chapter
 *Mt. Pleasant—Jean McCombs Claus (Mrs. Michael), 515 S. Main, Mt. Pleasant, MI 48858
 Oakland County—Yvonne Larime Fruit (Mrs. Walter), 8805 Shannon Dr., Sterling Heights, MI 48077
 Saginaw—Sandra Paramore Knedlick (Mrs.), 3905 Vanguard, Saginaw, MI 48604
 Ypsilanti—Ann Arbor—Edith Meeks Semark (Mrs. Duane), 1165 Pauline Blvd., Ann Arbor, MI 48103

State Reference Chairman: Elsie Waier Wirth (Mrs. Edward), 730 Wattles Rd., Bloomfield Hills, MI 48013

PROVINCE VII—Indiana

Province Collegiate Director: CARYOL MCCOLLEY FITZPATRICK (Mrs. MAX), Rt. #1, Box 182, Whiteland, IN 46184

Chapter/School	President	Chapter Address
A—DePauw Univ.	Donna Morris	411 Anderson, Greencastle, IN 46135
E—Indiana Univ.	Melissa Robinson	1423 North Jordan, Bloomington, IN 47401
Ψ—Franklin College	Sue Alexander	Box 5 Franklin College, Franklin, IN 46131
IX—Ball State Univ.	Christie Slack	720 West Centennial, Apt. 33B, Muncie, IN 47303

College Chapter Director/Address

Ann McNabb Cooper (Mrs. Charles), 2 Hanna Court, Greencastle, IN 46135
 Sarah Jane Shank Houston (Mrs. Harold), Advisor, Rt. 10, Box 106, Bloomington, IN 47401
 Sandi Wulforth Stoker (Mrs. John), 1086 E. King St., Franklin, IN 46131
 Jane Gustafson Thompson (Mrs. Mark), 555 S. Pendleton Ave., Pendleton, IN 46064

Province Alumnae Director: JANE DUNN LAWRENCE (Mrs. GARY), 7707 Woodside Dr., Indianapolis, IN 46260

Chapter
 Anderson—Deborah Barnes Pitts (Mrs. James), 417 Golf Club Rd., Anderson, IN 46011
 *Bloomington—Diane Mitchell Miller (Mrs. J. D.), 4540 Gifford Rd., Apt. 15-F, Bloomington, IN 47401
 Columbus—Carolyn Pitt White (Mrs. J. J.), R.R. #6, Granview Lake, #117, Columbus, IN 47201
 Franklin—Ruth Carstens Heminger (Mrs. Noel), 725 S. Main, Franklin, IN 46131
 Ft. Wayne—Marilyn Cuthriell Ray (Mrs. Dean), 814 Caribe Blvd., Ft. Wayne, IN 46805
 Greencastle—Julia Crawley Shumaker (Mrs. Arthur), 602 Anderson St., Greencastle, IN 46135
 *Hammond—Joanne Henderlong Ricci (Mrs. Dean), Box 3103 L.O.F.S., Crown Point, IN 46307
 Indianapolis—Diane Gebert Hensley (Mrs. Monti), 7340 Highbury Dr., Indianapolis, IN 46256

Chapter
 Indianapolis South Suburban—Karen Jameson Ferrill (Mrs. A. Wayne), 681 Colonial Way, Greenwood, IN 46142
 Lafayette—Judi Reynolds Forsyth (Mrs. Dale), 214 Valley Dr., W. Lafayette, IN 47906
 Muncie—Carol Brown McGrew (Mrs. LeRoy), 4608 Cardinal Dr., Muncie, IN 47304
 Terre Haute—Irene Roberts McDonough (Mrs. Charles Allen), 123 Barton, Terre Haute, IN 47803

State Reference Chairman: Joanna Harris Heshner (Mrs. Victor), R. R. #4, Box 5A, New Castle, IN 47362

PROVINCE VIII—Wisconsin

Province Collegiate Director: SANDI BETZ (Miss), 3011 Agnes St., Eau Claire, WI 54701

Chapter/School	President	Chapter Address
IT—Carroll College	Toni Parr	309 Swarthout, Carroll College, Waukesha, WI 53186
EK—Univ. of Wisc. at Whitewater	Vicki Reichert	604 W. Main, Whitewater, WI 53190
EX—Univ. of Wisc. at Milwaukee	Wendi Klaffer	Union Box #35, UWM, Milwaukee, WI 53201
EN—Univ. of Wisc. at Eau Claire	Rochelle Lebahn	607½ Menomonie Street, Eau Claire, WI 54701
ZB—Univ. of Wisc. at Stout	Pam Werth	2010 5th Street, Menomonie, WI 54751

College Chapter Director/Address

Nancy Porath Periman (Mrs. Charles), 921 Lynne Dr., Waukesha, WI 53186
 Lynn Brockmeyer Grosskreutz (Mrs. John), P.O. Box 91, Whitewater, WI 53190
 Cathy Belugum, Advisor, 2222 E. Bellevue, Apt. 101, Milwaukee, WI 53211
 Sandi Betz (Miss), 3011 Agnes St., Eau Claire, WI 54701
 Cynthia Govin Welch (Mrs.), Rt. 6, Box 32, Menomonie, WI 54751

ZO—Univ. of Wisc. at LaCrosse	Pat Greenwaldt	1615 Main Street, LaCrosse, WI 54601	Gail Kugler Jansen (Mrs. Peter), Bluff View Motel, 3715 Mormon Coulee Road, LaCrosse, WI 54601
ZX—Univ. of Wisc. at Stevens Point	Wanda Underwood	1513 Division St., Stevens Point, WI 54481	Karen Beebe Engelhard (Mrs. Robert), 4309 Janick Circle, Stevens Point, WI 54481

Province Alumnae Director: Care of National Vice President Alumnae Affairs

Chapter	President/Address	Chapter	President/Address
*Eau Claire—Lesley Borreson Gillingham (Mrs. Richard), 470 Garfield Ave., Eau Claire, WI 54701		*Whitewater—Karolyn Victor McKowen (Mrs. Richard), 4971 S. Magellan Dr., New Berlin, WI 53151	
Green Bay—Joanne Poppy (Miss), 905 Roy Ave., Green Bay, WI 54303			
Madison—			
*Milwaukee—Marlene Mravik Fisher (Mrs. Harry), 4626 W. County Line Rd., Mequon, WI 53092			

State Reference Chairman: Mary Podvin, Route #6, Box 407, Chippewa Falls, WI 54729

PROVINCE IX—Illinois

Province Collegiate Director: KAREN FELLOWS SOYK (MRS. LON), 3727 Bluebird St., Rolling Meadows, IL 60008

Chapter/School	President	Chapter Address	College Chapter Director/Address
AA—Northwestern Univ.	Barbara Pierce	DZ House, 717 University Pl., Evanston, IL 60201	Joanna Hall Gwinn (Mrs. Donald), 2721 Hartzell, Evanston, IL 60201
AB—Univ. of Illinois	Marcy Bumgarner	710 W. Ohio, Urbana, IL 61801	Kristine Overholt (Miss), 105 George Huff Dr., Urbana, IL 61801
FN—Eastern Illinois Univ.	Lana Kae Griffin	1528 4th St., Charleston, IL 61920	Gail Easley McKee (Mrs. Don), 776 Tenth St., Charleston, IL 61920
FP—Northern Illinois Univ.	Cathy Brandenburg	1010 Blackhawk, DeKalb, IL 60115	Judith Carlile McKinney (Mrs. Edward), 1110 Loren Dr., DeKalb, IL 60115
FO—Southern Illinois Univ.	Lou Ann Frese	712a S. University, Carbondale, IL 62901	Elizabeth Mestas Schill (Mrs. Thomas), 1805 W. Freeman, Carbondale, IL 62901
EO—Western Illinois Univ.	Diane Vondra	537 Elting St., Macomb, IL 61455	
ZA—Bradley Univ.	Linda Swett	DZ House 1514 Fredonia Ave., Peoria, IL 61606	Sandra Ausberger Gasparovich (Mrs. Stephen), 4920 Woodwind Court, Peoria, IL 61607
OO—DePaul Univ.	Robin Bentley	1716 W. Wellington, Chicago, IL 60657	Franki Synak Chabalewski (Mrs. George), 7175 Wrightwood, Chicago, IL 60635
AP—Illinois State Univ.	Donna Snyder	602 South Fell, Normal, IL 61761	Janet Morotti Lightbody (Mrs. Ray E.), 910 S. East Street, Bloomington, IL 61701

Province Alumnae Director: Care of National Vice President Alumnae Affairs

Chapter	President/Address	Chapter	President/Address
Arlington Heights—Linda Leake (Miss), 345 Mayfield Lane, Hoffman Estates, IL 60172		Peoria—Sharon McLain Clarke (Mrs. James), 2719 Radan Court, Apt. #8, Peoria, IL 61604	
Aurora—Maryland Fink Stoudt (Mrs.), 771 N. Ohio St., Aurora, IL 60505		Madison (St. Louis)—Pat Tenllado Marsh (Mrs.), 4303 Childs, E. St. Louis, IL 62201	
Bloomington—Elizabeth Tarvin Grogg (Mrs. William), 1210 Elmwood Rd., Bloomington, IL 61701		Northern Suburban Alumnae	
Champaign-Urbana—Mary Lou Hemmingway Davidson (Mrs. Don), 2203 S. Cottage Grove, Urbana, IL 61801		Rockford—Dorothy Hills Blanchard (Mrs. John), 2709 Woodside Dr., Rockford, IL 61109	
*Charleston—Mary Boykin Williams (Mrs. Ned), 2249 Cortland Dr., Charleston, IL 61920		Rock Island, Moline, and East Moline—See Province X (Quint Cities)	
Chicago—Dorothy Mohr (Miss), 637 Hinman Ave., Evanston, IL 60202		Salt Creek—Barbara Richard Kanzler (Mrs. Alfred), 5325 Meadow Lane, Downers Grove, IL 60515	
Chicago South Suburban—Pat White McElligott (Mrs. James), 17405 South Oconto, Tinley Park, IL 60477		*Springfield—Marjorie Sons Moynihan (Mrs. James), 1512 W. Ash St., Springfield, IL 62704	
*DeKalb—Eileen Wilson Dammers (Mrs. Clifford), 591 Normal Rd., DeKalb, IL 60115		West Suburban (Chicago)—Marianne Bazata Staidl (Mrs. Alan), 248 James Drive, Westmont, IL 60559	
Dupage Valley—Nancy Gartner (Miss), 247 N. Neltner Blvd. C, West Chicago, IL 60185			
Galesburg—Anna Weech Butts (Mrs. Cyril), 484 S. Soangetaha Rd., Apt. 15, Galesburg, IL 61401			

State Reference Chairman: Leanne DeLine DeLaurent (Mrs. John L.), Indian Trail Farm RR2, Pochontas, IL 62275

PROVINCE X—Iowa

Province Collegiate Director: LINDA HARMON GOOD (MRS. WILLIAM), 716 E. Burlington, Iowa City, IA 52240

Chapter/School	President	Chapter Address	College Chapter Director/Address
I—Univ. of Iowa	Jennifer Haberer	223 S. Dodge St., Iowa City, IA 52240	Susan Kracht Dane (Mrs. Robert), 704 Caroline Ave., Iowa City, IA 52240
BK—Iowa State Univ.	Lori Yamen	2138 Sunset Dr., Ames, IA 50010	Barbara Tweed Holland (Mrs. George), 287 Village Drive, Ames, IA 50010
FE—Drake Univ.	Sue Obenhouse	1300 34th St., #16, Des Moines, IA 50311	Linda Carmichael Ball (Mrs. Robert), 3105 45th, Des Moines, IA 50310
AM—Morningside College	JoEllen Ueber	Box C-139 Morningside College, Sioux City, IA 51106	Beatrice Tift (Miss), 4001 Orleans, Sioux City, IA 51106
OA—Simpson College	Jolene Geddes	710 N. Buxton, Indianola, IA 50125	Kathy Herriott King (Mrs. Gary), 113 South 'P' St., Indianola, IA 50125

Province Alumnae Director: PAT ELLISON MCCORMICK (MRS. GEORGE), 230 Fairchild, Iowa City, IA 52240

Chapter	President/Address	Chapter	President/Address
Ames—Mary Bohn Boehlje (Mrs. Michael), 4538 Westbend Dr., Ames, IA 50010		Sioux City—Alaire Swedlund Bornholtz (Mrs. Tim), 3601 Lafayette, Sioux City, IA 51104	
Cedar Rapids—Mary Alice Dunn (Miss), 419 1st Ave. SW, Cedar Rapids, IA 52404		Waterloo-Cedar Falls—Altabelle Jensen Riddle (Mrs. William), 2606 W. 9th, Waterloo, IA 50702	
Des Moines—Kay Morrow Wright (Mrs. Terry), 3618 Wakanda Dr., Des Moines, IA 50321			
Indianola—Marlene Fresco (Miss), 3501 S. W. 14th, Des Moines, IA 50315			
Iowa City—Kathryn Curtiss Goodspeed (Mrs. Robert), 2934 Sweet Briar, Iowa City, IA 52240			
Quint Cities—Cheri Muich Kline (Mrs. Louis), 3304 Westmar Dr., Bettendorf, IA 52722			

State Reference Chairman: Hope Petersen Wilhelm (Mrs. Rex), Box 91, Stuart, IA 50250

PROVINCE XI—Missouri

Province Collegiate Director: LILLIAN KENDIG TRUESDALE (MRS. JAMES), 4823 N. College, Kansas City, MO 64119

Chapter/School	President	Chapter Address	College Chapter Director/Address
FT—Missouri Valley College	Vanni Prickard	Box 675 MVC, Marshall, MO 63069	Mary Ruth Ingerson Vaillancourt (Mrs. Paul Leo), 314 E. Porter, Marshall, MO 65340
AS—Northeast Missouri State U.	Mary Finlay	308 Brewer Hall, NMSU, Kirksville, MO 63501	Ruth Warner Towne (Dr.), 709 N. Davis, Kirksville, MO 63501
ET—Central Missouri State U.	Deborah Swager	D203 Panhellenic Hall, Warrensburg, MO 64093	Maurine Paage Achauer (Mrs. Reynolds), 314 S. Holden, Warrensburg, MO 64093
EH—Harris Teachers College			
EP—Northwest Missouri State U.	Kathy Johnson	354 Roberta Hall, Maryville, MO 64468	Catherine Nance Clark (Mrs. Steven), 710 S. Vine, Maryville, MO 64468
ZP—William Jewell Col.	Margaret Appleton	W.J.C., DZ Wing, Semple Hall, Liberty, MO 64068	Phyllis Berens Ross (Mrs. Norman), 3441 NE 72nd Terrace, Kansas City, MO 64119
IE—Univ. of Missouri at St. Louis	Cathy Lieurance	4303 Russet Dr., St. Louis, MO 63134	Janet Eisler Havener (Mrs. Gary), 231 Old Ballwin Road, Ballwin, MO 63011
KN—Missouri Western State Col.	Kathy Harsh	3004 Joslin Lane, St. Joseph, MO 64506	Carolyn Weston (Miss), 1818 Clay #101, St. Joseph, MO 64501

Province Alumnae Director: PAT ELLISON MCCORMICK (MRS. GEORGE), 230 Fairchild, Iowa City, IA 52240

Chapter	President/Address	Chapter	President/Address
Clay-Platte—Elvera Robker Bartels (Mrs. Henry), 6924 North Cosby Dr., Kansas City, MO 64151		Marshall—Josephine Lawless Reed (Mrs.), Box 83, Marshall, MO 65340	
Greater Kansas City—Wilma Towe Alexopoulos (Mrs. Ted J.), 12827 Smalley, Grandview, MO 64030		Maryville—Kathie Nance Clark (Mrs. Stephen), 710 S. Vine, Maryville, MO 64468	
Independence—Sandra Woolworth Zeller (Mrs. Dennis), RR 1, Box 92, Grain Valley, MO 64029		St. Louis—Helene Westermann Richmann (Mrs. Harold), 6137 Pointview Lane, St. Louis, MO 63123	
Kirksville—Cindy Walter Landis (Ms.), 2207 S. Marion, Apt. B, Kirksville, MO 63501		Warrensburg—Mary Hopkins Volentine (Mrs.), 409 E. Market St., Warrensburg, MO 64093	

State Reference Chairman: Kathleen Ramey May (Mrs. Steven), 412 Jackson, Kansas City, MO 64124



PROVINCE XII—Kansas and Nebraska

Province Collegiate Director: CAROLYN McCANDLESS WOODLING (Mrs. C. T.), 2203 Pennsylvania, Lawrence, KS 66044			College Chapter Director/Address		
Chapter/School	President	Chapter Address	Chapter	President/Address	
A—Kansas State Univ.	Melissa Hathaway	1803 Laramie, Manhattan, KS 66502		Christine Verbeten Yecke (Mrs. Robert), 2132 Griffith Terrace, Manhattan, KS 66502	
BT—Nebraska Wesleyan Univ.	Carolyn Zabel	2401 N. 51st, Lincoln, NE 68504		Mervona Easley Tavlin (Mrs. Michael), 6035 Dogwood Dr., Lincoln, NE 68516	
ΔΠ—Emporia Kansas State Col.	Rita Haggard	1005 Merchant, Emporia, KS 66801		Jana Hahn Enright (Mrs. Terry), 710 West St., Emporia, KS 66801	
ΔΩ—Ft. Hays State College	Robin A. Zimbelman	210 W. 6th, Hays, KS 67601		Marge Rohr Meyers (Mrs. Clayton), 2907 Hillcrest Dr., Hays, KS 67601	
ΘΗ—Creighton University	Peggy Helget	4929 North 103 Ave., Omaha, NE 68134		Mae Auten Sigler (Mrs. John D.), 7701 North 34th, Omaha, NE 68112	
Province Alumnae Director: JO ANN HOOVER FRANKE (Mrs. ROGER), 2600 Heather Parkway, Hutchinson, KS 67501					
Chapter	President/Address		Chapter	President/Address	
Emporia, KS—Chris Phillips Watkins (Mrs. Gary), 812 Prairie, Emporia, KS 66801			Topeka, KS—Linda Robben Reed (Mrs. Don), 3325 Twilight Drive, Topeka, KS 66614		
Hays, KS—Martha Wilson Kent (Mrs. Bruce), 3306 Willow, Hays, KS 67601			Wichita, KS—Lana Underwood Schlegel (Mrs. A. J.), 130 Rhodes, Wichita, KS 67233		
Johnson-Wyandotte County, KS—Sharon Roza, 5505 East 96th Place, #305, Kansas City, MO 64137			State Reference Chairmen: Kansas—Jane Smith Furman (Mrs. Richard), 4017 W. 68th Terrace, Prairie Village, KS 66208		
Kearney, NE—DeLoris Carlson Tonack (Mrs. Tom), 1202 East 33rd St., Kearney, NE 68847			Nebraska—Sue Ann Leaver Volkmer (Mrs. Greg), Box 112, Hemingford, NE 69348		
Lawrence, KS—Sue Quick Schmidt (Mrs. Floyd), R.R. #3, Baldwin City, KS 66006					
Lincoln, NE—Patricia Johann Heermann (Mrs. Dean), 2248 South 50, Lincoln, NE 68506					
Manhattan, KS—Gayle Foster Willard (Mrs. Lloyd), R.R. 5, Manhattan, KS 66502					
Omaha, NE—Nancy Brown Sutherland (Mrs. Robert), 13365 Cedar, Omaha, NE 68144					

PROVINCE XIII—Minnesota, North Dakota, and South Dakota

Province Collegiate Director: BARBARA VELDHIJZEN (Miss), 2900 James Ave., S. #E, Minneapolis, MN 55408			College Chapter Director/Address		
Chapter/School	President	Chapter Address	Chapter	President/Address	
Y—Univ. of North Dakota	Kathy Power	2724 Uversity Ave., Grand Forks, ND 58201		Sandi Egg Fedje (Mrs. Neil), 3109 Leend Lane, Grand Forks, ND 56802	
ZY—Winona State College	Laurel Bettcher	215 W. 6th Street, Winona, MN 55987		Kay Everson Walz (Mrs. William), Box 304 Rt. 1, Galesville, WI 54630	
ΘM—St. Cloud State University	Lana Mills	525 3rd Ave., S., St. Cloud, MN 56301		Charlotte Tubbs Kephart (Mrs. Richard), 820 14th St. S.E., St. Cloud, MN 56301	
ΘN—Moorhead State Univ.	Julie Berger	1025 7th Ave. South, Moorhead, MN 56560		Karen Erickson, 908 24th Ave. S., Moorhead, MN 26560	
ΘΠ—Mino State College	Glenda Zurface	618 Third St. NW, Minot, ND 58701		Cheryl Smith Erdmann (Mrs. Joseph), 1015 5th Ave. S.E., Minot, ND 58701	
IB—Dickinson State College	Mary Lou Sadowsky	641 3rd street, West, Dickinson, ND 58601		Paulette Rudnick DeFoe (Mrs. David), 876 2nd Ave. E, Dickinson, ND 58601	
Province Alumnae Director: ALICE PETERSON FARIBAULT (Mrs. BRUCE), 3104 E. 65th, Inver Grove, MN 55075					
Chapter	President/Address		State Reference Chairmen: Minnesota—Jill Schwartz Grier (Mrs. Jock), 7801 Unity Ave. North, Brooklyn Park, MN 55429		
Fargo-Moorhead, ND—Donna Grumet Adams (Mrs. T. S.), 1517 9th St. S., Fargo, ND 58102			North Dakota—Phyllis Kjerstad Power (Mrs. James), Box 218, Beulah, ND 58523		
Grand Fork, ND—			South Dakota—Doris Dalin Huffman, Jr. (Mrs. Richard), 1535 S. State St., Aberdeen, SD 57401		
*Minot, ND—Ann Severson Joyer (Mrs. Lloyd), 509-8th St. NW, Minot, ND 58701					
Twin City, MN—Jeanne Wenthe Weingart (Mrs. John), 5255 W. 95th St., Bloomington, MN 55437					

PROVINCE XIV—Colorado, Wyoming, Utah, Arizona, New Mexico, and Nevada

Province Collegiate Director: LINDA GREGG DOYLE (Mrs. D. W.), 3535 E. Cannon Dr., Phoenix, AZ 85028			College Chapter Director/Address		
Chapter/School	President	Chapter Address	Chapter	President/Address	
BΣ—Colorado State Univ.				Janet Moore (Miss), Box 3663, Las Cruces, NM 88003	
BI—Univ. of Arizona	Terry Smith	1125 N. Vine, Tucson, AZ 85719			
ΓE—New Mexico State Univ.	Antoinetta Borde	Box 3973, University Park, MN 88003		Francie Schwaegerle Johnson (Mrs. Stan), 4978 San Rafael Circle, Las Vegas, NV 89109	
ΔE—Univ. of Northern Colorado	Vicki Wendt	1717 Tenth Ave., Greeley, CO 80631			
ΔP—New Mexico Highlands Univ.					
Φ—Univ. of Nevada at Las Vegas	Debbie Hofferd	101 W. Philadelphia #5B, Las Vegas, NV 89102			
Province Alumnae Director: RUBY L'HERISSON (Miss), 1608 Mesa Ave., Colorado Springs, CO 80906					
Chapter	President/Address		State Reference Chairmen: Arizona—Jeanette Mitchell Andriano (Mrs. Joseph), 1149 E. McMurray Blvd., Casa Grande, AZ 85222		
Albuquerque, NM—Jeanne Fowler Grassham (Mrs. Charles), 825 California SE, Albuquerque, NM 87108			Colorado—Martha Whitehead Larsen (Mrs. Dania), 2700 Bevan Circle, Fort Collins, CO 80521		
Colorado Springs, CO—Janet Henning Williams (Mrs. Norman), 1349 Shenandoah Dr., Colorado Springs, CO 80919			Nevada—Kay Jackson Stockstill (Mrs. Thomas), 4129 Meadowglen Way, Las Vegas, NV 89121		
Denver, CO—Jo Harriss Messlin (Mrs. Carl), 2998 S. Akron Ct., Denver, CO 80231			New Mexico—Rene Robison Everett (Mrs. Bert), 10308 Chapala Dr. NE, Albuquerque, NM 87111		
El Paso, TX—Patricia Keeling Brasfield (Mrs. Tom), 5223 Santa Elena, El Paso, TX 79912			Utah—Norma Hamilton Lundberg (Mrs. Glen O.), 1208 Fenway Ave., Salt Lake City, UT 84102		
Ft. Collins, CO—Sandra Larson Axelsen (Mrs. Kenneth), 1700 Yucca Ct., Ft. Collins, CO 80521			Wyoming—Dorothy Shipton Boyd (Mrs. W. R.), 3810 Reed Ave., Cheyenne, WY 82001		
Las Cruces, NM—Janet Moore (Miss), P. O. Box 3663, Las Cruces, NM 88001					
Las Vegas, NV—Charlotte Werth Hejamoski (Mrs. Paul), 709 Starks, Las Vegas, NV 89107					
Phoenix, AZ—Marjorie Mercer Miller (Mrs.), 2622 N. 8th St., Phoenix, AZ 85006					
Reno, NV—Nora Danielson Kabat (Mrs. George), 14295 Riata Circle, Reno, NV 89502					
Roswell, NM—					
Salt Lake City, UT—Jean Peters Christensen (Mrs. William L.), 1669 Yalecrest Ave., Salt Lake City, UT 84105					
Tucson, AZ—Nancy John South, (Mrs. Zary, Jr.), 10910 E. Linden, Tucson, AZ 85715					

PROVINCE XV—California, Washington, Oregon, Idaho, Montana, Alaska, and Hawaii

Province Collegiate Director: CAROLYN OLIVER WILKE (Mrs. WALTER), 711 Rodeo Road, Fullerton, CA 92635			College Chapter Director/Address		
Chapter/School	President	Chapter Address	Chapter	President/Address	
K—Univ. of Washington	Devra Hayes	4535 18th N.E., Seattle, WA 98105		Lorraine Lyons Borden (Mrs. L.), 2354 Yale East, Seattle, WA 98102	
X—Oregon State Univ.	Sue Peterson	2311 NW Van Buren, Corvallis, OR 97330		Sue Alexander Smith (Mrs. Richard), 1299 W. 8th Ave., Albany, OR 97321	
AX—Univ. of Calif. at Los Angeles	Elizabeth Howard	824 Hilgard Ave., Delta Zeta Sorority, Los Angeles, CA 90024		Claire Petersen Purnell (Mrs. Richard), 228 Prospect Ave., Long Beach, CA 90803	
ΔA—Calif. State Univ. at Long Beach	Mary Kay Wintheiser	148 Molino, Long Beach, CA 90803		Marva Luttges Knox (Mrs. Robert), 1115 12th W. Ave., Chico, CA 95926	
ΔX—Calif. State Univ. at Chico	Nancy Schafhirt	606 W. Fifth St., Chico, CA 95926		Carol Greene Moody (Mrs.), 19702 S. Main #401, Carson, CA 90744	
EE—Calif. State Univ. at Fresno				Janet Breitweiser Savage (Mrs. Tom), 5102 Wood Wind Lane, Anaheim, CA 92807	
ΘP—Calif. State Univ. at Los Angeles	Virginia Hunden	502 S. Russell, Monterey Park, CA 91754			
ΠY—Calif. State Univ. at Fullerton	Janice Mullen	125 S. Sunkist, Anaheim, CA 92806			

Province Alumnae Director: Care of National Vice President Alumnae Affairs

Chapter	President/Address	Chapter	President/Address
Bakersfield, CA—Eley McGovern (Dr.), 5812 Carissa Ave., Bakersfield, CA 93309		Central San Fernando Valley, CA—Dolores Pyl Petty (Mrs. Dale), 9440 Noble Ave., Sepulveda, CA 91343	

Chapter
 Chico, CA—Dorothy Fosen Vanous (Mrs. Frank), Rt. 2, Box 219, Chico, CA 95926
 Delta Zetas by the Sea, CA—Diane Stamp (Miss), 108 Topaz, Balboa Island, CA 92662
 Fresno, CA—Judy Calandra Wallin (Mrs. Larry), 1524 9th St., Sanger, CA 93657
 Glendale-Burbank, CA—Janet Marks Anderson (Mrs. Laurence), 1255 Highland Ave., Glendale, CA 91202
 Greater Seattle, WA—Gail Cunningham Kollie (Mrs. Owen A.), 6108 127th Pl. SE, Bellevue, WA 98004
 Honolulu, HI—Julie Winn Sellers (Mrs. Richard), 68-253 Au St., Waialua, HI 96791
 Humboldt County, CA—Carol Foster Mills (Mrs. William), 4336 Fairway Dr., Eureka, CA 95501
 Long Beach, CA—Althea Aleko Miller (Mrs. James L.), 11314 Rochelle St., Los Alamitos, CA 90720
 Los Angeles, CA—Claire Koffel Damwood (Mrs. Forrest), 6987 La Presa Dr., Los Angeles, CA 90068
 Marin County, CA—Sally Kreutzberg Zunino (Mrs. Ernest), 131 Marinda Dr., Fairfax, CA 94930
 Monterey Peninsula, CA—Maryalice Hagerty Williamson (Mrs. J. Harold), 73 Monte Vista Dr., Monterey, CA 93940
 Mt. Diablo, CA—Carol Schnick Coyle (Mrs. Francis), 213 Wimbledon Road, Walnut Creek, CA 94598, Walnut Creek, CA 94598
 *Olympia, WA—Maryann Cook Milholland (Mrs. Kenneth), 820 Highland Dr., Olympia, WA 98501
 Orange County, CA—Marlene Bachman Taylor (Mrs. R.D.), 406 Fernhill Lane, Anaheim, CA 92807
 Palo Alto, CA—Mary Lou Hoover Eastwood (Mrs. Fred), 274 Diablo Ave., Mt. View, CA 94040
 Pasadena Foothills, CA—Karen Severloh Moffitt (Mrs. John), 2075 Los Robles Ave., San Marino, CA 91108
 Portland, OR—Paula Links McCracken (Mrs. Curtis), 7255 SW Brenne Lane, Portland, OR 97225
 Riverside Area, CA—Mary Devere Moore (Mrs. Louis), 1475 River Dr., Norco, CA 91760
 *Rogue Valley, OR—Susan Lorimer Meltzer (Mrs. William), 1551 Johnson, Medford, OR 97501
 Sacramento, CA—Lois Rooker Adamek (Mrs. Victor), 3001 El Prado Way, Sacramento, CA 95825
 Salem, OR—Jean McEachern Avison (Mrs. Richard), 1923 Dallas Road, N.W., Salem, OR 97304
 San Diego, CA—

PROVINCE XVI—Oklahoma

Province Collegiate Director: MARY ANN GALLATIN FRENCH (Mrs. JOHN), 2322 N.W. 58th Circle, Oklahoma City, OK 73112

Chapter/School	President	Chapter Address
AE—Oklahoma State Univ.	Peggy Duane	224 S. Jefferson, Stillwater, OK 74074
ΓY—Oklahoma City Univ.	Jana Strange	Box 169 Walker Hall, OCU, Oklahoma City, OK 73106
ΔO—Northwestern State Univ.	Christee Nance	Baker Apt. #6, Northwestern State Univ., Alva, OK 73717
ΔΦ—Northeastern State Univ.	Rita Linville	216 N.W. Leoser, Tahlequah, OK 74464
EY—Central estate Univ.	Ellen Dillon	1000 N. Chowning, Edmond, OK 73034

Province Alumnae Director: DORIS WRIGHT SANDOZ (Mrs. N.O.), 624 S.W. 51st St., Oklahoma City, OK 73109

Chapter
 Alva—Jean Levstik Saunders (Mrs. Mark), 815 Locust, Alva, OK 73717
 Bartlesville—Maebeth Brown Furrow (Mrs. C.L.), 1410 Lariat Dr., Bartlesville, OK 74003
 Enid—Sharon Arnold Bishop (Mrs. Jerry), 1717 E. Locust, Enid, OK 73701
 Oklahoma City—Pamela Wadley Neville (Mrs. James), 5413 NW 114th, Oklahoma City, OK 73132

PROVINCE XVII—Texas

Province Collegiate Director: JANE GRAY NELSON (Mrs. J. MICHAEL), 1516 Regency Ct., Apt. 167, Arlington, TX 76010

Chapter/School	President	Chapter Address
AT—Univ. of Texas	Allyson Knoebel	2315 Nueces, Austin, TX 78705
ΓZ—Southwestern Univ.	Stefani Harris	DZ Box, SU Station, Georgetown, TX 78626
ΔO—Univ. of Houston	Betty Edwards	1017 Waverly, Houston, TX 77008
ΔA—Lamar Univ.	Dianne M. Hunt	P.O. Box 10060, L.U. Station, Beaumont, TX 77710
ZZ—West Texas State Univ.	Sandra Skinner	Box 414, WT Station, Canyon, TX 79015
ZΘ—Sam Houston State University	Cathy Colwell	Delta Zeta House, SHSU, Huntsville, TX 77340
ZΨ—Stephen F. Austin Univ.	Carol Graham	Box 7501 S.F.A., Nacogdoches, TX 75961
ΘO—Pan American Univ.	Bonnie Solether	1600 W. McIntyre #4, Edinburg, TX 78539
IA—Southwest Texas State Univ.	Patty Denham	#210 Comanche Woods Apts., San Marcos, TX 78666
IΨ—Univ. of Texas at Arlington	Gina Forsythe	1607 S. Oak #227, Arlington, TX 76010
KZ—North Texas State Univ.	Marcia Blackburn	200 Ave. D. Apt. W204, Denton, TX 76201
ΔΞ—Texas A & M Univ.	Patsy Hedges	1505 Park Place #13, College Station, TX 77840
AO—Angelo State University	Sandi Dennis	P.O. Box 10969 ASU, San Angelo, TX 76901

Province Alumnae Director: MARY MARGARET CALHOUN FORE (Mrs. SAM), 73 Townhouse Lane, Corpus Christi, TX 78412

Chapter
 Amarillo—Mikala Faville Stephens (Mrs. Sherron), 2609 Travis, Amarillo, TX 79109
 Arlington—Patricia Rainbolt Ownby (Mrs. James), 2104 Guinevere, Arlington, TX 76014
 Austin—Nancy Williams Mueller (Mrs. Leo), 1903 Elton Lane, Austin, TX 78703
 Beaumont—Judy Hammond (Miss), 7485 Concord Rd., Beaumont, TX 77705
 *Brazos Valley—Doris Rea Clark (Mrs. Fred), 1405 Sunny Ct., College Station, TX 77840
 Canyon—Diane Winn Fitzgerald, Jr. (Mrs. James R.), 402 Holman Lane, Canyon, TX 79015
 Corpus Christi—Lynne Burge Hancock (Mrs. Max), 3134 Baybrook, Corpus Christi, TX 78418
 Dallas—Rebecca Ragan Barr (Mrs.), 3821 Marquette, Dallas, TX 75225
 Denton—Carolyn Smith Conekin (Mrs. A.M.), 911 Windsor, Denton, TX 76201
 Edinburg-McAllen—Clara Buitendijk (Miss), 920 S. 10th, Edinburg, TX 78539
 El Paso—See New Mexico—Province XIV
 Ft. Worth—Sue Wallace Duvall (Mrs. Duncan E., Jr.), 3913 Kenley St., Ft. Worth, TX 76107
 *Georgetown—Lillian Kolb Jones (Mrs. T. P.), 1601 East 17th, Georgetown, TX 78626

Chapter
 San Francisco Bay Cities, CA—Lila Ready Pemberton (Mrs. Walter), 827 Balra Dr., El Cerrito, CA 94530
 San Francisco Peninsula, CA—Zelta Wieman Adams (Mrs. Edward), 4233 Bettina Ave., San Mateo, CA 94403
 *San Joaquin Valley, CA—Corinne VanAuken Morris (Mrs. Howard), J12012 North Angier Rd., Lodi, CA 95240
 San Jose, CA—Nancy Buck Bibler (Mrs. James), 3877 Villa Glen Way, San Jose, CA 95123
 Santa Monica, CA—Carmen Rexach Zellhoefer (Mrs. Jon), 17070 San Mateo Street, Apt. E, Fountain Valley, CA 92708
 South Bay, CA—Vicky Hurst Jeffcoach (Mrs. Keith), 1914 W. 262nd Street, Lomita, CA 90717
 Spokane, WA—Nancy Haas Hawkins (Mrs. William H.), 3915 Eastgate Ct., Spokane, WA 99203
 Tacoma, WA—Nancy McCartney Wilson (Mrs. Donald), 1715 Stewart, Puyallup, WA 98371
 *Wenatchee, WA—D. Clarice Pittman (Miss), 15 Hamilton, E. Wenatchee, WA 98801
 West Covina, CA—Aletheia Osburn Brill, Jr., (Mrs. Arthur), 1461 East Grovescenter, Covina, CA 91722
 Whittier, CA—June Kropp Giffin (Mrs. June), 1020 LaSerna, LaHabra, CA 90631

State Reference Chairmen: Alaska—Margaret Williams Parker (Mrs. Allen), 2335 Lord Baranof, Anchorage, AK 99503
 California (North)—Martha Henry Burde (Mrs. Walter), 24685 Camino Del Monte, Carmel, CA 93921
 California (South)—Jane Lotspeich Davis (Mrs. Richard), 1200 Via Landeta, Palos Verdes Estates, CA 90274
 Hawaii—June Burnell Solomon (Mrs. Albert, Jr.), 435 Seaside Ave., Apt. 208, Seaside Towers, Honolulu, HI 96815
 Idaho—Gertrude Calhoun Lundquist (Mrs. W. L.), 1004 S. Logan, Moscow, ID 83843
 Montana—Catherine Bollen Everingham (Mrs. B. S.), 5620 Rattlesnake Rd., Missoula, MT 59801
 Oregon—Margaret Hurst Leatherman (Mrs. Charles), 7404 S.W. 36th, Portland, OR 97217
 Washington—Elizabeth Harrington Smith (Mrs. Wesley), 3710 S.W. Donovan St., Seattle, WA 98126

College Chapter Director/Address
 Nancy Irwin Crenshaw (Mrs. Jerry B.), 106 N. Grandview, Stillwater, OK 74074
 Diana Igleheart (Miss), 4402 NW 36th Apt. 5, Oklahoma City, OK 73112
 Wilma Ernst (Dr.), 802 Maple St., Alva, OK 73717
 Mary Malone (Miss), 2641 Columbus, Muskogee, OK 74401
 Deborah McWhirter Bruce (Mrs. Bill), 5008 N.W. 62nd, Oklahoma City, OK 73122

Chapter
 Stillwater—Carolyn Gang (Miss), P.O. Box 335, Stillwater, OK 74074
 Tulsa—Carol Ann Barton Michno (Mrs. Joe), 3544 S. Sandusky, Tulsa, OK 74135

State Reference Chairman: Ruby Gray Purdum (Mrs. Calvin Booth), R.R. #1, Box 81, Dewey, OK 74029

College Chapter Director/Address

Nancy Harriss Bacchaus (Mrs. Robert), 1813 Main, Georgetown, TX 78626
 Judy Harwell (Miss), 3737 Hillcroft, #102, Houston, TX 77027
 Paula Tate O'Neal (Mrs. James), 840 Jasmine Drive, Beaumont, TX 77706
 Leuna Foster Parker (Mrs. James), 1601 8th Ave., Box 839, Canyon, TX 79015
 Gale Arnold Mathews (Mrs. Michael), Honeyhollow #5, Huntsville, TX 77340
 Patsy Griffin Barham (Mrs. George, III), 3614 N. Raguet, Nacogdoches, TX 75961
 Helen Krell Decker (Mrs. Art), 21 4D E. Mahl, Edinburg, TX 78539
 Margaret Ewing Hoch (Mrs. Frank), Blanco Star Rt., Box 26, San Marcos, TX 78666
 Sandra Beardman Cahill (Mrs. Bobby), 2003 Deer Path Dr., Arlington, TX 76012
 Mary Craver Denny (Mrs. Henry), Rt. 2, Box 271, Aubrey, TX 76227
 Wilene Sockwell Siler (Mrs. Willie), 2473 A&M, San Angelo, TX 76901

Chapter
 Houston—Karen Muckleroy Parma (Mrs. Dennis), 9829 Cedardale, Houston, TX 77055
 Huntsville—Dorothy Reynolds King (Mrs. O. Ray), SHSU Station Box 76107, Huntsville, TX 77340

*Longview—Georgia Hogan Myers (Mrs. Lyle J.), 412 Greenleaf, Longview, TX 75601
 Lubbock—Susan Cure Bode (Mrs. William), 5517 8th Pl., Lubbock, TX 79416
 *Midland—Mary Skufca Conyers (Mrs. William), 2814 Stutz Dr., Midland, TX 79701
 *Nacogdoches Area—Sharon Rumm Mefford (Mrs. George), 317 Crestwood, Nacogdoches, TX 75961
 *Nasa Area—Sue Miller Mohring (Mrs. G. Edward), 803 Wavecrest Lane, Houston, TX 77058
 *Odessa—Mary Roach (Miss), Odessa Jr. College, Odessa, TX 79760
 Port Arthur—Wanda Thornell Oubre (Mrs. Charles), 664 Merilyn Lane, Port Neches, TX 77651
 *San Angelo—Elizabeth Atkins Bray (Mrs. Charles), 2809 Briargrove Lane, San Angelo, TX 76901

Chapter
 San Antonio—Carol Dowling Britt (Mrs. John), 7610 Meadow Lawn, San Antonio, TX 78251
 San Marcos—Patricia Kettler Greiner (Mrs. Allen), Laurel Estates R#1, Box 168, San Marcos, TX 78666
 Waco—Ruth Hobart Roney (Mrs. Maurice W.), 219 Robins Loop, James Connally Campus, Waco, TX 76705

State Reference Chairman: Anne Hawkins (Mrs. J. M.), 324 Pine Street, Lake Jackson, TX 77566

PROVINCE XVIII—Louisiana and Mississippi

Province Collegiate Director: Care of National Director BETTY SCHNEIDER FENTON (MRS. RICHARD), 2151 East Ramsey Dr., Baton Rouge, LA 70808

Chapter/School	President	Chapter Address	College Chapter Director/Address
Σ—Louisiana State Univ.	Barbara Gravel	Box 17770-A, L.S.U., Baton Rouge, LA 70803	Mary Kent Thomas (Mrs. Don), 544 Rodney Dr., Baton Rouge, LA 70808
ΔK—Univ. of Southwestern La.	Mary Mazzeno Bordelon	P.O. Box 3363 USL, Lafayette, LA 70501	Rose Martin Clement (Mrs. Ray), 511 Howard Ave., Lafayette, LA 70501
EB—Northwestern State Univ.	Paula Jones	Box 4746, N.S.U., Natchitoches, LA 71457	Marlene McKenney Allen (Mrs. Arthur), Fish Hatch Rd., Rt. 1, Box 296, Natchitoches, LA 71457
EM—Univ. of Southern Miss.	Vicki Jones	Box 672 Southern Station, Hattiesburg, MS 39401	Vickie Bramlett (Mrs. James), 709 Montrose Ave., Hattiesburg, MS 39401
ΘK—Univ. of New Orleans	Marie Prevost	109 Central Park Place, New Orleans, LA 70124	Joanna Broussard Bauer (Mrs. Todd H.), 1132 Lake Ave., Metairie, LA 70005
KA—Nicholls State Univ.	Cindy Bush	P.O. Box 2371, NSU, Thibodaux, LA 70301	Laura McQuaig Badeaux (Mrs. Lloyd), 126 E. 6th St., Thibodaux, LA 70301

Province Alumnae Director: GLORIA ERVIN LYNCH (MRS. JOHN), 572-A Julia St., Rt. 2, Thibodaux, LA 70301

Chapter
 *Alexandria, LA—Lynda Morrow Elsing (Mrs. Fred, Jr.), 1216 Wilshire Dr., Alexandria, LA 71301
 Baton Rouge, LA—Jane Weaver Mathes (Mrs. Jimmy), 14363 Firethorn St., Baton Rouge, LA 70815
 *Bayou Area, LA—Virginia Anne Cook (Dr.) Rt. #2, Box M 19, Thibodaux, LA 70301
 *Hattiesburg, MS—Pam Purchner Sims (Mrs. R. H.), Rt. 1, Box 605, Hattiesburg, MS 39401
 Jackson, MS—Betty McFarland Wells (Mr. Kenneth), 221 Allstate, Jackson, MS 39211
 Lafayette, LA—Linda Carpenter Wenger (Mrs. Mark J.), 509 Laurence Ave., Lafayette, LA 70501
 Mississippi Gulf Coast, MS—Jeanne Young Bujak (Mrs. Richard G.), 2208 Swetman Blvd., Gulfport, MS 39501

Chapter
 New Orleans, LA—Debra Madden Courtney (Mrs. Richard D.), 2716 Whitney Place (620), Metairie, LA 70002
 *Ruston, LA—Mable May (Miss), Rt. 1, Lakeshore Dr., Ruston, LA 71270
 Shreveport, LA—Virginia Schattner Carnahan (Mrs.), 2519 Douglas Dr., Bossier City, LA 71010
 *Starkville-Columbus, MS—Cynthia Strong Harris (Mrs. Larry), 1420 9th St. South, Columbus, MS 39701

State Reference Chairmen: Louisiana—Charlotte Butcher Meador (Mrs. H. Kirkland Jr.), 585 Unadilla St., Shreveport, LA 71106
 Mississippi—Jane O'Neil Letchworth (Mrs. John), P.O. Box 772, Shelby, MS 38774

PROVINCE XIX—Tennessee and Arkansas

Province Collegiate Director: JANIS LUMPKINS, 6001 Old Hickory Blvd. Apt. 344, Hermitage, TN 37076

Chapter/School	President	Chapter Address	College Chapter Director/Address
BA—Univ. of Tennessee	Janet Hoskins	Box 77-1621 West Cumberland, eenoxtville, TN 37916	Patty Sonka Mallicote (Mrs. R.E.), 507 Neadcrest Dr., Knoxville, TN 37919
FI—Memphis State Univ.	Judy Harris	P.O. Box 90056, Memphis State Univ., Memphis, TN 38152	Joyce Lockhart Gary (Mrs. Wallace W.), 1347 Greendale Ave., Memphis, TN 38127
ΔH—East Tennessee State Univ.	Roberta Adams	Box 1613 ETSU, Johnson City, TN 37601	Lucretia Diane Roddy Nelson (Mrs. Jack), 1701 Woodridge Dr., Johnson City, TN 37601
EE—University of Central Arkansas	Shery Williamson	Box 567 UCA, Conway, AR 72032	Pat Cantrell Otto (Mrs. Bill), 1520 South Blvd., Conway, AR 72032
EII—Henderson State University	Cheryl Gandy	Box H 1609, Arkadelphia, AR 71923	Becky Betts Andrews (Mrs. James), N. 26th St., Arkadelphia, AR 71923
II—Middle Tenn. state Univ.	Susan Bennett	1224 Laurelwood Drive, Chattanooga, TN 37412	Susan D. Roberts, 6001 Old Hickory Blvd., Apt. 344, Hermitage, TN 37076

Province Alumnae Director: JEAN COX GARIBALDI (MRS. THOMAS), 6616 London Dr., Memphis, TN 38138

Chapter
 *Conway, AR—Rebecca Farris Jessup (Mrs. Tim), 1409 Bean, Conway, AR 72032
 *Hendersonville, TN—Judy Norrod Pate (Mrs. Forrest), 104 Cheryl Circle, Hendersonville, TN 37075
 Knoxville, TN—Charlotte Duncan (Miss), 1527 D Coleman Rd., Knoxville, TN 38118
 *Little Rock, AR—Sandy Shumard Ledbetter (Mrs. Joel), 7 Box Hunt Trail, Little Rock, AR 72205
 Memphis, TN—Laura Bennett Davis (Mrs. R.E.), 5029 Knight Arnold, Memphis, TN 38118
 Nashville, TN—Violet Henson Anderson (Mrs. Charles A.), 3033 Jenry Dr., Nashville, TN 37214

State Reference Chairmen: Arkansas—Patsy Camp Farris (Mrs. Jefferson), 140 Donaghey Ave., Conway, AR 72032
 Tennessee—Kathryn Mulholland Bright (Mrs. S. Gael), 4824 Frontier Dr., Kingsport, TN 37664

PROVINCE XX—Kentucky

Province Collegiate Director: MADONNA BADGETT HUFFMAN (MRS. MARTIN), 314 Tippet Ave., Morehead, KY 40351

Chapter/School	President	Chapter Address	College Chapter Director/Address
AG—Univ. of Kentucky	Pamela Pickard	319 Columbia Terrace, Lexington, KY 40508	Charlotte Case Lundergan (Mrs. Gerald), 1625 Liberty, Lexington, KY 40505
BF—Univ. of Louisville	Diane Ziegler	513 Briar Hill Road, Louisville, KY 40206	Fannette Lindsay Schmitt (Mrs. Edward), 2414 Brighton Dr., Louisville, KY 40205
KB—Northern Kentucky State Col.	Tricia Smith	731 Grand Ave., Ft. Thomas, KY 41075	Brenda Jones Boone (Mrs. Jessie), 207 Park Ave., Ludlow, KY 41016
KT—Morehead State Univ.	Pam Cupp	701 Nun Hall MSU, Morehead, KY 40351	Nadine Collinsworth Griffith (Mrs. Winston), Forest Hills Subdivision, Morehead, KY 40351

Province Alumnae Director: DEANNA MCCRARY WHITE (MRS. BOB), Rt. 3, Box 191-E, Corbin, KY 40701

Chapter
 Lexington—Julia Jones Owen (Mrs. Gordon), 3481 Castleton Way N., Lexington, KY 40502
 Louisville—Judith Virgo Penner (Mrs. Duane T.), 8903 Largo Ct., Louisville, KY 40299

State Reference Chairman: Carol Childers Johnson (Mrs. Larry), 3806 Little Bend Rd., Louisville, KY 40222

PROVINCE XXI—North Carolina, Virginia, Maryland, and Washington, D.C.

Province Collegiate Director: Care of National Headquarters

Chapter/School	President	Chapter Address	College Chapter Director/Address
ET—Longwood College	Jane Hill	Box 385, Longwood College, Farmville, VA 23901	Gladys Massey Seiwel (Mrs.), 110 Venable St., Farmville, VA 23901
ZA—East Carolina Univ.	Jan Hatchell	801 E. 5th St., Greenville, NC 27834	Linda Glosson Monroe (Mrs. John E.), 111 Placid Way, Greenville, NC 27834
ZE—Lenoir Rhyne Col.	Susan Wise	Box 1526 Lenoir Rhyne College, Hickory, NC 28601	Anne Conrad Meisner (Mrs. Bruce), 1941 12th St. NE, Hickory, NC 28601
ΘI—Western Carolina Univ.	Carol Ann Morris	Box 403, B-1 Walker, Cullowhee, NC 28723	Jane Strickland Powers (Mrs. Don), P. O. Box 1194, Cullowhee, NC 28723
ΘΦ—Old Dominion Univ.	Lou Moore	4811 Killiam Ave., Apt. 4, Norfolk, VA 23508	Martha Fischer Cummings (Mrs. Bredin), 3700 Wedgefield Ave., Norfolk, VA 23502
ΘQ—Atlantic Christian Col.	Sharon Kay Weaver	Box 5529, ACC, Wilson, NC 27893	Margaret Bridge Averett (Mrs. Larry T.), Rt. 3 Box 187, Wilson, NC 27893
KΘ—Virginia Polytechnical Inst.	Cindy Cave	395 Slusher Tower VPI & SU, Blacksburg, VA 24061	Cindy Meadows, 29 C Terrace View Apt., Blacksburg, VA 24060
KΦ—Univ. of North Carolina at Charlotte	Donna Upchurch	401 Dorm 73 UNCC, Charlotte, NC 28223	Elvina Price Rogers (Mrs. Ken), 5001 Vescova Ct., Charlotte, NC 28212
ΔΦ—Appalachian State Univ.	Dayle Howard	Box 1891 ASU, Boone, NC 28608	Jessie Smith Carpenter, Jr. (Mrs. I. W.), P.O. Box 331, Boone, NC 28608

Province Alumnae Director: ELOISE HELMS DELLINGER (MRS. HENRY), 408 Red Barn Trail, Matthews, NC 28105

Chapter
 Charlotte, NC—Eloise Helms Dellinger (Mrs. H. Stephen), 408 Red Barn Trail, Matthews, NC 28105
 *Cullowhee, NC—Linda Kesler Peterson (Mrs. Martin), 640 Denning Place, Charlotte, NC 28212
 *Greenville, NC—Becki Barrow Young (Mrs. James H.), 1606 South Elm, Greenville, NC 27834
 Peninsula, VA—Ronne Preston Hand (Mrs. William R.), 356 Hughes Dr., Newport News, VA 23602
 *Raleigh, NC—Karen White Dunn (Mrs. William, III), 4621 Woodridge Dr., Raleigh, NC 27612
 Richmond, VA—Diane Carlson Klinck (Mrs. Edward), 1426 Newell Rd., Richmond, VA 23225
 Tidewater Area, VA—Linda Spruell Bennett, (Mrs. J. G.), 823 Winstonsalem Ave., Virginia Beach, VA 23451

Chapter
 Triangle Area, NC—Barbara Bryson Hastings (Mrs. James), 4903 Mandel Rd., Durham, NC 27705
 Washington D.C.—Ann Overton Winstead (Mrs. Billy), 3428 Holly Rd., Annandale, VA 22003

State Reference Chairmen: District of Columbia—Carolyn Overton Winstead (Mrs. Billy), 3428 Holly Road, Annandale, VA 22003
 Maryland—Marianne Belding Willing (Mrs. Edwin), 110 Canterbury Dr., Windsor Hills, Wilmington, Delaware 19803
 North Carolina—Nancy Tilden Campbell (Mrs. Ronald), 412 Woodlake Dr., Greensboro, NC 27406
 Virginia—Lynn Eddy Pope (Mrs. Leroy III), 7105 Crittenden Rd., Suffolk, VA 23432

PROVINCE XXII - Georgia and South Carolina

Province Collegiate Director: LEAH BURGESS RICHARDS (MRS. KENNETH), 770 Mt. Vernon Highway N.W., Atlanta, GA 30327

Chapter/School	President	Chapter Address
AO—Brenau College	Mary Catherine Pridgen	Delta Zeta House, Brenau Col., Gainesville, GA 30501
BA—Univ. of South Carolina	Tery L. Allen	601 St. Andrews Road, St. Andrews Apt., Apt. 14-G, Columbia, SC 29210
ΔΔ—Georgia State Univ.	Robin Brock	Box 502, Atlanta Univ. Plaza, Atlanta, GA 30303
IN—Georgia Southern College	Debbie Modellmog	Landrum Box 10285, Statesboro, GA 30458
KΩ—Limestone College		
ΑΠ—Georgia (Sandra Hensley)		Box 1005, Georgia College, Milledgeville, GA 31060
ΑΨ—Columbus College	Kathy Trigg	2508 Schaul St., Columbus, GA 31907

College Chapter Director/Address
 Jane Owen (Miss), P. O. Box 1481, Gainesville, GA 30501

Linda Langford Reynolds (Mrs. Ray), 1511 Carter St., Columbia, SC 29204
 Amaryllis Pickett Barnes (Mrs. Ray), 2424 Glenwood Dr. N.E., Atlanta, GA 30305
 Bernice Forrest Kellogg (Mrs. Craig), 113 Herty Drive, Statesboro, GA 30458

Tally Hodges (Mrs. Ray, Jr.), P. O. Drawer 967, Milledgeville, GA 31060

Province Alumnae Director: MARY CLARE EBY BRUMLEY (MRS. DUDLEY T.), 3050 Henderson Mill Rd., Atlanta, GA 30341

Chapter
 Atlanta GA—Helen Philpott Palmour (Mrs. Weldon), 5027 Chestnut Forrest Ct., Doraville, GA 30340
 Charleston, SC—Nancy Ann Simpson (Miss), 1744 I'on Avenue, Sullivan's Island, SC 29482
 *Columbia, SC—Judith Philpott Silverthorne (Mrs. John), 1739 Sapling Dr., Columbia, SC 29210
 *Columbus, GA—Alice Russell Jordan (Mrs. Dewey), 3633 Ginger Dr., Columbus, GA 31904
 *Macon, GA—Nancy Rawls Taylor (Mrs. Garland F.), 1240 Elm St., Macon, GA 31201
 Suburban, GA—Ann Atkinson Snead (Mrs. Stanley), 4017 Plantation Drive, Marietta, GA 30060

State Reference Chairmen: Georgia—Marilyn Couey Hedrick (Mrs. William), 2040 W. Broad Apt. 5, Albany, GA 31701
 South Carolina—Kathleen Adams Thompson (Mrs. R. E.), 14 Archdale Rd., Columbia, SC 29209

PROVINCE XXIII—Alabama

Province Collegiate Director: DWAYLA DEAN FINCH PORTER (MRS. ARTHUR), 1409 Preston St., Opelika, AL 36801

Chapter/School	President	Chapter Address
AI—Univ. of Alabama	Nanci Martin	P. O. Box 6273, Univ. of Alabama, University, AL 35486
ΑΠ—Samford University	Lynn Olive	SU Box 875, Birmingham, AL 35209
BE—Auburn Univ.	Donna McCauley	Dorm D., Room 203, Auburn Univ., Auburn, AL 36830
KA—Livingston Univ.	Jean Ratcliffe	Box 820, Livingston, AL 35470

College Chapter Director/Address
 Miriam Webster McFarland (Mrs. J. W.), 4714 7th Court East, Tuscaloosa, AL 35401
 Linda Rhodes Butler (Mrs. James), 4213 Mountaine Rd., Birmingham, AL 35213
 Sandra McAlister Nesbitt (Mrs. Milton), 112 Talheim Dr., Auburn, AL 36801

Province Alumnae Director: BETH KENNARD MOORE (MRS. JOHN C. III), 412 Cliff Place, Birmingham, AL 35209

Chapter
 Auburn-Opelika—Ann Sturkie Williams (Mrs. Edward), 1309 Sycamore, Auburn, AL 36830
 Birmingham—Belinda Ausley Mathison (Mrs. John C.), 1512 Valley View Dr., Birmingham, AL 35209
 *Decatur—
 Huntsville—Helen Utter Schuppener (Mrs. Paul B.), 5805 Criner Rd. SE, Huntsville, AL 35802
 Mobile—Bligh Tissington Jones (Mrs. H. Randall), 4901 General Lee Ave., Mobile, AL 36609

Chapter
 Montgomery—Ann Grant Wadsworth (Mrs. Donnie), 127 Lina Dr., Prattville, AL 36067
 *Muscle Shoals Area—
 Tuscaloosa—Miriam Webster McFarland (Mrs. J. W.), 4714 7th Court East, Tuscaloosa, AL 35401

State Reference Chairman: Ann Hatchett Cheney (Mrs. Robert), 3506 Ramsey Rd., Montgomery, AL 36111

PROVINCE XXIV—Florida

Province Collegiate Director: ELAINE ALARIE MORELLI (MRS. WILLIAM), 13375 White Oak Circle, Tampa, FL 33618

Chapter/School	President	Chapter Address
AS—Florida State Univ.	Sheryl Kent	749 S. Jefferson St., Tallahassee, FL 32304
BM—Florida Southern College	Pam Snidar	P.O. Box 577 FSC, Lakewood, FL 33802
BN—Univ. of Miami		
IA—Univ. of South Florida	Peggie Radcliff	Box 3456 Apt. #1, East Park Square, Tampa, FL 33612
Ω—Jacksonville Univ.	Anne Herbster	Box 616 Jacksonville University, Jacksonville, FL 32211

College Chapter Director/Address
 Willa Bradford, 140 Glendale Ave., Apt. 306, Lakeland, FL 33803

Linda Swanson (Miss), 2020 Continental Ave., #208, Tallahassee, FL 32304

Province Alumnae Director: ANN CAIN ANDERSON (MRS. CARL), 25 Valencia Rd., Rockledge, FL 32955

Chapter
 Brevard County—Patti Baker Fansler (Mrs. Les), 2613 Newfound Harbor Dr., Merritt Island, FL 32952
 Clearwater—Ruth Taylor Madsen (Mrs. Breinert R.), 1257 Taylor Ave., Dunedin, FL 33528
 Gold Coast Area—Marilyn Long Green (Mrs. Richard), 3232 NE 27th Ave., Lighthouse Point, FL 33064
 Jacksonville—
 Lakeland—Audrey McColphin Coleman (Mrs. J.E.), 2403 Coventry Ave., Lakeland, FL 33803
 Miami—Dorothy Frisk Phelps (Mrs. J. Grady), 2830 Jefferson, Miami, FL 33133
 Orlando-Winter Park—Leah McGraw Tiam (Mrs. Elvin), P.O. Box 20642, Orlando, FL 32814
 *Palm Beaches—Virginia Olson Hinman (Mrs. Earl), 278 Camellia, Palm Beach Gardens, Lake Park, FL 33403

Chapter
 Pensacola—
 St. Petersburg—Carolyn Leeman Wieland (Mrs. Karl), 6601 Tanglewood Dr. NE, St. Petersburg, FL 33702
 Sarasota-Bradenton—Jane Carroll Pegelow, (Mrs. Edward J.), 4960 Commonwealth Dr., Sarasota, FL 33581
 Southwest—Jean Maxham Edwards (Mrs. Gilbert H.), 315 Estero Blvd., Ft. Myers Beach, FL 33931
 Tallahassee—Carolyn Arey Schriemer (Mrs. David), 1504 Hilltop Dr., Tallahassee, FL 32303
 Tampa—Susan McClure Summers (Mrs. Phillip), Rt. 6, Box 382A3, Tampa, FL 33617

State Reference Chairman: Margaret Peek (Miss), 605 Pennsylvania Ave., New Port Richey, FL 33552



courtesy Alpha Gamma Delta QUARTERLY

Gwen Moss McKeeman was the speaker for the Panhellenic luncheon given by Alpha Gamma Delta during their recent convention in Kansas City. Pictured with Myra Foxworthy, former Chairman of National Panhellenic Conference, Delta Zeta's Panhellenic Delegate spoke on Panhellenic history and growth.



Greek organizations honored alumnae at the First Kansas State Appreciation night. Lambda chapter honored Leota Evans, house corporation president, Christine Chalender, treasurer, Barbara Robel, Panhellenic advisor, and Chris Yecke, CCD.



Florida Gold Coast alumnae include Fort Lauderdale, Pompano Beach and Boca Raton members. Standing behind their president Marilyn Long Green, EP, are Dawn Gordon Grandon, BP, Priscilla Beatty, IT, Barbara Welky Goodloe, IQ, Anita Voden Bridges, IT, Mary Ann Trahan, BN, and Ruth Bennett Jewell, AZ.



courtesy ARROW of Pi Beta Phi

Margaret Shipman Tranter, Ψ, demonstrates her spinning hobby at the Pi Beta Phi convention held last summer in Miami, Florida.

Tranthers Spin for Fun

Two Franklin College graduates of the early '30's have attracted the attention of Southwest Florida with their retirement hobbies, the latest of which is spinning. Dr. Frank and Margaret Shipman Tranter retired from Sharpsville, Indiana, to Ft. Myers, Florida in 1966 when Frank lost his eyesight. Crafts have, for many years, been important to them. Their pursuits in lapidary, the leading of stained glass, macramé, and stitchery have been rewarding. At present their attention has turned to hand spinning.

Beginning their experience in spinning as self-taught, they then attended comprehensive courses at the Arrowmont School of Arts and Crafts at Gatlinburg, Tennessee. Previous to this they had attended courses in macramé and stitchery at this very fine craft school. Margaret and Frank have experimented with many types of natural fibers including cotton, flax, silk, ramie, kopak and wool from various breeds of sheep. At present, Frank gives demonstrations in macramé while Margaret gives demonstrations of spinning for various schools and clubs.

Their three summers at the Pi Beta Phi Arrowmont School brought them an invitation to give a demonstration at the national convention in Miami last June.

Two busier people cannot be found, and their lovely home in Ft. Myers, is the stopping place for many old friends from Indiana and hosts of new friends who drop in for many good reasons,—chiefly sincere friendship.



Sandra Cheneweth, ΓΧ
Ball State



Sheila Hillis, ΕΞ
Central Arkansas



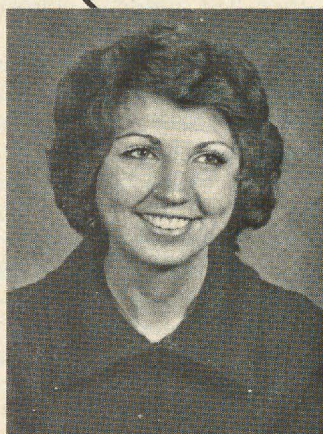
Rosemary Richardson, ΓΨ
Central Michigan



Ann Marie Bollwerk, ΑΕ
Oklahoma State

GOLDEN CIRCLE SCHOLARSHIPS

Dorothy Best Rich, Franklyn, chairman of the Colonnade Clubs, announces the 1975 recipients of the Golden Circle scholarships. The fund is derived from donations from individuals and chapter Colonnade clubs over the country.



Gail Theise, ΘΙΙ
Minot



Kathryn Hayes, ΚΑ
Livingston

DELTA ZETA SCHOLARSHIPS AND GRANTS



Amaryllis Barnes presented Patty Lynch of Delta Delta chapter at Georgia State with the Gertrude Meatheringham Memorial scholarship during the Awards banquet program at the convention last June.



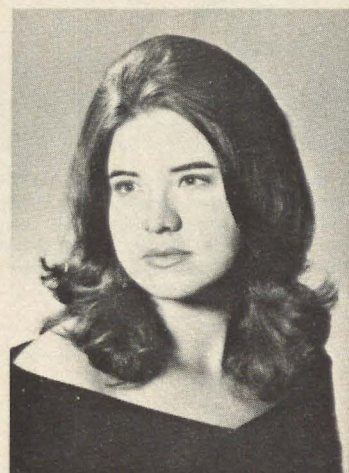
Frances Merrill, wife of the president of Gallaudet College, graciously accepted the gift check from Jane Prall at the convention last summer and thanked her Delta Zeta sisters for their continued help to the college.



Lucile Cooks presented the Arlene Davis award plaque to the president Kathryn Power of Upsilon chapter at the University of North Dakota since Jean Haley a Upsilon member, was the recipient.



Jean Haley, Y
University of North Dakota
Arlene Davis Award Winner



Becky Sutherland, III
Western Michigan
Friendship Fund Scholarship

Alpha Chi Celebrates Fiftieth



Present at Alpha Chi's fiftieth anniversary reunion, front row, Helen Martin Hoch, Marian Forsyth Stites, Betty Brush Ashley, Charline Chilson Potts, Harriet Sterrett Crane, Allura Easton Cockley, Ruth Stark Freckelton, Dorothy Haserot Smith, Edith Smith Beaming. Second row, Grace Hester McKnight, Mary Trevarrow Frederick, Gladys Marguardt, T, Thalia Woods Phillips, Helen Denney Bowman, Vivian Mead Williams, Aline Bryant Francis, Ethel Cooley, Blanche Carlson Williams.

*by Elizabeth Stevenson
Los Angeles Alumnae*

What a happy and exciting day was May 18, 1975 for Alpha Chi Chapter! It was Golden Anniversary time and alumnae came to the House from distances as far away as 500 miles. The luncheon at 12 noon was catered for 35 guests, to include more than half of our group installed in 1925 and those who came soon after. Honored guests were: Eleanor Fariss, National Treasurer, Ileen Taylor Marquardsen, Mu, first faculty advisor, Mrs. David Bjork, First Patroness, and Gladys Marquardt, Tau, first "Big Sister". Reminiscences flew from table to table and we thrilled to hear from each and every one.

The dining room was then rearranged for tea and open house to follow. Delta Zetas enjoyed hours of reunion in a beautiful setting. Rare potted plants, along with a magnificent floral arrangement from National Council were admired. U.C.L.A. Year Books 1924 to 1934 were eagerly shared. In the Trophy Room 150 signed the Guest Book and pored over our very first Scrap Book, to see telegrams of congratulations upon our Installation. Bulletin Boards displayed messages from alumnae unable to attend, also many programs and pictures from FLAME FANTASY.

All was very friendly and informal, but Helen Martin Hoch and Grace Hester McKnight, as co-chairmen, were pleased to have a distinguished receiving line, to introduce Eleanor Fariss, Carolyn Wilke, Province Collegiate Director; Ileen Taylor Marquardsen, Elizabeth Howard, Alpha Chi Chapter President, Claire Damewood, Los Angeles City Alumnae President; Rae Templin, Province Alumnae Director; and Hildy Owen, College Chapter Director.

Elenor Walters and Bertha Westerberg had charge of the tea and those at the tea and coffee urns were: Gladys Marquardt, Dorothy Breitweiser, Dallas Shenk, Norma Gerritson, and Ruth Walsh.



In the receiving line for Alpha Chi's open house were Rae Sweet Templin, alumnae province director, Claire Koffel Damewood, Los Angeles alumnae president, Elizabeth Howard, Alpha Chi chapter president, Ileen Taylor Marquardsen, first faculty adviser, Carolyn Oliver Wilke, province collegiate director, and Eleanor Strickler Fariss, National Treasurer.



Betty Hoskins Ellis, AΣ, Evelyn Ogan Roberts, Θ, Dolly Mattesen, BN, standing beside poster designed by Helen Keeler Spach for a special Panhellenic presentation featuring Edith Head, AX. Seated, Portia Cooper Laughlin, E, Beverly Ivanish Briggs, BN and Dorothy Frink Phelps, AΣ.



Sally Sears Kipke, IY, screens a senior citizen from Saginaw, Michigan. The hearing screening program initiated by the alumnae is done once a month by a trained member. Other Delta Zetas go along to explain the program and to serve refreshments. There are five apartment houses for senior citizens and the screening is done at a different house each month.

Miami Alumnae and Edith Head

*by Dorothy Frink Phelps, AΣ
Miami Alumnae*

Miami Delta Zeta alumnae are still wondering how they could have been so lucky as to have Delta Zeta Edith Head, an eight time Oscar winner for design, arrive at just the right moment.

When Panhellenic asked each of the alumnae groups represented in Panhellenic to put on a three minute skit portraying one of their nationally known members, Delta Zetas immediately thought of Edith Head. They considered the possibility of having Edith Head, AX, portrayed by a local alumna, designing a gown for Gail Patrick Velde, AII. And still another possibility was to have Edith Head designing a gown for television personality Marcia Wallace, ΔN, who stars as a secretary on the Bob Newhart Show. But all the way, it seemed as if Edith Head should be used in some way.

In fact, fate seemed to take a hand. For when Dorothy Frink Phelps, AΣ, chairman of Delta Zeta's skit presentation, appealed to Joan Nielsen McHale, who has her own local radio talk show, to help work on such a skit, it couldn't have been at a more propitious time. Joan was doing a thirty minute interview with Edith Head the very next day right in Miami! However, since she would be out of town on the day of the Panhellenic program, Joan requested Miss Head to do a special three minute tape after the thirty minute interview especially for Delta Zetas to present at Panhellenic.

Local Delta Zetas listened to the thirty minute show and were thrilled to hear Miss Head bid a special hello to "my Delta Zeta sisters" in Miami. Joan not only turned over the three minute tape, but also the thirty minute broadcast tape. Now Dorothy Phelps, AΣ, and Betty Hoskins Ellis, AΣ, who were planning the Panhellenic program, had a dilemma. The thirty minute tape was so exciting and entertaining that they wanted to use parts of it and save the special three minute tape, that was keyed especially to Delta Zetas, for the alumnae and college chapters. So, they set out to do this. Finally Betty decided she had it worked out and all of "the best of Edith Head" for the Panhellenic program was down to the three minute allotment.

Helen Keeler Spach designed a large poster which included a headline story and pictures of Edith Head that had appeared in the Miami *Herald* during her stay. Now the presentation was ready!

An Open Letter to Delta Zetas

From a Grateful Hospital Administrator

I hope this letter can be heard from coast to coast, for the efforts of Huntsville, Alabama's, Delta Zetas in support of their community hospital deserve a nationwide accolade.

Huntsville Hospital serves far beyond the boundaries of its community of 150,000 people. Because it has more beds and more specialty services than any other hospital in north Alabama or southcentral Tennessee, truly it serves a regional community.

One of the most vital services is the high-risk nursery, an intensive care unit for critically ill newborns. As you can well imagine, the cost of maintaining the specialized staff and equipment needed to deliver that level of care is staggering, even in an era when high prices are commonplace.

A great many of our infant patients are from indigent or modest-income families, unable to pay their hospital bills. Yet no one is denied admission or treatment, for care—not cost—is our first and abiding concern.

Because it's economically draining just to keep the high-risk nursery functioning, we depend heavily on community support for the money to purchase needed new equipment for expansion of services. One of our leading supporters in that effort has been and continues to be Delta Zeta.

The Delta Zetas adopted the high-risk nursery as their project in 1973 and '74, committing the proceeds of their annual fall arts and crafts show toward purchase of major equipment. Combined receipts totaled \$4,000. Anxious to help the hospital obtain a high-priority nonbudgeted item—a neonatal x-ray unit—the Delta Zetas collaborated with two other groups to speed the purchase.

Delta Zeta was the prime mover and chief financial backer for that landmark contribution, largest community gift yet received by the high-risk nursery.

The momentum created by Delta Zeta's efforts generated community awareness of the mission and needs of the high-risk nursery, spurred interest and gifts from other local organizations and aided the hospital in securing a \$50,000 federal grant.

The Delta Zetas have adopted the high-risk nursery as their project again this year. Proceeds of the Nov. 21-23 arts and crafts show, expected to draw scores of exhibitors from throughout the southeast, have been pledged toward another major purchase—infant ECG and respiration monitoring equipment. We are delighted.

It is my pleasure to report that we are already \$250 closer to that goal thanks to the Huntsville chapter's selection for a covered maximum-level award from the national foundation in support of the Huntsville Hospital project. The Huntsville group's distinction is double, I feel, in that it is the smallest of the chapters so-distinguished this year. Smallest, but indeed among the most dedicated.

Two untiring workers in our behalf have been Janet Meaders, philanthropy chairman of the Huntsville chapter, and Nancy Lackey, chairman of the arts and crafts shows. To them in particular our admiration and thanks.



Janet Meaders presents starter check for infant ECG and respiration monitoring equipment to Dr. Jean Quirante and Belva Dervage of Huntsville's hospital staff.



The Harrison Inter-district school for Hearing Impaired was the recipient of a grant through the philanthropy project of the Cleveland Westside alumnae. Miss Jane Eaton, one of the teachers accepts the check from Gertrude McHall, ☉, and Alice Rice, BX.

Sincerely, N.A. Thompson
Administrator

Alumnae Profiles



Marilu Giallombardo Jones, AA

Marilu Jones

by Harriet Gotchel Weldon, ΔT
Southern New Jersey Alumnae

Marilu Giallombardo Myers Jones, AA, Northwestern University, president of the Southern New Jersey Alumnae Chapter lives her philosophy "taking what comes along and making the best of it."

At her home in Cherry Hill, Marilu, surrounded by plants, hanging and otherwise, looks directly at you, opens her refulgent, brown eyes expressively, and says, "that may sound like 'midwestern corn' but that's how I feel." Maybe that's what growing up near Chicago, attending Northwestern, and teaching fifth and sixth grade in Oak Park, Illinois, does for you.

How did that nice midwestern girl get transplanted to South Jersey and involved in sorority activities? It started in 1970 when she moved to Palos Verdes, California and her first contact with an alumnae group, the South Bay, California Alumnae Chapter. An invitation to attend a meeting rekindled her former interest in the sorority (as a collegian she had been rush and activities chairperson and after graduation, chapter rush advisor).

So when she moved to South Jersey a year later, her favorable experience with the Los Angeles area group persuaded her to join the South Jersey Chapter. Three years later she became president; and what a president! Her enthusiasm, creativity, and organization gave vitality to the group and culminated in their receiving the Commendation for Chapter Achievement Award at the 1975 National Convention. The activities that helped win this award were: initiating a get-acquainted champagne party; increasing attendance at the monthly meeting by presenting diverse and topical programs; instituting a monthly newsletter; directing goal-oriented executive board meetings; and giving new emphasis and direction to their philanthropies (Archway School for the Multiple Handicapped and the Camden County Home for the Aged).

During this time her career also took a change in direction. For sometime Marilu felt that an occupation dealing with adults might be more challenging than teaching but she was undecided inasmuch as her education and working experience had been in elementary education. Fortunately a conversation with a person at a neighbor's party proved decisive. He told her his company, a large insurance firm in Philadelphia, was about to hire an insurance underwriter trainee and, if she were interested in the job, that she should come to his office on Monday. Within a few days she was working in that capacity.

Marilu does admit this job was not exactly what she had in mind. So one day while having lunch with some business associates, she heard one say that he liked his job because he didn't just push papers around all day but actually saw the results of his efforts. The job, described as that of a technical field representative in loss control, immediately appealed to her. She then inquired about the possibility of his firm having an opening. He replied

that traditionally women didn't enter this field because of probability of working in "unsafe areas." However, since his company was considered "progressive," she should explore job opportunities with them.

Today Marilu is the Insurance Company of North American's first woman technical service representative. Throughout metropolitan Philadelphia Marilu works with companies who buy INA's customer protection services package by performing comprehensive safety reviews for the clients to eliminate hazards and create safer work environments, thus reducing premiums, and by helping businesses understand the implication of the Occupational Safety & health Act of 1970 with its emphasis on employee safety. She expounds, "The OSHA regulation guide, about an inch thick and printed in type meant for an elf, is difficult for people in business to interpret."

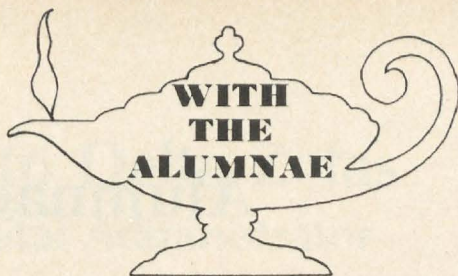
Her job duties also entail conducting in-depth investigations to determine underlying causes of injury or property damage, inspecting all property and work areas to detect safety hazards, and helping the employer train employees in safe daily work practices. Sometimes her clients are shocked to see a woman arrive on the scene, but as Marilu puts it, "I'm not out to shock people, I'm there to do a job . . . when they realize I know my job, they relax."

Perhaps meeting the right people at social gatherings comes in threes. At another party, Marilu met someone who really was interested in "talking shop," but from another viewpoint—that of a construction engineer. Raymond Jones from Virginia working for the Federal government made her an offer she couldn't refuse.

Marilu has been married almost a year, a technical field rep for almost two and loves every minute of both her new careers. However, this doesn't curtail her other activities and she still finds time for needlecraft, gourmet cooking and CONTACT, a crisis intervention telephone hot line.



Sunshine Janda Overkamp, an alumna of Delta Theta chapter at the University of Houston, is now Director of the News Bureau at the University of St. Thomas in Houston, Texas.



Elizabeth Anticaglia

Elizabeth Anticaglia, BΩ, married and the mother of two children, has been very active for some time in the concerns of women, from child care to women's rights. Her articles, columns, books, and public appearances deal with these concerns.

Last spring, two books written by her were published. They are *Twelve American Women and Heroines of '76*. In addition, she is a writer for J. B. Lippincott textbooks, 1975 editions. Her *A Housewife's Guide to Women's Liberation* was published in 1972.

She has written approximately thirty articles for national publications on history, women's rights, medicine and child care. She has a weekly feminist column, "Woman Today," for *Today's Post* newspaper and with her physician husband she co-authors "The Doctor's Bag," medical advice in *Companion* magazine.

She has been interviewed on numerous television and radio shows. On television, she has appeared on Target, the Betty Hughes Show, Perspective, Update, and other news programs. In addition, she speaks to high school and church groups. She helped organize a course in feminism for a night school in Pennsylvania.

Her listings include *Contemporary Authors*, *Women's Organizations and Leaders' Directory*, *The World Who's Who of Authors*, *Dictionary of International Biography*, and *First State Authors*. She belongs to the National Organization for Women (NOW) and the Authors' Guild.

Elizabeth has had out of the ordinary jobs, also. She taught English at the British School in Bologna, Italy, and she has worked with magazine editorial production at Living for Young Homemakers.



Muriel Gray Cerf, A, and Lois VonHusen Lehman, M, practice their camping skills under the direction of a youth representing the young people at Unibetic Camp. Providing camp opportunities for diabetic children is the aim of the Flame Fantasy held in early spring. Gail Patrick Velde, AII, founder of the Flame Fantasy and also a diabetic, awarded the grand prizes. Sorority members have raised over \$100,000 for the camp.

Vee Toner

Vee Shakarian Toner, O, was selected to be an umpire at the Wimbledon Tennis Championships held during June in England. Vee is one of the few woman in the United States who has the rating of "Stadium Umpire" in the United States Lawn Tennis Association. She has been umpiring many of the top tennis matches in the U.S. for years, including the National Championships at Forest Hills. She is the first official in the Pittsburgh area and probably among the few in the country to ever be named Umpire at the famous Wimbledon Championships.

She flew to England early in June to umpire for the Eastbourne Championships, a popular warm-up tournament prior to Wimbledon. Basically the same players compete in both tournaments.



Karen Muckleroy Parma, ZP, and Rhonwyn Rather Baker, IZ, present a check for \$5800 to Mrs. Yvonne Streit, founder and principal of Briarwood School for Exceptional Children. This was the largest check ever donated by the Houston group to their philanthropy and Mrs. Streit stated the Delta Zetas raise more money than any other group that supports the school.

Leslie Mason

A gift of \$2500 in the name of Leslie Mason, M, has been added to the San Carlos AAUW Endowment Fund, which will become part of the educational foundation in Washington, D.C. to provide money for fellows.

Leslie, a charter member of the branch, has been involved with fellowships, hospitality activities, and educational programs of the AAUW. She started the local government study group and the AAUW crafterie. A past president of the San Carlos branch, she is currently serving on the board of directors as legislative chairman.

In addition to her AAUW activities, she has served on three citizens advisory committees for schools and has held elected positions in four San Carlos Parent-Teacher Associations.

Leslie is the third member of the San Francisco Peninsula alumnae group of Delta Zeta to be so honored by AAUW. Juanita Alving, M, was recently named a fellowship honoree by the San Mateo branch and Hazel Bohn, AA, was honored in 1973 by the San Mateo branch.

Beatrice Tift

The Sioux City, Iowa, AAUW has established a \$500 American Fellowship Grant in honor of Beatrice Tift, ES. A professor of English at Morningside College, Bea has been a corporate delegate for the AAUW and has served as chairman for program, topic, education, ad and membership committees. She has appeared as a symposium leader at the state level.

Bea was also honored by the 1975 Morningside College Commencement for her distinguished educational career. She was presented with a doctor of letters degree for her "significant contributions to teacher training and grammar." She was honored in 1974 with the Order of Morningside upon retirement from fulltime teaching. An active member of the local Delta Zeta alumnae, Bea has served as CCD for Delta Mu collegiate chapter.

Harriet Payne

Harriet Payne, K, the National Chairman of the 1974 Mu Phi Epsilon Convention, whose expertise and hard work contributed so much to its success, was well qualified for this demanding job . . . Her job started two years ahead of time and gathered momentum as Convention time approached. She well deserved the applause of the delegates for the monumental job she did so well.

Harriet is a performing musician and educator, a composer and an active member of Mu Phi Epsilon. She has been a principal violist in the Indianapolis, Santa Monica, and Orange County Symphonies and Columbia Pictures Recording Orchestra . . . She has played in many ballet and opera orchestras, sometimes as principal violist, sometimes as a conductor.

As an educator, Harriet has taught at Jordan Conservatory, USC, Interlochen, Limberlost Music Camp, and in the Los Angeles school system.

In addition to her performing and teaching experience, she has been a first prize winner in the MΦE Original Composition Contest. Her compositions have been performed by Indianapolis, Pittsburgh, Miami, Long Beach Symphonies and the New York Philharmonic at Saratoga.

Harriet holds bachelor and master of music degrees from the American Conservatory of Music in Chicago. Early training was at Jordan Conservatory. Later she studied in Cincinnati, New York, and London.

Listed in *Who's Who of American Women* and *Who's Who in Music*, she is a past president of the Dominant Club in Los Angeles and the Mu Phi Epsilon alumnae chapters of Beverly Hills and Long Beach. In addition she has served as a District Director and is a Golden Benefactor of the Foundation. Retired from teaching, she is busy with performing engagements.



Jane Ann Irwin, Δ

Jane Ann Irwin

Jane Ann Irwin, Δ, has been appointed training officer for California. She is responsible for establishing a state wide training program for top level executives and management personnel. She will serve on the executive staff of the State Personnel Board. This past year she became the first woman member of the Board of Directors for the California State Employees Credit Union.

A Mortar Board graduate with a degree in economics from the University of Michigan, she entered the U.S. Air Force and earned the rank of captain before resigning in 1960.

In 1961, she accepted a position with the California Department of Water Resources. She advanced to become the Division Administrative Officer. In 1972, she was appointed chairman of the State Personnel Board Committee that encompassed all state agencies. In this role she directed the study of personnel systems throughout all agencies and developed recommendations for a centralized computer system for the state Civil Service agencies.

Jane assumed the duties of Assistant Project Manager for the implementation of a new payroll system that affected 190,000 state employees in 1973. Last year she was appointed Chief of the new organization responsible for this payroll system. She trained a staff of 78 and coordinated the training of 2500 state employees.

CAMPUS SIGHTS AND SOUNDS

—Prepared by the Operation Brass Tacks Committee of the National Panhellenic Editors Conference

BULGING DORMS: Campus disorder, riots, rising crime, financial woes, declining enrollments—for the past decade it has appeared that news datelined from American campuses must be bad to qualify for attention. Then came fall, 1975, and new lines were forming—not picket lines this time but lines at the housing office, students desiring and demanding campus housing. The dormitory, unpopular as campus residence for the past few years, has suddenly emerged as the in place to live. Surprised educational institutions are reporting full to overflowing dorms with many students still seeking space. Most agree that the economy is the basic reason for this return to low cost student housing, but some students admit that they had tried apartment living and found housekeeping and grocery shopping left something to be desired.

REPORTED UP, along with dorm occupancy, are enrollments, thievery, Greek membership. **DOWN,** along with hemlines, are bicycle sales (saturation point among adult population possibly has been reached) and SAT scores.

RE THE SAT DROP: Continuing a twelve-year progression, the SAT scores for 1974-75, which includes incoming freshmen 1975, settled at a level below the year before—a ten-point drop in verbal scores, eight points in the mathematical section of the test. The College Entrance Examination Board which gives the Scholastic Aptitude Test to a million high school students each year says scores peaked in 1963 and have moved steadily downward ever since. Students often opt for taking the SAT twice, in the junior year and again in the senior year of high school, with the hope of an improved score the second time to accompany college applications. The Board notes that these twice-takers for 1974 and 1975 did not improve so much as in past years. No one is ready to settle on a definite cause for the declining trend, some saying too much television, poorer teaching, or the change in population mix taking the test.

SENIOR CITIZENS: Many universities and colleges are offering special services and inducements to bring the over-65 age group back to the campus. This may include waiving of tuition, simplified registration, special parking permits, and the College of St. Benedict has even planned for residents in this age bracket, pairing two young students with two roommates aged 55 and over in campus apartments.

MIDDLE COLLEGE, a combining of high school and college programs to eliminate repetitive courses, is being developed by Seattle University and Seattle Preparatory School under a Carnegie Corporation grant. The first class of ninth graders is enrolled this fall with the prospect of receiving BA degrees at the end of what would be their sophomore year in college.

A THIRTY PERCENT DISCOUNT is being offered University of Kentucky alumni in the purchase of books published by the University Press of Kentucky. Alumni have taken advantage of the three-year-old program to purchase 2,200 volumes to date.

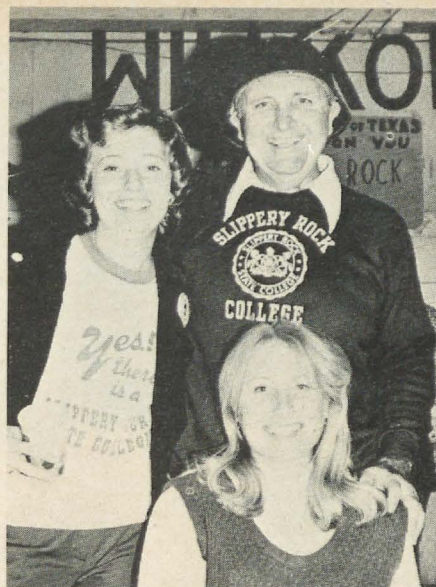
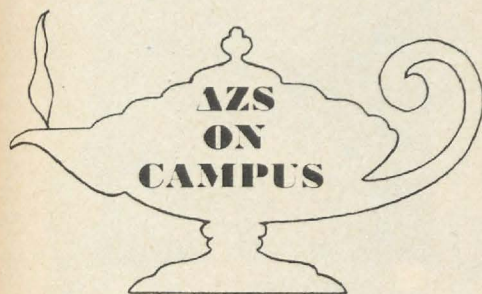
ENERGY and its conservation, what the alma mater is doing about it in campus buildings, is news of note in many current issues of alumni publications across the continent. It seems fitting and proper to let alumni know that their school is making an effort to conserve and that these efforts are paying off in money as well as fuel saved.

WOMEN: Twenty-two percent of first year students in law and medicine are women College enrollment among women is about double that of a decade ago, black enrollment nearly tripled . . . Women graduates are receiving higher salary offers than men this year in accounting and engineering, and at the same time engineering school administrations are considering methods of attracting more women to engineering fields. In other fields than accounting and engineering, salary offers for women continued to be lower than for men in similar jobs.

THE JOB MARKET being what it is today has caused a number of schools to evaluate present placement programs in the light of what they really do to help a student look for a job—beyond placing him in a position to be found by a company which has come to his school to look for potential employees. Liberal arts colleges have the toughest task in assisting their history, English, etc. majors, but they are finding ways to show these students how to present themselves as having as great potential as the more specifically trained student. Programs include workshops on writing resumes, job-hunting strategy, interview techniques, and the use of successful alumni as counselors in specific areas.

YEARBOOK PICTURES can be a pain, so Bowling Green's *Key* set up a motor driven camera in a box near the student union where a student could pause and pose for the self-snapped portrait for the yearbook.

WRITING INABILITIES of today's student have occupied considerable media space for cussing and discussing during the past year, and, as could be expected, reaction is pell mell action. Some schools are returning to the old freshman English placement with required remedial courses for those who don't pass, while others are moving toward a similar English screening at the close of the sophomore year before a student can qualify for upper level classification. The University of Oregon published an open letter in January, 1975, specifically addressing secondary school English teachers and administrators and recommending in its final paragraph frequent instruction and practice in expository writing, instruction and practice including all the mechanics of composition, and the support of this program for English teachers from administrations by appropriate adjustments in teaching loads and schedules to accommodate these objectives. There is no doubt that from sea to sea institutions will meet the communications crisis as they did the Sputnik-inspired science education crisis of the late 'fifties—much talk and more action.



Betsy Trump, ZΦ, and Wally Pryor of Slippery Rock, Melissa Stallones, AT, at welcoming exchange in Texas.



Lane Nicholson and Janice Lee of Epsilon Upsilon chapter hold the two top offices in AWS on the Central Oklahoma campus.

Slippery Rock To Texas

by Beth Montgomery, ZΦ

The Zeta Phi chapter of Slippery Rock State College would like to acknowledge and thank the sisters of the Alpha Tau chapter at the University of Texas and the Iota Alpha chapter at Southwest Texas State College for the generous hospitality given to our sister Betsy Trump, head cheerleader for the rocket squad.

Betsy was recently selected as public relations representative to the University of Texas in accordance with the unique friendship of our two schools. This unique friendship started about six years ago when the Slippery Rock football team was just beginning to pick up momentum that would lead it to a dominating role in Pennsylvania's intercollegiate football history. From this, hundreds of letters and telegrams, municipal and state proclamations began to arrive at Slippery Rock. The love affair between the mammoth University of Texas and the small state college in Pennsylvania began to grow and grow.

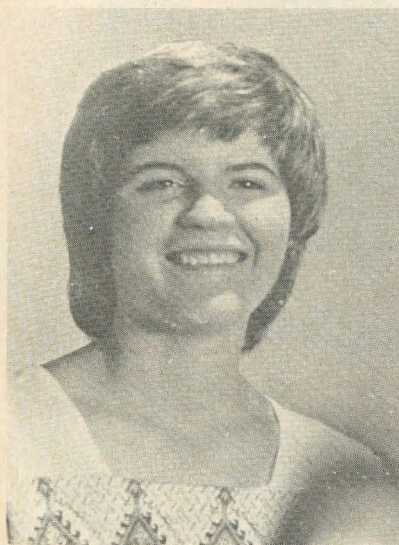
When Betsy first arrived she was greeted by more than 2,000 Slippery Rock fans gathered at Scholz's, a favorite gathering place of the University of Texas students, this was spon-

sored by the sisters of the Alpha Tau chapter, all of whom are official members of the Slippery Rock Fan Club-Texas Branch. Betsy was a house guest of the sisters of the Alpha Tau chapter during her five day visit. While sharing their gracious hospitality and warm friendship, Betsy felt right at home. She never once felt strange or alone because wherever she went there was always a warm and welcoming Delta Zeta sister accompanying her. Betsy and the sisters compared notes on little things that differ in our chapters such as having sorority outfits, no limitation, having a house and not wearing beanie during pledging. Also the thoughtful sisters of Alpha Tau honored Betsy with a beautiful rust colored jacket with her name on it and also lettered was Delta Zeta and Texas Longhorns. Betsy is very proud of this fine gift and wears it practically everywhere she goes.

Also while in Texas, Betsy was the honored luncheon guest of the sisters of the Iota Alpha chapter at the Southwest Texas State College. Betsy found that the closeness and friendship in the sisterhood of Delta Zeta is not merely within her given chapter but extends nationwide.



Judy Tipton, IX
Ball State
Senior Greek Woman of Indiana



Jan Henson, ZZ
West Texas
Greek Woman of the Year



Patty Lynch, ΔΔ
Georgia State
Greek Woman of the Year



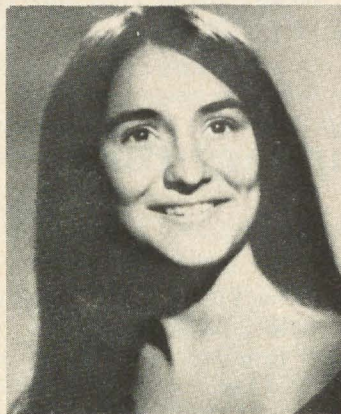
Tina Teschke, ΔΩ
Fort Hays
Sigma Chi Sweetheart



Debbie Jung, IΞ
Missouri-St. Louis
Pi Kappa Alpha Dream Girl



Missy Schmaltz, IΞ
Missouri-St. Louis
Sigma Pi Sweetheart



Jan Helfrich, A
Lambda Chi Alpha Crescent Queen



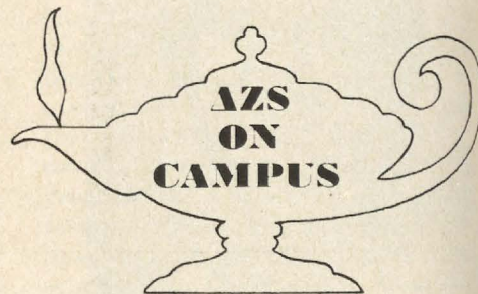
Robin Angle, ZP
William Jewell
Kappa Alpha Rose



Colleen McInerney, ΘΘ
De Paul
Miss Sorority
Phi Kappa Theta Queen



Laurel Bettcher, ZY
Winona
Sigma Tau Gamma Sweetheart

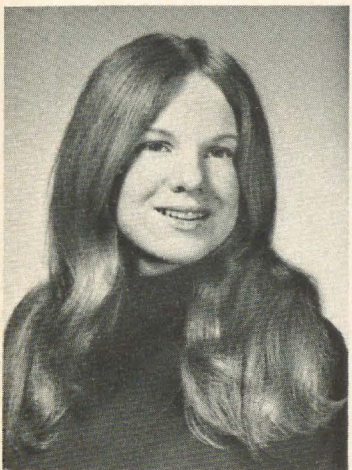




Chris Cole, A
Miami-Ohio
Distinguished Cadet Award



Ginger Perry, Θ
Ohio State
Panhellenic President
Archons, Student Leader



Lee Ann Rush, BΘ
Bucknell
Phi Beta Kappa



Debbie Krajec, AE
Pittsburgh at Johnstown
Outstanding Greek Woman



Zeta Zeta's Carla Combs is pictured with Bob Hope who was the stellar attraction at Amarillo's benefit for the Speech and Hearing Clinic. Over fifty thousand dollars was raised for the clinic with Delta Zeta members serving as hostesses.

A Lamp to Light My Path

*To the Tune of
"Turn Around, Look At Me"*

With a lamp to light my path and a rose to help me grow
With a friendship sure and steadfast, I pledge my heart
to let you know—

That I'll be there when you are troubled and we'll find
what joy can mean.

As ever sisters, our lives together form the love of
Delta Z.

To be loved for what you are and to know just what that
means;

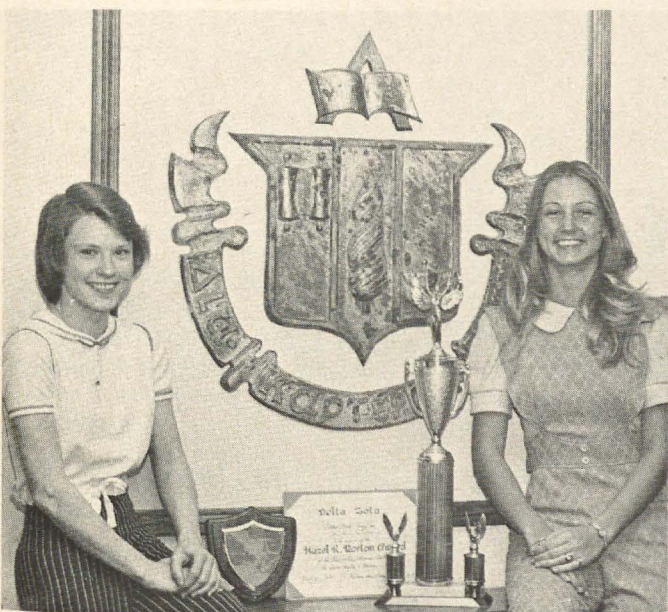
Is a feeling from sisterhood, but best of all from Delta Z.
As you grow and come to know, how much love affects your
life,

Then you'll thank your lucky stars that DZ showed you love
like ours.

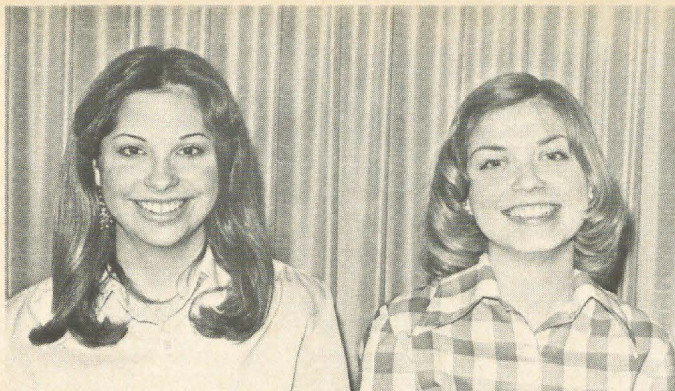
And I'll be there when you are troubled and we'll find
what joy can mean.

As ever sisters, our love forever and the love of Delta Z.

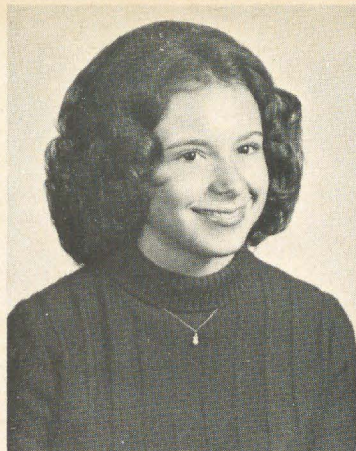
*Debbie Modellmog, IN,
Georgia Southern College*



Ruthie Herrold was honored as the Outstanding Upper Class Woman at Central State University in Edmond, Oklahoma. Another Epsilon Upsilon member Sherry Shofner was the Calendar Girl of the year.



Delta Mu chapter at Morningside has two of the three fraternity sweethearts on campus, Robin Reckert for Sigma Phi Epsilon and Penny Germer for Tau Kappa Epsilon.



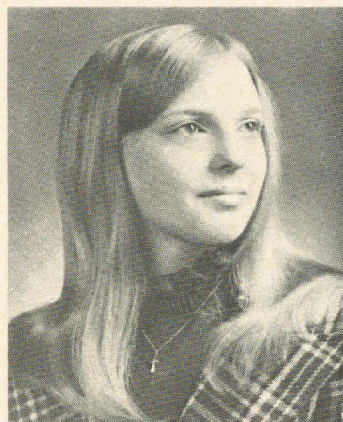
Kathi King, ZK
Ohio Northern
Delta Sigma Phi Sweetheart



Reggie Nowak ☺☺
De Paul Homecoming Queen
Inter Fraternity Queen
Phi Kappa Alpha Queen



Janice Mastropietro, ZΦ
Slippery Rock
Tau Kappa Epsilon Sweetheart



Clarissa Bodell, ZK
Ohio Northern
Alpha Epsilon Pi Sweetheart



Delta Zeta Creed

To the tune of "Today"

To the world do I humbly promise
Temperance and insight and courage
To crusade for justice all of my days
To seek the truth and defend it always.

Chorus:

Golden Lamp and Killarney Rose
Symbols of joy every sister near holds
A million tomorrows will all pass away
E'er I forget Delta Zeta's joys that are mine today.

To those whom my life may touch in slightest measure
May I give graciously of what is mine
And to my friends, my sisters, my brothers
Understanding and appreciation.

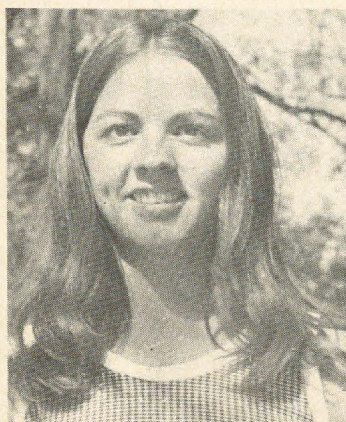
Chorus

To those closer ones love ever steadfast
To my mind growth, and now last of all
Faith to myself that I'll always walk truly
Truly in the light of the flame.

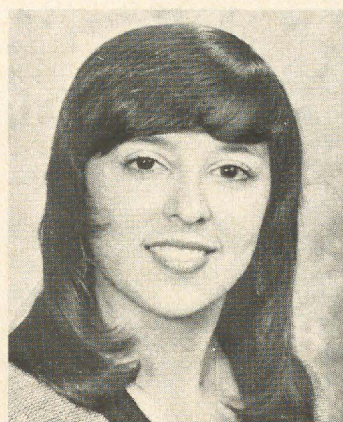
Chorus

E'er I forget Delta Zeta's joys that are mine today.

*arranged by Nola Stewart, ΔZ
University of Maine at Portland Gorham*



Monica Lohmuller, ΔΩ
Fort Hays
Sigma Phi Epsilon Sweetheart



Debbie Solis, ΙΑ
Southwest Texas
TKE Sweetheart
Cheerleader



When Parsons college dissolved, Delta Nu chapter became inactive, but twenty-seven alumnae gathered for dinner and reminiscing. On display were scrapbooks, trophies, crowns from the Parsons chapter. Those present were, front row, Marilyn Olson Young, Donna Hall Cumpston, Faye Sobaski Shunick, Kaye Sobaski Richardson, Sally Rinehart Neff, Dottie Dalton Pagels, Dian Whitney Marker, Ann Blaine Duncan. Middle row, Meg Johnson Casady, Madeline Williams, Pat Kasowski, Lelia Prewitt, Pat Sheetz Funkhouser, Ethel Bates, Pat Williams Ballou. Rear, Mr. and Mrs. Lyman Evans, (patron and patroness) Ella Adrain, Lois Clappitt Adams, Ada Leisure, Phyllis Williams Howell, Louise Messer, Louise Oehlman, Vera Anderson, Beverly Snetslaar Cummings, Alberta Lambeth, Vera Price Young, Charlotte Pierson Lamb, I.

San Jose, California: The Sidewalk Sale was a successful summertime fund raising project. A fun autumn fund raiser was ΔZ Country, which featured a hayride, square dancing, and a dinner. Alumnae boosted their treasury by selling one another houseplants at the September potluck dinner.

Santa Monica, California: Husbands and special guests were honored at the Patio Party in August. Alice Barlow had anecdotes galore after having thirty-five Japanese children at her home part of the summer. The September meeting featured Anita Corrigan and her collection of antique dolls. Alumnae who had unusual dolls also brought theirs for display.

Denver, Colorado: Two area florists displayed houseplants and discussed plant care at this autumn's Plant Party. The November Tasting Tea and Boutique Event was a successful prelude to the holiday season. All alumnae brought samples of their favorite recipes. Their recipes were collected into a book before the Testing Tea and Boutique, so that those attending the Tea could look through the recipes and sample them at the same time. Added attractions were a food demonstration and a corner Boutique.

Fort Collins, Colorado: The bond of sisterhood that can last a lifetime was evident at the Colorado State University fifty year reunion. Beta Sigmas began corresponding early last spring and the Delta Zeta Reunion Tea brought together friends from as far east as Pennsylvania and as far west as California. Many had not seen one another in forty years.

Akron, Ohio: The first meeting of the fall honored two different groups of area Delta Zetas. First, the young women just out of college were initiated into the alumnae chapter. Second, the Golden Rose members were recognized. These were Mary Barnet, Helen Pfahl, Ruth Simon, Irene Taylor, Agnes Teeple, Inez Thorton, and Dorothy Vaughn. A silent auction was held in November to build the treasury. Members brought baked goods and crafts, and time was allotted for everyone to circulate among the items for bidding.

Canton, Ohio: The Gamma Kappa Chapter at Kent State has new initiation robes because of the joint efforts of the Kent and Canton alumnae. The fabric for the robes was purchased by the Kent alumnae and the robes were made by the Canton alumnae. The robes were presented in a ceremony at Founders' Day activities.

Cincinnati, Ohio: The annual potluck supper provided a time to renew acquaintances, to taste delicious food, and to hear an informative speaker on the changeover to the metric system. Now the alumnae are "thinking metric"? Three special ideas are being tested this year: 1) a hostess box is being provided so that the hostess of a program won't overlap with the supplies of a previous program, 2) "encouragement bags" filled with fun things are being assembled by the alumnae for the Xi chapter at semester exam time, and 3) a new section has been added to the newsletter. The section is called the Classified Section, and for a small fee alumnae may list items they want to sell or buy.

Dayton, Ohio: Super Delta Zeta sleuths surprised the alumnae chapter in September with a new idea for the annual potluck. Invitations to the September meeting enticingly promised a "Mystery Dinner." Wouldn't you like to know what the "Mystery Dinner" was? A special event for those unable to attend evening meetings was the Daytime Luncheon. These alumnae toured the Dayton Art Institute in addition to having a luncheon together.

Beaumont, Texas: The alumnae-commissioned macrame was hung in September in the new million dollar Speech and Hearing Center. The Center is spacious and the macrame hangs in a prominent location.

Dallas, Texas: Everyone has heard of a zip code, but has everyone heard of a Zip Code Coffee? These coffees are held to encourage and aid Delta Zetas to get acquainted with other Delta Zetas in their zip code areas. Each area has a hostess who contacts everyone in that area regarding the time and the place for the special party for that area. Another way that area alumnae can get acquainted is through interest groups. In addition to regular monthly meetings for the whole alumnae group, there are interest group meetings for those who like bridge, crafts, gourmet cooking, and needlework, to name a few. Another good idea from the Dallas alumnae is a welcome letter. When a Delta Zeta moves into the Dallas area, the president of the alumnae chapter sends her a welcome letter. The letter includes information on the group, its program for the year, and phone numbers to call if interested in participating in various projects.

Charleston, West Virginia: Late summer was full of activities. Alumnae donned bathing suits and had a Splash Party. Besides splashing, they snacked, played cards, and relaxed together. In August the alumnae had a more formal get-together with a French Dinner.

Milwaukee Area, Wisconsin: (Epsilon Kappa Alumnae) This alumnae group consists solely of Delta Zetas who were initiated into Epsilon Kappa at White-water. So many live in the Milwaukee area that they have formed their own alumnae group. They meet monthly and have social and philanthropic activities. A special luncheon is planned each year for those who come to Milwaukee for the Teachers' Convention and a reunion luncheon is held in the spring.

Around and About

Lexington, Kentucky: The proceeds from a very successful raffle of a country ham were used to purchase equipment for the Kentucky Commission for Handicapped Children's Ear and Hearing Clinic.

Detroit, Michigan: The theme of the Flame Fantasy this year was "Neighborly Nations," in honor of Canada and United States. The location was a perfect setting on the Detroit River with a view of Canada from every position in the dining room. Grand Prize was a trip for two to Toronto for a week-end. The color scheme was red and white, the two common colors in the Canadian flag and the U.S. flag. Door prizes ranged from an ecology lamp to crocheted shawls. Most were made by the alumnae. Joy Wheeler acted as mistress of ceremonies and read a nostalgic poem about the flag. The proceeds of \$1300 were donated to the Detroit Hearing and Speech Center.

Grand Rapids, Michigan: A favorite event of the spring is the Salad Smorgasbord. Each member brings her favorite salad, hot or cold. The recipes are then sold for a nominal fee to help boost the chapter treasury.

Saginaw, Michigan: The alumnae were quite busy with volunteer projects this past spring. Besides hosting an Easter party for the hearing impaired, they initiated a hearing screening program for the senior citizens of Saginaw.

Clay-Platte, Missouri: Alumnae and their husbands enjoyed a wine and cheese tasting party. The "Teach Your Child to Talk" kit has been so successful and in such demand that the Clay County Health Department hopes that the alumnae will be able to purchase another kit for them. Community organizations and schools have the kit in use almost every weekday and evening.

Kansas City, Missouri: Barbara Grady Montalto, ΓΓ, was honored as local Woman of the Year at the May potluck. She was presented an engraved silver tray in recognition of her years as treasurer and president. Margaret Correll Brown, ΕΙ, is serving as president of the Greater Kansas City Panhellenic Association. Peggy Cock Maggio, ΕΙ, is assistant treasurer for the Panhellenic Association.

St. Louis, Missouri: Highlights of the year have been two activities to raise philanthropy money. The first, an auction of homemade items, brought in \$200. Marilyn Burt Heidemann, ΖΡ, was the auctioneer. Dottie Harper Branson, ΕΗ, philanthropies chairperson, organized the

Flame Fantasy. Fashions were modeled by alumnae and Iota Xi collegiates.

Lincoln, Nebraska: Alumnae and collegiates worked together on two important projects this year. A salad luncheon and card party was held at the Beta Tau chapter house for the benefit of the Ethel Johnson Scholarship Fund. Ethel Johnson was a Dean of Women at Nebraska Wesleyan University. The groups also worked on a garage sale to raise money for the collegiate chapter.

Omaha, Nebraska: There were two well expressed thoughts to share in the Omaha report. "Tradition seems to be a part of our alumnae chapter. Each year we traditionally honor our fifty year members and the graduating seniors. It's a delightful time and demonstrates to each of us the vastness of national sorority membership. Graduating seniors become fifty year members. There's no generation gap." Doesn't that give a feeling of sisterhood? Then this: "Please accept this late report. I sent it last week the day of the tornado. My post office was the one demolished. I can only assume the report didn't survive."

Camden and Burlington Counties, New Jersey: Southern New Jersey Alumnae's May Game Night was a great success. Using the Delta Zeta color theme, baskets of rose, white, and green gingham and polka-dot cloth flowers decorated tables and doubled as table prizes. Other unique door prizes included spice trimmed chopping boards, real bread dough baskets, napkin rings and braided wreaths, products of Janet McInnis's handicrafts workshops. When play time was over, cake and other sweets donated by members were served. Chairwomen for the event were Doris Helgesen Crozier, ΓΗ, Game Night; Cindy Schafer Plucinski, ΒΙ, program; Johanna Shetter Hyde, Θ, refreshments; and Janis Dittmer McInnis, ΕΩ, crafts and prizes.

Long Island, New York: The Tri-County Alumnae listened to a registered nurse and qualified instructor of the Lamaz method of childbirth at one monthly meeting. She sparked an interesting discussion and question-answer session. Appropriately a surprise baby shower followed.

Charlotte, North Carolina: The alumnae enjoyed a year of interaction with the Kappa Phi Chapter. Several fund raising events were held. Participation in a local radio station's "World's Largest Attic Sale" resulted in \$300 profit. Florence Harvey, National President, was entertained at a luncheon during her visit to Charlotte.

Berea, Ohio: This spring brought a new event geared to the younger set called "The Animals are Coming, Won't You?" This zoo program was sponsored by the alumnae with the help of several Gamma Alphas. The thirteenth annual Rose Banquet coordinated by the Cleveland Area alumnae and Gamma Alpha was held in April. Parents of the Gamma Alphas are also invited for the presentation of awards. A new award was established this year in honor of Norma Minch Andrisek, National Vice-President and a Berea alumnae member. It goes to the outstanding Gamma Alpha in the sophomore class.

Cleveland, Ohio: The Westside Alumnae are proud of Lynne Rice for her award from the Stan Hewitt Museum for her embroidery work. Members laughed at *Play It Again, Sam* at Delta Zeta Night at the Playhouse.

Findlay, Ohio: This group adds a little (or a lot?) to their treasury by bringing their weight in pennies to some meetings. Two members have been selected as college chapter advisors: Cindy Fitzpatrick for Ohio Northwestern and Barbara Shelton for Findlay College. The highlight of the alumnae-collegiate activities this year was the presentation of a new sorority flag designed and hand made by the alumnae group.

Bartlesville, Oklahoma: Mabel Flaherty Loy, ΔΟ, and Ninette Sherwood Dack, Η, were presented fifty year remembrance rose purses. These surprise presentations were hand made by alumnae members. Fifty roses of various sizes and buds were embroidered to green leaves and trellis designs. The Golden Rose members' initials and Delta Zeta were embroidered in the purse linings. This gift of love is a tradition that Bartlesville has started for its fifty year members. Similar tote bags are made for collegiate Christmas gifts.

Oklahoma City, Oklahoma: April was a busy month for fun and funds. The fun was the Casino Party. At the end, White Elephants were purchased with play money. The fund raising was a garage sale that cleared \$300.

Stillwater, Oklahoma: A Smarty Party was held for collegiates of Alpha Epsilon with a three point or higher grade average. The alumnae presented the collegiates with thirteen new place settings of table silver and new ritual robes. The group hosted area Delta Zetas to plan State Day.

Portland, Oregon: Alumnae have continued to make significant progress in furnishing and purchasing books for the Delta Zeta Professional Library at Tucker-Maxon Oral School. The library, according to a recent issue of Tucker-Maxon *Topics* is fast becoming "one of the largest specialized libraries on deafness in the Pacific Northwest." Jean Bowman Gustafson, X '39, and Mildred Diescher, BK, were members of a three week Arts and Crafts Safari in Africa. They were greeted personally at the American Embassy by U.S. Ambassador Shirley Temple Black. Doris Read Thoen, X '47, president of the Oregon State Federation of Republican Women, attended the national convention in Washington, D.C. Gene Beach, X '35, has retired as Associate Regional Commissioner for Medical Services with the distinction of being the only woman to hold that position in ten regional offices.

Philadelphia, Pennsylvania: The North Suburban group contributed a sizable monetary gift to the Pennsylvania School for the Deaf from proceeds of a theater party in May. Dorothy French Clark, ΔT, received an award for civic contributions as a result of organizing and leading CAPE, a volunteer organization to prevent child abuse. Florence Reid Wilson, ΔT, was cited for twenty-five years as a Girl Scout leader. Several members attended a Panhellenic luncheon where Virginia Knauer, President Ford's consumer advocate, gave tips on how to deal with recession.

State College, Pennsylvania: Scrapbooks made by the alumnae and toys collected by the alumnae were given to the Speech and Hearing Clinic at Penn State. Scrapbooks were made from paper that would have been thrown away by a printing company, so the alumnae felt they were also doing a community ecological service.

Bryan-College Station, Texas: The Brazos Valley alumnae were recently organized under the direction of Elizabeth Schatz Dillion, O. They plan to work closely with one of the newest collegiate chapters, Lambda Xi, at Texas A&M. A new alumnae chapter and a new collegiate chapter in the same area!

Houston, Texas: Two charter members, Clara Weisser and Charlotte Knows Latimer, of Alpha Tau were honored with Golden Rose certificates. The ninth annual Hobby Hi-Lites, which benefits the Audiology Department of Briarwood School, attracted over 3200 visitors and raised about \$6000, an all time high. Yes, \$6000! Hobby Hi-Lites provides an impetus that keeps the alumnae going and growing all through the busy year.

Corpus Christi, Texas: The big project of the year was the Benefit Tea for the Bi-County School for the Deaf. Sue Scott Hamon, AΨ, was presented with her Golden Rose Pin.

McAllen, Texas: Opal White was awarded the C. B. Curtis Award for distinguished service for 25 years of devotion to the annual Mission Citrus Fiesta.

San Antonio, Texas: There was television coverage when Carolyn McKinney Smith, IA, and Carol Dowling Brit, I'Z, presented Southwest Center for Hearing Impaired with a sound film camera and projector earned through philanthropy projects. The alumnae received a Certificate of Appreciation from the board members.

Salt Lake City, Utah: Lois Sorsenson is the only woman principal in the Salt Lake Valley. Karen Christensen Knudson is Director of Admissions at the University of Utah College of Law.

Peninsula, Virginia: During the Historic Garden Week, members visited historic landmarks, including Chippokes, believed to be the oldest continuously worked plantation still in existence in America. Sandra Casey Graham, I'P, was elected president of the Peninsula City Panhellenic.

Virginia Beach, Virginia: Tidewater Area alumnae have combined many timely activities and made a big boost to help the collegiate chapter Theta Phi, which now has the largest pledge class on campus. The collegiates invited the alumnae to a large barbeque during the spring. Cindy Sparks was recently included in *Outstanding Secondary Educators of America* for 1975.

Seattle, Washington: A successful Flame Fantasy netted \$1000. The committee responsible for the overall results consisted of Katherine Raichle Rue, Aleece Morgan Otto, Dolores Stein Dyson, Vivian Steele Cornwall, Frances Plummer Iverson, Doris Jansen Gillespie, Kathryn MacVicar Thomas, and Harriet Jensen Pickett. Two students from the Vocational Rehabilitation Center demonstrated the deaf program being carried on at Seattle Community College at the Installation meeting.

Wheeling, West Virginia: A mini State Day was sponsored for the Iota Tau collegiates. Alumnae provided refreshments and then presented awards to the pledges and actives.

Washington, D.C.: Alumnae enjoyed a spring luncheon prepared by former embassy chefs. A special treat was a rare opportunity to visit the headquarters of the Society of Cincinnati, the oldest patriotic society in America. Original members were officers in the Continental Army and the membership today is composed of male descendants of these officers. Alumnae decorated birthday cakes for patients at Walter Reed Hospital. Ann Rhind is attending Gallaudet College to study sign language. She's a public defender in Maryland and found so many in court with hearing problems that she felt that need to learn this means of communication. The annual Scholarship Benefit for Gallaudet was entitled "Spring Fever," and featured a dance group, choral group and sketches from *The Fantastiks*.

Findlay alumnae made a Delta Zeta flag to present to Theta Tau chapter as a token of their affection. Linda Thomas Smith, ΘT, Findlay, and Dorothy Germann Myers, ΓN, Eastern Illinois, were members of the committee.



And Now A Word About Your Magazines

Your support of the Magazine Program will result in increased revenue for the EDUCATIONAL FUND and YOUR Chapter. It costs no more to order magazine subscriptions through DELTA ZETA, and we receive a commission on every order that is placed through our office.

Magazine subscriptions make excellent gifts for all occasions, and there is a magazine exactly suitable for everyone on your shopping list.

Remember to think DELTA ZETA when thinking of magazine subscriptions.

ZIP CODES ARE ESSENTIAL

U.S. POSTAL SERVICE
STATEMENT OF OWNERSHIP, MANAGEMENT AND CIRCULATION
(Act of August 12, 1970, Section 3685, Title 39, United States Code)

1. TITLE OF PUBLICATION: THE JOURNAL OF DELTA ZETA
2. DATE OF FILING: Sept. 19, 1971
3. FREQUENCY OF ISSUE: Quarterly
4. LOCATION OF KNOWN OFFICE OF PUBLICATION (Street, city, county, state and ZIP code) (Not printer): 11 E. State St., Columbus, Ohio 43215
5. LOCATION OF THE HEADQUARTERS OR GENERAL BUSINESS OFFICES OF THE PUBLISHERS (Not printer): Delta Zeta, 11 E. State St., Columbus, Ohio 43215
6. NAMES AND ADDRESSES OF PUBLISHER, EDITOR, AND MANAGING EDITOR:
PUBLISHER (Name and address): Delta Zeta Society, 11 E. State St., Columbus, Ohio 43215
EDITOR (Name and address): Mrs. Arthur J. Miller, 1040 Avenue H, Nevada, Iowa 50601
MANAGING EDITOR (Name and address): Mrs. Sally S. Adams, 11 E. State St., Columbus, Ohio 43215
7. OWNER (If owned by a corporation, its name and address must be stated and also immediately thereunder the names and addresses of stockholders owning or holding 1 percent or more of total amount of stock. If not owned by a corporation, the names and addresses of individual owners must be given. If owned by a partnership or other unincorporated firm, its name and address, as well as that of each individual must be given.)
NAME: ADDRESS:
None
8. KNOWN BONDHOLDERS, MORTGAGEES, AND OTHER SECURITY HOLDERS OWNING OR HOLDING 1 PERCENT OR MORE OF TOTAL AMOUNT OF BONDS, MORTGAGES OR OTHER SECURITIES (If there are none, so state.)
NAME: ADDRESS:
None
9. FOR OPTIONAL COMPLETION BY PUBLISHERS MAILING AT THE REGULAR RATES (Section 1103, Title 39, United States Code):
10. FOR COMPLETION BY PUBLISHERS AUTHORIZED TO MAIL AT SPECIAL RATES (Section 1103, Title 39, United States Code):
The publisher has made and completed a statement of the actual circulation of this publication for the period of 12 months ending on the date of filing this statement.
11. EXTENT AND NATURE OF CIRCULATION
A. TOTAL NO. COPIES PRINTED (Net Press Run) 70,000
B. PAID CIRCULATION
1. SALES THROUGH DEALERS AND CARRIERS STREET VENDORS AND COUNTER SALES None None
2. MAIL SUBSCRIPTIONS 69,000 70,000
C. TOTAL PAID CIRCULATION 69,000 70,000
D. FREE DISTRIBUTION BY MAIL, CARRIER OR OTHER MEANS SAMPLES, COMPLIMENTARY AND OTHER FREE COPIES 100 100
E. TOTAL DISTRIBUTION (Sum of C and D) 69,100 70,100
F. COPIES NOT DISTRIBUTED
1. OFFICE USE, LEFT OVER, UNACCOUNTED, SPOILED AFTER PRINTING 290 290
2. RETURN FROM NEWS AGENTS None None
G. TOTAL (Sum of E, F, and G) should equal net press run shown in A 70,000 70,000
12. I certify that the statements made by me above are correct and complete.
SIGNATURE OF EDITOR/PUBLISHER (BUSINESS MANAGER OR OWNER):
13. I certify that the statements made by me above are correct and complete.
SIGNATURE OF EDITOR/PUBLISHER (BUSINESS MANAGER OR OWNER):
14. I certify that the statements made by me above are correct and complete.
SIGNATURE OF EDITOR/PUBLISHER (BUSINESS MANAGER OR OWNER):
15. I certify that the statements made by me above are correct and complete.
SIGNATURE OF EDITOR/PUBLISHER (BUSINESS MANAGER OR OWNER):
16. I certify that the statements made by me above are correct and complete.
SIGNATURE OF EDITOR/PUBLISHER (BUSINESS MANAGER OR OWNER):
17. I certify that the statements made by me above are correct and complete.
SIGNATURE OF EDITOR/PUBLISHER (BUSINESS MANAGER OR OWNER):
18. I certify that the statements made by me above are correct and complete.
SIGNATURE OF EDITOR/PUBLISHER (BUSINESS MANAGER OR OWNER):
19. I certify that the statements made by me above are correct and complete.
SIGNATURE OF EDITOR/PUBLISHER (BUSINESS MANAGER OR OWNER):
20. I certify that the statements made by me above are correct and complete.
SIGNATURE OF EDITOR/PUBLISHER (BUSINESS MANAGER OR OWNER):
21. I certify that the statements made by me above are correct and complete.
SIGNATURE OF EDITOR/PUBLISHER (BUSINESS MANAGER OR OWNER):
22. I certify that the statements made by me above are correct and complete.
SIGNATURE OF EDITOR/PUBLISHER (BUSINESS MANAGER OR OWNER):
23. I certify that the statements made by me above are correct and complete.
SIGNATURE OF EDITOR/PUBLISHER (BUSINESS MANAGER OR OWNER):
24. I certify that the statements made by me above are correct and complete.
SIGNATURE OF EDITOR/PUBLISHER (BUSINESS MANAGER OR OWNER):
25. I certify that the statements made by me above are correct and complete.
SIGNATURE OF EDITOR/PUBLISHER (BUSINESS MANAGER OR OWNER):
26. I certify that the statements made by me above are correct and complete.
SIGNATURE OF EDITOR/PUBLISHER (BUSINESS MANAGER OR OWNER):
27. I certify that the statements made by me above are correct and complete.
SIGNATURE OF EDITOR/PUBLISHER (BUSINESS MANAGER OR OWNER):
28. I certify that the statements made by me above are correct and complete.
SIGNATURE OF EDITOR/PUBLISHER (BUSINESS MANAGER OR OWNER):
29. I certify that the statements made by me above are correct and complete.
SIGNATURE OF EDITOR/PUBLISHER (BUSINESS MANAGER OR OWNER):
30. I certify that the statements made by me above are correct and complete.
SIGNATURE OF EDITOR/PUBLISHER (BUSINESS MANAGER OR OWNER):
31. I certify that the statements made by me above are correct and complete.
SIGNATURE OF EDITOR/PUBLISHER (BUSINESS MANAGER OR OWNER):
32. I certify that the statements made by me above are correct and complete.
SIGNATURE OF EDITOR/PUBLISHER (BUSINESS MANAGER OR OWNER):
33. I certify that the statements made by me above are correct and complete.
SIGNATURE OF EDITOR/PUBLISHER (BUSINESS MANAGER OR OWNER):
34. I certify that the statements made by me above are correct and complete.
SIGNATURE OF EDITOR/PUBLISHER (BUSINESS MANAGER OR OWNER):
35. I certify that the statements made by me above are correct and complete.
SIGNATURE OF EDITOR/PUBLISHER (BUSINESS MANAGER OR OWNER):
36. I certify that the statements made by me above are correct and complete.
SIGNATURE OF EDITOR/PUBLISHER (BUSINESS MANAGER OR OWNER):
37. I certify that the statements made by me above are correct and complete.
SIGNATURE OF EDITOR/PUBLISHER (BUSINESS MANAGER OR OWNER):
38. I certify that the statements made by me above are correct and complete.
SIGNATURE OF EDITOR/PUBLISHER (BUSINESS MANAGER OR OWNER):
39. I certify that the statements made by me above are correct and complete.
SIGNATURE OF EDITOR/PUBLISHER (BUSINESS MANAGER OR OWNER):
40. I certify that the statements made by me above are correct and complete.
SIGNATURE OF EDITOR/PUBLISHER (BUSINESS MANAGER OR OWNER):
41. I certify that the statements made by me above are correct and complete.
SIGNATURE OF EDITOR/PUBLISHER (BUSINESS MANAGER OR OWNER):
42. I certify that the statements made by me above are correct and complete.
SIGNATURE OF EDITOR/PUBLISHER (BUSINESS MANAGER OR OWNER):
43. I certify that the statements made by me above are correct and complete.
SIGNATURE OF EDITOR/PUBLISHER (BUSINESS MANAGER OR OWNER):
44. I certify that the statements made by me above are correct and complete.
SIGNATURE OF EDITOR/PUBLISHER (BUSINESS MANAGER OR OWNER):
45. I certify that the statements made by me above are correct and complete.
SIGNATURE OF EDITOR/PUBLISHER (BUSINESS MANAGER OR OWNER):
46. I certify that the statements made by me above are correct and complete.
SIGNATURE OF EDITOR/PUBLISHER (BUSINESS MANAGER OR OWNER):
47. I certify that the statements made by me above are correct and complete.
SIGNATURE OF EDITOR/PUBLISHER (BUSINESS MANAGER OR OWNER):
48. I certify that the statements made by me above are correct and complete.
SIGNATURE OF EDITOR/PUBLISHER (BUSINESS MANAGER OR OWNER):
49. I certify that the statements made by me above are correct and complete.
SIGNATURE OF EDITOR/PUBLISHER (BUSINESS MANAGER OR OWNER):
50. I certify that the statements made by me above are correct and complete.
SIGNATURE OF EDITOR/PUBLISHER (BUSINESS MANAGER OR OWNER):
51. I certify that the statements made by me above are correct and complete.
SIGNATURE OF EDITOR/PUBLISHER (BUSINESS MANAGER OR OWNER):
52. I certify that the statements made by me above are correct and complete.
SIGNATURE OF EDITOR/PUBLISHER (BUSINESS MANAGER OR OWNER):
53. I certify that the statements made by me above are correct and complete.
SIGNATURE OF EDITOR/PUBLISHER (BUSINESS MANAGER OR OWNER):
54. I certify that the statements made by me above are correct and complete.
SIGNATURE OF EDITOR/PUBLISHER (BUSINESS MANAGER OR OWNER):
55. I certify that the statements made by me above are correct and complete.
SIGNATURE OF EDITOR/PUBLISHER (BUSINESS MANAGER OR OWNER):
56. I certify that the statements made by me above are correct and complete.
SIGNATURE OF EDITOR/PUBLISHER (BUSINESS MANAGER OR OWNER):
57. I certify that the statements made by me above are correct and complete.
SIGNATURE OF EDITOR/PUBLISHER (BUSINESS MANAGER OR OWNER):
58. I certify that the statements made by me above are correct and complete.
SIGNATURE OF EDITOR/PUBLISHER (BUSINESS MANAGER OR OWNER):
59. I certify that the statements made by me above are correct and complete.
SIGNATURE OF EDITOR/PUBLISHER (BUSINESS MANAGER OR OWNER):
60. I certify that the statements made by me above are correct and complete.
SIGNATURE OF EDITOR/PUBLISHER (BUSINESS MANAGER OR OWNER):
61. I certify that the statements made by me above are correct and complete.
SIGNATURE OF EDITOR/PUBLISHER (BUSINESS MANAGER OR OWNER):
62. I certify that the statements made by me above are correct and complete.
SIGNATURE OF EDITOR/PUBLISHER (BUSINESS MANAGER OR OWNER):
63. I certify that the statements made by me above are correct and complete.
SIGNATURE OF EDITOR/PUBLISHER (BUSINESS MANAGER OR OWNER):
64. I certify that the statements made by me above are correct and complete.
SIGNATURE OF EDITOR/PUBLISHER (BUSINESS MANAGER OR OWNER):
65. I certify that the statements made by me above are correct and complete.
SIGNATURE OF EDITOR/PUBLISHER (BUSINESS MANAGER OR OWNER):
66. I certify that the statements made by me above are correct and complete.
SIGNATURE OF EDITOR/PUBLISHER (BUSINESS MANAGER OR OWNER):
67. I certify that the statements made by me above are correct and complete.
SIGNATURE OF EDITOR/PUBLISHER (BUSINESS MANAGER OR OWNER):
68. I certify that the statements made by me above are correct and complete.
SIGNATURE OF EDITOR/PUBLISHER (BUSINESS MANAGER OR OWNER):
69. I certify that the statements made by me above are correct and complete.
SIGNATURE OF EDITOR/PUBLISHER (BUSINESS MANAGER OR OWNER):
70. I certify that the statements made by me above are correct and complete.
SIGNATURE OF EDITOR/PUBLISHER (BUSINESS MANAGER OR OWNER):
71. I certify that the statements made by me above are correct and complete.
SIGNATURE OF EDITOR/PUBLISHER (BUSINESS MANAGER OR OWNER):
72. I certify that the statements made by me above are correct and complete.
SIGNATURE OF EDITOR/PUBLISHER (BUSINESS MANAGER OR OWNER):
73. I certify that the statements made by me above are correct and complete.
SIGNATURE OF EDITOR/PUBLISHER (BUSINESS MANAGER OR OWNER):
74. I certify that the statements made by me above are correct and complete.
SIGNATURE OF EDITOR/PUBLISHER (BUSINESS MANAGER OR OWNER):
75. I certify that the statements made by me above are correct and complete.
SIGNATURE OF EDITOR/PUBLISHER (BUSINESS MANAGER OR OWNER):
76. I certify that the statements made by me above are correct and complete.
SIGNATURE OF EDITOR/PUBLISHER (BUSINESS MANAGER OR OWNER):
77. I certify that the statements made by me above are correct and complete.
SIGNATURE OF EDITOR/PUBLISHER (BUSINESS MANAGER OR OWNER):
78. I certify that the statements made by me above are correct and complete.
SIGNATURE OF EDITOR/PUBLISHER (BUSINESS MANAGER OR OWNER):
79. I certify that the statements made by me above are correct and complete.
SIGNATURE OF EDITOR/PUBLISHER (BUSINESS MANAGER OR OWNER):
80. I certify that the statements made by me above are correct and complete.
SIGNATURE OF EDITOR/PUBLISHER (BUSINESS MANAGER OR OWNER):
81. I certify that the statements made by me above are correct and complete.
SIGNATURE OF EDITOR/PUBLISHER (BUSINESS MANAGER OR OWNER):
82. I certify that the statements made by me above are correct and complete.
SIGNATURE OF EDITOR/PUBLISHER (BUSINESS MANAGER OR OWNER):
83. I certify that the statements made by me above are correct and complete.
SIGNATURE OF EDITOR/PUBLISHER (BUSINESS MANAGER OR OWNER):
84. I certify that the statements made by me above are correct and complete.
SIGNATURE OF EDITOR/PUBLISHER (BUSINESS MANAGER OR OWNER):
85. I certify that the statements made by me above are correct and complete.
SIGNATURE OF EDITOR/PUBLISHER (BUSINESS MANAGER OR OWNER):
86. I certify that the statements made by me above are correct and complete.
SIGNATURE OF EDITOR/PUBLISHER (BUSINESS MANAGER OR OWNER):
87. I certify that the statements made by me above are correct and complete.
SIGNATURE OF EDITOR/PUBLISHER (BUSINESS MANAGER OR OWNER):
88. I certify that the statements made by me above are correct and complete.
SIGNATURE OF EDITOR/PUBLISHER (BUSINESS MANAGER OR OWNER):
89. I certify that the statements made by me above are correct and complete.
SIGNATURE OF EDITOR/PUBLISHER (BUSINESS MANAGER OR OWNER):
90. I certify that the statements made by me above are correct and complete.
SIGNATURE OF EDITOR/PUBLISHER (BUSINESS MANAGER OR OWNER):
91. I certify that the statements made by me above are correct and complete.
SIGNATURE OF EDITOR/PUBLISHER (BUSINESS MANAGER OR OWNER):
92. I certify that the statements made by me above are correct and complete.
SIGNATURE OF EDITOR/PUBLISHER (BUSINESS MANAGER OR OWNER):
93. I certify that the statements made by me above are correct and complete.
SIGNATURE OF EDITOR/PUBLISHER (BUSINESS MANAGER OR OWNER):
94. I certify that the statements made by me above are correct and complete.
SIGNATURE OF EDITOR/PUBLISHER (BUSINESS MANAGER OR OWNER):
95. I certify that the statements made by me above are correct and complete.
SIGNATURE OF EDITOR/PUBLISHER (BUSINESS MANAGER OR OWNER):
96. I certify that the statements made by me above are correct and complete.
SIGNATURE OF EDITOR/PUBLISHER (BUSINESS MANAGER OR OWNER):
97. I certify that the statements made by me above are correct and complete.
SIGNATURE OF EDITOR/PUBLISHER (BUSINESS MANAGER OR OWNER):
98. I certify that the statements made by me above are correct and complete.
SIGNATURE OF EDITOR/PUBLISHER (BUSINESS MANAGER OR OWNER):
99. I certify that the statements made by me above are correct and complete.
SIGNATURE OF EDITOR/PUBLISHER (BUSINESS MANAGER OR OWNER):
100. I certify that the statements made by me above are correct and complete.
SIGNATURE OF EDITOR/PUBLISHER (BUSINESS MANAGER OR OWNER):

DELTA ZETA SUBSCRIPTIONS P.O. BOX 725 Concord, California 94522

Order Form

Date 19

Chapter to be credited

Address

Amount Enclosed \$

Please make checks payable to:
DELTA ZETA SUBSCRIPTIONS

Please Print

Magazine to be sent to:

Name of subscriber

Street

City & State Zip Code

NAME OF MAGAZINE

No. of Years ☐ New ☐ Renewal

Is this a gift? If so, write in name of giver here

Street

City & State Zip Code

No Card Sent Unless Requested
Birthday Christmas

Anniversary

General

No Card

Gift Card ☐ ☐ ☐ ☐ ☐

Card to arrive 19 Card to be Signed

OFFICIAL INSIGNIA

Order your official jewelry and insignia from National Headquarters. When ordering standard badges use the official order form and forward to the Executive Secretary for her approval. These badge orders are obtainable from Headquarters. Official approval is also necessary on Daughter-Granddaughter pendants and Golden Rose pins.

Badges:	Price
Pearls & 1 Zircon, Set Flush	\$19.50
Pearls & 1 Zircon, Set Tiffany	19.50
Pearls & 1 .10 Diamond, Tiffany	107.00
Pearls & 1 .05 Diamond, Tiffany	76.50
Pearls & 1 .04 Diamond, Tiffany	58.00
Pearls & 1 .03 Diamond, Tiffany	48.00
Pearls & 1 .015 Diamond, Tiffany	36.00
Recognition Pin, Staggered Greek Letters, yellow gold finish	2.50
Same, 10K Y.G.	7.50
Recognition Pin, Staggered Greek Letters, Crown Pearl, 10K Y.G.	24.50
Close Set Pearl, 10K Y.G.	20.75
Recognition Pin, Lamp Style, yellow gold finish	2.50
Same, 10K Y.G.	8.25
Mothers Pin, yellow gold finish, 4 Pearls	9.00
Same, 10K Y.G.	12.75
Mothers Pin, Plain, yellow gold finish	4.50
Same, 10K Y.G.	8.25
Pledge Pin with Safety Catch	2.50
Greek Letter Monogram Pendant (specify staggered or vertical letters)	
yellow gold finish with gold filled chain	5.50
Lamp Pendant, 10K Y.G., gold filled chain	7.50
Same, yellow gold finish with gold filled chain	5.50
Lamp Bracelet, yellow gold finish	8.75
Same, silver finish	8.75

Guard Pins:

	Single Letter	Double Letter
Plain	\$ 4.50	\$ 7.25
Engraved	5.50	8.80
Close Set Pearl	10.95	16.50
Crown Set Pearl	12.00	19.60
Crown Set Opal	14.00	21.00
Daughter-Granddaughter Pendant, GF with gold filled chain		7.75
10K, Y.G. with gold filled chain		12.50
Golden Rose Pin (for 50 year members)		
Price includes tax, postage and handling		28.00
Lapel button for men, yellow gold finish		4.75
10K Y.G.		7.00
Tie Tac, yellow gold finish		5.00
10 K Y.G.		7.25
Alumnae president gavel, gold with pearl		5.00

Be sure to include the name of your chapter when ordering a guard.

An Order Processing Charge of \$2.00 must be added to all orders of less than \$10.00.

State, county and municipal taxes, where in effect, are to be added to all prices quoted.

CHANGE OF ADDRESS OR NAME

Clip and mail to Delta Zeta National Headquarters,
21 East State Street, Columbus, Ohio 43215

Miss
Mrs.
Ms.

Given Name

Maiden Name

Husband's last name, if married

Collegiate Chapter

Year of Graduation

Date Change is Effective

New Address

(City)

(State)

(Zip Code)

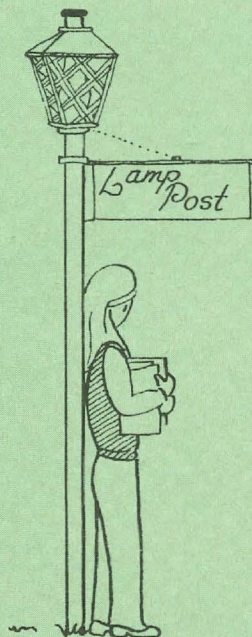
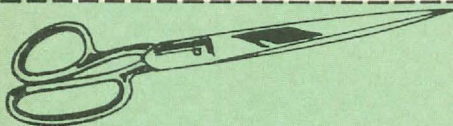
If you wish to have the LAMP mailings discontinued, please indicate

If you are currently a national, province, or chapter
officer for Delta Zeta, please indicate office held

Optional Information:

Husband's first name

Date of Marriage



ΔZ

TO ΔZ PARENTS

Your daughter's magazine is sent to her home address while she is in college, and we hope that you also enjoy reading it. If she is no longer in school and is not living at home, please clip and send her new address to Delta Zeta National Headquarters, 21 East State Street, Columbus, Ohio 43215.

Delta Zeta Sorority
Suite Six Hundred
Twenty-one East State Street
Columbus, Ohio 43215

Second class postage
paid at Columbus,
Ohio and at additional
mailing offices.