

*Volume 43 · Number 2 · December 1953*

# LAMP

The



*of Delta Zeta*



# What TO DO When

(For college chapter officers, alumnae advisory boards and province directors.)

## COLLEGE CHAPTERS

### ● January

- 2—Rush Chairman—Form No. 2 completed and send copies to Mrs. T. J. Bianchi, 5727 Ellsworth Ave., Dallas, Texas and your province director.
- 5—Treasurer, using white supplies, sends material to Simplified Audits.
- 12—Treasurer, using yellow supplies, sends material to Simplified Audits.
- 20—Corresponding Secretary places chapter monthly statistic report in mail to National Headquarters. Copy to province director.
- 15—Scholarship chairman in schools on quarter system sends report to National Scholarship Chairman, Mrs. T. K. Haven, 3675 Ward's Point, R.F.D. 5, Pontiac, Michigan.
- 2—Publicity Chairman sends news clippings to National Publicity Chairman.

### ● February

- 1—Vice-President reports to National Pledge Training Committee Member.
- 5—Treasurer, using white supplies, sends material to Simplified Audits.
- 12—Treasurer, using yellow supplies, sends material to Simplified Audits.
- 15—Scholarship Chairman in schools on semester system sends report to National Scholarship Chairman, Mrs. T. K. Haven, 3675 Ward's Point, R.F.D. 5, Pontiac, Michigan.
- 20—Corresponding Secretary places chapter monthly statistic report in mail to National Headquarters. Copy to province director.
- 2—Publicity Chairman sends news clippings to National Publicity Chairman.

### ● March

- Election of chapter officers. Corresponding secretary sends list of chapter officers to National Headquarters *immediately* after election.
- 5—Treasurer, using white supplies, sends material to Simplified Audits.
  - 12—Treasurer, using yellow supplies, sends material to Simplified Audits.
  - 10—Editor prepares news letter and mails to LAMP Editor for March 15 deadline.
  - 2—Publicity Chairman sends news clippings to National Publicity Chairman

### ● April

- 1—Vice-President reports to National Pledge Training Committee Member.
- 1—Installation of chapter officers at first regular chapter meeting in April.
- 2—Rush Chairman—Form No. 2 completed and send copies to Mrs. T. J. Bianchi, 5727 Ellsworth, Dallas, Texas and your province director.
- 2—Publicity Chairman sends news clippings to National Publicity Chairman.
- 5—Treasurer, using white supplies, sends material to Simplified Audits.

- 12—Treasurer, using yellow supplies, sends material to Simplified Audits.
- 15—Scholarship Chairman on quarter system makes report to Mrs. T. K. Haven, 3675 Ward's Point, R.F.D. 5, Pontiac, Michigan.
- 15—Name and address of new Rush Chairman by note on postcard to your Province Director and to Mrs. T. J. Bianchi, 5727 Ellsworth, Dallas, Texas.
- 20—Corresponding Secretary places chapter monthly statistic report in mail to National Headquarters. Copy to province director.

### ● May

- 2—Rush Chairman—Form No. 2 completed and send copies to Mrs. T. J. Bianchi, 5727 Ellsworth, Dallas, Texas and your province director.
- 2—Publicity Chairman sends news clippings to National Publicity Chairman.
- 5—Treasurer, using white supplies, sends material to Simplified Audits.
- 10—Report to your Province Director of rush school and send fall party plans to Province Director.
- 12—Treasurer, using yellow supplies, sends material to Simplified Audits.
- 15—Scholarship Chairman makes report to Mrs. T. K. Haven, 3675 Ward's Point, R.F.D. 5, Pontiac, Michigan.
- 28—Candidates for Grace Mason Lundy and Florence Hood Award due on blanks furnished by National Headquarters.
- 20—Corresponding Secretary places chapter monthly statistic report with per capita check in mail to National Headquarters. Copy to Province Director. Annual report to be filled out by Chapter President and Corresponding Secretary.

### ● June

- RUSH CHAIRMEN—RUSHING DATES FOR FALL OF 1954 SUBMITTED TO PROVINCE DIRECTOR AND TO MRS. T. J. BIANCHI, 5727 ELLSWORTH, DALLAS, TEXAS.**
- 2—Rush Chairman—Form No. 2 completed and send copies to Mrs. T. J. Bianchi 5727 Ellsworth, Dallas, Texas, and your province director.
  - 2—Publicity Chairman sends news clippings to National Publicity Chairman.
  - 5—Treasurer, using white supplies, sends material to Simplified Audits.
  - 12—Treasurer, using yellow sheets, sends material to Simplified Audits.
  - 15—Chapter Scholarship Chairman should obtain from the registrar's office the chapter scholastic record for the last quarter or semester and send the record to Mrs. T. K. Haven, 3675 Ward's Point, R.F.D. 5, Pontiac, Michigan. As soon after the close of school as they are compiled, the Scholarship Chairman will be expected to send campus comparative averages to Mrs. T. K. Haven, 3675 Ward's Point, R.F.D. 5, Pontiac, Michigan.

(Continued on page 106)



# THE LAMP OF DELTA ZETA

**ELLEN KROLL JENKINS**  
*Editor*

## *Contents for* **DECEMBER, 1953**

Frontispiece .....	58
Delta Zeta Woman of the Year 1953 .....	59
Court of Honor . . . 1953 .....	60
Invitation to Convention, 1954 .....	61
Council Makes New Appointment .....	62
Beta Pi Helps a Young Camper .....	63
Directory of Mothers' Clubs .....	64
Field Representative Takes New Position .....	65
Myra Is 50th Anniversary Queen .....	66
Man + Idea + Δ Z Dollars = Success .....	67
Panhellenic Presents Sorority Preview .....	69
Announcing . . . Future Perfect .....	70
SPAN Sends Gamma Members Abroad .....	70
Mothers' Club Presents Piano to Beta Rho .....	71
Oregon Holds Three-fold Celebration .....	72
Gamma Mu Acquires Chapter "House" .....	74
Communism and the College Student .....	75
Scholarship Announcement .....	76
New Project Announced .....	77
Change of Address Blank .....	77
Aluminations .....	78
College Chapter letters and 2 double page picture spreads .....	79
Vital Statistics .....	104
The Golden Flame Eternal .....	106
State Membership Chairmen .....	107
Directory .....	108

THE LAMP OF DELTA ZETA is published four times a year in September, December, March and May by the George Banta Publishing Company, official printers to the sorority, at 450-454 Ahnaip Street, Menasha, Wisconsin.

\$2.00 per year. Life subscription \$25.00. Printed in U.S.A.

Entered as second class matter October 18, 1909, at the postoffice at Menasha, Wisconsin, under the Act of Congress of March 3, 1879.

Acceptance for mailing at special rate of postage provided for in section 1103, Act of October 3, 1917, authorized September 26, 1918.

Send all material for publication to Mrs. Paul L. Jenkins, 5926 E. 43rd St., Indianapolis 26, Indiana; all changes of address and advertising information to Miss Irene C. Boughton, 450 Ahnaip St., Menasha, Wisconsin, or 1325 Circle Tower, Indianapolis 4, Indiana.

COPYRIGHT 1953 BY DELTA ZETA SORORITY

Postmaster: Please send copies returned under labels form 3579 to Delta Zeta Sorority, 1325 Circle Tower, Indianapolis 4, Indiana. Return Postage Guaranteed.





PHOTOGRAPH BY DON WELLS, DES MOINES, IOWA

*“Glory to God in the highest,  
And on earth peace among men”*

**LUKE 2:14**



# Delta Zeta Woman of the Year 1953— Mildred Wade Lenning

(Sponsored by her own Dayton, Ohio, Alumnae Chapter)

**I**O YOU—Mildred Wade Lenning, leader in civic affairs and public service, we give Delta Zeta's highest alumnae honor, that of being named our 1953 "Woman of the Year."

You became an initiated member of Delta Zeta at Alpha Lambda chapter at the University of Colorado where you met your husband, George Lenning. You are the mother of two children and have four grandchildren.

At Alpha Lambda chapter you served as vice president. In Dayton you have served the alumnae chapter as president, treasurer, publicity chairman, City Panhellenic representative, and chairman of the 1951 Ohio State Day.

You have given generously of your time and effort to community service. While living in Schenectady, New York, you helped to organize the library in Scotia, New York, and assisted in forming the City Panhellenic in Schenectady.

For the past twenty-five years you have lived in Dayton, Ohio, and it is here that you have given much civic and public service.

You have been outstanding for your Community Chest work, serving on its solicitation and budget committees.

The Red Cross claims you as a tireless worker serving in many capacities: at present member of the Board of Directors, member of the Home Service committee, chairman of the Budget and Fund Committees, organizing all entertainment



MILDRED WADE LENNING, 1953 WOMAN OF THE YEAR

as chairman of the Camp and Hospital committee and serving as a Nurse's Aide during World War II.

You have also served in executive capacity in many other groups including the Cancer Society, Travelers Aid, Aid to Dependent Children, P.T.A., Ohio Federation of Women's Clubs, and Y.W.C.A.

You are well known in Dayton for your efficiency in organization and love for helping others, and as a successful homemaker, devoted wife and mother, and a faithful church member.

—BABS MONTGOMERY

←

NOTE ABOUT THE FRONTISPIECE: Jean Randall Peacock, Gamma Epsilon, and son Dante portray a Madonna and child in a Christmas program at the Des Moines Women's Club. This arrangement was prepared by Marguerite W. Havens, Beta Kappa, member of the Planning Committee of the club's Art Department. Originally this was a study in gold (frame and background) with the clothing in purple and rose tones.



## Court of Honor . . . 1953



DR. EUNICE CARMICHAEL ROBERTS,  
1953 COURT OF HONOR

### **DR. EUNICE CARMICHAEL ROBERTS** Bloomington, Indiana

TO YOU—Dr. Eunice Carmichael Roberts, exemplary leader in education, we give a place in our Court of Honor.

Your college chapter Alpha Beta claims you as a charter member, a president, and an alumna advisor.

B.A., M.A., and Ph.D. degrees were earned by you at the University of Illinois, where you were a member of  $\Phi$  B K and six other honorary fraternities.

Widowed at an early age you raised your two children and put them through college, always advancing in personnel and academic administration leadership. You now have two grandchildren.

In September, 1952, you went to Indiana University into a newly created position, Assistant Dean of the Faculties and Director of Women's Educational Programs.

You are sponsored by the Champaign-Urbana alumnae chapter.



VIRGINIA LOVEJOY BOWERS,  
1953 COURT OF HONOR

### **VIRGINIA LOVEJOY BOWERS** Dallas, Texas

TO YOU—Virginia Lovejoy Bowers, outstanding leader in church work, we give a place in our Court of Honor.

At Beta Alpha chapter you were recording secretary, chairman of the house committee, and convention delegate. For Dallas alumnae you served as president, program, social and rush chairman. Alpha Psi claims you as the interior decorator of their lovely new house.

You have made a happy home for your husband and given your children capable leadership in their activities, especially sports and hobbies.

You have been most active in church work serving as a Sunday school teacher, member of the Board of Education, Activities chairman, head of the Nursery School, and as a member of the Dallas Council of Church Women.

Your family was named "Christian Family of Dallas" in May, 1952.

You were sponsored by four groups, Beta Alpha and Alpha Psi college chapters and South County and Providence, Rhode Island alumnae.





CHASE HOTEL, site of the 1954  
Delta Zeta National Convention.

*The National Council of Delta Zeta  
invites you to attend the  
Twenty-Third  
National Convention of Delta Zeta  
June 28 through July 2, 1954  
at the  
Chase Hotel, St. Louis, Missouri*

---



## Council Makes New Appointment

**N**ATIONAL COUNCIL of Delta Zeta announces the appointment of Marguerite Wherry Havens as College Chapter Administrator. A former member of Council, she will work directly with the college chapters and in close cooperation with the National Membership Vice President.

A member of Beta Kappa chapter, she is a graduate of Iowa State College, receiving her bachelor's degree in Home Economics Education. While in college she participated in many activities, among them: college debate team, Phi Upsilon Omicron, I fraternity (Women's Athletic Association), and director of the May Fete. In view of her outstanding contributions in these and other campus organizations she was named one of the outstanding women in Iowa State College activities. She was awarded an assistantship which enabled her to work on her master's degree, which she received in 1934.

After graduation she taught high school home economics in Radcliffe, Iowa, and Sheridan, Wyoming. She followed this with instructing in the education department of Iowa State College for two years.

Marguerite is by no means idle, for she participates in numerous and varied organizational activities. At Grace Methodist Church she is a member of the Proto Study Club, official church board, and was Circle leader of W.S.C.S. for six years.

At Elmwood School she was a member of the P-TA board for four years. She is now serving on the Callanan School hospitality committee and as membership chairman for 1953.



MARGUERITE WHERRY HAVENS, B K, College Chapter Administrator

Maintaining a continued interest in both her alma mater and the field of home economics, she is a member of the Des Moines Alumni Association of Iowa State College, and has served as a board member for three years. She was a charter member and first president of the Des Moines Home Economics Association. For the Iowa Home Economics Association she was secretary for two years and legislative chairman for two years. She has also served as president of the Iowa Vocational Teachers Association, and holds memberships in IHEA and AHEA.

Serving in community affairs, Marguerite was captain in 1952 and area chairman in 1953 for the Community Chest and Red Cross chairman for a year. For the Des Moines Women's Club she has been co-chairman of the Book Mart and a member of the art department board. She was drive captain for the Civic Music Association and served for two years as city Panhellenic delegate.

Marguerite began her career as an outstanding Delta Zeta alumna by returning to Beta Kappa to help with reorganization in 1936. She continued as adviser of this chapter until 1940. In 1946 she helped to found Gamma Epsilon chapter at Drake University. Since then she has been on the house corporation board of this chapter, a job which she also held at Beta Kappa from 1946 to 1951.

She was president of the Des Moines Alumnae Chapter and was chairman of the money-making committee from 1949-1952. She has continued her work in Delta Zeta by attaining the following offices: province director, 1938-1946; National Alumnae Vice President, 1945-1946; National Extension Vice President, 1946-1950; and National Secretary, 1950-1952.

You wouldn't think it possible, but in addition to all her community and Delta Zeta work, she still has time for hobbies. Anything connected with people is right up Marguerite's line. She thrives on activity and company, which is shown by the Saturday night open houses at 3018 School Street. Neighbors stream in from all directions to watch television and have a social gathering, at times making it into a pot luck dinner. She comes by this social grace naturally, her mother having been a teacher and her father, a minister.

Marguerite Havens has built a fine American home, contributed much to her church and community and given of her whole self to Delta Zeta. She is a woman with knowledge and deep understanding to whom college chapters can turn and know that their needs and problems will be solved under her guidance.



## Beta Pi Helps a Young Camper

WHEN Beta Pi Gretchen Personius, Elmira, New York, returned from Christmas vacation last January, she told us a story of a young boy in her home town, which touched the hearts of all of us. Gretchen, while doing vacation social work in Elmira, met 11 year old Bobby Maslinski, whose legs were severely burned when his pants leg caught on fire. His parents, unable both mentally and physically to care for him, did not notify anyone of the accident for five days. Finally, he was discovered and rushed to the hospital in serious condition.

We Beta Pis took great interest in the case, and many of us sent him cards and letters of encouragement. Then, through Gretchen, we discovered that his greatest desire was to go to summer camp. We decided to pay his expenses for one week at a nearby camp, and an organization in Elmira sent him to day camp throughout the summer.

We received the following letter from the social worker in charge of Bobby's case telling of his happy summer:

"Dear Sorority Sisters,

"It is my pleasure to report to you about getting your Bobby to camp. First, he was thrilled to know that you were sending him—something he had wanted for years. He was registered and sent a list of clothing, etc. needed. A few days later, I saw Bobby and he was crestfallen. He was wondering how he could get the necessary camp items, and although the campership was paid, he knew he couldn't go. You should have seen the expression on his face when told that you girls also had the money needed for the items. He looked stunned—then the silliest grin you ever saw came over his face and he giggled all over.

"The pleasure of taking Bobby shopping was all mine. It is hard to say which of us enjoyed it the most. The shopping expedition had to prepare him for the day camp as well as for the ten day camp at Harris Hill. For day camp he needed a lunch box. Bobby had seen the kind he wanted—a royal blue job, trimmed with silver—\$1.00! Golly, was he proud! He fairly strutted out of the store with his lunchbox.

"He was so proud choosing the colors, etc. of his new clothes. The clerks were grand to him. He told them all he was getting ready for camp. Tears of joy were in his eyes when he chose the bathing trunks—sunshine yellow with a brown and green palm tree design. Unfortunately, he didn't get to use the bathing trunks at Harris Hill because his leg started to drain. They had

taken the bandage off, but it was so tender that it soon opened. They bandaged it again, and sometime in late July it became healed, and he was able to go swimming and use those gaudy trunks.

"Yes, my dears, he liked all the clothes. I really believe the pajamas were the first ones he ever owned. Raincoat, too.

"Bobby could walk to day camp, but I took him to Harris Hill. The Sunday I went to pick him up was very hot. When he got in the car he heaved a sigh and said, 'Well, for once I'm going to have a good time!' And he meant just that. Fortunately, Gretchen was able to go up with us, too. We arrived fairly early, and Bobby had the privilege of picking out his bed in the cabin—he was the first one there.

"I went up to get him at the end of camp, and he actually didn't want to leave. I believe it was the best time he had ever had. He wanted so much to thank you, Gretchen, and me, but he didn't know how. He had never been taught how to do such things and really felt embarrassed because he wanted to and couldn't. As I was leaving, he came out to the car. He stood there a minute and that 'grateful expression' came over his face, you could see the tears in his eyes. I thought, well, this is it—at last Bobby is going to say 'thank you.' What he said, when he looked

*(Continued on page 73)*



BOBBY MASLINSKI enjoys his first camping experience thanks to Beta Pi chapter of Albion College.



# Delta Zeta Mothers' Clubs

• • •

- GAMMA (U. of Minnesota): Mrs. Habbley W. Clarke, 495 Frontenac Pl., St. Paul 4, Minn.
- DELTA (DePauw U.): Mrs. P. H. Baughman, R.R. 35, Box 49, Goshen, Ind.
- EPSILON (Indiana U.): Mrs. R. L. Giffin, 3105 S. Anthony Blvd., Ft. Wayne, Ind.
- THETA (Ohio State U.): Mrs. A. Rush, 834 Linwood Ave., Columbus, O.
- KAPPA (U. of Washington): Mrs. Fay L. Miller, 4814 49th South, Seattle, Wash.
- MU (U. of California): Mrs. Kenneth B. Eakin, 406 Van Buren Ave., Oakland, Calif.
- XI (U. of Cincinnati): Mrs. Frank Marshall, 2882 Werk Rd., Cincinnati 11, O.
- OMICRON (U. of Pittsburgh): Mrs. V. C. Holsinger, 3 Reserve St., Pittsburgh 9, Pa.
- PSI (Franklin College): Mrs. Jarvis Fergason, 548 King St., Franklin, Ind.
- SIGMA (Louisiana State U.): Mrs. C. C. Couvillion, 2606 June St., Baton Rouge, La.
- TAU (Madison): Mrs. W. W. Wolf, 2415 Commonwealth Ave., Madison, Wis.
- TAU (Milwaukee): Mrs. L. E. Lawrence, 6603 Revere Ave., Wauwatosa 13, Wis.
- UPSILON (U. of North Dakota): Mrs. L. W. Burdick, 316 Cambridge, Grand Forks, N.D.
- PHI (Washington State College): Mrs. Clyde Gregory, 1043 4th St., S.E., Puyallup, Wash.
- CHI (Oregon State College): Mrs. Elizabeth Folston, 5545 E. Stark, Portland 15, Ore.
- ALPHA ALPHA (Northwestern U.): Mrs. Marie Liegel, 818 Clinton Pl., Evanston, Ill.
- ALPHA BETA (U. of Illinois): Mrs. Clinton Martin, West McHenry, Ill.
- ALPHA EPSILON (Oklahoma A.&M.): Mrs. Fred F. Wolfe, 16 E. Drummond, Shawnee, Okla.
- ALPHA KAPPA (Syracuse U.): Mrs. Carl Naumann, 109 Century Dr., Syracuse, N.Y.
- ALPHA CHI (U. of California): Mrs. John L. Hughes, Jr., 1008 17th St., Santa Monica, Calif.
- ALPHA PSI (Southern Methodist U.): A Mrs. H. S. Raef, 5437 Richmond Ave., Dallas, Tex.  
B Mrs. J. L. Schneider, 6173 Kenwood Ave., Dallas 14, Tex.
- ALPHA THETA (U. of Kentucky): Mrs. Jeanet A. Feltus, 828 N. Broadway, Lexington, Ky.
- BETA ALPHA (U. of Rhode Island): Mrs. V. L. Allen, 228 County Rd., Barrington, R.I.
- BETA GAMMA (U. of Louisville): Mrs. A. C. Renfrow, R.R. 8, Louisville 16, Ky.
- BETA THETA (Bucknell U.): Mrs. M. F. Torrence, 125 Washington St., Woodston, N.J.
- BETA KAPPA (Iowa State College): Mrs. Hampton Hall, 3822 Ninth St., Des Moines, Ia.
- BETA PI (Albion College): Mrs. Melville Hawke, 13601 Mettetal, Detroit 26, Mich.
- BETA SIGMA (Colorado A.&M.): Mrs. Lester B. Sherman, 1419 S. College Ave., Ft. Collins, Colo.
- BETA RHO (Michigan State College): Mrs. Walter Hoffman, 3409 S. Logan, Lansing, Mich.
- BETA TAU (Nebraska Wesleyan U.): Mrs. Walter Anderson, Beaver Crossing, Neb.
- BETA CHI (Wittenberg College): Mrs. Wm. Gravenkemper, 2513 Sunset Ave., Springfield, O.
- GAMMA EPSILON (Drake U.): Mrs. R. C. Bechtel, 3729 Kingman Blvd., Des Moines, Ia.
- GAMMA THETA (Carroll College): Mrs. Lester Frank, Rt. 3, Waukesha, Wis.
- GAMMA IOTA (Memphis State College): Mrs. T. C. Pollard, 505 S. Perkins, Memphis, Tenn.
- GAMMA ALPHA (Baldwin-Wallace College): Mrs. Ellis Hoag, Abbe Rd., Rt. 1, Elyria, O.
- GAMMA KAPPA (Kent State College): Mrs. F. H. Wood, 139 Elm St., Hudson, O. (acting president).
- GAMMA LAMBDA (San Jose State College): Mrs. N. C. Steinbaugh, 36 Belford Way, San Mateo, Calif.
- GAMMA MU (Illinois Inst. of Tech.): Mrs. L. F. Graper, 9430 Loomis Ave., Chicago, Ill.
- GAMMA OMICRON (San Diego State College): Mrs. Bonnie Trueblood, 4339½ Illinois, San Diego, Calif.
- GAMMA RHO (Northern Ill. State College): Mrs. Frank W. Braun, 533 Perry St., Belvidere, Ill.
- DAYTON (Ohio chapters): Mrs. Carl Karstaedt, 1921 Shofar Rd., Dayton 9, O.
- HOUSTON (Texas chapters): Mrs. Allan Collette, 3436 Overbrook Lane, Houston 19, Tex.
- INDIANAPOLIS (Indiana chapters): Mrs. George J. Kamphaus, 4818 N. Pennsylvania, Indianapolis, Ind.
- SAN ANTONIO (Texas chapters): Mrs. G. C. Zimmerman, 1740 Mulberry, San Antonio, Tex.

## New Mothers' Clubs

- BETA LAMBDA (U. of Tennessee): Mrs. W. L. Bowen, 3269 Strickland Ave., Knoxville, Tenn.
- ALPHA TAU (U. of Texas): Mrs. Wallace Scott, 2302 Griswold Lane, Austin, Tex.



# Field Representative Takes New Position

**N**ATION-WIDE is the viewpoint of Cleora Crosby, who as Delta Zeta's field representative has visited chapters and conferred with members and college officials all over the country. Although she had four years of important counselling experience and stimulating travel, she now finds life in one place far from dull.

Since July 15, Cleora has held the position of "assistant to the principal" at St. Helen's Hall, Episcopal girls' day and boarding school in Portland, Oregon. This came about when the new principal, Gertrude Houk Fariss, past national president of Delta Zeta and again head of St. Helen's Hall after several years of absence, learned that Cleora was giving up her life on the move.

Accordingly, Gertrude offered Cleora a position at St. Helen's Hall, for she knew Cleora's delightful personality, gracious poise, initiative, creative thinking, ability and sympathetic interest in youth would be great assets to the school. And indeed they have been, as a check of these past months discloses.

A flashback reveals that Cleora was a member of both Phi and Kappa chapters and was graduated from the University of Washington. She majored in institutional administration, taking such courses as education, foods, quantity cookery, management, interior decoration, counselling . . . all of which are useful in her new post. Before becoming Delta Zeta's field representative, she was with Seattle's Boeing Aircraft corporation in the editorial department, where books of instruction, some 1,000 pages in length, were prepared.

One of the first questions Cleora was asked is: "How do you like being associated with younger girls, after four years of working with college girls and alumnae?"

Cleora replied: "Those years of varied and intensive work with girls in Delta Zeta chapters are wonderful years. I treasure the fine friendships made then. Now, I find the high school age group very interesting. I enjoy the girls—their personalities are in the formative stage. They seem to seek guidance along ways that will make their lives worth while and develop their characters for future life. The girls are really lots of fun to be with and I find when problems come up that reasoning helps solve most of them."

"Design for Living"—a new extracurricular course—is scheduled at St. Helen's Hall. This course, adapted from Delta Zeta's famous, top-



CLEORA CROSBY is now "assistant to the principal" at St. Helen's Hall, after four years of traveling for Delta Zeta.

ranking Standards program, established years ago by Gertrude Fariss, is proving popular with the girls and is giving examples and instruction in how to make the most of oneself and prepare for life in the fields of marriage, business and profession, or a combination of all of them.

Responsibilities in her new position include: boarding department, administration of the Senior House, calendar, social activities for the high, lower and pre-schools, public relations, liaison work, chaperoning and counselling.

In connection with the Senior House, which had been occupied for four years by faculty members who had their own furniture, Cleora found one of her first activities was to supervise the painting, re-decorating, furnishing and expanding of the place for occupancy by senior boarders, a housemother and herself. The results are very pleasing in decor, practicability and comfort.

How does she organize the numerous responsibilities and multitudinous details of her new undertaking? Cleora points to four large loose-leaf notebooks with blue covers, standing on a shelf in her attractive office which looks out over the school grounds.

"When I first started to list and organize my work, I thought one reference notebook would be sufficient, but I soon found it necessary to have separate books for my four major responsibilities," Cleora explained.

The notebooks, supplied with adequate dividers for ready reference are titled and broken



down as follows: I. Household: menus, equipment, kitchen, dining room, laundry, heating system, workers' schedules; II. Social: calendar, clubs, mothers' club, dances, orchestras, events; III. Boarders: policies, constitution, council, meetings, housemothers' meetings, policies and obligations; IV. Organizations (day and boarders): freshman, sophomore, junior and senior, officers, student government, scheduled activities, school annual.

Although she attends most in-school meetings, Cleora makes time for outside interests, also. She has joined Portland branch of the American Association of University Women and is a member of the branch's legislative, calendar and television committees.

Portland Delta Zetas and the Oregon State chairmen lost no time in seeking out Cleora to share her abundant Delta Zeta enthusiasm and experience. She was a guest of honor at the first

meeting of Portland alumnae and was a speaker at the Founders' observance at State Day at Oregon State College, Corvallis on October 24.

While railroad transportation facilities may miss Cleora's constant traveling from chapter to chapter, Cleora doesn't miss the railroad. She does board the train upon occasion for the few hour jaunt to visit her family in Seattle, which is glad to have her located at such a convenient distance these days.

Life is not dull in one place, Cleora finds . . . it is full of challenge . . . for work is, as it has always been a challenge to her. The girls admire her and look up to her and she likes the girls. St. Helen's Hall students and faculty find her a great asset to the administration. And how could it be otherwise—for her smile is ever-present, her attention to problems is instant and her interest is sincere!

—KAY BUTTERFIELD LARSON

• • •



MYRA BRIEVE, *Western Michigan College's*  
*Homecoming Queen.*

## Myra Is 50th

## Anniversary Queen

**M**YRA BRIEVE, Gamma Pi and a sophomore at Western Michigan College, reigned as queen over their fiftieth anniversary homecoming celebration, held (appropriately for us) on Delta Zeta's Founders' Day, October 24.

She was sponsored by Tau Kappa Epsilon fraternity. Myra hopes to become an elementary teacher and is majoring in speech correction. Her home is in Holland, Michigan. While in high school she was a member of the student council, a drum majorette and a cheerleader.

Four other Western Michigan coeds were in Myra's court for the homecoming festivities.



# Man + Idea + $\Delta Z$ Dollars = Success

John H. Gaeth, Ph.D.

Assistant Professor of Audiology, Northwestern University

IT IS a special pleasure to speak to the Chicago Alumnae Chapter of Delta Zeta, because your group helped me to carry out an idea which I had been considering for some time. When I assumed responsibility for the supervision of the training of students interested in working with the hard of hearing and deaf at Northwestern University, I felt there was real need for a more practical kind of supervised teaching. The shortage of teachers in these areas added to my desire to do something about the situation. Since there are no large training centers for deaf children in the immediate vicinity of the University, the problem was to arrange for the best possible experience for these potential teachers. I had discussed this problem with Dr. Daniel Cloud, then superintendent of the Illinois State School for the Deaf at Jacksonville, Illinois. We both regretted the fact that our schools were so far apart as they were, but he offered to provide board and room and training supervision for any students whom I might be able to send to the school for experience.

I began by investigating what effect one quarter off-campus would have on the four-year program of a student training to be a teacher in audiology. For the average student it would mean the addition of one summer's attendance at Northwestern. Since, during the summer, many of our students earn part of their tuition or at least a portion of their living expenses for the ensuing academic year, attending school meant not only additional expense but also the loss of their usual income.

I felt that if I could find the right girl with whom to begin the joint training project, the arrangement might be one which would have long-term implications for both Northwestern University and the Illinois State School for the Deaf. I discussed the idea with the Dean, with several of my colleagues at the University, and with several of our superior students. The school

administration was generally receptive to the idea, but I was unable to find a student who could afford the additional summer's work. At about this stage of development, I received a note from Dean McBurney saying that the Chicago Alumnae Chapter of Delta Zeta was offering what amounted to a part-tuition scholarship to a worthy girl interested in the hard of hearing and deaf. At just that time, I had been discussing our plans with a particularly suitable girl. When I told her I thought it might be possible to secure some financial help for her tuition in summer school if she were to attend the State School at Jacksonville for a quarter, she said that she would certainly be willing to do so. Consequently, without actually telling her what was about to happen, we awarded to Miss Margaret Peterson the first Delta Zeta Scholarship at the School of Speech Honors Convocation in May of 1950. Miss Peterson spent the winter quarter in residence at the school in Jacksonville where she performed so well that Dr. Cloud offered her a teaching position with the school for the next academic year. Miss Peterson accepted and proved to be a very satisfactory teacher. She has since taken a job as one of the traveling supervisors working with the hard of hearing and deaf in the State of Delaware. This position is a responsible one and indicates that our support of her was justified.

I was pleased to learn a year later that your chapter would be able to repeat the scholarship, since we had a very worthy recipient in Miss Jean Chapman. Her academic record was excellent, and she was a person whose major interest was work with the hard of hearing and deaf. In addition, she was in need of financial help. She is now a teacher of the hard of hearing and deaf in Birmingham, Alabama. The present holder of your scholarship is Miss Daphne Southard who is a junior and was selected for support during her junior year for two reasons. In the first place, all of our seniors came from families who were well able to support themselves. Secondly, Miss Southard was an outstanding junior who was at the moment somewhat undecided about her future training and who was willing to devote herself to work with the hard of hearing and deaf when given the proper encouragement. I am certain that she too will prove to be worthy of the support that we have given her.

---

EDITOR'S NOTE: For the past four years the Chicago Alumnae Chapter has given a "Hearing Scholarship" to a student at Northwestern University. At the annual Spring Luncheon of the group last May, Professor John H. Gaeth and Miss Daphne Southard, 1952-53 recipient of the scholarship, were guests of the chapter. Those who heard Professor Gaeth at the luncheon felt his speech should be shared with all Delta Zetas because of our national project, Hearing Helps.



The recipient for 1953-54 is Miss Virginia Breed. She is a Chicago girl, who has been working a good portion of her way through school, and who finds herself in the unusual position of having her father, a dentist, drafted into the armed service.

I am not sure that your group is fully aware of the credit which it deserves for helping me to initiate this successful program. There have been several other girls who have spent three months in residence at the Illinois State School for the Deaf at Jacksonville who have done so without any financial assistance. However, at the time that I was attempting to put this program into operation, there were no girls who were in a financial position to attend without assistance, and your scholarship came to my attention at just the critical time. I am happy to be here to thank you in person on behalf of the girls who have been recipients of this scholarship and on my own behalf for helping me to initiate a program which has become an integral aspect of our teacher training.

Since your sorority, nationally and locally, is interested in hearing, I thought you might be interested in some of the problems of hearing on which we are presently conducting research here at Northwestern University. The problem of hearing which has been of particular interest to me in the last four or five years has been the matter of hearing loss in elderly adults. In our research in this connection several things have come to light which are not as widely known by the lay person as they should be, and, unfortunately, not as fully understood as might be even among people who are giving advice to the individuals concerned.

In order to understand the problem of hearing in these individuals, one must keep in mind the fact that the main practical function of hearing is the reception of communication. There are two measurable aspects of the reception of speech by hearing which are usually measured. The first of these we call acuity; the second we refer to as discrimination. In many instances the two are closely related, but in quite a number of cases the two function quite separately. Loss of acuity refers to the amount that speech has to be increased in intensity before the individual is able to hear it. This is the attribute of hearing loss with which we are most familiar. We assume that when an individual is hard of hearing all that we need to do is to talk louder and he will be able to understand us.

Discrimination refers to the ability to understand speech when it is loud enough that it can be heard. Perhaps the easiest way to explain a problem in discrimination is to give illustrations. If one listens to a foreign language which

he is unable to understand, increasing the loudness of the language to which he is listening will not make it any easier to translate. One may also assume that discrimination is related to a kind of distortion. If one were to take a recording which was originally made at  $33\frac{1}{3}$  rpm and play it back at 78 rpm, the material in the record will be loud enough that one can hear it, but it will be so distorted that it will be completely unintelligible. Both of these help to give an idea of situations in which it is possible that speech is loud enough to hear, but not understandable. The weaknesses of the analogies which I have presented lie in the fact that in both instances the difficulty may be said to exist outside of the listener, while in a discrimination problem associated with hearing loss, the difficulty, of course, is in the hearing of the individual in question.

Elderly adults who are recognized as having hearing losses sometimes have a difficulty which is a combination of a loss in acuity and a loss in the ability to discriminate speech. The causes of the difficulties vary according to the individual and according to the previous and present health of that individual. Many people, especially men who have worked in noisy environment, have a much more severe loss for the higher frequencies than they do for the low frequencies. In some instances the loss is actually confined almost exclusively to the higher frequencies. For these individuals, speech at normal conversational levels is generally intense enough that it can be heard, but because the high frequency components are not heard by these individuals the speech itself is distorted and, consequently, is difficult to understand. Other individuals, and this applies to women as well as men, have approximately equal loss of hearing for the high and low frequencies, but have a loss in the ability to discriminate speech, which is more severe than one would expect from the nature of the hearing loss. For these individuals speech appears fuzzy, it is frequently too loud when the speaker raises his voice in an effort to be helpful, and the speech is made generally less understandable in the presence of noise. The best description we have of the cause of this difficulty in hearing at the present time is that it is merely part of the aging process itself.

Unfortunately, the hearing aid, which is generally most helpful to hard-of-hearing individuals, is seldom of use to the individual with a discrimination problem. A hearing aid will raise from the inaudible to audible sound in the environment of the listener. However, as I pointed out relative to foreign languages a moment ago, making speech louder will not necessarily make it

*(Continued on page 73)*





*Back row (standing): Mrs. Herbert L. Plumb, A Φ; Mrs. Elizabeth Wright Evans, A Γ Δ; Mrs. Donald Cash, Δ Γ, president Seattle City Panhellenic. Middle row: Florabell Key, K Δ; Kathy Long, Σ K; Lee Jones, Δ Δ Δ, secretary of Panhellenic; Marion Lichtenwalner, A Γ Δ, president of Panhellenic; Mrs. Foster McGovern, X Ω, executive secretary of Panhellenic; Mrs. J. H. West, Δ Z; Mrs. Helen Curtis, Δ Δ Δ housemother. Front row: Betty Capeluto, Δ E Φ; Sylvia Whitman, Δ X Ω, public relations chairman; Shirley Goggins, A Ξ Δ; Kenneth Yandle, KING TV; Julie Yearsley Hungar, Δ Δ Δ; Donna Prevost, Δ Z; Ann Edmiston, Δ Γ; Sonja Strandberg, A O Π.*

## Panhellenic Presents Sorority Preview

By Angeline Hoff West

**J**UST a few weeks before rush this fall, the College Panhellenic of the University of Washington, under sponsorship of Seattle City Panhellenic, presented a TV show. The program was produced to answer the countless questions about sororities asked each year by incoming freshmen. In addition to interesting the rushees, the show was designed to inform parents, as well as the general public. KING TV donated 30 minutes on their Community Workshop, a regular public relations feature.

Chapter presidents of the national sororities on the campus, as well as alumnae advisors of College Panhellenic and one sorority housemother, participated. Mrs. Elizabeth Wright Evans, Alpha Gamma Delta, public relations director of KING TV, directed the show. Mr. Kenneth Yandle, producer-director of the studio, rehearsed and instructed the cast before camera time. Co-chairmen of the television program were Julie Yearsley Hungar, Delta Delta Delta and Angeline Hoff West, Delta Zeta. Bill Corcoran of KING TV was master of ceremonies.

Selected scenes were the Panhellenic office, a sorority receiving line, a dorm room, a sorority

study table and back to the Panhellenic office. Introductions of cast members and explanations of each act were presented by Julie Hungar. Scholarship, finance, rushing procedure, wardrobe and uniformity of houses were discussed. The greatest emphasis was placed on the availability of adult and unprejudiced counseling at the campus Panhellenic office.

"Sorority Preview" reached over 50,000 regular TV viewers who watched a "rushee" and her mother in conference in the Panhellenic office. From there the "rushee" was taken through typical experiences encountered during rushing. The questions most repeatedly asked about sororities were answered on the half-hour program. A characteristic response from a non-sorority person was, "I was so interested in seeing your TV show. I knew so little about sororities before and had so many wrong ideas." Not only does such a program prepare each girl before rushing but serves to enlighten many people about sororities.

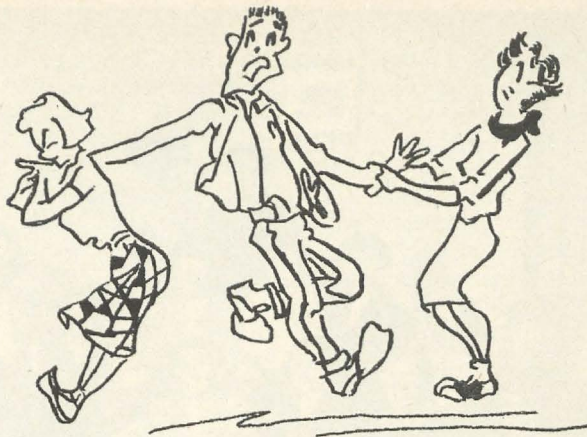
For outline of format or other information, write Angeline M. West (Mrs. J. H.) 4801 38th N.E. Seattle 5, Washington.





*Is some special Delta Zeta function, such as a tea or open house planned for entertaining the faculty each year?*

*We foster the amenities,  
By entertaining Ph.D's!*



*When a guest or visitor arrives at your chapter house, do you feel that you are the hostess and that it is your personal duty to make the person feel welcome?*

## Announcing . . . Future Perfect

By Delta Zetas—for Delta Zetas is *Future Perfect*, the new guide for Delta Zeta chapter public relations. It will make its premier appearance soon.

The copy, written by Juanita Kelly Bednar, Nu, national publicity chairman, was based on research, and actual suggestions made by college chapters on a questionnaire returned last fall. The guide is made up of questions touching the eight fields of public relations, and these questions were selected which best met the needs of

college girls.

Reproduced on this page are two of the many spicy illustrations from the book which were so cleverly done by Roberta (Bobbie) Stout, Nu, last year's Grace Mason Lundy Award winner.

Gail Brook Burket, Alpha Beta, Delta Zeta's master of poetry, was asked to illustrate the guide with original "Terse Verse" which further adds to the individuality of this newest Delta Zeta publication. Watch for it!

## SPAN Sends Gamma Members Abroad

**F**OUR Delta Zetas have been traveling in Europe this past summer and fall on SPAN (Student Project for Amity Among Nations). Joann Langlie, Cathy Sweeney, Karen Otto, and Marcia Koth sailed from Montreal on June 6. All four girls are members of Gamma chapter, University of Minnesota.

Joann Langlie stopped in Paris, then flew to Bombay, India. She has been studying secondary education in India, both in the villages and in cities such as Delhi and Calcutta. She has had offers to teach in Calcutta and the village of Aligarh. In addition to her studies, Joann has attended council meetings and has seen their congress in action. The mode of travel was by oxcart, horseback, tractor, or bus, and the roads are bad between villages. Joann sailed for home

from Bombay in September.

Karen Otto's headquarters have been in Spain for her project is "The Youth Movement in Spain." She has been in Madrid, Granada, Seville and Barcelona, and has visited various schools and camps for both girls and boys. One camp for girls was located in the mountains north of Madrid. Toward the end of August, Karen's group went to the French Riviera.

The entire SPAN group met in Paris in September. However, Karen and Maria planned to work in London for two months, so they will not return home until the middle of December.

Cathy Sweeney studied the Women's Auxilliary of the Catholic Church in Spain. This organization teaches the Spanish women the arts and home economics. She spent most of her time in



Madrid. En route to Spain, Cathy and Marcia spent several days in London. They were even able to partake in the closing events of the Coronation celebration. In fact, they saw the Queen at two different times. Cathy attended the annual fair and festival held in Valencia. This city is different from Madrid—although it is very dry, the land is quite good and green. While in Valencia, Cathy was able to swim in the Mediterranean Sea. Before coming home, she plans to visit Barcelona, the French Riviera, Rome (where she will meet Kay Otto), Florence, Venice, Switzerland, Germany and France.

Marcia Koth visited Madrid, Barcelona, Seville, Granada and San Sebastian in order to obtain material for her topic, "Musical Oppor-

tunities for Spanish Youth." While they were in Rome, Marcia and Cathy were able to have an audience with the Pope. Marcia was among the seven privileged Americans who heard a private one and one-half hour concert of the Symphony Orchestra in the Royal Palace in Madrid. However, the biggest thrill for her came when she was asked to speak over the radio in Spanish. She told of her experiences as a student at the University of Minnesota. Marcia's talk was translated into six languages in order to compare her account of student life in America with that of student life in a dictatorship.

—from *The Gammaphone*,

Caroline and Joan Tema, editors

## Mothers' Club Presents Piano to Beta Rho

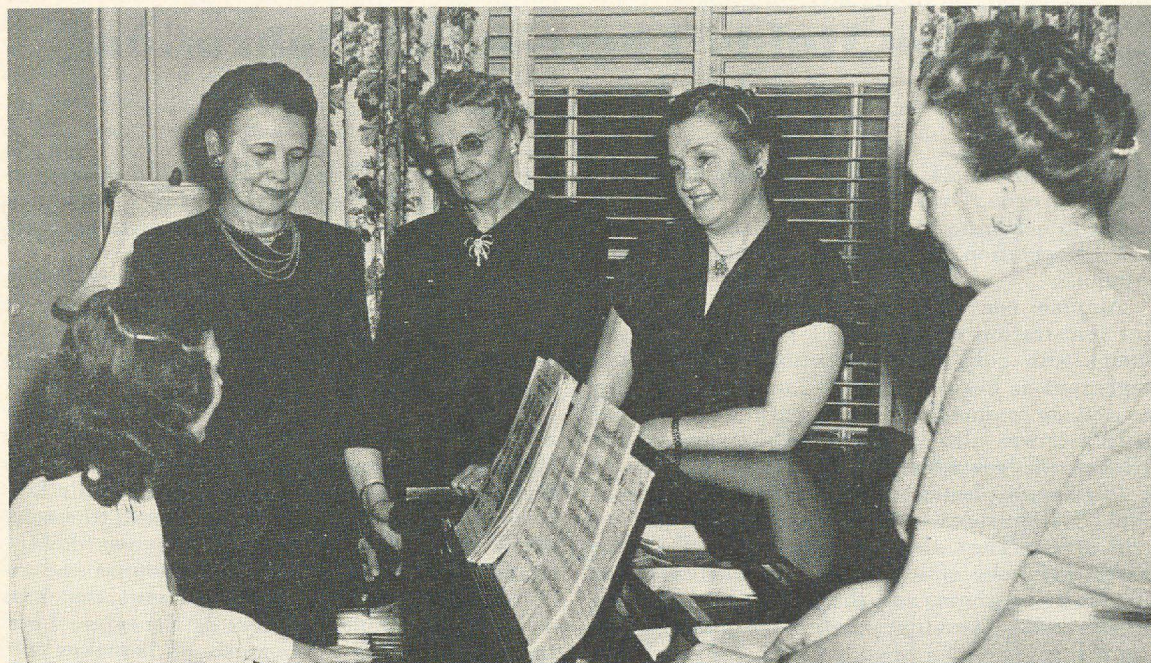
**A** MOST ambitious project undertaken by the Mothers' Club of Beta Rho chapter, Michigan State College, was completed with the presentation of a grand piano to the chapter house.

The idea, conceived some time ago, progressed over a period of years, with each benefit pointed towards payment on the piano. Daughters of the chapter assisted by coordinating all of their efforts with the Mothers' Club on rummage sales, auctions and bridge parties. Each girl gave four

items to each rummage sale. And Dads dug down in the well-known manner for their share toward the success of the Mothers' Club plan. It became a family affair and each member was thrilled over its success.

The Beta Rho Mothers' Club has found many ways to make living in the new chapter house more pleasant. Tables, lamps and a new sewing machine were recent gifts, in addition to the piano.

—FERN RILEY WILSON



VIRGINIA RAINEY tries out the new Beta Rho piano for Mothers' Club members Mrs. Ella Dibble, Mrs. Margaret Mussdorfer, Mrs. Edith Rainey, and Mrs. Bess Green.





PICTURED ON THE STEPS OF THE MEMORIAL UNION BUILDING OF OREGON STATE COLLEGE are members of the Corvallis Alumnae Chapter which received its charter on a combined State Day and Founders Day held on October 24. Seated: Mary Beth Minden, Mrs. Elizabeth Cramer, Mrs. Ralph Allen, Alice Edwards, and Mrs. Kenneth Parkhurst; standing: Mrs. A. L. Albert, Mrs. H. Joe Meyers and Mrs. Victor Clinton of Albany, Ore.; Mrs. Elmer Ingle, Mrs. Mary McCulloch State, Mrs. Hazel El Maghraby, and Mrs. Joe B. Johnson.

## Oregon Holds Three-fold Celebration

By Euzetta Holeman McKee

**O**CTOBER 24, 1953 was a banner day in Oregon. Over 130 Delta Zetas met in Corvallis to celebrate Founders Day, State Day and the presentation of a charter to the Corvallis Alumnae.

Alumnae converged on the Chi chapter house for registration starting at 11 A.M. Lovely black lamps with gold lettering were pinned on each registrant as her ticket to the luncheon, and also as a name reminder for us forgetful alums! What a help it was also in learning the names of the 18 new pledges which Chi has this fall.

Chis were pleased to show their newly decorated living room all in lovely shades of red and green. They also had stories to tell of the first two weeks of school without any furniture in the living room, and the sighs of relief when it all arrived two days before rushing was to begin!

We were very fortunate to have as our luncheon speaker Gertrude Houk Fariss, past National

President. Her Founders Day address was enthusiastically received by all. Cleora Crosby, past National Field Representative, served as toastmistress.

One of the highlights of the afternoon came with the presentation of the Corvallis charter by Genevieve Rall Leveton, Region V Alumnae Director to Alice Edwards, president of the Corvallis Alumnae.

Another thrilling moment came with the announcement of Women of the Year awards. Ruth Hopson of Klamath Falls, state chairman for Oregon first announced that Mildred Wade Lenning of Dayton, Ohio, had been named to receive the National Woman of the Year award. Miss Grace Yoakley then rose to announce the recipient of Oregon's own Woman of the Year award. The winner this year is Genevieve Leveton, who has given so much of her time and effort to Delta Zeta. Oregon's award was inaugurated about four years ago when Ruth Lundgren



Pasley presented a lovely gold-crested locket to Gertrude Fariss as Oregon's first Woman of the Year. This locket is presented each year by the previous year's winner to the Delta Zeta Alumna who has contributed most in that year in time, energy and interest in Delta Zeta.

The program for the luncheon was truly wonderful. Chi presented their trio singing the  $\Delta$  Z Chant, Like Roses Rare (Sigma Nu) and Sunshine and Shadows. This was followed by introductions for everyone and it was found that our own beloved Gertrude McElfrish was not only the alum from the farthest chapter (Beta) but was also the one who has worn the diamond and four pearls for the greatest number of years, 47.

Chi continued their part of the entertainment with an hilarious monologue by Kayrene Butler.

Chapter reports followed from the presidents of Portland, Salem, Eugene and Corvallis Alumnae. Individual reports from cities where there are no organized alumnae chapters were given by Zenda Sanders, Medford; Barbara Husband Myers, Albany; and Esther Goeller, Klamath

Falls. Chapter reports were given by the presidents of Chi and Omega chapters.

Both college chapters entertained with group singing, and the Omega sextet sang "In the Still of the Night" and "Halls of Ivy."

The luncheon was completed with a very lovely Founders Day service conducted by Doris Durthick of Salem.

The afternoon program ended with short workshops held by college members and alumnae separately to help coordinate activities for next year's rushing.

Much credit must be given: to Gertrude for an inspiring address, to Cleo for a beautiful job of "toastmistressing," to Ruth Hopson for a masterful job of coordinating through many letters over many miles of distance, to Ione Wanstrom Downs, Portland, who was luncheon chairman, to Irene Albert who was "on the scene" chairman and who did a beautiful job of arranging and decorating, and of course to both Chi and Omega chapters who cooperated so well in attendance and in the lovely program presented.

• • •

### Beta Pi Helps a Young Camper

(Continued from page 63)

at me was, 'Well, the summer will soon be over.' The poor boy just couldn't express himself. But he was grateful. More so than we'll ever know. Since then I've talked to him and suggested that he write to you girls and thank you. He may and he may not. But rest assured he thanked you in his heart for the most wonderful summer of his life.

"I want to thank all of you for doing this nice thing for someone you don't know. It was a fine experience for him—getting him with the nicer

boys and girls and giving him an idea of how other people live. You are to be commended for this project. May you all benefit by knowing that in the sight of our Lord you have made one unfortunate little boy very happy.

"May God watch over each one of you as you start another school term, and stay close to you each day of the year.

"Sincerely,

Gert Elliott"

—Barbara Hawke, Beta Pi.

• • •

### Man + Idea + $\Delta$ Z Dollars = Success

(Continued from page 68)

any clearer. As a matter of fact, it is our experience that individuals who have severe discrimination problems almost never find these problems helped by the use of a hearing aid.

This matter of hearing loss in elderly adults is an interesting theoretical question and also an important, practical one. The thought I would like to leave with you is that the problem is seldom a simple one. In some instances, a hearing aid will help and the individual will accept it; in other instances, a hearing aid would provide

a satisfactory solution, but the individual is unwilling to wear the aid. However, for quite a number of people a hearing aid gives little or no help, or at best partial relief, and then only with considerable practice and patience is the individual able to get anything satisfying at all from the aid. Certainly the problem is an individual one and in many instances going to the trouble of securing help and advice from a hearing clinic is worth the trouble.



# Gamma Mu Acquires Chapter "House"

**G**AMMA MU of Delta Zeta has a home at last! It is an apartment in the recently completed Carman Hall on the Illinois Institute of Technology campus. This building, designed by the world famous architect, Mies van der Rohe, consists of nine stories of exposed, reinforced concrete with the latest living accommodations.

The chapter home is a suite of rooms on the second floor consisting of living room, bedroom, study, bath, and kitchen in which we cook all our

own meals.

The furnishings and decorations are in the modern mode. Our Mothers' Club and alumnae were invaluable in helping to supply the furnishings.

The last two weeks of summer vacation were busy ones indeed with all the last minute preparations, but now that we have moved in, we're all convinced that this is the most wonderful thing that ever happened to Gamma Mu.

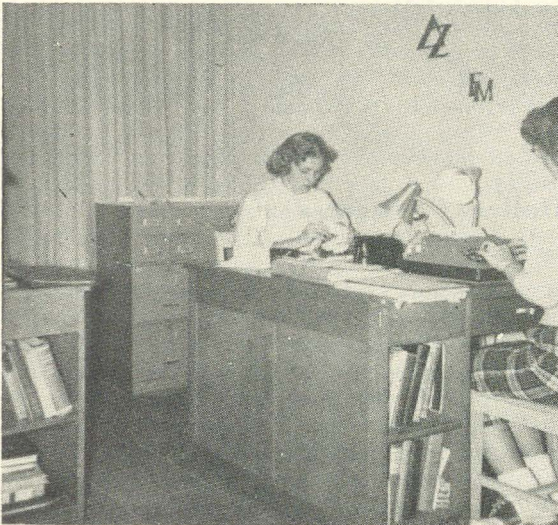
by DELORES JACKSON



BARBARA UNDERWOOD and MARILYN GREEN demonstrate the kitchen facilities of the new apartment.



LOUNGE in the entrance way of Carman Hall, Illinois Institute of Technology.



LORRAINE PARDUHN and BARBARA UNDERWOOD hit the books in the study of Gamma Mu's new home.



BARBARA UNDERWOOD is pictured in the ultra-modern entrance to Carman Hall.



# Communism and the College Student

By J. Edgar Hoover

Director, Federal Bureau of Investigation

**Y**OU, the college student, whether or not you realize it, are the rich earth which the Communist conspirator hopes to till. Your mind is the soil in which he hopes to implant alien seed. Your subsequent acts are the products whose growth he strives to direct. The harvest which he seeks is the destruction of our democratic processes of government.

What then, can you, the college student, do about communism? Awareness of danger is the first requisite to combating that danger. First then, know your enemy. That necessitates learning what communism really means, not what its apologists say it means.

How is one to separate truth from propaganda? I can only say, "Set yourself the task of developing a free mind—a mind which seeks facts." Such a mind accepts neither the minority version nor the majority version; it seeks and considers evidence. It is not satisfied until irrefutable evidence points out the road which leads toward irrevocable truth.

When you have learned everything possible from the experience of those who escaped from "Utopia"—where they learned the bitter difference between promise and reality—then steep yourself in the history of America. Go back to the heart and soul of its origins. Read the documents, books, and letters of the immortal giants who, with faith and prayer and idealism, shaped and molded a form of government which is a continuous expression of faith in the individual. There you will learn that true Americanism is an act of faith—an overwhelming belief that the individual man, with God's help, is an intelligent being capable of self-rule. That faith is essential to the continuance of the American form of government.

In its simplest terms, the struggle lies between the spiritual and the material. The Communist seeks to rob you of your birthright by destroying your faith in our republic. The mess of pottage which he offers in tempting the weak, the shallow, and the short-sighted is the illusory promise of material security—the security of the slave. The Communist offensive must never be underestimated, for that promise has seduced millions of people and the ultimate objective is to swing all the peoples of the globe into the Communist orbit. Like the confidence man, therefore, the Communist labors incessantly to get his victims in the proper frame of mind—to "set up the

suckers for the kill." Diligently and indiscriminately he pours his corrosive acid of disunity, hatred, and discontent over the worker, the professor, the artisan, the student.

What can you do to combat it?

**Communism is the antithesis of Christianity.** To endorse communism is to deny all the tenets of Christianity—the great teachings which have guided our civilization during the dark ages of mankind's long, upward climb toward the light. You can be Christian.

**Communism is immoral.** The Communist teaches that the end justifies the means. You can live positively. You can promote the dynamic morality which is essential to the preservation of a free nation.

**Communism seeks "fronts."** Don't provide protective coloring for subversive organizations by being an indiscriminate "joiner." Ascertain the ultimate objectives of groups which mouth platitudes and espouse causes before you lend the strength of your name to their petitions and their rolls.

**Communism feeds on ignorance.** Be informed. Never yield to the disastrous luxury of emotional or "fuzzy" thinking. Stick to the facts.

**Communism seeks change.** It would make the state the master and the individual the slave. You, therefore, need to gain a true understanding of the republic in which the individual is the key. Our form of government is only as good as the people in it. Consequently, it cannot be perfect. But active and intelligent effort has made it function in such a manner that it has been the marvel and the envy of the world. You hold the future in your hands. Be a crusader for democracy.

**Communism lives on lies.** It corrodes honor, destroys integrity, and subverts all the qualities which combine in an individual to make him, in the truest sense, a man. Wherever there is an honest man, there is an island of strength. Live honorably.

**Lastly, communism wears a cloak of many colors.** Learn to recognize these colors, and no act of yours will tend to bring to fruition the destructive harvest which the Communist seeks, and toward which all his efforts are bent.

*N.B.: This article, supplied by the NPC Citizenship Committee, is a reprint from the Boston University Campus and The Evening Star of Washington, D.C.*



Delta Zeta alumnae in Vallejo, California, began meeting a year ago November. Officers of the group are Elsie Whitford Haskins, president; Mrs. Leroy Harvey, vice president; Mrs. E. J. Bell, recording secretary; and Mrs. R. F. Brownlee, treasurer. They would like to hear from Delta Zetas in Napa, Fairfield, Suisun, Benicia, and Rodeo, in order to build their group.

## Attention-College Members

### PITTSBURGH PANHELLENIC SCHOLARSHIPS

The City Panhellenic Association of Pittsburgh, Pennsylvania, will have one or more scholarships, in the amount of \$100.00 each, available for the academic year 1954-55.

#### APPLICANTS MUST BE:

1. A member, in good standing, of an active Chapter of an N.P.C. Fraternity.
2. A sophomore or junior at the time of application, in a college or university outside Pittsburgh.
3. A resident of the Pittsburgh, Pennsylvania vicinity.

Scholarships are awarded on the same basis as those given to undergraduates at the University of Pittsburgh and Carnegie Institute of Technology; i.e.

1. A quality point average of 2.0 (on a 3-point basis), or a B average, for her entire college career to date.
2. Contribution to her fraternity as determined by active participation in chapter life and responsibilities.
3. Contribution to her college or university as evidenced by participation in campus activities, and membership in honorary groups.
4. Financial need. Where all other things seem equal, choice will be made in favor of the junior who might otherwise be unable to return to school for her senior year without financial assistance.

Personal interviews with the Scholarship Committee of Pittsburgh Panhellenic Association will be conducted as soon as possible after the close of the academic year 1953-54. Application should be made on the form below as soon as possible, but not later than April 1, 1954.

DUELLA S. STRANAHAN, *Kappa Alpha Theta*  
President

---

Name	Class
College or University	Fraternity
Home Address (Please include postal zone)	
School Address	
Miss Audrey Green, Scholarship Chairman 5921 Hobart St., Pittsburgh 17, Pa.	Date

Please send me an application blank for the scholarship to be awarded by Pittsburgh Panhellenic Association to a Pittsburgh girl attending school outside the City.



## New Project Announced

**M**RS. HOWARD McDANIEL, chairman of the Project Committee, announces that a new line of paper products are now available for sale to college and alumnae chapters. Stationery, informals, place cards and playing cards are engraved with the Delta Zeta crest. Napkins, coasters, guest towels, matches, and foil ash trays are stamped Delta Zeta in gold.

ITEM	COLOR	PRICE
Stationery, Engraved 24 envp; 48 sheets box	White	\$1.25 Box (10 box min.)
Informals, Engraved 100 cards, 100 envp box	White	4.25 Box
Napkins, Gold-stamped Beverage size	Wh., Green, Pink	8.00 500
Luncheon size	Wh., Green, Pink	8.50 500
Place Cards, Engraved	White	3.75 100
Coasters, Gold-stamped	Green	2.05 100
Towels, Gold-stamped	Pink	2.90 100
Matches (10 strike)	Black, Gold-stamp	2.90 100
Foil ash trays	Gold, Stamped in Black	4.25 100
Playing Cards	Gold-Stamped	2.75 dbl pack

Order blanks and complete information about these products have been sent to chapters. Support the Delta Zeta Endowment Fund by ordering your chapter's paper products through the Project Committee. Send all orders or inquiries to:

**Mrs. Howard McDaniel**  
**6120 St. Clair Avenue**  
**North Hollywood, California**

### IF YOU

## Have Changed Your Name or Address

Please fill in this notice NOW and mail it to  
 NATIONAL HEADQUARTERS, 1325 CIRCLE TOWER, INDIANAPOLIS 4, INDIANA

Maiden Name ..... Chapter .....

Husband's Name..... Date of Marriage .....

### FORMER ADDRESS

Name .....

Street and Number .....

City, and State .....

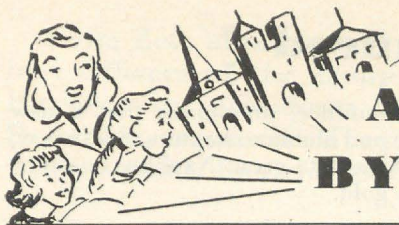
### PRESENT ADDRESS

Name .....

Street and Number .....

City, Zone and State .....





## ALUMINATIONS BY GRADABOUTS



Evanstonian Mabel Obenchain, promotion manager of Famous Features Syndicate, was re-elected as vice president of the Advertising Federation of America at the 49th annual convention in Cleveland. She is a past president of the Women's Advertising Club of Chicago. Last year, as vice president of the AFA and chairman of its council on women's advertising clubs, she visited and talked before 22 clubs of advertising men and women in the east and midwest.

★ ★ ★

Dr. Eunice Carmichael Roberts, Alpha Beta, and member of the 1953 Woman of the Year Court of Honor, has a Δ Z "full house." Her daughter, Roberta Roberts Harrison, is also a member of Alpha Beta chapter. She is a Phi Beta Kappa like her mother, and also received her M.A. at the University of Illinois. Dr. Roberts' son Jack is married to Elene La Liberté, another Alpha Beta member.

★ ★ ★

Marguerite Kroener Speer, Theta, of Worthington, Ohio, is one of three national winners receiving a new car in an essay contest on Rusco Combination Windows. She is a member of the Columbus Alumnae Chapter.

★ ★ ★

Jessie Johnson, president of the Spokane Alumnae, reported that Delta Zeta, under the guidance of Johnnie Tustin, Elizabeth Gadau and Dorothy Devine, participated in the Panhellenic TV show on November 6, telling about philanthropic work.

★ ★ ★

The Tacoma Alumnae Chapter is still working with the Cerebral Palsy School for which Ruth Shumway is Ways and Means chairman.

★ ★ ★

Along with her many other accomplishments, Virginia Lovejoy Bowers, Woman of the Year Court of Honor Member, is so adept at interior decorating that she planned the decorating of the entire interior of the beautiful new home of Alpha Psi chapter at Southern Methodist University.

★ ★ ★

Helen Harris, Epsilon, has been elected second vice president of the Michigan State Federation of Women's Clubs. She is the first junior to hold this office. Helen is also Director of Counseling and Attendance in Muskegon Heights, adviser of Sub Juniors (a teen age organization), on the Recreation Board, and a member of the Child Guidance Clinic.

★ ★ ★

Helen Rachel Parker has her own orchid greenhouse in California near San Mateo. She also trains WAC recruits one evening a week.

★ ★ ★

Mary Goss, Gamma, is head librarian in the research department of Carleton College, Northfield, Minnesota.

★ ★ ★

Five Epsilon graduates of the class of 1928 attended their 25th class reunion at Indiana University in June. Not one knew that any of the others were going to be

there. It was announced at the class dinner that Delta Zeta had more members present than any other sorority or fraternity. Those attending were Dorothy Benner Rieke, Indianapolis, Ind.; Ilene Ormsby Byrne, Natchez, Miss.; Beulah Young, Bloomington, Ind.; Helen Lynch Kirker, College Corner, Ohio; and Juanita Carnelley, Elkhart, Ind.

★ ★ ★

Connie Parvey, Gamma, has accepted a position on the staff of the Dean of Women at Duke University, Durham, North Carolina. She will be a residence counselor for Women's Dormitory and adviser for student groups.

★ ★ ★

Marge Booker Foster, Epsilon, has been elected new president of the Junior Michigan State Federation of Women's Clubs. She is also Regent of the Muskegon chapter of the D.A.R., president of Lakeshore Alumnae chapter of Delta Zeta, president of Muskegon Heights Junior Women's Club, secretary of Regional Council 13 of the Michigan Education Association, and delegate from Muskegon Heights to the M.E.A. Representative Assembly.

★ ★ ★

Lucille Hunt Pendell, Alpha Epsilon, and librarian at the Gallaudet College (for the deaf) was speaker for the Washington, D.C. Alumnae Chapter's observance of Founders' Day.

★ ★ ★

Mildred Deischer, Beta Kappa, is busy as assistant state supervisor of home economics education in Oregon. She is also state adviser for Future Homemakers of America, working with high school students.

★ ★ ★

A Beta Kappa far from home is Marilyn Ousdahl Hansen who has been living "by the shores of Tripoli" in Africa for nearly two years. Her husband, Capt. Merlin Hansen, is stationed with the Air Force there.

★ ★ ★

Lois Korslund is in Norway as one member of the International Farm Youth Exchange Program. She sailed from Montreal on June 16 and remained in Norway until the early part of November. Lois is a member of Beta Kappa chapter.

★ ★ ★

From the Washington, D.C. Alumnae *Chatterbox* comes this report on traveling Δ Z's: Felicia Miller, who last year toured France, Spain and Italy, this summer wandered through the Scandinavian countries. Zelta Rodenwold attended the Eighth International Congress on Home Economics in Edinburgh, Scotland, as the official delegate from the U.S. Department of Agriculture. She was accompanied by two sisters who are also Δ Zs from Oregon. Margaret Gurney has gone to Sweden for a conference with the Bureau of Statistics for the Swedish government in Stockholm; then she will stop several places in Germany, on to Rome for another conference, on to London, and finally home. Dr. Dorothy Torpey will spend this next year in Europe. Miriam Curson and Mona Bolles have gone to London to stay! Margaret Jenkins visited Mexico and Havana.



# Delta Zetas ON CAMPUS

## PROVINCE I NORTH

### Alpha Upsilon—University of Maine

With the fall semester well on its way, Alpha Upsilon has hopes for a great year. Upon our arrival we staged a very profitable rummage sale.

President, Donna Richardson, made new suggestions for fall rushing. We elected Betty White, assistant treasurer; Diana Eslin and Kay Zoidas, co-publicity chairmen; Shirley Putnam, standards; and Faith Wixon, assistant rush chairman.

Now that upper-class rushing is over, we claim six new pledges: Martha Burow, Christine Hurd, Mary Pelletier, Betty La Furley, Betty Tucker, and Gwenita Knowlton.

In commemoration of Founders' Day, Alpha Upsilon held a tea October 26 in the new Memorial Union. Among our guests was Mrs. Jean Cody Sullivan, national secretary.

PAMELIA POOR, *editor*  
DONNA RICHARDSON, *president*

### Beta Alpha—University of Rhode Island

After a grand summer everyone has returned to Beta Alpha full of spirit, enthusiasm and good will. Newest initiates living in the house are Marilyn Barnes, Joyce Collins, Patricia Dodge, Barbara Manley, Marcia Matteson, Nancy Nelson, Marcia Sayles, and Ann Tolderlund. We also have Mamie Lynn Carter, June Fitzpatrick, Janet Giordani, Maria Passannanti, Margaret Sullivan, and Louise Sylvia living with us as pledges.

Our homecoming display, "Floating Along to Victory," won second place. It consisted of a large soap bar with many colored balloons.

The new rushing program on campus consists of small informal parties rather than one elaborate party. Restriction of a one point or C average has been removed but our chapter will continue to stress high scholarship.

Founders' Day was celebrated with a buffet supper. Five girls visited Alpha Kappa Chapter at Syracuse University. It was wonderful to exchange ideas with them.

BARBARA TOEGEMANN, *editor*  
JOYCE GIBLIN, *president*

### Gamma Beta—University of Connecticut

Gamma Beta pledged Barbara Coletti, New York City, and Marjorie Costanzo, Stamford, Connecticut recently.

We initiated five girls October 7 when we were privileged to have with us Mrs. Jean Cody Sullivan, our national secretary. They are Anita Bohmer, Leatrice Frankland, Elizabeth Kinsey, Jean Alice Marsh, and Cynthia Meadnis. The week's festivities were climaxed by the traditional dinner dance at the chapter house.

Mrs. Irma Foden, New York City, is our new house-mother. An informal coffee was held in her honor October 18.

Delta Zeta took top honors at the St. Lawrence football rally winning a trophy for the most original and appropriate slogan for beating the St. Lawrence football team.

Gamma Beta welcomes Joanne Campbell, a transfer from Bowling Green State University.

BARBARA COLEMAN, *editor*  
LEE SMITH, *president*

## PROVINCE I SOUTH

### Alpha Zeta—Adelphi College

Alpha Zeta Chapter's president MaryRose McCrystal stars in "The Madwoman of Chaillot" and is a member of Dean's List.

We received the scholarship award at State Day in the Hotel Statler in New York City along with the attendance award.

Olga Schlottmann and Sabina Dia are on Dean's List, a group of honor students.

Joyce Bonomi is also starring in the play with our president.

Recently the initiates and alumnae conducted a cookie sale in Hempstead, New York. Members baked the cookies and the profits went to the Hearing-Aid Fund of the Sorority.

During the year the athletic interests have been upheld by Ann Brod, swimming, and Josephine Salvato, tennis.

The singing trio of Norma Dia, Marion Oltmann and Olga Schlottmann was a big success at our rushing functions. Alumnae were very co-operative.

ANN BROD, *editor*  
MARYROSE MCCRYSTAL, *president*

### Alpha Kappa—Syracuse University

Alpha Kappa officers are Eleanore Hawie, president; Barbara Lewis, first vice president; Mary Lou Talmage, second vice president; Patricia Webb, recording secretary; Jane Sheckells, corresponding secretary; Angele Agababian, treasurer, and Clara Willey, historian.

This summer Eleanore Hawie, Clara Willey, Cindy Stewart, and Jo Counterman spent a week vacationing on an island on Lake Rideau in Portland, Ontario.

CLARA WILLEY, *editor*  
ELEANORE HAWIE, *president*

### Gamma Eta—Hunter College

June did not find us bidding each other a fond farewell until September, since we held weekly meetings every Friday during the summer. In addition we spent two weeks in a cottage at Hampton Beach in New Hampshire.

Rushing opened with a tea and closed with a formal dinner. This season our girls depicted everything from "Eve" through "Florence Nightingale" to "Angels" in our "Delta Zeta Heaven Rush." Our alumnae, as well as the New Jersey Alumnae Chapter helped. Charlotte Freygang, Grace Poe and Mrs. Howard Bonnett, Delta Zeta's "Woman of the Year 1950," were among those from New Jersey who gave their support.

Our latest project is to increase our knowledge of and friendships with other chapters in Delta Zeta. Our girls are writing to the girls in the Beta Alpha Chapter at Rhode Island University.

Some of our girls have distinguished themselves on campus for scholarship and extracurricular activities.





GAMMA ETA PLEDGES. Top to bottom: Edna Malina, Toni Malizia, Dolly Di Gregorio, Marge Nelson.

Anne Pattie, Patricia Butler, Frances Brandes and Paula Italia are on the Dean's List. Concetta De Nave was elected Publicity Chairman of the Student Self-Government Association and the Italian Club. Gloria Patkelmo was elected Interclub Delegate by the Panhellenic Association. Patricia Butler is a member of Theatre Workshop and is working on the technical production of the "Madwoman of Chaillot." Pat is also in the cast of the original musical comedy "High Spirits," written by the students of Hunter.

PATRICIA BUTLER, *editor*  
MARY O'SHEA, *president*

## PROVINCE II

### Omicron—University of Pittsburgh

Starting off what we hope will be a most eventful year is Omicron Chapter. Among our social activities were a Halloween party and a Christmas formal. At Christmas time, there will be a party for orphans at the house. Our standard's chairman, Jane Morrell, has scheduled Dr. Martin to discuss social relationships; Pat Ritz, to outline her European trip, and a Religion-in-life Week program.

Many Omicron members take an active part in campus activities. Among them are Pat Ritz, Zora Kukic, and Millicent Maravich, members of Mortar Board; Pat Ritz, president of Women's Self Government Association; Zora Kukic, chief justice of Senior Court; Shirley English, Quo Vadis Representative to WSGA; Nancy Creasy, Joan Stigers, Ruth Ireland Kutz, Pat Ritz, Millicent Maravich, and Zora Kukic, Senior Mentors; Pat Woods, Jane Pickering, Nancy Muhlheizer, Zora Getting, and Pat Ritz, Student Congress Representatives.

Joan Stigers, literary editor of *The Owl*, student yearbook; Ruth Ireland Kutz, Norma Kraus, Peg Close, Beverly Nemeska, Nancy Creasy, Irene Powlenok, members of Heinz Chapel Choir; Norma Jurso, corresponding secretary of WSGA; Lois Grosz, recording secretary of WSGA; Zora Getting and Jane Morrell, Cwens; Pat Ritz, Zora Kukic, Jane Pickering, Pat Woods, and Lois Grosz, Quo Vadis; and Nancy Creasy, secretary of the Class of 1954.

DORIS JOHNSON, *editor*  
NANCY CREASY, *president*

### Alpha Delta—George Washington University

"Activity" seems to be the order of the year in Alpha

Delta chapter. With the aid of our alumnae and Mother's Club, our sorority apartment was redecorated prior to the opening of school and formal rush. Our new pledges, Joyce Gray, Anne Hunt, Marilyn Jones, Kathy Massas, Margaret McGraw, Betty Park, Irene Schuler, and Helen Taylor made their campus debut at our annual Rose Formal, which was held on Founders' Day as part of Delta Zeta week. At the dance we crowned Gini Page, our president, as "Dream Girl of Delta Zeta" and presented her with a spray of Killarney Roses. Other activities of Delta Zeta week included the Founders' Day Banquet and an open house held for all Alpha Delta alumnae. The week was climaxed by our winning of the first place trophy in the University House Decoration contest. Besides the gleaming trophy, our victory earned the chapter bonus points towards the coveted Colonial Booster Award. This is given to the sorority and fraternity who have done most to boost school spirit.

Campus citations go to Jackie May who was recently elected to membership in Delphi, an honorary for outstanding sorority women, of which Marily Kettler and Gini Page are already members; and to Audrey Follien, our treasurer and candidate for Homecoming Queen.

Individually we are represented in such organizations as Traveling Troubadors, Art Club, Dance Production Group, Future Teachers of America, Glee Club, Womens Recreation Association, and Debate Team. As a group we are proud of our one hundred percent membership in the Colonial Booster organization.

VIRGINIA PAGE, *president*

### Beta Theta—Bucknell University

Beta Theta is swinging into high gear for a year of fun and friendship. Most of this first semester is centered around plans for rushing next semester, but we are also planning many absorbing projects such as an all day sorority picnic, a homecoming float in co-operation with Phi Lambda Theta, and a Panhellenic-Interfraternity Council dance.

Last semester we initiated sixteen of our seventeen pledges. New officers are Jacqueline Jolly, president; Virginia Martin, first vice president; Lucille Baylis, second vice president; Barbara Anderson, recording secretary; Margaret Klugh, corresponding secretary; Dorothy Ryan, treasurer.

Our initiates have been quite active in campus activities. Elected to Honor House are Shirley Hess and Jacqueline Jolly. She received the Samuel Lewis Ziegler Prize for excellence in French conversation at Bucknell's annual Convocation.

Other awards presented at this time were The Bucknell Prize for Women to the sophomore showing the greatest proficiency in English Composition and Literature to Martha Roberts; The Allan Gates Halline Prize for aptitude in American literature to Claudette Kemper, president of Sigma Tau Delta, English honorary.

Beta Theta also received the Panhellenic Scholarship Cup for the highest academic average for 1952-53. This is the fourth straight year we have won.

Shirley Hess was elected vice president of the Women's Student Government Association. Virginia Nill is treasurer. Ellen Diefenbach and Jean Weaver have been elected as junior counselors.

LESLIE TOZIER, *editor*  
JACQUELINE JOLLY, *president*

### Gamma Delta—Pennsylvania State College

Gamma Deltas wound up the 1953 spring semester in a rush of Spring Week activities. Phi Kappa helped with our float for the parade, and in producing "Mother Goose Goes Collegiate" for the carnival.

September 21 found us in the midst of formal rush-



ing, during which we became Indians for the "D Z Pow Wow." We pledged Jane Applegate, Morrisville; Betty Barbieri, Carlisle; Joan Bianchi, Avonmore; Dolores Casiato, Upper Darby; Joetta Hall, Fredricktown; Jean Keatley, Alexandria, Virginia; Nancy Kishler, Brockport, New York; Connie Paulakos and Bernadette Sheehan, Johnstown; Barbara Rhoades, Springfield; Helen Rothlisberger, Washington; Yvonne Vanduren, Erie; Claudia Webster, Conshohocken; Joan Wilson, Hawley.

Our social whirl began with dinner and entertainment at Chi Phi Fraternity. The following week, our initiates took pledges to dinner, and later held a spaghetti dinner in the suite for the alumnae of State College. Founders' Day was observed by a banquet at the Nittany Lion Inn. Plans for the future include a booth for Mardi Gras, the annual Pledge Dance, and Knit Bazaar.

Some of Delta Zeta's greatest competitors for the time of its members are: Carolyn Baer is senior manager of costumes for Penn State Players; Peggy Reilly, Joan Bianchi, Betty Barbieri, Bernadette Sheehan, and Connie Paulakos have roles in the Fall Thespians' production, "Let's Face It"; Connie, Bernadette, and Alice Colbert are members of the Modern Dance Concert Group; Jean Johnston is secretary-treasurer of ACEI; Peg Spedding is president of Pi Omega Pi; Alice Colbert is president of Lakonides, and Joetta Hall, president of Chi Theta, and Louise Moreman is vice president of Panhellenic Council.

ALICE COLBERT, *editor*  
MARY SULLIVAN, *president*

### **Gamma Phi—Indiana State Teachers College**

Each Saturday afternoon we helped at the Indiana State Hospital.

Our float for Homecoming was entitled "150 Years of Progress." It had two large birthday cakes with Patricia Neuroth representing 1803 and Patricia Hobough as 1953. After the football game we held a banquet for members and guests.

New pledges are Esther Niner, Dolores Dick, Marjorie Marth and Carmella Carnalucci, an art student from Argentina.

NADIA MALICK, *editor*

## **PROVINCE III**

### **Alpha Theta—University of Kentucky**

New initiates are Irene George, Lebanon; Vera Baldridge, Lexington; Shirley Rasdale, Lexington; and Pat Hoffman, Louisville. We pledged Beverly Sims, Fort Thomas; Carol Walter, Louisville; Mary Burns, Lexington; Jance Frost, Madisonville; Martha Eirk, Madisonville; Joyce Moore, Mossy Oaks, South Carolina; Virginia Snodgrass, Alva; and Sue Bailey, Middletown, Ohio.

During open rush we pledged Kay Reagin, Tallahassee, Florida.

Sally Hoffman and Carolyn Turner will sing solo parts in *The Messiah*. Sally also sang each day of the season at the Lexington Trots and received an orchid daily for her contribution.

Carolyn has been asked to sing in an opera written by an U. K. professor. Debbie Schwartz has been assigned by the head of the journalism department to cover the Kentucky Farm Convention in Louisville. Debbie is also president of the House Presidents' Council.

Yvonne Eaton was initiated into Alpha Lambda Delta, national freshman honorary for women, and was elected



ALPHA'S THETA'S CANDIDATE for Lances' Carnival Queen at the University of Kentucky is Yvonne Eaton. Wearing pink and black, she received much praise as the loveliest coed.

Yvonne, whose home is in Corbin, Kentucky, received the Theta Sigma Phi award for the outstanding freshman woman in journalism. In addition she is corresponding secretary of Alpha Lambda Delta, member of English Club, Kernel Staff and House Committee of the Student Union.

corresponding secretary. Jackie Averill and Jean Fraser are again this year editors on *Stylus*, a literary magazine. Jackie was recently pledged to Chi Delta Phi, national literary honorary.

At our Founders' Day Dessert Sylvia Simmons was voted the outstanding senior. Carolyn Turner received the Jesse Wilson rotating bracelet for the girl that has done the most to help Alpha Theta.

Among our other activities were a tent show, "From Here to Obscurity," for Lances Carnival. A tea honored our new housemother.

Our dance will be held at the Boiling Springs Country Club with a breakfast at the house afterwards.

Last semester we again were recognized for our outstanding scholarship. The actives had an overall of 1.9 out of a perfect 3.0 and the house average was a little better than a 2.

YVONNE EATON, *historian*  
SALLY HOFFMAN, *president*

### **Beta Gamma—University of Louisville**

Our rushing parties included a garden party, a night club party and a disc jockey show. Since our president



Mary Kaye Wolfe transferred to Western State Teachers College we elected Martha Renfrow to finish out her term.

Betty Johnston was initiated into Mortar Board.

As our citizenship project we are working on the Bookmobile. It helps bring reading material to those in rural areas.

LEAH GALANTER, *editor*  
MARTHA RENFROW, *president*

Beta Gamma is off to a fine start with fifteen new pledges. Celebrations included a tea on November 22 given by the Mothers' Club for pledges, their mothers, college members and alumnae. Among the guests were Hilda Threlkeld, Dean of Women, and her assistant, Miss Doris Nickel. We were also entertained with two dinner parties given by alumnae, one given by Mrs. Robert Ross, and the other by Mrs. Robert Muth with Mrs. Elsa Geary and Mrs. Edna Chelton, co-hostesses. A finishing touch was added by the T K E's with a party given in our honor at their newly redecorated house.

Two of our members, Bebe Bailey and Carol Sharpe, were elected as sponsors by the Air Force ROTC on campus. Bebe is co-editor of the *Static*, the AFROTC newspaper, and a member of the rifle team. Marguerite Stevens and Tinker Everhart held prominent roles in "Twilight Walk," the first drama workshop production.

Delta Zeta is well represented in the Future Teachers' Organization. Temple Hill holds the office of state treasurer, Martha Breland is vice-president of the local group, and Joy Williams and Joann Boerner are members. Our representative for Thoroughbred Queen is Ina Marie Wittig; the queen will be chosen by John Robert Powers. Joy Williams is our candidate for Queen of Triangle fraternity's Winter Formal. By the way, Joy, former Miss Kentucky and Miss City Beautiful, is also leading our Can-Can line which competed in Lambda Chi's Can-Can contest held in November.

We are also looking forward to our annual Big Sister-Little Sister Christmas Party.

PAT STURGILL, *acting editor*  
MARTHA RENFROW, *president*

#### **Beta Lambda—University of Tennessee**

New officers of Beta Lambda are Emma Jean Leek, president; Janice Jones and Dot Mabry, vice presidents; Anne Davis, recording secretary; Phil Smith, treasurer; Margaret Cameron, corresponding secretary; Willie Hammond, rush chairman; Margaret Brown, chapter historian.

Anne Davis was chosen runner up for Cherry Blossom Queen last spring and was also one of the twenty-four U-T beauties.

On September 29 we initiated Pat Reich.

Beta Lambda was happy to pledge eighteen pledges during fall rush. They are Betty Blanton, Nashville; Nona Childress, Chattanooga; Gail Clark, Spencer; Martha Couch, Madison; Barbara Ford, Nashville; Joan Fracchia, Memphis; Helen Freeman, Maryville; Sandra Golden, Atlanta; Marlene Little, Newton, North Carolina; Terry Ann Long, Maryville; Carol McSpadden, Knoxville; Mary Moore, Columbia, South Carolina; Mardy Oxendine, Knoxville; Ann Ridings, Maryville; Shirley Staples, Knoxville; Carol Steele, Atlanta; Nancy Underwood, Knoxville; Martha Skinner, Memphis.

MARGARET BROWN, *editor*  
EMMA JEAN LEAK, *president*

#### **Gamma Iota—Memphis State College**

Gamma Iota has pledged seventeen girls. Rush parties included the pink elephant party, the secret ambitions party and a Candlelight Supper.

Leonora Gill was presented a cup from the alumnae for the most improved scholarship in the group.

We are busy planning for Founders' Day, a slumber party, a Halloween Outing, a Christmas party to be given by the Mothers' Club and a chicken and beans scholarship dinner. Girls with a B average may eat chicken. Members with a C average are required to spend three hours a week in the library. Those not making a C average must spend five. A register has been placed in the library for the girls to sign and letters will be sent out to each parent at the end of the quarter informing them of their daughter's standing, scholastic and otherwise.

Ann Haines and Jean Cross, new pledges, are drum majorettes. Ann Spears Thomas was elected president and Ruchie Webber, secretary of Lambda Delta, freshman honorary society. Ann Dodd was appointed chairman of the decorations committee for the Junior Dance.

LEONORA GILL, *editor*  
IMOCENE GORDON, *president*

### **PROVINCE IV**

#### **Beta Mu—Florida Southern College**

We purchased new lamps for our chapter room and redecorated some of the rooms. Our open house was held October 10.

This year we won the volley ball tournament. Chapter members presented a minstrel number for the Cap and Gown party honoring new students. We were in charge of entertainment for the College birthday dinner. Our skit depicted "Do's and Don'ts of Rushing."

Linda Pearson, Rusville, Illinois, and Barbara Hinsey, Durham, North Carolina, were recently initiated.

ANNE SAVAGE, *Historian*

#### **Beta Nu—University of Miami**

New officers are Jean Maguire, president; Enelle Nobles, first vice president; Eugenia Adams, second vice president; Pat Dunn, recording secretary; Diana Metts, corresponding secretary; Janet Miller, treasurer; and Helen H. Hilson, historian.

We were third in scholarship and had sweethearts of two fraternities, Audrey Larson for Alpha Tau Omega and Janice Carey of Delta Sigma Phi.

In the biggest beauty contest ever held on this campus, Mary Alice Creekmore captured the coveted IBIS QUEEN title.

Lola Ruth has been studying voice in Italy and had several major roles there. She plans to stop in New York City on her way back and try for a Broadway role.

We started off our rushing season with our "Greek Toga" party. All members wore togas, sandals and cherry wreaths. Food included grape juice and fried chicken served on leaves. We sat Greek style on pillows and feasted on apples and grapes.

Sally Deren, who earned a varsity letter on the fencing team, became the first female member of M-Club, which is open to Varsity letter holders and outstanding athletes.

HELEN H. HILSON, *editor*  
JEAN MAGUIRE, *president*

### **PROVINCE V NORTH**

#### **Gamma Kappa—Kent State University**

Honored at the Rose Ball in May were Barbara Pickering, chosen Dream Girl of the Year for her outstanding chapter work, and Mrs. Robert I. White for her help and encouragement as an alumna advisor.





PRESIDENT ANITA EWING presents Barbara Pickering with a bouquet of roses. Barbara was chosen Dream Girl of the Year by Gamma Kappa chapter.

Three trophies and a medal were added to the mantel last year. Carol Roof and Elsie Engel rowed their way to a trophy at the annual Rowboat Regatta. Gamma Kappas captured the May Day Relay trophy for sororities. Perfect attendance at Ohio's State Day brought home another trophy. The Campus Day float "A Steady Stream of Progress" won a first prize medal in the Ohio sesquicentennial division.

During the year Christmas and Valentine parties were given for the retarded children's school. Cigar boxes were decorated and filled with sewing materials and toilet articles for the children's health camp.

To earn money for the pledge scholarship award which pays half the pledge fee, Gamma Kappas washed cars, sold home-baked cookies, and served at banquets.

Initiated in May were Eleanor Bujalski, Cleveland; Virginia Colson, Warren; Carole Grosser, Cleveland; Sandra McIntyre, North Canton; Sue Patrick, Akron, and Kay Sexton, Elyria.

Kent alumnae presented Gamma Kappa with tarnish-proof silver bags, and the Akron alumnae gave members snack sets for the fifth birthday of the chapter.

Janice Eberhardt, a transfer from Gamma Alpha at Baldwin Wallace, was welcomed by the chapter this fall.

Two vacancies were taken by Betty Steinkemper Jones, first vice president, and Anne Wood, second vice president.

SYLVIA CARUTH, *editor*  
ANITA EWING, *president*

#### **Gamma Tau—Bowling Green State University**

Early last spring Gamma Tau initiated Karlene Anshutz, Shirley Brechmacher, Betty Lou Claypool Bruning, Janet Crane, Sue Ann Coburn, Doris Cvetic, Rose

Marie Davis, Barbara Dowds, Shirley Grimes, Marilyn King, Lillian Koehler, Louise Kulhman, Helen Long, Janette Lott, Marilyn Ray, Patricia Reynolds, Jean Spencer, Dolores Szostak, and Joan Wilson.

At our annual Mother's Day Banquet we presented our housemother, Mrs. Mildred Sampson with a Delta Zeta Mother's pin.

Joyce Crede was elected Panhellenic president while Dorothy Cooley is the new president of Kappa Phi. Joy Traver is vice president of Kappa Delta Pi and Future Teachers of America. She has also been elected to Book and Motor, a scholastic honorary.

At the annual Honors and Awards Day, Agnes Oates graduated Magna Cum Laude and received the Ann Batchelder Award, the English Departmental Award, the Faculty Women's Club Award, and the Book and Motor Scholarship Award.

Jeanne Butler graduated Cum Laude.

Over the summer new initiates made an activities board on which names and activities are recorded.

Our annual Senior Breakfast was held in May honoring the graduates.

Gamma Tau held its annual orchestra dance, "Starlight Street." A thousand glittering stars composed the ceiling, and the band stand carried out the theme. Lamp posts and park benches added to the atmosphere. Dancers entered through a blue angel-hair cloud, sprinkled with stars.

The pledge class of last spring joined a fraternity pledge class and donated their services to the people of Bowling Green for a day. The money taken in was given to the cancer drive.

At our Initiation Banquet last spring we named Carol Charles our outstanding senior and Barbara Dowds the outstanding pledge.

Berneda Ruck and Jack Taylor were chosen as the Rose Couple at our annual Rose Formal.

DORIS BENDER, *editor*  
JOY TRAVER, *president*

### **PROVINCE V SOUTH**

#### **Alpha—Miami University**

Alpha Chapter returned to find a beautifully re-decorated suite, thanks to the alumnae.

We pledged a full quota including Ardel Adam, Grosse Ile, Michigan; Barb Allen, Newark; Judy Anderson, Dayton; Cynthia Armstrong, Dayton; Jeri Barnhill, Marion; Jean and Joan Cestone, Youngstown; Ann Chamberlain, Hamilton; Sue Egan, Miamisburg; Mary Ferguson, Oxford; Barb Fullerton, Kingsville; Jean Hambleton, Middletown; Pat Holland, South Bend; Judy Lambert, Miamisburg; Jeune Larrick, Cambridge; Nancy Landen, Dayton; Ann Lopina, Lincolnwood, Illinois; Dolores Martin, Reading; Jo-Hanna O'Neill, Jefferson; Judith Mitchell, Fredricksburg; Gerry Shunkwiler, Canton; Joan Sicafuse, Poland; Nancy Teach, Piqua; Nancy Tischer, Birmingham, Michigan.

Now wearing the Golden Lamp of Delta Zeta are Ann Anderson, Carol Cappel, Sandy Saly, Nancy Haas, Sue Higley, Linda Hoff, Evie Jerome, Carolyn Measell, Gail Perin, Betty Plantz, Judy Russell, Joan Shumway, Sandy Tischer, Gaye Ward, Barb Welles, and Jan Wimer.

We had an open house get-together with the new pledges followed up by a wiener roast with a fraternity the next evening. Formal pledging was held October 11.

Our annual rush paper, *Delta Zeta Lamplighter*, was edited by Ann Anderson this summer. Articles and pictures of the Delta Zetas on campus include a welcoming speech by our president Jane Richey, newly elected



Mortar Board and Kappa Delta Pi and also on the Disciplinary Board; articles about Nancy Hefner, president of the Women's League, member of the student faculty council, Alethenoi, Kappa Delta Pi, Mortar Board; Marge Mason, editor of *For Women Only* and assistant editor of the campus magazine *The Tomahawk*; Nelda Sciarra, Pi Delta Phi; Jan Morgan, Commercial Business; Cwens, Ann Anderson, Gail Perin, Joan Shumway; program chairman of the Y.W.C.A., Alice Scott; and Nancy Sweet, W.A.A. vice president.

DAWNA PARENT, *editor*  
JANE RICHEY, *president*

### Theta—Ohio State University

Last spring Theta initiated Sally Demuth, Corrine Fergus, Mary Kay Fischer, Shirley Huff, Julie Petit, Carol Pierce, Nancy Reichard, Frances Rings, Jane Vannorsdall and Bonnie Oyler.

Delta Zeta is again showing faith in activities with a girl in each of the sophomore, junior and senior women's honoraries. Bonnie Oyler is in Mirrors, Anne Clark in Chimes, and Mary Hough in Mortar Board. Many girls are in the honoraries of their special fields. Last spring active chapter was fifth among sororities in scholarship and the pledges were seventh.

The Chapter House is getting a new addition and interior remodeling and will house 34 girls when completed.

Miss Irene Boughton, National Executive Secretary, was our guest again at rushing this fall. Our sixteen new pledges are Marilyn Wortman, Kathleen Myerholtz, Jane Goltz, Alice Verity, Sallie Lou Grappy, Marilyn Saxton, Margery Patterson, Nancy Ireland, Jeannene Wright, Eleanor Dask, Lou Ann Campbell, Myrna Zellers, Joan Harper, Julie Booker, Nancy Waler and Janet Eckelberry.

Social schedule for the fall includes the formal at the Deshler Hilton Hotel, Christmas party for underprivileged children, big and little sister Christmas gift exchange, Sadie Hawkins Dance, Homecoming Decorations, Founders' Day dinner, pledge parties, Sophomore Party skit and song practice for Intramural Sing.

Shirley Coyle, a transfer from the University of Kentucky affiliated with Theta. The thirteen girls to be initiated fall quarter are Martha Darnell, Carlyn Diehl, Mary Lou Frank, Joanne Grove, Charlotte Lutz, Edna Parker, Johanna Shetter, Eleanor Cervi, Carolyn Dicke, Margaret Thomas, Joyce Grauser and Pauline McDevitt.

BEVERLY BAILEY, *editor*  
MARILYN EDRIS, *president*

### Xi—University of Cincinnati

Xi pledged Mureen Foster, Laurely Kyrilach, Gloria Miller, Eloise Orleman, and Lois Rahm. At the banquet afterwards the outstanding pledge award was given to Margaret Mosehart.

Alene Verran was named outstanding senior in the College of Home Economics. Marilyn Cones received the Chi Omega award in sociology. Beverly Borman, Gail Hachtel, and Carol Rhyner are Junior Advisers, while Betty Chase and Lyn Marstall are members of Ivy Chain.

Lyn Marstall was appointed chairman of the Women's Senate Used Bookstore. She also was elected president of Omicron Nu, and represented the UC chapter at the Conclave held in June at Iowa State College. Beverly Borman and Beth Owens are members of YWCA Cabinet.

Our display in the annual Fire Prevention contest received honorable mention. We are planning our Home-



*Xi chapter, University of Cincinnati, received honorable mention and a trophy for their Fire Prevention Week display.*

coming float; we hope to win two consecutive Homecoming trophies.

In addition we found time for several exchange dinners and parties, and are looking forward to our Christmas formal.

LYN MARSTALL, *editor*  
BEVERLY BORMAN, *president*

### Beta Chi—Wittenberg College

Our rush parties consisted of a Mardi Gras with French artists and a gypsy palmist, a Greek Gold with a skit about the meaning of Delta Zeta friendship and an open house.

New pledges are Dorcees Ditmar, Marysville; Norma Carol Driscoll, Dover; Sharon Farlow, Fort Wayne, Indiana; Patricia Pauth, Rochester, New York; Jean McGhiray, Springfield, and Florence Wethoft, Chatham, New York.

Initiated on October 3 were Roberta Weaver, Warren, and Carol Fisher, Springfield.

## PROVINCE VI NORTH

### Beta Pi—Albion College

Beta Pi pledged Karen Hall, Dearborn; Yvonne Larime, Royal Oak; Marilynn Maynard, Grosse Pointe; Janet Thomas, Oscoda; Carolyn Carr, Saugatuck, and Shirley Blunden, Marilyn Brackett, Maribeth Buckler, Muriel Corr, and Catherine Jewell, Detroit. Last May we pledged Gwen Morris, Roanoke, Indiana, and Evelyn Sanders, Detroit.

One of our most successful rushing parties had a Hawaiian theme. A brief skit included a hula by our president, Ann Stowe.

On October 26, we initiated Barbara Bain, Fort Wayne, Indiana; Shirley Brady, Rochester; Janet McNally, Detroit, and Georgiana Protzman, Holland.

Officers are Ann Stowe, president; Maureen Kennedy, pledge trainer; Lee Grill, rush chairman; Dorothy Thomas, corresponding secretary; Edna Humphrey, recording secretary, and Gretchen Personius, treasurer.

The loan on our lodge has been paid and we purchased a new davenport.



At a meeting of the International Student Council of YWCA and YMCA members at the Geneva Conference last summer, Linda Bacon was elected vice-chairman of the YWCA. She is a member of the national board.

Three Beta Pis—Lee Grill, Phyllis Starkweather, and Joan Wieting—along with Inez Draper, Zeta Tau Alpha, have formed a quartet known as "The Four Muses." In addition to entertaining at several all school functions, the girls worked as singing waitresses at the House of Ludington, Escanaba, Michigan, this summer.

Carol Chenoweth, Barbara Hawke, Mary Ellen James, Gwen Morris, and Lauralee Thomas, were recently initiated into Alpha Lambda Delta, freshman women's scholastic honorary. Dorothy Thomas was initiated into Kappa Pi, national honorary art fraternity. Gretchen Personius and Phyllis Starkweather are members of Sigma Alpha Iota, national professional music fraternity.

BARBARA HAWKE, *editor*  
ANN STOWE, *president*

### Beta Rho—Michigan State College

Beta Rho initiated on October 10 Mary Louise Grimes, East Lansing; Mary Alice Roell, Greenville, and Rhosan D. Dobben, Jackson.

Jane Burham reigned over the Harvest Ball as a member of the Queen's Court. Selected to the Homecoming Queen's Court was Jeanne Selma Rydholm.

Nancy Anne Harris was named to the Junior Council, an advisory board to the class officers.

Our Homecoming display was a huge spider web. A "Spartan Spider" in it trapped several flies, representing Big Ten football victories this year.

Some 1500 rushees attended our formal teas. Final stages of rushing will take place during January.

KAREN OLSEN, *editor*  
JUDY MATTHEWS, *president*

### Gamma Pi—Western Michigan College

The Inter-Sorority Sing last spring brought us a third place for our "Comin' Through The Rye."

Greek Week was held from May 10-16. Our brother fraternity for the week was Sigma Epsilon and together we carried away many honors. The Sig Eps took second place in the track and chariot races, and we received third place for Skit Night during Greek Week. Gamma Pi president Joyce Bailey was chosen "Greek Goddess" by the Inter-Fraternity Council for her outstanding activities and contributions to Greek life on campus.

"W" Club chose Anne Cefalo as Track Queen for the Mid-American conference. Ricky Dalporto was on the court.

June Breakfast sponsored by AWS honored freshman girls with high grades. The Delta Zetas in the Daisy Chain were Ann Carter, Judy Adkins, Sandra Beaver, Janet Nelson and Cynthia Hale. Betts Snyder and Nina Hyshka were tapped for membership to Arista, senior women's honor society.

Margaret Eddy was chosen "outstanding Senior" and was so awarded at the Honors Convocation. She also received the Kappa Delta Pi Award.

Our return to campus this fall was highlighted by winning first place for entertainment at the All Student Carnival.

September 26 we presented our annual Buttons and Bows dance.

Initiation of our new faculty advisor Mrs. Clayton Maus was held October 7.

Delta Sigma Phi Fraternity chose Delores Lee as queen of their Carnation Ball.

DORIS LOWER, *editor*  
JOYCE BAILEY, *president*

### Gamma Psi—Central Michigan College

Last May 1, 2, 3 we were thrilled to become a chapter of Delta Zeta. Our first activity was a memorable trip to Albion College for State Day.

Two members Sally Dierich and Eleanor Kaiser were elected to "Who's Who in American Universities and Colleges." Sally was Homecoming queen for 1952.

JO NICKORA, *editor*  
NANCY WILD, *president*



FALL 1953 PLEDGES OF DELTA CHAPTER. Standing: Joan Barkley, Judy Rees, Miriam Cole, Patricia Rise, Marietta Coble, Eleanor Lewis, Carol Scheihing. Sitting: Betty Armstrong, Elizabeth Allan, Mary Jane Pietsch, Jane Irwin, Joan Skinner. Kneeling: Carolyn Glover, Luane Urbanek, Carolyn Jones, Sharon Noll.

## PROVINCE VI SOUTH

### Delta—De Pauw University

Delta pledges are Liz Allen, Michigan City; Betty Armstrong, Jasper; Marietta Coble, South Bend; Mirium Cole, Marshall; Carolyn Glover, Hoxie, Ark.; Jane Irwin, Roachdale; Carolyn Jones, Toms River, N.J.; Eleanor Lewis, Davenport, Iowa; Sharon Noll, St. Louis, Mo.; Mary Jane Pietsch, Judy Rees, Bloomington, Ill.; Pat Rice, Potomac, Ill.; Carol Scheihing, Luane Urbanek,



Delta took first place honors for Old Gold Day (Homecoming) decorations with this display:

"We've a FABulous team,  
We'll start a new TREND,  
We'll BREEZE right thru,  
And CHEER to the end."





**DELTA PLEDGES.** Back row: J. Barkley, J. Rees, M. Cole, P. Rice, M. Cobel, E. Lewis, C. Scheihing; middle row: B. Armstrong, L. Allen, M. J. Bietsch, J. Irwin, J. Skinner; front row: C. Glover, L. Urbanek, C. Jones, S. Noll.

Chicago, Ill.; Joan Barkley, Washington, D.C.; Joan Skinner, Morocco; Mary Lynn Harris, Verden, Ill.; Ila Alexander, Marion; Mary Ann Kimmell, Fort Wayne; Jaan Varland, Morris, Ill.; Fay Sullivan, Brooklyn, N.Y.; and Quincy Polk, Pocomoke, Md.

Old Gold Day was October 10, and for the second year we received first prize for our decorations. Carolyn Gipe headed the committee on decorations. The  $\Delta Z$  front yard was turned into a soap box advertisement. Our slogan was "We've a FABulous team, We'll start a new TREND, We'll BREEZE right thru, And CHEER to the end." A good deal of thanks goes to Sally Harris, Marilyn McClellan, Joan Dehn, Norma Hawkinson, Kay Brower, Marje Schneider and Pat Sale who were on the decoration committee. If we win next year, we will be able to keep the Old Gold Day trophy.

This fall we have started a self improvement campaign for Delta including an excellent series of Standards programs. We are having a series of five lectures on successive Wednesday evenings by the Patricia Stevens Modeling School of Indianapolis.

CAROLYN GIPE, *historian*  
JANE ROWLES, *president*

### Epsilon—Indiana University

Several repairs were made on the chapter house this summer. The pillars, balcony and dormitory had been freshly painted, the dining room floor had been sanded, and the living room furniture had been cleaned.

Our new fall pledges are Shirley Spears, Barbata Fortner and Barbara Sue Feedback.

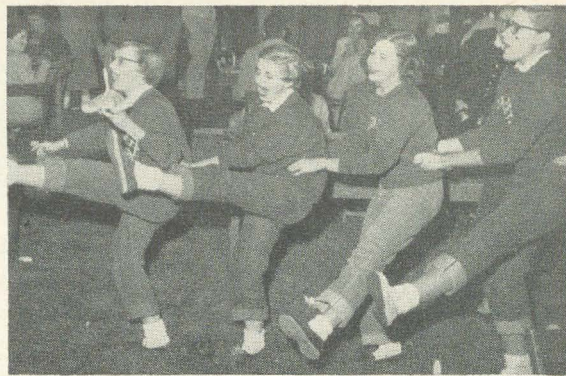
Olympia Aimarette, a graduate student from Brazil, is our annex chaperone.

Patsy Harris was chosen Parliamentarian. Many of the girls were appointed to positions on campus activities this fall. In YWCA Jane Tossell, Ann Averitt, Louann Rutherford, Majorie Fetherstone, Carole Rausch, Laura Hochhalter, Karen Nygord, Sharon Heath, Shad Newkirk, Wilma Olson, Virginia Zell, and Phyliss Goodall are on committees. Mary Ann Espey is on Housing Council and Sue LeBrun is on Projects Council.

In AWS Mary Ann Espey, Shad Newkirk, Dart Ganz, Caroline Cunningham and Judy Wear are committee members.

Dart Ganz, senior editor, Mary Ann Espey, research editor, and Kathy Neff, copy editor, serve on the Arbutus staff.

We won a trophy in October for the most unique display at the Fall Carnival. This was the fourth consecu-



*Epsilon pledges go into a peppy routine to promote watermelon consumption at the annual Sigma Chi "Melon Mess." In the usual order are Ann Porter, Ann Averitt, Karen Nygord and Shad Newkirk.*

tive award this chapter won for its carnival work.

A theme was chosen which set a scene of olden times in the days of the Wizard of Oz. Co-chairmen were Darlene Ganz and Jane Everitt.

ANN AVERITT, *editor*  
NANCY TOMAN, *president*

### Gamma Chi—Ball State Teachers College

In September we sponsored an ice cream social and street dance, an annual event.

Our Homecoming float theme was "The World is Our Oyster." Kathy Conelley, a member of the Student Executive Council and the Student Center Governing Board, was our candidate for queen. A tea for returning alumnae was held after the football game.

On November 7 initiation was held for Joan Bailey, Kay Davis, Janet Frazier, and Mary Little. Also initiated were alumnae of the Omega Sigma Chi who wished to follow the chapter in becoming a part of Delta Zeta. We became Gamma Chi chapter last February.



*New initiates of Gamma Chi, Ball State Teachers College are (standing) Joan Bailey, Mary Little, (seated) Kay Davis, and Janet Frazier.*



In fall elections Freda Wilt and Miriam Acker were chosen president and secretary of Lucina Hall. Doris Harthan was elected treasurer of the sophomore class.

MARTHA VOGHT, *editor*  
PHYLLIS NEFF, *president*

## PROVINCE VII NORTH

### Tau—University of Wisconsin

Twenty-five new pledges were added to the chapter. Besides the formal tea, the group entertained the rushees at an "Aloha" party and formal dinner. Pledging took place Sept. 27.



MOLLY STONER of Milwaukee entertained at Tau's informal "Aloha" party.

Our first social event of the year was an open house for the fraternities and men's dorms. Next event was a buffet supper with Tau Kappa Epsilon. Plans were also made with Theta Chi and Delta Tau Delta for listening parties and for a buffet supper with Lambda Chi Alpha.

Plans for the year include Christmas formal, pledge party, inter-dorm-sorority sports, Founders' Day dinner, Winter Carnival, Spring Sing and spring formal. Last spring, Tau won third place in Spring Sing.

PATRICIA DAY, *editor*  
AUDREY PAFF, *president*

### Alpha Alpha—Northwestern University

First on our agenda was an exciting and busy rush week climaxed by the pledging of twenty-nine girls: Elsbeth Andrus, Pensacola, Fla.; Gretchen Baker, Barbara Reichert, Toledo, O.; Ruth Mary Beers, Muskegon, Mich.; Sandy Belt, Granite City, Ill.; Barbara Brett, Oak Park, Ill.; Marie Carsella, Diana Davenport, Diane Havoroka, Donna Kohn, Rosemary Helen Milos, Janice Prochell, Marie Santucci, Marlene Strand, Chicago, Ill.; Jo Ann Cassens, Edwardsville, Ill.; Iris Donner, Milwaukee, Wis.; Theresa Intellisano, Clifton, N.J.; Jill Kaiser, Manhasset, N.Y.; Roberta Johnson, Rockford, Ill.; Lois Larson, Algoma, Wis.; Nancy Magnusson, East Cleveland, Ohio; Marsda Mead, Blue Island, Ill.; Mary Myster, Kassens, Minn.; Elaine McCaffery, Kenosha, Wis.; Ritha Plainte, Cleveland Heights, Ohio; Sally Rosenheimer, South Bend, Ind.; Sandra Schoeneman, Hawarden, Iowa; Diane Tuttle, Waukegan, Ill.; Patti Bing, Champaign, Ill.

Officers for 1953-54 include Joyce Hertzler, president; Roma Speer, vice-president; Diane Zimmerman, recording secretary; Judy Larsen, corresponding secretary; Nancy Wier, treasurer; Glenn Johnson, house president; Mary Ann Pasternock, social chairman, and Fran Gilbert, standards chairman.

On October 10 our pledges were entertained at a pajama party. On October 11 the Alpha Chi Sigmas (social chemistry honorary) were feted at an exchange dessert; and October 25 the Chi Phis were guests of the chapter. At a recent date dinner Mary Ann Pasternock and Judy Larsen presented a travelogue of their recent European trip. Outstanding Northwestern professors were guests for this program.

We are especially proud of Mary Ann Pasternock who was elected to Shi-Ai, junior women's campus honorary. She is chairman of NU Varieties, WNUR staff director, former vice president of Panhellenic, and now Panhellenic discussion leader. Ruth Brockman is Gamma Delta's new vice president. Carol Kaiser is secretary of Eta Sigma Phi. Mary Myster is in the campus water show, Dolphin Show. University Theatre and Theatre Workshop claim Sally Rosenheim and Liz Mason.

Musically speaking there are ten Alpha Alpha girls in Glee Club. Nancy Garbe sings in A Cappella Choir. Mary Ellen Campbell was initiated into Mu Phi Epsilon, and Roma Speer is a member of Phi Beta, music and speech honorary.

Julie Liegel and Carol Kaiser were elected to Alpha Lambda Delta, freshman women's scholastic honorary.

CAROLYN OAS, *editor*  
JOYCE HERTZLER, *president*

### Gamma Theta—Carroll College

We participated in the All-School Sing on Carroll campus last spring and sang patriotic songs. Most of us were dressed in Navy blue with a "V" of girls dressed in white.

Two of our girls, now graduates, received special recognition last spring. Alta Schmidt was voted Gamma Theta's Dream Girl.

Mary Schlichting was voted Sigma Phi Epsilon Sweetheart.

This fall's activities started with our formal rushing tea, September 20. Over 100 girls attended.

We had an informal rush party in our Student Union September 28. The theme was Delta Zeta Dream party.

Our annual Rose dinner was held at the Avalon hotel. We sang the sweetheart songs of the fraternities



This snow sculpture of choir boys and organist won first prize for Gamma Theta, Carroll College.



on campus as a replica of each fraternity pin was brought in.

SUE HENNING, *editor*  
MARILYN NEEDINGER, *president*

### **Gamma Mu—Illinois Institute of Technology**

Gamma Mu began the new semester by moving into their new apartment in Carman Hall, the new apartment building for students and staff members. This is the first time there has been any housing for woman students on the Illinois Tech campus, and we are all quite thrilled about it. Four of our eight initiates live there fulltime, and the other initiates, as well as the pledges, all Chicago residents, may stay overnight when they have late meetings or classes.

Gamma Mu had a very successful rush season this year. We began with a luncheon at which we served twenty-eight people, rushees, alumnae, and initiates, in our four-room apartment. Our second party was a "Greek" party. As each guest arrived she was given a sheet, one safety pin and a piece of string. From these raw materials she was to fashion for herself an ancient Greek costume. We had quite an assortment of unique designs before the party was over. Our final party was a dinner at Klas' restaurant.

We pledged nine girls, which more than doubles the size of our chapter. New pledges, all from Chicago, are Elizabeth Brooke, Elizabeth Barnes, Rita Dörner, Suzanne Fisher, Joan O'Connell, Lorraine Parduhn, Elaine Point, Nancy Vierling and Geraldine Voelker.

DELORES JACKSON, *editor*  
FERN SCHALUND, *president*

## **PROVINCE VII SOUTH**

### **Nu—Knox College**

Nu chapter began its activities this fall with a spaghetti supper in the Panhellenic house. October 25 we entertained several prospective patronesses at a tea in the Panhellenic house. New initiates are Carol LeCuyer and Jane Thomas.

Members are active this year in theatre work. Audrey Rayfield is student director of Jean Girardoux's "The Mad Woman of Chaillot," the first production of the Knox Theatre this season. She is also a member of the cast, as are Ruth Henderson and Marjorie Bourns. Permanent crew members for all theatre productions are Diane Chamberlain, Ruth Henderson and Ruth Ann Dahl.

Marjorie Bourns is chairman of the Knox Community Service Projects Committee, a service group which works with hospitals and welfare agencies in Galesburg. Diane Chamberlain, our president, is also president of Panhellenic council.

Among staff members of the Knox *Student* are Cynthia Cowell, copy editor; Marjorie Bourns, assistant feature editor; and Judy Miller. Vivian Najim is president and assistant director of the college choir, and Pat McGee is secretary. Ruth Ann Dahl and Marjorie Bourns are also members.

Nu chapter plans to hold its fall party December 4 after deferred rush, to allow new pledges to participate.

CYNTHIA COWELL, *editor*  
DIANE CHAMBERLAIN, *president*

### **Pi—Eureka College**

Pi pledged half of the girls who were rushed at Eureka College this fall. New pledges include Judy Markland, Champaign; Bonnie Lundberg, Rockford; Pat Marshall and Roberta Cowling, Rutland; Norma

Ioder, Walnut; Ruth King, Eureka; Pauline Calhoun, Bushnell; and Ruth Blair, Ellsworth. The formal pledge banquet was held on September 18th, with fifty alumnae, patronesses, and members present.

During Eureka's biannual Pumpkin Festival, Delta Zeta's float "Eureka's Crown Jewel" won second place in its division in competition with other town and sorority floats.

Many of the campus elections this fall were won by Pi girls. Marguerite Johnston is vice president of the Senior Class and Luella Ewing is secretary. Luella Ewing is also president of Women's Council. The dramatic fraternity, Alpha Epsilon Sigma, has three Delta Zeta's for officers, Donna Klopfenstein, Luella Ewing, and Peggy Magnuson. Peggy Magnuson is also secretary of the Student Council.

Four of Pi's girls have roles in the fall play "Love Rides the Rails"—Judy Markland, Donna Klopfenstein, Luella Ewing, and Sue Woolley.

Marguerite Johnston is general chairman of Homecoming, and many other chapter members are serving on committees.

The annual Winter Formal will be held in Lida's Wood December 4. Donna Klopfenstein is chairman of the dance. A masquerade house dance was held October 16 at Lida's Wood.

PEGGY MAGNUSON, *editor*  
DONNA KLOPFENSTEIN, *president*

### **Alpha Beta—University of Illinois**

Initiated in October were Sarah Beggs, Oak Park; Marianne Kreiling, Peoria; Shirley Heinz, Gillespie; and Stephanie Kusek, Chicago. Mrs. Norman Beggs and Mrs. Mary North, both alumnae, were present for the ceremony and banquet.

New pledges of Alpha Beta are Anna Fruin, Oregon; Janet Brown, Caledonia; Nancy Kurrie, La Grange; Leah McGowan, Downers Grove; Arlene Morris, Griffith, Indiana; Johna Glaze, St. Louis, Mo.; Christine Hansen, Peoria Hgts.; Linda Hanson, Rock Island; Roberta Johnson, Park Ridge; Nancy Kerr, Chicago; Phyllis Larson, Lombard; Mary Moore, Downers Grove; Donna Orr, Maywood; Elizabeth Roe, Forrester; Marjorie Strobberg, Geneva; Sandra Ullom, Benton; Mary Jo Vibert, Oak Park; and Ruth Adamstone, Champaign.

Recent honors go to Betty Briney and Elsie Krumpke who were elected to Shi-Ai a sophomore women's honorary.

We were thrilled to learn that an Alpha Beta Alumna, Dr. Eunice Carmichael Roberts, Assistant Dean of The Faculties and Director of Women's Educational Programs at Indiana University in Bloomington, was elected to the Delta Zeta Court of Honor. The local alumnae group and the active chapter of Alpha Beta are planning to honor Dr. Roberts at a celebration here this fall.

Jane Swidel, our rushing chairman, has been selected as the Ideal Sorority Girl. She will appear at the Panhellenic Ball November 21.

Harlequin Ball, our next dance, will be given in honor of the pledges.

DONNA RUYS, *editor*  
JANET BARKER, *president*

### **Gamma Nu—Eastern Illinois State College**

Since school started we have been preparing house decorations and the Homecoming float. Earlene Petty was elected junior attendant to the Queen's court.

Audree McMillan was appointed associate editor of the "News," the college newspaper. Clare Emmerick was named feature editor. Virginia Garbe and Cecilia Shay are co-editors of the Warbler, the college yearbook.





PLEDGE CLASS OF ALPHA BETA CHAPTER, UNIVERSITY OF ILLINOIS

Eleanor Young was appointed business manager, Mary Alice Rigg was elected president of Kappa Delta Pi, and Clare Emmerick has been named president of the English Club.

CECILIA SHAY, *editor*  
GAIL EASLEY, *president*

### **Gamma Omega—Southern Illinois University**

Newly organized Gamma Omega chapter moved into its house this fall. Arriving two weeks before school, we remodeled the entire house.

Our Open House theme was "Isle of Enchantment." The house was decorated with artificial flowers, palm trees, and hula dancers.

At the annual all-school Variety Show, we won first place trophy with our skit "Urp Surps from Carmen." When Greek Week came along, we again won first place trophy—this time in Women's Sports.

At the Spring Carnival Vaudeville Show, we won the second place trophy. On Honors Day we were presented with the campus Panhellenic Honor Plaque for being the sorority with the highest grade average. At this time, Pat Lamont won the local Anita Early Award for speech majors.

We recently gave a benefit show at the Marion Veterans Hospital, and a style show for the Alyce Fly Shop.

Plans are underway for Homecoming house decorations and float. One of our girls, Ellie Miller is the Greek nominee for first place for Homecoming Queen's Court, and another, Pat Lamont, has the lead in the Homecoming Play.

Our chapter has introduced to the campus the all-school card party. This was such a success we are making it an annual event.

SHIRLEY HOHMAN, *editor*  
ANN HUNSAKER, *president*

### **PROVINCE VIII NORTH**

#### **Gamma—University of Minnesota**

New initiates of Gamma are Mary Cravens, Mary Pel-low, Helen Joan Stafford, and Janet Wold.

Rushing parties' themes ranged from a hill-billy party to the traditional Rose Party. Then on October 14, Gamma went to the Panhellenic Ball to introduce its ten new pledges. They are Shirley Anderson, Jean Bohne, Mikell Bescancini, Barbara Egan, Rhonna Hower, Myrna Huckabee, Patricia Jamieson, Sharon MacKenzie, Marlene Nelson, and Carol Stiles. We now have a pledge class of twelve, including Joan Lundin and Mary Gorton who pledged in spring quarter.

For the third consecutive year, Gamma has placed in the contest for Dean for a Day of the College of Science, Literature, and the Arts. This year Mary Beth Ekberg won the post of secretary to the "Dean." Year before last, Marcia Koth was Dean, and last year, Madge Micheels. Two of Mary Beth's other offices are vice president of AWS, and social chairman of Gamma chapter.

Delta Zeta was well represented with three girls from Gamma chapter in the Homecoming Queen Contest. Mary Cravens was the candidate from our chapter, Mary Beth Ekberg, the candidate for Beta Theta Pi fraternity, and Bette Perry, for Zeta Psi fraternity.

Gamma chapter was happy to welcome its new house-mother, Mrs. Isabel Bather. Mrs. Bather was formerly housemother for the Chi Omega chapter at South Dakota, and was honored at a housemothers' tea.

Connie Barnes was also honored by one of the tradi-tions of Gamma chapter, the giving of a rose to each month's outstanding girl. Connie is office secretary of AWS, and treasurer of the Corps of Sponsors. A dozen pink roses were presented to Madge Micheels in recognition of her receiving of the Florence Hood Award for 1953.

New officers of Gamma are Jean Newgard, first vice president; Madge Micheels, second vice president; Sue Mulvaney, treasurer; Lee Katter, corresponding secretary; and Carolyn Davis, historian.

CAROLYN DAVIS, *editor*  
BETH SARANTOS, *president*

#### **Iota—State University of Iowa**

Iota has added nineteen new pledges. They are Jacqueline Alper, Memphis, Tennessee; Judy Bishop, Phoenix-ville, Pennsylvania; Beverly Ann Cronk, Bloomfield,



Iowa; Colleen Dolezal, Ely, Iowa; Mary Jane Harms, Vincennes, Indiana; Sandra Jean Harris, Cedar Rapids, Iowa; Barbara Hays, Des Moines, Iowa; Margaret Henry, Bedford, Iowa; Jeanne Hoops, Marshalltown, Iowa; Ann Jochumsen, Waterloo, Iowa; Betty Kay Johnson, Prophetstown, Illinois; Mona Knight, Mount Ayr, Iowa; Maureen Kratzke, Council Bluffs, Iowa; Pat McKenna, Burlington, Iowa; Mary Miller, Rock Island, Illinois; Jane Kees, Mason City, Iowa; Shirley Rollene, Dows, Iowa; Elizabeth Simon, Iowa City, Iowa, and Lynda Woodford, Cedar Rapids, Iowa.

We were honored to have Mrs. George Havens, College Chapter Administrator, stay with us during rush.

One of the highlights of our social season has been the dessert-exchanges we've had with Alpha Tau Omega, Sigma Nu, Delta Upsilon, and Phi Kappa Sigma.

Chapter members have been very active in campus activities. These include YWCA, WRA, Hospital Reading Program, chorus, band, intramurals, UWA, and the Hawkeye (S.U.I.'s yearbook).

Pat Thomas has made Phi Beta Kappa, Sarah Adams was tapped for Mortar Board, and Marian Shapiro was elected to Alpha Lambda Delta.

Our new pledge class elected Mona Knight, president; Jane Rees, secretary, and Sandra Harris, social chairman.

New chapter officers are Nola Carpenter, president; Dorothy Widman, pledge trainer; Beth Vandermyde and Carol Loichinger, co-rush chairmen; Constance Wagner, historian and publicity chairman; Phyllis Helmke, corresponding secretary and song leader; Sarah Adams, treasurer; Margaret Moellering, recording secretary; June Lyman, judiciary chairman; Miriam Forber, activities chairman; Carole Freeman, social chairman; Ericka Erich, standards chairman; and Marian Shapiro, scholarship chairman.

CONSTANCE WAGNER, *editor*  
NOLA CARPENTER, *president*

### **Beta Kappa—Iowa State College, Ames, Iowa**

Beta Kappa pledged twenty-two girls on September 22. They are: Colleen Ann Burns, Phyllis Butler, Rose-

mary Clark, Helen Katherine Coe, Dixie Lou Elder, Janice Elliott, Susan Lou Hadley, Dalimira Hanus, Bettie and Bonnie Holvik, Mary Jean Lockard, Nell Lange Luttig, Mary Margaret Maloney, Mildred Moen, Sally Ann Needham, Marcia Neil, Jeanice Raker, Marilyn J. Schweitzer, Peggy Stiles, Frances Van Maanen, Jean Williams, and Virginia Wright.

New officers are: Esther Hunter, president; Jane Atwater, treasurer; and Jean Wilkerson, historian.

Scholarship honors announced at State Day last April went to Diane Schmeckebeier, sophomore; Ruanne Martin, junior; and Jacie Zeiner, senior. Pledge awards were given at the White Dinner, March 3. Jo Leisner received the House Spirit award, and Bonnie Brenholdt the Outstanding Pledge award.

Last spring we won first place in Sor-Dor which is a sorority-dormitory competitive sing. They sang their winning numbers over WOL-TV.

Ruanne Martin was initiated into Psi Chi and Jean Goul to Mortar Board. Joan Crawford was chosen to be Military Ball Queen and was one of two attendants to the Veishea Queen last May. This summer Joan was elected National T K E Sweetheart.

A Standards meeting was held this fall which consisted of a group discussion of the advantages and disadvantages of sorority life.

Last week we all helped with homecoming open house and in the building of our lawn decoration.

JEAN WILKERSON, *editor*  
ESTHER HUNTER, *president*

### **Gamma Epsilon—Drake University**

Gamma Epsilon chapter pledged seventeen girls. Our theme for the decorated party was "Oriental Dream." Pledges are Mary Lois Cannon, Davenport; Dorothy Ann Fisher, Bouton; Gretchen Ann Hayne, Des Moines; Mariann Hobson, Des Moines; Joan Edette Hummel, Newton; Margie Joy, Corydon; Marjorie Mae Lindberg, Rockford, Illinois; Judith Ann Long, Peoria, Illinois; Jean Louise Marloth, Dixon, Illinois; Rita Ann McGuire, Des Moines; Dixie Diane Meyer, Des Moines; Dorothy Marie Milligan, Gary, Indiana; Beverly Ann Monschien, Chicago, Illinois; Jan Utley Noble, Dixon,



GAMMA EPSILON CHAPTER, DRAKE UNIVERSITY



Illinois; Nancy Jo Russell, Des Moines; Mary Sue Walker, Burlington; Marilois Wolter, Albia. The following week end we honored our new members with a slumber party.

Gamma Epsilon entertained all parents and guests at an afternoon tea October 10. The following week Gamma Epsilon members were proud to introduce our new house mother, Mother Halton at a Sunday afternoon tea.

October 17 we, along with other social and professional groups on campus, combined efforts to raise money for the Community Chest by operating a booth at the Kampus Carnival. There was a trophy given to the organization bringing in the most money for the cause. We won with a "Singing in the Rain" theme.

Our Ronnie Purcell reigned over the Drake Homecoming festivities as Queen. We constructed a huge duck to represent Drake popping out of an egg shell symbolizing our opponent for homecoming decorations. The theme was "We'll Crack 'em."

ELIZABETH J. RICHARDS, *editor*  
FAYE ALLYN, *president*

## PROVINCE VIII SOUTH

### Beta Sigma—Colorado A. and M. College

Our pledge class includes Ann Beauchamp, Beverly Byers, Jan Carlstrom, Janice Chamberlain, Jo Ann Dobesh, Phyllis Fiebig, Faye Fox, Carol Hutton, Marjorie Lamb, Barbara McCowan, Anne McMillan, Frankie Malles, Margie Morehouse, Beverly and Barbara Nissen, Joan Pace, Rosamund Schaffer, Suzanne Schmitt, Pat Thomas, and Nadine Thompson.

Scholastically we ranked third. This quarter the initiates are challenging the pledges to a scholarship competition. Losers have to prepare a breakfast for the winners.

Our annual pledge dance was held October 31. The theme was Midnight Frolic. This year we extended our invitation to the Denver Alumnæ as well as the Fort Collins Alumnæ.

Two girls were chosen for Spurs, sophomore women's honorary. They are Gerda Wilhelm and Barbara Burry.

Marie Dickman has been selected to membership in the Senior honorary, Tau Iota Omega. Betty Looney is holding the presidency of Junior Panhellenic.

DOROTHY PRIESKORN, *editor*  
SHIRLEY BELIER, *president*



BETA SIGMA CHAPTER, COLORADO A. & M.

### Beta Tau—Nebraska Wesleyan University

Beta Tau officers are Jo Ann Hagemeister, president; Beth Rosenau, and Joyce Anderson, vice presidents; Muriel Joy, recording secretary; Doris Miller, corresponding secretary; Ruth Nelson, treasurer; Marilyn Linton, historian; and Joy Koenig, parliamentarian.

On May 9, Dorothy Sharp and Jean Barber were initiated into Beta Tau of Delta Zeta.

Fifteen girls were pledged September 26.

The house was turned into the pirate ship, The Jolly Roger for our fall rush party.

Homecoming was celebrated October 16-17. Our decoration theme was "Soc 'em," illustrated by a large yellow sock with brown V's, "socking" a Tiger man.

First project of the year was a half hour program by both pledges and initiates given for Veterans Hospital in Lincoln.

JEAN BARBER, *editor*  
JO ANN HACHEMEISTER, *president*

### Gamma Gamma—Missouri Valley College

Gamma Gamma chapter pledged Daneen Cranor, Corder, Missouri; Kay Miller, Kansas City, Missouri; Shirley Crighton, Butler, Missouri; Bonita Whipple, Kansas City, Missouri; Valerie Becker, McComb, Illinois; and Barbara Swensson, Macon, Missouri.

Four of our initiates received honor certificates for last spring's academic work. They were Marilee Jones, Elvera Robker, Shirley Hedges, and Anna Rickels.

For a standards program a professor lectured on "How to Form Good Study Habits."

DIANE PRIEFERT, *editor*  
ANNA RICKELS, *president*

## PROVINCE IX

### Sigma—Louisiana State University

Sigma pledged Edith Donald, West Monroe; Carolyn Duplantis, Baton Rouge; Nancy Durett, Arcadia; Jo Ann Farmer, Shreveport; Shirley Harvey, Monroe; Janice Higdon, Thibodaux; Marianne Hurst, New Roads; Lorainne Lamy, Baton Rouge; Magda Lieux, New Roads; Pat Lowry, New Orleans; Janice Mire, Madisonville; Gail Perrin, Kaplan; Jane Kay Rolfs, New Orleans; Elizabeth Toler, Clinton; Jewell Vegas, Westwego; Shirley Wilson, Lake Providence; Franklyn Youngman, New Orleans; Elizabeth Potts, Baton Rouge; Betty Gaude, New Roads; Barbara Penington, Westwego; and Kay Supple, White Castle.

After the pledging ceremony, pledges were honored at a banquet by the Mother's and Patronesses club at the home of Mrs. Hannis T. Bourgeois.

Louise Guthrie graduated as valedictorian of the 1953 class. Louise graduated magna cum laude.

Graduating in the upper 10 per cent of the 1953 class were Louise Guthrie, Virginia Easterly, and Bobbye Blanchard. They were members of Phi Kappa Phi.

Three girls were chosen as ROTC sponsors this year—Betty Gaude, Janet Andrus, and Pat Lowry.

Pledges and initiates donned Mexican costumes to attend a party given by the Alum Advisory Board. The terrace of the Berlin Perkin's home was the setting for the party. It was decorated with Mexican hats and Serapes. Entertainment was furnished by a dancing team from Mexico.

Mrs. T. J. Bianchi of Dallas, Texas, National Membership Chairman, spoke at the Founders' Day Banquet.

JEANIE DUPONT, *editor*  
PAT NECK, *president*



### Alpha Gamma—University of Alabama

Alpha Gamma pledged Mary Jean Barrett, Birmingham; Lucie Jean Chambliss, Montgomery; Jane Campbell, Memphis, Tennessee; Imogene Courington, Gorgas; Martha Anne Fussell, Chickasaw; June Hoefer, Dothan; Dorothy Lee Hutchins, Tuscaloosa; Bernardine Letitia Johnson, Birmingham; Sara Lou Karrh, Carbon Hill; Joan Linda Kassner, Tuscaloosa; Mary Elizabeth Kinzer, Evergreen; Carolyn Sherer Kirkland, Dothan; Lynda Laughmiller, Huntsville; Elizabeth Ann Nighswonger, Birmingham; Nancy Ray Nighswonger, Birmingham; Barbara Ann Patton, Huntsville; Norma Jean Prater, Decatur, Georgia; Joan Lavada Thompson, Butler; and Joan Jeffrey Wrenn, Bay Minette.

Jean West is the new Rose of Delta Sigma Pi, Honorary Commerce Fraternity; Jeanne Davidson is Miss Executive Secretary of the University of Alabama, and also one of the eight cheerleaders for the Crimson Tide this year; Shirley Bradberry is the Most Outstanding Freshman in the School of Home Economics; Wanda Shivers is Secretary to the *Corolla*, the school annual; Joanne Barnes is Secretary to the President of the Student Government Association; Ann O'Rear is Sorority Representative to Wesley; and Pat Clark is Copy Editor of the *Crimson and White*, the school paper.

A tea October 11 honored our new housemother, Mrs. Garnett Parks. A skit was put on for the Pi Kappa Phi's rush party. Our first standards program was on Charm and Manners. We have entered intramural sports.

JOAN CARLSON, *editor*  
ANN LIGHTFOOT, *president*

### Alpha Pi—Howard College

Alpha Pi gave a formal mother daughter tea with Beta Xi Chapter at Auburn for our rushees and their mothers. School and formal rush started September 14. We had coke parties, luncheons, and visited the dorms. For our big formal rush party, we presented a "Delta Zeta Now and Ever Fashion Show and Skit" along with a French Salon Party. Our alumnae dressed as French waitresses to serve our rushees.

We pledged Marilyn Bryant, Betty Ross Cannon, Dorothy Ramsey, and Joann Smith all from Birmingham, Alabama and Carole Eady from Graysville, Alabama.

We have elected some new officers to fill vacancies. They are Floannell Fuqua, corresponding secretary; Marion Crowder, treasurer, and Joyce Palmer, treasurer-elect.

Phi Gamma Delta Fraternity at Sewanee University invited the Alpha PIs to be their guests at the homecoming dance and game.

At the Founders' Day banquet pledges put on the program. Dorothy Ramsey, pledge president worked up a humorous skit.

FLOANNELL FUQUA, *editor*  
BETTA JEAN RITCHEY, *president*

### Beta Xi—Alabama Polytechnic Institute

A tea honored our founders and our 32 new pledges at the home of our brother fraternity, Phi Kappa Tau, on October 22.

Doris Whaley was Beta Xi's candidate for Alabama State Day's "Star." She was chosen the "Star" for her



OFFICERS OF ALPHA GAMMA chapter with their new housemother, Mrs. Garnett Parks, were photographed at a tea given in her honor. STANDING: Joan Cardon, historian; Pat Clark, treasurer; Ann Lightfoot, president. SEATED: Shirley Bradberry, recording secretary; Clair Hunt, corresponding secretary; Mrs. Parks; Wanda Shivers, second vice president; Ann O'Rear, first vice president.





*Pictured is the cast of Alpha Gamma's Undersea Party skit, "The Gem of the Ocean": Jo Ann Shaw (Minnie the Mermaid), Jeanne Davidson (Minnie's boyfriend), Jean Burkhalter (sea nymph), Joanne Barnes (diver), Barbara Hunt (Davey Jones), Joan Cardon (King Neptune), Wanda Shivers (the Pearl of Delta Zeta), and Betty Ann Hardy (the octopus).*



## **Drake Selects Delta Zeta Queen**

Another Delta Zeta Homecoming Queen who reigned on Founders' Day is Romaine "Ronnie" Purcell, Gamma Epsilon at Drake University. A sophomore in the college of education, Ronnie is fond of sports. She was elected by the student body of the university from among fourteen candidates.

As Queen of Homecoming, Ronnie presided at the traditional Drake-Iowa football game and later at a semiformal dance that same night. She was also guest of honor at a tea given by the Panhellenic and Interdormitory councils and the Town Girl Club the afternoon preceding the game.

---

QUEEN RONNIE PURCELL OF DRAKE UNIVERSITY



outstanding campus and sorority activities and services.

Jean Pettyjohn was elected president of Dormitory I and Ann Cox was elected social chairman. Marilyn Monette represented the Phi Delta Theta Fraternity in the O Δ K Beauty Ball. Doris Lessman is society editor of the campus newspaper. Others on the staff are Eleanor Seay and Judy McCarter. Beta Xi has one member and two pledges who play in the college band—Ann Formby, Jan Webb, and Joyce Dorne.

Two new officers have been elected. They are June Reynolds, assistant treasurer and Norma Beach, historian.

Joanne Powell and Beryl Quinn were selected by the home economics department to give demonstrations at the Alabama State Fair.

Bettye Rae Crane is president of WRA and Jean Pettyjohn is secretary.

Upon graduation, Margaret Ann Hatchett received the award for women students for having the highest grade average for her 12 quarters in school.

Judy McCarter, Nancy Smith and Norma Beach were candidates for "Crescent Girl" of Lambda Chi Alpha Fraternity. Nancy Smith was one of the five finalists.

Bettye Rae Crane was tapped for Sphinx, junior-senior honorary, and Merry Lou Authur was tapped for Owls, the freshman honorary.

Beta Xi social life has been highlighted with party swaps with Sigma Pi, Lambda Chi Alpha, Phi Delta Theta, Theta Chi, Phi Kappa Tau, and Alpha Tau Omega.

NORMA BEACH, *editor*  
JOANNE POWELL, *president*

### **Beta Upsilon—H. Sophie Newcomb College**

Beta Upsilon started the year by redecorating the chapter rooms. Jane Carter, an alumna who is an interior decorator, gave us advice on paints and material for seat covers. The rooms look lovely and we certainly had fun redecorating them.

To combine work and play, there was a Rush Week House Party at the home of Marisa Martinez in Klin, Miss. Amid making favors, practicing skits, and singing songs, we managed to find time to enjoy ourselves swimming in the cold river waters.

We pledged six girls: Joel Babylon, Jackie Du Bos, Merle Evans, Anne Levinson, Joyce Schnieder, and Lynn Stokes. After the pledging ceremony, which was held in the chapter rooms, a banquet was given at Delmonico's Restaurant.

Barbara Sorenson, an alumna and director of the League for Better Hearing, spoke on the subject, "Facts about Delta Zeta" for our first standards program. Before the talk there was a supper at the rooms. The members, new pledges, and Mothers all attended this program.

We are planning a truck ride for the pledges. The Founders' Day banquet was held at the Metairie Country Club. All of the sororities are competing for the Panhellenic Cup, which is awarded at the end of the school year. To gain points toward the winning of this cup, we have entered the volley ball tournament and we are now practicing for Song Fest.

JERRY WOLF, *editor*

## **PROVINCE X**

### **Alpha Epsilon—Oklahoma A. & M.**

Alpha Epsilon officers are Pat Parnell, president; Evelyn Smith, pledge trainer; Ann May, rush chairman; Beth Favor, recording secretary; Ardyth Carson, corresponding secretary; Sue Horton, historian; Linda Deutsch, treasurer, and Pat Allison, social chairman.

We have 18 new pledges. One of our new pledges Patty Barnes was elected freshman cheerleader. Our president Pat Parnell is head cheerleader.

Lois Hayes was a candidate for American Royal Queen. Pat Wolf ran for Dairy Science Queen. Beth Favor is on the YWCA Cabinet this year. Our song-leader, Cynthia Taylor, is on the Student Entertainers. Pat Parnell is on the Homecoming Committee.

A Standards Program on scholarship was held September 28. We will initiate six girls in October.

Our Chapter has a new hostess, Mrs. John Florence. She was housemother at the Pi Kappa Alpha House. Her daughter, Margaret Florence, is a former member of the Delta Zeta Chapter at Oklahoma A & M.

Our Chapter won the plaque in the Sorority Division for the sorority with the largest percentage of parents present on Parent's day.

SUE HORTON, *editor*  
PAT PARNELL, *president*

### **Alpha Tau—University of Texas**

Alpha Tau returned this fall to a beautifully redecorated chapter house. Rush proved successful. With the help and inspiration of Mrs. T. J. Bianchi, we pledged thirty-three girls. Officers of the pledge class are: Jane Bogar, president; Leora Callahan, vice president; Amber Bernard, secretary; Mary Ann Robinson, treasurer; Jody Camp, song-leader; Lois Jean Feagin and Carolyn Jutzi, guards; and Shirley Steinbomer, parliamentarian.

Other pledges include Joan Berry, Carolyn Biggs, Mary Frances Blomquist, Shirley Brown, Leona Callahan, Virginia Cator, Sally Cockrell, Dorothy Deitrick, Gwen Hilliard, Jane Holmes, Susan Homsy, Nancy Horne, Nancy Krasowski, Meta Mogford, Pauline Nieman, Jerry Power, Carol Reinhackel, Mary Ann Schlosser, Catherine Viscardi, Diane Wilson, Patsy Chivers, Phyllis Foote, Gena Devin, Fredna Schroeder, Charlotte Moore.

Initiated September 7 were Carmen Anton, Mary Dee Cooper, Jan McManus, Sandra Mechura, Sue Noel, Jeannine Prosser, Jennis Tucker, Sue Ann Worthington, and Nancy Ann Wren.

Our retreat at Mission Valley Guest Ranch helped us to know our new pledges and started our social activities for the year. On October 3, we entertained our parents with a buffet dinner before the Texas-University of Houston game. Alpha Taus and their dates enjoyed dinner and a listening party for the Texas-Arkansas game on October 17.

Dorothy Durrenberger is president of Mortar Board. She was also appointed Student Representative to the Board of Regents and is Senior Cabinet Member. She was nominated for "Best All Round Girl on Campus" by three honorary organizations—Pi Lambda Theta, Orange Jackets and Mortar Board.

Mary Lou Lynch is vice president of the Radio-Television Guild and Secretary of Texas Stars, the University precision twirling team.

ROBERTA ANDERSON, *editor*  
ANN COLFETTE, *president*

### **Alpha Psi—Southern Methodist University**

The 23 new pledges are Sally Bowling, Sumner, Iowa; Sue Bowling, Sumner, Iowa; Shirley Burridge, Angleton; Carolyn Forrest, Midway; Esther Hagg, Dallas; Libby Hays, Little Rock, Arkansas; Jocelyn Heiman, Bryan; Dot Hemperley, Shreveport, Louisiana; Anita Hill, Bellingham, Washington; Dolores Holland, Dallas; Janis Hudson, Coolidge; Dorothy Jean Hunter, Minden, Louisiana; Rosalene Jensen, Seattle, Washington; Jean Maier, Dallas; Pat Martin, Dallas; Janice Oppenhuizen,





NORTHERN CALIFORNIA DELTA ZETAS pictured at their State Day luncheon, held July 11, 1953.

Dallas; Janice Pattison, Clovis, New Mexico; Mary Paxton, Dallas; Ardell Poll, Grand Rapids, Michigan; Merrill Smith, Dallas; Julia Thomas, Dallas; Kay Thomson, Dallas; and Carolyn Whitner, St. Louis, Missouri.

Our president is Dolores Brandt, with Sue English as Pledge-Trainer. Other officers are: Nancy Burridge, second vice president; Carolyn Schlipf, recording secretary; Ann Hinton, corresponding secretary; Norma McCombs, treasurer; Aldena Barton, historian; and Ann Larson, panhellenic representative.

In November the following girls will be initiated:

Louanne Avery, Troy Garmes, Barbara Gepp, Ralette King, Vee Mims, Thalia Smith, and Sylvia Weir.

The chapter was thrilled to learn last month that Mrs. Virginia Bowers of Dallas, the alumna who decorated our house, has been named in the Honor Court of Delta Zeta Woman of the Year.

ALDENA BARTON, *editor*  
DOLORES BRANDT, *president*

#### **Gamma Zeta—Southwestern University**

Gamma Zeta announces the pledging of thirteen girls on September 19. This brings our chapter total to



### **Gamma Zeta, Southwestern University**

*Back row:* Shirley Blackmore, pledge; Dorothy Foust, pledge; Patricia Hoke, pledge; Eleanor Sparks, pledge; Geraldine Morgan, initiate; Helen Dobbins, initiate; Sue Holt, initiate; Peggy Huddleston, social ch.; Marilyn Colegrove, pledge; Peggy Pryor, pledge; Jackie Faye Doyle, pledge; Marilyn Miller, scholarship ch.

*Middle row:* Ellen Kenny, initiate; Mary Ann Springer, initiate; Marjorie Zimmerman, recording secretary; Jeanette Causey, pledge mother; Ann Wilkinson, president; Marcia Neuberger, rush ch.; Betty Davis, corresponding secretary; Jann Wickersham, treasurer; Mary Ann Kalmbach, historian; Dorothy Pyke, pledge president.

*Front row:* Shirley Wiemers, pledge; Aleida Lambert, pledge; Carmin Cleavenger, initiate; Helen Kothmann, pledge; Mada McAngus, pledge; Jean Dernehl, pledge.



twenty-eight. Our new province director, Mrs. Harvin Lewis from Bartlesville, Oklahoma, was with us during rush.

For our first Standards Program we traveled to Bridges Furniture Company in Austin, Texas, where we attended a lecture on the latest trends in home furnishings and decorations.

We are very proud of our new chapter room which was completed just before this school year. The San Antonio Mothers' Club gave us a beautiful lamp which brightens the room. Another gift, a silver tray was given by the Houston Mothers' Club.

Along the banks of the San Gabriel River, we enjoyed the annual picnic on October 18.

Girls who hold major offices on campus are Ann Wilkinson and Marjorie Zimmerman, Cardinal Key (equivalent to Mortar Board); Ann Wilkinson, Marjorie Zimmerman, Marilyn Miller, and Aleida Lambert, A Cappella Choir; Marcia Neuberger, Marjorie Zimmerman, and Ann Wilkinson, Alpha Chi (National Scholarship Society); Marjorie Zimmerman, Sigma Phi Alpha (Honorary Fine Arts Society); Sue Holt and Mary Ann Kalmbach, Student Senate; Ellen Kenny, Pi Delta Epsilon; Marjorie Zimmerman, president, Delta Omicron (National Music Sorority).

MARY ANN KALMBACH, *editor*  
ANN WILKINSON, *president*

### **Gamma Xi—New Mexico A. & M. College**

Gamma Xi started the year by having Mrs. Betsy Leach, national alumnae vice president, help us with our formal rush week. We pledged Prestene Pennington, Alice Kurtz, Jane Ann Little, Jo Ann King, Loudell Mays, Dorothy Deck and Carolyn Sue Allan.

Last year we won the All Greek Sing. The Delta Zeta song which we sang, "What Do You Go To College For?", was written especially for Gamma Xi for the occasion. We have won the last three All Greek Competitions.

Last spring we moved into what was formerly the home management house.

Joy Miller is secretary of Student Commission and candidate for Homecoming queen. Leone Hurst, our past president, is business manager of the Roundup, our college paper; Alice Kurtz, is president of the Home Economics Club, and secretary of the State Home Economics Club; Margaret Richards is president of the campus big-little sister organization; Frances Stark is president of Panhellenic and president of All Greek Council, being the first girl ever to hold the latter position on this campus.

The Dean's List for second semester included Leone Hurst, Elaine Houston, Joy Miller, Rebecca Molina, and Annabel Green who boasts an "A" average for the past two semesters.

Bonnie Russell was a delegate to the American Home Economics Association Convention at Kansas City, Missouri. Loudell Mays attended the American Youth Foundation Camp at Minnewanka, Michigan. This is the third year a Gamma Xi girl has received a scholarship to attend this meet. Margureite Woodwell was one of New Mexico A & M's delegates to the National Newman Club Convention in Minneapolis, Minnesota.

On Founders' Day we honored our alumnae and patronesses at a dinner. The history of the Elizabeth Coulter Stevenson fund was portrayed in a skit.

SUZANNE BRUMLEY, *editor*  
FRANCES STARK, *president*

### **Gamma Upsilon—Oklahoma City University**

Gamma Upsilon began her third year at Oklahoma City University by having Mrs. T. J. Bianchi with us during

formal rush. Our pledge list includes Meredith Brower, Alice Buchanan, Vivian Burkhart, Rosalee Hofman, Anne Hopkins, and Doris Wheeler, all of Oklahoma City; and Johanna Foshee, Muskogee, Okla.; Shirley Ann Norris, Hennessey, Okla.; and Mary Wehling, Minco, Okla.

The first big party of the year was the "All Greek Dance" held at the Oklahoma City Golf and Country Club. Delta Zeta and Sigma Phi Epsilon were in charge of decorations for this function at which new pledges of Greek organizations are introduced. Other social events included sorority open house to introduce our new pledges to the men's fraternities and faculty, and to promote better student faculty relations; a twin party for members, pledges and dates; and a pajama party for members and pledges.

Eugenia Atkinson, first vice president of Gamma Upsilon was elected sophomore treasurer in the fall election; Shirley Ann Norris, was freshman queen candidate; and Caroline Jenks is our representative in Student Senate.

Founders' Day was observed at a banquet at Beverley's by members, pledges, and alumnae. A tribute to our founders was given in a candle lighting service. Histories of chapters represented by alumnae were given and the remainder of the evening was spent socially.

LORETTA J. ABELL, *editor*  
BETTY JO DENNY, *president*

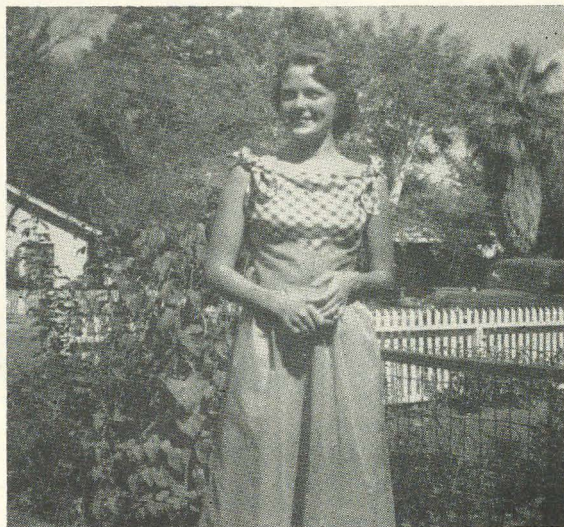
## **PROVINCE XI**

### **Mu—University of California**

When Delta Zetas at the University of California came back this fall, they were welcomed by three surprises. During the summer the Mother's Club had painted and decorated our basement, and the pledges had painted our lawn furniture. Second, our new housemother, Mrs. Henry Miller, from Washington, was here. Third, our new transfer student arrived from Knox College at Illinois, Judith Mock.

Our new pledge class numbers 26. We had the guidance of Mrs. Bernice Hutchinson Gale.

We elected three new officers this fall, Bernice Bronson, activities chairman; Judith Mock, parliamentarian, and Mary Ann Boyd, publicity chairman.



MARY LOU CLAUSEN, *Mu*, is representative-at-large on the Cal. campus. She is also active on the Student Union Com., Constitutional Advisory Board, Ex-Committee, and the Cal-Indo project.





SALLY AKERS, president of Mu chapter, is active in Child Development Majors Club and  $\Sigma \Sigma \Pi$  at the University of California.

The campus yearbook, Blue and Gold, awarded us a trophy for the group having the most sales for 1953.

Since last Spring two new appointments have been made. On Torch and Shield, the senior women's social organization, we find Joan Tempel, and in Panile, sophomore honorary, Bernice Bronsdon.

On the four class councils we are represented by 22 girls. The all-important publications of the campus have claimed a majority of the girls; between *Daily Cal*, *Pelican*, *Blue and Gold*, and *Cal Engineer*, there are thirty-two. The two glee clubs, Treble Clef and Collegians, took in ten Delta Zeta songsters; and Lynne Goree was elected Publicity Manager for Treble Clef. Elections Council has six girls, with Gladys Tolhurst as its busy chairman, and YWCA has seven.

Initiated were Carol Eaton, Walnut Creek; Phyllis Galbraith, Albany; Norma McDonell, Berkeley; Ann McGee, Placerville; Lois Mentzer, San Francisco; Pharaba Oakley, Berkeley; Margaret Stone, Berkeley; Patricia Woods, Bremerton, Washington.

CHARLENE MYSZKA, editor  
SALLY AKERS, president

#### Alpha Chi—University of California at Los Angeles

New pledge officers are Betty Garino, president; Carolyn Hackamac, vice president; Marlene Bockman, secretary; Beverly Smith, treasurer; Lisa Seeger, social chairman; Shirley Akres, song leader; and Donna Weitz, Junior panhellenic representative.

We entertained our fathers at a banquet.

Pledges are Mary MacMurray, Marcia Powell, Marilyn Mason, Peggy McClure, and Barbara Fox.

Outstanding Alpha Chis this year are Pat Koene-Kamp, Mortarboard and the the Cal Club; Barbara Bozeman, president of the Red Cross; and Caroline Briggs, Southern Campus representative.

BARBARA FOX, editor  
MARTHA LOU STITES, president

#### Gamma Lambda—San Jose State College

Delta Zeta made headlines when they helped the Mental Health Clinic with a survey. Barbara Yakim was in charge of the group which consisted of Kay Morgan, Nathalie Vayassie, Diane Dyke, Claire Schmidt, Joan Mariner, Joan Painter, Joan Harlan, Gerry Holderness, Gerry Sartain and Sue Britton. The girls went from house to house in the various districts of San Jose and asked the already prepared questions.



Pledges of Gamma Lambda chapter, San Jose State College are: Dorothy Whittier, Nancy Kelly, Alice Hunsucker, Doris Regenberg, Geraldine Haederness.

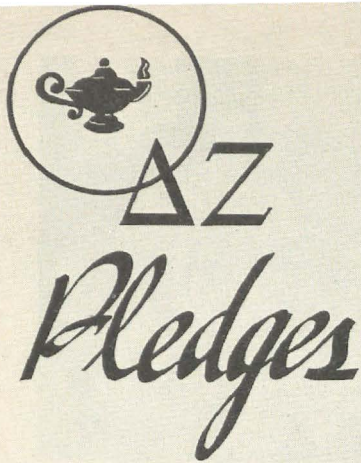
Gamma Lambda greeted new spring Pledges, Geraldine Holderness, Nancy Kelly, Doris Ringenberg, Dorothy Whittier, and Alice Hunsucker.

The most exciting occasion for the chapter was winning a trophy and a plaque for the best pushcart



Madalyn Sandoval (Indian Maiden) and Dottie Moore (Jester) welcomed rushees to the Gamma Lambda Mardi Gras.





# ΔΖ Pledges



BETA XI, ALABAMA POLYTECHNIC INSTITUTE. *Back row, left to right:* Jan Webb, Jane McElroy, Rosemary Smith, Mary Louise Condon, Shirley Rudd, Jackie Jackson, Betty Ann Smith, Dolores Dulsion, Trudy Howard. *Second row:* Patsy Keaffe, Ruth Bradley, Mary Ellen Crowe, Patsy Steen, Eleanor Seay, Vange Nichopoulos, Marilyn Monette, Becky D'arcy, Jeanette Jacobs. *Front row:* Ava Ann Rogers, Ann Marie Powell, Pat Cauthen, Ann Rogers, Judy Scruggs, Corky Thompson, Melinee Foster, Patsy Curry. *Not pictured:* Ann Sadler, Phyllis Shepard, Joyce Dorne, Julianne Thompson, Kathryn Reynolds, Emily Ann Thomson.



PI, EUREKA COLLEGE. *Back row:* Ruth King, Pauline Calhoun, Ruth Blair. *Second row:* Bonnie Lundberg, Roberta Cowling, Norma Ioder, Judy Markland. *Front row:* Sue Woolley, Pat Marshall.



ALPHA EPSILON, OKLAHOMA A. & M. *Back row:* Ardith Gunter, Bonnie Beard, Sue Sherrod, Joan Rickstrew, Sharon Shanks, Frances Abell. *Second row:* Beth Carverton, Jo Ann Steckpole, Sylvia Leigh, Jeanie Dearing, Joan Newberry, Carol Timmons, Marion Jardot. *Front row:* Elizabeth Guilford, Paula Van Arsdale, Dolores McPeck, Patti Barnes. *Not pictured:* Mary Lou Fikes.



PHI, WASHINGTON STATE COLLEGE. *Back row:* Marilyn Morgan, Mona Chonzena, Allyne Rendel, Lila Heywood, Virginia Roholt. *Second row:* Jeraldne Lyons, Jacqueline Becker, Joan Pagel, Barbara Cheney, Marilyn Mulroney, Verlene Yeoman. *Front row:* Sally Jo Eaton, Sandra Parker, Charleen Holmes, Tracy Argens, Susan Keys.





GAMMA OMEGA, SOUTHERN ILLINOIS UNIVERSITY. *Back row, left to right:* Rose Marie Marko, Cynthia Kuehn, Helen Collins, Dorothy Cooper, Lyn Montgomery, Ruth Ann Echel, Jean Sish, Barbara George. *Second row:* Jeanean Damron, Peggy Farrell, Rose Marie Cunningham, Loretta Mondoni, Norma McPeak, Norma McCarthy. *Front row:* Gwen Flathery, Diane Pennington, Bobbie Sue Bartley. *Not pictured:* Phyllis Katz.



# ΔZ Pledges



GAMMA XI, NEW MEXICO A. & M. *Back row:* Loudell Mays, Dorothy Deck, Janeann Little. *Front row:* Alice Kurtz, Prestene Pennington, Jo Ann King.

BETA KAPPA, IOWA STATE COLLEGE. *Back row:* Phyllis Buttler, Susan Hadley, Janice Elliott, Marcia Neil, Kathy Coe, Jeanice Raker. *Third row:* Colleen Burns, Frances Van Maanen, Mildred Moen, Marilyn Schweitzer, Jean Williams. *Second row:* Rosemary Clark, Nell Lange-Luttig, Peggy Stiles, Dixie Elder, Mary Jean Lockard. *Front row:* Mary Margaret Maloney, Bettie Holvik, Virginia Wright, Bonnie Holvik, Dalimira Hanus. *Not pictured:* Sally Needham.







CHI PLEDGES. Back row: Laura Abell, Jolene Hoppe, Judith Cramer, Marlene Sallup, Janet Long, Anne Granville, Marlene Bacon, Marygrace Harger, Lois DeGuire, Rosalee Mumford, Sally Radey; front row: Arline Weaver, Kathleen Wilson, Janet Guyton, Carolyn Neely, Anne Roderrick, Loretta Kelly.

GAMMA MU PLEDGES. Back row: Rita Dorner, Geraldine Voelker, Elizabeth Brooke, Elaine Point, Joan O'Connell; front row: Lorraine Parduhn, Nancy Vierling, Elizabeth Barnes, Suzanne Fisher.



GAMMA KAPPA PLEDGES. Back row: Eleanor Walter, Evelyn Heimer, Carol Marabito, Joan Steinkemper, Margie Moss; middle row: Carol Howersaat, Linda Horn, Marilyn Hamill, Sylvia Conrad; front row: Marilyn Vargo, Lois Wanous, Beverly Koch, Joyce Zinsmeister, Sandra Muller.



**GAMMA IOTA PLEDGES.** *Back row: Princess Yelvington, Alice Wilkinson, Nancy Callis, Jean Carole Cross; middle row: Connie Grubb, Peggy Stover, Ann Haines, Gloriann Cross, Ruth Moddy, Roe Mae Weldon; front row: Jo Ann Knolton, Donalyn Graves, Sharon Craig, Jeanne Massareno, Ellorene Robbins, Harriet Hall, Barbara Bettis. Not pictured: Barbara Williams.*



**ALPHA DELTA PLEDGES.** *Back row: Joyce Gray, Margaret McGraw, Irene Schuler, Kathy Massas; front row: Anne Hunt, Marilyn Jones, Betty Park.*



**THETA PLEDGES.** *Back row: Marilyn Wortman, Kathleen Myerholtz, Jane Goltz, Alice Verity, Sallie Lou Grappy, Marilyn Saxton, Margery Patterson, Nancy Ireland; front row: Jeanene Wright, Eleanor Dask, Lou Ann Campbell, Myrna Zellers, Joan Harper, Julie Booker, Nancy Walker, Janet Eckelberry.*





## PROVINCE XII

### Kappa—University of Washington

Kappa chapter's formal dinner dance was held last April 24 at the Seattle Tennis Club.

Second place trophy was won in the Sophomore Carnival.

Kappa chapter was proud of Barbara Ferguson and Donna Prevost, president, who were pledged to Totem Club, an upperclass women's honorary for activities and scholarship. Barbara Ferguson and Elizabeth Jallie were tapped for Mortar Board. Shirley Campbell was elected secretary of Theta Sigma Phi, women's journalism honorary.

The chapter officially said goodbye to five graduating seniors at the annual senior breakfast May 17.

July 25 brought Delta Zeta members and alumnae together at a State Day luncheon at the Women's University Club.

Kappa pledged Marilyn Baisch, Jane Noble, Molly Shining, Glenda Moran, Margaret Smith, Elayne Olson, Merri Lou Shepler, Barbara Berry, Mavis Grytness, Pat Sylling, Marcia Fisher, Ann Hill, Clare Cadwell, Janet Sunden, Nancy Ann Schatz, Beverly Slusser, Nancy Walton, Helen Creezy, Darlene Cohen, Mae Lee Brown, Louise Shapely, Marilyn Hannifin, Maryann Cook, Joyce Craig, Mary Lou Davidson, Dianna Banks, Molly Ann Torticil, Constance Walbom, Louisa Renhard, Bette Eckart, Glennis Ross, Sue Logan, Darlene Sigurdson, Pat Keagle, Nancy Gordon, Ann Schoonmaker.

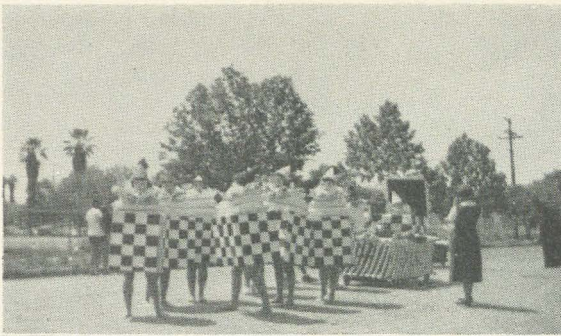
Fall quarter brings a fraternity exchange every Friday. The climax of the fall social season will be the pledge formal November 7.

NANCY MCCARTNEY, *editor*  
DONNA PREVOST, *president*

### Phi—Washington State College

We pledged sixteen girls during the fall rush and the house is now filled to capacity.

One of the girls is vice president of Mu Phi Epsilon, music honorary, and chairman of the Compton union



*Gamma Lambda won first prize for its "Jack in the Box Girls" in the annual Lambda Chi Alpha Pushcart Relays.*

decorations in the annual Lambda Chi Alpha pushcart relays.

Kay Morgan, Ann Rogers, Ella Helwig, Peggy Pasquali, Joan Harlan, Joan Mariner, Jackie Mitchell, Claire Clarke, and Charlene Johnson were the "walking Jack-In-A-Boxes" in the relays.

JOAN HARLAN, *editor*  
ANN ROGERS, *president*



PLEDGE CLASS OF KAPPA CHAPTER, UNIVERSITY OF WASHINGTON





OMEGA CHAPTER, UNIVERSITY OF OREGON, pictured with their housemother, Mrs. Lobdell.

music. Another is vice president of Delta Mu. We have secretaries of Crimson Circle, Future Teacher's Association, Sigma Iota, and Cosmos Club.

PATT RYAN, *editor*  
LOIS FREESE, *president*

#### Chi—Oregon State College

Our new pledges are Laura Abell, Marlene Bacon, Judith Cramer, Lois DeGuire, Sallyann Draper, Anne Granville, Janet Guyton, Mary Grace Harger, Jolene Hoppe, Loretta Kelley, Janet Long, Rosalie Mumford, Carolyn Neely, Sally Radey, Ann Roderick, Marlene Sallup, Arline Weaver, and Kathleen Wilson.

Our new pledges represent the states of Oregon, California, Wisconsin, and of Alaska.

Mrs. Augusta Kelleway, national treasurer, and Mrs. Genevive Leveton, regional alumnae director, were our guests during rush week.

Our chapter officers are: Kayrene Butler, president; Robin Vander Griend, pledge trainer; Marilyn Gerspach, rush chairman; Shirley Shockley, recording secretary; Patricia Ohlson, corresponding secretary; Carol Kincaid, treasurer; Donna Gray, standards chairman; Joanne De Merritt, scholarship chairman; Sandra Brown, social chairman; and Peggy Welch, historian.

Janet Guyton was elected historian for Sackett A dormitory; and Kathleen Wilson won a ten-day trip to Chicago, sponsored by Standard Oil for outstanding 4-H work.

State Day was held at the Chi Chapter House on October 24.

The formal dance in honor of our new pledges was given at the chapter house November 7. Two exchange dinners were held with Delta Chi and Phi Kappa Sigma fraternities.

Homecoming brought an open house and an informal get-together for all our friends and alumni after the game.

PEGGY WELCH, *editor*  
KAYRENE BUTLER, *president*

#### Omega—University of Oregon

Omega chapter got an active start with a completely new landscaped lawn, new lawn furniture and a re-decorated card room. Plans to refinish the guest room are completed.

Freshman orientation week saw many active Omegas, including Erma Houston, Lonnie Daly, Judy Johnson and Pat Collins, who were "Duckling Counselors" for incoming freshman women.

Judy Johnson and Tina Fisk were busy with their respective honoraries, Kwama and Phi Theta, while Lonnie Daly, Marjorie Harris, Nancy Gilbert and Tina put in some time on the YWCA membership drive.

Delta Zetas are also represented in the marching band. Dixie Reynolds and Phyllis Mullin are majorettes while Pat Hoy plays the saxophone.

Ingrid Meijling is our foreign student this year. She is from Sweden and is majoring in journalism.

PATRICIA HOY, *editor*  
PHYLLIS KARN, *president*

• • •

Special price or combination offers of magazines can also be secured through the Delta Zeta Magazine Agency at advertised rates. Subscribe to the Endowment Fund by subscribing to your magazines through the Delta Zeta Magazine Agency.



# Marriages

*Alpha*—Mary Jane Connell '48 to Oatrick J. McMahon, June 7, 1953.

*Gamma*—Betty Ashmeade '55 to Thomas Snouse, Aug. 29, 1953; Alice Rondeau '53x to Donald Fulton, June 13, 1953; Bea Johnson '54x to Gary Yo, Jan. 10, 1953.

*Delta*—Georgia Mae Smith '49 to Ivan Kalman, July 6, 1953.

*Epsilon*—Julia Ann Harbert '55 to Richard Douglas, Sept. 12, 1953; Nancy Ellen Evans '54 to Mr. Cowdry, Sept. 1953; Ethelinda Ellen Farnham '53 to Wade A. Fredrick, June 7, 1953; Janet Alexander '54 to Ronald Weaver, Nov. 27, 1952; Betty Carter '46 to J. H. Currier, 1953; Marce Englehart '50 to Fred R. Hewitt, Feb. 8, 1953; Shirley Fledderjohn '53 to Gene P. Haffick, Dec. 1952; Barbara Kipp '52 to Richard Inman, Feb. 28, 1953; Betty Knearl '54 to John Zimmerman, June 1953; Dorothy Lowe '53 to Glen D. Stewart, June 21, 1953; Jo Ann Marquis '52 to J. James Pyles, June 21, 1953; Gloria McGahan '53 to Jack Snyder, June 28, 1953; Kathy Phares '48 to John Decker, March 21, 1953; Barbara Raines '55 to Philip Zimmerman, April, 1953; Nancy Sweetman '55x to Charles Hudson, Feb. 14, 1953; Jane Raake '53 to Chester Sommer, May 10, 1953; Aileen Lipps '51 to Robert Elliott, Nov. 28, 1953; Ruth Templeton '49 to Ross Kirkpatrick, Nov. 15, 1953.

*Theta*—Margaret A. Lucas '53 to Richard C. Zoerb, Oct. 10, 1953.

*Iota*—Maebeth Elise Brown '53 to C. Lee Furrow Jr., Sept. 6, 1953; Margaret Irene Almberg '53x to Stewart C. Crockett, June 13, 1953.

*Mu*—Kathleen Ardis Kendall '54 to Albert Vail Haven, Sept. 5, 1953; Marlene Diane Hight '54 to Walter Gerald Brown, July 15, 1953.

*Tau*—Mary Sholtes '53 to T/Sgt. Milfred A. Cunningham, June 10, 1953.

*Upsilon*—Helen Berg '40 to John Harvey, May 1, 1953.

*Chi*—Janice Elaine Manly '53x to Wyman Williams Jr., 1952.

*Omega*—Joy Trieman '53 to David Hall, July 18, 1953; Kathryn Elizabeth Clark '55 to Willis Lee Johnson, June 21, 1953.

*Alpha Alpha*—Janet Barbara Smith '50 to Ralph Otwell, July 18, 1953; June M. Long '51 to John P. Ferbend, June 20, 1953.

*Alpha Gamma*—Catherine Joanne Harper '53 to Hoyt H. Durham, Aug. 27, 1953.

*Alpha Iota*—Marilyn Stelling '53 to James L. Teel, July 18, 1953.

*Alpha Sigma*—Nancy Louise Lane '52 to A. Burt Whiting, June 18, 1953.

*Alpha Tau*—Caroline Mogford '51 to Jack H. Whited, June 12, 1953.

*Alpha Chi*—Judith Newhoff '52 to Vincent C. Cerasi, May 24, 1953; Elizabeth E. Albert '35 to Donald B. Wolcott, April 17, 1952.

*Beta Alpha*—Barbara Jane Allen '52 to Donald C. Collier, Oct. 3, 1953; Joan Frances Pouliot '54x to Robert E. Tucker, May 14, 1953; Diane Curran '55 to Frederick Henry Stein, June 20, 1953; Ann Lydia Moran '52 to Charles Ellis William Jr., Aug. 15, 1953; Eleanor Rita Tougas '53 to Guy Eugene Nolan, Aug. 29, 1953; Carol Spear Hearld '51 to Thomas Wray, Sept. 26, 1953.

*Beta Delta*—Jacqueline Caldwell '54x to Guy Smith, Oct. 14, 1953.

*Beta Theta*—Isabel Beers '53 to Walter McConnell, June 13, 1953; Jeanne Mack '53 to Robert Burnash, July 11, 1953; Joanne Cottle '53 to John Storch, Sept. 5, 1953; Mary Jane Fisher '51 to Howard Thompson, June 20, 1953; Carolyn Eschback '52 to Clarence R. Mehl,

Sept. 19, 1953; Sally Baumgardner '52 to George Stanton, June 20, 1953; Nancy Hitchcock '50 to Norman Lange, March 7, 1953; Virginia Clements '52 to Stavely Kober, May 2, 1953; Mary Ellen Mayhew '52 to Keith Law, Dec. 27, 1952.

*Beta Kappa*—Darleen Bornschein '54x to Winton Bittinger, July 11, 1953; Janice Wood '51 to Wayne Dundore, July 20, 1953; Twila Peters '54 to Donald Bittner, July 26, 1953.

*Beta Mu*—Nancy Caperton '51 to Douglas Thullbery, April 25, 1953.

*Beta Nu*—Audrey Anne Larson '56x to Kenneth J. Holme Jr., Oct. 2, 1953.

*Beta Xi*—Doris Jeanette Clements '46 to Gordon Cole, Dec. 26, 1952; Rita Marie Kelly '49 to Herbert H. Nelson Jr., Dec. 27, 1952; Ruby Dell Long '54x to John Dorland, June 7, 1953; Mary Averyt '53 to Henry Pate, June 3, 1953; Ann Pernecia Sanders '54x to William J. Keller, June 27, 1953.

*Beta Pi*—Audrey Eppler '52 to George R. Raville, Feb. 1, 1953; Dawn McCullough '54x to David Fowler, June 13, 1953; Marianne Barkley '55 to Kenneth Miller, Sept. 5, 1953.

*Beta Rho*—Janet Louise Hadley '53x to George Morgan Close, April 19, 1953; Marilyn Anne Waldron '53x to Thomas Tambling, Dec. 20, 1953.

*Beta Sigma*—Mary Katherine Meyer '52 to Richard Young, June 6, 1953; Marianne Unger '55x to William Patrick, Aug. 9, 1953; Patricia Gilbert '52 to Donald Freeman, June 7, 1953; Joan Rossmiller '54 to Dean Dybing, June 14, 1953; Lois Carol Brown '52 to Paul Scott, June 21, 1953; Mary Joan Ouder Kirk '53 to John Cromer, June 19, 1953.

*Beta Tau*—Lois Virginia Clark '51 to Earle Nickerson, Aug. 9, 1953; Lois Elizabeth Knapple '51x to H. Duane Birt, Aug. 16, 1953.

*Beta Chi*—Doris Wittoft '53 to Douglas Hatch, Aug. 23, 1953; Gail Niethamer '52 to Thomas Laybourne, July 3, 1953.

*Gamma Delta*—Janet Moorhead '50 to John B. Chapman, Aug. 16, 1951.

*Gamma Epsilon*—Mary Carolyn Danielson '52 to Glen H. Frizell, Oct. 14, 1953; Jo Ann Hunter '52 to Robert H. Krueger, Sept. 25, 1953; Dorothy Jane Carlin '54x to Joseph A. Hostetler, May 9, 1953.

*Gamma Eta*—Ingaborg Halbeck '52 to William Davis, May 3, 1953; Marie Benedetti '51 to Lt. Robert Hajosy, Sept. 13, 1953.

*Gamma Theta*—Alta Louise Schmidt '53 to William Arnold Wachs, June 20, 1953; Eleanor Katie Pauls '53 to Carl K. Hart, Sept. 12, 1953; Virginia Smith '53 to Carvin Smith, July 18, 1953; Nancy Lynard '56 to Donald Dusterhoft, Aug. 8, 1953; Phyllis Smith '53 to Robert Ducklow, Aug. 1953.

*Gamma Iota*—Hazel K. Younghanse '50 to Dr. Andrew H. Crenshaw, June 18, 1950; Marie Cattanio '53 to Louis E. Ricossa, Sept. 7, 1953; Glenda Kay Young '56x to Ray Byrd, Sept. 5, 1953; Betty Jo Miles '56x to Joseph Ward Howell, June 26, 1953; Ann Spears '56 to Louis Thomas, Sept. 13, 1953; Ida Wills Stanton '53 to James Holmes, Aug. 7, 1953; Mary Catherine Howell '54x to Charles N. McKellar, Oct. 3, 1953; Dorothy Jean Hosse '55 to James Wood, Oct. 14, 1953; Margaret Ballard '52x to Robert B. Morris, Nov. 19, 1950.

*Gamma Kappa*—Donna Allen '53 to Robert Ingram, Oct. 4, 1953; Marion Loudin '56 to Paul Wingard, March 21, 1953; Barbara Burris '52 to William Reed, Sept. 19, 1953; Donna Ralph '51 to William Loeb, April 25, 1953; Mary Ellen Rodebaugh '54 to William Hudson, Sept. 20, 1953.



*Gamma Lambda*—Barbara Lee Champion '51 to Ervin E. Henson, Jan. 24, 1953.

*Gamma Nu*—Dorothy Jane Dorband '54 to Leo William Cordes, June 7, 1953; Margaret Wahl '53x to Alister J. Lyons, June 6, 1953; Jeanne Barth '51 to Robert Keith Cox, May 30, 1953; Doris Schmittler '52 to Charles Harper, April 3, 1953; Donna Shores '54x to Leonard Tyvoll, April 12, 1953; Ella Mae Kercheval '53 to Martin Chilovich, Sept. 27, 1953; Janice Jump '53 to John Boyd Waggoner, Aug. 23, 1953; Marie Cerven '53 to Donald Tolley, Aug. 22, 1953; Shirley Stiff '53 to William Goudie, Aug. 23, 1953; Barbara Sager '54 to Dale McMillen, July 25, 1953; Donna Jean Carothers '54x to Harold J. Butler, Nov. 15, 1953.

*Gamma Xi*—Elaine Velda Black '53 to John B. Houston, June 4, 1953.

*Gamma Pi*—Patricia Ann Wilson '52 to James R. Morse, Aug. 8, 1953; Jeanette Nelson '52 to Fred Kogge, Dec. 28, 1953; Gloria Jean Allen '53 to Lt. David L. Thorne, June 27, 1953; Elsie Olga Braunz '54x to John Philip Mayo, Aug. 8, 1953; Donna Mae Bush '54x to Jon Pindar, May 2, 1953; Anne Cefalo '54 to Edward Polan, June 27, 1953; Jeanne Carol Dreger '53 to Philip

H. Chichester, June 20, 1953; Margaret Eddy '53 to Bernard Zimmer, June 27, 1953; Janet Lois Gideon '53 to James Richard DeWolf, May 21, 1953; Emma Jean Hamilton '53 to Gerald Albert Hale, Aug. 22, 1953; Betty May Wright '53 to Donald C. Prange, June 7, 1953; Irene Leah Whipple '52 to Lewis Allen Kraushaar, July 8, 1953; Barbara Ann Newman '55 to Fredrick E. Teeter, Oct. 3, 1953; Rosalynde Ramseyer '52x to Everett L. Washburn, Sept. 12, 1953; Leslie Lee Roell '52 to Norman R. Haas, July 11, 1953; Clara Hall '52 to Douglas Eugene Hoekzema, May 16, 1953; Nina Hyshka '54 to George Gaffke, Sept. 5, 1953.

*Gamma Rho*—Janet Long '54 to Woolson Ray Moore, June 13, 1953; Marie Anderson '53 to Victor A. Martiny, June 27, 1953; Emma Ann Lawson '55 to Merrill S. Thompson, Aug. 15, 1953.

*Gamma Tau*—Jean Romayne Albright '52 to Thomas W. Greig, Aug. 8, 1953; Janet Ingledew '54 to Del Fischer, July 1953.

*Gamma Upsilon*—Theresa Darlene Wolf '56 to Charles Grover Moss—Aug. 23, 1953.

*Gamma Phi*—Jean Caldwell '53 to Bruce Jenkins, Aug. 22, 1953.

## Births

*Gamma*—To Mr. and Mrs. Michael Gardiner (Wanda Everett) a son, Michael Frank, March 24, 1953; to Mr. and Mrs. Ronald Welbaum (Ruth Ruckle) a daughter, Ruth Ann, June 19, 1953.

*Delta*—To Mr. and Mrs. Edward W. Watts (Jean Houston) a son, Gregory Allan, June 1, 1953; to Mr. and Mrs. David A. Gee (Lois Jean Ellis) a son, John David, April 20, 1953.

*Epsilon*—To Mr. and Mrs. Robert Fields (Joyce Rouch) a daughter, Debra Sue, Oct. 3, 1953; to Mr. and Mrs. Paul Gill (Jerrie Wilson) a son, David Michael, July 25, 1953; to Mr. and Mrs. L. D. Klopfenstein (Jeanne Lautenschlager) a daughter, Kathe Ann, May 4, 1953; to Mr. and Mrs. Robert Koko (Joan Corbin) a daughter, Donna Kay, July 23, 1953; to Mr. and Mrs. Henry Corff (Evelyn Wilson) a son Henry, June 22, 1953; to Mr. and Mrs. George F. Lahey (Marge Keeler) a son, David Joseph, May 9, 1953; to Mr. and Mrs. Bruce Miller (Thelma Van Est) a son, Martin Edward, April 9, 1953; to Mr. and Mrs. William Ploughe (Nancy Beaman) a son, Aug. 15, 1953; to Mr. and Mrs. Calvin C. Rose (Carol Jean Havens) a daughter, Diana, Feb. 1953; to Mr. and Mrs. Jean Ryan (Glenna Lou Franke) twins, Sharon and Tawny, March 19, 1953; to Mr. and Mrs. Richard Sisson (Delores Hauer) a daughter, Cynthia Gail, July 14, 1953; to Mr. and Mrs. Norbert Sprouse (Joanne Bennett) a son, Stephen, Sept. 12, 1953.

*Kappa*—To Mr. and Mrs. Oliver A. Schantz (Mary Harriet Sharkey) a daughter, Barbara Ann, July 22, 1953.

*Pi*—To Mr. and Mrs. Hollie E. White (Bette Jensen) a son, Daniel R., Aug. 19, 1953.

*Alpha Epsilon*—To Mr. and Mrs. Milton F. Baker (Coy Nella McCoy) a daughter, Deborah Lynn, Oct. 14, 1953; to Mr. and Mrs. J. Kenneth Fanning (Margaret Hudson) a son, Kenneth Kyle, Dec. 11, 1952.

*Alpha Zeta*—To Mr. and Mrs. Bloise V. Recca (Anne P. Carbone) a daughter, Leslie Anne, April 12, 1953.

*Alpha Eta*—To Dr. and Mrs. Donald W. McMillan (Patricia Elaine Thayer) a daughter, Kathleen Diana, Aug. 17, 1953.

*Alpha Theta*—To Mr. and Mrs. W. I. Fender (Marilyn Matherly) a daughter, Sherrin Lynn, Aug. 13, 1953.

*Alpha Sigma*—To Mr. and Mrs. Edward Strong (Edith Jean Bregger) a daughter, Karen Marie, Aug. 2, 1953.

*Alpha Psi*—To Mr. and Mrs. Marvin Ross (Etta Lou Campbell) a son, Frank Glenn, May 8, 1952.

*Beta Alpha*—To Mr. and Mrs. William Taber (Nancy Chatterton), a daughter, Dale Carolyn, Sept. 20, 1953; to Mr. and Mrs. John Malloy (Theresa Majeau) a son, David Duane, July 5, 1953.

*Beta Beta*—To Mr. and Mrs. Howard M. Raspillair (Emily Ann Bickerstaff) a son, Joseph III, Oct. 9, 1953.

*Beta Delta*—To Mr. and Mrs. Arthur E. Treiber (Mary Ann Benson Eldred) a son, Paul Arthur, May 17, 1953.

*Beta Lambda*—To Mr. and Mrs. William J. Thomas (Dorothy Wells) a daughter, Mary Lynne, June 22, 1953.

*Beta Xi*—To Mr. and Mrs. Herbert H. Nelson Jr. (Rita Marie Kelly) a son, Herbert H. III, Sept. 15, 1953.

*Gamma Alpha*—To Mr. and Mrs. James William Lamb (Marjorie Raja) a son, Walter James, Sept. 16, 1953; to Mr. and Mrs. W. Jay Mincks (Kay Stull) a daughter, Susan Kay, Oct. 8, 1953.

*Gamma Iota*—To Mr. and Mrs. Lawrence Smith (Elizabeth May Sharp), a daughter, Elizabeth Lee, July, 1953; to Mr. and Mrs. Sydney Vanderburg (Una Orafine Ashlock) a daughter, Belinda, July, 1953; to Mr. and Mrs. Joseph Deming (Patsy Keathley) a son, Joseph W. III, Sept. 4, 1953; to Mr. and Mrs. Donald Cheek (Anna Pearson) a daughter, Virginia Dale, Aug. 1953.

*Gamma Lambda*—To Mr. and Mrs. Carl P. Leijon (Ruth Gallaher) a daughter, Susan Elizabeth, Feb. 14, 1953.

*Gamma Nu*—To Mr. and Mrs. Richard A. Bokenkamp (Joan Levitt) a daughter, Debra Ann, May 1, 1953.

*Gamma Pi*—To Mr. and Mrs. Joseph VanNess (Barbara Musser) a son, John Wilson, July 24, 1953; to Mr. and Mrs. Donald Rienstra (Marcia Chapman) a son, Gary Lee, Sept. 22, 1953.

*Gamma Tau*—To Mr. and Mrs. Earl Lockwood (Kay Kuder) a daughter, Marcia Ellen, May, 1953.



*There is no death! the stars go down  
To rise upon some other shore,  
And bright in Heaven's jeweled crown,  
They shine for ever more.*

—JOHN L. MCCREERY

RHO

MELBA JOHN HEASLIP (Mrs. William E.) '20 July 31, 1953.



• • •

## *What TO DO When*

### **Alumnæ Chapters**

*(Continued from Cover II)*

#### ● **December**

- 1—Treasurer sends copy of Income tax form 990 to Collector of Internal Revenue in her state; also a copy to National Treasurer.

#### ● **January**

- 5—Alumnæ LAMP Editor: Prepare news letter and mail to LAMP Editor for January 15 deadline.

#### ● **April**

Election of chapter officers. Secretary sends list of chapter officers to National Headquarters immediately after election.

#### ● **May**

- 15—Résumé of year's activities or special reports should be sent by retiring President of the alumnæ chapter to the National Alumnæ Vice-President before May 10.

#### ● **June**

- 5—Alumnæ Editor: Prepare news letter and mail to LAMP Editor for June 15 deadline.



# State Membership Chairmen

---

- ALABAMA: Mrs. Harry Strange, 1428 S. Perry, Montgomery, Ala.
- ALASKA: see Washington.
- ARIZONA: Mrs. Loren Curtis, Box 755, Casa Grande, Ariz.
- ARKANSAS: Mrs. R. C. Medlock, 3111 Ridge Road, Park Hill North, Little Rock, Ark.
- CALIFORNIA:
- Northern: Mrs. Walter Burde, Rt. 1, Box 667, Carmel, Calif.
- Southern: Mrs. Theodore Nichols, 3745 Cerritos, Long Beach 7, Calif.
- COLORADO: Mrs. D. E. Cadwell, 858 S. Josephine, Denver, Colo.
- CONNECTICUT: Miss Alfreda Oliwa, 5 Prospect, Derby, Conn.
- DELAWARE: Mrs. R. C. Schreyer, 8 Van Dyck Dr., Wilmington 3, Del.
- DISTRICT OF COLUMBIA: See Virginia.
- FLORIDA: Miss Lurana Purdy, 911 Monterey St., Coral Gables, Fla.
- GEORGIA: Miss L. Anne Bonds, 11 Glenwood Apts., Rome, Ga.
- IDAHO: see Washington.
- ILLINOIS: Mrs. William Dean, 316 N. Mayfield, Chicago 44, Ill.
- INDIANA: Mrs. Ray Richardson, 465 So. Main, Martinsville, Ind.
- IOWA: Miss Esther Lorenz, 1000 37th St., Des Moines, Ia.
- KANSAS: Miss Gladys Taggart, 1426 N. Vassar, Wichita, Kan.
- KENTUCKY: Mrs. Kenneth V. O'Neal, 712 S. Limestone, Lexington, Ky.
- LOUISIANA: Mrs. J. H. McCusker, 1938 Terrace Ave., Baton Rouge, La.
- MAINE: Mrs. Frank W. Howard, 81 Hillsdale Road, Medford 55, Mass.
- MARYLAND: Mrs. R. C. Schreyer, 8 Van Dyck Dr., Wilmington 3, Del.
- MASSACHUSETTS: Mrs. Frank Pote, 15 Chester Ave., Medford, Mass.
- MICHIGAN: Mrs. David G. Kistler, 918 South Westnedge, Kalamazoo, Mich.
- MINNESOTA: Miss Evelyn McMeans, 206 W. Mill St., Austin, Minn.
- MISSISSIPPI: Miss Bess Stevenson, P.O. Box 66, Meridian, Miss.
- MISSOURI: Mrs. Earl M. Winkle, 645 Pearl Ave., Kirkwood 22, Mo.
- Co-Chm. Recomm. Mrs. Edward G. Deuser, 4019 Linwood Blvd., Kansas City, Mo.
- MONTANA: Mrs. Roy Malsor, 921 Third St., Bozeman, Mont.
- NEBRASKA: Mrs. Ben Akert, Elkhorn, Neb.
- NEVADA: see Northern California.
- NEW HAMPSHIRE: Mrs. Stanley R. Shimer, 37 Woodman Rd., Durham, N.H.
- NEW JERSEY: Miss Grace O. Poe, 530 Park Ave., Apt. M-6, Orange, N.J.
- NEW MEXICO: Mrs. H. P. Vanderverter, 505 Wellesley, S.E., Albuquerque, N.M.
- NEW YORK:
- Upstate: Mrs. Clarence Pollastek, 341 W. Newell, Syracuse, N.Y.
- Co-Chm. Recomm. Ina Taylor, 402 Valley Dr., Syracuse, N.Y.
- Metropolitan: Jean Reincke, 35 Lefferts Ave., Brooklyn, N.Y.
- NORTH CAROLINA:
- NORTH DAKOTA: Mrs. Donald Hariman, 2423 University, Grand Forks, N.D.
- OHIO: Mrs. George Lenning, 522 Woodview Dr., Dayton, Ohio
- Co-Chm. Mrs. John Kunst, 511 Volusia Ave., Dayton, Ohio.
- OKLAHOMA:
- Co-Chm. Recomm. Mrs. Sam A. Hutzell, 1113 Euclid, Oklahoma City, Okla.
- OREGON: Mrs. Roger C. Hopson, 2037 Fremont St., Klamath Falls, Ore.
- PENNSYLVANIA:
- RHODE ISLAND: Mrs. William R. Guise, 7 Cullen Ave., Valley Falls, R.I.
- SOUTH CAROLINA: Miss Margaret Martin, 4102 Parkman Dr., Columbia, S.C.
- SOUTH DAKOTA: Mrs. Richard E. Huffman, 309 5th Ave. S.E., Aberdeen, S.D.
- TENNESSEE: Mrs. Thomas Scales, 1101 Caldwell Lane, Nashville, Tenn.
- TEXAS: Miss Ruth Creed, 1 Chelsea Pl., Houston, Texas.
- Co-Chm. Mrs. Wayne C. Chipman, c/o Sunset Drive-In Theatre, Temple, Texas
- UTAH—Co-chairman: Mrs. Duncan Holaday, 61 Virginia St., Salt Lake City, Utah
- Co-Chr. Mrs. Eugene X. Hall, 715 S. 11th St., Salt Lake City, Utah
- VERMONT: see New Hampshire.
- VIRGINIA:
- WASHINGTON: Mrs. Stuart Gillespie, 5050 37th Ave., N.E., Seattle 5, Wash.
- WEST VIRGINIA:
- WISCONSIN: Mrs. Walter A. Domann, Box 411, Elm Grove, Wis.
- WYOMING: Miss Florence Forbes, Farm Bureau, Court House, Rawlins, Wyo.



# ● Delta Zeta Sorority ●

Founded at Miami University, October 24, 1902

\* GUY POTTER BENTON, D.D., LL.D., Grand Patron (Deceased)

## FOUNDERS

JULIA BISHOP COLEMAN (Mrs. J. M.)	104 Riverside Ave., Loveland, Ohio
MARY COLLINS GALBRAITH (Mrs. George)	3194 Tremont Rd., Sta. B., Columbus 12, Ohio
ALFA LLOYD HAYES (Mrs. O. H.)	3761 N. Meridian, Indianapolis, Ind.
ANNA KEEN DAVIS (Mrs. G. H.)	Deceased
MABELLE MINTON HAGEMAN (Mrs. Henry)	Deceased
ANNE SIMMONS FRIENDLINE (Mrs. Justus R.)	Deceased

## NATIONAL COUNCIL

President	BERNICE HUTCHISON GALE (Mrs. Guy H.) 130 Van Winkle Drive, San Anselmo, Calif.
Alumnæ Vice-President	BETSY BRADLEY LEACH (Mrs. Garold A.) 1865 Hill Dr., Eagle Rock, Los Angeles 41, Calif.
Extension Vice-President	VIOLET SHARRATT WHITFIELD (Mrs. R. H.) 1104 Colfax St., Evanston, Ill.
Membership Vice-President	LOUISE WADLEY BIANCHI (Mrs. T. J.) 5727 Ellsworth, Dallas 6, Tex.
Secretary	JEAN CODY SULLIVAN (Mrs. A. F.) 157 Bellevue Ave., West Haven, Conn.
Treasurer	AUGUSTA PIATT KELLEWAY (Mrs. Fred) 425 Lakewood Rd., Walnut Creek, Calif.

## EX-OFFICIO MEMBERS

National Panhellenic Conference Delegate	EVELYN A. COSTELLO (Mrs. Russell T.) 2850 Pine Lake Dr., R.F.D. 3, Pontiac, Mich.
Editor of THE LAMP	ELLEN KROLL JENKINS (Mrs. Paul L.) 5926 E. 43rd St., Indianapolis 26, Ind.
Immediate Past National President	GERTRUDE HOUK FARISS (Mrs. C. A.) 2997 S.W. Fairview Blvd., Portland 1, Ore.
Executive Secretary	MISS IRENE C. BOUGHTON 1325 Circle Tower, Indianapolis 4, Ind.
College Chapter Administrator	MRS. GEORGE C. HAVENS 3018 School St., Des Moines 11, Iowa
Executive Office	1325 Circle Tower, Indianapolis, Ind.
Secretary in Charge	IRENE C. BOUGHTON
Chairman of N.P.C.	MRS. WILLIAM H. HUTCHINSON 3545 Penrith Rd., Seattle 5, Wash.
National Panhellenic Delegate	MRS. RUSSELL T. COSTELLO 2850 Pine Lake Dr., R.F.D. 3, Pontiac, Mich.
Board of Trustees of LAMP Fund: GERTRUDE HOUK FARISS (1958); IRENE BOUGHTON (1956); AUGUSTA PIATT KELLEWAY (1954); BERNICE HUTCHISON GALE (1954); FRANCES E. WESTCOTT (1954).	

## COMMITTEES

*Building Chairman:* Frances E. Westcott, 549 E. 84th St., Indianapolis 20, Ind.  
*Constitution Chairman:* Mrs. Rudolf O. Cooks, 2673 N. Park Blvd., Cleveland Heights 6, Ohio.  
*National Recommendation Chairman:* Mrs. Austin F. Sullivan, 157 Bellevue Ave., West Haven, Conn.  
*Hearing Help Chairman:* Mrs. Portia Laughlin, 3598 Bayhomes Rd., Miami 33, Fla.  
*National Pledge Training Chairman:* Miss Anne Singleton, 343 N.E. 26th St., Miami 37, Fla.

### Province

### Member

- I. Miss Barbara Oppel, Hotchkiss Grove Road, Branford, Conn.
- II. Miss Barbara Oppel, Hotchkiss Grove Road, Branford, Conn.
- III. Miss Mary Conroy, 1320 Hamilton-Richmond Blvd., Hamilton, Ohio
- IV. Miss Elizabeth Class, 4009 W. Grand Ave., Detroit 4, Mich.
- V. Miss Elizabeth Class, 4009 W. Grand Ave., Detroit 4, Mich.
- VI. Mrs. Paul Church, 911 Harrison St., LaPorte, Ind.
- VII. Mrs. William Runyon, 701 Miccosukee Rd., Tallahassee, Fla.
- VIII. Mrs. Paul Kuhns, 842 Wilson Drive, Edwardsville, Ill.
- IX. Mrs. Paul Church, 911 Harrison St., LaPorte, Ind.
- X. Mrs. Sam Fore, 228 Wildrose, San Antonio, Tex.
- XI. Mrs. Charles Hansen, 8819 E. 57th Terrace, Kansas City, Mo.
- XII. Mrs. Harold Pasley, Rt. 1, Box 74, Hillsboro, Ore.
- XIII. Mrs. Keith Berry, 4509 Marsha St., Bakersfield, Calif.
- XIV. Mrs. John French, 2020 Downing St., Oklahoma City, Okla.
- XV. Miss Janet Hart, 702 S. Third St., Goshen, Ind.
- XVI. Miss Bess Stevenson, Box 66, Meridian, Miss.
- XVII. Mrs. W. B. Trice, 1619 Cardinal Dr., Ocala, Fla.

*Mothers' Club Chairman:* Mrs. Francis R. Wilson, 725 Broer Ave., Toledo, Ohio.  
*Standards Chairman:* Mrs. Maurice P. Rhodes, 20067 Renfrew Rd., Detroit 21, Mich.  
*History:* Mrs. H. M. Lundy, R.R. #1, Bloomington, Ind.



*Adventures in Friendship Chairman:*

*Magazine Chairman:* Mrs. Clarence Nelson, 7752 18th, N.E., Seattle 5, Wash.

*Stamp Project Committee Chairman:* Mrs. Howard C. McDaniel, 6120 St. Clair, North Hollywood, Calif.; Mrs. Clarence Kearney, 1350 Linden Ave., Glendale, Calif.; Mrs. Edgar House, 1020 Lima, Burbank, Calif.

*National Activities Chairman:*

*Publicity Chairman:* Mrs. Charles Bednar, 1737 N. Prairie St., Galesburg, Ill.

*Judiciary Committee Chairman:* Mrs. Raymond J. Nolop, Dawson, Minn.

*Scholarship Chairman:* Mrs. T. K. Haven, 3675 Ward's Point Dr., R.F.D. 5, Pontiac, Mich.

## Alumnæ Regions

Provinces	States
	REGION ONE—Mrs. Robert A. Beach, 32 Third Ave., Berea, Ohio.
I. (South)	Maine, Vermont, Connecticut, New Hampshire, Massachusetts, Rhode Island
I. (North)	New York, New Jersey
II.	Pennsylvania, West Virginia, Delaware, District of Columbia, Maryland
V.	Ohio
III.	Virginia ( <i>only</i> )
	REGION TWO—Mrs. Fred Lewis, 600 Capstone, Tuscaloosa, Ala.
III.	North Carolina, South Carolina, Kentucky, Tennessee
IV.	Florida, Georgia
IX.	Louisiana, Mississippi, Alabama
	REGION THREE—
VI.	Indiana, Michigan
VII.	Illinois, Wisconsin
VIII. (North)	North Dakota, South Dakota, Wyoming, Iowa, Minnesota
	REGION FOUR—Mrs. M. J. McKee, 3130 Daniels, Apt. #6, Dallas 5, Texas
X.	Texas, Oklahoma, New Mexico
VIII. (South)	Nebraska, Kansas, Colorado, Missouri, Arkansas
	REGION FIVE—Mrs. Joe Y. Leveton, 1682 S.E. Tenino, Portland 2, Oregon
XI.	Arizona, California, Nevada, Utah
XII.	Washington, Oregon, Idaho, Montana

## Provinces of Delta Zeta

PROVINCE I: New England, Upper New York

*Director:* MISS IDA O. FLEMING, 1149 Elmwood Ave., Providence 7, R.I.

*Alpha Kappa, Syracuse University*—ELEANORE HAWIE, Delta Zeta House, 405 Comstock Ave., Syracuse 10, N.Y.

*Alpha Upsilon, University of Maine*—DONNA RICHARDSON, 80 Fourteenth St., Bangor, Me.

*Beta Alpha, University of Rhode Island*—JOYCE GIBLIN, Delta Zeta House, University of Rhode Island, Kingston, R.I.

*Gamma Beta, University of Connecticut*—LEE SMITH, Delta Zeta Box, University of Connecticut, Storrs, Conn.

*Hartford, Conn. Alumnæ*—MRS. JOHN HIGGINS, 259 Hartford Ave., Weathersfield, Conn.

*New Haven, Conn. Alumnæ*—MISS BARBARA OPPEL, Hotchkiss Grove Rd., Branford, Conn.

*Providence Alumnæ*—MRS. B. W. MOORE, 81 Oakland Ave., Cranston, R.I.

*South Counties, R.I. Alumnæ*—MRS. R. E. TABOR, West Kingston, R.I.

*Syracuse Alumnæ*—MRS. CHARLES HINXMAN, R.D. 3, East Syracuse, N.Y.

*Rochester Alumnæ*—MRS. HAROLD STAHL, 100 Roosevelt Rd., Rochester 18, N.Y.

PROVINCE II: New York City and Long Island and New Jersey

*Director:* MISS ALICE WOLLER, 9115 Colonial Rd., Brooklyn 9, N.Y.

*Alpha Zeta, Adelphi College*—MARYROSE McCRYSTAL, 86-71 108 St., Richmond Hill, N.Y.

*Beta Omega, New York University*—PATRICIA COLEMAN, 155 E. 52nd St., New York 22, N.Y.

*Gamma Eta, Hunter College*—MARY O'SHEA, 36 Marble Hill Ave., New York 63, N.Y.

*Long Island Alumnæ*—MURIAL SCHAUF, 216-20 113th Ave., Queens Village, L.I., N.Y.

*New York Alumnæ*—MISS BETTY COLEMAN, 79 W. 12th St., New York 11, N.Y.

*Northern New Jersey Alumnæ*—MRS. C. L. PENNEY, 36 Booklake Rd., Madison, N.J.

PROVINCE III: Pennsylvania, West Virginia, Delaware, District of Columbia, Maryland

*Director:* LUCILLE BOLSTAD MAY (Mrs. Leland B.), 3502 Martha Custis, Alexandria, Va.

*Omicron, University of Pittsburgh*—NANCY CREASY, Delta Zeta House, 158 Bellefield Ave., North Pittsburgh, Pa.

*Alpha Delta, George Washington University*—VIRGINIA PAGE, 3518 P St. N.W., Washington, D.C.

*Beta Theta, Bucknell University*—JACQUELINE JOLLY, Bucknell University, Lewisburg, Pa.

*Gamma Delta, Pennsylvania State College*—MARY SULLIVAN, 131 Simmons Hall, State College, Pa.

*Gamma Phi, State Teachers' College*—JANICE LUTES, Room 369, John Sutton Hall, Indiana, Pa.

*Baltimore Alumnæ*—MRS. HERBERT L. HOOVER, 1430 Gettings Ave., Baltimore, Md.

*Pittsburgh Alumnæ*—MRS. JOHN HENDERSON, 713 Hastings St., Pittsburgh 6, Pa.

*Richmond Alumnæ*—MRS. WILLARD S. HEMKER, Rt. 8, Westover Gardens, Richmond, Va.

*State College, Pennsylvania Alumnæ*—MRS. PETER NAS-TASE, 221 E. Beaver Ave., State College, Pa.

*Washington Alumnæ*—MRS. MILTON F. SPITZ, 2912 A 16th Rd. S., Arlington, 4, Virginia.

*Wilmington Alumnæ*—MRS. RALPH C. SCHREYER, 8 Van Dyck Dr., Edgemoor Ter., Wilmington 3, Dela.



# PROVINCE IV: Southern Ohio

## Director:

- Alpha, Miami University*—JANE RICHEY, 43 Anderson Hall, Oxford, Ohio
- Theta, Ohio State University*—MARILYN EDRIS, Delta Zeta House, 212 15th St., Columbus, Ohio
- Xi, University of Cincinnati*—BEVERLY BORMAN, Delta Zeta House, 2811 Swiss Chalet Ct., Cincinnati, Ohio
- Beta Chi, Wittenberg College*—MAXINE GITHENS, Delta Zeta House, 923 Fountain Ave., Springfield, Ohio

- Cincinnati Alumnae*—MISS ESTHER VANDERVORT, 975 Richwood Ave., Cincinnati 2, Ohio.
- Columbus Alumnae*—MRS. THEODORE GOETZ, 9 E. 12th Ave., Columbus, Ohio.
- Dayton Alumnae*—MRS. FRED BUCKEY, 1661 Newcon Ave., Dayton, Ohio
- Hamilton Alumnae*—MISS LEONA WESTLAND, 9 Dick Ave., Hamilton, Ohio
- Springfield Alumnae*—MISS THELMA LEIB, 124 W. Liberty, Springfield, Ohio

# PROVINCE V: Northern Ohio

Director: MISS NANETTE DEMUESY, 632 Greenfield Ave., S.W., Canton, Ohio

- Gamma Alpha, Baldwin-Wallace College*—MARIANNA JONES, Baldwin-Wallace College, Berea, Ohio
- Gamma Kappa, Kent State University*—ANITA CAROL EWING, Delta Zeta House, 244 E. Main St., Kent, Ohio
- Gamma Tau, Bowling Green State University*—JOY TROVER, Delta Zeta House, Bowling Green, Ohio
- Akron Alumnae*—MRS. DONALD CHURCH, 589 Greenwood Ave., Akron, Ohio

- Cleveland Alumnae*—MRS. E. C. SPENCER, 3110 Chadbourne Rd., Shaker Heights 20, Ohio
- Kent Alumnae*—MRS. GEORGE MONTGOMERY, Twin Lakes, Kent, Ohio
- Toledo, Alumnae*—MISS JOANNE BEAUCHAMP, 3544 Island Ave., Toledo, Ohio
- Westside Cleveland Alumnae*—MRS. OWEN KOLLIE, 14119 Terminal Ave., Cleveland 17, Ohio
- Youngstown Alumnae*—MRS. E. DEAN MILWAY, 112 W. Park Ave., Hubbard, Ohio

# PROVINCE VI: Michigan

Director: HELEN SOOY MCCrackEN (Mrs. Harold), 3741 Seyburn Ave., Detroit 14, Mich.

- Beta Pi, Albion College*—ANN STOWE, Susanna Wesley Hall, Albion, Mich.
- Beta Rho, Michigan State College*—JUDITH MATTHEWS, Delta Zeta House, 110 Oakhill, East Lansing, Mich.
- Gamma Pi, Western Michigan College*—JOYCE BAILEY, Spindler Hall, Kalamazoo, Mich.
- Gamma Psi, Central Michigan College*—NANCY WILD, Barnard Hall, Central Michigan College, Mt. Pleasant, Mich.

- Detroit Alumnae*—MRS. JOSEPH THOMPSON, 1353 Harvard Rd., Grosse Pointe 30, Mich.
- Flint Alumnae*—MRS. EARLE W. JONES, JR., 2618 Swayze, Flint, Mich.
- Kalamazoo Alumnae*—MRS. HOWARD J. COOPER, 1342 W. Kelgore Rd., Kalamazoo, Mich.
- Lakeshore Alumnae*—MRS. C. E. FOSTER, 1582 Beach St., Muskegon, Mich.
- Lansing-East Lansing Alumnae*—MISS PATRICIA SCHRAM, 1913 W. Main St., Lansing, Mich.

# PROVINCE VII: Indiana

Director: DORRIS PIKE SILVERTHORN (Mrs. Frank W.), 2710 Kilgore, Muncie, Ind.

- Delta, DePauw University*—JANE ROWLS, Delta Zeta House, Greencastle, Ind.
- Epsilon, Indiana University*—JANET TURPIN, Delta Zeta House, 809 E. Seventh St., Bloomington, Ind.
- Psi, Franklin College*—BETTY Jo HINANT, Bryan Hall, Franklin, Ind.
- Gamma Chi, Ball State Teachers' College*—PHYLLIS NEFF, Lucina Hall, Muncie, Ind.

- Fort Wayne Alumnae*—MISS ELIZABETH LOWRY, 1230 Home Ave., Ft. Wayne 6, Ind.
- Franklin Alumnae*—MISS MARCIA NEESE, 845 E. King St., Franklin, Ind.
- Indianapolis Alumnae*—MRS. M. L. REASOR, R.R. 14, Box 255 H, 7980 Windcombe Blvd., Indianapolis, Ind.
- South Bend Alumnae*—MRS. VERA GRACE FRENCH, 415 S. 25th St., South Bend, Ind.

# PROVINCE VIII: Southern Illinois

Director: RUTH WALSH HYDE (Mrs. Victor), 1413 Cambridge Dr., Westview, Champaign, Ill.

- Nu, Knox College*—DIANE CHAMBERLAIN, Whiting Hall, Galesburg, Ill.
- Pi, Eureka College*—DONNA KLOFFENSTEIN, Lida's Wood, Eureka, Ill.
- Alpha Beta, University of Illinois*—JANET BARKER, Delta Zeta House, 710 W. Ohio, Urbana, Ill.
- Gamma Nu, Eastern Illinois College*—GAIL EASLEY, Delta Zeta House, 860 Seventh St., Charleston, Ill.
- Gamma Rho, Northern Illinois State College*—DONNA AVERELL, 513 N. 10th St., DeKalb, Ill.

- Gamma Omega, Southern Illinois University*—ANN HUNSAKER, 701 S. University, Carbondale, Ill.
- Eureka Alumnae*—MRS. DON B. PIOLETTI, Eureka, Ill.
- Galesburg Alumnae*—MRS. WESTON RICHARDS, 1364 E. Losey, Galesburg, Ill.
- Peoria Alumnae*—MRS. E. HEYSE DUMMER, 505 Florence, Peoria, Ill.
- Rockford Alumnae*—MRS. WILLIAM SPRINGER, 1517 S. 4th St., Rockford, Ill.
- Urbana-Champaign Alumnae*—MRS. B. G. RICKETTS, 518 Fairlawn Dr., Urbana, Ill.

# PROVINCE IX: Northern Illinois, Wisconsin

Director: DELTA STIEKERT CNARE (Mrs. R. F.), 609 Walton Place, Madison, Wis.

- Tau, University of Wisconsin*—AUDREY PAFF, Delta Zeta House, 142 Langdon St., Madison, Wis.
- Alpha Alpha, Northwestern University*—ALICE TENEZAR, Delta Zeta House, 717 University Place, Evanston, Ill.
- Gamma Theta, Carroll College*—MARILYN MEIDINGER, Voorhees Dormitory, Waukesha, Wis.
- Gamma Mu, Illinois Institute of Technology*—FERN SCHALUND, 60 E. 32nd St., Chicago 16, Ill.

- Madison Alumnae*—MISS FRANCES KLEINERT, R. R. #1, Madison, Wis.
- Milwaukee Alumnae*—MISS MARION SEMRAU, 1035 Laurel Court, Wauwatosa 13, Wis.
- Waukesha Alumnae*—CHARLOTTE BECK, N. Beaver Lake Road, Hartland, Wis.



PROVINCE X: Iowa, South Dakota, Minnesota, North Dakota  
 Director: MRS. RICHARD DAVIDSON, University Terrace Apts., 7-C, Des Moines 11, Iowa

*Iota, University of Iowa*—NOLA CARPENTER, 322 N. Clinton St., Iowa City, Iowa  
*Gamma, University of Minnesota*—ELIZABETH SARANTES, Delta Zeta House, 519 10th Ave., S.E. Minneapolis, Minn.  
*Upsilon, University of North Dakota*—ELAINE FRYDENLUND, Delta Zeta House, 2724 University Ave., Grand Forks, N.D.  
*Beta Kappa, Iowa State College*—ESTHER HUNTER, Delta Zeta House, 2138 Sunset Drive, Ames, Iowa  
*Gamma Epsilon, Drake University*—ANN PETERSON, Delta Zeta House, 3118 Cottage Grove, Des Moines, Iowa

*Ames-Boone Alumnae*—MRS. ARNOLD LIVINGSTON, 216 Campus Ave., Ames, Iowa  
*Cedar Rapids, Alumnae*—MRS. W. G. HUGHES, 1113 29th St., Cedar Rapids, Iowa  
*Des Moines, Alumnae*—MRS. GEORGE PETERSON, 2400 34th St., Des Moines, Iowa  
*Quad City Alumnae*—MRS. WILLARD H. PETERSON, 1104 45th St., Rock Island, Ill.  
*Sioux City Alumnae*—MRS. DARRELL HANNA, 1026 S. Alice, Sioux City 6, Iowa  
*Twin City Alumnae*—MRS. CECIL TAMMEN, 4225 Brunswick Ave., S., Minneapolis, Minn.

PROVINCE XI: Nebraska, Missouri, Colorado, Kansas  
 Director:

*Beta Sigma, Colorado A. & M.*—SHIRLEY BELIER, Delta Zeta House, 1002 Remington, Fort Collins, Colo.  
*Beta Tau, Nebraska Wesleyan University*—JO ANN HAGEMEISTER, Delta Zeta House, 4942 Madison Ave., Lincoln, Neb.  
*Gamma Gamma, Missouri Valley College*—ANNA RICKELS, Young Hall, Marshall, Mo.  
*Denver Alumnae*—MRS. FRANK LENON, 7800 E. 16th St., Denver, Colo.  
*Fort Collins Alumnae*—MRS. H. G. JORDAN, 428 West Laurel, Fort Collins, Colo.  
*Grand Junction Alumnae*—MRS. C. A. RASOR, 1155 Merca Ave., Grand Junction, Colo.

*Lincoln Alumnae*—MRS. RICHARD H. YOUNG, 3145 N. 60th St., Lincoln, Neb.  
*Marshall Alumnae*—MRS. ROBERT S. BAGNELL, Blackburn, Mo.  
*Omaha Alumnae*—MISS DORIS ROOT, 4730 S. 48th St., Omaha, Neb.  
*St. Louis Alumnae*—MRS. F. L. STOCKHAM, 5834 Cabanne Ave., St. Louis, 12, Mo.  
*Kansas City Alumnae*—MRS. JOHN BURKE, 5832 McGee, Kansas City, Mo.  
*Wichita Alumnae*—MRS. DWIGHT T. CASTELLO, 831 So. Christine Ave., Wichita, Kan.

PROVINCE XII: Oregon, Washington  
 Director: JOHNNIE MILLER TUSTIN (Mrs. Johnnie M.), 516 W. 29th Ave., Spokane 44, Wash.

*Kappa, University of Washington*—DONNA PREVOST, Delta Zeta House, 4535 18th N.E., Seattle, Wash.  
*Phi, Washington State College*—LOIS FREESE, 1704 Opal St., Pullman, Wash.  
*Chi, Oregon State College*—KAYRENE BUTLER, Delta Zeta House, 23rd & Van Buren, Corvallis, Ore.  
*Omega, University of Oregon*—PHYLLIS KARN, Delta Zeta House, 1883 University Ave., Eugene, Ore.  
*Corvallis Alumnae*—ALICE EDWARDS, 907 Madison St., Corvallis, Ore.  
*Eugene Alumnae*—MRS. VERNON L. SPRAGUE, 1765 Skyline Drive, Eugene, Ore.  
*Portland Alumnae*—MRS. FELIX F. FORS, 557 A Ave., Oswego, Ore.

*Pullman Alumnae*—MRS. RAY MOREE, 1501 Charlotte Ave., Pullman, Wash.  
*Salem Alumnae*—MRS. CHARLES H. DERTHICK, 955 Marion St., Salem, Ore.  
*Seattle Alumnae*—MRS. NELLA HULET, 805 Warren Ave., Seattle 9, Wash.  
*Spokane Alumnae*—MRS. C. J. HURD, W. 614 22nd Ave., Spokane, Wash.  
*Tacoma Alumnae*—MISS GERALDINE KEM, Tacoma Indian Hospital, Tacoma, Wash.  
*Yakima Alumnae*—MRS. DAVID LEONARD, 1006 Rose Place, Yakima, Wash.

PROVINCE XIII: California, Arizona, Nevada, Utah  
 Director: SUE WILLIAMS BEBB (Mrs. Robert S.), 3743 W. 60th St., Los Angeles 43, Calif.

*Mu, University of California*—SALLY AKERS, Delta Zeta House, 2728 Durant St., Berkeley 4, Calif.  
*Alpha Chi, University of California, Los Angeles*—MARTHA LOU STITES, Delta Zeta House, 824 Hilgard, West Los Angeles 24, Calif.  
*Gamma Lambda, San Jose State College*—ANN E. ROGERS, 64 S. Tenth, San Jose, Calif.  
*Gamma Omicron, San Diego State College*—PATRICIA R. HARPER, 4228 58th St., San Diego, Calif.  
*Fresno Alumnae*—MRS. JOHN D. McFEATERS, 207 Meridian, Fresno, Calif.  
*Glendale-Burbank Alumnae*—MRS. RAY E. SHORB, 440 Naomi, Burbank, Calif.  
*Honolulu, T. H. Alumnae*—MRS. JACK N. STEVENS, 210 Center St., Honolulu 18, T. H.  
*Long Beach Alumnae*—KATHERINE MORRISON, 3555 California, Long Beach, Calif.  
*Los Angeles Alumnae*—MRS. EVERETT J. WALSH, 552½ N. Kingsley Dr., Los Angeles 4, Calif.  
*Marin County Alumnae*—MRS. WILLIAM L. BLAIR, 380 Cascade Dr., Fairfax, Calif.  
*Monterey Peninsula Alumnae*—MRS. RICHARD A. ROSS, 1119 Buena Vista, Pacific Grove, Calif.

*Orange County Alumnae*—MRS. JOSEPH P. CRITCHFIELD, 123 So. Ohio St., Anaheim, Calif.  
*Pasadena Foothills Alumnae*—MRS. E. HALE BECKMANN, 1220 DeVar Dr., Pasadena, Calif.  
*Phoenix Alumnae*—MRS. JOHN A. POBAR, Veterans Hospital, 4102 N. 7th St., Phoenix, Ariz.  
*Sacramento Alumnae*—MRS. DON PEARSON, 3925 Bartley Dr., Sacramento, Calif.  
*San Diego Alumnae*—MRS. J. WILLIAM WARREN, 3103 28th St., San Diego 4, Calif.  
*San Francisco-Bay Cities Alumnae*—MRS. THOMAS W. TAYLOR, 3200 Oakland, Lafayette, Calif.  
 Secretary: Miss Betty Laughlin, 3630 Cabrillo St., San Francisco, Calif.  
*San Francisco Peninsula Alumnae*—MRS. BERT MASON, 236 Oakview, San Carlos, Calif.  
*San Jose Alumnae*—MRS. ALDO BALBIANI, 234 W. St. James St., San Jose, Calif.  
*Santa Barbara-Ventura Alumnae*—MRS. BAILARD FRANKLIN, Box 144, Carpinteria, Calif.  
*Santa Monica Alumnae*—MRS. MARK C. ALLEN, 1730 Robson, Santa Monica, Calif.  
*Mt. Diablo Area Alumnae*—MRS. JUEL LIEN, 108 Poscha Rd., Concord, Calif.



PROVINCE XIV: Texas, Oklahoma, New Mexico

Director: MRS. HARVIN R. LEWIS, The Phillips, Apt. 620, Bartlesville, Okla.

*Alpha Epsilon, Oklahoma A. & M.*—PATRICIA PARNELL, Delta Zeta House, 224 S. Jefferson, Stillwater, Okla.  
*Alpha Tau, University of Texas*—ANN COLLETTE, Delta Zeta House, 1704 West Ave., Austin 21, Tex.  
*Alpha Psi, Southern Methodist University*—DOLORES GUPTON BRANDT, Delta Zeta House, 3034 Daniels St., Dallas, Tex.  
*Gamma Zeta, Southwestern University*—ANN WILKINSON, Delta Zeta Box, Southwestern University, Georgetown, Tex.  
*Gamma Xi, New Mexico A. & M.*—FRANCES STARK, Box 973, State College, N.M.  
*Gamma Upsilon*—BETTY JO DENNY, Route 10, Box 106, Oklahoma City, Okla.

*Austin Alumnae*—MISS VIRGINIA PARKER, 1204 Justin Lane, Austin, Tex.  
*Dallas Alumnae*—MRS. R. F. MITCHELL, JR., 6030 McCommas, Dallas, Tex.  
*Enid Alumnae*—MRS. HUBERT HITCHCOCK, 821 E. Pine St., Enid, Okla.  
*Houston Alumnae*—MRS. ROYAL G. BRANTLEY, 2337 Albano Rd., Houston 5, Tex.  
*Oklahoma City Alumnae*—MARTHA JONES, Rt. 2, Box 253X, Silver Lake, Okla.  
*San Antonio Alumnae*—MRS. TEMPLE G. HOLLAND, 114 Artillery Rd., Fort Sam Houston, Tex.  
*Stillwater Alumnae*—MRS. MELVIN ALBRIGHT, 840 W. Cantrell, Stillwater, Okla.

PROVINCE XV: Kentucky, Tennessee

Director: CLARICE DEVERE BOND (Mrs. C. W.), 1617 Graybar Lane, Nashville, Tenn.

*Alpha Theta, University of Kentucky*—SARAH HOFFMANN, Delta Zeta House, 185 E. Maxwell, Lexington, Ky.  
*Beta Gamma, University of Louisville*—MARTHA RENFROW, Delta Zeta House, 2028 S. First, Louisville, Ky.  
*Beta Delta, University of South Carolina*—HAZEL DUKE, Box 1082 Girls' Dormitory, U. of S. Carolina, Columbia, S.C.  
*Beta Lambda, University of Tennessee*—EMMA JEAN LEEK, 200 Crawford St., Fountain City, Tenn.  
*Gamma Iota, Memphis State College*—IMOGENE GORDON, 844 Inez St., Memphis, Tenn.

*Knoxville Alumnae*—MISS MARTHA ANN WILLIAMS, 6010 Easton Road, Knoxville, Tenn.  
*Lexington Alumnae*—MRS. KENNETH FORTUNE, 309 Romney Road, Lexington, Ky.  
*Louisville Alumnae*—MRS. C. L. SMITH, 1131 Ashland Ave., Louisville, Ky.  
*Memphis Alumnae*—MISS MARTHA ANN GATTI, 795 North Perkins, Memphis, Tenn.  
*Nashville Alumnae*—MISS JEAN MARIE HAMILTON, 1402 Acklen Ave., Nashville, Tenn.

PROVINCE XVI: Louisiana, Mississippi, Alabama

Director: MARIE GROSS LEPINE (Mrs. J. Wilson), Laurel Valley Plantation, Thibodaux, La.

*Sigma, Louisiana State University*—PATRICIA NECK, Delta Zeta, Box 7675, University Sta., Baton Rouge, La.  
*Alpha Gamma, University of Alabama*—ANN LIGHTFOOT, Delta Zeta House, University, Ala.  
*Alpha Pi, Howard College*—BETTY JEAN RITCHEY, 7432 Division Ave., Birmingham, Ala.  
*Beta Xi, Alabama Polytechnic Institute*—JOANNE POWELL, Dormitory #1, A.P.I., Auburn, Ala.  
*Beta Upsilon, H. Sophie Newcomb College*—PATRICIA HEROY, 1103 Elvis Court, Metairie, New Orleans, La.  
*Baton Rouge Alumnae*—MISS MARY DELL BOGAN, 239 N. 19th St., Baton Rouge, La.  
*Birmingham Alumnae*—MISS DINNIE MAE MACKEY, 7618 Division Ave., Birmingham, Ala.

*Jackson Alumnae*—MRS. HERBERT A. WOOTEN, 843 Arbor Vista Blvd., Jackson, Miss.  
*New Orleans Alumnae*—MRS. DONALD W. DODDS, 5127 Louisa Drive, New Orleans, La.  
*Shreveport Alumnae*—MRS. E. A. THARPE, JR., 503 Monrovia St., Shreveport, La.  
*Tuscaloosa Alumnae*—MRS. E. C. WRIGHT, 1 The Downs, Tuscaloosa, Ala.  
*Montgomery Alumnae*—MRS. NICK W. HARRIS, JR., 7 Olivia Ct., Montgomery, Ala.  
*Mobile Alumnae*—MRS. B. W. DEAN, 262 Houston St., Mobile, Ala.

PROVINCE XVII: Florida, Georgia, South Carolina

Director: HELEN MCGERR KEVE (Mrs. C. S.), 1481 Hillview Drive, Sarasota, Fla.

*Alpha Sigma, Florida State University*—CAROL TRIMMER, Delta Zeta House, 409 S. Copeland, Tallahassee, Fla.  
*Beta Delta, University of South Carolina*—HAZEL DUKE, Box 1082, U. of South Carolina, Columbia, S.C.  
*Beta Mu, Florida Southern College*—JUDITH OTT, Delta Zeta House, Ingram Ave., Florida Southern College, Lakeland, Fla.  
*Beta Nu, University of Miami*—JEAN MCGUIRE, 2550 S.W. First St., Miami, Fla.  
*Atlanta Alumnae*—MRS. ALTON V. HILL, JR., 685 Darlington Circle, N.W., Atlanta, Ga.  
*Charleston Alumnae*—MISS HAZEL MOORE, 68 Elizabeth Lane, Charleston, S.C.  
*Columbia Alumnae*—MRS. LLOYD McMULLEN, 2814½ Blossom St., Columbia, S.C.  
*Jacksonville Alumnae*—MARGARET MCCOOGAN, 1504 Dunsford Rd., Jacksonville, Fla.

*Lakeland Alumnae*—MRS. THERA HOWARD, 840 S. Florida Ave., Lakeland, Fla.  
*Miami Alumnae*—MRS. WALTER E. GILLEN, 2835 S.W. 37th Court, Miami, Fla.  
*Orlando Alumnae*—MRS. T. E. GRASON, 811 E. Concord, Orlando, Fla.  
*Pensacola*—MRS. MURRAY FLACK, 1800 N. "E" St., Pensacola, Fla.  
*Plant City Alumnae*—MRS. ROBERT L. DIXON, 1603 Burton St., Plant City, Fla.  
*St. Petersburg Alumnae*—MRS. SHEENA JOHNSTON, 2332 Lakeview Ave. So., St. Petersburg, Fla.  
*Tallahassee Alumnae*—MRS. HARRY T. OWENS, P.O. Box 645, Tallahassee, Fla.  
*Tampa Alumnae*—MISS VIRGINIA BROWN, 3706 W. Platt, Tampa, Fla.



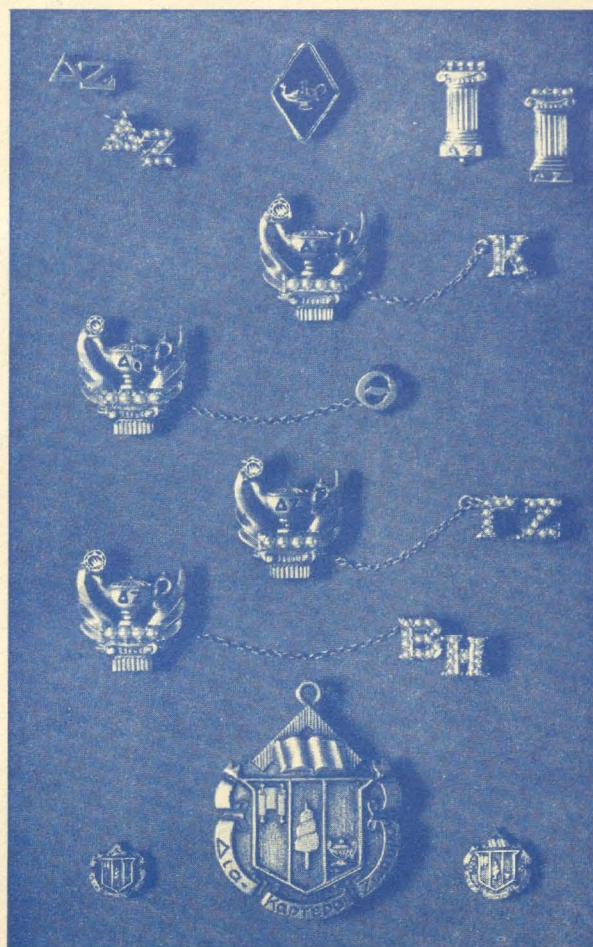
# Order Your $\Delta Z$ Jewelry

*from our Official Jeweler*

## BURR, PATTERSON & AULD COMPANY

2301 Sixteenth Street  
Detroit 16, Michigan

When ordering badges, please use the official badge order form and forward same to the Executive Secretary for her approval. Your sorority requires this.



### STANDARD BADGES

Zircon, set flush or tiffany .....	\$12.50
Brilliant cut diamond, flush or tiffany .....	22.50
Medium size diamond, flush or tiffany .....	27.50
.10 Diamond set flush or tiffany .....	62.50
(Be sure to specify your choice of setting for the diamond, flush or tiffany.)	
Recognition pin, staggered letters, crown set pearl .....	10.00
Recognition pin, staggered letters, gold-filled .....	1.00
10K gold .....	2.00
Mother's pin, plain .....	2.50
with pearls .....	3.50
Pledge pin, with safety catch .....	1.00

### GUARD PIN PRICES

	Single Letter	Double Letter
Plain .....	\$2.25	\$ 3.50
Crown set pearl .....	6.50	11.50

(Be sure to mention the name of your chapter when ordering a guard for your pin.)

**20% FEDERAL EXCISE TAX MUST BE ADDED TO ABOVE PRICES; ALSO STATE SALES AND USE TAX WHERE THEY ARE IN EFFECT.**



Mrs. Richard E. Emmer

204 Blue Hills Ave.,

Hartford, Conn.

Entered as

If undeliverable return copies and Form 3579 to Delta  
Zeta Sorority, 1325 Circle Tower, Indianapolis 4, Indiana.

RETURN POSTAGE GUARANTEED

