

VOL. XIV

DECEMBER, 1924

NO. 2

Delta Zeta Lamp

December, 1924

OFFICIAL PUBLICATION OF
Delta Zeta Fraternity

VERA BROWN JONES, *Editor*
1115 Church St. Evanston, Ill.

[[PRINTED
IN U.S.A.]]

The National Council

of

Delta Zeta

announces the installation of

*Alpha Upsilon
Chapter*

University of Maine

Orono, Maine

Contents

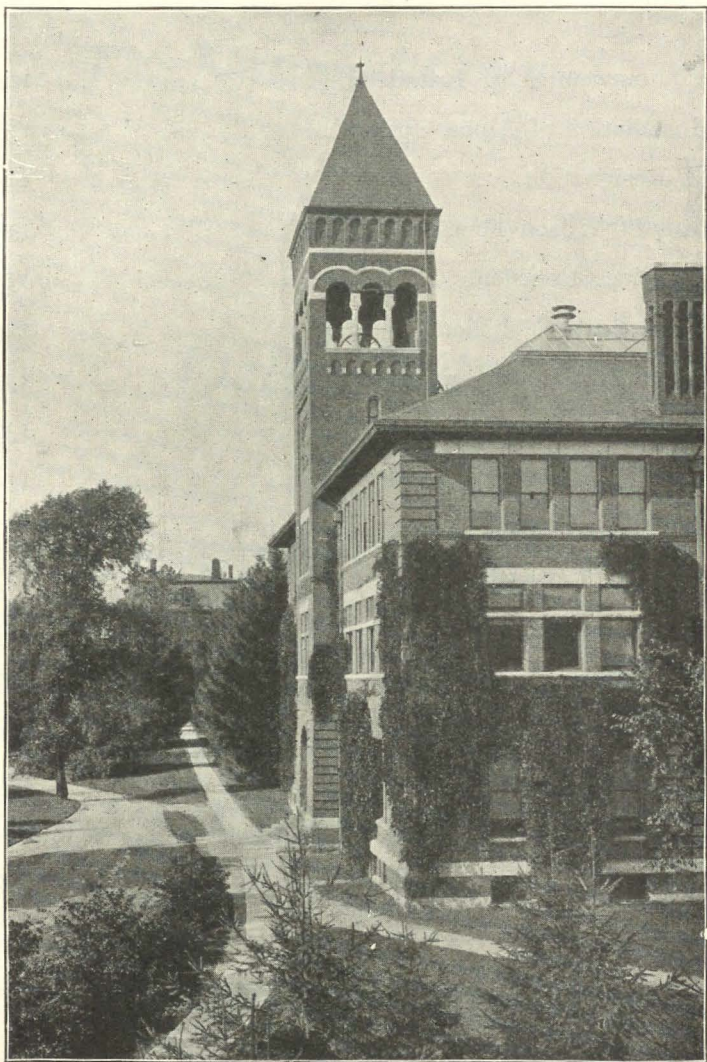
Announcement of Installation	108
Installation of Alpha Upsilon	111
A Resignation	114
Edythe Wilson Thoesen	114
Province Presidents	117
New York Panhellenic House	125
Delta Zeta Community Center	131
Rough Initiation	132
Lambda Girls Are Writers	134
Alumnæ Chapter Letters	136
Chapter Letters	147
Clippings Bureau	172
Honor Roll	179
Announcements	184
Pledges and Initiates	186
Our '24 Seniors and Their Activities	192
Directory	197

The DELTA ZETA LAMP is published four times a year by the George Banta Publishing Co., 450-454 Ahnaip St., Menasha, Wis., official printer to the fraternity.

Subscription price \$1.50 per year, single copies forty cents. Life subscription \$25.00.

Entered as second class matter October 18, 1909, at the postoffice at Menasha, Wisconsin, under the Act of Congress of March 3, 1879.

Acceptance for mailing at special rate of postage provided for in section 1103. Act of October 3, 1917. Authorized September 26, 1918.



WINGATE HALL, UNIVERSITY OF MAINE



Installation of the Alpha Upsilon Chapter

IT IS with the utmost enthusiasm and pleasure that I bring you news of our "youngest child," the Alpha Upsilon chapter of Delta Zeta, at the University of Maine, Orono, Maine.

The University of Maine was established in 1862 and admitted its first students in 1868, but no women were enrolled until 1872. It is, therefore, one of the oldest of the Land Grant colleges. It has acquired an international reputation in the chemistry of paper manufacture and attracts students from many countries all over the world.

The university campus is beautifully located just north of the junction of the Penobscot and the Stillwater Rivers which bound it on the west and the east, respectively. The Stillwater is most appropriately named, for one may see its peaceful waters flowing past from practically every building on the campus, and the quiet restfulness which its beauty imparts seems to permeate the entire university.

The installation officers consisted of Mrs. Coleman, our National President, Grace Mason, our Executive Secretary, Mrs. Edith Oakes Hilton, a Beta from the class of '23, Josephine McEntee, a senior from the Alpha Zeta chapter at Adelphi College, and myself. We pledged the girls Friday evening and initiated them Saturday morning. On Saturday afternoon the Alpha Upsilon chapter entertained at a lovely tea which was attended by the representatives and patronesses of Alpha Omicron Pi, Phi Mu, Delta Delta Delta, Pi Beta Phi, Chi Omega, and Kappa Psi, a local sorority; the matrons of both the women's dormitories, and a few

other selected guests, chief among whom were the patronesses of the new chapter.

Saturday evening the installation banquet was held at a lovely old home on the very banks of the Stillwater River. The place has been in the possession of one family for several generations and is filled with the most interesting collection of antique furnishings I have ever seen outside of a museum. Almost everything in the house has been brought from England and the Continent, and the beautiful and harmonious atmosphere of the place was peculiarly appropriate to the occasion. The dinner was followed by a number of interesting talks by various members of the newly initiated group, telling of their brief existence as a local sorority and of their boundless joy in being received into the ranks of Delta Zeta. Responses were made by each of the installing officers, and the banquet then turned into a song-fest and we heard a large selection of Maine songs which will be enthusiastically received by members of other chapters at the next convention, I am sure, for there were peppy songs, funny songs, very tuneful ones, and, to cap the climax, the new chapter presented a new Delta Zeta song which they have arranged which will be a welcome addition to our collection.

Mrs. Hilton, who is a Maine girl living only seventy-five miles away, was selected as the Big Sister of the new chapter, and has promised to keep a close watch on their affairs. The members of the chapter are delighted to have a Big Sister so conveniently located who will be able to help them with rushing quite frequently, and who will be close enough to pay them visits instead of confining her supervision exclusively to correspondence.

Sunday morning we all attended church in a body, and in the afternoon we went to Old Town, a village three miles distant where the famous Old Town canoes are made, where snow shoes are manufactured, where there is an Indian Reservation possessing a painting done by a member of the tribe over a hundred years ago, using fruit juices as a medium, and still in a fine state of preservation.

Sunday evening we all left, feeling to the utmost the customary mixed emotions of happiness and sadness—so pleased to have had the privilege of making this fine group of girls into real Delta Zetas, and yet sorry to go away just as we were becoming really good friends.

The Alpha Upsilon chapter, as it was installed, was composed of four alumnæ, Ellen Pierson, Ethelyn Percival, Muriel Varnum and Joy Nevens, who is doing graduate work at the University of Maine, and is therefore still with the girls; five seniors, Anne Fuller, Margery Bailey, Madeline McPhetres, Harriet Page and Dorothy Mossler; three juniors, Velma Olliver, Emily Pendleton and Jessie Wood, and three sophomores, Margaret White, Annette Matthews and Amy Adams. Their rushing period will soon be over, however, and then they will probably add several freshmen to their list. Two upperclassmen are pledges of the group at the present time, so they are numerous enough to have the strength necessary to firmly establish themselves as an influence among the Greek-letter women on their campus.

MARCELLE PENDERY, *Beta*, '21.



MONNETT HALL
(from Northeast Corner)
Ohio Wesleyan University, Delaware, Ohio

A RESIGNATION

ALL Delta Zetas will regret to know that Mrs. Marita Littauer, finding her duties as National Secretary conflicted with the demands of her family, has reluctantly tendered her resignation and it has been just as reluctantly accepted.

While we regret very much to lose Mrs. Littauer from our official family, we are pleased to announce that Edythe Wilson Thoesen has been appointed to succeed her.

JULIA BISHOP COLEMAN.

EDYTHE WILSON THOESSEN

FEW readers of THE LAMP need an introduction to Edythe Wilson Thoesen. In taking up the portfolio put down by Marita Littauer, Mrs. Thoesen comes, as Secretary, back into a circle in which she is already a familiar figure.

The name of Edythe Wilson Thoesen has become one well known in every chapter-house, to every council member, and even among the alumnae, where her campaign for the payment of life dues met with such a gratifying response. As Grand Treasurer of Delta Zeta for two years, she brought into service her splendid organization ability, capacity for systemization, and persuasive power, all to the betterment and the financial enrichment of her Fraternity.

These qualities are not newly developed, nor have they come as the result of responsibility, as is sometimes the case. They represent the flowering of the very same abilities shown in her student day, and proving as valuable to her chapter at that time as they have proved since then to her Fraternity at large.

She was never too busy while she was in college, to go on another errand, serve on another committee, attend a special meeting, do some individual rushing on a girl who was proving difficult, or give of her time in any other way if it was needed at the "house." She could always be counted on to offer constructive criticism, instead of just "crabbing." She regarded it as a part of her fraternity duty to take part in discussions of ways to improve the chapter in organization, in scholarship, in financial stability, and in culture. Her suggestions were always thoughtful ones, and because real thought and concern had been expended on them, they were usually helpful.



EDYTHE WILSON THOESEN
National Secretary

All of these same things can be said of her in her relationship to Delta Zeta nationally. In the administration of the office which she held—one of the hardest and most responsible in the entire Fraternity—as well as in all other work which she has ever been given to do, she has exhibited the same reliability and the same excellence of performance.

It is said that there are certain definite characteristics which mark the valuable member of any organization, of whatever kind. Those characteristics are loyalty, accuracy, promptness, perseverance, judgment, courtesy, tact, originality, and resourcefulness. "And"—to become Scriptural in tone—"the greatest of these is loyalty," for if one is truly loyal one will, of course, use all the other qualities, to make sure that one's work is good and valuable.

An outstanding trait of Edythe's is her loyalty to Delta Zeta and to whatever branch of work she is doing for the Fraternity. There has never been a better national treasurer than she was, and she not only discharged the work at hand in an efficient and praiseworthy manner, but she also made a study of it and was able to offer, in giving up the work, constructive suggestions for carrying it on in the future.

She will bring to the office of secretary the same business ability, the same interest, and the same spirit of loyalty that have characterized all her work, in college and out of it. She is willing to serve her Fraternity, and she is unwilling to serve it poorly. Charming, poised, youthful, and, above all, *interested*, she is an asset to the council, personally as well as officially. It is as pleasant to see her at work as it is to work with her, and working with her—I speak from the standpoint of one who has done much of it—is pleasant indeed.

One of her most valuable traits is that she is not dictatorial. She is willing to take suggestions, and has always had the faculty of putting the good of her Fraternity above any personal considerations of hers.

The sudden change of personnel in the office of secretary can perhaps best be commented upon in the old words: "The Queen is dead; long live the Queen." We are sorry to see Mrs. Littauer give up the work, but we are happy to see her place filled as we all know Edythe will fill it.

IZIL POLSON,

Lambda.

Province Presidents

WHEN you ask me about our province presidents, I would reply as did Cornelia of old, "These are my jewels." They have been selected because of their high ideals and enthusiastic service for Delta Zeta and will be a great factor in carrying out our program of development and standardization of chapters.

Marcelle Pendery

First let me present Marcelle Pendery, president of Alpha Province. She received her Delta Zeta baptism from Beta chapter and served as its president, the year 1920-21, having served the unexpired term of her predecessor. New York Alumnæ appreciated her ability and made her their president. In this office she served efficiently for one year and was reelected, but her decision to accept a secretarial position at the University of North Carolina made it necessary for her to resign. However, her seeming isolation in the South did not interfere with her Delta Zeta service. While there, she undertook the organization of Beta Alumnæ Association, edited and published their first *Beta Bulletin* and is now working on the second.

She was Beta's delegate to the 1920 convention at Denver, served on the entertainment committee for the 1922 convention, and was official stenographer for the 1924 convention. We prophesy that she will make a splendid report of her stewardship at the 1926 convention.

At 1922 convention Sigma was still our one southern chapter. The six Sigma girls who made the long trip to meet their sisters from north, east and west would have been incredulous with delight had a prophet pictured to them the present Beta Province. At that convention were chartered the chapters at George Washington and University of Alabama; since then have been added Randolph-Macon, Howard, Brenau and Florida State College. In

the near future alumnae chapters in Baton Rouge and Birmingham will keep the alumnae of Washington chapter company.

Catherine Winters

To guide and direct the growth of these chapters, no more admirable person could be found than Catherine Winters, who will serve as president of Beta Province. A charter member of Sigma chapter, she knows well the path that leads from local to national affiliation. In her term of service on the faculty of Florida State College, she has demonstrated her ability to select girls and assist in the building of a strongly coherent local, for largely to her we owe our splendid Alpha Sigma chapter. Her many friends among other sororities on this campus clearly show her to be considered by all as one who realizes the broadest significance of membership in a Greek fraternity. One of her activities has been to encourage the formation of an honorary society, open to students displaying special excellence in history.

"Only the best is good enough for Delta Zeta," said this snappy, black-eyed Louisiana lady. Such an attitude will mean the attainment of a fine degree of excellence in all Beta Province chapters.

Gladys Hartman Ruoff

Probably youngest among our province presidents is Gladys Hartman Ruoff, of Gamma chapter. Gladys graduated from the Arsenal Technical High School, Indianapolis, at the middle of the year 1915-16 and entered Indiana University, where she was promptly pledged to Delta Zeta. After being in the chapter for a year and a half, she returned to Indianapolis to carry on her work in the Department of Social Service of the university, located at Indianapolis in connection with the Medical School. Thus is indicated her choice of professions, a work in which she has continued until this fall. She was for some months in charge of the Civilian Relief of the Indianapolis chapter of the American Red Cross, resigning that position to become the chief adult probation officer of the city of Indianapolis.

During all this time of active work she has retained a close and constant interest in Delta Zeta, both in the Indianapolis

Alumnæ chapter, and in Epsilon chapter. She served most capably as president of the alumnæ, 1921-22, and was the delegate to convention at Ithaca in 1922. She has also been a member of the Alumnæ Council of Epsilon chapter, and was Chapter Big Sister, 1922-23. Still more recently she has been active and interested in furthering the welfare of Alpha Nu in her first year on the Butler campus.

Gladys brings to her work just the qualities most essential for successful guidance of the province and has begun it with great enthusiasm. The ten chapters in this province are geographically so well located that their province convention should be a notably worth-while one.

It would be unfair to omit mention, in connection with "Glad," of her mother, for "Mrs. Annie" has been, to use a phrase noted recently in *Banta's Greek Exchange*, a "member who is not a member." Mrs. Hartman's interest in Delta Zeta has always been ardent, and no matter what was the call, she stood ready to help—her house, her services and her interest always at Delta Zeta's disposal.

Gladys was married in September, 1922, to Frederick L. Ruoff, Sigma Phi Epsilon, from Cornell University.

Owing to the large number of chapters, both active and alumnæ, in Gamma Province, a secretary for the province has been appointed and already commenced her work. We are fortunate in having for this work, Margaret Henderson Crawford, '19, of Alpha Chapter. "Peg" was one of Alpha's most active members, serving as president of the chapter, and being elected to Pleade, the honorary which has since become a chapter of Mortar Board. She was married in 1921 to Kenneth Crawford, Beta Theta Pi, also from Miami, and lives in Fort Thomas, Kentucky. The Cincinnati Alumnæ chapter counts her as one of its most valuable members, and when she went to Lexington to assist with the installation of Alpha Theta chapter, she was immediately seized upon by that chapter and made Big Sister, which position she still continues. Her natural ability, close contact and experience make her an ideal person for this position, and from rumors heard since a conference of the president and secretary of the province, it seems great things lie ahead.



PROVINCE PRESIDENTS

Lois Higgins
President of Delta Province

Gladys Hartman Ruoff
President of Gamma Province

Margaret Pope Fraser
President of Zeta Province

Marcelle Pendery
President of Alpha Province

Ruby Long
President of Eta Province

Catherine Winters
President of Beta Province

Lois Higgins

As president of Delta Province we have chosen Lois Higgins of Chicago. When you remember her as toastmistress at the last convention, you will all agree in the sentiment so tersely expressed—"Nuf ced"—for did not we all feel that she expressed and is the ideal of what a Delta Zeta officer should be? Lois received her early Delta Zeta training at Miami, along with Rene Sebring Smith. She did not graduate from Miami, however, but went to the University of Chicago where she received her Ph.B. degree. As office manager of Lippincott Publishing Company she has had an experience which will help her in directing the development of her chapters. Delta Province may well rejoice in the leadership of Lois Higgins.

Fannie Putcamp Smith

Those of us who know Fannie Putcamp Smith were disappointed because she could not attend convention, for we wanted Delta Zetas to know the one who has, in a quiet way, done so much for our fraternity. She was one of the charter members of Zeta chapter and helped a short time later to install Eta chapter. She did not graduate from University of Nebraska, but took her degree from Leland Stanford University. When she went to the University of North Dakota as a member of the faculty she was not to be deprived of Delta Zeta contacts for as soon as expedient she began to organize a local for Delta Zeta which became our Upsilon chapter. In telling of her work there, one of the faculty spoke of her as being a keen judge of girls and that she had insisted upon the highest requirements from those who were to be the chapter members of Upsilon. For two terms Mrs. Smith has served on our Extension Committee where she has given invaluable service.

The summer of 1922, Fannie Putcamp became the wife of Dr. Frederick Smith, professor at Southern Methodist University, Dallas, Texas, where Mrs. Smith has also become a member of the faculty. Since we have no chapter in this splendid Southern University, you may easily guess what is going on there. It is second nature to Mrs. Smith to guide girls who aspire to build an organization worthy of Delta Zeta. For all Epsilon Province, Mrs. Smith will set a definite goal and point the way to its attainment.

Margaret Pope Fraser

Impressed though one must have been with the quality and quantity exhibited by Mu chapter in her representation at 1924 convention, their conversation indicated that they had left behind them at least one whose worth they swore was greater than any of theirs, and whose ability would equal any demands made upon it. All these asseverations were vouched for by Georgia Chandler Hornung, who spoke in emphatic approval of the appointment of this girl as Province President, and so it comes to pass that the old joke about the member who stayed away and received a large commission, was again demonstrated. Zeta Province is to be presided over by Margaret Pope Fraser.

Living in Oakland, Margaret has been part and parcel of Mu Chapter since her entrance into it. During the undergraduate career, she was represented in practically every phase of campus activity, culminating in membership in Prytanean. After leaving active chapter life, she retained her connection with the chapter through her election as Big Sister. Here she was of invaluable service to the chapter. Scarcely had the old house at 1837 Arch Street fallen in embers and ruins, when she was in touch with National, communicating the news of the loss, arranging for replacement of chapter supplies, and for a loan from the national treasury, if needed.

In the Berkeley Alumnæ chapter she has been a vital force, helping to form the close connection which exists between this alumnæ chapter and the active chapter.

Her recent marriage to Dr. Harold Fraser has taken her to San Francisco to live, but her service for Delta Zeta is just now taking on a larger scope as she begins the work as president of Zeta Province.

It is a pleasure to announce her acceptance of this position and to urge all Delta Zetas to plan to meet her, president of the entertaining province, in 1926.

Ruby Long

Bright among the memories of the 1922 and 1924 conventions will be the recollections of those famous "last night parties," inspiration of those two unique hostesses, Nettie Wills Shugart and

Ruby Long. These highly successful funfests have firmly established "Nettie" and "Ruby" in the hearts of their hilarious guests, and it is no stranger whom we present to our chapters when introducing Ruby Long as president of Eta Province of Delta Zeta.

Even those who have not had the pleasure of knowing her personally at convention or elsewhere have had occasion to know her in connection with Delta Zeta, for Ruby's career in official Delta Zeta began early and her service has been nearly continuous.

A charter member of Kappa chapter, she was one of the first to build for Delta Zeta on the western coast. Upon her graduation from the University of Washington in 1914 she began teaching school, in which profession she continues. Before long she was added to the then Grand Council, and at convention was elected National.

The 1920 convention elected her vice-president, and she served again from 1922-24 as Parliamentarian. Although at her motion this office has been dropped from Council, all have cause to be grateful for her work on the Committee of Laws, and, at 1922 convention, as chairman of the committee to go over and revise the National Constitution. This onerous task she performed with splendid insight and keen perception of changes necessary to make the constitution conform more nearly to the present and future needs of the Fraternity.

The fact that much of her work has been done under the threat of ill health makes her devotion even more marked. Since convention she has spent considerable time in a hospital in Denver, and therefore the Council appreciates all the more her acceptance of the position of president of Eta Province.

Her past work in inspection shows that she will be helpful and encouraging to her chapters, and under her plans for province convention, the chapters of this section may look forward to a greater acquaintance with each other and with Delta Zeta in general, and with a delightful acquaintance with this ever sunny, reassuring and dependable friend, Ruby Long.

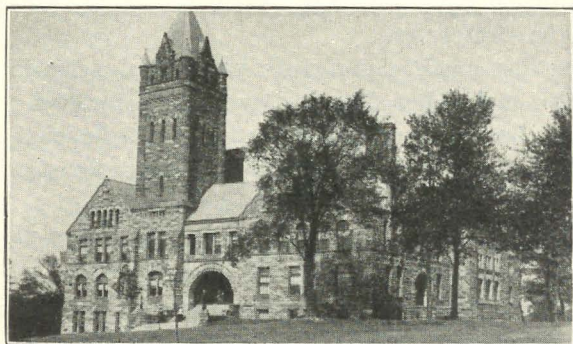
Province Secretaries

Three of our province presidents are being assisted in their work by province secretaries. Sara Newsom, charter member of Alpha

Gamma chapter, is secretary of Beta Province. She is on the faculty of Birmingham College and is in every way fitted to serve Delta Zeta most efficiently.

In Gamma Province there are more chapters than any one person can direct, so Mrs Ruoff is being assisted by Margaret Henderson Crawford, of Cincinnati. "Peg" Crawford is a graduate of Miami, where she held important offices in Alpha chapter. She is now vice-president of the Cincinnati Alumnæ chapter and one of its most faithful members. As Big Sister of Alpha Theta chapter she has shown her ability to direct the development of a chapter of Delta Zeta.

Mrs. Smith has chosen Mrs. Sullivan of Fort Riley, Kansas, to be secretary of Epsilon Province. Evelyn Kramer Sullivan is an alumna of Lambda chapter. We all know of her splendid service to Delta Zeta as chairman of the Examination and Education Committee and feel that Mrs. Smith's choice of her as province secretary was a wise one.



UNIVERSITY HALL AND GRAY CHAPEL FROM
SOUTHWEST CORNER

University of Maine, Orono, Maine

New York Panhellenic House

SO MUCH has been said about the New York Panhellenic House both at convention and through letters to the chapters, that it must be a familiar subject to most of us. In brief explanation to any who have not yet chanced to hear of it, I will only say that it is a plan being worked out by the New York City Panhellenic Association to build and operate a million dollar hotel and club for fraternity women. The reason that it is still a plan and not yet a reality is because the money necessary to set the plan in operation has not yet been procured. This initial outlay must come from the fraternities themselves, and until it is raised nothing can be done.

Of the sum allotted to each fraternity, \$5,600, Delta Zeta still lacks only \$650. The sale to chapters or individual Delta Zetas of thirteen more bonds at \$50.00 each will complete our quota and insure us representation on the Board of Directors—but it is the sale of these few remaining bonds that constitutes our problem.

New York Alumnae chapter has made vigorous efforts to raise the entire sum of money and has met with a generous response. National Council subscribed to \$3,000 worth and many individuals, not only from this chapter but from others, have subscribed. In addition, the following chapters have bought bonds:

Active Chapters

Alpha, two bonds; Beta, Gamma, Delta, Iota, Lambda, Nu, Xi, Pi, Chi, Psi, Omega, Alpha Alpha, Alpha Beta, Alpha Eta, Alpha Theta, Alpha Zeta, Alpha Iota and Alpha Mu.

Alumnae Chapters

Indianapolis, Cincinnati, Columbus, Lincoln, New York, Seattle, San Francisco, Washington, D. C., Pittsburgh and Chicago.

We wish to thank every one of those chapters which have so generously aided us in this matter, as well as individuals from other chapters. Essential though the actual money has been, the response given by chapters has meant even more than that. It

has meant a strengthening of the ties that bind us together, a keener realization of the spirit of mutual helpfulness which means "fraternity." This alumnae chapter will not forget the aid given us by our sister chapters, both active and alumna.

At the same time we realize fully the financial difficulties that confront many chapters, especially the ones recently admitted into Delta Zeta, and we wish to acknowledge also the letters which came to us from chapters which would gladly have subscribed if it had been possible.

For those who feel ready to purchase one of the remaining thirteen bonds, let me say once more that only ten per cent must be paid at time of subscription. Full information and pledge blanks may be obtained by writing to Dorothy Schumann, 71 Winthrop St., Brooklyn, N. Y.

The fourth annual luncheon of the New York City Panhellenic was held at the Hotel Astor, May 17, Mrs. William H. Ives, Alpha Phi, presiding. There were nearly three hundred women present.

Eight national officers were introduced to the luncheon guests. The luncheon committee was composed of representatives from Zeta Tau Alpha, Alpha Gamma Delta, Alpha Delta Pi, Delta Zeta, and Phi Mu.

Mrs. William Vanamee, secretary of the American Academy of Arts and Letters, gave a most able address in which she spoke of the "cowardice of culture" and urged college women to take an active part in civic affairs. She spoke of a recent interview that she had with the editor of *The Outlook* in which he said the world at large was interested in three things to-day: what the political woman is doing; why she is doing it; her attitude, and what contribution she is making to civilization.

Miss Rochelle Gachet of Alpha Omicron Pi gave a splendid outline of the New York Panhellenic House. Her paper is given herewith:

With apologies to Edward Lear, I am going to feminize a famous rhyme:

There was a young Dame on a hill, who seldom, if ever, stood still;
She ran up and down, in her Mother's best gown,
which adorned that young Dame on the hill.

I am sure your imaginations can readily picture this "young Dame

on the hill" as the sorority system, which has "seldom, if ever, stood still."

In the early days, as you all know, the sororities were purely social and literary organizations, delightful for the few, but without serious thought of a "mission in life." As we began running up and down the hill of our growth, and national organization and control developed, there grew up a consciousness of opportunities for service that may be called our "mother's best gown," for, I believe, those who are held dear by us as the founders of our different groups had visions in which, in their own hearts, they adorned these children of their love and courage. It has taken some years for us to grow into an appreciation of the garb we might wear, but we are beginning now to realize opportunities hardly consciously thought of in the earlier days.

A real development of an opportunity by the fraternities and sororities can be found in the chapter house system. I saw recently a statement that in a certain western state university, the saving to the state, because of the partial handling of the housing problem by the fraternities and sororities, was estimated to be five million dollars. There are now over 2,600 groups who find homes in the fraternity and sorority houses on the various campuses. Alpha Phi has the honor of having had the first chapter of a sorority to own or occupy a chapter-house. This first house was built in 1886. Thirty years later, 1915, there were seventy-six sorority chapters owning houses, and only eight years later, 1923, the number had increased to 219 chapter-houses, valued at over four million dollars. There are, besides these, the chapters that live in rented houses, or are in process of purchasing their homes. We can justly point with the pride of accomplishment to this practical contribution of the sorority system.

The building up of endowment funds, the establishment of scholarships, the adoption of definite philanthropic work for national support—all have been recent developments in sorority life, and indicate that we are not "keeping still."

As the larger view of things began to prevail, the common interests of the different groups become preëminently the field of marked development. As some one remarked after a recent National Panhellenic Congress meeting, "Everyone here seems so like everyone else, that I almost forget which fraternity I belong to." In the early days of extreme youth, it was felt that there were great

and unavoidable antagonisms between the different groups. In some local cases, the situation is still unhappy, but that now seems childish from a national point of view. Since we are all human beings, there will always be healthy disagreements, but these as often as not are the means of better understanding, and in the last N. P. C. meeting there was not a single local Panhellenic dispute to be brought up for settlement. In other words, we *are* adorning ourselves with our "mother's best gown," and there is fast developing a solidarity among the sorority women that will be the means of accomplishing many interesting things.

It is on this basis that we are endeavoring to build the New York Panhellenic House. Such joint Panhellenic projects are but the natural step in the growth of the sorority structure.

Think back to your college days! A big drive was on for an endowment to build a new dormitory to replace the old one that had become inadequate for the freshman women. The college authorities—naturally, we would say—turned to the sororities for help. Each sorority pledged itself to do its share, partly through public spirit, partly because its own freshmen would have to live in this dormitory according to college rulings. Raising the quota was by no means all fun, but who wanted her sorority to appear ineffectual or indifferent in this common cause, and the spirit of sacrifice prevailed and the drive was put across.

Isn't that a pretty good parallel to the situation here now? New York is *not* housing properly our "freshman" alumnae, the girls just beginning with their small salaries. We cannot each of us put up a house, any more than we could have built our own freshman dormitory in the college days, but our joint endeavor in this common cause *can* solve the difficulty for *all*; and we need less public spirit than in the college days, for this house will not be erected for the college authorities to govern, but will be our own joint possession, to develop and control as we will.

As you know, the development of the house project is now on a business basis, under the control of a Board of Directors elected by the stockholders, one director for each participating fraternity. We all yearn for the day when we can point to a towering edifice of brick, and say with pride, "That is the Panhellenic House." That day may seem long in coming, but the project is a difficult one, involving, as it does, such large scale development, and based on the cooperation of eighteen different groups. We on the board

feel that matters are advancing satisfactorily, for we *want* to be careful and avoid mistakes.

I am happy to report that three sororities have "gone over the top" in the sale of their quota of the common stock—Alpha Delta Pi, Kappa Kappa Gamma and Zeta Tau Alpha. Alpha Delta Pi has the honor of being the first to achieve that happy state. Three other groups have arrangements with their national organizations by which stock not taken by individuals will be purchased, or underwritten, by the national. These are Kappa Alpha Theta, Alpha Phi, and Alpha Omicron Pi. Therefore full participation by six sororities is already assured.

Of the other sororities

Delta Zeta has	\$4,400 subscribed;
Phi Mu has	\$4,200 subscribed;
Chi Omega has	\$3,100 subscribed;
Delta Gamma has	\$2,550 subscribed;
Alpha Xi Delta has	\$2,000 subscribed;
Sigma Kappa has	\$1,800 subscribed;
Gamma Phi Beta has	\$1,750 subscribed;
Alpha Chi Omega has	\$1,550 subscribed;
Tri Delta has	\$1,000 subscribed.

In some cases, notably Alpha Gamma Delta and Kappa Delta, which have had no alumnae organizations in New York, the matter has had to be handled through the national organization, and final decision is not possible until action at the conventions to be held this summer.

The total amount of common stock actually subscribed up to to-day is \$45,550.00 with an additional \$9,650.00 that will be carried by national treasuries until sold by the local group. The Phi Mu report contained a significant statement. "Phi Mu has reached \$4,200 in the sale of common stock. The most interesting part of this campaign is that only \$1,000 of this amount has been subscribed by residents of New York. The other subscriptions come from Phi Mus everywhere in the United States."

Matters have now reached a stage where speeding up is highly desirable. It is *you*, though, to whom we must look at this stage to hurry things along, for the board can hardly proceed very effectively with the general sale of preferred stock until the fraternity women have shown that they themselves are really back of this thing by having bought up *all* of the common stock. If you

have not yet taken this means of showing your interest in the broader aspects of fraternity life, seek out the representative of your fraternity to-day and subscribe to common stock. Because of a legal requirement, ten per cent in cash must be paid with each subscription. The remainder will be due when called for by the board, with sixty days' notice, and may be paid in installments. However, it has been agreed that no additional payments on the common stock will be called in until the total amount of preferred stock has also been subscribed.

September 1, 1924, has been set as the date on which all groups desiring to participate must have their full quota of common stock in. The sorority system has not ceased to have its bitter opponents. I believe even these will yield admiration if this is truly a Panhellenic endeavor, undertaken by the full roll of N. P. C. sororities.

January 1, 1925, has been set as the tentative date by which it is hoped to have all the preferred stock sold. While this stock need not be held by fraternity women, it is expected that much of it will be. To dispose of this large amount of stock will not be easy, but faith and enthusiasm can accomplish a great deal. If the fraternity women want this house, it will go up without doubt of question, but we must want it not only in theory, but in fact, with a willingness to work for, and sacrifice, if need be, in order to get it. In taking out your subscriptions, visualize the opportunity that is offered here for fraternity women to render a real service to the community and to themselves. We are not the pioneers in such a scheme. Akron, Ohio, has had a Panhellenic House for several years, and I understand that Huntington, West Virginia, has one also. So do not think of this merely as a New York endeavor, badly though we need here in New York proper living quarters for our girls, and a club, and meeting rooms for our groups. What we accomplish here will be an example and model for Panhellenic groups in other cities. Who knows but that some day we may be able to have the same pride in the part alumnae have had in solving housing problems in the big cities for fraternity girls, as we can now have in our share in solving housing problems on the campuses. This is a vision that can become a reality, if we have the will and courage to succeed.

You've all heard that stirring motto:

Hitch your wagon to a star,
Keep your seat—and there you are!

—*Banta's Greek Exchange.*

Delta Zeta Community Center

THE dormitory at the Community Center was to be ready December 1. As usual we need everything. Each active and alumnæ chapter will be asked to do one certain thing for Christmas. However, we need clothing for our monthly sales at the Center. At these sales a small sum is charged for clothing; however, if John hasn't any money he can pay with a dozen eggs, a pound of lettuce, a bag of beans, *et cetera*. If he wishes he can work on the Center. This helps them to realize we are there to help and not merely give. It also helps them to keep their self respect. Clothing should be sent direct to the center. Address—Delta Zeta Community Center, c/o Effie Davis, Lackey, Ky.

Whenever you send anything to the Center let me know. This is absolutely necessary for I must keep a check on things.

We need the following articles for the dormitory: bed clothing, table linen, towels, pictures, rugs, mirrors, toilet articles, dishes, pans, knives, forks, spoons, books, kitchen ware, *et cetera*. It takes a great many things to operate a dormitory of twenty girls. If you would rather send money, all right. The committee will tell you for what it was used. All chapters will do a certain thing but the scattered alumnæ can help in so many ways.

Come on everybody and help. It is a glorious thing to be a part of this wonderful work Delta Zeta is doing. All Christmas boxes must reach Lackey, which is eighteen miles from Vest, where our Center is located, by December 22. What will you send? The committee awaits your answer.

THE COMMITTEE.

Rough Initiation

The advisability of rough initiation has always been a question in the Greek-letter world. To-day it is becoming less popular than ever before. As a national organization Delta Zeta frowns on all such antics that would in any way relate foolishness or ridiculousness with a beautiful initiation service which commands all the dignity and solemnity that a chapter can give to it. Ofttimes an initiate's mind is so filled with the uncertainty as to what is to befall her in the informal initiation that little time is left for her to visualize and fully appreciate the beauty and sacredness of the real initiation service.

The one general criticism of the upperclassmen on the newly initiated girl is that she does not take her fraternity as seriously as she should. How can an initiate be expected abruptly to turn from frivolous and ofttimes embarrassing public procedure to the serious and devoted attitude of the girls who have worked and sacrificed through the past for their fraternity?

No doubt the major part of public criticism and reproof on fraternities in general comes from the sensational publicity of the press of such procedures so called "Rough Initiation," "Informal Initiation," or, as labeled in some universities, "Hell Week."

In an editorial of *Banta's Greek Exchange*, from which we quote, Mr. Banta gives the views of one of much experience with fraternity life.

It may be safely claimed that every fraternity in the land, without any exception, has set its face against the unauthorized attachments that have been put on the machinery of initiation by the chapters. A very large number of the fraternities, indeed, have definitely forbidden the so-called chapter initiation in one way or another. It may be said that if there are any Conference fraternities which have not done this directly they have done so by implication, in that they have joined in the unanimous vote of the Conference condemning at least many of the features of the practice of adding unnecessary and harmful claptrap to the ceremonies of admitting new members. . . .

If the initiating fraternity man really desires to adhere to tradition he will immediately throw aside all of this worthless and harmful rubbish and return to the ways of the fathers of the fraternities and so initiate his new brothers that they will feel that they are entering something serious, something noble in its purpose, something too stately to permit itself to be marred by bumpkin-like antics on the part of its members.

We verily believe that there would be just as much sense in a church requiring its candidates for membership to pass through a spurious preliminary admission ceremony, conceived on the spur of the moment by would-be humorists whose bump of humor is a depression. We believe that admission to a fraternity is only a degree less important than admission to the communion of a church. We believe that if ever the chapters themselves can be brought to realize and feel this that the very largest part of things which so irritate the public will vanish overnight.

These rough house initiations, are, after all, nothing in the world but sheer imitation of the so-called high school "frat." The fraternities themselves fulminate against the "frat" but the college boy has never been brought to sense the harmfulness of these organizations. He still imitates their way and he seems to be not yet far enough from the "frat" days to realize that the fraternity he has entered is a vastly different thing. . . .

Not many weeks ago a high school sorority chapter, with beautiful ignorance of the chemicals they were using, so branded some of their initiates that there is possibility of disfigurement for life. Of course the girls who did it stand aghast at the unintentional atrocity they have committed. Every reader will be able to recall cases of terrible disaster that have followed the calf-like gambolings of the "humorous" portion of the initiating chapter.

Were there no higher, no more noble reason for the utter and complete suppression of the whole business, an entirely adequate reason is to be found in the withdrawal of the evil impression that is inspired in the breasts of the public by not only the specific disasters that occur from time to time but the constant sight on the streets and on the college ground and in all public places of neophytes who are being made ridiculous and unhappy by their persecutors. How in the world can the public ever be made to believe that the fraternity is something really worth while when its most common visible manifestation is a lot of horse play that is worthy only a bunch of yokels at a county fair?

In one of the universities in which our fraternity is represented public opinion has recently attributed the deaths of two students to irresponsible acts of unthinking student mobs. It is sincerely hoped that all chapters of Delta Zeta Fraternity will seriously consider abolishing all such undignified and injurious conduct.

LAMBDA GIRLS ARE WRITERS

ELIZABETH (DICKENS) SHAFFER, Lambda, has become a successful contributor to magazines. Most of her recent articles have appeared in household magazines, but she has also had material accepted by *The Nation*, *The Smart Set*, and *The American Mercury*. Her household articles have been appearing in *The Modern Priscilla*, *Holland's*, *To-day's Housewife*, and the *New York World*. Elizabeth's husband, E. H. Shaffer, is managing editor of the *New Mexico State Tribune*. An excellent article of his, entitled "Editorials, Judges, and Jails," appeared in a recent number of the *New Republic*. The Shaffers live at 1400 East Central, Albuquerque, New Mexico.

Araminta Holman, Lambda, head of the Applied Art Department of the Kansas State Agricultural College, is the author of a sixty-two page bulletin, "Applied Art in Home Furnishing and Decorating," which is attracting a great deal of attention among art teachers and home economics schools.

The book is most attractive in appearance. The cover page is artistic, tan in color, with a block print design in dull blue. The contents, printed on very heavy, creamy book paper, are readably arranged, and are interspersed with a number of interesting and striking illustrations.

The book takes up decoration, giving attention to its general application, principles, and violation of principles of design. Illustrations and typical problems bear out the discussion.

Next is a section given to color, treating of qualities, significance of color tones, and the principles and importance of harmony in coloring of home furnishing and decoration. Line and form are extensively treated.

Furniture, hangings, pictures, wall papers are discussed, with the clearest illustrations of the kinds to use and those not to use, and why. Some attention is given to the exterior of houses, with pictures of pleasing architecture contrasted with that which is faulty in line, balance and proportion.

Miss Holman is an artist and designer of ability. She has studied in the New York School of Fine and Applied Art, and also has an arts degree from Columbia University.



THE FINANCE COMMITTEE

Leila Colwell, Lambda

C. M. Stegenga

Leah M. Reardan

Esther R. Simmons

Sally Boyle

Barbara Murray

Alumnæ Chapter Letters

BERKELEY, CALIFORNIA

Oh, what fun to be a Mu at Berkeley, this fall, with the new house rearing its stately walls to greet you and the Big Game drawing near! For this is the time-o-year when King Football reigns—and the growl of the Golden Bears, for the first time in four years judged a beatable combination, is taking on the tones of victory instead of mere courage. What a football season, for those of us who have been lucky enough to see the games! This is a year when football is full of surprises, and the Bruins' football brains have seen them through. With the defeat on November 1 of their most dangerous antagonist of the season, the U. S. C. Trojans, the Californians passed safely through their Little Big Game and, to the tune of a 7-0 score, serpentine triumphantly before the crowded Trojan rooting section. With Washington and Nevada to play, the Bears so far have an unbeaten team to oppose the doughty Cardinals, also unbeaten, who boast the best team of many years. With a *real* Stanford-California battle in sight, seats will be at a premium and—well, we are going early, that's all, and we won't leave until the flaming sunset has swallowed the last "All Hail."

Local interest just now is centering on the big bazaar and bridge party at the chapter-house Saturday, November 8, both afternoon and evening. The bazaar promises to be a thing of beauty and a joy forever in the minds of those who have seen the lovely things that are daily arriving from all over, and we have felt impelled to place an armed guard around the room where the things are kept to keep them from being trousseaued away by those with intentions.

There will be apron, handkerchief, lingerie tables, and tables with every conceivable dainty thing milady may wish for Christmas gifts. Besides, there is a grab bag at ten cents a chance, and there is a "parcel post" table of twenty-five cent gifts sent in by people who are away, who have been asked to send in one contribution themselves and ask two others to contribute. Coffee and cakes will be served and there will be a prize at each table. Proceeds to go to the Furniture Fund.

Furnishing of the new house is nearing completion. The house will be open for inspection for the bazaar. The Mothers' Club has taken over the furnishing of the hall, which is, as you might say, the keynote to our whole house, being the apex of the two wings and opening into each. From it the circular stairway with its handsome iron railing winds on up, and from it one sees into the court in the rear. To add just the right note the Mothers' Club has furnished it with a large, exquisite Oriental rug,

which, with a lovely teakwood table and drapes, gives a good "first impression."

We hope in time to surpass even the old lawn, with its hedge-inclosed triangular lawn, its monkey tree, its lovely flowers, the apple of our last year's eye. Mary Louise Powers, '24, graduate of Architecture and Landscape Gardening, has been coming up from Fresno every few weeks to supervise the laying out of the gardens, especially the enclosed court in the rear of the house, where already installed is our bird bath and a brand new goldfish bowl, where colored lights may make Fairyland at parties.

Last week-end, the active chapter held open house to fifteen Alpha Iota girls from the Sunny South who came up for the U. S. C. game. The local girls were delighted with the southern visitors, and were delighted that their house was far enough along to permit of guests. Friday evening preceding the big game, November 21, the active girls were to be at home to the alumnæ and their escorts at a dance in the new house. A Homecoming luncheon for all will follow it Saturday just before the game, when old friendships, old songs, old traditions and customs will be revived, and mutual acquaintances made between the old girls and the new order.

Mrs. Guy Gale, '20 (Bunnie Hutchison), is a Berkeley visitor since September, waiting for Guy to fly up (literally) from El Paso, Texas, where he is stationed with the Aviation Corps, to take her to the big game. We think the incident worthy of note.

The September meeting of alumnæ was held at the home of Ileen (Kewpie) Taylor. Peggy Pope Fraser, a recent bride, was hostess to the October meeting, making it a Hallowe'en party on Friday night (we said football was in the air; we hold our meetings at night so as not to miss the games.)

Football again. Excuse me—but it is football season, and "there's music in the air"—and we'll bet our fire-defying bird bath in the new garden court that Stanford cannot sing "Your Palms of Victory We'll Change to Willows" at the *close* of this Big Game.

ELSIE JAEGGIE.

CHICAGO, ILLINOIS

Everyone of us has enjoyed reading the letters of the other alumnæ chapters. The things you do give us an inspiring thrill and a feeling of kinship, too, that is mighty pleasant. This time of the year, especially, makes one feel closer than ever to each one of you, since we are all interested and working on plans and programs for Christmas giving.

Our Founders' Day is commemorated with Alpha Alpha each year and has been a source of reunion and pleasant reminiscence for many of us, who, because of husbands, babies or professional duties, are unable to attend all of the regular meetings. There is something about Founders' Day that brings out every girl, eager to meet and to visit with her sisters. The banquet was held this year at the Orrington Hotel. That name will evoke fond recollections for all who honored us at convention in June. Ruth Gaddis Jeffries presided most graciously as toastmistress and informal responses

were made by members of the various chapters. We leave these Founders' Day parties feeling that we have participated in a very precious ceremony, and our resolve to attend each succeeding meeting grows stronger.

The October meeting found us all in good spirits, happy to gather at the College Club for news and greetings from those who summered in other places. Fifteen girls were present. After the luncheon, a short business meeting was held. During the summer, Chicago Alumnae chapter subscribed for a bond in the new Panhellenic House in New York. It was decided to omit the regular November meeting because of its nearness to the Founders' Day banquet and we suspect the exciting football games to be seen at Stagg Field, Chicago, and in Evanston, are a great attraction for college folks.

Chicago Alumnae wishes each of her alumnae sisters much of joy and happiness for the coming holiday season.

HELEN TRIMPE.

CINCINNATI, OHIO

Nothing very much has happened since I last wrote, to make this letter very exciting. We are all well pleased with the results of rushing season this fall, and are not only proud of our fifteen pledges, but also of the active chapter, who surely did work hard. About twenty-eight of us attended their formal rush party and enjoyed ourselves as much as the rushees themselves—especially the "time honored" minstrel show.

We feel, too, that we've gained by the active chapter's loss, since we initiated so many fine girls from both Xi and Alpha.

LUCY DRAPER FULLER.

CLEVELAND, OHIO

After working under many difficulties, Cleveland Delta Zetas have at last been blessed with a real honest-to-goodness charter, and now we can vote in convention, send in chapter letters, pay dues n'everything like real alumnae. I tell you we are proud of our charter and everyone seems to take a keener interest in Delta Zeta doings. Let me add here—and now is a good time, for we have just appeared on the map, and this is our first letter—that most of the credit for organizing the group goes to Olive McCune, Alpha, who also organized the local Panhellenic Association here which has grown to be a real, live, peppy organization, so I think we should dedicate our first letter to Olive, if you will all pardon the informality.

Last winter we "adopted" a little three-year-old girl who was a ward of the court and a charity case. We have had lots of fun dressing her up and feeding her and bringing her to our meetings and parties. She's the prettiest little thing with great big blue eyes and rosy cheeks and blond curly hair, and she calls her pet rag doll Delta Zeta. Her mother, who is a widow, is not physically able to take care of her three little children and has been leaning on the Associated Charities for some time. One of the girls got our child through the Chief Probation Officer here who said she thought this to be a very pitiful case and one worth our taking, as the charities couldn't do everything that was necessary to their welfare.

We gave a big benefit party for our Thelma last spring at the Cleveland Hotel, which was patronized by a great many socially prominent women in Cleveland and, really, everyone said it was a wonderful party. We had a private ballroom which was beautifully decorated and had lovely prizes. About a month ago we gave our child a birthday party and now she is well stocked up with winter clothes. December 6 we are to have another benefit party which will be even larger and nicer than the former one, and would love to have our Delta Zeta sisters in near-by towns come up for it, for we can assure you it is to be a real social event and all the newspapers in town will be full of the accounts. You are cordially invited to come and be one of the hostesses.

Money is our middle name, for on one Saturday in each month we give small benefit parties and manage to have a short business meeting before the "crowd" arrives. Pretty soon we'll have enough money to buy a house or something as expensive—or perhaps National or somebody will be coming to the wealthy Cleveland Alumnae for a loan. Do you think they'll get it?

Here's looking forward to meeting you ("on equal terms" now) in THE LAMP's next issue.

LOUISE E. DAVIS.

COLUMBUS, OHIO

Although it is election day and the wires are hot with pre-returns forecasts and the atmosphere in a newspaper office is filled with anticipated excitement, I am taking a few seconds to dash off some Columbus alumnae news, in the absence of any regular correspondent.

We are very sorry to report that the Columbus alumnae president, Amanda Thomas, has been ill at her home for more than a month. She contracted a cold at Camp Perry, where she spent the summer as hostess. She has had influenza, tonsilitis and heart trouble and, to cap the climax, was forced to undergo an operation for the removal of her tonsils last week. She is getting better and we hope to have her as presiding officer at our November meeting.

The active girls have moved into their new home at 76 Fifteenth Avenue and are going at the task of buying it gradually. It is furnished and draped most attractively and the alumnae are coöperating in furnishing the draperies for the living-room. We intend to carry on an active campaign for funds for the purchase of the house.

Our alumnae chapter, having listened to Arema O'Brien Kirven's fascinating account of the new school in Kentucky, decided to buy curtains and door draperies. They have been acquired and the committee is hard at work, getting them ready for a Christmas box.

The big event since the last letter went to THE LAMP was the Founders' Day banquet at the Maramor, our most attractive restaurant. Anna Young Surgeon and Gladys Laughlin Stoneman were the committee in charge and introduced an original note with the use of favors at each plate in the form of beautiful young girls of pasteboard, carrying in their hands real linen handkerchiefs of rose and green. The entire active chapter, with the ex-

ception of two or three who were ill, was present, but only about one half of the alumnae turned out.

Our honored guests were Mrs. Ruoff of Epsilon chapter, the district inspector, and Mrs. Mary Galbraith, one of the founders. They were each given a corsage of roses and were introduced to their sisters. Amanda Thomas arose from her sickbed to preside, introducing the active chapter as the entertainers for the evening. They gave stunts and sang songs and were humorous and clever.

RUTH E. YOUNG.

DENVER, COLORADO

During the beautiful autumn we have many inspiring thoughts, and some of these inspirational thoughts have been put into action by Mu girls. The girls who are able to be together are always thinking of those who are not able to be with them. In previous years we have had great difficulty in notifying the girls out of the city of our meetings, but this year we have a successful plan that has helped. We have printed a program for the year. This program consists of the announcement of the place of meeting each month of the year. Two girls combine in entertaining the other girls of the chapter at a buffet supper, this being followed by the meeting.

Our meeting is opened by a Delta Zeta song; next we have roll call, this being answered with current events or the like, and then we have one other stunt. We have several committees organized to carry on this work, each girl of the chapter having her own particular duties to perform. This plan has helped to create much enthusiasm. These programs have been printed and mailed to all members of our chapter and in this way our girls know all the plans for the year. We have found this a great help and thought it wise to tell other Delta Zetas about it, although many may have a similar or even a better plan.

The Colorado Educational Association held its meeting in Denver, November 7-9. This is a time that we all looked forward to with hope of seeing all of our girls in Denver.

We send our best wishes for the future and remain,

DOROTHY LESLIE.

FT. WAYNE, INDIANA

The Fort Wayne chapter has many good things planned for the coming year.

The chapter is made up of a jolly bunch of girls, needless to say, for the picture tells the story. This was taken at the home of Helen Slagle Aker in Columbia City.

Hope Graeter, of Fort Wayne, entertained the chapter at her home November 1. After a business session, we had a delightful social hour with dainty refreshments and all lingered long, as we always do at Hope's home.

RUTH McDANIEL.

INDIANAPOLIS, INDIANA

No letter.

KANSAS CITY, MISSOURI

Since our last letter, we have had only one social function—a bridge tea held at the home of Mrs. D. D. Bonewits (Ruth Roll, Eta, '23), in honor of Marie West, who will be married November 8 to Edward Kehr. Marie is the sister of Norma West Henderson and has been as loyal as one of our own members, and considered by all the girls as one of us.

It has been our plan to observe Founders' Day with a luncheon, but due to several unavoidable reasons we have had to dispense with it this year, much to our regret. As our finances are very low at the present time we thought it best to place more importance on our benefit bridge party which is to be November 15, and to especially encourage a large attendance.

ESTHER WEBER.

LINCOLN, NEBRASKA

THE LAMP just arrived and it is wonderful! We certainly appreciate it and extend thanks to the girls who worked so hard and so faithfully to give us such a fine publication. It radiates the spirit of Delta Zeta and makes us feel that we are personally acquainted with all Delta Zetas. I know that it isn't as good as going to convention, but it makes us feel almost as though we had been there.

For Founders' Day celebration the alumnae acted as hostesses at a tea given at the chapter-house for the active girls. We met all the pledges and enjoyed several cute "get acquainted" stunts. After tea Nettie Shugart made a talk on our founders and the candle light service was held.

LILA BELLE LOVE.

LOS ANGELES, CALIFORNIA

Tradition says that Southern California always sends cheer and sunshine. We do send it for Christmas and the New Year, 1925.

We alumnae of Los Angeles are very happy to have our Past National President, Miss Rene Sebring Smith, here with us. She is an inspiration to our monthly trystings which come on the last Saturday of each month.

Our social committee has decided to try a new meeting plan this year. We are to alternate social service and entirely social meetings. This November we are looking forward to helping Alpha Iota celebrate her first birthday on the eighth at a formal dinner to be given in the Tea Garden of the Mary Louise. We wish that every chapter might be represented. We know that at least twelve will be.

It is lovely to have you come to us, but we don't understand why you will emigrate. Pearl Parkhurst Little has left us to return to Kansas, and Dorothy Porter Miller is now living in San Francisco.

GLADYS E. MARQUARDT.

NEW YORK CITY, NEW YORK

I hate to seem to brag, so early in the year too, but this is the most gorgeous autumn that was ever known to man—air freshly washed and ironed and skies so blandly blue that they don't seem real. What, I ask you, can be of interest when such things happen day after day? In spite of such sterling outdoor attractions, New York Alumnae chapter has started the year with what we are pleased to think is our customary vim and dash. The first meeting of the year was held on September 27 at the home of Hilda Persons in Brooklyn. We sturdy New Yorkers are prone to think that a trip to Brooklyn is little easier than a dash to the South Pole, but a meeting in Brooklyn always brings out the regulars, just as surely as a meeting on the corner of Forty-second and Broadway would. At any rate that first meeting was hugely successful; committees which the rest of us did not know had even been appointed, reported briskly on various matters. The program for the year was passed on and accepted. If you are in New York at the time of any of these affairs please let us know. We shall consider it a real privilege to meet you and have you tell us what you are doing for Delta Zeta.

Our Annual Founders' Day luncheon was at the Hamilton Hotel. There were about twenty-five girls present, mostly old (if they will let me use that word) with only one or two new members. We had not been able to get into touch with many new people, but hope to be able to do so before the next meeting. We had a sumptuous time—no speeches. Speeches are all right in their place but somehow that place does not seem to be the first social event of the season. There is too much time to be caught up in the matter of legitimate gossip. The girls looked lovely and you had the satisfaction of looking around and saying to yourself, very confidentially, "This is a nice crowd to run with." Sounds flippant, but, as a matter of strict fact, it is an extremely comforting thought, upon occasion. Seems rather strange to be writing it now, but by the time you read this it will be appropriate—may you all have the pleasantest of Christmases.

KATHLEEN ROBERTSON.

OMAHA, NEBRASKA

October marked the reorganization of the Omaha Alumnae chapter for its winter program of work and recreation. Mrs. Ford Bates, who is remembered as Ethel King, opened her home for the occasion and entertained the girls at luncheon. It was a combined business and social meeting with election of officers and plans for the winter's work following the social hour.

Effie Norris, who affiliated with Delta Zeta at Iowa State University, was the unanimous choice of the group for president. Mrs. Walter Sweeney (Marie Houska) received the office of secretary-treasurer and Mrs. Jack A. Bristol (Clara Dodds) was made press representative. The chapter decided to continue its work for the Christ Child Mission and made arrangements for securing material for layettes. Mrs. Louis Kavanagh will have charge of the work again this year.

The social program of the group will include a series of monthly luncheons at the homes of the members with an occasional luncheon at a downtown tea room or club. The chapter is considering a few informal evenings to which husbands and escorts will be bidden.

The second of the luncheon meetings took place at the home of Mrs. Arthur Rosenblum. The Hallowe'en motif prevailed in the table appointments. Place cards contained tiny fortunes. Sewing and visiting occupied the guests after luncheon.

The Omaha chapter has had the pleasure of seeing several of its former members recently. Mrs Matthews, formerly Julia Lynn, who was called to Omaha by illness in her family, attended the luncheon at Mrs. Bates' home. It was her first meeting with the girls in more than four years.

Esther Ellinghusen of Hollywood, California, was in Omaha last summer and renewed her acquaintance with the Omaha group with which she was formerly affiliated.

The chapter has learned with interest that Ruth Odell is now an instructor in the English Department in an exclusive girls' school in Los Angeles. Before going to California she was a member of the English Department at the University of Nebraska at Lincoln.

Several members of the local group had the pleasure of a brief visit with Ethel Arnold this summer. She has since returned to Las Cruces, New Mexico, where she is a member of the high school faculty.

Mrs. Rosenblum is recovering from injuries sustained in an automobile accident. Her car was struck by another and overturned. She sustained a fracture of the collar bone and was badly bruised and shaken.

Mrs. Bristol has returned from a six months' sojourn in the West. She accompanied her husband on a business trip which included points along the Union Pacific territory.

Illness has prevented Emily Houska from attending chapter meetings so far this year.

CLARA R. BRISTOL

PORTLAND, OREGON

Most of the interest of Portland Alumnae this month is centered around our rummage sale which is to take place November 7-8. Everyone has been collecting all manner of material and we have every reason to believe that it will be a success. All homes and the homes of friends of every member have been combed and we have rented a room in a likely district. Those who are free to do so will be in charge of the sale and we have great hopes for the outcome.

We have had one social event this month in the way of a bridge party at which Dorothy Edwards, our delegate to convention, gave a most interesting and detailed account of happenings at convention.

We are glad to say that our group is well knit this year and our meetings, held regularly, are well attended.

ALICE FEIKE WEIMAN.

PITTSBURGH, PENNSYLVANIA

Events seem to come thick and fast here in Pittsburgh, as we are always getting ready for something. Founders' Day banquet is now a thing of the past and we really feel that it was a huge success. Never before have so many of our Alumnæ been with us and it was a real treat to be together again. Our decorations were carried out in Delta Zeta roses and pink candles in tall silver candlesticks. At each place was a rose boutonniere and a small candle in a rose holder to be used in the candlelight service. We were pleased to have with us Bess Goodykoontz from the Iowa chapter, who is an instructor at the University of Pittsburgh this year.

Rushing season with all its accompanying festivities has begun. There are some splendid freshmen this year and we are hoping for our share. Tuesday night the alumnæ chapter is entertaining Omicron chapter and some freshmen at a cabaret party. The plans of the committee certainly sound splendid and as the girls are entering into them so enthusiastically, we are looking forward to a big party.

Mary Scanlon is spending the winter in Vienna studying music and her sister, Pauline, who was married this summer to Ionel Gardescu, is living near Bucharest, Roumania.

Rumors have come to us that there are some Delta Zetas in Pittsburgh this year, but as yet we have been unable to locate them. We would be pleased to have them look us up.

ELIZABETH ASKIN.

SEATTLE, WASHINGTON

We in this northwest corner of Delta Zeta, have elected our new officers and made a big start toward our annual bazaar, to be held November 15. For our bazaar we have secured the services of a man who deals in Oriental rugs, and he is going to hang the walls with these beautiful rugs and furnish us with lamps and other decorations. Some of our girls will be in Oriental costume, and if we can only transplant some of the spirit into our patrons I am sure we will do well financially.

The "alums" having charge of the bazaar this year feel the responsibility of having attractive articles for sale, so the married girls are meeting once a week and having sewing bees. We enjoy them so much that we shall be sorry to have the need discontinued.

Perhaps some of the other chapters would be interested to know of our alumnæ council, which consists of four alumnæ girls and three active girls. They meet once a month at the chapter-house and discuss any subject that the active girls feel they would like to have advice on. The council was started last winter and became so useful that we thought it advisable to continue another year.

We had a splendid banquet this year on our National Founders' Day, and some of the best speeches that have ever been made. We are very proud of our freshmen—indeed, we always seem to be fortunate in our selection.

Next month I shall be able to give you results of our efforts for the bazaar, and I feel sure they will be well worth repeating.

CLARA PEMBERTHY WILSON.

WASHINGTON, D. C.

The first meeting after the summer was held at our president's home on October 16. Of course the chief topic of conversation was the convention. Since Ruth May Armstrong was not in the city to tell us all about it, we had to content ourselves with reading and discussing the long letter she had written to the chapter concerning it. It gave a very graphic description of all that happened in Evanston, and we felt as if we knew almost as much as we would have, had we been there ourselves.

A great many plans were talked over, some to be discarded and others to be enlarged upon and adopted. Not the least important of the latter was the plan for what seems to be the Washington Alumnæ specialty: namely, another rummage sale. All of our newly acquired wisdom, which we had gained from the spring rummage sale, was brought into display.

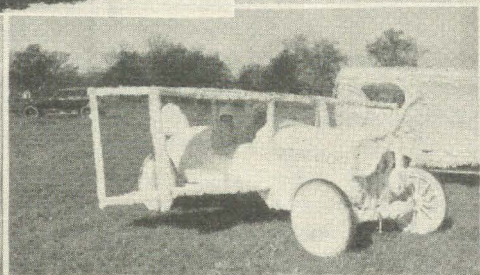
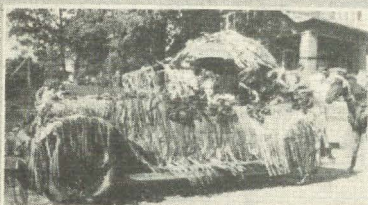
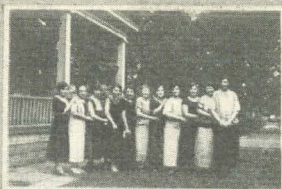
We decided that the things which would be most in demand would be silk stockings and particularly men and boys' suits. From the way things looked when the meeting closed, husbands, fathers and sons will have a hard winter ahead of them.

Another plan is that of giving a party especially for the seniors in the active chapter so that they might have an additional opportunity to know the alumnæ chapter, and would step naturally from one to the other, thus helping to maintain the spirit of Delta Zeta. Of course, the regular "get-together-meetings" of both chapters would be held as usual, and this would be just a little extra one.

We shall certainly miss Ruth May Armstrong, who will not be in the city this winter, but we are also glad to welcome Mrs. Olga Kephart, who has become a very interested member.

Like all you other chapters we are planning big things for Delta Zeta, and I know that each one of us hopes that there will be success in store for everyone.

ALICE BALDWIN.



Ft. Wayne Alumnæ

Alpha Beta Pledges

Rose of Rho

Pi—First Prize Float

Alpha Alpha—First Prize Float at Homecoming

Delta Pledges

Eta Pledges

Alpha Mu Pledges

Chi Pledges

Chapter Letters

ALPHA—Miami University

At last we are beginning to realize that college has really started for six-weeks' grades came out to-day and we are determined that Delta Zeta shall keep her place at the top of the honor roll.

Since our last letter we have pledged another girl who, we feel sure, will prove a loyal D. Z. and of whom we are all justly proud. Our lucky thirteen has now become lucky fourteen. My, doesn't it make you feel proud to look over your pledges and feel that perhaps in some way you have done something for Delta Zeta?

On Founders' Day, October 24, we had our annual party. The pledges gave us a very clever stunt. May Drake Joyner, one of our seniors of last year who is now Y.W.C.A. secretary here at the university, talked to us about our Founders and the spirit and ideals they hoped to promote in founding our own Delta Zeta Fraternity. Food came next on the program in the way of chicken sandwiches, pumpkin pie and cider. Then we ended our party by cozily sitting around the fire and singing Delta Zeta songs.

Our Homecoming this year proved a great success. Saturday, October 18, found twenty-six Delta Zeta alumnae on our campus among whom we were delighted to see our National President, Mrs. Julia Bishop Coleman. Saturday night we held our fraternity reunion where old times and friendships were renewed and new friendships formed. Our pledges again entertained us with stunts, and with "D. Z. happy D. Z.'s" we said "Good night."

So far I seem only to find news of our parties but we really are concerned with many other things that take up time in an average college girl's life. All campus activities find D. Z.'s scattered through them everywhere and Delta Zeta ideals are ever before us.

FLORENCE HILL, *editor*.

MARION PARKER, *president*.

BETA—Cornell University

We just know that this is going to be a big year for Beta—so many exciting things have happened already. Saturday, October 18, our rushing season ended when we pledged seven lovely girls at a delightful pledge banquet. You can just imagine how much excitement there was that day. Two girls from each house went to the recreation room of one of our dormitories and the girls, who had received written bids, came there to interview the girls of the house which they desire to accept, as to dues, etc. We had just felt that our rushing would be a success because we had so many peppy parties. One of our formals was in the spirit of a cabaret. Our living-

room was fixed up with little card tables, all decorated with gay vari-colored streamers. We had it arranged so that we had a course of food with an oriental cabaret look and flavor, and then a dance, then some more food, and another dance. One of the girls imitated a cabaret singer, and three of the girls, dressed in pretty little abbreviated dancing costumes made of black oil cloth (with an obvious odor), gave us a fancy dance. We tossed confetti, pulled snappers, and threw serpentines. Of course we go on rushing informally all year, but just now we're turning our attention to a lot of neglected school work, and, to make matters worse, our first prelims are just coming.

Sunday, October 26, eight of our Alpha Kappa sisters from Syracuse stopped at the house for a few minutes. They were all pepped up as they were just returning from a victorious football game with Penn State. I'm sorry I mentioned that word "football" for it conjures up unpleasant thoughts. However, don't believe all that you read in the papers. Cornell may win a game or so before the season is over.

I've left the very biggest thing of all for last. I just returned from the Woman's Self Government Association meeting at which one of our girls, Helen Bettis, was elected president of our association. We were excited then. We rushed right out and ordered two dozen American Beauties, but the messenger got upset and did not find the building until the meeting was over. Helen got the roses, though.

I might add "Merry Christmas and Happy New Year."

MARY GILCHRIST, *editor*.

LEONA ROUFF, *president*.

GAMMA—University of Minnesota

Yes, our rushing season is over, and Oh, how glad we are, although there is not one girl in the chapter who didn't enjoy it. After our formal rose dinner, which was a huge success according to all reports, we were all wondering if we would get all the girls who were with us that evening. We had silence for four days, and it was all we could do to suppress our excitement and curiosity, but when pledge night came and ten of the most wonderful girls walked in, everyone of us was so excited we all talked at once. They are of all types ranging from blondes to brunettes and from short to tall ones, and we are proud to say they are sorority sisters of ours. They are spending their spare time in learning all about Delta Zeta and what it means to them.

College has been in session about five weeks and in that time we have had three drives, one for our college magazine, *The Ski-U-Mah*, the second for our college annual, *The Gopher*, and the third, the Homecoming issue of the *Ski-U-Mah*. In all three drives Delta Zeta did something that has never been done before on the campus that is winning three silver loving cups in succession, each being the first prize. Besides winning these cups, Leona Train received highest individual honors for the *Ski-U-Mah* and Gertrude Johnson received a silver loving cup for highest individual honors for the *Gopher*. Due to these drives there are four loving cups added to

our collections. It is needless to say that we are proud of them and it is our sincere hope that we can keep up the good work.

Just at present we are in the midst of Homecoming. It is going to be a great week, beginning with selling buttons and *Ski-U-Mah* to the "grads." and decorating our house and float, attending the annual pep fest the night before the game, the parade the next morning, and last but not least the game with Michigan that we are all hoping that we will win.

ELEANOR STRICKLER, *editor*.

LORINDA LARSON, *president*.

DELTA—De Pauw University

It seems only yesterday that we were preparing our first LAMP material and to think that it nearing Christmas and it is time for another issue! Perhaps the most interesting thing that has happened since last writing was our Founders' Day banquet and formation of a Delta Alumnae Association on Old Gold Day. All DePauw "grads" recognize Old Gold Day as the gala day of the year and we were particularly fortunate in having about thirty alumnae back. At the banquet our tables were arranged as those at convention and we observed Founders' Day with the candle light service. Bertha Lemming of Indianapolis talked on the founding and growth of Delta Zeta and the service was very impressive. Ruth Robertson presented the program for the formation of the alumnae association which was adopted with hearty approval. Ruth Robertson was elected president, Mrs. Eugene Hutchins, vice-president, Bess Johnson, secretary-treasurer, and Mrs. Frank Weathers as editor of a Delta active and alumnae publication. We are expecting great things from our alumnae and feel that their new officers will be very competent in coöperating with our local chapter.

We are very happy to have with us this week Mrs. Crawford and Mrs. Rouff who are inspecting our chapter. Although they will not be able to spend very much time with us we are hoping to have a tea for them so that other organizations on our campus may know that we have some very lovely province officers.

Since it is so near Christmas we wish each of you the happiest Christmas possible.

GLADYS LANE, *editor*.

HELEN ENGLISH, *president*.

EPSILON—Indiana University

One month of association and tense activity, and it seems only a day or two! Time passes so swiftly when we are all so busy. It's Katy with her Y.W. and Zena with her W.S.G.A. and Clyde with her Panhellenic and Dorothy with her Outing Club and Lala with her W.A.A. No wonder we have other worries besides books. The upperclassmen, however, are sponsoring freshmen study table every night now excepting week-ends, and thereby we're hoping to strengthen mid-term grades.

Did I tell you that Catharine Howard and Zena Dinehart made Mortar Board? Catharine is planning to attend the convention at Lexington, Kentucky, next week. One of our freshmen, Dortha Davis, was elected freshman representative on Women's Self Government Council. I'm sure you will be glad to hear that she made such a success of the freshmen vaudeville stunt that she carried off first prize. Dorothy Benner is proving quite a college debator after easily winning her way to a place on the freshmen squad. Lillyon Snyder made Garrick Club this fall. Sometime soon, we'll have to be giving our Show Down Stunt and we'll need all this talent and hard practice combined.

We were quite satisfied with the success of our fall dance on November 1. We held over celebrating Hallowe'en one day and decorated with pumpkins, cornstalks, witches and cats. How we did enjoy the music and the good programs! Next day, we had plenty of pep left to entertain the faculty at dinner.

So, you see how it goes. Study and work and fun. Here's success to you in your mid-terms and if, by lucky chance, you don't have any, think of us poor suffering ones and rejoice.

LILLYON SNYDER, *editor*.

CLYDE JACOBS, *president*.

ZETA—University of Nebraska

No letter.

ETA—Baker University

We have settled down to the humdrum of college life. Grades for the first month have come out; some of us are sadder and all are wiser, but there has been a lot of fun along the way. Early one Tuesday morning "Fall Holiday" was heralded by shouts and telephone bells. The holiday is a yearly affair, but the date is always a surprise. The regular routine for the day gave way to picnics, hikes and strolls—and late dates.

The pledges asked us all to be "at home" Friday night, October 10. We were. The party began with a serenade. The pledges had learned our songs. Then they came into the house and staged all sorts of stunts. They "fed" us too. On the place cards the pledge pin was reproduced in black and gold.

Thursday, October 23, we had our Founders' Day banquet honoring the pledges. Several mothers were in town as our guests also. We had two Eta charter members with us, too—Florence Alderdice Hazzard, of Boston, and Anna Clarke Jillson, of Baldwin. Mrs. Hazzard told us all about "the beginning of things" for Delta Zeta in Baker. Our other toasts were very interesting.

Then we are planning a tea for our patronesses and house mother and initiation is to be held before long. After all, college life isn't so humdrum!

ETHEL HOMER, *editor*.

MAUD MCCOMAS, *president*.

THETA—Ohio State University

Here at Ohio State we have not yet even started rushing, and we surely wish we knew the names of this year's pledges, as most of you do; so we have all our parties to look forward to. Panhellenic is trying out new rushing rules this year—deferred rushing—so we cannot rush, individually or collectively, until November! Until then we cannot even wear our pins on the campus.

October 19 we had our house warming and it was a wonderful success. We surely are proud of our new home with its attractive furnishings and bedrooms made as adorable as possible with bright colored cretonnes and painted furniture. It's the best looking sorority house on the campus—if we do say so ourselves.

Our province president, Mrs. Ruoff, was here for several days about October 20. We enjoyed having her with us so much, and we did our best to have our initiates-to-be amuse her. We initiated eleven girls October 26, which we feel make quite an addition to our family.

The Ohio State-Chicago game was October 25, which was also the annual Dads' Day, so we invited all the Delta Zeta dads who were in town to dinner that night. They all seemed to have a grand time, and we felt that they appreciated the sorority and its activities much more after knowing us better.

Theta has one affiliate this year, Mabel Fry from Epsilon chapter, and what was Epsilon's loss was surely our gain.

KATHARINE KAUFFMAN, *editor*.

MARJORIE VAN BOLT, *president*.

IOTA—State University of Iowa

Iota chapter has been in a flurry which began with preparations for Homecoming, October 25, and is still with us, though it is at the fag end. Our pledges decorated the house with "Gopher the Gophers," and had a miniature football field on the lawn. The game was with Minnesota, as you may have guessed. They had eleven little gophers with maroon sweaters bearing gold numbers, staked in place on the field. We were feeling quite "Ritzzy," thinking that our decorations would win the fifteen dollar prize. We won it last year. The Alpha Xi Deltas got the prize for an electric display.

We were delighted when four Gamma girls came in about one-thirty Saturday night and all of the residents wrapped themselves in kimonas and gathered round to greet the guests. We hoped the girls from Gamma chapter could stay for our Founders' Day banquet Sunday noon but they left us Sunday morning.

Our house was filled with alumnae and parents. The buffet supper Saturday night featured a peppy sing. Everyone's spirits were at the peak over our victory of 13-0. A great many people ran in for the tea-dance following the game.

The banquet was quite an event for Iota chapter, for there were sixty of us present. The twenty "old girls" were glad we had postponed our celebration of Founders' Day.

We are proud of Margaret Triplett's illustrations in *Frivol* for Homecoming, and of Helen Cole's piano program for the radio station WAAA.

Nine of our girls were elected to campus literary societies last month, and two of the pledges were nominated to Freshman Commission.

The three Oxford debaters were on our campus October 30, and several Delta Zetas were responsible for their entertainment at a banquet given by the forensic societies. It was the day election news reached Malcolm McDonald, but he was very witty and sociable in spite of the fact that he was not elected to Parliament.

Last Saturday one of our last year's girls came to the house to announce in person the news of a wedding. Beatrice Taggart was the little bride. She was married on Hallowe'en to Thomas Dalzell, Theta Xi, who graduated from the university last June. They left their new address with us, 925 S. 11th St., LaCrosse, Wisconsin.

With Homecoming over, we are talking of school work. We were first in scholarship at the close of first semester last year and we hope to rise again.

We're glad the Gamma girls came and wish we could see more of you as the year passes.

JUDITH TORNELL, *editor*.

ESTHER VAN CLEVE, *president*.

KAPPA—University of Washington

Eleven new pledges! Of course we are thrilled with them all and have many plans for them. There is Esther, Caroline, a future Phi Beta Kappa; Elna, the pianist, just back from Paris; Grace, another player; Frances, our violinist; Janice, the speech maker; Helen, quiet and helpful; Edith, happy and gay; and three Margarets who are full of fun.

These pledges, with our initiate, Dorothy Burdick, will be splendid helps to Delta Zeta.

Several things have happened since the last LAMP was issued, including our Founders' Day banquet which was held at the Hotel Gowman. Our pledges gave a Hallowe'en party for all the women's pledges on the campus. Also, oh so thrilling, seven of us made a trip to Eugene to see the game with Oregon. The Oregon Delta Zetas are the loveliest girls and just did everything for our girls. Why, they were so nice we almost didn't mind seeing Oregon win.

This is Homecoming week-end, and last night there were many graduates back for our big dinner. Isn't it thrilling to rush to the door and just pounce onto some Delta Zeta you haven't seen for so long? Our husky blood is aroused since the big pep rally last night, and so to-day—well we just can't help feeling sorry for California's Golden Bear.

AMELIE NICHOLS, *editor*.

LAURA BEAGER, *president*.

LAMBDA—Kansas State Agricultural College

Two months of college have elapsed and everyone is busy studying for mid-semester examinations but we must take some time off to write to our Delta Zeta LAMP.

We have two new pledges to announce since rush week. They are Cleda Scott, Westmorland, and Leslie Black, Sterling.

Lambda celebrated her annual Founders' Day banquet, October 24, with the candle light service. Irene Barner, our president, was toastmistress and responses were given by Virginia Reeder, Karleen Garlock, Ruth Johnson, Alice Beeler, Izil Polson and Mother Sullenberger.

Our annual domino party, given by the seniors for our freshmen, went off with a bang the evening of October 25. It was a very informal house dance and everyone seemed to enjoy it. Apples, cider and doughnuts constituted the refreshments.

Hilmarie Freeman, our convention delegate, gave us an interesting report on the convention. She had many new and interesting ideas by which we hope to profit.

Lambda is represented in activities on the hill and many are taking an active part in Y.W.C.A. work. Charlotte Swanson, one of our pledges, a junior in general science, had the honor of making honorary scholastic, Phi Alpha Mu. She was also awarded a one hundred dollar scholarship, first prize in debate.

Bernice Fleming, one of our alumnae of last year, received a scholarship to Merril-Palmer's school in Detroit, where she is now attending school. She expects to be with us next semester taking work toward her master's degree.

We are all looking forward to our Homecoming game November 22, with Nebraska and hope we will have some of our Zeta sisters with us.

EDITH NORRIS, *editor*.

IRENE BORNER, *president*.

MU—University of California

Our only thought, now that we have finished our second mid-term examinations, is the bazaar and housewarming November 8. We've all been working feverishly to remove some of the too obvious marks of "newness" from our gorgeous new house, because we're determined that it will be in fine shape for its first initiation into a really and truly party. Our wonderful Mothers' Club is taking charge in the afternoon and the girls will be in charge at night. Already fifty tables of bridge have been sold for the afternoon and a great many more for the evening. We feel sure that it is going to be a great success, between the bridge party and the sale of the wonderful things that have been turned in for the bazaar.

Last week-end about fifteen girls came up from Alpha Iota chapter at the University of Southern California to see the football game between our two varsities. We were thrilled to have them and though we were anxious

for them to have the best time possible, we were proud as peacocks when our team was victorious.

MARJORIE I. LEWIN, *editor*.

VIRGINIA VAIL, *president*.

EDITOR'S NOTE: A curious fact about the foregoing letter is that there is no mention of California's weather.—V. B. J.

NU—Lombard College

The rushing season was rounded out with the all day rushing party which lasted from morning until midnight. Dates were drawn for these parties by the Panhellenic committee on rushing and the last one was held one week before pledging. Then came that week of silent rushing which was mad-dening and ended Friday, October 17, Nu with six pledges.

In order to stimulate these new girls to scholastic attainments the active chapter appointed a pledge mother over each pledge. The scholastic interest of the active girls is very noticeable now, since competition has begun with all the other women's fraternities on the campus. Nu has held this cup for the past four years.

One of the things that Nu tries to stand for in the college is the activity in student affairs. It is this year represented on the staff of the *Lombard Review*.

Several very enjoyable social events have been held in the last two months. A sandwich shuffle was given by the active chapter for the pledges soon after the end of rushing. Our Founders' Day banquet was held at the Galesburg Club, October 24, and our last party was in the form of a Goblink Frolic. Here all the girls wore aprons and the men presented themselves in their neat blue shirts to celebrate the feast of Hallowe'en. Our next affair will be staged before the Christmas holidays.

We are busy now making plans for our float for our Homecoming parade, November 21. The last night we are planning a sandwich shuffle for our alumnæ from out of town and we are expecting quite a delegation to represent Nu at the Lombard-Valparaiso game.

MARION QUIGLEY, *editor*.

LUDELLA MALCOLM, *president*.

XI—University of Cincinnati

The rushing season had not been completed at the University of Cincinnati when my last letter was due, so first of all I want to tell you about our pledges. We are very happy to tell you that we have pledged eleven attractive girls here at Xi chapter. We are proud of them all, and, judging from their present attitude toward their fraternity and school, we expect much from them in the future. We have also re-pledged four of last year's girls so we have fifteen pledges all together. I'm sure that you will agree with us in saying that we have completed a very successful rushing season. Much gratitude is due our alumnæ chapter for its splendid coöperation during rushing.

We are making plans for a dance to be given in honor of our pledges at the Fort Mitchell Country Club on November 21. We are exceedingly anxious that it be a success and our dance committee is working hard.

Our Mothers' Club gave a rummage sale last week in a colored district of the city. The girls of the active chapter helped them, each girl being required to attend the sale for half a day. The sale lasted for two days and the mothers expect to give us a part of the profits.

We are very glad to have with us Mildred Harris, a Delta Zeta from Alpha chapter, who is attending the University of Cincinnati this year.

There is at present a splendid spirit among the girls of Xi chapter. They are working very diligently toward both scholarship and activities. With the splendid start which has been made, and the continuation of the fine coöperation and true Delta Zeta spirit which is now manifest, Xi chapter can look forward to a most successful year.

MAY E. OLIVER, *editor*.

MARY MCEVILLE, *president*.

OMICRON—University of Pittsburgh

Omicron chapter has eighteen active members and three pledges enrolled this fall. With this number we hope to accomplish much this college year. At present, we are very busy with our two weeks rushing season. We opened with a Howdy-Do party the first evening, followed by a Chinese party the second evening. For this, everything was "Chinky," from the paper Chinamen invitations, to the refreshments, including chop suey. The girls wore kimonas and pajamas, and received as favors cute little Chinamen. Additional parties are coming so thick and fast that it seems necessary to forget studying for the time being. As usual, we expect to close our rushing season with the rose dinner-dance, which is always our biggest event.

Our alumnae chapter arranged for us a lovely Founders' Day banquet at the Fort Pitt Hotel. This occasion was a reunion for the alumnae and active girls, and a very pleasant evening long to be remembered.

We feel that Delta Zeta counts on our campus, as we are represented in Mortar Board, Y.W.C.A., Women's Athletic Association, Glee Club, and other activities.

HELEN MILAR, *editor*.

MAGDALENE AUSTIN, *president*.

PI—Eureka College

Almost as soon as rushing season ended, we began planning for the annual Homecoming. We wrote to all our alumnae and friends, inviting them to come back, and so many of them answered favorably that we worked with added zest to prepare for them. Friday dawned bright and warm, so we met all trains to welcome our guests. That evening after the school pep meeting and a pajama race, our house was filled with numerous voices talking excitedly about all the happenings of the years since they parted. Our house was decorated in Hallowe'en colors and the fire in the grate helped to

cast shadows across the room. The guests enjoyed playing games as the girls supervised them, and thus they became acquainted with the new Delta Zetas. When the interest began to lag, we gathered around the fireplace to toast marshmallows to eat with our fudge and popcorn.

Saturday morning we were all up early to finish our float. Delta Zeta had won first last year so we were resolved to repeat our success. It was a tropical float. The body was "thatched" with light brown crêpe paper. The wheels had large orange poppies on them. The float was topped by a "thatched" umbrella. "Palms" and more "poppies" decorated the sides and back. The girls all wore the "lei" and brown bands around their heads. The picture does not even begin to do our float justice so I'm leaving it to your imaginations to realize how attractive it was. All afternoon we continued to hear praises to Delta Zeta, which made hours drag until that evening when the announcements were made. Imagine how we felt to hear "Delta Zeta has been awarded the prize for the most beautiful float." Now we have won for two years and we are looking forward to next year.

Our pledges all know what scholarship means and are trying their best to bring Delta Zeta to the top. Only last week one of them showed her love for us by serving wonderful caramel pie with whipped cream and nuts. But to continue about their plans—they have a "Green Parrot" tea room scheduled for a week-end soon. They plan to serve sandwiches, coffee, pickles, olives, and ice cream. They are also planning a "pup" orchestra and we are sure it will be good.

JOSEPHINE E. SMITH, *editor*.

FRANCES C. ROBESON, *president*.

RHO—Denver University

Here it is time to write another letter for our publication. But this isn't all—October and November were so chuck full for us that we feel "dizzier" than ever. To start the good work going, we gave an informal reception for our mothers and fathers which proved very successful. November 5 we had a state teachers' convention at which many of our former active girls were present and we gave them a buffet luncheon at our Delta Zeta house. The girls were very glad to see the old house again and once more set their foot upon the threshold as of old.

Another great event for us was the big sister circus in which we had a particular part. We had a side show and gave a one-act play for our feature. This gave us a good chance for second semester rushing. We had a chance to show our sisterly love November 15 as the University of Denver played the University of Colorado in football. Alpha Lambda and Rho chapters joined in a luncheon at the Edelweiss Café that Saturday and had a most glorious time. We went to the game together, but parted there for a few hours. Our mothers enjoyed themselves so much at their reception that we gave them a tea November 20. The result of this tea will be a rummage sale sometime in the near future.

Thanksgiving we parted for a few days but came back with better ideas for the future—results of Turkey.

Soon it will be time for our Christmas vacation. May everyone be so filled with meats, sweets and all good things to eat that we will come back with a better end in view.

A Merry Christmas and Happy, Happy New Year to every Delta Zeta girl is the wish of Rho chapter.

SYLVIA MORROW, *editor*.

MARGARET BEATTY, *president*.

SIGMA—University of Louisiana

Rushing season is over at Louisiana State University and Sigma has fourteen new pledges of whom we are very proud. We held pledge service at six o'clock Saturday, October 11, at the house. Afterwards we had a buffet supper for the freshmen, then open house, as is our custom at L.S.U.

We had three rushing parties this year. The first was a bridge and mah jong party given at the Women's Club by Edna McLean, Lucille Wilkinson, Alma Dodson, Lavinia and Elizabeth McGuire at which we were able to meet many freshmen. The alumnae honored us with a Spanish Fiesta at the handsome Dodson home. A cabaret supper, dancing, and various entertainments were essential features for the enjoyment of the Delta Zeta seniors and their freshman señoritas. The last affair was a Japanese party at the house at which we played "Delta Z" instead of "Hearts." The favors, prizes and decorations for this party were given by two of our patronesses.

Although the season has had its enjoyable aspects, we are, as a whole, glad it is over on account of misunderstandings among the sororities on the campus. We are hoping for a revision of Panhellenic rules which will provide for a longer period of rushing and preferential bidding.

The new university plant which is just south of Baton Rouge is nearing completion. Millions of dollars have already gone into its construction. University authorities expect the entire plant to be moved by next fall. And then—when the new campus is as lovely as the old is now, we hope that sometime Sigma may have the honor of convention and that Delta Zetas will come south to us.

RACHEL VIOLETTE, *editor*.

LAVINA MCGUIRE, *president*.

TAU—University of Wisconsin

No letter.

UPSILON—University of North Dakota

We feel very proud to tell you that our rushing parties brought us results ten fold. We have, we believe, both the quantity and quality desired in our twelve new sisters, and are very proud of each one of them.

Homecoming was a most pleasant day for our chapter. Out-of-town alumnae who were guests at the chapter-house were Glenna Travis, Agnes

Van Arsdale, Alice Kops, Alice Melbye, Esther Hurtt, Mable Evingson and Dorothy Torkelson. A Founders' Day banquet was held at the house on the evening of Homecoming which was also honoring our *alumnæ*.

Our house and yard were decorated to represent a Dutch scene for Homecoming. We received honorable mention on our house as we did on our float. The latter represented a huge basket of flowers. The basket was green and at the highest point on the handle there was a large pink bow. Inside of the basket were many colored flowers, both artificial flowers and girls who were dressed as flowers.

We are pleased to have three of our girls taken into Kappa Psi Omicron, a women's forensic fraternity. These girls are Ruth Germs, Ruby Pederson and Karleen Home. Many of our girls have quite a number of new activities this year. Norma Hanson and Mildred Nelson were taken into the dancing class. The try-outs for Dakota Playmakers have not been held as yet but some of our girls are practicing for this event. Many of our *alumnæ* were here for the State Teachers' Convention. We also had a short visit from Beulah Jacobson, of Grafton. Great interest was shown on our campus over the football game with the "A.C." which was played at Fargo. About four hundred students from our campus attended the game and a special train was chartered to carry the enthusiastic rooters to Fargo. Seven of our girls attended the game.

KATHERINE PRATT, *editor*.

JANICE SIMENSTAD, *president*.

PHI—State College of Washington

No letter.

CHI—Oregon State College

With our best rushees now Delta Zeta pledges and the *alumnæ* writing us about Homecoming, we really feel that college has started in earnest. I mentioned our pledges—we rushed and rushed hard to get them—but we felt amply repaid, for October 6 we pledged eight of the very best girls we could find on the campus. Then a few days later we added another equally fine girl to our list.

We have been feasting on the fruits of convention. Our president and representative has been telling us so much about it! Already we are making plans to go to California in 1926. Having convention in the West makes our dreams come true!

Founders' Day was a wonderful day for Chi. Omega, fifty-one strong, journeyed the forty-two miles in the rain to be our guests at our banquet. The true Delta Zeta spirit was manifested in that group of nearly one hundred who gathered around the tables formed in the shape of the Delta, lighted with rose and green candles and decorated with our own Delta Zeta roses.

Chi has been lucky again, for during the summer the husband of one of our patronesses was made dean of men. Delta Zeta has felt the honor and

is giving a tea for all the patrons and patronesses, complimenting Dr. Dubach. We have also added another patroness, Mrs. Maris, the wife of the director of the extension service. We consider ourselves very fortunate in securing Mrs. Maris.

November 8 we gave a pledge dance for the new pledges. We invited the pledges of the other sororities to come and meet the girls of whom we are so proud.

Chi has made an excellent start this college year and wishes to extend Thanksgiving and Christmas greetings to all chapters in Delta Zeta.

ALICE MCCOOL, *editor*.

RUTH SLOTTREE, *president*.

PSI—Franklin College

The opening of the 1924 college year finds us in our new chapter home. This is the first year that Psi has had a chapter-house. Three years ago the college administration decided that the sororities should leave the dormitory in the order of founding on the campus. Thus 1924 was the year for Delta Zeta. Mrs. Cora Packer, the mother of our chapter president, is house chaperon.

Psi had a very successful rush season. We had two rush parties. Our afternoon party was a tea at the home of one of our patronesses, Mrs. J. M. Balsars. The sorority colors, rose and green, furnished the color scheme. Killarney roses were the favors. Our last party was a Colonial dinner party, held at the chapter-house. Small Colonial dolls dressed in rose taffeta were the favors. As a result of these parties, we have ten fine pledges. We are very glad to have Naomi Mason, the sister of our Executive Secretary, with us this year. Two of our old girls, Annie Laurie McElhenie and Treva McCarty, have returned this year.

The week-end of October 24-26 was a very busy time. Franklin College yearly entertains the High School Press Convention. There were about three hundred delegates at this convention. On Friday evening the high school students were entertained with a banquet in the college gym. A Homecoming banquet was held Saturday evening for the members of Psi active chapter and her alumnae at Wayside Inn. Over fifty attended.

The annual all college Y.W.C.A. and Y.M.C.A. Hallowe'en party will be staged October 30. This party is one of the all-college affairs when all the students mask and enter into the real college spirit.

We have many social functions planned for the semester, but the calendar has been so full of all-college affairs that it has not been possible to stage them. Our pledges are planning an election party for the actives. The fact that our own college professor, Dr. Sherwood, is in the race for State Superintendent of Public Instruction will make this party all the more interesting.

BIRDENA ESTHER DONALDSON, *editor*.

MARY PACKER, *president*.

OMEGA—University of Oregon

The fall term so far has been one of the most successful and interesting terms of Omega history, and we believe that we have been instrumental in cementing Delta Zeta bonds more closely, both locally, and with our near-by sister chapters, Chi and Kappa, of the Oregon Agricultural College at Corvallis, and the University of Washington at Seattle, respectively.

Perhaps the most impressive and longest-to-be-remembered incident occurred October 24, last, when our chapter attended the Founders' Day banquet at Chi chapter of Corvallis, as their guests. Although we had the use of several automobiles to make the trip, we found it necessary to charter a large bus besides, and we closed our house for the evening. We had a 100 per cent attendance at Corvallis, not including many of the local alumnae who turned out en masse for the event. Fifty-one girls went from Omega and approximately ninety girls were seated around the huge banquet tables which were placed in the form of a Delta. This union with Chi chapter brought home to us a sincere and true feeling of sisterhood. We sang our national songs with the impressive candle light ceremony.

One of the girls who attended the banquet was there from the Philippine Islands. Several alumnae were there who had watched Delta Zeta grow from infancy to the wonderful Fraternity it now is. Among the latter was Mrs. McElfrish, Omega's Big Sister and formerly Chi's. She reviewed Delta Zeta history for us and told many incidents, some amusing and others almost tragic, connected with our growth and development. She passed briefly over early struggles and trials of both Chi and Omega and was exceedingly happy that we had come out ahead and strong—"better than her dreams," she said. We motored back to Eugene the same night. It is the wish of both the chapters to make this reunion on Founders' Day an annual one.

Omega has entered into campus activities this year with renewed zest. Debate, athletics and other activities all claim their share of our girls and our attention. We are trying very hard to be successful in debate again this year so that we may keep the two silver cups awarded to our chapter in 1924 for having the winning team. Our pledges, too, have shown capability in this line, and we hope the end of the debating season will find us still in possession of the prized cups.

We are delighted with the group of pledges we took in this year and have every reason to believe that they will live up to the high hopes we have for them and make our Fraternity bigger and better in the years to come.

M. GLENNA FISHER, *editor*.

GERTRUDE HANK, *president*.

ALPHA ALPHA—Northwestern University

Hurrah! Since the last edition of THE LAMP Alpha Alpha chapter has added two more cups to the three won last year. One was for second place in the subscription drive for the *Purple Parrot*, the college humor magazine (Delta Zeta won with a big lead last year), and the other was a large cup

for the winning float in the Homecoming parade (Delta Zeta won first place last year). We now have five cups to put on the mantel in our "house-to-be." After an exciting game with Indiana, our alumnæ, actives and pledges had supper together at the home of one of the pledges. The following girls were back: Lillian Widemer Schuler, Lillian Bollenbach, Rosamond Howland, Margaret Knauer, Mildred Baxter, Ethelwyn Kring, Aura Splinter, Betty Travis, Evelyn Brown, Mary Myers, Catherine O'Gara, Mabel Schmitz and Grace Schultze.

Our Founders' Day banquet was very beautiful and impressive. After Mrs. Jeffries, our toastmistress, had spoken, she called on representatives to respond from their respective chapters. Marcline R. Snorf repoded from Alpha, Sabina Murray from Beta, Pauline Dodd from Delta, Virginia Johnson from Tau, Annette Mayhew from Alpha Alpha and Miss Morrison from Alpha Beta. The dinner was held in the banquet hall of the Orrington (oh, don't you remember!) and the tables were arranged in the shape of a triangle. The last response was from the president of the Alpha Alpha pledges who said that they were starting in the school of Delta Zeta and that they hoped to receive their diplomas in the near future.

Not long ago our eight pledges gave a tea for all new girls on the campus which was very dainty and lovely. Beth Stemmons played two selections on the violin, accompanied by Bessie Hoon, and Helen Larson and Alberta Shank read. On Monday night the pledges gave a masquerade for the actives.

Another bit of news before closing—Alpha Alpha is proud of its first D. Z. nephew born November 2, to Mr. and Mrs. Byron S. Coon (Audrey Beem).

HARRIET GORBY, *editor*.

ANNETTE MAYHEW, *president*.

ALPHA BETA—University of Illinois

A few days ago we received our first copy of THE LAMP. It's really needless to tell you how eager we were to read it and learn what every Delta Zeta chapter was doing. No one seems to be loafing on the job but we know the busier we are, the more we have time for other things and the better we do them.

It's been our pleasure this month to be the hostesses of alumnæ, friends and dads. First Homecoming and then Dads' Day, these two things standing out as the biggest events of the month, and, aside from school work and campus activities, they have occupied all our time.

Homecoming, October 18, was the dedication of our marvelous, memorial stadium of which we are all so proud. About thirty of our girls were back. Saturday night we had our regular Homecoming banquet. Then, instead of rushing off to the Orph we had it brought to our very door in a stunt by the pledges. We learned a great deal about ourselves that night. We were so glad to have girls from Alpha, Alpha Alpha and Alpha Eta chapters visit us over the week-end.

This last week-end we entertained the dads. We realize how much we owe our dads so we put forth an extra effort to make them have a good time.

Now we are settling down to work again and in the next few weeks hope to make school work count.

ILAH MENDENHALL, *editor*.

HELEN ZICK, *president*.

ALPHA GAMMA—University of Alabama

We had a month of rushing this year and it seemed an eternity. However, we had a jolly good time running around after the new girls. Our first party was a dance at the Country Club and it was glorious success. Then, to be different, we had a spider party. It was a dark night and we led the rushees and their dates along the bank of our beautiful Black Warrior River, over logs, stones and ditches. It was a mad chase but finally we arrived at a huge bon-fire lighted beneath a massive cliff. The guests were given attractive boxes with "supper for two" in them. We had a nice cozy time after supper. It was just cool enough for a crackling fire and some songs.

Our last party was the climax to the rushing season, an Oriental tea, and I wish you all might have been there. We had it in our chapter room, which was decorated with various curios from the East. At the close we sang some Delta Zeta songs and served a salad course.

GLADYS F. OGLESBY, *editor*.

AUGUSTA PARR, *president*.

ALPHA DELTA—George Washington University

We are all feeling very much excited at present for the university authorities have consented to first semester bidding, a thing we have worked for for several years and for which both our energies and our pocketbooks are duly grateful. It has also been ruled that each sorority shall give only three formal parties and so we expect to put every ounce of energy and enthusiasm that we have into a Hallowe'en party, a bridge supper, and a formal dance and make them go over the top with a rush.

We gave a housewarming tea at the beginning of the year and what fun (and work too) we did have in getting ready for it. We cut and sewed and painted until we had everything in our room as bright and shining as could be. Especially did we paint! I don't believe there was much of anything in the room that we didn't decide needed "just a little paint anyway." The result was that much turpentine was used on the clothes of those who tried to navigate the room too freely, and then, to cap the climax, our pledges presented us with a lovely new table and four chairs to match.

Our opening tea was such a success! Edith Finney, whom some of you met at the convention, acted as hostess and made a lovely picture as she sat behind the table pouring tea. We had a Delta Zeta incense lamp burning on the table and for favors we gave Delta Zeta lamps made of gilt paper

and tied with rose and green ribbons. We all had a wonderful time and we feel sure that with such a start we have a big year ahead of us.

Well, Founders' Day banquet has come and gone and such a banquet as it was! Edith Finney was our toastmistress and she said that a modern fraternity reminded her of the radio stretching all over the country as it did and so she called our chapter "Station OPSAF," the letters standing for the toasts, which were Origin, Presidents, Service, Alumnæ and Future. It gave us such a thrill to feel that all over the country every single chapter of Delta Zeta was doing exactly the same thing we were.

The next evening we had a most successful party. It was called a Dutch party and as the color scheme of our room is delft blue we had just the proper background. The invitations were written in a sort of Dutch dialect and had a windmill painted in one corner. We played many games such as guessing advertisements, carrying peanuts on a knife, and making up poems with certain given words as rhyme scheme. For refreshments we had little baskets packed with sandwiches, peanuts and pickles served by one of the girls in a Dutch costume. It being so near Hallowe'en we also served cider and doughnuts. While eating, each Delta Zeta was paired off with a rushee by means of matching paper Dutch girls cut in two. After refreshments we gathered around the piano and sang Delta Zeta songs and then we closed a very happy evening with dancing.

OLIVE CHACE, *editor*.

VERA STAFFORD, *president*.

ALPHA EPSILON—Oklahoma State Agricultural College

Now that two months and a half of this term have passed it seems that we should all be settled down to our work—work we all have been doing—but just now I hardly believe anyone at Oklahoma A. and M. College would tell you that they were settled. November 1 was our Homecoming football game. We played Oklahoma University and beat them for the first time in seven years! With a larger group of alumnæ back than has been for years you can well imagine the hilarious time we had.

Delta Zeta alumnæ held a reunion the same week-end and a great many of our girls were here for that. Our alumnæ have perfected their organization and are doing a lot to assist the active chapter. This year they are offering a special prize to the member which has the highest average. Of course we all aspire but time alone will tell the tale.

Alpha Epsilon has placed several of its girls in different campus activities. Vera Vandenburg, Velma McIntire and Cata Fariss are on the Y.W.C.A. Cabinet. Letha B. Gould, one of the few girls who wears an "O" sweater, is again taking a very active part in women's athletics. Vera Vandenburg has a part in the next college play, *The Boomerang*. Helen Newlin and Bess Sullivan are to take part in the style show which is to be given in connection with the opening of the new Animal Husbandry Building and Stock Pavilion. Jo Neil Glover and Velma McIntire have been elected to Pi Zeta Kappa, an honorary interdenominational religious fraternity.

Rosalie Bollinger has been called home because of the serious illness of her father.

ALICE FOUNTAIN, *editor*.

VERA VANDERBURG, *president*.

ALPHA ZETA—Adelphi College

The suspense will soon be over, as our rushing season closes in two weeks. We have already given two very successful parties and expect to pledge at least eight wonderful girls. The New York Alumnae chapter has been coöperating with us splendidly. Last Saturday we celebrated Founders' Day with them at a luncheon at the Hotel Hamilton. We have great plans for the coming year. The first event is our usual fall bridge to be given December 1 at the Hotel St. George. The big event of the year will be our dance. It will take place at the Hotel McAlpine on December 30 and we are expecting it to be as great a success as last year's.

The news that we have been chosen to sponsor the new chapter at the University of Maine has been a source of great pleasure to us. Jo McEntee, who has been appointed delegate to be present at installation, is quite thrilled at the prospect of meeting our new sister chapter.

JOSEPHINE SANCHEZ, *editor*.

JEAN ROSS, *president*.

ALPHA ETA—University of Michigan

Now that formal rushing and pledging are over and things have settled down somewhat into the regular routine, we of Alpha Eta have been sort of catching our breath, as it were. That does not mean that we have been idle, though—we've just been doing a heap of things.

We are very happy to announce that Carol Whitney of Alpha Sigma has affiliated with us. Another matter of chapter interest is that we have initiated Mrs. Clyde Love, one of our patronesses. It is a university ruling that each sorority on the Michigan campus shall have two initiated patronesses, and we are glad to welcome Mrs. Love as a sister who, in the past, has proved a most helpful counsellor and friend.

It gave us a great deal of pleasure to meet our sisters from Alpha who stayed with us the week-end of the Miami-Michigan game. For their sakes we could not help feeling a bit sorry that Michigan won.

When Wisconsin came to play ball with our team, the house was crowded to capacity—fathers, mothers, sisters, brothers, friends and our own alumnae club swarmed in and out all morning Saturday. The house resembled nothing more than a beehive. We decorated the house very attractively in honor of the two teams (some one was kind enough to say that it was the cutest on the campus) with maroon and white balloons on one side and blue and maize on the other, bunting and cardboard footballs with "W" and "M" on them. As the first conference game of the season is the date of our Homecoming and this year is the first time we have celebrated the occasion, the alumnae gave us a breakfast at the Green Tree Inn with

cute dolls on elastic strings for favors. At night we entertained in their honor at an informal dance. The hall was decorated with maize and blue streamers, the living-room with maroon and white, and the dining-room and den also in maize and blue. Everybody had a good time. Fancy paper caps and serpentine lent a carnival air to the party, and punch was served between dances.

Hallowe'en we had a "git-to-gether" for all active girls and pledges. An old-fashioned Virginia reel started the fun which continued until ten o'clock. Stunts, charades, Hallowe'en games, and handsome "waiters" who allotted each of us some pumpkin pie, apples, cider and doughnuts made one more happy Delta Zeta memory for Alpha Eta girls.

Coming events cast their shadows before them and we are under the pall of mid-semester examinations. We wish all Delta Zetas everywhere a safe and sane blue-book period as "AEBS signs off."

SARITA DAVIS, *editor*.

THYRA SHEFFIELD, *president*.

ALPHA THETA—University of Kentucky

Another month has gone by bringing with it for Alpha Theta chapter much of hope, some fear, bits of disappointment, greater bits of triumph, and a great amount of happiness. In short Alpha Theta has been living a normal, wholesome life.

Cupid invaded our camp early in the season and claimed for his captive Maryanna Reynolds who was married to Archie Carpenter, Alpha Sigma Phi, October 3. Maryanna, however, is not lost to Alpha Theta chapter for she is continuing in school and in Delta Zeta activities.

We are a thrifty group, and to add to our exchequer we held a rummage sale which netted us a tidy sum. A last year's hat may have possibilities after all!

We don't like to "crow" over our triumphs, but we are literally hugging ourselves in glee, for the scholarship cup is ours again this year, and in the popularity contest our Lillian Rasch was elected one of the six most popular girls on the campus. I am reminded that Christmas, too, is not so far off. Here's wishing every Delta Zeta girl the happiest of Christmases.

MARY ELIZABETH DEPEW, *editor*.

SARAH SHONE, *president*.

ALPHA IOTA—University of Southern California

No letter.

ALPHA KAPPA—Syracuse University

Never before has such autumn weather blessed Syracuse or passed so quickly! So it seems, anyway, to Alpha Kappa chapter, for it surely does keep us busy trying to be worthy representatives of Delta Zeta on our campus.

A victory in our first game of the interliving center basketball tournament greatly encouraged us, and as a result we are practicing diligently for our next game against Gamma Phi Beta, who now have the basketball championship of the university. (But they didn't have the Delta Zeta girls to play against last year!)

October 21 Alpha Kappa held initiation for five pledges: Katherine Atwell, '25, Ethel McCartney, '25, Carmelita Hebblethwaite, '27, Helen Henderson, '27, and Ethel Slater, '27, all of whom have already shown their desire and ability to make our chapter a better one.

Alpha Kappa is also very glad to announce that Mrs. McLean of Xi chapter, who is now residing at Syracuse, has consented to act as our Big Sister.

Last Thursday evening a very successful Hallowe'en dance was held at the chapter-house at which the members of the Sigma Beta Fraternity were our guests. Another dance is being planned for November 22, the date of the Colgate-Syracuse football game, when we are expecting to entertain many of our alumnae. Alpha Kappa sends her Christmas greetings to all Delta Zetas.

A. MARGUERITE RISLEY, *editor*.
MILDRED CURTIS, *president*.

ALPHA LAMBDA—University of Colorado

No letter.

ALPHA MU—St. Lawrence University

Much has happened since our last letter. Rushing is over and we have pledged nine attractive girls. Within the last month we have added one more member to our active chapter. Last week the sophomores entertained the chapter at a Hallowe'en party. To-night the freshmen entertained us with a musical comedy in which they showed all their pep and ability.

The unique custom of interfraternity serenading is now in full swing at St. Lawrence and Delta Zeta songs are being heard for the first time on the campus. In serenading it is necessary to have a local call and yell.

One cannot appreciate this much cherished custom until she is awakened by mid-night serenaders of another fraternity. Various college organizations are beginning to function again. The first glee club rehearsal was held last week. Six of our fifteen members and three of our pledges made the club. Several of the girls tried out for Mummers, the St. Lawrence dramatic association, but as yet no report of those selected has been given. Some of us are also trying out for the *Hill News* staff.

We announce with pleasure that we have a new patroness, Mrs. Rich, and we feel sure that she will be a great asset to our group.

BERNICE MCGILL, *editor*.
GLADYS MOUNT, *president*.

ALPHA NU—Butler College

Sister Delta Zetas you can't realize just how much of a thrill we get from that salutation after the worry and harrowing but wonderful experiences of graduating from localdom into one of the newest links in the chain of Delta Zeta. We haven't quite recovered from installation, either, although it was way back in June and so many things have happened since then.

In the first place I'll have to mention the lovely house we have, because second to our new pledges, that is the pride of our existence. We plunged into ownership without stopping to wonder if we could do it, and now it isn't necessary to wonder because everything is going fine.

Our house is white stucco with a huge front porch, lots of windows for the pledges to wash, and two big trees in the front yard that shed their leaves all over the front walk—more tasks for the newest ones! The arrangement of the interior was certainly planned with a sorority in view because the long living-room, hall and dining-room with their hardwood floors make an ideal place for entertaining.

We furnished our living-room in taupe needle-point, overstuffed davenport, comfy chairs and fireside seat. Two parchment shaded bridge lamps and a frilly, vain, little table lamp on a gate-leg table furnish that soft glow of light so essential to "hominess," while over in one corner there is our prize possession—a mahogany grand piano! We just had to have it for our room needed it so, and an upright would have spoiled the effect since the ceiling is low and beamed, and the room is so long. There's a big fireplace, also, that used to smoke in an aggravating manner but doesn't now, and there are two tiny lights above it with parchment shields. Out in the hall there's a built-in seat the length of the room and some day we hope to have enough pillows to fill it. I do wish you girls could see our house, because descriptions are so inadequate.

Much paint, much muss, much argument, and orange-colored hair on one industrious member resulted in our main achievement—four small tables of burnt orange, trimmed in dull green with corresponding chairs for our dining-room.

Upstairs we have three big bedrooms and a room for our chaperon. They are attractively furnished with mahogany dressers, gray cots, to match our gray study tables and chairs and the windows are hung with frilly white curtains.

Our first fall social event was given in the form of an open house when we entertained one Sunday afternoon for the fraternities, sororities and faculty of the college. Mrs. Crawford was here for inspection and we were so proud to have her stand in our receiving line and meet the students!

We expect to initiate four girls Thanksgiving and since pledging goes on at Butler all the year around we expect to have a "sure nuff" full sized chapter before long.

KATHLEEN DYER, *editor*.

ALBERTA COBURN, *president*.

ALPHA PI—Howard College

Alpha Pi girls have just settled down to real work and are happy to be together again. Rushing is on the boom! and our rush captain with the other Delta Zetas is doing some fine work. Basketball, which is our main sport, has just begun, and several of our girls are working hard to make the team. Among other honors we have, president of Panhellenic, feature editor of *Entre Nous* (college annual), treasurer and U.R. of Y.W., vice-president of Dramatic Club, assistant editor-in-chief of *Crimson* (weekly paper). Two of our girls are on the faculty. We are remodeling our chapter room, getting ready for some real work as well as fun and have a bright future before us.

ADDILEE MATTISON, *editor*.
DAISY HOOVER, *president*.

ALPHA XI—Randolph-Macon Woman's College

It is with a feeling of relief and joy that we settle down to the regular run of things now that promise day is over. We found that our new rushing rules worked very well and we were very successful with our rush teas which were given for four afternoons the week of promise day. They were very informal and were a means of becoming acquainted with the new girls who were invited. Several of our girls played the piano and gave readings and these selections were entertaining and at the same time informal. Promise day, October 20, we waited in suspense for a reply to our bids. It was our first experience on a formal day when all the other fraternities were bidding, too, and one not to be forgotten soon. At last the note came and we learned that we had seven girls. They were immediately notified to appear at the house at five o'clock. We had a simple service and then a great time of greetings and supper. We are very happy over the outcome and we feel as proud of our promisees as "the proud mother of twelve." They have organized and are having meetings at the same time we meet. We are now looking forward to pledge day when our girls can have the full privileges of the house.

October 25 we initiated our three old girls who had been pledged before promise day.

We heard just a few days ago that Mrs. Coleman is coming to see us November 15, and we are looking to her visit with pleasure. Mrs. Coleman was one of our installing officers and we all learned to love her dearly in those few days she had with us.

ANNIE LEE YOUNG, *editor*.
BOWERS MACKORELL, *president*.

ALPHA OMICRON—Brenau College

We gave a house-warming Monday, October 6. Our picturesque Swiss mountain lodge, situated on the road to Lake Takeda, was thrown open to the active members of the seven other fraternities on the campus and to the faculty. Pink Killarney roses were placed in green baskets here and

there, harmonizing with the green and cream color of the room. Leah Beth Connor, our president, presided at the tea table while Lorene Wakefield, vice-president, and Marie Newsom met the guests at the door. Music for the occasion was rendered by members of the fraternity. Tea and confections were served to the seventy-five guests who called between the hours of four and six. I know all of you will like to know what the different fraternities gave us. Alpha Delta Pi presented us with a lovely mirror, while Alpha Chi Omega gave us a beautiful reproduction of the "Heron." The Phi Mus and Alpha Gamma Deltas delighted us with their gift of a mahogany end table. Delta Delta Delta's gift was a bronze desk set, Zeta Tau Alpha's book-ends, and Theta Upsilon a most attractive table lamp.

Our big rush party, which is to be in the form of a dinner-dance, is planned for November 8. We are expecting sixty guests, including Louise Stokes from Alpha Gamma chapter, and Edith Jonas, one of our alumnae. This is our first formal rush party since we do not pledge until after Christmas. We will write you all about it in our next issue.

MARIE NEWSOM, *editor*.

LEAH BETH CONNER, *president*.

ALPHA RHO—Ohio Wesleyan University

Work is now well started at Ohio Wesleyan University and Alpha Rho chapter is working hard to make Delta Zeta the best fraternity on the campus. We entertained Gladys Hartman Ruoff of Indianapolis, the National Inspector of Gamma Province, the week-end of October 18. We enjoyed the visit very much and feel that it was very profitable for us in that we learned more about Delta Zeta aims and ideals.

The Alpha Rho girls carried on their first initiation October 11 when one senior and six sophomores took the lamp as their symbol of sisterhood. It was very inspirational for us as well as for the new girls. We observed Founders' Day with a candle lighting service and "feed" in our president's room October 24. The girls entertained the men with a Harvest Hike November 5.

VIRGINIA FLEMING, *editor*.

MARGARET JOHNSON, *president*.

ALPHA SIGMA—Florida State College for Women

Alpha Sigma has certainly experienced an eventful first month. Of course, rushing was new to us but in spite of this fact, we rushed against the oldest fraternities on the campus and won, so to-day fourteen girls are wearing our little pledge pins and are most proud of them.

Sunday, November 2, we initiated four of the old girls and they are so proud to be wearing our lamps. After initiation we had breakfast at the Leon Hotel.

To celebrate Delta Zeta's twenty-second birthday we gave a dinner party at the Elite tea room. The pledges had charge of all the decorations

and the hall looked beautiful. Between courses toasts were drunk and I want you to hear the one which the pledges gave, written by Bobbie Cannon, their president.

Before we took our sacred vow
A rose was just a rose—
But sweeter is its fragrance now,
And daily sweeter grows.

And green was just an emerald light—
Perhaps a rainbow hue—
But Delta Zeta shows us
That it brings a message new.

The lamp has led us to new friends,
And ever we'll be true
So here's to green, and here's to rose—
Delta Zeta's—here's to you!

We were all so thrilled when it was announced that Ava Leatherman was elected vice-president of Student Government. Ava has held several offices in Student Government—treasurer last year, vice-president this year. Blanche Curry, one of our sophomores, was recently elected secretary of Student Government, while Annie Flagg Wilder, our president, and Helen Ames have been selected fire chiefs for Jennie Murphree and Bryan Halls, respectively. Our little red haired Mim (Mildred Harris) was chosen by the sophomore class to take charge of all their financial problems in the capacity of class treasurer. Several of our pledges are going out for basketball and if all reports are true they are coming splendidly.

Our chapter is fortunate in having with us Miss Catherine Winters, Sigma, our province president. She is on the faculty as an instructor of history and holds the good will of every student on the campus.

We want all of our sisters to know how proud we are to be wearing these beautiful lamps. Somehow the meaning of our Fraternity grows deeper everytime we look at them—which is quite often (we can't help it). We are now looking forward to a province convention which will give us an opportunity to meet other of our Delta Zeta sisters.

ELISABETH G. CARTMEL, *editor*.

ANNIE FLAGG WILDER, *president*.

ALPHA UPSILON—University of Maine

I wish every Delta Zeta girl might have been at the University of Maine last week-end, November 7-9. At that time Alpha Upsilon chapter of Delta Zeta was installed. One thing that especially thrilled us was the thought that all Delta Zetas were wearing the old rose and green for us. We were also very much impressed with the many telegrams and letters that we received from the other chapters.

Soon after college opened, we received word that installation would be November 7-9, and that Mrs. Coleman would be here. Of course we began to make plans immediately.

On the evening of November 6, the delegates arrived. Friday evening Miss Mason gave us our examination, and that same evening pledge service was held. Saturday morning at nine, initiation began. In the afternoon, we gave a tea to the other sororities on the campus. Our installation banquet was held that evening at The Elms. The guests of honor were Mrs. Coleman, Miss Mason, Miss Pendery, Miss Josephine McEntee, the representative from our sponsoring chapter, Alpha Zeta, Mrs. Edith Hilton, our Big Sister, and our patronesses, Mrs. Halverson and Mrs. Wilbur. Sunday morning we attended church in a body.

Although Mrs. Coleman and Miss Mason were obliged to leave that evening, Miss Pendery and Miss McEntee remained for our first meeting as Delta Zetas, held Monday afternoon.

We were pleased to find that a song composed by one of our members for our local sorority, could be used, with a few changes, as a Delta Zeta song.

DELTA ZETA

Tune: *Santa Lucia*

To our sorority
Praise we are bringing,
Pledging fidelity,
Come hither singing,
Nobly we'll ever win,
Be to each other kin,
Delta Zeta! Delta Zeta! our Delta Zeta!

Our lamp will brightly gleam,
Will be dimmed never,
Of the old rose and green
We will think ever,
True shall we always be
To our dear Delta Z,
Delta Zeta! Delta Zeta! our Delta Zeta!

ANNETTE MATTHEWS, *editor*.

ANNIE MAY FULLER, *president*.

Clippings Bureau

GAMMA

SORORITIES TIE FOR *SKI-U-MAH* HONORS

CHI OMEGA AND DELTA ZETA EVEN AT FINISH LINE OF MAGAZINE SALES CONTEST

Because of the close finish in the annual campaign for yearly subscriptions for the *Ski-U-Mah*, the sales staff decided to award two first prize trophies. The Chi Omega team is the winner of one of the trophies while the other goes to the Delta Zeta Sorority.

Gertrude Johnson, is a junior at the university, who has been active in the *Ski-U-Mah* and *Gopher* drives as a member of the Delta Zeta Sorority teams. She will participate in the sale of Homecoming balloons and buttons this week.

'26 *GOPHER* GAINS 3,000 SUBSCRIBERS IN FIVE DAY CAMPAIGN

DELTA ZETA TEAM WINS

With a total subscription list of 2,737, the five-day 1926 *Gopher* drive ended. Gertrude Johnson, a member of the Delta Zeta team, as high solicitor, won the individual cup with 483 points while the Delta Zeta Sorority, with 658 points, was awarded the first place team cup. Marcella Rancleve, Kappa Delta, was second high individual solicitor with 240 points, and the Kappa Delta Sorority won the second place team cup, having a total of 493 points.

PSI

DELTA ZETAS MOVE INTO NEW CHAPTER HOME

MRS. CORA PACKER TO ACT AS HOUSE MOTHER FOR SORORITY

The Delta Zeta Sorority has leased the beautiful home of the Misses Florence Maude and Mayme Johnson, at 250 N. Water Street, and will use the place as a sorority home during the coming college year. Although the lease has been pending for some time, contracts were not signed until Friday evening and an announcement was made Saturday morning.

This house is one of the most commodious houses in the city and is ideally fitted for a sorority home. There are ten rooms in the house and each room is exceptionally large. The ground floor is well arranged for entertaining purposes. Ideal study rooms can be arranged on the second floor.

Although the house was rented furnished, a quantity of new furniture will be added.

Not only is the house well suited for sorority house purposes, but the home has a spacious lawn attractively decorated with flowers, which will provide a place for late fall and early summer entertainment.

Mrs. Cora Packer has been engaged as house chaperon and she and her daughter, Mary, a junior in Franklin College, and a member of the Delta Zeta Sorority moved into the Johnson property early this week.

Elections were held this week in which the following officers for the ensuing year were chosen: Thelma Cline, house president; Fanny Brewer, vice-president; Thelma Stout, secretary, and Birdena Donaldson, treasurer. Miss Brewer, as vice-president, has appointed all the proctors and it is her duty to give points.

The Delta Zeta Sorority will hold its annual Founders' Day banquet Saturday evening, October 25, at Ye Wayside Inn. The room is to be decorated in the sorority colors, rose and green, and a four-course dinner will be served by Mrs. Julian at 6:30.

The chief feature of the entertainment will be a stunt arranged by the pledges of the sorority. Fraternity songs will be sung at intervals during the evening and talks will be given by Una Houk, representing the alumnae, Mary Packer, representing the actives, and Naomi Mason, representing the pledges.

Among the out-of-town alumnae who will attend the banquet are Alta Redmond and Gladys Walker of Columbus, Gertrude Sharp of Camdon, Una Houk of Kirklin, Gladys McCammon of Elwood, Alice Shook of Kirklin, Edith Williams of Fairland, and Bertha Caffyn and Mrs. Jessie Wolord of Delphi.

Sororities, 1.714; Pi Beta Phi, 1.933; Delta Zeta, 1.627; Phi Beta Gamma, 1.603; Delta Delta Delta, 1.57.

Fraternities—Delta Chi Omicron, 1.357; Kappa Delta Rho, 1.351; Sigma Alpha Epsilon, 1.350; Phi Delta Theta, 1.334.

Independent men, 1.363; independent women, 1.440.

The Delta Zetas initiated eight students at the chapter-house on North Water Street, Friday evening, followed with a picnic in the city park. They initiated Helen Winters, Linton; Thelma Shaw, Columbus; Mary Merrill, Indianapolis; Mary Ring Hymert, Cleo Rogers, Columbus; Dorothy Best, Franklin; Katherine Boyd, Clayton; Doris Gillaspy, Amity.

A number of alumnae members were present for the initiation and attended the picnic.

HAROLD CRATER, '25, ELECTED PRESIDENT EDUCATION SOCIETY

NAME FOR ORGANIZATION TO BE CHOSEN AT AN EARLY DATE

Harold Crater, '25, was elected president of the local education society at the first regular meeting held at 8:00 o'clock Thursday evening at the home of Professor J. E. Adams, on Edwards Street. *Birdena Donaldson* was elected *vice-president* and Thelma Cline, secretary-treasurer. Mr. Crater was elected on the first ballot by a large majority.

COMPLETE EDITORIAL STAFF OF FRANKLIN

EDKINS TO ACT AS ASSISTANT EDITOR; ENERY'S AUTHOR DISCLOSED

The editorial staff of *The Franklin* has been completed for the college year. The complete staff of the paper is as follows: J. Arthur Curry, managing editor; Dan Edkins, assistant managing editor; Marion Coy, co-ed manager; Helen Forsythe, *Treva McCarty*, Mary Covert and Katherine Glick, associate editors; Nathan Neal and Bur. Buckner, feature writers. The reportorial staff will consist of Eugene Kenny, *Mary Packer*, Robert Walden, Lester Bowles, *Mary Merrill*, Ruth Burton and Martha Scott.

Election of officers of the freshman class of Franklin College was completed yesterday morning, when Ruth Burton, of Franklin, was chosen treasurer, after the withdrawal of Leland Sharp, of Greenwood, from the race. Those elected at the meeting held Friday afternoon in the college chapel were Dan A. Edkins, Greensburg, president; *Alice Butler*, *Linton*, *vice-president*, and Jennie Johnson, Chattanooga, Tennessee, secretary.

ALPHA ALPHA

7,000 GRADS ARE BACK TO PURPLE '24 HOMECOMING

PEP MEETING FRIDAY OPENS CELEBRATION; MANY "GRADS" RETURN

Heralded by the appearance of 7,000 returning alumni the 1924 Homecoming proved to be as enjoyable as entertainment as any of the previous events of that nature.

Almost without a break, the program went off as planned. What threatened to be a hitch, occurred when the big bonfire which was built and ready for action, was touched off Thursday night, causing considerable excitement and getting the Evanston fire department onto the job. However, with chairman McCarrison supervising, the university freshmen turned out in fine style and rebuilt the pyre higher than before.

On Friday evening the pep session took place. Accompanied by doleful music the "body" of the enemy was carried from Patten Gym to the await-

ing hearse and transported over most of Evanston, followed by some 2,000 students making various unclassified noises.

The Hoosier squad was serenaded at the Orrington with "Indiana" rendered by the Purple band. From thence, the throng made its way back to the gym where the funeral pyre was set off and the hearse burned with it.

Saturday morning the festivities opened with a smoker in the lounging room of the gym at nine A. M., following which the "grads" were given a chance to see their championship Olympic swimmers in action. The finish of the cross-country race with Purdue was also viewed with great satisfaction as three Purdue runners crossed the line before the Boiler-maker showed up, Phil Platt and Alvo Martin tying for first place.

At 11:15 A. M. the annual Homecoming parade moved itself down Sheridan Road on its appointed course which ended at Northwestern Field. Judges awarded the prizes for the fraternity and sorority floats were as follows: Fraternities; Phi Delta Theta, first; Sigma Chi, second; Sigma Alpha Epsilon, third. Sororities: *Delta Zeta*, first; Lambda Phi Delta, second; Delta Gamma, third.

The prize for house decoration was won by Delta Upsilon with their portrayal of the Purple leading Indiana in a motor race. The Scribblers, with their gallows bearing all big ten teams, gave them second prize, while Lambda Chi Alpha got third with a tableau of the rise of a Greater Northwestern.

Fannie May candy shop won the first prize offered for the best decorated store on Davis Street and Chandler's secured second.

The class of 1924 had the most alumni back, while the class of '22 was second. Alumni, however, represented classes of almost every year. The oldest alumni back was L. C. Collins, '72, who was a member of the championship baseball team of 1870. Two other members of that team were also present, Dr. Bragdon, '70, and A. D. Langworthy, '70.

The crowd at the game was entertained by several novel stunts. Clowns and bullfights, an Apache dance by Norman Schmidt and Valorus Lang, and a tumbling exhibition by Coach Kranz's tumbling squad, featuring, also, Buddy Kühlen, last year's varsity tumbling captain, and western intercollegiate champion in that art.

Chairman Elmer McCorrison wishes to extend thanks to his committee for their hearty coöperation and hard work on the day's plans. The committee was composed of Paul Ware, Elwood Snyder, John Martin, George Chott, French Eason and Paul Gorby.—*Daily Northwestern*.

HOCKEY SQUADS FOR INTERCLASS GAMES ARE CHOSEN

Hockey squads for the women's interclass games have been chosen, announces Margaret Kimbark, head of hockey. The class managers have co-operated with the coaches and Miss Kimbark is selecting the squad members. The freshman squad is not yet ready for posting, and those girls interested will please watch for a notice of it later.

The teams will be chosen in about two weeks, and until then every girl is urged to be present at as many practices as possible. There are six practices before that time, and of these four at least are required. Training rules are on, and must be strictly observed. These rules are posted on the W.A.A. bulletin board in the Y.W.C.A. room, and copies are obtainable at the desk.

Those making the class squads are: Seniors—Biesemeire, Dunn, Fischer, G. Gessler, Ingersoll, Harding, Nash, Schanbacher, Walrath, Watt, Underwood; Juniors—Bauer, Boulton, Coleman, Cope, Fenlon, Falsom, Fulton, Hayford, Hellstrom, Kimbark, Larson, Lovejoy, McFadden, F. Mallory, M. Mallory, Moore, Mitchell, Penfield, Smith, Swinehart, VanDuesen; Sophomores—A. Baker, P. Baker, Anderson, Baldwin, Bissel, Bobb, Crimmins, Decker, Dibble, Farley, Foley, Goodwillie, *Gorby*, Greer, Haessler, Heckler, Hilton, Howard, Hulten, Jaglowski, Lytle, Moulton, Randall, Robertson, Row, Schaffer, Schoenthaler, Schultz, Sprenger, Swift, *Tibbetts*, Towne, Van Ness, White.—*Daily Northwestern*.

NAMES ON WOMEN'S SOCCER SQUADS ARE MADE PUBLIC

The soccer squads have been chosen. The following lists include the members of the senior, junior, sophomore and freshman squads. Training rules should be rigorously adhered to. Ten points are deducted for any infringement of the rule.

The squads are as follows:

Seniors: E. VanVactor, M. Smallpage, *J. Maxham*, H. MacDonald, E. Fisher, D. Rapp, A. Bovee, M. Youngquist, D. Rueht, D. Pearson, H. Carrol, F. Nelson, *A. Mayhew*.

TOMORROW IS LAST TIME FOR "ONLY 38"; IS WELL RECEIVED

Campus Players repeated their success of Wednesday evening again Friday night when they presented A. E. Thomas' comedy, *Only 38* in Anne May Swift Hall for the second time before a crowded house.

The play has to do with a minister's widow who wishes to enjoy the things she has missed. Her twin children are horrified at her ideas and only acquiesce to her second marriage when they realized how selfish they have been all the time.

Harriet Nerbovig and Sol Empey again shared honors as the stars of the performance. Miss Nerbovig plays the young widow with a thorough understanding and stands out as a striking figure through the entire play. Empey, a newcomer to Northwestern, as the father of the widow, is comic in his rôle even if he overplays part of the time. They give two of the best performances that have been witnessed in a long time.

The others are well chosen, especially the four youngsters played by Dorothy Tinley, Sylvia Torpe, Frank Nosek and Wesley McKee. They are original, humorous and add a fresh note to the play.

James Prindle as the professor was as convincing as he was in the first performance. He is a good actor. *Emily Wescott* and *Alberta Shank* came in for a great share of the applause in their comedy parts.

The play will be repeated for the last time to-morrow evening at 8:15 in Annie May Swift Hall. There are a few good tickets left for the performance. They are seventy-five cents and may be purchased at the door, in U. H. or at Chandler's, DuBreuil's, Childs and Raeder's and MacFarland and Browning.

ALPHA ETA

JUNIOR ADVISERS GIVE HALLOWE'EN PARTY TO-NIGHT

Goblins, pumpkins, cornstalks, practically all the external evidences of Hallowe'en will be displayed at the junior advisory party given at eight o'clock to-night in Barbour Gymnasium. All freshmen women and entering upperclass women are invited to attend.

Lucille Cornell, '26, is in charge of the party. Other committee chairmen are as follows: Decorations, *Cynthia Smith*, '26, refreshments, *Edith Mayer*, '26, invitations, *Constance Clarke*, '26, *Emma Lou Rea*, '26, and music, *Isabel Harder*, '27.

Mummers will present the play, *A Pair of Lunatics* by W. R. Walkes. *Katy Clarke*, '26, and *Florence Nelson*, '25, will participate in the play. Fortune telling will be one feature of the evening. *Thomas' Orchestra* will play for dancing.

The patronesses for the affair will be: *Miss Jean Hamilton*, *Mrs. M. L. Burton*, *Mrs. Amy Hobart*, *Miss Frieda Diekoff*, *Mrs. W. R. Humphreys*, *Mrs. J. R. Effinger*, *Mrs. A. S. Whitney*, *Mrs. J. H. Hanford*, *Miss Mary Ross*, *Mrs. L. A. Strauss*, *Mrs. E. H. Kraus*, and *Miss Grace Richards*.

ANNOUNCE COMMITTEES FOR PANHELLENIC BALL

The annual Panhellenic ball given by the Michigan Intersorority Association will take place November 28 at Granger's Academy. This ball is given for the benefit of the University of Michigan League and it is for this reason that Mr. Granger has consented to have it in the academy.

Tickets will be distributed among the various sororities and a sale will be held in the gymnasium at a later date, announcement as to the exact date of the beginning of the sale will be announced later. The academy will accommodate 350 couples.

Committees for the affair are as follows: General chairman, *Jeanne Briggs*, '25; chairman of refreshments, *Ruth Morey*, '25, *Mary Haskell*, '26, *Wielabelle Harper*, '26; program: *Betty Drake*, '25, *Ruth MacDonald*, '26, *Marian Daniels*, '27; decorations: *Katherine Mellen*, '26, *Freda Schmidt*, '25, *Ruth Strickland*, '26; ticket: *Gertrude MacCauley*, '25, *Illaine Stively*, '25, *Harriet Goodall*, '25, *Gladys Lax*, '27. Patrons and patronesses: *Delmas Cochlin*, '26, *Winifred Shimp*, '26, *Berenice Smith*, '26; publicity: *Vesta DeWitt*, '25, *Louise Roberts*, '26, *Dorothy Anderson*, '25.

ALPHA IOTA WEDDING

One of the Delta Zeta June brides is LaVerne Harrison of Alpha Iota chapter, who was married to Harold Humbert on Sunday, June 22, at four o'clock at Trinity Church, Long Beach, California.

Miss Harrison graduated from the fresh impetus at the University of Southern California last year, and has been teaching school in Santa Paula this year. While in school she was very active in the Y.W.C.A. and was president of Clionian Literary Society for one semester. She was a member of Spooks and Spokes, junior women's honor society.

The wedding was unique in that the ceremony was performed by the Reverend C. T. Harrison, father of the bride, and the Reverend Ella Humbert, of Spokane, Washington, mother of the groom.

TWENTY-SECOND ANNIVERSARY OF FOUNDING IS
CELEBRATED BY THE DELTA ZETA SORORITY

The Indianapolis Alumnae chapter observed the twenty-second anniversary of the founding of Delta Zeta, Friday, October 17, with a luncheon at the Hotel Severin. The luncheon also celebrated the institution of the forty-fourth chapter of the sorority at the University of Maine.

The guests were seated at one long table, beautifully decorated with autumn leaves, teasels and bittersweet and lighted with tapers in dull green, burnt orange and brown shades. Each place was marked by place cards in the vari-colored oak and maple leaves and small candles in orange. In the center of the table was a large birthday cake lighted with twenty-two tapers. Between the first and second courses the Founders' Day candle light service was given. Delta Zeta songs were sung between the other courses. Miss Grace Mason, National Executive Secretary, gave a brief history of the founding of the sorority and its growth.

Honor Roll

BETA CHAPTER

Helen Bettis	President of Women's Self Government Association
Mary Gilchrist	Woman's Debate Club Le Cercle Francais
Almira Gilchrist	Le Cercle Francais

DELTA CHAPTER

Josephine Niles	Alpha Mu Phi (Sponsor for R.O.T.C.) Biology Club
Wilma Armstrong	<i>Mirage</i> Staff
Doris Leavitt	Y.W.C.A. Sub-cabinet
Opal Leavitt	Pi Delta Epsilon (Duzer Du National Collegiate Players)

ETA CHAPTER

Prudence Ditto	Y.W.C.A. Cabinet Epworth League Cabinet
Ethel Homer	Y.W.C.A. Cabinet Epworth League Cabinet <i>Wildcat</i> Staff Departmental Editor
Irma Kevan	Sunday School Cabinet W.A.A. (Women's Athletic Association)
Evelyn Mills	Treasurer Panhellenic Glee Club Band
Frances Allen	Reporter
Eunice Walker	W.A.A. (Women's Athletic Association)
Eleanor Winans	Student Commission
Lucille Warner	Glee Club
Evelyn Warner	Glee Club
Helen Erickson	Glee Club
Laura Parker	Glee Club
Beatrice Fultz	Glee Club
Angeline Wilson	Glee Club
Opal Oliver	Band
Edith Beccroft	Band

IOTA CHAPTER

Melba Carpenter	Treasurer of Junior League of Women Voters in the University
Helen Cole	Member of Y.W.C.A. Council
Mary Agnes Flannigan	Secretary-treasurer of Classical Club
Vivian Conrad	Treasurer of Delta Sigma Rho President of Hesperia Literary Society
Catherine Donica	Vice-president of Women's Forensic Council
Ruth McClenahan	University Symphony Orchestra (violin)
Doris Rae	Treasurer of freshman law class Elected Kappa Beta Pi (women's law fraternity)
Vera Ragan	Secretary-treasurer of Spanish Club
Alice Timberman	Seals Club (swimming) In the program of aesthetic dancing Homecoming
Margaret Triplett	<i>Frivol</i> Staff (illustration) Y.W.C.A. Council
Judith Tornell	Staff and Circle (honorary senior organization) Manager of Saturday afternoon varsity
Esther Van Cleve	Staff and Circle Vice-president Y.W.C.A.
Dorothy Wilson	Women's Editor of <i>Daily Iowan</i> Executive Council of Women's Association

NU CHAPTER

Evelyn Adams	Phi Kappa Phi Scholarship to Illinois Delta Zeta won the Scholarship Cup
Lucille Thompson	Lambda Phi Delta
Frances Bjorling	Lambda Phi Delta
Inez White	Lambda Phi Delta

PSI CHAPTER

Audra Bedster	Theta Alpha Phi, Honorary Education Club
Alice Butler	House Council, Vice-president freshman class
Beatrice Cauldwell	Vice-president Boosters' Club Vice-president Student Council
Birdena Esther Donaldson	History Assistant Biology Assistant
Marjorie Gray	Honorary Education Club Glee Club
Annie Laurie McElhenie	Alpha Chi Alpha Theta Alpha Phi
Jane Linkenheldt	Chemistry Assistant

Treva McCarty	Alpha Chi Alpha
	Associate Editor <i>The Franklin</i>
Mary Packer	Vice-president Y.W.C.A.
	President Alpha Chi Alpha

OMEGA CHAPTER

Gertrude Houk	Upper <i>Emerald</i> Staff
	Life Saving Corps
Mary Ann Hanson	Orchesus
Dorothy Abbott	Zeta Kappa Psi
	Debate Order of the O
Doris M. Parker	Hermian Club
	Orchesus
Charlotte Newhouse	Collegium Angestate
Betty Lewis	Hermian Club
	Orchesus
Belle Taggart	Hermian Club
	Orchesus
Margaret Duerner	Zeta Kappa Psi
	Debate Order of the O
Helen M. Dickey	Class Swimming Team
Aileen Mordoff	Thespian
M. Glenna Fisher	Thespian
	Women's League Executive Council

CHI CHAPTER

Ruth Slottee	Phi Chi Theta
	Point System Committee
Clara Miller	Publicity Manager Home Economics Club
	Legislative Council of Women's League
Wildes Edwards	National Collegiate Players
	Panhellenic delegate
Alice McCool	Y.W.C.A. Cabinet
	Chairman Big Sister Movement
Georgia English	Y.W.C.A. Cabinet
	Junior Big Sister
Lois Fendall	Secretary Delta Psi Kappa
	President Panhellenic
Margaret Pratt	Citation Committee
Doris Philips	<i>Beaver</i> staff
	Madrigal
Idamae Schloth	Madrigal
Katherine Lindley	Associated Rookess
Edna Beckett	Homecoming Committee
Mabel Brown	<i>Orange Owl</i> staff
Nina McCord	Madrigal

ALPHA ALPHA CHAPTER

Frances Westcott	<i>Daily Northwestern</i> staff Campus Players, <i>Only 38</i>
Lois Thomas	Laurean literary society
Bessie Hoon	Girls' Glee Club
Alice Anderson	Girls' Glee Club
Alberta Shank	Campus Players, <i>Only 38</i>
Helen Brueckner	President of Girls' Commerce Club
Vivienne Morin	Manager of Girls' Glee Club
Mildred Weber	Glee Club
Mary O'Gara	Publicity Committee of Y.W.C.A. Archery squad
Annette Mayhew	Head of soccer "N" wearer
Jean Maxham	Soccer team "N" wearer
Joy Tibbetts	<i>Daily Northwestern</i> staff

ALPHA GAMMA CHAPTER

Matilda Jones	<i>Coralla Board</i> <i>Rammer Jammer</i> staff
Augusta Parr	Honor Committee President of Panhellenic
Gladys Oglesby	Undergraduate Representative Y.W.C.A. Honor Committee
Louise Perry	Kappa Delta Pi Honor Roll
Hazel Brown	Y.W.C.A. Cabinet <i>Crimson White</i> staff
Jessie Armentrout	President of Freshman Commission
Gertrude Clapp	President of Student Volunteer Band Y.W.C.A. Cabinet
Louise Nichols	Blackfriars (dramatic club) Erosophic (literary society)

ALPHA ETA CHAPTER

Elinor Bauchard	Players' Club Senior Adviser
Mary Brashear	Girls' Glee Club
Joy Carpp	Players' Club Choral Union
Norma Case	Players' Club Publicity Committee
Lucile Cornell	Junior Advisers' Committee Kappa Phi

Virginia Cronin	Masques
	Athena
Marion Daniel	Choral Union
	Players' Club
Sarita Davis	Y.W.C.A. World Fellowship Committee
Florence Harnau	Players' Club
	Choral Union
Frances Hinckley	Americanization Committee of Y.W.C.A.
Lillian Lake	Players' Club
Marjorie Matthews	Leadership Commission
	Leaders' Club of Y.W.C.A.
Jean Ramsey	Players' Club
Thyra Sheffield	Senior Girls' Social Committee
	Honor Point System Committee
Isabelle Slauson	Girls' Glee Club
	Choral Union
Carol Stickle	Chaplain, Kappa Phi
Margaret Walz	Players' Club

ALPHA THETA CHAPTER

Mary Stallings	Mortar Board
Sara Thorn	Mortar Board
Lillian Rasch	SuKy
Mary Stallings	Vice-president of Woman's League
Anastile Taylor	Treasurer of Woman's League
Mary Elizabeth Depew	Kappa Delta Pi
Margaret Doty	Kappa Delta Pi

ALPHA RHO CHAPTER

Dorothy James	Histrionic Club
	Editorial staff of <i>The Transcript</i>

ALPHA SIGMA CHAPTER

Ava P. Leatherman	Vice-president of Student Government
Blanche Curry	Secretary of Student Government
Annie Flagg Wilder	<i>Flambeau</i> staff
Mildred Harris	Treasurer of sophomore class
Natalie Lamb	Vice-president of Iota Pi Omicron (honor- ary history fraternity)
	President of Episcopal Auxiliary
Edith Edwards	Secretary of History and Social Science Club
Catherine Ray	Iota Pi Omicron

Announcements

ENGAGEMENTS

Evelyn Ross, Beta, to Charles S. Mills, A T Ω, Dartmouth.
 Josephine Metcalfe, Beta, '23, to Raymond Newberry, Yale.
 Dorothy Gerrie, Mu, to George Davis.
 Dorothy Duncan, Mu, to Emory Listen, '24, Φ K T.
 Martha Schroöder, Nu, to William Watson, Σ N.
 Alice McCreary, Nu, to Russel Malcolm, Π K Λ.
 Ludella Malcolm, Nu, to Forrest Keller, Σ N.
 Inez White, Nu, to Ralph E. Robb, Farm House.
 Opal Bradfield, Nu, to Beaumont Paine, Σ N.
 Evelyn Adams, Nu, to George Magraw.
 Virginia Eaton, Omicron, to Kenneth Lockwood, K Σ.
 Loréttä Weirich, Omicron, to George Harsh.
 Mary Louise Nance, Pi (pledge), to Maxwell S. Corey.
 Olge Stenmo, Upsilon, to Gordon LaBree, Σ N.
 Clara Miller, Chi, to Virgil Sexton, Δ X A.
 Faith Burk, Chi, to Herman Hill, A T Ω.
 Zelta Feike, Chi, to Benjamin Rodenwald, A Γ P.
 Katherine Boyd, Psi, to Henry Owens, Φ Δ Θ.
 Dorothy Best, Psi, to Earl Rich, Φ Δ Θ.
 Annie Laurie McElhenie, Psi, to Stanley Castell, A Γ P.
 Mary Brashear, '25, Alpha Eta, to C. C. Wiltse.

Lincoln Alumnæ

Wilavieve Weaver to Mr. Ohman.

MARRIAGES

Beryl Emory, Beta, to Herman Evarts, A Z, Cornell.
 Hilda Eulenstein, Beta, to Lawrence B. Wolverton.
 Hazel Wilson, Lambda, to Dr. Cecil J. Buster, of Manhattan, Kan.,
 June 1 at the Delta Zeta house. At home in Manhattan.
 Lois Emily Litchfield, Lambda, to Fred H. Stone, Jr., of Blackwell, Okla.,
 July 15, in Kansas City, Mo. At home in Los Angeles.
 Dorothy Gerrie, Mu, ex-'25, to George Davis.
 Dorothy Frost, Mu, to Paul Scovell.
 Christine Gottrick, Nu, to William Snyder, Π K Λ.
 Bess Brundage, Nu, to George McIntyre.

Mae Northcutt, Sigma, to Alfred J. Carr, Λ X A.
Josie Munson, Sigma, to Leopold Morey, Σ I.
Anne Hobart, Chi, to Paul Dicky, Λ II Δ .
Wilma Miller, Chi, to Carlton Strong Rondeau, Γ N.
Alete Ahlson, Chi, to Edward Leroy Aikens, Π K A.
Helen Jennings, Chi, to Edward Grider, Λ X A.
Elizabeth Hughson, Chi, to Clyde B. Wright, Ω T.
Florence Melis, Chi, to Verne Ferguson, Φ K Σ .
Martha Wickburg, Chi, to H. B. Hobson.
Milan Rhodes, Alpha Omicron, to William Baker Huff.

Los Angeles Alumnae

Lois E. Litchfield, Lambda, to Fred Hutchins Stone.
Ruby Parkhurst, Lambda, to Harold Beardsly Ringle.
Reba Long, Alpha Iota, to Dr. Chris Weber.
Pauline Scanlon, Omicron, to Ionel Gardescu.

BIRTHS

To Mr. and Mrs. Lain (Anne Cunneen, Beta, '22), a daughter, October 19.

To Mr. and Mrs. Raymond (Dorothy Curtis, Beta, '23), a daughter, August 17.

To Mr. and Mrs. Arthur A. Charleson (Mary Esther Hamilton, Mu), a son.

To Mr. and Mrs. Cecil Scott, Upsilon, of Minot, a son, Billy.

To Mr. and Mrs. Byron Coon (Audrey Beem, Alpha Alpha), a son.

Los Angeles Alumnae

To Mr. and Mrs. Frank O'Connor (Ruth Ellinghusen, Zeta), October 18, a son.

Pledges and Initiates

ALPHA CHI

Initiates

Helen Samouce
Catherine Spears
Mary Crawford

ALPHA RHO

Initiates

Bessie Free, 716 S. Main St., Bryan, Ohio.
Dorothy James, 385 Grove Ave., Galion, Ohio.
Jane Ellis, 10722 Orville Ave., Cleveland, Ohio.
Dorothy Doxee, R. F. D. 4, Massillon, Ohio.
Elizabeth Allen, 121 N. Main St., Miamisburg, Ohio.
Eudora Dye, Rockford, Ohio.
Marie Smott, 346 E. King Ave., Lancaster, Ohio.

ALPHA

Pledge

Ruth Bennett, Chicago, Ill.

BETA

Pledges

Dorothy Eulenstein, Brooklyn, N. Y.
Helen Grant, Ithaca, N. Y.
Dorothy Knapton, Long Island, N. Y.
Marjorie Jacobs, Oneida, N. Y.
Mary MacDonald, Ithaca, N. Y.
Frances Unger, Ithaca, N. Y.
Ruth Wallace, Forrestville, N. Y.

DELTA

Pledges

Betty Engle, 462 N. State, Indianapolis, Ind.
Helen Dunbar, Preston, Minn.

ETA

Pledge

Nell Rhoades, Hanover, Kan.

THETA

Pledges

Helen H. Bone, Lafayette, Ind.
Bernice Sargent, Sidney, Ohio.
Eleanor Torbert, Columbus, Ohio.
Florence Yingling, Bellvue, Ohio.

IOTA

Pledge

Arlene Wiles, Gowrie, Iowa.

KAPPA

Pledges

Edith Allen, Seattle, Wash.
Caroline Benham, Seattle, Wash.
Elna Burgeson, Seattle, Wash.
Margaret Cartano, Seattle, Wash.
Margaret Mattson, Seattle, Wash.
Helen Morgan, Hoquiam, Wash.
Margaret Rapp, Vancouver, Wash.
Janice Wilmot, Seattle, Wash.
Esther Girard, Hoquiam, Wash.
Grace Perry, Lake Chelan, Wash.
Frances Rawson, Puyallup, Wash.

MU

Pledge

Dorothy Brown, Fresno, Cal.

NU

Pledges

Violet Field, Galesburg, Ill.
Ruth Webb, Stockton, Ill.
Pearl Jackson, Bushnell, Ill.
Pearl McCabe, Galesburg, Ill.
Veda Sweat, Lafayette, Ill.
Arlene Johnson, Galesburg, Ill.

PI

Pledge

Florence Gibson

SIGMA

Pledges

Luna Mae Barron, Sulphur, La.
Vera Booze, Monroe, La.
Mary Breathwit, Farmerville, La.

Cecile Carpenter, Zachary, La.
 Ertith Green, Baton Rouge, La.
 Nell Gribble, Plaquemine, La.
 Ruth Guyton, White Castle, La.
 Mary Alice Hebert, Baton Rouge, La.
 Pansy Inabnett, Minden, La.
 Frances Judd, DeQuincy, La.
 Myrtle Pipes, Amite, La.
 Frances Sheets, Baton Rouge, La.
 Rebecca Simmons, Enterprise, Ala.
 Mary Wall, Zachary, La.

UPSILON

Pledges

Hazel Gunderson, Grand Forks, N. Dak.
 Ellen Gunderson, Grand Forks, N. Dak.
 Volberg Oslund, Grand Forks, N. Dak.
 Mildred Nelson, Grand Forks, N. Dak.
 Alice Johnson, Grand Forks, N. Dak.
 Lillian Klagos, University, N. Dak.
 Kathleen Bolstad, Northwood, N. Dak.
 Ruby Pederson, Grand Forks, N. Dak.
 Irma Beaty, Carrington, N. Dak.
 Myrtle Lee, Carrington, N. Dak.
 Grace Scott, Buxton, N. Dak.
 Emma Newgard

XI

Pledges

Esther Anishansel, 2335 Flora Ave.
 Mary Cochnower, 2616 University Court.
 May Crary, 2559 Roseland Ave.
 Dorothy Cummings, Larch and Davey Ave.
 Florence Dalzell
 Margaret Doran, 3419 Berry Ave.
 Harriet Grever, 258 Albany Ave.
 Doris Hodge, 4436 Lucerne Ave.
 Alice Huenefeld, 3350 Woodburn Ave.
 Mary Virginia Jameson, 2331 Grandview Ave.
 Betty Mirrieles, 3644 Archer Ave.
 Louise Ray, 3584 Mooney Ave.
 Jean Schillinger, 4212 Mooney Ave.
 Dorothy Spence, 4711 Winona Ave.
 Catherine Sturwold, 2841 Harrison Ave.

OMICRON

Pledges

Ruth Stultz, Chartiers Ave., McKees Rocks, Pa.
Jess Rayburn, 126 Prospect Ave., Ingram, Pa.
Florence Hulton, 1025 Fifth St., Oakmont, Pa.

CHI

Pledges

Maud Jennings, Boise, Idaho.
Carrie Jennings, Boise, Idaho.
Dorothy Cannon, Portland, Ore.
Florence Kruse, Portland, Ore.
Hilda Springmier, Portland, Ore.
Katherine Lindley, Klamath Falls, Ore.
Elva Slottee, Astoria, Ore.
Dagny Rudback, Astoria, Ore.
Inez Johnson, North Powder, Ore.

PSI

Pledges

Audra Bedster, West Baden, Ind.
Alice Butler, Linton, Ind.
Nellie Duncan, Franklin, Ind.
Marjorie Gray, Peru, Ind.
Georgia Gunder, Brownstown, Ind.
Helen Linkenheldt, Franklin, Ind.
Naomi Mason, Martinsville, Ind.
Mildred Phillips, Spencer, Ind.
Gretchen Scharf, Crawfordsville, Ind.
Blanche Stucker, Franklin, Ind.

OMEGA

Pledges

Lela Boyer, Portland, Ore.
Constance Coulter, Portland, Ore.
Dorothy Dodds, Bend, Ore.
Jean Ross, Portland, Ore.
Marguerite Rusho, Roseburg, Ore.
Mildred Klepper, Portland, Ore.
Aileen Mordoff, Klamath Falls, Ore.
M. M. Sweeney, Medford, Ore.
Lois Prinzing, Nampa, Idaho
Miriam Heath, Grass Valley, Ore.
Nina Kitts, Portland, Ore.

Grace Thomas, Valsetz, Ore.
Doris Efteland, Portland, Ore.
Ethel Helliwell, Portland, Ore.
Eleanor Doughty, San Francisco, Cal.
Winifred Morris, Eugene, Ore.
Margaret Hargus, Klamath Falls, Ore.
Doris Nicolle, Santa Clara.
Eve Forstrom, North Powder, Ore.

ALPHA BETA

Pledge

Janet Shirley, 3020 N. Illinois St., Indianapolis, Ind.

ALPHA GAMMA

Pledges

Ruby Gulley, Tuscaloosa, Ala.
Daisy Flippen, Sheffield, Ala.

ALPHA EPSILON

Pledge

Mrs. Flora McMurtry, Spokane, Wash.

ALPHA THETA

Pledges

Mary Jane Lyle, Owensboro, Ky.
Margaret Lyle, Owensboro, Ky.

ALPHA KAPPA

Pledge

Mary Grant, Fairhaven, N. Y.

ALPHA MU

Pledges

Anna Bergin, Ogdensburg, N. Y.
Sophia Ball, Theresa, N. Y.
Ruth Miller, Munson, Mass.
Bernice Shutts, Tupper Lake, N. Y.
Dorothy Tate, Tupper Lake, N. Y.
Florence Eagan, Lake Placid, N. Y.
Elsie Weiser, Boyertown, Pa.
Mary Moses, De Kalb Jct., N. Y.
Inez Hodge, Spragueville, N. Y.

ALPHA SIGMA

Pledges

Enid Lee Adair, Lakeland, Fla.
Doris Bartlett, Ocoee, Fla.
Anna May Cannon, Jacksonville, Fla.
Charlotte Chazal, Ocala, Fla.
Madeline Fleming, Jacksonville, Fla.
Ireme Hopkins, Live Oak, Fla.
Miriam Johnson, Monticello, Fla.
Mary Carolyn Logan, Ocala, Fla.
Julia Quillen, Hartford, Ala.
Madge Rivers, Kissimmee, Fla.
Esther Maud Saunders, Sebring, Fla.
May Shealy, Dothan, Ala.
Elizabeth Shingler, Leesburg, Fla.
Elizabeth Wetherbee, Leesburg, Fla.



OMEGA PLEDGES

Our '24 Seniors and Their Activities

ALPHA

Leah Rose, Teaching, Hamilton, Ohio.
Alice Kimmel, Teaching, New Madison, Ohio.
Vera Anderson, Girls' Work Secretary, Muncie, Ind.
May Drake (Joyner), Y.W.C.A. Secretary at Miami.
Helen Hooven, Secretary of Scripps Foundation of Sociological Research at Miami University.
Armina Sturm, At home.
Pauline Smith, At home.
Eleanor Lafferty, Domestic Art teacher, Kent.

BETA

Marian McWhinney, Teaching.
Margaret Kelley, Dietician, Clifton Springs, N. Y.
Helen Tewksbury, Teaching.
Helen Koerner, Teaching.

GAMMA

Ruth Greenfield, Hospital work in Minneapolis Asbury Hospital.
Hilda (Greenfield) Kiehne, Statistical work at the University Farm.
Arlyne Ostrom, Teaching school in Welcome, Minn.
Erma Wood, Teaching in Monticello, Minn.
Dorothy McCarthy, Teaching Physical Education in Chatfield, Minn.
Iva Nelson, Traveling for Webb Publishing Co.
Ruth Moore, Teaching in Long Beach, Cal.
Sylvia Larson, Postgraduate work at Minnesota.

DELTA

Edna House, Teaching school in Bicknell, Ind.
Jane Johnson, Teaching school in Noblesville, Ind.
Marion Boyd, Teaching school in Connersville, Ind.

EPSILON

Mrs. Dorothy Walker Scott, Teaching school at Helmburg, Ind.
Edith Goings, Teaching school at Alexandria, Ind.
Margaretta Fristoe, At home Rochester, Ind.
Florence Kirlin, Secretary in psychology office of Indiana University.
Jean Swan, Teaching school at Rochester, Ind.

ZETA

Agnes Anderson, Secretary, Governor Bryan, Lincoln, Neb.
Mae Earl, History instructor, Ravanna, Neb.
Ruth Ellsworth Chapman, Housewife, Sterling, Colo.
Beth Jenkins Turnbull, Housewife, Chicago, Ill.
Clara Morris, Mathematics instructor, Ord, Neb.
Ailene Nestor, Latin instructor, Springfield, Neb.
Luella Johnson Koken, Housewife, Lincoln, Neb.
Alice Yost, At home, Lincoln, Neb.

ETA

Lucille Muenzenmeyer, Teaching, Neodesha, Kan.
Mary Read, Teaching, Melvern, Kan.

THETA

Sadie Strosnider, Teaching at Sedalia, Ohio.
Martha Bell, Teaching at Sedalia, Ohio.
Katherine Shearer, Working in a bank in Bucyrus, Ohio.
Helen Campbell, Teaching at Toledo, Ohio.
Grace Heinlein, Bucyrus, Ohio.
Thelma Seeger, Teaching at Youngstown, Ohio.

IOTA

Charlotte Fisk, Graduate work at Bryn Mawr.
Verda James, Teaching English, Algona, Iowa.
Dorothy McClenahan, At home.
Mildred Owens, Banker, West Union, Iowa.
Margaret Ragan, Graduate work in the university.
Lucille Whiting, At home, Waukee, Iowa.
Lois Sensor-Wilson, Secretary in Political Science Department in the university.

KAPPA

Anita Graybill, Taking postgraduate work.
Alice Spriesterbach, Teaching in Arlington, Wash.
Margaret Boyer, Teaching in Auburn, Wash.
Dorothy James, Living at home.
Frances Morgan, Teaching in Lake Stevens, Wash.

MU

Dorothy Duncan, Married.
Valeria Hall, Teaching in San Diego.
Winona Jones, Graduate student in physical education.
Esther Munson, Graduate student in geology.
Vera Perrott, Graduate student in French.
Mary Louise Powers, Landscape gardening.

LaVerne Williams, At home.
Dorothy Wolf, Graduate student in art.

NU

Opal Bradfield, Teaching, Elmhurst, Ill.
Evelyn Adams, Student, University of Illinois, Urbana, Ill.

XI

Sue Ely, Attending Business College.
Mildred Schmidt, Attending Business College.
Florence Roth, Taking a library course.
Betty Fisher Igler, Married and is keeping house.
Hazel Burk, Teaching school.
Dorothy DeBeck, Taking special work at the University of Cincinnati.

OMICRON

Virginia Eaton, Teaching.
Dorothy Naumann, Automobile Saleswoman.
Florence Raber, Teaching.
Leona Reschke, At home.
Loretta Weirich, Teaching.
Dorothy Vogely, At home.

PI

Hazel Miller, Teaching in Huntington Beach, Cal.
Eldora Kesler, Taking postgraduate work.
Irene Reiterman, Teaching in Washington, Ill.
Ruby Painter, Doing Religious Education work.

RHO

Pauline Garrett, Teaching public speaking, East Denver High School.
Elvie Hubbard, Substitute teaching in Denver schools.
Jessie McCallum, Substitute teaching in Denver schools.
Pauline Kleitz, Teaching in Woodrow, Colo.
Kathryn Keller, Teaching in East Lake, Colo.
Esther Simmons, Teaching Romance Languages, Alamosa, Colo.

UPSILON

Agnes Van Arsdale, At home, Conway, N. Dak.
Alice Melbye, Teaching Commercial, Morris, Minn.
Amy Peterson, Teaching, Nowthwood, N. Dak.
Dorothy Torkelson, Teaching, Cooperstown, N. Dak.
Ingeborg Sylvester, Teaching, Hitterdahl, Minn.
Marguerite Kops, Studying Design, Paris, France.
Ellen Quam, Teaching Art, Powers Lake, N. Dak.

CHI

Vivian Feike, Teaching at Melba, Idaho.
Irene Shelton, Registrar's Office, Corvallis, Ore.
Helen Ogden, Teaching at Ilwaco, Wash.
Elise Slavin, At home.
Katherine Elmer, Teaching at Newport, Ore.

PSI

Helen Caffyn, Teacher High School, Angola, Ind.
Gladys King, Teacher High School, 316 S. 4th St., Elkhart, Ind.
Olga Welch, Teacher High School, Urbana, Ind.

OMEGA

Margaret Burroughs, Stenographer in Governor Pierce's office of Oregon.
Maud Graham, Head of the Physical Education Department at Pacific University, Forest Grove, Ore.
Rose McGrew, Teaching school.
Beulah Wright, Teaching school at Silverton, Ore.

ALPHA ALPHA

Mary Myers, 819 Elberon Ave., Cincinnati, Ohio. Taking a secretary's course.

Catherine O'Gara, At home 4726 N. Winchester Ave., Chicago, Ill.

Katherine Butterfield, University of Oregon, Eugene, Ore. Assistant to the dean and secretary to the head of the Geology Department. Katherine is working for her master's degree.

Emily Heidemann, Walla Walla, Wash. Head of the Latin Department in St. Paul's Academy.

Mabel Schmitz, 4816 N. Hermitage Ave., Chicago, Ill., Editor to the *Scale Journal*.

ALPHA BETA

Margaret Hoefflin, Student at Moser Business College.

Dorothy Gee, At home.

Audrea Miller, At home.

Lucia Miller, Teaching at Sterling, Ill.

Abbie Jacobs, Teaching at Waverly, Ill.

Marie Ivy, Marshall Field's.

Hedwig Downs, At home.

Florence Harding, University of Illinois Library.

ALPHA GAMMA

Naomi Poole, Teaching.

Frances Pickens, Teaching.

Purcell Corley, Teaching.

Marion Bishop, Married.

Mary Jane Eiland, Teaching.

Louisa Wheeler, Married.

Nelle Duke, Teaching.

Gladys Clayton, Teaching.

ALPHA EPSILON

Velma Anderson, Teaching Home Economics in the High School at Edmond, Okla.

Myrtle Leitch, Teaching Home Economics at Frederick, Okla.

ALPHA ETA

Love Barnett, Teaching botany, New Castle, Ind.

Norma Bowbeer, Teaching physical education, Detroit, Mich.

Catherine Jones, Teaching history and mathematics, Junior High School, Detroit, Mich.

Jean MacCauley, Teaching junior high school mathematics, Detroit, Mich.

Lillian Prance, Teaching junior high school mathematics, Flint, Mich.

Alene Davis, Secretary of Michigan Children's Aid, Flint, Mich.

Louise Mattern, University Hospital, Ann Arbor, Mich.

Alfrieda Barth Kessler, Housewife, Ann Arbor, Mich.

Margaret Koon MacKenzie, Housewife, Lansing, Mich.

Lucile Chalmers, Postgraduate work in mathematics, University of Michigan.

Jewel Heiser, Postgraduate work in School of Business, Cleveland, Ohio.

ALPHA THETA

Bernice Bird Browning, Teaching at Williamsburg, Ky.

Gertrude Collins, Mayslick, Ky.

Virginia Duff, Mount Sterling, Ky.

Gwendolyn Purdom, Teaching at Murray, Ky.

Jean Crow, Teaching at Paintsville, Ky.

ALPHA KAPPA

Olive Bishop, Teacher.

Wilhelmina Colels, Librarian.

Iva Hawkins, Teacher.

Cornelia Henderson, Librarian.

Florence Morehouse, Teacher.

Ruth Shattuck, Teacher.

Bessie Thomas, Teacher.

Elsie Welker, At home.

Jessie Weaver, Secretary.

ALPHA MU

Ethel Hardick, Assistant social worker.

Grace Woodcock, Married.

Zelma Bancroft, Teaching.

Iola Bull, Teaching.

Marianne Oberton, Teaching.

Delta Zeta Fraternity

Founded at Miami University October 24, 1902

GUY POTTER BENTON, D.D., LL.D., *Grand Patron*

FOUNDERS

ALFA LLOYD HAYES
ANNA KEEN DAVIS
MABELLE MINTON HAGEMANN

ANNA SIMMONS FRIEDLINE
MARY COLLINS GALBRAITH
JULIA BISHOP COLEMAN

NATIONAL COUNCIL

National President.....JULIA BISHOP COLEMAN (Mrs. J. M.)
104 Riverside Drive, Loveland, Ohio

National Vice-president.....GEORGIA CHANDLER HORNUNG (Mrs. H. V.)
8238 Lawton Ave., Detroit, Mich.

National Secretary.....EDYTHE WILSON THOESEN (Mrs. H. J.)
Canon Park, Boulder, Colo.

National Treasurer.....MYRTLE GRAETER MALOTT (Mrs. Carl)
931 W. Craig Place, San Antonio, Tex.

Editor of LAMPVERA BROWN JONES (Mrs. E. E.)
1115 Church St., Evanston, Ill.

Historian.....GRACE E. MASON
1340 Park Ave., Indianapolis, Ind.

Executive SecretaryGRACE E. MASON
1340 Park Ave., Indianapolis, Ind.

Delta Zeta Panhellenic DelegateRENE SEBRING SMITH
Y.W.C.A., Long Beach, Cal.

President of National Panhellenic.....DR. MAY AGNESS HOPKINS, Z T A
619 Medical Arts Building, Dallas, Tex.

STANDING COMMITTEES OF DELTA ZETA

Social Service: Arema O'Brien Kirven (Mrs. Frank), 27 Berkeley Place, Columbus, Ohio; Alene Davis, Δ Z House, Ann Arbor, Mich.; Amanda Thomas, Box 511, Columbus, Ohio; Mrs. Frank Harper, 9 Berkeley Place, Columbus, Ohio.

Health Committee: Dr. Helen Johnston, 1005 Bankers Trust Bldg., Des Moines, Iowa; Dr. Wilhelmina Scott, Lancaster General Hospital, Lancaster, Pa.; Dr. Mary Hill Fulstone, Wellington, Nev.; Melva John, Emergency Hospital, Washington, D. C.; Gladys M. Taggart, 1544 10th St., Des Moines, Iowa.

Examination and Educational: Evalene Kramer Sullivan (Mrs. M. F.), Chairman, Ft. Riley, Kan.; Izil Polson, 1111 Bluemont Ave., Manhattan, Kan.; Jean Spiers Helgeson (Mrs. Gail), Aberdeen, S. D.

Scholarship: Louella Hall, Hotel Lodi, Lodi, Cal.

Extension: Edythe Wilson Thoesen.

Constitution: Violet Ironmonger, Mountain Lakes, N. J., chairman; Mildred French, 417 W. 120th St., New York, N. Y.; Mrs. Mary Dranga Campbell, Callowhill St., East End, Pittsburgh, Pa.; Margaret Gladney, Box 494, Beaumont, Tex.

House Management: Irene Boughton, 3824 Jackson St., Sioux City, Iowa; Marion Burns, 34th and Frederick Sts., Kansas City, Mo.; Mrs. J. R. Thompson, 1340 R St., Lincoln, Neb.; Louise Mattern, 816 Hill St., Ann Arbor, Mich.

Songbook: Virginia Smith, 3113 E. Cherry St., Seattle, Wash.; Dorothy Wigman, 103 Overbrook Blvd., Mt. Oliver Branch, Pittsburgh, Pa.; Evelyn Ross, 1174 Ashland Ave., Columbus, Ohio; Mrs. M. Jerome Hubert, Delmoor Bldg., Cincinnati, Ohio.

Vocational Guidance: Bertha Rogalsky, 138 Kinsey Ave., Cincinnati, Ohio; Thelma Jones, Mary Lou Wickerson, 10 Bella Vista Place, Cincinnati, Ohio.

Finance: Myrtle Graeter Malott, 931 W. Craig Place, San Antonio, Tex., chairman.

Leila B. Colwell, 904 Bluemont, Manhattan, Kan.

P

Z

T

A E

H

Bernice Klotz, Wilson, Kan.

Δ

E

O

Ψ

Θ

Constance Stegenga, 120 Hitchcock, Alpena, Mich.

A A
A B
Γ
Ξ
A P

Mrs. Leah McIntyre Rearden, 302 Physicians Bldg., Sacramento, Cal.

A I
M
K
A A
T

Barbara Murray, 310 S. 35th St., Billings, Mont.

B
A M
A K
Σ
A Γ

Esther Simons, 404 West Ave., Alamosa, Colo.

A Θ
A Ξ
A Π
N
Π

Sallie Boyle, San Francisco, Cal.

A H
A N
A
I
X

Florence L. Becker, Liberty, N. Y.

A Z
A Δ
A O
A Σ
(A T) A
A T
Φ
Ω

Beulah Nelson, Cashmere, Wash.

Convention: June 1926—Berkeley, Cal. Mu Chapter hostesses

Provinces of Delta Zeta Fraternity

ALPHA PROVINCE

President—Marcelle Pendery, 880 W. 181 St., New York, N. Y.

COLLEGE

BETA—Cornell University, Ithaca, N. Y.

OMICRON—University of Pittsburgh, Pittsburgh, Pa.

ALPHA ZETA—Adelphi College, Brooklyn, N. Y.

ALPHA KAPPA—Syracuse University, Syracuse, N. Y.

ALPHA MU—St. Lawrence University, Canton, N. Y.

ALPHA UPSILON—University of Maine, Orono, Me.

ALUMNÆ

New York, N. Y.

Pittsburgh, Pa.

BETA PROVINCE

President—Catherine Winters, Florida State College for Women, Tallahassee, Fla.

COLLEGE

SIGMA—Louisiana University, Baton Rouge, La.

ALPHA DELTA—George Washington University, Washington, D. C.

ALPHA GAMMA—University of Alabama, University, Ala.

ALPHA OMICRON—Brenau College, Gainesville, Ga.

ALPHA PI—Howard College, Birmingham, Ala.

ALPHA SIGMA—Florida State College, Tallahassee, Fla.

ALPHA XI—Randolph-Macon Woman's College, Lynchburg, Va.

ALUMNÆ

Washington, D. C.

GAMMA PROVINCE

President—Gladys Hartman Ruoff (Mrs. F. L.), 783 East Drive, Woodruff Place, Indianapolis, Ind.

COLLEGE

ALPHA—Miami University, Oxford, Ohio.

DELTA—DePauw University, Greencastle, Ind.

EPSILON—Indiana University, Bloomington, Ind.

THETA—Ohio University, Columbus, Ohio.

XI—University of Cincinnati, Cincinnati, Ohio.

PSI—Franklin College, Franklin, Ind.

ALPHA ETA—University of Michigan, Ann Arbor, Mich.

ALPHA THETA—Kentucky State University, Lexington, Ky.

ALPHA NU—Butler College, Indianapolis, Ind.

ALPHA RHO—Ohio Wesleyan University, Delaware, Ohio.

ALUMNÆ

Indianapolis, Ind.

Cincinnati, Ohio.

Columbus, Ohio.

Cleveland, Ohio.

Ft. Wayne, Ind.

Franklin, Ind.

La Fayette, Ind.

Detroit, Mich.

DELTA PROVINCE

President—Lois Higgins, 5427 University Ave., Chicago, Ill.

COLLEGE

GAMMA—University of Minnesota, Minneapolis, Minn.

IOTA—Iowa State University, Iowa City, Iowa.

NU—Lombard College, Galesburg, Ill.

PI—Eureka College, Eureka, Ill.

TAU—University of Wisconsin, Madison, Wis.

UPSILON—University of North Dakota, Grand Forks, N. Dak.

ALPHA ALPHA—Northwestern University, Evanston, Ill.

ALPHA BETA—University of Illinois, Champaign, Ill.

ALUMNÆ

Chicago, Ill.

Eureka, Ill.

EPSILON PROVINCE

President—Fannie Putcamp Smith (Mrs. F. D.), Southern Methodist University, Dallas, Tex.

COLLEGE

ZETA—University of Nebraska, Lincoln, Neb.

ETA—Baker University, Baldwin, Kan.

LAMBDA—Kansas State Agricultural College, Manhattan, Kan.

ALPHA EPSILON—Oklahoma State College, Stillwater, Okla.

ALPHA TAU—University of Texas, Austin, Tex.

ALUMNÆ

Lincoln, Neb.

Kansas City, Mo.

ZETA PROVINCE

President—Margaret Pope Fraser (Mrs. Harold E.), 1456 Sacramento St., San Francisco, Cal.

COLLEGE

MU—University of California, Berkeley, Cal.

RHO—Denver University, Denver, Colo.

ALPHA IOTA—University of Southern California, Los Angeles, Cal.

ALPHA LAMBDA—University of Colorado, Boulder, Colo.

ALUMNÆ

San Francisco, Cal.

Denver, Colo.

Los Angeles, Cal.

ETA PROVINCE

President—Ruby Long, Cashmere, Wash.

COLLEGE

KAPPA—University of Washington, Seattle, Wash.

PHI—State College of Washington, Pullman, Wash.

CHI—Oregon Agricultural College, Corvallis, Ore.

OMEGA—University of Oregon, Eugene, Ore.

ALUMNÆ

Seattle, Wash.

Portland, Ore.

Spokane, Wash.

Chapter Directory

ALUMNÆ

Berkeley, Cal.

President—Helen Wetzel, 1943 Marin Ave.
Secretary—Dorothy Morton, 946 San Benito.
Treasurer—Helen Kendall Chapman, 6420 Telegraph Ave., Oakland.
Editor—Elsie Jaeggi, Oakland High School, Twelfth and Jefferson Ave., Oakland.

Chicago, Ill.

President—Ruth Gaddis Jeffries (Mrs. Robt.), 5445 Cornell Ave.
Treasurer—Aura Splinter, 1442 Belleplaine Ave.
Secretary—Camille Branham, 613 Fullerton Parkway.
Editor—Helen Trimpe, 529 Wellington Ave.

Cincinnati, Ohio.

President—Mrs. M. Jerome Hubert (Dorothy Smith), Romaine Apartments.
Secretary—Mrs. Wm. Maxwell Fuller (Lucy Draper), 3332 Morrison Ave.
Treasurer—Mrs. Edward C. Marshall (Edith Durrell), Ridge Ave.

Cleveland, Ohio.

President—Ruth Davis, Theta, 10305 Lake Ave.
Secretary—Mildred Foureman, Theta, 3138 Kensington Rd., Cleveland Heights, Ohio.
Treasurer—Marvene Howard, Alpha, c/o Cleveland Electric Illuminating Co., Cleveland, Ohio.

Columbus, Ohio.

President—Amanda Thomas, Box 511.
Secretary—Hazel Stevens (Mrs. W. A.), 1046 Linwood Ave.
Treasurer—Marie Smith Baber (Mrs. John), West Jefferson, Ohio.

Denver, Colo.

President—Mrs. Minnie Ellison Gray (Mrs. Howard), 5300 W. 41st Ave., Denver.
Secretary—Bernadetta Daly, 1357 Kalamath St.
Treasurer—Miriam O'Brien, 1654 S. Pearl St.
Chapter Editor—Dorothy Leslie, R. 2, Box 490, Edgewater, Colo.

Detroit, Mich.

Eureka, Ill.

Ft. Wayne, Ind.

President—Marie Thrush.
Treasurer—Virginia Jackson.
Secretary—Marion Thrush Weathers, Garrett, Ind.
Editor—Ruth McDaniels.

Indianapolis, Ind.

President—Mrs. Walter Smuck, 2816 Ruckle St.
Vice-president—Mrs. Robert Allen, 3272 McPherson.
Secretary—Mrs. Frank Abel, 2108 N. Meridian, No. 22.
Treasurer—Helen Pearson, 2932 Central.

Kansas City, Mo.

President—Marion Burns, 2502 N. 34th St., Kansas City, Kan.
Secretary—Beulah Kelly, 944 Ann Ave., Kansas City, Kan.
Treasurer—Mrs. R. D. Marquis, 3408 Smart Ave., Kansas City, Mo.
Chapter Editor—Esther Weber, 1415 Walker Ave, Kansas City, Kan.

Lincoln, Neb.

President—Elizabeth Enyeart Thompson (Mrs. J. F.), 1340 R St.
Secretary-Treasurer—Ruby Knepper, 2045 Pepper Ave.
Editor—Lila Belle Love, 1448 South St.

Los Angeles, Cal.

President—Mrs. Fred H. Stone, 1566 W. 51st St.
Secretary—Regina Reis, 96 W. Emerson, Monterey Park, Cal.
Treasurer—Pauline Parkhurst, 6142 Afton Place, Hollywood, Cal.
Editor—Gladys E. Marquardt, 376 Broadway, Huntington Park, Cal.

Omaha, Neb.

President—Geneva Hursh Beck (Mrs. A. V.), 2555 Meredith Ave.
Secretary—Clara Dodds Bristol (Mrs. John), 2538 Dodge St.
Treasurer—Rose Bergman Rosenblum (Mrs. A.), 5120 Izard St.

New York, N. Y.

President—Violet M. Ironmonger, Mountain Lakes, N. J.
Vice-president—Marion C. Schaaf, 1913 Bogart Ave., New York, N. Y.
Secretary—Dorothy Schumann, 71 Winthrop St., Brooklyn, N. Y.
Treasurer—Dorothy King, 387 E. 5th St., Brooklyn, N. Y.
Editor—Kathleen Robertson, Apt. 47, 618 W. 177th St., New York, N. Y.

Pittsburgh, Pa.

President—Elizabeth Askin, 1 Wheeler Ave., Ingram, Pa.
Secretary and Editor—Margaret Ralston Wilson, 214 W. North Ave.,
Pittsburgh, Pa.
Treasurer—Elizabeth Austen, 305 Center St., Aspinwall, Pa.

Portland, Ore.

President—Naomi Coffield, 710 Porter Bldg.
Secretary—Alice Feike Weiman, 1009 E. 16th St. N.
Treasurer—Jean Kitts, 1434 Wisteria Ave.

Seattle, Wash.

President—Gertrude Sisler, 711 Thirty-third Ave.
Secretary and Treasurer—Dorothea Jackson, 1847 Shelby.
Editor—Clara Penberthy Wilson (Mrs. G. E.), 2837 Thirty-third Ave. S.

Spokane, Wash.

Washington, D. C.

President—Mrs. Dorothy D. Zirkle, The Calverton, Washington, D. C.
Secretary—
Treasurer—Mrs. E. Remington Kellogg, 4003 Eighth St., N. W., Wash-
ington, D. C.
Editor—Miss Alice Baldwin, The Argyle Apt., Washington, D. C.

COLLEGE

ALPHA—Miami University, Oxford, Ohio.

President—Marian Parker, 30 Wells Hall.
Secretary—Camilla Fry, 34 Wells Hall.
Treasurer—Frances Helen Mains, 40 Wells Hall.
Editor—Florence Hill, 47 Wells Hall.
Big Sister—Mrs. Park J. Smith.

BETA—Cornell University, Ithaca, N. Y.

House—200 Highland Ave.
President—Leona Ruoff, ΔZ House.
Treasurer—Anita Gehan, ΔZ House.
Secretary—Esther Conroy, Risley Hall.
Editor—Mary Gilchrist, Risley Hall.
Big Sister—Florence Becker, Liberty, N. Y.

GAMMA—University of Minnesota, Minneapolis, Minn.

House—1112 S. E. 6th St.
President—Lorinda Larson.
Secretary—Gertrude Rider.
Editor—Gertrude Johnson.
Big Sister—Mrs. W. A. Billings (Alpha), 1325 W. 27th St., Minneapolis, Minn.

DELTA—DePauw University, Greencastle, Ind.

President—Helen English.
Vice-president—Helen Schudel.
Secretary—Alba Guyer.
Treasurer—Ruth Dick.
Editor—Gladys Lane.
Big Sister—Catherine Sinclair, 2446 College Ave., Indianapolis, Ind.

EPSILON—Indiana University, Bloomington, Ind.

House—809 E. 7th St.
President—Clyde Jacobs.
Secretary—Helen Lewis.
Treasurer—Juanita Collins.
Editor—Lillyon Snyder.
Big Sister—Mrs. Frank Duncan, Gosport, Ind.

ZETA—University of Nebraska, Lincoln, Neb.

House—557 N. 16th.
President—Blanch Stevens.
Secretary—Phyllis Walters.
Treasurer—Fern Jenkins.
Editor—Constance Stevens.
Big Sister—Mrs. Mae Bennett, 2700 Ryons Ave.

ETA—Baker University, Baldwin, Kan.

House—720 Dearborne St.
President—Maude McComas.
Secretary—Evelyn Mills.
Treasurer—Ruth Burns.
Editor—Ethel Homer, 202 Baker St.
Big Sister—Beulah Kelly, Muncie, Kan.

THETA—Ohio State University, Columbus, Ohio.

House—76 Fifteenth Ave.

President—Marjorie Van Bolt, 85 E. Oakland Ave.

Secretary—Gertrude Reed.

Treasurer—Carol Van Bolt.

Editor—Kathryn Kauffman.

Big Sister—Arema O'Brien Kirven, 27 Berkeley Place.

IOTA—Iowa State University, Iowa City, Iowa.

House—400 N. Clinton.

President—Esther Van Cleave.

Secretary—Lorraine Luthmer.

Treasurer—Virginia Douglas.

Editor—Judith Tornell.

Big Sister—Dorothy Banks, Burlington, Iowa.

KAPPA—University of Washington, Seattle, Wash.

House—4535 Eighteenth St.

President—Laura Beager, 4535 18th N. E.

Secretary—Dorothy Benham, 1204 E. 75th St.

Treasurer—Louise Ellinger, 4535 18th N. E.

Editor—Amelia Nichols, 610 Twenty-second Ave. N.

Big Sister—Gertrude Sisler, 711 33rd Ave.

LAMBDA—Kansas State Agricultural College, Manhattan, Kan.

House—1111 Bluemont.

President—Irene Barner.

Secretary—Anna Mae Davy.

Treasurer—Ruth Davison.

Editor—Edith Norris.

Big Sister—Izil Polson, 830 Bertrand.

MU—University of California, Berkeley, Cal.

House—2311 LeConte St.

President—Virginia Vail.

Secretary—Dorothy Cooper.

Treasurer—Mary Greenberg.

Editor—Marjorie Lewin, 136 Parkside.

Big Sister—Salome Boyle.

NU—Lombard College, Galesburg, Ill.

President—Ludella Malcolm, 767 Bateman St.

Secretary—Maurie Nelson, 67 N. Pearl St.

Treasurer—Lucille Thompson, R.F.D. 6, Galesburg, Ill.

Editor—Marion Quigley, 1042 N. Broad St.

Big Sister—Edna Thoreen, 1115 E. Main St.

XI—University of Cincinnati, Cincinnati, Ohio.

President—Mary McEvelly, 2525 Observatory Road, Hyde Park, Cincinnati, Ohio.

Secretary—Virginia Dale, 2256 Park Ave., Walnut Hills, Cincinnati, Ohio.

Treasurer—Dorothy Hetzel, 2840 Linwood Road, Hyde Park, Cincinnati, Ohio.

Editor—May E. Oliver, 6262 Robison Road, Pleasant Ridge, Cincinnati, Ohio.

Big Sister—Elaine DeBeck Fisher (Mrs. Cherrington).

OMICRON—University of Pittsburgh, Pittsburgh, Pa.

Chapter Rooms—1401 Bryn Mawr Road.

President—Magdalene Austen, Center Ave., Aspinwall, Pa.

Secretary—Margaret Boleky, Orchard Ave., Bellevue, Pa.

Treasurer—Katherine Morrison, 14 Dewey Ave., Ingram, Pa.

Editor—Helen R. Milar, 501 Library Ave., Carnegie, Pa.

Big Sister—Niella Snyder Reese, Idlewood St.

PI—Eureka College, Eureka, Ill.

House—Eureka, Ill.

President—Frances Robeson.

Secretary—Louise Coleman.

Treasurer—Josephine Felter.

Editor—Josephine Smith.

Big Sister—Mary Hoover Jones.

RHO—Denver University, Denver, Colo.

House—1950 S. University Ave.

President—Margaret Beatty, 2142 S. Milwaukee.

Secretary—Roberta McCallum, 2823 Vallejo St.

Treasurer—Dorothy Ellis, 2500 E. 11th Ave.

Editor—Sylvia Morrow, 1622 Dawning St.

Big Sister—Mrs. Lola Sylvester, 264 S. Grant St.

SIGMA—Louisiana University, Baton Rouge, La.

House—542 Boyd Ave.

President—Lavina McGuire.

Secretary—Marie Louise Berrel, 215 St. Charles.

Treasurer—Sarah Maxie Simmons, 132 St. Joseph's St.

Editor—Rachel Violette.

Big Sister—Effie May Dewitt, 325 Royal St.

TAU—University of Wisconsin, Madison, Wis.

House—10 Langdon St.

President—Lorraine Kreatz

Secretary—Martha Dalrymple.

Treasurer—Gwendolyn Drake.

Editor—Clara Eberly.

Big Sister—

UPSILON—University of North Dakota, Grand Forks, N. Dak.

House—315 Hamline St.

President—Janice Simonstad, 706 Walnut St.

Secretary—Lois Ferguson—East Grand Forks, Minn.

Treasurer—Olive Berget.

Editor—Katherine Pratt, 419 N. 5th St.

PHI—State College of Washington, Pullman, Wash.

House—511 Colorado.

President—Gertrude Tunnard.

Secretary—Dorothy Butler.

Treasurer—Myrtle Burnham.

Editor—Ruth Henrichsen.

Big Sister—Flossie Folsom, 2112 N. Howard, Spokane, Wash.

CHI—Oregon State College, Corvallis, Ore.

House—3 Park Terrace.

President—Ruth Slottee.

Secretary—Georgia M. English.

Treasurer—Lois Fendall.

Editor—Alice McCool.

Big Sister—Zelta Feike.

Psi—Franklin College, Franklin, Ind.

House—Franklin, Ind.

President—Mary Packer.

Secretary—Mary Ring.

Treasurer—Dorothy Best.

Editor—Berdina Donaldson.

OMEGA—University of Oregon, Eugene, Ore.

House—381 E. 12th St., Eugene, Ore.

President—Gertrude Helen Houk.

Secretary—Doris Parker.

Treasurer—Nell Miller.

Editor—M. Glenna Fisher.

Big Sister—Alys Sutton McCroskey (Mrs. Lyle).

ALPHA ALPHA—Northwestern University, Evanston, Ill.

President—Annette Mayhew, 6967 Sheridan Road, Chicago.

Secretary—Vivienne Morin, 635 Maple Ave., Wilmette, Ill.

Treasurer—Bertha Shoemaker, 1725 Orrington Ave., Evanston, Ill.

Editor—Harriet Gorby, 1411 Main St., Evanston, Ill.

Big Sister—Pauline Edwards Dodd (Mrs. C. A.), 4407 Magnolia Ave., Chicago, Ill.

ALPHA BETA—University of Illinois, Champaign, Ill.

House—509 E. Chalmers St.

President—Helen Zick.

Secretary—Ethel Mortenson.

Treasurer—Florence Frier.

Editor—Ilah Mendenhall.

Big Sister—Dorothy Gee, Lawrenceville, Ill.

ALPHA GAMMA—University of Alabama, University, Ala.

President—Augusta Parr.

Secretary—Thyra Muckle.

Treasurer—Gertrude Clap.

Editor—Gladys Oglesby.

Big Sister—Sara Newsom.

ALPHA DELTA—George Washington University, Washington, D. C.

Rooms—2022 G St. N. W.

President—Vera Stafford, 2905 Eleventh St. N. W.

Secretary—Ida May Lang, 25 Adams St.

Treasurer—Martha Morgan, 214 Eighth St. N. E.

Editor—Olive Chace, 6 W. Virginia St., Chevy Chase, Md.

ALPHA EPSILON—State Agricultural College, Stillwater, Okla.

House—308 Jefferson St.

President—Vera Vandenburg.

Secretary—Lucille Hunt.

Treasurer—Letha B. Gould.

Editor—Alice Fountain.

Big Sister—Miss Marian Burns, Kansas City, Kan.

ALPHA ZETA—Adelphi College, Brooklyn, N. Y.

President—Helen Jean Ross, 252 Rugby Road.

Secretary—Esther Keck, 352 Argyle Road.

Treasurer—Marjorie Atkins, 1424 Caton Ave.

Editor—Josephine Sanchez, 1572 Seventy-third St.

Big Sister—Miss Harriet B. Littig, 7 Summit Rd., Port Washington, N. Y.

ALPHA ETA—University of Michigan, Ann Arbor, Mich.

House—816 Hill St., Ann Arbor, Mich.

President—Thyra Sheffield.

Secretary—Joy Carp.

Treasurer—Elinor Bauschard.

Editor—Sarita Davis.

Big Sister—Ruth Simering, Epsilon, Romeo, Mich.

ALPHA THETA—University of Kentucky, Lexington, Ky.

House—110 High St.

President—Mary Elizabeth Depew.

Secretary—Ann Williams.

Treasurer—Mary Stallings.

Editor—

Big Sister—Mrs. Kenneth Crawford, 620 S. Fort Thomas St., Fort Thomas, Ky.

ALPHA IOTA—University of Southern California, Los Angeles, Cal.

House—902 W. 30th St.

President—Yvonne MacFadden.

Secretary—Beata Giddings.

Treasurer—Jessie Earl.

Editor—Jean Delavan.

Big Sister—Lucille Goodykoontz, 837 S. Burlington.

ALPHA KAPPA—Syracuse University, Syracuse, N. Y.

House—100 Waverly Ave.

President—Mildred Curtiss.

Secretary—Elizabeth Woodman.

Treasurer—Ethel McCarney.

Editor—Marguerite Risley, 867 Sumner Ave.

Big Sister—Mrs. D. B. McLean, 417 S. Crouse Ave.

ALPHA LAMBDA—University of Colorado, Boulder, Colo.

House—1506 Twelfth St.

President—Phoebe Gaumer.

Secretary—Anne Trimble.

Treasurer—Claire Ohlson.

Editor—Florence Goure, 1042 Tenth St.

Big Sister—Edythe Wilson Thoesen, Cañon Park.

ALPHA MU—St. Lawrence University, Canton, N. Y.

House—5 University Ave.

President—Gladys Mount.

Secretary—Marian Lawrence, 5 Harrison St.

Treasurer—Dorothy Pollock, 19 Elm St.

Editor—Bernice McGill.

Big Sister—Ethel Hardick, King's Park, Long Island, Box A.

ALPHA NU—Butler College, Indianapolis, Ind.

House—5815 E. Washington St.

President—Alberta Coburn.

Secretary—Katherine Fillmore.

Treasurer—Zerelda Rubush.

Editor—Kathleen Dyer.

Big Sister—Mrs. Kobert Franklin Miller, 140 Hampton Drive.

ALPHA XI—Randolph-Macon Woman's College, Lynchburg, W. Va.

President—Bowers MacKorell, Box 78, R.-M. W. C.
Secretary—Elizabeth DuBose, Box 148, R.-M. W. C.
Treasurer—Almeda Garland, Box 50, R.-M. W. C.
Editor—Annie Lee Young, Box 265, R.-M.W.C.
Big Sister—Marjorie Harris, R.-M. W. C.

ALPHA OMICRON—Brenau College, Gainesville, Ga.

Δ Z Lodge—Gainesville, Ga.
President—Leah Beth Connor.
Secretary—Sara Bridge.
Treasurer—Sibyl Strickland.
Editor—Marie Newsom.

ALPHA PI—Howard College, Birmingham, Ala.

All Mail to Box 37, East Lake, Ala.
President—Daisy Hoover.
Vice-president—Frances Newman.
Secretary—Elma Almgren.
Treasurer—Elizabeth Sadler.
Editor—Addilee Mattison.
Big Sister—Miss Peterson.

ALPHA RHO—Ohio Wesleyan University, Delaware, Ohio.

President—Margaret Johnston, Austin Hall.
Secretary—Louise Zurmehly, Monnett Hall.
Treasurer—Mary Bartter, Austin Hall.
Editor—Virginia Fleming, Monnett Hall.
Big Sister—Amanda Thomas, Box 511, Columbus, Ohio.

ALPHA SIGMA—Florida State College for Women, Tallahassee, Fla.

President—Annie Flagg Wilder, 136 Jennie Murphree Hall.
Secretary—Mary Cornelia Saunders, 132 Jennie Murphree Hall.
Treasurer—Pauline Jernigan, 129 Reynolds Hall.
Editor—Elizabeth Cartmel, 240 Jennie Murphree Hall.
Big Sister—Catherine Winters.

ALPHA TAU—University of Texas, Austin, Tex.

President—Janet Stark, Women's Building.
Secretary—Melba Mitchell, Women's Building.
Treasurer—
Editor—
Big Sister—

ALPHA UPSILON—University of Maine, Orono, Me.

President—Annie Myrtle Fuller, Balentine Hall.
Secretary—Velma Oliver.
Treasurer—Harriet Page.
Editor—Annette Matthews.
Big Sister—Edith Hilton, Greenville, Me.

A Life Subscription to The Lamp

*Costs
Only* \$25.00

any time; and may cost you less if you act NOW.

SEE ANNOUNCEMENT ELSEWHERE IN
THIS ISSUE

Send Your Subscription to

GRACE E. MASON, Executive Secretary
1340 Park Ave. Indianapolis, Ind.